

016.6307

Un3i

1988

VOCATIONAL AGRICULTURE SERVICE

Instructional Materials

1 9 8 8



THE LIBRARY OF THE
JUN 16 1988
UNIVERSITY OF ILLINOIS
LIBRARY-CHAMPAIGN

"50 years of service"

Vocational Agriculture Service
College of Agriculture
University of Illinois
1401 South Maryland Drive
Urbana, Illinois 61801
217/333-3871

NOTICE

For all billing, the University Business Office requires a **FEDERAL EMPLOYER'S IDENTIFICATION NUMBER (F.E.I.N.)** for schools and companies, or a **SOCIAL SECURITY NUMBER** for individuals. The University has established these as personalized customer numbers for accounting purposes. Your F.E.I.N. may be obtained from the person who prepares your payroll tax for the Federal government. It will be necessary to include this information on all orders to be billed.

GENERAL INFORMATION

Instructional materials in Agriculture listed in this catalog have been developed primarily for use in high schools, junior and community colleges, and universities.

Vocational Agriculture Service, a division of the College of Agriculture, University of Illinois at Urbana-Champaign, operates on a nonprofit basis. Prices for materials are calculated to cover development and production costs. Because of tax support from the state, Illinois orders are billed at a 20% discount under catalog prices, unless indicated otherwise.

Ordering Information

Orders are accepted without payment in advance from schools and other recognized institutions when accompanied by official purchase orders and F.E.I.N. or Social Security numbers as previously stated. Actual shipping charges are added to orders when billed.

Cash Orders

If payment is sent with an order, please include the following additional amounts for postage and handling:

For orders \$9.99 and under	\$1.50
For orders from \$10.00 to \$14.99 . . .	\$1.75
For orders from \$15.00 to \$24.99 . . .	\$2.00
For orders from \$25.00 to \$74.99 . . .	add 8%
For orders from \$75.00 and up	add 7%

Checks for prepaid orders should be made payable to the **UNIVERSITY OF ILLINOIS**, but sent to Vocational Agriculture Service, 1401 S. Maryland Drive, Urbana, IL 61801.

Telephone Orders

Orders may be placed by calling Vocational Agriculture Service. Please have an authorized purchase order number and Federal Employer's Identification or Social Security Number before placing your order by telephone. Call **217/333-3871**.

Payment

Orders will be invoiced shortly after materials are shipped. Payment is due upon receipt of invoice. Checks must be drawn upon a U.S. bank and payable in U.S. currency. Prices are subject to change without notice. Shipping charges are added to invoice. University policy states that accounts that are unpaid after 30 days will be charged a 1% or \$1.00 minimum monthly charge on the amount that is 30 days or more past due. Charges over one year old will be sent to a collection agency by the Accounts Receivable Section of the Accounting Division.

Returns for Credit

Written authorization for return of materials to Vocational Agriculture Service must be obtained prior to return. Credit will be issued **ONLY** if material is listed in the current catalog, is unmarked and in resalable condition. There will be a 20% restocking fee for all returns. Material must be returned prepaid within 90 days of the date of purchase. The invoice number on which the materials were billed must be included with the return.

Items returned to Vocational Agriculture Service not in resalable condition or not authorized for return will be returned to purchaser without credit.

Foreign Orders

A statement of total cost of material ordered and postage charges will be submitted before shipment. Orders must be prepaid, including surface or airmail charges. Payment must be made either in the form of a U.S. currency money order, or by check drawn on an American bank in U.S. currency.

TABLE OF CONTENTS

	Page
ANIMAL SCIENCES	
Beef Cattle	1
Breeding and Selection	2
Dairy Cattle	3
Feeds and Feeding	4
Horses	4
Meats	5
Sheep	7
Small Animals and Companion Animals	9
Swine	9
Miscellaneous	10
Other Materials	11
Judging Booklets	11
AGRICULTURAL BUSINESS	
Agribusiness Management	12
Human Relations and Salesmanship	13
Computers and Computer Software	13
Miscellaneous	14
AGRICULTURAL ECONOMICS	
Credit and Financial Management	14
Farm Planning	15
Marketing and Business Management	15
Records	16
Miscellaneous	16
AGRICULTURAL MECHANICS	
Agricultural Mechanics Shop	17
Carpentry and Construction	18
Electricity	19
Machinery	20
Small Engines	21
Surveying	22
Tractors and Large Engines	23
Welding and Metalwork	24
Miscellaneous	25
HORTICULTURE	
Floriculture	26
Fruits	28
Landscaping and Landscape Materials	29
Turfgrass	33
Vegetables	34
Miscellaneous	34
AGRONOMY	
Forages	36
Forestry	36
Grain Production	36
Pesticides	37
Soils	39
Soybeans	41
Weeds	42
Miscellaneous	43
MISCELLANEOUS	
Careers	46
FFA, SOEP, Record Books	46
Judging Materials	47
Parliamentary Procedure	48
Calendar, Report Pads, Notebooks	48

DESCRIPTION OF TEACHING AIDS

Subject-Matter Units

Units cover a particular subject and are designed for use as a text by every student in the class. They are 8½" x 11" in size and punched for three-ring notebook.

Slidefilms

Slidefilms are single-frame, 35mm color films used on a standard filmstrip projector. Some text material is generally shown on each frame so that a separate script may be unnecessary. However, most slidefilms are accompanied by a study guide or script that is included in the slidefilm price. Cassette tapes narrating study guide text are listed when available for the slidefilms.

Slide Sets

Standard 2" x 2" color slides usually include material identical to the slidefilm of the same title and number. Slide sets may have an accompanying study guide which is included in the slide set price. Cassette tapes narrating study guide text are listed for slide sets when available.

Transparencies

These are 8½" x 11" instructional illustrations printed on clear plastic for overhead projection. Each transparency is accompanied either by a printed paper copy, usually with some text on the back, or by a study guide with text. Some transparencies have cassette tapes for narration. Each set is packaged in a manila pocket folder with the title of the set stamped on the tab.

Study Guides

Study guides are 8½" x 11" printed booklets that may accompany slidefilms, slide sets, or transparency sets of the same title and number. They include reduced-size black and white picture frames adjacent to the narration or script for the frame. Study guides are used for narration, to review the presentation, and for independent study. They may be purchased separately, but are included in the price of slidefilms, slide sets, and transparency sets and are listed with accompanying visuals when available.

Cassette Tapes

Cassette tapes fit a standard cassette tape player and are used to narrate slidefilms, slide sets, or transparency sets of the same title and number. The information in the cassette is the same as contained in the study guide or script.

Color Photo Sheets and Booklets

Color photo sheets, 8½" x 11", consist of detailed close-up pictures on one side and concise descriptions on the reverse side. Weed Plants, Crop Plants, Horticulture Plant Diseases, and Field Crop Plant Diseases, Herbicide Injury, and Insects are booklets with photo sheets, 8½" x 11", spiral bound.

Diseases of Soybeans and Corn, Insect Pest Identification of Corn, Soybeans, and Alfalfa, and Vegetative Identification of Common Row-Crop Weeds are pocket sized spiral-bound booklets. These informative color photos and booklets are useful for identification purposes in the classroom or in the field.

Color Flash Cards

Flash cards have color photographs on one side and identification and a brief description on the reverse side. Cards may be used for individual or classroom instruction.

Agribusiness Selling Series and Managing for Profit Series

Both series consist of slidefilms, study guides and cassette tapes. By combining tape recordings for each series on three cassettes, the complete sets are offered at a considerable savings.

Oxyacetylene Series

This series consists of 12 slidefilms or 12 slide sets on oxyacetylene processes. Individual slidefilms or slide sets may be purchased with or without cassettes. By combining the 12 tape recordings on 6 cassettes, a complete set is offered at considerable savings. The slidefilm set only is packaged in an attractive storage box.

Please write or call for further information

VOCATIONAL AGRICULTURE SERVICE
College of Agriculture
University of Illinois
1401 S. Maryland Drive
Urbana, Illinois 61801

Telephone: 217/333-3871

BEEF CATTLE

Subject-Matter Units, Test Questions & Teacher's Keys

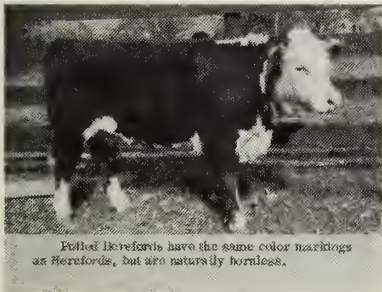
U1010b	Managing the Beef Cow Herd, 16p	\$.90
Q1010b	Test Questions, pkg. of 10	1.10
K1010b	Teacher's Key	.55
U1054	Health Problems With the Beef Cow Herd, 12p	.70
U1055	USDA Grades of Beef, 12p	.70
U1056	The Beef Breeding Enterprise, 8p	.45
Q1056	Test Questions, pkg. of 10	1.10
K1056	Teacher's Key	.55
U1057	The Feeder Cattle Enterprise, 8p	.45
Q1057	Test Questions, pkg. of 10	1.10
K1057	Teacher's Key	.55

Slidefilms, Slide Sets, Study Guides, Cassette Tapes

Selecting Beef Breeding Animals

This 75-frame slidefilm illustrates and discusses the factors that should be considered when selecting beef breeding animals.

F100a	Slidefilm, 75 fr.	\$14.85
-------	-------------------	---------



Breeds of Beef Cattle

This 26-frame slide set (or slidefilm) illustrates and describes the following eight breeds of beef cattle: Aberdeen Angus, Red Angus, Hereford, Polled Hereford, Shorthorn, Polled Shorthorn, Red Poll, and Charolais.

F102	Slidefilm, 26 fr.	\$5.15
S102	Slide Set, 26 fr.	8.60

New and Exotic Breeds of Beef Cattle

This 64-frame slide set (or slidefilm) illustrates and describes twenty new and exotic breeds of beef cattle.

F104	Slidefilm, 64 fr.	\$12.65
S104	Slide Set, 64 fr.	21.10

Aberdeen Angus Judging Classes, Part I

This 33-frame slide set (or slidefilm) includes one ring each of Angus bulls and heifers. Three views of each animal are presented as well as group pictures along with placings and official reasons.

F103-1.1	Slidefilm, 33 fr.	\$6.55
S103-1.1	Slide Set, 33 fr.	10.90

Aberdeen Angus Judging Classes, Part II

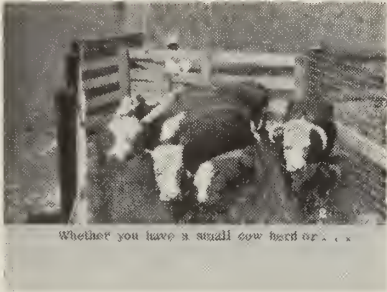
This 31-frame slide set (or slidefilm) includes one ring each of yearling heifers and crossbred steers. Two views of each animal are presented as well as group pictures along with placings and official reasons.

F103-1.2	Slidefilm, 31 fr.	\$6.15
S103-1.2	Slide Set, 31 fr.	10.25

Hereford Judging Classes: Yearling Bulls and Yearling Heifers

This 31-frame slide set (or slidefilm) includes one ring each of Hereford yearling bulls and Hereford yearling heifers. Two views of each animal are presented as well as group pictures along with placings and official reasons.

F103-2.1	Slidefilm, 31 fr.	\$6.15
S103-2.1	Slide Set, 31 fr.	10.25



Cattle Handling Facilities

This 38-frame slide set (or slidefilm) illustrates and describes cattle handling facilities such as corrals, working chutes, and blocking gates.

F187	Slidefilm, 38 fr., w/study guide	\$ 8.90
S187	Slide Set, 38 fr., w/study guide	13.90

Transparencies, Study Guides, Cassette Tapes

Cattle Transparencies

This is a set of 63 overhead transparencies printed in colored ink on clear plastic. It includes many different aspects of beef cattle production. Also included is a white paper copy of each frame with text on the back.

T100	Transparency set, 63 fr.	\$25.90
------	--------------------------	---------

BREEDING AND SELECTION

Subject-Matter Units, Test Questions & Teacher's Keys

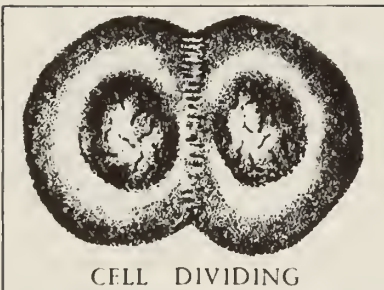
U1002b	Artificially Inseminating Livestock, 8p	\$.45
U1009a	Improving Animals Through Breeding, 16p	.90
Q1009a	Test Questions, pkg. of 10	1.10
K1009a	Teacher's Key	.55
U1019a	Judging Livestock, 20p	1.10
Q1019a	Test Questions, pkg. of 10	1.10
K1019a	Teacher's Key	.55
U1061	Using Livestock Production Records, 12p	.70

Transparencies, Study Guides, Cassette Tapes

Animal Genetics and Breeding Transparencies

This is a set of 53 overhead transparencies printed in colored ink on clear plastic. It includes many different facts and information on the topic of animal genetics and breeding. Also included is a white paper copy of each frame with text on the back.

T130	Transparency set, 53 fr.	\$22.05
------	--------------------------	---------



DAIRY CATTLE

Subject-Matter Units, Test Questions & Teacher's Keys

U1020b	Feeding Dairy Cattle, 16p	\$.90
U1022	Raising Dairy Heifers and Bulls, 8p	.45
U1025	The Cow's Udder and How It Functions, 12p	.70
U1046	Dairy Cattle Breeds, 12p	.70
Q1046	Test Questions, pkg. of 10	1.10
K1046	Teacher's Key	.55

Slidefilms, Slide Sets, Study Guides, Cassette Tapes

Breeds of Dairy Cattle

This 38-frame slide set (or slidefilm) illustrates and discusses six breeds of dairy cattle: Ayrshire, Brown Swiss, Guernsey, Holstein, Jersey, and Milking Shorthorn.

F210	Slidefilm, 38 fr.	\$ 7.55
S210	Slide Set, 38 fr.	12.55



Holstein Judging Classes

This 32-frame slide set (or slidefilm) includes two rings of mature Holstein cows. Two views of each animal are presented as well as group pictures along with placings and official reasons.

F211-1.1	Slidefilm, 32 fr.	\$6.35
S211-1.1	Slide Set, 32 fr.	10.55

Guernsey Judging Classes

This 32-frame slide set (or slidefilm) includes two rings of Guernsey cows. Two views of each animal are presented as well as group pictures along with placings and official reasons.

F211-2.1	Slidefilm, 32 fr.	\$6.35
S211-2.1	Slide Set, 32 fr.	10.55

Selecting Dairy Cattle

This 61-frame slide set (or slidefilm) illustrates in detail and discusses how to select dairy cows and heifers based on type, production records, and production pedigrees. It also illustrates and describes desirable breed characteristics for Ayrshire, Brown Swiss, Guernsey, Holstein, and Jersey breeds.

F207a	Slidefilm, 61 fr.	\$12.10
S207a	Slide Set, 61 fr.	20.15

The Cow's Udder and How It Functions

This 48-frame slidefilm illustrates and explains the functions of the various parts of the cow's udder. It also explains how the cow "lets down" her milk and what happens to milk "let down" when a cow is frightened or injured.

F208a	Slidefilm, 48 fr.	\$9.50
-------	-------------------	--------

Clipping and Trimming Dairy Cattle

This 34-frame slidefilm illustrates and discusses the step-by-step procedure involved in clipping dairy cattle.

F209 Slidefilm, 34 fr. \$6.70

FEEDS AND FEEDING

Subject-Matter Units, Test Questions & Teacher's Keys

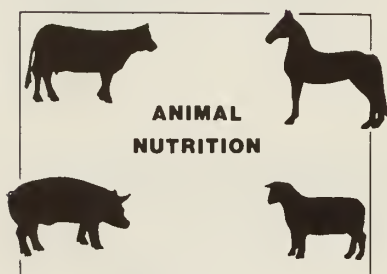
U1013a	General Facts on Livestock Feeding, 8p	\$.45
Q1013a	Test Questions, pkg. of 10	1.10
K1013a	Teacher's Key	.55
U1063	Feed Additives and Hormone Implants in Animal Agriculture, 32p	1.80

Transparencies, Study Guides, Cassette Tapes

Animal Nutrition Transparencies

This is a set of 72 transparencies with study guide covering ruminant and non-ruminant digestive systems, the "feed groups," nutrient requirements of livestock, how to formulate a ration, sample rations for beef, swine, sheep, and horses, and other topics. This is one of the most complete sets of transparencies available on animal nutrition.

T131 Transparency set, 72 fr., w/study guide \$29.35



HORSES

Subject-Matter Units, Test Questions & Teacher's Keys

U1041	Caring for the Brood Mare and Foal, 8p	\$.45
Q1041	Test Questions, pkg. of 10	1.10
K1041	Teacher's Key	.55
U1047	Horses and Horsemanship, 44p	2.45
Q1047	Test Questions, pkg. of 10	1.10
K1047	Teacher's Key	.55

Slidefilms, Slide Sets, Study Guides, Cassette Tapes

Good Horsemanship

This 43-frame slide set (or slidefilm) illustrates and discusses various points to check before mounting the horse, how to mount properly, best positions for the hands and feet, and the proper rider position in the saddle for various gaits.

F150 Slidefilm, 43 fr. \$ 8.55
S150 Slide Set, 43 fr. 14.20

Preparing the Horse for Riding

This 52-frame slide set (or slidefilm) illustrates and discusses proper clipping, grooming, checking the feet and shoes, and checking and adjusting riding equipment.

F151 Slidefilm, 52 fr. \$10.30
S151 Slide Set, 52 fr. 17.15



Horse Feeding and Nutrition

This 79-frame slide set (or slidefilm) with study guide illustrates many of the common factors that should be considered in good horse nutrition. Techniques for developing a proper horse feeding program are stressed that are based on common sense applications of nutritional needs. Topics discussed include the nonruminant digestive system, nutrient requirements and their sources, specific feeding techniques, suggested life stage feed rations, and the various grains and hays used as horse feed. Techniques for monitoring potential health problems and using protein supplements are also included.

F152	Slidefilm, 79 fr., w/study guide*	\$17.05
S152	Slide Set, 79 fr., w/study guide*	27.45

Transparencies, Study Guides, Cassette Tapes

Horse Transparencies

This is a set of 40 overhead transparencies printed in colored ink on clear plastic. It includes many different aspects of caring for horses. Also included is a white paper copy of each frame with text on the back.

T150	Transparency set, 40 fr.	\$17.05
------	--------------------------	---------

MEATS

Slidefilms, Slide Sets, Study Guides, Cassette Tapes

Identification of Retail Meat Cuts

This 110-frame slide set (or slidefilm) identifies and discusses wholesale meat cuts for beef, pork, and lamb. It also identifies 70 retail cuts of meat.

F180-1	Slidefilm, 110 fr.	\$21.70
S180-1	Slide Set, 110 fr.	36.30

Identification of Kinds of Meat

This 33-frame slide set (or slidefilm) illustrates and discusses how to determine whether a given piece of meat is beef, pork, veal or lamb.

F181a	Slidefilm, 33 fr.	\$6.55
S181a	Slide Set, 33 fr.	10.90

Identification of Pork Cuts

This 81 frame slide set (or slidefilm) presents the wholesale pork cuts divided into their respective retail cuts. It then illustrates and discusses how to identify the retail cuts. Most of the retail cuts are again shown at the end of the film for practice identification.

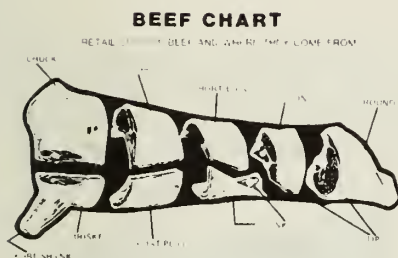
F182a	Slidefilm, 81 fr.	\$16.05
S182a	Slide Set, 81 fr.	26.75

Identification of Beef Cuts

This 96-frame slide set (or slidefilm) presents the wholesale beef cuts divided into their respective retail cuts. It then illustrates and discusses how to identify the retail cuts. Most of the retail cuts are again shown at the end of the film for practice identification.

F183a	Slidefilm, 96 fr.	\$19.05
S183a	Slide Set, 96 fr.	31.70

Additional study guides are available at a cost of \$1.40 each.



Identification of Lamb Cuts

This 47-frame slide set (or slidefilm) presents the wholesale lamb cuts divided into their respective retail cuts. It then illustrates and discusses how to identify the retail cuts. Most of the retail cuts are again shown at the end of the film for practice identification.

F185a	Slidefilm, 47 fr.	\$ 9.30
S185a	Slide Set, 47 fr.	15.50

20% Series Discount

Complete series on Meat Identification (180-1, 181a, 182a, 183a, and 185a)

MF180-1	Slidefilms, 367 fr.	\$58.20
MS180-1	Slide Set, 367 fr.	96.90



Beef Slaughtering

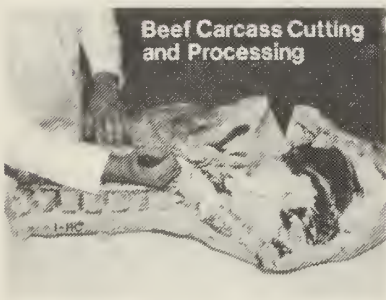
This 81-frame slide set (or slidefilm) with study guide pictorially shows and describes the beef slaughtering process as taught at the University of Illinois Meat Science Laboratory. All aspects of the slaughtering process are illustrated from the time the animal is unloaded from the truck until the dressed carcass is rolled into a cooler.

F261	Slidefilm, 81 fr., w/study guide*	\$17.45
S261	Slide Set, 81 fr., w/study guide*	28.10

Pork Slaughtering

This 75-frame slide set (or slidefilm) with study guide pictorially shows and describes the pork slaughtering process as taught at the University of Illinois Meat Science Laboratory. All aspects of the slaughtering process are illustrated from the time the animal is unloaded from the truck until the dressed carcass is rolled into a cooler.

F263	Slidefilm, 75 fr., w/study guide*	\$16.25
S263	Slide Set, 75 fr., w/study guide*	26.15



Beef Carcass Cutting and Processing

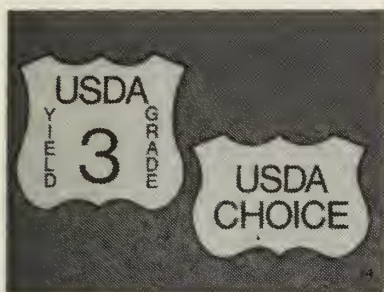
This 75-frame slide set (or slidefilm) with study guide pictorially shows and describes the complete fabrication process of a beef carcass beginning with the chilled carcass and resulting in the common retail cuts of beef. Detailed photographs show the fabrication of each cut.

F262	Slidefilm, 75 fr., w/study guide*	\$16.25
S262	Slide Set, 75 fr., w/study guide*	26.15

Pork Carcass Cutting and Processing, Part I and Part II

These two slide sets (or slidefilms) with study guides pictorially show and describe the complete fabrication process of a pork carcass. Part I (97 frames) begins with the chilled carcass and shows the step-by-step procedure resulting in retail pork cuts. Part II (64 frames) shows and describes how to cure and smoke pork.

F264-1	Slidefilm, 97 fr., w/study guide*	\$20.60
F264-2	Slidefilm, 64 fr., w/study guide*	14.05
S264-1	Slide Set, 97 fr., w/study guide*	33.40
S264-2	Slide Set, 64 fr., w/study guide*	22.50



Quality and Yield Grading of Beef Carcasses

This 80-frame slide set (or slidefilm) with study guide illustrates, through the use of photographs, drawings, and charts, the detailed step-by-step procedure used when quality grading and yield grading beef carcasses. Each step is well illustrated and described in easy to understand terms.

F260	Slidefilm, 80 fr., w/study guide*	\$17.20
S260	Slide Set, 80 fr., w/study guide*	27.80

Meat Evaluation Classes, Part I: Beef

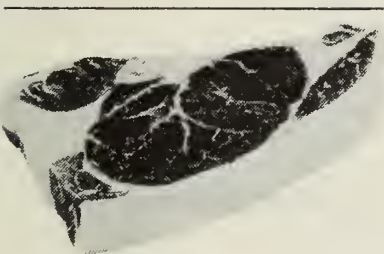
This 100-frame slide set (or slidefilm) with study guide illustrates through photographs and discussion, the following rings: beef carcasses (head-on, side, and internal views), ribeyes, pelvic and kidney area, chucks (arm-end, blade-end, top view), ribs (loin end, blade-end, top views) loins (rib-end, sirloin-end, top views), and rounds (sirloin-end, top view and rear view). This is a good introductory presentation of what to look for when evaluating beef on the rail.

F270-1	Slidefilm, 100 fr., w/study guide*	\$21.20
S270-1	Slide Set, 100 fr., w/study guide*	34.40

Meat Evaluation Classes, Part II: Pork & Lamb

This 85-frame slide set (or slidefilm) with study guide illustrates through photographs and discussion, the following rings: pork carcasses (side, head-on, loin-eye views), hams (butt-face, top, back views), lamb carcasses (head-on, side, rib-cage, internal, rib eye views). This is a good introductory presentation of what to look for when evaluating pork and lamb on the rail.

F270-2	Slidefilm, 85 fr., w/study guide*	\$18.20
S270-2	Slide Set, 85 fr., w/study guide*	29.45



Flash Cards

This set of 125 flash cards includes color photographs of over 70 retail cuts of meat as used in the state and national meat judging contests. Cuts are identified and described on the back. Also includes wholesale cuts of beef, pork, and lamb. This flash card set correlates with the VAS "Meat Judging and Grading" handbook and with a slide set entitled "Identification of Retail Meat Cuts."

X180-1	Flash Cards (Rev. 1984), 125 cards	\$27.50
--------	------------------------------------	---------

SHEEP

Subject-Matter Units, Test Questions & Teacher's Keys

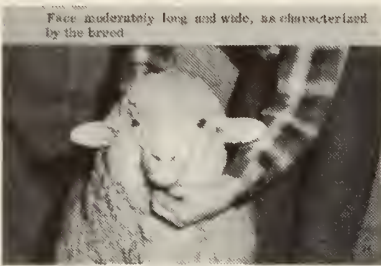
U1031a	The Sheep Enterprise, 4p	\$.25
U1044	Blocking and Trimming Sheep, 8p	.45
U1049	Breeds of Sheep, 20p	1.10
U1060	Feeding & Managing Sheep & Lambs, 16p	.90

Slidefilms, Slide Sets, Study Guides, Cassette Tapes

Selecting Breeding Sheep

This 72-frame slidefilm illustrates and discusses the parts of a sheep, desirable physical characteristics, and selection procedures based on production ability.

F143a	Slidefilm, 72 fr.	\$14.25
-------	-------------------	---------



Breeds of Sheep

This 58-frame slide set (or slidefilm) illustrates and discusses twelve common breeds of sheep.

F145	Slidefilm, 58 fr.	\$11.50
S145	Slide Set, 58 fr.	19.15

Hampshire Sheep Judging Classes: Part I

This 36-frame slide set (or slidefilm) presents one ring each of Hampshire yearling ewes and ewe lambs. Three views of each animal are shown as well as group pictures along with placings and official reasons.

F146-1.1	Slidefilm, 36 fr.	\$ 7.15
S146-1.1	Slide Set, 36 fr.	11.90

Hampshire Sheep Judging Classes: Part II

This 35-frame slide set (or slidefilm) presents two rings of market lambs. Three views of each animal are shown as well as group pictures along with placings and official reasons.

F146-1.2	Slidefilm, 35 fr.	\$ 6.95
S146-1.2	Slide Set, 35 fr.	11.55

20% Series Discount _____

Complete series above(143a, 145, 146-1.1, and 146-1.2)

MF145	Slidefilms, 201 fr.	\$31.85
MS145	Slide Sets (without 143a), 129 fr.	34.05

Shearing Sheep

This 73-frame slidefilm illustrates and discusses the step-by-step procedure of shearing sheep.

F141a	Slidefilm, 73 fr.	\$7.20
-------	-------------------	--------

Blocking and Trimming Sheep

This 42-frame slidefilm illustrates the equipment needed and discusses the step by step procedure used to block and trim sheep for showing.

F144	Slidefilm, 42 fr.	\$4.15
------	-------------------	--------

Transparencies, Study Guides, Cassette Tapes

20% Discount _____

Blocking and Trimming Sheep Transparencies

This is a set of 31 overhead transparencies printed in colored ink on clear plastic. It includes illustrations of the proper procedures to use in blocking and trimming sheep. Also included is a white paper copy of each frame with text on the back.

T144	Transparency set, 31 fr.	\$10.75
------	--------------------------	---------

20% Discount _____

Sheep Transparencies

This is a set of 50 overhead transparencies printed in colored ink on clear plastic. It includes many different aspects of sheep production. Also included is a white paper copy of each frame with text on the back.

T140	Transparency set, 50 fr.	\$16.70
------	--------------------------	---------

Animal Sciences

SMALL ANIMALS & COMPANION ANIMALS

Subject-Matter Units, Test Questions & Teacher's Keys

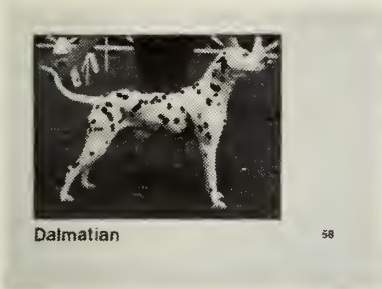
U1050	Rabbit Raising, 12p	\$.70
U1052	Caring for the Small Laying Flock, 8p	.45
U1062	Feeding and Care of Dogs, 16p	.90

Slidefilms, Slide Sets, Study Guides, Cassette Tapes

Breeds of Dogs: Part I and Part II

Two dog breed identification slidefilms (or slide sets) are available. In addition to color photographs, origin, height, weight, and desirable color markings are given for each breed. Part I (76 frames) includes sporting dogs, hounds and terriers. Part II (80 frames) includes working dogs, herding dogs, toy dogs, and nonsporting dogs.

F190-1	Slidefilm, Part I, 76 fr., w/study guide	\$16.45
F190-2	Slidefilm, Part II, 80 fr., w/study guide	17.20
S190-1	Slide Set, Part I, 76 fr., w/study guide	26.45
S190-2	Slide Set, Part II, 80 fr., w/study guide	27.80



20% Series Discount _____

Both sets of Breeds of Dogs (Parts I and II)

MF190-1	Slidefilms, 156 fr.	\$26.90
MS190-1	Slide Sets, 156 fr.	43.35

SWINE

Subject-Matter Units, Test Questions & Teacher's Keys

U1029a	The Swine Enterprise, 8p	\$.45
Q1029a	Test Questions, pkg. of 10	1.10
K1029a	Teacher's Key	.55
U1033b	Selecting and Purchasing Hogs, 8p	.45
Q1033b	Test Questions, pkg. of 10	1.10
K1033b	Teacher's Key	.55
U1034a	Caring for the Swine Herd During Breeding and Gestation, 4p	.25
U1036a	Swine Feeds and Feeding, 16p	.90
Q1036a	Test Questions, pkg. of 10	1.10
K1036a	Teacher's Key	.55
U1037b	Caring for the Sow & Litter at Farrowing Time, 8p	.45
Q1037b	Test Questions, pkg. of 10	1.10
K1037b	Teacher's Key	.55
U1039a	Systems of Swine Breeding, 8p	.45
U1045a	Breeds of Swine, 12p	.70
U1048	USDA Grades of Swine, 8p	.45
U1064	Feed Rations for Swine, 28p	1.55

Slidefilms, Slide Sets, Study Guides, Cassette Tapes

Breeds of Swine

This 52-frame slide set (or slidefilm) illustrates and briefly discusses the following nine breeds of swine: Berkshire, Chester White, Duroc, Hampshire, Landrace, Poland China, Spotted Poland China, Tamworth, and Yorkshire.

F164a	Slidefilm, 52 fr.	\$10.30
S164a	Slide Set, 52 fr.	17.15



Additional study guides are available at a cost of \$1.40 each.

Duroc Swine Judging Classes

This 30-frame slide set (or slidefilm) illustrates and discusses two rings of Duroc hogs. It presents two views of each animal as well as group pictures along with placings and official reasons.

F171-1.1	Slidefilm, 30 fr.	\$5.95
S171-1.1	Slide Set, 30 fr.	9.90

Digestion in Swine

This 47-frame slidefilm illustrates the step-by-step digestion process taking place in swine beginning with the mouth and ending with the large intestine.

F170	Slidefilm, 47 fr.	\$9.30
------	-------------------	--------

Transparencies, Study Guides, Cassette Tapes

Swine Transparencies

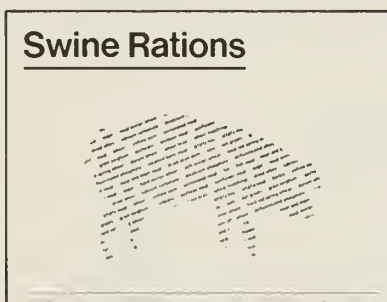
This is a set of 40 overhead transparencies printed in colored ink on clear plastic. It includes many different aspects of swine production. Also included is a white paper copy of each frame with text on the back.

T160	Transparency set, 40 fr.	\$17.05
------	--------------------------	---------

Swine Rations

This is a set of 40 transparencies with study guide covering the major aspects of feeding swine. Included are the basic factors used in formulating rations for different classes of swine, suggested baby pig, growing, finishing, and sow rations, and a step-by-step procedure for balancing rations.

T161	Transparency set, 40 fr., w/study guide	\$17.05
------	---	---------



MISCELLANEOUS

Subject-Matter Units, Test Questions & Teacher's Keys

U1026a	Digestion in Animals, 4p	\$.25
U1032	Castrating, Docking & Dehorning, 8p	.45
U1053	Using Rope in Animal Agriculture, 12p	.70
U1058	Animals in World Agriculture, 20p	1.10
U1059	Livestock Waste Management, 20p	1.10

Slidefilms, Slide Sets, Study Guides, Cassette Tapes

Preventing Transportation Losses of Livestock

This 33-frame slidefilm illustrates and discusses, through cartoons, the causes and means of preventing bruises on livestock due to transportation.

F186a	Slidefilm, 33 fr.	\$6.55
-------	-------------------	--------





Introduction to Livestock Waste Management

This comprehensive packet of materials includes a discussion of the following topics: livestock waste overview, livestock waste terminology, livestock waste collection and storage, livestock waste field applications, waste handling systems available, and personal safety. The following items are individually available.

F1109	Slidefilm, 83 fr., w/study guide*	\$17.80
S1109	Slide Set, 83 fr., w/study guide*	28.75
U1109	Booklet, 24p	1.30
Q1109	Test Questions, pkg. of 10	1.65
K1109	Teacher's Key, 8p	1.10

Good Animal Waste Management Prevents Pollution

F1103	Slidefilm, 29 fr., w/study guide*	\$6.95
-------	-----------------------------------	--------

OTHER MATERIALS

Approved Practices

A100	Approved Practices for Beef, 8p	\$.45
A140	Approved Practices for Sheep, 8p	.45
A160	Approved Practices for Swine, 8p	.45
A200	Approved Practices for Dairy, 8p	.45

JUDGING BOOKLETS

Judging and Grading Poultry and Eggs

A new 52 page judging manual has just been completed. It was prepared to aid teachers and students in preparing for poultry and egg judging contests. It includes judging production birds, grading ready-to-cook birds, interior egg quality grading, exterior egg quality grading, proper handling of live birds, giving oral reasons, and grading live poultry.

J120a	Manual, 52 p	\$3.85
-------	--------------	--------

Meat Judging and Grading

This is a thorough, 48 page handbook that describes meat judging and grading practices. The handbook has three sections: Section one discusses, in detail, how to judge both carcasses and wholesale cuts of beef, pork, and lamb. Clear photographs and line drawings complement the written text. Section two describes quality grading, and yield grading of beef carcasses. Section three tells how to identify the 70 retail meat cuts as used in the state and national Meat Judging Contest. This handbook may be used in connection with the VAS series *Identification of Retail Meat Cuts*, as well as the VAS *Meat Identification Flash Cards*.

J180	Manual, 48 p	\$2.20
------	--------------	--------

Judging Booklets

J100	Judging & Grading Beef Cattle, 21p	\$1.10
J140	Judging Sheep, 10p	.85
J150	Judging Light Horses, 16p	1.10
J160	Judging & Grading Swine, 16p	1.10
J200	Judging Dairy Cattle, 16p	1.10
J250	Judging & Scoring Milk & Cheese, 12p	.85

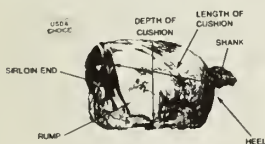


Fig. 8. Parts of Carcass of Beef Round

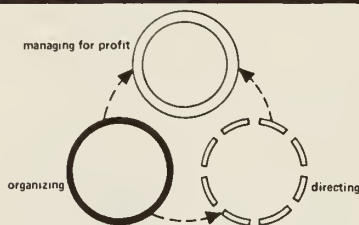
Agricultural Business

AGRIBUSINESS MANAGEMENT

Subject-Matter Units, Test Questions, Teacher's Keys

U6004	Agricultural Business Procedures, 32p	\$1.80
U6006	Simplifying Work in an Agricultural Business, 28p	1.55
U6007	Agricultural Credit Instruments, 12p	.70
U6008	Customer Credit Management in Agricultural Business, 12p	.70
U6009	What Factors Affect Prices of Agricultural Products?, 12p	.70
U6010	Inventory Management & Control, 8p	.45
U6012	Planning to Meet Cash Requirements, 8p	.45
U6014	Common Ways of Organizing a Business, 8p	.45
U6018	Establishing Prices for Meat Animals, 12p	.70

Slidefilms, Slide Sets, Study Guides, Cassette Tapes



Managing for Profit Series

This 6-slidefilm series outlines the major points in managing an agricultural business in a sequential order. F301-1 presents an overview of the management process and discusses the various types of organizational structures. F301-2 identifies management styles and looks at tasks involved in directing the business. F301-3 outlines planning procedures and policies and the steps in planning. F301-4 deals with the management needed to coordinate the activities of the business. F301-5 discusses the communication necessary to motivate employees to achieve business goals. F301-6 explains the principles of control, including delegating of duties, eliminating unneeded reports and paperwork, and evaluating progress toward goal achievement.

F301-1	Organizing the Business, 65 fr., w/study guide*	\$14.25
F301-2	Directing the Business, 40 fr., w/study guide*	9.30
F301-3	Planning the Business, 49 fr., w/study guide*	11.10
F301-4	Coordination, 51 fr., w/study guide*	11.50
F301-5	Communication and Motivation, 58 fr., w/study guide*	12.90
F301-6	Business Control, 61 fr., w/study guide*	13.50

20% Series Discount

MF301-1	Managing for Profit Series (6 slidefilms)*	\$58.00
---------	--	---------

Agribusiness Selling Series

This series of 6 slidefilms outlines the steps necessary to determine a competitive price for products sold by agricultural businesses. F383 outlines the features to consider about the product itself. F384 discusses evaluating the competition for your product. F385 explains customer buying habits, pricing the product, and identifying the market for the product. F386 outlines the basic principles of display, design, and good arrangement when displaying the product. F387 discusses personal and nonpersonal selling, forms of advertising, and elements of an advertisement, including layout, headline, illustration, copy, and signature line. F388 explains how to do a cost analysis for a product and how to decide on a price.

F383	Product Knowledge, 52 fr., w/study guide*	\$11.65
F384	Product Competition, 43 fr., w/study guide*	9.90
F385	A Market for Your Product, 44 fr., w/study guide*	10.05
F386	Displaying Merchandise, 55 fr., w/study guide*	12.25
F387	Advertising Your Product, 74 fr., w/study guide*	16.05
F388	Product Cost Analysis/Pricing, 56 fr., w/study guide*	12.50

20% Series Discount

MF383	Agribusiness Selling Series (6 slidefilms)*	\$58.00
-------	---	---------

Agricultural Business

HUMAN RELATIONS AND SALESMANSHIP

Subject-Matter Units, Test Questions, Teacher's Keys

U6001b	Applying for a Job, 16p	\$.90
U6002	Salesmanship in an Agricultural Business, 24p	1.35
U6003	Human Relations in Agricultural Business, 12p	.70
U6016	Motivating Workers in an Agricultural Business, 8p	.45
U6021	International Agriculture Exchange and Work Opportunities, 16p	.90

Slidefilms, Slide Sets, Study Guides, Cassette Tapes

Salesmanship in Agricultural Business

This slidefilm deals with important aspects of selling in agricultural business. Topics include: Some Opportunities in Agricultural Business, The Salesman's Role in Our Economy, Personal Qualities That Are Important, What a Salesman Must Know to Perform His Job, Opening a Sales Interview, Handling Objections Raised by a Prospect, and Closing a Sale.

F391	Slidefilm, 58 fr.	\$9.20
------	-------------------	--------

Human Relations in Agricultural Business

Aspects of human relations in agricultural business are dealt with in this slidefilm, including: Evaluating Personal Appearance, Communicating Properly and Effectively, Personality Characteristics, Proper Etiquette, Getting Along With Others in the Business, and Pleasing the Customer.

F392	Slidefilm, 57 fr.	\$9.00
------	-------------------	--------

COMPUTERS AND COMPUTER SOFTWARE

Subject Matter Units, Test Questions, Teacher's Keys

U6023	Introduction to Computers in Agriculture, 12p	\$.70
U6025	Selecting Agricultural Computer Software, 12p	.70

Computer Programs

Apple II

CP102	Grain Information Program	\$ 86.00
CP103	NUTRI-SWINE	195.00
CP104	Fertilizer Templates, set of 3 (set includes Agricultural Plant Food Automatic Calculator, Turf Fertilization, Greenhouse Fertilizer Program)	125.00
CP105	Agricultural Economics Programs (includes Crop Budget, Grain Price Projection, Feeding Livestock Budget, and Machinery Economic Decisions)	45.00
CP106	Crops and Soils Programs (includes Crop Budget, Fertilizer Cost, Corn Nitrogen, Calibration of Field Sprayers, Grain Price Projection, and Soil Loss)	70.00
CP107	Horticulture Programs (includes Lawn Planning and Greenhouse Heating)	25.00
CP108	Livestock Programs (includes Feeding Livestock Budget, Calf Weaning Weights, Pearson Square Instructions, Pearson Square Calculations, and Random Order of Sale)	60.00
MCP105	Complete set of CP105, CP106, CP107, CP108	160.00

20% Series Discount _____

Agricultural Business

Tandy/Radio Shack

CP302	Grain Information Programs	111.00
CP304	Fertilizer Templates, set of 3	62.50

IBM

CP405	Agricultural Economics Programs (includes Crop Budget, Grain Price Projection, Feeding Livestock Budget, and Machinery Economic Decisions)	45.00
CP406	Crops and Soils Programs (includes Crop Budget, Fertilizer Cost, Corn Nitrogen, Calibration of Field Sprayers, Grain Price Projection, and Soil Loss)	70.00
CP407	Horticulture Programs (includes Lawn Planning and Greenhouse Heating)	25.00
CP408	Livestock Programs (includes Feeding Livestock Budget, Calf Weaning Weights, Pearson Square Calculations, and Random Order of Sale)	60.00
MCP405	Complete set of CP405, CP406, CP407, CP408	160.00
CP409	Supervised Occupational Experience Programs (This program is an excellent complement to subject matter unit U7003. Please note whether you will be using a PC or XT, an AT, or an MS/DOS compatible computer.)	62.50

NOTE: Additional copies of documentation for CP105, CP106, CP107, CP108, CP405, CP406, CP407, CP408, and CP409 are available at a cost of \$1.25 each.

MISCELLANEOUS

Subject-Matter Units, Test Questions, Teacher's Keys

U6015	Using Arithmetic in Agriculture, 20p	\$1.10
K6015	Teacher's Key to U6015	.55
U6017	Using Insurance in the Farm Business, 12p	.70
U6024	Illinois Agriculture and Its Implications in the Economy, 28p	1.55

Agricultural Economics

CREDIT AND FINANCIAL MANAGEMENT

Subject-Matter Units, Test Questions, Teacher's Keys

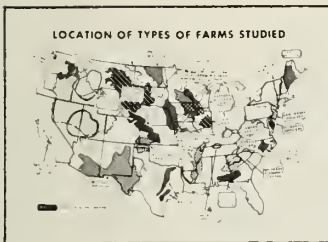
U2024b	Using Credit to Increase Farm Earnings, 12p	\$.70
U2025b	Determining Credit Needs on the Farm, 12p	.70
Q2025b	Test Questions, pkg of 10	1.10
K2025b	Teacher's Key	.55
U2026b	Planning for Repayment of Loans, 20p	1.10
U2027b	Sources of Farm Credit, 12p	.70
Q2027b	Test Questions, pkg. of 10	1.10
K2027b	Teacher's Key	.55
U2028b	Factors Involved in the Borrowing Process, 8p	.45
Q2028b	Test Questions, pkg. of 10	1.10
K2028b	Teacher's Key	.55
U2033a	Using Farm Real Estate Loans, 8p	.45

Agricultural Economics

FARM PLANNING

Subject-Matter Units, Test Questions, Teacher's Keys

U2001b	Planning a Profitable Farm Business, 4p	\$.25
U2002b	Inventorying Resources for Farm Planning, 12p	.70
U2003b	Planning the Cropping System, 16p	.90
U2004a	Field Arrangement Principles, 8p	.45
U2006b	Choosing Specific Crops to Grow and Estimating Production, 16p	.90
U2010b	The Soil Fertility Program—Economic Considerations, 16p	.90
U2011a	Choosing the Type of Farm, 12p	.70
U2012b	Planning Livestock for the Farm, 12p	.70
U2013a	Planning to Have an Adequate Size of Business, 8p	.45
U2035a	Balancing the Labor Supply and the Farm Business, 12p	.70
U2039a	Fitting Machinery and Equipment to the Farm, 24p	1.35
U2043	Income Possibilities for Your Farm, 20p	1.10



Other Materials

U310	Farm Management Manual, 24p	\$.70
Z371	Income Possibilities on Your Farm, 4p. form	.20
U371	Planning Your Farm Business, 36p	1.65
Q371	Problem Illustration for Planning Your Farm Business, pkg. of 10	.55
K371	Key to Problem—Planning Your Farm Business	.55
Z353-1	Annual Financial Budget and Farm Income Statement, 4p	.10
Q353	Annual Financial Planning Problem, pkg. of 10	.40
Z353-2	Net Worth Statement, 4p. form	.10
Z372	Partial Budget Forms, set of 4	.10
Q372	Partial Budgets & Break-Even Problems, 8p	.30
K372	Key to above, 4p	.20

MARKETING AND BUSINESS MANAGEMENT

Subject-Matter Units, Test Questions, Teacher's Keys

U2023a	Marketing Dairy Products, 8p	\$.45
U2040a	Agricultural Business Management—Principles That Affect Production, 24p	1.35
U2044	Calculating the Cost of Producing and Storing Corn, 16p	.90
U2046	Fundamentals of Marketing Agricultural Products, 8p	.45

Slidefilms, Slide Sets, Study Guides, Cassette Tapes

Insurance in the Farm Business

This slidefilm discusses the major kinds of insurance coverages needed by farm operators, including life, fire, crop, liability, and hospitalization.

F380a	Slidefilm, 54 fr.	\$10.65
-------	-------------------	---------

Transparencies, Study Guides, Cassette Tapes

Grain Futures Transparencies

This set of 51 transparencies discusses how farmers can use futures markets. Major topics include: Essentials of Futures Contracts, Delivery Months, Settlement, Cash Markets, Futures Markets, and Margins and Commissions. Problems in the set illustrate pricing stored grains, growing crops and feed grains, and projecting prices.

T321	Transparency set, 51 fr.	\$17.05
------	--------------------------	---------

Additional study guides are available at a cost of \$1.40 each.

Agricultural Economics

RECORDS

Subject-Matter Units, Test Questions, Teacher's Keys

U2008c	Record Keeping on the Farm, 12p	\$.70
U2009c	Using the Illinois Farm Record Book, 20p	1.10
U2037a	Setting Up Farm Records to Provide for Analysis, 12p	.70
Q2037a	Test Questions, pkg. of 10	1.10
K2037a	Teacher's Key	.55
U2041a	Keeping Records of the Supervised Farming Program, 28p	1.55

Other Materials

Z352-1	Livestock Package, Analysis chart, 10 blank charts, tabulation sheet	.55
Z352-2	Crops Package, Analysis chart, 10 blank charts, tabulation sheet	.55
Q351	Problem for use with Illinois Farm Record Book (1982)	.20
K351	Key to Record Problem (1982)	.95
Z351-1	Practice Record Book for use with Problem	1.55
Z351-2	Income Tax Illustration for Farm Record Problem (1985)	1.55
Z351-3	Problem Sheet for use with Income Tax Illustration (1985), pkg. of 10	.55
Z315	Machine Hire Rates Based on Costs, 6p	.20
Z354	Standards for Measures of Efficiency for 1987, 8p This item, based on FBFM records, provides standards for use in analyzing and evaluating student records.	.45
Q358	Practice Problem for Use with the Record Book "Records of My Supervised Experience Program," 13p	.85
K358	Teacher's Key for above problem	1.10
Q398	Record Keeping Problem for Agribusiness Placement	.20
K398	Teacher's Key for above problem	.85
Z373	Hedging Worksheet, pkg. of 10, with Key	1.65

MISCELLANEOUS

Subject-Matter Units, Test Questions, Teacher's Keys

U2018d	Law for the Farmer, 28p	\$1.55
Q2018d	Test Questions, pkg. of 10	1.10
K2018d	Teacher's Key	.55
U2042	Land Surveys and Descriptions, 8p	.45
Q2042	Test Questions, pkg. of 10	1.10
K2042	Teacher's Key	.55
U2045	Water Use and Allocation Laws, 8p	.45

Other Materials

Q375	Review Questions for a Farm Business Management Contest, 32p	\$1.65
K375	Instructor's Key for Farm Business Management Contest Review Questions, 32p	1.65



SERIAL

University of Illinois at Urbana-Champaign. Vocational Agriculture Service.
 Instructional materials / Vocational Agriculture Service, College of Agriculture, University of Illinois.
 OCLC #18084267.

016.6307
Un3i

location(s)
STX (C.1)
STX (C.2)

Issues sent: 1988 (2 copies)

Mark by:
Yr.

mak
1 F 89
220M-2-80

ICS

ICULTURAL MECHANICS SHOP

Print-Matter Units, Test Questions, Teacher's Keys

5	Sharpening Hand Tools, 16p	\$.90
5	Spray Painting, 28p	1.55
3	Air Compressors, 20p	1.10
2a	Safety in the Shop, 32p	1.80
2	Student Safety Tests, 32p	1.75
2	Teacher's Key	1.75
3	Micrometers & Related Measuring Tools, 8p	.45
4	A Color Code for Shop Safety, 12p	.70
1a	Planning a Woodworking Project, 20p	1.10
1	Test Questions, pkg. of 10	1.10
1	Teacher's Key	.55

acq.code: CH.

Films, Slide Sets, Study Guides, Cassette Tapes

To Use It Safely Slidefilm Series

Slidefilms show how to safely use six of the most common power tools in the plus power lawn mowers. Safe operation is stressed along with instruction on how to perform the most common and useful operations with each tool. These are useful for every shop orientation class and as a refresher for more advanced students.

	The Jointer, 35 fr.	\$ 6.95
	The Drill Press, 48 fr.	9.50
	The Circular Saw, 57 fr.	11.30
F463	The Power Grinder, 48 fr.	9.50
F464	The Radial Arm Saw, 61 fr.	12.10
F465	The Portable Electric Saw, 57 fr.	11.30
F498	Using the Power Lawn Mower Safely, 78 fr.	15.45
MF460	How To Use It Safely Series (7 slidefilms)	\$60.85

20% Series Discount

Transparencies, Study Guides, Cassette Tapes

Shop Tool Identification Transparencies

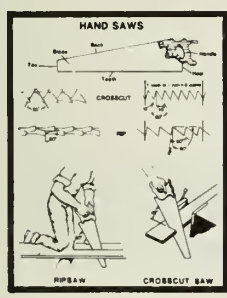
This set of 24 transparencies includes artist's sketches of 171 common shop tools. The tools are arranged in 6 different categories: carpentry and woodworking, engine and machinery, metalworking, various construction skills, hand power, and horticulture. Detailed transparencies are included on Nail Hammers, Hand Saws, Brace and Bits, and Bench Planes. A 12-page study guide provides additional information about each tool identified.

T457	Transparency set, 24 fr., w/study guide	\$10.90
------	---	---------

Charts on Safety Rules for Power Tools

This set of nine 8 1/2 x 11" laminated charts is designed to be placed at those strategic places in the shop where students need to be constantly reminded of the importance of working safely in the shop.

Z490.1	Arc Welder	\$1.10
Z490.2	Oxyacetylene Welder	1.10
Z490.3	Band Saw	1.10



Agricultural Economics

RECORDS

Subject-Matter Units, Test Questions, Teacher's Keys

U2008c	Record Keeping on the Farm
U2009c	Using the Illinois Farm Records
U2037a	Setting Up Farm Records to
Q2037a	Test Questions, pkg. of 10
K2037a	Teacher's Key
U2041a	Keeping Records of the Sup

Other Materials

Z352-1	Livestock Package, Analysis tabulation sheet	
Z352-2	Crops Package, Analysis chart tabulation sheet	
Q351	Problem for use with Illinois	
K351	Key to Record Problem (1985)	
Z351-1	Practice Record Book for use	
Z351-2	Income Tax Illustration for	
Z351-3	Problem Sheet for use with Illinois (1985), pkg. of 10	
Z315	Machine Hire Rates Based on	
Z354	Standards for Measures of Efficiency This item, based on FBF for use in analyzing and	
Q358	Practice Problem for Use with My Supervised Experience	
K358	Teacher's Key for above problem	
Q398	Record Keeping Problem for	
K398	Teacher's Key for above problem	
Z373	Hedging Worksheet, pkg. of 10, with Key	1.65

MISCELLANEOUS

Subject-Matter Units, Test Questions, Teacher's Keys

U2018d	Law for the Farmer, 28p	\$1.55
Q2018d	Test Questions, pkg. of 10	1.10
K2018d	Teacher's Key	.55
U2042	Land Surveys and Descriptions, 8p	.45
Q2042	Test Questions, pkg. of 10	1.10
K2042	Teacher's Key	.55
U2045	Water Use and Allocation Laws, 8p	.45

Other Materials

Q375	Review Questions for a Farm Business Management Contest, 32p	\$1.65
K375	Instructor's Key for Farm Business Management Contest Review Questions, 32p	1.65



Agricultural Mechanics

AGRICULTURAL MECHANICS SHOP

Subject-Matter Units, Test Questions, Teacher's Keys

U3005	Sharpening Hand Tools, 16p	\$.90
U3015	Spray Painting, 28p	1.55
U3018	Air Compressors, 20p	1.10
U3022a	Safety in the Shop, 32p	1.80
Q3022	Student Safety Tests, 32p	1.75
K3022	Teacher's Key	1.75
U3023	Micrometers & Related Measuring Tools, 8p	.45
U3044	A Color Code for Shop Safety, 12p	.70
U3051a	Planning a Woodworking Project, 20p	1.10
Q3051	Test Questions, pkg. of 10	1.10
K3051	Teacher's Key	.55

Slidefilms, Slide Sets, Study Guides, Cassette Tapes

How To Use It Safely Slidefilm Series

Seven slidefilms show how to safely use six of the most common power tools in the shop plus power lawn mowers. Safe operation is stressed along with instruction on how to perform the most common and useful operations with each tool. These are useful for every shop orientation class and as a refresher for more advanced students.

F460	The Jointer, 35 fr.	\$ 6.95
F461	The Drill Press, 48 fr.	9.50
F462	The Circular Saw, 57 fr.	11.30
F463	The Power Grinder, 48 fr.	9.50
F464	The Radial Arm Saw, 61 fr.	12.10
F465	The Portable Electric Saw, 57 fr.	11.30
F498	Using the Power Lawn Mower Safely, 78 fr.	15.45

20% Series Discount

MF460	How To Use It Safely Series (7 slidefilms)	\$60.85
-------	--	---------

Transparencies, Study Guides, Cassette Tapes

Shop Tool Identification Transparencies

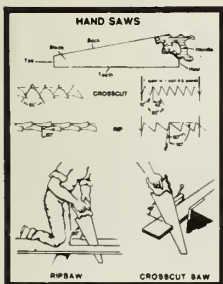
This set of 24 transparencies includes artist's sketches of 171 common shop tools. The tools are arranged in 6 different categories: carpentry and woodworking, engine and machinery, metalworking, various construction skills, hand power, and horticulture. Detailed transparencies are included on Nail Hammers, Hand Saws, Brace and Bits, and Bench Planes. A 12-page study guide provides additional information about each tool identified.

T457	Transparency set, 24 fr., w/study guide	\$10.90
------	---	---------

Charts on Safety Rules for Power Tools

This set of nine 8½ x 11" laminated charts is designed to be placed at those strategic places in the shop where students need to be constantly reminded of the importance of working safely in the shop.

Z490.1	Arc Welder	\$1.10
Z490.2	Oxyacetylene Welder	1.10
Z490.3	Band Saw	1.10



Agricultural Mechanics

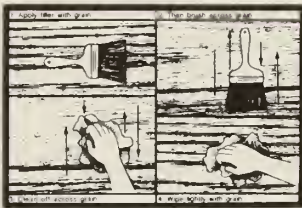
Z490.4	Drill Press	1.10
Z490.5	Grinder	1.10
Z490.6	Jointer	1.10
Z490.7	Portable Electric Saw	1.10
Z490.8	Radial Arm Saw	1.10
Z490.9	Tilting Arbor Saw	1.10

20% Series Discount	MZ490	Set of 9 charts above	\$7.90
---------------------	-------	-----------------------	--------

CARPENTRY AND CONSTRUCTION

Subject-Matter Units, Test Questions, Teacher's Keys

U3007a	Concrete Improvements for Farm & Home, 28p	\$1.55
Q3007a	Test Questions, pkg. of 10	1.10
K3007a	Teacher's Key	.55
U3009a	Using the Carpenter's Square, 20p	1.10
U3034	Recommended Practices for Building with Concrete Masonry, 16p	.90
U3035	Applying Asphalt Roofing & Siding, 24p	1.35
U3039	Glazing, 8p	.45
U3042	Plywood Applications in Farm Construction, 28p	1.55
U3045	Metal Roofing & Siding for Farm Structures, 16p	.90
U3050	How Can I Save Money and Energy by Insulating My Home?, 16p	.90
Q3050	Test Questions, pkg. of 10	1.10
K3050	Teacher's Key	.55
U3052	Selecting Fasteners & Hardware, 16p	.90
Q3052	Test Questions, pkg. of 10	1.10
K3052	Teacher's Key	.55
U3053	Paints and Painting, 20p	1.10
Q3053	Test Questions, pkg. of 10	1.10
K3053	Teacher's Key	.55
U3055	Lumber: Grading, Selecting, Buying, Using, and Storing, 20p	1.10
Q3055	Test Questions, pkg. of 10	1.10
K3055	Teacher's Key	.55
U3056	Designing, Installing, Maintaining and Repairing Plumbing Systems, 40p	2.20
U3060	Collecting and Using Solar Energy, 32p	1.80



Slidefilms, Slide Sets, Study Guides, Cassette Tapes

Electrical Wiring in Livestock Confinement Buildings

This program discusses the electrical wiring materials and techniques which must be used in this hostile environment. Equipment is discussed from the service entrance panel and the wiring to the receptacles, switch boxes, and lights. This material is suitable for anyone interested in modern livestock buildings and electrical wiring materials, equipment, and practices.

F406	Slidefilm, 70 fr., w/study guide*	\$15.25
S406	Slide Set, 70 fr., w/study guide*	24.50

Truss Construction—A Farm Shop Project

This 63-frame slidefilm presents a step-by-step procedure for building a truss in the shop which is properly designed.

F425	Slidefilm, 63 fr.	\$12.50
------	-------------------	---------

Agricultural Mechanics

Transparencies, Study Guides, Cassette Tapes

Carpentry Transparency Series

These two sets of transparencies relate to the use of the steel square in the shop or on the job. Students who are planning a woodworking project in the shop will want to study these.

T422	Rafter Marking, 31 fr., w/study guide*	\$13.60
T423	Steel Square, 25 fr.	11.30

20% Series Discount

MT420	Carpentry Transparency Series (2 sets of transparencies)	\$19.90
-------	--	---------

Lumber—Buying, Grading, Selecting, Storing and Using

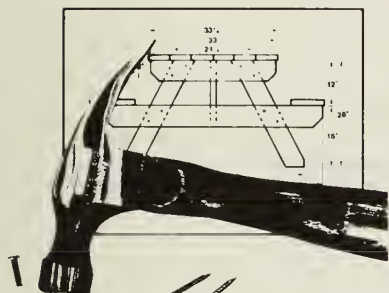
This set of 50 transparencies is accompanied by a 20-page study guide. These transparencies may be used as a single resource or used along with the subject-matter unit U3055 which has the same title. Important definitions, illustrations, examples, and tables provide information the student needs to learn about lumber.

T426	Transparency set, 50 fr., w/study guide*	\$20.90
------	--	---------

Planning A Woodworking Project Transparencies

This set of 34 transparencies is accompanied by a 12-page study guide. These transparencies are designed to supplement the recently revised subject-matter unit, U3051a, which has the same title. All the important illustrations, tables, forms and plans explained in the unit are included in the transparencies. These transparencies are especially useful when working with the beginning woodworking student.

T427	Transparency set, 34 fr., w/study guide*	\$14.75
------	--	---------



ELECTRICITY

Subject-Matter Units, Test Questions, Teacher's Keys

U3003b	Planning for Electrical Wiring, 44p	\$2.45
U3012a	Electrical Hazards in Home, Farm, and Business, 40p	2.20
U3016a	Electrical Wiring Procedures, 28p	1.55
Z3016a	Electrical Wiring Exercises, 20p	1.10
U3038	Using Three-Phase Electrical Power on the Farm, 8p	.45
Y3057	Applying Electrical Controls in Farm Production, 12p	.55
Z3057	Student Exercises for Controls Kit, 50p	2.20
U3058	Selecting Electric Motors for Use in Agriculture, 24p	1.35
U3059	Installing and Caring for Electric Motors in Agriculture, 28p	1.55

Slidefilms, Slide Sets, Study Guides, Cassette Tapes

Identification of Electrical Wiring Items

F404c	Slidefilm, 66 fr.	\$13.10
-------	-------------------	---------

Electric Motors Slidefilm Series

This series of six slidefilms includes basic principles of magnetism and electricity related to both DC and AC electric motors. Practical procedures for testing, con-

Agricultural Mechanics

necting, reversing, troubleshooting, cleaning, and maintaining electric motors are included in these slidefilms.

F412a	Magnetism and the DC Motor, 34 fr.	\$ 6.70
F413a	Induction and the AC Motor, 36 fr.	7.15
F414a	Testing and Identifying Leads, Connecting and Reversing, 39 fr.	7.70
F415a	Trouble Shooting, 64 fr.	12.65
F416	Cleaning Electrical Motors, 46 fr.	9.15
F417	Practical Maintenance of Electric Motors, 55 fr.	10.90
MF412a	Electric Motors Series (6 slidefilms)	43.40

20% Series Discount

Transparencies, Study Guides, Cassette Tapes

Electricity Transparency Series

These two sets of transparencies are designed for use in a class involving electric wiring and electric motors. T400 contains 48 wiring exercises.

T400	Wiring Exercises, 52 fr.	\$21.65
T410	Electric Motors, 60 fr.	24.75

Other Materials

Z401	Suggestions for Wiring 100-Amp. Service Entrance Box, 8p	\$.25
Z403	Electrician's Helper—Student Occupational Guide	.85
Z3058	Suggestions to Teachers for Controls Kit	.45

MACHINERY

Subject-Matter Units, Test Questions, Teacher's Keys

U3021a	Row-Crop Planters, 48p	\$2.65
U3047	Introduction to Combines, 12p	.70
U3048	Combines—Selecting and Servicing, 16p	.90
U3049	Combines—Reducing Harvesting Losses, 28p	1.55

Slidefilms, Slide Sets, Study Guides, Cassette Tapes

Calibration of Pesticide Application Equipment Series

These slidefilms are also available as slide sets and each is accompanied by a study guide. Also available is a reference manual, a booklet of sample problems, an instructor's key, and a cassette tape of each study guide. Topics stressed are determining amounts of pesticides to apply per acre, selection of nozzles and tip size, calibration, measuring ground speed, determining the amount of pesticide to add to the spray tank, and safety.

SLIDEFILMS — with study guides

F444-1	The Calibration of Low-Pressure Field Sprayers, 80 fr.*	\$17.20
F444-2	The Calibration of Granular Applicators, 62 fr.*	13.65
F444-3	The Calibration of High-Capacity Flotation Sprayers, 80 fr.*	17.20
F444-4	The Calibration of Commercial Pesticide Application Equip. for Ornamentals and Turfgrass, 80 fr.*	17.20



Agricultural Mechanics

F444-5	The Calibration of Homeowner Chemical Application Equipment, 74 fr.*	16.05
F444-6	Calibration of Equip. for Applying Pesticides on Rights-of-Way & Other Noncrop Areas, 62 fr.*	13.65
F444-7	The Calibration of Air-Carrier Sprayers, 41 fr.*	9.55
SLIDE SETS – with study guides		
S444-1	The Calibration of Low-Pressure Field Sprayers, 80 fr.*	27.80
S444-2	The Calibration of Granular Applicators, 62 fr.*	21.85
S444-3	The Calibration of High-Capacity Flotation Sprayers, 80 fr.*	27.80
S444-4	The Calibration of Commercial Pesticide Application Equip. for Ornamentals and Turfgrass, 80 fr.*	27.80
S444-5	The Calibration of Homeowner Chemical Application Equipment, 74 fr.*	25.80
S444-6	Calibration of Equip. for Applying Pesticides on Rights-of-Way & Other Noncrop Areas, 62 fr.*	21.85
S444-7	The Calibration of Air-Carrier Sprayers, 41 fr.*	14.95
20% Series Discount —————		
MF444-1	Calibration of Pesticide Application Equipment Series (7 slidefilms)*	83.60
20% Series Discount —————		
MS444-1	Calibration of Pesticide Application Equipment Series (7 slide sets)*	134.30
MANUALS		
M444-1	The Calibration of Low-Pressure Field Sprayers	1.40
M444-2	The Calibration of Granular Applicators	1.40
M444-3	The Calibration of High-Capacity Flotation Sprayers	1.40
M444-4	The Calibration of Commercial Pesticide Application Equipment for Ornamentals and Turfgrass	1.40
M444-5	The Calibration of Homeowner Chemical Application Equipment	1.40
M444-6	Calibration of Equipment for Applying Pesticides on Rights-of-Way and Other Noncrop Areas	1.40
M444-7	The Calibration of Air-Carrier Sprayers	1.40

NOTE: Test Questions and Teacher's Keys for each of the above titles are available at an additional cost of \$1.40 each.

Transparencies, Study Guides, Cassette Tapes

Basic Principles of Hydraulics Transparencies

Fifty-nine transparencies and an information packed 16-page study guide provide an excellent teaching tool. Emphasis is on hydraulic principles, basic formulas, pistons, pumps, valves, and design functions of hydraulic systems. This teaching aid is especially valuable in providing the student with an understanding of the basic principles of hydraulics needed to become a successful mechanic.

T440	Transparency set, 59 fr., w/study guide	\$24.40
------	---	---------

Other Materials

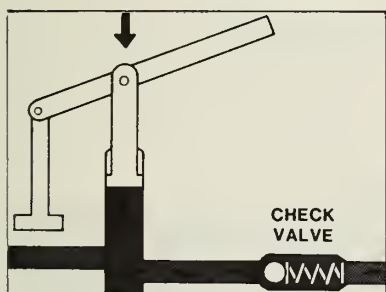
Z3049.1	Measuring Harvesting Losses—Corn, pkg. of 10	\$.90
Z3049.2	Measuring Harvesting Losses—Soybeans, pkg. of 10	.90
Z3049.3	Measuring Harvesting Losses—Small Grain, pkg. of 10	.90

SMALL ENGINES

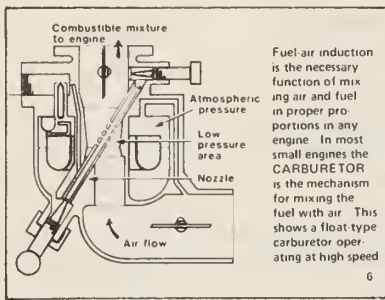
Subject-Matter Units, Test Questions, Teacher's Keys

U3014	Small Engines—Principles of Operation, Trouble-Shooting and Tune-Up, 16p	\$.90
U3019	Small Engines—Repair and Overhaul, 20p	1.10
U3020	The Two-Cycle Engine, 20p	1.10

Additional study guides are available at a cost of \$1.40 each.



Agricultural Mechanics



Slidefilms, Slide Sets, Study Guides, Cassette Tapes

Small Engine Parts and Functions—FUEL-AIR INDUCTION

Eighty frames, available either as a slide set or slidefilm, are accompanied by a 16-page study guide. The parts of the small engine which are used in the process of fuel-air induction are pictured and their function in the process is explained. The last section of the program consists of pictures of the parts for identification by the students with an answer key provided in the final frames. This material should be especially useful for introducing beginning students to small engine fuel-air induction.

F486-1	Slidefilm, 80 fr., w/study guide*	\$17.20
S486-1	Slide Set, 80 fr., w/study guide*	27.80



Small Engine Parts and Functions—COMPRESSION

Eighty frames, available either as a slide set or slidefilm, are accompanied by a 16-page study guide. The parts of the small engine which are associated with compression are pictured and their function in the process is explained. The format is the same as the material on the fuel-air induction in 486-1, with pictures provided for identification by the students, and the last frames providing an answer key. This material should be especially useful for introducing beginning students to small engine compression.

F486-2	Slidefilm, 80 fr., w/study guide*	\$17.20
S486-2	Slide Set, 80 fr., w/study guide*	27.80

Transparencies, Study Guides, Cassette Tapes

Small Gas Engines Transparencies

This transparency set explains basic principles of small engine operation, repair and overhaul, and maintenance.

T489	Transparency set, 50 fr.	\$20.90
------	--------------------------	---------

Other Materials

Z487	Small Engine Service and Repair—Student Occupational Guide	\$.85
------	--	--------

SURVEYING

Subject-Matter Units, Test Questions, Teacher's Keys

U2042	Land Surveys and Descriptions, 8p	\$.45
Q2042	Test Questions, pkg. of 10	1.10
K2042	Teacher's Key	.55
U3010a	Agricultural Surveying, 24p	1.35

Slidefilms, Slide Sets, Study Guides, Cassette Tapes

Surveying Series

This series of four films presents information in color photographs, illustrations, and diagrams on using the steel tape, the level, taking field notes, and staking out a building.

SLIDEFILMS

F436a	Using the Steel Tape in Surveying, 36 fr.	\$ 7.15
F437a	Recording Field Notes for Surveying, 41 fr.	8.15

Agricultural Mechanics

F438a	Using the Level in Farm Surveying, 79 fr.	15.60
F439a	Staking Out a Building Site, 33 fr.	6.55
SLIDE SETS		
S436a	Using the Steel Tape in Surveying, 36 fr.	11.90
S437a	Recording Field Notes for Surveying, 41 fr.	13.55
S438a	Using the Level in Farm Surveying, 79 fr.	26.05
S439a	Staking Out a Building Site, 33 fr.	10.90

20% Series Discount. _____

MF436a	Farm Surveying Series (4 slidefilms)	30.00
MS436a	Farm Surveying Series (4 slide sets)	49.90

Other Materials

Z435	Farm Drainage Packet	\$6.05
Z436	Field Book for Surveying Notes	.55

TRACTORS AND LARGE ENGINES

Subject-Matter Units, Test Questions, Teacher's Keys

U3008	Farm Tractor Tune-Up, 12p	\$.70
U3025	Engine Compression & Cylinder Leakage Testing, 16p	.90
Q3025	Test Questions, pkg. of 10	1.10
K3025	Teacher's Key	.55
U3028	The Ignition System—Testing and Analyzing Test Results, 28p	1.55
U3030	The Engine Cooling System, 24p	1.35
U3032	Electrical Fundamentals Useful in Engine Analysis, 20p	1.10
U3040	Preventing Tractor Overturns, 20p	1.10
U3054	Energy Alternatives in Agriculture: Alcohol, 24p	1.35

Slidefilms, Slide Sets, Study Guides, Cassette Tapes

Operator Responsibility for Diesel Engine Maintenance

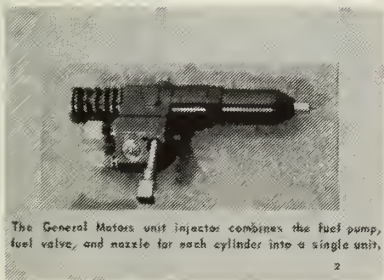
Sixty-two frames, available as either a slidefilm or as a slide set, offer information on diesel fuel selection and storage and use of starting aids. Lubrication, air filter, and fuel system servicing procedures are examined. Also included is a section on proper diesel tractor operation.

F485	Slidefilm, 62 fr.	\$12.25
S485	Slide Set, 62 fr.	20.45

Diesel Engine Pump and Injection Nozzle Series

Four slide programs on diesel injector nozzles are available. These are useful for any class involved in the study of diesel engines.

S486.12	Removing Diesel Injection Nozzles, 20 fr.	\$6.60
S486.13	Servicing Diesel Injection Nozzles, 29 fr.	9.55
S486.14	Testing Diesel Injection Nozzles, 24 fr.	7.90
S486.15	Types of Diesel Injection Nozzles, 14 fr.	4.60



Agricultural Mechanics

Transparencies, Study Guides, Cassette Tapes

Tractor Transparency Series

This series of two sets of transparencies may be used with any class studying farm tractor safety and maintenance.

T485	Tractor Safety, 40 fr.	\$17.05
T488	Tractor Tune-up and Maintenance, 36 fr.	15.50
MT485	Tractor Transparency Series (2 sets of transparencies)	26.05

20% Series Discount

WELDING AND METALWORK

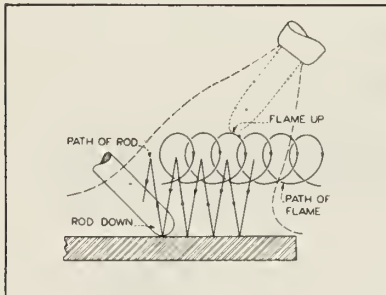
Subject-Matter Units, Test Questions, Teacher's Keys

U3001a	Oxyacetylene Welding and Cutting, 28p	\$1.55
U3002a	Cold Metal Work, 24p	1.35
Q3002a	Test Questions, pkg. of 10	1.10
K3002a	Teacher's Key	.55
U3004a	Shielded Metal-Arc Welding, 48p	2.65
U3027	Soldering for Home, Farm and Shop Applications, 24p	1.35
U3036	Tungsten Inert Gas (TIG) Welding, 32p	1.80
U3037	Metal Inert Gas (MIG) Welding, 44p	2.45
U3041	Ferrous Metals—Properties, Identification, and Treatment, 28p	1.55
U3043	Hot Metal Work, 20p	1.10

Slidefilms, Slide Sets, Study Guides, Cassette Tapes

Oxyacetylene Welding Series

This is a series of twelve programs available either as slidefilms or slide sets. They may be purchased separately or as a complete teaching package for oxyacetylene welding and cutting instruction.



SLIDEFILMS — Oxyacetylene

F454a	Equipment and Processes, 61 fr.*	\$12.10
F455a	Equipment and Safe Practices, 93 fr.*	18.45
F456a	Equipment Setting Up, 57 fr.*	11.30
F471	Lighting and Adjusting the Flame, 42 fr.*	8.30
F472	Manual and Machine Cutting, 70 fr.*	13.85
F473	Bronze Welding, 63 fr.*	12.50
F474	Fusion Welding Steel, 74 fr.*	14.70
F475	Hard Facing, 50 fr.*	9.90
F476	Using Powder Braze Torch, 43 fr.*	8.55
F477	Aluminum Welding, 49 fr.*	9.70
F478	Silver Brazing, 52 fr.*	10.30
F479	Equipment Maintenance, 58 fr.*	11.50

SLIDE SETS — Oxyacetylene

S454a	Equipment and Processes, 61 fr.*	20.15
S455a	Equipment and Safe Practices, 93 fr.*	30.70
S456	Equipment Setting Up, 57 fr.*	18.80
S471	Lighting and Adjusting the Flame, 42 fr.*	13.85
S472	Manual and Machine Cutting, 70 fr.*	23.10
S473	Bronze Welding, 63 fr.*	20.80
S474	Fusion Welding Steel, 74 fr.*	24.40
S475	Hard Facing, 50 fr.*	16.50
S476	Using Powder Braze Torch, 43 fr.*	14.20
S477	Aluminum Welding, 49 fr.*	16.15
S478	Silver Brazing, 52 fr.*	17.15
S479	Equipment Maintenance, 58 fr.*	19.15

Agricultural Mechanics

20% Series Discount _____

MF454a	Oxyacetylene Welding Series (12 slidefilms, 6 cassettes)	112.75
MS454a	Oxyacetylene Welding Series (12 slide sets, 6 cassettes)	176.00

Arc Welding Slidefilm Series

The first three of these four slidefilms are available only as a complete set. Safety of operation is stressed while covering the welding equipment and processes for shielded metal arc welding (SMAW). Flat, vertical, horizontal, and overhead welding positions are introduced, explained, and illustrated.

F450	Process, Equipment and Safety, 45 fr.	
F451	Flat Position Welding, 63 fr.	
F452	Vertical, Horizontal, and Overhead Position, 34 fr.	
MF450	Complete set of above 3 slidefilms	\$28.10
F470	Care and Maintenance of Arc Welding Equipment, 56 fr.	11.10

Transparencies, Study Guides, Cassette Tapes

Arc Welding Transparencies

T450	Shielded Metal-Arc Welding, 80 fr.	\$32.45
T454	Inert Gas Welding, 65 fr.	26.70

20% Series Discount _____

MT450	Arc Welding Transparencies (2 sets of transparencies)	47.30
-------	---	-------

MISCELLANEOUS

Slidefilms, Slide Sets, Study Guides, Cassette Tapes

Energy Challenges and Choices, Part I: Energy Use and Supply

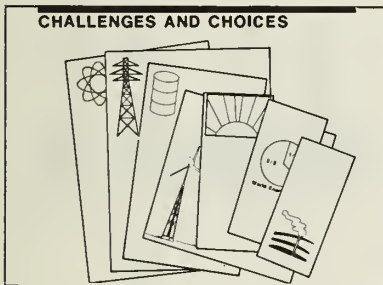
The 46 frames are available either as a slidefilm or slide set and are accompanied by a 12-page study guide. Present sources and potential future sources of energy are explored in this film. The student is introduced to the concepts of energy conservation and energy management. The study guide contains a checklist which may be used to review the home for energy efficiency.

F411-1	Slidefilm, 46 fr., w/study guide*	\$10.50
S411-1	Slide Set, 46 fr., w/study guide*	16.55

Energy Challenges and Choices, Part II: Home Energy Management

Eighty frames, available either as a slidefilm or slide set, are accompanied by a study guide. The primary focus of this program is efficient use of energy in the home from design features, construction practices, and appliance selection and use.

F411-2	Slidefilm, 80 fr., w/study guide*	\$17.20
S411-2	Slide Set, 80 fr., w/study guide*	27.80



FLORICULTURE

Subject-Matter Units, Test Questions, Teacher's Keys

U5006a	Producing Plants by Asexual Propagation, 20p	\$1.10
U5007	Growing Plants Indoors, 12p	.70
U5010a	Growing Flowering Annuals, 24p	1.35
Q5010a	Test Questions, pkg. of 10	1.10
K5010a	Teacher's Key	.55
U5011	Poinsettias, Care and Propagation, 8p	.45
U5013	Producing Poinsettias Commercially, 12p	.70
U5017a	Careers in the Retail Flower Shop Business, 8p	.45
U5019	Care of Flowering Pot Plants in the Home, 8p	.45
U5020	Reblooming Flowering Gift Plants, 28p	1.55
U5023	Soils for Plant Growth—Amendments for Container Soils, 8p	.45
U5024	Soils for Plant Growth—Standardized Growing Media, 8p	.45
U5035	Preparing Plant Materials for Dried Arrangements, 20p	1.10

Slidefilms, Slide Sets, Study Guides, Cassette Tapes

Identifying Coniferous Trees

F504	Slidefilm, 59 fr.	\$11.65
------	-------------------	---------

Introduction to Plant Propagation by Tissue Culture

Introduces the viewer to the concept of growing plants by tissue culture, a relatively new plant propagation method. Supplies, equipment, and techniques used in tissue culture are described. Conditions required to maintain established cultures are also discussed. Film and script explain in common terminology various aspects of these innovative procedures used by plant propagators and researchers.

F600-1	Slidefilm, 61 fr., w/study guide*	\$13.50
S600-1	Slide Set, 61 fr., w/study guide*	21.50

Garden Flowers, Annuals—Part I and Part II

Shows annual garden flowers in color and gives cultural information. Practice sets are useful for review and testing.

F601	Slidefilm, Part I, 50 fr.	\$ 9.90
F601(Supp)	Slidefilm—practice set for F601, 25 fr.	4.95
F602	Slidefilm, Part II, 50 fr.	9.90
F602(Supp)	Slidefilm—practice set for F602, 26fr.	5.15
S601	Slide Set, Part I, 50 fr.	16.50
S602	Slide Set, Part II, 50 fr.	16.50

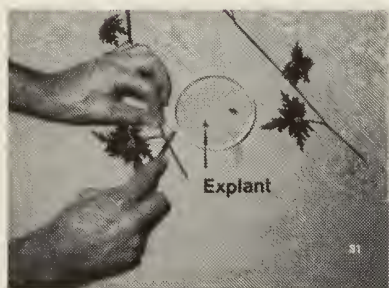
20% Series Discount

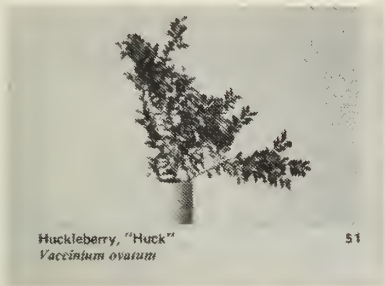
MF601	Garden Flowers—Annuals (4 slidefilms)	23.95
MS601	Garden Flowers—Annuals (2 slide sets)	26.40

Diseases of Garden Flowers

Provides information needed for identification and control of common diseases of garden flowers.

F604	Slidefilm, 78 fr., w/study guide*	\$16.85
S604	Slide Set, 78 fr., w/study guide*	27.15





Design Materials: Cut Flowers and Foliage

In 64 frames, the viewer is introduced to popular cut flowers and foliage by common and scientific names. The script gives information on colors, sizes, seasons of availability, and keeping or lasting quality.

F605	Slidefilm, 64 fr., w/study guide*	\$14.05
S605	Slide Set, 64 fr., w/study guide*	22.50



Design Techniques: Rose Corsage Construction

This 41-frame film describes in detail the construction of a rose (or carnation) corsage, from selection of plant material and supplies to preparing components and assembly of the corsage. Wiring and taping, plus flower and bow placement are illustrated.

F606-1	Slidefilm, 41 fr., w/study guide*	\$ 9.50
S606-1	Slide Set, 41 fr., w/study guide*	14.95

Wiring and Taping Flowers and Foliage

In 33 frames, methods are explained for replacing or reinforcing natural plant stems with artificial ones. Common wire sizes, special wiring aids, wiring techniques, taping, and using picking machines are illustrated as common techniques used by floral designers when arranging plant materials.

F606-2	Slidefilm, 33 fr., w/study guide*	\$ 7.90
S606-2	Slide Set, 33 fr., w/study guide*	12.30



Preserving Flowers and Foliage

Several methods of drying and processing flowers and foliage are described; included are pressing, air drying, burying, and glycerinating. The microwave oven is featured as an aid to burying-type drying. Photographs of flowers and foliage that preserve well are accompanied by a guide to appropriate drying methods.

F607	Slidefilm, 65 fr., w/study guide*	\$14.25
S607	Slide Set, 65 fr., w/study guide*	22.85

Foliage Plant Identification Series

Illustrates foliage plants with color photos and identifies them by common and scientific names. Includes cultural details such as light, temperature, location, soil, and watering. Practice sets are suitable for review and testing.

F610	Slidefilm, Part I, 49 fr.	\$ 9.70
F610(Supp)	Slidefilm—practice set for F610, 39 fr.	7.70
F611	Slidefilm, Part II, 49 fr.	9.70
F611(Supp)	Slidefilm—practice set for F611, 39 fr.	7.70
F612	Slidefilm, Part III, 55 fr.	10.90
F612(Supp)	Slidefilm—practice set for F612, 39 fr.	7.70
S610	Slide Set, Part I, 49 fr.	16.15
S611	Slide Set, Part II, 49 fr.	16.15
S612	Slide Set, Part III, 55 fr.	18.15

20% Series Discount _____

MF610	Foliage Plant Identification Series (6 slidefilms)	43.55
MS610	Foliage Plant Identification Series (3 slide sets)	40.35

House Plant Care Series

Describes sound horticultural practices for care of hanging baskets and flowering plants. Perfect for introducing students to indoor horticulture.

SLIDEFILMS

F613	Planting & Care of Hanging Baskets, 66 fr.	\$13.10
F614-1	Care of Flowering Plants, 82 fr.	16.25

SLIDE SETS

S613	Planting & Care of Hanging Baskets, 66 fr.	21.80
S614-1	Care of Flowering Plants, 82 fr.	27.05

Greenhouses—Uses and Design

Shows various types of greenhouses, including even-span and lean to. Greenhouse coverings and bench arrangements are described.

F680	Slidefilm, 44 fr.	\$8.70
------	-------------------	--------

Soils for Plant Growth Series

Explains the physical characteristics of soil and how they affect plant growth, in the field and in containers. Describes soil amendments to improve soil physical properties so optimum plant growth conditions are achieved.

SLIDEFILMS – with study guides

F690-1	Air and Water in Soils, 39 fr.*	\$9.15
F690-2	Container Soils, 42 fr.*	9.70
F690-3	Modifying Container Soils, 35 fr.*	8.30

20% Series Discount

MF690-1	Soils for Plant Growth Series (3 slidefilms)*	21.65
---------	---	-------



Transparencies, Study Guides, Cassette Tapes

The Principles of Floral Design Transparencies

Explains design elements used in every good floral design. Emphasized are various major floral design principles, including Proportion, Balance, Rhythm, and Dominance. Radiation, repetition, transition, variety, and contrast are explained as minor design principles. Principles and techniques are illustrated by floral drawings, as well as abstract shapes and forms.

T620	Transparency set, 42 fr., w/study guide	\$17.80
------	---	---------

FRUITS

Subject-Matter Units, Test Questions, Teacher's Keys

U4043	Pruning Fruit Trees, 8p	\$.45
U5026	Growing Raspberries and Blackberries in the Midwest, 16p	.90
U5027	Growing Strawberries, 28p	1.55
U5027(Supp)	Strawberry Cultivars, 8p (color)	1.40
U5028	Growing Blueberries, 20p	1.10
U5029	Growing Grapes, 24p	1.35

Slidefilms, Slide Sets, Study Guides, Cassette Tapes

Strawberry Production

A thorough overview of strawberry production. Choosing and ordering of plants, choosing a training system, site selection, and soil preparation are described. Planting, first growing season operations, second growing season care, and renovation are depicted by 40 photos and many line drawings.

F692	Slidefilm, 76 fr., w/study guide*	\$16.45
S692	Slide Set, 76 fr., w/study guide*	26.50

LANDSCAPING AND LANDSCAPE MATERIALS

Subject-Matter Units, Test Questions, Teacher's Keys

U5001a	Trees for Landscaping, (with 8-page color insert) 44p	\$3.30
U5003	Fertilizing and Watering Shade and Ornamental Trees, 12p	.70
U5004a	Controlling Plant Growth, 20p	1.10
U5005b	Controlling Tree and Shrub Insects, 28p	1.55
Q5005b	Test Questions, pkg. of 10	1.10
K5005b	Teacher's Key	.55
U5014	Growing Lilies, 20p	1.10
U5021	Identifying Tree and Shrub Insects, 16p	.90
Q5021	Test Questions, pkg. of 10	1.10
K5021	Teacher's Key	.55
U5022	Using Coniferous Evergreens in a Landscape, 32p	1.80
U5034	Vines for Landscaping, 40p	2.20
U5037	Plant Hardiness, 12p	.70

Slidefilms, Slide Sets, Study Guides, Cassette Tapes

Objectives of Pruning Deciduous Trees

Gives reasons and specific directions for pruning many common landscape plants.

F615	Slidefilm, 58 fr., w/study guide*	\$12.85
S615	Slide Set, 58 fr., w/study guide*	20.55

Introduction to Landscape Design

First in a three-part series, this 80-frame film introduces a step-by-step procedure for developing a good landscape plan. The film is arranged in 4 major subtopics: Site Analysis, Design Concepts, Design Elements, and Design Mechanics.

F621-1	Slidefilm, 80 fr., w/study guide*	\$17.20
S621-1	Slide Set, 80 fr., w/study guide*	27.80

Creating a Design

This 81-frame film uses background information from 621-1 to lead the student into developing a design. Drawing mechanics are given special emphasis, as is Designing Walks and Driveways, Patios and Construction Materials, Patio Construction, Designing Planting Beds and Lawn Areas, Designing Fences and Storage, Maintaining Design Lines on the Ground, and Flowers and Roses in the Garden.

F621-2	Slidefilm, 81 fr., w/study guide*	\$17.45
S621-2	Slide Set, 81 fr., w/study guide*	28.10





Putting Plants into the Design

In 81 frames, correct procedures for putting plants into the design are presented. Bed staking, edging, bed preparation, planting hole excavation, top pruning, root pruning, mulching, boulder and rock incorporation, tree staking and guying, bricks and pavers, and retaining walls are featured.

F621-3	Slidefilm, 81 fr., w/study guide*	\$17.45
S621-3	Slide Set, 81 fr., w/study guide*	28.10

Landscape Construction Series

A convenient collection of slide sets detailing construction of landscape components. From bed edging to patios, these films give practical and useful diagrams to aid in landscape construction.

S626	Plan Interpretation, Surveying, Edging, Planning, Bed Preparation, 77 fr., w/study guide	\$26.80
S627	Planting, Protecting Existing Features, 71 fr., w/study guide	24.80
S628	Walks, Steps, Retaining Walls, 80 fr., w/study guide	27.80
S629	Fencing, Patios, 73 fr., w/study guide	25.50
S630	Mounds, Boulders, Statuary, Lighting, 74 fr., w/study guide	25.80
S631	Structures, Seating, Play Areas, Containers, 81 fr., w/study guide	28.10
S632	Water Features, Irrigation, Materials, 81 fr., w/study guide	28.10

20% Series Discount

MS626	Landscape Construction Series (7 slide sets)	149.50
-------	--	--------

Landscape Planting Plan Series

Each set in this series presents a landscape plan for a particular type of home, illustrates the plants recommended by the plan, and gives an alternative planting list.

SLIDEFILMS – with study guides

F642	Landscaping—Dos and Don'ts, 86 fr.*	\$18.40
F625-1.1	Split-Level Home, 57 fr.	12.65
F625-1.2	Two-Story Victorian Style Home, 21 fr.	5.55
F625-1.3	One-Story Ranch Style Home, 29 fr.	7.15
F625-1.4	Two-Story Cape Cod Home, 42 fr.	9.70
F625-1.5	Early American Restored Home, 21 fr.	5.55
F625-1.6	Two-Story Ranch Home, 37 fr.	8.70
F625-1.7	Two-Story Colonial Home, 30 fr.	7.30

SLIDE SETS – with study guides

S642	Landscaping—Dos and Don'ts, 86 fr.*	29.80
S625-1.1	Split-Level Home, 57 fr.	20.20
S625-1.2	Two-Story Victorian Style Home, 21 fr.	8.30
S625-1.3	One-Story Ranch Style Home, 29 fr.	10.95
S625-1.4	Two-Story Cape Cod Home, 42 fr.	15.25
S625-1.5	Early American Restored Home, 21 fr.	8.30
S625-1.6	Two-Story Ranch Home, 37 fr.	13.60
S625-1.7	Two-Story Colonial Home, 30 fr.	11.30

20% Series Discount

MF625-1.1	Landscape Planting Plan Series (8 slidefilms)	60.00
MS625-1.1	Landscape Planting Plan Series (8 slide sets)	94.00

Tree Identification

Shows tree identification characteristics as line drawings, habit illustrations, and color photos. Includes information on culture and growth rate, as well as highlighting landscape potential.

S636 Slide Set, 200 fr. \$66.00

Dwarf Conifers

Describes the origin of dwarf conifers and their use in landscaping. Twenty-six dwarf conifers are illustrated and described in cultural terms.

F637 Slidefilm, 58 fr., w/study guide* \$12.85
S637 Slide Set, 58 fr., w/study guide* 20.55



Major Pruning of Trees

Describes pruning techniques such as repairing a broken leader and a split crotch. Emphasis is placed on pruning plant parts which have been damaged by ice, wind, insects, disease, and crossed branches.

F639 Slidefilm, 53 fr., w/study guide* \$11.90
S639 Slide Set, 53 fr., w/study guide* 18.90

Pruning Series

Gives reasons and specific directions for pruning many common landscape plants.

SLIDEFILMS — w/study guides

F643 Pruning Evergreens, 79 fr.* 17.05
F644 Pruning Deciduous Shrubs, 45 fr.* 10.30
F645 Pruning Flowering Trees, 46 fr.* 10.50

SLIDE SETS — w/study guides

S643 Pruning Evergreens, 79 fr.* 27.45
S644 Pruning Deciduous Shrubs, 45 fr.* 16.25
S645 Pruning Flowering Trees, 46 fr.* 16.50

20% Series Discount

MF643 Complete Series: 643, 644, 645* 30.30
MS643 Complete Series: 643, 644, 645* 48.15

Ground Covers and Their Uses

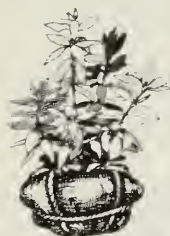
Suggests ground covers appropriate for specific areas or sites. Fifty ground covers are illustrated with photographs and their culture is described in detail. An excellent film to increase awareness of ground covers.

F646 Slidefilm, 60 fr., w/study guide \$13.25
S646 Slide Set, 60 fr., w/study guide 21.20

Establishing a *Rhododendron* Planting

Rhododendrons and azaleas are sometimes excluded from landscapes because they require special site preparations and cultural care. This film dispels some of the mysteries surrounding *Rhododendron* and gives pointers for establishing and maintaining a vigorous planting. Soil amendments, planting guidelines, mulching, and post-planting care are described. Recommended cultivars for midwestern gardeners are listed.

F648-1 Slidefilm, 43 fr., w/study guide* \$ 9.90
S648-1 Slide Set, 43 fr., w/study guide* 15.60



Plant Anatomy Series

Illustrates various types of pods, fruits, nuts, flowers, and inflorescences, using familiar examples. A basic introduction to floral and fruit structures.

SLIDEFILMS – with study guides

F670-1 Identification of Pods, Fruits, and Nuts, 70 fr.* \$15.25

F670-2 Identification of Flowers & Inflorescences, 73 fr.* 15.85

SLIDE SETS – with study guides

S670-1 Identification of Pods, Fruits, and Nuts, 70 fr.* 24.50

S670-2 Identification of Flowers & Inflorescences, 73 fr.* 25.50

20% Series Discount

MF670-1 Plant Anatomy Series (2 slidefilms)* 24.85

MS670-1 Plant Anatomy Series (2 slide sets)* 39.95

Landscape Design Series

Introduces aspects of good design, elements of design, considerations in planning, and specific types of design.



SLIDEFILMS – with study guides

F620-1 Fundamental Aspects of Good Design, 99 fr.* \$21.10

F620-2 Moods, Seasons, Soil & Water, 65 fr.* 14.25

F620-3 Considerations in Planning, 66 fr.* 14.45

F620-4 Small Properties, Naturalistic Landscapes and Patios, 67 fr.* 14.65

SLIDE SETS – with study guides

S620-1 Fundamental Aspects of Good Design, 99 fr.* 34.10

S620-2 Moods, Seasons, Soil & Water, 65 fr.* 22.85

S620-3 Considerations in Planning, 66 fr.* 23.20

S620-4 Small Properties, Naturalistic Landscapes and Patios, 67 fr.* 23.50

20% Series Discount

MF620-1 Landscape Design Series (4 slidefilms)* 51.50

MS620-1 Landscape Design Series (4 slide sets)* 82.85

Nursery Management Series

An overall view of nursery management, this series illustrates typical nursery operations, including mechanical and hand digging, transplanting, propagation, and packaging.

SLIDEFILMS

F641-1 Mechanical Digging of Trees & Shrubs, 74 fr. \$14.65

F641-2 Hand Digging of Trees & Shrubs, 45 fr. 8.90

F641-3 Proper Transplanting of Trees, 55 fr., w/study guide* 12.25

F641-4 Care of Newly Planted Trees, 45 fr., w/study guide* 10.30

F684 Container Production of Nursery Stock, 66 fr. 13.10

F685-1 Propagation of Evergreens for Nursery Production, 53 fr. 10.50

F685-2 Propagation of Deciduous Shrubs for Nursery Production, 39 fr. 7.70

F686 Packaging of Trees and Shrubs, 77 fr. 15.25

SLIDE SETS

S641-1 Mechanical Digging of Trees & Shrubs, 74 fr. 24.40

S641-2 Hand Digging of Trees & Shrubs, 45 fr. 14.85

S641-3 Proper Transplanting of Trees, 55 fr., w/study guide* 19.55

S641-4 Care of Newly Planted Trees, 45 fr., w/study guide* 16.25

S684 Container Production of Nursery Stock, 66 fr. 21.80

S685-1 Propagation of Evergreens for Nursery Production, 53 fr. 17.50

S685-2	Propagation of Deciduous Shrubs for Nursery Production, 39 fr.	12.85
S686	Packaging of Trees and Shrubs, 77 fr.	25.40
20% Series Discount	MF641-1 Nursery Management Series (8 slidefilms)	74.90
	MS641-1 Nursery Management Series (8 slide sets)	122.05

Transparencies, Study Guides, Cassette Tapes

Landscape Construction Transparencies

A comprehensive series that shows construction details for fences, walls, earth features, driveways, sidewalks, patios, lighting, and beds. Clear illustrations explain surveying, protecting existing features during construction, and tree planting procedures.

T617.1	Landscape Construction Accessories, 74 fr.	\$30.15
T617.2	Landscape Construction, 86 fr.	34.75
T617.3	Landscape Planting & Bed Preparation, 30 fr.	13.20

20% Series Discount	MT617.1 Landscape Construction Transparency Series (3 transparency sets)	62.50
---------------------	--	-------

Flash Cards

Nursery/Landscape Plant Identification

This set of 116 cards features glossy color photographs of 111 plants common to the nursery and landscape trades in the United States. On each card, an original line drawing illustrates branch, leaf, flower, and fruit characteristics so important in choosing the right plant for horticultural uses. Plants are identified and described on the back of each card. Practical cultural and landscape use information has been compiled from numerous references and authorities.

X664	Flash Cards, 116 cards	\$55.00
------	------------------------	---------



TURFGRASS

Subject-Matter Units, Test Questions, Teacher's Keys

U5008	Establishing A Lawn, 8p	\$.45
U5015	Turfgrass Diseases and Their Control, 28p	1.55
U5016a	Identifying and Controlling Lawn Insects, 20p	1.10
U5036	Maintaining a Weed-Free Lawn, 16p	.90

Slidefilms, Slide Sets, Study Guides, Cassette Tapes

Lawn and Turfgrass Series

Reviews all basic steps in establishing and maintaining a healthy, attractive lawn. Identification of turfgrass and weeds, plus weed control are key features of this film series.

SLIDEFILMS – with study guides

F650	Lawn Weeds—Identification and Control, 39 fr.*	\$ 9.15
F651a	Steps to a Better Lawn, 85 fr.*	18.20
F652	Identifying Illinois Turfgrasses, 63 fr.	13.85

SLIDE SETS — with study guides		
S650	Lawn Weeds—Identification and Control, 39 fr.*	14.30
S651a	Steps to a Better Lawn, 85 fr.*	29.45
S652	Identifying Illinois Turfgrasses, 63 fr.	22.20
S653	Seed Structure and Identification of Cool Season Turfgrasses, 61 fr.	21.50
20% Series Discount _____		
MF650	Lawn and Turfgrass Series (3 slidefilms)	32.95
MS650	Lawn and Turfgrass Series (4 slide sets)	69.85

VEGETABLES

Subject-Matter Units, Test Questions, Teacher's Keys

U5030	Preparing for the Vegetable Garden, 12p	\$.70
U5031	Planting the Vegetable Garden, 20p	1.10
U5032	Caring for the Vegetable Garden, 16p	.90
U5033	Growing and Harvesting Herbs, 40p	2.20

Slidefilms, Slide Sets, Study Guides, Cassette Tapes

Diseases of the Vegetable Garden

F1108-2.3	Slidefilm, 72 fr., w/study guide*	\$15.60
S1108-2.3	Slide Set, 72 fr., w/study guide*	25.15

MISCELLANEOUS

Subject-Matter Units, Test Questions, Teacher's Keys

U5025	Careers in Horticulture, 16p	\$.90
-------	------------------------------	--------

Slidefilms, Slides Sets, Study Guides, Cassette Tapes

Insect Identification and Control Series

Common household and horticultural pests are illustrated in this new series. Each pest is identified by photograph; life cycle and habits are described (including damage); and chemical and nonchemical controls are listed.

SLIDEFILMS — with study guides		
F654.1	Household Insects: Identification & Control, 80 fr.*	\$17.35
F654.2	Turf Insects: Identification & Control, 39 fr.*	9.15
F654.3	Vegetable Insects: Identification & Control, 80 fr.*	17.35
F654.4	Shade Tree and Woody Shrub Insects: Identification & Control, 78 fr.*	16.95
F654.5	Houseplant, Flower, and Fruit Insects: Identification & Control, 56 fr.*	12.55

SLIDE SETS — with study guides		
S654.1	Household Insects: Identification & Control, 80 fr.*	\$27.80
S654.2	Turf Insects: Identification and Control, 39 fr.*	14.30
S654.3	Vegetable Insects: Identification & Control, 80 fr.*	27.80
S654.4	Shade Tree and Woody Shrub Insects: Identification & Control, 78 fr.*	27.15
S654.5	Houseplant, Flower, and Fruit Insects: Identification & Control, 56 fr.*	19.90



20% Series Discount _____

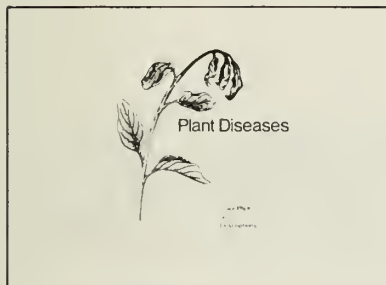
MF654.1	Insect Identification & Control Series (5 slidefilms)*	58.70
MS654.1	Insect Identification & Control Series (5 slide sets)*	93.55

Horticulture Plant Disease Picture Sheets

X699.01	Flower & House Plant Diseases I	\$.20
X699.02	Flower & House Plant Diseases II	.20
X699.03	Flower & House Plant Diseases III	.20
X699.04	Flower & House Plant Diseases IV	.20
X699.05	Flower & House Plant Diseases V	.20
X699.06	Flower & House Plant Diseases VI	.20
X699.16	Tree Diseases I	.20
X699.17	Tree Diseases II	.20
X699.18	Tree Diseases III	.20
X699.25	Woody Ornamental Diseases I	.20
X699.31	Turfgrass Diseases I	.20
X699.46	Apple Diseases I	.20
X699.47	Apple Diseases II	.20
X699.48	Cherry & Plum Diseases I	.20
X699.49	Cherry & Plum Diseases II	.20
X699.50	Grape Diseases I	.20
X699.51	Peach Diseases I	.20
X699.52	Peach Diseases II	.20
X699.53	Bramble Fruit Diseases I	.20
X699.54	Strawberry Diseases I	.20
X699.55	Strawberry Diseases II	.20
X699.56	Blueberry Diseases I	.20
X699.61	Vegetable Diseases I	.20
X699.62	Vegetable Diseases II	.20
X699.63	Vegetable Diseases III	.20
X699.64	Vegetable Diseases IV	.20

Horticulture Insect Picture Sheets

X698.16	Ornamental Insects	.20
---------	--------------------	-----



Plant Diseases: Horticultural Plants

This 8½" x 11" spiral bound booklet has 26 photo identification sheets, each of which has one side filled with 20 to 25 detailed color photos; the other side has concise descriptions. Disorders of indoor plants, turf, landscape plants, and fruits and vegetables are illustrated. Simplifies identification of many horticultural plant diseases.

MX699.96	Spiral bound booklet, 26 disease sheets	\$11.25
MX699.95	Fruit & Vegetable Plant Diseases (8½ x 11") 12 sheets which include: Apple Diseases I & II, Cherry & Plum Diseases I & II, Grape Diseases I, Bramble Fruit Diseases I, Peach Diseases I & II, Vegetable Diseases I, II, III, & IV	\$5.00

FORAGES

Subject-Matter Units, Test Questions, Teacher's Keys

U4014a	Improving Permanent Pastures, 20p	\$1.10
U4032b	Producing High Alfalfa Yields, 20p	1.10

Slidefilms, Slide Sets, Study Guides, Cassette Tapes

Efficient Alfalfa Production

F748	Slidefilm, 52 fr.	\$10.30
S748	Slide Set, 52 fr.	17.15

Diseases of Alfalfa

F749	Slidefilm, 42 fr., w/study guide*	\$ 9.70
S749	Slide Set, 42 fr., w/study guide*	15.25

Diseases of Clovers

F750	Slidefilm, 40 fr., w/study guide*	\$ 9.30
S750	Slide Set, 40 fr., w/study guide*	14.60

FORESTRY

Subject-Matter Units, Test Questions, Teacher's Keys

U4018	Farmstead Windbreaks, 8p	\$.45
U4024	Planting and Care of Farm Forests, 16p	.90

Transparencies, Study Guides, Cassette Tapes

Forest Tree Identification

Over 90 native forest species are illustrated in this transparency set. Each 8½" x 11" frame shows leaf, flower and/or fruit, and leaf arrangement characteristics. An enlarged twig illustration shows terminal buds and leaf scars in sufficient detail to teach identification features. Each frame is headed by common and scientific names. Since many native trees are used in landscape situations, this transparency set will be useful for horticulturists as well as foresters.

T780	Transparency set, 92 fr.	\$36.20
------	--------------------------	---------



GRAIN PRODUCTION

Subject Matter Units, Test Questions, Teacher's Keys

U4023b	Growing Oats, 16p	\$.90
U4027b	Growing Wheat, 28p	1.55
U4056	Wheat Diseases, 20p	1.10
U4039b	Corn Production, 20p	1.10
U4040a	Corn Insects and Their Control, 20p	1.10
U4055a	Growing Grain Sorghum, 20p	1.10

Slidefilms, Slide Sets, Study Guides, Cassette Tapes

Planting Corn

Covers basic procedures in planting corn, including early planting, hybrid selection, seedbed preparation, fertilization, and weed and insect control.

F731a	Slidefilm, 70 fr.	\$13.85
S731a	Slide Set, 70 fr.	23.10

Corn Problems Series

Illustrates many of the insects, diseases, and other problems that interfere with the normal growth and development of the corn plant.

SLIDEFILMS – with study guides		
F732-1	Planting to Knee High, 66 fr.*	\$14.45
F732-2	Knee High to Tasseling, 41 fr.*	9.50
F732-3	Tasseling to Maturity, 45 fr.*	10.30
SLIDE SETS – with study guides		
S732-1	Planting to Knee High, 66 fr.*	23.20
S732-2	Knee High to Tasseling, 41 fr.*	14.95
S732-3	Tasseling to Maturity, 45 fr.*	16.25

20% Series Discount

MF732-1	Corn Problems Series (3 slidefilms)*	27.40
MS732-1	Corn Problems Series (3 slide sets)*	43.45

Recognizing Corn Herbicide Injury

F798-1	Slidefilm, 57 fr.	\$11.30
S798-1	Slide Set, 57 fr.,	11.30

PESTICIDES

Subject-Matter Units, Test Questions, Teacher's Keys

U4045a	Handling and Using Pesticides Safely, 16p	\$.90
--------	---	--------

Safe Use of Farm Chemicals Series

Safety in the use, storage, and application of agricultural chemicals is a common goal of agriculturists and the general public. Safe practices result from awareness of what agricultural chemicals are, how they can be used, how they are supplied, and how to respond to emergency situations. This series of 5 manuals and glossary covers the major aspects of agricultural pesticides and their safe use.

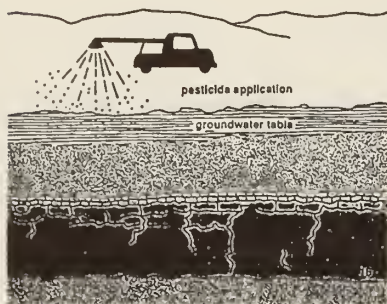
U4080	Pesticide Use: A Benefit/Risk Analysis, 20p	\$1.10
U4081	Reading Chemical Container Labels, 16p	.90
U4082	Using Farm Chemicals Safely, 24p	1.35
U4083	Managing the Environmental Impact of Pesticides, 24p	1.35
U4084	Pesticide Application: Equipment & Calibration, 28p	1.55
U4085	Glossary of Pesticide Terms, 8p	.45

Slidefilms, Slide Sets, Study Guides, Cassette Tapes

Safe Use of Farm Chemicals Series

This series of films is designed to reinforce the information presented in the Safe Use of Farm Chemicals series of manuals. Together with those manuals, they are a





thorough overview of agricultural pesticides and their safe selection, use, storage, and application.

SLIDEFILMS — with study guides

F780	Pesticide Use: A Benefit/Risk Analysis, 48 fr.*	\$10.95
F781	Reading Chemical Container Labels, 42 fr.*	9.70
F782	Using Farm Chemicals Safely, 54 fr.*	12.15
F783	Managing the Environmental Impact of Pesticides, 36 fr.*	8.55
F784	Pesticide Application: Equipment & Calibration, 52 fr.*	11.70

SLIDE SETS — with study guides

S780	Pesticide Use: A Benefit/Risk Analysis, 48 fr.*	17.25
S781	Reading Chemical Container Labels, 42 fr.*	15.25
S782	Using Farm Chemicals Safely, 54 fr.*	19.20
S783	Managing the Environmental Impact of Pesticides, 36 fr.*	13.30
S784	Pesticide Application: Equipment & Calibration, 52 fr.*	18.55

20% Series Discount

MF780	Safe Use of Farm Chemicals Series (5 slidefilms)*	42.10
MS780	Safe Use of Farm Chemicals Series (5 slide sets)*	66.30

Assaying for Herbicide Residue

Presents steps involved in the biological assay, an alternative to laboratory analysis. Uses readily available supplies and common test plants. This test will indicate whether enough herbicide residue is present to harm sensitive crops.

F797	Slidefilm, 28 fr., w/study guide*	\$6.95
S797	Slide Set, 28 fr., w/study guide*	10.65

Pests and Pesticides Series

An extensive film series on pesticides; covers selection, safe use and handling, calibration, and application. Common insect pests and vegetable garden diseases are examined in detail.

SLIDEFILMS — with study guides

F1108-1.1	Understanding and Safe Use of Pesticides, 72 fr.*	\$15.60
F1108-1.2	Selecting and Handling Pesticides, 62 fr.*	13.65
F1108-1.3	Calibrating and Applying Pesticides Safely, 52 fr.*	11.65
F1108-2.1	Safe Use of Pesticides Around the Home, 37 fr.	8.70
F1108-2.2	Identifying Common Insect Pests, 73 fr.*	15.85
F1108-2.3	Diseases of the Vegetable Garden, 72 fr.*	15.60

SLIDE SETS — with study guides

S1108-1.1	Understanding and Safe Use of Pesticides, 72 fr.*	25.15
S1108-1.2	Selecting and Handling Pesticides, 62 fr.*	21.85
S1108-1.3	Calibrating and Applying Pesticides Safely, 52 fr.*	18.55
S1108-2.1	Safe Use of Pesticides Around the Home, 37 fr.	13.60
S1108-2.2	Identifying Common Insect Pests, 73 fr.*	25.50
S1108-2.3	Diseases of the Vegetable Garden, 72 fr.*	25.15

20% Series Discount

MF1108-1.1	Pests and Pesticides Series (6 slidefilms)*	64.85
MS1108-1.1	Pests and Pesticides Series (6 slide sets)*	103.75

Transparencies, Study Guides, Cassette Tapes

Safe Use of Pesticides

Pesticide types, formulations, classification, labels, and warnings are described in detail. Protective clothing and equipment and safe practices are illustrated.

T790	Transparency set, 40 fr., w/study guide*	\$13.65
------	--	---------

SOILS

Subject-Matter Units, Test Questions, Teacher's Keys

U4001a	Collecting and Preparing Soil Samples for Testing, 16p	\$.90
U4002a	pH Test for Soil Acidity, 8p	.45
U4003c	Phosphorus Management, 16p	.90
U4004b	Determining Available Potassium in Soils, 12p	.70
U4005	Nature of Soil Acidity and Major Plant Nutrients, 4p	.25
U4006a	Soil Liming—A Key to Better Farming, 8p	.45
U4008b	Potassium Management, 12p	.70
U4009b	Planning the Nitrogen Program, 16p	.90
U4010a	Planning a Fertilizer Program, 8p	.45
U4011a	Hunger Signs in Crops (with color insert), 12p	.85
U4021a	Grassed Waterways, 24p	1.35
U4028	Soil Structure, 8p	.45
U4029	Soil Color, 8p	.45
U4030	Soil Texture, 8p	.45
U4050	Nitrates in Water Supplies, Field Crops, and Ruminant Nutrition, 12p	.70
U4052a	Understanding Soils, 20p	1.10
U4053a	Using the Illinois Land-Use Scorecard, 28p	1.55
U4054b	Using the Universal Soil Loss Equation to Estimate Soil Loss, 20p	1.10
U4058	Using Conservation Tillage Systems, 16p	.90
Q4058	Test Questions, pkg. of 10	1.10
K4058	Teacher's Key	.55
U4060	Soil Erosion—The Silent Enemy of the Soil—Our Precious Resource, 36p	2.00

Slidefilms, Slide Sets, Study Guides, Cassette Tapes

Collecting and Preparing Soil Samples for Testing

Since soil testing is so important to making the best decisions for proper application of fertilizers, this film is basic to introducing soil management principles.

F703a	Slidefilm, 36 fr.	\$ 7.15
S703a	Slide Set, 36 fr.	11.90

Soil Color

Compares and contrasts soil colors and relates differences to soil origins and management practices.

F708	Slidefilm, 47 fr.	\$9.30
------	-------------------	--------

Soil Erosion Series

This set of 3 films describes various aspects of soil erosion and how they affect farmland and water quality.

SLIDEFILMS — with study guides

F722	Agriculture: Soil Erosion and Water Quality, 82 fr.*	\$17.60
F723a	Soil Erosion—The Silent Enemy of the Soil—Our Precious Resource, 44 fr.*	10.10
MF724	Meet the Speck: The Erosion Crisis, 67 fr. and Cassette Tape	18.50

SLIDE SETS — with study guides

S722	Agriculture: Soil Erosion and Water Quality, 82 fr.*	28.45
S723a	Soil Erosion—The Silent Enemy of the Soil—Our Precious Resource, 44 fr.*	15.90
MS724	Meet the Speck: The Erosion Crisis, 67 fr. and Cassette Tape	27.35

20% Series Discount	MF722	Soil Erosion Series (3 slidefilms)*	36.95
	MS722	Soil Erosion Series (3 slide sets)*	57.30

Land and Water Series

This series (cooperatively developed by several agencies) deals with soil-erosion loss, soil conservation, and promoting specific soil conservation practices.

SLIDEFILMS – with study guides

F725-1	From Dust Bowl to Mud Bowl—The Erosion Problem, 82 fr.*	\$17.80
F725-2	T by 2000—State Erosion-Control Goals, 72 fr.*	15.85
F725-3	Raindrops and Bombs—The Erosion Process, 77 fr.*	16.85
F725-4	How to Measure What's Missing—The Universal Soil Loss Equation, 79 fr.*	17.05
F725-5	A Plan for the Land—Erosion Control Alternatives, 82 fr.*	17.80
F725-6	Declaring War on Weeds and Erosion—Weed Control for Conservation Tillage, 81 fr.*	17.45
F725-7	Returning to Grass Roots—Hay and Pasture Establishment, 81 fr.*	17.45

SLIDE SETS – with study guides

S725-1	From Dust Bowl to Mud Bowl—The Erosion Problem, 82 fr.*	28.45
S725-2	T by 2000—State Erosion-Control Goals, 72 fr.*	25.15
S725-3	Raindrops and Bombs—The Erosion Process, 77 fr.*	26.80
S725-4	How to Measure What's Missing—The Universal Soil Loss Equation, 79 fr.*	27.45
S725-5	A Plan for the Land—Erosion Control Alternatives, 82 fr.*	28.45
S725-6	Declaring War on Weeds and Erosion—Weed Control for Conservation Tillage, 81 fr.*	28.10
S725-7	Returning to Grass Roots—Hay and Pasture Establishment, 81 fr.*	28.10

20% Series Discount	MF725-1	Land and Water Series (7 slidefilms)*	96.20
	MS725-1	Land and Water Series (7 slide sets)*	154.65

Conservation Systems Workshop Material

This series was produced for the U.S. Department of Agriculture and developed by the Cooperative Extension Service. It was prepared in March 1988.

SLIDEFILMS – with study guides

F726-1	Conservation Planning: A Tool for Better Resource Management, 80 fr.*	17.35
F726-2	The Water Erosion Process, 80 fr.*	17.35
F726-3	Controlling Water Erosion with Conservation Planning, 80 fr.*	17.35

SLIDE SETS – with study guides

S726-1	Conservation Planning: A Tool for Better Resource Management, 80 fr.*	27.65
S726-2	The Water Erosion Process, 80 fr.*	27.65
S726-3	Controlling Water Erosion with Conservation Planning, 80 fr.*	27.65

Transparencies, Study Guides, Cassette Tapes

Soil Testing and Fertility

Shows equipment, procedures, and test results of soil testing. Explains how nutrients are held in soils and how soil environmental conditions affect added nutrients. Charts point out the benefits of nutrient applications.

T702 Transparency set, 57 fr., w/study guide* \$23.60

Soil Science

Introduces the science of classifying and managing soils. Graphically illustrates soil particle size, textural classes, and common types of soil structure.

T701 Transparency set, 32 fr. \$14.00

SOYBEANS

Subject-Matter Units, Test Questions, Teacher's Keys

U4033b Soybean Production, 20p \$ 1.10
 U4057 Common Problems of Soybeans, 20p 1.10

Slidefilms, Slide Sets, Study Guides, Cassette Tapes

Soybean Problems Series

Illustrates many of the insects, diseases, and other problems that interfere with the normal growth and development of the soybean plant.

SLIDEFILMS – with study guides

F751 Planting to Emergence, 42 fr.* \$ 9.70
 F752 Emergence to Flowering, 64 fr.* 14.05
 F753 Flowering to Maturity, 54 fr.* 12.10

SLIDE SETS – with study guides

S751 Planting to Emergence, 42 fr.* 15.25
 S752 Emergence to Flowering, 64 fr.* 22.50
 S753 Flowering to Maturity, 54 fr.* 19.20

20% Series Discount _____

MF751 Soybean Problems Series (3 slidefilms)* 28.65
 MS751 Soybean Problems Series (3 slide sets)* 45.55

Growing Soybeans Series

A useful series on soybean management that describes high-yield narrow row planting, controlling soybean diseases, and recognizing herbicide injuries.

SLIDEFILMS

F755 Growing Soybeans in Narrow Rows, 28 fr.,
 w/study guide \$ 6.95
 F756 Soybean Disease Management, 37 fr., w/study guide 8.70
 F798-2 Recognizing Soybean Herbicide Injury, 57 fr. 11.30

SLIDE SETS

S755 Growing Soybeans in Narrow Rows, 28 fr.,
 w/study guide 10.65
 S756 Soybean Disease Management, 37 fr., w/study guide 13.60
 S798-2 Recognizing Soybean Herbicide Injury, 57 fr. 18.80

20% Series Discount _____

MF755 Growing Soybeans Series (3 slidefilms) 21.50
 MS755 Growing Soybeans Series (3 slide sets) 34.45

Transparencies, Study Guides, Cassette Tapes

Soybeans—Planting to Harvesting

An excellent set for illustrating various phases in the life of a soybean. Line drawings clearly show seeds, germination, and plant parts. Equipment used in soybean culture is illustrated, as are insects and charts regarding various cultural practices.

T740 Transparency set, 50 fr., w/study guide* \$20.90

WEEDS

Subject-Matter Units, Test Questions, Teacher's Keys

U4020	Plants Poisonous to Livestock, 16p	\$.90
U4042a	Controlling Weeds, 16p	.90
Q4042a	Test Questions, pkg. of 10	1.10
K4042a	Teacher's Key	.55

Slidefilms, Slide Sets, Study Guides, Cassette Tapes

Weed Identification Series

Illustrates vegetative and floral characteristics used to identify weeds. Seeds, seedlings, and mature plants of broadleaf and grassy weeds are shown. Practice sets have no identifying labels, so they can be used for review and testing.



SLIDEFILMS

F791b	Weed Identification, 117 fr.	\$23.15
F791b(Supp)	Practice Set for F791b, 61 fr.	12.10
F793	Identification of Weed Seeds, 68 fr.	13.50
F793(Supp)	Practice Set for F793, 70 fr.	13.85
F800	Identification of Weed Seedlings, Broadleaves, Pt. I, 45 fr.	8.90
F801	Identification of Weed Seedlings, Broadleaves, Pt. II, 45 fr.	8.90
F802-1	Weed Seedlings and Vegetative Identification—Grass Weeds, 42 fr., w/study guide*	9.70
F802-2	Weed Seedlings and Vegetative Identification—Broadleaf Weeds, 102 fr., w/study guide*	21.55
F803	Identification of Weed Seedlings, Grasses, 42 fr.	8.30
F811	The Wicked World of Weeds, 77 fr.	15.25

SLIDE SETS

S791b	Weed Identification, 117 fr.	38.60
S791b(Supp)	Practice Set for S791b, 61 fr.	20.15
S793	Identification of Weed Seeds, 68 fr.	22.45
S793(Supp)	Practice Set for S793, 70 fr.	23.10
S800	Identification of Weed Seedlings, Broadleaves, Pt. I & Pt. II, 83 fr.	27.40
S802-1	Weed Seedlings and Vegetative Identification—Grass Weeds, 57 fr.	18.80
S802-2	Weed Seedlings and Vegetative Identification—Broadleaf Weeds, 146 fr.	48.20
S803	Identification of Weed Seedlings, Grasses, 42 fr.	13.85
S811	The Wicked World of Weeds, 77 fr.	25.40

20% Series Discount

MF791b	Weed Identification Series (10 slidefilms)	108.15
MS791b	Weed Identification Series (9 slide sets)	190.35



Transparencies, Study Guides, Cassette Tapes

How Herbicides Work

Shows how weeds reduce crop yields and why good control is important. Illustrates life cycles of annuals, biennials, and perennials. Describes different kinds of herbicides and how they work. Briefly reviews application equipment and its use.

T700 Transparency set, 46 fr. \$19.35

MISCELLANEOUS

Slidefilms, Slide Sets, Study Guides, Cassette Tapes

Seed Quality—A Major Factor in Crop Yields

F796 Slidefilm, 39 fr. \$7.70

Crop Disease Series

Illustrates the diseases which can affect crops and reduce yields. Also shows some noninfectious disorders. Promotes recognition of disease as the first step of proper control.

SLIDEFILMS — with study guides

F773 Diseases of Wheat, 50 fr.* \$11.30
 F747a Diseases of Soybeans, 45 fr.* 10.30
 F749 Diseases of Alfalfa, 42 fr.* 9.70
 F750 Diseases of Clovers, 40 fr.* 9.30
 F754 The Soybean Cyst Nematode Problem, 55 fr.* 12.25

SLIDE SETS — with study guides

S773 Diseases of Wheat, 50 fr.* 17.90
 S747a Diseases of Soybeans, 45 fr.* 16.25
 S749 Diseases of Alfalfa, 42 fr.* 15.25
 S750 Diseases of Clovers, 40 fr.* 14.60
 S754 The Soybean Cyst Nematode Problem, 55 fr.* 19.55

20% Series Discount

MF773 Crop Disease Series (5 slidefilms)* 42.25
 MS773 Crop Disease Series (5 slide sets)* 66.75

Approved Practices

A730a Approved Practices of Corn \$.45
 A740a Approved Practices of Soybeans .45
 A750 Approved Practices of Alfalfa .45
 A770a Approved Practices of Wheat .45
 A780 Approved Practices of Oats .45

Soil Judging and Testing Materials

J700 Land-Use Scorecards (Prod.-Ag) 100 pt., pkg. of 25 \$1.40
 J701 Land-Use Scorecards (non-Ag. Use) 116 pt., pkg. of 25 1.40
 J702 Tables for Soil Judging Scorecard, pkg. of 10 .90
 Soil Test Report Forms, pkg. of 10 as follows:
 J703 Form A, Directions for Collecting Soil Samples .55
 J704 Form B, Request for Testing Service,
 Information Sheet .55
 J705 Form D-1, Soil Test Report .55
 J706 Form D-2, Lime—Maps & Interpretations .55
 J707 Form D-3, Phosphorus—Maps & Interpretations .55
 J708 Form D-4, Potassium (K)—Maps & Interpretations .55

Herbicide Injury Identification Picture Sheets

X899.01	Corn I	\$.20
X899.02	Corn II	.20
X899.06	Soybeans I	.20
X899.07	Soybeans II	.20
X899.16	Injury Symptoms from Selected Herbicides	.20

Field Crop Insect Picture Sheets

X798.30	Corn Insects—Above Ground	\$.20
X798.31	Corn Insects—Below Ground	.20
X798.40	Soybean Insects	.20
X798.01	Stored Grain Insects and Molds	.20

Field Crop Disease Picture Sheets

X799.30	Corn Diseases I	\$.20
X799.31	Corn Diseases II	.20
X799.32	Corn Diseases III	.20
X799.33	Corn Diseases IV	.20
X799.34	Corn Diseases V	.20
X799.35	Sorghum Diseases I	.20
X799.36	Sorghum Diseases II	.20
X799.40	Soybean Diseases I	.20
X799.41	Soybean Diseases II	.20
X799.50	Alfalfa Diseases I	.20
X799.51	Alfalfa Diseases II	.20
X799.60	Clover I	.20
X799.61	Clover II	.20
X799.62	Forage Grass Diseases I	.20
X799.70	Wheat I	.20
X799.71	Wheat II	.20
X799.80	Oats	.20
X799.81	Barley and Rye	.20

Plant Diseases: Field Crop Plants

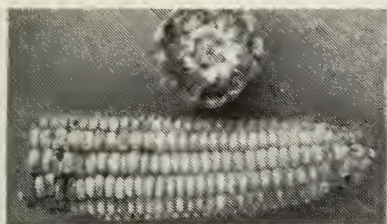
An 8½" x 11" spiral bound booklet with 26 photo identification sheets, each of which has one side filled with up to 25 detailed color photos and the other side with descriptions of the illustrated disorders. Major categories of disorders include diseases, herbicide injuries, and insect pests. A useful reference for agronomists.

MX799.91	Spiral bound booklet	\$11.25
----------	----------------------	---------

Diseases and Pests Notebook

A 3-ring notebook organized with tab dividers for storing diseases and pests color photo sheets. There is additional room for other information in each section. Major divisions of the notebook include diseases, herbicide injury, pests, and weeds of agronomic and horticultural crops.

X800	Notebook, with tabbed dividers	\$12.00
------	--------------------------------	---------



Diseases of Soybeans and Corn

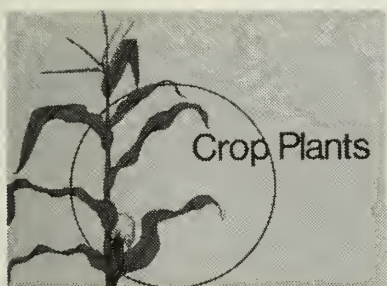
This 3" x 5½" booklet (spiral bound) is a guide to help identify diseases of soybeans and corn quickly and accurately. It assists in early, in-the-field identification when control measures are generally more effective. Over 50 different diseases are illustrated with color photos.

X830 Spiral bound pocketbook \$6.00

Vegetative Identification of Common Row Crop Weeds

In pocket booklet size (3" x 5½", spiral bound), this guide features 38 of the most common weeds in row crops in the Midwest, including perennials, annual grasses, and annual broadleaves. Key vegetative parts of each species are presented along with a color photo. A convenient aid to being a knowledgeable row crop manager.

X840 Spiral bound pocketbook \$5.50



Weed Plants Crop Plants

Each 8½" x 11" booklet has 40 sheets with clear color photographs that help identify plants quickly and accurately. Each weed or crop plant is shown in 4 stages—seed, seedling, mature plant, and flower.

X850 Weed Plants booklet, 82 p \$15.00
X860 Crop Plants booklet, 82 p \$15.00

Insect Pest Identification of Corn, Soybeans, and Alfalfa

A handy 3" x 5" pocket booklet with 25 color photographs of insect pests. Describes damage, scouting procedures, and guidelines for control.

X870 Spiral bound pocketbook, 52 p \$4.50

Field Crop Scouting Manual

Designed to aid in identification and evaluation of common pest problems in the field. Contains basic scouting procedures for insects, diseases, and weeds. Describes nutrient deficiencies, herbicide injury, and other agronomic crop problems (includes 19 color sheets).

X880 Spiral bound book, 136 p \$11.00

Judging Booklet

Crop Judging

A manual designed to aid in preparing students to judge crops. For wheat, oats, soybeans, corn, hay and corn silage, listings of quality factors ranked in order of importance are presented. Sample completed scorecards are included—these match sample judge's reasons and placing. Illustrations include crop seed photographs and diagrams.

J790 Manual \$3.85

CAREERS

Slidefilms, Slide Sets, Study Guides, Cassette Tapes

Careers in Agriculture

The need for trained people to work in the field of agriculture is outlined in this slidefilm/slide set. Workers representing production agriculture and a variety of agricultural sales and service jobs explain what they do at work and comment on the outlook and training needed for those jobs. Each slidefilm or slide set is packaged with a study guide and cassette recording of that script.

20% Discount

MF1008	Slidefilm, 144 fr., w/study guide & cassette	\$33.70
MS1008	Slide Set, 144 fr., w/study guide & cassette	52.75

Other Materials – Brochures

W901.1	Opportunities in Agricultural Education	\$.10
W402.1	Opportunities in Agricultural Supply and Service	.10

FFA, SOEP, RECORD BOOKS

Subject-Matter Units, Test Questions, Teacher's Keys

U7001	The History of the Illinois FFA, 12p	\$.70
Q7001	Test Questions, pkg. of 10	1.10
K7001	Teacher's Key	.55
U7003	SOE Programs in Agriculture, 24p	1.35

Slidefilms, Slide Sets, Study Guides, Cassette Tapes

SLIDEFILMS

MF1007	The History of the Illinois FFA—History in the Making, 98 fr., w/study guide and cassette	\$24.65
MF1010	Behind the Scenes of the Illinois FFA Convention, 96 fr., w/study guide and cassette	24.20
F1011	The Challenge of Illinois FFA Office, 113 fr., w/study guide*	23.75
F1112	Exploring Supervised Occupational Experience Programs (SOEP), 46 fr.	9.15

SLIDE SETS

MS1010	Behind the Scenes of the Illinois FFA Convention, 96 fr., w/study guide and cassette	36.90
S1011	The Challenge of Illinois FFA Office, 113 fr., w/study guide*	38.70
S1112	Exploring Supervised Occupational Experience Programs (SOEP), 46 fr.	15.15

Transparencies, Study Guides, Cassette Tapes

T1007	FFA Facts, 16 fr.	\$7.80
-------	-------------------	--------

Record Books for FFA Foundation Awards

R401	Agricultural Electrification	\$.85
R402	Agricultural Mechanics	.85
R403	Safety	.85
R501	Fish and Wildlife	.85
R502	Forestry	.85
R601	Floriculture	.85
R602	Fruit or Vegetable Production	.85

Miscellaneous

R603	Home and Farmstead Beautification	.85
R604	My Plant Diary	.30
R605	Nursery Operations	.85
R606	Turf and Landscape Management	.85
R701	Soil and Water Management	.85
R1001	Outdoor Recreation	.85
R1002	Product Processing	.85
R701	Soil and Water Management	.85

Supplemental Material for Record Books

Z404	Sales and Service Self-Employment Supplement	\$.30
Q602	Problem for Use with Fruit or Vegetable Production Record Book, 4p	.20
K602	Teacher's Key to above Problem, 12p	.65

JUDGING MATERIALS

Computing Slide

J1001	Hormel Computing Slide (Price subject to change following notice in Vo-Ag NEWS & NOTES)	\$9.90
-------	---	--------

Judging Cards used in Illinois State Contests

Specify type and color (salmon, green, pink, blue, yellow)

	Agricultural Management—sample contest questions (see Z374, Ag. Economics section)	
	Agricultural Mechanics—No judging cards used.	
	Crops Contest	
J999.100	Regular Placing	\$.04
J999.107	Crop Seed Identification	.04
J999.108	Weed Identification	.04
	Dairy Contest	
J999.100	Regular Placing	.04
J999.101	Production Ring	.04
	Dairy Products Contest	
J999.113	Scoring and Criticizing Milk Samples	.04
J999.114	Scoring and Criticizing Milker Unit Heads	.04
J999.115	Identification of Cheeses	.04
J999.117	California Mastitis Test	.04
J999.118	Real Versus Artificial Dairy Foods/Products	.04
	Horse Contest	
J999.100	Regular Placing	\$.04
	Livestock Contest	
J999.100	Regular Placing	.04
J999.102	Female Selection Class (Keep—Cull)	.04
J999.104	Swine Grading	.04
J999.103	Beef Cattle Grading (Slaughter Cattle)	.04
	Meat Contest	
J999.100	Regular Placing	.04
J999.105	Beef Carcass Quality Grading	.04
J999.106	Beef Carcass Yield Grading	.04
J181	Meat Identification (pink, yellow, green)	.03
	Horticulture Contest	
J999.100	Regular Placing	.04
J690	Horticulture Identification Ring (4 pages)	.20

Miscellaneous

Poultry Contest		
J999.100	Regular Placing	.04
J999.109	Dressed Market Bird Grading	.04
J999.110	Egg Grading – Exterior Quality	.04
J999.111	Egg Grading – Interior Quality	.04
J999.112	Identification of Chicken Parts	.04

Registration Cards

J999.21	Livestock	\$.03
J999.22	Dairy	.03
J999.23	Poultry	.03
J999.24	Crops	.03
J999.25	Meat	.03
J999.26	Dairy Products	.03
J999.27	Horticulture	.03
J999.28	Farm Business Management	.03
J999.29	Agricultural Mechanics	.03
J999.3	Judges Placing Cards	.01
J999.4	Manila Cards for Scoring	.03
J999.5	Summary Sheets	.01

PARLIAMENTARY PROCEDURE

Slidefilms, Slide Sets, Study Guides, Cassette Tapes

Introduction to Parliamentary Procedure

This slidefilm/slide set explains why parliamentary procedures were developed and discusses the classes of motions. It would make an excellent lead-in to a series of lessons on parliamentary procedure.

F1006	Slidefilm, 49 fr.	\$ 9.70
S1006	Slide Set, 49 fr.	16.15

Transparencies, Study Guides, Cassette Tapes

Parliamentary Procedure Transparencies

Classes and ranking of motions used in parliamentary procedure are explained in this set of transparencies.

T1006	Transparency set, 14 fr.	\$7.05
-------	--------------------------	--------

Other Parliamentary Procedure Materials

P270	A Guide to Parliamentary Practices	\$1.10
P271	Beginning Steps in Parliamentary Procedure	.55
P272	The Teacher's Guide to Parliamentary Procedure	.30
Q272	Test Questions for above	.40
K272	Teacher's Key to above Test Questions	.55
P273	Characteristics of Motions, 12p	.65

CALENDAR, REPORT PADS, NOTEBOOKS

Z1001	Calendar of Events, Set of monthly calendars, August through July, 8½ x 11", printed on heavy paper with space for writing in events	\$.90
Z1002	Report of Ag. Instructors Activities, pad of 50 Notebooks, 3-ring, sturdy, white with clear plastic shield on front cover and spine for title inserts	1.10
Z1003	1-inch ring	\$5.00
Z1004	1½-inch ring	6.00
Z1005	2-inch ring	6.50

GENERAL ORDER FORM

1988

Vocational Agriculture Service, University of Illinois, 1401 S. Maryland Drive, Urbana, Illinois 61801

Please send to: _____

Name _____ Date _____

School _____

Address _____ Zip Code _____

Billing Instructions: _____

FEI No. _____ OR Social Security No. _____
(For schools and companies) (For individuals)

Quantity Desired	Item Number	Title	Price Each	Amount

Checks should be made payable to the **UNIVERSITY OF ILLINOIS** but sent to Vocational Agriculture Service

* If payment is sent with this order, please add the following for postage and handling:

For orders \$9.99 and under	add \$1.50	Total	_____
For orders from \$10.00 to \$14.99	add \$1.75	Less 20% (Illinois residents only)	_____
For orders from \$15.00 to \$24.99	add \$2.00	Postage & Handling*	_____
For orders from \$25.00 to \$74.99	add 8%	TOTAL COST	_____
For orders from \$75.00 and up	add 7%		

From: _____

Stamp

Vocational Agriculture Service
University of Illinois
1401 S. Maryland Drive
Urbana, Illinois 61801

(tape or staple)

RELEASE ORDER SERVICE

Production Agriculture Release Service

Agricultural Releases are a series of packets assembled periodically, October through April, containing miscellaneous new or revised materials in Agriculture. Subscribers to this service automatically receive a copy of each new circular, most new bulletins, various newsletters and releases from departments of the College, proceedings of conferences, seminars, and field days, each new printed publication from VAS, and other items of interest. Occasionally materials are obtained from the USDA and other state universities. Many of these items are provided free to VAS Release subscribers, while others are distributed at cost.

The Release charges are accumulated and billed to schools at the end of the school year. Maximum charge for this service for 1988-89 is \$80.00 for Illinois schools, and \$95.00 for out-of-state schools (plus postage). If the total charge is less than the maximum, the lesser amount (plus postage) will be billed.

Also included with each packet are a reference sheet and a set of 3" x 5" cards indexed according to the 72 categories used in the VAS filing system. (The filing system is sent free to new subscribers.)

Horticulture Release Service

Horticulture Releases include current printed materials of interest to Horticulture teachers. Each Release packet contains recent University of Illinois Extension publications, new and revised Vocational Agriculture Service publications, plus additional relevant information. Free items are often included; most items are sent at cost. Release packets are issued periodically from October through April.

Release charges are accumulated and billed at the end of the school year. Maximum charge for this service for 1988-89 is \$50.00 for Illinois schools, and \$60.00 for out-of-state schools (plus postage). If the total charge is less than the maximum, the lesser amount (plus postage) will be billed.

ADVANCE ORDER SERVICE

Advance Order Program

Teachers who subscribe to the **Advance Order Program** receive an additional 10% discount under the regular price paid for new materials by those not enrolled. All new and revised subject-matter units, slidefilms, slide sets, study guides, and transparencies released by Vocational Agriculture Service during the school year are distributed in this program.

The program is divided into two separate categories: Production Agriculture/Agribusiness, and Horticulture. Four types of materials are offered under each category—slidefilms, slide sets, transparencies, and sets of subject-matter units.

Slidefilms/Slide sets — The advance order for slidefilms/slide sets includes one print of each slidefilm or slide set released during the school year and a study guide or script if one is produced. For Illinois residents, the guaranteed maximum cost for 1988-89 Production Agriculture/Agribusiness slidefilms is \$80.00; for slide sets the guaranteed maximum is \$130.00. For out-of-state residents, the guaranteed maximum cost is \$95.00 for slidefilms and \$165.00 for slide sets.

For Illinois residents, the guaranteed maximum cost for 1988-89 Horticulture slidefilms is \$60.00; for slide sets the guaranteed maximum is \$100.00. For out-of-state residents, the guaranteed maximum cost is \$70.00 for slidefilms and \$115.00 for slide sets. You may subscribe to either format, or both, at the prices listed.

Transparencies — The advance order for transparencies includes one set of each packet of overhead projection transparencies released during the school year. Each packet includes transparencies printed on clear plastic, brown paper copies, and related text material, all in a manila pocket folder with the title stamped on the tab. The 1988-89 guaranteed maximum price for transparencies in Production Agriculture/Agribusiness is \$30.00 for Illinois teachers, and \$35.00 for out-of-state teachers. The 1988-89 guaranteed maximum price for transparencies in Horticulture is \$25.00 for Illinois teachers, and \$30.00 for out-of-state teachers.

Subject-matter Units — The advance order for sets of subject-matter units includes one copy in each set of every unit released during the school year. A number of sets may be ordered, often to match the number of students in a teacher's largest class. The 1988-89 guaranteed maximum cost for subject-matter units in Production Agriculture/Agribusiness is \$5.00 per set, and for Horticulture, \$3.00 per set.

NOTE:

Advance order materials are shipped throughout the school year as they are released. Charges are accumulated and billed at the end of the school year. Billing is for actual costs, at or below the guaranteed maximum, for each area: slidefilms, slide sets, transparencies, and sets of subject-matter units, (plus postage). Other billing times may be arranged if requested.

VOCATIONAL AGRICULTURE SERVICE STAFF

ROGER L. COURSON, Ph.D. — Head

Subject Matter Specialists:

WILLIAM P. HUNTER, Ph.D.
Specialist in Agricultural Economics

JANET L. HICKENBOTTOM, B.S.
Specialist in Animal Sciences

KENNETH D. McPHEETERS, Ph.D.
Specialist in Horticulture and Agronomy

JOHN E. SMITH, Ed.M.
Specialist in Agricultural Mechanics

SONJA L. WILLIAMS, M.S.
Specialist in Agriculture/Science Education

Publications Editor:

BARBARA BADGER
Technical Editor

Secretaries:

WILLIE McELWEE
Head

LOIS WESSELS
Typesetter

Graphic Arts and Photography:

BARBARA KITA BURCH
Art Director

Instructional Materials Center:

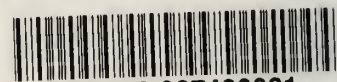
JIM WARD
Supervisor

JACK STAYTON
Printer

ERIC OLSON
Kit Programs and Assembly

Vocational Agriculture Service
College of Agriculture
University of Illinois
1401 South Maryland Drive
Urbana, Illinois 61801

UNIVERSITY OF ILLINOIS-URBANA
016.6307 UN31 C001 1988
Instructional materials /



3 0112 087480031

Special Collections
314 Library, MC=522
CAMPUS MAIL,