

TT 520

. E 49

TT 520

.E49

Copy 1

NEW EDITION.

INSTRUCTIONS AND DIAGRAMS
FOR USING
THE NEW COMPLETE TAILOR SYSTEM
OF
DRESS CUTTING.



IMPROVED.

A SYSTEM FOR CUTTING LADIES' MISSES' AND CHILDREN'S
GARMENTS BY *ACTUAL* MEASUREMENT.

Illustrated Books of Instruction in English, German and French.

Copyright 1886 and 1888.

—BY—

B. S. ELMES,

INVENTOR AND PROPRIETOR,
SPRINGFIELD, MASS.

P. O. Box 84.

NEW EDITION.
INSTRUCTIONS AND DIAGRAMS
FOR USING
THE NEW COMPLETE TAILOR SYSTEM
OF
DRESS CUTTING.



15
9476

LIBRARY
FEB 24 1887
5004

IMPROVED.
A SYSTEM FOR CUTTING LADIES' MISSES' AND CHILDREN'S
GARMENTS BY *ACTUAL* MEASUREMENT.

Illustrated Books of Instruction in English, German and French.

Copyright 1886 and 1888.

—BY—

B. S. ELMES,

INVENTOR AND PROPRIETOR,
SPRINGFIELD, MASS.

P. O. Box 84.

TT 520.
.E 49

PREFACE.

This work is intended to furnish the learner with instructions in that art of Dress Cutting, and more especially the application to practical cutting. The chief object of the author has been to construct a system by actual measurements, and at the same time combine simplicity with accuracy. The principles are presented in the simplest manner by descriptions and illustrated diagrams, from which it can be easily learned by anyone, so that by practice and correct measures, any lady can cut perfect fitting garments.

Yours Respectfully,

B. S. ELMES.

P. S.—The latest edition of the system has been thoroughly revised and improved. Extra books 25 cents.

B. S. ELMES,

INVENTOR AND PROPRIETOR,

P. O. Box 84.

Springfield, Mass.

QA 10 3291 Elmest.

INSTRUCTIONS AND DIAGRAMS FOR DRAFTING.

DIRECTIONS FOR TAKING MEASURES.

FIRST.—The bust measure : The tape line is brought over the fullest part of the bust, and close under the arms, and raise the tape line a little in the back, about to the center of the shoulder blades, and draw as tight as the garment is desired. For example this is 34 inches.

SECOND.—The waist measure is taken as tight as the garment is desired. For example this is 24 inches.

THIRD.—The length of waist under arms taken from the under arm seam to the hip. For example this is 8 inches.

These measures are best taken standing at the person's back.

These are all the measures that are required thus far in drafting for a good form.

DIRECTIONS FOR DRAFTING A BASQUE.

Use for measures those taken for example. Bust 34, waist 24, Length of waist under arm 8. For the front fold the goods $1\frac{1}{2}$ inches for hem. Then place the front of system even with the edge of hem, and 36 scale II, at the top edge of paper or lining, this is for seam on the shoulder. Now follow the different scales represented by the Roman numerals in order, and dot at 34 in scales I and II for the neck, then dot at 34 in scale III at C for medium length of shoulder in this draft. [The lengths A and B are short French shoulders, C is a medium, D and E are long shoulders. From the scale you can design any length of shoulder.]

Next under medium chest dot at 34 in scale IV for arm's eye. [The full chest is only used for an extreme full broad chest, when the bust measure is 42 inches or more and when used in such a case you will need to go over an extra size in scale V, for example to 44 and take up $1\frac{1}{4}$ inches in the under arm dart at arm's eye, and when the side form in back is drafted, dot at 40 in scales XII and XIII ; now you have 42 bust and full chest.]

Next dot at 34 in scale V, then dot at 34 in scale VI, on the line 8 for length of waist under arm. Now in the scales of VII and VIII dot each side of the Dart Space at 8, for space between darts. Next take the waist measure from the bust measure and with the difference refer to table on system for width of darts. For example 34 less 24 equals 10, and on system at 10 difference in dart table you find the width of front dart $1\frac{1}{2}$ inches front from dart space locate a dot. The back dart 2 inches back from the dart space locate a dot. Then locate the top of the darts as indicated on the systems.

For large figures, the system should be moved back $\frac{1}{2}$ inch or more from edge of hem before the darts are put in as it will

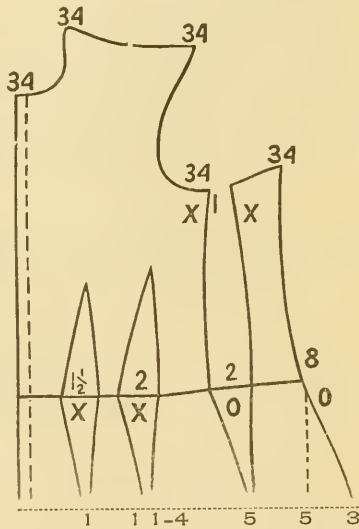


DIAGRAM OF FRONT. No 1.

give a better outline to the form to not have the darts too near the front, especially if the darts are deep, like 2 inch front and $2\frac{1}{2}$ or 3 inches back dart.

The under arm dart is put in after the outline is drafted.

Now move the system, placing it so as to draft the neck by the neck, the shoulder by the shoulder, using the medium, or hollow, or full shoulder as you think the figure requires. To draft the arm's eye place the system so that the arrow on system points to the dot in the arm's eye, draft from the shoulder dot,

and if the system has to be rotated in order to meet the dot at back of arm's eye for point of under arm seam, still keep the arrow pointing nearly at the dot. Of course you will see that in drafting for all sizes it can not be kept pointing directly at the dot but very nearly so.

Draft the length of waist under arm from point to dot by the corresponding part of system.

Next draft the waist line by placing the system so that the angle at figure 9 on the waist line of the system comes to the back dot of the back dart, draw the waist line over the hip,

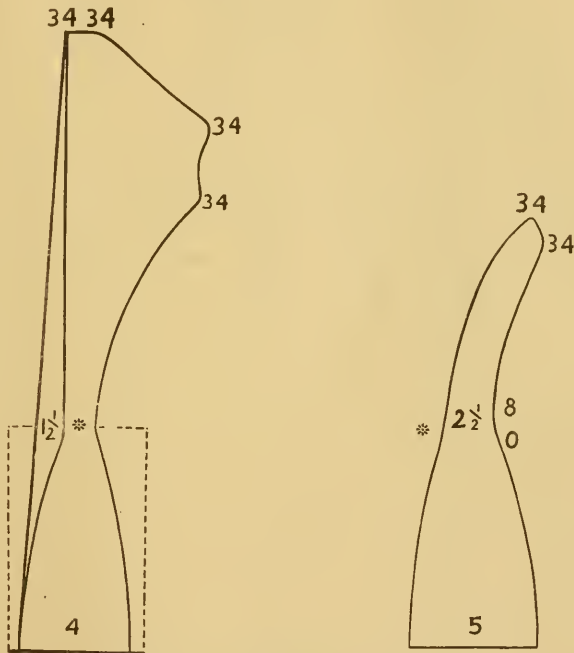


DIAGRAM OF BACK. No. 2.

square the system with line of dots for darts and finish waist line in front. From point of dart rule draft the darts above the waist line. [But for figures and Misses that are full at the pit of stomach, draft the darts from a point about 2 inches from point of rule.] To put in the under arm dart measure from the dot at arm's eye to dot at point of under arm seam, and locate a

dot in the center on the line, then measure 1 inch front and locate another dot, for width of under arm dart at arm's eye. By referring to the dart table on system, when we have 10 inches difference, we find the under arm dart given as 2 inches. Now measure the waist line from back dart to under arm seam

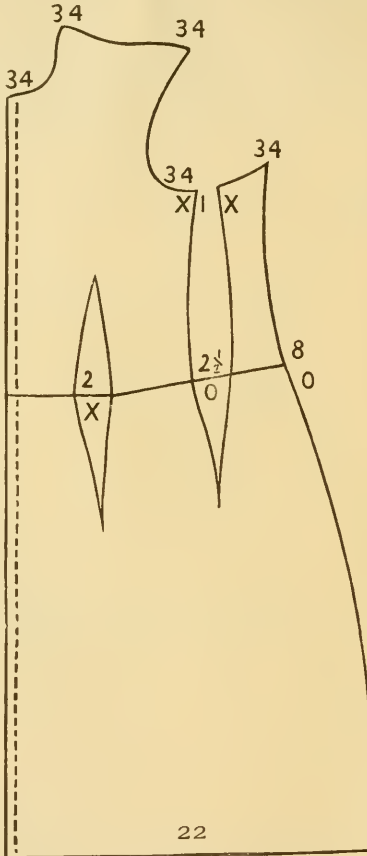


DIAGRAM No. 3.

and locate a dot in the center and as the under arm dart was given as 2 inches, locate a dot 1 inch back and 1 inch front from the center dot on waist line for width of under arm dart. From the point X on dart rule, placed at dots at arm's eye for the dart, draft to the dots on the waist line with an outward curve. (See diagram No. 1.)

To finish the skirt of the basque, measure straight down from back dot on the waist line (or under arm seam) 5 inches, or the length required and locate dot, from this dot measure back $2\frac{1}{2}$ inches and dot for spring on the hip for a slender figure, 3 inches for a medium and $3\frac{1}{2}$ inches for figures with very large

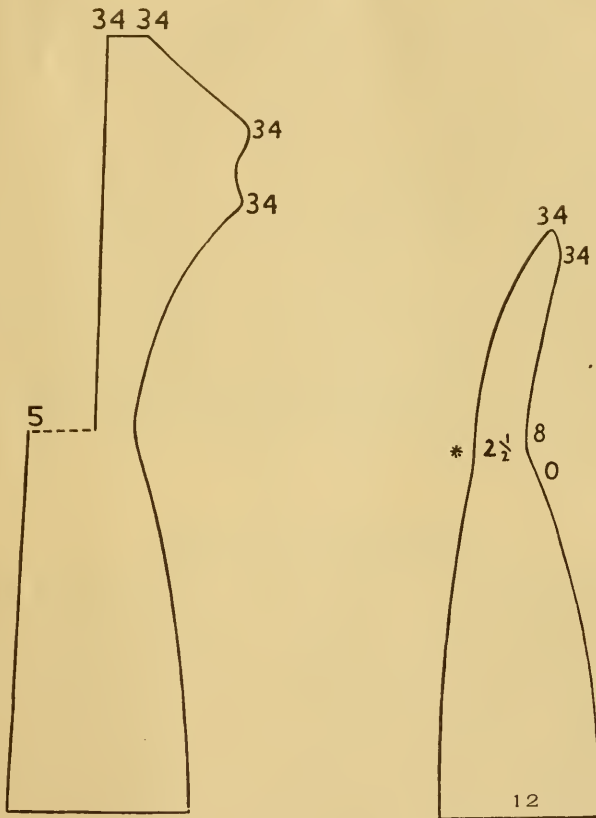


DIAGRAM No. 4.

hips. Now from the point O on dart rule draft the hip line with an outward curve to the dot located for spring on the hip.

To finish the under arm dart below the waist line, place the dart rule with the figures at the center dot of under arm dart on the waist line, with the edge of dart rule *parallel with the back line of under arm dart*; thus leaving a space through the

under arm dart equal to that from the center dot to the back line of under arm dart, and locate a dot 5 inches below waist line for the bottom of the under arm dart, now draft the hip line from the point O with an inward curve.

To draft the front dart measure straight down on the hem 7 inches for length of basque below waist line. Then from this point on the hem measure back $2\frac{3}{4}$ inches and dot, place the edge of dart rule with the point X opposite the first dot of front dart and draft to the dot at the bottom. Next measure 1 inch back and dot for width of front dart at bottom. Place the opposite edge of dart rule with the point X opposite the back dot of front dart, and draft to the dot at the bottom, from this dot measure back $1\frac{3}{4}$ inches and dot for space between darts at the bottom of basque. Now measure back $1\frac{1}{4}$ inches and dot for width of back dart at the bottom, place the dart rule the same as on front dart and draft the lines. [These directions are for medium figures. Diagram No. 1 gives a little more fullness in the skirt of the basque for a figure with large abdomen. To shape off a pointed basque, short on the hip, draw from the back of side form, using the desired length on hip also for point in front.]

TO DRAFT THE BACK.

Place the system on the goods or paper so that the edge of the system will leave room for a seam at the back of the neck, and spring in at the waist line $1\frac{1}{2}$ inches. Now dot at 34 in the scales IX and X, also 34 C, scale XI, for a medium length shoulder.

If shorter or longer shoulders are wanted use the scales to suit the demands. Then dot at 34, scale XII, for back of arm's eye and follow down the side form seam in the line 22 to length of waist 8 and dot. Also dot opposite in the center of the back. The line 22 is a medium, 20 is for slender figures, 24 and 26 are for large figures. You should strive to give the best proportioned outline for the figure for whom you are cutting.

Draft the back line first by the system, also back of neck, shoulders and back of arm's eye, by the corresponding parts of the system. Draft the side form seam from the curved point of side form placed at the dot at the back of arm's eye, to the dot at waist line.

To finish below the waist line, use the dart rule from the *star* and draw a line 7 inches for length with required spring for the seam in the center of back. Measure 4 inches for width at bottom and dot, from opposite the *star* draft to the dot at the bottom. This is for a medium size 34, but for slender figures

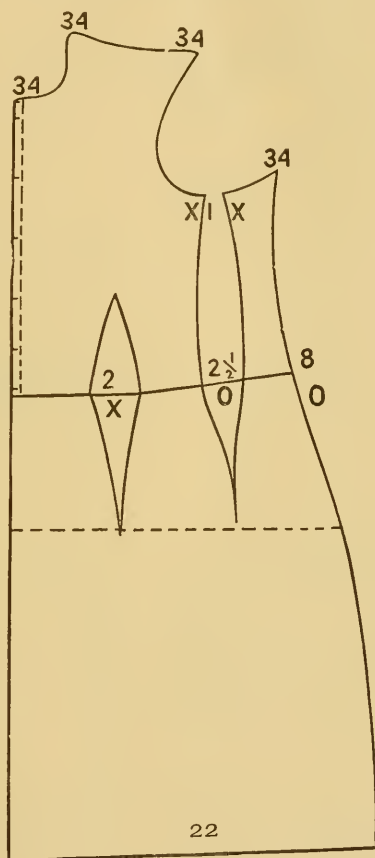


DIAGRAM No. 5.

decrease by $\frac{1}{4}$ inch to a size down to size 30, and for sizes above 34 increase by $\frac{1}{4}$ of an inch.

Dotted lines in Diagram No. 2 represent box pleates, which are $4\frac{1}{2}$ or 5 inches deep from the center of back, and side form

seams each way. To draft the side form, place the system on so that the grain of the goods or paper is nearly straight at the waist line, and dot at 34, scales XII and XIII; also 34, scale XIV, at 8 length of waist under arm and at 22 on the line of 8 for side form seam, then with the system draft by the back of

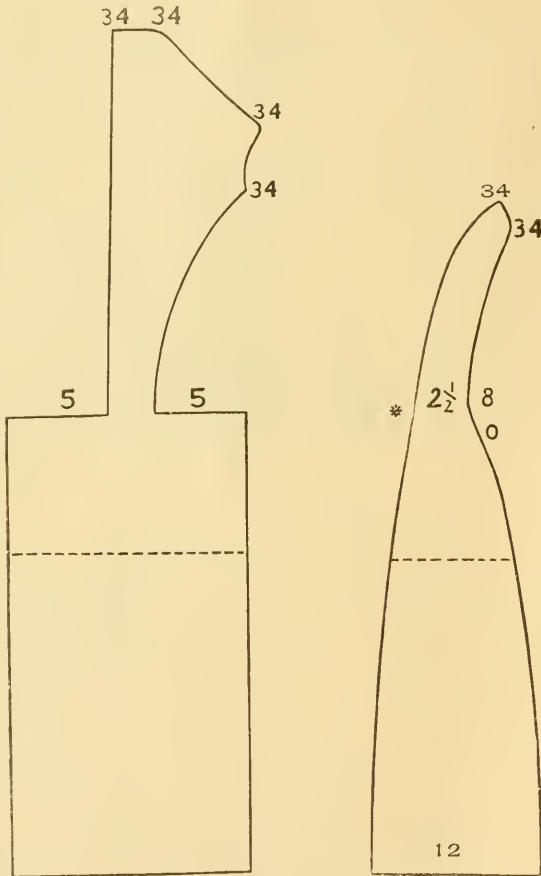


DIAGRAM No. 6.

the arm's eye, and length of waist under arm, draft the side form seam by side form from the curved point to the dot at the waist line. Now place the star on dart rule at the dot of side form seam at the waist line, and the point of the rule at the

center of side form, from the star at the dot draw a line 7 inches for length below waist line. Now measure the side form at the waist line and we find it $2\frac{1}{2}$ inches, double this measure at the waist line for the bottom, at 7 inches from the waist line for length, and dot at 5 inches for width at bottom. From the point O on dart rule, draft the hip line with an outward curve, to the dot at the bottom and the back is drafted. Refer to Diagram No. 2.

To draft a wrapper, use the same principle as taught from Diagrams No. 1 and 2, use two darts or one as represented in

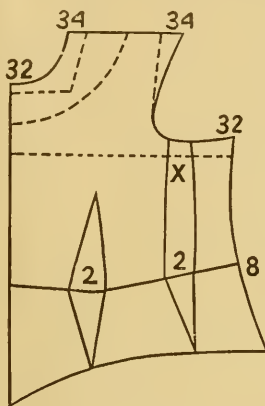


DIAGRAM No. 7.

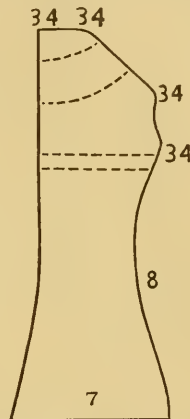


DIAGRAM No. 8.

Diagram No. 3. For proportions refer to figures at the bottom of Diagrams Nos. 3 and 4.

SHORT WALKING JACKETS AND SACQUES.

These are usually drafted with one dart. Using the same general principle only in half fitting garments, when we have 10 inches for taper make the *single dart* 2 inches, and the under arm dart $2\frac{1}{2}$ inches. The measures are taken one size larger than for a tight fitting dress.

NEWMARKETS AND ULSTERS.

To draft these garments use the same general principles as taught in Diagrams Nos. 3 and 5 for front, and Nos. 4 and 6 represent back with box-pleats and proportions of side form, which is cut the desired length.

CORSET COVER AND MOTHER HUBBARD YOKE.

Diagrams 7 and 8 represent the corset cover with one dart; you can use two darts if desired, also the *French back*. The dotted line represents *Mother Hubbard Yoke*.

DIRECTIONS FOR DRAFTING SLEEVES.

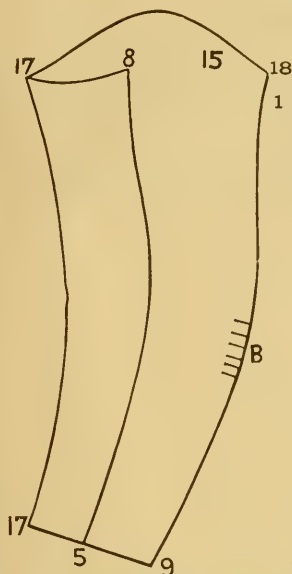


Measure the length of arm on the inside ; and for example this measure is 17 inches ; then pass the tape line around the arm's eye over the point of shoulder, and for example this measure is 15 inches.

Measure the hand at the base of the thumb for size at wrist : and for example this measure is 8 inches. To draft a skeleton sleeve, place the system on the goods or paper with the row of perforation at the top straight with the grain of the goods. By the front edge of the sleeve system draft from 17 to 17 for the length on the inside. For the wrist dot at 8 on the line 17 for outside part ; count 2 less and dot at 6 for the underpart. For the arm's eye follow the line 17 over to size 15 and

dot for outside part, for the under part count 4 less and 1 above and dot on line 11. Place the outside edge of the sleeve system with 17 in the margin opposite the outside dot at wrist, and the outside edge at the outside dot at the arm's eye, then draft from the dot at the arm's eye to the dot at the wrist. Use the same to draft the underpart from arm's eye to wrist, and draft the line at wrist. To draft the curve over the point of shoulder keep the row of perforations straight with the grain of the goods, and move the system down until you can see the top of the inside and outside lines, then draft the curve. To curve the under part of sleeve reverse the system, and place A at the top of inside seam and draft to dot 11. Now to change to a curved sleeve for a thin arm, place the system $1\frac{1}{2}$ inches from the top at dot 15 and draft to the elbow. Use the same for the underpart, curve the underpart when only one curve is required.

$$\text{Formula } \left\{ \begin{array}{l} \text{Length, 17 inches,} \\ \text{Arm's Eye, } 15 - 4 = 11. \\ \text{Wrist, } 8 - 2 = 6. \end{array} \right.$$

SLEEVE WITH GATHERED ELBOW.

Place the system the same as for a skeleton sleeve and use this for a basis for all sleeves. This is drafted by adding 1 on to the size of wrist for the outside part, and take 1 from the underpart. For example, size of wrist $8+1=9$, underpart $6-1=5$.

At the arm's eye add 3 spaces to the size and dot 1 below for outside part, and take 3 from the underpart and dot on the line of length.

For example, size of arm's eye, $15+3=18$. Underpart, $11-3=8$. It is drafted the same as the skeleton sleeve after the dots are located, and gathers at elbow.

Formula of outside part { Length, 17 inches.
Arm's Eye, $15+3=18$.
Wrist, $8+1=9$.

Formula of under part { Length, 17 inches.
Arm's Eye, $15+3=18-10=8$.
Wrist, $8+1=9-4=5$.

FRENCH SLEEVE.

Place the system and draft the length on the inside of the sleeve. For the size of wrist 8 add 2, and dot at 10 on the line 17 for outside part; take 2 from 6 and dot at 4 for under part. For the arm's eye follow the line 17 over to size 15 and dot, to the size add 5 spaces, then 3 spaces below and dot on the line 20 for outside part. Take 5 spaces from 11 and 2 below and dot on the line 6 for under part at arm's eye. Draft the lines from dots at arm's eye to the dots at wrist the same as for a skeleton sleeve.

To form the curve at the arm's eye, place the back point at the dot 20 and draft to dot 15, finish the same as the skeleton sleeve.

Formula of outside part { Length, 17 inches.
Arm's Eye, $15+5=20$.
Wrist, $8+2=10$.

Formula of under part { Length, 17 inches.
Arm's Eye, $15+5=20-14=6$.
Wrist, $8+2=10-6=4$.



TO DRAFT A SKIRT

Measure the length of skirt in front, fold the cambrie double, take $\frac{1}{4}$ of the waist measure. For example if the waist measure is 24 inches $\frac{1}{4}$ is 6 inches, with side form put in the skirt dart in

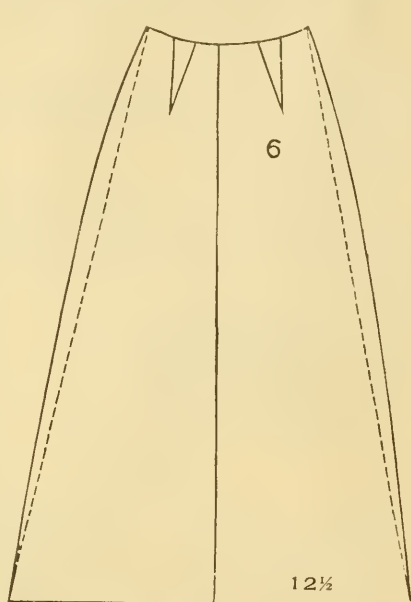


DIAGRAM No. 12.

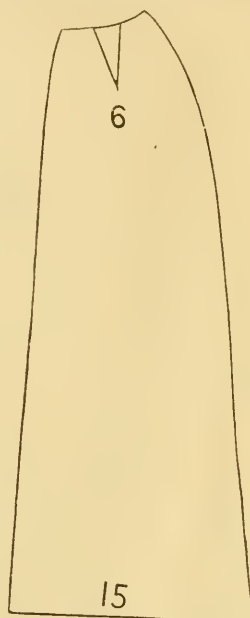


DIAGRAM No. 13.

the center, shape the top with the side form, turn the side form over and from the inside curve draft from top to bottom. If you use the average width of cambrie which is 25 inches wide, the front when doubled is $12\frac{1}{2}$ inches at bottom. See diagram No. 12. To draft the side gore, measure the desired length, take $\frac{1}{4}$ of the waist measure and put in the dart and shape the same as in the front breadth, measure 15 inches wide at the bottom, turn the side form over and draft by the outside curve from the waist line to the bottom of skirt. See diagram No. 13.

The back breadth is put in straight. This varies according to the fullness desired.

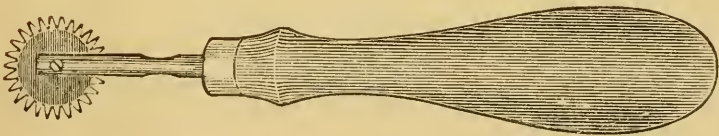
Any one can draft for children as well as ladies. But in the outline of the back you must use your judgment and add on

enough at the waist line to give an outline becoming to the form ; some will require 2, 4, 6, 8 and even 10 sizes at the waist line in the back. Draft the front and before you put in darts, measure the width of back at the waist line also width of the front at the waist line. From this measure take the waist measure, and put the difference into the darts as desired.

By referring to the outline on the system the idea can be seen at once.

THE TRACING WHEEL.

It saves time prevents errors and, in fact, a lady's work basket is not complete without a *fine steel tracing wheel*.



TRACING WHEEL.

- | | |
|--|--------|
| "Fancy Tracing Wheel," fine steel, extra weight, nickel plate, "Cocoa Bola" handle, price, | \$.50 |
| "Favorite Tracing Wheel," fine steel, price, | .25 |
| No. 1, Linen Tape Line Reversible, 60 inches, price, | .05 |
| No. 2, Linen Tape Line Reversible, 60 inches, price, | .10 |

The above sent postpaid on receipt of price.

Tracing wheels, tape lines and systems by the dozen if wanted.

Agents teaching the system, should carry them for their own use and the accommodation of their customers.

RATES FOR POSTAGE.

The system can be safely packed between two Cap Binders Board which protects the corners and warrants safe delivery, and sent by mail to any POST OFFICE in the United States, at the following rates of postage :

Package of 1 System, by mail,	\$.35
Package of 2 Systems, by mail,50
Package of 6 Systems, by mail,	1.00
Favorite Tracing Wheels, per dozen, by mail,20
Fancy Tracing Wheels, per dozen, extra weight, by mail,30

One and two-cent stamps or currency received for postage.

I have written these rates for any who may not be near an *Express Company's Office*, or those who wish to have their orders reach them as soon as possible by mail. I would suggest that you should have your orders shipped by EXPRESS when you can and in as large quantities as possible, as the rates will be less.

N. B. *Every New Agent* ORDERING ONE-HALF DOZEN SYSTEMS OR MORE on the START is PRESENTED WITH A SAMPLE CASE.

NEVER WAIT until your last system is sold BEFORE ORDERING MORE. *Positively no credit. Terms Cash. Money should be sent by Post Office Money Order or Registered Letter.*

Address all orders to the Inventor and Proprietor,

B. S. ELMES,

P. O. Box 84,

SPRINGFIELD, MASS.

TESTIMONIALS

FROM LADIES USING MY

NEW COMPLETE TAILOR SYSTEM OF DRESS CUTTING.

INVENTED 1886.

Many others could be added if space permitted.

Respectfully, B. S. ELMES.

SPRINGFIELD, MASS., Jan. 16, 1888.

MR. B. S. ELMES.

SIR,—After 20 years' experience in dress making and teaching different systems of dress cutting, I can truthfully say that your New Complete Tailor System is the most rapid and perfect fitting I have ever seen. I can cheerfully recommend it to dress makers and ladies wishing to do their own dress making. For its SIMPLICITY, QUICKNESS and PERFECT FIT, I think it has no equal.—Yours truly,

P. O. Box 84.

Mrs. K. M. TAYLOR, Teacher.

NORTHAMPTON, MASS., Feb. 6, 1888.

MR. B. S. ELMES.

DEAR SIR,—I am well pleased with your system of dress cutting—so much so, that I recommend it to my friends. Please send me the enclosed order, as I wish to act as one of your salesladies for the system.—Yours truly,

Mrs. A. S. GARDNER.

SPRINGFIELD, Feb. 7, 1888.

TO WHOM IT MAY CONCERN.

This is to certify that I have used "The New Complete Tailor System of Actual Measurement" for two years, and have found it a very simple system to cut by, and sure of giving a perfect fit. I would recommend it to all who want the best system in use.

Room 32, Vernon House.

Mrs. C. E. WILLARD.

THE FOLLOWING IS A NOTICE FROM THE SPRINGFIELD
DAILY REPUBLICAN.

Feb. 3, 1887.

The first meeting of the class in dress making at the Young Woman's Christian Association Home on Bliss Street will be on Friday evening with 14 pupils. "The Elmes System," whose manufacture is a Springfield industry, will be used.

SPRINGFIELD, MASS., Feb. 1, 1887.

MR. B. S. ELMES,

DEAR SIR,—The committee appointed to take charge of the class in dress making, at the Woman's Christian Association Home of Springfield, have decided to adopt your New Complete Tailor System of Dress Cutting in preference to others that we have seen.

MRS. JAMES A. BILL, JR., President.

OLD ORCHARD, MAINE, Dec. 11, 1887.

MR. ELMES.

DEAR SIR,—I hope to teach your Tailor System again this winter. I would like to work Portland, Me., more. I give thorough instructions, and that recommends the system, so that every one is satisfied.—Yours respectfully,

MRS. M. WESCOTT.

P. O. Box 212.

FALL RIVER, MASS., Jan. 25, 1888.

MR. B. S. ELMES.

DEAR SIR,—I am using your "New Complete Tailor System" in my business, and can recommend it to ladies desirous of learning the art of dress making. Please forward me the enclosed order.—Respectfully,

112 Davol St.

MRS. J. COBB.

BRIGHTWOOD, MASS., Jan. 25, 1888.

MR. B. S. ELMES.

DEAR SIR,—For 30 years and more I have carried on the business of DRESS MAKING EXTENSIVELY in Louisville, Ky., Hartford, Conn., and Springfield, Mass., and I have had opportunities to see and use a great many systems, but have never found any that gave the satisfaction that your "New Complete Tailor System" gives; and would say to any lady wishing to learn the art of dress cutting, take the advice of one with experience, and learn the New Complete Tailor System, and you will never regret it.—Respectfully yours,

MRS. M. A. MEYRICK.

MONSON, MASS., Jan. 2, 1888.

MR. B. S. ELMES.

DEAR SIR,—A year ago I learned your New Complete System of Dress Cutting. Previous to that I knew nothing of the art; since then, my success has been such that many of my friends have inquired who my dress maker was, and what system was used. My reply was that I would teach them for \$5.00. I have taught a number who are using it with good success. Please send me another half dozen as soon as possible.

MISS M. J. TAYLOR.

SPRINGFIELD, Feb. 8, 1888.

This is an age of progression, and I find, on thoroughly testing "The Elmes System," that it is perfection. I have taken an agency, and will from this time make it my business to teach this system of cutting at my rooms.

C. E. WALLACE.

17 Barnes' Block.

MIDDLEBORO, MASS.

MR. B. S. ELMES.

DEAR SIR,—I am using the New Complete Tailor System in my Dress Making Rooms, and find it just as represented—the quickest, simplest and most complete method of dress cutting. It gives perfect satisfaction.

MRS. A. L. TINKHAM.

SPRINGFIELD, MASS., Feb. 7, 1888.

MR. B. S. ELMES.

SIR,—I have used your New Complete Tailor System more than a year. I have taught it at my rooms with good success. With correct measure, a perfect fit is the result. I have used higher priced systems, but with not as good results. I would not exchange for any I have ever seen; it is so rapid and easy to learn, and gives such good satisfaction. The more I use it the better I like it.—Respectfully yours,

Mrs. M. GERAGHTY, Teacher.

541 Main St.

Also Fashionable Dress and Cloak Maker.

HOLYOKE, MASS., Oct. 5, 1887.

MR. ELMES.

DEAR SIR,—Since June, when you taught me your System of Dress Cutting, I have had the best of success in cutting and fitting. I think the work of taking orders and teaching just splendid. Please send me One Dozen Systems and One Dozen Fancy Tracers. Enclosed find Money Order for payment.—Yours truly,

MISS S. MCINTYRE.

69 High Street.

P. S.—Please send One-half Dozen French Books.

WESTFIELD, MASS.

MR. B. S. ELMES.

DEAR SIR,—I have had fifteen years' experience with dress systems, and can most heartily say the New Complete Tailor System is the easiest to learn, and nearest the perfect thing of any I ever tested.

MRS. H. A. LOOMIS.

CHICOPEE, MASS., Nov. 10, 1887.

MR. B. S. ELMES.

DEAR SIR,—I cannot say enough in praise of your New Complete Tailor System of Dress Cutting. I would not be without it for anything, if I could not get another.—Respectfully,

MRS. GEORGE WOOD.

MILLTOWN, Feb. 4th, 1888.

B. S. ELMES.

DEAR SIR,—Enclose you will find post office order, please send me half a dozen systems and sample case. I think I can sell quite a number in this vicinity.—Yours,

MRS. LUCY BALCON.

P. O. Box 437.

P. S.—Please send by express to Calais, Me.

SPRINGFIELD, MASS., Feb. 9, 1888.

MR. ELMES.

DEAR SIR,—I have used your System of Dress Cutting with perfect success.—Respectfully,

MRS. F. H. COLTON.

WESTFIELD, MASS.

MR. B. S. ELMES.

DEAR SIR,—I have had the best of success with your New Complete Tailor System of Dress Cutting. Have cut for some of the most difficult figures, both large and small, among my many patrons with repeated success. I am much more pleased by the use of your system, than by the previous systems that I had tested.—Respectfully,

24 Chapel St.

MRS. C. P. GEHLE.

NEW BEDFORD, Feb. 6, 1888.

B. S. ELMES.

I have used your system nearly a year, and am very much pleased with it. Like it better than any I have used.

M. A. GIFFORD.

NORTH ADAMS, MASS., Sept. 5, 1887.

MR. B. S. ELMES.

MY DEAR SIR,—I was taught your system by one of your lady agents, Miss Leonor Leary, from New York. From practical work, study and observation I have found it the best and most simple of any that has ever come to my notice. Please forward, by American Express Company, one half dozen New Complete Tailor Systems, one dozen Fancy Tracing Wheels. Enclosed find money required for the above.—Respectfully,
50 Church St. Mrs. GEORGE S. INGALLS, Teacher.

NEW BEDFORD, MASS.

MR. B. S. ELMES.

DEAR SIR,—I think your New Complete Tailor System a very good invention, I use it wholly in preference to four others that I have in my possession. I hope to be able to devote part of my time to teaching. Then I shall advertise for more pupils.—Yours,
16 Fifth St.

Mrs. L. J. GREENE.

EASTHAMPTON, MASS., Feb. 6, 1887.

B. S. ELMES.

DEAR SIR,—I have used your New Complete Tailor System of Dress Cutting since early last fall and am well satisfied with it. It is much more simple than any system I have seen before, and the patterns drafted from it are very good fitting.

Miss M. C. SCHLEICHER.

SPRINGFIELD, MASS., July 27, 1887.

MR. B. S. ELMES.

DEAR SIR,—Last year I learned your New Complete Tailor System, and it gave such good satisfaction that during my vacation I wish to take several to my friends.—Yours respectfully,

Mrs. A. E. SMITH.

Cor. State and Maple Sts.

Fashionable Dress and Cloak Maker.

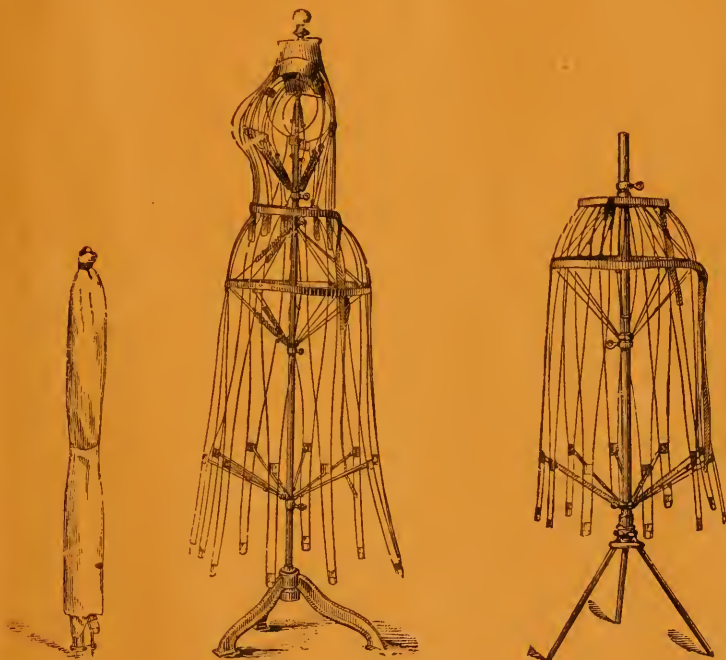
REFERENCES.

MME. H. G. LA MOTHE, Ottawa, P. Ont.
Miss HATTIE W. TITUS, Westport, N. S.
Miss FLORA H. WESCOTT, White Rock, Me.
Miss LIZZIE SMITH, Mittineague, Mass.
Mrs. A. A. CLARKE, Bellows Falls, Vt.
Miss BESSIE BRADY, Front River, N. Y.
Mrs. H. W. WILDER, Black Diamond, Cal.
Miss LEANOR LEARY, Amsterdam, N. Y.
Mrs. L. S. CLARK, Worcester, Mass.
Miss AMELIA K. ROBBINS, New Bedford, Mass.
Miss M. E. DALE, Hinsdale, N. H.
Miss HELEN S. SHAW, West Gouldsborough, Me.
Mrs. FANNIE V. DUTTON, Niantic, Conn.
Mrs. O. GREENE, Saco, Me.
Mrs. A. HEMPSTEAD, West Hartford, Conn.

THE FAVORITE ADJUSTABLE DRESS AND SKIRT FORMS.

The Form is made in two parts, and can be quickly changed from one size or height to another. Thus one form can be used for all customers. The neck can be made large or small, the shoulders long or short, round, square or sloping; the bust full or flat; the waist long or short, large or small; the hips large or small; the skirt full or scant.

It can be made any size. The band around the waist and hips is a tape measure to facilitate adjustment. It is the most durable and compact *Dress Form in the world*. Nothing to get out of order.



PRICE LIST.

Complete Form, 12 lbs.,	• • • • •	\$6.50
Bust Form, 4 lbs.,	• • • • •	3.00
Bust Form, Iron Post and Foot,	• • • • •	3.50
Skirt Form, Iron Post and Foot,	• • • • •	3.50
Skirt Form, Wooden Post, Improved Foot,	• • • • •	3.00

Full directions for use with each Form.

Forms sent to any address upon receipt of price.

Send money by Post Office Money Order or Registered Letter.

Address all orders to

B. S. ELMES,

P. O. Box 84, Springfield, Mass.



DRESS MAKERS AND

Who have by ambitious over work broken down your health can by
A CHANGE IN BUSINESS

For a time, by taking orders and teaching the new

Complete Tailor System of Dress Cutting

Find your health benefitted and financial success.

Illustrated Books of Instruction in English, German and French.



ALSO

LADIES AND GENTLEMEN

Out of employment. I will start you in a good paying business. It requires but *little capital to start at once.*

THREE WAYS TO SUCCESS.

FIRST.—Make a thorough canvass among the *Dress Makers* and *ladies* everywhere. Show the system by making a drafting and let everyone know that it drafts on the lining. You will be surprised to know how many ladies are looking for something like what you are introducing. Take their order and teach them at once thoroughly. This is a very satisfactory method.

SECOND.—Form classes at your rooms or home, and teach by classes and special private lessons.

THIRD.—Travel through towns and cities, and advertise *to teach Dress Making* for a time at some hotel, or central location.

Send stamp for particulars to the Inventor and Proprietor.

I have an ACADEMY OF DRESS CUTTING connected with the Home Office, so that any lady who purchases the system can receive thorough instructions.

Address all orders to

B. S. ELMES,

P. O. Box 84. SPRINGFIELD, MASS.

ACADEMY OF DRESS CUTTING, 27 BLISS ST.,

LIBRARY OF CONGRESS



0 014 061 957 7

