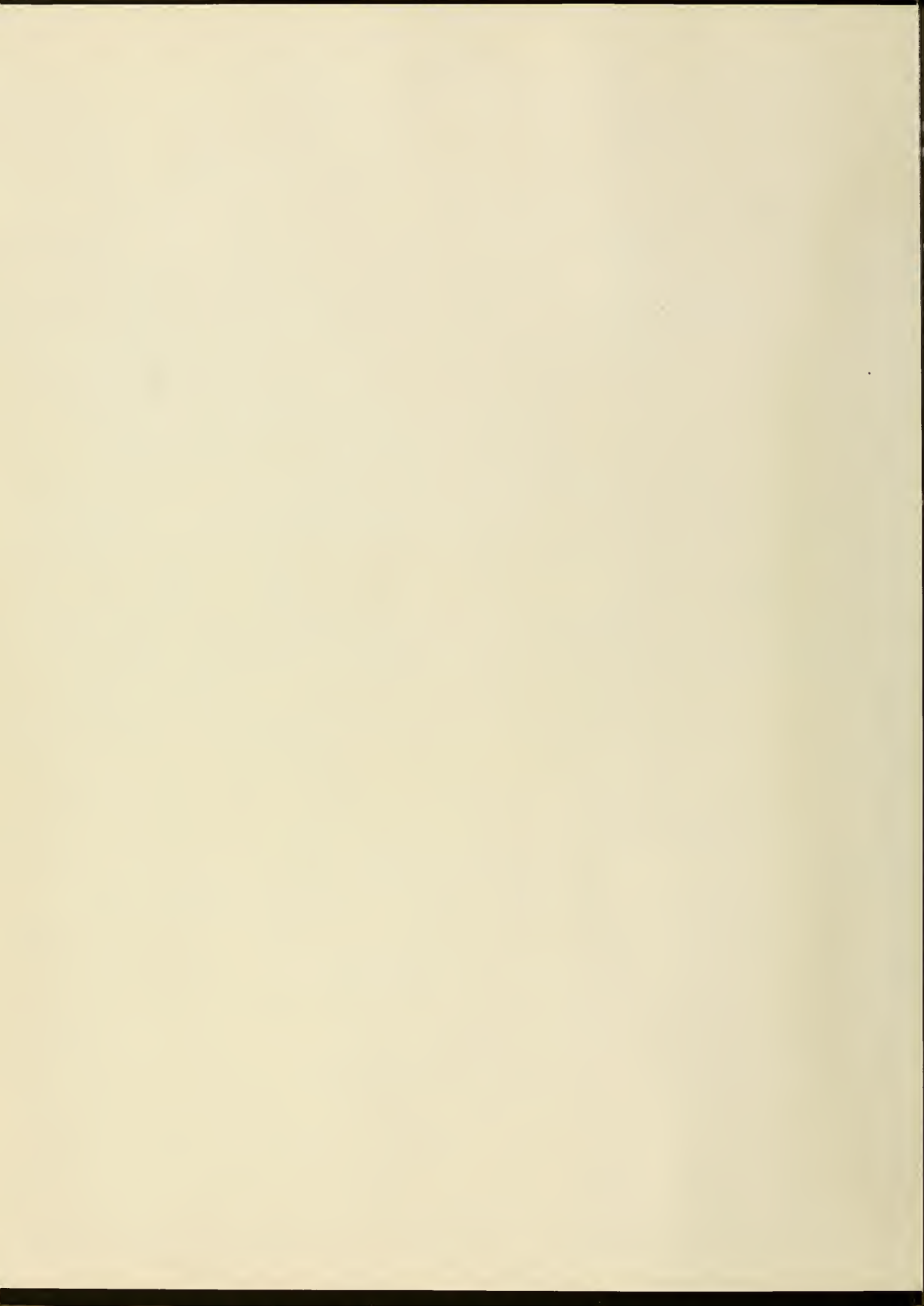


INTERLACHEN

Southern Living 1984









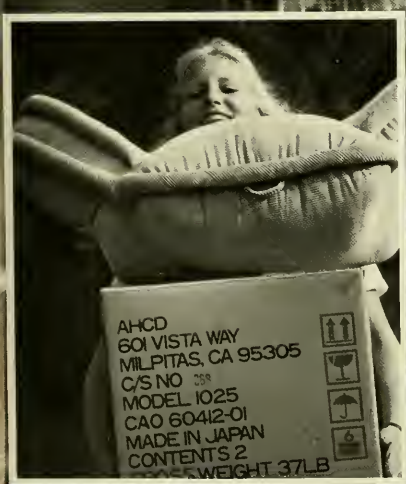
INTERLACHEN

•1984•

**FLORIDA SOUTHERN COLLEGE
LAKELAND • FLORIDA
VOLUME • 52**

For us, **SOUTHERN LIVING** is more than just a term to describe a life style. It's a moment-to-moment series of experiences that, put together, comprise us in terms of character, personality, and potential. And we're busy putting together all our yesterdays to prepare us for our tomorrows.











We'd like to pretend otherwise, but most of our time is spent preparing for our potential. From classrooms to library to dormitory desks our paths are most heavily worn. There are the flings, but even in the midst of them we know what we have to get back to.









There's a book waiting somewhere, a term paper to do, and a quiz that won't go away. But the moments in between are often more of an education, at least until we're able to assimilate the academics into the everyday.





THE WILLIAM F. CHATLOS
JOURNALISM BUILDING





And on the horizon we see the same day, and give it different names. For those pressed into this life, it's a day of deliverance, for others it's a day of decision, and for the rest of us it's a day of goodbyes. But for all of us, **SOUTHERN LIVING**, as we each knew it, will pass into our yesterdays as tomorrow becomes today.







College

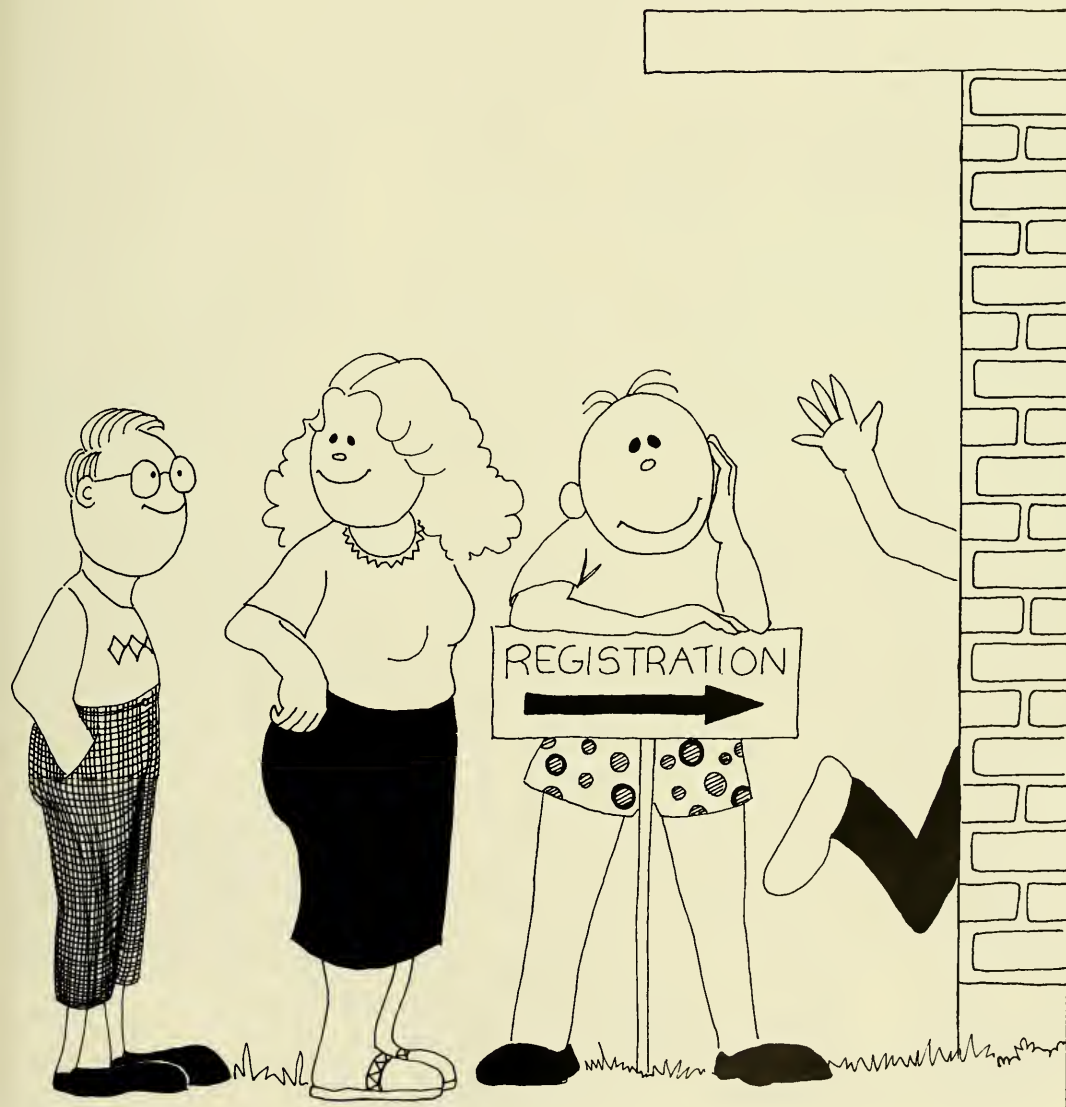




Southern



Lifestyles





School spirit reaches a goal



School Spirit . . . every student witnesses it in his or her college years. Some have more than others, but even those students with an ounce of spirit put forth a positive attitude to keep FSC a number one college.

**The Alma Mater
Orange groves o'er spread her
campus
Chimes her hymns intone,
India greets across the garden
Southern's mystic throne.**

**Florida Southern, thee we love;
Thee we'll never fail
Hail to thee our Alma Mater,
Hail to Southern, hail.**

**Stately walls alone can never
Compass learning's goal
Heart to heart must pass the
token
Soul inspirit soul.**





Students express character

Everyone has been misunderstood at one time or another. At FSC, the need to express oneself and to have the ability to communicate well became apparent.

Each semester we were classified as students all possessing individual characteristics.

Many students expressed their individual interests by participating in clubs and fraternities or sororities. Out of more than forty organizations, ten fraternities, and six sororities offered at FSC, the majority of students didn't have any trouble finding a group that fitted their social needs. (continued)



... expressions

The different bands and choirs were outlets for those students to express their musical talents. Throughout the year, the talent of these groups were displayed at such events as concerts, basketball games, and the Christmas Gala.

Practice, discipline, and a lot of hard work were necessities for the students who chose to express their individualism in sports. These athletes spent many long hours conditioning their minds and bodies for competition.

Throughout the year, each student at FSC expressed his or her own individualism. It might not have been through participation in clubs, greeks or sports, but through the communication and interaction with friends and acquaintances.







Keeping fit and trim

Muscles, strength, and physical power were emphasized as body-building became popular among many college students.

Daily, some students worked-out in the weight room under Edge Hall. A lot

of strenuous effort was put forth in those hours. Some may have felt the pains of sore muscles, but they know the exercise will keep them fit and trim.







Going, going, gone with the wind

The sun was shining, the sky was clear, and there was a stiffening breeze originating from the west. It was early, but already obvious that it was a perfect day for sailing.

White, colored, and even rainbow specs of dacron dotted the horizon as many people had the same plan. FSC students seemed to succumb to the beautiful weather. Finding themselves where the sky and the water came together, students were able to relax and let their tensions blow away with the wind.

Music reflects individual styles

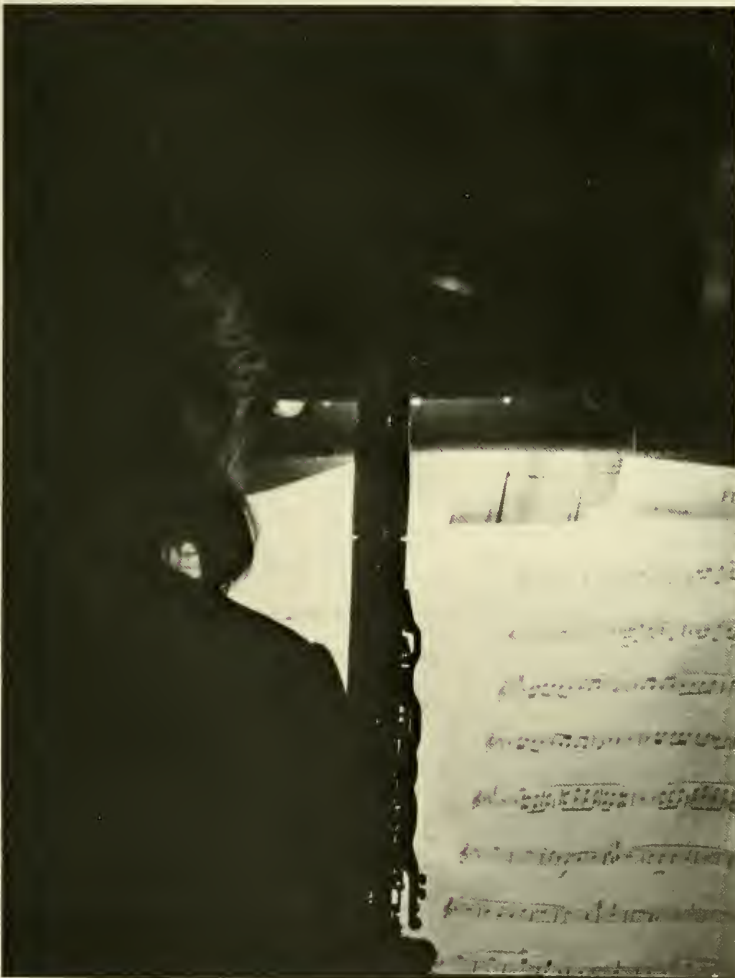
Music is all around us. It provides entertainment and dominates a large part of our lives. The distinct beat of rock, country, and mellow music could be heard on favorite radio stations as well as in the campus fine arts concerts.

Radio stations in the area provided musical entertainment that fulfilled the needs and wants of their listeners. Certain stations held contests and gave away prizes such as money, albums, movie tickets, and gift certificates.

A good number of the students participated in the many band and choirs. The respective directors inspired the groups to use their individual talents and natural abilities.

Music is in many forms and reflects many different ways of life. But all types of music have one basic factor in common — music is a form of communication through organized sounds that provide entertainment and makes memories.







Just for fun

"Get up. Do your homework, attend meetings, go through rush, turn the page . . ." Sound familiar? Despite busy schedules and unsympathetic teachers, students usually found excuses to condone talking on the telephone, watching television, not doing that research paper, and staying up past midnight, thus risking a nap during first period. Not only was studying put off and ignored on weekdays, but the process of studying was delayed even longer on the weekends. Saturday and
(continued)



... just for fun

Sunday offered a two-day break which was used to catch up on lost sleep, missed meals, and an occasional chore or piece of homework. More often than not, students were obsessed with having a good time — whether at a basketball game, or cracking jokes behind a teacher's back. To prove this, just take a look at the things we did, and the places we went ... all for fun.





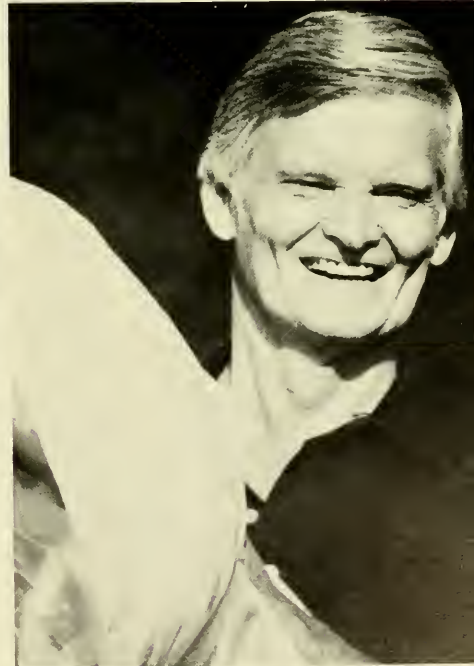


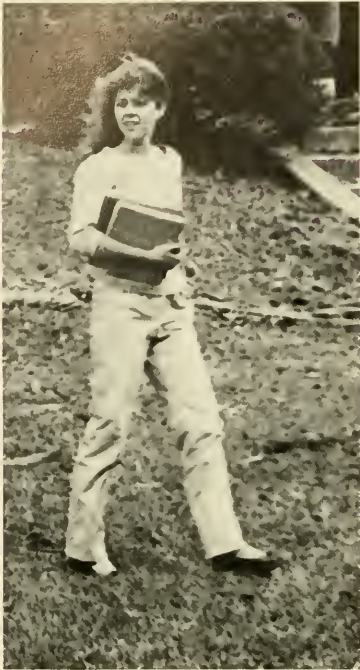
Faculty, staff, and administration . . .

they're human too

Education is unquestionably a primary ingredient in the upbringing of all eras. But in the course of time, the job of an educator becomes more than a job; it becomes a big part of life.

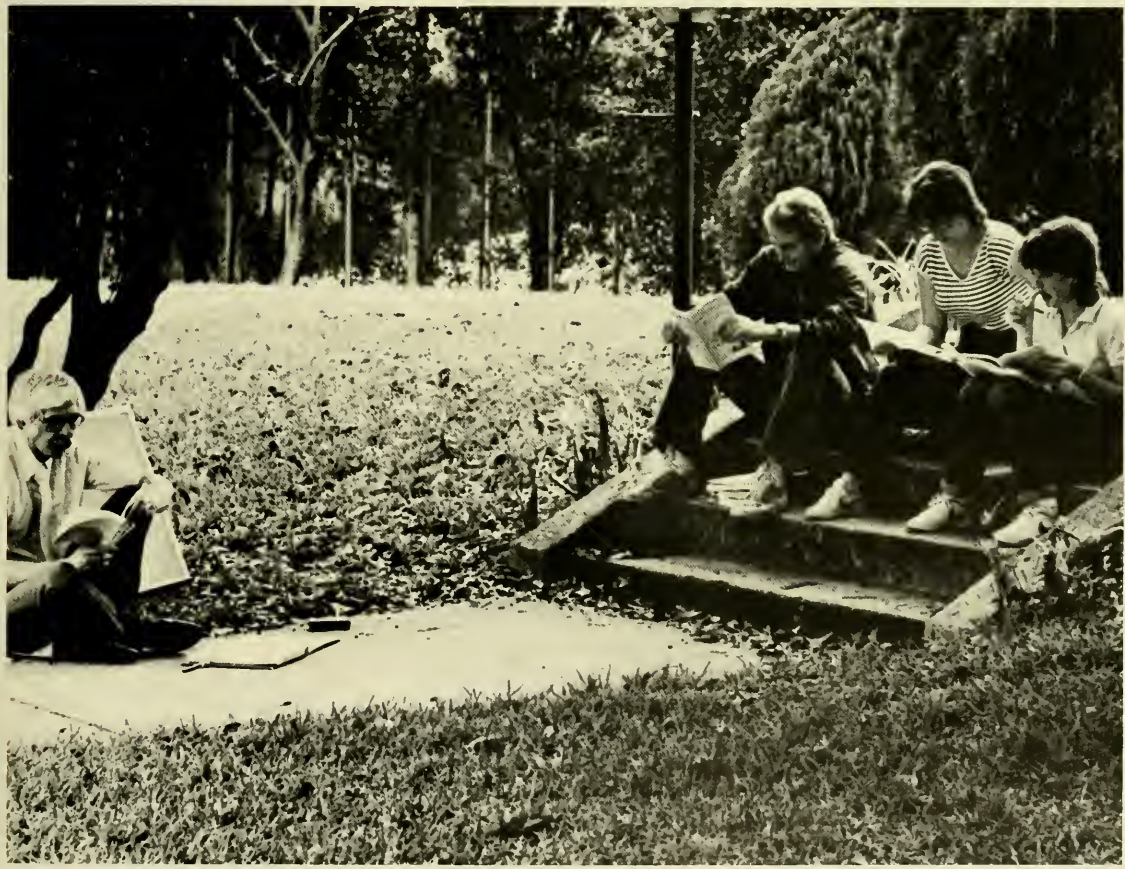
"Teachers are people too," seemed to be the message that the faculty and administration attempted to get across to the students. There has always been a barrier that makes students think of their teachers as anything but human. But they are. At the heart of the concerned staff were the teachers who daily gave of themselves to the students.





Meeting students' needs

The diversification of many courses offered at FSC gave a wide range of subject matter for even the most discriminating student. There were approximately 300 courses offered each semester. Such a varied curriculum met the demands of most of the students regardless of their interests.



Merry Christmas to all

"And Joseph also went up from Galilee, from the city of Nazareth, to Judea, to the city of David, which is called Bethlehem, to be enrolled with Mary his betrothed, who was with child. And while they were there, the time came for her to be delivered. And she gave birth to her first-born son and wrapped him in swaddling clothes, and laid him in a manger, because there was no place for them in the inn." Luke 2:4-7
RSV







Dedication plays a major role



The United States Government maintains a Senior Division of the Army Reserve Officers' Training Corps at Florida Southern College. The general objective of the Army ROTC curriculum is to produce junior officers possessing qualities and attributes essential to their progressive and continued development in the Regular Army and in the United States Army Reserve.

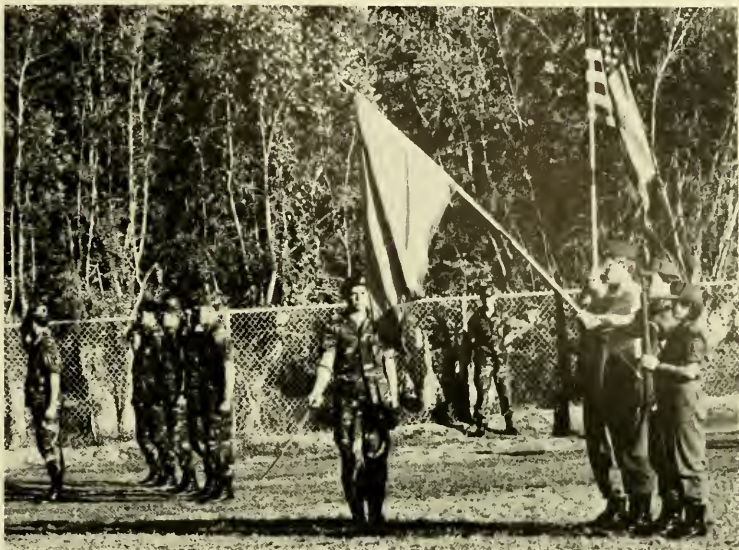
It will provide the student with an
(continued)

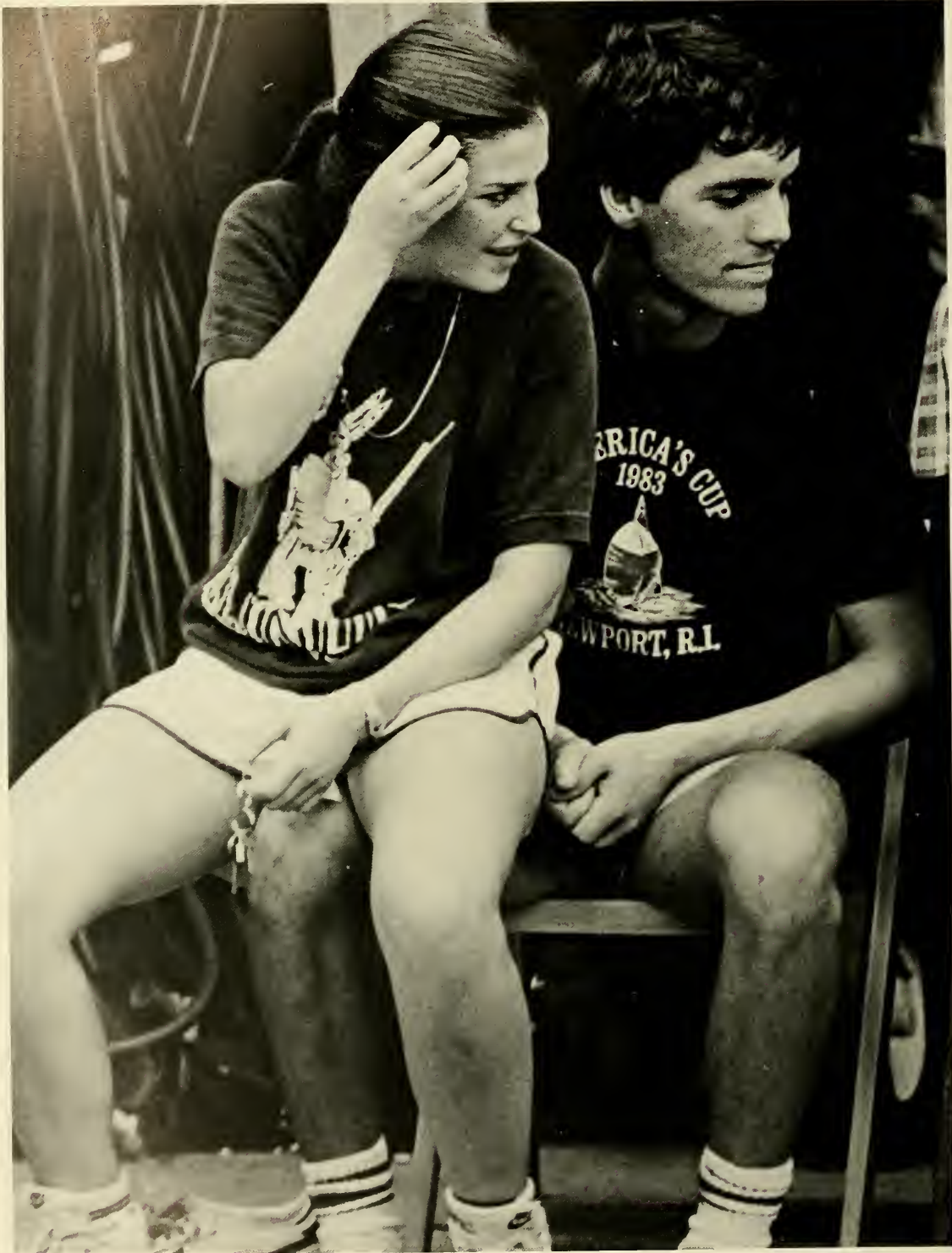


... ROTC

appreciation of the responsibilities of each American as a citizen, to contribute time, talent, and energies to be the protection of liberty and an appreciation of the need for trained leadership in the military defense organization of the United States of America.





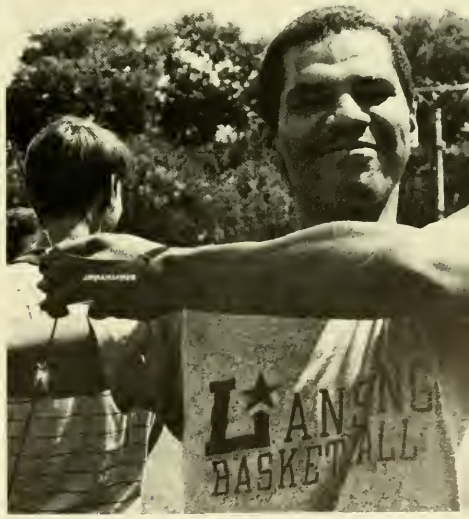


Slogans parade campus as T-shirts lead styles

Easygoing attire often dominated the college fashions since few students felt like donning their "Sunday best" after dragging themselves out of bed for a first period class. It was often much easier to stumble around in the closet and pull out a pair of blue jeans and a T-shirt.

A T-shirt . . . just a simple piece of cotton clothing. Some are white while others are multicolored. Some support professional teams and others display fraternal-organization favorites.

Regardless of the color or slogan, students who sought comfort found it in the T-shirt.



Students benefit from good nutrition

Nutrition . . . something of major concern to those seeking good health. For the students of FSC, eating proved to be a major pastime.

Mealtimes provided an outlet that broke up the monotony of the reading and writing drudgeries. During each

meal, hungry students congregated in the cafeteria in anticipation of a good meal.

To receive the benefits of good health, many students followed the advice of doctors — exercise daily, get plenty of rest, and eat nutritionally.







A common sight

At FSC, it was common to see long lines, wait in lines, and even perform in lines. Yet, emotions of all types were exposed as students patiently became included in lines.

Along with the first day of registration came chaos and confusion, and many long lines. Aggravation was commonly felt by many as the process of drop-add became necessary.

Other lines were encountered by those students who congregated in the cafeteria. Breakfast, lunch, and dinner seemed to be a way to break the monotony of classes as students assembled in the various lines.

Mixed emotions of happiness, sadness, and a feeling of accomplishment always felt as the soon-to-be graduates line up for their hard-earned diplomas.

Undoubtedly, a feeling of unity was always present as people experienced all types of lines.







Fashion conscious students adopt new styles



People expressed their own individuality through different styles of clothing. Hair and skirt length varied in length from long to short and alternative feminine fashions contrasted with the popular masculine look.

Once again blue jeans received the vote of popularity. Jeans were seen casually or dressed up with boots. Another version of the All-American blue jeans were the designer jeans. Many students paid as much as \$50 for a prestigious name such as Calvin Klein, Sasson, or Gloria Vanderbilt scrawled across the back pocket.

(continued)



... fashions

Dresses and skirts also took on a new look. Many dresses had side, front, and back seams that were slit. The rebirth of the mini-skirt was also in fashion.

When the north winds blew through, winter sweaters and coats were brought out. Sweaters, blouses and boys shirts were dominant. Winter also provided an opportunity to flaunt FSC athletic jackets.

Whether it was a t-shirt, jeans, dress or suit, FSC students didn't want to be left out of the newest fashions. They continued to show their own individuality through their choice of clothing.







More than just a cheerleader

A cheerleader's devotion is overpowering, not only to the school and the players, but also to each other. The FSC cheerleaders have just that — devotion.

The twelve member squad, consisting of six women and six men, practiced every afternoon. Practices began with 15-20 minutes of stretching and

individual warm-ups, and were followed by a two-hour period of cheers, chants, jumps, stunts and pyramids.

The cheerleader's main goal is to set an example of school spirit and team support. Many of the cheerleaders were designed to ignite the crowd to a peak of rowdiness.

Nowadays, cheerleading is more

dangerous and challenging than ever before. Yet cheerleading will always be the same because nothing can ever suppress the smiles or deplete the vast reserves of the Moc Magic spirit that the 1983-84 FSC Cheerleaders possessed.



Front Row: Kelleigh Withers, Holly Alexander, Jodie Drees, Cathy Kirk, Andrea Moror, Lisa Durham Back Row: Dave Marmol, Brooks Goodgame, Bill Welch, Keith Greenwood, Pat Burns, Rob Iles.

A year of renovations

Transition is the difference in what things start out to be and how they wind up. The 1983-84 school year wound up with many renovations relieving problems but changing the campus appearance.

The Carlisle Rogers Building, largely funded through a one million dollar gift from Mr. and Mrs. Rogers, will host classrooms for Business Administration and Economics. The new building, the third major facility constructed at FSC in the last five years, is scheduled for completion by the fall of 1984.



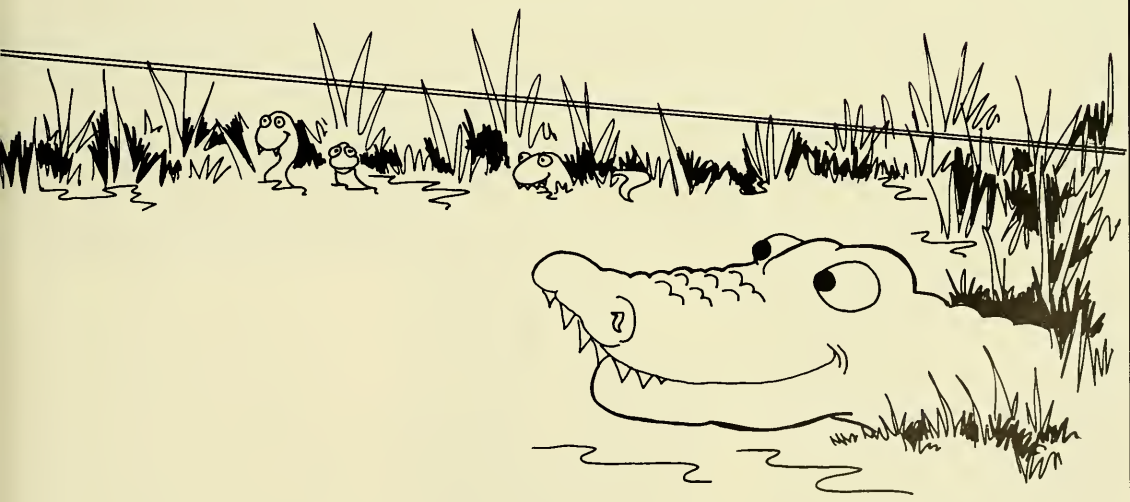


Southern



SERICH

Sports



Practices prepare teams

Practice . . . a word heard by many, especially athletes. But for the athletes of FSC, this was not just a word that was heard. Athletes practiced all year round for their sport. If they didn't practice with a team, they practiced on their own.

Practice . . . something which may be taken seriously or neglected. For Florida Southern's athletes, practice was utilized until accomplishments became apparent.







Bottom row sitting: Glen Fernandez, Lew Marotti, Johnnie Pleicones, Jimmy Roberts, Nelson Menendez, Hector Villanueva, Carl Feraro, Dave Carter. Middle row: Don Samra,

Jimmy Mee, John Thompson, Jim Barr, Robert Green, Dave Minotti, Drew Miller, Carl Wilbanks. Back row: Tracy Toy, Ken Kranick, Mike Workman, Keith Sullivan, John Cedarburg,

Dave McCorkle, Tom Temrowski, Aaron Anderson, Jim Bridges, Dave Parkulo, Rich Glickman, Mike Culumber.

Baseball: more than just a 'pastime'

Baseball—it is the team sport that epitomizes the idea of sportsmanship. It is a game played and watched by both scholars and schoolboys. But for the FSC baseball team, it was more than just a way to pass time.

In his first year as head coach, Chuck Anderson worked the team hard, developed skills, and got his players in top condition for the season. Stretching to loosen muscles, pushups to strengthen the arms, and sprints for all-around agility helped to improve the players' physical condition. In addition, the team members put on their mitts to practice throwing, fielding,

(continued)



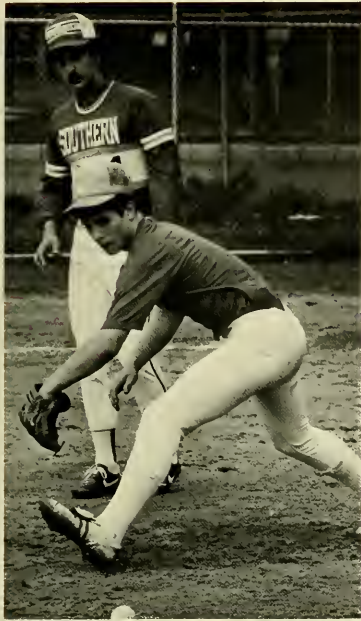
. . . *Baseball*

and batting which developed them into a winning ball club.

While some students were out playing a pick-up game in a sand lot, the baseball team members were in the midst of a very serious game. Baseball—it is not just a game to pass time, it is a pastime.



Coaching staff (left to right): Head Coach Chuck Anderson, Asst. Coach Mike Coombs, Asst. Coach Gary Calhoun, Asst. Coach Mike Gaski.





Quality team plays ball – Southern style



There are all kinds of polls. Gallop polls, presidential polls, and public opinion polls. The information gained from these polls is usually very accurate. But, sporting polls are probably the hardest type of poll to compile because of the many different factors involved. It is quite an honor to be recognized as a quality team. The men's basketball team possessed the talents of a quality team.

All year head coach George Scholz and his assistants worked
(continued)



. . . men's basketball

the team hard, developed skills, and got their players in top physical condition for a challenging season.

Support was apparent for the basketball team. Our team had the talent to be a top-ranked team and through dedication, practice, and support they were highly recognized.





Front Row: Jim Jones — Manager, Wayne Washington, Travis Stanley, Mark DeVoss, Al Garmon, Wade Luke, Jim Harris, Bill Conners — Trainer. Back Row: George Scholz — Head Coach, Moses Johnson — Assistant Coach, Scott Knecht, Bill Sawyer, Bob Salmi, Paul Woerner, Kevan Miles, Eric Hartje, Cesar Odio — Assistant Coach, Kirk Speraw — Assistant Coach.

Determined to win

Looking down the court, eyes searched for a fellow player positioned near the basket. Eye contact was made, and a pass followed. The shot went up and through. Two points registered on the scoreboard and the crowd cheered.

Under the guidance of head coach Dick Goding, the Lady Mocs strived for success. Despite the many unfortunate injuries of the team members, they united and put forth a positive effort for each game.





Front Row: Becky Bachtel — Manager, Robin Rosemeier, Kelly Carson, Jody Kay, Megan Henry, Pam Sheffer, Teri Cinelli, Dina Lauricella, Chris Bellotto — Trainer. Back Row: Dick Goding — Head Coach, Janet Gray, Deidre Lane, Mary Ann Lantinga, Cindy Galbicka, Kim Disbro, Janet Reynolds, Lois Webb — Assistant Coach.



Left to Right: Angie Cicanese, Lisa Harrison, Janet Gray, Marolyn Rhodes, Janae Jennings, Marcella Cox.



Cross-Country: the epitome of running

Withstanding the distance shows the true test of your ability. Everyone has the pain, the drive, the feeling of dismay. To be able to see your potential and know your diversity . . . That's what makes a runner an athlete. Cross-Country tests endurance, the chance for giving your best shot.

The FSC cross-country teams are the athletes that happened to choose running. Hurdling over obstructions and jumping into challenges, the team members performed in a way that showed that they were true running athletes.



(left to right): Dusty Boyd, Paul Westcott, Eric Lymon, Rob Nicholson, Coach Ed Plowman, Harold Hendron.



Florida Southern's tee-team drives toward success

Silence greets you as you enter a green world, and your feet leave a trail in the dewey early morning grass. You struggle beneath a bag full of heavy clubs as you pursue a small white ball around a designated course. Under the leadership of head coach Charley Mat-

lock, the 1983-84 golf team played many strong rounds in tournaments.

Although golf is not a glamor sport, it is one that tests a golfer's skills, talent, and determination. The FSC golfers seemed to pass the test as they were rewarded by a successful season.



Front row: Pat Chisholm, Rocco Mediate, Jim Winhelm. Middle row: Jeff Schumcher, Lee Janzen. Standing: Greg Gamster, Wally Les,

Ralph Howe, Coach Charley Matlock, Ric Manning, Marc Dawson, Craig Kindrat.



Scoring a goal for success

In its 27th season of existence, the FSC soccer team has established itself as a dominant force in the conference. They were faced with some of the toughest games ever by playing top-ranked teams.

In his third year as head coach, Sam Snow was an aggressive coach. The players felt this was an asset because the discipline and determination made everyone learn to work together.

Without the skillful players, coaches, and assistants, the soccer team could not have been the team we knew them to be.



Front Row: (left to right) Craig Seitz, Tony Middleton, Robert Warden, Toby Therrien, Kris Pahl, Jeff Janszen, Carlos deRada, Frank Srtazulla, Frank Stork, Adam Uchin, Scott Hutchinson. Second Row: (left to right) Butch Nichols — Asst. Coach Rich Compana — Student Asst., David Green, John Jane, Scott Levine, John Mines, Hank Gibson, Darryl Long, Joie Davis, Pat Hegert, Howard Penney, Todd Starks, Terry Rinehart — Equip. Mgr., Sam Snow — Head Coach.



A style of their OWN

(Left to right) Kathy Fishbaugh, Dawn Smith, Kelly Carson, Lorri Marvel, Robin Rosemeier, Anne Hartman, Susan Young, Kim Disbro, Jody Kay, Lora Ash, Lorri Zuidema. Second row: Laurie Baker, Susan Main, Pam Sheffer. Coach: Chris Bellotto, Asst. Coach: Pete Oglesby.

Similar yet different from the traditional men's sport of baseball, softball is one of the strenuous sports played exclusively by women.

Under head coach Chris Bellotto, the Lady Mocs had a chance to prove their athletic abilities. Through the consistency of grueling practices and a determined spirit, the team headed for a winning season.

Although softball is a take-off of baseball, it became a sport that the Lady Mocs played with a style of their own.

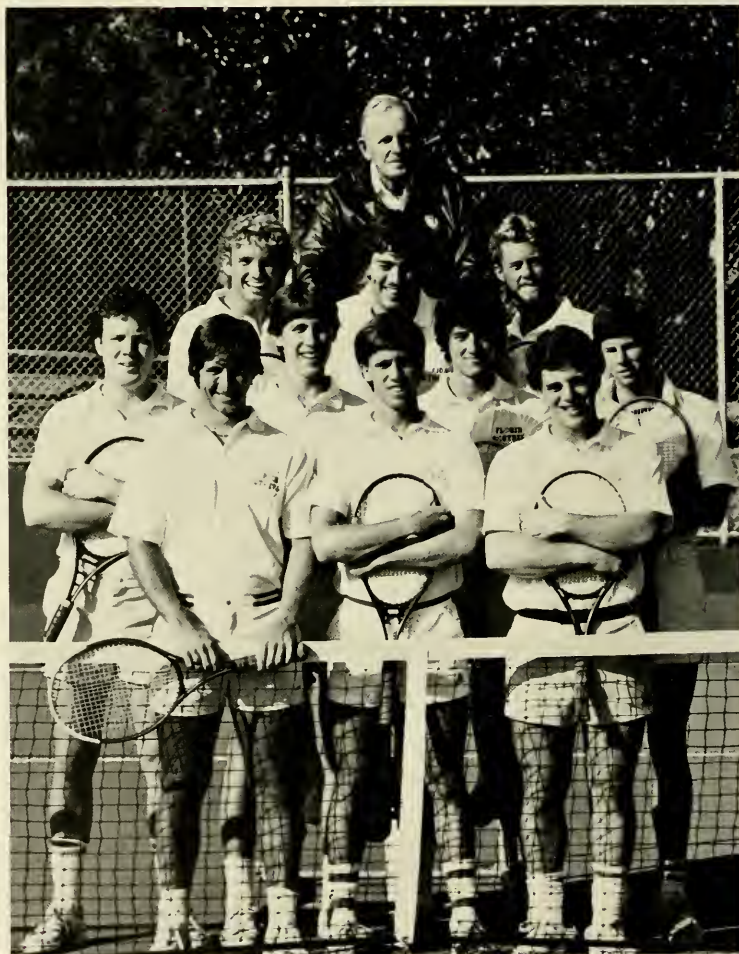




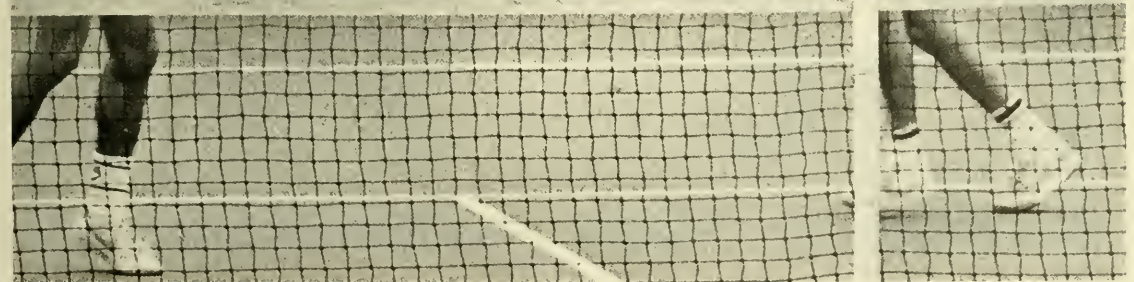
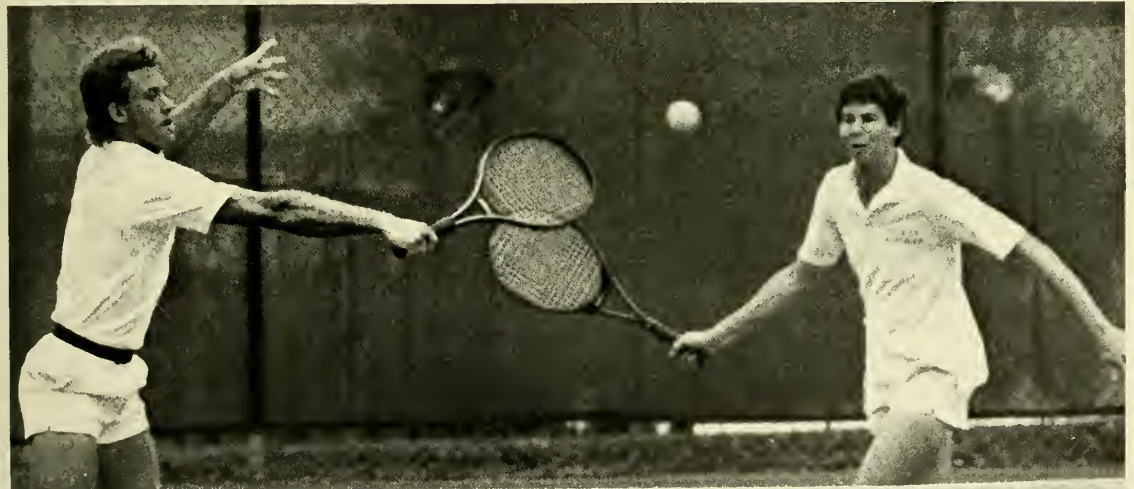
Men's team nets victories

Contrary to what may be popular belief, being on the tennis team does not consist simply of getting on the court and hitting a few balls back and forth with another player. It requires dedication, talent, concentration, and a lot of hard work.

Under the coaching skills of Jim Bush, the men's tennis team competed well. They knew that consistency was a major factor in the teams' success. Not only did this quality win respect, but it attributed to their successful matches and games.



Front row: Rick Soule, Jim Pehrson, Vinne Montleone. Second row: Rob Goulet, Doug Dodd, Sam Garcia, Scott Reinmund. Third row: Jim Taggart, Paul Laporta, Tom Evans. Back: Coach Jim Bush.



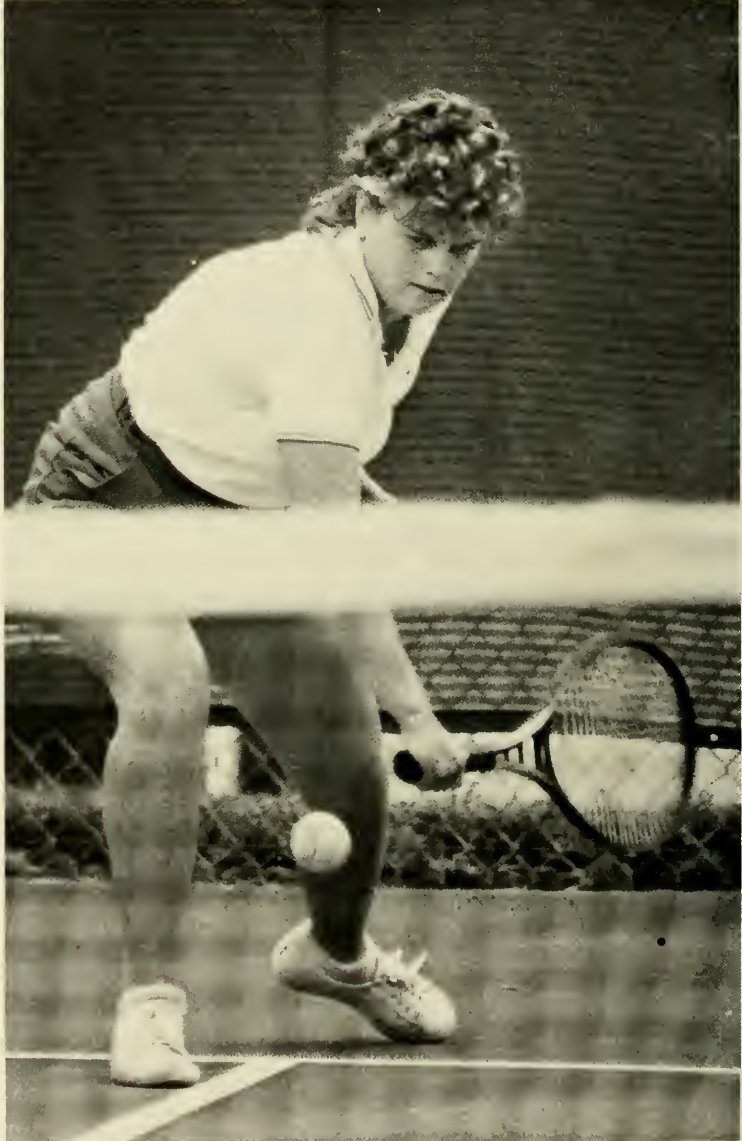
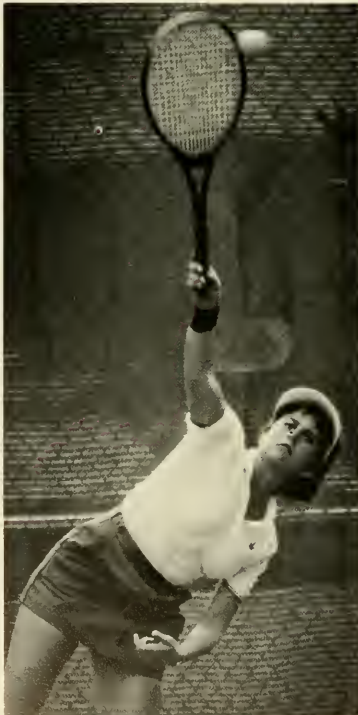
A hope for victory

The rhythmic slamming of the tennis balls echoed throughout the tennis courts. This sound was a common occurrence at the FSC tennis complex as the women's tennis team continued their quest for mastery.

Many hours of practice proved to be a necessity as the women tried to mas-

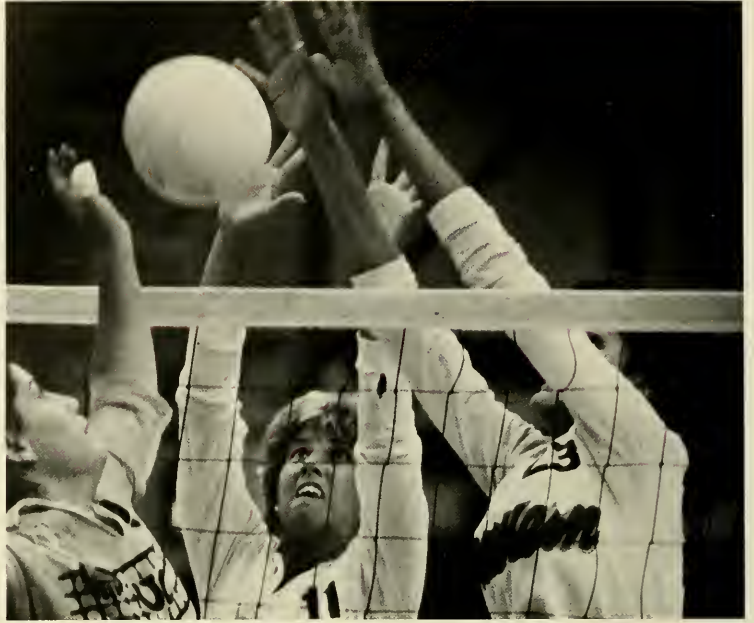
ter one of the hardest sports. The nearly everyday practice sessions involved a great deal of stretching and practice matches among team members.

Along with head coach Ed Jeffries and the individual talents and hard work of the women, the team had high hopes of victory.





(Left to right) Mary Key Priest, Allison Avey, Darcy Ranson, Mary Lloyd, Kim Smith, Coach Ed Jeffries, Kathy Lloyd, Betsy Broadwater, Kim Storkel, Darla Holb, Deborah Dodd.



Sitting, Front row: Jeanne Stupm, Lisa Testworth, Susan Young, Nancy Blakeslee, Beth Haslage, Jill Petrie. Back Row: Chris Bellotto — Trainer, Lorrie Marvel, Michelle Kurtgis, Cindy Galbicka, Dana DeLoach, Haili Wurtz, Dana Cozine, Lois Webb — Head Coach.

Lady Mocs spike their way to success

Once the volleyball team established momentum, the points began to register on the scoreboard.

Under the guidance of head coach Lois Webb, momentum was built up in a variety of ways. Getting the first point usually started the wheel turning. Making good set-ups, which resulted in point-scoring spikes, shifted the action into second gear. The driving force built as the number of points totaled higher and higher.

(continued)



... volleyball

By this time the women's emotions flowed with confidence, and the wheels were churning at full speed.

Even though momentum was not the biggest factor in the success of the women's volleyball team, it contributed a great deal. The players' talents and attitude was the true reason for their success.







Ski Team



Front: (Left to right) Brian Guyer, Lynn Domagala, Sean Shoppee, Sandy Roeder
Middle: Mary Raynor, Charlie Aurich, Jeffrey Jones, Rick Anderson
Back: Dave Styron

Southern



Greeks





Lori Cochrane, Gwendolyn Jones, Missy Lee, Carrie Roche, Jama Smith, Barbara Turney, Donna Chastain, Susan Stauffer, Patricia Willcox, Kim Barfield, Debbie Dorsey, Susan Ferris, Mary Nichols, Jane Robert, Kelley Schroeder, Nancy Stanley, Hilary Counts, Darcy Flynn, Beth Harding, Shawna Scott, Shaun Steggle, Kathleen Wood, Susan Young, Kristen Fishbaugh, Marty Pottorff, Allison Avey, Beth Bass, Melanie McMullen, Tina Westburg, Anne Marie Bucy, Kelly Daly, Kathy Fishbaugh, Karyn Folland, Dawn Garner, Anne Geiger, Dhays Gruber, Penny Langston, Mary Lloyd, Tawn Prior, Mary Jo Sattler, Ruth Spencer, Caroll Sprauer, Lynn Stauffer, Sharon Thomas, Katie Ward, Meridy Werder, Natalie Williams, Beth Deaton, Celaine McCart, Yvette Talley, Cindy Beswick, Alejandra Evans, Kellie Fitzpatrick, Beth Harrelson, Kelly Landers, Mary Beth Thomas, Janet Trucks, Jill Winkler.



Alpha Chi Omega



Alpha Chi Omega began as a national sorority at DePaw University in Greencastle, Indiana, on October 15, 1885. The Beta Omicron chapter of Alpha Chi was founded at Florida Southern College on Nov. 15, 1936. Alpha Chi's symbol is the lyre and the carnation is their flower.

The Alpha Chis are represented in every major honorary on campus. They are class officers, Junior advisors, and little sisters for Pike, Pi Kapp, TKE, SAE, Sigma Chi, Phi Sig, and Sig Ep.

Every year they raise money for one of their three philanthropies, cerebral palsy, and by working with the Theta Chis to accomplish a 52 hour dance-a-thon.



Alpha Delta Pi

Alpha Delta Pi was the first sorority for college women, founded on May 15, 1856 at Wesleyan College in Macon, GA. Gamma Gamma chapter was chartered at F.S.C. on April 27, 1946. Alpha Delta Pi's have served as class officers, members in honoraries, S.G.A., and fraternity little sisters. ADPi's currently have five Junior Advisors, Sigma Chi, Sig Ep, KA, and Pike sweethearts, Miss Interlachen and Miss Southern titles.

Alpha Delta Pi's colors are azure blue and white, their flower is the violet, and the lion their symbol. Their open motto is "We live for each other". Qualifications have remained unchanged throughout the years — scholarship, high principals of behavior, and true friendship.





Donna Auger, Amy Bardill, AnnMarie Bassett, Sarah Beasley, Lori Boyd, Joan Brady, Cheryl Lynn Brown, Susie Bubreg, Pam Campo, Kim Christensen, Nancy Clark, Patty Davis, Tammy Dean, Lynn Demmer, Ely DeRada, Kathy Erwin, Kim Ferdinandsen, Debbie Green, Terri Griggs, Tammy Haer, Holly Hangen, Becky Hedges, Holly Hight, Darla Holb, Debbie Hutchinson, Linda King, Jennifer Kunde, Sally Land, Evanne Logan, Beth McGuire, Julie Michaels, Hollis Mussler, Laurie Paullin, Cindy Robinson, Jodi Roskosh, Joy Rossi, Pam Roy, Patti Roy, Barb Scherer, Teresa Schrader, Debbie Smoak, Nancy Straw, Jenny Stevens, Dayna Swalley, Valerie Thomas, Kelly Thompson, Susan Tonn, Judy Truitt, Renee Turbeville, Sherry Tye, Eileen Walsh, Nancy Walsh, Melanie Ward, Beth White, Melody Witt, Michele Bonina, Kim Bergstrom, Jeannie Blocker, Kelly Doppelheuer, Bibiana Gomez, Paige Kasper, Beth Lewis, Laurie McNew, Sissy Meyer, Irene Sowards.





Jean Agee, Beth Allen, Holly Alexander, Dana Casini, Lois Cananico, Teri Courtoy, Jackie Chung, Joy DeCaro, Lynn Domagala, Caroline Dosssett, Jane Gordon, Stacey Grimm, Janet Grey, Amy Hodge, Brenda Hulen, Kim Isaacs, Lisa Jackson, Suzanne Jackson, Janae Jennings, Mary Kelly, Margriet Knetsch, Jane Knickerbocker, Kyle Krein, Virginia Landry, Diedre Lloyd, Alicia Loadholtz, Elise MacLennon, Ana Morejon, Cindy Morvillo, Kim Mutzel, Susan Oliva, Betsy Powell, Winnie Putnam, Jelane Reed, Lorraine Rideout, Sheli Rogers, Cheri Shultz, Kelly Sheel, Robin Smith, Wendy Starling, Joyce Tibeno, Pam Topping, Lisa Trongone, Mirtha Vallejo, Kim Wirick, Kathy Zimmer, Crystal Barwis, Susan Easton, Martha Herron, Monica Kiley, Virginia Nunan, Allison Odom, Mari Payne, Dawn Yates.

Alpha Omicron Pi



Many years ago, Mary Gatewood Pullian and Sam Banks arrived at E.S.C. They decided to form two clubs made up of their own friends, and presented a petition to the proper authorities. When this plan failed, Kappa Gamma Tau held secret meetings until Ludd M. Spivey, in 1924 recognized the group as a sorority. In the fall of 1945, Kappa Gamma Tau petitioned Alpha Omicron Pi fraternity. On May 5, 1946, Alpha Omicron Pi installed the local sorority as Kappa Gamma, the 52 chapter of the fraternity.

Ever since its first days, ΑΟΠ members have been leaders in campus activities and scholarship, and have maintained high ideals and a cooperative spirit in all understanding.





Denise Wolfe, Karen Kladakis, Beverly Avis, Debbie Waldo, Marcia Gillett, Cynthia Trickel, Lori Rainey, Kathy Bouse, Kim Calvert, Debbie Gerg, Beth Haslage, Mary Jo Nobile, Linda Dinkins, Floanne Murdoch, Kathy Axt, Sarah Cohn, Deedra Stebbins, Michelle Boisvert, Lisa Carlton, Kathleen Donohue, Jill Emerson, Maria Hardwick, Margie Johnson, Kindra Mickelsen, Sandy Miller, Leicha Rittgers, Kim Davis, Charla Drake, Darice Fields, Susie Hause, Lori Petrie, Betsy Raymond, Janet Reynolds, Jane Brandfass, Nancy Doane, Laura Fraker, Laura Dunaway, Betsy Ennis, Laurie Hiatt, Donna Hill, Cindy Michaelis, Jamie Piper, Peggy Reynolds, Elizabeth Sellers, Jill Sheffield, Marcy Strong, Kelly Sullivan, Nancy Baggett, Donna Beede, Jill Desplinter, Susan Ernst, Robin Ciminello, Claire Dukes, Megan Henry, Jeanne Leslie, Kathy Miller, Lauren Rodberg, Alicia Stein, Elizabeth Stidham, Sherry Worth.



Kappa Delta



Kappa Delta sorority was founded on October 23, 1897 at Longwood College, Farmville, Virginia. The Gamma Epsilon Chapter was founded at Florida Southern College on February 5, 1955. Our sisters are well recognized on campus with members participating in major honoraries, S.G.A., The Southern, Interlachen, athletic teams, and fraternity little sisters and sweethearts. The chosen colors of our sorority are olive green and pearl white. Our flower is the white rose, and our mascot is the katydid. Kappa Delta's National Philanthropy is the Crippled Children's Home in

Richmond, Virginia. We, as sisters, strive for that which is honorable, beautiful, and highest.



Phi Mu Fraternity is the second oldest and fifth largest secret organization for women. It was founded at Wesleyan College in Macon, Georgia in 1853. The Alpha Tau Chapter was established on F.S.C.'s campus in 1954 and will be celebrating our 30th anniversary this year. Phi Mu is seen in many organizations across campus in-

cluding JA's, members of honorary fraternities, and fraternity little sisters. Phi Mu's colors are pink and white. The jewel is the pearl, the flower is a pink carnation, and our mascot is the lion. Our motto is: The Faithful Sisters; yet we strive to be faithful to others outside our family as well.

Phi Mu



Sally Austin, Eileen Berry, Yasmin Bowman, Julie Cockrill, Barbara Devonmille, Evelyn Duell, Nora Gould, Sherry Gauntlett, Beth Hammond, Judith Jacoby, Pam Johnson, Linda Lohne, Kelly McCarley, Jacquie O'Leary, Ann Palo, Diane Rhea, Penny Sherman, Michelle Tomkow, Laurie True, Karen Wertz, Jane Zewalk.



Zeta Tau Alpha Fraternity was founded in 1898 at Longwood College in Farmville, Virginia. The Delta Beta Chapter was established here at F.S.C. in 1957. Zeta's colors are turquoise blue and steel gray, and

her flower is the white violet. The national philanthropic project of Zeta Tau Alpha is the National Association of Retarded Citizens. Delta Beta's mascot is the frog, homer bean.

Zeta Tau Alpha





Barbie Allen, Suzette Caroli, Missy Gouture, Amy Downey, Ellen Fluck, Polly Hamilton, Barb Hoover, Penny Orr, Amy Wood, Debbie Bidwell, Laurie Acton, Gina Colina, Kelly Funston, Leona Hammond, Tricia Johnson, Tami Shearer, Paige Smith, Susan Stuart, Susan Burton, Heather Chryst, Julie Rodgers, Terri Tremain, Terri Almond, Janet Collins, Patty Connors, Laura Di Marco, Cindy Dygert, Vicki Garrone, Colleen Gillogly, Tami Goetz, Gwyn Graham, April Henderson, Susan Howard, Cindy Kimbril, Kim Krasinski, Gretchen McCurdy, Layla Alo, Susan H. Jones, Lisa Osmer, Kathleen Freeman, Robin Freeman, Maura Tysver, Kimble Palmer, Anne Miotke.





(left to right) Scott Crossman, Scott Wynn, Rod Jaeger, Mark Owen, Paul Ferracci, Rob Chronahite, Kirk McKinnon, Pete Alridge, Greg Owens, Bob Flynn, Larry Brooks, Bill Meakin, Joe Morrison, Bill Yancy, Scott Crosby, Bob Blaydes, Scott Longley, Charlie Jewett, Mike Chisum, Pete Mollo, Paul Wescott, Joe Gang, Rich Kear, Steve Ridge, Chris Kaelin, Ron Bridges, Darrell Brackin.



Kappa Alpha is an order of great heritage. KA was born in 1865 at Washington and Lee University with Robert E. Lee as its spiritual founding father. The Gamma Pi chapter of Kappa Alpha has been on the campus of Florida Southern since 1958. Kappa Alpha takes pride in its chivalrous values taken from Lee. The Knights of KA emulate the values of their spiritual founding father, putting God and women above all.

Kappa Alpha





The Lambda Chi Alpha fraternity was started in 1809 at Boston University Law School by Warren Albert Cole. In the last 75 years Lambda Chi Alpha has grown from its original chapter to more than 220 chapters in the U.S. and Canada. Lambda Chi Alpha is the third largest fraternal brotherhood in the nation and also has the second largest

number of chapters. Florida Southern's Epsilon Xi Zeta is the oldest chapter on campus. Originally chartered in 1938 and re-chartered in 1979. A strong characteristic of the Lambs is a strictly enforced national policy against hazing. Lambda Chi does not have pledges but Associate Members and an A.M. program for fraternity education.

1984 was the 75th anniversary of the existence of the national fraternity. A General Assembly was held in New Orleans to celebrate the past and plan for the future with the theme, "Celebrate Our Heritage . . . Tomorrow's Foundation."

Lambda Chi Alpha



David Knowles, Lyndon Sweeting, Alan Pex, Roy Kramer, Jr., William Welch, Wade Warren, Alan Garey, Joe Baker, Jr., Robert Collins, Thomas Padro, John Burnett, Scott Shellabarger, H. Thomas Adair, Jr., Keith Clanton, Richard Rasmussen II, Michael Crawford, Brooks Goodgame, D. James Amick III, Jeffery Grove, Scott Chappell, David Springer, Mitch Bailey, Ragan Harrison, Mike Ivey, Munro Sefcik, Toyokazu Kosugi, Paul Krist, Mark Raiford, Steven DeWitt, James Burnett, Steven Dollenmayer, Robert Iles, Robert Bateman, Steven Breathitt, Andrew Walls.

Phi Sigma Kappa Fraternity was founded March 15, 1873 at the University of Massachusetts. Our present chapter here at Florida Southern received our charter on December 1, 1981. The "NEW PHI SIG" is working hard to promote our ideals of brotherhood, scholarship, and character as well as fulfilling our goals of making a positive contribution to Florida Southern College.

Phi Sigma Kappa





Prescott Palmer, Eric Anderson, Joe Burley, Jim McGuire, Chris Fielder, Dave Logan, Nick Zanni, Nate Freeman, Gary Westerman, Pat McCarly, Mike Zizzo, John Sumple, Jim Pehrson, Brian Basile, Mark Tallo, Jack Chapell, Mike Stevens, Michael Fields, Mark Peet, Keith Hulbert, Rich Hayes, Rich Engler.





Scott Bushouse, Ken Clark, Giovanni Delcompaure, Joe Falls, Jeff Sheehan, Maury Filips, Bill Glode, Rudy Rodreguez, Jeff Jones, Tom Kirsten, Steve Lindemann, Darryl Long, Wes Longstreath, Tom McDonald, Ed Meszaros, Tom Murphy, Mike Paracca, Rod Radloff, Billy Rogers, Sammy Samsel, Julio Spinoso, Todd Starks, Jeremiah Steiner, Frank Wheeler, Ronnie Doremus, Scott Levine, John Cervini, Dome (Mascott).



The Pi Kappa Alpha Fraternity was founded on March 1, 1868 at the University of Virginia. The founding was attributed to the high ideals, characteristics and principles of Robertson Howard, Julian Edward Wood, James Benjamin Sclaten Jr., Fredrick Southgate Taylor, Littleton Walker Tazewell (Bradford) and William Alexander, our founders. Our Chapter Delta-Delta, became the 100th Chapter back in 1947. For 37 years we have continued to uphold the lasting brotherhood, good times, and the tradition of Pi Kappa Alpha.

Pi Kappa Alpha



Pi Kappa Phi was founded on December 10, 1904 at Charleston, S.C. Our Three Founding Fathers, Andrew A. Kroeg, Jr., Simon Fogarty, Jr. and Lawrence H. Mixon established the traditions upon which our fraternity is built. Pi Kapp was established here at Southern in 1948. Our colors are gold and white and the totem pole stands here as a representation of the Beta Beta chapter. Little sisters of the star and lamp represent four sororities and various other campus organizations. Sweetheart for 1983-1984 is AOΠ Jean Agee.

Our National philanthropy is Project Push which provides handicapped children a learning environment.

Pi Kappa Phi





Bill Aber, Barry Logan, Dave Loisell, Dave Marmol, Chuck Dutil, Vince Wyatt, Kurt Beronja, Dan Painter, Joe Strada, Tim Vangellow, Dave Ake, Jeff Dumas, Doug Grayson, Don Klein, Dave Lange, Franklin McKinney, Don Moose, Rob Nicholson, Steve Polonus, Vinnie Propst, John Steadman, Todd Von Weyhe, Scott White, Jim Harris, John Matz, Todd Allen, Charlie Ranaudo, Phil Fabiano, Kent Abbett, Jeff Wallace.



Sigma Alpha Epsilon was founded May 9, 1856 at the University of Alabama. It is currently the largest national fraternity. Sigma Alpha Epsilon is primarily a southern based fraternity and hold true to southern ideals.

Sigma Alpha Epsilon



(left to right) Mark Dorrill, Cliff Johnson, Robert Evans, Jayce Holley, David Beck, Bill Harlan, Tomas Gustoff, Michael Culumber, Jerry Ankenbrandt, Lee Brackman, John Jane, Craig Bachar, Michael Marcouiller, Todd Sturlin, Clarke Jones, Brian Gurchiek, Tim Packman, Louis Girardin. Not pictured — Gene Panzer, John Cedarburg.



Founded in 1885, the Sigma Chi fraternity is well recognized in the Greek world today. Likewise, the Epsilon Sigma Chapter chartered in 1959 maintains a similar stature here at F.S.C., following the ideas represented in the

white cross, a symbol of our fraternity. Through it all, Sigma Chi remains a privilege, a foundation for the future, and a eternal friendship. Sigma Chi is what others strive to be — an organization that knows no age.

Sigma Chi



Jay Alford, John Anastasia, David Anderson, Sean Barclay, Trent Boleski, Rick Bovay, Rob Burnette, Jim Carroll, Glenn Clark, Bill Dickman, Cort Douglas, Bobby Duncan, Joe Finnegan, Wade Harvey, Ed Hecker, Jeff Henderson, Carter Hopkins, John Houchin, Brian Jefferies, Jim Kazanecki, Chris Keefer, John Korbel, Ward Michaels, David Moenning, Jeff Moore, Tim Mulford, Paul Parzik, Dan Pfister, Rick Price, Tony Senzamici, Jeff Soukup, Hector Villanueva, Paul Walker, Barney White, Chuck Williams, Barry McGee, Todd Joiner, Mark Benson, Rich Knowles, Vinnie Monteleone.



Sigma Phi Epsilon was established on November 1, 1901 at Richmond College. Founded on the principles of virtue, diligence, and brotherly love; Sigma Phi Epsilon has grown from a group of twelve

determined young men to the second largest national fraternity. Our own Florida Delta Chapter was chartered here at Florida Southern on May 28, 1949.

Sigma Phi Epsilon



Brandon Fluman, Don Leon, Tom Kramig, Mark Ziebarth, Kirk Hobart, Robert Stigleman, Ralph Ferrara, Craig Seitz, Pat Hegert, Robert Hunt, John Reeck, John Couture, Scott Hutchinson, Henry Gibson, Chris Scheuer, Richard Campana, Robert Dynarski, Rich Hopper, Craig Poffenbarger, Scott Reinmond, Skip Shumway, David Batman, Gary Franek, Jeff Mathewson, Craig Scates, Wally Les.







Tau Kappa Epsilon, the largest social fraternity in the world with over 300 active chapters, was founded at Florida Southern in 1947 when the Jones House on Lake Hollingsworth became the Beta Tau Chapter of TKE. TKE Fraternity is based on the belief that the three essential

elements of meaningful fraternal relations are love, charity, and esteem. The TEKES of 83-84 will remember our sweetheart Traci Lincoln and Mom Chisolm for their support and love. We will also remember our little sisters for all the help they have given us.

Tau Kappa Epsilon



Spencer Artman, Glenn Steffenhagan, Dean Sasek, Chris Johns, Chris Pharo, Joe Preston, Roger Ward, Bobby Bass, Steve Behre, Hideto Nishimoto, Matt Richards, Jack Harris, Stuart Morrison, Dave Barnum, Paul Mersch, Marrion Flowers, Aaron Anderson, Joe Salvaggio, Bill Hopkins, Tim Hyatt, Vince Leone.

The Gamma Delta Chapter of Theta Chi began its FSC brotherhood in 1946 and has been growing stronger ever since. Although times have changed, the quality of brotherhood has not. Unity and respect for each other is

what our house strives on as Theta Chi continues its role as a leader in the FSC campus. The good times we share with each other during our short stay here will always be remembered.

Theta Chi



Dave Davenport, James Wilhelm, Jim Cadott, Kevin Banfield, David Raymond, Gardener Reynolds, Marco Dawson, Craig Kindrat, Jeff Babineau, John Lefeber, Rob Goulet, Dave Flower, Trip Bowlby, Eden Escamilla, Wes Starling, Paul Montoya, John Santiago, Chris Kops, Mike Gentile, Scot Hagadorn, Jim Yelsits.



Southern



Groups



Advertising Club



(Left to Right) Front Row Seated: Jeanne Mason, Rob Iles, Maureen Jahns, Douglas Trudeau, Middle Row: Mr. Obrecht, Sanford Lechner, Nancy Straw, Julie Gallin, Diana Bruch, Patricia

Byrd, Darla Holb, Brenda Hulén, Missy Lee, Back Row: Teri Courtoy, Cynthia Tricket, Floanne Murdoch, Laurie Allegood, Michelle Boisvert, Sheli Rogers, Cindy Morvillo, Paul Montoya, Kyle

Krein. Not pictured: Eileen Berry, Jane Considine, Sharon Jackson, Jane Robert, Terri Tremain, Jama Smith, Roger Ward, Susan Young

All Campus Fellowship

(Left to Right) Front Row: Diana Bryan, Susie Hause, Sherry Worth, Cynthia Tricket, Jodi Drees, Maureen Jahns, Vickie Carver, Donna Beede, Row 2: Ralph Spencer, Marian Gilmore, Robin Ciminello, Kletia Carlson, Adrea Morar, Row 3: Jana Huling, Jeannine Headley, Jill Emerson, Maria Hardwick, Back Row: Kendra Mickelsen, Brooks Goodgame, Brian Ruskamp, Joe Baker



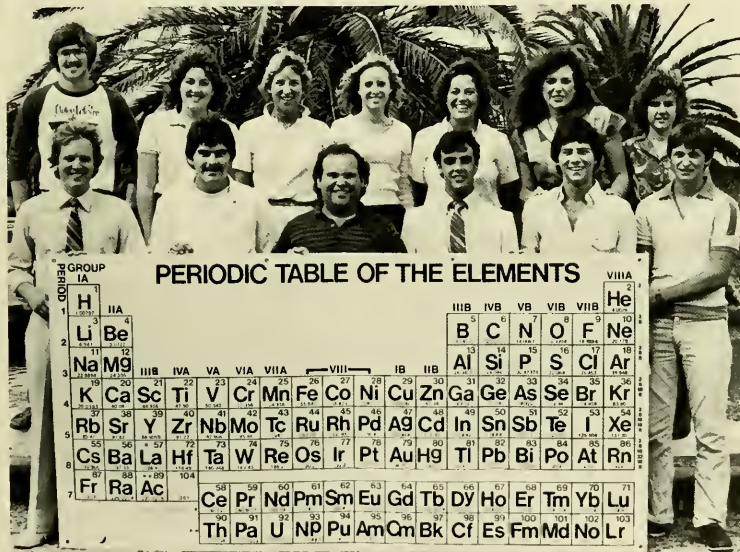
Alpha Psi Omega

(Drama Honorary)

(Left to Right) Front Row: Amy Bardill, Kathy Connelly, Rafe Vigil, Robin Gerhard. Back Row: Tim Connelly, Doug Trudeau, William Willard, Bill Grange.



American Chemical Society



(Left to Right) Front row: Dr. White, Steve Ridge, Joseph D. Wheatley, Jeff Wallace, James Futch, Daniel Robertson. Back Row: Tom Hicks, Liz Palmer, Susie Hause, Kathy Dedlow, Ann Palo, Cheri Schulze, Angela Cowden.

American Society for Personnel Administration

(Left to Right) Front Row: Lisa Carlton, Kelly Stanley, Back Row: Carole Washuta, Mary Thorn, Jon Brow



Association of Women Students



(Left to Right) Front Row: Mary Thorn, Kathleen Donahue, Suzette Veal, Kim Christensen, Kathy Miller, Jackie Rossing,

Middle Row: Ann-Marie Fox, Victoria Villalba, Karina Holt, Jan King, Jr., Sally Sechrest, Cari Weaver, Anne Geiger, Tami Shearer, Jama

Smith, Back Row: Kim Pickering, Pam Tipps, Dineen Scoggins, Leslie Brown, Liz Palmer, Cathy Kirk, Ann Jago

Baptist Campus Ministry



Front Row: Jimmy Lewis, Karen Kelly, Kathryn Shelly, Thomas Eddy, Ann Sokolowski. Row 2: Scott Shellabarger, Randy Lewis, Jeff Lawson, John Burnett.



Bell Choir

(left to right) Row 1: Tesi Hansen, Robert Walker, Row 2: Lorri Zuidema, Mrs. Linda Cox, Valerie Posenauer, Row 3: Shannon Roberts, Shelly Crenshaw, Luke Nash, Vickie Johnson, Susan Christopher

Broadcasting

(left to right) Front Row: Eden Escamilla, Sue Stauffer, Patricia Wilcox, Karen Pierce, Barbara Makris, Row 2: Steve Seipp, Tom Kramig, Toyokazu Kosugi, Kristen Fishbaugh, Brad Moore, Jana Huling, Back: Mr. Winzenburg



Citrus Club



Concert Band



(left to right) Linda Zirbas, Keith Clanton, Julia Cunningham, Yoshiko Oshida, Deb Driskell, Janet Whaley, Jeannine Headley, Iris Albritton, Donna Yeomans, Jackie Kourmpates, Marie Bridges, Liz Cox, Nancy Doane, Diane Thomas, Betty Bickhart, William Willard, Elaine Willard, Christine Gannon, Kim Sharpe, Deonne Barger,

Trudy White, Shelley Longnecker, Darrell Joachim, Virginia Nunan, Mike Crawford, Barbara Willard, Dretha Ison, Greg Wilks, Cathy Lamb, Tesi Hansen, Susan Ernst, Kim Croft, Bunny Sutton, Steve Allen, Martha Wolfe, William Fisackerly IV, William Johnson, Chris Kirchman, Robert Heckeo, Jill Clemmons,

Lonnie Buchanon, Tom Willard, Gigi Lyon, Claude Burnett, Keith McKeenan, Andy Major, Dineen Scoggins, Steve Breathitt, Dan Dominick, Ian McConkey, Bill Cockrell, David Tisdale, Steve Scoffield, Sandy Lechner, Dirk Schmidt, Lisa White, Valerie Posenauer, Linda Mann



Concert Chorale

(left to right) Front Row: Nancy Bock Brzezinski, Iris Albritton, Charla Drake, Keri Lamparter, Tracy Thayer, Kelly Lewison, Julie Michael, Valerie Schleicher, Andrea Dort, Joy Milligan, Maritza Padron, Marie Bridges, Julia Cunningham, Row 2: Melanie Ward, Donna Hill, Jill Sheffield, Jennifer Hermany, Marcia Forsett, Jill Stephens, Angie Dean, Cathy Lamb, Jill Emerson, Jackie Kourmpates, Lynn Keenan, Cindy Lambert, Robin Roberts, Row 3: Kathy

McBurney, Lisa Jackson, Deb Driskell, Kathy Bouse, Linda Parkos, Shelly Crenshaw, Tracy Torrance, Ann Jago, Shannon Roberts, Anna Sokolowski, Linda Mann, Valerie Posenauer, Susan Christopher, Row 4: Rob Walker, Donald Weeks, Greg Wilks, Mike Crawford, Mark Mangum, Ken Cheshire, Jay Michael, Dan Dominick, Paul Parzik, Luke Nash, Robert Evands, Lee Brackman

Delta Omicron

(Music Honorary)

(Left to Right) Front Row: Miss Rita Fandrich, Mark Mangum, Susan Christopher, Row 2: Linda Mann, Lynn Keenan, Jackie Kourmpates, Dretha Ison, Linda Zirbas, Linda Parkos, Row 3: Cindy Roberts, Iris Albritton, Jill Emerson, Jennifer Hermany, Charla Drake, Elizabeth Cox, Back Row: Diane Thomas, Kathleen McBurney, Valerie Posenauer, Deb Driskell, Kathy Bouse



(Left to Right) Front Row: Juan Carlos Zapata, Tammy Reichert, Kelly Stanley, Sandy D'Agati, Alison Taylor, Liz Cox, Denise Wolfe, Debbie Hutchinson, Holly Alexander, Pam Johnson, Frank Campano, Second Row: Scott Kolar, John Burnett, John Stohler, Lori Cochrane, Vince Wyatt, John Lennon, Lisa Ham, Carole Washuta, Mary Thorn, Back Row: Juan Carlos DeRada, Gary Franek, Jeff Mathewson, Rich Hopper, Jon Brow, Bob Blaydes, Scott Crossman, Shelly Price, Mark Ziebarth

Delta Sigma Pi



Dixieland Band



(left to right) Bill Johnson, Keith Clanton, Linda Zirbas, Janet Whaley, Dirk Schmidt, Steve Scofield, Claude Burnett, Steve Allen, Lisa White, Dretha Ison, Martha Wolfe

Florida Nursery Growers Association



Fellowship of Christian Athletes

(Left to Right) Front Row: Mary Key Priest, Deborah Dodd, Maria Hardwick, Michelle Boisvert, Jill Petrie, Middle Row: Paul Imig, Ben McDaniel, Van Davis, Mark Peet, Dave Moenning, Douglas Dodd, Back Row: Bill Yancy, D. W. Irvine, Jim Roberts, S. M. Carlton



Interfaith Council



(Left to Right) Front: Mylene Alberto, Amy Jorgensen, Row 2: Bret Seligman, Bob Kenworthy, Row 3: Jodi Lisa Rome, Karen Kelly, Row 4: Scott Shellabarger, Randy Lewis

Interlachen



(top to bottom) Kathy Shelly, Maureen Jahns, Paige Kasper, Laurie Struck, Jackie Rossing, Dan Brady, Joy Rossi, Beth Allen.



(left to right) Bobby Duncan, Jane Steiner, Karen Pierce, Jackie Rossing, Lauren Rodberg, Tom Adair.

Left to Right) First Row: Susan Ernst, Steve Allen, Row 2: Dretha Ison, Mr. Eric Osterling, Row 3: Dan Dominick, Darice Fields, Row 4: Kim Croft, Steve Breathitt, Linda Zirbas, Row 5: Martha Wolfe, Greg Wilks, Lisa White, Chris

Kirkman, Row 6: Michael Crawford, Bunny Sutton, Steve Scofield, Durk Schmidt, Row 7: Regina Arndt, Shelly Longnecker, Ian McConkey, Jay Michaels, Linda Mann, Back Row: Bill Fisackerly IV, Keith Clanton, Bill Johnson

Jazz Band



Junior Advisors

(Left to Right) Front Row: Holly Hangen, Linda Lohne, Patti Roy, Middle Row: Lisa Dunson, Tami Shearer, Jodi Drees, Suzanne Jackson, Susan Burton, Pam Roy, Back Row: Lori Petrie, Kimberly Christensen, Kayrn Folland, Susie Hause, Vickie Carver



Kappa Delta Pi (Education Honorary)



Kappa Mu Epsilon

(Math Honorary)

(Left to Right) Front Row: Mrs. Hunt, Mrs. Durham, Mrs. Kent, Brent Lowe, Debbie Waldo, Row 2: Ellen Fluck, Scott Meeker, Liz Palmer, Kim Christensen, Row 3: Henry Hartje, Daniel Carreira, Lane Goodson, Allen Wuertz, Jeff Penrod



Men's Intramurals



Men's Intramurals (Left to Right) Front: Ira Anderson, Alan Geary, Bill Globe, Rick Hilmer, Rob Dynarski, Todd VonWehe, Eric Anderson,

Back: Pete Aldrich, Steve Polonous, Rob Cronkhite, Chris Johns, Jim Carroll



Newman Club

(Left to Right) Front Row: Mylene Alberto, Chaplain Barbara McLaughlin, Suzanne Buhreg, Elizabeth De Rada, Back Row: Bill Welch, Steve Dallenmayer, Tom Padro, Maura Tysrer, Kim Krasinski, Not pictured: Paul Rybinski

Omicron Delta Kappa



(Left to Right) Front Row: Vickie Burton, Paul Wescott, Joan Brady, Liz Cox, Evanne Logan, Sue Stauffer, Row 2: Kim Christensen, Tim Richardson, Barb Scherer, Mrs. Gilbert, Dr. Cook, Joe Baker, Darice Fields, Jodie Drees,

Karen Wuertz, Angie Cicanese, Michelle Bouvier, Mary Thorn, Linda Pittard, Lisa Page, Jane Steiner, Debbie Walda, Jill Emerson, Jayce Holly, Row 3: Debbie Hutchinson, Amy Bardill, Barbie Allen, Jill Petrie, Row 4: Ann-Marie

Bassett, Sarah Cohn, Denise Wolfe, Rob Isles, Tami Shearer, Holly Hangen, Ron Bridges, Steve Allen, Row 5: Mr. Winzenburg, Vickie Johnson, Mr. Hulcher, Mr. Tate, Dr. Burnette, Dr. Moberly

Panhellenic Council

(Left to Right) Front Row: Dayna Swalley, Penny Orr, Nora Gould, Middle Row: Carrie Roche, Elizabeth Sellers, Kimberly Calvert, Back Row: Jodi Roskosh, Mary Nichols, Suzanne Jackson, Kim Pickering



Phi Chi Theta

(Business/Economic Honorary)

(Left to Right) Front Row: Kelly Bruce, Donna Julian, Missy Maver, Lisa Page, Back Row: Kim Christensen, Debbie Waldo, Ann Marie Bassett, Kathryn Holmes, Dee Dee Howard, Beth Harrelson, Bibiana Gomez, Joan Buccino



Phi-Mu Alpha Sinfonia *(Music Honorary)*



Pre-Ministerial



(Left to Right) Front Row: Lee Ferdon, William Fisackerly IV, Jill Sheffield, Brett Pace, Row 2: Jimmy Lewis, Jeanne Johnston, Brian James, Jeannine Headley, Rafe Vigil, Bob Kenworthy, Madison Hankal, Row 3: Ray Warren, Randy Lewis, Row 4: Art Sputa, Stephen Hartsfield, David Moenning, Mark Mangum, Vickie Johnson

Psi Chi

(Psychology Honorary)

(Left to Right) Eloise Grams, Joe Morrison, Linda King, Alan Pex, Amy Jorgensen, Vicky Burton, Linda Pittard, Glenda Gage, Suzanne Bubregh



Residence Advisors

(Left to Right) Front Row: Bill Daniels, Joe Baker, Pete Oglesby, Middle Row: David Knowles, Rich Knowles, Scott Crossman, Back Row: Tim Richardson, Paul Westcott, Steve Allmond, Back: Bill Yancy

Sigma Delta Chi *(Journalism Honorary)*



(Left to Right) Front Row: Kim Scott, Kim Davis, Betsy Raymond, Jackie Rossing, Kim Barrows, Row 2: Mark Miley, Pat McCarley, Rich Knowles, Barbie Allen, Vickie Johnson, Leo Owens, Back: Mr. Rick Wilbur

Sigma Delta Pi

(Spanish Honorary)

(Left to Right) Front Row: Juan Carlos Zapata, Middle Row: Kim Barrows, Suzanne Bubregh, Elizabeth De Rada, Back Row: Juan Carlos De Rada, Mirtha Vallejo, Jill Petrie, Dr. Martinez



(Left to Right) Front Row: Vicky Burton, Tesi Hansen, Amy Jorgensen, Kathryn Shelly, Jimmy Lewis, Kimberly Barrows, Karen Kelly, Back Row: Gail Cates, Art Sputa, Jeannine Headley, Vicki Johnson, Ray Warren, Susan Christopher, Chuck Underwood, Bob Kenworthy

Sigma Rho Epsilon

(Christian Service Organization)



Ski Club

(Left to Right) Front Row: Erin Flanagan, Lynn Domagala, Brian Goyer, Sandy Roeder, Row 2: Charlie Aurich, Mary Raynor, Sean Shapper, Chris Rogers, Row 3: Meridy Werder, Rick Anderson, Row 4: Steve Hierholzer, Jeffrey Jones, Ken Janata, Dave Styron, Gregory Lietzau



The Southern



(Left to Right) Front Row: Carie Call, Anita Jones, Diana Bruch, Eileen Berry, Middle Row: Rich Knowles, Dusty Boyd, Scott Shellabarger, Brenda Wilks, Kim Barrows, Back Row: Rich Rasmussen, Roger Ward, Susan Howard, Maureen Jahns, Jana Huling



Editor: Kim Davis

Spanish Club

(Left to Right) Heidi Rigby, Jennilyn Chuck, Elizabeth DeRada, Back Row: Dr. Cole, Lauren Schild, Juan Carlos DeRada, Cathy Kirk, Suzanne Bubregh



Student Council For Exceptional Children



(Left to Right) Front Row Seated: Laura DiMarco, Debbie Bidwell, Back Row Seated: Missy Coutare, Mrs. Pitt, Lala Cade, Brenda Snedden

Student Government Association



(Left to Right) Front Row: Victoria Villalba, Debbie Caldwell, Jan King, Jr., Beth White, Nancy Straw, Tammy Reichert, Row 2: Jeff Jones, Tim Richardson, Kim Calvert, Kristen Fishbaugh, Bill Hanks, Teresa Schraeder, Scott White, Row 3: Ann Jago, Jeff Grove, Joe Baker, Scott Crossman, Row 4: Paul Westcott, Dave Flower, Munro Sefeik, William Daniels, Dean Hugh Moran



President
Tim Richardson
Vice-President
Dave Flower
Secretary
Kim Calvert
Treasurer
Joe Baker

Student Union Board

(Left to Right) Front Row: Tammy Reichert, Ann Jago, Middle Row: Jodi Lisa Rome, Anne-Marie Fox, Mary Thorn, Cari Weaver, Back Row: Bret Seligman, Richard Woodall, Mark Jordan



Theta Chi Beta

(Left to Right) Front: Steve Hartsfield, Bill Fisackerly IV, Dr. Walt Weaver, Rafe Vigil

Toastmasters

(Left to Right) Front Row: William Meakin, Kim Scott, Joyce Bradley, Kelly Stanley, Catherine Neff, Lori Black, Back Row: Allen Larsen, Kendra Mickelsen, Murrell Gillan, Deanna Tingley, Richard Woodall, Danny Cannon



Beta Beta Beta

(Biology Honorary)

(Left to Right) First Row: Brent Lowe, Bette Ann Pelley, Jeff Grove, Joseph Wheatley, Mickie Germain, Susan Hogge, Skelly Ton, Kathy Dedlow, Becky Glass, Row 2: Margaret Gilbert, Susie Hause, Ann Palo, Dineen Scoggins, Mark Jordan, Row 3: Cheryl Pierce, Janet Collins, Janet Whaley, Liz Palmer, Allanna Stephens, Catherine Neff, James Futch, Row 4: Ronny Bridges, Cheri Schulze, Tom Hicks, Robert Jadv Singh, Judi Jones, Robert Baum

Vagabonds



(Left to Right) First Row Seated: Doug Trudeau, Amy Bardill, Linda Pittard. Row 2: Robin Gerhard, Terry Derr, Andrea Dort, Deonne Barger, Nancy Fisher, Christine Gannon, Kathy Connelly, Row 3: Bill Grange, Rafe Vigil, Lauren

Mayer, Bill Willard, Amy Schneider, Katie Hester, Ric Fearnow, Tim Connelly, Back Row: Cort Douglas, Christopher Sanders, Charles Williams, Larry Lebo, Lee Hegley

Wesley Fellowship



(Left to Right) Front Row: Vicky Burton, Heidi Rigby, Jimmy Lewis, Linda Pittard, Jill Sheffield, Brett Pace, Diane Oleson, Middle Row: Lorelei

Rouse, Martha Wolfe, Jeannine Headley, Bob Kenworthy, Kathryn Shelly, Lois Wittenberg, Back Row: Bill Fisackerly IV, Art Sputa, Amy

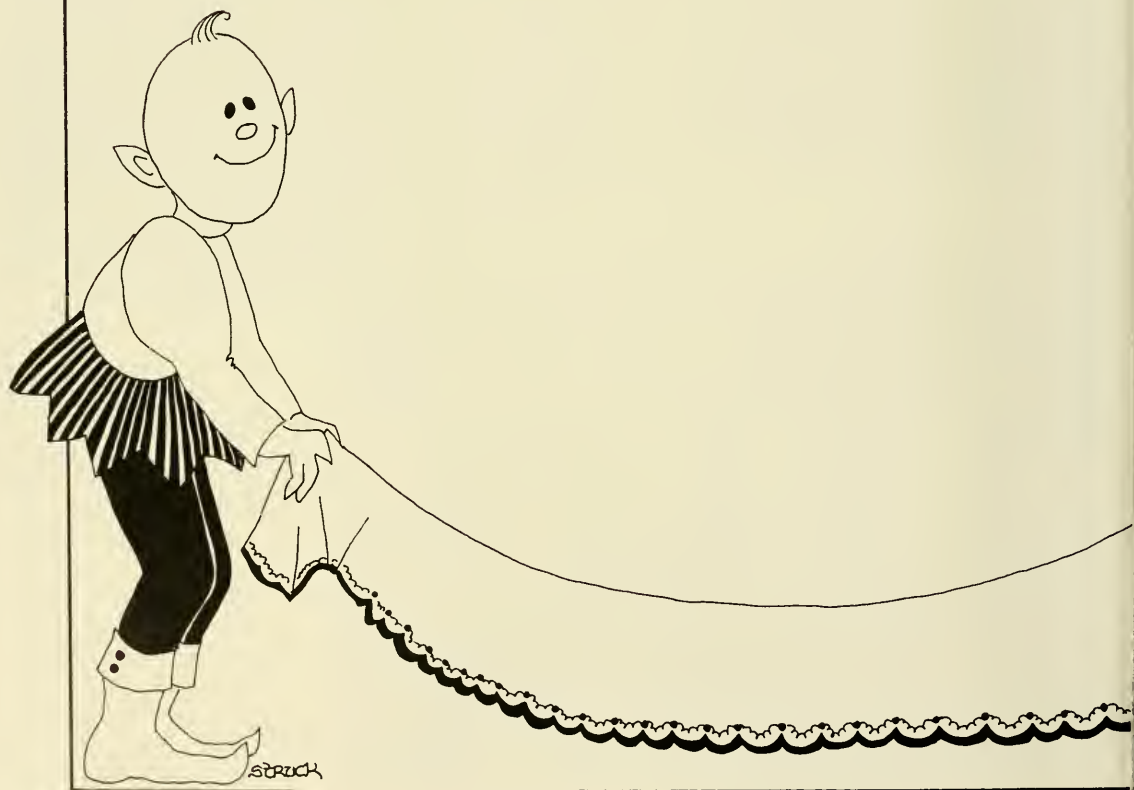
Jorgensen, Ray Warren, Shelly Crenshaw, Vickie Johnson, Randy Lewis



Women's Intramurals

(Left to Right) Front Row: Mrs. Straw, Patty Connors, Donna Laing, Judy Killan, Myra Penvel, Mrs. Benn, Back Row: Kelly Funston, Betsy Powell, Darcy Flynn, Lori Petrie, Elizabeth Sellers

Southern Stars





Dedication . . .

William S. Barnes, Chaplain





1984 Honor Walk Student

Jill S. Petrie

Miss Interlachen 1984

Melody Witt





*First
runner-up*

Meridy Werder

*Second
runner-up*

Vicky Hodge



Miss Interlachen

Marcy Strong



Leslie Brown

finalists



Adair Valdespino



Barb Scherer

Miss Interlachen Contestants



First Row:

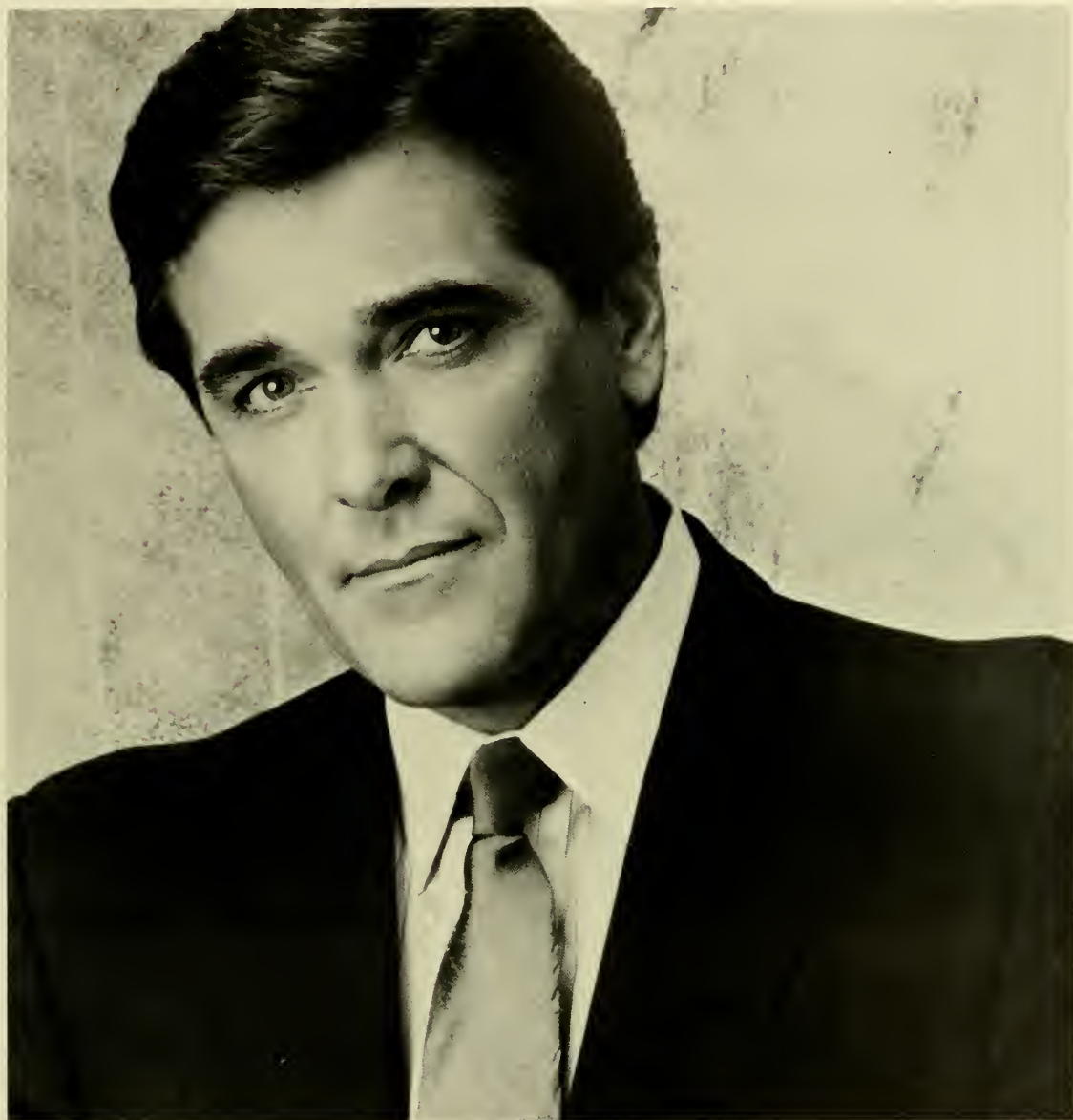
Kelly Fitzpatrick — Alpha Chi Omega
 Jodie Drees — Joseph Reynolds
 Melody Witt — Alpha Delta Pi
 Karen Hanlon — Lambda Chi
 Barb Scherer — Sigma Chi
 Terry Derr — Building 25
 Jane Bistline — Allen Spivey
 Kelly McCarley — Phi Mu

Second Row:

Vicky Hodge — Kappa Alpha
 Betsy Powell — Alpha Omicron Pi
 Meridy Werder — Upperclassmen/Joseph Reynolds
 Leslie Brown — Freshman Dorm
 Adair Valdespino — Freshman Dorm
 Laura Melton — 115 Hollingsworth
 Janine Lott — Building 14
 Marcy Strong — Kappa Delta
 Deedra Stebbins — Wright Hall
 Tracy Lincoln — Tau Kappa Epsilon



Polly Hamilton — Zeta Tau Alpha
 Dana Casini — Building 15
 Tammy Rigdill — Theta Chi



Miss Interlachen Judge **Chuck Woolery**

Mr. Chuck Woolery was chosen to be this year's Miss Interlachen judge. Mr. Woolery had the difficult task of selecting Florida Southern's Miss Interlachen and two runners-up from the photographs of seven finalists. A great deal of thanks goes to Mr. Woolery for his assistance in FCS's beauty pageant.

Mr. Woolery was the former host of the T.V. game show, "Wheel of Fortune," and is currently the host of "Love Connection."



Miss Southern 1984

Holly Alexander

Holly Alexander, a senior from Glastonburg, Connecticut, represented Alpha Omicron Pi Sorority. Her major is marketing and her activities and honors include: AWS representative, Alpha Omicron Pi pledge — class treasurer, Delta Sigma Pi, Greek Hall of Fame, Fellowship of Christian Athletes, French Club President, and Cheerleading Captain.

Miss Southern Candidates



Holly Alexander
Alpha Omicron Pi



Vicky Burton
Princeton Hall



Kim Christenson
Upperclass,
Joseph Reynolds



Sarah Cohn
Upperclass,
Allan Spivey



Polly Hamilton
Zeta Tau Alpha



Melissa Maver
Building 20



Jill Petrie
115 Lake Hollingsworth



Linda Pittard
Building 25



Jodi Roskosh
Alpha Delta Pi



Sue Stauffer
Student Government Assoc.



Mary Thorn
Assoc. of Women Students



Karen Wertz
Phi Mu



Denise Wolfe
Kappa Delta



Kathleen Wood
Alpha Chi Omega



James C. Rogers, Jr. Award

Tim Richardson

Tim Richardson, a senior from Haines City, Florida, represented the Association of Women Students. His major is Business-Finance/Marketing. His activities and honors include: Student Government Association — President, Junior Class President, American Student Association — Vice Chairman of Private Schools for the Nation, Omicron Delta Kappa, Delta Sigma Pi, 1982-83 Outstanding S.G.A. Senate members award, Who's Who Among Colleges and Universities, Wesley Fellowship, Committee on Student Affairs, National Association of Accountants, Resident Advisor — 3 years.

50th Honorary Chancellor

Gerald R. Ford — 38th President of the United States





Who's Who Among Students in American Colleges and Universities

Front row (left to right): Angie Cicanese, Linda Pittard, Jodie Drees, Sarah Cohn, Kimberly Christensen, Jackie Kourmpates, Darice Fields. Middle Row — (left to right): Mark DeVoss, Rich Knowles, Douglas

Trudeau, Dori Hernquist, Tami Shearer, Debbie Hutchinson, Joe Baker, Jr. Back Row — (left to right): Mark Ziebarth, Juan Carlos, DeRada, Paul Westcott, Tim Richardson, Rob Collins. NOT PICTURED: Amy Bardill, Ann

Bassett, Kim Belmonte, Deborah Bidwell, Ron Bridges, Kim Calvert, David Flower, Al Garmon, Beth Haslage, Jayce Holley, Rob Iles, Jody Kay, John Mines, Linda Parkos, Jill Petrie, Sue Stauffer.

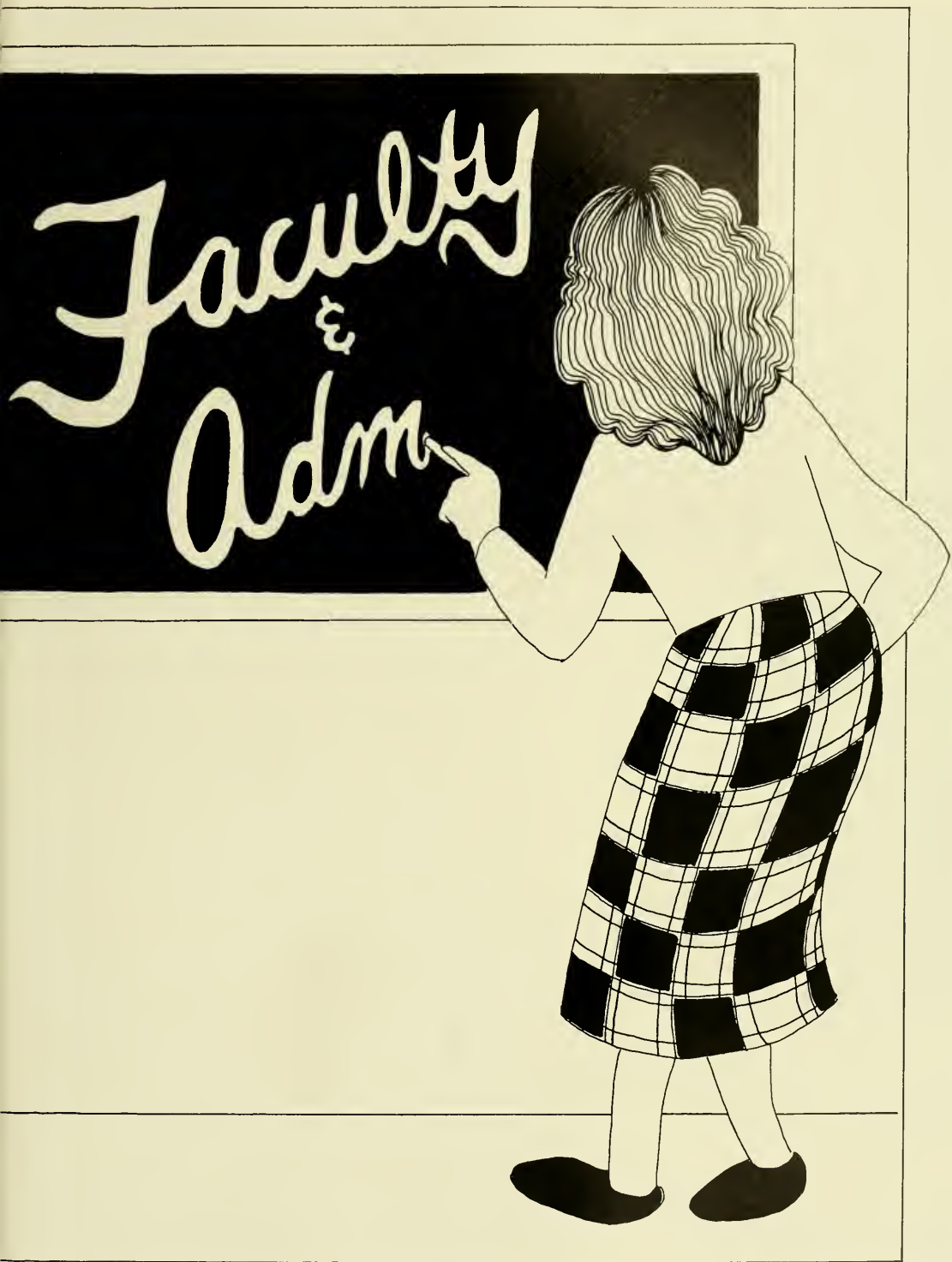
Greek Hall of Fame



Front Row — (left to right): Polly Hamilton, Holly Alexander. Back Row — (left to right): Denise Wolfe, Joy DeCaro, Sarah Cohn. NOT PICTURED: Kim Clavert, Evanne Logan, and the Men's Greek Hall of Fame.

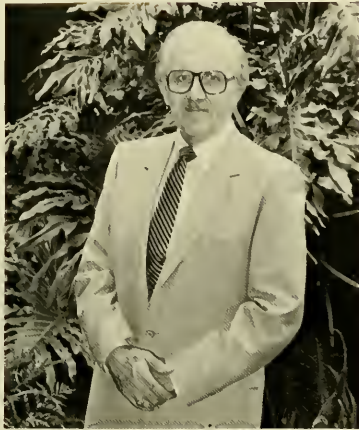
the Southern





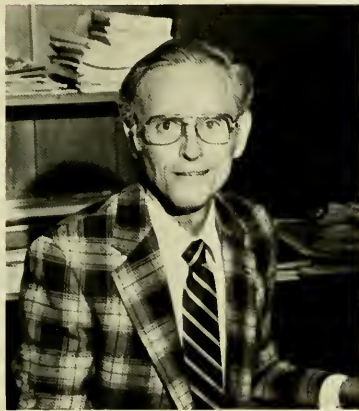


President Robert A. Davis



Theodore H. Haggard
Assistant to the President

ADMINISTRATION



Brunner R. Hunt
Vice President and Business Manager



David G. Moberley
Vice President and Dean of the College



Mead F. Rogers
Vice President for Development



Bishop E.J. Pendergrass
Assistant to the President



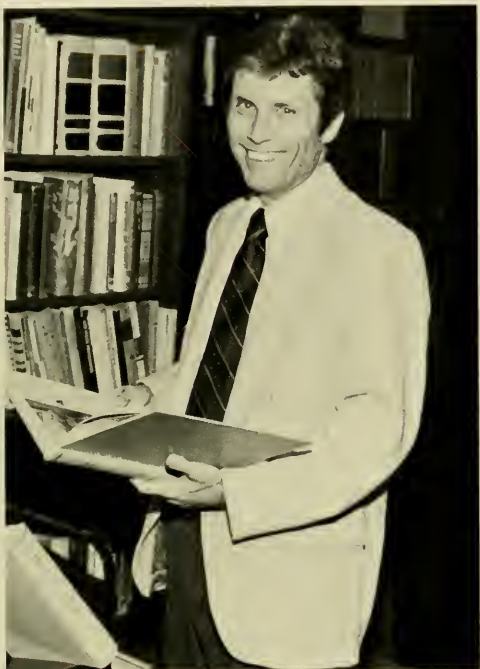
Dr. Charles Thrift, Jr.
President Emeritus



William B. Stephens
Director of Admissions



William S. Barnes
Chaplain



G. Lawrence Stallings
Director of the Library



Raymond H. Fischer
Director of Alumni Relations



William M. Hannah
Comptroller



Robert Sterling
Director of Student Financial Aid



Mary Lou Spencer
Registrar



Francis L. Luce
Placement Assistant



Frank P. Szabo
Assistant Dean of Students for Men



Hugh A. Moran, Jr.
Dean of Students



Darrell D. Webb
Physical Plant Manager



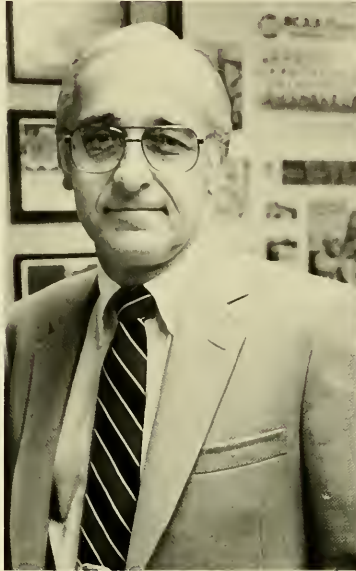
Kim A. Pickering
Assistant to the Dean of Students for Women



Lynn Goding
Assistant Dean of Students for Women



Wayne Koehler
Director of Sports Information



Harold Smeltzly
Director of Athletics



Harold Waters
Director of Communications



Samuel W. Luce
Director of Recreation



Melinda B. Luce
Director of Student Activities



Marta Ladd
Director of Public Relations

Art



(Left to Right) Gale Doak, Joyce Davis, Banton Doak, Downing Barnitz, Beth Ford

Biology

(Left to Right) Malcolm Manners, Margaret Gilbert, Robert Baum, Sharon Hooker, John Halderman, Mary Walker, John Tripp, Laurence Campbell



Business/Economics



(Left to Right) Row 1: Murrell Gillan, Wendell Hulcher, Harold O'Leary, Mary Jo Berquist, Jeffrey Wiley, Margaret Bair, Joan Buccino, Row 2: Mrs. Long, Allen Larsen, Patricia Dockery, Samuel Newman, Bruce Arnold, Duane Hopkins, William Juchau

Citrus/Horticulture



(Left to Right) Sue Herdman, Vern Mullen, Robert Prevatt, Thomas Mack, Malcolm Manners

Communications



(Left to Right) Edward Thorn, Gary English, Stephen Winzenberg, Harold Waters, Richard Wilber, John O'Brecht

Education



(Left to Right) Row 1: Mary Peaslee, Louise Pitt, Emily Hancock, Row 2: Davis Holland, Jo Ann Little, Katherine Betts, Jack Haynes

English



(Left to Right) Paula Romanik, Gwendolyn Ziemann, Wesley Ryals, Robert Tate, Glenn James, Mary Ann Hodges, Robert Zimmerman, Raymond Lott

History/Political Science

(Left to Right) John Santosuosso, Francis Hodges, Larry Durrence, Rand Sutherland



Language

(Left to Right) Bennett Cole, Gerda von Paleske, Jose Martinez, Wallace Brandon



Math



(Left to Right) Row 1: Allen Wuertz, Caroline Durham, Brunner Hunt, Row 2: Lane Goodson, Daniel Carreira, Henry Hartje

Military Science



(Left to Right) Sgt. Orden, Sgt. Kos, Cpt. Dardoza, Col. Bailey, Maj. Fox, Sgt. Pierce, Specialist Hodges

Music



(Left to Right) Robert MacDonald, Rita Fandrich, William Woodruff, Paula Parsche, Bennett Penn, James Slutz, Beverly Wolff — not pictured

Nursing



(Left to Right) Rose Marie Lamm, Clara Clayton

Physical Education



(Left to Right) Row 1: Mary Clarke, Lois Webb, Row 2: Charlie Anderson, Harold Smeltzly, Kathleen Benn, Katherine Straw, Edward Jefferies, Bill Conners, Chris Bellotto, Sam Snow, Row 3: Kirk Speraw, James Bush, Mike Gaski, Pat McFadden, Row 4: George Scholz, Charley Matlock

Psychology



(Left to Right) Gregory Mugg, Sandra Ivey, Richard Burnette, Christopher Weaver

Religion

(Left to Right) Waite Willis, John Cook, Frank Johnson, Walter Weaver



Sociology



(Left to Right) Deborah Padgett, Barbara Sreenan, Edward Plowman

Theatre

(Left to Right) William Grange, Mary Clarke, Amy Diche, Timothy Connelly



Housemothers



(Left to Right) Mrs. Chisholm, Mrs. Bond, Mrs. Chandler, Mrs. Westerfield, Mrs. Pope, Mrs. Yelton, Row 2: Mrs. Huggins, Mrs. House, Mrs. Mohler, Mrs. Michael, Mrs. Blanton, Mrs. Denman, Mrs. Meyer, Mrs. Council, Mrs. Hall, Mrs. Lashbrook, Mrs. Hopkins, Mrs. Achor, Mrs. Glass, Mrs. Brotherton, Mrs. Covington, Mrs. Mericle

Library Staff



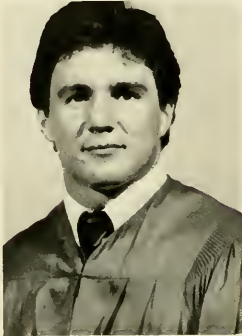
(Left to Right) Larry Stallings, Sally Gullage, Mary Flekke, Rosina Urquiza, Barbara Elliot, Margaret Barthe, Polly McCormick, Louise Eastwood, Harry Roberts



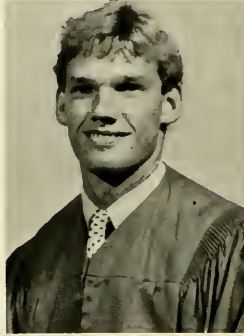
Southern Faces



Seniors



Jayce Holley, President



Barney White, Male Senator



Amy Bardill, Female Senator



Kristen Fishbaugh,
SUB Representative



William Aber
Business
Robin Adkisson
Communications
Jean Agee
Art Therapy
Mylene Alberto
Accounting
Iris Albritton
Music



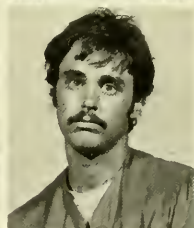
Holly Alexander
Business
Elizabeth Allan
Psychology
France Allegood Jr.
Marketing
Barbara Allen
Communications
Cindy Allen
Elementary Ed.



Stephen Allen
Music
Timothy Allison
Business Adm.
John Anastasia
Business
Mark Angelo
Business
Spencer Artman
Biology



Lora Ash
Criminal Justice
Katherine Axt
Elementary Ed.
Jeffery Babineau
Communications
Craig Bachar
Accounting
Rebecca Bachtel
Christian Ed.



Cynthia Ball
Business Ed.
Kevin Banfield
Personnel
Amy Bardill
Political Science
Kim Barfield
Art Communication
Brian Basile
Art Communication



Elizabeth Bass
Personnel Management
Ann Marie Bassett
Business
Kimberly Belmonte
Accounting
Ronald Betz
Accounting
Deborah Bidwell
Mathematics

Melinda Bittinger
 Art Communication
 David Black
 Ornamental Hort.
 Carrie Blackwell
 Business
 Robert Blaydes
 Business
 Michelle Boisvert
 Public Relations



Katherine Boose
 Elementary Ed.
 MaryBeth Bosserdet
 Financial Mgmt.
 Richard Bovay
 Communications
 Darrell Brackin
 Citrus
 Joyce Bradley
 Political Science



Joan Brady
 Art Therapy
 James Bridges
 Social Science
 Ronny Bridges
 Biology
 Ray Britt Jr.
 Accounting
 Lawrance Brooks
 Criminal Justice



Jon Brow
 Business
 Jacqueline Brown
 Social Work
 Jennifer Brown
 Business
 David Buckner
 Personnel
 George Budd
 Ornamental Hort.



Accounting
 Deborah Bidwell
 Mathematics



Joseph Burley
Business Management
Robert Burnette
Business Adm.
Victoria Burton
Psychology
Kimberly Calvert
Education
Frank Campano
Accounting



Larry Campbell
Business
Tammy Campbell
Marketing Mgmt.
Lisa Ann Carlton
Business
Stephen Carlton
Communications
Suzette Caroli
Social Work



Chris Cates
Business Adm.
David Carter
Marketing
Gail Cates
Business Adm.
Donna Chastain
Sociology
Kimberly Christensen
Mathematics



Susan Christopher
Mathematics
Tina Christy
Economics
Kenneth Clark
Political Science
Lori Clark
Marketing
Nancy Clark
Finance

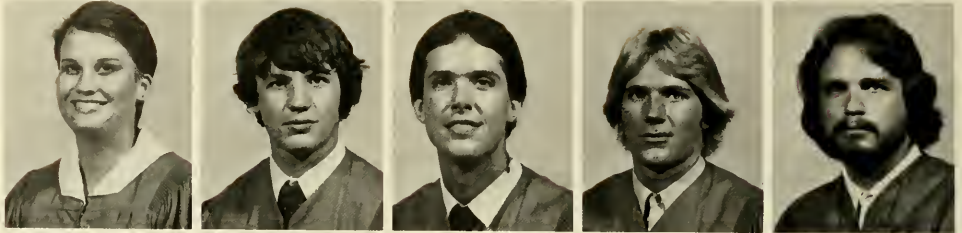


Lori Cochrane
Business
Bill Cockrell
Music Management
Sarah Cohn
Communications
Kathryn Cole
Art Communication
Robert Collins
Communications



Michael Connors
Accounting
Patricia Connors
Therapeutic Recreation
Jeanne Cope
Business
Teri Courtoy
Communications
Michelle Couture
Education

Elizabeth Cox
Music Management
Kevin Cox
Political Science
Robert Cronkrite
Communications
Kris Crooks
Mathematics
Kristian Crooks
Sports Management



Michael Culumber
Accounting
Sheila Daniels
Art Recreation
Kimberly Davis
Communications
Joseph Davis
Communications
Patty Davis
Business



Stacy Davis
Accounting
Van Davis
Accounting
Joy DeCaro
Business Adm.
Kathlena Dedlow
Biology
Felix Deering
Mathematics



Giovanni Delcompare
Citrus
Lynn Demmer
Business
Shari Dennard
Business Adm.
Barbara Devonville
Personnel Mgmt.
Elizabeth Derada
Business



Juan Carlos DeRada
Marketing
Linda Dinkins
Communications
Douglas Dobrinich
Financial Mgmt.
John Dolan
Marketing
Lynn Domagala
Communications



Clay Donald
Music Ed.
Kathleen Donohue
Business
Mark Dorrill
Communications
Debra Dorsey
Marketing
Amy Downey
Biology





Cynthia Dunwoody
Communications
Cindy Durrance
Elementary Ed.
Charles Dutil
Communications
Alan Edwards
Accounting
Mark Edwards
Citrus



Deborah Ellis
Business Adm.
Frederick Elmhorst
Communications
Eden Escamilla
Communications
Dean Fagally
Communications
Wade Fahnestock
Business Adm.



Douglas Feek
Citrus
Lee Ferdon
Religion
Susan Ferris
Sports Mgmt.
Christopher Fielder
Communications
Maury Filips
Political Science



Jeff Fillmore
Political Science
Joseph Finnegan
Marketing
William Fisackerly
Religion
Kristen Fishbaugh
Communications
Erin Flanagan
Marketing

David Flower
Marketing Mgmt.
Marrion Flowers
Biology
Ellen Fluck
Math
Lori Fogel
Social Science
Julia Gallin
Communications



Deborah Gerg
Psychology
Laura Gilcrest
Social Science
David Glod
Business Adm.
Raymond Goodin, Jr.
Personnel
Jane Gordon
Communications



Rob Goulet
Communications
Gwyndolyn Graham
Business Adm.
Eloise Grams
Psychology
Janet Gray
Sports Mgmt.
Jennifer Gray
Elementary Ed.



Teresa Green
Therapeutic Recreation
Keith Greenwood
Business
Stacey Grimm
Advertising
Karen Grob
Accounting
Brian Gurchiek
Finance



Joseph Giuttari
Sports Mgmt.
Tammy Haer
Business
Scot Hagadorn
Biology
Polly Hamilton
Elementary Ed.
Marie Hannah
Social Science



Maria Hardwick
Sports Mgmt.
Jack Harris
Communications
James Harris
Business
Jay Harris
Political Science
Rhonda Hartje
Business





Stephen Hartsfield
Religion
Wade Harvey
Finance
Elizabeth Haslage
Business Adm.
Richard Hayes
Art Communication
Ronnie Hayes
Accounting



Edward Hecker
Business Adm.
Rebecca Hedges
Social Work
April Henderson
Education
Phyllis Henderson
Elementary Ed.
Mark Henschel
Music Mgmt.



Susann Hensley
Communications
Jennifer Hermany
Sacred Music
Dori Hernquist
Political Science
Laurie Hiatt
Art
Ronald Hicks
Elementary Ed.



Holly Hight
Business
James Hill
Marketing Mgmt.
Susan Hogge
Psychology
Jayce Holley
Political Science
Barbara Hoover
Social Work





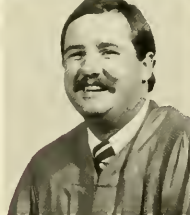
Brenda Hulen
Communications
Robert Hunt
Finance
Blanche Hutchinson
Physical Education
Deborah Hutchinson
Accounting
Paul Imig
Psychology



Dretha Ison
Music Education
Michael Ivey
Citrus
Robert Jadusingh
Biology
Rodman Jaeger
Ornamental Horticulture
Jeff Janszen
Sociology



Brian Jefferies
Personnel Mgmt.
Christopher Johns
Journalism
Moses Johnson
Biology
Pamela Johnson
Finance
Gwendolyn Jones
Business



Jeffrey Jones
Marketing Mgmt.
Judith Jones
Biology
Mark Jordan
Biology
Tamela Jordan
Early Childhood Ed.
Amy Jorgensen
Psychology





Donna Julian
Math
Christian Kaelin
Criminal Justice
Jody Kay
Physical Education
Lynn Keenan
Music
Karen Kelly
Christian Ed.



Satoshi Kimura
Business
Linda King
Psychology
Karen Kladakis
Elementary Ed.
Walter Klein
Physics
Joseph Knaack
Business



David Knowles
Accounting
David Knutson
Physical Education
Richard Koepsel
Marketing
Jackie Kourmpates
Music
Tom Kramig
Communications



Robin Krimm
Psychology
Jennifer Kunde
Finance
Virginia Landry
Social Work
Janet Langford
Elementary Ed.
Dina Lauricella
Biology



Hugh Lawson
Psychology
Margie Lee
Advertising
Stephen Lehman
Citrus
Donald Leon
Psychology
Vincent Leone
Art Communication



Jim Lewis
Natural Science
Gregory Lietzau
Finance
Alicia Loadholtes
Marketing Mgmt.
Jeffrey Locascio
Political Science
Barry Logan
Accounting

Evanne Logan
Sociology
David Loiselle
Marketing Mgmt.
Darryl Long
History
Lowell Longstreth
Marketing
Marcos Lopez
Sociology



William Lowe
Biology
John MacKay
Marketing
Richard MacKenzie
Business
Larbara Makris
Communications
Cindy Manley
Early Childhood Ed.



Katrina Manz
Early Childhood Ed.
Christine Marmen
Computer Science
David Marmol
Communications
Lorri Marvel
Physical Education
Phil Masie
Business



John Matz
Business Mgmt.
James Maurno
Finance
Melissa Maver
Accounting
Leslie May
Business
William McAnly
Political Science





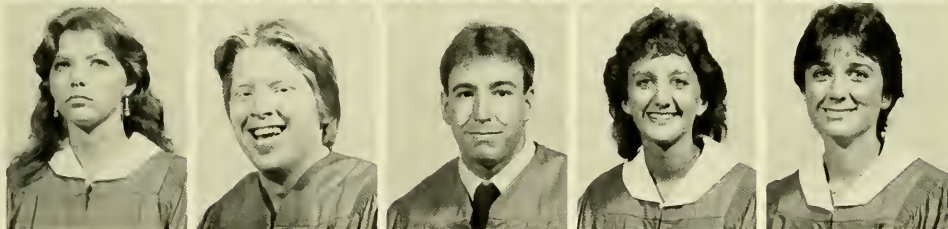
Paul McCann
Business
Colleen McGehee
Elementary Ed.
Judi McMillan
Accounting
Matthew McMillan
Political Science
Serena McQuillen
Business Ed.



Jimmy Mee
Recreation
Laura Melton
Journalism
Edward Meszaros
Biology
Ward Michaels
Business
Craig Miley
Citrus



Mark Miley
Journalism
Wendy Miller
Elementary Ed.
Lori Milligan
Communications
Dave Minotti
Marketing
Peter Mollo
Communications



Debra Moore
Psychology
Michael Moore
Political Science
Michael Moore
Physical Education
Cynthia Morvillo
Communications
Floanne Murdoch
Communications



Dawn Murphy
Marketing
Joseph Newton
Business
Windon Newton
Art Communication
Mary Nichols
Marketing Mgmt.
Mary-Jo Nobile
Special Education



Timothy O'Leary
Finance
Chris O'Meara
Journalism
Penny Orr
Biology
Emily Page
Communications
Elizabeth Palmer
Biology

Michael Paracca
Marketing Mgmt.
Linda Parkos
Music Education
Paul Parzik
Religion
Mark Patricoski
Business
Myra Penuel
Physical Education



Alan Pex
Psychology
Dan Pfister Jr.
Business
Chris Pharo
Business
Jack Piemonte
Business Adm.
Cheryl Pierce
Biology



Linda Pittard
Psychology
Monika Plischue
Tourism
Elizabeth Powell
Business Adm.
Thomas Powers
Citrus
Eric Pratt
Business Adm.



Kavick Price
Citri-Business
Michelle Price
Accounting
Sara Putnam
Biology
Winnifred Putnam
Sociology
James Ranson
Political Science

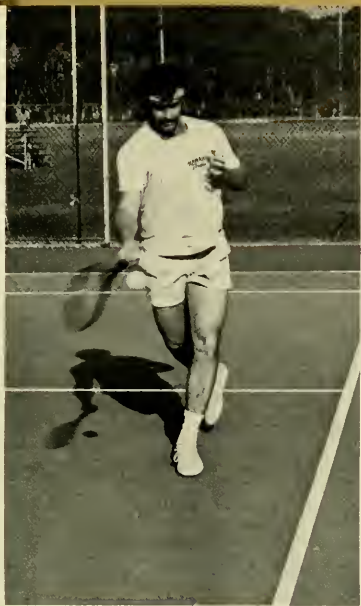


Robert Rawls
Business
Curtis Rawsthorne
Business Mgmt.
Jelane Reed
Business Adm.
Jo Dee Reese
Citri-Business
Gregory Reints
Horticulture



Gardner Reynolds
History
Tim Richardson
Business
Lorraine Rideout
Broadcasting
Tamara Ridgdill
Business
Diane Rhea
Business





Jane Robert
Communications
Cindy Roberts
Music
Carrie Roche
Marketing
Chris Rogers
Citrus
William Rogers Jr.
Computer Info. Syst.



Robin Rosemeier
Sociology
Jodi Roskosh
Communications
Jackie Rossing
Communications
Brent Ryan
Business
William Ryan
Business



Patricia Sacco
Communications
Robert Salmi
Business
Kelly Sanders
Physical Education
Dean Sasek
Mathematics
Lynn Satterfield
Broadcast Comm.

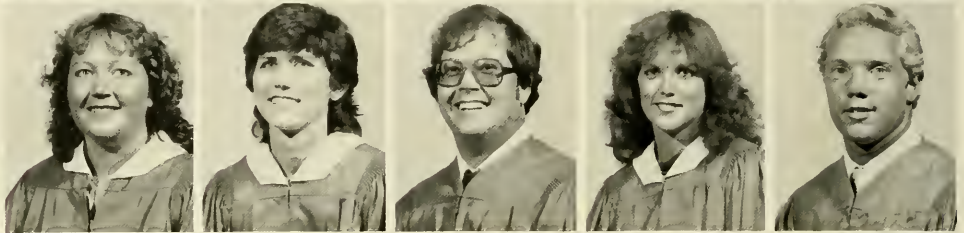


Bonnie Saunders
Physical Education
Barbara Scherer
Communications
Dirk Schmidt
Music Mgmt.
Kelley Schroeder
Physical Education
Amy Schuler
Special Education

Shawna Scott
 Communications
 Steve Seipp
 Broadcasting
 Craig Seitz
 Communications
 Anthony Senzamic
 Physical Education
 Linda Sessions
 Elementary Ed.



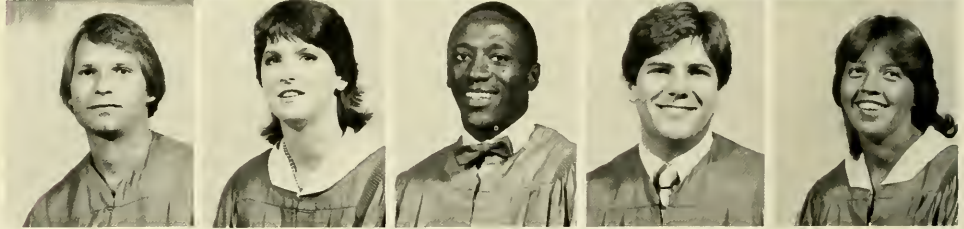
Kelly Sheel
 Art Therapy
 Lynne Simms
 Elementary Ed.
 Bruce Simpson
 Religion
 Jama Smith
 Communications
 Lance Smith
 Recreation



Lisa Smith
 Recreation
 Patricia Smith
 Business
 Robin Smith
 Marketing Mgmt.
 Allen Spears
 Management
 Frank Spinosa Jr.
 Business Mgmt.



Robert Stambaugh
 Citri-Business
 Nancy Stanley
 English
 Travis Stanley
 Journalism
 Stephen Stapor
 Business
 Landa Starling
 Special Education



Wes Starling
 Political Science
 William Starr
 Journalism
 Susan Stauffer
 Communications
 Deedra Stebbins
 Education
 Jeremiah Steiner
 Finance



Glenn Stettenhagen
 Marketing
 Elizabeth Stewart
 Criminal Justice
 Rebecca Stevens
 Art Communications
 Helen Stewart
 Elementary Ed.
 Chuck Stickler
 Finance





Renee St. Louis
Business
John Stohler
Business
Laurie Struck
Art Communications
David Styron
Sports Mgmt.
Alison Taylor
Business



Bruce Templin
Horticulture
James Tew
Marketing Mgmt.
John Thompson
Sports Mgmt.
Steven Thompson
Political Science
Mary Thorn
Business



Joyce Tiberio
Financial Mgmt.
Susan Tonn
Finance
Douglas Trudeau
Communications
Laurie True
History
John Tucker
Personnel Mgmt.



Renee Turbeville
Accounting
Clifford Turner
Physical Education
Jimmy Turner
Citrus
Barbara Turney
Marketing
Melissa Tye
Communications





Sherry Tye
Broadcasting
Mirtha Vallejo
Spanish
Suzette Veal
History
Rafe Vigil
Religion
James Vinson
Recreation



Edna Vulcano
German
Deborah Waldo
Mathematics
Samuel Walker
Citri-Business
Michael Walsh
Horticulture
Carla Warren
Business

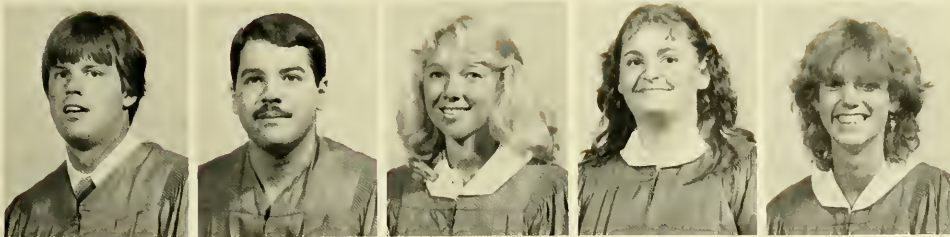


Wade Warren
Social Science
Diane Wegerif
Citri-Business
Curtis Weishaupt
Citri-Business
Karen Wertz
Art Therapy
Joseph Wheatley
Chemistry



Beaugwynn Wigley
Finance
Patricia Wilcox
Communications
Pamela Williams
Business Adm.
Kimberly Wirick
Business Mgmt.
Barney White
Finance





Paul Woerner
Sociology
Robert Wolf
Business Adm.
Denise Wolfe
Accounting
Amy Wood
Biology
Kathleen Wood
Finance



Vince Wyatt
Mathematics
Mary Wyllie
Horticulture
Hollye Yard
Computer Science
Joseph Zamrin
Mathematics
Nicholas Zahni
Psychology



Mark Ziebarth
Business Adm.
Linda Zirbas
Music Education
Eva Zwemer
Marketing



Juniors



(Left to Right) Tammy Reichert, Scott Crossman, Paul Westcott, Nancy Straw



Cyndie Ade
 Caryn Alberti
 Victor Albo
 Carla Albritton
 Pete Aldrich
 Laurie Allegood
 Steve Allmond



Beverly Alvis
 Kathy Amick
 Aaron Anderson
 James Anderson
 Ira Anderson
 Mary Anderson
 Paula Anderson



Richard Anderson
 Deborah Andrews
 Kolby Andrews
 Theodore Armistead
 Donna Auger
 Sally Austin
 Allison Avey



Philip Bagwell
 Mitch Bailey
 Joe Baker
 James Barr
 Kimberly Barrows
 Robert Bass
 Katherine Bastidas



Darryl Baxley
 Sarah Beasley
 Steven Behre
 James Belanger
 Mark Benson
 Kurt Beronja
 Eileen Berry



Cindy Beswick
 Nancy Blakeslee
 Jeannie Blocker
 Trent Bolesky
 Michele Bonina
 Lynne Boway
 Walter Bowlby



Shelly Brady
 Fluman Brandan
 Steven Breathitt
 Daniel Britt
 Elizabeth Broadwater
 George Brooks
 Cherilynn Brown

Kelly Bruce
 Thomas Bruder
 Suzanne Bubreggh
 Patsy Bull
 Claude Burnett
 John Burnett
 Patrick Burns



Sandra Burns
 Susan Burton
 Scott Bushouse
 Harold Cameron
 Luis Campano
 Tim Campbell
 Danny Cannon



Edwin Carlson
 Kletia Carlson
 Jim Carroll
 William Cary
 William Cash
 Dana Casini
 George Castine



Richard Cates
 John Cedarbury
 Michelle Cerdan
 Joyce Ceto
 Michel Chisum
 Heather Chryst
 Robin Ciminello



Susan Clark
 Terri Cole
 Angeline Colina
 Garnett Coolier
 Kenneth Comer
 Katherine Connelly
 Hillary Counts



John Couture
 Chris Coward
 Dana Cozine
 Ray Crone
 Scott Crossman
 Sandra D'Agati
 William Daniels



Cynthia Davenport
 Angelia Dean
 Tammy Sue Dean
 Elizabeth Deaton
 Jill DeFino
 Joe DiCesare
 Bill Dickman





Chuck Diggs
 Dan Domimick
 David Douglas
 Stephen Dowdie
 Charla Drake
 Jodie Drees
 Bobby Duncan



Lisa Dunson
 Lisa Durham
 JoAnne Dyer
 David Dyrek
 Timothy Edwards
 Marion Ellis
 Jill Emerson



Lisa Estes
 Thomas Evans
 Philip Fabiano
 Harry Farnbaugh
 Richard Fearnow
 Tina Feleccia
 Carl Ferrano



Daniel Field
 Darice Fields
 Susan Fischbach
 James Floyd
 Dorothy Flynn
 Robert Flynn
 Karyn Folland



Anne-Marie Fox
 Gary Franek
 Jill Freeman
 Kathleene Freeman
 Robin Freeman
 Kathie Fuller
 Kelly Funston



James Futch
 Glenda Gage
 Gregg Gamester
 Anglea Gann
 Brian Gardner
 Alan Garey
 Alvin Garmon



Vicki Garrone
 Sherry Gauntlett
 Thomas Geller
 Robin Gerhard
 Henry Gibson
 Marcia Gillett
 Colleen Gillogly



Peter Girardin
 William Glode
 Bibiana Gomez
 Joseph Gong
 Ricardo Gonzales
 Brooks Goodgame
 Holly Goodrich

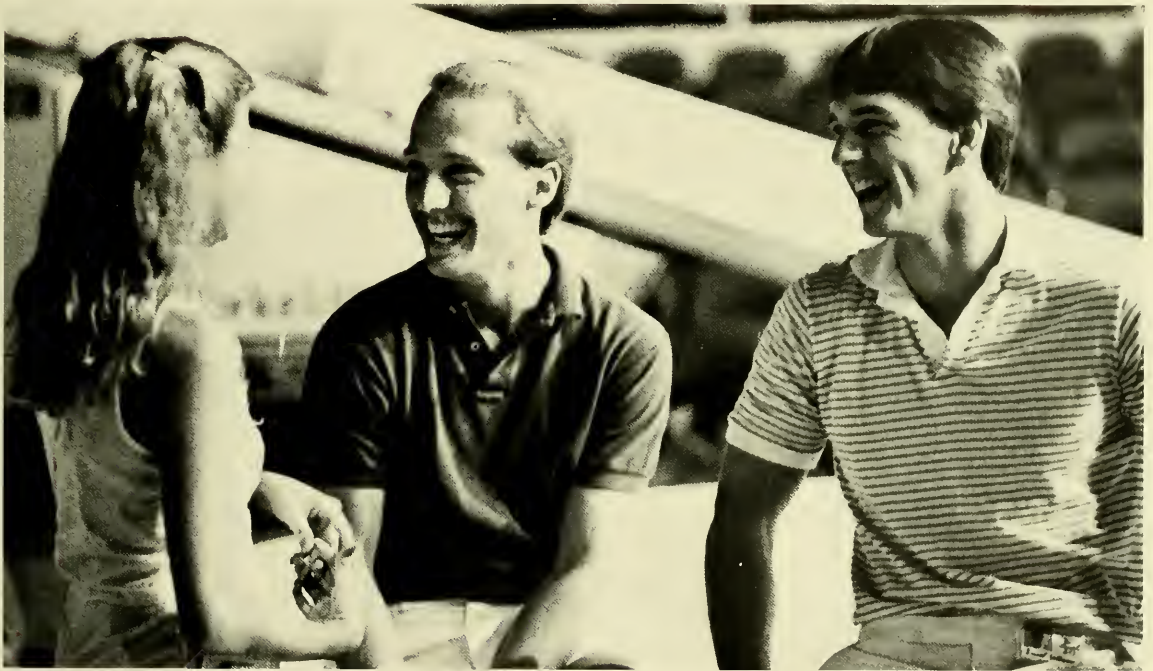




Nora Gould
Steve Graves
Robert Green
Suzanne Green
Teresa Griggs
Brett Grover
Dhays Gruber



Mark Guzier
Lynn Hallock
Lisa Ham
Leona Hammond
Holly Hangen
Madison Hankal
Margaret Hamon



Susan Hansberger
Beth Ann Harding
William Hardman
Beth Harrelson
Ragan Harrison
Eric Hartje
Susan Hause



Patrick Hegert
Jeff Henderson
Melissa Hendley
Harold Hendren
Martha Herron
Greg Highnam
Frederick Hilmer

Kirk Hobart
 Kelly Hobbs
 Amy Hodge
 Kirk Hodson
 Heidi Holcomb
 Kathryn Holmes
 Richard Hopper



Leslie Hosick
 Carolyn Howard
 William Hughes
 Sharon Humburg
 Lisa Hunt
 Lori Hurt
 Douglas Hutchison



Timothy Hyatt
 Robert Iles
 Lisa Jackson
 Sharon Jackson
 Suzanne Jackson
 Seeta Jadusingh
 Maureen Jahns



Brian James
 John Jane
 Paula Jenkins
 Juanita Jess
 Charlie Jewett
 Clifford Johnson
 Marjorie Johnson



Mary Johnson
 Tricia Johnson
 Christy Jones
 Clarke Jones
 Randy Jones
 Susan Jones
 Stephen Jones

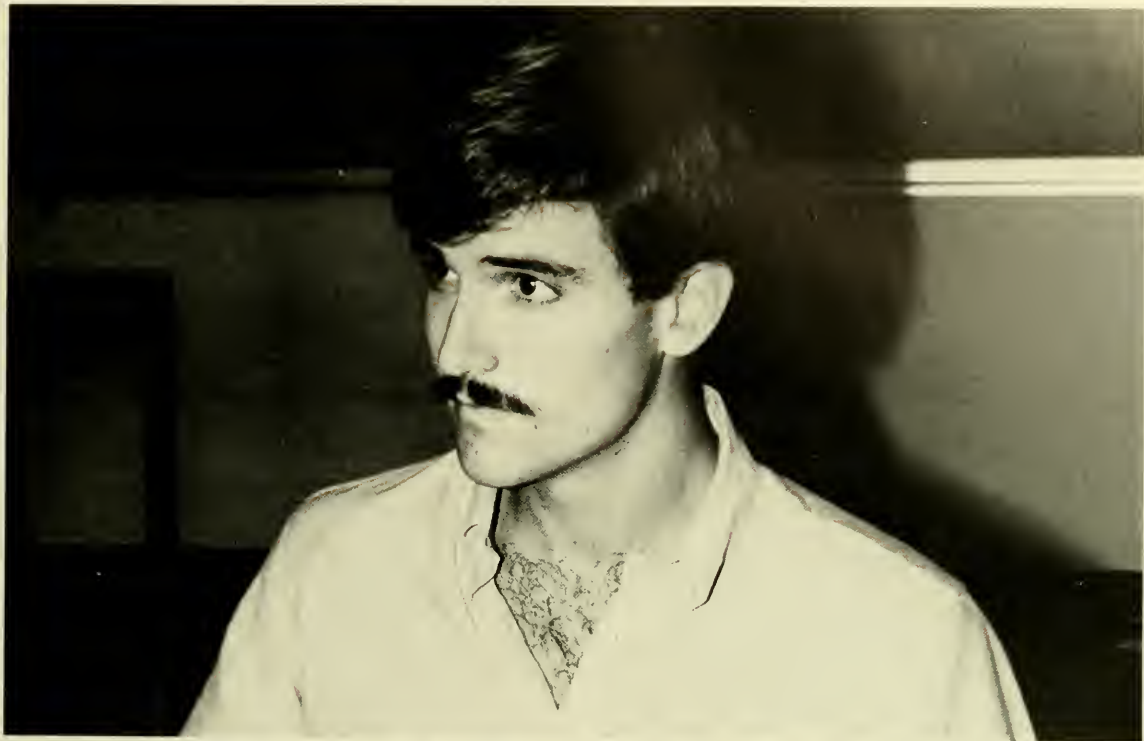


Paige Kasper
 Richard Kear
 William Kelley
 Robert Kenworthy
 Annette Kilgore
 Jan King
 Thomas Kirsten



Scott Knecht
 Sharin Knoop
 Richard Knowles
 Scott Kolar
 Chris Kops
 Roy Kramer
 Ken Kranick





Kyle Krein
 Patricia Kramig
 Sally Land
 Kelly Landers
 Deidre Lane
 Sanford Lechner
 Traci Lincoln



Linda Lohne
 Joanne Lyke
 H. T. Lykes II
 Sherry Lynch
 Laurie Madonia
 Rosemary Madonia
 Mark Mangum



Linda Mann
 Edward Marable
 Russell Marlowe
 Timothy Marshall
 Lenor Marti
 Jeanne Mason
 Jeffrey Mathewson

Kelly McCarley
 Celaine McCard
 David McCorkle
 Ben McDaniel
 Barry McGee
 James McGuire
 Mable McKee



Patrick McKenna
 Jeffrey McKey
 Kirk McKinnon
 Sharon McLellan
 Melanie McMullen
 Albert McNorton
 Greg McNutt



William Meakin
 Rocco Mediate
 Scott Meeker
 Densie Michalowski
 Kendra Mickelsen
 Grant Millensted
 Kathy Miller



Sandra Miller
 Joy Milligan
 John Mines
 Anne Miotke
 David Moenning
 Brad Moore
 Charles Moore





Diane Moore
 Don Moose
 Adrea Morar
 Nicole Morgan
 Stuart Morrison
 William Morrison
 Tim Mulford



Tom Murphy
 Hollis Mussler
 Kimberly Mutzel
 Steven Myers
 Leigh Nabers
 Nicholas Nalepa
 Luke Nash



Rachel Nash
 Catherine Neff
 Douglas Noah
 Virginia Nunan
 Arne Oak
 Allison Odom
 Kay Odom



Pete Oglesby
 Jacquie O'Leary
 Patrick O'Sullivan
 Mark Owen
 Greg Owens
 Leo Owens
 Thomas Padro

Lisa Page
 Prescott Palmer
 Ann Palo
 Lois Pansler
 Gene Panzer
 Dave Parkulo
 Laurie Paulin



Mary Frances Payne
 Michael Peace
 Erick Pedersen
 Mark Peet
 James Pehrson
 Howard Penney
 Jeffrey Penrod



Michelle Perdue
 Marty Perez
 Jill Petrie
 Lori Petrie
 Carla Pftotenhauer
 Karen Pierce
 Johnnie Pleicones



Craig Poffenbarger
 Robert Pontious
 Marty Pottorff
 Todd Radloff
 Lori Rainey
 Betsy Raymond
 David Raymond



Mary Raynor
 John Reeck
 John Reese
 Tammy Reichert
 Scott Reinmund
 Janet Reynolds
 Steve Ridge





Mary Jane Riner
 Jeanette Rinker
 Leicha Rittgers
 Jimmy Roberts
 Shannon Roberts
 Andrew Robinson
 Cindy Robinson



Lauren Rodberg
 Julie Rogers
 Sheli Rogers
 Jodi Rome
 Joy Rossi
 Pam Roy
 Patti Roy



Scott Samsel
 William Sawyer
 Chris Scheuer
 Jeff Schnuckee
 Teresa Schrader
 Bret Seligman
 Elizabeth Sellers



Sean Shappee
 Karen Shaw
 Tami Shearer
 Scott Shellabarger
 Debra Shepherd
 PERNAN Sherman
 Holly Sisson



Alison Smith
 Paige Smith
 Stephen Smith
 Brenda Snedden
 Greg Sorensen
 Jeffrey Soukup
 Irene Sowards



Louise Spencer
 Arthur Sputa
 Linda Stafford
 Kelly Stanley
 Todd Starks
 Wendy Starling
 Shaun Steggle



Jane Steiner
 Scott Stewart
 Robert Stigleman
 Karen Stof
 Donald Stokes
 Joseph Starda
 Nancy Straw

Susan Stuart
 Jeanne Stump
 Judi Sullivan
 Robert Sullivan
 Dayna Swalley
 Joni Synatsch
 Mark Tallo



Thomas Temrowski
 James Teschner
 Lisa Tetsworth
 Diane Thomas
 MaryBeth Thomas
 Valerie Thomas
 Debra Thompson



Cord Thorson
 Jeff Thurn
 Deanna Tingley
 Pamela Tipps
 Jeff Titus
 Raymond Titus
 Michelle Tomkow



Pamela Topping
 Christine Towne
 Kosugi Toyokazu
 Terri Tremain
 Cynthia Trickle
 Paul Trinklein
 Mary Ann Troiano



Lisa Trongone
 Janet Trucks
 Judy Truitt
 Maura Tysver
 Charles Underwood
 Lou Vaden
 Hector Villanueva



Todd VonWeyhe
 William Wallace
 Nancy Walsh
 Kelly Ward
 Dowwie Ray Warren
 Wayne Washington
 Carole Washuta



Gregory Waters
 Louis Weeks
 Christina Westberg
 Paul Westcott
 Gary Westerman
 Carl Winbanks
 Brenda Wilks





Greg Wilks
 William Willard
 Barbara Williams
 Paul Williams
 Tammy Wilson
 Jill Winkler
 Janet Winslow



Janice Wireman
 Melody Witt
 Beth Woerner
 Martha Wolfe
 Richard Woodall
 Kay Woodard
 Michael Workman



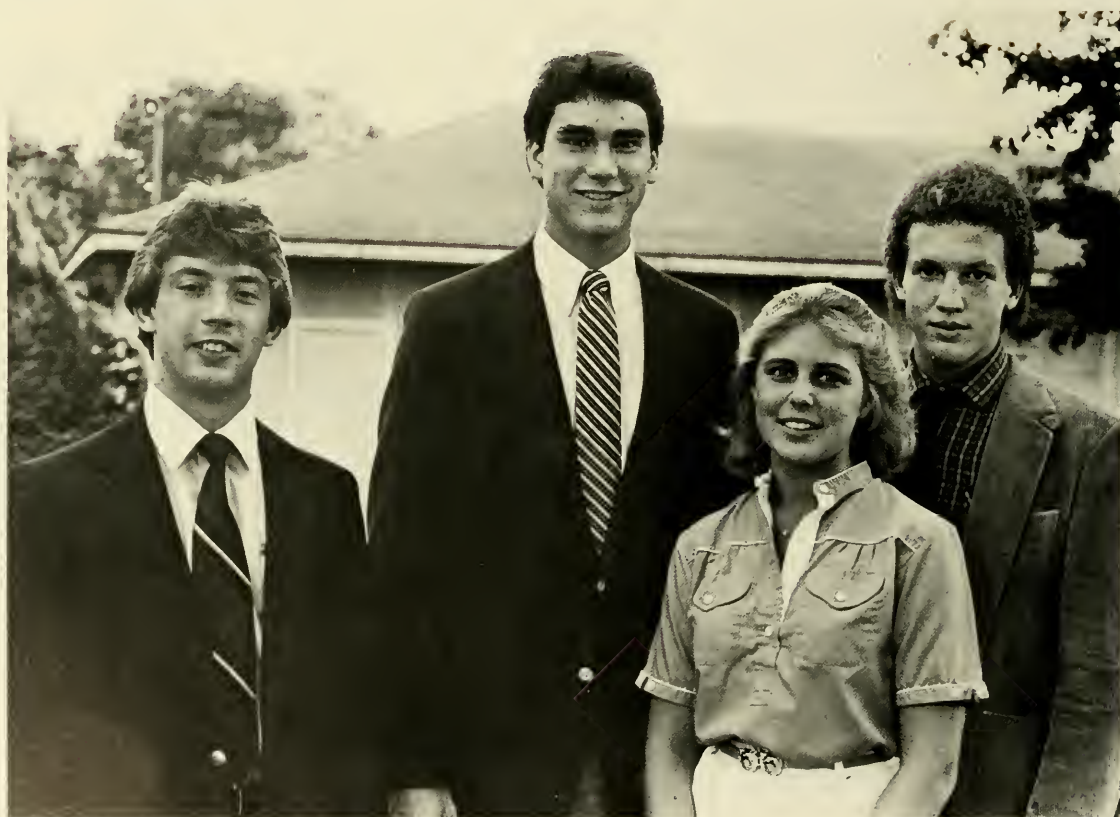
Cheryl Worth
 Robert Wyckoff
 Matthew Wynne
 Bill Yancy
 Susan Yelton
 Susan Young
 Juan Zapata



Kathy Zimmer
 Robert Zimmerman
 Michael Zizzo
 Lorri Ann Zuidema



Sophomores



(Left to Right) Jeff Grove, Munro Sefeik, Beth White, Scott White



Tom Adair
 David Ake
 Christine Albino
 Tony Alford
 Brian Allen
 Terrie Almond
 Kris Alvarez



Donald Amick
 James Andrews
 Erik Anderson
 Jerome Andenbrandt
 Cynthia Anson
 William Archebelle
 Jeanine Armbruster



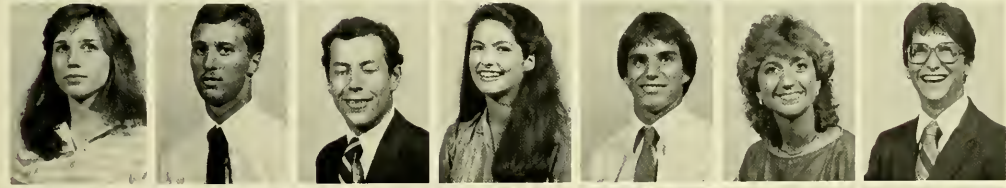
Regina Arndt
 Charles Aurich
 Nancy Baggett
 Laurie Baker
 Donovan Baltich
 Sean Barclay
 Steve Barger



Connie Bartels
 Tami Basey
 Robert Bateman
 Gregory Becker
 Donna Beede
 Lori Belanger
 Caren Belli



Eric Bendfeldt
 Kimberly Bergstrom
 Tanya Bessert
 Chris Bianca
 Jeff Birge
 Lori Black
 Steven Blount



Frances Boag
 Robert Bolger
 Mark Bovee
 Yasmin Bowman
 Dusty Boyd
 Lori Boyd
 Lee Brackman



Michael Bradley
 Dan Brady
 Betsy Bramley
 Jane Brandfass
 Kathleen Braun
 Diana Bruch
 Diana Bryan

Lisa Buck
Ann-Marie Bucy
Dean Burkey
James Burnett
Mark Andrew Buzza
Patricia Byrd
Lala Cade



James Cadott
Debbie Caldwell
Susan Callahan
Richard Campana
Dennis Camper
Pam Campo
Lois Canonico



Casey Carlson
Miriam Carrion
Vickie Carver
Kathy Causey
John Cervini
Scott Chappell
Debra Chipley



Patrick Chisholm
Jackie Chung
Keith Clanton
Beth Clark
Glenn Clark
Patrick Clawson
Krista Cochran



Julianne Cockrill
Vicki Cohill
Richard Collette
Janet Collins
Jane Considine
Charles Cook
Joseph Coyne





Michael Crawford
Michelle Crenshaw
Cindy Crimmel
Steven Crosby
Julia Cunningham
Steven Dalton
Kelly Daly



Dana Deloach
Todd Denson
Terry Derr
Timothy Desmond
Jill DeSplinter
Steve DeWitt
Kim Diamond



Laura Dimarco
Gina Dixon
Nancy Doane
Deborah Dodd
Steve Dollenmayer
Sheldon Donohoe
Kelly Doppelheuer



Ronald Doremus
Caroline Dossert
Cort Douglas
Cathleen Dowdie
Deborah Driskell
Sarah Dudenhoefter
Evelyn Duell

Sarah Dukes
 Jeff Dumas
 Laura Dunaway
 Cindy Dygert
 Robert Dynarski
 John Dziedzic
 Thomas Eddy



Ronnie Elrod
 Denise Engel
 Betsy Ennis
 Susan Ernst
 Kathy Erwin
 Mickey Etherton
 Alejandra Evans



Robert Evans
 Paul Feraci
 Kim Ferdinandsen
 Ann Ferguson
 Roseanna Ferguson
 Kathy Fishbaugh
 Kellie Fitzpatrick



Shannon Ford
 Teresa Fordham
 Laura Fraker
 Staci Franklin
 Nathan Freeman
 Gerrie Gage
 Suzanne Gainer



Cynthia Galbicka
 Sam Garcia
 Dawn Garner
 Anne Geiger
 Michael Gentile
 Lynn Girardin
 Joe Gisondi



Becky Glass
 Rich Glickman
 Tamara Goetz
 Stephen Goodrick
 Deborah Green
 Jeff Grove
 Thomas Gustoff



Brian Guyer
 Tammy Haire
 Teresa Hallman
 Elizabeth Hammond
 Tesi Hansen
 William Harlan
 Leigh Harrison





Carolyn Harvey
Beth Ann Hauser
Robert Heckel
Richard Heilig
Diana Heitman
Megan Henry
Katherine Hester



Thomas Hicks
Pam Highnam
Donna Hill
Misako Hiramata
Darla Holb
Julie Hone
Michael Honsharuk



Carter Hopkins
William Hopkins Jr.
John Houchin
Susan Howard
Jana Huling
Doris Huss
Paul Imathiu



D. W. Irvine
Judith Jacoby
Glen Jaffee
James Jarvie
Lee Janzen
Janae Jennings
Archie Johnson



Blair Johnson
Edythe Johnson
Peggy Johnson
Richard Johnson
Todd Joiner
Anita Jones
James Jones Jr.



Susan Jones
Christopher Keefer
Gary Kelly
Kevin Killingsworth
Cynthia Kimbril
Kinora King
Don Klein



Margriet Knetsch
 Jane Knickerbocker
 Judith Konsler
 John Korbel
 Timothy Koutsafes
 Kim Krasinski
 Paul Krist



Tracey Kuehn
 Carrie Kunde
 Michael Labriola
 Amy Lack
 Paul LaFauci
 Penny Langston
 Alo Layla



John Lennon III
 Jeanne Leslie
 Scott Levine
 Beth Lewis
 Randy Lewis
 Steven Lindemann
 Diedre Lloyd



Mary Lloyd
 Clinton Logan
 Janine Lott
 Juan Luzio
 Glynda Lyon
 Judy MacDonald
 Elise MacLennan



Michelle Major
 Salvatore Maniscalco
 James Manoli
 Michael Marcouiller
 Lew Marotti
 Owen Marr III
 John Martinez

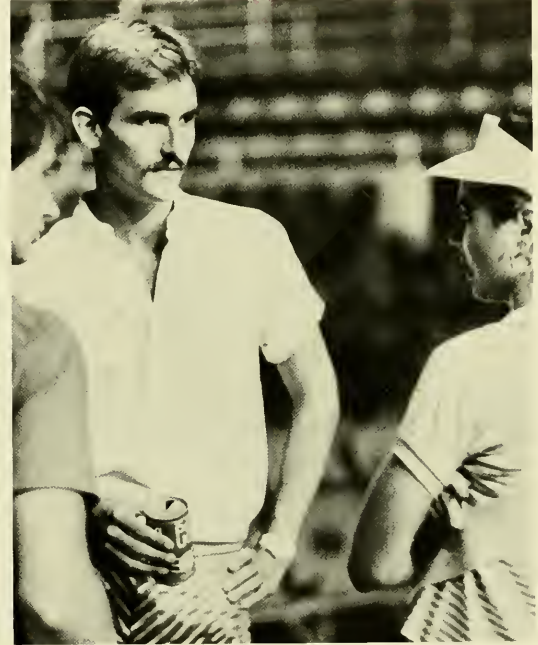




Rich Martyn
 Kathleen Mathews
 Kathleen McBurney
 Patrick McCarley
 Susan McCollum
 Ian McConkey
 Gretchen McCurdy



Thomas McDonald
 Elizabeth McGuire
 Franklin McKinney
 Thomas McMaster
 Laurel McNew
 Nelson Menendez
 Paul Mersch



Beatrice Meyer
 Julie Michael
 Cynthia Michaelis
 Drew Miller
 Vincent Monteleone
 Paul Montoya
 Jeff Moore



Ana Morejon
 Amy Morgan
 Matthew James Mosher
 Kimberly Napier
 Cynthia Newell
 Robert Nicholson
 Hideto Nishimoto

Mary Nutt
 Susan Oliva
 Kieth Onderdonk
 Lisa Osmer
 Irene O'Sullivan
 Jim Pacioni
 Tim Packman



Bettina R. Padgett
 Debra Padgett
 Kris Pahl
 Kimble Palmer
 Richard Parker
 Caroly Pasos
 Lee Paul

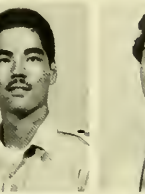


BetteAnn Pelley
 Drew Peloubet
 Joy Permane
 Dawn Perry
 Lisa Peterson
 Jamie Piper
 Karen Pipkin



Nicole Pleasants
 Steve Polonus
 Valerie Posenauer
 Bryan Powerl
 Rhonda Powner
 Joe Preston
 Tawn Prior





Tracey Prather
 Steven Puertas
 Michael Pursell
 Martha Puryear
 Warren Quets
 Mark Damon Raiford
 Charles Ranaudo



Richard Rasmussen
 Greg Reynolds
 Margaret Reynolds
 Marolyn Rhoades
 Patricia Richards
 Duncan Ridley
 Mike Roberts



Daniel Robertson
 Dorothy Robinson
 Stephen Robnson
 Brenda Rogers
 Brian Roskamp
 Sandra Russell
 Donald Samra



John Santiago
 Hamilton Sargent
 Mary Jo Sattler
 Craig Scates
 Scott Schaefer
 Valerie Schleicher
 Lauren Schild



Cherilyn Schulze
 Amy Schweider
 Dineen Scoggins
 Kimberly Scott
 Sally Sechrest
 Munro Sefcik
 Cammie Selig

Pam Sessions
 Jill Sheffield
 Kathryn Kim Shelly
 Beth Sherrick
 Paul Shumway
 Anita Sipe
 Sandi Slate



Edward Slechta
 Dawn Smith
 Kim Smith
 Sandy Smith
 Deborah Smoak
 Josh Snively
 Richard Soulé



Ruth Spencer
 Carol Sprauer
 David Springer
 Richard Spurlin
 Lynda Stauffer
 John Steadman
 John Steele



Michael Steele
 Alicia Stein
 Jennifer Stevens
 Michael Stevens
 Jeffrey Stewart
 Elizabeth Stidham
 Susana Stilson



Marcy Strong
 Kelly Sullivan
 Catherine Szaro
 Richard Tevault
 Chalah Thomas
 Sharon Thomas
 Kelly Thompson



Fleet Tilden
 Tracy Toy
 James Travis
 John Turner
 Kevin Venancio
 Kelly Walker
 Les Walter



Paul Walker
 Andrew Walls
 Eileen Walsh
 Katherine Ward
 Melanie Ward
 Roger Ward
 Aileen Ware





Patty Warren
 Connie Waschull
 Kathy Watkins
 Polly Watson
 Caroline Weaver
 Steve Weis
 Meridy Werder



Janet Whaley
 Frank Wheeler
 Gena Wheeler
 Beth White
 Lisa White
 Jim Wilhelm
 Charles M. Williams

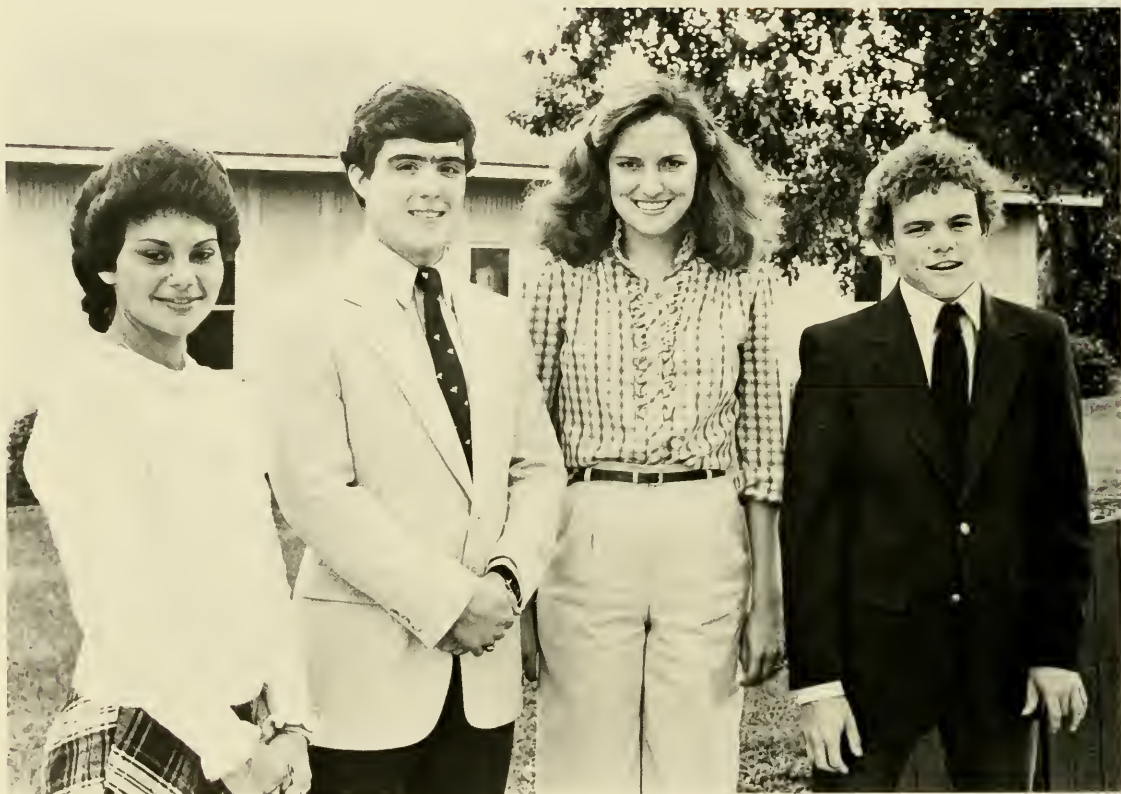


Natalie Williams
 Wendell Witten
 Roxann Woerner
 Elise Wood
 Kevin Wood
 Haili Wurtz
 Scott Wynn



Dawn Yates
 James Yelsits
 Kimberly Young
 Valerie Young
 Ed Zamorski
 Daniel Seisler
 Jane Zewalk

Freshmen



(Left to Right) Vickie Villalba, Bill Hanks, Ann Jago, Scott Sells



Leon K. Abbett
Susan E. Abello
Ralph Acquaro
Sally Ann Adkisson
Beth Allen
Kyle Altstadt
Ernie Anderson



Joseph Angelino
Stephen Auld
Russell Ausley
Lesley Austin
Robert Bailey II
William Ball
Deonne Barger



Gregory Barnes
David Batman
Thomas Beall
Steven Bedford
Kristi Beggs
Renee Behr
Ana Bejar



Marisa Bell
Jan-Annette Bellamy
Al Bellotto
Babette Bennett
Lynn Bergmon II
Matt Bernal
Elizabeth A. Bickhart



Jane Bisline
Joseph Bivona
Ashley Blackridge
Paul Blackwood
David Boisvert
Christine Bowes
Teresa Bowman



James Bracey
Lynn Bradley



Hope Brandis
Rick Brandt

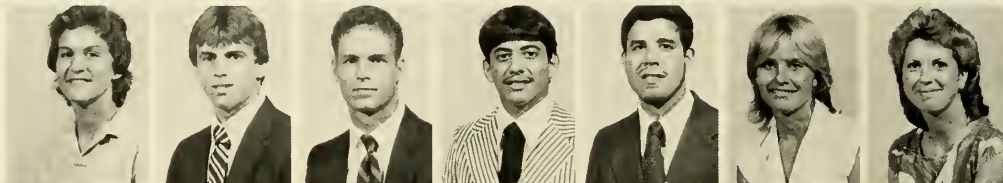
Bonnie Bridges
 Sandra Broadhurst
 Bonnie Broman
 Margaret Bronson
 Karen Brown
 Leslie Brown
 Shawn Brumbaugh



Jeffrey Bua
 Otto Bundy
 Kristine Butler
 Carie Call
 Russell Carawan
 Maritza Carrion
 Timothy Carson



Vera Carson
 Christopher Carton
 Charles Casten
 Stanley Castor
 Stephen Castor
 Karen Cates
 Faith Chapin



Ken Chesire
 Brad Chill
 Jennilyn Chuck
 Teri Cinelli
 Pamela Claughton
 Traci Close
 Laurie Colacini



Shawn Coleman
 Gregory Cook
 Linda Covello
 Angela Cowden
 Lee Cox
 Marcella Cox
 Scott Croak



Kimberly Croft
 Todd Csencsits
 Robert Curran
 Lori Daniels
 Jeannie Davis
 Shannon Dean
 Laurie DeLoach



Sue Denman
 Anthony Densmore
 James Desmarais
 Dawn DeVoss
 James Dickinson
 Martin DiGregory
 Lois Dinkins





Kimberly Disbro
Douglas Dodd
Tammy Dolan
Andrea Dort
Patricia Douglas
William Dudman
Gretchen Dunker



Gilbert Dunlap
Marti Dunn
Edythe Durbeck
Kritin Dye
Daniel Dyer
Hugh Eighmie
Tom Elliott



Suellen Emblar
Jennifer Ertel
Pamela Evers
Douglas Fagan
James Ferland
Keli Fink
Robert Fiore



Nancy Fisher
David Fisco
Megan Fletcher
Anne Floyd
Thomas Flynn
Emily Folker
Marcia Forsett



Kim Frasier
Douglas Freebern
Sean French
Donald Fry
Mark Fugett
Leyla Gagliano
Martha Gales



Christine Gannon
Kirk Geiger
Michele Germain
Marian Gilmore
Terrance Gilmore
Sheila Glover
Marcie Gogerty



Cindy Gordon
Richard Gordon
Tom Gram
Thomas Grant
David Green
Lauralee Green
Alison Greer



Roben Griffin
Mike Grossman
Marylynn Haas
Jeff Hagy
Molly Hamilton
William Hanks
Karen Hanlon





Rebecca Hardaway
Melanie Harden
Steve Harder
Suzanne Harmon
Thomas Harris
Lisa Harrison
Holly Hartery



Anne Hartman
Bruce Hartup
Yali Hasan
Chris Hayes
Jeannine Headley
Lee Hegley
Susan Hegyessy



Kimberly Hewett
Scott Higgenbotham
William Hill
Kimberly Hilson
Clark L. Hippler
Victoria Hodge
Roger Holler III



Karina Holt
Ralph Howe
Laura Hulse
Jannie Hunt
Sherry Huskey
Laura Huth
Barbara Ianzano



Beatrix Ivanyi
Yugoro Iwamuta
Lori Izzo
Lisa Jackson
Lisa Jackson
Ann Jago
Jeffrey Jakes



Scott James
Irene Jenkins
James Jenkins
Paul Jenkins
Jackie Jennings
Rosemarie Johnson
Jeanne Johnston



Jennifer Jones
Mary Lynne Jones
Michael Jones
Linda Justice
David Kalchbrenner
Denise Kanitsch
Craig Kardon

Lisa Kaytis
 Elisa Kennedy
 Sabrina Kershner
 Judith Killam
 William King IV
 Chris Kirchner
 Cathy Kirk



Adam Korsick
 James Kreinbrink
 Catherine Krist
 Michelle Kurtgis
 Donna Laing
 Cathy Lamb
 Cynthia Lambert



Scott Lambeth
 Keri Lamparter
 Todd Lanfave
 Maryann Lantinga
 Paul LaPorta
 John Lasch
 Mary Lemasters



Christina Lenihan
 Nancy Leonard
 Pearl Levy
 Brian Lewandowski
 Kelly Lewison
 Richard Lindau
 Nancy Lindell



Suaan Lippmann
 Karen Lloyd
 Kathryn Lloyd
 Thomas Long
 Shelley Longnecker
 Wade Luke
 Eric Lyman



Amy MacIntyre
 Janie Maguire
 Michael Mahoney
 Susan Main
 Robert Malan
 Eric Manning
 William Manson



Keith Martin
 Roxanne Martin
 Stephen Mathis
 Roy McCreery
 Missy McDermott
 Mary McDonald
 Mary McGee





Paula McKay
 David Meehan
 Phil Mendham
 Joseph Merenda
 Lauren Meyer
 Jay Michael
 John Michael



Debbie Michel
 Anthony Middleton
 Kevan Miles
 Scott Milleman
 Kimberly Miller
 Frank Miner
 Laura Mischley



Catina Mitchell
 David Mixner
 Yoshizawa Miyuki
 Charity Moore
 Tracy Moore
 John Morgan
 Jennifer Mosher



Marla Mossbarger
 Julie Mulford
 James Murphy Jr.
 Maureen Murphy
 Paula Napolitano
 Stephanie Nase
 Elizabeth Nesbitt



Dee Newsome
 Rebecca Nichols
 April Norris
 Kimber Norris
 Denise Notaro
 Diane Oleson
 Yoshiko Oshida



Jeanette Owen
 Tom Paar
 Brett Pace
 Ann Padgett
 Maritza Padron
 Anthony Panno
 Samantha Parkman



Greg Parks
 Elba Pasos
 Toby Patterson
 Frank Peacock
 Paul Pederson
 Shannan Peterson
 Lori Petrella



Lisa Philbeck
 Lisa Pinder
 Loriann Pinner
 Kathy Pirkle
 Johnnie Pleicones
 Lorie Plyer
 Andrea Pope





Gerald Prescott
Debra Price
Mary Priest
Alex Prieto
Jodi Radake
Patricia Ralston
Darcy Ranson



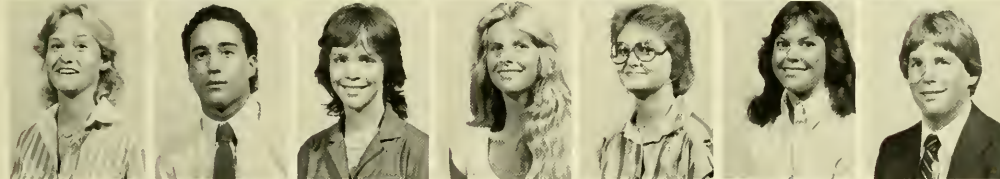
Paula Rappleyea
Kenneth Rea
Julie Reese
Kelly Reimann
David Richardson Jr.
Donna Richardson
Keli Richardson



Heidi Rigby
Rob Rittgers
David Roberts
Kim Roberts
Susan Robertson
Shelli Robinson
Sandy Roeder



Michele Rogers
Richard Ross Jr.
Catherine Roth
Lorelei Rouse
Suzanne Roy
Kim Russ
Paul Rybinski



LeeAnne Rymph
Stephen Santiago
Mollie Sawyer
Regina Sayer
Lynne Scalf
Traci Scatchard
Martin Schiller III



Stephen Schofield
Cynthia Scott
Holly Sellman
Scott Sells
Sandra Sessums
Stuart Setcavage
Michael Setzer



Kim Sharpe
Debbie Shaver
Pamela Sheffer

Jill Sheneman
 Lee Shewmake
 Cheryl Shirah
 Thomas Shorter
 Frances Sickler
 Allyn Simmons
 Robin Sirota



Jonathan Sjogren
 Alise Smith
 Tammy Smith
 Alan Snapp
 Anna Sokolowski
 Carole Spedale
 Ralph Spencer



Paul Spurlin
 Kathryn Stammberger
 Christopher Stegura
 Allanna Stephens
 Jill Stephens
 Cynthia Stevens
 Kimberly Ann Stevens



Scott Stevens
 Kenneth Stoff
 Roger Stone
 Frank Stork
 Kim Storkel
 Frank Strazulla
 Gretchen Stross



Bunny Sutton
 Joyce Swenson
 James Taggart
 Cheryl Talbott
 John Taylor
 Lisa Taylor
 Karen Teel



David Thacker
 Tracy Thayer
 Sagine Thebaud
 Toby Therrien
 Donald Thiele
 Cindy Thompson
 Margaret Thompson



Elizabeth Tierney
 David Tisdale
 Tracy Ann Tourance
 Kathleen Tourville
 William Travi
 Michael True
 Lisa Tucci





Adam Uchin
 Tricia Urban
 Valerie Valdespino
 Victoria Villalba
 Lee Wages
 Vance Waggener
 Michael Walker

Robert Walker
 Mickey Waller
 Robert Warden
 Kristi Watkins
 Thomas Watson
 Allen West
 Cynthia West

Christopher White
 Trudy White
 Carol Wiggins
 Holly Williams
 Mark Wilson
 Julia Wirtz
 Kelleigh Withers

Lois Wittenburg
 Kimberly Wooten
 Kimberly Workman
 Roland Wyant
 Richard Yelton
 Laura Zimmerman
 Tahar Zenati



SPRICK

Southern Goodbye





A year of memories

Along with the closing of another school year were the memories of victorious triumphs and lonely defeats, good times and bad situations and the remembrances of new beginnings and old friends.











Graduation prompts new challenges

It all hits at once. Nerves become jumpy and stomachs ache with excitement. Graduation is upon us!

Hundreds of dedicated seniors are about to take one of the most important steps in their lives. For the past four years, seniors have endured almost every kind of hardship. Now they must turn to a new world where they will be faced with many new challenges. These graduates must act as the responsible adults that they are. They must accept the responsibilities that are handed to them.

A lifetime of challenges are waiting to be completed and infinite opportunities are right ahead of them.



... Graduation





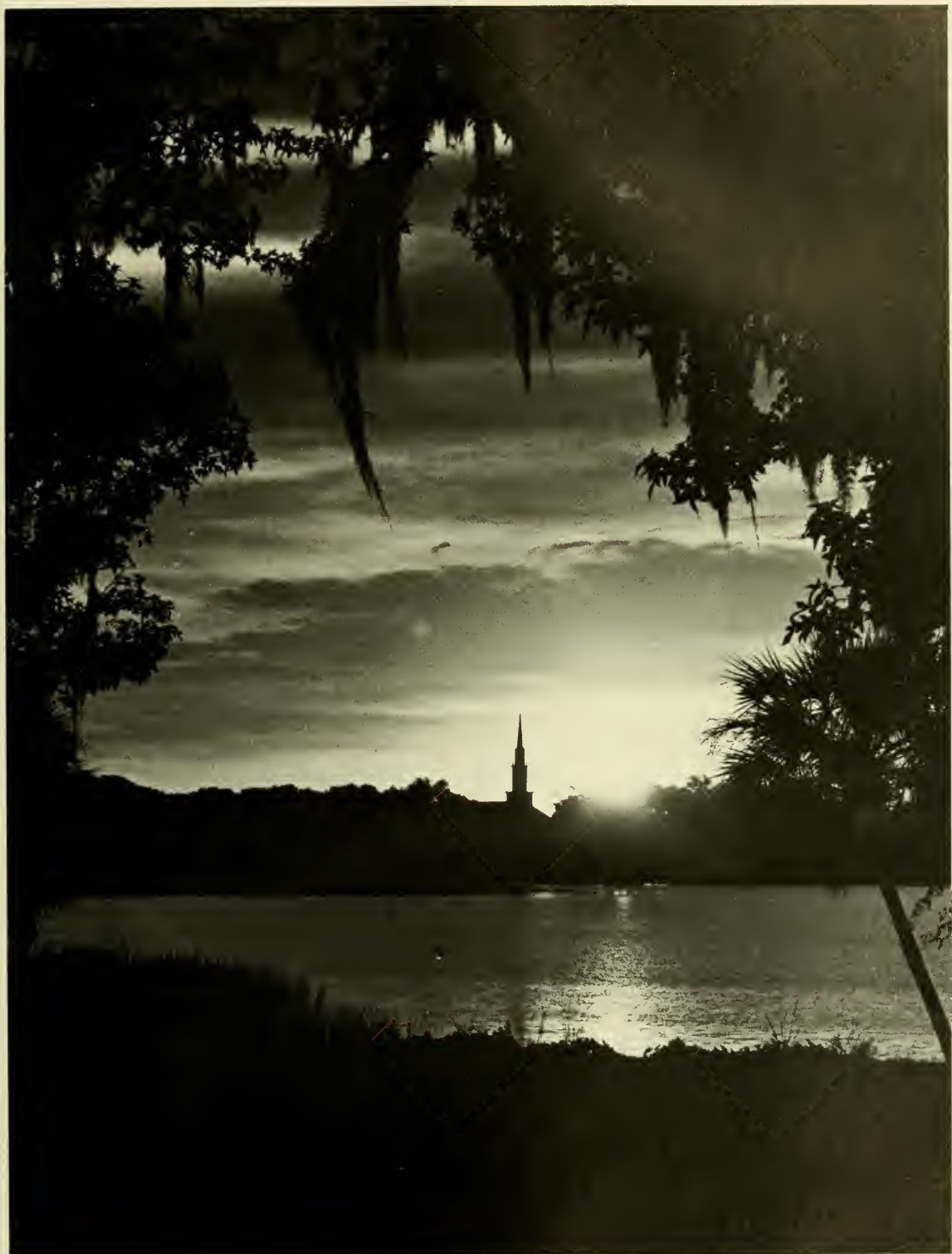
In memory of . . . Tom Wilnau

Editor's Note: The following is a reprint of the memorial to Mr. Wilnau written by William H. Skip Boyer, editor of the Southern News, as it appeared in the July 1983 issue.

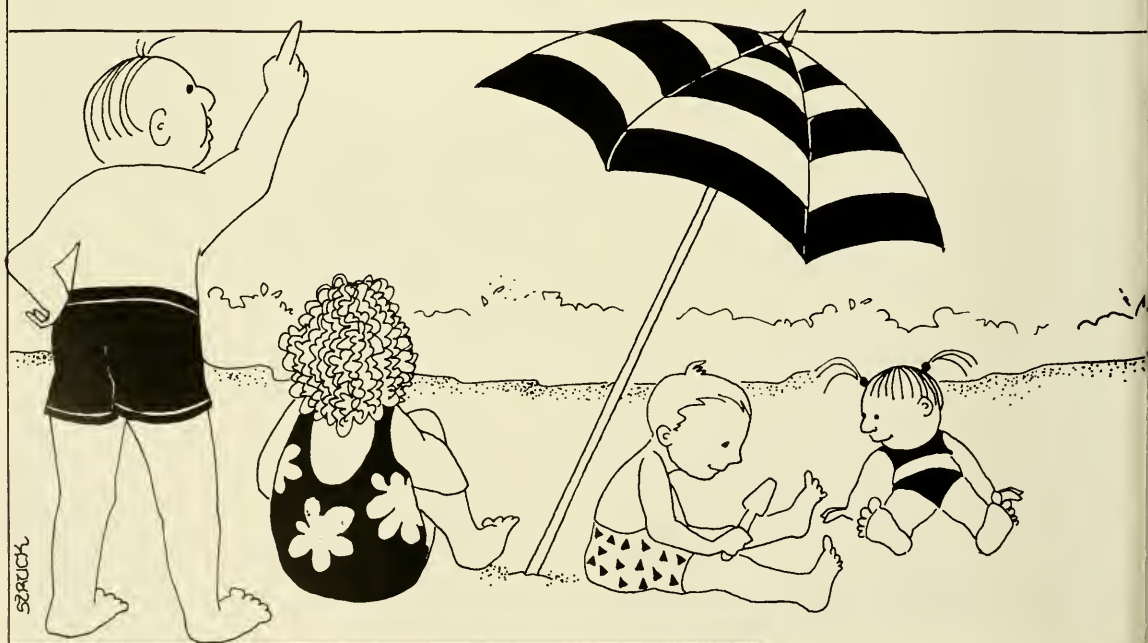
When Tom Wilnau walked across the stage at this year's commencement to receive his degree, he also received a standing ovation from the members of the senior class. Tom was 56 years old when he received that degree. He had been attending classes in both the evening and day programs to complete his work. He was also teaching classes in the journalism department, bringing to his classroom years of experience as an accredited public relations professional and radio broadcaster. He had

fallen in love with Florida Southern and the students and staff members of the College had fallen in love with him. Tom Wilnau was a very special man, a loving father, talented professional, caring teacher and close friend. He died of heart failure on July 2, 1983. To say he will be missed doesn't begin to do justice to the emptiness that his passing leaves in the lives of those of us who were fortunate enough to be numbered among his friends.





Southern Ads







... but we want to say thanks to the businesses and organizations that appear in this section of the 1984 INTERLACHEN. Our advertisers are very special — their support and interest helps make this record of the 1983-84 school year possible. They represent quality and service and we encourage you to call upon them. Quality and service, like saying "thanks", are ideas that never go out of style.

**IT MAY
SOUND
OLD-
FASHIONED...**



Congratulations to the Class of '84

Compliments of

ESTABLISHED 1904
Badcock

HOME FURNISHING CENTERS

FURNITURE • APPLIANCES • FLOOR COVERING • HOME ENTERTAINMENT
OVER 175 STORES SERVING THE SOUTHEAST

"Badcock Will Treat You Right"

Congratulations

to the

Class of '84

and

Best Wishes

to all

Southern Students

The FSC Bookstore



**FOR THE
GOOD
TIMES**



Good times begin at the Publix Deli. You'll find everything from complete Deli Dinners, including fried chicken and all the fixins, to sandwiches and salads all ready to take out. And whether you're entertaining formally or casually, Deli platters are a great way to get the good times underway.

THE MOST CONVENIENT CARD IN LAKELAND

SEARSTOWN BRANCH
Searstown Shopping Center

EDGEWOOD BRANCH
2150 E. Edgewood Dr.

SOUTHSIDE BRANCH
Lake Miriam Square



EAST LAKELAND BRANCH
435 S. Combee Road

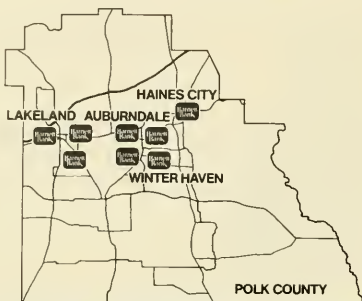
NORTH LAKELAND BRANCH
Lake Gibson Shopping Center

CENTRAL AVENUE BRANCH
1515 S. Central Avenue



Peoples Bank of Lakeland

115 S. MISSOURI AVE. • PHONE 687-6500 • MEMBER F.D.I.C.



**WHEREVER
YOU ARE
WE'RE NOT
FAR AWAY.**



All Barnett Banks are members of FDIC.



LAKELAND
Home of the New **CHEYENNE IV** and
Piper's **DELIVERY CENTER**

THE SOUTHERN

CONGRATULATES
ALL GRADUATING SENIORS . . .

BEST WISHES!

"Behold, the fear of the Lord, that is wisdom; and to depart from evil is understanding." (Job: 28:28)

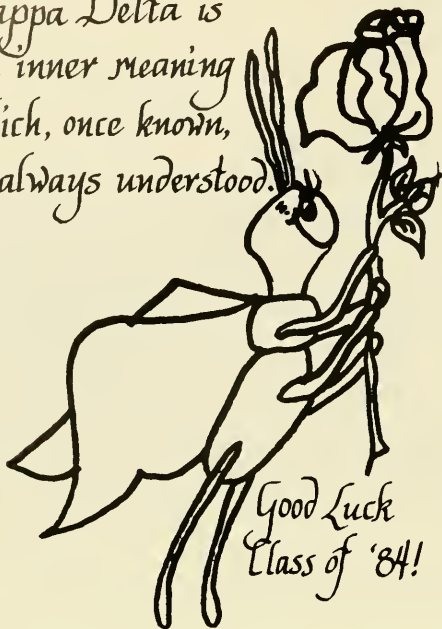


SCHWEIZER ASSOCIATES, INC.

architecture - engineering - planning - construction services
THE ENVIRONMENTAL DESIGN GROUP

55 EAST JACKSON STREET PO BOX 1471
ORLANDO, FLORIDA 32802 TELEPHONE (305) 425-0922

*Kappa Delta is
an inner meaning
which, once known,
is always understood.*



Tyler
FLORAL SHOPPE



Since 1919

10% Discount
given to all
FSC students

**"FLOWERS FASHIONED
WITH LOVE"**



682-4754



or 688-7355

207 E. Main St.

Maas Brothers. Florida's quality department store.

Here's our invitation to come in and say hello to Maas Brothers, a Florida tradition. And you'll welcome having a Maas Brothers near you at 310 E. Orange Street where you'll find exciting fashions for you, your family and your home.

Our Bridal Gift Registry Computer will assist you in the selection and registration of the perfect wedding gift to give or receive. We offer gift wrap and delivery for registered bride purchases at no charge, of course.

In the Suncoast Restaurant you'll enjoy gourmet entrees, crisp salads and delicious tempting desserts.

Use our Shop-at-Home service to shop for custom draperies and window treatments for your home.

Charge purchases 3 ways with your Maas Brothers credit card, American Express or Diner's Club. With a Maas Brothers account you'll receive advance notice of all our exciting sale events.

Our Continuing Club Account allows you to stretch your payments over a longer period for major home purchases.

"Jane Lee" lets you shop by mail or phone, whichever is more convenient.

Maas Brothers' Travel Service, a division of Exchange Travel Service, can map out exciting vacation cruises and tours for you and your family.

Our Gift Wrap department will gladly make your purchase as special on the outside as the gift is on the inside.

Maas Brothers

FLORIDA

Tampa St Petersburg Clearwater Sarasota Fort Myers Gainesville Tallahassee Lakeland Bradenton Naples Winter Haven Ocala Port Richey

Lakeland
Coca-Cola
Bottling
Co.



Coke is it!

To one of
the best -
It's hard to believe
that another school
year has come and gone
so quickly! This has
been the best one yet!
Always remember the
parties and basketball
games, studying for
finals and popping
popcorn - all with a
bottle of Coke...
Have a great
summer! Keep
in touch!

CONGRATULATIONS
to the
Class of 1984

Compliments of:

**NUNEZ
COLLINS
TOUGHTON & CO.**
Certified Public Accountants



Jannabelle's
SALON FOR BRIDES, INC.

111 South Kentucky Avenue
Lakeland, Florida
Phone (813) 688-1226

**Cocktail and
Party Dresses**

**Good Luck
Graduates**



the traveler

For All Your Travel Needs

**2015 S. Fla. Ave.
Lakeland, Fla. 33803
(813) 682-2172**

MEMBER



**Fresh
idea!**



**New 12 oz. Apple Juice
from concentrate**

Now, our delicious Apple Juice is available in 12 ounce containers. Like our other canned juices, it's made from concentrate, so we can guarantee the quality. More important, we can guarantee the freshness.

The Fresh Ideas Company.™

JUICE BOWL®

P.O. Box 1048
Lakeland, Florida 33802
(813) 665-5515

**CONGRATULATIONS
CLASS OF '84**

Compliments:

**CEMENT PRODUCTS
&
SUPPLY CO. INC.**

**516 W. Main
Lakeland, Florida**

**GOLD AND SILVER FOIL STAMPING
EMBOSSING • DIE CUTTING
FULL PROCESS COLOR
STATIONERY • BUSINESS FORMS
BROCHURES • BOOKLETS
NEWSLETTERS • SOCIAL PRINTING**

CROWN

CROWN PRINTING, INC.

**1741 East Gary Road
Lakeland, Fl. 33801
682-4881 / 682-1706**

Movies!!! Specials!!! Sports!!!



We take you to the stars!!!!

688-7707

**GROUP
W
CABLE**

Westinghouse Broadcasting and Cable, Inc.



Lori Cochran - Wendy Jones - Missy Lee - Carrie Roth
Tama Smith - Barb Turner - Patricia Willcox - Beth Bass
Dona Chastain - Sue Stauffer - Kim Barfield - Debbie Dorsey
Susan Ferris - Mary Nichols - Jane Robert - Kelley Schroeder
Nancy Stanley - Kathleen Wood - Shawna Scott
Good
Luck Seniors
* Alpha Chi Omega

**Best Wishes from
a newspaper with
close ties and
genuine affection for
Florida Southern College:**

We're practically one of you.



**The Polk County Democrat
Bartow's NEWSpaper
Southern's FRIEND**

Printers of The Southern
Two FSC alumni on the staff
Advisors to the
FSC Communications Dept.
Sponsor of a Community
Journalism Scholarship

925 E. PARKER ST.
PHONE 682-6859

CORSAGES, WEDDINGS,
FUNERAL PIECES,
SPECIAL ARRANGEMENTS

*B*RADLEY FLOWER SHOP
"Distinctive Floral Design"



WIRE SERVICE

LAKELAND, FLORIDA

Balloons for all occasions.

BEST WISHES

to the

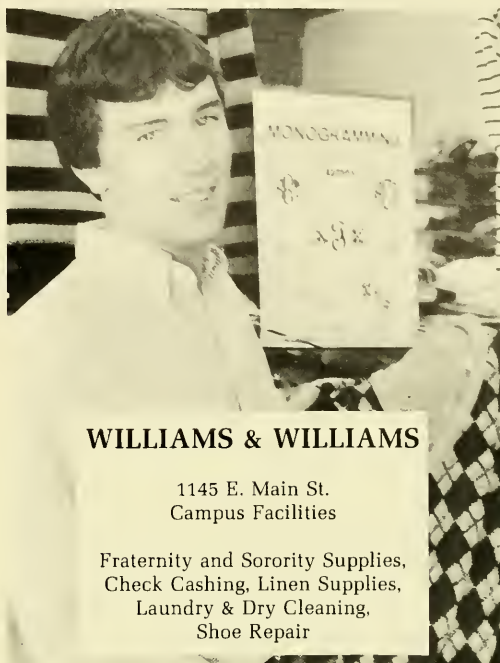
1984

Graduating Class

of FSC

from the

College Cafe and Terrace



WILLIAMS & WILLIAMS

1145 E. Main St.
Campus Facilities

Fraternity and Sorority Supplies,
Check Cashing, Linen Supplies,
Laundry & Dry Cleaning,
Shoe Repair

Pepsi Now!

Take the Challenge

GOOD LUCK '84 GRADUATES!

Pepsi-Cola Bottling Group

5023 Recker Hwy.

Winter Haven, FL 33880

813-967-4491



The Interlachen Staff

EDITOR-IN-CHIEF	Jane Steiner
EXECUTIVE STAFF	Tom Adair Bobby Duncan, Jr. Karen Pierce Lauren Rodberg Jackie Rossing Patricia Willcox
GENERAL STAFF	Beth Allen Dan Brady Paige Kasper Nancy Lindell Cindy Robinson Joy Rossi Kathy Shelly
ARTIST	Laurie Struck
BUSINESS MANAGER	Maureen Jahns
PHOTOGRAPHERS	Brad Beck, Campus Photographer Chris Bowes Chuck Diggs Chris O'Meara Jodi Lisa Rome D.J. Theile Basic photography class, fall semester
FACULTY ADVISOR	Hal Waters
PUBLISHER	Delmar Publishing Co. Charlotte, N.C.
PUBLISHER'S REPRESENTATIVE	Byron Kennedy







