

F 127
.A2 S77
Copy 1

• INTO THE LAKE REGION •

OF THE ADIRONDACKS

S. R. STODDARD.



INTO THE LAKE REGION



INTO THE LAKE REGION OF THE ADIRONDACKS

THE FULTON CHAIN · RAQUETTE LAKE · BLUE MOUNTAIN LAKE · LONG LAKE

BY S. R. STODDARD



PHILADELPHIA: J. B. LIPPINCOTT & CO.,
NEW YORK

NEW YORK: G. P. PUTNAM'S SONS,
NEW YORK

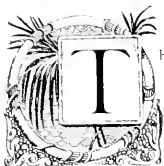
NEW YORK: G. P. PUTNAM'S SONS,
NEW YORK

21926

Library of Congress
TWO COPIES RECEIVED
JUL 19 1900
Copyright entry
July 18, 1900
No. *Q. 17702*
SECOND COPY.
Delivered to
ORDER DIVISION,
July 30, 1900

17287

INTO THE LAKE REGION.



THE FULTON CHAIN OF LAKES stretches through the green woods like a string of pearls on a silver cord. Beyond are the crystal fibers that enter into the Queenly Raquette and farther still are Utowana and dainty Blue Mountain, while northward toward the land of the Saranacs stretches the slender form of Long Lake.

Years ago came old John Brown—not he of Osawatomie, but a man of money from Rhode Island—who scented iron in the ground, which meant millions to the fortunate possessor if the delicate question of manufacture had not entered in. A son-in-law also came—a German noble, Baron Herreshoff—who, with science and enthusiasm linked, as the chronicle relates, threw heart and soul into the enterprise and finally when he found that the iron had cost him a dollar a pound to manufacture—threw himself into the hole he had made and called on his men to cover him over. Later he shot himself.

The old forge crumbled; the dam rotted away, and the place became as one forgotten. But with the railroad new life entered in, and now along the shores of the lakes are hundreds of summer cottages and dainty camps and hotels sufficient for all who may come. And now comes the locomotive and palace cars, from the heart of the Big City to penetrate even to the heart of the Wilderness, resting not until the shores of the Raquette are reached where swift steamers cut their way through crystal waters to the outlet, and up the winding Manion through intermediate links into the lake that rests under Blue Mountain. Yet over all is the almost untouched beauty of the Great Wilderness!



"THE FAIRY OF THE OLD FOGGE"

FORGE HOUSE

FORGE STATION



NORTH
FROM
FORGE
HOUSE



AT OLD FORGE

BALD MOUNTAIN



FOURTH LAKE



THIRD LAKE

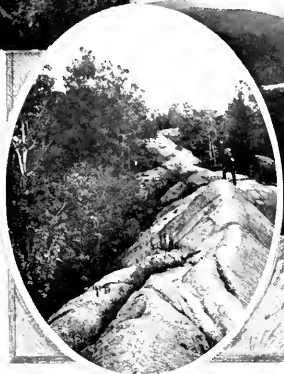


FIRST LAKE

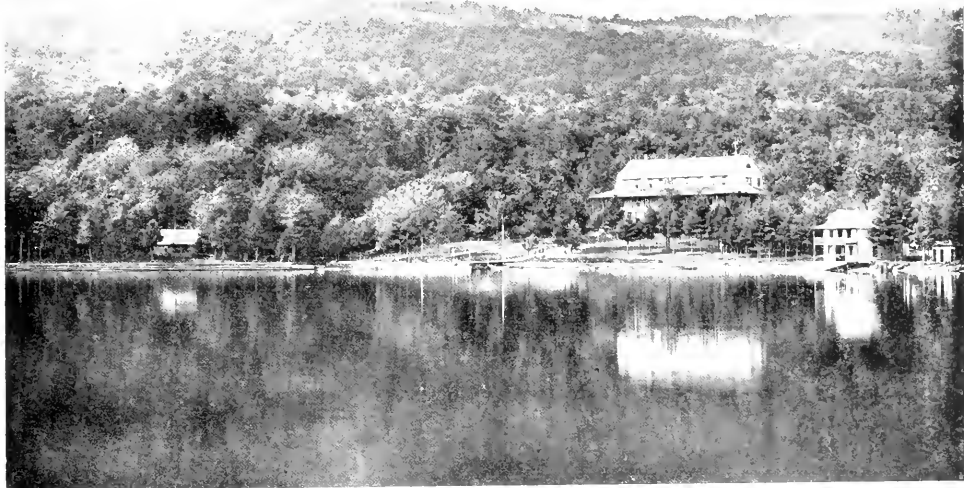
SECOND LAKE

THE FULTON CHAIN FROM BALD MOUNTAIN

THE
C-BONE
OF
BALD
MOUNTAIN



BALD MOUNTAIN



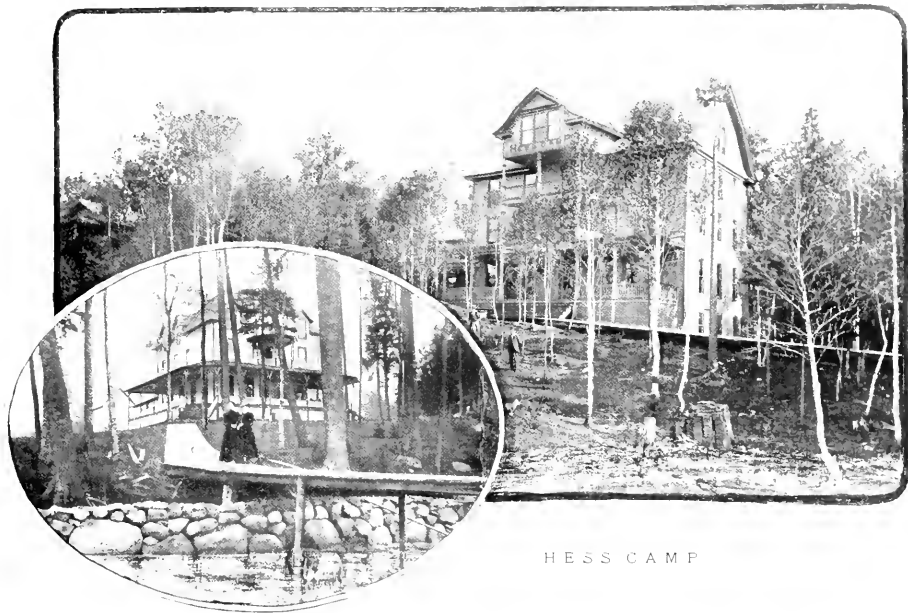
BALD MOUNTAIN HOTEL

THIRD LAKE



IN THE NARROW.

FOURTH LAKE FROM THE NARROWS



HESS CAMP

COHASSET



AN ADIRONDACK BUCKBOARD

EAGLE BAY HOTEL



ROCKY POINT INN



EDGAR ISLAND

EDGIE BAY

WEST FRIM FISHING

AT ARROW HEAD INN



A FIFTH YEAR.



SIXTH LAKE FROM OUTLET DAM

SEVENTH LAKE HOUSE



ALONZO W. C. STAU

SEVENTH LAKE



EIGHTH LAKE OF THE FULTON CHAIN



RAQUETTE LAKE FROM THE CRAGS LOOKING SOUTHEAST



A CAMP INTERIOR RAQUETEK LAKE





IN BLUE MOUNTAIN LAKE OUTLET

BLUE MOUNTAIN LAKE HOUSE

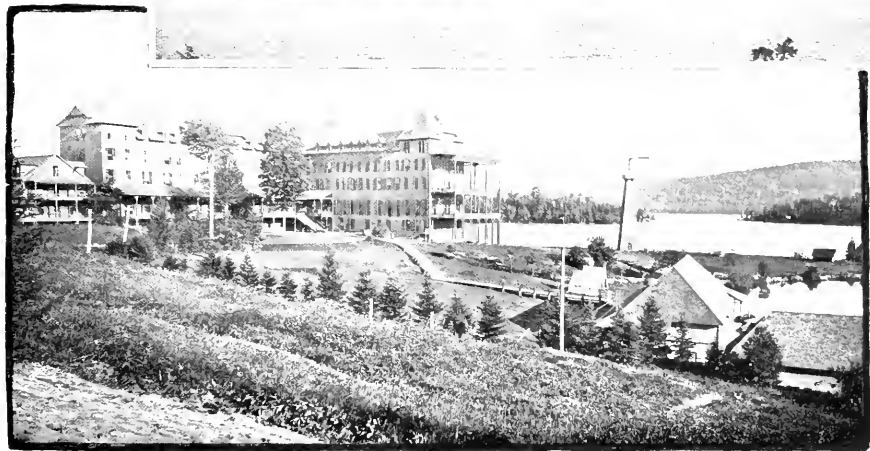


BLUE MOUNTAIN



BLUE MOUNTAIN LAKE FROM THE OUTLET

BLUE MOUNTAIN LAKE FROM LAKE HOUSE



THE OTUWANA

BLUE MOUNTAIN LAKE

EAGLE LAKE MICHIGAN



BLUE MOUNTAIN LAKE FROM MERWIN'S

"THE SAGAMORE"



LONG LAKE FROM THE NORTH

JUL 19 1900



LIBRARY OF CONGRESS



0 014 114 282 3