

LIBRARY OF THE
UNIVERSITY OF ILLINOIS
AT URBANA-CHAMPAIGN

A 352.0773

H62i

no. 5

cop. 4



ILLINOIS HISTORICAL SURVEY

ILL. HIST. SURVEY

INVENTORY OF THE COUNTY ARCHIVES OF ILLINOIS



RECEIVED

THE UNIVERSITY OF ILLINOIS
MAY 13 1965

BROWN COUNTY (MT. STERLING) NO. 5

THE HISTORICAL RECORDS SURVEY CHICAGO, ILLINOIS.

9352.0773
H62i
No. 5
copy 24

INVENTORY OF THE COUNTY ARCHIVES
OF ILLINOIS

Prepared by

The Historical Records Survey
Division of Women's and Professional Projects
Works Progress Administration

No. 5. BROWN COUNTY (MT. STERLING)

* * * * *

Chicago, Illinois
The Historical Records Survey
February 1938

The Historical Records Survey

Luther H. Evans, National Director
Howard E. Colgan, State Director

Division of Women's and Professional Projects

Ellen S. Woodward, Assistant Administrator
Mary Gillette Moon, State Director

WORKS PROGRESS ADMINISTRATION

Harry L. Hopkins, Administrator
Charles E. Miner, State Administrator

A352.0773

H621

110,5

cop. 4

U.S.A.S.

FOREWORD

The Inventory of County Archives of Illinois is one of a number of bibliographies of historical materials prepared throughout the United States by workers on the Historical Records Survey of the Works Progress Administration. The publication herewith presented, an inventory of the archives of Brown County, is number 5 of the Illinois series.

The Historical Records Survey was undertaken in the winter of 1935-36 for the purpose of providing useful employment to needy unemployed historians, lawyers, teachers, and research and clerical workers. In carrying out this objective, the project was organized to compile inventories of historical materials, particularly the unpublished government documents and records which are basic in the administration of local government, and which provide invaluable data for students of political, economic, and social history. The archival guide herewith presented is intended to meet the requirements of day-to-day administration by the officials of the county, and also the needs of lawyers, business men and other citizens who require facts from the public records for the proper conduct of their affairs. The volume is so designed that it can be used by the historian in his research in unprinted sources in the same way he uses the library card catalog for printed sources.

The inventories produced by the Historical Records Survey attempt to do more than give merely a list of records - they attempt further to sketch in the historical background of the county or other unit of government, and to describe precisely and in detail the organization and functions of the government agencies whose records they list. The county, town, and other local inventories for the entire country will, when completed, constitute an encyclopedia of local government as well as a bibliography of local archives.

The successful conclusion of the work of the Historical Records Survey even in a single county, would not be possible without the support of public officials, historical and legal specialists, and many other groups in the community. Their cooperation is gratefully acknowledged.

The Survey was organized and has been directed by Luther H. Evans, and operates as a nation-wide project in the Division of Women's and Professional Projects, of which Mrs. Ellen S. Woodward, Assistant Administrator, is in charge.

HARRY L. HOPKINS
Administrator

PREFACE

The Historical Records Survey was initiated as a nation-wide undertaking in January 1936, as part of the Federal Writers' Project of the Works Progress Administration. In Illinois the Survey became an independent unit in August 1936, but continued to operate as a part of the nation-wide project under the technical supervision of Dr. Luther H. Evans, National Director, and under the administrative supervision of the Division of Women's and Professional Projects.

In compiling this Inventory of the Archives of Brown County, the Survey has sought to locate, describe, and classify all extant county records and to make them more easily accessible to county officials, the general public, and research workers. It is believed that this inventory will be useful in the preservation of this valuable material, and as a guide to the archives wherein may be found so much important information in the fields of history, sociology, political science, and economics. While some historians have realized this for many years, the general public has never been made aware of the intrinsic worth of this material. In the official documents of Brown County is recorded the story of the coming into the wilderness of settlers who created a territory and later founded a state, bought and sold land, built roads, established schools, and created the rudiments of a simple frontier government.

The Historical Records Survey has proved itself of invaluable aid to local and county governments in Illinois. Records have been rearranged and made more accessible, material believed to be lost has been located; indexing projects have been fostered, and county officials have been encouraged and induced to provide new equipment for their offices and better storage space for the records. In addition, the program of the Archives Division of the State Library to locate, inventory, collect and preserve public records has been materially advanced by the work of the Survey. Information has been obtained leading to the drafting of new legislation for the handling of records. Valuable work has been done in the microfilming of records, in codifying county archives, and in preparing inventories of current and non-current records for the various state departments.

Work on the survey of records of Brown County, the fifth county on the alphabetically arranged list of the one hundred and two counties in Illinois, was begun October 12, 1936, and finished January 15, 1937. The inventory was taken by Harry Allen, Otto Walz, and Bess Stocklos, under the supervision of V. C. Karcher. Rechecking, including a thorough search for missing and incomplete records, was started October 1, 1937, and completed October 12, 1937.

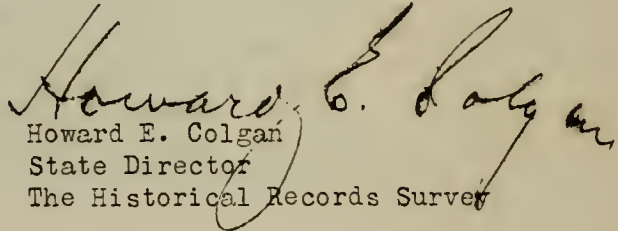
The inventory was prepared for publication by the state editorial staff of the Historical Records Survey at Chicago, under the supervision of Herbert R. Rifkind. Ably assisting were: Martine O'Connor in charge of editing and re-editing; Kathleen Summitt in charge of arranging and

Preface

indexing; Theodore Nicholson in charge of rechecking; Edward J. McDonough in charge of format and collation; Alonzo D. Brewer in charge of research; and Irving E. Barnett in charge of cartography. In addition, too much credit cannot be given to the other members of the editorial and typing staffs for their intelligent and diligent cooperation in the compilation of this inventory.

The various units of the Inventory of County Archives will be available for distribution to government offices, libraries, schools, and historical societies in Illinois, and libraries and governmental agencies in other states. Requests for information concerning particular units of the Inventory should be addressed to the state director.

All of the officers of Brown County cooperated in every possible way with the workers, and grateful acknowledgment of their aid is hereby made. County officials at the time of the survey were: Earl Johnson, County Clerk; Lucy M. Parlier, Circuit Clerk; Leslie Harper, County Treasurer; Ed Simmons, Sheriff; Vernon Briggs, State's Attorney; Fred Nations, Superintendent of Schools; Frank Kennedy, Surveyor; Guy Seckman, Superintendent of Highways; Elmer Hufnagel, Coroner. I wish also to express appreciation for the cooperation rendered by the officers of the Illinois State Library, and by the officials of the Illinois Works Progress Administration and Federal Writers' Project. For the cover design and the binding we are indebted respectively to the Federal Art Project and the Bookbinding Project, of District 3, Chicago, Illinois.


Howard E. Colgan
State Director
The Historical Records Survey

February 10, 1938

TABLE OF CONTENTS

Page

A. Brown County and Its Records System

1. Historical Sketch..... 3

2. Governmental Organization and Records System..... 5
Chart 9

3. Housing, Care, and Accessibility of the Records..... 10

4. List of Abbreviations, Symbols, and Explanatory Notes..... 12

B. County Offices and Their Records

I. County Board of Supervisors..... 14
Proceedings of Board. Disposition of Accounts:
Registers of County Orders; Cancelled County Orders.
Receipts and Disbursements. Bills and Claims:
Contracts. Management of County Properties:
Insurance. Reports to Board. Jury Lists.

II. County Clerk..... 19
Taxation: Lists of Taxable Property, Levies; Collection,
Abatement; Judgment, Sale, Redemption. Vital Statistics:
Births; Deaths; Marriages. Licenses and Registers:
Professional Licenses and Registers; Patents; Stallion
Certificates; Estrays; Dog License. Elections. Bonds
of Officers. Oaths of County Officers. Fees, Receipts,
and Expenditures. Maps and Plats. Miscellaneous Records
and Files.

III. Recorder..... 32
Entry Books. Instruments Recorded: General; Deeds;
Mortgages - Real Estate; Mortgages - Chattel;
Certificates of Levy and Sale; Other Instruments.
Special Indexes. Maps and Plats.

IV. County Court..... 37
Proceedings of Court. Dockets: Court Dockets; Justice
Dockets. Fee Books. Pensions. Naturalization.
Office Transactions.

V. Probate Court..... 43
Proceedings of Court. Probate Business: Wills, Bonds,
and Letters; Inventories and Appraisements; Widows'
Relinquishment and Selection; Petitions, Decrees, Reports
of Sale; Reports, Current and Final Accounts. Dockets:
Court Proceedings; Probate Business. Fee Books.

Table of Contents

Page

VI.	Circuit Court.....	50
	Proceedings of Court. Transcripts. Dockets. Fee Books. Reports to the Court. Bonds. Naturalization. Receipts and Expenditures.	
VII.	Probation Officer.....	56
VIII.	Sheriff.....	57
	Process. Jail Records. Fees, Receipts, Expenditures.	
IX.	Coroner.....	59
X.	State's Attorney.....	60
XI.	Supervisor of Assessments.....	62
XII.	Board of Review.....	62
XIII.	County Collector.....	63
	Collection and Settlement. Delinquent Tax, Forfeitures and Abatement.	
XIV.	County Treasurer.....	65
	Receipts and Disbursements.	
XV.	County Superintendent of Schools.....	67
	Accounts of School Funds. Sale of School Lands. Teachers' Records. Reports.	
XVI.	County Superintendent of Highways.....	70
XVII.	County Surveyor.....	72
XVIII.	Special Drainage Commissioners.....	73
XIX.	County Department of Public Welfare.....	74
	Chronological Index.....	76
	Subject Index.....	82

1. HISTORICAL SKETCH

The first white man to settle in what is now Brown County, a squatter by the name of Sheppard, arrived in the spring of 1823 and built a pole cabin along the bluffs of Camp Creek in the northeast quarter of section fourteen in what is now Versailles township. Apparently he did not remain long, for in the following year, when one Cornelius Vandeventer and his three sons came to this locality, they found his burned and deserted cabin. Vandeventer, later the first justice of the peace and postmaster of the community, proceeded to build up a permanent settlement at this site.

In 1825, with the creation of Schuyler County, all of this region became the southern half of that county. By 1836 settlers in the south were numerous enough to strenuously voice their objections over the long distance to be traveled to Rushville, the county seat, located in the northern part of the county. In addition, claiming that Cripple Creek, which lay to the south of Rushville, was difficult to cross when swollen by rains or melting snow, they made several attempts to have the county seat removed to Ripley, on the south side of Crooked Creek and in the approximate center of the county. When these failed, it was not long before demands for the creation of a new county, to be named in honor of General Jacob Brown, a distinguished soldier in the War of 1812, began to be heard. A petition signed by nearly every man in the southern half of Schuyler County was finally presented to the state legislature, and on February 1, 1839¹ the act effecting the separation of Brown from Schuyler was passed.

In the act creating Brown County, John M. Campbell of Schuyler County, John B. Curl of Adams County, and William A. Bailey of McDonough County were appointed commissioners to legally locate the county seat.²

-
1. L.1839, p. 52. An Act to create the County of Brown out of the County of Schuyler: "Section 1. Be it enacted by the people of the State of Illinois represented in the General Assembly, that all that tract of country lying and being within the following boundaries, to wit, beginning at the southwest corner of township two, south of range four, west of the fourth principal meridian; thence east to the Illinois River; thence up said river to the mouth of Crooked Creek; thence up said creek to the township line between townships one and two north; thence west to the range line between four and five west of the meridian aforesaid; thence south with said range line to the place of beginning, shall constitute a new county to be called the County of Brown."
 2. L.1839, p. 52,53, sec. 2,3.

Carrying out the popular wish, they selected Mt. Sterling as the seat of justice, meeting there to announce their selection on the first Monday in June, 1839. Mt. Sterling had been given its name by Robert N. Curry in 1830, three years before it became a town. This same Robert Curry later loaned the new county fifty dollars to buy its first record books.

In May 1839, Thomas Brockman, Joseph Robinson, and Joseph Stoner were elected county commissioners, and Jacob Vandeventer was elected clerk of the county commissioners' court. For the purpose of assessing taxable property, the county was divided into four districts.

The first session of the probate court met at Mt. Sterling, July 10, 1839 with Daniel R. Lucas as probate justice of peace. The first circuit court was held in the Presbyterian Church on April 6, 1840; Judge Peter Lott of the first judicial circuit presided, and the clerk was James M. Burt.

The county court first met on December 3, 1849, with Judge Samuel Black presiding, and George Taylor and Phillip Briggs as associate justices. Succeeding the county court as the administrative body of the county, the first board of supervisors met May 29, 1854, with Benoni R. Parks as chairman. Brown County, in its nearly one hundred years of organization, has thus been governed by nine boards of county commissioners, 1839-1849; four county courts, 1849-1853; and eighty-four county boards of supervisors, 1854-1937.

The first courthouse was constructed of brick in 1844 at a cost of \$11,000. The second and present courthouse was erected in 1866 at a cost of \$21,299. The county has had two jails, the first built in 1841 and the second in 1859.

Brown County is approximately eighteen miles square with an area of three hundred and twenty-four square miles. The population, according to the census of 1930, is 7,892. Brown County is bounded on the north and northeast by Schuyler County, on the south by Pike County, on the west by Adams County, and on the east by the Illinois River. The county is primarily agricultural, although in the past it was noted for its potters' ware, building stone, and fire clay.

2. GOVERNMENTAL ORGANIZATION AND RECORDS SYSTEM

The county in Illinois is a corporate body and an administrative unit of the state. In Brown and other counties organized under the township plan, the towns comprise a unit of county government.

The county board has general administrative jurisdiction of county and town affairs, including authority to raise revenue within statutory limits, control of public and semipublic funds, and management of corporate property. In Brown County, where it is composed of all the town supervisors, it is known as the board of supervisors. This governing body has also power to appropriate money for roads and bridges. The county clerk is its ministerial and secretarial officer.¹ An early significant function of the board was the role it performed as board of review for the equalization of assessments. Since 1898, however, the chairman of the county board is the ex-officio chairman of this body. Two additional members are appointed by the county judge.

The fiduciary aspect of finances is represented by the county treasurer, who receives, has custody of, and disburses by order of the county board or with statutory authorization, all funds. In Brown County, he also is ex-officio supervisor of assessments and county collector, bringing about a centralization of the revenue procedure. The county clerk, as one phase of his duties, binds together the entire revenue procedure, originating certain records, collecting relevant information, and reporting from each officer or body concerned to the others.²

Justice is administered by the following officers: two justices of the peace in each district, in Brown County coextensive with townships; the county judge; and three circuit judges, elected in the eighth

-
1. Constitution of 1818, Art. III, sec. 3; R.S.1845, p. 129-36; Constitution of 1848, Art. V, sec. 17,19; Art.VII, sec. 6; L.1849, p. 63-65, L.1851, p. 35-39,46,47,50-63; L.1859, p. 129; L.1861, p. 236-38; L.1869, p. 104; Constitution of 1870, Art. VI, sec. 18; R.S.1874, p. 260,273, 321-25; L.1909, p. 160; L.1911, p. 242,243; L.1925, p. 323.
 2. R.S.1845, p. 136,138,139; L.1851, p. 37-45; L.1853, p. 14,66,77,111; L.1861, p. 239,240; Constitution of 1870, Art. X, sec. 8; L.1871-72, p. 664; L.1872, p. 11,14,15,19,23,41,47,55-58; L.1873, p. 51; R.S.1874, p. 323,324; L.1879, p. 241,242; L.1881, p. 133; L.1885, p. 142-47,234; L.1895, p. 304; L.1898, p. 36-45,50; L.1905, p. 360; L.1911, p. 485; L.1913, p. 516; L.1915, p. 568; L.1917, p. 654; L.1919, p. 765; L.1923, p. 495; L.1927, p. 744; L.1931, p. 747; L.1932, p. 84; L.1933, p. 898.

Governmental Organization
and Records System

judicial district composed of eight counties, of which Brown is one. In Brown County the county court also has probate jurisdiction, and appeals may be taken from the county court and probate court to the circuit court. The records of the county and probate courts are kept by the county clerk as ex-officio clerk in both instances. There is an independent office of clerk of the circuit court elected by the county electorate. The sheriff is the ministerial officer of all courts of record, and is the principal agent for the enforcement of the law. The coroner shares many powers, as conservator of the peace, with the sheriff; however, his major duty of holding inquests pertains to the administration of justice. Also importantly engaged in the enforcement of law and the administration of justice is the office of state's attorney. This office commences and prosecutes in all courts of record in the county, all suits and actions in which the people of the state or county are concerned.¹

In the administration of education, the county superintendent of schools serves as the principal county officer. In the school townships, coextensive with townships or consolidated townships, are boards of trustees, aided by the school township treasurer who is also ex-officio clerk of the board of trustees. The county superintendent of schools exercises wide supervisory powers over these bodies, and in all matters relating to schools and educational affairs. Above him are the following authorities: the county board of supervisors, exercising general financial control; the state superintendent of public instruction, representing state academic supervision; the state department of public health; the state fire marshal, and the state architect, advising in such matters related to schools as fall within their province. The superintendent reports on his supervision in the county to all of these officers and bodies, thereby unifying the administration of education.²

Public health services are similarly administered on all levels of government, with the county clerk figuring importantly. The state department of public health has authority over sanitation, exercised through district boards consisting of the town supervisor, assessor, and clerk. Each county clerk is the liaison officer in his county between the local and state agencies. The same department supervises lodging houses, the

-
1. Constitution of 1818, Art. IV, sec. 4; R.S.1845, p. 75,76,143-58, 323-26,414-27,515-18; Constitution of 1848, Art. V, sec. 7,16,17,29; L.1849, p. 51,62-67; L.1854, p. 16,17; L.1859, p. 95-97; L.1861, p. 119; L.1865, p. 79,80; Constitution of 1870, Art. V, sec. 25, Art. VI, sec. 12,13,18,20, Art. X, sec. 8; L.1871-72, p. 189,190,325; L.1872, p. 19, 32-34,46,55-58; R.S.1874, p. 172-75,260-64,273,281-87,321,329,339-41, 989-92; L.1877, p. 77-84; L.1895, p. 206,210,211,217; L.1907, p. 213; L.1909, p. 311,335; L.1919, p. 403; L.1931, p. 388; L.1933, p. 435-48, 451,459.
 2. R.S.1845, p. 497-99; L.1872, p. 702-5; L.1889, p. 262-66; L.1909, p. 342-50; L.1915, p. 628-35; L.1919, p. 387; L.1929, p. 745.

supervision being effected in each county through reports collected by the county clerk. It also has supervision of the registration of vital statistics, in Brown County exercised through the town clerks, who act as local registrars. But the county clerk is charged with keeping duplicate records, and also with reporting thereupon to the department, thereby again acting as the agent of state control in his county.¹

Public assistance in Brown County is provided through the county department of public welfare. This department is administered by the county superintendent of public welfare, an appointee of the county board of supervisors. The superintendent functions mainly under the direction of the state department of public welfare.²

Public and semipublic works are administered by township, county and state authorities. The (state) department of public works and buildings, through the county superintendent of highways, exercises technical supervision of the construction and maintenance of township, county and state roads, culverts, and bridges. The county superintendent of highways is also subject to the direction of the (state) chief highway engineer. He is required to keep records of his duties prescribed by the department and the chief highway engineer. The said superintendent exercises powers over the township and county roads and bridges and is also granted supervision over state-aid roads in his county.

Another aspect of this large phase of public works is the provision for drainage districts, governed by quasi-corporate bodies of drainage commissioners. Organized basically by towns, these commissioners have all powers necessary to the construction and maintenance of drains and ditches for agricultural, sanitary, and mining purposes. In some cases the town clerk, in others the county clerk, ministers to the commissioners.

The county surveyor is necessarily often employed in these public and semipublic works.³ He also makes surveys for private persons, as a step in the creation of land records. His maps and plats, however, have no legal effect unless recorded by the recorder. The latter, whose duties are performed in Brown County by the clerk of the circuit court in an ex-officio capacity, also is charged with the recordation of instruments affecting title to land and the less important other classes of instruments conveying or establishing non-property rights.⁴

-
1. L.1877, p. 208-11; L.1899, p. 355-356; L.1901, p. 301-6; L.1903, p. 315-18; L.1916, p. 630-70; L.1917, p. 753-68; L.1923, p. 480.
 2. L.1937, p. 452.
 3. Constitution of 1870, Art. IV, sec. 31; R.S.1874, p. 1050; L.1879, p. 120-34; L.1885, p. 73-113; L.1913, p. 521-81.
 4. R.S.1845, p. 305,432,606; R.S.1874, p. 833-35,1050; L.1885, p. 77; L.1901, p. 307; L.1915, p. 575; L.1921, p. 367.

Governmental Organization
and Records System

The coordination of county government is effected through the county clerk. In addition to his many and dissimilar duties, already noted, he issues licenses, has custody of official bonds, keeps various registers, enters into the election procedure, and acts for the board of review. This entire concentration of duties, statutory jurisdiction over which is vested variously in the county board, the county court, and other bodies, results in a considerable centralization of county government.¹

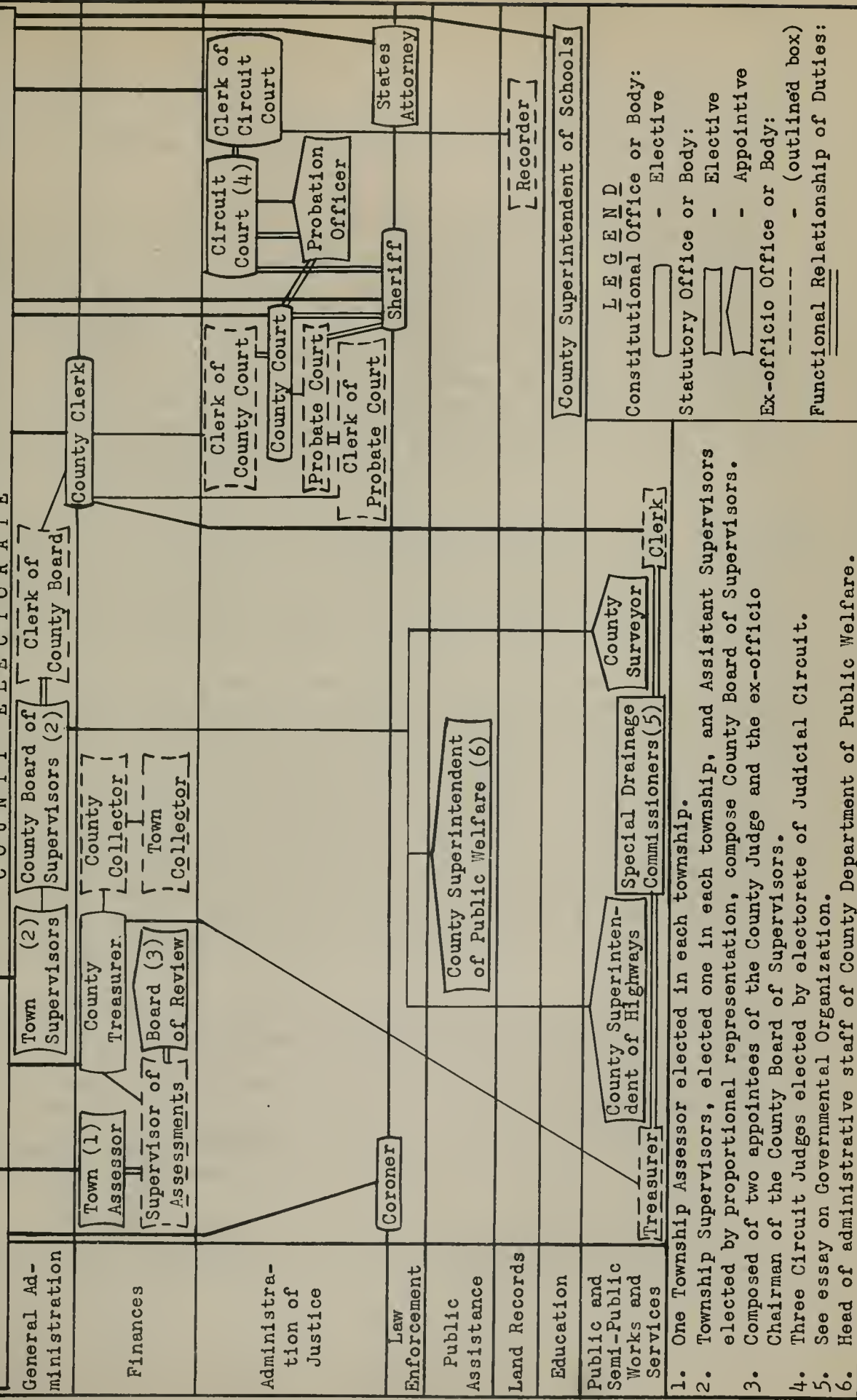
All the independent county offices except surveyor, superintendent of highways, probation officer, and superintendent of public welfare, are now filled by election, and most have been since 1848. The surveyor also was elected at one time, but he, as in the case of each of the officers noted above, is now an appointee of the county board of supervisors. Only a few of the present county offices and bodies were recognized by the first state constitution; but, except for the superintendent of highways, created in 1913, the probation office in 1911, and the superintendent of public welfare in 1936, all were established by law at a very early date and are recognized by the second, and present constitutions.

The creation of such state agencies as touch upon county government is a later development, occurring between 1877 and 1917. The quantity and character of county records are affected thereby, but not the system of records. More significant in its effect on records is the concentration of multiple and dissimilar duties in the county clerk.

Making for uniformity in records are laws requiring county boards to supply books and forms in many cases. But the only uniformity between counties is accomplished by the use of standard forms in a few cases required by state agencies. Legislation to extend this development has the support of local officers. Adequate statutory provision is made for rebinding and transcription of old records. The use of loose-leaf books has further improved records; statutory compulsion could extend the improvement. The legal requirement to destroy election ballots after two years is not always regarded; new legislation, more extensive in scope as well as more stringent, would be valuable.

1. L.1818, p. 25,79,206; L.1845, p. 41,42; L.1861, p. 238; L.1872, p. 380; R.S.1874, p. 325; L.1877, p. 209; L.1885, p. 142.

T O W N S H I P E L E C T O R A T E
C O U N T Y E L E C T O R A T E



L E G E N D
 Constitutional Office or Body: - Elective
 Statutory Office or Body: - Elective
 - Appointive
 Ex-officio Office or Body: - (outlined box)
Functional Relationship of Duties:

1. One Township Assessor elected in each township.
2. Township Supervisors, elected one in each township, and Assistant Supervisors elected by proportional representation, compose County Board of Supervisors.
3. Composed of two appointees of the County Judge and the ex-officio Chairman of the County Board of Supervisors.
4. Three Circuit Judges elected by electorate of Judicial Circuit.
5. See essay on Governmental Organization.
6. Head of administrative staff of County Department of Public Welfare.

CHART SHOWING BROWN COUNTY GOVERNMENTAL ORGANIZATION, 1938

3. HOUSING, CARE, AND ACCESSIBILITY OF THE RECORDS

Like an early New England town hall or church, the courthouse of Brown County is built in Georgian style. The portico with four Doric columns rise forty-five feet, the full height of the building; an ornamental cupola rises an additional thirty-four feet from the center of the building, a two-story brick structure, sixty-five feet long, forty feet wide, and having a cubic content of 118,000 feet. The courthouse, erected in 1868 and now sixty-nine years old, is not fire-proof, nor are any of the vaults. In order to reduce the fire hazard, the floors of all offices except that of the superintendent of schools, are now of concrete. Uniformly sized windows, nine feet high and five feet wide, admit ample light and air. All walls and ceilings are plastered, and in general the building is kept in a good state of repair.

The offices and all of the records of the following county officials are located in the courthouse: county-probate clerk, circuit clerk-recorder, sheriff, superintendent of schools, and superintendent of highways. The offices and records of the treasurer and coroner are housed in separate buildings, with the exception that nearly all of the records of the treasurer as ex-officio collector are kept in the county clerk's office.

The county and probate clerk's office occupies one room on the first floor, measuring nineteen by twenty-four feet. Bound records are kept on six hundred and fifty linear feet of steel shelving and unbound material in several file boxes. Ninety percent of the clerk's records kept in his capacity as county clerk, and all of his records as clerk of the probate court, are kept here. The remaining ten percent of the county clerk's records are kept in the office of the superintendent of highways on the second floor. All of the collector's records with the exception of one record kept in the highway commissioner's office, are also housed here. Practically all shelf space in this office is utilized and there is no room for expansion. Additional space and equipment will have to be acquired in the near future. The accommodations for users of records are sufficient.

The office of the circuit clerk and recorder, also on the first floor, is the same in size as that of the county clerk, and has identical types of filing equipment. The shelves total five hundred and thirty feet in length and are located along the east, south, and north walls of the room. All of the records of this official in his dual capacity as circuit clerk and ex-officio recorder are kept in this office, which is extremely crowded. One large desk and several chairs provide adequate accommodations for consultants of records.

On the first floor also, is the office of the sheriff, with a floor area of two hundred and twenty square feet. Thirty-five linear feet of wooden shelving in this office, in addition to a few steel file

boxes, are more than sufficient for all of the records. There is no crowding, and two tables and three chairs provide ample accommodations for users of records.

The last office on the first floor is that of the superintendent of schools. It has a floor area of two hundred and ninety square feet and has wooden shelving arranged along the north wall of the room. A few file boxes make up the balance of the filing equipment. There is no crowding, and there is considerable room for expansion. All necessary conveniences are provided for those wishing to consult the records.

The remaining county office in the courthouse, that of the superintendent of highways, is located on the second floor, measures fifteen feet square, and is lighted by four windows. Since no independent records of this office are kept in Brown County, the thirty-five linear feet of wooden shelving, extending along the east and west walls, contain about ten percent of the county clerk's records, and five percent of the county treasurer's records. The shelves are crowded, but there is abundant room for additional shelving. Accommodations for consultants of records are adequate.

The treasurer's office is located on the first floor of the Farmer's State Bank Building on West Main Street, a two-story brick building of semi-fireproof construction erected in 1910. This office consists of one room with a built-in fireproof vault. Records including those of the treasurer as ex-officio collector, consist mainly of bound volumes filed on seven linear feet of wooden shelves which are more than ample for present needs. Five percent of the treasurer's records are kept in the office of the superintendent of highways on the second floor of the courthouse. Atmospheric and other conditions are good.

The coroner maintains an office at his residence, 134 East Main Street, a two-story L-shaped frame building, erected in 1890. His office measures fifteen feet square and has five windows. Flooring is of wood, and the walls and ceiling are plastered. Here the coroner keeps all of his records, partly on a six-foot shelf above his desk and partly in steel file boxes. A desk, table, and four chairs provide liberal accommodations for consultants of records.

In summarizing, it may be stated that the records of Brown County are well housed and cared for. The absence of soot, dust, and dampness is strikingly noticeable. The chief, and perhaps the only serious objection, is the absence of fireproof vaults.

No records have been lost because of fires or floods. The existing gaps in record dates are nominal, and may be attributed to changes in administration or in systems of keeping records. Indexing and filing, as practiced in Brown County, correspond in the main with the systems generally adopted by the great majority of other Illinois counties.

4. LIST OF ABBREVIATIONS, SYMBOLS, AND EXPLANATORY NOTES

alph.	alphabetical (ly)
arr.	arranged
Art.	Article
assr.	assessor
aud.	auditor
bsmt.	basement
bd.	board
bdl.	bundle (s)
ch.	chapter (s)
chron.	chronological (ly)
cir.	circuit
clk.	clerk
coll.	collector
cor.	coroner
co.	county
cont.	continued
ct.	court
dept.	department
ft.	feet
f.b.	file box(es)
f.d.	file drawer(s)
fl.	floor
fm.	form
hdw.	handwritten
hdgs.	headings
hwys.	highways
ibid.	ibidem - the same (references)
i.e.	id est - that is
Ill.S.A.	Illinois Statutes Annotated
in.	inch(es)
L.	Laws
mi.	mile(s)
no.(s)	number(s)
off.	office
p.	page(s)
pr.	printed
pro.	probate
rec.	recorder
R.L.	Revised Laws
R.S.	Revised Statutes
rm.	room
sch.	school(s)
sec.	section(s)
sep.	separate
sess.	session
sh.	sheriff

sp.....	special
strm.....	storeroom
supt.....	superintendent
surv.....	surveyor
treas.....	treasurer
twp.(s).....	township (s)
U.S.R.S.....	United States Revised Statutes
U.S.S.....	United States Statutes
vlt.....	vault
vet.....	veterinarian
v.....	volume (s)
--.....	current

1. Despite inaccuracies in spelling and punctuation, titles of records are shown in the inventory proper exactly as on volumes and file boxes. The current or most recent title is used as the title of the entry.

2. Explanatory additions to inadequate titles and corrections of erroneous titles are enclosed in parentheses and have initial capitals.

3. In the absence of titles, supplied titles are capitalized and enclosed in parentheses.

4. In the title set-up, letters or numbers in parentheses indicate the exact labeling on volumes or file boxes. If the volumes or file boxes are unlabeled, no labeling is indicated.

5. Title-line cross references are used to complete series for records kept separately for a period of time, and in other records for different periods of time. They are also used in all artificial entries - records which must be shown separately under their own proper office or section heading even though they are kept in files or records appearing elsewhere in the inventory. In both instances, the description of the master entry shows the title and entry number of the record from which the cross reference is made. Dates shown in the description of the master entry are only for the part or parts of the record contained therein, and are shown only when they vary from those of the master entry.

6. Separate third paragraph cross references from entry to entry, and "see also" references under subject headings, are used to show prior, subsequent, or related records which are not part of the same series.

7. Unless the index is self-contained, an entry for the index immediately follows its record entry. Cross references are given for exceptions to this rule.

8. Records may be assumed to be in good condition unless otherwise indicated.

9. On maps and plat records, the names of author, engraver, and publisher, and information on scale have been omitted only when these data were not ascertainable.

10. Unless otherwise specified, all records are located in the county courthouse.

I. COUNTY BOARD OF SUPERVISORS

The most important functions of the county board, with little change from the earliest date, are:

1. The purchase, sale, and custody of the real and personal property of the county.
2. Examining and settling accounts against the county.
3. Settling accounts concerning the receipts and expenditures of county officers.
4. Supervision of elections, schools, and the selection of juries; construction and maintenance of roads and bridges; care of the indigent, infirm, and disabled.
5. Issuing orders on the county treasury in pursuance of its fiscal administration.
6. Appropriating funds necessary to the effecting of its functions, raising such sums through taxation, and in general the management of county funds and county business.¹

The first state constitution, 1818, made provision for the election of three county commissioners in each county, whose powers and duties were to be regulated by law.² The establishment of elective county commissioners was a distinct change from the centralization of government as practiced under the territorial government in Illinois prior to the formation of the state. The territorial laws had provided for the appointment of local officials by the territorial authorities. The local administrative officials, under these laws, performed the judicial function within the limits of their jurisdiction.

In 1819 the general assembly provided for an administrative, non-judicial court to be composed of the three elected officers and to be styled "the county commissioners' court".³ Thus a change is noted in the separation of administrative from judicial function along the lines of the Pennsylvania system of local government. Since Brown County was established in 1839, it came first under the administration of the county commissioners' court.⁴

-
1. R.S.1845, ch. XXVII, sec. 15,17,20,25,29,34-38,46,47; R.S.1874, ch. XL, sec. 25,57.
 2. Constitution of 1818, ch. VIII, sec. 4; L.1819, p. 175.
 3. Under the laws of 1819, the commissioners were to serve until August 1820; L.1819, p. 100. Then in 1821 the term was made for a biennial period; L.1821, p. 80, sec. 15; L.1823, p. 66, sec. 32; R.L.1829, p. 67, sec. 25; R.L.1833, p. 255, sec. 25.
 4. L.1839, p. 52,53.

The mobility of population with attachments to different types of local government was an influencing factor in the development of local government in Illinois. The south with its large farms and plantations found the county unit the system best fitted for its needs. The northern industrial and marketing states on the other hand found the township system more advantageous. During the first decade of the state, following its organization in 1818, the disintegration of the early civil townships and the formation of districts and sub-districts for elections, roads, and other purposes, showed the influence of migration from the south.

The arrival of township adherents into Illinois, particularly from the east, resulted from the town lot speculation which began in Chicago and spread over the state. In addition to the marketing in Chicago of town plats for counties, vessels regularly carried plats of town lots to the New York and Boston markets. The ensuing speculation which reached its peak in 1836 brought about an influx of settlers, and towns and marketing centers arose rapidly.

These conflicting influences, together with compromises and adaptation to local needs, brought about state legislation enacted in 1849 for two types of county government. An administrative county court was established for each county of the state, with township plan optional at the acceptance of the county electorate.¹

Brown County, failing to elect the township plan in 1849, was governed by the county court for the following five years (1849-1854). The legislation of 1849 delegated to this court the duties formerly performed by the county commissioners' court.² When so acting the powers of the county court were carried out by the county judge and two justices of the peace. The county court serving in this capacity met at special terms in each year and was distinct from the county court in its judicial function. In the latter instance the duties were performed solely by the county judge.

In 1854 the electorate selected the optional township plan of government. Under this plan the several township supervisors elected by the township electorate, composed the county board of supervisors, and this body became the successor to the administrative county court. Brown has been governed by the board of supervisors from 1854 until the present date.

-
1. The Constitution of 1848, Art. VII, sec. 6, had required the general assembly to provide for an optional form of township organization of counties. See L.1849, p. 190-229, also L.1851, p. 35-78; Constitution of 1870, Art. X, sec. 6.
 2. Constitution of 1848, Art. V, sec. 17,19; L.1849, p. 62,66.

The township law in Illinois closely patterned that of New York. Its main features were the decentralization of road administration and state functions, such as assessment and collection of taxes. However, the broader powers of transacting and administering county business remained vested in the county body itself. In this respect the powers of Illinois town governments fell short of those of New England towns.

The records listed in this section were kept in Brown County, first, by the clerk of the county commissioners' court from 1839 to 1849; second, by the clerk of the county court from 1849 to 1854; third, by the clerk of the county court as ex-officio clerk of the county board of supervisors from 1854 to 1870; and finally, by the county clerk in his ex-officio capacity as clerk of the county board of supervisors from 1870 to date.

The major record kept by the clerk for the board is the minutes of its proceedings. This heterogeneous record includes: orders to issue warrants on the county treasury; the board's consideration of and action on reports of committees of its members on roads and bridges, indigent and infirm relief, schools, taxation, etc.; and its orders in regard to juries, licenses, and other matters within its jurisdiction.

The clerk also keeps separately, a register of orders issued on the county treasury and lists of jury venire; files and preserves all bills of accounts acted on by the board; and takes custody of reports required to be made to the board by the county treasurer, various school bodies, and a number of county officers.²

Proceedings of Board

1. SUPERVISORS' RECORD, 1839--. 7 v. (3 not numbered, 4-7).

Title varies: County Commissioners' Court Record.

Record of proceedings of board of supervisors, including minutes of meetings, roll call, reports of committees and county officers, orders to pay claims, record of licenses, appointments of road supervisors, justices, constables, and school land trustees, reports of superintendent of schools, records of road district boundaries, election precincts, tax rates and levies, abstracts of votes on township organization, and all other county business transacted by board. Also contains Drainage Record, 1880-1914, entry 208. Arr. chron. No index. 1839-1928, hdw.; 1929--, typed. 250 p., 639 p.; 14 x 10 x 1, 18 x 14 x 3. Co. clk.'s off., 1st fl.

-
1. L.1819, p. 5,6,28,77,127,334-38,352; L.1823, p. 145,149; L.1825, p. 130,131; R.L.1829, p. 126,132-37,151-53; L.1831, p. 89,90; L.1835, p. 131,132,136,200; L.1839, p. 71,72; R.S.1845, p. 51-55,287,342,403,437; L.1849, p. 66; L.1861, p. 234-37; R.S.1874, p. 323.
2. L.1819, p. 201,315; L.1825, p. 147; R.S.1827, p. 366; L.1843, p. 169; R.S.1845, p. 136,366; L.1861, p. 237; R.S.1874, p. 325.

County Board of Supervisors -
Disposition of Accounts; Receipts
and Disbursements; Bills and Claims

2. RESOLUTIONS ADOPTED BY BOARD OF SUPERVISORS, 1890--. 1 f.b.
Resolutions presented to and adopted by county board of supervisors, showing names of supervisors, nature of resolution, vote of board, and date. Arr. chron. No index. 11 x 4 x 14. Co. clk.'s off., 1st fl.

Disposition of Accounts

Registers of County Orders (See also entry 196.)

3. REGISTER OF COUNTY ORDERS, 1882--. 6 v. (B, B-F).
Register of county orders issued for payment of claims, showing order number, date, to whom and for what purpose issued, amount paid, date cancelled, and remarks. Arr. by order no. No index. Hdw. under pr. hdgs. 200 p. 18 x 15 x 1. Co. clk.'s off., 1st fl.

Cancelled County Orders

4. COUNTY WARRANTS CANCELLED, 1896--. 5 f.d.
Cancelled county warrants showing warrant number, date, amount and to whom paid, purpose of payment, and date cancelled. Arr. chron. No index. 11 x 4 x 14. Co. clk.'s off., 1st fl.

5. JUROR'S CERTIFICATES (Stubs), 1903--. 5 v.
Stub book of certificates issued in payment for jurors' services, showing certificate number, date, names of jurors and clerk, travel fees, and amount paid. Arr. by certificate no. No index. Hdw. on pr. fm. 300 p. 18 x 15 x 1½. Co. clk.'s off., 1st fl.

Receipts and Disbursements

6. LEDGER (County Farm), 1919--. 3 v.
Ledger of county farm receipts and disbursements, showing date, purpose, amount, and from whom received or to whom paid. Arr. chron. No index. Hdw. under pr. hdgs. 500 p. 13 x 9 x 2. Co. clk.'s off., 1st fl.

Bills and Claims (See also entries 1, 70.)

7. BROWN COUNTY CLAIMS, 1919--. 4 f.d.
Claims against county allowed by county board of supervisors, showing claim number, names of claimant, chairman, and attorney, amount and purpose of claim, and date claim allowed. Arr. chron. No index. 10 x 8 x 16. Co. clk.'s off., 1st fl.

County Board of Supervisors -
Management of County Properties;
Reports to Board

(8-13)

8. COUNTY HIGHWAY CLAIMS, 1915--. 2 f.b.

Claims filed against county for highway improvements, showing highway number, description of improvement, amount of claim, and date paid. Arr. chron. No index. 11 x 4 x 14. Co. clk.'s off., 1st fl.

9. MOTOR FUEL TAX, 1933--. 2 f.b.

Claims against motor fuel tax fund, showing number, date, and amount of claim, name of claimant, filing date, and signature of clerk. Arr. chron. No index. 11 x 4 x 14. Co. clk.'s off., 1st fl.

Contracts (See also
entry 69.)

10. (CONTRACTS AND CONTRACTORS' BONDS), 1892--.

In Miscellaneous Records (Probate Files), entry 122.

Contracts for work done in county, showing names of contractors, purpose, amounts, dates, approval by board of supervisors, and contractors' bonds.

Management of County Properties

Insurance

11. INSURANCE POLICIES, 1879--. 1 f.b.

Insurance policies on county property, showing name of insurance company, description and location of insured property, kind of insurance, amounts of policy and premium, and dates of issuance and expiration. Arr. chron. No index. 10 x 3 x 14. Co. clk.'s off., 1st fl.

For prior records, see entry 12.

12. POLICY REGISTER, 1876-78. 1 v. Discontinued.

Register of insurance policies on county property, showing name of insurance company, property insured, kind of insurance, amounts of policy and premium, and dates of issuance and expiration. Arr. alph. by name of insurance company. No index. Hdw. under pr. hdgs. 200 p. 18 x 15 x 2. Co. clk.'s off., 1st fl.

Reports to Board
(See also entries 1, 206.)

13. REPORTS OF COUNTY OFFICERS, 1902--. 2 f.b.

Reports of various county officers, showing name of officer, dates, and itemized receipts and disbursements. Arr. chron. No index. 10 x 5 x 14. Co. clk.'s off., 1st fl.

Jury Lists

(See also entries 5, 67, 96, 154, 155, 157, 160.)

14. (JURY LISTS), 1880. In Miscellaneous Files, entry 70. Lists of persons eligible for jury service, showing name, address, and occupation of juror, and date of court term.

II. COUNTY CLERK

The county clerk has the most varied duties of any county official. To his office belong important duties relating to taxation, elections, vital statistics, licenses, bonds, and lesser duties in the operation of county government. Jurisdiction in these matters is distributed to a number of state and county authorities and the clerk's relationship with these groups makes him a de facto chief executive officer of the county. He is custodian of the county records, ex-officio clerk of the county court and ex-officio clerk of the county board of supervisors. The records he keeps in each case belong to his office, the county court, and the county board respectively.

The early legal status of the county clerk was first as clerk of the county commissioners' court, an administrative, nonjudicial body.¹ The clerk was, in practice, the county clerk as well as clerk of the county commissioners' court.

An interesting change took place in this office under the constitution of 1848 and the legislation of 1849.² The clerk served as an officer of both an administrative body and a judicial court. His title was clerk of the county court. The administrative body was the county court (the county board) sitting at special terms and composed of the county judge and two justices of the peace. The judicial court was the county court administered by a single officer, the county judge.³ The clerk of the court in its administrative function was the successor to the clerk of the county commissioners' court. The judicial responsibilities of the clerk were under the county court acting in civil and criminal matters and also in its probate jurisdiction. In the latter category the clerk performed the ministerial duties formerly performed by the probate justice of the peace.⁴

1. Clerk was an appointee of the commissioners' court from 1819 to 1837. L.1819, p. 175. In 1837, the office became elective with a term of two years. L.1837, p. 49; R.S.1845, p. 573.
2. Constitution of 1848, Art. V, sec. 16,18,19; L.1849, p. 63. Like his predecessor, an elected officer, but with a term of four years.
3. Ibid.
4. L.1849, p. 62,63,65,67.

In 1854 another change was made in the governing body of Brown County. At the election in this year, township organization was voted on and accepted, and the new county board became the "county board of supervisors." The duties formerly commissioned to the county court for county transactions were transferred to this board. The clerk, however, retained his role as clerk of the county court and of the county board.

The clerk when acting for the county was frequently referred to in legislation as the county clerk. However, the constitution in 1870 titled the clerk, when so acting, as the county clerk. He was elected by the county electorate as the county clerk and retained his role as clerk of the county court and of the county board.¹

With the revision of the law in 1874, a careful distinction in terms came to be made. The county clerk, whenever he acts for the county court in its law jurisdiction, is referred to as clerk of the county court;² when he acts for the county board, he is expressly declared to be so doing.³ Thus the simple designation of county clerk is reserved for the officer when he performs that group of duties which belongs to his office alone, and which gives rise to the records in this section.⁴

In review, it may be said that the county clerk has served as clerk of the county, in Brown County, from its organization in 1839 to the present time. His earliest title was clerk of the county commissioners' court; later he was known as clerk of the county court; then under the constitution of 1870 he was titled the county clerk. As clerk of the county board he was first, clerk of the county commissioners' court; second, clerk of the county court; third, clerk of the county court as ex-officio clerk of the county board of supervisors; and fourth, the county clerk as ex-officio clerk of the county board of supervisors. His office as clerk of a judicial court began in 1849 as clerk of the county court, both in civil and criminal matters, as well as in probate matters. Beginning with the constitution of 1870 until the present, the county clerk, acting for the county court in its probate function, has been referred to as the ex-officio clerk of the probate court.

-
1. Constitution of 1870, Art. VI, sec. 18 and Art. X, sec. 8. The clerk's term was set for four years.
 2. R.S.1874, p. 260.
 3. R.S.1874, p. 273.
 4. The bond of the county clerk, however, covers also his actions as clerk of the county court and as clerk for the county board. The penal sum is fixed by the latter body, which also passes on the securities, and the bond itself is filed with the clerk of the circuit court. R.S.1874, p. 321.

The clerk is required to keep an extensive group of taxation records. He has legal custody of the books used by the supervisor of assessments and compiles those used by the collector, obtains and prepares abstracts of assessment and collections, keeps records of the proceedings of special tax bodies, makes reports of delinquent taxes returned by the collector, attends all tax sales and prepares a list of all sales and issues duplicate reports thereof, and records affidavits of purchases of property for taxes; records tax sales, forfeitures and redemptions in a book kept by him known as "the tax judgment, sale and forfeiture record."¹ In addition, various lists and receipts involved in the taxation procedure from beginning to end are required to be transmitted to him.²

The department of public health in Illinois has charge of the registration of births and deaths but the county clerk keeps complete records of that category of vital statistics, as well as of marriages, the registration of which is regulated solely by statute.

Marriage certificates are returned to the clerks by persons qualified to celebrate ceremonies; copies of birth, stillbirth, and death certificates are transmitted to him by the local registrars of the department of public health (in Brown County, the clerks of townships). The clerk registers and files all certificates and records marriages, births, and deaths in separate books, and indexes each separately.³

The clerk is involved in nearly every step of the election procedure. He issues and keeps a record of blank ballots; petitions, marked ballots, tally sheets, and returns of elections are required to be transmitted to him by election officials.⁴ Formerly the clerk originated the abstracts of returns; those currently found in his office are copies he is required by law to obtain from the election commissioners or judges of election. Canvasses also were originally made by the clerk alone, but now the clerk, with the justices of the peace, audits votes by election precincts.⁵

The bonds of a number of county officers are required to be transmitted to the clerk and filed by him.⁶ He is required to keep a book

-
1. L.1819, p. 317; L.1825, p. 173,174; R.L.1827, p. 327-33; L.1838, p. 4-7,12,14; L.1845, p. 9,11,12; L.1853, p. 102; L.1855, p. 35,37, 40; L.1872, p. 19,32-34,46,55; L.1873, p. 51; L.1879, p. 57,241,242; L.1881, p. 133; L.1885, p. 77,192-97; L.1898, p. 41,47-50; L.1915, p. 389.
 2. R.L.1827, p. 330; R.L.1837, p. 572; L.1840, p. 4; L.1843, p. 232; L.1872, p. 56-58; L.1885, p. 77; L.1898, p. 40,41; L.1909, p. 311,333.
 3. L.1819, p. 26,281; R.S.1845, ch. XVII, sec. 3-5, ch. LXIX, sec. 6; R.S.1874, p. 695; L.1877, p. 200-210; L.1901, p. 301-4; L.1903, p. 315-18; L.1915, p. 660-70; L.1917, p. 2-36,763-66.
 4. L.1819, p. 25,206; L.1821, p. 77; L.1823, p. 54,55; R.L.1829, p. 59,60; L.1845, p. 41,42; L.1871-72, p. 380; L.1885, p. 142.
 5. L.1819, p. 96; L.1885, p. 142.
 6. For citations to the laws so providing, see the discussions of legal status under each office in this volume.

in which is to be entered a minute of those bonds, and such other information as will serve to provide an index to them.¹ In practice, this book is sometimes broken down into several volumes, segregating information relating to bonds of separate officers.

The clerk issues licenses to peddlers, taverns, ferries, etc., and is required to keep records thereof.² In addition, he keeps records of estrays, registers of physicians and midwives, and lists of county officers, compiled from information sent to him to enable him to perform these and other duties of his office.³

Besides the papers he is required to issue and those he is required to file and preserve, the county clerk also is charged by law with the care and custody of all other books and papers pertaining to his office.⁴ Of this last group, arising indirectly in the performance of his other duties, he is required to keep alphabetical indexes.⁵

Taxation
(See also entries 1, 65,
69, 70, 121, 185-193.)

Lists of Taxable
Property, Levies

15. RATE BOOK (Tax), 1875--. 2 v. (A, 1 not lettered).

Missing: 1887-1927.

Docket of certificates of rates and amounts wanted, showing date filed, school district, amount wanted, rates of levy for lands, lots, and personal property, total in each town, railroad valuation in each town, comparative valuation in other towns, total value in district, tax spread, assessed value, and equalized value by county and state boards. Arr. alph. by name of twp. No index. 1875-86, hdw. under pr. hdgs.; 1928--, hdw. 144 p. 18 x 11 $\frac{1}{2}$ x $\frac{1}{2}$. Co. clk.'s off., 1st fl.

16. ASSESSORS' BOOKS, 1863--. 371 v.

Lists of taxable real and personal property, showing owner's name, description of property, tax spread, assessed value, full value, total tax, and remarks. Arr. by sec., twp., and range. No index. Hdw. under pr. hdgs. 150 p. 16 x 10 x $\frac{1}{2}$. 335 v., 1863-1930, off. of supt. of hwys., 2nd fl.; 36 v., 1934--, co. clk.'s off., 1st fl.

Buckhorn Township, 1863--. 45 v. Missing: 1864, 1866-72, 1874-80, 1882, 1886, 1888-97, 1901, 1906.

Cooperstown Township, 1863--. 42 v. Missing: 1863-93.

Elkhorn Township, 1863--. 43 v. Missing: 1863-88, 1890-92, 1894, 1895, 1898.

-
1. L.1861, p. 238; R.L.1874, p. 325.
 2. L.1819, p. 79; R.L.1827, p. 320; R.L.1833, p. 439; R.L.1837, p. 175.
 3. L.1819, p. 206, 207; R.L.1827, p. 190, 191; L.1877, p. 209.
 4. R.S.1874, p. 327.
 5. R.S.1874, p. 331.

- Lee Township, 1863--. 42 v. Missing: 1863-93.
- Missouri Township, 1863--. 39 v. Missing: 1863-92, 1897.
- Mt. Sterling Township, 1863--. 38 v. Missing: 1863-91, 1894-97, 1911, 1916, 1919.
- Pea Ridge Township, 1863--. 40 v. Missing: 1863-85, 1887-94, 1896-98.
- Ripley Township, 1863--. 39 v. Missing: 1863-96.
- Versailles Township, 1863--. 43 v. Missing: 1863-91, 1894, 1895.

17. TAXABLE PROPERTY, 1846-51. 1 v. Discontinued.

Lists of taxable property, showing lands and personal property, town lots, forfeited lands and lots, amount of taxes for state and county road purposes, and date. Arr. by twps. No index. Hdw. 600 p. 18 x 15 x 2. Co. clk.'s off., 1st fl.

18. RAILROAD TAX BOOK, 1873--. 4 v. (A-D).

Lists of taxable railroad property, showing name of railroad, location, legal description, number of acres on right of way, length of main and sidetrack, value as listed by railroad, assessed value as equalized by state and county board, tax spread, and total tax. Arr. alph. by name of railroad. No index. Hdw. under pr. hdgs. 180 p. 18 x 12 x 2. Co. clk.'s off., 1st fl.

19. TELEPHONE AND TELEGRAPH TAX BOOK, 1884--. 3 v. (1-3).

Title varies: Telegraph Tax Book.

Schedule of taxes on taxable property of telephone and telegraph companies, showing in whose name assessed, legal description of property, tax spread, total amount of tax, and date. Arr. alph. by name of company. No index. Hdw. under pr. hdgs. 80 p. 15½ x 10½ x 1. Co. clk.'s off., 1st fl.

20. REAL ESTATE (Schedule of Assessments for Road Repairs), 1900-1920. 1 v. Discontinued.

Schedule of assessments against real estate owners for costs of repairing roads, showing name of owner, date, legal description of property, amount of assessment, and remarks. Arr. alph. by name of property owner. No index. Hdw. under pr. hdgs. 540 p. 16 x 11 x 2. Off. of supt. of hwys., 2nd fl.

21. ABSTRACT OF ASSESSMENTS AND TAXES, 1883--. 4 v. (1, 3 not numbered).

Statements of totals of footings of each assessment book on real estate, town lots, and personal property. Arr. by sec., twp., and range. No index. Hdw. under pr. hdgs. 58 p. 17 x 15 x ½. Co. clk.'s off., 1st fl.

Collection, Abatement

22. COLLECTORS' BOOKS, 1854--. 145 v.

Lists of assessed taxable real and personal property, showing name of owner, description of property, tax spread, assessed value, amount of tax due, date, and total; also contains abatement lists. Prior to 1893, books grouped for entire county; 1893-1933, segregated by townships; 1934--, 3 volumes per year for each township. Arr. by sec., twp., and range. No index. Hdw. under pr. hdgs. 500 p. 18 x 12 x 2. 78 v., 1854-1913, off. of supt. of hwys., 2nd fl.; 67 v., 1914--, co. clk.'s off., 1st fl.

Judgment, Sale, Redemption

23. TAX JUDGMENT, SALE, REDEMPTION, AND FORFEITURE RECORDS, 1881--.
5 v. (4-8).

Record of delinquent taxes, showing name of property owner, legal description and location of property, amount of delinquent tax due, judgment and sale, and final disposition of property. This record is a combination of two records formerly kept separately, Tax Judgment Record, entry 24; Tax Sale Record, entry 25. Arr. by sec., twp. and range. Indexed alph. by name of defendant. Hdw. under pr. hdgs. 170 p. 18 x 15 x 2. V. 4-7, 1881-1930, co. clk.'s off., 1st fl.; v. 8, 1931-- , treas.'s off., 1st fl., Farmers State Bank Building, West Main Street,

24. TAX JUDGMENT RECORD, 1839-30. 4 v. 1881-- in Tax Judgment, Sale, Redemption, and Forfeiture Records, entry 23.

Record of tax judgments, showing name of owner, legal description of property, assessed valuation, costs and penalties, total amount due, and date and amount paid. Arr. chron. No index. Hdw. 200 p. 12 x 15 x 1 1/2. Co. clk.'s off., 1st fl.

25. TAX SALE RECORD, 1859-80. 2 v. (C, D). 1881-- in Tax Judgment, Sale, Redemption, and Forfeiture Records, entry 23.

Record of tax sales, showing name of property owner, legal description of property, number of acres, date, and to whom sold; amount of tax, penalties, interest and printers' fees due, and amount, date, and by whom paid. Arr. alph. by name of property owner. No index. Hdw. under pr. hdgs. 150 p. 15 x 12 x 1. Co. clk.'s off., 1st fl.

26. RECORD OF LAND FORFEITED TO STATE, 1877--. 1 v.

List of lands forfeited to state for taxes due and unpaid, showing legal description of property, amounts of tax due and paid, name of owner, and dates of forfeiture and recording. Arr. chron. No index. Hdw. under pr. hdgs. 375 p. 15 x 12 x 3. Co. clk.'s off., 1st fl.

27. TAX SALES AND NOTICES, 1870--. 1 f.b.

Tax sale certificates of purchase, showing record book and page numbers, names of owner, purchaser, county collector, and county clerk, date and amount of sale, legal description of property, penalty and costs; tax purchaser's notices showing dates of notice and sale, name of owner, legal description of property and date of expiration of redemption period. Arr. chron. No index. 10 x 5 x 14. Co. clk.'s off., 1st fl.

28. AFFIDAVIT TAX DEED, 1884--. 1 f.b.

Affidavits of purchase of property at tax sales, showing names of affiant and newspaper publishing notice, dates of tax sale, application for tax deed and filing, legal description of property, amount of sale, and statement of notice to original owner and present occupant of tax sale land. Arr. chron. No index. Hdw. on pr. fm. 10 x 5 x 14. Co. clk.'s off., 1st fl.

County Clerk -
Vital Statistics

29. AFFIDAVITS FOR TAX DEEDS, 1895--. 1 v. (1).

Copies of affidavits for tax deeds, showing names of affiant and owner, date of affidavit and tax sale, legal description of property, amount of delinquent tax, penalties and costs due, amount of sale, and date of filing. Arr. chron. No index. Hdw. on pr. fm. 265 p. 15 x 12 x 3. Co. clk.'s off., 1st fl.

30. TAX DEEDS, 1896-1900. 1 v. 1901-- in Miscellaneous Record, entry 69.

Copies of tax deeds, showing name of purchaser, date of sale, legal description of property, amount paid, certification of purchase, signature of county clerk, and date filed. Arr. chron. No index. Hdw. on pr. fm. 550 p. 16 x 11 x 2. Off. of supt. of hwys., 2nd fl.

Vital Statistics

Births (See
also entry 66.)

31. BIRTH CERTIFICATES, 1878--. 12 f.b., 3 v. (1-3).

Copies of birth certificates, showing certificate number, date and place of birth, sex, names of child and parents, address, color, age, birth-place and occupation of parents, number of children, certificate of attending physician or midwife, and date of filing. Subsequent to 1915, certificates kept in bound form. Arr. by certificate no. 1878-1915, no index; for index, 1916--, see entry 32. Hdw. on pr. fm. F.b. 11 x 4 x 14, v. 766 p. 8 x 9 x 5. Co. clk.'s off., 1st fl.

32. BIRTH INDEX, 1916--. 1 v. (A).

Index to Birth Certificates, showing name of child, and book and page of record. Arr. alph. by surname of child. Hdw. under pr. hdgs. 600 p. 16 x 12 x 3. Co. clk.'s off., 1st fl.

33. REGISTER OF BIRTHS, 1878-1915. 1 v. Discontinued.

Register of births, showing names of child, father, and mother, place of birth, sex, color, and nativity of mother and father, and date registered. Arr. alph. by surname of child. Hdw. under pr. hdgs. 250 p. 16 x 12 x 2. Co. clk.'s off., 1st fl.

For bound birth certificates subsequent to 1915, see entry 31.

34. BIRTH INDEX, 1878-1915. 1 v.

Index to Register of Births, showing name of child, and book and page of record. Arr. alph. by surname of child. Hdw. under pr. hdgs. 400 p. 16 x 12 x 2. Co. clk.'s off., 1st fl.

Deaths (See also
entry 65.)

35. DEATHS AND STILLBIRTHS (Certificates), 1878--. 11 f.b.
3 v. (1-3).

Copies of death and stillbirth certificates, showing certificate number, name of deceased, date and place of death and burial, personal and statistical particulars, names of physician or midwife, undertaker, and registrar. Subsequent to 1915, certificates kept in bound form. Also contains Certificates of Burial of United States War Veterans, 1878-1931, entry 40. Arr. chron. 1878-1915, no index; for index, 1916--, see entry 36. Hdw. on pr. fm. F.b. 11 x 4 x 14, v. 600 p. 9 x 10 x 5. Co. clk.'s off., 1st fl.

36. DEATH INDEX (and Stillbirths), 1916--. 1 v. (1).

Index to Deaths and Stillbirths, showing certificate number, name of deceased, and book and page of record. Arr. alph. by name of deceased. Hdw. under pr. hdgs. 600 p. 16 x 12 x 3. Co. clk.'s off., 1st fl.

37. REGISTER OF DEATHS (and Stillbirths), 1878-1915. 3 v.
(1-3). Discontinued.

Register of deaths, showing register number, date of report, name of deceased, age, sex, nationality, date, place and cause of death, place of burial, and names of undertaker and physician. Also contains Register of Stillbirths, 1892-1915, entry 39. Arr. chron. Hdw. under pr. hdgs. 300 p. 16 x 12 x 2. Co. clk.'s off., 1st fl.

For bound death and stillbirth certificates subsequent to 1915, see entry 35.

38. INDEX TO DEATHS, 1878-1915. 1 v. Discontinued.

Index to Register of Deaths, showing name of deceased, and book and page of record. Arr. alph. by name of deceased. Hdw. under pr. hdgs. 300 p. 10 x 8 x 2. Co. clk.'s off., 1st fl.

39. REGISTER OF STILLBIRTHS, 1878-91. 1 v. 1892-1915 in Register
of Deaths, entry 37.

Register of certificates of stillbirths, showing certificate number, date of return, names of mother and father, date and place of stillbirth, sex and color, residence of mother, period of utero-gestation, nativity of father, cause of stillbirth, signature of medical attendant, name and address of person making return, name of undertaker, and place and date of burial. Arr. chron. Indexed alph. by name of parent. Hdw. under pr. hdgs. 72 p. 18 x 11 $\frac{1}{2}$ x 1 $\frac{1}{2}$. Co. clk.'s off., 1st fl.

40. CERTIFICATE OF BURIAL OF UNITED STATES VETERANS, 1932--. 1 v.
1878-1931 in Deaths and Stillbirths, entry 35.

Transcript of certificates of burial of war veterans, showing name, residence, race, and address of veteran, marital status, dates of birth, enlistment and death, birthplace, war record, whether discharged or not, branch of service, name of informant, cemetery, grave, lot, block, and section numbers, and name and address of undertaker. Arr. alph. by name of veteran. No index. Hdw. under pr. hdgs. 25 p. 9 x 11 $\frac{1}{2}$ x 1. Co. clk.'s off., 1st fl.

Marriages

41. MARRIAGE LICENSES, 1847--. 16 f.b. Prior licenses destroyed. Licenses for marriage, showing names of bride, groom, and county clerk, dates of issuance, marriage, filing, and registration. Arr. chron. No index. 11 x 4 x 14. Co. clk.'s off., 1st fl.

42. INDEX TO MARRIAGE RECORDS, 1839--. 2 v. (1, 2). Index to Marriage Records and Marriage Register, showing names of bride and groom, license number, and book and page of record. Arr. alph. by names of bride and groom. Hdw. under pr. hdgs. 200 p. 16 x 12 x 2. Co. clk.'s off., 1st fl.

43. MARRIAGE RECORDS, 1877--. 2 v. Copies of marriage certificates, showing number and date of license, full names of bride and groom, age, address, race or color, occupation, place of birth, father's name, mother's maiden name, number of marriages, bride's maiden name if a widow, place and date of marriage, names of witnesses, by whom certified, and dates of return and registration. Arr. chron. For index, see entry 42. Hdw. on pr. fm. 260 p. 18 x 13 x 2. Co. clk.'s off., 1st fl.

For prior records, see entries 41, 44.

44. MARRIAGE REGISTER, 1839-85. 3 v. (A-C). Discontinued. Marriage register showing license number, names and addresses of bride and groom, and dates married and certified. Arr. chron. For index, see entry 42. Hdw. under pr. hdgs. 240 p. 18 x 13 x 2. Co. clk.'s off., 1st fl.

For record of marriage certificates, see entry 43.

45. APPLICATION MARRIAGE LICENSES, 1874--. 9 v. Applications for marriage licenses, showing license number, names, addresses, and ages of applicants, signatures of applicants and county clerk, and dates; for marriages of minors, also shows name of person giving consent to marriage. Arr. chren. No index. Hdw. on pr. fm. 300 p. 16 x 12 x 1 $\frac{1}{2}$. Co. clk.'s off., 1st fl.

Licenses and Registers
(See also entry 1.)

Professional Licenses
and Registers

46. RECORD OF PHYSICIANS' CERTIFICATES, 1877--. 2 v. (1 not numbered, 1). Copies of certificates of state board of health issued to physicians, showing date, certificate number, names of physician and college attended, date of graduation, and signatures of president, secretary, and three members of the board. Arr. alph. by name of physician. Hdw. on pr. fm. 270 p. 18 x 13 x 2. Co. clk.'s off., 1st fl.

For other physicians' certificates, see entry 50.

47. REGISTER OF PHYSICIANS AND ACCOUCHEURS, 1877--. 2 v.
(1 not numbered, 1).

Register of certificates of physicians and accoucheurs, showing name and address of physician or accoucheur, certificate number, and date registered; for physician, shows school of practice, age, nativity, number of years practice, number of years practice in state, and certificate of the state board of health. Also contains registration of veterinarians' and dentists' certificates subsequent to 1916. Arr. chron. Indexed alph. by name of registrant. Hdw. under pr. hdgs. 100 p. 18 x 12 x $\frac{1}{2}$. Co. clk.'s off., 1st fl.

48. REGISTER OF CERTIFICATES OF REGISTERED NURSES, 1913--. 1 v.

Register of certificates issued to registered nurses, showing certificate number, name and qualifications of nurse, and dates of certificate and recording. Arr. chron. No index. Hdw. under pr. hdgs. 250 p. 15 x 12 x 3. Co. clk.'s off., 1st fl.

49. OPTOMETRY RECORD, 1915--. 1 v. (1).

Copies of certificates issued to optometrists, showing names of optometrist and president and secretary of state board of examiners, number and date of license, date of filing, and signature of clerk. Arr. chron. Indexed alph. by name of optometrist. Hdw. on pr. fm. 600 p. 16 x 12 x 3. Co. clk.'s off., 1st fl.

50. PHYSICIAN, VETERINARIAN AND DENTIST RECORD, 1895-1916.

1 v. Discontinued.

Copies of certificates of physicians, veterinarians, and dentists, showing names of practitioner and members of examining board, school attended, and dates of graduation and certificate. Arr. chron. Indexed alph. by name of doctor. Hdw. on pr. fm. 200 p. 18 x 12 x 2. Co. clk.'s off., 1st fl.

For registration of certificates, see entry 47.

Patents

51. PATENT REGISTER, 1846-66. 1 v. Discontinued.

Record of patents issued on useful inventions, showing names of patentee and clerk, description and drawing of invention, and dates of invention and patent. Arr. chron. Indexed alph. by name of patentee. Hdw. Binding and paper poor, writing faded. 200 p. 18 x 11 x $\frac{1}{2}$. Co. clk.'s off., 1st fl.

Stallion Certificates

52. RECORD OF CERTIFICATES TO STOCK BREEDERS, 1867-91. 1 v.
Discontinued.

Copies of stallion certificates issued by state board of agriculture, showing certificate number, name of breeder, date, and seal and signature of secretary of state board of agriculture. Arr. chron. Indexed alph. by name of breeder. Hdw. on pr. fm. 250 p. 16 x 12 x 2. Co. clk.'s off., 1st fl.

County Clerk -
Elections; Bonds
of Officers

(53-59)

Estrays

53. ESTRAY RECORD, 1839--. 1 v.
List of estrays, showing date found, by whom taken up, names of justice of the peace and appraisers, value and description of animal, and costs. Arr. chron. No index. Hdw. under pr. hdgs. 200 p. 15½ x 11 x 1½.
Co. clk.'s off., 1st fl.

Dog Licenses (See also
entries 60, 61.)

54. SETTLEMENT OF ASSESSORS (Dog License), 1914--. 1 f.b.
List of dog owners, showing owners' names and addresses, and number of tags sent and returned. Arr. chron. No index. 10 x 5 x 14. Co. clk.'s off., 1st fl.

Elections
(See also entry 1.)

55. (ELECTION PAPERS), 1880--. In Miscellaneous Files, entry 70.
Applications for ballots, petitions for nominations, and lists of election clerks.

56. ABSTRACT OF VOTES, 1917--. 1 f.b.
Abstract of votes for general elections, showing names of candidates, titles of offices, number of votes received by each candidate, and date of election. Arr. chron. No index. 10 x 5 x 14. Co. clk.'s off., 1st fl.

Bonds of Officers
(See also entries 69, 86, 175.)

57. BONDS OF OFFICIALS, 1896--. 5 f.b.
Bonds of town and county officials, showing names of officials and bondsmen, date, amount and term of bond, purpose, expiration date, and remarks. Arr. chron. No index. Hdw. on pr. fm. 11 x 4 x 14.
Co. clk.'s off., 1st fl.

58. DOCKET OF OFFICIAL BONDS, 1884-98. 1 v. 1899-- in Miscellaneous Record, entry 73.
Copies of official bonds approved by county court, showing names of officials and sureties, date and amount of bond, orders of court, and date filed. Arr. chron. Indexed alph. by name of official. Hdw. on pr. fm. 238 p. 16 x 12 x 2. Co. clk.'s off., 1st fl.

59. RECORD OF JUSTICES' AND CONSTABLES' BONDS, 1877--. 1 v. (A).
Transcripts of justices' and constables' bonds, showing names of principals and bondsmen, amount and terms of bond, date of bond, and notarial seal. Arr. chron. No index. Hdw. on pr. fm. 410 p. 15 x 12 x 3.
Co. clk.'s off., 1st fl.

County Clerk: -

(60-66)

Oaths of County Officers;
Fees, Receipts, and Expenditures

60. ASSESSORS' BOND RECORD, 1891--. 1 v. (1).

Transcripts of bonds of town assessors, and bonds of county collector and supervisor of assessments, showing names of principal and bondsmen, date, amount, and terms of bond, and seal of notary. Also contains Dog License Bond Record, entry 61. Arr. chron. Indexed alph. by name of principal. Hdw. on pr. fm. 200 p. 18 x 13 x 3. Co. clk.'s off., 1st fl.

61. DOG LICENSE BOND (Record of), 1880-90. 1 v. 1891-- in Assessors' Bond Record, entry 60.

Bonds for performance of duty of collector of dog license fees, showing date, names of principal and bondsmen, and date and amount of bond. Arr. chron. Indexed alph. by name of bondsmen. Hdw. on pr. fm. 400 p. 16 x 11 x 2. Off. of supt. of hways., 2nd fl.

Oaths of County Officers

62. (OATHS OF COUNTY OFFICERS), 1886--. In Miscellaneous Record, entry 69.

Oaths of office of county officers, showing name of office, date, asseveration, signature of officer, and acknowledgment.

Fees, Receipts, and Expenditures

63. REGISTER OF FEES, 1872--. 2 v.

Register of fees and expenditures, including sheriffs' receipts prior to 1914, showing date, amount, from whom received and to whom paid, and remarks. Arr. chron. No index. Hdw. 600 p. 16 x 12 x 3. Co. clk.'s off., 1st fl.

64. LEDGER, 1919-25. 2 v. Discontinued.

Ledger of daily receipts and expenditures, showing amounts received and paid out, and date. Arr. chron. No index. Hdw. 150 p. 10 x 8 x 1. Co. clk.'s off., 1st fl.

65. COUNTY IN ACCOUNT WITH COUNTY COLLECTOR AND TREASURER, 1882-98. 1 v. Discontinued.

County collector's and county treasurer's accounts of receipts and disbursements as submitted to county clerk, showing amounts received from tax collections, tax sales, and other sources, amounts expended by cash and by county orders, with totals; also list of debits and credits against county funds. Arr. chron. Indexed alph. by name of collector. Hdw. under pr. hds. 160 p. 18 x 13 x 1 $\frac{1}{2}$. Co. clk.'s off., 1st fl.

For other records of receipts and expenditures, see entry 63.

66. BIRTH AND DEATH REPORT WARRANTS (Account Book), 1902--. 3 v.

Record of warrants issued in payment for reports of births and deaths, showing town from which reported, name of person reporting, and amount, date, and number of warrant. Arr. chron. No index. Hdw. on pr. fm. 300 p. 16 x 12 x 2. Co. clk.'s off., 1st fl.

67. JURY SCRIPT (Insane), 1896--. 1 v. Last entry 1911.
Script issued for payments for jurors' services in insane cases, showing name of juror, court term, order number, and amount and date paid. Arr. chron. No index. Hdw. on pr. fm. 250 p. 16 x 12 x 2. Co. clk.'s off., 1st fl.

Maps and Plats

68. SCHOOL PLAT RECORD, 1879--. 1 v. (1).
Plats of school districts organized in various townships, showing name of township, range, date, name of president of school board, clerk's signature, date filed, and boundaries of school district. Arr. chron. No index. Author, county clerk. Hdw. and hand-drawn. 1 in. to 1 mi. 126 p. 18 x 12 x $\frac{1}{2}$. Co. clk.'s off., 1st fl.

For other school plats, see entries 70, 89-95.

Miscellaneous Records and Files

69. MISCELLANEOUS RECORD, 1886--. 2 v. (1, 2).
Miscellaneous records including reports of coroner and cemetery boards, witness affidavits, and articles of incorporation, county contracts, petitions and decrees of adoption, and bonds of county officials prior to 1922. Also contains Tax Deeds 1901--, entry 30, (Oaths of County Officers) entry 62. Form varies according to type and record. Arr. chron. Indexed alph. by title of subject matter. 1886-1916, hdw. on pr. fm.; 1917--, typed. 250 p. 16 x 12 x 2. Co. clk.'s off., 1st fl.

70. (MISCELLANEOUS FILES), 1880--. 16 f.b.
County clerk's files of miscellaneous documents, including county highway resolutions and claims, reports of township treasurers and supervisors, objections to taxes, road and school plats, road tax papers, and bills and claims approved by board. Also contains (Election Papers), entry 55; (Harr and Cognovit Papers), entry 101; (Jury Lists), entry 14; and (Sale of School Lands), entry 198. Arr. chron. No index. 10 x 5 x 14. Co. clk.'s off., 1st fl.

III. RECORDER

The office of recorder, which at first existed by statute, is now constitutional. Originally, the recorder in Brown County was an elected officer of the county electorate.¹ Following the constitution of 1848 until the present time, the clerk of the circuit court in Brown County has served as ex-officio recorder.²

In contrast to its legal status, the duties of the office have changed little; they have developed in scope but not altered in nature. The basic function of the recorder is to record at length and in order of their receipt all instruments in writing.³

The recorder is required to keep the following records:

1. An entry book for the notation of the date and order of receipt of instruments, and the names of parties and location of property.
2. Books of recordation, with a single alphabetical index for grantor and grantee. Separate books may be kept for different classes of instruments; a separate series, denoted "B" for recordation of bills of sale, chattel mortgages, releases and extensions, etc.
3. A separate book to record certificates of honorable military, aviation, and naval discharges.
4. An index, arranged alphabetically by name of grantor, containing also name of grantee, and showing date and kind of instrument and the page of its recordation.
5. A similar index, kept by name of grantee. In practice this and the above index are sometimes kept as one numbered series, but with no results contrary to the intent of the law.

-
1. Tenure of office was for four years, L.1835, p. 166; the term was reduced to two years, L.1845, p. 28. Prior to the formation of Brown County the recorder had been an appointee of the governor for the years 1819 to 1835, L.1819, p. 166.
 2. Clerk of circuit court made ex-officio recorder in all counties, Constitution of 1848, Art. V, sec. 19, L.1849, p. 63-66; office made elective with term of four years in counties of 60,000 and greater of population, and provision for other counties unchanged, Constitution of 1870, Art. X, sec. 8; R.S.1874, p. 833. Bond is required in sum of \$10,000.
 3. L.1819, p. 18,20; R.L.1829, p. 116,117; R.S.1874, p. 834,835.

6. Other indexes, such as for instruments recorded by corporations, powers of attorney, chattel mortgages, etc. Sometimes duplicate "Grantor-Grantee Index", but recommended by utility.
7. An index to recorded maps and plats, based on location of property. Sometimes arranged by section, township, range, etc.
8. An abstract book, in effect indexing records by showing for each tract every conveyance or incumbrance recorded, its execution and filing date, and the book and page¹ of its recordation. Series optional with county board.

Entry Books

71. ENTRY BOOK, 1839--. 14 v. (1-14).

Entry book of conveyances, showing instrument number, type of instrument, names of grantor and grantee, legal description of property, fee paid, fees due, dates of entry and delivery, and to whom delivered. Arr. by instrument no. No index. 1839-1902, hdw.; 1903--, hdw. under pr. hdgs. 500 p. 16 x 12 x 2. Cir. clk.'s off., 1st fl.

Instruments Recorded

General

72. MISCELLANEOUS DOCUMENTS, 1877--. 23 f.b.

Miscellaneous instruments including mortgage releases, quitclaim deeds, warranty deeds, and trust deeds recorded but uncalled for, showing names of grantor and grantee, consideration, date of instrument, kind of instrument, legal description of property, and date recorded. Arr. chron. No index. 10 $\frac{1}{2}$ x 5 x 14. Cir. clk.'s off., 1st fl.

73. MISCELLANEOUS RECORD, 1880--. 9 v. (1-9).

Recordation of miscellaneous instruments, including extension of lease, certificates of election of trustees of cemeteries and lodges, certificates of stock transfers, renunciation of wills, certificates of organization, power of attorney papers, and articles of incorporation. Also contains Docket of Official Bonds, 1899--, entry 58; Foreclosure Records, entry 162; and Sheriffs' and Masters' Certificates of Levy, Sale, and Redemption, entries 84, 85. Arr. chron. No index. Hdw. 300 p. 13 $\frac{1}{2}$ x 11 $\frac{1}{2}$ x 2 $\frac{1}{2}$. Cir. clk.'s off., 1st fl.

1. L.1819, p. 18,20,21; L.1847, p. 69; L.1853, p. 254; L.1867, p. 148; L.1869, p. 2; L.1871-72, p. 645,646; L.1873, p. 144; R.S.1874, p. 834-37; L.1917, p. 652; L.1925, p. 521; L.1933-34, p. 214.

74. GRANTOR-GRANTEE INDEX, 1817--. 24 v. (1 not numbered, 1-11, grantor; 1 not numbered, 1-11, grantee).

General index to deed and mortgage records, showing names of parties, date of instrument, consideration, legal description of property, date of recording, and book and page of record. Arr. alph. by names of grantor and grantee. 1817-59, hdw.; 1860--, hdw. under pr. hdgs. 600 p. 18 x 12 x 2. Cir. clk.'s off., 1st fl.

For special indexes, see entries 87, 88.

75. CONVEYANCES, 1817-55. 10 v. (A-D, D-H, K).

Recordation of all types of instruments, including deeds and mortgages, showing names of parties, description of property, consideration, and dates of execution and recording. Arr. chron. For index, see entry 74. Hdw. 500 p. 18 x 12 x 2. Cir. clk.'s off., 1st fl.

For subsequent records, see entries 76, 80.

Deeds (See also entry 72.)

76. DEED RECORDS, 1822--. 48 v. (A-C, J-Y, not consecutive; 27-154, not consecutive).

Recordation of all types of deeds not recorded in separate series. Contains Quitclaim Deeds, 1822-67, entry 77; Release Records, 1822-75, entry 81; Trust Deeds, 1822-75, 1897--, entry 78; and Warranty Deeds, 1822-91, entry 79. Arr. chron. For index, see entry 74. 1822-1915, hdw.; 1916--, hdw. and typed on pr. fm., interspersed. 500 p. 18 x 12 x 2. Cir. clk.'s off., 1st fl.

For prior records, see entry 75.

77. QUITCLAIM DEED RECORD, 1868--. 7 v. (A, 44, 67, 77, 99, 141, 155). 1822-67 in Deed Records, entry 76.

Recordation of quitclaim deeds, showing names of grantor and grantee, legal description of property, consideration, and dates of execution and filing. Arr. chron. For index, see entry 74. Hdw. on pr. fm., and typed on pr. fm., interspersed. 500 p. 18 x 12 x 2. Cir. clk.'s off., 1st fl.

78. TRUST DEED RECORDS, 1876-96. 3 v. (28, 41, 43). 1822-75, 1897-- in Deed Records, entry 76.

Recordation of trust deeds, showing names of grantor and grantee, legal description of property, terms of deed, consideration, and dates of execution and recording. Arr. chron. For index, see entry 74. Hdw. on pr. fm. 500 p. 18 x 12 x 2. Cir. clk.'s off., 1st fl.

79. WARRANTY DEED RECORDS, 1892--. 16 v. (65-151, not consecutive). 1822-91 in Deed Records, entry 76.

Recordation of warranty deeds, showing names of grantor and grantee, legal description of property, consideration, and dates of execution and recording. Arr. chron. For index, see entry 74. Hdw. and typed on pr. fm., interspersed. 500 p. 18 x 12 x 2. Cir. clk.'s off., 1st fl.

Recorder - Instruments
Recorded

(80-84)

Mortgages - Real Estate (See
also entries 72,109.)

80. MORTGAGE RECORD, 1856--. 39 v. (O, P, R, U, Z; 34-152, not consecutive).

Recordation of mortgages, showing instrument number, dates of execution and recording, names of mortgagor and mortgagee, consideration, legal description of property, terms of mortgage, signature of recorder, and acknowledgment. Arr. chron. Indexed alph. by name of mortgagor; for sep. index, see entry 74. 1856-1932, hdw. and hdw. on pr. fm., interspersed; 1933--, typed. Cir. clk.'s off., 1st fl.

For prior records, see entry 75.

81. RELEASE RECORDS, 1874--. 2 v. (33, 104). 1822-73 in Deed Records, entry 76.

Recorded releases showing names of releasor and releasee, legal description of property, consideration, terms of release, and dates of instruments. Arr. chron. For index, see entry 74. Hdw. on pr. fm. 500 p. 18 x 12 x 2. Cir. clk.'s off., 1st fl.

82. REAL ESTATE RECORD, 1922--. 4 v. (125, 131, 140, 145).

Recordation of foreign mortgages and trust deeds on real estate, showing names of parties, legal description of property, consideration, terms of instrument, and dates of execution and recording. Arr. chron. For index, see entry 74. Typed, and typed on pr. fm., interspersed. 500 p. 18 x 12 x 2. Cir. clk.'s off., 1st fl.

For prior mortgage records, see entry 80; for prior trust deed records, see entries 76, 78.

Mortgages - Chattel

83. CHATTEL MORTGAGE RECORDS, 1867--. 31 v. (A, 37-150, not consecutive).

Record of chattel mortgages, showing instrument number, names of mortgagor and mortgagee, date, amount, description, rate of interest, and dates due and recorded. Arr. chron. Indexed alph. by name of mortgagor; for sep. index, see entry 74. 1867-1914, hdw. under pr. hdgs.; 1915--, typed, and typed under pr. hdgs., interspersed. 500 p. 16 x 12 x 2 $\frac{1}{2}$. Cir. clk.'s off., 1st fl.

Certificates of Levy
and Sale (See also entry 122.)

84. SHERIFF'S CERTIFICATE SALE AND REDEMPTION, 1846-1910.

2 v. (A, B). 1880-- also in Miscellaneous Record, entry 73.

Sheriff's certificates of levy, sale, and redemption, showing names of defendant, sheriff, and purchaser, legal description of property, dates of sale and redemption, consideration, by whom redeemed, amount due, and amount paid. Arr. chron. Indexed alph. by name of plaintiff. Hdw. on pr. fm. 600 p. 16 x 12 x 3. Cir. clk.'s off., 1st fl.

85. MASTER'S CERTIFICATE OF SALE AND REDEMPTION, 1885-1928.

1 v. (1). 1880-- also in Miscellaneous Record, entry 73.

Master's certificates of sale and redemption, showing names of plaintiff, defendant and master, legal description of property, amount due, date of sale, by whom purchased, date of redemption, by whom redeemed, and amount paid. Arr. chron. No index. Hdw. on pr. fm. 500 p. 16 x 12 x 3. Cir. clk.'s off., 1st fl.

Other Instruments

86. REGISTER OF BONDS, 1857--. 4 v. (A-C, 1). Title varies:
Town Collectors' Bond Record.

Register of bonds of township collectors, showing names of collector, surety, and recorder, name of township, amount, date, and terms of bond, notary's acknowledgment, and dates of filing and recording. Arr. chron. 1857-78, no index; 1879--, indexed alph. by name of collector. 1857-78, hdw.; 1879-1924, hdw. under pr. hdgs.; 1925--, typed. 260 p. 16 x 13 x 2. Cir. clk.'s off., 1st fl.

Special Indexes
(See also entry 74.)

87. SECTIONAL INDEX (Tract Index), 1818--. 16 v. (1-5, 1818-59;
1-11, 1818--).

Sectional index showing names of grantor and grantee, legal description of property, instrument, date, book and page number, and date of filing. Volumes 1-5, 1818-59, are transcribed into volumes 1-11. Arr. by sec., twp., and range. Hdw. under pr. hdgs. 300 p. 13 $\frac{1}{2}$ x 11 $\frac{1}{2}$ x 2 $\frac{1}{2}$. Cir. clk.'s off., 1st fl.

88. INDEX TO TOWN LOTS, 1829--. 5 v. (1-5).

Index to town lots, showing names of town and owner, lot, block, book and page number of record, consideration, and date of filing. Arr. alph. by name of owner. Hdw. under pr. hdgs. 450 p. 13 $\frac{1}{2}$ x 11 $\frac{1}{2}$ x 2 $\frac{1}{2}$. Cir. clk.'s off., 1st fl.

Maps and Plats

89. CHURCH, SCHOOL AND CEMETERY MAP OF BROWN COUNTY, no date.
1 map.

Political map of Brown County, showing the locations of churches, schools, and cemeteries. Printed. 14 x 18. 35 in. to 1 mi. Cir. clk.'s off., 1st fl.

90. TOWNSHIPS OF BUCKHORN, RIPLEY, LEE, MT. STERLING, VERSAILLES,
AND COOPERSTOWN, no dates. 6 maps.

Political maps of townships, showing their relation to each other, locations of boundaries, schools, churches, and roads. H. Boss, artist. Printed. 1 in. to 1 mi. Cir. clk.'s off., 1st fl.

91. SCHOOL MAP OF COOPERSTOWN TOWNSHIP, no date. 1 map.
Political map showing location of schools in township, and school district number. Printed. 18 x 12. 2 in. to 1 mi. Cir. clk.'s off., 1st fl.
92. TOWNSHIP MAPS, no date. 4 maps.
Political and communication maps of Elkhorn, Lee, Missouri, and Pea Ridge townships, showing township layout, section, and range, location of towns, roads, railroads, schools, and churches. Printed. 12 x 12. 1 in. to 400 ft. Cir. clk.'s off., 1st fl.
93. RIPLEY TOWNSHIP, no date. 1 map.
Political and communication map showing township layout, legal description of township, location of towns, roads, railroads, schools, and churches. Printed. 3 x 8. 2 in. to 1 mi. Cir. clk.'s off., 1st fl.
94. VERSAILLES TOWNSHIP, no date. 1 map.
Political and communication map showing township layout, section, and range, location of towns, roads, railroads, schools, and churches. Printed. 15 x 12 $\frac{1}{2}$. 1 in. to 300 ft. Cir. clk.'s off., 1st fl.
95. MT. STERLING, ILLINOIS, no date. 1 map.
Political, communication, and land tenure map showing town layout, names of property owners, legal description of property, location of streets, schools, churches, and railroads. Printed. 17 x 14 $\frac{1}{2}$. 1 in. to 400 ft. Cir. clk.'s off., 1st fl.

IV. COUNTY COURT

The county court was first established in Illinois by the constitution of 1848 and the legislation of 1849.¹ As a judicial court, it was administered by a single judge, elected by the county electorate for a quadrennial term. The judge was styled the county judge of Brown County and was commissioned by the governor. His four-year term of service has remained in effect from the first legislation until the present day.²

The court was given originally the same civil and criminal jurisdiction as the justices of the peace. The county judge was the conservator of the peace for the county. He was given the same power and

1. Constitution of 1848, Art. V, sec. 16; L.1849, p. 62.

2. L.1849, p. 64; R.S.1874, p. 339; L.1933, p. 451.

authority as the circuit court, in preserving order in the court and punishing contempts offered the court while in session.¹

In addition to its civil and criminal powers the county court was vested with all the powers and jurisdiction of the probate court. In its probate function the court was given concurrent jurisdiction with the circuit court.² In Brown County the county judge has served until the present day in his ex-officio capacity as judge of the probate court.

The law jurisdiction of the county court in Brown County, from 1874 to the present, is concurrent with that of the circuit court in that class of cases, first, wherein the justices of the peace have jurisdiction where the value or the amount in controversy does not exceed one thousand dollars;³ second, in all cases of appeals from justices of the peace and police magistrates; third, in all criminal offenses and misdemeanors where the punishment is not imprisonment in the penitentiary or death.⁴

Appeals from the judgments and decisions of the county court may be taken to the circuit court.⁵ To the appellate court or supreme court may be taken and prosecuted appeals and writs of error in proceedings for the sale of lands for taxes and special assessments, and in all common law and attachment cases, and cases of forcible detainer and forcible entry and detainer. Such appeals and writs of error are, when not otherwise provided, taken and prosecuted in the same manner as appeals and writs of error from the circuit court.⁶

The records of the court are kept by the clerk of the county court. The county clerk is the ex-officio clerk of the county court. In addition to these statutory records described below, the clerk necessarily maintains others in effecting the court's orders.⁷

1. L.1849, p. 64; L.1859, p. 99; R.S.1874, p. 339; L.1933, p. 451.

2. L.1859, p. 99.

3. Under the laws of 1872 the jurisdiction was in cases not exceeding \$500. The revised laws of 1874 and subsequent legislation extended the jurisdiction to cases wherein the amount involved was not over \$1000.

4. R.S.1874, p. 339; L.1877, p. 77; L.1933, p. 448.

5. R.S.1874, p. 339.

6. R.S.1874, p. 339; L.1877, p. 77; L.1881, p. 66.

7. This category is obliquely recognized by law; though the form which such records take is generally determined by court order. L.1849, p. 66; R.S.1874, p. 263.

For the court, the clerk keeps the following records:

1. Books of record of the proceedings and judgments of the court, with alphabetical indexes by parties. Proceedings are recorded at length only in cases designated by law, or when the court, at the motion and assumption of expense by one of the parties, so orders. In practice, the court record has been broken down from an early date into segregated types of proceedings and judgments.
2. "Plaintiff-Defendant Index to Court Records" and "Defendant-Plaintiff Index to Court Records." Intended to be separate records, but frequently combined in a single volume with the two indexes segregated in each volume.
3. A general docket, in which all suits are entered in the order they are commenced.
4. A judgment and execution docket, containing a column for the entry of satisfaction or other disposition. In practice an execution is frequently set up independently, highlighting the information for which the extra column of the larger record was intended.
5. Additional dockets, designated as the clerk's, judge's, and bar docket. In practice the bar docket has tended to drop out of use.
6. A fee book, in which costs and fees are to be entered under the proper title of the cause. In practice separate series of volumes are maintained under these titles of causes.
7. Transcripts of proceedings in appeals from justices' courts, dockets thereof, and transcripts of judgment for liens, etc., from justices' courts.
8. Naturalization records, including petitions, proceedings, final certificates, etc. The county courts in Illinois prior to 1906 met the requirement of Federal statutes to exercise naturalization jurisdiction.¹
9. Original documents used in court hearings and determinations; of particular importance in the large number of cases where complete proceedings are not spread upon court record.²

Proceedings of Court

96. COUNTY COURT CASES, 1872--. 13 f.b.

Original documents in county court common law and criminal cases, including summonses, subpoenas, instructions to the jury, probation papers, jury lists, affidavits of witnesses, mittimus, habeas corpus, writs, bonds, indictments, and all court orders. Arr. chron. No index. 11 x 4 x 14, Co. clk.'s off., 1st fl.

1. U.S.S.1802, p. 153; U.S.R.S.1874, p. 378.
 2. R.S.1845, p. 57,323,324,414,418,419; L.1865, p. 79,80; L.1871-72, p. 325; R.S.1874, p. 262,263,339; L.1877, p. 77; L.1933, p. 448, 451; U.S.S.1802, p. 153-55; U.S.R.S.1874, p. 378-80; U.S.S.1906, p. 598-607; U.S.S.1915, p. 736-38; U.S.S.1926, p. 709,710.

97. COUNTY COURT RECORD, 1872---. 4 v. (1, B-D).

Daily record of proceedings in common law, criminal, and dependent and delinquent cases, showing date of term, names of plaintiff, defendant and attorneys, cause of action, and orders and decrees of the court. Includes recognizance and bail bonds, and fine records. Arr. chron. Indexed alph. by name of plaintiff; for sep. index, see entry 98. Hdw. 340 p. 18 x 15 x 1 $\frac{1}{2}$. Co. clk.'s off., 1st fl.

98. INDEX TO COURT RECORDS - PLAINTIFF, DEFENDANT, 1872---.
2 v. (1, defendant; 1, plaintiff).

Index to county court cases, showing names of defendant and plaintiff, type of action, and book and page of record. Arr. alph. by names of plaintiff and defendant. Hdw. under pr. hdgs. 350 p. 18 x 12 x 2. Co. clk.'s off., 1st fl.

99. DEFAULT RECORD, 1872---. 1 v.

Record of judgments by default in term and vacation, showing date, term of court, names of judge, clerk, sheriff, plaintiff, and defendant, kind of action, amount of judgment, and signature of clerk. Arr. chron. Indexed alph. by name of defendant. Hdw. on pr. fm. 600 p. 16 x 12 x 3. Co. clk.'s off., 1st fl.

100. ADOPTIONS, 1868---. 1 f.b.

Original papers in connection with adoption cases, showing names of child and guardian, petition for adoption, and orders of court. Arr. chron. No index. 10 x 5 x 14. Co. clk.'s off., 1st fl.

For other adoption records, see entry 69.

101. (NARR AND COGNOVIT PAPERS), 1880---. In Miscellaneous Files,
entry 70.

Narr and cognovit papers in common law cases, showing names of plaintiff, defendant, and attorneys, kind of action, and plaintiff's statement of fact or defendant's confession.

102. INSANE (Petitions and Orders in Insanity Cases), 1866---. 4 f.b.

Documents in insanity cases, including petition for commitment and for examination of patient, and court order of commitment or release. Arr. chron. No index. 10 x 5 x 15. Co. clk.'s off., 1st fl.

103. INSANITY RECORD, 1894---. 2 v.

Record of insanity findings and orders of county court, showing names of patient, jurors and commissioner, date, and name of hospital to which committed. Arr. chron. Indexed alph. by name of patient. Hdw. on pr. fm. 210 p. 18 x 13 x 3. Co. clk.'s off., 1st fl.

For prior records, see entry 131.

104. JUDGMENT RECORD BY CONFESSION, 1927---. 1 v. (1).

1872-1926 in Judgment Docket, entry 106.

Record of judgments by confession in term time and vacation, showing term of court, date, names of plaintiff, defendant, and attorneys, and amount of judgment. Arr. chron. Indexed alph. by name of defendant. Typed on pr. fm. 300 p. 18 x 13 x 3. Co. clk.'s off., 1st fl.

Dockets

Court Dockets

105. JUDGE'S DOCKET, 1872--. 4 v. (2 not numbered, 1, 2).
Docket of proceedings in county court cases, showing names of attorneys, plaintiff, and defendant, judge's remarks, court term, and date. Also contains Insanity Docket, 1872-93, entry 108. This docket also serves as Probate Estate Docket, entry 150, showing names of deceased, sureties, administrator, widow and heirs, date of letters, and amounts of bond and sale bill. Arr. chron. No index. Hdw. under pr. hdgs. 600 p. 18 x 15 x 2. Co. clk.'s off., 1st fl.

106. JUDGMENT DOCKET, 1872--. 2 v. (1, 2).
Docket of judgments rendered in county court cases, showing names of attorneys, plaintiff, defendant, and judge, type of action, date and against whom judgment is entered, costs, and satisfaction. Also contains Judgment Record by Confession, 1872-1926, entry 104. Arr. alph. by name of person against whom judgment is entered. Indexed alph. by title of cause. Hdw. under pr. hdgs. 600 p. 18 x 12 x 4. Co. clk.'s off., 1st fl.

107. EXECUTION DOCKET, 1872--. 1 v.
Docket of executions, showing docket number, names of plaintiff and defendant, date of execution, amount of damage, costs, fee book and page number, and dates issued and returned. Arr. alph. by name of person against whom judgment is entered. No index. Hdw. under pr. hdgs. 120 p. 18 x 13 x 3. Co. clk.'s off., 1st fl.

108. INSANITY DOCKET, 1894--. 1 v. (1).
1872-93 in Judges' Docket, entry 105.
Docket of insanity cases, showing names of petitioner, defendant, judge, and witnesses, history of case, dates of entries, and court orders. Arr. chron. No index. Hdw. under pr. hdgs. 400 p. 18 x 12 x 2. Co. clk.'s off., 1st fl.

Justice Dockets

109. JUSTICE OF PEACE DOCKET, 1875-1907. 1 v. Missing: 1878-1901.
Subsequent dockets kept in local offices of justices.
Docket of justice of peace court proceedings, showing date, names of plaintiff, defendant, and justice, type of action, and disposition of case. Also contains copies of mortgages, showing names of mortgagor and mortgagee, date of mortgage, terms, and legal description of property. Arr. chron. No index. Hdw. under pr. hdgs. Binding poor. 234 p. 18 x 12 x 2. Co. clk.'s off., 1st fl.

County Court - Fee Books;
Probation; Naturalization;
Office Transactions

(110-114)

Fee Books

110. FEE BOOK LAW AND CRIMINAL, 1872--. 3 v. (1 not numbered, 1872-94; 2, 3, 1884--).

Record of fees received in common law and criminal cases, showing case number, names of plaintiff, defendant, and sheriff, plaintiff's and defendant's costs, and amount and date received. Arr. chron. 1872-94, no index; 1884--, indexed alph. by name of defendant. Hdw. on pr. fm. 400 p. 15 x 12 x 3. Co. clk.'s off., 1st fl.

Pensions

111. MOTHERS' AND BLIND PENSIONS, 1918--. 1 f.b.

Petitions for pension relief, showing names of petitioner and county clerk, date of application, entry of appearance, investigation report, and date of filing. Arr. chron. No index. 11 x 4 x 14. Co. clk.'s off., 1st fl.

Naturalization

(See also entries 176, 177.)

112. NATURALIZATION RECORD, 1876-1900. 2 v. (1 not numbered, 3).

1901-- in United States District Court, Springfield, Illinois.

Record of final certificates of naturalization, also petitions, final oaths, and certificates of naturalization of minors, showing date of petition, names of judge, alien, and minor, nativity, years lived in the United States and Illinois, renunciation of foreign allegiance, date of final oath of alien and attestation of clerk, and date and number of final certificate. Arr. chron. Indexed alph. by name of alien. Hdw. on pr. fm. 300 p. 18 x 13 x 2. Co. clk.'s off., 1st fl.

113. NATURALIZATION RECORD DECLARATION, 1879-97. 1 v.

1898-- in United States District Court, Springfield, Illinois.

Record of declaration of intention, showing name of alien, address, nativity, oath of intention, date, and names of witnesses. Arr. chron. Indexed alph. by name of petitioner. Hdw. on pr. fm. 288 p. 18 x 13 x 2. Co. clk.'s off., 1st fl.

Office Transactions

114. WITNESS AFFIDAVITS, 1888--. 4 v.

Register of warrants issued for services of witnesses, showing number of days in court, dates, miles traveled, names and addresses of witnesses, and fees paid. Arr. chron. No index. Hdw. on pr. fm. 275 p. 14 x 8½ x 3. Co. clk.'s off., 1st fl.

For other records of witness affidavits, see entry 69.

115. ATTORNEYS' RECEIPT FOR PAPERS, 1925--. 1 v.
 Receipt book of county clerk for legal papers removed from his files, showing number and title of cause, dates received and returned, and signature of recipient. Arr. chron. No index. Hdw. under pr. hdgs. 159 p. 18 x 12 x 1. Co. clk.'s off., 1st fl.

V. PROBATE COURT

Probate courts have original jurisdiction in all matters of probate, the settlement of estates of deceased persons, the appointment of guardians and conservators and settlement of their accounts; matters relating to apprentices; proceedings by executors, administrators, guardians, and conservators for sale of real estate; proceedings for the collection of taxes.¹

From the time of the first general assembly, there has been little change in probate jurisdiction. In 1319, the assembly first gave jurisdiction to the county commissioners' court. In 1821 independent probate courts were established.² The newly created courts of probate were composed of a "judge of probate", elected by the general assembly.³ In 1839, when Brown County was formed, "the judges of probate" were succeeded by "probate justices of the peace." A probate justice was elected in each county by the county electorate for a quadrennial term, as of 1839.⁴ Finally, less than a decade later, the second constitution transferred to the newly created county court all probate jurisdiction, and subsequent legislation required it to hold special terms for such matters.⁵ Brown County court has retained probate jurisdiction from its creation until the present day.

The early probate judges and justices were required to perform the ministerial functions of the probate clerk.⁶ Following the organization of the county court in 1848, the county clerk has served as ex-officio clerk of the probate court.

-
1. Constitution of 1870, Art. VI, sec. 20; R.S.1874, p. 339,340; L.1877, p. 80.
 2. L.1819, p. 224; L.1821, p. 119.
 3. L.1821, p. 119; the manner of election of all judges of inferior courts, however, had been designated by the Constitution of 1818, Art. IV, sec. 4.
 4. L.1837, p. 176.
 5. Constitution of 1848, Art. V, sec. 16,18; L.1849, p. 64,65; R.S.1874, p. 339,340.
 6. L.1821, p. 120; R.L.1837, p. 429.

The major records of probate courts are:

1. Journal of all judicial proceedings and determinations of the judge.
2. A judgment docket with direct and indirect index, former by name of claimant against estate, latter by estate. In practice the requirement of two indexes often leads to two dockets.
3. Books for recordation of bonds and letters of administrators, executors, and guardians; appraisements and sale bills; widows' relinquishment and selection of property; wills and the probate thereof; annual and final reports of administrators, executors, and guardians. Generally each category of these probate business matters is recorded separately, but the segregation is not always carefully maintained.
4. Separate dockets of unsettled estates and claims against estates, and a ledger of the accounts of executors, administrators, and guardians. Note that the dockets of probate business matters are separated from dockets of court proceedings, just as are the books of recordation of the two categories; the intention of the law to make this distinction is further shown in its granting the clerk, during vacation of the court, power to receive petitions, accept bonds, grant letters testamentary, etc.
5. Files of original documents not subject to recordation; indexes of such; records of office transactions in pursuance of the court's orders to the clerk necessary in the latter's settlement with that body.¹

Proceedings of Court

116. (PROBATE FILES), 1839--. 131 f.b. (1-131).

Original documents in the settlement of estates, including petitions for appointments, bonds and letters of appointees, claims against estates, adjustments, deeds to property involved in probate proceedings, and all other estate matters. Arr. chron. 11 x 4 x 14. Co. clk.'s off., 1st fl.

117. INDEX TO FILES, 1839--. 1 v.

Index to probate files, showing name of estate, title of cause, and file box number. Arr. alph. by name of estate. Hdw. under pr. hdgs. Binding poor. 600 p. 13 x 12 $\frac{1}{2}$ x 2. Co. clk.'s off., 1st fl.

1. L.1821, p. 119; R.S.1829, p. 215,231; R.S.1837, p. 429; R.S.1845, p. 427,428; L.1851, p. 193; L.1859, p. 92-94; R.S.1874, p. 260-65; L.1877, p. 63; L.1933, p. 293.

118. PROBATE RECORD, 1839--. 28 v. (1, 4-30).
Record of probate cases in county court, showing term of court, names of estate, plaintiff, defendant, and attorneys, kind of action, proceedings and orders of court. Arr. chron. Indexed alph. by name of estate. Hdw. on pr. fm. 600 p. 16 x 13 x 3. Co. clk.'s off., 1st fl.
119. PROBATE JOURNAL, 1869--. 23 v. (4-31).
Daily record of probate court proceedings, showing date, names of estate, judge, and attorneys, cause of action, court orders, and decrees. Arr. chron. 1869-90, indexed alph. by name of estate; 1891--, no index. 1869-1918, hdw.; 1919--, typed. 598 p. 18 x 13 x 3. Co. clk.'s off., 1st fl.
120. PROBATE JUDGMENT RECORD OF CLAIMS, 1886--.
3 v. (9, 10, 1 not numbered).
Record of claims against estates in probate, showing names of estate and claimant, nature of claim, amount claimed, date, and amount allowed. Arr. chron. V. 9, 10, 1886-99, indexed alph. by name of estate; 1 v. not numbered, 1900--, no index. Hdw. on pr. fm. 318 p. 18 x 13 x 2. Co. clk.'s off., 1st fl.
121. INHERITANCE TAX RECORD, 1910--. 1 v.
Record of inheritance tax proceedings, showing names of estate, heirs, appraiser, judge, and clerk, appraiser's estimate of value of estate, rate and tax set, court orders, date, and inheritance tax receipts. Arr. chron. Indexed alph. by name of estate. Hdw. 260 p. 18 x 12 x 2. Co. clk.'s off., 1st fl.
122. MISCELLANEOUS RECORD (Probate Files), 1892--. 1 f.b.
Miscellaneous papers of the probate and county clerk, including petitions for letters of administration, administrators' bonds, certificates of levy, and claims against estate. Also contains Contracts and Contractors' Bonds, entry 10. Arr. chron. No index. 10 x 5 x 15. Co. clk.'s off., 1st fl.
123. J. B. GLASS ASSIGNMENT, 1866--. 1 f.b.
Affidavits of claims against the J. B. Glass estate, insolvent, showing names of claimant and estate, nature and amount of claim, and date filed. Arr. chron. No index. 10 x 5 x 15. Co. clk.'s off., 1st fl.

Probate Business

Wills, Bonds and Letters (See
also entry 162.)

124. RECORD OF WILLS, 1869--. 6 v. (B-G).
Copies of wills with petitions for record, proof of death and will, with oath of executor, showing names of deceased, heirs, and executor; description and value of property, notes and annuities, and dates and terms of will. Arr. chron. Indexed alph. by name of deceased. 1869-1917, hdw. on pr. fm.; 1918--, typed. 250 p. 18 x 13 x 3. Co. clk.'s off., 1st fl.

125. WILLS, 1866. 1 f.b.

Wills filed for probate in county court, showing names of deceased and heirs, list of property and value, date filed, date of will, and amount willed to each heir. Arr. chron. No index. 10 x 5 x 15. Co. clk.'s off., 1st fl.

126. ADMINISTRATORS' BONDS AND LETTERS, 1867--. 6 v. (C-H).

Copies of petitions for appointment of administrator, including oaths, bonds, and letters of administration, showing names of petitioner, estate, principal, and sureties, dates of petition, bond, and letters, amount and terms of bond, and signature of clerk. Arr. chron. Indexed alph. by name of administrator. Hdw. on pr. fm. 290 p. 18 x 13 x 3. Co. clk.'s off., 1st fl.

127. EXECUTORS' RECORD, 1869--. 5 v. (B-F).

Record of petitions for appointment of executor and appraisers of estates, including executor's bond, oath, and letters testamentary, showing names of executor, petitioner, appraiser, estate, and bondsmen, dates of petition, bond, letters, and appraisement, terms and amount of bond, and signature of clerk. Arr. chron. Indexed alph. by name of executor. 1869-1934, hdw. on pr. fm.; 1935--, typed on pr. fm. 250 p. 18 x 13 x 3. Co. clk.'s off., 1st fl.

128. GUARDIANS' RECORD, 1858--. 5 v. (A-E).

Record of petitions for appointment of guardian of minor, and guardian's bond and letters, showing names of minor, guardian, petitioner, and bondsmen, date and amount of bond, and orders of court. Also contains Report Record (Estate of Deceased), 1904--, entry 144. Arr. chron. Indexed alph. by name of minor. Hdw. on pr. fm. 300 p. 18 x 13 x 3. Co. clk.'s off., 1st fl.

129. GUARDIANS' (Bonds and Letters), 1841--. 38 f.b.

Original papers in the appointment of guardians, including petitions, oaths, bonds, letters of appointment, and orders of discharge. Arr. chron. For index, see entry 117. 1841-1902, hdw. on pr. fm.; 1903--, hdw. and typed on pr. fm. 11 x 4 x 14. Co. clk.'s off., 1st fl.

130. CONSERVATORS' RECORD, 1905--. 2 v. (D, E).

1874-- also in Insane and Conservators' Record, entry 131.

Transcripts of petitions for appointment of conservator, oaths, bonds, and letters of appointment, showing names of estate, petitioner, conservator, and bondsmen, dates of letters, bond, and petition, terms and amount of bond, and orders of court. Arr. chron. Indexed alph. by name of conservator. Hdw. on pr. fm. 100 p. 18 x 13 x 3. Co. clk.'s off., 1st fl.

131. INSANE AND CONSERVATORS' RECORD, 1874--. 2 v.

(A, 1874-1909; A, 1910--).

Transcripts of petitions for appointment of conservator, including oaths, bonds, and letters of appointment, showing names of conservator, incompetent, petitioner, and bondsman, amount and terms of bond, orders of court, and dates of all instruments; also contains reports of findings of insanity commission prior to 1894. Conservators' Record also kept separately subsequent to 1904, entry 130. Arr. chron. Indexed alph. by name of defendant. Hdw. on pr. fm. 130 p. 18 x 13 x 2. Co. clk.'s off., 1st fl.

132. CONSERVATORS' (Documents), 1890--. 3 f.b.
Original papers in appointment of conservators, including petitions, oaths, bonds, and letters; also conservators' reports and orders of discharge. Arr. chron. No index. 10 x 5 x 15. Co. clk.'s off., 1st fl.

133. BOND RECORD (Sale of Real Estate), 1895--. 1 v. (A).
Transcript of administrators' bonds for sale of real estate, showing names of estate, administrator, and sureties, date of term, amount, date, and terms of bond, certified statement, and signature of county judge. Arr. chron. Indexed alph. by name of estate. Hdw. on pr. fm. 316 p. 18 x 13 x 3. Co. clk.'s off., 1st fl.

134. MISCELLANEOUS PROBATE RECORD, 1880--. 2 v. (A, B).
Copies of petitions, bonds, and letters of administration with will annexed, appointment of appraisers, letters, bonds, and petitions for appointment of administrators de bonis non, and petition for additional bond and administrator's bond to collect, showing names of estate, appraisers, and administrator, dates of wills, letters, bonds, petitions and appointments, and amount and terms of bond. Arr. chron. Indexed alph. by name of estate. Hdw. on pr. fm. 194 p. 18 x 13 x 3. Co. clk.'s off., 1st fl.

Inventories and
Appraisements

135. INVENTORY RECORD, 1870--. 8 v. (B-I).
Inventory of estates in probate, showing date, names of estate and appraiser, description of real and chattel property, statement of notes, accounts, value and soundness. Arr. chron. Indexed alph. by name of estate. Hdw. on pr. fm. 290 p. 18 x 13 x 3. Co. clk.'s off., 1st fl.

136. APPRAISEMENT RECORD, 1871--. 7 v. (B-H).
Statements of administrator of estates in probate, with warrant to appraiser, appraiser's estimate, bill and oath, showing names of deceased, heirs, appraiser, and administrator, description and value of property, and date. Arr. chron. Indexed alph. by name of estate. Hdw. on pr. fm. 280 p. 18 x 13 x 3. Co. clk.'s off., 1st fl.

137. COPARTNERSHIP INVENTORY APPRAISAL RECORD, 1875--. 2 v. (A, B).
Record of inventories of copartnership property of estates in probate, showing description of real estate, chattel property, list of notes and accounts, value, name of estate, and date. Arr. chron. Indexed alph. by name of estate. Hdw. on pr. fm. 428 p. 13 x 13 x 3. Co. clk.'s off., 1st fl.

138. GUARDIANS' INVENTORY RECORD, 1879--. 2 v. (1, 2).
Record of inventory of estates of minor heirs in probate, showing description of real and personal property, value, probable rental, annuities and credits, by whom owed, and amount of interest. Arr. chron. Indexed alph. by name of guardian. Hdw. on pr. fm. 128 p. 16 x 13 x 1 $\frac{1}{2}$. Co. clk.'s off., 1st fl.

Widows' Relinquishment
and Selection

139. WIDOWS' RELINQUISHMENT AND SELECTION, 1893--. 2 v. (A, B).
Petitions for appraisement of estate in probate, and copies of widows' relinquishments and selections, showing names of estate, petitioner, appraiser and widow, itemized statement of real and chattel property, notes and account value, itemized statement of property selected by widow, and date. Arr. chron. Indexed alph. by name of estate. Hdw. on pr. fm. 584 p., 230 p.; 18 x 13 x 3, 15 x 12 x 1. Co. clk.'s off., 1st fl.

Petitions, Decrees,
Reports of Sale

140. SALE OF REAL ESTATE, 1876--. 4 v. (C, 1-3).
Petitions to and orders of the probate court to sell real estate to pay debt of estates in probate, showing names of estate, petitioner, and purchaser, list of realty sold, amount paid, and a statement of true bill by administrator or executor. Arr. chron. Indexed alph. by name of estate. Hdw. on pr. fm. 525 p. 18 x 13 x 2. Co. clk.'s off., 1st fl.

141. PUBLIC SALE RECORD, 1869--. 3 v. (B-D).
Copies of sale bills of personal property of estates, petitions to sell personal property, and inventory of property, showing names of estate and petitioner, date of petition, itemized statement of real and chattel property value, date of sale, to whom sold, and amount received. Arr. chron. Indexed alph. by name of estate. Hdw. on pr. fm. 230 p. 18 x 13 x 3. Co. clk.'s off., 1st fl.

142. PRIVATE SALE RECORD (Personal Property), 1892--. 3 v. (1-3).
Record of petitions and court orders to sell personal property at private sale, showing names of estate and petitioner, date of petition and sale, list of articles sold, to whom sold, and date and amount received. Arr. chron. Indexed alph. by name of estate. Hdw. on pr. fm. 290 p. 18 x 13 x 3. Co. clk.'s off., 1st fl.

Reports, Current and
Final Accounts

143. ESTATE LEDGER, 1859--. 7 v. (A-C, C-F).
Ledger of accounts of administrators, showing date of death, location of letters, names of estate, executor, widow, heirs, administrator, and sureties amount of bond, inventory of property, notes and accounts, and record of claims allowed. Arr. chron. Indexed alph. by name of estate. Hdw. under pr. hdgs. 269 p. 18 x 13 x 3. Co. clk.'s off., 1st fl.

144. REPORT RECORD (Estate of Deceased), 1884-1903. 1 v. 1904-- in Guardian's Record, entry 128.
Reports of decedents' estates, showing names of deceased and guardian, itemized receipts and disbursements, term date, amount and from whom received, amount and to whom paid, balance on hand, and balance due court. Arr. chron. Indexed alph. by name of deceased. Hdw. on pr. fm. 300 p. 15 x 12 x 3 $\frac{1}{2}$. Co. clk.'s off., 1st fl.

145. CONSERVATORS' REPORTS, 1927--. 1 f.b.
Conservators' statements showing names of estate and conservator, dates of appointment and report, list of property and value, money on hand, and amounts received and paid. Arr. chron. No index. Hdw. and hdw. on pr. fm., interspersed. 10 x 5 x 15. Co. clk.'s off., 1st fl.

Dockets

Court Proceedings

146. PROBATE DOCKET, 1886--. 2 v. (1, 2).
Probate court docket showing name of estate, nature of case, date, and order of court. Arr. chron. No index. Hdw. under pr. hdgs. 290 p. 18 x 13 x 3. Co. clk.'s off., 1st fl.

147. PROBATE JUDGMENT DOCKET, 1850--. 8 v. (A-H).
Docket of judgments entered in probate court cases, showing claim number, date filed, names of claimant and estate, nature of claim, amount, memorandum as summons and notices, and judgment of court. Arr. alph. by name of person against whom judgment is entered. Hdw. under pr. hdgs. 320 p. 18 x 13 x 2. Co. clk.'s off., 1st fl.

148. INDEX TO JUDGMENT DOCKET, 1850--. 3 v. (A-C).
Index to Probate Judgment Docket, showing names of claimants and estates, docket and page number. Arr. alph. by names of plaintiff and defendant. Hdw. under pr. hdgs. 300 p. 13 x 13 x 2. Co. clk.'s off., 1st fl.

Probate Business

149. GUARDIANS' ESTATE DOCKET, 1883--. 1 v. (1).
Guardians' docket of estate matters, showing names of ward, guardian, and estate, date of letters and inventory, inventory of property, amount received and paid, and remarks. Arr. chron. Indexed alph. by name of guardian. Hdw. under pr. hdgs. 215 p. 15 x 12 x 3. Co. clk.'s off., 1st fl.

150. PROBATE ESTATE DOCKET, 1859-71. 1 v. 1872-- in Judges Docket, entry 105.
Docket of proceedings on estates in probate, showing names of deceased, sureties, administrator, widow, and heirs, date of letters, amount of bond, date inventory and sale bill filed, amount of sale, and remarks. Arr. chron. Indexed alph. by name of estate. Hdw. under pr. hdgs. 289 p. 18 x 13 x 2. Co. clk.'s off., 1st fl.

Fee Books

151. PROBATE FEE BOOK, 1887--. 6 v. (1, 2, 4-7).
Probate fee book showing names of deceased, administrator or executor, itemized statement of clerk's costs, fees, court costs, and dates. Arr. chron. No index. Hdw. under pr. hdgs. 425 p. 15 x 12 x 3. Co. clk.'s off., 1st fl.

152. GUARDIANS' AND CONSERVATORS' FEE BOOK, 1909--. 2 v. (1, 2).
Ledger of guardians' and conservators' fees, showing date, items of cost, total earned, total for year, date of receipts, and reports to county court.

VI. CIRCUIT COURT

The circuit court has original jurisdiction of all causes of law and equity, and acts as a court of appeal in probate matters and causes cognizable by the county court and justices of the peace.¹ In addition, it is one of the courts capable, according to Federal statutes, of having naturalization jurisdiction.²

Originally, the circuit courts in Illinois were held in the several counties respectively by the chief justice and associate justices of the supreme court. In accordance with the constitution of 1818, the general assembly by law prescribed the manner and terms of the circuit court in Brown and each county of the state.³ The second constitution greatly changed this judicial arrangement. It divided the state into nine judicial districts, in each of which a circuit judge was elected by the voters thereof.⁴ The constitution of 1870 altered the circuit districts and established population requirements for counties that may comprise a circuit.

Thus, in Brown County the circuit courts were held by a justice of the supreme court from its formation in 1839 until 1848. From the latter date until the present the circuit judge has been an elected officer of the judicial district electorate of which Brown County is a part.

The clerk of the circuit court was first appointed by the circuit court in Brown County.⁵ He was required to keep, and preserve complete records of all proceedings and determinations of the court of which he was clerk.⁶

The constitution of 1848 made the clerk of the circuit court an elected officer of the county electorate with a four-year term.

-
1. Constitution of 1870, Art. VI, sec. 12.
 2. U.S.S.1302, p. 153; U.S.R.S.1874, p. 378; U.S.S.1906, p. 596; U.S.S.1913, p. 737; U.S.S.1926, p. 709.
 3. Constitution of 1818, Art. IV, sec. 4; R.L.1829; R.L.1833, p. 151; R.S.1845, p. 143.
 4. Constitution of 1848, Art. V, sec. 7.
 5. R.L.1829 and R.L.1833, p. 152; R.S.1845, p. 146,147.
 6. Ibid.
 7. Constitution of 1848, Art. V, sec. 29; Constitution of 1870, Art. X, sec. 8.

In effecting the court's orders, the clerk necessarily maintains non-statutory records in addition to the following which he keeps for the court:

1. Books of record of the proceedings and judgments of the court, with alphabetical indexes by parties. Proceedings are recorded at length only in cases designated by law, or when the court, at the motion and assumption of expense by one of the parties, so orders. In practice, the court record has been broken down from an early date into segregated types of proceedings and judgments.
2. "Plaintiff-Defendant Index to Court Records" and "Defendant-Plaintiff Index to Court Records." Intended to be separate records, but frequently combined in a single volume with the two indexes segregated in each volume.
3. A general docket, in which all suits are entered in the order they are commenced.
4. A judgment and execution docket, containing a column for the entry of satisfaction or other disposition. In practice an execution is frequently set up independently, highlighting the information for which the extra column of the larger record was intended.
5. Additional dockets, designated as the clerk's, judge's, and bar docket. In practice the bar docket has tended to drop out of use.
6. A fee book in which costs and fees are to be entered under the proper title of the case. In practice, separate series of volumes are maintained under such titles of causes.
7. Transcripts of proceedings in appeals from justices' courts and foreign courts, dockets thereof, and transcripts of judgments for liens, etc., from the former.
8. Naturalization proceedings, from petitions to final certificates. Federal statutes allow circuit court to exercise jurisdiction.
9. Reports to the court from its designated masters in chancery, the state's attorney, and the coroner's inquest juries.
10. Jury venires, summonses, certificates, etc.
11. Original documents used in court hearings and determinations. These documents are of particular importance because in a large number of cases the complete proceedings are not spread upon the court record.¹

1. R.S.1845, p. 57,323-26,414,418,419,518; L.1865, p. 79,80; L.1871-72, p. 325; R.S.1874, p. 262,263,285-87,339; L.1877, p. 77; L.1895, p. 206,210,211,217; L.1933, p. 378-80; U.S.S.1802, p. 153-55; U.S.R.S.1874, p. 378-80; U.S.S.1806, p. 597-607; U.S.S.1926, p. 709,710; U.S.S.1929, p. 154,155.

Proceedings of Court

- 153. INDEX TO COURT RECORDS, PLAINTIFF-DEFENDANT, 1857--.
4 v. (1 not lettered, B, plaintiff; 1 not lettered, B, defendant).

Index to common law and chancery records and files, and criminal files prior to 1873, showing case number, names of plaintiff and defendant, kind of action, dates commenced and disposed of, satisfaction, amount, and date of judgment, book and page number of record, and fee book and page numbers. Arr. alph. by names of plaintiff and defendant. Hdw. under pr. hdgs. 550 p. 18 x 12 x 3. Cir. clk.'s off., 1st fl.

- 154. COMMON LAW, 1857--. 72 f.b.

File of documents in common law cases, including summonses, subpoenas, affidavits of witnesses, court orders, defendants' answers, writs of habeas corpus, instructions to jury, stipulations, pleas, replications, motions for new trial, proof defendants refused instructions, challenges to the array of jurors, verdicts, praecipe for record, and venire for jurors. Arr. by document nos., 1-6082. 1837-56, no index; for index, 1857--, see entry 153. 10 $\frac{1}{2}$ x 5 x 14. Cir. clk.'s off., 1st fl.

- 155. COMMON LAW RECORDS (Circuit Court), 1840--. 11 v. (1-11).

Record of common law cases, showing execution and case number, term of court, nature of case, proceedings of court, names of judge, plaintiff, defendant, and attorneys, date, amount of judgment, attorneys' fees, and jury lists. Arr. chron. 1840-56, no index; for index, 1857--, see entry 153. 1840-70, hdw.; 1871-1935, hdw. on pr. fm.; 1936--, typed on pr. fm. 600 p. 18 x 12 x 3. Cir. clk.'s off., 1st fl.

- 156. CHANCERY, 1840--. 93 f.b.

Summonses, citations, petitions, affidavits, subpoenas, orders, defendants' answers, writs of habeas corpus, bills for divorce, suits, final orders of reversal, instructions to jury, stipulations, and additional counts and declarations, showing date, case number, names of plaintiff and defendant, nature of case, and court orders. Arr. by document nos., 1-3045. 1840-56, no index; for index, 1857--, see entry 153. 10 $\frac{1}{2}$ x 5 x 14. Cir. clk.'s off., 1st fl.

- 157. CHANCERY RECORD, 1840--. 20 v. (1-20).

Record of chancery cases in circuit court, showing names of plaintiff, defendant, judge, attorneys, and clerk, nature of action, proceedings of court, date, cause of action, master in chancery reports, and jury lists. Arr. chron. 1840-56, no index; for index, 1857--, see entry 153. 1840-1920, hdw.; 1921--, typed. 500 p. 18 x 12 x 3. Cir. clk.'s off., 1st fl.

- 158. PEOPLES INDEX (General Index of Records and Files of Circuit Court), 1873--. 1 v.

Index to criminal records and files of circuit court, showing names of plaintiff and defendant, case, docket, execution, book and page, and file numbers, and remarks. Arr. alph. by name of plaintiff. Hdw. under pr. hdgs. 250 p. 18 x 12 x 2. Cir. clk.'s off., 1st fl.

159. CRIMINAL, 1840--. 29 f.b.

Files of criminal cases, including warrants for arrest, complaints before justices, bail records, indictments, instructions to petit jury, petit jury verdicts, and all orders of court. showing names of parties, nature of charge, case number, and dates. Arr. by document nos., 1-1770. Arr. chron. 1840-56, no index; for index, 1857-72, see entry 153; for index, 1873--, see entry 158. 10 $\frac{1}{2}$ x 5 x 14. Cir. clk.'s off., 1st fl.

160. CRIMINAL RECORD, 1873--. 4 v. (1 not numbered, 2-4).

Record of criminal cases, showing names of plaintiff, defendant, clerk, judge, and attorneys, date, case number, cause for action, indictment, and court orders. Includes probation reports, state's attorney's reports, and jury lists. Arr. chron. For index, see entry 158. 1873-87, hdw.; 1888-1915, hdw. on pr. fm.; 1916--, typed on pr. fm. 300 p. 13 $\frac{1}{2}$ x 11 $\frac{1}{2}$ x 2 $\frac{1}{2}$. Cir. clk.'s off., 1st fl.

161. RECORD OF DEFAULT, 1859--. 1 v.

Record of defaulted notes, showing names of plaintiff, defendant, judge, clerk, and sheriff, nature of charge or complaint, and date and amount of note. Arr. chron. No index. Hdw. under pr. hdgs. 600 p. 16 x 12x 3. Cir. clk.'s off., 1st fl.

162. FORECLOSURE RECORDS, 1830--. In Miscellaneous Records, entry 73.

Record of proceedings in foreclosure on property, including affidavits of witnesses, leases, agreements, contracts, master's reports of sale and distribution, certificates of publication, assignment of judgments, copies of wills, bonds, and letters testamentary used as evidence, certificates of mailing notices to non-residents, and court decrees of foreclosure.

163. EXECUTIONS, 1840--. 15 f.b.

Executions on judgments, showing names of plaintiff and defendant, executions on debts, amount, date of judgment, date and number of execution, and by whom served. Arr. by document no. No index. 10 $\frac{1}{2}$ x 5 x 14. Cir. clk.'s off., 1st fl.

164. COMPLETE RECORD, 1837-70. 1 v. Discontinued.

Complete record of common law, criminal, and chancery cases, showing names of plaintiff and defendant, judges, jurors, and attorneys, action, date, minutes of case, and final disposition. Arr. chron. No index. Hdw. 450 p. 16 x 12 x 2. Cir. clk.'s off., 1st fl.

Transcripts

165. RECORD (Transcript from Justice of Peace), 1845--.

5 v. (A-D, 1845--; 1 not lettered 1847-75).

Transcripts from records of the justice of peace court proceedings, showing date, nature of charge, names of plaintiff, defendant, and justice of peace, and final disposition of case. Arr. chron. No index. Hdw. 450 p. 15 x 12 x 2. Cir. clk.'s off., 1st fl.

Dockets

166. JUDGE'S DOCKET, 1844--. 23 v. Title varies: Court Docket, Docket of civil, criminal, and common law cases, showing names of plaintiff, defendant, attorneys, and judge, date, case number, action, and docket entries. Arr. chron. No index. Hdw. under pr. hdgs. 350 p. 16 x 12 x 2. Cir. clk.'s off., 1st fl.

167. CLERK'S DOCKET, 1861-98. 9 v. Discontinued. Clerk's docket of cases in circuit court, showing names of plaintiff, defendant, attorneys, judge, and clerk, type of action, proceedings of case, orders of court, and dates. Arr. chron. No index. Hdw. under pr. hdgs. 150 p. 18 x 12 x 1. Cir. clk.'s off., 1st fl.

168. BAR DOCKET, 1848-80. 6 v. Discontinued. Docket of cases in circuit court, showing names of plaintiff, defendant, and attorneys, and date and cause of action. Arr. chron. No index. 1848-52, hdw.; 1853-80, hdw. under pr. hdgs. 150 p. 16 x 10 x 1. Cir. clk.'s off., 1st fl.

169. JUDGMENT DOCKET, 1840--. 6 v. (1-6). Docket of judgments by confession and default, showing names of plaintiff and defendant, date, amount of debt or damages, action taken, and book and page of record. Arr. alph. by name of person against whom judgment is entered. No index. 1840-78, hdw.; 1879--, hdw. on pr. fm. Binding poor. 300 p. 16 x 12 x 2. Cir. clk.'s off., 1st fl.

170. EXECUTION DOCKET, 1840--. 5 v. (1-5). Docket of executions entered, showing names of plaintiff, defendant, and sheriff, date, number, amount of judgment, costs, and remarks. Arr. alph. by name of person against whom judgment is entered. No index. 1840-56, hdw.; 1857--, hdw. on pr. fm. 450 p. 18 x 12 x 2 $\frac{1}{2}$. Cir. clk.'s off., 1st fl.

171. DOCKET OF MECHANIC'S LIENS, 1887--. 1 v. (A). Docket of mechanic's liens, showing lien number, date, names of persons by whom and against whom lien is filed, legal description of property charged with lien, nature and amount of claim and fees, satisfaction, and remarks. Arr. chron. Indexed alph. by name of defendant. Hdw. on pr. fm. 300 p. 18 x 12 x 3. Cir. clk.'s off., 1st fl.

Fee Books

172. FEE BOOK, 1841--. 25 v. (1-25). Book of fees, showing names of plaintiff, defendant, and witnesses, amount of costs in suit, items of fees, and date paid. Arr. chron. 1841-56, no index; for index, 1857--, see entry 153. Hdw. under pr. hdgs. 375 p. 13 $\frac{1}{2}$ x 11 $\frac{1}{2}$ x 2 $\frac{1}{2}$. Cir. clk.'s off., 1st fl.

Circuit Court - Reports to the
Court; Bonds; Naturalization;
Receipts and Expenditures

(173-178)

Reports to the Court

173. RECORD OF INQUISITION, 1886--. 2 f.b.

Coroner's inquisition papers, showing names of deceased and coroner, proceedings of trial, verdict of jury, date and place of inquest, and filing date. Arr. chron. No index. 11 x 4 x 14, 10 x 5 x 13. Cir. clk.'s off., 1st fl.

Bonds

174. RECOGNIZANCE RECORD, 1868--. 1 v. (A).

Copies of recognizance and bail bonds, showing names of defendant, bondsman, judge, clerk, state's attorney, and sheriff, nature of charge, amount and date of bond, and date and place of appearance. Arr. chron. No index. Hdw. on pr. fm. 450 p. 16 x 12 x 2. Cir. clk.'s off., 1st fl.

175. BOND REGISTER, 1922--. 1 v. (1).

Register of official bonds and court bonds, including replevin, partition, probation, and power of attorney, showing names of principal, sureties, and recorder, date, amount, and terms of bond, and dates of expiration and recording. Arr. chron. Indexed alph. by name of principal. Typed. 500 p. 18 x 12 x 2 $\frac{1}{2}$. Cir. clk.'s off., 1st fl.

For prior records, see entry 69.

Naturalization

(See also entries 112, 113.)

176. NATURALIZATION RECORD, INTENTION, 1857-90. 1 v. Discontinued.

Declaration of intention to become citizen, showing names of alien and clerk, date, renunciation of allegiance to foreign power, and attestation by clerk. Arr. chron. Indexed alph. by name of alien. Hdw. on pr. fm. 250 p. 16 x 12 x 1 $\frac{1}{2}$. Cir. clk.'s off., 1st fl.

177. NATURALIZATION RECORD, FINAL CERTIFICATE, 1857-74. 1 v.
Discontinued.

Copies of final certificates of naturalization, showing name and place of birth of alien, certificate number, names of presiding judge and witnesses, date of application, oath of allegiance, and name of clerk of circuit court. Arr. chron. No index. Hdw. on pr. fm. 250 p. 16 x 12 x 1 $\frac{1}{2}$. Cir. clk.'s off., 1st fl.

Receipts and Expenditures

178. CIRCUIT COURT DAY BOOK (Cash Book), 1931--. 2 v.

Prior records are missing and cannot be located.

Clerk's daily record of receipts and expenditures, showing by and from whom received, title of account, fee book and page of entry, and how paid. Arr. chron. No index. Hdw. under pr. hdgs. 350 p. 18 x 12 x 2. Cir. clk.'s off., 1st fl.

VII. PROBATION OFFICER

The office of probation officer for adult probationers was first established in Brown County in 1911. In accordance with the legislation of that year,¹ courts exercising criminal or quasi-criminal jurisdiction are given power to deal with adult or juvenile offenders of specified offenses. In the performance of his prescribed duties, the probation officer serves both the county and circuit courts, although appointed by the latter. He is required to give bond as determined by the circuit court in a sum not exceeding \$5,000.00, and is subject to the rules of and removal by the appointing court. Brown County has one probation officer under the legal allowance of one for each 50,000, or fraction thereof, of population.

The probation officer is compensated at a rate determined by the county board of supervisors. In the performance of his duties, he is required to: investigate cases of defendants requesting probation; notify the court of previous conviction or probation; make reports to the respective courts; keep a set of records as described below; and take charge of and watch over all persons placed on probation, and probationers moving from another county into his county.²

The reports made by the probation officer to the courts are kept by the clerk of the court trying the case. The courts' probation records include orders granting or refusing release on probation, probationers' bonds, the reports of probation officers noted above, and discharge of probationers.

The probation officer is required to keep complete and accurate records of investigated cases, including description of the investigated persons, the action of the court, and the subsequent history of probationers. These are private records, open to inspection only by a judge or by any probation officer pursuant to a court order, and may not be examined by the public.³ Consequently they were not surveyed by the current historical records study.

For county court probation papers, see entry 96; for probation officer's reports to circuit court, see entry 160.

-
1. L.1911, p. 280,281.
 2. L.1911, p. 281,282; L.1915, p. 381,382.
 3. L.1911, p. 277-84; L.1915, p. 378-84.

VIII. SHERIFF

The sheriff by constitutional provision has been an elected officer since Illinois was admitted to statehood.¹ The term originally set at two years, is now four years; bond in Brown County is required in the sum of \$10,000. The sheriff appoints one or more deputies as allowed by the rule of the circuit court.²

Essentially without change for over one hundred years, the principal duties of the sheriff are:

1. Acting as conservator of peace, with power to arrest offenders on view.
2. Attending, in person or by deputy, all courts of record in his county, obeying the order and direction of the court. These judicial courts include city courts, county courts, probate courts, and sittings of circuit and appellate courts.³
3. Serving, executing, and returning all writs, warrants, processes, orders, and decrees legally directed to him.
4. Selling real and personal property by virtue of execution or other process.
5. Having the custody and care of the courthouse and jail of the county.⁴

In the course of the multiple detailed duties included in these broad provisions, the following records occur:

1. Data of identification, criminal and stolen property.
2. Calendar of commitments to jail.
3. Receipts of delivery of prisoner in changes of venue.
4. Docket of executions.

-
1. Constitution of 1818, Art. III, sec. 11; Constitution of 1848, Art. VII, sec. 7; Constitution of 1870, Art. X, sec. 8; second amendment November 22, 1880, to the Constitution of 1870, Art. X, sec. 8; L.1819, p. 110; R.S.1874, p. 989.
 2. Constitution of 1870, Art. X, sec. 9; R.S.1374, p. 990. Compare: R.L.1827, p. 373.
 3. R.S.1845, p. 515; L.1849, p. 66; R.S.1874, p. 339,989; L.1877, p. 69; L.1881, p. 64; L.1901, p. 136; L.1931, p. 413; L.1933, p. 458.
 4. L.1819, p. 111,112,160-62,314-17,332,333; L.1821, p. 37,63,64; R.L.1827, p. 247,311,344,372,373; R.L.1829, p. 121; L.1831, p. 103, 104,106; R.L.1833, p. 574,575; L.1839, p. 10,12-14; L.1845, p. 10,19; R.S.1845, p. 133,154,515-17; R.S.1874, p. 989-91. The citations include references to duties which exceed the general outline noted.

5. "Books of Accounts." Include fees and disbursements required to be recorded by all county officers paid in whole or part by fees.
6. Copies of reports to county and circuit courts and county board.¹

Process
(See also entry 84.)

179. PROCESS DOCKET, 1875--. 4 v. (1, 1875-81; B, 2, 2, 1875--). Docket of processes served by sheriff, showing names of plaintiff, defendant, sheriff, and attorney, action, from where issued, dates received, served, and returned, by whom served, sheriff's fees, amount of fees received, date paid, and remarks. Also contains Jail Record, 1931--, entry 181. Arr. chron. Indexed alph. by title of cause. Hdw. under pr. hdgs. 200 p. 12 x 10 x 2. Sh.'s off., 1st fl.

180. SHERIFF'S EXECUTION DOCKET, 1879--. 2 v. (B, I).
Missing: 1921-29.

Docket of executions served by sheriff, showing execution number, name of defendant, dates of judgment, writ, and return, costs and fees, fees earned and received, and sheriff's return. Arr. chron. Indexed alph. by name of defendant. Hdw. under pr. hdgs. 250 p. 18 x 12 x 2. Sh.'s off., 1st fl.

Jail Records

181. JAIL RECORD, 1927-30. 1 v. 1931-- in Process Docket, entry 179. Sheriff's register of prisoners, showing dates, names of prisoners, nature of charge, by whom brought, date committed, when and how discharged, amount of fees received, and remarks. Arr. chron. Indexed alph. by name of prisoner. Hdw. under pr. hdgs. 300 p. 16 x 10 x 1 $\frac{1}{2}$. Sh.'s off., 1st fl.

1. L.1919, p. 201,317; L.1821, p. 182; R.L.1827, p. 249,273; L.1845, p. 11; R.S.1845, p. 305; R.S.1874, p. 566,991,992,1096; L.1907, p. 316-19; L.1909, p. 301; L.1921, p. 500; L.1923, p. 424; L.1929, p. 649; L.1931, p. 465; L.1933, p. 187-90.

Coroner

Fees, Receipts, Expenditures

182. SHERIFF'S FEE BOOK, 1914--. 2 v. (1, 2).

Fee book of sheriff's receipts and disbursements, showing dates received and paid out, from whom and amount received, fee book and page number, to whom paid, and check number. Arr. chron. No index. Hdw. under pr. hdgs. 250 p. 18 x 12 x 2. Sh.'s off., 1st fl.

For prior sheriff's receipts, see entry 63.

IX. CORONER

The office of coroner in Illinois counties was originally established by constitutional provision in 1818.¹ The Illinois laws require the coroner to act as a conservator of the peace, with powers equal to the sheriff's in that respect, serve as a ministerial officer of the courts in the absence or disqualification of the sheriff, and perform all the duties of the latter when the office is vacant.² In practice these duties are far less significant than the inquest function, the principal statutory duty of the coroner. Basically that procedure has hardly changed since a time antecedent to the formation of Brown County; the coroner when informed of a death resulting or appearing to have resulted from violence or casualty, summons a jury to inquire into the manner of death and its cause.³

To the custody of the clerk of the circuit court are returned the verdict of the jury, and such recognizances as may be given the coroner by witnesses whose testimony implicates any person as the unlawful slayer of the deceased.⁴ In his own office the coroner files and preserves the record of such testimony.⁵ Additionally the coroner keeps one record which he himself originates, the "inquest record." This

-
1. Under the Constitution of 1818, the tenure of office was set for two years; the term was extended under the Constitution of 1870 to four years. Constitution of 1818, Art. III, sec. 11; Constitution of 1870, Art. X, sec. 8.
 2. L.1819, p. 111,160; L.1821, p. 20-22; L.1825, p. 65,64; R.L.1827, p. 246-50,372,373,375; R.S.1845, p. 515-17; R.S.1874, p. 281,282. The office is constitutional and elective (Constitution of 1818, Art. III, sec. 11; Constitution of 1870, Art. X, sec. 8) and the term formerly two years, is now four years (second amendment, November 22, 1880, to Constitution of 1870, Art. X, sec. 8).
 3. L.1821, p. 22-24; R.S.1845, p. 517,518; R.S.1874, p. 282-84; L.1879, p. 82; L.1907, p. 213; L.1919, p. 403; L.1931, p. 388.
 4. L.1821, p. 24,25; R.S.1845, p. 518; R.S.1874, p. 284,285.
 5. L.1821, p. 25; R.S.1845, p. 518; L.1869, p. 104; R.S.1874, p. 285; L.1907, p. 213; L.1919, p. 293.

record recapitulates all the data involved in the entire inquest procedure and includes an inventory and accounting of the personal property and money of the deceased.¹

For other coroner's records, see entry 173.

183. CORONER'S RECORD, 1885--. 2 v. (1 not numbered, 2).

Record of deaths, showing name, residence, and occupation of deceased, names of jurors and witnesses, verdict of jury, description of deceased, inventory of personal effects, and disposition. Arr. chron. Indexed alph. by name of deceased. Hdw. under pr. hdgs. 20 p., 80 p.; 20 x 12 x 2, 18 x 12 x 1. 1 v. not numbered, 1885-1922, co. clk.'s off., 1st fl.; v. 2, 1923--, cor.'s off., 1st fl., cor.'s residence, 134 East Main Street.

184. VERDICT OF JURY, 1937--. 1 f.b.

Jury verdicts of coroner's inquests, showing names of deceased, coroner, jurors, and witnesses, date and place of inquest, and filing date. Arr. chron. No index. Hdw. on pr. fm. 11 x 4 x 14. Cor.'s off., 1st fl., cor.'s residence, 134 East Main Street.

X. STATE'S ATTORNEY

The duties of the state's attorney were originally performed in Brown County by a circuit attorney, an appointee of the governor. The appointed state's attorney attended each session of the circuit court in each of the counties of the circuit. He was required to commence and prosecute all actions in which the people of the state or any county within the judicial circuit were concerned.²

Under the constitution of 1848 the office became elective by the electors of the circuit.³ Following the creation of the county court under the constitution of 1848 and the legislation of 1849, the duties of the state's attorney expanded to include services in this court for actions involving the state or county. The constitution of 1870 made the office an elective one in and for each county.⁴ The state's attorney's four-year term has remained the same from the creation of his office until the present.⁵ In each instance of appointment and election he has been commissioned by the governor.

-
1. L.1821, p. 26; L.1850, p. 104; R.S.1874, p. 285,286.
 2. L.1819, p. 178,204; R.L.1827, p. 79; R.L.1833, p. 98; R.S.1845, p. 76.
 3. Constitution of 1848, Art. V, sec. 21,28.
 4. Constitution of 1870, Art. VI, sec. 22; L.1871-72, p. 189; R.S.1874, p. 172.
 5. R.L.1827, p. 79; R.L.1833, p. 98; Constitution of 1848, Art. V, sec. 21; Constitution of 1870, Art. VI, sec. 22.

The duties of this office are:

1. To commence and prosecute all actions, suits, indictments, and prosecutions, civil or criminal, in any court of record in his county, in which the people of the state or county may be concerned.
2. To prosecute all forfeited bonds and recognizances and all actions and proceedings for the recovery of debts, revenues, moneys, fines, penalties, and forfeitures accruing to the state or his county, or to any school district in his county; also to prosecute all suits in his county against railroads or transportation companies, which may be prosecuted in the name of the people of the State of Illinois.
3. To commence and prosecute all actions and proceedings brought up by any county officer in his official capacity.
4. To defend all actions and proceedings brought against his county, or against any county or state officer in his official capacity, within his county.
5. To attend the examination of all persons brought before any judge on habeas corpus, where the prosecution is in his county.
6. To attend before justices of the peace and prosecute charges of felony or misdemeanor for which the offender is required to be recognized and to appear before a court of record, when in his power to do so.
7. To give his opinion, without fee or reward, to any county officer and to justices of the peace in his county, upon any question of law relating to any criminal or other matter, in which the people or the county may be concerned.
8. To assist the attorney general whenever it may be necessary, and in cases of appeal or writ of error from his county to the supreme court, to which it is the duty of the attorney general to attend, he shall, a reasonable time before the trial of such appeal or writ of error, furnish the attorney general with a brief, showing the nature of the case and the questions involved.
9. To pay all moneys received by him in trust, without delay, to the officer who by law is entitled to the custody thereof.
10. To perform such other and further duties as may from time to time be enjoined on him by law.
11. To appear in all proceedings by collectors of taxes against delinquent taxpayers for judgment to sell real estate, and see that all the necessary preliminary steps have been legally taken to make the judgment legal and binding.
12. To enforce the collection of all fines, forfeitures and penalties imposed or incurred in courts of record in his county. The state's attorney reports on the collection of these moneys to the circuit court.

In Brown County the only records appearing for this office are the state's attorney's reports to the circuit court, see entry 160.

1. R.S.1845, p. 78; R.S.1874, p. 172.

2. L.1909, p. 342; L.1911-12, p. 88; L.1929, p. 474.

XI. SUPERVISOR OF ASSESSMENTS

The assessment function in Illinois counties has been controlled by various statutory provisions. Early laws fixed the value of the several categories of real and personal property, leaving to the assessing officer only limited discretion. Principally, the assessors annually revise the assessment of property and correct the same upon complaint and quadrennially assess real and personal property.

The original provision for assessments delegated this function to a treasurer appointed by the county commissioners' court to serve as ex-officio assessor.¹ In 1839, at the formation of Brown County, provision was made for an assessor to be appointed by the county commissioners' court.² Then from 1845 to 1854 the county treasurer became ex-officio county assessor.³ After the election of the township organization plan in Brown County in the latter year, until the present day, the township assessment officers have been responsible for the county assessments in their respective townships.⁴ Between 1854 and 1898 the township assessors reported their assessments to the county clerk.⁵ Finally, in 1898 the legislature created the ex-officio office of supervisor of assessments, filled by the county treasurer.⁶ This latter provision remains in effect today.

The supervisor of assessments functions primarily in a supervisory capacity over township assessors who make their reports to him. The records of his office are mainly the original schedules of the different categories of assessed property upon which reports in other form are made to the county clerk. Provision is made in only a few cases for the permanent custody of these records in this office.⁷

No independent records are kept for the Supervisor of Assessments in Brown County.

XII. BOARD OF REVIEW

The duties of the board of review are essentially to assess, equalize, review, or revise the assessment of property. The function of the board of review prior to 1898, was performed by the county board and town boards of

-
1. L.1819, p. 315,319; L.1825, p. 173.
 2. L.1839, p. 4.
 3. L.1845, p. 5; L.1849, p. 127; L.1853, p. 46.
 4. L.1853, p. 7; L.1871-72, p. 19; L.1879, p. 243; L.1881, p. 133; L.1893, p. 73,74; L.1898, p. 37; L.1903, p. 295,296; L.1923, p. 492; L.1932, p. 66.
 5. L.1853, p. 16; L.1855, p. 37; L.1893, p. 73.
 6. L.1898, p. 37; L.1903, p. 295,296; L.1923, p. 492; L.1932, p. 66.
 7. L.1872, p. 16; L.1898, p. 50; L.1915, p. 568.

review. Early legislation provided for appeals from assessments to the county board.¹ The board was granted power to review and revise the assessment of real and personal property.

The legislature in 1871, provided that town boards could annually revise the assessment of towns. The county board was to meet annually to:

1. Assess omitted property.
2. Review assessments upon complaint.
3. Hear and determine the application of any person assessed on property claimed to be exempt from taxation.
4. Ascertain whether the valuations in one town or district bear just relation to those of all other towns or districts in the county.²

In 1898, this authority was transferred to the newly created board of review.³ The board of review was composed of the chairman of the county board and was ex-officio chairman of the board of review, and the county clerk, and a citizen appointed by the judge.⁴

For other taxation records, see entries 15-30, 121, 187-193.

185. BOARD OF REVIEW, 1898--. 1 v.

Transcripts of minutes of board of review, showing amount of assessment, date appraised value, and names of complainant and members of board. Arr. chron. d. indexed alph. by name of complainant. Hdw. 450 p. 18 x 13 x 3. Co. clk.'s off. 1st fl.

186. COMPLAINT DOCKET, 1899-1903. 1 v. Discontinued.

Board of review docket of tax complaints, showing complaint number, date presented, name of complainant, legal description of property, value as fixed by assessor and as alleged by complainant, and findings and orders of board of review. Arr. by complaint no. No index. Hdw. under pr. hdgs. 150 p. 18 x 13 x 3. Co. clk.'s off., 1st fl.

For records of complaints subsequent to 1903, see entry 185.

XIII. COUNTY COLLECTOR

The collection duties were originally performed in Brown County by the county collector appointed by the county commissioners' court.⁵ In 1834 the sheriff became ex-officio county collector of taxes.⁶ Then in 1854 follow-

1. Appeals were made to the county commissioners' court. L.1839, p. 7; L.1840, p. 239; L.1845, p. 8; R.L.1845, p. 441. From 1840 to 1854 appeals were made to the county court (county board). L.1853, p. 46. Then from 1854 to 1898 the appeals were to the county board of supervisors. L.1848, p. 207,208; L.1871, p. 22.
 2. L.1871, p. 23.
 3. L.1898, p. 54; L.1923, p. 496; L.1932, p. 75.
 4. L.1898, p. 54.
 5. L.1839, p. 7.

ing the election of the township government plan, the county treasurer became ex-officio county collector.¹

The principal function of this office is the collection of state, county, and other public corporation taxes as provided by law. The books used by the collector in effecting this procedure are prepared by the county clerk on the basis of the assessment and levy of taxes. The county clerk keeps an account with the collector charging him with the amount of the county tax placed in his hands for collection, and with the amount received by him from tax sales and redemptions. The county collector reports on the payment of taxes and the failure thereof to the county clerk and settles annually with the county board of supervisors. Also, the collector annually pays into the state treasury the taxes collected and payable to the state treasury.²

The county collector is required by statute to keep his records as collector of taxes separate from his records as county treasurer.³ The records of the collector's office are principally the collector's books, duplicates of receipts issued to taxpayers, township collectors' returns, state auditor's and county collector's certificates of the county collector's reports to the county clerk.⁴

For other taxation records, see entries 15-30, 121, 185, 186.

Collection and Settlement

187. RECORD OF SUMMARY OF TAXES, 1906--. 3 v. (1-3). Reports to county collector from township and town collectors, containing a summary of taxes, showing names of township and collector, and dates of oath and return. Arr. chron. No index. Hdw. under pr. hdgs. 200 p. 16 x 12 x 2. Treas.'s off., 1st fl., Farmers' State Bank Building.

188. TREASURER'S SETTLEMENT OF TOWN OFFICERS, 1879-1913. 2 v. (A, 1 not lettered). Missing: 1893-95. Discontinued. Ledger of town collectors' accounts with county collector, showing taxes of state, county, town, school district, district road and corporation, and arrearage tax, delinquent land and personal taxes, and commission on taxes collected, errors on taxes, receipts for taxes, and cash to balance. Arr. chron. No index. Hdw. under pr. hdgs. 148 p. 16 x 10 x 2. Co. clk.'s off., 1st fl.

For other reports of town collector to county collector, see entry 189.

189. SETTLEMENT OF TOWN OFFICERS, 1881--. 3 v. Report of township collectors' settlements with county collector, showing name of town collector, date, from whom received, and amount. Arr. alph. by name of twp. collector. No index. Hdw. under pr. hdgs. 275 p. 16 x 11 x 2. 1 v., 1861-96, off. of supt. of hwy., 2nd fl.; 2 v., 1897--, co. clk.'s off., 1st fl.

1. L.1849, p. 204; L.1851, p. 53; L.1871, p. 664,
2. L.1819, p. 317; R.L.1827, p. 373; L.1839, p. 8-12; L.1840, p. 3; L.1845, p. 9,11; L.1853, p. 66,77,111; L.1871-72, p. 32; L.1873-74, p. 51; L.1911, p. 485; L.1917, p. 664; L.1919, p. 765; L.1930, sp. sess., p. 59; L.1931, p. 747; L.1933, p. 930; R.L.1935, p. 1149.
3. L.1917, p. 664; L.1930; sp. sess., p. 59; R.L.1935, p. 1149.
4. Ibid. 2.

190. COLLECTOR'S CREDIT AND SETTLEMENT OF PARTIAL SETTLEMENTS, 1872---. 2 f.b.

Lists of credits for taxes collected, showing names of collector and treasurer, and amount and date of partial settlements. Arr. chron. No index. Hdw. on pr. fm. 11 x 4 x 14. Co. clk.'s off., 1st fl.

Delinquent Tax, Forfeitures and Abatement

191. DELINQUENT LIST, 1846---. 22 v.

Lists of lands and town lots returned by town collector on which taxes remain due and unpaid, showing name of owner, legal description of property, tax spread, total taxes, and amount delinquent. Arr. by sec., twp., and range. No index. Hdw. under pr. hdgs. 250 p. 18 x 13 x 2½. Co. clk.'s off., 1st fl.

192. FORFEITED TAX AND SETTLEMENT RECORD, 1929---. 3 v.

Lists of forfeited property, showing name of owner, legal description of property, equalized value, forfeited tax, interest, penalty, costs, date and by whom paid; also accounts with collectors, showing name of tax levying body, taxes collected, total amount, and to whom paid, and date of final settlement. Arr. by sec., twp., and range. No index. Hdw. under pr. hdgs. 176 p. 17 x 19 x 2. Treas.'s off., 1st fl., Farmers' State Bank Building.

193. PERSONAL PROPERTY ABATEMENT RECORD, 1935---. 1 v. (1).

List of personal property abatements, showing name of owner, tax spread, valuation, school district number, amount of taxes due, cause for delinquency, and date. No records of this type kept prior to 1935. Arr. by sec., twp., and range. No index. Hdw. under pr. hdgs. 160 p. 18 x 12 x 1. Treas.'s off., 1st fl., Farmers' State Bank Building.

XIV. COUNTY TREASURER

The county treasurer is a constitutional officer who receives the county revenue, keeps custody of its funds, and disburses them in accordance with orders of the county board, or by specific authorization of law.¹

Originally the county treasurer was a statutory officer. He was first appointed by the county commissioners' court (the county board).² The legislature provided in 1823 that the sheriff could not serve as the county treasurer. However, in 1825 he was made successor to the treas-

1. R.S.1845, p. 138; L.1861, p. 239; R.S.1874, p. 323,324.

2. L.1819, p. 315; L.1823, p. 206.

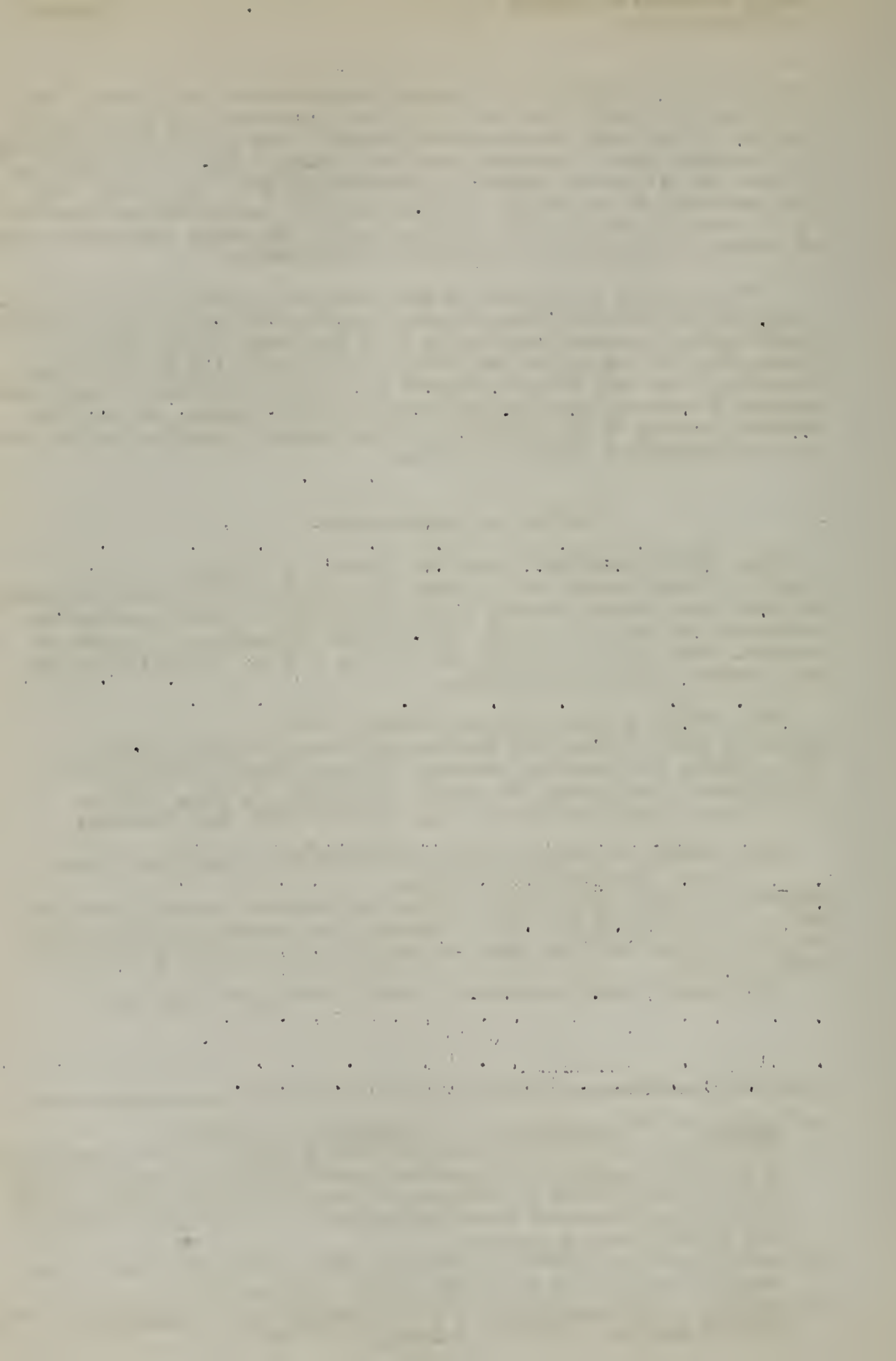
urer and was to receive all the moneys and records of said office. This provision was short-lived, for in 1827 the treasurer again became an appointee of the county commissioners' court.¹ Then in 1837 the office was made elective with a four-year term. With changes only in the tenure of office, the office has remained an elective one until the present day.² Bond was first set at \$2000, but since 1827 the penalty sum has been set by the county board.³ Thus, in Brown County, the county treasurer has been an elected officer since the formation of the county.

The treasurer is required to keep books of accounts of all funds received and disbursed by him, maintain a register of county orders countersigned and paid, report annually to the county board on the financial transactions of his office, and settle his accounts with the board semi-annually.⁴ The last two requirements give rise to a number of segregated records of accounts beyond strict statutory requirements. In addition, reports are made to the treasurer by other county authorities in the process of transacting business with him.

Receipts and Disbursements

194. COUNTY TREASURER'S ACCOUNTS, 1886--. 1 v. (A).
Record of county collector's accounts with county, with itemized statement of debits and credits, showing dates and amounts of moneys received and disbursed, and purpose of each. Arr. chron. Indexed alph. by name of account. Hdw. under pr. hdgs. 190 p. 18 x 12 x 2. Treas.'s off., 1st fl., Farmers' State Bank Building.
195. RECORD OF MONEY RECEIVED, 1894--. 2 v.
Ledger of funds received and disbursed by county treasurer, showing date, amount, and from whom received, and date, amount, and purpose of expenditure. Arr. chron. No index. Hdw. under pr. hdgs. 280 p. 18 x 13 x 3. Treas.'s off., 1st fl., Farmers' State Bank Building.
196. REGISTER OF COUNTY ORDERS COUNTERSIGNED BY TREASURER, 1908--.
2 v. No prior records found.
Register of county orders countersigned by treasurer, showing number and date of order, amount and date of payment, and to whom paid. Arr. chron. No index. Hdw. under pr. hdgs. 400 p. 16 x 10 x 2. Off. of supt. of hwy's., 2nd fl.
For county clerk's register of county orders, see entry 3.

1. L.1825, p. 178; R.L.1827, p. 329; R.L.1833, p. 515,516.
2. Office made elective with four-year term, R.L.1837, p. 274; term reduced to two years, L.1845, p. 28; office made constitutional without change of term, Constitution of 1870, Art. X, sec. 8; term lengthened to four years, second amendment (ratified November 22, 1880) to the Constitution of 1870, Art. X, sec. 8.
3. L.1819, p. 318; R.L.1827, p. 329; R.S.1874, p. 323. The bond is required to be filed in the office of the county clerk.
4. L.1819, p. 318; R.L.1837, p. 582,583; L.1843, p. 151; R.S.1845, p. 136, 138,139; L.1861, p. 239,240; R.S.1874, p. 323,324.



XV. COUNTY SUPERINTENDENT OF SCHOOLS

The superintendent of schools is a statutory officer, elected for a term of four years.¹ His principal duties are:

1. Selling township fund lands and issuing certificates therefor.
2. Examining the complete accounts of every township treasurer in his county and reporting irregularities to the township trustees.
3. Conducting a teachers' institute, holding quarterly examinations for teachers' certificates, and issuing such.
4. Holding examinations for normal and university scholarships.
5. Visiting the public schools in the county, observing methods of instruction, making recommendations to teachers, advising school officers; observing sanitary and safety conditions, notifying trustees and state authorities of unsatisfactory conditions; inspecting plans and specifications, and approving those meeting state regulations.²

The office of superintendent of schools was originally filled by the county commissioner of schools. Later the office of superintendent became an independent office and the functions of the former school commissioner were fulfilled by the new officer. More accurately it may be said that the origin of the office of superintendent of schools was the establishment of the office of county school commissioner.

The office of county school commissioner was created in 1829. The principal duties of this officer centered around the sale of school lands.³ His reports to the county commissioners' court (county board), of the sale of school lands, were recorded in the said court in a well-bound book kept for that purpose.⁴ He also reported on his other transactions and on the school fund.⁵

In 1845 the county school commissioner became ex-officio county superintendent of schools.⁶ The school commissioner became an elected officer in 1847, with a term of two years.⁷

-
1. L.1872, p. 702; L.1909, p. 342; L.1915, p. 628; L.1923, p. 596. Term formerly ran two years, R.S.1845, p. 497.
 2. L.1845, p. 156; R.S.1845, p. 496; L.1847, p. 122; L.1909, p. 345-52; L.1915, p. 635.
 3. R.L.1829, p. 150,151.
 4. R.L.1829, p. 152,153.
 5. L.1831, p. 175.
 6. L.1845, p. 54.
 7. L.1847, p. 120.

County Superintendent
of Schools - Accounts of School
Funds; Sale of School Lands

(197, 198)

In 1872 the independent office of county superintendent of schools was created with a tenure of office of four years.¹

The superintendent is required to keep the following records: three books denoted as A, B, and C, containing respectively petitions for the sale of school lands, records of sales of such, and accounts of all moneys received and paid out; files of township treasurers' bonds and trustees' reports to him, files of poll books and returns of school district elections; maps of school district boundaries; registers of certificates granted and teachers employed in the county.² In addition he is required to make annual reports to the state superintendent of schools on such matters as the latter may designate, quarterly reports to the county board on his visits to schools, and annual reports to the board on the receipts and expenditures of his office. Copies of these are sometimes found among his records, along with vouchers, special statements concerning the institute and other segregated funds, and similar current papers.³

For school plats and maps, see entries 68, 70, 89-95.

Accounts of School Funds

197. LEDGER (Loans of School Funds), 1839-51. 1 v. Discontinued. County superintendent's ledger of loans of school funds, showing amount of loan, terms, date, kind of security, amount of interest, date of maturity, amount of money received on principal, interest, from whom received, and to whom loaned. Arr. chron. No index. Hdw. 150 p. 16 x 8 x 1 1/2. Off. of supt. of sch., 1st fl.

Sale of School Lands

198. (SALE OF SCHOOL LANDS), 1880--. In County Clerk's Miscellaneous Files, entry 70. Reports of sale of school lands, showing name of purchaser, date of sale, price per acre, and school district.

1. L.1871-72, p. 702; L.1909, p. 342; L.1923, p. 596.
2. R.S.1845, p. 498; L.1847, p. 121; L.1849, p. 155; L.1853, p. 55; L.1889, p. 265; L.1909, p. 349,350; L.1919, p. 387.
3. R.S.1845, p. 500,501; L.1847, p. 122; L.1849, p. 156; L.1855, p. 57; L.1871-72, p. 705; L.1889, p. 265,325; L.1909, p. 347,350.

Teachers' Records

199. COUNTY SUPERINTENDENT OF SCHOOLS, 1863--. 3 v.

Title varies: School Commissioner's Record.

Superintendent's register of applicants for teachers' certificates, showing name, address, age, and nativity of teacher, subjects taught, grade, number and date of certificate, expiration date, and remarks. Arr. chron. No index. Hdw. under pr. hdgs. 120 p., 200 p.; 14 x 8 x 1, 14 x 9 x 1 $\frac{1}{2}$. Off. of supt. of sch., 1st fl.

200. REGISTER OF FEES - EXAMINATION OF APPLICANTS FOR CERTIFICATES, 1894--. 1 v. (A).

Register of applicants for school certificates, showing date, application number, name of applicant, address, age, nativity, subjects, grades, teaching experience, certificate number, grade or kind of certificate, amount of fee, failure, renewal, or registration, and total fees received. Arr. chron. No index. Hdw. under pr. hdgs. 320 p. 18 x 12 x 2. Off. of supt. of sch., 1st fl.

201. TEACHERS' RECORD, 1903--. 1 v.

Register of teachers qualified to teach in Brown County, showing date, name and address of teacher, age, fee for first and second grades, renewals, rejections, and remarks. Arr. chron. No index. Hdw. under pr. hdgs. 100 p. 16 x 8 x 1. Off. of supt. of sch., 1st fl.

202. TEACHERS' PERMANENT RECORD, 1914r--. 2.v. 1 f.b.

Record of teachers, showing name, age, address, certificate number, how issued, date, subjects, grades, schools attended, professional credits, where employed, teaching experience, and date of certificate. Arr. alph. by name of teacher. For index, 1914-26, see entry 203; 1927--., no index. Hdw. on pr. fm. V. 400 p. 10 x 16 x 2; f.b. 8 x 9 x 9. Off. of supt. of sch., 1st fl.

203. INDEX TO TEACHERS' PERMANENT RECORD, 1914-26. 1 v.

Discontinued.

Index to teachers' permanent record, showing name, age, and address of teacher, grade and date of certificate, and record book and page of entry. Arr. alph. by name of teacher. Hdw. under pr. hdgs. 100 p. 12 x 9 x 1. Off. of supt. of sch., 1st fl.

204. RECORD OF REGISTRATION OF TEACHERS' CERTIFICATES, 1930--.

1 v.

Register of teachers' certificates, showing date, teacher's name and address, age, teaching experience, certificate and registration numbers, grade of certificate, how secured, and amount paid for registration. Arr. chron. No index. Hdw. under pr. hdgs. 100 p. 16 x 8 x 1. Off. of supt. of sch., 1st fl.

Reports

205. SCHOOL DISTRICT RECORD, 1934--. 1 v.

Transcript of reports of annual election of school board, including minutes of meetings, school taxes, proceedings of district board, orders of school board, teachers' school contracts, register of school officials and bonds, accounts of current expenditures, treasurer's semi-annual statement and financial account, and teachers' annual reports. Arr. chron. No index. Hdw. on pr. fm. 120 p. 12 x 9 x 1. Off. of supt. of sch., 1st fl.

206. COUNTY SUPERINTENDENT'S EXAMINATION BOOK, 1862-86. 1 v.

Discontinued.

Copies of superintendent's reports to county board of supervisors on financial condition of school funds of the various townships, showing name and number of school district, receipts, expenditures, amounts, evidences of indebtedness, type of security, rate, date and amounts due, and remarks. Arr. chron. No index. Hdw. under pr. hdgs. 120 p. 14 x 8 x $\frac{1}{2}$. Off. of supt. of sch., 1st fl.

For subsequent reports, see entry 1.

XVI. COUNTY SUPERINTENDENT OF HIGHWAYS

The office of county superintendent of highways was first established in Illinois in 1913.¹ Prior to this date the township boards of highway commissioners effected essentially those duties since performed by the county superintendent of highways.

The superintendent is appointed by the county board. The board submits a list of three to five candidates to the (state) department of public works and buildings. The department examines the candidates to determine the person best fitted for the office.² The successful candidate holds office for six years and is remunerated in a sum fixed by the county board.

The powers and duties of the county superintendent of highways are subject to the rules and regulations of the department of public works and buildings. He is, however, upon hearing, subject to removal by the

1. L.1913, p. 524.

2. Between the years 1913 and 1921 the list of prospective candidates was required to be submitted to the state highway commission. L.1913, p. 524; L.1921, p. 781; L.1933, p. 960.

county board. The superintendent is required, also, to perform such duties as may be prescribed under the direction of the (state) chief highway engineer.¹ The said superintendent exercises supervision over township, county, and state-aid roads, and bridges and culverts in his county.

His principal duties are:

1. Preparing plans, specifications, and estimates for all bridges to be built by the county.
2. Supervising the construction and maintenance of county roads and bridges, and state-aid roads.
3. Inspecting the highways and bridges in each town or district of his county at least once a year.
4. Advising and directing the highway commissioners in each town or district as to the best methods of repair, maintenance, and improvement of highways and bridges.
5. Approving any purchase in excess of \$200 for materials, machinery, or apparatus to be used in road construction in any town or district.²

He is required to keep the following records:

1. Records of contracts, purchases, and expenditures authorized by himself, the county board, or township commissions.
2. Maps, plats, blueprints, specifications, etc., arising in his supervision of roads and bridges, or the planning of new constructions.
3. Accounts of the funds handled by his office.
4. Reports from other officers or bodies touching the affairs of his office; copies of his own reports on the administration of his office; related papers.³

No independent records are kept for the superintendent of highways in Brown County. For reports of the superintendent of highways to the county board, see entries 1, 13; for highway and motor fuel tax claims, see entries 8, 9.

1. L.1921, p. 781; L.1933, p. 960.

2. L.1913, p. 523-26.

3. L.1913, p. 525, 526.

XVII. COUNTY SURVEYOR

The office of county surveyor was first established in Illinois in 1821. The incumbent was an appointee of the general assembly.¹ In vacation, nominations were made by the county commissioners' court (county board) to the governor.² From 1835 to 1936, the county surveyor was an elected officer of the county electorate. Since September 1936, he has been an appointee of the county board.³ Thus, in Brown, the county surveyor has been an elected officer from its formation in 1839, until the latter instance of his appointment by the county board of supervisors.

The surveyor is required by law to make all surveys within the bounds of his county that he may be called upon to make by persons interested or the county board. Such surveys include surveys of additions or subdivisions, and marking of county lines. Few changes have been made in the original statutory requirements for the duties of this office.

The county surveyor is required by law to keep a bound book in which he records all surveys made by him, giving such information as the name of the person whose land is surveyed and descriptive data of the survey. He is also required to preserve his field notes and retain copies of plats.⁴

207. SURVEYOR'S RECORD, 1831--. 3 v. (1-3).

Surveys compiled by county surveyor, showing date, legal description of land surveyed, names of owner and surveyor, how survey was made, and location of markers. Arr. chron. Indexed alph. by name of owner. Hdw. and hdw. under pr. hdgs. 600 p. 18 x 12 x 4. Cir. clk.'s off., 1st fl.

-
1. L.1821, p. 62; R.L.1829, p. 172; R.L.1833, p. 591.
 2. Ibid.
 3. L.1835, p. 166; L.1837, p. 558; R.S.1845, p. 524; R.S.1874, p. 456,1050; L.1903, p. 349; L.1933, p. 1104.
 4. L.1821, p. 654; R.L.1829, p. 173; R.L.1833, p. 582,599,600; L.1845, p. 201; R.S.1874, p. 1050; L.1916, p. 575; R.S.1935, p. 2416.

XVIII. SPECIAL DRAINAGE COMMISSIONERS

The constitution of 1870 delegated to the general assembly a broad power to provide laws in regard to drainage.¹ Owners of land may organize drainage districts whose corporate authorities have power to acquire rights of way, issue bonds, construct and maintain drains, ditches, and levees for agricultural, sanitary, or mining purposes, and assess the property benefited thereby.²

Drainage districts have been established in Brown County upon petitions to the county court in accordance with the laws of 1879 and subsequent enactments. The dates of formation are dependent upon the petitions to the county court, and creation by county court orders of the various drainage districts.

Drainage districts are of three kinds; regular, composed of property lying in a single town; union, where the lands to be organized lie in two towns in the same or different counties; special, with three or more towns involved.³ The corporate powers of each district are vested in three commissioners appointed by town clerks except in special districts, where they are elected.⁴ In regular districts the commissioners appoint one of their own members to act as secretary; in union districts the town clerk, and in special the county clerk, act in an ex-officio capacity.⁵

The following records, however, regardless of how kept, belong to the drainage commissioners:

1. Records of bonds issued.
2. Assessment books.
3. Petitions of owners of land to stay assessments, orders of commissioners thereupon, and other proceedings.
4. State auditor's certificates of interest due on bonds.
5. Tax lists showing pro-rata share of levy for bond interest (union and special districts only).
6. Copies of reports to county court on conditions of district and estimated expenditures; and to county treasurer on delinquent lands; maps and plats, surveys and estimates; office transactions.

-
1. Constitution of 1870, Art. IV, sec. 31.
 2. First amendment to the Constitution, ratified November 29, 1878; incorporated in Constitution of 1870, Art. IV, sec. 31; L.1879, p. 120, 124-28.
 3. L.1879, p. 123; L.1885, p. 93,94,113. River districts, though not in this category, may be organized similarly and with like powers. L.1885, p. 106.
 4. L.1885, p. 93,95.
 5. L.1879, p. 123; L.1885, p. 93,95,113.
 6. L.1879, p. 120-34; L.1885, p. 78-104.

The first two records are required to be kept in separate books, the next three generally are known as the "Drainage Record", and the remaining records are kept desultorily.

208. DRAINAGE RECORD, 1915--. 3 v. (1-3). 1880-1914 in Supervisors' Record, entry 1.

Record of drainage and levee districts, showing date of petitions for assessments and repairs, assessment rolls, engineers' reports, affidavits, and orders of court. Arr. chron. No index. Typed. 362 p. 18 x 13 x 3. Co. clk.'s off., 1st fl.

209. DRAINAGE AND LEVEE, 1919--. 2 f.d.

Papers relative to drainage and levee districts, including petitions, reports, list of assessments, benefits and damages, verdicts of juries, and orders of court. Arr. chron. No index. 10 x 8 x 16. Co. clk.'s off., 1st fl.

XIX. COUNTY DEPARTMENT OF PUBLIC WELFARE

The legislation of 1937 repealed the county welfare system established in 1936. A single officer, the county superintendent of public welfare, becomes successor to the county commission of welfare and its executive appointee the county superintendent of public welfare.¹ The county commission consisted of three members appointed by the county judge to serve without compensation. Its successor, the county superintendent of public welfare, is an appointee of the county board of supervisors. The duties delegated to the commission are transferred to the newly created office of superintendent. In both instances the functions of this office are subject principally to state control. The changes occurring in the welfare system are only in the county administrative unit and not in function or records of this department.

The former county department of welfare consisted of the three commissioners, the superintendent of public welfare and an administrative staff.² The commission organized by electing one of its number as chairman and one as vice-chairman. This body met monthly to transact the business of public welfare and its members were allowed all traveling expenses necessary in the performance of the same.

1. Sp. Sess. Laws 1935-36, p. 70-73; L.1937, p. 451.
2. Sp. Sess. Laws 1935-36, p. 70.

County Department of
Public Welfare

The new county department of public welfare consists of the superintendent of public welfare and an administrative staff selected by him in accordance with, and subject to, the approval of the state department of public welfare. The county board of supervisors submits to the said state department a list of five residents as candidates for the office of superintendent. An eligible list from these candidates is prepared by the state department by competitive examination and certified to the county board. The board in turn makes an order appointing one of the eligibles.¹

The county superintendent of public welfare is in charge of all the executive and administrative duties and responsibilities of the county department of public welfare. He is subject to the rules and regulations of the state agency and may be removed by the said state department.²

The superintendent has power and it is his duty:

1. To have charge and develop plans for the administration of old age assistance.
2. To investigate and study problems of assistance, correction, and general welfare within his county.
3. To co-operate with the state department of welfare in the operation of welfare plans and policies in his county.
4. To maintain such records in the manner prescribed by the state department and file with the said state agency all required reports.
5. To serve as agent and executive officer of the state department of public welfare in the administration of all forms of public assistance administered by the said department.³

All of the records of the county department are subject to the inspection and supervision of the agents of this central authority.

Under the former act of 1936 the county superintendent of public welfare could serve as a probation officer in welfare problems when appointed by a court of competent jurisdiction.

At the time of the Survey, this office had not yet been established in Brown County; for records of mothers' and blind pensions, see entry 111.

1. L.1937, p. 452.

2. Sp. Sess. Laws 1935-36, p. 71,74; L.1937, p. 452.

3. Sp. Sess. Laws 1935-36, p. 72; L.1937, p. 452,453.

4. Sp. Sess. Laws 1935-36, p. 73.

CHRONOLOGICAL INDEX

1810-1819

1817-55 Conveyances, 75
1817--. Grantor-Grantee Index, 74
1818--. Sectional Index, (Tract Index), 87

1820-1829

1822--. Deed Records, 76
1829--. Index to Town Lots, 38

1830-1839

1831--. Surveyor's Record, 207
1837-70 Complete Record (Cir. Ct.), 164
1837--. Common Law (Cir. Ct.), 154
1839-51 Ledger (Supt. of Sch.), 197
1839-80 Tax Judgment Record, 24
1839-80 Tax Sale Record, 25
1839-85 Marriage Register, 44
1839--. Entry Book (Rec.), 71
1839--. Estray Record, 53
1839--. Index to Files (Co. Ct.), 117
1839--. Index to Marriage Records, 42
1839--. Probate Files, 116
1839--. Probate Record, 118
1839--. Supervisors' Record, 1

1840-1849

1840--. Chancery (Files), 156
1840--. Chancery Record, 157
1840--. Common Law Record (Cir. Ct.), 155
1840--. Criminal (Files, Cir. Ct.), 159
1840--. Executions (Cir. Ct.), 163
1840--. Execution Docket (Cir. Ct.), 170
1840--. Judgment Docket (Cir. Ct.), 169
1841--. Fee Book (Cir. Ct.), 172
1841--. Guardians' (Bonds and Letters), 129
1844--. Judge's Docket (Cir. Ct.), 166
1845--. Record (Transcript from Justice of Peace), 165
1846-51 Taxable Property, 17
1846-1910 Sheriff's Certificate Sale and Redemption, 84
1846--. Delinquent List, 191

Chronological Index

1846---. Patent Register, 51
1847---. Marriage License, 41
1848-80 Bar Docket (Cir. Ct.), 168

1850-1859

1850---. Index to Judgment Docket (Co. Ct.), 148
1850---. Probate Judgment Docket, 147
1854---. Collectors' Books, 22
1856---. Mortgage Record, 80
1857-74 Naturalization Record, 177
1857-90 Naturalization Record, Intention, 176
1857---. Index to Court Records, Plaintiff-Defendant
(Cir. Ct.), 153
1857---. Register of Bonds, 86
1858---. Guardian's Record, 128
1859-71 Probate Estate Docket, 150
1859---. Estate Ledger, 143
1859---. Record of Default (Cir. Ct.), 161

1860-1869

1861-98 Clerk's Docket (Cir. Ct.), 167
1862-86 County Superintendent's Examination Book
(Supt. of Sch.), 206
1863---. Assessors' Books, 16
1863---. County Superintendent of Schools, 199
1866 J.B.Glass Assingment (Estate), 123
1866---. Insane (Petitions and Orders in Insanity Cases), 102
1866---. Wills, 125
1867---. Administrators' Bonds and Lotters, 126
1867---. Chattel Mortgage Records, 85
1868---. Adoptions (Co. Ct.), 100
1868---. Quit Claim Deed Record, 77
1868---. Recognizance Record (Cir. Ct.), 174
1869---. Executors"Record, 127
1869---. Probate Journal, 119
1869---. Public Sale Record (Estate), 141
1869---. Record of Wills, 124

1870-1879

1870---. Inventory Record (Estate), 135
1870---. Tax Sales and Notices, 27
1871---. Appraisement Record (Estate), 136
1872---, Collector's Credit and Settlement of Partial
Settlements, 190
1872---. County Court Cases, 96
1872---. County Court Record, 97
1872---. Default Record (Co. Ct.), 99
1872---. Execution Docket (Co. Ct.), 107

Chronological Index

1872--. Fee Book - Law and Criminal (Co. Ct.), 110
1872--. Index to Court Records - Plaintiff,
Defendant, (Co. Ct.), 98
1872--. Judgment Docket (Co. Ct.), 106
1872--. Judge's Docket (Co. Ct.), 105
1872--. Register of Fees (Co. Ct.), 63
1873--. Criminal Record (Cir. Ct.), 160
1873--. Peoples Index (General Index of Records and
Files of Cir. Ct.), 158
1873--. Railroad Tax Book, 18
1874--. Insane and Conservator's Record, 131
1874--. Application Marriage Licenses, 45
1874--. Release Records, 81
1875-1907 Justice of Peace Docket, 109
1875--. Co-partnership Inventory Appraisal Record, 137
1875--. Process Docket (Sh.), 179
1875--. Rate Book (Tax), 15
1876-78 Policy Register, 12
1876-96 Trust Deed Records, 78
1876-1900 Naturalization Record, 112
1876--. Sale of Real Estate, 140
1877--. Marriage Records, 43
1877--. Miscellaneous Documents (Rec.), 72
1877--. Record of Justices' and Constables' Bonds, 59
1877--. Record of Land Forfeited to State, 26
1877--. Record of Physicians' Certificates, 46
1877--. Register of Physicians and Accoucheurs, 47
1878-91 Register of Stillbirths, 39
1878-1915 Birth Index, 34
1878-1915 Index to Deaths, 38
1878-1915 Register of Births, 33
1878-1915 Register of Deaths, 37
1878--. Birth Certificates, 31
1878--. Deaths and Stillbirths (Certificates), 35
1879-97 Naturalization Record Declaration, 113
1879-1913 Treasurer's Settlement of Town Officers, 188
1879--. Guardians' Inventory Record, 138
1879--. Insurance Policies, 11
1879--. School Plat Record, 68
1879--. Sheriff's Execution Docket, 180

1880-1889

1880-90 Dog License Bond, 61
1880--. Election Records, 55
1880--. Foreclosure Records, 162
1880--. Jury Lists (Co. Bd.), 14
1880--. Miscellaneous Files (Co. Ct.), 70
1880--. Miscellaneous Probate Record, 134
1880--. Miscellaneous Record (Cir. Ct.), 73
1880--. Narr and Cognovit Papers (Co. Ct.), 101
1880--. Sale of School Lands, 198
1881--. Settlement of Town Officers, 189

Chronological Index

- 1881---. Tax Judgment Sale, Redemption and Forfeiture Records, 23
- 1882-98 County in Account with County Collector and Treasurer, 65
- 1882---. Register of County Orders, 3
- 1883-1928 Masters' Certificate of Sale and Redemption, 85
- 1883---. Abstract of Assessments and Taxes, 21
- 1883---. Guardian Estate Docket, 149
- 1884-98 Docket of Official Bonds, 58
- 1884-1903 Report Record (Of Estate of Deceased), 144
- 1884---. Affidavit Tax Deed, 28
- 1884---. Telephone and Telegraph Tax Book, 19
- 1885---. Coroner's Record, 183
- 1886---. County Treasurer's Accounts, 194
- 1886---. Miscellaneous Record (Co. Ct.), 69
- 1886---. Record of Inquisition (Cor.), 173
- 1886---. Oaths of County Officers, 62
- 1886---. Probate Docket, 146
- 1886---. Probate Judgment Record of Claims, 120
- 1887-91 Record of Certificates to Stock Breeders, 52
- 1887---. Docket of Mechanic's Liens (Cir. Ct.), 171
- 1887---. Probate Fee Book, 151
- 1888---. Witness Affidavits, 114

1890-1899

- 1890---. Conservators' (Documents), 132
- 1890---. Resolutions Adopted by Board of Supervisors, 2
- 1891---. Assessor's Bond Record, 60
- 1892---. Contracts and Contractors' Bonds, 10
- 1892---. Miscellaneous Records (Probate Files), 122
- 1892---. Private Sale Record (Personal Property), 142
- 1892---. Warranty Deed Records, 79
- 1893---. Widows' Relinquishment and Selection, 139
- 1894---. Insanity Docket (Co. Ct.), 108
- 1894---. Insanity Record (Co. Ct.), 103
- 1894---. Record of Money Received (Treas.), 195
- 1894---. Register of Fees - Examination of Applicants for Certificates, 200
- 1895-1916 Physician, Veterinarian and Dentist Record, 50
- 1895---. Affidavits for Tax Deeds, 29
- 1895---. Bond Record (Sale of Real Estate), 133
- 1896-1900 Tax Deeds, 30
- 1896---. Bonds of Officials, 57
- 1896---. County Warrants Cancelled, 4
- 1896---. Jury Script (Insane), 67
- 1899-1903 Complaint Docket (Ed. of Rev.), 186
- 1899---. Board of Review, 185

1900-1909

- 1900-1920 Real Estate (Schedule of Assessments for Road Repairs), 20

Chronological Index

- 1902---. Birth and Death Report Warrants (Account Book), 66
- 1902---. Reports of County Officers, 13
- 1903---. Juror's Certificates (Stubs), 5
- 1905---. Teachers' Record, 201
- 1905---. Conservator's Record, 130
- 1906---. Record of Summary of Taxes, 187
- 1908---. Register of County Orders Countersigned by Treasurer, 19
- 1909---. Guardian's and Conservator's Fee Book, 152

1910-1919

- 1910---. Inheritance Tax Record, 121
- 1915---. Register of Certificates of Registered Nurses, 48
- 1914-26 Index to Teachers' Permanent Record, 203
- 1914---. Teachers' Permanent Record, 202
- 1914---. Settlement of Assessors (Dog License), 54
- 1914---. Sheriff's Fee Book, 182
- 1915---. County Highway Claims, 8
- 1915---. Drainage Record, 208
- 1915---. Optometry Record, 49
- 1916---. Birth Index, 32
- 1916---. Death Index (and Stillbirths), 36
- 1917---. Abstract of Votes, 56
- 1918---. Mothers and Blind Pensions, 111
- 1919-25 Ledger (Co. Clk.), 64
- 1919---. Brown County Claims, 7
- 1919---. Drainage and Levee, 209
- 1919---. Ledger (County Farm), 6

1922-1929

- 1922---. Bond Register (Court and Officials), 175
- 1922---. Real Estate Record, 82
- 1925---. Attorney's Receipt for Papers (Co. Ct.), 115
- 1927-30 Jail Record, 181
- 1927---. Conservators' Reports, 145
- 1927---. Judgment Record by Confession, 104
- 1929---. Forfeited Tax and Settlement Record, 192

1930---.

- 1930---. Record of Registration of Teachers' Certificates, 204
- 1931---. Circuit Court Day Book (Cash Book, 178
- 1932---. Certificate of Burial of United States Veterans, 40
- 1933---. Motor Fuel Tax, 9
- 1934---. School District Record, 205
- 1935---. Personal Property Abatement Record, 193
- 1937---. Verdict of Jury (Cor.), 184

Chronological Index

No Dates

Church, School and Cemetery Map of Brown County, 89
Mt. Sterling, Illinois (Map), 95
Ripley Township (Map), 93
School Map of Cooperstown Township, 91
Township Maps, 92
Townships of Buckhorn, Ripley, Lee, Mt. Sterling,
Versailles, and Cooperstown, 90
Versailles Township (Map), 94

SUBJECT INDEX

(Figures refer to entry numbers unless page is specified)

Abatement		Applications	
Lists,	22	- for ballots, see Election	
Record, Personal property,	193	- for marriage licenses,	
Abbreviations and symbols		see License	
used in inventory,		Teachers',	199, 200
p. 12, 13		Appointment(s)	
Abstracts		- in probate, see under	
- of assessments and		title of appointee	
taxes,	21	- of road supervisors,	1
- of votes, see Election		Appraisalment of estates,	127
Accoucheurs, Register of,	47	Petitions for,	139
Account(s), see also Cash;		Record,	136
Fund; Ledger; Re-		Appraisers	
ceipts and ex-		Appointment of,	127, 134
penditures		Bills,	136
Administrators', see		Estimates,	121
Administrator		Oaths,	136
- of births and deaths,	66	Articles of incorporation,	69, 73
- with county clerk,		Assessments, see Tax	
collector's and		Assessor	
treasurer's,	65	County, see Supervisor	
- School,	205	of assessments	
- Treasurer's,	194	Township	
Adjustments of estate claims,	116	Bond record,	60
Administrator(s), see also		Settlement (dog tax),	54
Estate; Probate court		Assignment(s)	
Accounts,	143	- of claims against estate,	123
Bonds,	122, 126, 134	- of judgments,	162
Additional,	134	Attorney(s)	
- to collect,	134	Power of, See Power of	
- for sale of real		attorney	
estate,	133	Receipts for papers,	115
De bonis non,	134	State's, see State's	
Letters,	122, 126, 134	attorney	
Oaths,	126	Bail	
Petitions,	122, 126, 134	Bonds, see Bonds	
- with will annexed,	134	Records,	159
Adoption		Ballots, see Election	
Decrees,	69	Bar docket,	168
Documents,	100	Bills	
Affidavit(s)		Appraisers',	136
- in chancery,	156	- against county,	70
- of claims against estate,	123	- for divorce,	156
- in drainage proceedings,	208	- of sale	
- for tax deeds,	28, 29	Estate,	150
Fitness,	69, 96, 154, 162	Personal property,	141
Register of,	114	Births, see also Vital	
Agreements in foreclosure		statistics	
proceedings,	162	Account of,	66
Aliens, see Naturalization			

Subject Index

Blind pension, see Pensions		Certificates (cont.)	
Board		Birth,	31
Cemetery, reports of,	69	Index to,	32
- of review, see Review		Burial, veterans',	35, 40
School, see School		Death,	35
- of supervisors, see		Index to,	36
Supervisors		- of dentists,	47, 50
Bond(s)		- of election of	
Assessors' - record,	60	trustees,	73
Bail,	97, 174	Jurors',	5
Collectors', township,	60, 86	- of levy,	122
- for dog license,	61	Master's,	73
Constables', Record,	59	Sheriff's,	73, 84
Contractors',	10	- of mailing,	162
- in county court,	96	Marriage,	43
Justices', Record	59	Index to,	42
Official,	57, 69	Naturalization, see	
Docket of,	58, 73	Naturalization	
Register,	175	- of nurses,	48
- of officials		- of optometrists,	49
County,	57	- of organization,	73
School,	205	- of physicians,	46, 50
Town,	57	Register,	47
Partition,	175	- of publication,	162
Power of attorney,	175	- of purchase (tax),	27
- of probate appointees,		- of redemption	
see under title		Master's,	73, 85
of appointee		Sheriff's,	73, 84
Probation,	175	- of sale,	
Recognizance,	97	Master's,	73, 85
Record,	174	Sheriff's,	73, 84
Replevin,	175	- Stallion,	52
Brown County		- of stillbirths,	35, 39
Area, p. 4		- of stock transfers	
Boundaries, p. 3, 4		(bank),	73
Establishment of, p. 3		Teachers',	200, 204
Map of,	89	Veterinarians',	47, 50
Origin of name, p. 3		Challenge to jurors,	
Population, p. 4		see Jurors	
Settlement of, p. 3		Chancery, see Circuit court;	
Township government		Master in chancery	
adopted, p. 15		Chattel mortgage, see Mortgage	
Buckhorn township, map of,	90	Children, see Juvenile;	
Burial certificates,		Minors	
veterans',	35, 40	Church map, Brown County,	89
Cash, see also Account; Fund;		Circuit court	
Ledger; Receipts and		Clerk(s)	
expenditures		Cash book,	178
Book, circuit clerk,	178	Duties and powers of,	
Cemetery		p. 6, 50, 51	
Board, reports,	69	<u>Ex-officio recorder,</u>	
Map,	89	p. 7	
Certificates, see also License		First incumbent, p. 4	
Accoucheurs, Register of,	47	Office of, p. 10	

Subject Index

Circuit court (cont.)		Collector(s) (cont.)	
Dockets		Township	
Bar,	168	Accounts with county	
Clerk's,	167	collector	188, 189
Execution,	170	Bonds,	86
Judges',	166	Credit and settlement	
Judgment,	169	record,	190
Mechanic's liens,	171	Summary of taxes,	187
Fee book (court costs),	172	Commissioner(s)	
Files		County, see County	
Chancery,	156	commissioners	
Common law,	154	Drainage, see Drainage	
Criminal,	159	Highway, see Highway	
Index to,	158	School, see School	
Execution,	163	Commitment of insane,	102
First term of, p. 4		Committees, board of super-	
Jurisdiction and func-		visors, reports,	1
tions of, p. 5, 50		Common law, see Circuit	
Plaintiff-defendant index,	153	court; County court	
Records		Complaint(s)	
Chancery,	157, 164	- before justices,	159
Common law,	155, 164	Docket,	186
Criminal,	160, 164	Confession, Judgment by,	104, 106
Index to,	158	Conservator(s), see also	
Default,	161	Estate; Probate	
Foreclosure,	162	court	
Recognizance,	174	Discharge, orders of,	132
Citations in circuit court,	156	Fee book,	152
Civil, see Common law under		Records (bonds, letters,	
County court, Cir-		oaths, petitions),	
cuit court			130-132
Claim(s)		Reports,	145
- against county,	1, 7	Constables	
- against estates,		Appointments,	1
116, 120, 122, 123		Bonds,	59
Highway,	8, 70	Contracts	
Motor fuel tax,	9	County,	10, 69
Clerk(s)		- in foreclosure	
County, see County clerk		proceedings,	162
- of courts, see under name		Teachers',	205
of specific court		Contractors' bonds,	10
Docket, circuit court,	167	Conveyances	
- of election,	55	Entry book,	71
Cognovit, see Narr		Record of,	75
Collection of taxes, see Tax		Index to,	74
Collector(s)		Cooperstown township, maps,	90, 91
County		Copartnership inventory	
Accounts		appraisal record,	137
- with county clerk,	65	Coroner(s)	
- with county treas-		Duties and powers of,	
urer,	194	p. 6, 59	
Bonds,	60	Inquests,	173, 184
Books (lists of taxable		Inquisition, Record of,	173
property),	22	Office, p. 11	
Duties and functions of,			
p. 63, 64			

Subject Index

Coroner(s) (cont.)		County officers, see Officers	
Records,	183	County offices, see Offices	
Reports,	69	County orders, see Orders	
County board of supervisors,		County property, insurance	
see Supervisors		on,	11, 12
County collector, see		County seat established, p. 4	
Collector		County superintendent of	
County clerk(s)		highways, see Super-	
Duties and powers,		intendent	
p. 5-8, 19-22		County superintendent of	
<u>Ex-officio</u> clerk		public welfare, see	
- of county court,		Superintendent	
p. 6, 38		County superintendent of	
- of probate court,		schools, see Superin-	
p. 6, 43		tendent	
First incumbent, p. 4		County surveyor, see	
Ledger,	64	Surveyor	
Office, p. 10		County treasurer, see	
County commissioners' court		Treasurer	
Early terms of, p. 4		County warrants, see Warrants	
Establishment, p. 14		Court, see Circuit; County;	
Record,	1	Probate	
County court		Courthouse	
Clerk, duties of, p. 37, 38		Buildings used, p. 4, 10	
Dockets		Description of, p. 10	
Execution,	107	Criminal, see Circuit court;	
Insanity,	108	County court; Indict-	
Judge's,	105	ments; Probation	
Judgment,	106	Damage in drainage	
Justice of the peace,	109	proceedings,	209
Fee books (court costs),	110	Death(s), see also Vital	
Files		statistics	
Adoption,	100	Accounts of,	66
Common law and criminal,	96	Proof of,	124
Insanity,	102	De bonis non, see Adminis-	
Miscellaneous,	70	trator	
First session of, p. 4		Declaration of intention,	
Jurisdiction and functions		see Naturalization	
of, p. 6, 37, 38		Decree(s), see also Order,	
Record(s)		court	
Common law and criminal,	97	- of adoption,	69
Index to,	98	- of foreclosure,	162
Default,	99	Deed(s)	
Dependent and delinquent,	97	Entry book of,	71
Fine,	97	Index to,	74
Insanity,	103	Miscellaneous,	72
Judgment,	106	- to property in probate,	116
- by confession,	104	Quitclaim,	72, 76, 77
Miscellaneous,	69	Records,	75, 76
Recognizance,	97	Tax,	30, 69
County department of public		Affidavits for,	28, 29
welfare, see Pub-		Trust,	72, 76, 78, 82
lic welfare		Warranty,	72, 76, 79
County farm, see also Public		Default records	
welfare		Circuit court,	161, 169
Ledger,	6	County court,	99

Subject Index

Defendant's answers		Estray record,	53
(circuit court),	154	Execution(s),	163
Delinquent child, see Juvenile		Docket(s)	
Delinquent taxes, see Tax		Circuit court,	170
Dentists' certificates,	47, 50	County court,	107
Dependent child, see Juvenile		Sheriff's,	180
Disbursements, see Receipts		Executor(s), see also Es-	
and expenditures		tates; Probate court	
District, school, see School		Oaths,	124
Divorce bills,	156	Record (bonds, letters,	
Docket		oaths, petitions),	127
Court, see under name of		Expenditures, see also	
specific court;		Receipts	
also under name		School, account of,	205
of docket		Explanatory notes to inven-	
- of rates and amounts		tory, p. 13	
wanted,	15	Fee books, court, see under	
Doctors, see Physicians		name of specific	
Dog license(s)		court	
Bond for collection of,	60, 61	Fees	
List of,	54	Register of	
Drainage		County clerk's,	63
Commissioners		Teachers',	200
Duties and powers of,		Findings and orders,	
p. 7, 73		insanity,	103
Papers,	209	Fines, record of,	97
Records,	1, 208	Foreclosure record,	162
Education, see School		Foreign mortgages, see	
Election(s)		Mortgage	
Abstract of votes,	1, 56	Forfeiture records,	23, 26, 192
Applications for ballots,	55	Fund(s), see also Ac-	
Certificates, trustees',	73	count; Cash; Led-	
Petitions, nomination,	55	ger; Receipts and	
Precincts, record of,	1	expenditures	
- of school board, see School		Highway, claims against,	8, 70
Elkhorn township, map of,	92	Motor fuel tax, claims	
Engineers' reports in drainage		against,	9
proceedings,	208	School,	197, 206
Entry book of conveyances,	71	Glass, J. B., estate,	123
Equalization of taxes, see Tax		Grantor-grantee index,	74
Estate(s), see also adminis-		Guardian(s), see also	
trator; Conservator;		Estate; Minors;	
Executor; Guardian;		Probate court	
Probate court; Real		Bonds,	128, 129
estate		Estate docket,	149
Appraisalment of,	127, 136	Fee book,	152
Petitions for,	139	Inventory record,	138
Claims against,		Letters,	128, 129
116, 120, 122, 123		Oaths,	129
Dockets		Petitions,	128, 129
Guardian,	149	Habeas corpus, writs	
Probate,	105, 150	of,	96, 154, 156
Inventories of,	135, 137, 138		
Ledger,	143		
Report record,	144		
Sale of - property,	140-142		

Subject Index

Highway(s), see also Road		Judges' (cont.)	
Commissioners, duties		Dockets	
of, p. 70		Circuit court,	166
County superintendent		County court,	105
of, see Superintendent		Probate court,	105
Funds, see Fund		Probate, p. 43	
Resolutions,	70	Judgment(s)	
Incorporation, articles of,	69, 73	Assignment of,	162
Index		- by confession,	104, 106
Birth,	32, 34	- by default,	99
Death,	36, 38	Dockets	
Grantor-grantee,	74	Circuit court,	169
Judgment docket,	148	County court,	106
Marriage record,	42	Probate court,	147
Peoples' (criminal),	158	Index to,	148
Plaintiff-defendant		- Record of claims,	
Circuit court,	153	Probate,	120
County court,	98	Tax,	23, 24
Probate files,	117	Judicial system in county,	
Sectional (recorder),	87	p. 5, 6	
Stillbirth,	36	Juror(s)	
Teachers' permanent record,	203	Certificates,	5
Town lots,	88	Challenges to,	154
Indictments		- in insanity cases,	103
Original,	96, 159	Jury	
Record of,	160	Instructions to,	
Inheritance tax record,	121	96, 154, 156, 159	
Inquests, see Coroner		Lists	
Insane record,	131	Circuit court,	155, 157, 160
Insanity		County court,	14, 70, 96
Dockets,	105, 108	Venires,	154
Jurors, see Juror		Verdicts,	
Papers,	102	154, 159, 183, 184, 209	
Record,	103	Warrants,	67
Insurance on county		Justice of the peace	
property,	11, 12	Appointment of,	1
Intention, Declaration		Bonds,	59
of, see Natu-		Complaints before,	159
ralization		Docket,	109
Inventory		Jurisdiction of, p. 6	
Copartnership,	137	Probate, p. 43	
Guardians',	138	Transcripts,	165
- of personal effects		Juvenile, see also Pension,	
of deceased,	183	mothers'; Minors	
- for public sale,	141	Dependent and delinquent	
Record,	135	record,	97
Jail records,	179, 181	Land(s) see also Lots; Real	
Judges'		estate	
Circuit, p. 5, 50		Forfeited to state,	
First incumbent, p. 4		Record of,	26
County, p. 5, 37		School, sale of,	70, 198
<u>Ex-officio</u> probate judge,		School - trustees,	1
p. 38		Leases on foreclosed	
First incumbent, p. 4		property,	162

Subject Index

Ledger, see also Account;		Minutes (cont.)	
Cash; Fund; Receipts		School board,	205
and expenditures		Miscellaneous	
Estate,	143	Deeds,	72
School fund,	197	Documents	
Lee township, map of,	90, 92	County clerk,	70
Letters		Probate court,	122
- of probate appointment,		Recorder,	72
see under title of		Records	
appointee		County clerk,	69
- testamentary used as		Probate court,	134
evidence,	162	Recorder,	73
Levee districts, record,	208	Missouri township,	
Levy		map of,	92
Certificates of,	73, 84, 122	Mittimus writs,	96
Rates of, on taxable		Mortgage(s)	
property,	1, 15	Chattel,	75, 83
Licenses, see also Certifi-		Entries of,	71
cates		Index to,	74
Dog		Real estate	
Bond of collectors of	60, 61	Foreign,	82
List of,	54	Record,	73, 80, 109
Marriage,	41	Releases,	72, 76, 81
Applications for,	45	Mothers' pension, see	
Record of,	1	Pension	
Liens, mechanic's, Docket of,	171	Motions for new trial	
Lots, see also Lands; Real		(circuit court),	154
estate		Motor fuel tax fund,	
Town, Index to,	88	claims against	9
Maps, see also Plats		Mt. Sterling	
Cemeteries, churches, and		Chosen as county seat,	
schools,	89	p. 4	
Mt. Sterling,	95	Map of,	90
Township,	90-94	Narr and cognovit papers,	101
Marriage, see Vital sta-		Naturalization	
tistics		Certificates (final	
Master in chancery		papers)	
Certificates		Circuit court,	177
- of levy,	73	County court,	112
- of sale and redemp-		Declaration of in-	
tion, 73, 85		tention	
Reports,	157	Circuit court,	176
- of sale and distribu-		County court,	113
tion,	162	Minors',	112
Mechanic's lien docket,	171	Oaths	
Minors, see also Guardian;		Circuit court,	177
Juvenile		County court,	112, 113
Naturalization	112	Petitions, county	
Minutes, see also Proceed-		court,	112
ings		Notices, tax sale,	27
Board of review,	185		
County board of super-			
visors,	1		

Subject Index

Oath(s)		Orders	
- for citizenship, see		Court (cont.)	
Naturalization		- to sell personal	142
- of county officers, see		property,	140
Officers		- to sell real estate,	1
- of probate appointees,		- to pay claims,	73
see under title of		Organization	1
appointee		Certificates,	73
Objections to taxes, see Tax		- of townships,	1
Officer(s)			
County		Partition bonds, see Bonds	
Oaths,	62, 69	Patent register,	51
Reports,	1, 13	Pea Ridge township, map of,	92
Probation		Pensions, see also Public	
Appointed by county		welfare	
board of		Blind,	111
supervisors,		Mothers',	111
p. 8		People's index, see Index	
Duties and powers of,		Personal property	
p. 56		Abatement record,	193
Township		Assessment of, see Tax	
Settlement with county		Inventory of,	137, 138, 141
collector,		Sale of	
	188, 189	Bills,	141
Offices, county		Orders for,	142
Appointive and elec-		Petitions for,	141, 142
tive, p. 8		Private - record,	142
Location and description of,		Petitions	
p. 10, 11		- for adoption,	69
Officials		- for appraisement of	
County, Bonds of,	57, 69	estate,	139
School		- in chancery,	156
Bonds,	205	- for citizenship, see	
Register,	205	Naturalization	
Town, Bonds of,	57	- for commitment to in-	
Optometry record,	49	sane institutions,	102
Orders.		- in drainage proceed-	
County, see also Warrants		ings,	208, 209
Countersigned by		Election,	55
treasurer,	196	- for probate appoint-	
Register of,	3	ments, see under	
Court, see also Decree		title of	
Chancery,	156	appointee	
Common law,	97, 154	- for record of will,	124
Criminal,	97, 159	- for sale of personal	
- in delinquency and		property,	141, 142
dependency cases,	97	- for sale of real	
- in drainage proceed-		estate,	140
ings,		Physicians	
208, 209		Certificates,	46, 47, 50
- in insanity cases, 102, 103		Register,	47
Probate,		Plaintiff-defendant index	
118, 119, 128, 130, 131		Circuit court,	153
- of discharge of		County court,	98
appointee, 129, 132			
- of reversal,	156		

Subject Index

Plats, see also Maps		Public welfare, see also	
Road,	70	County farm; Feeble-	
- of school districts,	68, 70	minded; Insanity;	
Pleas, common law,	154	Juvenile; Pensions	
Power of attorney		County department of	
Bonds,	175	Duties and powers,	
Papers,	73	p. 7, 74, 75	
Praeipie for record,	154	Establishment, p. 74	
Prisoners, see Jail		County superintendent of,	
Private sale record, personal		see Superintendent	
property,	142	Purchase	
Probate		Affidavits of,	28
Court, see also Administra-		Certificates of,	27
tor; Conservator; Es-		Quitclaim deeds,	72, 76, 77
tate; Executor;		Railroad	
Guardian		Tax book, see Tax	
Clerk of, p. 43		Valuations,	15
Dockets		Rate(s)	
Clerk's,	146	Docket,	15
Estate,	105, 150	- of levy,	1
Judge's,	105	Real estate, see also	
Judgment,	147	Estate; Land; Lots	
Index to,	148	Assessment of, see Tax	
Fee books,	151, 152	Inventories,	135, 137, 138
Files,	116, 122	Mortgage, see Mortgage	
Index to (116),	117	Sale of	
First term of, p. 4		Bonds for,	133
Journal,	119	Petitions and orders	140
Jurisdiction and func-		for,	
tions of, p. 43		Taxes, see Tax	
Record(s),	118	Receipts	
- of claims,	120	Attorneys',	115
Miscellaneous,	134	- and expenditures, see	
Jurisdiction in county		also Account; Cash;	
court, p. 38, 43		Fund; Ledger	
Probation		County clerk's,	63, 64
Bonds, see Bonds		County farm,	6
Officer, see Officer		County superintend-	
Records,	160	ent of schools,	206
Proceedings, see also Minutes		Estate,	144
County board of super-		Treasurer's record of,	195
visors,	1	Inheritance Tax,	121
Court, see Records under		Sheriff's,	63
name of specific		Recognizance records	
court		Circuit court,	174
Inheritance Tax,	121	County court,	97
School board,	205	Recorder	
Process docket, sheriff's,	179	Duties and powers	
Proof of death,	124	of, p. 7, 32, 33	
Public sale record, personal		Office, p. 10	
property,	141		

Subject Index

Records		Schedules, tax, see Assessments under Tax	
Housing, care, and accessibility of, p. 10, 11		School(s)	
Legislation concerning, p. 8		Board elections,	205
Redemption		Commissioner's record,	199
Certificates		District record,	205
Master's,	73, 85	Funds, see Fund	
Sheriff's,	73, 84	Lands, sale of,	70, 198
Record,	23	Maps	
Release		Brown county,	89
Orders of, insanity cases,	102	Cooperstown township,	91
Records (mortgage),	72, 76, 81	Plats,	68, 70
Relief, see County farm; Juvenile; Pension; Public welfare		Tax, see Tax	
Relinquishment, widows', see Widow		Teachers, see Teachers	
Repairs		Trustees, appointment of,	1
Drainage,	208	Script, used for jury payment,	67
Road,	20	Sectional index (recorder),	87
Replevin bonds, see Bond		Selection, widows', see Widow	
Replications (circuit court),	154	Settlement of taxes, see Tax	
Resolutions		Sheriff(s)	
- of board of supervisors,	2	Dockets	
Highway,	70	Execution,	180
Review, Board of		Process,	179
Complaint docket,	186	Duties and powers of, p. 6, 57, 58	
Duties and functions of, p. 62, 63		Fee books,	182
Minutes,	185	Jail records,	179, 181
Ripley township, maps of,	90, 93	Office, p. 10, 11	
Road(s), see also Highway		Receipts,	63
Assessments, see Tax		Soldiers, see Veterans	
District boundaries,	1	Stallion certificates,	52
Plats,	70	State's attorney	
Repairs,	20	Duties and powers, p. 60, 61	
Supervisors, appointments of,	1	Reports,	160
Sale(s)		Stillbirths, see Vital statistics	
Bills (estate),	140, 141	Stipulations	
Certificates of		Chancery,	156
Master's,	73, 85	Common law,	154
Sheriff's,	73, 84	Stock breeders' certificates, Record of,	52
- of property (probate)		Stock transfers (bank), certificates of,	73
Administrators' bonds for,	133	Subpoenas,	96, 154, 156
Petitions and orders for,	140	Suits in chancery,	156
Record		Summonses,	96, 154, 156
Private,	142	Superintendent	
Public,	141	- of highways, County	
Reports of, master's,	162	Appointed by county	
- of school lands, see School		board of supervisors, p. 8, 70	
Tax, see Tax			

Subject Index

Superintendent		Tax(es) (cont.)	
- of highways, County (cont.)		Assessments	
Duties and powers		Abstract of,	21
of, p. 7, 70, 71		Real and personal	
Office of, p. 11		property,	16
- of public welfare, County		Special	
Appointed by county		Lists,	209
board of super-		Roll,	208
visors, p. 7, 3, 74		Schedule for road	
Functions of, p. 7, 74, 75		repairs,	20
- of schools, County		Assessor's books (lists	
Duties and powers		of taxable	
of, p. 6, 67, 68		property),	16
Office of, p. 11		Collection records,	187-189
Register of applicants		Collector's books (lists	
for teachers'		of taxable	
certificates,	199	property),	22
Reports		Complaint docket,	186
- to county board		Deeds,	30, 69
of supervisors,	206	Affidavits for,	28, 29
- of sale of school		Delinquent	
lands, 70,	198	Forfeited property,	
Supervisor of assessments		lists of,	17, 26, 192
(County assessor)		Judgment,	24
Bonds,	60	- Sale, redemp-	
Books (lists of taxable		tion, and for-	
property),	16	feiture,	23
Duties and powers of, p. 62		List,	191
Supervisors		Sale(s)	
County board of		- and notices,	27
Acting as board of		Record,	25
review, p. 5, 62		Dog, collectors' bonds,	60, 61
Claims allowed,	7	Equalization of,	185
Contracts approved,	10	Inheritance, see Inher-	
Duties and powers		itance	
of, p. 5, 14-16		Levies,	1
First meeting of, p. 4		Lists,	17
Record,	1	Motor fuel, see Motor fuel	
Resolutions,	2	Objections,	70
Township, reports,	70	Railroad	
Road, see Road		Book (lists of taxable	
Surveyor(s)		property),	18
Appointed by board of		Valuations,	15
supervisors, p. 8, 72		Rate(s),	1
Duties and powers		- Book,	15
of, p. 7, 72		Road,	70
Election, p. 72		School, reports,	205
Record,	207	Settlement records,	
Tax(es)		54, 188-190,	192
Abatement		Summary of,	187
Lists,	22	Telegraph books (lists	
Record, personal		of taxable	
property,	193	property),	19

Subject Index

Tax(es) (cont.)		Versailles township, maps	
Telephone book (list of		of,	90, 94
taxable property),	19	Veterans' burial certifi-	
- wanted, docket,	15	cates,	35, 40
Teacher(s)		Veterinarians' certifi-	
Applications, Register of,	200	cates,	47, 50
Certificates, Register of,		Vital statistics	
	201, 204	Births	
Contracts,	205	Certificates,	31
Permanent record,	202	Index to,	32
Index to,	203	Register of,	33
Reports,	205	Index to,	34
Telephone and telegraph		Burial certificates of	
tax book,	19	veterans,	35, 40
Township		Death(s)	
Collectors, see Collector		Certificates,	35
Maps, see Maps		Index to,	36
Officers, see Officers		Coroner's record of,	183
Organization,	1	Register,	37
Offices, appointive and		Index to,	38
elective, p. 8		Marriage(s)	
Plan of government, p. 5, 15		Licenses,	41
Treasurer, see Treasurer		Applications for,	45
Transcripts, Justice of peace,	165	Records,	43
Treasurer		Index to,	42
County		Register,	44
Accounts,	194	Index to,	42
- with county clerk,	65	Stillbirth(s)	
Township collec-		Certificates,	35
tors' - with,	138	Index to,	36
Duties and powers		Register of,	37, 39
of, p. 5, 65, 66		Votes, see Election	
<u>Ex-officio</u> county col-		Warrants, see also Orders,	
lector and super-		county	
visor of assess-		- to appraisers,	136
ments,		- for arrest,	159
p. 5, 62, 64		Birth report,	66
Office of, p. 11		County, cancelled,	4
Record of money re-		Death report,	66
ceived,	195	- for service of wit-	
Reports to, Township		nesses,	114
collectors',	187	Warranty deeds,	72, 76, 79
School		Widows' relinquishment and	
Semiannual statements,	205	selection,	139
Township		Will(s)	
Reports,	70	Annexed, see Administrator	
Trust deeds,	72, 76, 78, 82	Original,	125
Trustees		Records,	124, 162
Election of, see Election		Witness affidavits,	
School, see School		69, 96, 114, 154, 162	
Venires, see Jury		Writs	
Verdicts, see Jury		Habeas corpus,	96, 154, 156
		Mittimus,	96



UNIVERSITY OF ILLINOIS-URBANA
A 352 0773H621 C004
INVENTORY OF THE COUNTY ARCHIVES OF ILLI
S 1938



3 0112 025403905