

AR 4037

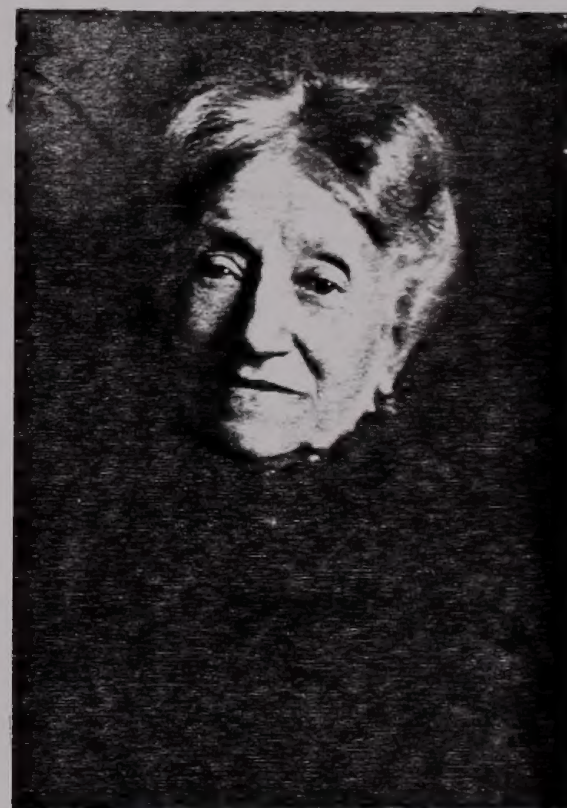
2/1

DOCUMENTATION- BRÜHL FAMILY MEMBERS UNDATED  
- PHOTOGRAPHS

A 25/3



Heimann Noa Oettinger  
geb. Rackwitz / Posen,  
✓ 8.1.1823, gest. Hamburg,  
21.3.1888. ✓  
beerdigt Rackwitz/Posen.



Emma Oettinger,  
geb. Jaffé,  
geb. 18.5.1837, im SCHWERSSENZ, PROVINZ POSEN  
Berlin, gest.  
14.1.1917, Hamburg. ✓



SEE "ONE LINE OF THE RABBI MORDECAI JAFFE PEDIGREE" p. 349.  
SEE PHOTOGRAPHS OF RAKWITZ CEMETERY and HEIMANN NOA DETTINGER'S TOMBSTONE WITH  
HEBREW INSCRIPTION.



STANDING:  
ROBERT CURDES, ERNST BRÜHL, MARGOT CURDES, FRIEDL BRAT, SIEGMUND BRÜHL  
EMIL BRAT, PAUL BRÜHL  
MARTIN OESTINGER

SITTING: STEFFI BRAT, SELMA BRAT, TWO LADIES ??  
(I BELIEVE COUSINS OF SELMA  
OR FRIENDS)

95<sup>th</sup> birthday of Siegmund Brühl, 25 Jan, 1930.  
see "Ona Line of the Rabbi Mordecai Jaffe Pedigree" p. 3 & 10.



E.X.1.5. FANNY BRÜHL  
nee JAFFE

b. 24 March 1840 SCHWERSENZ

d. 29 May 1923 BERLIN

see "One Line of the Rabbi  
Mordochai Jaffe Pedigree" p. 3 & 10.





SIEGMUND BRÜHL  
(1835-1935)  
husband of FANNY JAFFE  
with his  
great-grandchildren  
FRED & YVONNE BRAT,  
see "One Line of the  
Rabbi Mordecai Jaffe  
Pedigree" p. 10 & 55.

FRED BRAT (BRAT)    YVONNE BRAT (BRAT)  
SIEGMUND BRÜHL

ERNST  
BRUNN

SELMA  
BRUNN

P.T.O.





Selma Bruehl

b.19 August 1865 in  
Berlin

d. 7 March 1957 in  
Fort Smith, Arkansas  
USA.

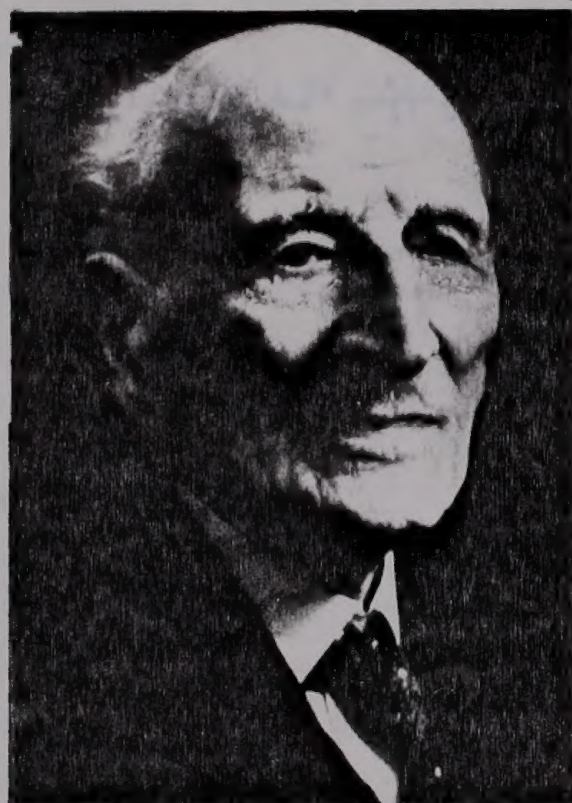
E.2.1.5.1. on Rabbi  
Mordecai J. Pedigree  
p.10.

Ernst Bruehl

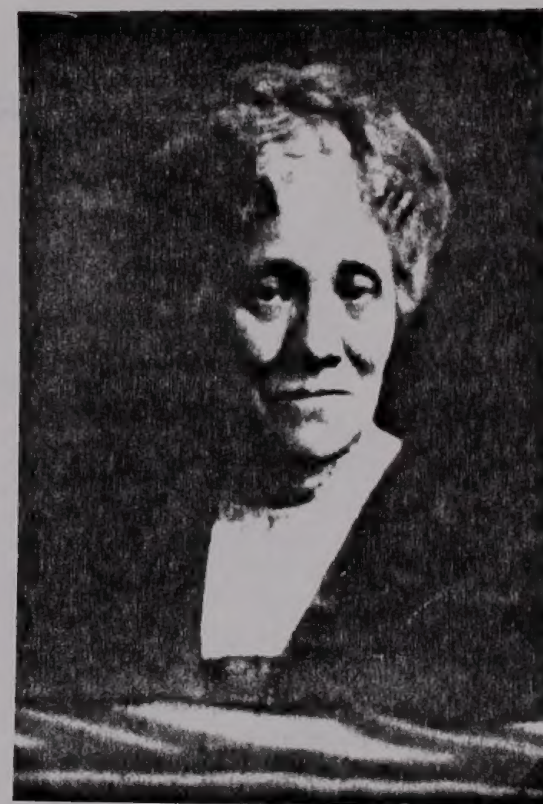
b.13 July 1867 Berlin

d. Date unknown, de-  
ported by Nazis.

E.2.1.5.2. on Rabbi  
Mordecai J. Pedigree  
p.10.



Siegmund Bruehl  
geb. 25.1.1835, Neisse  
gest. 15.6.1935, Berlin  
(Bild 25.1.1935)



Fanny Bruehl, geb. Jaffé  
geb. 24.3.1840, Schwersenz  
gest. 29.5.1923, Berlin

P.T.O.

See "One Line of the Rabbi Mendosai Zeffe Pedigree", p. 10.



SIEGFRIED BRAT



J. C. SCHAARWACHTER, KÖNIGL. HOF-PHOTOGRAPH BERLIN.



*Selma Ernst, Paul  
Brühl*  
CABINET-PORTRAIT  
W. GRÜNDNER BERLIN, W.  
178 Friedrich-Strasse 178,  
zwischen-Lauben u. Jägerstr.

SELMA PAUL ERNST  
BRÜHL



J. C. SCHWARZWÄCHTER *Wegh. durch Dr. H. Schuman, Berlin.* BERLIN

SIEGFRIED SELMA  
BRAT

SIEGFRIED BRAT



J. C. SCHWARZWÄCHTER *Wegh. durch Dr. H. Schuman, Berlin.* BERLIN

ERNST BRÜHL



ALBERT MEYER  
HOF-PHOTOGRAPH Berlin, C.

P. T. O.



The couple's children:

Liepfried and Selma Brat  
mei Brühl

Selma, Ernst and Paul Brühl  
(1865-1957) (1867-2. departed) (1874-1936)

see "RABBI MORDECAI PEDIGREE"

p. 10. and 24.

see "RABBI MORDECAI PEDIGREE"

p. 10, 24, 25, 55, 56,  
98, 99, 100.





FANNY

SIEGMUND

BRÜHN

P.T.O.

Siegmond and Fanny Brühl, née Jaffé  
(1835-1935)      (1840-1923)

See "ONE LINE OF THE RABBI MORDECAI JAFFE PEDIGREE"

P. 3 and 10.