

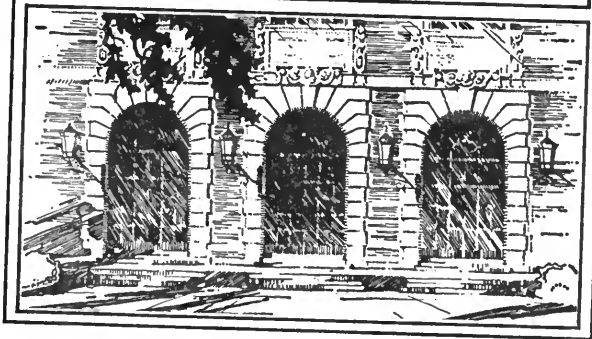


LIBRARY OF THE  
UNIVERSITY OF ILLINOIS  
AT URBANA-CHAMPAIGN

572

F453L

no. 1-21.



The person charging this material is responsible for its return to the library from which it was withdrawn on or before the **Latest Date** stamped below.

Theft, mutilation, and underlining of books are reasons for disciplinary action and may result in dismissal from the University.

To renew call Telephone Center, 333-8400

UNIVERSITY OF ILLINOIS LIBRARY AT URBANA-CHAMPAIGN

BUILDING JON ~~1111~~

DEC 18 1986

DEC 18 1986

JUL 19 1988

APR 27 1990

JUN 03 1992

JUN 01 1992

UNIVERSITY OF ILLINOIS LIBRARY



2572  
11-14  
200

JAPAN  
AS REPRESENTED IN  
FIELD MUSEUM OF NATURAL HISTORY

LEAFLETS 3, 11-14, and 20

26 PLATES

BY  
HELEN C. GUNSAULUS  
ASSISTANT CURATOR OF JAPANESE ETHNOLOGY



FIELD MUSEUM OF NATURAL HISTORY  
CHICAGO  
1924



## CONTENTS

References are to pagination at foot of page

	Page
Preface by B. Laufer . . . . .	1
The Japanese Collections . . . . .	4
The Japanese New Year's Festival, Games and Pastimes	21
Japanese Costume . . . . .	41
Gods and Heroes of Japan . . . . .	69
Japanese Temples and Houses . . . . .	93
The Japanese Sword and Its Decoration . . . . .	113





# INDEX

References are to pagination at foot of page

- Akasaka school, 127.  
Amaterasu, 11, 24, 71-74.  
Amida, 75.  
Ancestor-worship, 74.  
Archery, 15, 26.  
Architecture, 13, 93-106.  
Armor, 12, 15, 86.  
Asahina Saburo, hero, 87.
- Battledore and shuttlecock, 28.  
Belts, 47, 51, 57, 62, 63.  
Benkei, hero, 88.  
Benten, one of the seven gods of good fortune, 76.  
Bishamon, one of the seven gods of good fortune, 79.  
Buddha, 70.  
Buddhism, guardian deity of, 81; influence of on architecture, 95, 96; introduction of, 6, 70; merging of, with Shintoism, 75; Zen sect of, 123.  
Bushidō, philosophy of, 83.
- Carvings, of wood and ivory, 18.  
Charm, used against demons, 23; used to protect children, 55.  
China, heroes of, 84, 85; influence of, 6, 55, 64, 79, 121.  
Chōhi, Chinese hero, 84.  
Confucius, 70.  
Confucianism, 69, 83.  
Cosmetics, 59.  
Costume, of children, 53, 55; of court, 18, 55-66; illustrated on plates facing 58, 66; of men, 50-53; of peasants, 41-44; of women, 44-50.
- Daikoku, god of wealth, 78; illustrated on plates facing 12, 73.  
Dan-no-Ura, battle of, 128  
Dance, of lion, 30.  
Dragon-king, 74; daughter of, 74.  
Drama, masks worn in, 18.
- Earthquake, 99.  
Ebisu, god of good fortune, 77; illustrated on plate facing 73.  
Embossing, on wood-block prints, 21.  
Endo Morito, hero, 82.  
Eyebrows, shaving of, 49, 60.
- Feather-robe, legend of, 90.  
Fences, 101.  
Festival, of New Year, 9; of dolls, 16.  
Feudalism, 5, 14, 82, 83, 114-116; abolition of, 132; architecture of, 97.  
Flower-arrangement, 37; illustrated on plate facing 37.  
Footwear, 42, 49, 53, 61.  
Fudō, Buddhist divinity, 81.  
Fukurokuju, god of longevity, 88; illustrated on plate facing 73.  
Furniture, 107-109.  
Fushimi-Yoshirō, inlay, 124.
- Gakutei, 8; works of, illustrated on plates facing 37, 106.  
Games, 10, 32-35.  
Genji Monogatari, scene from, 18.  
Gentoku, Chinese hero, 84.  
Gifts for New Year's, 30.  
Goblin spider, legend of, 89.  
Gotō, school of metal-craftsmen, 123; Ichijō, 124, 132; Shinjō, 124; Yujo, 122, 123.
- Hair-dressing, 17, 47, 50, 54, 58, 65.  
Hamano school, 130.  
Handkerchiefs, of paper, 45.  
Hanrei, Chinese hero, 85.  
Harakiri, form of suicide, 14, 114.  
Haruaki Hōgen, metal-craftsman, 132.  
Hats, 42, 53, 64.  
Heating and light in houses, 109-112.

- Higo school, 127.  
Hina matsuri, dolls' festival, 16.  
Hiroshige, work of, illustrated on plate facing 99.  
Hitomaro, poet, 130.  
Hokkei, 8, 73, 77, 83, 88, 89, 91; works of, illustrated on plates facing 12, 24, 28, 58, 66, 73, 88, 95, 99.  
Hokusai, 8, 43, 77, 85, 95; works of, illustrated on plates facing 7, 8, 28, 33, 43, 51, 73, 84.  
Hotei, god of good fortune, 80; illustrated on plate facing 73.  
House, early form of, 93; of the present time, 99-112.  
Ichinomiya school, 131.  
Inn, illustrated on plate facing 95.  
Ironing, of clothes, done away with by stretching, 45.  
Ishiguro school, 131.  
Jakushi, metal-craftsman, 125.  
Jurojin, god of good fortune, 80; illustrated on plate facing 73.  
Kado-matsu, "pine of the doorway," New Year's decoration, 27.  
Kaneieye, metal-craftsman, 14, 122.  
Kaneko, heroine, 87.  
Kanō Natsuō, metal-craftsman, 132.  
Kato Kiyomasa, general, 86; illustrated on plate facing 84.  
Kesa, heroine, 82.  
Kinai, metal-craftsman, 126.  
Kintoki, boy of the forest, 89; illustrated on plate facing 88.  
Kite-flying, 28.  
Kojiki, historical records, 71, 75.  
Kojima Takanori, hero, 85.  
Korea, 6, 86.  
Kunisada, 81; work of, illustrated on plate facing 77.  
Kwan Yü, Chinese hero, 84.  
Lao-tse, 70.  
Lobster, used in decoration, 9, 26.  
Long life, emblems of, 26, 27.  
Masks, worn in classical drama, 18.  
Metals, used for mounts, 117; alloys of, 118.  
Mirror, legend of, 72.  
Mochi, New Year's delicacy, 26.  
Musical instruments, 18, 35.  
Myōto seki, the Husband and Wife Rocks, 25.  
Nabeshima, feudal lord of Hizen, 15.  
Namban, type of sword-guard, 125.  
Nanakusa, festival of, 29, 31.  
Nara artists, 128-130.  
New Year's festival, 9, 22-32.  
Nikkō, temples of, 16, 97.  
Nobuiye, metal-craftsman, 14, 122.  
Noshi, emblem used on gifts, 30.  
Obi, woman's girdle, 48.  
Okyō, painter, 132.  
Omori school, 131.  
Oni yarai, ceremony of expelling demons, 9, 23; illustrated on plate facing 24; on sword-mount, 130.  
Pagoda, 19.  
Painting, 6, 18, 19, 106, 123, 132.  
Partitions and walls, in houses, 100, 104.  
Philosophers, the three famous, 70.  
Poetry, 8, 29.  
Prints, 7, 8, 21; process of producing, illustrated on plate facing 8.  
Processes used on metal work, of chiseling, 120; of inlay, 119; of surface decoration, 119.  
Raikō, hero, 89.  
Raincoat, 43.  
Rice puddings, used at New Year's festival, 26.  
Ryōbu-Buddhism, 75, 76.  
Samurai, 5, 14, 15, 113-116.  
Screens, forms used in houses, 100, 103-105; of Tosa school, illustrated on plate facing 18.  
Sesshu, painter, 19, 123.  
Seven gods of fortune, 12, 31, 76-81; illustrated on plate facing 73.

- Seven spring grasses, 29, 31.  
 Shaku, ceremonial tablet, 63.  
 Shiba Onko, Chinese hero, 85.  
 Shibata Katsuiye, hero, 85.  
 Shigenobu, work of, illustrated on plates facing 58, 110.  
 Shingen, type of sword-guard, 125.  
 Shinsai, work of, illustrated on plate facing 110.  
 Shintoism, 70; deities of, 71-76; merging of with Buddhism, 75; Shintō temples, 94.  
 Shōchikubai, New Year's arrangement of plants, 9, 26.  
 Shōgun, 4, 114.  
 Shrines, household, 103; Shintō, 94.  
 Shuntei, 86; work of, illustrated on plate facing 84.  
 Soga brothers, heroes, 87.  
 Sōten of Hikone, metal-craftsman, 127.  
 Spirits of the pine, legend of, 91.  
 Straw rope, New Year's emblem, 9, 24; illustrated on plate facing 24.  
 Suicide, 14, 84, 114.  
 Sun Goddess, 4, 9, 11, 25, 71.  
 Surimono, 7, 21.  
 Sword, 13, 64, 86, 113-133.  
 Sword-mounts, 13, 14; decoration of, 117-133; defined, 116; illustrated on plates facing 14, 119, 123, 126, 130.  
 Symbolism of objects, used in New Year's decorations, 24, 26, 27, 30.  
 Tamagawa school, 131.  
 Tapestry, 16.  
 Tea ceremonial, 36, 102, 106.  
 Teeth, blackening of, 49, 60.  
 Temples, Buddhist, 96, 98; Shintō, 94.  
 Tangu, forest sprites, 88.  
 Tetsugendō school, 131.  
 Tokonoma, a unique feature of the house, 106.  
 Tokugawa, Iyeyasu, 16, 126; period of, 4, 5, 15, 58, 97, 114.  
 Tomoye Gozen, heroine, 87.  
 Torii, temple-gate, 94, 95.  
 Tosa school, screen of, illustrated on plate opposite 18.  
 Treasure-boat, 31.  
 Twenty-four paragons of filial virtue, 83.  
 Umetada Myōju, metal-craftsman, 126.  
 Uzume, dancing before the cave, 72.  
 Watanabe, hero, 82, 89; illustrated on plate facing 86.  
 Yanagawa school, 130.  
 Yokoya Somin, metal-craftsman, 130.  
 Yoshitsune, hero, 88.





UNIVERSITY OF ILLINOIS-URBANA



3 0112 055386194