



JAN 29 1957



~~LIBRARY~~

BIOLOG

The person charging this material is responsible for its return on or before the **Latest Date** stamped below.

Theft, mutilation and underlining of books are reasons for disciplinary action and may result in dismissal from the University.

UNIVERSITY OF ILLINOIS LIBRARY AT URBANA-CHAMPAIGN

~~AUG 22 1972~~

~~DEC 4 1972~~

~~DEC 11 1972~~

~~DEC 11 1972~~

~~DEC 9 1972~~

MAR 04 1974

Karl Patterson Schmidt
Anniversary Volume

In Honor of His Sixty-fifth Birthday

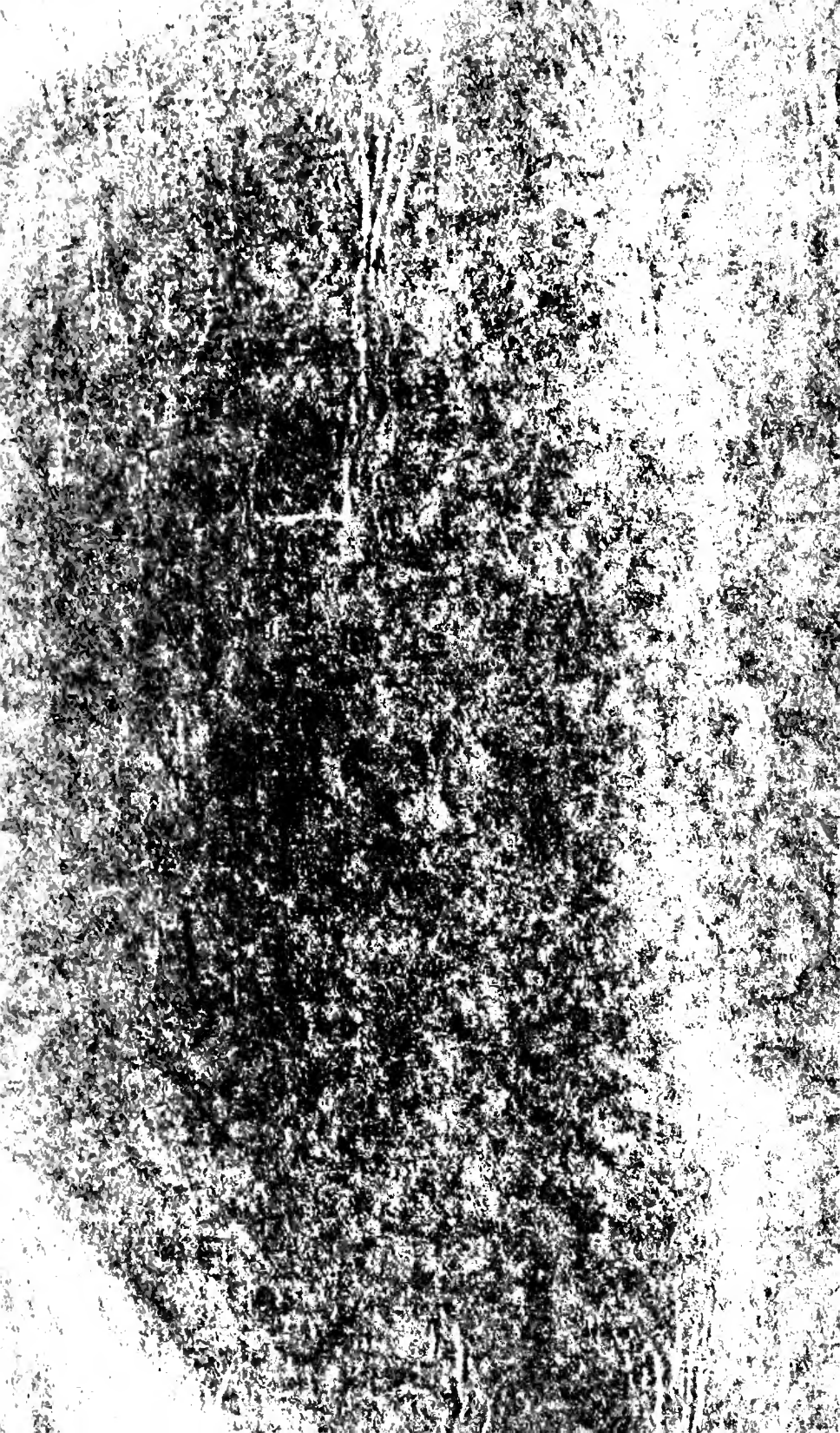
FIELDIANA: ZOOLOGY

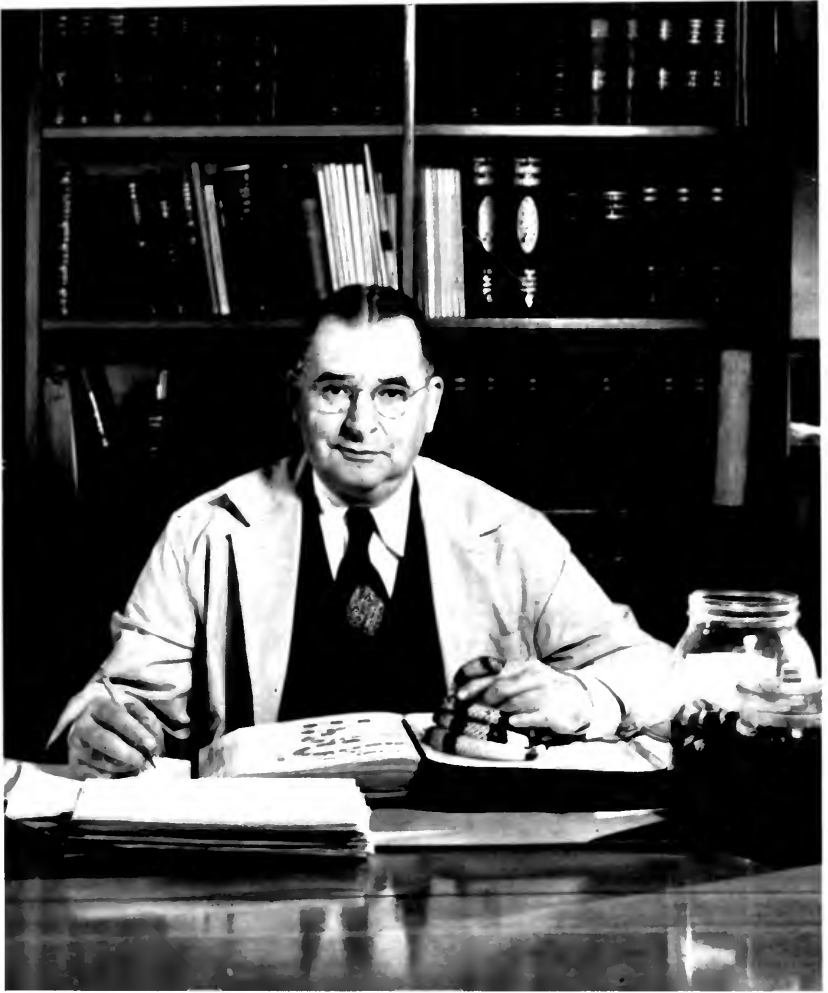
VOLUME 37

Published by

CHICAGO NATURAL HISTORY MUSEUM

JUNE 19, 1955





KARL PATTERSON SCHMIDT

FIELDIANA: ZOOLOGY

A Continuation of the

ZOOLOGICAL SERIES

of

FIELD MUSEUM OF NATURAL HISTORY

VOLUME 37



CHICAGO NATURAL HISTORY MUSEUM
CHICAGO, U. S. A.

1955

THE LIBRARY OF THE
JUL 8 1955
UNIVERSITY OF ILLINOIS

PRINTED IN THE UNITED STATES OF AMERICA
BY CHICAGO NATURAL HISTORY MUSEUM PRESS

Karl Patterson Schmidt
Anniversary Volume

Karl Patterson Schmidt
Anniversary Volume

In Honor of His Sixty-fifth Birthday

FIELDIANA: ZOOLOGY

VOLUME 37

Published by

CHICAGO NATURAL HISTORY MUSEUM

JUNE 19, 1955

39
F
V. 7-38

Contents

	PAGE
The Work of Karl Patterson Schmidt <i>By</i> STANLEY FIELD	1
An Appreciation of Karl Patterson Schmidt <i>By</i> CLIFFORD C. GREGG	5
A Note from the Contributors	7

NUMBER	
1 A Collection of Colombian Game Birds <i>By</i> EMMET R. BLAKE	9
2 Masticatory Apparatus in the Spectacled Bear <i>Tremarctos ornatus</i> <i>By</i> D. DWIGHT DAVIS	25
3 Ecological Notes on the Fish Fauna of a Coastal Drainage of North Borneo <i>By</i> ROBERT F. INGER	47
4 Western Atlantic Species of the Genus <i>Holocentrus</i> <i>By</i> LOREN P. WOODS	91
5 The Morphology of the Swim Bladder and Auditory Bulla in the Holocentridae <i>By</i> EDWARD M. NELSON	121
6 The Origin of the Land Birds of Tristan da Cunha <i>By</i> AUSTIN L. RAND	139
7 Notes on Snakes of the Genus <i>Calamaria</i> <i>By</i> HYMEN MARX AND ROBERT F. INGER	167
8 A Revision of the Tribe Amblyopinini: Staphylinid Beetles Parasitic on Mammals <i>By</i> CHARLES H. SEEVERS	211
9 Notes on a Collection of Bermuda Deep-Sea Fishes <i>By</i> MARION GREY	265
10 On Non-Marine Shells from Northeastern Brazil and Peru <i>By</i> FRITZ HAAS	303
11 A New Subspecies of <i>Caiman sclerops</i> from Colombia <i>By</i> FRED MEDEM	339
12 <i>Procolpochelys grandaeva</i> (Leidy), An Early Carettine Sea Turtle <i>By</i> RAINER ZANGERL AND WILLIAM D. TURNBULL	345

NUMBER		PAGE
13	Parallelism in the Evolution of the Permian Reptilian Faunas of the Old and New Worlds <i>By</i> EVERETT C. OLSON	385
14	Remarks on the Bats of the Genus <i>Vampyrops</i> <i>By</i> COLIN CAMPBELL SANBORN	403
15	Palestinian Species and Races of <i>Jaminia</i> Risso (Mollusca: Gastropoda) <i>By</i> GEORG HAAS	415
16	A New Variety of Cretaceous Decapod from Texas <i>By</i> EUGENE S. RICHARDSON, JR.	445
17	Early Devonian Vertebrates from the Knoydart Formation of Nova Scotia <i>By</i> ROBERT H. DENISON	449
18	Geographical Origins and Dispersions of Termite Genera <i>By</i> ALFRED E. EMERSON	465
19	A Recently Discovered <i>Phlegethontia</i> from Illinois <i>By</i> WILLIAM D. TURNBULL AND PRISCILLA F. TURNBULL	523
20	Three New Fleas of the Genus <i>Strepsylla</i> Traub (Siphonaptera: Hystrichopsyllidae) <i>By</i> ROBERT TRAUB AND ALFREDO BARRERA	541
21	New Feather-Wing Beetles from Termite Nests in the American Tropics (Coleoptera: Ptiliidae) <i>By</i> HENRY S. DYBAS	561
22	Bat Ticks of the Genus <i>Argas</i> (Ixodoidea: Argasidae). 1. The Subgenus <i>Chiropterargas</i> <i>By</i> HARRY HOOGSTRAAL	579
23	The Histerid Beetles of New Caledonia (Coleoptera: Histeridae) <i>By</i> RUPERT L. WENZEL	601
24	South American Marsh Rats, Genus <i>Holochilus</i> , With a Summary of Sigmodont Rodents <i>By</i> PHILIP HERSHKOVITZ	639
25	A Symmetrodont from the Early Cretaceous of Northern Texas <i>By</i> BRYAN PATTERSON	689
26	Bats from Guerrero, Jalisco and Oaxaca, Mexico <i>By</i> LUIS DE LA TORRE	695
—————		
INDEX		705

The Work of Karl Patterson Schmidt

The occasion of his retirement from active administrative duties seems to the Trustees and Scientific Staff of Chicago Natural History Museum an appropriate time to signalize their appreciation of Karl Patterson Schmidt's position in the Museum and in the scientific world. No token of esteem could be more appropriate than a special *Festschrift* in his honor, for his love for and intimate acquaintance with the technical literature of zoology has colored his whole career, and he has often expressed his affectionate regard and admiration for the practice, so common in German scientific circles, of honoring eminent men in this distinctive way.

This testimonial volume carries on the tradition begun in 1941 with the publication of a similar volume honoring his predecessor, Wilfred Hudson Osgood.¹ The Osgood volume was, in fact, Dr. Schmidt's idea.

It was thought at first that contributions should be invited from Dr. Schmidt's extra-mural colleagues, as was done with the Osgood volume, thus limiting the scope to his field of special interest, herpetology. Dr. Schmidt has been so closely associated with so many members of the Scientific Staff of the Museum, as teacher, inspiration, and critic, that it seemed more fitting to recognize this relationship by limiting contributions to members of the Museum's own staff. It is significant that these contributions represent not only the various Divisions of the Department of Zoology but also the Division of Paleontology.

A museum zoologist is a naturalist, and the hallmark of a naturalist is breadth of background and interest. One of the unfortunate results of increasing knowledge is increasing specialization, which often leads to stultifying narrowness of thinking and dangerous narrowness of interpretation, in science as in all other human activities. Certainly one of the primary responsibilities of a natural history museum, and of the men who staff it, is to maintain the broad perspective of nature as a whole that is now so often missing

¹ Field Museum of Natural History, Zoological Series, vol. 27.

from the science departments of our colleges and universities. Dr. Schmidt exemplifies to a high degree the breadth of interest and experience that characterizes the true naturalist. His early work, before coming to Chicago in 1922, dealt with the herpetology of the Belgian Congo, based on the great collection made by Herbert Lang; and with the West Indies, which he visited while still in college. At Chicago Natural History Museum he found the expedition program oriented toward Latin America, and over the next several years he participated in several zoological expeditions to parts of Central and South America. As scientific leader of the Crane Pacific Expedition he visited most of the important islands of the South Pacific in 1928 and 1929. He went to New Zealand as recently as 1949, and to Israel in 1953. Field trips to various parts of the United States, northern Mexico, and Central America provided him with an intimate first-hand knowledge of the geography and biota of our own continent.

A notable feature of all this field work is that Dr. Schmidt has not been merely a collector of amphibians and reptiles. All animal life, invertebrate as well as vertebrate, is of absorbing interest to him, along with the physical geography and the peoples of the areas in which he travels. Thus, he has become an outstanding field ecologist, and the breadth of his ecological knowledge was put to good account in his contribution to the recent monumental *Principles of Animal Ecology*, by Allee, Emerson, Park, Park, and Schmidt.

This first-hand knowledge of five continents was supplemented by his earlier work on the African fauna, and by his studies of the great herpetological collections made in China by the Asiatic expeditions of the American Museum of Natural History and the several Asiatic expeditions of Chicago Natural History Museum. All this is reflected in a consuming interest in zoogeography, a science that can be pursued only by museum methods and one to which Dr. Schmidt has made important contributions. The most notable of these is the translation and thorough revision, with W. C. Allee, of Hesse's *Tiergeographie auf oekologischer Grundlage*.

The translation of Hesse was only the first of several translations of important German scientific works that stemmed from Dr. Schmidt's familiarity with the German language. Still in manuscript are translations of Max Weber's great work on mammals, Hans Böker's *Einführung in die vergleichende biologische Anatomie der Wirbeltiere*, and Adolf Portmann's *Einführung in die vergleichende*

Morphologie der Wirbeltiere; still other works are presently being translated. The value of this unique contribution to the diffusion of scientific knowledge cannot be overestimated. Also contributing to the spread of scientific knowledge are the many articles on zoological subjects Dr. Schmidt has contributed to the *Encyclopaedia Britannica*.

As a scientist Dr. Schmidt is first and foremost a herpetologist. He has discovered and named twelve genera and more than two hundred species and subspecies of amphibians and reptiles, including several fossil crocodylians and turtles. Many notable herpetological collections have passed through his hands and have been reported on by him. The magnificent collection of amphibians and reptiles in Chicago Natural History Museum is due almost entirely to his efforts; when he arrived at the Museum the collection numbered only a few thousand specimens.

Dr. Schmidt's love for books led him to begin, at the outset of his career, the systematic accumulation of a library of the technical literature of herpetology. This interest has been pursued relentlessly over the years, and the Schmidt library now numbers some fifteen thousand titles. Most of these items are authors' reprints that cannot be bought but are obtained by exchange with colleagues. It is one of the largest single accumulations of this specialized literature in existence and represents an achievement of which he is justly proud. Since the technical literature is second only to the specimens themselves in scientific research, the Schmidt library adds an important dimension to the Division of Reptiles of Chicago Natural History Museum.

Many editorial and committee duties, usually thankless and time-consuming, have fallen on Dr. Schmidt's shoulders. For many years he was herpetological editor of *Copeia*, the official organ of the American Society of Ichthyologists and Herpetologists. He has edited the reptile section of *Biological Abstracts* since it was founded in 1927, and the sections on both amphibians and reptiles since 1941. For many years he has been the herpetological editor of the *American Midland Naturalist*. He has been a delegate to many national and international boards and science congresses, and in 1952 acted as chairman of the sessions on zoological nomenclature at the International Science Congress at Copenhagen. He was appointed to prepare the Sixth Edition of the *Check List of North American Amphibians and Reptiles*, which appeared in 1953.

At the outset of Dr. Schmidt's career the science of taxonomy, which is the most important research activity of natural history museums, was largely isolated from other areas of biological research. It was in bad repute, generally regarded as a game masquerading as science. Taxonomists, for their part, often looked with mistrust and contempt on other biologists. This unfortunate situation has now been largely clarified, and most of the credit goes to those few men on both sides whose understanding and interests were broad enough and flexible enough to bridge the gap. One of these men was Karl Patterson Schmidt, and his contributions in this direction may well turn out to be the most important of his career. Chicago Natural History Museum is proud of being in the forefront of this important *rapprochement* in the person of Karl P. Schmidt.

STANLEY FIELD

President, Chicago Natural History Museum

An Appreciation of Karl Patterson Schmidt

After a friendship of more than twenty-nine years with Karl Schmidt, I consider it a real privilege to be one of those who have co-operated in honoring him through this publication. Thirty-three years have elapsed since Dr. Schmidt joined the staff of this Museum as Assistant Curator of Reptiles. During that time he has been continuously in the service of the institution, becoming Curator of Reptiles in 1937 and Chief Curator of the Department of Zoology in 1941.

We hail as a great boon to science Karl Schmidt's early decision to leave the family farm in Wisconsin and join the ranks of research scientists, but we must not be misled into the thought that mere chance brought about the transition from farmer to scientist. He was reared in the atmosphere of scholarship by his father, who was a college professor, an insatiable reader, and an advocate of intellectual atmosphere in the home. Prior to his service at this Museum, Karl served as Research Assistant at the American Museum of Natural History in New York, beginning his work there immediately after his graduation from Cornell University.

Karl had been at the Museum less than a year when he undertook his first expeditionary work under the auspices of this institution. Since then he has participated in many Museum expeditions that have taken him to the most remote corners of the world.

He is a prolific writer. His reports and other scientific writings make an imposing list, but he does not confine himself to scientific literature. He has written popular books, including *Homes and Habits of Wild Animals*, and *Our Friendly Animals and Whence They Came*, both published by M. A. Donohue and Company of Chicago. Among his close friends he is even known as a poet of no mean ability.

At the Museum, Karl Schmidt, perhaps more than any other scientist on the staff, has interested himself in the training of young men and women for scientific careers. Quite a number of persons have become zoologists or specialists in fields related to zoology

through his interest and advice. Many more, while pursuing careers in other lines, have maintained a deep interest in zoology as an avocation.

His influence, moreover, reaches far beyond the walls of the Museum, and we find him helping out officially or unofficially in scientific and technical societies and in colleges and universities throughout the country. At the University of Chicago, he is a member of the committee charged with determining the fitness of candidates for the degree of Doctor of Philosophy in zoology. He has served for almost thirty years as editor of the Section on Amphibia and Reptilia of *Biological Abstracts* and served for many years as herpetological editor of *Copeia*. He was a founder and first treasurer of the Society for the Study of Evolution and has been a very active member in other scientific societies of which he is a member. The Chicago Zoological Society elected him an Honorary Governing Member and also made him a member of its Scientific and Advisory Committee, where his background is a most valuable asset to Brookfield Zoo. He is also a member of the Pacific Science Board.

It is only natural that wide recognition and many honors should come to a man of his attainments. More than twenty years ago, he became a fellow of the John Simon Guggenheim Memorial Foundation. His name has been starred in *American Men of Science* and Earlham College awarded him the degree of Doctor of Science.

My own personal appreciation of Dr. Schmidt is perhaps best evidenced by the many informal conferences I have held with him on matters in no way concerned with his official duties as Chief Curator of the Department of Zoology. His broad human understanding, his knowledge of the literature of his own and allied fields of study, his sincere interest and human sympathy, his genial optimism and his keen sense of humor have been of invaluable assistance in sweeping away many of the difficult and discouraging problems which find their way into the office of a museum director.

I welcome the years ahead in which Karl Schmidt will still be present, not as a Chief Curator burdened with the administrative duties of a great department, but as an emeritus research scientist who is free to continue his contribution to science and to humanity, restricted only by the hours in the day and the limits of his own endurance.

CLIFFORD C. GREGG

Director, Chicago Natural History Museum

A Note From the Contributors

Each of us owes a debt to Karl P. Schmidt. The nature and magnitude of these obligations vary, and none of them can ever be fully repaid. This volume is at once a token payment on our collective debt and an expression of our esteem for an associate and a friend.

EMMET R. BLAKE
D. DWIGHT DAVIS
LUIS DE LA TORRE
ROBERT H. DENISON
HENRY S. DYBAS
ALFRED E. EMERSON
MARION GREY
FRITZ HAAS
GEORG HAAS

PHILIP HERSHKOVITZ
HARRY HOOGSTRAAL
ROBERT F. INGER
HYMEN MARX
FRED MEDEM
EDWARD M. NELSON
EVERETT C. OLSON
BRYAN PATTERSON
AUSTIN L. RAND

EUGENE S. RICHARDSON, JR.
COLIN C. SANBORN
CHARLES H. SEEVERS
ROBERT TRAUB
WILLIAM D. TURNBULL
PRISCILLA F. TURNBULL
RUPERT L. WENZEL
LOREN P. WOODS
RAINER ZANGERL

Index

Principal discussion and all new names indicated by **bold-faced** type.

- Abo Formation 389
Abraeinae 605, **610**
Abraeus 601
 acicularis 620
 phyllobius 601
 punctiger 624
 vididulus 601
abruptum, *Platysoma* 629
aburri, *Aburria* 21
Aburria aburri 21
acanthognathus, *Lophodolus* 299
Acanthotermes 468, 486, 512
Achalinus spinalis 174
acicularis, *Abraeus* 620
 Bacanius 605, 606, **620**
Aciculitermes 515
acme, *Bulimulus* 325
Acorhinotermes 469, 493, 509
Acritus 602, 605
 biloculatus 612
 caledoniae 605, 607, **612**, 614
 lilliputianus 612
 schmidti 605, 607, 612, **614**
actinopterygians 388
Actitis macularia 154
aculeatus, *Argyropelecus* 275
acuminata, *Erolia* 154
acunhae, *Nesospiza* 147, 152
 horny palate 151
acutirostris, *Calamaria* 199
Adioryx 126
 Holocentrus 92, **109**
Admiral Formation 389
adusta, *Nenia* 305
 tumens, *Nenia* 305
aegyptiaca, *Tadarida* 595
aegyptiacus, *Rousettus* 595
Aeletes 620
 crenatus 605, 606, **610**
 daubani 610
 laevis 610
 longipes 614
 politus 610
aequatorialis, *Penelope* 17
aequinoctialis, *Succinea* 305
Afrosbulitermes 515
agilis, *Mus* 648
Agouti paca 215
Ahamitermes 469, 503, 510
Ailuropoda 44
Aistopoda 531
Akodon aereus 234
 berlepschii 231
 jelskii 254
 pulcherrimus 227
 pyrrholis 228
 nigrita 237
akodoni, *Amblyopinus* 228
alatus, *Lampanyctus* 289
alba, *Egretta* 153
 Monopterus 53, **59**
 Muraena 59
alberti, *Crax* 17
albinism, in cracids 19
albiventer, *Calamaria* 199
albopunctata, *Calamaria* 199
alidae, *Calamaria* 200
Allodotermes 473, 513
Allognathotermes 511
alstoni, *Neotomodon* 547
alticolus, *Edrabiellus* 259
amabilis, *Argyropelecus* 276
amazonicus, *Holochilus* 659, 667
 brasiliensis 667, 669
Ambassis, ecological distribution 81
 gymnocephalus 52, 54, 71
 interrupta 52ff, 71
 ecological distribution 82
 food 71, 84
 nalua 53, 72
 predator of 68
Amblyopininae 211ff
Amblyopinini 221
Amblyopinodes 216, 218, 220, 222, **247**
 claviger 249
 gahani 248
 peruvianus 250
 piceus 248
 similis 251
 travassosi 249
Amblyopinus 212, 214, 216-18, 220, 221
 akodoni 228
 ancashi 232
 angustus 247
 bequaerti 247
 brandesi 227
 chilomyysi 239
 colombiae 231
 emarginatus 239
 fuegensis 216, 237

- henseli* 212, 247
hershkovitzi 238
huilae 242
jelskii 212, 224
kalinowskii 243
kofordi 231
longus 234
marmosae 247
monticolus 228
montivagans 240
oryzomysi 240
pacae 244
punae 227
sanborni 238
schmidti 231
spinipennis 234
waterhousei 219, 243
amblyurus, *Hemirhamphus* 67
Zenarchopterus 52ff, 67
 food 67, 84
americanus, *Ursus* 25
Amitermes 467, 469, 472, 473, 477, 480, 483, 485, 488, 491, 493, 501, 503, 510
Amitermitinae 493, 505, 506, 510, 516, 562
amoenus, *Neomyripristis* 94
Amphibia, apsidospondylous 388
 lepospondylous 388
Amphicyodontinae 44
amplus, *Peromyscus difficilis* 547
Ampullariidae 303
Ampullarius (Ampullarius) bridgesii 304
 insularum 304
 papyraceus 303
 (*Limnopomus*) *crassus* 303
 nubilus 303
Anabantoidea, ecological distribution 83
Anacanthotermes 473, 482, 509
anale, *Scopelarchus* 284
Anapleus 601
Anatidae 153
ancashi, *Amblyopinus* 232
Ancistrotermes 513
andium, *Radiodiscus* 308
andivaga, *Streptaxis* 329
 Systrophia 308
andoicus, *Bulimulus* 324
Angelosaurus 395, 398
anguya, *Mus* 660
 Oryzomys 654
angrandi, *Bulimulus* 315
 kalinowskii, *Nenia* 306
 Nenia 306
 urubambensis, *Nenia* 306
Anguilla borneensis 52ff, 58
 ecological distribution 82
 food 58, 84
 predator of 62
Angularitermes 469, 495, 497, 514
Angulitermes 471, 485, 501, 512
angustus, *Amblyopinus* 247
anguya, *Holochilus* 647
 Mus (Holochilus) 648, 660, 666
Anodontostoma chacunda 52, 53, 55
Anomodontia 387, 398
 distribution, geographic 390
 geologic 390
Anoplogaster cornuta 292
Anoplogastriidae 292
Anoplotermes 472, 484, 491, 493, 500, 510
Anthias maculatus 73
apaporiensis, *Caiman sclerops* 340
Apicotermes 473, 485, 511
Apilitermes 511
Apobletes 628
 appendiculata 627
 montrouzieri 605, 607, 627
Apocryptes brachypterus 78
 rictuosus 80
Apoda 531
Apodes, ecological distribution 83
Aporodon 644
 appendiculata, *Apobletes* 627
 apraeocularis, *Calamaria* 200
 arborifera, *Linophryne* 300
Archotermopsis 468, 470, 482, 507, 509
Arctibeus lineatus 409
Arctotherium 25
arenarius, *Miniopterus natalensis* 595
Argas 579ff
 boueti 580, 594, 598
 (*Chiropterargas*) *boueti* 580
 confusus 579, 586, 594, 598
 vespertilionis 586, 596, 598
Argasidae 579
argenteus, *Diretmus* 292
argentimaculata, *Sciæna* 73
argentimaculatus, *Lutianus* 54, 55, 73
 food 84, 85
argentinus, *Edrabius* 258
argus, *Chaetodon* 75
 Scatophagus 52, 54, 55, 75
argyromus, *Myripristis* 136
Argyropelecus aculeatus 275
 amabilis 276
 hemigymnus 274
Ariidae, ecological distribution 86
Ariophantidae 308
Arius caelatus 64
 venosus 65
arkansas, *Catapleura* 377
armatus, *Neoniphon* 94
Armitermes 495, 514
Arroyo Formation 389
 fauna 390ff
artensis, *Saprinus* 605, 608, 609
arthuri-muelleri, *Rugitermes* 576
Artibeus cinereus toltecus 698
 harti 700
 jamaicensis jamaicensis 698
 rittatus 405

- ascendens*, *Bulimulus derelictus* 317
ascensionis, *Holocentrus* 93, **100**, 106,
 122, 134
Perca 100
Asellia tridens tridens 595
assimilis, *Carcinops* 619
Astronesthes leucopogon 278
Astronesthidae 278
atahualpa, *Epiphragmophora* 327
atarus, *Tretomys* 646
ataxus, *Bulimulus* 320
ater, *Lampanyctus* 288
atlantica, *Evermannella atrata* 284
atlanticus, *Diogenichthys* 286
Tetragonurus 298
Atlantisia 158, 159
rogersi 142
Atractaspis 168
Atractus 168
atractus, *Beloholocentrus* 95
atrata atlantica, *Evermannella* 284
atrum, *Cyema* 291
attenuata, *Vinciguerra* 273
auritus christiei, *Plecolus* 595
Reithrodon 646
australasiae, *Saprinus* 609
 Australian region, termite fauna of 470,
 476, 508ff
Australitermes 469, 477, 503, 515
 Autunian fauna 389ff
Bacanius 602, 605
acicularis 605, 606, **620**
fauxeli 605, **622**, 624, 625
hamatus 620
punctiger 605, 606, 622, **624**, 625
remingtoni 605, 606, 622, **624**
sulcisternus 620
Bagrus nemurus 65
Balantipteryx plicata plicata 695
balbo, *Evermannella* 284
balnearum, *Holochilus* 656, 661, 665
Holochilus brasiliensis 665
Barbodes sealei 62
Barbus elongatus 62
Bartramia longicauda 154
Basidentitermes 512
Bathophilus metallicus 281
Bathylagidae 284
Bathylagus glacialis 284
bathyphila, *Lampadena* 288
bathyphilum, *Gonostoma* 272
 bats, ticks of 579ff
Beanea 95
trivittata 95
beani, *Serrivomer* 291
beccari, *Calamaria* 200
 Belle Plains Formation 389
Beloholocentrus 95
atractus 95
Belone strongylura 66
benjaminsii, *Calamaria* 200
benoitii, *Hygophum* 285
Benthodesmus simonyi 298
bequaerti, *Amblyopinus* 247
berbicensis, *Holochilus* 661
Holochilus brasiliensis 655, **669**
berlepschi, *Crypturellus cinereus* 15
Beryciformes 121
Betta unimaculata 53, 54, **70**
 ecological distribution 82, 86
 food 70, 84
bibulbosus, *Eustomias* 282
bicolor, *Calamaria* 192, 200
bicornis, *Ceratostethus* 52, 54ff, **68**
Linophryne 300
Neostethus 68
bidentatus, *Urotraiinus* 563, **564**
bigelowi, *Eustomias* 282
bikolana, *Vaimosa* 79
bikolanus, *Pseudogobius* 52, 54, **79**
biloculatus, *Acritus* 612
bitaeniatus, *Thaumastus* 309
bitorques, *Calamaria* 200
blakfordi, *Yarella* 272
boa ferox, *Stomias* 278
boddaerti, *Boleophthalmus* 55, **80**
 food 80, 85
Gobius 80
Boleophthalmus boddaerti 55, **80**
 food 80, 85
bonapartei, *Nothocercus* 12
Bonapartia pedialota 269
borneensis, *Anguilla* 52ff, **58**
 ecological distribution 82
 food 58, 84
Calamaria 177ff, **194**, 200
Gastromyzon 64
Neostethus 52, 54ff, **69**
 Borneo, North, fishes of 47ff
 Borneo Zoological Expedition 47ff
boucardi, *Crypturellus* 16
boueti, *Argas* **580**, 594
boylii levipes, *Peromyscus* 545
brachygnathus, *Rhinolophus clivus* 595
Brachygobius doriae 52, 77
 food 77, 85
brachypterus, *Apocryptes* 78
Holocentrus 109
Gobiopterus 55, 78
brachyrhynchus, *Rhynchichthys* 93
brachyura, *Calamaria* **192**, 200
brachyurus, *Doryichthys* 55, 67
Syngnathus 67
brandesi, *Amblyopinus* 227
brasiliensis amazonicus, *Holochilus* 667
balnearum, *Holochilus* 665
berbicensis, *Holochilus* 655, **669**
brasiliensis, *Holochilus* 662
guianae, *Holochilus* 668
Hesperomys (Holochilus) 666
Holochilomy 662
Holochilus 645, 648, 653, 654, 657,
658, 660, 661, 666

- incarum*, *Holochilus* 668
leucogaster, *Holochilus* 648, 665
Mus 660, 662, 663, 667
nanus, *Holochilus* 666, 669
vulpinus, *Holochilus* 661
braueri, *Cyclothone* 272
Brazil, shells from 303ff
brevibarbatulus, *Stomias* 279
brevidentatus, *Serrivomer* 291
bridgesii, *Ampullarius* 304
bridwelli, *Spalacotheroides* 690
brookii, *Calamaria* 179
bruegeli, *Calamaria* 185, 187
brunnescens, *Penelope* 17
Bubulcus ibis 153
buccinatus, *Oryzomys* 654, 660
Buchen, Walter 140
buchi, *Calamaria* 195, 200
buckleyi, *Odontophorus gujanensis* 21
Bulbitermes 481, 514
Bulimimus aegyptiacus 429, 432
chondriiformis 419
heptodon 429
septemdentatus 422
sexdentatus 436
Bulimulidae 309, 331
Bulimulus acme 325
andoicus 324
angrandi 315
(*Ataxus*) *infundibulum* 320
infundibulum umbilicatellus 320
perforatus 320
cereicola 317
culmineus 315
dentritis 319
derelictus 317
elatus 324
extensus 323
(*Geoceras*) *veruculum* 320
(*Geopyrgus*) *turritus* 336
hamiltoni 325
infundibulum 320
umbilicatellus 320
jocosensis 322
(*Lissoacme*) *cereicola* 317
dentritis 319
derelictus ascendens 317
modestus 318
reconditus 320
rudistriatus 318
scutulatus 319
longitudinalis 316
modestus 318
mutabilis 334
nemorensis 316
obeliscus 322
(*Peronaeus*) **acme** 325
andoicus 324
elatus 324
extensus 323
hamiltoni 325
pupiformis 325
pyrgidium 321
proteiformis 335
proteus 335
(*Protoglyptus*) *rivasii* 336
pupiformis 325
pyrgidium 321
reconditus 320
revinctus 316
rivasii 336
rudistriatus 318
(*Scutulatus*) *angrandi* 315
culmineus 315
longitudinalis 316
mutabilis 334
nemorensis 316
phaeocheilus 334
proteus 335
revinctus 316
subjussieui 336
tupacii 316
scutulatus 319
(*Spirosulcatus*) *endospira* 336
subjussieui 336
tupacii 316
turritus 336
veruculum 320
Bulimus lamelliferus 434
ovularis 422, 438
sauleyi 416
septemdentatus 422
bullisi, *Holocentrus* 91, 113
bungaroides, *Calamaria* 200
burtoni, *Poliospiza* 149
horny palate 151
Butis butis 52, 75
gymnopomus 52, 55, 76
food 76, 85
butis, *Butis* 52, 75
Cheilodipterus 75

caelatus, *Arius* 64
Tachysurus 55, 64
food 85
caeruleomaculatus, *Chelon* 53, 68
Mugil 68
Caiman sclerops 339
apaporiensis 340
Calamaria 167ff
acutirostris 199
albiventer 199
albopunctata 199
alidae 200
apraeocularis 200
beccari 200
benjaminsi 200
bicolor 192, 200
bitorques 200
borneensis 177ff, 194, 200
brachyura 192, 200
brookii 179
bruegeli 185, 187
buchi 195, 200

- bungaroides* 200
ceramensis 200
 check list 199ff
collaris 201
crassa 192, 201
curta 191, 201
 dentition 173ff
döderleini 201
doerianense 199, 201
egregia 201
electa 201
elegans 190, 192, 201
everetti 192, 201
 food 174
gervaisi 169, 176, 178, 180, 201
 iridescens 182
gimletti 196, 199, 201
göringi 202
grabowskyi 178, 189, 202
gracilis 202
gracillima 196, 199, 202
grayi 183, 185, 188
griswoldi 178, 183, 202
 hollandi 202
hosei 202
indragirica 202
 javanica 202
 javanica 202
 lineata 196, 202
jeudi 202
joloensis 203
klossi 203
lateralis 203
lautensis 178, 191, 203
leucocephala 169, 176, 178, 193, 203
leucogaster 169, 176, 179, 203
 dentition 172ff
linnaei 171, 195, 203
lowi 178, 196, 199, 203
lumbricoidea 178, 183, 189, 203
 griswoldi 183, 202
lumholtzi 203
margaritophora 191, 192, 203
 gastropicta 204
 margaritophora 203
mearnsi 204
mecheli 204
melanota 204
mindorensis 204
mjobergi 204
muelleri 192, 204
nuchalis 204
occipitalis 204
ornata 204
pavimentata 193, 204
 formosana 205
 pavimentata 204
pendleburyi 178, 191, 192, 205
pfefferi 205
polillensis 205
prakkei 190, 192, 205
quinquetaeniata 205
 raveni 205
 rebutischi 205
 schlegeli 205
 schmidti 174, 178, 197, 205
 semiannulata 205
 septentrionalis 169, 178, 194, 206
 simalurensis 189, 190, 192, 206
 smithi 206
 sondaica 206
 specializations of 168ff
 stahlknechti 192, 206
 suluensis 178, 190, 192, 206
 sumatrana 191, 192, 206
 tropica 168, 192, 206
 ulmeri 206
 uniformis 206
 ventralis 196, 206
 vermiformis 176, 178, 183, 185, 207
 grayi 188, 207
 vermiformis 187, 207
 virgulata 180, 207
 zamboangensis 207
calcarifer, Holocentrus 72
 Lates 53, 72
 food 84
Calcaritermes 472, 490, 492, 498, 508
caledoniae, Acritus 605, 607, 612, 614
caledoniae, Sternaulax 605, 607, 626
calosoma, Macrostomias 279
canaliculatus, Drymaeus 314
canalifrons, Prorhinotermes 488
canellinus, Holochilus 647, 661, 666
Canis familiaris, weights of jaw muscles 42
capensis, Eptesicus 595
Capritermes 469, 477, 478, 480, 486, 488, 501, 503, 512
Captorhina 387
Captorhinikos 391
Captorhinoides 391
Captorhinomorpha 386, 399
 distribution, geographic 390
 geologic 390
 Permian evolution 391
Captorhinus 391
caquetae, Ortalis 19
Caranx ignobilis 53, 55, 72
 food 73, 84
carapace, of Caretta 374ff
 of *Lepidochelys* 374ff
 of *Procolpochelys* 349
 Carbondale Formation 523
carce, Ichthyocampus 54, 55, 67
 Syngnathus 67
Carcinops assimilis 619
 minuta 618
 palans 618
 pumilio 605, 608, 616, 619
 quattuordecimstriata 616
 rubripes 618, 619
 tibialis 617
 troglydites 605, 608, 618

- Carcinus pumilio* 616
Caretta 347, 365
 carapace 374ff
 caretta 360
 plastron 357, 377
 scales, head 376
 vertebrae 360
Carettini 345ff, 365
 plastron 377
Carollia perspicillata 238, 239
Casea 392
 haskellii 396
 nicholsi 396
Caseidae 387, 392, 399
Caseoides 395, 398
Catapleura arkansas 377
caucaea, *Crypturellus soui* 15
 Ortalis 19
Caulolepis longidens 292
 subulidens 293
caurinus, *Reithrodon* 646
cavifrons, *Constrictolermes* 474
Cavitermes 469, 494, 512
Centrobanchus nigro-ocellatum 286
Cephalaspis 449
 novaescotiae 454
Cephalofarer 95
Cephalotermes 469, 484, 493, 495, 510
 ceramensis, *Calamaria* 200
Ceratiidae 299
Ceratostethus bicornis 52, 54ff, 68
Ceratolermes 511
 cereicola, *Bulimulus* 317
 Ceylonitermellus 469, 515
 Ceylonitermes 481, 497, 514
 chacarius, *Holochilus* 655, 656, 663, 665
 chacunda, *Anodoniostoma* 52, 53, 55
 Clupanodon 55
Chaerephon major 595
Chaetodon argus 75
Chamaepetes goudotii goudotii 21
Chanda nalua 72
chapalmalense, *Proreithrodon* 646
chatareus, *Coius* 75
 Toxotes 52, 54, 55, 75
 food 75, 85
Chauliodontidae 277
Chauliodus danae 277
 sloanei 277
chavesi, *Lampadena* 288
Chelon caeruleomaculatus 53, 68
 sp. 54, 68
Chelone grandaeva 345
 longiceps 345
Chelonia 366
 girundica 366, 378
 grandaeva 345
 gwinneri 364, 377
 mydas 360, 378
 neurals 353
 sismondai 366, 378
 vertebrae 360
Cheloniidae, limbs 364, 378
 phylogeny 363ff
 scales, head 376
Cheloniinae, classification 365
Chelonini 366
 plastron 377
Chiasmodon niger pluriradiatus 297
Chiasmodontidae 297
Chiasognathe 499
Chilomys sp. 240, 242
chilomysi, *Amblyopinus* 239
Chilonycteris davyi fulvus 697
 parnelli 696
 personata 696
 psilotis 696
 rubiginosa mexicana 696
 torrei continentis 696
chionea, *Helicina* 305
Chiropterargas 579, 580
Chiostomias pliopterus 281
chocoensis, *Ortalis* 20
chondriformis, *Buliminus* 419
 Jaminia 419
 Pupa 419
Chondrula broti 441
 florieni 432, 441
 ghilanensis 441
 ledereri 441
 libanica 423
 limbodontata 441
 louisii 441
 Massei 419
 michoni 432
 septemdentata 422
 tricuspidata 441
 triticea 441
Chondrulus heptodon 429
Chondrus l'hotellieri 440
 ovularis 438
 septemdentatus 422, 440
Chondrusa saulcyi impressa 441
 septemdentatus 441
Choza Formation 389
 fauna 390ff
 christiei, *Plecotus auritus* 595
 chrysogaster, *Holochilus* 661
 chrysosoma, *Cyprinogobius* 52, 77
 Lophogobius 77
 Cichlherminia 145
 cinereiceps, *Ortalis* 20
 cinereus, *Crypturellus* 15
 toltecus, *Artibeus* 698
Clarias teysmanni 52, 54, 65
 ecological distribution 82
 food 65, 84
claromphalos, *Epiphragmophora* 327
Clausiliidae 305
clausomphalos, *Epiphragmophora* 327
 inferior, *Epiphragmophora* 327
claviger, *Amblyopinodes* 249
Clear Fork Group 388ff, 397
 fauna of 390

- Climatius* 458, 459
clivosus brachygnathus, Rhinolophus 595
Clupanodon chacunda 55
 Clyde Formation 389
Coarctotermes 473, 481, 486, 487, 489, 501, 514
cocco, Gonichthys 286
Coilia coomansi 54, 57
Coius chatareus 75
collaris, Calamaria 201
colombiae, Amblyopinus 231
colombiae, Cryptomorpha 572
 Colombian Zoological Expedition (1948-52) 214, 221
 map of collecting stations 11
 colonization of Tristan da Cunha 159
Coluber 169
columbiana, Ortalis 19
columbianus, Crypturellus boucardi 16
comeri, Porphyrtornis 142
commersoni, Stolephorus 52, 56
 food 56, 84
 competition, among termites 474
confusus, Argas 579, 586, 594
connezum, Platsyoma 605, 607, 628, 629
 Conover, Boardman 9
Constrictotermes 469, 481, 496, 497, 514
 cavifrons 474
 cyphergaster 474
contiguum, Platsyoma 629
Convexitermes 497, 515
coomansi, Coilia 54, 57
Coptotermes 468, 469, 472, 478, 483, 484, 488, 493, 509
 Coptotermitinae 516
cor, Megaderma 580, 595
cora, Neopetraeus 335
 unicolor, Neopetraeus 335
Corica, predator of 80
 soborna 52, 54, 57
Cornicapritermes 495, 512
Corniger 96, 122
Cornitermes 473, 495, 514
cornuta, Anoplogaster 292
cornutus, Hoplostethus 292
coruscus, Holocentrus 92, 100, 112
Cotylorhynchus 392, 397ff
 hancocki 396
 romeri 396
Cotylosauria 386
couesi, Cryptopsaras 299
crassa, Calamaria 192, 201
crassus, Ampullarius 303
Craz alberti 17
 globulosa 16
 rubra rubra 17
crenatus, Aeletes 605, 606, 610
Crenetermes 511
Crepititermes 494, 512
cretaceus, Neopetraeus 335
 Cricetidae 218
Crithagra 147
Crithagroides 147, 148
 crossopterygians 388
Cryptommatus jansoni 260
Cryptomorpha colombiae 572
Cryptopsaras couesi 299
Cryptotermes 472, 478, 487, 490, 492, 508
 dudleyi 492
 havilandi 487
Crypturellus boucardi columbianus 16
 cinereus berlepschi 15
 soui cauae 15
 undulatus yapura 16
Ctenogobius sp. 55, 77
Ctenomys 215, 216, 220
 fulvus 259
 magellanicus dicki 237
 opimus nigriceps 228, 252, 258
 peruanus 254, 259
Cubitermes 485, 511
 culmineus, Bulimulus 315
 cumanensis, Pipile 21
 cuniculoides, Reithrodon 646
 Cuniculus taczanowskii 215, 244
 cuprarius, Lampanyctus 288
 curta, Calamaria 191, 201
 Curvitermes 468, 495, 514
 cyaneocupreus, Saprinus 610
 cyaneus, Hister 608
 Saprinus 605, 608
Cyclothone braueri 272
 microdon 272
 pallida 272
Cyema atrum 291
 Cyemidae 291
Cylindrotermes 469, 493, 510
 cyphergaster, Constrictotermes 474
Cyprinogobius chrysosoma 52, 77
cystops, Rhinopoma hardwickei 595

dalmati, Strepsylla 541
danae, Chauliodus 277
Dangila, spilurus 63
darwini, Holochilus 647, 661, 663, 664
 darwiniensis, Mastotermes 468
 daubani, Aeletes 610
 daviseae, Strepsylla 546
 davyi fulvus, Chilonycteris 697
 Pteronotus 697
 Dendrophilinae 601, 605, 616
Dendrophilus minutus 618
 quattuordecimstriata 616
Dentispicotermes 494, 512
 dentition, of *Calamaria* 173ff
 of sigmodont rodents 644ff
 of symmetrodont 690
dentritis, Bulimulus 319
derelictus ascendens, Bulimulus 317
 Derichthyidae 290
Derichthys serpentina 290
 Dermochelyidae 365
Dermogenys, ecological distribution 81, 86

- pusillus* 52, 54ff, 66
 ecological distribution 82
Desmatodon 391
 Desmochelyidae 365
Desmodus murinus 700
 rotundus murinus 700
 Diadecta 387
Diadectes 387, 391
 Diadectidae 387, 399
 Diadectomorpha 386
 distribution, geographic 390
 geologic 390
 Permian evolution 391
diaphana, *Sternoptyx* 277
Diaphus dofeini 286
 fulgens 287
 gemellari 287
 metopoclampus 287
Diasparactus 391
Diatermes 507
diazi, *Romerolagus* 548
Didelphis albiventris 215, 243, 244
 aurita 247
 marsupialis 215
 paraguayensis 243
difficilis amplus, *Peromyscus* 547
diluta, *Epiphragmophora* 327
Dimacrodon 393, 395, 398, 400
Dimetrodon 387, 393, 397
 gigashomogenes 392, 397
dinema, *Photonectes* 282
Dinocyon 44
Diogenichthys atlanticus 286
 Dipnoi 388
 Diretmidae 292
Diretmus argenteus 292
disjuncta, *Margrethia* 270
 distribution, ecological, of fishes 81ff
 geographic, fossil reptiles 389ff
 vertical, of fishes 269ff
Diversitermes 496, 514
döderleini, *Calamaria* 201
doerianense, *Calamaria* 199, 201
dofeini, *Diaphus* 286
Dolichorhinotermes 469, 493, 509
Dolichosoma 531, 532
 Dolichosomatidae 531
doriae, *Brachygobius* 52, 77
 food 77, 85
 Gobius 77
dorsalis, *Vampyrops* 407
Doryichthys brachyurus 55, 67
Drepanotermes 469, 473, 503, 510
Drymaeus canaliculatus 314
 eucosmetus 331
 interruptus 333
 pamplonensis 314
 pocilus 332, 333
 ponsonbyi 332
 schmidti 314
 serotinus 313, 332
 zilchi 333
dudleyi, *Cryptotermes* 492
 Dunkard Formation 389
dunnei, *Nesospiza wilkinsi* 152
Duplidentitermes 511
dussumieri, *Mugil* 53, 68

ebriosus, *Neotomys* 646
 vulturinus, *Neotomys* 646
Echlostoma tanneri 281
 ectoparasitism, in beetles 211
Edaphosauria 387
 distribution, geographic 390
 geologic 390
Edaphosauria 387
 Edaphosauridae 387, 399
 evolution in Permian 392
Edaphosaurus 392
Edrabius 216, 218, 220, 254
 alticolus 259
 argentinus 258
 pearsoni 219, 258
 peruanus 259
 philippianus 212, 215, 254, 255
 weiseri 255
Edriolychnus schmidti 299
egregia, *Calamaria* 201
Egretta alba 153
 thula 152
Elaphe 169
elatus, *Bulimulus* 324
electa, *Calamaria* 201
Electrotermes 507
 Electrotermitinae 507
elegans, *Calamaria* 190, 192, 201
 Ptyssophorus 646
 Eleotridae, ecological distribution 81-82
Eleotris fusca 52, 76
 predator of 78
 gymnopomus 76
 melanosoma 52, 54, 76
 food 76, 85
 porocephala 76
 urophthalmus 77
Eleutheronema tetradactylum 55
 food 85
elongatum, *Gonostoma* 270
elongatus, *Barbus* 62
emarginatus, *Amblyopinus* 239
Emberiza 150
 tahapisi, horny palate 151
 Emberizinae 149
Enchisthenes harti 700
 Endodontidae 308
endospira, *Bulimulus* 336
Engraulis tri 56
enode, *Platysoma* 629
Enoploclytia walkeri schmidti 445
ensifer, *Holocentrus* 92
Eotermes 507
Epierus krujanensis 617
 rubripes 618
Epinephalus nebulosus 55, 72

- food 85
Epiphragmophora atahualpa 327
 claromphalos 327
 clausomphalos 327
 diluta 327
 (*Epiphragmophora*) *atahualpa* 327
 claromphalos 327
 diluta 327
 olssoni 336
 patasensis 327
 huanucensis 328
 olssoni 336
 patasensis 327
 (*Pilsbryna*) *clausomphalos* 327
 inferior 327
 puntana 328
Eptesicus capensis 595
 pusillus 595
 lenuipinnis 595
equula, *Leiognathus* 74
equulus, *Leiognathus* 52ff, 74
 food 74, 85
 Scomber 74
eremita, *Nesocichla* 145
Eremotermes 472, 480, 483, 510
Eretmochelys 366
 imbricata 376
 vertebrae 360
Erolia acuminata 154
erythrocephala, *Ornithoctona* 21
erythrogaster, *Hirundo rustica* 155
 Ethiopian region, termite fauna of 484, 508ff
Euchilotermes 511
Euclastes melii 363, 365, 377
eucosmetus, *Drymaeus* 331
Eucryptotermes 469, 492, 508
Euhamitermes 495, 510
Eurylyster 628
Eurypharyngidae 289
Eurypharynx pelecanooides 289
Eurytermes 468, 493, 510
Euscaiotermes 513
Eustomias bibulbosus 282
 bigelowi 282
 obscurus 282
 schmidti 282
Eutermellus 469, 487, 502, 515
Euxina moesta 433
Evenchelys macrurus 55, 58
 food 85
everetti, *Calamaria* 192, 201
 Nematabramis 53ff, 60
 ecological distribution 82
 food 60, 84, 88
Evermannella atrata atlantica 284
 balbo 284
 indica melanoderma 285
Evermannellidae 284
 evolution of cricetine dentition 643
 of parasitic staphylinids 216
 of rodents 217
 of sigmodont dentition 643
extensus, *Bulimulus* 323
familiaris, *Canis* 42
Farancia 169
Faremusca 95
fasciola, *Idiacanthus* 283
Fastigitermes 512
fautini, *Strepsylla* 546
fauveli, *Bacanius* 605, 622, 624, 625
ferox, *Stomias boa* 278
Firmitermes 511
 fishes, Bermuda deep sea 265ff
 complementary fresh-water 81
 of North Borneo 47ff
 ecological distribution 81ff
 food of 84, 87ff
 vertical distribution 269ff
Flammeo, *Holocentrus* 92, 99
flavicans, *Oryzomys* 657
flaviventris, *Serinus* 139, 155
 Flower Pot Formation 386
 fauna of 393ff, 398
fluviatilis, *Tetraodon* 54, 55, 80
 Tetrodon 80
 food, of *Calamaria* 174
 of fishes 87ff
Foramitermes 506, 515, 516
forestieri, *Paromalus* 619
 Platylomalus 605, 608, 619
Forficulitermes 511
 Formation, geologic, Abo 389
 Admiral 389
 Arroyo 389ff
 Belle Plains 389
 Choza 389ff
 Clyde 389
 Dunkard 389
 Flower Pot 389
 Hennessey 392
 Moran 389
 Putnam 389
 San Angelo 389
 Vale 389ff
formosana, *Calamaria pavimentata* 205
frantzii, *Ortalis* 20
Fringillaria tahapisi 150
Fringillinae 149
frontosum, *Platysoma* 631
Fruticicolidae 327, 336
fuegensis, *Amblyopinus* 216, 237
fulgens, *Diaphus* 287
fumosus, *Vampyrops* 405
fur, *Termes* 474
Furculitermes 511
fusca, *Eleotris* 52, 76
 predator of 78
 Poecilia 76
fuscipennis, *Nothocercus* 13
Gadidae 291
gahani, *Amblyopinodes* 248

- Galea musteloides* 254
Galenomys garleppi 254
Gallinula 143
 chloropus 143
garrula, *Ortalis* 20
Gastrocopta (Gastrocopta) wolfi 305
Gastromyzon borneensis 64
gastropicta, *Calamaria margaritophora* 204
gemellari, *Diaphus* 287
Gempylidae 298
Genuotermes 494, 512
Geoceras, *Bulimulus* 320
Geocichla 144
Geomyidae 218
Geopyrgus, *Bulimulus* 336
Geospiza 148
Gerres poeti 53, 74
 food 74, 85
gervaisi, *Calamaria* 169, 176, 178, 180, 201
Gibbotermes 488
gigashomogenes, *Dimetrodon* 392, 397
gimletti, *Calamaria* 196, 199, 201
girundica, *Chelonia* 366, 378
giurus, *Glossogobius* 52, 55, 78
 food 78, 85
 Gobius 78
glacialis, *Bathylagus* 284
Glarichelys knorri 364, 377
Globitermes 469, 510
globulosa, *Craz* 16
Glossogobius giurus 52, 55, 78
 food 78, 85
 predator of 68
Glossophaga soricina leachi 697
Glossotermes 479, 492, 509
Glyptotermes 468, 469, 473, 476-478, 484, 492, 498, 507, 508
Gnathamitermes 469, 472, 473, 491, 510
Gobiidae, ecological distribution 81ff
Gobiopterus brachypterus 55, 78
Gobius boddaerti 80
 doriae 77
 giurus 78
 schlosseri 79
 tentacularis 78
Gomphodus 459
Gonichthys cocco 286
Gonionenia, *Nenia* 308
Gonistomus subhybridus 314
Gonostoma bathyphilum 272
 elongatum 270
Gonostomatidae 269
gordoni, *Nesocichla* 146
Gorgonopsia 387, 397
göringi, *Calamaria* 202
goudotii, *Chamaepetes* 21
Gough Island 142ff
goughensis, *Nesospiza* 148
 Rowettia 142
 horny palate 151
grabowskyi, *Calamaria* 178, 189, 202
gracilis, *Calamaria* 202
gracillima, *Calamaria* 196, 199, 202
Grallatotermes 477, 478, 481, 486, 487, 501, 503, 514
grandaeva, *Chelone* 345
 Chelonia 345
 Procolpochelys 345ff
grandis robustior, *Urotriainus* 564
 Syntermes 564
 Urotriainus 564
Granopupa rhodia 429
gratus, *Peromyscus truei* 548
grayi, *Calamaria* 183, 185, 188, 207
 vermiformis 188, 207
Green Sand 345
griswoldi, *Calamaria* 178, 183, 202
 lumbricoidea 183, 202
guatemalensis, *Peromyscus* 544, 548
guernei, *Photostomias* 283
guianae, *Holochilus* 647, 659, 668
guttata, *Ortalis* 19
guttatus, *Tinamus* 12
gwinneri, *Chelonia* 364, 377
gymnocephalus, *Ambassis* 52, 54, 71
 Lutjanus 71
gymnopomus, *Butis* 52, 55, 76
 food 76, 85
 Eleotris 76
Habrocerinae 211
Habroconus (Pseudoguppya) semenlini 308
haedinius, *Taphozous perforatus* 580
Halacritus 611
halselli, *Casea* 396
hamatus, *Bacanius* 620
hamiltoni, *Bulimulus* 325
 Thriasa 56
 Thrissocles 53, 56, 58
 food 56, 84
Hampala macrolepidota 52, 53, 62
 ecological distribution 82
 food 62, 84
hancocki, *Cotylorhynchus* 396
Haplodus 392
hardwickei cystops, *Rhinopoma* 595
Harpag 95
 rosea 95
harti, *Artibeus* 700
 Enchisthenes 700
hasta, *Lutjanus* 73
 Neoniphon 94
 Pomadasy 53, 55, 73
 food 73, 85
hastatus, *Holocentrus* 92, 111
havilandi, *Cryptotermes* 487
Havilanditermes 481, 514
Helicinidae 304
Helicina (Helicina) chionea 305
 peruviana 304
helleri, *Vampyrops* 411

- Hemicyon* 44
hemigygnus, *Argyropelecus* 274
Hemirhamphus amblyurus 67
hemprichi, *Otonycteris* 595
 Hennessey Formation 392
henseli, *Amblyopinus* 212, 247
 Hershkovitz, Philip 9, 214
Hershkovitzi, *Amblyopinus* 238
 hershkovitzi, *Tinamus osgoodi* 10
Hesperomys 644
 (*Holochilus*) *brasiliensis* 666
 physodes 666
 vulpinus 663
 physodes 666
 russatus 666
 squamipes 666
 vulpinus 657, 664
Heteromys 218
 anomalus 238
Heterotermes 468, 472, 473, 477–479,
 483, 484, 490, 493, 499, 509
 Heterotermitinae 516
 hirtipes, *Petalasoma* 626
 Hirtitermes 481, 514
Hirundo rustica erythrogaster 155
hispidus, *Sigmodon* 647
Hister, *cyaneus* 608
 nanus 617
 troglydyles 618
 Histeridae 601ff
 Histerinae 605, 626
Hodotermes 473, 484, 502, 509
 Hodotermitidae 472, 479, 482, 484, 499,
 505–507, 509
 Hodotermitinae 516
Hodotermopsis 470, 482, 509
hollandi, *Calamaria* 202
 Holocentridae 91ff, 121ff
 auditory bulla 123
 opisthotic bone 125
 swim bladder 122
 Holocentrinae 122
Holocentrum longipinne 100
 perlatum 104, 107
 osculum 104
 productum 100
 riparum 109
 rostratum 99
Holocentrus 91ff, 121, 122
 (*Adioryx*) 92, 109
 bullisi 92
 coruscus 92, 100
 hastatus 92
 lacteoguttatus 92
 microstomus 92
 punctatissimus 92
 suborbitalis 92, 100
 tiere 92
 vexillarius 92, 100
 xantherythrus 92
 ascensionis 93, 97, 100, 106, 122ff, 134
 Atlantic species 91ff
 brachypterus 109
 bullisi 91, 97, 113
 calcarifer 72
 coruscus 97, 100, 112
 (*Flammeo*) 92
 laevis 92, 100
 marianus 92
 opercularis 92, 100
 sammara 92, 100
 scythrops 92, 100
 hastatus 111
 leo 92
 marianus 92, 96, 99
 maxilla 92
 meeki 95, 104, 109
 osculum 91
 punctatissimus 95
 puncticulatus 112
 rufus 91, 97, 102, 104, 122
 sammara 94
 sanctipauli 91, 100
 (*Sargocentron*) 92
 ensifer 92
 leo 92
 praslin 92
 tieroides 92
 spinosissimus 92
 sicciferum 95, 109
 spinifer 92
 suborbitalis 92, 126, 132
 tahiticum 95
 tortugae 112
 vexillarius 96, 97, 109
Holocheilus 648
Holochilomy brasiliensis 662
Holochilus 639ff, 647, 648, 653
 amazonicus 659, 667
 anguya 647
 balnearum 656, 661, 665
 berbicensis 661
 brasiliensis 645, 647, 648, 653, 654,
 657, 658, 660, 661, 662, 666
 amazonicus 667, 669
 balnearum 665
 berbicensis 655, 669
 brasiliensis 662
 guianae 668
 incarum 668
 leucogaster 648, 665
 nanus 666, 669
 venezuelae 670
 vulpinus 661, 662
 canellinus 647, 661, 666
 chacarius 655, 656, 663, 664, 665
 chrysogaster 661, 662
 darwini 647, 661, 663, 664
 guianae 647, 659, 668
 incarum 659, 668
 leucogaster 647, 661, 666
 magnus 640, 644, 648, 653, 654, 657
 multannus 647, 661, 663, 664
 nanus 647, 659, 666, 668

- physodes* 647, 666
russatus 647, 661
sciureus 647, 659, 661, 662, 666, 667, 669
 berbicensis 669
 squamipes 647
 venezuelae 661, 669, 670
 vulpinus 647, 657, 661, 663
Hololepta urvillei 630
Holotrachys 95, 122
 lima 95
Homalotermes 469, 512
Hoplognathotermes 468, 485, 511
Hoplostethus cornutus 292
Hoplotermes 469, 493, 510
hosei, *Calamaria* 202
Hospitalitermes 477, 478, 481, 503, 514
huanucensis, *Epiphragmophora* 328
huilae, *Amblyopinus* 242
Hyalorhynchus natalensis 284
hygomi, *Hygophum* 286
Hygophum benoitii 285
 hygomi 286
 macrochir 286
 reinhardti 285
hylocetes, *Peromyiscus* 548
hyperythrus, *Odontophorus* 22
hypopius, *Rhynchortyx cinctus* 22
Hypotermes 513
hypsoodonty 644
Hypsolenus 626
Hystricomorpha 217
Hystrichopsyllidae 541

ibis, *Bubulcus* 153
Ichthyocampus carce 54, 55, 67
Ichthyococcus ovatus 273
Idiacanthidae 283
Idiacanthus fasciola 283
Idister 626
 mendax 626
 morphon 626
ignobilis, *Caranx* 53, 55, 72
 food 73, 84
 Scomber 72
Ilisha kampeni 52ff, 57
 food 57, 84
imbricata, *Eretmochelys* 379
Incania, *Nenia* 307
incarum, *Holochilus* 659, 668
 brasiliensis 668
 Strophocheilus 331
incipiens, *Proreithrodon* 646
indica melanoderma, *Evermannella* 285
Indomalayan region, termite fauna of
 479, 508ff
indragirica, *Calamaria* 202
inferior, *Epiphragmophora clausom-*
 phalos 327
infundibulum, *Bulimulus* 320
infuscus, *Vampyrops* 405
ingolfianus, *Nessorhamphus* 291

inquilinus, *Termes* 474
insularum, *Ampullarius* 304
interrupta, *Ambassis* 52ff, 71
 food 71, 84
interruptus, *Drymaeus* 333
iostoma, *Porphyrobaphe* 331
iridescens, *Calamaria gervaisi* 182
Isospondyli, ecological distribution 81ff
Ixodoidea 579

jacobus, *Myripristis* 93
jacuáçu, *Penelope* 18
jaculator, *Toxotes* 74
jaculatrix, *Sciaena* 74
 Toxotes 54, 74
 food 74, 85
jamaicensis, *Artibeus* 698
Jaminia chondriformis 419
 ghilanensis 436
 hepiodon 423, 429ff
 lamellifera 434ff
 libanica 429, 432ff, 435
 ovularis 423, 438ff
 saulcyi 416
 septemdentata 421, 422ff, 433
 sexdentata 436ff
 suleidens 438ff
 tridens 440
jansoni, *Myotyphlus* 219, 259, 260
javanica, *Calamaria* 202
 lineata, *Calamaria* 196, 202
jello, *Sphyræna* 54, 68
 food 68, 84
jelskii, *Amblyopinus* 212, 224
 Thaumastus 309
jeudi, *Calamaria* 202
jocosensis, *Bulimulus* 322
joloensis, *Calamaria* 203
jouteli, *Kalotermes* 576
Jugositermes 511
julius, *Nothocercus* 12

kalinowskii, *Amblyopinus* 243
 Nenia angrandi 306
Kalotermes 467, 468, 472, 473, 478, 483, 488, 490, 491, 492, 502, 507, 508
 jouteli 576
Kalotermitidae 476, 479, 484, 491, 505-508, 516
 introductions 474
 termitophiles 563, 575
Kalotermitinae 507
kampeni, *Ilisha* 52ff, 57
 food 57, 84
 Pellona 57
Karlschmidtia 327
 lentiformis 328
klossi, *Calamaria* 203
knorri, *Glarichelys* 364, 377
koefoedi, *Searsia* 269
kofordi, *Amplyopinus* 231

- kretamensis*, *Tetraodon* 52, 55, 81
 food 81
krujanensis, *Epierus* 617
kuhli, *Pipistrellus* 595
Kutaflammeo 95
- labecula*, *Peromyscus maniculatus* 548
Labidosaurikos 391
Labidosaurus 391
Labiotermes 495, 514
Labritermes 510
Lacessititermes 481, 514
lacteoguttatus, *Holocentrus* 92
lactus, *Saprinus* 609
laeve, *Platysoma* 628
laevis, *Aeletes* 610
 Holocentrus 92, 100
lamellifera, *Jaminia* 434ff
Lampadena bathyphila 288
 charesi 288
 minima 288
Lampanyctus alatus 289
 ater 288
 cuprarius 288
 photothorax 289
 pusillus 289
 supralateralis 289
 taaningi 289
lankesteri, *Neostethus* 53, 69
lateralis, *Calamaria* 203
Lates calcarifer 53, 72
 food 84
Latisubulitermes 515
lautensis, *Calamaria* 178, 191, 203
leachi, *Glossophaga soricina* 697
 Monophyllus 697
leathensis, *Pteraspis* 452
Leiognathus equula 74
 equulus 52ff, 74
 food 74, 85
lentiformis, *Karlschmidtia* 328
Lepidochelys 349, 354, 365
 carapace 374ff
 neurals 349
 olivacea 376
 plastron 377
 scales, head 376
 vertebrae 360
Lepidotermes 511
Lepospondyli 531
Leptocephalus pseudolatissimus 290
 roulei 290
 splendens 290
Leptonycteris nivalis nivalis 698
Leuciscus sumatranus 60
leucocephala, *Calamaria* 169, 176, 178,
 193, 203
leucogaster, *Calamaria* 169, 176, 179, 203
 dentition 172ff
 Holochilus 647, 661, 666
 Holochilus brasiliensis 648, 665
 Mus (Holochilus) 648, 660, 666
 Leucopitermes 477, 478, 489, 502, 514
 leucopogon, *Astronesthes* 278
 leucops, *Subulitermes* 502
 leucopus, *Rhamphoberyx* 94
 levipes, *Peromyscus boylii* 545
 libanica, *Jaminia* 432ff
 lilium parvidens, *Sturnira* 700
 lilliputianus, *Acritus* 612
 lima, *Holotrachys* 95
 limbs, of *Cheloniidae* 364, 378
 Limnopomus, *Ampullarius* 303
 linearis, *Phlegethontia* 531
 lineata, *Calamaria javanica* 196, 202
 lineatus, *Vampyrops* 408, 409
 linnaei, *Calamaria* 171, 195, 203
 Linophryne arborifera 300
 bicornis 300
 Lissoacme, *Bulimulus* 317ff
 lobatus, *Rhinolophus* 595
 London Clay 345
 longibarbatu, *Macrostomias* 279
 longicauda, *Bartramia* 154
 longicaudatus, *Oryzomys* 648
 longiceps, *Chelone* 345
 longidens, *Caulolepis* 292
 Longipeditermes 469, 481, 514
 longipes, *Aeletes* 614
 longipinne, *Holocentrum* 100
 longitudinalis, *Bulimulus* 316
 longus, *Amblyopinus* 234
 Lophodolus acanthognathus 299
 Lophogobius chrysosoma 77
 lowi, *Calamaria* 178, 196, 199, 203
 Lozops 148
 lumbricoidea, *Calamaria* 178, 183, 189,
 203
 griswoldi, *Calamaria* 183, 202
 lumpholtzi, *Calamaria* 203
 lutescens, *Mus* 648
 Lutianus argenlimaculatus 54, 55, 73
 food 84, 85
 Lutjanus gymnocephalus 71
 hasta 73
Lysorophidae 531
- Macraaster elegans* 447
macrochir, *Hygophum* 286
macrolepidota, *Hampala* 52, 53, 62
 ecological distribution 82
 food 62, 84
macrolychnus, *Neonesthes* 278
macropus, *Ophthalmopelton* 284
Macrostermus montrouzieri 627
Macrostomias calosoma 279
 longibarbatu 279
Macrosbulitermes 503, 515
Macrotermes 473, 484, 486, 507, 513
Macrotermitinae 486, 505, 506, 513, 516
macrurus, *Evenchelys* 55, 58
 food 85
 Muraena 58
macularia, *Actitis* 154

- maculatus*, *Anthias* 73
Pomadasy 53, 73
 food 73, 85
magnus, *Holochilus* 640, 644, 648, 653, 654, 657
major, *Chaerephon* 595
Opheodrys 174
Tinamus 9
 Malacosteidae 283
Malagasitermes 469, 489, 501, 514
 Malagasy region, termite fauna of 487ff, 502, 508ff
Manchurodon 692
maniculatus labecula, *Peromyscus* 548
margaritophora, *Calamaria* 191, 192, 203
gastropicia 204
marginalis, *Rhinotermes* 493
Margrethia disjuncta 270
obtusirostra 270
marianus, *Holocentrus* 92, 96
marmoratus, *Odontophorus gujanensis* 21
marmosae, *Amblyopin* 247
martinica, *Porphyra* 153
Mastotermes 476, 490, 498, 507, 508
darwiniensis 468
Mastotermittidae 479, 490, 491, 505-508, 516
maxilla, *Holocentrus* 92
maximus vestitus, *Strophocheilus* 309
mazonensis, *Phlegethonia* 523
mearnsi, *Calamaria* 204
mecheli, *Calamaria* 204
meeki, *Holocentrus* 95, 104, 109
Megaderma cor 580, 595
Megagnathotermes 468, 485, 511
Megalobulimus, *Strophocheilus* 309
megalophylla, *Mormoops* 697
megalotis mexicana, *Micronycteris* 697
Megamblyopin 212, 215, 216, 218, 222, 251
germaini 254
mniszehi 216, 219, 251
mehelyi, *Rhinolophus* 595
Melamphaes anthrax 297
microps 296
mizolepis 297
opisthopterus 296
robustus 297
 Melamphaidae 296
 Melanocetidae 299
Melanocetus murrayi 299
Melanodera 144, 147-149
melanodera 149
 horny palate 151
melanoderma, *Evermannella indica* 285
Melanonius unipennis 291
melanosoma, *Eleotris* 52, 54, 76
 food 76, 85
Ophicephalus 54, 71
 ecological distribution 82
 food 71, 84
 Melanostomiatidae 281
Melanosuchus niger 339
melanota, *Calamaria* 204
melasoma, *Ophicephalus* 71
melii, *Euclastes* 363, 365, 377
Melursus ursinus 25
mendax, *Idister* 626
Metachirus opossum 247
metallicus, *Bathophilus* 281
Merostichis 656
metopoclampus, *Diaphus* 287
mexicana, *Chilonycteris rubiginosa* 696
Micronycteris megalotis 697
 Mexico, bats from 695ff
Microborus, *Strophocheilus* 330
microcephalus, *Neonesthes* 278
Microcerotermes 467, 469, 472, 473, 478, 480, 483, 485, 488, 493, 507, 510
microdon, *Cyclothone* 272
Microhodotermes 471, 473, 477, 482, 484, 502, 509
Micronycteris megalotis mexicana 697
microphthalmia, *Syntermomorpha* 572
microphyllum, *Rhinopoma* 595
microps, *Melamphaes* 296
 Microsauria 531
microstomus, *Holocentrus* 92
Microtermes 473, 486, 489, 501, 513
 Milleretidae 392
milloti, *Eutermes* 501
Mimeutermes 487, 489, 502, 514
mina, *Strepsylla* 546
mindorensis, *Calamaria* 204
minima, *Lampadena* 288
Miniopterus natalensis arenarius 595
minuta, *Carcinops* 618
minutus, *Dendrophilus* 618
 Miocene Marl 345
Miotermes 507
mira, *Ortalis* 20
Mirocapritermes 512
mizolepis, *Melamphaes* 297
mjobergi, *Calamaria* 204
mniszehi, **Megamblyopin** 216, 219, 251
modestus, *Bulimulus* 318
Zonibyx 154
molesti, *Urotirainus* 564
molestus, *Syntermes* 562, 564, 571
 Molgophidae 531
Molossus rufus nigricans 701
rufus rufus 701
sinaloae 701
Monopterus alba 53, 59
montagnii, *Penelope* 18
monticolus, *Amblyopin* 228
montivagans, *Amblyopin* 240
montrouzieri, *Apobletes* 605, 607, 627
Macrosternus 627
Platysoma 605, 607, 629
 Moran Formation 389
Mormoops megalophylla megalophylla 697

- morphon*, *Idister* 626
Mucrotermes 511
muelleri, *Calamaria* 192, 204
Mugil caeruleomaculatus 68
 dussumieri 53, 68
Mullerianus 620
multanensis, *Holochilus* 647, 661, 663
 664
Muraena alba 59
 macrurus 58
murinus, *Desmodus* 700
 Desmodus rotundus 700
Muroidea 218
murrayi, *Melanocetus* 299
Mus agilis 648
 angouya 660, 662
 brasiliensis 660, 662-664
 (*Holochilus*) *anguya* 648, 660, 666
 (*Holochilus*) *leucogaster* 648, 660
 lutescens 648
 physodes 660, 665
 simpsoni 648
 vulpinus 660, 662
mutabilis, *Bulimulus* 334
Myctophidae 285
mydas, *Chelonia* 360
Myomorpha 217
Myotyphlus 211, 215, 217, 218, 259
 jansoni 219, 259, 260
Myripristinae 122
 auditory bulla 124
 opisthotic bone 125
 swim bladder 123
Myripristis 96
 argyromus 136
 jacobus 93, 121
 occidentalis 93, 121
Mystus nemurus 53ff, 65
 ecological distribution 82, 86
 food 66, 84

nalua, *Ambassis* 53, 72
 Chanda 72
nanus, *Hister* 617
 Holochilus 647, 659, 666, 668
 brasiliensis 666
Nasutitermes 468, 469, 472, 473, 477,
 478, 480, 481, 483, 486, 489, 495,
 496, 514
Nasutitermitinae 486, 487, 495, 505,
 514, 516, 562
nasutus, *Nesiarchus* 298
natalensis, *arenarius*, *Miniopterus* 595
 Hyalorhynchus 284
 Rhynchohyalus 284
Natrix 169
 nuchalis 174
Nearctic region, termite fauna of 489,
 508ff
nebulosus, *Epinephelus* 55, 72
 food 85

Serranus 72
Nectomys 654, 670
 squamipes 249, 653
Nectridia 531
Nematabramis everetti 53ff, 60
 ecological distribution 82
 food 60, 84, 88
 predator of 62
Nemichthyidae 291
Nemichthys scolopaceus 291
nemorensis, *Bulimulus* 316
nemurus, *Bagrus* 65
 Mystus 53ff, 65
 ecological distribution 82, 86
 food 66, 84
Nenia angrandi kalinowskii 306
 urubambensis 306
 (*Gontionenia*) *weyrauchi* 308
 (*Incania*) *warszewiczi* 307
 (*Neniactra*) *adusta* 305
 tumens 305
Neniactra, *Nenia* 305
Neobacanius 620
Neocaprilermes 469, 495, 512
Neomyripristis 94
 amaenus 94
Neonesthes macrolychnus 278
 microcephalus 278
Neoniphon 94
 armatus 94
 hasta 94
Neopetraeus cora unicolor 335
 cretaceus 335
 platycheilus 311
 rhodolarynx 311
Neopsyllinae 541
Neostethus bicornis 68
 borneensis 52, 54ff, 69
 lankesteri 53, 69
Neotermes 467, 468, 470, 472, 478, 483,
 490, 492, 498, 507, 508, 576
Neotomodon 644
 alstoni 547
Neotomys 639, 640, 644, 645, 646
 ebriosus ebriosus 646
 vulturnus 646
Neotropical region, termite fauna of
 491, 508ff
Nesiarchus nasutus 298
nesiotis, *Porphyrionis* 143
Nesocichla 144ff
 eremita eremita 145
 gordoni 146
 procax 146
Nesospiza 157, 158
 acunhae 147
 acunhae 152
 horny palate 151
 questi 152
 goughensis 148
 wilkinsi 147
 dunnei 152

- wilkinsi* 150
 Nessorhamphidae 291
Nessorhamphus ingolfianus 291
 New Caledonia, Histeridae of 601ff
nicholsi, *Casea* 396
niger, *Melanosuchus* 339
 pluriradiatus, *Chiasmodon* 297
nigricans, *Molossus rufus* 701
nigro-ocellatum, *Centrobranchus* 286
nimbraria, *Vinciguerrria* 273
Nitiditermes 511
nitiduloides, *Saprinus* 610
nivalis, *Ischnoglossa* 698
 Leptoncyteris 698
Noditermes 511
 norvegicus, *Rattus* 648
Nothocercus bonapartei bonapartei 12
 fuscipennis 13
 julius 12
 venezuelensis 14
Notolychnus valdiviae 288
novaescotiae, *Cephalaspis* 454
 novae-scotiae, *Pteraspis* 452
nubilus, *Ampullarius* 303
nuchalis, *Calamaria* 204
 Natrix 174
nudiventris, *Taphozous* 595
Nycteris thebaica 595
- obeliscus*, *Bulimulus* 322
obscura, *Penelope* 18
obscurus, *Eustomias* 282
obtusirostra, *Margrethia* 270
Obtusitermes 497, 514
Occasitermes 503, 514
occidentalis, *Myripristis* 93
occipitalis, *Calamaria* 204
Occlitermes 503, 515
Odontophorus erythrorops parambae 21
 gujanensis buckleyi 21
 marmoratus 21
 hyperythrus 22
Odontotermes 469, 472, 473, 513
 olivacea, *Lepidochelys* 376
 olivascens, *Sicalis* 149
 horny palate 151
 olivensis, *Reithrodon* 646
 olssoni, *Epiphragmophora* 336
 onca, *Panthera* 42
Onchus 458, 459
 murchisoni 449
 Oneroiidae 299
opercularis, *Holocentrus* 92, 100
Opheodrys major 174
Ophiacodonta 387
 distribution, geographic 390
 geologic 390
Ophicephalus melanosoma 54, 71
 ecological distribution 82
 food 71, 84
 melasoma 71
Ophiderpeton 531, 532
- Ophiderpetonidae 531
Ophiocara porocephala 52, 76
Ophiocephalus melanosoma 71
Ophiotermes 494, 511
Ophthalmopelton macropus 284
opisthopterus, *Melamphaes* 296
Oriensubulitermes 515
ornata, *Calamaria* 204
ornatus, *Tremarctos* 25ff
 jaw mechanics 40
 mandibular articulation 38
 muscles 32
 salivary glands 31
 skull 26
 tongue and oral vestibule 29
 vessels and nerves 31
Ornithoctona erythrocephala 21
Ortalis garrula chocoensis 20
 garrula 20
 mira 20
 guttata cauae 19
 columbiana 19
 guttata 19
Orthognathotermes 469, 494, 512
Orthotermes 485, 512
Oryzomys 644
 albigularis 214, 242
 angouya 654
 buccinatus 654, 660
 flavicans 657
 keaysi 239
 longicaudatus 654
 sp. 251
oryzomysi, *Amblyopinus* 240
osculus, *Holocentrus* 91, 104
osgoodi, *Tinamys* 10
Ostariophysis 127
 ecological distribution 82ff
Osteochilus spilurus 53, 63
 ecological distribution 82
Ostichthyes 96
Ostichthys 122
 trachypoma 123
Otonycteris hemprichi hemprichi 595
ovatus, *Ichthyococcus* 273
ovularis, *Jaminia* 438ff
Oxyeleotris urophthalmus 52, 77
 food 77, 85
Oxymycteris judex 249
 rufus 249
Oxyurichthys tentacularis 55, 78
- pacae*, *Amblyopinus* 244
Pachyotus 595
pacificum, *Platysoma* 605, 607, 629
pacificus, *Platylister* 629
 Palaeartic region, termite fauna of 481, 508ff
Palaeastacus walkeri 445
palans, *Carcinops* 618
pallida, *Cyclothone* 272
pamplonensis, *Drymaeus* 314

- Panthera onca*, weights of jaw muscles 42
 Pantotheria 689
Papio maimon 44
 Papuan region, termite fauna of 477ff,
 503, 508ff
papyraceus, *Ampullarius* 303
Paracapritermes 469, 477, 503, 512
Paracornitermes 468, 473, 487, 495, 502,
 514
 parallelism 385ff
Paramastus 429
parambae, *Odontophorus erythroptus* 21
 Paramyidae 217
Paraneotermes 473, 490, 508
Parapocryptes rictuosus 55, 80
 food 80, 85
Parareptilia 387
Parastylotermes 507
Parasubulitermes 515
Pareiasauridae 387, 392, 397ff
parnelli, *Chilonycteris* 696
Paromalus forestieri 619
pumilio 616
quattuordecimstriata 617
trogloidytes 618
Parophiocephalus unimaculata 70
Parotermes 490, 507
Parrhinotermes 478, 500, 509
parvidens, *Sturnira lilium* 700
Parvitermes 497, 514
patagonicus, *Phrygilus* 149
 horny palate 151
patasensis, *Epiphragmophora* 327
pavimentata, *Calamaria* 193, 204
formosana 205
pavimentata 204
 Pearson, Oliver P. 215, 252, 254
pearsoni, *Edrabius* 219, 258
pedialota, *Bonapartia* 269
pelamidis, *Rhynchichthys* 93
pelecanoides, *Eurypharynx* 289
Pellona kampeni 57
Pelycosauria 387, 400
 distribution, geographic 390
 geologic 390
pendleburyi, *Calamaria* 178, 191, 192,
 205
Pene 429
Penelope montagnii montagnii 18
purpurascens aequatorialis 17
jacquáçu 18
 Pennsylvanian, Late 387
 fauna 390
Perca ascensionis 100
rufa 104, 107
 Perceoses, ecological distribution 81–83
 Percoidea, ecological distribution 81–83
perforatus, *Bulimulus* 320
Taphozous 580, 595
Pericapritermes 469, 486, 495, 501, 511
Periophthalmus schlosseri 79
schlosseri 55, 79
variabilis 55, 79
perlatum, *Holocentrum* 104, 107
 Permian fauna 385ff
Peromyscus 644
boyllii levipes 545
difficilis amplius 547
guatemalensis 231, 544, 548
hylocetes 548
maniculatus labecula 548
truei gratus 548
Peronaeus, *Bulimulus* 321
perroudi, *Platysoma* 629
personata, *Chilonycteris* 696
perspicax, *Penelope* 17
 Peru, shells from 304ff
peruanus, *Edrabius* 259
 Peruvian Zoological Expedition (1953)
 221, 304ff
 (1954) 330ff
peruviana, *Helicina* 304
Succinea 305
peruvianus, *Amblyopinodes* 250
peruvianus, *Radiodiscus* 308
Petalasoma hirtipes 626
pfefferi, *Calamaria* 205
phaeocheilus, *Bulimulus* 334
philippianus, *Edrabius* 212, 215, 254,
 255
Phlegethontia 523ff
linearis 531
mazonensis 523ff
serpens 531
 Phlegethontidae 524, 531
Photonectes dinema 282
Photostomias guernei 283
photothorax, *Lampanyctus* 289
Phrygilus patagonicus 149
 horny palate 151
Phyllostoma lineatum 403, 409
Phyllotis 644
boliviensis 254
darwini 234
sublimus 234
 phylogeny of Cheloniidae 363ff
physodes, *Hesperomys* 666
Holochilus 647, 666
Mus 660, 665
Reithrodon 646
piceus, *Amblyopinodes* 248
Pilotermes 511
Pilsbryna, *Epiphragmophora* 327
Pimelodus sagor 64
Pipile cumanensis cumanensis 21
Pipistrellus kuhli kuhli 595
Plaestius 626
Planicapritermes 495, 512
 plastron, of Cheloniidae 377
 of *Procolpochelys* 357
platycheilus, *Neopetraeus* 311
Platylister pacificus 629
urvillei 630
Platylomalus forestieri 605, 608, 619

- saucius* 619
umbilicatus 619
victoriae 619
Platypsyllus castoris 248
Platysoma 627
 abruptum 629
 connexum 605, 607, 628, 629
 contiguum 629
 enode 629
 frontosum 631
 laeve 628
 montrouzieri 605, 607, 629
 pacificum 605, 607, 629
 perroudi 629
 (*Platylister*) *montrouzieri* 629
 urvillei 630
 (*Platysoma*) *connexum* 628
 montrouzieri 629
 pacificum 629
 urvillei 630
 querulum 628
 oronense 631
 urvillei 605, 608, 630
 vanum 631
plebius, *Polydactylus* 55, 70
 food 85
Plectotus aurilus christiei 595
Plectognathi, ecological distribution 83
Plectrypops 96, 122
Plesiochelyidae 369
plicata, *Balantiopteryx* 695
pliopterus, *Chirostomias* 281
Pliotermes 507
pluriradiatus, *Chiasmodon niger* 297
Poecilia fusca 76
poecilopus, *Rhampoberyx* 93
poecilus, *Drymaeus* 332
poeti, *Gerres* 53, 74
 food 74, 85
polillensis, *Calamaria* 205
Poliospiza 147
 burtoni 149
 horny palate 151
politus, *Aeletes* 610
Polydactylus plebius 55, 70
 food 85
Polynemus tetradactylum 69
Polyporaceae 561
Pomadasys hasta 53, 55, 73
 food 73, 85
 maculatus 53, 73
 food 74, 85
Pomiatius olivieri 433
ponsonbyi, *Drymaeus* 332
popelairianus, *Strophocheilus* 309
porocephala, *Eleotris* 76
 Ophiocara 52, 76
Porotermes 468, 470, 471, 476, 484, 491, 492, 498, 502, 509
Porotermitinae 516
porphyreus, *Thaumastus* 309
Porphyrio 143

Porphyriornis nesiotis comeri 142, 143
 nesiotis 143
Porphyrobaphe iostoma 331
Porphyryla 143
 marinica 153
Postsubulitermes 515
Potamopyrgus subgradatus 304
poweriae, *Vinciguerria* 273
prakkei, *Calamaria* 190, 192, 205
praslin, *Holocentrus* 92
Proboscitermes 512
Procapritermes 511
procax, *Nesocichla* 146
Procolophonidae 387, 392, 400
Procolpochelys grandaeva 345ff
 carapace 349
 phylogeny 363ff
 plastron 357
 vertebrae 360
Procornitermes 472, 473, 495, 514
Procryptotermes 472, 473, 478, 490, 492, 498, 508
Procubitermes 511
productum, *Holocentrum* 100
productus, *Termitopteryx* 572, 575
Proelectrotermes 507
Profastigitermes 511
Prohamitermes 493, 510
Prokalotermes 507
Promirotermes 469, 485, 486, 494, 512
Proreithrodon 646
 chapalmalense 646
 incipiens 646
Prorhinotermes 471, 477, 478, 479, 488, 489, 493, 500, 509
 canalifrons 488
proteiformis, *Bulimulus* 335
Protermes 513
Proterothyris 391
proteus, *Bulimulus* 335
Protocapritermes 503, 511
Protoglyptus, *Bulimulus* 336
Protohamitermes 468, 480, 510
Protostegidae 365
proximus, *Saprinus* 610
Psammosteus cf. *anglicus* 449
Psammotermes 473, 479, 483, 484, 499, 509
 voeltzkowi 488
Psammotermatinae 516
Pseudacanthotermes 486, 513
Pseudocapritermes 512
Pseudogobius bikolanus 52, 54, 79
 sp. A 55, 79
 sp. B 52, 79
Pseudoguppya, *Habroconus* 308
pseudolatissimus, *Leptocephalus* 290
Pseudomicrotermes 510
psilotis, *Chilonycteris* 696
Psittirostra 148
Psophocichla 144
Pteraspis cf. *crouchi* 449

- leathensis* 452
novae-scotiae 452
vogli 452
whitei 450
Pteronotus davyi fulvus 697
Pteryx 562
 Ptiliidae 561ff
 habitat 561
 termitophilous adaptations 563
Ptinella 562
Ptyssophorus 646
 elegans 646
 rotundatus 646
Pugnititermes 511
pumilio, *Carcinops* 605, 608, 616, 619
 Carcinus 616
 Paromalus 616
punae, *Amblyopinus* 227
punctatissimus, *Holocentrus* 92, 95
puncticulatus, *Holocentrus* 112
punctiger, *Abraeus* 624
 Bacanius 605, 606, 622, 624, 625
puntana, *Epiphragmophora* 328
Puntius sealei 52ff, 62
 ecological distribution 82
 food 62, 84
 predator of 62
Pupa chondriformis 419
 michoni 432
 septedentata 422
pupiformis, *Bulimulus* 325
Puppigerus 345
purpurascens, *Penelope* 17
pusillus, *Dermogenys* 52, 54ff, 66
 Eptesicus 595
 Lampanyctus 289
 Putnam Formation 389
Pycnopteryx 562, 563, 567
 schmidti 562, 567, 570
 sp., 572
pyrgidium, *Bulimulus* 321

Quasitermes 469, 488, 512
quattuordecimstriata, *Carcinops* 616
 Dendrophilus 616
 Paromalus 617
Quechua, *Thaumastus* 331
Quediini 211
querulum, *Platysoma* 628
questi, *Nesospiza acunhae* 152
quinquetaeniata, *Calamaria* 205

 radiation, adaptive 388, 399
Radiconus, *Radiodiscus* 308
Radiodiscus (*Radioconus*) *andium* 308
 (*Radiodiscus*) *peruvianus* 308
Rasbora sumatrana 52ff, 60
 ecological distribution 82
 food 60, 84, 88
ratada 655ff
 rats, marsh 639ff
Rattus norvegicus 648

raveni, *Calamaria* 205
rebentischi, *Calamaria* 205
recifinus, *Vampyrops* 413
reconditus, *Bulimulus* 320
reinhardti, *Hygophum* 285
Reithrodon 639, 640, 644, 646
 auritus 646
 caurinus 646
 cuniculoides 646
 olivensis 646
 physodes 646
 typicus 646
remingtoni, *Bacanius* 605, 606, 622, 624
 reptiles of Permian 385ff
 geographic distribution 389
Reticulitermes 470, 471, 483, 489, 490, 507, 509
revinctus, *Bulimulus* 316
Rhaphoberyx 93
 leucopus 94
 poecilopus 93
Rhinoberyx 93
 chryseus 93
Rhinolophus clivosus brachygnathus 595
 lobatus 595
 mehelyi 595
Rhinopoma hardwickei cystops 595
 microphyllum 595
Rhinotermes 469, 493, 509
 marginalis 493
 Rhinotermitidae 476, 479, 505-507, 509
 introductions 474
 Rhinotermitinae 516
rhodolarynx, *Neopetraeus* 311
Rhynchichthys 93
 brachyrhynchus 93
 pelamidis 93
Rhynchohyalus natalensis 284
Rhynchortyx cinctus hypopiis 22
Rhynchotermes 468, 495, 514
ricluosus, *Apocryptes* 80
 Parapocryptes 55, 80
 food 80, 85
 ridley turtles 345
riparum, *Holocentrum* 109
rivasi, *Bulimulus* 336
robustior, *Urotraiinus grandis* 564
robustus, *Melamphaes* 297
 rodents, cricetine 639
 dentition 643ff
 sigmodont 639ff, 646
 dentition 643
 skull 640
rogersi, *Atlantisia* 142
romeri, *Cotylorhynchus* 396
Romeria 391
Romerolagus diazi 548
rosea, *Harpage* 95
rostratum, *Holocentrum* 99
Rostrotermes 511
Rothia 393, 398

- Rotunditermes* 496, 514
rotundus murinus, *Desmodus* 700
roulei, *Leptocephalus* 290
Rousettus aegyptiacus aegyptiacus 595
Rowettia 144, 147-150, 158
goughensis 142
 horny palate 151
rubiginosa, *Chilonycteris* 696
mexicana, *Chilonycteris* 696
rubra, *Craz* 17
 Sciaena 104
rubripes, *Carcinops* 618, 619
 Epiurus 618
rudistriatus, *Bulimulus* 318
rufa, *Perca* 104, 107
ruficeps, *Tinamus major* 10
rufus, *Holocentrus* 91, 102, 104, 122ff
 Molossus 701
Rugitermes 477, 478, 491, 492, 498, 508
 arthuri-muelleri 576
ruppelli, *Tadarida teniotis* 595
rusatus, *Hesperomys* 666
 Holochilus 647, 661

sagor, *Pimelodus* 64
 Tachysurus 55, 64
 food 85
sammara, *Holocentrus* 92, 94, 100
 San Angelo Formation 385
 fauna of 393ff, 398
sanborni, *Amblyopinus* 238
sanctipauli, *Holocentrus* 91, 100
 Sapriniinae 605, 608
Saprinus artensis 605, 608, 609
 australasiae 609
 cyaneocupreus 610
 cyaneus 605, 608
 laetus 609
 niliduloides 610
 proximus 610
 speciosus 609
 subnitidus 605, 608, 610
 tasmanicus 609
Sargocentron, *Holocentrus* 92
saturatus, *Tinamus major* 9
saucius, *Platylomalus* 619
saulcyi, *Bulimus* 416
 Jaminia 416
 scales, head, in *Cheloniidae* 376
Scatophagus argus 52, 54, 55, 75
Schedorhinotermes 469, 478, 479, 484, 493, 500, 509
schlegeli, *Calamaria* 205
schlosseri, *Gobius* 79
 Periophthalmus 79
 schlosseri 55, 79
schmidti, *Acritus* 605, 607, 612, 614
 Calamaria 174, 178, 197, 205
 Drymaeus 314
 Enoploclytia walkeri 445
 Pycnopteryx 562, 567, 570
 Strepsylla 544

 Thaumastus 309
schmidti, *Edriolychnus* 299
 Eustomias 282
scholvienea, *Thaumastus* 309
Sciaena argenteimaculata 73
 jaculatrix 74
 rubra 104
sciureus berbicensis, *Holochilus* 669
 Holochilus 647, 659, 661, 666, 667, 669
 Sciuromorpha 217
sclerosus apaporiensis, *Caiman* 340
 Caiman 339
scolodonta, *Streptaxis* 329
scolopaceus, *Nemichthys* 291
Scomber equulus 74
 ignobilis 72
 Scopelarchidae 284
Scopelarchus anale 284
Scutalus, *Bulimulus* 315ff, 334
scutulatus, *Bulimulus* 319
scythrops, *Holocentrus* 92, 100
sealei, *Barbodes* 62
 Puntius 52ff, 62
 ecological distribution 82
 food 62, 84
Searsia koefoedi 269
 Searsiidae 269
semenlini, *Habroconus* 308
semiannulata, *Calamaria* 205
septemdentata, *Jaminia* 421, 422ff
septentrionalis, *Calamaria* 169, 178, 194, 206
Serinus 147
 flaviventris 139, 155
 sulphuratus 149
 horny palate 151
serolinus, *Drymaeus* 313, 332
serpens, *Phlegethontia* 531
serpentina, *Derichthys* 290
Serranus nebulosus 72
Serritermes 515
Serritermitinae 497, 505, 506, 515, 516
Serrivomer beani 291
 brevidentatus 291
 Serrivomeridae 291
sexdentata, *Jaminia* 436ff
 sharks, *xenacanth* 388
Sicalis olivascens 149
 horny palate 151
sicciferum, *Holocentrus* 95, 109
Sigmodon 639, 640, 644, 645, 647, 648, 652, 653
 hispidus 647
 vulpinus 657
Sigmomys 647
Silvestritermes 515
simalurensis, *Calamaria* 189, 190, 192, 206
similis, *Amblyopinodes* 251
simonyi, *Benthodesmus* 298
simpsoni, *Mus* 648
sinaloae, *Molossus* 700

- Siphonaptera 541
sismondai, *Chelonia* 366, 378
sloanei, *Chauliodus* 277
smithi, *Calamaria* 206
snyderi, *Syntermes* 562, 570, 572
soborna, *Corica* 52, 54, 57
 Solenichthyes, ecological distribution 83
sondaica, *Calamaria* 206
soricina leachi, *Glossophaga* 697
oronense, *Platysoma* 631
soui, *Crypturellus* 15
 Spalacotheriidae 689
Spalacotherium 690, 692
Spalacotheroides 690, 692
 bridwelli 690
 dentition 690ff
 specialization, in *Calamaria* 168
 speciosus, *Saprinus* 609
Speculitermes 480, 493, 500, 510, 567
 termitophiles of 562
Sphaerotermes 513
Sphenacodon 392
 Sphenacodontia 387
 distribution, geographic 390
 geologic 390
Sphyaena jello 54, 68
 food 68, 84
Spicotermes 494, 511
spilurus, *Dangila* 63
 Osteochilus 53, 63
 ecological distribution 82
spinalis, *Achalinus* 174
spinifer, *Holocentrus* 92
spinipennis, *Amblyopinus* 234
Spinitermes 485, 494, 511
spinosissimus, *Holocentrus* 92
Spinus 147
 spinus 149
 horny palate 151
Spirosulcatus, *Bulimulus* 336
splendens, *Leptocephalus* 290
squamipes, *Hesperomys* 666
 Holochilus 647
 Nectomys 653
stahlknechti, *Calamaria* 192, 206
 Staphylininae 211, 221
 Stegocephali 531
 Stephanian fauna 389ff
Steppesaurus 393, 397ff
Sternaulax 605, 626
 caledoniae 605, 607, 626
 zealandica 626
 Sternoptychidae 274
 vertical distribution 275
Sternoptyx diaphana 277
Stolephorus commersoni 52, 56
 food 56, 84
 tri 54, 56
 food 84
Stolotermes 468, 470, 471, 476, 484, 498,
 502, 509
 Stolotermitinae 516
 Stomias boa ferox 278
 brevibarbatulus 279
 Stomiatidae 278
Strepsylla 541ff
 dalmati 541
 davisae 546
 fautini 546
 mina 541
 schmidti 544
 taluna 546
 villai 546
 Streptaxidae 329
Streptaxis (Scolodonta) andivaga 329
strongylura, *Belone* 66
strongylurus, *Tylosurus* 53, 66
 food 84
 Strophocheilidae 309, 330
Strophocheilus incarum 331
 maximus vestitus 309
 (*Microborus*) **tenuis** 330
 popelairianus 309
 tenuis 330
Sturnira lilium parvidens 700
styani, *Trirhinopholis* 174
Stylotermes 509
 Stylotermitinae 516
 subgradatus, *Potamopyrgus* 304
 subhybridus, *Goniosomus* 314
 subjussieuvi, *Bulimulus* 336
 subnitidus, *Saprinus* 605, 608, 610
 suborbitalis, *Holocentrus* 92, 100, 126,
 132
 subulidens, *Caulolepis* 293
 Subulitermes 469, 481, 487, 489, 496,
 497, 502, 515
 leucops 502
 undecimus 502
 Succinea aequinoctialis 305
 peruviana 305
 Succineidae 305
 sulcidens, *Jaminia* 438ff
 sulcisternus, *Bacanius* 620
 sulphuratus, *Serinus* 149
 horny palate 151
 suluensis, *Calamaria* 178, 190, 192, 206
 sumatrana, *Calamaria* 191, 192, 206
 Rasbora 52ff, 60
 ecological distribution 82
 food 60, 84, 88
 sumatranus, *Leuciscus* 60
 supralateralis, *Lampanyctus* 289
 Symmetrodonta 689
 Sympholis 168
 Synacanthotermes 468, 473, 513
 Synapsida 387
 Synbrancoidea, ecological distribution
 83
 Syntognathi, ecological distribution
 83
Syngnathus brachyurus 67
 carce 67

- Synhamitermes* 510
Syntermes 468, 473, 495, 514
 grandis 564
 molestus 562, 564, 571
 snyderi 562, 570
 termitophiles of 561
Syntermomorpha microphthalmalma 572
Systrophia (Systrophiella) andivaga 308
Systrophiella, Systrophia 308
 Systrophiidae 308
- taaningi, Lampanyetus* 289
Tachysurus caelatus 55, 64
 food 85
 sagor 55, 64
 food 85
 venosus 55, 65
 food 84
Tadarida aegyptiaca aegyptiaca 595
 teniotis ruppelli 595
tahapisi, Emberiza, horny palate 151
tahiticum, Holocentrus 95
taluna, Strepsylla 546, 547
tanneri, Echiostoma 281
Taphozous nudiventris 595
 perforatus 580
 haedinus 580, 595
 perforatus 595
 Tapinocephalia 387, 393, 397
Tappenosaurus 395, 397
Tarditermes 515
tasmanicus, Saprinus 609
teniotis ruppelli, Tadarida 595
tentacularis, Gobius 78
 Oxyurichthys 55, 78
tenuipinnis, Eptesicus 595
Tenuirostritermes 472, 481, 491, 496,
 497, 514
tenuis, Strophocheilus 330
Termes 468, 469, 473, 477, 478, 480,
 485, 488, 494, 507, 512
 fur 474
 inquilinus 474
 termites, zoogeography 465ff
 Termitidae 479, 505-507, 510-512
 Termitinae 485, 487, 494, 505, 506, 511,
 512, 516
Termitogeton 509
 Termitogetoninae 516
 termitophiles, of Kalotermitidae 563
 of *Speculitermes* 562
 of *Syntermes* 561, 562
Termitopteryx 563, 572
 productus 572, 575
 sp. 576
 Termopsinae 482, 516
Termopsis 482, 507
tetradactylum, Eleutheronema 55, 69
 food 85
 Polynemus 69
 Tetragonuridae 298
Tetragonurus atlanticus 298
- Tetraodon, ecological distribution* 81, 86
 fluviatilis 54, 55, 80
 ecological distribution 82
 food 80, 85
 kretamensis 52, 55, 81
 ecological distribution 82
 food 81, 85
Tetrodon fluviatilis 80
teysmanni, Clarias 52, 54, 65
 ecological distribution 82
 food 65, 84
Thaptomys nigrata 249
Thaumastus bitaeniatus 309
 conspicuus 331
 jelskii 309
 porphyreus 309
 (*Quechua*) *conspicuus* 331
 schmidti 309
thebaica, Nycteris 595
 Thecophora 368
 Therapsida 387, 392, 400
 distribution, geographic 390
 geologic 390
 origin 388
 Theria 689
 Theriodonta 387, 397
 distribution, geographic 390
 geologic 390
 origin 388
 Therocephalia 387, 397
Thomasomys 232, 644
 aureus nicefori 232
 laniger 239
Thoracotermes 511
Thrissa hamiltoni 56
Thrissocles hamiltoni 53, 56, 58
 food 56, 84
Thrysidium 532
thula, Egretta 152
Thyreoxenus 478
tibetanus, Ursus 26ff
tibialis, Carcinops 617
 ticks 579ff
tiere, Holocentrus 92
Tinamus guttatus 12
 major saturatus 9
 osgoodi hershkovitzi 10
Tinodon 692
Titanosuchia 387, 393, 397
 origin 388
tolteca, Stenoderma 698
toltecus, Artibeus cinereus 698
torrei continentis, Chilonycteris 696
tortugae, Holocentrus 112
 Toxochelyidae 365
 plastron 377
Toxotes
 chatareus 52, 54, 55, 75
 food 75, 85
 jaculator 74
 jaculatrix 54, 74
 food 74, 85

- Traquairaspis* 449
travassosi, *Amblyopinodes* 249
Tremarctos ornatus 25ff
 jaw mechanics 40
 mandibular articulation 38
 muscles 32
 salivary glands 31
 skull 26
 tongue and oral vestibule 29
 vessels and nerves 31
Tremarctotherium 25
Tretomys atavus 646
tri, *Engraulis* 56
 Stolephorus 54, 56
 food 57
 Tribalinæ 601
Tribalus 601
 Trichiuridae 298
 Trichopterygidae 561
Trichotermes 511
tridens, *Asellia* 595
Trinervitermes 473, 481, 486, 501, 514
 Trinity Sand Formation 689
tripunctulatus, *Valenciennellus* 274
Trirhinopholis styani 174
 Tristan da Cunha, land birds of 139ff
trivittata, *Beanea* 95
troglodytes, *Carcinops* 605, 608, 618
 Hister 618
 Paromalus 618
tropica, *Calamaria* 168, 192, 206
truei gratus, *Peromyscus* 548
Tuberculitermes 494, 511
tumens, *Nenia* (*Neniactra*) *adusta*
 305
Tumulitermes 469, 477, 503, 514
tupacii, *Bulimulus* 316
Turdus 144
turritus, *Bulimulus* 336
 turtles, caretine 345ff
 loggerhead 345
 ridley 345
Tylosurus strongylurus 53, 66
 food 84
Typhlogeophis 168
typicus, *Reithrodon* 646

ulmeri, *Calamaria* 206
Ulmeriella 482, 490, 499, 507
umblicatellus, *Bulimulus infundibulum*
 320
umblicatus, *Platylomalus* 619
umbratus, *Vampyrops* 408
undecimus, *Subulitermes* 502
undulatus, *Crypturellus* 16
Unguitermes 511
unicolor, *Neopetraeus cora* 335
uniformis, *Calamaria* 206
unimaculata, *Betta* 53, 54, 70
 ecological distribution 82, 86
 food 70, 84
 Parophiocephalus 70
 unipennis, *Melanonon* 291
 Uralotermes 507
 Uralotermitidae 506, 507
 Urodela 531
 urophthalmus, *Eleotris* 77
 Oxyeleotris 52, 77
 food 77, 85
 Urotirainus 561-563, 564, 567
 bidentatus 563, 564
 grandis 564
 robustior 564
 molesti 564
 ursinus, *Melursus* 25
 Ursus americanus 25
 tibetanus 26ff
 urubambensis, *Nenia angrandi* 306
 urvillei, *Hololepta* 630
 Platylister 630
 Platysoma 605, 608, 630

Vaimosa bikolana 79
valdiviae, *Notolychnus* 288
 Vale Formation 389
 fauna 390ff
Valenciennellus tripunctulatus 274
Vampyrops 403
 dorsalis 407
 fumosus 405
 helleri 411
 infuscus 405
 lineatus 408, 409, 411
 recifinus 413
 umbratus 408
 vittatus 405
 zarinus 411
vanum, *Platysoma* 631
variabilis, *Periophthalmus* 55, 79
Velocitermes 469, 496, 514
venezuelae, *Holochilus* 661, 669, 670
 brasiliensis 670
venezuelensis, *Nothocercus* 14
venosus, *Arius* 65
 Tachysurus 55, 65
 food 84
ventralis, *Calamaria* 196, 206
vermiformis, *Calamaria* 176, 178, 183,
 185, 207
 vermiformis 187, 207
 grayi, *Calamaria* 207
Verrucositermes 515
 vertebrae, of *Caretta caretta* 360
 of *Chelonia mydas* 360
 of *Eretmochelys* 360
 of *Lepidochelys* 360
 of *Procolpochelys* 360
 Vertiginidae 305
veruculum, *Bulimulus* 320
vespertilionis, *Argas* 586, 596, 598
vestitus, *Strophocheilus maximus* 309
vezillarius, *Holocentrus* 92, 96, 100, 109
victoriae, *Platylomalus* 619
villai, *Strepsylla* 546

- Vinciguerria attenuata* 273
 nimbraria 273
 poweriae 273
virgulata, *Calamaria* 180, 207
vittatus, *Vampyrops* 405
voeltzkowi, *Psammotermes* 488
vogli, *Pteraspis* 452
vulpinus, *Hesperomys* 657, 664
 Holochilus 647, 657, 661, 663
 Holochilus brasiliensis 661, 662
 Mus 660
 Sigmodon 657, 668
warszewiczi, *Nenia* 307
waterhousei, *Amblyopinus* 219, 243
weiseri, *Edrabiis* 255
weyrauchi, *Nenia* 308
whitei, *Pteraspis* 450
Wichita Group 389
 fauna 390

wilkinsi, *Nesospiza* 147, 150
Winteriidae 284

xantherythrus, *Holocentrus* 92

yapura, *Crypturellus undulatus* 16
Yarella blakfordi 272

zamboangensis, *Calamaria* 207
zealandica, *Sternaulax* 626
Zenarchopterus amblyurus 52ff, 67
 food 67, 84
zilchi, *Drymaeus* 333
Zonibyx modestus 154
zoogeography, of New Caledonia His-
 teridae 605ff
 of termites 465ff
Zootermopsis 489, 490, 507, 509
Zoothera 144



•

UNIVERSITY OF ILLINOIS-URBANA

590 5FI C001
FIELDIANA. ZOOLOGYSCHGD
37-38 1955-56



3 0112 009379683