

DELICIOUS



Chicago

"





Class F587

Book D2C3

Copyright N^o _____

COPYRIGHT DEPOSIT.

KILBOURN
and the
Dells of the Wisconsin

PUBLISHED BY THE
GENERAL PASSENGER DEPARTMENT
CHICAGO, MILWAUKEE & ST. PAUL RAILWAY
CHICAGO

Copyright 1909
By F. A. HENCK, CHICAGO

21 116

The Pioneer Limited



HERE is more than one railway line connecting Chicago and the Northwest whereby one may travel safely, comfortably and swiftly, but there is only one line that adds an enchanting scenic beauty to its standard efficiency, and that line is the Chicago, Milwaukee & St. Paul. When you have efficiency with beauty you have a service that you accept for your quick business runs at night, because there is nothing so good; and for your recreation tours by day, because perfect transportation is glorified and yourself entertained and rested by a shifting spectacle of Nature's tenderness and grandeur. Nature has given us up to huddle in dirty cities, but she has never wholly cut us off; and now the annual yearning is upon us to go back and be gay, sportive and foolish, romping with her who is always mother, and for a pitiful little time, resting upon her bosom.

The resources of Wisconsin, as refuge for the fugitive from work, are past enumeration; but pictures are another and more attractive story, and one that,

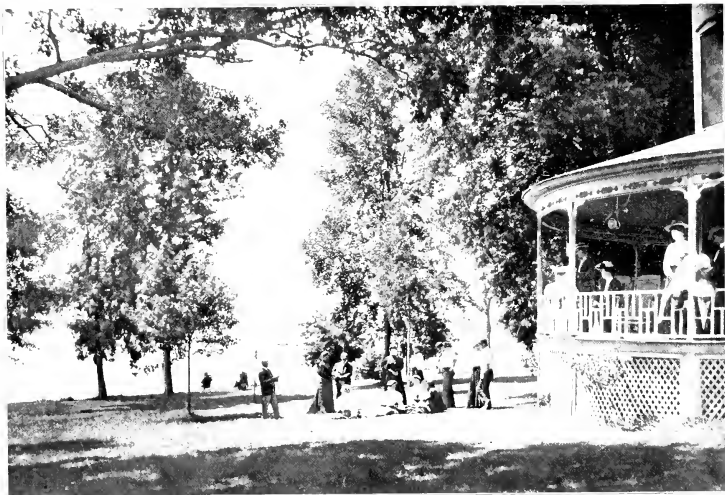
without coaxing, you enthusiastically believe. Rhetoric is a divine art, but when you want much in little, the photograph, well composed, is unexcelled.

This book of beautiful and interesting landscape scenes, along the line of the Chicago, Milwaukee & St. Paul Railway, suggests the possibilities of delight in a quick flight to the Northwest, a sojourn in a woodland spot beside a silver lake, a period of more ceremonial recreation in hotels at popular resorts, or the homely and jolly excursion of the day, that eats, drinks, laughs and is merry, for the greenwood is so fair to live in.

From Chicago, Milwaukee is less than two, and St. Paul and Minneapolis but little more than twelve hours distant. At La Crosse the Mississippi opens a way, to be thereafter a noble companion for 127 miles. En route are Milwaukee, Oconomowoc and the Dells. Remember the Dells, as thousands have done before you. Here, in days primeval, Nature turned her water courses free and wrought out Titanic sculpture and architecture for the eternal wonderment of man.



DELAVAN LAKE.



DELAVAN LAKE.



LAKE GENEVA.



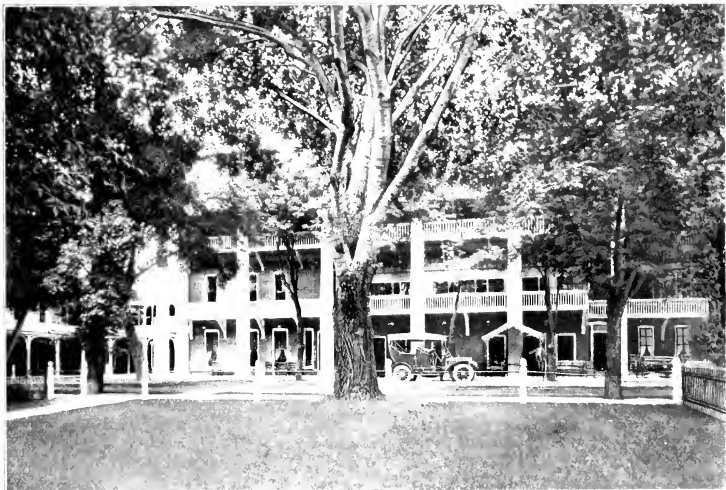
GRAND AVENUE, MILWAUKEE.



CHICAGO, MILWAUKEE & ST. PAUL RAILWAY STATION, MILWAUKEE.



ELKHART LAKE.



DRAHER HALL, OF INDIANAPOLIS



SUMMER HOME, OCONOMOWOC.



LAKE LA BELLE, OCONOMOWOC.



NEAR OCONOMOWOC.



LAKE MENDOTA, MADISON.



OBSERVATORY HILL, LAKE MENDOTA, MADISON.



THE DAM AT MIRROR LAKE, NEAR KILBOURN.



INK STAND AND SUGAR BOWL THE DELLS, KILBOURN.



THE WISCONSIN RIVER FROM ECHO POINT THE DELLS, KILBOURN.



THE FAST MAIL CROSSING THE WISCONSIN RIVER, KILBOURN



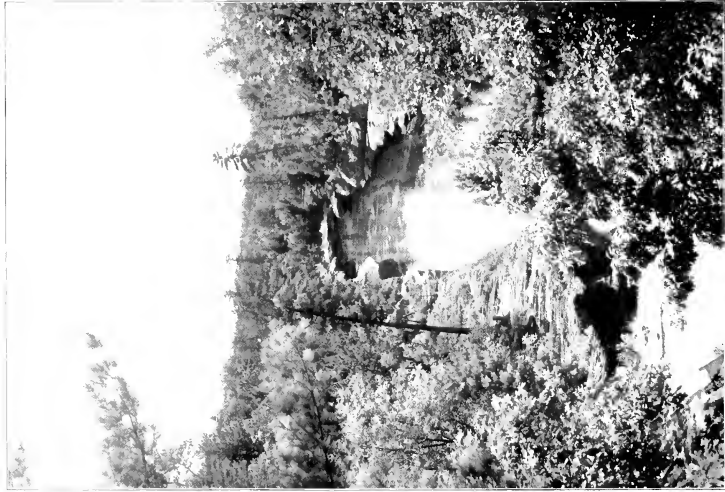
THE JAWS OF THE DELLS KILBOURN.



CIRCLE BEND—THE DELLS, KILBOURN.



CHAPEL GORGE - THE DELLS, KILBOURN



THE NARROWS, LOOKING NORTH—THE DELLS, KILBOURN.



NAVY YARD THE DELLS, KILBOURN.



THE NARROWS —THE BELLS, KILBOURN.



THE NARROWS, BLACKHAWK'S LEAP THE DELL'S, KILBOURN



THE APOLLO LANDING AN EXCURSION—THE DELLS, KILBOURN.



RIVER ENTRANCE, COLD WATER CANYON THE DELLS, KILBOURN.



WHIRLPOOL CHAMBER, COLD WATER CANYON - THE DELLS, KILBOURN.



STEAMBOAT ROCK THE DELLS, KILBOURN



STAND ROCK THE DELLS, KILBOURN.



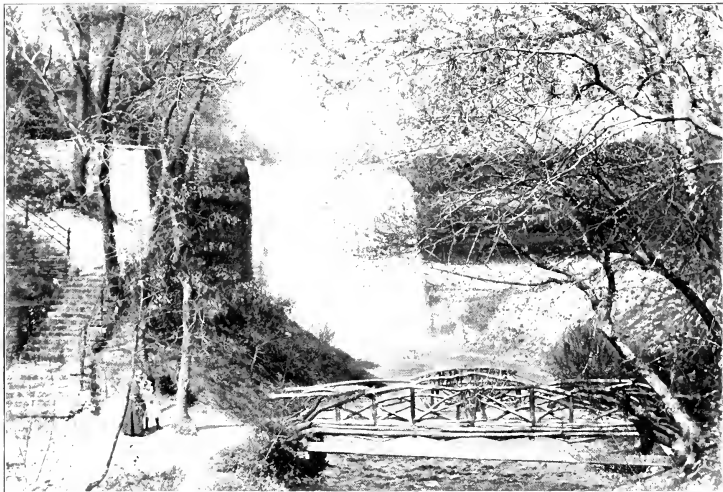
MAPLE GROVE FALL WATER CANYON THE DELLS, KILBOURN



ENTRANCE TO WITCHES GULCH THE DELLS, KILBOURN.



ST. PAUL, FROM HIGH BRIDGE.



MINNEHAHA FALLS BETWEEN ST. PAUL AND MINNEAPOLIS.



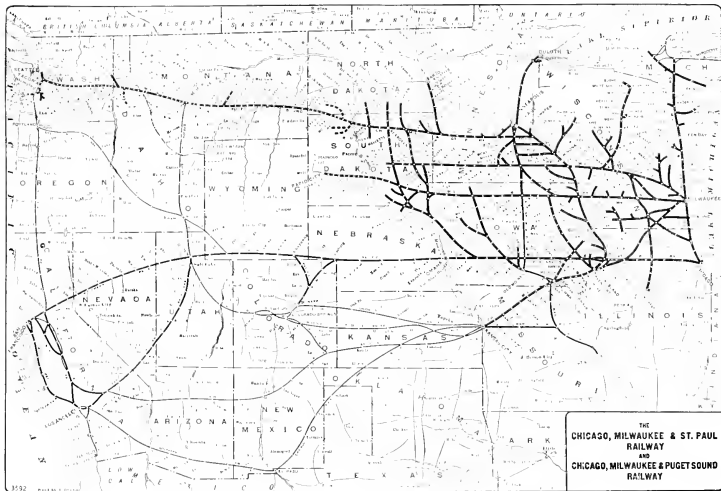
THE MISSISSIPPI RIVER, NEAR LAKE CITY.



THE MISSISSIPPI RIVER, NEAR RED WING.



FALLS OF ST. ANTHONY, MINNEAPOLIS.



LIBRARY OF CONGRESS



0 014 754 958 1