







Digitized by the Internet Archive
in 2010 with funding from
Lyrasis Members and Sloan Foundation

<http://www.archive.org/details/lacampana1981mont>

LA CAMPANA 1981

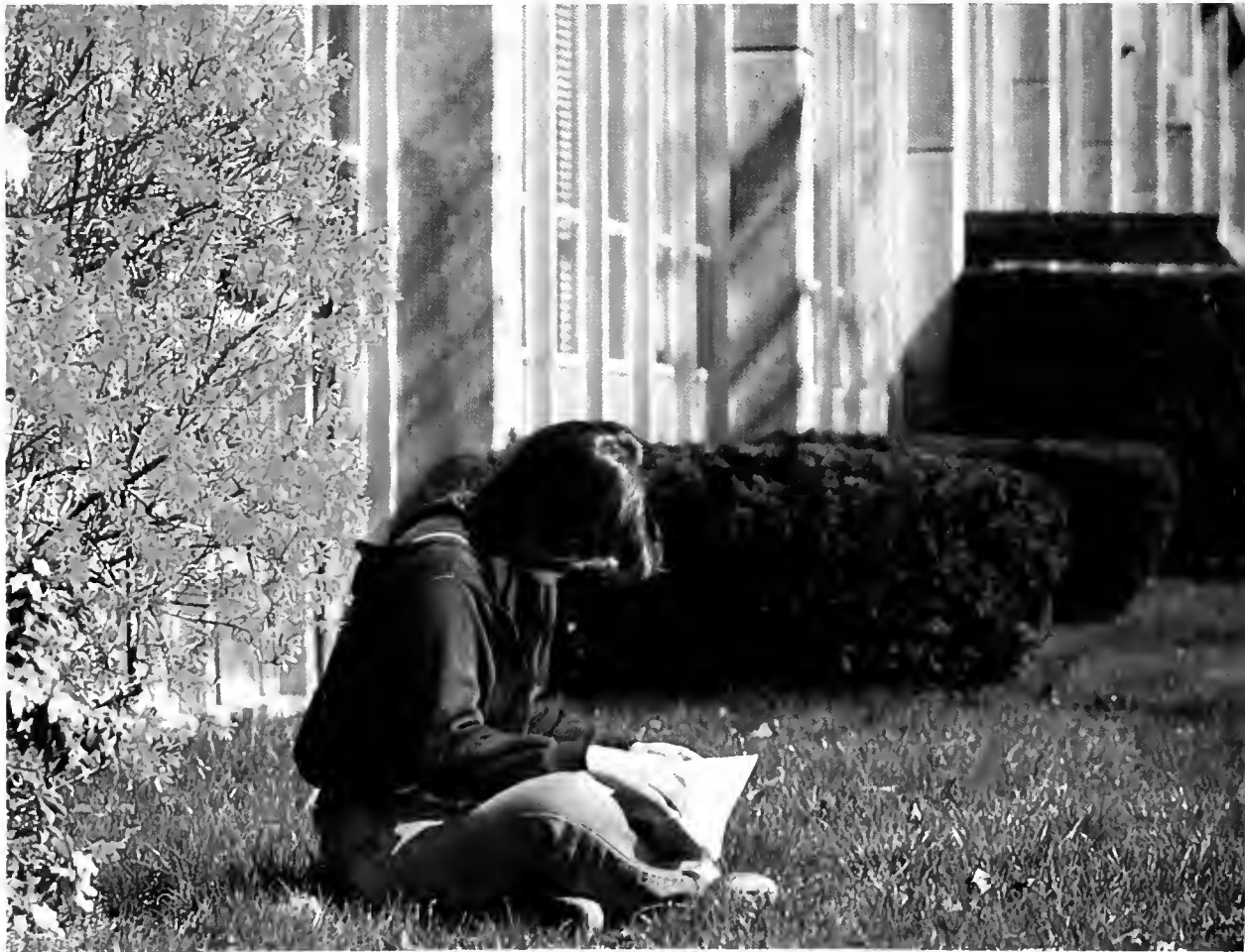


MONTCLAIR STATE COLLEGE
UPPER MONTCLAIR, N.J.
VOLUME LXII





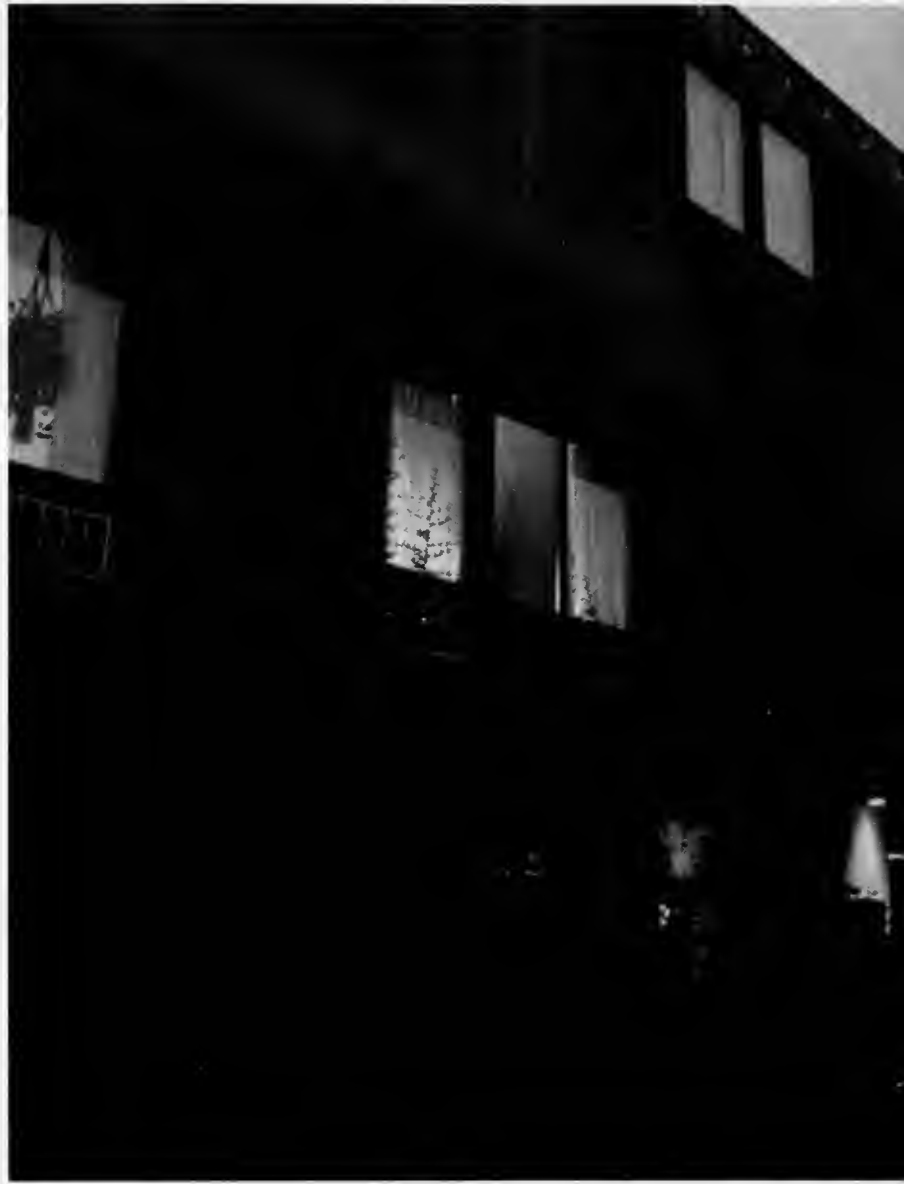
AN







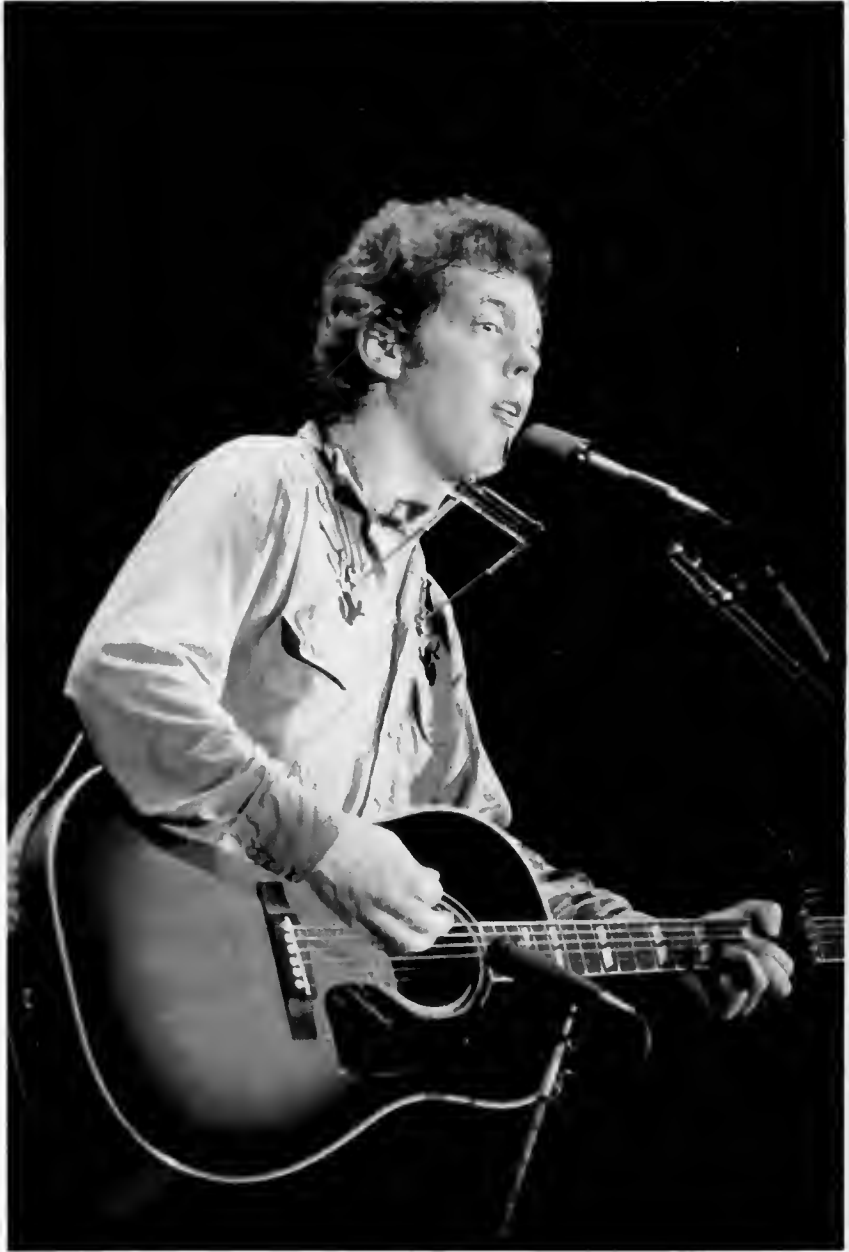








Steve Forbert





John Hall













KODAK SAFETY FILM 35mm 135
KODAK SAFETY FILM 35mm 135
KODAK SAFETY FILM 35mm 135
KODAK SAFETY FILM 35mm 135
KODAK SAFETY FILM 35mm 135
KODAK SAFETY FILM 35mm 135
KODAK SAFETY FILM 35mm 135

128
129
130
131
132
133
134
135
136
137
138
139
140

Table of Contents

Student Life	18
Dorms	38
Student Strike	52
New Game Show — “Find A Parking Space” ...	56
An Impetuous Exploit	66
Valentine Weddings	69
MSC Spirit Week.....	70
Carnival '81	74
Reflections on the MSC Elections	79
What's This Bulldozer Doing in My Parking Space	80
Entertainment 1980-1981.....	81
Alligator Chic	82
Candida.....	83
Lectures	102
Plays	106
Pedaling Through Pennsylvania.....	113
Sports	118
Organizations.....	150
Seniors	202
Graduation	296
Staff	306
Epilogue	310
Credits.....	311

Campana [cam-pah' -nah], f. 1 Bell. 2 La Campana was the name given to the yearbook in 1933. This name was inspired by the bells that are located in the tower of College Hall.



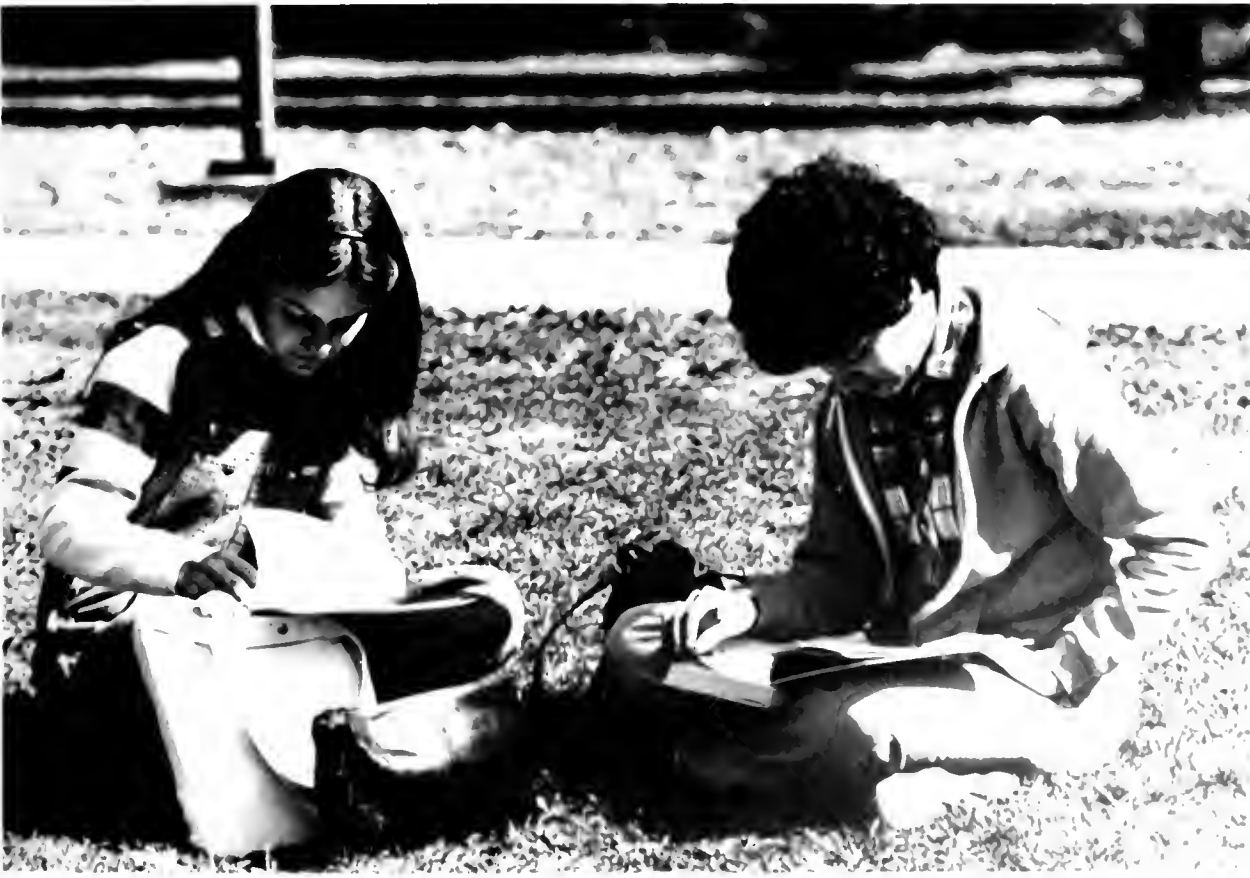
STUDENT LIFE





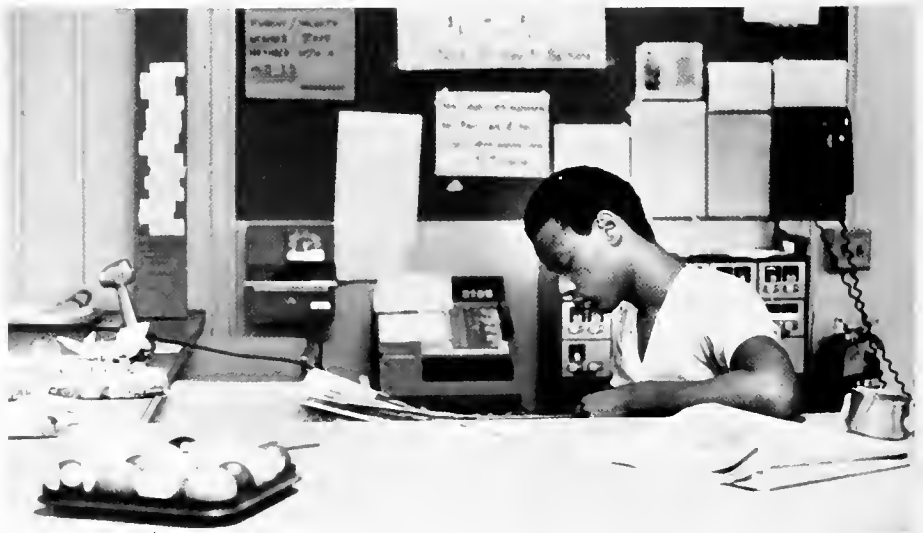






























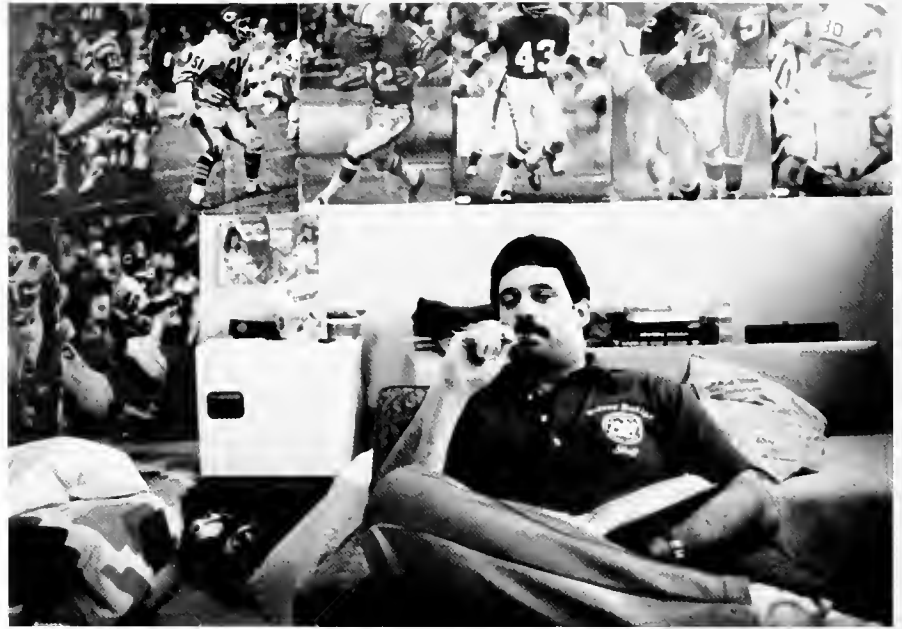






Dorms







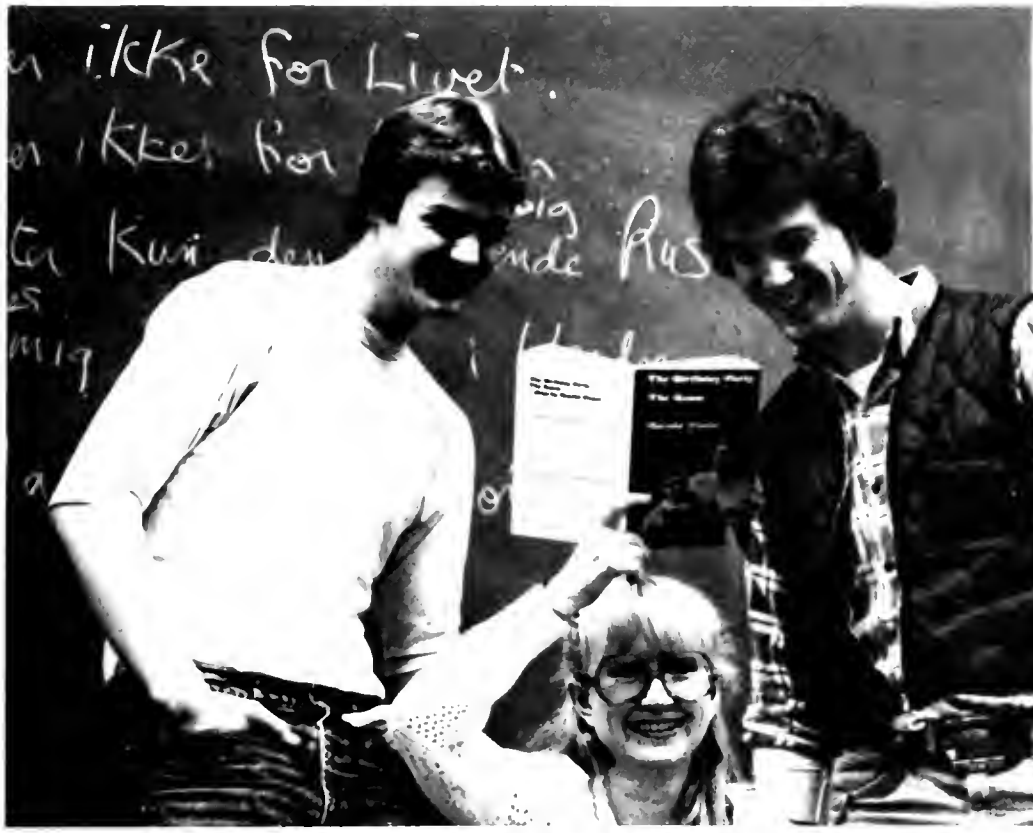
















HOW YA FEELIN' ?





Student Strike

Student leaders of MSC asked students to boycott classes on Friday, September 26, and Monday, September 29, in protest of an assembly bill that would reallocate up to five million dollars originally earmarked for improvements at state colleges to the Tuition Aid Grant/TAG program which last year incurred a four and a half million dollar deficit.

The student leaders at MSC made their decisions to strike the previous Tuesday and were followed by the New Jersey Institute of Technology/NJIT and Trenton State who decided that Wednesday to join MSC by rallying Friday and holding student strikes on their campuses on Monday. William Paterson College, Stockton State College, and Glassboro State College eventually joined the strike effort. On MSC's campus the class boycott was 90 to 94 percent effective. Demonstrations complete with picket signs halted traffic entering the school at Normal Avenue and Clove Road. The success of the action led to an amendment of the original bill.

Although fifty percent of last summer's tuition increase was to be channeled to the TAG, only \$1.4 million would now be allocated. In addition two hundred thousand from management and administrative services of the department of higher education, one hundred thousand from aid to private colleges, and \$1.3 million from the general treasury fund were channeled into the TAG account.

"No matter how you look at it, it's a victory," Ken Brown, student representative to the board of trustees, said. "At least the money that we do lose we'll lose to our own students, and not to out of state and independent colleges."

"My first reaction to the amendment is that instead of getting two hundred lashes, we're getting one hundred lashes — and we're still not guilty," Brian Cige, SGA president, said. "I guess for the time being we should accept the fact that we won a victory by making our point and saving as much for the students as we possibly could."









New Game Show — “Find A Parking Space”

Bzzzz. 6:00 a.m. Darkness envelops the room. Still groggy, unaware of what day it is. First thought enters — Economics exam at 10:00. If I awaken now, shower, and eat something in the car, I might grab a decent parking space. Why, I might even get a spot in the upper lots!

Pity the poor commuter students. They go through the above scenario countless times every semester. Frazzled nerves, wasted gas, damaged cars, not to mention decreased sleep time, are all the result of playing the ridiculous and necessary game of “Find a Parking Space”. Prerequisites for playing the game are:

— Regulation Commuter Car
MEN: Monte Carlo with rosary beads and a H.S. graduation tassel around the rearview mirror

Women: Datsun, Toyota, or Firebird

- 20/20 Vision
- Masochistic Tendencies
- Parking Decal (optional)

The last of the above is optional for the simple reason that 8200 students can not possibly be assured of a space, when in fact only about 5000 such spaces exist.

The daily conditions commuters face in trying to park their cars *AND* arrive to class on time range from being buried in mud slides in the west quarry to being swallowed up by massive potholes on the hill to the lower

lots. To have gotten through the '80-'81 school year unscathed in the daily quest for a safe sanctuary for one's vehicle is a cause for celebration.

In addition to proper mental makeup and constant obstacles, the players in this game must consider geographics when making their crucial decision. Successful negotiation of a space without recrimination from campus or municipal police requires thorough knowledge of where the “danger zones” are. Fines issued by Clifton, Little Falls, and Montclair men in blue range from five to twenty dollars. Due to frequent ticket blitzes, the author of this piece has accumulated over \$100.00 in fines during the past three years.

Montclair State is a commuter college first and foremost and; in



all fairness to the administration, the parking situation has improved with the addition of the quarry lots. However, this is seen as a concession, rather than a concerted effort, by administration to remedy the problem. As long as 5000 spaces are secured at ten dollars each, the winner of “Find a Parking Space” will not be the student.







12A



13



13A







Paul Meli, English.



Arlayne R. Williams, Business Revenue.



Peggy Cass, Phys Ed Instructor.



Barbara Bugbee, Office Services.



Dr. Sharon Spencer, English, and Toni Morrison, Novelist



Clarence Chesterman, Storekeeper II



Myriam Jimenez, Secretary.



Dr. Jo Anne Engelbert, Spanish.



Dr. Lillian Rosenberg, Health Center.



Zaibette Maldonado, Anthropology.



William L. Stanton, Philosophy.



Florence Junda, bookkeeper of SGA



Business Revenue Personnel

An Impetuous Exploit

By Dr. D. McDermott

"Good heavens, what have I gotten us into?" The words recurred again and again in my mind as we drove across Canada, down into the U.S. at Niagara, and onto Montclair. In one of the least orthodox moves I have made in ten years of college teaching, I agreed last spring to swap places for one year with a professor from Montclair State College. Here with a report on that swap and my impressions of it.

For ten years I have been a faculty member at the University of Alaska Anchorage, a small, land-grant institution which has had phenomenal growth in the past decade. When I received a letter from a professor at Montclair State looking to come to Alaska, the thought of a swap entered my mind. We worked it out with our schools and — lo and behold — the thing actually happened! I am amazed because institutions tend not to do new things; I guess we convinced them this was an old thing in new guise. I call it the poor person's sabbatical.

I knew nothing of Montclair State except its location near New York. Over the months of discussion and planning, there emerged the picture of a school offering a wide variety of programs in an interesting administrative set-up. This seemed to add all the more to my interest.

We made the trip (we being Toni, my wife, Megan, 7, Andy, 5, and myself) from the West Coast in a Winnebago. We dubbed it the Gross-Mobile because it is a conspicuous consumer of gasoline. It has served us well, and even economically, because of the saving on accomodation and restaurant costs. And, in keeping with the American Dream, we have come to love our happy home on wheels.

We have come, too, to love Montclair and all it has come to mean to us. Nobody loves an institution any more — that is passe. But we will remember long and fondly the good things about Montclair and this year.

What are some of these good things? People, to start with. I have worked with some of the neatest students there are during this year. What do I like about Montclair State students? Well, you are refreshingly frank; there is less pretense than one might expect on a campus in 1981. You are bright; both in the sense of wise to the market-place and wise to things academic. And you are young — the average age of Anchorage undergrads is twenty-eight — so it has been a new world for me, working with people closer to twenty again.

I have liked the faculty with whom I have worked. They have provoked my mind with new thoughts and proven to be sounding boards for my old thoughts. They have been most helpful.

Overall, I would like to say that we have found a warmth and genuiness which both surprised and delighted us. It surprised us because there is not supposed to be any of that human quality left around big cities anymore. It delighted us because we enjoy working with people, and the kind of people we have met here — well, you are special.

Thank you, then, for what will be a happy memory for years to come. We are richer for having known you. Come see us when you get to Alaska!



John J. Sanz, director of Weekend College.



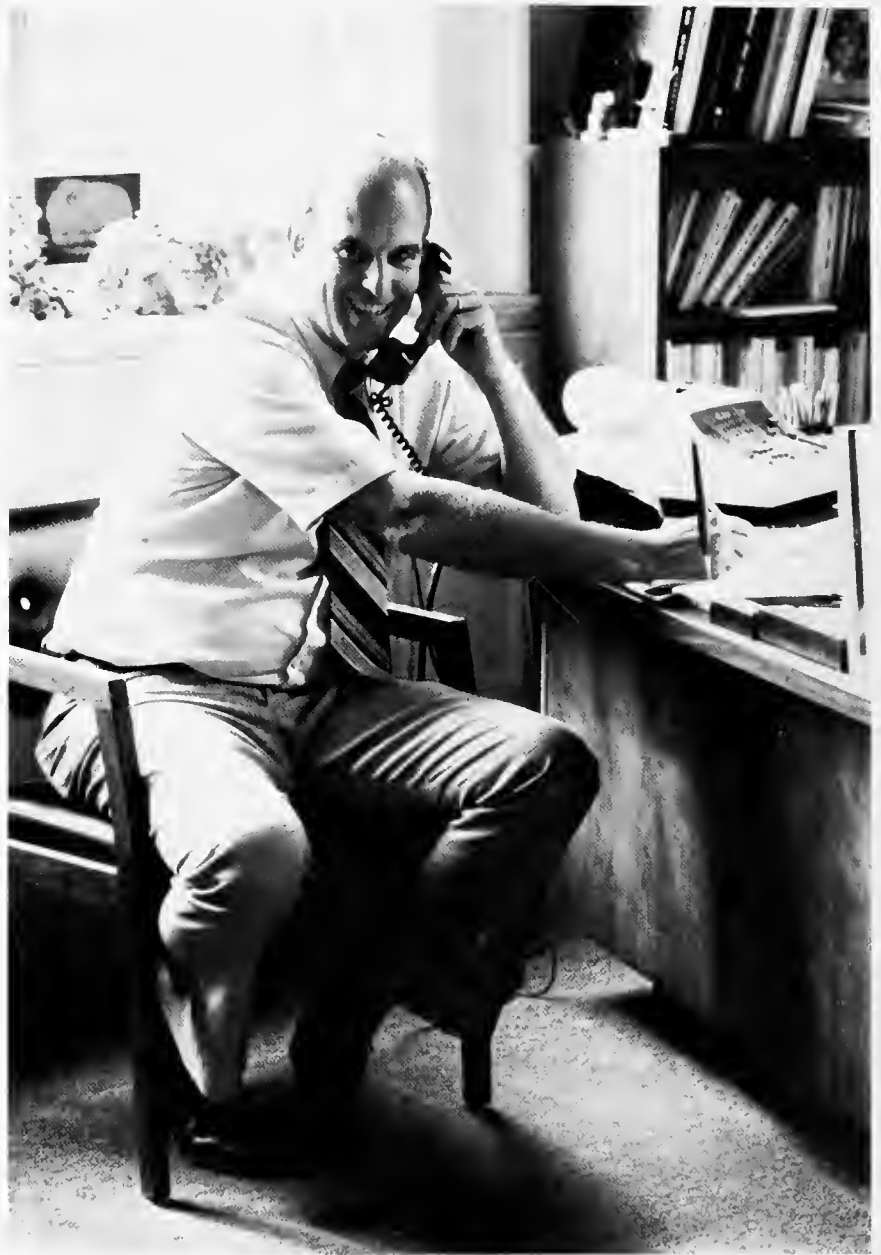
Barbara Richardson.



William Welsch, Counselor



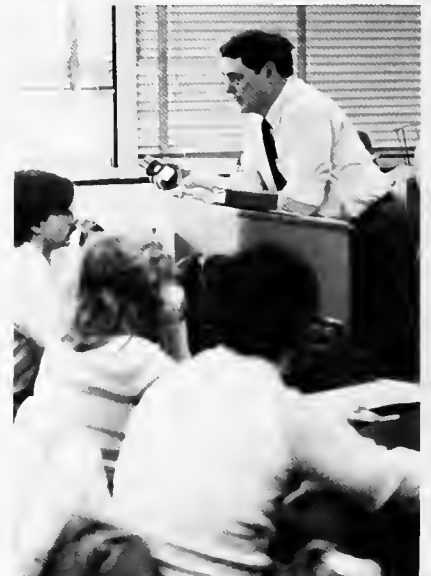
Ray Pars, Marketing



Marshall A. Butler, Registrar



Robert R. Ruezinsky, director of Media Center.



Frank S. Kelland, Physics/Geoscience.

Valentine Weddings



Dr. David W.D. Dickson, president of M.S.C., wed Barbara Chiles Mickey on Valentine's Day. The services, held at St. Luke's Episcopal Church in Montclair, were officiated by Father Kenneth Herbster and Dr. Alfred Vail.

In mid-April, they enjoyed their honeymoon on the island of St. Kitts in the West Indies.

Mrs. Dickson has a Masters Degree in health education for the deaf and teachers at Vailsburg High School in New York.

Dr. Dickson graduated from Bowdoin College in Marine and then to Harvard where he received both his Masters and Doctorate Degrees in English Literature.



Dr. Marie Frazee, a guidance counselor at Montclair State College for the Department of Mathematics and Computer Science married Dr. Anthony Baldassarre on February 14, 1981: Valentines Day. The services were held in the Chapel at the Newman House with Father Kenneth Herbster officiating.

Both Frazee and Baldassarre enjoy traveling a great deal and were on a tour in Italy when they met in 1972.

Dr. Baldassarre, who formerly taught foreign languages in the Massachusetts public school system, now teaches Spanish and French at the Essex Catholic High School for girls.

Mrs. Baldassarre graduated from Montclair State College in 1943. She was an English major, with a minor in French. She received her Masters Degree here in 1946 and her Doctor of Education Degree from the Teachers College of Columbia, New York City in 1967.

MSC Spirit Week





"What seems to be the problem?" he gruffly inquired.

"Well, sir, our campus has had a severe attack of apathy. It's been lingering for quite some time; can you suggest a cure?"

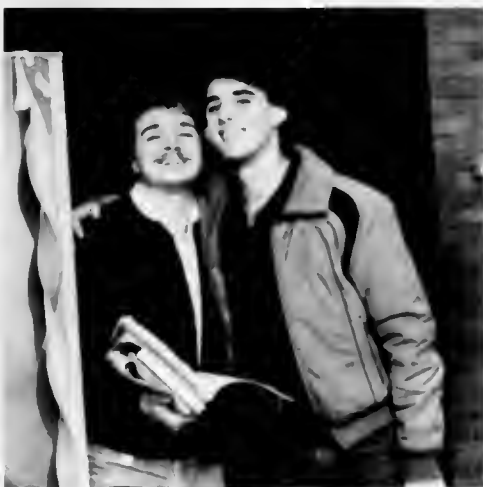
"Certainly," he knowingly replied, "Plaster the campus with red and white ribbons. Give out a large dose of free food and buttons, sponsor educational and social events, and finally, call it Spirit Week."

Spirit Week, held between March 23 and March 29, provided a much needed remedy for the mid-semester blues.

Sponsored by student government, it was planned to dispel apathy and acquaint students with campus activities.

Everyone enjoyed the gaily decorated campus, the rowdy gatherings in the quad, and the nightly entertainment.

Everyone from SGA organizations to the pub and cafeteria got into the act. The week officially started with a balloon lift-off then progressed to, among other things, Budweiser night, Reservoir Run, Spring Dance Festival, and Caberet Night. Ending this active week was the popular Weekend College Carnival.







CARNIVAL '81

Latin Week at MSC

During April, the Weekend College Student Organization held its 7th Annual Dance Festival or "Carnival" commemorating Latin Week.

A rich celebration of the diversity and richness of the Hispanic Culture, the event was such a success that people were turned away at the doors to Memorial Auditorium.

Professional as well as amateur performers, representing 18 of the 23 Latin American countries, were arrayed in vivid native costumes. The audience was delighted by their grand entrance and by Channel 41's beautiful and witty Marcia Julian, who served as Mistress of Ceremonies.

The performances ranged from the Spanish flamenco dance and Mexican zapatiada to singing by Roy Brown, the internationally renowned folk singer from Puerto Rico. The program took a serious turn and photographers flashed away as the dancers from El Salvador came on stage. Other countries included in the performances were Panama, Guatemala, Argentina, the Dominican Republic, and Brazil. Food was sold by MSC's Spanish Club.











Reflections on the M.S.C. Elections

By Mike Sinatra

In our Student Government elections, as in all political contests, there are winners and losers. The word "loser" carries a negative connotation. Losing implies failure, blasted dreams, unfulfilled hopes, ambushed aspirations. The agony of defeat is an inescapable part of all competitive situations in life and it certainly existed at the conclusion of this past election.

In this past election, however, defeat did not carry with it the sting of failure as one might have expected. Any anguish which I may have felt because of my one-vote defeat was eclipsed totally by the incalculable positive revelations which came out of this campaign. True, I failed to win office, but I achieved something of far greater importance. I gained an insight into the kind of beautiful people who comprise the overwhelming majority of the students of Montclair State. Countless numbers of students who were, regrettably, only blank faces to me during my previous years at Montclair, suddenly became people of infinite value, every one a unique combination of all the good things which make people more precious than the most priceless treasure. My campaign enabled me to speak to these people, to get to know and understand them, which is a reward far greater than election to office. Perhaps the high point of the entire election was watching the campaign workers of victorious candidates dancing, drinking, and laughing with campaign workers of defeated candidates. Friendships grew and were sealed as these people completely and permanently put aside all of the animosity generated between them during the previous two weeks.

Montclair State College is truly blessed with people who personify humanity at its best. My defeat in this election was a tiny technical inconvenience when weighed against the inner rewards I received because of this campaign. The students in this school, diverse in perceptions yet united in spirit, individuals striving for personal success yet a community concerned with the welfare of all, have shown me nothing but positive qualities, the best that people can be. Defeat in the election was an insignificant price to pay for the friends I've made, the insight I've acquired, and the good feelings I've received. Montclair State College is truly a place about which will always be "talking proud" because I am proud to be a part of a campus community comprised exclusively of beautiful people.



What's This Bulldozer Doing In My Parking Space?

As everyone who has been on the MSC campus this year has probably noticed, there's been some construction going on. The construction of the 640-bed dorm, Blanton Hall, which started in March of 1980, has eliminated over 400 parking spaces. With a shortage of parking on campus before the construction, this caused an increased number of illegally parked cars and a 65% increase in the number of tickets issued in September of 1980 as compared to last year.

However, approximately 1200 new parking spaces have been paved in the Quarry and another 800 spaces across from the Clove Road apartments.

Construction of the dorm was delayed and it is believed that it will not be completed by its August 1981 deadline. Boulders were encountered during excavation and instead of blasting them, it was decided that smaller machinery should be used, which would be a longer process.

The new dorm will contain a new cafeteria, to replace Bohn Hall's inadequate one, a new health center, and facilities to host summer conferences, which help keep the cost of student housing down. The dorm will be fully carpeted and air conditioned. It is designed to utilize solar energy during both the summer and winter. The roof will have special lighting features to capture the winter sun, but exclude the summer sun.

It is expected that Blanton Hall will increase MSC's housing by 47 percent, from 1,375 to 2,015, and it will cost approximately \$10 million upon completion.

The construction of a Student Center Annex has been under way. This annex will include new offices for the SGA and Class I organizations, and it will cost \$2 to \$3 million.

The general construction contractors have been Solart Construction Company of Monroe, New York for Blanton Hall, and Mahieu Construction Company of Prospect Park for the Student Center Annex. Other independent contracts have been awarded for mechanical and electrical items by the Educational Facilities Authority.



Entertainment: 1980-1981

The life of a student can be quite boring at times. The seemingly endless lectures, countless homework assignments, and stress-filled exams leave us dazed, bored, and in dire need of some sort of temporary diversion. However, a chronic lack of money, so common to the typical student, severely limits us in our quest for that diversion.

The easiest, and cheapest, way to escape from the pressures of school is television. The new shows presented by the networks in the fall seemed to be designed for the person seeking an hour or two of mindless entertainment. The major networks' show line-up this year seemed bent on avoiding any subject that required the audience to use its mind.

CBS gave us more "Dukes of Hazzard" with its never-ending car chases, scantily clad, although virginal, women, and gee whiz, aw shucks, golly gee, down home boys. To add insult to injury, the network presented "Enos", a spin-off featuring the former deputy of "Hazzard" in a country boy goes to the big, bad city format.

The return of "Dallas" and the continuing saga of who shot J.R. was greeted with an unprecedented amount of fanfare. This prime-time soap opera received worldwide attention from magazines and newspapers. Even bookies got involved by giving odds and taking bets on the suspects most likely to have shot the infamous J.R. Ewing. By the time the show revealed J.R.'s assailant, the whole world was asking "Who shot J.R.?". The much awaited episode drew the largest audience for a regularly scheduled show in the history of T.V. In the final analysis though, who really cared?

CBS was not alone. NBC and ABC also made an art out of insulting the viewer's intelligence. We could wallow in the sleaze of NBC's "Flamingo Road" and "Harper Valley P.T.A.", ogle at ABC's T and A sitcoms, and even learn about transvestites watching "Bosom Buddies". The award for tastelessness must go the ABC's "That's Incredible" and NBC's "Real People". These two shows, with a freak of the week format, demonstrated that no matter how bad television is, it can always get worse.

The television season was not without its bright spots. Richard Chamberlain and "Shogun" has us turning Japanese in September as the mini-series drew record audiences. In the spring, ABC presented Masada — the story of a group of 900 Jews who chose mass suicide rather than surrender to the Romans. The mini-series told both sides of the story with compassion and intelligence. Peter O'Toole gave a powerful performance as the leader of the Roman troops and Peter Strauss gave an equally fine performance as the leader of the besieged Jews. These two shows demonstrated what commercial television can, and should, be.

It was a banner year for the news departments of the three major networks. The prolonged hostage crisis in Iran and the Presidential election in the fall provided an ample supply of material for special reports and features. ABC's "Nightline" was a direct result of the need for comprehensive news coverage of the hostage situation. The late night news program was born during the early days of the crisis and became so popular that it remained after the crisis ended.

The election of Ronald Reagan as Chief Executive was not greeted with much enthusiasm on campus. It is likely that few of us would have watched his inauguration had it not been for the hostages' release during the ceremony. The pictures of the hostages stepping off the planes in Germany, the parade from the airport in New York to West Point, and the millions of yellow ribbons tied to everything in sight were responsible for countless tears shed in front of television sets across America. The ordeal through which we suffered was finally over. After 444 days, the people we knew only through television and press coverage were free.

The television press were not infallible. The coverage of the assassination attempt on President Reagan was filled with errors and rumours reported as facts. After watching the video tape of the attempt in slow motion, stop motion, and frame by frame, we were told that the President was not wounded, that he might have been grazed by a bullet, and, finally, that he had in fact been shot.

The most grievous error occurred, however, when all three networks reported that Press Secretary James Brady had died from his wounds. It was not until later that we learned he was in surgery and not dead as had been previously reported.

For those that found television's fare not to their liking, Hollywood offered a wide range of films during the year. Robert DeNiro portrayed fighter Jake Lamotta in "Raging Bull" and garnered the Oscar for best actor. In another biographical film, Sissy Spacek won the best actress award for her performance as Loretta Lynn in "Coal Miner's Daughter".

Robert Redford made his debut as a director in fine fashion, winning best director for "Ordinary People". The film, starring Mary Tyler Moore and Donald Sutherland, showed a family torn by tragedy and lacking in love and understanding. Timothy Hutton won the best supporting actor award as the son.

There was a plethora of horror films to scare us this year. "Friday the 13th" was the most popular, demonstrating some very ingenious ways to do away with people. In addition to "Friday the 13th" horrors, we could be eaten by an albino amphibian lurking in sewers in "Alligator", have our heads explode by "Scanners", or be slashed by a crazed transvestite psychiatrist in "Dressed to Kill".

"The Empire Strikes Back", the second in the Star Wars series, was the blockbuster of the year while Michael Cimino's "Heaven's Gate" was the most expensive, \$40 million, flop in history. Cimino pulled the movie after one day of release in November to edit and try to salvage the film. When it was rereleased in the spring, one reviewer said that now, instead of it being the longest, most expensive, worst movie in history, it is just the most expensive, worst movie

Outgrossing all movies, however, was Penthouse's "Caligula". The film followed the rise and fall of Caligula Caesar and set new marks for depravity in film.

Alligator Chic

The image has been around for decades, although the word "Preppy" was first introduced to us by Erich Segal in heartwarming book "Love Story" in 1970. This year's best-seller list included "The Official Preppy Handbook", a complete guide to dressing and acting preppy without ever attending an Ivy League school or getting one's Topsiders wet at the yacht club. As did many things in the nation this year, fashion got back to basics.

The preppy look is what today's fashion conscious men and women are wearing; some don't realize it's the look that fashion unconscious men and women have been wearing for years. Somewhat of a rebellion to label-consciousness, preppies don't need a designer because they already have good taste in clothing.

Men and women dress very much alike and clothing for either sex denies specifics of gender. Primary colors and pastels are worn indiscriminately by both sexes. The wearing of hot pink and electric green together is the surest way to pick out a true preppy in any crowd.



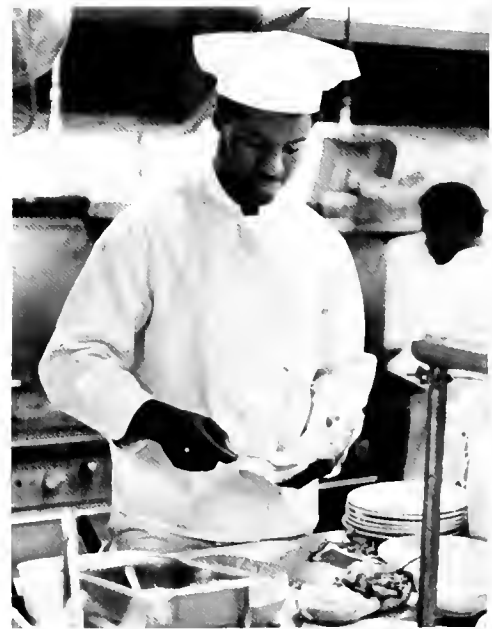


DUE TO Severe
DISCIPLINARY PROBLEMS ON FRIDAY
NOV. 7, The RATHSKeller Will
NOT SERVE ALCOHOLIC BEVERAGES
UNTIL FURTHER NOTICE DURING
THIS PERIOD THE RATHSKeller Will
Be OPEN FOR FOOD + SOFT DRINKS
FROM 11:00 AM - 2:00 PM.















S.G.A. Banquet







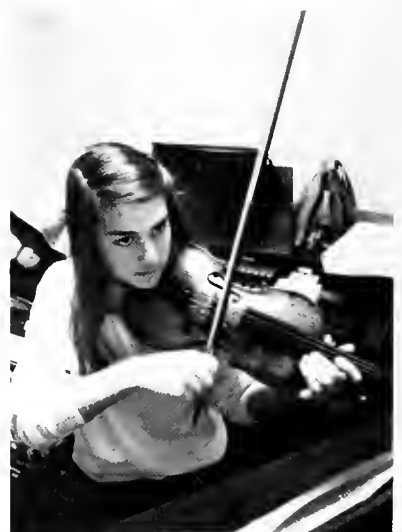
















Senator Birch Bayh
February 10, 1981
"Moral Majority"



Dr. Emanuel Lottem
March 31, 1981
"Middle East Update"

LECTURES
LECTURES
LECTURES
LECTURES
LECTURES



Wilson Bryan Key
December 2, 1980
"Subliminal Seduction"



Melba Tolliver
March 2, 1981
"Women and Minorities in
the Media"



Peter Lance
March 24, 1981
"The Making of 20 20"

Hall and Oates





Birthday Party







Shenandoah



Royal Family





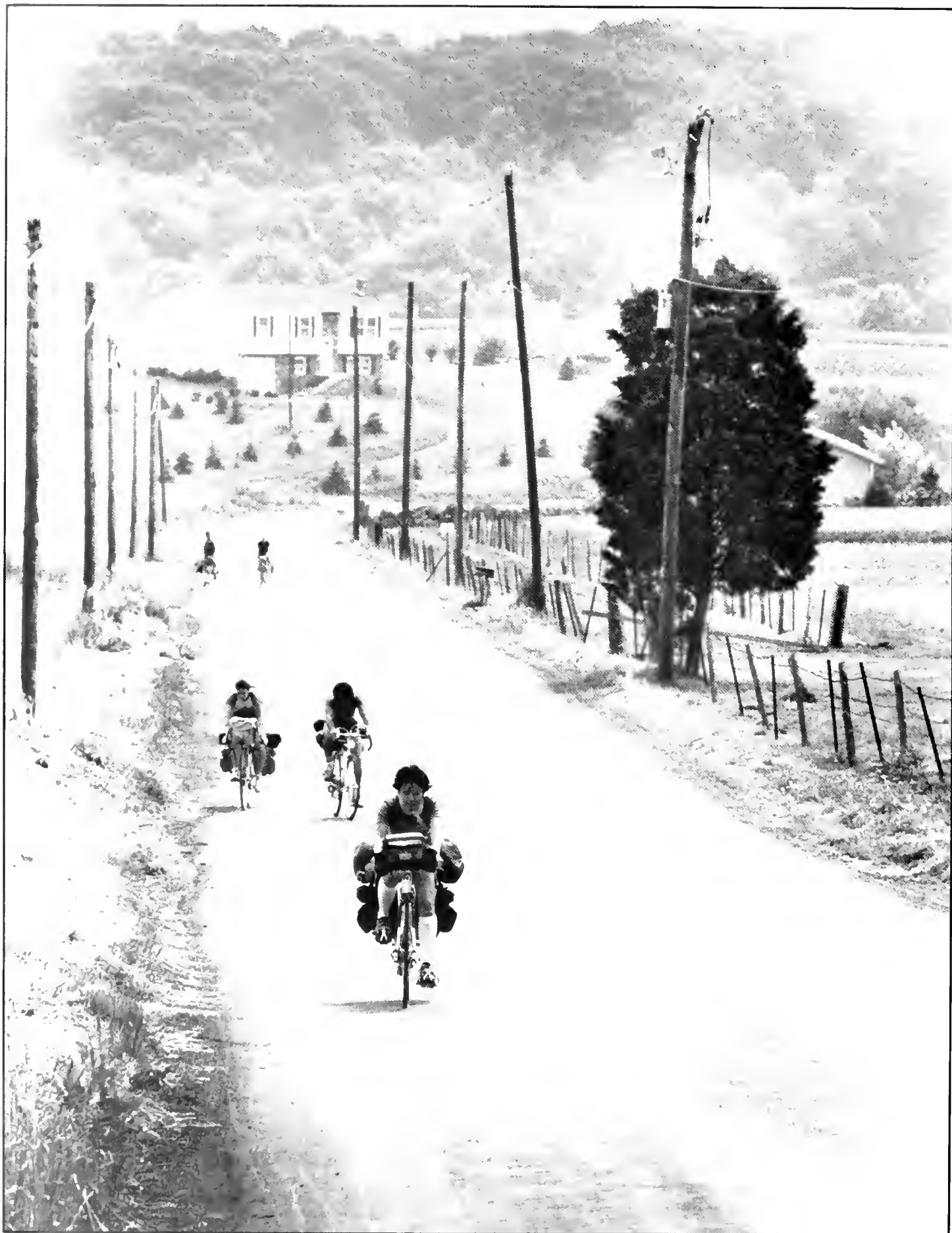
Pedaling Through Pennsylvania



Early in June ten students met in Panzer Gym for what promised to be one of the more unusual courses of the summer session, a bicycling and camping trip through eastern Pennsylvania. Under the guidance of Peggy Cass, two days were spent refurbishing and equipping the bikes as well as plotting routes that avoided major highways while cutting through the scenic farmland. Following that, early the next morning, everyone met down at Rutgers and set off in the direction of Princeton, Washington's Crossing and beyond. Five minutes later, before anyone adjusted to carrying an array of tents, sleeping bags, and cook sets on the bikes, Charlie called the first rest stop with the first of many flat tires.

Although there were ideas of earning three credits without much effort initially, they didn't last very long. Transporting all that weight was no simple feat especially up the apparently never-ending hills. Still, despite rumors of forming a lynch mob for Peggy if the elevation kept going upward, no one had a problem maintaining a sense of humor. Campsites ranged from outhouse to heated pool. Peggy seemingly knew the location of every ice cream stand west of the Delaware and every bar became an oasis of civilization. Each supermarket was a pleasant surprise allowing for Dorie and Bob's top-rated Chinese dinner. When only a campground general store was available, however, Cathy and Ruth showed some ingenuity and served up some standard fare as well as a sampling of the regional cooking. Everyone took in the local sights, the Amish and Menonite farms, the Lititz Pretzel Factory, Valley Forge, and the outdoor flea markets. Somewhere along the line six people disappeared in transit causing momentary panic until someone in that group remembered that they should have taken a left instead of a right. And one morning Rich announced he was old enough to see the more earthy aspects of life and headed for the towns of Intercourse and Blue Ball. Solarcaine and insect repellent became constant companions and a can of beer was a trip staple. As New Jersey drew close again, the bets were on to see if Charlie could go through one day with his tires intact.

Despite the return to the land of "Born To Run", bicycle fever didn't end. Since Pennsylvania, trips have been taken by a few to local sights and a race in Central Park saw representation. A reunion barbecue, months in the planning, took place during Fall Registration Week allowing everyone to catch up with each other and hear about Peggy's bike tour across Europe. As the sky got darker, more and more talk centered on the possibility of doing it all again next summer. So with a little bit of luck MSC will sponsor another trip next year, but with an addition — passports











SPOR



S



BASEBALL

Back to back 10th inning losses to William Paterson College deprived MSC of a chance to repeat as the New Jersey State College Athletic Conference champions. Nevertheless, Coach Fred Hill had to be pleased with his team's 18-10 performance for the 1981 campaign.

After scoring two in the top of the 10th at William Paterson College on May 1, the Indians ace reliever Brian Cloney gave up three in the bottom half of the inning to give the victory and forced MSC into a must situation in their season finale the following day at Pittser Field.

Again, however, the game went into the 10th inning and again WPC took the decision. This time 10-9, knocking the Tribe out of the state playoff picture.

The Indians started the season like a house on fire, scoring 65 runs and hitting 17 homers during a five game stint the first week in April. They broke the MSC record for combined home runs in a game when they and Rider College cracked 10 in MSC's 10-9 win at Rider. Bill Schoenig (2), Bob Fortunato, Tony Sabato, Mark Baker, and Ray Morelli tallied for the Tribe.

At the season's end, second baseman Schoenig was named the team's Most Valuable player. His .367 batting average combined with his four homers and 17 RBI's earned him the honor. The MSC junior who was drafted last season by the Cleveland Indians, also scored 31 runs, stole four bases, and hit eight doubles while making just eight errors in 27 games. His career batting average at MSC is an awesome

.363.

Cocaptain Bob Fortunato's .396 average earned him a nomination to the Region 2 All-American Division III baseball team. In 107 at bats, the hard hitting third baseman fanned just four times. He also led the Tribe in runs scored with 26.

Outstanding dedication and leadership earned Fortunato the Charles Turek Award given annually to an MSC player. He was also a first team NJSCAC selection.

MSC's other cocaptain, Vin Tiberi won the Lee Walsky Award for the second straight year. The award is given annually to the MSC player who demonstrates the best team spirit. The MSC catcher also received a second team nomination on the NJSCAC all-star team.



Out!

Men's Basketball

A series of spectacular victories gave Coach Ollie Gelston's Indians the New Jersey State College Athletic Conference championship and made his team the most talked about thing on campus in mid-March.

After the JV basketball team went an astonishing 22-0 with a 66-65 victory over Glassboro State College on Feb. 21, and leading scorer Jeff Johnson left the varsity squad for a job with the IRS a week earlier, it appeared that the team would have to take a back seat again.

Captain Fred Hill and Co. had other ideas, however.

They were nicknamed the "Cinderella" Indians and were considered the basketball version of Rocky. They upset some of the top Division III basketball teams in the Northeast while going through the regular season with

a 14-11 record.

A 52-51 victory over Glassboro on Kevin Barry's last second foul shot gave them the NJSCAC championship. This was the Indians first NJSCAC title in 10 years and gave them their first NCAA Division III berth since 1970-71.

Before they won the opportunity to meet Glassboro, the fourth ranked Indians faced William Paterson College, the number one ranked team in the conference tournament and a team that had beaten them twice (87-85 in 20T and 64-57) during the regular season. This didn't mean anything to the determined Indians, however, and they upset the Pioneers 64-58 giving them the championship shot at Glassboro.

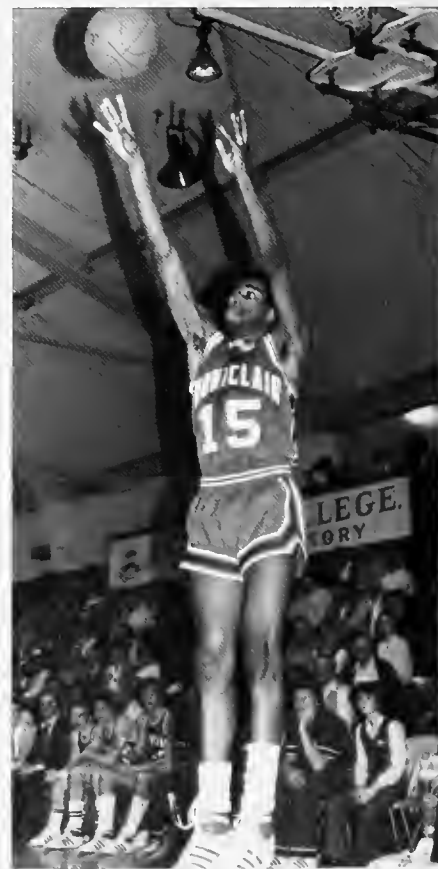
The victory over the Profs vaulted the Tribe into the South Atlantic Regional Tournament vs. three teams, if

combined, had won 63 times and lost only 12 times all year.

The Indians had the seemingly unfortunate task of facing Roanoke College of Virginia, the second ranked Division III team in the nation with a 26-1 record, but MSC made believers out of them.

With 11 seconds left, Hill drove the lane, twisted in mid-air and banked a shot with two seconds left giving MSC a 57-55 victory setting up a confrontation between 13th ranked Upsala College.

The Indians were soundly beaten (86-84) by a much taller Upsala team, but they had nothing to be ashamed of. They showed a tremendous amount of character, poise, and determination in playing their hearts out, and showing the rest of the teams that the Indians were for real.







The future for MSC women's basketball looks very promising with four of the five starters of this year's 16-11 team returning. Tracey Brown, Sharon Ross, Marguerite Dempsey, and Bebbie O'Brien are all two year starters and should continue to provide a good nucleus for the coming year.

As was the case last season, the Squaws were eliminated in the first round of the Northeast Regional Tournament by Cheyney State College. In what was perhaps their best played game of the year, MSC fell 81-59.

The Squaws opened their campaign by taking their second Dial Classic in as many years by routing the University of Wyoming (86-47) and Villanova (68-62).

A thirteen game road trip that lasted from mid-December 1980 to the end of January 1981 took the Squaws to Utah, Michigan, Califor-

nia, Pennsylvania, Connecticut, and New York. MSC defeated the University of Utah 79-61; Michigan State 82-66; San Jose State 65-58; Washington State 65-53; Rhode Island 77-63; the University of Massachusetts 79-63; and the University of Connecticut 75-54.

Brown led the team in scoring, averaging 19.6 points per game and in assists with 94. Ross led MSC in steals (72) and senior Pat Fixter was the top rebounder with 159.

Freshman Fran Sivoiella posted the best free throw percentage (.857) and O'Brien did likewise with a .475 field goal percentage.



Women's Basketball



Men's Cross Country



Coach James Harris' harriers compiled an outstanding 14-3 overall record in 1980 and an equally strong New Jersey State College Athletic Conference (NJSCAC) mark of 5-1.

The Tribe's lone conference setback came in MSC's second meet, a 50-15 rout by champion Glassboro State College.

Captain Ian Gordon paced MSC along with standout Steve Boyle. Charlie Cilwik proved to be the Indians' most pleasant surprise and one of the team's most devoted runners.

Women's Cross Country

Pat Salmon paced the women's cross country team in 1980 as MSC ran past Kings College 22-36 and Manhattan 15-45. The Squaws also looked sharp at West Point where they finished third and at the New Jersey Association of Intercollegiate Athletics for Women (NJIAIW) championships where they also finished in the number three position.

Salmon's season high 18:58 gave her a seventh place individual finish in the NJIAIW meet while her 19:49 and 19:47 gave her first place honors at both Southern Connecticut State College and Manhattanville. In the Eastern Association of Intercollegiate Athletics for Women (EAIWA) division III Northeast regionals, she finished 29th with a time of 20:05.9.

Geri Pomeranz, Linda Glosinski, and Pat Cavallero also had fine seasons for MSC.



Fencing



Captain Sandi Heinze, Michele Pilger, Diane Flynn, and Kathy Rippey led the MSC women's fencing team to a 4-8-1 record in 1981.

After taking their first three matches in impressive fashion — 11-5 over Caldwell College, 10-6 over Drew University, and 10-6 over Queens College — the Squaws appeared to be headed for a spectacular season.

The rest of their schedule, however, presented many talented Division I and II opponents. MSC held their own against such powerhouses as St. Peter's College, Princeton University, and Hofstra University.



Field Hockey





Field Hockey

A young and improving field hockey team just missed the .500 mark, finishing their 1980 campaign with a 7-8-1 record.

When the season began, Coach Donna Olsen wasn't sure who would replace last year's standout goalie Evelyn Jackson. When red headed Ronnie Gudewicz took the net on opening day, however, all doubt was gone.

After blanking MSC's first two opponents — Southern Connecticut State College (2-0) and Adelphi University (2-0), she went on to make 174 saves while posting an impressive 2.25 goals against average. She also added three more whitewashes to give her total of five shutouts for the year.

On offense, Judy Popadaniec and Debbie Dietrich provided most of the scoring punch.

Popadaniec knocked in 10 goals while assisting on four others, to give her the team's scoring title with 14 points. Dietrich netted five goals and assisted on five to place her a close second.

Two MSC field hockey records were broken this season — both, however, were on the negative side.

The longest losing streak for an MSC team is now four, breaking the previous record by one. During the eight day

span, the Squaws dropped consecutive decisions to Temple University (3-0), C.W. Post College (5-1), William Paterson College (1-0), and Rutgers University (6-0).

Also this season, MSC opponents scored 35 goals on the Tribe — an all time high. The previous record was established in 1979 (31.)

Goalie Gudewicz cannot bear all of the blame for this embarrassing statistic however, as her young defense frequently found themselves open for attack.

May Johnson and Mary Zoeller accumulated three points apiece for MSC, and Pat Connor and Diane Tyson tallied two each on the season.

The Squaws' most impressive victory came vs. Kings College (4-0), at Brookdale Park. Popadaniec scored twice, and Connor and Dietrich added one each. Gudewicz made 11 saves en route to what was her third shutout in the Squaws' first four games.



Football



Football



For the first time in three years, Coach Fred Hill's Indians failed to capture the New Jersey State College Athletic Conference (NJSCAC) football crown. A 26-13 loss to Trenton State College eight games into the season gave the Tribe their second setback of the season and eliminated all hopes for a division III playoff bid and the title. MSC finished the season at 8-2.

When all-conference kicker Keith Sahlin missed a field goal with :03 left to play in MSC's opening night loss to Wagner College, 12-10, the Tribe knew that a playoff berth would be difficult to obtain. But, in typical Fred Hill fashion, they made a valiant try.

Their next six games were all MSC as they blanked East Stroudsburg State College 16-0, routed Kean College 28-13, Ramapo College 38-3, Seton Hall University 28-16, William Paterson College 28-0, and division II powerhouse Central Connecticut State College 14-6.

When conference rival Trenton came to Sprague Field the following week, however, the MSC magic wasn't evident as the Lions mauled the Tribe 26-13 and MSC's title hopes were all but gone.

Nevertheless, the Indians closed out in a fury, crippling Jersey State College 24-7 in Jersey City, and stunning Glassboro State College 32-12 in their finale.

At the season's end, eight Indians were honored as NJSCAC all-stars.

Linebacker Sam Mills' 127 tackles impressed enough people to get him the conference honor as well as an all-American selection. Mills ended his career with an unbelievable 501 tackles.

Senior Bill Grundy ran for a team high 1,005 yards and now holds MSC's all-time career rushing record with 2,152 yards. His 80 yard burst during the scrimmage vs Central Connecticut is the longest in Indian history.

The all-conference tailback also set new MSC marks for touchdowns in a season (14) and points scored in a season (84).

Tight end Hubert Bond's incredible blocking ability and his 21 receptions (tops for MSC) earned him the NJSCAC honor along with center Joe Hughes, and defensive tackles Doug Roberts and Mike Popek.

Sahlin, known as "Ice" by his teammates, was a perfect 29-29 on extra point tries. He also added four field goals en route to his conference nomination.

Defensive back/kick returner Mike Smith was the Tribe's eighth selection. The MSC senior averaged 17.1 yards in 14 kickoff returns while accumulating 87 yards in 28 punt returns.

Coach Hill will lose 24 players due to graduation this year.



Golf

If it weren't for two old nemesises, the golf team would have become MSC's second undefeated team in 1980-81 (the JV basketball team went 22-0). Fairleigh Dickinson University (Madison) and Ramapo, however, proved too strong for the Tribe and handed them their only three losses (Ramapo beat the Indians twice) of an awesome 13-3 season.

Pat Romano and Jim Shubert were the indian's aces in the hole during the season. They had strong support from teammates Mark McCormick and Dave Fedor, all four averaging in the low to mid-70s.

John Casalino, George Macaloso, and Gene Lowe also contributed to Coach Pete Famiano's successful club.

Gymnastics

The MSC women's gymnastics team over-came three consecutive early season defeats and posted a .500 mark at 6-6. A 109.6-82.0 rout of Kean College broke the ice and gave the Squaws their initial victory, four meets into the 1980-81 season.

The highlight of the year for MSC was a second place finish in the EAIWA division II gymnastics championships held in Connecticut. The Squaws scored a school record 122.05 points.

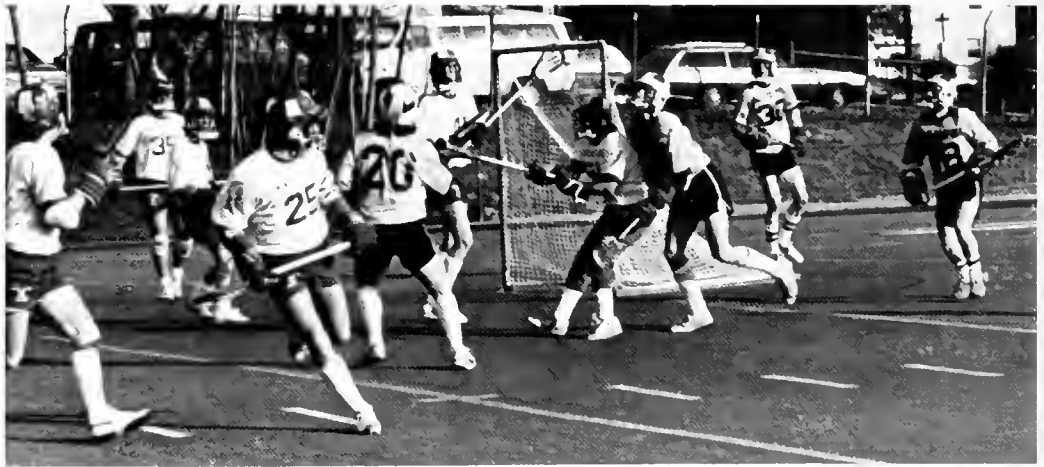
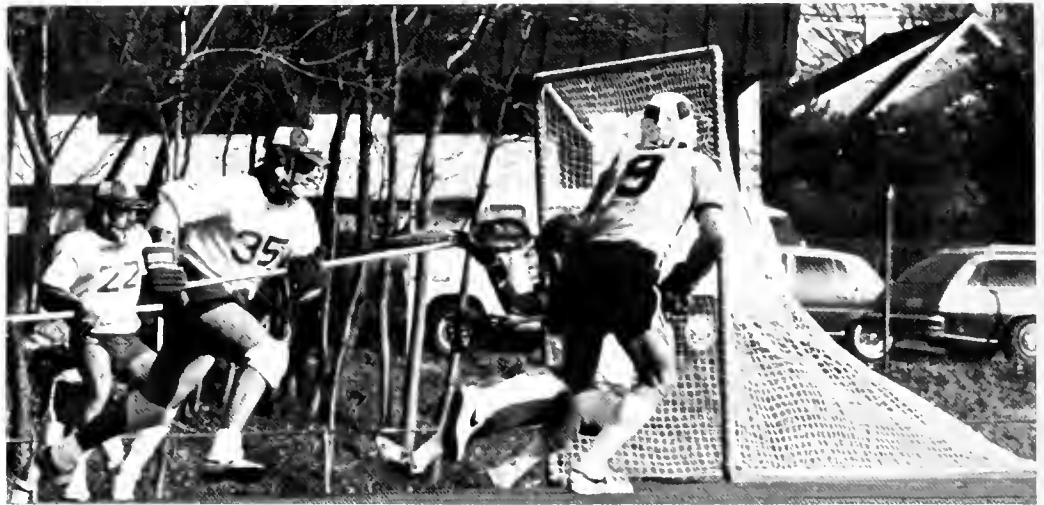
Renee Massey proved to be MSC's best all-around performer, posting team high scores in the vault, (8.25 vs Maryland), the uneven bars (7.7 vs Trenton State College), the floor exercises (7.9 vs Nassau Community College), and overall score (30.25 vs Trenton State College).

Senior Joan Hayes set a school record with an 8.0 on the balance beam in a meet vs Towson State College and the University of Connecticut.

Stefanie Grohoski, Donna DeKluyver, Margie Breznak, Sharon Bakunas, Meloney Kiegel and Jill Mandell also showed promise for the Squaws.







Men's Lacrosse



Following back to back losses as the 1981 season opened, the men's lacrosse team went on a scoring rampage to take nine out of their final 12 games and captured the conference title.

Scores of 23-2 (over Stevens Institute of Technology), 18-2 (over FDU/Teaneck) and 18-5 (over Kean College) were familiar sights to MSC fans. The main reason for this was MSC's scoring machine — George Nucera.

Nucera's 40 goals and 19 assists proved to be the key to the Tribe's success. His single game performances were devastating to opposing teams: 7 goals vs Stevens, 6 vs Drew University, 5 vs Morgan State, and 4 each vs C.W. Post, Kean College and Lehigh University to name a few. Only twice was number 10 held in check (vs Villanova and FDU/Teaneck).

Goalkeeper Jerry Buonocore helped key the defensive end of the Stickmen's game,

coming up with 246 saves in 14 games — an average of 19 per game. His 26 stops vs both Penn State University and C.W. Post College were game highs for the year.

Other Indians put on impressive scoring exhibitions. Kevin Oxley netted five goals vs Legish and four vs FDU/Teaneck. Four goal performances were the most frequent, however, for the Tribe. Sal Guastella posted two such performances as did Jerry Jacob and Doug Mathews. Alan Geissel also had one.



Women's Lacrosse

In just their second year playing on a varsity level, Jan Biber's women's lacrosse team posted a winning record at 4-3.

Senior Roslyn Goldschmidt started the season by scoring all eight goals in a heartbreaking 9-8 overtime loss to Rutgers University. From there, she continued her unstoppable scoring spree and, at the season's end, was named to AIAW all star squad.

Alisa Ramierz proved to be a pleasant surprise in goal for the Squaws, consistently coming up with the big stop when it was needed most.



Soccer



They were billed as the "new Indians" when the season began and "new" they were. A new coaching staff headed by former professional player Phil Santiago, new scarlet Adidas uniforms, shiny new blue and white Tango soccer balls, a new home field (Sprague) and a new low for wins in a season — three.

When the Indians closed out their season with a 0-0 tie vs Rutgers University (Newark), it brought their season record to a disappointing 3-10-2.

The absence of a prolific goal scorer was the main reason for the Tribe's horrendous year. MSC tied

two games where they scored only one goal, lost four games by a one goal margin, and four others by only two.

In the New Jersey State College Athletic Conference (NJSCAC), MSC finished in the cellar with an 0-6-1 mark. In fact, the Tribe failed to beat a NJ team this season. Their victories came against NY's Pratt University (3-2), New York University (3-1), and Pennsylvania's Kings College (5-0).

A heartbreaking 1-0 loss in double overtime on opening night at Sprague Field was perhaps the Indians' best game. For 110 minutes, the Tribe played their hearts out, never easing off the supposedly more powerful Mercy College team.

After falling to 1-7, the booters went on a "warm" streak. They beat NYU (3-1), proceeded to rounce Kings (5-0), and tie Ramapo College (1-1) in a downpour — three straight games without a defeat.

The Indians, however, lost three out of their last four games while being shutout twice.

This season, the Indians averaged a dismal 1.33 goals per game. Junior Alvaro Tarrago led the team in scoring with seven goals and four assists.

Sweeper Paul Liddy, the team's most valuable player, leaves MSC after four outstanding years of play. The 5 foot 10 inch Clark, NJ native will be the most missed of all the graduating players. His coolness under pressure and extraordinary skills should have secured him a spot on the New Jersey College Athletic Conference (NJSCAC) all-star team but he was unexplainably overlooked at the season's end.

Nutley's Jeff Gruelich was the surprise of the year when Santiago moved him from fullback to the front line midway through the season vs Kean College. His aggressive play continually kept opposing defenses on their toes and goalkeepers on the ground.

Senior Joe DaRocha set an MSC "record" when he knocked out a Kean forward with one punch, after being hit in the face during the Tribe's 4-0 setback. It was the quickest "decision" on record at MSC.

Goalkeeper Mike Tropeano proved that he could still play up to his all-state (Roselle Catholic High School) potential after three years on the bench. His 1.55 goals against average was exceptional considering the pressure he was under all season long. Sophomore Paul Huegel filled in adequately as the Tribe's number two keeper in his first season for MSC.



Softball





Men's Swimming

It's not often that a freshman comes along and dominates a collegiate athletic team but this happened to be the case in 1981 as Scott Worswick came to MSC and became the star of the men's swimming team.

The team's 5-4 record was overshadowed by Worswick's heroics; most notable of which was an invitation to the Division III swimming and diving championships at Dedar Rapids, Iowa. His tenacious backstroke shattered numerous MSC records.

The Tribe posted victories over Kean College, Ramapo State College, Seton Hall University, Stockton State College, and the New Jersey Institute of Technology while dropping a heartbreaker 57-56 to William Paterson College.

MSC finished fourth behind Rider College, Monmouth College, and Glassboro State College in the New Jersey College Swimming and Diving Championships to conclude their season. In the championship, Worswick took two third place finishes (100 and 200 backstroke) and a seventh in the 22 freestyle.

Cocaptain Steve Dempsey took seventh place finishes in both the 100 and 200 breaststroke. Calvin Taylor, cocaptain Corey Jewett, Pat Farley, Ken Dioguardi, Kevin Pyhel, Jim Schmidt, and Ken Fernandez also turned in good years for MSC.



Women's Swimming



Coach Greg Lockard pulled double duty this season as he instructed both the men's and women's swimming and diving teams. In his first year heading the girl's team, Lackard's Squaws posted a 3-7 record. An opening win over Kean College, 61-79, and a 97-33 drowning of St. Peter's College highlighted MSC's season. A 69-53 victory over Seton Hall University accounted for the Tribe's other win.

Freshman diver Mickey David was the Squaws' most dangerous weapon and has unlimited potential for the future at MSC. Her second place finish in the three meter dive in the state championships surprised few people that had watched David all year.

Lisa Clark impressed a lot of people when she, too, took a second place finish in the states. Her time of 2:44.60 in the 200 breast-stroke gave her the place.

Sue Taylor, Cindy Tandanza, Trish Walling, Nancy Graebener, and Maria Nappo helped the Squaws to fourth, fifth, and sixth place finished in the 200 free relay, the 400 free relay, and the 200 medley relay respectively.



Women's Tennis



A 5-4 victory over Kean College put the women's tennis team over the .500 mark for the 1980 season as the Squaws finished with a 7-6 record.

After streaking to a 3-0 record with victories over Fairleigh Dickinson University (6-3), Upsala College (5-4), and Monmouth College (5-4), MSC was outclassed in their ensuing three matches. Their record sank to 3-3 as West Point smashed them 9-0 followed by drubbings at the hands of the University of Bridgeport (6-1) and Seton Hall University (7-2).

From there, it was an up and down season for the Squaws as they battled to stay ahead in the wins column.

Sue Dobosh (8-5), Mary Lynn DeFeo (9-4), and Mary Tuffy (7-6) were MSC's singles leaders.

Dobosh and Tuffy also dominated the doubles action, posting an impressive 8-3 mark.



Men's Tennis



First year coach Chet Mazula's men's tennis team had an up and down year as they closed out their '81 season at 6-10.

Larry Davidson and Ted Kristek turned in outstanding individual performances for MSC as did the doubles team of Randy Stein and Steve Jasko.

In the New Jersey State College Athletic Conference Championships, Davidson beat Trenton State College's Brian Peters 6-4, 3-6, 6-1 and Kristek netted the Lion's Dennis Blake 6-3, 6-3 to close out the season.

Stein and Jasko got past Jersey City State College (6-3, 1-6, 6-3) and Ramapo State College (6-3, 6-3) before faltering in the championship final vs Trenton State College (6-4, 6-4).

The Tribe's most impressive victory of the season was an 8-1 rout of Monmouth College on their own courts.

Women's Track

Under the direction of Coach Michelle Willis and Assistant Coach Jeff Holt, the 1981 Women's track team had many outstanding performances. They competed at Rutgers in the New Jersey Association for Intercollegiate Athletics for Women (NJIAIW) meet. Picking up third place honors were captain Fran Harwell in the heptathlon, Laura Frisch in the 400 meter run, and captain Kim Shelley in the discus event.

Qualifying for the Eastern Association for Intercollegiate Athletics for Women (EIAIW) were Laura Frisch, Fran Harwell, Mary La Duca, and Gaye Noval along with captains Pat Salmon and Kim Shelley. The team performed remarkably well at the Regionals held at Keene College, N.H. Kim Shelley held steady and, once again, placed third in the discus event. The 800 medley relay team consisting of Laura Frisch, Fran Harwell, Mary La Duca, and Gaye Noval came in sixth. Gaye Noval's spectacular timings all season enabled her to qualify for the AIAW Nationals held at California State — Hayward. She competed against over 300 athletes from more than 100 colleges from all over the US.

Completing the Squaw's roster were Sandy Cipriani, Janet Hirsch, Cathy Grimshaw, and Amy McLaughlin. "Pooch"



Wrestling





Continued improvement was the story of the MSC wrestling team this season as they cuminated the '80-81 campaign with an impressive 17th place finish at the Division III Nationals in Cleveland, Ohio. There were 92 teams in the field.

Senior captain John Antosiewicz and junior Rodney Smith received All-American honors for the second consecutive year to lead the grapplers. For both of them, it was their third trip to the Nationals.

For Antosiewicz, his sixth ranking was his second in a row and highlighted his four years as a member of the team. His All-American ranking was well earned as he decisioned number one seed Brick Mock of Trenton State College in the 167 pound weight class. Smith, an All-American for the past three years, earned a seventh place ranking in his weight class of 126 pounds.

In the NCAA regional tournament, MSC qualified six grapplers — Smith (126), Dan DaCunto (142), Dave Drozjak (150), Antosiewicz (167), Chuck Bronder (190), and heavyweight Art Sopelsa.



Wrestling



Copyright 1981
DC Comics Inc
Warner Brothers



ORGANIZATIONS



African Student Organization



Alpha Kappa Psi



PRESIDENT
VICE-PRESIDENTS

CORRESPONDING SECRETARY
RECORDING SECRETARY
TREASURER
MASTER OF RITUALS

Linda Lamonica
Diane Kerestes
Ken Hollasch
Dorothy Pietrucha
Chrysa Radice
Dominic Vacarello
Mario Bochna

Alpha Kappa Psi is the national, professional business fraternity on campus. Unity is developed between students who have the common bond of working towards a career in business. Interaction between business students and professional business people is provided by this fraternity. Business symposiums, regional conferences, and national conferences are attended by the members. Extensive participation by Alpha Kappa Psi in school activities is evident. Members have been involved in the Alumni phone-a-thon, SILC intramural volleyball and softball leagues, and the volleyball marathon. Events sponsored include a banquet, homecoming balloon lift-off for cancer, fundraising drives, and a variety of social trips.

Alpha Phi Omega



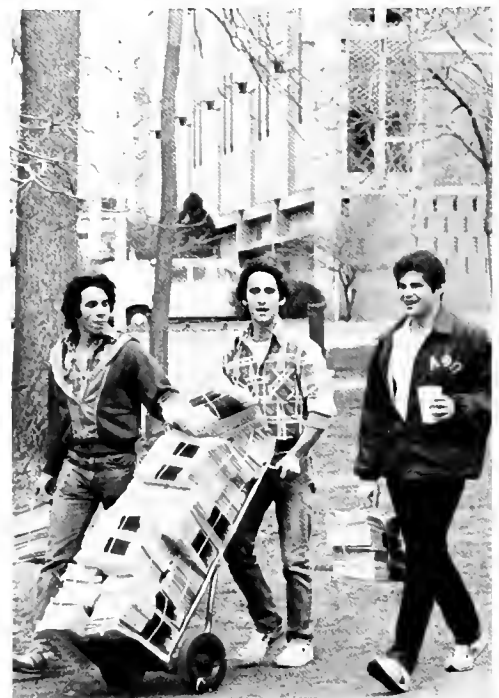
PRESIDENT
VICE-PRESIDENTS

Joseph Natoli
Mike Ruggiero
John Burns
Nick Parisi
Jim Dixon
Dean De Pice
Steve Ferguson

SECRETARIES

TREASURER

Alpha Phi Omega (APO) is a national service fraternity associated with the Boy Scouts of America. They have sponsored a used bookstore, a lost & found, a blood drive, the Ugly Professor on Campus contest, and other such events. Outstanding services provided by APO for the campus include delivery of the Montclarion, the giving of campus tours, and participation in the Alumni phone-a-thon. Profits from all events are donated to charitable groups.



Biology Club

PRESIDENT
VICE PRESIDENT
SECRETARY
TREASURER

Marie Russo
Hossam Ahmed
Sandy Resch
Diane Lent



Black Student Cooperative Union



PRESIDENT
VICE-PRESIDENT
SECRETARY
TREASURER
ADVISOR

Michael Smith
Richard Shorter
Juanita Brown
Cynthia Etheridge
Prof. Percy Johnston

The Black Student Cooperative Union's objective is to build respect and cooperation between students, faculty, and administration on the MSC campus. Another purpose of BSCU is to build understanding of all races' histories and lifestyles.

BSCU's activities consist of the drama workshop, cultural affairs, academic affairs, strive community, Kitabu committee, Montclair State Contemporary Gospel Ensemble, and a variety of lectures.



Council On International And National Affairs



PRESIDENT
VICE-PRESIDENT
SERETARY
TREASURER

Beth McNeilly
Barbara Kucinski
Judy Echeveria
Claire Caffrey

The Council on International and National Affairs (CINA) is a chartered Class I organization of the SGA. Through the use of lectures, discussions, films, seminars, and trips, CINA brings relevant events into focus for the average college student. Noted speakers who have lectured at MSC this past school year and been sponsored by CINA include Wilson Bryan Key, Birch Bayh, Melba Tolliver, and Peter Lance. CINA is open to all students and welcomes their input.

Circle K

Circle K, currently comprised of twentyone students, is a co-ed service club. This organization performs community services for both social and charitable purposes. The 1980-81 events sponsored by Circle K include Special Olympics, Blood Bank Drive, Dance-A-Thon, and Texas Cookout.



PRESIDENT
VICE-PRESIDENT
SECRETARY
TREASURER
HISTORIAN

Michele Shambelan
Kim Armengol
Tracy Gibbons
Marty Beck
Sandy Cipriani

Class I Concerts



College Life Union Board (Club)



PRESIDENT
VICE-PRESIDENT
SECRETARY
TREASURER

Joe Sebolao
David Breslauer
Diane Rocinski
John P. Burns

A Class I organization to which all MSC students belong is College Life Union Board (CLUB). Committees, which all students are invited to join, include cinema, lectures, entertainment, and catacombs. Two popular CLUB events are the Winter and Spring Balls. CLUB's purpose is to coordinate social, cultural, and educational student programs.

Computer Science Club

The Computer Science Club brings together people interested in computers and programming. It provides information about the field to the campus community. A trip to Prudential in Roseland, where they were given a tour of the computer facilities, was one of the highlights of the year. The Computer Club also sponsored the Association for Computing Machinery (ACM) Chapter Dinner at which chapters from the northern New Jersey area attended. The unique Computer Dating Party provided a novel way for students to meet each other.

PRESIDENT
VICE-PRESIDENT
SECRETARY
TREASURER
SPECIAL EVENTS
COORDINATOR

Frank S. Palmieri
Kevin Mackemull
Kathy Reilly
Margaret Harkin
Jeff Raskin



Conservation Club



Dance Club



PRESIDENT
VICE-PRESIDENT
SECRETARY
TREASURER

Marsha Riley
Patty Peilegrin
Nadine Whiting
Melissa Giovenco

Dance Club, a Class II Organization, gives people on campus an opportunity to get involved in dance. The members, dance majors, as well as non-majors, sponsor and organize Master Workshops. Professional teachers from the community and New York, teach classes in their various specialties, thus providing a wide assortment of techniques. Many fund raisers are held to pay for the workshops. This year bake sales, T-shirt sales and coupon booklets sales were held. An annual trip to New York City to see a dance company is the highlight of the club's events.



Delta Kappa Psi



Distributive Education Clubs Of America (DECA)

The Distributive Education program at MSC is affiliated with the Distributive Education Clubs of America (DECA). This program prepares students to either teach or work in distributive occupations such as buying, selling, managing, and advertising.

Fundraising activities run by Montclair State's DECA Club includes raffles, carnation sales, bake sales, and candy sales. Particular mention needs to be given to the annual DECA Fashion Show coordinated by the students.

Each year members from DECA attend the State Conference held in Cherry Hill, NJ. They also participate in the national conference which this year was held in Anaheim, CA.



PRESIDENT
VICE-PRESIDENT
SECRETARY
CORRESPONDING SECRETARY
REPORTER
TREASURER
HISTORIAN

Adrienna Eider
Carol Emering
Kathy Rung
Marlene Duskalovitz
William Ramirez
Adam Shapiro
Paul Resnick

Drop-In Center



PRESIDENT
VICE-PRESIDENT
TREASURER
PERSONAL COORDINATORS

Ralph Giarrusso
Pamela Wood
Diane Bullo-Cooney
Anania Molina
Linda Rauh

The Drop-In Center provides peer counseling, information, and referral services to any student who so desires these benefits. Some activities for the 1980-81 school year have been an Open House, Planned Parenthood display in the Student Center, dorm presentations, and an alternatives to pregnancy presentation. Those at the Drop-In center have also contributed to the Health Fair, the Rape Seminar, and Freshman Orientation. The Drop-In Center is located between the Student Center and the Math/Science Building. It has 24 hour walk-in service and telephone service.

Freeman Food Service



Geoscience Club



German Club



Greek Student Union

PRESIDENT
VICE-PRESIDENT
SECRETARY
TREASURER

Bellos Grigorios
Sofras Eleftherios
Fakourelis Nickolaos
Bellos Tylianos

A Class II organization, the Greek Student Union attempts to unite the student population by establishing new ties and friendships between Greeks, Greek-Americans, and non-Greeks on campus. They teach and promote the Hellenic culture, history, and traditions through social and educational activities, both on and off campus. During the 1980-81 academic year, GSU participated in a trip to the National Art Gallery in Washington, D.C., a lecture about "Phillip II of Macedonia", and CINA film festival, and the International Fellowship of MSC festival.





Home Economics Association
Executive Board

Human Relations Organization



PRESIDENT
VICE-PRESIDENT
SECRETARY
TREASURER

Judi Paoella
Cindy Bink
Joanne Condo
Cara Myers

The Human Relations Organization, better known as HRO, is a Class I organization. They endeavor to improve communication skills between groups and individuals. Various workshops are sponsored to actively improve communication skills. The principal activity is The Laboratory Weekend. It provides an environment which is conducive to learning communication skills. Other workshops include Psychodrama, Likwid Theater, and Relax Your Mind.

Industrial Arts Club

The Industrial Arts Club offers various activities pertaining to industrial education and technology. This Class II organization provides useful campus articles such as dorm keytags and guest passes. The highlight of this year's events was the American Industrial Arts Association Convention in Pittsburgh, attended by sixteen MSC representatives.

PRESIDENTS

Len Litowitz

VICE-PRESIDENTS

Marty Marshal

David Press

SECRETARY

Mark Teshkoyan

TREASURER

Dorothy Kurkiel

Marty Wall



IOTA Gamma XI



A social sorority, Iota Gamma Xi attempts to bring together women at Montclair State College. Moreover, this organization helps to increase school and community spirit. Iota participates in school activities like Spring Day, volleyball marathon, and the Alumni phone-a-thon. Each year the sorority sponsors trips to Vermont in January, to Florida during spring break, and to the Jersey shore during the summer. Finally, Iota Gamma Xi sponsors a foster child and donates to various charities.

PRESIDENT	Carol Centanni
VICE-PRESIDENT	Chris Ochal
CORRESPONDING SECRETARY	Jan Christian
RECORDING SECRETARY	Connie Centanni
TREASURER	Laura Benson
CO-HISTORIANS	Edie Duggan Cindy Phillippe



Italian Student Organization



PRESIDENT
VICE-PRESIDENT
SECRETARY
TREASURER

Nicola D'uva
Linda Martelli
Maria Lentino
Carmelina Romaniello

The Italian Student Organization was formed in 1969 at Montclair State. Educating students about Italian culture and strengthening ties between MSC students of different ethnic backgrounds are the goals of ISO. Special events for the 1980-81 school year were a trip to Little Italy, Christmas banquet, Festive Italiano, Italian Day, a trip to Atlantic City, and Spring Dinner Dance.

Delta Theta PSI



PRESIDENT
VICE-PRESIDENT
SECRETARY
TREASURER

Suzanne Signor
Shari Bardo
Rosemarie Platoff
Conchita Bellu

The sorority, Delta Theta Psi, aims at promoting friendship and harmony. This Class III organization boasts being the oldest social sorority. Delta Theta Psi, composed of twenty-three girls, has held events such as a wine and cheese party, a potluck dinner, a cotillion, and a spring picnic.

Psychology Club



Jewish Student Union

The purpose of the Jewish Student Union is to further the cultural, spiritual, and social ideals of Jewish life in relation to the college environment. This Class III organization has conducted many beneficial activities this year. A few of these functions include a Chanukah Cocktail Party, student conferences, Israeli dancing, Sukkah Building and decorating, and a Passover Model Seder Dinner.



PRESIDENT
PROGRAM BOARD

Steve Elkin
Felicia Balk
Lorraine Netko
Mark Spiro
Andy Perry

Kappa Alpha PSI



Kappa Sigma RHO



Koei-Kan Karate Club



For those interested in the martial arts, there is a Koei-Kan Karate Club at Montclair State College. This organization attempts to help members improve themselves both physically and mentally. The Karate Club successfully competed in the International Koei-Kan Tournament held at Fairleigh Dickenson University in Rutherford. Two first place trophies and two second place trophies were garnered in this competition.

PRESIDENT
VICE-PRESIDENT
SECRETARY

Lee A. Miller
Amy Rosamilla
Rodney Baltimore



Latin American Student Organization

The Latin American Student Organization, commonly referred to as LASO, is a Class I organization. Their roster shows membership of thirty-five students. Bringing Latin culture to Montclair State College is the goal of LASO.

PRESIDENT
VICE-PRESIDENT
SECRETARIES

Bolivar Gonzalez
Barbara Bonilla
Winnie Lloyd
Anania Molina
Sonia Rodriguez

TREASURER



Middle Eastern Organization



Montclarion



The Montclarion is the weekly student newspaper of Montclair State College. It seeks to provide a means of communication within the college through a journalistic medium. Another function of this Class I organization is to assist its members in the comprehension of journalistic techniques. A noteworthy accomplishment of the Montclarion is that it is a six time winner of the Associated Collegiate Press' All American Award.

EDITOR-IN-CHIEF
MANAGING EDITOR
EDITORIAL PAGE EDITOR
TREASURER

Paul Heugel
Nora De Palma
Chris Carroll
Diane Kerestes

Music And Arts Organization Commission (MAOC)



The Music and Arts Organization Commission, a Class II organization, strives to instill an awareness of the cultural arts of classical music and art through discussions, concerts and informal performances. The group attended concerts in Essex County and New York City. One informal performance was a flute recital by president Joan Helwig.

PRESIDENT
VICE-PRESIDENT
SECRETARY
TREASURER

Joan Helwig
Laurie G.
Karen
Norman

Phi Alpha Theta



Phi Chi Theta

Phi Chi Theta is a national business fraternity. Their purpose is to promote women in business and economics. Events sponsored by this organization throughout the year are lectures, workshops, and symposiums. All are geared to helping women in the business environment.



PRESIDENT
VICE-PRESIDENT
SECRETARY
RECORDING SECRETARY
HISTORIAN

Agostina Paglialunga
Dorothy Massaros
Debra Wallace
Roberta Weeden
Kathy Leonard

Platform Tennis Club

The Montclair State Platform Tennis Team excelled as the National Collegiate runner up. Falling just one point short of the national championship title, held by MSC last year, the team had a twelve month winning streak. A team of substantial caliber, our team lost only three matches for a record of 16-3 in the past two years. We can expect the team to have a commanding bid for next year's championship title.





Political Science Club

Riding Club



The MSC Riding Club is a Class II organization. They sponsor a fourteen member equestrian team whom competes in the New Jersey-New York region. On October 26, 1980 the club held its own horse show in which twenty-six other college teams competed. Fundraisers held by this organization are bake sales, stationery sales, and a variety of raffles.

PRESIDENT
VICE-PRESIDENT
SECRETARY
TREASURER
CAPTAIN

Virginia Steindl
Amy Raskin
Kathy Reilly
Lori Maviglia
Joanne Farrell

Sigma Delta PHI



Sigma Delta Phi is one of the sororities on the Montclair State campus. The purpose of this sorority is, simply, to improve relationships between commuters and residents of the college. This social organization is a participant in various social events throughout the year.

PRESIDENT
VICE-PRESIDENT
SECRETARY
TREASURER

Lisa Corbo
Wendy Duda
Lois Nalasco
Amy Rosamilia

Spanish Club



Student Government Association (SGA)



The Student Government Association (SGA) serves approximately 12,000 undergraduates and has accumulated nearly one million dollars in assets. Our SGA is unique in that it is the only New Jersey SGA to be student run. A total of about seventy students are appointed or elected to represent each department and school on campus.

SGA's main responsibilities entail approving appointments made by the President, submitting and discussing legislative bills, reviewing charters, reviewing and appropriating budgets, and, most importantly, protecting the interest of the student body.

PRESIDENT
VICE-PRESIDENT
SECRETARY
TREASURER
REPRESENTATIVE TO
BOARD OF EDUCATION

Brian Cige
Karen Dalton
Laura Pedalino
Scott Garrett
Ken Brown

Student Intramural And Leisure Council (SILC)



The Student Intramural and Leisure Council (SILC) has the unique distinction of being one of the few student run intramural programs in the country. Throughout the year SILC runs leagues for men and women in touch football, soccer, softball, bowling, basketball and volleyball.

For those who don't want to participate in the competitiveness of the various leagues, SILC also runs tournaments in the areas of Ping Pong, Billiards, Wrestling and Tennis.

One of the most important and enjoyable areas of their Intramural Programming is Special Events. This facet of their program offers "something for everyone," including special one day activities and evening trips (to professional sporting events including the Yankees, Rangers, Knicks and Cosmos games.)

The special one-day events are held at noon on various days of the week and include such memorable activities as the Water Balloon Toss Puff Basketball Contest, Coin-catching Contest, and all time favorite Munchkin Eating Contest. (Current record is 24 in 60 seconds.) Major special events include Spring Day and the 24 hour Volleyball Marathon.

Evening activities consist of a roller skating night, an ice skating night, and an evening of Candlelight bowling. There are trips to professional sporting events including Yankees, Rangers, Knicks and Cosmos games. Tickets are available in the SILC office and free transportation is provided for these special evening events.

PRESIDENT	Ann Marie Miskewica
VICE-PRESIDENT	Mike Ritz
SECRETARY	Lisa Dibiseglie
TREASURER	Mike Pucciarelli
SPECIAL EVENTS CHAIRPERSON	Carol Snow

Tau Kappa Beta



Tau Kappa Beta's major concern is to better social life at MSC and to reduce student apathy on campus. To accomplish their task, this Class II organization has done the following: co-sponsored and participated in a 24 hour dance marathon for Multiple Sclerosis, participated in the Alumni phone-a-thon, passed out buttons for MSC Spirit Week, cleaned the wall in front of the Student Center, organized a plant sale for earth day, and participated in a volleyball marathon for the American Cancer Society.

PRESIDENT
VICE-PRESIDENTS

Rick Messina
John Ruskan
Alvaro Tarrago
Susan Brovarone
Mary Jo Tort
Sandy Schlanger

SECRETARY
TREASURER

Turkish Student Association



The Turkish Student Association is a Class II organization with a 1980-81 roster of twenty-three. Activities range from lectures by the Turkish U.N. Ambassador to soccer competitions among various ethnic clubs on campus to trips to Turkish restaurants. By sponsoring these activities, the Turkish Student Association allows the college community to observe different aspects of the culture, history, and life of Turks.

PRESIDENT
VICE-PRESIDENT
SECRETARY
TREASURER
ADVISOR

Susan Aybaz
Mehmet Cecen
Sevgi Kaya
Maria J. Perez
Dr. S. Sisik-Leveen

Weekend College Student Association



The Weekend College Student Association's main purpose is to organize activities such as "The Annual Latin-American Dance Festival", trips to Hispanic plays, and much more.

PRESIDENT	Franz E. Buchhalter
VICE-PRESIDENT	Carlos Manrique
SECRETARY	Ana Elsie Baires
CORR. SECRETARY	Angela Restrepo
TREASURER	Victor Niedbalski

WMSC 90.3 FM



Operating on a frequency of 90.3 FM in stereo is Montclair State's own radio station, WMSC. This student-run radio station services the campus and Northern New Jersey. WMSC's objectives include training students in the field of radio broadcasting and being a medium of public relations between the campus and surrounding areas. The station specializes in music, entertainment, educational news and features.



Inter-Sorority Council

One of the Class III Organizations at MSC is the Inter-Sorority Council. Coordination of the four MSC social sororities is a primary function of the council. The main event of the year is a formal dinner dance during which each sorority presents its new sisters.

PRESIDENT	Valerie Perugini
VICE-PRESIDENT	Laura Benson
SECRETARY	Luann Villano
TREASURER	Shari Bardo
ADVISOR	Beth Sharp-Webber

Players

Players is a Class I organization of the SGA. Bringing theatrical events to the students on campus is the main purpose of Players. This is accomplished through plays, workshops, and Forensics. Three plays are produced each year. This year's plays were "A View From the Bridge", "Shenandoah!", and "Heaven Can Wait". All were totally student produced and designed.

The Forensics team is currently number one in the state of New Jersey. Moreover, it is number five on the Great Eastern Circuit.

PRESIDENT	Leo Hudzik
VICE-PRESIDENT	Troy Eric West
SECRETARY	Mary Ellen Argentieri
TREASURER	Dennis Brito
HISTORIAN	Larry Vanella
FORENSIC CHAIRPERSON	Jeffrey Weiser

Sigma Phi Mu

Sigma Phi Mu, a math club and Class II organization, provides a forum for the exchange of ideas relevant to those who have a sincere interest in mathematics. Sigma Phi My also serves as a link between students and faculty. Among some of the events sponsored by this math club are related films, guest lectures, bake sales, and socials.

PRESIDENT
VICE-PRESIDENT
SECRETARY
TREASURER
ADVISORS

Silvana Serafini
Cathy Bumbaco
Diane Forgione
Janet Griffiths
Dr. Kenneth Wolff
Prof. Thomas Carrol

Zeta Phi Beta

Zeta Phi Beta sorority is a member of Xi Iota chapter. This is a Class IV organization of the SGA. The purpose of this MSC sorority is to stress education, service, sisterly love, and finer womanhood among all. Activities include elementary tutoring, International Foreign Students Dinner, "Finer Womanhood Day Luncheon", fundraising for the Atlanta children's cause, and a splash pool party.

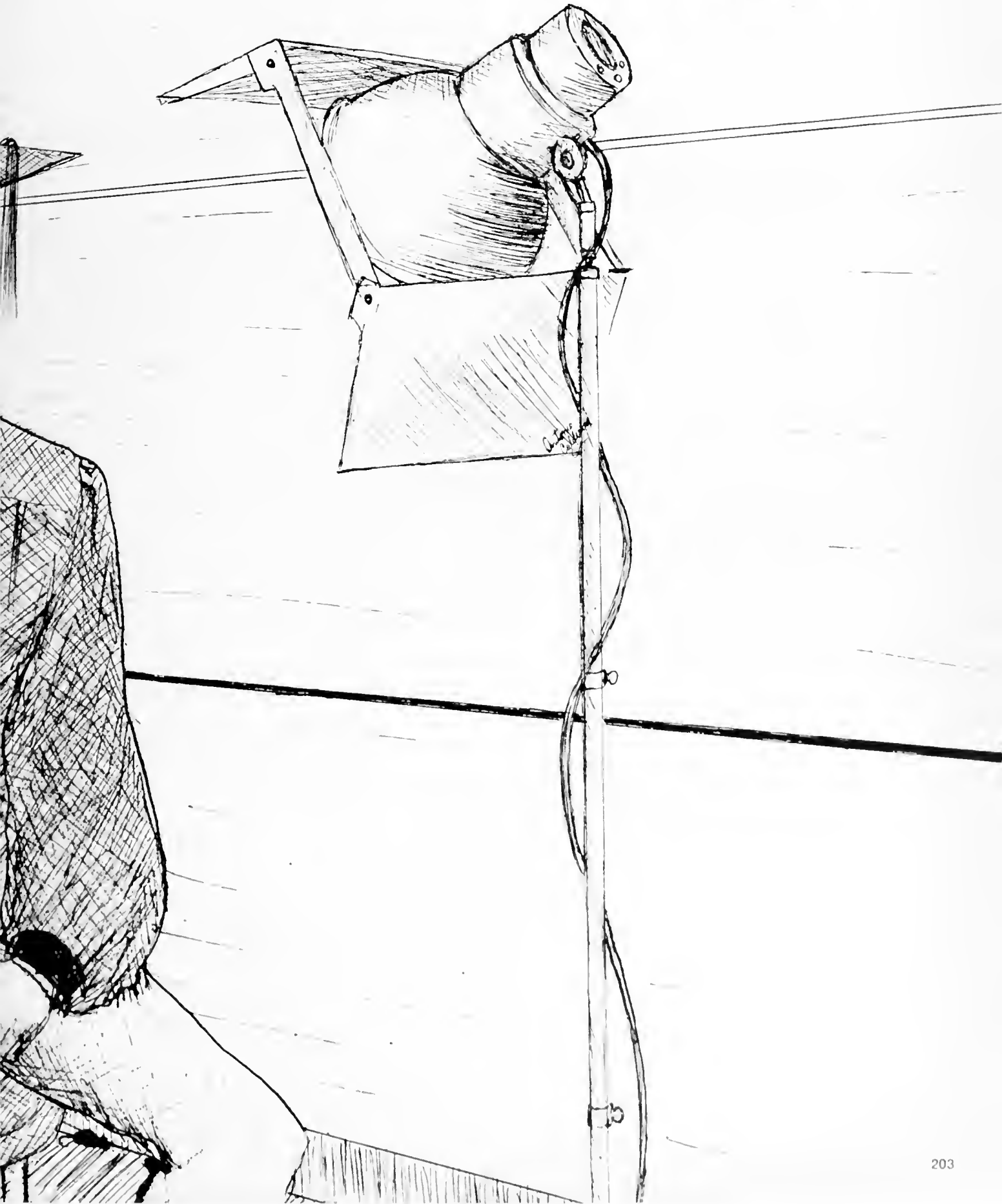
PRESIDENT
VICE-PRESIDENT
SECRETARY
TREASURER

Karen Wood
Monique Johnson
Cynthia Kojas
Lynne Henderson





SENIORS





Phyllis Abbatiello
Chemistry



Abebaye Abegaz
Chemistry



Caryn Fran Abel
Recreation Professions



Karen Elaine Abercrombie
Fine Arts



Donna L. Ackerman
Communication Sciences



Nancy Jean Adamczyk
Business Management



Tracey Ilene Adams
Community Health



Babatunde A. Adedeji
Biology



Gerardine Antionette Aerts
Nutrition



Fredrick Jerome Agle
General Business





Wannes Agopian
French and Italian



Pura M Aguilera
Distributive Education



Joann C Ahart
Business Administration



Andrew Aiello
Music Education



Helen Jean Albano
Accounting



Stanley Alcala
Business Administration



Timothy H Alessi
Accounting



Frank Alfano
Business Administration



Philip John Alfieri
Business Administration



Susan Alfieri
Psychology



Kevin Lee Allen
Speech and Theater



Richard William Allen
Environmental Studies



Susan Ali
Accounting



Lori Jean Altiero
Marketing



Beatriz Alvarado
Business Administration



Jorge E Alvarado
Business Administration



Maria D Alves
Spanish and English



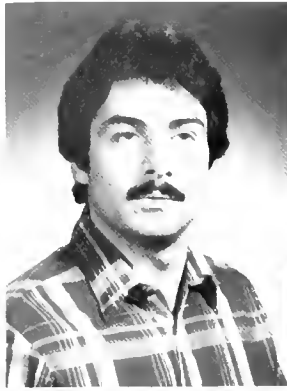
Nneka F Amaechina
Environmental Management



Stephanie Marie Amato
Business Administration



Patricia L Amendola
Community Health



Paul A. Amoroso
Physics



David R. Anderson
Broadcasting, Poli. Sci.



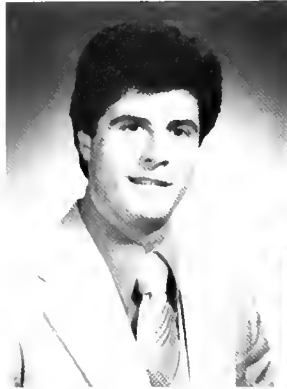
Lisa G. Andolina
Sociology



David Andrews
Marketing/Mgmt



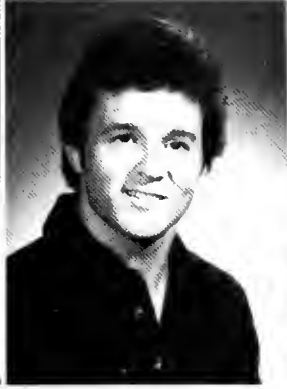
Julia M. Andrews



Joseph G. Angiolini
Business Administration



Arthur M. Antonucci
Accounting



John Peter Antosiewicz
Marketing



Gary R. Anzovino
Marketing



Gerard A. Appell
History



Mehrdokht Ardebili
Finance



Vincent F. Arfuso
Marketing Mgmt



Lawrence Arillo
English



Eileen Susan Arnold
Music Education





David James Arthurs
Industrial Arts



James Arthurs
Business Administration



Susan E. Artmann
Accounting



Julie Ann Ascenzo
Communication Sciences



Mary Diane Askins
Psychology



Camille A. Astalos
Home Economics



Marianne Astalos
English



Mary Margaret Atchison
Foods and Nutrition



Jeanette Aughey
General Humanities



Joanne Aughey
General Humanities



Thomas A. Auleta
Spanish



Kathleen R. Auriemma
English



Maria A. Aviles
Sociology



Shelley A. Avola
Psychology



Susan H. Aybar
Biology



Stephen Charles Babbitt
English



Cynthia Marie Bacon
Food and Nutrition



Angel Baghdassarian
Accounting



Walter F. Baginsky
Chemistry



Bonnie Lynn Bahr
Political Science



Rodney Stephan Baltimore
Speech and Theater



Deanna H. Baron
Environmental Studies



Jean Barracato
Business Administration



Dena L. Barry
Psychology



Debra R. Barter
Psychology



Elizabeth Ann Barth
Business Administration



Catherine R. Bataille
Psychology



Elaine H. Bator
Mathematics



Margaret P. Baver
Business Administration



Cindy J. Bauman
Chemistry



Susan Marie Bauman
English



Steven Timothy Bauman
Business Administration



Keith T. Becker
Finance



Beth Ann Beer
Nutrition



Mark S. Behnke
Psychology



Patricia M. Belci
Allied Health



Mary Ann Bellina
Office Systems Admin



Marianne Elizabeth Bellizzi
Sociology



Petrona Olga Bello
Spanish



Grigorios K. Bellos
Computer Science



Stylianos K. Bellos
Economics



Ernestine Bembry
Home Economics



Esther D. Benard
Fine Arts



Chery Renee Bender
Biology



Beverly Lorraine Benjamin
Home Economics



Jane Bennettsen
Marketing



Laura Marie Benson
Political Science



Nancy Ann Benson
Home Economics



Carol Olivia Bentinck
Business Administration



Mark Salvatore Bentivegna
Accounting



Joseph Stephen Bergen, Jr.
Accounting



Karen E. Bergmann
Home Economics



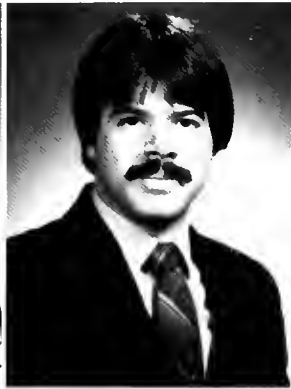
Helen J. Bernadino
Office Systems Administration



Steven B. Beubis
Business Administration



Vilma Hortensia Beverly
Business Administration



Robert M. Beyer
Accounting





Beth Ann Biglin
Fine Arts



George P. Biglin
Business Administration



Thomas C. Biglin
Business Administration



Anneliese Binger
Office Systems Admin.



John Anthony Binko
Management



Suzanne L. Biondi
Therapeutic Recreation



Kathleen M. Bissett
Computer Science



Elizabeth A. Black
Environmental Science



Janice Paula Black
Therapeutic Recreation



John J. Black
Psychology



Hathi Ellen Blackman
Anthropology



Debra Ann Blades
Family Child Studies



EllenJane Blanck
Physical Education



Beth A. Block
Political Science



Cheryl A. Blondina
Business Administration



Robert John Bloodgood
Political Science



Debra S. Bloomfield
Food and Nutrition



Dennis Blowbus
English



Kathleen M. Boer
Home Economics



Linda Anne Boman
French



Hubert M. Bond
Communication and Theory



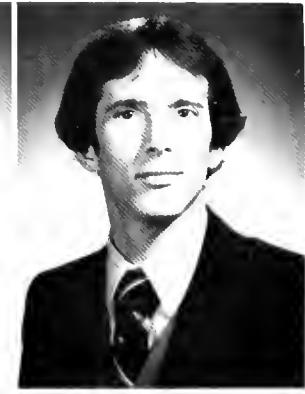
Janet A. Bongiorno
English



Deborah Denise Boone
Business Administration



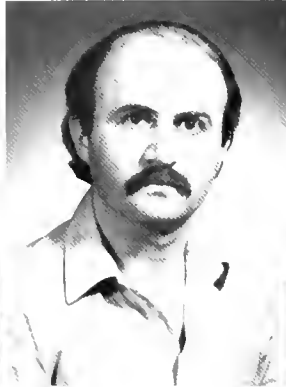
Paula A. Boone
Political Science



Tracy D. Boorman
Poli. Sci..History



Perry Alan Borch
Marketing



Walter F. Bordonaro
Business Administration



Joseph F. Borges
Political Science



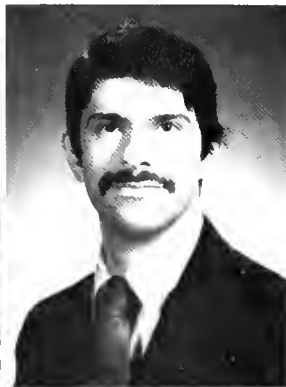
Donald Vincent Borkowski
Physical Education



Maria Borrelli
Business Administration



Sossi Boyadjian
Business Administration



Jeffrey John Boyajian
Business Administration



Anne Marie Boyle
Recreation Professions



Angela M. Brand
Spanish





Inez Lynne Brandon
Community Health



Kevin P. Breen
Biology



Jill C. Breslin
Nutrition



Diane J. Bristol
Accounting



Susan L. Brodow
Sociology



Dorothy K. Bronstein
Home Economics



Richard C. Brooks
Business Administration



Kathleen C. Brophy
Food and Nutrition



Susan M. Brovarone
Home Economics



Gloria Ann Brown
Psychology



James A. Brown
Accounting



Jonathan McConnell Brown
Recreation



Kenneth M. Brown
English, Poli. Sci.



David Michael Brown
Physical Ed., Health



Michael J. Brown
Industrial Arts



Linda Jean Bruno
Psychology



Fred Augustine Brusco
Philosophy Religion



Rubina Bubani
Spanish



Robert A. Buccino
Physical Education



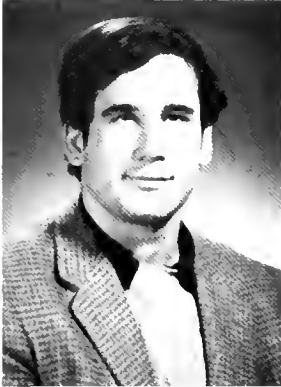
Mark Francis Buckley
Mathematics



Thomas R. Buckley
Business Administration



Donald James Budd
Recreation



Christopher John Budesa
Biology



Catherine A. Bumbaco
Math Computer Science



Laura Jean Bunin
Allied Health



Lora A. Buono
Marketing



Gerald T. Buonocore
Biology



Julie Ann Buras
Music Therapy



Diane M. Burghardt
Community Health



Anne Marie Burke
Home Economics



Lucia H. Burke
Spanish



William C. Burke
Accounting



Robert M. Burner
Environmental Studies



Sylvia Ada Burts
Office Systems Admin



Wayne Calvin Bushell
Geo Science



Dianne N. Byrnes
Accounting



Dennis William Byron
Physical Education



Laura Marie Byrouty
Home Economics



Wilson R. Babilonia
Marketing



Francesca Cacciaquerria
Spanish



Tom R. Caden
Marketing



Toni-Lynne Calabrese
Home Economics



Robert Joseph Calamari
Chemistry



Jody Calamito
Fine Arts



Barbara Ann Caloca
Accounting



Kevin William Callaghan
Music Education



Gerald Joseph Campbell
Geography Urban Studies



Michael P. Campbell
Physical Education



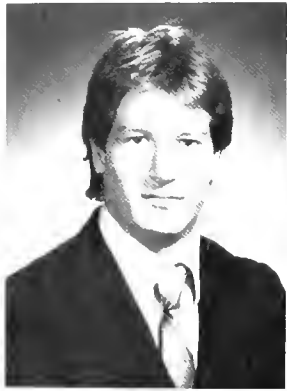
Robert F. Campo
Accounting



Arturo Canales
Economics



Mary G. Cancellieri
Communication Sciences



Albert J. Candelmo
Accounting



Donna Ann Cangelosi
Distributive Education



Martin James Cannon
Marketing



Cynthia E. Canova
Family Child Studies



Debra E. Cantor
Communication Sciences





Carol-Lynn Capizzi
Business Administration



Ronald W. Capko
Business Administration



Michelle Elaine Caporelli
Family Child Studies



Marianne Cappuccio
Physical Education



V. James Carbo
Communication Sciences



Beth S. Carbone
Business Administration



Sharon A. Carey
Fine Arts



Joanmarie Carlone
Communication Sciences



Laura Ann Carnazza
Marketing



Jeffrey M. Carollo
Business Administration



Maryann Caromil
Mathematics



Michelle C. Carpenter
English



Lisa Louise Carrier
Communication Sciences



Kathleen M. Carroll
Business Administration



Thomas C. Caruccio
Accounting



Ellen Cassarino
Business Education



Mary M. Cassulis
Communication Sciences



Louis Anthony Castaldo
Business Administration



Francesca M. Castelli
Business Administration



Anne Diane Catrambone
Fine Arts



Nancy E. Cattle
Business Administration



Patricia Jean Cavallaro
Business Education



Mehmet Cecen
Computer Science



Anthony Celeste
Business Administration



Carol Ann Centanni
Accounting



Ernest Christopher Cerino
Political Science



Michael Robert Chadzivtko
Business Administration



William Ronald Chaky
Industrial Arts



Nancy Irene Chambers
Industrial Arts



Barbara P. Chang
Computer Science



Joan Marie Channell
Business Administration



Elaine Catherine Chelak
Speech and Theater



Donna Bede Chell
Physical Education



Elaine M. Cherekjian
Computer Science





Kathy T. Chiamonte
Business Administration



Anthony Joseph Chairò
Business Management



Kathryn L. Chisholm
English



Philip W. Chraszewsky, Jr.
Physical Education



Dorothy T. Christman
English



Sharon Marie Chura
Biology



Steven A. Ciesla
Business Administration



Teresa R. Ciezobka
Communication Sciences



Brian Mitchell Cige
Political Science



John Charles Cioffi
Mathematics



Celeste G. Clark
Business Administration



Jill Renee Clark
Business Administration



Lisa Marie Clark
Consumer Affairs



Scott T. Clark
Broadcasting



Kevin Brent Clause
Marketing



Maureen Anne Cavin
Consumer Affairs



Bab G. Clifford
Industrial Education



Ellen M. Codispoli
Home Economics



J. Bricin Coffey
Speech and Theater



Michele R. Cohen
Family Child Studies



Wendy S. Cohen
Anthropology



Susan Marie Colazzo
Communication Sciences



Rose Colella
Business Administration



William Colletti
Computer Science



Maria V. Coman
Home Economics



Maryalice Condon
Mathematics



Barbara Ellen Conry
Business Administration



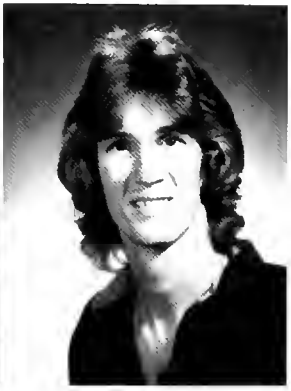
Lorraine A. Conte
Fine Arts



Heidi A. Conti
Business Administration



Debbie Lynn Cook
Business Administration



Paul W. Cooper
Music Therapy



Molly F. Cornell
German



Cheryl Ann Corradetti
Foods and Nutrition



Patricia Correa



Alison Mary Corry
Sociology



Catherine Corsano
Psychology



Cynthia Diane Corseri
Psychology



Richard E. Costa
Accounting



Robert Edward Costa
Business Administration



William J. Cote
Marketing



Paula Cottingham
Fine Arts



Annette Marie Coward
Music Education



Patrick E. Cox
Accounting



Sabina Rose Coyle
General Humanities



Elizabeth C. Crann
English



Kevin Joseph Crosby
Business Administration



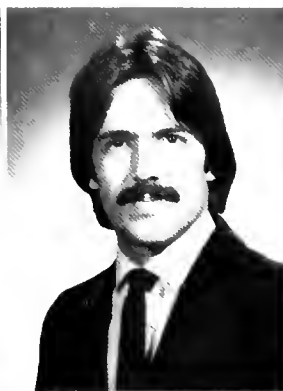
Maureen Crost
Fine Arts



Barbara A. Cruitt
Home Economics



Sandra Cruz
Office Systems Admin.



William J. Cubellis, Jr.
Industrial Education



Gregory A. Cugliari
Business Administration



Cynthia Anne Cullari
Home Economics



Kathleen J. Cuneo
Physics



Carol Ann Cunningham
Home Economics



Georgianna Gloria Cuntala
History



Thomas A. Cupo
Marketing





Cheryl Lynn Cushine
Music Therapy



Dianne P. Czarkowski
Home Economics



Lynn D. Dadika
Psychology



Christina Lynn Dages
Business Administration



Karen L. Dalton
Anthropology



Marie E. Daly
Home Economics



Michael Stephen Daly
History



Patrice E. Daly
Accounting



Lydia Dorothy Damato
Recreation



Ravanne Mutek Damiano
English



Maria P. Daniele
Languages



Brett N. Daniels
Business Administration



Donna M. Dann
Business Education



Diane Lynn D. Apolito
Psychology



Lisa Anne D. Arpa
Business Administration



David M. Davenport
Accounting



Michael Francis Davino
English



Edward F. Davis
Marketing Mgmt



Christina M. Davitt
Recreation



Gillian Rosamond Day
English Education



Gita Dayal
Food and Nutrition



Rosalia DeAngelis
French Italian



Robert R. Dearing
Industrial Education



Diane Debellis
Business Administration



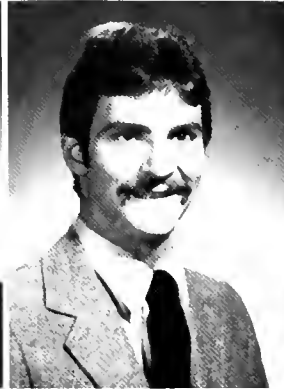
Charles Anthony Dec
Economics/ Poli. Sci.



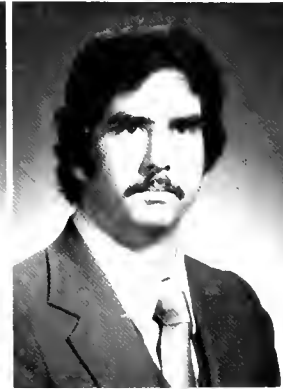
Eleanor DeCandia
Psychology



Julianne M. DeFalco
Business Administration



Nicholas Deflora
Business Administration



Thomas B. Degraw, Jr.
Business Administration



Audrey Diane Deile
History



Cheryl L. Delancey
Communication Sciences



Ralph Matthew DeLibero
Physical Education



Laurie DeLillo
Business Administration



Gilda Delmonte
Sociology



Patricia Jule Delplato
Home Economics



Ivette DelRio
Spanish



Charles J. DeLuca
Physical Ed Health



Kathryn I. DeLuca
Speech and Theater



Claire M. Del Vecchio
Accounting



Douglas Joseph DeMarco
Industrial Education



Carolann Marie DeMartino
Home Economics



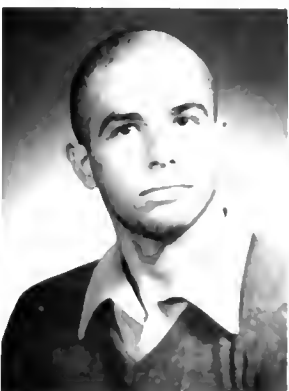
Geri DeMayo
Music Education



Rosemary M. Deming
Home Economics



Michael P. Demkowicz
Chemistry



Lawrence S. Dempsey
Recreation



Mary DeMuro
Business Education



Diane Demyanovich
Business Administration



Kathleen Ann Denzel
Psychology



Irving L. Dennis
Accounting



Michael DePama
Marketing



Steven T. DePalma
Business Administration



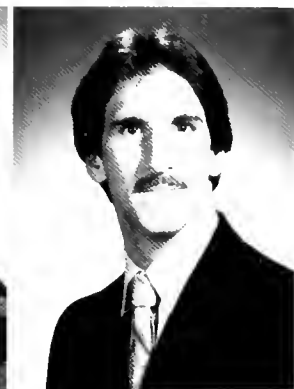
Ivana DePasqua
Marketing



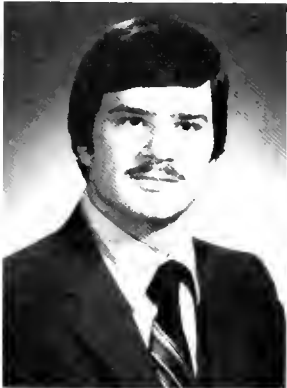
Ann DeRosa
Management



Mary A. DeStefano
Business Administration



Thomas William Devine
Physical Education



Robert Louis Diana
Business Administration



David Joseph DiCarlo
English Speech and Theater



Laura Lynn DiCioccio
Finance



Edward Adonis Dickerson
Industrial Studies



Val S. Dickerson
Recreation



Donna Lynn DiCostanza
Business Administration



Denise A. DiGiovanni
Sociology



Karen Mary DiLorenzo
Home Economics



Sharon M. DiSalvo
Food Service Mgmt.



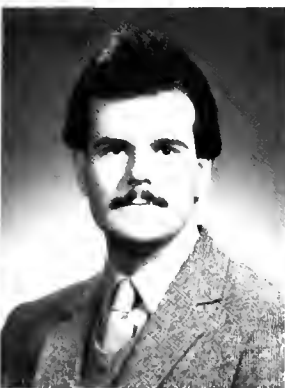
Michael Discafani
Accounting



Thomas E. Diveny
Recreation Professions



Anne M. Diverio
Home Economics



Richard M. Dluhy
Marketing Mgmt.



Nancy S. Dobak
Psychology



Nick Dobrowolski
Economics



Eileen M. Dock
Home Economics



Antonia Dolcimascolo
Home Economics



Dan Dolinsky
Physical Education



Edvie Marie Dollbaum
Communication Sciences



Magdalena Dominguez
Economics



Joan Ellen Donnelly
Biology



David Scott Denton
Accounting



Lisa N. Donzella
Accounting



Joseph C. Doty
Industrial Technology



James W. Dougherty
Chemistry



Janet A. Dougherty
Office Systems Admin.



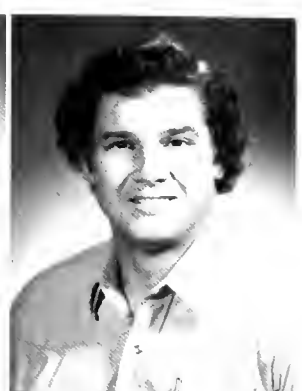
Joanne B. Dougherty
Office Systems Admin.



Eileen A. Dowling
Accounting



Carol Anne Doyle
Computer Science



Max C. Dreisbach
Accounting



Sarah Suzanne Drumm
Physical Education



Dawn A. Duca
Food Service Management



Wendy Elise Duda
Speech and Theater



Michael George Duderich
Accounting



Kenneth William Duff
Speech and Theater





Jo-Anne Duffy
Marketing



Rose L. Salomon DuFresne
Community Health



Maureen Dulski
English



Patricia Durkin
Broadcasting



Glenn Richard Durocher
Fine Arts



Nicola R. D'Uva
Marketing Mgmt



John Michael Dworak
Math Computer Science



Glenn Stephen Dwyer
Distributive Education



Glenn Dyke
Business Management



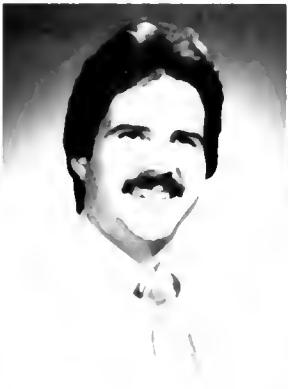
Michael Dziedzic
Business Management



Patricia Anne Danatos
Home Economics



Luz M. Echavarria
Spanish



Jorge E. Echevarria
Business Administration



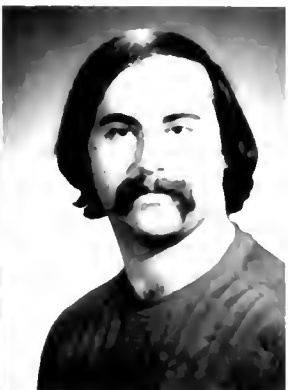
John Charles Edgar
Political Science



Ann L. Egan
Therapeutic Recreation



Christopher George Egan
Business Administration



Steven J. Eisenstein
History



James W. Elder
Business Administration



Marichon J. Eja
Distributive Education



Stoyan Ekin
Business Administration



H. Scott Ellis
Accounting



Kenneth William Elwood
Political Science



Michele Ann Emberger
Home Economics



Anthony V. Emering
Business Administration



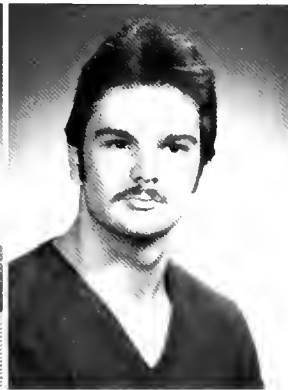
Eugene Joseph Emering
Business Administration



Paul John Endler
Economics



Paul M. Esposito
Sociology



Philip A. Esposito
Business Administration



Mary Elizabeth Esskuchen
Office Systems Admin.



Jannett G. Estrella
Business Administration



John Salvatore Ettore
Finance



David John Eula
Psychology

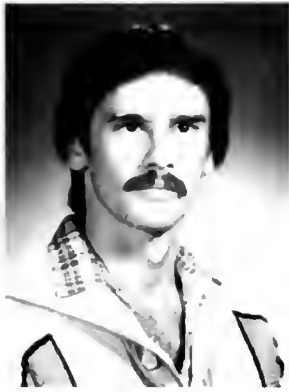


Nancy C. Fader
Home Economics



Cynthia R. Fadil
Business Administration





Robert George Fairchild
Psychology



Giselle Falcon
History



Judith A. Faley
Industrial Education



Lars Erik Fallman
Geoscience



Susan Frances Faschan
Accounting



Kenneth Gerard Fass
Business Administration



Theresa Mary Favo
Business Administration



Allan Edward Fegely
Industrial Art



Edwin Feliciano
Marketing



Gisela Felipe
Psychology



Kelly A. Fenton
Business Education



Anthony Peter Feola
Political Science



Herenia Ferreira
Sociology



Rocco Ferrigno
Biology



Carolyn Forsch
Home Economics



John M. Festa
Allied Health



Paul Joseph Fierro
Marketing



Chris J. Filbert
Mathematics



Susan F. Filippone
Home Economics



Dion C. Finch
Business Administration



Raymond Robert Finnegan
Marketing



Scott H. Fischer
Business Administration



Barbara A. Fisher
Foods and Nutrition



Patricia E. Fitzgerald
Business Education



Carol A. Fitzmaurice
English



Patricia Lynn Fixter
Physical Education



Sue-Ellen Flaxman
English



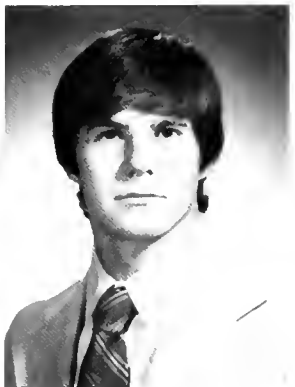
Irene Lynn Fleitell
Home Economics



Marlene P. Flynn
Physical Education



Nancy Ann Foczmanski
Marketing Mgmt



Richard C. Fogarty
Physical Education



Carlos Fojo-Prieto
Management



Joan Marie Foley
Business Administration



Doris Ann Folkes
Home Economics



Frances Fontana
Home Economics



Margaret Forbes
Sociology



Augustin Formoso
Accounting



Margaret Katherine Forrer
Business Administration



Shelly H. Foxman
Home Economics



Rafael J. Fraquela
History



Jean Ann Franco
Art Education



Christina Franko
Home Economics



Janine Renae Fraser
French



Miguel A. Frías
Business Administration



Linda S. Friedland
Business Administration



Joseph W. Fritch
Industrial Studies



Katharine Lee Fuellhart
Office Systems Admin.



Rebecca Ann Fuellhart
Communication Sciences



Diane Milo Fuhrmann
Fine Arts



Ellen L. Fulton
Marketing Mgmt



Robert B. Gabriele
Accounting



Mona Gadallah
Marketing Finance



Kim Gaddis
Business Administration



Vivian Gahtan
Psychology



Diane Gairala
Business Administration



Aileen Mary Galianese
Business Administration





Richard P. Gallagher, Jr.
History Economics



Ted W. Gallagher
Spanish



Jane M. Gallina
French



Kathleen M. Galvin
Communication Sciences



Lou Ann Gambino
French



Mark Gannon
Accounting



Angela Garcia
Communication Sciences



Donna M. Garcia
Psychology



John F. Garda
Allied Health



Lisa J. Gardner
Urban Studies



Dorothy Garfinkel
Speech and Theater



Ernest Scott Garrett
Political Science



Barbara J. Gasior
Psychology



James W. Gasparini
Business Administration



Carol A. Gasparovic
Business Administration



Teresa E. Gatto
English



Dobra L. Geddie
Home Economics



Ann Marie Gobble
English



Nick J. Georges
Computer Science



Donna L. Gerard
History



Mildred P. Gerhard
Psychology



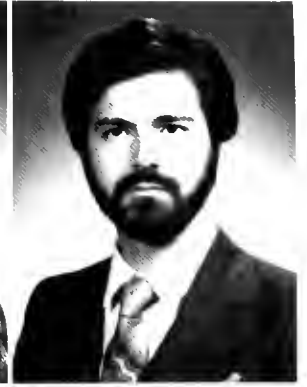
June Ellen Geyer
English



Gale Giacalone
Communication Sciences



Karen Ann Giacobbe
Recreation Professions



Nicola G. Giancaspro
Computer Science



Donald M. Gibson
Chemistry



Nancy J. Gildred
Office Systems Admin.



Kathleen Gillen
Political Science



Robert Gilsenan
Psychology



John W. Ginste
Accounting



Joan Marie Glasser
Political Science



Hugh J. Gleason
Geoscience



Susan F. Glinka
Biology



Susan E. Gockeler
Business Administration





Steven Godine
Business Administration



Claire Golden
Psychology



Rosalyn Goldschmidt
Recreation



Eric Goldstein
Business Administration



Mindy Goldstein
English



Nancy C. Goldstein
Dance



Frederick F. Golz
Health Education



Agnes Gomezmaicas
Physical Education



Marianne Gomulinsky
Recreation



Isabel M. Goncalves
Business Administration



Carol L. Gonzalez
Business Administration



Enaida Gonzalez
Business Education



Esperanza Gonzalez
Finance



Ileana O. Gonzalez
Sociology



Mercedes M. Gonzalez
Psychology



George A. Gordon
Industrial Educator



Ian Keith Gordon
Accounting



Lorraine C. Gracie
English



Jeanne M. Grady
French



Ann Marie Greto
Art Education



Kathleen A. Griffin
Home Economics



Janet E. Griffiths
Mathematics



James J. Grimaldi
Industrial Education



Robert D. Grimaldi
Accounting



Kathy Ann Grimm
Business Administration



Donald D. Gross
Industrial Technology



John F. Gross
Accounting



Robert A. Grudzinski
Accounting



Glenn L. Grusinski
Management



Alma Guadalupe
Home Economics



Lisa J. Guglielmi
Business Administration



Geraldine C. Gunn
Business Administration



Antonio Guzman
Business Administration



Maria E. Guzman
Personal Services



Sharon B. Haas
Physical Education



Charles A. Haeberle
Business Administration



Christine J. Haerens
Accounting



Diederick W. Haerens
Marketing



Linda Susan Hahn
Mathematics



Patricia Hahner
Home Economics



Elizabeth M. Hale
Computer Science



Velma J. Haley
English



Thomas G. Hallock
Business Administration



Carol A. Hamilton
Business Administration



Arthur E. Hamr
Business Administration



Wendt Beth Hamme
Spanish



Virginia M. Hanley
Sociology



Anna May Hansen
Biology



George L. Hansen
Physical Education



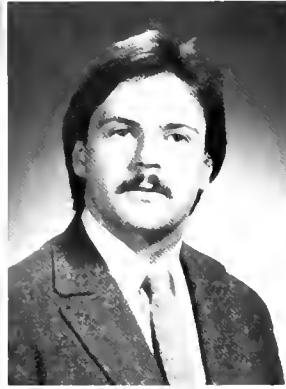
Edward Happle
Political Science



Margaret Harkin
Mathematics



William Harkley
Industrial Arts



James J. Harold
Marketing



Phyllis Carol Harris
Distributive Education



Susan Lynne Harris
Computer Science



Patricia E. Hart
Marketing





Dennis Hartigan, Jr.
Business Administration



Thomas A. Hartmann
Business Administration



Barbara S. Hausman
Office Systems Admin.



Naedine J. Hazell
English



Peter J. Healy
Business Administration



Jerilynn A. Heigl
Business Administration



Nancy E. Heinrichs
Office Systems Admin.



Jennifer L. Helm
Recreation Professions



Joan Elizabeth Helwig
Spanish



John Patrick Henry
Industrial Arts



Sherri A. Herborn
Office Systems Admin.



Carol F. Herkert
Business Admin.



James L. Hernandez
Business Administration



Joe Hernandez
Marketing



Joseph Hernandez
Marketing



Josephine F. Hernandez
Accounting



Donna P. Herold
Computer Science



Laura Marie Herting
Psychology



James W. Hesp
Biology



Barbara Hoss
Sports and Theater



Jeanine A. Hess
Physical Education



Hossein Hezarkhani
Computer Science



Ann Marie Hickey
Communication Sciences



Ted Hicks
Physical Education



Tom A. Hill
Industrial Education



Marion Hillmann
Business Administration



Arthur Hines
General Humanities



Luann Hladik
Psychology



Jane K. Homcy
English



Sharon A. Homiek
Business Administration



John T. Hooley
History



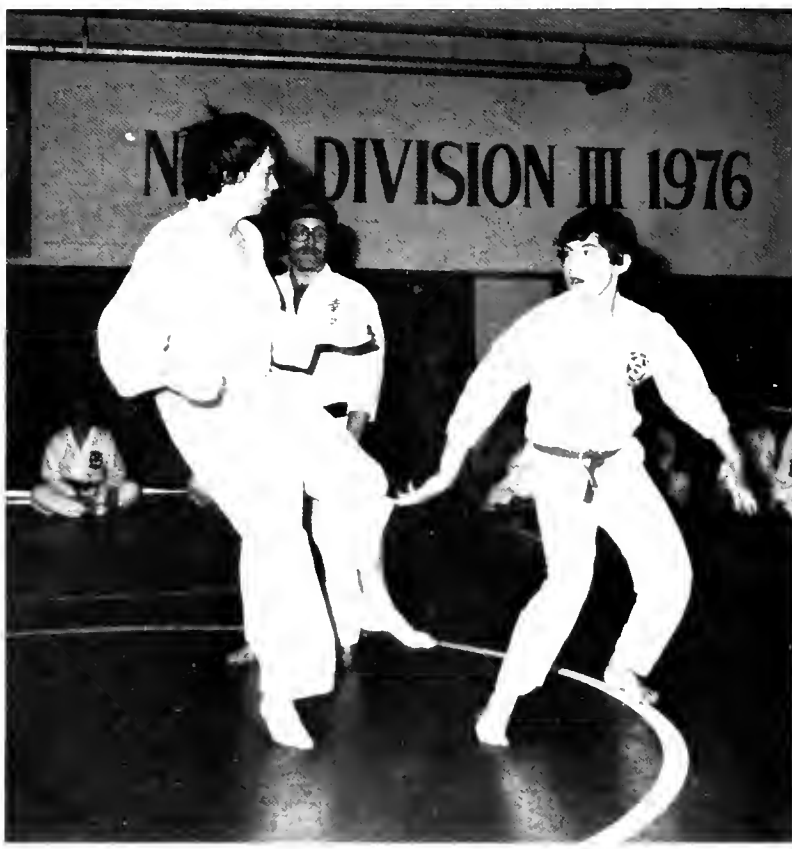
Randy Gene Hoogerheyde
Accounting



Julie C. Hopler
Home Economics



Kim T. Horn
Business Administration





Antoinette Hrotko
Business Administration



Mary Jean Huettner
Accounting



William P. Huff
Business Administration



Wendy L. Hull
History



Kathy Hunt
Communication Sciences



Sonja Husby
Accounting



Carol A. Huston
Home Economics



Karen Hutcheson
Home Economics



Kathleen M. Hyland
Computer Science



Lisa Ann Iacovelli
Speech and Theater



Karen A. Iacullo
Accounting



Cynthia A. Iadanza
Recreation



Joanne Iandoro
Fine Arts



Gary Iandoli
Accounting



Geradine V. Iannini
Home Economics



Patricia S. Ibarra
Accounting



Keith T. Ignance
Marketing



MaryLou Ilgandi
English



Carolann M. Imm
Computer Science



Michael F. Imperato
Accounting



Okon E. Inyang
Industrial Technology



Mary Jo Iorlano
Psychology



Mark D. Irwin
Political Science



Allison J. Isaac
Marketing



Naomi E. Isakson
Distributive Education



Gary J. Ivankevich
Biology



Ronald P. Jackey
Business Administration



Dolores Jackson
Home Economics



Rhonda L. Jackson
Home Economics



Jill A. Jacobi
History



Susan F. Jacobs
Fine Arts



Robert J. Jacques
Psychology



Diane A. Jahsen
Computer Science



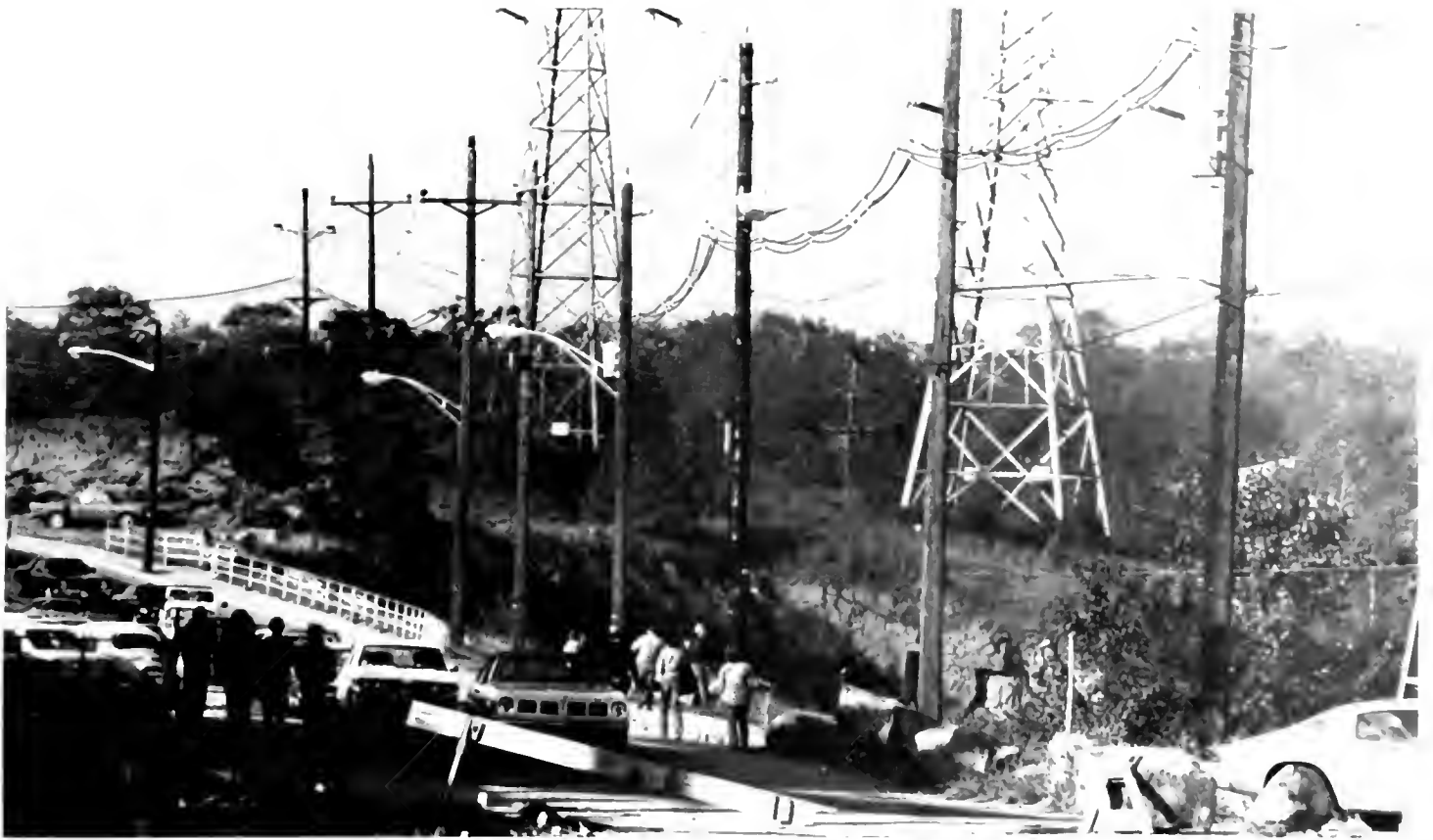
Evelyn Jakubovitz
Business Administration



Cynthia A. Jancz
Physical Education



Joanne Janiak
Home Economics



Mindy I. Jaslove
General Humanities



Donna L. Jencsik
Home Economics



Don Jervis
Management



Teresa M. Jesionka
Accounting



Mariynn Jimenez
Spanish



Janet Johansen
Home Economics



Maria A. John
Communication Sciences



Deborah J. Johnson
English



Elizabeth A. Johnson
Communication Sciences



[Name partially obscured]
Business Administration



Jeffrey L. Johnson
Business Administration



Karen L. Johnson
Business Administration



Kathleen Ann Johnson
Business Administration



Monique C. Johnson
Business Administration



Thomas F. Johnson
Physical Education



Dennis E. Johnston
Business Administration



Mary E. Johnston
Recreation



Janel J. Jones
Spanish



Hans E. Josephsen IV
Psychology



Therese M. Junta
Mathematics





Mary Ellen Juzefyk
Business Administration



Gerard K. Kalajian
Geography



Sari L. Kalomeer
Home Economics



James J. Kane
Psychology



Susan M. Kaplan
Home Economics



Joan L. Katlun
Psychology



William K. Kaufman
English



Kathleen Kays
English



Ellen A. Kazalski
Accounting



Dwayne O. Kearney
Office Systems Admin



Martha S. Kelly
Physical Education



Patricia E. Kenney
Chemistry



James F. Kenny
Industrial Arts



Teresa M. Kerr
Philosophy



Mary A. Kerrigan
Communication Sciences



Julius M. Kioko
Computer Sciences



Mary F. Kiselica
Art Education



Kathleen Kish
Business Administration



Barbara A. Kiss
Physical Education



Denise Kissane
Business Education



Karen Klemm
Home Economics



Frances Klikier
Business Education



Linda M. Klim
Communication Sciences



Ronald P. Klimik
Religion/Philosophy



Deborah A. Kline
Sociology



Karlene Knaub
Political Science



Cheryl A. Knight
English



Mary Beth Knight
French



Kathy A. Kocinsky
Biology



Gigi C. Kohl
Distributive Education



Leona L. Kohn
Psychology



Robin D. Koller
Allied Health



Sharon E. Koon
Business Administration



Janine Korsakoff
Chemistry





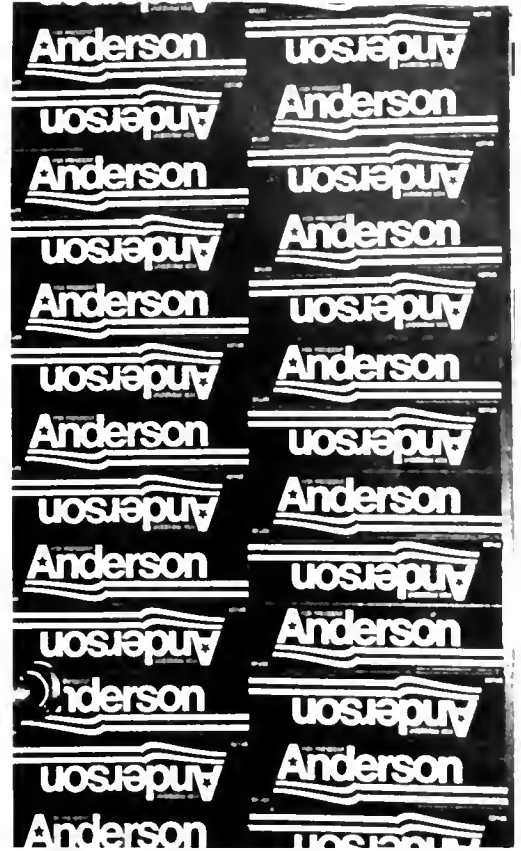
Karen Koruda
Home Economics



Gary G. Koseyan
Political Science



Stephanie E. Kostyk
Psychology



Ani Kouzouian
Business Administration



Patricia A. Kraak
Office Systems Admin



Adrienne M. Kramer
Home Economics



David M. Krichmar
Business Administration



David H. Kreismer
Industrial Studies



Tove Brock Kristoffersen
Physical Education



John P. Kruger
Business Administration



Dorothy M. Krueke
Business Administration



Veronica L. Kubicka
English



Diane Kuchenbrod
Accounting



Barbara E. Kuinski
French



Karen Kwiatkowski
Health Education



Marion Kye
Marketing



Cheryl L. LaConte
Accounting



Maritza Lago
Psychology



Loren J. LaGuerre
Communication Sciences



Gizella V. Lako
Music



Kathleen Lancaster
Communication Sciences



Joel E. Landberg
Linguistics



Glen S. Landesman
Biology



Lena D. Lanfranca
Recreation



Denise M. Lanza
Recreation Professions



Robert J. Lanza
Broadcasting



Timothy J. LaPointe
Finance



Susan J. Larkin
Recreation



Elizabeth Larkins
Home Economics



Lois LaScala
Marketing



Dorothy H. Lasek
Management



Mary Jo Lasorsa
Communication Sciences



Lynn Dawn Laster
Allied Health



Thomas Latchford
Business Administration



Anna L. Latona
Recreation



Julie D. Laub
Anthropology



Louis J. Lavelle
English



Ida M. Hollis Lawson
Home Economics



Dennis James Lear
Psychology Sociology



Belinda J. Lee
Home Economics



Donna Lee
Physical Education



Janice-Lynn Loeffelbine
Math Speech & Theater



Edward L. Lefkowitz
Speech and Theater



Randi C. Lehrer
Speech and Theater



Kathleen M. Lombardi
Finance



Anacoly Comus Vega
Business Administration



Jean B. Lenthe
English



Madeline Lenzo
Accounting



Kathleen M. Leonard
Business Administration



Dianne Leonardi
Home Economics



JoAnn Leone
Business Administration



Paul M. Lewandowski
Chemistry



Silverine R. Lewars
Home Economics



Maria I. Lewie
Political Science



Sharon M. Lewis
Finance



Donna M. Leyland
English/Comm. Sciences





Paul A. Liddy
History



Lori Jane Lieberman
Home Economics



Linda M. LiJoi
Business Administration



Frank E. Lindsay
Biology



Sharon Link
Psychology



Jean M. Linke
Psychology English



Monica Lintott
Psychology English



Sarah V. Lipani
History



Michael Lisbona
Fine Arts



Rosann Liva
Psychology



Robin S. Livingston
Home Economics



Deborah A. Lizotte
Fine Arts



Osvaldo Llanes
Business Administration



Gloria E. Lloyd
Home Economics



David S. Lowenstein
Business Administration



Michael G. Long
Accounting



Elizabeth A. Longo
Psychology



Antonio R. Lopez
Political Science



Brian Lopez
Political Science



Denise Lopez
History



August Lorio
Physical Education



James T. Loverde
Health Ed. Biology



Eugene A. Lowe
Marketing



Linda L. Lucarella
Business Administration



Theresa E. Ludt
Recreation



Helene Ludwig
Home Economics



William J. Ludwig
English Education



Patrick J. Lundy
Business Management



Stephen Luongo
Business Administration



Ann Marie Lupo
Home Economics



Cloe Lupo
History



Denise Lynch
Business Administration



Diane Macaluso
Chemistry



Paul J. Maccaro
History





Theresa Maccia
Distributive Education



Marion C. Machucici
Consumer Affairs



Laurie A. Mackevich
Sociology



Anna M. Magliacano
Home Economics



Therese M. Magath
Nutrition



Carol A. Mahler
Nutrition



Diane M. Makouj
Accounting



Jose J. Maldonado
Sociology



Stanley S. Malecki
Accounting



Hugh R. Mallack
Computer Science



Debra A. Malmgren
Physical Education



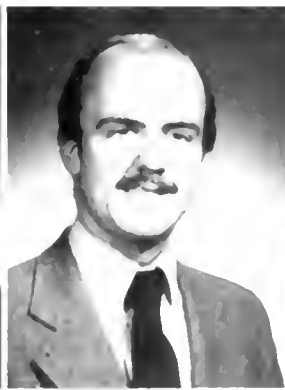
Anne S. Malmquist
Commercial Recreation



Kevin M. Malmud
Business Administration



Mark J. Maloney
Business Management



Paul J. Maloney
History



Frank Mancinelli
Fine Arts



Richard Macinelli
Political Science



Barbara A. Mancuso
Psychology



Laurie Mandara
Home Economics



Karen Maneri
Biology



Susan A. Manfre
Psychology



JoAnn Mantione
Psychology



Carolyn J. Marano
English



Linda March
Home Economics



Rose Marchionda
Marketing



Carol Ruth Marchione
Psychology/Sociology



Stephen M. Maret
History Psychology



Anthony A. Marino
Speech and Theater



Donna M. Marino
English



Jane Ellen Marra
Community Health



Linda Martelli
English



Christine M. Martin
English



Sterling A. Martin
Business Administration



Peter Martino
Art History



Denise Martone
French



Elena M. Martone
Business Education



Ann Marie Martucci
Fine Arts



Gordon Thomas Marzocco
Geography



Valerie E. Mascia
Home Economics



Pamela L. Mason
Psychology



Dorothy S. Massaros
Business Administration



Ronne Massey
Psychology



Diane Massina
Foods and Nutrition



Maria J. Masucci
Home Economics



Arto M. Mate
Biology



Mary R. Mathis
Economics



Tarsia Matrakas
Physical Education



Debra L. Matthews
Home Economics



Lorraine Matthews
Nutrition



Adalberto L. Maurell
Business Administration



Shelley B. Maurice
Business Administration



Lynn Marie Mauro
Finance



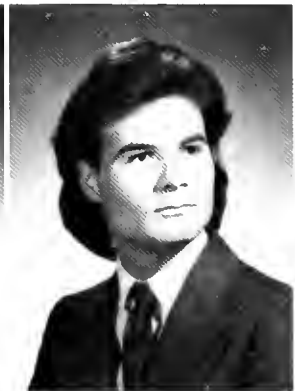
Michele Mauro
Anthropology



Ann Marie Mawhinney
Home Economics



Kathleen Maxwell
French



Todd E. May
Accounting





Valerie M. Mayer
Commercial Recreation



Pamela J. Mazer
Accounting



Geraldine A. Mazza
Communication Sciences



Maria C. Mazzarone
Psychology



Paula M. Mazzer
Accounting



Cynthia Mazzeo
Marketing



Catherine M. McBroom
Business Administration



Diane M. McCarty
Fine Arts



Andrew P. McCormick
Political Science



William J. McCormick
Psychology



Melinda D. McDonald
Psychology



Lori Anne McDonough
Home Economics



Theresa McDonough
Home Economics



James A. McElhinney
Management



Barbara J. McGraw
Psychology



Marlene A. McGraw
Office Systems Admin



Nancy McGrory
Business Administration



Peter A. McGuigan
Accounting



Maura E. M. Hugh
Business Administration



Debra M. Keever
Psychology



Brian T. McLaughlin
Office Systems Admin.



Ellen M. McLaughlin
English Education



John M. McLaughlin
Business Administration



Laurence C. McNamara
Geography



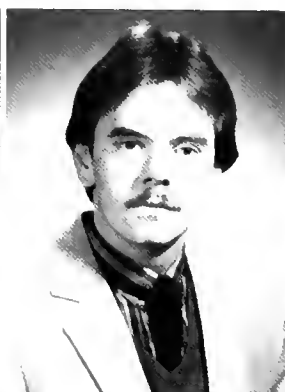
Susan A. McNamara
Business Administration



Beth McNeilly
Communication Sciences



Daniel McNeilly
Business Administration



William C. McPherson
Distributive Education



Gisele M. McQueeney
Business Administration



Kathleen McRell
Business Administration



Kathleen M. Mehan
Business Administration



Kevin J. Meehan
Business Administration



Stephanie D. Mei
Business Administration



Michael V. Melillo
Physical Education



David M. Mellone
Health



Carlos A. Mendoza
Political Science



Abraham A. Mensah
Business Administration



Anita Merandina
Recreation Therapy



Edward R. Merchant
Industrial Education



Ellen C. Mercurio
Home Economics



Beverly L. Merritt
English



Cynthia D. Mersier
Business Administration



Mary L. Mesce
Business Education



Charles R. Messina
Sociology



Paul V. Messina
Political Science



Richard J. Messina
English



Jan Meyer
Speech and Theater



Jill Meyers
Communication Sciences



John McDermott
Biology



Joseph D. Miele
Business Administration



Yvonne M. Migliaccio
English



John Mihalo
Business Administration



Regina N. Mihm
Recreation Professions



Eugene A. Mikijanic
Industrial Studies



Catherine D. Miller
Marketing



Elizabeth Miller
Sociology



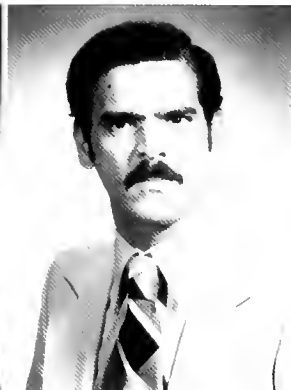
John J. Miller III
Health Education



Keith J. Miller



Annette K. Minassian
Art Education



Manelic Minaya



Joseph S. Mirabelli
English



Lenore Miraglia
Psychology



Karen A. Misajet
Psychology



Ann Marie Miskewicz
Business Administration



Sharon Mitchem
Psychology



Mark W. Moede
Acting Directing



Karen E. Molenaar
Biology



Greg Mondadori
Communication



Denise M. Montera
French



Caryn C. Mooney
Home Economics



Lucrecia B. Mora
French



Michael J. Moroz
Physical Education



Ellen Maria Morra
Communication Sciences



Edna Morrell
Political Science



Frances T. Morris
Accounting



Sandra L. Morrison
Fine Arts



Daniel R. Morse
Poli. Sci. Ind. Ed.



Robert W. Morse
Business Administration



Donald F. Mott
Computer Science



Mary V. Mott
Fine Arts



Thomas Moyer
Accounting



Julius Muirde
Geography



MaryJo Mule
Communication Sciences



Paul E. Mullen
Business Administration



Lucille Muller
Business Administration



Kerry Mullin
Industrial Education



Gail Mullins
Broadcasting



Christine Murk
Office Systems Admin.



Donna Murphy
Office Systems Admin.



Maureen Murphy
Business Administration





Sean P. Murphy
Political Science



Susan E. Murray
Business Administration



Colleen A. Murtha
Psychology



Carol C. Muscio
Home Economics



Vito A. Muti
Home Economics



Laura J. Myers
Geoscience



Drew G. Nagel
Business Administration



Vera M. Nakoneczny
Political Science



Lois A. Nalasco
Home Economics



Lorraine A. Nalesnik
Psychology



Sweeta A. Nanwani
Business Administration



Ronald J. Naples
Speech & Theater Poli Sci



Susan Napoliello
Home Economics



Joseph A. Natoli
Psychology



Roberto Negrón
Sociology



Kathleen A. Nelson
Home Economics



Linda Nemoth
Home Economics



Frances R. Noppel
English



Margaret M. Nevins
Home Economics



Tina Nicolaidos
Psychology



Nick C. Nicolaou
Psychology



Janice Marie Nidds
Home Economics



Robert A. Niemela
Biology



JoAnn Nieradka
Business Administration



Connie F. Nieto



Anna Gina Nigido
Accounting Psychology



Concetta M. Nigro
Italian



Robert John Nisivoccia
Marketing



Diane Marie Noah
Foods and Nutrition



Patrice Suzanne Noah
Political Science



Denise M. Normyle
Health Education



Andrea Notare
Psychology Religion



Anna G. Notarberto
Business Administration



Rhonda Sue Novack
Business Education





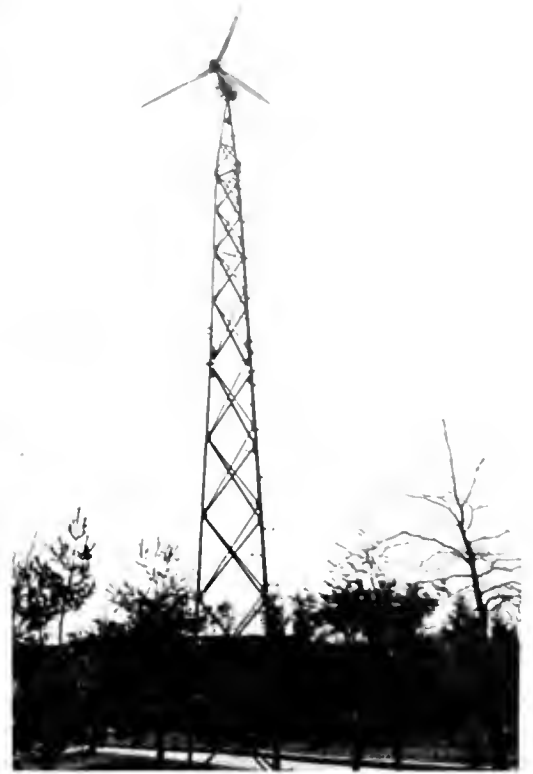
George G. Nucera
Biology



Halina Obremski
Office Systems Admin.



Sharon Lynn O'Brien
Linguistics



Linda Lou Oejo
Psychology



Elizabeth A. O'Connor
Physical Education



Kimberly Rose Odom
Communication Sciences



Susan Patricia O'Donnell
English



Carl N. Oerke, Jr.
Biology



Wayne John O'Hara
Computer Science



Grace Chr. Okafor
Community Health



Michael Francis O'Keefe
Sociology Poli. Sci



Nancy A. O'Keefe
Community Health Services



Marian Chineld O'Keefe
Home Economics



Denise C. O'Larte
Biology



Carol Ann Oldakowski
Accounting



Linda B. Olivio
English



Mark E. Olson
Business Administration



Patricia Elizabeth O'Neill
Chemistry



Nancy Ellen Orrico
Home Economics



Nancy E. O'Shea
Business Administration



Gloria M. Osorio
Sociology



Wendy Marie Ostrov
Psychology



Waldemar J. Ostrowski
Business Administration



Michael M. Padovano
Math Computer Science



Michael J. Padula
Marketing Mgmt



Patricia S. Paganelli
Physical Education



Agostina Maria Paglialunga
Business Administration



Doris H. Pahl
Psychology



Teresa Marie Palisi
Marketing



Peggy A. Pallis
English



Steven Paul Pancoast
Computer Science



Dina Papadakos
Office Systems Admin.



Harriet Papadakos
Office Systems Admin.



Joanna Papaioannou
Home Economics



Linda S. Papazian
Computer Science



Thomas Anthony Pappalardo
Business Administration



Chris Pappas
Marketing Mgmt



Gerard A. Paradiso
Spanish



Naomi Parciasepe
Chemistry



Alan Leonard Paris
Biology



Loraine Parolie
Psychology



Nan Mary Pascale
Mathematics



Carla Marie Passerini
Political Science Psych



Jill Amelia Paster
Home Economics



Theodore J. Patz
Business Administration



Fear- Anne Patrus
Business Administration



Thomas Pawlicki
Business Administration



Anthony Salvatore Pecci
Geoscience



Lisa Morgan Peck
Music Therapy



Concetta A. Peduto
Marketing Mgmt



Vincent Gerald Pelleher
Business Administration



Arthur A. Penny
Political Science



Pedro C. Peraza
Political Science



Maria D. Perez
Home Economics



Rosario J. Perez
Psychology



Albert A. Perrella
Psychology/Sociology





Nancy J. Peters
Business Administration



Althea Patricia Peterson
Accounting



William Michael Peto
Psychology



MaryAnn Petriello
Psychology



Judith A. Pett
English Psychology



Michael Petrizzo
Fine Arts



Michele Peyko
Physical Education



Merryl Anne Pfaff
Home Economics



Paul August Pfefferle
Biology



Mark Christopher Phelan
Speech and Theater



David A. Philhower
Office Systems Admin



H. James Phillips
Community Health Services



Patricia Ann Picano
Marketing



Alice Jean Pickhardt
Accounting



Sara Angela Picone
Business Administration



Michele Regina Pilger
Physical Education



Rosalind D. Pinkney
Sociology



Raymond D. Pinney
Political Science



Maria A. Pino
Sociology



Pina Pippo
English



Tina Marie Pisa
English Education



Peter S. Piszczatoski
Political Science



Carla Celeste Pitale
French



Patricia Leigh Pitale
Psychology



Michael Pitts
Political Science



RoseMarie Theresa Platoff
Consumer Affairs



Diane E. Plocinski
Sociology



Harriet Christine Poca
Home Economics



Laura Polese
Poli. Sci./Broadcasting



Nina Polizzano
Psychology



Michael John Popek
Political Science English



Deborah Popola
Business Administration



Craig S. Porter
Business Administration



Patricia Porter
Office Systems Admin.





Mary Catherine Possett
Poli. Sci. Economics



Theresa A Powell
Speech Pathology



Luann Prestifilippo
Home Economics



Joan C Pritchard
Business Administration



Kevin Thomas Pryor
Music



Michael Steven Pucciarelli
Accounting



Laura Jean Punderson
English



Helen M Purcell
Accounting



Joseph Lawrence Purcell
Psychology



Mary Jane Puskas
Psychology



Joseph O Quave
Business Administration



Carol Lisa Quinn
English



David William Quinn
Speech and Theater



John Leonard Rademaker
Business Administration



Tarry Wilde Rankin
Speech and Theater



Susan L Rankin
Industrial Arts



Pilar A. Ramirez
Management



Jeffrey S. Raskin
Accounting



Deborah L. Rathnow
Home Economics



Kathryn Rau
Business Administration



Joyce Raymond
Home Economics



Ruth Raymond
Communication Sciences



Margarit A. Reasor
English



Joseph L. Rebholz
Business Administration



Joann M. Recchia
Home Economics



Carolyn Ann Reddington
Mathematics



Linda J. Reed
Mathematics



Coleen Reilly
Business Education



Caryn Donna Reineke
Communication Sciences



Stephen H. Reitberger
Physical Education



Edward B. Renz
Business Education



Luis F. Restrepo
Mathematics



Maryanne B. Revel
Mathematics



Violeta Reyes
Business Administration



Amelia M. Ribero
Home Economics



Neyda Ricardo
Sociology



Christine Ann Rice
Biology



Cynthia T. Richardson
Music Education



Michael E. Riggi
Recreation Professions



Katherine J. Rippey
Foods and Nutrition



Kevin J. Ritter
Geography



Judy Robbins
English



Douglas Frank Roberts
Business Administration



Kristie S. Robertson
Communication Sciences



Christopher S. Robinson
English



Howard Rodriguez
Fine Arts, Poli. Sci.



Elizabeth Anne Roeser
French



Patricia Ann Roettger
English Education



Deborah B. Rogers
Transcultural Studies



Matthew Rohsler
Sociology



Glenn C. Romaglia
Psychology



Carol Rosamilia
Home Economics



Cheryl A. Rose
English



Marybeth Ann Rosin
Home Economics



Marie Rovetto
Sociology



Susanne F. Roy
Psychology





Michael Rozek
Computer Science



Coy R. Rudd
Economics



Joyce Marie Rudolph
Accounting



Rosemarie J. Rufo
Office Systems Admin.



Diane Rullo-Cooney
Psychology



Shari Lee Rummel
Physical Education



Joan P. Russo
Business Administration



Maria Theresa Russo
Foods and Nutrition



Mel Joseph Russo
Biology



Rosemary B. Russo
English



Donna Marie Ryan
Sociology



Marianne E. Ryan
Office Systems Admin.



Ann Mary Rykowski
Accounting



George A. Saba
Accounting



Lisa Ann Sabat
Psychology



Michael J. Sabatino
Economics



Angela Rosary Sabato
Speech and Theater



Leslie Rose Sack
Home Economics



Lorraine Ann Sarty
Business Administration



Arthur E. Sawitz
Music Education



Joanne Helen Sakmyster
English



Doreen Frances Sale
Distributive Education



Joseph Salfelder
Chemistry



Marianne Salvatore
Business Administration



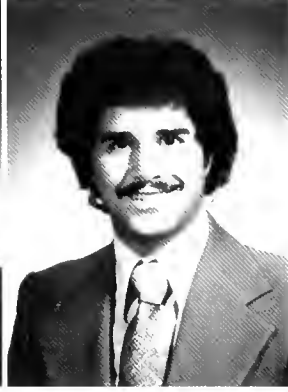
Michael Richard Samples
Business Administration



Dawn M. Samra
Business Administration



John Samra
Business Administration



Scott R. Sansolo
Business Administration



Carmen E. Santiago
Marketing



Linda M. Santiago
Home Economics



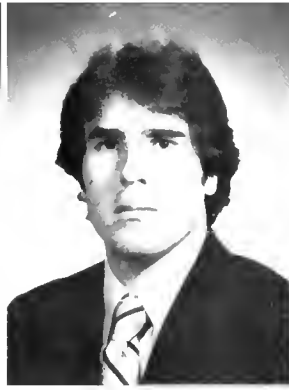
Tom V. Santulli
Mathematics



Laurie Ann Sarro
Communications Sciences



John A. Sarti
Business Administration



Nicholas Henry Sartiano
Business Administration





Carol Ann Sautner
Business Administration



Michael Savignano
Industrial Technology



Antoinette Marie Savino
Sociology



Ethmoula Mary Savvides
Business Administration



Regina Aurora Sbrocco
Speech and Theater



Donna Leah Scarpone
Mathematics



Paul F. Scattergood
Business Administration



Annette Rose Schillaci
Office Systems Admin



Bruce Steven Schimmel
Business Administration



Bettina Elisabeth Schinke
French German



Beverly A. Schlamp
English



Mark Anthony Schmidt
Physical Education



Susan Kay Schmidt
Music Therapy



John James Schmitt
Biology



Susan Heintz Schmitt
Business Administration



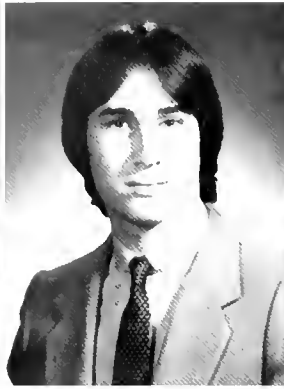
Nancy Schmitt
Communication Sciences



MaryLou Schnur
Sociology



Nancy Dara Scholle
Physical Education



Scott M. Schron
Biology



Glenn Fredric Schulman
Recreation Professions



William Joseph Schulz, Jr.
Business Administration



Thomas Schumacker
Marketing



Irene Ruth Schwager
Business Administration



Donna Carol Schwankert
Fine Arts



Michael I. Schwartz
Political Science



Eric R. Schwartzberg
Marketing



Letitia Broome Schwarz
History



Barbara Schwern
Communication Sciences



Carmela Sciabica
Retail Management



Valerie Scorson
Fine Arts



Joseph S. Scriffignano
Biology



Janice N. Scrudato
Business Education



Lori A. Scutti
Nutrition



Joseph Sebolao
Marketing Mgmt.



Steven Sedlak
Business Administration



Howard J. Sehulster
Biology



Karin S. Seidel
Marketing Mgmt



Gary A. Senior
History



Silvana Serafini
Math and Computer Science



Francine Barbara C. Shabet
Physical Education



Mariam Shahrokh
Business Education



Suzanne Shapiro
Music



Nancy G. Shaw
Foods and Nutrition



Kathleen Mary Sheber
Psychology



Karen Ann Shrooms
English



David George Shondak
Music



Paul A. Simons
Industrial Arts



Ada Louise Sinacore
Music



Annette Sisco
Psychology



Matthew D. Skelley
Political Science



Glenn A. Skidmore
Management



Mitchell Jay Slachman
Business Administration



William Adam Slawinski
Business Administration



Geri Ellen Smit
Music Therapy



Barbara Lynn Smith
Business Administration



Diana Elizabeth Smith
Music Therapy



George Christian Smith
Business Administration



Michael Smith
Sociology



Robert F. Smorol
Accounting



Daria L.
Allied



Susan Snyder
Business Administration



Viviane L. Snyder
Business Administration



Eletherio Sofras
Computer Science and
Biology



Donna Marie S.
Business Adminis



Maria G. Spataro
History



AnnMarie Speranza
Family Child Studies



Elizabeth Ann Spiegel
Home Economics



Alan Stagg
Accounting



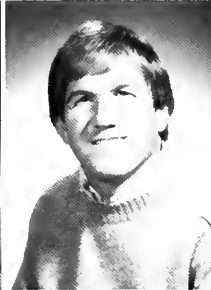
Richard August Stahnke
Music Performance



Kathy Irene Stanley
Physical Education



John T. Stanton
Marketing



Paul J. Stapleton
Psychology



Donna Marie Stas
Business Administration



Lauren Elizabeth Steel
Marketing Mgmt.



Jeff Stein
Administration



Jam Michael Stern
Biology





Heather Dawn Steewart
Music Education



John Daniel Stouter
English



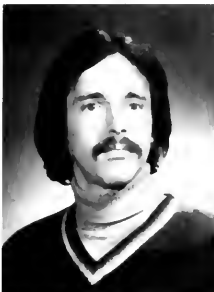
Linda Marie Strasser
Psychology



Elizabeth Strauss
Foods and Nutrition



Phyllis Strauss
Business Education



Lawrence Paul Strohmeier
Biology



Barbara Jeanne Strollo
Environmental and Geo.
Studies



John W Struble
Chemistry



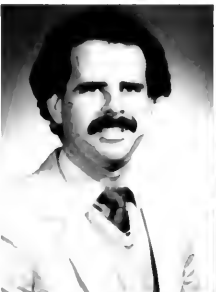
Ruth S Stryker
Business Administration



Jay R Stuart
Business Administration



Ibrahim Suarez
Spanish



Roman S Suarez
Business Administration



Linda Suljic
Business Administration



Dawn Margaret Sullivan
Psychology



Frank W Sullivan
Economics



Michael Suscavage
Psychology



Dianna J. Swan
Accounting



Randolph L. Swickle
Food Service



Karen S. Sydoryk
Home Economics



Karen Szepletowski
Business Administration



John J. Szupiany
Business Administration



Fatemeh Tabassi
Computer Science



Roy S. Tamargo
Industrial Studies



Margaret C. Tanis
Marketing



Steven Bart Tannenbaum
Office Systems Administration



Simone C. Taylor
Communication Sciences



William Alan Taylor
Business Administration



Martin S. Teich
Accounting



Halimat Tekelani
Accounting



Sandra Lee Terrell
English



Karen Ann Testa
Psychology



Valerie D. Testa
Home Economics



Evelyn M. Thomas
Home Economics



Karen Gwen Thomas
Accounting



Beverly June Thompson
Business Administration



Janet M. Thompson
Foods and Nutrition



Karin Lee Thoms
Political Science



Cathy L. Thomsen
Psychology



Debra Ann Thomson
Broadcasting



Renee M. Thurnes
Communication Sciences



Daniel E. Timpert
Recreation



Karen Joy Tippenreiter
Biology



Diane Erma Tirpak
Biology



Heidi B. Tobackman
Foods and Nutrition



Susan M. Tobin
Communication Sciences



Michael Stephens Tomche
Computer Science



Marina C. Torrecuso
French Italian Spanish



Linda Rosa Torres
Psychology



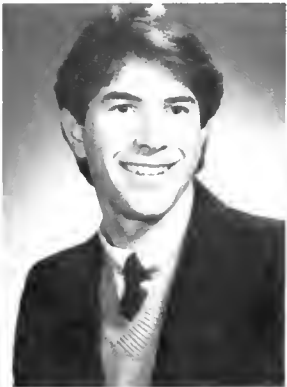
Lisa Marie Torricelli
Accounting



Janine M. Torsiello
English



Arnold Steven Trauth
Psychology



Anthony Tricarico
Business Management



Tammy Sue Trimble
Fine Arts



Michael Anthony Tropeano
Business Administration



Nicholas Frank Tropiano
Sociology



Charles Franklin Truesdale
Home Economics





Lynn Marie Truntio
Political Science



Mary C. Tuffy
Recreation



Kathleen Uber
Physical Education and
Health



Patricia Donegan Uchtel
Sociology



Robert Charles Uhl
Recreation Professions



Allyson Rose Urspruch
Business Administration



Deborah L. Ustas
Sociology



Valerie Vaccaro
Accounting



Cynthia A. Valente
Distributive Education



Jo-Ann Valentine
Communication Sciences



Steven Mark Valvano
Business Administration



Robert Vamvas
Communication Theory and
Practices



Elisabeth Jane Vandermeij
Home Economics Education



Kenneth J. Van Dongen
Business Administration



Annemarie VanHemmen
French



Arthur John VanHouten
Business Administration



Konstantinos Vanikiotis
Computer Science



Susan Ellen Vasile
Accounting



Deborah Lynn Vaslerok
English



Nancy Marie Voss
Music Therapy



Carole A. Velardi
Business Administration



Robert Andrew Vendetti
Industrial Arts and Education



Collette S. Venturella
Chemistry



Cynthia Roseann Verdolina
Speech and Theater
Education



LuAnn E. Villano
Biology



Judith Villarroel
Sociology



Michele Rene Vivas
Nutrition



Michael F. Vivino
Music and Mathematics



Michele G. Vochosky
English



Eileen R. Voelbel
English



Janice Martha Vogel
Chemistry



Anna Von Winckler
English



Lorie A. Vuyosevich
Recreation Professions



Carrie Elnora Walker
Music Therapy





Debra A. Wallace
Business Administration



Alice Dolores Waller
Physical Education



Karen Wallo
Psychology



William V. Wambach
Mathematics Comp Sci



George G. Wangelen
Business Administration



Gerard C. Ward
Business Administration



Susan Ward
Industrial Studies



William A. Ware III
Music



Willie J. Warren
Psychology



Marilyn S. Wataha
Office Systems Administration



Nick J. Watsik
Marketing Mgmt



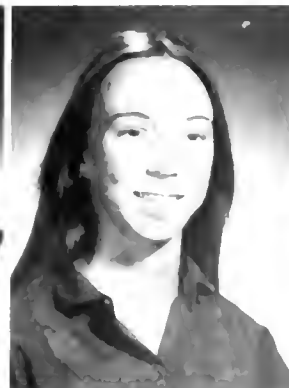
Klaus D. Wehenig
Business Administration



Reid Weinman
History and Political Science



Douglas Weinmann
Accounting



Kathleen Mary Weir
Outdoor Recreation



Kater Weiland
Family Child Services



Doris Welfel
Spanish



Laure J. Wells
English



April L. Wenig
Home Economics



Gail A. Werner
Allied Health



Evelyn Werthan
Fine Arts



Pamela Jeanne Werts
Psychology



Charles Glenn White
Business Administration



Joan C. Widmer
Marketing Mgmt.



Donna Wiedman
Recreation Professions



Barry Wiesenfeld
Music Performance



Dianne Evelyn Wigertz
Accounting



Susan E. Willar
Home Economics



Paulette Felicia
English



Russel Craig Wilson
Accounting



Victoria Lynn Wilson
Business Administration



Bob Charles Winter
Accounting



Robert J. Wojtowicz
Accounting



Anne Marie Wolanski
Accounting



Nancy Gail Wolfskeil
Computer Science



Julia Marie Wood
Business Administration



Kenneth R. Wood
Accounting



Maureen E. Wood
Home Economics



Philip Chin Wu
Business Administration



Richard George Yee
History



Mojgan Yekta
Political Science



Michael David York
Accounting



Fernando Zabala
Business Administration



Leslie Ann Zama
Food and Nutrition



Richard George Yee
History



Mojgan Yekta
Political Science



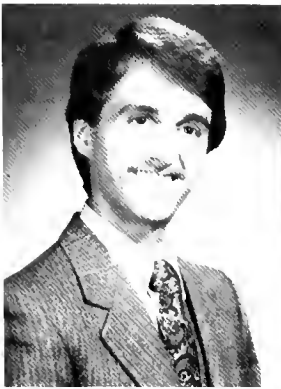
Bonnie Susan Ziens
Communication Sciences



Diane Zimmerman
English



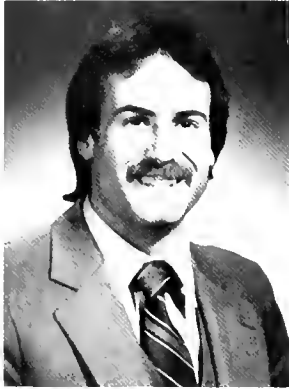
James Victor Zimmerman
Mathematics



Lawrence Joseph
Zimmerman
Speech and Theater



Frank B. Zinno
Management



Richard K. Zipf
German



Patricia Ann Zuber
Communication Sciences



Janice B. Zwingl
Home Economics



Mark Dante
Portrait Photographer, Merin Studios





GRADUATION





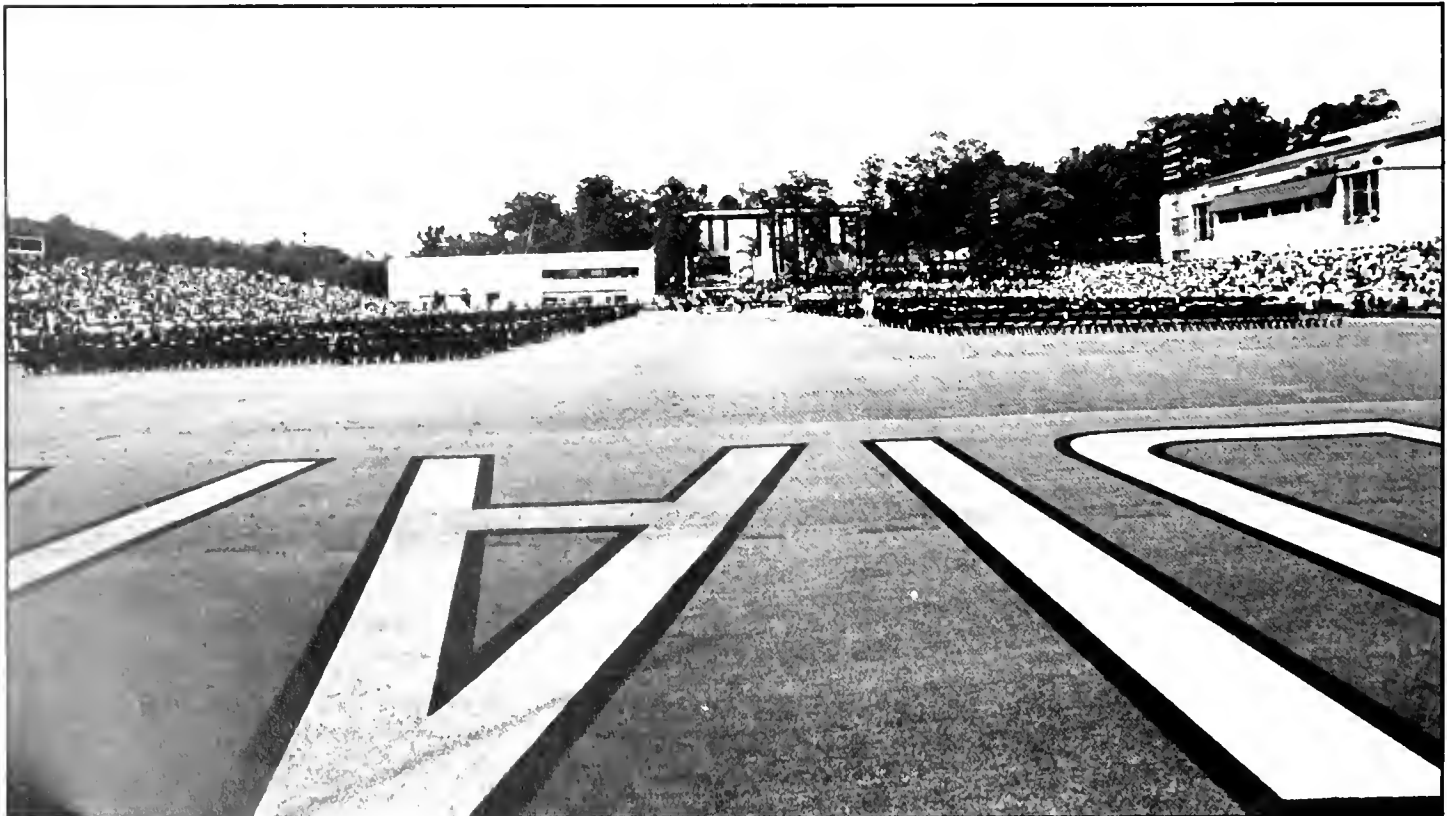
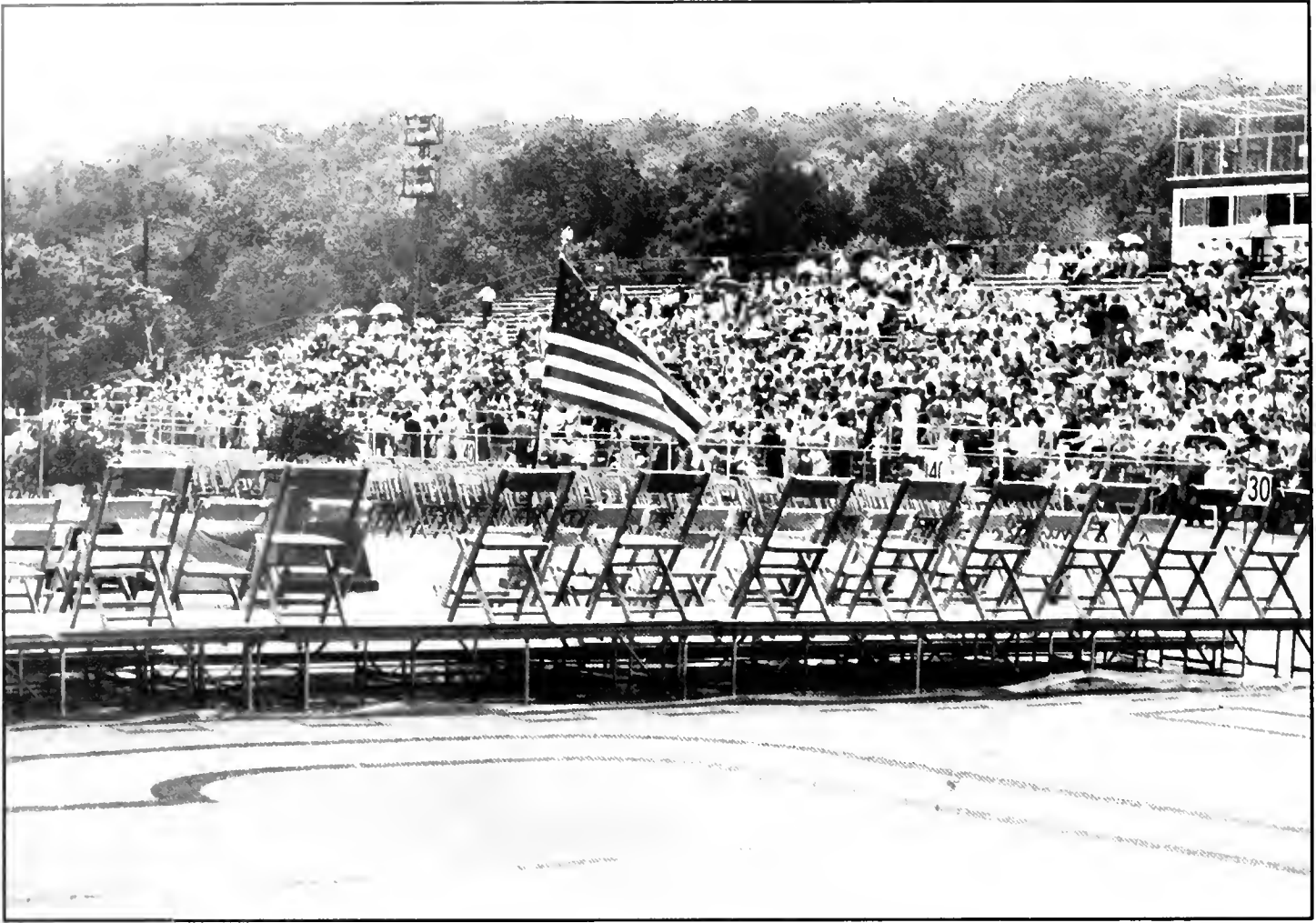
















ILFORD

HP5

ILFORD

HP5

SAFETY

17 → 17A
SAFETY

18 → 18A
FILM

19 → 19A
ILFORD
HP5

20 → 20A

21 → 21A

27 → 27A
FILM

28 → 28A
ILFORD
HP5

29 → 29A

30 → 30A

31 → 31A
ILFORD
HP5

22 → 22A
ILFORD
HP5

23 → 23A
SAFETY

24 → 24A
FILM

25 → 25A
ILFORD
HP5

26 → 26A

2 → 2A
ILFORD

3 → 3A
HP5

4 → 4A
SAFETY

5 → 5A
FILM

6 → 6A
ILFORD
HP5

7 → 7A

8 → 8A

9 → 9A
ILFORD
HP5

10 → 10A
SAFETY

11 → 11A
FILM

12 → 12A
ILFORD
HP5

13 → 13A
SAFETY

FILM

14 → 14A
ILFO

15 → 15A
ILFORD
HP5

16 → 16A

La Campana 1981





I had originally intended to write a lengthy essay on the trial and tribulations involved in producing this yearbook but, after giving it some thought, decided to discard the notion in favor of something completely different. After all, I believe that the content of this book speaks for itself and the hard work that went into it; if it needs me to tell you why you should appreciate it, this yearbook should not have been published.

I'm very proud of my staff, for they alone deserve credit for the copy and layout — a far cry from previous years when the editors labored without assistance to do all the work. Any undergraduates who read this by accident should take note that La Campana's staff is always looking for people who are interested in taking pictures, writing articles and stories, typing, doing layout, or simply contributing ideas. Every year, due to the high rate of turnover, there is a great demand for new members, so I hope word will spread that the yearbook is still a "land of opportunity".*

My heartfelt thanks go to Meeta Patel who took charge of completing the book upon my graduation, Naedine Hazell for her ingenuity and durable sense of humor, and Rich Hango, the man who supplied the T-shirts. "Thank you, thank you, thank you's" are in order for my incredible staff, the S G A. (their organization makes this one possible), and naturally the students of MSC who keep us in business. ?



Robert Clifford
Editor-In-Chief, 1981

P.S. Rich, Excelsior!

*893-4346, yes, that's 893-4346. Call today for a free appointment or just listen to our strange answering service — no purchase necessary.



The Cast

Editor-In-Chief

Robert G! Clifford

Managing Editor/Treasurer

Meeta Patel

Seniors Editor

Naedine Hazell

Copy Editor

Laura Laniewski

Photography Editor

Edgar Pineros

Senior Portraits

Merin Studios, Philadelphia,
Pennsylvania

Advisor

David Fogg

Staff

Pietro Anastasio

Rekha Das

Scott Falkenberg

Mona Gadallah

Elsa Jimenez

Elizabeth Larkins

Jeanette Pinkney

Rosalind Pinkney

Anjali Sangani

Janet Wojtanzek

Harold Thompson

Sue Chauvette

Photo Staff

Cindy Bacon

Rich Hango

Jay Harold

Pat Hart

Wayne T. Roth

Klaus Weihenig

Bonnie Ziemkiewicz

Cover Design

Pietro Anastasio

Divider Pages

Tony Calderon

Color Thanks To:

Larry Clifford

Robert G! Clifford

David Fogg

Rich Hango

Larry Morgan

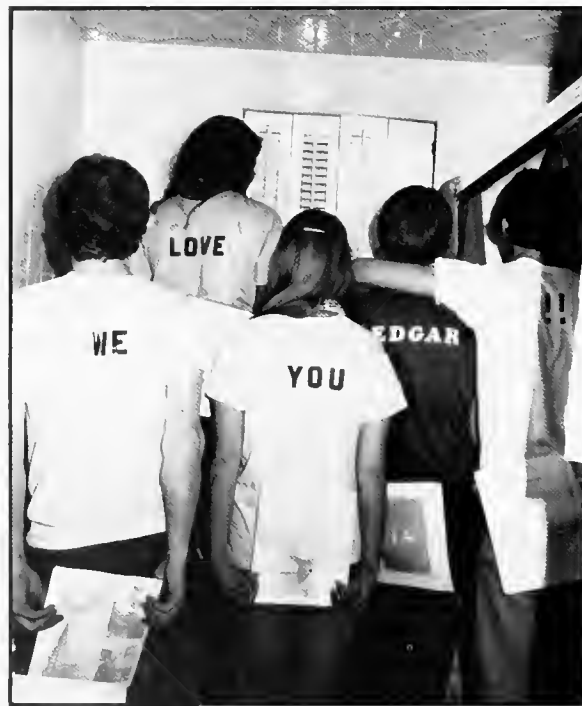
Robin Witek

Edgar Pineros

Alan Stagg

The 1981 La Campana is a Class One Organization
of the Student Government Association.

Published by the Hunter Publishing Company,
Winston-Salem, North Carolina.



Back Page

“... And you guess you won't be going
back to school anymore.”

— Billy Joel





HUNTER PUBLISHING COMPANY

• Winston-Salem

• North Carolina

Steve Merrin Philadelphia Pennsylvania
Representative

3 3000 00618 2670

Online

1981, C. 2

Dr. Terence State Members Coll. ca.
onclair.

La Campone.



