


The image shows the spine and front cover of a book. The spine is decorated with gold-tooled patterns, including a wavy border at the top, a central panel with stylized, overlapping leaf or petal shapes, and another wavy border at the bottom. The front cover is a dark green, textured material. In the bottom right corner, there is a gold-tooled rectangular label containing the title.

The LANTHORN



EX
LIBRIS



Digitized by the Internet Archive
in 2011 with funding from
Lyrisis Members and Sloan Foundation

<http://www.archive.org/details/lanthorn193100susq>

1031
LANTHORN



Copyright, 1930

By

IDA A. SCHWEITZER
Editor-in-Chief

AND

RUSSELL E. YOAS
Business Manager

1931
LANTHORN



PUBLISHED
BY THE ~ ~ ~
JUNIOR ~ ~
CLASS OF ~
SUSQUE =
HANNA ~ ~
UNIVERSITY
SELINGROVE
PA.

FORERWORD

Just a block from the wall of
time, just a record of one more
successful year at Susquehanna,
determining to give you not
only a history of the year's ac-
tivities but a desire to carry on
to a greater S. U., we, the
Class of 1931, present
t h i s Lanthorn.

CONTENTS

The College

Classes

Athletics

Activities

Organizations

Humor

DEDICATION

To

DR. H. N. FOLLMER,

a scholar of excellent ability, a
teacher of lofty purpose, a true
friend, an exemplification of all
that is commendable in a man,
we the Class of 1931,
respectfully dedicate
t h i s Lanthorn.



STAFF 1931 LANTHORN

VOLUME THIRTY-FOUR

<i>Art Editor</i>	<i>Editor-in-Chief</i>	<i>Business Manager</i>
DONALD S. LESHER	IDA A. SCHWEITZER	RUSSELL E. YOAS

<i>Chief Statistician</i>	<i>Assistant Editor</i>	<i>Assistant Business Manager</i>
ETHLYNNE MILLER	JOHN P. SENKO	GLENN CLARK

Associate Editors

WALTER FULKROD	DANIEL KWASNOSKI	JOHN SALEM
MARY HUTCHINGS	MARTHA LAUDENSLAGER	HERBERT SCHMIDT
CLIFFORD W. JOHNSTON	BRYCE NICODEMUS	

<i>Athletic Editor</i>	<i>Assistant Statistician</i>	<i>Humor Editor</i>
VERNON BLOUGH	INEZ SARVER	ALTON GARMAN

Assistant Athletic Editor

NELLIE SHUE

Advertising Manager

WARREN WOLF

Assistants on Advertising

LENA BAIRD	WALTER L. BURFORD	ALVIN T. BARBER
------------	-------------------	-----------------



THE COLLEGE



BOARD OF DIRECTORS

Term Expires 1934

WILLIAM A. DEISROTH	Hazleton, Pa.
WILLIAM A. HASSINGER	Middleburg, Pa.
E. M. HUYETT	Centre Hall, Pa.
WILLIAM A. REARICK, A.M., D.D.	Mifflinburg, Pa.
HON. C. W. SONES	Williamsport, Pa.
JOHN B. KNISELEY, A.M., B.D.	Northumberland, Pa.

Term Expires 1933

CHARLES R. BOWERS, A.B., A.M., D.D.	Sunbury, Pa.
STERLING R. DECKER, A.B.	Montgomery, Pa.
A. G. GAWINSKE	Pittsburgh, Pa.
REV. JOHN F. HARKINS, A.B.	State College, Pa.
THOMAS REISCH, A.B., Ph.D., D.D.	Harrisburg, Pa.
DANIEL SMITH, JR.	Williamsport, Pa.
GEORGE MORRIS SMITH, A.M., D.D.	Selinsgrove, Pa.

Term Expires 1932

M. M. ALLBECK, D.D.	Zelienople, Pa.
J. P. CARPENTER, A.B., A.M.	Sunbury, Pa.
EDWARD J. HARMS, A.B., A.M., D.D.	Hagerstown, Md.
R. C. NORTH, A.M.	Selinsgrove, Pa.
D. W. SHELLENBERGER	Montgomery, Pa.
REV. H. W. MILLER	Williamsport, Pa.

Term Expires 1931

M. P. MOLLER, M.U.S.D.	Hagerstown, Md.
H. C. MICHAEL, A.B., A.M., D.D.	Johnstown, Pa.
R. L. SCHROYER, B.S., M.S.	Selinsgrove, Pa.
I. A. SHAFFER, JR.	Lock Haven, Pa.
HON. CHARLES STEELE, A.M.	Northumberland, Pa.
REV. I. STOY SPANGLER	Newport, Pa.

Term Expires 1930

E. S. BROWNMILLER, Ph.D., D.D.	Reading, Pa.
FRANK A. EYER	Selinsgrove, Pa.
DAVID OTT	Johnstown, Pa.
A. P. URICH	Millersville, Pa.
H. I. WIEAND, A.B., Ph.D., D.D.	Lancaster, Pa.
CLAUDE G. AIKENS, B.S.	State College, Pa.

Officers of the Board

WILLIAM A. REARICK, A.M., D.D.	<i>President</i>
STERLING R. DECKER, A.B.	<i>Vice-President</i>
THOS. REISCH, A.B., Ph.D., D.D.	<i>Vice-President</i>
FRANK A. EYER	<i>Secretary</i>
HON. CHARLES STEELE, A.M.	<i>Endowment Treasurer</i>
ROSCOE C. NORTH, A.M.	<i>Treasurer</i>

SUSQUEHANNA UNIVERSITY

THE growth of Susquehanna University has a history that is both remarkable and interesting. It first began as the Missionary Institute and its origin dates back to 1856, when the Maryland Synod of the Lutheran Church officially began a movement for the building of an educational institution that would provide good classical training for the young men of the church and give an opportunity to men to prepare for the Gospel Ministry. A committee was appointed by the Synod for the purpose of selecting a good location for the proposed School of the Lutheran Church. Selinsgrove was chosen as the ideal spot and after striving as Missionary Institute, it was given a charter and became known as Susquehanna University, in 1894.

Since then Susquehanna University has made remarkable progress. In 1858 Selinsgrove Hall was the only building on the campus, and now the University includes many fine buildings: Selinsgrove Hall, Hassinger Hall, Gustavus Adolphus, Seibert Hall, the Alumni Gymnasium, the University Laundry, a modern steam heating plant, the Conservatory of Music, Charles Steele Science Hall, Faculty Homes, and a new library.

Susquehanna University is beautifully situated on an elevation, just outside the borough limits of Selinsgrove, about one-half mile from the west bank of the Susquehanna River. Overlooking one of the most scenic sections of the historical valley, the site itself is of remarkable beauty, being only a few miles below the confluence of the North and West branches of the Susquehanna River. It commands an outlook of more than ten miles of the great valley, so rich in Indian legend, and the wooded hills of Northumberland County, just beyond the river.

Selinsgrove is quite accessible from every section of Pennsylvania. An electric railway connects with Sunbury, five miles away, which is an important railroad center of Pennsylvania. It is within a radius of fifty miles from Harrisburg, Lewistown, Williamsport, and the larger towns of the anthracite coal regions.

With these descriptive details concerning the life, development, and growth of Susquehanna University one can more fully understand and appreciate her present existence.

COLLEGE CALENDAR

JUNE 2-6.....Monday to Friday *Semester Examinations*
JUNE 7.....Saturday *Senior Class Day Exercises*
JUNE 8.....Sunday *Baccalaureate Sermon*
JUNE 9.....Monday *Alumni Day*
JUNE 10.....Tuesday *Commencement Exercises*

FIRST SEMESTER, 1930-1931

SEPTEMBER 11.....Thursday *Freshmen Expected to Arrive*
SEPTEMBER 12-15.....Freshmen Week
SEPTEMBER 16.....Tuesday *Registration of Old Students*
SEPTEMBER 17.....Wednesday, 9.10 *Formal Opening Exercises*
SEPTEMBER 17.....Wednesday, 10.10 A. M. *Instruction Begins*
SEPTEMBER 17.....Wednesday, 8.00 P. M. *Faculty Reception*
NOVEMBER 26.....Wednesday *Founder's Day*
NOVEMBER 26.....Wednesday, 11.00 A. M. *Thanksgiving Recess Begins*
DECEMBER 1.....Monday, 1.10 P. M. *Thanksgiving Recess Ends*
DECEMBER 18.....Thursday, 11.00 A. M. *Christmas Recess Begins*
JANUARY 5.....Monday, 1.00 P. M. *Christmas Recess Ends*
JANUARY 26-29.....Monday to Thursday *Semester Examinations*
FEBRUARY 3.....Monday, 7.00 P. M. *Mid-year Board Meeting*



As we enter



Steele Science Hall



West View of Our Campus



Hassinger Hall



Our entrance from the Campus



Seibert Hall



Our Campus from the Highway



Front view of Seibert Hall



Lower Campus



Alumni Gymnasium



Library



Our President's Home



Entrance to the Athletic Field

ALMA MATER

*The story we would tell you, friends,
Would cover many a book;
The subject matter of the same
Is found in every nook
Of old S. U.'s broad campus,
The common battle ground,
Whose trees might whisper secrets grave,
Amusing and profound.*

CHORUS

*Of Susquehanna now we sing,
Let Susquehanna's praises ring,
Loyal to her by night and by noon,
We'll raise the Orange and Maroon,
Loyal to her by night and by noon,
We'll raise the Orange and Maroon.*

*How dear to one and all the name
Their Alma Mater bears,
When they have left its classic halls,
To shoulder worldly cares,
Of winning maids and noble lords
Of dear old college days,
Come join in recollections fond,
And tell us of your ways.*

*In classroom and on gridiron, friends,
S. U. will stand the test;
Defeat to her a word unknown,
Her motto, "Do your best,"
With vim, then let us give the yell,
Display her banner bright,
That all may know of old S. U.
She stands for God and right.*

E. EDWIN SHELDON.



FACULTY





G. MORRIS SMITH, M.A., D.D.

President

Franklin and Marshall Academy, 1907: B.A.,
Roanoke College, 1911: M.A., Princeton Uni-
versity, 1912; Instructor Blair Academy,
Blairstown, N. J., 1912-14; Graduate, Mt.
Airy Seminary, 1919; Pastor, English
Lutheran Church, Mt. Vernon, N. Y., 1918-20;
Pastor, Lutheran Church of the Redeemer,
Buffalo, N. Y., 1920-28. Present position,
1928.

Dr. Smith began his executive administration
on Susquehanna's campus in the spring of
1928.

As the Executive Head, Dr. Smith is striving
ably and successfully to continue the work of
his predecessor. Through his untiring efforts,
Susquehanna is carrying on a great educational
achievement which is the fruit of his careful
planning.

The combination of a keen intellect and under-
standing, a profound, religious nature, and
a practical business knowledge,
enables Dr. Smith to be the
successful executive he
has proved himself
to be.

GEORGE F. DUNKLEBERGER

B.A., M.A., Ph.D., Ph.D.
Dean, Professor of Education

B.A., Susquehanna University, 1908; M.A., University of Pittsburgh, 1919; Susquehanna University, 1921; Ph.D., New York University, 1927; Teacher of Rural Schools for seven years; Supervising Principal of Schools, Swatara Township, Dauphin County, 1912-16; Professor of Education, California State Normal School, 1916-1921; Dean and Professor of Education, Waynesburg College, 1921-25; Student at New York University and Instructor in Education, 1925-26; Present position, 1926.

THOMAS CALVIN HOITZ

B.A., M.A., Sc.D., D.D.
Professor of Astronomy

Public School, 1872; Boalsburg Academy, 1874; State College, 1879; A.M., *ibid.* 1886; Sc.D., 1904; D.D., Susquehanna University, 1918; Present position, 1885.



GEORGE ELMER FISHER

Ph.B., M.A., Ph.D.
Professor of Chemistry

Ph.B., Bucknell University, 1891; M.A., Susquehanna University, 1898; Ph.D., Wesleyan University, 1902; Principal of Friends' Normal Institute, 1891-1892; Professor of Natural Science, Bucknell Academy, 1892-1909; Present position, 1896.

FRANKLIN PIERCE MANIART

B.A., M.A., D.D., LL.D.
Dean of the School of Theology, Professor of Church History and Systematic Theology

Missionary Institute, 1875; B.A., Gettysburg College, 1877; M.A., University of Pennsylvania, 1896; D.D., Gettysburg College, 1899; Head Deaconess' Motherhouse, 1896-1904; LL.D., Wittenburg College, 1925; Present position, 1904.

THEODORE WILLIAM KRETCHMANN

B.A., M.A., B.D., Ph.D.

Professor of Religion and Ethics

University of Pennsylvania (A.B., 1888; A.M., B.D., Ph.D., 1892) Phi Beta Kappa; Philadelphia Lutheran Seminary, 1891; Pastor, Charges: Christ Church, Chestnut Hill, Philadelphia; Atonement, Buffalo, N. Y.; St. Stephen's West Philadelphia; Instructor in Hebrew, Philadelphia Lutheran Theological Seminary, 1892-1898; Professor of Old Testament, Pacific Theological Seminary, Seattle, Washington, 1919-1924; Dean of Washington School of Religion, Seattle, 1924; Present position, 1924.

WILLIAM AGUSTUS SADTLER

M.A., Ph.D., D.D.

Professor of New Testament Exegesis

Muhlenberg College, 1883; Philadelphia Lutheran Seminary, 1888; University of New York, 1892; Pastor, Wilmington, Delaware; Professor in Chicago Lutheran Seminary; 1891-1901; in Wartburg Theological Seminary, Dubuque, Iowa, 1901-1906; in Bethany College, Lindsburg, Kansas, 1906-1909; in Midland College, 1909-1913; Present position, 1923.



JOHN IRWIN WOODRUFF

B.A., M.A., Litt.D., LL.D.

Professor of Philosophy and Director of Extension Work

Missionary Institute, 1888; B.A., Bucknell University, 1890; M.A., Bucknell University, 1893; Litt.D., Wittenburg College, 1903; LL.C., Waynesburg College, 1921; Principal of Friends' Normal Institute, 1890-91; Principal of Mifflin Academy, 1891-92; President, Palatinate College, 1896; Acting President of Susquehanna University, 1901-04; served as member of Pennsylvania Legislature in sessions of 1919 and 1920, during that time he sponsored important educational measures; Lecturer on Educational Subjects; Present position since 1892.

FRANKLIN GRANDEY WILLIAMS

A.B., A.M., Ph.D.

Professor in Mathematics

A.B., Middleburg College, 1913; A.M., Pennsylvania State College, 1923; Cornell University, Ph.D., 1929; Preparatory School positions, 1913-20; Instructor in Mathematics, Pennsylvania State College, 1920-27; Instructor in Mathematics, Cornell University, 1927-29; Member of American Mathematics Society; Mathematics Association of America; Kappa Delta Rho; Phi Mu Alpha; Phi Kappa Phi; and Sigma Xi; Present position, 1929.

HARVEY ADAM SURFACE

B.S., M.S., Sc.D.
Professor of Biology

B.S., Ohio State University, 1891; M.S., *ibid.*, 1892; Sc.D., Franklin and Marshall College, 1910; Assistant Professor in Geology, Ohio State University, 1891-93; Professor of Natural Science, University of the Pacific, 1893-95; Teacher of Zoology, Cornell University, 1895-96; Professor of Biology and Zoology, Pennsylvania State College, 1900-07; State Zoologist, 1904-16; Author of many books; Member of Phi Kappa Phi; Present position, 1920.

J. THEODORE PARK

Sc.B., M.S.
*Assistant Professor of Chemistry
and Physics*

Sc.B., Bucknell University, 1906; Advance work in Electrical Engineering and Physical Research; Principal and Supervising Principal of High Schools for twenty years; Professor of Physics and Chemistry in School of Lackawanna, Scranton, Pa., Professor of Chemistry in City High Schools of Stamford, Conn.; M.S., Susquehanna, 1927; Present position, 1925; Elected to Royal Fellowship Society, 1930.



JOHN J. HOUTZ

B.A., M.A., M.S.
Assistant Professor of Mathematics

Susquehanna University, B.A., 1908; Professor, Renovo High School, 1909; Susquehanna University, M.A., 1910; Louisiana State University, 1912; M.S., Chief Chemist, Belle Hellene Sugar Co., Louisiana, 1913; Superintendent and Chief Chemist, Central "San Vicente," Jovellanos, Cuba, 1914-19; Head of Mathematics Department and Assistant Principal, Sunbury High School, 1919-27; Associate Professor of Mathematics, Susquehanna University Summer School, 1913-27; Present position, 1927.

HAROLD NEWTON FOLLMER

B.A., M.A., D.D.
Professor of Economics and Sociology

Missionary Institute, 1883; B.A., Wittenburg College, 1885; Theology, Susquehanna University, 1887; M.A., Wittenburg College, 1888; D.D., *ibid.*, 1915; Present position, 1909.

HERBERT ALLEN ALLISON

B.A., M.A., Litt.D.

Professor of History and Political Science

Gettysburg Academy, 1890; B.A., Gettysburg College, 1894; M.A., *ibid.*, 1897; Boston University, 1909; Litt.D., Carthage College, 1914; Professor of Mathematics, Palatinate College, 1894-95; Present position, 1896.

ADELBERT C. HARTUNG

B.A., A.M.

Professor of English Literature and Rhetoric

University of Rochester, 1920-24; Harvard, 1924-25; Johns Hopkins, 1927-29; Chicago, 1927; Professor of English, Thiel College, 1926-27; Instructor of English, Johns Hopkins, 1927-28; Present position, 1929.



NAOMI K. HADE

B.A., M.A.

Instructor in English and Dean of Women

B.A., Hood College, 1919; Macedonia High School, Ohio, 1919-20; Physical Director and Girls' Work Sec., West Side Y. W. C. A., Cleveland, Ohio, 1920-21; Chambersburg High School, 1921-23; Student at Columbia University, 1923-24; Head of English Department at Irving College, 1924-26; M.A., Columbia University, 1927; Present position, 1926.

AUGUSTUS WILLIAM AHL

M.A., Ph.D.

Professor of Greek and Bible

Susquehanna University, 1908-10; Graduate, Breklum Seminary, Language and Theological Departments, 1908; Susquehanna University, 1910-12; M.A., Susquehanna University, 1912; Graduate work at Peabody College for Teachers, 1921; Instructor, Vanderbilt University, 1921-22; Author, "Outline of Persian History Based on Cuneiform Inscriptions," 1922; "Bible Studies in the Light of Recent Research," 1923; Member of British Philosophical Society; American Philological Association; American Oriental Society; Corresponding Member of the Academy of Letters and Science of Naples; Classical Association of the Atlantic States; Professor of Greek Language and Literature, Thiel College, 1922-27; Member, Pi Gamma Mu; Present position, 1927.

HANS AUGUSTUS FREDERICT'S KERN

B.A., M.A., U.S.T., M.D., D.D.

*Professor of German, Liturgic and
Christian Sociology*

Elected member of: American Oriental Society; American Classic League; American Association of Modern Languages; Goethe-Bund in America; Pi Gamma Mu; Tau Kappa Alpha; Sponsor of Susquehanna Chapter, Tau Kappa Alpha; Present position, 1924.

EDWIN MONROE BRUNGART

B.A., M.A.

Professor of Latin and Education

Susquehanna Academy, 1895; B.A., Susquehanna University, 1900; M.A., *ibid.*, 1903; Post Graduate Work, University of Pennsylvania, 1907; Principal, Cross Forks High School, 1900-02; Principal, Millinburg Schools, 1902-04; Principal of Susquehanna Academy to 1924; Present position, 1904.



LUCY TAYLOR IRVING

B.S., M.A.

Instructor in Spanish

State Teachers' College, Farmville, Virginia, 1924; Middlebury College, Middlebury, Vermont, 1929; Special Teacher of English, Camuy, Pórtó Rico, 1924-25; Instructor, Farmville High School, Farmville, Virginia, 1925-26; Instructor, Lares High School, Lares, Pórtó Rico, 1926-27; Secretary to the Dean of the Spanish School, Middlebury College, 1928-29; Member of Sigma Delta Pi; Present position, 1929.

EVELYN ROSE ALLISON

B.A., M.A.

Instructor in French

Susquehanna University, B.A., 1920; Hewlett School for Girls, Long Island, 1920-21; Teacher, South Williamsport High School, 1921-24; Hanover High School, 1924-27; M.A., Susquehanna University, 1924; Graduate Work, Columbia University Summer Session, 1924; French Institute, Penn State, 1924; Columbia University Summer Session, 1927; Columbia University, Second Semester, 1927-28; University of Grenoble, Summer School, 1928; Present position, 1927.

MARY E. WOODRUFF

B.S., M.A.

Assistant Professor of Latin

B.S., Susquehanna University, 1919;
Taught in Susquehanna Academy, 1919-20;
Nanticoke High School, 1920; Present position, 1921.

CHARLES ADAM FISHER

Ph.B., B.A., D.B.A.

Professor of Business Administration

Ph.B., Lebanon University; B.A., Yale University; D.B.A., Thiel College, 1923; Graduate studies at other institutions; Supervising Principal of Schools at Sugar Grove, Russell, Littlestown and Lewistown, 1908-19; Secretary and Sales Manager, Penn. Art Steel Works, Erie; Present position, 1920.



GEORGE NOBLE WOOD

B.A., M.A.

Assistant Professor in Business Administration

B.A., Michigan State Normal College, 1916; M.A., Columbia University, 1922; Superintendent of Schools, Standish, Michigan; Vice-President of State Oratorical Association and County Normal Board, 1916-19; Professor of Economics, Hillsdale College, 1919-21; Professor of Business, Cultural Institute, New York, 1921-23; Superintendent of Schools, St. Louis, Michigan, 1923-26; Present position, 1927.

EMILY McELWEE

B.S.

Instructor in Secretarial Studies

B.S., Susquehanna University, 1927; Teacher, Mount Carmel High School; Present position, 1927.

SARA E. SEAL

B.S.

Instructor in Business Administration

Columbia University; B.S., Susquehanna University; Present position, 1928.

E. EDWIN SHELDON

Mus.M.

Director of Conservatory of Music

Anna College, 1892; Baldwin Wallace College, 1894; Oberlin Conservatory of Music, 1895-98; New England Conservatory of Music, 1900; Instructor, Toledo Conservatory of Music, 1900-01; Director of Susquehanna University Conservatory of Music, 1903-10; Director, Lebanon Valley College Conservatory of Music, 1910-20; Cornell Summer Work, 1918; Graduate of New York University Summer Music School, 1921; Present position, 1920.



IDA MANEVAL SHELDON

Mus.B.

Instructor in Voice, Harmony and History of Music

Mansfield State Normal, 1900; Susquehanna Conservatory of Music, 1907-10; Seven Studios, New York Summer School, 1908; Instructor, Lebanon Valley College Conservatory of Music, 1910-20; Graduate Work in Voice and Harmony, New York University Summer Music School, 1919; Present position, 1920.

PERCY MATHIAS LINEBAUGH

Mus.B.

Instructor in Pianoforte, Organ, Rudiments and Keyboard Harmony

Graduate of Lebanon Valley College Conservatory of Music in Piano, 1916; in Organ with Mus.B., 1917; Instructor in Piano, Harrisburg, 1917; Instructor in Piano and Ear Training, Lebanon Valley Conservatory of Music; with A. E. F. in France, 1918-19; New York University Summer School, 1921; Peabody Institute of Music, 1922; Present position, 1921.

MARY KATHRYN POTTEIGER

Mus.B.

Instructor in Piano, Sight Singing and Dictation

Susquehanna University Conservatory of Music, 1924; New York University Summer School, 1926; Present position, 1924.

WILLIAM DONALD HEMPHILL

Mus.B.

Professor of Violin and Orchestra

Mus.B., Kansas State Teachers' College (Hays), 1925; Bush Conservatory of Music, Chicago, 1927; Present position, 1927.



BERTHA LANSING RODGERS

L.T.C.M.

Instructor in Voice

Student and Church Soloist in Cleveland, Ohio; Toronto Conservatory, 1915; Studies with Prominent Teachers in New York City; Choir and Concert Engagements in New York City; Toured the United States and Canada with Hans Kronold, Cellist; Present position, 1928.

ELROSE L. ALLISON

Mus.B.

Instructor in Piano, Organ, Dictation and Harmony

Susquehanna University, Mus.B., 1928; Present position, 1928.

EMMA B. CUNNINGHAM

B.S.

Instructor in Public School Music

Institute of Music, Mt. Pleasant, Pa., 1909-14; State College Music Course, Summer, 1916; Cornell Summer School, 1918-24; Pittsburgh Summer School, 1927; B.S., New York University, 1928; Supervisor of Music, Mt. Pleasant, Pa., 1919-22; Assistant Director of Music, California Normal, 1924; Director of Music, Millersville State Teachers' College, 1928; Supervisor of Music, Selinsgrove Public Schools; Instructor in Public School Music, 1928; Present position, 1928.

LUTHER DAY GROSSMAN

B.S.

Professor of Physical Education and of Athletics

General Secretary and Physical Director of Y. M. C. A., 1908-11; Springfield College Summer School, 1914; B.S., Susquehanna University, 1916; Special Teachers' Course in Physical Education, Temple University, 1916-19; Director of Physical Education and Athletics, Lower Merion High School, 1916-21; Director, Athletic Activities, Camp Kennebec, N. Belgrade, Me., 1921-25; Lower Merion High School, Athletic Director and Coach, 1925-27; Present position, 1927.



WILLIAM ULLERY

B.S.

Coach of Athletics

Graduate of Pennsylvania State College;
Present position, 1928.

DOROTHY WELSH REEDER

B.A.

Instructor in Physical Education of Women

Kellogg School of Physical Education of Battle Creek College; Instructor, Swimming and Canoeing, Camp Keewano, Mich., 1923-24; Campfire Executive and Director, Camp Tahapis, Butte, Mont., 1925; Susquehanna University, 1924-26; Executive Secretary, Campfire Girls, Sandusky, Ohio, 1926-28; Columbia University, Summer Session, 1928; Present position, 1928.

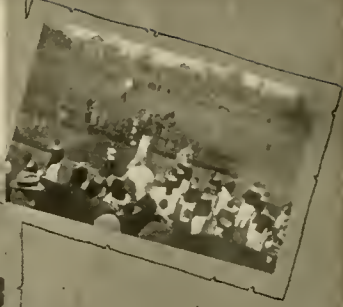


MARTHA S. DODSON
Librarian
B.L.E.

Syracuse University; Reference Librarian,
James V. Brown Library, Williamsport, Pa.;
Present position, 1928.

MRS. LITTLE
House Mother

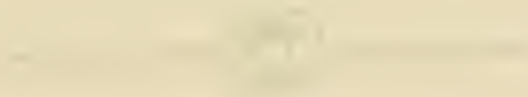
BEAUTIFUL



BEAUTIFUL

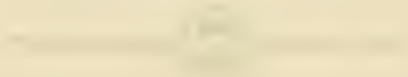


CLASSES





SENIORS



THE CLASS OF '30

CLIFFORD KIROCOFFE	<i>President</i>
	<i>Vice-President</i>
MARJORIE PHILLIPS	<i>Secretary</i>
	<i>Treasurer</i>
ANNA MOORE	<i>Class Historian</i>

HAS it been four years since that memorable day in 1926 when the Class of '30 made their first entrance upon S. U.'s campus? The friendly greetings at once made us feel quite at home and for a few days we were treated as royal guests. Then when the Sophomores decided that the tradition of keeping the "Frosh" in submission must be kept alive they placed their "sentences" upon us. This rather hurt the pride of such an ambitious class, but now we are glad that we "wore the sack cloth and paint" and obeyed their commands. It was not long before the Class of '30 staged their "getaway." On this great night, Luke Rhoads was selected as our class president. A large proportion of the football squads was made up of our classmates and they brought much glory to their Alma Mater. The same active spirit and ability was shown by our members in Debating, on the Glee Club, Choral Club and in both social and Academic realms.

When we returned as Sophomores, many of our "pioneer" members were missing, but others had come in to take their places. Henry Hartley had been selected to pilot "our ship of state" during that year. We won trophies in soccer and hockey, the Interclass Basketball Championship, and again many of our classmates had places on the Varsity teams. At the close of the year a pleasant feeling of satisfaction possessed us, knowing that we had aided considerably in the welfare of our school.

To keep up our established reputation of having efficient officers, the following were elected to carry on the activities of our Junior Year: Frank Ramsey, president; Howard Lukehart, vice-president; Marjorie Phillips, secretary; George Spangler, treasurer; and Howard Wertz, historian. Our Junior Prom was an event receiving much favorable commendation. At the close of the year we accepted the Mantle from the Class of '29, well assured that we could keep up the high standard established by that preceding class.

Thus, we are pressing on to our graduation day, happy with the memories of four wonderful years, and trusting that we have aided in keeping the name of Susquehanna clean and unblemished.

ANNA MOORE, *Class Historian.*

ELWOOD A. ADAMS
Freeburg, Pa.

General Science

Epsilon Sigma

Selinsgrove High School; Class Football, (2); Varsity, (1, 2);
Natural Science Club.



PAUL M. BISHOP
Harrisburg, Pa.

Commercial Education

Phi Mu Delta

Class Football, (1, 2); Class Basketball, (1); Class Track,
(1, 2, 3); Class Soccer, (2); Varsity Track, (1, 2, 3); Varsity
Relay Team, (5).



EDWARD T. BOLLINGER
Williamsport, Pa.

Classical

Class Soccer Team, (2, 3, 4); President, Pre-Theological Club,
(3); Glee Club, (1, 2); President, Glee Club, (2); Y Cabinet
Member, (2, 3, 4); Vice-President Y. M. C. A., (3); Class His-
torian, (1, 2).



N. EVELYN BRINSER
Middletown, Pa.

Commerce Teacher Training

Sigma Sigma Delta

Middletown High School; Y. W. C. A., (3, 4); Spanish Club,
(4); Women's Co-Operative Council, (4).



ANNE M. CLEAVER
1736 Walnut St.
Ashland, Pa.

Business Administration

Kappa Delta Phi

Ashland High School; Hockey, (1, 2, 3); Baseball, (2, 3);
Secretary of Class, (1); Girls' Financial Secretary, (4); Sus-
quehanna Staff, (3, 4); Statistician of Lanthorn; Student Coun-
cil, President, (4); May Day, (1, 2, 3).





TWILA CREBS
Selinsgrove, Pa.

Education Selinsgrove High School; Hockey, (1, 2, 3); Class Basketball, (1, 2, 3); Track, (1, 2); Y. W. C. A. *Sigma Sigma Delta*



HAROLD E. CROSSMAN
5 Dickinson St.
Amherst, Mass.

Business Administration Amherst High School; Bay Path Institute; Class Football, (1, 2, 3); Fraternity Basketball, (2, 3); Fraternity Baseball, (2, 3); Class Soccer, (1, 2, 3, 4); Assistant Baseball Manager, (3); Baseball Manager, (4). *Epsilon Sigma*



JOHN FRANCIS DeLAY
117 Rowe St.
Tamaqua, Pa.

Business Administration Tamaqua High School; Varsity Football, (1, 2, 3, 4); Varsity Basketball, (1, 2, 3); Varsity Track, (1, 2, 3, 4); Varsity "S" Club; Sports Editor Susquehanna, (3). *Phi Mu Delta*



ELIZABETH DAUBENSPECK
Selinsgrove, Pa.

Education Selinsgrove High School, 26. *Sigma Sigma Delta*



JANET DIVELY
Berlin, Pa.

Public High School Music Berlin High School; Choral Club, (1, 2, 3, 4); Orchestra, (1, 2, 3, 4); Trinity Choir, (1, 2, 3, 4); Y. M. C. A., (1, 2, 3, 4). *Sigma Alpha Iota*

MARY MARGARET EASTEP
Williamsburg, Pa.

Education

Williamsburg High School; Member Student Council, (2, 3); Vice-President, (3); Assistant Editor Lanthorn, (3); Y. W. C. A., (1, 2, 3, 4); Cabinet Member, (2, 3, 4); Alumni Editor Susquehanna; Ladies' Choral Club, (3, 4); Debating Team, (1, 2); Pi Gamma Mu.

Sigma Sigma Delta



EDITH E. ERDLY
Selinsgrove, Pa.

Education

Selinsgrove High School; Y. W. C. A., (1, 2, 3, 4); Class Hockey, (1, 2); Debating Club, (3); Women's Co-operative Council, (4).

Sigma Sigma Delta



RUTH H. ERIDMAN
Burkittsville Md.

Education

Middletown High School; Pi Gamma Mu; Hockey, (1, 2, 3); Y. W. C. A., (1, 2, 3, 4); Y. W. C. A. Cabinet, (2); Sophomore Hop Committee, (2); Junior Prom Committee, (3); Lanthorn Staff, (3); Intersorority Council, (3); Hay Day, (1, 2, 3, 4); House Committee, (4).

Kappa Delta Phi



CLOYD R. FISHER
Selinsgrove, Pa.

General Science

Selinsgrove High School; Y. M. C. A.; Pre-Medical Club.



RAYMOND P. GARMAN
Sunbury, Pa.

Education

Sunbury High School; Varsity Football, (1, 2, 3, 4); Varsity Track, (2).

Bond and Key





ARTHUR A. H. GELNETT
Swineford, Pa.

Business Administration *Phi Mu Delta*
Middleburg High School; Class Baseball, (1, 2, 3); Class Soccer, (1, 2, 3); University Orchestra, (1, 2, 3).



MILLER GERHARDT
300 Pine St.
Johnstown, Pa.

General Science *Bond and Key*
Varsity Track, (1, 2, 3, 4); Varsity Basketball, (2, 4); Penn Relay Team, (2); Inter-Class Football, (1, 2).



RUTH D. GOFF
141 Watkins Ave.
Belleville, Pa.

Education *Kappa Delta Phi*
Aspinwall High School; Y. W. C. A., (1, 2, 3, 4); Class Hockey, (2, 3); Class Basketball, (1, 2, 3, 4); Track, (1).



MARY E. GRENINGER
Logantown, Pa.

Education *Kappa Delta Phi*
Logantown High School; Class Basketball, (1, 2, 3); Captain, (2); Hockey, (1, 2, 3); Junior Hockey Captain; Sophomore Baseball Captain; Varsity "S" Club; Y. M. C. A.; Natural Science Club.



WAYNE HALL
Baxter, Pa.

Business Administration *Phi Lambda Theta*
Brookville High School, '25; Sub-Assistant Track Manager, (2); Assistant Track Manager, (3); Y. M. C. A., (1).

GERTRUDE A. HART
Rock Glen, Pa.

Education

Rock Glen High School, '26.



WELLINGTON PURSEL HARTMAN
Danville, Pa.

Business Administration

Epsilon Sigma

Danville High School; Class Football, (1, 2, 3); Soccer, (2, 3, 4); Basketball, Class, (2, 3); Varsity Track, (2, 4); Band, (3, 4); Bloomsburg State Teachers' College, Summer Session, '29.



LEOLIN HAYES
DuBois, Pa.

Education

Bond and Key

Sandy High School; Science Club; Lanthorn Editorial Staff; University Orchestra, (1, 2, 3, 4); Class Soccer, (1, 2, 3, 4).



RUSSELL C. HEIM

Business Administration

Kappa Sigma

Cross Country, (1, 2); Baseball, (1, 2, 3, 4); Basketball, (2, 4); Track, (1, 2).



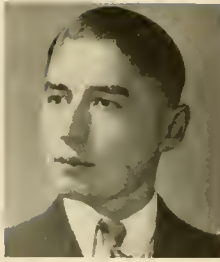
ROBERT E. HEPNER
Herndon, Pa.

Education

Bond and Key

Glee Club, (1, 2); Class Football, (1, 2); Class Basketball, (1, 2); High School Principal.





LEWIS HERROLD
Port Trevorton, Pa.

Pre-Medical

Selinsgrove High School; Pre-Medical Society; Class Soccer, (1, 2, 3); Class Track, (2, 3); Class Baseball; Y. M. C. A., (3, 4); Natural Science Club, (1, 2, 3, 4).



ROBERT F. HOSTETTER
308 W. Burgess St., N. S.
Pittsburgh, Pa.

Education

Phi Mu Delta

Cheerleader, (1, 2, 3, 4); Glee Club, (3, 4); Student Director, (4); Class Football, (1, 2, 3, 4); Soccer, (2, 3); Junior Varsity Football, (1, 2).



VINCENT M. JONES
Centralia, Pa.

Business Administration

Phi Lambda Theta

Track, (3); Class Football, (1, 2); Class Basketball, (2, 3); Business Staff, Lanthorn; Sophomore Hop Committee.



OREN S. KALTRITER
Selinsgrove, Pa.

General Science

S. U. Academy, 1922-24; Tennis, (3, 4); Class Tennis, (4); Science Society, (3, 4); Y. M. C. A., (3, 4); Pi Gamma Mu; Band, (4).



CLIFFORD A. KIRACOFFE
315 S. Pitt St.
Carlisle, Pa.

Social Science

Bond and Key

Pi Gamma Mu, President, (4); Athletic Board, (3, 4); Student Council, (3); Business Manager, Lanthorn, (3); Junior Prom Committee, (3); Tennis, (1, 2); Captain, (3, 4); Cheer Leader, (1, 2, 3, 4); Head, (4); General Manager Sophomore Hop, (2); Class Treasurer, (2); Class Soccer Manager, (2); Class Tennis Manager, (2); Sophomore Tribunal, (2).

LILLIAN KORDES
Timblin, Pa.

Education
Kitanning High School; Thiel, '26-27; Basketball, (1, 4);
Hockey, (2); Y. W. C. A., (1, 4); Spanish Club; French Club.

Sigma Sigma Delta



LUTHER D. KURTZ
Mifflinburg, Pa.

Business Administration
Glee Club, (1, 2, 3, 4); President, (4); Assistant Baseball Man-
ager, (3); Class Soccer, (2, 3); Business Manager, The Sus-
quehanna, (4).

Phi Mu Delta



GRACE FRANCES LAUER
Ashland, Pa.

Education
Ashland High School; Debating Club, (2); Science Club, (2);
Dramatic Club; Hockey, (2); Y. W. C. A.; Basketball, (2);
Chairman Freshman Library.

Sigma Sigma Delta



FLORENCE LAUER
Selinsgrove, Pa.

Education
Selinsgrove High School.



ARTHUR E. LECRONE
Dallastown, Pa.

Education
Y. M. C. A., (1, 2, 3, 4); Secretary, (3); Science Club, (3,
4); Lanthorn Staff, (3); Glee Club, (4).

Phi Mu Delta





SIDNEY LEONARD

Sunbury, Pa.

Business Administration

Phi Lambda Theta



T. RICHARD MATTERS

Trowelville, Pa.

General Science

Phi Lambda Theta

Mt. Union High School; Honor Science Club; Student Council, (3); Interfraternity Council, (3, 4); Band, (3, 4); Glee Club, (3); Class Soccer, (2, 3, 4).



FENTON C. MEANS

Education

Bond and Key

Football, (1, 2); Captain, (3, 4); Reserve Basketball, (1, 2); Fraternity Basketball, (2, 3); Varsity "S" Club.



RHEA MILLER

Tylersville, Pa.

Education

Sigma Sigma Delta

Loganton High School; Y. W. C. A.; Class Hockey, (1, 2, 3); Class Soccer, (4); Lanthorn Staff, (3).



VIRGINIA E. MOODY

528 N. Eighth Street

Selinsgrove, Pa.

Education

Sigma Alpha Iota

Selinsgrove High School; Choral Club, (1, 2, 3, 4); Pianist, (3, 4); President, (4); Vesper Organist, (3, 4); French Club, (4); Chapel Organist, (2, 3, 4); Y. W. C. A., (3, 4).

ANNA MOORE
DuBois, Pa.

General Science

Omega Delta Sigma

Brady High School; Student Government Council; Y. W. C. A., Vice-President, (3), President, (4); Intersorority Council; Class Historian, (4); Pi Gamma Mu; Science Club.



ISABELLE MORITZ
Plains, Pa.

Education

Sigma Alpha Iota

Plains High School; Student Council, (3, 4); Class Hockey, (1, 2, 3, 4) Baseball, (1, 2); Track, (1, 2); Soccer, (4); Choral Club, (1, 2, 3, 4); Y. W. C. A., (1, 2, 3, 4).



FREDERICK C. MOYER
Freeburg Pa.

General Science

Class Football, (1, 2); Class Baseball, (1, 2); Y. M. C. A.; Natural Science Club; German Schrift Club.



MARJORIE PHILLIPS
Selingsrove, Pa.

Education

Omega Delta Sigma

Selingsrove High School; Ladies' Choral Club, (1, 2, 3, 4); Y. W. C. A.; Class Secretary, (3, 4); Senior Invitation Committee; Intersorority Council, (4).



FRANK ELLSWORTH RAMSEY
Selingsrove, Pa.

Classical

Epsilon Sigma

Editor-in-chief, The Susquehanna, (4), Managing Editor, (3); Manager of Varsity Tennis, (4); President of Class, (3); Manager Men's Debating Teams, (3); Athletic Editor, Lanthorn, (3); Pi Gamma Mu, (4); Intercollegiate Newspaper Association Honorary Key, (4); Tau Kappa Alpha, (4); Interfraternity Council, (4).





JOHN S. RHINE
R. D. 1, McClure, Pa.

Social Science

Phi Beta Rho

McClure High School; Y. M. C. A., (1, 2, 3, 4); Pre-Theological Club, (2, 3, 4); Sophomore Tribunal, (2); Business Manager of Handbook, (3); Track, (1), Track Manager, (4).



LUKE H. RHOADS
443 Thomas Ave.
Johnstown, Pa.

Social Science

Phi Mu Delta

Inter-class Soccer, (2, 3, 4); Class Football, (1, 2); Class Basketball, (2, 3, 4); Varsity Basketball, (1); Pre-Theological Club; Interclass Track; President of Class, (1); Basketball Manager, (4).



SIMON B. RHOADS
Selinsgrove, Pa.

Business Administration

Phi Lambda Theta

Selinsgrove High School; Class Basketball, (2, 3); Junior Varsity Football, (3, 4); Pi Gamma Mu; Class Soccer, (1, 2).



STEWART MILLER SCHRACK
Bonesville, Pa.

Education

Phi Lambda Theta

Loganton High School; Y. M. C. A.; Class Basketball, (3); Lanthorn Staff, (3); Manager Debating Team, (4).



GEORGE MARLIN SPAID
Beavertown, Pa.

Social Science

Beavertown High School; Selinsgrove High School; Susquehanna Summer School; Dickinson College; Class Soccer, (3, 4); Debating Club, (4); Tennis, (3, 4); German Club, (2, 3, 4); French Club, (3, 4).

FLORENCE MAY STEWART
Selinsgrove, Pa.

Social Science

Pi Gamma Mu; Choral Club; Y. W. C. A.

Sigma Sigma Delta



DOROTHY M. STRINE
552 S. Front St.
Milton, Pa.

Commercial Teachers Training

Milton High School; Indiana State Teachers' College; Phi Alpha Tau; Choral Club, (4); Basketball, (4); Hockey, (4); Soccer, (4).



FRANCES C. THOMAS
2015 Riverside Drive
Williamsport, Pa.

Education

Kappa Delta Phi

Class Historian, (1); Y. W. C. A., Secretary, (2); Chairman Social Committee, (4); Natural Science Club, Treasurer, (1, 2, 3); Vice-President, (4); Debating Association, (1, 2); Secretary (2); Varsity Debating Team, (1, 2); Susquehanna Staff, (1, 2, 4); Lanthorn, Editor-in-Chief, 1930, (3); Pi Gamma Mu.



ALMA CHRISTINE THOMPSON
1260 Market St.
Sunbury, Pa.

Business Administration

Sigma Sigma Delta

Millersburg High School; Freshman Hockey.



EDNA TRESSLER
426 Fairmount Ave.
Sunbury, Pa.

Public School Music

Sigma Alpha Iota

Accompanist, Choral Club, (2); Intersorority Council, (4); Student Council, (4).





WILMA NAOMI WALKER

Friedens, Pa.

Education

Friedens High School, '26; Class Basketball, (1, 2, 3); Debating Club, (1, 2, 3, 4), Secretary, (3, 4); Debating Team, (2); Natural Science Club, (1, 2); Y. W. C. A., Vice-President, (4), Financial Secretary, (3); Associate Editor, Lanthorn, (3); Intersorority Council, (4).

Kappa Delta Phi



JOHN H. WALL

1305 Parrett St.
Evansville, Ind.

Business Administration

Varsity Football, (1, 2, 3, 4); Captain, (3); Varsity Basketball, (1, 2, 3, 4), Captain, (3); Varsity Baseball, (3, 4); Varsity Track, (2); Varsity "S" Club, (1, 2); Member Student Council, (3); Member Athletic Board, (4); Financial Secretary Senior Class; Varsity Tennis, (1); Coach Class '30 Basketball Team, (2, 3, 4).

Phi Mu Delta



ELIZABETH WATKINS

317 Harkins Ave.
N. Braddock, Pa.

Education

North Braddock High School, '26; Westminster College, (1); Archer, (3).

Omega Delta Sigma



HOWARD JERRY WERTZ

Mt. Carmel, Pa.

Education

Mt. Carmel High School; Soccer, (1, 2, 3, 4); Class Football, (2); Class Basketball, (1, 2); Class Historian, (3); Assistant Football Manager, (2); Assistant Business Manager of Lanthorn; Sub-Assistant Football Manager, (2); Football Manager, (4); Class Baseball, (2); Junior Prom Committee; Debate, (2).

Epsilon Sigma



ROBERT WILSON

Waymart, Pa.

Education

Debating, (4); Glee Club, (4).

Epsilon Sigma

DONALD S. WORMLEY
Northumberland, Pa.

General Science

Northumberland High School; Varsity Football, (1, 2, 3, 4); Varsity Basketball, (1, 2, 3, 4); Varsity Baseball, (1, 2, 3); Junior Varsity Basketball Coach, (4).

Phi Mu Delta



MARGARET YOUNG
Salisbury, Pa.

Education

Salisbury High School; Marion College; Basketball, (3, 4); Vice-President, Pi Gamma Mu; Dramatics, (2); Junior Oratorical Contest, (3); May Day, (4); Y. W. C. A., (3, 4).

Kappa Delta Phi



JOSEPH J. ZAK
Sunderland, Mass.

Education

Amherst High School; Varsity Football, (1, 2, 3, 4); Varsity Track, (1, 2); Varsity Basketball, (1, 2); Class Basketball, (3); Assistant Basketball Manager; Class Baseball, (3, 4).

Epsilon Sigma



OLD S. U.

*This world seems filled with many schools,
Each school seems full of people.
Each person aiming for the top
Of some high point or steeple.
Some pass the "Grades" and thru the "High."
Then seem content to stop—
But give me Susquehanna's halls
Where schedules make one hop.*

CHORUS

*For it is S. U.—S. U. S. Q. U.
E. H. A. N. N. A.—our boon
She treats us royal. To her be loyal
And wear the Orange and Maroon.
For it is S. U.—S. U. S. Q. U.
E. H. A. N. N. A.—we'll praise
With colors flying. The world defying.
To old S. U.—our song we'll raise.*

*And on our field we like clean sport.
In Football and Baseball battle.
In Baseball we'll keep our heads
Though other teams may rattle.
And when our clubs would represent
Old S. U. in Debate
Or in some concertizing stunt
We try to be sedate.*



JUNIORS



THE CLASS OF '31

WALTER S. FOULKROD.....	<i>President</i>
LENA BAIRD.....	<i>Vice-President</i>
CORINDA SELL.....	<i>Secretary</i>
RICHARD A. SCHARFE.....	<i>Treasurer</i>

THE most favored period of college life is ours. We have reached that point where we can look upon our first two years of college with pleasure in their recollection, but we can still look forward to another year of triumphs. Thoughts of victory thrill us with joy and pride; memory of defeat serves as an incentive for greater efforts.

We entered as other classes have done. During our days as Freshmen we were taught by Superior Ones "our place" in the rank of classes. Indeed, we became familiar with various minor matters which our present dignity will not permit us to mention. Let us remind you, however, that we staged a successful "Get-Away" at which time the Class of '31 was organized on a firm basis with the ejection of competent leaders. We had the great pleasure of humbling our rivals in the "tug-of-war" and in the Freshmen-Sophomore football game. Moreover, to us belonged the Interclass Baseball Championship.

Coming into our inheritance as Sophomores we realized that we had imbibed a considerable amount of wisdom, which we philanthropically lavished upon the immature newcomers. Our valuable time was not spent in vain, since the new class soon displayed its willingness and capability in upholding the traditional customs of our "Alma Mater." Although we were defeated on the gridiron by the Freshmen, we retaliated our defeat by taking the Interclass Soccer and Co-ed's Interclass Hockey trophies. Five of our number figured prominently on the Varsity football team and many were those active in the debating and musical organizations.

Having attained our present status of Juniors, we are no longer entertained by class rivalry, but we take a keen interest in the enterprise of raising the standards of Susquehanna. The girls have acquired the Interclass Hockey and Soccer trophies while the boys almost obtained the Soccer trophy in a closely contested game. We are especially proud that the captainship of the Varsity football team has been ours in 1929 and will also be ours in the 1930 season. We have the unique honor of our class president holding the presidency of the newly organized chapter of Tau Kappa Alpha, the national forensic fraternity. At present we are expending our efforts upon producing a *Lantern*, which will rank favorably with previous ones. The annual Junior Prom, which remains to be featured promises to be an outstanding social event.

Thus far the passing of our career has served to broaden our vision of college life and ideals. Before our final appearance in the *Lantern* we hope to succeed in many lines of endeavor, which will assist in placing Susquehanna in the foremost rank of colleges.

ETHLYNNE MILLER, *Class Historian.*



SIGNE EVANGELINE ALFORD
1007 Kennedy Ave.
Duquesne, Pa.

Commercial *Omega Delta Sigma*

Duquesne High School; Augustana College; Y. W. C. A., (2, 3); Hockey, (3); Soccer, (3); May Day Program, (2); Intersorority Council, (3).

The pleasure is ours in introducing the "Goldilocks" of the class of '31. Just everything about Signe makes us want to know her better.

St. Augustana College in Illinois received the first advantage in having her sunny presence during her Freshman year, but we are proud to claim her remaining three years.

As a typist, "Sig" is one of the best and could easily claim a position in the White House. Not only do we predict a high position in the business world, but due to her personality and charm, we prophesy a high position in the social world.

We are glad to know and to claim you as a friend, Signe

"A flashing smile portraying what is within a true and faithful heart."



JACK AMBICKI
Selinsgrove, Pa.

Education *Phi Mu Delta*
Selinsgrove High School; Band; Orchestra; Class Soccer.

Jack being a day student, one did not see very much of him, yet we wish that he could be with us always, for in his quiet unassuming way he is a true gentleman.

Besides his ability as a student, Jack could play a real game of Soccer. Yet one remembers how he could play that trumpet. Those hot tunes would enable him to play in any orchestra.

Yes, Jack is there when it comes to classes, also. Here he upheld the standard established by former local students.

We are convinced by the way Jack has exhibited his abilities he will be successful in whatever profession he may choose.



ALBERT L. ANSELM
9 Susquehanna Ave.
Wyoming, Pa.

Social Science

Wyoming High School; LL.B., Dickinson School of Law, 1929; Sadler Pre-Legal Society, (3); Member of Debating Team, (3); Tau Kappa Alpha National Debating Association.

Here we have another of our prominent future attorneys. Immediately after the completion of his work at Law School, "Al" enrolled at Susquehanna, where he expects to climax his school days. From the quality of work that he has produced during his stay with us, there is no question as to his future success in the legal profession.

As evidence of his legal ability, "Al" has earned a berth on our Negative Debating Team. Because of his successful work here, he has been elected to the Tau Kappa Alpha National Forensic Society.

The manner in which he displayed his legal talents while serving in the capacity of Senior Attorney in the "mock" trial staged by the Sadler Pre-Legal Society will long be remembered by all who witnessed the "mock" trial.



EDITH E. ASH
Marysville, Pa.

Education

Kappa Delta Phi

Edith came to S. U. only this fall, so we really should feel slighted. But we are proud to have her on our class-roll; and it is our loss that some other institution gave her credits for her first two years.

Very seriously does she apply herself to her studies; but this does not mean that she is always studious and serious. In fact, to let you in on a little secret, Edith does not impress one as that type at all. And if we did not witness her attitude in classes every day, we would disbelieve any positive statement on her scholastic attainments.

Her pleasing personality seems to create a feeling of closer companionship wherever she goes, so one need not wonder at the large number of friends she has already made at S. U.

"To you belong our best wishes, Edith."



LENA O. BAIRD
310 Pennsylvania St.
Altoona, Pa.

Education *Kappa Delta Phi*
Lantern Staff, Altoona High School;
Y. W. C. A., (1, 2, 3); Class Hockey,
(1, 2, 3); Track, (1); Vice-President
of Class, (3); Spanish Club Secretary,
(3).

Aw, quit your kidding, "Lee"!

What shall we say about Lena?

All who meet her immediately wish to know her better. Lena is always in the midst of things whether it be dances, studies, or athletics. She is certainly one of '31's favorites, although '32 seems to like her rather well also.

Lena's good qualities are in such profusion that we find them very hard to enumerate in such a small space.

But have you ever heard of the superior qualities of Bedford, Pa.? Perhaps Lena would digress upon this matter for any interested party.

Our Lee is charmingly feminine, with a quick smile just as sunny as it is sweet.



ALVIN T. BARBER
118 S. Tennessee Ave.
Atlantic City, N. J.

Business Administration *Bond and Key*
Mifflinburg High School; Interfraternity

Council, (3); Band, (2, 3); Varsity
Football, (2, 3); Class Football, (1);
Orchestra, (1); Class Baseball, (1);
Lantern Business Staff; Sub-Assistant
Track Manager Beckley College,
'26.

Who is this tall, husky, well tanned, carefree lad? Let us introduce "Bony" who comes from the vicinity where big mosquitoes and good health prevail.

Our "Bony" seems to be a perfect specimen of good health, and the possessor of a genial disposition.

When passing Selinsgrove Hall, we can usually hear some peculiar noise, and we can always feel quite certain that "Bony's" trombone is taking a "beating," but he claims to be practicing for a chance at Sousa's Band.

"Al" seems to be talented in many different lines and whichever one he decides to pursue, we wish him the best of luck.



LLOYD F. BEDFORD
1409 Monroe St.
Endicott, N. Y.

Business Administration *Phi Mu Delta*
Union Endicott High School; Varsity Football, (1, 2); Varsity Track, (1, 2); Susquehanna business staff; Vice-President of Sophomore Class.

If all the people from Endicott are as fine as Lloyd, it sure would be the ideal city, but one must travel far to find another that will be as much a real friend as Bedford. Always a winning smile and sincere heart has won for Lloyd a host of friends at S. U. His stature is typical of the big way he does things, for he always does all he can in the best way. Scholastically, too, Bedford was always there for his humor and knowledge make him welcome in any classroom.

*"Big ways that weigh with men
Have swayed men now and will then."*



WILBUR E. BERGER
134 Greenwood St.
Coaldale, Pa.

Education *Phi Mu Delta*
Coaldale High School; Circulation Manager of the Susquehanna; Athletic Board; Varsity "S" Club; Interfraternity Council; Y. M. C. A.; Varsity Football, (1, 2, 3); Junior Varsity Basketball; Chairman of Junior Prom Committee.

May we present Berger, athlete and student. Here is one man who can keep a cool head in the midst of difficulties, whether it be making a touchdown on the gridiron or passing an examination in the class-room. He is a student of no mean ability and his success in football during his three years at S. U. cannot be over-estimated.

And did you know Wilbur could sing? Not very many of us realized this until he made his debut at the Phi Mu Minstrels this past year.

As Chairman of our Junior Prom Committee, he surely served the class of '31 most loyally, for it was through his efforts and those of his committee that this important affair proved to be so successful.

Publications have not been omitted from Berger's list of activities and in the capacity of circulation manager of the Susquehanna, more honors came to this lad.

The field of education is his chosen line.



ALMA BOWERSOX
Selinsgrove, Pa.

Business Administration
Kappa Delta Phi
Selinsgrove High School.

Selinsgrove contributed many valuable additions to our class. Alma is one of the best of them. Although a day student, she has not allowed that to prevent her from entering into college activities. She has a natural reserve through which we had to break before we could fully appreciate her character. We found her worth knowing and are proud to have her in our class. Perhaps someday—circumstances not preventing—she will be one of those business women we hear so much about. Whatever you do, Alma, we believe you can do it and wish you much success.

"To those who know thee all words are faint.

And to those who know thee not no words can paint."

VERNON BLOUGH
Johnstown, Pa.

Education
Westmont High School; Lanthorn Staff;
Susquehanna Staff.

Vernon comes from the famous city of Johnstown and if one lists his true friends of old S. U. Blough is sure to be among them. If one wants to meet a real student just let him meet Vernon; if you want a real fellow, take Vernon; and if you want someone to do something right, just let Vernon do it.

In classwork Blough has for his slogan "Be Prepared," for he always knows his lesson and knows it well.

As to characteristics, those of thoroughness and promptness are outstanding. He has a sense of humor that is somewhat hidden by an unassuming manner, but is very entertaining when one knows him well.

We know that some day the class of '31 will be proud of Vernon and we hope he is exceedingly successful.



IRENE BROUSE
354 Sixth St.
Northumberland, Pa.

Education *Sigma Sigma Delta*

Irene has proved a good friend to all who know her well. She is one of that valiant band which provides a "raison d'être" for the Sunbury-Selingsgrove Railway Company. Every day she commits her well being to its care.

Irene is one of a very rare species—a good Latin student. Can't you just imagine her teaching indirect discourse or ablative absolute? She has shown herself to be possessed of a very well developed sense of humor. She is not always so quiet as one might suppose. Sometimes she—well, ask someone about the noon exhibitions in the social room. Irene is a good student, and above all a good classmate. Unless she is the exception that proves the rule, we are willing to wager that Irene will do something worth while after she leaves S. U.



LOIS BRUNGART
Selingsgrove, Pa.

Education *Kappa Delta Phi*

Selingsgrove High School, '27; Orchestra,
(1, 2, 3).

Lois is a day student. Because of this, we suppose, most of us do not know her quite as well as we would like.

We have discovered that under her demureness and quietness is friendliness and sweetness, and satirical wit that is refreshing and inexhaustibly clever. She is a clever little dancer—and we are certain you know all about her ability on the cello. We have heard her make that instrument sing, and we know that she is invaluable to the orchestra of S. U.

Lois admits a weakness for dogs—there are quite a few of us who would like as much attention from her as her dog gets.

The class of '31 knows her well enough to hope that she'll be the biggest sort of a success in every way—we even expect it of her.

"Pretty—wise and witty."



NORMAN H. BROUGHT
Lewistown, Pa.

Education

Lewistown High School; Class Soccer, (1, 2, 3); Class Baseball, (1, 2); Class Track, (1, 2, 3); Varsity Track, (2, 3); Y. M. C. A.; Chapel Monitor, (3).

Although small in stature, "Norm" possesses all the qualities necessary to produce an efficient and powerful citizen of the little haven of Lewistown. He is always ready to lend a helping hand to any person in need, or to any project which the class may undertake. His prowess has also been well demonstrated on the track.

His accuracy in mathematics cannot be laid idly aside, for the Junior boys who occupy the first few rows of seats during Chapel exercises can well testify to this. Promptly at the playing of "Holy, Holy, Holy," "Norm" can be detected checking up on the late-comers.

But this is not all. Lately there have been rumors on the campus that a certain fair damsel from Harrisburg has captivated the heart of our classmate and student. In fact, this young lady has done it so well that "Norm" now passes Seibert Hall without even giving a thought to the fair ones that reside therein.



WALTER L. BURFORD
205 Laurel Ave.
Bellevue, Pa.

Business Administration Bond and Key
Bellevue High School; Class Soccer, (1, 2, 3); Varsity Tennis, (2, 3); Varsity "S" Club; Lanthorn Business Staff; Junior Prom Committee.

"Burf" "Jit"

This dignified and reserved young gentleman is none other than our friend "Burf." "Jit's" keen sense of humor and his ability to amuse and entertain makes him one of the most desirable characters on the campus.

Well dressed? We should say so. And, by the way, we are taking this opportunity of announcing that he is one of the distinguished members of the Seibert Hall Club.

"Burf" has shown us that he certainly can wield a "mean" tennis racket. He has been on the varsity tennis team for two years and all those who have seen him play can readily testify that in this line he is outstanding.

"Jit" tells us he is planning to enter the business world after graduation. With his integrity we are sure he will be a great success in his chosen field. He has already given us a sample of his work as one of the assistants on the Lanthorn Business Staff. His persistence is sure to bring him deserved success.

*"Then give to the world the best you have,
And the best will come back to you."*



GLENN H. CLARK
McClure, Pa.

Education *Bond and Key*

McClure High School, '25; Middleburg High School, '27; Class Football, (1); Class Soccer, (1, 2, 3); Class Baseball, (1); Class Track; Natural Science Club, (1, 2); Honor Science Society.

"Guzz," the boy from McClure, has what some term an instinct for study. He believes in the art of concentration and also in pleasure seeking. His idea is "getting all the work prepared, and then let's have fun." No person can deny that this is a perfectly fine policy.

Glenn is also one of those boys who has helped to uphold the athletic end of the class of 1931. He has been on the football teams and has performed nobly in each game.

He has had the privilege of rooming in "Old Sleepy Hollow," which has now passed into the realms of the "has-beens."

"Guzz" usually makes several weekly trips to Sunbury, but we are sure that the movies are not the only attraction.

"When you want a thing done, do it yourself."



FRANCIS J. DEVERS
Avoca, Pa.

Pre-Medical

Avoca High School; St. Thomas College; Glee Club, (3).

"Dev"

"Dev" has come from St. Thomas College to join the class of '31. This is his first year on the campus of S. U., and has made a host of friends.

He is a likable chap, with a smiling personality and a helping hand for everyone. "Dev" has vocal talent and has won a place on the Glee Club. Also, his initiative along that line led him to form a quartet known as "The Glassinger Quartet," of which he is the leader. Many a bright moonlit night, strains of music are heard over the campus, coming from this famed quartet. "Dev" is right there when it comes to singing.

Along with being interested in the social and extra-curricular sides of college life, "Dev" is also a student of high standing and expects to continue his work at a medical school next year.

The Class of '31 wishes you all the success in your chosen profession.

"Music hath charms."



BEATRICE DeWIRE
2230 North Fourth St.
Harrisburg, Pa.

Education *Kappa Delta Phi*
William Penn High School, '27; Class Hockey, (1); Captain, (2, 3); Soccer, (3); Basketball, Captain, (1, 2); Baseball, (1, 2); Track, (1, 2); French Club, (3); Spanish Club, (3).

From the capital city comes this capital girl, fair-haired and blue-eyed. Once "Bea" almost decided to leave S. U. and to continue her work at Bucknell. What a howl all the Co-eds set up at this idea and there certainly was an equal amount of rejoicing when she decided to remain with us.

"Bea's" father is a coach and perhaps this may account for her interest in sports. You may find her represented on all class teams, fighting hard to bring in the trophies for the Class of 1931. She was captain of the Hockey Team this year and we must say that she surely can handle a stick in a manner worthy of a "DeWire."

*"Blue were her eyes as the fairy-flax,
Her cheeks like the dawn of day."*



ROBERT DONNELL
Montoursville, Pa.

General Science *Bond and Key*
Natural Science Club; Varsity Baseball, (1, 2, 3); Class Soccer, (1); Junior Varsity Basketball, (1); Class Football, (2).

Wouldn't we all be proud to possess a big smile and disposition like Bobby? We really think his name should have been "Service," because everywhere he aims to serve, not only in the dining room, but on the athletic field, he is one who continually keeps serving baseballs to our opponents on the diamonds.

It is always easy to start a conversation with Bob and in case you don't know how, here it is—just mention the subject of baseball.

Robert's highest aspiration is to be a doctor, but we really think he would look more natural on the mound of a big league diamond than behind an operating table. But whatever you undertake, Bob, success will surely be yours.



NEVIN EUGENE DORSHIMER
Brodheadsville, Pa.

Social Science *Epsilon Sigma*
Chestnut Hill Township High School;
Natural Science Club, (1); Class Soc-
cer, (1, 2); Sub-Assistant Football
Manager, Assistant Football Manager,

"Nev"

This quiet and reserved chap hails from Brodheadsville. During his three years at S. U., "Nev" has made a host of friendships.

"Nev's" interests seem to have deeper root than the halls of Seibert Hall, for this curly-haired lad is not seen escorting the fair demoiselles about the campus. His aims are far-reaching, and intends to aspire to the deeper realms of biological studies.

Along with being a student, "Nev" has athletic inclinations. Although he has not actually participated in football, he, nevertheless, knows the technique from the managerial point of view, for he has been elected manager of the Varsity squad.

The Class of 1931 wishes you all the success in your future endeavors.



WILDA K. FEY
Tamaqua, Pa.

Business Administration
Tamaqua High School, '27; Summer
School, S. U., '28, '29; Choral Club,
(1, 2); Archery, (2, 3); Y. W. C. A.

Another addition to S. U.'s campus from the coal cracker city of Tamaqua is Wilda.

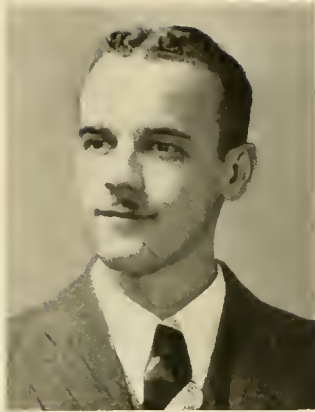
The thing we know best about this "Indian Maid" is that she is a whale of a proctor! With Wilda on the job, quiet reigns on the third floor, that is, if everyone else is at the library. Seriously, we would say that Wilda is the House Committee's choice for an ideal monitor to keep the peace.

That Wilda studies late, we are well aware, for many a night we can see her desk lamp burning after most girls are in bed.

On the athletic field, Wilda is always ready to help the team along.

Her chief ambition is to be "Somebody's Stenographer" and we have no doubt but that she will make an ideal one.

We are sorry to say that this addition to the class will become a subtraction next year, for Wilda has planned to be graduated ahead of us. Needless to say, '31 will miss her.



FREDERICK RAYMOND FISHER
31 South Water St.
Bellevonte, Pa.

Business Administration

Phi Lambda Theta

Bellevonte High School, '27; Y. M. C. A.;
Class Basketball, (1); Fraternity Bas-
ketball, (2, 3); Soccer, (1, 2, 3);
Assistant Track Manager.

"Freddy"

"Freddy" comes to us from the metrop-
olis of Bellevonte, the county seat of Cen-
ter County, the place that gave three
governors to Pennsylvania.

He is very talkative and sure loves
to think of the day when he is to make
fourth governor for Pennsylvania. His
activities on the campus are rather lim-
ited, but concentrated mainly on one
thing. He is a member of the "Sops of
Seibert Hall."

As an educator, "Freddy" is a whiz
because he spends most of his week
ends traveling—?



S. WALTER FOULDRD, JR.
Conyngnam, Pa.

Social Science *Phi Lambda Theta*

President Sophomore Class; President
Junior Class; President Debating So-
ciety, '29-'30; Y. M. C. A.; Varsity
Debating Team, (1, 2, 3); Tau Kappa
Alpha, President, (3); Pi Gamma Mu;
Class Baseball, (1, 2); Class Football,
(1, 2); Editorial Staff of Lanthorn.

The city of "brotherly love" was kind
to us when they gave us "Wally." When-
ever anyone mentions "debating", Walter
is always the first person to be mentioned.
Whether it be in a friendly conversation
or on the platform, he is always ready
for an argument, and his ability in the
art of convincing oratory has won nu-
merous contests for his Alma Mater.

Walter has faithfully served the Class
of '31 in the capacity of president during
two years. He has handled our class and
we owe him a debt of appreciation which
can never fully be repaid.

It was largely through his efforts that
the Susquehanna Chapter of Tau Kappa
Alpha became a reality.

As a lawyer, Walter can be nothing
less than extremely successful, with his
logical mind and the start he has we
expect big things.



PAUL WETZEL FREED
Beavertown, Pa.

Public School Music

Beavertown High School; Selinsgrove High School; Susquehanna University Summer School.

"Step on the gas; we're late."

Paul is one of the quiet members of our class. He is a very diligent student, and is inclined along musical lines. He is seldom seen about the campus or athletic field, due to the fact that he commutes from Beavertown every day.

Paul has attended several summer sessions here, so he is really not a new addition to the Class of 1931, but he is, nevertheless, warmly welcomed to our midst as a classmate.

Paul is aspiring to high ideals, and after graduating from S. U. intends to profess in Public School Music.

The Class of 1931 wishes you, Paul, the best of luck in your pursuit of greater things and may your attainment be a success worthy of your efforts.



DAVID S. FULCOMER
Tyrone, Pa.

Commercial

Warriors Mark High School; S. U. Summer School, (2); Class Baseball, (3); Class Soccer, (3); Beckley College, (1, 2).

Beckley College lost a good man when Dave left its portals to take work at Susquehanna. Although he has only been in our midst since the beginning of this school term, everyone knows this conscientious boy. In the classroom Dave feels right at home; the word "unprepared" is obsolete in his mind.

We understand that somewhere in the metropolis of Harrisburg there is an attraction which leads him to travel south on week-ends. There's nothing like an inspiration, Dave.

Dave is interested in the business world, and we feel safe in saying that somewhere there is a place waiting for him which will yield heaps of success.

"Best of luck, Dave."



WILLIAM E. GALLAGHER
506 Charles St.
Luzerne, Pa.

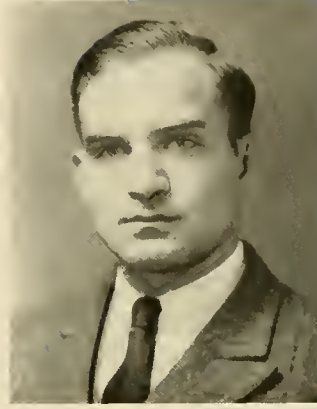
Pre-Medical

Pringle High School; Class Soccer, (1, 2, 3); Pre-Legal Club, (2, 3); Class Track, (2); Class Football, (1).

Well, well, if it isn't our old pal "Bill." He is a quiet, studious boy, always minding his own business and never getting into trouble. He has done quite well in his classes, and has never been known to grumble about his marks—for he is just a jolly good fellow. He is always willing to give a helping hand and never fails to get his own tasks done.

Since Hassinger Hall has been equipped with a radio, he has acquired the title "Radio Bill." Before retiring every Thursday night, "Bill" tunes in on the Irish reels and jiggs, at which time he exhibits his dancing skill.

His major interests are found in the sciences. He has dissected many specimens and found it very interesting. He was always anxious to know when Dr. Surface would display another specimen for dissection. From all indications, it won't be long until we see posted up in Luzerne the sign "Wm. Gallagher, M. D."



ALTON GARMAN
140 N. Sixth St.
Sunbury, Pa.

Education

Bond and Key

Sunbury High School; Varsity Football, (1, 2, 3); Captain, (3, 4).

Let us introduce the "Will Rogers" of Susquehanna. "Al's" original jokes and wise-cracks have won him a host of friends on the campus. He always has a good word for every person he meets, and if you feel blue just see Al and get on the road to laughter.

"Al" came to us from the metropolis of Sunbury with a bit of football fame which he has proved in his three years on our campus as a member of our varsity football squad.

"Al" intends to teach math when he leaves S. U., and we believe that at this he can not help but be a success.

We want to wish you the best of luck, "Al."

"Laugh and the world laughs with you!"



J. RICHARD GOETZ
1937 Whitehall St.
Harrisburg, Pa.

Education *Phi Lambda Theta*
Harrisburg Academy, '22; Franklin and Marshall College, '22-'23; Susquehanna, '24; Varsity Track, (1, 3); Class Track, (3); Fraternity Basketball, (3); Class Soccer, (3); Debating Association, (3); Junior Prom Committee, (3).

"Dick"

Although not himself a stranger at S. U., "Dick" was unknown to most of us when he came to our campus last fall. For several days he was known as "the man in the brown suit."

But when classes had begun and we learned to know "Goetz" a little better we found in him a man of marked intellectual capacity. His remarkable vocabulary and ability to use the English language are also among his attributes.

His athletic training has not been neglected and it was he who carried off the high jump for the Juniors in the Indoor Track Meet.

"Dick" plans to work for a Ph.D in psychology. His ambitions are high and our best wishes for his success are equally as lofty.



DANIEL F. GRAHAM
Cincinnati, Ohio

Educational Course *Bond and Key*
Track, (1, 2); Class Basketball, (1, 2); Assistant Cheer Leader, (1, 2); Class Football, (1, 2); North Braddock High School.

The "Prodigal" has returned. "Danny" could not stay away from the campus and we are led to believe that it is not all on account of studies and the fellows here at school. There must be some other attraction because we understand that "Danny" is a member of the "Sons of Seibert."

"Crackers" has had his hands full of late as he seems to have assumed the position of assistant coach. He spends much of his time on the athletic field seeing that the teams are in good condition.

All in all "Dan" is just another proof that good goods come in small packages. We know that he will be another successful member of the Class of '31.



DAVID IRVIN GRAYBILL

Paxtonville, Pa.

General Science *Phi Lambda Theta*

Middleburg High School, '26; Class Soccer, (1, 2, 3); Track, (1).

"Dig"

"Dig" came to us from a town whose main exports are "bricks." He certainly brought a considerable amount of his commodity along with him for he sure is a "brick." His general disposition cannot be ruffled, not even by the roughhouse antics of the "Day Students' Room."

"Dig" is also a good student and is more interested in mathematics than any other subject. He is not only a student, but an athlete of no mean ability, for he has proved himself one of the versatile artists appearing in Grossman's Frolics.

"Dig" likes to have a good time, yet never neglects his work. We predict his success and feel certain that some day he will make Paxtonville famous.



J. WALTER GROCE

Education

Bond and Key

Selinsgrove High School, 1927; Natural Science Club, (1, 2); Honorary Society, (3); Class Football, (1, 2); Class Soccer, (2).

"Mother," as Walter is more commonly known about the campus halls from Selinsgrove. He belongs to that group that has just a little difficulty in getting to class on time. As a student, however, he is diligent and thorough.

"Mother" has taken an interest in class athletics, especially football. He has been a member of the class football team and has shown his integrity in this sport at all times.

Walter intends to enter the noble field of teaching, and is preparing himself along scientific lines.

As a scientist—Walter has proved himself to be one of '31's outstanding.



SARA R. HAINES
Millheim, Pa.

Educational Course — *Sigma Sigma Delta*
Millheim High School.

Sara is one of the staid and practical minded members of our class. While she likes a good time as well as any of us, she never lets pleasure interfere with her business—her studies.

Sara belongs on the list of excellent, efficient proctors. As far as we know, Sara doesn't give demerits, but she has a stern demeanor when enacting her "policeman" role which frightens her charges into silence.

This young lady is fortunate enough to be able to ride in a car as often as she chooses, but then—we all haven't brothers, have we, Sara?

As a teacher we have no doubt that Sara will be excellent. She is tender-hearted with children, and at the same time she has enough of the disciplinarian in her make-up to be sure that they learn their lessons. We believe Sara will have unusual success.



PAUL MUSSER HAINES
Millheim, Pa.

Education — *Phi Lambda Theta*

Millheim High School; Y. M. C. A.; Track, (1, 3); Soccer, (1, 2, 3); Class Football, (1, 2, 3); Fraternity Basketball; Band, (2, 3); Pi Gamma Mu.

Most students usually have many troubles vested upon them. In this, Paul is no exception. His interests in a certain one at Aaronsburg is his main "trouble." However, the mails are favored by Paul in a fighting effort to conquer his—.

His sincerity is the captivating factor in Paul's universal respect. Other things must wait until his logic is out. Why it should be logic, we cannot say. But however, when his logic is out his thoughts are turned eastward.

Upon graduation, this small man—small in stature, will enter the teaching field. It is naturally supposed that he will teach children the arts and sciences of the ages.

It is our sincere hope that Paul will carry on in his chosen work with the same sincerity that characterizes his success at Susquehanna.



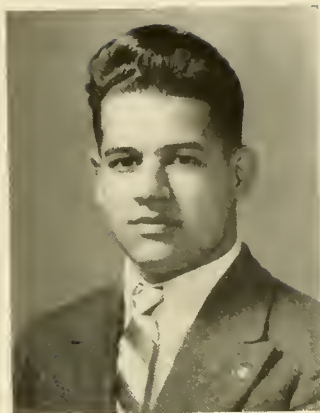
RANDOLPH HARVEY
23 W. High Street
Coaldale, Pa.

Educational *Phi Mu Delta*
Coaldale High School; Class Basketball, (1, 2, 3); Class Football, (1, 2); Class Soccer; Y. M. C. A.; Assistant Basketball Manager, (3).

This ambitious gentleman never lets anything interfere with his studies. One could always find Harvey working away at his books and in class the results of his efforts were self-evident. Always a student yet "Randy" found time to be a basketball star on his class and fraternity team; stature being the only thing that kept him off the college varsity. The crowd always thrilled at his long, accurate shots that won many a game.

Harvey is one of S. U.'s real fellows and we're sure if he carries his ambition, accuracy and personality they will carry him high into the educational world.

*"He kept to standards always high,
He finds the best and does it."*



PAUL W. HARTLINE
Strawberry Ridge, Pa.

Social Science

Watsontown High School, Varsity Track, (1, 2); Y. M. C. A., (1, 2, 3); President of "Y." (3); Class Soccer, (1, 2, 3); Orchestra, (1, 2); Pre-Theological Club, (1, 2, 3).

Behold! Another athlete from the Junior Class. Our Class can claim many of the S. U. athletes, among whom is Paul. He was an active member of the track squad for two years, and also represented his class on the class soccer team for three years.

He is always ready to give a helping hand in any project that is undertaken by the Junior Class. Whether it be in scholastic, athletic, or extra-curricular activities, Paul contributes his share towards making it a success.

Paul is one of the foremost religious workers on the campus. His indefatigable efforts to uplift the Y. M. C. A. have gained for him the presidency in the Junior year.

He is planning to enter the Susquehanna Seminary. The class is agreed that Paul has chosen well his future profession. From the ability that he has displayed in conducting Chapel services we know he will be successful in his future work.



WILLIAM CRAIG HAZLETT

Dry Run, Pa.

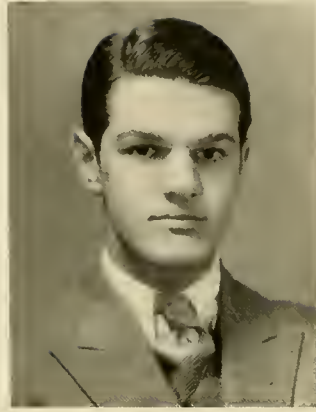
Social Science *Epsilon Sigma*

Dry Run High School; Chambersburg High School; Shippensburg State Teachers College; S. U. Junior Varsity Football, (3); Pre-Legal Society (3).

"Bill" came to S. U. from Shippensburg State Teachers College during his Junior year, and believe me it didn't take long for him to get acquainted. He is such a wonderful sport, that without him the class would be deadier than the Dead Sea. He is a diligent young man ready for fun, but never taking minutes from his work to add to play.

He was a big asset to our Junior Varsity football team during the past season and great things are expected of him next season. However, football does not constitute his entire athletic prowess, for he is also a valuable baseball man, having played varsity baseball during his two years' stay at Shippensburg.

"Bill's" future aspirations lie in the legal profession, as was manifested by his joining the Pre-Legal Society immediately upon his arrival here. Here's hoping you enjoy great success, "Bill."



WILLIAM S. HERMAN

Middleburg, Pa.

Social Science *Bond and Key*

Pre-Legal Club, (3); Class Basketball, (2); Class Football, (1, 2); Class Baseball, (1, 2).

"Bill" came to us from our neighboring town, Middleburg, and his good nature has acquired for him numerous friends on the campus.

He seems to associate with his own sex while on the campus, but nevertheless, we believe that there are some attractions somewhere, as he spends most of his week-ends traveling around.

"Bill" expects to pursue higher knowledge after leaving S. U., as he intends to take up the legal profession, and we believe from all indications he will make a good lawyer.

We as his judge sentence him to a happy and successful life.

"Here we are; where are we?"



MARGARET A. HOFFMEISTER
Brick Church, Pa.

Commercial Education *Sigma Delta*

Lyons Union High School, Lyons, New York; North Lima High School '26, North Lima, Ohio; the Youngstown Institute of Technology, Youngstown, Ohio; Thiel College; Class Soccer, '33; Y. W. C. A.

Have you seen a smiling countenance beneath a shock of curly black hair? It must be "Peg," for none other fits the description so well.

"Peg," who is a student of commercial subjects, has confided to us that she loves office duties, so perhaps it will not be amiss to look forward to her interest in her profession furthering along the road to success.

In social life "Peg" shines. She dances well and talks well—two indispensable assets to a popular girl.

We have neglected to mention, but have not forgotten "Peg's" absorbing "interest." He's an amiable lad and seems to thoroughly appreciate the young lady—are we right, "Freddy"?

'31 likes "Peg," and hopes that she is pleased with her choice of classes.



LEONE HOLTZAPFLE
Selinsgrove, Pa.

Education *Kappa Delta Phi*

Selinsgrove High School, Class Hockey, (1, 2, 3).

This young lady with the smiling eyes is one of Selinsgrove's contributions to our class. Leone can be very mischievous upon occasions. She has been a very versatile young lady in her three years' stay with us. A little bit of athletics has shown her efficient in that line.

For some inexplainable reason Leone has acquired the habit of leaving our numbers quite frequently on Saturday. The City of Brotherly Love seems to hold an attraction we won't try to explain. Leone's attention to Philadelphia, however, has not hindered her in her scholastic ability. In the classes she is ever ready to give a fine recitation. Happy is the girl or boy of the class of '31 who can list Leone as one of their friends. She is of one of our true blue, dyed-in-the-wool, good pals.

"How brilliant and mirthful the light of her eye."



WINFIELD HUDKINS

R. F. D. No. 1
Connellsville, Pa.

Bond and Key

Varsity Football, (1, 2, 3, 4); Assistant
Basketball Manager, (3).

The fellow with a big smile and a happy "How are you?" for everyone he meets, is "Ace." Good nature is one of "Ace's" big selling points for a host of friends.

He has proved himself to be quite a student during his three years on the campus, and though we do not exactly know what "Ace" expects to do in life, we can give him our best wishes for success in anything he may undertake.

"Still water runs deep."



MARY A. HUTCHINGS

210 Valentine Street
Brooklyn, N. Y.

Education Kappa Delta Phi

Manual Training High School, Brooklyn, '26; Class Hockey, (1, 2, 3); Captain, (1); Soccer, (1, 2); Baseball, (1, 2); Track, (1, 2); Baseball, (1, 2, 3); Varsity "S" Club; Susquehanna Staff, (1, 2); May Day Program Committee, (2); Choral Club, (3); Lanthorn Staff, (3); Spanish Club, (3).

All the way from New York City, Mary, we have often wondered how you happened to find S. U. But this just goes to prove that Susquehanna is on the map.

Although Mary may have come from the metropolis, she certainly did not leave her talents and ideas behind. Mary always has an original thought, which she is anxious to put into practice. She has done everything from dancing the Tango to taking roles in plays. A dramatic production would scarcely be complete without our Mary.

Mary's chief interests are along the literary line, and here again her originality becomes quite evident at times. Her ability to write was certainly used to a very great advantage in the preparation of the 1931 Lanthorn.

Here's to our Mary from little old New York.



RUTH JACOBS
Burnham, Pa.

Education *Omega Delta Sigma*
Class Basketball, (1, 2, 3); Hockey, (1, 2, 3); Soccer, (3); Baseball, (2);
Susquehanna Staff, (1); Y. W. C. A.;
Intersorority Council, (3); Women's
Student Council, (2, 3).

Not Ruth of Bible fame, not Ruth the actress, not even Ruth the aviatrix, but Ruth Jacobs, the petite co-ed with that winning smile!

Activity in a great variety of forms appeals to Ruth—a strenuous game of hockey, soccer, tennis, or even a brisk hike before breakfast; the arduous solution of a difficult "math" problem (yes, she is quite different from her sisters—she really enjoys struggling and triumphing in a class of higher mathematics). And let us not forget that a dance always finds Ruth in great demand.

"Ruthie" impresses us that Time is never wearisome to her, since every minute of the day is so crowded with work and diversion that no time is left for listless ennui.

"Oh life, long to the wretched, short to the happy!"



CLIFFORD W. JOHNSTON
Altoona, Pa.

Social Science *Bond and Key*
Altoona High School; News Editor of
Susquehanna, (3); Lanthorn Staff,
(3); Glee Club, (1, 2, 3); J. V. Foot-
ball, (2, 3); Class Basketball, (1, 2);
Class Football, (1); Varsity "S"
Club; Varsity Track, (1, 2).

"Cliff," one of the smallest and lightest members of the football squad, has been calling signals for the J. V.'s for the past two seasons.

He is also one of those leather lunged boys who performs so nobly on the Glee Club. He has been a member of this organization during his three years' sojourn here, and excels not only in the realms of music, but also in the realm of humorous readings.

It is readily seen that "Cliff" takes an active part in all lines of journalism. He is news editor of the Susquehanna and also a member of the Lanthorn staff.



MIRIAM E. KEIM
Pottstown, Pa.

Education *Sigma Sigma Delta*

Prep. School; Pottstown High School; Temple University, '27-28; S. S. D. Secretary; Y. W. C. A., (2); Science Club, (2); Hockey, (2, 3); Soccer, Captain, (3); Baseball, Captain, (3); Basketball, (2, 3).

Miriam came to S. U. as a Sophomore. Not many weeks passed, however, before her ability both on the athletic field and in the classroom was realized. Now we proudly point to her as our hockey star. She also excels in all other sports.

But she isn't satisfied to take a prominent place only on the athletic field. She stands near the top in scholastic subjects. Although she may appear to be deeply interested in psychology, we have been secretly informed that she prefers math at all times. But whether math or hockey, she undertakes the task with equal interest and enthusiasm.

Yet with all her earnest application to field and books, Miriam has left plenty of time which she devotes to her friends.

Since "Mim" has been endowed with the qualities of leadership we know she will succeed in whatever she undertakes.

"Nothing great was ever achieved without enthusiasm."



J. HAROLD KIMMELL
Rockwood, Pa.

Business *Phi Lambda Theta*

Rockwood High School; Class Football, (1, 2); Junior Varsity Basketball, (1); Class Basketball, (2, 3).

Introducing no one else but "Had" in person. For some unknown reason, he has desired to room in Selinsgrove Hall. As this Hall is noted for its solitude, this may account for his never failing to be prepared in his studies. Keep up the good work, Kimmell.

The Juniors made a wise selection when they chose Kimmell as manager of the class track team. Although his team did not come out on top, nevertheless, he is to be commended on his ability to assume the capacity of managership.

It has not been until recently that the reason for Kimmell's frequent visits to the social room at Hassinger has been detected. He is now specializing as a terpsichorean. Many pledges have benefited from his instructions.

The members of the Junior Economics class received a shocking surprise when Kimmell made his appearance promptly at the ringing of the 1:10 bell. Don't keep us waiting too long for another surprise, "Had."



RENO S. KNOUSE
Selinsgrove, Pa.

Commercial Education Epsilon Sigma
Selinsgrove High School, '26; Class Soccer, (1, 2, 3); Class Track, (1, 2, 3); Varsity Track, (1, 2, 3); Varsity "S" Club; Fraternity Basketball (2, 3); Intermural Board, (2); Business Staff of Susquehanna, (1, 2); Sophomore Hop Committee, (2); Penn Relay Team, (2, 3).

Thirty was thrown for a loss when Reno left Susquehanna to spend a year in New York. Thirty-one isn't a bit sorry that he chose to stay away, for it gives them a chance to claim him for a classmate.

Reno's specialty is track. He has been on the Varsity Track Team for two years, and in addition to this has been a valued member on the Penn Relay teams. In his Sophomore year, "Knousey" ran a spectacular race in Philly, pulling our team ahead to third place. Spectators will agree that it is a pleasure to see this blond chap circle the cinder path.

His chief interest lies in Seibert Hall, for lo! these many years he has had his heart in the possession of the lil' girl from New Yawk.

Reno aspires to a prominent place in the business world, and we all wish him the success he deserves.

"A pleasant smile is a good substitute for sunshine."



CHARLES KROECK
3127 Perrysville Ave.
Pittsburgh, Pa.

Business Phi Mu Delta
Allegheny High School; Advertising Manager; Glee Club.

"Pete" as everyone on the campus knows him comes to us from the Smokey City. He continues to uphold the reputation of the students from the big town. Anyone will agree to this once they have heard him give his usual good recitation in class.

Kroeck is interested mainly in the business world and any class activities that require real business management have found "Pete" willing and capable of any task.

"Pete" is always one of the "fellows" and his aspirations cannot be greater than our best wishes for his success. In the future we look for him to be president of some prosperous firm.

*"His joy is more than what's been done
It rests in what must be done."*



DANIEL H. KWASNOSKI
614 Maple St.
Ranshaw, Pa.

Education *Epsilon Sigma*

Coal Twp. High School; Pre-Legal Club, (2, 3); Vice-President, (3); S. U. Summer School; Class Football, (2); Class Soccer, (1, 2, 3); Lanthorn Staff, '31.

"Dan is a boy who has a personality profession, has been one of our class' best boosters. He has helped on the football team, has been one of our best soccer players, and has filled a berth on the track squad.

"Dan" is a boy, who has a personality that everyone admires; a pleasant smile and a good word for everyone. He believes that school should be a place for study, and has put his convictions into active practice within the walls of Has-singer.

As a member of the Lanthorn Staff, "Dan" has been a valuable aid. We feel that he should meet with great success in his chosen field.

"Joy is good; let us seek it."



ARLENE E. LAUDENSLAGER
624 N. Fourth St.
Sunbury, Pa.

Commercial *Sigma Sigma Delta*

Arlene comes from Sunbury each morning and returns each afternoon—via the S & S cars. She is very faithful in her returning so we are rather inclined to think there must be a reason which she refuses to disclose to us.

Arlene has a pleasant disposition and a keen sense of humor. Both of these traits have been the sources of much entertainment for others—especially at the noon hour in the Day Students' Room.

As a student Arlene is faithful and thorough; she doesn't try to slip through with the least work possible, but in the classroom is invariably prepared.

Arlene is a real friend to those of us who know her. She is ever ready to do a favor, and can be depended on to do all she can for her classmates.

*"And so, for that help you proffered here,
Kind friend, you'll reap a joy—some-
time—somewhere."*



MARTHA E. LANDENSLAGER
Selinsgrove, Pa.

Educational Course — *Sigma Sigma Delta*
Selinsgrove High School; Hockey, (1, 2,
3); Baseball, (2).

Did you ever encounter Martha in one of her teasing moods? Though one would never suspect her of such ability she possesses a marvelous capacity for this art of annoyance. Sometimes Martha transfers some of her surplus energy into athletic ability. At such a time she defends our goal in hockey or soccer and very clever must the player be who passes her. But Martha's quietness of manner does mean something. It is truly indicative of the studiousness which has enabled her to master such courses as Math. and Logic. She has a rather pronounced predilection for Math. It is not difficult to picture her instructing the youth of America in mathematical knowledge. In other words, we think, Martha, that you'll make a good teacher.

"Her quietness of manner belies the mischief that lies underneath."



DONALD S. LESHIER
Yeagertown, Pa.

General Science — *Bond and Key*
Yeagertown High School; Art Editor of
Lantern; Class Football, (2); Cross
Country, '29.

Gaze upon this fellow from Yeagertown. They have a right to be pleased with him back home. "Don" is a first class student and a willing worker in anything he is asked to do.

It is to "Don's" ability that we owe the success of the Art of our Lantern in which capacity we believe he has done well.

"Don" expects to enter into the Scientific field after leaving college and as he is heart and soul in science and in making a success of it we want to wish him many new discoveries.



DOROTHY F. LESHNER
226 Ninth St.
Renovo, Pa.

P. S. Music and Voice—*Sigma Alpha Iota*
Renovo High School; Y. W. C. A.; World
Fellowship Club, (1); Choral Club,
(2, 3); Chapel Organist, (1); Inter-
sorority Council, (3); Choral Club
Vice-President, (3); Chair, (1, 3);
May Day Program, (2).

Quick elfin-like steps, a gay retort and a lilt of laughter including the entire musical gamut! Yes, that is our "Dottie," who is ever in demand by some one in Seibert Hall, the "Con" or Hassinger. Of course we all are aware that her heart has already been captured. By whom? You need not be kept in the dark very long. When passing the "Con" merely listen in a few minutes to that musical strain in Practice Room 22—"lu, lu, lu, lu, lu." Now do you know the secret?

Indeed Dorothy's lyric soprano voice has gained her great renown on the campus. We will always remember with what pathos and beauty Solvejg sang in the Pageant from the Peer Gynt Suite last May Day.

*"Sweetest the strain when in the song
The singer has been lost."*



RALPH LOHR
Davidsville, Pa.

Pre-Theological

Ferndale High School; Glee Club, (3);
Pre-Theological Club; Phi Kappa; Track,
(1); Tennis, (3).

Ralph is the fellow with the smile for every one whom he meets. His main object in life seems to be "Live-saving" as he has entered the road to the ministry. In this calling we know that he will be a success since he has a winning personality.

Then too, Ralph has been a member of the Glee Club. Just ask him about that Western Trip. "What do you say, Ralph?"

Some day we expect to hear that he is one of our greatest ministers, and we believe that the gods of success are with you. We wish you luck in the cares of the world.

"Still water runs deep."



ANNA M. LOSCH
544 Wilson St.
Jersey Shore, Pa.

Commercial Education
Sigma Sigma Delta
Jersey Shore High School, '27; Class
Soccer, (3); Y. W. C. A.; Vice-
President Sorority, (3).

Here is one of our most quiet members. She is seen very much oftener than she is heard. And that is our loss, for thus we are deprived of the opportunity to discover just what she has concealed under that silence.

However, after one knows Anna better, one realizes that a kindly, thoughtful nature rules her life. Sincerity also is one of the traits of Anna that binds her closer to her friends.

Never does she fail to do her part, whether on the athletic field or in some other field. Indeed we have reasons to believe that she does not know that meaning of the phrase "shirking responsibility." In a word, Anna is a good friend, and always ready to do her part.

*"They might not need me; but they might
I'll let my head be just in sight."*



ANTHONY J. LUPAS
76 W. Carey St.
Plains, Pa.

Social Science
Varsity debating, (1); Tau Kappa Alpha; Psi Gamma Mu; Plains High School; Pre-Legal Society, (2, 3); President, (3); Debating Association, (3).

Appearances are often deceiving. We have a case of this kind right in the Junior Class. "Tony" looks to be very angelic, but when you come to know him, I think you may change your opinion. His cheerful, willing ways, his desire to do right, and his constant work have made him a real friend and companion.

Lupas is a born leader. He has done much for us in maintaining the Pre-Legal Society in his Junior year. Under his supervision the society has made considerable progress. His greatest ambition is to fill the judge's seat in Luzerne County. There is no question as to the fulfillment of your desire, "Tony" if you continue your good work.



RUTH MAUREY
443 N. Nineth St.
Allentown, Pa.

Commercial Education

Shamokin High School; Class Hockey, (1, 2, 3); Baseball, (1, 2); Soccer, (3); Basketball, (2); Choral Club, (2, 3), Y. W. C. A., (1, 2).

Ruth is one of those diminutive personages who seem to crowd a wealth of variety and ability in to one small frame. Not content with an ordinary college education course she has delved into the world of music. She not only sings but is a pianist as well. Finding variety pleasing she directed her efforts toward athletics. Anyone who has seen her on the hockey field, basketball court or baseball diamond can testify to her efficiency in this line. Ruth has always proved dependable for when she says she'll do a thing she does it. Equipped with musical and athletic ability and a big supply of excellent characteristics it is a reasonable conjecture that Ruth will meet with success.



MARJORIE MICHAEL
Laceyville, Pa.

Education *Sigma Sigma Delta*

French Club; Choral Club; Y. W. C. A.; Mansfield State Teachers' College; Laceyville High School.

Marjorie is another member of our class who is inclined to be "seen but not heard." This is her first term at S. U., but already she had made her presence felt.

As a student, Marjorie is conscientious and thorough, for she not only knows her books, but she thinks things through to their conclusions. "Unprepared" is a word excluded at all times from her vocabulary.

Aside from being a good student, she is a friend worth having. She has a kindly disposition, and though she is quiet, her ready smile and betraying eyes inform us that out of class she plays pranks. Here's to her success in her chosen profession.



ETHLYNNE V. MILLER
300 Walnut Ave.
Scottsdale, Pa.

Education *Kappa Delta Phi*
Prep. Schools Scottdale; Marion Junior
College; Women's Cooperative Council;
Vice-President, (3); Y. W. C. A.,
(2, 3); Cabinet, (3); Chief Statistician
of Lanthorn; Class Historian,
(3).

Marion College was the scene of
Ethlynn's first round in the four year
bout for education. The count was
against her, tho; so she thought she'd
change the "ring" and she came to Sus-
quehanna.

Since here, Ethlynn has proved a
superior being to the one who left Marion.
She has been active in all forms of ac-
tivity.

The adjectives sweet and girlish fit her
remarkably, and she is in herself a fine
argument against people who say that
femininity is losing ground.

Ethlynn seems to not only have a
"Bond," but the "key" to unlock it—
how about that, "Lynne"?

As Chief Statistician for our year
hook—she has more than ably fulfilled
her duties.

We are sure that in the last round
of the battle, Ethlynn will be the victor
when the final gong rings.



WALTER MILLER
Catawissa, Pa.

Pre-Medical

Catawissa High School; Varsity Foot-
ball, (2, 3).

Well, here comes Miller. We don't
often hear this, but when we do, we are
all assured of a witty remark. We are
not as well acquainted with him as we
should be because he does not spend much
time with us on the campus. We never
know he's around until some one men-
tions the fact, but despite "Walter's"
quietness he has a most pleasing dis-
position.

Walter is quite proficient in playing
football, having been on the varsity dur-
ing his Sophomore and Junior years.
Unfortunately he was hurt in a rough
scrimmage during his Junior year, which
made him unable to participate in the
early grid contests.

"Doc" desires that the symbols M. D.
be affixed to his name, consequently most
of his time is spent in the Chemical
Laboratory working upon various experi-
ments. If he works as earnestly and
conscientiously in the future as he is
doing in college, success is assured.



FRANK LOUIS McCORMICK

Allenwood, Pa.

Education *Epsilon Sigma*

Allenwood High School, '24; Milton High School, '26; Class Soccer, (1, 2, 3); Assistant Elect Tennis Manager; Class Track, (1, 2, 3); Fraternity Basketball, (3).

"Mac"

This smiling, gallant, and exceedingly tall gentleman comes to us from the town of Allenwood. His irresistible personality has won for him many a true friend in both sexes. His ways with the "weaker sex" are astounding, but try as we may, not one word of his secret methods will be divulge.

"Mac" moves slowly from one class to another, but once arrived at the proper place, he is quickly engrossed in the task of recalling which class he is now attending.

Some day he claims he is going back home to preach the gospel, and when he does leave our midst he will carry with him the best wishes of the class of '31.



KATHRYN L. MORNING

211 Stock St.

Hanover, Pa.

Public Music and Violin
Sigma Alpha Iota

Hanover High School; Y. W. C. A., (1); Orchestra, (1, 2, 3, 4); Choral Club, (1, 2, 3); Intersorority Council, (2); Choir, (1); May Day Program, (1, 2); Student Council, (3).

Unfortunately for us, "Kate" has decided to leave us at the end of this year and graduate with the Class of '30. However, we are proud of her and feel she is truly our own classmate.

She plays the violin beautifully as all who have heard her will readily testify. The Choral Club couldn't get along without her accompaniments.

And have you ever heard her laugh? Such a low, throaty, chuckle as will make any listener join her—truly an infectious little giggle.

Kathryn is interested in teaching but we prophesy that a cottage on faculty hill would prove a fitting background for her.

By the way—haven't you seen her and the "Professor" looking 'em over?



GEORGE MOSER
Evansville, Ind.

Education *Phi Mu Delta*
Varsity Football, (1, 2, 3); Basketball,
(1, 2, 3); Track, (1, 2); Baseball,
(1, 2, 3); Benjamin Bosse High
School; Varsity S Club.

We do not doubt the least that George really likes S. U. for after an absence of a year he has returned to complete his college course. In addition to being a real fellow "Cubby" is known particularly for his ability as a football player. As full back on the varsity he proved to be a real star at hitting the line as well as backing up the line. In addition George is big hearted for he is always ready to do his bit for the other fellow. Failure is not part of his vocabulary because when "Cubby" is around results are sure to be forthcoming.

Whatever George undertakes in life is sure to be a success and whatever it may be the class of '31 extends its best wishes for his success.



MYER RAY MUSSER
Bellefonte, Pa.

Business Administration *Phi Lambda Theta*

Bellefonte High School; Y. M. C. A.;
Class Basketball; Fraternity Basket-
ball; Soccer, (1, 2, 3).

"Muss"

"Muss," Sunbury's outstanding supporter will some day adorn that city beautiful with his citizenship. The fact is, that his interests demand his presence. When interests demand presences, there "Muss" is. As a business student, he will some day make a name for himself in the world's industry. The kind of a name he will make we are not prepared to state in this informal way.

Then too "Muss" is quite a statistician. He can recall just how many S & S fares he paid during the average college semester. We mention "average" because some semesters were off form. When the semesters were off so was "Muss."



AGNES McMULLEN
Johnstown, Pa.

Education

Johnstown High School; Hockey, (1, 2, 3); Basketball, (1, 2, 3); Soccer, (3); Spanish Club, (3); French Club, President, (3).

Let us introduce Mademoiselle McMullen, professeur de francais! Much to our disappointment "Ag" has decided to join the Class of '30. Consequently, as a student teacher, she endeavors to inspire her clevés with an inestimable amount of French idioms.

'Tis true, Johnstown has sent some perfect specimens of the male species to Susquehanna, but let us assure you that she has not neglected to send us one of the most popular co-eds on the campus—one whom we all know as "Ag."

Versatility is one of the best qualities which can be ascribed to "Ag." Alertness and capability make her an outstanding figure on the athletic field or basketball floor; ambition and achievement are ever present when work must be accomplished; and her jolly good nature causes her to be always in demand as a comrade or pal.

*"A day for toil, an hour for sport
But for a friend, is life too short."*



ALICE MARCE MULLIGAN
263 E. South St.
Wilkes-Barre, Pa.

Education

Sigma Sigma Delta

Stroudsburg State Teachers' College, '26;
Susquehanna University Summer Session, '28.

About the size of a pint o' peanuts, Alice joined the Class of '31 just this year.

We frequently see her returning from home—in fact she seems to spend a great deal of time there. Alice, is there a big Reason why you delayed your entrance to our class so long?

As steady a date as can be seen are Alice and brother Dan—their affection for one another is really fine to see.

We hear that you expect to teach, Alice, and you have the best wishes of '31 to back you up.



BRYCE E. NICODIMUS

Pre-Medical *Epsilon Sigma*

Class Football; Band, (2, 3); Glee Club, (2, 3); Honorary Science Society; Susquehanna Campus Owls, (1, 2, 3).

"Nick," our "Paul Whiteman," has which is such a welcome addition to all formed one of those modern noisemakers college social affairs, namely a jazz band.

"Nick" also belongs to another exclusive organization on our campus—the "B and C" Club, which consists of some of the most independent men (to a certain degree).

Bryce is a faithful member of two music clubs—the Band and the Glee Club. He has shown an active interest in both of these popular organizations and can always be counted on to be present when the band needs a drummer.

*"Music has cham to soothe the savage
beast."*



GEORGE A. PARALIS

534 Hoyt St.
Kingston, Pa.

Social Science

Pringle High School; Varsity Track; Class Soccer, (1, 2, 3); Varsity Basketball, (1); Class Football, (2); Pre-Legal Club, (2, 3) Varsity "S" Club; Class Basketball, (2).

Here we have the big boy from Pringle Hill. He may be a coal miner, but that doesn't interfere with his soccer playing. We all remember the winning points that "Gooper" scored against the Juniors to win the soccer championship during his Sophomore year.

George didn't stop at soccer, for the same year he won his varsity letter in track. Although it was his first endeavor in this field, he proved himself an able pole vaulter.

In his Junior year, George decided to leave the dormitory to room in town. He made many friends during his stay on the campus. His week-ends were well taken up with his frequent visits home. Now he confines his visits chiefly to the Nanticoke State Hospital. We are all anxious to know the attraction, George.

We have not been able to ascertain his future profession, but we are sure he will succeed in whatever he may undertake.



PAUL DONALD REAMER
Millmont, Pa.

Education *Phi Lambda Theta*
Lewisburg High School; Y. M. C. A.;
Track, (1); Soccer, (1, 2, 3).

Paul is one of those quiet, but impressive fellows that are too few on most college campuses. His personality coupled with his striking sincerity point him out even to those who do not know him as a young man regarding whom we will hear more. But with all this, Paul is not slow. His experience as a track man has brought to him deserved honors.

Girls seemed to make little or no impression upon him. Perhaps it is because he is one of those fellows whom girls simply will not effect—simply or otherwise.

His friends, and they are many, wish him a success in life that will far surpass his own expectations.

"His friendship hath been a priceless treasure to all that know him."



SARAH E. RHOADS

Education *Omega Delta Sigma*
Johnstown High School, University of
Pittsburgh; Y. W. C. A.

Activity is Sarah's by-word. She is never idle or does she ever waste her time. If no work is forthcoming, she hunts some.

She follows in the footsteps of the members of her family who have preceded her at Susquehanna. They may be well proud of her for she is a much sought after young lady.

We have never heard Sarah say an unkind thing about anyone, and that is alone something well worth saying for anyone.

Johnstown has no more fervent boosters than Sarah, although we hear that she thinks West Point is a delightful place also.

A girl with a sunny smile, a light laugh and the title of everyone's friend—that's Sarah.



MICHAEL T. RUDOWSKI
24 W. Kirmar Ave.
Alden, Pa.

Social Science

Newport Township High School; Pre-Legal Society, (2, 3); Class Soccer, (1, 2); Class Basketball, (1, 2); S. U. Summer School, (2).

Here we have the curly youth from Luzerne County. "Rudy," as he is known by his fellow students, is a jovial sort of chap. During his stay on our campus he has acquired many friends—just as many females as those of the stronger sex.

His school work is not slighted. The word "unprepared" is one that has not been made a part of "Timmy's" vocabulary.

Although he has not endeavored to become affiliated with the Glee Club, nevertheless, he has a voice that anyone would be proud of. When the radio in Has-singer is not in proper working order, "Rudy" furnishes the entertainment by singing popular numbers.

He has not, as yet, made up his mind definitely as to his future work, but he may rest assured the best wishes of the class are with him in whatever he may choose.



INEZ A. SARVER
Port Royal, Pa.

General Science Kappa Delta Phi

Port Royal High School; Juniata Summer session; Dickinson College; Y. M. C. A.; Lanthorn Staff; Science Club; Class Hockey, (2, 3); Baseball, (1, 2); Soccer, (3); Track, (1, 2); May Day Program, (1, 2).

Perhaps you do not know as much about Inez as you would like to, for, we'll grant you that a great deal of her time is spent in the Chemistry lab. Oh yes! she is one of '31 outstanding scientists.

However, all of her talent does not lie in this field for we all know that she has in her entourage a very attentive—alright Inez, we'll keep your secret safe.

Did you hear of the latest prank pulled at the dorm? Well! you may be sure Inez is in on it. With her keen sense of humor you may be certain that it was very timely and a great success.

Inez came to us from Dickinson and we can very sincerely say that we are proud to have her for she certainly has proved herself an asset to the class of '31.



JOHN SALEM
Selinsgrove, Pa.

Bond and Key

Selinsgrove High School; Lanthorn Editorial Staff; Class Financial Secretary, (3); Class Football, (1, 2); Class Soccer, (1, 2); Class Soccer and Class Football Manager, (1, 2); Natural Science Club, (3); Varsity Track, (1, 2); Sub-Assistant Track Manager, (2).

John is one of the few who knows more of S. U. than most of us as he has been reared in its environment.

A glance at the above list and we can not help but believe that John is quite active on the campus and has its interests at heart, but regardless of all these activities, he is one of our "A-1" students.

Personality is one thing we must have to succeed and since we know that John is the possessor of this quality, we feel reasonably certain that he will succeed in his chosen profession.



IRA C. SASSAMAN
Williamsport, Pa.

General Science *Bond and Key*

Williamsport High School; Class Basketball, (1); Honor Science Society, (3); Glee Club, 1, 2; University Quartet, (1, 2); Y. M. C. A., (1, 2, 3); Assistant Baseball Manager, (3).

Ira is our Math shark, or if one desires to use an epithet of quantity, our Math Whale. Ira has always been one of those dear boys who love to strengthen their lungs, and go around the country, dressed in formal attire. In plain words, he has been a member of the Glee Club for the three years that he has been attending Susquehanna.

"Sass" has decided to take up teaching as his vocation, and judging from his knowledge of the laws of trig., analytic, and the like, he should be able to produce a first class group of mathematicians.

Ira belongs to that select, but that little known team of the campus, the horseshoe pitchers, being one of the champions. If horseshoes bring good luck, Ira will surely have it.



IDA A. SCHWEITZER

39 Jackson Ave.

West Hazleton, Pa.

Education *Kappa Delta Phi*

Hazleton High School, '27; Class Secretary, (2); Student Council, Secretary-Treasurer, (2); Girls' Finance Secretary, (3); Assistant Editor-in-Chief *Lantern*, '31; Intersorority Council, (3); Hockey, (1, 2, 3); Soccer, (3); Basketball, (1, 2); Track, (1, 2); Spanish Club, (3); French Club, (3); Debates, (3).

"Near killed me off!"

"Scoofer"

Court is in session. We are to try the case of S. F. vs. Ida Schweitzer.

The first two witnesses have testified that Ida is an athlete of skill, and also an important addition to social functions.

The third witness says that this young lady is always keeping people laughing at her witty sayings. This is especially true when she plays cards. (Too many people tried to add to this testimony.)

The judge stepped out of character long enough to add that the girl has a big "Will," too.

After hearing all the evidence, the judge declared the defendant, "Guilty," and who will say he has erred?

*"To know her is to love her,
And everybody knows her."*



RICHARD A. SCHARFE

120 40th St.

Irvington, N. J.

Business Administration *Phi Mu Delta*

Varsity Basketball, (1, 2, 3); Class Soccer; Sophomore Class Treasurer; Susquehanna Staff; Newark Prep School.

This earnest and business-like young man is none other than our good friend Richard. "Dick" always aspired to be a real business man as his zeal and energy in his chosen field demonstrates. Even with all the time he spends at his work we find "Rich" very much interested in other activities. He always plays hard on the basketball floor and supports his class in all its projects and on its teams.

Studies are no hindrance to "Dick" when it comes to being well dressed and the fair sex always seem disappointed when they find dear "Dick" faithful to the girl back home.

"Keep up your work and your work will keep you."



JOHN A. SCHIAVO
35 E. Diamond Ave.
Hazleton, Pa.

Hazleton High School; LL.B., Dickinson School of Law, '26; Secretary Sadler Pre-Legal Society, (3); Debating Association.

Here we have an embryo lawyer; a second Clarence Darrow! After graduating from Law School, he decided to complete his work at Susquehanna. We are all certain that you have chosen the right profession, John.

In the classroom he can always be heard arguing about something, or offering some knowledge derived from his experiences. John, is murder "bailable"?

As Secretary of the Sadler Pre-Legal Society he has become one of the outstanding figures on the campus. As Senior attorney in the "mock" trial John displayed his legal talents in a most capable manner.

His chief task is that of acquiring a large vocabulary. We can say that you are making wonderful progress along this line.

Your success as a lawyer is inevitable. The best wishes of the class are with you.



HERBERT SCHMIDT
551 Harold Ave.
Johnstown, Pa.

Social Science *Phi Mu Delta*
Secretary Y. M. C. A.; Class Football, (1, 2); Vice-President Y. M. C. A., Vice-President Pre-Theological Club; Lanthorn Staff; Assistant Football Manager, (4); Pi Gamma Mu; Debating, (3); Phi Kappa Greek Club; Fraternity Basketball; Class Basketball; Representative Y. M. C. A. to Atlantic Field Council; Sigma Sigma Delta Play "Quality Street."

"Herby"

Silent "Herby" as he is called is always doing something. If it is not studying it is sleeping. By the way, "Herby" is quite the student. A man of many activities is he. Girls seem to make little or no progress on this young man of destiny.

His chosen profession is the ministry. In this field "Herby" should be a great success. Being an ardent supporter of all the school's religious projects he is creating a great name for himself in collegiate circles.

Punctuality, is "Herby's" motto. Never late, but on the other hand never so very early. It has been rumored that he is the living alarm clock at about 7.15 A. M. We sincerely hope he never runs down.

With the graduation of Herbert Schmidt his friends wish him the greatest success that can possibly befall any man.



RAYMOND SCOTT
Mt. Carmel, Pa.

Business Administration Phi Mu Delta
Varsity Football, (1, 2); Varsity
Track, (1); Varsity "S" Club; Mt.
Carmel High School.

"Ramie" is one of the most popular fellows on S. U.'s campus. Always full of fun and an ambitious worker in the classroom as well as in sports "Scotty" has made many friends. In football Scott always proves a fast elusive back and his spectacular runs always bring the crowds to their feet. In the track "Scotty" is our crack half-miler and up-hold his speedy record.

If you were considering stature you you might think the above is not true but stature, we must remember, is not always the way in which a man is measured. Scott again proves that good things often come in small packages.



CORINDA MAE SELL
128 Third Ave.
Altoona, Pa.

Commercial Ed. Sigma Sigma Delta
Student Council, (1); Y. W. C. A. Treasurer, (2); Debating, (1, 2, 3); Class Secretary, (3); Hockey, (1, 2, 3); Soccer, (3); Basketball, (1, 2); Baseball, (1, 2); Track, (1, 2).

Did anyone ask for a perfect picture of a helping hand? That's Corinda. If you want aid in something she's a girl who will never fail you.

When it comes to preparing spreads, Corinda wields a mean knife. At decorating for a party, one can always go to her for active participation or helpful suggestions. When it comes to lending anything from needles to books, Corinda is always to be relied upon.

On the hockey field it is not customary to hear her grumble because she cannot play the position she wants most. She takes any one given and makes it stand out as a fine piece of playing.

Have you ever heard these Altoona people rave when they get together? Miss Sell is typical of this group. After having a "confab" with her we are sure Altoona must be an ideal spot.

Having the qualities of happiness, a cheerful, generous disposition, we predict a future of service for Corinda.



JOHN P. SENKO
893 Pace Street
Hazleton, Pa.

Education *Epsilon Sigma*

Hazleton High School Class; Soccer, (1, 2, 3); Lanthorn Staff; Orchestra, (1, 2, 3); Interfraternity Council, (2, 3); Class Baseball; Susquehanna Staff.

Whenever one meets John he is certain to receive a friendly greeting, and let us not forget, with his familiar smile. He is never too busy to be friendly—a rare talent.

We can almost guess John's chosen profession without thinking much about it. All through his college career he has been noted for his ability to write. We as a class readily observed this talent and he was chosen for Class Historian for two years. John has done much work of merit as the assistant editor of the Lanthorn. We are sure that you will attain some worthy goal if you continue with your work.



BRUCE B. SHEATS
Lewistown, Pa.

Education

Mifflinburg High School; Bloomsburg State Teachers' College.

Here is another of the more reserved and quiet type of boys of our class. Bruce hails from Lewistown, lest you know. This is his first year on S. U. campus and the class welcomes him as one of its members.

Bruce is a student in every sense of the word. When help is wanted in some deep subject, Bruce is always ready and can very easily be relied upon.

Bruce intends to enter the teaching profession after graduating from here. With his ability and persistence to do what he always starts out to do, we know that he cannot help but be a success in the realm of teaching.

May your future be a bright attainment strewn with success.



NELLIE SHUE
217 Arch Street
Sunbury, Pa.

Education

Huntingdon High School; Juniata College; Hockey, (2, 3); Soccer, (3); Basketball, Captain, (2); Track, (2); Baseball, (2); Orchestra, (3); Lantern Staff, (3).

This young lady came to us from our friendly rival, Juniata College. Immediately after her arrival she distinguished herself on the hockey field. In the two years that we have known her, she has never failed the Class of '31 in any sport.

On the other hand, "Nell" never fails in the classroom. But she is too modest to tell you that. One assumes from her conversation about herself that she is just a little below average.

But all the popularity of this modest Junior can't be traced to her athletic and scholastic abilities. A large percentage is due to—well, just "Nell"! By glancing at her countenance one can see that she is always present when a prank is to be played on someone, or when some fun is to be had. She is always ready with a retort for the one who tries to "put one over" her.

"Modesty seldom resides in a breast that is not enriched with nobler virtues."



CHARLES J. SHEARER
McEwensville, Pa.

Education

Phi Lambda Theta

Milton High School; Y. M. C. A.; Indiana State Teachers' College; Bucknell University Summer Session; Bloomsburg State Teachers' College Summer School.

"Chuck"

This quiet fellow can be seen on the campus between the hours of nine and twelve. There is no particular reason in mentioning the hours unless someone wishes to locate him. Otherwise he can be located in his room studying ways and means in teaching. His place is teaching.

When "Chuck" goes home during the week-end the stock in McEwensville rises. At no time, however, is it at a low ebb. She is nice, though. With the passing of Charles from within our midst a musical vacancy will occur. But his absence will in some place be an appreciated presence. Where? We cannot say. How? Again we cannot say.

"The night shall be filled with music."



WILLIAM SHEARER

Education *Epsilon Sigma*

Dry Run High School; Shippensburgh State Teachers' College (1925-26-27); Baseball, (3) Fraternity Basketball, (3).

"Bill" decided to further his knowledge and he located himself within the portals of Susquehanna.

"Bill" claims that his reason for leaving Shippensburgh was too many women, and it looks as though he is right because here at S. U. they do not seem to bother him in the least. Since his main object seems to be the acquiring of the maximum knowledge the evenings find "Bill" in the library pondering over books of instruction.

"Bill" is one of the "twirlers" out for baseball this year and practices indicate him to be no novice of the art. But don't forget "Bill," keep on twirling in the world in order to assure your achievements.



WILSON SIEBER

Mifflintown, Pa.

Social Science *Phi Mu Delta*

Pre-theological Club; Debating; Y. M. C. A., Treasurer, (3).

Here we introduce one of Susquehanna's orators as well as one of her good students. Wilson can always be counted upon for a good speech at Vespers or a real debate when he is debating on the forensic platform. Sieber will not say anything for the mere matter of speaking, but his message always carries real thought.

Wilson always does his best in whatever is the task, especially in his Y. M. C. A. activities.

We feel sure that Wilson, jolly, winning, a good speaker, and real gentleman, will make an excellent minister.

*"Honest work at the work you love
Will always carry the worker above."*



ALEXANDER JOSEPH SOKOLOSKI
1555 Oneida Street
Shamokin, Pa.

Social Science

Coal Township High School; Pre-Legal Society, (1, 2, 3); Secretary, (1); Secretary-Treasurer, (2); S. U. Summer School, (1, 2); Class Soccer, (1, 2).

Here we have one of the greatest politicians of the time. We have all read of his political dealings in Shamokin. This accounts for the fact that he doesn't spend many week-ends with us on the campus. But, after all, we cannot blame him for that, as it is in accordance with his future ambitions.

To say the least, he is very much absorbed in his schoolwork. All his spare moments are concentrated upon legal questions. From the interest that he has shown in this field we all know he will be a success.

Don't think for a moment that we are accepting your explanation for your frequent visits home every week-end, "Sock." It must be for some other than political reasons that you spend so much of your time in Ramshaw. Let us in on the secret, "Sock."

"Success to the future Attorney Sokoloski!"



HELEN W. SWOPE
Northumberland, Pa.

Educational Course

Sunbury High School; Susquehanna Staff, (2).

Helen is one of those rare persons about whom we may say, "It is nice to be natural when you're naturally nice." She often surprises us with some new idea—the product of her originality. The good books she has read plus the literature courses she has elected have endowed Helen—in addition to natural ability—with the quality of being "witty to talk with." Not only is her conversation witty, but usually very interesting. Helen belongs to the group who daily increase the income of the Sunbury-Selinsgrove street car company. If she proves as successful in the future as she has been in her work at Susquehanna, the future should be rosy.

*"She is pretty to walk with
And witty to talk with,
And pleasant too, to think on."*



PARK WAGENBACH
Steeleton, Pa.

Social Science *Phi Mu Delta*
Steeleton High School; Gettysburg College; Pre-Theological Club.

Gettysburg certainly lost a good man when Park decided to come to Susquehanna. A real student, he sticks to his books most of the time and the way he can answer questions in class proves his ability in this field.

However, Park finds time to make a trip to Steeleton every week-end for it seems that a "certaine jeune demoiselle" holds quite an attraction for him. With all his work Park still finds time to mix with his fellow students for real companionship.

These admirable qualities, along with his attitude toward life, are sure to bring him success in his chosen work—the ministry.



WILLIAM J. WELIKY
574 S. Thirteenth Street
Newark, N. J.

Social Science *Phi Mu Delta*
Newark Prep School; Captain, Varsity Track, (3); Class Track, (1, 2, 3); Class Football, (1, 2); Varsity Track, (1, 2, 3); Junior Class Treasurer; Treasurer of Glee Club, (3).

Who is this good-looking, well-dressed young man with the business-like gait? You say he is a student, an athlete, and a real fellow. When you meet "Bill" you cannot help but like him and know that what has been said is all very true.

"Bill" is always an active member of our famous class. The call of extra-curricular activities has found "Bill" always ready for active participation. His capable leadership in class track and also in varsity track team show that he possesses real ability.

Socially too, "Bill" was right there and many a co-ed felt her heart skip a beat as "Bill" went by.

"We feel sure Bill will succeed in whatever he undertakes."



JOSIAH WINTERS
54 Nevins Street
Sewickley, Pa.

Phi Mu Delta

Sewickley High School; Varsity Football, (1, 2, 3); Varsity Track, (1, 2); Varsity "S" Club.

"Big Joe," as he is popularly known on the campus, hails from the famous city of Pittsburgh. Although everyone knows Joe, nevertheless, one does not see much of him, except in football and basketball for he is quite active.

In sports, Joe has always been a big asset, for he was one of the hardest plugging players in the history of old S. U.'s football teams. In basketball he also proved himself a fast and clean player.

Is he a student? He most certainly is. This serious-minded boy has yet to decide his life work, but we are certain he will make good in his chosen field, for to such a diligent worker success is sure to come.



WARREN WOLF
514 Chestnut Street
Sunbury, Pa.

Classical

Epsilon Sigma

Sunbury High School; Varsity Football, (1, 2, 3); Varsity "S" Club; Lanthorn Bus. Staff; Varsity Track, (1); Class Basketball, (1, 2).

Warren comes to us from Sunbury, but nevertheless spends a great deal of his time on the campus and we believe the cause to be an interest in or around Seibert Hall.

Warren has proved to us this year that he has the "Never say die" spirit as he showed on the football field this year by playing an excellent season.

He expects to enter the ministry after his four years here and with such spirit as he has we believe everyone will find him as true as steel.

The Class of '31 wishes him the best o' luck in his chosen profession.



RUSSELL YOAS
313 Knarr Street
DuBois, Pa.

Commercial Education *Bond and Key*
Interfraternity Council; Business Manager, *Lanthorn*; Class Basketball, (1, 2, 3); Pi Gamma Mu; DuBois High School.

Certainly, life is never tedious for "Rus" who always has ample time for work and play. To him "The world is a stage where every man must play a part." We admire him for assuming so many roles with such major skill.

In classes we find him giving brilliant recitations, on the basketball floor he is always ready to make a spectacular play, and at any social event he's always ready for a good time, and as a pal and friend, none better can be found. His art of repartee is a certain panacea for the "blues."

As Business Manager for the 1931 *Lanthorn* we feel that "Rus" merits special recognition, always enthusiastic and willing to work, he has displayed his efficiency in a remarkable way. To him much of the credit of its publication belongs.

Never lose your ability of execution, "Rus," and we assure you that much is in store for you.

*"So much one man can do,
That does both act and know."*



RUTH VON LIEB deTURKE

Education

Reading High School for Girls; Bucknell University; Debating, (3); Y. W. C. A.

Ruth is poised and dignified when necessary, but we usually see her smiling ready for a good time or to plan a joke on someone else. Every dance finds her there among the merry-makers. However, we have heard that her good times are not all had on the campus—but you can't believe everything you hear. As for tricks—well we usually know who planned them, carried them out and then acted innocent.

Ruth must be known to be appreciated. Sincerity and loyalty being her dominating characteristics, all who do know her, realize that she's the possessor of many possibilities for success in any profession she should choose.

Just one unfavorable comment—Ruth waited too long to join our class on Susquehanna's campus.



SARA S. BUCKLEY
East Shirley Street
Mt. Union, Pa.

Education *Sigma Sigma Delta*

Mt. Union High School; Lebanon Valley
Summer School; Temple University
Summer School; Elizabethtown Col-
lege Summer School; Juniata College,
'29-'30; French Club; Spanish Club;
Y. W. C. A.

"Sally" just came to Susquehanna this year from our neighboring college, Juniata. You'll notice when Juniata is mentioned her blue eyes light with enthusiasm; she's ready to hear all about it, in fact, at times we are afraid she's too interested in our traditional rival.

As a friendly, smiling and sociable person "Sally" is known. Scholastically too, she's near the top; those who hear her recite realize she knows her subject and what she's talking about. We think "Sally" is going to make an excellent teacher, winning her students by her charming personality.

Although with us only a year, she has made a host of friends among her fellow-students—they all wish her success.



In Memoriam

ROBERT HOWARD CUPPLES
227 W. Fifth Street
Lewistown, Pa.

It has pleased the Great Master to call to his eternal rest, Robert Howard Cupples, our beloved classmate.

Died, June 16, 1929.

CONSERVATORY OF MUSIC

Seniors

DIVELY, JANET G.	Berlin, Pa.
MORNING, KATHRYN L.	Hanover, Pa.
TRESSLER, EDNA R.	Sunbury, Pa.

Juniors

FISHER, MARTHA A.	Sunbury, Pa.
FREED, PAUL W.	Beavertown, Pa.
LEISHER, DOROTHY F.	Renovo, Pa.
MOODY, VIRGINIA E.	Selinsgrove, Pa.

Sophomores

ALBIG, GERTRUDE	Scottdale, Pa.
BITTNER, KATHRYN	Steelton, Pa.
DUNKELBERGER, ANNA	Mount Carmel, Pa.
KANYUCK, ARLINE	Glen Lyon, Pa.
LEINBACH, ANNA	Carlisle, Pa.
LYON, MILDRED	Sunbury, Pa.
MARKLE, MARGARET	Millheim, Pa.
MINICH, RAY	Loysville, Pa.
PUCKEY, DOROTHY	Orbisonia, Pa.
STRANDQUEST, WALTER	Somerset, Pa.
WAGNER, ISABEL	Salisbury, Pa.
WIEST, MAE	Sunbury, Pa.
WOMELDORF, MARTHA	Pittsburgh, Pa.
WYMAN, BERYL	Cardiff, Md.
COLEMAN, CHARLES	Beavertown, Pa.
GENTZLER, BEATRICE	York, Pa.
HOY, JOSEPHINE	Far Hills, N. J.
HUMMEL, MARY	Northumberland, Pa.
IDE, MARGARET	Easton, Pa.
LAHR, HELEN	Sunbury, Pa.
McNALLY, ROBERT	Seranton, Pa.
MENDEL, IRENE	Freeburg, Pa.
OAKLEY, ELIZABETH	Hop Bottom, Pa.
SHIVELY, BEATRICE	Selinsgrove, Pa.
STAMBAUGH, FRANCES	Spring Grove, Pa.
ROWE, GRACE	Selinsgrove, Pa.

95 Special Students



SOPHOMORES



SOPHOMORE CLASS HISTORY

HERBERT RUMMEL	<i>President</i>
CHARLES VARNER	<i>Vice-President</i>
MURIEL GAMERER	<i>Secretary-Treasurer</i>
ETTA MUMMA	<i>Class Historian</i>

HERE they come! thundering down the track, the four mighty classes of old S. U. '30 is swiftly covering the ground to the line, '31 on the third lap is still going strong. '32 upon whom are placed the hopes and fears of many is making rapid progress on their second lap, while '33 is beginning to feel more at ease in this race of life.

Odds are three to one on '32. All eyes are on her. Notice the celerity with which she moves! She is bound to come out on top. She is creeping up, she is making progress, she is getting ahead!

"Thirty-two entered the race as an amateur on September 18, 1928. She staged a never-to-be-forgotten "Get-Away" with much opposition from the Sophomores and much struggle with street-cars and conductors. Nevertheless, all turned out well, and the following were elected to guide us safely through the first lap of our race: President, Jack Auchmuty; Vice-President, Edward Helwig; Secretary, Etta Mumaw, and Treasurer, Reed Speer.

As Freshmen we defeated the Sophomores in the annual gridiron battle on Homecoming Day by a score of 2-0. For this we received the customary reward of the "rules off." The Class of '32 was also well represented on the various Varsity teams, and though only yearlings, we could boast of several letter men on the football, basketball and track teams.

We elected for our Sophomore year capable representatives to carry us successfully through the second lap. They are: President, Herbert Rummel; Vice-President, Charles Varner; Secretary, Muriel Camerer; Treasurer, Merle Hubbard, and Class Historian, Etta Mumaw.

Our Sophomore year we stood out prominently in all school activities. We easily defeated the Frosh in the football game on Alumni Day, 24-0. The Sophomore boys also won the Interclass Soccer Match, and the girls came out second in the Girls' Hockey Tournament. The Sophomore co-eds were also champions of the Interclass Basketball League.

The second lap of the great race is about over. Are we ready to start the third? Are we prepared for the bigger things in store for us?

WILLIAM T. P. ADAMS
16 N. Tinwood Ave.
Crafton, Pa.



GERTRUDE ALBIG
Scottdale, Pa.



MILDRED ARBEGASI
238 North St.
Harrisburg, Pa.



JACK H. AUCHMUTY
237 Broad St.
Tamaqua, Pa.



WALTER E. BELL
Hop Bottom, Pa.



GLENROY BISOP
1731 N. Fourth St.
Harrisburg, Pa.



KATHRYN BITTNER
Steelton, Pa.



MILDRED BOLICH
334 Mahoning St.
Lehighton, Pa.



QUARTER

MILDRED BOYER
880 N. Orange St.
Selinsgrove, Pa.



JAMES H. BRUBAKER
Center St.
Millersburg, Pa.



MURIEL CAMERER
327 Allegheny Ave.
Jersey Shore, Pa.



ELIZABETH CHARLES
Main St.
Middleburg, Pa.



VERNA CLEMENTS
25 Ruddle St.
Coaldale, Pa.



THELMA CREBS
Selinsgrove, Pa.



ALDEN J. DANKS
410 S. Main St.
Elmira, N. Y.



GERTRUDE DIXIE
Selinsgrove, Pa.



GRADUATES

CLAIR W.
DREIBELLIS
Mifflensburg, Pa.



ANNA DUNKELBERGER
Mt. Carmel, Pa.



THELMA ERB
Middleburg, Pa.



L. MYER FAIRCHILD
Canton, Pa.



HERMAN J.
FENSTERMACHER
736 E. Broad St.
Tamaqua, Pa.



MARGARET FINK
Conynghan, Pa.



LAWRENCE FISHER
Selinsgrove, Pa.



LLOYD FOLTZ
Belleville, Pa.



GRADUATES

WILLIAM GELNETT
Millerstown, Pa.



MARTHA GESSNER
Lock Hill, Pa.



JOHN D. GREAVES
Main St.
New Alexandria, Pa.



ROBERT HARTMAN
463 Main St.
South Williamsport,
Pa.



GRACE HERROLD
Port Treverton, Pa.



GEORGE M. HESS
Winburne, Pa.



MERLE E. HUBBARD
Sunderland, Mass.



ARLINE KANYUCK
Glen Lyon, Pa.



BENJAMIN KEMPSKI
254 Robert St.
Alden Station, Pa.



JOHN F. KINDSVATIER
601 McKennon Ave.
East Liverpool, Ohio



GLADYS KNOEBEL
Elysburg, Pa.



ANDREW KOZAK
1424 Highland Ave.
Corapolis, Pa.



LEWIS LEGACY
Renova, Pa.



HARRIET LEESE
Westminister, Md.



LUCILLE LEHMAN
Central City, Pa.



ANNA LEINBACH
Carlisle, Pa.



LANZHEIM

JANET LEITZELL
916 Prospect Ave.
Williamsport, Pa.



MILDRED LYON
Sunbury, Pa.



CLYDE MAILLAFEEY
1229 Memorial Ave.
Williamsport, Pa.



FRANK MALASKY
DuBois, Pa.



MARGARET MARKLE
Milheim, Pa.



FAY MCAFEE
Paxtonville, Pa.



JARED MAYES
Milton, Pa.



ALMA MCCLEAN
Coaldale, Pa.



STONE

ANNA P. McHUGH
39 Hillard St.
Wilkes-Barre, Pa.



MARGARET MILLER
Friedens, Pa.



GRACE MINNIG
W. Hazleton, Pa.



FORREST E. METZGAR
601 Market St.
S. Williamsport, Pa.



B. RAY MINNICK
Loyesville, Pa.



ETTA MUMMAW
W. Hazleton, Pa.



JESSE NEWCOMER
Selinsgrove, Pa.



WAYNE NEISWENTER
443 Catawissa Ave.
Sunbury, Pa.



FRED L. NORTON
214 McIntyre Ave.
Pittsburgh, Pa.



JAMES R. PETRUCCI
259 Thirteenth St.
Newark, N. J.



CHARLES A. PALMER
West End Ave.
Somerville, N. J.



MARY ESTHER POTIER
Antes Fort, Pa.



ELIZABETH PHILLIPS
323 Market St.
Sunbury, Pa.



DOROTHY PUCKEY
Orbisonia, Pa.



ERNEST RANO
4 Mary St.
Binghamton, N. Y.



ROBERT M. RODGERS
7½ S. Market St.
Selinsgrove, Pa.



HERBERT H. RUMMEL
57 Main St.
Port Carbon, Pa.



BETTY SENKO
Peace St.
Hazleton, Pa.



ELEANOR SHERIFF
Blairsville, Pa.



CARLTON SHAFFER
2065 Riverside Drive
S. Williamsport, Pa.



REED SPEER
20 S. Grandview Ave.
Crafton, Pa.



HERBERT
SPEIGLEMYER
S. Brady St.
Du Bois, Pa.



WILLIAM STAHLMAN
1420 Elmira St.
Williamsport, Pa.



WALTER STRANDQUEST
R. D. No. 5
Somerset, Pa.



CHARLES W. STROUP
Belleville, Pa.



HAROLD B. SUNDAY
371 Broad St.
Montoursville, Pa.



LEWIS A. SWARTZ
Millerstown, Pa.



ELIZABETH VORLAGE
Blairsville, Pa.



CHARLES VARNER
Hanover, Pa.



ISABEL WAGNER
Salisbury, Pa.



ELIZABETH WARDROP
Mt. Carmel, Pa.



RAY WATKINS
507 N. Eighth St.
Selinsgrove, Pa.



MARY WEAVERLING
Everett, Pa.



EDNA WILLIAMSON
Antes Fort, Pa.



ARTHUR E.
WILMARTH
New Milford, Pa.



ENZA WILSON
Lewistown, Pa.



MARTHA WOMLEDORF
Pittsburgh, Pa.



HAROLD WITKOP
269 Parker Ave.
Buffalo, N. Y.



BERYL WYMAN
York, Pa.







FRESHMEN



THE CLASS OF '33

MARGARET IDE	<i>President</i>
AMELIA KRAPP	<i>Vice-President</i>
HAROLD KRAMER	<i>Treasurer</i>

THIS year's Freshman Class had a slight advantage over previous years, when the administration arranged Freshman Week. After a series of lectures and several social affairs for the purpose of getting us better acquainted with each other, we felt able to meet the onslaught of the upper classmen. We met them, especially the Sophomores, and were given orders to buy bells or dinks and identification tags as the case might have been.

Then came the "Get-Away." When the mental capacity of Freshmen is considered, it may truthfully be said that we staged a successful "Get-Away." September 24, 1929, we met at Brooks Bank, had a weiner roast and afterwards elected the following officers: Charles Yon, President; Margaret Ide, Vice-President; Amelia Krapp, Secretary, and Harold Kramer, Treasurer. All of us walked bravely back to Selinsgrove, not fearing an attack by the Sophomores. However, we went to the theatre in comparative peace and then came the scrimmage.

The Freshman class this year is not as large as previous classes but, from all indications, it represents quality not quantity. For we have shown our mettle in athletics, in musical activities and in fact in all extra-curricular activities. There are Freshmen in the debating, pre-medical, pre-theological and pre-legal clubs, in the orchestra and band and in the Choral and Glee Clubs. This participation is a good omen of a very real interest this Freshman class takes in Susquehanna. A school is judged by its reputation in extra-curricular activities as well as by the students and their scholastic attainments. The Freshmen have taken a tangible means of showing their interest in Susquehanna's success and good name.

The Freshman number of the Susquehanna as edited by Bruce Worthington was an unqualified success and compared favorably with that issued by the regular staff. We were fortunate to have such a competent editor and capable staff.

Only one unfortunate incident has marred our days at S. U. and that was the departure of our class president for another school. The vice-president filled his place.

The class has not done anything spectacular in athletics but worked consistently. Several Frosh played on the Varsity football team. We were also well represented on the Junior Varsity. The Freshmen lost the annual Soph-Frosh football game largely because they were outweighed. However, we have representatives on track, baseball and basketball squads.

Our first semester has been comparatively successful and it seems certain that the Class of '33 will add its efforts to keep "Susquehanna on the march."

SARAH SHAUL'S, *Class Historian.*



*Senior Class
1911-1912*

FRESHMAN CLASS ROLL

Ahl, William	James, Kenneth	Petry, Jack
Ballentine, John	Jones, Barbara	Ramer, Paul
Boyer, Charles	Kline, Harold	Reese, Harold
Boyle, Grace	Koons, Leila	Reynolds, Harold
Brimming, Hughes	Kramer, Harold	Royer, William
Carl, Fred	Krapf, Amelia	Rupp, Clare
Caroline, William	LaHaza, Mary	Sala, Robert
Coleman, Charles	Lahr, Helen	Schoffstall, John
Cruse, Harrison	Lasher, G. Alfred	Shaulis, Sarah
Dockey, Selon	Lauver, Charles	Shoemaker, John
Edwards, John	Liehliter, Winifred	Shively, Beatrice
Ellmore, Flora	Lizdas, Diana	Shotsberger, Ernest
Fisher, Roseoe	Long, J. Learmont	Snyder, Daniel
Foltz, Mabel	Matlack, Jacob	Stambaugh, Francis
Geisel, Esther	McGeehan, Robert	Steele, J. Donald
Geistweit, Charles	McNally, Robert	Stephens, Freda
Gemberling, Laird	Mengel, Irene	Suffel, Mary
Gentzler, Beatrice	Metzger, Walter	Sutphen, Lenard
Griesemer, Mildred	Meyer, Emma Dortha	Swarm, William
Hamel, Kenneth	Meyers, John	Traxler, Albert
Harner, Ada	Miller, Harriet	Wagner, Paul
Hassey, John	Moff, Joseph	Walborn, Marian
Heisy, George	Moody, Anna	Watkins, Ray
Hepner, Serene	Naugle, George	Wentzel
Hoover, Mary	Oakley, Elizabeth	Worthington, Bruce
Hoy, Josephine	Olshefesky, Edna	Worthington, Jay
Hummel, Mary	Orlando, Emma	Wright, Paul
Ide, Margaret	Paseoe, Sannal	Yagel, Marguerite
	Pearle, Estella	Kufta, Michael



ATHLETICS

CHEERS

A-N-N-A
H-E-U-Q-S-U-S
Susqua—U.
Rah!

Kai-i-i Kai-i-i,
Kai-i-i-i-i-i
Rah!

Rah! Rah! Rah!
Rah! Rah! Rah!
Team! Team! Team!
Who?
Team!
Who?
Team!
Who?
Team! Team! Team!

S-U - S-U - S-U-S
Q-U - Q-U - Q-U-E
H-A - H-A - H-A-N-N-A
Rah!

Sus-Que-Han-Na. Rah! Rah!
Hoorah! Hoorah!
Sus-Que-Han-Na!
Rah!

G-R-R-R-Rah! (Stamping of feet)
Fight! Team! Fight!
G-R-R-R-Rah! Fight! Team! Fight!
Yeah! Team! Fight!

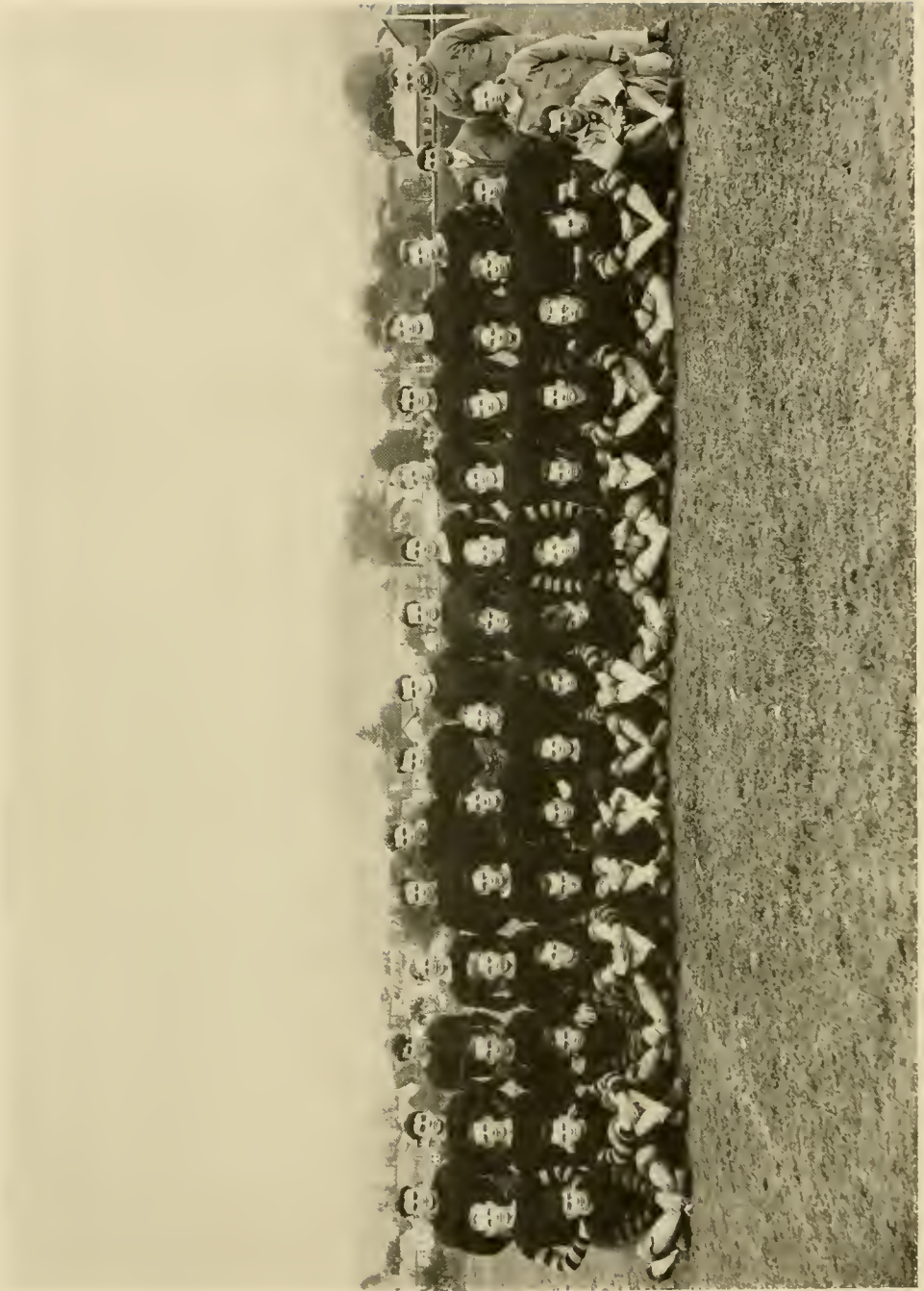
Oski-wah-wah!
Wiski-wah-wah!
Holi-mackeli, Kentuckii,
Susquehanna! Rah!

Rah! Rah! Rah! Rah! Sus-Que-Han-Na
(Repeat three times, faster each time)
Rah! Team! Team! Team!



FOOTBALL





FOOTBALL 1929

ALTHOUGH Susquehanna nearly equaled their opponents in the total number of points scored, they failed to enjoy what is really called a successful season.

Winning two of the eight scheduled games, and losing all their games with close margins, three of which being lost by one touchdown. The team seemed to be gripped by some intangible, unexplainable thing and was followed by this "jinx" the entire season.

With many veterans back seeking their old positions and one of the largest squads in the history of football, a team was whipped into shape and for the first several weeks looked like an undefeatable eleven. In the first game with Washington College Coach Ullery put on the gridiron a powerful aggregation and made a wonderful showing against the Washington boys but at the expense of injuries to many regulars and afterwards was unable to put the same combination on the field in future games. Parents' Day the Little Crusaders were doomed by a fast Haverford eleven but was not outplayed by them and this was the start of the "jinx." Then journeying to Newark, Susquehanna nosed out the Delaware eleven in fine form. In the next tilt with Drexel on the annual Home-Coming Day was at the short end of the score again after many of the Orange and Maroon stars had broken loose for many long and spectacular runs. Playing in a sea of mud with their ancient rivals of the gridiron, Juniata won another heart-breaker from the Little Crusaders. From Juniata the Orange and Maroon traveled to Ursinus, here they outplayed the Bears in all departments but managed to score a touchdown on the Little Crusaders and scored a victory. Gallaudet was the big surprise of the season, everyone figuring on an overwhelming victory for the Orange and Maroon, but lacking organization and unable to stop the strong forward thrusts, Susquehanna was downed again by a margin of a lone touchdown. The season closed when the team journeyed to Chester to play the Pennsylvania Military College. This last game proved to be one of the hardest fought games of the season. The Orange and Maroon, slashing off many long runs and outplaying their opponents in all departments, was nosed out of a victory in the last few seconds of play.

The Junior Varsity again had a regular schedule and much promising material was brought to light on that squad. The Jay Vees met Mansfield Normal, Lock Haven, National Farm School and Dickinson Seminary.

Though the record of the past season does not look very pleasing, we can gain encouragement from the fact that only three letter men will be lost to the squad next year through graduation, and we can look forward for one of the best seasons in the gridiron history of Susquehanna.



COACH ULLERY

Considerable credit is due Coach Ullery for the team he built though fighting against obstacles during the entire season. Coach Ullery is a graduate of Penn State, where he was a football, basketball, and baseball star, particularly the latter. He came to us from Beckley College, where he coached for several years. This is Ullery's second year on the campus, during which time he has established many friendships on the football field and off.

WOLFE

This classy pass-snatcher has been playing a whale of a game during the past season. He proved to be one of the main cogs in the machine. This flashing wingman was responsible for many of the long runs of the backfield and the big gains on the line. On the defense his smooth, consistent football tactics paved the way for many failures of the opposing teams.

GARMAN

Without a good center a football team is lost, but this was not the case with the Orange and Maroon, who had a real fighter at the pivot position. "Al" was appointed captain in his junior year to fill a vacancy. Due to his fighting spirit "Al" filled this position very creditably. He was quick on the delivery and one could always find him in the midst of the battle.

GLENN

This was "Skippy's" first year of varsity football at college and he sure deserves credit for his accomplishments. After Wall was forced out on account of injuries, Glenn was developed into a varsity quarterback and barked the signals off well for his first attempt. He was one of the best booters on the squad, for his toe could be trusted any time. In several of the games he got off some nice runs which netted the Orange and Maroon yards when they were needed most.



ADAMS

Adams is one of the players who was taken from the junior varsity and developed into a varsity end. He is tall and rangy, which helps to qualify him for the wing post. He is fast and a good defense player, making it hard for the opposition to circle his end. He is a consistent and hard-fighting player.

ZAK

This makes the second "Joe" on the varsity. This "Joe" is called the big onion man from Massachusetts, who also plays hard at the tackle position. This big fellow has been fighting for a berth on the varsity for the past three years and at last, in his senior year, his fighting spirit netted him the coveted varsity "S." On the defense he is a hard man to get out of the road to run a play through.

MALASKY

This husky young man from the coal fields proved himself this year. Frank is a hard worker and is very conscientious about football. When he hits the line they sure feel it, as Frank is one of the hardest line-plungers on the team. His work at Juniata was especially good. He was in every play and was easily one of the outstanding players of the day.

BERGER

Berger, a product of Coaldale High School, is another player who has been on the varsity for the past three years. He has played at both center and guard and has performed capably at both positions. His work is always steady and dependable and he implants a spirit of confidence in his teammates when he is in the game.



BARBER

Barber, playing his first year at end on the varsity squad, showed the makings of a real pass-snatcher. In the games that he participated, Barber gave his best and always played a good game. At Ursinus he played one of his best games of the season. Barber has another year of college football and profiting by the experience of the past season he should be a valuable asset to the team next year.

DANKS

This sturdy back, coming to Susquehanna in the second semester of his freshman year, and this fall reporting to the squad, immediately made a fine impression. Danks is a fine passer and passes and kicks from the portside. "Lefty" is fast and shifty and a very dangerous man to stop. When "Lefty" was called on to carry the ball, one could always depend on him for a nice run.

WINTERS

"Joe," who hails from Sewiekeley High, is Susquehanna's biggest lineman. This is his third year that he has earned a berth on the varsity and he certainly has worked hard for it, too. He is tall, rangy and fast, is a hard, consistent player, holding down one of the tackle positions. A hole could always be secured at his tackle; while the opposing team found great difficulty to penetrate the line at this point.

WORMLEY

"Dinny" proved to be the main cog in the backfield of the 1929 machine, playing a halfback position. "Dinny" played a bang-up game in every contest. He has the ear-marks of a good football player. His work was always smooth, regular and scientific. Could certainly dent the line and skirt the end for substantial gains. He did most of the ball carrying this year and was a capable performer at all times.



AUCHMUTY

This is Jack's second year on the varsity and was the center of strength on the line. He built up a reputation of being a football player at Staunton Military Academy and has certainly lived up to his standard his first two years at Susquehanna. He is a real fighter, which is a real asset to any team. He always managed to break through the line to get many a tackle and throw an opponent for a loss.

MACDONALD

"Mac" had a hard time to get going this season due to the large number of back-field aspirants to whom he had to display his wares. He is a hard and consistent ball player and through this has earned a halfback berth on the varsity. "Mac" is a hard man to stop when he has the ball and when several yards are needed he is sure to break through the line and make them.

WAGNER

"Wag" was one of the few freshmen who made the varsity squad this year. He came to us from Johnstown and soon displayed such promise that Coach Ullery put him on the varsity squad so that he could give him individual instruction. He showed up well in the last few games, especially in the Gallaudet game, when he did some very good punting.

MILLER

Miller is another one of the big husky Orange and Maroon linemen. Miller is big and that alone has been a factor in gaining a position on the varsity squad. He has shown marked improvement over past years in playing at his tackle post and was called to fill the position quite frequently the past season. He is a fighter and a hard worker and is sure to prove his worth during his last year.



YON

You is one of the freshmen this year that has shown much promise. He is tall and husky and has a real football spirit. He was substituted several times at the tackle position during the past season and has shown some real form. He plays hard and on the defense he is a hard man for the three long years yet and in that time he should develop into a real star on the Susquehanna's line.

MEYERS

Meyers is a newcomer, hailing from Penn State High, and has shown some real speed on the gridiron during the past season. Meyers' position is at halfback. He is a little short fellow with plenty of speed. In the beginning of the season he played with the junior varsity and starred in the Lock Haven game, but later in the season he was transferred to the varsity squad.

SCOTT

This diminutive halfback of the Little Crusaders, hailing from Mt. Carmel High School, has proven his ability as a great football player by holding down a berth on the varsity for three consecutive years. Scott is the lightest man on the team, he is fast and shifty, tearing around an end and making opposing tacklers look foolish is his specialty. He is a sure receiver of forward passes and is very skillful at running back punts.

FENSTERMACHER

Fenstermacher is one of the men who has risen from the ranks of the junior varsity to the varsity during the past season. "Sonny" plays the guard position and has proven that he can capably fill the guard position. He has two big years ahead of him and we are sure that he will come through next year in great form.



WERTZ

Manager Wertz, the boy wonder. How he ever staggered around the field under the bags of lime and what not while he had the assistant managerial duties is more than we can fathom. Under the reign of manager of the Little Crusaders, he proved his wonderful executive ability in subduing some of the opposing managers and handling the heavy gate receipts and guarantees.

DRIEBELBIS

Driebelbis is in the making of a real dependable end. This season was the first season that he played with the varsity squad and has shown up well in the games that he participated. He is tall and has an excellent build for a good end. Driebelbis is trying to live up to his end and has worked hard in the past seasons to gain a berth with the varsity squad.

WALL

Johnny had a streak of bad luck this year, being injured in the Washington game and for the first time in his splendid college football career he was forced to remain from the starting line-up in the Haverford game. Misfortune still followed, Johnny several weeks later received serious injuries forcing him out for the remainder of the season. Johnny earned a berth on the varsity eleven the four years at Susquehanna.

SPEER

Speer, a former Crafton High star, played his second year with the varsity. Speer is a good ball carrier and with some experience he ought to come through fine in the coming years for the Orange and Maroon. He is fast and a good open field runner. Being handicapped to some extent through an injury, his name did not appear on all the line-ups.

FOOTBALL 1929

Washington	0	Susquehanna	20
Haverford	19	Susquehanna	6
Delaware	0	Susquehanna	6
Drexel	13	Susquehanna	0
Juniata	12	Susquehanna	0
Ursinus	6	Susquehanna	0
Gallaudet	14	Susquehanna	7
P. M. C.	12	Susquehanna	6



BASKETBALL



FOOTBALL



BASKETBALL 1929

COACH ULLERY for the first year coached Susquehanna's floormen through a successful campaign. We can call our 1929 basketball season successful for one reason alone, that we saw some of the finest games ever played in the Alumni gymnasium. Every game was hard fought, and although all but two Varsity men were lost from the 1928 team, there were men equally good who stepped into their places and made the scores in every game close ones even if they did not win their games. Captain "Tom" Dixon, Wall, Winters and DeLay, experienced men from the preceding year, served as a nucleus around which Coach Ullery built a winning team. This task was made more difficult, for these men were coached by a different system in the preceding years of participation of collegiate basketball.

Some real stars were brought to light in the 1929 campaign. Captain "Tom" Dixon, Susquehanna's hard plugging center, a floor man of much skill and one that could be depended upon at all times, was one of the best men at the pivot position in Susquehanna's class of basketball.

From the ranks of the Freshmen Coach Ullery drew at least three men to fill the open positions on the Varsity. Schrock, former basketball star at Johnstown High School, was developed into a forward that could be depended upon to take a ball down the floor at any time, played a wonderful game up until he was forced out by a football injury. "Skippy" Glenn we have at the other forward position, the fastest man on the team and who handled the ball like a veteran. This pair of forwards, Glenn and Schrock, was always seen in the midst of battle. "Moe" Steinman and "Joe" Winters proved stone walls at the guard position. In Rummel, Coldren, Kozak, Spaid and DeLay and Secharge, Coach Ullery had some very dependable substitutes.

Although Susquehanna only won three games, all the rest of the games were close with the exception of Lehigh, where the Little Crusaders bumped into a real basketball club. The game between Susquehanna's friendly rivals, Juniata, perhaps proved the most exciting, especially the game played in the Alumni gym with Juniata, an extra period game, but the Ullerymen defeated their rival to the tune of 40 to 36.

Captain Dixon, Steinman, Coldren and Rummel were awarded the numerals "1932."

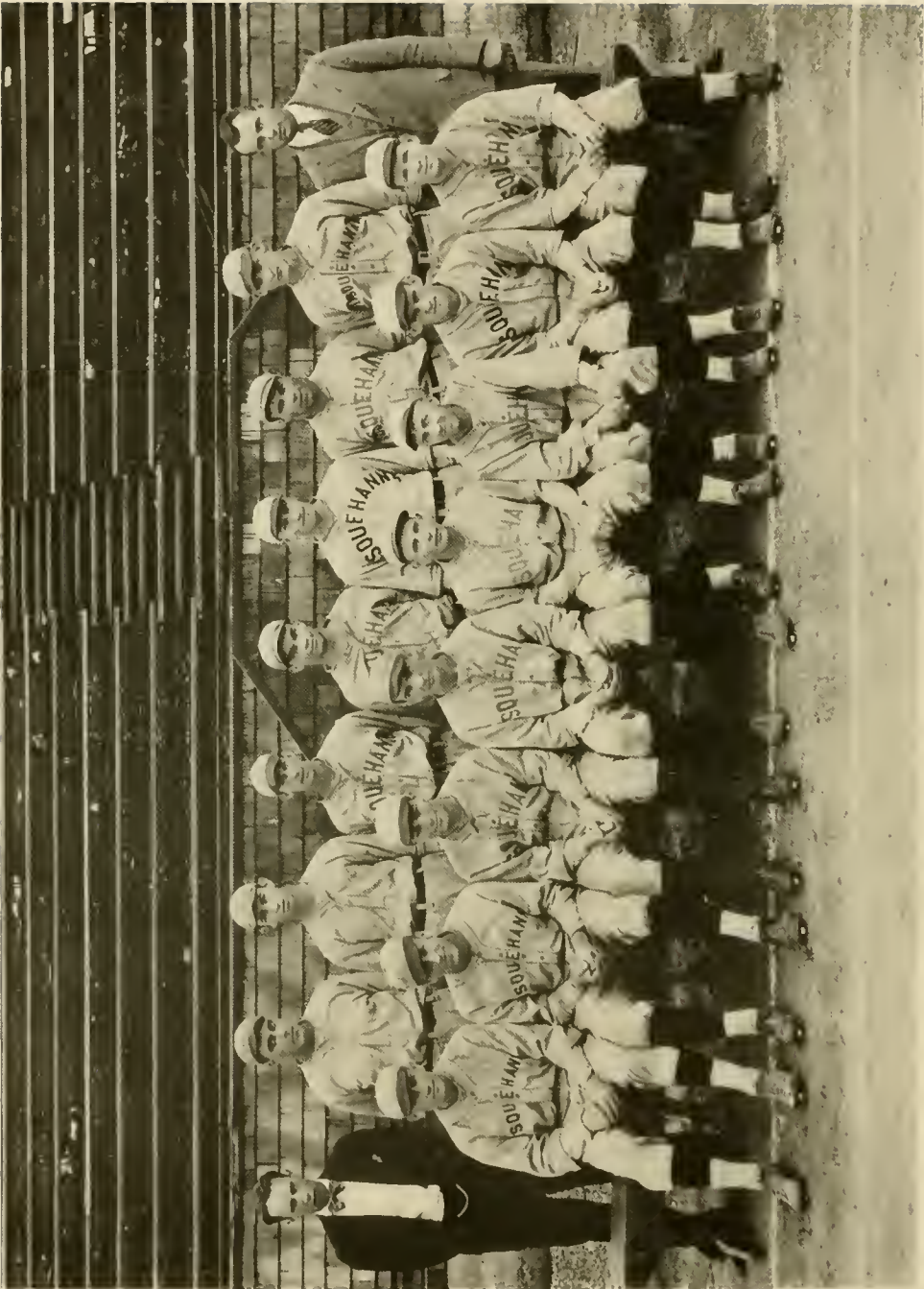
BASKETBALL 1929

Susquehanna 37	Washington 55
Susquehanna 34	Lebanon Valley 37
Susquehanna 24	at Juniata 30
Susquehanna 23	at Moravian 27
Susquehanna 24	at Lehigh 81
Susquehanna 16	at Delaware 15
Susquehanna 30	at P. M. C. 25
Susquehanna 20	Swarthmore 33
Susquehanna 28	Drexel 30
Susquehanna 27	at Lebanon Valley 39
Susquehanna 40	Juniata 36
	Ursinus (Cancelled)



BASEBALL





BASEBALL 1929

IN THE spring of 1929, Coach Ullery issued a call for all diamond men to report for preliminary practice. The call went straight to the hearts of many loyal supporters of Susquehanna's most favorite sport. Coach had a large squad of players from which to choose a Varsity nine. All experienced men from the preceding year were hard pressed for their positions on the Varsity.

The incoming Freshman class brought with them some real material for the diamond sport. In the person of "Swede" Palmer the Little Crusaders had a real first baseman. Stroup, with the experience of the past season, is sure to land an outfield position in coming seasons. Foltz was also fine reserve material for the shortstop position. Shaeffer, another Frosh, did well behind the plate, Wall holding down the Varsity position. Captain Shilling worked around third base in real style. Good could always be relied upon at the keystone sack and Heim at short. Groce and Snyder, who kept many long flies from turning into hits, and Sprout, all experienced men, handled outfield positions. Susquehanna had two real "slab artists" in the persons of "Lefty" Danks and "Bob" Donnell—"Lefty" Danks, a new face on the squad, transferring from Alabama.

The Little Crusaders took the first game from a strong Washington College Club, downing them 8-3, which put much courage and enthusiasm. Susquehanna's record was one of the best in years, with seven victories and four defeats for the season.

Probably the most interesting and closely contested game was played with the Little Crusaders' old rivals, Juniata, on Aikens Field. "Lefty" Danks happened to be called on to pitch by Coach Ullery and pitched a 3-0 victory over Juniata in one of the closest and hardest fought baseball games ever played on Aikens Field.

The team hit opposing pitchers for an average of .244. Good led his teammates with an average of .308 and the rest of the team batting below the .300 mark.

The Varsity letter men for the 1929 season were: Captain Shilling, Groce, Good, Snyder, Heim, Wall, Palmer, Malasky, Donnell, Danks, and Manager Beam. Those receiving numerals being Shaeffer, Stroup and Sprout.

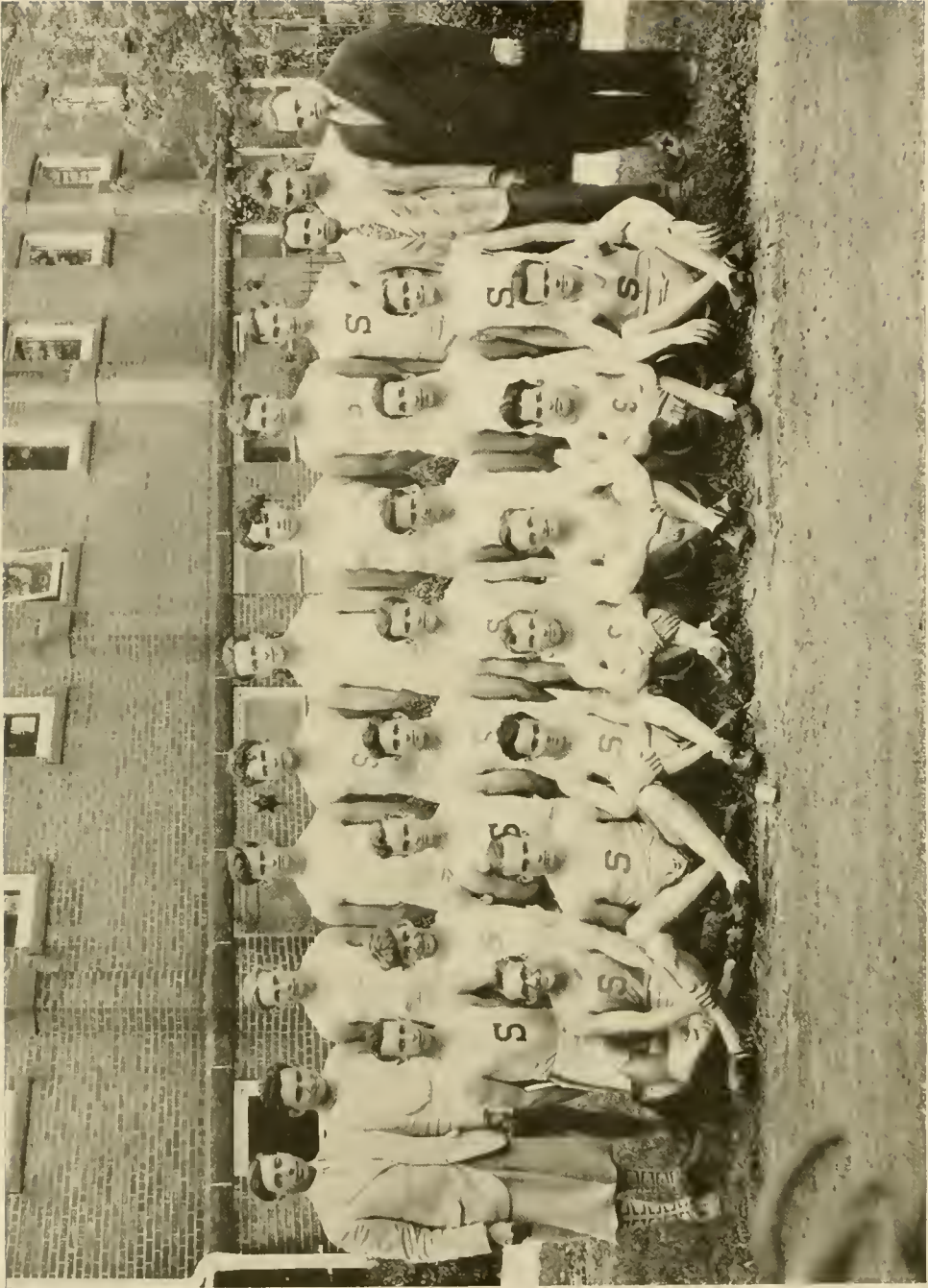
The Varsity's 7-0 victory over the Susquehanna Alumni brought to a close one of the best seasons in the history of diamond sports at Susquehanna.

BASEBALL 1929

Susquehanna	8		Washington	3
Susquehanna	3	at	Swarthmore	16
Susquehanna	7	at	P. M. C.	2
Susquehanna	1	at	Hamilton	2
Susquehanna	3	at	Juniata	6
Susquehanna	4		Ursinus	3
Susquehanna	7		Selinsgrove	3
Susquehanna	7	at	Lebanon Valley	3
Susquehanna	3	at	Juniata	0
Susquehanna	1		Lebanon Valley	10
Susquehanna	7		Alumni	0



TRACK



TRACK

THE preliminary spring track activities started with the indoor track meet, March 26, in the Alumni gym. The Class of '30 won the meet, making the third year in succession. Following this was an outdoor meet won by the Sophomores.

These meets served more or less for a line-up for Varsity material. The succeeding weeks was found an intensive schedule of indoor and outdoor track practice, until the coming of warm weather. Coach Grossman had mostly Freshman material to draw from, which took much training and trials from which served as an elimination.

Susquehanna was represented at the Penn Relays and took fifth position. This is considered good in the fast company that they were competing against and the amount of inexperienced men.

The Varsity team was under fire for the first time in the Elizabethtown Meet at Aikens Field, May 4. This proved to be a walk-over by Susquehanna's spiked-shoe artists, winning 99-27.

In the Drexel Meet, May 11, Susquehanna did not fare so well, losing by 14 points, 70-56.

At the C. P. I. C. C. meet at Dickinson, Susquehanna did not score high as a team, but "Raymie" Rhine, captain of the 1929 cinder men, who had been doing remarkable work in the one-mile and two-mile runs, distinguishing himself in every meet as a man of endurance and physical stamina, came within an ace of breaking the record in the two-mile run. His time was one-tenth of a second short of the original record.

The last meet of the year the team lost to Juniata 99½ to 26½.

Weliky was elected track captain and the following men were given Varsity letters: Weliky, Fairchild, Gerhardt, Paralís, Norton, Winters, Rhine, Jones, Johnston, Glenn, Gilliland, C. Fisher, Manager Straesser. Numerals: P. Bishop, Neiswenter, Dreibelbis, DeLay, Coldren, Young.

TRACK 1930

April 26	Penn Relays	Away
May 3	Delaware	Home
May 10	Elizabethtown	Home
May 17	C. P. C. T. C.	Away
May 19	Bucknell	Away
May 24	Juniata	Away



TENNIS





TENNIS

TENNIS took on a new lease of life during the 1929 season, being renewed after a lapse of several years. Much interest and enthusiasm was shown towards the sport. A systematic schedule being worked out for the use of the different courts on the campus, some for the women students and some for the male and Varsity courts. The athletic association also constructed five new courts.

Harry Shaffer was elected manager. Clifford Kiracofe was chosen captain and Prof. Leinbaugh, Faculty Advisor. These officers in co-operation with the athletic association and the students were responsible for placing tennis on a new foundation.

Members of the team being: C. Kiracofe, Stern, R. Michaels, W. Adams, R. Speer, W. Burford. All the members won the Varsity insignia.

TENNIS 1930

May 3.....	Juniata	Away
May 10.....	Washington	Home
May 14.....	Lebanon Valley	Away
May 16.....	Bucknell	Away
May 22.....	Bucknell	Home
May 24.....	Lebanon Valley	Home



ACTIVITIES





May

Day





THE JUNIOR PROM

IT HAS been customary for the Junior Prom to be included in the year's social calendar. This custom was introduced by the Class of 1926 and has continued to be an annual affair of unusual importance. The plans and preparation necessary for this year's event are in the hands of a general committee appointed by the president of the Junior Class. It is composed of the following individuals: Wilber Burger, chairman; Lena Baird, Corinda Sell, Walter Burford, Richard Goetz.

This year's Prom is to be held as the climax of the May Day activities. It is to be a formal affair and promises to be one of elaborateness and pomp.

PARENTS' DAY

ONE of the most outstanding events of the college year was the initial observance of Parents' Day on Saturday, October 12, 1929.

Invitations were sent to the parents of all the students for the purpose of offering them an opportunity of visiting their children, and also giving the Faculty a chance of learning to know the parents. An opportunity of this type certainly is worth while and judging from the success of this occasion this year, we can hope to look forward to many more such days at Susquehanna University.

At noon the festivities came to a climax in an elaborate dinner served at 12.15 o'clock in the college dining hall with the parents as guests of the University. An interesting program was prepared as entertainment for the occasion consisting in after-dinner speeches, and renditions by the college Glee Club. Following the banquet the guests made a tour of the campus and the various buildings. At two o'clock they assembled on the athletic field, where the Haverford-Susquehanna football game was played. This proved to be a highly exciting game and, in fact, one of the most interesting games of the season.

This occasion was so different and so thoroughly enjoyable to all that we are sure that it is an event which will be looked forward to by parents, faculty and students, annually.



COUNCILS





CO-OPERATIVE STUDENT

ANNE CLEAVER, — *President*

ETHELTYNNE MILLER, *Vice-President*

ENZA WILSON, *Secretary and Treasurer*

Katherine Morning

Evelyn Brinser

Ruth Jacobs

Isabelle Moritz

Sarah Shanlis

Miriam Keim

WOMEN'S Co-operative Council was established on this campus, October 25, 1925. Miss Barbara De Reemer was first president and instigator in bringing this organization, which has proven a great step forward, toward bettering the living conditions in Seibert Hall and furthering the advancement of welfare of the college in general. The next president was Miss Marion Pounder, who guided the Council through a most successful year. Following her, Miss Essex Botsford and Miss Foster both enjoyed very successful years. This year, under the very capable presidentship of Anne Cleaver, great things have been accomplished.

Miss Naome K. Hade, Dean of Women, who came to Susquehanna during the second year of co-operative government, has done much to perfect this system of government. It is hoped, however, by contact with similar and more mature governments in other colleges and universities, our local government will continue to improve, not only for its own cause but for the general standing of the college itself.



*Standing:—Mattern, Berger, Barber, Yoas, Senko
Sitting:—Ramsey, Rhoads, Schrack*

INTER-FRATERNITY COUNCIL

	LUKE RHOADS, <i>President</i>	STEWART SCHRACK, <i>Secretary</i>
FRANK RAMSEY, <i>Vice-President</i>	ALVIN BARBER, <i>Treasurer</i>	Russell Yoas
John Senko		Wilber Berger
Richard Mattern		

THIS body was first organized in 1927-28 in order to create and maintain a more friendly relationship among the fraternities by a fair and honest consideration of the many problems which confront fraternity men as a group.

The membership is made up of eight men, two representatives from each fraternity.

Certain regulations regarding rushing and bidding are taken care of by this organization. The installation of a preferential bidding system was one of their first and most noteworthy achievements.



*Standing:—Jacobs, Leisher, Alfred, Thomas, Schweitzer, Moritz
Sitting:—Walker, Tressler, Moore*

THE INTERSORORITY COUNCIL

MARJORIE PHILLIPS, *Vice-President*
Frances Thomas
Ida Schweitzer

EDNA R. TRESSLER
Signe Alford
Ruth Jacobs

WILMA WALKER, *Secretary*
Dorothy Leisher
Isabelle Moritz

THE Inter-Sorority Council was organized for the purpose of maintaining a more congenial relationship among the sororities; it has served in this capacity for many years.

Nine women, three representing each sorority, make up this membership. The presidents and vice-presidents of the sororities automatically become members and the other representatives are chosen by election, by the individual group.

Through the efforts of this organization practically all sorority affairs have been of inter-sorority origin, thus increasing the spirit of co-operation.



PUBLICATIONS



Standing:—Kozak, Blough, Worthington
Sitting:—Eastep, Johnston, Ramsey, Editor-in-Chief; Wardop, Cleaver

THE SUSQUEHANNA

EDITORIAL STAFF

<i>Editor-in-Chief</i>	FRANK E. RAMSEY, '30
<i>News Editor</i>	CLIFFORD JOHNSTON '31
<i>Sports Editor</i>	VERNON BLOUGH, '31
<i>Assistant Sports Editor</i>	BRUCE WORTHINGTON, '33
<i>Social Life Editor</i>	FRANCES THOMAS, '30
<i>Alumni Editor</i>	MARY EASTEP, '30
<i>Exchange Editor</i>	ANNA CLEAVER, '30

Assistants on Reportorial Staff

Betty Wardrop, '32	John Kindsvatter, '32
Andrew Kozak, '32	Fred Norton, '32

THE SUSQUEHANNA, campus weekly publication, is published by the Susquehanna University Publishing Association, comprising members of the student body, the faculty, and the alumni organization. It was founded in 1894.

Its purpose is to give reflect in a clear-cut, concise manner, life at Susquehanna University and to inform the outside world of her activities from time to time.

The Editorial Staff is composed of members of the three upper classes. The Editor-in-Chief is chosen by a gradual process of elimination.



*Standing:—Fisher, Fairchilds, Auchmuty, Fenstermacher
Seated:— Kroek, Kurtz, Berger*

THE SUSQUEHANNA

BUSINESS STAFF

Business Manager LUTHER KURTZ, '30
Circulation Manager WILBUR BERGER, '31
Advertising Manager CHARLES KROECK, '31

Assistants on Business Staff

Herman Fenstermacher, '32	Lee Fairchilds, '32
Lawrence Fisher, '32	Jack Auchmuty, '32

THE Business Staff is comprised of members of the three upper classes, usually students interested in the Business Courses. The Business Manager is selected by a gradual process of elimination, in the same manner as the Editor-in-Chief is chosen.



Standing:—Johnston, Salem, Fulkrod, Blough, Hutchings, Schmidt, Nicodemus, Kwasnoski
Seated:—Miller, Schweitzer, Senko, Leshner, Sarver

THE LANTHORN

EDITORIAL STAFF

Editor-in-ChiefIDA A. SCHWEITZER
Art EditorDONALD S. LESHNER
Assistant EditorJOHN P. SENKO
Chief StatisticianETHLYNE MILLER

Associate Editors

Walter Fulkrod	Martha Laudenslager
Mary Hutchings	Bryce Nicodemus
Clifford Johnston	John Salem
Daniel Kwasnoski	Herbert Schmidt

Athletic EditorVERNON BLOUGH
Assistant StatisticianINEZ SARVER
Humor EditorALTON GARMAN
Assistant Athletic EditorNELLIE SHUE

THE LANTHORN is a yearly publication put out by the Junior Class. Its sole purpose is to bring back and revivify the wonderful memories of our college days. It also depicts the actual life of a student during his college career.



*Standing:—Clark, Barber, Wolfe, Burford
Seated:—Baird, Yoas*

THE LANTHORN

BUSINESS STAFF

<i>Business Manager</i>	RUSSELL E. YOAS
<i>Assistant Business Manager</i>	GLENN CLARK
<i>Advertising Manager</i>	WARREN WOLF
<i>Advertising Manager</i>	WARREN WOLFE
<i>Assistants on the Staff</i>	{ Lena Baird Walter Burford Alvin T. Barber

THE Business Staff has made possible this edition of the Lanthorn through its co-operation with the Editorial Staff, and the untiring efforts to secure the financial aid necessary for this publication.

SUSQUEHANNA HANDBOOK

THIS is a yearly publication printed and distributed by the Y. M. C. A. and Y. W. C. A. of Susquehanna University.

These little books are a great aid to all students, but particularly to the Freshmen. They find in the contents everything they need to know about the rules and regulations of Susquehanna's organizations.

The students responsible for this year's Handbook are: Harry J. Lupfer, Editor; John S. Rhine, Business Manager.

A word about the contents of the book. We find information concerning the various departments of the college, the buildings of the campus, the constitution and by-laws of the organizations and various matters of interest which makes it indispensable to everyone actively interested in the University.



MUSIC





MEN'S GLEE CLUB

PROFESSOR ELROSE L. ALLISON, *Director*

MR. ROBERT HOSTETTER, *Student Director*

MR. LAWRENCE C. FISHER, *Business Manager*

MR. ROBERT McNALLY, *Accompanist*

MR. NORTON, *Stage Manager*

First Tenors

Robert Hostetter
Robert Wilson
Lawrence Wilson
Roscoe Fisher
William Swarm
John Ballentine

First Basses

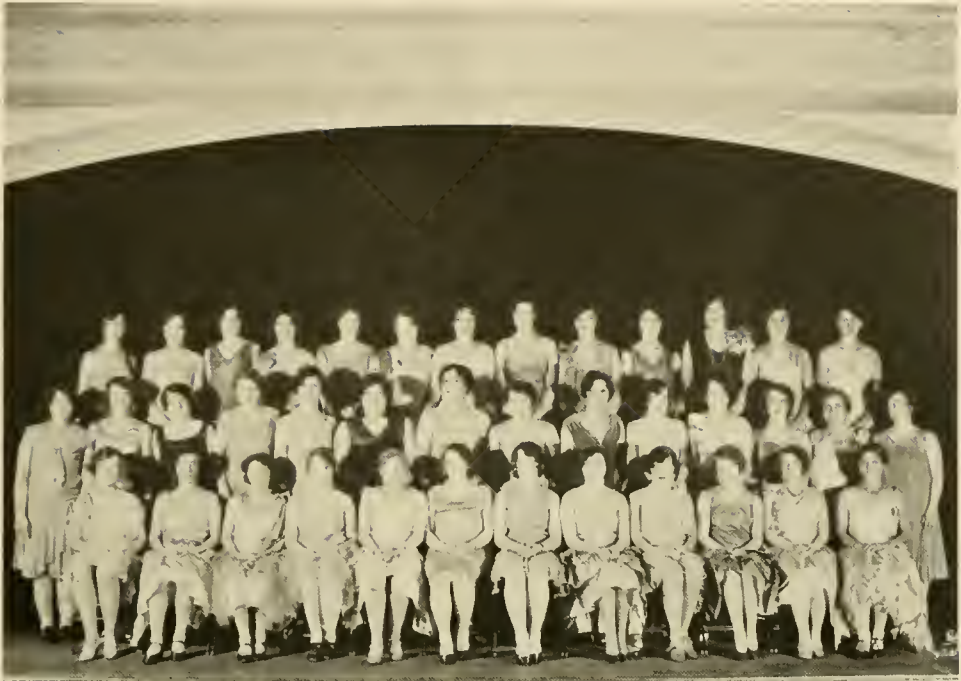
Luther D. Kurtz
Clifford Johnston
Charles Kroeck
Lew Legacy
Francis Devers
Forest Metzgar

Second Tenors

Bryce Nicodemus
John Shoemaker
William Welicky
Ray Watkins
William Oleson
Ray Minnich
John Petry

Second Basses

George M. Hess
Robert Rodgers
Lewis Fox
Arthur Leerone
Fred Norton
Learmont Long
Ralph Lohr



LADIES' CHORAL CLUB

VIRGINIA MOODY, *President*
 ANNA LEINBACH, *Secretary*
 DOROTHY PUCKEY, *Treasurer*

EDITH ASH, *Business Manager*
 RUTH MAURY, *Stage Manager*
 BERYL WYMAN, *Stage Manager*

ANNA GAGE MOODY, *Librarian*

First Sopranos

Janet Dively
 Martha Fisher
 Mabel Foltz
 Beatrice Gentzler
 Mary Hutchings
 Lelan Lahr
 Anna Leinbach
 Dorothy Leisher
 Margaret Markle
 Ruth Maury
 Marjorie Michael
 Harriet Miller
 Kathryn Morning
 Marjorie Phillips
 Dorothy Puckey
 Frieda Stephens
 Fannie Shipe
 Beryl Wyman

Second Sopranos

Katryn Bittner
 Anna Dunkelberger
 Mary Eastep
 Josephine Hoy
 Margaret Ide
 Anna Gage Moody
 Virginia Moody
 Irene Mengel
 Isabel Moritz
 Elizabeth Oakley
 Edna Olshefsy
 Estelle Pearle
 Beatrice Shively
 Dorothy Strine

Contraltos

Edith Ash
 Arline Kanyuck
 Betty Long
 Alma McLean
 Bertha Rodgers
 Florence May Steward
 Francis Stambaugh
 Isabel Wagner



Third row:—Shaffer, Burns, Rhine, Good, Kaltriter, Kozak, Shoemaker, Hartman, Mattern, Ambicki
Second Row:—Minnich, Hohman, Ballentine, Berkey, Haines, Strandquest, Newcomer, Gilnet
First row:—Wright, Steele, Metzgar, Coleman, Nicodemus, Prof. Allison, Oberdorf, Freed, Bringer, Graybill, Snyder
Seated:—Petry, Kiracoffe, Hostetter, Norton

SUSQUEHANNA UNIVERSITY BAND

PROF. ELROSE E. ALLISON, *Director*

CLYDE MAHAFFEY, *President*

RICHARD MATTEEN, *Secretary*

RAY MINNICH, *Treasurer*

JESSE NEWCOMER, *Business Manager*

Trumpets
 C. E. Mahaffey
 S. Berkey
 P. Haines
 J. Ballentine
 H. Hohman
 R. Minnich
 J. Ambicki

Trombones
 A. Barber
 R. Mattern
 W. Gilnet

Basses
 A. Kozak
 J. Shoemaker

Clarinets
 C. Shaffer
 A. Snyder
 D. Graybill
 H. Bringer
 P. Freed

Altos
 H. Burns
 W. Hartman
 J. Rhine

Baritone
 S. Good
 O. Kaltriter

Saxophone
 D. Steele
 B. Wright
 C. Metzgar
 B. Coleman

Drums
 R. Speer
 B. Nicodemus
 J. Newcomer
 J. Oberdorf

Cymbals
 W. Strandquest



Standing:—Watkins, Markle, Dunkleberger, Brungart, Shaffer, Kozak
Seated:—Moody, Senko, Arbegast, Minig, Morning, Dively, Prof. Hemphill, Strandquest, Leese, Shue, Leinbach, Hayes, Lizdas

SUSQUEHANNA UNIVERSITY ORCHESTRA

PROF. DONALD HEMPHILL, *Director*
 KATHRYN MORNING, *President*

MARGARET MARKLE, *Vice-President*
 JANET DIVELY, *Secretary*

WALTER STRANDQUEST, *Treasurer*
 ANDREW KOZAK, *Business Manager*

PERSONNEL

First Violins
 Kathryn Morning
 (Concert Master)
 Janet Dively
 Mildred Arbegast
 Anna Moody
 John Senko
 Ray Watkins
 Paul Hartline
 John Shoemaker
Violincellos
 Lois Brungart
 Mabel Foltz

Clarinets
 Carleton Shaffer
 Elizabeth Oakley
Trombone
 Alvin Barber
Second Violins
 Leolin Hayes
 Lurriet Leese
 Nellie Shue
 Walter Strandquest
 Richard Michaels
 Anna Leinbach

Diana Lizdas
 Helen Potteiger
Double Bass
 Andrew Kozak
Trumpets
 Hillis Berkey
Drums
 John Oberdorf
Piano
 Margaret Markle

STAR COURSE

THE concerts and lectures which were presented in Seibert Chapel Hall during the past month were sponsored by the Conservatory of Music with Professor Sheldon, Director, bearing the responsibility of putting out a quality program which comprised the Star Course.

The following numbers were included:

October 18—R. Leon Trick, Pianist
D. Phillips, Baritone

November 15—The Sprague Players in "Back Home"

December 6—The Marianne Kneisel String Quartet of New York

January 23—The Arpa Columbiana South American Folk-Lorists, and
Senorita Milla Dominguez

March 6—The Boston Male Choir and Mme. May Korb, Soprano.



ORGANIZATIONS



SOCIETIES





Standing:—Bollinger, Fairchilds, Fox, Geistweit
Seated:—Schmidt, Hartline, Seiber, Kindsvatter

Y. M. C. A.

PAUL HARTLINE, *President*

HERBERT SCHMIDT, *Vice-President*

JOHN KINDSVATTER, *Secretary*

WILSON SIEBER, *Treasurer*

DR. AUGUSTUS W. AHL, DR. G. MORRIS SMITH, *Faculty Advisors*

THE Y. M. C. A. is a union of students which has for its purpose the development of a well-balanced life through Christ.

During Freshman Week the new students were welcomed and acquainted with their new environment.

Sunday evening Vesper Services are conducted for those who wish to come together for a short period of worship.

The "Y" also sponsors Deputation Teams, Bible Study Groups, and Sunday School Class. Speakers of note, presenting current topics of vital importance, are brought to the campus through this organization.

The local "Y" was, this past year, the host to the Y. M. C. A. Officers' Training Conference.



Y. W. C. A.

Vice-President, WILMA WALKER *President,* ANNA MOORE *Secretary,* BETTY WARDROP *Treasurer,* LENA BAIRD

CHAIRMEN OF COMMITTEES

Program
MARY EASTEP

Membership
WILMA WALKER

Vesper
ETHYLNNE MILLER
HARRIET LEESE

Social
FRANCES THOMAS

THE Y. W. C. A. ever does a noble and much needed work. Its purpose is to aid the co-ed in developing an all around life. Its reasons for existence are numerous and widespread, it goes into any field where a need is manifest.

The Freshmen are made to feel more at home through the kindly feeling extended them by the "Y" girls. The parties, hikes and meetings sponsored by the Y. W. C. A. help to bring all of the girls together in friendship.

May Day is something beautiful given the students and friends of Susquehanna by its Y. W. C. A. Months are spent in careful planning and preparation for the annual celebration of May Day.

Vesper Services conducted in co-operation with the Y. M. C. A. affords students an opportunity for expression. Much talent has been discovered in these meetings and much help has been derived from them.



THE PRE-THEOLOGICAL CLUB

HERBERT SCHMIDT, *President*

SILSON SIEBER, *Vice-President*

LEWIS L. COX, *Secretary*

THE Pre-Theological Club is an organization which brings together those students who are looking forward to the gospel ministry as their life work. In its meetings an opportunity is given to everyone to share his spiritual failures and triumphs.

The meetings this year have all centered around some vital problem of Christian life. Several of the discussions were led by members of the Seminary and College faculty.



Standing:—Moore, Kaltriter, Sassaman, Fisher, Stahlman, Schrack, Clark, Sarver
Seated:—Dr. Fisher, Hayes, Thomas, Mattern, Dr. Surface

HONOR SCIENCE SOCIETY

FRANCES THOMAS, *Vice-President*

LEOLIN HAYES, *Secretary-Treasurer*

PERSONNEL

Dr. George E. Fisher
 Dr. Harvey A. Surface
 J. Richard Mattern
 Stewart Schrack

Oren Kaltriter
 Ira Sassaman
 Anna Moore

Inez Sarver
 Lawrence Fisher
 William Stahlman
 Glen Clark



Standing:—Stephens, Haffer, Fulkrod, Seiber, Dr. Kern, Pearl, Lupas, Wilson, Shaulis
Seated:—Weaverling, Schwitzer, Sell, Walker, Shue, Dr. Turk

THE DEBATING ASSOCIATION

WALTER FOULKROD, *President*

WILMA WALKER, *Secretary-Treasurer*

SEVERAL years ago this organization was established for the purpose of giving all students interested in the advancement of public speaking, as well as oratorical ability, an opportunity. It served its purpose very well, manifesting its activity mostly through debates.

This year it has reached a goal worthy of commendation, for it was through this club headed by the most efficient debaters of last year's Varsity teams that we have secured the Susquehanna Chapter of Tau Kappa Alpha. In this manner it is possible for this association to bestow upon those who participate in two inter-collegiate debates the honor of membership in this national fraternity.



First row:—Sokoloski, Schiavo, Lupas, Dr. Kern, Kwasnoski, Lauer, Petrucci
Second row:—Steele, Reynolds, Devers, Yon, Paralis, Rudowski, Gallagher, Anselmi
Third row:—Gemberling, Pascoe, Spaid, Wiliky, Bruno

THE SADLER PRE-LEGAL SOCIETY

President, ANTHONY J. LUPAS
Vice-President, DANIEL KWASNOWSKI

Secretary, JOHN A. SCHIAVO
Treasurer, JAMES R. PETRUCCI

THE Sadler Pre-Legal Club was organized during the year 1927-28 by a group of students contemplating law as a profession. Regular meetings are held to discuss subjects pertaining to the legal profession, and outside authorities are invited to speak to the group.

During the past year (1929-30) the club has made wonderful progress. The membership has been increased, a key as an emblem of the club has been adopted, and a mock trial presented at Seibert Hall, being the most outstanding accomplishments of the club. Anyone interested in law as a profession cannot help but benefit by becoming a member of this organization.



*First row, left to right:—Gerhardt, Berger, DeLay, Wormley, Wall, Heim, Hostetter
Second row:—Johnston, Garman, Fairchilds, Paralis, Palmer, Danks
Third row:—Malasky, Norton, Glen, Adams, Auchmuty, Speer*

VARSITY "S" CLUB

THE membership of the Varsity "S" Club is composed of those who have won their letter in any Varsity sport.

The club has contributed many things to the school. One of them which stands as a monument to this organization is the beautiful Gate Way at main campus entrance to the athletic field. Another purpose of this club is to show the best of courtesy and hospitality to visiting teams, and to keep the letter men together.



FRATERNITIES





Third row:—Malasky, Rummel, Hartman, Neiswenter, Kaufman, Barber, Shaffer, Hess,
Bingaman Mahaffey, Speer, Rodgers, Coldren
Second row:—Hayes, Garman, Kozak, Groce, Clark, Herman, Garman, Speiglemeyer, Young,
Adams, Gerhardt, Hudkins, Doebler, Shilling, Brubaker
First row:—Groce, Johnston, Sassaman, Kiracoffe, Leshner, Yoas, Burford



BOND AND KEY CLUB

Chartered 1914
300 Walnut Street

PERSONNEL

Seminary

Adam Bingaman
Russel Shilling

Harold Doebler
George Young

Jerome Kaufman

Seniors

Raymond Garman
Leolin Hayes

Miller Gerhardt
Clifford Kiracoffe

Wilfred Groce
Fenton Means

Juniors

Alvin Barber
Robert Donnel
William Herman
Donald Leshner

Walter Burford
Alton Garman
Winfield Hudkins
John Salem
Russel Yoas

Glen Clark
Walter Groce
Clifford Johnston
Ira Sassaman

Sophomores

William Adams
Robert Hartman
Andrew Kozak
Fared Mayes
Herbert H. Rummel

James Brubaker
George Hess
Clyde Mahaffey
Wayne Neiswenter
Carlton Shaffer
Herbert Speiglemeyer

Smith Coldren
Merle Hubbard
Frank Malasky
Robert Rogers
Reed Speer

Pledges

Lewis Legacy
William Swann
Donald Steele

Harold Reynolds
William Royer
Paul Edwards
Hughes Brinninger

John Meyers
William Ahl
John Shoemaker



Third row:—Kwasnoski, Hohman, Varner, Maxheimer, Shearer, Crabtree
Second row:—Paris, Knouse, Nicodemus, Shaffer, McCormick, Crossman, Adams, Heikes
First row:—Foust, Dr. Kretchman, Ramsey, Wertz, Dorshimer, Senko, Hartman



EPSILON SIGMA

Chartered 1924

401 Walnut Street

PERSONNEL

Seminary

Wayne Daubenspeck

Martin Foutz

Seniors

Frank Ramsey, *President*
Howard Wertz, *Vice-Pres.*
John Heikes
Joseph Zak

Charles Stephens
Wellington Hartman
James Bruno
Ellwood Adams

Daniel Kwasnoski
Harold Crossman
Robert Wilson

Juniors

William Crabtree
Nevin Dorshimer, *Secretary*
Fred Showalter

Frank Paris
John Senko, *Treasurer*
Reno Knouse
William Hazlett

Bryce Nicodemus
Frank McCormick
William Shearer

Sophomores

Herbert Hohman
Daniel Maxheimer

Maurice Sheaffer
Clair Dreibelbis

Charles Varner
Albert Traxler

Pledges

Laird Gemberling
Robert McNally
Charles Geistweit
Sylvester Matlack
Harrison Cruse

Kenneth Hamel
Harold Kramer
Selon Dockey
John Hassay
George Lasher

Herrold Metzgar
Ernest Shotsberger
Daniel Snyder
Jesse Newcomer



Third row:—Whitkop, Wilkes, Sieber, Hoffman, Sunday, Greeves, Palmer, Auchmuty,
Fenstermacher, Olson, Fairchilds, Stoup, Ambicki, Bishop
Second row:—Fox, Watkins, Kindsvatter, Scharfe, Harvey, Schmidt, Berger, Bedford,
Strandquest, Danks, Metzgar, Reno, Weliky, Scott, Fisher, Bishop
First row:—Leerone, Rhonds, Wormley, Wall, Delay, Kurtz, Hostetter



MU ALPHA CHAPTER

OF

PHI MU DELTA

Local Chapter Chartered 1924

306 Walnut Street

PERSONNEL

Seniors

Paul Bishop
Donals Wormley
John Wall

Arthur Gelnett
Luke Rhoads
Arthur Lechrone

Luther Kurtz
Robert Hostetter
John Delay

Juniors

John Ambicki
George Moser
Lloyd Bedford
Randolph Harvey

Wilber Berger
Charles Kroeck
Raymond Scott
William Weliky

Hubert Schmidt
Josiah Winters
Richard Scharfe
Wilson Sieber

Sophomores

Glenroy Bishop
Herman Fenstermacher
Lawrence Fisher
Donald MacDonald
Walter Strandquest
Harold Sunday
Fred Norton
John Greaves

Jack Auchmuty
Lee Fairchild
John Kindsvatter
Charles Palmer
Ray Watkins
Alden Danks
Fred Wilkes
Lewis Fox

Warren Hoffman
Leonard Olson
Forrest Metzgar
Charles Stroup
Harold Witkop
Ernest Reno

Pledges

Vernon Blough
Claire Rupp
Roscoe Fisher

Douglas Sutphin
Robert McGeehan
John Long
Samuel Pasco

Park Wagenbaugh
William Carolan
John Ballentine

CONTENTS



Standing:—Haines, Whitman, Reamer, Wilmarth, Goetz, Cartwright, Bell
Seated:—Schrack, Hall Rhoads, Fulkrod, Kimmel, Musser, Mattern



PHI EPSILON CHAPTER

OF

PHI LAMBDA THETA

Chartered 1928

400 Pine Street

PERSONNEL

Seniors

Wayne Hall
Vincent Jones
Albert Cartwright

John Rhine
J. Richard Mattern, *Sec.*
Simon Rhoads

Stewart Schrack
B. J. Wirt

Juniors

Walter Foulkrod, *President*
Fred Fisher
David Graybill
J. Richard Goetz

Myer Musser
Paul Heines
Harold Kimmel
K. D. Witmer

Paul Reamer
Charles Shearer

Sophomores

W. Harold Gellnett
Arthur Wilmarth

Samuel B. Brosius
Walter Bell

B. Ray Minnig

Pledges

Walter Metzger

George Wentzel
Paul Wright

Serene Hepner



Standing:—Dr. Fisher, Rhoads, Kaltriter, Eastep, Moody, Erdman, Thomas, Moore, Ramsey,
Dr. Wood, Prof. Brungart
Seated:—Dr. Dunkleberger, Dr. Follmer, Dr. Kretchmann, Kiracoffe, Young, Dr. Sadtler,
Dr. Manhart

ΓAMMA MU is the National Social Science Honor Society, founded December 1, 1924, having for its object, "to encourage and reward the undergraduate study of social science." The term "social science" is used in the broadest sense possible.

This society consists of forty-five chapters organized in colleges and universities throughout the United States.

Pennsylvania Gamma Chapter of Susquehanna University was organized May 9, 1927; and it was formally installed June 6, 1927. This Chapter holds four regular business meetings during the year; two literary events and two social functions. Special events are featured from time to time.

Membership in the society is attained through election by the Faculty members of the Chapter. About ten members of the Junior Class are elected annually, at the close of the Junior year. The members practically elect themselves; they must manifest special interest in social science, carry at least twenty hours in social science studies, be of good character, and have a satisfactory general scholastic standing.



SORORITIES





Standing:—Miller, Sarver, Weaverling, Greninger, Bowersox, Cleaver, Young, Erdman, Goff,
Walker, Holzapple

Seated:—Lehman, De Wire, Baird, Thomas, Schweitzer, Miller, Brungart

KAPPA DELTA PHI

Founded 1917

Seibert Hall

PERSONNEL

Seniors

Frances Thomas, *President*
Anna Cleaver

Ruth Erdman
Ruth Goll
Mary Greninger

Wilma Walker
Margaret Young

Juniors

Lena Baird, *Treas.*
Beatrice DeWire, *Fin. Sec.*
Inez Sarver

Lois Brungart
Alma Bowersox
Leona Holtzapple

Ethlynn Miller, *Sec.*
Ida Schweitzer, *Vice-Pres.*

Sophomores

Lucille Lehman

Marie Miller

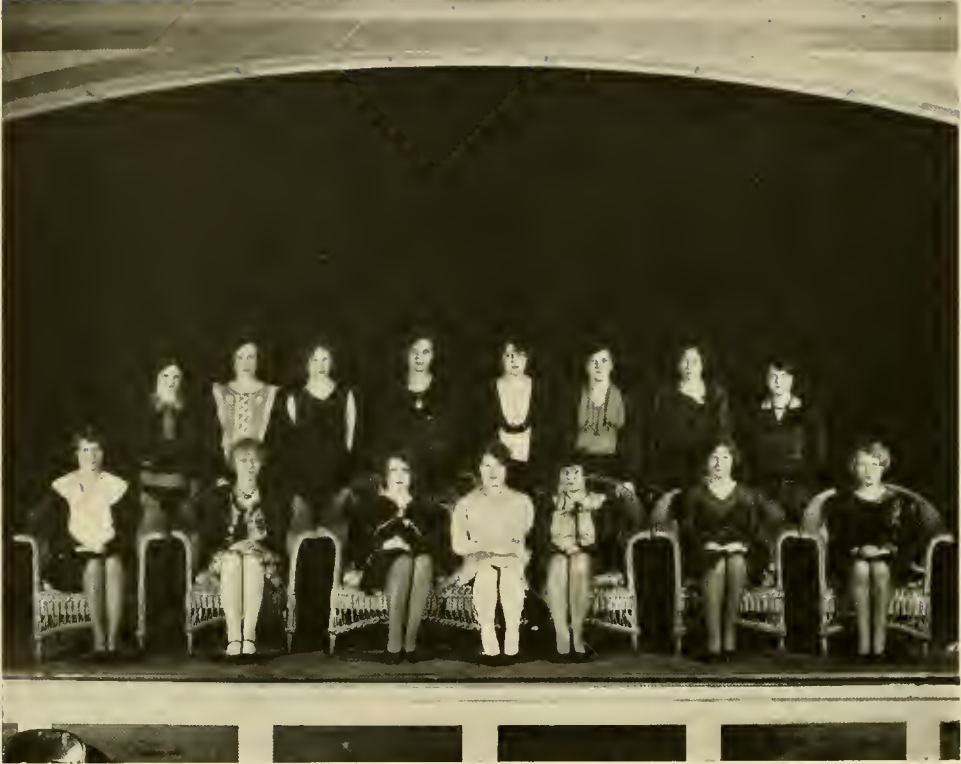
Mary Weaverling

Pledges

Mildred Arbogast
Edith Ash
Mabel Fultz
Esther Geisel

Mary Hutchings
Harriett Leese
Winnifred Lichtler
Diane Lizdas

Harriett Miller
Anna Gage Moody
Sarah Shaulis
Marian Walborn



Standing:—Leitzel, Sheriff, Phillips, Wilson, Potter, Camerer, Vorlage, Williamson
Seated:—Wardrop, Alfred, Phillips, Moore, Watkins, Jacobs, Mumaw

OMEGA DELTA SIGMA

Founded 1917

Seibert Hall

PERSONNEL

Seniors

Anna Moore, *President*

Marjorie Phillips, *Vice-President*

Elizabeth Watkins, *Secretary*

Juniors

Signe Alford, *Treasurer*

Ruth Jacobs

Sophomores

Muriel Camerer
Etta Mumaw
Elizabeth Vorlage

Olive Porcey
Mary Esther Potter
Elizabeth Wardrop
Edna Williamson

Enza Wilson
Janet Leitzell
Mary Elizabeth Phillips

Pledges

Sara Rhoads

Helen Swope



*Standing:—Wyman, McLean, Lyon, Dunkleberger, Markle, Leinbach
Seated:—Dively, Moretz, Leisher, Tressler, Moody, Puckey, Morning*

SIGMA OMEGA CHAPTER
OF
SIGMA ALPHA IOTA

Chartered 1927

Seniors

Edna Tressler, *President*
Janet Dively, *Secretary*
Kathryn Morning

Virginia Moody, *Treasurer*
Isabelle Moritz

Juniors

Dorothy Leisher, *Vice-President*

Sophomores

Anna Dunkleberger
Anna Leinbach
Martha Womeldorf

Mildred Lyons
Margaret Markle
Dorothy Puckey

Beryl Wyman

Pledges

Gertrude Albig
Beatrice Gentzler
Mary Hummel

Josephine Hoy
Margaret Ide
Arlene Kanyuck

Helen Lahr
Beatrice Shively
Francis Stambaugh



Third row:—Fink, Hoffmeister, McHugh, Leese, Knoebel
Second row:—Brinser, Haines, Erdley, Gessner, Clements, Minnig, Crebs, Charles, Kordes
First row:—Laurer, Eastep, Sell, Miller, Keim, Losch, Hutchings

SIGMA SIGMA DELTA

Founded 1928

Seibert Hall

PERSONNEL

Seniors

Evelyn Brinser
Edith Erdly
Grace Laner

Twila Crebs
Gladys Knoebel
Nan McHugh

Mary Eastep
Lillian Kordes
Rhea Miller, *Pres.*

Juniors

Irene Brouse
Miriam Keim, *Sec.*
Sara Haines

Arlene Laudenslager
Corinda Sell, *Treas.*
Margaret Hoffmeister

Anna Losch, *Vice-Pres.*

Sophomores

Elizabeth Charles
Margaret Fink

Thelma Crebs
Martha Gessner

Grace Minnig
Verna Clements

Pledges

Mildred Bolick
Mary Hoover
Amelia Krapp
Emma Orlands
Freda Stephens
Dorothy Strine

Grace Boyle
Barbara Jones
Marjorie Micheals
Elizabeth Oakley
Dorothy Strine
Mary Suffel

Sara Buckley
Leila Koons
Alice Mulligan
Estella Pearl
Freda Stephens
Marguerite Yagel



HUMDIR



PETER KLINGLER, Ph.G.

Pharmacist

Drugs and Chemicals
Eastman Kodak Agency
Developing, Printing, Enlarging

SELINGROVE, PA.

BOOKS

For Everyone

JOS. L. MENTZ

*Books, Stationery and Office
Supplies*

**21 N. THIRD STREET
SUNBURY, PA.**

Edwards: "My watch is keeping better since I put my girl's picture in it."

Shoemaker: "Oh, I see, you added another jewel."

"I guess my son in college has changed his mind about football and has gone in for something more useful."

"How's that?"

"He writes that he made the scrub team."

Sheiky Al: "I have an attachment for your daughter, sir."

Father: "Young man, when my daughter needs accessories, I'll buy them for her myself."

Andy: "What profession does he follow?"

Frank: "The medical."

Andy: "Oh, so he is a doctor, eh?"

Frank: "No, an undertaker."

Dr. Edward A. Phillips

(S. U., '17)

DENTIST

**117 NORTH MARKET STREET
SELINGROVE, PA.**

Office Hours

Wednesday 9 A. M.—8 P. M.

Friday 1 P. M.—8 P. M.

The

MICHAEL'S STORES

*"Smart Clothes for Smart
Young Men"*

Charter House Clothes

LOOK — STUDENTS — LOOK
Come to
REICHLEY'S CANDY SHOPPE
to
Dance and Dine

THE BIGGEST JOKE OF THE COLLEGE YEAR—FROSH RULES.

Hayes: "Have you heard the Sextet from Lucia tonight?"
Stahlman: "I don't listen to those kind of stories."

"This dining room goes back to Louis the Fourteenth."
"My whole living room suit goes back to the Home Furnishing store on the Fifteenth."

There's one thing gets us college guys,
We wish we had a bat
To bash the heads of ev'ry bloke
That calls our house a "frat."

"Sweetheart, am I the first fellow you ever kissed?"
"Of course, honey; but why do all the boys ask the same question?"

**THE PENNY
SPECIALTY SHOP**

OUR AIM
*Satisfactory Service and
Courtesy*
SELINGROVE, PA.

Lytle's Pharmacy

*Drugs, Toilet Articles, Fine
Box Candy, Soda Water*
Agency for United Cigars
"THE REXALL STORE"
SELINGROVE, PA.

YE COLLEGE INN

Ye Olde Home Cooking

8 SOUTH MARKET ST.

SELINGROVE, PA.

The Selingsrove Book Store

Magazines and Stationery

Picture Framing a Specialty

JAMES H. STYERS

SELINGROVE, PA.

Compliments of

Hendricks Hardware Co.

SELINGROVE, PA.

ROSSITER'S

"Say It With Flowers"

SUNBURY, PENNA.

Telephone 361-J

Martha Washington Candy

Bingaman's Quick Lunch

All Home-made Pies

We Fill the Man But Never

Empty His Purse

1 WEST PINE STREET
SELINGROVE

GARAGE

ROY A. BONAWITZ

Tires and Accessories

Gas and Oil

SELINGROVE, PA.

SUSQUEHANNA UNIVERSITY

If You Want a College

With a family spirit
Where the student is known by the faculty
Of distinctly Christian atmosphere.
In a healthful climate
With exceptional athletic facilities
And where good scholarship is stressed

Come

to SUSQUEHANNA
Bachelor Degrees in Liberal Arts, Science, Education
and Music

For Catalog Write the Dean

SUSQUEHANNA UNIVERSITY

SELINGROVE, PA.

The M. P. Moller Organ Works

The world's largest organ factory

Builder of the two electric organs in Susquehanna University, also of the three manual organ in Trinity Lutheran Church, Selinsgrove, and organs for more than one thousand Lutheran Churches and institutions.

Every organ a special creation for a particular use, and fully guaranteed.

Möller Organs lead all makes for every use.

Möller "Artiste" reproducing residence organ has no equal in its particular field.

Booklets and specifications on request.

Address:

M. P. MOLLER

Factory and General Offices

HAGERSTOWN, MARYLAND

Compliments of

THE DON-MAR RESTAURANT

L. M. GABEL, PROP.

SELINGROVE, PA.

Compliments of

**HERMAN & WETZEL
HARDWARE CO.**

SELINGROVE, PA.

Compliments of

H. & A. ROSENBLUM

Outfitters for Women

SUNBURY, PA.

Bell Phone 77-X-7

Home Dressed Meats a Specialty

KELLER'S QUALITY MARKET

Grocery and Meat Market

DEALERS IN ALL CHOICE MEATS AND GROCERIES

Delivery Service

SELINGROVE, PA.

Jack: "I hear they are starting a new campaign against malaria."

Sonny: "Just what have the Malarians done now?"

Compliments of

BUTTER KRUST BAKING COMPANY

MAKERS OF

BUTTER KRUST BREAD

Sunbury, Pa.

Two golfers sliced their drives into the rough and went in search of the balls. They searched for a long time without success, a kindly old lady watching them with interest.

Finally after the search had lasted half an hour (they were Scotch) the dear old lady spoke to them.

"I don't want to bother you," she said, "but would it be cheating if I told you where they are?"

FEASTER'S RESTAURANT

THE FINEST RESTAURANT IN THE CITY

Corner of Pine and Market Streets, Selinsgrove, Pa.

Seating Capacity of 70

SODA GRILL

MEALS

LUNCHES

NEVER CLOSED

FOR THE BEST IN SPORT

Patronize the

ATHLETIC ASSOCIATION
CO-OPERATIVE
STORE

ALUMNI GYMNASIUM



A co-operative business conducted under the direction of the Athletic Board in the interest of Susquehanna University Students.

Your most exacting needs in sports wear and equipment can be met, at a real saving.

THE FIRST NATIONAL BANK

of

SELINGROVE, PA.

ESTABLISHED 1864

Resources in Excess of \$1,875,000.00

Invites Your Business & Patronage

Pays 4% on Time and Savings Deposits

Authorized to Act as Trustee, Executor, Administrator

Registrar of Stocks & Bonds, Guardian, Assignee & Receiver

DIRECTORS

A. L. ALLINSON
FRANK A. EYER

ROSCOE C. NORTH
E. E. PAWLING, ESQ.
M. S. SCHUCH

W. M. SCHNURE
H. S. STERNER

OFFICERS

ROSCOE C. NORTH, *President*
W. M. SCHNURE, *Vice-President*

CHAS. C. WALTER, *Cashier*
CLAYTON E. LEACH, *Assistant Cashier*

THE UNITED LUTHERAN PUBLICATION HOUSE

Publishers and Book Sellers

MUHLENBERG BUILDING

PHILADELPHIA, PA.

F. K. SUTTON

Funeral Director

SELINGSGROVE, PA.

T. T. WEIRMAN

Watchmaker and Jeweler

*High-grade Jewelry
Diamonds and Watches*

349 MARKET STREET
SUNBURY, PA.

**D. & M.
CANDY CO.**

Wholesale

SELINGSGROVE, PA.

Compliments of

LEIBY'S RESTAURANT

SUNBURY, PA.

STEFFEN'S

Groceries, Gifts and Stationery

LENDING LIBRARY
SELINGSGROVE, PA.

Cleaning

Dyeing

TRIMBLE'S

KLINGER & DAGLE, Agents

You Call 62-W, We Do the Rest

Pressing

Repairing

Compliments of

W. H. DUNKELBERGER

437 MARKET STREET
SUNBURY, PA.

Home Furnisher

Compliments of

Eureka Tailoring Co.

EAST PINE STREET

THE SELINGSGROVE TIMES

MARION S. SCHOCH, Publisher

Commercial Printing

Trade Composition

Printers of "The Susquehanna"

Monogram Stationery

The definition of Lacrosse comes from one who does the game: Running twenty miles to hit somebody over the head with a snowshoe.

FISHER'S JEWELRY STORE

In the Service

of those who count quality the only assurance of complete satisfaction in the purchase of the precious stones, pearls, silver and watches.

344 MARKET STREET, SUNBURY, PA.

SINCE 1891

Father: Hey, youse. Where do you think yer goin'?"

Daughter: "Aw, I was only goin' out with Mike O'Rourke. He's dat coal heaver what's got a crush on me."

Father: "Dat's all right, kid. I thought youse was goin' out wit' one of dem college boys."

The Kepler Studio and Gift Shop

HIGH SCHOOL AND COLLEGE PHOTOGRAPHERS

127 E. Market Street

Lewistown, Pa.

NOTHING!

Is as delicious and wholesome as a dish of our

ICE CREAM EXQUISITE
And what's more—IT'S A FOOD

The ingredients used are those only of a very fine and select quality.
DON'T FORGET! FOR THAT PARTY AND PICNIC SERVE—

GLEN LOCK ICE CREAM

A refreshing cool drink. Try a bottle and be convinced.
"It is the best because it stands the test."

A Bottle of Milk Is a Bottle of Health

GLEN LOCK DAIRIES COMPANY

SUNBURY, PA.

Phone 386-R

W. G. PHILLIPS

The College Tailor

SELINGSGROVE, PA.

GEORGE B. RINE

Florist

Cut Flowers — Potted Plants

Store Phone 36-W — Greenhouse 32-Y

Selinsgrove, Penna.

Compliments of

THE SMITH PRINTING CO.

Book Stationers Office Outfitters

WILLIAMSPORT, PA.

The
Stanley Theatre

**Selinsgrove's Home
of All Talking Pictures**

Under Management of

**The
Comford Theatres Co.**

Scranton, Pa.

YES

Student Klothes Shop

for

University Klothes

SUNBURY, PA.

*Remember Your College
Days With Photographs*

SCHINDLER STUDIO

*Frames and Enlargements
to Order*

**515 MARKET STREET
SUNBURY, PA.**

**THE STERNER
SELINGROVE, PA.**

*Service the Best
Cuisine Excellent
Environments Most Pleasing*

*Proprietor Management
H. S. STERNER*

Compliments of

REA & DERICK, Inc.

*The Stores of
Service*



THE

VOYAGER

**ENGRAVING
AND
ELECTROTYPE
COMPANY**

**Specialists in the de-
signing and exe-
cution of High-
School and-
College Pub-
-lications**

CANTON, OHIO

Weis Pure Food Stores

Stores Throughout Central Pennsylvania

The world's meanest man: He was deaf and never told his barber.

Co-ed: "I play the piano just to kill time."

Acquaintance: "You certainly have a fine weapon."

R. L. SCHROYER

General Insurance

SELINGSGROVE, PA.

Fashion Footwear for

WOMEN

GEDDY'S

at

SUNBURY, PENNA.

Tomorrow's Styles Today

KAUFFMANS

for

Good Candies and Sodas

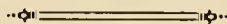
"How'd you get the grease on your face?"

"Well, you see, our car broke down and I had to fix it."

"Since when do you grease your car with red grease?"

Two hundred nineteen

WHITMER-STEELE CO.



SOUTH RIVER LUMBER COMPANY, Inc.

Manufacturers of

PINE, HEMLOCK, AND HARDWOOD LUMBER,
LATH, PROP TIMBERS, TIES



65 KING STREET

NORTHUMBERLAND, PA.

ESTABLISHED 1888

A Quarter Century of
College Photography



220 WEST 42nd STREET

NEW YORK

Completely equipped to render the highest quality craftsmanship and an expedited service on both personal portraiture and photography for college annuals.

OFFICIAL PHOTOGRAPHER TO THE
"1931 LANTHORN"

POST-WORD



HONEST endeavors, countless failures, and endless achievements are elements from which Progress evolves. So we, as but a small part of this large process, hope in closing, that with the publication of this book, we have accomplished our aims, and that with our aims we have achieved some traits that bear the significance of Progress.

THE STAFF.

PRINTED BY
CLARK PRINTING HOUSE, INC.
PHILADELPHIA, PA

SUSQUEHANNA UNIVERSITY



3 4998 0027 8217 0

**BLOUGH-WEIS LIBRARY
DOES NOT
CIRCULATE
ARCHIVES**
SUSQUEHANNA UNIVERSITY

