

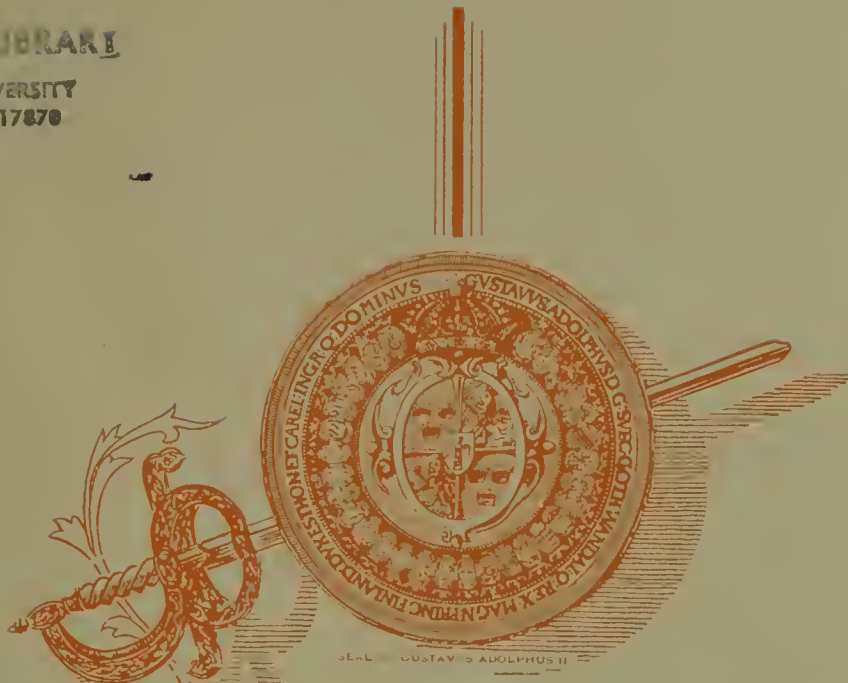


THE  
LANTHORN  
1934



WISCONSIN LIBRARY

UNIVERSITY  
SUNNINGGROVE, PA 17870



Ex Libris





*"May the riches of earth not make  
you forgetful of the still more pre-  
cious treasures of heaven."*

GUSTAVUS ADOLPHUS.

FOR the thirty-seventh year the Junior Class of Susquehanna University presents THE LANTHORN. We offer no apologies for what appears within its pages, but we do feel somewhat the tremor of a playwright at his first night performance. Within these pages you will find little that is classical, and still less that is inspired by the Muses—but if we have succeeded in presenting a perfect picture of the life at Old Susquehanna that will recall pleasant memories and make the “Old Boys” sit down and wish that they were back “On the old hill again,” our efforts have not been in vain. Pursue these pages carefully, loyal supporter of Susquehanna! With you rests the verdict. If we have succeeded, praises be!!!

—EDITOR.

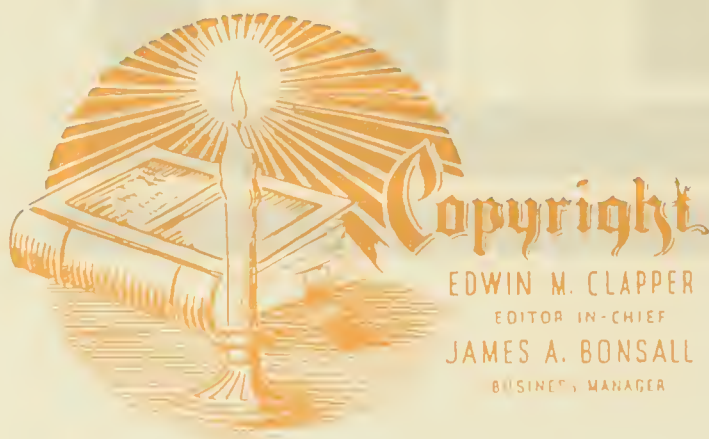


*The*  
**Ganthorn**  
**1934**

GUSTAVUS ADOLPHUS II KING OF  
THE SWEDES



Digitized by the Internet Archive  
in 2011 with funding from  
Lyrasis Members and Sloan Foundation



EDWIN M. CLAPPER  
EDITOR IN-CHIEF  
JAMES A. BONSALL  
BUSINESS MANAGER

<http://www.archive.org/details/lanthorn193400susq>



AT AN EARLY AGE THE GREAT  
DEFENDER OF THE LUTHERAN  
FAITH WAS TAUGHT THE ART OF  
FENCING.

*The*  
1934  
**Santhorn**

PUBLISHED BY THE  
JUNIOR CLASS OF  
SUSQUEHANNA  
UNIVERSITY ~~~  
SELINS GROVE, PA.

# Foreword

THREE hundred years ago the life of Gustavus Adolphus was taken in Battle at Luetzen in 1632. By his blood the victory that enabled the Christian Faith to survive in Europe was sealed. Susquehanna erected a seminary three hundred years after the birth of this Christian in whose honor it was named for the purpose of preserving his spirit among college men and women.

Time as a mighty sculptor has once more taken up the

task of adding another ray to the brilliancy of the lantern which illuminates the history of this University; this new ray should set it deeply in the glorious events of the present, lining it with glowing memories for a future which only school days can bring. We consecrate this volume of the LANTHORN to the purpose of guarding these treasures.



RIGISMUND WHO ALREADY HAD  
BECOME A CATHOLIC WAS FORCED  
TO SIGN A DECREE PROHIBITING  
ANY RELIGION IN SWEDEN  
EXCEPT THE LUTHERAN FAITH



# Contents

THE COLLEGE  
FACULTY  
CLASSES  
ATHLETICS  
FEATURES  
ACTIVITIES  
ORGANIZATIONS



IN 1611 OUR HERO WAS SOLEMNLY  
KNIGHTED AND SENT TO COLLECT  
TROOPS FOR THE RELIEF OF  
CALMAR

# Redi

To one who has brought us inspiration by her high ideals, strength by her influential character, school spirit and contentment through her honest companionship, and lasting friendship, we affectionately dedicate this volume of the Lanthorn

Miss Naomi K. Hade



G. TAVU ADOLPH INTERID  
LEBIN I DEFEND OUR  
CAUSE



# Callions





# Staff 1934 Lanthorn

VOLUME THIRTY-SEVEN

EDWIN CLAPPER	- - - - -	<i>Editor-in-Chief</i>
JAMES BONSALE	- - - - -	<i>Business Manager</i>
DR. WILSON	- - - - -	<i>Advisor</i>

*Art Editor*

ELEANOR BROWN

*Chief Statistician*

PAULINE CROW

*Managing Editor*

EDITH FRANKENFIELD

*Assistant Editor*

RUTH NELSON

*Assistant Business Manager*

CALVIN NAUGLE

*Assistant Statistician*

EARNEST HUSTON

*Athletic Editor*

HAROLD ROWE

*Advertising Manager*

D. EDGAR HUTCHINSON

*Assistant Athletic Editors*

ROBERT SALA

VIRGINIA ANDREWS

*Associate Editors*

ISABELLA HORN

MARGARET WILLIAMS

HENRY CASSLER

WILLIAM MORROW

RUTH BERGSTRESSER

*Typists*

NELSON KING

LUDLOW NICHOLS

MARLIN BOTTIGER

*Assistants on the Business Staff*

ABERDEEN PHILLIPS

MARGARET HAUSMAN



# The College



IN 1620 EDUCATION ADVANCED  
AND TEACHERS FROM FOREIGN  
COUNTRIES WERE ENCOURAGED  
TO COME TO SWEDEN



## The Story

**I**N 1856 the Maryland Synod of the Lutheran Church made the first official move to establish an educational institution at Selinsgrove. It was thought that this section along the Susquehanna River would provide excellent classical training for young men of the church who intended to prepare for the gospel ministry.

A beautiful Gothic Cross stands in the vicinity of Selinsgrove Hall beneath the majestic pines as a monument of gratitude to the great man in whose heart was first conceived and chiefly by whose efforts was realized the noble institution we all love. Reverend Dr. Benjamin Kurtz, an eminent divine of the Lutheran Church laid the cornerstone of Missionary Institute on Sept. 1, 1858. Exactly seventy-five years ago beneath a clear sky on an eminence overlooking the town of Selinsgrove and the flowing river beyond, the first spadeful of earth was turned and the first stone put in place; being born in faith and organized and promoted through prayer, it has grown steadily to its present strength. Just as the great pine trees which adorn her campus have developed from tiny insignificant twigs, so Susquehanna has grown in honor and in power from one building to twelve fine modern structures of splendid design, capable of supplying the needs of a large number of students.



*Library*

In speaking of the triumphs, one must always consider the circumstances through which they have developed. It was great and noble of those learned doctors, some of whom from the days of Missionary Institute and others who from the time of Susquehanna's beginning as a University





## of Susquehanna

in 1894 have given their full measure of devotion. Around those beloved individuals the story as told by the Class of '34 radiates and upon whom reflects the glory of this institution.

On account of the University being beautifully situated on an elevation about one-half mile from the west bank of the Susquehanna River one may look toward the South from the campus and see the horizon broken by rugged peaks of the hills and the promontories of the mountains which extend like sentinels guarding the valley between and the students who attend classes on the campus. As a climber who reaches the summit of Mahanoy Mountain can look down upon a gorgeous scene, so may one gain by study among the Classic Halls of S. U. the height of attainment from which he may look out upon a world of splendid opportunities. In her going forward, Susquehanna has undergone many trials and hardships, but as old Mahanoy buffeted by winds and rains stands in rugged majesty, so our Susquehanna continues to stand casting a classical influence upon all those who came in contact with her.

Much like the great river after which the University is named she has practically cut her own channel, gathering strength in its course by inflowing streams—the service and devotion of Godly men and women. We, the Class of '34, feel somewhat elated, for with our coming to the campus as Freshmen, Susquehanna became an accredited institution of higher learning. It appears to us that beyond this sea of fulfillment of her existence, there rises a radiant prophesy of greater work and glory, rich in power, Christian ideals and knowledge.



STEEL SCIENCE HALL







SEIBERT HALL

THE  
ENTRANCE



THE  
PRESIDENT'S  
HOME



ENTRANCE  
TO  
UNIVERSITY  
FIELD

THE  
CONSERVATORY  
OF  
MUSIC





STEELE  
SCIENCE  
HALL



THE  
FOUNTAIN



GUSTAVUS ADOLPHUS

THE  
METEOR



ALUMNI  
GYMNASIUM



## Alma Mater

The story we would tell you, friends,  
    Would cover many a book;  
The subject matter of the same  
    Is found in every nook,  
Of old S. U.'s broad campus,  
    The common battle-ground  
Whose trees might whisper secrets grave,  
    Amusing and profound.

### *Chorus*

Of Susquehanna now we sing,  
Let Susquehanna's praises ring,  
Loyal to her by night and by noon,  
We'll raise the Orange and Maroon,  
Loyal to her by night and by noon,  
We'll raise the Orange and Maroon.

How dear to one and all the name  
    Their Alma Mater bears,  
When they have left its classic halls,  
    To shoulder worldly cares.  
Of winning maids and noble lords  
    Of dear old college days,  
Come join in recollections fond,  
    And tell us of your ways.

In classroom and on gridiron, friends,  
    S. U. will stand the test;  
Defeat to her a word unknown,  
    Her motto, "Do your best,"  
With vim, then let us give the yell,  
    Display her banner bright,  
That all may know old S. U.  
    She stands for God and Right.



# Faculty







# Board of Directors

## OFFICERS OF THE BOARD

WILLIAM M. REARICK, A.M., D.D.	- - - - -	President
HON. CHARLES STEELE, A.M.	- - - - -	First Vice President
THOMAS REISCH, A.B., A.M., B.D., Ph.D., D.D.	- - - - -	Second Vice President
FRANK A. EYER	- - - - -	Secretary
HON. CHARLES STEELE, A.M.	- - - - -	Endowment Treasurer
ROSCOE C. NORTH, A.M.	- - - - -	Treasurer

## LIFE MEMBER

E. S. BROWNMILLER, Ph.D., D.D. - - - 731 N. Ninth Street Reading, Pa.

## TERM EXPIRES 1937

M. M. ALLBECK, D.D.	- - - - -	Scottdale, Pa.
J. P. CARPENTER, Esq., A.B., A.M.	- - - - -	Sunbury, Pa.
EDWARD J. HARMS, A.B., A.M., D.D.	- - - - -	Hagerstown, Md.
ROSCOE C. NORTH, A.M.	- - - - -	Selinsgrove, Pa.
REV. H. W. MILLER	- - - - - 1010 Elmira St.,	Williamsport, Pa.
W. B. KELLER	- - - - -	Connellsville, Pa.

## TERM EXPIRES 1936

M. P. MOLLER, Mus.D.	- - - - -	Hagerstown, Md.
H. C. MICHAEL, A.B., A.M., B.D., D.D.	- - - - - 512 Park St.,	Johnstown, Pa.
R. L. SCHROYER, B.S., M.S.	- - - - -	Selinsgrove, Pa.
I. A. SHAFER, JR.	- - - - -	Lock Haven, Pa.
HON. CHARLES STEELE, A.M.	- - - - -	Northumberland, Pa.
REV. L. STOY SPANGLER	- - - - -	Newport, Pa.

## TERM EXPIRES 1935

CLAUDE G. AIKENS	- - - - -	State College, Pa.
HON. BENJAMIN APPLE	- - - - -	Sunbury, Pa.
FRANK A. EYER	- - - - -	Selinsgrove, Pa.
HARRY MILES IMBODEN, M.D.	- - - - - 30 W. 59th St.,	New York, N. Y.
DAVID OTT	- - - - - 435 Pine St.,	Johnstown, Pa.
G. MORRIS SMITH, A.M., D.D.	- - - - -	Selinsgrove, Pa.

## TERM EXPIRES 1934

WILLIAM A. HASSINGER	- - - - -	Middleburg, Pa.
E. M. HUYETT	- - - - -	Centre Hall, Pa.
REV. JOHN KNISFLEY, A.M., D.D.	- - - - -	Northumberland, Pa.
WILLIAM M. REARICK, A.M., D.D.	- - - - -	Mifflinburg, Pa.
HON. C. W. SONES	- - - - -	Williamsport, Pa.

## TERM EXPIRES 1933

CHARLES R. BOWERS, A.B., A.M., D.D.	- - - - -	Sunbury, Pa.
PHILIP H. GERNER	- - - - - Liberty Bank Bldg.,	Buffalo, N. Y.
REV. JOHN F. HARKINS, B.S., A.M.	- - - - -	State College, Pa.
THOMAS REISCH, A.B., A.M., B.D., Ph.D., D.D.	- - - - - 1829 Berryhill St.,	Harrisburg, Pa.
DANIEL SMITH, JR.	- - - - - 225 E. Third St.,	Williamsport, Pa.





G. MORRIS SMITH, M.A., D.D.

*President*

Franklin and Marshall Academy, 1907; B.A., Roanoke College, 1911;  
M.A., Princeton University, 1912; Instructor Blair Academy,  
Blairstown, N. J., 1912-14; Graduate, Mt. Airy Seminary, 1919;  
Pastor, English Lutheran Church, Mt. Vernon, N. Y., 1918-20;  
Pastor, Lutheran Church of the Redeemer, Buffalo, N. Y., 1920-28.  
Present position, 1928.





GEORGE FRANKLIN DUNKELBERGER

A.B., A.M., Pd.D., Ph.D.

*Dean of the College and Professor of Education*

A.B., Susquehanna University, 1908; A.M., University of Pittsburgh, 1919; Pd.D., Susquehanna University, 1921; Ph.D., New York University, 1927; Teacher of Rural Schools for seven years; Supervising Principal of Public Schools for eight years; Professor of Education, California State Normal School, 1916-21; Dean of the College and Professor of Education, Waynesburg College, 1921-1925; Student at New York University and Instructor in Educational Sociology, 1925-26; Present position, 1926.

### Is It Worthwhile?

College life has manifold contacts. It can be the most constructive and enjoyable period of a person's life. College life means companionship, and companionship means partnership on equal and friendly terms. This in turn means membership in a common society, mutually helpful and co-operative living, a communal living but not necessarily a communistic living.

Living on a high plane for four years must be a character building process. Psychologically our nervous systems grow in the direction in which they are exercised. This is education that leads to more education. It is creative and makes for a unified personality. Four years in college provide the best opportunity for growth, enlarged and enriched experiences, for happiness and for the development of a character that will stand in good stead throughout life.

Sincerely yours,



FRANKLIN PIERCE MANHART

B.A., M.A., D.D., LL.D.

*Dean of the School of Theology, Professor of Church History and Systematic Theology*

Missionary Institute, 1875; B.A., Gettysburg College, 1877; M.A., University of Pennsylvania, 1896; D.D., Gettysburg College, 1899; Head Deaconess' Motherhouse, 1896-04; LL.D., Wittenburg College, 1925; Present position, 1904.

Our founder, Benjamin Kurtz, was an able, divine, and an eloquent preacher, an ecclesiastical statesman, and an ardent patriot and humanitarian.

With clear insight into man's nature and needs he projected an institution to prepare persons for intelligent and helpful service in the home land and in other lands to the rims of the earth. It is the glory of Missionary Institute and Susquehanna University that so many trained here made real the far vision of life and service of its great founder.

Vivat, crescat, et floreat!

Respectfully yours,







NAOMI K. HADE

B.A., M.A.

*Dean of Women*

*Assistant Professor of English*

Hood College, A.B., 1919; Macedonia High School, Ohio, 1919-20; Physical Director and Girls' Work Secretary, West Side Y. W. C. A., Cleveland, Ohio, 1920-21; Chambersburg High School, 1921-23; Columbia University, 1923-24; Head of English Department, Irving College, 1924-26; Columbia University, M.A., 1927; Oxford Summer School, 1932; Present position, 1926.



I send good wishes to the many Susquehanna women and men whom, to meet, has been a pleasant experience and, to know, a happy memory. Our intimate and constant life together has, perhaps, influenced my own ideals and philosophy much more than it has that of the students.

Cordially,

E. EDWIN SHELDON

Mus.M.

*Director of Conservatory of Music*

Alma College, 1892; Baldwin Wallace College, 1894; Oberlin Conservatory of Music, 1895-98; New England Conservatory of Music, 1900; Instructor, Toledo Conservatory of Music, 1900-01; Director of Susquehanna University Conservatory of Music, 1903-10; Director, Lebanon Valley College Conservatory of Music, 1910-20; Cornell Summer Work, 1918; Graduate of New York University Summer Music School, 1921; Present position, 1920.



Susquehanna University Conservatory of Music has a welcome for college men and women who would make their lives richer by intelligent study of the Art of Music as well as those students who would make Music a profession.

The college man or woman who has had no contact with or experience in the "fine arts" has fallen short of a well rounded education quite as much as the musician who has not made contacts with the best thought of people of other walks of life. Dr. James Francis Cooke in his recent address in Seibert Chapel cited many persons among professional musicians who have served with distinction in governmental and business positions of responsibility.

"Everything that God has made was created 'in tune'—the voice of man, the whisper of the wind, the laughter of the little brooks and the throb of the great ocean. Nature is harmony, the maintenance of right relations between every living thing."—E. L. Good.

Respectfully,





T. W. KRETSCHMANN

A.M., B.D., Ph.D.

*Hebrew Old Testament and Practical Theology*

University of Pennsylvania (A.B., 1888; A.M., B.D., Ph.D., 1892) Phi Beta Kappa; Philadelphia Lutheran Seminary, 1891; Pastor, Charges: Christ Church, Chestnut Hill, Philadelphia; Atonement, Buffalo, N. Y.; St. Stephen's, West Philadelphia; Instructor in Hebrew, Philadelphia Lutheran Theological Seminary, 1892-98; Professor of Old Testament, Pacific Theological Seminary, Seattle, Washington, 1919-24; Dean of Washington School of Religion, Seattle, 1924; Present position, 1924.

WILLIAM AUGUSTUS SADTLER

M.A., Ph.D., D.D.

*Professor of New Testament Exegesis*

Muhlenberg College, 1883; Philadelphia Lutheran Seminary, 1888; University of New York, 1892; Pastor, Wilmington, Delaware; Professor in Chicago Lutheran Seminary, 1891-01; in Wartburg Theological Seminary, Dubuque, Iowa, 1901-06; in Bethany College, Lindsburg, Kansas, 1906-09; in Midland College, 1909-13; Present Position, 1923.



THOMAS CALVIN HOUTZ

A.M., Sc.D., D.D.

*Professor Emeritus of Mathematics and Astronomy*

Public School, 1872; Boalsburg Academy, 1874; State College, 1879; A.M., ibid, 1886; Sc.D., 1904; D.D., Susquehanna University, 1918; Present position, 1885.

JOHN IRVIN WOODRUFF

B.A., M.A., Litt.D., LL.D.

*Professor of Philosophy*

Missionary Institute, 1888; B.A., Bucknell University, 1890; M.A., Bucknell University, 1893; Litt.D., Wittenburg College, 1903; LL.D., Waynesburg College, 1921; Principal of Friends' Normal Institute, 1890-91; Principal of Mifflin Academy, 1891-92; President, Palatinate College, 1896; Acting President of Susquehanna University, 1901-04; served as member of Pennsylvania Legislature in sessions of 1919 and 1929, during which time he sponsored important educational measures; Lecturer on Educational Subjects; Present position since 1892.





HAROLD NEWTON FOLLMER

B.A., M.A., D.D.

*Professor of Economics and Sociology*

Missionary Institute, 1883; B.A., Wittenburg College, 1885; Theology, Susquehanna University, 1887; M.A., Wittenburg College, 1888; D.D., *ibid.* 1915; Present position, 1909.



GEORGE ELMER FISHER

Ph.B., A.M., Ph.D.

*Professor of Chemistry*

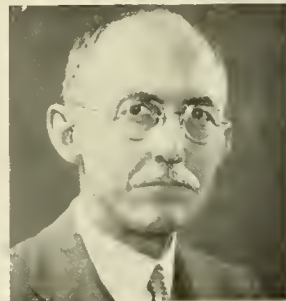
Ph.B., Bucknell University, 1891; M.A., Susquehanna University, 1898; Ph.D., Wesleyan University, 1902; Principal of Friends' Normal Institute, 1891-1892; Professor of Natural Science, Bucknell Academy, 1892-1909; Present position, 1896.

HERBERT ALLEN ALLISON

B.A., M.A., Litt.D.

*Professor of History and Political Science*

Gettysburg Academy, 1890; B.A., Gettysburg College, 1894; M.A., *ibid.* 1897; Boston University, 1890; Litt.D., Carthage College, 1914; Professor of Mathematics, Palatinate College, 1894-95; Present position, 1896.



AUGUSTUS WILLIAM AHL

A.M., Ph.D.

*Professor of Greek Language and Literature*

Gymnasium Diploma, Germany, 1904; Breklum Seminary, Diploma, 1908; Susquehanna University, 1908-09; A.M., 1912; Vanderbilt University, 1916-20, Ph.D.; Pastor, Baltimore, Md.; Nashville, Tenn.; Instructor Vanderbilt University, 1921-22; Head Greek and Bible Depts., Thiel College, 1922-27; Author "Outline of Persian History, Based on Cuneiform Inscriptions," 1922, revised 1931; "Bible Studies in the Light of Recent Research," 1924, revised, 1930; Pi Gamma Mu, Scourse Research Council, and several American and European Learned Societies; Present position, 1927.





**EDWIN MONROE BRUNGART**

B.A., M.A.

*Professor of Education*

Susquehanna Academy, 1895; B.A., Susquehanna University, 1900; M.A., ibid. 1903; Post Graduate Work, University of Pennsylvania, 1908; Columbia University, 1928; Principal, Cross Forks High School, 1900-02; Principal Millinburg Schools, 1902-04; Principal of Susquehanna Academy to 1924; Present position, 1904.

**PAUL J. OVREBO**

A.B., Ph.D.

*Professor of Physics*

A.B., St. Olaf College, Northfield, Minnesota, 1923; Ph.D., University of Chicago, 1928; Teacher in Consolidated Schools, 1920-21; Superintendent, Public Schools, Goodridge, Minnesota, 1923-25; Assistant Professor of Physics at West Virginia University, 1928-29; Present position, 1930.



**JOHN J. HOUTZ**

B.A., M.A., M.S.

*Assistant Professor of Chemistry and Mathematics*

Susquehanna University, B.A., 1908; Renovo High School, 1909; Susquehanna University, M.A., 1910; Louisiana State University, M.S., 1912; Chief Chemist, Belle Hellene Sugar Co., Louisiana, 1913; Superintendent and Chief Chemist, Central "San Vicente," Jovellanos, Cuba, 1914-19; Head of Mathematics Department and Assistant Principal, Sunbury High School, 1919-27; Associate Professor of Mathematics, Susquehanna University Summer School, 1919-27; Present position, 1927.



**ELDON KINGSLEY RUMBERGER**

B.S., M.S.

*Instructor in Education*

Pennsylvania State College, B.S., 1923; M.S., 1925; Graduate Research, Penn State, 1923-25; Professor of Education, Morristown College, 1925-28; Present position, 1928.







FISK WILLIAM STOCKING SCUDDER

A.B.

*Assistant Professor of Biology*

Ohio Wesleyan College, A.B., 1923; Graduate Work, Ohio Wesleyan, 1924-25; Graduate Work, Cornell University, 1924-30; Instructor of Histology Embryology, Cornell Medical College, 1925-30; Member of American Association for Advancement of Science; Present position, 1930.



ARTHUR HERMAN WILSON

A.B., A.M., Ph.D.

*Professor of English*

University of Pennsylvania, the College, A.B., 1927; Graduate School, M.A., 1929; Ph.D., 1931; Department of English, University of Pennsylvania, 1927-31; Elected to Phi Beta Kappa, University of Pennsylvania, 1927; Present position, 1931.

ROBERT WHITNEY TUCKER

A.B., Ph.D.

*Professor of Latin*

A.B., Cornell University, 1926; Ph.D., Cornell University, 1929; Instructor in Classics at Cornell University, 1929-1930; Present position, 1930.



RUSSELL W. GILBERT

A.B., M.A.

*Professor of German*

Muhlenberg College, A.B., 1927; University of Pennsylvania, M.A., 1929; Assistant Professor of German, Lehigh University, 1927-29; Instructor in German, Muhlenberg College, 1929-30; Middlebury College Summer School of German, 1931; University of Pennsylvania, 1932; Pennsylvania Modern Language Association; Modern Language Association of America; Tau Kappa Alpha; Present position, 1929.





EVELYN ROSE ALLISON

B.A., M.A.

*Professor of French*

Susquehanna University, A.B., 1920; Hewlett School for Girls, Long Island, 1920-21; Teacher, Williamsport High School, 1921-24; Hanover High School, 1924-27; M.A., Susquehanna University, 1924; Graduate Work, Columbia University Summer Session, 1924; French Institute, Penn State, 1924; Columbia University Summer Session, 1927; Columbia University, Second Semester, 1927-28; Columbia University, Summer Session, 1928; University of Grenoble, Summer School, 1928; M.A., Columbia University, 1929; University of Paris, Sorbonne, 1931-32; Diploma, Sorbonne, 1932; Present position, 1929.

LUCY TAYLOR IRVING

B.S., M.A.

*Instructor in Spanish*

State Teachers College, Farmville, Virginia, 1924; Middlebury College, Middlebury, Vermont, 1929; Special Teacher of English, Camuy, Porto Rico, 1924-25; Instructor, Farmville High School, Farmville, Virginia, 1925-26; Instructor, Lares High School, Lares, Porto Rico, 1926-27; Secretary to the Dean of the Spanish School, Middlebury College, 1928-29; Member of Sigma Delta Pi; Present position, 1929.



PAUL BOEDER

M.A., Ph.D.

*Professor of Mathematics*

Lehrer Bildungsanstalt, Hamburg, Germany, Diploma, 1923; M.A., University of Pennsylvania, 1925-26; Instructor of Mathematics, University of Delaware, 1926-27; University of Göttingen, Germany, 1927-32, Ph.D., Göttingen, 1931.

GEORGE REEL SEIDEL

Ph.D.

*Instructor in Mathematics*

Baltimore Polytechnic Institute, 1924; Ph.D., Johns Hopkins University, 1931; Present position, 1931.





**CHARLES IEESE**

A.B., M.A., Ph.D.

*Professor of Business Administration*

Gettysburg, A.B., 1924; Wharton School of Commerce and Finance, M.A., 1925; University of Pennsylvania, Ph.D., 1927; Professor of Economics and Business Administration, Clarkson College of Technology, 1927-1930; Industrial and Business experience with P. H. Glatfelter Co., Spring Grove, Pa., during summers of 1919 to 1926; Research Assistant, Industrial Research Department of the Wharton School of Commerce and Finance, during Summers of 1927 and 1928; Publication: "Collective Bargaining Among Photo-Engravers in Philadelphia."

Member of: American Economic Association; American Management Association; Kappa Phi Kappa, National Educational Fraternity; Pi Gamma Mu; Present position, 1930.



**GEORGE N. WOOD**

B.A., M.A.

*Assistant Professor of Business Administration*

Graduate of Western State Teachers College; Michigan State Teachers College; Northern Illinois College; A.M., Columbia University; Superintendent of Standish, Michigan, Schools; Head of the Arenac County Normal School, Michigan; Superintendent of St. Louis, Michigan, School, 1916-1926; Author, The Policy of the Federal Reserve; Present position, 1927.

**D. IRVIN REITZ**

Ph.B., A.M.

*Assistant Professor of Commercial Education*

Keystone State Normal School, 1915; Pennsylvania State College Summer School, 1916-17, 1919; Teacher, Fredericksburg, Pa., High School, 1915-20; Teacher, Coopersburg, Pa., High School, 1920-22; Temple University Summer School, 1923; Ph.B., Muhlenberg College, 1926; A.M., University of Pennsylvania, 1930; Instructor, Cedar Crest College, 1923-31; National Association of Commercial Teacher Training Institutions; Eastern Commercial Teachers Association; Pennsylvania State Educational Association; Present position, 1931.



**THELMA ELIZABETH ARMAGOST**

A.B., A.M.

*Instructor in Commercial Education*

Graduate of Oberlin School of Commerce, 1921; Edinboro State Teachers College, 1923; Youngstown College, A.B., 1930; University of Pittsburgh, M.A., 1931; Teaching Experience, Union City, Pa., 1921-1922; Campbell, Ohio, 1922-1930; Youngstown College (Night School), 1924-1926; Present position, 1931.







PERCY MATHIAS LINEBAUGH

Mus.B.

*Instructor in Pianoforte, Organ, Rudiments  
and Keyboard Harmony*

Graduate of Lebanon Valley College Conservatory of Music in Piano, 1916; in Organ with Mus.B., 1917; Instructor in Piano, Harrisburg, 1917; Instructor in Piano and Ear Training, Lebanon Valley Conservatory of Music; with A. E. F. in France, 1918-19; New York University Summer School, 1921; Peabody Institute of Music, 1922; Present position, 1921.

IDA MANEVAL SHELDON

Mus.B.

*Instructor in Voice, Harmony and History of Music*

Mansfield State Normal, 1900; Susquehanna Conservatory of Music, 1907-1910; Severn Studios, New York Summer School, 1908; Instructor Lebanon Valley College Conservatory of Music, 1910-20; Graduate Work in Voice and Harmony, New York University Summer Music School, 1919; Present position, 1920.



MARY KATHRYN POTTEGER

Mus.B.

*Instructor in Piano, Sight Singing and Dictation*

Susquehanna University Conservatory of Music, 1924; Selinsgrove Public School, 1924-26; New York University Summer School, 1926 and 1931; Present position, 1924.

ELROSE L. ALLISON

Mus.B.

*Instructor in Piano, Pipe Organ, Wind  
Instruments and Band*

Susquehanna University, Mus.B., 1928; New York University, 1931; Present position, 1928.







WILLIAM DONALD HEMPHILL

Mus.B.

*Professor of Violin and Orchestration*

Kansas State Teachers College (Hays), Mus.B., 1925; Bush Conservatory of Music, Chicago, 1927; Present position, 1927.



BERTHA LANSING RODGERS

L. T. C. M.

*Instructor in Voice*

Student and Church Soloist, Cleveland, Ohio; Toronto Conservatory, 1915; Choir and Concert Engagements in New York City; Toured United States with Hans Kronold, Cellist; Present position, 1928.

FREDERICK C. STEPHENS

B.A., M.A.

*Instructor in Voice*

University of Minnesota, B.A., 1926; Graduate Work at Columbia University, 1930-31; Studied in Paris under La Pierre and La Bonte, 1928-29; Columbia University, M.A., 1932; Phi Mu Alpha; Present position, 1930.



MARY NESBIT

B.S.

*Public School Music Methods*

B.S., New York University, 1929; Cincinnati Conservatory of Music, Summers of 1915-1915; Cornell School of Music, Summers of 1915-1918; New York University, Summers of 1925-1929; Teacher Public School Music, Port Washington, N. Y., 1930-1931; Teacher Public School Music, Normal School, Moundsville, W. Va., Summer Sessions, 1922 and 1924; Supervisor Public School Music, Public Schools, Moundsville, W. Va., 1915-1930; Present position since 1930.





### LUTHER DAY GROSSMAN

B.S.

*Professor of Physical Education and of Athletics*

General Secretary and Physical Director of Y. M. C. A., 1908-11; Springfield College Summer School, 1914; B.S., Susquehanna University, 1916; Special Teachers' Course in Physical Education, Temple University, 1916-19; Director of Physical Education and Athletics, Lower Merion High School, 1916-21; Director, Athletic Activities Camp Kennebec, N. Belgrade, Me. (Summer 1918-28); Professor Physical Education and Director of Athletics, Susquehanna University, 1921-25; Returned to Lower Merion High School, 1925-27; Present position, 1927.

### WILLIAM W. ULLERY

B.S.

*Physical Education and Coach of Athletics*

Pennsylvania State College, B.S., 1922; Graduate Work, Columbia University; Present position, 1928.



### DOROTHY WELSH REEDER

B.A.

*Instructor in Physical Education of Women*

Kellogg School of Physical Education of Battle Creek College; Susquehanna University, 1924-26; Executive Secretary, Campfire Girls, Sandusky, Ohio, 1926-27; Columbia University, Summer Sessions, 1929 and 1931; Present position, 1928.

### EMILY E. SWETTMAN

*Registrar*

Irving College, 1919-21; Columbia University Summer School, 1921 and 1927; Head of Commercial Department, Middletown High School, Middletown, Pa., 1921-26; Commercial Department, Greensburg High School, Greensburg, Pa., 1926-29; Secretary to the Dean, Susquehanna University, 1929-31; Present position, 1931.





E. BEATRICE HERMAN

A.B.

*Bursar*

A.B., University of Pittsburgh, 1925; Teaching positions, Sunbury High School; Union High, Turtle Creek, Pa.; Verona High School; Instructor in Secretarial Studies, Susquehanna, 1925-27; Present position, 1927.



MARTHA S. DODSON

B.L.E.

*Librarian*

Syracuse University; Reference Librarian, James V. Brown Library, Williamsport, Pa.; Vice President Pennsylvania State Library Association; Present position, 1928.

ALICE KING BICKERSTAFF

A.B.

*Assistant Librarian*

Oberlin College, A.B., 1926; Graduate Work at Buffalo State Teachers College 1927-29; Diploma in Library Science, University of Buffalo, 1931; Teacher in Kentucky Mountain Mission School; Present position, 1931.



MILDRED G. ARBEGAST

*Secretary to the Dean of the College*

Irving College, 1928-29; Susquehanna University, S. of B., 1930; Present position, 1930.





GAIL L. HEMMINGER

A.B., M.A.

*Secretary to the Dean of Women*

A.B., Irving College, 1916, M.A., 1925; Wayne County Schools, 1916-17; Linden Hall Seminary, 1917-19; Academic Dean, Instructor in History, Irving College, Mechanicsburg, 1919-29; Present position, 1932.

JOSEPHINE LONG

*Secretary to the Director of Physical Education*

Selinsgrove High School, 1925; Susquehanna University, 1925-26; Present position, 1929.



ANNA M. HUMPHREY

*Dictitian*

Mechanics Institute, Rochester, N. Y.; Rochester Business Institute; Present position, 1931.



H. VERNON BLOUGH

B.S.

*Assistant Publicity Director and Assistant Alumni Director*

Westmont High School, 1927; Susquehanna University, 1931; Graduate Work, Bucknell University, 1932-33; Present position, 1932.







## In Memoriam



JOHN C. OBERDORF

During the past year it has pleased the Great Master to call from this earth our beloved friend and Superintendent, John C. Oberdorf. We dedicate this page to his sacred memory.

Born, May 29, 1878

Died, October 9, 1932







MARY LAHAZA

May Queen

1933

# Classes



THE GOSPEL WAS PREACHED  
IN THE CAMP OF GUSTAVUS  
ADOLPHUS



## Graduation

They say 'tis time to bid the last farewell,  
Commencement Day is dawning and the swell  
Of music strikes upon the Senior's ear,  
He pensive meditates in thoughts sincere:—

As classmates, must we also say adieu?  
Yes, we must part to enter life anew.  
Ah me! the time when first our faces met  
Seems only yesterday to us and yet  
How we have changed in this space so brief.  
In aspirations, hopes, loves and belief.  
We had our mutual trials as well as joys  
Not much unlike the days when girls and boys.  
But now life's scenery changes with this day,  
The world's broad stage on which we all must play  
Our role before our great Creator's eye  
Is stretched before our minds yet young and shy;  
Oh, may we act our parts with vim and skill  
That others' hearts with courage we may fill.

Farewell, then, college scenes and days, farewell,  
We loved you much as love can tell,  
Your ashes shall be kept in memory's urn  
But yet we would not wish for your return.  
In the great book of Life we've passed the page  
Where pictures bold portray the student age.  
We long to enter broader fields of strife,  
And there engage in active things of life.  
Each has a place to fill in this great world,  
For opportunity has long unfurled  
Her gleaming banner to attract our eyes,  
Forbidding us her callings to despise.

Away with all things old, salute the new,  
Hail, future scenes which curtains hide from view.  
We greet you, then, Commencement Day so fair,  
Your gay and festive hours we all shall share.

SELECTED.



# Seniors





# The Class of '33

## OFFICERS

SAMUEL PASCO	-	-	-	-	-	-	-	-	-	<i>President</i>
DIANA LIZDAS	-	-	-	-	-	-	-	-	-	<i>Vice-President</i>
ESTELLE PEARL	-	-	-	-	-	-	-	-	-	<i>Secretary</i>
JOHN SCHOFFSTALL	-	-	-	-	-	-	-	-	-	<i>Treasurer</i>
MABEL FULTZ	-	-	-	-	-	-	-	-	-	<i>Historian</i>

SILENTLY and yet with absolute certainty the year 1933 has arrived. Now, for the fourth and last time the Class of 1933 will make its appearance in THE LANTHORN. After years of varied experience, pleasant and otherwise, its members draw near to the end of their college career. Undoubtedly, during these years, many obstacles and many discouragements were encountered, but by the earnest and sincere efforts of everyone the class is rapidly approaching its much coveted goal.

To enumerate the merits and excellencies of our class would be a long and tedious narration, and if it were attempted might enforce upon us the stigma of egotism. Confident of the fact that memories of men live after them, we will not amplify upon this subject. Let it suffice to say, however, that unity of action and the utmost cordiality in the associations of members are facts long to be remembered, and in the future will call forth reminiscences of our college days.

Since the beginning of time, Service has been the one great ambition which has grasped men and brought forth from them what worth they contained. By this worth we are judged: to base our expectations of reward on a solid foundation of service rendered, to be willing to pay the price of success in honest effort and to look upon our work as an opportunity to be seized with joy rather than regarding it as a painful drudgery to be reluctantly endured. This is required Service. How are we going to stand the test? Just as men are judged by their labors, so an institution is judged by its graduates, and in all our endeavors we shall never permit that thought to leave us.

Now that our college work is almost finished—one task done, another fairly begun—and as we are about to enter our chosen vocations, let us remember that it is by what we ourselves have done, and not by what others have done for us, that we shall be remembered in after years. Our history to you is the impression that we leave; your history to us is pleasant and enriching memories.







WILLIAM G. AHL

Selinsgrove, Pa.

*Bachelor of Arts*

*Bond and Key*

Gettysburg Academy; Varsity Basketball Manager (4); Class Soccer (1, 2, 3, 4); Tennis (2, 3, 4); Football (2, 3); Class Basketball (2, 3, 4); Class Baseball (2, 3, 4); Varsity "S" Club (4); Orange Key Club (4); Pi Gamma Mu (3, 4); Phi Kappa (2, 3); Deutsche Verein (2, 3); Y. M. C. A. (1, 2).



JOHN E. BALLENTINE

Mountain Avenue  
Somerville, New Jersey

*Business Administration*

*Phi Mu Delta*

Somerville High School; Tennis Manager (4); Class Basketball (1, 2); Soccer (1, 2); Manager, Class Golf (2, 3); Business Administration Association (2, 3, 4); Band (1, 2, 3, 4); Glee Club (1, 2, 3); Choral Society (1, 2, 3) Junior Prom Committee (3); Dramatics (1, 2, 3, 4).



GRACE BOYLE

Wolverton Street  
Sunbury, Pa.

*Bachelor of Arts*

Sunbury High School; Le Cercle Francais (1, 2); Honor Science Club (3, 4), Secretary-Treasurer (4).



HUGH D. BRININGER

*Bachelor of Arts*

*Bond and Key*

McClure High School; Varsity Basketball (1, 2, 3); Varsity Baseball (1, 2, 3, 4), Captain (4); Soccer (1, 3, 4); Varsity "S" Club (2, 3, 4); Honor Science Club (3, 4); University Band (1, 2, 3, 4); Deutsche Verein (2); Inter-Fraternity Basketball (2, 3, 4); Golf Champion (4).



MARGARET BENNER BURNS

Selinsgrove, Pa.

*Public School Music*

Selinsgrove High School; Peabody Conservatory; Glee Club (3, 4); Choral Society (3, 4).





**FRED CARL**

244 South Maple Street  
Mount Carmel, Pa.

*Business Administration*

*Epsilon Sigma*

Mount Carmel High School; Varsity Football (3, 4); Junior Varsity Football (1, 2); Varsity Baseball (2, 3, 4); Class Baseball (1); Basketball (1, 2, 3); Boxing (1, 2); Volleyball (1, 2, 3, 4); Varsity "S" Club (4); Intra-Mural Board (1, 2, 3); Business Administration Association (2, 3, 4); Le Cercle Francais (1, 2); Business Staff, LANTHORN (3); Junior Prom Committee (3); Y. M. C. A. (1, 2, 3); Class Vice President (3).



**WILLIAM L. CAROLAN**

146 Mountain Avenue  
Somerville, N. J.

*Business Administration*

*Phi Mu Delta*

Somerville High School; Class President (3); Varsity Track (1, 2, 3, 4); Penn Relay Team (2); Varsity "S" Club (3, 4); Class Basketball (1, 2, 3, 4); Interfraternity Basketball (2, 3, 4); Class Baseball (1, 2, 3, 4); Junior Varsity Basketball (2); Class Tennis (2, 3, 4); Soccer (1, 2, 3, 4); Class Football (2); Manager, Class Tennis (3); Director, Interclass Basketball (3); Le Cercle Francais (2, 3); Business Administration Association (3, 4); Athletic Board (4); Interfraternity Council (3, 4), Vice President (4).



**CHARLES W. COLEMAN**

Beavertown, Pa.

*Public School Music*

*Phi Lambda Theta*

Beaver Vocational High School; University Band (1, 2, 3, 4); Glee Club (2, 3); Orchestra (2, 3, 4); President, Recital Class (1).



**RITA L. DILLON**

126 Main Street  
Galeton, Pa.

*Bachelor of Arts*

*Sigma Sigma Delta*

Galeton High School; Elmira College; El Club Espanol (4).



**SELON L. DOCKEY**

Shamokin Dam, Pa.

*Commercial Education*

*Epsilon Sigma*

Selinsgrove High School; Assistant Manager Football (3), Manager (4); Varsity Track (1); Soccer (1, 2); Ice Hockey (2); Varsity "S" Club (4); Orange Key Club (2, 3, 4); Pi Gamma Mu (3, 4); Business Administration Association (2, 3, 4); Men's Student Council (4), Vice President (4); Business Manager, LANTHORN (3); Business Staff, Susquehanna (2); Advertising Manager, Susquehanna (3); Fl Club Espanol (2); Secretary, Athletic Board (3).



PAUL EDWARDS

Wilkes-Barre, Pa.

*Bachelor of Arts*

*Bond and Key*

Blair Academy; Class Football (2); Basketball (1, 2, 3); Baseball (1, 2, 3); Track (1); Phi Kappa (3, 4); El Club Espanol (1, 2); Choral Society (3, 4); Junior Prom Committee (3); Men's Student Council (3), Secretary (4).



JOHN E. EXTROM

Kenvil, N. J.

*Bachelor of Science*

*Epsilon Sigma*

Emporium High School; Varsity Football (1, 2, 3, 4), Captain (4); Track (2, 3, 4); Varsity "S" Club (2, 3, 4).



VASCO A. FANTI

Wilkes-Barre, Pa.

*Bachelor of Science*

*Phi Mu Delta*

Parsons High School; St. Thomas College; Varsity Football (4).



JOHN W. FISHER

Selinsgrove, Pa.

*Pre-Medical*

*Phi Lambda Theta*

Selinsgrove High School; Class Football (1); Track (1, 2).



MABEL AMELIA FULTZ

Reedsville, Pa.

*Bachelor of Arts*

*Kappa Delta Phi*

Reedsville High School; Baseball (1, 2, 3); Track (1, 2); Hockey (1, 2, 3, 4); Soccer (1, 2, 3, 4); Women's Athletic Club (4); Honor Science Club (2, 3, 4); Choral Society (1, 2); Orchestra (1, 2, 3); Le Cercle Francais (1, 2, 3); LANTHORN Staff (3); Y. W. C. A. (1, 2, 3, 4).





FRANCIS R. GEIGLE

Trevorton, Pa.

*Commercial Education*

Trevorton High School; Dickinson Seminary.



ESTHER GEISEL

First and Ochre Streets

Lehighon, Pa.

*Bachelor of Arts*

*Kappa Delta Phi*

Lehighon High School; Basketball (1, 2, 3, 4); Hockey (1, 2, 3, 4); Volleyball (1, 2, 3, 4); Baseball (1, 2, 3, 4); Soccer (1, 2, 3); Women's Athletic Club (3, 4), President (4); Inter-Sorority Council (3, 4); Women's Student Council (3, 4), Vice President (4); Glee Club (4); Deutsche Verein (2, 3, 4), President (3); Editorial Staff, LANTHORN (3); Junior Prom Committee (3); Y. W. C. A. (1, 2, 3, 4), President (4).



LAIRD S. GEMBERLING

8 South Water Street

Selinsgrove, Pa.

*Social Science*

*Epsilon Sigma*

Selinsgrove High School; Soccer (1, 2, 3); Basketball (1, 2, 3, 4); Class Baseball (1, 2); Pi Gamma Mu (3, 4); Advertising Manager, LANTHORN (3); Editor-in-Chief, Susquehanna (4); Managing Editor, Susquehanna (3); Y. M. C. A. (1); Class Treasurer (3).



BEATRICE M. GENTZLER

York, Pa.

*Public School Music*

*Sigma Alpha Iota*

York Collegiate Institute; Inter-Sorority Council (3, 4), President (4); Women's Student Council, Vice President (3); Glee Club (1, 2, 3, 4), Vice President (4); Choral Society (3, 4); Le Cercle Francais (3, 4); Junior Prom Committee (3); Y. W. C. A. (1, 2, 3, 4), Cabinet (3).



MILDRED D. GRIESEMER

North Orange Street

Selinsgrove, Pa.

*Bachelor of Arts*

Selinsgrove High School; Le Cercle Francais (1, 2, 3, 4); Honor Science Club (2); Hockey (1, 2); Y. W. C. A. (2).





JOHN L. HASSAY

Sunderland, Mass.

*Commercial Education*

*Epsilon Sigma*

Amherst High School; Assistant Manager, Varsity Baseball (3), Manager (4); Varsity Track (1); Class Football (1, 2); Soccer (1, 2); Secretary, Orange Key Club (3, 4); Business Administration Association (2, 3, 4); Deutsche Verein (1, 2); Business Staff, Susquehanna (2).



JOSEPHINE STANLEY HOY

Asbury Park, N. J.

*Public School Music*

*Sigma Alpha Iota*

Somerville High School; Orchestra (3); Glee Club (1, 2, 3, 4); Choral Society (3, 4); Editorial Staff, LANTHORN (3); Y. W. C. A. (1, 2, 3, 4).



MARY G. HUMMEL

264 Water Street  
Northumberland, Pa.

*Public School Music*

Northumberland High School; Glee Club (1, 2, 3, 4); Choral Society (3, 4); Y. W. C. A. (1, 2).



DOROTHY M. HUTTER

463 Carey Avenue  
Wilkes-Barre, Pa.

*Business Administration*

*Kappa Delta Phi*

Coughlin High School; Hockey (4); Soccer (2, 3, 4); Volleyball (3, 4); Class Baseball (2, 3, 4); Class Basketball (2, 3, 4); Women's Athletic Club (4); Le Cercle Francais (2, 3, 4); Y. W. C. A. (2, 3, 4).



MARGARET H. IDE

1556 Ferry Street  
Easton, Pa.

*Public School Music*

*Sigma Alpha Iota*

Bethlehem High School; Class Basketball (1, 2); Inter-Sorority Council (4); Women's Student Council (4), Secretary-Treasurer (4); Glee Club (1, 2, 3, 4), Vice President (4); Choral Society (3, 4); Le Cercle Francais (3, 4); Susquehanna Staff (3, 4); Y. W. C. A. (1, 2, 3, 4), Cabinet (4).







**KENNETH JAMES**

Hanover, Pa.

*Pre-Theological*

*Phi Mu Delta*

Hanover High School; Honor Science Club (2); Phi Kappa (1, 2, 3, 4), Vice President (3); Pre-Theological Club (1, 2, 3, 4); Deutsche Verein (1, 2); Y. M. C. A., Freshman Cabinet (1).



**BARBARA JONES**

Paxtonville, Pa.

*Bachelor of Arts*

*Sigma Sigma Delta*

Middleburg High School; Hockey (1, 2, 3, 4); Soccer (1, 2, 3, 4); Class Basketball (1, 2, 3, 4); Class Baseball (1, 2, 3, 4); Class Track (1, 2, 3, 4); Tennis (1, 2, 3, 4); Women's Athletic Club (3, 4); Honor Science Club (2, 3, 4); Le Cercle Francais (1, 2); Assistant Editor, LANTHORN (3); Junior Prom Committee (3); Y. W. C. A. (1, 2, 3, 4).



**HAROLD O. KRAMER**

926 West Walnut Street

Shamokin, Pa.

*Commercial Education*

*Epsilon Sigma*

Shamokin High School; Varsity Football (2, 3, 4); Basketball (3); Varsity Baseball (1, 4); Class Track (1, 2, 3, 4); Class Basketball (1, 2); Class Football (1); Varsity "S" Club (2, 3); Business Administration Association (3, 4); Business Staff, Susquehanna (1, 2), Circulation Manager (3), Business Manager (4); Athletic Board (4); Class Treasurer (1); Class President (2).



**AMELIA LOUISE KRAPP**

100 Rock Street

Pittston, Pa.

*Bachelor of Arts*

*Sigma Sigma Delta*

Hughestown High School; Hockey (1, 2, 3, 4); Soccer (1, 2, 3); Class Baseball (1, 2, 3); Women's Athletic Club (3, 4); Honor Science Club (1, 2); Deutsche Verein (3, 4); Y. W. C. A. (1, 2, 3, 4), Treasurer (4).



**MARY ZENOVIJA LAHAZA**

1070 Scott Street

Kulpmont, Pa.

*Public School Music*

*Sigma Sigma Delta*

Mount Carmel High School; Orchestra (3, 4); Glee Club (1, 2, 3, 4); Choral Society (3, 4); Le Cercle Francais (3, 4).



DIANA I. LIZDAS

Hunlock Creek, Pa.

*Bachelor of Arts*

*Kappa Delta Phi*

Hazleton High School; Hockey (1, 2, 3, 4); Class Basketball (1, 2, 3, 4); Class Track (1, 2, 3, 4); Class Tennis (1, 2); Soccer (1, 2, 3); Class Baseball (1, 2, 3, 4); Volleyball (1, 2); Women's Athletic Club (1, 2, 3), Secretary (2), Vice President (4); Orchestra (1, 2, 3, 4); Le Cercle Francais (2, 3, 4); Editorial Staff, Susquehanna (2, 3, 4); LANTHORN Staff (3); Y. W. C. A. (1, 2, 3); Class Vice President (4); Honor Science Club (2).



JOSEPH A. MAIMON

1219 Wingohocking Street  
Philadelphia, Pa.

*Business Administration*

*Pbi Mu Delta*

Brown Preparatory School; Dickinson Law School; Varsity Baseball (2, 3, 4); Soccer (2, 3, 4); Volleyball (2, 3, 4); Sadtler Pre-Legal Club (2, 3, 4); Business Administration Association (2, 3, 4); Deutsche Verein (2, 3); LANTHORN Staff (3); Men's Student Council (2, 3, 4), Secretary (3), Ex-President (4); Tau Kappa Alpha (3, 4); Secretary-Treasurer (3), President (4).



ROBERT MCGEEHAN

513 East Madison Avenue  
West Hazleton, Pa.

*Bachelor of Science*

*Pbi Mu Delta*

West Hazleton High School; Varsity Basketball (1, 2, 3, 4), Captain (4); Junior Varsity Football (1); Class Football (2); Baseball (1, 2, 3); Soccer (2, 3); Manager, Class Tennis (3); Volleyball (2, 3, 4); Varsity "S" Club (2, 3, 4); Intra-Mural Board (3); Men's Student Council (3, 4); Mathematics Club (4), President (4); Coach, Class Basketball (2, 3, 4); Coach, Freshman Football (4).



ANN MCHUGH

39 Hillard Street  
Wilkes-Barre, Pa.

*Commercial Education*

*Sigma Sigma Delta*

Coughlin High School; Science of Business, '30, Susquehanna University; Hockey (2, 3); Soccer (3); Class Baseball (2, 3, 4); Women's Athletic Club (4); Deutsche Verein (4); LANTHORN Staff (3); Y. W. C. A. (3).



ROBERT McNALLY

126 Spruce Street  
Sunbury, Pa.

*Soloist Course*

*Epsilon Sigma*

Berrysburg High School; University Band (1, 2, 3, 4); Pianist, Orchestra (1, 2, 3); Pianist, Glee Club (1, 2, 3).





IRENE MENGEL

Freeburg, Pa.

*Public School Music*

Freeburg High School; Glee Club (1, 2, 3, 4); Choral Society (3, 4).



WALTER C. METZGER

Halifax, Pa.

*Business Administration*

*Phi Lambda Theta*

Halifax High School; Secretary, Intra-Mural Board (3); Business Administration Association (3, 4), Vice President (4); Inter-Fraternity Council (4); University Band (1); Orchestra (2); LANTHORN Staff (3); Junior Prom Committee (3); Spanish Club; Orange Key Club (4).



E. DOROTHEA MEYER

325 Orange Street  
Selingsgrove, Pa.

*Commercial Education*

Selingsgrove High School; Pi Gamma Mu (3, 4); Business Administration Association (4); Glee Club (3, 4); Choral Society (4); Spanish Club (1, 2, 3, 4), President (4).



JOHN W. MEYERS

State College, Pa.

*Business Administration*

*Bond and Key*

State College High School; Varsity Football (1, 2, 3, 4); Varsity Track (1, 2, 3, 4), Captain (4); Class Track (1, 2, 3); Boxing (1, 2); Handball (2, 3); Varsity "S" Club (1, 2, 3, 4); Intra-Mural Board (3); Business Administration (2, 3); French Club (4); Penn Relay Team (2, 3); Class Treasurer (2).



ANNA GAGE MOODY

Selingsgrove, Pa.

*Bachelor of Arts*

*Kappa Delta Phi*

Selingsgrove High School; Hockey (1, 2, 3, 4); Soccer (1, 2, 3); Basketball (1, 2, 3, 4); Baseball (1, 2); Track (1); Women's Athletic Club (2, 3, 4); Pi Gamma Mu (3, 4); Honor Science Club (1); Orchestra (1, 2, 3), Vice President (4); Glee Club (1, 2); Choral Society (4); French Club (1, 2, 3, 4); Susquehanna Staff (4); LANTHORN Staff (3).



**SAMUEL PASCOE**

120 East Ridge Street  
Coaldale, Pa.

*Bachelor of Arts*

*Phi Mu Delta*

Coaldale High School; Assistant Manager, Varsity Basketball (3); Sadtler Pre-Legal Club (1, 2); German Club (1, 2, 3); Editorial Staff, LANTHORN (3); Class President (4).



**ESTELLE HARTMAN PEARL**

807 Chestnut Street  
Kulpmont, Pa.

*Bachelor of Arts*

*Sigma Sigma Delta*

Mount Carmel High School; Hockey (1, 2, 3, 4); Soccer (1, 2, 3); Basketball (1, 2, 3); Volleyball (2, 3, 4); Women's Athletic Club (3, 4); Pi Gamma Mu (3, 4), Vice President (4); Honor Science Club (2, 3, 4); French Club (1, 2, 3, 4), President (4); Alumni Editor, Susquehanna (4); Chief Statistician, LANTHORN (3); Y. W. C. A. (1, 2, 3, 4); Class Secretary (4).



**JACK A. PETRY**

Salisbury, Pa.

*Bachelor of Arts*

*Phi Mu Delta*

Salisbury High School; Franklin and Marshall; Track Captain (2); Varsity Tennis (1, 2, 3, 4); Class Football (1); Class Tennis (1, 2, 3); Baseball (1, 2, 3, 4); Track (1, 2, 3, 4); Soccer (1, 3, 4); Cheerleader (1, 2, 3, 4); Head Cheerleader (3, 4); Varsity "S" Club (2, 3, 4), Treasurer (4); Glee Club (1, 3); Choral Society (3); German Club (3); Junior Prom Committee (3); Y. M. C. A. (1); Mathematics Club (4).



**WILLIAM E. ROYER**

319 Catawissa Avenue  
Sunbury, Pa.

*Bachelor of Arts*

*Bond and Key*

Lock Haven High School; Soccer (1, 2); Track (1); Pi Gamma Mu (2, 3, 4); Honor Science Club (3, 4); Phi Kappa (1, 2, 3, 4); German Club (2, 3); Art Editor, LANTHORN (3).



**JOHN SHIVO**

35 East Diamond Avenue  
Hazleton, Pa.

*Bachelor of Arts*

Hazleton High School; Debating Club (3); Sadtler Pre-Legal Society (3, 4).







JOHN A. SCHOFFSTALL

Greenbrier, Pa.

*Bachelor of Science*

*Epsilon Sigma*

Upper Mahanoy Township High School; Varsity Football (3, 4); Junior Varsity Football (2, 3); Varsity Baseball (3, 4), Assistant Manager (2); Volleyball (2, 3, 4); Track (1); Baseball (1, 2, 3, 4); Basketball (2, 3); Varsity "S" Club (4); Intra-Mural Board (2, 3); German Club (2, 3), Vice President (3); Y. M. C. A. (1, 2, 3); Business Staff, LANTHORN (3); Mathematics Club (2, 3, 4).



RUSSELL E. SHEETZ

Harrisburg, Pa.

*Public School Music*

Steeltown High School; Orchestra (1, 2, 3, 4); Glee Club (3); Choral Society (3, 4); President, Conservatory Recital Organization (4).



BEATRICE P. SHIVELY

Selinsgrove, Pa.

*Public School Music*

Selinsgrove High School; Glee Club (1, 2, 3, 4); Choral Society (3, 4); Y. W. C. A. (1, 2).



FRANCES E. STAMBAUGH

Spring Grove, Pa.

*Public School Music*

*Sigma Alpha Iota*

Spring Grove High School; Glee Club (1, 2, 3, 4); Choral Society (3, 4); Y. W. C. A. (1, 2, 3, 4); Women's Student Council (3, 4); President, Student Council (4).



J. DONALD STEELE

180 Orange Street  
Northumberland, Pa.

*Pre-Legal*

*Bond and Key*

Northumberland High School; Assistant Manager, Varsity Football (3); Pi Gamma Mu (3, 4), President (4); Interfraternity Council (3, 4), President (4); Sadtler Pre-Legal (1); French Club (2); University Band (1); Advertising Staff, LANTHORN (3).





FREDA E. STEPHENS

15 Greenwood Street  
Hop Bottom, Pa.

*Bachelor of Arts*

*Sigma Sigma Delta*

Hop Bottom High School; Pi Gamma Mu (3, 4); Honor Science Club (2, 3, 4);  
Glee Club (1, 4); Spanish Club (1, 2, 3, 4); Y. W. C. A. (1, 2, 3, 4);  
Debate Club (1, 2, 3, 4).



MARY K. SUFFEL

117 South Eleventh Street  
Sunbury, Pa.

*Bachelor of Arts*

Sunbury High School; Hockey (1, 2, 3, 4); Soccer (1, 2, 3); Baseball (1, 2,  
3, 4); Women's Athletic Club (4); German Club (3, 4); Y. W. C. A. (3, 4).



WILLIAM R. SWARM

Millheim, Pa.

*Bachelor of Arts*

*Bond and Key*

Millheim High School; Varsity Track (1, 2, 3, 4), Co-Captain (4); Class Foot-  
ball (1, 2); Soccer (1, 2, 3, 4); Boxing (2); Track and Relays (1, 2, 3, 4);  
Pi Gamma Mu (3, 4); Varsity "S" Club (2, 3, 4), President (4); Phi  
Kappa (1, 2, 3, 4), Secretary (3); Men's Student Council (3, 4); University  
Band (1, 2); Glee Club (1, 2, 3), Business Manager (3); German Club (2);  
Assistant Editor, LANTHORN (3); Penn Relay Team (2, 3); Class Vice  
President (2).



GEORGE A. TRUCKENMILLER

537 Front Street  
Freeland, Pa.

*Bachelor of Science*

*Phi Mu Delta*

Mining and Mechanical Institute, Freeland, Pa.; Bucknell University; Varsity  
Track (3); Penn Relay Team (3); Junior Varsity, Football (2); Basketball  
(2, 3, 4); Baseball (2, 3, 4); Volleyball (2, 3, 4); Track (2, 3, 4); Soccer  
(2, 3, 4); Intra-Mural Board (3, 4); German Club (2, 3, 4), Treasurer (3),  
President (4).



MARIAN A. WALBORN

924 Line Street  
Sunbury, Pa.

*Bachelor of Arts*

*Kappa Delta Phi*

Sunbury High School; Hockey (1, 2, 3, 4); Soccer (1, 2, 3); Baseball (1, 2, 3,  
4); Track (1, 2); Women's Athletic Club (2, 3, 4); Honor Science Club  
(2, 3, 4), Vice President (3, 4); Inter-Sorority Council (4); Women's Stu-  
dent Council (3); German Club (2), Secretary (2); LANTHORN Staff (3);  
Y. W. C. A. (1, 2, 3, 4).





**RAY DEWITT WATKINS**

503 North Eighth Street  
Selinsgrove, Pa.

*Bachelor of Arts*

*Pbi Mu Delta*

Selinsgrove High School; Class Baseball (3, 4); Boxing (2); Orchestra (1, 2, 3); Glee Club (1, 2).



**BRUCE WORTHINGTON**

8 Hamilton Avenue  
Yonkers, N. Y.

*Bachelor of Science*

Yonkers High School; Varsity Basketball (1, 2, 3, 4); Class Soccer (1, 2, 3); Class Baseball (1, 2, 3, 4); Volleyball (1, 2, 3, 4); Football (2); Intra-Mural Board (4); Orange Key Club (4), Assistant Treasurer (4); Men's Student Council (3, 4), President (4); Spanish Club (1, 2); Susquehanna Staff (1, 2, 3), Sports Editor (3); LANTHORN Business Staff (3); Y. M. C. A. (1, 2, 3), Membership Committee (3); Interfraternity Basketball (2, 3, 4), Captain (4).



**JAY W. WORTHINGTON**

8 Hamilton Avenue  
Yonkers, N. Y.

*Bachelor of Arts*

*Bond and Key*

Central High School, Yonkers, N. Y.; Varsity Basketball (4); Junior Varsity (2); Track (2, 3); Class Football (1, 2); Soccer (1, 2, 3); Cross-country (1, 3, 4); Basketball (1, 3); Track (1, 2, 3); Baseball (2, 3); French Club (1, 2, 3, 4); Associate Editor, Susquehanna (2, 3), Feature Editor (4); Editor-in-Chief, LANTHORN (3); Y. M. C. A., Freshman Cabinet (1); Cap and Gown Committee (4); Interfraternity Basketball (3, 4).



**MARGUERITE YAGEL**

516 Market Street  
Mifflinburg, Pa.

*Bachelor of Arts*

*Sigma Sigma Delta*

Hartley Township High School; Soccer (1, 2, 3, 4); Hockey (1, 2, 3, 4); Baseball (1, 2, 3, 4); Volleyball (1, 2, 3, 4); Women's Athletic Club (4); Orchestra (2, 3, 4); French Club (2, 3, 4); Y. W. C. A. (1, 2, 3, 4).







# The Class of '34

## OFFICERS

NELSON GRAY	-	-	-	-	-	-	-	-	-	<i>President</i>
CALVIN NAUGLE	-	-	-	-	-	-	-	-	-	<i>Vice-President</i>
RUTH BERGSTRESSER	-	-	-	-	-	-	-	-	-	<i>Secretary</i>
HELEN HALL	-	-	-	-	-	-	-	-	-	<i>Treasurer</i>
EDITH FRANKENHELD	-	-	-	-	-	-	-	-	-	<i>Historian</i>

A WHITE-HAIRED scholar, in the midst of research on the life and manners of the Sutchinawalabec Tribe of Pre-Historic Man in the Annals of World History, saw in the preceding article headed "Susquehanna University," a few words which attracted his attention in that portion which described the activities and the contributions of the Class of '34.

He read that with the coming of this class as Freshmen Susquehanna became an accredited college. After many deductions he finally came to the conclusion that certainly these two incidents must be linked up as cause and effect. Other events in their Freshman year promised a bright future for such an auspicious group. The outcome of the annual class football tilt was a tie; this was the first class to hold the Sophomores scoreless.

Having gained the social status of Sophomores, they, in the natural evolution of college classes, grew in wisdom and number of activities, contributing many leaders and successful teams.

But what in particular conquered the admiration of the aged professor was the glowing account of the Junior year. Many age-old organizations were headed by Juniors; in many others their influence was strongly felt. Several championships were captured by them, including the soccer and basketball by the men and the hockey and volleyball by the women. In that same year they also won the indoor track meet. Was it also a coincidence that when this famous class was in its most active year and contributed many of its members to Varsity Football, Susquehanna should have its first undefeated football team? The Junior Prom that year was an outstanding success.

A volume was published by that class to which the reader was referred for more detailed information concerning this group. The scholar took from the library shelf Volume XXXVII of the LANTHORN, which he perused for several hours enchanted by the glowing pictures and tales of these youths. Finally, with a sigh of envy he reluctantly closed the book and turned again to his study of the Sutchinawalabecs.

*"The air about is filled with cheer,  
 The atmosphere is wondrous clear  
 The birds above—they seem so near—  
 We walk on the air away down here,  
 For at last has come the golden year,  
 The "Seventh Heaven of a College Career—  
 WE ARE JUNIORS"*







**VIRGINIA ANDREWS**

6 Boulder Place  
Yonkers, N. Y.

*Bachelor of Arts Omega Delta Sigma*

Yonkers High School; Hockey (1, 2, 3); Soccer (1, 2, 3); Class Basketball (1, 2); Volleyball (1, 2); Baseball (1, 2); Women's Athletic Club (2, 3); Le Cercle Francais (1, 2, 3); Inter-Sorority Council (3); Y. W. C. A. (1, 2, 3); Class Historian (2); Class Secretary (3).

Here's to Virginia, Yonker's female representative to S. U.'s campus. "Ginny" is full of vim, vigor, and vitality. Whenever the call of the "Bob-white" is heard, everyone knows that "Ginny" sees Luke somewhere in her vicinity.

She realized a long-hoped desire at the beginning of the second semester when she entered a business school in New York. We were sorry to lose a very popular co-ed and classmate, but our best wishes go out to her.

We wonder if she is preparing to type sermons. No one seems to know. Best of luck, Virginia!

**ANNA BENFER**

16 South High Street  
Selinsgrove, Pa.

*Bachelor of Arts Omega Delta Sigma*

Selinsgrove High School; Hockey (1); Soccer (1); Le Cercle Francais (1); Choral Club (1, 3); Y. W. C. A. (3).

A true representative of the group which Selinsgrove has contributed to Susquehanna is Anna, who enters whole-heartedly as a student. Although at first she seemed the friend who never becomes jolly, but of the quiet, studious type, we were pleased to find that she has a mischievous twinkle in her eye while seriously "giving us a line."

But Anna is perhaps most outstanding in the classroom where she exhibits an intelligent understanding of her studies and has that much desired gift of expressing her knowledge and ideas in a way that makes one sit up and take notice. The honor roll that is posted semi-annually is never complete without the name of Anna Benfer.

"Perseverance is the Keystone of Success."







E. RUTH BERGSTRESSER

83 N. Church Street  
Hazleton, Pa.

*Bachelor of Arts Omega Delta Sigma*

Hazleton High School; Basketball (1, 2, 3); Baseball (1, 2, 3); Hockey (1, 2, 3); Women's Athletic Club (2, 3); French Club (1, 2, 3); Y. W. C. A. (1, 2, 3), Cabinet (3); Susquehanna Staff (2, 3), News Editor (3); Assistant Art Editor, LANTHORN (3); Tau Kappa Alpha (3); Inter-Sorority Council (3).

In Ruth we see the typical co-ed, a valuable member of our Junior Class. All our Junior teams claim Ruth as a member necessary for their success. The Y. W. C. A. Cabinet makes use of her interest in its principles and talents along that line.

Since a Freshman, she has given her time and interest to work on the Susquehanna Staff. At the present time Ruth has the distinction of being the only co-ed member of Tau Kappa Alpha, a fact which speaks enough for her ability in debating.

As the typical co-ed also is active in letter-writing, and Seibert Hall's agent of Uncle Sam regularly has something for her. May you have success, Ruth, in whatever your field of concentration.



PETER BLACKWOOD

1224 Chestnut Street  
Turtle Creek, Pa.

*Public School Music Bond and Key*

Turtle Creek Union High School; Shenandoah College; Band (2, 3); Orchestra (2, 3); Glee Club (2); Choral Society (2, 3).

This young man from Turtle Creek has not only discovered his talents, but is developing them. Juniors admire him not only as a jolly good fellow, but also a capable musician.

Some claim that "Music hath power to charm," but in this case we may truthfully say that the musician himself has a power indicative of charming. With his delightful disposition, Pete has won many friends. Perhaps a portion of his popularity is due to his ability as a pianist. He, too, gives volume to the choral society and much time to the interest of the band.

Should he continue in his search in the music realm, we are sure that the world will have another of man's greatest benefactors—a good musician.

"May his departure from Susquehanna  
Leave footprints in the sands of time."





JAMES A. BONSTALL

Grampian, Pa.

*Commercial Education*

*Phi Lambda Theta*

Curwensville High School; Sub-Assistant Manager Varsity Baseball (2); Assistant Manager, Baseball (3); Orange Key Club (2, 3); Business Administration Association (1, 2, 3); Business Manager, LANTHORN (3); Editorial Staff Susquehanna (2), Sports Editor (3); Spanish Club (1, 2); Men's Student Council (3); Class President (2).

This concentrated mass of originality came to college bashful and young three years ago. His imagination is so vivid that he is seldom found wanting for an answer in the classroom.

When the Junior Class was confronted with the selecting of a Business Manager for this year's Annual, the task was made easy. "Jim" is a real business man, and this LANTHORN is a fine example of his business managership. He has proved himself a great asset to Susquehanna.

"Jim" has made a host of friends, and his true friendship has yearly cemented these bonds more firmly together which shall be retained by the warm places he has won in the hearts and memories of everyone with whom he comes in contact.

"He is a friend to all men."

MARLIN C. BOTTIGER

Mt. Pleasant Mills, Pa.

*Pre-Theological*

*Phi Lambda Theta*

Freeburg High School; Varsity Track (1, 2, 3); Class Soccer (1, 2, 3); Class Track (1, 2); Varsity "S" Club (2); French Club (1, 2); Pre-Theological Club (1, 2, 3); Y. M. C. A. (1, 2, 3); Phi Kappa (1, 2, 3), President (3).

This boy has earned the title of the "Flying Parson" for his good track work. His strong feet and lengthy stride have won many races for the Crusaders. He had a taste of boarding life and of the reckless day-student life.

We will always remember "Torchie" and his huge brief case which he drags from classroom to classroom with the air of an erudite person, and really he does crack ye olde bookes. One always finds him ready to crack a good joke and have a good time; still in the realm of studies he is very persevering and serious, especially in Greek which appeals to him as an attractive subject.

Here is a real boy for the ministry—a gentleman and a student indeed.

"Knowledge is great but wisdom lingers."





ELEANOR SUE BROWN

23 Park Avenue  
Westminster, Md.

*Commercial Education*

*Kappa Delta Phi*

Pleasant Valley High School; Michigan Albion College; Hockey (3); Soccer (2, 3); Basketball (2, 3); Volleyball (2, 3); Baseball (2, 3); Track (2, 3); Women's Athletic Club (3); French Club (2); Glee Club (3); Art Editor, LANTHORN (3); Y. W. C. A. (2).

From Maryland we get this dark-haired, blue-eyed girl, and we are indeed proud to claim her. The one thing for which we are sorry is the fact that she spent her Freshman year at Albion, Michigan.

However, Eleanor wasn't here long before her ability on the hockey field was recognized. Now she also excels in all other sports as well.

But she isn't satisfied to capture a prominent place in athletics—she stands next to the top in scholastic subjects. She is conscientious and thorough, and "Unprepared" is a word excluded at all times from her vocabulary.

As Art Editor for our year book, she has more than fulfilled her duties.

We are sure that she will always work earnestly and conscientiously and success will be assured for her.

"I have labored, and with no little study,  
That the strong course of my authority  
might go one way."

BERNICE BRUBAKER

542 Vickroy Avenue  
Johnstown, Pa.

*Commercial Education*

*Omega Delta Sigma*

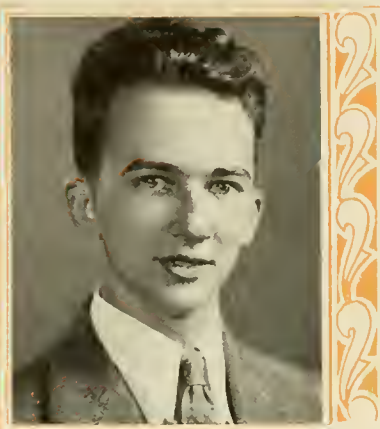
Ferndale High School; University of Pittsburgh Junior College; Hockey (2); Soccer (2); Spanish Club (2, 3); Y. W. C. A. (2).

The class of '34 lost a thoroughly likable young lady when Bernice decided to return to Pitt Junior College in Johnstown at the end of the first semester of her Junior year here at Susquehanna. She didn't greet S. U. till her Sophomore year, but we have all learned to love her and we all miss her merry care-free disposition and her happy-go-lucky ways which have won for her many friends. Bernice always mixed work with play, a little of both and not too much of either.

If this fair Johnstonian would decide in favor of our campus once more she would receive a most cordial welcome.







HARRY A. CARL

Gordon, Pa.

*Pre-Medical*

Mahanoy City High School; Varsity Track (2); Class Football (1, 2); Soccer (1, 2, 3); Volleyball (1, 2, 3); Golf (3); Track (1, 3); Spanish Club (1, 2, 3); Honor Science Club (1, 2, 3), President (3); Class Volleyball (1).

In the midst of a bright, sunny day we found a half serious, half tricky looking lad plodding his way towards the hall of S. U. from Susquehanna Heights. "Doc" took up his course with us in his Freshman year. Unlike many of the College day students he soon entered the activities around the school and at once found himself enjoying real College life. He is a natural friend, a lover of nature's beauty and her handicraft, which three probably account for his good marks in scientific studies.

Although at times a little serious he is always on the job when it comes to playing a little joke on one of the fellows. "Doc" is taking up medicine and we feel sure that some day he will be one of Pennsylvania's ablest M. D.'s.

"Admired for thy cunning."

*Bond and Key*

HENRY H. CASSLER

Hollsopple, Pa.

*Pre-Theological*

Johnstown Central Senior High School; University of Pittsburgh; Soccer (3); Track (3); Golf (3); Pre-Theological Club (3); Editorial Staff, LANTHORN (3); Debating Team (3); Volleyball (3).

"Pass the bread!"

This lad came breezing to Susquehanna in his Junior year as another of those brisk and renowned young gentlemen from the vicinity of Johnstown. His cheery smile and bashful mien contradict one another so far as the girls are concerned.

Although he did not arrive on the campus until this year he has become one of the prominent members of the Junior class; Henry was a strong pillar on the debating team this year. As an exponent of behavioristic psychology he maintains his position well.

Since he has decided to study for the ministry the Class of '34, in viewing his sincerity and ingenuity in the classroom, predicts for him the acme of success in his most admirable work. You'll get there, Henry—good luck!





EDWIN MORRISON CLAPPER  
Duncansville, Pa.

PAULINE ELIZABETH CROW  
Liverpool, Pa.

*Bachelor of Arts*      *Phi Mu Delta*

*Bachelor of Arts*      *Sigma Sigma Delta*

Holidaysburg High School; Class Soccer (1, 2, 3); Baseball (1, 2); Track (1, 2); French Club (1, 2); Advertising Manager, Susquehanna (3); Editor-in-Chief, LANTHORN (3); Phi Kappa (3); Tau Kappa Alpha (3); Pre-Theological Club (2, 3), President (3); Y. M. C. A. (1, 2, 3); Debating Team (1, 2, 3).

Liverpool High School; Class Hockey (1, 2); Soccer (1, 2); Basketball (1, 2); Baseball (1, 2); Women's Athletic Club (2, 3), Secretary-Treasurer (3); Honor Science Club (3); Women's Student Council (3); German Club (1, 2, 3), Secretary-Treasurer (3); Susquehanna Staff (3); Chief Statistician, LANTHORN, (3); Y. W. C. A. (1, 2, 3), Cabinet (2, 3), Secretary (3).

Eddie has been chosen by the Junior class to act as Editor-in-Chief of the LANTHORN and judging by the book we find that our confidence in him has not been misplaced. He has been efficient, tireless in his effort, and has displayed real ability in his assigned task.

Let us introduce you to one of the most individual and faithful members of our class, Pauline, the girl with a light-hearted giggle. If you want to make sure of hearing it, ask her if she likes pie! Also, she has that color hair which, it is said, "Gentlemen prefer".

However, he has not limited his endeavors to just one field. A glance at the list of activities above will prove conclusively that he has engaged in other extra-curricular activities, especially in the Pre-Theological Club of which he is President.

Always active and busy, Pauline is one of our good workers, not only in her studies but in many of our organizations, such as the Y. W. C. A. and the LANTHORN Staff which shared her talent and ability as chief statistician and associate editor. Secretarial work seems her specialty since she capably holds three such positions this year.

That he is a very conscientious student does not limit him from being a first rate sport and friend.

Having enviable qualities of happiness, a cheerful, generous disposition, as well as a stick-to-it-iveness, we predict the acme of success for you, Pauline, always!

To wish him success would be unnecessary for one who is so skilled in the art of debating will surely succeed in the ministry.

"Continue to work, Eddie, it well may be  
That best things will be added unto thee."

"A tender heart, a helping hand,  
Always ready on demand."







LILLIAN DIEHL

47 Hanover Street  
Gettysburg, Pa.

*Bachelor of Arts Omega Delta Sigma*

Gettysburg High School; Hood College; Class Baseball (2); Soccer (2); Hockey (2, 3); Women's Athletic Club (3); French Club (2, 3); Y. W. C. A. (2, 3).

From near the site of the great Battlefield of Gettysburg comes this very peaceful maiden to grace our campus. Peaceful? Well, generally. She is at peace with her professors, at peace with her friends, and at peace with her "one and only." But how she does war like a true citizen of historic Gettysburg when she is down on, no, not the battlefield, but the hockey or soccer field, not to mention the war she wages when her fist comes in contact with the volleyball.

"Tennie's" greatest asset is her charm. Those who know her best are fascinated by her winning personality and find her purposeful quick changes of disposition a never-failing source of entertainment. Best of happiness in the future, Lillian!



PENN G. DIVELY

Main Street  
Berlin, Pa.

*Bachelor of Arts Bond and Key*

Berlin High School; Assistant Track Manager (3); Class Soccer (2, 3); Orange Key Club (2, 3); Band (1, 3); Orchestra (1); Phi Kappa (1, 2, 3); Editor-in-Chief, Handbook (2, 3); Susquehanna Staff (1, 2, 3); Managing Editor (3); Y. M. C. A. (1, 2, 3).

In Penn we have a classmate to whom the Class of '34 will some day point with pride! Ordinarily he has a calm outlook on life, and a cool way of regarding things. Even in the classroom he seems to have the knack of getting it across, as he not only knows his books, but thinks things through.

He has been one of the responsible members of the Susquehanna Staff this year. As managing editor his work was very satisfactory.

Penn is a leader of men and bound to inspire confidence in those who know him. Wit is a rich possession, which few seem to have, but here's one among the keenest. We feel sure that back of his wit there is sincerity, and the earnestness with which he tackles every difficulty will carry him safely through the trials which his chosen profession harbors.

"May clouds ne'er shadow thy way."





P. RICHARD FISHER

Selinsgrove, Pa.

*Bachelor of Arts*      *Bond and Key*

Selinsgrove High School; Varsity Football (1, 2, 3); Varsity Basketball (1); Varsity "S" Club (1, 2, 3).

"Rich" is one of the gang from downtown. We mean he comes from Selinsgrove; he doesn't just live there. In spite of his attractive surroundings he has remained pretty bashful and unspoiled. When he smiles, and it's often, the girls just can't resist turning around. As one of the most agreeable and good natured persons one could meet, he is making great strides in his chosen profession of trying to get out of college.

For three consecutive years "Rich" has played varsity center with the Orange and Maroon eleven. On the football field he reminds us of the terrible Turk. He is by no means the gentlest sort of person to meet after signals have been called. And in the refined sport of neck twisting he is as amiable as a polar bear. Some day we will be very proud to have known him.



EDITH FRANKENFIELD

4911 North Twelfth Street  
Philadelphia, Pa.

*Bachelor of Arts*      *Omega Delta Sigma*

Simon Gratz High School; Hockey (1, 2, 3); Soccer (1, 2, 3); Women's Athletic Club (2, 3); French Club (2, 3); Basketball (1, 2, 3); Volleyball (1, 2, 3); Baseball (1, 2, 3); Women's Student Council (1, 2, 3); Editorial Staff, LANTHORN (3); Y. W. C. A. (1, 2, 3), Cabinet (2, 3), Vice President (3), President (4).

"Frankie" is a living example of that oft-quoted proverb, "All good things come in small packages." She may be small but her active and retentive mind has kept her constantly among the upper section of the Junior Class. If you want to know where this Latin word comes from or who wrote that quotation, just ask "Frankie".

This petite versatile Miss has exhibited her ability as a leader during her three years with us, but most especially when she was called upon in an emergency to become temporary president of the Y. W. C. A. Here as in all things "Frankie" demonstrated her quick-thinking, her tact, and her dependability. Best of luck, "Frankie", we know you will find no little position.

"True to her work, her word and her friends."



**QUINTO GIONTO**

34 Orchard Street  
Glen Lyon, Pa.

*Bachelor of Arts*

*Epsilon Sigma*

Newport High School; Alabama University Summer School; Class Soccer (1, 2, 3); Class Football (1); Basketball (1, 2, 3); Class Baseball (1, 2, 3); German Club (1, 2, 3); Glee Club (2); Choral Society (2); Sadtler Pre-Legal Club (1, 2, 3); Phi Kappa (1, 2, 3).

Quinto is a bundle of ambition of which the Junior Class can be proud. He is one of those students who is making a successful attempt to complete his college course in three years plus some summer study. Among his colleagues he is known as one who expends concentrated effort on his studies and is ready to respond in class when a question is directed his way.

However, he does not spend all his time with books, but is ready at any time to devote an accurate portion of his moments to social activities. His fraternity and some of the sorority dances would not be complete without him.

With the supply of knowledge which he has accumulated, Quinto should be successful as a teacher. The class of '34 wishes him a place of repute in life.

**A. NELSON GRAY**

51 Rutter Street  
Wilkes-Barre, Pa.

*Bachelor of Arts*

*Phi Mu Delta*

Hanover Township High School; Varsity Football (1); Varsity Baseball (1, 3); Class Basketball (1, 2, 3); Baseball (1, 2, 3); Boxing (1); Soccer (1, 2, 3); Sadtler Pre-Legal Club (1, 2, 3); Men's Student Council (2, 3); Junior Prom (3); Vice President Class (1); Class President (3).

"Red" came to us from the coal regions of Wilkes-Barre and has well established his mark here on the campus. His greatest zeal lies in the realm of inter-class sports. Many of the Junior victories in baseball have been the result of the fine exhibition of pitching that is characteristic of this quiet, conservative youth.

After attending college for three years it was finally realized that he could and did fall too; this year he contracted the welcome disease of Seibert Hallitis and became just another of the sons in the Seibert circle.

This sedate youth has yet to decide his life work, but we are certain that he will make good in his chosen field because he possesses the prerequisite of success, which is good judgment.







**MARTIN A. GRAYKOSKIE**

813 West Mulberry Street  
Shamokin, Pa.

*Bachelor of Science*      *Phi Mu Delta*

Coal Township High School; University of Alabama; Varsity Track (2, 3); Class Baseball (1, 2, 3); Volleyball (1, 2, 3); Honor Science Club (3); Sadtler Pre-Legal Club (1, 2, 3); Glee Club (1); Spanish Club (1, 2, 3); Junior Prom (3).

The old saying, "When in Rome, do as the Romans," does not apply to "Alabam". He is Shamokin's best example of one who has the courage of his convictions. Besides being worried as to when he could cultivate a mustache, he does do some studying which has been a great factor in placing him one step ahead of the rest of us. A little work and summer school has enabled him to graduate this year.

Although we have no fear for his success, we do have sympathy for his competitors because he is an optimist who feels that an Arts Course was beneath the notice of an intelligent man. He has qualities that should carry him far along the road to success in life. Good luck to you, "Alabam", old kid!

"In his presence there is only one parallel,  
That person is just Alabam."

**JAMES GROVE**

Selinsgrove, Pa.

*Bachelor of Arts*      *Epsilon Sigma*

Selinsgrove High School; Class Football (2); Baseball (1, 2, 3); Track (1, 2).

To characterize "Jimmie" would tax the poor brain of any editor. Anyone who can enjoy the reckless day-student life, who has the moral courage to slumber peacefully in his classes knowing full well that his dreams will be rudely disturbed, who takes great delight in driving a car—be they campus relics or Model A's—who demonstrates his ability as a tonsorial artist and who spends his evenings at the State Colony, presents a problem to his biographer.

His friendliness is a constant companion and with his winning smile, makes for him a pleasing personality all of his own. In him we have a classmate to whom we will some day point with pride, for he has a cool and analytic way of regarding everything.





HELEN HALL

Trout Run, Pa.

*Commercial Education*

*Omega Delta Sigma*

Williamsport High School; Basketball (1, 2, 3); Baseball (1, 2, 3); Soccer (1, 2, 3); Hockey (1, 2, 3); Spanish Club (1, 2, 3); Women's Student Council (3); Y. W. C. A. (1, 2, 3); Class Treasurer (3).

Here we have Helen; a loyal, quiet and dignified young lady who comes to us from Williamsport. Helen's charm consists in a compelling personality, dark fascinating eyes, a slow dreamy voice, and complimentary brown hair.

Commercial education is her by-word. When a problem of finance arises, Helen is there with book and pencil ready to assist wherever help is needed. Helen is planning to teach after her graduation, and all our wishes go toward her success, which we know she will have because she has shown qualities which tend to indicate a good teacher during these three years on the campus. She has even won a place on that severe body, the Student Council. Her merry heart and smiling face coupled with excellent zeal, should satisfy our high hopes for success.

"Friends speak for a girl, and she has a host of them."

MARGARET MARIE HAUSMAN

221 South Market Street

Selinsgrove, Pa.

*Commercial Education*

*Kappa Delta Phi*

Sunbury High School; German Club (1, 2, 3), Secretary (2), Vice President (3); Women's Student Council (3); Business Staff, LANTHORN (3).

Margaret is a day student. Because of this, we suppose, most of us do not know her quite as well as we should like.

"Peg" has a natural reserve through which we had to break before we could fully appreciate her character. But as soon as we really learned to know her, we were glad to claim her as a member of our class.

She is especially popular on the campus for her unusual scholastic ability, for during her three years here she has been either at or near the head of our class.

Aside from her being a good student, she has a kindly disposition and is, at all times, a friend worth having.







ELMER C. HAWK

330 Pennsylvania Avenue  
Sunbury, Pa.

*Public School Music*

*Pbi Lambda Theta*

Sunbury High School; University Band (1);  
Choral Society (2, 3).

Here we have one of the musicians of our campus. Elmer is more than a student at the "Con"; he is an excellent one. His friendliness is his constant companion. Although he is seldom heard on the campus, his quietness is of a type that expresses individuality which makes for him a radiant personality that is felt as soon as he is around. We've been told that he is not as quiet as he seems at first acquaintance; he is the consistent type who can keep up their part in a conversation.

His chosen field of music has been wisely selected and judging from his class work and his general knowledge of the subject we, his classmates, sincerely send our best wishes; trusting that he will put this knowledge into practical use after graduation.

"All through my keys that give sounds to a  
wish of my soul,  
All through music and me."

ISABELLA T. HORN

921 Shima Sagimiya  
2 Chrome, Nakano Ku  
Tokyo, Japan

*Public School Music*

*Omega Delta Sigma*

American School in Japan; Glee Club (1, 2, 3),  
Treasurer (3); Choral Society (1, 2, 3);  
Y. W. C. A. (1, 2, 3), Cabinet (2, 3); Editorial Staff, LANTHORN (3).

Isabella is the "Pollyanna" of Seibert Hall. Homesick girls are her specialty. She radiates sympathy and understanding.

Whenever a speaker is needed for a church service, missionary meeting, girls' club, or prayer meeting, this versatile young lady is always at hand with her immense fund of information on Japan and on life, or whatever subject is required. She has a widespread reputation and is always ready to utilize her talents and skill when called upon.

Isabella is majoring in voice, and she should have a very successful future if we can judge her predestination.

From rumors, we learn that she is planning to return to Japan from whence she came to enter Susquehanna. Lady Luck and Dame Fortune need no request to smile brightly on such an absolute personality.

"Yes, there's rings on her fingers,  
And bells on her toes,  
Isabella has her music  
Wherever she goes."





**EARNEST W. HUSTON**

Hooversville, Pa.

*Pre-Theological*

Hooversville High School; Varsity Track (3); Class Soccer (1, 2, 3); Track (2); Glee Club (2); Phi Kappa (2, 3); Assistant Statistician, LANTHORN (3); Y. M. C. A. (1); Pre-Theological Club (1, 2, 3), Vice President (3).

Hooversville High may be small, but it didn't do a small job when it prepared "Earnie" for Susquehanna. A large part of the class's attainment in contributing to religion rests upon his shoulders, for we all recognize his natural ability as a Gospel Minister. He not only hopes to enter that field in the future, but also proves his sincerity by grasping every opportunity to render bits of such service.

In preparation for his life work he delves into the cultural subjects of Greek, History, and Philosophy; where he proves to be a conservative and stable student.

But "Earnie" also finds time for recreation, which he spends profitably in giving his tenor voice a "work out," doing a little running, and adding "just another friend" to the already large number of admirers. But, "You know how it is."

**D. EDGAR HUTCHISON**

133 East Lancaster Avenue

Downingtown, Pa.

*Commercial Education Phi Mu Delta*

Downingtown High School; Intra-Mural Board (2); Business Administration Association (1, 2, 3), Treasurer (3); Interfraternity Council (3); Band (1, 2, 3); Chairman, Junior Prom Committee (3); Advertising Manager, LANTHORN (3); Chairman, Interfraternity Dance Committee (3).

Although "Ted" belongs to the executive group in the Business Department we do manage to hear and to see little things about him. In the Fall of 1930 when he alighted at the Selinsgrove station for the first time he betrayed his experience. In a short time studying became more or less a past-time for him as his interest drifted into the field of music. Early in his Sophomore year he organized a dance orchestra, known as "The Crusaders."

When the date arrives to select an orchestra "Ted" always has one to suggest which satisfies the best tastes of college social life.

As an orchestra leader or a business executive we are back of you and wishing you fertile opportunities.

"A musical lad with a versatile mind."





**HARRY H. JOHNSON**

280 King Street  
Northumberland, Pa.

*Bachelor of Arts*     *Epsilon Sigma*

Northumberland High School; Ursinus College; Waynesburg College; Class Basketball (3); Football (2); Baseball (2, 3); Spanish Club (2, 3), Vice President (3).

Harry is one of Northumberland's representatives among the Juniors and we must say that he does make a fine ambassador.

His disposition in the classroom shows that what he has obtained, no one can deprive him. Being endowed with a sort of inventive genius he attempts to apply his keen knowledge of Mathematics, which is his favorite study, to his experiments. Frequently he may be seen head in hands, saying nothing, but thinking deeply. When in this mood it is unwise to disturb him, for some day he will probably be master of his invention.

It is to you, Harry, to whom we wish the greatest success.

"May the best that is in man win him."

**R. LEONA KAUFMAN**

435 North Walnut Street  
Mount Carmel, Pa.

*Bachelor of Arts*     *Sigma Sigma Delta*

Mount Carmel High School; Class Hockey (1, 2, 3); Soccer (1, 2, 3); Baseball (1, 2, 3); Y. W. C. A. (1, 2); Junior Prom Committee (3).

Here's to Leona, the popular after dinner entertainer of Seibert Hall. She is just another of Mount Carmel's contributions to Susquehanna. If it were not for her, the girls of Seibert would miss their diversion for the day. When we wish to know something about an orchestra or dancing, we ask Leona, and she usually knows.

She is witty, vivacious, and versatile as well as a good student. Her yearning to teach when she concludes her courses will certainly be satisfied for there is great need of famous History teachers who find it very difficult to get their dates mixed. We trust that Leona will enjoy teaching as much as she enjoys life at Susquehanna.







CHARLES KELLER

Market Street  
Selinsgrove, Pa.

*Business Administration Epsilon Sigma*

Selinsgrove High School; Staunton Military Academy; Junior Varsity Basketball (1, 2); Varsity Baseball (1, 2); Class Football (1); Class Basketball (2, 3); Class Soccer (1, 2).

It is with a keen sense of pleasure that we attempt to characterize this highly esteemed classmate and friend. He resides with his parents in the city of Selinsgrove when he is not with a certain maiden on the campus. Socially, he's a wizard. "Charley" is not a firm believer in the "57 Varieties" but in one and only one. She is portrayed to the readers earlier in the LANTHORN.

His many friends on the campus make up a portion of the booty won through his winning smile and unsurpassed good nature that is always beaming from his eyes. As a good companion he is always eager to play a good game of baseball. From youth he has been a member of some baseball club.

Casting levity to the wind, we are saying that if he follows his principle of "Let conscience be your guide," we the class of '34 need feel no apprehension for his happiness and success.

NELSON KING

Mt. Wolf, Pa.

*Commercial Education Epsilon Sigma*

Manchester High School; Assistant Manager, Football (3), Manager-elect (3); Class Soccer (1, 2, 3); Orange Key Club (2, 3); Spanish Club (1, 2); Business Staff, Susquehanna (2); Editorial Staff, LANTHORN (3); Junior Prom Committee (3).

Nelson is the "vest pocket edition" of our class from Mt. Wolf, Pa. In spite of all reports that he has not grown an inch since his entrance at Susquehanna three years ago, his scholastic ability as well as his many friends have grown.

We know he cannot help but make a successful business executive, for he certainly manifests much effort and interest in this field. None of us know whether he lets himself be dominated with books, but we occasionally see him studying and practicing on his Remington portable.

Contented, yet progressive; happy, yet serious minded; gay but not wild; a good student, but not a drudge; a good pal and a friend of all—may we wish you, just the best.

"Speech is human, silence is divine."







FRANCES A. KLINE

2 North Market Street  
Selinsgrove, Pa.

*Commercial Education*

*Omega Delta Sigma*

Selinsgrove High School; Class Hockey (1, 2); Soccer (1, 2); Basketball (3); Choral Society (1); Spanish Club (1, 2).

Some people do not make a lot of noise and are not heard from so much, but still when we get to know them they are true blue through and through. Just such a person is "Francie".

Classed among those who daily "walk up the street to S. U.," she has found a place here in the hearts of her classmates. Her quiet charm and pleasant smile go hand in hand with each other to greet us when we pass her on the campus.

May you ever keep on smiling, "Francie", and we are sure that it will lead you to success and happiness.

RICHARD F. KREAR

Emlenton, Pa.

*Bachelor of Arts Phi Lambda Theta*

Emlenton High School; Varsity Football (1, 3); Class Football (2); Basketball (3); Baseball (1, 2); Soccer (2); Honor Science (1, 2, 3); Business Administration Association (1); French Club (1, 2).

No "bull session" is complete without "Dick's" contribution of ready humor and superfluous reasoning. But don't expect him too early, because he's seldom awake much before noon. We're undecided as to whether or not his former association with Bucknell is responsible for this characteristic, but be that as it may, they have sent another good student to the Business Department of Susquehanna. Dick can talk circles if it need be, and they aren't tiring either. Happy and indifferent, he should win his way to success.

"Here's to the man who keeps his bed  
Though he loses his heart!"





DANIEL T. MCKELVEY

572 North Vine Street  
Hazleton, Pa.

*Bachelor of Arts*

*Epsilon Sigma*

Hazleton High School; Orange Key Club (3); Sadtler Pre-Legal (1, 2); Inter-Fraternity Council (2, 3), Secretary (3); French Club (3); Business Staff, Susquehanna (2), Circulating Manager (3).

Upon gazing out over our campus in the fall of 1930 we were able to observe a young man with a look of determination that meant success in anything that he might undertake. The above is his portrait, that of Daniel T. McKelvey, our delightful classmate hailing from the town of Hazleton, Pa.

"Buddy" is usually a good companion and is always ready to help wherever he can. As Circulation Manager of the "Susquehanna" he has filled the demands of his position well. Taking a glance at him one might think he were rather a calm fellow, although from his aptitude of mind and irony, we assure you not to be deceived, as occasionally he is known to assume a stormy condition.

However, "Buddy" has one failing, that is, the power to withstand the alluring charms of the gentler sex. He is one of those regulars who frequent the confines of Seibert Hall and is also indicted to the disease of Campustry and Movieitis. Our wish to you is incommensurable success.

VICTOR J. MARIETTA

1248 West Arch Street  
Shamokin, Pa.

*Public School Music*

St. Edward's High School; New England Conservatory of Music, Boston, Mass.; Temple University, Philadelphia, Pa.; President of Music Department, Temple University, 1933; Secretary of Kappa Phi Kappa, Honorary Educational Fraternity, 1933; Choral Society (3).

Victor spent his first year at the New England Conservatory of Music. He then went to Temple University but a guilty conscience brought him to Susquehanna.

We don't hear much from "Vic" during the day, for he spends his time from eight until five in the conservatory. But in the evening! And on Saturday evenings! Whoopee! We find him agreeable in most places and situations, and pretty adaptive to all kinds of company.

We might say that if he will only lay off those frequent week-end trips to Shamokin and take lots of work in the Conservatory he will soon reach the top of that social ladder which he has climbed so far.





AUDRA E. MARTZ  
1201 Susquehanna Avenue  
Sunbury, Pa.

*Public School Music*

Sunbury High School; Ladies' Glee Club (1, 2, 3); Choral Society (1, 2, 3).

Audra came to us from Sunbury High School where she was a good student, earnest and sincere about her work. Now, we know that she prefers her work in the Conservatory to any other.

She is a true and steadfast friend and is always willing to help when "one's down and out". She is an earnest supporter of the school, generous in her encouragement of societies.

Her friends attribute an even disposition, kindness, and loyalty to her intimate companions as the most outstanding qualities of her nature.

When the Conservatory of Music offers a program her piano solos rank among the best. We, your classmates, hope that the curtain of life will rise and find you in a curtain of happiness.



ALBERT C. MEYER  
174 South Welles Street  
Wilkes-Barre, Pa.

*Bachelor of Arts*      *Phi Mu Delta*

Girard College High School; Varsity Basketball (2); Varsity Baseball (1, 2, 3); Varsity Track (2); Class Soccer (1, 2, 3); Basketball (1, 3); Baseball (2); Volleyball (2, 3); Class Track (1); Boxing (1, 2); Class Football (2); French Club (1, 2).

'Tis "Silent Al" the shouting Irishman who, after giving the collegiate world an intensive try-out, dropped his hat at Susquehanna and, for some unknown reason, managed to stay here. His trusty car, plus a very squawky horn, is often heard dashing madly over the campus. He seems to get a great deal of pleasure out of driving a car; the people with him get the thrills. Mimicing in sport the yell of the local fish vendor he is known as "Fish-ho" Meyer.

After studying mathematics for four years, he probably will be a first class professor, and we will shout loudly for him when he is pitching his way to fame for some big baseball club.







WILLIAM S. MORROW  
Loysville, Pa.

CALVIN J. NAUGLE  
Hollsopple, Pa.

*Bachelor of Arts*

*Bond and Key*

*Bachelor of Arts*

*Phi Lambda Theta*

Tressler Prep School; Varsity Baseball (1, 2); Class Soccer (1, 2, 3); Class Basketball (1, 2); Varsity "S" Club (3); Phi Kappa (3); German Club (2, 3); Business Manager, Handbook (2); Y. M. C. A. (1, 2, 3); Pre-Theological Club (1, 2, 3).

Here's "Bill". Loysville did Susquehanna a good turn when she sent this flashy handsome youth.

"Bill" has demonstrated his ability in more ways than one. On the debating floor he simply vanquishes all would-be opponents by his clear diction, clever logic, and originality.

"Bill" also is very much devoted to a certain blonde on the campus just about his size.

When it comes to intellectual capacity and ability, "Bill" is not in the background. His plucky determination and crafty ingenuity has made him an outstanding student in the realm of the arts and sciences.

In baseball and track "Bill" has also made a remarkable showing in bringing many laurels to old S. U.

We predict for "Bill" a happy and prosperous future in whatever he may undertake.

Ferndale High School; Sub-Assistant Manager, Track (2), Assistant Manager (3); Class Basketball (1, 2, 3); Football (1, 2); Soccer (1, 2, 3); Baseball (1, 2, 3); Track (1, 2, 3); Intra-Mural Board (3); Orange Key Club (3); Honor Science Club (2, 3); Interfraternity Council (3), Treasurer (3); Pre-Theological Club (1, 2); Y. M. C. A. (1, 2); Junior Prom Committee (3); Business Staff, LANTHORN (3); German Club (1, 2).

Somerset County has again contributed to Susquehanna by sending us one hundred and eighty pounds of real social strength combined with capacity and winning personality. Try as you will, he simply sells you. Nothing is too difficult for him to try; not even the works of Plato, Homer or Kant.

"Cal" figures on the Track managerial staff and participates actively in nearly all types of intra-mural sports. When he has made a goal, he quietly steps back to position without any sign of elation, and prepares for the next one.

To wish "Cal" luck is unnecessary for we all feel that his hopes of entering the ministry will be pleasing and fruitful.







RUTH E. NELSON

Thompsontown, Pa.

*Bachelor of Arts*      *Kappa Delta Phi*

Port Royal High School; French Club (2, 3); Editorial Staff, LANTHORN (3); Junior Prom Committee (3); Y. W. C. A. (1, 2, 3); Cabinet (2, 3), Secretary (2); Women's Student Council (2, 3); Class Secretary (1).

You need no introduction to this fair maiden with the smiling eyes. A girl with a winning smile, a light laugh, and the title of everyone's friend—that's Ruth.

She has been blessed with the rare ability to do things well. Whether it be on the Student Council or in Y. W. C. A. work, she never shirks her duty. Such was her interest in school life and traditions that she was selected assistant editor of the LANTHORN.

However, her abilities are not limited to such leadership. In the classroom she is always found among the highest ranks.

In considering her ambition and achievement, all we can say is that we trust her whole life will be as successful as the years she spent at College.

"Of a truth thou art fair and wise."



ANNA LUDLOW NICHOLS

Sunbury, Pa.

*Commercial Education*      *Kappa Delta Phi*

Upper Augusta Township High School; Class Hockey (1, 2, 3); Soccer (1, 2, 3); Basketball (1, 2, 3); Track (1, 2, 3); Volleyball (1, 2, 3); Women's Athletic Club (2, 3); Y. W. C. A. (1, 2, 3); Spanish Club (1, 2); LANTHORN Staff (3); Inter-Sorority Council (3); Glee Club (3).

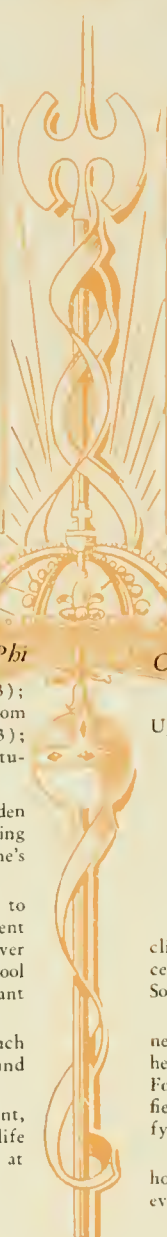
"Say——."

"Lud" is one member of our class who is inclined to be "seen and not heard"—that is, except as a member of the Glee Club or Choral Society.

Her chosen profession is in the field of business, and many times we find her working over her accounts. However, it isn't her only hobby. For anyone who has seen her on the hockey field, basketball court, or baseball field can testify to her efficiency along that line.

The class of '34 knows "Lud" well enough to hope that she'll be the biggest sort of success in every way—in fact we expect it of her.

"Here is a mixture of Love and Beauty."





JOHN W. OBERDORF

Selinsgrove, Pa.

*Bachelor of Arts*

*Bond and Key*

Selinsgrove High School; Varsity Football (1); Varsity Track (1); Soccer (1, 2, 3); Baseball (1, 2, 3); Class Track (1, 2, 3); Class Basketball (1, 2, 3); Varsity "S" Club (1, 2, 3); Intra-Mural Board (1); University Band (1, 2); Orchestra (1); Glee Club (1); Inter-Fraternity Council (3).

Here's to a quiet, but most popular man on the campus. His tastes are very aesthetic, so that if every hair is not in place, his cravat not properly tied, or his trousers creased, his sense of immaculate beauty is so disturbed that he will not appear on the campus until such things have been properly adjusted.

We will always remember "Johnny" for his ardent work on the track team. He stands at the head of his class as the hurler of the javelin. We must also note that above all he is a student. To be unprepared in class is the unpardonable sin for him.

It is not our purpose to prophesy, but to assure this member of our class success in his future activities.

"Let us then be up and doing,  
With a heart for any fate;  
Still achieving, still pursuing,  
Learn to labor and to wait."

ABERDEEN HELENE PHILLIPS

216 South Market Street

Selinsgrove, Pa.

*Commercial Education*

*Omega Delta Sigma*

Selinsgrove High School; Hockey (1, 2, 3); Soccer (1, 2, 3); Class Baseball (1, 2, 3); Volleyball (1, 2, 3); Class Basketball (1, 2, 3); Women's Athletic Club (1, 2, 3); Glee Club (1, 2); Choral Society (3); Spanish Club (1, 2, 3); Inter-Sorority Council (3); Women's Student Council (3); Business Staff, LANTHORN (3); Junior Prom Committee (3).

Whether as an efficient library assistant, a student, an athlete, or a friend, "Abby" is capable and held high in the esteem of those about her. She is one of those who, when we ask them to do something, we know will do it well. But do not be misled. She is not merely a good follower but an excellent executive, as can be shown by the way in which she leads others in organizations which she has headed.

Although she is a day student, a "good bit" of her time is spent on the campus, and her many friends find her frequenting Seibert Hall for friendly chats between classes. Just such little acts of friendliness make her so dear to us.

"Pleasure is good; let us seek it."





JOSEPHINE PIFER

19 High Street  
East Bangor, Pa.

*Public School Music*

Bangor High School; Glee Club (1, 2, 3); Choral Society (2, 3); Y. W. C. A. (1, 2, 3); Junior Prom Committee (3); College Choir (1, 2, 3).

We must revive the rather obsolete term "it" because it adequately applies to this young lady with the snappy brown eyes. "Jo" is the proud possessor of many talents including a lovely voice and art ability. She never has a care and her conception of life seems to be, "All is well that means well."

"Jo" is charming, dignified and determined. She is extremely good-natured and ready to be of assistance to any one, but does she like to upset things!!!

To "Jo" we wish all the possible success and we are sure she will attain the desired heights.

"If music be the food of love,  
Play on."



RUTH M. PLUMMER

21 North Market Street  
Selinsgrove, Pa.

*Bachelor of Arts Omega Delta Sigma*

Selinsgrove High School; Hockey (1, 2, 3); Soccer (1, 2, 3); Baseball (1); Women's Athletic Club (2, 3); Girls' Glee Club (1, 3); Le Cercle Francais (1, 2, 3), Secretary (3); Y. W. C. A. (1, 2, 3).

Ruth is the intellectual ace of the Junior class. We are all very proud of this sweet brown-eyed lass. She has won many friends with her cheerful smile and her unassuming manner.

No matter what subject may be discussed, Ruth is always ready to respond and contribute her share from an immense fund of knowledge which she has acquired during her lifetime.

She is rather tall, dignified, and when the occasion demands it very clever. She knows all about radios and electric lights (and aeroplanes) as well as her studies. She has proved her efficiency in any time of need. Predicting a successful future for Ruth is like foretelling a Christmas Day! Best wishes from your fellow classmates of '34.







DAISY M. REESE

Audenried, Pa.

*Bachelor of Arts*    *Omega Delta Sigma*

West Hazleton High School; Hockey (1, 2, 3); Soccer (1, 2, 3); Baseball (1, 2, 3); Basketball (1, 2, 3); Volleyball (1, 2, 3); Women's Athletic Club (2, 3); Editorial Staff, Susquehanna (1, 2, 3); Y. W. C. A. (1, 2, 3); French Club (1, 2, 3), Secretary (2), Vice President (3); Inter-Sorority Council (3), Vice President (3).

A perky little brown-eyed daisy but it does not wave as the wind blows it. Nor is this daisy overshadowed in a great field of daisies, for however many are those who surround her this daisy is sure to be noticed. Daisy is what everyone would call "cute". Whether we know her well or not, when we are in her company we are gay with her, and led on by her quick retorts to any joke accompanied by the sparkle and snap of her brown eyes.

This is only the outward expression of her deeper character which shows strength of mind and purpose and which enables her to be one of our leaders and will in the future, we know, allow her to make a successful place for herself.

"Always laughing, seldom sad;  
Just girls like this make men go mad."

LEE DONALD RISHEL

West Pine Street  
Selinsgrove, Pa.

*Bachelor of Arts*    *Bond and Key*

Selinsgrove High School; Varsity Football (1, 2, 3), Captain (4); Class Basketball (1, 2, 3); Class Baseball (1, 2, 3); Varsity Track (1); Varsity "S" Club (2, 3).

When the fall winds of 1930 ceased blowing across our campus we found among our midst Lee Rishel. A brilliant looking chap, he was soon to be known among his fellows as "Skipper". He can attribute this name to his characteristic method of plunging forward with an oval on the football field. The Orange and Maroon teams have been greatly aided by this witty halfback who has been chosen captain of the sport for next year.

He is a "local lad," having graduated from Selinsgrove High School in 1930 and entered the class of '34 as a freshman.

Lee is a friend indeed—one who has a cheery greeting for all whom he meets. Always a cosmopolitan with an exceptional personality we are sure that he will be able to plunge through the line of life for a good ten yards. To wish him success would be superfluous, for he is not the failing kind.







RALPH RISHEL

263 Water Street  
Northumberland, Pa.

*Bachelor of Arts*      *Epsilon Sigma*  
Northumberland High School; Waynesburg  
College; Class Baseball (3).

Few men possess that sublime trait of speaking only when there is something to say. Rishel is one of these. This same quiet quality of observation finds practical use in his classes. Any progress that he has made along the lines of study have been under the stress and strain of day student life. He hails from Northumberland, just across the Susquehanna.

His classmates consider him among the members of the group who go through college with ambitions far removed from making themselves known on the campus. The above picture is a portrait of one of these. His presence in college is marked by a quietness that is so characteristic of his whole existence. He is by no means a recluse, but is on hand to indulge in any of the so-called collegiate pastimes such as frequent arguments which he enjoys very much.

Serious minded and thorough in his methods, he will probably leave his native habitat and seek his fortune in the world of teaching.



HAROLD ROWE

Thompstontown, Pa.

*Pre-Theological*      *Phi Mu Delta*

Millerstown High School; Class Soccer (1, 2, 3); Tennis (1, 2, 3); Volleyball (1, 2, 3); Band (1, 2); Phi Kappa (3); Le Cercle Francais (1, 2); Pre-Theological Club (2, 3); Handbook Staff (2); Sports Editor, IANTHORN (3); Y. M. C. A. (1, 2, 3), President (3); Debating Team (3).

Harold is one of the few fellows who has combined "a college education" with studies and produced a result that is eminently successful. He has made his play a frolic, his studies a serious business, and his extra-curricular activities, such as debating and the Y. M. C. A. of which he is president, a sensitive duty.

He is not only an ardent believer in the nice order of things both physical and spiritual but a greater utilizer of this idea. Certainly, he has made a wise choice in selecting the ministry as his chosen profession. Having won the good graces of our classmate, Ruth, he has become a frequent visitor of Seibert Hall and no longer lacks that part of his ministerial equipment.

The index files, portfolios and memorandums around his desk would make an American Telephone and Telegraph statistician green with envy. His clear voice, excellent personality, and intellectual ability insure unusual success for him as a pulpit orator.



ROBERT R. SALA

Johnstown, Pa.

*Pre-Theological Phi Lambda Theta*

Ferndale High School; Assistant Manager, Basketball (3); Class Soccer (1, 2); Baseball (1, 2, 3); Track (1); Football (2); Golf (3); President, Intra-Mural Board (3); Orange Key Club (3); Phi Kappa (1, 2, 3); Men's Student Council (3); Pre-Theological Club (1, 2, 3); German Club (2); Editorial Staff, LANTHORN (3).

"It is just too bad that a bunch of college boys cannot get together without being dirty. Do you doubt the veracity of my statement, Mr. \_\_\_\_\_?"

Those are two characteristic statements of "Bob" who is a gift to the Junior Class from the Class of '33, as the result of an injury received while he was playing soccer. It was necessary for him to be out of school for one year on account of this accident; he is still loved by his former classmates and much more by the members of the class of which he is now a member.

Although recognized as "God's gift to women" it has not been realized on this campus, for he never has visited Seibert Hall, except with a huge brief case in the service of Uncle Sam. Bob is quiet, easy going, and a happy-go-lucky fellow. It will not be long until he will be known as Reverend Sala we hope.

"Happy am I, from care I'm free,  
Why aren't they all contented like me?"

H. BLANCHE SAVIDGE

620 Front Street

Northumberland, Pa.

*Bachelor of Arts*

Northumberland High School; Track (1, 2); Baseball (1, 2); Basketball (1, 2); Hockey (1, 2); Soccer (1, 2, 3); Women's Athletic Club (2, 3); Spanish Club (1, 2, 3); Y. W. C. A. (1).

From Northumberland Susquehanna has received many students who are outstanding, and in Blanche we find no exception.

We regret, however, that after her first year, Blanche decided to commute rather than submit to the rules and regulations of dormitory life. When we hear gales of laughter coming from the day students' room, we know from past experience that Savidge is helping to entertain, and we envy them.

Blanche is planning to teach math after she has graduated from her Alma Mater and judging from the ability which she displays in the classroom we feel certain that she will surely be a success.

The Class of '34 wishes you the best of everything in all that you undertake whether teaching or otherwise.

"There's nothing that's of great concern  
Except to live, and work, and learn."





**JERAULD M. SCHLEGEL**

Thompsontown, Pa.

*Bachelor of Arts*

*Bond and Key*

Port Royal High School; Varsity Football (1, 2, 3); Junior Varsity Basketball (1); Varsity Basketball (2, 3); Varsity Track (1, 2); Varsity Tennis (1, 2, 3), Captain (3); Class Baseball (1, 2, 3); Volleyball (1, 2, 3); Varsity "S" Club (2, 3); Junior Prom Committee (3); Y. M. C. A. (2, 3).

From fame to fortune or how an all-around campus athlete grew into a varsity football man is the story of Jerry's career. Just another Thompsontown boy makes good. He has been able to participate in many Intra-Mural sports and to make a good job of each.

As one of the most agreeable and good natured persons one could meet, Jerry always smiles; with his pleasing personality he has won many friends. He has gotten a lot out of college. Marks just come to him. Since the close of the football season, he has been spending his time on things of a higher nature—joys of the heart. In a short time this college year will be over and he is going home—back to dear old Thompsontown. This town may justly welcome their returning son upon whom has been heaped the praise of his fellow students.

**RICHARD SHADE**

Lewistown, Pa.

*Public School Music*

*Pbi Mu Delta*

Yeagertown High School; University Band (1, 2, 3), President (3); Orchestra (1, 2, 3); Glee Club (2); Choral Society (2, 3).

To those who know "Dick" better he is one of that rare type of human kind whose presence is agreeable in most places and situations, and is pretty adaptive to all kinds of company. There is a marked quiet and pondent congeniality about him which seldom loses his pleasantness. He is faithful to his practice periods.

His good wit extends from more subtle heights down to the gutter, yet he is not guilty (much) of this practice. "Dick" manages to pass his time between soft, sweet music and long letters. Quiet and retiring by nature and studious by inclination, he frequently spends Saturday afternoons in the Conservatory punishing the ivory. As a mainstay of the musical organizations, especially the Band, his teachers find him a connoisseur of the art of music.

He is not only the epitome of neatness on the campus; they say that he was mistaken for a coat model while standing in front of a local clothing store. We predict that he will make a success in either music or pedagogy.

"He is as sincere and faithful a friend as one can find."







MARY ELISE SPIGGLE

Sipesville, Pa.

*Bachelor of Arts Omega Delta Sigma*

Somerset High School; Marion Junior College; Hockey (3); Basketball (3); Volleyball (3); French Club (3); Y. W. C. A. (3).

Many are the tales we hear of Mary Elise's past experiences at Marion Junior College, from which she has come to finish her college career here at Susquehanna. We are glad to have such a welcome addition to our class in the person of this merry individual. Her bewitching, high-pitched giggle which always accompanies her funny stories and which, by the way, she is trying to cultivate in a lower key indicates her sunny disposition.

But Mary Elise is not always giggling; she is a conscientious worker and seems to have arrived at that stage where she can mix pleasure with work in just the right proportion. Endowed with such characteristics, she will be sure to get along well in the future.

"Mary, always bright and cheery,  
With helpful hand for all who're weary."

NAOMI E. STONESIFER

300 West Hanover Street

Hanover, Pa.

*Commercial Education*

*Kappa Delta Phi*

Hanover High School; Beckley College; Spanish Club (3); Y. W. C. A. (3).

"Nomie" has come from Beckley Business College to join the class of '34. This is her first year on the campus of S. U., and she has made a host of friends.

We never hear her say an unkind thing about anyone and that alone is well worth saying for any girl. She always wears a sunny smile and is everybody's friend.

In social life "Nomie" shines. She dances well and talks well—two indispensable assets to a popular girl.

"Nomie" also shows an active interest in the Commercial Department. If you find a page of Shorthand that is too difficult, just ask "Nomie"—she will be able to read it. No matter what line of work she takes up after leaving college, we are safe in predicting a successful future for her.

"Endowed with many gifts."







**JAMES C. SUTER**  
Williamsburg, Pa.

*Pre-Theological*      *Phi Mu Delta*  
Williamsburg High School; Varsity Football (1, 2); Baseball Manager (2, 3); Orange Key Club (3); Business Staff, Susquehanna (2); Y. M. C. A. (1, 2); Phi Kappa (1, 2, 3); Vice President (3); Pre-Theological Club (1, 2, 3).

Step up and meet a boy who hails from the papertown of Williamsburg, Pa. "Jim," as we know him best, has been interested in extra-curricular activities, some of which were guided by his influence.

He is one of those fortunate individuals who have a great number of friends in all four of the classes and who have nerve to major in Greek. Classmates speak of him as another Socrates in Greek Class and admire his willingness to lend his help whenever possible. Once the class of '34 establishes itself in life we expect to meet him comfortably located in some manse as the successful pastor of a Lutheran parish.

"'Tis a most capable and wise head we have here."

**LLOYD M. SWARTZ**  
Millerstown, Pa.

*Bachelor of Arts*      *Phi Lambda Theta*  
Newport High School; Varsity Track (2); Class Soccer (1, 2, 3); Band (1, 2, 3); Class Track (2).

Lloyd, better known as "Poke," has the distinction of being the slowest man at Susquehanna. Of course, every rule has an exception, of which his ping pong opponents are well aware. Besides his attainment in this activity he also holds the checker championship of the Day Students' Room.

Lloyd commutes from the quiet country where his environment is most conducive to the deep thinking which his Chemistry and Mathematics demand. To augment these secular sciences he resorts to the field of Philosophy, where his thinking ability proves itself admirable.

As for extra-curricular activities, how could the Band afford to lose this master of the saxophone, or how could the Track Team win without him?

Best of a future, "Poke". We know you'll succeed and become a competent pedagogue for some lucky school.





SARA M. ULRICH

Washington Street  
Downingtown, Pa.

MARGARET BATEMAN WILLIAMS

114 West Avenue  
Mount Carmel, Pa.

*Bachelor of Arts Omega Delta Sigma*

Greencastle High School; Wilson College; Class Basketball (3); Hockey (3); Soccer (3); French Club (3); Susquehanna Staff (3); Y. W. C. A. (3).

Wilson's loss has been Susquehanna's gain. This is indeed true in Sally's case, for the Junior Class has certainly profited by her decision to settle at Susquehanna. "Sally" always gives her best whether it be on the hockey or soccer field, the basketball court, the classroom, or in her contact with her friends. These latter are numerous and find her a true pal, always ready to lend the helping hand and to share their joys and sorrows. Sincerity and doing the fair thing are her by-words.

Success can not fail to abide with one who plays the game of life so squarely as does "Sally".

"For the great and the low there is but one test;  
'Tis that each girl shall do her best.  
Who works with all the strength she can  
Shall never fall in search of plan."

*Public School-Music Sigma Alpha Iota*

Mount Carmel High School; Glee Club (1, 2, 3); Choral Society (1, 2, 3); LANTHORN Staff (3); Y. W. C. A. (1, 2, 3); Inter-Sorority Council (3); Women's Student Council (3).

There are a great many people who can do one thing well but here is one who can do a great many. A born leader and musician—that's "Peg". Always dependable and willing to do more than her share in anything. But "Peg" has one weakness and I'm sure that she agrees with Sancho Pauza where he said "God bless the man who invented sleep." She is also known for her wit and extra cleverness; as a girl with the big, broad, congenial smile—with her lovely voice and magnetic personality "Peg" should do big things in the field of music. Not only in concert work but also in public school music, in which she is taking a minor.

"An unwearyed spirit in doing courtesies."





ALBIN T. ZIMLICKI

1516 Oneida Street  
Shamokin, Pa.

*Bachelor of Arts*

Coal Township High School; Class Football (1, 2); Non-Fraternity Basketball (1, 2, 3); Soccer (1, 2, 3); El Club Espanol (1, 2, 3); Sadtler Pre-Legal Club (1, 2, 3).

This young man came to Susquehanna F. O. B. (Full of Banter) with those who annually hibernate on College Hill to avoid the biting winter of Shamokin.

Every editor welcomes an opportunity to characterize an individual who has a particular outstanding trait. "Indian" satisfies in this respect, although he is outstanding in more ways than one. His puns are shared by his classmates with pleasure.

We look upon him as one from Shamokin, with all its coal dirt, who shows that it can send a fellow to school as a sport. This is his outstanding trait; all of us think of him as such and admire him in that light.

As every other college fellow indulging in a cultural pursuit, we find Albin in search of an A.B. He is an expert when it comes to repairing the bearings in a Model A; some of his companions object, but just look at the head of this column and decide if their objections really have any grounds. When the bearings in the machine of life need repair, this Junior will certainly put his theories in practice and make the motor hum.



# Sophomores







# The Class of '35

## OFFICERS

ERLE SHOBERT	- - - - -	<i>President</i>
DONALD HENRY	- - - - -	<i>Vice-President</i>
ELVA WINKELBLICK	- - - - -	<i>Secretary</i>
FRANCES HUBLER	- - - - -	<i>Treasurer</i>
HELEN KELLER	- - - - -	<i>Historian</i>

THE Class of '35 returned to Susquehanna's campus in September, after what proved to be a successful vacation and were ready to begin another year of work, study, and play together. We missed our classmates who were not able to return to school.

This year we felt more at home and equipped to help the freshmen become accustomed to their new surroundings; within the first few days we became acquainted with them, and these friendships later blossomed into happiness.

Our first big event was Homecoming Day. This year it had a deeper meaning than last because we could now welcome back all old friends and renew acquaintances. On this day the annual Frosh-Soph football tilt was played, which we won in a grand way. Better luck to you next year because we are back of you. We are proud to boast of several of our class who are members of the undefeated football team. Our co-eds were the winners of the inter-class soccer championship. Athletics is not the only field in which we are interested. We were well represented in other organizations, such as "The Susquehanna," musical clubs, and the debating squad.

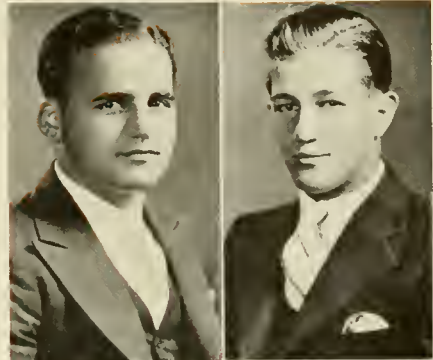
It was a pleasure for us to participate in two projects which beautified our campus. The one was the stone wall around the heating plant which the men of our class with the help of the freshmen constructed; the other was the contributing of a sum of money to be used for the erection of a Crusader Quadrangle as a memorial to our undefeated football team of this year. Whether contributing money or rendering service we are ready and willing to offer our best to our dear school which has done so much for us—more than we shall ever be able to repay.

This year was filled with many things upon which we can look with great satisfaction. Half of our college career is over and of our work together as classmates. We desire to go forward in the two short years that are remaining and hope that by so doing we will be able to improve our attitudes toward life.





SAVIOR ABBOTT  
Oliver Street  
Swayerville, Pa.



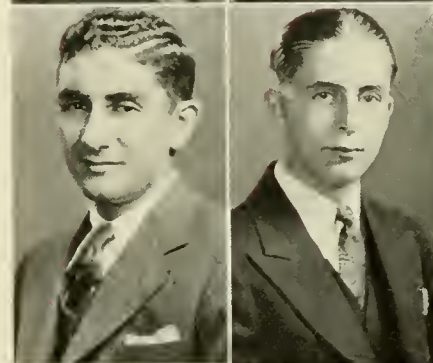
KENNETH ANDERSON  
Petersburg, Pa.

RUTH C. BAIR  
1738 Center Street  
Ashland, Pa.



TIMOTHY BARNES  
Middleburg, Pa.

FRANK BERNARDI  
605 Hepburn Street  
Williamsport, Pa.



KENNETH E. BLYLER  
Millmont, Pa.

LUTHER K. BOYER  
242 West Third Street  
Mount Carmel, Pa.



ELEANOR BOZIMSKI  
22 North Market Street  
Nanticoke, Pa.





WILLIAM B. CARUTH  
36 West Hollenback Avenue  
Wilkes-Barre, Pa.

PHYLLIS CHIMOCK  
241 South Oak Street  
Mount Carmel, Pa.



ROBERT CLARK  
222 Cemetery Street  
Jersey Shore, Pa.

DOROTHY CLEGG  
Water Street  
Everett, Pa.



MARY ANNA CRESSMAN  
11 North Wayne Street  
Lewistown, Pa.

DONALD C. DORSETT  
404 Washington Avenue  
Jersey Shore, Pa.



ELMER DRUMM  
Fishers Ferry, Pa.

DOROTHY EASTEP  
116 East Second Street  
Williamsburg, Pa.





RUSSELL W. EISENHOWER

246 Seventh Street  
Northumberland, Pa.



ERDENE ELLMORE

402 Cherry Street  
Roaring Spring, Pa.

MARY ELTRINGHAM

30 North Maple Street  
Mount Carmel, Pa.



MARY L. GRIESEMER

North Orange Street  
Selinsgrove, Pa.

ELIZABETH HAIDACHER

West Mahoning Street  
Danville, Pa.



JOHN R. HANNA

64 Sherman Street  
Bradford, Pa.

DONALD K. HENRY

Blain, Pa.



E. MILLE HINES

10 Landon Street  
Pittston, Pa.







FRANCES H. HUBLER

440 Clochey Avenue  
Mount Lebanon  
Pittsburgh, Pa.



CHARLES JONES

Paxtonville, Pa.



HELEN R. KELLER

Mowry, Pa.



FRANCES L. MARKS

106 South Market Street  
Selinsgrove, Pa.



ANNA LOUISE MEHRING

Littlestown, Pa.



A. CARL MESSINGER

561 North Locust Street  
Hazleton, Pa.



HELEN L. MONOHAN

559 North Church Street  
Hazleton, Pa.



SARAH ALMA MYERS

Lincoln Way West  
New Oxford, Pa.





MILDRED McCLURE  
Port Royal, Pa.



HAZEL E. NAUGLE  
219 Plum Street  
Williamsburg, Pa.

HOWARD C. NEELY  
322 Ridgewood Avenue  
West View, Pa.



RUTH L. NEWELL  
918 Wallace Street  
Vandergrift, Pa.

LEONARD L. NEWFIELD  
Northumberland, Pa.



THEODORE J. OSBORNE  
Chestnut Street  
Sunbury, Pa.

RUDOLPH OVREBO  
Selinsgrove, Pa.



MARY L. PATTERSON  
Broad Street  
Selinsgrove, Pa.





WILLIAM L. REGER

White House, N. J.

SAMUEL R. SCHLEGEL

Thompsontown, Pa.



MORGAN R. SCHREINER

State Street  
Nanticoke, Pa.

ELIZABETH E. SHIPE

Catawissa Avenue  
Sunbury, Pa.



ERLE I. SHOBERT

702 Maple Avenue  
DuBois, Pa.

ROBERT L. SMITH

Beaver Springs, Pa.



ALFRATA A. STAMETS

2244 North Fifth Street  
Harrisburg, Pa.

KATHERINE E. STETLER

417 Orange Street  
Millintown, Pa.







J. WESLEY STIRLING  
47 North Locust Street  
Hazleton, Pa.

JOHN D. STOUFFER  
Port Royal, Pa.

WILLIAM E. SULLIVAN  
North Sixth Street  
Youngwood, Pa.

WALTER VAN NUYS  
Selinsgrove, Pa.

KONSTANTY WASILEWSKI  
15 Brinkerhoff Place  
Passaic, N. J.

JUNE WEAVER  
Roosevelt Avenue  
Westwood, N. J.

WILLIAM S. WHITELEY  
456 South Market Street  
Selinsgrove, Pa.

ELVA WINKELBLECK  
Aaronsburg, Pa.







WALTER B. WESLOTSKY  
1042 Spruce Street  
Kulpmont, Pa.



# Freshmen

A decorative graphic element on the right side of the page. It features a shield-shaped frame containing an illustration of an open book with a quill pen resting on its pages. The entire graphic is rendered in a light blue color.



## The Class of '36

### OFFICERS

ROBERT SASSAMAN	-	-	-	-	-	-	-	-	<i>President</i>
JOHN MAGUIRE	-	-	-	-	-	-	-	-	<i>Vice-President</i>
DAVID EVANS	-	-	-	-	-	-	-	-	<i>Treasurer</i>
ANNA MEASE	-	-	-	-	-	-	-	-	<i>Secretary</i>
GWENDOLYN SCHLEGEL	-	-	-	-	-	-	-	-	<i>Historian</i>

ON September 14, 1932, eighty-three youths, fresh from high schools, "prep" schools and the school of experience, came to this institution to form the new Freshman Class of 1936.

The succeeding week was Freshmen Week, devoted to acclimating us to college atmosphere. There were "Get Together Parties," receptions, teas, lectures, examinations to find out what we knew about the Bible, and to measure our intelligence, more lectures, and to top it all came Registration Day with various blanks and slips to fill out, leaving us at last full-fledged Frosh.

Then came weeks of being identified as Freshmen by arm bands or dinks and name plates, weeks of showing our subservience to the upperclassmen by the work lists published in the gym. We decided to hold our "Get Away" in the middle of September; on account of the Sophomores who arrived on the scene just as we were dispersing after the election it was declared a success. During football season, we helped arouse the greatest display of enthusiasm that Susquehanna has experienced by various things, including a bonfire the night before the Homecoming Game.

Now with our Freshman year behind us, we look back with satisfaction on what has passed. We have been well represented in all the phases of college life. We are proud of our contributions to Susquehanna's winning eleven, proud of our men on the basketball varsity and even of our class teams, which met defeat through inexperience. We are proud of our members of the various clubs of the campus and of our appearance socially. It is with great pride that we take interest in our class work and laboratories, but we are most proud of the fact that we are students of Susquehanna University.





KENNETH ALEXANDER

3213 North Main Street  
Scranton, Pa.



ANNE APICHELL

Spruce Street  
Kulpmont, Pa.

STEPHEN AZARY

815 Chestnut Street  
Kulpmont, Pa.



STANLEY BENNER

McAlisterville, Pa.

FRED C. BILLMAN

Herndon, Pa.



GLENN D. BLAIR

Blairs Mills, Pa.

MAX S. BLAIR

Blairs Mills, Pa.



ANNA ELIZABETH BOCK

53 North Vine Street  
Hazleton, Pa.

ETHELYN BOLIG

Selinsgrove, Pa.



MARCELLA CHAYA

843 Main Street  
Slatington, Pa.





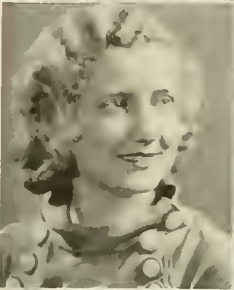


RUTH CHERRINGTON

Catawissa, Pa.

RICHARD CRANKSHAW

1115 Arrot Street  
Philadelphia, Pa.



ALTHEA CROWL

215 South Tenth Street  
Sunbury, Pa.

PHYLLIS E. ENGLE

1057 East Market Street  
Sunbury, Pa.



DAVID R. EVANS

22 North Bridge Street  
Sommerville, N. J.

ALLEN J. EYER

48 South Market Street  
Shamokin, Pa.



CLARENCE W. FARLEY

107 Gearhart Street  
Danville, Pa.

CHARLES F. FASOLD

110 North Market Street  
Selingsgrove, Pa.



JAMES B. FINN

Port Treverton, Pa.

DOROTHY E. GASKINS

119 Avenue E  
Riverside, Pa.



MARY K. GELNETT  
Middleburg, Pa.

JAMES A. GROSSMAN  
Newville, Pa.

JEROME V. GUSS  
Paintersville, Pa.

BERNICE HARDING  
Center Street  
Port Morris, N. J.

WALTER M. HERTZ  
544 North Front Street  
Milton, Pa.

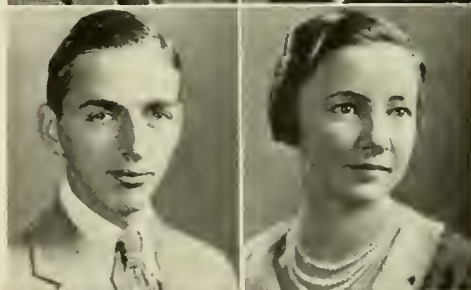
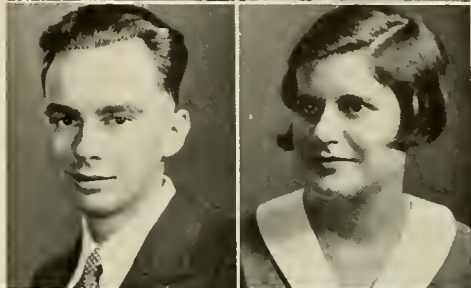
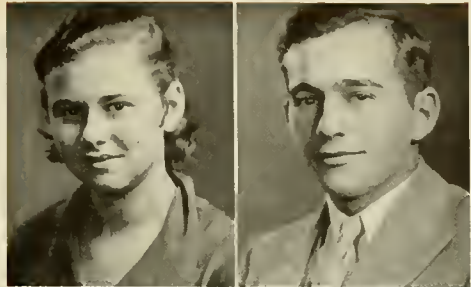
ALBERT HESS  
463 Hawthorne Avenue  
Yonkers, N. Y.

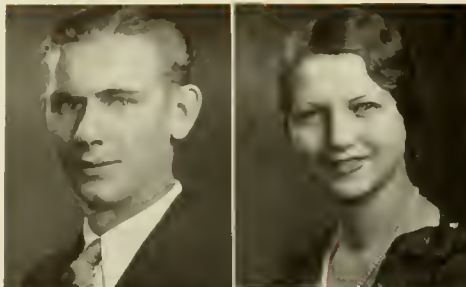
HORACE M. HUTCHINSON  
133 E. Lancaster Avenue  
Downingtown, Pa.

MARY JANE KEHLER  
263 Highland  
Downingtown, Pa.

GERTRUDE L. KILGORE  
115 Park Street  
Greensburg, Pa.

ROY LEITZEL  
Klingerstown, Pa.





STANLEY LIPSKI

East Main Street  
Glenn Lyon, Pa.



LOIS LONG

Port Royal, Pa.



LENA LOSASSO

320 Jackson Street  
Vandergrift, Pa.



JOHN MAGUIRE

Locust Dale, Pa.



ANNA MEASE

117 North Orange Street  
Selinsgrove, Pa.



PEARL METTE

Austin, Pa.



FRANCIS E. MILLER

1000 Fort Augusta Avenue  
Sunbury, Pa.



CHARLES S. MITCHELL

DuBois, Pa.



EUGENE D. MITCHELL

Beaver Springs, Pa.



JOHN NAEGELI

Main Street  
Old Forge, Pa.







LEONARD A. NAJAKA

503 East Main Street  
Glen Lyon, Pa.

ELEANOR OLSHEFSKY

541 West Third Street  
Mount Carmel, Pa.

LETHA PARRY

123 North Oak Street  
Mount Carmel, Pa.

GEORGE E. PHILLIPS

Huntington Street  
Huntington Mills, Pa.

HORATIO PISANESCHI

61 Calvin Street  
Wilkes-Barre, Pa.

CHARLES PRICE

22 South Main Street  
Yeagerstown, Pa.

NATALIE PRICHARD

41 Polar Street  
Kingston, Pa.

ROLAND PRICHARD

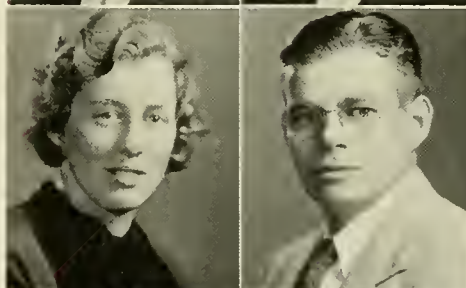
41 Polar Street  
Kingston, Pa.

RUTH H. RAMMACHER

149 Middlesex Road  
Buffalo, N. Y.

ELIZABETH M. RAUDENBUSH

1431 Market Street  
Ashland, Pa.







EDWARD M. RIMER  
700 Main Street  
Clarion, Pa.



ROSE H. RUNK  
East Lancaster Avenue  
Downingtown, Pa.



ROBERT SASSAMAN  
735 Pearl Street  
Williamsport, Pa.



GWENDOLYN C. SCHLEGEL  
Thompstontown, Pa.



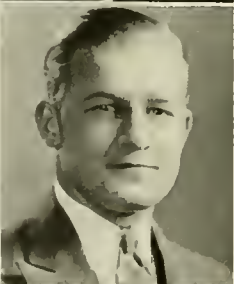
HARRY E. SHUMAKER  
129 Twelfth Street  
Sunbury, Pa.



REGINALD SEAVEY  
150 Ridge Avenue  
Milton, Pa.



MARGUERITE SHARPNAK  
Carmichaels, Pa.



GEORGE SHAEFFER  
Ickesburg, Pa.



LOUIS E. SHIVO  
121 North Wyoming Street  
Hazleton, Pa.



RALPH I. SHOCKEY  
Meyersdale, Pa.





ALICE SMITH  
Nace, Va.

DORA E. STITZER  
Mowry, Pa.

DOROTHY TURNER  
681 Wyoming Avenue  
Kingston, Pa.

PETER A. VENTURA  
1429 Prospect Avenue  
Scranton, Pa.

MYRLE WALMER  
Highspire, Pa.

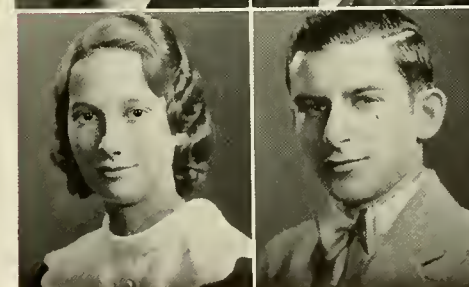
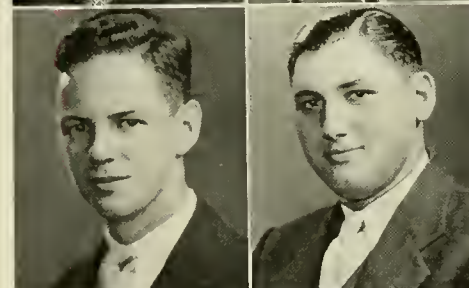
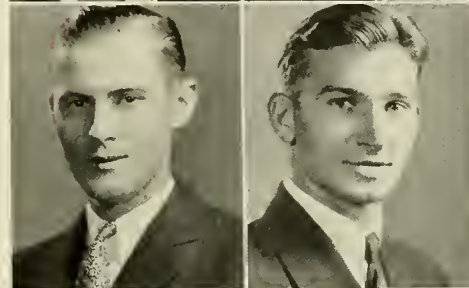
WALTER WASILEWSKI  
15 Brinkerhoff Place  
Passaic, N. J.

ARTHUR WEBBER  
1415 Gibson Street  
Scranton, Pa.

JULIUS WEINBERGER  
231 Oak Street  
Old Forge, Pa.

RUTH E. WILLIAMSON  
Davidsville, Pa.

HARRY WRUBLE  
161 Second Avenue  
Kingston, Pa.





Sus-Que-Han-Na. Rah! Rah!  
 Hoorah! Hoorah!  
 Sus-Que-Han-Na  
 Rah!

G-R-R-R-R-Rah!  
 Fight. Team. Fight.  
 G-R-R-R-R-Rah! Fight. Team. Fight.  
 Yeah. Team. Fight.

S-U-S-U-S-U-S  
 S-U-Q-U-Q-U-E  
 H-A-H-A-H-A-N-N-A  
 Rah!

A-N-N-A  
 H-E-U-Q-S-U-S  
 Susqu-U  
 Rah!



Rah! Rah! Rah!  
 Rah! Rah! Rah!  
 Team! Team! Team!  
 Who?  
 Team!  
 Who?  
 Team!  
 Who?  
 Team! Team! Team!

Kai-i-i Kai-i-i  
 Kai-i-i-i-i-i-i-i  
 Rah!

Rah! Rah! Rah! Rah! Sus-Que-Han-Na!  
 Rah! Rah! Rah! Rah! Sus-Que-Han-Na!  
 Rah! Rah! Rah! Rah! Sus-Que-Han-Na!  
 Rah! Team! Team! Team!



# Athletics



GUSTAVE PRAYING BEFORE THE  
BATTLE OF LUIZEN





L. D. GROSSMAN  
*Director of Athletics  
Coach, Varsity Track*



W. B. ULLIRY  
*Head Coach*



DR. G. B. SLIDEL  
*Coach, Tennis*



H. H. SNELL  
*Assistant Coach  
Football, Track*

## Athletic Board

### OFFICERS

JOHN J. HOUTZ	- - - - -	President
RALPH WHITMER	- - - - -	Vice-President
WILLIAM CAROLAN	- - - - -	Secretary
L. D. GROSSMAN	- - - - -	Treasurer

G. M SMITH  
G. E. FISHER  
E. M. BRUNGART  
GEORGE S. SCHOCH

LUKE H. RHOADS  
HAROLD KRAMER  
ROBERT MCGEEHAN  
CALVIN NAUGLE

JAY M. RIDEN

In spite of severe adverse conditions athletics have continued to occupy a prominent position at Susquehanna. Among the worst years financially this one was a success in sports. We were represented this year in four varsity sports. Football, as usual, attracted the most attention; our team was undefeated.

While considering the records of the various teams it must not be forgotten that all participants are amateurs who make up a part of the life on the campus and in the classroom. With the co-operation of the Intra-Mural Board, Professor Grossman arranged an elaborate schedule of inter-class sports during the year.



# Football





Third Row—Dockey (Manager), Snell (Assistant Coach), Tice, Roach, Ventura, Kramer, Fisher, Leitzel, Extrom (Captain), Schlegel, Wasilewski, W. Wasilewski, Fanti, Eisenhower, Maguire, Filory (Coach).  
 Second Row—Reger, Ferster, Alexander, Martinec, Sassaman, Rishel, Badger, Hanna, Sullivan, Pisaneschi, Carmichael, Grossman, Wruble, Conolan.  
 First Row—Phillips, Shaffer, Deveraux, Van Nuys, Walsh, J. Meyers, Sabatella, Carl, Yaros, Martin, Greider, Krear, Anderson, Schoffstall.

## Football Awards

Varsity Letters for Football Were Awarded to: Extrom, Dockey, Alexander, Carmichael, Eisenhower, Fisher, Hanna, Kramer, Martinec, Meyers, L. Rishel, Roach, Sassaman, Schlegel, Sullivan, Tice, W. Wasilewski, Carl, Schoffstall, Walsh.

Numerals were Awarded to: Badger, Fanti, Reger, Sabatella, Ventura.

### SCHEDULE

Moravian    Haverford    Hartwick    Washington    Swarthmore    P. M. C.    Wagner    Juniata



DOCKEY



CARL



SCHOFFSTALL



WALSH





# Football Summary

The 1932 Football aggregation enjoyed the most successful season in the history of the institution. Seven victories and a scoreless tie were registered by the mighty Crusader machine under the tutelage of Coach Bill Ullery and his able assistant, Herb Snell.

Without a doubt the most outstanding feature of this unparalleled season was the spirit of co-operation and enthusiasm which has existed among the players themselves, with their coaches, and with the student body. It is doubtful whether there has ever been a team at Susquehanna that has shown such willingness to act as a unit; the team was without cliques and with few flaws.

Captain Extrom, Carmichael, Tice, and Fisher were outstanding pillars on the strong Orange and Maroon forward wall. While in the backfield Meyers, Martinec, Hanna, Rishel, and Sassaman proved devastating to all opponents.

As a memorial to these undefeated warriors, a Crusader Quadrangle was erected through the efforts of the Varsity "S" Club. This will serve not only as a beauty spot on the campus but also as a monument to the team that was the first to register an undefeated season in the football history at Susquehanna.

## MORAVIAN

Football was auspiciously introduced by Susquehanna's Orange and Maroon eleven on the University Field Saturday, October 1, 1932, when they defeated Moravian College by a score of 12-7. Martinec, Mey-



Extrom



Tice



Eisenhower



Alexander





Fisher



Schlegel



Martinec



Hanna

ers, and Rishel aided Sassaman mutually in the ball-running department by making consistent gains. Captain John Extrom led off in the 1932 season in a brilliant manner; this husky Crusader figured in nearly every close line play. Russell Carmichael, a rejuvenated varsity guard from the 1927-28 season staged his comeback as he starred with Captain Extrom on the first line defense. Lee Rishel scored the winning touchdown late in the fourth period on a beautiful exhibition of broken field running.

### HAVERFORD

Piling up a score of 37-0, the largest score made by a Maroon team since 1920, the Crusaders ran wild over Haverford College, to turn in their second straight victory for the season. Meyers, Hanna, Martinec, and Sassaman slashed the Red and Black line for consistent gains while the strong Susquehanna forward wall was breaking through to break up Haverford's attempts to gain ground. Perhaps the most sensational play of the game came in the final period when Walsh took the ball on the enemy's 20-yard line and wormed his way through the entire Haverford team in a spectacular exhibition of broken field running.

### HARTWICK

Susquehanna's powerful Crusaders completely outplayed Hartwick College on the University Field in the annual Parents' Day tilt and turned in their third consecutive victory for the season; the score was 45-0. Coach Ullery was able to use three full teams in this one-sided fray. Only twice did the Hartwick eleven threaten the Orange and Maroon goal line, and the game ended then with Susquehanna in possession of the ball on their own 30-yard line.





### WASHINGTON

Scoring in the first five minutes of play the Crusaders stretched their winning streak to four consecutive games by defeating Washington College at Chestertown, Maryland, by a score of 6-0. The Ullerymen showed up exceptionally well in the defensive as they held Washington without a first down. However, after the first period, the Susquehanna backfield passers were kept in check by the charging Washington tackles. Bob Sassaman scored the only touchdown of the game.



Meyers

### SWARTHMORE

For the first time in forty-one years, which covers the complete span of S. U. grid campaigns, the Orange and Maroon defeated Swarthmore College 13-10 at Swarthmore, October 29, 1932. The pigskin toters came from behind the last three minutes of play in the final quarter when Captain Extrom broke through the Quakers' line to block a punt which was turned into a touchdown as Carmichael shoved the oval across the goal. The game was one of the greatest exhibitions ever staged by an Orange and Maroon eleven.



Kramer

### P. M. C.

Before a Homecoming Day crowd of over 3,000 fans, the Crusaders rose to a great height to battle the Pennsylvania Military College boys in a scoreless tie on the University Field. Loyal fans saw sixty minutes of the most exciting football ever played on the Selinsgrove gridiron. Susquehanna's cause in the battle rested much with Steve Martinec whose consistent punting kept the ball out of Orange and Maroon territory. Rishel, former Selinsgrove High School star, seemed the only ground gainer of the University team.



Sullivan



Rishel



### WAGNER

After a scoreless first half, the Crusaders came back in the second half to score 26 points and wallop a hitherto undefeated Wagner eleven at Staten Island, New York. The Orange and Maroon goal line was never threatened during this game. End runs and reverses completely bewildered the New Yorkers and paved the way for Susquehanna's touchdowns. Bob Sassaman led the scoring attack with one; Hanna and Walter Wasilewski scored the next two, while the fourth and final one came shortly before the game ended. Meyers, on a reverse made the necessary two yards to end the scoring.



Sassaman



Wasilewski



Roach



Carmichael

### JUNIATA

Susquehanna's Crusaders completed their first undefeated season when they downed their traditional rivals by a score of 12-7. The annual battle was staged in a sea of mud before the large crowd on the University Field. John Meyers, the Crusader's fleet-footed quarterback, turned in the longest runs of the game and registered both touchdowns for the S. U. aggregation as he side-stepped and out-ran the opponents. Captain Extrom, Tice and Fisher were the outstanding pillars on the forward wall. Both teams hurled themselves at one another savagely in a supreme effort to prove their superiority. Battered, weary, but always fighting, they surged back and forth over the miry field. When the final sound of the whistle was made, the brilliant colors of the Orange and Maroon undefeated team were raised in victory. This game was typical of the 1932 Crusaders, never willing to admit defeat, but always in the spirit of "Fair Play."



# Basketball







Back Row—Hess, Naegeli, Flery (Coach), Eisenhower, Ahl, B. Worthington, J. Worthington.  
 Front Row—Sassaman, Schlegel, McGechan, Alexander, Evans.

## Basketball Awards

Varsity Letters for Basketball Were Awarded to:

McGechan  
 Ahl  
 Hess

Naegeli  
 Sassaman

Schlegel  
 B. Worthington  
 J. Worthington

Numerals Were Awarded to:

Alexander

Eisenhower

Yon Kondy

### SCHEDULE

December 9—Alumni	- - -	Home	February 10—Elizabethtown	-	Home
December 16—Osteopathy	- -	Home	February 15—Lebanon Valley	-	Away
January 4—Penn State	- -	Away	February 18—Elizabethtown	-	Away
January 7—Lebanon Valley		Home	February 20—Bucknell	-	Away
January 12—Western Maryland,		Home	February 24—West Chester	-	Away
January 17—Bucknell	- -	Home	February 25—Delaware	-	Away
January 20—La Salle	- -	Away	March 4—Pennsylvania Military		
January 21—Haverford	- -	Away	College	- - -	Home





## Basketball Summary

THE Crusaders of Susquehanna closed a fairly successful basketball season by winning five games and losing ten encounters on the hardwood courts. Much credit is due to the Orange and Maroon cagers for their fighting spirit throughout the season as many of their games were lost by very small margins.



ROBERT MCGEEHAN  
*Captain*

Coach Ullery deserves commendation for putting out a quintet that fought the full forty minutes of every game. One of the most notable examples of this was their vicious attack against the stalwart P. M. C. cadet team in the final game of the season. He was faced with the task of shifting his line-up many times during the season on account of injuries, but each time the chosen team was playing basketball and forcing each competitor to the limit.

With the annual graduation exercises taking its usual toll Coach Ullery's first call for candidates included four veterans: Captain "Bob" McGeehan, "Walt" Van Nuys, "Kon" Wasilewski and "Jerry" Schlegel. Several outstanding Freshmen candidates were immediately injected into the line-up, but as fate would have it Coach Ullery failed to keep any one line-up intact for any great length of time during the season, injuries wrecking his combination just as they were about to click.



WILLIAM AHL  
*Manager*

The season brought at least three Freshmen to the varsity horizon: "Bob" Sassaman, "Al" Hess and John Naegeli. These three players may be classified as the nucleus of future Orange and Maroon court combinations. In the last quarter of the season, Kenneth Alex-





W. W. ULLERY  
*Coach*

ander, of the Freshmen class, appeared as one of the best basketball players to ever wear a Susquehanna suit. The work of "Bob" Sassaman as a back-court guard was especially outstanding; he was voted a place on several of our opponents "all opponent" teams.

After winning their opening game against the Susquehanna Alumni by a score of 41 to 20, the Crusaders fell short by eight points as they lost to a strong College of Osteopathy team by a score of 36 to 28. Following the Christmas holidays, the Orange and Maroon were outclassed by a Penn State Lion with a score of 43 to 24. Returning to the home floor, they next fell short in the second half to lose to their old rival, Lebanon Valley, 34 to 29. A return game with the College of Osteopathy ended with another loss for the Crusaders by the score of 39 to 32, and then the Orange and Maroon basketeters again lost a heart-breaking game to Bucknell University by a single point.

After losing six straight games, Coach Ullery was forced to shift his line-up due to drop-outs, and a practically new team won over Haverford College by a score of 37 to 35, and then stretched their winning streak to four games with victories over Lebanon Valley and two wins with Elizabethtown College. In the return game at Annville it took Coach Ullery's 1933 court quintet to turn back "Hooks" Mylin's cagers for the first time in seven years by a Susquehanna team. The annual court games with Lebanon Valley had almost become traditional victories for the Annville boys. After encountering all sorts of difficulties during the fore part of the season and because of their inconsistent winning the Crusaders happened to be primed for a battle that night; it really was a classic, for the Orange and Maroon "net slicers" were able to tote back to Selinsgrove their first victory of the Lebanon Valley court.

Finally the season was brought to a close as they were forced to drop decisions to La Salle and Washington; the Crusaders were then outclassed by the University of Delaware, the Bucknell Bisons and the Chester soldiers.

# Baseball







Third Row—Spigelmyer, Hanna, Martinec, Eisenhower, Hubbard.  
 Second Row—Coach Ulery, Sheaffer, Malasky (Captain), Danks, Palmer, Stroup.  
 First Row—Foltz, Maimon, Morrow, Anderson, Brininger.

## Awards

Varsity Letters in Baseball Were Awarded to:

Malasky	Danks	Martinec	Stroup
Hubbard	Foltz	Morrow	Sheaffer
Brininger	Hanna	Palmer	Spigelmyer

Numerals Were Awarded to:

Anderson	Eisenhower	Maimon
----------	------------	--------

### SCHEDULE

Susquehanna	-	-	-	-	-	-	20	Elizabethtown	-	-	-	-	-	-	4
Susquehanna	-	-	-	-	-	-	17	Penn State	-	-	-	-	-	-	18
Susquehanna	-	-	-	-	-	-	4	Delaware	-	-	-	-	-	-	8
Susquehanna	-	-	-	-	-	-	4	Delaware	-	-	-	-	-	-	7
Susquehanna	-	-	-	-	-	-	0	Juniata	-	-	-	-	-	-	11
Susquehanna	-	-	-	-	-	-	11	Bucknell University	-	-	-	-	-	-	3
Susquehanna	-	-	-	-	-	-	4	Lebanon Valley	-	-	-	-	-	-	17
Susquehanna	-	-	-	-	-	-	10	Danville	-	-	-	-	-	-	4
Susquehanna	-	-	-	-	-	-	3	Bucknell	-	-	-	-	-	-	9
Susquehanna	-	-	-	-	-	-	13	Elizabethtown	-	-	-	-	-	-	4
Susquehanna	-	-	-	-	-	-	1	Lebanon Valley	-	-	-	-	-	-	3
Susquehanna	-	-	-	-	-	-	0	Juniata	-	-	-	-	-	-	7





## 1932 Baseball Summary

**I**T TOOK the diamond men of Coach Bill Ullery just seven innings to roll in 20 runs against Elizabethtown College on the home field in the first game of the year. Both Maimon and Meyers who split the pitching duties for the Selinsgrove ash swingers showed rare form. Hanna, a freshman, had four safe bingles in the game.

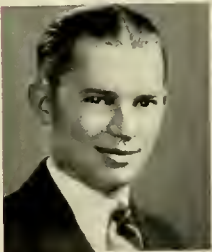
For the first time in the history of athletic relations with Penn State, Susquehanna won by the narrow margin of 17-16. Martinec fared well during the game by featuring with the willow.

The Crusaders received their first setback of the season at the hands of the Delaware "Mud Hens," who took advantage of some costly errors, and at other times bunched their hits to score runs. Delaware University also won the return game at Wilmington.

In the game with Juniata, the "Indians" scored a lop-sided victory over Coach Ullery's tossers. In the first 7 innings the Juniatians crossed the plate on as many different occasions but none of these were counted as earned runs; they were the results of the Crusaders' misplays with Danks on the mound pitching masterly ball during these frames.

Danks was again pitching against Bucknell when a victory, the best played game of the season, was registered. With the Crusaders' revamped inter-cordon clicking to perfection, it took the Orange and Maroon hurler several innings to find himself, but after this, was never in trouble. Coach Ullery's boys were out for "blood" that Saturday afternoon and lost little time in getting started. Susquehanna's sticks were ringing out base hits as the Crusaders sounded out fourteen clean hits off Harry Fry, the Hefty Bison hurler.

A hectic first inning in which ten runs were tallied proved disastrous for the Crusaders as they were whipped 17-4 at Annville by Lebanon Valley. The Ullerymen were off color counting numerous errors, combined with poor pitching in opening innings which resulted in a rather one-sided affair. Briningler, Maimon and Danks hurled for Susquehanna and Wood for Lebanon Valley who pitched air-tight ball until the eighth inning.



JOHN HASSAY  
*Manager-elect*



HUGH BRININGER  
*Captain-elect*

The Orange and Maroon inter-cordon were not sufficiently braced to aid their pitching ace and they also lacked the batting punch which gave the Crusaders a victory over the Bucknellians in a previous game. Susquehanna was forced to take the small end of a 9-3 count on the University field at Selinsgrove. Several costly errors netted the majority of the Bisons' tallies. Both teams registered the same number of hits, but the Selinsgrove boys found





theirs well scattered. The first blood drawn for S. U. happened in the fourth inning; Martinec connected with a fast one labeling it for a 3-base blow, and the single of Palmer's swing counted the initial run. Susquehanna came back in the sixth for their second run with Palmer leading off with a double and tallying on Hanna's single. The third run for the Crusader's was counted in the eighth inning; Hanna was given free transportation, advanced a base on a balk and tallied on Sheaffer's single.

Joe Maimon, unheralded Orange and Maroon hurler allowed Elizabethtown but 3 hits on their own diamond to win 13-4. Maimon's tosses proved to be very effective, yielding but three scattered hits.

Seven husky Crusaders who helped make baseball history at Susquehanna sang their "Swan Song" in their final home appearance when Captain Frank Malasky, Danks, Stroup, Spigelmyer, Palmer, Sheaffer, and Fultz played their last engagement with members of an Orange and Maroon diamond outfit. Malasky took top batting honors for the last two years, while Stroup has been a "ball-hawk" while patrolling the territory as center fielder for the Crusaders. When the season closed Manager Hubbard indicated Maurice Sheaffer, veteran Orange and Maroon receiver as heading the list of "Willow Wielders" with a .437 mark in eleven games.

Lefty Danks, ace hurler for the Crusaders whiffed nine Lebanon Valley batters, but dropped the contest by a 3-1 score on the University Field, Selinsgrove. The boys paid a tribute to their Coach by giving everything they had.

After chalking up some notable victories for the season the curtain was drawn when the Crusaders closed the season with Juniata College at Huntingdon on Decoration Day, which ended in favor of the Indians on account of errors and faulty fielding.

When the Ledger was finally tallied at the end of the season, the Crusaders were able to boast of one of the best aggregations in years, if for no other reason than their two major triumphs established over the Penn State Lions and the Bison nine from Bucknell University.









Third Row—Grossman (Coach), Sullivan, Malasky, Hanna, Marthue, Pearson, Tice, Hess, Carolan, Extrom, Stirling, Carl, Snell (Assistant Coach), Brubaker (Manager).  
 Second Row—Fairchild, Swarm, Meyers, Neiswenter (Captain), Swartz, Truckenmiller, Muir, Jones.  
 First Row—Clark, Stonffer, Huston, Bottiger, Bishop, Sullivan, Hartman, J. Worthington.

## Awards

### Varsity Letters for Track Were Awarded to:

Neiswenter	Extrom	Martinec
Brubaker	Hanna	Meyers
Botteiger	Malasky	Muir
Coldren		Swarm

### Numerals Were Awarded to:

Hess	Jones	Stahlman
	Truckenmiller	

### SUMMARY

Susquehanna	- - - - -	85	Washington	- - - - -	41
Susquehanna	- - - - -	66½	Bucknell	- - - - -	59½
			C. P. C. T. C. A.		
Susquehanna	- - - - -	47	Juniata	- - - - -	79





## 1932 Track Summary

FOR the second consecutive year Susquehanna's relay team ran behind Juniata who copped first place at the annual Penn relays. Light and Fetner, the spiked shoe artists from Huntingdon had just a little too much for Coach Grossman's boys. This was the second year in the relay race for Meyers and Swarm, of the Crusader quartet. The other two members from Selinsgrove were Captain Neiswenter and William Stahlman, of Williamsport, classified as the "dark horse."



JOHN MEYERS  
*Co-captain-elect*

Meyers started off with a bang jumping into first place which was held by Stahlman, his colleague. The lead was taken from Captain Neiswenter by Light, of Juniata, who stepped the distance in 52 seconds. In the anchor positions were Fetner, of Juniata, and Swarm, of the Crusaders. When Fetner received the baton he had a ten-yard lead but Swarm gave him a merry chase as he gradually crept behind him, but fell short by six yards at the finishing line. The time of the event was three seconds faster than in 1931, the mark being lowered to 3 minutes and 33 seconds.

The work of the Orange and Maroon field men featured as Susquehanna overwhelmed Washington College, 85-41, at University Field. All three positions were copped by the Crusaders in the shotput and discus throws. Coach Grossman's Cinderpath Artists seemed keyed up to the right pitch as they won 10 out of the first 14 places. Meyers and Swarm each won two first positions and a second netting them 13 points apiece.



WILLIAM SWARM  
*Co-captain-elect*

One of the best races of the afternoon was the two-mile run in which Bottiger finished first for Susquehanna; this was the first time Bottiger finished first in any varsity event and displayed a brilliant stride among a large field of competitors. Captain Neiswenter won the high hurdles and Swarm, also of Susquehanna, came in second in the race.





L. D. GROSSMAN  
*Coach*

The Orange and Maroon trackmen broke seven meet records and Captain Neiswenter and Bill Swarm carved new college records for themselves in the high hurdles and broad jump. Captain Neiswenter topped the high timbers as first at 16 seconds flat. His previous record of college meets was broken by the small margin of 6'10 seconds. Bill Swarm shattered the broad jump record when his distance was measured at 21' 5". John Hanna, freshman field performer for the Crusaders, hurled the javelin 155 feet and 4 inches for a new school meet record. These records were made by the Crusaders finely balanced track team.

Swarm gave Coates, of Bucknell, a battle for the 880-yard run but the Bison captain ran his usual brilliant race in taking the event. Meyers was an outstanding performer in that he took the 100-yard dash, the 220, and the 220 low hurdles.

Of the 14 events Susquehanna took 8 first and Bucknell 6; second and third places being fairly well distributed. The Selinsgrove collegians displayed supremacy in the pole vault which gave them honors in the meet.

The Susquehanna track team took fourth place in the C. P. C. T. C. meet staged in the Bucknell Stadium. Two firsts, two seconds, and five thirds were the honors captured by the Crusaders. Swarm placed first in the 120 high hurdles and Neiswenter won in the 220 low hurdles. Meyers had a second in the 100-yard dash and the 220 low hurdles. Truckenmiller stood third in the 220-yard dash and Bottiger seized the third place in the two-mile run. Captain Neiswenter set a new C. P. C. T. C. record in the Class B 220-yard low hurdles, with the time of 25.9 seconds.

The only dual meet of the season was dropped to Juniata in the final track event of the year at Huntingdon. Juniata "Indians" seemed to snatch first places at random taking eight out of the thirteen. Swarm is credited with the high score in the meet by breaking the tape in the 880 and 120-yard high hurdles. John Meyers and William Swarm, Co-captains elect for the 1933 season, each grabbed two first places in the meet.

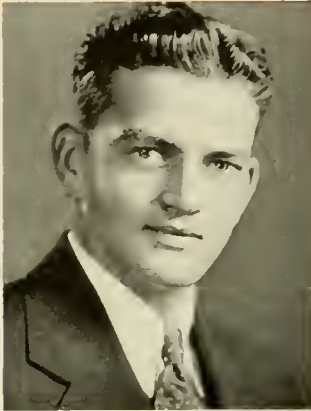
**F**errous







## 1932 Tennis Summary



JERALD SCHLEGEL  
*Captain-elect*

SUSQUEHANNA tennis players opened the season by defeating Mansfield State Teachers College, 5-2, on the local courts. Adams, Speer and Schlegel won their matches. In the doubles, Speer-Adams and the Petry-Schlegel combinations clicked to win.

The Crusaders were completely outclassed in every match during their contest with the Bison racquet wielders. Susquehanna netmen were again passed on the home courts where Lebanon Valley defeated them, 5-2. Reed Speer was the only Crusader to capture a single and Captain Petry and Schlegel won in the doubles.

Juniata clay court performers proved to be too much for the local netmen who dropped the match, 5-2, to their Huntingdon rivals on the home courts. Adams and Speer were the only two to win their matches for the Crusaders. Facing stiff competition the Orange and Maroon racquetees were defeated by the Penn State Lions on the clay courts at State College by the score of 7-0.

Dr. George Seidel and Captain Schlegel returning to the courts show remarkable skill and interest even though a schedule has not been arranged for the 1933 season. Tennis this season is classed as an Intra-Mural sport and the racquet artists are displaying expert ability during the course of inter-class games.

### AWARDS

Varsity Letters for Tennis Were Awarded to:

Petry  
Kozak

Adams  
Rummel

Schlegel  
Speer

### SCHEDULE

Susquehanna	-	-	-	-	4	Mansfield	-	-	-	-	3
Susquehanna	-	-	-	-	0	Bucknell	-	-	-	-	7
Susquehanna	-	-	-	-	rain	Villanova	-	-	-	-	rain
Susquehanna	-	-	-	-	rain	Lebanon Valley	-	-	-	-	rain
Susquehanna	-	-	-	-	2	Juniata	-	-	-	-	5
Susquehanna	-	-	-	-	2	Lebanon Valley	-	-	-	-	5
Susquehanna	-	-	-	-	0	Bucknell	-	-	-	-	7
Susquehanna	-	-	-	-	2	Juniata	-	-	-	-	5
Susquehanna	-	-	-	-	0	Penn State	-	-	-	-	7



JOHN BALLENTINE  
*Manager-elect*



# Features





M  
A  
Y



D  
A  
Y

1  
9



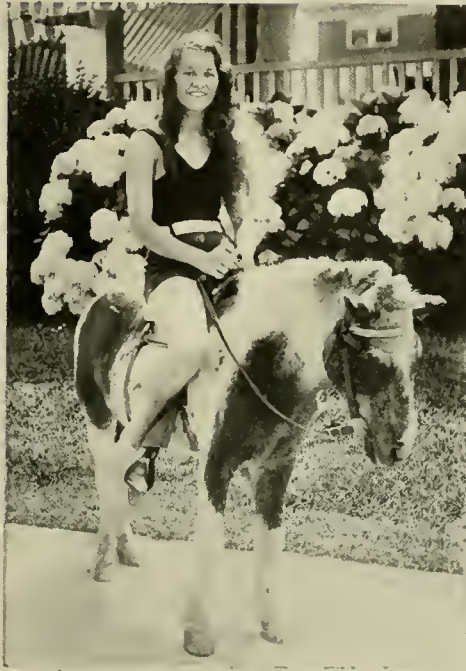
3  
2



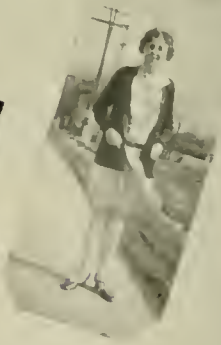


















MARY LA HAZA



DIANA LIZDAS



Senior Beauties

# Activities



AS GUSTAVUS AND HIS MEN WERE PASSING THE THURINGIAN FOREST AN INCIDENT OCCURRED WHICH THEY TOOK AS A GOOD OMEN. A LARK, WHICH WAS BEING PURSUED BY A HAWK FLEW INTO THE BOSOM OF THE KING. THIS WAS TAKEN TO MEAN THAT AUSTRIA WAS THE BIRD OF PREY AND HAD THROWN ITSELF INTO THE ARMS OF THE KING FOR PROTECTION.



Third Row—Hutter, Fultz, Hubler, Brown, Naugle, Yagel, Pearl, Mellugh.  
 Second Row—Cressman, Bergstresser, Jones, Keller, Andrews, Phillips, Mehring, Diehl, Eltringham.  
 First Row—Frankenfield, Reese, Nichols, Crow, Geisel, Reeder, Lizdas, Walborn, Krapf.

## Girls' Athletic Club

### OFFICERS

ESTHER GEISEL	-	-	-	-	-	-	-	-	-	President
DIANA LIZDAS	-	-	-	-	-	-	-	-	-	Vice-President
PAULINE CROW	-	-	-	-	-	-	-	-	-	Secretary-Treasurer
MISS DOROTHY REEDER	-	-	-	-	-	-	-	-	-	Faculty Advisor

The Women's Athletic Club was organized September 29, 1930. Those women who have been awarded either letters or numerals for participation in the inter-class athletic events are eligible for membership. The purpose of the club is to stimulate a general interest in women's athletics at Susquehanna and also to regulate inter-class sports for women. The club sponsors speakers from time to time during the year which brings much valuable and helpful information to the club members.





## Girls' Athletics

SUSQUEHANNA believes in a well rounded life for all its students; in accord with this policy athletic activity is provided by a series of inter-class competitive sports under the direction of Miss Dorothy Reeder, instructor in physical education for girls at Susquehanna. Much rivalry and keen competition is aroused among the four classes in the several sports which include field hockey, soccer, basketball, volleyball, track, baseball and tennis.

In each sport a series of games is played and the team winning most of the games is declared the champion. This is an added incentive and, although the games are not played during the class period the girls are always eager to participate.

Perhaps the major sport for the girls is field hockey, in which the girls are engaged from the beginning of the year until Thanksgiving Day. On Homecoming Day an added attraction to the program of sport events was a hockey game between the alumni who were former stars in the sport and the co-eds, a team selected from those girls who had ability to participate in this event.

At the close of each season an Orange and a Maroon team are chosen from the four classes by selecting those who are interested and among the best in their class. A series of games are then played to determine the winner. This year in hockey as in many other events the girls won the hockey series easily as members of the Junior class. Other series won by Junior girls were the basketball and volleyball contests. The class of '35 were named champions in soccer.

Many ambitions of Junior girls were realized in the outcome of the Annual Indoor Track Meet which was easily won by the Juniors; the co-eds won three places in the all-up club races which contributed points that helped to win the meet.

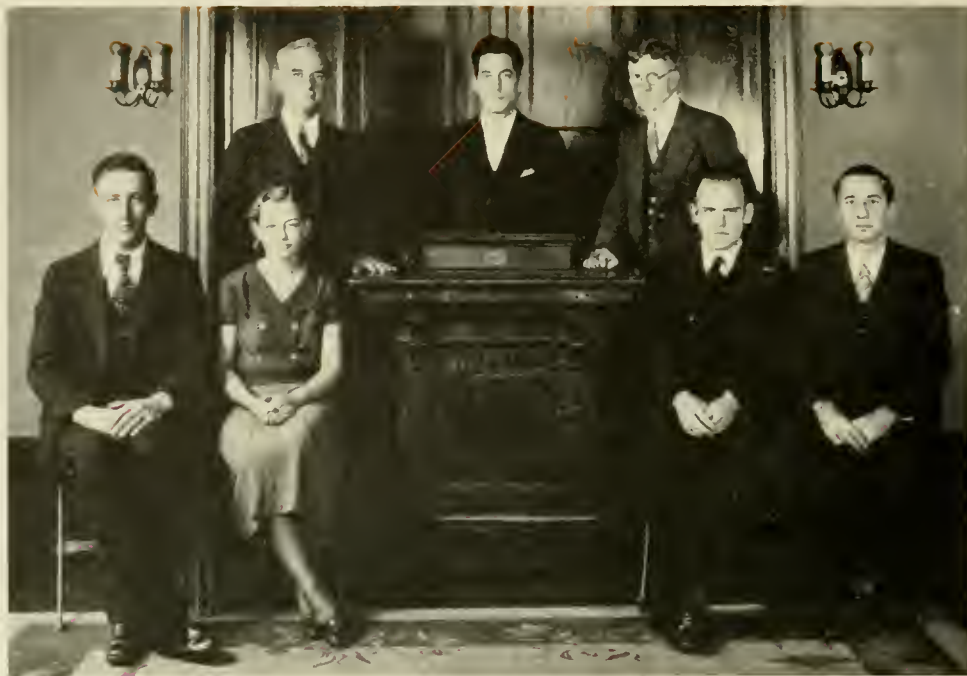
First places were won in the Standing Broad Jump, the all-up Club Race, and the Hop, Skip and Jump. Those girls winning first places were Nichols, Ulrich and Brown.



ETHEL GEISEL  
*President*







Standing—Dr. Dunkelberger, Prof. Gilbert, Prof. Wool.  
Sitting—Clapper, Bergstresser, Brosius, Maimon.

## Tau Kappa Alpha

### OFFICERS

JOSI PH MAIMON	- - - - -	<i>President</i>
PROF. R. W. GILBERT	- - - - -	<i>Faculty Advisor</i>
JOSEPH MAIMON	- - - - -	<i>Men's Manager</i>
RUTH BERGSTRESSER	- - - - -	<i>Women's Manager</i>

The Susquehanna Chapter of Tau Kappa Alpha, National Forensic Fraternity of more than one hundred chapters, organized at the University of Indiana in 1908, was chartered here January 18, 1930. A petition for membership was presented the previous year.

### DEBATE SCHEDULE

#### *Affirmative*

Mansfield	- - - - -	February 24	Ursinus	- - - - -	March 9
Franklin and Marshall	- - - - -	March 10	Bucknell	- - - - -	March 30
University of Vermont	- - - - -	April 1	Muhlenberg	- - - - -	April 10

#### *Negative*

Waynesburg	- - - - -	March 2	Ursinus	- - - - -	March 9
Albright	- - - - -	March 13	St. Francis	- - - - -	March 21
Geneva	- - - - -	March 22	Bucknell	- - - - -	March 30
Geneva	- - - - -	April 5	Muhlenberg	- - - - -	April 10





## Debating at Susquehanna

THERE are few scholastic activities which are more helpful, in developing the ability of the student to think clearly and at the same time to present logically and effectively his opinions, than debating. It ought to aid the student to weigh conflicting opinions in the light of careful study of a subject and then to come to a well-founded conclusion.

No question in life has only one side. We must generally decide which is the better side. There is an old saying, "Think before you speak." Debating makes one follow this advice, but it does more, for it makes one think also while he is speaking. What more does one need to become a persuasive personality?

The success of a debating season is dependent largely upon the degree of fulfillment of these purposes, a thing which can hardly be measured. Debates won are only secondary factors. Our only yardstick is the list of debates in the win column. The final score is 9-3. We won nine and lost three. Most fans of the season agree that the outstanding debate was the one with the University of Vermont; Susquehanna won the decision which was given by a critic judge.

At all our debates the issue was: "Resolved, that All Inter-governmental Allied World War Debts and Reparations Should Be Cancelled." The affirmative team consisted of Alexander Youngerman, Henry Cassler and Edwin Clapper, Captain; the negative members were Joseph Maimon, Harold Rowe and William Morrow, Captain. Included in the affirmative victories were Muhlenberg, and Franklin and Marshall, on foreign floors, as well as the University of Vermont at home. Much credit has been given to the negative team due to the fact that it bowed to defeat only once. Congratulations!



JOSEPH MAIMON  
*President*



Standing—Kaufman, Naugle, Nelson.  
Sitting—King, Phillips, Hutchinson, Pifer, Graykoskie.

## Junior Prom

D. EDGAR HUTCHINSON  
*Chairman*

In 1926 the first Junior Prom was held; since that date it has become an annual custom to close the May Day festivities with a dance in the Alumni Gymnasium.

The Junior Class begs due credit for the event which it sponsors; days are spent in preparation and decorations are beautifully placed that it may be a jolly affair.

Couples declared the Prom held this year, and promoted by the Class of '34, one of the most successful social events ever sponsored by a class at Susquehanna; it was an excellent example of clean social life that is characteristic of Susquehanna University.









Standing—Dockey, Snell, McGeehan.  
Sitting—Bonsall, Gray, Swarm, Worthington, Williams, Sala, Gemberling.

## Men's Student Council

### OFFICERS

BRUCE WORTHINGTON	-	-	-	-	-	-	-	-	-	President
WILLIAM SWARM	-	-	-	-	-	-	-	-	-	Vice-President
PAUL EDWARDS	-	-	-	-	-	-	-	-	-	Secretary
ROBERT MCGEEHAN	-	-	-	-	-	-	-	-	-	Treasurer
JOHN HOUTZ	-	-	-	-	-	-	-	-	-	Advisor



BRUCE WORTHINGTON  
President

The Men's Student Council Association was organized on the campus during the second semester of the year 1923-24. This organization has functioned very successfully and Susquehanna is today more democratic and progressive because this body has worked with the administration.

Since the time of organization, the constitution has been revised several times to meet the growing needs of the institution. The Council consists of ten men, two representatives from each fraternity and two members from the non-fraternity group. It deals with certain topics pertaining to the various phases of college life.





Standing—Phillips, Williams, Crow, Keller.  
 Sitting—Frankenfield, Nelson, Ide, Stambaugh, Geisel, Hall, Hausman.

## Women's Student Council

### OFFICERS

FRANCES STAMBAUGH	- - - - -	-	<i>President</i>
ESTHER GEISEL	- - - - -	-	<i>Vice-President</i>
MARGARET IDE	- - - - -	-	<i>Secretary-Treasurer</i>

Eight years ago the Women's Co-operative Council was established as a step forward toward the improving of the living conditions in Seibert Hall and the social life on the campus. Much credit is due the girls who compose this group, for upon them rests a great responsibility of promoting sportsmanship at Susquehanna.

The year following the organization of this council, Miss Naomi K. Hade joined the faculty as Dean of Women; since that time her interest in the group and co-operation with the girls have done much to perfect this excellent system of student government. With high hopes of improvement, the influence of the council has grown from year to year.



FRANCES STAMBAUGH  
*President*





Standing—Metzgar, Oberdorf, Hutchinson.  
 Sitting—Gemberling, Carolan, Steele, McKelvey, Naugle.

## Inter-Fraternity Council

### OFFICERS

DONALD STEELE	-	-	-	-	-	-	-	-	<i>President</i>
WILLIAM CAROLAN	-	-	-	-	-	-	-	-	<i>Vice-President</i>
DANIEL MCKELVEY	-	-	-	-	-	-	-	-	<i>Secretary</i>
CALVIN NAUGLE	-	-	-	-	-	-	-	-	<i>Treasurer</i>



DONALD STEEL  
*President*

The purpose of the Inter-Fraternity Council is to act on matters of importance to the various fraternities existing at Susquehanna University. Representatives of the various national and local fraternities constitute the Council.







Standing—Andrews, Ide, Williams, Nichols.  
Sitting—Phillips, Reese, Gentzler, Geisel, Walborn

## Inter-Sorority Council

### OFFICERS

BEATRICE GENTZLER	-	-	-	-	-	-	-	<i>President</i>
DAISY REESE	-	-	-	-	-	-	-	<i>Vice-President</i>
ESTHER GEISEL	-	-	-	-	-	-	-	<i>Secretary-Treasurer</i>

The Inter-Sorority Council of Susquehanna University, which is a relatively old organization, meets once a month for the purpose of promoting a better spirit of fellowship among the sororities. The membership of the council consists of three representatives of each of the three sororities interested in the Council. The presidents and vice presidents of the sororities automatically become members while the other representatives are elected by the individual sororities.

In 1927 the Preferential Bidding System was introduced, which is a method of pledging that has been tried and tested in several other schools with much satisfaction. An Inter-Sorority Hop was sponsored this year through the interests of this organization. Through such efforts it is hoped that a more friendly spirit of co-operation will exist among the sororities.



BEATRICE GENTZLER  
*President*







## How We Voted

MOST LIKELY TO SUCCEED—Gemberling; Walborn; B. Worthington.

BEST ATHLETE—Sassaman; J. Meyers; Martinec.

HARDEST WORKER—Shobert; Long; H. Keller.

BEST DRAG WITH THE FACULTY—Shobert; Al Meyer.

HANDSOMEST—F. Carl; Oberdorf; Truckenmiller.

BIGGEST ROUGHHOUSER—A. Meyer.

WITTIEST—J. Worthington; Pearl; Sassaman.

ANSWER TO A MAIDEN'S PRAYER—Maimon; Shivo; Maguire.

MOST LOVESICK—Dorsett; A. Meyer; Rhoads; Keller; Petri; Rowe.

LAZIEST—Krear; Bernardi; Hess.

THE BEST SLEEPER—Grove; Rimer; McKelvey.

BIGGEST EATER—Suter and Alexander, tied.

THE FIRST TO BE MARRIED—Petry; C. Keller.

MIGHTIEST IN MUSCLE—Extrom; Suter.

EASIEST ON THE BARBER—Stirling; Royer; Carmichael.

YOUR FAVORITE SCHOOL—Susquehanna.

THE BEST DRESSED GIRL ON THE CAMPUS—Lizdas; Mehring.

THE BEST PROCTOR IN THE GIRLS' DORMITORY—Hemming; Pearl; Hall.

THE PERSON HAVING THE BEST LINE—Edwards; Johnson; Graykowskie.

THE BEST DANCER—James; Patterson; McHugh.

THE BEST SUBJECT TAUGHT AT S. U.—Personal Hygiene.

THE BEST TAUGHT SUBJECT AT S. U.—Psychology; Evidences.

BIGGEST GRIPER—Boyer.



# Publications





Third Row—Huston, Cassler, King.  
 Second Row—Crow, Horn, Williams, Andrews, Nichols.  
 First Row—Frankenfield, Sala, Brown, Clapper, Nelson, Rowe, Bergstresser.

## The Lanthorn

### EDITORIAL STAFF

EDWIN CLAPPER	- - - - -	<i>Editor-in-Chief</i>
EDITH FRANKENFIELD	- - - - -	<i>Managing Editor</i>
RUTH NELSON	- - - - -	<i>Assistant Editor</i>
HAROLD ROWE	- - - - -	<i>Athletic Editor</i>
ROBERT SALA, VIRGINIA ANDREWS	- - - - -	<i>Assistant Athletic Editors</i>
PAULINE CROW	- - - - -	<i>Chief Statistician</i>

### Associate Editors

ISABELLA HORN	RUTH BERGSTRESSER	MARGARET WILLIAMS
HENRY CASSLER		WILLIAM MORROW

### Typists

MARLIN BOTTIGER	LULLOW NICHOLS	NILSON KING
-----------------	----------------	-------------



EDWIN CLAPPER  
*Editor-in-Chief*

A time presents itself in the life of every college graduate when he sits down and reminiscences of the events related to his college days; a desire appears for a means of reviving those experiences. The LANTHORN, published yearly by the Junior Class, was intended to satisfy this desire. This volume is a record of those thrilling events and glowing remembrances portrayed by pictures, prose and poetry.





Standing—Leese, Naugle.  
Sitting—Phillips, Bonsall, Hausman.

## The Lanthorn

### BUSINESS STAFF

JAMES BONSCALL	- - - - -	<i>Business Manager</i>
CALVIN NAUGLE	- - - - -	<i>Assistant Business Manager</i>
D. EDGAR HUTCHINSON	- - - - -	<i>Advertising Manager</i>
ABIRDEEN PHILLIPS, MARGARET HAUSMAN	- -	<i>Assistants</i>

Since 1898 when the first volume of the LANTHORN was published, the Business Staffs contracted and financed the publications. This has always been a very tedious experience and we appreciate the efforts of those who provided the necessary revenue by assessments and advertisements to make this volume a reality.



JAMES BONSCALL  
*Business Manager*







Third Row—Clark, Mehring, Messinger.  
 Second Row—Pearl, Dr. Wilson, Ide, Henry, Crow, Anderson.  
 First Row—Lizdas, J. Worthington, Bergstresser, Gemberling, Divily, Reese, Bonsall.

# The Susquehanna

## STAFF

JAY WORTHINGTON, '33	- - - - -	Editor-in-Chief
LAIRD GEMBERLING, '33	- - - - -	Ex-Editor-in-Chief
Managing Editor	News Editor	Alumni Editor
PINN DIVILY, '34	RUTH BERGSTRESSER, '34	ESTELLA PEARL, '33
Sports Editor	Social Life Editor	Women's Athletics
JAMES BONSALE, '34	DIANA LIZDAS, '33	PAULINE CROW, '34
Conservatory of Music		Assistant Social Life Editor
MARGARET IDE, '33		DAISY REESE, '34

### Assistants of the Reporatorial Staff

KINNETH ANDERSON, '35	DONALD HENRY, '35
ROBERT CLARK, '35	A. CARL MESSINGER, '35



JAY WORTHINGTON  
 Editor-in-Chief

A college paper is one of the great means of progress in a college community. *The Susquehanna*, which has been in existence since 1894, is a five column weekly, published on Tuesday of each week by the Susquehanna Publishing Association, which consists of the students and instructors.

Valuable experience is offered through *The Susquehanna* to anyone aspiring to get into the newspaper work. The Editor and Business Manager are elected to their respective positions through a series of elimination; the most efficient persons are generally selected to fill the various positions on the staff.





McKeivey, Clapper, Dr. Leese, Kramer, Deveraux, Whiteley.

## The Susquehanna

### BUSINESS STAFF

HAROLD KRAMER	- - - - -	<i>Business Manager</i>
EDWIN CLAPPER	- - - - -	<i>Advertising Manager</i>
DANIEL MCKELVEY	- - - - -	<i>Circulation Manager</i>

Business experience of an excellent type is offered to a capable person in the position of Business Manager of *The Susquehanna*. He and his staff are selected in the same way as the Editorial Staff. The Business Staff is composed of one Senior (the Business Manager), two Juniors and generally four Sophomores.



HAROLD KRAMER  
*Business Manager*





## The Student Handbook

**I**N 1925 the Y. M. C. A. and the Y. W. C. A., realizing the needs of Freshmen, as they came from their respective homes, new and unacquainted with the details of the campus, registration and college life in general, decided to publish The Student Handbook as a guide to the newcomer.

The volume issued this year contained a complete description of the campus, histories of the various organizations and clubs, Freshmen Traditions, constitutions and by-laws of the clubs and organizations, registration proceedings and all other particulars which enable him to make himself more at home on the campus. The person most responsible for the issue this year was Penn Dively, a member of the Junior Class.



# Religious







Third Row—James, Beahn, Rhoads, Rumberger, Heather, Schlegel, Remley, Henning  
 Second Row—Hohman, Heckman, Bredow, Duerr, Rossler, Mrs. Remley, Leese, Mrs. Wagenbach, Fitzgerald, Brosius,  
 First Row—Wagenbach, Dunkelberger, Kretschmann, Manhart, Smith, Sadtler, Moyer.

## Theological Seminary

DR. FRANKLIN P. MANHART  
*Dean of Seminary*

### OFFICERS

PARK WAGENBACH	- - - - -	<i>President</i>
PAUL ASHBY	- - - - -	<i>Vice-President</i>
LUKE RHOADS	- - - - -	<i>Secretary-Treasurer</i>

### PROFESSORS

DR. MANHART	DR. DUNKELBERGER	DR. BLICK
DR. SADTLER	DR. KRETSCHMANN	DR. WOODRUFF

### PERSONNEL

<i>Seniors</i>	<i>Middlers</i>	<i>Juniors</i>
ASHBY	BROSIOUS	HOHMAN
RHOADS	HECKMAN	CARMICHAEL
WAGENBACH	MOYER	SCHLEGEL
	BACKMAN	WAGNER
	HEATHER	WOLFF

### Special Students

MISS BREDOW	MRS. WAGENBACH	BEAHM	DUERR	HENNING
MRS. A. BINGAMAN	ROBISON	A. BINGAMAN	RUMBERGER	JANSEAN
MRS. COLE	R. BINGAMAN	COLE	FITZGERALD	LEESE
MRS. REMLEY				REMLEY





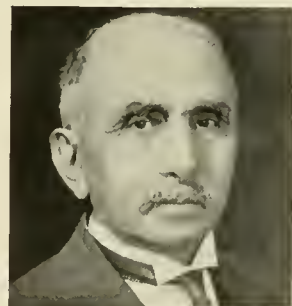
## Theological Seminary

**I**N 1856, The Maryland Synod decided that an urgent need existed for an institution which would train men in practical theology for the Lutheran ministry without lengthy collegiate training. Two years later this vision was realized when Missionary Institute was founded. The object of this institution was, "The education of men for the ministry without regard to age or domesticities." "Time unceasingly bears its changes with itself," which is shown by the growth of the institution that evinces the wisdom of its founder, Benjamin Kurtz, D.D., LL.D.

Some of the familiar faces—those of Dr. Kurtz and his colleagues—are seen no more about the Seminary and their well known voices are heard no more within its sacred walls. The change is, perhaps, no more evident than in the Dean's chair which is now being capably occupied by Dr. Franklin Pierce Manhart. We are confident that he and his colleagues are nobly and satisfactorily filling the position and imparting the Word of God. We have plenty of witnesses now out in the field who are attesting this result.

In the early years of Susquehanna University the Seminary served as a nucleus around which were centered the other activities of the Institution.

There can be no proper balance in man's nature without the cultivation of his heart and soul. Much modern education is atheas; it leaves virtue unprotected. The yawning chasm must not exist between our colleges and Jesus Christ. Our conscience in this respect is somewhat appeased because the Seminary here at Susquehanna has cared well in that portion of our education. Although it never has boasted of a large enrollment the effects of its former students have been well appreciated by Christian people in all parts of the world.



DR. FRANKLIN P. MANHART  
*Dean of Seminary*





Third Row—Nangle, Shockey, Maguire, Suter, Rowe, Cassler  
 Second Row—Drumm, Sala, Anderson, Dorsett, James, Hartman, Sassaman, Beemer.  
 First Row—Bottiger, Guss, Clapper, Dr. Ahl, Huston, Morrow, Clark.

## Pre-Theological Club

### OFFICERS

EDWIN CLAPPER	-	-	-	-	-	-	-	-	-	<i>President</i>
EARNEST HUSTON	-	-	-	-	-	-	-	-	-	<i>Vice-President</i>
WILLIAM MORROW	-	-	-	-	-	-	-	-	-	<i>Secretary</i>
DR. AHL	-	-	-	-	-	-	-	-	-	<i>Advisor</i>

An organization which in times past has meant much to religious life at Susquehanna has been this Club. It is a group of earnest male students organized for the expressed purpose of learning more of the principles of Jesus Christ, as they are related to the lands about us and to the gospel ministry. Membership is open to all ministerial students. Meetings are held once each month during the school year at which discussions, lectures and book reviews make up the programs.







Standing—Dively, Stouffer, Clapper, Henry, Boyer.  
Sitting—Shobert, Rowe, Dr. Ahl, Morrow, Clark.

## Y. M. C. A.

### OFFICERS

HAROLD ROWE	- - - - -	-	<i>President</i>
WILLIAM MORROW	- - - - -	-	<i>Vice-President</i>
ROBERT CLARK	- - - - -	-	<i>Secretary</i>
ERLE SHOBERT	- - - - -	-	<i>Treasurer</i>
DR. SMITH, DR. AHL	- - - - -	-	<i>Advisors</i>

Although many clubs have been chartered here in the last decade, the "Y" still is one of the most active and its members uphold a high standard of studentship. Some of the outstanding achievements of this beneficent group may lead the reader to understand the nature of the "Y's" accomplishments aside from the intellectual, educational, and devotional aspects of the organization. It publishes the handbook, assists in staging the "Mixer," fosters the "Big Brother Movement," and participates in the several state conferences. Through discussion groups it aids in solving student problems. A Sunday School Class, deputation teams, and a vesper service among other religious activities are sponsored by this organization.

Freshmen always find friends on the "Y" Cabinet, which returns early each year to meet and to greet the Freshmen.







Standing - Ellmore, Plummer, Ide, Stamets, Nangle, Horn, Bergstresser.  
Sitting - Mehring, Krapf, Crow, Geisel, Frankenfield, Nelson, Hubler.

## Y. W. C. A.

### OFFICERS

ESTHER GEISEL	-	-	-	-	-	-	-	-	President
EDITH FRANKENFIELD	-	-	-	-	-	-	-	-	Vice-President
PAULINE CROW	-	-	-	-	-	-	-	-	Secretary
AMILIA KRAPF	-	-	-	-	-	-	-	-	Treasurer

### Faculty Advisors

MISS HADI	MISS RIDLER	MRS KRETSCHMANN
-----------	-------------	-----------------

### COMMITTEE CHAIRMEN

Program	-	-	-	-	RUTH NILSON	Publicity	-	-	-	-	MARGARIT IDE
Membership	-	-	-	-	RUTH BERGSTRESSER	Pianist	-	-	-	-	ERDINE ELLMORE
Social	-	-	-	-	FRANCIS HUBLER	World Fellowship	-	-	-	-	
Vesper	ALJARATA STAMETS, LOUISE MEHRING					ISABELLA HORN, HAZEL NAUGLI					

The Y. W. C. A. has proved itself a very active and beneficial organization at Susquehanna. It aids in developing an all-around life by sponsoring a variety of activities.

During Freshman Week the Y. W. C. A. helps entertain the Freshmen and aids them in getting accustomed to college.

Vesper services in co-operation with the Y. M. C. A. are conducted each Sunday evening. They also sponsor plays and entertainments during the year.

This year the Y. W. and Y. M. entertained the Lutheran Student Conference which was held on the campus.



Music





# Susquehanna University Orchestra

PROFESSOR HEMPHILL - - - Director      WILLIAM CARUTH - - - Concert Master  
 DOROTHY EASTEP - - - Principal

## PERSONNEL

### First Violins

William Caruth	Anna Gage Moody	Arnold Michaels	Mary Jane Kehler	Elizabeth App
Marcella Chaya	Robert Clark	Richard Michaels	Diana Lizdas	Clarence Farley

### Second Violins

Dorothy Eastep  
 Margarite Yagel  
 Elsie Wagner  
 Jean Stauffer  
 Ruth Lenker  
 Katherine Webber  
 Curtis Lytle  
 Robert Weis  
 Franklin Marks

### Double Bass

Charles Price

### Flute

James Grossman

### Piano

Fred Billman

### Horn

Roland Pritchard

### Clarinets

Richard Shade  
 Kenneth Blyler  
 Stephen Azary

### Trumpets

Frank Bernardi  
 Arthur Webber  
 Mary LaHaza

### Tympani

Peter Blackwood

### Organ

Russell Sheetz

### Oboe

Lloyd Mail



W. DONALD HEMPHILL  
 Director

### Viola

Ruth Newell

### Cello

Erle Shobert





## Susquehanna University Band

PROFESSOR ELROSE L. ALLISON - - - <i>Conductor</i>	ROLAND PRITCHARD - - - <i>Stage Manager</i>
RICHARD SHADE - - - - <i>President</i>	JOHN BALLENTINE - - - - <i>Secretary</i>
FRANK BENNARDI - - - - <i>Vice-President</i>	PETER BLACKWOOD - - - - <i>Treasurer</i>
D. EDGAR HUTCHISON - - - <i>Business Manager</i>	HORACE HUTCHISON - - - - <i>Librarian</i>

### PERSONNEL

<i>Solo Trumpets</i>	<i>Solo Clarinets</i>	<i>Alto Saxophones</i>	<i>First Trumpet</i>
Frank Bennardi	Richard Shade	D. Edgar Hutchison	Wesley Stirling
Penn Dively	Kenneth Blyler	Horace Hutchison	
<i>Second Trumpet</i>	<i>Tenor Saxophone</i>	<i>Tympani</i>	
Ray Fullmer	Charles Coleman	Peter Blackwood	
<i>Flute</i>	<i>Tuba</i>	<i>Horns</i>	
James Grossman	Arthur Webber	Robert Clark	
<i>E Flat Clarinet</i>	<i>Baritone</i>	Roland Pritchard	
Stephen Azary	William Caruth	Eugene Mitchell	
<i>First Clarinet</i>	<i>Sousaphone</i>	<i>Trombones</i>	
Hugh Brining	John Ballentine	James Phillips	
<i>Second Clarinet</i>	<i>Bass Violin</i>	Charles Miller	
Harold Showers	Erle Shobert	Charles Meekins	
<i>Third Clarinet</i>	<i>Snare Drum</i>		
Leonard Newfield	Fred Billman		
	<i>Bass Drum and Cymbals</i>		
	Robert McNally		



ELROSE L. ALLISON  
*Director*







Third Row—Ellmore, Shipe, Brown, A. Myers, D. Meyer, Ide, Long, Shively, Schlegel, Plummer, Haidacher, Stephens, Nichols, Kehler.  
 Second Row—Stitzer, McClure, Newell, Fultz, LaHaza, Hoy, Geisel, Metter, Stambaugh, Weaver, Chaya, Martz, Eastep, Turner.  
 First Row—Winkelbleck, Mengel, Eltringham, Horn, Hines, Pifer, Gentzler, Williams, Rodgers, Bair, Rammacher, Mehring, Hummel, Scudder, Benfer.

## Girls' Glee Club

### OFFICERS

MARGARET WILLIAMS	- - - - -	President
BERTHA L. RODGERS	- - - - -	Musical Director
MARGARET BENNER BURNS, BEATRICE SHIVELY	- - - - -	Accompanists
MISS DOROTHY RIEDER	- - - - -	Stage Director

### PERSONNEL

**First Sopranos**—Beatrice Gentzler, Vice-President; Ludlow Nichols, Josephine Pifer, Stage Manager; Louise Mehring, Wardrobe Mistress; Marcella Chaya, Freda Stephens, Alma Myers, Ruth Newell, Lois Long, Gwendolyn Schlegel, Dora Stitzer, Ruth Plummer, Yvonne Scudder, Irene Mengel, Phyllis Engle, Grace Drew.

**Second Sopranos**—Margaret Burns, Eleanor Brown, Millie Hines, Business Manager; Margaret Ide, Isabella Horn, Treasurer; Pearl Mette, Dorothy Turner, Margaret Williams, Elizabeth Haidacher, Ruth Rammacher.

**First Altos**—Audra Martz, Dorothy Eastep, Anna Benfer, Mary Eltringham, Mary Jane Kehler, Ruth Bair, Secretary.

**Second Altos**—Mary Hummel, Josephine Hoy, Betty Shipe, Frances Stambaugh, Mary LaHaza, Elva Winkelbleck, Beatrice Shively, Esther Geisel.



BERTHA RODGERS  
Director





Fourth Row—Hummel, Moody, Fultz, Newell, Mette, A. Myers, Pifer, Ellmore, Pair, Shively, Martz, McClure, Olshefsky, Kehler, Stephens, Turner.  
 Third Row—Williams, Edwards, Parry, Naugle, Baker, Lahaza, Pottzeiger, Mrs. Rodgers, Stare, Horn, Chaya, Rammacher, Hemphill, Burns, Mengel, Linebaugh, Wilson, Messinger.  
 Second Row—Ovrebø, Eastep, Eltringham, Winkelleck, Shipe, Stambaugh, Hoy, Sheldon, Raudenbush, Prof. Sheldon, Williams, Ide, Gentzler, Mehring, Hines, Sharpnack, Shobert.  
 First Row—Stevens, Hemphill, Caruth, Blyler, Shade, Bernardi, Lewis, Blackwood, Pritchard, H. Hutchison, Billman, Clark, Stirling, Allison, Sheetz.

## Choral Society

PROFESSOR E. E. SHELDON, *Director*

Edward Dickinson has said, "Music is the most social of the arts, not only because it is the most universally beloved, but also because it affords the largest opportunities for co-operation." Among the greater forms of musical art the one most enjoyed and encouraged by the people in general is the "oratorio." Group singing unites in sympathetic emotional expression a large number of people. Those who participate in choruses derive much satisfaction and many social contacts from the cantatas and oratorios.

The Susquehanna University Choral Society was organized for the study and performance of standard cantatas and oratorios by students of music and music lovers on the campus with the hope that such students may be better prepared to go out into other communities and help to make America a singing nation.



E. EDWIN SHELDON  
*Director*





## The Conservatory of Music

THE Conservatory of Music affords an added reputation in the progress of Susquehanna. This music department is composed of an efficient and artistic group of musician-faculty—of whom one might be justly proud. To add to the musical distinction which Susquehanna harbors, the Pennsylvania State recognizes the conservatory as a reputable institution of musical learning.

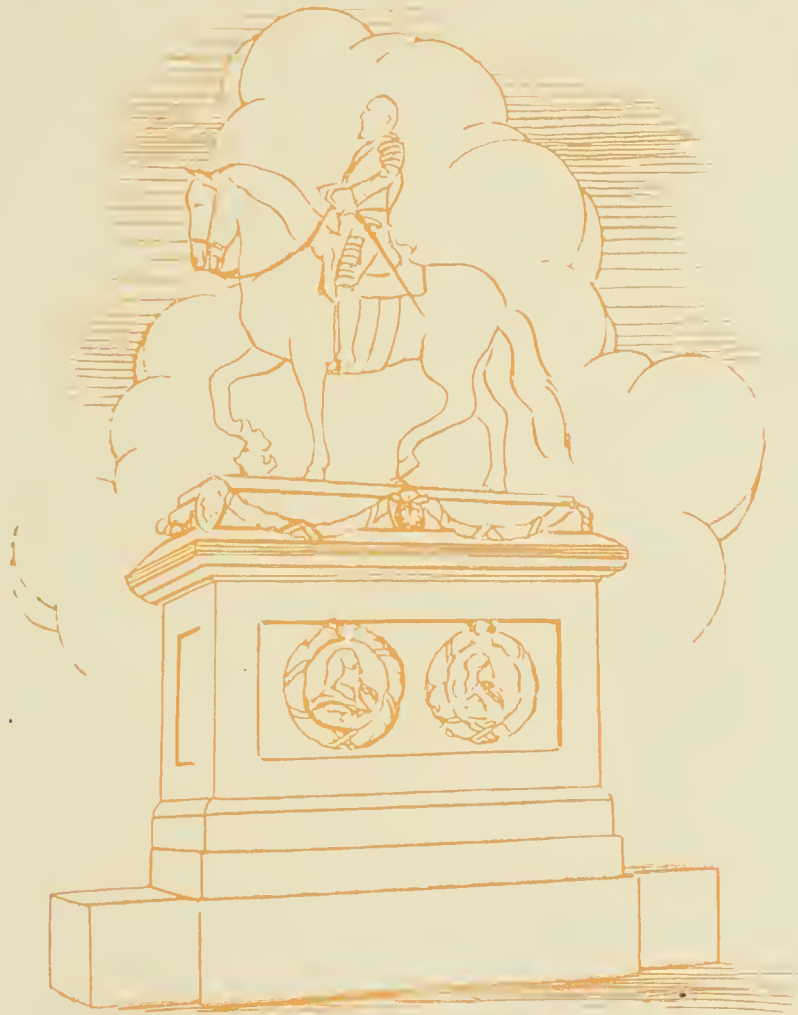
The purpose of the music course is to develop a high degree of musicianship in the students, by giving a complete course of instruction in theoretical subjects as well as Voice, Violin, Organ and Pianoforte culture.

These “con” students manage to find a great deal of joy out of the “music box” as their worthy opponents are wont to call their habitude. Those afternoon recitals provide an opportunity (though a fearful strain they be!) for the would-be artist to gain confidence and poise. Fortunately, these “practice recitals” are performed before classmates only, but it seems they are merely a stepping stone to that much anticipated and great moment of each young musical hopeful’s life—the Evening Recital.

The plight of the “con” student is sad, for her college-bred classmates insist on trampling on good nature. However, the students of music plea for a little recognition in the progressive growth of the historical and reputable annals of the campus life through enriching S. U.’s life as worthy and valuable musicians.



# Organizations



STATUE OF GUSTAVUS ADOLPHUS  
IN STOCKHOLM





## Star Course

**E**ACH year Susquehanna secures colorful artists representing the musical world, dramatic talent and excellent lecturers. These programs from year to year are always enjoyed by the community and town as well as the college groups. Foremost among the interesting numbers was that program of music offered by the "Boston Sinfionnetta." Max Fiedler, who had just returned from European lands where he studied music, was the conductor.

During the year the "Star Course" included:

SEPTEMBER 22, 1932

"The Boston Sinfionnetta," Max Fiedler, Conductor.

NOVEMBER 16, 1932

Lothrop Stoddard, Lecturer, Personalities I Have Met.

FEBRUARY 23, 1933

Maurice Hindus, Lecturer, Russia Today.

MARCH 15, 1933

Ethel Fox, Operatic Soprano; Leonora Cortex, Concert Pianist.



# Societies





Standing—Gemberling, Brosius, Moody, Swarm, Meyer, Royer, Stephens, Ahl, Dockey.  
 Sitting—Dr. Leese, Dr. Ahl, Dr. Dunkelberger, Pearl, Steele, Dr. Kretschmann, Dr. Mauhart,  
 Dr. Sadtler, Prof. Wood.

## Pi Gamma Mu

### OFFICERS

DONALD STEELE	- - - - -	<i>President</i>
ESTELLA PEARL	- - - - -	<i>Vice-President</i>
DR. KRETSCHMANN	- - - - -	<i>Secretary-Treasurer</i>

Phi Gamma Mu, National Social Science Honor Society, was founded December 1, 1924, Pennsylvania Gamma Chapter at Susquehanna University was organized and installed three years later. Commander Richard E. Byrd is the honorary president of the organization. Our chapter now has a total membership of 130, including faculty, alumni, and undergraduates.

The main object of Pi Gamma Mu is to encourage and reward the undergraduates' study of social science. In this case the term "social science" is used in the broadest sense possible.

About ten juniors and two or three seniors are elected each year by faculty members of the chapter.

Students may qualify themselves by manifesting interest in social sciences, in which they must have taken at least twenty semester hours with an average of "B", must be of good character, and must have a satisfactory scholastic standing.





Standing—Dively, Huston, Hartman, Dorsett, Sala, James.  
Sitting Naugle, Clark, Swarm, Bottiger, Ahl, Suter, Drumm.

## Phi Kappa

### OFFICERS

MARLIN BOTTIGER	-	-	-	-	-	-	-	-	<i>President</i>
JAMES SUTER	-	-	-	-	-	-	-	-	<i>Vice-President</i>
ROBERT CLARK	-	-	-	-	-	-	-	-	<i>Secretary</i>
WILLIAM SWARM	-	-	-	-	-	-	-	-	<i>Treasurer</i>
DR. A. W. AHL	-	-	-	-	-	-	-	-	<i>Advisor</i>

Phi Kappa, or the Phil-Hellenic Society of Susquehanna University, is "an organization for lovers of things Greek." Its object is to cultivate a proper appreciation of the Greek language and culture, and aims to enrich its members with the treasures of this precious heritage. Since it is an honor society, a certain class standing, as well as an interest in the objectives, is required for membership. Meetings are held once a month at which time papers prepared by the members are presented and a social hour usually follows.







Standing—Cressman, Stouffer, Crow, McHugh.  
 Sitting—Stetler, Morrow, Hausman, Prof. Gilbert, Geisel, Webber, Krapf.

## Deutsche Verein

### OFFICERS

GEORGE TRUCKENMILLER	-	-	-	-	-	-	-	<i>President</i>
MARGARET HAUSMAN	-	-	-	-	-	-	-	<i>Vice-President</i>
PAULINE CROW	-	-	-	-	-	-	-	<i>Secretary-Treasurer</i>
PROF. RUSSELL W. GILBERT	-	-	-	-	-	-	-	<i>Faculty Advisor</i>

*Motto—"Der Mensch kann was er will"*

Der Deutsche Verein was organized in 1930, under the supervision of Professor Gilbert. The purpose of the club is that of creating interest in German language and literature. The club proves itself of valuable service not only in affording entertainment, but in helping students develop a vocabulary by the use of the German language in an atmosphere decidedly different from that of the classroom.





Third Row—J. Worthington, Hubler, Plummer, Andrews, Stamets, Messinger, Nelson, McKelvey, Keller.  
Second Row—Frankenfield, Benfer, Clegg, Hines, Diehl, Ulrich, Runk, Weaver, Spiggle, Bergstresser.  
First Row—LaHaza, Ide, Lizdas, Yagel, Miss Allison, Reese, Hutter, Gentzler, Pearl.

# Le Cercle Francais

## OFFICERS

- |               |   |   |   |   |   |   |   |   |   |                       |
|---------------|---|---|---|---|---|---|---|---|---|-----------------------|
| ESTELLE PEARL | - | - | - | - | - | - | - | - | - | <i>President</i>      |
| DAISY REESE   | - | - | - | - | - | - | - | - | - | <i>Vice-President</i> |
| MILLIE HINES  | - | - | - | - | - | - | - | - | - | <i>Secretary</i>      |
| RUTH PLUMMER  | - | - | - | - | - | - | - | - | - | <i>Treasurer</i>      |
| MISS ALLISON  | - | - | - | - | - | - | - | - | - | <i>Advisor</i>        |

Sensing the need of securing a better interest in the knowledge of the French language those students interested in this phase of literature organized a club each year. This organization meets once each month at which time programs are given in the French tongue to encourage a better use of the language in the classroom. During the last four consecutive years French students enjoyed interesting plays, songs, games, and social functions which make up a part of their regular meetings.





Standing—Williamson, Stephens, Meyer, Boyer, Savidge, Brubaker, Stonesifer, Dillen.  
 Sitting—Patterson, Phillips, Olshefsky, Irving, Boeh, Hall, Eltringham.

## El Club Espanol

### OFFICERS

DOROTHEA MEYER	-	-	-	-	-	-	-	-	<i>President</i>
HARRY JOHNSTON	-	-	-	-	-	-	-	-	<i>Vice-President</i>
MARY PATTERSON	-	-	-	-	-	-	-	-	<i>Secretary</i>
BLANCHE SAVIDGE	-	-	-	-	-	-	-	-	<i>Treasurer</i>
ABERDEEN PHILLIPS	-	-	-	-	-	-	-	-	<i>Reporter</i>
MISS IRVING	-	-	-	-	-	-	-	-	<i>Faculty Advisor</i>

In 1929 El Club Espanol was organized, and since then has been an active organization on the campus. The students of Spanish have an opportunity to widen their vocabulary and their knowledge of the language, literature, and customs of Spain and Spanish American countries through the medium of short plays, games, songs and pictures presented at monthly meetings. This year the meetings were made even more interesting because of the lectures accompanied by slides which Miss Irving presented, describing her visit to Spain.







Third Row—Westlotsky, Graykoskie, Royer, Shobert.  
 Second Row—Crossman, Pearl, Boyle, Crow, Stephens, Walborn, Keller.  
 First Row—Brininger, Jones, Prof. Scudder, H. Carl, Dr. Ovrebo, Fultz, Dr. Fisher.

## Honor Science Club

### OFFICERS

HARRY CARL	- - - - -	<i>President</i>
MARION WALBORN	- - - - -	<i>Vice-President</i>
GRACE BOYLE	- - - - -	<i>Secretary-Treasurer</i>

The Honor Science Club was organized in 1920 to promote a popular interest in scientific investigation among the students who are interested in the field of science.

To become a member, a student must have at least twelve hours credit in science and a "B" average in these courses. Interesting lectures of scientific study have been presented by faculty members and guests from other universities to give the students the widest possible scope in scientific thought.







Standing—Dockey, Ballentine, Kramer, Carolan, Metzgar.  
 Sitting—Bonsall, F. Carl, Prof. Wood, Dr. Leese, Prof. Reitz, Maimon, J. Meyers.

## Business Administration Association

### OFFICERS

JOHN BALLENTINE	- - - - -	<i>President</i>
WALTER METZGER	- - - - -	<i>Vice-President</i>
HAROLD KRAMER	- - - - -	<i>Secretary</i>
D. EDGAR HUTCHINSON	- - - - -	<i>Treasurer</i>

Among the other organizations on the campus this one is among the most recent. Two years ago those students taking work in the Business Administration and Commercial Education curricula organized this Club for the purpose of bringing business students in closer contact with the problems of the modern business world. The event attracting most interest is the annual dinner sponsored by the Club.





Left to Right—Bernardi, Graykoskie, Dr. Leese, Mainon, F. Carl, Abbott

## Sadtler Pre-Legal Society

### OFFICERS

ALBIN ZIMLICKI	-	-	-	-	-	-	-	-	<i>President</i>
QUINTO GIONTA	-	-	-	-	-	-	-	-	<i>Secretary</i>
MARTIN GRAYKOSKIE	-	-	-	-	-	-	-	-	<i>Treasurer</i>

In 1927-28 the pre-legal students organized this club in honor of Chief Justice Sylvester B. Sadtler, of the Supreme Court of Pennsylvania, for the purpose of creating an interest in the study of law.

Membership is limited to a small number which may be increased by the consent of the regular members. Interesting programs are prepared and lectures of an educational type are delivered at every meeting





Standing—Hassay, Schlegel, Ballentine, Bottiger,  
 Sitting—Morrow, Ahl, Swarm, Brininger, Carolan, Kramer, Petry.

## Varsity "S" Club

### OFFICERS

WILLIAM SWARM	-	-	-	-	-	-	-	-	-	-	<i>President</i>
LEE RISHEL	-	-	-	-	-	-	-	-	-	-	<i>Vice-President</i>
JOHN OBERDORF	-	-	-	-	-	-	-	-	-	-	<i>Secretary</i>
JACK PETRY	-	-	-	-	-	-	-	-	-	-	<i>Treasurer</i>

All those boys who have attended classes at Susquehanna for one or more years and who have won their letter in any Varsity sport are eligible for membership in this organization.

In 1924 this Club became interested in beautifying the campus; the outcome of this interest was realized in the erection of beautiful gates at the entrance to the athletic field. The principal donation of this Club in 1932 was one hundred pine trees to be planted on or about the athletic field. When the time came to erect a memorial to the 1932 undefeated football squad the Varsity "S" Club rallied and a quadrangle was constructed as a tribute to the Crusaders.

Chief, however, among the numerous purposes of this Club are those of keeping the men together who have won the Varsity "S", to teach them the meaning of it, and to cultivate the expression of hospitality to visiting teams.







Standing—Stouffer, Henry, Suter.  
Sitting—Dively, Ahl, Hassay, Naugle, Bonsall.

## Orange Key Club

### OFFICERS

WILLIAM G. AHL	- - - - -	<i>President</i>
JOHN HASSAY	- - - - -	<i>Vice-President</i>
JAMES SUTER	- - - - -	<i>Secretary</i>
JOHN STOFFER	- - - - -	<i>Treasurer</i>

The Orange Key Club, initiated in 1931, is composed of the managers and assistants of the various athletic teams. Its chief purpose is the promoting of organization and recognition among these men.

Each and every athletic activity held on the campus shares the initiative of the members who desire to promote efficiency in conducting the several sports. Much energy has been adapted to landscape work on the athletic field this year.







Standing—Sassaman, Petry, Truckenmiller, Nangle,  
Sitting—Meyers, Hohman, Sala, Henry, Worthington.

## Intra-Mural Board

### OFFICERS

ROBERT SALA	-	-	-	-	-	-	-	-	-	<i>President</i>
HERBERT HOHMAN	-	-	-	-	-	-	-	-	-	<i>Vice-President</i>
DONALD HENRY	-	-	-	-	-	-	-	-	-	<i>Secretary</i>

To stimulate a keener interest in intra-mural sports, and give those who possess athletic ability and who are not members of some team a chance to develop their inclinations this Board was organized. During the past year it has worked diligently in carrying out schedules and promoting the various inter-class games. More interest was manifested this year in sports than is generally expected, which speaks well for this organization.

It is composed of ten members representing the fraternities, non-fraternity groups, the classes, and the Seminary.



Fraternities





Fifth Row—Carolan, A. Meyer, Moser, Graykoskie, Clapper.  
Fourth Row—McGeehan, Carmichael, Shade, Bennardi, Suter, Truckenmiller.  
Third Row—Wasilewski, Watkins, James, Fanti, Petry, Reger, Hutchison, Maimon, Martinec.  
Second Row—Gray, Ballentine, Walsh, Neely, Pascoe, Rhoads.  
First Row—Clark, Rowe, Stauffer, Van Nys, Schreiner.





WILLIAM CAROLAN  
*President*

MU ALPHA CHAPTER

OF

Phi Mu Delta

Local Chapter Chartered 1926

306 Walnut Street

PERSONNEL

*Seminary*

Luke Rhoads

Park Wagenbaugh

*Seniors*

John Ballentine  
Russell Carmichael  
William Carolan

Vasco Fanti  
Kenneth James  
Robert McGeehan  
Ray Watkins

Samuel Pascoe  
Jack Petry  
George Truckenmiller

*Juniors*

Edwin Clapper  
Nelson Gray  
Martin Graykoskie

D. Edgar Hutchison  
Albert Meyer

Harold Rowe  
Richard Shade  
James Suter

*Sophomores*

Frank Bennardi  
Steve Martinec

William Reger  
Morgan Schreiner  
Robert Clark

Walter Van Nuys  
Konstanti Wasilewski

*Freshmen*

Kenneth Alexander  
Max Blair

Paul Conohan  
James Grossman  
Jack Roach

Horace Hutchison  
Peter Ventura







Third Row Brosius, Boyer, Stirling, Sullivan, Blyler.  
Second Row -M. Swartz, Naugle, Krear, J. Fisher, Hawk, Coleman, Bottiger.  
First Row -Bonsall, Wentzel, Prof. Reitz, Metzger, Dr. Dunkelberger, Prof. Rumberger, Sala.





WALTER C. METZGER  
*President*

PHI EPSILON CHAPTER

OF

Phi Lambda Theta

Chartered 1928

400 Pine Street

PERSONNEL

*Seminary*

Samuel Brosius

*Seniors*

Walter Metzger

Russell Sheetz  
George Wentzel

Charles Coleman  
John Fisher

*Juniors*

Russell Goodling  
Elmer Hawk  
Earnest Huston  
Robert Sala

Calvin Naugle  
Lloyd Swartz  
Marand Swartz

James Bonsall  
Marlin Bottiger  
Richard Krear

*Sophomores*

Kenneth Blyler  
Samuel Schlegel

Robert Smith

Luther Boyer

*Freshmen*

James Finn  
Vernon Ferster  
Jerome Guss  
Eugene Mitchell

George Phillips  
Ralph Shockey  
Harlan Showers

Stanley Benner  
Richard Crankshaw  
Clarence Farley





Fourth Row—Weslowsky, Eisenhower, Henry.  
Third Row—Holman, R. Rishel, Drumm, Abbott.  
Second Row—Giunta, Johnson, McNally, Extram, Dockey, Schaffstall, Keller.  
First Row—Whiteley, King, Gemberling, Kramer, F. Carl, McKelvey, Hassay.





FRED CARL  
*President*

# Epsilon Sigma

Chartered 1924

401 Walnut Street

## PERSONNEL

### *Seminary*

Herbert Hohman

### *Seniors*

Fred Carl  
Selon Dockey  
John Extrom

Laird Gemberling  
John Hassay

Harold Kramer  
Robert McNally  
John Schoffstall

### *Juniors*

James Grove  
Quinto Gionta

Harry Johnson

Daniel McKelvey  
Nelson King

### *Sophomores*

Savior Abbott  
Kenneth Anderson

Elmer Deveraux  
Elmer Drumm  
Donald Henry

William Whiteley  
Walter Weslotsky

### *Freshmen*

Stephen Azary  
Stanley Lipski

Francis Miller

Leonard Najaka  
William Van Horn







Third Row—Shobert, Jones, Hanna, Ahl, Schlegel, Dorsett, Caruth.  
Second Row—Hartman, Tice, Barnes, H. Carl, Royer, L. Rishel, Dively, Blackwood.  
First Row—Brininger, Edwards, J. Worthington, Steele, J. Meyers, Morrow, Swarm.





DONALD STEELL  
*President*

## Bond and Key Club

Chartered 1914

309 Walnut Street

### PERSONNEL

#### *Seniors*

William Ahl  
Hugh Brininger  
Paul Edwards

John Meyers  
William Royer

Donald Steele  
William Swarm  
Jay Worthington

#### *Juniors*

Harry Carl  
Penn Dively  
Richard Fisher

William Morrow  
John Oberdorf  
Peter Blackwood

Lee Rishel  
Gerald Schlegel  
Henry Cassler

#### *Sophomores*

Timothy Barnes  
William Caruth  
Donald Dorsett

John Hanna  
Paul Hartman

Charles Jones  
Erle Shobert  
Richard Tice

#### *Freshmen*

Fred Billman  
David Evans  
Allen Eyer  
Charles Fasold  
Albert Hess

Walter Hertz  
Roy Leitzel  
Jack Maguire  
John Naegeli  
Charles Price

Roland Pritchard  
Robert Sassaman  
Arthur Webber  
Jacob Yaros  
John Yon Kondi



*“May your industry be rewarded  
by a prosperous harvest, your stores  
be plenteously filled, and may you be  
crowned abundantly with all the  
blessings of this life.”*

GUSTAVUS ADOLPHUS.

# Sororities







Third Row—Patterson, Diehl, Cressman, Mehring.  
Second Row—Eltringham, Brubaker, Horn, Andrews, Plummer, Marks.  
First Row—Benfer, Bergstresser, Frankenfield, Phillips, Reese, Hall, Kline.





ABERDEEN PHILLIPS  
*President*

# Omega Delta Sigma

Chartered 1917

## OFFICERS

ABERDEEN PHILLIPS	-	-	-	-	-	-	-	-	-	<i>President</i>
DAISY REESE	-	-	-	-	-	-	-	-	-	<i>Vice-President</i>
EDITH FRANKENFIELD	-	-	-	-	-	-	-	-	-	<i>Secretary</i>
HELEN HALL	-	-	-	-	-	-	-	-	-	<i>Treasurer</i>

## PERSONNEL

### *Juniors*

Virginia Andrews	Edith Frankenfield	Ruth Plummer
Anna Benfer	Helen Hall	Aberdeen Phillips
Ruth Bergstresser	Isabella Horn	Daisy Reese
Bernice Brubaker	Frances Kline	Mary Elise Spiggle
Lillian Diehl		Sarah Ulrich

### *Sophomores*

Mary Ann Cressman	Frances Marks	Louise Mehring
Mary Eltringham		Mary Patterson

### *Freshmen*

Anna Mease	Natalie Pritchard	Alice Smith
	Rose Runk	





Standing—Hines, Hausman, Lizdas, Stamets, Hubler, Geisel, Clegg.  
Sitting—Stetler, Fultz, Nelson, Walborn, Nichols, Hutter, Brown.





MARIAN WALBORN  
*President*

# Kappa Delta Phi

Chartered 1917

## OFFICERS

MARIAN WALBORN	-	-	-	-	-	-	-	-	<i>President</i>
LUDLOW NICHOLS	-	-	-	-	-	-	-	-	<i>Vice-President</i>
RUTH NELSON	-	-	-	-	-	-	-	-	<i>Secretary</i>
MABEL FULTZ	-	-	-	-	-	-	-	-	<i>Treasurer</i>

## PERSONNEL

### *Seniors*

Mabel Fultz	Dorothy Hutter	Anna Gage Moody
Esther Geisel	Diane Lizdas	Marian Walborn

### *Juniors*

Eleanor Brown	Ruth Nelson	Ludlow Nichols
Margaret Hausman		Naomi Stonesifer

### *Sophomores*

Dorothy Clegg	Frances Hubler	Alfarata Stamets
Millie Hines	June Weaver	Kathryn Stetler

### *Freshmen*

Ruth Cherrington	Mary Gelnett	Lois Long
Phyllis Engle	Bernice Harding	Gwendolyn Schlegel
Dorothy Gaskins		Dora Stitzer







Standing—Chimoch, Bozinski, Yagel, Pearl.  
Sitting—Stephens, Crow, Krapf, Kaufman, McHugh, Keller.





AMELIA KRAPF  
*President*

# Sigma Sigma Delta

Founded 1928

## OFFICERS

AMELIA KRAPF	-	-	-	-	-	-	-	-	-	<i>President</i>
PAULINE CROW	-	-	-	-	-	-	-	-	-	<i>Vice-President</i>
LEONA KAUFMAN	-	-	-	-	-	-	-	-	-	<i>Secretary</i>
NAN McHUGH	-	-	-	-	-	-	-	-	-	<i>Treasurer</i>

## PERSONNEL

### *Seniors*

Rita Dillon	Amelia Krapf	Nan McHugh
Barbara Jones	Mary LaHaza	Estelle Pearl
	Freda Stephens	

### *Juniors*

Leona Kaufman	Pauline Crow	Ruth Newell
---------------	--------------	-------------

### *Sophomores*

Eleanor Bozinski	Helen Keller	Phyllis Chimoeh
------------------	--------------	-----------------

### *Freshmen*

Anne Apichell	Eleanor Olshelsky	Lena Losasso
---------------	-------------------	--------------





Back Row—Ide, Bair, Stambaugh.  
Sitting—Williams, Gentzler, Hoy.





BLATRICE GENTZLER  
*President*

SIGMA OMEGA  
OF  
Sigma Alpha Iota

Chartered 1927

OFFICERS

BLATRICE GENTZLER	- - - - -	<i>President</i>
MARGARET WILLIAMS	- - - - -	<i>Vice-President</i>
JOSEPHINE HOY	- - - - -	<i>Secretary</i>
MARGARET IDE	- - - - -	<i>Treasurer</i>

PERSONNEL

*Seniors*

Beatrice Gentzler	Josephine Hoy	Frances Stambaugh
	Margaret Ide	

*Juniors*

Margaret Williams	Josephine Pifer
-------------------	-----------------

*Sophomores*

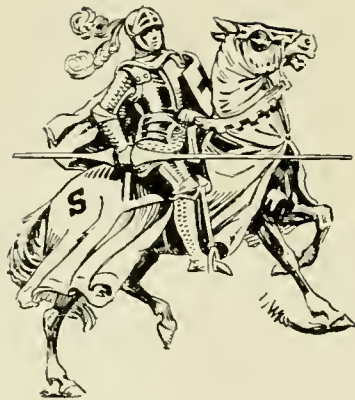
Ruth Bair	Elizabeth Haidacher	Betty Shipe
Dorothy Eastep	Alma Myers	Elva Winkelblech

*Freshmen*

Marcella Chaya	Pearl Mette	Ruth Rammacher
Mary Jane Kehler		Dorothy Turner







# OUR ADVERTISERS



THOSE firms whose advertisements appear in this volume of the LANTHORN, have contributed substantially to the financial success of the book. In their several lines they are outstanding, and in their willingness to support Susquehanna they are especially worthy of the patronage that students and friends are able to give them.

# Susquehanna University

SELINGROVE, PA.

G. MORRIS SMITH, A.M., D.D., *President*  
(*Co-educational*)

An Accredited Lutheran College in Central Pennsylvania  
Dedicated to Christian Scholarship



ENTRANCE

LIBERAL ARTS CURRICULUM  
AN ACCREDITED CONSERVATORY OF MUSIC  
CURRICULA IN BUSINESS ADMINISTRATION  
COMMERCIAL EDUCATION  
SIX WEEKS' SUMMERS SESSION

*For Catalogue Write*

GEORGE F. DUNKELBERGER, Ph.D., Dean

WHITMER-STEELE COMPANY

---

# South River Lumber Co., Inc.

*Manufacturers of*

Pine, Hemlock, and Hardwood Lumber  
Prop Timber and Ties

65 King Street

NORTHUMBERLAND, PA.

---

*Conserve Energy by Saving Steps in the Home*

INSTALL AN EXTENSION TELEPHONE

Middle Creek Valley  
Telephone Company

BELL SYSTEM

Call O2 Selinsgrove

FRANK A. EYER, *General Manager*



GLEN LOCK DAIRIES COMPANY

*A Bottle of Milk Is a Bottle of Health*

Phone 386R

SUNBURY, PA.

---

*The Lutheran Theological Seminary*

GETTYSBURG, PENNSYLVANIA

BEGINS ITS 108TH YEAR SEPTEMBER 13, 1933

THE SEMINARY OFFERS:

Free Tuition

Furnished Rooms

Use of 43,500 Volumes in Library

Standard and Elective Courses Leading to the B.D. Degree

Graduate Work Leading to the Degree of S. T. M.

*A Limited Number of Scholarships Available*

For further information address JOHN ABERLY, *President*

---

LYTLE'S PHARMACY

DRUGS, TOILET ARTICLES,  
FINE BOX CANDY, SODA WATER

*"The Rexall Store"*

SELINGROVE, PA.

Compliments of

Wentzel's Department  
Store

SELINGROVE, PA.

Phone 108-Y

FOR THE BEST IN SPORT

*Patronize the*

Athletic Association  
Co-operative  
Store

ALUMNI GYMNASIUM



A co-operative business conducted under the direction of the Athletic Board in the interest of Susquehanna University Students.

Your most exacting needs in sports wear and equipment can be met, at a real saving.

# Engraving ◻ Printing ◻ Binding

ALL UNDER ONE ROOF

A COMPLETE PRINTING PLANT



SCHOOL AND COLLEGE  
ENGRAVING SPECIALISTS

## GRIT PUBLISHING COMPANY

WILLIAMSPORT, PENNA.

*Makers of the 1933 LANTHORN*

*Sittings*

*By Appointment*

*Telephones*

Pennypacker 6190, 8070

# Zamsky Studio, Inc.



This year we have completed the photographic work for over a hundred schools and colleges, and the photographs in this book are an example of our uniform quality and fine workmanship.

Write for particulars about our special school rates, and contracts for school publications.

Sittings may be made at school, or at the studio.

902 CHESTNUT STREET

PHILADELPHIA, PA.



## Keller's Quality Market

Dealers in all

CHOICE MEATS AND  
GROCERIES

*Delivery Service*

SELINGROVE, PA.

## THE STERNER

SELINGROVE, PA.

SERVICE THE BEST CUISINE SERVICE

ENVIRONMENT MOST PLEASING

*Proprietor Management, H. S. STERNER*

# The First National Bank of SELINGROVE, PA.

ESTABLISHED 1864

Resources in excess of \$1,875,000.00

Invites Your Business and Patronage

Pays Three Per Cent on Time and Savings Deposits

Authorized to Act as Trustee, Executor, Administrator

Registrar of Stocks and Bonds, Guardian, Assignee and Reviewer

### DIRECTORS

A. L. ALLISON  
FRANK A. EYLER

ROSCOE C. NORTH  
E. E. PAWLING, ESQ.  
M. S. SCHOCH

W. M. SCHNURI  
H. S. STERNER

### OFFICERS

ROSCOE C. NORTH, *President*  
W. M. SCHNURI, *Vice President*

CHARLES C. WALTER, *Cashier*  
CLAYTON E. LACH, *Assistant Cashier*

ARTHUR C. BROWN

*Representing*

NEW YORK LIFE INSURANCE COMPANY

Phone 24R13

FREEBURG, PA.

# THE SELINGSGROVE TIMES

MARION S. SCHOCH, *Publisher*


ALL KINDS OF COMMERCIAL PRINTING

*Printers of "SUSQUEHANNA"*

Dance Programs a Specialty

---

## Selinggrove Water Supply Company



FRANK A. EYER, *President*

W. K. SEEHOLTZ, *Superintendent*

JAMES F. McCLURE, *Treasurer*

---

*Your Playground*

## ROLLING GREEN PARK

SELINGSGROVE, PA.

DANCING

SHOWS

BATHING

REUNIONS

PICNICS

**THE**  
**SOUTHWAY**  
**ENGRAVING**  
**AND**  
**ELECTROTYPE**  
**COMPANY**  
Specialists in the de-  
signing and exe-  
cution of High  
School and  
College Pub-  
lications  
**CANTON, OHIO**

**STRAND & RIALTO**

SUNBURY



*The*

COMERFORD THEATRES, INC.

**STEFFEN'S**

*Groceries, Gifts and Stationery*

LENDING LIBRARY

SELINGROVE, PA.

---

**KENDALL CANNED MOTOR OIL**

W. F. DAGLE, *Distributor*

THE 2,000 MILE OIL

Bell Phone 147

SELINGROVE, PA.

---

**BOGAR BROTHERS' LUMBER COMPANY**

CONTRACTORS

BUILDERS

*Manufacturers of and Dealers in*

LUMBER, MILL WORK, BUILDING SUPPLIES

Phone: Bell 74-W

SELINGROVE, PA.

---

**Plummers' Electric Shop**

EVERYTHING

ELECTRICAL

SELINGROVE, PA.

*Remember Your College Days*

*With* PHOTOGRAPHS

**SCHINDLER STUDIO**

Frames and Enlargements to Order

515 Market Street

SUNBURY, PA.



**SHAFFER'S  
BARBER SHOP**

5 East Pine Street

SELINGROVE, PA.

---

**THE COLLEGE  
BOOK STORE**



Chilton Pens and Pencils

Sheaffer Ink

Pennants

Monogram Stationery

---

**R. L. SCHROYER**

*General Insurance*



SELINGROVE, PA.

**The SELINGROVE  
BOOK STORE**

MAGAZINES AND STATIONERY

*Picture Framing a Specialty*

JAMES H. STYERS  
SELINGROVE, PA.

---

**The  
STANLEY THEATRE**

*Presents*

*The Best in Talking  
Pictures*

Under the Management of

*The*  
COMERFORD THEATRES, INC.

---

**D & M  
CANDY COMPANY**

*Wholesale*

Sweeten the Day with  
C A N D Y

SELINGROVE, PA.



## Greetings . . . Class of 1934

VIRGINIA ANDREWS  
ANNA BENTER  
RUTH BERGSTRESSER  
PETER BLACKWOOD  
JAMES BONSALE  
MARLIN C. BOTTIGER  
ELEANOR S. BROWN  
BERNICE BRUBAKER  
HARRY ALBERT CARL  
HENRY H. CASSLER  
EDWIN CLAPPER  
PAULINE E. CROW  
LILLIAN DIEHL  
PENN G. DIVELY  
RICHARD FISHER  
EDITH FRANKENFIELD  
QUINTO GIONTA  
RUSSELL C. GOODLING  
ARTHUR NELSON GRAY  
MARTIN A. GRAYKOSKIE  
JAMES D. GROVE  
HELEN L. HALL  
MARGARET M. HAUSMAN  
ELMER HAWK  
ISABELLA T. HORN  
EARNEST W. HUSTON  
DAVID EDGAR HUTCHISON  
HARRY H. JOHNSON  
RUTH LEONA KAUFMAN  
CHARLES KELLER  
NELSON KING

FRANCES A. KLINE  
RICHARD F. KREAR  
DANIEL T. MCKELVY  
VICTOR J. MARIETTA  
AUDRA MARTZ  
ALBERT C. MEYER  
WILLIAM S. MORROW  
CALVIN J. NAUGLE  
RUTH NELSON  
ANNA LUDLOW NICHOLS  
JOHN W. OBERDORF  
ABERDEEN H. PHILLIPS  
JOSEPHINE PIFER  
RUTH N. PLUMMER  
DAISY REESE  
LEE DONALD RISHEL  
RALPH G. RISHEL  
HAROLD L. ROWE  
ROBERT R. SALA  
HELEN BLANCHE SAVIDGE  
JERAULD SCHLEGEL  
RICHARD B. SHADE  
MARY E. SPIGGLE  
NAOMI E. STONESIFER  
JAMES SUTER  
MARAND D. SWARTZ  
LLOYD MONROE SWARTZ  
SARA ULRICH  
MARGARET B. WILLIAMS  
ALEXANDER YOUNGERMAN  
ALBIN L. ZIMLICKI





# IN CLOSING

• • •

AS the explorer of the jungles, coming home from his jaunt, pauses and ponders on the fascination of his experience, so we as a staff consider our years of friendly relations in publishing this volume. Realizing fully our deficiencies, a number of which were mere oversights, we take this opportunity to make apologies for the privileges we have exercised and consider this volume the culmination of our energies as Juniors.

THE STAFF.





AUTOGRAPHS






Printed by  
GRIT PUBLISHING COMPANY  
Williamsport, Pa.





SUSQUEHANNA UNIVERSITY



3 4998 0027 8137 0

SUSQUEHANNA UNIVERSITY  
BELMONT GROVE, PA 17810

SUSQUEHANNA UNIVERSITY

BLOUGH-WEIS LIBRARY  
DOES NOT  
CIRCULATE  
ARCHIVES

SUSQUEHANNA UNIVERSITY



