

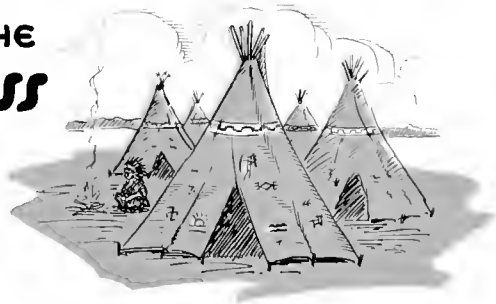
Digitized by the Internet Archive
in 2011 with funding from
Lyrasis Members and Sloan Foundation

<http://www.archive.org/details/lanthorn193500susq>

THE LANTHORN

PUBLISHED BY THE
JUNIOR CLASS

1935



♦♦ E ♦♦ E ♦♦ E ♦♦ E ♦♦
PRESENTED BY:
DONALD K. HENRY.
EDITOR IN CHIEF
WILLIAM S. WHITELEY.
BUSINESS MANAGER
♦♦ E ♦♦ E ♦♦ E ♦♦ E ♦♦

THE 1935 LANTHORN



SUSQUEHANNA
UNIVERSITY
SELINGROVE, PA.

FOREWORD

BEFORE the white man came into this country, the Indians roamed through these hills and valleys, undisputed. They were the sole inhabitants of this great country.

With the advent of the settler, all of this was changed. Disputes arose, and wars often resulted. Many dark and bloody battles were fought over the ownership of certain sections of land.

In this section, one great chief stands out as a pacifist and friend to the white man. This Indian was none other than Chief Shikelemy, and it is to his memory that we, the Junior Class, dedicate our art theme.



CONTENTS

COLLEGE
ADMINISTRATION
CLASSES
ACTIVITIES
ATHLETICS
ORGANIZATIONS





PROF. E. EDWIN SHELDON





COLLEGE



Susquehanna University

A Few Facts

Founded	September 1, 1858
Founder	Dr. Benjamin Kurtz
Name when founded	Missionary Institute
Name changed to	Susquehanna, 1894
First Building	Selinsgrove Hall
Most Recent Building	The Library
Situation	Selinsgrove, on the Susquehanna River

Aim

--to prepare young men and women for all honorable vocations in life, never ceasing to emphasize Christianity in its fullest meaning.



Alma Mater

*The story we would tell you friends,
Would cover many a book;
The subject matter of the same
Is found in every nook,
Of old S. U.'s broad campus
The common battle ground
Whose trees might whisper secrets grave,
Amusing and profound.*

*How dear to one and all the name
Their Alma Mater bears,
When they have left its classic halls,
To shoulder worldly cares,
Of winning maids and noble lords
Of dear old college days,
Come join in recollections fond,
And tell us all your ways.*

*In classroom and on gridiron, friends,
S. U. will stand the test;
Defeat to her a word unknown,
Her motto, "Do your best."
With vim, then let us give the yell
Display her banner bright,
That all may know of old S. U.
She stands for God, and right.*

Chorus

*Of Susquehanna now we sing,
Let Susquehanna's praises ring,
Loyal to her by night and by noon,
We'll raise the Orange and Maroon,
Loyal to her by night and by noon,
We'll raise the Orange and Maroon.*





ADMINISTRATION



G. MORRIS SMITH, M.A., D.D.
President

Franklin and Marshall Academy, 1907; B.A., Roanoke College, 1911; M.A., Princeton University, 1912; Instructor, Blair Academy, Blainstown, N. J., 1912-1916; Graduate, Mt. Airy Seminary, 1919; Pastor, Mt. Vernon Lutheran Church, Mt. Vernon, N. Y., 1918-20; Pastor, Lutheran Church of the Redeemer, Buffalo, N. Y., 1920-28. Present position, 1928.



A MESSAGE FROM DR. SMITH

Susquehanna University takes a deep and abiding interest in her students. They are her joy and her crown. Whether in college or out in life, Alma Mater never ceases to be interested in her children.

We have earnestly sought to draw out your God-given powers. By the interaction of mind upon mind, and of spirit with spirit, growth takes place in the personality. It is to be hoped that you are a little finer in spirit, something more alert in mind, more open to reason, less given to prejudice, stronger in faith in God, more considerate of your fellowmen than when you came to us. We are very sure development and enrichment along these lines represent the genius and value of true education.

This has been a delightful year to me. Somehow I feel more attached. Perhaps this is because my children are growing in number. Three score or more will soon be leaving the parental domicile to pitch their tents with God's people beyond. We expect to hear from you in the years to come.

Never betray your trust, hold fast to your ideals, love your fellowmen, be unselfish in your point of view, be a positive force for good, "looking unto Jesus as the Author and Finisher of your Faith."

G. MORRIS SMITH.

Selinsgrove, Pa.
March 24, 1934



GEORGE FRANKLIN DUNKELBERGER

A.B., A.M., Ph.D., Ph.D.

Dean of the College and Professor of Education

A.B., Susquehanna University, 1908; A.M., University of Pittsburgh, 1919; Ph.D., Susquehanna University, 1921; Ph.D., New York University, 1927; Teacher of Rural Schools for seven years; Supervising Principal of Public Schools for eight years; Professor of Education, California State Normal School, 1916-21; Dean of the College and Professor of Education, Waynesburg College, 1921-1925; Student at New York University and Instructor in Educational Sociology, 1925-26. Present position, 1926.



E. EDWIN SHELDON

Mus.M.

Director of Conservatory of Music

Alma College, 1892; Baldwin Wallace College, 1894; Oberlin Conservatory of Music, 1895-98; New England Conservatory of Music, 1900; Instructor, Toledo Conservatory of Music, 1900-01; Director of Susquehanna University Conservatory of Music, 1903-10; Director Lebanon Valley College Conservatory of Music, 1910-20; Cornell Summer Work, 1918; Graduate of New York University Summer Music School, 1921; Present position, 1920.



NAOMI K. HADE

B.A., M.A.

Dean of Women

Assistant Professor of English

Hood College, A.B., 1919; Macedon High School, Ohio, 1919-20; Physical Director and Girls' Work Sec., West Side Y. W. C. A., Cleveland, Ohio, 1920-21; Chambersburg High School, 1921-23; Columbia University, 1923-24; Head of English Department, Irving College, 1924-26; Columbia University, M.A., 1927; Present position, 1926.



T. W. KRETSCHMANN

A.M., B.D., Ph.D.

Hebrew Old Testament and Practical Theology

University of Pennsylvania (A.B., 1888; A.M., B.D., Ph.D., 1892), Phi Beta Kappa; Philadelphia Lutheran Seminary, 1891; Pastor, Charges: Christ Church, Chestnut Hill, Philadelphia; Atonement, Buffalo, N. Y.; St. Stephen's, West Philadelphia; Instructor in Hebrew, Philadelphia Lutheran Theological Seminary, 1892-98; Professor of Old Testament, Pacific Theological Seminary, Seattle, Washington, 1919-21; Dean of Washington School of Religion, Seattle, 1921. Present position, 1924.

JOHN IRVIN WOODRUFF

B.A., M.A., Litt.D., LL.D.

Professor of Philosophy and Director of Extension Work

Missionary Institute, 1888; B.A., Bucknell University, 1890; M.A., Bucknell University, 1893; Litt.D., Wittenburg College, 1903; LL.D., Waynesburg College, 1921; Principal of Friends' Normal Institute, 1890-01; Principal of Mifflin Academy, 1891-92; President, Palatinate College, 1896; Acting President of Susquehanna University, 1901-04; served as member of Pennsylvania Legislature in sessions of 1919 and 1929, during that time he sponsored important educational measures; Lecturer on Educational Subjects; Present position since 1892.



GEORGE ELMER FISHER

Ph.B., A.M., Ph.D.

Professor of Chemistry

Ph.B., Bucknell University, 1891; M.A., Susquehanna University, 1898; Ph.D., Wesleyan University, 1902; Principal of Friends' Normal Institute, 1891-1892; Professor of Natural Science, Bucknell Academy, 1892-1909; Present position, 1896.



EDWIN MONROE BRUNGART

B.A., M.A.

Professor of Education

Susquehanna Academy, 1895; B.A., Susquehanna University, 1900; M.A., *ibid.*, 1903; Post Graduate Work, University of Pennsylvania, 1907; Columbia University, 1928; Principal Cross Fork High School, 1900-02; Principal Mifflinburg Schools, 1902-01; Principal of Susquehanna Academy to 1924; Present position, 1904.



AUGUSTUS WILLIAM AHL

A.M., Ph.D.

Professor of Greek Language and Literature

Gymnasium, Diploma, Germany, 1904; Breklum Seminary, Diploma, 1908; Susquehanna University, 1908-09; A.M., 1912; Vanderbilt University, 1916-20, Ph.D.; Pastor, Baltimore, Md., Nashville, Tenn.; Instructor Depts., Thiel College, 1922-27; Author "Outline of Persian History, Based on Cuneiform Inscriptions," 1922, revised 1931; "Bible Studies in the Light of Recent Research," 1924, revised, 1930; Pi Gamma Mu, Scourse Research Council, and several American and European Learned Societies. Present position, 1927.





CHARLES LEESE

A.B., M.A., Ph.D.

Professor of Business Administration

Gettysburg, A.B., 1921; Wharton School of Commerce and Finance, M.A., 1925; University of Pennsylvania, Ph.D., 1927; Professor of Economics and Business Administration, Clarkson College of Technology, 1927-30; Industrial and Business experience with P. H. Glatfelter Co., Spring Grove, Pa., during summers of 1919 to 1926; Research Assistant, Industrial Research Department of the Wharton School of Commerce and Finance, during Summers of 1927 and 1928; Publication: "Collective Bargaining Among Photo-Engravers in Philadelphia." Member of: American Economic Association; American Management Association; Kappa Phi Kappa, National Educational Fraternity; Pi Gamma Mu; Present Position, 1930.



ARTHUR HERMAN WILSON

A.B., A.M., Ph.D.

Professor of English

University of Pennsylvania, the College, A.B., 1927; Graduate School, M.A., 1929; Ph.D., 1931; Department of English, University of Pennsylvania, 1927-31; Elected to Phi Beta Kappa, University of Pennsylvania, 1927; Present position, 1931.



JOHN J. HOUTZ

B.A., M.A., M.S.

Assistant Professor of Chemistry and Mathematics

Susquehanna University, B.A., 1908; Removo High School, 1909; Susquehanna University, M.A., 1910; Louisiana State University, M.S., 1912; Chief Chemist, Belle Hellene Sugar Co., Louisiana, 1913; Superintendent and Chief Chemist, Central "San Vicente," Jovellanos, Cuba, 1914-19; Head of Mathematics Department and Assistant Principal Sunbury High School, 1919-27; Associate Professor of Mathematics, Susquehanna University Summer School, 1919-27; Present position, 1927.



GEORGE N. WOOD

B.A., M.A.

Assistant Professor of Business Administration

Graduate of Western State Teachers College; Michigan State Teachers College; Northern Illinois College; A.M., Columbia University; Superintendent of Standish, Michigan, Schools; Head of the Arenac County Normal School, Michigan; Superintendent of St. Louis, Michigan, School, 1916-26; Author, "The Policy of the Federal Reserve"; Present position, 1927.

PAUL J. OVREBO
A.B., Ph.D.

Professor of Physics

A.B., St. Olaf College, Northfield, Minnesota, 1923; Ph.D., University of Chicago, 1928; Teacher in Consolidated Schools, 1920-21; Superintendent, Public Schools, Goodridge, Minnesota, 1923-25; Assistant Professor of Physics at West Virginia University, 1928-29; Present position, 1930.



PAUL BOEDER
M.A., Ph.D.

Professor of Mathematics

Lehrer Bildungsanstalt, Hamburg, Germany, Diploma, 1923; M.A., University of Pennsylvania, 1925-26; Instructor of Mathematics, University of Delaware, 1926-27; University of Göttingen, Germany, 1927-32; Ph.D., Göttingen, 1931.



WILLIAM ADAM RUSS, JR.
A.B., M.A., Ph.D.

Professor of History

Ohio Wesleyan, A.B.; University of Cincinnati, M.A.; University of Chicago, Ph.D. Present position, 1933.



FISK WILLIAM STOCKING SCUDDER
A.B.

Assistant Professor of Biology

Ohio Wesleyan College, A.B., 1923; Graduate Work, Ohio Wesleyan, 1924-25; Graduate Work, Cornell University, 1924-30; Instructor of Histology Embryology, Cornell Medical College, 1925-30; Member of American Association for Advancement of Science; Present position, 1930.





EVELYN ROSE ALLISON

B.A., M.A.

Professor of French

Susquehanna University, A.B., 1920; Hewlett School for Girls, Long Island, 1920-21; Teacher Williamsport High School, 1921-24; Hanover High School, 1924-27; M.A., Susquehanna University, 1924; Graduate Work, Columbia University Summer Session, 1924; French Institute, Penn State, 1924; Columbia University Summer Session, 1927; Columbia University, Second Semester, 1927-28; Columbia University, Summer Session, 1928; University of Grenoble, Summer School, 1928; M.A., Columbia University, 1929; University of Paris, Sorbonne, 1931-32; Diploma, Sorbonne, 1932; Present position, 1929.



RUSSELL W. GILBERT

A.B., M.A.

Professor of German

Mulenberg College, A.B., 1927; University of Pennsylvania, M.A., 1929; Assistant Professor of German, Lehigh University, 1927-29; Instructor in German, Mulenberg College, 1929-30; Middlebury College Summer School of German, 1931; University of Pennsylvania, 1932; Pennsylvania Modern Language Association; Modern Language Association of America; Tau Kappa Alpha; Present position, 1929.



GEORGE REEL SEIDEL

Ph.D.

Instructor in Mathematics

Baltimore Polytechnic Institute, 1924; Ph.D., Johns Hopkins University, 1931; Present position, 1931.



LUTHER DAY GROSSMAN

B.S.

Professor of Physical Education and Athletics

General Secretary and Physical Director of Y. M. C. A., 1908-11; Springfield College Summer School, 1914; B.S., Susquehanna University, 1916; Special Teachers' Course in Physical Education, Temple University, 1916-19; Director of Physical Education and Athletics, Lower Merion High School, 1916-21; Director, Athletic Activities Camp Kennebec, N. Belgrade, Me. (Summer 1917-28); Professor Physical Education and Director of Athletics, Susquehanna University, 1921-25; Returned to Lower Merion High School, 1925-27; Present position, 1927.

D. IRVIN REITZ

Ph.B., A.M.

Assistant Professor of Commercial Education

Keystone State Normal School, 1915; Pennsylvania State College Summer School, 1916-17, 1919; Teacher, Frederickburg, Pa., High School, 1915-20; Teacher, Coopersburg, Pa., High School, 1920-22; Temple University Summer School, 1923; Ph.B., Muhlenberg College, 1926; A.M., University of Pennsylvania, 1930; Instructor, Cedar Crest College, 1923-31; National Association of Commercial Teacher Training Institutions; Eastern Commercial Teachers Association; Pennsylvania State Educational Association; Present position, 1931.



THELMA ELIZABETH ARMOGOST

A.B., A.M.

Instructor in Commercial Education

Graduate of Oberlin School of Commerce, 1921; Edinboro State Teachers College, 1923; Youngstown College, A.B., 1930; University of Pittsburgh, M.A., 1931; Teaching Experience, Union City, Pa., 1921-22; Campbell, Ohio, 1922-30; Youngstown College (Night School), 1924-26; Present position, 1931.



MARTHA S. DODSON

B.L.E.

Librarian

Syracuse University; Reference Librarian James V. Brown Library, Williamsport, Pa.; Vice-President Pennsylvania State Library Association; Present position, 1928.



DOROTHY WELSH REEDER

B.A.

Instructor in Physical Education of Women

Kellogg School of Physical Education of Battle Creek College; Instructor Swimming and Canoeing, Camp Keewano, Mich., 1923-24; Campfire Executive and Director, Camp Tahapis, Butte, Mont., 1925; Susquehanna University, 1924-26; Executive Secretary, Campfire Girls, Sandusky, Ohio, 1926-28; Columbia University, Summer Session, 1928; Present position, 1928.





PERCY MATHIAS LINEBAUGH

Mus.B.

*Instructor in Pianoforte, Organ, Rudiments and
Keyboard Harmony*

Graduate of Lebanon Valley College Conservatory of Music in Piano, 1916; in Organ with Mus.B., 1917; Instructor in Piano and Ear Training, Lebanon Valley Conservatory of Music; with A. E. F. in France, 1918-19; New York University Summer School, 1921; Peabody Institute of Music, 1922; Present position, 1921.



IDA MANEVAL SHELDON

Mus.B.

Instructor in Voice, Harmony and History of Music

Mansfield State Normal, 1900; Susquehanna Conservatory of Music, 1907-10; Seven Studios, New York Summer School, 1908; Instructor, Lebanon Valley College Conservatory of Music, 1910-20; Graduate Work in Voice and Harmony, New York University Summer School Music School, 1919; Present position, 1920.



WILLIAM DONALD HEMPHILL

Mus.B.

Professor of Violin and Orchestration

Kansas State Teacher's College (Hays), Mus.B., 1925; Bush Conservatory of Music, Chicago, 1927; Present position, 1927.



ELROSE L. ALLISON

Mus.B.

Instructor in Piano, Pipe Organ, Wind Instruments

Susquehanna University, Mus.B., 1928; New York University, 1931; Present position, 1928.

FREDERICK C. STEVENS

B.A.

Instructor in Voice

B.A., University of Minnesota, 1926; Graduate work at Columbia University, 1930-31; Studied in Paris under La Pierre and La Bonte, 1928, 1929; Phi Mu Alpha; Present position, 1930.



EMILY E. SWETTMAN

Registrar

Irving College, 1919-21; Columbia University Summer School, 1921 and 1927; Head of Commercial Department, Middletown High School, Middletown, Pa., 1921-26; Commercial Department, Greensburg High School, Greensburg, Pa., 1926-29; Secretary to the Dean, Susquehanna University, 1929-31; Present position, 1931.



E. BEATRICE HERMAN

A.B.

Bursar

A.B., University of Pittsburgh, 1925; Teaching Positions, Sunbury High School; Union High, Turtle Creek, Pa.; Verona High School; Instructor in Secretarial Studies, Susquehanna, 1925-27; Present position, 1927.



WILLIAM W. ULLERY

B.S.

Physical Education and Coach of Athletics

Pennsylvania State College, B.S., 1922; Graduate work, Columbia University; Present position, 1928.





ALICE KING BICKERSTAFF

A.B.

Assistant Librarian

Oberlin College, A.B., 1926; Graduate Work at Buffalo State Teachers College, 1927-29; Diploma in Library Science, University of Buffalo, 1931; Teacher in Kentucky Mountain Mission School; Present Position, 1931.



MILDRED G. ARBEGAST

Secretary to the Dean of the College

Irving College, 1928-29; Susquehanna University, S. of B., 1930; Present position, 1930.



MARY KATHRYN POTTEGER

M.S.B.

Instructor in Piano, Sight Singing and Dictation

Susquehanna University Conservatory of Music, 1924; Selinsgrove Public School, 1921-26; New York University Summer School, 1926 and 1931. Present position, 1921.



EDNA BOGWALD

B.M.

Public School Music Methods

Northwestern University, B.M., 1930; Columbia University, 1932-33; Supervisor of Music, Rock Falls, Illinois, 1930-31; Supervisor of Music, Two Rivers, Wisconsin, 1931-32; Present position, 1933.

MARGARET E. KEISER
Mus.B.

Instructor of Voice

Susquehanna University, 1926; Mus.B., Graduate Work, Temple University, 1931-32; Peabody Conservatory of Music, Baltimore, Summer 1921; Church and recital soloist; Present position, 1933.



JOSEPHINE LONG

Secretary to the Director of Physical Education

Selinsgrove High School, 1925; Susquehanna University, 1925-26. Present position, 1929.



GAIL L. HEMMINGER
A.B., M.A.

Secretary to the Dean of Women

A.B., Irving College, 1916, M.A., 1925; Wayne County Schools, 1916-17; Linden Hall Seminary, 1917-19; Academic Dean, Instructor in History, Irving College, Mechanicsburg, 1919-29. Present position, 1932.

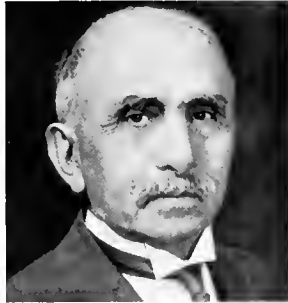


ANNA M. HUMPHREY
Dietitian

Mechanics Institute, Rochester, N. Y.; Rochester Business Institute. Present position, 1931.



Memoriam



In Memory

of

these three men, Doctor Manhart, Doctor Allison, and Doctor Follmer, who have given the best part of their lives in unselfish and zealous work for the betterment of the mental, moral, and spiritual life of Susquehanna University, we devote this page.

The Faculty and the entire student body pause here for just a moment to do homage to their memory. In thinking of the great loss to our faculty, caused by the death of these three beloved professors, we are reminded of those immortal lines of Tennyson:

*Sunset and evening star,
And one clear call from me,
May there be no moaning of the bar,
When I put out to sea.*





◆ E CLASSES ◆ E





SENIORS

The Class of '34

OFFICERS

President
Vice-President
Secretary
Treasurer
Historian

DANIEL T. MCKELVEY
HELEN HALL
RUTH BERGSTRESSER
MARY E. SPIGGLE
SARA M. ULRICH

WHETHER it was sidereal time, apparent solar time, mean solar time, or civil time, that a disturbance was manifest in the celestial sphere of which Susquehanna forms the center we cannot definitely ascertain, but that a new and peculiar object appeared above the horizon on the college world is a fact that is clearly and positively known. The professors were uncertain whether it was a meteor, comet or planet. They examined it by the perfect telescopes of musty languages and stiff mathematics and pronounced it a Freshman constellation. It appeared higher as well as smaller in size; the professors taking another view of it declared it was a Sophomore constellation. It rose higher and increased in brightness. They examined it through the improved lenses of mind, matter, light, heat, and sound. After a process of *a posteriori* reasoning they named it a Junior constellation. Now it has approached the zenith, and the professors, after having carefully considered the time of its appearance, the progress of its course, and the brilliancy of its members, have declared this object to be the class of 1934, and have agreed that it is one of the brightest as well as most beautiful constellations that has ever risen in the heavens of Susquehanna.

These constellations have been successful in their various undertakings. In their get-away, in both Freshmen-Sophomore football tilts, they have been victorious, and in the number of Varsity men they have been outstanding. Not to be outdone the women have brought back the hockey championship for two consecutive years, and the basketball, volleyball, and baseball championship their Junior years. Not forgetting the brilliancy of the constellations, it would be well to add that during this our Senior year our average by far surpasses that of any other class.

The members of the class look forward with pleasure to that eventful day, Commencement, the one longed for throughout their course when they shall have finished playing their little part here and shall have entered upon the larger stage of real active life. The thought of fulfilling the plans, attaining the desires, realizing the hopes naturally gives to each feelings of joy, although the thought that this is the last year of college life with its freedom, companions and happy associations is not unalloyed with regret.

It will be ideal if the class of 1934 will go forth with each member attempting to prove himself or herself an honored and respected citizen and a loyal and devoted child of Susquehanna.

ANNA BENTER

16 S. HIGH STREET, SELINSGROVE, PA.

Selinsgrove H. S.

Omega Delta Sigma

Hockey 1; Soccer 1.

Le Cercle Francais 1; Choral Club, 1, 3, 4; Y. W. C. A. 3, 4.



E. RUTH BERGSTRESSER

87 N. CHURCH STREET, HAZLETON, PA.

Hazleton H. S.

Omega Delta Sigma

Basketball 1, 2, 3; Baseball 1, 2, 3, 4; Hockey 1, 2, 3, 4; Women's Athletic Club 2, 3, 4.

French Club 1, 2, 3, 4; Y. W. C. A. 1, 2, 3, 4; Cabinet Staff 3, 4; Susquehanna Staff 2, 3; News Editor 3; Assistant Art Editor Lanthorn 3; Tau Kappa Alpha 3; Inter-Sorority Council 3, 4.



PETER BLACKWOOD

1224 CHESTNUT STREET, TURTLE CREEK, PA.

Turtle Creek Union H. S.

Bond and Key

Varsity Track 3, 4; Captain, Track 4.

Band 2, 3, 4; Orchestra 2, 3, 4; Glee Club 2; Choral Society 2, 3, 4.



JAMES A. BONSALE

GRAMPION, PA.

Ouracougville H. S.

Phi Lambda Theta

Sub-Assistant Baseball Manager 2; Assistant Baseball Manager 3; Baseball Manager 4.

Orange Key Club 2, 3, 4; Business Administration Club 1, 2, 3, 4; Business Manager LANTHORN 3; Editorial Staff Susquehanna 2, 3; Sports Editor 3; Men's Student Council 1, 3, 4; Spanish Club 1, 2; Class President 2.



MARLIN C. BOTTIGER

MT. PLEASANT MILLS, PA.

Fredburg H. S.

Phi Lambda Theta

Varsity Track 1, 2, 3, 4; Class Soccer 1, 2, 3, 4; Class Track 1, 2; Varsity "S" Club 2.

French Club 1, 2; Pre-Theological Club 1, 2, 3, 4; Y. M. C. A. 1, 2, 3, 4; Phi Kappa 1, 2, 3, 4; President 3.





ELEANOR SUE BROWN

23 PARK AVENUE, WESTMINSTER, MD.

Pleasant Valley H. S.

Kappa Delta Phi

Hockey 3, 4; Soccer 2, 3, 4; Basketball 2, 3; Volleyball 2, 3; Baseball 2, 3; Track 2, 3; Women's Athletic Club 3, 4.

French Club 2; Glee Club 3, 4; Art Editor *LASTHORS* 3; Y. W. C. A. 2.



HENRY H. CASSLER

HOLLSOPPLE, PA.

Johnstown Central H. S.

Soccer 3, 4; Track 3; Volleyball 3.

Pre-Theological Club 3, 4; Editorial Staff *LASTHORS* 3; Debating Team 3, 4.



EDWIN M. CLAPPER

DUNCANSVILLE, PA.

Hollidaysburg H. S.

Phi Mu Delta

Class Soccer 1, 2, 3; Baseball 1, 2; Track 1, 2.

French Club 1, 2; Advertising Manager *Susquehanna* 3; Editor-in-Chief *LASTHORS* 3; Phi Kappa 3, 4; Tau Kappa Alpha 3, 4; Pre-Theological Club 2, 3, 4; President 3; Y. M. C. A. 1, 2, 3, 4; Debating Team 1, 2, 3, 4.



PAULINE E. CROW

LIVERPOOL, PA.

Liverpool H. S.

Sigma Sigma Delta

Class Hockey 1, 2, 4; Soccer 1, 2; Basketball 1, 2; Baseball 1, 2; Women's Athletic Club 2, 3, 4; Secretary-Treasurer 3.

Susquehanna Staff 3; *LASTHORS* Staff 3; Y. W. C. A. 1, 2, 3, 4; Cabinet 2, 3, 4; Secretary 3.



LILLIAN DIEHL

17 HANOVIA STREET, GETTYSBURG, PA.

Gettysburg Hood College

Omega Delta Sigma

Class Baseball 2; Soccer 2; Hockey 2, 3, 4; Women's Athletic Club 3, 4.

French Club 2, 3, 4; Y. W. C. A. 2, 3, 4.

PENN G. DIVELY
MAIN STREET, BERLIN, PA.

Berlin H. S.

Bond and Key

Assistant Track Manager 3; Class Soccer 2, 3; Orange Key Club 2, 3.

Band 1, 3; Orchestra 1; Phi Kappa 1, 2, 3, 4; Editor-in-Chief Handbook 2, 3; Susquehanna Staff 1, 2, 3, 4, Editor-in-Chief 4; Y. M. C. A. 1, 2, 3, 4.



P. RICHARD FISHER
SELINGROVE, PA.

Selingrove H. S.

Bond and Key

Varsity Football 1, 2, 3, 4; Varsity Basketball 1; Varsity "S" Club 1, 2, 3, 4.



EDITH FRANKENFIELD

1911 N. TWELFTH STREET, PHILADELPHIA, PA.

Simon Gratz H. S.

Omicron Delta Sigma

Hockey 1, 2, 3, 4; Soccer 1, 2, 3, 4; Women's Athletic Club 2, 3, 4; Basketball 1, 2, 3; Volleyball 1, 2, 3; Baseball 1, 2, 3.

French Club 1, 2, 3, 4; Women's Student Council 1, 2, 3, 4; W. W. C. A. 1, 2, 3, 4, Vice-President 3, President 4.



RUSSEL GOODLING
COCOLAMUS, PA.

Cocolamus H. S.

Phi Lambda Theta

Choral Society 3, 4; Band 3, 4; Orchestra 3.



A. NELSON GRAY

51 RUTLER STREET, WILKES-BARRE, PA.

Hoover Township H. S.

Phi Mu Delta

Varsity Football 1, 4; Varsity Baseball 1, 3; Class Basketball 1, 2, 3; Baseball 1, 2, 3; Boxing 1.

Sattler Pre-Legal Club 1, 2, 3; Men's Student Council 2, 3, 4; Junior Prom 3; Class President 3.





JAMES GROVE
SELLESGROVE, PA.

Sellesgrove H. S. *Epsilon Sigma*
Class Football 1, 2; Baseball 1, 2, 3, 4; Track 1, 2.



HELEN HALL
TROTTS RUN, PA.

WilliamSPORT H. S. *Omega Delta Sigma*
Basketball 1, 2, 3; Baseball 1, 2, 3; Soccer, 1, 2, 3;
Hockey 1, 2, 3, 4.
Spanish Club 1, 2, 3; Women's Student Council 3, 4;
Y. W. C. A. 1, 2, 3, 4; Class Treasurer 3.



MARGARET M. HAUSMAN
SELLESGROVE, PA.

Sunbury H. S. *Kappa Delta Phi*
German Club 1, 2, 3, 4, Secretary 2, Vice President 3,
President 4; Women's Student Council 3, 4; Business Staff,
LANTHERS 3.



ELMER C. HAWK

330 PENNSYLVANIA AVENUE, SUNBURY, PA.

Sunbury H. S. *Phi Lambda Theta*
University Band 1; Choral Society 2, 3, 4.



ISABELLA T. HORN

921 SHIMA SAGAMIYA, 2 CHROME, NAKANO-KU, TOKYO, JAPAN
American H. S. in Japan *Omega Delta Sigma*

Glee Club 1, 2, 3, 4, Treasurer 3; Choral Society 1, 2, 3, 4;
Y. W. C. A. 1, 2, 3, 4; Cabinet 2, 3, 4; LANTHERS Staff 3.

EARNEST W. HUSTON
HOOVERSVILLE, PA.

Hooversville H. S.

Varsity Track 3; Class Soccer 1, 2, 3, 4;
Glee Club 2; Phi Kappa 2, 3, 4; LANTHORN Staff 3;
Y. M. C. A. 1; Pre-Theological Club, 1, 2, 3, 4, Vice-President 3.



D. EDGAR HUTCHINSON

133 E. LANCASTER AVENUE, DOWNINGTOWN, PA.

Downingtown H. S.

Phi Mu Delta

Intra-mural Board 2.

Business Administration Association 1, 2, 3, 4, Treasurer
3; Interfraternity Council 3, 4; Band 1, 2, 3, 4; Chairman
Junior Prom Committee 3; LANTHORN Staff 3.



R. LEONA KAUFMAN

135 N. WALNUT STREET, MT. CARMEL, PA.

Mount Carmel H. S.

Sigma Sigma Delta

Class Hockey 1, 2, 3, 4; Soccer 1, 2, 3; Baseball 1, 2, 3, 4;
Y. W. C. A. 1, 2; Junior Prom Committee 3.



CHARLES KELLER

MARKET STREET, SELINGROVE, PA.

Selingrove H. S. Epsilon Sigma, Stanton Military Academy

J. V. Basketball; Varsity Baseball 1, 2; Class Football 1;
Class Basketball 2, 3; Class Soccer 1, 2.



NELSON KING
MT. WOLF, PA.

Manchester H. S.

Epsilon Sigma

Assistant Manager, Football 3; Manager, Football 4;
Class Soccer 1, 2, 3.

Orange Key Club 2, 3, 4; Spanish Club 1, 2; Susquehanna
Staff 2; LANTHORN Staff 3; Junior Prom Committee 3.





FRANCES A. KLINE

2 N. MARKET STREET, SELINSGROVE, PA.

Selinsgrove H. S.

Omega Delta Sigma

Class Hockey 1, 2; Soccer 1, 2; Basketball 3.
Choral Society 1; Spanish Club 1, 2.



RICHARD F. KREAR

EMLETON, PA.

Emleton H. S.

Varsity Football 1, 3; Class Football 2; Basketball 3;
Baseball 1, 2; Soccer 2.

Honor Science 1, 2, 3; Business Administration Association 1; French Club 1, 2.



DANIEL T. MCKELVEY

572 N. VINE STREET, HAZLETON, PA.

Hazleton H. S.

Epsilon Sigma

Basketball Manager 1; Orange Key Club 3.

Sattler Pre-Legal Club 1, 2; Inter-fraternity Council 1, 2, 3, 4; French Club 3, 4; Business Staff, Susquehanna 2, 3, 4; Business Manager 1.



WILLIAM S. MORROW

LOUISVILLE, PA.

Fressler Prep School

Bond and Key

Varsity Baseball 1, 2, 3, 4, Captain, Baseball 4; Soccer 1, 2, 3; Class Basketball 1, 2; Varsity "S" Club 3, 4.

Phi Kappa 3, 4; German Club 2, 3; Business Manager, Handbook 2; Y. M. C. A. 1, 2, 3, 4; Debating 3, 4; Pre-Theological Club 1, 2, 3.



PAUL F. MOWERY

R. D. 2, SHAMOKIN, PA.

Cool Township H. S.

Special Student.

CALVIN J. NAUGLE
HOLDSOPPE, PA.

Ferndale H. S.

Phi Lambda Theta

Track Manager 4; Class Basketball 1, 2, 3; Football 1, 2; Soccer 1, 2, 3, 4; Baseball 1, 2, 3, 4; Track 1, 2, 3; Intramural Board 3.

Honor Science Club 2, 3, 4; Interfraternity Council 3, 4; Pre-Theological Club 1, 2; Y. M. C. A. 1, 2; Junior Prom Committee 3; LANTHORN Staff 3; German Club 1, 2.



RUTH E. NELSON
THOMPSON TOWN, PA.

Port Royal H. S.

Kappa Delta Phi

French Club 2, 3; LANTHORN Staff 3; Junior Prom Committee 3; Y. W. C. A. 1, 2, 3, 4; Cabinet 2, 3, 4; Women's Student Council 2, 3, 4; Class Secretary 1.



ANNA LUDLOW NICHOLS
SUNBURY, PA.

Upper Augusta Township H. S.

Kappa Delta Phi

Class Hockey 1, 2, 3, 4; Soccer 1, 2, 3, 4; Basketball 1, 2, 3; Track 1, 2, 3; Volleyball 1, 2, 3, 4; Women's Athletic Club 2, 3, 4.

Y. W. C. A. 1, 2, 3, 4; Spanish Club 1, 2; LANTHORN Staff 3; Inter-Sorority Council 3, 4; Glee Club 3, 4.



JOHN W. OBERDORF
SELENSGROVE, PA.

Selinsgrove H. S.

Bond and Key

Varsity Football 1; Varsity Track 1; Soccer 1, 2, 3, 4; Basketball 1, 2, 3, 4; Baseball 1, 2, 3; Class Track 1, 2, 3; Class Basketball 1, 2, 3, 4; Intra-mural Board 1.

University Band 1, 2; Orchestra 1; Glee Club 1; Interfraternity Council 3, 4.



EMMA ORLANDO

41 SOMERSET ST., RARITAN, N. Y.

Somerville H. S.

Sigma Sigma Delta

Y. W. C. A., 1, 2, 3, 4; May Day 1, 2; Dramatic Club 3; French Club 1, 2, 3; Lanthorn Staff 3.





ABERDEEN H. PHILLIPS

216 S. MARKET STREET, SELINGSGROVE, PA.

Selinggrove H. S.

Omega Delta Sigma

Hockey 1, 2, 3, 4; Soccer 1, 2, 3; Class Baseball 1, 2, 3; Volleyball 1, 2, 3; Class Basketball 1, 2, 3; Women's Athletic Club 1, 2, 3, 4.

Glee Club 1, 2; Choral Society 3, 4; Spanish Club 1, 2, 3; Inter-Sorority Council 3, 4; LANTTORS Staff 3; Junior Prom Committee 3.



JOSEPHINE PIFER

19 HIGH STREET, EAST BANGOR, PA.

Bangor H. S.

Glee Club 1, 2, 3, 4; Choral Society 2, 3, 4; Y. W. C. A. 1, 2, 3, 4; Junior Prom Committee 3; College Choir 1, 2, 3, 4; May Queen 4.



RUTH M. PLUMMER

21 N. MARKET STREET, SELINGSGROVE, PA.

Selinggrove H. S.

Omega Delta Sigma

Hockey 1, 2, 3, 4; Soccer 1, 2, 3, 4; Baseball 1; Women's Athletic Club 2, 3, 4.

Girls' Glee Club 1, 3, 4; Le Cercle Francais 1, 2, 3, 4; Secretary 3; Y. W. C. A. 1, 2, 3, 4.



DAISY M. REESE

ADDENRIED, PA.

West Hazleton H. S.

Omega Delta Sigma

Hockey 1, 2, 3, 4; Soccer 1, 2, 3, 4; Basketball 1, 2, 3; Volleyball 1, 2, 3; Women's Athletic Club 2, 3, 4.

Susquehanna Staff 2, 3, 4; Y. W. C. A. 1, 2, 3, 4; French Club 1, 2, 3; Inter-Sorority Council 3, 4, Vice-President 3.



LEE DONALD RISHEL

W. PINE STREET, SELINGSGROVE, PA.

Selinggrove H. S.

Bond and Key

Varsity Football 1, 2, 3, 4, Captain 4; Class Basketball 1, 2, 3; Class Baseball 1, 2, 3; Varsity Track 1; Varsity "S" Club 2, 3, 4.

RALPH RISHEL

263 WATER STREET, NORTHUMBERLAND, PA.

Northumberland H. S.

Epsilon Sigma

Northumberland H. S. Epsilon Sigma, Waynesburg College

Class Baseball 3.



HAROLD ROWE

THOMPSONTOWN, PA.

Millerstown H. S.

Phi Mu Delta

Soccer 1, 2, 3; Tennis 1, 2, 3; Volleyball 1, 2, 3.

Band 1, 2; Phi Kappa 3; French Club 1, 2; Pre-Theological Club, 2, 3, 4; Handbook Staff 2; LANTHORNS Staff 3; Y. M. C. A. 1, 2, 3, 4; President 1; Debating Team 3, 4.



ROBERT R. SALA

JOHNSTOWN, PA.

Ferndale H. S.

Phi Lambda Theta

Soccer 1, 2, 4; Baseball 1, 2, 3; Track 1; Football 2; Golf 3.

President Intra-mural Board 3; Orange Key Club 3; Phi Kappa 1, 2, 3, 4; Pre-Theological Club 1, 2, 3, 4; German Club 2; LANTHORNS Staff 3.



H. BLANCHE SAVIDGE

620 FRONT STREET, NORTHUMBERLAND, PA.

Northumberland H. S.

Track 1, 2; Baseball 1, 2; Basketball 1, 2; Hockey 1, 2; Soccer 1, 2, 3; Women's Athletic Club 2, 3; Spanish Club 1, 2, 3; Y. W. C. A. 1.



JERAULD M. SCHLEGEL

THOMPSONTOWN, PA.

Port Royal H. S.

Bowl and Key

Varsity Football 1, 2, 3, 4; Varsity Basketball 2, 3, 4, Captain 4; Varsity Track 1, 2; Varsity Tennis 1, 2, 3, Captain 3.

Varsity "S" Club 2, 3, 4; Junior Prom Committee 3; Y. M. C. A. 2, 3, 4.





RICHARD SHADE
LEWISTOWNS, PA.

Yagertown H. S. *Phi Mu Delta*
University Band 1, 2, 3, 4, President 3.
Orchestra 1, 2, 3, 4; Glee Club 2; Choral Society 2, 3, 4.



MARY ELISE SPIGGLE
SIDESVILLE, PA.

Somerset H. S., Marion Junior College *Omega Delta Sigma*
Hockey 3; Basketball 3; Volleyball 3.
French Club 3; Y. W. C. A. 3, 4.



NAOMI E. STONESIFER

300 WEST HANOVER STREET, HANOVER, PA.

Hanover H. S. *Kappa Delta Phi*
Spanish Club 3; Y. W. C. A. 3, 4.



JAMES C. SUTER
WILLIAMSBURG, PA.

Williamsburg H. S. *Phi Mu Delta*
Varsity Football 1, 2.
Orange Key Club 3; Business Staff, Susquehanna 2;
Y. M. C. A. 1, 2, 3, 4; Phi Kappa 1, 2, 3, 4, Vice-President 3;
Pre-Theological Club 1, 2, 3, 4.



LLOYD M. SWARTZ
MILLERSFOWN, PA.

Newport H. S. *Phi Lambda Theta*
Varsity Track 2; Class Soccer 1, 2, 3, 4.
Band 1, 2, 3, 4; Class Track 2.

D. MARAND SWARTZ
RICHFIELD, PA.

Newport H. S.

Phi Lambda Theta

Baseball 1, 2; Class Soccer 1, 2, 3, 4.
Honor Science 1, 2, 3.



SARA M. ULRICH

WASHINGTON STREET, DOWNINGTOWN, PA.

Greencastle-Wilson College

Omega Delta Sigma

Class Basketball 3; Hockey 3, 4; Soccer 3, 4.

French Club 3; Susquehanna Staff 3, 4; Y. W. C. A. 3, 4.



WALTER WESLOTSKY

KULPMONT, PA.

Kulpmont H. S.

Epsilon Sigma

Baseball 2, 3, 4; Golf 3, 4.

Honor Science Club 2, 3, 4; Mathematics Club 2, 3, 4;
French Club 2, 3.



MARGARET B. WILLIAMS

111 WEST AVENUE, MOUNT CARMEL, PA.

Mount Carmel

Sigma Alpha Iota

Glee Club, 1, 2, 3, 4; Choral Society 1, 2, 3, 4; LANTHORN
Staff 3; Y. W. C. A. 1, 2, 3, 4; Inter-Sorority Council 3, 4;
Women's Student Council 1, 3, 4.







JUNIORS



Junior Class History

OFFICERS

President

TIMOTHY BARNES

Historian

MARY ELTRINGHAM

ON or about the fourteenth day of September in the year of our Lord, nineteen hundred and thirty-one, a magnificent troops of lads and lassies known as the class of 1935 was ushered into Susquehanna University to become a part of her college life.

One starlight night in the early part of that first semester we made our "get-away," and then in an old barn we held a most solemn election of class officers. After this we met the Sophs in a general "free-for-all," but they wisely thought of their safety and refrained from participating in such an affray—one which would have accomplished little for them save the lowering of what little dignity they had.

Our freshman year passed, leaving us many fond memories. Summer. Then after that, September called us back to old S. U. Lo! there had been thrust upon our Alma Mater a verdant bunch of youngsters who needed a few lessons in congeniality. We had very little trouble with these frosh, for they were well aware with whom they had to contend, and they seldom overstepped their bounds. Even in the annual Soph-Frosh grid battle, we were victorious.

Again another summer. Now we stand on the rugged heights from which we, as Juniors, look back on the green fields of freshman days and the stormy territory of our Sophomore year, and then we gaze ahead for what is yet to come. As Juniors, we have well defended our laurels of these past two years. We may proudly boast of our place in the athletic realm, for our masculine half has indeed been predominant on the gridiron, track, basketball floor, and elsewhere. The girls, too, have been active in sports and won the interclass soccer championship for the past two years.

This class prominence is not only true of athletics, but members of '35 have been co-workers in all the campus organizations—music, debating, dramatics, school publications. As an example of the latter, we can point with pride to this edition of the *Luxurion*, which, with the Junior Prom, has composed our biggest projects.

Thus, in another year we will be fitted to take our honored and supreme positions as Seniors, and pursue our way in making worthwhile footsteps in the sands of Time.

SAVIOR ABBOTT

166 Oliver Street
SWOYERVILLE, PA.

Swoyerville H. S.

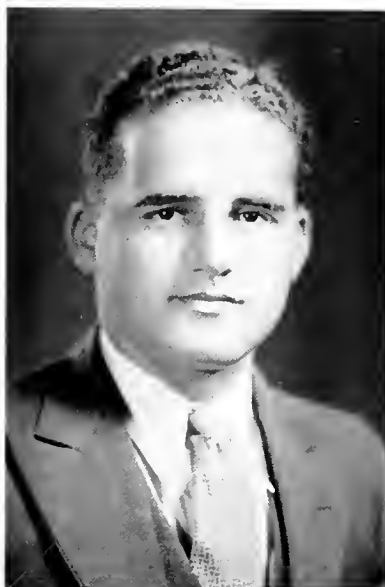
Epsilon Sigma

Varsity Football 1, 2, 3; Baseball 1, 2; Assistant Manager Baseball 3.

Orange Key Club 2, 3; Intra-mural Board 3; President 3; Y. M. C. A. 1, 2; Spanish Club 1, 2; Lanthorn Staff 3.

When better football players are needed, Swoyerville will supply them. If anybody wishes to know what football players come from that town, all we can say is, "Abbot and Brominski." This hefty lad is also a good wrestler and looks like Jim Londos in miniature.

What we can say of Abbot is that he studies very hard and burns much "midnight oil" in preparing his courses. His goal is to become baseball manager and he looks forward to that position in his remaining year. Here's luck to you, Savior and may we have more like you at Susquehanna.



KENNETH ANDERSON

TYROSE, PA.

Petersville H. S.

Epsilon Sigma

Varsity Baseball 1, 2, 3; Varsity Football 2, 3; Soccer 1, 2; Varsity "S" Club 3.

Deutsche Verein 1, 2, 3; Phi Kappa 2, 3; Men's Student Council 3; Y. M. C. A. 1, 2, 3; Lanthorn Staff 3.

Here is one of our pre-theologs who takes his calling seriously. This handsome chap does all of the work that is required of him in a serious, dignified manner very befitting to a future minister. He does not always travel in this guise, however, as he also enjoys good, clean, fun as well as the rest of us.

Andy stars on the diamond, where he can swat the horse-hide just as far as anybody on the team, and his throwing arm has been the downfall of many an opponent runner at the plate. If any of us will succeed in life, I am sure that Andy will be one of the first.



RUTH CHARLOTTE BAIR

ASHLAND, PA.

Ashland H. S.

Sigma Alpha Iota

Basketball 1, 2 (Captain 2); Soccer 2, 3; Baseball 2;
Hockey 3; Athletic Club 3.

Girls' Glee Club, 1, 2, 3 (Secretary 2, 3); Choral Society
1, 2, 3; Trinity Choir, 1, 2, 3; Diamond Jubilee 2;
May Day 1, 2; Lanthorn Staff; Motet Choir 3; Junior
Prom Committee 3; Y. W. C. A. 1, 2, 3.

"Teddy," as the campus knows her, is not one-sided in her activities. Naturally, we find her doing her duty in music because she is the only contralto voice major of our class. We pay our respects to her as Queen Elizabeth in the operetta.

When it comes to athletics one sees her doing her part in hockey, soccer and baseball. With all these activities she does not forget her social life, for she is a constant visitor at Reichley's.

In whatever phase of work you undertake, "Teddy," the Class of '35 wishes you the most success.

TIMOTHY E. BARNES

MIDDLEBURG, PA.

Middleburg H. S.

Bond and Key

Baseball, 1, 2; Soccer 1; Assistant Manager Baseball 3;
Orange Key Club 2, 3; Intra-mural Board 2; Class President 3; Spanish Club 1, 2; Lanthorn Staff 3.

Here's to Tim, whose heart is very big, even if it is a trifle weak. Before this book went to press he made the assertion that he did not want his middle name in print, so you will have to ask him about that big E.

The secret of Tim being so well liked all over the campus is his pleasing personality. In three years of college we have never seen Tim in a bad humor. He has that rare ability of making friends with all of those persons that come in contact with him.

He likes his game of golf and he claims it is a great game, although some people think he is trying to reduce. He is well known in Seibert circles and his favorite indoor sport is ping pong.



FRANK A. BENNARDI

605 Hepburn Street
WILLIAMSPORT, PA.

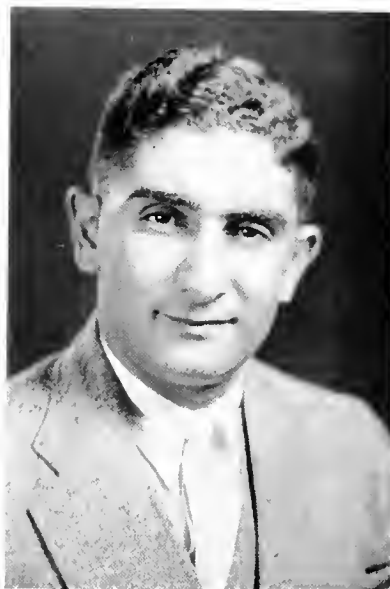
Williamsport H. S.

Phi Mu Delta

Band 1, 2, 3; Orchestra 1, 2, 3; Combined Choral 1, 2, 3.

This young man is good looking, but don't be hasty, girls! He is a married man. Frank is a welcome member at any place on the campus, because things just seem to liven up when he is around. His motto is: "Face life with a smile."

Frank is one of the main-stays of our band and Professor Allison will surely miss him when he graduates. His trumpet playing is outstanding, especially at the football games. He is one of the most outstanding members of the Conservatory of Music.



KENNETH E. BLYLER

MILLMONT, PA.

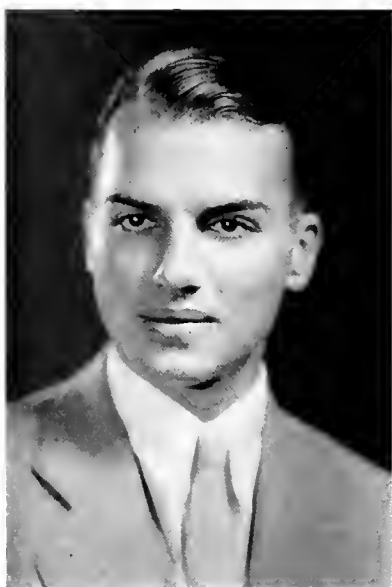
Millmont H. S.

Phi Lambda Theta

Band 1, 2, 3; Orchestra 1, 2, 3; Combined Choral 1, 2, 3.

Ken is another of our Conservatory students. He is a reserved young man and never brags of his work, but can be depended upon to do almost anything that is required of him. He sings in a rich baritone and can be heard at recitals, doing his best. His fingers are very nimble on the keyboard and he plays in a manner that comes from his soul.

He is a member of Phi Lambda Theta fraternity and adds much to the home life of the boys there. It is stated that he plays a very good game of pinochle.



LUTHER K. BOYER

212 Third Street
MT. CARMEL, PA.

Mt. Carmel H. S. *Phi Lambda Theta*

Class Baseball 1, 2, 3; Soccer 1, 2, 3; Class Basketball 1, 2.

Orange Key Club 3; Assistant Track Manager 3; Y. M. C. A. 1, 2, 3 (Treasurer 3); Spanish Club 1, 2; Lanthorn Staff 3; Mathematics Club 3.

Last year Luther was voted the biggest griper in the school. Only his friends know what a great mistake that was. To those persons that do not know him very well he may appear to be cynical at times, but that is not the true Luther. He has a more even temper than many and his so-called griping is a camouflage that covers a kind nature and a good disposition.

He is taking a teaching course and is greatly interested in Chemistry. His experiments are very famous. His favorite pastime is collecting bankies, and generally says the wrong thing at the right time when in conversation.

When you accuse Boyer of being cynical next time, just remember that you are not seeing the real Boyer.

WILLIAM B. CARUTH

36 W. Hollenbach Avenue
WILKES-BARRE, PA.

Wilkes-Barre H. S. *Bond and Key*

Class Baseball 1, 2.

Band 1, 2, 3; Orchestra 1, 2, 3; Choral Society 1, 2, 3; Chairman Junior Prom 3.

Here's to the "Clyde McCoy" of the Junior Class. He can do more with a trumpet than a magician can do with a deck of cards. The Conservatory of Music has in "Bill" a budding genius of the first rank. Besides his ability with a trumpet he can also play several other musical instruments equally as well. His sense of rhythm is almost uncanny.

Bill is also prominent in the social life of the college. He is the fashion plate of the class, and always looks his best. He divides most of his time between conservatory activities and Sunbury. Wilkes-Barre has again given to Susquehanna one of her best young men.



PHYLLIS REGINA CHIMOCK

240 South Oak Street
Mt. Carmel, Pa.

Mt. Carmel H. S.

S. S. D.

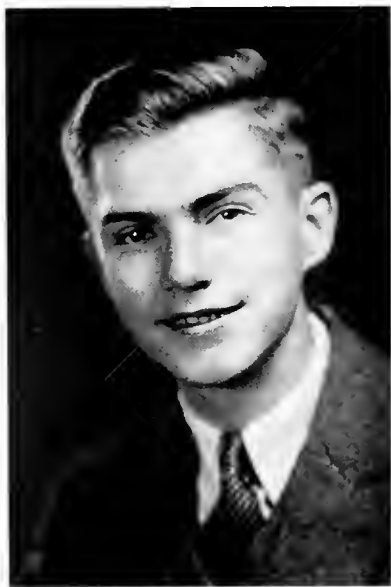
Business Administration 3.

"Phil" came to us from the coal regions of Mount Carmel, and by her well-known red hair has established her charming personality in the portals of Seibert Hall. And as for "Phil's" dancing, it is a technique difficult to be excelled, and many have tried to master her smooth, tricky steps.

One of "Phil's" most recognized hobbies is sleep, perhaps she is just making up for that which she lost over the week-ends or during the summer but, nevertheless, she is alert when out for a good time.

"Phil" thus far proved to be quite a success in the Commercial Department. If you come across any difficulties in this field, just ask "Phil"—you will not be misled. We are quite assured that whether in this line or others her future will be attended by success.

"To one with such a sunny disposition—
Happiness."



ROBERT R. CLARK

JERSEY SHORE, PA.

Jersey Shore H. S.

Phi Mu Delta

Track 1, 2; Frosh-Soph Football 1, 2; Class Baseball 1.

Editor Handbook 3; Susquehanna Staff 1, 2, 3 (Editor Elect 3); Y. M. C. A. 1, 2, 3, 4; Pre-Theological Club 1, 2, 3; Phi Kappa 1, 2, 3; Deutsche Verein 1, 2.

Robert is one of the dependable members of the Class of '35. Whether he is called upon to deliver a sermon, set up scenery, or write articles for the newspaper, Bob can be depended upon to do his best—and that's a lot!

Bob possesses a keen sense of humor and has quite a cheerful and friendly personality. As a pre-Theolog, Bob is a promising young minister.

This young man does not confine his talents only to the advancements of his studies, but also participates in athletics and social activities.

We know you will aspire to great heights in your chosen fields of endeavor. The good wishes of the class go with you, Bob.



MARY ANNA CRESSMAN

LEWISTOWN, PA.

Lewistown H. S. Omega Delta Sigma

Hockey 1, 2, 3 (Captain 3); Soccer 1, 2, 3; Volleyball 1, 2, 3; Baseball 1, 2, 3 (Captain 2); Orange and Maroon Hockey Team 1, 2, 3.

Lanthorn Staff 3; Women's Student Council 3; Secretary Y. W. C. A. Cabinet 3; Honor Science Society 2, 3 (Secretary-Treasurer 3); German Club 1, 2; Women's Athletic Club 2, 3; May Day 1, 2, 3.

Smiling, carefree, jovial, sympathetic—that is Mary Ann, but that's not all. Whenever anyone is in trouble Mary Ann is always on deck to say a cheering word and dispel a frown. "Smile and the world smiles with you; weep and——," but Mary Ann has a host of friends.

In the history of hockey at Susquehanna she is perhaps the best goalie we've ever had; she just seems to have a natural adaptation for the position. In other sports she is never far away.

Although she professes to live in Seibert Hall she actually spends most of her time in Steel Science in the laboratories, that is, except for her research work with Myrtle, Orphan Annie, and Utopia Texas, her turtles.

ELMER J. DEVEREAUX

Walnut Street
SHAMOKIN, PA.

Shamokin H. S. Epsilon Sigma

Varsity Football 1, 2, 3; Baseball 1, 2; Class Track 1, 2; Spanish Club 1, 2; Business Staff Susquehanna 1, 2, 3 (Circulation Manager 3); Business Administration Association 1, 2, 3; Lanthorn Staff 3; Junior Prom Committee 3.

"Debby" is another of our Commercial students but—so individual!

If ever anyone needs a helping hand, Debby is right there with the right remedy.

In spite of all his social activities Elmer is one of our Class who does not forget his studies. With a zealous effort he does what is expected of him and can boast of a quite enviable reputation of being of the best scholastic standing.

A keen sense of humor and a "dry wit" is Debby's prize possession. His pleasing personality and genuine unselfishness has won many real friends for this young man.

We all know you will go far in this world, Debby, and everyone of this Class of 1935 will be proud of whatever you do.



DONALD DORSETT

104 Washington Avenue
JERSEY SHORE, PA.

Jersey Shore H. S.

Bond and Key

Tennis 1, 2; Basketball 1, 2; Class Baseball 1, 2.

Pre-Theological Club 1, 2, 3; Y. M. C. A. 1, 2, 3.

Don seems to expect more from college than just an education. Since he has been a freshman here he has been given the reputation of being a one-girl man and things look pretty serious to him. He is another of our ministerial students and looks forward to a happy life in the preaching of the Gospel to help bring the world to Jesus Christ.

He is at home in his philosophy class where he would sooner recite the life and writings of Aristotle than play tennis, which he does very well. Don is very good-natured and this alone should carry him far in life.



ELMER DRUM

SUNBURY, PA. R. D. 3

Sunbury H. S.

Epsilon Sigma

Phi Kappa 1, 2, 3; Pre-Theological Club 1, 2, 3; Phi Gamma Mu 1, 2, 3; German Club 1, 2.

Studious, quiet, but with a wonderful nature, Elmer adds to Susquehanna one more of her noted Pre-theologs. We are sure that Elmer will be a success as a minister as he has all of the qualities that are required. He translates Greek with an ease that is the despair of his less fortunate classmates.

The thing that makes Elmer so pleasing to his acquaintances is his smile which is a habit that he does not digress from. Success to you, Elmer, and wherever you go, may your wealth of knowledge be appreciated. Keep that smile always on your face.



DOROTHY CATHERINE EASTEP

WILLIAMSBURG, PA.

Williamsburg H. S. Sigma Alpha Iota

Soph. Soccer Team; Soph. Baseball Team.

Diamond Jubilee Players; Choral Society 1, 2, 3; Glee Club 1, 2, 3; Trinity Choir 3; Inter-Sorority Council 3; Orchestra 1, 2, 3; Secretary Y. W. C. A. (Cabinet); May Day 1, 2.

In Dot we find the type of girl who is an asset any where and any time.

Whatever she does she believes in the proverb of "Do your best always." For a true friend "Dot" is unexcelled.

The task never matters to her, for in orchestra, Y. W. C. A., or Sorority, she can always be depended upon.

Dot never murmurs about her work, although we have heard her say how sorry she is that she can not take trumpet lessons until her senior year, for she would like to know more about that subject, it seems.

You ask what is her favorite song. "Hold Me," seems to be way in the lead, but never ask us why.

Public school music is Dot's major and by her sincerity and earnestness we prophesy only success.

RUSSEL W. EISENHOWER

NORTHUMBERLAND, PA.

Northumberland H. S. Epsilon Sigma

Varsity Football 1, 2, 3; Varsity Baseball 1, 2, 3; Varsity Basketball 2, 3.
Mathematics Club 3; Varsity "S" Club 1, 2, 3.

I suppose that you read about that husky tackle who so deftly took the football from the Haverford eleven last fall and who ran seventy yards to score the only touchdown of the game. That, my friends, was Eisey, the lad from Northumberland. As a first baseman on our baseball team, he is hard to beat and can deftly pick the ball out of the dirt. In academic work he excels in mathematics and physics, and also has a weakness for chemistry.



L. ERDENE ELLMORE

102 Cherry Street
ROARING SPRINGS, PA.

Roaring Springs H. S.

Hockey 2; Soccer 2.
Girls' Glee Club 1, 2, 3; Choral Club 1, 2, 3; Y. W. C. A.
1, 2, 3.

The young lady pictured above is the spirit of '35 personified, always thoughtful and reserved, but always agreeable and a friend to all. Erdene is a conscientious student, a sincere friend and a capable person at all times.

She takes the Conservatory course here at Susquehanna and her major is piano. She firmly believes that "all work and no play makes Erdene a dull igrl." She is a splendid dancer and can interpret rhythm in its fullest sense.

We look forward to Erdene's returning to school next year with much interest as she is one of the "best" in our class.



MARY KEMBLE ELTRINGHAM

MT. CARMEL, PA.

Mt. Carmel H. S. *Omega Delta Sigma*

Soccer 1, 2, 3; Volleyball 1, 2, 3; Baseball 1, 2, 3; Tennis 1, 2, 3; Basketball 1, 2, 3; Hockey 1, 2, 3; Track 1, 2, 3; Orange and Maroon Hockey Team 1, 2, 3.
Ladies' Choral Club 1, 2, 3; Student Council 3; Lantern Staff 3; Business Administration Society 1, 2, 3; May Day 1, 2, 3; Spanish Club 1, 2; Women's Athletic Club 2, 3; Choral Club 1, 2; Captain—Hockey; Y. W. C. A. 1, 2, 3; "The Youngest" Play Class Historian 3.

Here's to the girl who is responsible for the bicycles on our campus! May she have an unending membership in our Hall of Fame. At first no one took much interest in the idea, but as continual dripping wears away a stone, so continual tripping to the gym wore away Professor Grossman's resistance, and last May tickets were sold to pay for the first installment on the wheels.

But Mary's versatile! Basketball? She's there! Track? She's off! Dancing? She interprets. Dramatics? She's phenomenal. Strains of "Mood Indigo"? It's Mary at the piano.

May we call you temperamental Mary? It is the mark of genius. Sometimes you soar to the heights, sometimes you sink to the depths. Your feelings find expression in your poetry.





RALPH C. GEIGLE

TREVORTON, PA.

Trevorton, Dickinson Seminary — Bowd and Key

Soccer 3.

Tau Kappa Alpha 3; Mathematics Club 3.

Ralph is one of the representatives of Dickinson Seminary now on Susquehanna's campus. Funky just came to Susquehanna this year from that Williamsport school and already he is very well liked on the campus. Funky is what is known as an "A" student, judging from his first semester's work. He is very studious, but still finds enough time to join in the social life of the campus.

Although not eligible for the varsity track team this year, Funky surprised everybody by winning the inter-class javelin throw by heaving the spear 151 feet. We look forward to great things from Ralph next year.

MARY L. GRIESEMER

SELINGSGROVE, PA.

Sellinggrove H. S.

Soccer 3; Track 1, 2.

Y. W. C. A. Cabinet 3; Choral Club 3.

Here's a girl, who, in her own quiet way, will make her position in life. She's a day student, so most of us do not know her quite as well as we should like to. But those who haven't had the good fortune to become acquainted with her can rely on her pleasant smile as a key to her personality.

She is conscientious in all of her work. The Latin students, especially, must bow to her because, after seven years of this romantic language, she has acquired considerable skill.

Mary has a wide range of interests outside of her studies. Our class can well be proud of her athletic record because in the track meets she is sure to stand high and in our inter-class games she makes a formidable opponent. She represents the Day Students in the Y. W. C. A. Cabinet. Music also is one of her chief interests.

For you, Mary, we can predict success, because you have set for yourself high ideals and we are sure you can easily cross them just as you so often crossed the bar in high-jumping.





ELIZABETH HAIDACKER

DANVILLE, PA.

Danville H. S.

Sigma Alpha Iota

Oh yes, this is the driver of the wicked Essex. She has, through her driving experience between Danville and Selinsgrove, come to put a taboo on all Fords. In her eyes they are a veritable nuisance, being in the way of a good Essex at a most inopportune time.

Betty came to us after a semester's work at Bloomsburg and we are glad she made the change. All who learn to know her like her, for she is always smiling and seems to do her work easily and well.

Her choice of schools are S. U. and Temple Dental School.



JOHN R. HANNA

64 Sherman Street

BRADFORD, PA.

Bradford H. S.

Bond and Key

Varsity Baseball 1, 3; Varsity Football 1, 2, 3; Varsity Track 1, 2, 3.
Varsity "S" Club, 1, 2, 3; Spanish Club 1, 2.

"Heine" is one of our football flashes. With the pig-skin packed under his arm he can soon pick out the holes in the opponent's defense and knows how to sidestep to make a substantial gain. The coach finds in him a fullback that is hard to beat. He is one of the old in the backfield.

In his business course Johnny is very aspiring. He is very efficient, as his marks show, and he always has his work up to date. In his "spare time" he works at the Colony. He is also on the varsity baseball squad. This all goes to prove that, working one's way through college, study, and sports can be combined if one's time is spent to the best advantage.





LOUISE BREAM HARTZELL

GETTYSBURG, PA.

Gettysburg H. S.

Omega Delta Sigma

Class Hockey 3.

Susquehanna Staff (Associate Editor 3).

Although Louise came to us her Junior year, she quickly found a place in the hearts of her classmates, and a prominent place in the activities of the school. She is honored by being an associate editor of "The Susquehanna."

All her friends know Louise as a clever, capable person, full of fun and always ready for a good time.

Very fond of poetry and music is this young lady and when it comes to playing her mandolin, she has no rival, at least in Seibert Hall.

DONALD HENRY

BLAIR, PA.

Blair Vocational School

Epsilon Sigma

Baseball 1, 2, 3; Soccer 2, 3.

Orange Key Club 2; Editor-in-Chief Lanthorn 3; Intramural Board 2 (Secretary 2); Susquehanna Staff 1, 2, 3 (News Editor 3); Sophomore Tribunal 2.

In choosing Don as editor-in-Chief of our year book we felt and we know that we have chosen a classmate who is a good student, a business man and an impartial friend.

Don's chief concern has been to make every student proud to possess one of the Lanthorns of the Class of '35.

He is the type of fellow who is everybody's pal. A friend to Don is foremost and he does his best to make others happy. Upon observation it seems that Don is happiest when helping someone else.

His smile is contagious and gloom is forgotten. With a personality such as your's Don, success is apparent.

The best of everything to you!



E. MILLIE HINES

10 Landon Street
PITTSBURGH, PA.

West Pittston H. S. Kappa Delta Phi

Lantern Business Staff (Publicity Manager 2); Girls' Glee Club 1, 2, 3 (Treasurer 3); Choral Society 1, 2, 3; French Club 2, 3 (Secretary-Treasurer 2); May Day 2; Dramatics; Inter-Sorority Council (Vice-President 3); Susquehanna Staff 3; Y. W. C. A. 1, 2, 3; Student Council (Social Committee) 3.

This young lady is one of the few blondes in our class. Her charming personality has made her many friends on our campus. She always has a bright smile and a cheery "Hello" for everyone. In addition to her class work and other student activities in which she is engaged, she is the secretary to our president. Consequently, Seibert Hall sees little of her except in the evenings and at meal times. Millie is also musically gifted but she has been in the habit of keeping this "light hid under a bushel." At S. U. Millie's helping hand has served many of us at a time when we needed it most. She's one that next shirks her duty.

We hope that future years will hold much happiness for her—and in that great adventure of life we wish her all the success in the world.



FRANCES H. HUBLER

440 Clokey Avenue
MT. LEBANON, PITTSBURGH, PA.

Mount Lebanon H. S. Kappa Delta Phi

Soccer 1, 2, 3; Hockey 1, 2, 3; Baseball 1, 2, 3; Women's Athletic Club 2, 3.
Lantern Historian 3; Class Historian 1, 2, 3; Y. W. C. A. 1, 2, 3.

Here's to "Pat," our class historian. She believes in the old proverb, "Laugh and the world laughs with you; Weep, and you weep alone," because we could not picture "Pat" weeping, as her merry laugh echoes through Seibert Hall continuously.

She is also one of the Honor Roll students in our class. With an average of slightly less than an "A," she is taking from her college course all that she could possibly get. Her major is English and teaching, this in a high school is her aim in life.

Generous to the nth degree of sharing her last nickel, always working for her fellow classmates—what more need we say to adequately describe "Pat."





CHARLES G. JONES

MIDDLEBERG, PA.

Middleburg H. S.

Bond and Key

Varsity Track 1, 2, 3; Class Baseball 1, 2; Soccer 1, 2.
Varsity "S" Club 2, 3; German Club 1, 2.

Sometime, just ask Charlie what causes rust-spots in clothing. Or if you would argue with him, ask him what black is—well, you won't win your argument, maybe. This young whipper-snapper is so conceited that he pauses in the air while pole vaulting and says, "I hope you like it."

Well, there aren't any good points about Charlie which need elaboration—they're already elaborated. He dreams of an M.D. behind his name—and with that magnetic charm and scintillating personality (this is a lot of boloney—I just have to put it in), Charlie should reach his goal. Well, all kidding aside, he's one of those fellows who can take a ride and be as happy after it as he was before—that's something. There's a lot more I could tell you about him, but someday you'll read that in a newspaper.

HELEN RUTH KELLER

MOWRY, PA.

Ashland H. S. *Sigma Sigma Delta*
Women's Athletic Club 2, 3; Class Hockey 1, 2, 3; Soccer 1, 2, 3; Basketball 1; Volleyball 1, 2; Baseball 1, 2.
Inter-Sorority Council 3 (Treasurer 3); French Club 2, 3; Science Club 2, 3; Mathematics Club 3 (Secretary 3); May Day 1, 2; Y. W. C. A. 1, 2, 3 (Cabinet 3); Women's Student Council 2; Statistician, Lanthorn 3.

Let us introduce Helen as one of the most representative members of the Junior class. During her three years in college Helen has been outstanding for her scholastic achievements, but judging from the list of activities we find that she has not neglected extra-curricular. The Junior class teams would not be complete if Helen were not a member of them.

Very few people are gifted with as many talents as this young co-ed possesses. We feel sure that Helen has made no mistake in choosing mathematics as her major in college and teaching as her profession in life.

If you want something done and want it done quickly and efficiently, just ask Helen and you need worry no longer about it.

Her sunny disposition and pleasing personality have won for her many friends.

Do not think that Helen spends all her time working, for social activities claim much of her time.

Best of luck to an excellent student and friend.



FRANCES L. MARKS

SELINGROVE, PA.

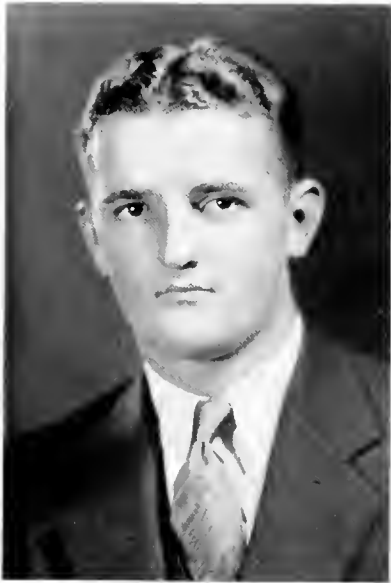
Sellingrove H. S. Omega Delta Sigma

Hockey 1, 2, 3 (Captain 2); Volleyball 1, 2, 3; Soccer 1, 2, 3; Basketball 1, 2; Baseball 1, 2, 3; Track (Captain 1);
May Day 1, 2, 3; Women's Athletic Club 2, 3; Spanish Club 1, 2.

The star athlete of the Class of '35! Beyond a doubt, Marks is our most outstanding girl in athletics. In hockey she has the speed, endurance, and precision needed to hold down her forward line position. And in soccer she goes straight through the line of defense. She is the mainstay of the basketball team, and in baseball she swings a "wicked" bat. Marks is in her element in track season and each year brings laurels to herself and the class, and don't think we're not proud of you, Frances.

No matter when or where we see her she's joking and teasing. Her ready wit and brilliant humor make her the object as well as the subject of the taunt. Seeing is believing, but we honestly believe she prefers associations with girls more than with boys.

Whatever your line of endeavor, "Frannie," you have our sincere support.



STEPHEN J. MARTINEC

4 W. Water Street

COALDALE, PA.

Coaldale H. S.

Bond and Key

Varsity Football 1, 2, 3; Varsity Basketball 1, 3; Soccer 1, 2; Varsity Track 1, 2, 3; Varsity Baseball 1, 2, 3;
French Club 1, 2.

"Stevie" is the star punter of our football team. In our undefeated season, last school year, he had a punting record that equaled some of the best punters in the East. "Steve" is another of our colony boys and has proven to us again just how to go to school and work at the same time.

"Steve" is also a very dependable lad. When he promises to do a thing, it is just as good as done, and so to you, "Steve," may you have all sorts of success in life and may you go far with that smile of yours.



ANNA LOUISE MEHRING

LITTLESTOWN, PA.

Littlestown H. S. Omega Delta Sigma
Hockey 1, 2, 3; Soccer 1, 2, 3; Volleyball 1, 2 (Captain 2); Basketball 1, 2; Baseball 1, 2, 3 (Captain 1).
Business Administration 1, 2, 3; Choral Club 1, 2; Glee Club 1, 2, 3; Women's Athletic Club 2; Lantern Art Editor 3; Y. W. C. A. 1, 2, 3; "Perfect Alibi" 2; May Day 1, 2, 3; Student Government 3; Susquehanna 1, 2.

Coming to Susquehanna to Louise was like picking up the last thread of a story, for it was the renewal for three years of a friendship which had begun thirteen years before when Ruth lived in Littlestown.

Louise is an outstanding student, but we should not place too much emphasis on this phase of her life, for in this versatile personality we find one who is equally at home in the classroom, in the drawing room, or on the baseball diamond.

The Business Administration boasts only one of the fair sex in its Junior enrollment and we can well picture her as a charming and successful executive in the commercial world, or a partner in a task of equal importance, that of managing a household. In spite of her business interests, Louise carries out her philosophy which will, no doubt, extend over more than a four year period: "Social life is half of one's education."

A. CARL MESSINGER

561 N. Loenst Street
HAZLETON, PA.

Hazleton H. S. George Washington University
Editorial Staff Susquehanna 2.

When Carl came to Susquehanna from George Washington, he added to our campus wit, humor and a certain debonaïr air that cannot fully be described. He has great journalistic ability, and his writings are interesting, refreshing, and stimulating.

Much of his time is spent in going to Seibert Hall where he has found peace from the exhaustion and worry of the work-a-day world. His dramatic ability is not to be forgotten.

In history and philosophy he is an authority and his depth of thought is recognized by all of his instructors. And as we bring his writings to a close we may say, "Hail, Wenchell."



SARA HILDA MICKEY

HARRISBURG, PA.

John Harris H. S.

Non-Sorority

Baseball 2; Hockey 3; Soccer 3;
Pi Gamma Mu; Y. W. C. A. 1, 2, 3; French Club 3;
Chemistry Club 1, 2, 3.

Our class roll would not be complete without this nurse from Harrisburg. She is a graduate from St. Mary's Hospital for Children in New York City and is taking work on our campus which will enable her to become an instructress of nurses.

"Mickey," as she is called by all of us, takes her work very seriously. She is studious, yet not a book-worm. Because of her many science courses she has become a well-known figure in the Chemistry Laboratory.

Her work here is helping to broaden her scope of interest and she enjoys it very much, but in spite of this she is anxious to return to her chosen field.

We of the class of '35 wish for you, "Mickey," the height of success in your future work.



HELEN LOUISE MONAHAN

HAZLETON, PA.

Hazleton Senior H. S.

Hockey, Basketball, Soccer, Volleyball, Tennis, Golf,
Hiking,
Y. W. C. A. (Class Secretary); French Club; Junior

Prom Committee; May Day.

*Her smile, just like the sun's bright rays
Brings happiness to all our days.*

Here's to a Hazletonian, clever, witty, and good looking. "When Irish eyes are smiling, the world is bright and gay." We are sure that the poet must have been inspired by those dancing blue eyes of Helen. However, the saying "Beautiful, but dumb," doesn't apply to her. In the classroom, she shows that beauty and brains mix attractively. But this is not the end of her charm. She has that gracious manner that makes one feel at ease in her presence. We are sure her pleasing personality will continue to bring her a host of friends.



HOLLIS A. MUIR

124 Pennsylvania Avenue
WARREN, PA.

Warren H. S.

Bond and Key

Varsity Track 1, 2, 3; Baseball 1, 2; Soccer 1, 2, 3.

"Holly" is one of the mainstays of Prof. Grossman's track team. He is one of the best hurdlers that Susquehanna has produced for several years. Some time ago "Holly" went into the field of matrimony and by the look on his face, he is well satisfied with that state. However, he is a very good student as his reports show and will some day make the world a better place in which to live.

SARAH ALMA MYERS

NEW OXFORD, PA.

New Oxford H. S.

Sigma Alpha Iota

Choral Society 1, 2, 3; Glee Club 1, 2, 3; Motet Choir, 3;
Trinity Choir, 1, 2, 3; Lanthorn Staff; May Day 1, 2;
Diamond Jubilee 2; University Quartette 2; Student
Government 3.

Alma is the Florence Nightingale of our class. Her splendid voice has won her many leading roles in operettas and other musical events both on and off the campus. She did very splendidly in the leading role of the "Two Queens" presented by the Conservatory of Music this spring.

She likes Susquehanna very much except for the occasional touch of home-sickness that she has, just after her return from vacations. Despite that, she is generally very jolly and her laugh can be heard all over the campus. Her sense of humor is indescribable.



HAZEL E. NAUGLE

WILLIAMSBURG, PA.

Williamsburg H. S. Non-Sorority

Hockey 1, 2, 3; Soccer 1, 2, 3, (Captain 1); Baseball 1, 2;
Orange-Maroon Hockey Team.
Y. W. C. A. Cabinet 1, 2, 3 (Vice-President 3); Glee
Club 1, 2; Choral Society 1, 3; Science Club 2.

Here's to Hazel; a loyal, quiet and dignified young lady who comes to us from Williamsburg. She is one of the most outstanding members of the class. We find in Hazel an excellent Latin student. The honor roll that is posted semi-annually is never complete without the name of Hazel Naugle.

Always active and busy, Hazel is one of our good workers, not only in her studies but in many of our organizations.

Hazel has her whole life-work planned. She intends to be a missionary in Africa. The class of '35 is proud to boast of a future missionary in their midst. Her kind and understanding heart enables her to help people less fortunate than herself. We hope that Hazel shall realize her ambition.

Having enviable qualities of happiness, a cheerful, generous disposition as well as stick-to-it-iveness, we predict the name of success for you, Hazel, always.

*"Then give to the world the best you have,
And the best will come back to you."*



RUTH NEWELL

918 Wallace Street

VANDERGRIFT, PA.

Vandergrift H. S.

S. S. D.

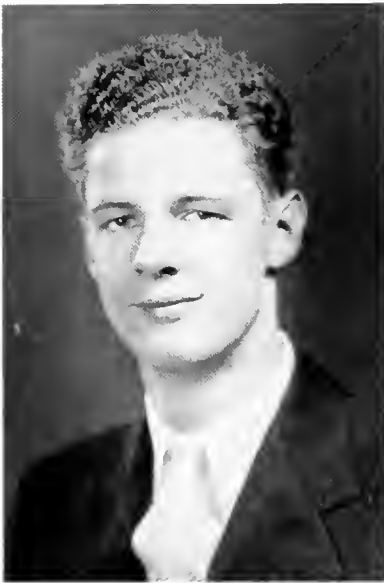
Choral Club 1, 2; Y. W. C. A. 1, 2; Glee Club 1, 2;
Orchestra 2; May Day 1, 2.

As a Freshman "Rudy" came to S. U. from Vandergrift rather quiet and reserved, but a few years here have changed that.

"Rudy" is one of our conservatory students and spends much of her time there but you may be assured that she never lets her work interfere with her good times and insomnia is never present on account of worry.

As a teacher of music in the Public Schools, we can imagine, Ruth leading high school orchestras, glee clubs and the other musical organizations as well as teaching the children their do re mi's.

Never a worry, never a care, just let it all go and it will all end well, this is "Rudy's" conception of life. To one who is a good pal and friend, the Class of '35 extends its best wishes.



LEONARD L. NEWFIELD

R. D. 1 NORTHUMBERLAND, PA.

Northumberland H. S.

Soccer 1, 2, 3; Class Baseball 1, 2, 3; Spanish Club 1, 2,
Band 1, 2, 3; Orchestra 1, 2, 3.

Leonard is one of our representatives from Northumberland. His main study while in college is Chemistry at which he works constantly. His favorite sport is golf and he "swings a mean driver." He is a good pianist and works in his spare time with an orchestra from Sunbury. He is also a member of the University Band.

THEODORE J. OSBORNE

241 Chestnut Street
SUNBURY, PA.

Sunbury H. S.

Phi Lambda Theta

Class Track 1, 2; Class Baseball,
German Club 1, 2.

"Still water runs deep," is personified in "Ted" who takes his business course seriously and who can do bookkeeping better than he can do most anything else. College has done great things for "Ted." When he first came here he was very shy and did not put his personality to the fore, but he soon became acquainted with the things that go with the making of a college man, and now he can hold his own with anyone on almost any subject. "The cocoon has had a complete metamorphosis into the butterfly" would be a good simile.



RUDOLPH OVERBO

SELINGROVE, PA.

Selingrove H. S.

Phi Mu Delta

Class Baseball 1, 2, 3; Soccer 1, 2.

Honor Science 1, 2, 3.

If there is anything that you would ask concerning the Physics course, it would be of value to you to see "Rudy" for he is one of our few well-versed students in school along that subject.

"Rudy" is one of those boys who does not express himself on a subject unless he is sure of himself as do some other people, and therefore he may be considered as quiet by those persons who do not understand him. But to those who are his friends, "Rudy" could scarcely be replaced.



MARY LISBETH PATTERSON

SELINGROVE, PA.

Selingrove H. S., Cristobal, C. Z.

Omega Delta Sigma

Hockey 1, 2, 3; Soccer 1, 2, 3 (Captain 2); Volleyball 1, 2; Track 1, 2, 3; Baseball 1, 2, 3.

Spanish Club 1, 2 (Secretary 2); Women's Athletic Club 2, 3 (Vice-President 3); Y. W. C. A. 1; May Day 1, 2, 3; Business Administration 1, 2, 3; Women's Student Council 3; Junior Prom Committee 3; Lantern Advertising Staff.

She may be small, but—Oh! Does anyone know the definition of "it"? Well, here "it" is in person as we can readily see in Mary's host of friends on all sides.

Mary is one of our brilliant classmates, an honor roll would be incomplete without her name well near the top, and it is surely deserved.

Just as determined is Mary on the Hockey field where she's ready for a fight in defending the honor of the Juniors. She's one of our "star" players on the champion soccer team, and can she kick a soccer ball!

Mary has quite an enviable reputation for being a good dancer and can all bear evidence of that fact.

Mary is truly an "All-American" girl. A good student, an all-around athlete, socially popular, and a real friend.





WILLIAM L. REGER

Warren Horse, N. J.

Somerville H. S.

Phi Mu Delta

Varsity Football 2, 3; Class Baseball 1, 2.

Business Administration Association 1, 2, 3; Advertising Manager of *Susquehanna* 3.

It seems that the town of Somerville, N. J., has a soft spot in its heart for *Susquehanna*, because we have had many fine students from that town. "Bill" is one person that Somerville should be proud of, because we consider "Bill" as one of the best.

This year "Bill" was one of the coaches' mainstays on the football line. "Bill" is a commercial student and has a good start on the road to success by his magnetic personality.

"Bill," as president of his fraternity and as the new Business Manager of "*The Susquehanna*," has shown his ability as a leader.

MORGAN SCHREINER

205 State Street
NANTICOKE, PA.

Nanticoke H. S.

Phi Mu Delta

Soccer 1, 2, 3; Class Baseball 1, 2; Assistant Manager Basketball 3.

Orange Key Club 2, 3; Business Administration Association 1, 2, 3; Lantern Staff 3; Junior Prom Committee 3.

An attractive appearance, a contagious smile, and a cheerful word for everyone have made Morgan one of the most popular young men on the campus. He has a wonderful personality which accounts for his popularity at Seibert Hall, where he has a "Steady," in one of the May Court young ladies.

Morgan is also a business student and his favorite outside study is Ellies which he claims should be taught in every school. His pastime is spent in playing tennis which he does very skillfully.



ELIZABETH EILEEN SHIPE

SUNBURY, PA.

Sunbury H. S.

Sigma Alpha Iota

Class Hockey 2; Class Soccer 2; Indoor Track 2.
Choral Society 1, 2, 3; Girls Glee Club 1, 2, 3; U. Quartette 2; May Day; Jubilee Players; President Girls' Club 3.

What would a lot of us do without "Betty" here on the campus during the day to aid people to make schedule work without being late for trains. Then too a number of fair Sunbury lasses depend on her known chariot as a means of conveyance to and from school.

"Betty" is talented in both music and athletics. Music claims her paramount attention and we all enjoy hearing her sing and appreciate her keen sense of appreciation in Junior Violin Class for "Betty" is well versed on the playing of violins.

Her pleasant ways and kindness see for her a happy future.

Luck to you, "Betty."



ERLE I. SHOBERT

702 Maple Avenue
Dubois, Pa.

Dubois H. S.

Bond and Key

Class Baseball 1, 2; Class Track 1, 2.

Y. M. C. A. 1, 2, 3; Honor Science 1, 2, 3; Mathematics Club 2, 3; Class President 2; Choral Society 1, 2; Orchestra 3; French Club 1; German Club 3.

Earl is the only student at Susquehanna who is on the honor system. And how well he deserves that distinction. He is the future valedictorian of the class and has a genius mentality rating. When the instructor of the classes find some knotty problem that cannot be solved by the rest of the class they will call upon Erle to give the solution, and in three years he has never disappointed them. In addition to his required work, Earl does a great deal of collateral reading in every subject that he takes.

He is an invaluable asset in Hassinger Hall because he is always willing to help those who deserve to be helped. If your A's are as numerous in life as they are in college, Earl, you will find that through hard work life will be a bed of roses.





ROBERT L. SMITH

BEAVER SPRINGS, PA.

Beaver Springs H. S. Phi Lambda Theta

Class Soccer 1, 2, 3; Class Baseball 1, 2.
German Club 1, 2, 3.

When the discussion turns to German, "Bob" can give you all of the dope on all of the writers of that country from the eighteenth century to the present day. He seems to think that a business course and German are courses that should be taken together, and judging from the way he does both, we may say that he is not far wrong.

In closing this writing about "Bob," we may say that he has adopted the motto of the German club, which is, "Der Mensch kann was er will."

ALFARATA AYRES STAMETS

2211 N. 5th Street
HARRISBURG, PA.

William Penn H. S. Kappa Delta Phi

Assistant Editor of *Lantern* 3; Y. W. C. A. 1, 2, 3;
Y. W. C. A. Cabinet 2; French Club 1, 2, 3; May
Day 1, 2.

Here's a member of the Class of '35 who is always ready for a good time, provided her studies have not been neglected. "Alfey" is popular on the campus for her intellectual ability as well as her less serious moods. "Alfey's" sunny disposition has won for her many friends. Those of us who know "Alfey" well, have found her a true friend and comrade at all times. She is always ready to do her part and seems to derive a great deal of fun and satisfaction in helping others. If you are feeling blue or your spirits are at low ebb, all you have to do is go to "Alfey" and you soon forget all your cares and troubles.

One of "Alfey's" chief hobbies is collecting species of the canine family. Her favorite pastime is playing pranks.

Success is certain with such a combination of personality and intellect.



KATHARINE ELIZABETH STETLER

417 Orange Street
MIFFLINTOWN, PA.

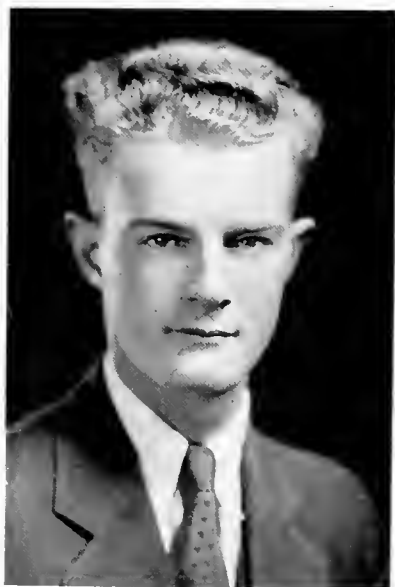
Mifflintown H. S.

Kappa Delta Phi

Assistant Editor *Lantern* 3; *Y. W. C. A.* 1, 2, 3;
Deutsche Verein 2, 3; *Honor Science Club* 3; *May Day* 1, 2.

Here's the girl that holds the honor of having the keenest sense of humor in Seibert Hall. Her dancing black eyes and her jolly laugh plus her happy personality have made her many friends. Although only five feet two inches tall, she always does more than her share of work, when there's work to be done. If anyone wants a thing done right, they call on "Kate"—she always see it through. Her closest friends have found in her a comrade and a pal without equal. "Kate" has an instinctive love for all things that have to do with housekeeping, and we certainly envy that lucky "someone" whom we have heard so much about.

And now the Class of '35 wishes good luck and success to our jolly pal—for the rest of her college days and the many years to follow.



J. WESLEY STIRLING

47 N. Locust Street
HAZLETON, PA.

Hazleton H. S.

Phi Lambda Theta

Class Track 2, 3; Soccer 1.
Band 1, 2, 3; Orchestra 1, 2, 3; Choral Society 1, 2, 3.

"Wes" is another of our conservatory students. He is the Lawrence Tibbet of our class. His rich full baritone can be heard at all recitals and when Prof. Sheldon needs a male soloist he finds in Wesley everything that he could desire. He is also a prominent member of the band.

Recently he has gone into the photographic business and is the successor of Henry Cassler in this field, so you can see that his ability is not limited to music alone.

His favorite summer activity is going into army training at one of the C. M. T. C. training camps. He can handle a rifle very efficiently and hopes to become a general some day in his spare time.



JOHN D. STOUFFER

PORT ROYAL, PA.

Port Royal H. S.

Phi Mu Delta

Track 1, 2, 3; Baseball 1, 2; Soccer 1, 2, 3; Co-Manager Elect, Football 3; Orange Key Club 2, 3; Intra-mural Board 3; Vice-President 3; German Club 1, 2, 3.

Whenever there is a "bull session" we may expect to see John there, if he can spare the time from his studies, and he always emphasizes everything he says. He is a track man and we can always tell when spring is just around the corner by the sight of John jogging around the cinder way.

John has added much polish since his entrance into college and can hold his own with the best of the men on the campus. His favorite course is chemistry and he may be seen doing equations at almost any time. In passing, may we say that John's one weakness is pepper.

WILLIAM E. SULLIVAN

YORNSWOOD, PA.

Yornewood H. S.

Phi Lambda Theta

Varsity Football 1, 2, 3; Track 1, 2, 3; Soccer 1, 2, 3.

"Bill" is a hard working Business student. He has contributed greatly to Susquehanna's football teams during the past three years as a running guard and is expected to bolster the line for next year's eleven.

"Bill" never talks too much, but prefers to think things over in his own quiet, easy-going manner before making any comments or decisions. Consequently, he is very well liked by everyone, and especially so by those who are fortunate to be among his intimate friends.

We look for this quality to carry "Bill" through a world in which success is dependent upon accurate mental faculties.



M. MARGARET TAYLOR

517 Market Street
BROWNSVILLE, PA.

South Brownsville H. S.

S. S. D.

Bluffton College

Honor Science Club 3.

Many are the tales that come to us from Bluffton through the medium of "Peg." We are glad she decided to come to S. U. this year and hope she will remain with us next year also. Just a newcomer to the campus this year she has not found it difficult to make friends on the campus.

"Peg" is majoring in Biology and other sciences with teaching her chosen profession. Listening to her discourse we can readily and truly predict that she has not chosen amiss. She can readily recall the scientific names of plants and animals, which in itself is a great accomplishment.

She possesses the quality desired by many, yet possessed by few—that of giving her opinion without offending the people concerned. Have you ever been in one of the delicious spreads, "Peg" frequently gives for her many friends?

To one—who is a good sport in everything—success and happiness.



RICHARD TICE

SELINGROVE, PA.

Selinsgrove H. S.

Bond and Key

Varsity Football 1, 2, 3 (Captain Elect 3); Track 1, 2, 3;
Soccer 1, 2, 3; Class Baseball 1, 2.

In spite of his quiet and retiring nature, "Dick" is one of the most popular men on the campus. His uncanny skill and headwork on the gridiron have earned him a Varsity berth for three years, and he has been chosen to captain next year's eleven.

Although "Dick" is another colony man, his studies have not been affected by the long hours of work put in at that institution. His determination to finish what he starts out to do will be a striking factor in the years to come.

A good big man is always better than a good little man is a saying that goes very well with "Dick."



VINCENT L. WALSH

105 Cherry Street

DUNMORE, PA.

Dunmore H. S.

Phi Mu Delta

Varsity Football 1, 2, 3; Baseball 1, 2; Soccer 1, 2, 3.
German Club 1, 2.

If you ever hear the expression, "Benny sent me," you can feel assured that you are somewhere in the vicinity of "Dink" Walsh. His aspirations for the shortest man in the class has given him that name of "Dink."

He is always the life of the party when he is around, because his wit and humor always bring the required laugh that go to make up a happy party.

He should always have many friends wherever he goes because his smile and humor are irresistible.

ARTHUR C. WEBBER

1115 E. Gibson Street

SCRANTON, PA.

Scranton H. S., Lehigh University - Bond and Key
Varsity Track 2, 3; Baseball 2; Soccer 2, 3.
German Club 2.

An attractive appearance, a contagious smile, and a cheerful word for everyone have collected a host of friends for this young man. After spending two years at Lehigh University, "Art" decided that Susquehanna had a stronger appeal which happily serves to keep him with us.

This energetic young man has a genuine enthusiasm in the study of Medicine. If anyone finds a problem confusing in any of the science courses, "Art" can be depended upon to give the right answer.

He possesses a keen and original mind which is quite refreshing in contrast with the usual college man. He is also one of those rare individuals who keeps so quiet about his accomplishments that we never realize what he can do until it is all over, especially in track.

Such all-around ability and all-around personality should enable "Art" to have his name placed along with the great men of Medicine.



WILLIAM SHELLEY WHITELEY

SELINGROVE, PA.

Selingrove H. S.

Epsilon Sigma

Class Baseball 1, 2, 3; Class Soccer 1, 2, 3; Class Football 2; Class Baseball 1; Inter-fraternity Basketball 2, 3; Business Staff Susquehanna 2; Business Manager Lanthorn 3; Assistant Manager Varsity Football 3; Co-Manager Elect Football 4; Business Administration 1, 2, 3; Spanish Club 1, 2.

Here is the class "Juggler—in figures."

He is business manager of this year-book and says that he will have grey hair before this book is published. It is a good thing that he had this picture taken before this book came out or you might see the lines on his face from overwork on this book. "Bill" wishes to say that his job is no picnic.

However, he is very efficient and can do more in juggling an account than a Japanese can do with a barrel. If this book is in any way worthy of the Class of '35 it is due to the untiring efforts of "Bill."

He is very attractive and spends a great deal of time in Sunbury. His favorite pastime is multiplying figures mentally just for practice.



ELVA GERTRUDE WINKELBLECK

AARONSBURG, PA.

East Penn Valley H. S.

Sigma Alpha Iota

Hockey 2, 3; Soccer 2, 3; Basketball 2; Indoor Track (Captain) 2; Girls' Athletic Club 3; Baseball 2; Choral Club 1, 2, 3; Glee Club 1, 2, 3; Inter-Sorority; Trinity Choir 3; Diamond Jubilee 2; May Day 1, 2; Class Secretary 2.

In 1931 we welcomed to the Conservatory of S. U. a "wee but mighty" maiden from Center County. Not many of us learned to know her during her first year on the campus but during the past two years we've discovered what a "peach of a sport" she is.

Since the "con" claims her as one of its family we often find her working hard in counterpoint and form but she finds time to take a large interest in college subjects, too.

This year we do not see "Winky" nearly as much as we would like to. Quite often she is seen with a tall, dark and handsome youth who claims much of her leisure time.

"Winky" though a music lover is also quite fond of sports. She has had positions on many of the class etams and has filled each position very well, not only in playing the game but also by instilling a feeling of spirit and sportsmanship in the other player.

To you, "Winky," we wish the best of luck in everything you undertake and may you be a success in your chosen field.







SOPHOMORES



Sophomore Class History

OFFICERS

President
Vice-President
Secretary
Treasurer
Historian

GEORGE PHILLIPS
JACK ROACH
ALICE SMITH
JAMES FINN
LOIS LONG

ANOTHER year has passed. To many it is simply another year, but to the sixty-three members of the class of '36 this has been a most eventful year. When we came back last September we looked at the incoming Frosh and wondered if we were ever so green. It brought back the many happy times we had as Frosh—and the trouble we caused by revolting against traditions!

This year's Frosh "got-away," but when they came back we were ready for them with scissors, automobiles, sticks, and various other implements of war.

The first big event this year was Homecoming Day, which held a different meaning for us. We now felt the joy of seeing again some of our old friends who had graduated the previous year. The annual Soph-Frosh football tilt, usually played on this day, was postponed until a later date, when the Sophs humbly went down in defeat—offering no excuses. We took our beating cheerfully and allowed the Frosh their well-earned freedom from regulations.

We were proud to be among the student body which helped to celebrate the seventy-fifth anniversary of Susquehanna on Founders' Day. Next came the eventful night, January the third, when our gym burned. The Sophomores played an active part, along with the other students, in trying to save the building, but their efforts proved futile.

Finally as our last bit of strategem, our class revised the Constitution of the LAXTUORN. After this year the underclassmen will aid in compiling statistics for the Annual.

Only half our college life remains, during which time we shall continue to train ourselves for greater responsibilities. Susquehanna is giving us a true view of life—we are happy to belong to her.

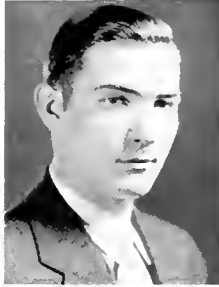
Fred C. Billman
Herndon, Pa.



Grace E. Drew
211 Willington Road
Jenkintown, Pa.



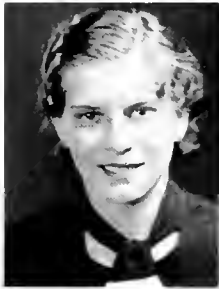
Max S. Blair
Blairs Mills, Pa.



Phyllis E. Engle
1057 E. Market St.
Sunbury, Pa.



Anna Elizabeth Bock
53 North Vine St.
Hazleton, Pa.



David R. Evans
22 N. Bridge St.
Sommerville, N. J.



Marcella Chaya
843 Main Street
Slatington, Pa.



Allen J. Eyer
48 S. Market St.
Shamokin, Pa.



Ruth Cherrington
Catawissa, Pa.



Clarence W. Farley
107 Gearhart St.
Danville, Pa.



Charles F. Fosold
110 N. Market St.
Selinsgrove, Pa.



Lester Greider
Dauphin, Pa.



Vernon H. Ferster
McAllisterville, Pa.



James A. Grossman
Newville, Pa.



James B. Finn
Port Treverton, Pa.



Jerome V. Guss
Paintersville, Pa.



Dorothy E. Goskins
119 Avenue E
Riverside, Pa.



Bernice Harding
Center Street
Port Morris, N. J.



Mary K. Gelnett
Middleburg, Pa.



Walter M. Hertz
514 N. Front St.
Milton, Pa.





Albert Hess

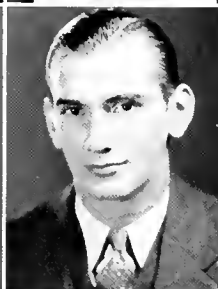
163 Hawthorne Ave.
Yonkers, N. Y.



Lois Lang

Port Royal, Pa.

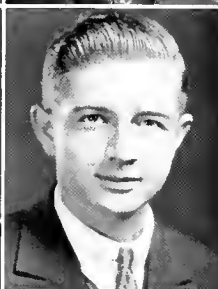
Horace M. Hutchinsan
133 E. Lancaster Ave.
Downingtown, Pa.



John Maguire

Locust Dale, Pa.

Mary Jane Kehler
263 Highland
Downingtown, Pa.



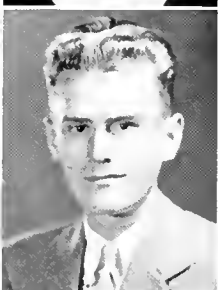
Milton Martin
610 Dallas St.
York, Pa.

Grace Krapf
100 N. Broad St.
W. Hazleton, Pa.



Anna Mease
117 N. Orange St.
Selinsgrove, Pa.

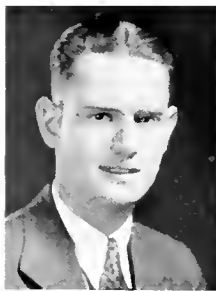
Roy Leitzel
Klingerstown, Pa.



Francis E. Miller
Royersford, Pa.



Charles S. Mitchell
DuBois, Pa.



George E. Phillips
Huntington St.
Huntington Mills, Pa.



Eugene D. Mitchell
Beaver Springs, Pa.



Charles Price
22 S. Main St.
Yeagerstown, Pa.



Margaret Meyers
34 Liberty St.
West Minster, Md.



Natalie Prichard
11 Polar Street
Kingston, Pa.



John Naegeli
Main Street
Old Forge, Pa.



Robert Prichard
11 Polar Street
Kingston, Pa.



Eleanor Olshefsky
511 W. Third St.
Mount Carmel, Pa.



Ronald Prichard
11 Polar Street
Kingston, Pa.



Peter Riccardo
309 Mill Street
Dimmore, Pa.



Dora E. Stitzer
Mowry, Pa.



Rose H. Runk
E. Lancaster Ave.
Downingtown, Pa.



Darothy Turner
681 Wyoming Ave.
Kingston, Pa.



Gwendolyn C. Schlegel
Thompsontown, Pa.



William Elmer VanHorn
339 Duke Street
Northumberland, Pa.



Ralph I. Shackey
Meyersdale, Pa.



Charles Walter
Selinsgrove, Pa.



Harlan Showers
Penns Creek, Pa.



Katharine Webber
902 N. Seventh St.
Camden, N. J.



Ruth Williamson
Davidsville, Pa.



Jacob Donald Yaros
35 Witherspoon Ave.
Middletown, Pa.



Our Next Year's Lanthorn

Editor

VERNON FERSTER

Business Manager

ALBERT HESS

TO you two men on whose shoulders lies the responsibility of publishing the Annual for next years: "May you have easy paths to travel and may your annual be a success in all ways.

"To you will come the knowledge of the many trials and obligations that are coupled with the publishing of this annual."





FRESHMEN



Freshman Class History

OFFICERS

President

RAYMOND SULAHEEN

Vice-President

PAUL LUCAS

Treasurer

MOLLIE FOX

Secretary

MARY-BETH RICHARDS

Historian

WILHELMINA MOODY

ON September 17, 1933, 61 young people gathered on this campus. After several days of getting acquainted, we discovered that our little group was the prospective graduating class of 1937.


The week following our entrance to this institution was devoted to lectures, entrance examinations, teas, get-together parties, and at last the final step that made us full-fledged Freshmen—Registration Day.

In order to make ourselves known to the faculty and upperclassmen, we were obliged to wear identification tags and arm bands or dinks. This Freshman custom continued until our Thanksgiving vacation. We outwitted the Sophomores by staging a successful "Get Away" on September 27. The football team of '37 gallantly won for us the annual Frosh-Soph game, thus enabling us to enjoy a week-end of Soph privileges.

On leaving these grounds until next September, we thoughtfully look upon the year that has passed. Although during its course we have lost several of our classmates, other staunch members have made headway on this campus. Our class was represented in athletic events as well as in scholastic activities.

Our school has grown very dear to us, and we are happy to have found a corner in her heart. Throughout the past several months we have striven toward one goal, that of becoming loyal students. We are proud to have contributed to any activity on this campus. Above all we are proud to claim Susquehanna as our Alma Mater.





Freshman Roll

ANTHONY ALEX
STANLEY AUGHIENBAUGH
WILLIAM AUMILLER
MARY BARNES
CHARLES BARNERT
JOHN BARNI
ROBERT BASTRESS
OREN BENNER
HARVEY BRUMBACH
BARBARA BURNS
SAMUEL CAMP
DANIEL COTTON
ROBERT CHERVANIK
MARGARET CORSON
KATHRYN DEISHER
MOLLIE FOX
ANDREW FREDERICKS
FRANCIS GELNETT
FREDERICH GOYNE
HELEN GUNDRUM
ROBERT HARTT
ROBERTA HELD
BEULAH HERROLD
ERNEST HESS
JEAN HOFFORD
DOROTHY HOFFMAN
LEWIS HOWELLS
EVELYN JANSON
ELEANOR JONES
LESTER KARSCHNER
WOODROW KLINGER

EVELYN LEESER
CHESTER LONG
PAUL LUCAS
ARLENE MARSHALL
STEWART MENGEL
WILHELMINA MOODY
ROBERT MOSHER
HERBERT NEFF
WILLIAM O'NEIL
FRANK PALMISANO
WALTER POYCK
MARY BETH RICHARD
GEORGE RODGERS
CHARLES SALKELD
DOROTHY SAVIDGE
CLARENCE SCHAEFFER
MARY SCOTT
HENRY SHAEFFER
RAYMOND SHAHEEN
DAVID SHELLENBERGER
JAMES SHOLLY
CLYDE SPITZNER
ROBERT STUCK
HARRY SWOPE
MARY K. TAYLOR
FRID TINURELLI
LUKE TOOMEY
JOHN ULP
CLARENCE WENSEL
HELEN WENTZEL
HELEN YEAGER







◀➤ **ACTIVITIES** ▶◀





ATHLETICS



EYTRON

ULLERY

CARMICHAEL

Athletic Board

President

DR. JOHN J. HOUTZ

Vice-President

RALPH WITMER

Secretary

LUTHER BOYER

Treasurer

PROF. L. D. GROSSMAN

PROF. E. M. BRUNGART

GEORGE S. SCHUCH

DR. GEORGE E. FISHER

LEE D. RISHEL

ALTON J. GARMAN

P. RICHARD FISHER

JOHN M. AUTEN

KENNETH ANDERSON

ATHLETICS, under the direction of Professor Luther Day Grossman, have continued to occupy a prominent position in the face of severe adverse conditions. Despite one of the worst years in financial history, and an enrollment of men students who are able to take part in athletics reduced to about 150, Susquehanna has continued to put out fighting teams in five varsity sports.

Winning teams at Susquehanna have a real significance, since their members are strictly amateur, and are so much a part of the classroom and campus as any other student. This factor should be kept well in mind when considering the records of the various teams.

Interclass and fraternity competition have also been greatly encouraged, and by the co-operation of Professor Grossman and Intra-mural Board, have earned much popularity during the past year.

FOOTBALL



CAPTAIN RISHLI

Football 1933

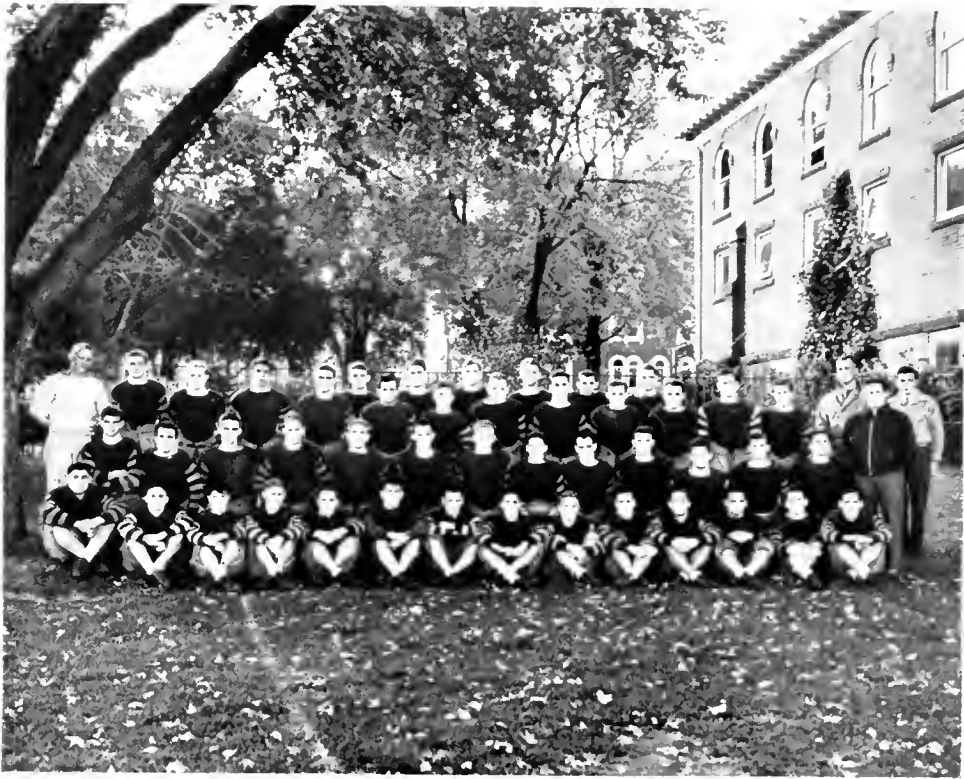


MANAGER KING

SCHEDULE FOR 1933

Susquehanna	0	Moravian	6
Susquehanna	6	Haverford	0
Susquehanna	7	St. Joseph's College	6
Susquehanna	6	Washington College	0
Susquehanna	37	Hartwick College	0
Susquehanna	6	Drexel	7
Susquehanna	0	P. M. C.	16





Football

LETTERS

RISHIEL, LEE D. (Captain)
 KING, NELSON J. (Manager)
 BASTRESS, ROBERT M.
 EISENHOWER, RUSSELL W.
 FISHER, P. RICHARD
 GOYNE, JOHN F.
 GRAY, A. NELSON
 HANNA, JOHN F.
 MAGUIRE, JOHN P.
 MARTINEC, STEPHEN J.

ROACH, JOHN S.
 RODGERS, GEORGE E.
 SCHLEGEL, JERARD M.
 SHOLLY, JAMES B.
 SULLIVAN, WILLIAM E.
 SWOPE, HARRY C.
 TICE, RICHARD H.
 WALSH, VINCENT L.
 WASILEWSKI, WALTER
 YON KONDY, JOHN

NUMERALS

ABBOTT, SAVIOUR, '35
 ANDERSON, KENNETH R., '35
 DEVERAUX, ELMER J., '35

HESS, N. ERNEST, '37
 LEITZEL, ROY R., '36
 TOOMEY, T. LUKE, '37

Football Season 1933

UNLUCKY breaks! Unlucky breaks! Yes, they seemed to be the only factors which Coach Ullery's gridiron proteges were not able to overcome during the 1933 season's grind, and thus, what should have been a very successful season was destined to become one of mediocrity in comparison with our preceding year's undefeated season.

However, the fact that our fighting Crusaders were met constantly with unforeseen and uncontrolled setbacks, they managed to turn in a fairly successful record against a set of opponents that compares favorably to any set of opponents that a Susquehanna football team has ever faced.

Should we attempt to choose from the list of players any one particular individual whose work stands out in respect to that of the rest of the team, we would be doing a very unjust thing, for every man, in both the line and the back field, cooperated zealously with his teammates to make possible such victories as were recorded. Touchdown were made, not by one man, but by the team as a unit which worked as an automaton with a definite end in view.

To Captain Rishel we might attach the enviable honor of having captained one of the best football teams ever produced at Susquehanna—whose motto on the field of play might read thusly, "All for one and one for all."

MORAVIAN 6 SUSQUEHANNA 0

In the opening game with Moravian, at Allentown, Susquehanna was constantly held down due to numerous fumbles which came at the most inopportune moments, and which were indirectly responsible for the lone Moravian touchdown in the third quarter, at which time, due to a Susquehanna fumble, Moravian was given the ball on the Orange and Maroon's 35-yard line, from which point Captain Waldron, of Moravian, took a long pass near the goal line and stepped over the last white stripe of the lone tally of the game.



"HIT THAT LINE"

SUSQUEHANNA 6 HAVERFORD 0

Despite their defeat in the first game, the Crusaders retaliated strongly against a black-jerseyed Haverford eleven from Philadelphia and defeated them in the opening home of the season on the University field by the small but significant score of 6 to 0, when Russ Eisenhower, a husky Susquehanna tackle, batted a Haverford pass into the air, grabbed it and dashed half the length of the playing field for the winning touchdown before a Parents' Day crowd of 2000.

SUSQUEHANNA 7 ST. JOSEPH'S 6

Continuing their winning ways, the Orange and Maroon journeyed to Philadelphia Saturday, October 21st, and eked out a hard-earned victory over St. Joseph's College in the waning minutes of the fourth quarter, when Walter Wasilewski faded back from the line of scrimmage and shot a bullet-like pass into the waiting arms of Joh Yon Kondy, Crusader right-end, who had cleverly eluded all opponents and was standing in the open, across the goal line. With the game in the last minute of play, and the fans tense in their seats, Bob Bastress calmly took the ball from center and held it while Wasilewski deftly kicked it over the cross bars and the hectic game was over.

SUSQUEHANNA 6 WASHINGTON COLLEGE 0

On Saturday, October 28th, before a Homecoming Day crowd, Susquehanna's Orange and Maroon warriors, led by Captain Rishel, won their third straight victory when Captain Rishel took the ball from center in the second quarter and, on an off tackle play, wormed his way from the twenty-yard line through the entire Washington team for the only score of the game.

SUSQUEHANNA 37 HARTWICK 0

After being held to a lone touchdown in the first quarter the Crusaders suddenly came to life and played inspired football for the remaining three-quarters of this game to pile up the highest score of the season against Hartwick College, at Oneonta, New York, on Saturday, November 4th. Coach Ullery used two teams in this game, which proved to be, as expected, the easiest game of the season.



Ready to go

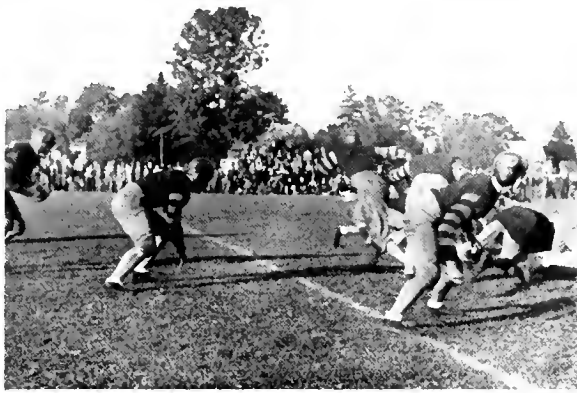
DREXEL 7
SUSQUEHANNA 6

Before the largest crowd of the season, Susquehanna's fighting Orange

and Maroon warriors outplayed a highly favored Drexel Dragon eleven for three-quarters of the game at Philadelphia on Saturday, November 11th. In the opening period of play, Dick Tice, a fighting Crusader tackle, broke through the Drexel defense, blocked a punt, scooped up the ball and ran twenty yards for a touchdown. However, after holding the Dragons scoreless for three quarters, the Crusader defense crumbled and Drexel completed two lateral passes for the winning touchdown and extra point.

P. M. C. 16 SUSQUEHANNA 0

In the final game of the year, Susquehanna outplayed a heavy P. M. C. team 14 first downs to 12, but were defeated 16 to 0, due to the breaks of the game. The Crusaders were completely overwhelmed in the first quarter by a vicious P. M. C. attack which netted two touchdowns and virtually ended the scoring until near the end of the game when the Crusaders were forced back over their own goal line for a safety and two more points. Only a week previously P. M. C. had held the undefeated Army team scoreless for three periods before Army scored 12 points and victory—so Susquehanna can be justly proud of her showing in this game.





Frosh—Soph Game

FRESHMEN 13

SOPHOMORES 0



One Hundred Six

BASKETBALL



Basketball 1933-34

LETTERS

SCHLEGEL, JERAULD M. (Captain)

McKELVEY, DANIEL T., JR.
(Manager)

EISENHOWER, RUSSELL W.

FISHER, P. RICHARD

FREDERICKS, ANDREW

HESS, ALBERT

MARTINEC, STEPHEN J.

NAEGEL, JOHN H.

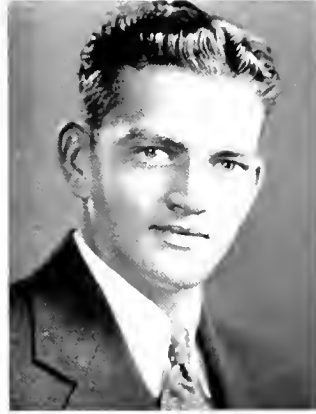
ROACH, JOHN S.

SPITZNER, CLYDE

WASILEWSKI, WALTER

Basketball Season 1933

THE untimely burning of the Alumni Gymnasium and the inability of Professor Grossman to procure a suitable place for practice and the playing of home games necessitated the abandoning of Susquehanna's basketball schedule after four games had already been played. This was quite a blow to Coach Ullery and his Varsity quintet who were expecting to complete a good season on the wooden way.



CAPTAIN SCHLEGEL

With a victory over Elizabethtown College courtmen on Saturday, January 6, the Crusaders were enabled to even up their four-game schedule. Coach Ullery's basketceers took the initial and final tilts of the season, winding up with a percentage of .500 for what proved to be the shortest season in the history of basketball at Susquehanna.

The Crusaders, led by Captain "Jerry" Schlegel, won the first game of the season in the Alumni Gymnasium on December 15 by defeating the Alumni, 60 to 21, in a one-sided contest. Only five of the Alumni participated in the game, and a team recruited from the varsity squad relieved the harrassed Alumni in alternate quarters.

In the second game of the season, a very weak Bucknell Bison managed to eke out a 31 to 25 victory over the Crusaders on the Lewisburg High School floor on December 18. The first half of this game was a runaway for Bucknell, but by a brilliant third period offensive the Crusaders managed to draw within a few points of the Bisons. However, Bucknell came back strong in the fourth period with some close guarding and brilliant shooting to put the game into their win column.



MANAGER MCKELVEY

On January 4, the strong Penn State Lions completely outclassed the Crusaders in the third game of the season on the Penn State floor when they won by the overwhelming score of 47 to 22. Susquehanna's defense was very weak and the Lions, who forged ahead early in the game, had little difficulty in holding and increasing their lead as the game progressed. During the intermission at half-time, Coach Ullery, who is an alumnus of Penn State, was presented to the fans.

Coach Ullery's proteges showed their best form of the season on Saturday, January 6, when they turned back Elizabethtown, 48 to 19, at Elizabethtown. The Crusaders, led by Roach, Wasilewski, Hess, and Spitzner, could not be stopped and were never in danger of losing the lead. Coach Ullery was exceedingly well pleased with the team's fine showing, and regretted very much that no more of the scheduled games could be played.

BASEBALL



Baseball 1933

LETTERS

BRININGER, HUGH D. (Captain)
 HASSAY, JOHN L. (Manager)
 ALEXANDER, KENNETH
 ANDERSON, KENNETH R.
 BENNER, STANLEY R.
 CARL, FRED L.

EISENHOWER, RUSSELL W.
 MAGUIRE, JOHN P.
 MEYER, ALBERT C.
 MORROW, WILLIAM S.
 SASSAMAN, ROBERT S.
 YAROS, JACOB D.

NUMERALS

FASOLD, CHARLES L. '36

GRAY, A. NELSON '34

MAIMON, JOSEPH A. '33

Baseball Season 1933

SUSQUEHANNA'S 1933 Baseball season, like that of the Basketball season was not destined to be a very extensive one, although there were nine games listed on the schedule. Of the nine games scheduled, four of them were cancelled because of rainy weather; the game with Penn State being called off twice because of this unpleasant condition. The first game of the season which was to be played against Bucknell, at Lewisburg, was cancelled after the team had made the short trip and were just entering the dressing room in preparation for the game; a thunder shower turned the field into a sea of mud. The other games that had to be cancelled were both home games, one with Washington College and the other with Bucknell, both games being called off because of a wet field.



MANAGER BOSSALL

The Orange and Maroon finally opened the 1933 baseball season at Chester, Pa., on Friday, April 28, when they took a hard fought nine inning game from the P. M. C. Cadets by the score of 8 to 0. Captain Brininger pitched airtight ball, allowing but one bingle for the full nine innings while his teammates garnered eleven safeties off of two Cadet hurlers. The Crusaders also fielded brilliantly in this game, completing three snappy double plays. Continuing on to Newark, Delaware, after the P. M. C. game, the Crusaders spent the night on the Campns at Delaware University. The following day the Orange and Maroon completely overwhelmed a Delaware "Mud Hen" nine by the score of 15 to 5. Al Meyers shouldered the brunt of the pitcher's duty and turned in a nice performance, in lieu of the fact that he walked nine men. The Crusaders collected thirteen hits and also completed three double plays in this game.



CAPTAIN MORROW

The last three games were as one long drawn-out nightmare to the Coach as he sat on the bench and watched his boys come out on the short ends of 1 to 0, 11 to 2, and 3 to 0 scores against Lebanon Valley at home, Lebanon Valley at Annville, and Delaware, respectively. The complete lack of hitting punch and poor fielding was significant in these

three defeats. This concludes a season marked by some very good playing and some very poor playing; however, with the exception of the Lebanon Valley game at Annville, the scores were in our favor or were very close, which indicates that the fielding and pitching strength of the team was exceptionally good.

SCHEDULE 1933

Susquehanna (cancelled)	Bucknell University
Susquehanna—8	P. M. C.— 0
Susquehanna—15	University of Delaware— 5
Susquehanna (cancelled)	Washington
Susquehanna (cancelled)	Penn State
Susquehanna (cancelled)	Bucknell University
Susquehanna—0	Lebanon Valley— 1
Susquehanna—2	Lebanon Valley—11
Susquehanna—0	Delaware University— 3

S **TRACK**



Track 1933

LETTERS

MEYERS, JOHN W. (Captain)
 SWARM, WILLIAM R. (Captain)
 LAUFER, CHARLES H. (Manager)

BLACKWOOD, PETER
 CARUTH, WILLIAM B.
 MARTIN, MILTON D.

TRUCKENMILLER, GEORGE A.

NUMERALS

OBERDORF, JOHN W. '34

WORTHINGTON, JAY W. '33

Track Schedule 1933

April 29	Penn Relays at Philadelphia
May 6	Drexel Dual Meet at Home
May 16	Bucknell Dual Meet at Home
May 20	C. P. C. T. C. at Dickinson

IN the C. P. C. T. C. meet, Swarm broke the 120 yard high hurdle record by 3 seconds. Time, 15.7 seconds. Swarm also received high scoring honors, having scored 15 points.

In this same meet Johnny Myers broke the 100 yard dash record by .2 of a second.

Track

ALTHOUGH our last year's track team only met with fair success, the cloud of our several defeats had a silver lining in the brilliant running of the co-captains, "Johnny" Meyers and "Bill" Swarm. These two men accounted for the greater part of Susquehanna's scores in the various meets and they also set new records in the C. P. C. T. C. meet which was held at Dickinson.

PENN RELAYS

Placing third in its event at the Penn Relays, Susquehanna's relay team shook off a persistent Juniata "jinx" of two years duration only to trail Dickinson and Haverford to the tape. Both of these two teams were new contenders of our team.

Johnny Meyers, Paul Hartman, George Truckenmiller, and Bill Swarm turned in a fast performance for the Crusaders, running in the order named, but could not match the running time of 3 minutes, 28 and 2/10 seconds registered by Dickinson.

DREXEL 78 2/3

SUSQUEHANNA 47 1/3

Susquehanna's Orange and Maroon clad track team, led by Co-Captains Meyers and Swarm, was defeated on a muddy and treacherous track in their initial meet with Drexel on the University Field, Saturday, May 6.

Both Drexel and Susquehanna gained seven first places. However, Oberdorf and Martin were the only two Susquehanna men to take second place positions and to this can be attributed the edge in scoring.

BUCKNELL 83

SUSQUEHANNA 43

Susquehanna bowed in defeat to Bucknell, 83 to 43, in a dual track meet held on University Field, May 17. This was Bucknell's first victory over Susquehanna in three years.

Bucknell took first place in eleven of the fourteen events and this attack was led by that stellar track man, "Greyhound" Wilkinson.

Meyers and Swarm led for Susquehanna with a total of 23 points. Milton Martin was the only other Susquehanna man to win a first place in this meet, this being in the half mile.

C. P. C. T. C. MEET

Our stellar Co-Captains of track, Johnny Meyers, and Bill Swarm each shat-



CAPTAIN BLACKWOOD



MANAGER NAGLE

tered a record in the Central Pennsylvania Inter-collegiate Conference Track Meet as the Orange and Maroon runners captured a fourth position in a close line-up of the Class B events.

The order and number of points tallied by the colleges in Class B was as follows:

Drexel	44
Albright	35
Juniata	33 $\frac{1}{2}$
Susquehanna	31
Ursinus	14 $\frac{1}{2}$

Swarm lowered the time for the low hurdles with 15.7 seconds and Meyers broke the century record, negotiating the distance in 10.2 seconds.



Third Row—Phillips, Reese, Ulrich, Mehring, Hall, Winkebleck, Frankenfield.
Second Row—Williamson, Hubler, Bair, Schlegel, Gelnett, Cressman, Keller, Spiggle.
First Row—Brown, Nichols, Crow, Diehl, Reeder, Patterson, Bergstresser, Eltringham.

Women's Athletics

ALL the girls at Susquehanna, we are safe to say, are interested in athletics. Under the capable supervision of Miss Dorothy Reeder. This is manifested in the large membership of the Athletic Club, whose organization is composed of those who have earned numerals or a letter by participating in the various sports.

Hockey is the principal sport in which the rivalry is great and the competition keen between the class teams. This year it was particularly acute between the Juniors and Seniors, but the latter team proved too strong for their opponents.

In the selection of the Orange and Maroon team at the close of the hockey season, the Juniors were well represented. Members of this team played in the annual Homecoming game, but were unable to turn back the more powerful team of Alumnae.

In soccer the Juniors are at their height and for the second consecutive year they have proved their powers in this sport by winning the soccer crown.

Baseball and track also prove adequate incentives for all the girls and each year golf becomes of greater importance in the physical education program.



BENNER, HUSTON, SCHREINER, EVANS

Cheer Leaders

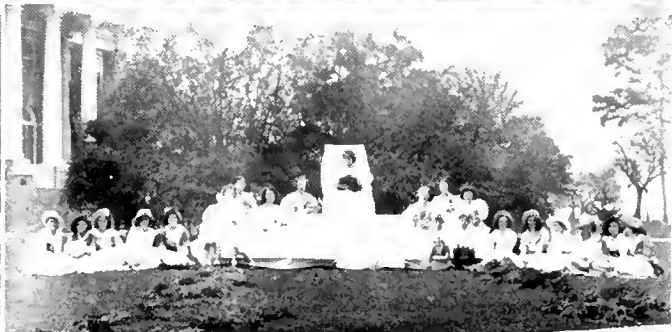
Sus-Que-Han-Na. Rah! Rah!
 Hoorah! Hoorah!
 Sus-Que-Han-Na
 Rah!

S-U-S-U-S-U-S
 S-U-Q-U-Q-U-E
 H-A-H-A-H-A-N-N-A
 Rah!

A-N-N-A
 H-E-U-Q-S-U-S
 Susque-U
 Rah!

Rah! Rah! Rah!
 Rah! Rah! Rah!
 Team! Team! Team!
 Who?
 Team!
 Who?
 Team!
 Who?
 Team!
 Team! Team! Team!

Rah! Rah! Rah! Rah! Sus Que-Han-Na!
 Rah! Rah! Rah! Rah! Sus Que-Han-Na!
 Rah! Rah! Rah! Rah! Sus Que-Han-Na!
 Rah! Team! Team! Team!







ORGANIZATIONS



Star Course

FOR many years, the administration of Susquehanna University, in conjunction with the Conservatory of Music, has given the students an opportunity to hear the best lecturers, actors, and musicians of the day. This year's program included the following numbers:

October 30—Granville Dramatic Interludes.

November 21—Vocal Byzantine Ensemble.

February 15—Japan vs. China, Adachi and Park.

March 6—Frank Mannheim, pianist; Rollo Maitland, organist.



COUNCIL



*Standing—Anderson, Fisher, Rowe.
Sitting—Bonsall, Sala, Uontz, Gray, Rishel.*

Men's Student Council

President

NELSON GRAY

THIS Council is one of the most outstanding organizations on Susquehanna's campus. It consists of ten men, two representatives from each fraternity and two members from the non-fraternity group.

Its purpose is to help the student interests and to serve the general standing of the college itself. Thus the matters with which it deals are quite varied arising from the various phases of college life and its relation to the individual student.

One of the most outstanding features performed by the council the past few years have been the donation of two hundred dollars to the Physics Laboratory, and fifty dollars towards the purchasing of a volume of new books in the College Library.



First Row—Frankenfield, Brown, Nelson, Eltringham, Patterson.
Second Row—Ulrich, Cressman, Spiggle.

Women's Co-operative Council

President

RUTH NELSON

WOMEN'S CO-OPERATIVE COUNCIL was established on this campus, October 25, 1925. Miss Barbara De Reemer was first president and instigator in bringing this organization, which has proven a great step forward toward bettering the living conditions in Seibert Hall and furthering the advancement of welfare of the College in general.

Miss Naomi K. Hade, Dean of Women, who came to Susquehanna during the second year of co-operative government, has done much to perfect this system of government. It is hoped, however, by contact with similar and more mature governments, in other colleges and universities, our local government will continue to improve, not only for its own cause but for the general standing of the college itself.



*Standing—Weslowsky, Reeger, Sala.
Sitting—Dively, McKelvey, Hutchinson, Oberdorf, Naugle.*

Inter-Fraternity Council

President

D. EDGAR HUTCHINSON

THIS body was first organized in 1927-28 in order to create and maintain a more friendly relationship among the fraternities by a fair and honest consideration of the many problems which confront fraternity men as a group.

The membership is made up of eight men, two representatives from each fraternity.

Certain regulations regarding rushing and bidding are taken care of by this organization. The installation of a preferential bidding system was one of their first achievements. For the past few years, in addition to their regular duties, they have sponsored an Intra-Fraternity Dance which was one of the most successful of the year.



Standing—Winkelblech, Estep, Crow, Nelson, Ulrich.
Sitting—Phillips, Kauffman, Hines, Reese, Williams, Keller, Brown.

Inter-Sorority Council

President

DAISY REESE

THIS group is similar to the Inter-Fraternity Council in aim and in composition. The Inter-Sorority Council has been in existence for many years and through it a more congenial relationship is maintained among the sororities.

Nine women, three representing each sorority, make up this membership. The presidents and vice-presidents of the sororities automatically become members and the other representatives are chosen by election, by the individual group.

Through the efforts of this organization practically all sorority affairs have been of intersorority origin, thus increasing the spirit of co-operation.



Student Handbook

Editor

ROBERT CLARK

Business Manager

RALPH SHOCKEY

EVERY year a small book is published by the Y. M. C. A. and Y. W. C. A. that is known as the student handbook. The Freshmen are required to carry these books at all times and hence they are sometimes known as the Freshman "Bible."

Much valuable information is found in this book in assisting our first-year men to become acquainted on the campus. It also contains rules in regard to dinks, smoking, and other things that have become tradition on the campus of Susquehanna.



RELIGIOUS



*Third Row—Guss, Martin, Clark, Shaheen.
 Second Row—Stahl, Drumm, Dorsett, Sala, Anderson, Karslmer.
 First Row—Sutter, Rowe, Houston, Ahl, Cassler, Clapper, Shawkey.*

Y. M. C. A.

President
Vice-President
Secretary
Treasurer
Advisors

HAROLD ROWE
 ROBERT CLARK
 JOHN STOFFER
 LUTHER BOYER
 DR. AHL, DR. OVERBO

THIS is the organization that has taken the responsibility to have the religious phase of the student life on the campus as its center.

This year, under the very capable directorship of Harold Rowe, the "Y" has been very active on the campus, and has won several prizes at conventions held in various parts of the state.

One of the biggest tasks of the "Y" is to sponsor the student handbook which acts as a guide to the Freshmen, and who carry it at all times.



Sitting—Eastep, Long, Brown, Frankenfield, Cressman, Crow, Griesemer.
Standing—Bergstresser, Mehring, Horn, Naugle, Hubler, Keller.

Y. W. C. A.

President

EDITH FRANKENFIELD

THE Y. W. C. A. has proved itself a very active and beneficial organization. It aims to give the co-ed an all-around life by sponsoring a variety of activities.

During Freshman Week the Y. W. C. A. helped in entertaining and aiding the Freshmen to feel more at home.

Vesper services, in co-operation with the Y. M. C. A., are conducted each Sunday evening.

A number of plays and entertainments were sponsored by the Y. W. C. A. during the year.



*Standing— Guss, Hutchinson, Clapper, Shobert, Grossman.
Sitting— Houston, Boyer, Clark, Ahl, Rowe, Stouffer, Shawkey.*

Pre-Theological Club

President

ERNEST HUSTON

THE Pre-Theological Club is an organization which brings together those students who are looking forward to the gospel ministry. The aim of the club is to foster the spiritual life on the campus.

The club holds monthly meetings at which time topics of interest to ministerial students are discussed. Faculty members and ministers are frequently invited to speak to this group which is open to all those anticipating the ministry.



MUSIC



Susquehanna Symphonic Society

PERSONNEL

Conductor ELROSE L. ALLISON
Ass't Conductor and Concertmaster W. DONALD HEMPHILL

First Violins

W. DONALD HEMPHILL
 WILLIAM CARUTH
 FRANK BENNARDI, *Vice-President*
 MILLIE ARBEGAST
 MARY JANE KEHLER
 CLARENCE FARLEY

Second Violins

MARCELLA CHAYA
 DOROTHY EASTEP, *Secretary*
 LEWIS HOWELLS
 KATHERINE WEBER
 DOROTHY HOFFMAN

Viola

ROBERT CLARK

Cello

ERLE SHOBERT, *Business Manager*
 LOIS BRUNGART

Double Bass

FRANCIS GELNETT
 CHARLES PRICE

Harp

NAOMI KUNKLE BIERMAN

Clarinets

RICHARD SHADE, *President*
 WALTER POYCK, *Property Manager*
 STEVEN AZARY

Oboe

ALLEN EYER

Flutes

DAVID J. LEWIS
 JAMES GROSSMAN

Bassoon

HORACE HUTCHISON, *Librarian*

Trumpets

DAVID SHELLENBERGER
 KENNETH BLYLER

Tuba

ARTHUR WEBBER

Horns

ROBERT CLARK
 CHARLES BARNETT

Trombone

WILLIAM MILLER
 CHESTER LONG

Percussion

PETER BLACKWOOD, *Treasurer*
 J. STANLEY AUGHENBAUGH,
Assistant Librarian

Piano

FRED BILLMAN
 DOROTHY TURNER



Susquehanna University Band

PERSONNEL

Conductor

ELROSE L. ALLISOK

Solo Trumpets

FRANK BENNARDI, *Vice-President*
DAVID SHELLENBERGER

Second Trumpet

CLARENCE SALKELD,
Assistant Property Manager

Third Trumpet

JOHN ULP

Solo Clarinets

RICHARD SHADE, *President*
KENNETH BLYLER
WALTER POYCK, *Property Manager*

Second Clarinets

STEPHEN AZARY
LEON SHOWERS

Third Clarinet

LEONARD NEWFIELD

Flute

JAMES GROSSMAN

Oboe

ALLEN EYER

Bassoon

HORACE HUTCHISON, *Librarian*

Alto Saxophone

EDGAR HUTCHISON

Tenor Saxophone

JAMES PHILLIPS

Horns

ROBERT CLARK
JAMES MITCHEL
CHARLES BARNETT

Baritone

WILLIAM CARUTH
Assistant Business Manager

Trombones

CHARLES MILLER
CHARLES KUSTER

Tuba

ARTHUR WEBER, *Secretary*

Sousaphone

FRANCIS GELNET

Bass Violin

CHARLES PRICE

Snare Drums

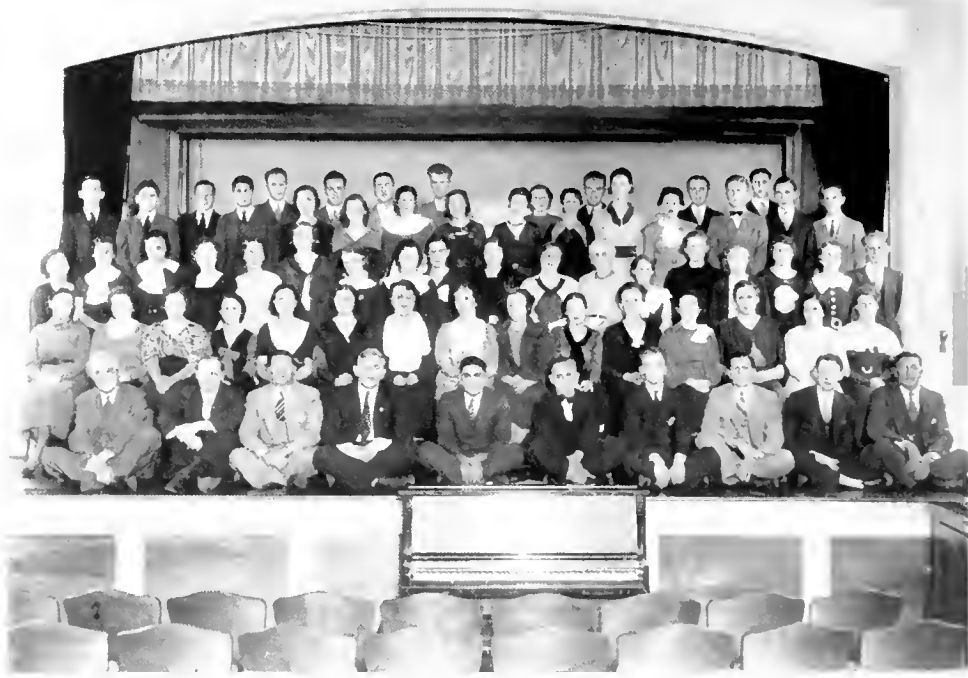
JOHN OBERDORF
LEWIS HOWELLS,
Assistant Librarian

Tympani

PETER BLACKWOOD,
Treasurer and Business Manager

Bass Drum and Cymbals

FRED BILLMAN



Choral Society

Conductor

E. EDWIN SHELDON

THE Choral Society under the leadership of Professor Sheldon has made many public appearances this year both on and off the campus.

This society is not composed of students alone, but of the faculty and persons from Selinsgrove as well. This is our largest organization on the campus.

The outstanding presentation of the Choral Society this year was Mendelssohn's "Elizah," which was given in a manner that was truly inspiring.



Girl's Glee Club

PERSONNEL

Director

MARGARET E. KEISER

Dance Director

DOROTHY W. REEDER

SOPRANOS

MARY BARNES

LOIS LONG

MARCELLA CHAYA,

LOUISE MEHRING

Wardrobe Mistress

ALMA MYERS

PHYLLIS ENGLE

JOSEPHINE PIFER,

MARTHA ENGLE

Business Manager

JEAN HOFFORD

MARY SCOTT

ISABELLA HORN

MARGARET WILLIAMS

MEZZO-SOPRANOS

ELEANOR BROWN

MILLIE HINES, *Treasurer*

KATHRYN DEISHER,

ELEANOR JONES

Assistant Stage Manager

HAZEL NAUGLE

GRACE DREW

BETTY SHIPE, *President*

MARY ELTRINGHAM

DOROTHY TURNER

ALTOS

RUTH BAIR, *Secretary*

MARY JANE KEHLER,

MARGARET CORSON

Stage Manager

DOROTHY EASTEP

AUDRA MARTZ, *Vice-President*

MOLLIE FOX, *Librarian*

WILHELMINA MOODY

DOROTHY HOFFMAN

KATHRYN WEBER

BEATRICE SHIVELY, *Accompanist*

ELVA WINKELBLECK

KATHRYN DEISHER,

MARCELLA CHAYA,

Assistant Accompanist

Assistant Accompanist





PUBLICATIONS



Standing—Guss, Wilson, Henry, Maguire, Clark.
Sitting—Ulrich, Hartzell, Reese, Dively, Schlegel, Hines.

The Susquehanna

EDITORIAL STAFF

Editor-in-Chief

PENN G. DIVELY, '34

News Editor

DONALD HENRY, '35

Sports Editor

WILLIAM VANHORN, '36

Managing Editor

ROBERT CLARK

ASSOCIATE EDITORS

Sarah Ulrich, '34

Louise Hartzell, '35

REPORTERS

Daisy Reese, '34

Allen Eyer, '36

Alice Smith, '36

Gwendolyn Schlegel, '36

Vernon Ferster, '36

Jerome Guss, '36

John Maguire, '36

Robert Mosher, '37

Raymond Shaheen, '37

Walter S. V. Poyek, '37

Mary Catherine Taylor, '37

C. Foster Salkeld, '37

Billie Hines, '35

Isabelle Horn, '34

Marcella Chaya, '36

Wilhelmina Moody, '37

Francis Gelnett, '37

EDITOR, FRESHMAN ISSUE

Vernon Ferster

THE *Susquehanna* is a four-page, five-column weekly published by the members of the Susquehanna Publishing Association for the purpose of keeping students, alumni, and friends of the University in touch with the various events concerning the college.



Standing—Reeger, Hess.
Sitting—Phillips, McKelvey, Miller, Devereaux.

The Susquehanna

BUSINESS STAFF

Business Manager

DANIEL MCKELVEY, '34

Advertising Manager

WILLIAM REGER, '35

Circulation Manager

ELMER DEVERAUX, '35

ASSISTANTS ON BUSINESS STAFF

Albert Hess, '36

George Phillips, '36

Clarence Farley, '35

Charles Walters, '36

THE Business Staff of *The Susquehanna* is responsible for the maintenance and circulation of the paper. Its members are usually elected from students in the business curriculum.



Sitting—Anderson, Stamets, Stetler Henry, Mehring, Eltringham, Boyer.
Standing—Cressman, Hubler, Bair, Keller.

Lanthorn

EDITORIAL STAFF

Editor-in-Chief
Assistant Editor
Art Editor
Athletic Editor
Girls Athletics
Chief Statistician
Chief Typist

DONALD K. HENRY
 KATHRYN STETLER
 LOUISE MEHRING
 KENNETH ANDERSON
 MARY ANN CRESSMAN
 HELEN KELLER
 MARY ELTRINGHAM

ASSOCIATE EDITORS

Frances Hubler
 Luther Boyer

Alma Myers

Alfarata Stumitz
 Morgan Schreiner



*Standing—Abbott, Deveraux.
Sitting—Chimock, Whiteley, Hines.*

Lanthorn

BUSINESS STAFF

Business Manager
Assistant Business Manager
Advertising Manager

WILLIAM S. WHITELEY
SAVIOUR ABBOT
MARY PATERSON

ASSISTANTS

Elmer Deveraux

E. Mille Hines

Phyllis Chimock





SOCIETIES AND CLUBS



Standing—Hauseman, Dively, Ahl, Brown, Plummer, Frankenfield.
Sitting—Wood, Woodruff, Benfer, Morrow, Kretzman, Dunkelberger, Brungart.

Pi Gamma Mu

President

WILLIAM MORROW

PI GAMMA MU is the National Social Science Honor Society, founded December 1, 1924, having for its object "to encourage and reward the undergraduate study of social science." The term "social science" is used in the broadest sense possible.

Pennsylvania Gamma Chapter at Susquehanna was formerly organized and installed in 1927, now having a total membership of 117, including faculty, alumni and undergraduates.

Members are elected by faculty members of the Chapter, usually about ten Juniors being chosen annually. They qualify themselves by manifesting interest in social science, in which they must have taken at least twenty semester hours with an average of "B," must be of good character, and have a satisfactory scholastic standing in general.



*Standing—Rowe, Clapper.
Sitting—Cassler, Dunkelberger, Gilbert, Wood, Bergstresser.*

Tau Kappa Alpha

President

RUTH BERGSTRESSER

THE Susquehanna Chapter of Tau Kappa Alpha, National Forensic Fraternity, was organized January 18, 1930. The petition for membership was presented by teams of 1928-29.

Tau Kappa Alpha at present has over 100 chapters throughout different colleges and universities in the United States. It was organized at the University of Indiana in 1908. Those who are interested in debating work indeed have a fine goal for which to strive.



Third Row—Boeder, Overbo, Scudder, Shobert, Fisher, Hontz, Weslowsky.
Second Row—Boyer, Stetler, Mickey, Keller, Spigle, Cressman, Geigle.
First Row—Schlegel, Henry.

Honor Science Club

President

ERLE SHOBERT

THE Honor Science Club has been organized since 1920, in order to promote a popular interest in scientific investigation among those students who are particularly interested in the field of science.

Membership in the Club has been recently limited to those who maintain an average of "B" in their respective courses.

Interesting lectures of scientific interest have been presented by faculty members and guests from other universities, to give each student the widest possible scope in scientific work and thought.



Third Row—Deveraux, Yaros, Hess, Leitzel, Whiteley, Smith, Bonsall.
Second Row—Eltringham, Monahan, Pritchard, Chimoeh, Olshefsky, Harding, Stonesiefer, Nichols, Patterson, Clegg.
First Row—Mehring, Phillips, Hall, Wood, Leese, Armogast, Hutchinson, Reitz, Hauseman, Brown.

Business Administration Association

President

D. EDGAR HUTCHINSON

THIS is a recent organization of Susquehanna's campus, having been inaugurated in 1931. Its members are composed of those who are taking work in the Business Administration and Commercial Education curricula.

The Club has been formed for the purpose of bringing the business students in closer contact, considering the affairs and problems in the business world today. An annual dinner is one of the feature events on the Association's calendar.



*First Row—Ulrich, Benfer, Plummer, Allison, Reese, Bergstreser, Spiggle.
 Second Row—Schlegle, Nelson, Hubler, Long, Stamets, Pawling, Hines, Miller.
 Third Row—Frankenfield, Mease, Keller, Clegg, Mickey.*

French Club

President

RUTH PLUMMER

IN the fall of 1929 a group of French students, interested in securing a better knowledge of the French language, met and a club was organized. Since then "Le Cercle Francaise" has grown steadily and has done much to promote an interest in this language. By means of interesting plays, songs, games, and social functions, those who desire to do so may increase their understanding by speaking and hearing the language.



First Row—Swartz, Grossman, Phillips, Stuck.
Second Row—Anderson, Price, Steller, Jones, Harding, Webber, Leitzel, Shubert.
Third Row—Henry, Smith, Crow, Hausman, Gilbert, Morrow, Oberdorf.

Deutsche Verein

President

MARGARET HAUSMAN

MOTTO—"Der Mensch kann was er will."

NOT a "touch of misery," but a common language "makes the whole world kin." The German department has aided in giving us a touch of both.

Der Deutsche Verein was organized in 1930, under the direction of Professor Gilbert, aiming more at "being able to say it" than at the abstract technicalities of synthax.

The most important service this club accomplishes is developing a vocabulary of the German language in an atmosphere decidedly different from that of the classroom.



Standing—Martin, Drumm, Stahl, Guss, Anderson.
Sitting—Sutter, Rowe, Clark, Ahl, Houston, Clapper, Shawkey.

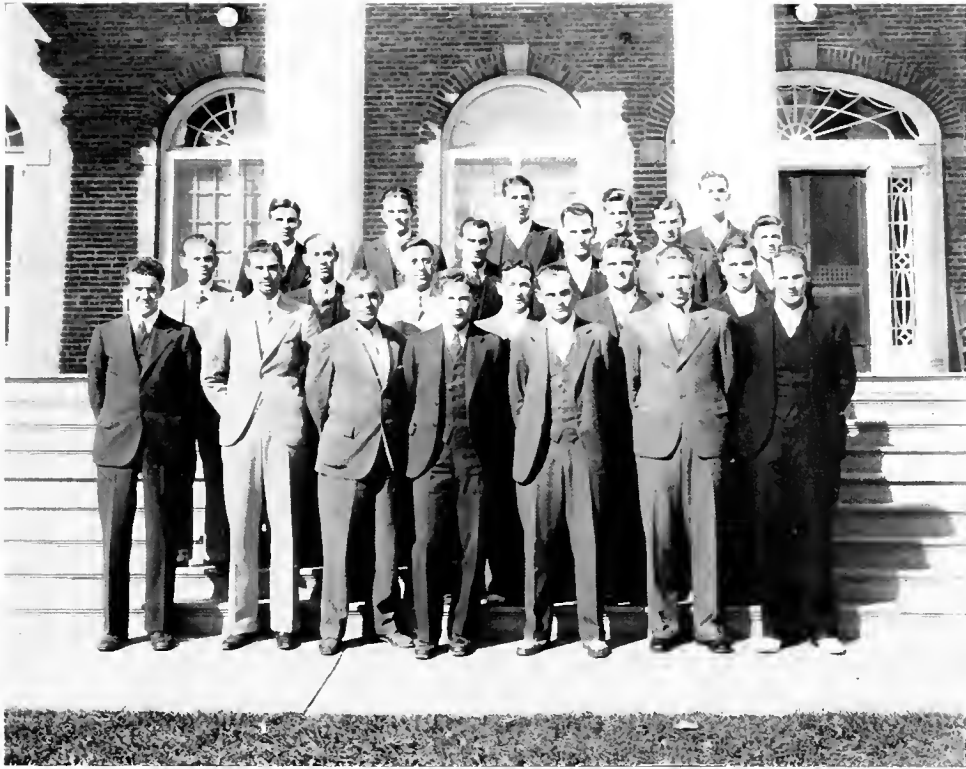
Phi Kappa

President

ROBERT CLARK

PHI KAPPA, or the Phihellenic Club, is a local honor society for Greek students. It was organized in 1930 by Dr. Ahl for the purpose of keeping the students in contact with Greek culture. Since it is an honor society, a certain class standing, as well as an interest in the objectives, is required for membership.

From its very recent and modest beginning, the Club has grown steadily and now takes its place among the most popular on the campus.



*Fourth Row—Naglei, Schlegel, Hess, Anderson, Fisher.
Third Row—Maguire, Roach, Wasielewski, Martin.
Second Row—Morrow, Yaros, Grossman, Walsh, Martinec, Sullivan.
First Row—Muir, Oberdorf, Houtz, Rishel, Hanna, Eisenhower, Tice.*

Varsity "S" Club

THE membership of the Varsity "S" Club is composed of those who have won their letter in any Varsity sport.

For several years the Varsity "S" Club was one of the outstanding organizations of the campus. During 1924 and 1925 this organization was exceedingly active and it was at this time that the beautiful gates at the entrance to the athletic field were made possible through the efforts of this club. The structure stands as a monument to the labors of this body of athletes.

Last year, after six years of inactivity, the Club has presented the University with one hundred pine trees, distributed in various parts of the athletic field and neighboring vicinities.

The chief purpose of the Club is to keep the letter men together and to show deference and hospitality to visiting teams.



Stouffer, Poyck, Abbot, Greider, Yaros.

Intra-Mural Board

President

SAVIOUR ABBOT

THIS organization has for its purpose to stimulate interest in intra-mural sports, and give those who possess athletic ability an opportunity to develop.

Consisting of ten members, one from each of the fraternity and non-fraternity groups, one from each class, and one from the Seminary, the Intra-Mural Board has worked hard and efficiently in arranging and carrying out schedules, and successfully arousing interest in athletic competition between the different groups and classes on the campus.



*Standing—Stouffer, Classler.
Sitting—Boyer, McKelvey, Abbot, Sala.*

Orange Key Club

President

JAMES BONSALL

THE Orange Key Club, instituted in 1931, is composed of the managers and assistants of the various athletic teams, formed for the purpose of promoting organization among these men.

The club is active in promoting all athletic events held on the campus.



Sitting—Ulrich, Crow, Shobert, Boeder, Keller, Mease, Gaskins.
Standing—Wesiotsky, Boyer, Jones, Long, Ayres, Geigle, Grossman.

Mathematics Club

President

RALPH RISHIEL

Advisor

DR. BOEDER

THE Mathematics Club meets once a month, when interesting programs are put on, both by students here on the campus, and by lectures by important mathematicians. This Club is devoted to practical mathematics and often the program includes contests that challenge the skill of the members in the mathematical line. An interesting program this year was on the subject of Chess which was explained by Dr. Boeder to the group.



FRATERNITIES



Third Row—Azary, Eisenhower.

Second Row—Messinger, Drumm, Miller, VanHorn.

First Row—McKelvey, Weslotsky, King, Abbott, Najaka.



Epsilon Sigma

Chartered 1924
101 Walnut Street

President

NELSON KING

Personnel

SENIORS

JAMES GROVE
WALTER WESLOTSKY

DANIEL McKELVEY
NELSON KING

CHARLES KELLER

JUNIORS

SAVIOR ABBOT
KENNETH ANDERSON

ELMER DEVERAUX
ELMER DRUM
DONALD HENRY

RUSSELL EISENHOWER
WILLIAM WHITELEY

SOPHOMORES

STEPHEN AZARY

FRANCIS MILLER
WILLIAM VANHORN

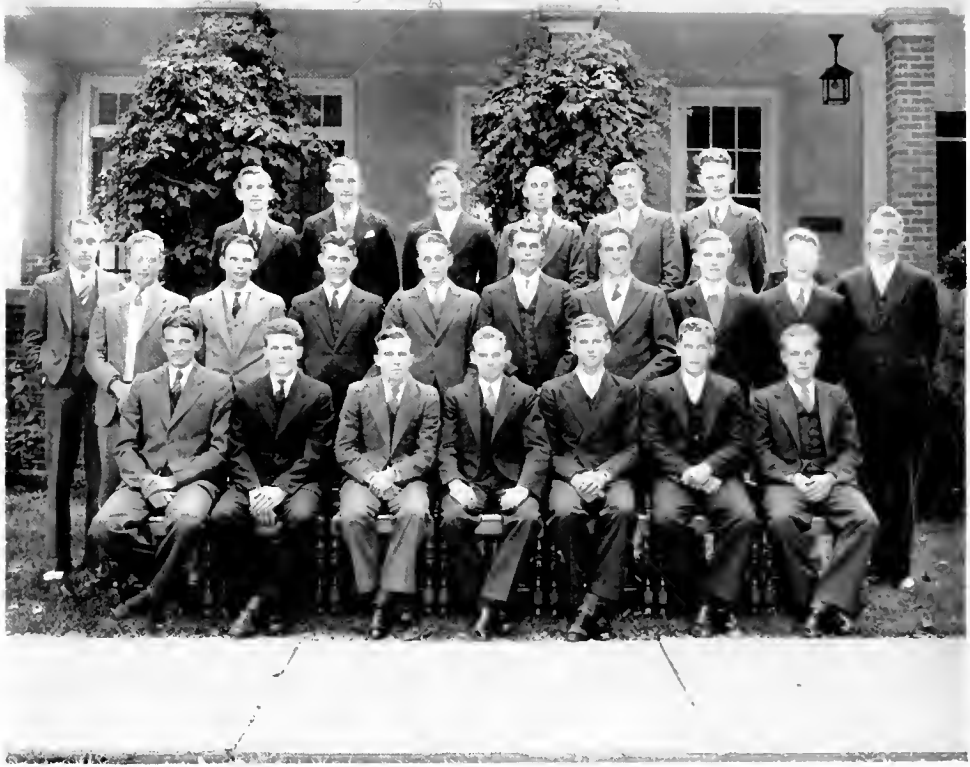
LEONARD NAJAKA

PLEDGES

PETER RICARDO
FRANK PALMISANO

WILLIAM O'NEIL
FRED TINURELLI
ANTHONY ALEX

JOHN BARNI
ROBERT BASTRESS



Third Row—Billman, Dorsett, Seavey, Yaros, Pritchard, Mitchell.

Second Row—Eyer, Hartz, Evans, Barnes, Caruth, Hess, Fisher, Price, Schubert, Leitzel.

First Row—Schlegel, Muir, Dively, Morrow, Oberdorf, Rishel, Blackwood.



Bond and Key Club

Chartered 1914
309 Walnut Street

President

WILLIAM MORROW

SENIORS

PENN DIVELY
RICHARD FISHER
WILLIAM MORROW

JOHN OBERDORF
PETER BLACKWOOD
LEE RISHELL

JERAULD SCHLEGEL
HENRY CASSLER

JUNIORS

TIMOTHY BARNES
WILLIAM CARUTH

JOHN HANNA
CHARLES JONES

ERLE SHUBERT
RICHARD TICE

SOPHOMORES

FRED BILLMAN
DAVID EVANS
ALLEN EYER
CHARLES FASOLD

ALBERT HESS
WALTER HERTZ
ROY LEITZEL
JACK MAGUIRE

JOHN NAGLEI
CHARLES PRICE
ROLAND PRICHARD
JACOB YAROS

PLEDGES

OREN BENNER
RALPH GEIGLE
ROBERT PRITCHARD

ROBERT TAYLOR
WALTER POYCK
ROBERT MOSHER
LUKE TOOMEY

EARNEST HESS
JOHN GOYNE
PAUL LUCAS




Fourth Row—Sullivan, Ferster, Hawk, Shawkey.

Third Row—Smith, Farley, Finn, Sala, Showers.

Second Row—Mitchell, Guss, Phillips, Goodling, Swartz, Greider.

First Row—Blyler, Nangle, Reitz, Dunkelberger, Gilbert, Bonsall, Sterling.



Phi Epsilon Chapter
of
Phi Lambda Theta

Chartered 1928
100 Pine Street

President

CLAVIN NAUGLE

Personnel

SENIORS

JAMES BONSALE
MARLIN BOTTEIGER
RUSSELL GOODLING

ELMER HAWK
EARNEST HUSTON
ROBERT SALA

CALVIN NAUGLE
LLOYD SWARTZ
MARAND SWARTZ

JUNIORS

LUTHER BOYER

KENNETH BLYLER

ROBERT SMITH

SOPHIOMORES

CLARENCE FARLEY
VERNON FERSTER

EUGENE MITCHEL
JEROME GUSS
HARLAN SHOWERS

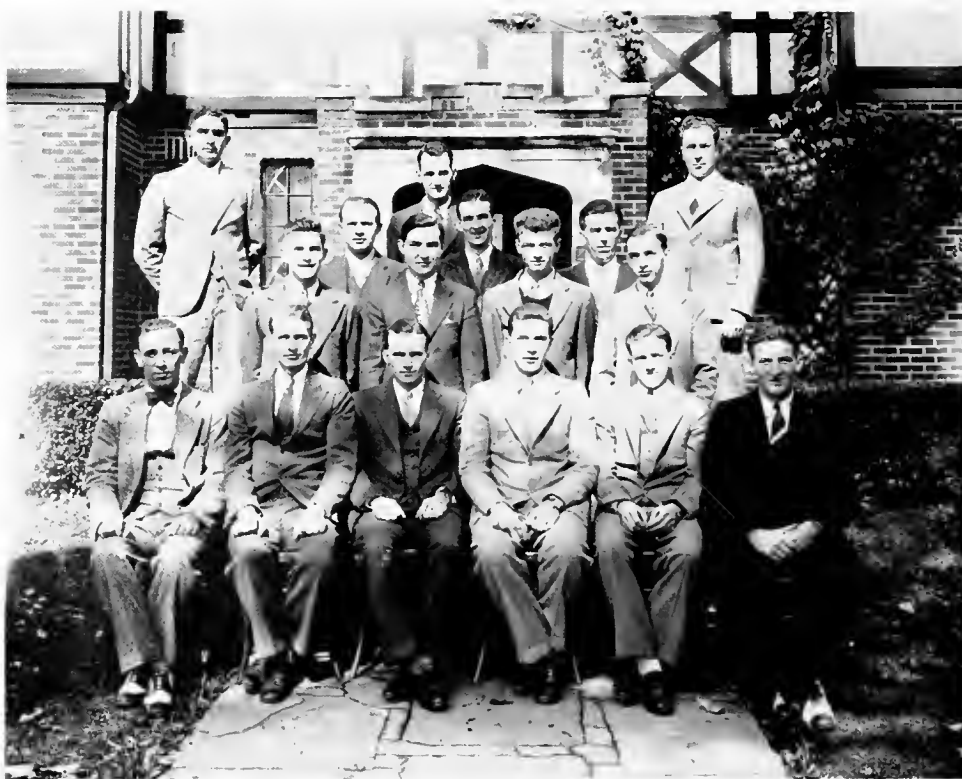
GEORGE PHILLIPS
RALPH SHAWKEY

PLEDGES

FOSTER SALKELD
WOODROW KLINGER
HENRY SHAEFFER

CLARENCE SHAEFFER
JOHN ULP
CHESTER LONG

LESTER KAISCHNER
JOSEPH BARNETT




Fourth Row—Bernardi, Roach, Krear.

Third Row—Shade, Hutchinson, Connahan.

Second Row—Clark, Blair, Stouffer, Hutchinson.

First Row—Clapper, Rowe, Gray, Reeger, Schreiner, Meyer.



Mu Alpha Chapter
of
Phi Mu Delta

Local Chapter Chartered 1926
306 Walnut Street

Personnel

SENIORS

EDWIN CLAPPER
NELSON GREY

D. EDGAR HUTCHINSON
RICHARD SHADE

HAROLD ROWE
JAMES SUTER

JUNIORS

FRANK BERNARDI
STEPHEN MARTINEC

WILLIAM REGER
MORGAN SCHREINER

ROBERT CLARK
WALTER WASILEWSKI

SOPHOMORES

MAX BLAIR
PAUL CONALLAN

GLEN BLAIR
JAMES GROSSMAN

JACK ROACH
HORACE HUTCHINSON

PLEDGES

CLYDE SPITZNER
STANLEY
AUGHENBAUGH

FRANCIS GELNETT
LEWIS HOWELLS
DANIEL COTTON

ANDREW FREDERICKS
RAYMOND SHAHEEN





SORORITIES



Third Row—Clegg, Gelnett, Cherrington, Stitzer.

Second Row—Stonesifer, Engle, Schlegel, Stamets, Long, Gaskins, Williamson.

First Row—Nelson, Hubler, Hines, Brown, Stetler, Nichols, Harding.



Kappa Delta Phi

Chartered 1917

President

ELEANOR BROWN

Personnel

SENIORS

ELEANOR BROWN
MARGARET HAUSMAN

RUTH NELSON
LUDLOW NICHOLS

NAOMI STONESIFER

JUNIORS

DOROTHY CLEGG

MILLIE HINES
ALEXARATA STAMETS

FRANCES HUBLER

SOPHOMORES

RUTH CHERRINGTON
PHYLLIS ENGLE
DOROTHY GASKINS

MARY GELNETT
BERNICE HARDING
LOIS LONG

GWENDOLYN SCHLEGEL
DORA STITZER

PLEDGES


MARY SCOTT

MARGARET MEYERS

WILHELMINA MOODY



*Standing—Slupe, Myers, Bair.
Sitting—Eastep, Williams, Winkelbeck.*



Sigma Omega
of
Sigma Alpha Iota

Chartered 1927

President

MARGARET WILLIAMS

Personnel

SENIORS

MARGARET WILLIAMS

JOSEPHINE PIFER

JUNIORS

RUTH BLAIR
DOROTHY EASTEP

ELIZABETH HADACHER
ALMA MYERS

BETTY SHIPE
ELVA WINKELBLECH

SOPHOMORES

MARCELLA CHAYA

MARY JANE KELLER

DOROTHY TURNER

PLEDGES

MOLLIE FOX

KATHRYN DEISHER
DOROTHY HOFFMAN

JEANNE HOFFARD



*Standing—Olshefsky, Orlando.
Sitting—Chimock, Kaufman, Keller, Crow.*



Sigma Sigma Delta

Founded 1928

President

PAULINE CROW

Personnel

SENIORS

LEONA KAUFMAN

PAULINE CROW

RUTH NEWELL

JUNIORS

PHYLLIS CHIMOCK

HELEN KELLER


SOPHOMORES

ELEANOR OLSHEFSKY

PLEDGES

MARGARET TAYLOR

One Hundred Seventy-five





Third Row—Frankenfield, Patterson, Mease, Mehring, Eltringham, Runk.
Second Row—Kline, Hall, Spiggle, Horn, Pritchard, Bergstresser, Marks.
First Row—Ulrich, Deihl, Benfer, Reese, Cressman, Phillips, Plummer.



Omega Delta Sigma

Chartered 1917

President

DAISY REESE

Personnel

SENIORS

ANNA BENFER
RUTH BERGSTRESSER
LILLIAN DIEHL
EDITH FRANKENFIELD

HELEN HALL
ISABELLA HORN
FRANCES KLINE
RUTH PLUMMER

ABERDEEN PHILLIPS
DAISY REESE
MARY ELISE SPIGGLE
SARAH ULRICH

JUNIORS

MARY ANN CRESSMAN
MARY ELTRINGHAM

FRANCES MARKS
LOUISE MEHRING

MARY PATTERSON

SOPHOMORES

ANNA MEASE
NATALIE PRITCHARD

ROSE RUNK

ALICE SMITH

PLEDGES

MARGARET CORSON
ELEANOR JONES

ARLENE MARSHALL
MARY RUTH RICHARDS

MARY K. TAYLOR
MARY BARNES



Junior Prom

Chairman

WILLIAM CARRUTH

An annual event since 1926, the Junior Prom brings a fitting climax to the festivities of May Day at Susquehanna.

Since it is sponsored by the Junior Class, the committee in charge of all arrangements is composed of Juniors appointed by the class president. This year the Prom will be held in the Dining Hall and the band will be under the direction of Duke Morris, of Penn State.

To Our Advertisers

ALTHOUGH we have gone through the most trying year business has ever known, the following business men have shown their true Susquehanna loyalty by their willingness to co-operate with us in the publishing of our year book. Show your true spirit by returning this favor when in the market for any of their products.

THE STAFF.

SUSQUEHANNA UNIVERSITY

FOUNDED 1858

IF YOU WANT A COLLEGE

*With a family spirit
Where the student is known by the faculty
Of distinctly Christian atmosphere
In a healthful climate
With exceptional athletic facilities
And where good scholarship is stressed*

COME

to SUSQUEHANNA

Bachelor Degrees in Liberal Arts, Science, Education
and Music

CO-EDUCATIONAL

For catalogue write the Registrar

Susquehanna University

Selinsgrove, Pa.

Compliments of
THE STANLEY THEATRE
Under the management of
The
COMERFORD THEATRES, INC.

**Middle Creek Valley
Telephone Company**

(B e l l S Y S T E M)

FRANK A. EYER, *General Manager*

GLEN LOCK DAIRIES CO.

Pasteurized Milk and Cream

Manufacturers of
GLEN LOCK ICE CREAM

141 North Fifth Street

Phone 386

SUNBURY, PA.

Keller's Quality Market

Dealers in all

**CHOICE MEATS AND
GROCERIES**

Delivery Service SELINGSGROVE, PA.

**SHAFFER'S
BARBER SHOP**

Monday, Tuesday, Wednesday,
Thursday25
Friday, Saturday35

**5 EAST PINE STREET
SELINGSGROVE, PA.**

**Selinsgrove
Water Supply Company**



FRANK A. EYER, *President*

W. K. SEEHOLTZ, *Superintendent*

JAMES F. McCLURE, *Treasurer*

Compliments of

**BUTTER KRUST BAKING COMPANY
SUNBURY, PA.**

Manufacturers of

**TOASTMASTER AND JUMBO BREAD
Breads with the Health Flavor**

Snyder County Trust Company

Solicits Your Patronage

Whitmer-Steele Co.

South River Lumber Co., Inc.

Manufacturers of
PINE, HEMLOCK
AND HARDWOOD LUMBER
LATH, PROP TIMBERS, TIES

65 KING STREET
NORTHUMBERLAND, PA.

BOGAR BROTHERS' LUMBER COMPANY

CONTRACTORS

BUILDERS

Manufacturers of and Dealers in
LUMBER, MILL WORK, BUILDING SUPPLIES

Phone: Bell 74 W

SELINSGROVE, PA

Compliments of
**The Snyder County
Tribune**
SELINGROVE, PA.

Compliments of
SNAVELY'S
Clothing and Shoes
SELINGROVE, PA.

The Lutheran Theological Seminary

GETTYSBURG, PENNSYLVANIA

BEGINS ITS 109TH YEAR SEPTEMBER 12, 1934

THE SEMINARY OFFERS:

Free Tuition

Furnished Rooms

Use of 43,500 Volumes in Library

Standard and Elective Courses Leading to the B.D. Degree

Graduate Work Leading to the Degree of S. T. M.

A Limited Number of Scholarships Available

For further information address JOHN ABERLY, *President*

Weis Pure Food Stores

Stores Throughout Central Pennsylvania

THE SELINGSGROVE TIMES

MARION S. SCHOCH, *Publisher*

All Kinds of Commercial Printing

Printers of "The Susquehanna"

Dance Programs a Specialty

GEORGE B. RINE

Florist

CUT FLOWERS - POTTED PLANTS

Store Phone, 36-W Greenhouse, 32-Y

SELINGSGROVE, PA.

The Don-Mar Restaurant

L. M. GABEL, *Prop.*

SELINGSGROVE, PA.

R. L. SCHROYER

General Insurance



SELINGSGROVE, PA.

NATIONAL CAFE RESTAURANT

Meals at all hours

R. A. MEASI, *Prop.*

I. O. O. F.
BUILDING
SELINGSGROVE, PA.

Compliments of

Kepler's Chevrolet Sales
and Service

Bread energy for Vitality
Old Timer, Bonnie, and Split
Loaf Bread

MANBECK BAKING CO.

E. R. KLINGER, Distributor

CHAS. A. HEISER

Fresh Fish and Oysters

217 W. SNYDER STREET
SELINGROVE, PA.

STEFFEN'S

Groceries, Gifts and Stationery

LENDING LIBRARY

SELINGROVE, PA.

Plummers' Electric Shop

EVERYTHING

ELECTRICAL

SELINGROVE, PA.

F. K. SUTTON

Funeral Director

Known for Service

SELINGROVE, PA.

Lytle's Pharmacy

Drugs, Toilet Articles, Fine
Box Candy, Soda Water

"THE REXALL STORE"

Selingrove, Pa.

THE STRAND

Sunbury

A Publix Theatre

Compliments of

KLINE'S

Meat Market

West Pine Street

BOOKS

For Everyone

JOS. L. MENTZ

*Books, Stationery and Office
Supplies*

THIRD AND MARKET STREETS
SUNBURY, PA.

RICHFIELD BUS LINE

A. E. Whiteley, Owner

Schedule and Party Service

456 S. MARKET STREET
SELINGSGROVE, PA.

W. G. PHILLIPS

The College Tailor

SELINGSGROVE, PA.

S. E. FISHER MOTORS

Chrysler, Plymouth

Towing and complete service on all cars
Alemite Lubricants, Fisk Tires,
Kendall Oils
Puroil

REA & DERICK, Inc.

Stores at

430 Market Street and 314 Market Street Sunbury, Pa. Northumberland, Pa. Shamokin, Pa.	Lewistown, Pa. Bloomsburg, Pa. Shickshimy, Pa. State College, Pa. Selingsgrove, Pa. Tyrone, Pa.	Berwick, Pa. Milton, Pa. Lewisburg, Pa. Mt. Carmel, Pa. Danville, Pa.
--	--	---

**The Selingsgrove
Book Store**

Magazines and Stationery

Picture Framing a Specialty

JAMES H. SUIERS
SELINGSGROVE, PA.

*Remember Your College
Days With Photographs*

SCHINDLER STUDIO

*Frames and Enlargements
to Order*

515 MARKET STREET
SUNBURY, PA.

SITTINGS
BY APPOINTMENT



Bell Telephone:
Pennypacker { 6190
 { 6191

ZAMSKY STUDIO, Inc.

Portraits of Distinction

902 CHESTNUT STREET

PHILADELPHIA, PA.

We have completed successfully over one hundred school and college annuals this year, and are adding new ones to our list.

There must be a reason—it will pay you to investigate.



Let
YOUR ANNUAL
Lead

In working with the Lanthorn Staff for the past year it has been our aim to help produce an annual which is the leader in its class. We hope that we have been successful to the end that, year after year, the advice of each retiring Lanthorn Staff will be "*Repeat with Lotz*"

ENGRAVERS AND DESIGNERS OF
NEARLY 100 YEARBOOKS ANNUALLY

The **LOTZ** PHOTO ENGRAVING COMPANY



COLLEGE ANNUAL DEPARTMENT
12TH and CHERRY STREETS
PHILADELPHIA

E X C E L L E N C E

"Excellence is not a mantle put around our shoulders by destiny. It is something attained by thought and act."



PUMUNANGWET
(He Who Shoots the Stars)

... who dares to attempt even the unattainable with the conscious pride of an unconquerable spirit.

Excellence in Annuals is attained. There is something a book has, or does not have—and the "ability" to know what to do to make a book different and distinctive—is something you cannot buy indiscriminately at any price.

When a Staff places their Annual in our hands, they immediately have at their disposal a service that is truly exceptional and complete. We look beyond the dotted line of the contract to broader horizons. Your problem becomes ours. Our resources of experience and facilities become yours.

Our cumulative knowledge of years in this line of work is applied understandingly and sympathetically to your specific aims. Cost is held to a figure in sensible proportion to the result to be accomplished.

Back of our organization is the spirit of "He Who Shoots the Stars"—vision—ambition—confidence—strength—and with the Staff catching this spirit along with us, the result will be an Annual which can be passed on to your Classmates with pride.

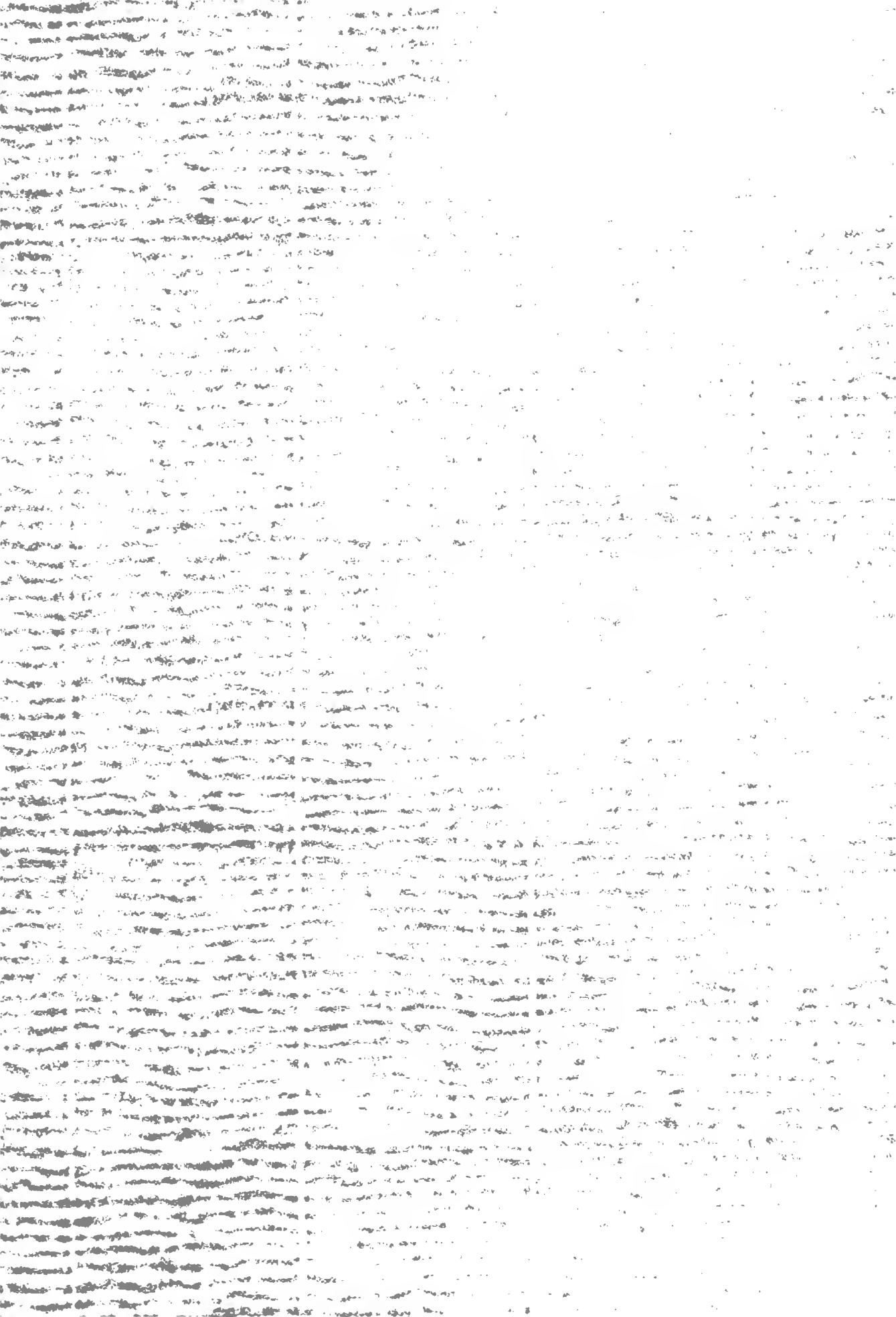
CLARK PRINTING HOUSE, INC.

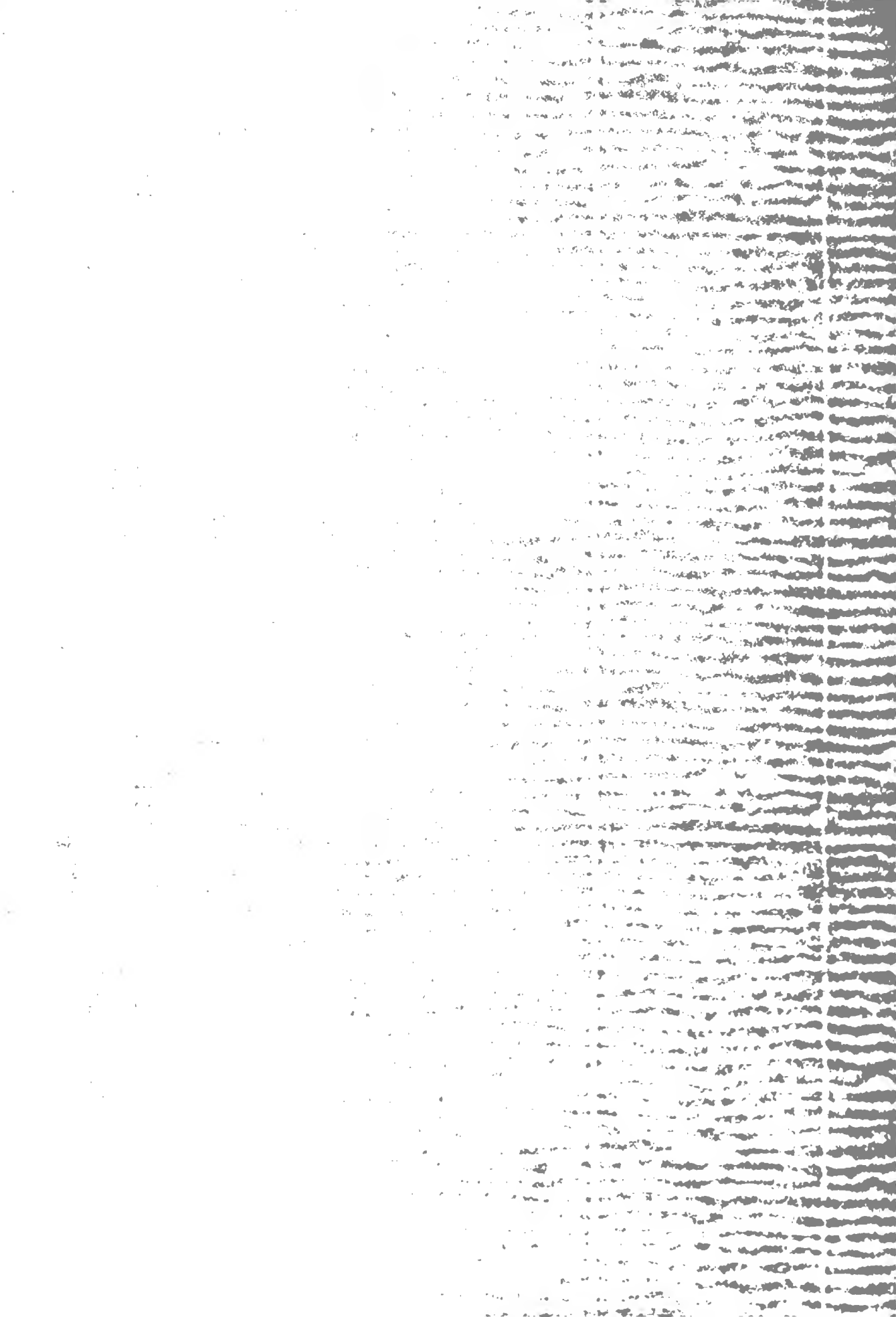
Printers for the School and College

821 CHERRY STREET :: :: PHILADELPHIA, PA.

Good Printing Without Extravagance

PRINTED BY
CLARK PRINTING HOUSE, INC
PHILADELPHIA, PA.





BLOUGH-WEIS LIBRARY

SUSQUEHANNA UNIVERSITY
SELINGROVE, PA 17070

SUSQUEHANNA UNIVERSITY LIBRARY



3 4998 0020 9653 0

SUSQUEHANNA UNIVERSITY LIBRARY
BLOUGH-WEIS LIBRARY
DOES NOT
CIRCULATE
ARCHIVES
SUSQUEHANNA UNIVERSITY
SUSQUEHANNA UNIVERSITY

