

# Lanthorn

S  
U



SUSQUEHANNA



"OF SUSQUEHANNA NOW WE SING,  
LET SUSQUEHANNA'S PRAISES RING"







EX LIBRIS

---

---

Copyright, 1937

KARL EUGENE KNISELEY, *Editor*

WILLIAM MORGAN EDWARDS, *Business Manager*

SUSQUEHANNA UNIVERSITY

JUNIOR PUBLICATION

LANTHORN

THE 1938



# DEDIC

With an ever growing love for  
Susquehanna in our hearts, the  
class of 1938 dedicates her  
LANTHORN to the memory of  
those faithful men and women  
who have already passed through  
our alma mater's broad and  
beautiful portals.



ATION



LANTHORN

JUNIOR PUBLICATION

SUSQUEHANNA UNIVERSITY

# THE LANT



KARL EUGENE KNISELEY  
*Editor-in-Chief*



WILLIAM MORGAN EDWARDS  
*Business Manager*

# HORN STAFF



Back Row—Mildred Pifer, James Higgins, Kent Worthington, Esther Yingling  
Front Row—Ethel Ramer, Helen Hisdorf, Karl Kniseley, Eleanor Brown, Estlier Kaufman



Left to Right—Morgan Edwards, Ruth Jones, John Rakshys, Dr. Leese (Faculty Advisor)  
George Kimmel, Elizabeth Fry

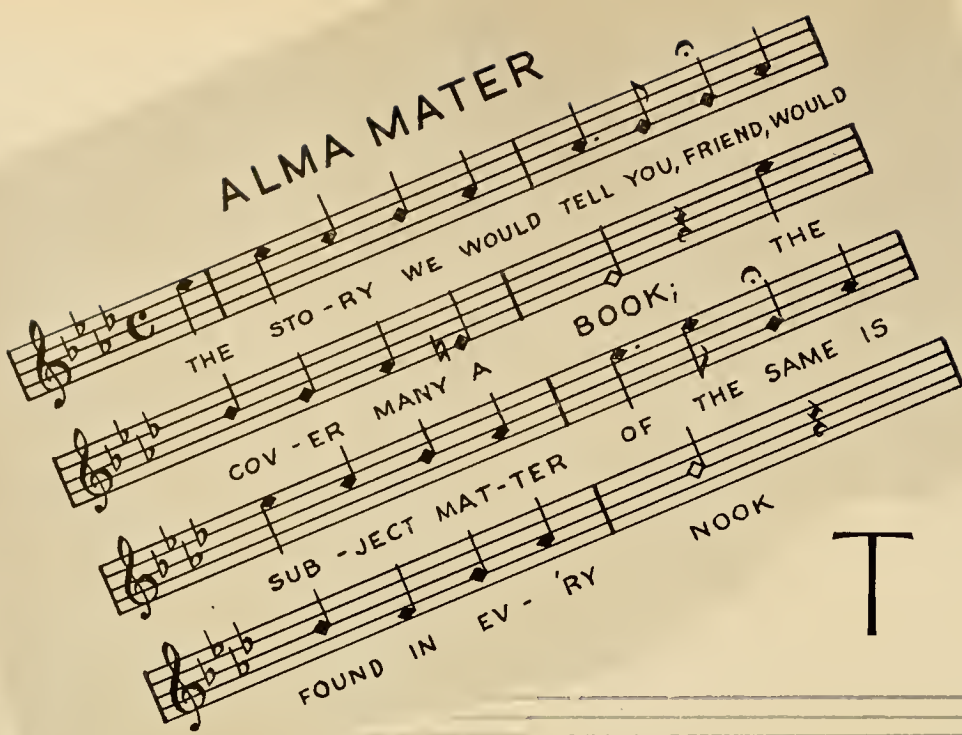
S  
U  
S  
Q  
U  
E  
H  
A  
N  
N  
A  
  
J  
U  
N  
I  
O  
R  
  
P  
U  
B  
L  
I  
C  
A  
T  
I  
O  
N  
  
U  
N  
I  
V  
E  
R  
S  
I  
T  
Y





S  
U  
S  
Q  
U  
E  
H  
A  
N  
N  
A  
  
U  
N  
I  
V  
E  
R  
S  
I  
T  
Y

# ALMA MATER



THE STO-RY WE WOULD TELL YOU, FRIEND, WOULD  
COV-ER MANY A BOOK; THE  
SUB-JECT MAT-TER OF THE SAME IS  
FOUND IN EV-'RY NOOK

THE

# FOREWORD









# CAMPUS

OF OLD S. U'S BROAD CAM-PUS, THE  
COM-MON BAT-TLE GROUND, WHOSE  
TREES MIGHT WHIS-PER SE-CRETS GRAVE, A-  
MUS-ING AND PRO-FOUND.

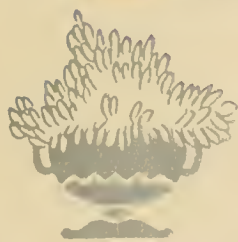


















## ADMINISTRATION

HOW DEAR TO ONE AND ALL THE NAME THEIR  
AL-MA MA-TER BEARS, WHEN  
THEY HAVE LEFT ITS CLAS-SIC HALLS, TO  
SHOULD-ER WORLD-LY CARES .



G. MORRIS SMITH  
A.B., A.M., D.D.

Franklin and Marshall Academy, 1907; A.B., Roanoke College, 1911; A.M., Princeton University, 1912; Instructor, Blair Academy, 1912-1916; Graduate, Mt. Airy Seminary, 1919; Pastor, Mt. Vernon Lutheran Church, 1918-1920; Pastor, Lutheran Church of the Redeemer, Buffalo, N. Y., 1920-1928; Present Position, 1928.

GLADYS B. ERDAIL  
A.B., A.M.  
*Dean of Women*



GEORGE F. DUNKELBERGER  
A.B., A.M., Pd.D., Ph.D.  
*Dean of College and Professor of  
Education*





LANGUAGE AND LITERATURE

RUSSELL WIEDER GILBERT, A.B., A.M.  
*Professor of German*

JAMES CARRINGTON FREEMAN, A.B., A.M.  
*Instructor in English*

LOIS M. BOE, A.B., A.M., Ph.D.  
*Professor of French*

ARTHUR H. WILSON, A.B., A.M., Ph.D.  
*Professor of English*

A. WILLIAM AHL, A.M., Ph.D.  
*Professor of Greek*



## SOCIAL STUDIES

EDWIN M. BRUNGART, A.B., A.M.  
*Assistant Professor of Education*

GEORGE F. DUNKELBERGER, A.B., A.M., Pd.D., Ph.D.  
*Professor of Education*

WILLIAM A. RUSS, JR., B.A., A.M., Ph.D.  
*Professor of History and Political Science*

THEODORE W. KRETSCHMANN, A.B., A.M., B.D., Ph.D.  
*Professor of Bible and Religion*

JOHN IRVIN WOODRUFF, A.B., A.M., Litt.D., LL.D.  
*Professor of Philosophy*



## SCIENCE

PAUL J. OVREBO, A.B., Ph.D.  
*Professor of Physics*

FISK WILLIAM STOCKING SCUDDER, A.B.  
*Assistant Professor of Biology*

GEORGE ELMER FISHER, Ph.B., A.M., Ph.D.  
*Professor of Chemistry*

ADAM SMITH, A.B., A.M., Ph.D.  
*Professor of Mathematics*

JOHN J. HOUTZ, A.B., A.M., M.S., Sc.D.  
*Assistant Professor of Chemistry and Mathematics*



## BUSINESS FACULTY

VIOLA MAUDE DUFRAIN, A.B., A.M.  
*Instructor in Commercial Education*

GEORGE NOBLE WOOD, A.B., A.M.  
*Assistant Professor of Business Administration*

CHARLES LEESE, A.B., A.M., Ph.D.  
*Professor of Business Administration*

D. IRVIN REITZ, Ph.B., A.M.  
*Assistant Professor of Commercial Education*



## CONSERVATORY FACULTY (MEN)

E. EDWIN SHELDON, Mus.M.

*Director of Conservatory*

FREDERICK C. STEVENS, A.B., A.M.

*Instructor of Singing, Director of Motet Choir*

ELROSE L. ALLISON, Mus.B.

*Instructor in Piano, Pipe Organ, and Wind Instruments*

PERCY MATHIAS LINEBAUGH, Mus.B.

*Professor of Pianoforte, Organ, Rudiments, and Harmony*

WILLIAM DONALD HEMPHILL, Mus.B.

*Professor of Violin and Orchestration*





## CONSERVATORY FACULTY (WOMEN)

MARGARET E. KEISER, Mus.B.

*Instructor of Singing and Appreciation*

MARY KATHRYN POTTEIGER, Mus.B.

*Instructor in Piano, Sight Singing, Dictation*

MARY W. WHITEHURST, Mus.B., A.M.

*Public School Music Methods*

IDA MANEVAL SHELDON, Mus.B.

*Instructor in Harmony and Music History*

DOROTHY WELSH REEDER, A.B.

*Instructor in Eurythmics, Pageantry and Folk Dances*



## ATHLETIC DIRECTORS

AMOS ALONZO STAGG, JR., A.B., A.M.  
*Head Coach, Director of Physical Education*

DOROTHY REEDER, A.B.  
*Instructor in Women's Sports*

JACK ROACH, A.B.  
*Assistant Coach*



## OFFICE PERSONNEL

ANNA M. HUMPHREY  
*Dictitian*

MILDRED G. ARBEGAST, A.B.  
*Registrar and Secretary to the Dean*

E. BEATRICE HERMAN, A.B.  
*Bursar*



LIBRARIANS

MARTHA S. DODSON, B.L.E.  
*Librarian*

CHARLOTTE BAISH  
*Assistant*



BUSINESS MANAGER AND PUBLICITY DIRECTOR

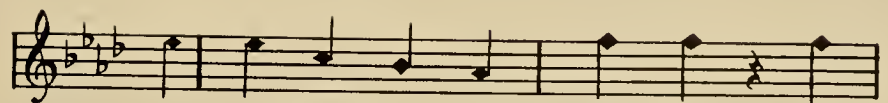
ERNEST T. YORTY  
*Business Manager*

H. VERNON BLOUGH, A.B.  
*Publicity Director*





# CLASSES



OF WIN-NING MAIDS AND NOBLE LORDS OF



DEAR OLD COL-LEGE DAYS ,







SENIOR  
CLASS



## SENIOR OFFICERS

FRANCIS GELNETT	- - - - -	<i>President</i>
MARY SCOTT	- - - - -	<i>Secretary</i>
MARY BETH RICHARDS	- - - - -	<i>Treasurer</i>

## SENIOR CLASS HISTORY

Shortly we, the class of 1937, bid a sad farewell to our alma mater. With regret in our hearts, we realize that only too soon we must be counted among those who have passed out into the world, no longer protected by Susquehanna and all for which she stands.

We have spent four happy years together at Susquehanna. They have been four years filled with memories that we shall never forget.

It was during our freshman year that we accomplished the supposed impossible—the defeat of the sophomores in the annual freshman-sophomore football tilt. Our men and women lost no time in winning places on most of the varsity teams. Fondly we retain memories of a successful “Get-away” and “Home-coming Night.”

Then, too, we must recall our LANTHORN and Junior Prom—two things which place the class of 1937 in the Susquehanna’s hall of fame.

Although much success has been showered upon the class of 1937, we realize that mistakes have also been made. We exhort you, who are soon to take our place, to profit by our successes and defeats.

Our charge to you, the under-classmen of Susquehanna—

“Upon the wreckage of thy yesterday  
Design thy structure of tomorrow. Lay  
Strong corner-stones of purpose, and prepare  
Great blocks of wisdom cut from past despair.  
Shape mighty pillars of resolve, to set  
Deep in the tear-wet mortar of regret.  
Believe in God—in thine own self believe,  
All thou hast hoped for thou shalt yet achieve.”

—ELLA WHEELER WILCOX.



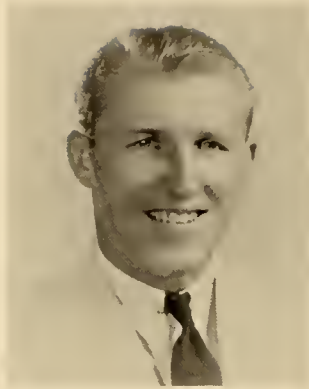
**KENNETH ALEXANDER**

3213 N. Main Street  
Scranton, Pa.

*Phi Mu Delta*

Varsity Football, (Co-Captain);  
Varsity Basketball; Varsity Base-  
ball; Interfraternity Basketball;  
Class Soccer.

*High School—Scranton*



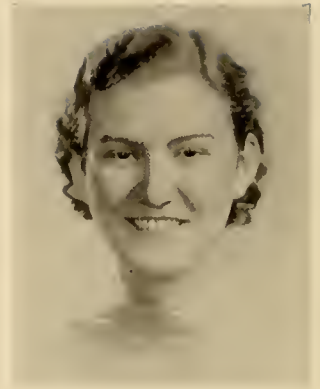
**KENNETH BADGER**

Middleburg, Pa.

*Bond and Key*

Varsity Football; Varsity Basket-  
ball; Varsity Baseball; Track;  
Soccer; Colony Organization.

*High School—Middleburg*



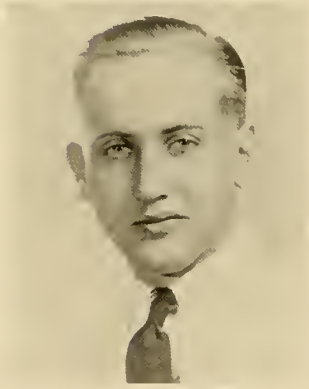
**MARY C. BARNES**

Middleburg, Pa.

*Omega Delta Sigma*

President, Women's Student  
Council; Pi Gamma Mu; French  
Club; Choral Club; Motet Choir;  
Y. W. C. A. Cabinet; Women's  
Athletic Association; Class Base-  
ball; Basketball; Soccer; Hockey;  
"Who's Who in American Col-  
leges."

*High School—Middleburg*



**OREN BENNER**

Walnut Street  
Mifflinburg, Pa.

*Bond and Key*

Track, (Captain of Track); Class  
Football; Basketball; Soccer; In-  
terfraternity Basketball; Varsity  
"S" Club; Motet Choir.

*High School—Mifflinburg*



**VIVIAN CAROLUS**

135 Race Street  
Sunbury, Pa.

*High School—Windsor*



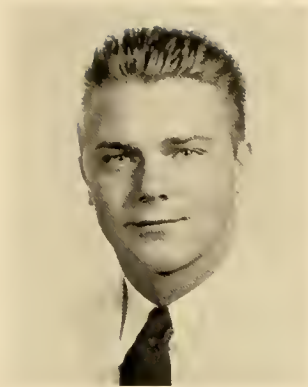
**MARGARET L. CORSON**

101 N. Main Street  
Hughesville, Pa.

*Omega Delta Sigma*

German Club; Glee Club; Motet  
Choir; Choral Society; Science  
Club, President; W. A. A., Presi-  
dent; Class Soccer; Basketball;  
Volleyball; Baseball; Hockey;  
Captain of the Varsity Basketball  
and Hockey Teams; Intersorority  
Council.

*High School—Hughesville*



**DANIEL COTTON**

823 Main Street  
Druryea, Pa.

*Phi Mu Delta*

Varsity Baseball; Interfraternity  
Council; Mathematics Club.

*High School—Druryea*



**MARY ANN FOX**

16 South Sixth Street  
Shamokin, Pa.

*Sigma Alpha Iota*

Choral Society; Motet Choir; Glee  
Club; Intersorority Council; W.  
A. A.; Class Hockey; Volleyball;  
Soccer; Basketball; Baseball.

*High School—Pottsville*



**ANDREW FREDERICKS**

330 Hawthorne Avenue  
Yonkers, N. Y.

*Phi Mu Delta*

Business Society; Men's Student  
Council; French Club; Varsity  
Basketball Captain; Varsity Base-  
ball; Intra-Mural Board.

*High School—Yonkers High  
School of Commerce*



**DONALD GAVER**

904 Fourth Avenue  
Altoona, Pa.

*Bond and Key*

Band; Interfraternity Basketball;  
Class Soccer; Baseball; French  
Club.

*High School—Altoona*



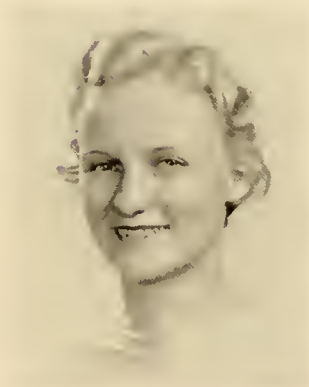
**FRANCIS GELNETT**

210 S. Market Street  
Selinsgrove, Pa.

*Phi Mu Delta*

Symphonic Society; Band; Presi-  
dent Senior Class; President Dra-  
matic Club; Co-Editor *Susque-  
hanna*; Class Basketball and Soc-  
cer; Track.

*High School—Selinsgrove*



**HELEN E. GUNDRUM**

944 E. Main Street  
Rockwood, Pa.

*Kappa Delta Phi*

French Club; Class Hockey; Soc-  
cer; Dramatic Club; Debating  
Club.

*High School—Rockwood*



**JEANNE HOFFARD**

113 North Elmer Avenue  
Sayre, Pa.

*Sigma Alpha Iota*

Trinity Lutheran Choir; Choral  
Society; Intersorority Council;  
Glee Club; Class Soccer; Hockey.

*High School—Wilkes-Barre  
Coughlin*



**DOROTHY L. HOFFMAN**

Bloomsburg, Pa.  
Route No. 5

*Sigma Alpha Iota*

Symphonic Society; Choral Soci-  
ety; Glee Club; Class Soccer;  
Hockey.

*High School—Bloomsburg*



**LEWIS HOWELLS**

1131 Scott Street  
Kulpmont, Pa.

*Phi Mu Delta*

Motet Choir; Choral Society; As-  
sistant Manager Football.

*High School—Shamokin*



**EVELYN JANSON**

910 Susquehanna Avenue  
Sunbury, Pa.

*Omega Delta Sigma*

French Club; Class Basketball;  
Hockey; Volleyball; Baseball;  
Soccer; Student Council.

*High School—Sunbury*



**ELEANOR E. JONES**

251 E. Park Street  
Mount Carmel, Pa.

*Omega Delta Sigma*

Mathematics Club; German Club;  
President Intersorority Council;  
Science Club; W. A. A.; Class  
Baseball; Basketball; Volleyball;  
Hockey; Soccer; Student Council.

*High School—Mount Carmel*



**LESTER KARSCHNER**

Muncy, Pa.  
R. D. No. 2

*Phi Lambda Theta*

Phi Kappa; Pre-Theological Club;  
Motet Choir; Choral Society; Pi  
Gamma Mu; College Photographer;  
S. C. A.

*High School—Muncy*



**WOODROW KLINGER**  
Herndon, Pa.

*Phi Lambda Theta*

Pre-Theological Club; Pi Gamma Mu; Phi Kappa President; Class Soccer; Football; Varsity Baseball.

*High School—Herndon*



**EVELYN LEESER**  
238 South Front Street  
Sunbury, Pa.

Pi Gamma Mu; French Club; Class Hockey; Class Volleyball.

*High School—Sunbury*



**CHESTER LONG**  
Friedens, Pa.

*Phi Lambda Theta*

German Club; President, Student Council; Orange Key Club; Y. M. C. A.; Class Football.

*High School—Somerset Township*



**PAUL LUBOLD**  
Broad Street  
Selinsgrove, Pa.

*High School—Selinsgrove*



**ARLINE MARSHALL**  
1215 Walnut Street  
Jersey Shore, Pa.

*Omega Delta Sigma*

French Club; Choral Society; Business Society; Y. W. C. A. Cabinet; W. A. A.; Class Hockey; Class Soccer; Class Baseball; Class Basketball; Class Volleyball.

*High School—Jersey Shore*

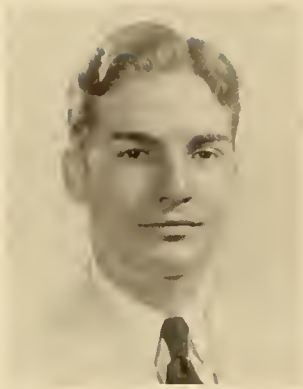


**ROBERT MOSHER**  
53 Lake Avenue  
Auburn, N. Y.

*Bond and Key*

Class Treasurer, 3; *Susquehanna* Staff, (Co-Editor, 4); Associate LANTHORN Editor, 3; French Club.

*High School—Auburn*



**WALTER POYCK**

82 Lockhart Street  
Wilkes-Barre, Pa.

*Bond and Key*

Symphonic Society; Band; Football; Pi Gamma Mu; Business Society; Interfraternity Council President; French Club; *Susquehanna*.

*High School—Coughlin and Meyers*



**MARY REESE**

901 Center Street  
Freeland, Pa.

German Club; French Club; Dramatic Club.

*High School—Freeland*



**MARY BETH RICHARD**

30 Rossner Avenue  
Hagerstown, Md.

*S. C. A. Cabinet*

Choral Society; Science Club President; German Club; W. A. A.; Class Soccer; Class Baseball; Class Volleyball; Class Basketball; Class Hockey; Varsity Hockey; Secretary-Treasurer of Senior Class.

*High School—Marion Junior College*



**JOHN ROBERTS**

322 First Street  
Slatington, Pa.

*Phi Mu Delta*

*High School—Slatington*



**MARGARET ROUSH**

709 N. Market Street  
Selinsgrove, Pa.

*Kappa Delta Phi*

Business Society; French Club; Dramatic Club.

*High School—Selinsgrove*



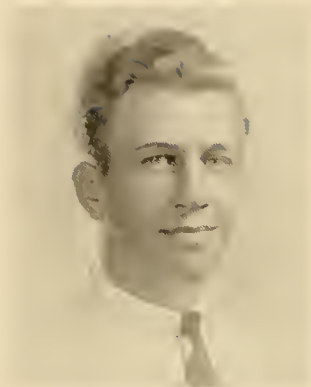
**DOROTHY SAVIDGE**

265 Eleventh Street  
Sunbury, Pa.

Day Student Organization.

*High School—Sunbury*





**HENRY SHAFER**

Selinsgrove, Pa.  
R. D. No. 2

*Phi Lambda Theta*

Track; Debating Club; Pi Gamma Mu; Class Soccer; "Who's Who in American Colleges."

*High School—Freeburg*



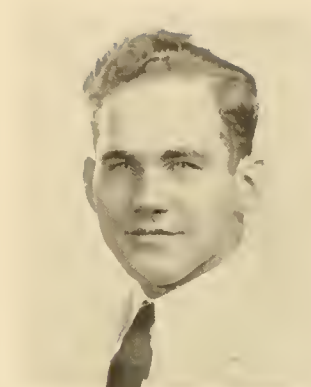
**RAYMOND SHAHEEN**

400 Jordan Street  
Montoursville, Pa.

*Phi Mu Delta*

S. C. A. Cabinet; Phi Kappa; Pre-Theological Club; "Who's Who in American Colleges"; Debating Club.

*High School—Montoursville*



**DAVID SHELLENBERGER**

400 West Pine Street  
Selinsgrove, Pa.

*Phi Lambda Theta*

Band; Symphonic Society; Motet Choir; Madrigals; German Club; Class Football; Class Baseball; Class Track; Class Soccer.

*High School—Tressler*



**EVA SACHS**

24 York Street  
Gettysburg, Pa.

*Sigma Alpha Iota*

Choral Society; Motet Choir; Madrigals; Lutheran Church Choir; Symphonic Society; "Who's Who in American Colleges."

*High School—Gettysburg*



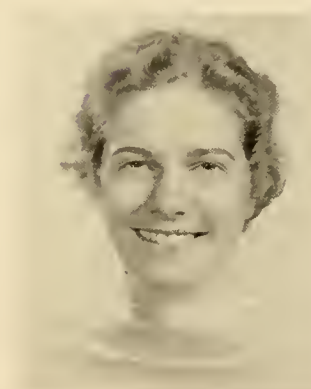
**CLARENCE SCHAEFFER**

Dalmatia, Pa.

*Phi Lambda Theta*

Pre-Theological Club; Phi Kappa President.

*High School—Dalmatia*



**A. MARY SCOTT**

505 E. Sunbury Street  
Shamokin, Pa.

*Kappa Delta Phi*

Women's Co-operative Council; S. C. A. Cabinet; President Susquehanna Publishing Association; Intersorority Council; Motet Choir; W. A. A.; Vice President Senior Class; Business Society; French Club.

*High School—Shamokin*



**PHYLLIS SLOUT**

311 Woodland Avenue  
Williamsport, Pa.

French Club; Business Society.

*High School—Williamsport*



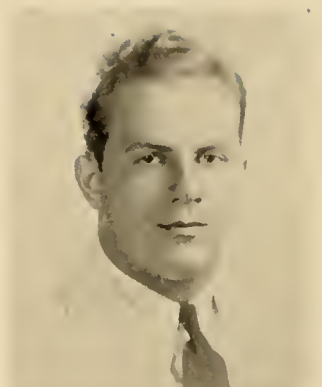
**CLYDE SPITZNER**

22 Laurel Street  
Freemont, Pa.

*Phi Mu Delta*

Varsity Football; Varsity Basketball; Debating Club; Varsity Baseball. (Captain); Business Society; German Club; Colony Organization.

*High School—Pottsville*



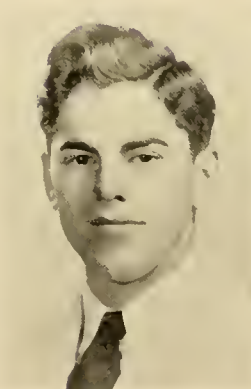
**LUKE TOOMEY**

Wila, Pa.

*Bond and Key*

Varsity Football; Varsity Track; Intra-Mural Board; Varsity "S" Club; Interfraternity Basketball; Men's Student Council.

*High School—Newport*



**JOHN ULP**

420 Third Street  
Northumberland, Pa.

*Phi Lambda Theta*

Motet Choir; Choral Society; Orange Key Club; Symphonic Club; Band.

*High School  
Northumberland*



**CLARENCE WENSEL**

136 Market Street  
Lewisburg, Pa.

*Phi Lambda Theta*

German Club; Class Soccer; Class Football; Class Basketball; Motet Choir; Business Society; Choral Club; Madrigals.

*High School—Lewisburg*



**HELEN WENTZEL**

Market Street  
Selinsgrove, Pa.

*Omega Delta Sigma*

Class Hockey; Class Baseball; Class Soccer; Business Society.

*High School—Selinsgrove*



**HELEN YEAGER**

66 Queen Street  
Northumberland, Pa.

*Sigma Alpha Iota*

Choral Club; Motet Choir.

*High School  
Northumberland*



J  
U  
N  
I  
O  
R  
  
C  
L  
A  
S  
S



## JUNIOR OFFICERS

MORGAN EDWARDS	-	-	-	-	-	-	-	-	<i>President</i>
ESTHER YINGLING	-	-	-	-	-	-	-	-	<i>Vice President</i>
ESTHER KAUFMAN	-	-	-	-	-	-	-	-	<i>Secretary</i>
GEORGE KIMMEL	-	-	-	-	-	-	-	-	<i>Treasurer</i>

## JUNIOR CLASS HISTORY

'Twas on a September day in 1934 that we entered the portals of Susquehanna, for the first time, in the quest of knowledge. Since that time many things have transpired in our lives, and as we look back on our three years at Susquehanna we have a feeling that we have really accomplished something of which we may truly be proud. We have had many of our class members on the athletic teams; we have taken an outstanding part in the social life of the school; our class has been well above the average along the scholastic line; we have taken an active part in the journalistic work on our campus, having several members of the class on the Susquehanna Staff and are now publishing this our annual LANTHORN; and finally we have contributed much to the work of the Student Christian Association on our campus, having several of our members as outstanding leaders in the association. Our participation in these various activities on our campus has given us a much broader view on life and in later life we will know that our work here has not been in vain.

And now, as we the members of the class of 1938 approach the last year of our college career, we look back on that which is past with conflicting emotions. We regret that the happy days here at school are nearly finished. Who of us can ever forget the many escapades of our Freshman year, our victory over the Sophs in football, the bonfire before the homecoming game? We also look back on these past three years with a feeling of thankfulness that we have been given the opportunity to be a part of this life here, even though it could only be for four short years. We now look forward to our last year of school hoping to attain a completeness that will better enable us to meet the problems of life.

## In Memoriam



*Jackson Ritchie*

JACKSON ARTHUR RITCHIE  
R. D. No. 3                      Sunbury, Pa.

Sunbury High School

*Phi Lambda Theta*

Pre-Theological Club 1, 2; Greek Club  
1, 2; Football 1, 2; Class Football 1;  
S. C. A. 1, 2.

Ministry.

Born April 17, 1916  
Died November 24, 1935

The class of 1938 dedicates this page to the memory of a beautiful life which, by the will of God, has been taken from us and transplanted in Heaven.

We shall never forget Jackson, for his life has brought to each one of us a vivid picture of a youth, strong of courage, fighting against difficulties—and overcoming them.



*Hildegard Ahl*

HILDEGARD AHL  
University Heights Selinsgrove, Pa.  
Selinsgrove High School

*Omega Delta Sigma*

Motet Choir 1, 2, 3; Choral Society 1,  
2, 3; Biemic Society 3; German  
Club 2, 3; May Day 1, 2; Class  
Hockey 1, 2; Trinity Church Choir.

Medicine.

August 19, 1916.



*J. Stanley Aughenbaugh*

J. STANLEY AUGHENBAUGH  
Etters P. O. Goldsboro, Pa.  
William Penn High School,  
Harrisburg, Pa.

*Phi Mu Delta*

Motet Choir 1, 2, 3; Band 1; Inter-  
fraternity Football 2; Choral So-  
ciety 1, 2, 3; May Day 2.

Education (Music).

April 4, 1914.



*Robert T. Birchard*

ROBERT THOMAS BIRCHARD  
802 Faxon Parkway Williamsport, Pa.  
Williamsport High School;  
Dickinson Seminary

Band 3; Symphonic Society 3; French  
Club 3; S. C. A. 3.

Lawyer.

April 1, 1917.



*Martha Bolig*

MARTHA E. BOLIG  
558 Front Street Northumberland, Pa.  
Northumberland High School  
*Omega Delta Sigma*

Intersorority Council 3; French Club  
2, 3; Dramatic Club 3; LANTHORN  
Staff 3; W. A. A. 2, 3; Varsity  
Hockey and Basketball 1, 2, 3; Class  
Hockey 1, 2, 3; Class Basketball 1,  
2, 3; Class Volleyball 1, 2, 3; Class  
Soccer 1, 2, 3; Class Baseball 1, 2,  
3; May Day 1, 2.

Teaching.

September 6, 1916.





*Roy Bolig*

ROY BOLIG

301 South Market Street  
Selinsgrove, Pa.

Selinsgrove High School;  
Wenonah Military Academy;  
State College

*Phi Mu Delta*

Football 3; Track 2; S. C. A. 2, 3.

Athletic Coach.

October 29, 1913.



*Marjorie Bower*

MARJORIE BOWER

Middleburg, Pa.

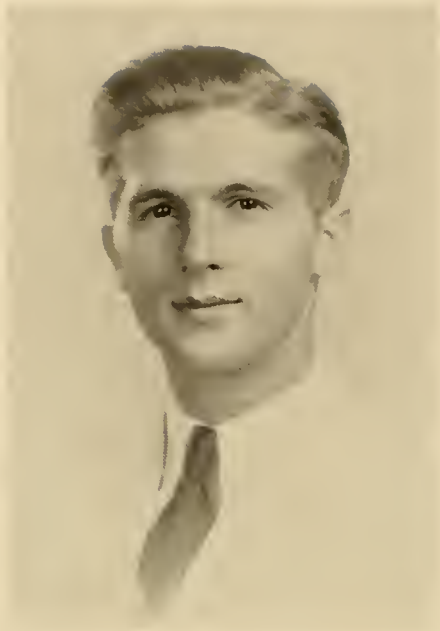
North High School, Columbie, Ohio.

*Kappa Delta Phi*

French Club 1; May Day 1; Dra-  
matic Club 3; Day Student Organ-  
ization.

Secretary.

March 1, 1916.



*Robert Boyer*

ROBERT A. BOYER

R. D. 1 Selinsgrove, Pa.

Selinsgrove High School

*Phi Lambda Theta*

Debating 1, 2, 3; Mathematics Club 1, 2, 3, President 3; Interclass Track 1, 2; Varsity Track 1, 2, 3; Interclass Soccer 1, 2; Interfraternity Football 2; Physics Assistant 3; College Who's Who 3; Stein Mathematics Prize.

Education (Science and Mathematics).

August 27, 1916.



*Margaret Boyle*

MARGARET BOYLE

1254 Wolverton Street Sunbury, Pa.

Sunbury High School

*Omega Delta Sigma*

Varsity Hockey 2, 3; W. A. A. 2, 3; German Club 3; Mathematics Club 2, 3; Class Hockey 1, 2, 3; Class Basketball 1, 2, 3; Class Baseball 1, 2, 3; Class Volleyball 1, 2, 3; Class Soccer 1, 2, 3; Track 1, 2; President of Day Students; May Day 1, 2.

Graduate Work in Physics.

June 13, 1913.



*Eleanor B. Brown*

ELEANOR B. BROWN

732 Third Avenue Ford City, Pa.

Ford City High School

*Kappa Delta Phi*

Intersorority Council 3; LANTHORN Editorial Staff 3; Class Treasurer 2; Susquehanna Editorial Staff 1, 2; Tennis Doubles Titleholder 2; Class Basketball and Baseball 1, 2, 3; Varsity Basketball 1, 2, 3; Class Hockey 2, 3; Class Soccer and Volleyball 2, 3; W. A. A. 3; Business Administration Club 1, 2, 3; German Club 1, 2.

Private Secretary.

March 25, 1915.



*Claude Clark*

CLAUDE CLARK

R. D. 1

Sunbury, Pa.

*Bond and Key*

Interclass Soccer 1; Assistant Football Manager 2, 3; German Club 1; Biemic Society 3.

Medicine.

September 1, 1911.



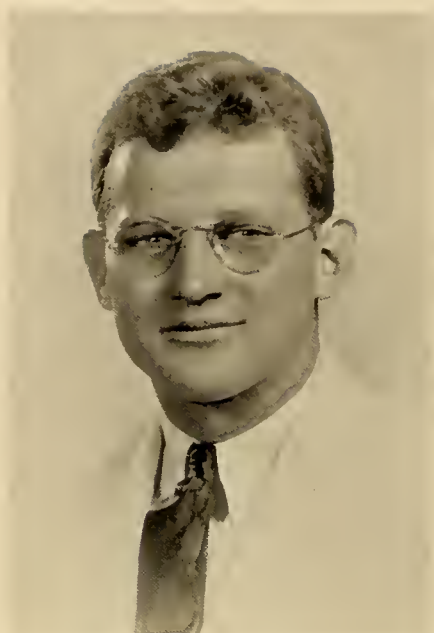
*George Clark*

GEORGE ALLAN CLARK  
222 Cemetery Street Jersey Shore, Pa.  
Jersey Shore High School  
*Phi Mu Delta*

Band 1, 2, 3; Pre-Theological Club 1, 2, 3; Greek Club 2, 3; Symphonic Society 1, 2, 3; Motet Choir 2, 3; Choral Society 1, 2, 3; S. C. A. 1, 2, 3; S. C. A. Cabinet 2, 3.

Ministry.

July 2, 1915.



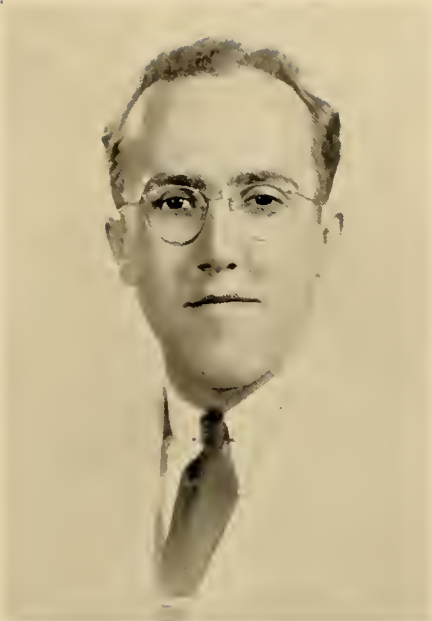
*James Diffenderfer*

JAMES BANKS DIFFENDERFER  
Market Street Middleburg, Pa.  
Middleburg High School  
*Bond and Key*

Varsity Football 1, 2, 3; Freshman Football; Varsity Track 1, 2, 3; Interclass Track 1, 2, 3; Varsity "S" Club 3; Varsity Basketball 2, 3; Interfraternity Basketball 2; Motet Choir 1, 2; Interclass Soccer 1, 2; Greek Club 2, 3; Pre-Theological Club 1, 2, 3; Choral Society 1, 2, 3; S. C. A. 1, 2, 3; S. C. A. Cabinet 3.

Ministry.

July 31, 1915.



*Richard Ditzler*

RICHARD EDWARD DITZLER  
211 West Pine Street Selinsgrove, Pa.

Selinsgrove High School

*Bond and Key*

Band 1, 3; Symphonic Society 1; Varsity Track 1; Interclass Track 1; Interclass Soccer 1.

Orchestral Work.

April 30, 1916.



*Donald Dorsett*

DONALD CLAYTON DORSETT  
409 Washington Avenue  
Jersey Shore, Pa.

Jersey Shore High School

*Bond and Key*

Band 1, 2, 3; Greek Club 1, 2, 3; Pre-Theological Club 1, 2, 3; Track 1, 2; S. C. A. 1, 2, 3.

Ministry.

May 16, 1910.



*Morgan Edwards*

**MORGAN EDWARDS**

Johnstown, Pa.

Johnstown Central High School

*Phi Mu Delta*

President of Junior Class 3; Basketball Manager 3; Secretary of Pre-Theological Club; Treasurer of S. C. A. 3; Business Manager of LANTHORN 3; Greek Club 1, 2, 3; "Who's Who in American Colleges"; Pi Gamma Mu.

Ministry.

July 12, 1913.



*Orville Fitzgerald*

**ORVILLE M. FITZGERALD**

229 South Broad Street

Jersey Shore, Pa.

Jersey Shore High School

*Bond and Key*

Band 1, 2, 3; Susquehanna Staff 1, 2, 3; Interfraternity Basketball; Interclass Basketball; Track; S. C. A., President 3.

Psychiatrist and Brain Surgeon.

May 30, 1916.



*Elizabeth Fry*

ELIZABETH BAIR FRY

2630 Perrysville Avenue  
Pittsburgh, Pa.

Perry High School

*Omega Delta Sigma*

W. A. A. 1, 2, 3; LANTHORN Business Staff 3; Susquehanna Staff 1, 2; French Club 2; Choral Society 1, 2; Biemic Society 1, 2, 3; May Day 1, 2; Dramatic Club 3; Varsity Hockey 2, 3; Varsity Basketball 2, 3; Class Hockey 1, 2, 3; Class Basketball 1, 2, 3; Class Soccer 1, 2, 3; Class Volleyball 1, 2, 3; Class Baseball 1, 2, 3.

Teaching.



*John Goyne*

JOHN F. GOYNE

1500 Market Street Ashland, Pa.

Ashland High School;  
Perkiomen Institute

*Bond and Key*

Football 1, 2, 3; Interclass Basketball; Interfraternity Basketball; Business Society; French Club.

Business.

May 25, 1913.



*Reed Grenninger*

REED GRENNINGER

638 Cherry Street Williamsport, Pa.

Williamsport High School

*Phi Mu Delta*

Debating 1, 2, 3, Manager 3; Varsity Track 1, 2, 3; Freshman Football; Pre-Theological Club 1, 2, 3, Vice President 2; Greek Club 1, 2, 3, Treasurer 3; Varsity "S" Club 1, 2; Dramatic Club 3; Interclass Soccer 1; S. C. A. 1, 2, 3; Interclass Track 1, 2, 3; Interfraternity Basketball 2.

Ministry.

February 27, 1915.



*Caroline Grubb*

CAROLINE E. GRUBB

Liverpool, Pa.

Liverpool High School

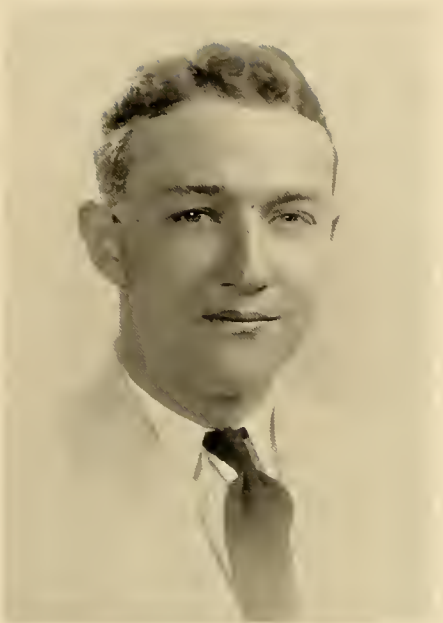
*Sigma Alpha Iota*

Choral Club 1, 2, 3; Women's Athletic Association 2, 3; Student Council 3; May Day 1, 2; Class Hockey 2; Class Basketball 2; Class Soccer 2; Class Baseball 2; Varsity Basketball 2.

Teaching (Music).

November 22, 1915.





*Mark R. Guthrie*

MARK REUBEN GUTHRIE  
562 King Street Northumberland, Pa.

Northumberland High School

*Phi Mu Delta*

Susquehanna Advertising Manager 3;  
German Club 1, 2; S. C. A. 1; Varsity  
Football 2; Commercial Club  
1, 2, 3.

Education.

September 29, 1915.



*Birdie Hamm*

BIRDIE S. HAMM  
106 Westminster Avenue  
Hanover, Pa.

Hanover High School

*Sigma Alpha Iota*

Orchestra 1, 2, 3; Band 1, 2, 3; Choral  
Society 1, 2, 3; Women's Athletic  
Association 2, 3; May Day 1, 2;  
Class Hockey 1, 2, 3; Class Basket-  
ball 1, 2, 3; Class Volleyball 1, 2, 3.

Concert Violinist.

November 15, 1917.



*John M. Hazlett*

JOHN McLEAN HAZLETT

Dry Run, Pa.

Dry Run High School

*Phi Mu Delta*

Varsity Football 1, 2, 3; Varsity  
Baseball 1, 2, 3; Debating 1; Inter-  
class Track 1; S. C. A. 3; Interfra-  
ternity Basketball 2, 3.

Lawyer.

October 13, 1916.



*Mary Heim*

MARY HEIM

Loysville, Pa.

Tressler High School

Choral Society 1, 2; German Club 1,  
2; Science Club 3; May Day 1, 2;  
Class Hockey 2, 3; Class Soccer 1,  
2, 3; Class Volleyball 1, 2, 3; W.  
A. A. 3.

Medicine.

March 26, 1918.



*Ruth Hemmerly*

RUTH HEMMERLY

600 North Laurel Street  
Hazleton, Pa.

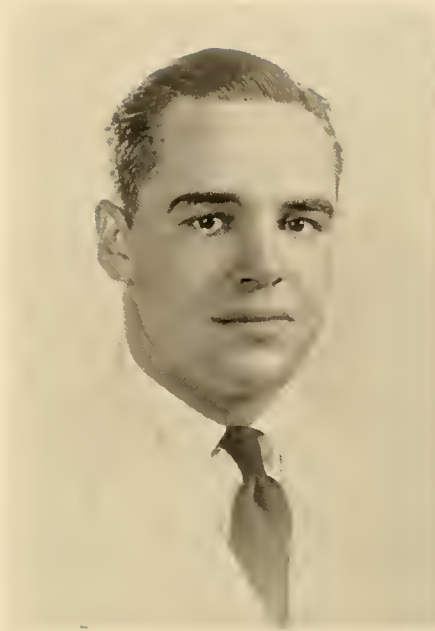
Hazleton High School

*Omega Delta Sigma*

W. A. A. 2, 3; S. C. A. Cabinet 3;  
Biemic Club; Deutsche Verein;  
Class Hockey 1, 2, 3; Class Soccer  
1, 2, 3; Class Basketball 1, 2, 3;  
Class Baseball 1, 2, 3; Class Volley-  
ball 1, 2, 3; Varsity Hockey 2, 3;  
May Day 1, 2.

Medicine.

January 14, 1919.



*Karl Herr*

KARL M. HERR

327 East Third Street Berwick, Pa.

Berwick High School;  
Perkiomen Institute;  
Gettysburg College

*Bond and Key*

Interclass Basketball 3; Band 3.

Insurance Broker.

May 1, 1915.



*James F. Higgins*

JAMES F. HIGGINS

Locust Gap, Pa.

Mt. Carmel Township High School

*Phi Mu Delta*

Choral Club 1, 2, 3; Band 1, 2, 3;  
Orchestra 1; Class Basketball 2, 3;  
LANTHORN Editorial Staff; Sopho-  
more Class President; Student  
Council.

Teaching.

September 18, 1917.



*Helen Hisdorf*

HELEN RUTH HISDORF

616 Greendale Avenue

Edgewood, Pa.

Edgewood High School

*Kappa Delta Phi*

French Club 1, 2, 3; Women's Athletic  
Association 2, 3; Motet Choir 1, 2,  
3; Business Society 1, 2, 3; LAN-  
THORN Staff 3; May Day 1, 2; Ten-  
nis Singles and Doubles Tourna-  
ment Winner; Class Hockey 1, 2, 3;  
Class Basketball 1, 2, 3; Class Vol-  
leyball 1, 2, 3; Class Baseball 1, 2,  
3; Class Soccer 1, 2, 3.

To study in France.

May 30, 1916.



*William H. Hudson*

WILLIAM HENRY HUDSON

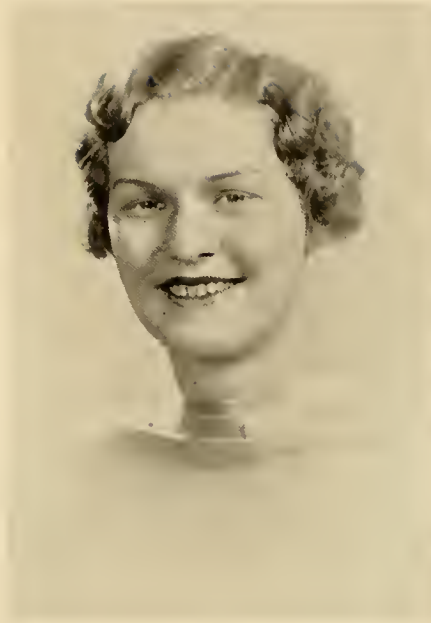
516 King Street      Seaford, Del.

Seaford High School

Band 3; Symphonic Society 3; S. C.  
A. 3; Pre-Theological Club 3.

Ministry.

November 24, 1917.



*Mary Jarrett*

MARY CATHERINE JARRETT

R. D. 2      Selinsgrove, Pa.

Sunbury High School

*Omega Delta Sigma*

Hockey 1; Class Soccer 1, 2; French  
Club 1, 2, 3; German Club 2, 3; May  
Day 1, 2; Mathematics Club 3.

Graduate Work in Languages.

October 30, 1917.



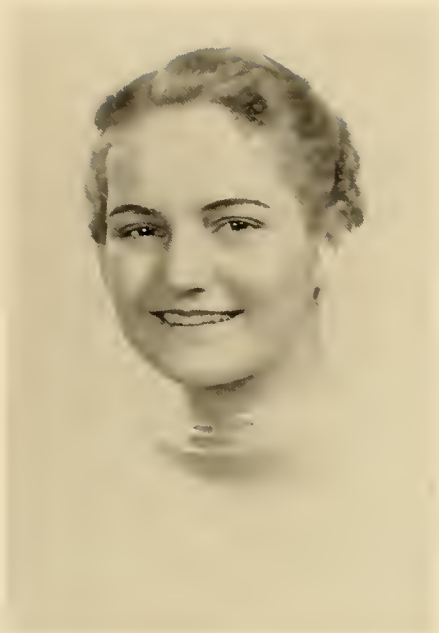
*Betty Johnston*

BETTY JOHNSTON  
116 South Market Street  
Selinsgrove, Pa.  
Selinsgrove High School  
*Omega Delta Sigma*  
French Club 3; S. C. A. 3.  
Journalism.  
May 6, 1916.

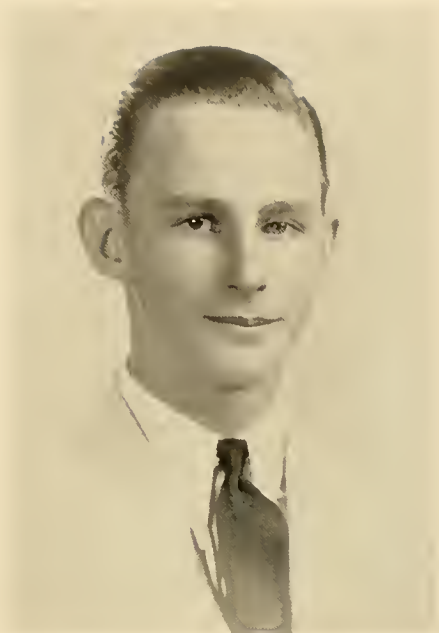


*Ruth A. Jones*

RUTH A. JONES  
Millerstown, Pa.  
Millerstown High School  
*Kappa Delta Phi*  
French Club 1, 2, 3; Choral Society  
3; May Day 1, 2; LANTERN Business  
Staff 3; Student Council 3; S.  
C. A. Cabinet.  
Teaching.  
May 9, 1917.



*Esther V. Kaufman*



*George J. Kimmel*

ESTHER VIRGINIA KAUFMAN

Davidsville, Pa.

Johnstown High School

*Sigma Alpha Iota*

Motet Choir 1, 2, 3; Choral Society 1, 2, 3; Trinity Church Choir; Secretary of Class 3; Intersorority Council 3; LANTHORN Editorial Staff 3; May Day 1.

Teaching.

August 8, 1917.

GEORGE KIMMEL

East Main Street Ashland, Pa.

Ashland High School

*Phi Lambda Theta*

Assistant Football Manager 2, 3; Band 1, 2; German Club 1, 2, 3; LANTHORN Business Staff; French Club 1, 2, 3; Interfraternity Football 2; Interclass Soccer 1, 2, 3.

Education.

March 30, 1919.



*Karl E. Kniseley*

KARL EUGENE KNISELEY  
47 Waldorf Street Pittsburgh, Pa.  
Northumberland High School

*Phi Mu Delta*

Freshman Class President; Baseball Manager; Orange Key Club 2, 3; Pre-Theological Club 1, 2, 3; Kappa Alpha 1, 2, 3; Editor-in-Chief of LANTHORN; S. C. A. 1, 2, 3; S. C. A. Cabinet 2; Debating 1; Band 2; Class Football 1; Class Basketball 2, 3; Junior Prom Chairman 3; Susquehanna Staff 1.

Ministry.

May 30, 1917.



*Herbert C. Lauver*

HERBERT C. LAUVER  
Richfield, Pa.

McAlisterville High School

*Phi Lambda Theta*

Football 1; LANTHORN Staff 1, 2; Susquehanna Staff 1, 2, 3; Susquehanna Circulation Manager 3; Class Football 1; German Club 1, 2, 3.

Teaching.

March 15, 1916.





*Paul Lucas*

PAUL LUCAS  
1230 Allegheny Street  
Jersey Shore, Pa.  
Jersey Shore High School  
*Bond and Key*  
Choral Club 1, 2, 3; Freshman Foot-  
ball; Vice President Class 1.  
Teaching.  
December 19, 1912.



*John McKeown .*

JOHN WILLIAM McKEOWN, JR.  
389 Laurie Street  
Perth Amboy, N. J.  
Perth Amboy High School  
Pre-Theological Club; Debate Club.  
Ministry.  
September 26, 1914.



*Henry Mitterling*

HENRY R. MITTERLING  
410 Orange Street Selinsgrove, Pa.  
Selinsgrove High School  
*Phi Mu Delta*  
Commercial Club; Interclass Basketball 1, 2, 3; Freshman Football.  
Teaching (Commercial).  
March 11, 1916.



*Frances Moyer*

FRANCES E. MOYER  
Hummels Wharf, Pa.  
Sunbury High School  
French Club 2, 3; Mathematics Club 1, 2, 3; Day Student Organization.  
Nurse (Graduate Johns Hopkins).  
July 30, 1917.



*John H. Paul*

JOHN HENRY PAUL  
210 South Market Street  
Shamokin, Pa.  
Shamokin High School

*Bond and Key*

Motet Choir 1, 2, 3; Band 1, 2, 3;  
Symphonic Society 1, 2, 3; Business  
Administration Society; French  
Club; Interclass Basketball; Inter-  
fraternity Basketball.

Teaching (Commercial).

November 23, 1916.



*Vernon R. Phillips*

VERNON RICHARD PHILLIPS  
Dalmatia, Pa.  
Dalmatia High School

*Bond and Key*

Freshman Football; Interclass Soccer  
1, 2; German Club 1, 2; Interclass  
Basketball 2; Biemic Society 2; S.  
C. A. 1; Interfraternity Basket-  
ball 3.

Medicine.

November 2, 1914.



Mildred Pifer

MILDRED ALICE PIFER

East Bangor, Pa.

Bangor High School

*Kappa Delta Phi*

Motet Choir 1, 2, 3; Choral Society 1, 2; LANTHORN Editorial Staff 3; Susquehanna Staff 1, 2; S. C. A. Cabinet 2; Women's Athletic Association 2, 3; Varsity Hockey 1, 2, 3; Class Hockey 1, 2, 3; Class Soccer 1, 2, 3; Class Basketball 1, 2, 3; Class Volleyball 1, 2, 3; Track 2; French Club 2, 3; Class Baseball 1, 2, 3; May Day 1, 2; Dramatic Club 3.

Radio Work.

November 18, 1915.



John Rakshys

JOHN RAKSHYS

322 Academy Street Peely, Pa.

Warrior Run High School

*Phi Mu Delta*

Interclass Soccer 1, 2; Debating 1; Varsity Track 2, 3; Varsity Tennis 2, 3, Captain 2; Varsity Basketball 2, 3; LANTHORN Editorial Staff; Interfraternity Football 2; Interfraternity Basketball 2; Interclass Track 1, 2, 3; S. C. A. 1.

Education.

November 1, 1916.



*Ethal E. Ramer*

ETHAL E. RAMER  
322 Meyers Avenue Meyersdale, Pa.

Salisbury High School

*Kappa Delta Phi*

LANTHORN Staff 3; Business Society  
1, 2, 3; Choral Society 1, 2, 3;  
French Club 2; May Day 1; S.  
C. A.

Secretary.

July 7, 1915.



*Jean Rheinhart*

JEAN RHEINHART  
526 South River Street  
Wilkes-Barre, Pa.

Elmer L. Meyer High School

*Omega Delta Sigma*

French Club 1, 2, 3; German Club 1,  
2, 3; Dramatic Club 3; May Day  
1, 2.

Teaching (Graduate Work  
in Languages).

April 10, 1917.



*Charles F. Salkeld*

FOSTER C. SALKELD  
1033 Maple Avenue Sharon Hill, Pa.  
Millersburg High School

*Phi Lambda Theta*

Band 1, 2, 3; German Club 1, 2, 3;  
Track 1, 2, 3; Class Football 1, 2;  
Class Basketball 1, 2; S. C. A. 1, 2,  
3; Susquehanna Staff 1.

Education.

November 23, 1915.



*Henry A. Shotsberger*

HENRY SHOTSBERGER  
Freeburg, Pa.

Freeburg High School

*Phi Lambda Theta*

Class Soccer 1, 2, 3; Mathematics Club  
1, 2, 3; German Club 1, 2; S. C. A. 1.

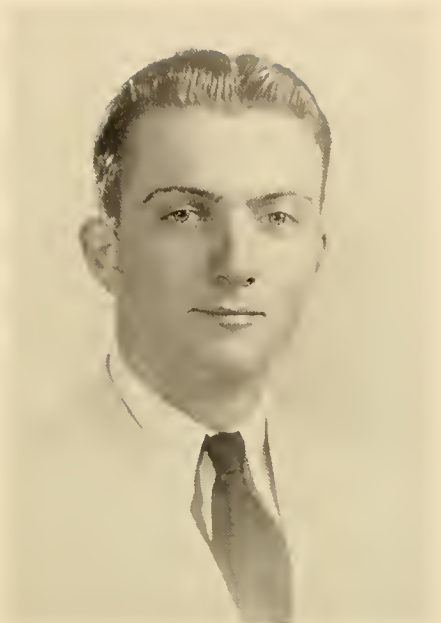
Education.

May 23, 1917.



*Peter Shuty*

PETER SHUTY  
Neville Island      Pittsburgh, Pa.  
Coraopolis High School  
*Bond and Key*  
Varsity "S" Club 2, 3; Football 1, 2,  
3; Co-captain of Football (1937);  
Class Basketball 2, 3; Class Track  
1, 2, 3.  
Football Coach.  
July 9, 1915.



*Verlin H. Smalts*

VERLIN H. SMALTS  
Gay Street      Hagerstown, Md.  
Hagerstown High School;  
Shenandoah College  
*Phi Lambda Theta*  
Motet Choir 3; Track 3.  
Teaching.  
September 2, 1914.



*Preston H. Smith*

PRESTON H. SMITH  
917 Market Street Williamsport, Pa.  
Williamsport High School;  
Peddie Prep.

*Bond and Key*

Susquehanna Business Staff 2; Student Council 3; Freshman Football; Business Society; Secretary of Student Council; Vice President Class 1; Freshman Soccer.

Business Executive.

January 6, 1915.



*Charles J. Stauffer*

CHARLES JACOB STAUFFER  
South Market Street Selinsgrove, Pa.  
Selinsgrove High School

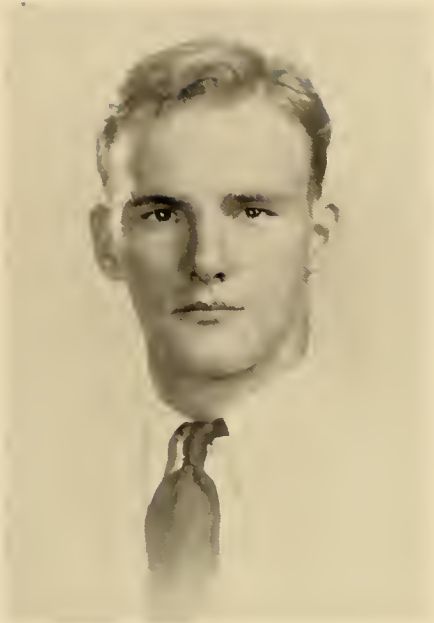
*Phi Lambda Theta*

Varsity Football 1, 2, 3; Varsity Track 1, 2, 3; Interclass Track 1, 2, 3; Student Council 3; Interfraternity Basketball 2, 3.

Education.

September 27, 1916.





*Harry C. Swope*

HARRY C. SWOPE  
13 North Water Street  
Selinsgrove, Pa.

Selinsgrove High School

*Phi Lambda Theta*

Football 1, 2, 3; Interclass Soccer 1;  
Track 1, 2, 3; Co-captain of Football (1937).

Teaching (Commercial).

September 14, 1914.



*Donald S. Wert*

DONALD STANFORD WERT  
Aaronsburg, Pa.

East Penn Valley High School

*Phi Mu Delta*

Varsity Basketball 2, 3; Varsity Baseball 1, 2, 3; Band 1, 2, 3; Symphonic Society 1; Mathematics Club 1, 3; S. C. A. 1; Freshman Football; Interfraternity Basketball 2; Interfraternity Football 2; Interclass Track 2; Interclass Soccer 1, 2.

Education.

November 1, 1916.



*Kent L. Worthington*

KENT L. WORTHINGTON

Hughesville, Pa.

Hughesville High School

*Bond and Key*

Freshman Football; Interfraternity  
Basketball 2, 3; Interclass Soccer  
1; LANTHORN Editorial Staff 3.

Lawyer.



*Esther A. Yingling*

ESTHER A. YINGLING

1604 Second Avenue Altoona, Pa.

Altoona High School

*Kappa Delta Phi*

Susquehanna Staff 1, 2, News Editor  
3; LANTHORN Editorial Staff 3; S.  
C. A. Cabinet 3; Vice President of  
Class 3; Intersorority Council 3;  
Class Historian 1; Choral Society  
1; Mathematics Club 1; German  
Club 2, 3; May Day 1; Dramatic  
Club 3; Class Hockey 1, 3; Class  
Soccer 3.

Teaching.

May 30, 1916.



S  
O  
P  
H  
O  
M  
O  
R  
E  
  
C  
L  
A  
S  
S



## SOPHOMORE OFFICERS

PAUL BROSIUS - - - - - *President*

ADELAIDE STEWART - - - - - *Vice President*

HAROLD BENION - - - - - *Secretary-Treasurer*

## SOPHOMORE CLASS HISTORY

On the sixteenth day of September, 1935, seventy-one freshmen had the light of knowledge thrown upon them with varying results, as tabulated at the end of two years. We now number some fifty, every one a true Susquehanna booster.

Our freshman year was eventful with such matters as class election, regulations, inter-class athletic victories, and fraternity affiliations with the resulting excitement. We were deprived of two events, which all freshmen are entitled to: Homecoming bonfire and Freshman-Sophomore football battle. In the latter event, we feel sure that the sophomores would have taken a beating—that is, however, a debatable question.

In our sophomore year, we, first of all, put the freshmen through their paces with midnight rides, duckings in the fish pond, and enforcement of regulations. The freshmen were able to play the traditional Freshman-Sophomore football games and we were defeated in a closely contested battle.

Already our members have won for themselves many important positions on the campus. Every major sport finds the class of 1939 well represented. Scholastically, we are more than holding our own.

We are now in the middle of our college career and we have learned much that is invaluable both in college work and in experience. We are looking forward to our junior year with the anticipation of greater things, both for ourselves and for our school.

WILLIAM AYRES

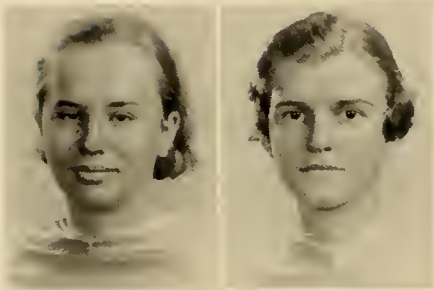
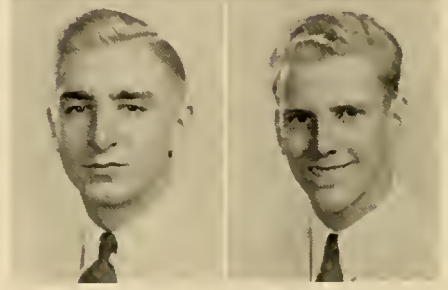
HOWARD BALDWIN

BETTE BALTZER

JEAN BEAMENDERFER

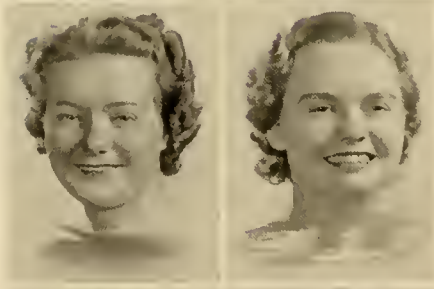
PAUL BROSIUS

HAROLD BENION



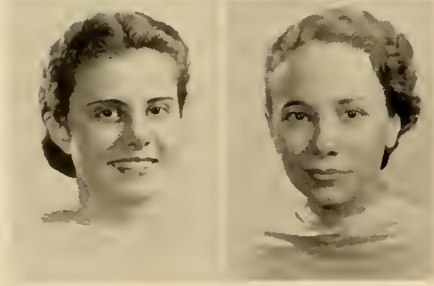
CATHERINE BIER

BETTY BOLIG



JOSEPHINE CAREY

GENEVIEVE CLUCK



ELEANOR CROFT

MARJORIE CURTIS



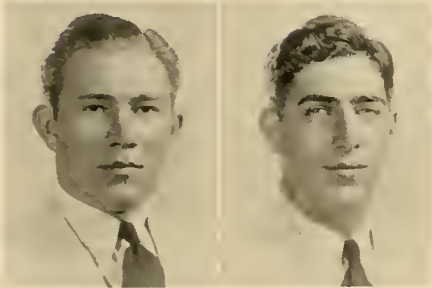
RUTH DERSTINE

MARTHA ENGLE



SHIRLEY FINKBEINER

VERNA GAYMAN



GLENN HAUFF

ROBERT HERR

JEAN HOFFMAN

JOHN HOSTETTER

HENRY KEIL

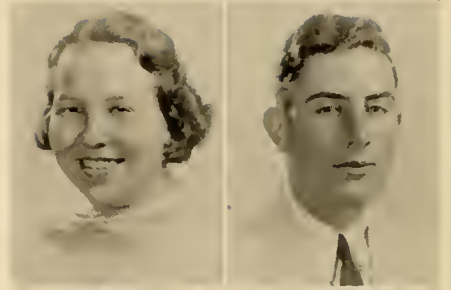
DAVID KEIM

MARTHA KLINGER

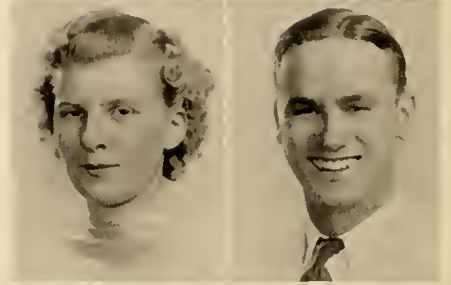
CAROLYN KROGMAN



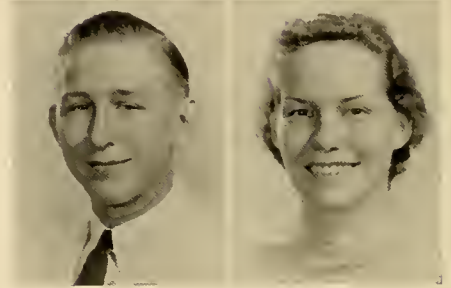
FLORENCE LANDBACK  
WILLIAM LAUDENSLAYER



MARGUERITE LENIG  
MILO MASTOVICH



HARRY McBRIDE  
MIRIAM MILLER



JUNE MILLER  
MATHILDA NEUDOERFFER

STEPHEN OWEN  
ALVERNA REESE

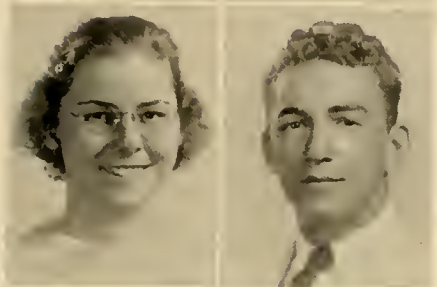
SAMUEL ROGERS  
HELEN ROGERS





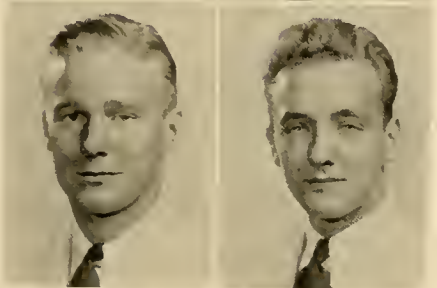
KATHERINE ROUSH

ELEANOR SAVERI



JANE SCHNURE

EDWARD SCHWEITZER



RALPH SHOBERT

EDWARD SIVICK

LEONORA SPOTTS

ADELAIDE STEWART

VIRGINIA STRAUB

GLADYS WENTZEL

LOUISE WEST

RUTH YARGER







FRESHMAN CLASS



## FRESHMAN OFFICERS

WILLIAM NYE - - - - - *President*

EDWARD KORPER - - - - - *Vice President*

MADALENE HAYES - - - - - *Secretary*

CHARLOTTE BAISH - - - - - *Treasurer*

## FRESHMAN CLASS HISTORY

It was on the sunny day of September fourteenth, nineteen hundred and thirty-six, that one hundred and twelve freshmen made their appearance in Seibert Hall Chapel. From our first meeting together, a unity was formed which we hope will never be broken. It was with this co-operation and understanding that we made our "Get-Away" and elected our first leaders:

WILLIAM NYE	-	-	-	-	-	-	-	-	-	<i>President</i>
EDWARD KORPER	-	-	-	-	-	-	-	-	-	<i>Vice President</i>
MADALENE HAYES	-	-	-	-	-	-	-	-	-	<i>Secretary</i>
CHARLOTTE BAISH	-	-	-	-	-	-	-	-	-	<i>Treasurer</i>

But this new found unity was not to be lost. United with a common purpose, we defeated the sophomores in the annual Freshman-Sophomore football game. Real school spirit was evidenced by the large number of freshmen present at all athletic and social functions on the campus.

One can imagine the surprise of the upperclassmen when we requested that more life be put into the execution of freshman traditions and customs. Joyfully we carried out the commands of the upperclassmen—wearing clothes backward, smoking corn-cob pipes, and carrying matches. The hardest task of all, and yet the most enjoyable, was the decorating of the campus for the Homecoming game. With every freshman present, there was more cheering and more noise-making than has taken place in many a year.

Our class has not been placed in the background in the intra-mural sports. Always we have shown real fight and competition.

But the outstanding event of our first year is yet to come. Already we have started to rehearse a three-act play, which promises to be an accomplishment that will be long remembered.

These are the things which distinguish our class as a class of spirit, unity, and co-operation. As we near the close of our first year in college, we look forward with hopes of higher accomplishments yet to come.

1940



HELEN ANDERSON

EUNICE ARENTZ



CHARLOTTE BAISII

JOHN BICE

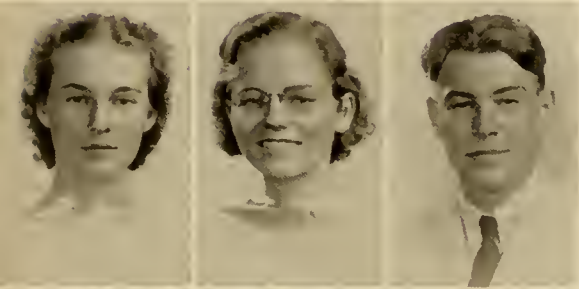
DONALD BILLMAN



NAOMI BINGAMAN

HESTER BITTINGER

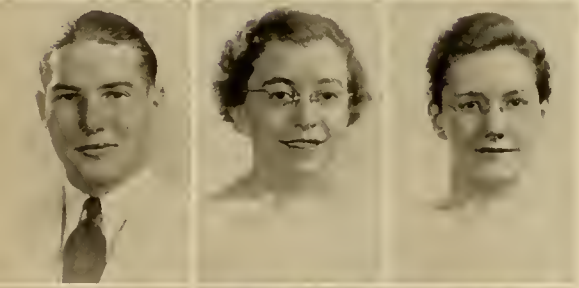
JEAN BULICK



ELEANOR BOLIG

JEAN BEAMENDERFER

CLYDE CHARLES



JAMES CHARLES

NAOMI DEARMY

KATHRYN DIEHL



ALICE DEITERICK

MARY ELLEN DIXON

JOHN DRUMHELLER



HELEN EDLUND

RUTH FARLEY

ROBERT FISHER

VINCENT FRATTALI

HILDA FREIDERICH



1940

GRACE FRIES

ROBERT GABRENYA

ROY GELNETT



JOHN GENSEL

JESSE GOLDBERG

EDWIN GRENNINGER



MARGARET GRENOBLE

REED GULICK

MADALENE HAYES



LEON HAINES

FREDERICK HICKMAN

ANNA HILL



RICHARD HUMMEL

CLAIRE KALTREIDER

KENNETH KINNEY



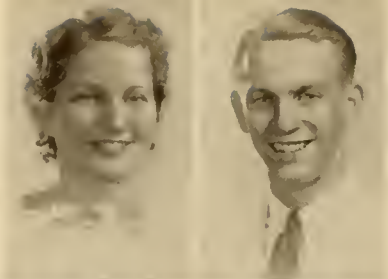
HERBERT KLINGER

JOHN LEAM

CHARLES LENGLER



1940



JANET LONG

JOE LUKENS



WILLIAM MEASE



WALTER MEEK



ETHA MEIKRANTZ



HELEN MUSSELMAN



WILLIAM NYE



GEORGE ORWIG



WILLIAM PRITCHARD



BURTON RICHARD



FLORENCE ROTHERMEL



ROBERT SANDER



HAROLD SAUNDER



GRAHAM SCHUCK



HAROLD SHAFFER



MARGARET SHEESLEY



JOHN SHIPE



NORMAN SHRAWDER



DOROTHY SHUTT



STEPHEN SKLANSKY



ADELLA SNYDER

GEORGE SPIGGLE

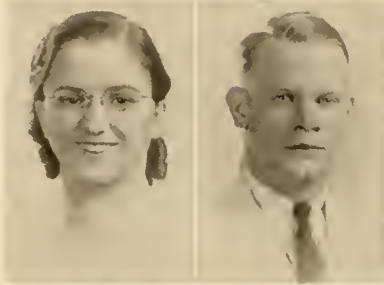


1940

EDNA STEPHENS

BYRON STOCKDALE

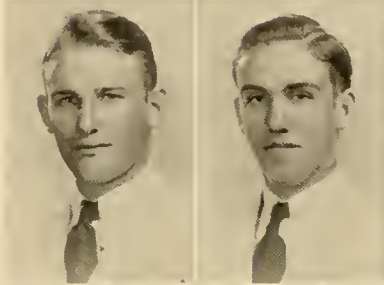
ETHEL STRAESSER



BARNER SWARTZ

WILLIAM TROUTMAN

JOHN UPDEGROVE



MILDRED WEBSTER

BETTY WENTZEL

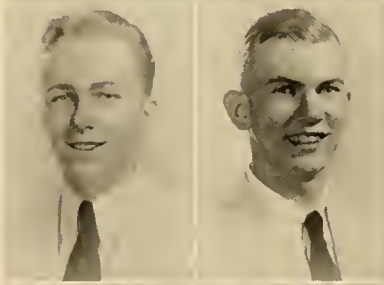
PALMER WETZEL



CHARLES WEYHENMYER

EUGENE WILLIAMS

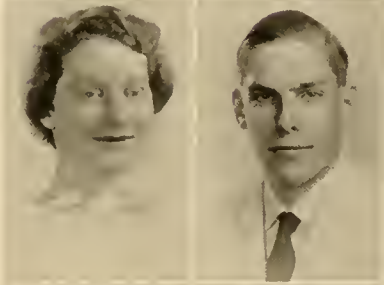
FRANCES WILLIAMS



ELIZABETH WITTENMEYER

DELOS WRAY

HELEN WRIGHT



FERNE ZECHMAN

LAWSON ZIEGLER

MARY ZELLERS



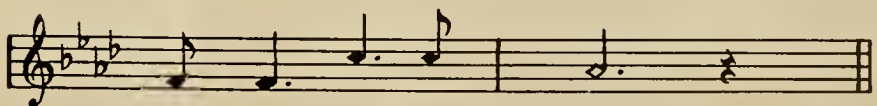




# ORGANIZATION



COME JOIN IN RE - COL - LEC - TIONS FOND, AND



TELL US OF YOUR WAYS .





F  
R  
A  
T  
E  
R  
N  
I  
T  
I  
E  
S



First Row, Left to Right—Jack Roach, Prof. Brungart, Dr. Fisher, Mr. Yorty, Francis Gelnett, Dr. Wood, Dr. Wilson, Prof. Allison, Vernon Blough  
 Second Row—Aughenbaugh, Cotton, Shaheen, Spitzner, Roberts, Alexander, Fredericks, Howells, Edwards, Clark  
 Third Row—Bolig, Guthrie, Rackshys, Kniseley, Herr, McBride, Wert, Miller, Schweitzer, Hazlett  
 Fourth Row—Mastovich, Hostetter, Keim, Grenminger, Peizick, Higgins, Adamavage, Sivick, Owen, Berkeley

# PHI MU DELTA

Local (Alpha Sigma Omega) Founded in 1915  
 Chartered as Mu Alpha Chapter of Phi Mu Delta in 1925

## OFFICERS

FRANCIS GELNETT	-	-	-	-	-	-	-	-	<i>President</i>
ANDREW FREDERICKS	-	-	-	-	-	-	-	-	<i>Vice President</i>
DANIEL COTTON	-	-	-	-	-	-	-	-	<i>Comptroller</i>
DONALD WERT	-	-	-	-	-	-	-	-	<i>Secretary</i>

## HONORARY MEMBERS

- |                             |                      |
|-----------------------------|----------------------|
| Professor Elrose L. Allison | Dr. William A. Russ  |
| H. Vernon Blough            | Dr. Arthur H. Wilson |
| Professor E. M. Brungart    | Prof. George N. Wood |
| Dr. George E. Fisher        | Ernest T. Yorty      |



## MEMBERS

### *Seniors*

Kenneth Alexander  
Daniel Cotton  
Andrew Fredericks

Francis Gelnett  
Lewis Howells

John Roberts  
Raymond Shaheen  
Clyde Spitzner

### *Juniors*

Stanley Aughenbaugh  
Morgan Edwards

John Hazlett  
James Higgins  
Karl Kniseley

John Rakshys  
Donald Wert

### *Sophomores*

Robert Herr  
John Hostetter  
David Keim

Milo Mastovich  
Harry McBride  
June Miller

Stephen Owen  
Edward Schweitzer  
Edward Siviek

### *Pledges*

Carman Berkeley  
Roy Bolig  
George Clark  
Paul Coleman  
Donald Critchfield  
William Davis  
Robert Fisher  
Vincent Frattali  
Robert Gabrenya  
Reed Greninger

Mark Guthrie  
Fred Hickman  
Edward Kozlowski  
Peter Lalish  
Joseph Mehalow  
Henry Mitterling  
William Nye  
James Pearce  
Fred Schmidt

Norman Shrawder  
William Salem  
John Scheig  
Harold Shaffer  
Stephen Sklansky  
George Spiggle  
Byron Stockdale  
William Troutman  
Graham Schuck  
Charles Weyhenmeyer



First Row, Left to Right—Prof. Houtz, Dr. Ahl, Prof. Linebaugh, Dr. Smith, Mr. Scudder, Toomey, Dr. Leese, Dr. Woodruff, Witmer, Dr. Ovrebo, Prof. Stevens  
 Second Row—Fitzgerald, Brosious, Keil, Rogers, Smith, Badger, Gaver, Dorsett, Gojne, Prof. Sheldon, Prof. Hemphill, Benner, Poyck, Moser, Diffenderfer, Paul, Clark, Benyon, Phillips, Kemberling  
 Third Row—Ditzler, Baldwin, Lewis, Camp, Worthington, Hertz, Shuty, Wetzel, Lucas, Irvin, Shobert, Hauff

## BOND AND KEY

Founded in 1914

### OFFICERS

LUKE TOOMEY	-	-	-	-	-	-	-	-	-	<i>President</i>
ROBERT MOSHER	-	-	-	-	-	-	-	-	-	<i>Vice President</i>
WALTER POYCK	-	-	-	-	-	-	-	-	-	<i>House Manager</i>
CLAUDE CLARK	-	-	-	-	-	-	-	-	-	<i>Secretary</i>

### HONORARY MEMBERS

Dr. William A. Ahl	Prof. Fisk W. Scudder
Prof. Donald Hemphill	Prof. Edwin Sheldon
Dr. John J. Houtz	Dr. Adam J. Smith
Dr. Charles Leese	Prof. Frederick Stevens
Prof. Percy M. Linebaugh	Dr. John I. Woodruff
Dr. Paul J. Overbo	





## MEMBERS

### *Seniors*

Oren Benner  
Donald Gaver

Robert Mosher

Walter Poyck  
Luke Toomey

### *Juniors*

Samuel Camp  
Claude Clark  
James Diffenderfer  
Richard Ditzler

Donald Dorsett  
Orville Fitzgerald  
John Goyne

John Paul  
Vernon Phillips  
Preston Smith  
Kent Worthington

### *Sophomores*

Harold Benion  
Paul Broscious  
Glenn Hauff

Robert Hertz  
Henry Keil

Jesse Kemberling  
Samuel Rogers  
Ralph Shobert

### *Pledges*

Howard Baldwin  
John Bice  
Donald Billman  
Clyde Charles  
James Charles  
Wilbur Dreher  
Walter Freed  
Edwin Grenninger  
Homer Groce  
Reed Gulick

Karl Herr  
Richard Hummel  
Clair Kaltreider  
Horace Kauffman  
Kenneth Kinney  
Edward Korper  
John Leam  
Paul Lucas  
John McCune  
William Mease

Edward McKeel  
George Orwig  
William Pritchard  
Joseph Ray  
Burton Richard  
Robert Sander  
Harold Saunder  
Clyde Sechler  
Peter Shuty  
Eugene Williams



First Row, Left to Right—Shellenberger, Mr. Gilbert, Dr. Dunkelberger, Wensel, Prof. Reitz, Long, Karschner  
 Second Row—Ulp, Saukeld, Boyer, Lauver, Baylor, Stauffer  
 Third Row—Klinger, Schaffer, Kimmel, Ochenreider, Laudenslayer, Shotsberger, Bollinger,  
 Beachel, Drunheller, Swope, Shafer

# PHI LAMBDA THETA

Chartered in 1928

## OFFICERS

CLARENCE WENSEL	-	-	-	-	-	-	-	-	<i>President</i>
CHESTER LONG	-	-	-	-	-	-	-	-	<i>Vice President</i>
DAVID SHELLENBERGER	-	-	-	-	-	-	-	-	<i>Secretary</i>
LESTER KARSCHNER	-	-	-	-	-	-	-	-	<i>Treasurer</i>

## HONORARY MEMBERS

Dr. George F. Dunkelberger                      Prof. Russel W. Gilbert  
 Prof. D. Irvin Reitz



## MEMBERS

### *Seniors*

Lester Karschner  
Woodrow Klinger  
Chester Long

Clarence Schaeffer  
Henry Shafer

David Shellenberger  
John Ulp  
Clarence Wensel

### *Juniors*

Robert Boyer  
George Kimmel

Herbert Lauver

Foster Saukeld  
Charles Stauffer

### *Pledges*

Louis Baylor  
Leroy Beachel  
Harold Bollinger  
John Drumbeller  
Robert Furman  
Roy Gelnett  
John Gensel  
Leon Haines

Carl Helt  
Chester Hess  
John Hoffman  
Herbert Klinger  
William Laudenslayer  
Joseph Lukens  
Walter Meek  
James Moyer  
Paul Ochenreider

John Shipe  
Henry Shotsberger  
Verlin Smaltz  
Barner Swartz  
Harry Swope  
John Updegrove  
Charles Wetzel  
Lawson Zeigler





S  
O  
R  
O  
R  
I  
T  
I  
E  
S



Left to Right—Bower, Gundrum, Miller, Brown, Pifer, Jones, Scott, Yingling, Ramer, Hisdorf Saveri, Roush, Stewart

# KAPPA DELTA PHI

Founded in 1917

*Motto: "Kalokagathia Dia Phileas"*

## OFFICERS

MARY SCOTT	-	-	-	-	-	-	-	-	-	<i>President</i>
ESTHER YINGLING	-	-	-	-	-	-	-	-	-	<i>Vice President</i>
RUTH JONES	-	-	-	-	-	-	-	-	-	<i>Recording Secretary</i>
ETHAL RAMER	-	-	-	-	-	-	-	-	-	<i>Financial Secretary</i>
MIRIAM MILLER	-	-	-	-	-	-	-	-	-	<i>Treasurer</i>

## HONORARY MEMBERS

Miss Lois Boe	Mrs. T. W. Kretschmann
Miss Viola DuFrain	Mrs. A. W. Ahl
Miss Beatrice Herman	Mrs. E. M. Brungart
Mrs. William A. Russ, Jr.	Mrs. Frederick C. Stevens



## MEMBERS

### *Seniors*

Helen Gundrum

Mary Scott

### *Juniors*

Marjorie Bower  
Eleanor Brown

Helen Hisdorf  
Ruth Jones  
Mildred Pifer

Ethal Ramer  
Esther Yingling

### *Sophomores*

Betty Bolig  
Verna Gayman

Miriam Miller  
Kathryn Roush

Eleanor Saveri  
Adelaide Stewart

### *Pledges*

Eunice Arentz  
Jean Beamenderfer  
Eleanor Bolig  
Eleanor Croft  
Naomi Dearmy

Betty Diehl  
Mary Ellen Dixon  
Martha Engle  
Marie Edlund

Grace Fries  
Madeline Hayes  
Dorothy Shutt  
Edna Stephens  
Ethel Straesser



First Row—Barnes, Fry, Hemmerly, Bolig, Jones, Marshall, Richard, Rhinehart, Corson  
 Second Row—Boyle, Hoffman, Finkbeiner, Jarrett, Ahl, Neudoerffer, Durstin, Jansen  
 Third Row—Curtis, Schnure, Baltzer, Appler, Reese

# OMEGA DELTA SIGMA

Founded in 1917

## OFFICERS

ELEANOR JONES	-	-	-	-	-	-	-	-	-	<i>President</i>
MARTHA BOLIG	-	-	-	-	-	-	-	-	-	<i>Vice President</i>
ARLINE MARSHALL	-	-	-	-	-	-	-	-	-	<i>Treasurer</i>
ELIZABETH FRY	-	-	-	-	-	-	-	-	-	<i>Financial Secretary</i>
JEAN RHEINHART	-	-	-	-	-	-	-	-	-	<i>Secretary</i>

## HONORARY MEMBERS

- |                       |                         |
|-----------------------|-------------------------|
| Mrs. Morris G. Smith  | Mrs. Martha S. Dodson   |
| Mrs. Arthur Wilson    | Mrs. Amos A. Stagg, Jr. |
| Mrs. John I. Woodruff | Mrs. D. I. Reitz        |
| Mrs. Ernest T. Yorty  | Mrs. George N. Wood     |
| Mrs. Paul J. Ovrebo   | Mrs. Charles Leese      |
| Mrs. George E. Fisher | Mrs. Russel Gilbert     |
| Mrs. John J. Houtz    |                         |





## MEMBERS

### *Actives*

Hildegarde Abl  
Mary Appler  
Betty Baltzer  
Mary Barnes  
Martha Bolig  
Margaret Boyle  
Margaret Corson  
Marjorie Curtis

Ruth Derstine  
Shirley Finkbeiner  
Elizabeth Fry  
Ruth Hemmerly  
Jean Hoffman  
Evelyn Janson  
Mary Catherine Jarrett  
Eleanor Jones

Arline Marshall  
Mathilda Neudoerffer  
Alverna Reese  
Jean Rheinhart  
Mary Beth Richard  
Jane Schnure  
Helen Wentzel  
Louise West

### *Pledges*

Naomi Bingaman  
Jean Bulick  
Virginia Burns

Ruth Farley  
Caroline Krogman  
Mary Mack  
Virginia Mann

Margaret Sheesley  
Mildred Webster  
Gladys Wentzel



First Row—Hoffman, Carey, Hoffard, Fox, Kaufman, Grubb  
 Second Row—Rogers, Cluck, Sacks, Straub

# SIGMA ALPHA IOTA

Founded June 12, 1903

*Motto: "Vita Brevis—Ars Longa"*

## OFFICERS

MARY ANN FOX	-	-	-	-	-	-	-	-	<i>President</i>
ESTHER KAUFFMAN	-	-	-	-	-	-	-	-	<i>Vice President</i>
JEANNE HOFFORD	-	-	-	-	-	-	-	-	<i>Secretary</i>
CAROLINE GRUBB	-	-	-	-	-	-	-	-	<i>Treasurer</i>

### *Honorary*

Miss Margaret Keiser



## MEMBERS

### *Seniors*

Jean Hofford

Dorothy Hoffman  
Eva Sachs

Mary Ann Fox

### *Juniors*

Esther Kaufman

Caroline Grubb

Birdie Hamm

### *Sophomores*

Josephine Carey

Helen Rogers  
Virginia Straub

Genevieve Cluek

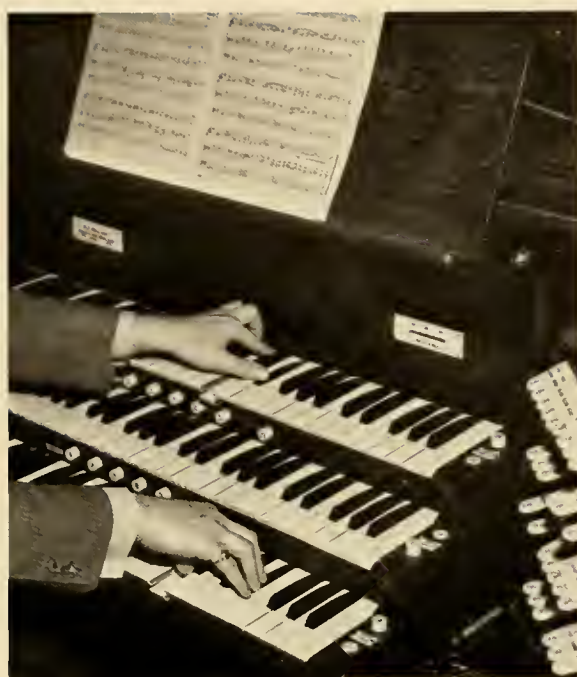
### *Pledges*

Helen Yeager  
Helen Anderson  
Charlotte Baish  
Betty Barnhart

Alice Dietrich  
Margaret Grenoble  
Etha Meikrantz

Anna Reeder  
Frances Williams  
Fern Zechman  
Mary Zellers





# MUSIC



## SUSQUEHANNA MOTET CHOIR

Organized in 1934

*Director, PROFESSOR FREDERICK STEVENS*

One of the outstanding organizations on our campus is the Motet Choir. The choir sings the a capella compositions of the great composers. The choir has done much to spread the name of Susquehanna over the United States.

This year the choir made a tour which carried them into Maryland, Pennsylvania and New York. Everywhere they were received by large and enthusiastic audiences. Many critics have rated the Motet Choir of Susquehanna University as second only to the famous Westminster Choir of professional fame.



Reading Left to Right—Professor Stevens, Clarence Wensel, Helen Rogers, Betty Diehl, Martha Engle, Mrs. Stevens, Jane Schnure, Eva Sacks, Orville Fitzgerald, David Shellenberger

## SUSQUEHANNA MADRIGAL SOCIETY

Organized in 1936

*Director, PROFESSOR FREDERICK STEVENS*

The Madrigal Society was organized for the purpose of delineating and perpetuating the musical literature for the small vocal ensemble groups, pertinent to the period in which it was used as a chief social measure.

Madrigals were a form of after dinner entertainment. Every guest was expected to participate in the singing, which took place around the festive board. Thus the custom has been revived in the present day in the form of Madrigal Societies.



# SUSQUEHANNA SYMPHONIC SOCIETY

Organized in 1933

*Director, PROFESSOR ELROSE ALLISON*

## PERSONNEL

### *First Violin*

W. Donald Hemphill  
(Concertmaster)  
Birdie Hamm  
Clarence Farley  
Oralce Phillips

### *Secoud Violin*

Anthony Paine  
Dorothy Hoffman  
Ruth Lenker  
Hilda Friederick

### *Viola*

Lewis Howells

### *Cello*

Lois Gresh

### *Double Bass*

Francis Gelnett  
Fred Hickman

### *Flutes*

Adalle Gaskins  
Fern Zeckman

### *Bassoon*

Joseph Mehalow

### *Trumpets*

David Shellenberger  
George Clark

### *Horns*

John Ulp  
James English  
Milo Mastovich

### *Tabu*

Carl Baney

### *Trombones*

William Miller  
John Paul  
William Hudson

### *Clarinetts*

Edmund Kozlowski  
Verna Gaymen  
William Fratalli

### *Oboe*

Edward Mekeel

### *Tympani*

Fred Schmidt, Librarian





# SUSQUEHANNA UNIVERSITY BAND

Organized in 1928

*Director, PROFESSOR ELROSE ALLISON*

## PERSONNEL

### *Solo Cornet*

D. Alton Shellenberger  
George Clark

### *First Cornet*

Donald Gaver

### *Second Cornet*

Barner Swartz

### *First Trumpet*

Walter Freed

### *Second Trumpet*

Birdie Hamm

### *Solo Clarinets*

Walter Poyck  
Charles Lengler

### *First Clarinet*

Harold Bollinger  
Vincent Fratalli

### *Second Clarinet*

Ed. Koslowski  
John Drumheller

### *Third Clarinet*

Verna Gaymen  
Mary Zellers

### *Soprano Saxophone*

Naomi Bingaman

### *Alto Saxophone*

Fred Schmidt, Librarian  
Robert Hayhurst

### *Tenor Saxophone*

Ed. Mekeel

### *Baritone Saxophone*

Richard Ditzler

### *Flute*

Fern Zeckman

### *Oboe*

William Smith

### *Bassoon*

Joseph Mehalow

### *Horns*

James English  
Milo Mastovitch  
James Pearce

### *Baritone*

Robert Furman

### *Trombones*

William Miller  
John Paul  
William Hudson

### *Bass Trombone*

Clair Kaltreider

### *Sousaphones*

Francis Gelnett  
Carl Bancy

### *Bass Violin*

Fred Hickman

### *Tympani*

Howard Baldwin

### *Snare Drum*

William Salem

### *Bass Drum—Cymbals*

Anthony Pane

# SUSQUEHANNA CHORAL SOCIETY

## OFFICERS

MISS JEANNE HOFFORD	-	-	-	-	-	-	-	<i>President</i>
MISS HELEN YEAGER	-	-	-	-	-	-	-	<i>Vice President</i>
MISS EVA SACHS	-	-	-	-	-	-	-	<i>Secretary</i>
PROFESSOR E. EDWIN SHELDON	-	-	-	-	-	-	-	<i>Director and Treasurer</i>
PROFESSOR PERCY M. LANEBAUGH	-	-	-	-	-	-	-	<i>Organist</i>
PROFESSOR ELROSE L. ALLISON	-	-	-	-	-	-	-	<i>Pianist</i>

## CLUB PERSONNEL

### *Sopranos*

Helen Anderson	Alice Deiterick	Helen Rogers
Charlotte Baish	Caroline Grubb	Mrs. Ida M. Sheldon
Elizabeth Barnhart	Mrs. Margaret Hemphill	Mrs. Sara Stevens
Eleanor Bingman	Miss Jeanne Hofford	Adella Snyder
Lois Boc	Ruth Jones	Frances Williams
Josephine Carey	Margaret E. Keiser	Fern Zechman
Naomi Dearnly	Etha Meikrantz	Mary Zellers

### *Contraltos*

Jean Beamenderfer	Hilda Friederich	Eva Sachs
Ruth C. Bair	Dorothy Hoffman	Virginia Straub
Genevieve Cluck	Esther Kaufman	Mary W. Whitehurst
Mary Ann Fox	Mary K. Potteiger	Mrs. Margaret Wingard
Verna Gayman	Ethal Ramer	Elizabeth Wittennyer
Margaret Grenoble	Anna Reeder	Helen Yeager
Birdie Hamm		

### *Tenors*

Oren Benner	Edmund Kozlowski	Clyde Sechler
Harold Bollinger	Michael Mastovich	Dr. Adam Smith
Walter Freed	Paul Ochenrider	Prof. Frederick C. Stevens
Prof. W. Donald Hemphill		John Ulp

### *Basses*

Stanley Aughenbaugh	Lewis Howells	Anthony Pane
Howard Baldwin	Horace Hutchison	James Pearce
Donald Billman	Paul Lueas	Fred Schmidt
George Clark	Joseph Mehalow	Barner Swartz
James Diffenderfer	Edward Mekeel	Maxwell Valsing
James Higgins		

Season 1937—Oratorio "Saint Paul" - - - - - *Mendelssohn*

### *Soloists*

Dorothy Orton, Soprano, New York	Edward Kane, Tenor, New York
Dorothy Urich, Contralto, Harrisburg	Leonard Treash, Bass-Baritone, Philadelphia





Front Row—Bolg, Derstin, Hisdorf, Barnes, Saveri, Gundrum, Edlund  
 Second Row—Schnure, Rheinart, Pifer, Miss Boe, Jarrett, Finkbeiner, Dearmy  
 Third Row—Jones, Kimmel

## LE CERCLE FRANCAIS

Organized 1927

### OFFICERS

JEAN RHEINHART	- - - - -	<i>President</i>
HELEN HISDORF	- - - - -	<i>Secretary</i>
ELEANOR SAVERI	- - - - -	<i>Treasurer</i>

*Faculty Advisor*—MISS MARGRETTA BOE

The Le Cercle Francais has grown rapidly in membership and now includes practically all of the students who have taken one year or more of French. Through the medium of plays, songs, games, and various social functions, the organization's aim has been to promote an interest in the language.



Front Row—Pane, Grenuinger, Gensel, Richard, Sivick, Nye, Owen  
 Second Row—Jarrett, Beamenderfer, Bingaman, Herr, Hemmerly, Richard, Jones, Corson, Mann  
 Third Row—Dixon, Nuedoerffer, Ayers, Baylor, Dr. Gilbert, Kaltreider, Spiggle, Reese, West  
 Fourth Row—Wetzel, Klinger, Rothermel, Boyer, Shutt, Stevens, Rogers, Rheinart, Ahl, Boyle, Hill,  
 Dearmy, Yingling, Bier, Kimmel, Ochenreider

## DEUTSCHE VEREIN

Organized 1930

### OFFICERS

RUTH HEMMERLY - - - - - *President*  
 ROBERT HERR - - - - - *Vice President*  
 MARY BETH RICHARD - - - - - *Secretary-Treasurer*

*Faculty Advisor—DR. RUSSELL GILBERT*

Der Deutsche Verein was organized to give students interested in German more opportunity for conversation in German and to bring these students in intimate contact with each other in a German atmosphere.



Front Row—Ahl, Shaheen, Dorsett, Klinger, Dr. Ahl, Clark, Karschner, Schaeffer, Stevens  
 Second Row—Edwards, Gensel, Grenninger, Otto, Drombeller, McKeown, Grenninger,  
 Diffenderfer, Kniseley, Nye, Beachel

# PHI KAPPA

Organized 1929

## OFFICERS

WOODROW KLINGER	- - - - -	<i>President</i>
CLARENCE SCHAEFFER	- - - - -	<i>Vice President</i>
GEORGE CLARK	- - - - -	<i>Secretary</i>
REED GRENNINGER	- - - - -	<i>Treasurer</i>

*Faculty Advisor—DR. AUGUSTUS AHL*

The aim of this organization is to create and cultivate in its members a deeper appreciation of the Greek language and culture. A certain class rating is required before membership is offered to the student.



First Row—Dr. Leese, Gayman, Brown, Fredericks, Poyck, Marshall, Ramer, Reese, Miss DuFrain  
 Second Row—Smith, Wensel, McBride, Prof. Reitz, Herr, Gelnett, Benyon  
 Third Row—Goyne, Paul, Hauff

## BUSINESS SOCIETY

Organized 1925

### OFFICERS

WALTER POYCK	- - - - -	<i>President</i>
ANDREW FREDERICKS	- - - - -	<i>Vice President</i>
ARLINE MARSHALL	- - - - -	<i>Treasurer</i>
HELEN HISDORF	- - - - -	<i>Secretary</i>

### *Faculty Advisors*

DR. CHARLES LEESE  
 PROF. GEORGE WOOD

PROF. IRVIN REITZ  
 MISS VIOLA DUFRAIN

To promote interest in the various fields of Commerce, Business, and Economics. Membership is open to students taking six hours of credit under one of the professors in the Business and Commercial departments.



First Row—Shotsberger, Jarrett, Boyer, Jones, Coleman  
Second Row—Bier, Boyle, Dr. Smith, Hemmerly, Ochenreider

# MATHEMATICS CLUB

Organized 1930

## OFFICERS

ROBERT BOYER - - - - - *President*  
MARY JARRETT - - - - - *Vice President*  
MARGARET BOYLE - - - - - *Secretary*

*Faculty Advisor*—DR. ADAM SMITH

The purpose of the club is to create interest in the field of mathematics, practical and applied, and to clearer understanding of its fundamental principles.





Front Row—Corson, Fry, Richard, Hemmerly, Jones  
 Second Row—Prof. Houtz, Dr. Ovrebo

## BIEMIC SOCIETY

Organized 1896

### OFFICERS

MARY BETH RICHARD - - - - - *President*

RUTH HEMMERLY - - - - - *Secretary-Treasurer*

### *Faculty Advisors*

DR. GEORGE FISHER

PROF. JOHN HOUTZ

DR. PAUL J. OVREBO

PROF. FISK SCUDDER

The club is maintained to further the interest of the students in Biology, Chemistry, and Physics. The club derives its name from a combination of two letters taken from the names of the three major sciences.



First Row—Boyer, Prof. Gilbert, Dr. Dunkleberger, Prof. Wood  
 Second Row—Shafer, West, Klinger, Grenninger

## DEBATING SOCIETY

Organized 1927

### OFFICERS

DR. GILBERT	- - - - -	Coach
REED GRENNINGER	- - - - -	Manager

### Faculty Advisors

DR. WIEDER GILBERT	DR. GEORGE WOOD
DR. GEORGE DUNKELBERGER	DR. WILLIAM RUSS

To develop within the individual the ability to speak clearly and logically before the public and to consider questions of importance in an unbiased manner. It is hoped that in this way an intercollegiate fellowship may be created.



First Row—Berkeley, Lewis, Extrom, Valunis, Dr. Cottom, Spitzner, Alexander  
Second Row—Swope, Irvin, Shuty, Wetzel, Keller, Pezick, Badger

## COLONY ORGANIZATION

Organized 1934

One of the youngest organizations at Susquehanna, this group is comprised of those of our athletes who live at the State Colony. These men are to be greatly admired for the sacrifices which they are making in order to receive a college education.





RECOLLECTIONS



MAY DAY COURT



MARCELLA CHAYA  
Queen of the May



MARY STIREWALT  
Lady-in-Waiting

MAY DAY 1936



MAY DAY INFORMALS



These informals furnish a small idea of the beauty of the May Day Coronation of the Queen of May. The pictures include the bringing of the May Pole, the Queen in procession, the battle of Robin Hood and Little John, and the May Pole dance.



EDITORIAL STAFF  
 Left to Right—  
 Mosher, Gelnett, Yingling



BUSINESS STAFF  
 Left to Right—Benion, Lauver, Spitzner, Gaymen, Miller, McBride, Dr. Leese

## THE "SUSQUEHANNA"

### THE STAFF

FRANCIS GELNETT, ROBERT MOSHER	-	-	-	-	-	-	<i>Editors-in-Chief</i>
CLYDE SPITZNER	-	-	-	-	-	-	<i>Business Manager</i>
ORVILLE FITZGERALD	-	-	-	-	-	-	<i>Managing Editor</i>
ESTHER YINGLING	-	-	-	-	-	-	<i>News Editor</i>
HENRY KEIL	-	-	-	-	-	-	<i>Sports Editor</i>
MARK GUTHRIE	-	-	-	-	-	-	<i>Advertising Manager</i>
HERBERT LAUVER	-	-	-	-	-	-	<i>Circulation Manager</i>

### *Faculty Advisers*

DR. ARTHUR HERMAN WILSON, Editorial  
 DR. CHARLES LEESE, Business



# JUNIOR PROM

## GENERAL COMMITTEE

Morgan Edwards, Class President

Karl Kniseley  
Kent Worthington

Preston Smith

Stanley Aughenbaugh  
George Kimmel

### *Program Committee*

Karl Kniseley, Chairman

Martha Bolig

### *Decoration Committee*

Kent Worthington, Chairman  
Helen Hisdorf  
Mildred Pifer

James Diffenderfer  
Elizabeth Fry  
Caroline Grubb  
Esther Kaufman

Jean Rheinhart  
Eleanor Brown  
Mary Jarrett

### *Ticket Committee*

Preston Smith, Chairman

Robert Boyer  
John Rakshys

Ethel Ramer

### *Orchestra Committee*

Stanley Aughenbaugh, Chairman

Paul Lucas

James Higgins

### *Furniture Committee*

George Kimmel, Chairman

Donald Wert  
Charles Stauffer

John Paul





















# ATHLETICS

IN CLASS-ROOM AND ON GRID-IRON, FRIENDS, S.  
U. WILL STAND THE TEST. DE -  
FEAT TO HER A WORD UN-KNOWN, HER  
MOT-TO " DO YOUR BEST."



Stagg, Coach

Badger and Alexander, Co-Captains

## VARSITY FOOTBALL

Susquehanna looks forward to the prospects of a successful 1938 football season. Fate seemed to be working against the Crusaders during the past season. A post-season misunderstanding led to the now famous football strike. It took practically the entire season to rebuild the enthusiasm and spirit which was lost. The P. M. C. game proved that this had finally been accomplished.

The Crusaders will start the 1938 season with a wealth of undeveloped material that is certain to evolve into a winning eleven. Already, Coach Stagg has started the spring practice sessions and is very favorably impressed by the showing of the football aspirants.

The 1938 eleven will be guided by Shuty and Swope, the recently elected co-captains.



McBride and Nye, Cheerleaders



Ulp, Manager

### GRIDIRON SCORES

September 26—Susquehanna	21	Bloomsburg	7	Home
October 3—Susquehanna	16	Moravian	26	Home
October 10—Susquehanna	12	Drexel	19	Away
October 17—Susquehanna	0	City College	0	Away
October 24—Susquehanna	6	Washington	0	Away
November 7—Susquehanna	13	Princeton "B"	0	Home
November 14—Susquehanna	0	Roanoke	13	Away
November 21—Susquehanna	6	P. M. C.	0	Away





## Susquehanna 21

### Bloomsburg S. T. C. 7

The Crusader eleven opened its 1936 season by renewing relations with an ancient rival, Bloomsburg State Teachers College. The upriver eleven fell victim to the powerful onslaught of Coach Stagg's mystery eleven to the tune of 21 to 7.

The brunt of the burden fell to the hands of the capable Walt Kozak and that live-wire Berkley. The combined efforts of these two lads gave us the three touchdowns of the afternoon. Time after time that powerful Stagg line opened up in the opposition's line making it possible for our hard-hitting backs to make successive gains. On the defensive Swope and Keller stole the show, throwing the opposition for decisive losses.

## Moravian 26

### Susquehanna 16

The Staggmens of Moravian met the Staggmens of S. U. in the second battle of our grid season. In a powerful first half attack the Crusader eleven was able to pile up a total of sixteen points with a field goal by Tom Lewis and touchdowns by Berkley and Kozak.

In the second half, the Greyhounds opened up with a barrage of passes that completely swept the Crusaders off their feet. When the final whistle blew the score stood 26-16 with the Moravian lads in the big end of the score.

Both teams played brilliant ball. The Crusaders distinguished themselves in powerful line drives; the Moravian lads excelled in their aerial attack.

Drexel 19

Susquehanna 12

October 10th saw the Crusaders in their annual tilt with a powerful Drexel eleven. The hard fought battle ended in a score of 19-12, with the Drexel lads holding down the big end of the score.

During the first half the Orange and Maroon eleven just couldn't seem to get its offensive working smoothly, with the result that the half ended 12-0 in favor of Drexel.

The second half witnessed a great change in the Crusaders. They came back fighting and determined, with Berkley and Tom Valunis going over the line for counters. The twelve-point lead held by Drexel seemed to be a bit too much to overcome and the Dragons pushed over another score, giving them the game with a score of 19-12.

City College of N. Y. 6

Susquehanna 0

Susquehanna suffered its third straight defeat in a hotly contested battle at the hands of a powerful C. C. N. Y. eleven. The score remained 0-0 until the final thirty seconds of the game. A poor punt on the part of the Crusaders put the opposition in a position to score. After a series of power plays they plunged over the line for the winning score.

The C. C. N. Y. lads outplayed the Crusaders slightly but the stubborn defensive play of the Stagmen held off C. C. N. Y. threats many times. Kozak and Berkley repeatedly made brilliant runs while Valunis kicked out of danger. On the line Badger, Shuty, and Alexander played exceptionally fine ball.





## Washington College 18

### Susquehanna 6

On October 24 Susquehanna suffered a severe drubbing at the hands of a large and powerful Washington College combination at Chestertown, Maryland.

The Shoremen impressed on the minds of the Orange and Maroon eleven in the first few minutes of play that they held the whip hand by completing a sixty-yard march for a touchdown.

Although the game ended 18-6 in favor of the Chestertown lads, the Stagmen fought the battle of their lives, bringing out some brilliant playing. Berkley and Kozak, as usual, gained their share of ground. Shobert, that hard-hitting back of last year's fame, finally hit his stride in this game and proved to be a great threat to the Shoremen.

## Susquehanna 13

### Princeton 6

Homecoming Day found the Crusaders in top notch form. Kozak, Alexander, Badger, and Berkley starred as the Stagmen upset dope by subduing the Baby Tigers with a 13-6 win.

Both teams took to the air in the first half but were unsuccessful in their attempts to score. The Tigers finally pushed a tally over the line late in the second quarter.

In the second half the Crusaders seemed to come back with that old-time Susquehanna spirit that had been lacking so far this year. They literally steam-rolled over the Princeton boys in two long marches that ended in touchdowns by Kozak and Badger. The hard charging line of the Orange and Maroon played outstanding ball with Swope and Shuty ever in the thick of the battle.

Roanoke 13

Susquehanna 0

The Susquehanna eleven was downed in a hotly contested battle with Roanoke at Salem, Va., with a final score of 13-0.

The Orange and Maroon eleven held the Dixie lads scoreless during the first half. Due to lack of reserve power, the Crusaders went down fighting in the second half when Roanoke pushed over the two winning touchdowns. Although the Stagmen were outweighed, they were not outfought. They continually gave the Dixie boys plenty to worry about. Berkley and Kozak functioned brilliantly but were unable to score. Swope did a marvelous bit of work on the line, stopping play after play with his hard-hitting tackles.

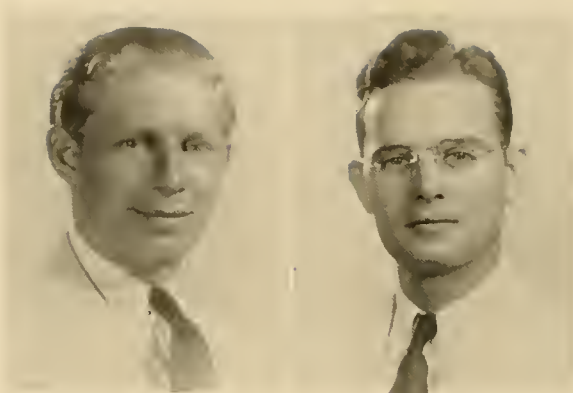
Susquehanna 6

P. M. C. 0

In their annual tussle with their arch rivals the Crusaders handed P. M. C. a 6-0 defeat. Doing what had been declared impossible by sports writers the Crusaders ran rampant over the Cadet eleven. Kozak literally tore the Cadet line to bits, while Alexander and Badger gave every ounce of their energy to stopping the power onslaught of the Cadets. These three lads were playing their last game for the Orange and Maroon and they certainly gave us plenty to remember them by.

Grim determination on the part of the greatly underrated Crusader eleven enabled them to hand the huskies from P. M. C. a sound drubbing. A win over these old-time rivals makes our season a real success.





Fredericks, Captain

Edwards, Manager

## VARSITY BASKETBALL

Winning possibilities in the basketball horizon were very gloomy at the start of the 1937 season. Susquehanna was beginning the season with two lettermen—Captain Fredericks and McBride. The lettermen from the colony, three regulars from the last season, had been ruled ineligible. There was a wealth of reserve material but, at the time, little of it was to be classed as varsity brand. Coach Stagg did not give up hope for he realized that, with practice, he could present a fighting five.

As we look back on the last season, we see a true example of team evolution. Although we won few games, every game was a sturdy fight against superior odds. We are proud to say that, although we had one of the smallest college basketball fives in the country, it was one with a will that cannot be surpassed.

Prospects look exceptionally bright for the next season. The squad will lose only two lettermen—Captain Fredericks and Alexander. This means that we will enter the season with a presentable array of experienced basketball players.

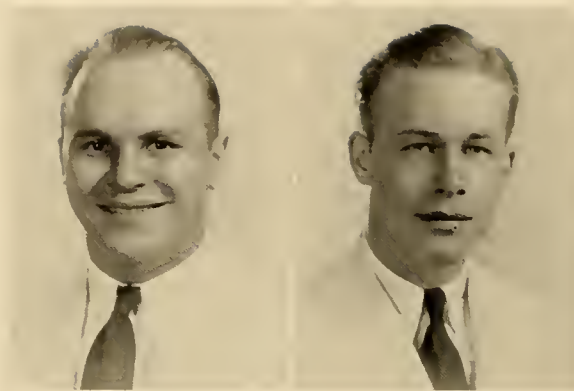
Wert and Rakshys have been elected the co-captains for the next season. Optimistically we look forward to a winning basketball season.



## BASKETBALL SCORES

December 7—Susquehanna	30	W. P. I.	42	Home
December 12—Susquehanna	29	M. S. T. C.	57	Home
December 13—Susquehanna	36	Alumni	29	Home
December 15—Susquehanna	28	Roanoke	36	Home
December 17—Susquehanna	26	Bloomsburg	41	Home
January 8—Susquehanna	19	Bloomsburg	33	Away
January 9—Susquehanna	19	Penn State	52	Away
January 12—Susquehanna	39	Elizabethtown	22	Home
January 15—Susquehanna	27	Moravian	29	Home
January 22—Susquehanna	29	Bucknell	37	Away
February 1—Susquehanna	31	Alfred University	40	Away
February 2—Susquehanna	33	Hartwick College	56	Away
February 5—Susquehanna	29	West Chester S. T.	47	Home
February 6—Susquehanna	25	Moravian	35	Away
February 9—Susquehanna	37	Elizabethtown	36	Away
February 11—Susquehanna	33	Upsala College	35	Home
February 19—Susquehanna	24	Drexel College	32	Away
February 20—Susquehanna	30	M. S. T. C.	63	Away
February 26—Susquehanna	29	Bucknell	39	Home





Spitzner, Captain

Kniseley, Manager

## VARSITY BASEBALL

With a wealth of material, Coach Roach is confident of a most successful 1937 season. He has found gratifying results in the pitching of Badger, Hummel, Dreher, and Gensel. Possibilities are evident in the showing of Keil, Klinger, Wert, and Baylor at the receiving end.

The infield looks exceptionally strong with "Bunky" Fredericks at the initial sack, "Junie" Miller at second, Cotton at short-stop, and Bollinger at third.

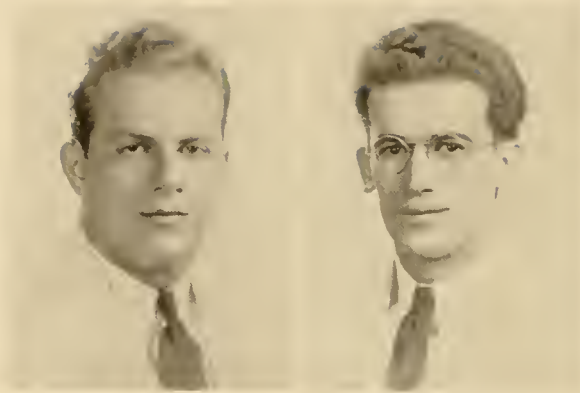
Alexander, Badger, Hummel, Wert, and Hummel are striving for the outfield positions.

The only dark cloud in the Crusaders' baseball horizon is the fact that Captain Spitzner will not be able to fill the second base position because of a trick knee injury, acquired during the football season. Coach Roach is thinking of shifting Spitzner to an outfield position where the risk on his injury will not be as great and the team can benefit by his hard hitting at the plate.

### BASEBALL SCORES

April 20—Susquehanna	6	Albright	13	Away
April 21—Susquehanna-Moravian—Rain				
April 25—Susquehanna	5	Bloomsburg	18	Home
April 28—Susquehanna	7	Bucknell	14	Away
May 2—Susquehanna	0	Gettysburg	11	Away
May 5—Susquehanna	3	Moravian	2	Home
May 7—Susquehanna	6	Elizabethtown	14	Away
May 8—Susquehanna	1	Albright	9	Home
May 9—Susquehanna	6	Lebanon Valley	3	Home
May 13—Susquehanna	5	Bucknell	6	Home
May 15—Susquehanna	6	Elizabethtown	17	Home
May 23—Susquehanna	5	Bloomsburg	10	Away





Toomey, Captain

Schaffer, Manager

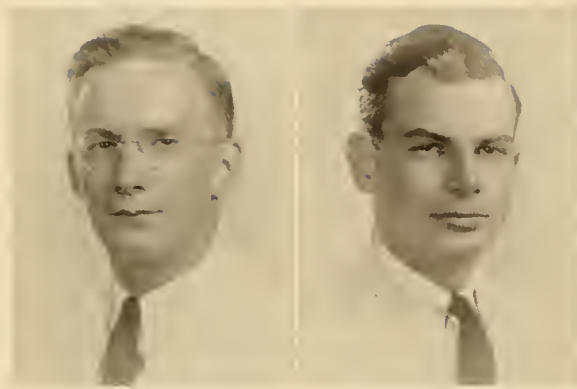
## VARSITY TRACK

### SCHEDULE

April 25	—Interclass Relays	At Susquehanna
April 24-25	—Penn Relays	At Philadelphia
April 29	—Interclass Track Meet	At Susquehanna
May 4	—Susquehanna versus Bloomsburg	At Bloomsburg
May 16	—C. P. C. T. C. Meet	At Swarthmore
May 22	—Susquehanna versus Bucknell	At Susquehanna



Front Row—Bice, Davis, Rogers, Diffenderfer, Toomey, Fitzgerald, Rakshys, Richard, Leam  
 Second Row—Schaffer, Wray, Greninger, McKeown, Lengler, Stockdale, Sander, Gulick,  
 Kinney, Kauffman, Orwig



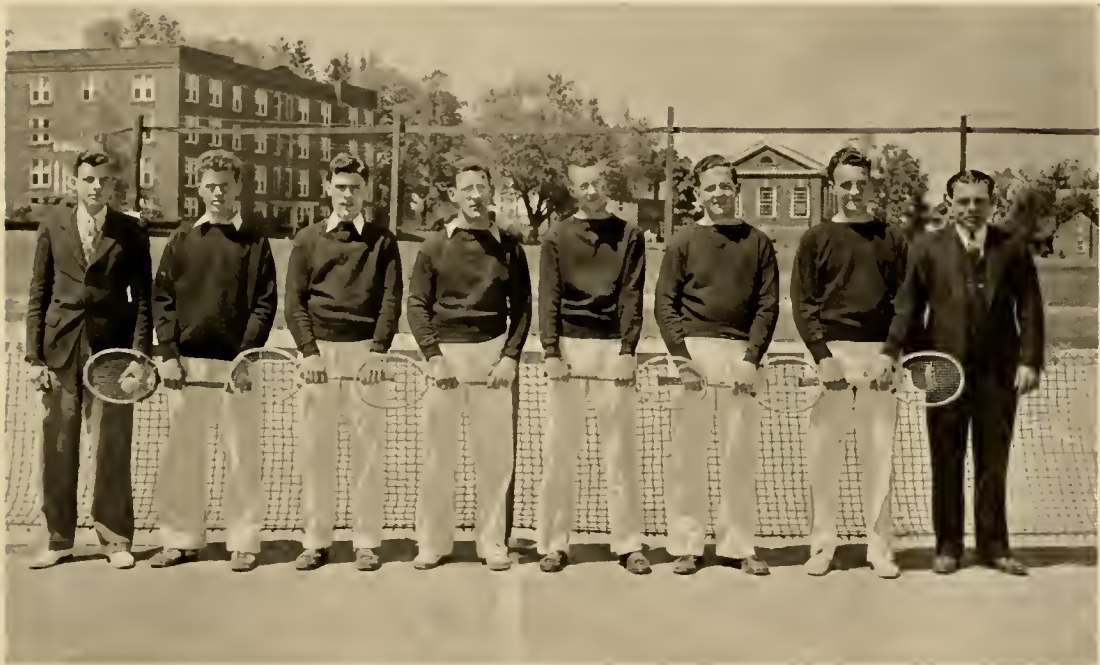
Hostetter, Captain

Owen, Manager

## VARSITY TENNIS

### TENNIS SCORES

April 25—Susquehanna	Lost to Lebanon Valley	Home
May 1—Susquehanna	Lost to Elizabethtown	Away
May 4—Susquehanna	Lost to Bloomsburg	Away
May 6—Susquehanna	Lost to Scranton Keystone Jr. College	Home
May 9—Susquehanna	Won From Wyomissing Polytechnical	Home
May 14—Susquehanna	Lost to Bucknell	Home
May 19—Susquehanna	Lost to Bucknell	Away
May 21—Susquehanna	Lost to Elizabethtown	Home



Left to Right—Owen, Raksbys, Gaver, Seavey, Hostetter, Keim, Sivick, Coach Stagg



First Row—Spitzner, Fredericks, Badger, Shuty, Benner, Goynes, Toomey  
 Second Row—Sankeld, Miller, Bolig, Swope, Pezick, Bollinger  
 Third Row—Shobert, Irvin, Wetzel, McBride, Gelnett, Hostetter  
 Fourth Row—Berkeley, Lewis, Keller, Grenninger

## VARSITY "S" CLUB

Organized in 1924

Requirements for Membership—Attending of classes for one or more years and the winning of the "S" in any varsity sport.

### 1930 LETTERMEN

Thomas Valunas—Football, Baseball, Track, Basketball	Joseph Pezick—Football
Kenneth Alexander—Football, Basketball, Baseball	Andrew Fredericks—Basketball
June Miller—Football, Basketball, Baseball	Harry McBride—Basketball
Kenneth Badger—Football, Baseball	Oren Benner—Track
Ralph Shobert—Football, Track	Luke Toomey—Track
Carmen Berkeley—Football, Basketball	Reed Grenninger—Track
Thomas Lewis—Football, Baseball	Roy Bolig—Football, Track
Richard Wetzel—Football, Basketball	Francis Gelnett—Track
Clyde Spitzner—Baseball	Harry Swope—Football
John Goynes—Football	Daniel Cotton—Baseball
Lewis Baylor—Football	John Hostetter—Tennis
Peter Shuty—Football	Harold Bollinger—Baseball

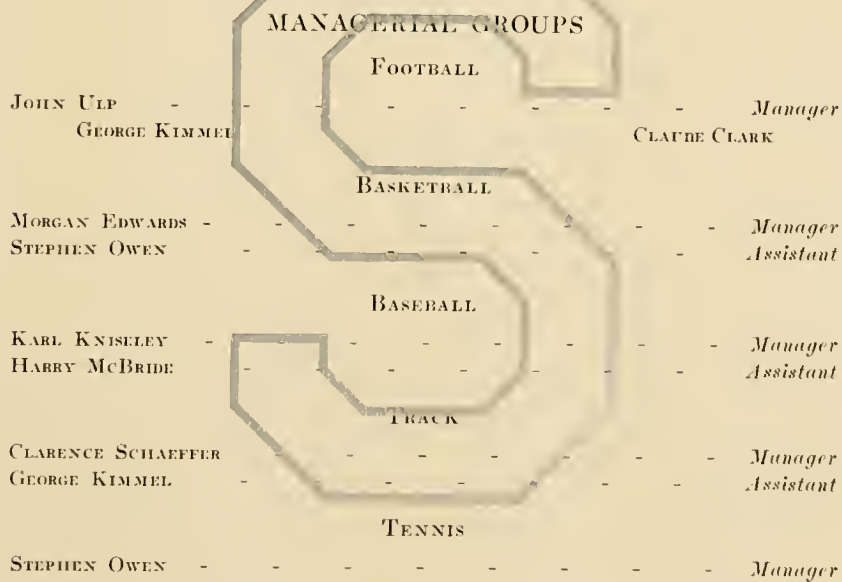


Left to Right—Kimmel, Edwards, Kniseley, Owen, Schaeffer

# ORANGE KEY CLUB

Organized in 1931

Purpose—Organized for the purpose of creating co-operation among the manager and assistant managers of the various athletic teams.



# 1937-1938 SCHEDULE

## TRACK

Wednesday, April 14—Interclass Track Meet  
Saturday, April 17—Dickinson at Susquehanna  
Tuesday, April 27—Bloomsburg at Susquehanna  
Saturday, May 1—Invitation Track Meet, West Chester  
Wednesday, May 5—Susquehanna at Bucknell  
Monday, May 10—Susquehanna at Bloomsburg  
Monday, May 17—Albright at Susquehanna  
Thursday, May 20—Interfraternity Track Meet

## TENNIS

Monday, April 19—Susquehanna at Bloomsburg  
Saturday, April 24—Bloomsburg at Susquehanna  
Wednesday, April 28—Susquehanna at Lebanon Valley  
Saturday, May 1—Susquehanna at Moravian  
Monday, May 3—Susquehanna at Wyomissing  
Thursday, May 6—Scranton Junior College at Susquehanna  
Friday, May 7—Elon College at Susquehanna  
Wednesday, May 12—Elizabethtown at Susquehanna  
Tuesday, May 18—Susquehanna at Elizabethtown  
Friday, May 29—Wyomissing at Susquehanna

## BASEBALL

Monday, April 19—Susquehanna at Bloomsburg  
Wednesday, April 21—Susquehanna at Gettysburg  
Saturday, April 24—Bloomsburg at Susquehanna  
Monday, April 26—Susquehanna at Albright  
Tuesday, April 27—Susquehanna at Moravian  
Wednesday, April 28—Susquehanna at Lebanon Valley  
Tuesday, May 4—Elizabethtown  
Saturday, May 8—Penn State  
Monday, May 10—Bucknell  
Wednesday, May 12—Haverford  
Tuesday, May 18—Elizabethtown at Susquehanna  
Friday, May 21—Susquehanna at Upsala  
Saturday, May 22—Susquehanna at Dickinson  
Tuesday, May 25—Bucknell at Susquehanna

## FOOTBALL

Saturday, September 25—Rutgers at New Brunswick, N. J.  
Saturday, October 2—Drexel at Drexel  
Saturday, October 16—C. C. of N. Y. at Susquehanna  
Saturday, October 23—Washington College at Susquehanna  
Saturday, October 30—Moravian at Bethlehem, Pa.  
Saturday, November 6—Bloomsburg at Bloomsburg  
Saturday, November 13—Roanoke at Susquehanna  
Saturday, November 20—Haverford at Susquehanna

## BASKETBALL

(Not Complete)

Wednesday, December 8—Bloomsburg at Susquehanna  
Saturday, December 11—Dickinson at Carlisle  
Friday, December 17—Bloomsburg at Bloomsburg  
Saturday, January 8—Penn State at State College  
Saturday, January 22—Moravian at Susquehanna  
Friday, February 4—Wyomissing Polytechnic Institute at Wyomissing  
Saturday, February 5—Moravian at Bethlehem  
Thursday, February 10—Earlham College, Indiana, at Susquehanna  
Saturday, February 12—Upsala at East Orange, N. J.  
Saturday, February 19—Bucknell at Susquehanna





Reeder, Instructor

## WOMEN'S ATHLETICS

Susquehanna may well be proud of the fine athletic facilities which she provides for her women students. The Women's Athletic Association, in co-operation with Miss Reeder, has successfully carried out a wide and varied schedule of athletic activities for the Seiberites. Unusual interest has been taken in the various inter-class sports, with the result that our women have developed some very powerful teams in the various sports. The sports program includes basketball, volleyball, softball, hockey, tennis, golf, table tennis, and archery.





# W. A. A.

## OFFICERS

MARGARET CORSON - - - - - *President*  
RUTH HEMMERLY - - - - - *Vice President*  
MARTHA BOLIG - - - - - *Secretary-Treasurer*

Membership in the W. A. A. is open to those girls who have earned either a letter or numerals while they have been in college.

## SPORT MANAGERS FOR 1937-1938

Mollie Fox—Hockey	Mary Barnes—Archery
Eleanor Jones—Soccer	Mary Scott—Tennis
Arline Marshall—Basketball	Mary Barnes—Golf
Mary Beth Richard—Volleyball	Mary Barnes—Hiking
Evelyn Janson—Baseball	Eleanor Jones—Bicycling

## INTRAMURAL WINNERS FOR 1937-1938

Hockey—Class of 1939	Volleyball—Class of 1937
Soccer—Class of 1940	Tennis—Class of 1938
Basketball—Class of 1938	Baseball—Class of 1937







## SOCIETIES

WITH VIM, THEN LET US GIVE THE YELL, DIS -  
PLAY HER BAN-NER BRIGHT, THAT  
ALL MAY KNOW OF OLD S. U. SHE  
STANDS FOR GOD AND RIGHT.



Front Row—Shaheen, Otto, Grenninger, Karschner, Edwards, Klinger, Schaffer  
 Second Row—Clark, Gensel, McKeown, Dr. Ahl, Kniseley, Diffenderfer, Dorsett  
 Third Row—Beachel, Nye, Drumheller, Sander, Ziegler, Haines

## PRE-THEOLOGICAL CLUB

Organized 1917

### OFFICERS

LESTER KARSCHNER	- - - - -	President
REED GRENNINGER	- - - - -	Vice President
MORGAN EDWARDS	- - - - -	Secretary-Treasurer

*Faculty Advisor*—DR. AUGUSTUS AHL

The club's purpose is to keep alive and foster the spiritual ideals of the men preparing for the Gospel ministry. Monthly meetings are held for the purpose of discussing problems which face the ministerial student.



Front Row—Edwards, Yingling, Fitzgerald, Richard, Shaheen  
 Second Row—Neudoerffer, Croft, Bolig  
 Third Row—Shobert, Clark, Diffenderfer

# STUDENT CHRISTIAN ASSOCIATION

Organized 1934

## OFFICERS

ORVILLE FITZGERALD	- - - - -	President
MARY SCOTT	- - - - -	Vice President
LUKE TOOMEY	- - - - -	Vice President
ESTHER YINGLING	- - - - -	Recording Secretary
MARY BETH RICHARD	- - - - -	Corresponding Secretary
MORGAN EDWARDS	- - - - -	Treasurer

## Faculty Advisors

PRESIDENT G. MORRIS SMITH	MRS. T. W. KRETSCHMANN
DR. PAUL J. OVREBO	DR. WILLIAM A. RUSS, JR.
MISS GLADYS ERDAHL	

The purpose of the S. C. A. is to help every student live his or her full personality. The cabinet sponsors vesper services, Freshman Week activities, and the Freshman Handbook.



Seated—Stauffer, Smith, Kozak, Long, Volunas, Fredericks, Toomey  
 Standing—Higgins, Prof. Houtz

## MEN'S STUDENT COUNCIL

### OFFICERS

CHESTER LONG	- - - - -	<i>President</i>
WALTER KOZAK	- - - - -	<i>Vice President</i>
PRESTON SMITH	- - - - -	<i>Secretary</i>

*Faculty Advisor*—PROF. JOHN J. HOUTZ

This council was organized to foster a closer union of the students by creating a better mutual understanding between the faculty and the student body. The council is composed of two men from each fraternity and two non-fraternity men.





Left to Right—Scott, Grubb, Jones, Barnes, Jones, Miss Erdahl, Hemmerly

# WOMEN'S CO-OPERATIVE COUNCIL

## OFFICERS

MARY BARNES - - - - - *President*  
 CAROLINE GRUBB - - - - - *Secretary-Treasurer*

*Faculty Advisor*—MISS GLADYS B. ERDAHL  
 Dean of Women

The purpose of this organization shall be to effect more comfortable, more progressive, and more harmonious living conditions on the campus, and to regulate in a just and orderly manner all student activities within its jurisdiction.



Left to Right—Wensel, Kniseley, Shellenberger, Fitzgerald, Poyck, Cotton

## INTERFRATERNITY COUNCIL

Organized 1928

### OFFICERS

WALTER S. V. POYCK	- - - - -	<i>President</i>
KARL KNISELEY	- - - - -	<i>Secretary</i>
ORVILLE FITZGERALD	- - - - -	<i>Treasurer</i>

*Faculty Advisor*—DEAN GEORGE DUNKLEBERGER

The purpose of the council is to regulate interfraternity relationships in a just and orderly manner promoting a mutual and beneficial understanding between the several fraternities.



Seated—Hoffard, Yingling, Kaufman, Jones, Scott  
 Standing—Corson, Fox, Bolig, Brown

# INTERSORORITY COUNCIL

Organized 1927

## OFFICERS

ELEANOR JONES	-	-	-	-	-	-	-	-	-	-	-	-	-	-	-	-	-	<i>President</i>
ESTHER YINGLING	-	-	-	-	-	-	-	-	-	-	-	-	-	-	-	-	-	<i>Vice President</i>
MOLLIE FOX	-	-	-	-	-	-	-	-	-	-	-	-	-	-	-	-	-	<i>Secretary</i>
MARGARET CORSON	-	-	-	-	-	-	-	-	-	-	-	-	-	-	-	-	-	<i>Treasurer</i>

*Faculty Advisor*—MISS DOROTHY W. REEDER

The purpose of the organization is to establish more perfect harmony among the organizations represented in the Intersorority Council. The council is composed of two representatives from each sorority.



First Row— Dr. Wood, Dr. Kretschman, Leese, Shafer, Barnes, Dr. Ahl, Dr. Leese  
 Second Row—Prof. Brungart, Shaheen, Karschner, Klinger, Dr. Woodruff  
 Third Row—Dr. Smith, Prof. Reitz, Dr. Russ, Dr. Dunkelberger

# PI GAMMA MU

Organized 1927

## OFFICERS

HENRY SHAFER	- - - - -	<i>President</i>
MARY BARNES	- - - - -	<i>Vice President</i>
DR. KRETSCHMANN	- - - - -	<i>Secretary-Treasurer</i>

### *Faculty Advisors*

DR. T. W. KRETSCHMANN	DR. CHARLES LEESE	PROF. IRWIN REITZ
DR. GEORGE DUNKLEBERGER	DR. JOHN WOODRUFF	DR. WILLIAM RUSS
DR. AUGUSTUS AHL	PROF. EDWIN BRUNGART	DR. G. MORRIS SMITH

The organization serves as a means of bringing together those students who manifest an active interest in social science. Requirements for admittance include at least twenty semester hours in social science with a "B" average, evidence of good character, and a satisfactory scholastic standing in general.



Left to Right—Keil, Long, Toomey, Fredericks, McBride, Shellenberger

## INTRA-MURAL BOARD

### OFFICERS

LUKE TOOMEY	- - - - -	<i>President</i>
ANDREW FREDERICKS	- - - - -	<i>Vice President</i>
HENRY KEIL	- - - - -	<i>Treasurer</i>
DAVID SHELLENBERGER	- - - - -	<i>Publicity Manager</i>

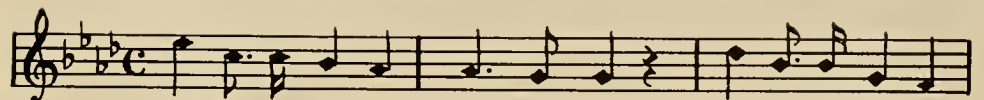
*Faculty Advisor—COACH ALONZO STAGG, JR.*

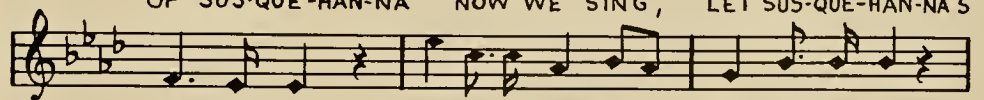
This group takes care of all class competition in the various sports. The competitive sports include soccer, football, basketball, and track. All rules and regulations governing the competition are decided by this body.

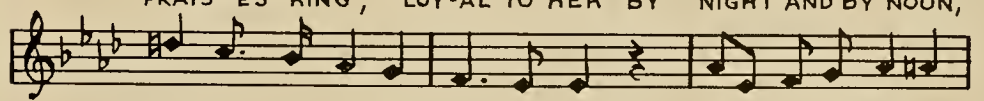


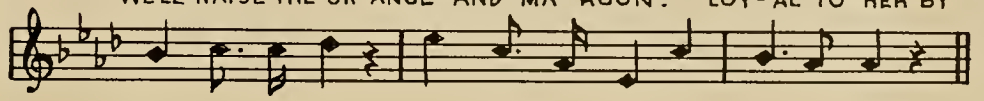


## FINIS


  
 OF SUS-QUE-HAN-NA NOW WE SING, LET SUS-QUE-HAN-NA'S


  
 PRAIS-ES RING, LOY-AL TO HER BY NIGHT AND BY NOON,


  
 WE'LL RAISE THE OR-ANGE AND MA-ROON. LOY-AL TO HER BY




  
 NIGHT AND BY NOON, WE'LL RAISE THE OR-ANGE AND MA-ROON.



## OUR ADVERTISERS

. . .

*We* express our deep appreciation to our advertisers for their kind assistance and interest in the 1938 LANTHORN. Their co-operation has greatly aided in the success of this publication. We ask that you aid them by your patronage.





# Zamsky Studio, Inc.

Sittings by  
Appointment

Telephone—Pennypacker  
6190—8070

There Is No Substitute For  
**EXPERIENCE**



The ZAMSKY STUDIO, INC., has successfully handled Yearbook  
Photography for twenty years. The skilled personnel and  
up-to-date equipment necessary for such a record  
is reflected in this book and is your  
assurance that you may—

*“Count on Zamsky”*



902 CHESTNUT STREET  
PHILADELPHIA, PA.

YALE RECORD BUILDING  
NEW HAVEN, CONN.



Official Photographers for Schools and  
Colleges From New England  
to the South

# SUSQUEHANNA UNIVERSITY

Founded 1858

*If you want a College . . .*

With a family spirit  
Where the student is known by the faculty  
Of distinctly Christian atmosphere  
In a healthful climate  
With exceptional athletic facilities  
And where good scholarship is stressed

*Come to SUSQUEHANNA*

Bachelor Degrees in Liberal Arts,  
Business Administration,  
Commercial Education,  
and Music  
Co-Educational

*For catalogue write the Registrar*

SUSQUEHANNA UNIVERSITY  
SELINGROVE, PA.

# The Lutheran Theological Seminary

GETTYSBURG, PENNSYLVANIA

Begins its 112th year September 14, 1937

---

## *The Seminary offers:*

Free Tuition

Furnished Rooms

Use of 43,500 Volumes in Library

Standard and Elective Courses Leading to the B.D. Degree

Graduate Work Leading to the Degree of S.T.M.

A limited number of scholarships available.

*For further information address:*

JOHN ABERLY, President.

---

# WHITMER - STEELE LUMBER COMPANY

*Manufacturers of*

PINE, HEMLOCK, and HARDWOOD LUMBER

PROP TIMBER and TIES

65 KING STREET

NORTHUMBERLAND, PA.

MIDDLE CREEK VALLEY  
TELEPHONE COMPANY

*Bell System*

FRANK A. EYER, *General Manager*

---

Compliments of

PALMER R. GARMAN

*Funeral Director*

*Very Well Known for Service*

MT. PLEASANT MILLS, PA.

THE COLLEGE BOOK STORE

*Student Supplies*



Chilton Pens and Pencils

Sheaffer Inks — Penmans

Monogram Stationery

College Keys and Rings

---

SELINGSGROVE  
WATER SUPPLY COMPANY



FRANK A. EYER

*President*

W. K. SEEHOLTZ

*Superintendent*

JAMES F. McCLURE

*Treasurer*

BOGAR BROTHERS' LUMBER COMPANY

CONTRACTORS — BUILDERS

*Manufacturers of and Dealers in*  
Lumber, Mill Work, Building Supplies

*Phone* Bell 74-W

SELINGROVE, PA.

THE STRAND

*A Comerford Theatre*

SUNBURY, PA.

PLUMMER'S

Electric Shop

*Everything Electrical*

SELINGROVE, PA.

Glen Lock Dairies Co.

*Pasteurized*

MILK and CREAM

*Phone* 386

141 N. Fifth Street

SUNBURY, PA.

SOFT DRINKS

*for Athletic Fetes*

May be purchased at

SELINGROVE  
BOTTLING WORKS

*Phone* 30-Z

SELINGROVE, PA.

RICHFIELD BUS LINE

SCHEDULE and PARTY SERVICE

A. E. WHITELEY, *Owner*

456 S. Market Street

SELINGROVE, PA.

# THE SELINGSGROVE TIMES

MARION S. SCHOCH, *Publisher*

All Kinds of Commercial Printing

DANCE PROGRAMS A SPECIALTY

*Printers of THE SUSQUEHANNA*

---

## THE FIRST NATIONAL BANK

of SELINGSGROVE

---

Salutes Susquehanna University and Its  
Glorious Accomplishments

---

### OFFICERS

ROSCOE C. NORTH, *President*

CHARLES C. WALTER, *Cashier*

MARION S. SCHOCH, *Executive Vice President*

E. E. PAWLING, *Vice President*

CLAYTON C. LEACH, *Assistant Cashier*

### DIRECTORS

A. L. ALLINSON

FRANK A. EYER

ROSCOE C. NORTH

E. E. PAWLING

MARION S. SCHOCH

WM. M. SCHNURE

HARVEY S. STERNER

---

Compliments of

## THE SMITH PRINTING CO.

*Bank Stationery Specialists*

WILLIAMSPORT, PA.

# REA & DERICK, Inc.

## *Stores at*

430 Market St.  
314 Market St.  
306 Market St.  
Sunbury, Pa.

54 E. Independent St.  
32 N. Market St.  
Shamakin, Pa.

Northumberland, Pa.  
Gettysburg, Pa.  
Lewistown, Pa.  
Bloomsburg, Pa.  
Shickshinny, Pa.  
Straudsbury, Pa.  
State College, Pa.  
Selinsgrove, Pa.

Tyrone, Pa.  
Berwick, Pa.  
Huntingdon, Pa.  
Milton, Pa.  
Lewisburg, Pa.  
Mt. Carmel, Pa.  
Danville, Pa.

## STEFFEN'S

FINE FOODS

GIFTS *and* STATIONERY

LENDING LIBRARY

SELINGROVE, PA.

Compliments of

## KLINE'S

MEAT MARKET

West Pine Street  
Selinsgrove, Pa.

Compliments of

## The STANLEY Theatre

*Under the Management of*

THE COMERFORD THEATRES,  
INC.

Compliments of

## SNAVELY'S

CLOTHING *and* SHOES

SELINGROVE, PA.

Compliments of

## BAUM'S SPORTING GOODS

*The Home of* COLLEGE *and* HIGH SCHOOL SPORTING GOODS

SUNBURY, PA.



# REICHLEY'S

*Refresh at Our*

## FOUNTAINS

*Phone 69-Z*

---

### NATIONAL CAFE

*Restaurant*

R. A. MEASE, *Proprietor*

Meals at All Hours

I. O. O. F. Bldg. SELINGSGROVE, PA.

### WEIS PURE FOOD STORES

—  
*Stores Throughout  
Central Pennsylvania*

---

### R. L. SCHROYER

*General Insurance*

SELINGSGROVE, PA.

Phone 173-Y

Compliments of

*Student Klothes Shop*

◆  
MARKLEY - ALTVATER

*Men's and Boys' Better Clothes*

SUNBURY, PA.

---

## SNYDER COUNTY TRUST COMPANY

SELINGSGROVE, PA.

*Solicits Your Patronage*

Compliments of

# ANDREWS HARDWARE

NORTHUMBERLAND, PA.

---

## KELLER'S QUALITY MARKET

*Dealer in*

Fancy Groceries and Choice Meats

Phone 84 SELINGSGROVE, PA.

Compliments of

## BRESSLER'S BARBER SHOP

*The Students' Barber Shop*

SELINGSGROVE, PA.

Compliments of

## CLYDE A. ZIMMERMAN

*Member of*

National Association of  
Piano Tuners, Inc.

*The Tuner Alone Preserves the Tone*

Phone 1021-R SUNBURY, PA.

Compliments of

## S. E. FISHER MOTORS

**Chrysler — Plymouth**  
*Sales and Service*

Quality Products. Expert Service

East Spruce St. SELINGSGROVE, PA.

Compliments of

## KEPLER'S Chevrolet Sales and Service

*Dealers in*

*Chevrolet* CARS and TRUCKS  
and Hayes-Motor-Homes — House Trailers

324 North Market Street

SELINGSGROVE, PA.

Compliments of the

MODERN SHOE SHOP

ANTHONY VARANO, *Proprietor*

Repair Service While You Wait

*"Stretch Your Money,  
Add Extra Wear to Every Pair"*

350 S. Market St. SELINGROVE, PA.

Compliments of

LOSE MOTOR COMPANY

*Leading Automobile Dealer  
in Selinsgrove, Pa.*

# Susquehanna University

## SUMMER SCHOOL

Thirty-fifth Regular Session of Six Weeks from  
June 28 to August 6, 1937. Post-session from  
August 7 to August 28.

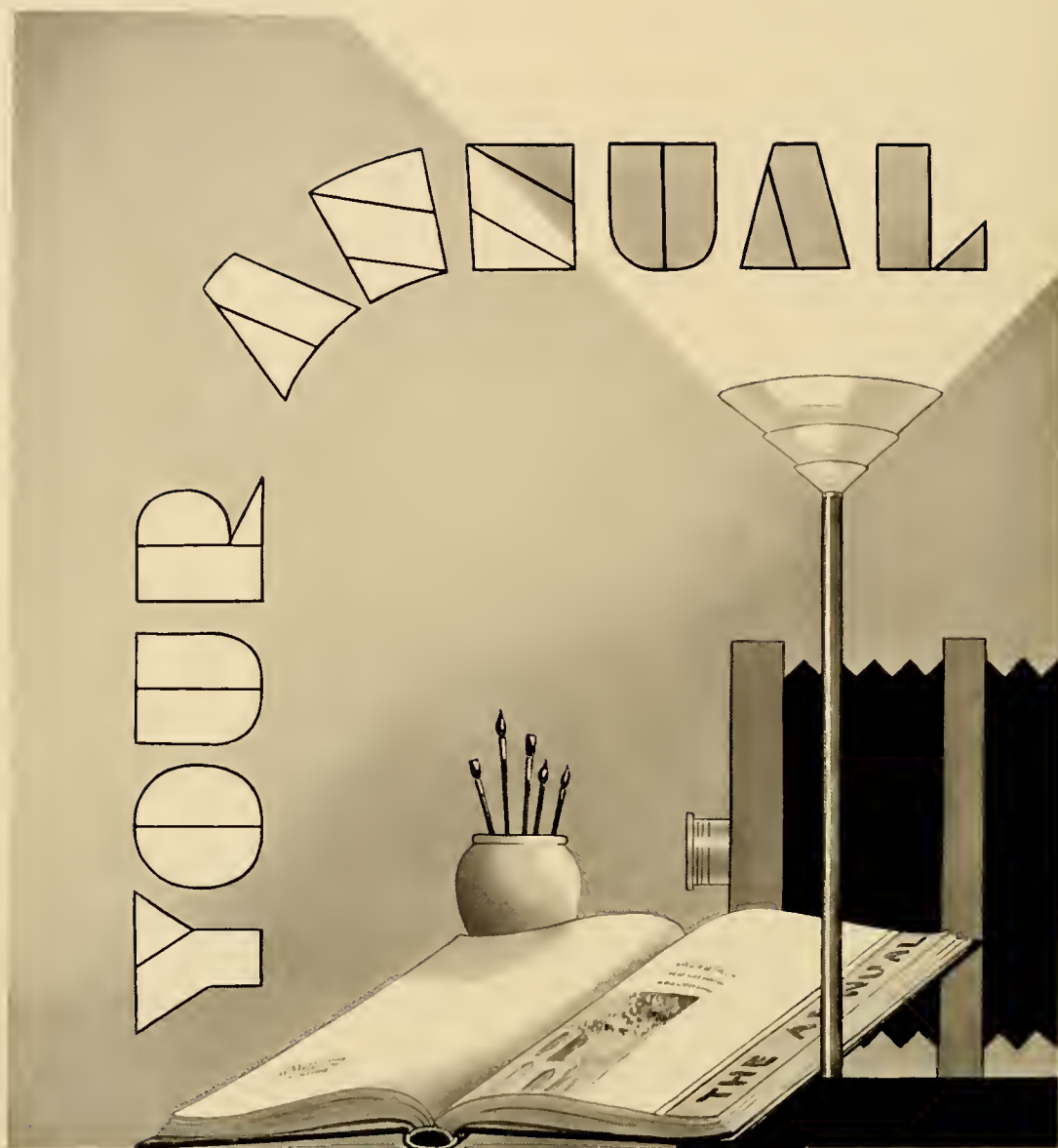
A wide choice of familiar courses will be offered with the addition of new ones including Curriculum Planning, Diagnostic Testing and Remedial Teaching, Methods in Teaching the Social Sciences, Methods in Teaching Secondary School English, Original Writing, Play Production, and Choral Technique.

*For further information, write*

PAUL J. OVREBO

*Director of the Summer School*

Susquehanna University, Selinsgrove, Pa.



*was*

DESIGNED, ENGRAVED, PRINTED AND BOUND IN OUR  
PLANT. WE ARE JUST AS PROUD OF IT AS YOU ARE.

**GRIT PUBLISHING COMPANY**

WILLIAMSPORT, PA.

*Producers of Distinctive School and College Publications*

---

---

---

# REGISTER OF STUDENTS, 1936-37

Ahl, Hildegard .....	Selinsgrove, Pa.	Fiokbeiner, Shirley .....	9455 Sutter Ave., Queens, N. Y.
Adey, Alfred Robert .....	542 Peace St., Hazleton, Pa.	Fisher, Robert .....	969 High St., Williamsport, Pa.
Alexander, Kenneth .....	3213 N. Main St., Scranton, Pa.	Fitzgerald, Orville .....	Jersey Shore, Pa.
Anderson, Helen .....	Blain, Pa.	Follmer, Mrs. Mildred .....	Selinsgrove, Pa.
Appler, Mary .....	Hanover, Pa.	Fox, Mary Ann .....	16 S. Sixth St., Shamokin, Pa.
Arentz, Eunice .....	409 Franklin St., Hanover, Pa.	Frattali, Vincent .....	116 N. Chestnut Ave., Scranton, Pa.
Aughenbaugh, J. Stanley .....	Etters, Pa.	Fredericks, Andrew .....	330 Hawthorne Ave., Yonkers, N. Y.
Ayers, William .....	24 Brook St., Warren, Pa.	Friederich, Hilda .....	Honesdale, Pa.
Badger, Kenneth .....	Selinsgrove, Pa.	Fries, Grace .....	1135 Second Ave., Duncansville, Pa.
Baish, Charlotte .....	Dillsburg, Pa.	Fry, Elizabeth .....	2630 Perrysville Ave., Pittsburgh, Pa.
Baldwin, Howard .....	2511 Tatnall St., Wilmington, Del.	Furman, Robert .....	142 N. Sixth St., Sunbury, Pa.
Baltzer, Betty .....	Jersey Shore, Pa.	Gabrenya, Robert .....	361 First St., Conemaugh, Pa.
Barnes, Mary .....	Middleburg, Pa.	Gartner, Charles .....	Salisbury, Pa.
Barnhart, Elizabeth .....	1250 Susquehanna Ave., Sunbury, Pa.	Gaver, Don .....	901 Twenty-first Ave., Altoona, Pa.
Baylor, Louis .....	Northumberland, Pa.	Gayman, Verna .....	R. D. 3, Newville, Pa.
Beachel, LeRoy .....	Middleburg, Pa.	Gelnett, Francis .....	Selinsgrove, Pa.
Beamenderfer, Jean .....	Selinsgrove, Pa.	Gelnett, Roy .....	Millerstown, Pa.
Benion, Harold .....	West Fairview, Pa.	Gensel, John .....	Catawissa, Pa.
Benner, Oren .....	Mifflinburg, Pa.	Goldberg, Jesse .....	410 Tenth St., Philipsburg, Pa.
Berkeley, Saul .....	269 Central Ave., Lawrence, N. Y.	Goyne, John .....	1500 Market St., Ashland, Pa.
Berkley, Carmon .....	291 Sell St., Johnstown, Pa.	Greninger, Edwin .....	2308 Sixth Ave., Altoona, Pa.
Bice, John .....	Millerstown, Pa.	Greninger, Reed .....	Cherry St., Williamsport, Pa.
Bier, Catharine .....	501 Packer St., Sunbury, Pa.	Grenoble, Margaret .....	Spring Mills, Pa.
Billman, Donald .....	Herndon, Pa.	Groce, Homer .....	Selinsgrove, Pa.
Bingaman, Naomi .....	Selinsgrove, Pa.	Grabb, Caroline .....	Liverpool, Pa.
Birchard, Robert .....	802 Faxon Pkwy, Williamsport, Pa.	Gulick, Reed .....	442 Grant St., Camden, N. J.
Bittinger, Hester .....	Shamokin Dam, Pa.	Gundrum, Helen .....	944 Main St., Rockwood, Pa.
Bolig, Betty .....	Selinsgrove, Pa.	Guthrie, Mark .....	Northumberland, Pa.
Bolig, Eleanor .....	Selinsgrove, Pa.	Haines, James Leon .....	R. D. 1, McClure, Pa.
Bolig, Martha .....	Northumberland, Pa.	Hamm, Birdie .....	Hanover, Pa.
Bolig, Roy .....	Selinsgrove, Pa.	Hauff, Glenn .....	New Freedom, Pa.
Bollinger, Harold .....	Northumberland, Pa.	Hayes, Madalene .....	203 W. Miner St., West Chester, Pa.
Bower, Marjorie .....	Middleburg, Pa.	Hazlett, John .....	Dry Run, Pa.
Boyer, Robert .....	R. D. 1, Selinsgrove, Pa.	Heim, Mary .....	Loysville, Pa.
Boyle, Margaret .....	Wolverton St., Sunbury, Pa.	Helt, Carl .....	Elmsport, Pa.
Brosious, Paul .....	Herndon, Pa.	Hemmerly, Ruth .....	600 N. Laurel St., Hazleton, Pa.
Brown, Eleanor .....	732 Third Ave., Ford City, Pa.	Herr, Karl .....	327 E. Third St., Berwick, Pa.
Buliek, Jean .....	428 Orange St., Selinsgrove, Pa.	Herr, Robert .....	Shamokin, Pa.
Burns, Virginia .....	Watson town, Pa.	Hertz, Robert .....	544 N. Front St., Milton, Pa.
Camp, Samuel .....	Milton, Pa.	Hess, Chester .....	Trevorton, Pa.
Carey, Josephine .....	101 E. Durham St., Philadelphia, Pa.	Hickman, Frederick .....	10 S. Marion Ave., Ventnor, N. J.
Carolus, Vivian .....	Race St., Sunbury, Pa.	Higgins, James .....	Locust Gap, Pa.
Charles, Clyde .....	Selinsgrove, Pa.	Hill, Anna .....	416 Allen St., W. Hazleton, Pa.
Charles, James .....	Selinsgrove, Pa.	Hisdorf, Helen .....	616 Greendale Ave., Edgewood, Pa.
Clark, Claude .....	R. D. 1, Sunbury, Pa.	Hoffman, Dorothy .....	R. D. 5, Bloomsburg, Pa.
Clark, George .....	Jersey Shore, Pa.	Hoffman, Jean .....	1132 Potomac Ave., Hagerstown, Md.
Cluck, Genevieve .....	McKnightstown, Pa.	Hoffman, John .....	Shamokin Dam, Pa.
Coleman, Paul .....	Somerset, Pa.	Hofford, Jeanne .....	Sayre, Pa.
Corson, Margaret .....	Hoguesville, Pa.	Hostetter, John .....	308 Burgess St., Pittsburgh, Pa.
Cotton, Daniel .....	823 Main St., Duryea, Pa.	Howells, Lewis .....	1141 Scott St., Kulpmont, Pa.
Critchfield, Donald .....	Somerset, Pa.	Hudson, William .....	Seaford, N. J.
Croft, Eleanor .....	Greencastle, Pa.	Hummel, Richard .....	Northumberland, Pa.
Curtis, Marjorie .....	52 Poplar St., Kingston, Pa.	Irvin, Bigler .....	1246 Highland St., Sunbury, Pa.
Davis, William .....	1508 Center St., Ashland, Pa.	Janson, Evelyn .....	910 Susquehanna Ave., Sunbury, Pa.
Dearny, Naomi .....	1114 Twentieth Ave., Altoona, Pa.	Jarrett, Mary .....	R. D. 2, Selinsgrove, Pa.
Deiterick, Alice .....	Moorestown, Pa.	Johnston, Catherine .....	Selinsgrove, Pa.
Derstine, Ruth .....	Chalfont, Pa.	Jones, Eleanor .....	251 Park St., Mt. Carmel, Pa.
Diehl, Kathryn .....	Hanover, Pa.	Jones, Ruth .....	Millerstown, Pa.
Diffenderfer, James .....	Middleburg, Pa.	Kaltreider, Clair .....	101 Fair Ave., Hanover, Pa.
Ditzler, Richard .....	Selinsgrove, Pa.	Karschner, Lester .....	R. D. 2, Muncy, Pa.
Dixon, Mary Ellen .....	Belle Mead, N. J.	Kauffman, Horace .....	144 N. Sixth St., Sunbury, Pa.
Dorsett, Donald .....	404 Washington Ave., Jersey Shore, Pa.	Kaufman, Esther .....	Davidsville, Pa.
Dreher, Wilbur .....	Tobyhanna, Pa.	Keil, Henry .....	690 Hudson Ave., Union City, N. J.
Drumheller, John .....	R. D. 3, Sunbury, Pa.	Keim, David .....	Lloyd St., Nanty Glo, Pa.
Drumm, Walter .....	1054 Masser St., Sunbury, Pa.	Keller, Robert .....	212 Fairmount Ave., Sunbury, Pa.
Edlund, Helen Marie .....	Fourth Ave., Ford City, Pa.	Kemberling, Jess .....	Selinsgrove, Pa.
Edwards, Morgan .....	R. D. 5, Johnstown, Pa.	Kimmel, George .....	Big Mine Run, Ashland, Pa.
Engle, Martha .....	1057 Market St., Sunbury, Pa.	Kinney, Kenneth .....	376½ Wyoming Ave., Wyoming, Pa.
Freed, Walter .....	2219 Race St., Ashland, Pa.	Kistler, Grover .....	Newport, Pa.
Farley, Clarence .....	Riverside, Pa.	Klinger, Herbert .....	Herndon, Pa.
Farley, Roth .....	Riverside, Pa.	Klinger, Martha .....	Herndon, Pa.

## REGISTER OF STUDENTS, 1936-37—Continued

Klinger, Woodrow	Herndon, Pa.	Salkeld, Charles	1033 Maple Ave., Sharon Hill, Pa.
Kniseley, Karl	47 Waldorf St., Pittsburgh, Pa.	Sander, Robert	878 Memorial Ave., Williamsport, Pa.
Korper, Edward	225 Ridge Ave., Sunbury, Pa.	Saunders, Robert	214 Pettebone St., Wyoming, Pa.
Kozak, Walter	Selinsgrove, Pa.	Saveri, Eleanor	E. Bangor, Pa.
Kozlowski, Edmund	204 N. Walnut St., Mt. Carmel, Pa.	Savidge, Dorothy	265 Eleventh St., Sunbury, Pa.
Krogmann, Carolyn	8627 Ninety-fourth St., Woodhaven, L. I.	Schaffer, Clarence	Dalmatia, Pa.
Lalich, Peter	Conemaugh, Pa.	Schleig, John	Trevorton, Pa.
Laudback, Florence	362 Duke St., Northumberland, Pa.	Schmidt, Fred	339 E. South St., Wilkes-Barre, Pa.
Laudenslayer, William	Hummels Wharf, Pa.	Schnure, Margaret	Selinsgrove, Pa.
Lauver, Herbert	Richfield, Pa.	Schuck, Robert	Shamokin Dam, Pa.
Leam, John	Ashland, Pa.	Schweitzer, Edward	39 Jackson Ave., W. Hazleton, Pa.
Leeser, Evelyn	238 S. Front St., Sunbury, Pa.	Scott, Mary	805 Sunbury St., Shamokin, Pa.
Lengler, Charles	1616 Olive St., Scranton, Pa.	Sechler, Clyde	Riverside, Pa.
Lenig, Marguerite	230 Tenth St., Sunbury, Pa.	Shafer, Henry	Selinsgrove, Pa.
Lewis, Thomas	319 Third St., Northumberland, Pa.	Shaffer, Harold	818 Main St., Windber, Pa.
Long, Chester	Friedens, Pa.	Shaheen, Raymond	Montoursville, Pa.
Long, Janet	Port Royal, Pa.	Shellenberger, David	Selinsgrove, Pa.
Lubold, Paul	Selinsgrove, Pa.	Sheesley, Margaret	Lykens, Pa.
Lucas, Paul	Jersey Shore, Pa.	Shipe, John	Herndon, Pa.
Lukens, Joe	92 E. Houston Ave., Montgomery, Pa.	Shobert, Ralph	702 Maple Ave., DuBois, Pa.
McBride, Harry	314 W. Pike St., Houston, Pa.	Shotsberger, Henry	Freeburg, Pa.
McCune, John	75 Analomink St., E. Stroudsburg, Pa.	Shrawder, Norman	Wernersville, Pa.
McKeown, John	389 Lawrie St., Perth Amboy, N. J.	Shutt, Dorothy	1722 Center St., Ashland, Pa.
Mack, Mary Catherine	600 Race St., Sunbury, Pa.	Shuty, Peter	Selinsgrove, Pa.
Mamm, Virginia	40 Purser Pl., Yonkers, N. Y.	Sivick, Edward	161 Stanley Ave., Yonkers, N. Y.
Marshall, Arline	1215 Walnut St., Jersey Shore, Pa.	Sklansky, Stephen	135 E. Main St., Somerville, N. J.
Martorelli, Gene	Old Forge, Pa.	Slout, Phyllis	311 Woodland Ave., Williamsport, Pa.
Mastovich, Michael	Franklin Boro., Pa.	Smalts, Verlin	Gay St., Hagerstown, Md.
Mease, William	117 N. Orange St., Selinsgrove, Pa.	Smith, Preston	917 Market St., Williamsport, Pa.
Meek, Walter	1009 Cambria Ave., Windber, Pa.	Snyder, Adella	Red Lion, Pa.
Mehalow, Joseph	602 Cedar St., Freeland, Pa.	Spiggle, George	Sipesville, Pa.
Mekeel, Edward	Ledgewood Ave., Neteong, N. J.	Spitzner, Clyde	Selinsgrove, Pa.
Mikrantz, Ethel	Tamaqua, Pa.	Spotts, Leonora	133 Linden St., Sunbury, Pa.
Miller, June	27 Broad St., Ashland, Pa.	Stauffer, Charles	Selinsgrove, Pa.
Miller, Miriam	R. D. 1, Reading, Pa.	Stephens, Edna	90 Catawissa St., Mahanoy City, Pa.
Mitterling, Henry	Selinsgrove, Pa.	Stewart, Adelaide	Pine Bosh, N. Y.
Mosher, Robert	53 Lake Ave., Auburn, N. Y.	Stockdale, Byron	Frostburg, Pa.
Moyer, Frances	Hummels Wharf, Pa.	Straesser, Ethel	Martinsburg, Pa.
Moyer, James	626 Mace St., Greensburg, Pa.	Straub, Virginia	Frackville, Pa.
Musselman, Helen	Selinsgrove, Pa.	Swartz, Barner	Millerstown, Pa.
Neudoerffer, Mathilda	Jackson Ave., W. Hazleton, Pa.	Swope, Harry	Selinsgrove, Pa.
Nye, William	109 S. Harrison St., Wilmington, Del.	Toomey, Luke	Wila, Pa.
Ochenrider, Paul	Aristes, Pa.	Troutman, William	Trevorton, Pa.
Orwig, George	Phillipsburg, Pa.	Ulp, John	Northumberland, Pa.
Otto, Clarence	Milton, Pa.	Updegrave, John	Herndon, Pa.
Owen, Stephen	U. S. Marine Hospital, Memphis, Tenn.	Valunas, Thomas	Selinsgrove, Pa.
Pane, Anthony	Hazleton, Pa.	Webster, Mildred	Downingtown, Pa.
Paul, John	210 S. Market St., Shamokin, Pa.	Weeks, Margaret	Selinsgrove, Pa.
Pearce, James	1014 Chestnut St., Kulpmont, Pa.	Wensel, Clarence	736 Market St., Lewisburg, Pa.
Pezick, Joseph	Williamsburg, Pa.	Wentzel, Betty	108 N. Eleventh St.
Phillips, Vernon	Dalmatia, Pa.	Wentzel, Gladys	Selinsgrove, Pa.
Pifer, Mildred	E. Bangor, Pa.	Wentzel, Helen	Selinsgrove, Pa.
Poyck, Walter	82 Lockhart St., Wilkes-Barre, Pa.	Wert, Donald	Aaronsburg, Pa.
Pritchard, William	41 Poplar St., Kingston, Pa.	West, Louise	Coaldale, Pa.
Rakshlys, John	322 Academy St., Peely, Pa.	Wetzel, Charles	Dornsife, Pa.
Ramer, Ethal	Meyersdale, Pa.	Wetzel, Richard	105 Dibert St., Johnstown, Pa.
Ray, Joseph L.	Catawissa Ave., Sunbury, Pa.	Weyhenmeyer, Charles	12 N. Church St., Hazleton, Pa.
Reeder, Anna	355 Tenth St., Sunbury, Pa.	Wheeland, Ruth	Williamsport, Pa.
Reese, Alverna	Audenried, Pa.	Wightman, Warren	Mt. Carmel, Pa.
Reese, Mary	901 Center St., Freeland, Pa.	Wittenmyer, Elizabeth	335 Main St., Lock Haven, Pa.
Rheinhart, Jean	526 S. River St., Wilkes-Barre, Pa.	Williams, Eugene	327 Pine St., Millersburg, Pa.
Richard, Burton	30 Roessner Ave., Hagerstown, Md.	Williams, Frances	1900 Wyoming Ave., Forty Fort, Pa.
Richard, Mary Beth	30 Roessner Ave., Hagerstown, Md.	Worthington, Kent	Hughesville, Pa.
Roberts, John	332 First St., Slatington, Pa.	Wray, Delos	West Rush, N. Y.
Rogers, Helen	650 Rutter St., Kingston, Pa.	Wright, Helen	Three Springs, Pa.
Rogers, Samuel	39 N. Maple St., Mt. Carmel, Pa.	Yarger, Ruth	Swengel, Pa.
Rothermel, Florence	Klingerstown, Pa.	Yeager, Helen	Northumberland, Pa.
Roush, Katherine	257 Chestnut St., Millinburg, Pa.	Yingling, Esther	1604 Second Ave., Altoona, Pa.
Roush, Margaret	709 N. Market St., Selinsgrove, Pa.	Zechman, Ferne	Beaver Springs, Pa.
Sachs, Eva	24 York St., Gettysburg, Pa.	Zellers, Mary	Liverpool, Pa.
Salem, William	Franklin Boro., Pa.	Ziegler, Lawson	Herndon, Pa.

# AUTOGRAPHS

AUTOGRAPHS







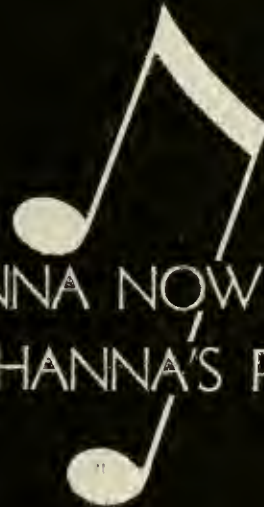


SUSQUEHANNA UNIVERSITY



3 4998 0027 8220 4

BLOUGH-WEIS LIBRARY  
DOES NOT  
CIRCULATE  
ARCHIVES  
SUSQUEHANNA UNIVERSITY



"OF SUSQUEHANNA NOW WE SING,  
LET SUSQUEHANNA'S PRAISES RING"

