

Lanthorn

S
U



SUSQUEHANNA



SUSQUEHANNA UNIVERSITY



"OF SUSQUEHANNA NOW WE SING,
LET SUSQUEHANNA'S PRAISES RING"



EX LIBRIS

Copyright, 1937

KARL EUGENE KNISELEY, *Editor*

WILLIAM MORGAN EDWARDS, *Business Manager*

SUSQUEHANNA UNIVERSITY

JUNIOR PUBLICATION

LANTHORN

THE 1938



DEDIC

With an ever growing love for
Susquehanna in our hearts, the
class of 1938 dedicates her
LANTHORN to the memory of
those faithful men and women
who have already passed through
our alma mater's broad and
beautiful portals.

ATION



JUNIOR PUBLICATION
LANTHORN

SUSQUEHANNA UNIVERSITY

THE LANT



KARL EUGENE KNISELEY
Editor-in-Chief



WILLIAM MORGAN EDWARDS
Business Manager

HORN STAFF



Back Row—Mildred Pifer, James Higgins, Kent Worthington, Esther Yingling
 Front Row—Ethel Ramer, Helen Hisdorf, Karl Kniseley, Eleanor Brown, Esther Kaufman



Left to Right—Morgan Edwards, Ruth Jones, John Rakshys, Dr. Leese (Faculty Advisor)
 George Kimmel, Elizabeth Fry

S
S
Q
U
E
H
A
N
N
A

J
U
N
I
O
R

P
U
B
L
I
C
A
T
I
O
N

U
N
I
V
E
R
S
I
T
Y

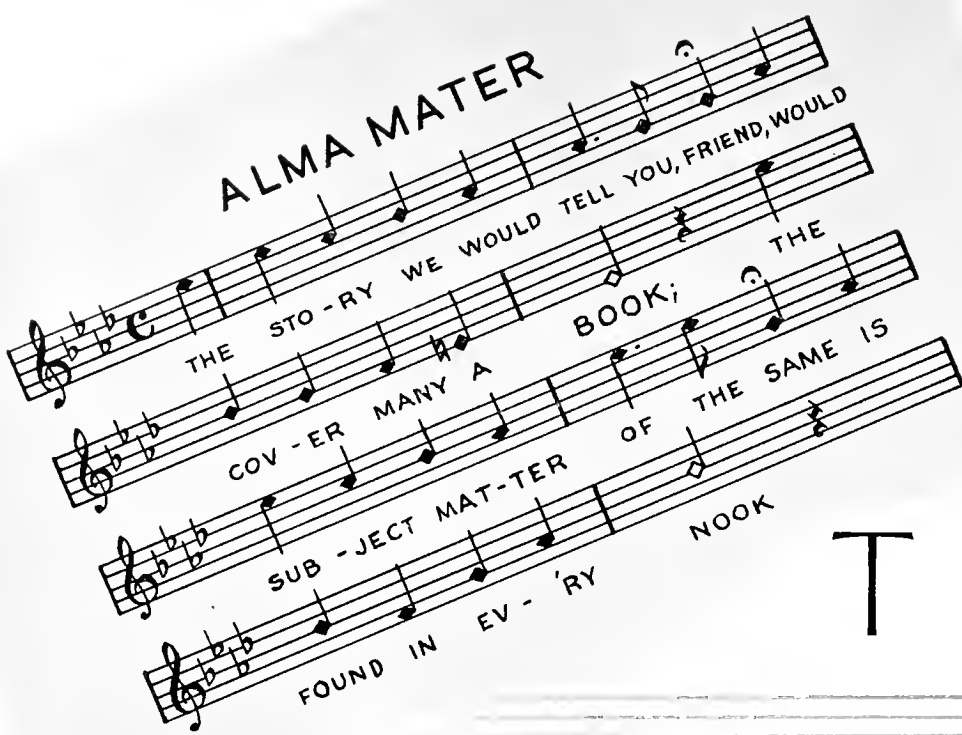




S
U
S
Q
U
E
H
A
N
N
A

U
N
I
V
E
R
S
I
T
Y

ALMA MATER



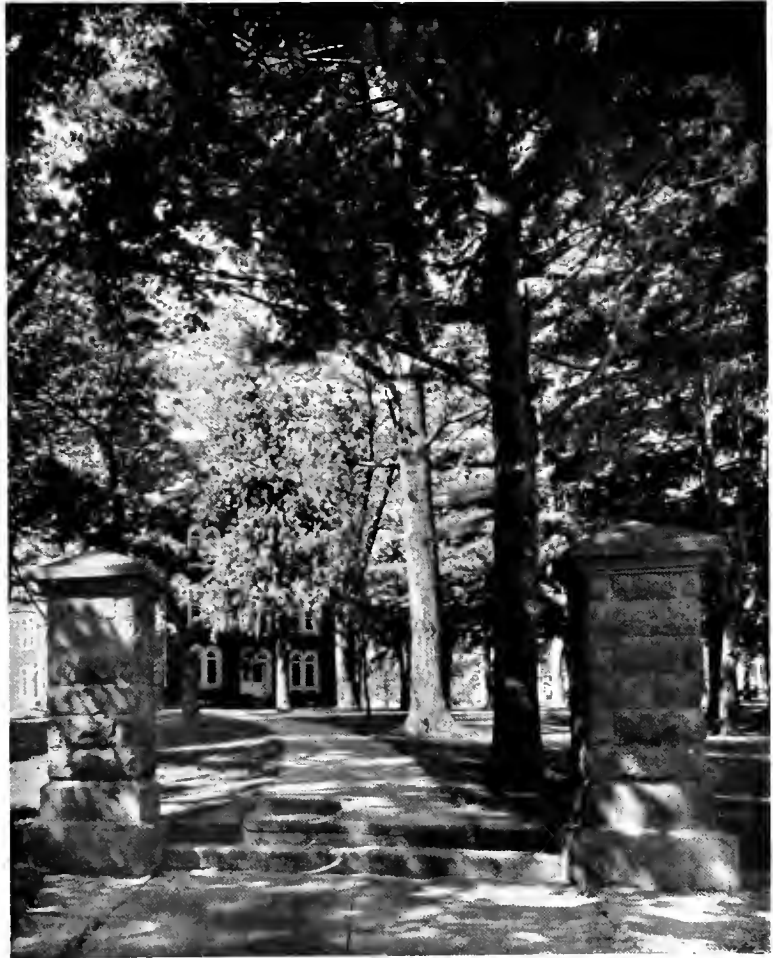
THE STO-RY WE WOULD TELL YOU, FRIEND, WOULD
COV-ER MANY A BOOK; THE
SUB-JECT MAT-TER OF THE SAME IS
FOUND IN EV-'RY NOOK

THE

FOREWORD







CAMPUS

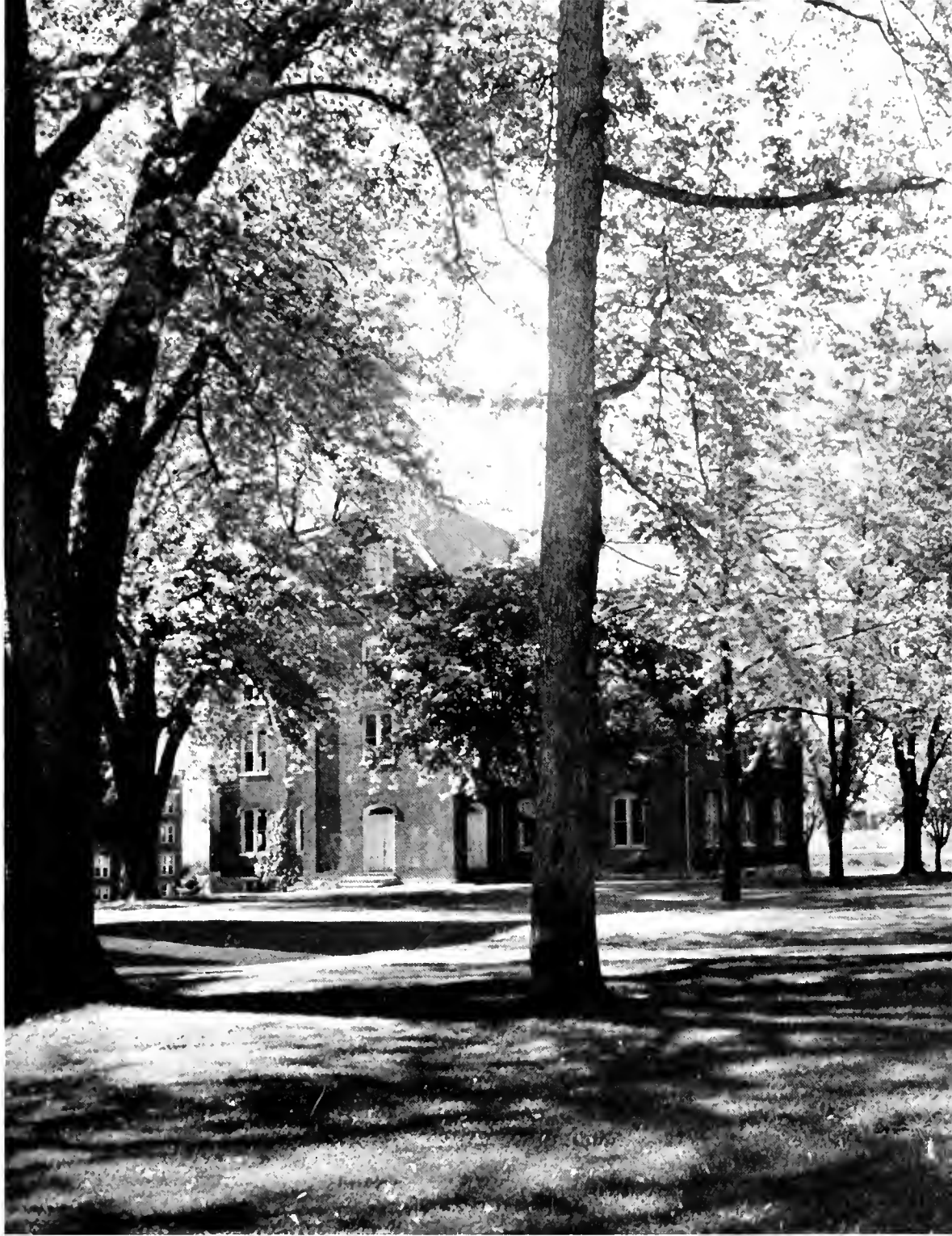
OF OLD S. U'S BROAD CAM-PUS, THE
COM-MON BAT-TLE GROUND, WHOSE
TREES MIGHT WHIS-PER SE-CRETS GRAVE, A-
MUS-ING AND PRO-FOUND.





1877
1878
1879
1880
1881
1882
1883
1884
1885
1886
1887
1888
1889
1890
1891
1892
1893
1894
1895
1896
1897
1898
1899
1900









733
1/31





ADMINISTRATION

HOW DEAR TO ONE AND ALL THE NAME THEIR
AL-MA MA-TER BEARS, WHEN
THEY HAVE LEFT ITS CLAS-SIC HALLS, TO
SHOULD-ER WORLD-LY CARES.



G. MORRIS SMITH
A.B., A.M., D.D.

Franklin and Marshall Academy, 1907; A.B., Roanoke College, 1911; A.M., Princeton University, 1912; Instructor, Blair Academy, 1912-1916; Graduate, Mt. Airy Seminary, 1919; Pastor, Mt. Vernon Lutheran Church, 1918-1920; Pastor, Lutheran Church of the Redeemer, Buffalo, N. Y., 1920-1928; Present Position, 1928.

GLADYS B. ERDAHL
A.B., A.M.
Dean of Women



GEORGE F. DUNKELBERGER
A.B., A.M., Pd.D., Ph.D.
*Dean of College and Professor of
Education*





LANGUAGE AND LITERATURE

RUSSELL WIEDER GILBERT, A.B., A.M.
Professor of German

JAMES CARRINGTON FREEMAN, A.B., A.M.
Instructor in English

LOIS M. BOE, A.B., A.M., Ph.D.
Professor of French

ARTHUR H. WILSON, A.B., A.M., Ph.D.
Professor of English

A. WILLIAM AHL, A.M., Ph.D.
Professor of Greek



SOCIAL STUDIES

EDWIN M. BRUNGART, A.B., A.M.
Assistant Professor of Education

GEORGE F. DUNKELBERGER, A.B., A.M., Pd.D., Ph.D.
Professor of Education

WILLIAM A. RUSS, JR., B.A., A.M., Ph.D.
Professor of History and Political Science

THEODORE W. KRETSCHMANN, A.B., A.M., B.D., Ph.D.
Professor of Bible and Religion

JOHN IRVIN WOODRUFF, A.B., A.M., Litt.D., LL.D.
Professor of Philosophy



SCIENCE

PAUL J. OVREBO, A.B., Ph.D.
Professor of Physics

FISK WILLIAM STOCKING SCUDDER, A.B.
Assistant Professor of Biology

GEORGE ELMER FISHER, Ph.B., A.M., Ph.D.
Professor of Chemistry

ADAM SMITH, A.B., A.M., Ph.D.
Professor of Mathematics

JOHN J. HOUTZ, A.B., A.M., M.S., Sc.D.
Assistant Professor of Chemistry and Mathematics



BUSINESS FACULTY

VIOLA MAUDE DUFRAIN, A.B., A.M.
Instructor in Commercial Education

GEORGE NOBLE WOOD, A.B., A.M.
Assistant Professor of Business Administration

CHARLES LEESE, A.B., A.M., Ph.D.
Professor of Business Administration

D. IRVIN REITZ, Ph.B., A.M.
Assistant Professor of Commercial Education



CONSERVATORY FACULTY (MEN)

E. EDWIN SHELDON, Mus.M.

Director of Conservatory

FREDERICK C. STEVENS, A.B., A.M.

Instructor of Singing, Director of Motet Choir

ELROSE L. ALLISON, Mus.B.

Instructor in Piano, Pipe Organ, and Wind Instruments

PERCY MATHIAS LINEBAUGH, Mus.B.

Professor of Pianoforte, Organ, Rudiments, and Harmony

WILLIAM DONALD HEMPHILL, Mus.B.

Professor of Violin and Orchestration



CONSERVATORY FACULTY (WOMEN)

MARGARET E. KEISER, Mus.B.

Instructor of Singing and Appreciation

MARY KATHRYN POTTEIGER, Mus.B.

Instructor in Piano, Sight Singing, Dictation

MARY W. WHITEHURST, Mus.B., A.M.

Public School Music Methods

IDA MANEVAL SHELDON, Mus.B.

Instructor in Harmony and Music History

DOROTHY WELSH REEDER, A.B.

Instructor in Eurhythmics, Pageantry and Folk Dances



ATHLETIC DIRECTORS

AMOS ALONZO STAGG, JR., A.B., A.M.
Head Coach, Director of Physical Education

DOROTHY REEDER, A.B.
Instructor in Women's Sports

JACK ROACH, A.B.
Assistant Coach



OFFICE PERSONNEL

ANNA M. HUMPHREY
Dictation

MILDRED G. ARBEGAST, A.B.
Registrar and Secretary to the Dean

E. BEATRICE HERMAN, A.B.
Bursar



LIBRARIANS

MARTHA S. DODSON, B.L.E.
Librarian

CHARLOTTE BAISH
Assistant



BUSINESS MANAGER AND PUBLICITY DIRECTOR

ERNEST T. YORTY
Business Manager

H. VERNON BLOUGH, A.B.
Publicity Director



CLASSES



OF WIN-NING MAIDS AND NOBLE LORDS OF



DEAR OLD COL-LEGE DAYS ,



SENIOR CLASS



SENIOR OFFICERS

FRANCIS GELNETT	- - - - -	<i>President</i>
MARY SCOTT	- - - - -	<i>Secretary</i>
MARY BETH RICHARDS	- - - - -	<i>Treasurer</i>

SENIOR CLASS HISTORY

Shortly we, the class of 1937, bid a sad farewell to our alma mater. With regret in our hearts, we realize that only too soon we must be counted among those who have passed out into the world, no longer protected by Susquehanna and all for which she stands.

We have spent four happy years together at Susquehanna. They have been four years filled with memories that we shall never forget.

It was during our freshman year that we accomplished the supposed impossible—the defeat of the sophomores in the annual freshman-sophomore football tilt. Our men and women lost no time in winning places on most of the varsity teams. Fondly we retain memories of a successful “Get-away” and “Home-coming Night.”

Then, too, we must recall our LANTHORN and Junior Prom—two things which place the class of 1937 in the Susquehanna’s hall of fame.

Although much success has been showered upon the class of 1937, we realize that mistakes have also been made. We exhort you, who are soon to take our place, to profit by our successes and defeats.

Our charge to you, the under-graduates of Susquehanna—

“Upon the wreckage of thy yesterday
Design thy structure of tomorrow. Lay
Strong corner-stones of purpose, and prepare
Great blocks of wisdom cut from past despair.
Shape mighty pillars of resolve, to set
Deep in the tear-wet mortar of regret.
Believe in God—in thine own self believe,
All thou hast hoped for thou shalt yet achieve.”

—ELLA WHEELER WILCOX.



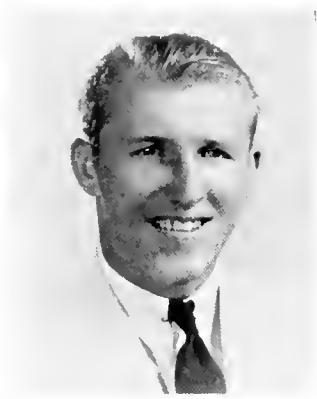
KENNETH ALEXANDER

3213 N. Main Street
Scranton, Pa.

Phi Mu Delta

Varsity Football, (Co-Captain);
Varsity Basketball; Varsity Base-
ball; Interfraternity Basketball;
Class Soccer.

High School—Scranton



KENNETH BADGER

Middleburg, Pa.

Bond and Key

Varsity Football; Varsity Basket-
ball; Varsity Baseball; Track;
Soccer; Colony Organization.

High School—Middleburg



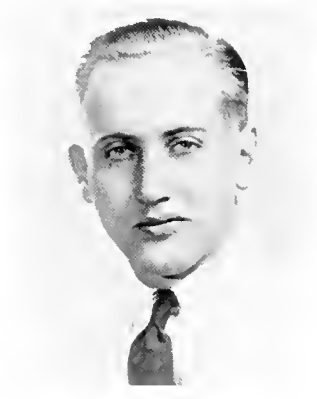
MARY C. BARNES

Middleburg, Pa.

Omega Delta Sigma

President, Women's Student
Council; Pi Gamma Mu; French
Club; Choral Club; Motet Choir;
Y. W. C. A. Cabinet; Women's
Athletic Association; Class Base-
ball; Basketball; Soccer; Hockey;
"Who's Who in American Col-
leges."

High School—Middleburg



OREN BENNER

Walnut Street
Mifflinburg, Pa.

Bond and Key

Track, (Captain of Track); Class
Football; Basketball; Soccer; In-
terfraternity Basketball; Varsity
"S" Club; Motet Choir.

High School—Mifflinburg



VIVIAN CAROLUS

135 Race Street
Sunbury, Pa.

High School—Windsor



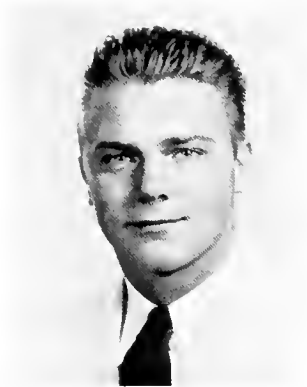
MARGARET L. CORSON

101 N. Maio Street
Hughesville, Pa.

Omega Delta Sigma

Geroan Club; Glee Club; Motet
Choir; Choral Society; Science
Club, President; W. A. A., Presi-
dent; Class Soccer; Basketball;
Volleyball; Baseball; Hockey;
Captain of the Varsity Basketball
and Hockey Teams; Intersorority
Council.

High School—Hughesville



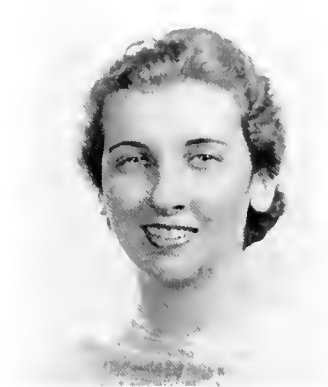
DANIEL COTTON

823 Main Street
Drurya, Pa.

Phi Mu Delta

Varsity Baseball; Interfraternity
Council; Mathematics Club.

High School—Drurya



MARY ANN FOX

16 South Sixth Street
Shamokin, Pa.

Sigma Alpha Iota

Choral Society; Motet Choir; Glee
Club; Intersorority Council; W.
A. A.; Class Hockey; Volleyball;
Soccer; Basketball; Baseball.

High School—Pottsville



ANDREW FREDERICKS

330 Hawthorne Avenue
Yonkers, N. Y.

Phi Mu Delta

Business Society; Men's Student
Council; French Club; Varsity
Basketball Captain; Varsity Base-
ball; Intra-Mural Board.

*High School—Yonkers High
School of Commerce*



DONALD GAVER

904 Fourth Avenue
Altoona, Pa.

Bond and Key

Band; Interfraternity Basketball;
Class Soccer; Baseball; French
Club.

High School—Altoona



FRANCIS GELNETT

210 S. Market Street
Selinsgrove, Pa.

Phi Mu Delta

Symphonic Society; Band; Presi-
dent Senior Class; President Dra-
matic Club; Co-Editor *Susque-
hanna*; Class Basketball and Soc-
cer; Track.

High School—Selinsgrove



HELEN E. GUNDRUM

941 E. Main Street
Rockwood, Pa.

Kappa Delta Phi

French Club; Class Hockey; Soc-
cer; Dramatic Club; Debating
Club.

High School—Rockwood



JEANNE HOFFARD

113 North Elmer Avenue
Sayre, Pa.

Sigma Alpha Iota

Trinity Lutheran Choir; Choral Society; Intersorority Council; Glee Club; Class Soccer; Hockey.

*High School—Wilkes-Barre
Caughlin*



DOROTHY L. HOFFMAN

Bloomsburg, Pa.
Route No. 5

Sigma Alpha Iota

Symphonic Society; Choral Society; Glee Club; Class Soccer; Hockey.

High School—Bloomsburg



LEWIS HOWELLS

1111 Scott Street
Kulpmont, Pa.

Phi Mu Delta

Motet Choir; Choral Society; Assistant Manager Football.

High School—Shamokin



EVELYN JANSON

910 Susquehanna Avenue
Sunbury, Pa.

Omega Delta Sigma

French Club; Class Basketball; Hockey; Volleyball; Baseball; Soccer; Student Council.

High School—Sunbury



ELEANOR E. JONES

251 E. Park Street
Mount Carmel, Pa.

Omega Delta Sigma

Mathematics Club; German Club; President Intersorority Council; Science Club; W. A. A.; Class Baseball; Basketball; Volleyball; Hockey; Soccer; Student Council.

High School—Mount Carmel



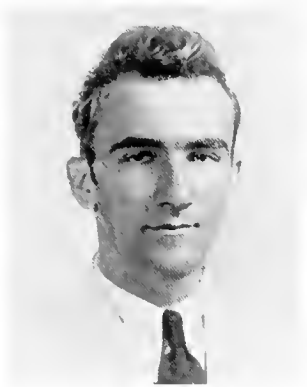
LESTER KARSCHNER

Muncy, Pa.
R. D. No. 2

Phi Lambda Theta

Phi Kappa; Pre-Theological Club; Motet Choir; Choral Society; Pi Gamma Mu; College Photographer; S. C. A.

High School—Muncy



WOODROW KLINGER

Herndon, Pa.

Phi Lambda Theta

Pre-Theological Club; Pi Gamma Mu; Phi Kappa President; Class Soccer; Football; Varsity Baseball.

High School—Herndon

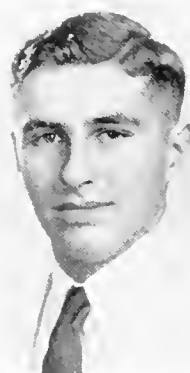


EVELYN LEESER

238 South Front Street
Sunbury, Pa.

Pi Gamma Mu; French Club;
Class Hockey; Class Volleyball.

High School—Sunbury



CHESTER LONG

Friedens, Pa.

Phi Lambda Theta

German Club; President, Student Council; Orange Key Club; Y. M. C. A.; Class Football.

High School—Somerset Township



PAUL LUBOLD

Broad Street
Selinsgrove, Pa.

High School—Selinsgrove



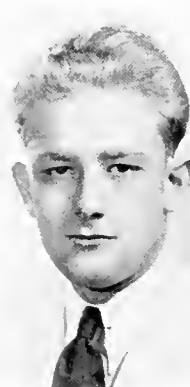
ARLINE MARSHALL

1215 Walnut Street
Jersey Shore, Pa.

Omega Delta Sigma

French Club; Choral Society;
Business Society; Y. W. C. A.
Cabinet; W. A. A.; Class Hockey;
Class Soccer; Class Baseball;
Class Basketball; Class Volleyball.

High School—Jersey Shore



ROBERT MOSHER

53 Lake Avenue
Auburn, N. Y.

Bond and Key

Class Treasurer, 3; *Susquehanna*
Staff, (Co-Editor, 4); Associate
LANTHORN Editor, 3; French
Club.

High School—Auburn



WALTER POYCK

82 Lockhart Street
Wilkes-Barre, Pa.

Bond and Key

Symphonic Society; Band; Football; Pi Gamma Mu; Business Society; Interfraternity Council President; French Club; *Susquehanna*.

High School—Coughlin and Meyers



MARY REESE

901 Center Street
Freeland, Pa.

German Club; French Club; Dramatic Club.

High School—Freeland



MARY BETH RICHARD

30 Rossner Avenue
Hagerstown, Md.

S. C. A. Cabinet

Choral Society; Science Club President; German Club; W. A. A.; Class Soccer; Class Baseball; Class Volleyball; Class Basketball; Class Hockey; Varsity Hockey; Secretary-Treasurer of Senior Class.

High School—Marion Junior College



JOHN ROBERTS

322 First Street
Slatington, Pa.

Phi Mu Delta

High School—Slatington



MARGARET ROUSH

709 N. Market Street
Selinsgrove, Pa.

Kappa Delta Phi

Business Society; French Club; Dramatic Club.

High School—Selinsgrove



DOROTHY SAVIDGE

265 Eleventh Street
Sunbury, Pa.

Day Student Organization.

High School—Sunbury



HENRY SHAFER

Selinsgrove, Pa.
R. D. No. 2

Phi Lambda Theta

Track; Debating Club; Pi Gamma Mu; Class Soccer; "Who's Who in American Colleges."

High School—Freeburg



RAYMOND SHAHEEN

100 Jordan Street
Montoursville, Pa.

Phi Mu Delta

S. C. A. Cabinet; Phi Kappa; Pre-Theological Club; "Who's Who in American Colleges"; Debating Club.

High School—Montoursville



DAVID SHELLENBERGER

100 West Pine Street
Selinsgrove, Pa.

Phi Lambda Theta

Band; Symphonic Society; Motet Choir; Madrigals; German Club; Class Football; Class Baseball; Class Track; Class Soccer.

High School—Tressler



EVA SACHS

24 York Street
Gettysburg, Pa.

Sigma Alpha Iota

Choral Society; Motet Choir; Madrigals; Lutheran Church Choir; Symphonic Society; "Who's Who in American Colleges."

High School—Gettysburg



CLARENCE SCHAEFFER

Dalmatia, Pa.

Phi Lambda Theta

Pre-Theological Club; Phi Kappa President.

High School—Dalmatia



A. MARY SCOTT

805 E. Sunbury Street
Shamokin, Pa.

Kappa Delta Phi

Women's Co-operative Council; S. C. A. Cabinet; President Susquehanna Publishing Association; Intersorority Council; Motet Choir; W. A. A.; Vice President Senior Class; Business Society; French Club.

High School—Shamokin



PHYLLIS SLOUT

311 Woodland Avenue
Williamsport, Pa.

French Club; Business Society.

High School—Williamsport



CLYDE SPITZNER

22 Laurel Street
Freemont, Pa.

Phi Mu Delta

Varsity Football; Varsity Basketball; Debating Club; Varsity Baseball, (Captain); Business Society; German Club; Colony Organization.

High School—Pottsville



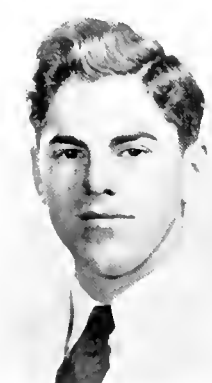
LUKE TOOMEY

Wila, Pa.

Bond and Key

Varsity Football; Varsity Track; Intra-Mural Board; Varsity "S" Club; Interfraternity Basketball; Men's Student Council.

High School—Newport



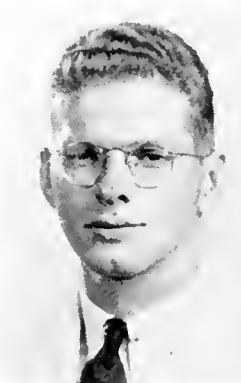
JOHN ULP

420 Third Street
Northumberland, Pa.

Phi Lambda Theta

Motet Choir; Choral Society; Orange Key Club; Symphonic Club; Band.

*High School
Northumberland*



CLARENCE WENSEL

136 Market Street
Lewisburg, Pa.

Phi Lambda Theta

German Club; Class Soccer; Class Football; Class Basketball; Motet Choir; Business Society; Choral Club; Madrigals.

High School—Lewisburg



HELEN WENTZEL

Market Street
Selinsgrove, Pa.

Omega Delta Sigma

Class Hockey; Class Baseball; Class Soccer; Business Society.

High School—Selinsgrove



HELEN YEAGER

66 Queen Street
Northumberland, Pa.

Sigma Alpha Iota

Choral Club; Motet Choir.

*High School
Northumberland*



J
U
N
I
O
R

C
L
A
S
S



JUNIOR OFFICERS

MORGAN EDWARDS	-	-	-	-	-	-	-	-	<i>President</i>
ESTHER YINGLING	-	-	-	-	-	-	-	-	<i>Vice President</i>
ESTHER KAUFMAN	-	-	-	-	-	-	-	-	<i>Secretary</i>
GEORGE KIMMEL	-	-	-	-	-	-	-	-	<i>Treasurer</i>

JUNIOR CLASS HISTORY

'Twas on a September day in 1934 that we entered the portals of Susquehanna, for the first time, in the quest of knowledge. Since that time many things have transpired in our lives, and as we look back on our three years at Susquehanna we have a feeling that we have really accomplished something of which we may truly be proud. We have had many of our class members on the athletic teams; we have taken an outstanding part in the social life of the school; our class has been well above the average along the scholastic line; we have taken an active part in the journalistic work on our campus, having several members of the class on the Susquehanna Staff and are now publishing this our annual LANTHORN; and finally we have contributed much to the work of the Student Christian Association on our campus, having several of our members as outstanding leaders in the association. Our participation in these various activities on our campus has given us a much broader view on life and in later life we will know that our work here has not been in vain.

And now, as we the members of the class of 1938 approach the last year of our college career, we look back on that which is past with conflicting emotions. We regret that the happy days here at school are nearly finished. Who of us can ever forget the many escapades of our Freshman year, our victory over the Sophs in football, the bonfire before the homecoming game? We also look back on these past three years with a feeling of thankfulness that we have been given the opportunity to be a part of this life here, even though it could only be for four short years. We now look forward to our last year of school hoping to attain a completeness that will better enable us to meet the problems of life.

In Memoriam



Jackson Ritchie

JACKSON ARTHUR RITCHIE
R. D. No. 3 Sunbury, Pa.

Sunbury High School

Phi Lambda Theta

Pre-Theological Club 1, 2; Greek Club
1, 2; Football 1, 2; Class Football 1;
S. C. A. 1, 2.

Ministry.

Born April 17, 1916
Died November 24, 1935

The class of 1938 dedicates this page to the memory of a beautiful life which, by the will of God, has been taken from us and transplanted in Heaven.

We shall never forget Jackson, for his life has brought to each one of us a vivid picture of a youth, strong of courage, fighting against difficulties—and overcoming them.



Hildegard Ahl

HILDEGARD AHL
University Heights Selinsgrove, Pa.
Selinsgrove High School

Omega Delta Sigma

Motet Choir 1, 2, 3; Choral Society 1,
2, 3; Biemic Society 3; German
Club 2, 3; May Day 1, 2; Class
Hockey 1, 2; Trinity Church Choir.

Medicine.

August 19, 1916.



J. Stanley Aughenbaugh

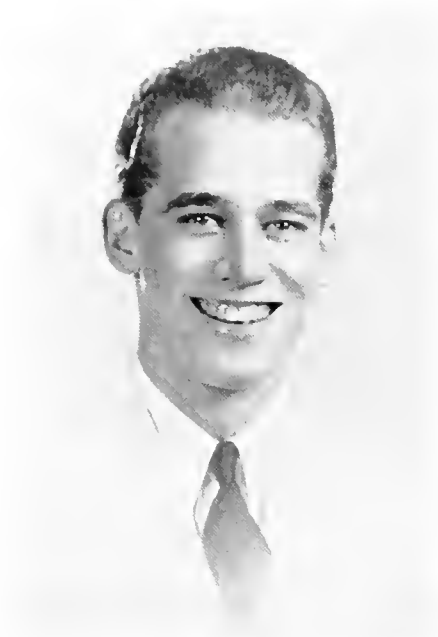
J. STANLEY AUGHENBAUGH
Etters P. O. Goldsboro, Pa.
William Penn High School,
Harrisburg, Pa.

Phi Mu Delta

Motet Choir 1, 2, 3; Band 1; Inter-
fraternity Football 2; Choral So-
ciety 1, 2, 3; May Day 2.

Education (Music).

April 4, 1914.



Robert T. Birchard

ROBERT THOMAS BIRCHARD
802 Faxon Parkway Williamsport, Pa.

Williamsport High School;
Dickinson Seminary

Band 3; Symphonic Society 3; French
Club 3; S. C. A. 3.

Lawyer.

April 1, 1917.



Martha Bolig

MARTHA E. BOLIG
558 Front Street Northumberland, Pa.

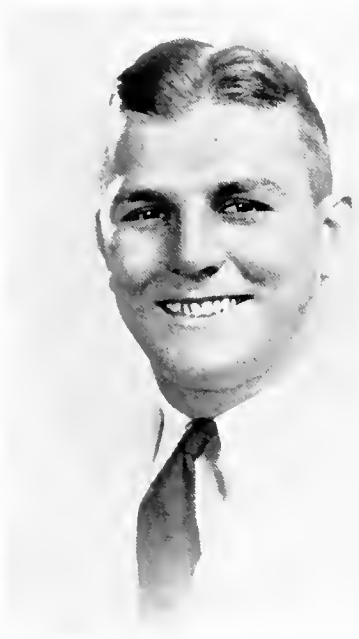
Northumberland High School

Omega Delta Sigma

Intersorority Council 3; French Club
2, 3; Dramatic Club 3; LANTHORN
Staff 3; W. A. A. 2, 3; Varsity
Hockey and Basketball 1, 2, 3; Class
Hockey 1, 2, 3; Class Basketball 1,
2, 3; Class Volleyball 1, 2, 3; Class
Soccer 1, 2, 3; Class Baseball 1, 2,
3; May Day 1, 2.

Teaching.

September 6, 1916.



Roy Bolig

ROY BOLIG

301 South Market Street
Selinsgrove, Pa.

Selinsgrove High School;
Wenonah Military Academy;
State College

Phi Mu Delta

Football 3; Track 2; S. C. A. 2, 3.

Athletic Coach.

October 29, 1913.



Marjorie Bower

MARJORIE BOWER

Middleburg, Pa.

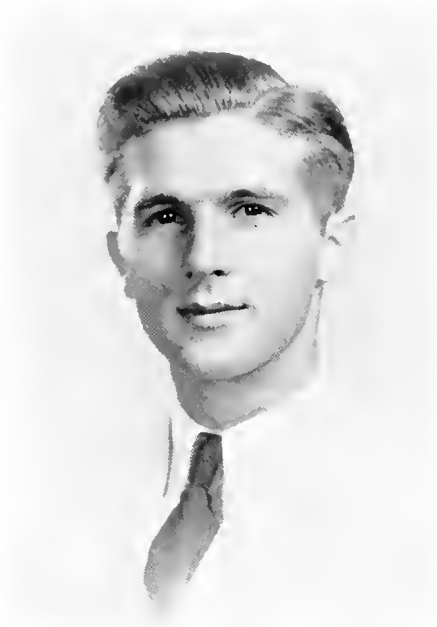
North High School, Columbic, Ohio.

Kappa Delta Phi

French Club 1; May Day 1; Dra-
matic Club 3; Day Student Organ-
ization.

Secretary.

March 1, 1916.



Robert Boyer

ROBERT A. BOYER

R. D. 1 Selinsgrove, Pa.

Selinsgrove High School

Phi Lambda Theta

Debating 1, 2, 3; Mathematics Club 1, 2, 3, President 3; Interclass Track 1, 2; Varsity Track 1, 2, 3; Interclass Soccer 1, 2; Interfraternity Football 2; Physics Assistant 3; College Who's Who 3; Stein Mathematics Prize.

Education (Science and Mathematics).

August 27, 1916.



Margaret Boyle

MARGARET BOYLE

1254 Wolverton Street Sunbury, Pa.

Sunbury High School

Omega Delta Sigma

Varsity Hockey 2, 3; W. A. A. 2, 3; German Club 3; Mathematics Club 2, 3; Class Hockey 1, 2, 3; Class Basketball 1, 2, 3; Class Baseball 1, 2, 3; Class Volleyball 1, 2, 3; Class Soccer 1, 2, 3; Track 1, 2; President of Day Students; May Day 1, 2.

Graduate Work in Physics.

June 13, 1913.



Eleanor B. Brown

ELEANOR B. BROWN

732 Third Avenue Ford City, Pa.

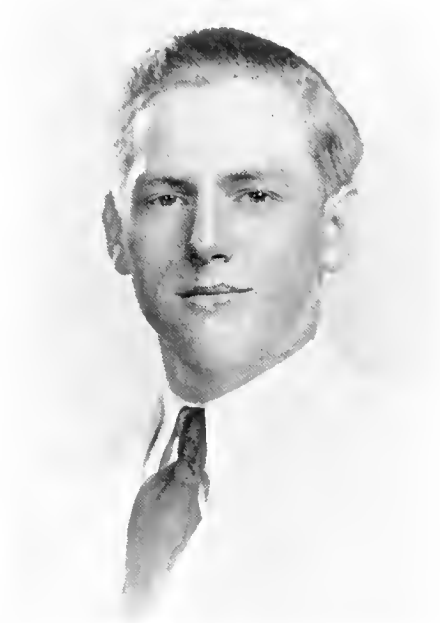
Ford City High School

Kappa Delta Phi

Intersorority Council 3; LANTORN Editorial Staff 3; Class Treasurer 2; Susquehanna Editorial Staff 1, 2; Tennis Doubles Titleholder 2; Class Basketball and Baseball 1, 2, 3; Varsity Basketball 1, 2, 3; Class Hockey 2, 3; Class Soccer and Volleyball 2, 3; W. A. A. 3; Business Administration Club 1, 2, 3; German Club 1, 2.

Private Secretary.

March 25, 1915.



Claude Clark

CLAUDE CLARK

R. D. 1

Sunbury, Pa.

Bond and Key

Interclass Soccer 1; Assistant Football Manager 2, 3; German Club 1; Biemic Society 3.

Medicine.

September 1, 1911.



George Clark

GEORGE ALLAN CLARK
222 Cemetery Street Jersey Shore, Pa.
Jersey Shore High School

Phi Mu Delta

Band 1, 2, 3; Pre-Theological Club 1, 2, 3; Greek Club 2, 3; Symphonic Society 1, 2, 3; Motet Choir 2, 3; Choral Society 1, 2, 3; S. C. A. 1, 2, 3; S. C. A. Cabinet 2, 3.

Ministry.

July 2, 1915.



James Diffenderfer

JAMES BANKS DIFFENDERFER
Market Street Middleburg, Pa.
Middleburg High School

Bond and Key

Varsity Football 1, 2, 3; Freshman Football; Varsity Track 1, 2, 3; Interclass Track 1, 2, 3; Varsity "S" Club 3; Varsity Basketball 2, 3; Interfraternity Basketball 2; Motet Choir 1, 2; Interclass Soccer 1, 2; Greek Club 2, 3; Pre-Theological Club 1, 2, 3; Choral Society 1, 2, 3; S. C. A. 1, 2, 3; S. C. A. Cabinet 3.

Ministry.

July 31, 1915.



Richard Ditzler

RICHARD EDWARD DITZLER
211 West Pine Street Selinsgrove, Pa.

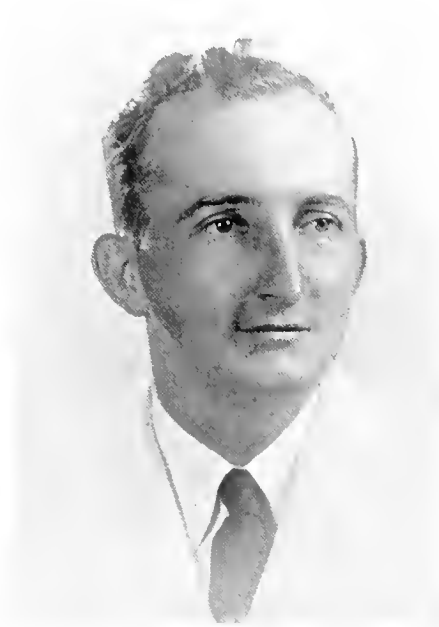
Selinsgrove High School

Bond and Key

Band 1, 3; Symphonic Society 1; Varsity Track 1; Interclass Track 1; Interclass Soccer 1.

Orchestral Work.

April 30, 1916.



Donald Dorsett

DONALD CLAYTON DORSETT
409 Washington Avenue
Jersey Shore, Pa.

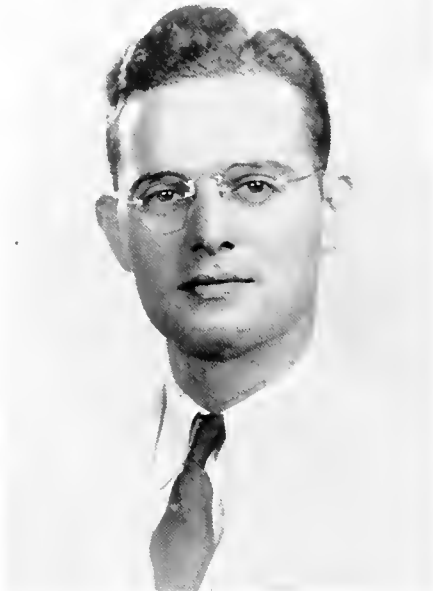
Jersey Shore High School

Bond and Key

Band 1, 2, 3; Greek Club 1, 2, 3; Pre-Theological Club 1, 2, 3; Track 1, 2; S. C. A. 1, 2, 3.

Ministry.

May 16, 1910.



Morgan Edwards

MORGAN EDWARDS

Johnstown, Pa.

Johnstown Central High School

Phi Mu Delta

President of Junior Class 3; Basketball Manager 3; Secretary of Pre-Theological Club; Treasurer of S. C. A. 3; Business Manager of LANTHORN 3; Greek Club 1, 2, 3; "Who's Who in American Colleges"; Pi Gamma Mu.

Ministry.

July 12, 1913.



Orville Fitzgerald

ORVILLE M. FITZGERALD

229 South Broad Street

Jersey Shore, Pa.

Jersey Shore High School

Bond and Key

Band 1, 2, 3; Susquehanna Staff 1, 2, 3; Interfraternity Basketball; Interclass Basketball; Track; S. C. A., President 3.

Psychiatrist and Brain Surgeon.

May 30, 1916.



Elizabeth Fry

ELIZABETH BAIR FRY

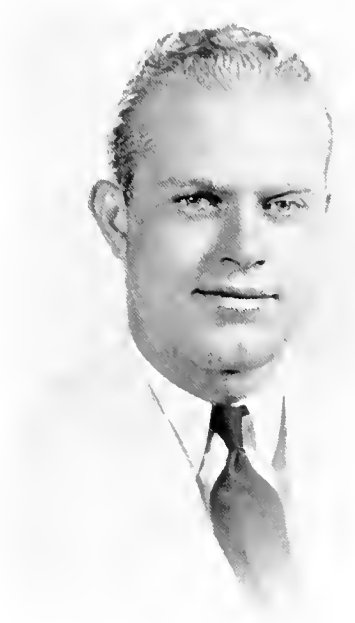
2630 Perrysville Avenue
Pittsburgh, Pa.

Perry High School

Omega Delta Sigma

W. A. A. 1, 2, 3; LANTHORN Business Staff 3; Susquehanna Staff 1, 2; French Club 2; Choral Society 1, 2; Biemic Society 1, 2, 3; May Day 1, 2; Dramatic Club 3; Varsity Hockey 2, 3; Varsity Basketball 2, 3; Class Hockey 1, 2, 3; Class Basketball 1, 2, 3; Class Soccer 1, 2, 3; Class Volleyball 1, 2, 3; Class Baseball 1, 2, 3.

Teaching.



John Goyne

JOHN F. GOYNE

1500 Market Street Ashland, Pa.

Ashland High School;
Perkiomen Institute

Bond and Key

Football 1, 2, 3; Interclass Basketball; Interfraternity Basketball; Business Society; French Club.

Business.

May 25, 1913.



Reed Grenninger

REED GRENNINGER

638 Cherry Street Williamsport, Pa.

Williamsport High School

Phi Mu Delta

Debating 1, 2, 3, Manager 3; Varsity Track 1, 2, 3; Freshman Football; Pre-Theological Club 1, 2, 3, Vice President 2; Greek Club 1, 2, 3, Treasurer 3; Varsity "S" Club 1, 2; Dramatic Club 3; Interclass Soccer 1; S. C. A. 1, 2, 3; Interclass Track 1, 2, 3; Interfraternity Basketball 2.

Ministry.

February 27, 1915.



Caroline Grubb

CAROLINE E. GRUBB

Liverpool, Pa.

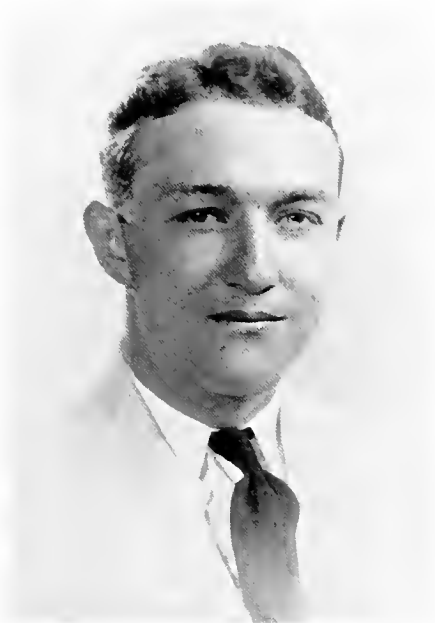
Liverpool High School

Sigma Alpha Iota

Choral Club 1, 2, 3; Women's Athletic Association 2, 3; Student Council 3; May Day 1, 2; Class Hockey 2; Class Basketball 2; Class Soccer 2; Class Baseball 2; Varsity Basketball 2.

Teaching (Music).

November 22, 1915.



Mark R. Guthrie

MARK REUBEN GUTHRIE
562 King Street Northumberland, Pa.

Northumberland High School

Phi Mu Delta

Susquehanna Advertising Manager 3;
German Club 1, 2; S. C. A. 1; Varsity
Football 2; Commercial Club
1, 2, 3.

Education.

September 29, 1915.



Birdie Hamm

BIRDIE S. HAMM
106 Westminster Avenue
Hanover, Pa.

Hanover High School

Sigma Alpha Iota

Orchestra 1, 2, 3; Band 1, 2, 3; Choral
Society 1, 2, 3; Women's Athletic
Association 2, 3; May Day 1, 2;
Class Hockey 1, 2, 3; Class Basket-
ball 1, 2, 3; Class Volleyball 1, 2, 3.

Concert Violinist.

November 15, 1917.



John M. Hazlett

JOHN McLEAN HAZLETT

Dry Run, Pa.

Dry Run High School

Phi Mu Delta

Varsity Football 1, 2, 3; Varsity
Baseball 1, 2, 3; Debating 1; Inter-
class Track 1; S. C. A. 3; Interfra-
ternity Basketball 2, 3.

Lawyer.

October 13, 1916.



Mary Heim

MARY HEIM

Loysville, Pa.

Tressler High School

Choral Society 1, 2; German Club 1,
2; Science Club 3; May Day 1, 2;
Class Hockey 2, 3; Class Soccer 1,
2, 3; Class Volleyball 1, 2, 3; W.
A. A. 3.

Medicine.

March 26, 1918.



Ruth Hemmerly

RUTH HEMMERLY

600 North Laurel Street
Hazleton, Pa.

Hazleton High School

Omega Delta Sigma

W. A. A. 2, 3; S. C. A. Cabinet 3;
Biemic Club; Deutsche Verein;
Class Hockey 1, 2, 3; Class Soccer
1, 2, 3; Class Basketball 1, 2, 3;
Class Baseball 1, 2, 3; Class Volley-
ball 1, 2, 3; Varsity Hockey 2, 3;
May Day 1, 2.

Medicine.

January 14, 1919.



Karl Herr

KARL M. HERR

327 East Third Street Berwick, Pa.

Berwick High School;
Perkiomen Institute;
Gettysburg College

Bond and Key

Interclass Basketball 3; Band 3.

Insurance Broker.

May 1, 1915.



James F. Higgins

JAMES F. HIGGINS

Locust Gap, Pa.

Mt. Carmel Township High School

Phi Mu Delta

Choral Club 1, 2, 3; Band 1, 2, 3;
Orchestra 1; Class Basketball 2, 3;
LANTHORN Editorial Staff; Sopho-
more Class President; Student
Council.

Teaching.

September 18, 1917.



Helen Hisdorf

HELEN RUTH HISDORF

616 Greendale Avenue

Edgewood, Pa.

Edgewood High School

Kappa Delta Phi

French Club 1, 2, 3; Women's Athletic
Association 2, 3; Motet Choir 1, 2,
3; Business Society 1, 2, 3; LAN-
THORN Staff 3; May Day 1, 2; Ten-
nis Singles and Doubles Tourna-
ment Winner; Class Hockey 1, 2, 3;
Class Basketball 1, 2, 3; Class Vol-
leyball 1, 2, 3; Class Baseball 1, 2,
3; Class Soccer 1, 2, 3.

To study in France.

May 30, 1916.



William H. Hudson

WILLIAM HENRY HUDSON
516 King Street Seaford, Del.
Seaford High School

Band 3; Symphonic Society 3; S. C.
A. 3; Pre-Theological Club 3.
Ministry.
November 24, 1917.



Mary Jarrett

MARY CATHERINE JARRETT
R. D. 2 Selinsgrove, Pa.
Sunbury High School
Omega Delta Sigma

Hockey 1; Class Soccer 1, 2; French
Club 1, 2, 3; German Club 2, 3; May
Day 1, 2; Mathematics Club 3.
Graduate Work in Languages.
October 30, 1917.



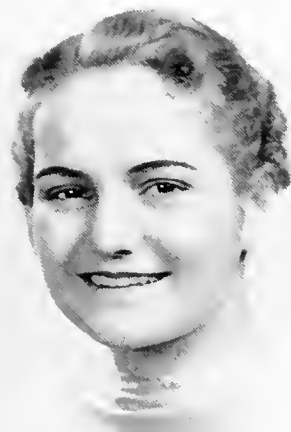
Betty Johnston

BETTY JOHNSTON
116 South Market Street
Selinsgrove, Pa.
Selinsgrove High School
Omega Delta Sigma
French Club 3; S. C. A. 3.
Journalism.
May 6, 1916.



Ruth A. Jones

RUTH A. JONES
Millerstown, Pa.
Millerstown High School
Kappa Delta Phi
French Club 1, 2, 3; Choral Society
3; May Day 1, 2; LANTERN Business
Staff 3; Student Council 3; S.
C. A. Cabinet.
Teaching.
May 9, 1917.



Esther V. Kaufman

ESTHER VIRGINIA KAUFMAN

Davidsville, Pa.

Johnstown High School

Sigma Alpha Iota

Motet Choir 1, 2, 3; Choral Society 1, 2, 3; Trinity Church Choir; Secretary of Class 3; Intersorority Council 3; LANTHORN Editorial Staff 3; May Day 1.

Teaching.

August 8, 1917.



George J. Kimmel

GEORGE KIMMEL

East Main Street Ashland, Pa.

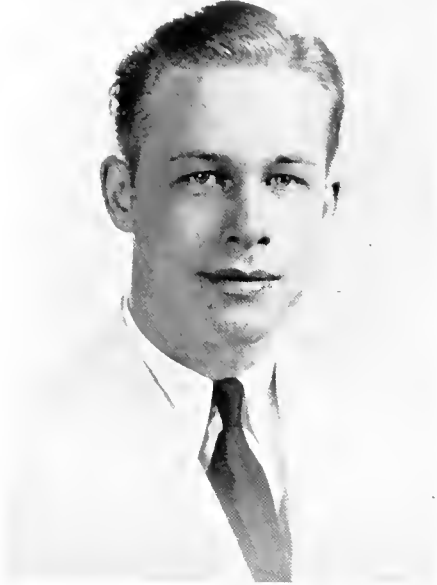
Ashland High School

Phi Lambda Theta

Assistant Football Manager 2, 3; Band 1, 2; German Club 1, 2, 3; LANTHORN Business Staff; French Club 1, 2, 3; Interfraternity Football 2; Interclass Soccer 1, 2, 3.

Education.

March 30, 1919.



Karl E. Kniseley

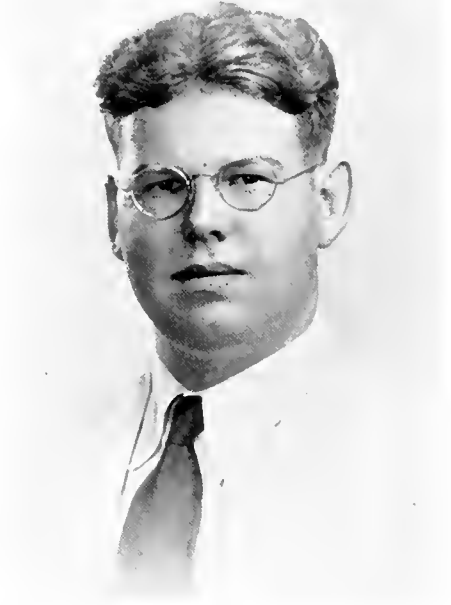
KARL EUGENE KNISELEY
47 Waldorf Street Pittsburgh, Pa.
Northumberland High School

Phi Mu Delta

Freshman Class President; Baseball Manager; Orange Key Club 2, 3; Pre-Theological Club 1, 2, 3; Kappa Alpha 1, 2, 3; Editor-in-Chief of LANTHORN; S. C. A. 1, 2, 3; S. C. A. Cabinet 2; Debating 1; Band 2; Class Football 1; Class Basketball 2, 3; Junior Prom Chairman 3; Susquehanna Staff 1.

Ministry.

May 30, 1917.



Herbert C. Lauver

HERBERT C. LAUVER
Richfield, Pa.
McAlisterville High School

Phi Lambda Theta

Football 1; LANTHORN Staff 1, 2; Susquehanna Staff 1, 2, 3; Susquehanna Circulation Manager 3; Class Football 1; German Club 1, 2, 3.

Teaching.

March 15, 1916.



Paul Lucas

PAUL LUCAS
1230 Allegheny Street
Jersey Shore, Pa.
Jersey Shore High School
Bond and Key
Choral Club 1, 2, 3; Freshman Foot-
ball; Vice President Class 1.
Teaching.
December 19, 1912.



John McKeown .

JOHN WILLIAM McKEOWN, JR.
389 Laurie Street
Perth Amboy, N. J.
Perth Amboy High School
Pre-Theological Club; Debate Club.
Ministry.
September 26, 1914.



Henry Mitterling

HENRY R. MITTERLING
410 Orange Street Selinsgrove, Pa.
Selinsgrove High School
Phi Mu Delta
Commercial Club; Interclass Basket-
ball 1, 2, 3; Freshman Football.
Teaching (Commercial).
March 11, 1916.



Frances Moyer

FRANCES E. MOYER
Hummels Wharf, Pa.
Sunbury High School
French Club 2, 3; Mathematics Club
1, 2, 3; Day Student Organization.
Nurse (Graduate Johns Hopkins).
July 30, 1917.



John H. Paul

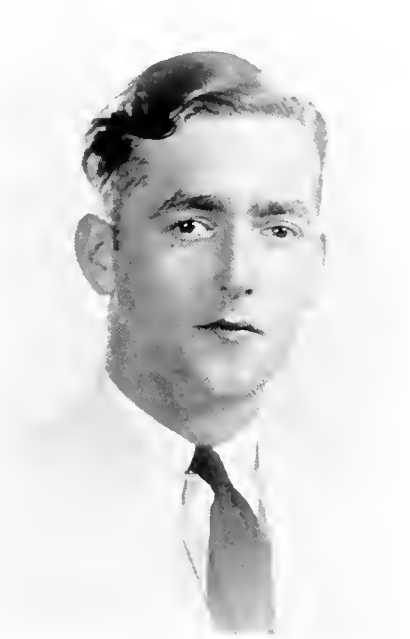
JOHN HENRY PAUL
210 South Market Street
Shamokin, Pa.
Shamokin High School

Bond and Key

Motel Choir 1, 2, 3; Band 1, 2, 3;
Symphonic Society 1, 2, 3; Business
Administration Society; French
Club; Interclass Basketball; Inter-
fraternity Basketball.

Teaching (Commercial).

November 23, 1916.



Vernon R. Phillips

VERNON RICHARD PHILLIPS
Dalmatia, Pa.
Dalmatia High School

Bond and Key

Freshman Football; Interclass Soccer
1, 2; German Club 1, 2; Interclass
Basketball 2; Biemic Society 2; S.
C. A. 1; Interfraternity Basket-
ball 3.

Medicine.

November 2, 1914.



Mildred Pifer

MILDRED ALICE PIFER

East Bangor, Pa.

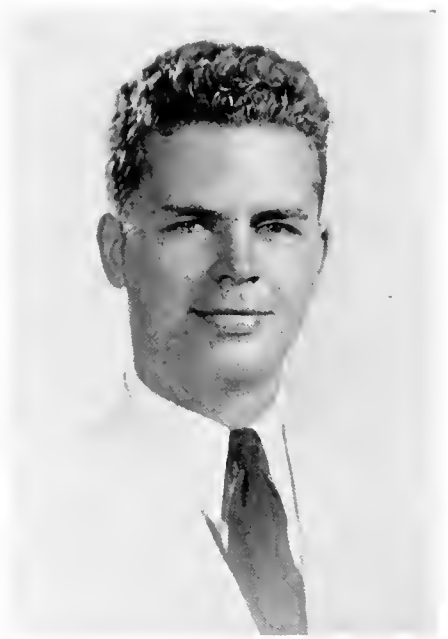
Bangor High School

Kappa Delta Phi

Motet Choir 1, 2, 3; Choral Society 1, 2; LANTHORN Editorial Staff 3; Susquehanna Staff 1, 2; S. C. A. Cabinet 2; Women's Athletic Association 2, 3; Varsity Hockey 1, 2, 3; Class Hockey 1, 2, 3; Class Soccer 1, 2, 3; Class Basketball 1, 2, 3; Class Volleyball 1, 2, 3; Track 2; French Club 2, 3; Class Baseball 1, 2, 3; May Day 1, 2; Dramatic Club 3.

Radio Work.

November 18, 1915.



John Rakshys

JOHN RAKSHYS

322 Academy Street Peely, Pa.

Warrior Run High School

Phi Mu Delta

Interclass Soccer 1, 2; Debating 1; Varsity Track 2, 3; Varsity Tennis 2, 3, Captain 2; Varsity Basketball 2, 3; LANTHORN Editorial Staff; Interfraternity Football 2; Interfraternity Basketball 2; Interclass Track 1, 2, 3; S. C. A. 1.

Education.

November 1, 1916.



Ethal E. Ramer

ETHAL E. RAMER
322 Meyers Avenue Meyersdale, Pa.

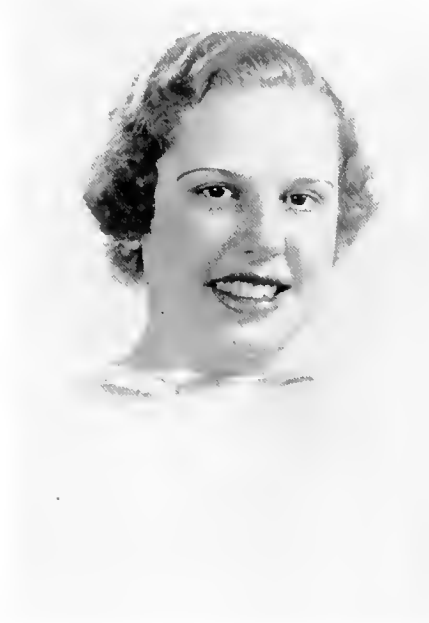
Salisbury High School

Kappa Delta Phi

LANTHORN Staff 3; Business Society
1, 2, 3; Choral Society 1, 2, 3;
French Club 2; May Day 1; S.
C. A.

Secretary.

July 7, 1915.



Jean Rheinhart

JEAN RHEINHART
526 South River Street
Wilkes-Barre, Pa.

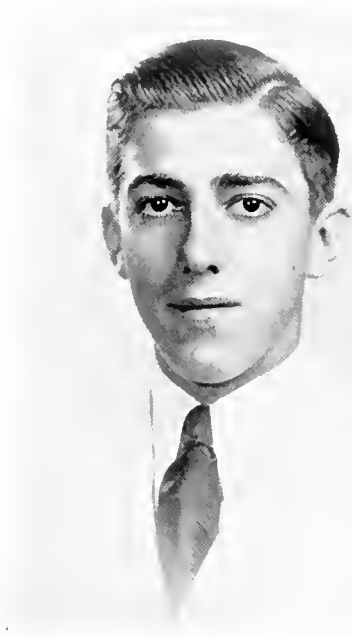
Elmer L. Meyer High School

Omega Delta Sigma

French Club 1, 2, 3; German Club 1,
2, 3; Dramatic Club 3; May Day
1, 2.

Teaching (Graduate Work
in Languages).

April 10, 1917.



Charles F. Salkeld

FOSTER C. SALKELD
1033 Maple Avenue Sharon Hill, Pa.
Millersburg High School
Phi Lambda Theta
Band 1, 2, 3; German Club 1, 2, 3;
Track 1, 2, 3; Class Football 1, 2;
Class Basketball 1, 2; S. C. A. 1, 2,
3; Susquehanna Staff 1.
Education.
November 23, 1915.



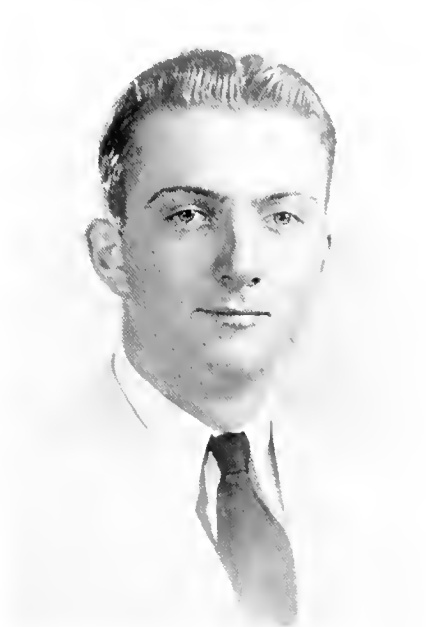
Henry A. Shotsberger

HENRY SHOTSBERGER
Freeburg, Pa.
Freeburg High School
Phi Lambda Theta
Class Soccer 1, 2, 3; Mathematics Club
1, 2, 3; German Club 1, 2; S. C. A. 1.
Education.
May 23, 1917.



Peter Shuty

PETER SHUTY
Neville Island Pittsburgh, Pa.
Coraopolis High School
Bond and Key
Varsity "S" Club 2, 3; Football 1, 2,
3; Co-captain of Football (1937);
Class Basketball 2, 3; Class Track
1, 2, 3.
Football Coach.
July 9, 1915.



Verlin H. Smalts

VERLIN H. SMALTS
Gay Street Hagerstown, Md.
Hagerstown High School;
Shenandoah College
Phi Lambda Theta
Motet Choir 3; Track 3.
Teaching.
September 2, 1914.



Preston H. Smith

PRESTON H. SMITH
917 Market Street Williamsport, Pa.
Williamsport High School;
Peddie Prep.

Bond and Key

Susquehanna Business Staff 2; Student Council 3; Freshman Football; Business Society; Secretary of Student Council; Vice President Class I; Freshman Soccer.

Business Executive.

January 6, 1915.



Charles J. Stauffer

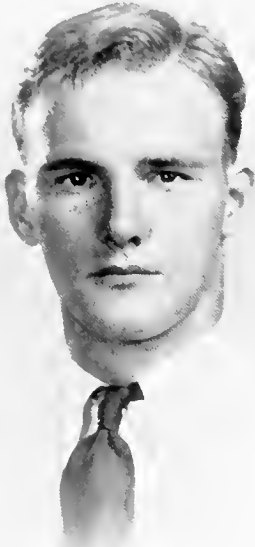
CHARLES JACOB STAUFFER
South Market Street Selinsgrove, Pa.
Selinsgrove High School

Phi Lambda Theta

Varsity Football 1, 2, 3; Varsity Track 1, 2, 3; Interclass Track 1, 2, 3; Student Council 3; Interfraternity Basketball 2, 3.

Education.

September 27, 1916.



Harry C. Swope

HARRY C. SWOPE

13 North Water Street
Selinsgrove, Pa.

Selinsgrove High School

Phi Lambda Theta

Football 1, 2, 3; Interclass Soccer 1;
Track 1, 2, 3; Co-captain of Football (1937).

Teaching (Commercial).

September 14, 1914.



Donald S. Wert

DONALD STANFORD WERT

Aaronsburg, Pa.

East Penn Valley High School

Phi Mu Delta

Varsity Basketball 2, 3; Varsity Baseball 1, 2, 3; Band 1, 2, 3; Symphonic Society 1; Mathematics Club 1, 3; S. C. A. 1; Freshman Football; Interfraternity Basketball 2; Interfraternity Football 2; Interclass Track 2; Interclass Soccer 1, 2.

Education.

November 1, 1916.



Kent L. Worthington

KENT L. WORTHINGTON

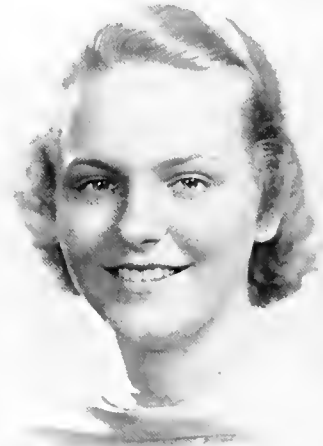
Hughesville, Pa.

Hughesville High School

Bond and Key

Freshman Football; Interfraternity
Basketball 2, 3; Interclass Soccer
1; LANTHORN Editorial Staff 3.

Lawyer.



Esther A. Yingling

ESTHER A. YINGLING

1604 Second Avenue Altoona, Pa.

Altoona High School

Kappa Delta Phi

Susquehanna Staff 1, 2, News Editor
3; LANTHORN Editorial Staff 3; S.
C. A. Cabinet 3; Vice President of
Class 3; Intersorority Council 3;
Class Historian 1; Choral Society
1; Mathematics Club 1; German
Club 2, 3; May Day 1; Dramatic
Club 3; Class Hockey 1, 3; Class
Soccer 3.

Teaching.

May 30, 1916.



S
O
P
H
O
M
O
R
E

C
L
A
S
S



SOPHOMORE OFFICERS

PAUL BROSIUS - - - - - *President*

ADELAIDE STEWART - - - - - *Vice President*

HAROLD BENION - - - - - *Secretary-Treasurer*

SOPHOMORE CLASS HISTORY

On the sixteenth day of September, 1935, seventy-one freshmen had the light of knowledge thrown upon them with varying results, as tabulated at the end of two years. We now number some fifty, every one a true Susquehanna booster.

Our freshman year was eventful with such matters as class election, regulations, inter-class athletic victories, and fraternity affiliations with the resulting excitement. We were deprived of two events, which all freshmen are entitled to: Homecoming bonfire and Freshman-Sophomore football battle. In the latter event, we feel sure that the sophomores would have taken a beating—that is, however, a debatable question.

In our sophomore year, we, first of all, put the freshmen through their paces with midnight rides, duckings in the fish pond, and enforcement of regulations. The freshmen were able to play the traditional Freshman-Sophomore football games and we were defeated in a closely contested battle.

Already our members have won for themselves many important positions on the campus. Every major sport finds the class of 1939 well represented. Scholastically, we are more than holding our own.

We are now in the middle of our college career and we have learned much that is invaluable both in college work and in experience. We are looking forward to our junior year with the anticipation of greater things, both for ourselves and for our school.

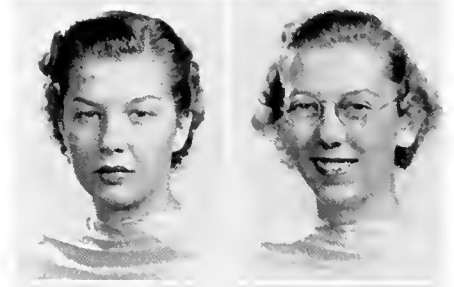
WILLIAM AYRES

HOWARD BALDWIN



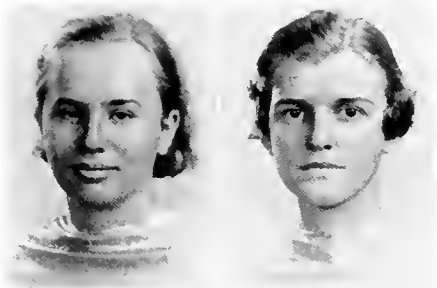
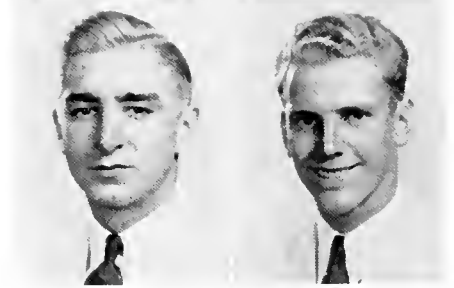
BETTE BALTZER

JEAN BEAMENDERFER



PAUL BROSIUS

HAROLD BENION



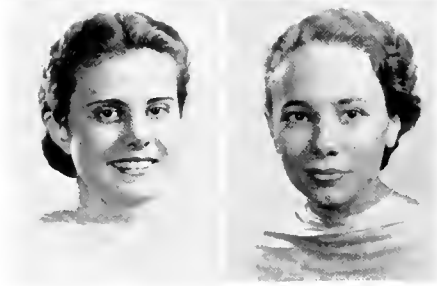
CATHERINE BIER

BETTY BOLIG



JOSEPHINE CAREY

GENEVIEVE CLUCK



ELEANOR CROFT

MARJORIE CURTIS



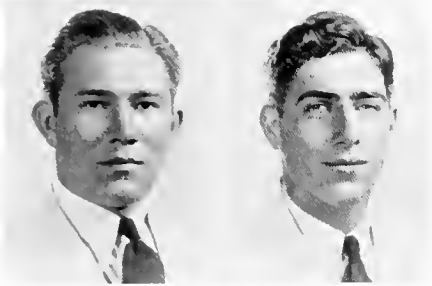
RUTH DERSTINE

MARTHA ENGLE



SHIRLEY FINKBEINER

VERNA GAYMAN



GLENN HAUFF

ROBERT HERR

JEAN HOFFMAN

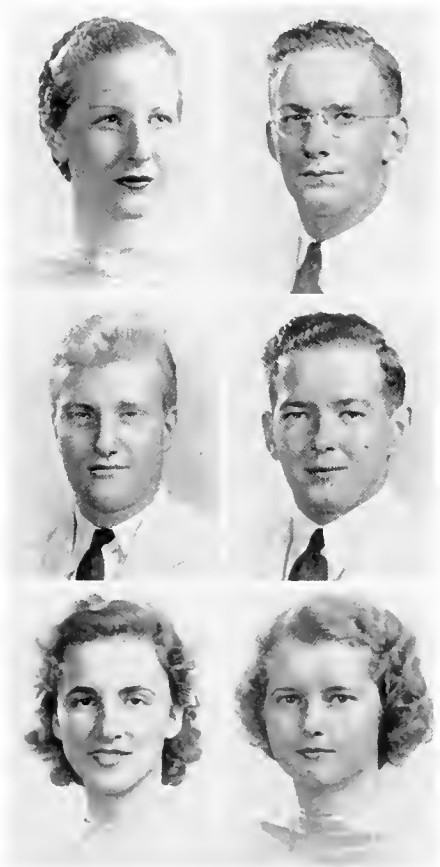
JOHN HOSTETTER

HENRY KEIL

DAVID KEIM

MARTHA KLINGER

CAROLYN KROGMAN



FLORENCE LANDBACK

WILLIAM LAUDENSLAYER



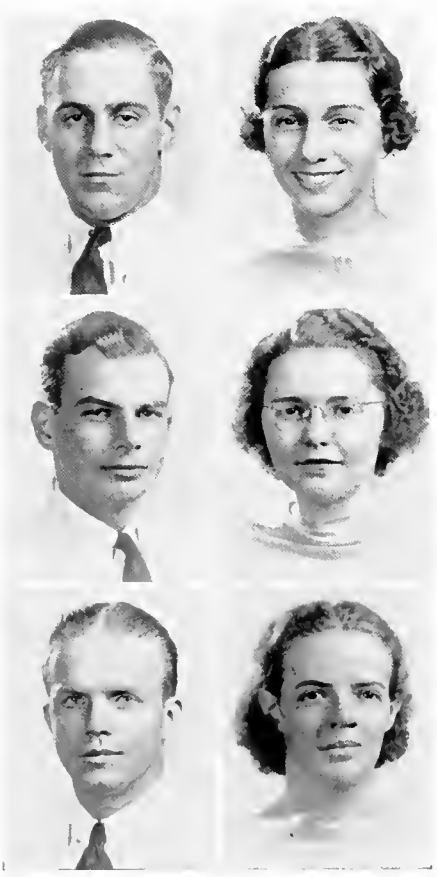
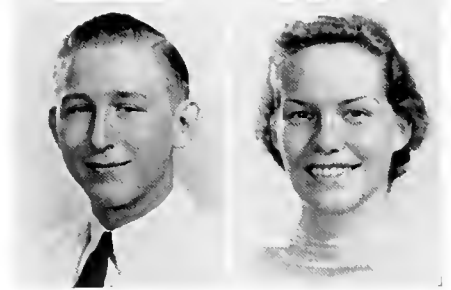
MARGUERITE LENIG

MILO MASTOVICH



HARRY McBRIDE

MIRIAM MILLER



JUNE MILLER

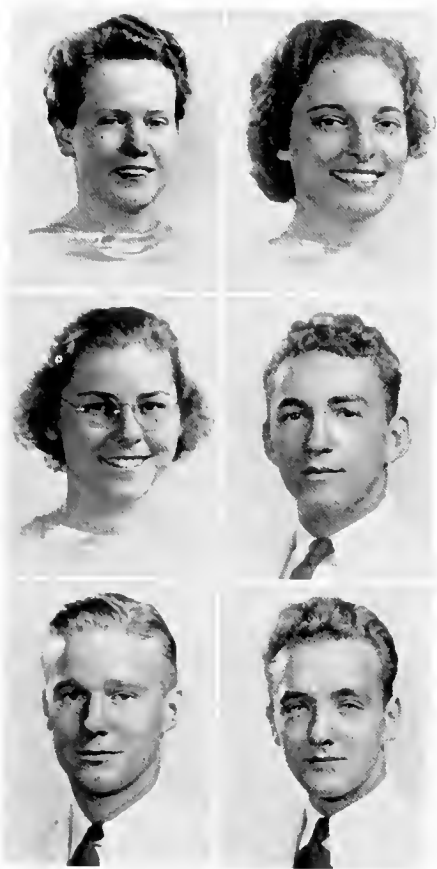
MATHILDA NEUDOERFFER

STEPHEN OWEN

ALVERNA REESE

SAMUEL ROGERS

HELEN ROGERS



KATHERINE ROUSH

ELEANOR SAVERI

JANE SCHINURE

EDWARD SCHWEITZER

RALPH SHOBERT

EDWARD SIVICK

LEONORA SPOTTS

ADELAIDE STEWART

VIRGINIA STRAUB

GLADYS WENTZEL

LOUISE WEST

RUTH YARGER





F
R
E
S
H
M
A
N
C
L
A
S
S



FRESHMAN OFFICERS

WILLIAM NYE	- - - - -	<i>President</i>
EDWARD KORPER	- - - - -	<i>Vice President</i>
MADALENE HAYES	- - - - -	<i>Secretary</i>
CHARLOTTE BAISH	- - - - -	<i>Treasurer</i>

FRESHMAN CLASS HISTORY

It was on the sunny day of September fourteenth, nineteen hundred and thirty-six, that one hundred and twelve freshmen made their appearance in Seibert Hall Chapel. From our first meeting together, a unity was formed which we hope will never be broken. It was with this co-operation and understanding that we made our "Get-Away" and elected our first leaders:

WILLIAM NYE	-	-	-	-	-	-	-	-	-	<i>President</i>
EDWARD KORPER	-	-	-	-	-	-	-	-	-	<i>Vice President</i>
MADALENE HAYES	-	-	-	-	-	-	-	-	-	<i>Secretary</i>
CHARLOTTE BAISH	-	-	-	-	-	-	-	-	-	<i>Treasurer</i>

But this new found unity was not to be lost. United with a common purpose, we defeated the sophomores in the annual Freshman-Sophomore football game. Real school spirit was evidenced by the large number of freshmen present at all athletic and social functions on the campus.

One can imagine the surprise of the upperclassmen when we requested that more life be put into the execution of freshman traditions and customs. Joyfully we carried out the commands of the upperclassmen—wearing clothes backward, smoking corn-cob pipes, and carrying matches. The hardest task of all, and yet the most enjoyable, was the decorating of the campus for the Homecoming game. With every freshman present, there was more cheering and more noise-making than has taken place in many a year.

Our class has not been placed in the background in the intra-mural sports. Always we have shown real fight and competition.

But the outstanding event of our first year is yet to come. Already we have started to rehearse a three-act play, which promises to be an accomplishment that will be long remembered.

These are the things which distinguish our class as a class of spirit, unity, and co-operation. As we near the close of our first year in college, we look forward with hopes of higher accomplishments yet to come.



HELEN ANDERSON

EUNICE ARENTZ



CHARLOTTE BAIŠII

JOHN BICE

DONALD BILLMAN



NAOMI BINGAMAN

HESTER BITTINGER

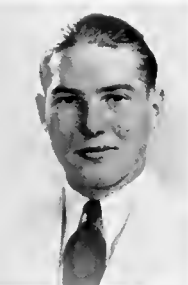
JEAN BULICK



ELEANOR BOLIG

JEAN BEAMENDERFER

CLYDE CHARLES



JAMES CHARLES

NAOMI DEARMY

KATHRYN DIEHL



ALICE DEITERICK

MARY ELLEN DIXON

JOHN DRUMHELLER



HELEN EDLUND

RUTH FARLEY

ROBERT FISHER

VINCENT FRATTALI



HILDA FREIDERICH

GRACE FRIES



ROBERT GABRENYA

ROY GELNETT

JOHN GENSEL



JESSE GOLDBERG

EDWIN GRENNINGER

MARGARET GRENOBLE



REED GULICK

MADALENE HAYES

LEON HAINES



FREDERICK HICKMAN

ANNA HILL

RICHARD HUMMEL



CLAIRE KALTREIDER

KENNETH KINNEY

HERBERT KLINGER



JOHN LEAM

CHARLES LENGLER



JANET LONG

JOE LUKENS



WILLIAM MEASE

WALTER MEEK

ETHA MEIKRANTZ



HELEN MUSSELMAN

WILLIAM NYE

GEORGE ORWIG



WILLIAM PRITCHARD

BURTON RICHARD

FLORENCE ROTHERMEL



ROBERT SANDER

HAROLD SAUNDER

GRAHAM SCHUCK



HAROLD SHAFFER

MARGARET SHEESLEY

JOHN SHIPE



NORMAN SHRAWDER

DOROTHY SHUTT

STEPHEN SKLANSKY

ADELLA SNYDER

GEORGE SPIGGLE



EDNA STEPHENS

BYRON STOCKDALE

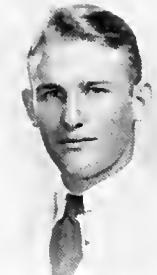
ETHEL STRAESSER



BARNER SWARTZ

WILLIAM TROUTMAN

JOHN UPDEGROVE



MILDRED WEBSTER

BETTY WENTZEL

PALMER WETZEL



CHARLES WEYHENMYER

EUGENE WILLIAMS

FRANCES WILLIAMS



ELIZABETH WITTENMEYER

DELOS WRAY

HELEN WRIGHT



FERNE ZECHMAN

LAWSON ZIEGLER

MARY ZELLERS





ORGANIZATION



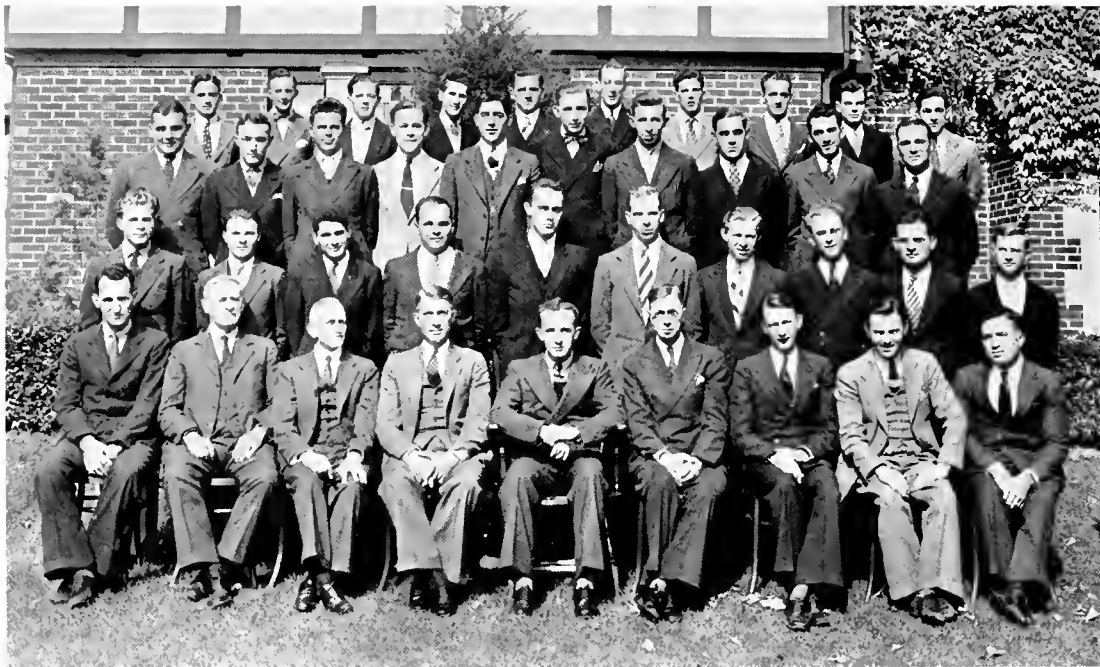
COME JOIN IN RE - COL - LEC - TIONS FOND, AND



TELL US OF YOUR WAYS .



F
R
A
T
E
R
N
I
T
I
E
S



First Row, Left to Right—Jack Roach, Prof. Brungart, Dr. Fisher, Mr. Yorty, Francis Gelnett, Dr. Wood, Dr. Wilson, Prof. Allison, Vernon Blough
 Second Row—Aughenbaugh, Cotton, Shaheen, Spitzner, Roberts, Alexander, Fredericks, Howells, Edwards, Clark
 Third Row—Bolig, Gnthric, Rackshys, Kuiseley, Herr, McBride, Wert, Miller, Schweitzer, Hazlett
 Fourth Row—Mastovich, Hostetter, Keim, Grenminger, Peizick, Higgins, Adamavage, Sivick, Owen, Berkeley

PHI MU DELTA

Local (Alpha Sigma Omega) Founded in 1915
 Chartered as Mu Alpha Chapter of Phi Mu Delta in 1925

OFFICERS

FRANCIS GELNETT	-	-	-	-	-	-	-	-	-	<i>President</i>
ANDREW FREDERICKS	-	-	-	-	-	-	-	-	-	<i>Vice President</i>
DANIEL COTTON	-	-	-	-	-	-	-	-	-	<i>Comptroller</i>
DONALD WERT	-	-	-	-	-	-	-	-	-	<i>Secretary</i>

HONORARY MEMBERS

Professor Elrose L. Allison	Dr. William A. Russ
H. Vernon Blough	Dr. Arthur H. Wilson
Professor E. M. Brungart	Prof. George N. Wood
Dr. George E. Fisher	Ernest T. Yorty



MEMBERS

Seniors

Kenneth Alexander
Daniel Cotton
Andrew Fredericks

Francis Gelnett
Lewis Howells

John Roberts
Raymond Shaheen
Clyde Spitzner

Juniors

Stanley Aughenbaugh
Morgan Edwards

John Hazlett
James Higgins
Karl Kniseley

John Rakshys
Donald Wert

Sophomores

Robert Herr
John Hostetter
David Keim

Milo Mastovich
Harry McBride
June Miller

Stephen Owen
Edward Schweitzer
Edward Sivick

Pledges

Carman Berkeley
Roy Bolig
George Clark
Paul Coleman
Donald Critchfield
William Davis
Robert Fisher
Vincent Frattali
Robert Gabrenya
Reed Greninger

Mark Guthrie
Fred Hickman
Edward Kozlowski
Peter Lalish
Joseph Mehalow
Henry Mitterling
William Nye
James Pearce
Fred Schmidt

Norman Shrawder
William Salem
John Scheig
Harold Shaffer
Stephen Sklansky
George Spiggle
Byron Stockdale
William Troutman
Graham Schuck
Charles Weyhenmeyer



MEMBERS

Seniors

Oren Benner
Donald Gaver

Robert Mosher

Walter Poyck
Luke Toomey

Juniors

Samuel Camp
Claude Clark
James Diffenderfer
Richard Ditzler

Donald Dorsett
Orville Fitzgerald
John Goyne

John Paul
Vernon Phillips
Preston Smith
Kent Worthington

Sophomores

Harold Benion
Paul Broscius
Glenn Hauff

Robert Hertz
Henry Keil

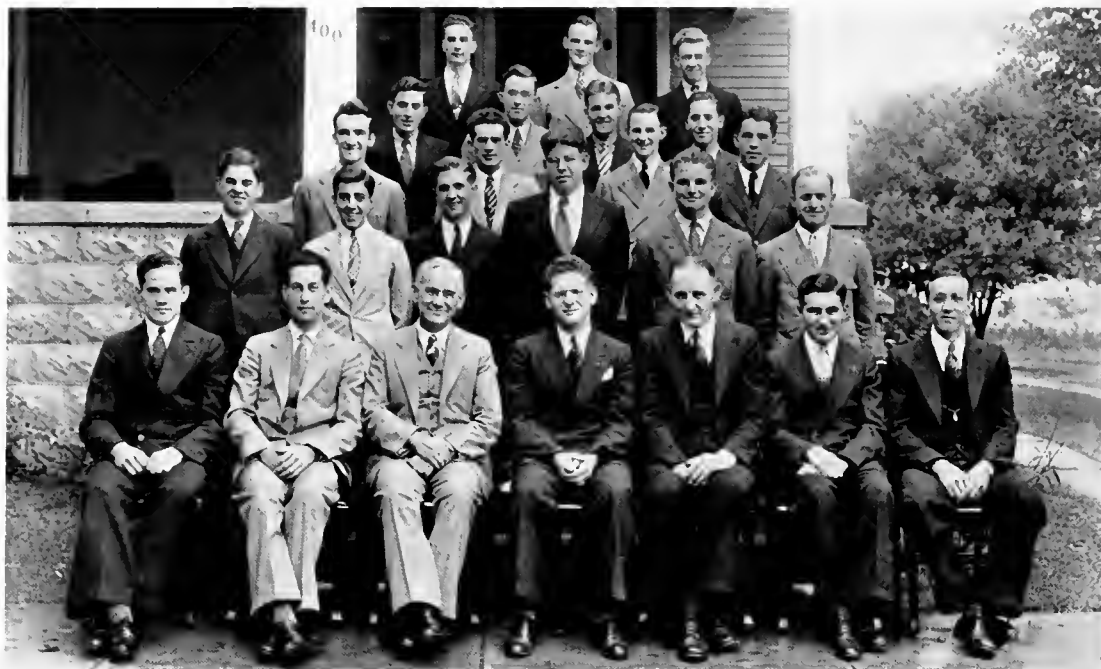
Jesse Kemberling
Samuel Rogers
Ralph Shobert

Pledges

Howard Baldwin
John Bice
Donald Billman
Clyde Charles
James Charles
Wilbur Dreher
Walter Freed
Edwin Grenninger
Homer Groce
Reed Gulick

Karl Herr
Richard Hummel
Clair Kaltreider
Horace Kauffman
Kenneth Kinney
Edward Korper
John Leam
Paul Lucas
John McCune
William Mease

Edward McKeel
George Orwig
William Pritchard
Joseph Ray
Burton Richard
Robert Sander
Harold Saunder
Clyde Sechler
Peter Shuty
Eugene Williams



First Row, Left to Right—Shellenberger, Mr. Gilbert, Dr. Dunkelberger, Wensel, Prof. Reitz, Long, Karschner
 Second Row—Ulp, Saukeld, Boyer, Lauver, Baylor, Stauffer
 Third Row—Klinger, Schaffer, Kimmel, Ochenreider, Landenslayer, Shotsberger, Bollinger,
 Beachel, Drumheller, Swope, Shafer

PHI LAMBDA THETA

Chartered in 1928

OFFICERS

CLARENCE WENSEL	-	-	-	-	-	-	-	-	<i>President</i>
CHESTER LONG	-	-	-	-	-	-	-	-	<i>Vice President</i>
DAVID SHELLENBERGER	-	-	-	-	-	-	-	-	<i>Secretary</i>
LESTER KARSCHNER	-	-	-	-	-	-	-	-	<i>Treasurer</i>

HONORARY MEMBERS

Dr. George F. Dunkelberger Prof. Russel W. Gilbert
 Prof. D. Irvin Reitz

MEMBERS

Seniors

Lester Karschner
Woodrow Klinger
Chester Long

Clarence Schaeffer
Henry Shafer

David Shellenberger
John Ulp
Clarence Wensel

Juniors

Robert Boyer
George Kimmel

Herbert Lauver

Foster Saukeld
Charles Stauffer

Pledges

Louis Baylor
Leroy Beachel
Harold Bollinger
John Drumbeller
Robert Furman
Roy Gelnett
John Gensel
Leon Haines

Carl Helt
Chester Hess
John Hoffman
Herbert Klinger
William Laudenslayer
Joseph Lukens
Walter Meek
James Moyer
Paul Ochenreider

John Shipe
Henry Shotsberger
Verlin Smaltz
Barner Swartz
Harry Swope
John Updegrove
Charles Wetzel
Lawson Zeigler



S
O
R
O
R
I
T
I
E
S



Left to Right—Bower, Gundrum, Miller, Brown, Pifer, Jones, Scott, Yingling, Ramer, Hisdorf Saveri, Roush, Stewart

KAPPA DELTA PHI

Founded in 1917

Motto: "Kalokagathia Dia Phileas"

OFFICERS

MARY SCOTT	-	-	-	-	-	-	-	-	-	<i>President</i>
ESTHER YINGLING	-	-	-	-	-	-	-	-	-	<i>Vice President</i>
RUTH JONES	-	-	-	-	-	-	-	-	-	<i>Recording Secretary</i>
ETHAL RAMER	-	-	-	-	-	-	-	-	-	<i>Financial Secretary</i>
MIRIAM MILLER	-	-	-	-	-	-	-	-	-	<i>Treasurer</i>

HONORARY MEMBERS

Miss Lois Boc	Mrs. T. W. Kretschmann
Miss Viola DuFrain	Mrs. A. W. Ahl
Miss Beatrice Herman	Mrs. E. M. Brungart
Mrs. William A. Russ, Jr.	Mrs. Frederick C. Stevens

MEMBERS

Seniors

Helen Gundrum

Mary Scott

Juniors

Marjorie Bower
Eleanor Brown

Helen Hisdorf
Ruth Jones
Mildred Pifer

Ethal Ramer
Esther Yingling

Sophomores

Betty Bolig
Verna Gayman

Miriam Miller
Kathryn Roush

Eleanor Saveri
Adelaide Stewart

Pledges

Ennice Arentz
Jean Beamenderfer
Eleanor Bolig
Eleanor Croft
Naomi Dearmy

Betty Diehl
Mary Ellen Dixon
Martha Engle
Marie Edlund

Grace Fries
Madeline Hayes
Dorothy Shutt
Edna Stephens
Ethel Straesser



First Row—Barnes, Fry, Hemmerly, Bolig, Jones, Marshall, Richard, Rhinehart, Corson
 Second Row—Boyle, Hoffman, Finkbeiner, Jarrett, Ahl, Neudoerffer, Durstin, Jansen
 Third Row—Curtis, Schure, Baltzer, Appler, Reese

OMEGA DELTA SIGMA

Founded in 1917

OFFICERS

ELEANOR JONES	-	-	-	-	-	-	-	-	-	<i>President</i>
MARTHA BOLIG	-	-	-	-	-	-	-	-	-	<i>Vice President</i>
ARLINE MARSHALL	-	-	-	-	-	-	-	-	-	<i>Treasurer</i>
ELIZABETH FRY	-	-	-	-	-	-	-	-	-	<i>Financial Secretary</i>
JEAN RHEINHART	-	-	-	-	-	-	-	-	-	<i>Secretary</i>

HONORARY MEMBERS

- | | |
|-----------------------|-------------------------|
| Mrs. Morris G. Smith | Mrs. Martha S. Dodson |
| Mrs. Arthur Wilson | Mrs. Amos A. Stagg, Jr. |
| Mrs. John I. Woodruff | Mrs. D. I. Reitz |
| Mrs. Ernest T. Yorty | Mrs. George N. Wood |
| Mrs. Paul J. Ovrebo | Mrs. Charles Leese |
| Mrs. George E. Fisher | Mrs. Russel Gilbert |
| Mrs. John J. Houtz | |

MEMBERS

Actives

Hildegarde Ahl
Mary Appler
Betty Baltzer
Mary Barnes
Martha Bolig
Margaret Boyle
Margaret Corson
Marjorie Curtis

Ruth Derstine
Shirley Finkbeiner
Elizabeth Fry
Ruth Hemmerly
Jean Hoffman
Evelyn Janson
Mary Catherine Jarrett
Eleanor Jones

Arline Marshall
Mathilda Neudoerffer
Alverna Reese
Jean Rheinhart
Mary Beth Richard
Jane Schuure
Helen Wentzel
Louise West

Pledges

Naomi Bingaman
Jean Bulick
Virginia Burns

Ruth Farley
Caroline Krogman
Mary Mack
Virginia Mann

Margaret Sheesley
Mildred Webster
Gladys Wentzel



First Row—Hoffman, Carey, Hoffard, Fox, Kaufman, Grubb
 Second Row—Rogers, Cluck, Sacks, Straub

SIGMA ALPHA IOTA

Founded June 12, 1903

Motto: "Vita Brevis—Ars Longa"

OFFICERS

MARY ANN FOX	-	-	-	-	-	-	-	-	<i>President</i>
ESTHER KAUFFMAN	-	-	-	-	-	-	-	-	<i>Vice President</i>
JEANNE HOFFORD	-	-	-	-	-	-	-	-	<i>Secretary</i>
CAROLINE GRUBB	-	-	-	-	-	-	-	-	<i>Treasurer</i>

Honorary

Miss Margaret Keiser

MEMBERS

Seniors

Jean Hofford

Dorothy Hoffman
Eva Sachs

Mary Ann Fox

Juniors

Esther Kaufman

Caroline Grubb

Birdie Hamm

Sophomores

Josephine Carey

Helen Rogers
Virginia Straub

Genevieve Cluek

Pledges

Helen Yeager
Helen Anderson
Charlotte Baish
Betty Barnhart

Alice Dietrich
Margaret Grenoble
Etha Meikrantz

Anna Reeder
Frances Williams
Fern Zelman
Mary Zellers



MUSIC



SUSQUEHANNA MOTET CHOIR

Organized in 1934

Director, PROFESSOR FREDERICK STEVENS

One of the outstanding organizations on our campus is the Motet Choir. The choir sings the a capella compositions of the great composers. The choir has done much to spread the name of Susquehanna over the United States.

This year the choir made a tour which carried them into Maryland, Pennsylvania and New York. Everywhere they were received by large and enthusiastic audiences. Many critics have rated the Motet Choir of Susquehanna University as second only to the famous Westminster Choir of professional fame.



Reading Left to Right—Professor Stevens, Clarence Wensel, Helen Rogers, Betty Diehl, Martha Engle, Mrs. Stevens, Jane Schinnre, Eva Sacks, Orville Fitzgerald, David Shellenberger

SUSQUEHANNA MADRIGAL SOCIETY

Organized in 1936

Director, PROFESSOR FREDERICK STEVENS

The Madrigal Society was organized for the purpose of delineating and perpetuating the musical literature for the small vocal ensemble groups, pertinent to the period in which it was used as a chief social measure.

Madrigals were a form of after dinner entertainment. Every guest was expected to participate in the singing, which took place around the festive board. Thus the custom has been revived in the present day in the form of Madrigal Societies.



SUSQUEHANNA SYMPHONIC SOCIETY

Organized in 1933

Director, PROFESSOR ELROSE ALLISON

PERSONNEL

First Violin

W. Donald Hemphill
(Concertmaster)
Birdie Hamm
Clarence Farley
Oralee Phillips

Second Violin

Anthony Paine
Dorothy Hoffman
Ruth Lenker
Hilda Friederick

Viola

Lewis Howells

Cello

Lois Gresh

Double Bass

Francis Gelnett
Fred Hickman

Flutes

Adalle Gaskins
Fern Zeekman

Bassoon

Joseph Mehalow

Trumpets

David Shellenberger
George Clark

Horns

John Ulp
James English
Milo Mastovich

Tabu

Carl Baney

Trombones

William Miller
John Paul
William Hudson

Clarinets

Edmund Kozlowski
Verna Gaymen
William Fratalli

Oboe

Edward Mekeel

Tympani

Fred Schmidt, Librarian



SUSQUEHANNA UNIVERSITY BAND

Organized in 1928

Director, PROFESSOR ELROSE ALLISON

PERSONNEL

Solo Cornet

D. Alton Shellenberger
George Clark

First Cornet

Donald Gaver

Second Cornet

Barner Swartz

First Trumpet

Walter Freed

Second Trumpet

Birdie Hamm

Solo Clarinets

Walter Poyck
Charles Lengler

First Clarinet

Harold Bollinger
Vincent Fratalli

Second Clarinet

Ed. Koslowski
John Drumheller

Third Clarinet

Verna Gaymen
Mary Zellers

Soprano Saxophone

Naomi Bingaman

Alto Saxophone

Fred Schmidt, Librarian
Robert Hayhurst

Tenor Saxophone

Ed. Mekeel

Baritone Saxophone

Richard Ditzler

Flute

Fern Zeckman

Oboe

William Smith

Bassoon

Joseph Mcballow

Horns

James English
Milo Mastovitch
James Pearce

Baritone

Robert Furman

Trombones

William Miller
John Paul
William Hudson

Bass Trombone

Clair Kaltreider

Sousaphones

Francis Gelnett
Carl Bancy

Bass Violin

Fred Hickman

Tympani

Howard Baldwin

Snare Drum

William Salem

Bass Drum—Cymbals

Anthony Pane

SUSQUEHANNA CHORAL SOCIETY

OFFICERS

MISS JEANNE HOFFORD	-	-	-	-	-	-	-	<i>President</i>
MISS HELEN YEAGER	-	-	-	-	-	-	-	<i>Vice President</i>
MISS EVA SACHS	-	-	-	-	-	-	-	<i>Secretary</i>
PROFESSOR E. EDWIN SHELDON	-	-	-	-	-	-	-	<i>Director and Treasurer</i>
PROFESSOR PERCY M. LINEBAUGH	-	-	-	-	-	-	-	<i>Organist</i>
PROFESSOR ELROSE L. ALLISON	-	-	-	-	-	-	-	<i>Pianist</i>

CLUB PERSONNEL

Sopranos

Helen Anderson	Alice Deiterick	Helen Rogers
Charlotte Baish	Caroline Grubb	Mrs. Ida M. Sheldon
Elizabeth Barnhart	Mrs. Margaret Hemphill	Mrs. Sara Stevens
Eleanor Bingman	Miss Jeanne Hofford	Adella Snyder
Lois Boe	Ruth Jones	Frances Williams
Josephine Carey	Margaret E. Keiser	Fern Zechman
Naomi Dearnly	Etha Meikrantz	Mary Zellers

Contraltos

Jean Beamenderfer	Hilda Friederich	Eva Sachs
Ruth C. Bair	Dorothy Hoffman	Virginia Straub
Genevieve Cluck	Esther Kaufman	Mary W. Whitehurst
Mary Ann Fox	Mary K. Potteiger	Mrs. Margaret Wingard
Verna Gayman	Ethal Ramer	Elizabeth Wittennyer
Margaret Grenoble	Anna Reeder	Helen Yeager
Birdie Hamm		

Tenors

Oren Benner	Edmund Kozlowski	Clyde Sechler
Harold Bollinger	Michael Mastovich	Dr. Adam Smith
Walter Freed	Paul Ochenrider	Prof. Frederick C. Stevens
Prof. W. Donald Hemphill		John Ulp

Basses

Stanley Aughenbaugh	Lewis Howells	Anthony Pane
Howard Baldwin	Horace Hutchison	James Pearce
Donald Billman	Paul Lucas	Fred Schmidt
George Clark	Joseph Mehalow	Barner Swartz
James Diffenderfer	Edward Mekeel	Maxwell Valsing
James Higgins		

Season 1937—Oratorio "Saint Paul" - - - - - *Mendelssohn*

Soloists

Dorothy Orton, Soprano, New York	Edward Kane, Tenor, New York
Dorothy Ulrich, Contralto, Harrisburg	Leonard Treash, Bass-Baritone, Philadelphia



C
L
U
B
S



Front Row—Bolg, Derstin, Hisdorf, Barnes, Saveri, Gundrum, Edlund
 Second Row—Schmre, Rheinhart, Pifer, Miss Boe, Jarrett, Finkbeiner, Dearnly
 Third Row—Jones, Kimmel

LE CERCLE FRANCAIS

Organized 1927

OFFICERS

JEAN RHEINHART	- - - - -	<i>President</i>
HELEN HISDORF	- - - - -	<i>Secretary</i>
ELEANOR SAVERI	- - - - -	<i>Treasurer</i>

Faculty Advisor—MISS MARGRETTA BOE

The Le Cercle Francais has grown rapidly in membership and now includes practically all of the students who have taken one year or more of French. Through the medium of plays, songs, games, and various social functions, the organization's aim has been to promote an interest in the language.



Front Row—Pane, Grenninger, Gensel, Richard, Sivick, Nye, Owen
 Second Row—Jarrett, Beamenderfer, Bingaman, Herr, Hemmerly, Richard, Jones, Corson, Mann
 Third Row—Dixon, Nuedoerffer, Ayers, Baylor, Dr. Gilbert, Kaltreider, Spiggle, Reese, West
 Fourth Row—Wetzel, Klinger, Rothmel, Boyer, Shutt, Stevens, Rogers, Rheinart, Ahl, Boyle, Hill,
 Dearnly, Yingling, Bier, Kimmel, Oehenreider

DEUTSCHE VEREIN

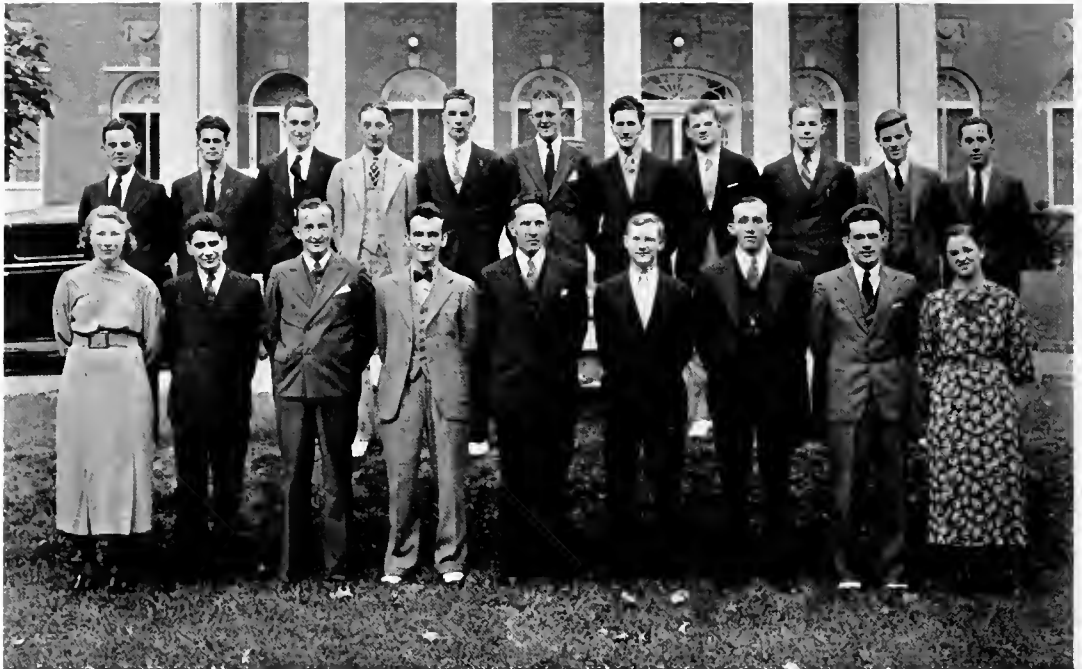
Organized 1930

OFFICERS

RUTH HEMMERLY - - - - - *President*
 ROBERT HERR - - - - - *Vice President*
 MARY BETH RICHARD - - - - - *Secretary-Treasurer*

Faculty Advisor—DR. RUSSELL GILBERT

Der Deutsche Verein was organized to give students interested in German more opportunity for conversation in German and to bring these students in intimate contact with each other in a German atmosphere.



Front Row—Ahl, Shaheen, Dorsett, Klinger, Dr. Ahl, Clark, Karschner, Schaeffer, Stevens
 Second Row—Edwards, Gensel, Grenninger, Otto, Drumbeller, McKeown, Grenninger,
 Diffenderfer, Kniseley, Nye, Beachel

PHI KAPPA

Organized 1929

OFFICERS

WOODROW KLINGER	- - - - -	<i>President</i>
CLARENCE SCHAEFFER	- - - - -	<i>Vice President</i>
GEORGE CLARK	- - - - -	<i>Secretary</i>
REED GRENNINGER	- - - - -	<i>Treasurer</i>

Faculty Advisor—DR. AUGUSTUS AHL

The aim of this organization is to create and cultivate in its members a deeper appreciation of the Greek language and culture. A certain class rating is required before membership is offered to the student.



First Row—Dr. Leese, Gayman, Brown, Fredericks, Poyck, Marshall, Ramer, Reese, Miss DuFrain
 Second Row—Smith, Wensel, McBride, Prof. Reitz, Herr, Gelnett, Benyon
 Third Row—Goyne, Paul, Hauff

BUSINESS SOCIETY

Organized 1925

OFFICERS

WALTER POYCK	- - - - -	<i>President</i>
ANDREW FREDERICKS	- - - - -	<i>Vice President</i>
ARLINE MARSHALL	- - - - -	<i>Treasurer</i>
HELEN HISDORF	- - - - -	<i>Secretary</i>

Faculty Advisors

DR. CHARLES LEESE	PROF. IRVIN REITZ
PROF. GEORGE WOOD	MISS VIOLA DUFRAIN

To promote interest in the various fields of Commerce, Business, and Economics. Membership is open to students taking six hours of credit under one of the professors in the Business and Commercial departments.



Front Row—Corson, Fry, Richard, Hemmerly, Jones
 Second Row—Prof. Houtz, Dr. Ovrebo

BIEMIC SOCIETY

Organized 1896

OFFICERS

MARY BETH RICHARD - - - - - *President*
 RUTH HEMMERLY - - - - - *Secretary-Treasurer*

Faculty Advisors

DR. GEORGE FISHER PROF. JOHN HOUTZ
 DR. PAUL J. OVREBO PROF. FISK SCUDDER

The club is maintained to further the interest of the students in Biology, Chemistry, and Physics. The club derives its name from a combination of two letters taken from the names of the three major sciences.



First Row—Boyer, Prof. Gilbert, Dr. Dunkleberger, Prof. Wood
 Second Row—Shafer, West, Klinger, Grenninger

DEBATING SOCIETY

Organized 1927

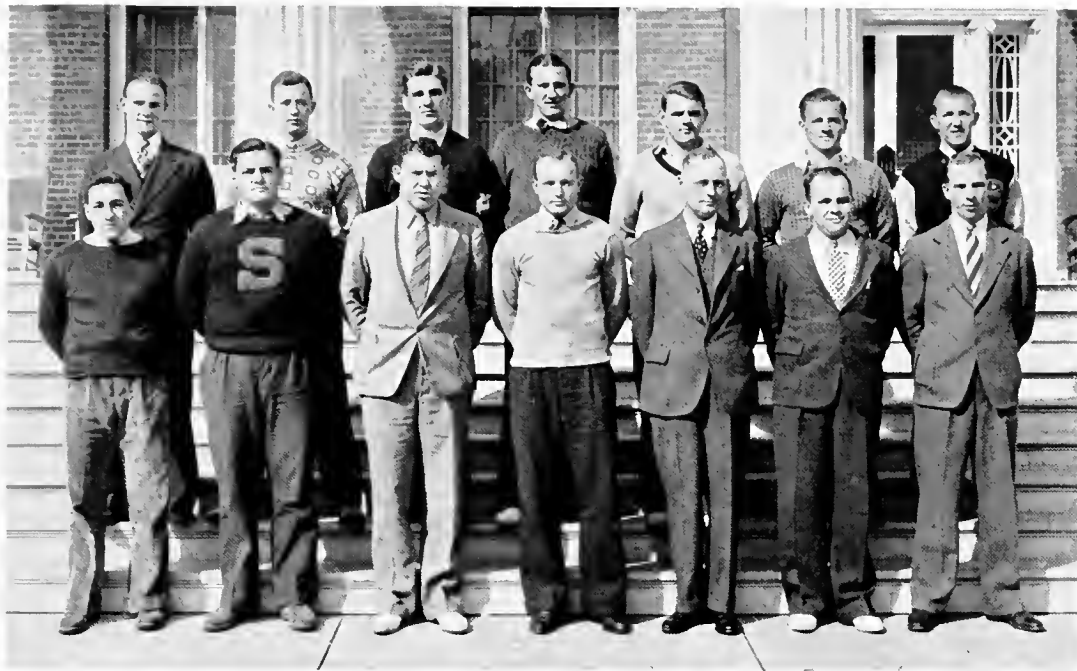
OFFICERS

DR. GILBERT	- - - - -	<i>Coach</i>
REED GRENNINGER	- - - - -	<i>Manager</i>

Faculty Advisors

DR. WIEDER GILBERT	DR. GEORGE WOOD
DR. GEORGE DUNKELBERGER	DR. WILLIAM RUSS

To develop within the individual the ability to speak clearly and logically before the public and to consider questions of importance in an unbiased manner. It is hoped that in this way an intercollegiate fellowship may be created.



First Row—Berkeley, Lewis, Extrom, Valunis, Dr. Cottom, Spitzner, Alexander
Second Row—Swope, Irvin, Shuty, Wetzel, Keller, Pezick, Badger

COLONY ORGANIZATION

Organized 1934

One of the youngest organizations at Susquehanna, this group is comprised of those of our athletes who live at the State Colony. These men are to be greatly admired for the sacrifices which they are making in order to receive a college education.



RECOLLECTIONS



MAY DAY COURT



MARCELLA CHAYA
Queen of the May



MARY STIREWALT
Lady-in-Waiting

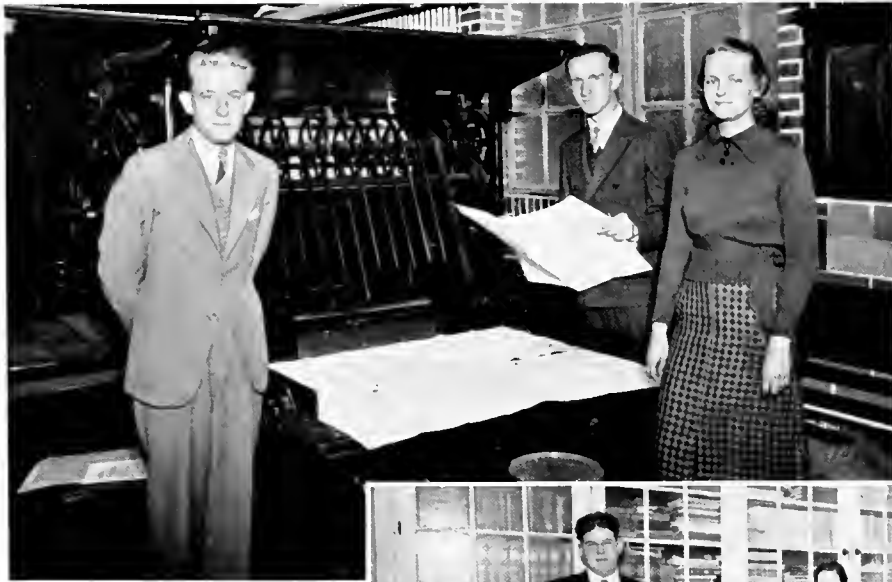
MAY DAY 1936



MAY DAY INFORMALS



These informals furnish a small idea of the beauty of the May Day Coronation of the Queen of May. The pictures include the bringing of the May Pole, the Queen in procession, the battle of Robin Hood and Little John, and the May Pole dance.



EDITORIAL STAFF
 Left to Right—
 Mosher, Gelnett, Yingling



BUSINESS STAFF
 Left to Right—Benion, Lauver, Spitzner, Gaymen, Miller, McBride, Dr. Leese

THE "SUSQUEHANNA"

THE STAFF

FRANCIS GELNETT, ROBERT MOSHER	-	-	-	-	-	-	<i>Editors-in-Chief</i>
CLYDE SPITZNER	-	-	-	-	-	-	<i>Business Manager</i>
ORVILLE FITZGERALD	-	-	-	-	-	-	<i>Managing Editor</i>
ESTHER YINGLING	-	-	-	-	-	-	<i>News Editor</i>
HENRY KEIL	-	-	-	-	-	-	<i>Sports Editor</i>
MARK GUTHRIE	-	-	-	-	-	-	<i>Advertising Manager</i>
HERBERT LAUVER	-	-	-	-	-	-	<i>Circulation Manager</i>

Faculty Advisers

DR. ARTHUR HERMAN WILSON, Editorial
 DR. CHARLES LEESE, Business

JUNIOR PROM

GENERAL COMMITTEE

Morgan Edwards, Class President

Karl Kniseley
Kent Worthington

Preston Smith

Stanley Anghenbaugh
George Kimmel

Program Committee

Karl Kniseley, Chairman

Martha Bolig

Decoration Committee

Kent Worthington, Chairman
Helen Hisdorf
Mildred Pifer

James Diffenderfer
Elizabeth Fry
Caroline Grubb
Esther Kaufman

Jean Rheinbart
Eleanor Brown
Mary Jarrett

Ticket Committee

Preston Smith, Chairman

Robert Boyer
John Rakshys

Ethel Ramer

Orchestra Committee

Stanley Anghenbaugh, Chairman

Paul Lucas

James Higgins

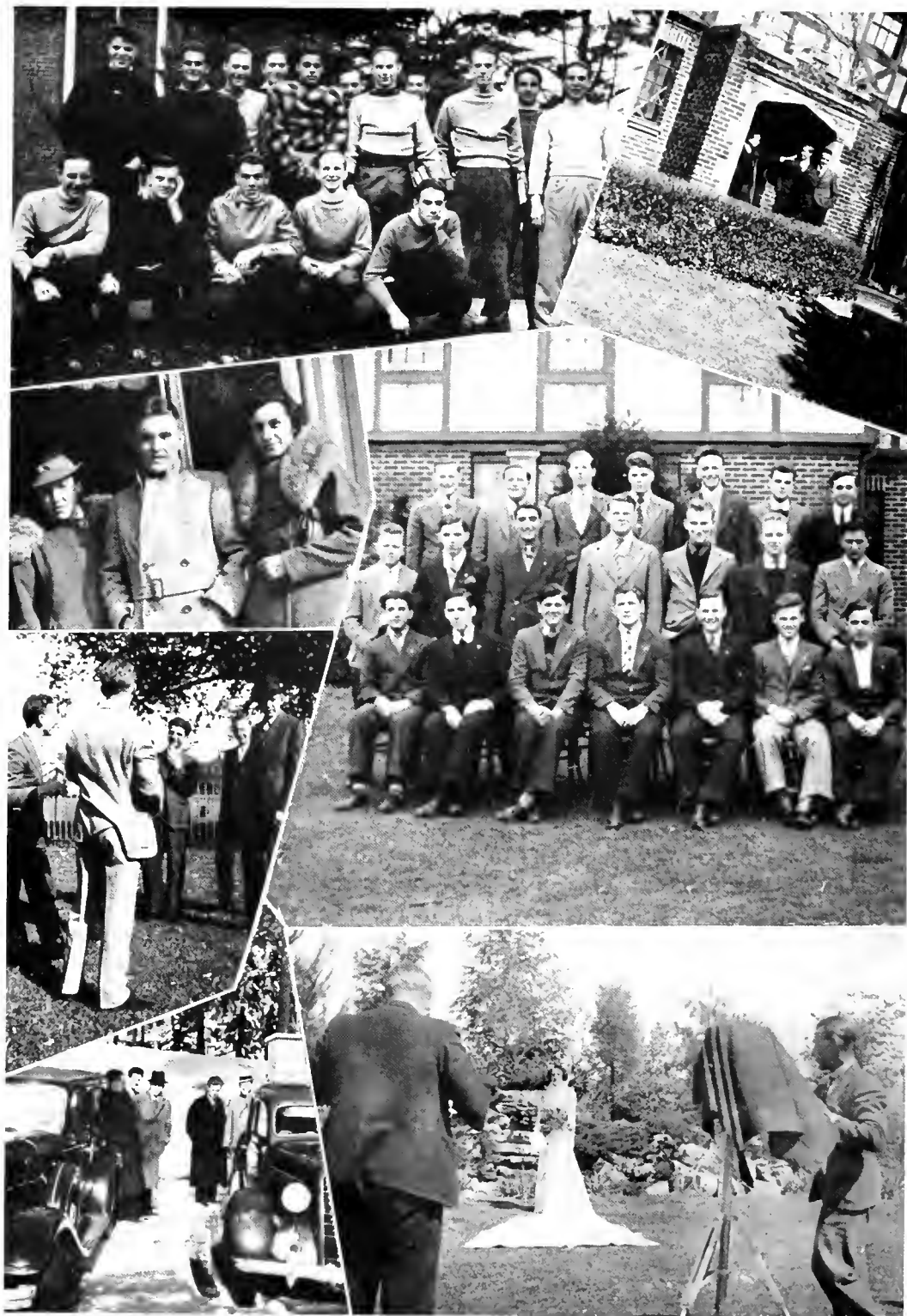
Furniture Committee

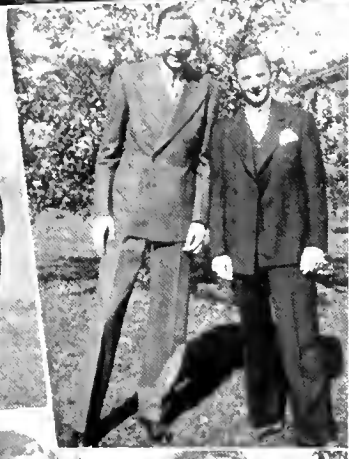
George Kimmel, Chairman

Donald Wert
Charles Stauffer

John Paul



















ATHLETICS

IN CLASS-ROOM AND ON GRID-IRON, FRIENDS, S.
U. WILL STAND THE TEST. DE -
FEAT TO HER A WORD UN-KNOWN, HER
MOT-TO " DO YOUR BEST."



Stagg, Coach

Badger and Alexander, Co-Captains

VARSITY FOOTBALL

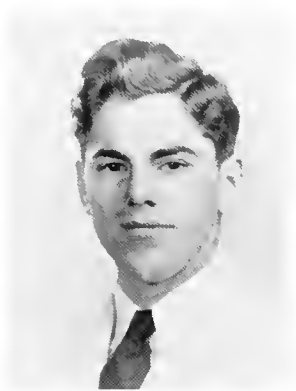
Susquehanna looks forward to the prospects of a successful 1938 football season. Fate seemed to be working against the Crusaders during the past season. A post-season misunderstanding led to the now famous football strike. It took practically the entire season to rebuild the enthusiasm and spirit which was lost. The P. M. C. game proved that this had finally been accomplished.

The Crusaders will start the 1938 season with a wealth of undeveloped material that is certain to evolve into a winning eleven. Already, Coach Stagg has started the spring practice sessions and is very favorably impressed by the showing of the football aspirants.

The 1938 eleven will be guided by Shnty and Swope, the recently elected co-captains.



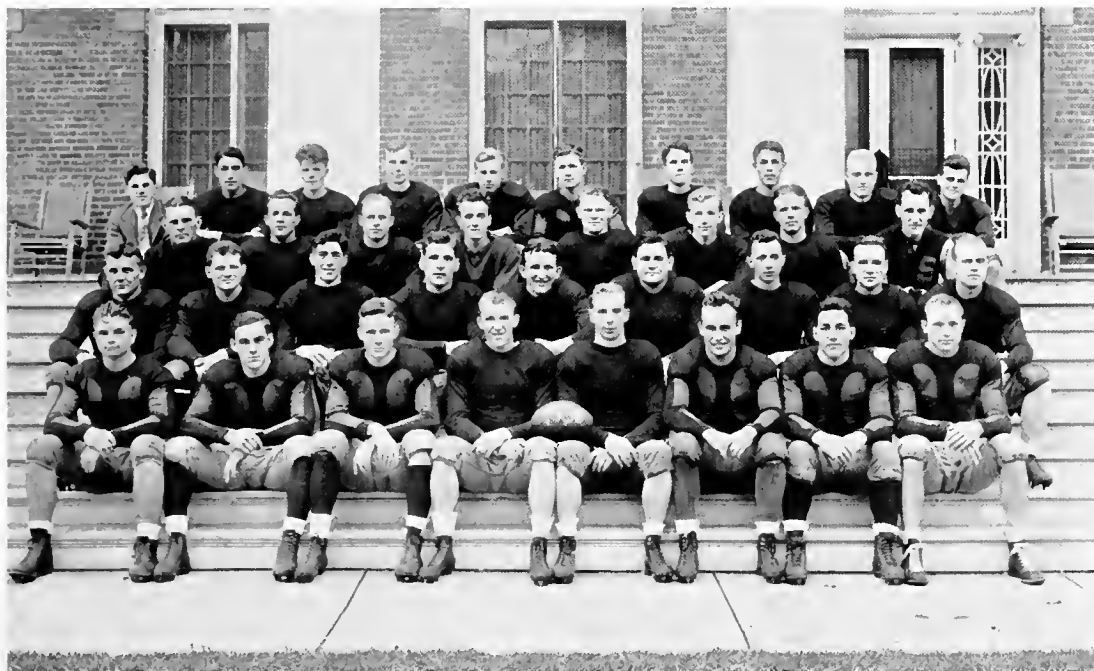
McBride and Nye, Cheerleaders



Ulp, Manager

GRIDIRON SCORES

September 26—Susquehanna	21	Bloomsburg	7	Home
October 3—Susquehanna	16	Moravian	26	Home
October 10—Susquehanna	12	Drexel	19	Away
October 17—Susquehanna	0	City College	0	Away
October 24—Susquehanna	6	Washington	0	Away
November 7—Susquehanna	13	Princeton "B"	0	Home
November 14—Susquehanna	0	Roanoke	13	Away
November 21—Susquehanna	6	P. M. C.	0	Away





Susquehanna 21

Bloomsburg S. T. C. 7

The Crusader eleven opened its 1936 season by renewing relations with an ancient rival, Bloomsburg State Teachers College. The upriver eleven fell victim to the powerful onslaught of Coach Stagg's mystery eleven to the tune of 21 to 7.

The brunt of the burden fell to the hands of the capable Walt Kozak and that live-wire Berkley. The combined efforts of these two lads gave us the three touchdowns of the afternoon. Time after time that powerful Stagg line opened up in the opposition's line making it possible for our hard-hitting backs to make successive gains. On the defensive Swope and Keller stole the show, throwing the opposition for decisive losses.

Moravian 26

Susquehanna 16

The Staggmens of Moravian met the Staggmens of S. U. in the second battle of our grid season. In a powerful first half attack the Crusader eleven was able to pile up a total of sixteen points with a field goal by Tom Lewis and touchdowns by Berkley and Kozak.

In the second half, the Greyhounds opened up with a barrage of passes that completely swept the Crusaders off their feet. When the final whistle blew the score stood 26-16 with the Moravian lads in the big end of the score.

Both teams played brilliant ball. The Crusaders distinguished themselves in powerful line drives; the Moravian lads excelled in their aerial attack.

Drexel 19

Susquehanna 12

October 10th saw the Crusaders in their annual tilt with a powerful Drexel eleven. The hard fought battle ended in a score of 19-12, with the Drexel lads holding down the big end of the score.

During the first half the Orange and Maroon eleven just couldn't seem to get its offensive working smoothly, with the result that the half ended 12-0 in favor of Drexel.

The second half witnessed a great change in the Crusaders. They came back fighting and determined, with Berkley and Tom Valunis going over the line for counters. The twelve-point lead held by Drexel seemed to be a bit too much to overcome and the Dragons pushed over another score, giving them the game with a score of 19-12.

City College of N. Y. 6

Susquehanna 0

Susquehanna suffered its third straight defeat in a hotly contested battle at the hands of a powerful C. C. N. Y. eleven. The score remained 0-0 until the final thirty seconds of the game. A poor punt on the part of the Crusaders put the opposition in a position to score. After a series of power plays they plunged over the line for the winning score.

The C. C. N. Y. lads outplayed the Crusaders slightly but the stubborn defensive play of the Stagmen held off C. C. N. Y. threats many times. Kozak and Berkley repeatedly made brilliant runs while Valunis kicked out of danger. On the line Badger, Shuty, and Alexander played exceptionally fine ball.





Washington College 18 Susquehanna 6

On October 24 Susquehanna suffered a severe drubbing at the hands of a large and powerful Washington College combination at Chestertown, Maryland.

The Shoremen impressed on the minds of the Orange and Maroon eleven in the first few minutes of play that they held the whip hand by completing a sixty-yard march for a touchdown.

Although the game ended 18-6 in favor of the Chestertown lads, the Staggmens fought the battle of their lives, bringing out some brilliant playing. Berkley and Kozak, as usual, gained their share of ground. Shobert, that hard-hitting back of last year's fame, finally hit his stride in this game and proved to be a great threat to the Shoremen.

Susquehanna 13 Princeton 6

Homecoming Day found the Crusaders in top notch form. Kozak, Alexander, Badger, and Berkley starred as the Staggmens upset dope by subduing the Baby Tigers with a 13-6 win.

Both teams took to the air in the first half but were unsuccessful in their attempts to score. The Tigers finally pushed a tally over the line late in the second quarter.

In the second half the Crusaders seemed to come back with that old-time Susquehanna spirit that had been lacking so far this year. They literally steam-rolled over the Princeton boys in two long marches that ended in touchdowns by Kozak and Badger. The hard charging line of the Orange and Maroon played outstanding ball with Swope and Sluty ever in the thick of the battle.

Roanoke 13

Susquehanna 0

The Susquehanna eleven was downed in a hotly contested battle with Roanoke at Salem, Va., with a final score of 13-0.

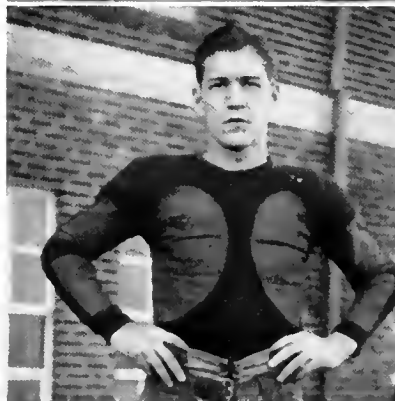
The Orange and Maroon eleven held the Dixie lads scoreless during the first half. Due to lack of reserve power, the Crusaders went down fighting in the second half when Roanoke pushed over the two winning touchdowns. Although the Stagmen were outweighed, they were not outfought. They continually gave the Dixie boys plenty to worry about. Berkley and Kozak functioned brilliantly but were unable to score. Swope did a marvelous bit of work on the line, stopping play after play with his hard-hitting tackles.

Susquehanna 6

P. M. C. 0

In their annual tussle with their arch rivals the Crusaders handed P. M. C. a 6-0 defeat. Doing what had been declared impossible by sports writers the Crusaders ran rampant over the Cadet eleven. Kozak literally tore the Cadet line to bits, while Alexander and Badger gave every ounce of their energy to stopping the power onslaught of the Cadets. These three lads were playing their last game for the Orange and Maroon and they certainly gave us plenty to remember them by.

Grim determination on the part of the greatly underrated Crusader eleven enabled them to hand the huskies from P. M. C. a sound drubbing. A win over these old-time rivals makes our season a real success.





Fredericks, Captain



Edwards, Manager

VARSITY BASKETBALL

Winning possibilities in the basketball horizon were very gloomy at the start of the 1937 season. Susquehanna was beginning the season with two lettermen—Captain Fredericks and McBride. The lettermen from the colony, three regulars from the last season, had been ruled ineligible. There was a wealth of reserve material but, at the time, little of it was to be classed as varsity brand. Coach Stagg did not give up hope for he realized that, with practice, he could present a fighting five.

As we look back on the last season, we see a true example of team evolution. Although we won few games, every game was a sturdy fight against superior odds. We are proud to say that, although we had one of the smallest college basketball fives in the country, it was one with a will that cannot be surpassed.

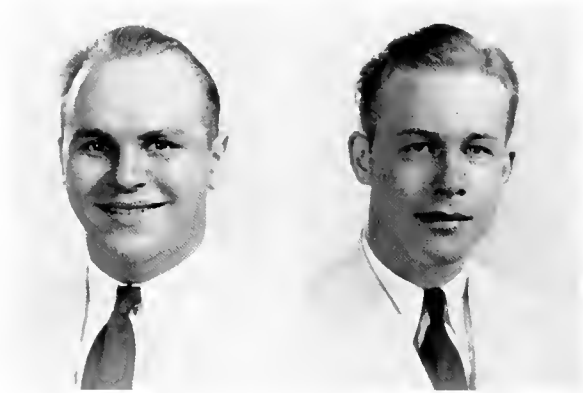
Prospects look exceptionally bright for the next season. The squad will lose only two lettermen—Captain Fredericks and Alexander. This means that we will enter the season with a presentable array of experienced basketball players.

Wert and Rakshys have been elected the co-captains for the next season. Optimistically we look forward to a winning basketball season.

BASKETBALL SCORES

December 7—Susquehanna	30	W. P. I.	42	Home
December 12—Susquehanna	29	M. S. T. C.	57	Home
December 13—Susquehanna	36	Alumni	29	Home
December 15—Susquehanna	28	Roanoke	36	Home
December 17—Susquehanna	26	Bloomsburg	41	Home
January 8—Susquehanna	19	Bloomsburg	33	Away
January 9—Susquehanna	19	Penn State	52	Away
January 12—Susquehanna	39	Elizabethtown	22	Home
January 15—Susquehanna	27	Moravian	29	Home
January 22—Susquehanna	29	Bucknell	37	Away
February 1—Susquehanna	31	Alfred University	40	Away
February 2—Susquehanna	33	Hartwick College	56	Away
February 5—Susquehanna	29	West Chester S. T.	47	Home
February 6—Susquehanna	25	Moravian	35	Away
February 9—Susquehanna	37	Elizabethtown	36	Away
February 11—Susquehanna	33	Upsala College	35	Home
February 19—Susquehanna	24	Drexel College	32	Away
February 20—Susquehanna	30	M. S. T. C.	63	Away
February 26—Susquehanna	29	Bucknell	39	Home





Spitzner, Captain

Kniseley, Manager

VARSITY BASEBALL

With a wealth of material, Coach Roach is confident of a most successful 1937 season. He has found gratifying results in the pitching of Badger, Hummel, Dreher, and Gensel. Possibilities are evident in the showing of Keil, Klinger, Wert, and Baylor at the receiving end.

The infield looks exceptionally strong with "Bunky" Fredericks at the initial sack, "Junie" Miller at second, Cotton at short-stop, and Bollinger at third.

Alexander, Badger, Hummel, Wert, and Hummel are striving for the outfield positions.

The only dark cloud in the Crusaders' baseball horizon is the fact that Captain Spitzner will not be able to fill the second base position because of a trick knee injury, acquired during the football season. Coach Roach is thinking of shifting Spitzner to an outfield position where the risk on his injury will not be as great and the team can benefit by his hard hitting at the plate.

BASEBALL SCORES

April 20—Susquehanna	6	Albright	13	Away
April 21—Susquehanna-Moravian—Rain				
April 25—Susquehanna	5	Bloomsburg	18	Home
April 28—Susquehanna	7	Bucknell	14	Away
May 2—Susquehanna	0	Gettysburg	11	Away
May 5—Susquehanna	3	Moravian	2	Home
May 7—Susquehanna	6	Elizabethtown	14	Away
May 8—Susquehanna	1	Albright	9	Home
May 9—Susquehanna	6	Lebanon Valley	3	Home
May 13—Susquehanna	5	Bucknell	6	Home
May 15—Susquehanna	6	Elizabethtown	17	Home
May 23—Susquehanna	5	Bloomsburg	10	Away





Toomey, Captain



Schaffer, Manager

VARSITY TRACK

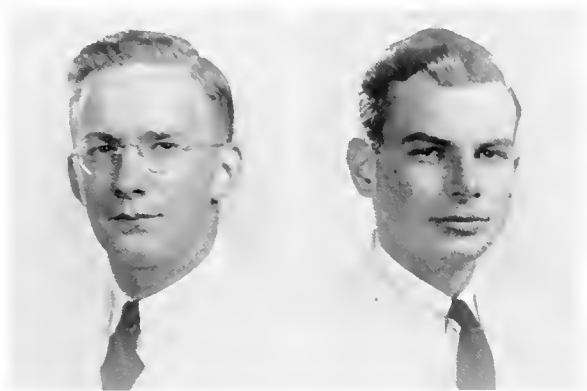
SCHEDULE

April 25 —Interclass Relays
 April 24-25—Penn Relays
 April 29 —Interclass Track Meet
 May 4 —Susquehanna versus Bloomsburg
 May 16 —C. P. C. T. C. Meet
 May 22 —Susquehanna versus Bucknell

At Susquehanna
 At Philadelphia
 At Susquehanna
 At Swarthmore
 At Susquehanna



Front Row—Bice, Davis, Rogers, Diffenderfer, Toomey, Fitzgerald, Rakshys, Richard, Leam
 Second Row—Schaffer, Wray, Grenninger, McKeown, Lengler, Stockdale, Sander, Gulick,
 Kinney, Kaufman, Orwig



Hostetter, Captain

Owen, Manager

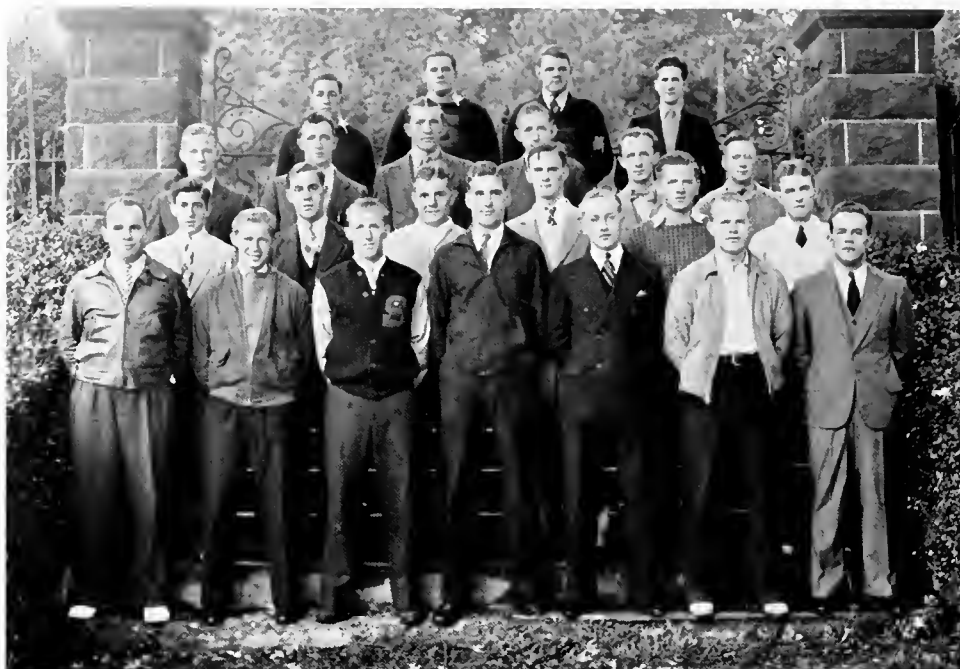
VARSITY TENNIS

TENNIS SCORES

April 25—Susquehanna	Lost to Lebanon Valley	Home
May 1—Susquehanna	Lost to Elizabethtown	Away
May 4—Susquehanna	Lost to Bloomsburg	Away
May 6—Susquehanna	Lost to Scranton Keystone Jr. College	Home
May 9—Susquehanna	Won From Wyomissing Polytechnical	Home
May 14—Susquehanna	Lost to Bucknell	Home
May 19—Susquehanna	Lost to Bucknell	Away
May 21—Susquehanna	Lost to Elizabethtown	Home



Left to Right—Owen, Rakshys, Gaver, Seavey, Hostetter, Keim, Sivick, Coach Stagg



First Row—Spitzner, Fredericks, Badger, Shuty, Benner, Goyne, Toomey
 Second Row—Sankeld, Miller, Bolig, Swope, Pezick, Bollinger
 Third Row—Shobert, Irvin, Wetzel, McBride, Gelnett, Hostetter
 Fourth Row—Berkeley, Lewis, Keller, Grenninger

VARSITY "S" CLUB

Organized in 1924

Requirements for Membership—Attending of classes for one or more years and the winning of the "S" in any varsity sport.

1936 LETTERMEN

Thomas Valunas—Football, Baseball, Track, Basketball	Joseph Pezick—Football
Kenneth Alexander—Football, Basketball, Baseball	Andrew Fredericks—Basketball
June Miller—Football, Basketball, Baseball	Harry McBride—Basketball
Kenneth Badger—Football, Baseball	Oren Benner—Track
Ralph Shobert—Football, Track	Luke Toomey—Track
Carmen Berkeley—Football, Basketball	Reed Grenninger—Track
Thomas Lewis—Football, Baseball	Roy Bolig—Football, Track
Richard Wetzel—Football, Basketball	Francis Gelnett—Track
Clyde Spitzner—Baseball	Harry Swope—Football
John Goyne—Football	Daniel Cotton—Baseball
Lewis Baylor—Football	John Hostetter—Tennis
Peter Shuty—Football	Harold Bollinger—Baseball

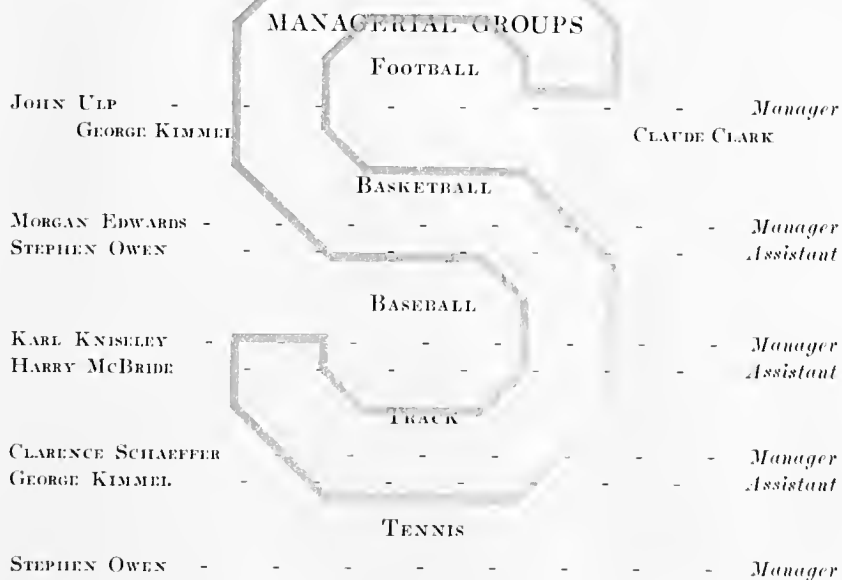


Left to Right—Kimmel, Edwards, Kniseley, Owen, Schaeffer

ORANGE KEY CLUB

Organized in 1931

Purpose—Organized for the purpose of creating co-operation among the manager and assistant managers of the various athletic teams.



1937-1938 SCHEDULE

TRACK

Wednesday, April 14—Interclass Track Meet
Saturday, April 17—Dickinson at Susquehanna
Tuesday, April 27—Bloomsburg at Susquehanna
Saturday, May 1—Invitation Track Meet, West Chester
Wednesday, May 5—Susquehanna at Bucknell
Monday, May 10—Susquehanna at Bloomsburg
Monday, May 17—Albright at Susquehanna
Thursday, May 20—Interfraternity Track Meet

TENNIS

Monday, April 19—Susquehanna at Bloomsburg
Saturday, April 24—Bloomsburg at Susquehanna
Wednesday, April 28—Susquehanna at Lebanon Valley
Saturday, May 1—Susquehanna at Moravian
Monday, May 3—Susquehanna at Wyomissing
Thursday, May 6—Scranton Junior College at Susquehanna
Friday, May 7—Elon College at Susquehanna
Wednesday, May 12—Elizabethtown at Susquehanna
Tuesday, May 18—Susquehanna at Elizabethtown
Friday, May 29—Wyomissing at Susquehanna

BASEBALL

Monday, April 19—Susquehanna at Bloomsburg
Wednesday, April 21—Susquehanna at Gettysburg
Saturday, April 24—Bloomsburg at Susquehanna
Monday, April 26—Susquehanna at Albright
Tuesday, April 27—Susquehanna at Moravian
Wednesday, April 28—Susquehanna at Lebanon Valley
Tuesday, May 4—Elizabethtown
Saturday, May 8—Penn State
Monday, May 10—Bucknell
Wednesday, May 12—Haverford
Tuesday, May 18—Elizabethtown at Susquehanna
Friday, May 21—Susquehanna at Upsala
Saturday, May 22—Susquehanna at Dickinson
Tuesday, May 25—Bucknell at Susquehanna

FOOTBALL

Saturday, September 25—Rutgers at New Brunswick, N. J.
Saturday, October 2—Drexel at Drexel
Saturday, October 16—C. C. of N. Y. at Susquehanna
Saturday, October 23—Washington College at Susquehanna
Saturday, October 30—Moravian at Bethlehem, Pa.
Saturday, November 6—Bloomsburg at Bloomsburg
Saturday, November 13—Roanoke at Susquehanna
Saturday, November 20—Haverford at Susquehanna

BASKETBALL

(Not Complete)

Wednesday, December 8—Bloomsburg at Susquehanna
Saturday, December 11—Dickinson at Carlisle
Friday, December 17—Bloomsburg at Bloomsburg
Saturday, January 8—Penn State at State College
Saturday, January 22—Moravian at Susquehanna
Friday, February 4—Wyomissing Polytechnic Institute at Wyomissing
Saturday, February 5—Moravian at Bethlehem
Thursday, February 10—Earlham College, Indiana, at Susquehanna
Saturday, February 12—Upsala at East Orange, N. J.
Saturday, February 19—Bucknell at Susquehanna



Reeder, Instructor

WOMEN'S ATHLETICS

Susquehanna may well be proud of the fine athletic facilities which she provides for her women students. The Women's Athletic Association, in co-operation with Miss Reeder, has successfully carried out a wide and varied schedule of athletic activities for the Seiberites. Unusual interest has been taken in the various inter-class sports, with the result that our women have developed some very powerful teams in the various sports. The sports program includes basketball, volleyball, softball, hockey, tennis, golf, table tennis, and archery.





W. A. A.

OFFICERS

MARGARET CORSON - - - - - *President*
RUTH HEMMERLY - - - - - *Vice President*
MARTHA BOLIG - - - - - *Secretary-Treasurer*

Membership in the W. A. A. is open to those girls who have earned either a letter or numerals while they have been in college.

SPORT MANAGERS FOR 1937-1938

Mollie Fox—Hockey	Mary Barnes—Archery
Eleanor Jones—Soccer	Mary Scott—Tennis
Arline Marshall—Basketball	Mary Barnes—Golf
Mary Beth Richard—Volleyball	Mary Barnes—Hiking
Evelyn Janson—Baseball	Eleanor Jones—Bicycling

INTRAMURAL WINNERS FOR 1937-1938

Hockey—Class of 1939	Volleyball—Class of 1937
Soccer—Class of 1940	Tennis—Class of 1938
Basketball—Class of 1938	Baseball—Class of 1937

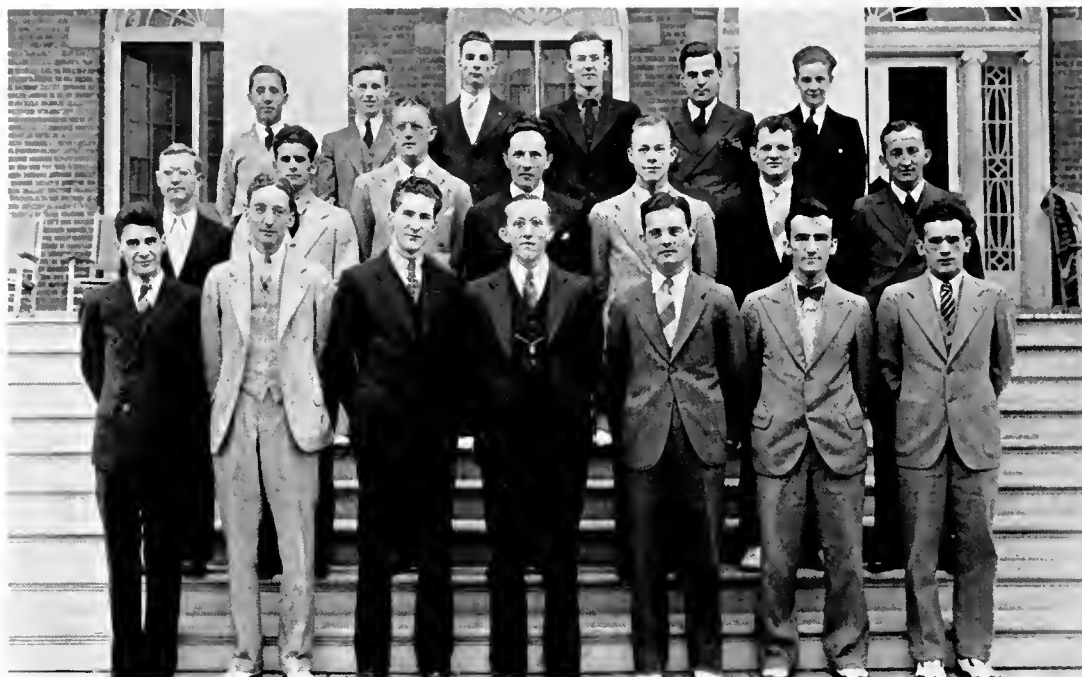






SOCIETIES

WITH VIM, THEN LET US GIVE THE YELL, DIS -
PLAY HER BAN-NER BRIGHT, THAT
ALL MAY KNOW OF OLD S. U. SHE
STANDS FOR GOD AND RIGHT.



Front Row—Shaheen, Otto, Grenninger, Karschner, Edwards, Klinger, Schaffer
 Second Row—Clark, Gensel, McKeown, Dr. Ahl, Kniseley, Diffenderfer, Dorsett
 Third Row—Beachel, Nye, Drumheller, Sauder, Ziegler, Haines

PRE-THEOLOGICAL CLUB

Organized 1917

OFFICERS

LESTER KARSCHNER	- - - - -	President
REED GRENNINGER	- - - - -	Vice President
MORGAN EDWARDS	- - - - -	Secretary-Treasurer

Faculty Advisor—DR. AUGUSTUS AHL

The club's purpose is to keep alive and foster the spiritual ideals of the men preparing for the Gospel ministry. Monthly meetings are held for the purpose of discussing problems which face the ministerial student.



Front Row—Edwards, Yingling, Fitzgerald, Richard, Shaheen
 Second Row—Neudoerffer, Croft, Bolig
 Third Row—Shobert, Clark, Diffenderfer

STUDENT CHRISTIAN ASSOCIATION

Organized 1934

OFFICERS

ORVILLE FITZGERALD	- - - - -	<i>President</i>
MARY SCOTT	- - - - -	<i>Vice President</i>
LUKE TOOMEY	- - - - -	<i>Vice President</i>
ESTHER YINGLING	- - - - -	<i>Recording Secretary</i>
MARY BETH RICHARD	- - - - -	<i>Corresponding Secretary</i>
MORGAN EDWARDS	- - - - -	<i>Treasurer</i>

Faculty Advisors

PRESIDENT G. MORRIS SMITH	MRS. T. W. KRETSCHMANN
DR. PAUL J. OVREBO	DR. WILLIAM A. RUSS, JR.
MISS GLADYS ERDAHL	

The purpose of the S. C. A. is to help every student live his or her full personality. The cabinet sponsors vesper services, Freshman Week activities, and the Freshman Handbook.



Seated—Stauffer, Smith, Kozak, Long, Volunas, Fredericks, Toomey
 Standing—Higgins, Prof. Houtz

MEN'S STUDENT COUNCIL

OFFICERS

CHESTER LONG	- - - - -	<i>President</i>
WALTER KOZAK	- - - - -	<i>Vice President</i>
PRESTON SMITH	- - - - -	<i>Secretary</i>

Faculty Advisor—Prof. JOHN J. HOUTZ

This council was organized to foster a closer union of the students by creating a better mutual understanding between the faculty and the student body. The council is composed of two men from each fraternity and two non-fraternity men.



Left to Right—Scott, Grubb, Jones, Barnes, Jones, Miss Erdahl, Hemmerly

WOMEN'S CO-OPERATIVE COUNCIL

OFFICERS

MARY BARNES - - - - - *President*
 CAROLINE GRUBB - - - - - *Secretary-Treasurer*

Faculty Advisor—MISS GLADYS B. ERDAHL
 Dean of Women

The purpose of this organization shall be to effect more comfortable, more progressive, and more harmonious living conditions on the campus, and to regulate in a just and orderly manner all student activities within its jurisdiction.



Left to Right—Wensel, Kniseley, Shellenberger, Fitzgerald, Poyck, Cotton

INTERFRATERNITY COUNCIL

Organized 1928

OFFICERS

WALTER S. V. POYCK	- - - - -	<i>President</i>
KARL KNISELEY	- - - - -	<i>Secretary</i>
ORVILLE FITZGERALD	- - - - -	<i>Treasurer</i>

Faculty Advisor—DEAN GEORGE DUNKLEBERGER

The purpose of the council is to regulate interfraternity relationships in a just and orderly manner promoting a mutual and beneficial understanding between the several fraternities.



First Row— Dr. Wood, Dr. Kretschman, Leese, Shafer, Barnes, Dr. Ahl, Dr. Leese
 Second Row—Prof. Brungart, Shaheen, Karschner, Klingler, Dr. Woodruff
 Third Row—Dr. Smith, Prof. Reitz, Dr. Russ, Dr. Dunkelberger

PI GAMMA MU

Organized 1927

OFFICERS

HENRY SHAFER - - - - - *President*
 MARY BARNES - - - - - *Vice President*
 DR. KRETSCHMANN - - - - - *Secretary-Treasurer*

Faculty Advisors

DR. T. W. KRETSCHMANN	DR. CHARLES LEESE	PROF. IRWIN REITZ
DR. GEORGE DUNKLEBERGER	DR. JOHN WOODRUFF	DR. WILLIAM RUSS
DR. AUGUSTUS AHL	PROF. EDWIN BRUNGART	DR. G. MORRIS SMITH

The organization serves as a means of bringing together those students who manifest an active interest in social science. Requirements for admittance include at least twenty semester hours in social science with a "B" average, evidence of good character, and a satisfactory scholastic standing in general.



Left to Right—Keil, Long, Toomey, Fredericks, McBride, Shellenberger

INTRA-MURAL BOARD

OFFICERS

LUKE TOOMEY	- - - - -	<i>President</i>
ANDREW FREDERICKS	- - - - -	<i>Vice President</i>
HENRY KEIL	- - - - -	<i>Treasurer</i>
DAVID SHELLENBERGER	- - - - -	<i>Publicity Manager</i>

Faculty Advisor—COACH ALONZO STAGG, JR.

This group takes care of all class competition in the various sports. The competitive sports include soccer, football, basketball, and track. All rules and regulations governing the competition are decided by this body.



FINIS



OF SUS-QUE-HAN-NA NOW WE SING, LET SUS-QUE-HAN-NA'S
PRAIS-ES RING, LOY-AL TO HER BY NIGHT AND BY NOON,
WE'LL RAISE THE OR-ANGE AND MA-ROON. LOY-AL TO HER BY
NIGHT AND BY NOON, WE'LL RAISE THE OR-ANGE AND MA-ROON.



OUR ADVERTISERS

. . .

We express our deep appreciation to our advertisers for their kind assistance and interest in the 1938 LANTHORN. Their co-operation has greatly aided in the success of this publication. We ask that you aid them by your patronage.



Zamsky Studio, Inc.

Sittings by
Appointment

Telephone—Pennypacker
6190—8070

There Is No Substitute For
EXPERIENCE



The ZAMSKY STUDIO, INC., has successfully handled Yearbook
Photography for twenty years. The skilled personnel and
up-to-date equipment necessary for such a record
is reflected in this book and is your
assurance that you may—

“Count on Zamsky”



902 CHESTNUT STREET
PHILADELPHIA, PA.

YALE RECORD BUILDING
NEW HAVEN, CONN.



Official Photographers for Schools and
Colleges From New England
to the South

SUSQUEHANNA UNIVERSITY

Founded 1858

If you want a College . . .

With a family spirit
Where the student is known by the faculty
Of distinctly Christian atmosphere
In a healthful climate
With exceptional athletic facilities
And where good scholarship is stressed

Come to SUSQUEHANNA

Bachelor Degrees in Liberal Arts,
Business Administration,
Commercial Education,
and Music
Co-Educational

For catalogue write the Registrar

SUSQUEHANNA UNIVERSITY
SELINGROVE, PA.

The Lutheran Theological Seminary

GETTYSBURG, PENNSYLVANIA

Begins its 112th year September 14, 1937

The Seminary offers:

Free Tuition

Furnished Rooms

Use of 43,500 Volumes in Library

Standard and Elective Courses Leading to the B.D. Degree

Graduate Work Leading to the Degree of S.T.M.

A limited number of scholarships available.

For further information address:

JOHN ABERLY, President.

WHITMER - STEELE LUMBER COMPANY

Manufacturers of

PINE, HEMLOCK, and HARDWOOD LUMBER

PROP TIMBER and TIES

65 KING STREET

NORTHUMBERLAND, PA.

MIDDLE CREEK VALLEY
TELEPHONE COMPANY

Bell System

FRANK A. EYER, *General Manager*

Compliments of

PALMER R. GARMAN

Funeral Director

Very Well Known for Service

MT. PLEASANT MILLS, PA.

THE COLLEGE BOOK STORE

Student Supplies



Chilton Pens and Pencils

Sheaffer Inks — Penmans

Monogram Stationery

College Keys and Rings



SELINGSGROVE
WATER SUPPLY COMPANY



FRANK A. EYER

President

W. K. SEEHOLTZ

Superintendent

JAMES F. McCLURE

Treasurer

BOGAR BROTHERS' LUMBER COMPANY

CONTRACTORS — BUILDERS

*Manufacturers of and Dealers in
Lumber, Mill Work, Building Supplies*

Phone Bell 74-W

SELINGROVE, PA.

THE STRAND

A Comerford Theatre

SUNBURY, PA.

PLUMMER'S

Electric Shop

Everything Electrical

SELINGROVE, PA.

Glen Lock Dairies Co.

Pasteurized

MILK and CREAM

Phone 386

141 N. Fifth Street

SUNBURY, PA.

SOFT DRINKS

for Athletic Fetes

May be purchased at

SELINGROVE
BOTTLING WORKS

Phone 30-Z

SELINGROVE, PA.

RICHFIELD BUS LINE

SCHEDULE and PARTY SERVICE

A. E. WHITELEY, *Owner*

456 S. Market Street

SELINGROVE, PA.

THE SELINGSGROVE TIMES

MARION S. SCHOCH, *Publisher*

All Kinds of Commercial Printing

DANCE PROGRAMS A SPECIALTY

Printers of THE SUSQUEHANNA

THE FIRST NATIONAL BANK

of SELINGSGROVE

Salutes Susquehanna University and Its
Glorious Accomplishments

OFFICERS

ROSCOE C. NORTH, *President* CHARLES C. WALTER, *Cashier*
MARION S. SCHOCH, *Executive Vice President*
E. E. PAWLING, *Vice President* CLAYTON C. LEACH, *Assistant Cashier*

DIRECTORS

A. L. ALLINSON FRANK A. EYER ROSCOE C. NORTH
E. E. PAWLING MARION S. SCHOCH WM. M. SCHNURE
HARVEY S. STERNER

Compliments of

THE SMITH PRINTING CO.

Bank Stationery Specialists

WILLIAMSPORT, PA.

REA & DERICK, Inc.

Stores at

430 Market St.
314 Market St.
306 Market St.
Sunbury, Pa.

54 E. Independent St.
32 N. Market St.
Shamokin, Pa.

Northumberland, Pa.
Gettysburg, Pa.
Lewistown, Pa.
Bloomsburg, Pa.
Shickshinny, Pa.
Straoudsburg, Pa.
State College, Pa.
Selinsgrove, Pa.

Tyrane, Pa.
Berwick, Pa.
Huntingdon, Pa.
Milton, Pa.
Lewisburg, Pa.
Mt. Carmel, Pa.
Danville, Pa.

STEFFEN'S

FINE FOODS

GIFTS *and* STATIONERY

LENDING LIBRARY

SELINGROVE, PA.

Compliments of

KLINE'S

MEAT MARKET

West Pine Street
Selinsgrove, Pa.

Compliments of

The STANLEY Theatre

Under the Management of

THE COMERFORD THEATRES,
INC.

Compliments of

SNAVELY'S

CLOTHING *and* SHOES

SELINGROVE, PA.

Compliments of

BAUM'S SPORTING GOODS

The Home of COLLEGE *and* HIGH SCHOOL SPORTING GOODS

SUNBURY, PA.

REICHLEY'S

Refresh at Our

FOUNTAINS

Phone 69-Z

NATIONAL CAFE

Restaurant

R. A. MEASE, *Proprietor*

Meals at All Hours

I. O. O. F. Bldg. SELINGSGROVE, PA.

R. L. SCHROYER

General Insurance

SELINGSGROVE, PA.

Phone 173-Y

WEIS

PURE FOOD STORES

—•—

*Stores Throughout
Central Pennsylvania*

Compliments of

Student Klothes Shop

◆

MARKLEY - ALTVATER

Men's and Boys' Better Clothes

SUNBURY, PA.

SNYDER COUNTY TRUST COMPANY

SELINGSGROVE, PA.

Solicits Your Patronage

Compliments of

ANDREWS HARDWARE

NORTHUMBERLAND, PA.

KELLER'S QUALITY MARKET

Dealer in

Fancy Groceries and Choice Meats

Phone 84 SELINGSGROVE, PA.

Compliments of

BRESSLER'S BARBER SHOP

The Students' Barber Shop

SELINGSGROVE, PA.

Compliments of

CLYDE A. ZIMMERMAN

Member of

National Association of
Piano Tuners, Inc.

The Tuner Alone Preserves the Tone

Phone 1021-R SUNBURY, PA.

Compliments of

S. E. FISHER MOTORS

Chrysler — Plymouth
Sales and Service

Quality Products. Expert Service

East Spruce St. SELINGSGROVE, PA.

Compliments of

KEPLER'S Chevrolet Sales and Service

Dealers in

Chevrolet CARS and TRUCKS
and Hayes-Motor-Homes — House Trailers

324 North Market Street

SELINGSGROVE, PA.

Compliments of the

MODERN SHOE SHOP

ANTHONY VARANO, *Proprietor*

Repair Service While You Wait

*"Stretch Your Money,
Add Extra Wear to Every Pair"*

350 S. Market St. SELINGSGROVE, PA.

Compliments of

LOSE MOTOR COMPANY

*Leading Automobile Dealer
in Selingsgrove, Pa.*

Susquehanna University

SUMMER SCHOOL

Thirty-fifth Regular Session of Six Weeks from
June 28 to August 6, 1937. Post-session from
August 7 to August 28.

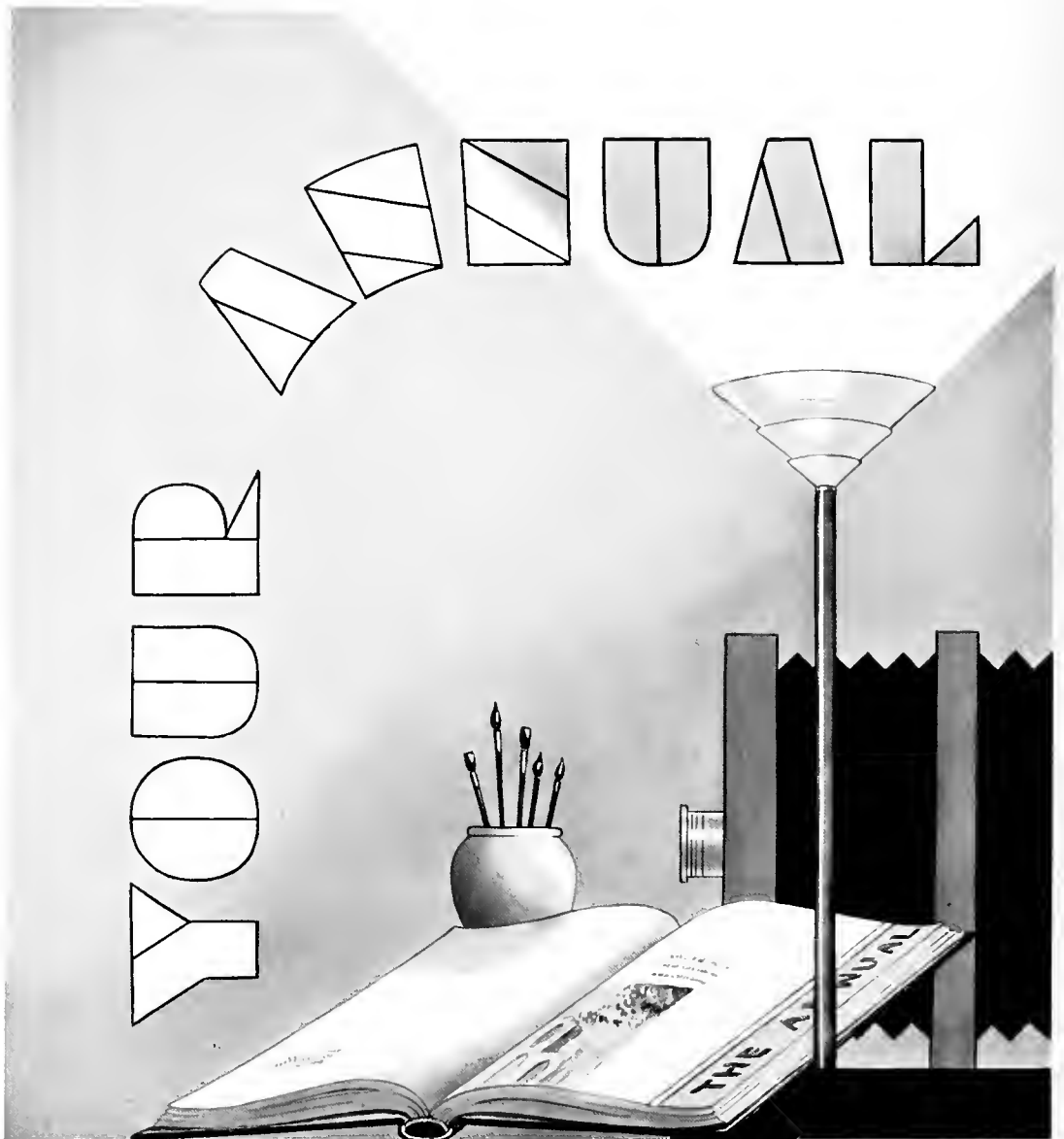
A wide choice of familiar courses will be offered with the addition of new ones including Curriculum Planning, Diagnostic Testing and Remedial Teaching, Methods in Teaching the Social Sciences, Methods in Teaching Secondary School English, Original Writing, Play Production, and Choral Technique.

For further information, write

PAUL J. OVREBO

Director of the Summer School

Susquehanna University, Selingsgrove, Pa.



was

DESIGNED, ENGRAVED, PRINTED AND BOUND IN OUR
PLANT. WE ARE JUST AS PROUD OF IT AS YOU ARE.

GRIT PUBLISHING COMPANY

WILLIAMSPORT, PA.

Producers of Distinctive School and College Publications

REGISTER OF STUDENTS, 1936-37

Ahl, Hildegard	Selinsgrove, Pa.	Finkbeiner, Shirley	9455 Sutter Ave., Queens, N. Y.
Adey, Alfred Robert	542 Peace St., Hazleton, Pa.	Fisher, Robert	969 High St., Williamsport, Pa.
Alexander, Kenneth	3213 N. Main St., Scranton, Pa.	Fitzgerald, Orville	Jersey Shore, Pa.
Anderson, Helen	Blain, Pa.	Follmer, Mrs. Mildred	Selinsgrove, Pa.
Appler, Mary	Hanover, Pa.	Fox, Mary Ann	16 S. Sixth St., Shamokin, Pa.
Arentz, Eunice	409 Franklin St., Hanover, Pa.	Frattali, Vincent	116 N. Chestnut Ave., Scranton, Pa.
Aughenbaugh, J. Stanley	Etters, Pa.	Fredericks, Andrew	330 Hawthorne Ave., Yonkers, N. Y.
Ayers, William	24 Brook St., Warren, Pa.	Friederich, Hilda	Honesdale, Pa.
Badger, Kenneth	Selinsgrove, Pa.	Fries, Grace	1135 Second Ave., Duncansville, Pa.
Baish, Charlotte	Dillsburg, Pa.	Fry, Elizabeth	2630 Perrysville Ave., Pittsburgh, Pa.
Baldwin, Howard	2511 Tatnall St., Wilmington, Del.	Furman, Robert	112 N. Sixth St., Sunbury, Pa.
Baltzer, Betty	Jersey Shore, Pa.	Gabrenya, Robert	361 First St., Conemaugh, Pa.
Barnes, Mary	Middleburg, Pa.	Gartner, Charles	Salisbury, Pa.
Barnhart, Elizabeth	1250 Susquehanna Ave., Sunbury, Pa.	Gaver, Don	904 Twenty-first Ave., Altoona, Pa.
Baylor, Louis	Northumberland, Pa.	Gayman, Verna	R. D. 3, Newville, Pa.
Beachel, LeRoy	Middleburg, Pa.	Gelnett, Francis	Selinsgrove, Pa.
Beamenderfer, Jean	Selinsgrove, Pa.	Gelnett, Roy	Millerstown, Pa.
Benion, Harold	West Fairview, Pa.	Gensel, John	Catawissa, Pa.
Benner, Oren	Mifflinburg, Pa.	Goldberg, Jesse	410 Tenth St., Philipsburg, Pa.
Berkeley, Saul	269 Central Ave., Lawrence, N. Y.	Goyne, John	1590 Market St., Ashland, Pa.
Berkley, Carmon	291 Sell St., Johnstown, Pa.	Greninger, Edwin	2308 Sixth Ave., Altoona, Pa.
Bice, John	Millerstown, Pa.	Greninger, Reed	Cherry St., Williamsport, Pa.
Bier, Catharine	501 Packer St., Sunbury, Pa.	Grenoble, Margaret	Spring Mills, Pa.
Billman, Donald	Herndon, Pa.	Groce, Homer	Selinsgrove, Pa.
Bingaman, Naomi	Selinsgrove, Pa.	Grubb, Caroline	Liverpool, Pa.
Birchard, Robert	802 Faxon Pkwy., Williamsport, Pa.	Gulick, Reed	442 Grant St., Camden, N. J.
Bittinger, Hester	Shamokin Dam, Pa.	Gondrum, Helen	944 Main St., Rockwood, Pa.
Bolig, Betty	Selinsgrove, Pa.	Guthrie, Mark	Northumberland, Pa.
Bolig, Eleanor	Selinsgrove, Pa.	Haines, James Leon	R. D. 1, McClure, Pa.
Bolig, Martha	Northumberland, Pa.	Hamm, Birdie	Hanover, Pa.
Bolig, Roy	Selinsgrove, Pa.	Hauff, Glens	New Freedom, Pa.
Bollinger, Harold	Northumberland, Pa.	Hayes, Madalene	203 W. Miner St., West Chester, Pa.
Bower, Marjorie	Middleburg, Pa.	Hazlett, John	Dry Run, Pa.
Boyer, Robert	R. D. 1, Selinsgrove, Pa.	Heim, Mary	Loysville, Pa.
Boyle, Margaret	Wolverton St., Sunbury, Pa.	Helt, Carl	Elmsport, Pa.
Brosious, Paul	Herndon, Pa.	Henmerly, Ruth	600 N. Laurel St., Hazleton, Pa.
Brown, Eleanor	732 Third Ave., Ford City, Pa.	Herr, Karl	327 E. Third St., Berwick, Pa.
Bulick, Jean	428 Orange St., Selinsgrove, Pa.	Herr, Robert	Shamokin, Pa.
Burns, Virginia	Watsonstown, Pa.	Hertz, Robert	544 N. Front St., Milton, Pa.
Camp, Samuel	Milton, Pa.	Hess, Chester	Trevorton, Pa.
Carey, Josephine	101 E. Darham St., Philadelphia, Pa.	Hickman, Frederick	10 S. Marion Ave., Ventnor, N. J.
Carolus, Vivian	Race St., Sunbury, Pa.	Higgins, James	Locust Gap, Pa.
Charles, Clyde	Selinsgrove, Pa.	Hill, Anna	416 Allen St., W. Hazleton, Pa.
Charles, James	Selinsgrove, Pa.	Hisdorf, Helen	616 Greendale Ave., Edgewood, Pa.
Clark, Claude	R. D. 1, Sunbury, Pa.	Hoffman, Dorothy	R. D. 5, Bloomsburg, Pa.
Clark, George	Jersey Shore, Pa.	Hoffman, Jean	1132 Potomac Ave., Hagerstown, Md.
Cluck, Genevieve	McKnightstown, Pa.	Hoffman, John	Shamokin Dam, Pa.
Coleman, Paul	Somerset, Pa.	Hofford, Jeanne	Sayre, Pa.
Corson, Margaret	Hughesville, Pa.	Hostetter, John	308 Burgess St., Pittsburgh, Pa.
Cotton, Daniel	823 Main St., Duryea, Pa.	Howells, Lewis	1141 Scott St., Kulpmont, Pa.
Critchfield, Donald	Somerset, Pa.	Hudson, William	Seaford, N. J.
Croft, Eleanor	Greencastle, Pa.	Hummel, Richard	Northumberland, Pa.
Curtis, Marjorie	52 Poplar St., Kingston, Pa.	Irvin, Bigler	1246 Highland St., Sunbury, Pa.
Davis, William	1508 Center St., Ashland, Pa.	Janson, Evelyn	910 Susquehanna Ave., Sunbury, Pa.
Dearny, Naomi	1114 Twentieth Ave., Altoona, Pa.	Jarrett, Mary	R. D. 2, Selinsgrove, Pa.
Deiterick, Alice	Moorestown, Pa.	Johnston, Catherine	Selinsgrove, Pa.
Derstine, Ruth	Chalfont, Pa.	Jones, Eleanor	251 Park St., Mt. Carmel, Pa.
Diehl, Kathryn	Hanover, Pa.	Jones, Roth	Millerstown, Pa.
Diffenderfer, James	Middleburg, Pa.	Kaltreider, Clair	101 Fair Ave., Hanover, Pa.
Ditzler, Richard	Selinsgrove, Pa.	Karschner, Lester	R. D. 2, Muncy, Pa.
Dixon, Mary Ellen	Belle Mead, N. J.	Kauffman, Horace	144 N. Sixth St., Sunbury, Pa.
Dorsett, Donald	404 Washington Ave., Jersey Shore, Pa.	Kaufman, Esther	Davidsville, Pa.
Dreher, Wilbur	Tobyhanna, Pa.	Keil, Henry	690 Hudson Ave., Union City, N. J.
Drumheller, John	R. D. 3, Sunbury, Pa.	Keim, David	Lloyd St., Nanty Glo, Pa.
Drumm, Walter	1054 Masser St., Sunbury, Pa.	Keller, Robert	212 Fairmount Ave., Sunbury, Pa.
Edmond, Helen Marie	Fourth Ave., Ford City, Pa.	Kemberling, Jess	Selinsgrove, Pa.
Edwards, Morgan	R. D. 5, Johnstown, Pa.	Kimmel, George	Big Mine Run, Ashland, Pa.
Engle, Martha	1057 Market St., Sunbury, Pa.	Kinney, Kenneth	376½ Wyoming Ave., Wyoming, Pa.
Freed, Walter	2219 Race St., Ashland, Pa.	Kistler, Grover	Newport, Pa.
Farley, Clarence	Riverside, Pa.	Klinger, Herbert	Herndon, Pa.
Farley, Roth	Riverside, Pa.	Klinger, Martha	Herndon, Pa.

REGISTER OF STUDENTS, 1936-37—Continued

Klinger, Woodrow	Herndon, Pa.	Salkeld, Charles	1033 Maple Ave., Sharon Hill, Pa.
Kniseley, Karl	47 Waldorf St., Pittsburgh, Pa.	Sander, Robert	878 Memorial Ave., Williamsport, Pa.
Korper, Edward	225 Ridge Ave., Sunbury, Pa.	Saunders, Robert	214 Pettebone St., Wyoming, Pa.
Kozak, Walter	Selinsgrove, Pa.	Saveri, Eleanor	E. Bangor, Pa.
Kozlowski, Edmund	204 N. Walnut St., Mt. Carmel, Pa.	Savidge, Dorothy	265 Eleventh St., Sunbury, Pa.
Krogmann, Carolyn	8627 Ninety-fourth St., Woodhaven, L. I.	Schaffer, Clarence	Dalmatia, Pa.
Lalich, Peter	Conemaugh, Pa.	Schleig, John	Trevorton, Pa.
Landback, Florence	362 Duke St., Northumberland, Pa.	Schmidt, Fred	339 E. South St., Wilkes-Barre, Pa.
Laudenslayer, William	Hummels Wharf, Pa.	Schnure, Margaret	Selinsgrove, Pa.
Lauver, Herbert	Richfield, Pa.	Schuck, Robert	Shamokin Dam, Pa.
Leam, John	Ashland, Pa.	Schweitzer, Edward	39 Jackson Ave., W. Hazleton, Pa.
Leaser, Evelyn	238 S. Front St., Sunbury, Pa.	Scott, Mary	805 Sunbury St., Shamokin, Pa.
Lengler, Charles	1616 Olive St., Scranton, Pa.	Sechler, Clyde	Riverside, Pa.
Lenig, Marguerite	230 Tenth St., Sunbury, Pa.	Shafer, Henry	Selinsgrove, Pa.
Lewis, Thomas	319 Third St., Northumberland, Pa.	Shaffer, Harold	818 Main St., Windber, Pa.
Long, Chester	Friedens, Pa.	Shaheen, Raymond	Montoursville, Pa.
Long, Janet	Port Royal, Pa.	Shellenberger, David	Selinsgrove, Pa.
Lubold, Paul	Selinsgrove, Pa.	Sheesley, Margaret	Lykens, Pa.
Lucas, Paul	Jersey Shore, Pa.	Shipe, John	Herndon, Pa.
Lukens, Joe	92 E. Houston Ave., Montgomery, Pa.	Shobert, Ralph	702 Maple Ave., DuBois, Pa.
McBride, Harry	314 W. Pike St., Houston, Pa.	Shotsberger, Henry	Freeburg, Pa.
McCune, John	75 Analomink St., E. Stroudsburg, Pa.	Shrawder, Norman	Wernersville, Pa.
McKeown, John	389 Lawrie St., Perth Amboy, N. J.	Shutt, Dorothy	1722 Center St., Ashland, Pa.
Mack, Mary Catherine	600 Race St., Sunbury, Pa.	Shuty, Peter	Selinsgrove, Pa.
Mann, Virginia	40 Purser Pl., Yonkers, N. Y.	Sivick, Edward	181 Stanley Ave., Vonkers, N. Y.
Marshall, Arline	1215 Walnut St., Jersey Shore, Pa.	Sklansky, Stephen	135 E. Main St., Somerville, N. J.
Martorelli, Gene	Old Forge, Pa.	Slout, Phyllis	311 Woodland Ave., Williamsport, Pa.
Mastovich, Michael	Franklin Boro., Pa.	Smalts, Verlin	Gay St., Hagerstown, Md.
Mease, William	117 N. Orange St., Selinsgrove, Pa.	Smith, Preston	917 Market St., Williamsport, Pa.
Meek, Walter	1009 Cambria Ave., Windber, Pa.	Snyder, Adella	Red Lion, Pa.
Mehalow, Joseph	602 Cedar St., Freeland, Pa.	Spiggle, George	Sipesville, Pa.
Mekeel, Edward	Ledgewood Ave., Netcong, N. J.	Spitzner, Clyde	Selinsgrove, Pa.
Mikrantz, Ethel	Tamaqua, Pa.	Spotts, Leonora	133 Linden St., Sunbury, Pa.
Miller, June	27 Broad St., Ashland, Pa.	Stauffer, Charles	Selinsgrove, Pa.
Miller, Miriam	R. D. 1, Reading, Pa.	Stephens, Edna	90 Catawissa St., Mahanoy City, Pa.
Mitterling, Henry	Selinsgrove, Pa.	Stewart, Adelaide	Pine Bosh, N. Y.
Mosher, Robert	53 Lake Ave., Auburn, N. Y.	Stockdale, Byron	Frostburg, Pa.
Moyer, Frances	Hummels Wharf, Pa.	Straesser, Ethel	Martinsburg, Pa.
Moyer, James	626 Mace St., Greensburg, Pa.	Straub, Virginia	Frackville, Pa.
Musschman, Helen	Selinsgrove, Pa.	Swartz, Barner	Millerstown, Pa.
Neudoerffer, Mathilda	Jackson Ave., W. Hazleton, Pa.	Swope, Harry	Selinsgrove, Pa.
Nye, William	109 S. Harrison St., Wilmington, Del.	Toomey, Luke	Wila, Pa.
Ochenrider, Paul	Aristes, Pa.	Troutman, William	Trevorton, Pa.
Orwig, George	Phillipsburg, Pa.	Ulp, John	Northumberland, Pa.
Otto, Clarence	Milton, Pa.	Updegrave, John	Herndon, Pa.
Owen, Stephen	U. S. Marine Hospital, Memphis, Tenn.	Valunas, Thomas	Selinsgrove, Pa.
Pane, Anthony	Hazleton, Pa.	Webster, Mildred	Downingtown, Pa.
Paul, John	210 S. Market St., Shamokin, Pa.	Weeks, Margaret	Selinsgrove, Pa.
Pearce, James	1014 Chestnut St., Kulpmont, Pa.	Wensel, Clarence	736 Market St., Lewisburg, Pa.
Pezick, Joseph	Williamsburg, Pa.	Wentzel, Betty	108 N. Eleventh St.
Phillips, Vernon	Dalmatia, Pa.	Wentzel, Gladys	Selinsgrove, Pa.
Pifer, Mildred	E. Bangor, Pa.	Wentzel, Helen	Selinsgrove, Pa.
Poyck, Walter	82 Lockhart St., Wilkes-Barre, Pa.	Wert, Donald	Aaronsburg, Pa.
Pritchard, William	41 Poplar St., Kingston, Pa.	West, Louise	Coaldale, Pa.
Rakshlys, John	322 Academy St., Peely, Pa.	Wetzel, Charles	Dornsife, Pa.
Ramer, Ethal	Meyersdale, Pa.	Wetzel, Richard	105 Dibert St., Johnstown, Pa.
Ray, Joseph L.	Catawissa Ave., Sunbury, Pa.	Weyhenmeyer, Charles	12 N. Church St., Hazleton, Pa.
Reeder, Anna	355 Tenth St., Sunbury, Pa.	Wheeland, Ruth	Williamsport, Pa.
Reese, Alverna	Audenried, Pa.	Wightman, Warren	Mt. Carmel, Pa.
Reese, Mary	901 Center St., Freeland, Pa.	Wittenmyer, Elizabeth	335 Main St., Lock Haven, Pa.
Rheinhardt, Jean	526 S. River St., Wilkes-Barre, Pa.	Williams, Eugene	327 Pine St., Millersburg, Pa.
Richard, Burton	30 Roessner Ave., Hagerstown, Md.	Williams, Frances	1900 Wyoming Ave., Forty Fort, Pa.
Richard, Mary Beth	30 Roessner Ave., Hagerstown, Md.	Worthington, Kent	Hughesville, Pa.
Roberts, John	332 First St., Slatington, Pa.	Wray, Delos	West Rush, N. Y.
Rogers, Helen	650 Rutter St., Kingston, Pa.	Wright, Helen	Three Springs, Pa.
Rogers, Samuel	39 N. Maple St., Mt. Carmel, Pa.	Yarger, Ruth	Swengel, Pa.
Rothermel, Florence	Klingershtown, Pa.	Yeager, Helen	Northumberland, Pa.
Roush, Katherine	257 Chestnut St., Millinburg, Pa.	Yingling, Esther	1604 Second Ave., Altoona, Pa.
Roush, Margaret	709 N. Market St., Selinsgrove, Pa.	Zechman, Ferne	Beaver Springs, Pa.
Sachs, Eva	24 York St., Gettysburg, Pa.	Zellers, Mary	Liverpool, Pa.
Salem, William	Franklin Boro., Pa.	Ziegler, Lawson	Herndon, Pa.

AUTOGRAPHS

AUTOGRAPHS



SUSQUEHANNA



SUSQUEHANNA UNIVERSITY



3 4998 0027 8220 4

BLOUGH-WEIS LIBRARY
DOES NOT
CIRCULATE
ARCHIVES
SUSQUEHANNA UNIVERSITY



"OF SUSQUEHANNA NOW WE SING,
LET SUSQUEHANNA'S PRAISES RING"

