

LANTHORN

1939




BLOUGH-WEIS LIBRARY

**SUSQUEHANNA UNIVERSITY
BELINGROVE, PA 17870**

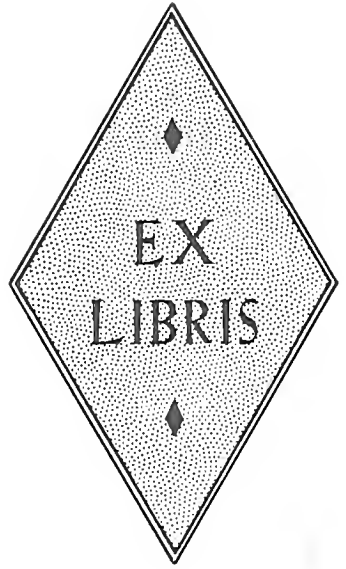
Patent to [unclear]

ENOUGH WITH [unclear]
RECEIVED [unclear]
[unclear]



Digitized by the Internet Archive
in 2011 with funding from
Lyrasis Members and Sloan Foundation

<http://www.archive.org/details/lanthorn193900susq>



Copyright, 1938

MARY ELIZABETH APPLER, *Editor*
FRANK LAUDENSLAYER, *Business Manager*

LANTHORN

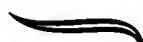
1939



PUBLISHED BY THE
JUNIOR CLASS
SUSQUEHANNA
UNIVERSITY
SELINGROVE
PENNSYLVANIA



FORE

The 1939 Lanthorn marks the passing of another memorable year in the hearts of those to whom Susquehanna is dear. This year commemorates two events in the history of our Alma Mater: the eightieth anniversary of the college, and the fortieth anniversary of the Lanthorn. 

WORD

The eightieth year of the school is depicted by the diamond from which we take our emblem, while the fortieth edition of the yearbook is signified by the ruby, from which we borrow our color.

In this volume of the Lanthorn we are recalling the achievements of the past, we are picturing the present, and we are facing the future.

DEDIC



ATION

With our eyes toward the future, the 1939 edition of the Lanthorn is dedicated to Dr. John J. Houtz, who, through his kind and friendly guidance during our college days, has instilled in us some of his courageous spirit which will go with us throughout our lives.

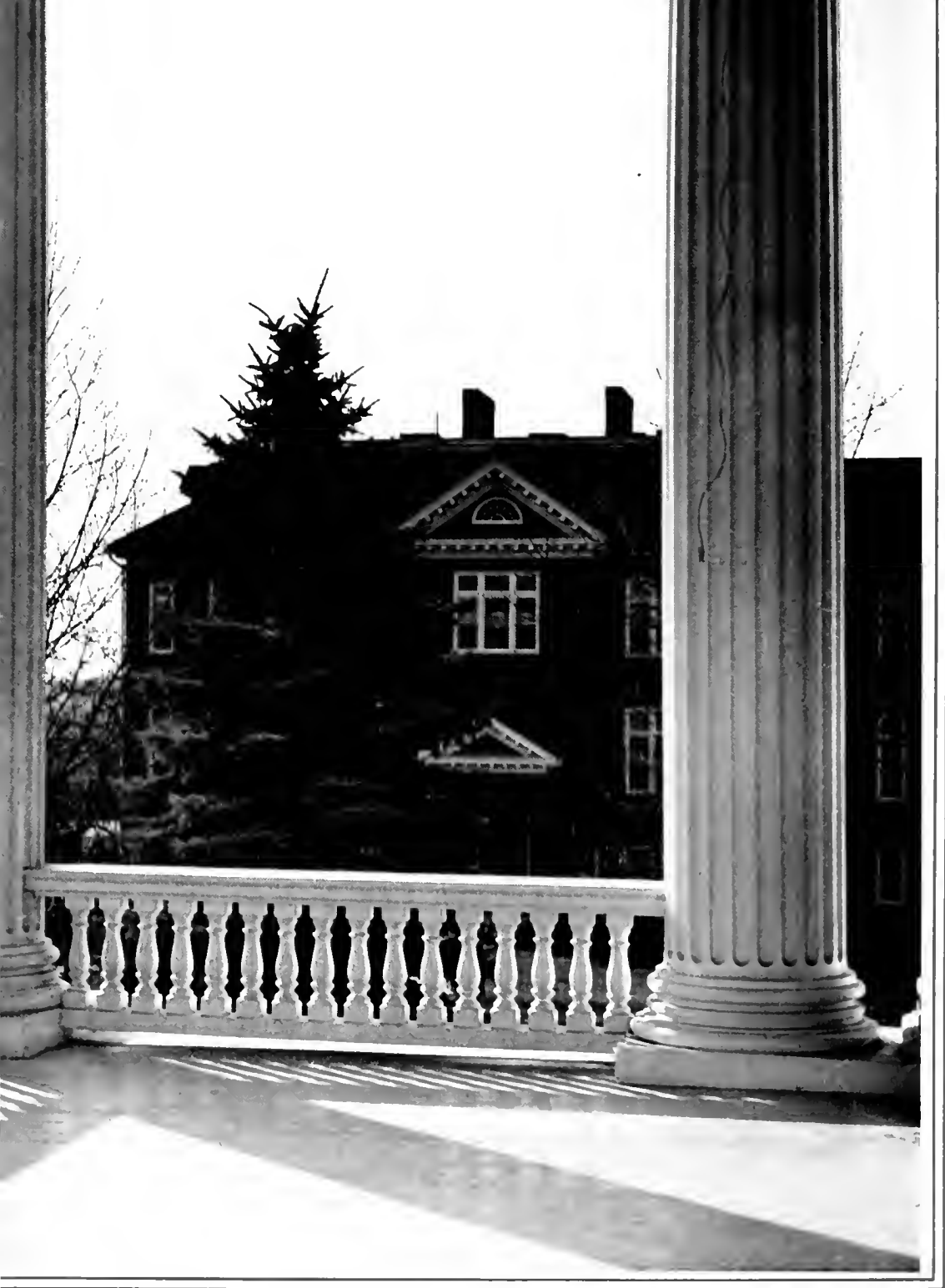




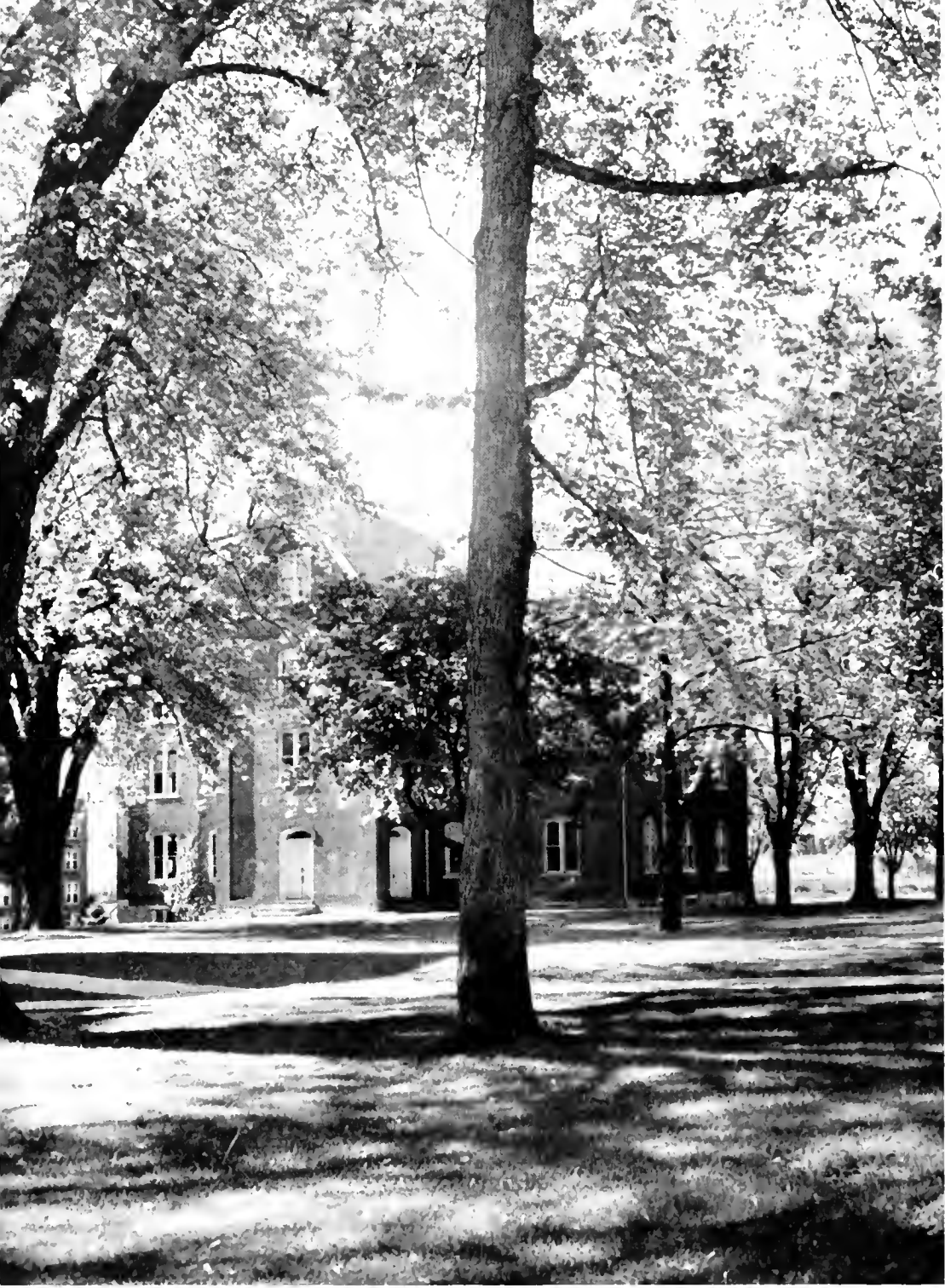
CAMPUS VIEWS















ADMINISTRATION



G. MORRIS SMITH

A.B., A.M., D.D.

Franklin and Marshall Academy, 1907; A.B., Roanoke College, 1911; A.M., Princeton University, 1912; Instructor, Blair Academy, 1912-1916; Graduate, Mt. Airy Seminary, 1919; Pastor, Mt. Vernon Lutheran Church, 1918-1920; Pastor, Lutheran Church of the Redeemer, Buffalo, N. Y., 1920-1928; Present Position, 1928.

President

GLADYS B. ERDAHL

A.B., Concordia College
A.M., Columbia University

Dean of Women



RAYMOND B. NELL

B.S., Gettysburg College
A.B., University of Minnesota
A.M., Thiel College
M.A., in Education Columbia
University

Dean of the College

Language and Literature

RUSSELL WIEDER GILBERT, A.B., A.M.

Professor of German

LAURA ALICE REED, A.B., A.M.

Instructor in Latin and Assistant to the Dean of Women

ARTHUR H. WILSON, A.B., A.M., PH.D.

Professor of English

A. WILLIAM AHL, A.M., PH.D.

Professor of Greek

JAMES CARRINGTON FREEMAN, A.B., A.M.

Instructor in English

LOIS M. BOE, A.B., A.M., PH.D.

Professor of French

CHARLES B. FOELSCH, A.B., A.M., PH.D.

Lecturer in Public Speaking



Social Studies

WILLIAM A. RUSS, JR., A.B., A.M., PH.D.

Professor of History and Political Science

JOHN I. WOODRUFF, A.B., A.M., LITT.D., LL.D.

Professor of Philosophy

THEODORE W. KRETSCHMANN, A.B., A.M., B.D., PH.D.

Professor of Bible and Religion

GEORGE F. DUNKELBERGER, A.B., A.M., PD.D., PH.D.

Professor of Psychology

GLADYS B. ERDAHL, A.B., A.M.

Instructor in History

RAYMOND B. NELL, A.B., A.M., B.S.

Dean of the College



Science

JOHN J. HOUTZ, A.B., A.M., M.S., Sc.D.

Assistant Professor of Chemistry

ADAM SMITH, A.B., A.M., Ph.D.

Professor of Mathematics

PAUL J. OVREBO, A.B., Ph.D.

Professor of Physics

GEORGE E. FISHER, Ph.B., A.M., Ph.D.

Professor of Chemistry

FISK WILLIAM STOCKING SCUDDER, A.B., A.M.

Assistant Professor of Biology



Business

D. IRVIN REITZ, PH.D., A.M.

Assistant Professor of Commercial Education

VIOLA M. DUFRAIN, A.B., A.M.

Instructor in Commercial Education

GEORGE N. WOOD, A.B., A.M.

Assistant Professor of Business Administration



Conservatory

MARGARET E. KEISER, Mus.B.
Instructor in Singing and Appreciation

ALICE HOLMEN GIAUQUE, B.S.
Instructor in Public School Music

IDA MANEVAL SHELDON, Mus.B.
Instructor in Harmony and Music History

EDNA IRENE SHURE, B.S.
Instructor in Eurythmics, Pageantry and Folk Dancing

MARY KATHRYN POTTEIGER, Mus.B.
Instructor in Piano, Sight Singing, and Dictation



Conservatory

E. EDWIN SHELDON, Mus.M.

Director of the Conservatory

FREDERICK C. STEVENS, A.B., A.M.

Assistant Professor of Singing, Director of the Motet Choir

PERCY M. LINEBAUGH, Mus.B.

Professor of Pianoforte, Organ, Rudiments, and Harmony

WILLIAM DONALD HEMPHILL, Mus.B.

Professor of Violin and Orchestration

ELROSE L. ALLISON, Mus.B.

Instructor in Piano, Organ, and Wind Instruments



Business Office

ERNEST T. YORTY

Business Manager

EDWIN M. BRUNGART, A.B., A.M.

Superintendent of Buildings and Grounds

H. VERNON BLOUGH, A.B.

Publicity Director



Athletic Directors

AMOS ALONZO STAGG, JR., A.B., A.M.
Head Coach, Director of Physical Education

ROBERT PRITCHARD, A.B.
Assistant Coach

EDNA IRENE SHURE, B.S.
Instructor in Women's Sports





E. BEATRICE HERMAN, A.B.

Bursar

HESTER HOFFMAN, A.B., B.S.

Librarian



Office Personnel

ANNA M. HUMPHREY

Dietitian

ELLA ENGEL, A.B.

Registrar

ISABEL NICELY

Secretary to the Dean





CLASSES

SENIOR CLASS OFFICERS

ROBERT BOYER - - - - - *President*

KENT WORTHINGTON - - - - - *Vice President*

ETHAL RAMER - - - - - *Secretary-Treasurer*



SENIOR CLASS HISTORY

The seventeenth day of September, 1934, was a bright, green, sunshiny day. So were the seventy-two students who arrived on S. U.'s campus. But after a week of orientation we felt that we "belonged".

After our successful class election a few weeks later, our victory over the sophomore class, our big bonfire, and our two big parties, we began to feel that we weren't such an unpromising freshman class.

Our sophomore year we were rather in the background because there were no football games to play nor any Junior Proms to give, and so we saved our energy for our junior year. It was then that we gave the campus a Junior Prom and a LANTHORN to remember.

During this time our class members were showing their prowess in activities such as athletics, social functions, journalistic enterprises, and religious work, and, we kept our promise as a freshman class—we did improve our scholastic standing.

Now that we are on our last mile, we look back with a feeling of pleasure and satisfaction. As we look forward to our Commencement Day, we are overwhelmed with the feeling that this is our last year at Susquehanna, and, although we are eager to be graduated, we will always be ready to come back.

SENIORS

HILDEGARD AHL

University Heights
Selinsgrove, Penna.
Omega Delta Sigma.
Motet Choir; Biemic Society;
German Club; Class Sports;
The Susquehanna Players.
A. B.



MARJORIE BOWER

Middleburg, Penna.
Kappa Delta Phi.
French Club; The Susquehanna Players.
Commercial Education.



STANLEY AUGHENBAUGH

Etters P. O.
Goldsboro, Penna.
Phi Mu Delta.
Motet Choir; Band.
Music.



ROBERT BOYER

R. D. 1, Selinsgrove, Pa.
Phi Lambda Theta.
Class President; President of Tau Kappa Alpha; President of Math. Club; Debating; Track.
A. B.



MARTHA E. BOLIG

558 Front Street
Northumberland, Penna.
Omega Delta Sigma.
Inter-Sorority Council;
French Club; The Susquehanna Players; Honor Hockey; Honor Basketball; Class Sports; W. A. A.; President of O. D. S.; Women's Co-operative Council.
A. B.



MARGARET F. BOYLE

1254 Wolverton Street
Sunbury, Penna.
Omega Delta Sigma.
W. A. A.; Women's Co-operative Council; Math. Club; German Club.
A. B.



SENIORS

ELEANOR B. BROWN

738 Third Avenue
Ford City, Penna.

Kappa Delta Phi.

Inter-Sorority Council;
W. A. A.; German Club;
Business Society; Treasurer
of Class; Class Sports;
Honor Basketball.

Commercial Education.



JAMES DIFFENDERFER

Main Street
Middleburg, Penna.

Bond and Key.

Football; Basketball;
Track; Baseball; Motet
Choir; Pre-Theological
Club; Vice President of
Phi Kappa; President of S.
C. A. Cabinet.

A. B.

CLAUDE K. CLARK

R. D. No. 1
Sunbury, Penna.

Bond and Key.

German Club; Football
Manager.

Pre-Medical.



W. MORGAN EDWARDS

Johnstown, Penna

Phi Mu Delta.

S. C. A. Cabinet; Basketball
Manager; Pre-Theological
Club; Vice President of Pi
Gamma Mu; Business Man-
ager of LANTHORN, 3.

Pre-Theological.

GEORGE A. CLARK

222 Cemetery Street
Jersey Shore, Penna.

Phi Mu Delta.

Band; Orchestra; Motet
Choir; Pre-Theological
Club; Phi Kappa.

Pre-Theological.



ORVILLE M. FITZGERALD

229 South Broad Street
Jersey Shore, Penna.

Bond and Key.

Band; Inter-Fraternity
Council; Motet Choir.

Pre-Medical.

SENIORS

ELIZABETH B. FRY

2630 Perryville Avenue
Pittsburgh, Penna.

Omega Delta Sigma.

W. A. A.; *Susquehanna*
Staff; Biemic Society;
Honor Hockey Team; In-
ter-Sorority Council; Class
Sports.

A. B.



MARK R. GUTHRIE

562 King Street
Northumberland, Penna.

Phi Mu Delta.

Business Society; Adver-
tising Manager of the
Susquehanna; Football.

Commercial Education.

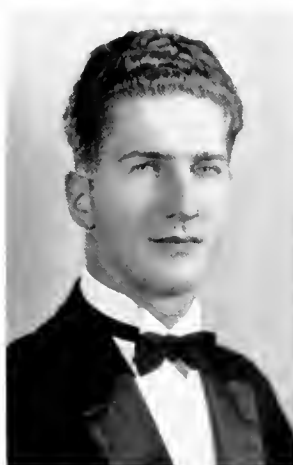
REED A. GRENINGER

638 Cherry Street
Williamsport, Penna.

Phi Mu Delta.

German Club; Phi Kappa;
The *Susquehanna* Players;
Vice President Pre-Theo-
logical Club; Varsity "S"
Club; Class Sports; Pi
Gamma Mu.

Pre-Theological.



BIRDIE S. HAMM

106 Westminster Avenue
Hanover, Penna.

Sigma Alpha Iota.

Orchestra; Band; W. A.
A.; Class Sports.

Music.

CAROLINE E. GRUBB

Liverpool, Penna.

Sigma Alpha Iota.

President of S. A. I.; W.
A. A.; President of the
W'omen's Co-operative
Council; Class Sports.

Music.



MARY HEIM

Loysville, Penna.

Class Sports; German
Club; The *Susquehanna*
Players; W. A. A.; Presi-
dent of Biemic Society.

Pre-Medical.

SENIORS

RUTH HEMMERLY

600 North Laurel Street
Hazleton, Penna.

President of W. A. A.;
Biemic Society; German
Club; Honor Hockey;
W o m e n ' s Co-operative
Council; Honor Basketball.

Pre-Medical.



HELEN R. HISDORF

616 Greendale Avenue
Edgewood
Pittsburgh, Penna.

Kappa Delta Phi.

W. A. A.; Motet Choir;
President of Inter-Sorority
Council; Business Society;
French Club; Pi Gamma
Mu; Class Sports; Presi-
dent of K. D. P.; Women's
Co-operative Council.

Commercial Education.

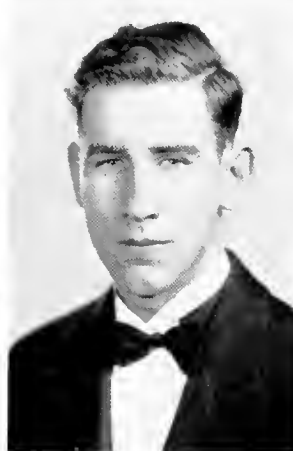
KARL M. HERR

327 East Third Street
Berwick, Penna.

Bond and Key.

Class Sports; Business So-
ciety; Basketball.

Business Administration.



WILLIAM HUDSON

516 King Street
Seaford, Del.

Bond and Key.

Band; Symphony; Pre-
Theological Club; S. C. A.
Cabinet.

A. B.

JAMES F. HIGGINS

Locust Gap, Penna.
Phi Mu Delta.

Student Council; Band;
Orchestra.

Music.



MARY C. JARRETT

Sunbury, Penna.

Omega Delta Sigma.

Class Sports; French Club;
G e r m a n Club; Math.
Club.

A. B.

SENIORS

BETTY JOHNSTON

116 South Market Street
Selinsgrove, Penna.
Omega Delta Sigma.
French Club.
A. B.

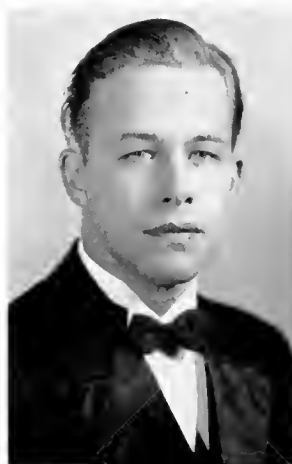


GEORGE J. KIMMEL

East Main Street
Ashland, Penna.
Phi Lambda Theta.
German Club; French
Club; Band; Inter-Frater-
nity Council; Intra-Mural
Board.
A. B.

RUTH A. JONES

Millerstown, Penna.
Kappa Delta Phi.
French Club; The Susque-
hanna Players; Women's
Co-operative Council; S.
C. A. Cabinet; Pi Gamma
Mu.
A. B.



KARL E. KNISELEY

47 Waldorf Street
Pittsburgh, Penna.
Phi Mu Delta.
President of Inter-Frater-
nity Council; President of
Phi Mu Delta; Debating
Society; Pre-Theological
Club; Orange Key Club;
S. C. A. Cabinet; Editor-
in-Chief of LANTHORN, 3;
Tau Kappa Alpha.
Pre-Theological.

ESTHER V. KAUFMAN

Davidsville, Penna.
Sigma Alpha Iota.
Motet Choir; Inter-Sorori-
ty Council; Secretary of
Class.
Music.



HERBERT C. LAUVER

Richfield, Penna.
Phi Lambda Theta.
German Club; Business
Manager of *Susquehanna*.
Commercial Education.

SENIORS

PAUL LUCAS

1230 Allegheny Street
Jersey Shore, Penna.
Bond and Key.
Class Sports.
Music.



FRANCES MOYER

Hummels Wharf, Penna.
French Club; Math. Club.
A. B.

JOHN W. McKEOWN

389 Laurie Street
Perth Amboy, N. J.
Pre - Theological Club;
Track; The Susquehanna
Players.
Pre-Theological.



JOHN H. PAUL

210 South Market Street
Shamokin, Penna.
Bond and Key.
Motet Choir; Symphonic
Society; Intra-Mural
Board; Class Sports; Busi-
ness Society; Band.
Commercial Education.

HENRY R. MITTERLING

410 Orange Street
Selinsgrove, Penna.
Phi Mu Delta.
Business Society; Class
Sports.
Commercial Education.



VERNON R. PHILLIPS

Dalmatia, Penna.
Bond and Key.
German Club; Biemic So-
ciety; Track.
A. B.

SENIORS

MILDRED A. PIFER

East Bangor, Penna.
 Kappa Delta Phi.
 Motet Choir; W. A. A.;
 Honor Hockey; Class
 Sports; The Susquehanna
 Players; French Club.
 A. B.



JEAN RHEINHART

526 South River Street
 Wilkes-Barre, Penna.
 Omega Delta Sigma.
 President of French Club;
 President of German Club.
 A. B.



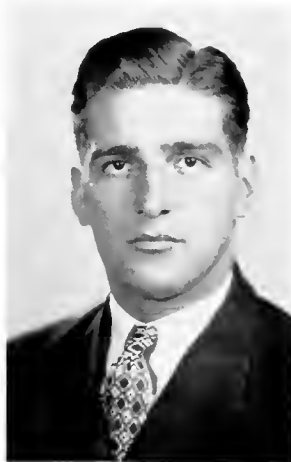
JOHN RAKSHYS

322 Academy Street
 Peely, Penna.
 Phi Mu Delta.
 Class Sports; Basketball
 Co-Captain; Biemic Society;
 Varsity "S" Club;
 Tennis, Captain.
 A. B.



PETER SHUTY

Neville Island
 Pittsburgh, Penna.
 Bond and Key.
 Football Co-Captain; Base-
 ball; Class Sports; Varsity
 "S" Club.
 Commercial Education.



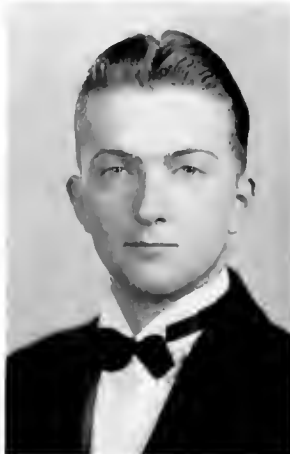
F'HAL F. RAMER

322 Meyers Avenue
 Meyersdale, Penna.
 Kappa Delta Phi.
 Business Society; French
 Club.
 Commercial Education.



VERLIN H. SMALTZ

Gey Street
 Hagerstown, Md.
 Phi Lambda Theta.
 Motet Choir; Biemic So-
 ciety.
 A. B.



SENIORS



HARRY C. SWOPE

13 North Water Street

Selinsgrove, Penna.

Phi Lambda Theta.

Football - Co-Captain;
Track; Varsity "S" Club.

Commercial Education.



KENT L. WORTHINGTON

Hughesville, Penna.

Bond and Key.

Class Sports; Vice Presi-
dent of Class; Junior
Prom Committee.

A. B.



ESTHER A. YINGLING

1604 Second Avenue

Altoona, Penna.

Kappa Delta Phi.

Editor-in-Chief of *Susque-
hanna*; Women's Co-oper-
ative Council; German
Club; Class Sports; W. A.
A.; S. C. A. Cabinet.

A. B.

JUNIOR CLASS OFFICERS

HENRY KEIL - - - - - *President*
JOSEPHINE CAREY - - - - - *Vice President*
MARJORIE CURTIS - - - - - *Secretary*
HAROLD BOLLINGER - - - - - *Treasurer*



JUNIOR CLASS HISTORY

One day which will be numbered among the most eventful during the course of our lives is September sixteenth, nineteen hundred and thirty-five. Since we entered S. U. as freshmen, we can contemplate many happy hours.

Our freshman year was marked by many distinct happenings such as our successful "get-away," inter-class athletic activities, and fraternity and sorority affiliations.

Exciting times with the freshmen will be remembered as characterizing our sophomore year. In the traditional soph-frosh football game, we were forced to accept defeat, but only after a hard fought battle.

Now, we find ourselves in our junior year, a year that holds much for all of us. Unbreakable ties have been formed between the class and our school. We eagerly look forward to our Junior Prom as the culmination of our year's activity. With this LANTHORN, our yearbook, we hope to contribute something to the common fund of Susquehanna. It is with regret that we look back upon the adventures and escapades of our earlier days on the campus. But, we can anticipate our senior year and the subsequent venture into life.

In Memoriam



GEORGE ALLEN HOLLAR

This page is set aside to commemorate in our hearts the memory of a beloved classmate who passed into the Great Beyond, March 6, 1936.

JUNIORS



MARY E. APPLER

362 High Street
Hanover, Penna.

Eichelberger High School.

Omega Delta Sigma.

Susquehanna Staff 1, 3; Class
Sports 1, 2, 3; Honor Hockey 1,
2, 3; French Club 1, 2, 3; Secre-
tary-Treasurer of W. A. A. 3;
Secretary of Omega Delta Sigma 3,
Editor-in-Chief of LANTHORN 3.

A. B.



WILLIAM P. AYRES

24 Brooks Street
Warren, Penna.

Warren High School.

German Club 2, 3; Track 2;
Business Society 2, 3.

Business Administration.



HOWARD B. BALDWIN

2511 Fatnall Street
Wilmington, Del.

Wilmington High School.

Bond and Key.

Football Manager 1, 2; Motet
Choir 2, 3; Band 1, 2; Orchestra
1, 2.

Music.

JUNIORS

BETTY BALTZER

325 S. Main Street
Jersey Shore, Penna.
Jersey Shore High School.
Omega Delta Sigma.
Class Sports 1; German Club 1,
2, 3.
A. B.



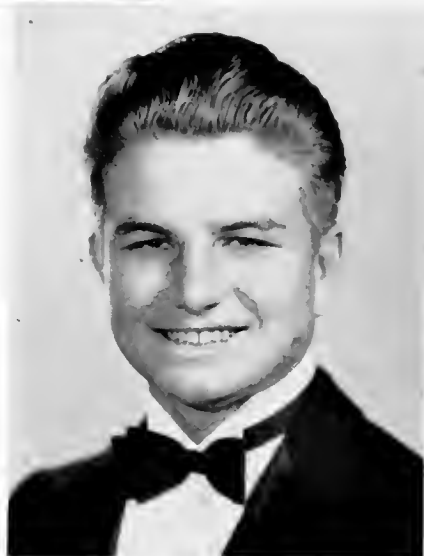
ROBERT BASTRESS

478 Duke Street
Northumberland, Penna.
Northumberland High School.
Bond and Key.
Football 1, 2, 3; Track 1, 2, 3;
Baseball 1, 2, 3.
A. B.



LOUIS BAYLOR

3 Front Street
Northumberland, Penna.
Northumberland High School.
Phi Lambda Theta.
Football 1, 2, 3; Baseball 2; Class
Sports 2, 3; German Club 2; The
Susquehanna Players 2; LAN-
THORN Staff 3.
Pre-Dental.



JUNIORS



LEROY BEACHEL

Middleburg, Penna.

Beaver Vocational High School.

Phi Lambda Theta.

Track 1; Phi Kappa 1, 2, 3; Pre-Theological Club 1, 2, 3; Band 1.

Pre-Theological.



JEAN BEAMENDERFER

401 Walnut Street
Selinsgrove, Penna.

Selinsgrove High School.

Kappa Delta Phi.

Business Society 3; Biemic Society 2; *Susquehanna* Staff 2, 3.

Commercial Education.



HAROLD BENION

Front Street
West Fairview, Penna.

Enola High School.

Bond and Key.

Student Council 3; Advertising Manager of *Susquehanna* 3; Business Society 1, 2, 3; Secretary-Treasurer of Class 2; German Club 1, 2, 3.

Business Administration.

JUNIORS

CATHERINE BIER

501 Packer Street
Sunbury, Penna.
Sunbury High School.
German Club 2; Math. Club 2,
3; Biemic Society 3.
A. B.



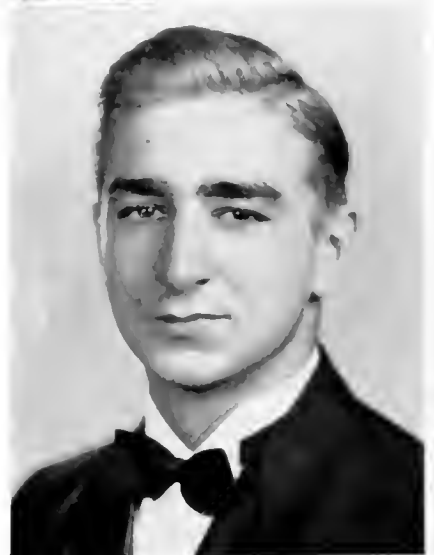
HAROLD E. BOLLINGER

132 Fifth Street
Northumberland, Penna.
Northumberland High School.
Phi Lambda Theta.
Motet Choir 1, 2; Baseball 1, 2;
Band 1, 2; Student Council, Sec-
retary 3; Treasurer of Class 3.
A. B.



PAUL BROSIOUS

Herndon, Penna.
Herndon High School.
Bond and Key.
Band 1, 2; Business Society 1, 2,
3; *Susquehanna* Staff 1, 2; Ger-
man Club 1, 2; LANTHORN Staff
3; Motet Choir 2; Class Sports
1, 2.
Business Administration.



JUNIORS



E. JOSEPHINE CAREY

101 E. Durham Street
Philadelphia, Penna.

Germantown High School.

Sigma Alpha Iota.

Vice President of S. A. I. 3; In-
ter-Sorority Council 3; Motet
Choir 1, 2, 3; *Susquehanna* Staff
1, 2.

Music.



GENEVIEVE CLUCK

McKnightstown, Penna.

Gettysburg High School.

Sigma Alpha Iota.

The *Susquehanna* Players 1, 2, 3.

Music.



ELEANOR CROFT

Greencastle, Penna.

Greencastle High School.

Kappa Delta Phi.

S. C. A. Cabinet 2, 3; Women's
Co-operative Council 3; LAN-
THORN Staff 3; Honor Hockey 1,
2, 3; Class Sports 1, 2, 3; W. A.
A. 2, 3; German Club 1, 2, 3.

A. B.

JUNIORS

MARJORIE CURTIS

52 Poplar Street
Kingston, Penna.

Kingston High School.

Omega Delta Sigma.

W. A. A. 2, 3; German Club 2,
3; Class Sports 1, 2, 3; Class Sec-
retary 3; Class Historian 2;
LANTHORN Staff 3.

A. B.



WALTER J. DRUMM

1054 Wasser Street
Sunbury, Penna.

Sunbury High School.

Phi Lambda Theta.

Phi Kappa 1, 2, 3; Pre-Theologi-
cal 1, 2, 3; The Susquehanna
Players 3.

Pre-Theological.



MARTHA A. ENGLE

1057 Market Street
Sunbury, Penna.

Sunbury High School.

Kappa Delta Phi.

Business Society 2, 3; Inter-Sor-
ority Council 3; Madrigal Soci-
ety 3.

Commercial Education.



JUNIORS



SHIRLEY V. FINKBEINER

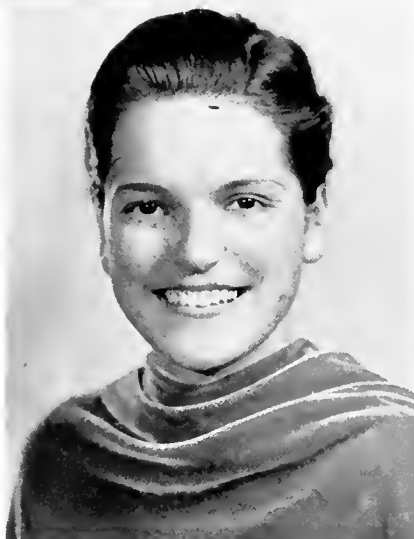
9455 Sutter Avenue
Ozone Park
Long Island, N. Y.

Girls High School, Brooklyn, N. Y.

Omega Delta Sigma.

Motet Choir 1, 2, 3; French Club
1, 2, 3; The Susquehanna Players
2, 3; W. A. A. 2, 3; Class Sports
1, 2, 3; Women's Co-operative
Council, Secretary-Treasurer 3;
LANTHORN Staff 3.

A.B.



VERNA GAYMAN

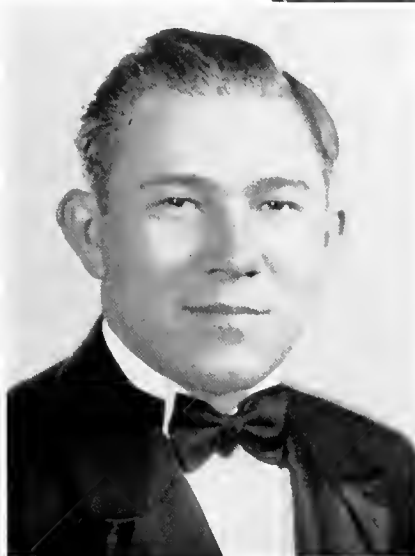
Newville, Penna.

Newville High School.

Kappa Delta Phi.

Circulation Manager of *Susque-*
hanna 3; Orchestra 1, 2; Band 2,
3; Business Society 1, 2, 3.

Commercial Education.



GLENN HAUFF

New Freedom, Penna.

New Freedom High School.

Bond and Key.

Baseball 1, 2, 3; Band 1; Business
Club 3; German Club 3; Foot-
ball 1.

Business Administration.

JUNIORS

ROBERT L. HERR

1218 Walnut Street
Shamokin, Penna.

Coal Township High School.

Phi Mu Delta.

Basketball 2, 3; Football 3; S. C.
A. Cabinet 3; German Club 1, 2;
Business Society 1, 2, 3; Intra-
Mural Board President 3.

Commercial Education.



JOHN W. HOSTETTER

308 W. Burgess Street
Pittsburgh, Penna.

Perry High School.

Phi Mu Delta.

Tennis, Capt. 3; Varsity "S"
Club; Inter-Fraternity Council
3; Basketball 1, 2; Class Sports
1, 2, 3; *Susquehanna* Staff 1;
LANTHORN Staff 1, 2.

A. B.



HENRY J. KEIL

690 Hudson Avenue
Union City, N. J.

Union Hill High School.

Bond and Key.

Football 2, 3; Baseball 1, 2, 3;
Basketball 1, 2; Class President 3;
Intra-Mural Board 2, 3; *Susque-
hanna* Staff 3; LANTHORN Staff
3.

A. B.



JUNIORS



JESS M. KEMBERLING

Selinsgrove, Penna.

Selinsgrove High School.

Bond and Key.

Debating 1; Business Society 3;
German Club 3.

Business Administration.



MARTHA KLINGER

Herndon, Penna.

Herndon High School.

Debating 1; Orchestra 1.

A. B.



JOHN R. KNAUL

R. D. 1.

Williamsport, Penna.

Williamsport High School.

Dickinson Junior College.

Pre-Theological Club 3.

Pre-Theological.

JUNIORS

FRANK LAUDENSLAYER

Hummels Wharf, Penna.

Augusta Township High School.

Phi Lambda Theta.

Baseball 2; Band 1, 2; German Club 1; Class Sports 1, 2, 3; Inter-Fraternity Council 3; Business Society 1, 2, 3; Business Manager of LANTHORN 3.

Commercial Education.



MICHAEL MASTOVICH

280 Main Street
Franklin Borough
Johnstown, Penna.

Franklin High School.

Phi Mu Delta.

Basketball 1, 2; Band 1, 2; Orchestra 1; Motet Choir 3; Varsity "S" Club.

Music.



HARRY GLENN McBRIDE

314 W. Pike Street
Houston, Penna.

East Washington High School.

Phi Mu Delta.

Basketball 1, 2, 3; French Club 1, 2; Business Society, Vice President 3; Varsity "S" Club; LANTHORN Staff 3; *Susquehanna* Staff 1, 2.

Business Administration.



JUNIORS



KATHRYN MEYER

618 Wood Street
Johnstown, Penna.
Johnstown High School.
Susquehanna Staff 3; French Club
3; The *Susquehanna* Players 3.
A. B.



JUNE MILLER

27 Broad Street
Ashland, Penna.
Ashland High School.
Phi Mu Delta.
Football 1, 2, 3; Basketball 2;
Baseball 1, 2; German Club 1, 2,
3; Varsity "S" Club.
A. B.



MIRIAM MILLER

Reading, Penna.
Shillington High School.
Kappa Delta Phi.
Susquehanna Staff 1, 2; K. D. P.
Treasurer 3; German Club 1;
Class Sports 1, 2, 3; Honor
Hockey 3; Debating 2; Business
Society 1, 2, 3; The *Susquehanna*
Players 3.
Commercial Education.

JUNIORS

MATHILDA NEUDOERFFER

1 Jackson Avenue
West Hazleton, Penna.
West Hazleton High School.
Omega Delta Sigma.
German Club 1, 2, 3; Class Sports
1, 2, 3; Motet Choir 1, 2, 3; S.
C. A. Cabinet 2, 3; The Susque-
hanna Players.
A. B.



PAUL OCHENRIDER

Aristes, Penna.
Conyngham Township High
School.
Phi Lambda Theta.
Motet Choir 1, 2, 3; Math. Club
2; Class Sports 1, 2, 3; Football
1; Band 1; German Club 1, 2.
Pre-Medical.



STEPHEN WALKER OWEN

129 Tritle Avenue
Waynesboro, Penna.
Mathew Fontaine Mawry High
School, Norfolk, Va.
Phi Mu Delta.
Tennis Manager 1, 2, 3; Basket-
ball Manager 2, 3; German Club
1, 2; Greek Club 3; Pre-Theolog-
ical Club 3; Treasurer of S. C. A.
Cabinet 3.
A.B.



JUNIORS



ALVERNA M. REESE

Audenried, Penna.

West Hazleton High School.

Omega Delta Sigma.

Business Society 1, 2, 3, Secretary
3; French Club 1; LANTHORN
Staff 3; Class Sports 1, 2, 3; In-
ter-Sorority Council 3.

Commercial Education.



HELEN OLIVE ROGERS

650 Rutter Avenue
Kingston, Penna.

Kingston High School.

Sigma Alpha Iota.

Motet Choir 2, 3; Madrigal Soci-
ety 1, 2; German Club 2, 3; LAN-
THORN Staff 3.

Music.



SAMUEL W. ROGERS

39 N. Maple Avenue
Mount Carmel, Penna.

Mount Carmel High School.

Bond and Key.

Football 1, 2, 3; Track 1; Motet
Choir 1; Class Sports 2, 3; Busi-
ness Society 1, 2, 3; Inter-Fra-
ternity Council 3.

Business Administration.

JUNIORS

ELEANOR SAVERI

East Bangor, Penna.
Bangor High School.
Kappa Delta Phi.

Class Sports 1, 2, 3; The Susquehanna Players 2, 3; *Susquehanna* Staff 1, 2; W. A. A., Vice President 3; Inter-Sorority Council 3; French Club 1, 2, 3; Honor Hockey 2, 3; LANTHORN Staff 3.
A. B.



EDWARD W. SCHWEITZER

39 Jackson Avenue
West Hazleton, Penna.
West Hazleton High School.
Phi Mu Delta.

Business Society 1, 2, 3; German Club 1, 2; Class Sports 1, 2, 3; Football 1, 2, 3.
Business Administration.



EDWARD M. SIVICK

161 Stanley Avenue
Yonkers, N. Y.
Yonkers High School.
Phi Mu Delta.

Tennis 1; Basketball 1, 2, 3; German Club 1, 2; Math. Club, Treasurer 3; Biemic Society 2, 3; Student Council 3.
Pre-Medical



JUNIORS



LEONORA SPOTTS

133 Linden Street
Sunbury, Penna.

Sunbury High School.
Bloomsburg State Teachers
College.

Business Society 2, 3.

Commercial Education.



ADELAIDE L. STEWART

Pine Bush, N. Y.

Pine Bush High School.

Kappa Delta Phi.

Class Sports 1, 2, 3; Honor Hock-
ey 2; *Susquehanna* Staff 2; LAN-
THORN Staff 3; French Club 1,
2; The *Susquehanna* Players 2;
Business Society 1, 2, 3; Vice
President of Class 2.

Commercial Education.



VIRGINIA STRAUB

423 West Frack Street
Frackville, Penna.

Frackville High School.

Sigma Alpha Iota.

Motet Choir 2, 3.

Music.

JUNIORS

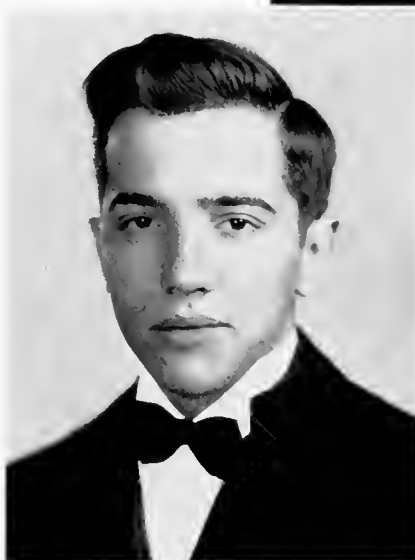
ISABEL TEWKESBURY

1058 Meade Street
Dunmore, Penna.
Dunmore High School.
Business Society 3; Class Sports
3; *Susquebanna* Staff 3.
Commercial Education.



DUDLEY B. TURNER

43 Eldred Street
Williamsport, Penna.
Williamsport High School.
Dickinson Junior College.
German Club 3; Class Sports 3.
Pre-Medical.



GLADYS WENTZEL

8 N. High Street
Selinsgrove, Penna.
Selinsgrove High School.
Omega Delta Sigma.
Class Sports 1, 2, 3; Business
Society 1, 2, 3.
Commercial Education.



JUNIORS



LOUISE E. WEST

53 E. Ridge Street
Coaldale, Penna.

Coaldale High School.

Omega Delta Sigma.

Biemic Society 2; German Club
1, 2, 3; W. A. A. 2, 3; Class
Sports 1, 2, 3; Financial Secretary
of O. D. S.; The Susquehanna
Players 3.

A. B.



RUTH ELLEN YARGER

Swengel, Penna.

Mifflinburg High School.

Math. Club 1; German Club 2,
3; *Susquehanna* Staff 2.

A. B.

SOPHOMORE CLASS OFFICERS

ROY GELNETT - - - - - *President*

HAROLD SHAFFER - - - - - *Vice President*

DOROTHY SHUTT - - - - - *Secretary*

BURTON RICHARD - - - - - *Treasurer*



SOPHOMORE CLASS HISTORY

It was on the fourteenth of September, nineteen hundred and thirty-six, that our class of one hundred and twelve made its first appearance on Susquehanna's campus. We met as a body in Seibert Hall chapel for orientation exercises. Then pep meetings, parties, and dances followed, and gradually we accustomed and adjusted ourselves to the routine and the new campus life. Our successful "get-away", the defeat we gave the sophomores in the football game, our regulations, our fraternity and sorority affiliations, and the three-act play which was presented so well, all make up a memorable picture of our freshman year.

We seemed to carry over from our first year all the enthusiasm, class spirit, unity, and co-operation that we formed and realized then. We very ably executed the freshman traditions and customs, putting forth our best efforts in hindering the freshman "get-away". This year again we showed our athletic ability by beating the freshmen with the score of 22-7. Socially we are looking forward to a sophomore "hop" which will climax our second year at S. U.

As we stand facing the other half of our college career, we hope that the remainder of our time at Susquehanna will be comparable in every way to those efforts and rewards of our first two years on the campus.

SOPHOMORES



EUNICE ARENTZ

HESTER BITTINGER



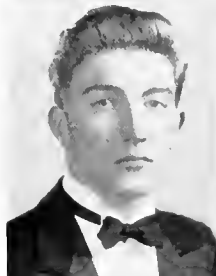
CHARLOTTE BAISH

GEORGE BROSIOUS



ELIZABETH BARNHART

VIRGINIA BURNS



JOHN BICE

PAUL COLEMAN



DONALD BILLMAN

WILLIAM DAVIS



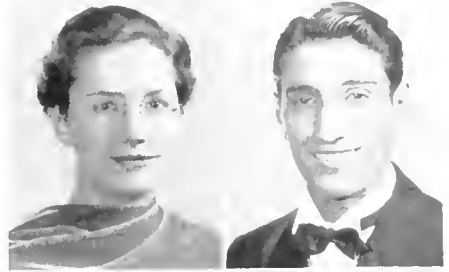
NAOMI BINGAMAN

ALICE DEITERICK

SOPHOMORES

KATHRYN DIEHL

VINCENT FRATTALI



MARY ELLEN DIXON

HILDA FREIDERICH



MARIE EDLUND

GRACE FRIES



RUTH FARLEY

ROBERT GABRENYA



ROBERT FISHER

ROY GELNETT



MRS. MILDRED FOLLMER

JOHN GENSEL



SOPHOMORES



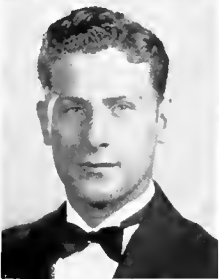
EDWIN GRENINGER

ANNA HILL



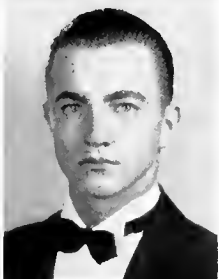
MARGARET GRENOBLE

JOHN HOFFMAN



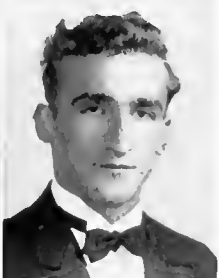
HOMER GROCE

CLAIR KALTREIDER



REED GULICK

KENNETH KINNEY



ELTON HAINES

HERBERT KLINGER



MADLENE HAYIS

EDWARD KORPER

SOPHOMORES

EDMUND KOZLOWSKI

VIRGINIA MANN



PETER LALICH

WILLIAM MEASE



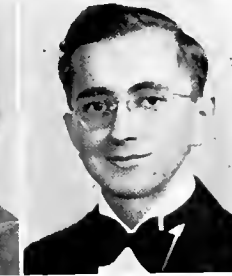
JOHN LEAM

WALTER MEEK



JANET LONG

JOSEPH MEHALOW



JOSEPH LUKENS

EDWARD MEKEEL



MARY C. MACK

HELEN MUSSELMAN

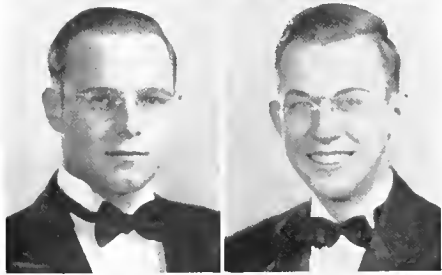


SOPHOMORES



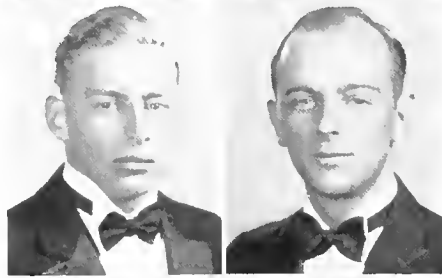
WILLIAM NYE

WILLIAM SALEM



JAMES PEARCE

ROBERT SANDER



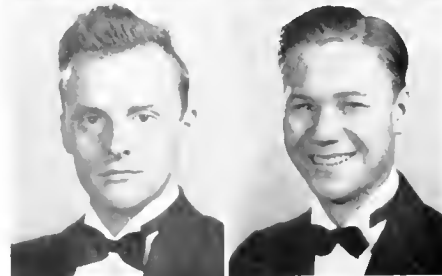
WILLIAM PRITCHARD

HAROLD SAUNDER



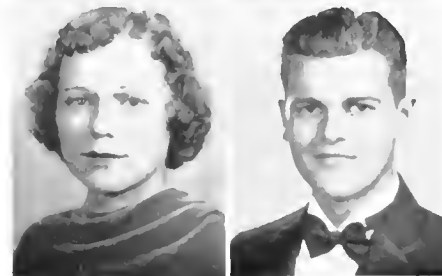
ANNA REEDER

JOHN SCHLEIG



BURTON RICHARD

FRED SCHMIDT



FLORINE ROTHFELT

GRAHAM SCHUCK

SOPHOMORES

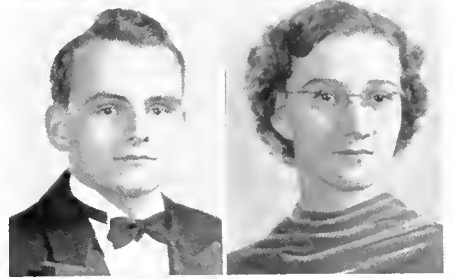
MARGARET SHEESLEY

EDNA STEPHENS



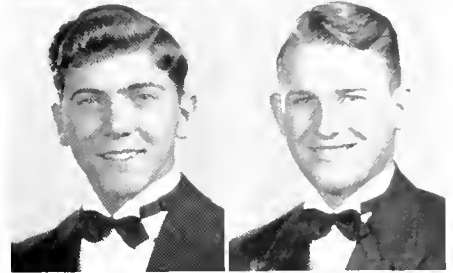
JOHN SHIPE

ETHEL STRAESSER



NORMAN SHRAWDER

BARNER SWARTZ



DOROTHY SHUTT

WILLIAM TROUTMAN



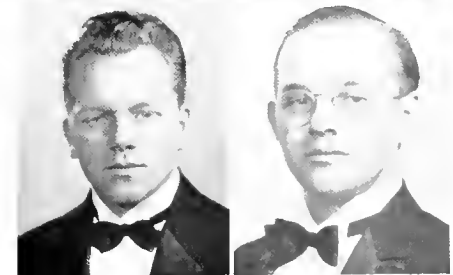
ADELLA SNYDER

DOROTHY UPHOUSE



GEORGE SPIGGLE

PALMER WETZEL



SOPHOMORES



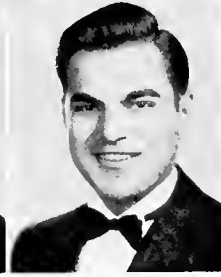
BETTY WENTZEL

FRANCES WILLIAMS



CHARLES WEYHENMEYER

HELEN WRIGHT



EUGENE WILLIAMS

DALLAS ZIEGLER

SOPHOMORE HOP

The Class of '40 is beginning what we hope will become another of Susquehanna's traditions—a Sophomore Hop.

The dance was held on April twenty-third in the Alumni Gymnasium, from eight to twelve with Artie August and his orchestra.

COMMITTEES

General Committee

Roy Gelnett, President

Charlotte Baish
Edwin Greninger
Edward Korper

Joseph Lukens
Norman Shrawder
William Troutman

Decorating

Joseph Lukens, Chairman

Ann Hill
Virginia Mann
Burton Richard

Robert Sander
Harold Saunders

Orchestra

Edward Korper, Chairman

Naomi Bingaman
Robert Fisher

Anthony Pane

Tickets

Charlotte Baish, Chairman

John Bice

Edward Meek

Publicity

Norman Shrawder, Chairman

Graham Schuck

Margaret Sheesley

Property

William Troutman, Chairman

Ruth Farley
Madelene Hayes

Edward Mekeel
William Pritchard

Demolishing

Edwin Greninger, Chairman

George Brosius
Grace Fries

Joseph Lukens
George Spiggle

FRESHMAN CLASS OFFICERS

JOSEPH PRITTS - - - - - *President*
ELEANOR SMITH - - - - - *Vice President*
PATRICIA SNEAD - - - - - *Secretary*
JOHN DETRICK - - - - - *Treasurer*



FRESHMAN CLASS HISTORY

It is with a decidedly superior feeling that we look back on our first few days at Susquehanna. It was a gay whirl, that second week in September. Parties, teas, receptions, and examinations were thrust upon us "greenies" in rapid succession.

But now that we have settled down to a more even keel, we recall our "get-away" which was unsuccessful, through the vigilance of the crafty sophomores. Again, in the annual soph-frosh football game, we bowed to defeat. However, we are not discouraged, for those early defeats only served to strengthen our indomitable spirit.

It was early in the year that we held a Freshman Dance which was very successful, not only for us, but for the upper-classmen as well.

And now, we are nearing the end of our first year at S. U. We have formed ties with the school and friendships with our fellow students that we hope may be continued during the remaining years of our college life.

FRESHMEN

DOROTHY ARTZ

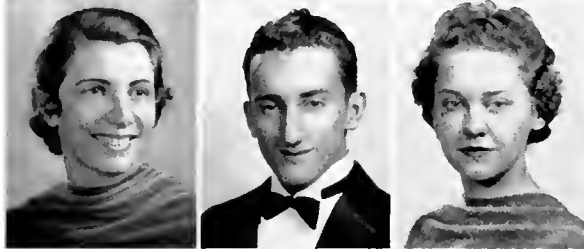
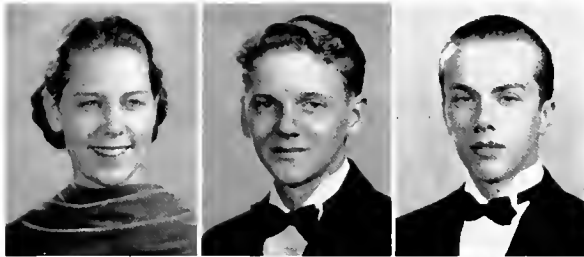
JOHN AUCKER

GEORGE BANTLEY

RICHARD BARRY

LOIS BEAMENDERFER

ELLEN BENNAGE



LOIS DAVIS

JOHN DETRICK

KATHERINE DIETTERLI

MARGARET DUNKLE

ELWOOD EWING

SAMUEL FITCHER



SARA JANE BERNT

KENNETH BONSCALL

ROBERT BOOTH

MARIAN BOYER

RICHARD BREON

ANGELYN CLEAVES

ROBERT CORNELIUS

PHYLLIS CRISPELL

MARIAN CROMPTON



FRESHMEN



DONALD FORD

MIRIAM GARNIR

BETTY GONSLER



DOROTHY HAFFNER

FAITH HARBESON

SARA HASSINGER

WARREN HERROLD

NAOMI HIMES

ELSIE HOHELLA

MERLE HOOVER

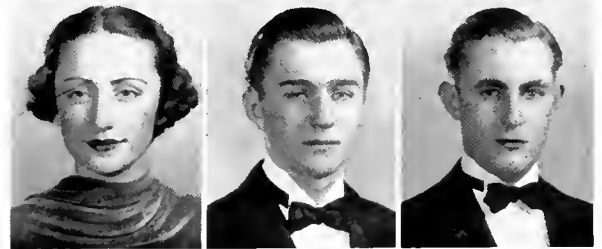
JANE HUTCHISON

MELVIN JONES

HELEN KERR

HARRY KLEPKO

ROBERT KONKLE



LEON KROUSE

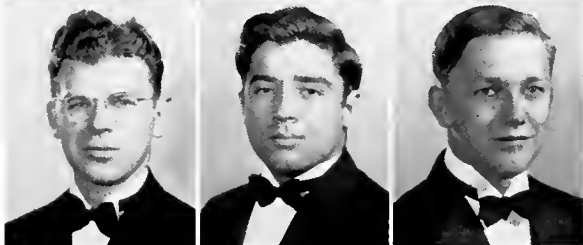
FRED LUKENS

NEWTON MABUS

JEFFREY MARK

JOHN MATTHEW'S

JAMES McCORD

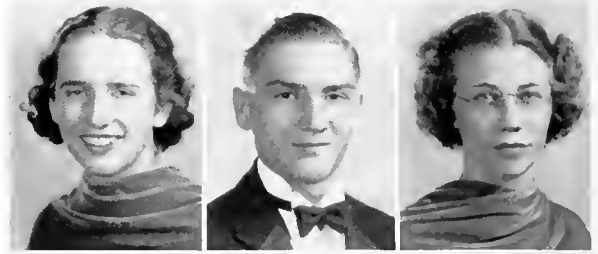


FRESHMEN

HARRIET MENDENHALL

HARRY MERVINE

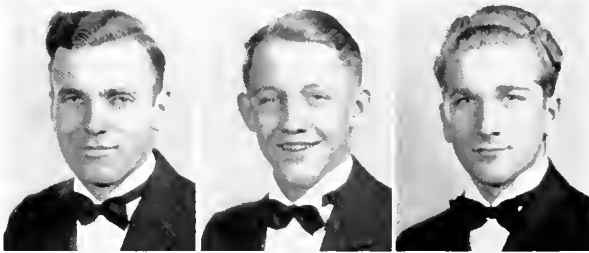
BEATRICE MEYER



ELAINE MILLER

EARL MINKWITZ

THOMAS MORROW



CHARLES MURRAY

GLENN MUSSER

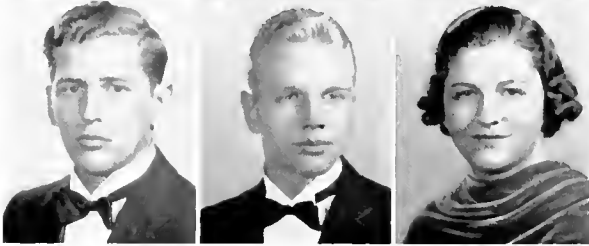
JOSEPH PASTERCHIK



FERNE POORBAUGH

KATHRYN PORTER

DOUGLAS PORTZLINE



JOHN POWELL

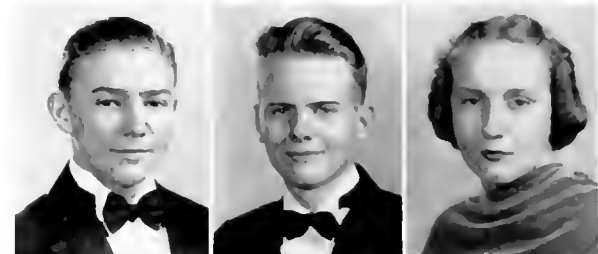
JOSEPH PRITTS

ELIZABETH REESE

HOWARD REESE

JOHN RICHARD

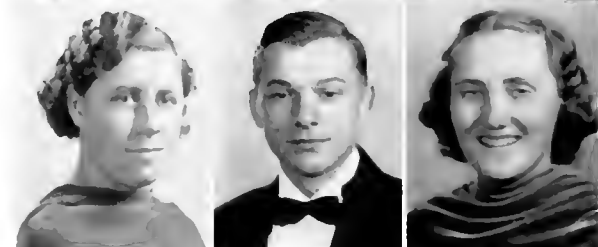
FLORENCE RITZ



HILDA RITZER

KENNETH RITZER

ELMIRA SASSAMAN



FRESHMEN



DORIS SAYRI

WILLIARD SCHADL

ESTHER SLITZINGER

PAUL SHATTO

ROY SHULTIS

ELIANOR SMITH



EUGENE SMITH

MELISSA SMOOT

PATRICIA SNEAD



MAYE SNYDER

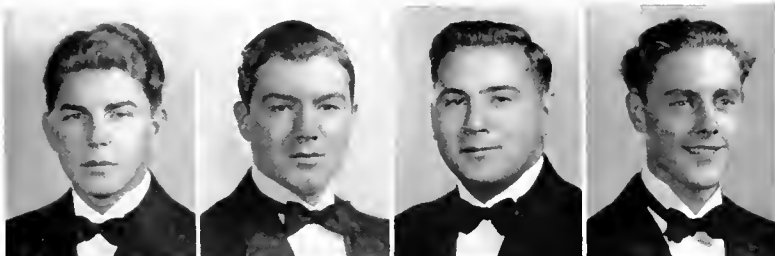
PAULINE SNYDER

RUTH SPFCHT

HARRY THATCHER

MARTHA TRIBBY

ROBERT UPDFGROVE

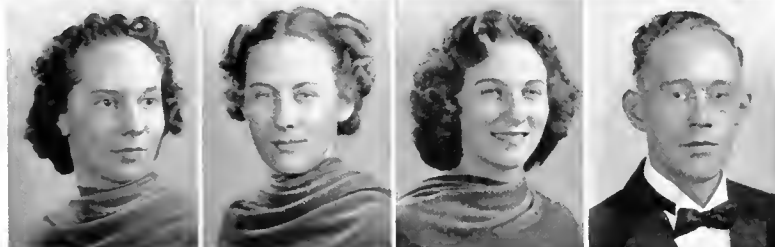


KENNETH WILT

MICHAEL WOLF

FRANKLIN WOLFE

RALPH WOLFGANG

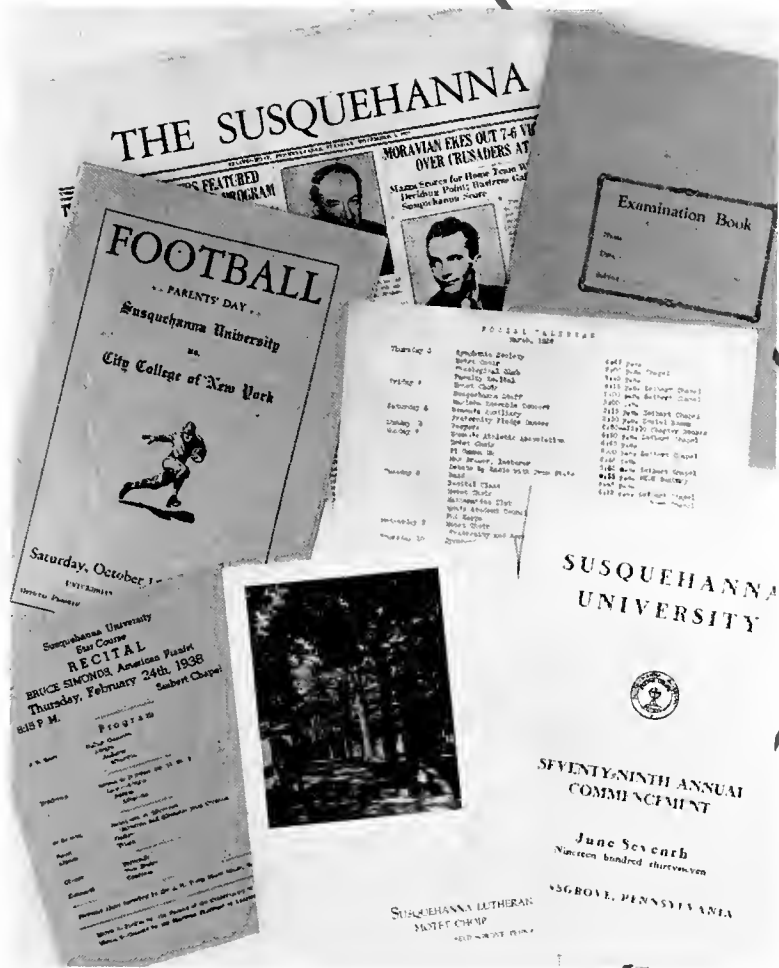


SARA JANF WORMILLY

MARY EMMA YODER

LOIS YOST

KARL YOUNG



ACTIVITIES

FRATERNITIES



BOND AND KEY

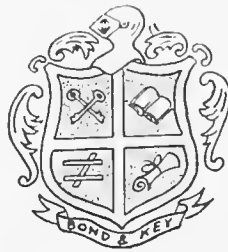
Founded in 1914

OFFICERS

PRESTON SMITH	- - - - -	<i>President</i>
VERNON PHILLIPS	- - - - -	<i>Vice President</i>
JOHN BICE	- - - - -	<i>Secretary</i>
SAMUEL ROGERS	- - - - -	<i>Treasurer</i>
JOHN PAUL	- - - - -	<i>House Manger</i>

HONORARY MEMBERS

DR. WILLIAM A. AHL
PROF. DONALD HEMPHILL
DR. JOHN J. HOUTZ
PROF. PERCY M. LINEBAUGH



DR. PAUL J. OVREBO
PROF. FISK W. SCUDDER
PROF. EDWIN SHELDON
DR. ADAM J. SMITH

PROF. FREDERICK STEVENS
DR. JOHN I. WOODRUFF



BOND AND KEY

Seniors

Samuel Camp	Karl Herr
Claude Clark	John Paul
James Diffenderfer	Vernon Phillips
Orville Fitzgerald	Preston Smith
John Goyne	Kent Worthington

Juniors

Harold Benion
Paul Brosious
Wilbur Dreher
Glenn Hauff
Robert Hertz
Henry Keil
Jesse Kemberling
Samuel Rogers



Sophomores

John Bicc
Donald Billman
Homer Groce
Clair Kaltreider
John Leam
Edward Mekeel
William Pritchard
Burton Richard
Clyde Sechler
Eugene Williams

Pledges

Howard Baldwin	Horace Kauffman
Robert Bastress	Kenneth Kinney
Philip Bergstresser	Edward Korper
Richard Breon	Leon Krouse
Robert Cornelius	Paul Lucas
Jack Detrick	William Mease
Samuel Fletcher	Earl Minkwitz
Don Ford	Thomas Morrow
Walter Freed	Douglas Portzline
Ray Fulmer	Robert Sander
Edwin Greninger	Harold Saunder
Reed Gulick	Paul Shatto
Melvin Jones	Peter Shuty

PHI MU DELTA

Local (Alpha Sigma Omega)
Founded 1915

Chartered as Mu Alpha Chapter of Phi Mu Delta in 1925

OFFICERS

KARL KNISELEY - - - - - *President*
STANLEY AUGHENBAUGH - - - - - *Vice President*
DONALD WIRT - - - - - *Comptroller*
EDWARD SCHWEITZER - - - - - *Secretary*

HONORARY MEMBERS

PROF. ELROSE L. ALLISON
H. VERNON BLOUGH
PROF. E. M. BRUNGART
DR. GEORGE E. FISHER



DR. T. S. COTTOM
DR. WILLIAM A. RUSS
DR. H. F. STRAUB
PROF. GEORGE N. WOOD

DR. ARTHUR H. WILSON
ERNEST T. YORTY



PHI MU DELTA

Seniors

Stanley Aughenbaugh	John Hazlett
Morgan Edwards	James Higgins
Karl Kniseley	Donald Wert

Juniors

Robert Herr
John Hostetter
Harry McBride
June Miller
Steve Owen
Edward Schweitzer
Edward Sivick



Sophomores

Paul Coleman
Donald Critchfield
William Davis
Robert Fisher
Robert Gabrenya
Peter Lulich
William Nye
William Salem
John Schleig
Harold Shaffer
Graham Schuck
Norman Shrawder
George Spiggle
William Troutman
Charles Weyhenmeyer

Pledges

Richard Barry	Harry Mervine
George Brosius	James Pearce
Joseph Campana	John Powell
Earl Deardorf	Joseph Pritts
Vincent Frattali	Howard Reese
Harry Klepko	John Reichard
Robert Konkle	Kenneth Ritter
Edward Kozlowski	Fred Schmidt
Newton Mabus	Roy Shaulis
Jeffrey Mark	Michael Shilo
Jack Martin	Eugene Smith
Milo Mastovitch	Dudley Turner
John Matthews	Willis Winner
William May	Ralph Wolfgang
James McCord	Karl Young
Joseph Mehalow	

PHI LAMBDA THETA

Phi Epsilon Chapter
Chartered in 1928

OFFICERS

GEORGE KINMEL	- - - - -	<i>President</i>
HERBERT LAUVER	- - - - -	<i>Vice President</i>
VERLIN SMAETZ	- - - - -	<i>Secretary</i>
PAUL OCHENRIDER	- - - - -	<i>Treasurer</i>
JOHN SHIPE	- - - - -	<i>Chaplain</i>

HONORARY MEMBERS

PROF. RUSSELL W. GILBERT



PROF. D. IRVIN REITZ

DR. GEORGE F. DUNKELBERGER



PHI LAMBDA THETA

Seniors

Robert Boyer
George Kimmel

Herbert Lauver
Charles Stauffer

Juniors

Frank Laudenslayer
Paul Ochenrider



Sophomores

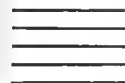
Roy Gelnett
Herbert Klinger
Joseph Lukens
Walter Meek
James Moyer
John Shipe
Barner Swartz
Charles Wetzel

Pledges

John Aucker
Louis Baylor
LeRoy Beachel
Harold Bollinger
Kenneth Bonsall
Robert Booth
John Drumheller
Walter Drumm
Robert Furman
John Gensel
Walter Gill
Leon Haines
Carl Helt
Warren Herrold
Chester Hess
John Hoffman
Merle Hoover

John Knaul
Charles Loss
Fred Lukens
Charles Murray
Glenn Musser
Reginald Schofield
Quinton Scholl
Truman Scholl
Henry Shotsberger
Harry Swope
Harry Thatcher
John Updegrove
Robert Updegrove
Kenneth Wilt
Michael Wolf
Franklin Wolfe
Dallas Zeigler

SORORITIES



OMEGA DELTA SIGMA

Founded 1917

OFFICERS

MARTHA BOLIG	- - - - -	<i>President</i>
ALVERNA REESE	- - - - -	<i>Vice President</i>
MARY APPLER	- - - - -	<i>Secretary</i>
LOUISE WEST	- - - - -	<i>Financial Secretary</i>
ELIZABETH FRY	- - - - -	<i>Treasurer</i>

HONORARY MEMBERS

MISS ELLA ENGEL
MRS. GEORGE E. FISHER
MRS. CHARLES FOELSCH
MRS. RUSSELL GILBERT
MRS. JOHN J. HOUTZ
MRS. R. B. NELL



MRS. PAUL J. OVREBO
MRS. D. IRVIN REITZ
MISS IRENE SHURE
MRS. G. MORRIS SMITH
MRS. AMOS A. STAGG
MRS. ARTHUR H. WILSON

MRS. GEORGE N. WOOD
MRS. JOHN I. WOODRUFF
MRS. E. T. YORTY



OMEGA DELTA SIGMA

Seniors

Hildegarde Ahl	Mary Jarrett
Martha Bolig	Betty Johnston
Margaret Boyle	Jean Rheinart
Elizabeth Fry	

Juniors

Mary Appler
Betty Baltzer
Marjorie Curtis
Shirley Finkbeiner
Mathilda Neudoerffer
Alverna Reese
Gladys Wentzel
Louise West



Sophomores

Naomi Bingamen
Virginia Burns
Virginia Mann
Margaret Weeks

Pledges

Angelyn Cleaves	Harriet Mendenhall
Lois Davis	Eleanor Smith
Ruth Farley	Ruth Specht
Betty Gonser	Dorothy Uphouse
Jane Hutchison	Sarah Jane Wormley
Helen Kerr	Mary Emma Yoder
Mary Catherine Mack	

KAPPA DELTA PHI

Founded 1917

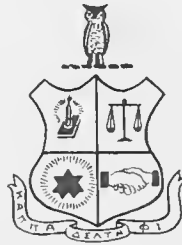
Motto: "Kalokagathia Dia Phileas"

OFFICERS

HELEN HISDORF	-	-	-	-	-	-	-	-	-	<i>President</i>
MARTHA ENGLE	-	-	-	-	-	-	-	-	-	<i>Vice President</i>
MILDRED PIFER	-	-	-	-	-	-	-	-	-	<i>Secretary</i>
ETHAL RAMER	-	-	-	-	-	-	-	-	-	<i>Financial Secretary</i>
MIRIAM MILLER	-	-	-	-	-	-	-	-	-	<i>Treasurer</i>

HONORARY MEMBERS

MRS. A. W. AHL
MISS LOIS BOE
MISS VIOLA DUFRAIN



MISS BEATRICE HERMAN
MRS. T. W. KRETSCHMANN
MISS ISABEL NICELY

MRS. W. A. RUSS, JR.



KAPPA DELTA PHI

Seniors

Marjorie Bower
Eleanor Brown
Helen Hisdorf
Ruth Jones

Mildred Pifer
Ethel Ramer
Esther Yingling

Juniors

Jean Beamenderfer
Martha Engle
Verna Gayman
Miriam Miller
Eleanor Saveri



Sophomores

Eunice Arentz
Betty Diehl
Mary Ellen Dixon
Marie Edlund
Grace Fries
Madelene Hayes
Dorothy Shutt
Edna Stephens
Ethel Straesser

Pledges

Lois Beamenderfer
Sara Jane Bernt
Eleanor Croft
Marian Crompton
Sara Hassinger
Beatrice Meyer

Elaine Miller
Elizabeth Reese
Florence Reitz
Isabel Tewkesbury
Martha Tribby

SIGMA ALPHA IOTA

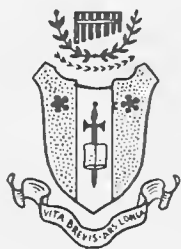
Sigma Omega Chapter
Founded 1927
Motto: "Vita Brevis-Arc Longa"

OFFICERS

CAROLINE GRUBB	-	-	-	-	-	-	-	-	-	<i>President</i>
JOSEPHINE CAREY	-	-	-	-	-	-	-	-	-	<i>Vice President</i>
ESTHER KAUFMAN	-	-	-	-	-	-	-	-	-	<i>Secretary</i>
HELEN ROGERS	-	-	-	-	-	-	-	-	-	<i>Treasurer</i>

HONORARY MEMBERS

MISS MARGARET KEISER
MRS. PERCY M. LINEBAUGH



MISS MARY POTTEIGER
MRS. FISK W. SCUDDER

MRS. E. E. SHELDON
MRS. FREDERICK STEVENS



SIGMA ALPHA IOTA

Seniors

Caroline Grubb
Birdie Hamm
Esther Kaufman

Juniors

Josephine Carey
Genevieve Cluck
Helen Rogers
Virginia Straub



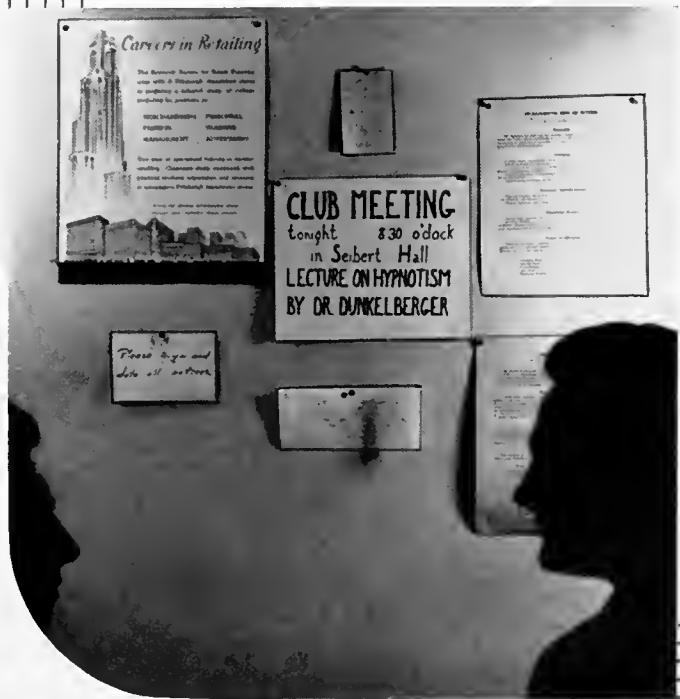
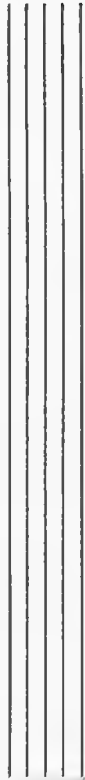
Sophomores

Charlotte Baish
Betty Barnhart
Alice Deiterick
Margaret Grenoble
Anna Reeder
Frances Williams

Pledges

Dorothy Artz
Harriet Faith Harbeson
Elsie Hochella
Sara Kathryn Porter
Melissa Smoot
Lois Yost

CLUBS AND SOCIETIES



BIEMIC SOCIETY

Organized 1896

OFFICERS

MARY HEIM - - - - - *President*
CLAUDE CLARK - - - - - *Vice President*
RUTH HEMMERLY - - - - - *Secretary*

FACULTY ADVISORS

DR. GEORGE FISHER
DR. PAUL J. OVREBO

DR. JOHN HOUTZ
MR. FISK W. SCUDDER

The society aims to broaden the student's interest in biology, chemistry, and physics. The name of the organization is derived from the union of two letters taken from the names of the three major sciences.



BUSINESS SOCIETY

Organized 1925

OFFICERS

PRESTON SMITH - - - - - *President*
HARRY MCBRIDE - - - - - *Vice President*
ALVERNA REESE - - - - - *Secretary*
ELEANOR BROWN - - - - - *Treasurer*

FACULTY ADVISORS

MISS VIOLA DUFRAIN MR. D. IRVIN REITZ
MR. GEORGE N. WOOD

The Business Society was organized to promote further interest in the various fields of commerce, business, and economics; to provide an open forum for scientific discussion of any subject in the general field of business; and to establish a closer fellowship among those interested in these subjects.

During the year, the Society sponsored tours, and engaged outstanding men in the business world to lecture at the regular monthly meetings.



DEBATING SOCIETY

Organized 1927

OFFICERS

PROFESSOR RUSSELL W. GILBERT - - - - - *Coach*
VINCENT FRATTALI - - - - - *Manager*

FACULTY ADVISORS

MR. RUSSELL W. GILBERT DR. WILLIAM A. RUSS
DR. GEORGE F. DUNKELBERGER MR. GEORGE N. WOOD

The Debating Society aims to train individuals to express their thoughts clearly before the public, and to speak logically and concisely.

In addition to the intercollegiate debates scheduled, the club makes an extensive spring tour, and participates in several radio debates.



FRENCH CLUB

Organized 1927

OFFICERS

JEAN RHEINHART - - - - - *President*
GRACE FRIES - - - - - *Secretary*
MILDRED PIFER - - - - - *Treasurer*

Miss Lois M. BOE, *Faculty Advisor*

The French Club is an active campus organization which includes all students interested in the French language. Monthly meetings are held and further interest in the French is developed by means of songs, plays, and conversation.



GERMAN CLUB

Organized 1930

OFFICERS

MATHILDA NEUDOERTTER - - - - - *President*
VIRGINIA MANN - - - - - *Vice President*
EDNA STEPHENS - - - - - *Secretary-Treasurer*

MR. RUSSELL GILBERT, *Faculty Advisor*

The German Club includes all students taking courses in German. Interest and vitality are retained by means of informal lectures, German songs, plays, and various social functions held during the regular club meetings.



MATHEMATICS CLUB

Organized 1930

OFFICERS

PAUL COLEMAN	-	-	-	-	-	-	-	-	-	<i>President</i>
MARGARET BOYLE	-	-	-	-	-	-	-	-	-	<i>Vice President</i>
KATHERINE BIER	-	-	-	-	-	-	-	-	-	<i>Secretary</i>
EDWARD SIVICK	-	-	-	-	-	-	-	-	-	<i>Treasurer</i>

DR. ADAM SMITH, *Faculty Advisor*

In order to create an interest in practical and applied mathematics, the Mathematics Club was organized. It is also the purpose of the club to develop a better understanding of unusual problems in this field.



PHI KAPPA

Organized 1929

OFFICERS

REED GRENINGER	- - - - -	<i>President</i>
LEROY BEACHEL	- - - - -	<i>Messenger</i>

DR. WILLIAM A. AHL, *Faculty Advisor*

The aim of this organization is to create and to cultivate in its members a deeper appreciation of the Greek language and culture.



PRE-THEOLOGICAL CLUB

Organized 1917

OFFICERS

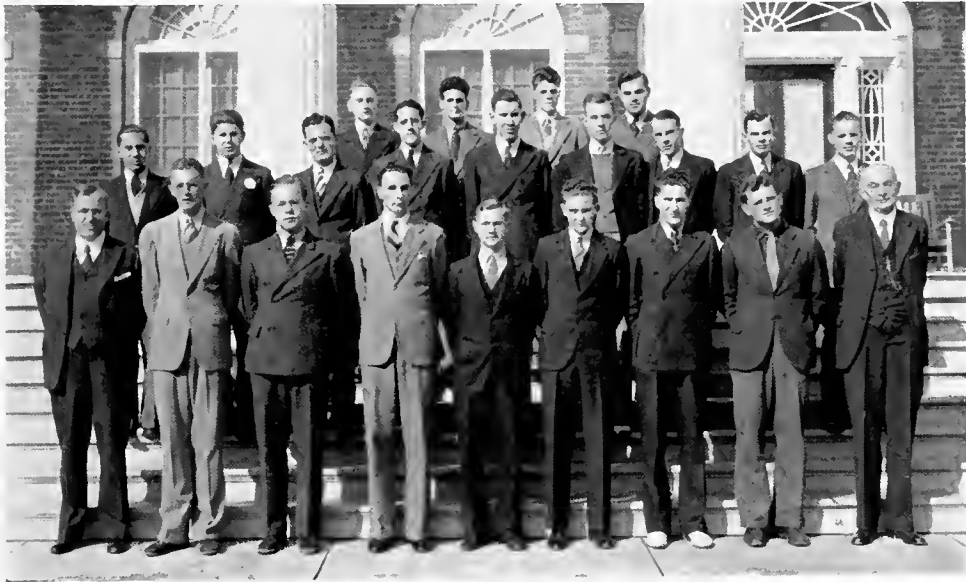
GEORGE CLARK	- - - - -	<i>President</i>
WALTER DRUMM	- - - - -	<i>Vice President</i>
LEON HAINES	- - - - -	<i>Secretary</i>

FACULTY ADVISORS

DR. G. MORRIS SMITH

DR. T. W. KRETSCHMANN

The Pre-Theological Club endeavors to maintain and strengthen the spiritual ideals of those preparing for the ministry. Outside speakers often lecture to the club, presenting problems which will be encountered in an active ministry.



THE SUSQUEHANNA PLAYERS

Organized 1936

OFFICERS

MILDRED PIER	-	-	-	-	-	-	-	-	-	<i>President</i>
MARGARET SHEESLEY	-	-	-	-	-	-	-	-	-	<i>Secretary</i>
MR. FREEMAN	-	-	-	-	-	-	-	-	-	<i>Treasurer</i>

MR. JAMES C. FREEMAN, *Faculty Advisor*

The purpose of this organization is to give students interested in dramatics a chance to express themselves, and to further the dramatic activities on the campus.

On December sixteenth, the Players gave a very successful three-act comedy entitled "Mama's Baby Boy." The group is also planning to give a Commencement play.



ORANGE KEY CLUB

MANAGERS

BURTON RICHARD, EDWIN GRENINGER	-	-	-	-	-	-	-	-	-	<i>Football</i>
MORGAN EDWARDS, STEPHEN OWEN	-	-	-	-	-	-	-	-	-	<i>Basketball</i>
KARL KNISELEY, HARRY MCBRIDE	-	-	-	-	-	-	-	-	-	<i>Baseball</i>
STEPHEN OWEN	-	-	-	-	-	-	-	-	-	<i>Tennis</i>
GEORGE KIMMEL	-	-	-	-	-	-	-	-	-	<i>Track</i>

The Orange Key Club consists of the manager and assistant managers of the various varsity sports. Its purpose is to create a greater spirit of co-operation in the organization of the various athletic teams.



PRE-LEGAL CLUB

Organized 1937

OFFICERS

JOHN HAZLETT - - - - - *President*

DR. WILLIAM A. RUSS, *Faculty Advisor*

The chief aim of the club is to acquaint all those students contemplating the study of law with the fundamental requirements of all the major law schools. There is, also, a general discussion of current questions of law that arise over the country from time to time.



TAU KAPPA ALPHA

Organized 1930

OFFICERS

PROF. RUSSELL GILBERT	-	-	-	-	-	-	-	<i>President</i>
DR. GEORGE F. DUNKELBERGER	-	-	-	-	-	-	-	<i>Secretary</i>
ROBERT BOYER	-	-	-	-	-	-	-	<i>Treasurer</i>

Tau Kappa Alpha is a national forensic honor fraternity which has over one hundred chapters in colleges and universities in the United States.

The Susquehanna chapter was organized January 18, 1930. Only those who have done exceptionally fine work in public speaking are admitted to its membership.



ORGANIZATIONS



MEN'S STUDENT COUNCIL

OFFICERS

PRESTON SMITH	-	-	-	-	-	-	-	-	-	<i>President</i>
JAMES HIGGINS	-	-	-	-	-	-	-	-	-	<i>Vice President</i>
HAROLD BOLLINGER	-	-	-	-	-	-	-	-	-	<i>Secretary</i>
HAROLD BINION	-	-	-	-	-	-	-	-	-	<i>Treasurer</i>

DR. JOHN J. HOUTZ, *Faculty Advisor*

This student organization was created in order to obtain a close union among the students and a closer bond between the faculty and the student body. The membership of this council is limited to two men from each fraternity and two non-fraternity men.



WOMEN'S COOPERATIVE COUNCIL

OFFICERS

CAROLINE GRUBB - - - - - *President*
SHIRLEY FINKBEINER - - - - - *Secretary-Treasurer*

MISS GLADYS B. ERDAHL, *Faculty Advisor*

Harmonious living conditions are absolutely necessary for a progressive and comfortable dormitory environment. Thus it is the purpose of this organization to foster and to regulate the activities of the dormitory women through cooperation with the student government.



INTER-FRATERNITY COUNCIL

Organized 1928

OFFICERS

KARL KNISELEY - - - - - *President*
ORVILLE FITZGERALD - - - - - *Vice President*
GEORGE KIMMEL - - - - - *Treasurer*

DR. GEORGE DUNKELBERGER, *Faculty Advisor*

Through its regulation of inter-fraternity relationships, the Inter-fraternity Council aims to promote a mutual and beneficial understanding among the fraternities on the campus.



INTER-SORORITY COUNCIL

Organized 1927

OFFICERS

HELEN HISDORF	-	-	-	-	-	-	-	-	-	<i>President</i>
CAROLINE GRUBB	-	-	-	-	-	-	-	-	-	<i>Vice President</i>
ELEANOR SAVERI	-	-	-	-	-	-	-	-	-	<i>Secretary</i>
MARTHA BOLIG	-	-	-	-	-	-	-	-	-	<i>Treasurer</i>

This organization has gathered its members from the three sororities on the campus. It is definitely the purpose of this council to foster and maintain a friendly and harmonious attitude among the three groups.



PI GAMMA MU

Organized 1927

OFFICERS

MARY JARRETT - - - - - *President*
MORGAN EDWARDS - - - - - *Vice President*
DR. T. W. KRETSCHMANN - - - - - *Secretary-Treasurer*

FACULTY ADVISORS

DR. WILLIAM A. AHL	MR. D. IRVIN REITZ
MR. EDWIN M. BRUNGART	DR. WILLIAM A. RUSS
DR. GEORGE F. DUNKELBERGER	DR. G. MORRIS SMITH
DR. THEODORE W. KRETSCHMANN	MR. GEORGE N. WOOD
DEAN RAYMOND B. NELL	DR. JOHN I. WOODRUFF

The society serves as a means of fostering and encouraging interest in the social sciences and in society itself. Qualifications for membership include at least twenty semester hours in social science with a "B" average, good character, and a satisfactory general scholastic standing.



STUDENT CHRISTIAN ASSOCIATION

Organized 1934

OFFICERS

JAMES DIFFENDERFER - - - - - *President*
GEORGE CLARK - - - - - *Boys' Vice President*
ESTHER YINGLING - - - - - *Girls' Vice President*
STEVE OWEN - - - - - *Treasurer*

FACULTY ADVISORS

DR. G. MORRIS SMITH
DR. PAUL J. OVREBO

MISS GLADYS B. ERDAHL
MRS. THEODORE KRETSCHMANN

The purpose of the S. C. A. is to help every student to grow in spiritual experience. Each year the cabinet sponsors vesper services, Freshman Week activities, and the Freshman handbook.



INTRA=MURAL BOARD

OFFICERS

ROBERT HERR - - - - - *President*
HENRY KEIL - - - - - *Vice President*

It is the duty of the Intra-Mural Board to schedule, control, and regulate the varied boys' sports of the institution, which include interclass and interfraternity games as well as various tournaments.

The board is made up of two members from each fraternity.

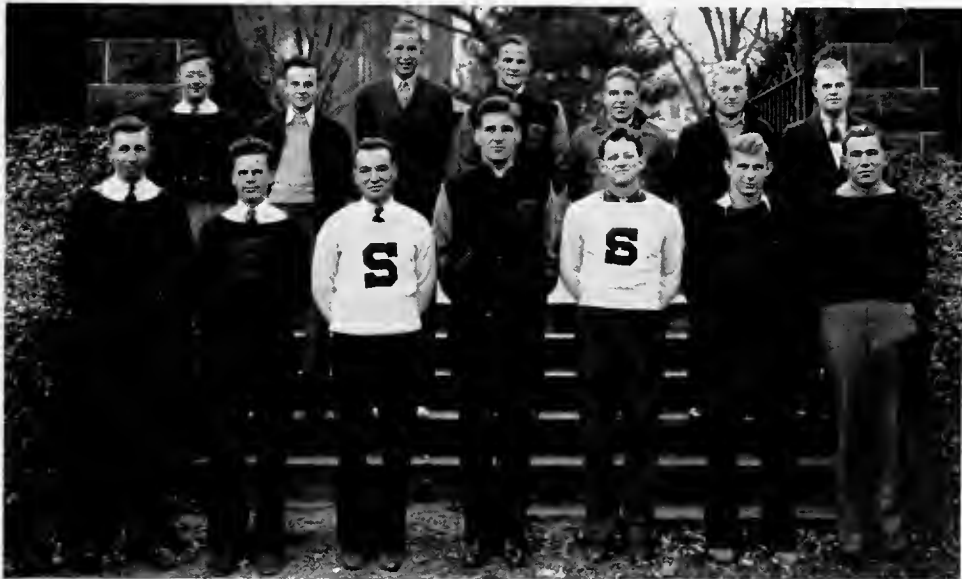


VARSITY "S" CLUB

In order to become eligible for membership in the club, the student is required to win an "S" in any varsity sport, after attending classes for a year or more.

MEMBERS

LOUIS BAYLOR—Football	HENRY KEIL—Football, Baseball
ROBERT BASTRESS—Football	PETER LALICH—Basketball
HAROLD BOLLINGER—Baseball	CHARLES LENGLER—Track
WILLIAM DAVIS—Football	JOHN MATTHEWS—Football
JACK DETRICK—Football	HARRY McBRIDE—Basketball
JAMES DIFFENDERFER—Football	HARRY MERVINE—Football
SAM FLETCHER—Football, Basketball	JUNE MILLER—Football, Baseball
DONALD FORD—Basketball	WILLIAM PRITCHARD—Football
REED GRENINGER—Track	JOHN RAKSHYS—Track, Basketball
WILLIAM GOULD—Basketball	BURTON RICHARD—Track
JOHN GOYNE—Football	SAM ROGERS—Football
GLENN HAUFF—Baseball	MICHAEL SHILO—Football
JOHN HAZLETT—Football, Baseball	PETER SHUTY—Football
KARL HERR—Basketball	CHARLES STAUFFER—Football
ROBERT HERR—Football, Basketball	HARRY SWOPE—Football, Track
JOHN HOSTETTER—Tennis	DONALD WERT—Basketball
CLAIR KALTREIDER—Football, Baseball, Basketball	



PUBLICATIONS



LANTHORN

EDITORIAL STAFF



The LANTHORN is the yearly publication of the Junior Class. Through it we have made an attempt to give a photographic study of our college life.

DR. ARTHUR H. WILSON, *Faculty Advisor*



Mary L. Appler, Editor

BUSINESS STAFF



The Business Staff is concerned with the terms of contracts, finances, and advertising which make the book possible. We are indebted to them and to our advertisers for the success of this book.

MR. D. IRVIN REITZ, *Faculty Advisor*



Frank Laudenslayer, Business Manager

THE SUSQUEHANNA

EDITORIAL STAFF

ESTHER YINGLING - - - - - *Editor-in-Chief*
HENRY KEIL - - - - - *Managing Editor*
GRACE FRIES - - - - - *News Editor*
REED GULICK - - - - - *Sports Editor*

DR. ARTHUR H. WILSON, *Faculty Advisor*

The *Susquehanna* is the weekly newspaper published by the students of the university. Aside from giving those on the staff invaluable journalistic experience, it gives the alumni and friends of Susquehanna a means of keeping in touch with events on the campus.



THE SUSQUEHANNA

BUSINESS STAFF

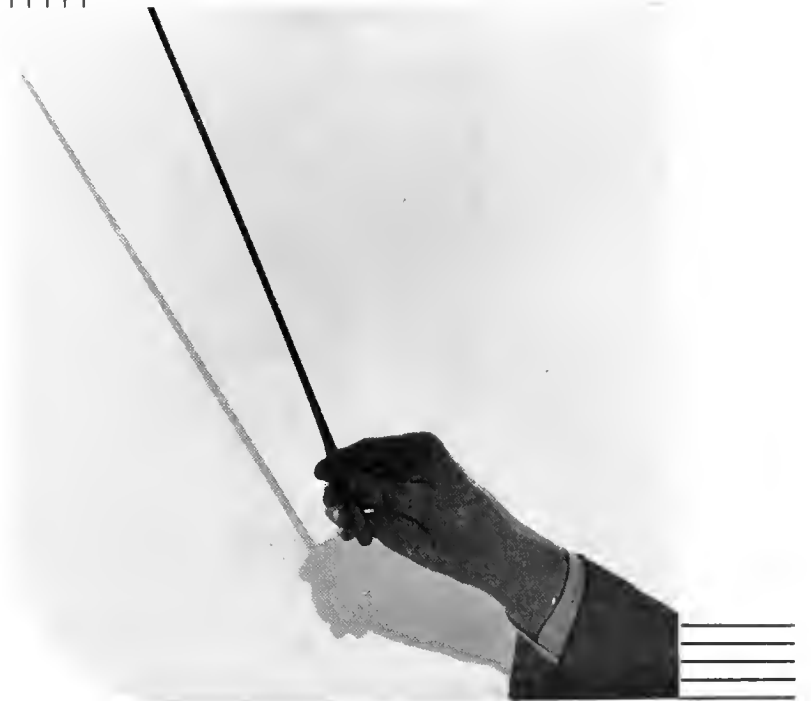
HERBRET LAUVER - - - - - *Business Manager*
HAROLD BENION - - - - - *Advertising Manager*
VERNA GAYMAN - - - - - *Circulation Manager*

MR. D. IRVIN REITZ, *Faculty Advisor*

The Business Staff is responsible for the maintenance and circulation of the paper. Through the *Susquehanna*, students are given an excellent opportunity for practical business experience.



MUSIC



SUSQUEHANNA MOTET CHOIR

Organized 1932

OFFICERS

MR. FREDERICK STEVENS - - - - - *Director*

DR. PAUL J. OVREBO - - - - - *Business Manager*

The Motet Choir was organized five years ago as a small choir of twenty voices. It is dedicated to the singing of the finest a cappella music of the Christian Church, and in order that the high purpose of this group can be realized, the Choir rehearses daily.

Each year the Motet Choir gives its program of sacred music in many of the leading cities of the east. Through two nation-wide annual broadcasts, the Choir adds a large radio audience to its thousands of listeners.



PERSONNEL

Sopranos

Josephine Carey
Margaret Dunkle
Elsie Hochella
Beatrice Meyer
Kathryn Porter
Helen Rogers

Esther Seitzinger
Melissa Smoot
Patricia Snead
Mrs. Stevens
Lois Yost

Altos

Dorothy Artz
Lois Beamenderfer
Sara Bernt
Shirley Finkbeiner
Hilda Friederick

Margaret Grenoble
Esther Kaufman
Mathilda Neudoerffer
Virginia Straub

Tenors

Howard Baldwin
George Brosius
Milo Mastovitch
Paul Ochenrider
Dr. Ovrebo

Clyde Sechler
Harold Shaffer
Kenneth Wilt
Warren Wightman

Basses

Stanley Aughenbaugh
Donald Billman
Orville Fitzgerald
Anthony Pane
John Paul

John Powell
Verlin Smaltz
Barner Swartz
Charles Weyhenmeyer
Karl Young

SUSQUEHANNA SYMPHONIC SOCIETY

Organized 1933

OFFICERS

MR. ELROSE ALLISON - - - - - *Conductor*

The purpose of this organization is to foster a love and appreciation of a symphonic repertoire within those who participate, to develop a sensitivity to musical interpretation, and to perpetuate the cause of fine instrumental music.



SUSQUEHANNA UNIVERSITY BAND

Organized 1928

OFFICERS

MR. ELROSE ALLISON - - - - - *Director*
JOSEPH MEHALOW - - - - - *Librarian*

The band brings to the students of our school musical entertainment of a high caliber and develops within the individuals an appreciation for this art.

An annual concert early in the spring is the climax to the year's activities.



BELLES





ESTHER KAUFMAN



ESTHER YINGLING



LOIS DAVID



MAD.ALENE HAYES



ATHLETICS



Coach Stagg

FOOTBALL



Coach Pritchard

The Crusaders, starting their third season under Coach A. A. Stagg, were handicapped from the very beginning by the lack of veteran material. Only six lettermen were on hand for the opening game of the season. As a result, practically a whole squad had to be developed, and it was not until late in the season that anything resembling a unit was shown. However, despite all the odds against them, the Staggmens did remarkably well in holding some of their opponents to respectable scores and, in several cases giving the opposition a real scare.

Particularly outstanding was the work of Co-Captains Shuty and Swope and June Miller and Bob Bastress, who joined the squad after the season was under way.

With fourteen of nineteen lettermen expected to return and the prospect of some likely candidates among the incoming students, the outlook for the season of 1939 is quite heartening. June Miller, hard-working back, has been elected to lead the Susquehanna forces in the coming campaign.

To open the season, the Orange and Maroon traveled to New Brunswick, N. J., and encountered the gridders of Rutgers University. After a hard-fought contest in which substitutions were frequent on both sides, Queensmen were able to boast of only a 9-0 win. The scoring was confined to the second period when, shortly after the period began,



Co-Captain Shuty



Co-Captain Swope

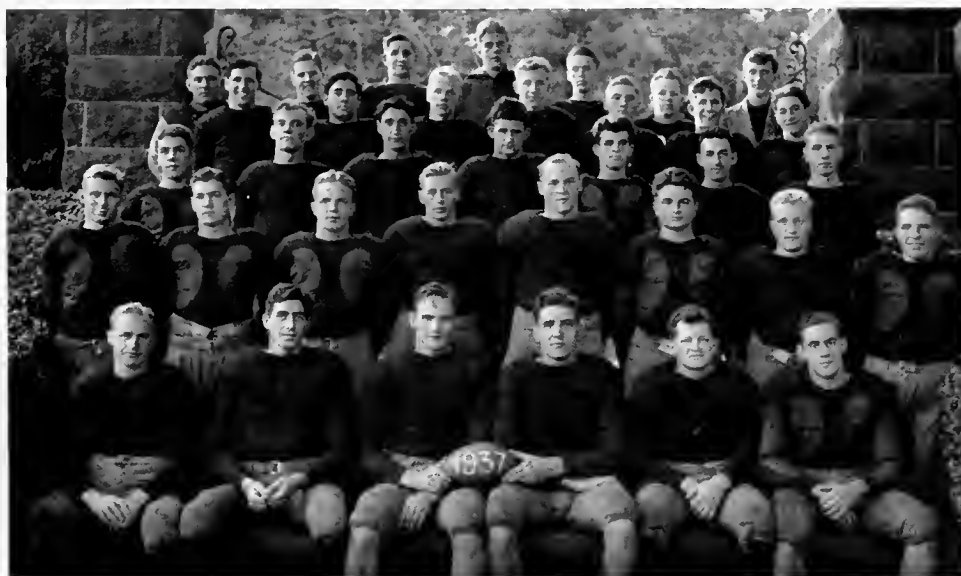
Susquehanna was the victim of a safety. Later a twenty-four yard run and conversion of the extra point netted the home team its remaining seven points. In this game Susquehanna lost the services of the veteran "Fritz" Goyne, who sustained an injured knee. Shuty, Swope, and Miller were the leads for the Crusaders.

Handicapped by injuries, the Crusaders met the Dragons of Drexel at Philadelphia. The home team, boasting a veteran team, possessed too much power for the visitors. Two passes and a fifty-yard run gave the Dragons their touchdowns, while Susquehanna was able to threaten only in the third period. Miller's ball-running and Pritchard's pass-catching stood out for the Orange and Maroon.

This game, the feature of Parents' Day, showed the outplaying of a superior opponent. The Stagmen reached a new high for the season but were the victims of bad breaks. Bastress scored early in the second period, but City College tallied a safety late in the same period. Throughout the major portion of the second half, Susquehanna gained consistently but was reluctant to take chances which might have meant further scoring. The visitors tallied on a short pass with but four minutes of play remaining to snatch the victory from the Crusaders. The play of Diffenderfer, Bastress, and Fletcher was the bright spot for Susquehanna.

Homecoming Day saw the Orange and Maroon face Washington in rain and mud. Young, fleet visiting back, was the main thorn in the side of Susquehanna. All of the Shoremen's touchdowns were enacted with Young either on the starting or the receiving end. Despite the score, the Crusaders staged a real fight holding the edge in first downs, but unable to push over a score.

Bad breaks again took victory from the outstretched Susquehanna hands. Playing at Bethlehem, the Crusaders met an opponent of like size for the first time in the season.





Jack Detrick, End



Bob Herr, Quarterback



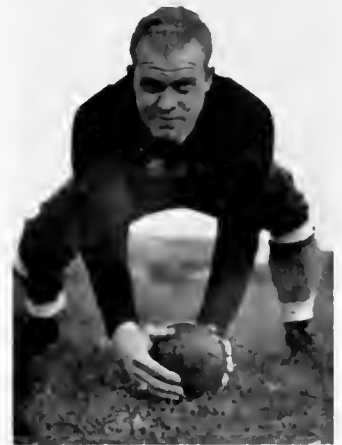
Mike Shilo, Halfback

Moravian scored first and converted the valuable extra point. Later, Bastress took the ball on an off-tackle slant and raced seventy-seven yards for a touchdown, but failed in the attempt for conversion. In the final quarter, Pritchard snared a pass and crossed the line standing up. But, the score was not allowed because of a Susquehanna offside. Shuty, Swope, Miller, and Bastress were the mainstays for the Orange and Maroon in this encounter.

The Crusaders at Bloomsburg, met the Huskies in a game which proved to be a contest of straight football. For the entire first half, the game was on even terms, although Susquehanna threatened soon after the kick-off. Then, in the third period, Bloomsburg took the ball and mainly on power plays rammed over the only score of the afternoon.



Louis Baylor, Halfback



Fritz Goyne, Center



Pete Shutty, Tackle



Sam Fletcher, Tackle



Bob Bastress, Halfback

The Stagmen rallied desperately in the closing minutes but to no avail. In this contest, June Miller received a knee injury which kept him on the sidelines for the remainder of the season. Again, Shutty, Swope, Pritchard, and Bastress aided by Detrick were the big guns for Susquehanna.

Hit by injuries, the Orange and Maroon faced Roanoke on University Field in another muddy battle. For the first half, Susquehanna's running attack clicked, and the Crusaders were able to push over a touchdown and threaten on other occasions. However, in the second half, lack of adequate replacements and injuries to key men were a severe handicap to the home team. Roanoke, on passes and a hard running attack, threatened in the third quarter and finally scored twice in the final period to garner a hard-fought victory.



Bill Davis, Fullback



June Miller, Fullback





Charles Stauffer, Guard



Harry Mervine, Guard



Jim Diffenderfer, Guard

Pedneau's quick kicking constantly harassed Susquehanna, while Bastress, with his tricky running, caused the Southerners no end of worry.

To close the season, Susquehanna gained a tie with a superior Haverford aggregation in a game that was marked by fine play on both sides. With Bastress again the spearhead of the attack, Susquehanna counted in the second quarter and played on even terms with the Main-Liners throughout the last half. The single break in the Susquehanna defense came in the third period when Beeler returned a punt to the Orange and Maroon three-yard line and went over for the score. Five seniors, Goynes, Shutty, Swope, Stauffer, and Hazlett, ended their football careers at Susquehanna with this game.



Clair Kaltreider, Halfback



John Matthews, Guard



Harry Swope, Tackle



Henry Keil, Center



Bill Pritchard, End

SCORES

September 25—Susquehanna	0	Rutgers	9
October 2—Susquehanna	0	Drexel	21
October 16—Susquehanna	6	C. C. N. Y.	8
October 23—Susquehanna	0	Washington	26
October 30—Susquehanna	6	Moravian	7
November 6—Susquehanna	0	Bloomsburg S. T.	7
November 13—Susquehanna	7	Roanoke	14
November 20—Susquehanna	6	Haverford	6



Sam Rogers, Halfback



John Hazlett, End





Coach Stagg

BASKETBALL



Coach Pritchard

Before the season was well under way, Coach Stagg felt the loss of a number of veteran players who had either graduated or withdrawn from school. This gap was filled in, however, by several freshmen who proved their ability by earning a place in the starting line-up.

Through lack of height and good reserve material, the Crusaders lost a number of close games which otherwise could have been turned into victories. Prospects are good for a successful season next year, however, as only three lettermen will be lost through graduation.

The Crusaders got off to a flying start by winning their first three games with outstanding playing by Ford, R. Herr, and Gould. Traveling to Carlisle for their first game away from home, the varsity put up a great fight, leading their opponents 19-18 at the half, but toward the end of the fourth quarter they were unable to hold out against the



numerous substitutions, and the game ended with the score 38-48 in favor of Dickinson's Red Devils.

With the memory of defeat several weeks before at the hands of the Stagmen still in mind, the Bloomsburg Huskies put on a vicious drive from the very first, and trounced a bewildered Orange and Maroon team by a 34-44 score. Going into a game in which they were rated as a "set-up" team, Stagg's basketeers held down Penn State's strong quintet by brilliant defense work on the part of Kaltreider and K. Herr. We can be proud of our men in holding this team to the score of 44-24 when we consider State's record against many larger schools.

The highlights of the evening centered on the brilliant floor-work of Sager and breath-taking shots from the middle of the floor by Kiick. Although Bucknell's Bisons were in command of the game at all stages, the Crusaders never gave up, but continued the fight to the end. Playing away from home, the Orange and Marooners assumed command of the situation and jumped into an early lead against the Drexel Dragons. A close battle continued until a closing minute rally by the Dragons ended the game at 40-32. Karl Herr played a great defensive game at guard.

In one of the best home games of the entire season, our boys edged out a victory by one point over the Moravian Greyhounds in the last minutes of play. Bob Herr and Gould helped pave the way for victory. Later in the season, the Crusaders repeated, winning their second victory over Moravian by a score of 41-40. The Stagmen hoped to win two contests from E-town, but away from home in the second tilt, they did not fare so well. The game was an unusually rough one, many fouls being called on both teams. Gould set a new high score for the season with twenty points, and Kaltreider's work on defense and point making was outstanding.

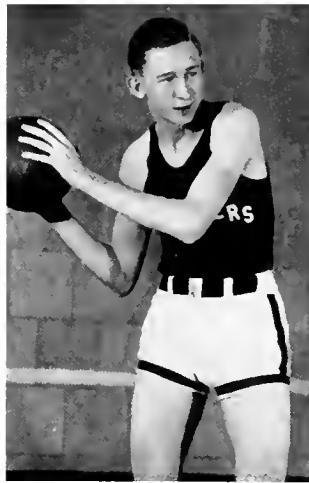
The Stagmen gained sweet revenge by defeating the Wyomissing Engineers in a well played contest—the last home game of the season. In the last twenty minutes of play, the Crusaders scored thirty-seven points, although they were not threatened at any stage of the game. High scoring honors proved to be a three way tie—Kaltreider, R. Herr, and Gould each having 13 points to their credit. Co-Captain Rakshys played an excellent floor game and was second in scoring with 11 points.

The Earlham team from Richmond, Indiana, gave local enthusiasts an opportunity to learn how basketball is played in the mid-west. Our varsity surprised this highly heralded team by keeping the score close until the last ten minutes. With the score tied at 28-28 in the final quarter, lack of sufficient substitutes proved too much for the Orange and Maroon cagers and the westerners took over the lead. Ford's thrilling one-hand shots brought the fans to their feet time and again. Credit must be given to the winners, however, both as individual stars and as a team, for their perfect execution of the fast break.

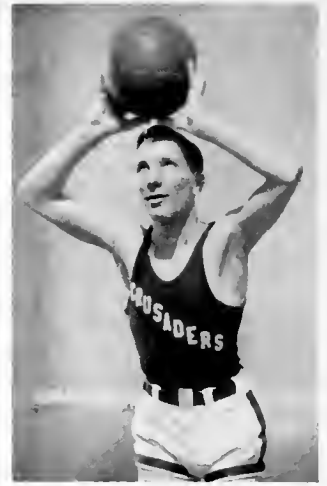
By a small score of 6 points advantage, the Crusaders suffered another defeat at the hands of Upsala. Don Ford led our men in the scoring with 11 points, but in spite of all their efforts to break into the lead, the final whistle ended the game at 42-36. In the remaining games of the season, the Crusaders put up a gallant fight, but to no avail. Wagner managed to net the game, but only after an extra period, making the final score



Co-Captain John Rakshys, Forward



Harry McBride, Center



Don Ford, Forward

36-27. Playing against a first rate Rutgers team, the Crusaders, fighting as one man, nevertheless, bowed to defeat by a score of 49-33. With this game two seniors, Co-captain Rakshys and Karl Herr, played their last game for Susquehanna.

BASKETBALL SCORES

December 3—Susquehanna	48	Bucknell Junior College	43
December 4—Susquehanna	53	Alumni	25
December 8—Susquehanna	35	Bloomsburg Teachers	28
December 11—Susquehanna	38	Dickinson	48
December 17—Susquehanna	34	Bloomsburg Teachers	54
January 7—Susquehanna	37	Scranton—Keystone	48
January 8—Susquehanna	24	Penn State	44



Bob Herr, Forward



Pete Lalich, Guard



Karl Herr, Guard



Co-Captain Don Wert, Guard



William Gould, Forward

January 11—Susquehanna 41	Elizabethtown 37
January 20—Susquehanna 37	Bucknell 45
January 22—Susquehanna 27	Moravian 24
January 27—Susquehanna 34	Drexel 40
February 1—Susquehanna 38	Elizabethtown 41
February 4—Susquehanna 44	Wyomissing Polytechnic 62
February 5—Susquehanna 41	Moravian 40
February 10—Susquehanna 36	Earlham 57
February 12—Susquehanna 36	Upsala 42
February 17—Susquehanna 47	Bucknell 58
February 19—Susquehanna 59	Wyomissing 37
February 22—Susquehanna 27	Wagner 36
February 23—Susquehanna 33	Rutgers 49



Clair Kaltreider, Guard



Sam Fletcher, Guard



BASEBALL

JOHN HAZLETT - - - - - *Captain*

April 24—Susquehanna lost to Bloomsburg	Home
April 27—Susquehanna lost to Moravian	Away
April 28—Susquehanna lost to Lebanon Valley	Away
May 4—Susquehanna lost to Elizabethtown	Away
May 8—Susquehanna lost to Penn State	Away
May 10—Susquehanna won from Bucknell	Away
May 12—Susquehanna won from Haverford	Away
May 18—Susquehanna lost to Elizabethtown	Home
May 21—Susquehanna won from Upsala	Away
May 22—Susquehanna lost to Dickinson	Away
May 25—Susquehanna lost to Bucknell	Home



SOCCER

WILLIAM TROUTMAN - - - - - *Captain*
 WALTER FREED - - - - - *Manager*

November 25—Susquehanna..... 3	Bloomsburg 2
November 5—Susquehanna 0	Milheim 4
November 10—Susquehanna 1	Mifflinburg 0
November 12—Susquehanna 4	Dalmatia 1
November 16—Susquehanna 2	Mifflinburg 3
November 18—Susquehanna 0	Bloomsburg 2



TENNIS

JOHN HOSTETTER

Captain

April 19—Susquehanna vs. Bloomsburg	Away
April 24—Susquehanna vs. Bloomsburg	Home
April 28—Susquehanna vs. Lebanon	Away
May 1—Susquehanna vs. Moravian	Away
May 6—Susquehanna vs. Scranton Junior College	Home
May 7—Susquehanna vs. Elon College	Home
May 8—Susquehanna vs. Wyomissing	Away
May 12—Susquehanna vs. Elizabethtown	Home
May 18—Susquehanna vs. Elizabethtown	Away
May 29—Susquehanna vs. Wyomissing	Home



TRACK

April 14—Interclass Track Meet	Home
April 17—Susquehanna vs. Dickinson	Home
April 27—Susquehanna vs. Bloomsburg	Home
May 1—Invitation Track Meet	West Chester
May 5—Susquehanna vs. Bucknell	Away
May 10—Susquehanna vs. Bloomsburg	Away
May 17—Susquehanna vs. Albright	Home
May 20—Interfraternity Track Meet	Home



WOMEN'S ATHLETIC ASSOCIATION

OFFICERS

RUTH HIMMELRY	-	-	-	-	-	-	-	-	-	<i>President</i>
ELEANOR SAVIRI	-	-	-	-	-	-	-	-	-	<i>Vice President</i>
MARY APPLER	-	-	-	-	-	-	-	-	-	<i>Secretary-Treasurer</i>
MIRIAM MILLER	-	-	-	-	-	-	-	-	-	<i>Financial Secretary</i>

MISS IRENE SHURE, *Faculty Advisor*

The W. A. A. was organized to stimulate a general interest in girls' athletic activities, and to regulate girls' inter-class sports.

Membership includes all of those girls who have earned two hundred and fifty or more points. The point system is based upon participation in the various sports.

Included in the social activities of the club are hay rides, hikes, and the annual County Fair.





CHEERLEADERS

The Cheerleaders are appointed during the Freshman year by Professor Allison.

Head Cheerleaders

JOHN HOSTETTER

HARRY McBRIDE

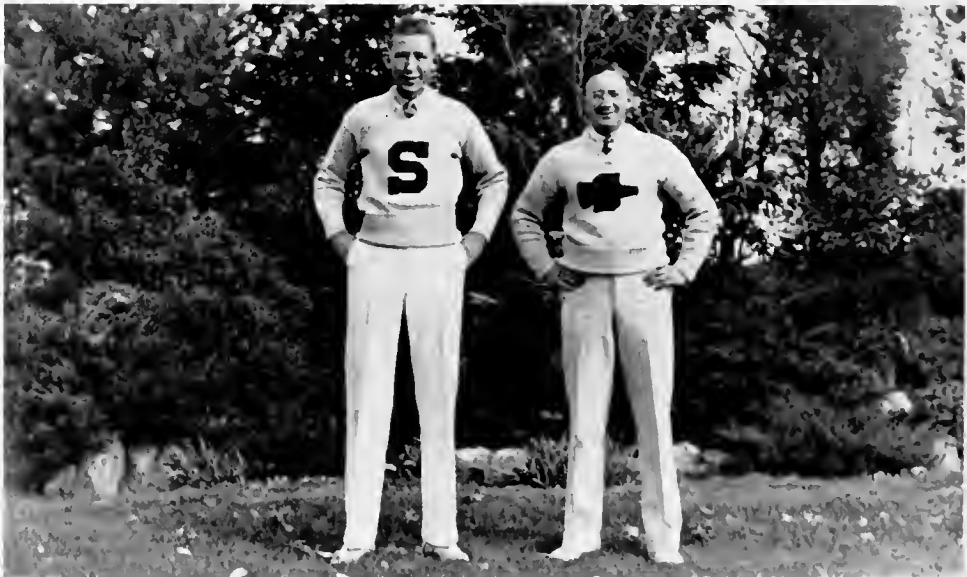
WILLIAM NYE

Assistants

HELEN KERR

JANE HUTCHISON

ELEANOR SMITH



SCHEDULE

1938 — 1939

BASEBALL

Saturday, April 9	Penn State at State College
Monday, April 25	Drexel at Philadelphia
Wednesday, April 27	Bloomsburg at Bloomsburg
Saturday, April 30	Albright at Susquehanna
Tuesday, May 3	Elizabethtown at Susquehanna
Thursday, May 5	Gettysburg at Susquehanna
Saturday, May 7	Moravian at Susquehanna
Tuesday, May 10	Upsala at East Orange
Wednesday, May 11	Rutgers at New Brunswick
Saturday, May 14	Scranton Keystone at Susquehanna
Monday, May 16	Bloomsburg at Susquehanna
Wednesday, May 18	Elizabethtown at Elizabethtown
Saturday, May 21	Dickinson at Dickinson
Tuesday, May 24	Bucknell at Susquehanna
Thursday, May 26	Bucknell at Bucknell

TRACK

Monday, April 25	Interfraternity Meet
Wednesday, April 27	Dickinson at Carlisle
Saturday, May 7	Seaton Hall College at Susquehanna
Saturday, May 14	Albright at Reading
Tuesday, May 17	Bloomsburg at Susquehanna
Saturday, May 21	Wyomissing at Susquehanna
Tuesday, May 24	Bucknell at Susquehanna
Saturday, May 28	Alfred at Alfred, New York

TENNIS

Saturday, April 23	Lebanon Valley at Susquehanna
Friday, April 29	Wyomissing at Wyomissing
Saturday, April 30	Lehigh at Lehigh
Tuesday, May 3	Elizabethtown at Susquehanna
Wednesday, May 4	Bucknell at Bucknell
Monday, May 9	Moravian at Bethlehem
Friday, May 13	Dickinson at Dickinson
Saturday, May 14	Moravian at Susquehanna
Monday, May 16	Bloomsburg at Susquehanna
Wednesday, May 18	Elizabethtown at Elizabethtown
Saturday, May 21	Scranton-Keystone at Susquehanna
Monday, May 23	Drexel at Philadelphia
Friday, May 27	Bucknell at Susquehanna

FOOTBALL

Saturday, October 1	Haverford at Haverford
Saturday, October 8	Drexel at Susquehanna
Friday, October 21	Alfred at Alfred, New York (Night Game)
Saturday, October 29	Moravian at Susquehanna
Saturday, November 5	Lebanon Valley at Susquehanna
Saturday, November 12	Dickinson at Carlisle
Saturday, November 19	Brooklyn at Brooklyn, New York

BASKETBALL (Incomplete)

Saturday, December 3	Alumni at Susquehanna
Thursday, December 8	Upsala at Susquehanna
Saturday, December 10	Penn State at State College
Tuesday, December 20	Bloomsburg at Susquehanna
Friday, January 6	Hartwick at Susquehanna
Tuesday, January 10	Elizabethtown at Elizabethtown
Friday, January 13	Wyomissing at Susquehanna
Thursday, January 19	Bucknell at Susquehanna
Wednesday, February 1	Elizabethtown at Elizabethtown
Saturday, February 4	Wagner at Susquehanna
Wednesday, February 8	Moravian at Bethlehem
Saturday, February 18	Moravian at Susquehanna



EVENTS

MAY DAY

1937





MAY QUEEN
 LADY IN WAITING
 MAY POLE DANCE

•
 QUEEN AND HER COURT
 QUEEN WALKING THROUGH
 ARCH OF FLOWERS
 MAY POLE DANCE

JUNIOR PROM

GENERAL COMMITTEE

Henry Keil, Class President

Harry McBride

Paul Ochenrider
Samuel Rogers

Glenn Hauff
John Hostetter

Ticket Committee

John Hostetter, Chairman

Harold Bollinger

Alverna Reese

Harold Benion

Orchestra Committee

Glenn Hauff, Chairman

Milo Mastovitch

Paul Brosious

Program Committee

Samuel Rogers, Chairman

June Miller

Eleanor Saveri

Mathilda Neudoerffer

Furniture Committee

Paul Ochenrider, Chairman

Louis Baylor

Edward Schweitzer

Robert Bastress

Decorating Committee

Harry McBride, Co-Chairman

Shirley Finkbeiner, Co-Chairman

Eleanor Croft

Marjorie Curtis

Josephine Carey

Verna Gayman

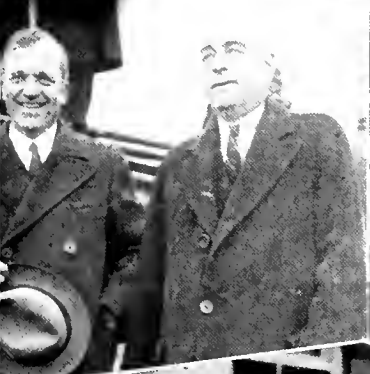
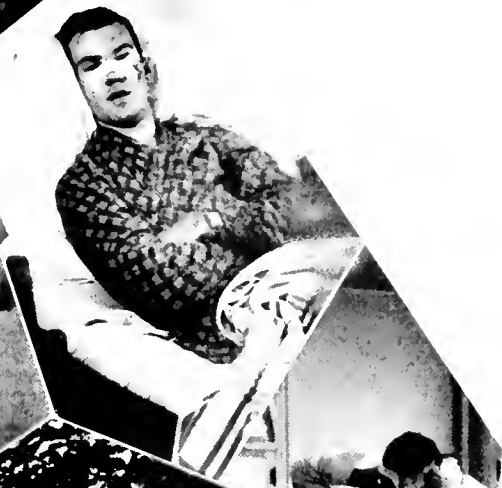
Robert Herr
Miriam Miller
Stephen Owen
Gladys Wentzel
Louise West

Mary Appler
Howard Baldwin
Betty Baltzer
Jean Beamenderfer
Paul Brosious













FINIS

STUDENT REGISTER

1937 — 1938

Ahl, Hildegard	Susquehanna Heights, Selmsgrove, Pa.	Curtis, Marjorie	52 Poplar St., Kingston, Pa.
Appler, Mary	362 High St., Hanover, Pa.	Davis, Lois	539 W. Main St., Somerset, Pa.
Arentz, Eunice	112 Fourth St., Hanover, Pa.	Davis, William	1508 Center St., Ashland, Pa.
Artz, Dorothy	West Main St., Elizabethville, Pa.	Deardorff, Earl	Biglerville, Pa.
Aucker, John	Selinsgrove, Pa.	Deisterick, Alice	Mooresburg, Pa.
Aughenbaugh, Stanley	Etters, Pa.	Detrick, John	529 Arch St., Sunbury, Pa.
Ayers, William	24 Brook St., Warren, Pa.	Diehl, Kathryn	Eichelberger St., Hanover, Pa.
Baish, Charlotte	Dillsburg, Pa.	Dietterle, Katherine	R. D. 5, Danville, Pa.
Baldwin, Howard	2511 Fatnall St., Wilmington, Del.	Diffenderfer, James	Main St., Middleburg, Pa.
Baltzer, Betty	Main St., Jersey Shore, Pa.	Dixon, Mary Ellen	Belle Mead, N. J.
Bantley, George	1210 Cambria Ave., Wmder, Pa.	Doebler, Luther	Water St., New Berlin, Pa.
Bastress, Robert	478 Duke St., Northumberland, Pa.	Dreese, Guy	Water St., Selinsgrove, Pa.
Barnhart, Elizabeth	1250 Susquehanna Ave., Sunbury, Pa.	Dreher, Wilbur	Tobyhanna, Pa.
Barry, Richard	601 First Ave., Altoona, Pa.	Drumheller, John	R. D. 3, Sunbury, Pa.
Baylor, Louis	Front St., Northumberland, Pa.	Drumm, Walter	1054 Wasser St., Sunbury, Pa.
Beamenderfer, Jean	401 W. Walnut St., Selmsgrove, Pa.	Dunkle, Margaret	540 Ferndale St., Johnstown, Pa.
Beamenderfer, Lois	401 W. Walnut St., Selinsgrove, Pa.	Edlund, Helen	Russellton, Pa.
Beachel, LeRoy	Middleburg, Pa.	Edwards, William Morgan, R. F. D. 5, Box 19,	Johnstown, Pa.
Benion, Harold	Front St., West Fairview, Pa.	Eisenhart, Edward	226 N. Fourth St., Sunbury, Pa.
Bennage, Ellen	131 North Second St., Lewisburg, Pa.	Engle, Martha	1057 Market St., Sunbury, Pa.
Bergstresser, Philip	18 S. Front St., Selinsgrove, Pa.	Ewing, Thomas Elwood	R. D. 3, Middleburg, Pa.
Bernt, Sara	112 Weaver Court, Johnstown, Pa.	Farley, Ruth	Gearhart St., Riverside, Pa.
Bice, John	Millerstown, Pa.	Finkbeiner, Shirley	9455 Sutter Ave., Ozone Park, N. Y.
Bier, Catharine	501 Packer St., Sunbury, Pa.	Fisher, Robert	969 High St., Williamsport, Pa.
Billman, Donald	Front St., Herndon, Pa.	Fitzgerald, Orville	Broad St., Jersey Shore, Pa.
Bingaman, Naomi	118 Independence St., Selmsgrove, Pa.	Fletcher, Samuel	446 Water St., Northumberland, Pa.
Bittinger, Hester	Main St., Shamokin Dam, Pa.	Follmer, Mrs. Mildred	9 N. High St., Selmsgrove, Pa.
Bolig, Martha	558 Front St., Northumberland, Pa.	Ford, Donald	2808 Beale Ave., Altoona, Pa.
Bollinger, Harold	132 Fifth St., Northumberland, Pa.	Frattali, Vincent	116 N Chestnut Ave., Scranton, Pa.
Bonsall, Kenneth	Grampian, Pa.	Freed, Walter	1219 Race St., Ashland, Pa.
Booth, Robert	13 W. Sunbury St., Shamokin, Pa.	Friederick, Hilda	New St., Honesdale, Pa.
Bower, Marjorie	Middleburg, Pa.	Fries, Grace	1135 Second Ave., Duncansville, Pa.
Boyer, Robert	R. D. 1, Selmsgrove, Pa.	Fry, Elizabeth	2630 Perrysville Ave., Pittsburgh, Pa.
Boyle, Margaret	1254 Wolverton St., Sunbury, Pa.	Fulmer, Ray	456 King St., Northumberland, Pa.
Boyer, Marian	1242 High St., Pottstown, Pa.	Furman, George	124 North Sixth St., Sunbury, Pa.
Breon, Richard	Main St., Montgomery, Pa.	Gabrenya, Robert	361 First St., Conemaugh, Pa.
Brosius, George	118 S. Sheridan St., Johnstown, Pa.	Garner, Miriam	2202 Second Ave., Altoona, Pa.
Brosious, Paul	Herndon, Pa.	Gayman, Verna	Newville, Pa.
Brown, Eleanor	738 Third Ave., Ford City, Pa.	Gelnett, Roy	Millerstown, Pa.
Burns, Virginia	902 Ash St., Watsontown, Pa.	Gensel, John	Third St., Catawissa, Pa.
Camp, Samuel	121 Broadway, Milton, Pa.	Gonser, Betty	R. D. 1, Sunbury, Pa.
Campana, Joseph	202 William St., Williamsport, Pa.	Goyme, John	1500 Market St., Ashland, Pa.
Carey, Josephine	101 E. Durnham St., Philadelphia, Pa.	Greninger, Edwin	2308 Sixth Ave., Altoona, Pa.
Clark, Claude	R. F. D. 1, Sunbury, Pa.	Greninger, Reed	638 Cherry St., Williamsport, Pa.
Clark, George	222 Cemetery St., Jersey Shore, Pa.	Grenoble, Margaret	Spring Mills, Pa.
Cleaves, Angelyn	112 Aldrich Ave., Altoona, Pa.	Groce, Homer	324 S. Market St., Selmsgrove, Pa.
Cluck, Genevieve	McKnightstown, Pa.	Grubb, Caroline	Water St., Liverpool, Pa.
Coleman, Paul	136 E. Church St., Somerset, Pa.	Gulick, Reed	442 Grant St., Camden, N. J.
Cornelius, Robert	New Berlin, Pa.	Guthrie, Mark	562 King St., Northumberland, Pa.
Crispell, Phyllis	1010 Monroe Ave., Scranton, Pa.	Haffner, Dorothy	627 Main St., Freeland, Pa.
Critchfield, Donald	West Union St., Somerset, Pa.	Hames, Leon	R. F. D. 1, McClure, Pa.
Croft, Eleanor	N. Allison St., Greencastle, Pa.	Hamm, Birdie	106 Westminster Ave., Hanover, Pa.
Crompton, Marian	536 Lake St., South Fork, Pa.	Harbeson, Harriet Faith	Main St., Milroy, Pa.

STUDENT REGISTER

Hassinger, Sara	524 Queen St., Northumberland, Pa.	Mark, Jeffrey	Franklin St., Old Forge, Pa.
Haufl, Glenn	New Freedom, Pa.	Martin, Jack	55 Penn Boulevard, E. Lansdowne, Pa.
Hayes, Madelene	203 W. Mener St., West Chester, Pa.	Matthews, John	2421 West Fourth St., Williamsport, Pa.
Hazlett, John	Dry Run, Pa.	May, William	Dogwood St., Monticello, Fla.
Heim, Mary	Loysville, Pa.	McBride, Harry	314 West Pike St., Houston, Pa.
Hemmerly, Ruth	600 N. Laurel St., Hazleton, Pa.	McCord, James	1309 Fifth Ave., Altoona, Pa.
Herr, Karl	327 E. Third St., Berwick, Pa.	McKeown, John	389 Laurie St., Perth Amboy, N. J.
Herr, Robert	Walnut St., Shamokin, Pa.	Mease, William	117 Orange St., Selingsgrove, Pa.
Hertz, Robert	544 N. Front St., Milton, Pa.	Meek, Walter	1109 Cambria Ave., Windber, Pa.
Higgins, James	Locust Gap, Pa.	Mehalow, Joseph	602 Cedar St., Freeland, Pa.
Hill, Ann	416 Allen St., W. Hazleton, Pa.	Meekell, Edward	Ledgewood Ave., Netcong, N. J.
Hisdorf, Helen	616 Greendale Ave., Edgewood, Pa.	Mendenhall, Harriet	Downingtown, Pa.
Hoffman, John	Shamokin Dam, Pa.	Mervine, Harry	914 Centre St., Ashland, Pa.
Hostetter, John	Burgess St., Pittsburgh, Pa.	Meyer, Beatrice	325 Orange St., Selingsgrove, Pa.
Hochella, Elsie	671 Peace St., Hazleton, Pa.	Meyer, Kathryn	518 Wood St., Johnstown, Pa.
Herrold, Warren	Port Trevorton, Pa.	Miller, Elaine	Waymart, Pa.
Himes, Naomi	Fourth St., Newport, Pa.	Miller, June	27 Broad St., Ashland, Pa.
Hoover, Merle	R. D. 1, Dornsife, Pa.	Miller, Miriam	R. D. 1, Reading, Pa.
Hudson, William	506 King St., Seaford, Del.	Minkwitz, Earl	R. D. 1, Millville, N. J.
Hutchison, Jane	133 E. Lancaster Ave., Downingtown, Pa.	Mitterling, Henry	410 Orange St., Selingsgrove, Pa.
Jarrett, Mary	421 N. Second St., Sunbury, Pa.	Morrow, Thomas	Loysville, Pa.
Johnston, Betty	Market St., Selingsgrove, Pa.	Moyer, Frances	Mill St., Hummels Wharf, Pa.
Jones, Melvin	R. D. 3, Danville, Pa.	Moyer, James	626 Mace St., Greensburg, Pa.
Jones, Ruth	Millerstown, Pa.	Murray, Charles	219 W. Snyder St., Selingsgrove, Pa.
Kaltreider, Clair	101 Fair Avenue, Hanover, Pa.	Musselman, Helen	704 N. Market St., Selingsgrove, Pa.
Kauffman, Horace	144 N. Sixth St., Sunbury, Pa.	Musser, Glenn	Kreamer, Pa.
Kaufman, Esther	Davidsville, Pa.	Neudoerffer, Mathilda	1 Jackson Ave., W. Hazleton, Pa.
Keil, Henry	690 Hudson Ave., Union City, N. J.	Nye, William	109 S. Harrison St., Wilmington, Del.
Kemberling, Jess	Selingsgrove, Pa.	Ochenrider, Paul	Aristes, Pa.
Kerr, Helen	R. D. 3, Box 386, Johnstown, Pa.	Owen, Stephen	Hotel Rawls, Enterprise, Ala.
Kimmel, George	East Main St., Ashland, Pa.	Pane, Anthony	Hayes St., Hazleton, Pa.
Kinney, Kenneth	Wyoming Ave., Wyoming, Pa.	Pasterchik, Joseph	1439 Thackeray St., Scranton, Pa.
Klepko, Harry	228 Water St., Northumberland, Pa.	Paul, John	210 S. Market St., Shamokin, Pa.
Klinger, Herbert	Herndon, Pa.	Pearce, James	1014 Chestnut St., Kulpmont, Pa.
Klinger, Martha	S. Main St., Herndon, Pa.	Phillips, Vernon	Dalmatia, Pa.
Knaul, John	R. D. 1, Williamsport, Pa.	Pifer, Mildred	Third Ave. and Chestnut St., Royersford, Pa.
Kniseley, Karl	47 Waldorf St., Pittsburgh, Pa.	Poorbaugh, Ferne	250 W. Union St., Somerset, Pa.
Konkle, Robert	684 First Ave., Williamsport, Pa.	Portzline, Douglas	423 Orange St., Selingsgrove, Pa.
Korper, Edward	225 Ridge Ave., Sunbury, Pa.	Porter, Sara	1404 Ninth Ave., Juniata, Pa.
Kozlowski, Edmund	204 N. Walnut St., Mt. Carmel, Pa.	Powell, John	Beech St., Mt. Carmel, Pa.
Krouse, Leon	Walnut St., Selingsgrove, Pa.	Pritchard, William	41 Poplar St., Kingston, Pa.
Lahch, Peter	26 Mam St., Franklin Boro., Pa.	Pritts, Joe	211 Centre Ave., Somerset, Pa.
Laudenslayer, William	Hummels Wharf, Pa.	Rakshys, John	322 Academy St., Peely, Pa.
Lauver, Herbert	Richfield, Pa.	Ramer, Ethal	408 Center St., Meyersdale, Pa.
Leam, John	1613 Center St., Ashland, Pa.	Reeder, Ann	355 Tenth St., Sunbury, Pa.
Lengler, Charles	710 N. Webster Ave., Scranton, Pa.	Reese, Alverna	Church St., Audenried, Pa.
Long, Janet	Port Royal, Pa.	Reese, Elizabeth	870 Ferndale Ave., Johnstown, Pa.
Loss, Charles	322 Mill St., Selingsgrove, Pa.	Reese, Howard	Church St., Audenried, Pa.
Lucas, Paul	1230 Allegheny St., Jersey Shore, Pa.	Reichard, John	1312 Elm St., Wilkinsburg, Pa.
Lukens, Fred	92 East Houston Ave., Montgomery, Pa.	Reitz, Florence	110 Independence St., Selingsgrove, Pa.
Lukens, Joe	92 East Houston Ave., Montgomery, Pa.	Rheinhart, Jean	526 S. River St., Wilkes-Barre, Pa.
Mabus, Newton	115 Twelfth St., Sunbury, Pa.	Richard, Burton	30 Roessner Ave., Hagerstown, Md.
Mack, Mary C.	600 Race St., Sunbury, Pa.	Ritter, Hilda	Vicksburg, Pa.
Mann, Virginia	40 Purser Place, Yonkers, N. Y.	Ritter, Kenneth	R. D. 1, Selingsgrove, Pa.
Mastovitch, Michael	280 Main St., Franklin Boro, Pa.	Rogers, Helen	650 Rutter Ave., Kingston, Pa.

STUDENT REGISTER

Rogers, Samuel	39 N. Maple St., Mt. Carmel, Pa.	Stauffer, Charles	S. Market St., Selinsgrove, Pa.
Rothermel, Florence	Klingerstown, Pa.	Stephens, Edna	90 S. Catawissa St., Mahanoy City, Pa.
Salem, William	222 Main St., Franklin Boro., Pa.	Stewart, Adelaide	Pine Bush, N. Y.
Sander, Robert	878 Memorial Ave., Williamsport, Pa.	Straesser, Ethel	Martinsburg, Pa.
Sassaman, Elmira	407 E. Walnut St., Lewistown, Pa.	Straub, Virginia	Frack St., Frackville, Pa.
Saunders, Robert Harold	214 Pettebono St., Wyoming, Pa.	Swartz, Barner	Millerstown, Pa.
Saveri, Eleanor	Hazen Ave., East Bangor, Pa.	Swope, Harry	Selmsgrove, Pa.
Sayre, Doris	116 N. Broadway, Pitman, N. J.	Tewkesbury, Isabel	Meade St., Dunmore, Pa.
Schadel, Willard	Klingerstown, Pa.	Thatcher, Harry	Perulack, Pa.
Schleig, John	Coal St., Trevorton, Pa.	Tribby, Martha	1717 Ridge Ave., Coraopolis, Pa.
Schmidt, Frederick	339 East South St., Wilkes-Barre, Pa.	Troutman, William	Trevorton, Pa.
Schofield, Reginald	50 E. Second Ave., So. Williamsport, Pa.	Turner, Dudley	43 Eldred St., Williamsport, Pa.
Scholl, Qumtin	Port Trevorton, Pa.	Updegrove, John	R. D. 1, Herndon, Pa.
Scholl, Truman	Port Trevorton, Pa.	Updegrove, Robert	R. D. 1, Herndon, Pa.
Schuck, Graham	Shamokin Dam, Pa.	Uphouse, Dorothy	Stoyestown, Pa.
Schweitzer, Edward	39 Jackson Ave., W. Hazleton, Pa.	Weeks, Margaret	115 N. Market St., Selinsgrove, Pa.
Seltzinger, Esther	608 Center St., Freeland, Pa.	Wentzel, Betty	108 N. Eleventh St., Sunbury, Pa.
Shaffer, Harold	818 Mam St., Windber, Pa.	Wentzel, Gladys	8 N. High St., Selinsgrove, Pa.
Shatto, Paul, Jr.	216 Elm St., Steelton, Pa.	Wert, Donald	Aaronsburg, Pa.
Shaulis, Roy	331 Park Ave., Johnstown, Pa.	West, Louise	53 E. Ridge St., Coaldale, Pa.
Sheesley, Margaret	Park Terrace, Lykens, Pa.	Wetzel, Charles Palmer	Dornsife, Pa.
Shilo, Michael	128 Duke St., Northumberland, Pa.	Weyhenmeyer, Charles	129 N. Church St., Hazleton, Pa.
Shipe, Jack	Main St., Herndon, Pa.	Wightman, Warren	317 S. Oak St., Mt. Carmel, Pa.
Shotsberger, Henry	Market St., Freeburg, Pa.	Williams, Eugene	327 Pine St., Millersburg, Pa.
Shrawder, Norman	Wernersville, Pa.	Williams, Frances	1900 Wyoming Ave., Forty Fort, Pa.
Shutt, Dorothy	1722 Centre St., Ashland, Pa.	Wilt, Kenneth	123 S. Jones St., Lock Haven, Pa.
Shuty, Peter	Colony, Selmsgrove, Pa.	Winner, Willis	760 Duke St., Northumberland, Pa.
Sivick, Edward	161 Stanley Ave., Yonkers, N. Y.	Wolf, Michael	514 Market St., Sunbury, Pa.
Smaltz, Verlin	Gay St., Hagerstown, Md.	Wolfe, Frankln	1 Vaux Ave., Tremont, Pa.
Smith, Eleanor	Front St., Northumberland, Pa.	Wolfgang, Ralph	2015 Center St., Ashland, Pa.
Smith, Preston	917 Market St., Williamsport, Pa.	Wormley, Sara	70 Duke St., Northumberland, Pa.
Smith, Eugene	1101 Fourth Ave., Altoona, Pa.	Worthmington, Kent	78 N. Second St., Hughesville, Pa.
Smoot, Melissa	44 Kenilworth Ave., Garrett Park, Md.	Wright, Helen	Three Springs, Pa.
Snead, Patricia	1630 Corporation St., Beaver, Pa.	Yargo, Ruth	Swengel, Pa.
Snyder, Laura	132 S. Franklin St., Red Lion, Pa.	Yingling, Esther	1604 Second Ave., Altoona, Pa.
Snyder, Maye	520 S. Market St., Selinsgrove, Pa.	Yoder, Mary Emma	1600 Oram St., Scranton, Pa.
Snyder, Paulne	Port Trevorton, Pa.	Yost, Lois	Mam St., Conyngham, Pa.
Specht, Ruth	Stoyestown, Pa.	Young, Karl	827 West Third St., Hazleton, Pa.
Spiggle, George	47 S. Mam St., Keyser, W. Va.	Ziegler, L. Dallas	Herndon, Pa.
Spotts, Leonora	133 Lmden St., Sunbury, Pa.		

SPECIAL STUDENTS

Bolig, Eleanor	214 Broad St., Selmsgrove, Pa.	Hess, Chester	Trevorton, Pa.
Eichman, Elizabeth	R. D. 3, Middleburg, Pa.	Pritchard, Robert	41 Poplar St., Kingston, Pa.
Gill, Albert	Troxelville, Pa.	Sardiga, J. Bryce	335 Grampian Blvd., Williamsport, Pa.
Gould, William	Montandon, Pa.	Wolfe, Harry E.	R. D. 2, Sunbury, Pa.
Helt, Carl	Ranshaw, Pa.	Woodring, Clara A.	530 Susquehanna Ave., Sunbury, Pa.

D E P E N D A B L E



Q U A L I T Y A N D S E R V I C E



GRIT PUBLISHING COMPANY
WILLIAMSPORT, PA.

Producers of Distinctive School and College Publications

ZAMSKY STUDIOS

Sittings by
Appointment

Telephone—Pennypacker
6190—8070

There Is No Substitute for
EXPERIENCE



The Zamsky Studios have successfully handled Year-book Photography for twenty years. The skilled personnel and up-to-date equipment necessary for such a record is reflected in this book and is your assurance that you may—

“Count on Zamsky”



Official Photographers for Schools and Colleges
From New England to the South

902 CHESTNUT STREET
PHILADELPHIA, PA.

YALE RECORD BUILDING
NEW HAVEN, CONN.

SUSQUEHANNA

● UNIVERSITY

Founded 1858

If you want a College

With a family spirit
Where the student is known by the faculty
Of distinctly Christian atmosphere
In a healthful climate
With exceptional athletic facilities
And where good scholarship is stressed

Come to SUSQUEHANNA

Bachelor Degrees in Liberal Arts
Business Administration
Commercial Education
and Music
Co-Educational

For Catalogue Write the Registrar

SUSQUEHANNA UNIVERSITY

SELINGROVE, PA.

The
Lutheran Theological Seminary

GETTYSBURG, PENNSYLVANIA

Begins its 113th year September 13, 1938



The Seminary offers:

Free Tuition

Furnished Rooms

Use of 43,500 Volumes in Library

Standard and Elective Courses Leading to the B.D. Degree

Graduate Work Leading to the Degree of S.T.M.

A Limited Number of Scholarships Available

For Further Information Address JOHN ABERLY, *President*

WHITMER-STEELE COMPANY

Manufacturers of

Pine, Hemlock and Hardwood Lumber

Prop Timber and Ties

65 KING STREET

NORTHUMBERLAND, PA.

Middle Creek Valley
Telephone Company

BELL SYSTEM

FRANK A. EYER, *General Manager*

Compliments of

PALMER R. GARMAN

FUNERAL DIRECTOR

Very Well Known for Service

MT. PLEASANT MILLS, PA.

THE COLLEGE BOOK STORE

Student Supplies



Chilton Pens and Pencils

Sheaffer Inks — Pennants

Monogram Stationery

College Keys and Rings

SELINGSGROVE WATER SUPPLY CO.



FRANK A. EYER

President

W. K. SITHOLTZ

Superintendent

JAMES F. MCCLURY

Treasurer

BOGAR BROTHERS' LUMBER COMPANY

CONTRACTORS — BUILDERS

Manufacturers of and Dealers in

Lumber, Mill Work, Building Supplies

Phone Bell 74-W

SELINGROVE, PA.

The Strand

"Where Happiness Costs So Little"

Direction

Comerford-Publix Theatres Corp.

SUNBURY, PA.

GLEN LOCK DAIRIES CO.

Pasteurized

MILK and CREAM

Phone 386

141 N. Fifth Street

SUNBURY, PA.

STEFFEN'S

Fine Foods

GIFTS and STATIONERY

*Greeting Cards for
Every Occasion*

SELINGROVE, PA.

JOHN SEXTON & CO.

Manufacturing

Wholesale Grocers

CHICAGO — BROOKLYN

Compliments of

CLYDE A. ZIMMERMAN

Member of

NATIONAL ASSOCIATION OF
PIANO TUNERS, INC.

The Tuner Alone Preserves the Tone

Phone 1021-R

SUNBURY, PA.

Compliments of

The STANLEY Theatre

Under the Management of

THE COMERFORD THEATRES, INC.

THE SELINGSGROVE TIMES

MARION S. SCHOCH, *Publisher*

All Kinds of Commercial Printing

DANCE PROGRAMS
A SPECIALTY

Printers of THE SUSQUEHANNA

THE FIRST NATIONAL BANK

of SELINGSGROVE



Salutes Susquehanna University and Its
Glorious Accomplishments



OFFICERS

ROSCOE C. NORTH, *President*

CHARLES C. WALTER, *Cashier*

MARION S. SCHOCH, *Executive Vice President*

E. E. PAWLING, *Vice President*

CLAYTON C. LEACH, *Assistant Cashier*

DIRECTORS

A. L. ALLINSON

FRANK A. EYER

ROSCOE C. NORTH

E. E. PAWLING

MARION S. SCHOCH

W.M. M. SCHNURE

HARVEY S. STERNER

CONGRATULATIONS TO THE CLASS OF 1938

THE SMITH PRINTING CO.

WILLIAMSPORT, PA.

Distributors of

MIMEOGRAPH MACHINES AND SUPPLIES

SCOTT TISSUE PRODUCTS
FOR SCHOOLS AND COLLEGES

BANK STATIONERS

OFFICE OUTFITTERS

REA & DERICK, Inc.

Stores at

430 Market St.
314 Market St.
306 Market St.
Sunbury, Pa.

54 E. Independent St.
32 N. Market St.
Shamokin, Pa.

Northumberland, Pa.
Gettysburg, Pa.
Lewistown, Pa.
Bloomsburg, Pa.
Shickshinny, Pa.
Stroudsburg, Pa.
State College, Pa.
Selinsgrove, Pa.

Tyrone, Pa.
Berwick, Pa.
Huntingdon, Pa.
Milton, Pa.
Lewisburg, Pa.
Mt. Carmel, Pa.
Danville, Pa.

Compliments of

SNAVELY'S

CLOTHING AND SHOES

SELINGROVE, PA.

Compliments of

KLINE'S

Meat Market

West Pine Street
Selinsgrove, Pa.

COLLEGE AND HIGH SCHOOL
PUBLICATION PRINTING

•

**Nittany Printing and
Publishing Company**

STATE COLLEGE, PA.

**SNYDER COUNTY
TRUST COMPANY**

SELINGROVE, PA.

SOLICITS YOUR
PATRONAGE

Compliments of

BAUM'S SPORTING GOODS

The Home of

COLLEGE AND HIGH SCHOOL SPORTING GOODS

SUNBURY, PA.

Reichley's

Refresh at Our
FOUNTAINS

Phone 69-Z

WEIS
PURE FOOD STORES

•
Stores Throughtout
Central Pennsylvania

Compliments of
MARKLEY—ALTVATER

Men's and Boys'
BETTER CLOTHES

SUNBURY, PA.

NATIONAL CAFE

Restaurant

R. A. MEASE, Proprietor

Meals at All Hours

I. O. O. F. Bldg. SELINGROVE, PA.

R. L. SCHROYER

General Insurance

Phone 173-Y SELINGROVE, PA.

Compliments of
KEPLER'S
Chevrolet Sales and Service

Dealers in
Chevrolet Cars and Trucks and
Hayes Motor-Homes — House Trailers

324 North Market Street

SELINGROVE, PA.



BLOUGH

JUNE
52

SUSQUEHANNA UNIVERSITY LIBRARY



3 4998 0020 9655 5

SUSQUEHANNA
UNIVERSITY
BLOUGH-WEIS LIBRARY
DOES NOT
CIRCULATE
ARCHIVES
SUSQUEHANNA UNIVERSITY

