

BLIGH-STEPH LIBRARY

BUSQUETTANIA UNIVERSITY
BELINGROVE, PA 17578

Bursar's Office

BLOOMSBURY LIBRARY

UNIVERSITY OF LONDON
BLOOMSBURY HOUSE, 10 MALET STREET, LONDON WC1E 7BT

1972

EX-LIBRIS

The

LANTHORN

SUSQUEHANNA

UNIVERSITY

SELINGROVE.

PENNSYLVANIA



PUBLISHED BY
CLASS OF **1940**

CONTENTS

••

ADMINISTRATION

CLASSES

ORGANIZATIONS

ACTIVITIES

ATHLETICS





FOREWORD

To you, the students of Susquehanna University, we, the Editors present this 1940 LANTHORN for more than a mere photographic study of our college life. For our cover design and general theme we have chosen the ivy leaf—the symbol of deep-rooted, lasting friendship.

To you, the fraternity men and sorority women, we offer this symbolism as a challenge to rise above your petty inconsistencies which hamper a normal, natural college life. Only in this way can you win admittance to the school of Better Understanding and take with you memories of a glorious Susquehanna.

To GOOD FELLOWSHIP AMONG
OUR FRATERNITY BROTHERS
AND OUR SORORITY SISTERS
WE DEDICATE THIS VOLUME

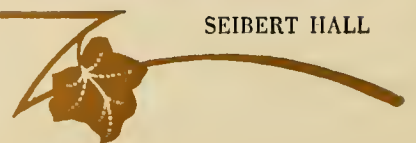


CAMPUS



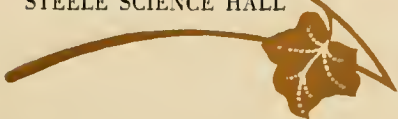


SEIBERT HALL





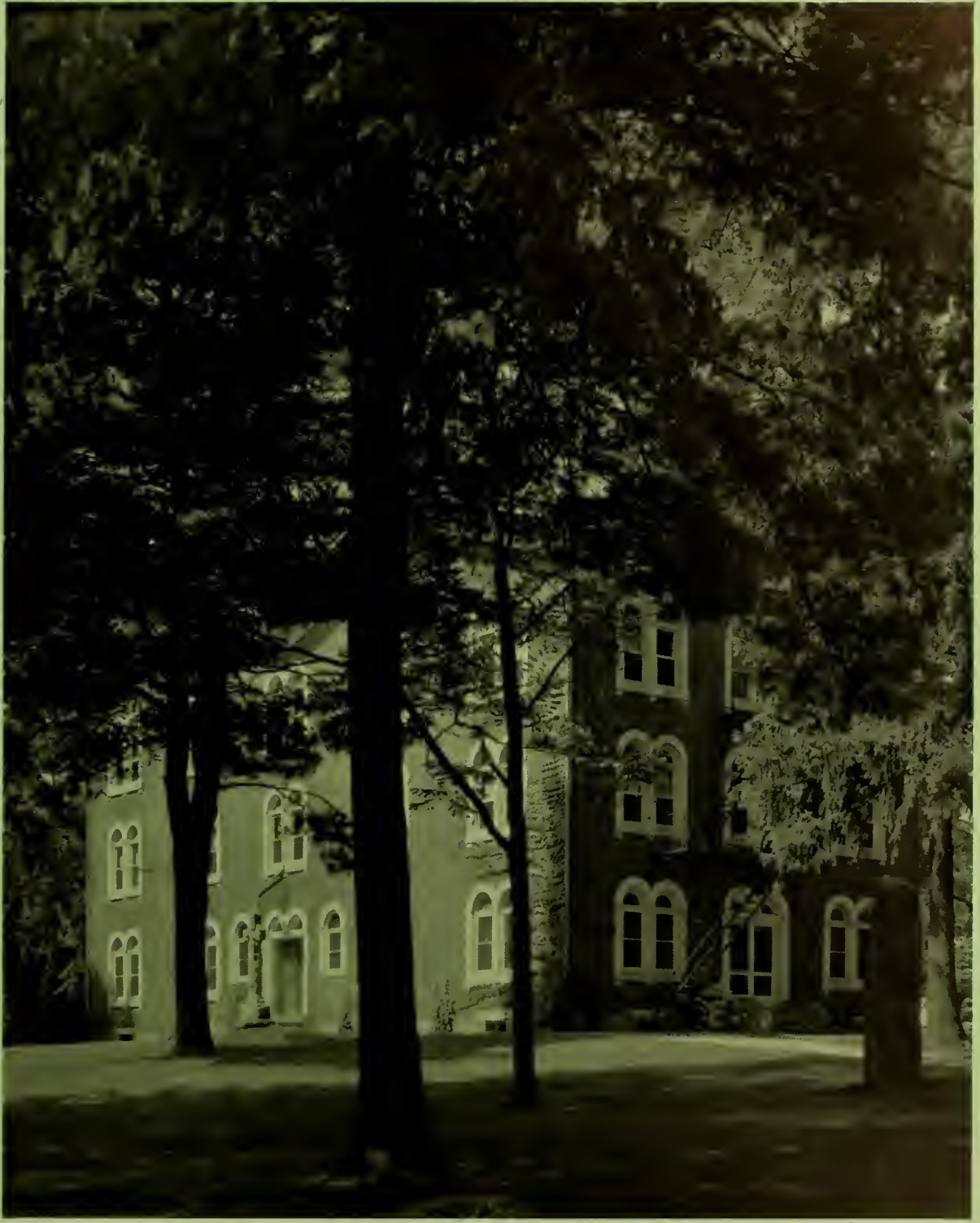
STEELE SCIENCE HALL





LIBRARY





SELINGROVE HALL





HASSINGER HALL





PINE LAWN



ADMINISTRATION





G. MORRIS SMITH

A.B., A.M., D.D.

President

Franklin and Marshall Academy, 1907; A.B., Roanoke College, 1911; A.M., Princeton University, 1912; Instructor, Blair Academy, 1912-1916; Graduate, Mt. Airy Seminary, 1919; Pastor, Mt. Vernon Lutheran Church, 1918-1920; Pastor, Lutheran Church of the Redeemer, Buffalo, N. Y., 1920-1928; President of Susquehanna University, 1928.



BARBARA KRUGER, A.M.
Dean of Women



RUSSELL GALT, Ph.D.
Dean of the College



LANGUAGE AND LITERATURE

A. WILLIAM AHL, A.M., Ph.D.

Professor of Greek

ARTHUR HERMAN WILSON, A.B., A.M., Ph.D.

Professor of English

CHARLES B. FOELSCH, A.B., A.M., Ph.D.

Lecturer in Public Speaking

LAURA ALICE REED, A.B., A.M.

Instructor in Latin and Assistant to the Dean of Women

RUSSELL WEIDER GILBERT, A.B., A. M.

Professor of German

LOIS M. BOE, A.B., A.M., Ph.D.

Professor of French

JAMES CARRINGTON FREEMAN, A.B., A.M.

Instructor in English



SOCIAL STUDIES

BARBARA KRUGER, A.M.

Instructor in History

JOHN I. WOODRUFF, A.B., A.M., LITT.D., LL.D.

Professor of Philosophy

THEODORE W. KRETSCHMANN, A.B., A.M., B.D., PH.D.

Professor of Bible and Religion

RUSSELL GALT, PH.D.

Assistant Professor of Education

WILLIAM A. RUSS, JR., A.B., A.M., PH.D.

Professor of History and Political Science

GEORGE F. DUNKELBERGER, A.B., A.M., PH.D., PH.D.

Professor of Education and Psychology



SCIENCE

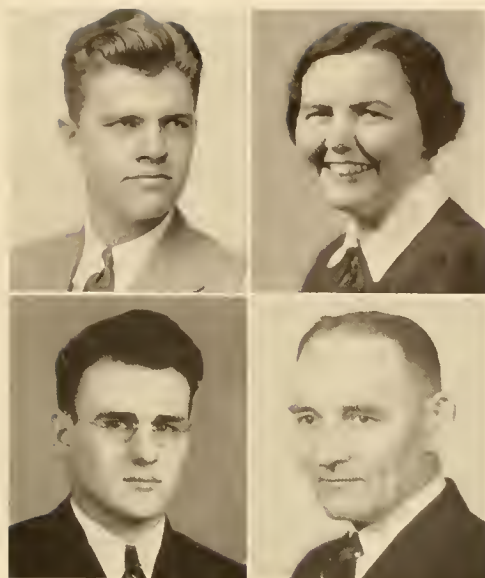
PAUL J. OVREBO, A.B., PH.D.
Professor of Physics

FISK WILLIAM STOCKING SCUDDER, A.B., A.M., PH.D.
Assistant Professor of Biology

ADAM SMITH, A.B., A.M., PH.D.
Professor of Mathematics

JOHN J. HOUTZ, A.B., A.M., M.S., SC.D.
Assistant Professor of Chemistry

GEORGE E. FISHER, PH.B., A.M., PH.D.
Professor of Chemistry



BUSINESS

CARTER OSTERBIND, M.S.

Instructor in Business Administration

VIOLA M. DUFRAIN, A.B., A.M.

Instructor in Commercial Education

ERIC. W. LAWSON, Ph.D.

Assistant Professor of Business Administration

D. IRVIN REITZ, Ph.B., A.M.

Assistant Professor of Commercial Education



CONSERVATORY

MARGARET E. KEISER, Mus.B.
Instructor in Singing and Appreciation

ALICE HOLMEN GIAUQUE, B.S.
Instructor in Public School Music

IDA MANEVAL SHELDON, Mus.B.
Instructor in Harmony and Music History

MARY KATHRYN POTTEIGER, Mus.B.
Instructor in Piano, Sight Singing, and Dictation

ANN RUPPIN, B.S.
Instructor in Violin, String Ensemble, and Alchin's Harmony

EDNA IRENE SHURE, B.S.
Instructor in Eurythmics, Pageantry, and Folk Dancing



CONSERVATORY

E. EDWIN SHELDON, Mus.M.

Director of the Conservatory

FREDERICK C. STEVENS, A.B., A.M.

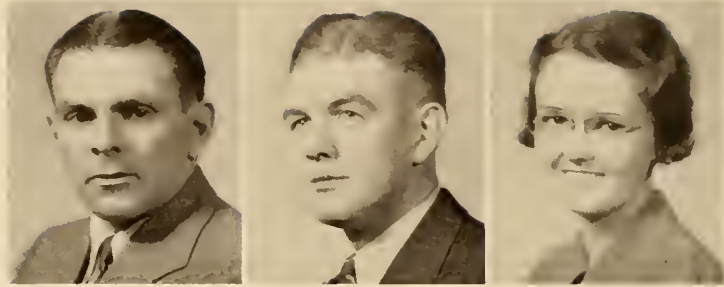
Assistant Professor of Singing

PERCY M. LINEBAUGH, Mus.B.

Professor of Pianoforte, Organ, Counterpoint, and Harmony

ELROSE L. ALLISON, Mus.B.

Instructor in Piano, Organ, and Wind Instruments



ATHLETICS

AMOS ALONZO STAGG, JR., A.B., A.M.

Professor of Physical Education

ROBERT W. PRITCHARD, A.B.

Assistant in Physical Education

EDNA IRENE SHURE, B.S.

Instructor in Physical Education



BUSINESS OFFICE

EDWIN M. BRUNGART, A.B., A.M.
Superintendent of Buildings and Grounds

ERNEST T. YORTY
Business Manager

H. VERNON BLOUGH, A.B.
Publicity Director



BURSAR'S OFFICE

NANCY MYERS
Business Secretary

E. BEATRICE HERMAN, A.B.
Bursar



REGISTRAR'S OFFICE

ELLA ENGEL, A.B.

Registrar

ISABEL NICELY

Secretary to the Dean



LIBRARY

HESTER HOFFMAN, A.B. B.S.

Librarian

AUDREY NORTH, B.S. In Library Science

Assistant Librarian



DIETITIAN

ANNA M. HUMPHREY

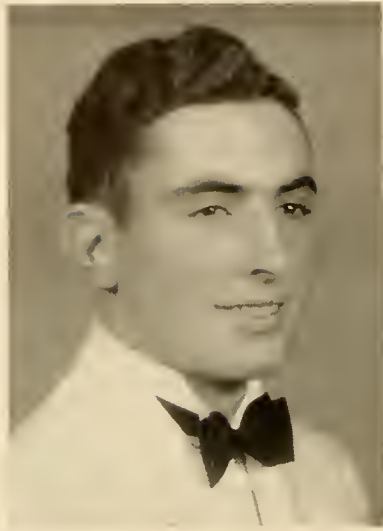


NURSE

GERTRUDE KEISER, R.N.

C L A S S E S





FRANK LAUDENSLAGER

SENIOR CLASS



STEPHEN OWEN



ELEANOR CROFT

OFFICERS

FRANK LAUDENSLAGER	-	-	-	-	-	-	-	<i>President</i>
STEPHEN OWEN	-	-	-	-	-	-	-	<i>Vice President</i>
ELEANOR CROFT	-	-	-	-	-	-	-	<i>Secretary-Treasurer</i>

Senior Class History

Vivid in our memories is the sixteenth day of September, nineteen hundred and thirty-five, the day on which our class first made its appearance on the campus of Susquehanna University. In retrospect we see much that has enriched our lives.

Our freshman year consisted mainly in our becoming used to the new life. Events such as the "get-away," inter-class athletic events, and fraternity and sorority affiliations characterized our first year. Some members of the class of '39 were already figuring prominently in various school activities.

The following year, we returned to Susquehanna as upper classmen and rapidly to the opportunity to impress our superiority upon the freshmen. However, in the traditional soph-frosh football game, we were forced to accept defeat after a hard fight. The remainder of our second year was spent in looking forward to the next year with its Junior Prom, LANTHORN, and other activities.

We feel that in the "Prom" and our Year Book, we have given succeeding classes something at which to aim. Both were eminently successful. Individuals in the class were recognized as leaders upon the campus. Athletics, journalistic endeavors, social life, and fraternity and sorority activity were some of the fields in which we were occupied. Our third year was certainly one of fruitful productivity.

Now that we are seniors we stand as it were upon a balance. We are reluctant to give up college days—and yet we look forward to graduation and life. Unbreakable ties have been formed between ourselves and our Alma Mater. We hope that the class of '39 has contributed something to that general fund which is Susquehanna University.



MARY APPLER

362 High Street, Hanover, Pa.

Omega Delta Sigma.

Editor-in-Chief of LANTHORN 3; Susquehanna Staff; Class Sports; Honor Hockey; French Club; Secretary-Treasurer of W. A. A.; Secretary of O. D. S.; Women's Student Council.

A.B.

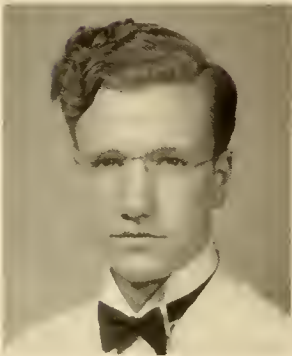


WILLIAM P. AYERS

24 Brooks Street, Warren, Pa.

German Club; Track; Business Society.

Business Administration.



HOWARD B. BALDWIN

2511 Tatnall Street, Wilmington, Del.

Bond and Key.

Football Manager; Photography; Motet Choir; Band; Orchestra.

Music.

BETTY BALTZER

325 S. Main Street, Jersey Shore, Pa.

Omega Delta Sigma.

President of Omega Delta Sigma; Class Sports; German Club.

A.B.



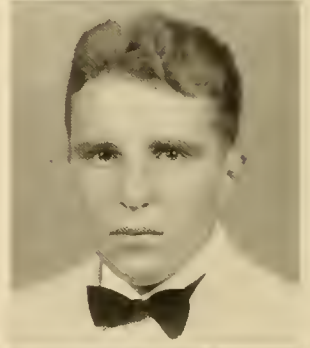
ROBERT BASTRESS

478 Duke Street, Northumberland, Pa.

Bond and Key.

Co-Captain of Football; Varsity Baseball; Track.

A.B.



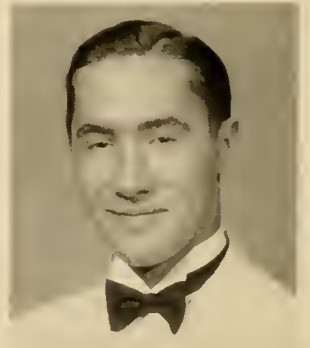
LEROY BEACHEL

Middleburg, Pa.

Beta Kappa.

Track; Phi Kappa; Pre-Theological Club; Band; Soccer.

Pre-Theological.



CLASS OF 1939

JEAN BEAMENDERFER

401 Walnut Street, Selinsgrove, Pa.

Kappa Delta Phi.

Business Society; Biemic Society; Susquehanna Staff.

Commercial Education.



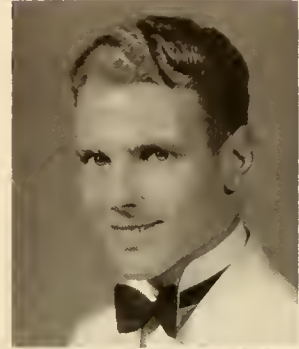
HAROLD BENION

Front Street, West Fairview, Pa.

Bond and Key.

Student Council; Business Manager of Susquehanna; Business Society; Secretary-Treasurer of Sophomore Class; German Club; Greek Club.

Business Administration.

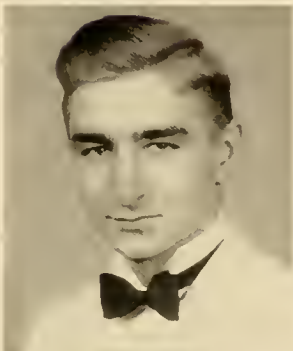


CATHERINE BIER

501 Packer Street, Sunbury, Pa.

German Club; Mathematics Club Biemic Society.

A.B.



PAUL BROSIOS

Herndon, Pa.

Bond and Key.

Band; Business Society; Susquehanna Staff; German Club; LANTHORN Staff; Motet Choir; Class Sports; President of Sophomore Class.

Business Administration.



JOSEPHINE E. CAREY

511 East Gravers Lane, Philadelphia, Pa.

Sigma Alpha Iota.

Choral Club; Motet Choir; Inter-Sorority Council; Operetta; May Day; Vice President of Class.

Music.



GENEVIEVE CLUCK

McKnightstown, Pa.

Sigma Alpha Iota.

Susquehanna Players.

Music.



ELEANOR CROFT

Greencastle, Pa.

Kappa Delta Phi.

S. C. A. Cabinet; Woman's Co-Operative Council; LANTHORN Staff; Honor Hockey; Class Sports; W. A. A.; German Club; Pi Gamma Mu; Who's Who Among Students in American Colleges.

A.B.



MARJORIE CURTIS

52 Poplar Street, Kingston, Pa.

Omega Delta Sigma.

President, Women's Student Council; Vice President, Inter-Sorority Council; German Club; W. A. A.; Class Sports; Class Historian; Class Secretary; LANTHORN Staff.

A.B.



WALTER J. DRUMM

1054 Masser Street, Sunbury, Pa.

Beta Kappa.

Pre-Theological Club, Vice President; Phi Kappa, Vice President; Susquehanna Players.

Pre-Theological.

MARTHA A. ENGLE

1057 Market Street, Sunbury, Pa.

Kappa Delta Phi.

Vice President of Kappa Delta Phi; Inter-Sorority Council, Treasurer; Business Society; Madrigal Singers.

Commercial Education.



SHIRLEY V. FINKBEINER

9455 Sutter Ave., Ozone Park, Long Island, N. Y.

Omega Delta Sigma.

W. A. A.; French Club; Motet Choir; Women's Student Council, Secretary-Treasurer; Class Sports; Susquehanna Players; LANTHORN Staff; Pi Gamma Mu.

A.B.



VERNA GAYMAN

Newville, Pa.

Kappa Delta Phi.

Orchestra; Choral Society; Band; Business Society; W. A. A.; Class Sports; Hockey Club; Circulation Manager of Susquehanna; Financial Manager of K. D. P.

Commercial Education.



CLASS OF 1939

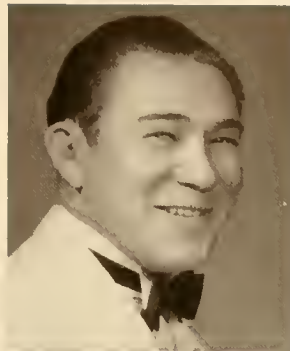
GLENN E. B. HAUFF

New Freedom, Pa.

Bond and Key.

Captain, Baseball; Band; Business Society; German Club; Greek Club; Varsity "S" Club; President of Bond and Key; Class Sports.

Business Administration.



ROBERT L. HERR

1218 Walnut Street, Shamokin, Pa.

Phi Mu Delta.

Basketball, Co-Captain; Football; German Club; President of Intra-Mural Board; President of Pi Gamma Mu; President of Business Society; May Day; S. C. A. Cabinet; Inter-Fraternity Council; Who's Who Among Students in American Colleges; Varsity "S" Club.

Commercial Education.



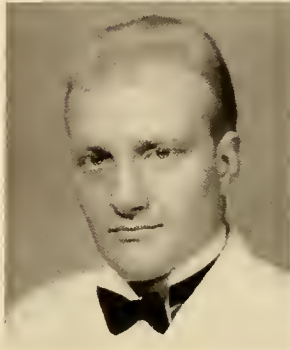
HENRY J. KEIL

690 Hudson Avenue, Union City, N. J.

Bond and Key.

Football; Baseball; President of Junior Class; President of Intra-Mural Board; Class Sports; Pi Gamma Mu; Varsity "S" Club; Editor-in-Chief of Susquehanna; LANTHORN Staff; Who's Who Among Students in American Colleges.

A.B.



JESS M. KEMBERLING

Selinsgrove, Pa.

Bond and Key.

Debating Society; Business Society; German Club.

Business Administration.



MARTHA KLINGER

Herndon, Pa.

Debating Society; Orchestra; Class Sports; Secretary-Treasurer of Day Student's Organization.

A.B.



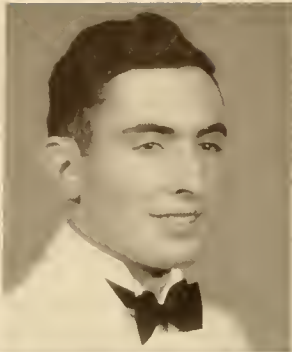
JOHN R. KNAUL

R. D. 1, Williamsport, Pa.

Beta Kappa.

Phi Kappa; Pre-Theological Club.

Pre-Theological.



FRANK LAUDENSLAYER

Hummels Wharf, Pa.

Beta Kappa.

Baseball; Band; German Club; Class Sports;
Inter-Fraternity Council; Business Society;
Business Manager of LANTHORN; President of
Senior Class; Pi Gamma Mu; President of
Inter-Fraternity Council.

Commercial Education.



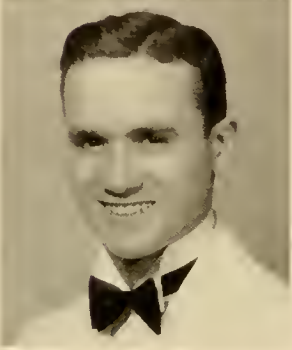
HARRY G. McBRIDE

314 West Pike Street, Houston, Pa.

Phi Mu Delta.

Basketball; Baseball Manager; Cheerleader;
Varsity "S" Club; French Club; Vice Presi-
dent, Business Society; LANTHORN Staff; Sus-
quehanna Staff; Intra-Mural Board.

Business Administration.



MICHAEL MASTOVICH

280 Main St., Franklin Borough,
Johnstown, Pa.

Phi Mu Delta.

Basketball; Band; Orchestra; Motet
Choir; Varsity "S" Club; Choral Club;
Men's Music Guild; Male Quartet.

Music.

KATHRYN MEYER

618 Wood Street, Johnstown, Pa.

S. C. A. Cabinet; Susquehanna Staff;
French Club; W. A. A.; Susquehanna
Players.

A.B.



JUNE MILLER

27 Broad Street, Ashland, Pa.

Phi Mu Delta.

Co-Captain, Football; Basketball; Baseball;
Varsity "S" Club; German Club.

A.B.



MIRIAM MILLER

Reading, Pa.

Kappa Delta Phi.

President, Treasurer of Kappa Delta Phi; Pi
Gamma Mu; Inter-Sorority Council; S. C. A.
Social Chairman; Business Society; Susque-
hanna Staff; German Club; Debating Club;
Susquehanna Players; W. A. A.; Class Sports;
Honor Hockey; Honor Basketball.

Commercial Education.



CLASS OF 1939

MATHILDA NEUDOERFFER

1 Jackson Avenue, West Hazleton, Pa.

Omega Delta Sigma.

President of German Club; Susquehanna Players; Motet Choir; S. C. A. Cabinet; Class Sports; W. A. A.

A.B.



PAUL OCHENRIDER

Aristes, Pa.

Beta Kappa.

Motet Choir; Intra-Mural Board; Class Sports; Mathematic Club; Band; German Club; President of Beta Kappa.

Pre-Medical.



STEPHEN W. OWEN

129 Tritle Avenue, Waynesboro, Pa.

Phi Mu Delta.

Manager of Tennis; Manager of Basketball; German Club; Greek Club; Pre-Theological Club; Treasurer of S. C. A.; Vice President of Senior Class.

Pre-Theological.



ALVERNA M. REESE

Audenried, Pa.

Omega Delta Sigma.

French Club; Business Society, Secretary; W. A. A.; Class Sports; Inter-Sorority Council, Financial Secretary; Vice President of Omega Delta Sigma.

Commercial Education.



HELEN O. ROGERS

650 Rutter Avenue, Kingston, Pa.

Sigma Alpha Iota.

Motet Choir; Madrigal Singers; Treasurer of Sigma Alpha Iota; President of Sigma Alpha Iota; President of Inter-Sorority Council; Secretary-Treasurer of Women's Student Council;

German Club; LANTHORN Business Staff.

Music.

SAMUEL ROGERS

39 North Maple Street, Mount Carmel, Pa.

Bond and Key.

Football; Track; Motet Choir; Inter-Fraternity Council; Secretary of Susquehanna Publishing Association; Class Sports; Business Society.

Business Administration.





HAROLD R. SAUNDERS

241 Pettebone Street, Wyoming, Pa.

Bond and Key.

Tennis; Varsity "S" Club; LANTHORN Staff;
Class Sports; French Club; Biemic Society.

A.B.



ELEANOR SAVERI

East Bangor, Pa.

Kappa Delta Phi.

President of W. A. A.; President of French
Club; Women's Student Council; Hockey;
Inter-Sorority Council; Basketball; Susque-
hanna Players.

A.B.



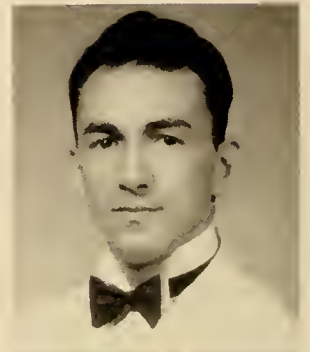
REGINALD C. SCHOFIELD

50 E. Second Ave., South Williamsport, Pa.

Beta Kappa.

Biemic Society; Pre-Theological Club;
Susquehanna Players; Phi Kappa; LAN-
THORN Business Staff.

Pre-Theological.



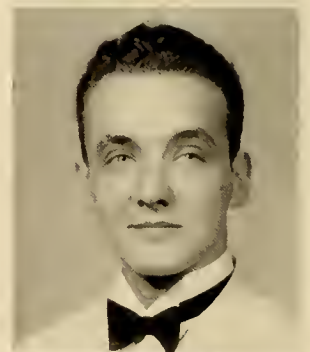
EDWARD M. SCHWEITZER

39 Jackson Avenue, West Hazleton, Pa.

Phi Mu Delta.

Class Sports; Business Society; German
Club.

Business Administration.



EDWARD M. SIVICK

161 Stanley Avenue, Yonkers, N. Y.

Phi Mu Delta.

President of Phi Mu Delta; Class Sports;
Vice President of Men's Student Council.

Pre-Medical.



LEONORA SPOTTS

133 Linden Street, Sunbury, Pa.

Business Society.

Commercial Education.

CLASS OF 1939

VIRGINIA STRAUB

423 West Frack Street, Frackville, Pa.

Sigma Alpha Iota.

Motet Choir; May Day; Operetta; Choral Club.

Music.



ISABEL TEWKESBURY

1058 Meade Street, Dunmore, Pa.

Kappa Delta Phi.

Business Society; Class Sports; Susquehanna Staff.

Commercial Education.



GLADYS WENTZEL

8 North High Street, Selinsgrove, Pa.

Omega Delta Sigma.

Class Sports; Business Society.

Commercial Education.



DONALD S. WERT

Aaronsburg, Pa.

Phi Mu Delta.

Basketball; Baseball; Track; Inter-Fraternity Sports; Class Sports; Mathematics Club; Co-Captain of Basketball.

A.B.



LOUISE E. WEST

53 East Ridge Street, Coaldale, Pa.

Omega Delta Sigma.

Biemic Society; German Club; W. A. A.; Class Sports; Financial Secretary of O. D. S.; Susquehanna Players.

A.B.

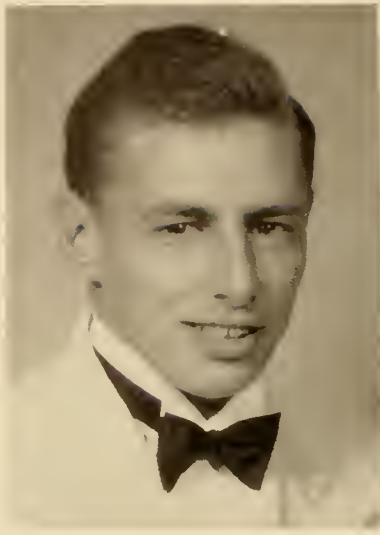


RUTH E. YARGER

Swengel, Pa.

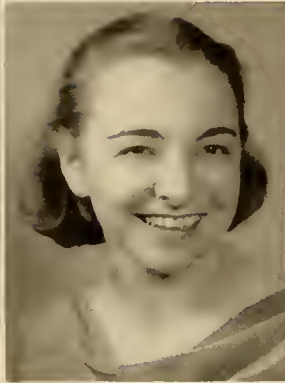
Mathematics Club; German Club; Susquehanna Staff; Pi Gamma Mu; Chess and Checker Club; Who's Who Among Students in American Colleges.

A.B.

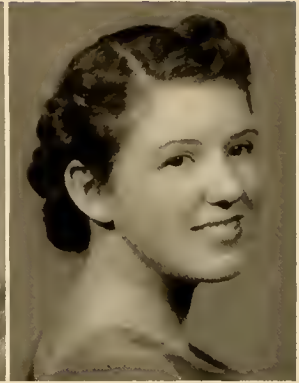


WILLIAM T. PRITCHARD

JUNIOR CLASS



EUNICE ARENTZ



MARIE EDLUND

OFFICERS

WILLIAM T. PRITCHARD	- - - - -	<i>President</i>
EUNICE ARENTZ	- - - - -	<i>Secretary</i>
MARIE EDLUND	- - - - -	<i>Treasurer</i>

CLASS OF 1940

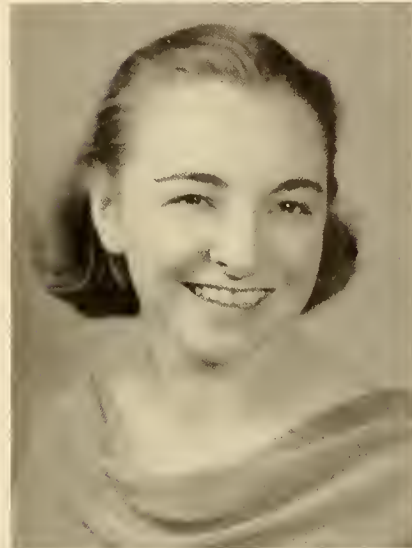
MATHILDE ALBURY

113 Eastman Street
Cranford, N. J.
Crane Institute, Potsdam, N. Y.
Sigma Alpha Iota.
Symphony 3; Dramatic Club 3.
Music Education.



EUNICE E. ARENTZ

112 Fourth Street
Hanover, Pa.
Eichelberger High School.
Kappa Delta Phi.
W. A. A. 3; Class Secretary 3; Treasurer of K. D. P. 3; Class Sports I. 2, 3; Business Society, 1, 2, 3; LANTHORN Editorial Staff 3.
Commercial Education.



CHARLOTTE BAISH

Dillsburg, Pa.
Dillsburg High School.
Sigma Alpha Iota.
Student Council 3; Class Treasurer 1; Choral Society 1; Susquehanna Players 2, 3; S. A. I. Chaplain 3.
Music Education.



CLASS OF 1940



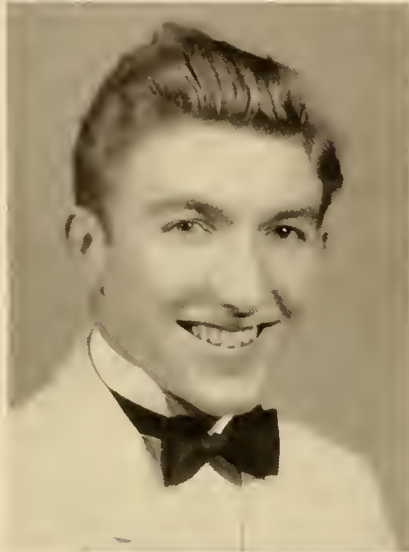
ELIZABETH BARNHART

1250 Susquehanna Avenue
Sunbury, Pa.

Sunbury High School.

Sigma Alpha Iota.

Music Soloist.



JOHN D. BICE

Millerstown, Pa.

Martinsburg High School,
Martinsburg, Pa.

Bond and Key.

Basketball 1, 2, 3; Class Sports 1, 2,
3; *Susquehanna* Business Staff 1, 2,
3; Business Society 1, 2.

Business Administration.



DONALD BILLMAN

Herndon, Pa.

Herndon High School

Bond and Key.

Motet Choir 1, 2, 3; Choral Society
1; Alumni Secretary of Bond and
Key 3; Operetta 2, 3; French Club
2, 3; Business Staff of LANTHORN 3.

A.B.

CLASS OF 1940

NAOMI BINGAMAN

118 Independence Street
Selinsgrove, Pa.

Selinsgrove High School.

Omega Delta Sigma.

W. A. A. 1, 2, 3; Secretary of W. A.
A. 3; German Club 1; Business Soci-
ety 1, 2; LANTHORN Business Staff 3;
Class Sports 1, 2, 3; Honor Hockey
3; Honor Basketball 1, 2; Band 1, 2.
Commercial Education.



HESTER E. BITTINGER

Shamokin Dam, Pa.

Sunbury High School.

French Club 1, 2, 3; Class Sports 2, 3.

A.B.



GEORGE R. BROSIUS

118 S. Sheridan Street
Johnstown, Pa.

Johnstown Central High School.

Johnstown Center of the University
of Pittsburgh.

Phi Mu Delta.

Motet Choir 2, 3; Pre-Theological
Club 2, 3; Phi Kappa 2, 3.

Pre-Theological.



CLASS OF 1940



VIRGINIA A. BURNS

7 Water Street
Selinsgrove, Pa.

Selinsgrove High School.

Omega Delta Sigma.

French Club 1, 2, 3; German Club
1, 2; Class Sports 1, 2; Women's
Student Council 1, 3; Day Student's
Organization 1, 2, 3.

A.B.



ANDREW A. CLARK, JR.

101 South Walnut Street
Mechanicsburg, Pa.

Mechanicsburg High School.

Dickinson College.

A.B.



PAUL D. COLEMAN

136 East Church Street
Somerset, Pa.

Somerset High School.

Phi Mu Delta.

Orchestra 2; Mathematics Club 1, 2,
3; Physics Assistant 3; Biemic So-
ciety 2; Class Sports 3.

A.B.

CLASS OF 1940

DAVID COREN

121 South Maple Street
Mount Carmel, Pa.

Northeast High School,
Philadelphia, Pa.

Temple University.

New York University.

Symphonic Society 3; Concert Band
3; Motet Choir 3; Men's Music
Guild 3.

Music Education.



DONALD A. CRITCHFIELD

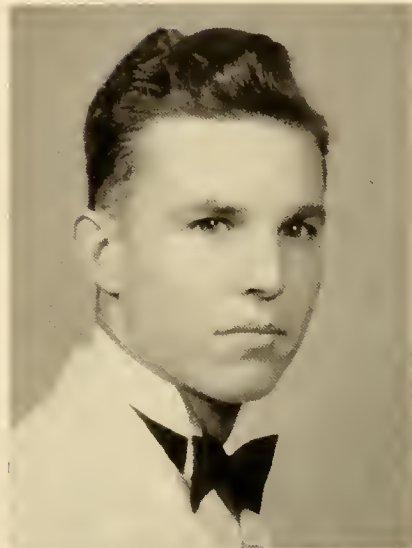
503 West Union Street
Somerset, Pa.

Somerset High School.

Phi Mu Delta.

Class Sports 1, 2, 3; Vice President
of Phi Mu Delta 3.

A.B.



WILLIAM L. DAVIS

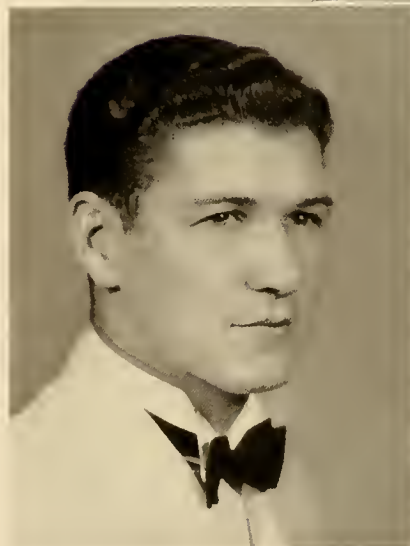
1508 Center Street
Ashland, Pa.

Ashland High School.

Phi Mu Delta.

Football 1, 2, 3; Track 1, 2; Men's
Student Council 3; Biemic Society
2, 3; German Club 2, 3.

Pre-Medical.

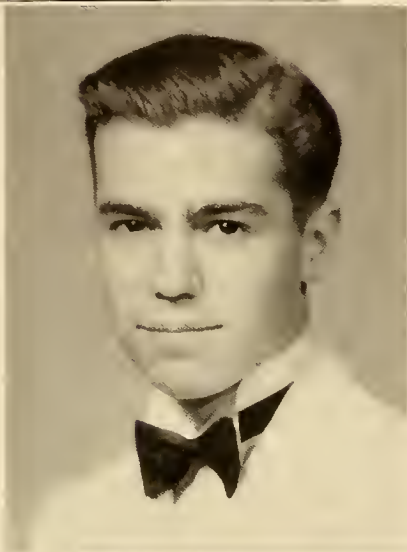


CLASS OF 1940



ALICE N. DEITERICK

Mooresburg, Pa.
Danville High School.
Sigma Alpha Iota.
Music Soloist.



JOHN F. DRUMHELLER

Sunbury, Pa., R. D. 3.
Sunhury High School.
Beta Kappa.
Mathematics Club 2, 3; Band.
A.B.



H. MARIE EDLUND

Tarentum, Pa., R. D. 2.
Ford City High School.
Kappa Delta Phi.
Susquehanna Players 2, 3; W. A. A.
2, 3; French Club 1, 2, 3; Secretary
of Kappa Delta Phi 3; Treasurer of
Junior Class 3; Class Sports 1, 2.
A.B.

CLASS OF 1940

EDWARD EISENHART

438 Race Street
Sunbury, Pa.
Sunbury High School.
Bucknell University.
Bond and Key.
Football 2, 3.
A.B.



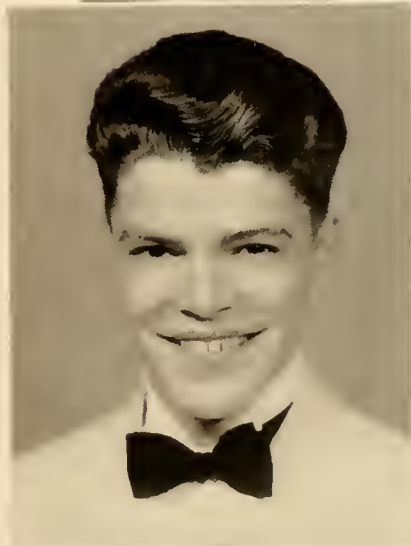
RUTH E. FARLEY

177 South Church Street
Hazleton, Pa.
Danville High School.
Omega Delta Sigma.
Class Sports 1, 2, 3; W. A. A. 2, 3;
French Club 1, 2, 3; Biemic Society
1, 2; May Day 2.
A.B.



ROBERT F. FISHER

969 High Street
Williamsport, Pa.
Williamsport High School.
Phi Mu Delta.
Football 1; Basketball 1, 2, 3; Phi
Kappa 2, 3; Pre-Theological Club
2, 3; Track 1.
Pre-Theological.



CLASS OF 1940



MILDRED GRACE FOLLMER

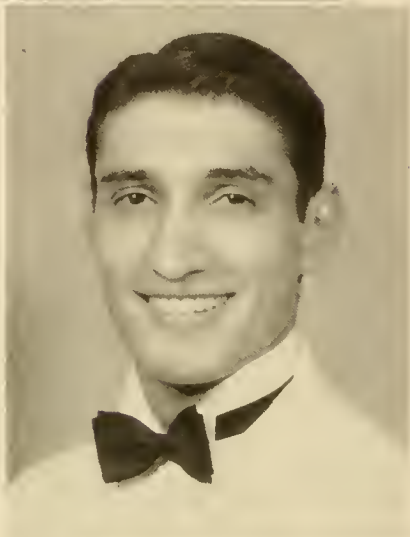
9 North High Street
Selinsgrove, Pa.

Selinsgrove High School.

Patroness Member of Sigma
Alpha Iota.

Member of Who's Who in American
Universities and College, 1938-1939.

Music Soloist.



VINCENT C. FRATTALI

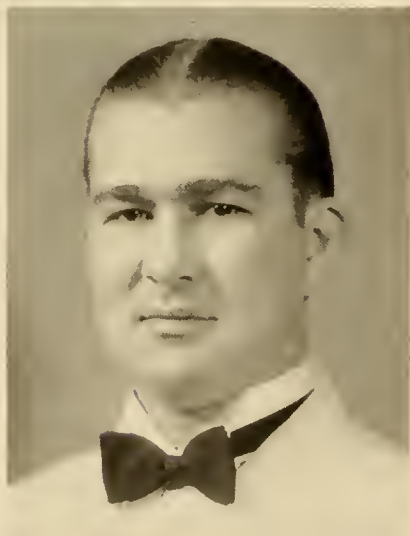
116 North Chestnut Avenue
Scranton, Pa.

Scranton Central High School.

Phi Mu Delta.

Football 1, 2, 3; Debate Manager 2,
3; Debating Society 1; Tau Kappa
Alpha; German Club 1, 2; Class
Sports 1, 3; Band 1, 2, 3; Symphonic
Society 1.

A.B.



WALTER H. FREED

1219 Race Street
Ashland, Pa.

Asbland High School.

Bond and Key.

Band 1, 2, 3; Symphonic Society 1;
Motet Choir 1; Track Manager 2;
Men's Music Guild 3; Baseball 1;
Choral Society 1; Susquehanna Play-
ers 3.

Public School Music.

CLASS OF 1940

HILDA L. FRIEDERICK

Hillside Avenue
Honesdale, Pa.

Honesdale High School.

Sigma Alpha Iota.

Symphony Society 1, 2, 3; Motet
Choir 1, 2, 3; Choral Society 1; Stu-
dent Quartet 3.

Public School Music.



GRACE E. FRIES

1135 Second Avenue
Duncansville, Pa.

Hollidaysburg High School.

Kappa Delta Phi.

Susquehanna Editorial Staff 1, 2, 3;
News Editor of *Susquehanna* 2, 3;
Class Sports 1, 3; Secretary of
French Club 2; Vice President of
French Club 3; *Susquehanna* Play-
ers 2, 3.

A.B.



GEORGE R. FURMAN

142 North Sixth Street
Sunbury, Pa.

Sunbury High School.

Beta Kappa.

Band 1; Mathematics Club 1; Class
Sports 3.

A.B.



CLASS OF 1940



ROBERT A. GABRENYA

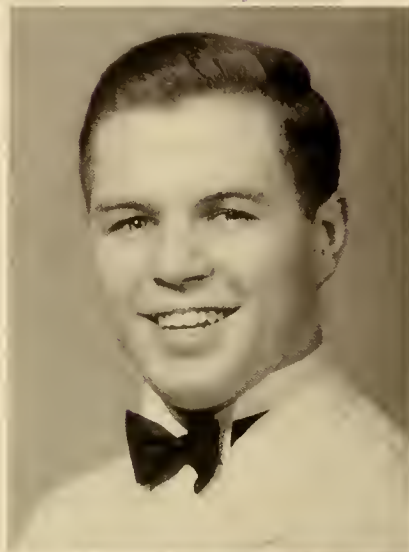
361 First Street
Conemaugh, Pa.

Franklin Borough High School.

Phi Mu Delta.

Manager of Basketball 1, 2, 3; Manager of Baseball 2, 3; Business Society 1, 2, 3; Business Manager of *Susquehanna* 3; Business Staff of *Susquehanna* 1, 2, 3; French Club 1; Class Sports 1, 2.

Business Administration.



WILLIAM GEHRON

736 Arch Street
Williamsport, Pa.

Williamsport High School.

Bond and Key.

Class Sports 3.

Pre-Medical.



JOHN GENSEL

Catawissa, Pa.

Catawissa High School.

Beta Kappa.

Baseball 1, 2; Soccer 2, 3; Pre-Theological Club 1, 2; President of Pre-Theological Club 3; Student Christian Association Cabinet 3; Phi Kappa 1, 2.

Pre-Theological.

CLASS OF 1940

MARGARET GRENOBLE

Spring Mills, Pa.

Gregg Township Vocational School.

Sigma Alpha Iota.

Motet Choir 2, 3; Vice President of Sigma Alpha Iota 3; W. A. A. 2, 3; Choral Society 1; Intersorority Council 3; Class Sports 2, 3; Operetta 2.

Public School Music.



REED H. GULICK

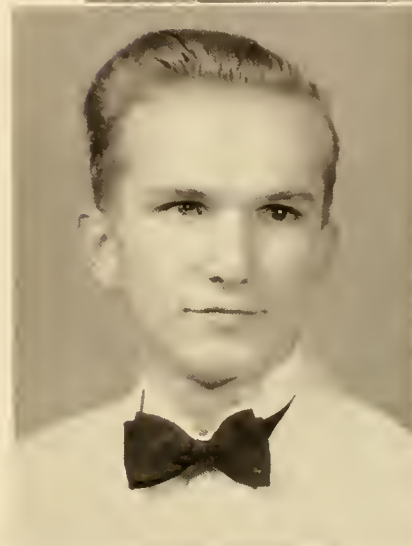
442 Grant Street
Camden, N. J.

Camden High School.

Bond and Key.

Biemic Society 1, 2, 3; German Club 1, 2; *Susquehanna* Business Staff, 1, 2, 3; Managing Editor of *Susquehanna* 3.

A.B.



J. LEON HAINES

McClure, Pa., R. F. D. 1.

Lewistown High School.

Beta Kappa.

Phi Kappa 1, 2, 3; Pre-Theological Club 1, 2, 3; Secretary of Pre-Theological Club 2; Vespers 1, 2, 3; Student Christian Association Cabinet 2, 3; President of S. C. A. 3; LANTHORN Staff 3; Student Church 3; Class Sports 3; Who's Who Among Students in American Colleges, 3.

Pre-Theological.



CLASS OF 1940



MADALENE P. HAYES

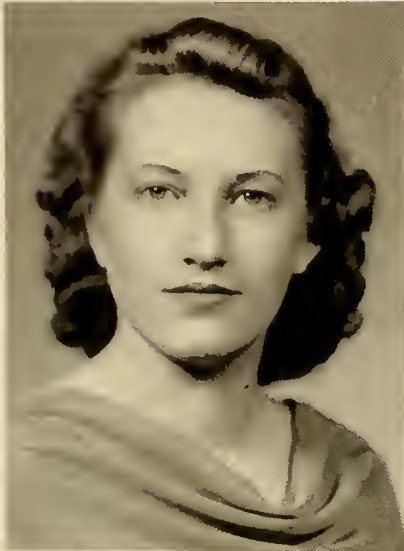
203 West Miner Street
West Chester, Pa.

West Chester High School.

Kappa Delta Phi.

Class Secretary 1; Dramatics 1; Class Sports 1, 2, 3; Class Hockey Captain 1, 2, 3; Honor Hockey 1, 2, 3; Honor Basketball 1, 2; W. A. A. 1, 2, 3; Vice President of W. A. A. 3; Vice President of K. D. P. 3; Intersorority Council 3; May Day 1, 2; Business Society 3.

Commercial Education.



ANNE HILL

416 Allen Street
Hazleton, Pa.

Hazleton High School.

Omega Delta Sigma.

Class Sports 1, 2, 3; Captain of Volleyball 2; German Club 1, 2, 3; Intersorority Council 3; Financial Secretary of Intersorority Council 3; Vice President of Omega Delta Sigma 3; Biemic Society 1, 2; LANTHORN Staff 3; *Susquehanna* Players 1; May Day 1, 2.

A.B.



JOHN W. HOFFMAN

Shamokin Dam, Pa.

Middleburg High School.

Beta Kappa.

German Club 1.

A.B.

CLASS OF 1940

CLAIR A. KALTREIDER

101 Fair Avenue
Hanover, Pa.

Eichelberger High School.

Bond and Key.

Editor of Freshman Handbook 1; S. C. A. Cabinet 1; Men's Student Council 3; Intramural Board 3; German Club 1, 2; Band 1, 2; Football 1, 2, 3; Basketball 1, 2, 3; Baseball 1, 2, 3; Varsity "S" Club 1, 2, 3.

A.B.



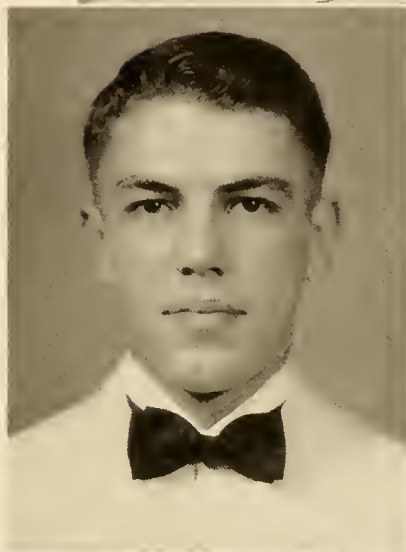
HORACE A. KAUFFMAN

144 North Sixth Street
Sunbury, Pa.

Sunbury High School.

Bond and Key.

A.B.

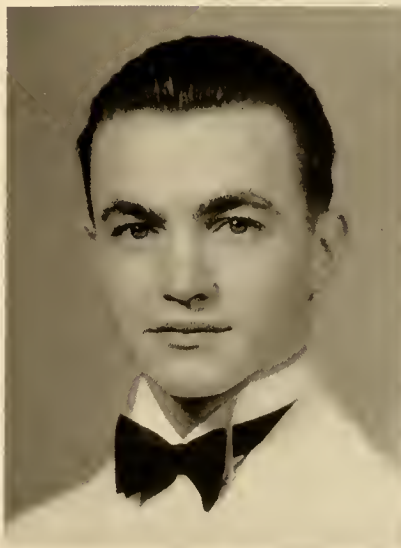


KENNETH R. KINNEY

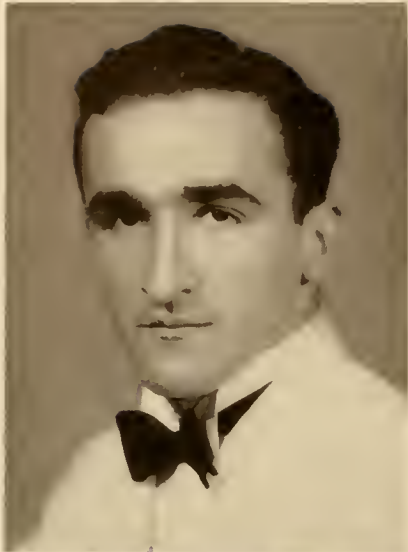
376½ Wyoming Avenue
Wyoming, Pa.

Business Manager of 1940 LANTHORN; Track 1, 2, 3; Vice President of Biemic Society 3; French Club 1, 2; Class Sports 1, 2, 3.

A.B.



CLASS OF 1940



HERBERT KLINGER

Herndon, Pa.
Herndon High School.

Beta Kappa.

Soccer 2, 3; Baseball 1, 2, 3; German
Club 1, 2; Business Society 1, 2, 3;
Interfraternity Council 3.

Commercial Education.



EDWARD N. KORPER

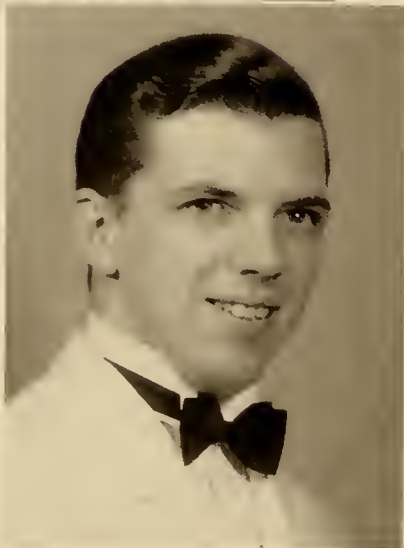
225 Ridge Avenue
Sunbury, Pa.

Sunbury High School.

Bond and Key.

Business Society 1, 2, 3; Motet Choir
1; Operetta 1; Vice President of
Class 1.

Commercial Education.



EDMUND J. KOZLOWSKI

204 North Walnut Street
Mount Carmel, Pa.

Mount Carmel High School.

Phi Mu Delta.

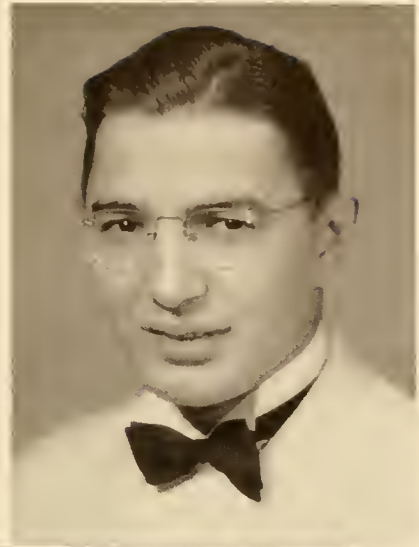
Band 1, 2, 3; Symphonic Society 1,
2, 3; Men's Music Guild 2, 3.

Public School Music.

CLASS OF 1940

PETER LALICH

26 Main Street
Conemaugh, Pa.
Franklin Borough High School.
Phi Mu Delta.
Basketball 2; Business Society 1,2,3.
Business Administration.



FLORENCE E. LANDBACK

365 Duke Street
Northumberland, Pa.
Northumberland High School.
Class Sports 1, 2.



J. ALFRED LEAM

1613 Center Street
Ashland, Pa.
Ashland High School.
Bond and Key.
Football 1, 2; Track 1, 2, 3; German
Club 1, 2, 3; Biemic Society 1, 2, 3.
Pre-Medical.



CLASS OF 1940

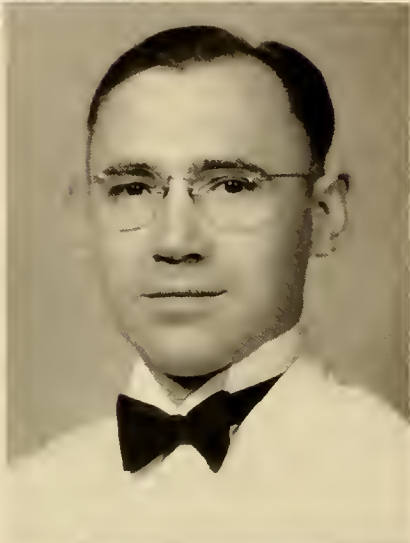


JANET JONG

Port Royal, Pa.

Biemic Society 1; Business Society 1,
2, 3.

Commercial Education.



REV. C. R. LOSS

322 West Mill Street
Selinsgrove, Pa.

Beta Kappa.

A.B.



MARY CATHERINE D. MACK

600 Race Street
Sunbury, Pa.

Sunbury High School.

Omega Delta Sigma.

Class Sports 1, 2, 3; W. A. A. 2, 3;
Honor Hockey 2, 3.

A.B.

CLASS OF 1940

VIRGINIA MANN

40 Purser Place
Yonkers, N. Y.

Yonkers High School.

Omega Delta Sigma.

Women's Co-operative Council 3; S.
C. A. Cabinet 2, 3; German Club 1,
2; French Club 3; Motet Choir 3;
Susquehanna Staff 1, 2; LANTHORN
Editorial Staff 3; *Susquehanna* Play-
ers 2.

A.B.



WILLIAM MEASE

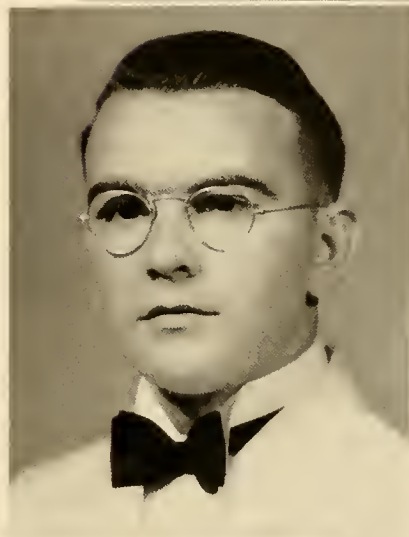
Orange Street
Selinsgrove, Pa.

Selinsgrove High School.

Bond and Key.

Business Society 1, 2, 3; Class Sports
1, 2.

Commercial Education.



W. EDGAR MEEK

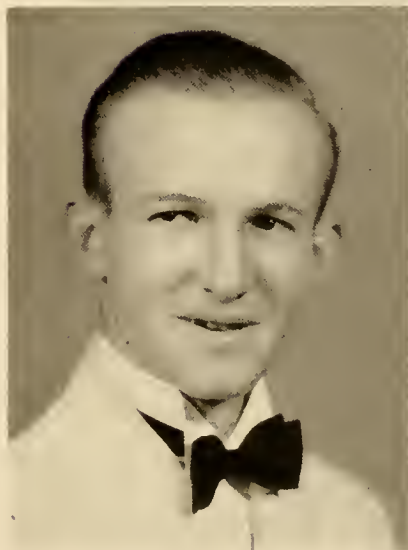
1009 Cambirn Avenue
Windber, Pa.

Windber High School.

Beta Kappa.

Vice President of Business Society
3; Intramural Board 3; Class Sports
2, 3.

Business Administration.



CLASS OF 1940



JOSEPH MEHALOW

602 Cedar Street
Freeland, Pa.

Foster Township High School.

Phi Mu Delta.

Band 1, 2, 3; Symphonic Society 1,
2, 3; Choral Society 1; Treasurer of
Men's Music Guild 2, 3.

Music.



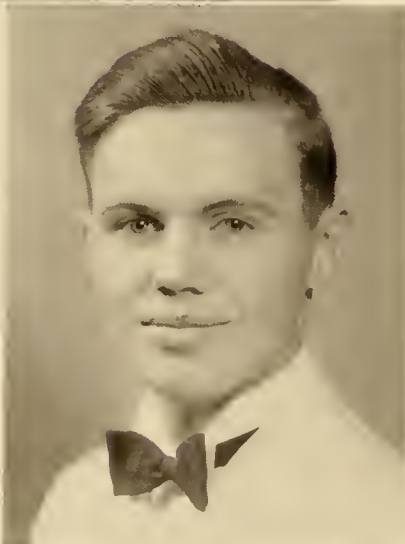
HELEN H. MUSSELMAN

704 North Market Street
Selinsgrove, Pa.

Selinsgrove High School.

W. A. A. 3; German Club 1; French
Club 1, 2, 3; Class Sports 1, 2, 3.

A.B.



WILLIAM E. NYE

109 South Harrison Street
Wilmington, Del.

Wilmington High School.

Phi Mu Delta.

Class President 1; Freshman Play,
Manager 1; Class Sports 1; Man-
ager of Baseball 1; German Club 1;
Cheerleader 1, 2, 3; Basketball 2, 3;
Phi Kappa 1, 2, 3; Susquehanna
Players 3; Editorial Staff of *Susque-*
hanna 3; Editorial Staff of *LAN-*
THORN 3.

Pre-Theological.

CLASS OF 1940

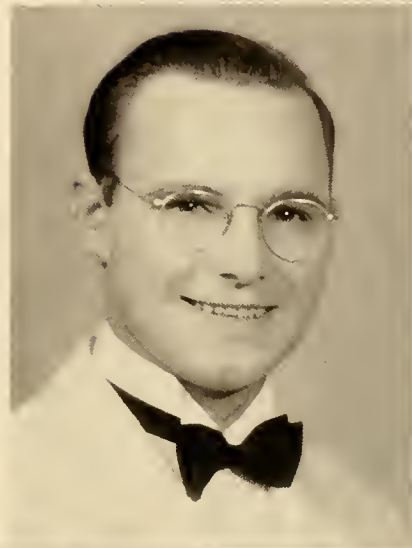
PAUL M. ORSO

1007 Memorial Avenue
Williamsport, Pa.
Williamsport High School.
Dickinson Junior College.
Bond and Key.
Pre-Theological Club 3.
Pre-Theological.



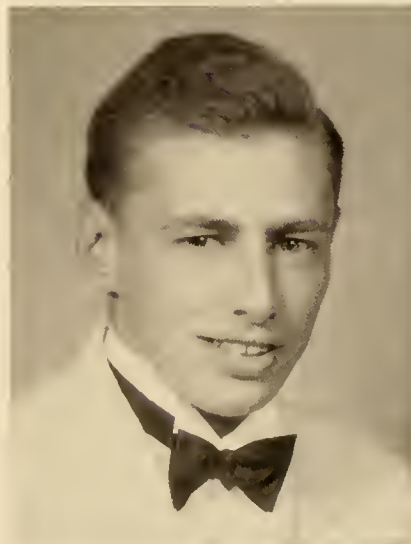
JAMES PEARCE

1014 Chestnut Street
Kulpmont, Pa.
Kulpmont High School.
Phi Mu Delta.
Choral Society 1; Band 1, 2, 3; Sus-
quehanna Symphonic Society 2; Sec-
retary of Men's Music Guild 2, 3.
Public School Music.



WILLIAM T. PRITCHARD

41 Poplar Street
Kingston, Pa.
Kingston High School.
Wyoming Seminary.
Bond and Key.
Football 1, 2, 3; Track 1, 2, 3; Cap-
tain of Track 3; Interfraternity Coun-
cil 3; President of Junior Class;
Business Society 1, 2, 3; Class Sports
1, 2, 3; Varsity "S" Club 2, 3.
Business Administration.



CLASS OF 1940



ANNA REEDER

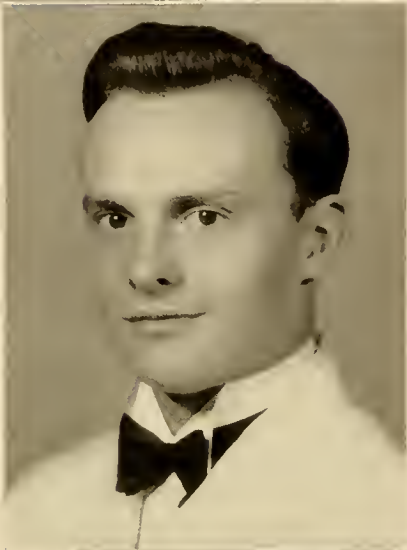
355 Tenth Street
Sunbury, Pa.

Sunbury High School.

Sigma Alpha Iota.

Choral Society 1.

Public School Music.



BURTON R. RICHARD

30 Roessner Avenue
Hagerstown, Md.

Hagerstown High School.

Bond and Key.

Track 1, 2, 3; Varsity "S" Club 1, 2;
German Club 1, 2; Biemic Society 1;
Class Sports 1, 2, 3; Treasurer of
Sophomore Class; S. C. A. Cabinet
3; Treasurer of S. C. A. 3; Editor-in-
Chief of 1940 LANTHORN 3; Man-
ager of Football 2, 3.

A.B.



FLORENCE I. ROTHERMEL

Klingerstown, Pa.

Mahanoy Township High School.

Kappa Delta Phi.

German Club 1, 2, 3; Susquehanna
Players 2, 3; W. A. A. 2, 3; Class
Sports 1, 2, 3; Honor Hockey 3.

A.B.

CLASS OF 1940

ROBERT G. SANDER

878 Memorial Avenue
Williamsport, Pa.

Williamsport High School.

Bond and Key.

Phi Kappa 1, 2, 3; Pre-Theological
Club 1, 2, 3; Track 1; Vice Presi-
dent of S. C. A. 3; Susquehanna
Players 3; Band 1; Editorial Staff of
LANTHORN 3.

Pre-Theological.



JOHN SCHLEIG

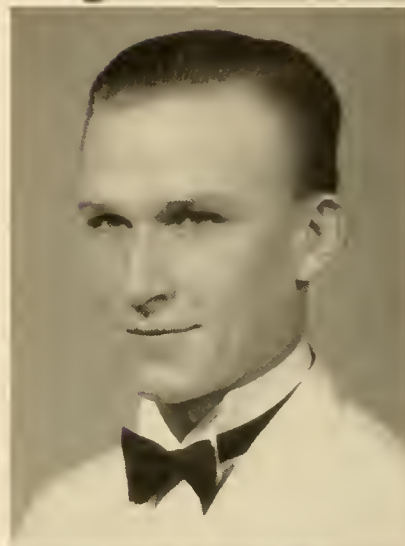
44 Coal Street
Trevorton, Pa.

Trevorton High School.

Phi Mu Delta.

Basketball 1, 2, 3; Baseball 1, 2, 3;
Manager of Football 3.

A.B.



FRED SCHMIDT

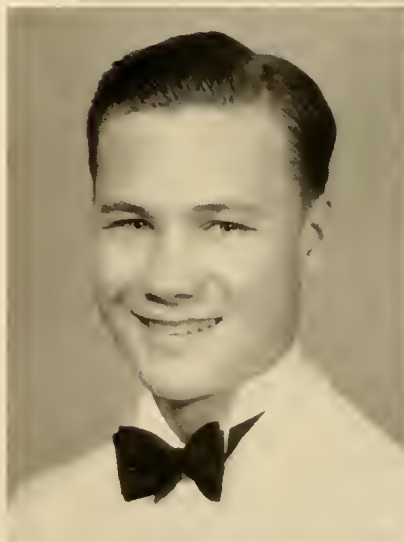
339 East South Street
Wilkes-Barre, Pa.

G. A. R. Memorial High School.

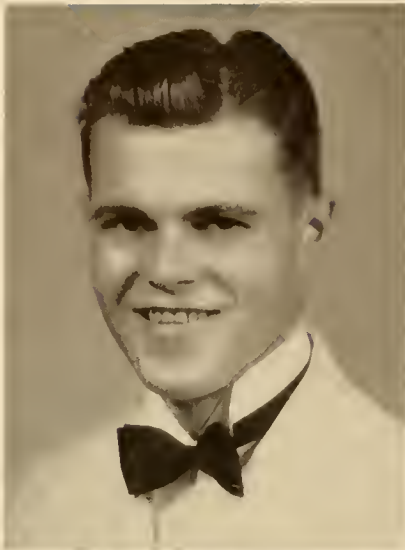
Phi Mu Delta.

Band 1, 2, 3; Symphonic Society 1;
President of Men's Music Guild, 2,
3; Choral Society 1; May Day 1, 2;
Susquehanna Players 2.

Public School Music.



CLASS OF 1940



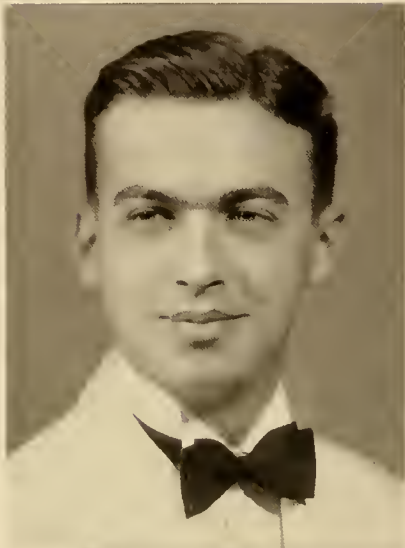
GRAHAM SCHUCK

Shamokin Dam, Pa.
Sunbury High School.

Phi Mu Delta.

Football 1; Class Sports 1, 2, 3; Business Society 1, 2, 3.

Business Administration.



HAROLD SHAFFER

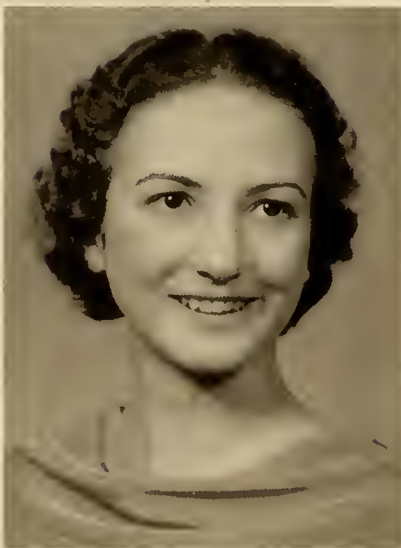
818 Main Street
Windber, Pa.

Windber High School.

Phi Mu Delta.

Interfraternity Council 3; Motet
Choir 3.

A.B.



MARGARET SHEESLEY

215 Park Terrace
Lykens, Pa.

Lykens High School.

Omega Delta Sigma.

Class Sports 1, 2, 3; Business Society 1, 2, 3; Financial Secretary of O. D. S. 3; Secretary of Dramatics Club 2.

Commercial Education.

CLASS OF 1940

JACK SHIPE

Herndon, Pa.
Herndon High School.

Beta Kappa.

Men's Student Council 3; Business
Society 1, 2, 3; French Club 1, 2;
Baseball 1, 2; Soccer 2, 3.

Business Administration.



DOROTHY SHUTT

1722 Center Street
Ashland, Pa.

Ashland High School.

Kappa Delta Phi.

Secretary of Sophomore Class; Wo-
men's Co-operative Council 3; S. C.
A. Cabinet 3; German Club 1, 2, 3;
French Club 1, 2, 3.

A.B.



GEORGE SPIGGLE

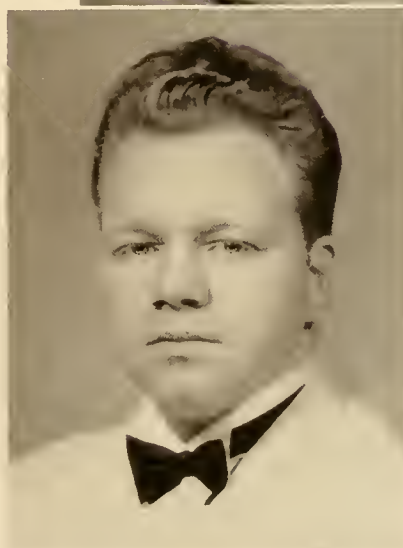
475 Main Street
Keyser, W. Va.

Somerset High School, Somerset, Pa.

Phi Mu Delta.

Basketball 1, 2, 3; Football 2; Ger-
man Club 1, 2; Dramatics 1; Class
Sports 1, 2, 3.

A.B.



CLASS OF 1940



EDNA STEPHENS

90 South Catawissa Street
Mahanoy City, Pa.

Mahanoy City High School.

Kappa Delta Phi.

German Club 1, 2, 3; Secretary-
Treasurer of German Club 1, 2, 3;
Phi Kappa 2; Biemic Society 3.

A.B.



ETHEL STRAESSER

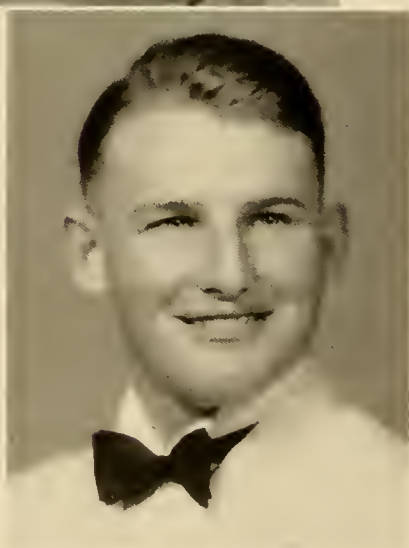
Martinsburg, Pa.

Martinsburg High School.

Kappa Delta Phi.

Business Society 1, 2, 3; S. C. A. Cab-
inet 3; Class Sports 1, 3; *Susque-*
hanna Editorial Staff 1, 2.

Commercial Education.



BARNER S. SWARTZ

Millerstown, Pa.

Liverpool High School.

Beta Kappa.

Motet Choir 2, 3; Band 1, 2, 3; May
Day 1; Men's Music Guild 3; Oper-
etta 2; Choral Society 1.

Public School Music.

CLASS OF 1940

ARTHUR A. SWEETSER

337 Harrison Avenue
Scranton, Pa.

Scranton Central High School.

Scranton Keystone Junior College.

Phi Mu Delta.

Tennis 3.

Pre-Medical.



WILLIAM TROUTMAN

Trevorton, Pa.

Trevorton High School.

Phi Mu Delta.

Soccer 2, 3; Track 2, 3; Susquehanna Players 1, 2, 3; German Club 1, 2.

A.B.



DOROTHY UPHOUSE

Stoyestown, Pa.

Stoyestown High School.

Omega Delta Sigma.

Susquehanna Players 2, 3; Business Society 2, 3.

Commercial Education.



CLASS OF 1940



BETTY WENTZEL

108 North Eleventh Street
Sunbury, Pa.

Sunbury High School.

French Club 2, 3; President of Day
Student's Organization 2, 3; Biemic
Society 2.

A.B.



WARREN W. WIGHTMAN

317 South Oak Street
Mount Carmel, Pa.

Mount Carmel High School.

Lehigh University.

Theta Xi, Lehigh.

Motet Choir 3, 4.

A.B.



EUGENE WILLIAMS

356 North Street
Millersburg, Pa.

Millersburg High School.

Bond and Key.

Tennis 1, 2, 3; Band 1, 3; French
Club 1, 2.

A.B.

CLASS OF 1940

FRANCES WILLIAMS

1900 Wyoming Avenue
Forty Fort, Pa.

Forty Fort High School.

Sigma Alpha Iota.

Motet Choir 1; Choral Society 1;
Treasurer of Sigma Alpha Iota 3;
Editorial Staff of LANTHORN 3; May
Day 1; Operetta 2.

A.B.



HELEN E. WRIGHT

Three Springs, Pa.

Hustontown High School.

Kappa Delta Phi.

Business Society 2, 3; Secretary of
Business Society 3; W. A. A. 1, 2,
3; Class Sports 1, 2, 3; Captain of
Baseball 1; Captain of Soccer 2, 3;
Honor Basketball 2; Honor Hockey 3.

Commercial Education.



L. DALLAS ZIEGLER

Herndon, Pa.

Herndon High School.

Beta Kappa.

Pre-Theological Club 1, 2, 3.

Pre-Theological.



Junior Class History

It was in the fall of nineteen hundred and thirty-six that a vigorous group of individuals entered the honored portals of Susquehanna University. After the usual period of orientation, parties and dances this group was gathered together and was given the name of freshman. From the start our class was active and gave promise of contributing a great deal to our Alma Mater. We were successful in conducting our "get-away" without the immediate interference of the sophomores. Our revenge, for all the regulations and other humiliations which we suffered at the hands of the sophomores, was made complete by our victory in the Frosh-Soph football game. In January many of us affiliated ourselves with a fraternity or sorority. Later, we presented a three-act play which was pronounced a success by all that attended.

The zeal of our freshman year was not diminished on becoming sophomores. We aided the freshmen in orientating themselves and were very careful to see that they observed all the freshmen traditions and customs. We further showed our superiority by defeating the freshmen in football, thus keeping our record clean. The Sophomore Hop was given in the spring. It was the first affair of its kind that had been given on this campus for a number of years. It proved to be such a success that it is likely that it will become an annual event at Susquehanna.

Our junior year finds us a little more settled, but still a dominating figure on the campus. We are sure that this will be a year that shall live in our memories for a long time. We are all looking forward to the Junior Prom which promises to be the nicest social event of the year. We are also anxiously awaiting the day when we may proudly present the LANTHORN, our yearbook, to the school.

Junior Prom

GENERAL COMMITTEE

William Pritchard, General Chairman

John Bice
Burton Richard

Madalene Hayes
Edgar Meek

Virginia Mann
Graham Schuck

TICKET COMMITTEE

John Bice, Chairman

Fred Schmidt

Ann Hill

Herbert Klinger

ORCHESTRA COMMITTEE

Burton Richard, Chairman

William Nye

Charlotte Baish

PROGRAM COMMITTEE

Madalene Hayes, Chairman

Naomi Bingaman

Donald Billman

Robert Fisher

FURNITURE COMMITTEE

Edgar Meek, Chairman

William Troutman

Harold Shaffer

John Leam

DECORATING COMMITTEE

Virginia Mann, Co-Chairman

Graham Schuck, Co-Chairman

Eugene Williams
Vincent Frattali
Jack Shipe
Margaret Sheesley
Grace Fries

Robert Sander
William Gelron
Dorothy Uphouse
Betty Albury
Edna Stephens
Frances Williams

Peter Lalich
William Davis
Ruth Farley
Eunice Arentz
Marie Edlund

SOPHOMORE CLASS



HARRIET MENDENHALL HARRY THATCHER JANE HUTCHISON ELSIE HOHELLA

OFFICERS

HARRY THATCHER	- - - - -	<i>President</i>
JANE HUTCHISON	- - - - -	<i>Vice President</i>
HARRIET MENDENHALL	- - - - -	<i>Secretary</i>
ELSIE HOHELLA	- - - - -	<i>Treasurer</i>

Sophomore Class History

Becoming hazier as the days roll by is the memory of our first few weeks on the campus of Susquehanna University in September of the year nineteen hundred and thirty-seven. However, we search the back of our minds and seem to recall the fêting bestowed upon us by our ever-so-willing, more experienced brothers and sisters.

We soon learned, though, that our rivals, the sophomores, were not so anxious to co-operate as they had seemed at first for they took special delight in thwarting our well-laid plans for a "get-away." Then, they proceeded to add injury to insult by defeating us in the annual sophomore-frosh football game by the impressive score, 22-7.

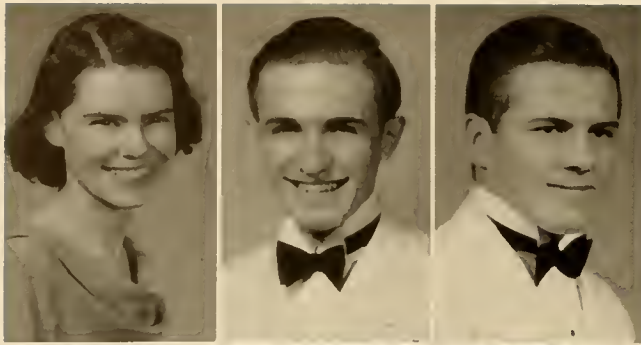
Throughout the ensuing months we took our places in athletics, scholastic achievements, and extra-curricular activities along with the upperclassmen.

Approximately twelve months after our first appearance, our slightly diminished ranks again took the campus by storm, determined to better our records of the previous year. To a certain extent, we gained revenge for our early setbacks by "sitting-in" on the freshman "get-away" and "sitting on" the freshman football team, 13-0.

We are busily making plans to continue the custom of having a sophomore "hop," a policy which was so nobly inaugurated by our worthy predecessors, the class of '40.

Thus we near the half-way point in our stay at Susquehanna, hoping that our affiliations and ties with our Alma Mater will remain as strong as they have been during the past two years.

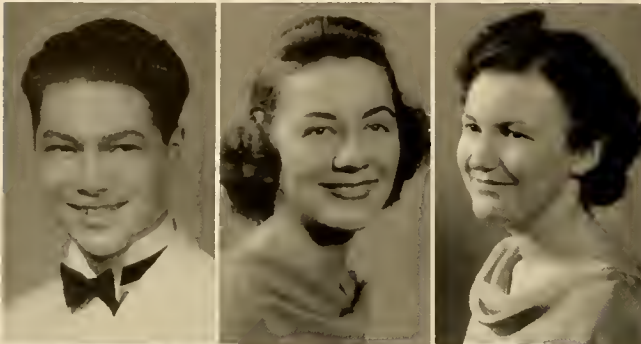
CLASS OF 1941



DOROTHY ARTZ

JOHN A. AUCKER

GEORGE H. BANTLEY



RICHARD P. BARRY

LOIS BEAMENDERFER

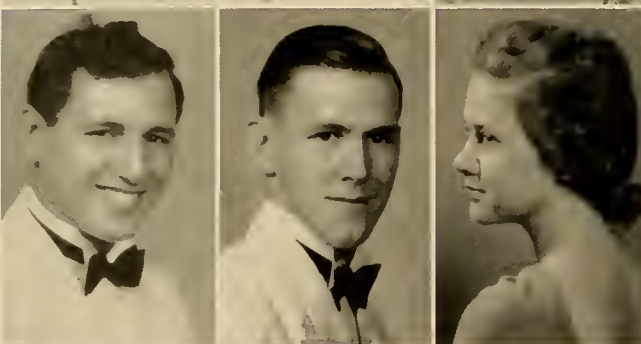
ELLEN E. BENNAGE



KENNETH A. BONSTALL

ROBERT G. BOOTH

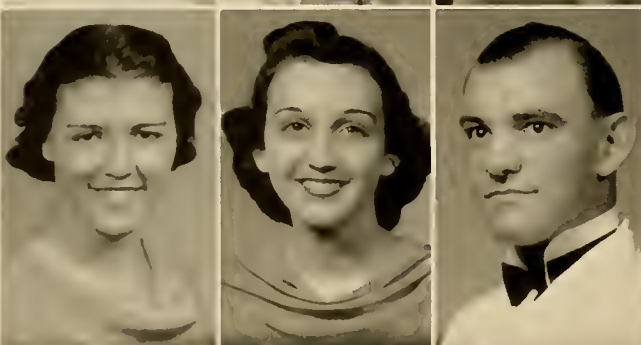
MARION H. BOYER



JOSEPH F. CAMPANA

DAVID L. CARTER

ANGELYN CLEAVES



MARIAN L. CROMPTON

LOIS V. DAVIS

EARL R. DEARDORFF

CLASS OF 1941

KATHERINE I. DIETTERLE

DONALD L. FORD

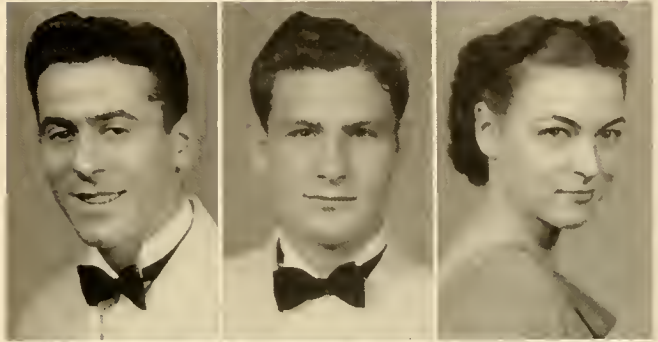
JOHN A. FRYER



JOSEPH GRECO

HOMER C. GROCE

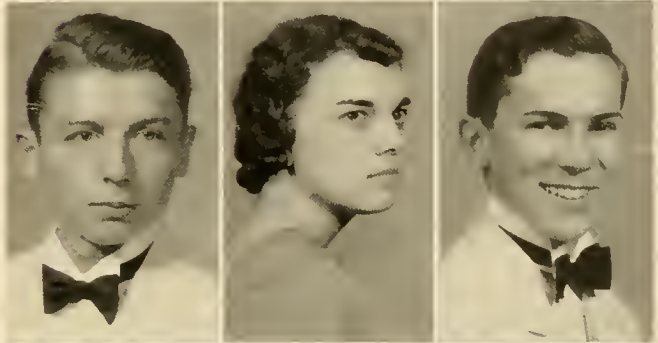
FAITH H. HARBESON



WARREN HERROLD

NAOMI HIMES

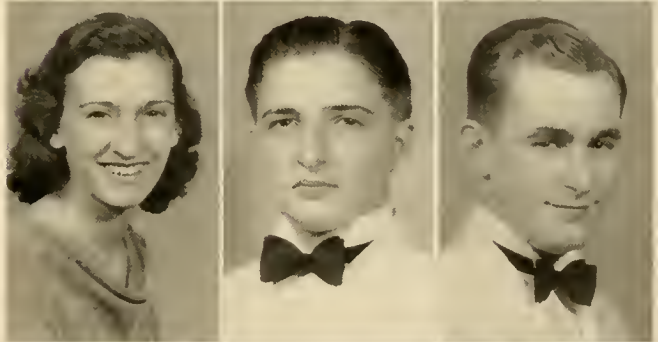
MERLE HOOVER



JANE M. HUTCHISON

MELVIN W. JONES

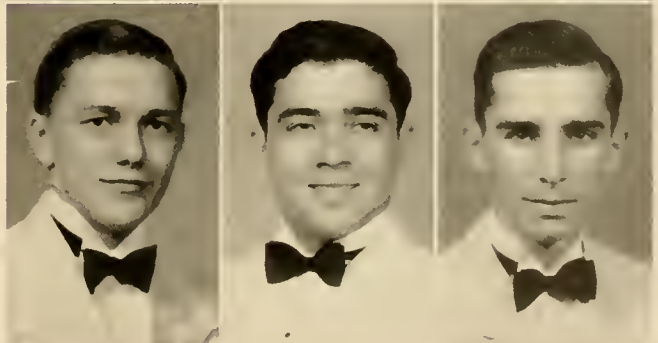
ROBERT W. KONKLE



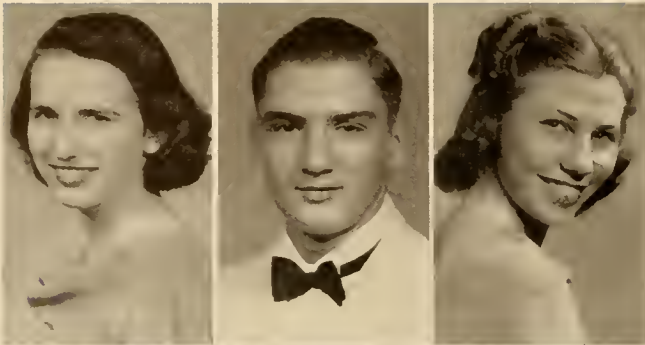
JAMES C. McCORD

JOHN W. MATTHEWS

WILLIAM D. MAY



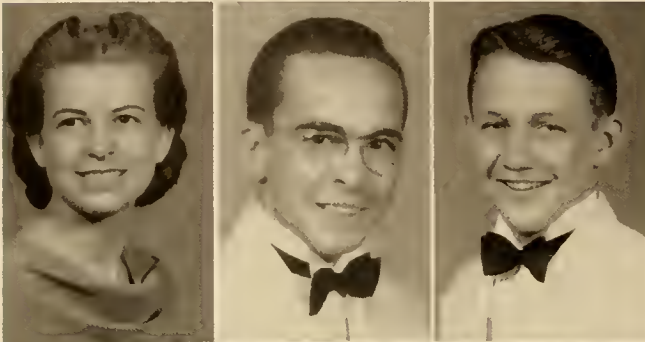
CLASS OF 1941



HARRIET H. MENDENHALL

HARRY U. MERVINE

BEATRICE MEYER



ELAINE B. MILLER

THOMAS MORROW

GLENN MUSSER



JOSEPH PASTERCHIK

FERNE E. POORBAUGH

DOUGLAS A. PORTZLINE



JOHN P. POWELL

ELIZABETH A. REESE

HOWARD D. REESE



JOHN M. REICHARD

FLORENCE A. REITZ

HILDA M. RITTER

CLASS OF 1941

WILLARD H. SCHADEL

ESTHER F. SEITZINGER

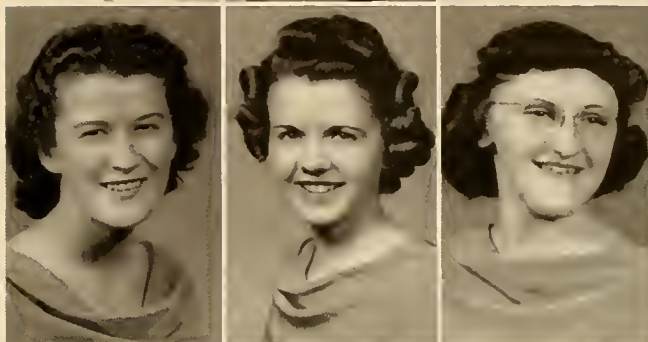
PAUL C. SHATTO



ELEANOR K. SMITH

MELISSA V. SMOOT

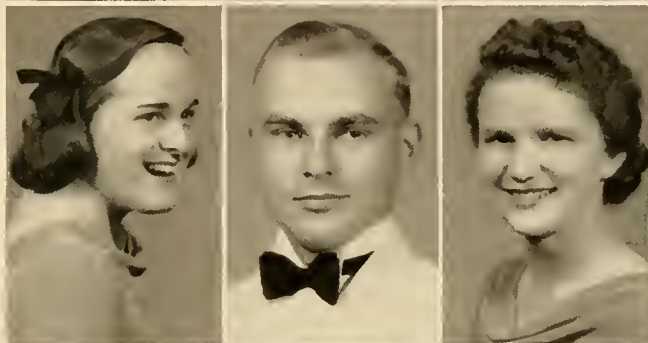
MAYE E. SNYDER



RUTH J. SPECHT

HARRY B. THATCHER

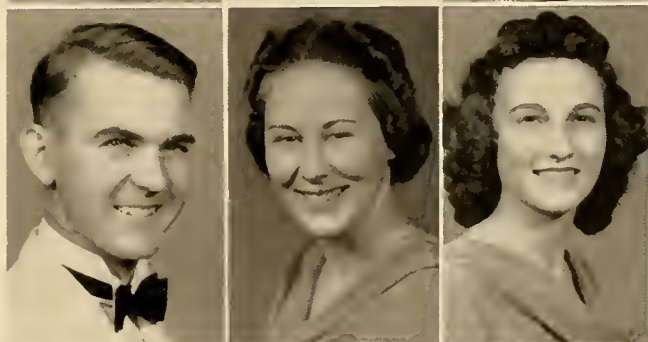
MARTHA J. TRIBBY



ROBERT A. UPDEGROVE

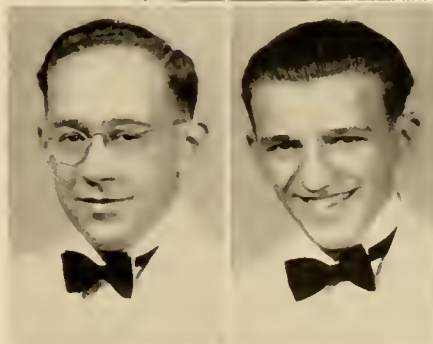
MARY E. YODER

LOIS YOST



KARL H. YOUNG

JOSEPH ZAVARICH



FRESHMAN CLASS



STANLEY STONESIFER JUNE SNYDER ARTHUR J. WILSON ANNE YOUNT

OFFICERS

ARTHUR J. WILSON - - - - - *President*
JUNE SNYDER - - - - - *Vice President*
STANLEY STONESIFER - - - - - *Treasurer*
ANNE YOUNT - - - - - *Secretary*

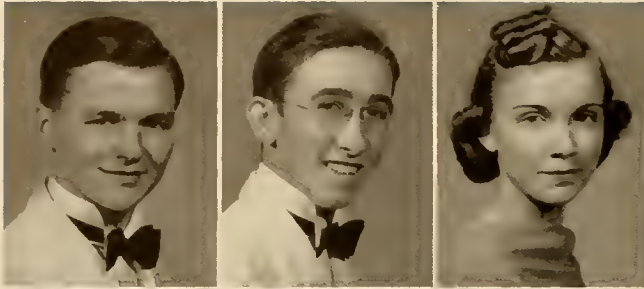
Freshman Class History

With a superior feeling we now look back upon our first few days spent at Susquehanna. It was on September the twelfth that many of us set foot on the campus for the first time. Then followed many assemblies in the chapel and conferences with the faculty. Parties, dances, and examinations throughout the months helped to complete our orientation.

Now that we have been here nearly a year, we look back over a few important incidents. Our "get-away" as freshmen was thwarted by the crafty sophomores. To add insult to injury they defeated us in the annual Soph-Frosh football game, 13 to 0. However, these defeats did not deaden our spirit; instead they only served to strengthen us for our future problems. We also recall our Freshman Dance—and it was on that memorable night when many of us blossomed socially.

As we near the end of this first year spent at Susquehanna, we feel that we have formed bonds of friendship with our fellow students which will never be broken. We feel that as the years go by these friendships will recall to our memories many of the happy incidents in our college life.

CLASS OF 1942



JOHN F. ADAMS

CHARLES BAILEY

LILA BARNES



JAMES BARRETT

IRMA BAUMAN

STANLEY BAXTER



ERNEST BAYE

ARLINE BITTNER

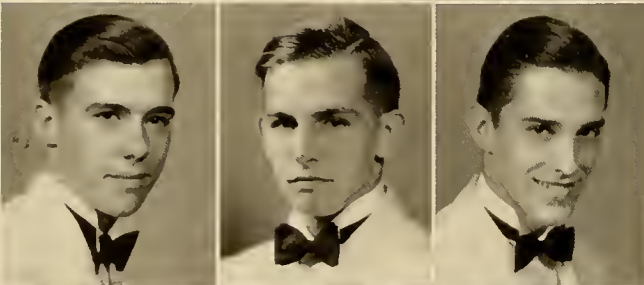
MILDRED BITTNER



SANFORD BLOUGH

WARREN BONAWITZ

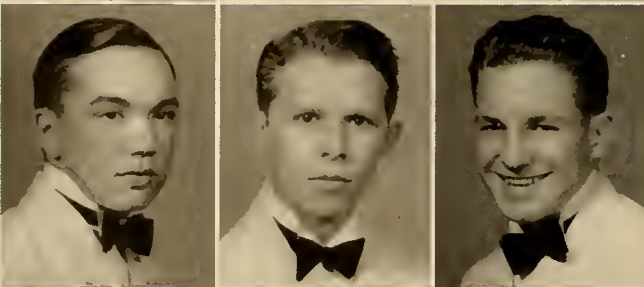
BETTY BRAND



JOHN BURKE

ROBERT BURNS

CHESTER BYERS



LAWRENCE CADY

ROBERT CRITCHFIELD

IRVINE DeREMER

CLASS OF 1942

HAROLD ELKINS

ELWOOD EWING

JEANNE FENNER

ELWOOD FISHER

NEIL FISHER

BLANCHE FORNEY

NANCY GRIESEMER

MELVIN HAAS

KATIE HANSEN

WILLIAM HAYS

ALBERT HEAP

BLAIR HEATON

FORREST HECKERT

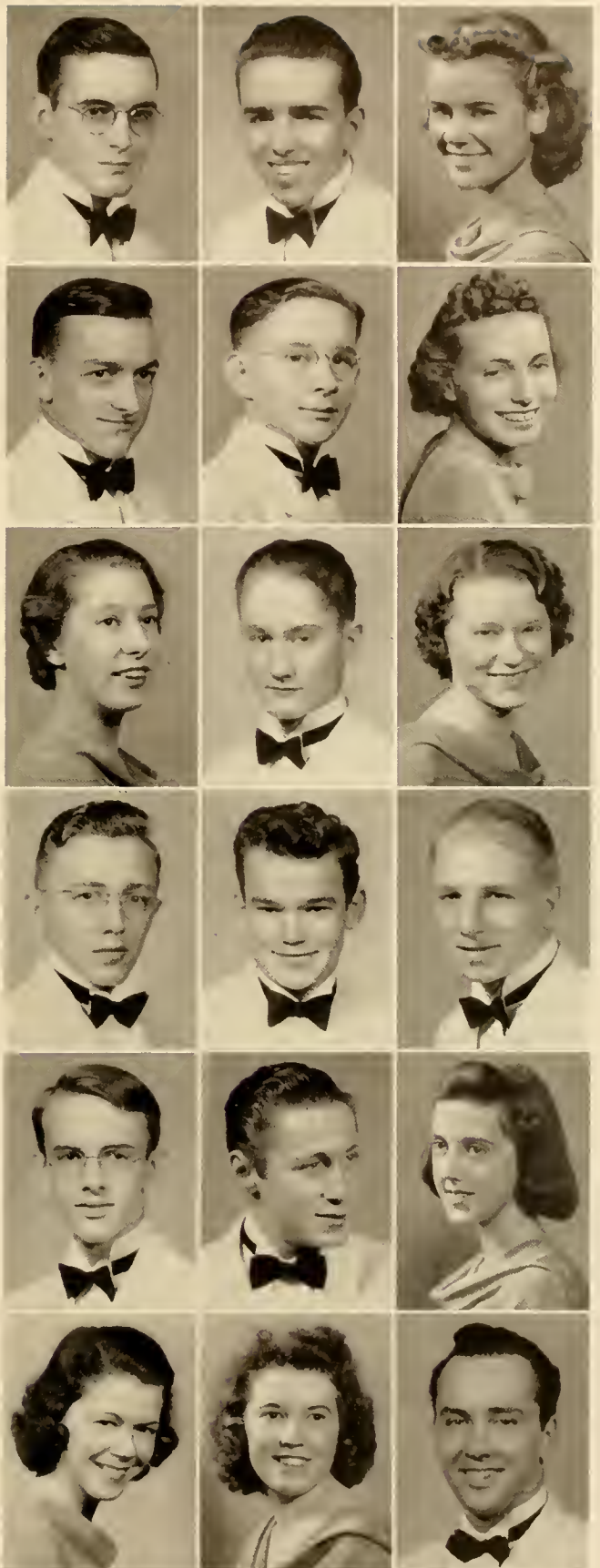
FOSTER HECKLER

MAXINE HEEFNER

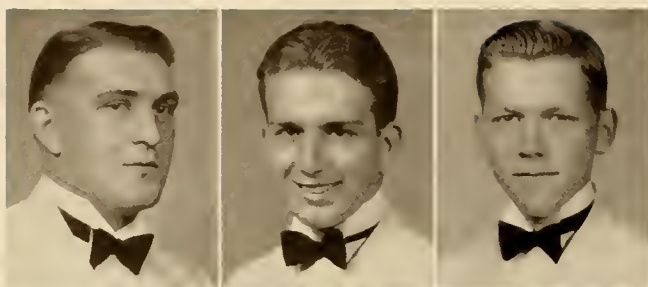
JUNE HENDRICKS

DELPHINE HOOVER

MORRIS HOUSEL



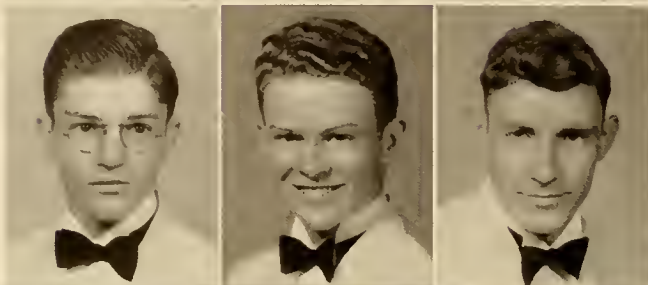
CLASS OF 1942



WILLIAM IRVINE

AUGUST KAUFMAN

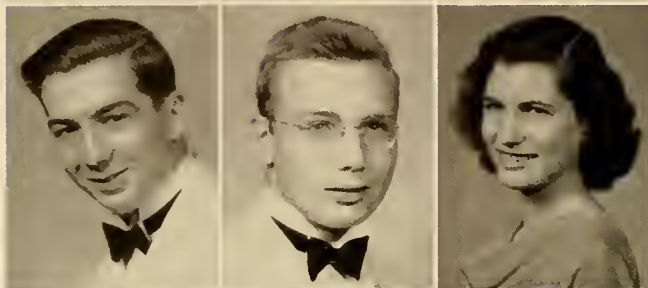
ROBERT KEARNS



CARLETON KIEBACH

CLARENCE KLINE

WILMER KLINGER



ALBERT KNAPP

WILLIAM KNAUBER

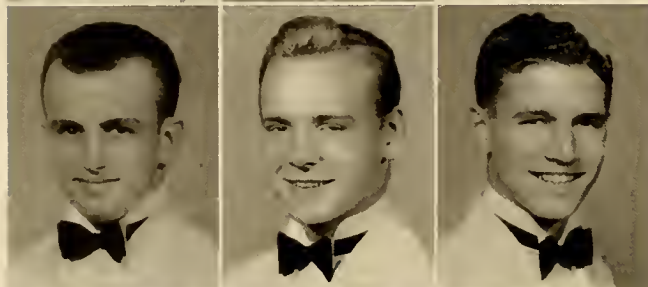
MARY LEE KRUMBHOLZ



PAUL LANTZ

CARRIE LAUDENSLAGER

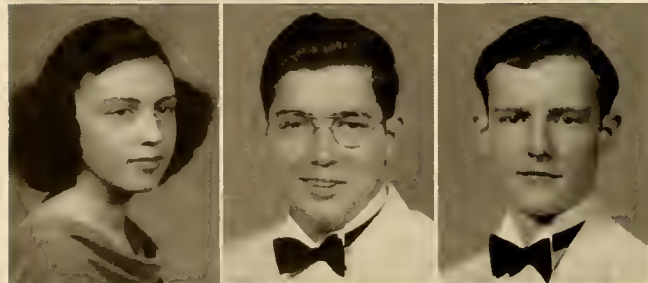
JOHN LAWRENCE



GERALD LEIB

KENNETH LYONS

ROBERT MacQUESTEN



BETTY MALONE

RICHARD MATTHEWS

JACK MAYER

CLASS OF 1942

WILLIAM MERVINE

ROBERT MESSNER

MAUDE MILLER

RUPERT MILLER

WILLIAM MILLER

JEAN MILLIGAN

VANE MINGLE

WILLIAM MITMAN

GEORGE MOYER

DAVID MURRAY

MARJORIE MUSSER

MONROE MYERS

JACK PRICE

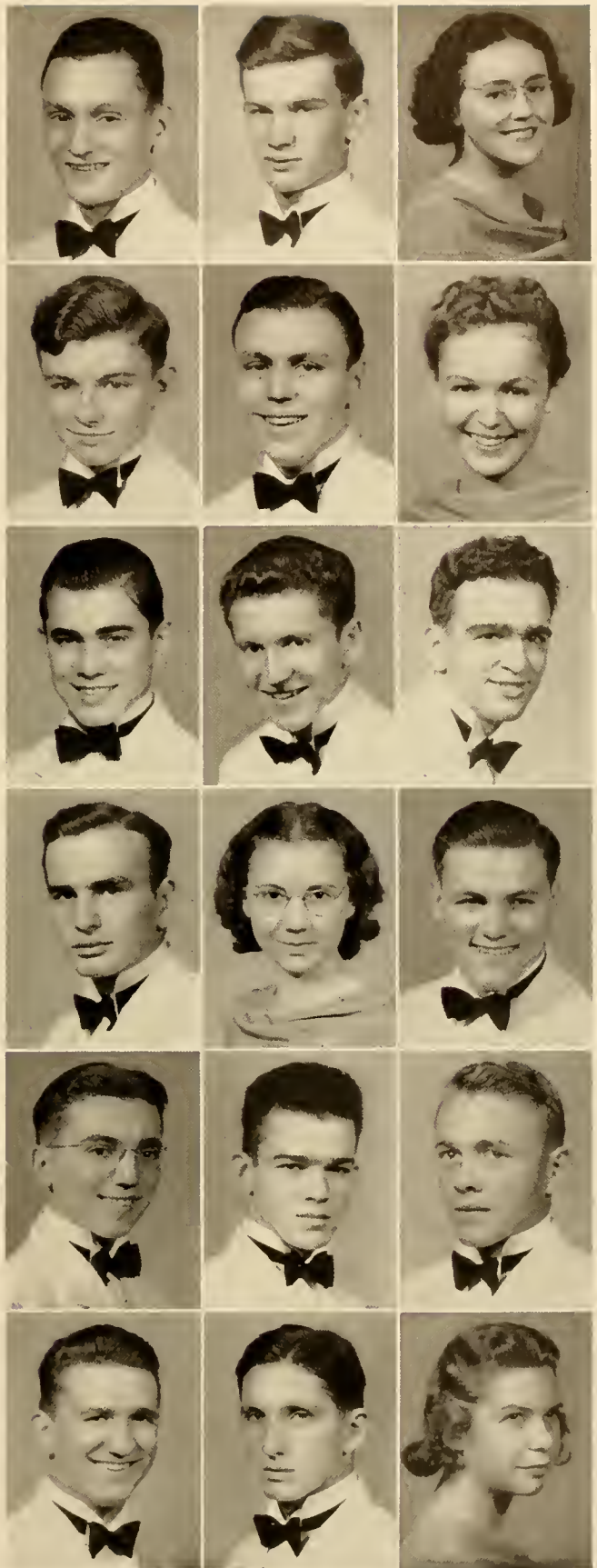
PAUL RAINEY

JOHN RINEHART

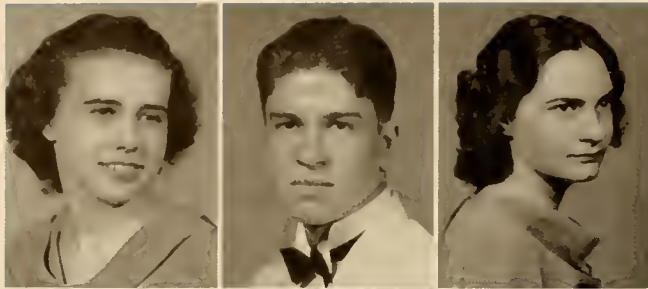
JAMES E. RISHEL

EDWARD ROGERS

LOIS SCHWEITZER



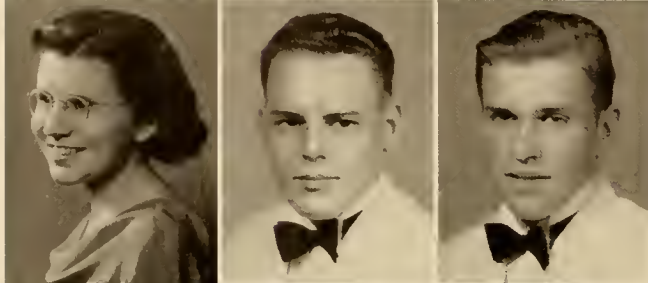
CLASS OF 1942



RUTH SCHIWENK

ROBERT SHAVER

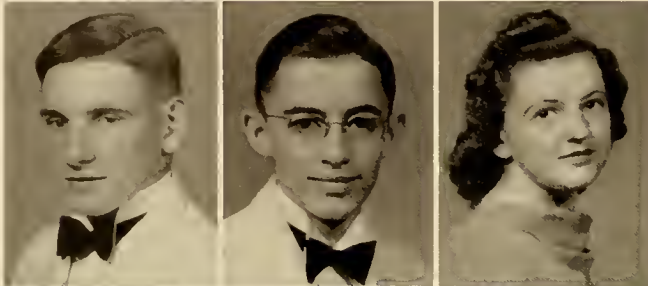
MARY SHIPE



JANET SHOCKEY

PAUL SHOEMAKER

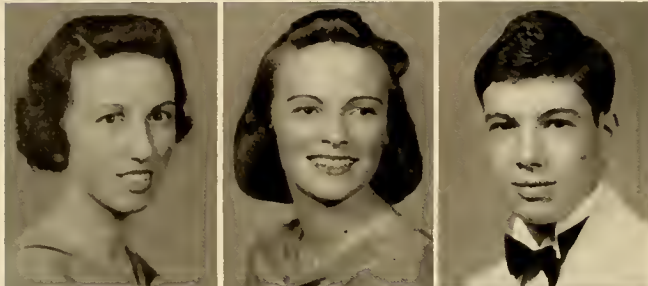
CHESTER SHUSTA



FRANK SIDLER

EDWIN SMITH

IRENE SMITH



BETTY SNYDER

JUNE SNYDER

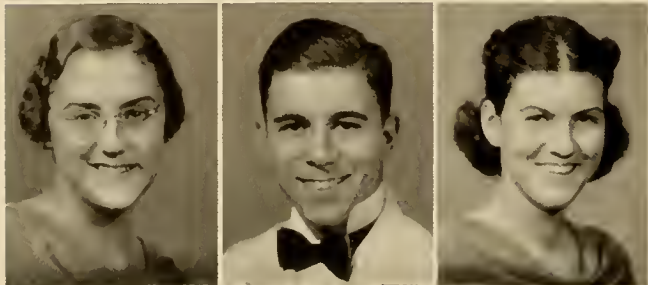
WILLARD STERRETT



STANLEY STONESIFER

PHILIP TEMPLIN

ARTHIUR TYSON



MIRIAM UNANGST

FRED WARNER

JEAN WARNER

CLASS OF 1942

ALLAN WELLMAN

ARTHUR WHITE

EMANELL WHITENIGHT

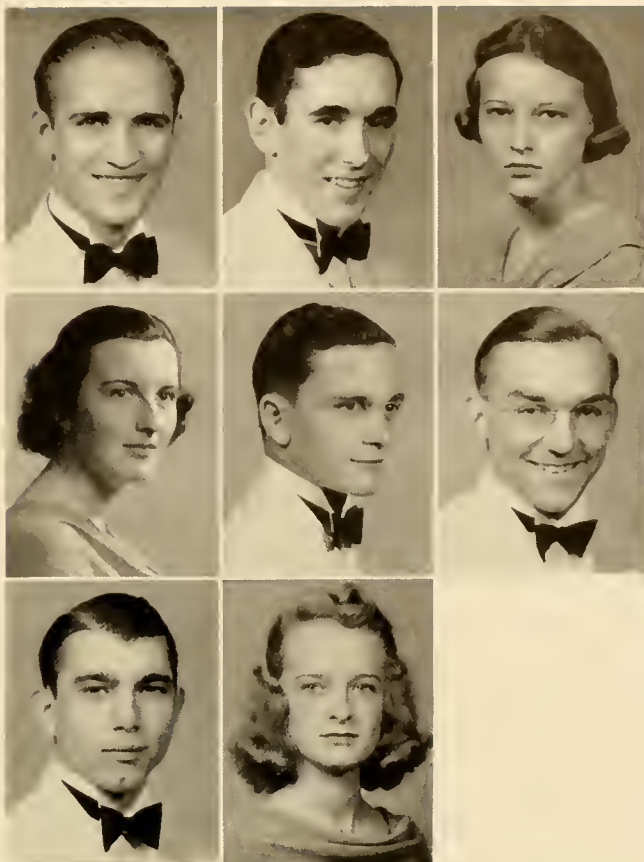
SARA WILLIAMS

ARTHUR J. WILSON

PAUL WILSON

MARVIN YOUNG

ANNE YOUNT



ORGANIZATIONS





FRATERNITIES



BOND AND KEY

Top Row, Left to Right—Benion, Brosious, Hauff, Keil, Kemberling, Rogers, Rice, Billman, Groce, Kaltroder
 Second Row—Leam, Pritchard, Richard, Williams, Morrow, Portzline, Saunders, Baldwin, Bastress, Ford
 Third Row—Freed, Gulick, Jones, Kauffman, Kinney, Korper, Mease, Sauder, Shatto, Eisenhart

OFFICERS

GLENN HAUFF	-	-	-	-	-	-	-	-	-	-	-	<i>President</i>
PAUL BROSIUS	-	-	-	-	-	-	-	-	-	-	-	<i>Vice President</i>
EUGENE WILLIAMS	-	-	-	-	-	-	-	-	-	-	-	<i>Secretary</i>
SAMUEL ROGERS	-	-	-	-	-	-	-	-	-	-	-	<i>Treasurer</i>
HENRY KEIL	-	-	-	-	-	-	-	-	-	-	-	<i>House Manager</i>

HONORARY MEMBERS

Dr. William A. Ahl	Dr. Fisk W. Scudder
Dr. John J. Houtz	Prof. Edwin Sheldon
Dr. Eric W. Lawson	Dr. Adam J. Smith
Prof. Percy M. Linebaugh	Prof. Frederic Stevens
Mr. Carter C. Osterbind	Dr. John I. Woodruff
Dr. Paul J. Ovrebo	



BOND AND KEY

MEMBERS

Seniors

Harold Benion
Paul Brosious
Samuel Camp

Glenn Hauff
Robert Hertz
Henry Kiel

Jesse Kemberling
Samuel Rogers
R. Harold Saunders

Juniors

John Bice
Donald Billman
Homer Groce
Kenneth Kinney

Clair Kaltreider
John Lean
Thomas Lewis

William Pritchard
Burton Richard
Clyde Sechler
Eugene Williams

Sophomores

Philip Bergstresser
Jack Detrick

Thomas Morrow

Douglas Portzline
Paul Shatto

Pledges

Charles A. Bailey
Howard Baldwin
George Bantley
Robert Bastress
Stanley Baxter
Daniel L. Bergstresser
Charles L. Boust
David L. Carter
Robert Cornelius
Irvine R. DeRemer
Edward Eisenhart
Harold E. Elkins
Samuel Fletcher

Donald Ford
Walter Freed
Raymond Fulmer
W. H. Gehron, Jr.
Reed Gulick
Melvin Haas
William Hays
Forrest Heckert
George Herman
Melvin Jones
Horace Kauffman
Edward Korper
Leon Krouse

William Mease
W. Harold Mitman
Monroe S. Myers
Paul Orso
Paul Rainey
John Rinehart
Everett Rishel
Robert Sander
Paul Shoemaker
Theodore Van Kirk
Ray Weisenfluh
Arthur White
Paul F. Wilson





PHI MU DELTA

Top Row, Left to Right—Herr, McBride, Miller, Owen, Schweitzer, Sivick, Coleman, Critchfield, Davis, Fisher
 Second Row—Gabrenya, Lallie, Nye, Schleig, Mervine, Pearce, Powell, Reese, Young, Shaffer
 Third Row—Schuck, Spiggle, Troutman, Barry, Brosius, Campama, Deardoff, Frattali, Konkle, Kozlowski
 Fourth Row—Mastovich, Matthews, May, McCord, Mehalow, Reichard, Schmidt, Greco, Zavarich, Pasterchik

OFFICERS

EDWARD SIVICK	-	-	-	-	-	-	-	-	-	-	<i>President</i>
DONALD A. CRITCHFIELD	-	-	-	-	-	-	-	-	-	-	<i>Vice President</i>
ROBERT A. GABRENYA	-	-	-	-	-	-	-	-	-	-	<i>Secretary</i>
ROBERT HERR	-	-	-	-	-	-	-	-	-	-	<i>Comptroller</i>

HONORARY MEMBERS

- | | |
|-----------------------|----------------------|
| Mr. Elrose L. Allison | Dr. William A. Russ |
| Mr. H. Vernon Blough | Dr. Arthur H. Wilson |
| Mr. E. M. Brungart | Mr. Ernest T. Yorty |
| Dr. George E. Fisher | |



PHI MU DELTA

MEMBERS

Seniors

Robert Herr
Harry McBride

June Miller
Stephan Owen
Edward Schweitzer

Edward Sivick
Donald Wert

Juniors

Paul D. Coleman
Donald A. Critchfield
William Davis
Robert Fisher

Robert A. Gabrenya
Peter Lalich
William Nye
John Schleg

Harold Shaffer
Graham Schuck
George C. Spiggle
William Troutman

Sophomores

Richard Barry
George Brosius
Vincent Fratali
Joseph Greco

Robert Konkle
Milo Mastovich
James McCord
John Matthews
Harry Mervine

John Powell
Howard Reese
John Reichard
Karl Young

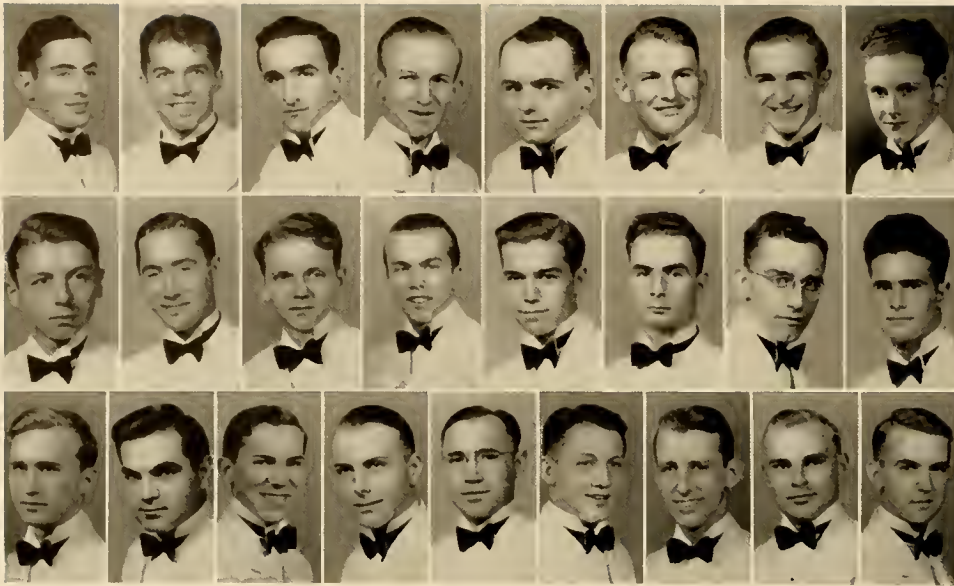
Pledges

Forrest Adams
William P. Ayres
Ernest Baye
Sanford Blough
Chester Byers, Jr.
Lawrence Cady
Joseph Campagna
David Coren
Robert Critchfield
Earl Deardorf
Elwood Fisher
Albert Heap, Jr.
Blair L. Heaton
Foster Heckler
John W. Jones

August Kaufman
Carleton T. Kiebach
Clarence Kline
Wilmer Klinger
Albert Knapp
Bill Knauber
Joseph Kozlowski
John Lawrence
Gerald S. Leib
Ken Lyons
Bob MacQuesten
Richard E. Matthews
Jack Mayer
William Mervine
Rupert Miller

William Miller
Vane Mingle
Joseph Pasterchick
James Pierce
Jack Price
Edward Rogers
Fred Schmidt
Robert Shaver
Chester Shusta
Stanley Stonesifer
Arthur Sweetser
Philip Templin
Fred Warner
Arthur J. Wilson
Joseph Zavarich





BETA KAPPA

Top Row, Left to Right—Laudenslayer, Ochenrider, Kluger, Meek, Shipe, Swartz, Aucker, Haines
 Second Row—Herrold, Beachel, Bonsall, Booth, Drumbeller, Drumm, Furman, Gensel
 Third Row—Hoffman, Ziegler, Hoover, Knaul, Loss, Musser, Schofield, Thatcher, R. Updegrove

OFFICERS

PAUL D. OCHENRIDER	-	-	-	-	-	-	-	-	-	<i>Arkon</i>
WILLIAM F. LAUDENSLAYER	-	-	-	-	-	-	-	-	-	<i>Deputy Arkon</i>
WALTER E. MEEK	-	-	-	-	-	-	-	-	-	<i>Scribe</i>
JACK P. SHIPE	-	-	-	-	-	-	-	-	-	<i>Treasurer</i>
JOHN R. KNAUL	-	-	-	-	-	-	-	-	-	<i>Chancellor</i>
FRANKLIN R. WOLFE	-	-	-	-	-	-	-	-	-	<i>Guard</i>

FACULTY MEMBERS

Dr. George F. Dunkleberger
 Prof. R. W. Gilbert
 Prof. D. I. Reitz



B E T A K A P P A

MEMBERS

Seniors

Karl Helt

Paul D. Ochenrider
William F. Landenslayer

Verlin Smalts

Juniors

Herbert Klinger
John Knaul

Walter E. Meek

Reginald C. Schofield
Jack Shipe

Sophomores

John A. Aucker
Kenneth A. Bonsall

Merle V. Hoover
Glenn L. Musser

Kenneth E. Wilt
Franklin R. Wolfe

Pledges

Harley Barrett
Lonis P. Baylor
LeRoy K. Beachel
Harold E. Bollinger
George R. Booth
John Burke
C. L. Chubb
John F. Drumheller
Walter J. Drumm
Neil C. Fisher
J. Alfred Fryer

Harry B. Fehrman
Robert G. Furman
John Gensel
William H. Gould
James L. Haines
Warren Herrold
John W. Hoffman
Martin Hopkins
Paul Lantz
Charles Loss

Robert Messner
George Moyer
Charles R. Murray
H. Willard Sterrett, Jr.
Barner S. Swartz
Harry Thatcher
Arthur Tyson
John H. Updegrove
Robert A. Updegrove
Michael F. Wolf
Lawson D. Zeigler





SORORITIES



OMEGA DELTA SIGMA

Top Row, Left to Right—Appler, Curtis, Finkbeiner, Nendoerffer, Reese, Wentzel, West
 Second Row—Bingaman, Burns, Maun, Cleaves, Davis, Farley, Hutchison
 Third Row—Maek, Mendenhall, Smith, Specht, Uphouse, Yoder

Founded 1917

OFFICERS

BETTY BALTZER	-	-	-	-	-	-	-	-	-	<i>President</i>
ANN HILL	-	-	-	-	-	-	-	-	-	<i>Vice President</i>
MARY APPLER	-	-	-	-	-	-	-	-	-	<i>Secretary</i>
LOUISE WEST	-	-	-	-	-	-	-	-	-	<i>Treasurer</i>
MARGARET SHEESLEY	-	-	-	-	-	-	-	-	-	<i>Financial Secretary</i>

HONORARY MEMBERS

Miss Ella Engel
 Mrs. George E. Fisher
 Mrs. Charles Foelsch
 Mrs. Russell Gilbert
 Mrs. John J. Hontz
 Mrs. Paul J. Ovrebo

Mrs. D. Irvin Reitz
 Miss Irene Shure
 Mrs. G. Morris Smith
 Mrs. Amos A. Stagg, Jr.
 Mrs. Arthur H. Wilson



OMEGA DELTA SIGMA

MEMBERS

Seniors

Mary Appler
Betty Baltzer
Marjorie Curtis

Shirley Finkbeiner
Mathilda Neudoerffer

Alverna Reese
Gladys Wentzel
Louise West

Juniors

Naomi Bingaman
Virginia Burns

Virginia Mann
Margaret Sheesley

Dorothy Uphouse
Margaret Weeks

Sophomores

Angelyn Cleaves
Lois Davis

Jane Hutchison
Harriet Mendenhall
Eleanor Smith

Ruth Specht
Mary Emma Yoder

Pledges

Lila Barnes
Irma Bauman

Ruth Farley
Mary Catherine Mack
June Snyder

Sara Williams
Anne Yount





KAPPA DELTA PHI

Top Row, Left to Right—Beamenderfer, Engle, Gayman, Miller, Saveri, Arentz, Edlund
 Second Row—Fries, Hayes, Shutt, Stephens, Straesser, L. Beamenderfer, Croft
 Third Row—Crompton, Meyer, E. Miller, Reese, Reitz, Tewkesbury, Tribby

Founded 1917

Motto: "Kalokgathia Dia Phileas"

OFFICERS

MIRIAM MILLER	-	-	-	-	-	-	-	-	-	<i>President</i>
MADALENE HAYES	-	-	-	-	-	-	-	-	-	<i>Vice President</i>
MARIE EDLUND	-	-	-	-	-	-	-	-	-	<i>Secretary</i>
VERNA GAYMAN	-	-	-	-	-	-	-	-	-	<i>Financial Secretary</i>
EUNICE ARENTZ	-	-	-	-	-	-	-	-	-	<i>Treasurer</i>

HONORARY MEMBERS

Mrs. A. W. Ahl	Mrs. T. W. Kretschmann
Miss Lois Boe	Miss Nancy Meyers
Miss Viola DuFrain	Miss Isabel Nicely
Miss Beatrice Herman	Mrs. W. A. Russ, Jr.



KAPPA DELTA PHI

MEMBERS

Seniors

Jean Beamenderfer
Martha Engle

Verna Gayman
Miriam Miller

Eleanor Saveri
Isabel Tewksbury

Juniors

Eunice Arentz
Maria Edlund
Grace Fries

Madalene Hayes
Florence Rothermel

Dorothy Shutt
Edna Stephens
Ethel Straesser

Sophomores

Lois Beamenderfer
Ellen Bennage

Marian Crompton
Elaine Miller
Elizabeth Reese

Florence Reitz
Martha Tribby

Pledges

Mildred Bittner
Betty Brand
Eleanor Croft
Jeanne Fenner

Katie Hansen
Maxine HeeIner
Delphine Hoover
Mary Lee Krumbholz
Carrie Laudenslager

Maude Millier
Lois Schweitzer
Helen Wright
Miriam Unangst





SIGMA
ALPHA
IOTA

Top Row, Left to Right—Carey, Cluck, Rogers, Straub, Baish
 Second Row—Barnhart, Deiterick, Grenoble, Keeder, Williams
 Third Row—Artz, Harbeson, Hochella, Smoot, Seltzinger

Founded 1927

Motto: *“Vita Brevis—Ars Longa”*

OFFICERS

HELEN ROGERS	-	-	-	-	-	-	-	-	-	<i>President</i>
MARGARET GRENORLE	-	-	-	-	-	-	-	-	-	<i>Vice President</i>
JOSEPHINE CAREY	-	-	-	-	-	-	-	-	-	<i>Secretary</i>
FRANCES WILLIAMS	-	-	-	-	-	-	-	-	-	<i>Treasurer</i>

HONORARY MEMBERS

Miss Margaret Keiser
 Mrs. Percy M. Linebaugh
 Miss Mary K. Potteiger

Mrs. Fisk W. Scudder
 Mrs. E. E. Sheldon
 Mrs. Frederick C. Stevens



SIGMA ALPHA IOTA

MEMBERS

Seniors

Josephine Carey

Genevieve Cluck
Helen Rogers

Virginia Straub

Juniors

Charlotte Baish
Betty Barnhart

Alice Deiterick
Margaret Grenoble

Anna Reeder
Frances Williams

Sophomores

Dorothy Artz
Faith Harbeson

Elsie Hochella
Melissa Smoot

Esther Seitzinger
Lois Yost

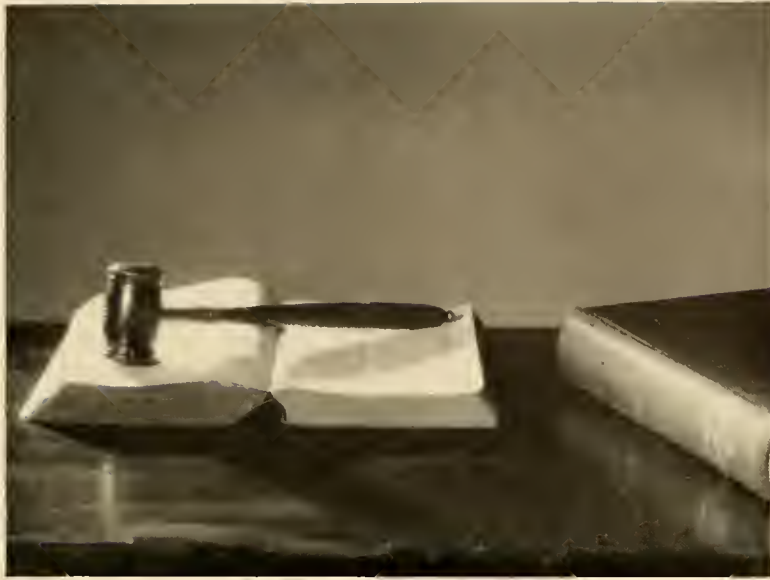
Pledges

Betty Albury
Blanche Forney
Nancy Griesemer

June Hendricks
Betty Malone
Jean Milligan
Ruth Schwenk

Janet Shockey
Jean Warner
Emanell Whitenight





CLUBS AND SOCIETIES

INTERFRATERNITY COUNCIL



Standing, Left to Right—Shaffer, Pritchard, Klinger
Seated—Herr, Landenslayer, Rogers



INTERSORORITY COUNCIL



Left to Right—Hayes, Carey, Grenoble, Curtis, Rogers, Engle, Hill, Baltzer, Miller

Interfraternity Council

Organized 1928

OFFICERS

FRANK LAUDENSLAYER	-	-	-	-	-	-	-	-	-	<i>President</i>
ROBERT HERR	-	-	-	-	-	-	-	-	-	<i>Secretary</i>
SAMUEL ROGERS	-	-	-	-	-	-	-	-	-	<i>Treasurer</i>
DR. GEORGE F. DUNKELBERGER	-	-	-	-	-	-	-	-	-	<i>Adviser</i>

It is the purpose of the Interfraternity Council to promote a better understanding among the fraternities on our campus, as well as to sponsor several dances a year.



Intersorority Council

Organized 1927

OFFICERS

HELEN ROGERS	-	-	-	-	-	-	-	-	-	<i>President</i>
MARJORIE CURTIS	-	-	-	-	-	-	-	-	-	<i>Vice President</i>
JOSEPHINE CAREY	-	-	-	-	-	-	-	-	-	<i>Secretary</i>
MARTHA ENGLE	-	-	-	-	-	-	-	-	-	<i>Treasurer</i>

The Intersorority Council was established to create harmony and understanding among the members of the various sororities on the campus. Its membership is made up of three representatives from each sorority.

MEN'S STUDENT COUNCIL



Left to Right—Davis, Kaltreider, Sivick, Bollinger, Shipe, Benion, Dr. Hontz



WOMEN'S CO-OPERATIVE COUNCIL



Left to Right—Mann, Croft, Shutt, Rogers, Curtis, Appler, Saveri, Burns, Miss Kruger, Baish

Men's Student Council

OFFICERS

HAROLD BOLLINGER	-	-	-	-	-	-	-	-	<i>President</i>
EDWARD SIVICK	-	-	-	-	-	-	-	-	<i>Vice President</i>
JACK SHIPE	-	-	-	-	-	-	-	-	<i>Secretary-Treasurer</i>
PROF. JOHN J. HOUTZ	-	-	-	-	-	-	-	-	<i>Faculty Adviser</i>

The Men's Student Council is designed to create closer harmony between the faculty and the student body. It is also interested in the proper orientation of Freshmen men.



Women's Co-operative Council

OFFICERS

MARJORIE CURTIS	-	-	-	-	-	-	-	-	<i>President</i>
HELEN ROGERS	-	-	-	-	-	-	-	-	<i>Secretary-Treasurer</i>
MISS BARBARA KRUGER	-	-	-	-	-	-	-	-	<i>Faculty Adviser</i>

The main purpose of this organization is to maintain an orderly and efficient dormitory and to uphold the rules governing resident women students.

BIEMIC SOCIETY



Seated, Left to Right—Gehron, Morrow, Sweetser, Sivick, Uchenreider, Dr. Seudder
 Standing—Hoover, Schadle, Jones, Tribby, Shatto, Bennage, Gulick, Tjeperson, Smalts



PI GAMMA MU



Seated, Left to Right—Finkbeiner, Croft, Herr, Miller, Yarger
 Standing—Landenslayer, Dr. Ahl, Kell, Mr. Brungart, Mr. Reitz, Dr. Kretschmann, Dr. Russ, Dr. Woodruff,
 Dr. Dunkelberger

Biemic Society

Organized 1896

OFFICERS

ALFRED LEAM *President*
KENNETH KINNEY *Vice President*
PAUL OCHENREIDER *Secretary-Treasurer*

Faculty Advisers

DR. GEORGE FISHER DR. PAUL J. OVREBO DR. FISK W. SCUDDER
DR. JOHN J. HOUTZ

This society has the distinction of being the oldest active organization at Susquehanna. Throughout the year it sponsors a number of interesting lectures by guest speakers as well as students.



Pi Gamma Mu

Organized 1927

OFFICERS

ROBERT HERR *President*
ELEANOR CROFT *Vice President*
DR. GEORGE F. DUNKELBERGER *Secretary-Treasurer*

Faculty Advisers

DR. A. WILLIAM AHL DR. THEODORE W. KRETSCHMANN DR. WILLIAM A. RUSS
PROF. EDWIN BRUNGART PROF. IRVIN D. REITZ DR. G. MORRIS SMITH
DR. GEORGE F. DUNKELBERGER DR. JOHN I. WOODRUFF

Requirements for membership in Pi Gamma Mu include at least twenty semester hours in social science with a "B" average, and a satisfactory scholastic standing in general. The club also sponsors lectures by speakers of national prominence.

DEBATING SOCIETY



Left to Right—Booth, Frattali, Prof. Gilbert, Thatcher, Hoover



TAU KAPPA ALPHA



Left to Right—Frattali, Dr. Foelsch, Prof. Gilbert, Dr. Dunkelberger

Debating Society

Organized 1927

OFFICERS

Coach - - - - - PROF. RUSSEL W. GILBERT
Manager - - - - - VINCENT FRATTALI

Faculty Advisers

DR. GEORGE F. DUNKELBERGER DR. WILLIAM A. RUSS

This club gives the students the opportunity to develop poise and self-expression in public speaking. It undertakes a number of intercollegiate debates each year in its annual spring tour of this and neighboring states.



Tau Kappa Alpha

Organized 1930

OFFICERS

PROF. RUSSEL W. GILBERT - - - - - *President*
DR. GEORGE F. DUNKELBERGER - - - - - *Secretary-Treasurer*

Tau Kappa Alpha, national forensic honor fraternity, includes only those in its membership who have done outstanding work in public speaking. The Susquehanna Chapter is one of more than a hundred in colleges and universities throughout the United States.

FRENCH CLUB



First Row, Left to Right—Lawrence, Baxter, Mann, Shatto, Saveri, Fries, Leib, Specht
 Second Row—Mitman, Bennage, Moyer, Brand, Burns, Miller, White, Krumbholtz, Hansen
 Third Row—Adams, Meyer, Baye, Farley, Heckler, Shutt, Knapp, Edlund, Tribby



GERMAN CLUB



First Row, Left to Right—Warner, Shutt, Kriebach, Stephens, Fisher, Smith, Relehard, Unangst, Bantley
 Second Row—Prof. Gilbert, Neudoerffer, Hill, Shoemaker, Rothermel, Croft, Poorbaugh, Curtis, West,
 Schweitzer, Baltzer
 Third Row—Wilson, Bauman, Knauber, I. Smith, Baxter, Snyder, DeRemer, Haffner, Price, Hansen

Le Cercle Francais

Organized 1927

OFFICERS

ELEANOR SAVERI	-	-	-	-	-	-	-	-	-	<i>President</i>
GRACE FRIES	-	-	-	-	-	-	-	-	-	<i>Vice President</i>
PAUL SHATTO	-	-	-	-	-	-	-	-	-	<i>Secretary-Treasurer</i>
MISS LOIS M. BOE	-	-	-	-	-	-	-	-	-	<i>Faculty Adviser</i>

This organization includes practically all those students taking French. Besides furthering an interest in the French language, this year they have created a better understanding of the French people by making it possible for the students to see several moving pictures as they are shown abroad.



Deutsche Verein

Organized 1930

PROF. RUSSEL W. GILBERT, *Faculty Adviser*

The German Club helps the student in a better understanding of the German people, their culture, and social and political trends both as a race and individually.

PHI KAPPA



First Row, Left to Right—Wilt. Sander, Drumm, Dr. Ahl, Nye, Yoder, Murray
 Second Row—Booth, Fuhrman, Benion, Fisher, Klinger, Bailey, Portzline
 Third Row—Clubb, Hopkins, Brosius, Knaul, Haines



SUSQUEHANNA PLAYERS



First Row, Left to Right—Schwenk, Rothermel, Hochella, Baish, Edlund, Forney, I. Smith, Harbeson, Williams,
 J. Snyder
 Second Row—Meyer, Mingle, Griesemer, Milligan, Uphouse, Unangst, Portzline, Warner, Freed, Meyer, Barry,
 Brand, Shatto, Finkbeiner, Young, Fries, Haffner, Prof. Freeman
 Third Row—Miller, Malone, McCord, Saveri, Powell, Whitenight, E. Smith, Barnes, M. Miller, Dietterle

Phi Kappa

Organized 1929

OFFICERS

WALTER DRUMM	-	-	-	-	-	-	-	-	-	-	<i>President</i>
GEORGE BROSIUS	-	-	-	-	-	-	-	-	-	-	<i>Messenger</i>
DR. A. WILLIAM AHL	-	-	-	-	-	-	-	-	-	-	<i>Faculty Adviser</i>

To create and cultivate in its members a better understanding of the ancient Greeks, their language and culture is the aim of this organization. Membership includes those who have a satisfactory class standing.



Susquehanna Players

Organized 1936

MR. JAMES FREEMAN, *Faculty Adviser*

One of the younger organizations at Susquehanna this group is comprised of all those students interested in dramatics. Each year students are chosen from its membership to produce a number of plays.

MEN'S CONSERVATORY CLUB



Seated, Left to Right—Wolfe, Mehalow, Elkins, Schmidt, Pearce, Fisher, Swartz
Standing—Coren, Weisenfluh, Burke, Young, Baldwin, Carter, Bousall, Rainey, Tyson, Kozlowski, Ewing



INTRAMURAL BOARD



Seated, Left to Right—Keil, Herr
Standing—Ochenreider, Kaltreider, Meek, Gabrenya

Men's Music Guild

Organized 1938

OFFICERS

FRED SCHMIDT	-	-	-	-	-	-	-	-	-	-	<i>President</i>
HAROLD ELKINS	-	-	-	-	-	-	-	-	-	-	<i>Vice President</i>
JAMES PEARCE	-	-	-	-	-	-	-	-	-	-	<i>Secretary</i>
JOSEPH MEHALOW	-	-	-	-	-	-	-	-	-	-	<i>Treasurer</i>

Membership of this organization includes all those men students in the Conservatory of Music. They hope to organize at Susquehanna, a chapter of a national music fraternity, and in this way add even more prestige to the music department of the University.



Intramural Board

OFFICERS

J. HENRY KEIL	-	-	-	-	-	-	-	-	-	-	<i>President</i>
AMOS ALONZO STAGG, JR.	-	-	-	-	-	-	-	-	-	-	<i>Faculty Adviser</i>

This group takes care of all intramural sports. It settles any disputes that may arise, and sets the dates and time of playing for interclass competition in soccer, football, basketball, and track.

PRE-THEOLOGICAL CLUB



First Row, Left to Right—Wilt, Booth, Drumm, Gensel, Brosius, Haines, Murray
Second Row—Nye, Zeigler, Sander, Dr. Kretschmann, Dr. Smith, Knaul, Hopkins
Third Row—Chubb, Owen, Fisher, Klinger, Bailey



PRE-LEGAL CLUB



Left to Right—West, Bantley, Richard, Portzline, Frattali, Thatcher, Spiggle

Pre-Theological Club

Organized 1917

OFFICERS

JOHN GENSEL - - - - - *President*
WALTER DRUMM - - - - - *Vice President*
GEORGE BROSIUS - - - - - *Secretary*

Faculty Advisers

DR. G. MORRIS SMITH DR. T. W. KRETSCHMANN

The purpose of the Pre-Theological Club is to give those young men preparing for the ministry an opportunity to associate for the discussion of the problems that will confront them in their chosen work. They also strive to keep alive a high standard of moral and spiritual principles on the campus.



Pre-Legal Club

Organized 1937

OFFICERS

ELEANOR SAVERI - - - - - *President*
DR. WILLIAM A. RUSS - - - - - *Faculty Adviser*

The club aims to acquaint those students planning to enter law school with the major requirements of the graduate schools. Their discussions concern current topics as well as those of legal and political importance.

STUDENTS' CHRISTIAN ASSOCIATION



First Row, Left to Right—Sander, Mann, Haines, Croft, Richard
 Second Row—Shutt, Gensel, Straesser, Bantley, M. Miller
 Third Row—E. Miller, Thatcher, Meyer



BUSINESS SOCIETY



Seated, Left to Right—Mr. Osterbind, Dr. Lawson, Ritter, Reese, Meek, Herr, Wright, Miss DuFrain,
 Cleaves, Davis
 Standing—G. Moyer, Shipe, Crompton, Deardorff, Reitz, Boyer, Beamenderfer, Schweitzer, Mendenhall, Himes,
 Straesser, Hoover, Miller, Gabrenya, Shoemaker

Student Christian Association Cabinet

Organized 1934

OFFICERS

J. LEON HAINES	-	-	-	-	-	-	-	-	-	<i>President</i>
ROBERT SANDER	-	-	-	-	-	-	-	-	-	<i>Vice President</i>
ELEANOR CROFT	-	-	-	-	-	-	-	-	-	<i>Vice President</i>
VIRGINIA MANN	-	-	-	-	-	-	-	-	-	<i>Recording Secretary</i>
KATHRYN MEYER	-	-	-	-	-	-	-	-	-	<i>Corresponding Secretary</i>
BURTON R. RICHARD	-	-	-	-	-	-	-	-	-	<i>Treasurer</i>

Faculty Advisers

DR. G. MORRIS SMITH	MRS. T. W. KRETSCHMANN	MISS BARBARA KRUGER
DR. PAUL J. OVBREO		DR. GEORGE F. DUNKELBERGER

The S. C. A. was formed in 1934 from the combined Y. M. C. A. and Y. W. C. A. Its aim is to sponsor vesper services, Freshman Week orientation, and the publication of the Freshman Handbook. It also sponsors social functions throughout the year and in this way strives to further wholesome recreation on the campus.



Business Society

Organized 1925

OFFICERS

ROBERT HERR	-	-	-	-	-	-	-	-	-	<i>President</i>
EDGAR MEEK	-	-	-	-	-	-	-	-	-	<i>Vice President</i>
HELEN WRIGHT	-	-	-	-	-	-	-	-	-	<i>Secretary</i>
ELIZABETH REESE	-	-	-	-	-	-	-	-	-	<i>Treasurer</i>

Faculty Advisers

MR. IRVIN REITZ	MR. CARTER OSTERBIND	DR. ERIC W. LAWSON
-----------------	----------------------	--------------------

This society boasts of one of the largest memberships on the campus. In monthly meetings are discussed the problems of the modern business world and suggested remedies. The society also sponsors lectures by prominent economists.

ORANGE KEY CLUB



Seated, Left to Right—Morrow, Reichard, McBride, Schleig
 Standing—Richard, Kiebach, Gabrenya



VARSIITY "S" CLUB



First Row, Left to Right—Kaltreider, Dr. Fisher, Miller, Dr. Woodruff, Bastress, Rogers
 Second Row—Cornelius, Richard, Schleig, Pritchard, Keil, Herr, Leam
 Third Row—Krouse, Deardorff, Lalich, Detrick, Mervine, Ford, McBride
 Fourth Row—Helt, Bollinger, Saunders, Thatcher, Hauff

Orange Key Club

MEMBERS

Burton Richard, John Schleg—Football	Harry McBride, Thomas Morrow—Baseball
Robert Gabrenya, Carleton Kiebach,	Walter Freed—Track
Jack Reichard—Basketball	Stephen Owen—Tennis

This group is composed of the managers of the varsity sports.



Varsity "S" Club

Membership in the club is composed of those men who have won at least one varsity letter and are of at least sophomore standing.

MEMBERS

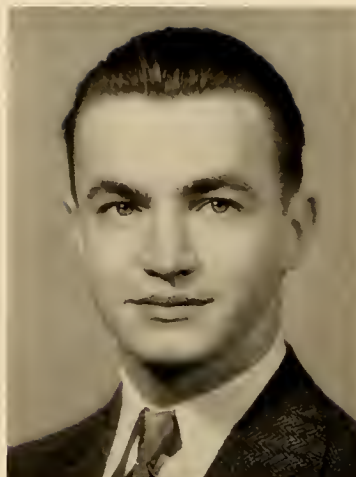
Clair Kaltreider—Football, Basketball, Baseball	Harry Mervine—Football
Sam Fletcher—Football, Basketball, Baseball	Jack Detrick—Football
June Miller—Football, Basketball, Baseball	John Matthews—Football
Robert Bastress—Football, Baseball	Tom Lewis—Football, Baseball
William Gould—Basketball, Tennis	Peter Lalich—Basketball
Robert Herr—Football, Basketball	Harry Thatcher—Track
Don Wert—Basketball, Baseball	William Troutman—Track
Henry Keil—Football, Baseball	Earl Deardorff—Track
William Pritchard—Football, Track	Robert Cornelius—Baseball
Don Ford—Basketball, Baseball	Leon Krouse—Baseball
Louis Baylor—Football	Carl Helt—Baseball
Michael Mastovich—Basketball	John Schleg—Baseball
Harry McBride—Basketball	Harold Saunders—Tennis
Harold Bollinger—Baseball	Alfred Leam—Track
Glenn Hauff—Baseball	William Davis—Football
Burton Richard—Track	Edward Eisenhart—Football
Sam Rogers—Football	Joseph Greco—Football

A C T I V I T I E S





BURTON RANDOLPH RICHARD
Editor-in-Chief



KENNETH RUSSELL KINNEY
Business Manager

Lanthorn 1940

For a period of forty-one years, the annual publication of Susquehanna University, the LANTHORN has been recalling to those of our Alumni many fond and cherished memories of their college days. It is the sincere wish of the members of the class of nineteen hundred and forty that this our LANTHORN will find an equally warm place in the hearts of you our future Alumni.

EDITORIAL STAFF

BURTON R. RICHARD, *Editor*

ANN HILL
VIRGINIA MANN
EUNICE ARENTZ

FRANCES WILLIAMS
J. LEON HAINES

ROBERT SANDER
HAROLD SAUNDERS
WILLIAM NYE

DR. ARTHUR H. WILSON, *Faculty Adviser*

BUSINESS STAFF

KENNETH R. KINNEY, *Business Manager*

NAOMI BINGAMAN

REGINALD SCHOFIELD
DONALD BILLMAN

WILLIAM TROUTMAN

MR. IRVIN REITZ, *Faculty Adviser*

EDITORIAL STAFF



Seated, Left to Right—Hill, Richard, Mann
Standing—Haines, Arentz, Sander, Williams, Nye, Saunders



BUSINESS STAFF



Billman, Kinney, Bingman, Schofield



Gulick

Fries

Keil

Ford

The Susquehanna

EDITORIAL STAFF

HENRY J. KEIL	-	-	-	-	-	-	-	<i>Editor-in-Chief</i>
REED H. GULICK	-	-	-	-	-	-	-	<i>Managing Editor</i>
GRACE E. FRIES	-	-	-	-	-	-	-	<i>News Editor</i>
DONALD L. FORD	-	-	-	-	-	-	-	<i>Sports Editor</i>
DR. ARTHUR HERMAN WILSON	-	-	-	-	-	-	-	<i>Faculty Adviser</i>

The *Susquehanna* is a member of the Intercollegiate Newspaper Association of the Middle Atlantic States and the National College Press Association.



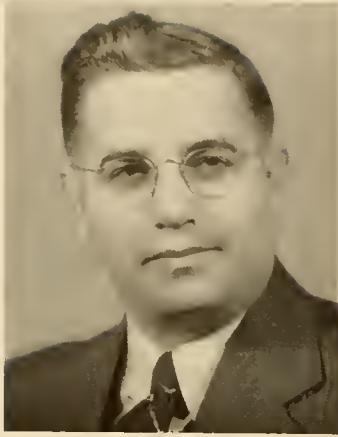
Seated, Left to Right—Gabrenya, Benion, Bice
 Standing—Crompton, Davis, Hoover, Stonesifer, Heefner, Reese

The Susquehanna

BUSINESS STAFF

HAROLD BENION	-	-	-	-	-	-	-	<i>Business Manager</i>
ROBERT GABRENYA	-	-	-	-	-	-	-	<i>Advertising Manager</i>
JOHN BICE	-	-	-	-	-	-	-	<i>Circulation Manager</i>
PROF. D. IRVIN REITZ	-	-	-	-	-	-	-	<i>Faculty Adviser</i>

The *Susquehanna* is the weekly publication through which the students voice their opinions and keep informed of both current and cultural news. The various staff managers receive their positions by elimination on a competitive basis and are given the opportunity to obtain valuable experience in newspaper work.



PROF. FREDERICK C. STEVENS
Director

Motet Choir

This year the Motet Choir completed its sixth year of organized singing. The choir has won a place of national prominence for Susquehanna in its winning of second place in the nation-wide Choral Quest conducted by the Columbia Broadcasting Company last spring.

The annual tour which the Choir undertakes includes many of the largest cities of Pennsylvania and those of neighboring states. All of us can be proud of this organization which is indeed outstanding in the field of *a capella* music.

DR. PAUL OVREBO, *Manager*

MOTET CHOIR

Sopranos

Josephine Carey
Elsie Hochella
Esther Seitzinger
Mrs. James C. Freeman

Janet Shockey
Dorothy Artz
Melissa Smoot

Mrs. Frederick C. Stevens
June Hendricks
Nancy Griesemer
Blanche Forney

Altos

Lois Beamenderfer
Virginia Mann
Virginia Straub

Lois Yost
Jean Milligan
Margaret Grenoble

Shirley Finkbinder
Hilda Friedrich
Jane Schnure

Tenors

Clyde Seehler
Melvin Jones
Warren Wightman

Michael Mastovich
Howard Baldwin

Paul Ochenrider
Harold Shaffer
George Brosius

Basses

George Bantley
Donald Billman
Barner Swartz

John Burke
Robert Critchfield
Paul Brosious

Jack Powell
Karl Young
Verlin Smaltz





Symphonic Society

This musical organization is concerned with a presentation of a musical repertoire including string and wind instruments. It develops within those who participate a love for this type of instrumental music as well as an appreciation for it among those of us who are interested in this art.

MR. ELROSE L. ALLISON. *Director*



Band

The University Band brings to the students of the school an opportunity to enjoy the better type of music in a specialized field. Delightful renditions of the works of the great composers are presented at the annual spring concert.

MR. ELROSE L. ALLISON, *Director*

State Band Festival



Edwin Franko Goldman, Guest Conductor of All-High School Band
The Parade
All-High School Band, One Hundred Fifty Pieces
Guest Band



GUEST BANDS



BOB HERR



MADALENE HAYES



NAOMI BINGAMAN



JUNE MILLER



VINCENT FRATTALI



MARGARET SHEESLEY

A T H L E T I C S



Football

Last fall the Susquehanna University football team started its fourth season under the direction of Coach Amos Alonzo Stagg, Jr. An abundance of lettermen returned to the campus but it was seen that the loss of Co-captains Peter Shuty and Harry Swope, along with such capables as Diffenderfer and Stouffer, would be keenly felt. However, with the veterans, who were captained by Junie Miller, it was thought that the Crusaders would be able to win games under the tutelage of Coaches Stagg, Pritchard, and Lawson. The Orange and Maroon team engaged in a heavy seven game schedule and in almost every case the odds seemed to be against them, except in the season's finale.

Soon after the season got under way, Junie Miller was lost for the rest of the season from a severe knee injury and as a result of the loss of the captain, Bob Bastress, fleet-footed halfback, was forced to carry the brunt of the running attack. The loss of Miller left the Crusaders without a capable line plunger, and on many occasions several yards would have meant first downs and scores for the locals.



First Row, Left to Right—J. Matthews, Kaltreider, Pritchard, Keil, Herr, Co-captain Miller, Co-captain Bastress, Baylor, Davis, Detrick, Fletcher
 Second Row—Rishel, Heaton, Campana, Dearloff, Eisenhart, Lewis, Templin, Frattali, R. Matthews, Grew, Kauffman
 Third Row—Coach Stagg, Manager Richard, Murray, Blough, Irvine, Baye, Lyons, Klinger, Rogers, Asst. Coach Lawson, Asst. Coach Pritchard, Manager Schleg

HEAD COACH A. A. STAGG, JR.

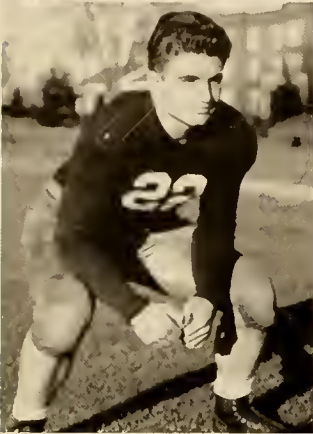
ASSISTANT COACH PRITCHARD

ASSISTANT COACH LAWSON



A heavy line featured the local grid combination. Fletcher, Lewis, and R. Matthews gave the Staggmens powerful tackles; Keil, Templin, Mervine, and Eisenhart made the inner defense strong; while Pritchard and Detrick held down the wing positions for the second straight year.

In the opening game of the season, the Orange and Maroon traveled to Philadelphia and encountered the gridders of Haverford College. The home team took the lead on the first play of the second quarter by scoring on an end run from the Crusaders' twenty yard marker. Their try for the extra point was successful and the Main Liners held a 7-0 lead. The Staggmens, however, staged a quick comeback and led by Bob Bastress advanced the ball deep into enemy territory where Pritchard scored on a pass from Bastress. The try for the extra point failed. The Crusaders' only other chance to score came in the third period when Fletcher blocked a punt and downed it on the Haverford twenty, but the threat was stopped when a bad pass from center produced a fumble which was recovered by Haverford.



Susquehanna outplayed their opponents in every department of the game as they tallied fourteen first downs to their rivals four, but were unable to push the ball over the goal line. The play of Miller, Bastress, Kaltreider, Keil, Fletcher, and Greco were bright spots for the locals.

In the annual Parent's Day game, the Drexel College Dragons completely outclassed the Crusaders in all departments. Their weight and experience proved too much for the Stagmen and the final score ended 19-3 with Susquehanna on the short end. The visitors scored twice in the second period after Tom Lewis had put the home team in the lead with a field goal from the twenty-three yard line. The Dragons were held scoreless during the third quarter but struck again in the final period to make the score 19-3. Lewis, Bastress, Greco, and Pritchard played well for the Stagmen. Pritchard distinguished himself by making over half of the tackles which the locals had occasion to make during the final half.

After a well earned week's rest, the Crusaders again took to the road and met Alfred University at Alfred, New York. This game with the Saxons was the first night game ever played by a Susquehanna football team. Handicapped by their lack of experience under the arcs and also by the methods employed by their opponents who were accustomed to the artificial light,

BASTRESS, *Back*

BAYLOR, *Back*

HERR, *Back*

KELL, *Center*

MILLER, *Back*

the Crusaders fought fiercely to score but were unable to come within striking distance of the goal line. On three occasions the Saxon fullback, Gardner, plunged over the Susquehanna line to score. The final score revealed the Orange and Maroon gridders on the short side, 19-0. The superb kicking and running of Bastress helped stave off several Alfred threats, while Rishel did some great defensive work in backing up the line.

The Greyhounds of Moravian College were present on the campus to help celebrate the sports program of the annual homecoming. Soon after the opening whistle the Crusaders scored when Sam Fletcher blocked a Moravian punt and raced thirty yards for a score and Lewis converted the extra point to put the Stagmen out in front 7-0. The visitors countered, however, and advanced the ball to the Susquehanna thirty-five from which point the visitors' fullback, Fritchman, raced for a score. Later the same man shook loose several local backfield men and skirted the sidelines for forty-five yards to score standing. The locals tried every offensive weapon in their power during the second half but were unable to score. The final count revealed the Susquehanna lads on the short end, 13-7.

The final home game of the 1933 season featured the "Flying Dutchmen" of Lebanon Valley College. The visitors proved



DAVIS, *Back*

EISENHART, *Tackle*

KALTREIDER, *Back*

PRITCHARD, *End*

CAMPANA, *Guard*



themselves superior in every department of the game and tallied sixteen first downs to the Crusaders' eight. Bob Bastress, however, made the longest run for the locals for the season when he broke through tackle and raced eighty-five yards for a score. Throughout the game the Orange and Maroon passing attack was hampered by the rain which descended. When the final gun sounded the visitors led 20-7.

The superb broken field running of Padjen, Dickinson full-back, kept the Crusaders from being a serious threat to the home team as the Orange and Maroon traveled to Carlisle to meet an experienced Dickinson College lineup. Four plays after the opening kickoff the Red Devils scored as Padjen raced thirty yards and promptly kicked the extra point. The Stagg line held the home team at bay throughout the second period and threatened early in the second on a pass from Bastress to Pritchard who lateraled to Herr. The ball rested on the Red Devil twenty but a fumble stopped the opportunity. The heavy and experienced Dickinson team proved too much for the Crusaders during the fourth period as the homesters pushed across two touchdowns to win the game by a 19-0 score. Bastress, Pritchard, and Templin were the bright spots in the Orange and Maroon attack. Bastress played a wonderful offensive game, his

DETTRICK, *End*

FLETCHER, *Tackle*

GRECO, *End*

LEWIS, *Tackle*

J. MATTHEWS, *Guard*

triple-threat tactics meriting him a place on the Dickinson all-opponent team.

In Brooklyn, N. Y., amid a sea of mud, the Crusaders defeated Brooklyn College 14-6. This victory was the first for Susquehanna since the 1936 season. Soon after the contest got under way, the Crusaders produced an eighty yard drive which culminated late in the first period as Bob Bastress scored from the Kingsmen ten yard line. The diminutive backfield star of the Crusaders then cut off tackle for the extra point to put the Orange and Maroon in the lead. Late in the second quarter, by virtue of the aggressiveness of the Stagg line, Ed Eisenhart recovered a Brooklyn fumble in the end zone to make the score 13-0 and Lewis booted the extra point to give the Susquehanna lads a distinct advantage. In the third period Brooklyn tallied their only score as Silverstein raced sixty yards for a score. From this point to the end of the game both teams were unable to do much offensively due to the condition of the turf.

At Brooklyn, five seniors competed in their last game. Henry Keil, Bob Bastress, Bob Herr, and Louis Baylor saw action for their final time under the Orange and Maroon. Captain Junie Miller was unable to be in action due to an early season injury.



MERVINE, *Guard*

HEATON, *End*

R. MATTHEWS, *Tackle*

RISHEL, *Back*

TEMPLIN, *Center*

Basketball

This year's Crusader cage squad compiled the most glorious record of Coach Stagg's tutelage, and marks one of the few successful years that Susquehanna has experienced on the court in the past decade. When the season was completed, it was discovered that the Crusaders had amassed ten victories out of sixteen contests.

Coincidental in the record is the fact that a trio of defeats was suffered in the first three games of the season, and the remaining three on foreign boards against adversaries who had been defeated previously in the season.

One outstanding obstacle to even a more enviable record was the lack of reserve material. During the entire season the squad included only nine men, and each was required to be a virtual "iron man" in order to meet the strength of the opposition.

Bolstered throughout the season by the scintillating performances of Bob Herr and Don Ford, the Crusaders presented a smooth working combination, but these individual players kept the squad balanced on the floor.

The first three games of the season saw Susquehanna go down to close defeats at the hands of Bucknell Junior College, Upsala, and Penn State, but the Dickinson Red Devils met a different style of basketball when they



First Row, Varsity, Left to Right—Templin, Fletcher, McBride, Co-captain Herr, Wert, Kaltreider, Fisher, Ford
Second Row—Manager Gabrenya, Mayer, Bice, Nye, McCord, White, Varsity Coach Stagg
Third Row—Junior Varsity Coach Pritchard, Heaton, Stonesifer, Schleg, Siviek, Klinger, Byers, Kline

HEAD COACH A. A. STAGG, JR.

JUNIOR VARSITY COACH PRITCHARD



invaded the campus. The game was nip and tuck throughout, and the outcome was not final until the concluding whistle signaled that the Crusaders had won their first victory of the season, with Benny Gould and Bob Herr alone accounting for twenty-five of the victor's points.

Although not registered as a victory for the home team, the Hartwick game was the most exciting of the season. Each team displayed "fire engine" basketball and the fracas ended with the score even. In the extra period, however, the reserve strength of the visitors showed itself, and the Crusaders were forced to nurse another loss.

Elizabethtown was the victim of Susquehanna's lone twin victory of the season. It was in this home game in which two freshmen, Phil Templin and Dave Murray, gave such good accounts of themselves. In the return game the E-towners were unable to stop Bob Herr, who scored nineteen points, and the local boys encountered little trouble.

For the first time in seventeen years Bucknell suffered a defeat from Susquehanna, and this year's victory was a decisive one. The blast of speed with which the Crusaders began the game was too much for the Bisons, and they were not able to overcome a thirteen point difference at half time. It was in this game that Ford, Templin, McBride, and Herr each scored twelve points apiece.

In the return game, Bucknell gained sweet revenge to even the series. Coming from behind at half time, the sharpshooting of Doblin and Nolan provided the margin of victory in spite of Susquehanna's determined stand in the waning minutes of play.



Juniata was the next guest to go down to defeat in the Alumni gymnasium. The Indians from Huntingdon kept a substantial lead until the final quarter, when the Crusaders displayed some of the fastest basketball and most accurate shooting of the season. The Freshman center, Phil Templin, garnered eighteen points in this game and Don Ford, the fleet Sophomore, fourteen.



In the return game, Juniata severed Susquehanna's six game winning streak. The Indians forged ahead during the first half when Bob Herr was injured in the opening minutes of play, and held their lead until the final whistle. Don Ford romped off with scoring honors in this game with twelve points.



Wagner College brought a snappy passing attack from Staten Island, but even this was not enough to overcome the scoring spree of its competition. The game was never close, and the victor was never in doubt, as Bob Herr and Phil Templin piled up a lead for the Crusaders.



Invading the Greyhound gym, Susquehanna again regressed to its "away-game" complex, and bowed to a strong Moravian combination. The game was close during the first half with Moravian having a two point advantage midway. During the second half, however, the Crusader mainstays, Herr, Ford, and Templin, were dismissed from the game and the Greyhounds piled up an eleven point lead. When he was forced to leave the game, Don Ford had already gathered scoring honors with nineteen counters.



In the return match, the Crusader combination opened up with everything they had and gained sweet revenge when it trounced the Greyhounds. This game really showed superb teamwork, with the points being evenly divided among the nine players.

Co-CAPTAIN GOULD, *Forward*

Co-CAPTAIN HERR, *Guard*

McBRIDE, *Forward*

WERT, *Guard*

KALTREIDER, *Guard*

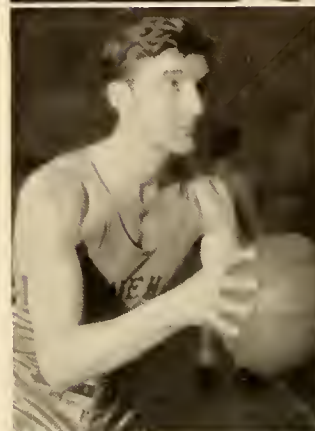
Scranton-Keystone showed little opposition to the Crusaders in their visit to the campus. With Bob Herr and Phil Templin leading the attack, the team ran rampant over its rivals.

Heralded as the only undefeated team in Pennsylvania, Wyomissing Polytechnic Institute invaded the Alumni gymnasium and left nursing the wounds of a crushing twenty point lacing. The attack was led by Don Ford and Bob Herr, who were accorded unprecedented applause when they left the game in the closing minutes of play. This thrilling encounter was the final of the year for the court squad, and rang down the curtain of intercollegiate competition for Co-captains Bob Herr and Benny Gould. Don Wert and "Slatts" McBride.

The Crusaders will miss the graduating lettermen, but they leave behind them the nucleus for a team next year which should continue to balance the winning ledger of Susquehanna.

BASKETBALL—1938-1939

December 2—Susquehanna.....	51	Bucknell Jr. College	54
December 8—Susquehanna.....	30	Upsala	33
December 10—Susquehanna.....	22	Penn State	42
December 13—Susquehanna.....	45	Dickinson	42
January 6—Susquehanna.....	42	Hartwick	49
January 10—Susquehanna.....	45	Elizabethtown	37
January 19—Susquehanna.....	58	Bucknell	39
January 21—Susquehanna.....	55	Juniata	51
February 1—Susquehanna.....	55	Elizabethtown	31
February 4—Susquehanna.....	54	Wagner	32
February 8—Susquehanna.....	48	Moravian	59
February 11—Susquehanna.....	36	Juniata	41
February 14—Susquehanna.....	61	Scranton-Keystone	39
February 18—Susquehanna.....	46	Moravian	29
February 20—Susquehanna.....	37	Bucknell	42
February 24—Susquehanna.....	52	Wyomissing	32



FISHER, *Guard*

BICE, *Forward*

FLETCHER, *Guard*

FORD, *Forward*

TEMPLIN, *Forward*

Baseball



First Row, Left to Right—Wert, Helt, Bastress, Hauff, Schloig, Captain Hazlett, Ford, Bollinger, Cornelius, Krouse, Assistant Manager Morrow
 Second Row—Manager McBride, Payne, Herrold, Kaltreider, Scholl, Head Coach Pritchard, Fletcher, Ancker, Zavarich, Shipe, Assistant Manager Gabrenya

BASEBALL 1938

April 25—Susquehanna	6	Drexel	17	Away
April 27—Susquehanna	9	Moravian	10	
May 3—Susquehanna	8	Elizabethtown	10	Home
May 5—Susquehanna	11	Gettysburg	4	Home
May 7—Susquehanna	4	Moravian	6	Home
May 10—Susquehanna	8	Upsala	5	Away
May 11—Susquehanna	3	Rutgers	4	Away
May 17—Susquehanna	2	Bloomsburg	13	Home
May 20—Susquehanna	0	Elizabethtown	6	Away
May 21—Susquehanna	1	Dickinson	12	Away
May 25—Susquehanna	5	Bucknell	12	Home
May 27—Susquehanna	0	Bucknell	11	Away
May 28—Susquehanna	5	Penn State	6	Away

Track

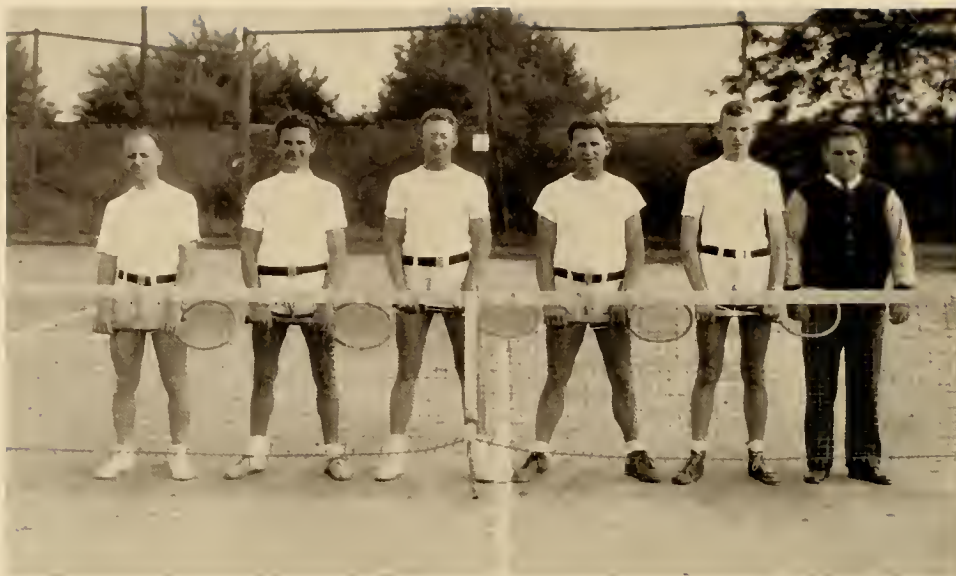


First Row, Left to Right—Mabus, Troutman, Rakshys, Greninger, Captain Swope, Lengler, Pritchard, Richard, Kinney
 Second Row—Manager Freed, Minkwitz, Leam, Pritts, Deardorff, Mekeel, Brosions, Thatcher, E. Greninger, Coach Stagg

TRACK 1933

April 27—Dickinson -----Away
 May 14—Albright -----Away
 May 17—Bloomsburg -----Home
 May 21—Wyomissing -----Home
 May 25—Bucknell -----Home
 May 28—Alfred -----Away

Tennis



Left to Right—Saunders, Rakshys, Captain Hostetter, Gould, Williams, Coach Stagg

TENNIS 1938

April 26—Susquehanna	1	Bucknell	8	Away
April 29—Susquehanna	5	Wyomissing	3	Away
May 3—Susquehanna	5	Elizabethtown	2	Home
May 7—Susquehanna	6	Keystone	3	Home
May 4—Susquehanna	0	Lebanon Valley	7	Home
May 13—Susquehanna	2	Dickinson	7	Away
May 16—Susquehanna	3	Bloomsburg	6	
May 23—Susquehanna	0	Drexel	9	Away
June 3—Susquehanna	3	Moravian	4	Home

Soccer



First Row, Let to Right—Updegrave, Herman, Heap, Gensel, Troutman, Shipe, Klinger
 Second Row—Moyer, Beachel, Fuhrman, Wightman, Laudenslayer, Mitman, McCord, Coach Pritchard

SOCCER 1938

September 23—Susquehanna.....	2	Herndon	0	Home
October 26—Susquehanna.....	3	Juniata All Stars	1	Home
October 27—Susquehanna.....	1	Bloomsburg S. T. C.	2	Home
November 1—Susquehanna.....	4	Beaver	1	Home
November 3—Susquehanna.....	1	Herndon	1	Away
November 7—Susquehanna.....	2	Dalmatia	2	Home
November 9—Susquehanna.....	3	Beaver	4	Away
November 10—Susquehanna.....	0	Bloomsburg S. T. C.	5	Away

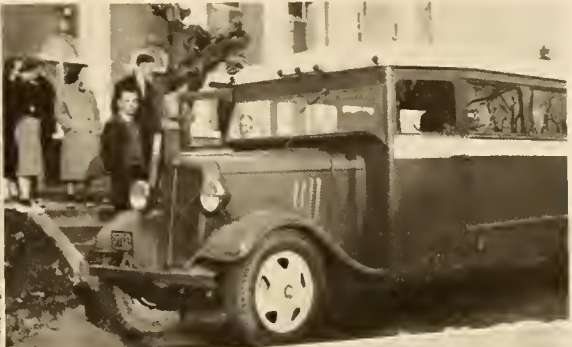
Women's Athletic Association



First Row, Left to Right—Baltzer, Appler, Reese, Ringaman, West, Miss Shure, Saveri, Hayes, Crompton,
M. Miller, Tewkesbury, Croft, Curtis
Second Row—Cleaves, Davis, Smith, Edlund, Reese, Baumenderfer, Arentz, Rothermel, E. Miller, Poorbaugh,
Wright, Gayman, Meyer
Third Row—Hutchinson, Mendenhall, Reitz, Farley, Musselman

The W. A. A. was originated to stimulate a more active interest in women's athletics at Susquehanna. The requirement for membership is the earning of at least two hundred fifty points, based on participation in the various sports.

This organization also plays host to women's athletic teams from other schools on the occasion of the Annual Play-Day.



May Day
1938



Esther Yingling, May Queen
The Queen and Her Court



Esther Kaufman, Lady-in-Waiting
The Crowning



The Queen and Her Attendants
Scene from the Pageant

The Dance of the Hours
Scene from the Pageant

Triumph for the Suitor

C
A
N
D
I
D



S
H
O
T
S









STUDENT REGISTER

1938-1939

<i>Name</i>	<i>Selinsgrove Address</i>	<i>Home Address</i>
Adams, John F.	Hassinger Hall	231 Spring Street, Johnstown
Albury, M. Elizabeth	Seibert Hall	113 Eastman Street, Cranford, N. J.
Allison, Lorna Wren		308 Walnut Street, Selinsgrove
Appler, Mary	Seibert Hall	362 High Street, Hanover
Arentz, E. Eunice	Seibert Hall	112 Fourth Street, Hanover
Artz, Dorothy	Seibert Hall	Main Street, Elizabethtown
Aucker, John A.		R. F. D., Selinsgrove
Ayers, William P.	Hassinger Hall	24 Brook Street, Warren
Bailey, Charles A.		Hummel's Wharf
Baish, Charlotte	Seibert Hall	Dillsburg
Baldwin, Howard B.	Hassinger Hall	2511 Tatnall Street, Wilmington, Del.
Baltzer, Betty C.	Seibert Hall	325 South Main Street, Jersey Shore
Bantley, George H.	Hassinger Hall	1210 Cambria Avenue, Windber
Barnes, Lila E.	Seibert Hall	Church Street, Milton, N. Y.
Barnhart, Elizabeth J.		1250 Susquehanna Avenue, Sunbury
Barrett, James H.		Paxinos, R. D. 1
Barry, Richard P.	Phi Mu Delta	601 First Avenue, Altoona
Bastress, Robert M.		478 Duke Street, Northumberland
Bauman, Irma	Seibert Hall	R. D. 4, Honesdale
Baxter, R. Stanley	Hassinger Hall	Main Street, Marlborough, N. Y.
Baye, Ernest	Hassinger Hall	403 Ellsworth Street, Bridgeport, Conn.
Baylor, Louis P.		3 Front Street, Northumberland
Beachel, Leroy K.		Middleburg
Beamenderfer, Jean		401 West Walnut Street, Selinsgrove
Beamenderfer, Lois		401 West Walnut Street, Selinsgrove
Benion, Harold H.	Bond and Key	Front Street, West Fairview
Bennage, Ellen E.	Seibert Hall	131 North Second Street, Lewisburg
Bergstresser, Daniel L.		18 South Front Street, Selinsgrove
Bergstresser, Philip		18 South Front Street, Selinsgrove
Bice, John D.	Bond and Key	Main and Sunbury Streets, Millerstown
Bier, Catharine S.		501 Packer Street, Sunbury
Billman, J. Donald	200 Water Street	Constitution Boulevard, Herndon
Bingaman, Naomi		118 Independence Street, Selinsgrove
Bittinger, Hester E.		Shamokin Dam
Bittner, Arline E.		R. D. 1, Sunbury
Bittner, Mildred E.		North Market Street, Selinsgrove
Bloogh, Sanford P.	Hassinger Hall	R. D. 5, Johnstown
Bollinger, Harold E.		132 Fifth Street, Northumberland
Bonawitz, Warren A.		327 North Market Street, Selinsgrove
Bonsall, Kenneth A.	Phi Lambda Theta	Grampian
Booth, G. Robert	Selinsgrove Hall	13 West Sunbury Street, Shamokin
Boust, Charles L.		634 North Fourth Street, Sunbury
Boyer, Marion H.	Seibert Hall	1240 High Street, Pottstown
Brand, Ellen E.	Seibert Hall	610 Vine Street, Coraopolis
Brosius, George R.	Hassinger Hall	118 South Sheridan Street, Johnstown
Brosius, Paul E.		Herndon
Burke, John V.	Hassinger Hall	416 Pacific Avenue, Wildwood, N. J.
Burns, Robert S.		25 East Pine Street, Selinsgrove
Burns, Virginia A.		7 Water Street, Selinsgrove
Byers, Chester A.	Hassinger Hall	52 Shady Lane, Johnstown
Cady, Lawrence S.	Selinsgrove Hall	15 Lobell Court, Bloomfield, N. J.
Campana, Joseph F.	Selinsgrove Hall	202 William Street, Williamsport
Carey, E. Josephine	Seibert Hall	511 East Gravers Lane, Philadelphia
Carter, David L.	Selinsgrove Hall	327 Madison Street, Mount Hope, W. Va.
Chubb, Clarence L.		Port Trevorton
Clark, Andrew A.	Hassinger Hall	101 South Walnut Street, Mechanicsburg
Cleaves, Angelyn	Seibert Hall	112 Aldrich Avenue, Altoona
Cluck, Genevieve M.	Seibert Hall	McKnightstown
Coleman, Paul D.	Phi Mu Delta	136 East Church Street, Somerset
Coren, David	Hassinger Hall	121 South Maple Street, Mt. Carmel
Cornelius, Robert L.		New Berlin
Critchfield, Donald A.	Phi Mu Delta	503 West Union Street, Somerset
Critchfield, Robert W.	Selinsgrove Hall	503 West Union Street, Somerset
Croft, Eleanor E.	Seibert Hall	North Allison Street, Greencastle
Crompton, Marian L.	Seibert Hall	536 Lake Street, South Fork
Curtis, Marjorie E.	Seibert Hall	52 Poplar Street, Kingston
Davis, Lois V.	Seibert Hall	539 West Main Street, Somerset
Davis, William L.	Hassinger Hall	1508 Center Street, Ashland
Deardorff, Earl R.	Selinsgrove Hall	Biglerville
Deiterick, Alice N.	Seibert Hall	Mooresburg
DeRemer, Irvine R.	Selinsgrove Hall	Box 336, Matamoras
Detrick, John W.		529 Arch Street, Sunbury
Dietterle, Katherine I.		R. D. 5, Danville
Dreese, S. Guy	220 Fairmount Avenue, Sunbury	211 Water Street, Selinsgrove
Drumheller, John F.		R. D. 3, Sunbury

STUDENT REGISTER

<i>Name</i>	<i>Selinsgrove Address</i>	<i>Home Address</i>
Drumm, Walter J.		1054 Masser Street, Sunbury
Edlund, Helen Marie	Seibert Hall	Russellton
Eisenhart, Edward E.		438 Race Street, Sunbury
Elkins, Harold E.	Hassinger Hall	Kilsythe, W. Va.
Engle, Martha A.	Seibert Hall	1057 Market Street, Sunbury
Ewing, Thomas E.	Selinsgrove Hall	Susquehanna University
Farley, Ruth E.	Seibert Hall	107 Gearhart Street, Riverside
Fenner, Jeanna L.	Seibert Hall	314 North Long Beach Avenue, Freeport, N. Y.
Fetzer, Gertrude G.		R. D. 2, Sunbury
Finkbeiner, Shirley	Seibert Hall	9455 Sutter Avenue, Ozone Park, N. Y.
Fisher, Elwood E.		111 South High Street, Selinsgrove
Fisher, Neil C.	Hassinger Hall	611 Washington Avenue, Mifflintown
Fisher, Robert F.	Selinsgrove Hall	969 High Street, Williamsport
Fletcher, Samuel S.		446 Water Street, Northumberland
Follmer, Mildred Groce		9 North High Street, Selinsgrove
Ford, Donald L.	Selinsgrove Hall	2808 Beale Avenue, Altoona
Formey, Blanche E.	Seibert Hall	102 East Main Street, Mechanicsburg
Frattali, Vincent C.	Phi Mu Delta	116 North Chestnut Avenue, Scranton
Freed, Walter H.	Bond and Key	1219 Race Street, Ashland
Friederick, Hilda L.	Seibert Hall	Hillside Avenue, Honesdale
Fries, Grace E.	Seibert Hall	Duncansville
Freyer, John A.		Turbotville
Fuhrman, Harry B.		Middleburg
Fulmer, Ray M.		456 King Street, Northumberland
Furman, George R.		142 North Sixth Street, Sunbury
Gabrenya, Robert A.	Phi Mu Delta	361 First Street, Conemaugh
Garner, Miriam H.	Seibert Hall	2202 Second Avenue, Altoona
Gayman, Verna M.	Seibert Hall	R. D. 3, Newville
Gehron, William H.	Hassinger Hall	736 Arch Street, Williamsport
Gensel, John	Selinsgrove Hall	Pine Street, Catawissa
Gould, William H.		226 High Street, Flemington
Greco, Joseph	Hassinger Hall	128 West Saylor Street, Atlas
Grenoble, Margaret E.	Seibert Hall	Spring Mill
Griesemer, Nancy K.	Seibert Hall	2217 West Fifth Street, Duluth, Minn.
Groce, Homer C.		324 South Market Street, Selinsgrove
Gulick, Reed H.	Bond and Key	442 Grant Street, Camden, N. J.
Haas, Melvin E.		R. D., Herndon
Haffner, Dorothy M.	Seibert Hall	627 Main Street, Freeland
Haines, Leon	Selinsgrove Hall	R. D. 1, McClure
Hansen, Katie F.	Seibert Hall	R. D. 2, Wapwallopen
Harbeson, H. Faith	Seibert Hall	Maine Street, Milroy
Hanff, Glenn E.	Bond and Key	Third Street, New Freedom
Hayes, Madalene P.	Seibert Hall	203 West Mener Street, West Chester
Hays, William A.	Selinsgrove Hall	Box 429, R. D. 4, Johnstown
Heap, Albert R.	Hassinger Hall	115 Rhoads Avenue, Haddonfield, N. J.
Heaton, Blair L.	Hassinger Hall	556 Fifth Street, Pileain
Heckert, Forrest F.	Hassinger Hall	314 Johnson Street, Millersburg
Heckler, Foster	Hassinger Hall	2702 Graham Avenue, Windber
Heefner, A. Maxine	Seibert Hall	Millerstown
Helt, Carl C.		Second and Clay Streets, Ranshaw
Hendricks, June J.		400 North Eighth Street, Selinsgrove
Herman, George J.		Middleburg
Herr, Robert L.	Phi Mu Delta	1218 Walnut Street, Shamokin
Herrold, Warren		Port Trevorton
Hertz, Robert		Milton
Hill, Anne	Seibert Hall	416 Allen Street, West Hazleton
Himes, Naomi	Seibert Hall	Fourth Street, Newport
Hochella, Elsie M.	Seibert Hall	571 Peace Street, Hazleton
Hoffman, John W.		Shamokin Dam
Hoover, Delphine O.	Seibert Hall	Dornsife
Hoover, Merle	Selinsgrove Hall	Dornsife
Hopkins, Martin	Selinsgrove Hall	479 Mill Street, Catawissa
Housel, Morris	Selinsgrove Hall	Pinesbridge R. D., Chappagua, N. Y.
Hutchison, Jane M.	Seibert Hall	133 East Lancaster Avenue, Downingtown
Irvine, William L.	Hassinger Hall	806 Wood Street, Coronopolis
Johnston, Catherine E.		116 South Market Street, Selinsgrove
Jones, John W.	Hassinger Hall	Taby Apartments, Shamokin
Jones, Melvin W.	Hassinger Hall	R. D. 3, Danville
Kaltreider, Clair A.	Bond and Key	101 Fair Avenue, Hanover
Kauffman, Horace A.		144 North Sixth Street, Sunbury
Kaufman, August T.	Hassinger Hall	580 North Church Street, Hazleton
Kearns, Robert M.		Main Street, Beavertown
Keil, Henry J.	Bond and Key	690 Hudson Avenue, Union City, N. J.
Keiser, Gertrude C.	Seibert Hall	144 South Fourth Street, Sunbury
Kemberling, Jess M.		Selinsgrove
Kiebach, Carleton T.	Hassinger Hall	105 Simpson Street, Wilkes-Barre
Kinney, Kenneth R.	Bond and Key	376½ Wyoming Avenue, Wyoming
Klepko, Harry		228 Water Street, Northumberland
Kline, Clarence	Hassinger Hall	333 West Frack Street, Frackville
Klinger, Herbert C.		Herndon

STUDENT REGISTER

<i>Name</i>	<i>Selinsgrove Address</i>	<i>Home Address</i>
Klinger, Martha L.	Hassinger Hall	Herndon
Klinger, Wilmer F.	Hassinger Hall	641 Dunkle Street, Harrisburg
Kuapp, Albert C.	Selinsgrove Hall	133 West Poplar Street, West Nanticoke
Knauber, William L.	Hassinger Hall	821 Diamond Street, Williamsport
Knaul, John R.	Hassinger Hall	R. D. 1, Williamsport
Konkle, Robert W.	Hassinger Hall	684 First Avenue, Williamsport
Korper, Edward F.	Hassinger Hall	225 Ridge Avenue, Sunbury
Kozlowski, Edmund J.	Hassinger Hall	204 North Walnut Street, Mt. Carmel
Krouse, Leon E.	Hassinger Hall	320 East Walnut Street, Selinsgrove
Krumholz, Mary Lee	Seibert Hall	2265 Sedgwick Avenue, Bronx, N. Y.
Lalich, Peter	Phi Mu Delta	26 Main Street, Franklin Borough
Landback, Florence E.	Phi Mu Delta	362 Duke Street, Northumberland
Lantz, Paul A.	Sunbury	McClay Street, Milroy
Laudenslager, Carrie A.	Hassinger Hall	211 North Market Street, Selinsgrove
Laudenslager, William F.	Hassinger Hall	Hummel's Wharf
Lawrence, John M.	Hassinger Hall	1253 Eckert Avenue, Reading
Leam, John A.	Bond and Key	1613 Center Street, Ashland
Leib, Gerlad S.	Hassinger Hall	Wheeler Boulevard, Oxford
Lewis, Thomas	Hassinger Hall	Duke Street, Northumberland
Long, Janet A.	Seibert Hall	Port Royal
Loss, Charles R.	Seibert Hall	322 Mill Street, Selinsgrove
Lyons, Kenneth J.	Selinsgrove Hall	2238 West Fourth Street, Williamsport
MacQuesten, Robert W.	Hassinger Hall	124 Parkway West, Bloomfield, N. J.
McBride, Harry Glenn	Phi Mu Delta	314 West Pike Street, Houston
McCord, James C.	Phi Mu Delta	1309 Fifth Avenue, Altoona
Mack, Mary Catherine	Hassinger Hall	600 Race Street, Sunbury
Malone, Betty R.	Hassinger Hall	515 Line Street, Sunbury
Mann, Virginia	Seibert Hall	40 Purser Place, Yonkers, N. Y.
Mastovich, Machael L.	Hassinger Hall	280 Main Street, Franklin Borough
Matthews, John W.	Hassinger Hall	2421 West Fourth Street, Williamsport
Matthews, Richard E.	Hassinger Hall	2421 West Fourth Street, Williamsport
May, William D.	312 Walnut Street	Dogwood Street, Monticello, Fla.
Mayer, John W.	Hassinger Hall	323 Washington Street, West Pittston
Mease, William L.	Hassinger Hall	Selinsgrove
Meek, Walter E.	Phi Lambda Theta	Windber
Mehalow, Joseph	Hassinger Hall	602 Cedar Street, Freeland
Mendenhall, Harriet H.	Seibert Hall	Downingtown
Mervine, William H.	Hassinger Hall	914 Center Street, Ashland
Mervine, Harry U.	Hassinger Hall	914 Center Street, Ashland
Messner, Robert H.	Hassinger Hall	636 South Front Street, Sunbury
Meyer, Kathryn R.	Seibert Hall	618 Wood Street, Johnstown
Meyer, Beatrice	Seibert Hall	325 Orange Street, Selinsgrove
Miller, June C.	Phi Mu Delta	27 West Broad Street, Ashland
Miller, Elaine B.	Seibert Hall	Waymart
Miller, Maude B.	Seibert Hall	Route 2, Somerset
Miller, Miriam A.	Seibert Hall	R. D. 1, Reading
Miller, Rupert P.	Selinsgrove Hall	61 Penn Street, Montgomery
Miller, William E.	Hassinger Hall	245 East Broad Street, Tamaqua
Milligan, Dorothy J.	Seibert Hall	Sea Beach Drive, Stamford, Conn.
Mingle, Vane D.	Hassinger Hall	R. D., Selinsgrove
Mitman, William H.	Hassinger Hall	274 Highland Avenue, Downingtown
Morrow, Thomas	Hassinger Hall	Loysville
Moyer, George W.	108 Independence Street	Railroad Street, Herndon
Murray, Charles	Hassinger Hall	219 West Snyder Street, Selinsgrove
Murray, David J.	Hassinger Hall	186 Dana Street, Wilkes-Barre
Musselman, Helen	Hassinger Hall	704 North Market Street, Selinsgrove
Musser, Glenn	Hassinger Hall	Kreamer
Musser, Marjorie E.	Hassinger Hall	R. D. 1, Mifflinburg
Myers, Monroe	Hassinger Hall	494 Water Street, Northumberland
Neudoerffer, Mathilde E.	Seibert Hall	1 Jackson Avenue, West Hazleton
Nye, William E.	Hassinger Hall	109 East Harrison Street, Wilmington, Del.
Ochenrider, Paul D.	Phi Lambda Theta	Aristes
Orso, Paul M.	Hassinger Hall	1107 Memorial Avenue, Williamsport
Owen, Stephen W.	Hassinger Hall	129 Tritle Avenue, Waynesboro
Pasterchik, Joseph	Selinsgrove Hall	1439 Thackeray Street, Scranton
Pearce, James	Hassinger Hall	1014 Chestnut Street, Kulpmont
Pellman, Hubert R.	Hassinger Hall	Richfield
Poorbaugh, Ferne E.	Seibert Hall	250 West Union Street, Somerset
Portzline, Douglas A.	Hassinger Hall	423 Orange Street, Selinsgrove
Powell, John P.	Phi Mu Delta	19 South Beech Street, Mt. Carmel
Price, Samuel J.	Hassinger Hall	1435 Market Street, Ashland
Pritchard, Robert W.	Hassinger Hall	41 Poplar Street, Kingston
Pritchard, William T.	Bond and Key	41 Poplar Street, Kingston
Rainey, Paul H.	Hassinger Hall	403 Champion Avenue, West Collingswood, N. J.
Reed, Laura A.	Seibert Hall	2026 East Clearfield Street, Philadelphia
Reeder, Anna E.	Hassinger Hall	355 Fourth Street, Sunbury
Reese, Alverna M.	Seibert Hall	Church Street, Audenried
Reese, Elizabeth A.	Seibert Hall	870 Ferndale Avenue, Johnstown
Reese, Howard D.	Phi Mu Delta	Church Street, Audenried
Reichard, John M.	Phi Mu Delta	1312 Elm Street, Wilkingsburg
Reitz, Florence A.	Hassinger Hall	110 Independence Street, Selinsgrove
Richard, Burton R.	Bond and Key	30 Roessner Avenue, Hagerstown, Md.
Rinehart, John J.	Hassinger Hall	North Eleventh Street, Sunbury
Rishel, James E.	Selinsgrove Hall	201 Valley Street, Lewistown
Ritter, Hilda M.	Seibert Hall	Vicksburg
Rogers, Edward	Hassinger Hall	2012 Riverside Drive, Trenton, N. J.
Rogers, Helen O.	Seibert Hall	650 Rutler Avenue, Kingston
Rogers, Samuel W.	Bond and Key	39 North Maple Street, Mt. Carmel
Rohrbach, John D.	Hassinger Hall	Sunbury Water Company
Rothermel, Florence I.	Seibert Hall	Klingerstown

STUDENT REGISTER

<i>Name</i>	<i>Selingsgrove Address</i>	<i>Home Address</i>
Rowe, Sovilla M.		R. D. 1, Selingsgrove
Sander, Robert G.	Hassinger Hall	878 Memorial Avenue, Williamsport
Sassaman, Elmira J.	Seibert Hall	Walnut Street, Lewistown
Saunders, Robert Harold	Bond and Key	214 Pettibone Street, Wyoming
Saveri, Eleanor C.	Seibert Hall	Hazen Avenue, East Baggor
Schadel, Willard H.	Hassinger Hall	Klingerstown
Schleig, John O.	Phi Mu Delta	Box 14, Coal Street, Trevorton
Schmidt, Frederick B.	Hassinger Hall	339 East South Street, Wilkes-Barre
Schofield, Reginald C.	Hassinger Hall	50 East Second Avenue, Williamsport
Schuck, R. Graham		Shamokin Dam
Schweitzer, Edward W.	Phi Mu Delta	39 West Jackson Avenue, West Hazleton
Schweitzer, Lois M.	Seibert Hall	625 Vine Street, Coraopolis
Schwenk, Ruth M.	Seibert Hall	426 North Fifth Street, Lebanon
Sechler, Clyde D.	Bond and Key	116 Sunbury Street, Riverside
Sechrist, Martha V.		Port Trevorton
Seitzinger, Estlier F.	Seibert Hall	608 Center Street, Frackville
Shaffer, Harold	Phi Mu Delta	818 North Main Street, Windber
Shatto, Paul C.	Hassinger Hall	216 Elm Street, Steelton
Shaver, Robert S.	Hassinger Hall	Main Street, Stoyestown
Sheesley, Margaret	Seibert Hall	215 Park Terrace, Lykens
Shipe, Jack P.		Main Street, Herndon
Shipe, B. Mary		1044 Masser Street, Sunbury
Shockey, Janet L.	Seibert Hall	Stoyestown
Shoemaker, Paul W.	Hassinger Hall	16 Tripp Street, Forty-Fort
Shusta, Chester J.	Hassinger Hall	7 St. Mary's Road, Wilkes-Barre
Shutt, Dorothy E.	Seibert Hall	1722 Center Street, Ashland
Sidler, Frank V.	Selingsgrove Hall	R. D. 2, Danville
Simmindinger, Alma C.	514 Market Street, Sunbury	29 West Main Street, Tremont
Sivick, Edward M.	Phi Mu Delta	161 Stanley Avenue, Yonkers, N. Y.
Smalls, Verlin H.	Phi Lambda Theta	Gay Street, Hagerstown, Md.
Smith, Edwin B.	Selingsgrove Hall	R. D. 2, Winchester, Va.
Smith, Eleanor K.	Seibert Hall	580 Front Street, Northumberland
Smith, Irene L.	Seibert Hall	2012 Noble Street, Swissvale, Pittsburgh
Smoot, Melissa Y.	Seibert Hall	41 Kenilworth Avenue, Garrett Park, Md.
Snyder, Betty J.	Seibert Hall	Paxinos
Snyder, June S.	Seibert Hall	214 West Third Street, Mt. Carmel
Snyder, Maye E.		520 South Market Street, Selingsgrove
Specht, Ruth J.	Seibert Hall	Stoyestown
Spizgle, George C.	Phi Mu Delta	17 South Main Street, Keyser, W. Va.
Spotts, Leonora F.		133 Linden Street, Sunbury
Stephens, Edna S.	Seibert Hall	90 South Catawissa Street, Mahanoy City
Sterrett, H. Willard	Hassinger Hall	4939 Rubicam Avenue, Philadelphia
Stonesifer, Stanley O.	Selingsgrove Hall	2148 North Sixth Street, Harrisburg
Straesser, Ethel Louise	Seibert Hall	Martinsburg
Straub, Virginia A.	Seibert Hall	423 West Frack Street, Frackville
Swartz, Barner		R. D., Millerstown
Sweetzer, Arthur A.	Hassinger Hall	337 Harrison Avenue, Scranton
Templin, Philip R.	Hassinger Hall	Mill Street, Dallas
Tewkesbury, Isabel	Seibert Hall	1058 Meade Street, Dunmore
Teperson, Sidney	Hassinger Hall	357 South Front Street, Steelton
Thatcher, Harry B.	Selingsgrove Hall	Perulack
Tribby, Martha J.	Seibert Hall	1717 Ridge Avenue, Coraopolis
Troutman, William M.	Selingsgrove Hall	Trevorton
Tyson, Arthur		300 North Market Street, Selingsgrove
Unangst, Miriam L.	Seibert Hall	331 South Main Street, Nazareth
Updegrove, John H.		Herndon
Updegrove, Robert A.		Herndon
Uphouse, Dorothy M.	Seibert Hall	Stoyestown
VanKirk, Theodore J.		672 Queen Street, Northumberland
Warner, Frederick G.	Hassinger Hall	1103 Montgomery Avenue, Narberth
Warner, Jean E.	Seibert Hall	201 Parkway, Schuylkill Haven
Weeks, Margaret P.		Walnut Street, Selingsgrove
Weisenhub, Raynard		222 Main Street, Taylor
Welman, Allan H.	Hassinger Hall	Matawan Road, Old Bridge, N. J.
White, Arthur J.	Selingsgrove Hall	1001 Laucks Avenue, Scottdale
Wentzel, Betty M.		108 North Eleventh Street, Sunbury
Wentzel, Gladys		8 North High Street, Selingsgrove
Wert, Donald S.	Phi Mu Delta	Aaronsburg
West, Louise E.	Seibert Hall	53 East Ridge Street, Coaldale
Whitenight, Emanell	301 Walnut Street	R. D. 1, Bloomsburg
Wightman, Warreo W.	Hassinger Hall	317 South Oak Street, Mt. Carmel
Williams, Eugene F.	Bond and Key	356 North Street, Millersburg
Williams, Frances K.	Seibert Hall	1900 Wyoming Avenue, Forty-Fort
Williams, Sara E.	Seibert Hall	613 Bryant Street, Stroudsburg
Wilt, Kenneth E.	Selingsgrove Hall	123 South Jones Street, Lock Haven
Wilson, Arthur J.	Hassinger Hall	54 Turner Street, Plymouth
Wilson, Paul F.	Selingsgrove Hall	100 Logan Street, Lewistown
Wolf, Michael F.		514 Market Street, Sunbury
Wolfe, Franklin R.	Phi Lambda Theta	1 Vaux Avenue, Tremont
Wright, Helen E.	Seibert Hall	Three Springs
Yarger, Ruth E.	Seibert Hall	Swengel
Yoder, Mary E.	Seibert Hall	1602 Oram Street, Scranton
Young, Karl H.	Phi Mu Delta	827 West Third Street, Hazleton
Young, Marvin N.	Hassinger Hall	R. D., Benton
Yount, Anne T.	Seibert Hall	415 DeKalb Avenue, Norristown
Zavarich, Joseph	Hassinger Hall	1710 Railroad Street, Shamokin
Ziegler, L. Dallas		Herndon

SUSQUEHANNA

• UNIVERSITY

FOUNDED 1858

If you want a College . . .

With a family spirit
Where the student is known by the Faculty
Of distinctly Christian atmosphere
In a healthful climate
With exceptional athletic facilities
And where good scholarship is stressed

Come to SUSQUEHANNA

BACHELOR DEGREES IN LIBERAL ARTS
BUSINESS ADMINISTRATION
COMMERCIAL EDUCATION
AND MUSIC
CO-EDUCATION

For Catalogue Write to

SUSQUEHANNA UNIVERSITY

SELINGROVE, PA.

The Lutheran Theological Seminary

GETTYSBURG, PENNSYLVANIA

Begins Its 114th Year September 12, 1939

•

The Seminary offers:

Free tuition

Furnished rooms

Use of 45,000 volumes in library

Standard and elective courses leading to the B.D. degree

Graduate work leading to the degree of S.T.M.

A LIMITED NUMBER OF SCHOLARSHIPS AVAILABLE

For Further Information Address JOHN ABERLY, President

THE COLLEGE BOOK STORE

Student Supplies

•

Chilton Pens and Pencils

Sheaffer Inks—Pennants

Monogram Stationery

College Keys and Rings

The FIRST NATIONAL BANK
of SELINGSGROVE

Salutes Susquehanna University and Its
Glorious Accomplishments

•

OFFICERS

ROSCOE C. NORTH, *President*

CLAYTON E. LEACH, *Cashier*

E. E. PAWLING, *Vice President*

MARION S. SCHOCH, *Executive Vice President*

DIRECTORS

A. V. ALLISON

FRANK A. EYER

ROSCOE C. NORTH

E. E. PAWLING

MARION S. SCHOCH

WILLIAM M. SCHNURE

HARVEY S. STERNER

The Penn State Photo Shop

BREON & STOVER

Commercial and Portrait Photography

OFFICIAL LANTHORN PHOTOGRAPHERS

214 E. COLLEGE AVENUE

STATE COLLEGE, PA.

UNIFORMS

for SCHOOL BANDS

AMERICAN UNIFORM COMPANY

134 South 11th Street
PHILADELPHIA, PA.

Compliments of

SNAVELY'S

Clothing and Shoes

SELINGROVE, PA.

Bogar Brothers' Lumber Company

CONTRACTORS — BUILDERS

Manufacturers of and Dealers in
LUMBER, MILL WORK
BUILDING SUPPLIES

Phone 74-W

SELINGROVE, PA.

The STRAND

Where Happiness Costs So Little

DIRECTION
COMERFORD-PUBLIX THEATRES CORP.

SUNBURY, PA.

STEFFEN'S

Fine Foods

STATIONERY

Greeting Cards for Every Occasion

SELINGROVE, PA.

The Selinsgrove Times

MARION S. SCHOCH, *Publisher*

All Kinds of

COMMERCIAL PRINTING

DANCE PROGRAMS
A SPECIALTY

Printers of
THE SUSQUEHANNA

Stanley Theatre

Under the Management of

THE COMERFORD THEATRES, INC.

For Better Dairy Products

Call the

GLENN LOCK DAIRIES

Phone 386

SUNBURY, PA.

SELINGSGROVE
WATER SUPPLY CO.



FRANK A. EYER

President

H. F. JARRETT

Superintendent

JAMES F. McCLURE

Treasurer

Middle Creek Valley
Telephone Company

Bell System

FRANK A. EYER, *General Manager*

NITTANY PRINTING AND PUBLISHING CO.
STATE COLLEGE, PENNSYLVANIA

Quality - Service - Price

110 WEST COLLEGE AVENUE

TELEPHONE 739

Colonial Colliery Company

Miners and Shippers of

**COLONIAL BLENDED
ANTHRACITE**

1421 Chestnut Street
PHILADELPHIA, PA.

BROCHON

*America's Oldest
Fraternity Jewelers and Stationers*

See our complete line of
**Fraternity Jewelry — Dance Programs
Favors — Gifts**

Our representative in your section
is at your service.

Before buying write

BROCHON

233-235 East Ontario Street Chicago, Illinois

NATIONAL CAFE

Restaurant

R. A. MEASE, Proprietor

Meals at All Hours

I. O. O. F. Bldg. SELINGROVE, PA.

**Hotel
GOVERNOR SNYDER**

DELICIOUS FOOD

Catering to
BANQUETS and PARTIES

SELINGROVE, PA.

WHITMER-STEELE COMPANY

Manufacturers of

PINE, HEMLOCK, and HARDWOOD LUMBER

PROP TIMBER and TIES

65 KING STREET

NORTHUMBERLAND, PA.

Congratulations to the Class of 1939

The Smith Printing Company

WILLIAMSPORT, PA.

Distributors of

SCOTT TISSUE PRODUCTS
FOR SCHOOLS AND COLLEGES

MIMEOGRAPH MACHINES AND SUPPLIES

BANK STATIONERS

OFFICE OUTFITTERS

Ideas

FOR THE ASKING



Whether it's a yearbook, a booklet, a catalog or a pamphlet, a brochure, broadside . . . whether it's big or little, simple or complex, deluxe or economical . . . our well-equipped and highly-skilled organization is capable of handling it from beginning to end—from originating the idea to preparing the finished job for shipment . . . Call us in while the job is being planned.



GRIT PUBLISHING COMPANY

ARTISTS :- ENGRAVERS :- PRINTERS :- BINDERS

The LANTHORN Was Produced In Our Plant

AUTOGRAPHS

AUTOGRAPHS

SUSQUEHANNA UNIVERSITY



3 4998 0027 8141 2

BLOUGH-WEIS LIBRARY

SUSQUEHANNA UNIVERSITY
BALDWINSGROVE, PA 17815

BLOUGH-WEIS LIBRARY
LIBRARY
SUSQUEHANNA UNIVERSITY
SUSQUEHANNA UNIVERSITY
DOES NOT
CIRCULATE
ARCHIVES

