



1 9 4 4

LANTHORN

UNIVERSITY OF TORONTO
LIBRARY
17879

BLOCHMAN'S LIBRARY
2160 UNIVERSITY AVENUE
SEATTLE WASH. 98101


For

The President's
Office

★ ★ ★ ★ ★ ★ ★

EX LIBRIS

★ ★ ★ ★ ★ ★ ★



Digitized by the Internet Archive
in 2011 with funding from
Lyrasis Members and Sloan Foundation

<http://www.archive.org/details/lanthorn194400susq>



THE '44 LANTHORN
PUBLISHED BY THE JUNIOR CLASS OF
SUSQUEHANNA UNIVERSITY



PRESENTING LIFE AT SUSQUEHANNA

DURING A YEAR OF WORLD STRIFE ★

DEDICATION

*M*EN AND WOMEN of every era have been called upon to sacrifice home, friends, and even self to fight their nations' battles. Our generation has been no exception. Therefore, we, the class of 1944, hoping in some small way to honor their valor, dedicate this LANTHORN to all those Susquehannans who have gone forth to serve their country in this hour of conflict.

I saw the spires of Oxford
As I was passing by,
The grey spires of Oxford
Against a pearl-grey sky;
My heart was with the Oxford men
Who went abroad to die.

The years go fast in Oxford,
The golden years and gay;
The hoary colleges look down
On careless boys at play,
But when the bugles sounded—War!
They put their games away.

They left the peaceful river,
The cricket field, the quad,
The shaven lawns of Oxford
To seek a bloody sod.
They gave their merry youth away
For country and for God.

God rest you, happy gentlemen,
Who laid your good lives down,
Who took the khaki and the gun
Instead of cap and gown.
God bring you to a fairer place
Than even Oxford town.

—W. M. LETTS.



★ IN TRIBUTE TO THOSE MEN AND WOMEN

IN THE SERVICE OF OUR COUNTRY



FOREWORD



THE 1944 LANTHORN Staff, in this year of conflict and inconstancy has chosen as its theme that which is symbolical of all that is strength and durability—Rocks—both chiseled by the skilled hand of the artist, and worn by the incessant toils of Nature. In particular, the Founder's Cross is to Susquehanna the chief corner-stone, a symbol of that Rock "in whom all the building fitly framed together groweth."

CONTENTS



Alma Mater

*THE STORY WE WOULD
TELL YOU, FRIEND,
WOULD COVER
MANY A BOOK:*



*THE SUBJECT MATTER OF THE SAME
IS FOUND IN EVERY NOOK*





*OF OLD S. U.'S
BROAD CAMPUS,
THE COMMON
BATTLE GROUND*



*WHOSE TREES MIGHT
WHISPER SECRETS GRAVE,
AMUSING AND PROFOUND.*

*HOW DEAR TO ONE AND ALL THE NAME
THEIR ALMA MATER BEARS,*



*WHEN THEY HAVE LEFT
ITS CLASSIC HALLS,
TO SHOULDER
WORLDLY CARES,*



*O, WINNING MAIDS AND NOBLE LORDS
OF DEAR OLD COLLEGE DAYS,*

*COME JOIN IN RECOLLECTIONS FOND,
AND TELL US OF YOUR WAYS.*





*IN CLASS ROOM AND
ON GRIDIRON, FRIENDS,
S. U. WILL STAND
THE TEST.*

*DEFEAT TO HER A WORLD UNKNOWN,
HER MOTTO—"DO YOUR BEST"*



*WITH VIM THEN LET US
GIVE THE YELL,
DISPLAY HER
BANNER BRIGHT,*



*THAT ALL MAY KNOW
OF OLD S. U.
SHE STANDS FOR
GOD AND RIGHT.*

* * * * *

The President

* * * * *

G. MORRIS SMITH

A.B., Roanoke College, 1911; A.M., Princeton University 1912; Diploma, Lutheran Theological Seminary, Philadelphia, 1919; D.D., Roanoke College 1923; Columbia University 1923.

* * * * *



Deans



JOSEPHINE LUMPKINS, Ph.D.
Dean of Women



ALICE HOLMEN GAUQUE
Dean of Women



RUSSELL GALT, Ph.D.
Dean of the College

Faculty



AUGUSTUS WILLIAM AHL
Professor of Greek

Diploma, Gymnasium, Germany, 1904; Diploma, Breklum Seminary 1908; A.M., Susquehanna University 1912; Ph.D., Vanderbilt University 1920.



ELROSE LEON ALLISON

*Instructor in Pianoforte
Wind Instruments, Band,
Orchestra*

Mus.B., Susquehanna University 1928; Sherwood Music School 1933; New York University 1931-1936.



LENORA R. ALLISON
*Assistant
Professor of Commerce*

A.B., Bowling Green College of Commerce 1930; Ed.M., University of Pittsburgh 1937; University of Tennessee; Temple University.



LOIS MARGRETTA BOE
Professor of French

A.B., Augustana College 1930; A.M., 1931 and Ph.D., 1935, University of Wisconsin.



PRUDENCE FISH BUSSEY
Instructor in Singing

Middlebury College 1918-20; Mus.B., Oberlin Conservatory of Music 1923.



GEORGE F. DUNKELBERGER
Professor of Education

A.B., Susquehanna University 1908; A.M., University of Pittsburgh 1919; Pd.D., Susquehanna University 1921; Ph.D., New York University 1927; Columbia University 1938.



GEORGE ELMER FISHER
Professor of Chemistry

Diploma, Missionary Institute 1888; Ph.B., Bucknell University 1891; Ph.D., Wesleyan University 1903.



RUSSELL GALT
Dean of the College

A.B., Muskingum College 1910; A.M. 1920 and Ph.D., 1932, Columbia University; Schools of Oriental Studies, Cairo, Egypt, 1920-22.



ALICE HOLMEN GLAUQUE
Dean of Women

*Instructor in
Public School Music Methods*

B.S., Columbia University 1937; Columbia University 1938.



RUSSELL WIEDER GILBERT
Professor of German

A.B., Muhlenberg College 1927; A.M., University of Pennsylvania 1929; University of Pennsylvania 1935-36; Ph.D., University of Pennsylvania 1943.



RUSSELL CONDRAN HATZ
Instructor in Violin

B.S., Lebanon Valley College 1937; Temple University 1939; Juilliard Institute 1937-39.

Faculty



HARVEY ALFRED HEATH
*Assistant Professor of
Economics and Business
Administration*

B.S., 1924 and A.M., 1926 University of Nebraska; University of Lyon, France, 1919; University of Nebraska, 1930; Ohio State University, 1931, 1932; Ph.D., University of Pittsburgh 1939.



JOHN JACOB HOUTZ
*Assistant
Professor of Chemistry*

A.B., Susquehanna University 1908; M.S., Louisiana State University 1912; Sc.D., Carthage College 1933.



WALTER BUTLER KELLY
Assistant Professor of English
B.S., Ursinus College 1937;
A.M., University of Pennsylvania 1940; Pennsylvania State College; Middlebury College.



AUDREY NORTH
Librarian

A.B., Rockford College 1937;
B.S., University of Buffalo 1938;
University of Michigan.



T. W. KRETSCHMANN

Professor of Bible and Religion
A.B., 1888, A.M. and B.D., 1891, University of Pennsylvania; Diploma, Lutheran Theological Seminary, Philadelphia, 1891; Ph.D., University of Pennsylvania 1892.



PERCY M. LINEBAUGH
*Professor of Pipe Organ
Pianoforte, Counterpoint
Harmony*

Mus.B., Lebanon Valley College 1917; Graduate Student New York University 1921; Peabody Conservatory of Music 1922, 1928.



JOSEPHINE LUMPKINS
Dean of Women

A.B., Trinity University 1933;
A.M., University of Michigan 1936; Ph.D., Cornell University 1941.



DANIEL IRVIN REITZ
*Assistant
Professor of Commerce*

Ph.B., Muhlenberg College 1926;
A.M., University of Pennsylvania 1930; Bucknell University 1939.



PAUL JOHANNES OVREBO
Professor of Physics

A.B., St. Olaf College 1923;
Ph.D., University of Chicago 1928; University of Chicago 1938.



MARY KATHRYN POTTEIGER
*Instructor in Pianoforte,
Sight Singing
Public School Music*

Mus.B., Susquehanna University 1925; New York University 1926.



LAURA ALICE REED
Instructor in Latin

A.B. 1928 and A.M. 1929, University of Pennsylvania; Temple University 1929, 1937; University of Pennsylvania 1935, 1938; Columbia University 1939.

Faculty



FISK W. S. SCUDDER
Professor of Biology

A.B., Ohio Wesleyan University 1923; Ohio Wesleyan University 1924-25; Ph.D., Cornell University 1938.



E. EDWIN SHELDON
Director of Conservatory of Music
Professor of Pianoforte, Music Form
Canon-Fugue

Graduate New England Conservatory of Music 1900; Graduate New York University 1921; Mus.M., Susquehanna University 1908; Mus.D., Susquehanna University 1939.



GEORGE MERRITT ROBISON
Professor of Mathematics
A.B., 1916, A.M., 1917; Ph.D., 1919, Cornell University.



WILLIAM ADAM RUSS, JR.
Professor of History and Political Science
A.B., Ohio Wesleyan 1924; A.M., University of Cincinnati 1926; Ph.D., University of Chicago 1933.



IDA MANEVAL SHELDON
Instructor in History of Music
Mus.B., Susquehanna University 1907; New York University 1919.



EDNA IRENE SHURE
Instructor in Physical Education
B.S., Sargent College of Physical Education, Boston University 1933; Bucknell University 1934-35; A.M., Columbia University 1939.



AMOS ALONZO STAGG, JR.
Professor of Physical Education

Ph.B. 1923 and A.M., 1935, University of Chicago; University of Chicago 1936; Columbia University 1938-1941.



FREDERICK C. STEVENS
Assistant Professor of Singing

A.B., University of Minnesota 1926; A.M., Columbia University 1932; Voice Study in Paris 1927-1929; Peabody Conservatory 1938, 1939.



ARTHUR HERMAN WILSON
Professor of English
A.B. 1927, A.M. 1929, and Ph.D. 1931, University of Pennsylvania.

Business Office



EDWIN M. BRUNGART, A.B., A.M.
*Superintendent of
Buildings and Grounds*

ERNEST T. YORTY
Business Manager

H. VERNON BLOUGH, A.B.
Publicity Director



MRS. FRANK ULRICH, B.S.
Secretary of Admissions

ISABEL NICELY
Secretary to the Dean

Registrar's Office

Bursar's Office

E. BEATRICE HERMAN, A.B.
Bursar

ELEANOR HERMAN
Business Secretary



AUDREY NORTH, A.B., B.L.S.
Librarian



Seated—Miss North.
Standing, Left to Right—Lempke, Eshrick, Nale, Sternut, Byrod.

Library

Dietitian



BERTHA M. HEIN, R.N.



College Dispensary

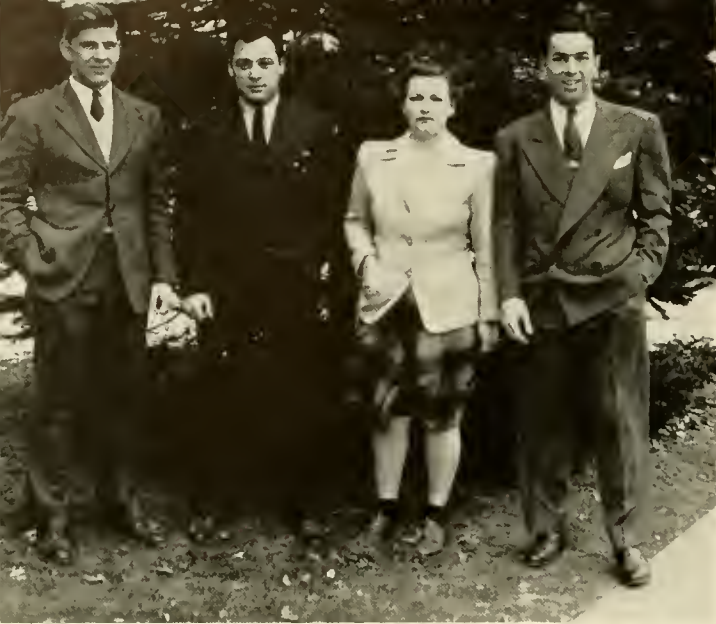
MRS. ANNA M. HUMPHREY



This monumental rock pays tribute to a group of Susquehanna students who answered their nation's call twenty-five years ago. "Lest we forget . . . !"



★ C L A S S E S ★



Left to Right—Sunday, Zuback, Lauver, Walsh.

Senior Class

OFFICERS

<i>President</i>	-	-	-	JACK WALSH
<i>Vice President</i>	-	-	-	REX SUNDAY
<i>Secretary</i>	-	-	-	FERNE LAUVER
<i>Treasurer</i>	-	-	-	JOHN ZUBACK

SINCE our arrival on the campus in the fall of 1939 as happy and, perhaps, irresponsible youngsters, a great many things of importance have happened to us, socially, intellectually, and spiritually.

Each year, as it came, we thought would be our most memorable one. As freshmen, we were sure that nothing could surpass the fun of "get-aways" and hazing and all that goes with being a first-year student. A year later, we thrilled ourselves and the rest of the campus with our Sophomore Hop—the popular Snowball Dance. In addition, we made the freshmen aware of our superiority and flattered ourselves that we were the Class-Most-Likely-to-Succeed.

Last year, as juniors, we took up first aid and home nursing and became air raid wardens and learned to knit, confident, however, that the war was a remote thing, hardly touching us. And in our spare time we produced a really fine LANTHORN and a successful Prom.

We know now that our senior year is the one we can never forget. The realization that we are soon to leave this campus and these friends, perhaps forever, to make our separate ways in an uncertain and turbulent world has made each experience something that will be treasured.

The arrival of men for military training right on our own campus and the departure of many of our own students for the armed services have awakened us to the necessity of unselfish service—the service which Susquehanna has been giving for so many years that it has become a part of the tradition which is our heritage.

FERNE CHARLOTTE ARENTZ

28 Maple Avenue Hanover, Pa.
Eichelberger High School
Kappa Delta Phi *Liberal Arts*

Business Society 1, 2, 3, 4; W. A. A. 1, 2, 3, 4; Motet Choir 1; Secretary-Treasurer of Student Council 3, Social Chairman 3; President 4; Secretary of Inter-Sorority Council 1; S. C. A. 1, 2, 3, 4; Intramural Sports 3, 4; May Day 1, 2; *Susquehanna* Staff 4; University Chorus 4; Who's Who in American Universities and Colleges 4.

RUTH ELIZABETH BILLOW

130 Church Street Catawissa, Pa.
Catawissa High School

Sigma Alpha Iota *Music Education*

S. A. 1, Treasurer 3; S. A. 1, Sergeant-at-Arms 4; S. C. A. 1, 2, 3, 4; May Day 2, 3; Variety Show 1, 2, 3.

EILEEN V. BOONE

1704 Monroe Street York, Pa.
West York High School

Sigma Alpha Iota *Music Education*

University Band 1, 2, 3; Symphonic Society 1; Variety Show 1, 2, 3; May Day 1, 2, 3; W. A. A. 3, 4; Intramural Sports 3, 4; Judiciary Committee 4; S. A. 1, Editor 3; Honors Chairman 4; Theatre Guild 1, 2; *Susquehanna* Staff 2, 3; S. C. A. 1, 2, 3, 4.

JEAN MELBA BOWERS

Landisburg, Pa.
Tressler High School

Sigma Alpha Iota *Music Education*

W. A. A. 1, 2, 3, 4; May Day 2, 3; Motet Choir 1; Trinity Choir 1, 2, 3, 4; Intramural Sports 1, 2, 3, 4; Varsity Basketball; Class Captain 2, 3, 4; Basketball Manager 4; Variety Show 1, 2, 3; S. C. A. 1.

MARGARET CHAMBERLAIN

100 South Chester Pike Glenolden, Pa.
Omega Delta Sigma *Liberal Arts*

W. A. A. 1, 2, 3, 4; Theatre Guild 1, 2, 3, 4.

PIERCE ALLEN CORYELL

121 North Market Street Selinsgrove, Pa.
Selinsgrove High School

Liberal Arts

Susquehanna Staff 1, 2, 3, 4, News Editor 3, Editor-in-Chief 4; Theatre Guild 1, 2, 3, 4; Debating Team 1, 2, 3, 4; Tau Kappa Alpha 3, 4, President 4; Alpha Psi Omega 1; Pre-Legal Club 1; S. C. A. 1; Theatre Guild Press Agent 1, 2, 3, 4; *First Lady, Kind Lady*.

WILLIAM O. CURRY, JR.

358 Oakland Avenue Ashland, Pa.
Ashland High School

Phi Mu Delta *Pre-Medical*

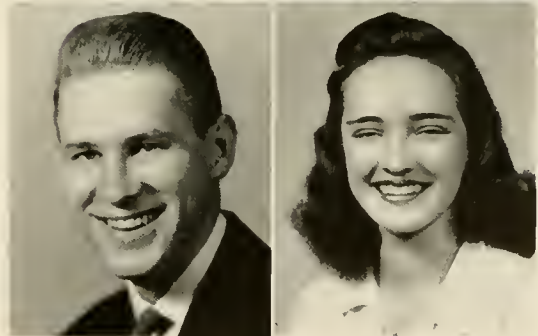
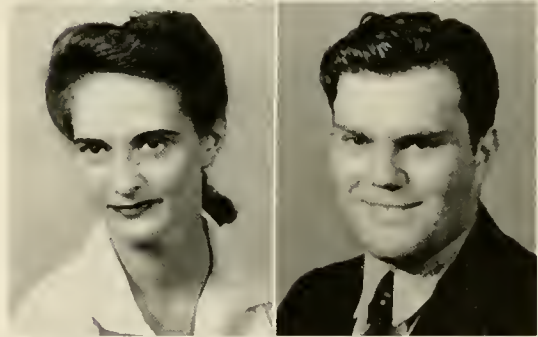
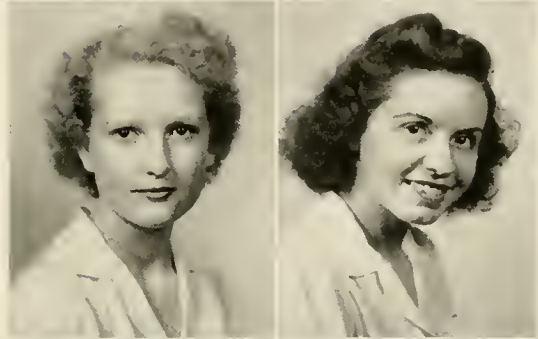
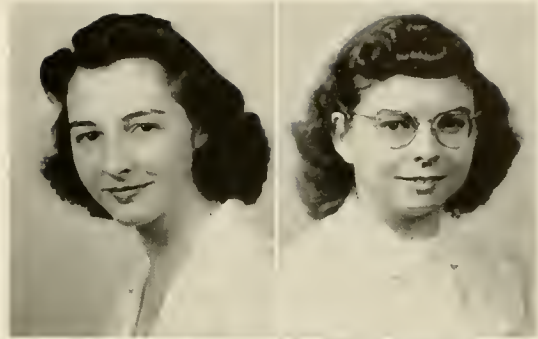
Track 1, 2, 3; S. C. A. 3; Biemic Society 1, 2, 3; German Club 1; Intramural Basketball 1, 2; Frosh-Soph Game 1, 2.

MARY COX

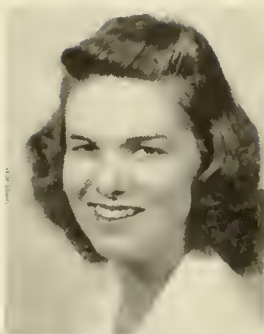
328 North Fourth Street Newport, Pa.
Newport High School

Kappa Delta Phi *Liberal Arts*

W. A. A. 1, 2, 3, 4, President 4; S. C. A. 1, 2, 3, 4; Cabinet 4; Pi Gamma Mu 3, 4, Vice President 4; Inter-Sorority Council 4; Vice President of K. D. P. 4; *Susquehanna* Staff 1, 2, 3, 4; Judiciary Committee 3; Biemic Society 1, 2, 3; Intramural Sports 1, 2, 3, 4; Honor Hockey 2, 3, 4; Hockey Captain 1, 2, 3, 4; Varsity Basketball 1, 2, 3, 4; Who's Who in American Universities and Colleges 4.

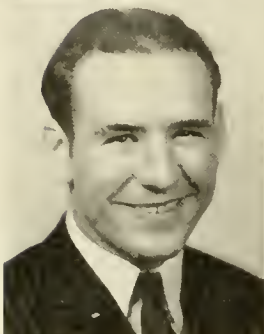


★ CLASS OF 1943 ★



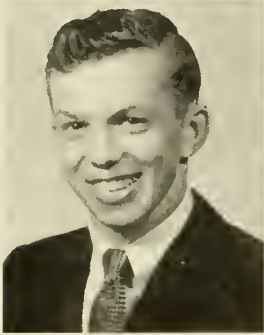
DOROTHY M. DELLECKER
 14 South Third Street Frackville, Pa.
 Frackville High School
 Sigma Alpha Iota *Music Education*

S. C. A. 1, 2, 3, 4; W. A. A. 3, 4; Intramural Sports 1, 2, 3, 4; May Day 1, 2, 3; University Band 1, 2, 3, 4; Concert Band 1, 2; Women's Student Council 2, 4; Judiciary Committee 3, 4; President 4; Inter-Sorority Council 4; Treasurer 4; Varsity Show 1, 2, 3; President of S. A. 1; Who's Who in American Universities and Colleges 4.



JOHN A. GALSKI
 1238 East Broad Street Hazleton, Pa.
 Hazleton High School
 Phi Mu Delta *Pre-Medical*

Intramural Basketball 1; S. C. A. 1, 3; Biemic Society 1, 2, 3; Basketball Manager 1, 2, 3, 4; Baseball Manager 1; LANTHORN Editorial Staff; Orange Key Club 1, 2, 3, 4; German Club 1.



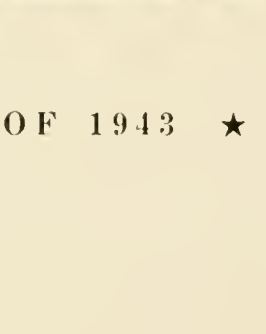
JAMES WARE HALL
 Tioga, Louisiana
 Johnstown Central High School
 Bond and Key *Liberal Arts*

Football 1, 2, 3, 4; Track 1, 2, 3; Intramural Sports 3, 4; Intramural Board 3, 4; Vice President of Bond and Key 4; Biemic Society 1, 2, 3.



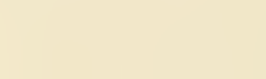
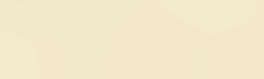
JOSIAH LESTER HOUSER, JR.
 Middleburg, Pa.
 Lewistown High School
Liberal Arts

Football 4; Basketball 4; Muhlenburg 1, 2, 3.



LARRY ISAACS
 123 East Center Street Shavertown, Pa.
 Kingston Township High School
 Phi Mu Delta *Business Administration*

Proctor's Committee 4; Student Council 4; Business Society 1, 2, 3, 4; S. C. A. 3, 4; Theatre Guild; Football 1, 2, 3, 4; Co-Captain 4; Basketball 1, 2, 4; Baseball 1, 2, 3; Co-Captain 3, 4; Junior Class President; Who's Who in American Universities and Colleges 4; Varsity "S" Club 1, 2, 3, 4; Chairman of Junior Prom.



JUNE A. JERORE
 975 Hummel Avenue Lemoyne, Pa.
 Lemoyne High School
 Kappa Delta Phi *Commercial Education*

S. C. A. 1, 2, 3, 4; W. A. A. 3, 4; Motet Choir 1; Inter-Sorority Council 3, 4; Vice President 4; Vice President of Kappa Delta Phi 3; President 4; Business Society 1, 2, 3, 4; May Day 1, 2; Intramural Sports 1, 2, 3.

SIDNEY RANDELL KEMBERLING
 Selingsgrove, Pa.
 Selingsgrove High School
 Bond and Key *Pre-Medical*

Track 1, 2; Football 3, 4; Biemic Society 1, 2, 3, 4; Varsity "S" Club; Intramural Sports 1, 2, 3, 4.

KENNETH H. KLINGER
 Lower Main Street Herndon, Pa.
 Herndon High School
 Theta Chi *Business Administration*

Baseball 1, 2, 3; Co-Captain 4; Intramural Sports 1, 2, 3; Football 4; Pre-Theological Club 1; Class Treasurer 3; Theta Chi Social Chairman 3; Varsity "S" Club; Business Society 3, 4; Soccer 1, 2; House Manager of Theta Chi 4.

★ CLASS OF 1943 ★

ETHEL MAE KNIFFIN

Marlboro, New York
Marlboro Central High School

Omega Delta Sigma *Commercial Education*

Financial Secretary of Omega Delta Sigma 3, Treasurer 4; Secretary of Business Society 3, Vice President 4; Pi Gamma Mu 3, 4; W. A. A. 2, 3, 4; S. C. A. 1, 2, 3, 4; Intramural Sports 2, 3, 4; Secretary of Defense Council 4; Theatre Guild 3.

FERNE ELIZABETH LAUVER

Richfield, Pa.

Fayette Township High School

Pi Gamma Mu *Commercial Education*

Class Secretary 4; Business Society 1, 2, 3, 4; W. A. A. 2, 3, 4; S. C. A. 1, 2, 3, 4; Intramural Sports 1, 2, 3, 4; May Day 2; Cottage President 4.

KEITH G. LOZO

310 East Roberts Avenue, Wildwood, New Jersey
Wildwood High School

Liberal Arts

Bienic Society 1, 2, 3, 4; S. C. A. 1, 3, 4; Basketball Manager 3, 4; Men's Student Council 3, 4, President 4; Intramural Sports 3, 4; Who's Who in American Universities and Colleges 4.

ELEANOR LETITICA LYONS

73 Tripp Street Forty Fort, Pa.
Forty Fort High School

Sigma Alpha Iota *Music Education*

Intramural Sports 3, 4; W. A. A. 4; Vice President's Council 3; Inter-Sorority Council 4; May Day 2, 3; Variety Show 1, 2, 3.

RUTH ELEANOR McCORKILL

178 Kingston Street Northumberland, Pa.
Northumberland High School

Omega Delta Sigma *Business Administration*

S. C. A. 2, 3, 4, Cabinet 4; Student Council 4; Inter-Sorority Council 3, 4, President 4; President of Omega Delta Sigma 4; W. A. A. 2, 3, 4; Business Society 2, 3, 4; Varsity Hockey.

LOUISE McWILLIAMS

14 West Mahoning Street Danville, Pa.
Danville High School

Sigma Alpha Iota *Music Education*

Secretary of S. A. I. 3; W. A. A. 1, 2, 3, 4, President 3; Vice President of Class 2; House President 3; Women's Student Council; Intramural Sports 1, 2, 3, 4; Varsity Hockey; Motet Choir 1; Theatre Guild 1, 2, 3, 4, President 4; Alpha Psi Omega 4.

EDWARD EGAN MILLER

330 South Front Street Sunbury, Pa.
Sunbury High School

Liberal Arts

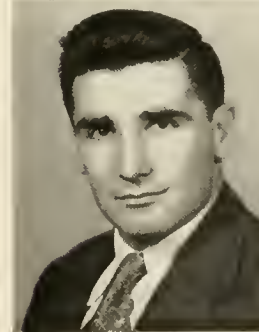
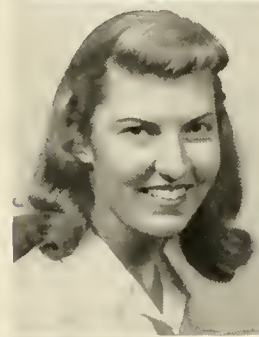
Football 3, 4; Basketball 3; Track 3; St. Francis College 1, 2.

MARTIN MUSSELMAN

704 North Market Street Selinsgrove, Pa.
Selinsgrove High School

Liberal Arts

Intramural Sports; Day Room Club.



★ CLASS OF 1943 ★



CLARK G. NEVIN

505 Race Street Sunbury, Pa.
Sunbury High School

Theta Chi *Music Education*
President of Men's Music Guild; President of Conservatory; Recital Class 4.

EMAJEAN ELNORA PENSYL

Elysburg, Pa.
Ralpho Township High School
Kappa Delta Phi *Commercial Education*

Vice President's Council 3; House President 4; Women's Student Council 4; President of Business Society 4; Vice President 3; Air Raid Warden 3, 4; Theatre Guild 1, 3; Business Society 1, 2, 3, 4; W. A. A. 1, 2, 3, 4; S. C. A. 1, 2, 3, 4; Cabinet 4; Intramural Sports 1, 2, 3, 4.

DONALD FREDERICK SPOONER

356 Washington Street Geneva, New York
Beacon High School

Theta Chi *Liberal Arts*
S. C. A. 1, 2, 3, 4; LANTHORNS Editorial Staff 3; University Band 1, 2, 3, 4; Concert Band 1, 2, 3; Le Circle Francaise 1; Editor of Fraternity Paper 3.

ROBERT CALVIN STAHL

Broadway Turbotville, Pa.
Turbotville-Lewis High School

Theta Chi *Pre-Theological*
Pre-Theological Club 1, 2, 3, 4; President 4; University Band 1, 2, 3; Intramural Sports 1, 2, 3, 4; Chancellor of Beta Kappa 3; President of Theta Chi 4; LANTHORNS Editorial Staff 3; Fraternity Senate 4.

REX H. SUNDAY

Market Street Millersburg, Pa.
Millersburg High School

Bond and Key *Business Administration*
Football 2, 3, 4; Orange Key Club; President of Class 2; Vice President 4; Intramural Sports 1, 2, 3, 4; President of Bond and Key 4; President of *Susquehanna* Publishing Association 4.

LORRAINE ELLEN TURNBACH

Sugarloaf, Pa.
West Hazleton High School

Sigma Alpha Iota *Music Education*
University Band 1, 2; Concert Band 1, 2; May Day 1, 2, 3; Symphonic Society 3; S. C. A. 1, 2, 3, 4; Chaplain of Sigma Alpha Iota 4; Variety Show 1, 2, 3.

JOHN VINCENT WALSH

Lopez, Pa.
Hazleton High School

Phi Mu Delta *Business Administration*
Basketball 1, 2, 3, 4, Captain 4; Tennis 1, 2, 3, Captain 4; Football 4; Cheerleader 1, 2, 3; Business Society 1, 2, 3, 4; S. C. A. Cabinet 2, 3; Varsity "S" Club 2, 3, 4; President of Class 4; Secretary of Phi Mu Delta 4; Social Chairman 4; May Day 1; Junior Prom Committee 3; *Susquehanna* Staff 4; Who's Who in American Universities and Colleges 4.

DOROTHY MAY WEBBER

1115 East Gibson Street Scranton, Pa.
Scranton Central High School

Kappa Delta Phi *Commercial Education*
S. C. A. 1, 2, 3, 4; W. A. A. 2, 3, 4; Intramural Sports 1, 2, 3, 4; May Day 1, 2; University Band 2, 3, 4; Women's Judiciary Committee 4; Secretary of Kappa Delta Phi 4; Business Society 1, 2, 3, 4; *Susquehanna* Business Staff 1, 2, 3, 4, Business Manager 4.

★ CLASS OF 1943 ★

MARY WEEKS

218 West Walnut Street Selinsgrove, Pa.
Selinsgrove High School

Omega Delta Sigma *Liberal Arts*

Vice President of Omega Delta Sigma 3; Inter-Sorority Council; Le Circle Francaise 1; May Day 2; LANTHORN Editorial Staff 3; Class Secretary 3.

DORIS MAE WELCH

144 North Fifth Street Sunbury, Pa.
Sunbury High School

Sigma Alpha Iota *Music Education*

W. A. A. 1, 2, 3, 4, Secretary 3; Vice President of Sigma Alpha Iota 3; Theatre Guild 1, 2, 3, 4; Inter-Sorority Council; Intramural Sports 1, 2, 3, 4; Varsity Hockey; Varsity Basketball; Cheerleader 4.

HARRY LYMAN WILCOX

Canton, Pa.

Canton High School

Theta Chi *Liberal Arts*

Editor-in-Chief of LANTHORN 3; *Susquehanna* Staff 1, 2, 3, 4; Intramural Board 2, 3, 4; Men's Student Council 1; Intramural Sports 1, 2, 3, 4; Deputy Arkon of Beta Kappa 3; Vice President of Theta Chi 4.

DOROTHY ELAINE WILLIAMSON

Davidsville, Pa.

Conemaugh Township High School

Kappa Delta Phi *Commercial Education*

Business Society 1, 2, 3, 4; W. A. A. 1, 2, 3, 4; S. C. A. 1, 2, 3, 4, Cabinet 3, 4; Editor of Student Handbook 2; Girls' President of S. C. A. 3, 4; LANTHORN Editorial Staff 3; Intramural Sports 1, 2, 3, 4; Theatre Guild 1, 2, 3, 4, Secretary 4, Executive Committee 4; Secretary-Treasurer of Women's Student Council 4; Treasurer of Kappa Delta Phi 4; May Day 1, 2; *Susquehanna* Staff 1, 2, 3, 4.

EVELYN WILLIAMSON

Davidsville, Pa.

Conemaugh Township High School

Kappa Delta Phi *Commercial Education*

Class Secretary 1; W. A. A. 1, 2, 3, 4, Treasurer 4; S. C. A. 1, 2, 3, 4, Cabinet 3, 4, Secretary 2, 4; Business Society 1, 2, 3, 4; Theatre Guild 3; Financial Secretary of Kappa Delta Phi 4.

JOHN EDMUND WOLFE

73 Orange Street Northumberland, Pa.
Northumberland High School

Bond and Key *Commercial Education*

Basketball 1, 2, 3, 4; Baseball 1, 2, 3, Co-Captain 4; Day Room Club 1, 2, 3, 4, President 1; Treasurer of Bond and Key 3, 4; Business Society 3, 4; Intramural Sports 1, 2, 3, 4.

MARJORIE A. WOLFE

332 South Market Street Selinsgrove, Pa.
Selinsgrove High School

Omega Delta Sigma *Liberal Arts*

Susquehanna Staff 1, 2, 3, 4, News Editor 3, Associate Editor 4; Secretary of Omega Delta Sigma 3, 4; Pi Gamma Mu 3, 4, President 4; May Day 2; LANTHORN Editorial Staff 3.

JOHN ZUBACK

667 Sixth Street Trafford, Pa.
Trafford High School

Phi Mu Delta *Liberal Arts*

Football 1, 2, 3, 4, Co-Captain 4; Baseball 1, 2, 3, Co-Captain 4; Biemic Society 1, 2, 3; S. C. A. 1, 2, 3, 4; Varsity "S" Club 1, 2, 3, 4.



★ CLASS OF 1943 ★

Junior Class



Left to Right—Leach, Harris, Brown.

OFFICERS

<i>President</i>	-	-	-	-	-	RALPH BROWN
<i>Vice President</i>	-	-	-	-	-	JOHN LEACH
<i>Secretary</i>	-	-	-	-	-	JEAN HARRIS

Junior Class History

WITH but nineteen left of the one hundred and five freshmen who viewed Susquehanna as their college on September 9, 1940, we of the Class of 1944 are both proud and sad.

We fill with pride at the thought that most of those who were in our Freshman Class are now wearing the uniform of our country which makes it possible for institutions as fine as Susquehanna to exist.

On the other hand, we are sad because they are not sharing the joys of college life with us. Of course they wanted to finish their college career the same as we who remain hope to do, but we are sure they are doing a fine job where they are, and though no longer with us, they are not forgotten.

Our years at Susquehanna have been, as they should be, ones we shall never forget.

To begin with, our freshman "get-away" was successful under the leadership of James Wert, president; Rena Baker, vice president; Jean Buffington, secretary; and Lois Kramer, treasurer. Before the joy of that event had died down, we found ourselves the victors in the annual Soph-Frosh football game.

During our sophomore year, the freshmen were shown the art of initiation and were handed a 6-0 defeat in the traditional football game in return for their successful "get-away." Outstanding this year was our Sophomore Hop through which we proved that everyone can have a good time at what had once been an elaborate affair and still fall in line with the war spirit by having hand-made programs and no decorations. Our second year officers were: Herman Stuempfle, president; Robert Hunter, vice president; Jean Buffington, secretary; and William Janson, treasurer.

And now in our junior year with nineteen of the original class and with the addition of a few others, we hope to finish our college days with continued significant contributions to the scholastic and athletic fields as well as to the general well-being of our much-loved school. Heading our class are: Ralph Brown, Frank Attinger, Jean Harris, and John Leach. This spring we were host to the school in a very successful Junior Prom.

May you enjoy reading our edition of the LANTHORN. With it we hand you our promise to do all we can to uphold the high standards Susquehanna has taught us to appreciate.

CHARLES W. AGUE

Hughesville, Pa.
Hughesville High School

Phi Mu Delta

Comptroller of Phi Mu Delta 3; Air Raid
Warden 2, 3; *Susquehanna* Business Staff 1, 2,
3; Debating Team 1, 2, 3, Manager 2; Intra-
mural Sports; Business Staff of LANTHORN 3;
S. C. A. 1, 2, 3; Business Society 3; Executive
Council of Defense 3; May Day 1.

Liberal Arts



GEORGE M. BASS

22 South Brighton Avenue, Upper Darby, Pa.
Upper Darby High School

Bond and Key

S. C. A. 1, 2, 3; Pre-Theological Club 1, 2, 3;
Phi Kappa 1, 2, 3, Treasurer 3; S. C. A. 1, 2,
3, Cabinet 2, 3; Track 1, 2; *Susquehanna*
Staff 3; Football 1, 2, 3, Captain-elect 3;
Intramural Sports 1, 2, 3; Varsity "S" Club
1, 2, 3.

Pre-Theological



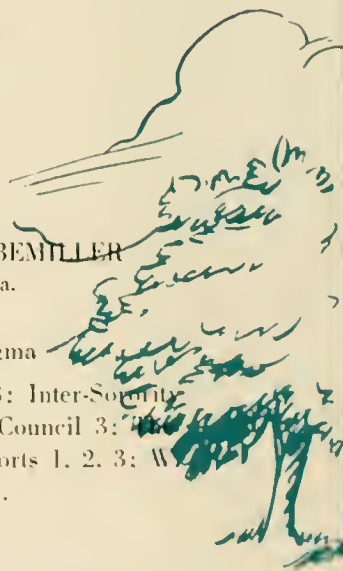
GERALDINE ELIZABETH BEMILLER

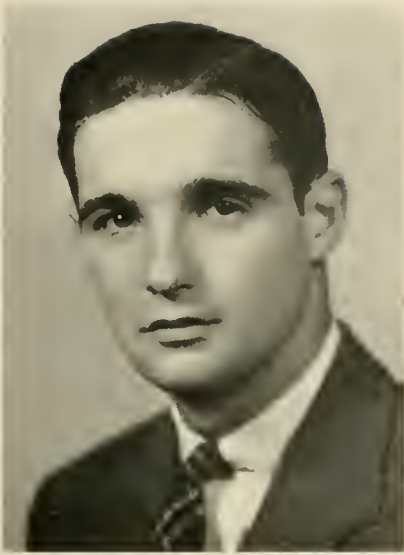
111½ High Street, Hanover, Pa.
Hanover High School

Omega Delta Sigma

Vice President of O. D. S. 3; Inter-Society
Council 3; Vice Presidents' Council 3; *Phi*
atre Guild 1; Intramural Sports 1, 2, 3; W.
A. A. 3; May Day 1; S. C. A. 1.

Liberal Arts





RALPH CONDIT BROWN

162 Walnut Street, Bloomfield, N. J.
Bloomfield High School

Bond and Key

Class President 3; House Manager of Bond and Key 3; Basketball 1, 2, 3; Advertising Manager of *Susquehanna* 3; Intramural Sports 1, 2, 3; S. C. A.; Business Society 1, 2; Sophomore Tribunal 2.

Business Administration



CATHERINE JOSEPHINE BYROD

223 Pine Street, Steelton, Pa.
Steelton High School

Kappa Delta Phi

W. A. A.; Intramural Sports 2, 3; Varsity Hockey; S. C. A. 2, 3; Theatre Guild; Temple University 1.

Liberal Arts



JAMES R. CLARK

12 Haines Drive, Bloomfield, N. J.
Bloomfield High School

Bond and Key

Treasurer of Bond and Key 3; Circulation Manager of *Susquehanna* 3; Intramural Sports 1, 2, 3; Track 1, 2; Proctor's Committee 3.

Business Administration



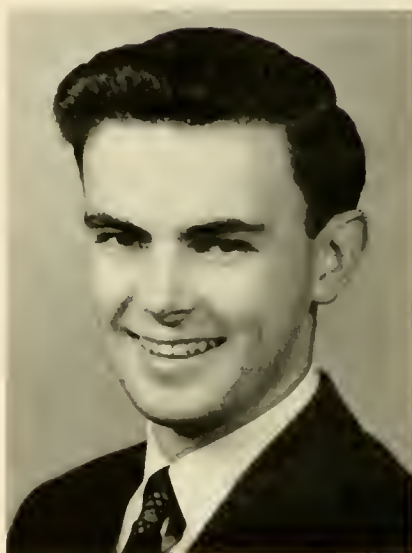
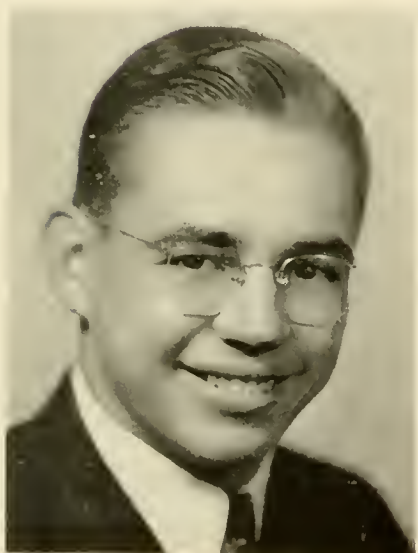
FRANKLIN ELLSWORTH FERTIG

496 Third Street, Northumberland, Pa.
Shamokin High School

Theta Chi

S. C. A. 1, 2, 3; Cabinet 3; Men's Music Guild
1, 2, 3; Intramural Board 2, 3; University
Band 1, 2, 3; Concert Band 1, 2, 3; Variety
Show 1, 2; Sophomore Tribunal 2; Track 1;
Headwaiter 3.

Music Education



STUARD FLICKINGER

Susquehanna Heights, Selinsgrove, Pa.
Selinsgrove High School

Baseball 1, 2; Basketball 1, 2, 3; Day Room
Club 1, 2, 3.

Liberal Arts

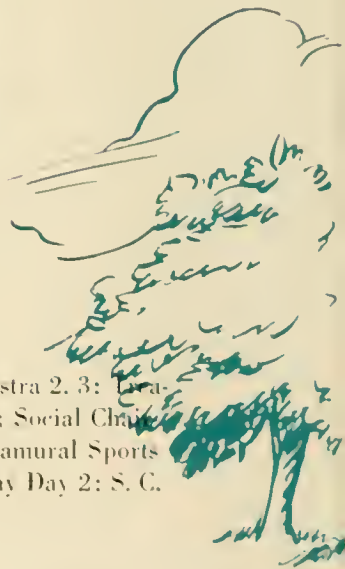
ALLEN WILLIAMS FLOCK

518 Race Street, Sunbury, Pa.
Sunbury High School

Bond and Key

University Band 1, 2, 3; Orchestra 2, 3; Treas-
urer of Men's Music Guild 3; Social Chair-
man of Bond and Key 3; Intramural Sports
1, 2, 3; Variety Show 1, 2; May Day 2; S. C.
A. 3.

Music Education





NORMA LEONA FRANK

704 South Filmore Street, Allentown, Pa.
Allentown High School

S. C. A. 1, 2, 3; Theatre Guild 1, 2, 3; May
Day 1, 2; Variety Show 1.

Music Education



MARGARET GEMMILL

32 North Harlan Street, York, Pa.
York High School

Kappa Delta Phi

S. C. A. 2, 3; Theatre Guild 3; *Susquehanna*
Staff 3; Business Staff of LANTHORN 3; Buck-
nell University 1, 2.

Pre-Medical



WILLIAM DAVID GROSS

355 Northway Street, Northumberland, Pa.
Northumberland High School

Bond and Key

Basketball 1, 2, 3; Tennis 1; Baseball 2; The-
atre Guild 2; S. C. A. 2, 3; Editorial Staff of
LANTHORN 3; *Susquehanna* Staff 2, 3. Manag-
ing Editor 3; Secretary of Bond and Key 3.

Pre-Legal

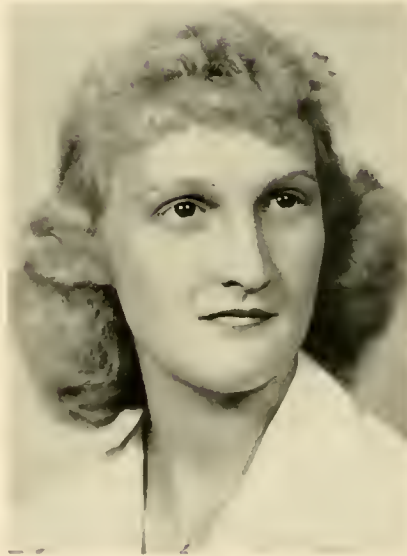


ROY A. GUTSHALL

226 West Simpson Street, Mechanicsburg, Pa.
Mechanicsburg High School

Pre-Theological Club 1, 2, 3; Treasurer 3;
Phi Kappa 2, 3; Intramural Sports 1, 2, 3;
Baseball 2.

Pre-Theological



DORIS ELAINE HAGGARTY

210 Wangum Avenue, Hawley, Pa.
Hawley High School

Omega Delta Sigma

S. C. A. 1, 2, 3; W. A. A. 1, 2, 3; Theatre
Guild 1, 3; Biemic Society 1, 2; Intramural
Sports 1, 2, 3; May Day 1; Women's Student
Council 3; Social Chairman 3.

Liberal Arts

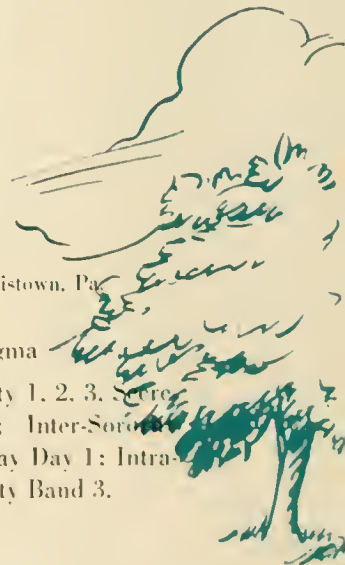
JEAN HELEN HARRIS

168 Pannebraker Avenue, Lewistown, Pa.
Lewistown High School

Omega Delta Sigma

W. A. A. 2, 3; Business Society 1, 2, 3, Secre-
tary 3; Class Secretary 3; Inter-Sorority
Council 3; S. C. A. 1, 2, 3; May Day 1; Intra-
mural Sports 1, 2, 3; University Band 3.

Commercial Education





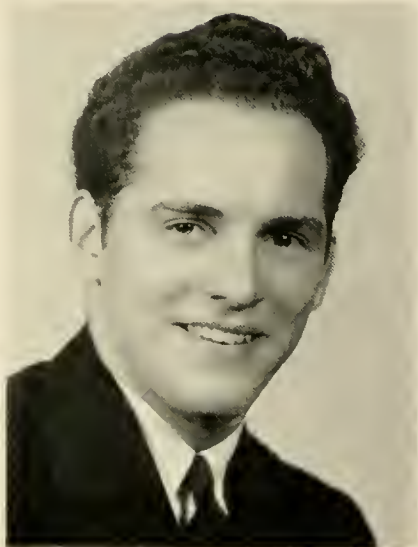
WILLIAM A. HAYS

R. D. No. 4, Johnstown, Pa.
Westmont High School

Bond and Key

Theatre Guild 3; S. C. A. 1, 3; Civilian Defense Council 3; Intramural Sports 1, 2; Bond and Key Alumni Secretary-Treasurer 3.

Liberal Arts



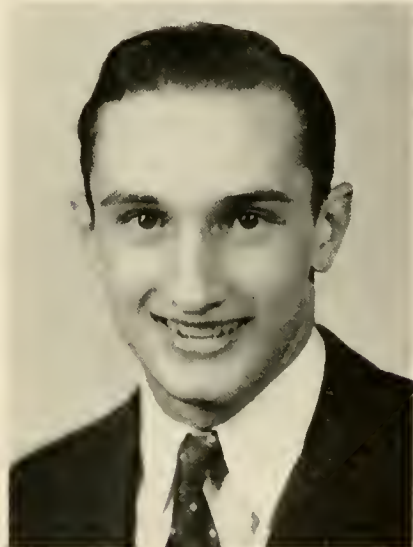
DAVID HEIM

R. D. No. 1, Cogan Station, Pa.

Theta Chi

S. C. A. 1, 2, 3, Cabinet 2, 3. Treasurer 3; Debating Team 1; Track 1; Pre-Theological Club 1, 2, 3. Treasurer 3; Phi Kappa 1; Proctor's Committee 3; Intramural Sports 1, 2, 3.

Pre-Theological



RAYMOND GEORGE HOCHSTUHL

3 Berkeley Heights Park, Bloomfield, New Jersey
Bloomfield High School

Phi Mu Delta

Track 1, 2; Business Society 1, 2, 3; S. C. A.; Vice President of Phi Mu Delta 3; Comptroller of Phi Mu Delta 3; Secretary of Men's Student Council 3; Intramural Sports 1, 2, 3; Varsity "S" Club.

Business Administration

Handwritten notes and signatures on the left margin, including a drawing of an American flag and the name 'David Heim'.

HELEN LOUISE HOCKER

Bethlehem Pike, Whitmarsh, Pa.
Lakewood School for Girls

Omega Delta Sigma

S. C. A.; String Trio; *Susquehanna* Business Staff 2, 3; LANTHORN Editorial Staff 1; Proctor's Committee; Theatre Guild 1; May Day 1, 2; Variety Show 1, 2.

Music Education



JANET ELIZABETH HOKE

Delta, Pa.
Delta High School

Kappa Delta Phi

Susquehanna Staff 2, 3, News Editor 3; Editorial Staff of LANTHORN; Business Society 2, 3; Judiciary Committee 3; Theatre Guild 2; S. C. A. 2, 3.

Commercial Education

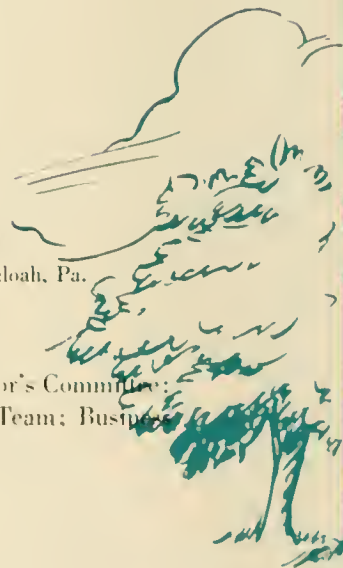
HERBERT H. HOLDERMAN

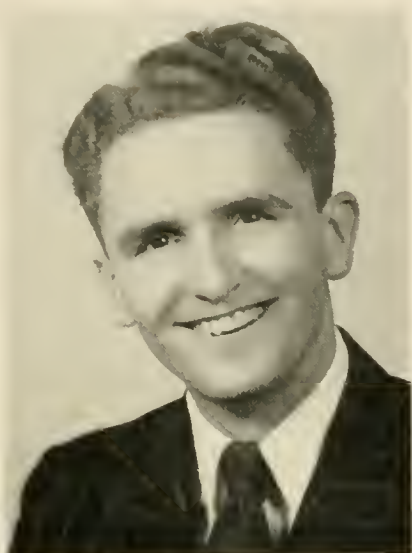
245 Schuylkill Avenue, Shenandoah, Pa.
I. W. Cooper High School

Phi Mu Delta

S. C. A.; Theatre Guild; Proctor's Committee; *Susquehanna* Staff; Debating Team; Business Society.

Liberal Arts





HENRY FRANCIS HOPKINS

Snydertown, Pa.
Catawissa High School

Phi Kappa 1, 2, 3, Secretary 3; Pre-Theological Club 1, 2, 3; Men's Student Council 3; Intramural Board 3; Intramural Sports 3.

Pre-Theological



FLORENCE EMILY HOUTZ

300 South High Street, Selinsgrove, Pa.
Selinsgrove High School

Day Students' Organization 1, 2, Vice President 3; May Day 1; Intramural Sports 1, 2, 3; W. A. A. 2, 3; Honor Hockey 3; *Susquehanna* Staff 2, 3, Proofreader 3; Debating Team 3; Pi Gamma Mu 3; S. C. A. 2, 3.

Liberal Arts



ROBERT MURDOCK HUNTER

301 Philadelphia Avenue, West Pittston, Pa.
Mercersburg Academy

Phi Mu Delta

S. C. A. 1; Basketball Manager 1, 2; Baseball Manager 1, 2; Orange Key Club 1, 2; LANTHORN Editorial Staff 3; Phi Mu Delta Pledge Secretary 1; Intramural Sports 1, 2, 3; May Day 1; Vice President of Class 2.

Pre-Medical



WILLIAM ALBERT JANSON, JR.

886 Prospect Street, York, Pa.
York High School

Phi Mu Delta

President of Phi Mu Delta 3; S. C. A. 1, 2, 3, Cabinet 2, 3, Boys' President 2, President 3; President of L. S. A. A. 3; Business Staff of LANTHORN 1, 2, Business Manager 3; *Susquehanna* Staff 3; Phi Kappa 1, 2, 3; Pre-Theological Club 1, 2, 3; Basketball 1, 2, 3; Baseball 1, 2; Football Manager 2, 3; Orange Key Club 2, 3; Fraternity Senate 3; Chaplain of Phi Mu Delta 3; Class Treasurer 2; Varsity "S" Club 2, 3.

Pre-Theological



LOIS M. KRAMER

10 East Mahanoy Avenue, Mahanoy City, Pa.
Mahanoy City High School

Sigma Alpha Iota

Secretary of Sigma Alpha Iota 3; Class Treasurer 1; Student Council; S. C. A.; Theatre Guild; Intramural Sports; W. A. A.; *Susquehanna* Business Staff; May Day.

Music Education



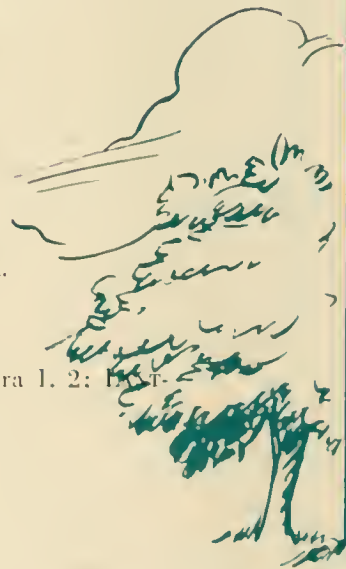
CHARLES PETER LAMON

158 Market Street, Sunbury, Pa.
Sunbury High School

Bond and Key

University Band 1, 2; Orchestra 1, 2; LANTHORN Editorial Staff 3.

Pre-Medical





JOHN ROBERT LEACH

524 South Market Street, Selinsgrove, Pa.
Selinsgrove High School

Theta Chi

Vice President of Class 3; Secretary of Theta Chi 3; LANTHORN Editorial Staff 3; Track 1; Men's Student Council 3; University Band 1, 2; Men's Music Guild 1, 2, 3, Secretary 2, Vice President 3; S. C. A. 3.

Music Education



ROY EDWARD LEADER

R. D. No. 1, Northumberland, Pa.
Northumberland High School

Day Room Club 2, 3.

Liberal Arts

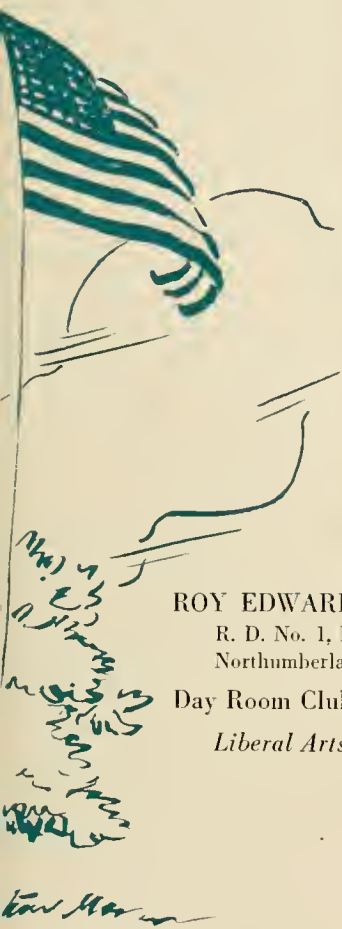


GRACE LEFFLER DUBENDORF

1018 East Chestnut Street, Sunbury, Pa.
Sunbury High School

Debating Team 3; Women's Student Council 3; Pi Gamma Mu 3; W. A. A. 1, 2, 3; S. C. A. 1, 2; Intramural Sports 1, 2, 3; Varsity Hockey 2, 3; Theatre Guild 2; *Susquehanna* Staff 3; LANTHORN Editorial Staff 3.

Liberal Arts



JAMES RICHARD LEPLEY

R. D. No. 1, Winfield, Pa.
Selinsgrove High School

Bond and Key

Day Room Club.

Liberal Arts



FRED LEROY LOWER

R. D. No. 3, Sunbury, Pa.
Sunbury High School

Bond and Key

Band 1; Day Room Club.

Liberal Arts



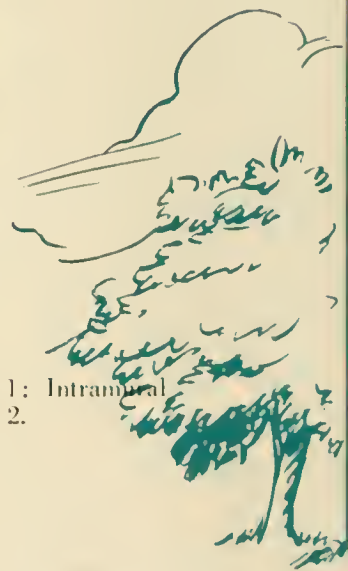
MARVIN W. MANEVAL

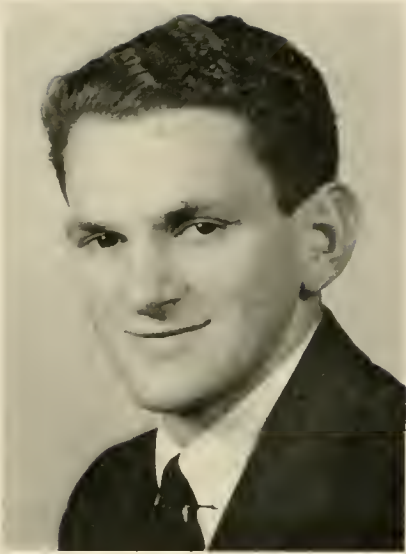
415 Gantt Street, Newport, Pa.
Newport Union School

Phi Mu Delta

Football 1, 2, 3; Basketball 1; Intramural
Sports 1, 2, 3; S. C. A. Cabinet 2.

Liberal Arts





RICHARD DANIEL MOGLIA

3 Clark Street, Glenn Ridge, New Jersey
Bloomfield High School

Phi Mu Delta

Business Staff of *Susquehanna* 1, 2, 3; Intra-
mural Board 3; Chairman of War Savings
Board 3; Headwaiter 3; Intramural Sports 1,
2, 3; S. C. A.; Business Society 1, 2; Tennis
1, 2.

Business Administration



STANLEY LEO NALE

Thomsontown, Pa.
Thomsontown High School

Theta Chi

Business Staff of *Susquehanna*: Phi Kappa 1,
2; Pre-Theological Club 1, 2, 3; Football 1;
Baseball 1; S. C. A. 1, 2, 3; Intramural Sports
1, 2, 3; Chaplain of Theta Chi 3; Pledge Mas-
ter 2; Concert Band 1; Debating Team 1.

Pre-Theological



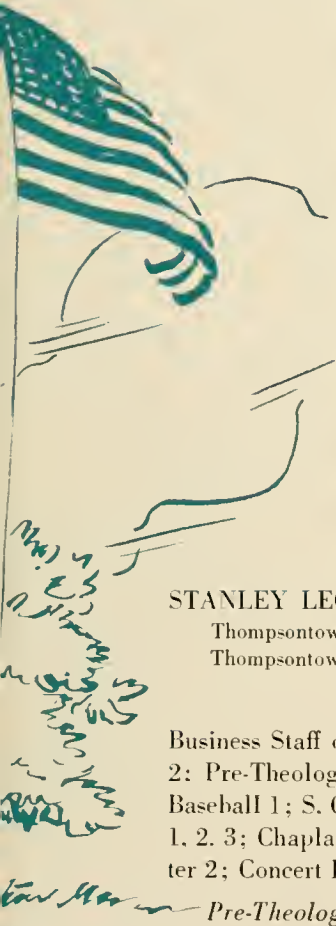
HOWARD R. PAYNE

124 Harrison Street, Taylor, Pa.
Taylor High School

Bond and Key

University Band 1, 2, 3; Symphonic Society
1, 2, 3; Variety Show 1, 2; Men's Music Guild
1, 2, 3; May Day 1, 2.

Music Education



JEAN HILDA RENFER

129 Rock Street, Pittston, Pa.
Hughestown High School

Omega Delta Sigma

W. A. A. 1, 2, 3; S. C. A. 1, 2, 3; Intramural
Sports 1, 2, 3; May Day 1; Varsity Hockey 2;
Theatre Guild 1, 2; Biemic Society 1, 2.

Liberal Arts



ALFONSO RODRIGUEZ

Bogata, Columbia, South America

Business Administration



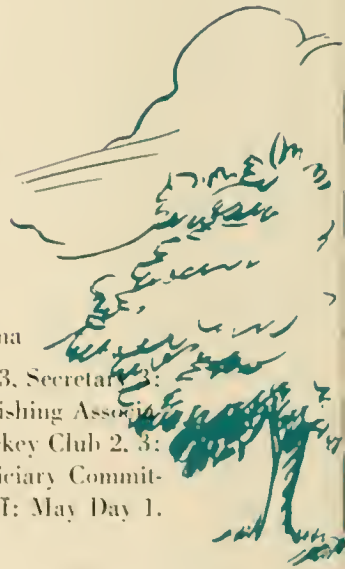
ADA JAYNE ROMIG

Beaver Spring, Pa.
Beaver Vocational High School

Omega Delta Sigma

S. C. A. 1, 2, 3; W. A. A. 1, 2, 3, Secretary 3;
Secretary of *Susquehanna* Publishing Association 3;
Theatre Guild 1, 2; Hockey Club 2, 3;
Intramural Sports 1, 2, 3; Judiciary Committee 3;
LANTHORN Editorial Staff; May Day 1.

Liberal Arts





RAYMOND ROBERT SCHRAMM
378 Belleville Avenue, Bloomfield, New Jersey
Bloomfield High School

Bond and Key

University Band 1, 2; Track Manager 1, 2;
Orange Key Club 1, 2; S. C. A. 1, 3; Biemic
Society 1, 2, 3; LANTHORN Editorial Staff 3;
House Manager of Bond and Key 3.

Liberal Arts



CHARLES GLENN SCHUELER
134 Weaver Avenue, Bloomfield, New Jersey
Bloomfield High School

Phi Mu Delta

Track 1, 2; Cheerleader 1, 2, 3; Business Society 1, 2, 3; Sergeant-at-Arms of Phi Mu Delta 3; Intramural Sports 1, 2, 3; Pledge Master of Phi Mu Delta; Varsity "S" Club.

Business Administration



JANET IRENE SECRIST
Millerstown, Pa.
Millerstown High School

Sigma Alpha Iota

Treasurer of S. A. I. 3; University Band 1, 2, 3; Concert Band 1, 2, 3; Zion Lutheran Choir 1, 2, 3; May Day 1, 2; Variety Show 1, 2; S. C. A. 1, 2, 3; Theatre Guild 2; Vice President's Council 3; Double Quartet 3.

Music Education



BETTY SOLEY

929 Creekside Drive, Niagara Falls, New York
Niagara Falls High School

Omega Delta Sigma

S. C. A. 1, 2, 3; Intramural Sports 1, 2, 3;
Biemic Society 1, 2.

Liberal Arts



BETH STILES

516 Main Street, Great Bend, Pa.
Commercial Education



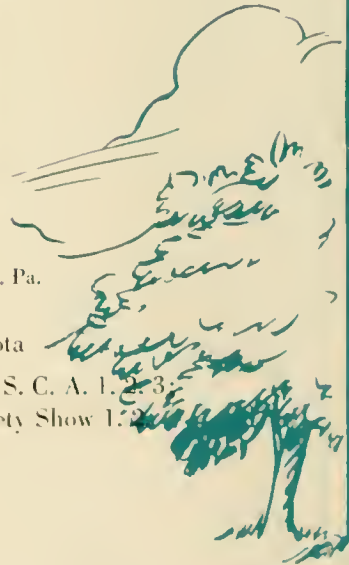
ELINOR JANE STITT

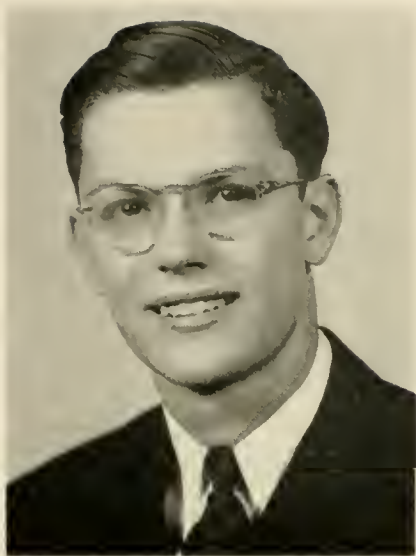
1405 West Market Street, York, Pa.
West York High School

Sigma Alpha Iota

Theatre Guild 1; May Day 2; S. C. A. 1, 2, 3;
Symphonic Society 2, 3; Variety Show 1, 2

Music Education





HERMAN G. STUEMPFLE, JR.

122 South Main Street, Hughesville, Pa.
Hughesville High School

Bond and Key

S. C. A. 1, 2, 3, Cabinet 2, 3, Boys' President 3; Football 1, 3; Basketball 1, 2, 3; Baseball 1; Track 2; Pre-Theological Club 1, 2, 3; Phi Kappa 1, 2, 3, President 3; Pi Gamma Mu 3; Men's Student Council 3, Treasurer 3; Intramural Board 3; Sports Editor of *Susquehanna* 2, 3; Editor-in-Chief of LANTHORN 3, Editorial Staff 1, 2; Football Manager 2; Orange Key Club 2; Vice President of *Susquehanna* Publishing Association 3; Secretary of Bond and Key 3.

Pre-Theological



JESSIE M. WALTON

1410 West Norwegian Street, Pottsville, Pa.
Pottsville High School

Sigma Alpha Iota

Symphonic Society; String Trio; String Quartet; S. C. A. 2, 3, 4, Cabinet 4; W. A. A.; Sigma Alpha Iota Editor; Varsity Show.

Music Education



ETHEL LOUISE WILSON

Kis-Lyn, Pa.
Hazleton High School

S. C. A. 1, 2, 3; May Day 1, 2; Variety Show 2.

Music Education



PHYLLIS LEONE WOLFE

Pennsylvania Avenue, Mill Hall, Pa.
Mill Hall High School

Sigma Alpha Iota

Vice President of S. A. I. 3; Inter-Sorority Council 3; W. A. A. 1; S. C. A. 1, 3; University Band 2, 3; Concert Band 2, 3; Symphonic Society 1, 2, 3; Trinity Choir 1, 2, 3; Editorial Staff of LANTHORN: Variety Show 1, 2; May Day 1, 2; Intramural Sports 1, 2; Double Quartet 2, 3.

Music Education



NADIA ELAINE ZAREMBA


437 West Second Street, Mount Carmel, Pa.
Mount Carmel High School

Omega Delta Sigma

W. A. A. 1, 2, 3; S. C. A. 2; Varsity Hockey 1, 2, 3; Varsity Basketball 1, 2; Vice President of Proctor Council 3.

Liberal Arts

★ ★ ★ ★ ★ ★ ★ ★ ★ ★ ★ ★ ★ ★ ★



In the Service

The following members of the Class of 1944 have gone into their nation's service:

PHILLIP ADONIZIO

FRED KREBS

CHARLES AGUE

JOHN LEACH

FRANK ATTINGER

DAVID LOHMAN

ALAN BERLIN

RICHARD MOGLIA

THOMAS BITTINGER

JOSEPH PEYTON

RALPH BROWN

PHILIP PLUMMER

JAMES CLARK

CHARLES REICHLEY

CALVIN CONRAD

DAVID RISHEL

RAYMOND CONRAD

JASON SCHAEFFER

STUART FLICKINGER

DONALD SHAFER

ALLEN FLOCK

ROBERT STOWERS

WILMER GRIMM

CALVIN WITMER

DAVID GROSS

JOSEPH WOS

JAMES HOWELL

LESTER YARNELL



Left to Right—Bougartz, Lempke, Mix.

Sophomore Class

OFFICERS

<i>President</i>	-	-	-	IRA BRADFORD
<i>Vice President</i>	-	-	-	ARNOLD MIX
<i>Secretary</i>	-	-	-	HERMINE LEMPKE
<i>Treasurer</i>	-	-	-	FERDINAND BOUGARTZ

WE RETURNED to the campus, an astute group of enlightened individuals in September, 1942, having completely lost any vestiges of the neophytic tendencies exhibited the previous year.

At the outset, it was evident that the exigencies of the war would cause changes calling forth the utmost of our abilities in adapting ourselves thereto. We therefore set forth upon the second leg of our collegiate adventure, imbued with the conviction that we would carry on despite adverse circumstances.

Our immediate concern—and sacred heritage, the orientation of the lowly frosh, we pursued with exacting precision. However, even this, an age old tradition, was overshadowed by the greatness of the task that lay before us—the task of preparing ourselves to meet the gigantic problems of the post-war world, which we knew would fall upon us as college graduates.

The atmosphere of austerity, however, was broken from time to time by the fulfillment of a somewhat restricted social calendar. The occurrence, in late fall, of our Soph Hop, started the ball rolling. It was generally pronounced a social if not a financial success.

Though we lost students to the armed services at intermittent intervals, the real blow came on February 13. At that time, with the induction of the Enlisted Reserve, we witnessed the departure of many of our classmates—classmates whom we had learned to care for deeply over the period of two years. Others will undoubtedly leave in the future. Be that as it may, we who remain pledge ourselves to ceaseless effort, looking forward to the day when once again we shall be reunited.

VICTOR ALESSI

DOROTHY ALLEN

OLIVE ATHERTON



RALPH AUKER

ALFRED BAGATINI

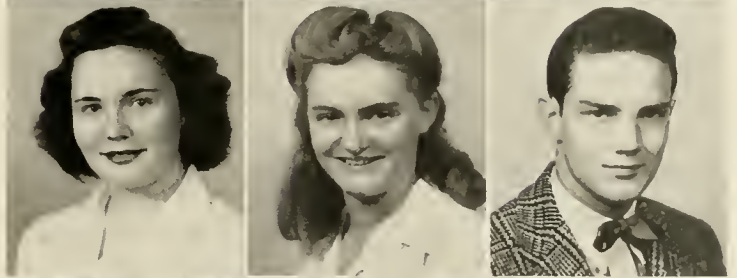
MARY LIB BASEHOAR



JANE BERGSTRESSER

FRANCES BITTINGER

FERDINAND BONGARTZ

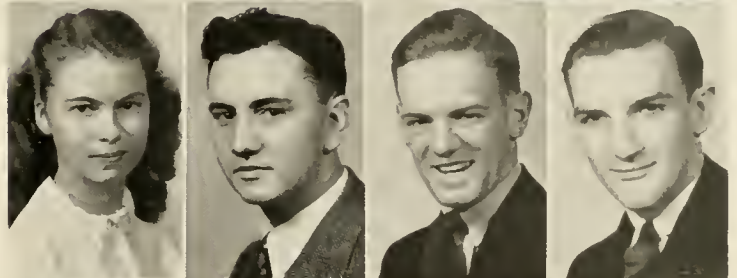


RUTH BOTDORF

ROBERT BOWMAN

IRA BRADFORD

ROBERT CAMERER



THERON CONRAD

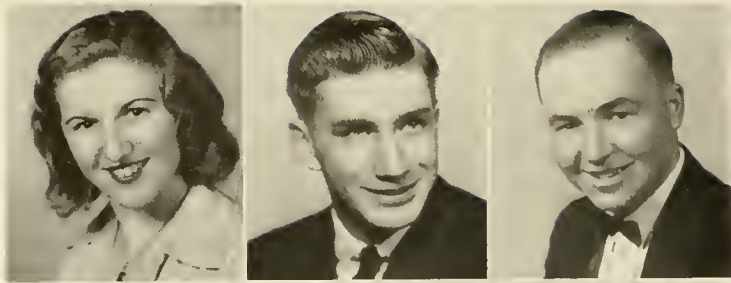
FRANCES DAY

MARJORIE DITZLER

ROBERT DORNSIFE



★ CLASS OF 1945 ★



DORIS ESCHRICH

ROBERT FELLOWS

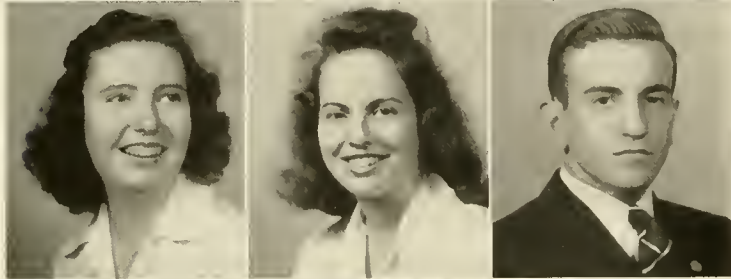
JOHN GEHMAN



EUGENE GRANDOLINI

JANE HAGY

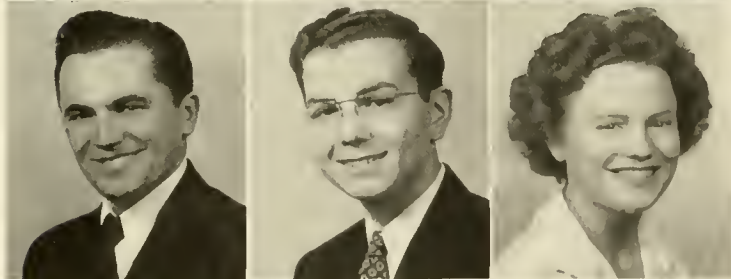
JAMES HINDMAN



JOYCE JENKINS

CORINNE KAHN

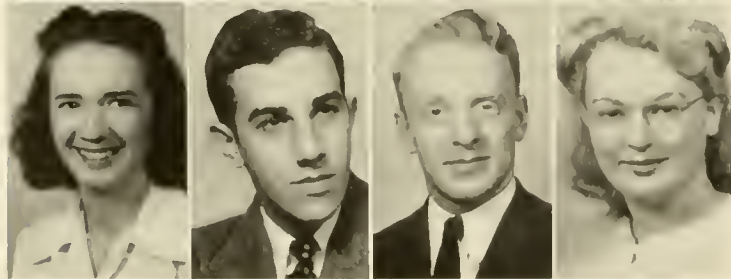
VINCENT KOCHENDERFER



JOHN KOCSIS

HAROLD KRAMER

LOUISE KRESGE



HERMINE LEMPKE

JACK LEVY

WILLIAM Mc CLURE

GLORIA MACHAMER

★ CLASS OF 1945 ★

JOSEPH MIGLIARESE

ARNOLD MIX

MARY MOYER



BETTY NAUGLE

ALAN PACKMAN

WARREN PIRIE



MARY REICHLEY

MARGARET SHIELDS

G. MORRIS SMITH



HAROLD SNYDER

ELIZABETH STONE

BERTRAM STRICKLAND

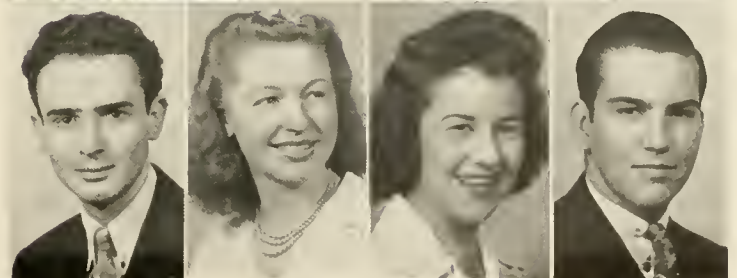


ROBERT SURPLUS

MARGARET WALTER

BETTE WARNER

JOHN WARNER



★ CLASS OF 1945 ★



Left to Right—Wohlson, Keller, Garman, Hoke.

Freshman Class

OFFICERS

<i>President</i>	-	-	-	WILLIAM HOKE
<i>Vice President</i>	-	-	-	RUTH GARMAN
<i>Secretary</i>	-	-	-	GENEVA KELLER
<i>Treasurer</i>	-	-	-	ROBERT WOHLSEN

SEPTEMBER FOURTEENTH dawned bright and clear as ninety-three "fit for the kill" freshmen began their college careers together as the "Class of '46". Orientation activities, placement exams, and registration proceedings preceded the formal opening of the college year on Thursday, September seventeenth. On that day began the hardships of all frosh—classes and hazing. In spite of the chatter of the much respected upper-classmen, these hardships were not so bad as had been anticipated, and ere long the pajama parade and backwards-inside-out day were only dim memories. The freshman getaway was a failure in that the prexy was caught by the vigilant sophs, but it was a decided success in the stimulation of the spirit of '46. This spirit has exemplified itself throughout the year in many ways.

It was this spirit that carried the frosh to the undisputed winning of the inter-class football crown by defeating the sophs on Homecoming Day and by defeating the juniors in the same manner a few days later. This same spirit caused the freshmen to do their bit in extra-curricular activities of the school such as sports, music, and dramatics. In studies, too, the freshman spirit was found bringing up the curves and stealing scholastic honors. About the middle of the year the band of freshmen became separated in body. Many fellows left for the armed forces to do their duties for Uncle Sam. Though the war separated this class in body, in spirit the class shall always remain as one, ever true and honest, speaking of the glories of S. U. through the "Spirit of '46".

ALEX ALEXANDER

MARJORIE BARTON

CARMEN BECKWITH



MARJORIE BIRKMIRE

EMILY BOTDORF

KATHRYN BOWMAN



DALE BRINGMAN

ROBERT BUBB

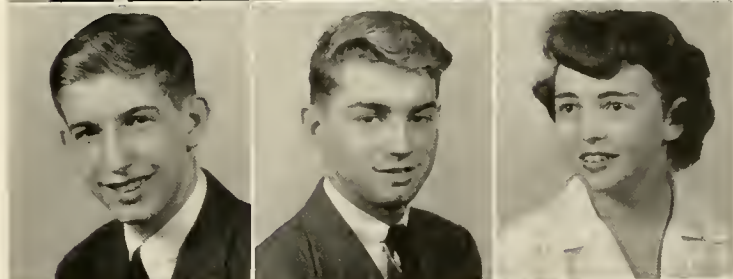
RAYMOND BUTEUX



ALBERT CAGE

ROBERT CHALOT

RUTH COCHRANE

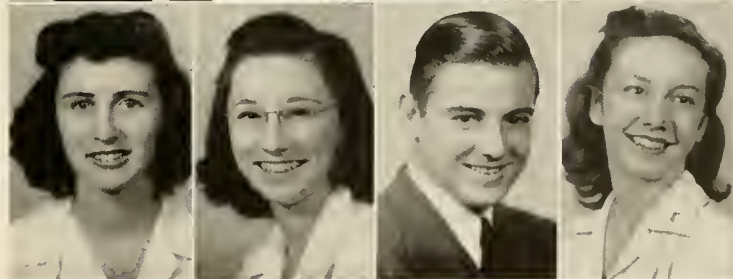


SONIA COHEN

CHRISTOBEL COULDREN

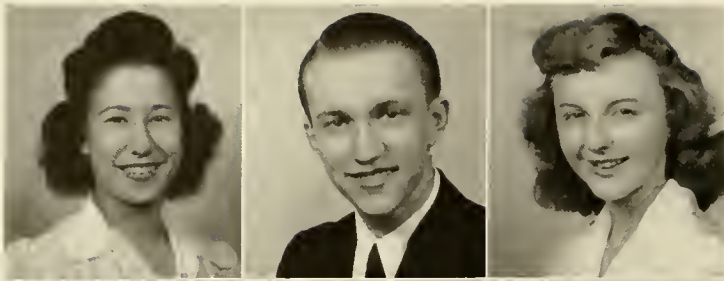
ROBERT COX

DOROTHY CROFT



CLASS OF 1946

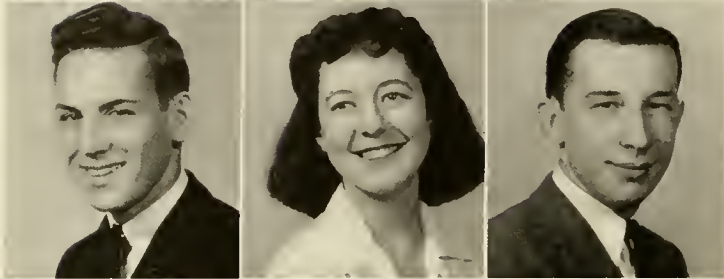




MARJORIE FISCHER

ROBERT FISHER

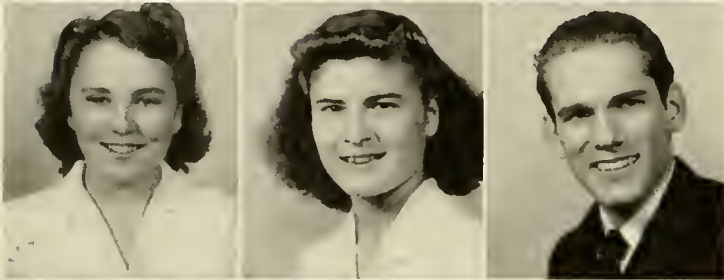
RUTH GARMAN



GALE GARRAUX

GLORIA GASPAROLI

ARTHUR GELNETT



JEAN GILBERT

VIRGINIA HALLOCK

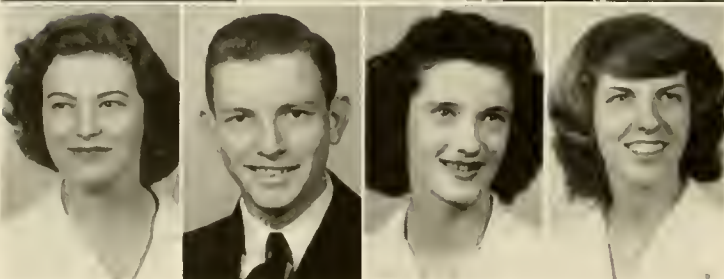
DAVID HARRIS



DONALD HERROLD

JUNE HOFFMAN

WILLIAM HOKE



CLAIRE HOLCOMBE

HOWARD HUCUS

JESSE INNIS

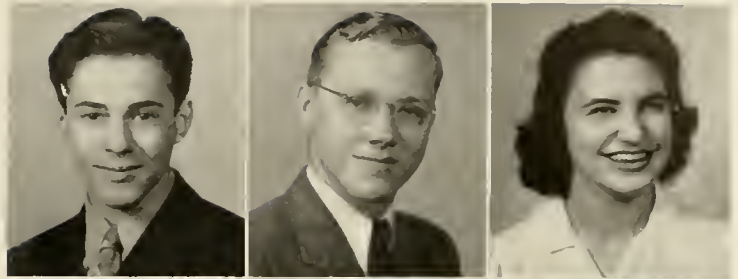
GENEVA KELLER

★ CLASS OF 1946 ★

ALFRED KESSLER

DONALD KING

JEAN KINZER



MARIE KLICK

LAVERNE KOHN

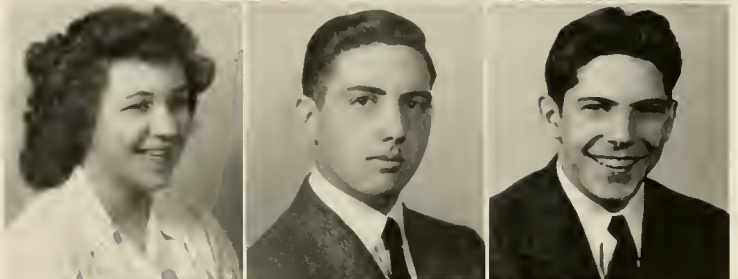
MARY KATHRYN KOLB



JANE LAUBACH

DONALD LEACH

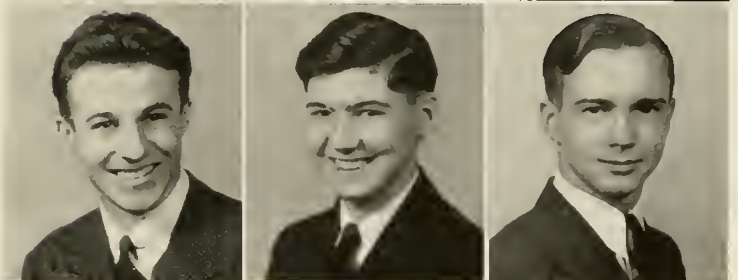
THOMAS LENZ



RICHARD LINDEMANN

KENNETH LOSS

ELWOOD McALLISTER

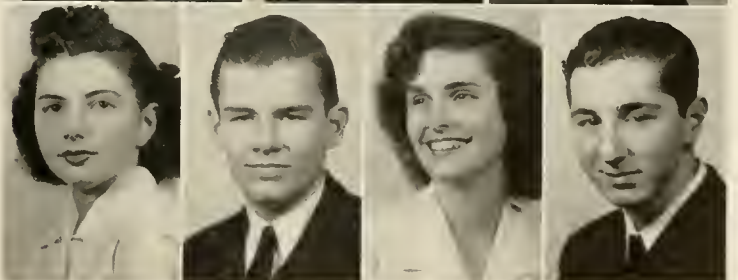


DOROTHY MACAROW

ROBERT MADDOCKS

JANE MALHAMES

LESLIE MASSEY



★ CLASS OF 1946 ★



ARNOLD MESZAROS

ANNA CATHERINE MILLER

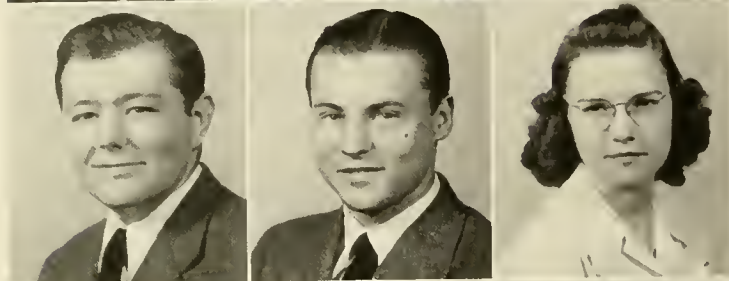
JAMES MOWLES



J. BURLIEGH PETERS

JANET ROHRBACH

JANE ROYER



RICHARD SCANLON

BRUCE SHOEMAKER

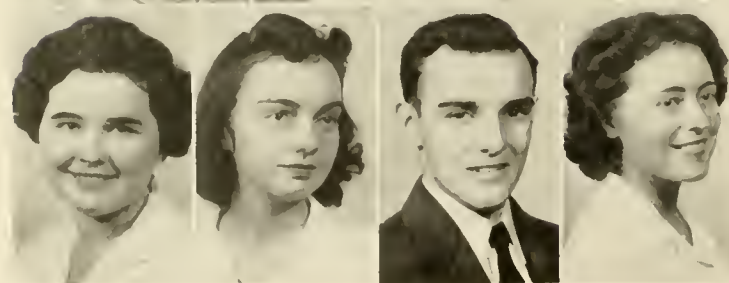
CHARLOTTE SMITH



PATRICIA SNYDER

MARJORIE SOULE

HOPE SPICER



MARJORIE STAPLETON

DOROTHY STERNAT

GEORGE STOW

JEAN STRAUSSER

★ CLASS OF 1946 ★



EVELYN SWARTZLANDER

JOSEPH TAYLOR

AUGUSTUS TIETBOHL



JEANNE TROSS

HELEN WELLE

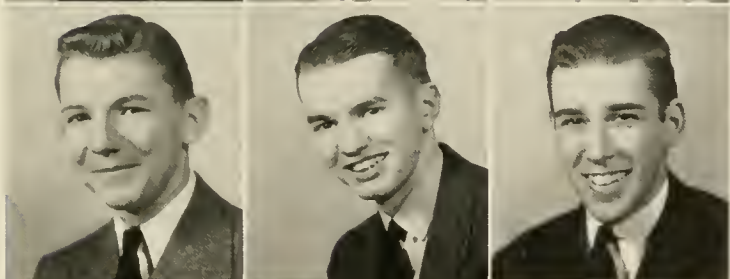
JEAN WHEAT



JOHN WILEY

MARIAN WILLARD

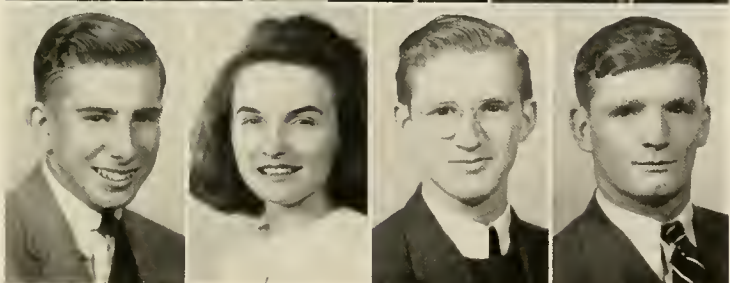
ELIZABETH WILT



RINE WINEY

RALPH WITMER

ROBERT WOHLSEIN



FRANK ZEIDLER

ANNA ZEIGLER

FRANKLIN ZERBE

EVAN ZLOCK

★ CLASS OF 1946 ★



Horas non numero nisi serenas

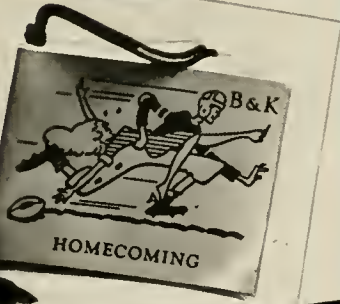
“I count only the sunny hours.”

—Motto from a sun-dial
near Venice.

The 1921 LANTHORN

PUBLISHED BY THE
JUNIOR CLASS
SUSQUEHANNA
UNIVERSITY
SHELLSBOURNE, PENNA.

BUSINESS SOCIETY
of SUSQUEHANNA UNIVERSITY



The Susquehanna

Student Publication of Susquehanna University for More Than 100 Years

of
L.T. WOLFE JAPAN'S PRISONER
Bagdad Educator Here
Thursday in Tell of
Sail Moves to Iran
6 SENIORS LEAVE IN 11
GRADUATION HIGH 8



A C T I V I T I E S





Seated, Left to Right—Prof. Linebaugh, Dean Galt, Dr. Heath, Dr. Dunkelberger.
 Standing—Sunday, Janson, Stahl.

Fraternity Senate

OFFICERS

DR. RUSSELL GALT
Chairman

PROF. PERCY M. LINEBAUGH
Secretary-Treasurer

WILLIAM JANSON
President of Social Chairmen

The Fraternity Senate is made up of the presidents of the social fraternities, their faculty advisers, and Dean Galt as chairman. It was reorganized in 1939 to serve as a governing body instead of an inter-fraternity council, and is now a link between the college administration and the fraternities. The Senate now determines the number of pledges each fraternity may take from each class, the dates for the rushing season, and general rushing regulations. The organization of the Senate was easily adapted to include inter-fraternity social events. The decreasing number of fraternity men has fostered more inter-fraternity dances. The president of the social chairmen is systematically chosen from the senators. The presidency rotates among the fraternities each year. The Fraternity Senate, by a democratic approach, has done much to relieve any strained relationships among its members and to create a better understanding of their problems.



Seated, Left to Right—Dellecker, Jerore, McCorkill, Arentz.
 Standing—Cox, Harris, Dr. Lumpkins, Wolfe, Bemiller, Lyons.

Inter-Sorority Council

The Inter-Sorority Council is composed of the three presidents, of the three vice presidents, and one other member of each sorority chosen by her president. The dean of women is the faculty adviser.

The purpose of the organization is to establish a more co-operative attitude among the three sororities on the campus. All policies concerning freshman rushing are under the jurisdiction of the council. The group meets once a month at which time they determine policies for regulating freshman rushing, and make plans for teas, hikes, and any other activities which may be an integral part of the rush program. Several dances are sponsored annually by the Inter-Sorority Council.

OFFICERS

RUTH McCORKILL
President

JUNE JERORE
Vice President

FERNE ARENTZ
Secretary

DOROTHY DELLECKER
Treasurer



Seated, Left to Right—Hopkins, Lozo, Leach, Kemberling.
Standing—Stuempfle, Dr. Gilbert.

Men's Student Council

OFFICERS

KEITH LOZO
President

HARRY WILCOX
Vice President

RAY HOCHSTUHL
Secretary

HERMAN STUEMPFLE
Treasurer

DR. RUSSELL W. GILBERT
Faculty Adviser

The Men's Student Council, whose membership equally represents each of the three fraternities and the non-fraternity men, was subject to a year of reorganization. In the fall, by directly appointing the Sophomore Tribunal, a more strict supervision was kept over freshman initiation policies. During the winter the Student Council Constitution was re-written in order to fill more adequately the present campus demands. Later in the year, a public address system, complete with record player and recorder, was purchased with the money collected for a memorial to the undefeated football team of 1940.



Seated, Left to Right—Dellecker, D. Williamson, Arentz, Dr. Lumpkins, Haggarty.
 Standing—Dubendorf, Klieck, Kramer, Basehoar, McOrkhill, Cox.

Women's Student Council

The usual program of orientation for freshman women sponsored by the council was carefully executed.

With the Homecoming, Anniversary, and Parents' Day celebrations all falling upon the same week-end, council joined with the men in the preparation of the program.

Precedent was established in the election of a Homecoming Queen, Doris Haggerty, junior, who officiated at the award ceremony of the plaque for decorations to Theta Chi fraternity. The traditional tea was held for the parents in Seibert in the early afternoon before the game.

As a seasonal activity, the members sponsored a room adjacent to the basement social rooms for the use of non-sorority girls during the week and for the entertainment of out-of-town visitors over week-ends. With the determined and keen assistance of the faculty adviser, Dr. Josephine Lumpkins, the Council realized its annual anticipated plans.

The activity of the year was a record dance held in the spring in the Alumni gymnasium with the resident air cadets as invited guests.

OFFICERS

FERNE ARENTZ
President

DOROTHY WILLIAMSON
Secretary-Treasurer

THE DEAN OF WOMEN
Faculty Adviser



Seated, Left to Right—Prof. Brungart, Dr. Kretschmann, Prof. Reitz, Wolfe, Cox, Dr. Dunkelberger.
 Standing—Hontz, Kniffin, Stuenkel, Lauver, Dr. Lumpkins, Dubendorf.

Pi Gamma Mu

OFFICERS

MARJORIE WOLFE
President

MARY COX
Vice President

PROF. D. IRVIN REITZ
Secretary-Treasurer

This year the programs of the campus' honor society were in keeping with the purpose of Pi Gamma Mu, attempting to stimulate profound consideration of current social events.

According to custom, the monthly meetings were held in the homes of faculty members and several times in the Seibert Hall social rooms.

Interesting round table discussions resulted after the presentation of the various main addresses of the evenings. Particularly fascinating was the subject of the American-Japanese citizens and their status in the United States at present.

A native of the South American country of Colombia and an exchange student, Alfonso Rodriguez, spoke on the contemporary social, economic, and political conditions extant in Colombia.

Dr. Josephine Lumpkins' paper on Texas' Negro Problem was read at one of the meetings and some excellent views were shown at another.

The annual banquet was held in May with the Reverend Raymond D. Wood, of Zion Lutheran Church, Sunbury, as speaker.



Seated, Left to Right—Dubendorf, Coryell, Houtz, Dr. Gilbert.
 Standing—Levy, Stone, Gelnett, Hagy, Bringman.

Debating Society

Susquehanna's Debating Society, for preparatory work, held several practice debates on the subject, "The Establishment of a Federal Union by the United Nations." Two teams attended a debate tournament at Shippensburg State Teachers College, February 20, and won five out of six debates. The affirmative team was Houtz and Stone; the negative team was Hagy and Coryell. The society was also represented at the Pennsylvania State Debaters' Convention held at State College, March 19 and 20, and a debate was broadcast over WKOK.

DR. RUSSELL W. GILBERT
Coach

Tau Kappa Alpha

Tau Kappa Alpha is the national, forensic honor fraternity. The Susquehanna chapter was organized January 18, 1930, with membership restricted to those who have shown exceptional ability in public speaking.



Left to Right—Dr. Gilbert, Dr. Dunkelberger, Coryell.



Seated, Left to Right—Dr. Lumpkins, Dellecker, Arentz.
Standing—Weber, Kniffin, Boone, Hoke, Romig.

Women's Judiciary Committee

DOROTHY DELLECKER
Chairman

The Women's Judiciary Committee is composed of two representatives of each sorority. The dean of women and the president of the Women's Student Council help to guide the activities of this group. The purpose of this committee is to carry out efficiently the rules set forth by the Women's Student Council. The work of this organization has proved very successful in achieving a more harmonious and co-operative dormitory spirit.



Seated, Left to Right Bemiller, Pensyl, Zarembo, Hocker,
Standing—Renfer, Jenkins.

Vice President's Council

The Vice Presidents' Council, organized to help keep Seibert Hall in a state of silence, has at its head a house president who is elected by the Student Council, and she, in turn, appoints a vice president or proctor for each hall. It is the responsibility of these officers, six in number, to see that quiet is maintained during hours designed for study.

Every month the council has dinner together in Horton Dining Hall. After dinner the council holds a meeting at which time problems with which the council are concerned are discussed, and then the Student Council makes rules concerning changes proposed by the Vice Presidents' Council.

This is the second year for the Council, and it has proved to be a very important student governmental agency.

OFFICERS

EMAGEAN PENSYL
House President

HELEN HOCKER, GERALDINE
BEMILLER, JEAN RENFER,
NADIA ZAREMBA, JANET
SECRETIST, JOYCE JENKINS

Vice Presidents



Seated, Left to Right—Hopkins, Janson, Stuempfle, Walsh, Dr. Ahl,
 Standing—Loss, Peters, Bass, Gutshall, Hugus, Hindman, Bergstresser, Wolfe.

Phi Kappa

OFFICERS

HERMAN STUEMPFLE
President

WILLIAM JANSON
Vice President

HENRY HOPKINS
Secretary

GEORGE BASS
Treasurer

The Philhellenika Koinonia, or Philhellenic Society, was organized in 1929 to create and to cultivate more interest and greater appreciation for the culture of Greek civilization. Since then, for obvious reasons, it has assumed the name Phi Kappa. Membership is limited to those Greek students who have maintained a satisfactory academic standing.

Some of the papers presented this year included the subjects of "The Greeks at Sea" and "Greek Cities." The December meeting, a Christmas social gathering, was held at the home of Dr. A. William Ahl. The new members, Bergstresser, Hugus, Loss, Peters, and Wolfe, were formally initiated in January. Meetings are held in the Greek room on the first Tuesday of each month.



Front Row, Left to Right—McAllister, Wiley, Migliarese, Hays, Wohlson, Garraux, Fisher.
 Second Row—Kohn, Macarow, D. Williamson, Coryell, Prof. Kelley, Gemmill, Garman, Fellows.
 Third Row—Cochrane, Strausser, Sternat, Stapleton, Soule, Geiger, Gasparoli, Baron, Kresge, Mix.
 Fourth Row—Willard, Holcombe, Hoffman, Frank, Basehour, Wheat, Eshrick, Keller.

Susquehanna Theatre Guild

The Theatre Guild produced three one-act plays selected, directed, and contributed to, in time, effort, and properties by the student committee members—"Trysting Place," by Booth Tarkington, "Confessional," by Percival Wilde, and "Two Crooks and a Lady."

"Magnificent Obsession" was the annual fall production presented in December, as usual in Seibert Auditorium. "Curse You, Jack Dalton" and "He Ain't Done Right," by Nell, were chosen to compose the spring production given in April.

The long desired objective of realizing a campus branch of Alpha Psi Omega, the honor dramatic society, materialized this year in our Theta Phi chapter.

OFFICERS

LOUISE McWILLIAMS
President

MARGARET GEMMILL
Treasurer

DOROTHY WILLIAMSON
Secretary

PROF. WALTER B. KELLY
Faculty Adviser

MISS ALLISON
Business Adviser



Left to Right- Hall, Mozlia, Schueler, Stnempfle.

Intramural Board

PROF. A. A. STAGG, JR.
Faculty Adviser

The purpose of the Intramural Board is to co-ordinate and supervise the intramural and interfraternity sports program for the men of the campus. The Intramural Board, this year, has proved its worth by launching a well-organized and well-balanced program of which Coach A. A. Stagg, Jr., is supervisor.

In the early autumn, a touch football tournament was held, and during the winter months basketball held sway. A spring softball league proved extremely interesting.



Seated, Left to Right—Bass, Hopkins, Stahl, Heim, Dr. Kretschmann.
 Standing—Loss, Peters, Janson, Gutshall, Hugus, Hindman, Stuempfle, Bergstresser, Wolfe.

Pre-Theological Club

The Pre-Theological Club is an organization for the students of Susquehanna who are preparing for the Gospel ministry. The meetings of the club are held once a month in Hassinger Hall. At this time topics and problems pertaining to the ministry are discussed, and leadership is encouraged in the members by having them conduct the meetings. Spiritual enrichment is also a vital part of the program. Prominent churchmen and faculty members are invited to speak at the meetings. The members of this club take an active part in college activities by planning and conducting many of the chapel programs, vesper services, and Student Christian Association meetings.

OFFICERS

ROBERT STAHL
President

STANLEY NALE
Vice President

DAVID HEIM
Secretary-Treasurer

DR. T. W. KRETSCHMANN
Faculty Adviser



Seated, Left to Right—Dr. Scudder, Stuempfle, Janson, D. Williamson, Dr. Ovrebo, Heim,
 Standing—E. Williamson, Cox, Fertig, Bass, McCorkill, Smith, Walton, McVicker, Dr. Lumpkins, Miss Hein.

S. C. A. Cabinet

OFFICERS

WILLIAM JANSON
President

DOROTHY WILLIAMSON
Girls' Vice President

HERMAN STEUMPFLE
Boys' Vice President

EVELYN WILLIAMSON
Secretary

DAVID HEIM
Treasurer

DR. PAUL J. OYREBO, DR.
 JOSEPHINE LUMPKINS, DR.
 F. W. S. SCUDDER, MISS
 BERTHA M. HEIN
Faculty Advisers

The Student Christian Association, whose purposes are to help the new students to become a part of the college, to continue church relationships, to establish friendships, and to help immediate moral and religious ideals, has been functioning superbly throughout the entire year. In addition to the regular weekly meetings, many special programs were under their supervision. The faculty reception for students, the Christmas program with its caroling, and the bringing to the school of such speakers as Rev. H. G. Stuempfle, Rev. Russel Crouse, Miss Mildred Winston, Rev. L. E. Bowers, Mrs. Dorothy T. Dyer, and Rev. Maurice Gortner—all of these were successful projects that give the Student Christian Association the distinction of being the center of campus activities.



Front Row, Left to Right Hoke, Bubb, Harris, Walsh, Maddocks, Zeidler, Fellows.
 Second Row—Warner, Prof. Reitz, Harris, Levy, Kniffin, Allen.
 Third Row—Dr. Heath, Lanver, E. Williamson, Jerome, Hochstahl, Royer, Innis, Laubach, Kinzer, Cohen.
 Fourth Row—Shields, Hoke, Arentz, D. Williamson, McCorkill, Lempke, Kahn, Eshrick, Willard, Holcombe.

Business Society

The Business Society has been organized for the purpose of enabling students registered in all fields of business to discuss matters of common interest.

Features of the monthly meetings this year included: a quiz program, a scavenger hunt, and discussions on such topics as "The Ethical Problem of Big Business" and "Propaganda" by members of the faculty.

During February, fifteen of the seventy members of the society were called into active service with the armed forces of our country.

OFFICERS

EMAGEAN PENSYL
President

ETHEL KNIFFIN
Vice President

JEAN HARRIS
Secretary

JACK LEVY
Treasurer

DR. HARVEY A. HEATH
 PROF. D. I. REITZ
Faculty Advisers

THE 1944 LANTHORN

To Susquehanna this book comes as a presentation of the Class of 1944 with the hope that its contents may re-awaken many a memory and afford much pleasure now and in the years to come. Especially do we present it to those of our own class who have been called into our nation's service. Throughout the years may this LANTHORN serve to bind us as classmates.

Seated, Left to Right—Romig, Gross, Stuempfle, Wolfe, Hoke, Dubendorf.
Standing—Lamon, Leach.



Left to Right—Prof. Reitz, Janson, Gemmill, Ague.

STAFF

EDITORIAL STAFF

Editor-in-Chief - - - HERMAN STUEMPFLE

Faculty Adviser - - - DR. ARTHUR H. WILSON

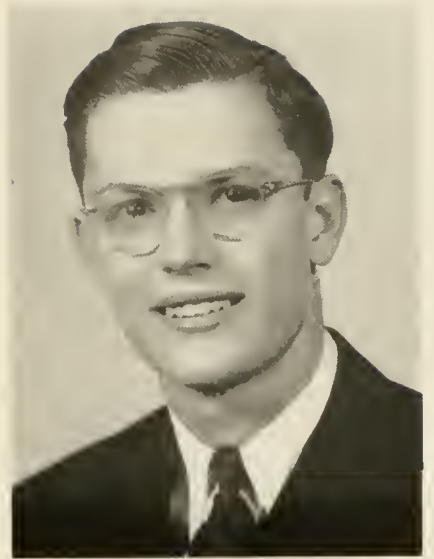
Grace Dubendorf	John Leach
David Gross	Ada Jane Romig
Janet Hoke	Raymond Schramm
Robert Hunter	Phyllis Wolfe
Peter Lamon	

BUSINESS STAFF

Business Manager - - - WILLIAM JANSON

Faculty Adviser - - - PROF. D. IRVIN REITZ

Charles Ague	Margaret Gemmill
--------------	------------------



HERMAN G. STUEMPFLE



WILLIAM A. JANSON

THE SUSQUEHANNA

EDITORIAL STAFF

<i>Editor-in-Chief</i>	- - -	PIERCE CORYELL
<i>Associate Editor</i>	- - -	MARJORIE WOLFE
<i>Managing Editor</i>	- - - -	DAVID GROSS
<i>News Editor</i>	- - - -	JANET HOKE
<i>Sports Editor</i>	- - -	HERMAN STUEMPFLE
<i>Faculty Adviser</i>	- - -	DR. ARTHUR H. WILSON

BUSINESS STAFF

<i>Business Manager</i>	- - -	DOROTHY WEBBER
<i>Circulation Manager</i>	- - -	JAMES CLARK
<i>Advertising Manager</i>	- - -	RALPH BROWN
<i>Faculty Adviser</i>	- - -	PROF. D. IRVIN REITZ

The Susquehanna is the weekly student publication of the college, the medium through which student opinion is expressed and the news of Susquehannans on the campus and out in the world is recorded.

This year *The Susquehanna* has emphasized the effects of world conditions on our college life. Through the issues were traced the lowering of the draft age, Susquehanna University students joining the Reserves in November, and being called for active service in February, the selection of Susquehanna as a training base for aviation cadets, the defense stamps and bond drive, and the outstanding accomplishments of our alumni on the field of battle.

The Susquehanna is a member of the Intercollegiate Newspaper Association of the Middle Atlantic States and the National College Press Association.



Left to Right - Hoke, Coryell, Wolfe, Stuempfle.



Seated, Left to Right - Webber, Prof. Reitz
Standing - Brown, Clark, Eshrick, Nale, Hoeker, Schneider.



Left to Right—Clark, Dean Galt, Prof. Kelly, Heim.

Proctors' Committee

The Proctors' Committee is one of the younger organizations on the campus. It is composed of four members, three representing Hassinger Hall and one representing Selinsgrove Hall. These student proctors meet as necessity demands with a member of the faculty who acts as an adviser.

The purpose of this organization is to see that the men's dormitories are run in a satisfactory manner. Excellent results have guaranteed its position among the governmental bodies of the campus.

OFFICERS

DEAN RUSSELL GALT
Chairman

DAVID HEIM
Secretary

PROF. WALTER B. KELLY
Faculty Adviser



Symphonic Society

The Symphonic Society, directed by Mr. Elrose L. Allison, has a far-reaching effect on both participants and audience. It gives those who participate an opportunity to produce truly great music, for the repertoire is one of choice literature. It gives the audience an opportunity to add to its cultural background in music.

The climax of the symphonic season is the annual Spring Concert, featuring an eminent soloist. This season the soloist was the first clarinetist of the Montreal Symphony, Zenna Gemmalò. In past years the Symphonic Society has featured such artists as Dorothy Minty, violinist, and Bernard Greenhouse, cellist.

Although several members were called into the Service in the middle of the season, the concert was given, still upholding the high standards and fine musicianship which have always been characteristic.

MR. ELROSE L. ALLISON
Conductor



University Band

Through its ever-increasing popularity, the Susquehanna Band has become well known throughout the region for its intricate drilling and showmanship. It has become an indispensable part of football games and other campus activities because of its excellent performance and the color and enthusiasm that it inspires.

The band is guided in routine by a capable director, and each year the musical technique of its members is displayed in the annual concert where the compositions of master composers are presented. This year's guest conductor, Richard Franko Goldman, was born in New York in 1910, and is the son of Edwin Franko Goldman. Mr. Goldman remains as associate conductor of the Goldman Band.

MR. ELROSE L. ALLISON

Director

Bond and Key



Seated Left to Right—Stuempfle, Gross, Sunday, Hall, Brown, Clark,
Standing—Fellows, Lamon, Hays, Mix, Schramm, Flock, Payne.

OFFICERS

<i>President</i>	- - - - -	REX SUNDAY
<i>Vice President</i>	- - - - -	JAMES HALL
<i>House Managers</i>	-	RALPH BROWN, RAYMOND SCHRAMM
<i>Secretaries</i>	- -	DAVID GROSS, HERMAN STUEMPFLE
<i>Treasurers</i>	- - -	JAMES CLARK, JOHN WOLFE



HONORARY MEMBERS

Dr. A. William Ahl
Dr. John J. Houtz
Prof. Percy M. Linebaugh

Dr. Paul J. Ovrebo
Dr. George M. Robison

Dr. Fisk W. S. Scudder
Dr. E. Edwin Sheldon
Prof. Frederick C. Stevens

MEMBERS

Seniors

James Hall

Sidney Kemberling
Rex Sunday

John Wolfe

Juniors

George Bass
Ralph Brown
James Clark
Allen Flock

David Gross
William Hays
Peter Lamon
Richard Lepley

Fred Lower
Howard Payne
Raymond Schramm
Herman Stuempfle

Sophomores

Ralph Aucker

Robert Fellows

Arnold Mix

Freshmen

Benjamin Bergstresser
Cale Garraux

Elwood McAllister
Burliegh Peters

Franklin Wolfe
Franklin Zerbe



Phi Mu Delta



Front Row, Left to Right—Ague, Hochstuhl, Janson, Walsh,
 Second Row—Curry, Schueler, Bagatini, Levy,
 Third Row—Matthews, Zuback, Pirie, Hunter, Bongartz, Galski.

OFFICERS

President - - - - - WILLIAM JANSON
Vice President - - - - - RAYMOND HOCHSTUHL
Secretary - - - - - JOHN WALSH
Comptrollers - - CHARLES AGUE, RAYMOND HOCHSTUHL



HONORARY MEMBERS

Mr. E. M. Brungart
Dr. George E. Fisher

Dr. Harvey A. Heath
Prof. Walter B. Kelly
Dr. William A. Russ

Dr. Arthur H. Wilson
Mr. Ernest T. Yorty

Brothers in the Faculty

Mr. Elrose L. Allison

Mr. H. Vernon Blough

MEMBERS

Seniors

William Curry
John Galski

Larry Isaacs

John Walsh
John Zuback

Juniors

Charles Ague
Raymond Hochstuhl
Herbert Holderman

Robert Hunter
William Janson

Marvin Maneval
Richard Moglia
Glenn Schueler

Sophomores

Victor Alessi
Alfred Bagatini
Ferdinand Bongartz

Ira Bradford
John Kocsis

Jack Levy
Joseph Migliarese
Warren Pirie

Freshmen

Jack Boyer
Ray Buteux
Robert Chalot
David Harris
William Hoke

John Kocsis
Thomas Lenz
Richard Lindemann
Robert Maddocks
Arnold Meszaros

George Stowe
Robert Wohlson
John Wiley
Frank Zeidler
Evan Zlock



Theta Chi



Front Row, Left to Right—Leach, Stahl, Dr. Dunkelberger, Klinger, Wilcox.
Second Row—Grandolini, Spooner, Kramer, Bowman, Nale.
Third Row—Dornsife, Hindman, Warner, McClure, Surplus.

OFFICERS

President - - - - - ROBERT STAHL
Vice President - - - - - HARRY WILCOX
Secretaries - - - - - JOHN LEACH, DAVID HEIM
Caterer - - - - - DONALD SPOONER



HONORARY MEMBERS

Dr. George F. Dunkelberger

Dr. Russell W. Gilbert

Prof. D. Irvin Reitz

MEMBERS

Seniors

Kenneth Kluger
Clark Nevin

Donald Spooner

Robert Stahl
Harry Wilcox

Juniors

Franklin Fertig
David Heim

John Leach

Stanley Nale
John Warner

Sophomores

Robert Bowman
William R. Camerer
Robert Dornsife

Eugene Grandolini
James Hindman

Harold Kramer
William McClure
Robert Surplus

Freshmen

Dale Bringman
Albert Cage

Robert Cox
Howard Hugus
Donald King

Donald Leach
Augustus Tietbohl



Kappa Delta Phi



Front Row, Left to Right—Shields, Gemmill, Day, Hagy.
 Second Row—Pensyl, E. Williamson, Webber, Cox, D. Williamson, Arentz.
 Third Row—Moyer, Jenkins, Stone, Byrod, Lempke, Hoke, Allen, Bergstresser, Warner.

OFFICERS

<i>President</i>	- - - - -	JUNE JERORE
<i>Vice President</i>	- - - - -	MARY COX
<i>Secretary</i>	- - - - -	DOROTHY WEBER
<i>Treasurer</i>	- - - - -	DOROTHY WILLIAMSON
<i>Financial Secretary</i>	- - - - -	EVELYN WILLIAMSON



HONORARY MEMBERS

Mrs. A. W. Abl
Miss Lenora Allison
Miss Lois Boe
Miss Viola DuFrain

Mrs. H. A. Heath
Miss Beatrice Herman
Mrs. T. W. Kretschmann

Mrs. Carter Osterbind
Mrs. W. A. Russ, Jr.
Miss Isabelle Nicely

MEMBERS

Seniors

Ferne Arentz
Mary Cox

June Jerore
Emajean Pensyl

Dorothy Webber
Dorothy Williamson

Evelyn Williamson

Juniors

Catherine Byrod

Margaret Gemmill

Janet Hoke

Sophomores

Dorothy Allen
Jane Bergstresser
Frances Day

Jane Hagy
Joyce Jenkins

Hermine Lempke
Mary Moyer

Margaret Shietis
Betty Stone
Bette Warner

Pledges

Jean Geiger
Claire Holcombe
Jessie Innis

Jean Kinzer
LaVerne Kohn

Katherine Kolb
Jane Laubach

Charlotte Smith
Evelyn Swartzlander
Marian Willard



Omega Delta Sigma



Seated, Left to Right—Wolfe, Kniffin, McCorkill, Bemiller, Kahn.
 Standing—Soley, Weeks, Basehoar, Harris, Chamberlain, Renfer, Romig, Haggarty, Zarembo.

OFFICERS

<i>President</i>	- - - - -	- RUTH McCORKILL
<i>Vice President</i>	- - - - -	GERALDINE BEMILLER
<i>Secretary</i>	- - - - -	MARJORIE WOLFE
<i>Treasurer</i>	- - - - -	ETHEL KNIFFIN
<i>Financial Secretary</i>	- - - - -	CORINNE KAHN



HONORARY MEMBERS

Mrs. George E. Fisher
Mrs. Russell Gilbert
Mrs. John J. Houtz
Mrs. Paul J. Ovrebo

Mrs. D. Irvin Reitz
Mrs. G. Morris Smith
Mrs. A. A. Stagg, Jr.
Miss Irene Shure

Mrs. A. H. Wilson
Mrs. J. I. Woodruff
Mrs. E. T. Yorte
Mrs. Frank Ulrich

MEMBERS

Seniors

Margaret Chamberlain
Ethel Kniffin

Ruth McCorkill

Mary Weeks
Marjorie Wolfe

Juniors

Geraldine Bemiller
Doris Haggerty

Jean Harris
Jean Renfer
Ada Jayne Romig

Betty Soley
Nadia Zarembo

Sophomores

Mary Elizabeth Basehoar

Corinne Kahn

Betty Naugle

Pledges

Marjorie Barton
Katherine Bowman
Ruth Cochrane
Sonia Cohen

Dorothy Croft
Ruth Garman
Geneva Keller
Dorothy Macarow
Jane Malkames

June Royer
Gloria Gasparoli
Patricia Snyder
Jean Wheat



Sigma Alpha Iota



Seated, Left to Right—Kramer, Wolfe, Dellecker, Sechrist, Turnbach, Billows.
 Standing—McWilliams, Walton, Boone, Stitt, Machamer, Lyons, Welsh, Kresge, Bowers, Hocker.

OFFICERS

<i>President</i>	- - - - -	DOROTHY DELLECKER
<i>Vice President</i>	- - - - -	PHYLLIS WOLFE
<i>Secretary</i>	- - - - -	LOIS KRAMER
<i>Treasurer</i>	- - - - -	JANET SECHRIST



HONORARY MEMBERS

Mrs. Percy Linebaugh
Miss Mary K. Potteiger

Mrs. Fisk W. Scudder

Mrs. E. E. Sheldon
Mrs. Frederick C. Stevens

MEMBERS

Seniors

Ruth Billow
Eileen Boone
Jean Bowers

Dorothy Dellecker
Eleanor Lyons

Louise McWilliams
Lorraine Turnbach
Jessie Walton

Juniors

Helen Hocker
Lois Kramer

Janet Sechrist

Jane Stitt
Phyllis Wolfe

Sophomores

Marjorie Ditzler

Louise Kresge
Gloria Machamer

Margaret Walter

Pledges

Carmen Beckwith
Emily Botdorf
Jean Gilbert
Virginia Hallock

Marie Klick
Ann Miller
Janet Rohrbach

Hope Spicer
Marjorie Stapleton
Dorothy Sternat
Jean Strausser





. . . a hardy rock garden to immortalize one of Susquehanna's two undefeated football teams.



A T H L E T I C S



1892



Crusaders of 1892—Pioneers of Fifty Fighting Football Teams.



YEARS OF FOOTBALL

Susquehanna University celebrated her Golden Anniversary of football—1892-1942—with a record of one win, one game tied, and four defeats. The 1942 Crusaders, a small but plucky contingent, gained a total of 1,313 yards through running and passing as against 1,579 for their opponents. Injuries again proved to be the jinx of the Orange and Maroon in this campaign which may have been the last until after the close of the war.

SUSQUEHANNA 0, UNIVERSITY OF BUFFALO 19

University Field

The Buffalo Bisons caught sight of the maroon jerseys of the Crusaders and raged to a 19 to 0 triumph. While her opponents were pushing across their markers in the first, second, and third quarters, Susquehanna could not capitalize on her scoring opportunities. A few bright spots, however, balanced the defeat. Jack Houser, senior transfer from Muhlenburg, showed the ability to aid greatly, and four freshmen, Meszaros, Taylor, Bolig, and Chalot, who broke into the lineup of the first game, further enhanced Susquehanna's prospects.

SUSQUEHANNA 6, HAVERFORD 27

Haverford

Haverford gained only seven more yards from scrimmage than Susquehanna and had only five more first downs, but even though Larry Isaacs played one of the greatest games of his career and made a sensational 50-yard run, and though freshman Burliegh Peters made a twisting touchdown dash, Susquehanna went down to a 27-6 defeat. All of the Fords' four scores came as a result of long plays—one on a pass and the other three on runs. It was all Isaacs for Susquehanna.

SUSQUEHANNA 12, JUNIATA 22

Huntington

If this game could have ended at the half, Susquehanna would have come home victorious, but a fateful second half proved the downfall of the Crusaders. Within the first five minutes the Stagmen made their first score. Isaacs passed to Meszaros, and then on the next play, freshman Evan Zlock plunged over for the score. Susquehanna's next tally came in the second period when Isaacs tossed to Chalot in the end zone.

Three linemen, Kemberling, Bradford, and Alessi, proved to



1942

Front Row, Left to Right—Houser, Bass, Miller, Kemberling, Isaacs, Zuback, Bradford, Hall, Alessi, Hindman.
Second Row—Lenz, Kocsis, Walsh, Klingler, Meszaros, Chalot, Kaplus, Taylor, Zlock.
Third Row—Coach Stagg, Peters, Lindemann, Stuempfle, Hugus, Klein, Maneval.

be the mainstay for the Crusaders. Again this year, Mickey Leeper was outstanding for the Indians.

SUSQUEHANNA 6, CITY COLLEGE OF NEW YORK 0

New York City

The Crusaders smashed to a well deserved first victory in Lewisohn Stadium on Saturday, October 24. Although the score was not impressive, the game was all Susquehanna's. Co-captain Larry Isaacs romped 50 yards to give the Orange and Maroon her only score. Nearly the entire game was played in City College territory, but the Crusaders could not capitalize on three other scoring opportunities. While Susquehanna was amassing 366 yards on land and in the air, the Beavers were only mustering 120. Until he was injured in the third quarter, it was Houser who proved to be the outstanding player on the field; however, the Crusader line played a brilliant defensive game.

SUSQUEHANNA 13, JOHNS HOPKINS 13

University Field

In the Founder's-Parents'-Alumni Day game, Susquehanna fought desperately in the last quarter to draw a 13-13 tie with a stubborn Johns Hopkins University aggregation. The first pointer came in the first quarter on a beautiful pass to Meszaros who went over stand-

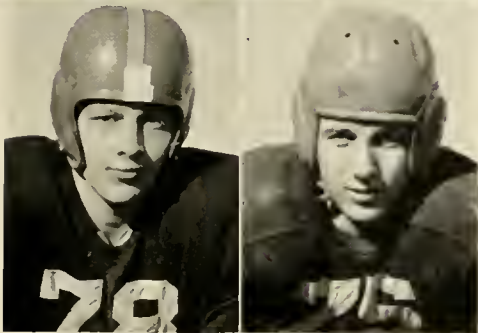


Left Page

Isaacs	Zuback
Alessi	Bass
Bradford	Chalot
Hall	Houser
Kaplus	Kemberling

Right Page

Koosis	Lenz
Maneval	Mezaros
Miller	Taylor
Zlock	Peters



ing up. Then followed a determined drive by the Bluejays for six points which ended the scoring until the third quarter. Then Johns Hopkins started another sustained march that finally culminated in a score plus the extra point. In the final period, the Crusaders "opened up." Houser made several brilliant runs that set up the stage for the touchdown pass from Isaacs to Peters, who wormed his way through several opponents for the score. Houser came through with a place kick that sailed directly through the up-rights.

SUSQUEHANNA 0, DREXEL 19

Philadelphia

Drexel tasted victory for the first time this season, at the expense of the Crusaders, and defeated Susquehanna by the same score in which the season had opened against Buffalo, 19-0. The Orange and Maroon battled gallantly in this the last game, but she was at no time able to reach pay dirt. Tech outrushed Susquehanna 285 yards to 173. The first Drexel score came as a result of a 50-yard run in the first period, and the other two in the final quarter from a touchdown pass and a 60-yard run. This game ended the collegiate gridiron careers of the following seniors: Co-captains John Zuback and Larry Isaacs, Jim Hall, Jack Houser, Sid Kemberling, Ed Miller, Ken Klinger, Rex Sunday, and Jack Walsh.

BASKETBALL



Front Row, Left to Right—Smith, Brown, Bagatini, Houser, Walsh, Janson, Isaacs, Wolfe, Camerer.
Second Row—Coach Stagg, Alessi, Zlock, Stuenpfle, Gross, Fellows, Kocsis, Coach Blough.
Third Row—Zeidler, Maddocks, Wohlsen, Lenz, Hugus, Mowles, Gelnett, Peters.

Susquehanna experienced the most successful basketball season in her history during the 1942-43 season, emerging victorious in eleven of her sixteen contests. Although Coach A. A. Stagg, Jr., lost four men in mid-season, he developed a well-oiled combination that rang up a total of 602 points as against 538 points for opposing quintets.

While the Varsity was proving its mettle, the Susquehanna Junior Varsity, under the guiding hand of Coach Vernon Blough, was effecting an impressive record of fourteen wins and one defeat.

Susquehanna opened the season on the Alumni Gymnasium hardwoods by eking out 33-30 triumph over a strong Hershey Junior College team. Trailing 15-9 at the end of the first half, the Crusaders opened up in the second half to vanquish their opponents by a narrow margin. Although the team was ragged, the starting five of Isaacs, Janson, Captain Walsh, Bagatini, and Houser pointed to a good season. Janson gathered 19 for the Staggen.

Traveling to State College, the Crusaders received their first setback of the season when they absorbed a 58-28 lacing from Penn State. Susquehanna could do little against the 6' 3" lads from State, but Janson and Bagatini managed to net 20 points between them.

Playing superb ball, the Crusaders soundly trounced Haverford, 42-30. Taking the lead in the first period, Susquehanna never relinquished it throughout the game. The team, paced by Center Bill Janson with 16 points, showed great improvement over previous games.

Susquehanna played the third game in four days and fought an uphill battle to snatch her second straight victory from Swarthmore. Swarthmore held the advantage over the Orange and Maroon until the closing minutes of the last quarter. Then Houser made two fouls and sank a beautiful one handed stab from near the sidelines to give Susquehanna the victory, 29-24.

Gettysburg Seminary, with two of Susquehanna's stars of past years, Eugene Smith and Bob Fisher, journeyed to Alumni Gym where they were handed a 41-21 defeat at the hands of a smooth functioning Crusader team which ran its wins to three straight. Janson garnered 11 for the victors.

Susquehanna's three-game winning streak was snapped by the Drexel Dragons in Philadelphia when a last quarter let-down paved the way to defeat, 32-26. After commanding the play throughout



the game, the Crusaders gave the offensive to the Dragons who swished the cords for 15 points while Susquehanna was held scoreless. Larry Isaacs accounted for 10 Susquehanna points.

After a slow start, the Orange and Maroon gained momentum and completely crushed an Elizabethtown five, 39-21, in Alumni Gym. The smooth play, teamwork, and speed of the Crusaders completely subjugated their opponents throughout the game. Isaacs led the Susquehannans with 12 points.

The Crusaders, anxious for victory against their traditional rivals from up the Susquehanna, Bucknell University, fought valiantly, but could not match the Union County five, and went down to defeat, 39-25. Janson copped high honors for Susquehanna with 11 markers.

The finest game played in Alumni Gymnasium this season was the 48-37 defeat of the Juniata Indians. With the score 21-13 against them at the half, the Crusaders, in an inspired third quarter, put 19 points through the net to give them the lead, a margin which they never relinquished. Bill Janson was in top form as he put through 16 points for Susquehanna.

Still running wild from the Juniata victory, the Crusaders completely routed the Philadelphia College of Pharmacy, 62-25, in Alumni Gym to give their seventh win of the season. Dominating the play throughout the evening, Susquehanna was led by the superb shooting of Houser with 20 points.

The Crusaders, in a roughly contested game, subdued the Northeastern Penitentiary quintet on the Penitentiary court.



Walsh
Bagatini
Brown

Camerer
Fellows
Gross



Houser
Isaacs
Janson

Smith
Stuempfle
Wolfe

52-35. After a close first half, the Orange and Maroon broke loose in the second half paced by Janson with 22 markers.

Susquehanna, her offensive play equalling her brilliant defensive work, "ack-acked" the Naval Cadets of Franklin and Marshall to defeat, 34-20, on the home floor. The deadly shooting of Janson accounted for 12 of the Staggs-men's points.

Traveling to Elizabethtown, to play the return game with the E-towners, the Orange and Maroon came through 50-38. At no time seriously threatened, the Crusaders were paced by Janson with 16 points.

A strong Dickinson Junior College quintet proved a stubborn foe for Susquehanna to subdue, but the Crusaders, a new team after the half, broke loose to win their sixth straight game. When the last gun was fired in Alumni Gym, Susquehanna was on top 37-31. Jack Houser was high man for the Crusaders with 14 points.

In the last home game in the basketball careers of Captain Jack Walsh, Jack Houser, and John Wolfe, Susquehanna relaxed her defense in the third period to allow Wagner to gain a six-point advantage and the game. The setback, 45-42, was the first loss of the season on the home floor. Jack Houser was the big gun for the Crusaders with 18 points.

The Crusaders closed their hardwood season in a disastrous manner when they went down in defeat to Juniata, 48-23, on the Huntington floor. Janson paced the Crusaders with 8 points.

So ended the season, eleven victories and five defeats—a brilliant record for the Susquehanna cagers.

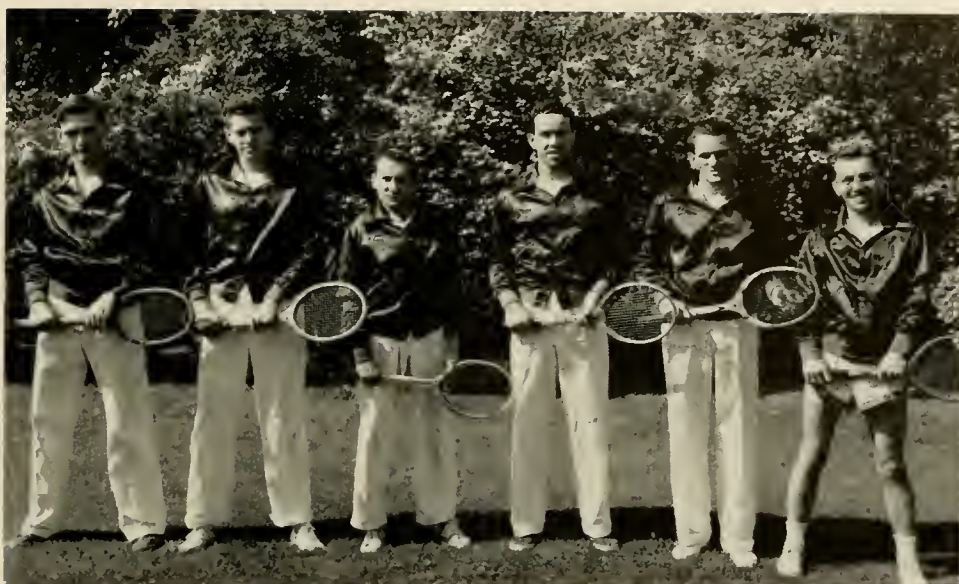


Kneeling, Left to Right—Shaffer, Janson, Co-Capt. Zubaek, Co-Capt. Isaacs, Klinger, Flickinger.
 Standing—Stiber, Fellows, Gross, Bagatini, Mix, Wolfe, Witmer, Hindman, Coach Bollinger.

Baseball

SCORES

Susquehanna.....	1	Gettysburg	7
Susquehanna.....	0	Drexel	3
Susquehanna.....	1	Swarthmore	2
Susquehanna.....	6	Elizabethtown	0
Susquehanna.....	6	Bucknell	15
Susquehanna.....	4	Juniata	17
Susquehanna.....	0	Bucknell	10
Susquehanna.....	1	Juniata	21
Susquehanna.....	4	Elizabethtown	3
Susquehanna.....	9	Upsala	8
Susquehanna.....	2	Dickinson	4



Left to Right—Camerer, Mitman, Capt. Jones, Walsh, Moglia, Price.

Tennis

SCORES

Susquehanna.....	0	Gettysburg	9
Susquehanna.....	0	Haverford	9
Susquehanna.....	0	Penn State	9
Susquehanna.....	0	Dickinson	9
Susquehanna.....	5	Elizabethtown	4
Susquehanna.....	6	Juniata	3
Susquehanna.....	0	Bucknell	9
Susquehanna.....	0	Drexel	9
Susquehanna.....	2	Juniata	7
Susquehanna.....	3	Elizabethtown	4
Susquehanna.....	4	Upsala	5



Kneeling, Left to Right—Clark, Schueler, Curry, Templin, Miller, Bass, Hochstuhl.
 Standing—Coach Stagg, Gundrum, Sunday, Stuenpfe, Levy, Hein, Schramm (Manager).

Track

SCORES

Susquehanna.....	55	Drexel	70
Susquehanna.....	26	Bucknell	100
Susquehanna	46	Gallaudet	79
Susquehanna.....	56	Juniata	70
Susquehanna.....	36½	Dickinson	89½

Cheerleaders



Keller



Schueler



Kresge





Front Row, Left to Right—Allen, Romig, Miss Shure, Cox, Kuhn, Chamberlain.
 Second Row—Hagy, McCorkill, Dubendorf, Arentz, Jerore, Lempke, D. Williamson, Lauver, Houtz.
 Third Row—Haggarty, Byrod, Kniffin, Moyer, Bittinger, Stone, Welsh.

Women's Athletic Association

OFFICERS

<i>President</i>	- - - - -	MARY COX
<i>Secretary</i>	- - - - -	ADA JANE ROMIG
<i>Treasurer</i>	- - - - -	EVELYN WILLIAMSON
<i>Faculty Adviser</i>	- - - - -	MISS IRENE SHURE

The Women's Athletic Association is an organization that was created for the women of Susquehanna University to promote interest in women's athletics and to obtain a spirit of fine sportsmanship. Any girl may be eligible for membership in W. A. A. after she has taken part in various class games and has obtained at least two hundred and fifty points. In order to retain her membership, she must earn at least two hundred additional points every year thereafter. The girls hold a monthly business meeting and conduct special activities during the year. The membership of the W. A. A. is composed of girls from every class who have reached the qualifications and have as their aim—true sportsmanship in play.

Women's Sports



Susquehanna University gives much attention to women's sports as one of the main extracurricular activities for the girls. Hockey, soccer, volleyball, basketball, and baseball are the main sports played. Hockey is perhaps the most popular among the girls. Each year a day is set aside which is known as "Play-day" when the girls of Cedar Crest College, Lebanon Valley College, and Susquehanna meet to engage in friendly competition. This year the hockey "Play-day" was held at Lebanon Valley, and was the only "Playday" that was held during the year because of transportation conditions, which have not hindered the women's sports on campus but have created a greater rivalry between classes.





. . . a meteor fragment, speaking
to us of those things unique, unnec-
essary, perhaps, but giving life
color and joy.



FEATURES



Who's Who

Arentz

Lozo

Cox

Walsh

Dellecker

Wilcox

Isaacs

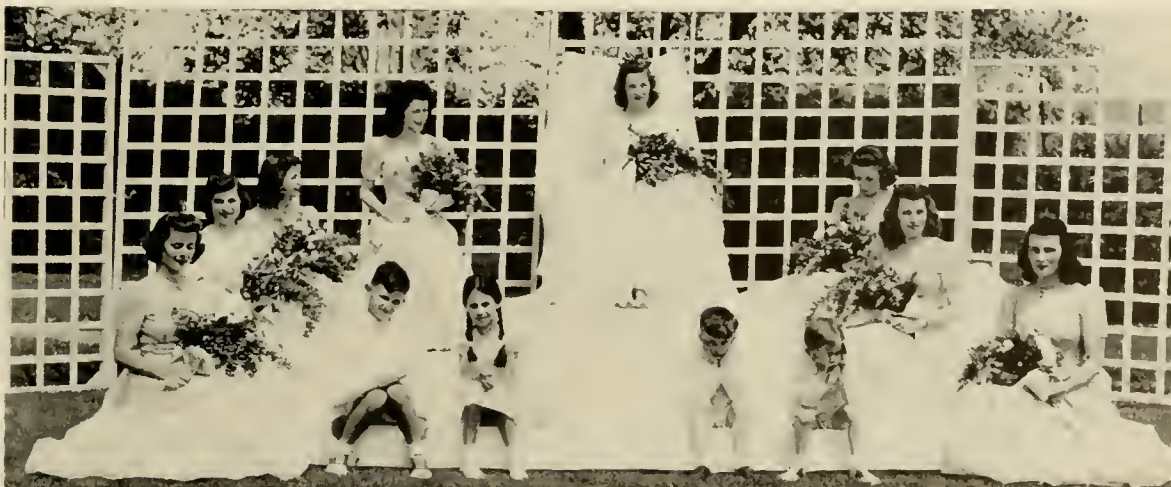
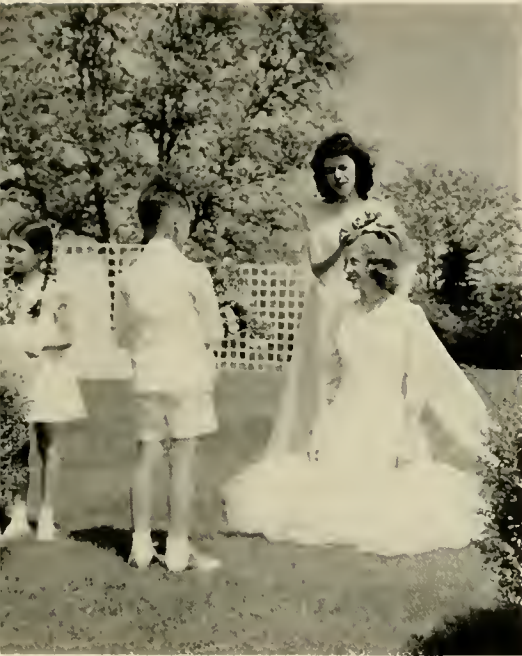
Wolfe

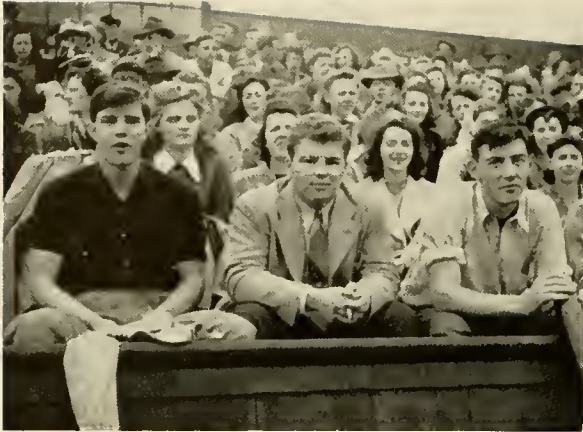


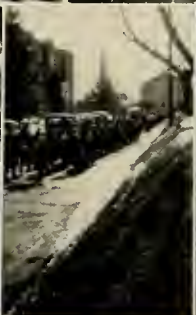
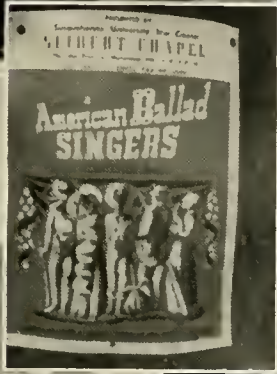
Left to Right—Lozo, Walsh, Isaacs, Dellecker, Arentz, Wolfe, Cox



May Day







Student Roster

1942-1943

<i>Name</i>	<i>Selinsgrove Address</i>	<i>Home Address</i>
Ague, Charles (3)	Phi Mu Delta	P. O. Box 26, Hughesville
Alessi, Victor (2)	Phi Mu Delta	844 Fourth Ave., Coraopolis
Alexander, Alex (1)	Hassinger	502 W. Girard St., Atlas
Allen, Dorothy (2)	Seibert	11 Mountain Ave., Pen Argyl
Arentz, Ferne (4)	Seibert	28 Maple Ave., Hanover
Atherton, Olive (2)	Seibert	R. D. No. 2, Hunlock Creek
Aueker, Ralph (2)		Port Trevorton
Bagatini, Alfred (2)	Phi Mu Delta	606 Fifth Ave., Coraopolis
Barton, Marjorie (1)	Seibert	Picture Rocks
Basehoar, Mary E. (2)	Seibert	R. D. No. 2, Littlestown
Bass, George M. (3)	Bond and Key	22 S. Brighton Ave., Upper Darby
Beckwith, Carmen (1)	Seibert	201 Stafford Ave., Scranton
Bemiller, Geraldine (3)	Seibert	111 ¹ / ₂ High St., Hanover
Bergstresser, Benj. (1)		18 S. Front St., Selinsgrove
Bergstresser, Jane (2)	Seibert	6510 Harvey Ave., Merchantville, N. J.
Billow, Ruth (4)	Seibert	130 Church St., Catawissa
Birkmire, Marjorie (1)	Seibert	Pawnee Road, Cranford, N. J.
Bittinger, Frances (2)		R. D. No. 2, Selinsgrove
Bolig, Robert (1)		Hummels Wharf
Bongartz, Ferl. (2)	Phi Mu Delta	28 Morse Ave., Bloomfield, N. J.
Boone, Eileen (4)	Seibert	1704 Monroe St., York
Botdorf, Emily (1)	Seibert	R. D. No. 1, Box 50, Harrisburg
Botdorf, Ruth (2)	Seibert	R. D. No. 1, Box 50, Harrisburg
Bowers, Jean (4)	Seibert	Landisburg
Bowman, Kathryn (1)	Seibert	361 Woodland Ave., Williamsport
Bowman, Robert (2)	Theta Chi	856 Baltimore St., Hanover
Boyer, Jack (1)		467 N. Second St., Sunbury
Boyer, The Rev. Walter (0)		Leek Kill
Bradford, Ira (2)	Selinsgrove	809 Wood St., Coraopolis
Bringman, Dale (1)	Theta Chi	R. D. No. 3, Hanover
Brown, Ralph (3)	Bond and Key	162 Walnut St., Bloomfield, N. J.
Bubb, Robert (1)	Hassinger	368 Vine St., Milton
Buteux, Raymond (1)	Hassinger	59 Gross Hill Ave., Yonkers, N. Y.
Byrod, Catherine (3)	Seibert	223 Pine St., Steelton
Cage, Albert (1)	Hassinger	165 E. Patriot St., Somerset
Camerer, William (2)	Theta Chi	327 Allegheny St., Jersey Shore
Chalot, Robert (1)	Selinsgrove	Mountain Road, Irvington, N. Y.
Chamberlin, Margaret (4)	Seibert	100 S. Chester Pike, Glenolden
Ciarcia, Jerome (1)	Hassinger	100 N. Fifteenth St., Bloomfield, N. J.
Clark, Hunter (1)	Hassinger	31 Shawnee Ave., Plymouth
Clark, James (3)	Selinsgrove	12 Haines Drive, Bloomfield, N. J.
Cochrane, Ruth (1)	Seibert	99 Spruce St., Bloomfield, N. J.
Cohen, Sonia (1)	Seibert	741 West End Ave., New York City
Conrad, Calvin (0)		1058 Wolverton St., Sunbury
Conrad, Theron (2)		200 Catawissa Ave., Sunbury
Coryell, Pierce (1)		121 N. Market St., Selinsgrove
Couldren, Christobel (1)		508 N. Eighth St., Selinsgrove
Cox, Mary (4)	Seibert	328 N. Fourth St., Newport
Cox, Robert (1)	Hassinger	328 N. Fourth St., Newport
Croft, Dorothy (1)	Seibert	519 Kelker St., Harrisburg
Curry, William (4)	Phi Mu Delta	358 Oakland Ave., Ashland
Day, Frances (2)	Seibert	3006 Quentin Road, Brooklyn, N. Y.
Dellecker, Dorothy (4)	Seibert	14 S. Third St., Frackville
Ditzler, Marjorie (2)		211 W. Pine St., Selinsgrove
Dorusife, Robert (2)	Theta Chi	Hobart St., Gordon
Dubendorf, Grace (3)		4018 E. Chestnut St., Sunbury
Duerr, Elwood (2)		962 Reagan St., Sunbury
Eschrich, Doris (2)	Seibert	339 Linden Ave., Johnstown
Fellows, Robert (2)	Hassinger	1308 Twenty-first Ave., Altoona
Fertig, Franklin (3)		Third and Hanover Sts., Northumberland

STUDENT ROSTER

<i>Name</i>	<i>Selinsgrove Address</i>	<i>Home Address</i>
Fischer, Marjorie (1)	Seibert	265 Cabrini Blvd., New York City
Fisher, Robert (1)		111 S. High St., Selinsgrove
Flickinger, Stuard (3)		Susquehanna Heights, Selinsgrove
Flock, Allen (3)		518 Race St., Sunbury
Frank, Norma (3)	Seibert	704 S. Filmore St., Allentown
Galski, John (4)	Phi Mu Delta	1238 E. Broad St., Hazleton
Garman, Ruth (1)	Seibert	Mt. Pleasant Mills
Garraux, Gale (1)	Hassinger	Box 147, Bakerstown
Garth, Miriam (0)	220 Pine St.	916 Louisa St., Williamsport
Gasparoli, Gloria (1)	Seibert	Marlboro, N. Y.
Gehman, John (2)		Port Trevorton
Gehres, Mary (1)	Seibert	Catasauqua
Geiger, Jean	Seibert	908 Louisa St., Williamsport
Gehnett, Arthur (1)		612 N. Market St., Selinsgrove
Gemmill, Margaret (3)	Seibert	32 N. Harlan St., York
Gilbert, Jean (1)	Seibert	615 N. Locust St., Hazleton
Goyne, Susan (3)	Seibert	237 Chestnut St., Ashland
Grandolini, Eugene (2)	Hassinger	2212 Boulevard Ave., Scranton
Gross, David (3)		355 Northway St., Northumberland
Gutshall, Roy (3)	Selinsgrove	226 W. Simpson St., Mechanicsburg
Haggarty, Doris (3)	Seibert	210 Wangum Ave., Hawley
Hagy, Jane (2)	Seibert	1107 Woodlawn St., Scranton
Hall, James (4)	Bond and Key	Camp Beauregard, Louisiana
Hallock, Virginia (1)	Seibert	Willow Tree Road, Milton, N. Y.
Harris, David (1)	Hassinger	120 Cleveland Terrace, Bloomfield, N. J.
Harris, Jean (3)	Seibert	168 Pannebaker Ave., Lewistown
Hays, Grace (1)	Seibert	R. D. No. 4, Box 545, Johnstown
Hays, William (0)	Bond and Key	R. D. No. 4, Box 545, Johnstown
Heim, David (2)	Theta Chi	R. D. No. 1, Cogan Station
Herrold, Donald (1)		Port Trevorton
Hindman, James	Theta Chi	720 Ferndale Ave., Johnstown
Hochstahl, Raymond (3)	Phi Mu Delta	3 Berkeley Heights Park, Bloomfield, N. J.
Hocker, Helen (3)	Seibert	Bethlehem, Whitmarsh
Hoffman, June (1)	Seibert	75 S. Cedar St., Hazleton
Hoke, Janet (3)	Seibert	Delta
Hoke, William	Hassinger	Main St., Delta
Holcombe, Claire (1)	Seibert	123 W. Seventh Ave., Roselle, N. J.
Holderman, Herbert (3)	Phi Mu Delta	245 Schuylkill Ave., Shenandoah
Hopkins, Henry (3)		Snydertown
Houser, Lester (4)	Hassinger	Middleburg
Houtz, Florence (3)		300 S. High St., Selinsgrove
Hugus, Howard (1)		W. Walnut St., Selinsgrove
Hunter, Robert (3)	Phi Mu Delta	301 Philadelphia Ave., West Pittston
Innis, Jessie (1)	Seibert	Academia
Isaacs, Lawrence (4)	Phi Mu Delta	123 E. Center St., Shavertown
Janson, William (3)	Phi Mu Delta	886 Prospect St., York
Jenkins, Joyce (2)	Seibert	1002 Linden St., Scranton
Jerore, June (4)	Seibert	975 Hummel Ave., Lemoyne
Kahn, Corinne (2)	Seibert	14 Collins Ave., Bloomfield, N. J.
Kaplan, Albert (1)	Bond and Key	100 Forrest Ave., Verona, N. J.
Keller, Geneva (1)	Seibert	1051 Queen St., Pottstown
Kemberling, Sidney (4)		R. D. No. 2, Selinsgrove
Kessler, Alfred (1)	Phi Mu Delta	400 Oriental Ave., Atlantic City, N. J.
King, Donald (1)	Theta Chi	Market St., New Berlin
Kinzer, Jean (1)	Seibert	R. D. No. 1, Newport
Klein, Arthur (1)	Phi Mu Delta	Sundance Lodge, Little Falls, N. J.
Klick, Marie (1)	Seibert	Wind Gap
Klinger, Kenneth (4)		S. Main St., Herndon
Kniflin, Ethel (4)	Seibert	Grand St., Marlboro, N. Y.
Kochenderfer, Leon (2)	Hassinger	R. D. No. 1, Lewistown
Kocsis, John (2)	Hassinger	102 William St., South River, N. J.
Kohn, LaVerne (1)	Seibert	4633 Woodland Ave., Merchantville, N. J.

STUDENT ROSTER

<i>Name</i>	<i>Selinsgrove Address</i>	<i>Home Address</i>
Kolb, M. K. (1)	Seibert	312 Reed St., Clearfield
Kramer, Harold (2)	Beta Kappa	1906 Hanover Ave., Allentown
Kramer, Lois (3)	Seibert	10 E. Mahanoy Ave., Mahanoy City
Kresge, Louise (2)	Seibert	96 Webb Ave., Ocean Grove, N. J.
Lamon, Peter (3)	Bond and Key	158 Market St., Sunbury
Laubach, Jane (1)	Seibert	901 E. Front St., Berwick
Lauver, Ferné (4)		Richfield
Leach, Donald (1)		524 S. Market St., Selinsgrove
Leach, John (3)		521 S. Market St., Selinsgrove
Leader, Roy (3)		R. D. No. 1, Northumberland
Leitzel, Celo (1)		
Lempke, Hermine (2)	Seibert	59 Mohr Ave., Bloomfield, N. J.
Lenz, Thomas (1)	Selinsgrove	621 Ferree St., Coraopolis
Lepley, Richard (3)		R. D., Winfield
Levy, Jack (2)	Phi Mu Delta	24 Washington St., West Pittston
Lindemann, Richard (1)	Hassinger	43 Carteret St., Bloomfield, N. J.
Loss, Kenneth (1)	408 W. Pine St.	Penns Creek
Lower, Fred (3)		R. D. No. 3, Sunbury
Lozo, Keith (3)	Selinsgrove	310 E. Roberts Ave., Wildwood, N. J.
Lyons, Eleanor (4)	Seibert	73 Tripp St., Forty Fort
McAllister, Elwood (1)		705 Queen St., Northumberland
McCorkill, Ruth (4)	Seibert	178 King St., Northumberland
McClure, William (0)	Theta Chi	Open Hearth, Lewistown
McVicker, Edna (2)	Seibert	217 Spring St., Bedford
McWilliams, Louise (4)	Seibert	14 W. Mahoning St., Danville
Macarow, Dorothy (1)	Seibert	Lattimer Mines
Maehamer, Gloria (2)	Seibert	Walnut St., Wiconisco
Maddocks, Robert (1)	Phi Mu Delta	296 Belleville Ave., Bloomfield, N. J.
Malhames, Jane (1)	Seibert	601 Vine St., Hazleton
Maneval, Marvin (3)	Phi Mu Delta	145 Gantt St., Newport
Massey, Leslie (1)	Hassinger	160 Central Park South, New York City
Matthews, Richard (1)	Phi Mu Delta	154 W. Third St., Williamsport
Meszaros, Arnold (1)	Selinsgrove	Erie St., Ardsley-on-Hudson, N. Y.
Migliarese, Joseph (2)	Phi Mu Delta	286 Ridge St., Newark, N. J.
Miller, Anna C. (1)		161 Spruce St., Sunbury
Miller, Edward (1)		330 S. Fourth St., Sunbury
Mix, Arnold (2)	Bond and Key	154 Franklin St., Bloomfield, N. J.
Mowles, James (1)		105 Independence St., Selinsgrove
Moyer, Mary (2)	Seibert	Middleburg
Musselman, Martin (1)		701 N. Market St., Selinsgrove
Moglia, Richard (3)	Selinsgrove	3 Clark St., Glen Ridge, N. J.
Nale, Stanley (3)	Theta Chi	Thompstontown
Naugle, Betty (2)		8 N. Market St., Selinsgrove
Nevin, Clark (1)		505 Race St., Sunbury
Packman, Alan (2)	Hassinger	28 S. Montgomery Ave., Atlantic City, N. J.
Payne, Howard (3)	Bond and Key	124 Harrison St., Taylor
Pensyl, Emagean (1)	Seibert	Elysburg
Peters, James B. (1)	Bond and Key	915 Twenty-third Ave., Altoona
Pirie, Warren (2)	Phi Mu Delta	36 Brighton Ave., Bloomfield, N. J.
Reichley, Mary (0)		11 N. Market St., Selinsgrove
Renfer, Jean (3)	Seibert	129 Rock St., Pittston
Rodriguez, Alfonso (0)	Hassinger	Bogota, Columbia, S. A.
Rohrbach, Janet (1)		1021 Penn St., Sunbury
Rouig, Ada (3)	Seibert	Beaver Springs
Royer, Jane (1)	Seibert	428 King St., Pottstown
Scandon, Richard (1)		1242 Wolverton St., Sunbury
Schramm, Raymond (3)	Bond and Key	378 Belleville Ave., Bloomfield, N. J.
Schueler, Glenn (3)	Phi Mu Delta	134 Weaver Ave., Bloomfield, N. J.
Seaman, Gladys (1)	Seibert	64 Maple Ave., White Plains, N. Y.
Sechrist, Janet (3)	Seibert	Millerstown

STUDENT ROSTER

<i>Name</i>	<i>Selinsgrove Address</i>	<i>Home Address</i>
Sheetz, Wilfred (1)		119 E. Pine St., Selinsgrove
Shields, Margaret (2)	Seibert	102 Jefferson St., Newtown
Shoemaker, Bruce (1)		224 Fairmount Ave., Sunbury
Smith, Charlotte (1)	Seibert	314 Crown St., Morrisville
Smith, Morris (2)		Pine St., Selinsgrove
Snyder, Harold (2)		R. D. No. 1, Selinsgrove
Snyder, Patricia (1)		1019 Susquehanna Ave., Sunbory
Soley, Betty (3)	Seibert	929 Creekside Drive, Niagara Falls, N. Y.
Soule, Marjorie (1)	Seibert	437 Morningside Road, Ridgewood, N. J.
Spangler, Sheilavay		Selinsgrove
Spicer, Hope (1)	Seibert	Springfield Ave., New Providence, N. J.
Spooner, Donald (4)	Theta Chi	356 Washington St., Geneva, N. Y.
Stahl, Robert (4)	Theta Chi	Broadway, Turbotville
Stapleton, Marjorie (1)	Seibert	108 W. Broad St., Tamaqua
Sternat, Dorothy (1)	Seibert	E. York St., Biglerville
Stiles, Beth (3)	Seibert	516 Main St., Great Bend
Stitt, Elinor (3)	Seibert	1405 W. Market St., York
Stone, Elizabeth (2)	Seibert	12 Nassau Place, East Orange, N. J.
Stow, George (1)	Phi Mu Delta	6723 Cedar Ave., Merchantville, N. J.
Strausser, Jean (1)	Seibert	142 W. Third St., Mt. Carmel
Strickland, Bertram (2)	Hassinger	402 Center St., Milton
Stoempfle, Herman (3)	Bond and Key	122 S. Main St., Hughesville
Sunday, Rex (4)	Bond and Key	Market St., Millersburg
Surplus, Robert (2)	Seibert	Goaldsboro
Swartzlander, Evelyn (1)	Seibert	McAlisterville
Swienki, Bernard (1)	Phi Mu Delta	Glen Lyon
Taylor, Joseph (1)	Hassinger	108 E. Bennett Ave., Wildwood, N. J.
Tietbohl, Augustus (1)	Theta Chi	443 Percy St., South Williamsport
Tross, Jeanne (1)	Seibert	528 S. Irving Ave., Scranton
Turnbach, Lorraine (4)	Seibert	Sugarloaf
Venner, Charles (1)	Phi Mu Delta	45 State St., Bloomfield, N. J.
Wagenbach, Park W. (0)		126 Spruce St., Sunbory
Walsh, John (4)	Phi Mu Delta	Box 217, Lopez
Walter, Margaret (2)	324 S. Market St.	518 Center St., Milton
Walton, Jessie (4)	Seibert	1410 W. Norwegian St., Pottsville
Warner, Bette (2)	Seibert	Ave. N. and First St., Matamoras
Warner, John (2)	Hassinger	201 Parkway, Schuylkill Haven
Wasserberg, Ira (1)	Bond and Key	1948 Third St., Brooklyn, N. Y.
Webber, Dorothy (4)	Seibert	1415 E. Gibson St., Seranton
Weeks, Mary A. (4)		218 W. Walnut St., Selinsgrove
Welch, Doris (4)		144 N. Fifth St., Sunbury
Welle, Helen (1)	Seibert	68 Clinton St., Bloomfield, N. J.
Wheat, Jean (1)	Seibert	446 Ridge Road, Cedar Grove, N. J.
Wilcox, Harry (4)	Theta Chi	R. D. No. 1, Canton
Wiley, John (1)	Phi Mu Delta	4438 Terrace Ave., Merchantville, N. J.
Willard, Marian (1)	Seibert	West Chester Road, Coatesville
Williamson, Dorothy (4)	Seibert	Davidsville
Williamson, Evelyn (4)	Seibert	Davidsville
Wilson, Ethel (3)	Seibert	Drums
Wilt, Elizabeth (1)		McAlisterville
Winey, Rine (1)		412 N. Eighth St., Selinsgrove
Witmer, Ralph (1)		310 W. Walnut St., Selinsgrove
Wohlsen, Robert (1)	Phi Mu Delta	39 Marshall Road, Yonkers, N. Y.
Wolfe, A. Franklin (1)	Bond and Key	R. D. No. 1, Camp Hill
Wolfe, John (4)		73 Orange St., Northumberland
Wolfe, Marjorie (4)		332 S. Market St., Selinsgrove
Wolfe, Phyllis (3)	Seibert	Pennsylvania Ave., Mill Hall
Zaremba, Nadia (3)	Seibert	437 W. Second St., Mt. Carmel
Zeidler, Frank (1)	Phi Mu Delta	108 State St., Bloomfield, N. J.
Ziegler, Anna (Mrs.) (1)		214 Snyder St., Selinsgrove
Zerbe, B. Franklin (1)		336 Race St., Sunbury
Zlock, Evan (1)	Phi Mu Delta	274 Third St., Coaldale
Zubak, John (4)	Phi Mu Delta	667 Sixth St., Trafford

* * * * *

OUR ADVERTISERS

* * *

WE express our deep appreciation to our advertisers for their kind assistance and interest in the 1944 LANTHORN. Their co-operation has greatly aided in the success of this publication. We ask that you aid them by your patronage.

* * * * *

SELINGROVE WATER SUPPLY CO.



FRANK A. EYER

President

H. J. JARRET

Superintendent

JAMES McCLURE

Treasurer

MIDDLE CREEK VALLEY TELEPHONE COMPANY

Bell System

FRANK A. EYER, *General Manager*

The FIRST NATIONAL BANK
of SELINGROVE

*Salutes Susquehanna University and Its
Glorious Accomplishments*

•
OFFICERS

MARION S. SCHOCH, *President* FRANK A. EYER, *Vice President*
CLAYTON E. LEACH, *Cashier*
AGNES B. BOGAR AND CHARLES ARBOGAST, *Assistant Cashiers*

DIRECTORS

A. L. ALLINSON
FRANK A. EYER

JAMES McCLURE

DR. R. W. JOHNSTON
MARION S. SCHOCH

The Penn State Photo Shop

BREON & STOVER

Commercial and Portrait Photography

OFFICIAL LANTHORN PHOTOGRAPHERS

214 E. COLLEGE AVENUE

STATE COLLEGE, PA.

Hotel
GOVERNOR SNYDER

SELINGROVE, PENNA.

•

SARAH CORNFORTH, *Manager.*

WALTER E. PINAND, *Proprietor.*

R. L. SCHROYER INSURANCE AGENCY
General Insurance

•

Agent — J. CHANDLER MARSHALL

Phone 98

SELINGROVE, PENNA.

The
Lutheran Theological Seminary
GETTYSBURG, PENNSYLVANIA

Begins Its 118th Year September 1, 1943



The Seminary Offers:

- Free tuition.
- Furnished rooms.
- Use of 53,000 volumes in library.
- Standard and elective courses leading to the B.D. degree.
- Graduate work leading to the degree of S.T.M.
- A Limited Number of Scholarships Available.

For Further Information Address

PRESIDENT'S OFFICE

NATIONAL RESTAURANT

R. A. MEASE, *Proprietor*

REAL HOME COOKING

I. O. O. F. Bldg.

SELINGSGROVE, PA.

Compliments of
GIANT
Cleaners—Dyers

•

Stores Throughout

Eastern Pennsylvania

Compliments of
"FRED" REICHLEY

Where Students

MEET and EAT

F. A. BRILL CO.

419 Market St.

SUNBURY, PA.

FLOOR COVERINGS

Armstrongs

DRAPERIES

Linoleum—Walls

AWNINGS

Resilient Tiles

SHADES

Congratulations to the Class of 1944

The
Smith Printing Company
WILLIAMSPORT, PA.

Distributors of Tissue Products for
Schools and Colleges

MIMEOGRAPH MACHINES
and SUPPLIES

Bank Stationers

Office Outfitters

WHITMER-STEELE COMPANY

Manufacturers of

PINE, HEMLOCK, AND HARDWOOD LUMBER

PROP TIMBER AND TIES

65 KING STREET

NORTHUMBERLAND, PA.

- STEAM
- VAPOR

HEATING

- HOT WATER
- WARM AIR

AIR CONDITIONING—PLUMBER

E. KEELER CO.

Established 1864

238 WEST STREET, WILLIAMSPORT, PA.

Compliments of

MARKLEY-ALTVATER

Men's and Boys'
BETTER CLOTHES

SUNBURY, PA.

Compliments of

HACKETT'S Hardware Stores

SUNBURY

MIDDLEBURG

Compliments of

CHILDREN'S SHOP

Mary Barron Slips
Laros Lingerie
Phoenix Socks
Bags, Costume Jewelry and
Accessories

Mary Burns

SELINGROVE, PA.

Steffen's

Fine Foods

STATIONERY

Greeting Cards for Every Occasion

SELINGROVE, PA.

BOGAR BROTHERS' LUMBER COMPANY

Contractors—Builders

Manufacturers of and Dealers in

LUMBER, MILL WORK, BUILDING SUPPLIES

Phone 74-W

SELINGROVE, PA.

**The
Selinsgrove Times**

MARION S. SCHOCH, *Publisher*

Printers of

THE SUSQUEHANNA AND
THE ALUMNI QUARTERLY

Compliments of

GEORGE B. RINE

Florist

Compliments of MILLER'S

*Everything for the
midnight snack*

**The
College Book Store**

STUDENT SUPPLIES

•

Schaeffer Inks—Pennants

Monogram Stationery

College Keys and Rings

SUSQUEHANNA ● UNIVERSITY

SELINGROVE, PA.

*“For Eighty-five years in the service of
Christian higher education”*

ALTHOUGH SELECTED as a college to train prospective aviation cadets in basic college subjects, Susquehanna University announces its regular curricula for civilian students as follows:

LIBERAL ARTS (A.B.)

BUSINESS EDUCATION (B.S.)

MUSIC EDUCATION (B.S.)

THE SUMMER TERM of 12 weeks for regular civilian students will begin on June 7, 1943. By attending summer terms, students may appreciably shorten the time required for graduation.

For catalogue write:

G. MORRIS SMITH, D.D., LL.D., President



Your
LANTHORN

Was Designed, Engraved, Printed
and Bound in our College
Annual Department.



We do a variety of Commerical
Printing — including Catalogs,
College and School Year Books.
Consult Us before placing your
next order for Printing.

GRIT PUBLISHING COMPANY
WILLIAMSPORT, PENNA.

Publishers · Printers · Designers · Engravers

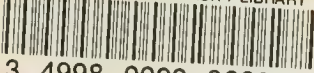


BIOLOGICALS DEPARTMENT

UNIVERSITY OF PENNSYLVANIA
PHILADELPHIA, PA. 19107

BLOUGH-WEIS LIBRARY
SUSQUEHANNA UNIVERSITY
BELLEFLORE, PA 17874

SUSQUEHANNA UNIVERSITY LIBRARY



3 4998 0020 9660 5

SUSQUEHANNA UNIVERSITY LIBRARY
BLOUGH-WEIS LIBRARY
DOES NOT
CIRCULATE
ARCHIVES
SUSQUEHANNA UNIVERSITY LIBRARY

