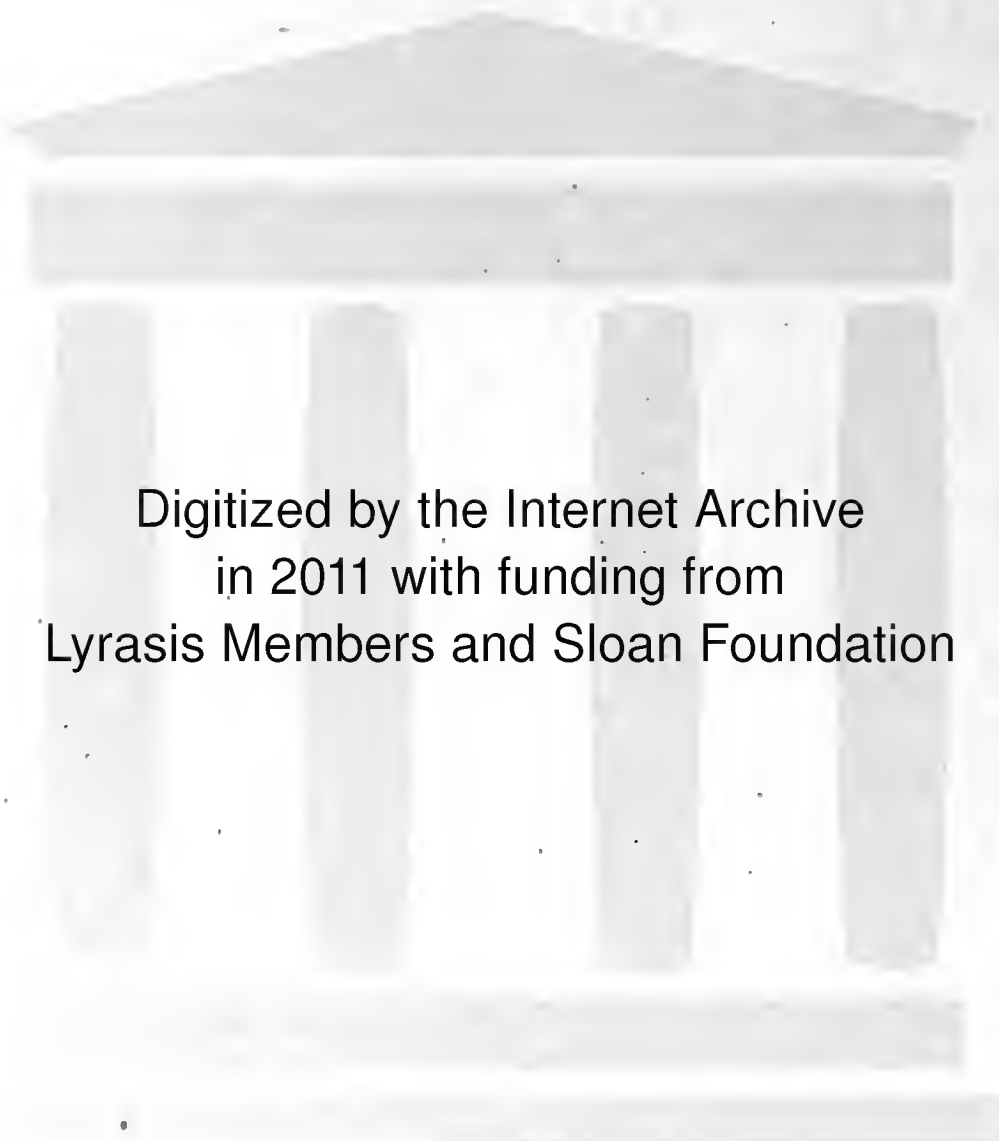




1948

LANTHORN



Digitized by the Internet Archive
in 2011 with funding from
Lyrasis Members and Sloan Foundation

<http://www.archive.org/details/lanthorn194800susq>





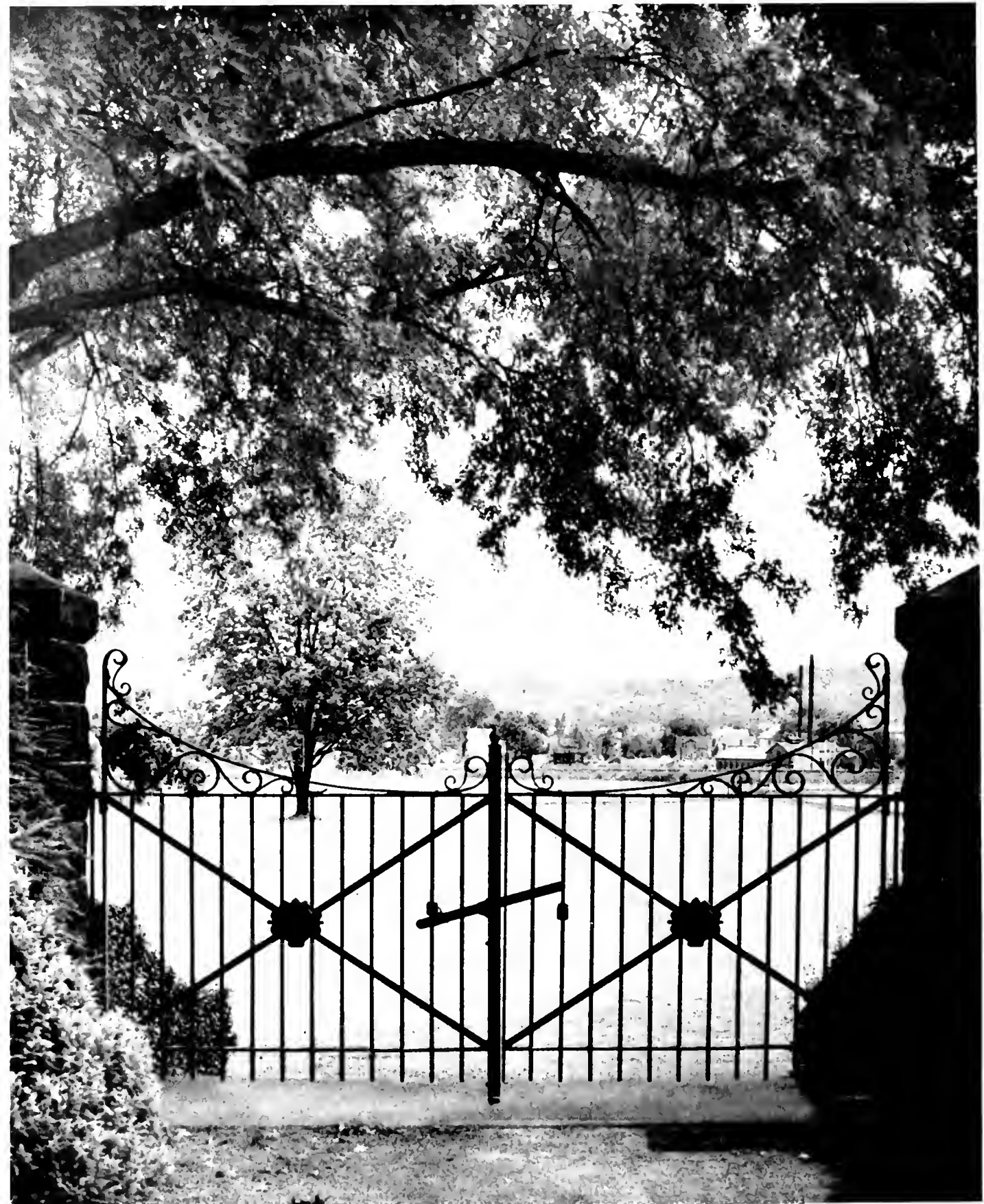
EX LIBRIS

THE JUNIOR CLASS
OF
SUSQUEHANNA
UNIVERSITY
SELINGROVE, PENNSYLVANIA

Presents



the 1948 LANTHORN



CRUSADER GATE

FOREWORD

The Story we would tell you, friends,
 Would cover many a book;
The subject matter of the same
 Is found in every nook
Of old S. U.'s broad campus,
 The common battle-ground,
Whose trees might whisper secrets grave,
 Amusing, and profound.

E. Edwin Sheldon.



DR. GEORGE E. FISHER

DR. GEORGE F. DUNKELBERGER



DEDICATION

*W*E, the Class of 1948, wish to dedicate this LANTHORN to these two men whom we have held in high esteem throughout our stay at Susquehanna. They have spent many long years helping to uphold the standards which Susquehanna stands for. We wish by this small token to express our appreciation to them.

President of the University



G. MORRIS SMITH

President

A.B., Roanoke College 1911; A.M., Princeton University 1912; Diploma, Lutheran Theological Seminary, Philadelphia 1919; D.D., Roanoke College 1928; Graduate study, Columbia University; LL.D., Bucknell 1940.

Deans of the University



RUSSELL GALT

Dean of the College

A.B., Muskingum College 1919; A.M. 1920
and Ph.D. 1936. Columbia University; School
of Oriental Studies, Cairo, Egypt, 1920-22.

CHRISTINE WELLS

Dean of Women

A.B., Friends University 1925; A.M., Colorado
State College of Education 1935.



Language and Literature



ARTHUR HERMAN WILSON *Professor of English*
A.B. 1927, A.M. 1929, and Ph.D. 1931, University of Pennsylvania.

ATHALIA TABITHA KLINE *Instructor in French and Spanish*
A.B., Randolph Macon Woman's College 1922; A.M., Duke University
1925.

ROBERT MEADER *Instructor in Latin and English*
A.M., Middleburg College 1929; M.A., University of Pennsylvania 1931.

AXEL KLEINSORG *Instructor in English*
B.S. in Ed. Temple University 1935.

RUSSELL WIEDER GILBERT *Professor of German*
A.B., Muhlenberg College 1927; A.M. 1929 and Ph.D. 1943, Univer-
sity of Pennsylvania.

Science and Mathematics



MERLE HOOVER *Instructor in Physics*
A.B., Susquehanna University 1941; A.M., George Washington University 1946.

FISK WILLIAM STOCKING SCUDDER *Professor of Biology*
A.B., Ohio Wesleyan University 1923; Ohio Wesleyan University 1924-25; Ph.D., Cornell University 1933.

GEORGE MERRITT ROBISON. *Assistant Professor of Mathematics and Physics*
A.B. 1916, M.A. 1917, and Ph.D. 1919, Cornell University.

JOHN JACOB HOUTZ, *Assistant Professor of Chemistry and Mathematics*
A.B., Susquehanna University 1908; M.S., Louisiana State University 1912; Sc.D., Carthage College 1933.

Social Studies

RUSSELL GALT - - - - - *Dean of the College*

A.B., Muskingum College 1919; A.M. 1920 and Ph.D. 1936, Columbia University; School of Oriental Studies, Cairo, Egypt. 1920-22.

AUGUSTUS WILLIAM AHL - - - - - *Professor of Greek*

Diploma, Gymnasium and Seminary, Breklum, Germany, 1908; A.M., Susquehanna University 1912; Ph.D., Vanderbilt University 1920; Graduate Study, Peabody College for Teachers, Nashville, Tenn.

WILLIAM ADAM RUSS, JR. - *Professor of History and Political Science*

A.B., Ohio Wesleyan 1924; A.M., University of Cincinnati 1926; Ph.D., University of Chicago 1933.

KENNETH B. WATERBURY, *Assistant Professor of Education and Psychology*

B.S. 1930, M.Ed. 1933, and Ed.D. 1939, Pennsylvania State College.

FREDERICK C. STEVENS - *Assistant Professor of Sociology and History*

B.A., University of Minnesota 1926; M.A., Columbia University 1932; Studied Voice in Paris 1927-1929.



Business

WALDEMAR ZAGARS - - - - - *Assistant Professor of Economics*
Econ. D., University of Riga, Latvia 1931.

GROVER C. T. GRAHAM, *Assistant Professor of Economics and Business Administration*
A.B., William Jewell College 1909; A.M., Brown University 1910;
Graduate Study, Brown University.

LENORA ALLISON - - - - - *Instructor in Commercial Education*
A.B., Bowling Green College of Commerce 1930; M.Ed., University of Pittsburgh 1937.

RICHARD STRATHMEYER, *Instructor in Accounting and Business Administration*
B.S. in Commerce, Drexel Institute of Technology 1943.





Conservatory

ALICE HOLMAN GIAUQUE—*Instructor in Public School Music Methods, Music Appreciation, Chorus Singing*
B. S. in Music Education 1937 and A. M. 1940, Columbia University.

MARY KATHRYN POTTEIGER—
Instructor in Piano/forte, Sight Singing
Mus. B., Susquehanna University 1925; Graduate study, New York University.

PERCY MATHIAS LINEBAUGH—
Professor of Pipe Organ, Pianoforte, Counterpoint
Mus. B., Lebanon Valley College 1917; Graduate study, New York University, Peabody Conservatory of Music.

E. EDWIN SHELDON—
Director of the Conservatory
Mus. M., 1908 and Mus. D. 1939, Susquehanna University.

RUSSELL CONDRAN HATZ—
Assistant Professor of Violin, Harmony, Band, Orchestra
B. S. in Music Education, Lebanon Valley College 1937; Graduate study, Temple University, Juilliard Institute; A.M., Columbia University 1942.

NANCY BOWMAN HATZ—
Instructor in Harmony, Band Instruments
B. S. in Music Education, Lebanon Valley College 1936; A.M., Columbia University 1941.

DIANA IRVINE—
Instructor in Singing
Studied Voice in Milan, Italy and Philadelphia; Sang Soprano in leading operas in Italian Theaters.

ELBERT DIXON HASKINS—
Instructor in Singing, Choral Conducting
A.B., University of Michigan 1923; A.M., New York University 1939.



Athletics

JOHN ZUBAK *Assistant Coach*
B.A., Susquehanna University 1943.

RUTH SPARHAWK *Instructor of Physical Education*
B.S., Kent State University 1945.

AMOS ALONZO STAGG, JR. *Professor of Physical Education*
Ph.B. 1923 and A.M. 1935, University of Chicago; A.M., Columbia
University 1941; Graduate study, University of Chicago.

Library



HILDA G. KOLPIN
B.S., B.S. in Lib. Sci.

Librarian

Dietitian



MRS. ANNA M. HUMPHREY
Dietitian

Dispensary



BERTHA M. HEIN, R.N.
Assistant to the Dean of Women

Business Office



EDWIN MONROE BRUNGART, A.M. *Superintendent of Buildings and Grounds*
 RUTH E. McCORKILL, B.S. *Business Secretary*

Bursar's Office



BEATRICE E. HERMAN, A.B. *Bursar*
 ELEANOR HERMAN *Assistant to the Bursar*

Registrar's Office



ARLA BILGER - - - - - *Secretary in the Admissions Office*
ISABEL NICELY - - - - - *Secretary of Admissions*

Book Room



MARJORIE BARTON, B.S. - - - - - *Secretary to the President*



MRS. CAROL K. KLINE

**Preceptress
Hassinger Hall**

**Faculty Resident
The Cottage**



ATHALIA TABITHA KLINE

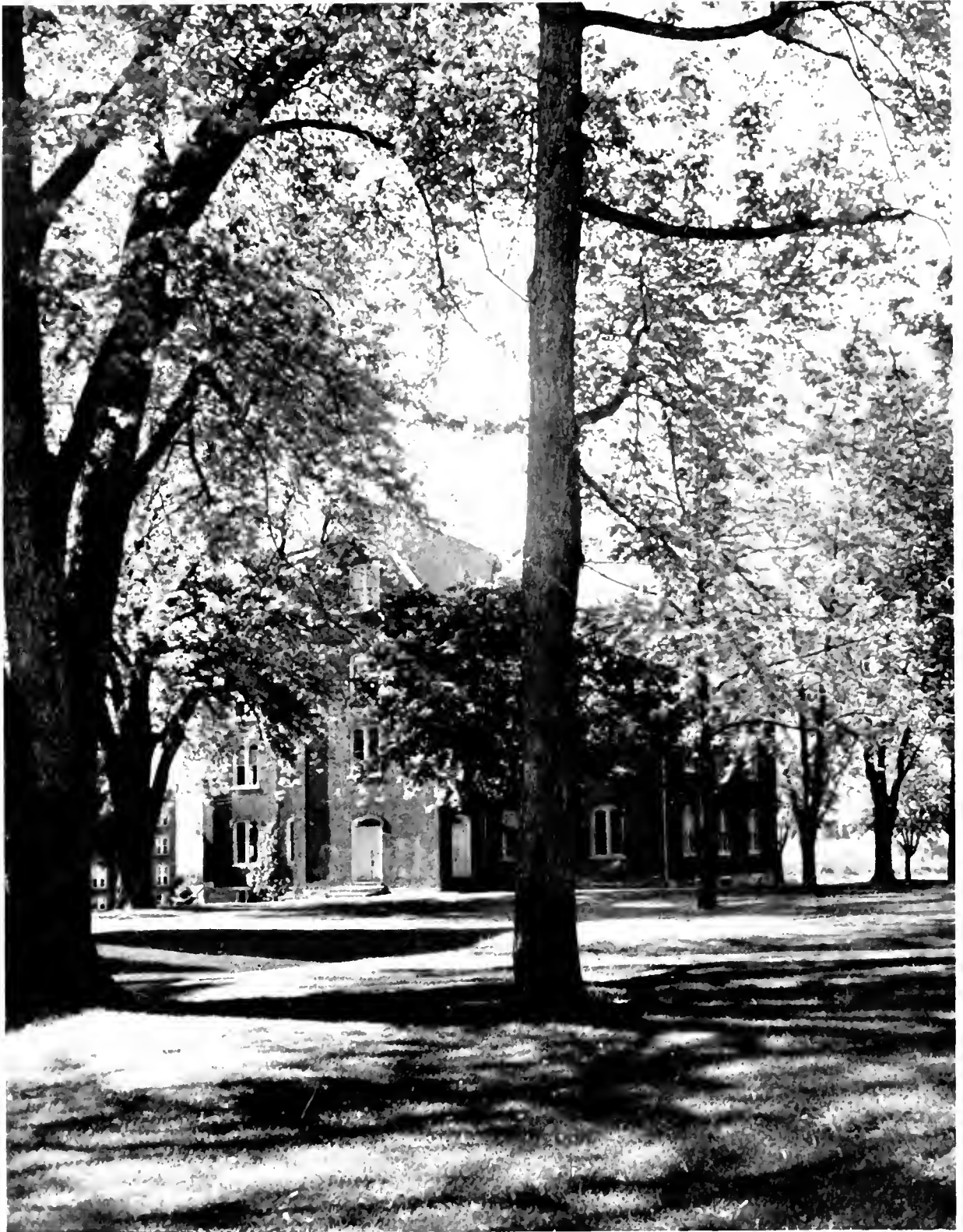
AUTUMN

Thou comest, Autumn, heralded by the rain,
With banners, by great gales incessant fanned,
Brighter than brightest silks of
Samarcand,
And stately oxen harnessed to thy
wain!
Thou standest, like imperial Charle-
magne,
Upon thy bridge of gold: thy royal hand
Outstretched with benedictions o'er
the land,
Blessing the farms through all thy
vast domain!—

—*Longfellow.*



SELINGROVE HALL.



GUSTAVUS ADOLPHUS HALL



Left to Right—E. Thompson, M. Maneval, F. Corcoran, J. Reichard.

Class of 1947

OFFICERS

<i>President</i>	- - - - -	FRANK CORCORAN
<i>Vice President</i>	- - - - -	MARVIN MANEVAL
<i>Secretary</i>	- - - - -	ELISE THOMPSON
<i>Treasurer</i>	- - - - -	JOHN REICHARD

CLASS HISTORY

It doesn't seem possible that four short years ago, we were welcomed on the campus of "old S. U." by a group of upperclassmen. On that very first day, we never dreamed that we would be going to college along with cadets! How we dreaded the thought of "hazing" especially with the soldiers viewing all escapades with disillusionment reflected in their eyes.

But our Sophomore year was our shining glory. We gained prestige by thoroughly deflating the ego of the new Freshmen girls. The mention of our Sophomore Tribunal even made some of us shudder let alone the Frosh culprits. For the first time Hassinger Hall was open to women and the Cadets were taboo. Because of war-time restrictions, we did not have the annual Sophomore Hop.

Juniors this year, Selinsgrove Hall and the Cottage were opened. Yes! The men of S. U. were returning. Things around campus began to take on new light. A long dreamed of and envied status at last was ours.

As Seniors our dream of what college life really should be has come true. The men's dorms filled to capacity, a real football team, dances, parties, and most of all being a graduation class that S. U. will miss as we will miss her.



VICTOR P. ALESSI

841 Fourth Ave., Coraopolis, Pa.

Phi Mu Delta

Business Administration

Fraternity Officer 1; Sergeant-at-Arms 1; Football 1, 2; Basketball 1, 2; Theater Guild 1, 4; Student Christian Association 1; Business Society 1, 2, 3, 4; Intramural Sports 4; Varsity "S" Club 1, 2.

DONALD R. BASHORE

341 S. Market St., Selinsgrove, Pa.

Theta Chi

Liberal Arts

Football 1, 2; Beta Kappa 1, 2; Interfraternity Sports 3, 4.



FERDINAND A. BONGARTZ

28 Morse Ave., Bloomfield, N. J.

Phi Mu Delta

Business Administration

Fraternity Secretary 2; Fraternity Social Chairman 4; *The Susquehanna* 1, 2; Theatre Guild 1, 2, 3, 4; Business Society 1, 2, 4; Student Christian Association 1, 2; Class Treasurer 2; Tennis 1; Cheerleader 4.

ROBERT BOWMAN

856 Baltimore St., Hanover, Pa.

Theta Chi

Liberal Arts

Student Christian Association 1, 2, 3, 4; Fraternity Historian 2; Fraternity Vice President 3, 4; Student Council 4.



JACQUELINE BRAVEMAN

215 W. 85th St., New York, N. Y.

Kappa Delta Phi

Liberal Arts

The Susquehanna Staff 1, 2, 3, 4; Managing Editor 3; Associate Editor 4; Biemic Society 3, 4; Student Christian Association 1, 2, 3; Intramural Sports 1, 2; Theater Guild 4.

RALPH C. BROWN, JR.

162 Walnut St., Bloomfield, N. J.

Bond and Key

Business Administration

Class President 3; House Manager 3; Treasurer Bond and Key 4; Basketball 1, 2, 3; *The Susquehanna* 3; Varsity "S" Club 3, 4; Intramural Sports 1, 2, 3, 4; Business Society 1, 2, 3, 4; Pi Gamma Mu 4.

WILLIAM R. CAMERER, JR.

327 Allegheny St., Jersey Shore, Pa.

Theta Chi

Business Administration

Tennis 1; Basketball 1, 2; Marching Band 1, 2; Student Christian Association 1, 2; Business Society 1, 2.



GAYLE V. CLARK

2229 Lynn Blvd., Drexel Hill, Pa.

Kappa Delta Phi

Business Administration

Student Christian Association 1, 2, 3, 4; Business Society 2, 3, 4; Theater Guild 1, 2, 3, 4; Biemic Society 1, 2, 3; *The Susquehanna* Staff 1, 2, 3, 4; Girls' Sports Editor 4; Orientation Program 3; Operetta 2; Intramural Sports 1, 2, 3, 4; Hockey Honor Team 2, 3, 4; Hockey Captain 3; Women's Athletic Association 2, 3, 4; Vice President W. A. A. 3; LANTHORN Staff 3; Kappa Delta Phi Secretary 3.

FRANK CORCORAN

1018 Rose Ave., Coraopolis, Pa.

Phi Mu Delta

Business Administration

Football 1, 2, 3; President Business Society 3; Men's Student Council 3; Proctor's Committee 3; Charles E. Covert Prize; President Senior Class 4; Who's Who 4.

LEAH M. CRYDER

Park Ave., Woolrich, Pa.

Omega Delta Sigma

Business Administration

Honor Hockey Team 2, 3, 4; Business Society 2, 3, 4; Women's Athletic Association 2, 3, 4; *The Susquehanna* Staff 3, 4; Circulation Manager 3; Business Manager 4; LANTHORN Staff 3; Intramural Sports 2, 3, 4; Theater Guild 2, 3, 4; Letters to Lucerne 2; Student Christian Association 3, 4; Alpha Psi Omega 3, 4; Fire Captain 4.

NAOMI E. DAY

221 North Charles St., Red Lion, Pa.

Omega Delta Sigma

Liberal Arts

Women's Athletic Association 1, 2, 3, 4; Student Christian Association 1, 2, 4; Intramural Sports 1, 2, 3, 4; *The Susquehanna* Staff 3, 4; Honor Hockey Team 2, 3, 4; Vice President's Council 2; Vice President Omega Delta Sigma 4; Inter-Sorority Council 4; Financial Secretary 4; Freshmen Orientation 4.

HELEN EBY DOSS

227 Mulberry St., Newport, Pa.

Kappa Delta Phi

Commercial Education

Business Society 1, 2, 3, 4; Student Christian Association 1, 2; Women's Athletic Association 1, 2, 3, 4; Intramural Sports 1, 2, 3; Vice President Kappa Delta Phi 3; Alpha Psi Omega 2, 3, 4; Theater Guild 1, 2, 3, 4; *The Susquehanna* Business Manager 2; Inter-Sorority Council 3; Secretary 3; Women's Student Council 3, 4; Social Chairman 3; House President 4; Letters to Lucerne 2; Operetta 1; Judiciary Council 3; Freshmen Orientation 3; Junior Class Treasurer 3; Sophomore Class Vice President 2.

CLAIR H. EASTEP

1915 N. Second St., Harrisburg, Pa.

Bond and Key

Business Administration

Student Christian Association 1; Business Society 1, 2, 3, 4; Men's Student Council 3; Intramural Sports 1, 2, 3, 4; Bond and Key House Manager 4.

ROBERT C. FELLOWS

1308 Twenty-first Ave., Altoona, Pa.

Bond and Key

Business Administration

Bond and Key Treasurer 3; Class Vice President 1; Business Society 1, 2, 4; Football Manager 1; Varsity Basketball 1, 2, 3, 4; Captain 4; Intramural Sports 1, 2, 3, 4; Theater Guild 2; Varsity Baseball 1, 4; Student Christian Association 1, 2.

IL GRACE FELTON

2 Salem Park, Elizabeth, N. J.

Student Christian Association 3, 4.

Liberal Arts

FRANKLIN E. FERTIG

294 King St., Northumberland, Pa.

Theta Chi

Music Education

Student Christian Association 1, 2, 3; Cabinet 3; Men's Music Guild 1, 2, 3; Intramural Board 2, 3; University Band 1, 2, 3; Concert Band 1, 2, 3; Variety Show 1, 2; Sophomore Tribunal 2; Track 1; Headwaiter 3; Pinafore 4.





ALLEN W. FLOCK

745 Edison Ave., Sunbury, Pa.

Bond and Key

Music Education

Men's Music Guild 1, 2; Student Christian Association 2; Chorus 2, 3, 4; Octette 3, 4; Conductor of Operetta 4; May Day 2, 3; Orchestra 3, 4; Band 1, 2, 3, 4; Student Conductor 3, 4.

LENORE GARMAN

501 N. High St., Selinsgrove, Pa.

Sigma Alpha Iota

Music Education

Trinity Choir 1, 2, 3, 4; Band 1, 2, 3, 4; Jazz Band 1, 2; Susquehanna Singers 2, 3; Student Christian Association 1, 2, 3, 4; Cabinet 4; Girls' President 4; President Sigma Alpha Iota 4; May Day 2, 3; Susquehanna Symphony 1, 2, 3, 4; Sunbury Symphony 3, 4; Intramural Sports 1; Operetta 1, 2, 4; Theater Guild 4; LANTHORN Staff 3; Clarinet Quartette 3; Day Student's Organization 1, 2, 3; Inter-Sorority Council 4, Vice President 4; Who's Who 4.

GENE P. GRANDOLINI

2212 Boulevard Ave., Scranton, Pa.

Theta Chi

Business Administration

Business Society 1, 2, 3, 4; Track 1; Basketball 2; Intramural Sports 2; *The Susquehanna Staff* 2.

WILLIAM DAVID GROSS

7 W. Pine St., Selinsgrove, Pa.

Bond and Key

Business Administration

Basketball 1, 2, 3, 4; Baseball 2; Tennis 1; *The Susquehanna Staff* 1, 2, Managing Editor 3; Theater Guild 4; Student Council 4, Vice President 4; Bond and Key Secretary 3, 4; Business Society 3, 4.

SARA JANE GUNDRUM

944 E. Main St., Rockwood, Pa.

Omega Delta Sigma

Commercial Education

Theater Guild 2, 3; Intramural Sports 1, 2, 3, 4; Biemic Society 2; Operetta 1; Women's Athletic Association 1, 2, 3, 4; *The Susquehanna Staff* 1, 2, 3, 4; LANTHORN Staff 3; Freshmen Orientation 3; Orchestra 1, 2, 3, 4; Business Society 1, 2, 3, 4; Student Christian Association 1, 2, 3, 4; Omega Delta Sigma Secretary 4; Vice President's Council 2; Inter-Sorority Council 4, Secretary 4; Women's Student Council 4.

E. VIRGINIA HALLOCK

Willow Tree Road, Milton, N. Y.

Sigma Alpha Iota

Music Education

Symphony Orchestra 1, 2, 3, 4; Student Christian Association 1, 2, 3, 4; String Trio 2, 3, 4; Marching Band 1, 4; Swing Band 2; Girls' Band 2; Susquehanna Singers 2, 3; Theater Guild 3; LANTHORN Staff 3; *The Susquehanna Staff* 3; Operetta 3, 4; Vice President's Council 3.

RAYMOND G. HOCHSTUHL

3 Berkeley Heights Park, Bloomfield, N. J.

Phi Mu Delta

Business Administration

Track 1, 2; Business Society 1, 2, 3, 4; Student Christian Association 1, 2, 3, 4; Vice President Phi Mu Delta 3; Comptroller 3; Men's Student Council 3, Secretary 3; Intramural Sports 1, 2, 3, 4; Varsity "S" Club 3.

JEAN L. HUEVER

331 N. Fifth St., Allentown, Pa.

Sigma Alpha Iota

Music Education

Transferred from Pennsylvania State College, Susquehanna Singers 3, 4; Student Christian Association 3, 4; May Day 3; Marching Band 4; Concert Orchestra 4; Sigma Alpha Iota Program Chairman 4.



THOMAS E. JAMES

112 N. Front St., Selinsgrove, Pa.

Bond and Key *Music Education*
Student Christian Association 1, 2, 3; Men's Music Guild 1, 2, 3, Secretary 2; Band 1, 2, 3; Symphony Orchestra 1, 2, 3; Octette 2, 3, 1; Bond and Key Alumni Secretary 3; Operetta 1; President Recital Class 1.

MARGARET H. JOHNS

1207 East St., Honesdale, Pa.

Kappa Delta Phi *Liberal Arts*
Student Christian Association 1, 2, 3, 4; Hockey Team 1; Intramural Sports 1, 2, 3, 4; *The Susquehanna* Staff 1, 2, 3, 4; Freshmen Orientation Co-chairman 3; Theater Guild 1, 2, 3, 4; Operetta 2; Trinity Choir 1, 2; Girls' Band 1, 2; Concert Orchestra 1, 2; Debate 3.

JEAN E. KELLY

20 High St., Goshen, N. Y.

Kappa Delta Phi *Liberal Arts*
Student Christian Association 1, 2, 3, 4; Intramural Sports 1, 2, 3, 4; Women's Athletic Association 2, 3, 4, Captain 2; Vice President's Council 2, 3; Freshmen Orientation 3, 4; *The Susquehanna* Staff 2, 3, 4, News Editor 3, Editor 4; LANTHORN Staff 3; Kappa Delta Phi Recorder 3; Pi Gamma Mu 3, 4, President 4; Theater Guild 1; Women's Student Council 4, Secretary-Treasurer 1; Judiciary Council 1, Chairman 4; Who's Who 4.

EDITH KEMP

Box 215, Sunbury, Pa.

Commercial Education
Business Society 1, 2, 3, 4; Women's Athletic Association 1, 2, 3, 4; Day Student's Organization 1, 2, 3, 4; Class Officer 1; Intramural Sports 1, 2, 3.

JOHN R. LEACH

524 S. Market St., Selinsgrove, Pa.

Theta Chi *Music Education*
President Theta Chi 4; Secretary 2, 3; Who's Who 4; Men's Student Council 3, 4; Class Officer 3; LANTHORN Staff 3; University Band 1, 2; Student Christian Association 3, 4; Operetta 4.

HELEN LEPLEY

Winfield, Pa.

Omega Delta Sigma *Liberal Arts*
Women's Athletic Association 1, 2, 3, 4; Intramural Sports 1, 2, 3, 4; Student Council 4; Day Student's Organization 1, 2, 3, 4.

MARY LIZZIO

10 Main St., Conemaugh, Pa.

Kappa Delta Phi *Business Administration*
Student Christian Association 1, 2, 3, 4; Business Society 1, 2, 3, 4, President 3; Pi Gamma Mu 3, 4; Vice President 4; Biemic Society 1; Women's Athletic Association 1, 2, 3, 4; Secretary 3; President 4; Treasurer Kappa Delta Phi 3; Chaplain 4; Vice President's Council 2; Honor Hockey Team 2, 3, 4; Intramural Sports 1, 2, 3, 4; *The Susquehanna* Advertising Manager 3; Freshmen Orientation 3, 4; LANTHORN Staff 3; Theater Guild 4; Inter-Sorority Council 1; Treasurer 1; Student Council 1.

MARVIN MANEVAL

415 Gantt St., Newport, Pa.

Phi Mu Delta *Liberal Arts*
Football 1, 2, 3; Basketball 1, 2; Intramural Sports 1, 2, 3, 4; Student Christian Association Cabinet 2; Vice President Class 4.





HILDA MARKEY

1695 Mt. Rose Ave., York, Pa.

Kappa Delta Phi

Commercial Education

Who's Who 4; Pi Gamma Mu 4; Student Christian Association 1, 2, 3, 4; Cabinet 4; Women's Athletic Association 1, 2, 3, 4; Business Society 1, 2, 3, 4; Vice President 4; LANTHORN Business Staff 1; Women's Student Council 4; Susquehanna Singers 1; Theater Guild 1, 2, 3, 4; Biemic Society 1, 2, 3, 4; President Kappa Delta Phi 4; President Hassinger Hall 4; Handbook Editor 3; Sunday School Treasurer 4; Fire Captain 2; Intramural Sports 1, 2, 3, 4; Freshmen Orientation 2, 3, 4; Inter-Sorority Council President 4.

JAMES MILFORD

584 N. Laurel St., Hazleton, Pa.

Phi Mu Delta

Business Administration

Class Treasurer 1; Business Society 1, 2, 3; Phi Mu Delta Secretary 2; Vice President 3; Business Manager of LANTHORN 3; Intramural Sports 1, 2, 3; Inter-Fraternity 1, 2, 3.



ELIZABETH MILLER

2223 Newberry St., Williamsport, Pa.

Sigma Alpha Iota

Music Education

Transferred from Williamsport Dickinson Junior College. Susquehanna Singers 3, 4; Sigma Alpha Iota Pianist 3, 4; Student Christian Association 3, 4; May Day 3.

RICHARD MOGLIA

3 Clark St., Glen Bidge, N. J.

Phi Mu Delta

Business Administration

Business Staff *The Susquehanna* 1, 2, 3; Chairman Intramural Board 3; Chairman War Savings Board 3; Intramural Sports 1, 2, 3, 4; Student Christian Association 1, 2, 3, 4; Business Society 1, 2, 3, 4; Varsity Tennis 1, 2; Phi Mu Delta Pledge Master 4; Men's Student Council 4; Secretary 4; Business Manager "Hasty Heart" 4; Theater Guild 1, 2, 3, 4.



NANCY E. MYERS

136 W. High St., Elizabethtown, Pa.

Omega Delta Sigma

Liberal Arts

Alpha Psi Omega 2, 3, 4; Women's Athletic Association 1, 2, 3, 4; Omega Delta Sigma Secretary 3; President 4; Biemic Society 1, 2, 3, 4; President 2; Judiciary Committee 3; Cheerleader 1, 2, 3, 4; Captain 4; Vice President's Council 2; *The Susquehanna* Staff 3; Theater Guild 1, 2, 3, 4; Letters to Lucerne 2; Honor Hockey Team 2, 3, 4; Student Christian Association 1, 2, 3, 4; Class Secretary 2; Freshmen Orientation 3, 4; Chairman 4; Intramural Sports 1, 2, 3, 4; Inter-Sorority Council 4; Women's Student Council 2, 4; Who's Who 4; May Day 2.

STANLEY NALE

1814 Park St., Harrisburg, Pa.

Theta Chi

Liberal Arts



JOHN M. REICHARD

1507 Center St., Wilkesburg, Pa.

Phi Mu Delta

Business Administration

Biemic Society 2; German Club 1, 2; Student Christian Association 1, 2, 3; Theater Guild 2; Basketball Manager 2; Inter-Fraternity Sports 2; Comptroller Phi Mu Delta 4; Treasurer Senior Class 4; Men's Student Council 4; President 4; Business Society 3, 4; Laboratory Assistant Accounting Department 4; Who's Who 4.

GEORGE E. RIEGEL

944 Elizabeth St., Williamsport, Pa.

Pre-medical

Pi Gamma Mu 4; Chemistry Laboratory Assistant 4; Dean's List 3.

WILLIAM B. ROTHENBERG
314½ Fairmount Ave., Sunbury, Pa.

Theta Chi *Music Education*
Student Christian Association 1, 2, 3; Band 1, 2, 3, 4; Orchestra 4; Chorus 2, 4.

LOUISE SCHLICK

85 W. Dorrance St., Kingston, Pa.

Sigma Alpha Iota *Music Education*
Treasurer Sigma Alpha Iota 3; Student Christian Association 1, 2, 3, 4; Susquehanna Singers 2, 3; Trinity Choir 1, 2, 3, 4; May Day 2, 3; Theater Guild 4; LANTHORN Editor 3; Band 1, 2, 4; Symphony Orchestra 3, 4; Operetta 1, 2, 4; Freshmen Orientation 3, 4.

HOWARD SOLOMON

124 W. Southern Ave., South Williamsport, Pa.,

Phi Mu Delta *Business Administration*

OSCAR S. STONESIFER, JR.

2202 N. Fifth St., Harrisburg, Pa.

Phi Mu Delta *Liberal Arts*

Freshman Class Treasurer 1; Business Staff of *The Susquehanna* 1, 2; Varsity Basketball 2, 3; Intramural Sports 1, 2, 3, 4; Inter-Fraternity Sports 1, 2, 3, 4; Varsity "S" Club 2, 3; Inter-Fraternity Senate 4; Phi Mu Delta President 4; Who's Who 4.

MARIE TALBOT

149 W. Green St., Reading, Pa.

Sigma Alpha Iota *Music Education*

Student Christian Association 1, 2, 3, 4; Trinity Choir 2, 3, 4; Band 1, 2, 3; Operetta 1, 2, 4; Corresponding Secretary Sigma Alpha Iota 4.

JOSEPH TAYLOR

108 E. Bennett Ave., Wildwood, N. J.

Phi Mu Delta *Business Administration*

Business Society 1, 2, 3, 4; Treasurer 2, 3; Student Christian Association 1, 2, 3; Theater Guild 1, 2; Football 1; Basketball 1, 2, 3; Co-captain 3; Junior Class President 3; Intramural Sports 1, 2, 4; Phi Mu Delta President 4; Fraternity Senate 4; Business Manager LANTHORN 3; Sports Editor *The Susquehanna* 3; Informal Baseball 2, 3.

ELISE C. THOMPSON

37 Burtis St., Lynbrook, N. Y.

Sigma Alpha Iota *Music Education*

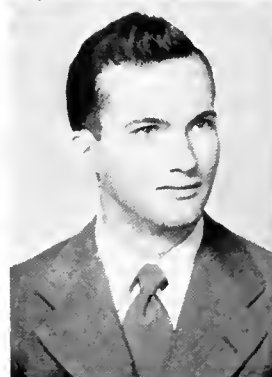
Student Christian Association 1, 2, 3, 4; Women's Athletic Association 1, 2, 3, 4; Vice President Sigma Alpha Iota 3; Secretary 4; Susquehanna Singers 2, 3; Orchestra 1, 2, 3, 4; Band 1, 2, 3, 4; Class Officer 2, 3, 4; Intramural Sports 1, 2, 3, 4; Inter-Sorority Council 3; LANTHORN Staff 3; Theater Guild 4; Women's Judiciary Committee 4.

DOROTHY V. WAGNER

32 W. Magnolia Ave., Aldan, Pa.

Omega Delta Sigma *Commercial Education*

House President Cottage 4; Honor Hockey Team 2, 3, 4; Student Council 4; Treasurer Omega Delta Sigma 3; Women's Athletic Association 1, 2, 3, 4; Treasurer 4; Intramural Sports 1, 2, 3, 4; Business Society 1, 2, 3, 4; Theater Guild 1, 2, 3, 4; Freshmen Orientation 3, 4; Operetta 1, 2; May Day 2; LANTHORN Editorial Staff 3; *The Susquehanna* Staff 1, 2, 3.





RUTH E. WILLIAMS

50 Llewellyn Ave., Bloomfield, N. J.

Kappa Delta Phi

Commercial Education

Women's Student Council 4; President 4; Financial Secretary
Kappa Delta Phi 3; Secretary 4; Student Christian Association
1, 3, 4; Cabinet Secretary 4; Women's Athletic Association 1,
2, 3, 4; Treasurer 3; Alpha Psi Omega 4; Business Society 1, 2,
3, 4; Intramural Sports 1, 2, 3, 4; Theater Guild 1, 2, 3, 4;
Stage Door 3; *The Susquehanna* Reporter 3; Operetta 1, 2;
Freshmen Orientation 3, 4; Judiciary Committee 4; Cheerleader
2, 3, 4.



ADAH WOLFE

Pensylvania Ave., Mill Hall, Pa.

Omega Delta Sigma

Liberal Arts

Honor Hockey Team 2, 3, 4; Financial Secretary Omega Delta
Sigma 3, 4; Intramural Sports 1, 2, 3, 4; Hockey Captain 4;
Biemic Society 1, 2, 3, 4; Operetta 1, 2; *The Susquehanna* Re-
porter 3; Women's Athletic Association 1, 2, 3, 4; May Day
2; Student Christian Association 1, 2, 3, 4; Freshmen Orienta-
tion 3, 4.





Coach A. A. Stagg, Jr.



Assistant Coach John Zubak

FOOTBALL—1946



First Row, Left to Right—R. Frankenhoff, Campbell, Devine, Diaz, Peters, Captain Zlock, Kurlowicz, Witowski, Reitz, Arthur.

Second Row—Yanovitch, Bresnock, Wissinger, Berstine, Aurand, Clark, Sheesley, Edmunds, Mbindi.

Third Row—Derr, Benner, Hess, Webber, Bartuska, Duncan, Dunn, Santangelo.

Fourth Row—Stagg, Woodring, Rowe, Bales, Jenkins, Johnson, Hrkman, Zubak.



Zlock
Witowski

Peters
Kurlowicz

R. Frankenfield
Arthur

Clark

Diaz

Devine

Minnich
Bresnock

City College of New York -----	7	Susquehanna-----	13
Haverford -----	20	Susquehanna-----	6
Dickinson -----	27	Susquehanna-----	0
Juniata -----	0	Susquehanna-----	9
Hartwick -----	26	Susquehanna-----	13
Wagner -----	6	Susquehanna-----	27
	<hr/>		
	86		68

SUSQUEHANNA 13. CITY COLLEGE OF NEW YORK 7

University Field

Playing their first football game in four years, the Crusaders really "Threw on the Welsh Coal" as they trampled over a favored Beaver eleven, 13 to 7. The Crusaders drew first blood midway through the first period when Eve Zlock passed to Johnny Reitz who lateraled to Jimmy Diaz to score a 60 yard touchdown. City College scored in the next quarter to tie up the game, but Susquehanna was not to be denied as late in the final period Ed Bresnock and Jim Peters carried the ball down the field until Peters went over from the seven to win the game for Susquehanna.

SUSQUEHANNA 6. HAVERFORD 20

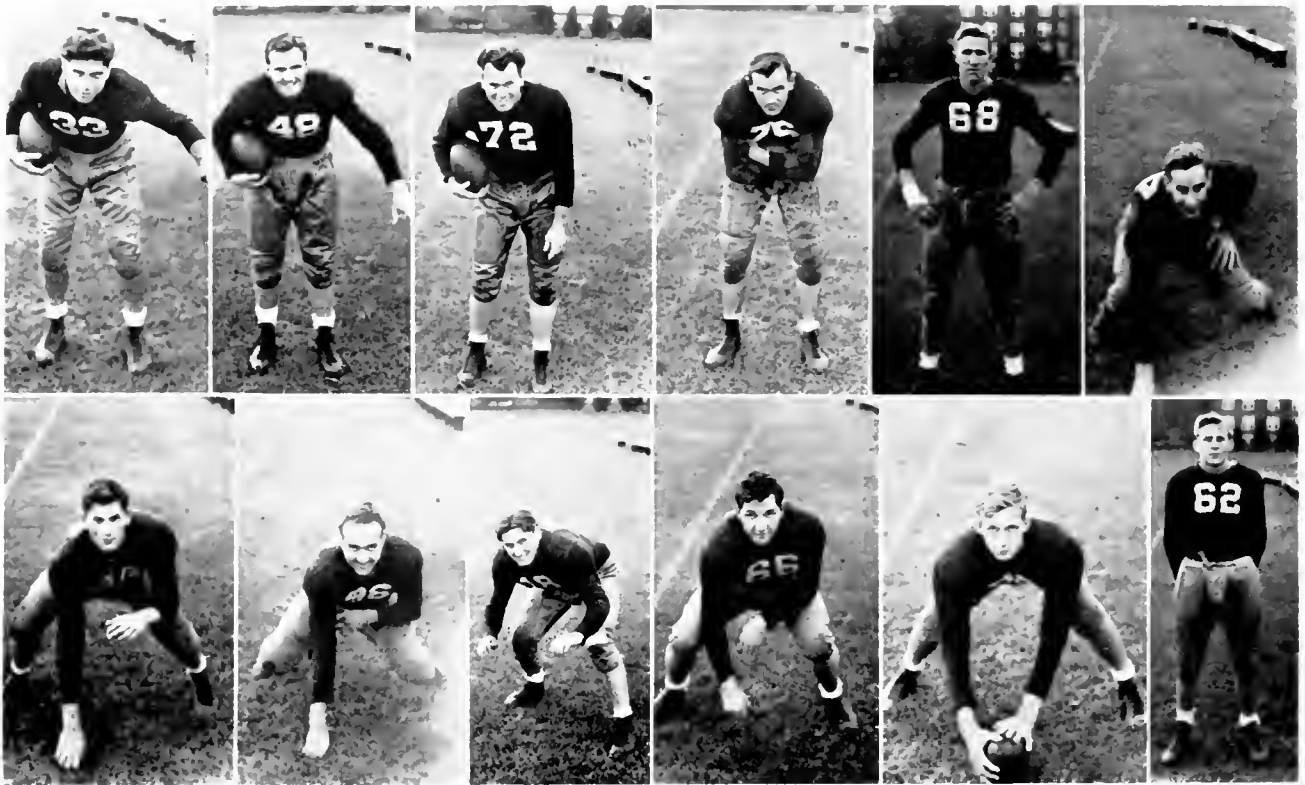
University Field

Once again the Crusaders were the first to talley as they recovered a Ford fumble deep in Haverford's territory. From there it was a simple matter for Jim Peters to scoot around right end for the only Susquehanna score. From there in, it was all Haverford. Susquehanna was dead game, but the Fords were just a little too big, and came out on the long end of a 20 to 6 score.

SUSQUEHANNA 0. DICKINSON 27

Carlisle

Scoring four touchdowns in the first three periods, Dickinson College's undefeated team won its third game by trouncing Susquehanna 27 to 0. The Red Devils hit pay dirt early in the game when they blocked an attempted Crusader punt. The only bright spot of the game for Susquehanna was the runback of a punt by Jim Peters who lateraled to Eve Zlock for a 65 yard touchdown run. However, it was called back for clipping and the only Crusader threat was stopped.



Bernstine
Campbell

Wissinger
Webber

Edmunds
Shoesley

Aurand
Hoss

Bartuska
Yanovitch

Reitz
Dunn

SUSQUEHANNA 9, JUNIATA 0

Huntington

Flashing the winning form that defeated CCNY but seemed lacking in their last two games, Susquehanna defeated a highly favored Juniata eleven 9 to 0 before 4,000 disappointed Juniata Homecoming fans. Eye Zlock's pass across the field to Jim Peters accounted for the first Crusader touchdown with Don Wissinger adding the extra point. Early in the second quarter Jimmy Diaz blocked a Juniata punt and the ball rolled out of the end zone for a Susquehanna safety. The Crusader line held the Indian backs to a net yardage gain of one yard which was the big reason for Susquehanna winning their second game of the season.

SUSQUEHANNA 13, HARTWICK 26

University Field

The big blue and white team from upstate New York started out quickly by scoring three touchdowns in the first quarter. Again in the final period Hartwick tallied to make the score 26 to 0 and it looked like an overwhelming victory for the Iroquois Warriors. However, the Crusades began to roll and tallied two times before the gun went off ending the game. Harold Aurand skirted right end for the first score set up by Tony Bartuska's block of a Hartwick punt and Eye Zlock threw a pass to Jim Peters to make the second Crusader touchdown. Don Wissinger once again added the conversion to end the ball game with Susquehanna on the short end of a 26 to 13 score.

SUSQUEHANNA 27, WAGNER 6

Staten Island, N. Y.

Susquehanna's Crusaders playing their last football game of the season at Staten Island defeated the Wagner College eleven 27 to 6. The Crusaders got started very slowly, getting only six points in the first half. However, in the last two periods they pushed across three touchdowns with passes by Eye Zlock and runs by Jim Peters and Earl Bernstine. Ed Kurlowicz played a stellar game in the forward wall getting in Wagner's backfield on many plays to spoil their attack before it could get rolling. This game ended the season for 1916 with a record of three wins as against three setbacks.



Myers
Zeidler

Getsinger

Pirie

Gietz

Williams

Phillips

Bongartz
Compton

Cheerleaders

Cheerleading is often a thankless task. The basketball or the football game appears in the next morning's papers but the cheerleaders receive little or no credit for their work.

We can certainly doff our hats to this year's cheerleaders who kept up the morale of the fans and therefore the team. When the team was winning, they were the first to celebrate; when the team was losing they were the first to encourage the boys to keep on fighting.



Kneeling Left to Right Getsinger, Williams, Myers, Gietz, Phillips
Standing Compton, Zeidler, Bongartz, Pirie



First Row, Left to Right: Walker, Hoyer, Swartz, Wood, Hallock, Jones, Uip, Jones, Kaley,
Derr, Lybarger, Southwick,
Second Row: Lady, Bollinger, Thompson, Sarba, Schlick, Getsinger, Wikel, Roberts, Wolfe, McHenry, Flock,
Meerbach, Rush, Kershner, Peters, Garman, Williams, Dale,
Third Row—Heim, Ramp, Welliver, Childress, Rhone, Rothenberg, Derr, Auman, Dornsife.

Marching Band

The band has become an indispensable part of football games and activities because of its excellent performance and the color and enthusiasm that it inspires. This year under the leadership of student director Allen Flock with Mr. Russell Hatz as faculty adviser, the band is well remembered for its intricate drilling and showmanship.





Left to Right - D. Ellhardt, A. Tietbohl, J. Williard, R. Maddocks.

Class of 1948

OFFICERS

<i>President</i>	- - - - -	JOSEPH WILLIARD
<i>Vice President</i>	- - - - -	AUGUSTUS TIETBOHL
<i>Secretary</i>	- - - - -	DOROTHY EILHARDT
<i>Treasurer</i>	- - - - -	ROBERT MADDOCKS

It doesn't seem possible that three years ago, we Juniors were evident freshmen. It seems like only yesterday, but that is because our "second home" has become so dear to us. Even during the short summer months, we would find ourselves longing for the commencement of college all too soon.

Remember "hazing days?" Ah, yes, the Frosh got their share of our pent up emotions. But gee, can you blame us? We got our share of black stockings, no make up, name tags, etc. from the preceeding sophs and now we upperclassmen were going to dish it right back. Ah—revenge is sweet. What was terrifically outstanding during our Sophomore year, however, was our splendid "Sophomore Hop." Remember the hectic week of making hundreds of cotton snow balls, the week before the dance? It was a grand success and we were proud.

And now, we as Juniors with an even larger enrollment are still ever progressing spiritually, intellectually, and socially. We are looking forward to our Junior Prom, knowing it will be the outstanding highlight of our Junior year.

Yes and to look to the future, for in the future does our destiny lie. As seniors, we will reach the peak of our college careers. May we find our goals as splendidly as Susquehanna has been in providing each one of us ample means for so doing.



CHARLES AGUE
Box 26, Hughesville, Pa.

Phi Mu Delta

Student Christian Association 1, 2, 3; Business Society 3; *Susquehanna* Business Staff 1, 2; Debate Club 1, 2, 3, Manager, 2; *Lanthorn* Business Staff 3; Phi Mu Delta Comptroller 3; Executive Council of Defense 3.

Business Administration



JOAN APPLE
1122 Market St., Sunbury, Pa.

Omega Delta Sigma

Business Society 1, 2, 3; Student Christian Association 1, 2, 3; May Day 1; Business Manager *Lanthorn* 3; Biemic Society 3; Theatre Guild 3; Fire Captain.

Four-Year Secretarial



FROSTA MARY ARSENI
211 W. Market St., Lewistown, Pa.

Sigma Alpha Iota

Student Christian Association 1, 2, 3; Sigma Alpha Iota Treasurer 3; Band 1, 2, 3; Orchestra 1, 2, 3; Operetta 1, 3; Trinity Choir 1; String Trio 3; *Susquehanna* Singers 1, 2, 3; May Day 1, 2; Vice President's Council 2; Fire Captain 2, 3; Women's Athletic Association 1, 2.

Music Education

CORA MAE ARTHUR
R. D. No. 1, Hughesville, Pa.

Sigma Alpha Iota

Student Christian Association 1, 2, 3; May Day 1, 2; Operetta 1, 3; *Susquehanna Singers* 2, 3; Fire Captain 3.

Music Education



RICHARD P. BARRY, JR.
601 First Ave., Altoona, Pa.

Phi Mu Delta

Student Christian Association 1, 2, 3; Business Society 1, 2, 3; Intra-mural sports 1, 2, 3; Inter-fraternity sports 1, 2, 3.

Commercial Education



MARGARET BATHGATE
Box 783, State College, Pa.

Omega Delta Sigma

Student Christian Association 1, 2, 3; Cabinet 3; Business Society 1, 2, 3, President 3; Women's Athletic Association 1, 2, 3, Secretary 3; Honor Hockey Team 3; Theatre Guild 1, 2, 3; Biemic Society 1, 2, 3, Secretary 3, 9; Orientation Program 3; Intramural Sports 1, 2, 3; *Susquehanna Staff* 3, Advertising Manager 3; Class Secretary 2.

Medical Secretary





DAVID BOMBOY
744 Market St., Bloomsburg, Pa.

Theta Chi

Student Christian Association 1, 2, 3. Cabinet 2, 3. Men's President 3; Marshall of Theta Chi 2. Secretary 3; Phi Kappa 2, 3. President 2, 3; Theatre Guild 1, 2, 3; *Susquehanna* Staff 2; Trinity Choir 1.

Pre-Theological



WILLIAM BOMGARDNER
56 Maple Ave., Hershey, Pa.

Business Administration



JACK BOYER
117 N. Second St., Sunbury, Pa.

Student Christian Association 1, 2, 3; Intramural Sports 1, 2, 3.

Business Administration

RONALD H. BOYER
24 Market St., Pillow, Pa.

Bond and Key

Student Christian Association 1, 2, 3; Biemic Society 1, 2, 3;
Baseball 1, 2; Intramural Sports 1, 2, 3; Bond and Key,
Vice President 3.

Liberal Arts



WILLIAM S. CLARK
4 West 8th St., Bloomsburg, Pa.

Liberal Arts



THERON W. CONRAD
200 Catawissa Ave., Sunbury, Pa.

Business Administration





DONALD R. COSGROVE
154 Ashland Ave., Bloomfield, N. J.

Phi Mu Delta

Liberal Arts



HERBERT S. DANKMAN
1544 Park Place, Brooklyn, N. Y.

Student Council 3; Dean's List 2.

Liberal Arts



LOIS C. DAUBERMAN
Nemacolin, Pa.

Omega Delta Sigma

Student Christian Association 1, 2, 3; Theatre Guild 1, 2, 3;
Women's Athletic Association 1, 2, 3; Basketball Manager
3; Biemic Society 2, 3; Orientation Program 3.

Liberal Arts

VIRGINIA A. DOSS
14 Adams Ave., Cranford, N. J.

Kappa Delta Phi

Student Christian Association 1, 2, 3; Business Society 1, 2, 3; Biemic Society 1, 2, 3, Vice-President 2; Kappa Delta Phi Vice-President 3; Inter-Sorority Council 3, Vice President 3; Women's Athletic Association 1, 2, 3; Honor Hockey Team 1, 2, 3; Intramural Sports 1, 2, 3; Orientation Program 3; May Day 1.

Medical Secretarial



DAWN J. EBERT
Box 27, Shamokin Dam, Pa.

Kappa Delta Phi

Student Christian Council 1, 2, 3; Business Society 1, 2, 3.

Commercial Education



E. DOROTHY EILHARDT
719 Linden St., Clarks Summit, Pa.

Kappa Delta Phi

Student Christian Association 1, 2, 3; Biemic Society 1, 2, 3; Intramural Sports 1, 2, 3; *Lanthorn* Staff 3; Class Secretary 3; Vice President's Council 2; May Day 2; Women's Athletic Association 1, 2, 3.

Liberal Arts





H. STUARD FLICKINGER
1047 Miller St., Sunbury, Pa.

Liberal Arts



BETTY FRANK
485 E. Shore Rd., Great Neck, N. Y.

Kappa Delta Phi

Student Christian Association 1, 2, 3; Business Society 1, 2, 3; Theatre Guild 1, 3; Intramural Sports 1, 2, 3; *Susquehanna* Staff 1, 3; Women's Athletic Association 1, 2, 3; May Day 1.

Business Administration



ROBERTA M. GAETZ
128 West Ave., Mt. Carmel, Pa.

Kappa Delta Phi

Student Christian Association 1, 2, 3, Cabinet 3; Women's Athletic Association 2, 3; Biemic Society 1; Cheerleader 2, 3; Theatre Guild 1, 2, 3, *Letters to Lucerne* 1; Vice President's Council 2; *Susquehanna* Staff 1; Intramural Sports 1, 2, 3.

Liberal Arts

MARTHA E. GARARD
130 Market St., Lewisburg, Pa.

Student Christian Association 1, 2, 3; *Susquehanna* Editorial Staff 3, Managing Editor 3; *Susquehanna* Staff 1, 2, 3; Debate 2; *Lanthorn* Business Staff 3.

Liberal Arts



ANN E. GIBSON
2 Sunset Road, Lewistown, Pa.

Kappa Delta Phi

Student Christian Association 1, 2, 3; Women's Athletic Association 1, 2, 3; Intramural Sports 1, 2, 3; Biemic Society 2; Theater Guild 1, 2.

Liberal Arts



ALVIN GLANZBERG
1070 E. Fourth St., Brooklyn, N. Y.

Symphony Orchestra 1, 2, 3; Debate 2, 3; Sunbury Symphony Orchestra 2, 3.

Pre-Medical





HARRIET ANN GOULD
307 Olive St., Johnstown, Pa.

Sigma Alpha Iota

Student Christian Association 1, 2, 3; Vice President's Council 2; Class Treasurer 1; Class Vice President 2; Alpha Psi Omega 2, 3; Theatre Guild 1, 2, 3; *Letters to Lucerne* 1; *You Can't Take It With You* 3; Women's Athletic Association 1, 2, 3; Intramural Sports 1; *Susquehanna* Staff 1, 2; Assisting Advertising Manager 3; Co-Editor of Frosh-Soph Issue 1; *Lanthorn* Editorial Staff 3; May Day 1, 2; *Susquehanna Singers* 2, 3; Trinity Choir 1, 2, 3; Operetta 1, 3; Octette 2, 3; Sigma Alpha Iota Magazine Chairman 3.

Music Education



CAROLINE GRAYBILL
McAlisterville, R. D. No. 1, Pa.

Kappa Delta Phi

Student Christian Association 1, 2, 3; Biemic Society 1, 2, 3; President, 2; Vice President's Council 2; Theatre Guild 1, 2, 3; Intramural Sports 1, 2, 3; *Susquehanna* Staff 1, 2, 3; Women's Athletic Association 2, 3; Orientation 3.

Liberal Arts



HOPE C. HARBESON
Main St., Milroy, Pa.

Sigma Alpha Iota

Student Christian Association 1, 2, 3; Vice President's Council 3; Sigma Alpha Iota Chaplain 3; Band 1; Orchestra 1; *Susquehanna Singers* 2, 3; May Day 1, 2; Operetta 1, 3; Octette 2, 3; Clarinet Quartette 2.

Music Education

MARIANNA HAZEN
139 Catawissa Ave., Sunbury, Pa.

Kappa Delta Phi

Student Christian Association 1, 2, 3; *Susquehanna* Staff 1, 3.

Liberal Arts



HAROLD LEE HEBEL
R. D. No. 1, Liverpool, Pa.

Student Christian Association 1, 2, 3; Phi Kappa 1, 2, 3;
Pre-Theological Club 1, 2, 3; *Susquehanna Singers* 3;
Operetta 3.

Pre-Theological

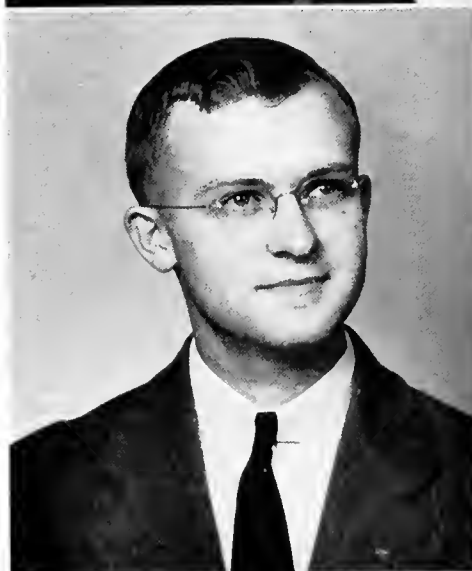


CARL L. HERMAN
R. D. No. 1, Lewisburg, Pa.

Theta Chi

Biemic Society 3; Theta Chi Librarian 2, First Guard 3;
Intramural Basketball 2, 3.

Pre-Medical





BERNADINE KOONS

235 W. Fifth St., Mt. Carmel, Pa.

Student Christian Association 1, 2, 3; Theatre Guild 1, 2, 3;
Biemic Society 2, 3.

Liberal Arts



HAROLD KRAMER

1906 Hanover Ave., Allentown, Pa.

Theta Chi

Student Christian Association 1, 2, 3; Business Society 1, 2,
3; *Susquehanna* Staff 1; Theta Chi Treasurer 2; Theater
Guild 1, 2, Treasurer 2; *Susquehanna* Advertising Staff 2.

Business Administration



JEANETTE KRAMER

416 N. Eighth St., Sunbury, Pa.

Sigma Alpha Iota

May Day 1, 2; Operetta 1, 3; *Susquehanna* Singers 1, 2, 3.

ARLENE JULIA KREPS
523 Highland Ave., Lewistown, Pa.

Sigma Alpha Iota

Student Christian Association 2, 3; Susquehanna Singers 3;
Band 2; Orchestra 2, 3; Vice President's Council 3; Juniata
College 1.

Music Education



MARLIN KROUSE
Box 162, Shamokin Dam, Pa.

Biemic Society 3.

Liberal Arts



ELAINE LAKS
106 Third Ave., Kingston, Pa.

Student Christian Association 1, 2, 3; Biemic Society 1, 2;
Women's Athletic Association 3.

Liberal Arts





FRANCES LEISENRING

Bear Gap, Pa.

Student Christian Association 1, 2, 3; Susquehanna Singers
2, 3; May Day 2; Operetta 3; Fire Captain 2, 3.

Music Education



KENNETH LOSS

R. D. No. 1, Middleburg, Pa.

Bond and Key

Student Christian Association 1, 2; Phi Kappa 2, 3; Debate
Club 3; Journalism 1, 3.

Pre-Law



ROBERT MADDOCKS

296 Belleville Ave., Bloomfield, N. J.

Phi Mu Delta

Student Christian Association 1; Class Treasurer 3; *Lan-*
thorn Sports Editor 3; *Susquehanna* Staff, Sports Editor 3;
Phi Mu Delta House Manager 3; Intramural Sports 1, 2, 3;
Business Society 1, 3; Penn State 2.

Business Administration

ANN R. MALKAMES
132 W. Sixth St., Hazleton

Omega Delta Sigma

Student Christian Association 1, 2, 3; Theatre Guild 1, 2, 3;
Biemic Society 1, 2, 3; *Lantern* Staff 3; Freshman Orientation 3.

Liberal Arts



MARJORIE MENGEL
Market St., Freeburg, Pa.

Sigma Alpha Iota

Student Christian Association 1, 2; Susquehanna Singers
2, 3; Operetta 3; May Day 2; Inter-Sorority Council 3.

Music Education



ARNOLD MIX
154 Franklin St., Bloomfield, N. J.

Bond and Key

Student Christian Association 1; Business Society 1, 2; In-
tramural Sports 1, 2, 3; Baseball 1; Class Vice President 2.

Business Administration





ONGKAR NARAYAN
Georgetown, British Guiana
Bond and Key (Honorary)

Student Christian Association 1, 2, 3.

Liberal Arts



ALLAN PACKMAN
23 S. Montgomery Ave., Atlantic City, N. J.

Student Council 3.

Business Administration



ALAN PARCELLS
6 Eastern Parkway, Auburn, N. Y.

Bond and Key

Bond and Key Secretary 2, Social Chairman 3; Basketball 1, 2.

Business Administration

HOPE H. PETERS

Reedsville, Pa.

Sigma Alpha Iota

Student Christian Association 1, 2, 3; Band 1, 2, 3; Orchestra 1, 2, 3; Operetta 1, 3; May Day 1, 2; Susquehanna Singers 2, 3.

Music Education



JOSEPH P. PEYTON, JR.

153 Hubbard Park, Red Bank, N. J.

Phi Mu Delta

Business Administration



NEDIA POLANCHYCK

60 N. Lehigh Ave., Frackville, Pa.

Student Christian Association 1, 2, 3; Susquehanna Singers 2, 3; Operetta 3; Theater Guild 3; Biemic Society 3; Vice President's Council 2; Fire Captain 3.

Music Education





GLORIA REICHLEY
91 S. Main St., Dover, Pa.

Omega Delta Sigma

Student Christian Association 1, 2, 3; Women's Athletic Association 1, 2, 3, Vice President, 3; Intramural Sports 1, 2, 3; Honor Hockey Team 3, Captain, 3; Biemic Society 1, 2, 3; Theatre Guild 1, 2, 3; *Susquehanna* Staff 1, 2, 3, Assistant Advertising Manager 3; Orientation 3; Business Society 1, 2, 3, Treasurer 3.

Medical Secretarial



BETTY K. REISCH
1121 Centre St., Ashland, Pa.

Omega Delta Sigma

Student Christian Association 1, 2, 3; Vice President's Council 3; Fire Captain 2; Theater Guild 3; Biemic Society 3; *Lantern* Editorial Staff 3; *Susquehanna* Staff 2, 3; Freshman Orientation 3.

Liberal Arts



EDWARD E. RICHARDS
62 Rice St., Trucksville, Pa.

Bond and Key

Business Society 1, 2, 3; Intramural Sports 1, 2, 3; Football 1, 2; Basketball 1.

Business Administration

GERTRUDE A. ROBERTS
Keyport Road, New Monmouth, N. J.

Kappa Delta Phi

Student Christian Association 1, 2, 3; Women's Athletic Association 1, 2, 3; Business Society 1, 2, 3; Secretary 2; Class Officer 2; *Lantern* Editor 3; Band 3; Intramural Sports 1, 2, 3; Fire Captain 2, 3; Freshman Orientation 3.

Business Administration



CAROL SCHREINER
416 W. Market St., Williamstown, Pa.

Student Christian Association 1, 2, 3; *Susquehanna* Staff 1, 2, 3; Biemic Society 1, 2, 3; Theatre Guild 1, 2, 3; Debate Club 3.

Liberal Arts



MARTHA DOROTHY SHARWARKO
137 Muir Ave., Hazleton, Pa.

Omega Delta Sigma

Student Christian Association 1, 2, 3; Women's Athletic Association 1, 2, 3; Biemic Society 1, 2, 3; Intramural Sports 1, 2, 3; Theater Guild 1, 2, 3; Vice President's Council 3.

Laboratory Technician





ANNA M. SHEETZ

142 S. Market St., Mt. Carmel, Pa.

Student Christian Association 1; Biemic Society 2, 3.

Liberal Arts



VELMA SHOOK

238 North 16th St., Allentown, Pa.

Sigma Alpha Iota

Student Christian Association 1, 2, 3; Susquehanna Singers
2, 3; Inter-Sorority Council 3; Sigma Alpha Iota Vice Pres-
ident 3; Band 1, 2; Orchestra 2, 3; Operetta 1, 3.

Music Education



SHIRLEY SIROYER

846 Edison Ave., Sunbury, Pa.

Student Christian Association 1, 2, 3; Business Society 1, 2,
3; Day Student Treasurer 2.

Commercial Education

BETTY SMITH
Woodsboro, Maryland

Omega Delta Sigma

Women's Athletic Association 3; Student Christian Association 1, 2, 3, Cabinet, 3; Theatre Guild 2, 3; Women's Student Council 2; *Susquehanna* Staff 1; Biemic Society 1, 2, 3, Secretary-Treasurer 3.

Liberal Arts



SARA LEE SMITH

1028 Poplar St., Scranton, Pa.

Student Christian Association 1, 2, 3; Women's Athletic Association 2, 3; Theatre Guild 3; *Susquehanna* Staff 1; Intramural Sports 1, 2, 3.

Liberal Arts



CHARLES W. SNYDER
330 N. 10th St., Lebanon, Pa.

Business Administration





ELEANOR E. STEELE
2631 Butler St., Penbrook-Harrisburg, Pa.

Kappa Delta Phi

Student Christian Association 2, 3, General President, 3, Cabinet 2, 3; Vice President's Council 2, 3; Women's Athletic Association 2, 3; Honor Hockey Team 2, 3; *Susquehanna* Staff 2, 3, News Editor, 3; Theatre Guild 1; Biemic Society 1; Susquehanna Singers 1; Women's Student Council 1, 3.

Liberal Arts



PAUL B. STETLER
Middleburg, Pa.

Bond and Key

Business Administration



MARIE E. STOUT
R. D. No. 2, Neptune, N. J.

Omega Delta Sigma

Student Christian Association 1, 2, 3; Student Council 3; Women's Athletic Association 1, 2; Business Society 1, 2, 3; Vice President's Council 2, 3; Hassinger Hall Vice President 3; May Day 1; Intramural Sports 1, 2; LANTHORN Business Staff 3.

Business Education

GEORGE C. STOW, JR.
136 Prospect St., Merchantsville, N. J.

Phi Mu Delta

Student Christian Association 1, 2, 3; Phi Mu Delta Vice
President 3; Intramural Sports 1, 2, 3; Biemic Society 1, 2.

Pre-Medical



FLORENCE STROUSE

Proctor, Pa.

Sigma Alpha Iota

Student Christian Association 1, 2, 3; Susquehanna Singers
2, 3; Operetta 1, 3; Trinity Choir 1, 2, 3; May Day 1, 2;
Theater Guild 1, 2, 3; Vice President's Council 3.

Music Education



AUGUSTUS V. TIETBOHL

443 Percy St., S. Williamsport, Pa.

Theta Chi

Student Christian Association 1, 2, 3; Theta Chi Treasurer
3; Alpha Psi Omega 1, 2, 3; Phi Kappa 3; Class Officer 3;
Theatre Guild 1, 2, 3.

Pre-Theological





GAYNELLE WAGONER

Pylesville, Maryland

Kappa Delta Phi

Student Christian Association 1, 2, 3; Women's Athletic Association 1, 2, 3; Vice President's Council 2; Biemic Society 2; Intramural Sports 1, 2, 3; *Susquehanna* Staff 2.

Liberal Arts



VIRGINIA WALKER

81 Main St., Beavertown, Pa.

Sigma Alpha Iota

Student Christian Association 2; *Susquehanna* Singers 2, 3; Band 3; Orchestra 3; Operetta 3; Sigma Alpha Iota Year-book Chairman 3.

Music Education



GLORIA WALMER

40 S. 24th St., Penbrook-Harrisburg, Pa.

Kappa Delta Phi

Student Christian Association 1, 2, 3, Cabinet, 3; Business Society 1, 2, 3, Secretary, 3; *Susquehanna* Staff 1, 2, 3, Circulation Manager, 3; Theatre Guild 1, 2, 3; Kappa Delta Phi Treasurer 3; Operetta 1; Co-Chairman of Bond Drive 2; Intramural Sports 1, 2, 3; Women's Athletic Association 1, 2, 3; LANTHORN Advertising Staff 3; Biemic Society 1, 2; Orientation, Assistant Chairman, 3; Co-Editor of *Susquehanna*, 2; May Day 2.

Commercial Education

DEXTER N. WEIKEL

New Berlin, Pa.

Phi Mu Delta

Student Christian Association 1, 2, 3, Cabinet Treasurer 2, 3; Phi Mu Delta Secretary 2, 3; Class Vice President 1; Band 3; Orchestra 3; Susquehanna Singers 3.

Music Education



HARRY WELLIVER

55 Berwick St., Beaver Meadows, Pa.

Phi Mu Delta

Student Christian Association 1; Susquehanna Singers 3; Band 1, 2, 3; Orchestra 1, 2, 3; Phi Mu Delta Sergeant-At Arms 2; Trinity Choir 1, 2.

Music Education



JOHN D. WILEY

4438 Terrance Ave., Merchantville, N. J.

Phi Mu Delta

Student Christian Association 1, 3; Business Society 1, 3; Theatre Guild 1; Freshman Football Team 1.

Business Administration





JOSEPH R. WILLIARD
226 Logan St., Lewistown, Pa.

Bond and Key

Bond and Key President 3; Class President 3; Business Society 2, 3; Debate Club 2, 3; West Point Debate 2; *Susquehanna* Staff 3; Intramural Sports 2, 3; Inter-Fraternity Senate 3; President 3; Bond and Key Assistant House Manager 2.

Business Administration



MARY ELLEN WOOD
Merritt Road, Farmingdale, N. Y.

Sigma Alpha Iota

Student Christian Association 1, 2, 3; Sigma Alpha Iota Editor 3; Theatre Guild 1, 2, 3; Women's Athletic Association 1, 2, 3; Orchestra 3; Band 3; *Susquehanna* Singers 2, 3; Operetta 1, 3; Trinity Choir 3.

Music Education

FRANK ALBERT ZEIDLER
103 State St., Bloomfield, N. J.

Phi Mu Delta

Student Christian Association 1, 3; Intramural Sports 1, 3; Intramural Board 3; Basketball 1, 3; Cheerleader 3; Band 1; Penn State 2; Business Society 1, 3.

Business Administration

FRANKLIN R. WOLFE
1 Vaux Ave., Tremont, Pa.

Theta Chi

Student Christian Association 1, 2, 3; Band 1, 2, 3; Orchestra 1, 2, 3; *Susquehanna* Singers 2, 3; Trinity Choir 1, 2; Operetta 1, 2, 3; May Day 1, 2.

Music Education









Seated on Floor, Left to Right—Lizzio, Wagner, Davison, Dale,
 Seated—Myers, Cryder, Wolfe, Clark, Day.
 Standing—Reichley, Doss, Nicklin, Lyarger, Bonsum, Steele, Bathgate.

Girls' Honor Hockey Team

The Crusaderettes started the fall season with nineteen co-eds making up the varsity and reserve squads. Throughout the season the girls displayed splendid sportsmanship. They were out to win all of their games, but just as important to them and to the coach, was the furthering of their ideals and principles in regards to inter-collegiate sports.

Susquehanna	----- 1	Shippensburg State Teachers College	----- 2
Susquehanna	----- 0	Lebanon Valley (<i>away</i>)	----- 3
Susquehanna	----- 1	Lebanon valley (<i>home</i>)	----- 2

PLAYED AT CEDAR CREST

Susquehanna	----- 1	Moravian	----- 0
Susquehanna	----- 0	Cedar Crest	----- 0
Susquehanna	----- 0	Kutztown	----- 0

Susquehanna was tied with Cedar Crest for honors of the day.

WINTER

Blow, Blow, thou winter wind,
Thou art not so unkind
As man's ingratitude
Thy tooth is not so keen,
Because thou art not seen,
Although thy breath be rude.
Heigh Ho! sing heigh ho! unto the green holly:
Most friendship is feigning, most loving mere folly:
Then Heigh Ho, the holly!
This life is most jolly.

—*Shakespeare.*



SEIBERT HALL



Left to Right—Bringman, Kretsinger, Butts, Black.

Class of 1949

OFFICERS

<i>President</i>	- - - - -	HARRY BUTTS
<i>Vice President</i>	- - - - -	LOUISE KRETSINGER
<i>Secretary</i>	- - - - -	CONSTANCE BLACK
<i>Treasurer</i>	- - - - -	DALE BRINGMAN

The thought of being an Upperclassman this year frightened each of us in one way or another. It was good coming back to S. U. and all of our friends. It was quite different from our freshmen year when the "hazers" took us into hand. We became "humble frosh" under their expert guidance and persuasive manners. We won't forget our first big collegiate basketball game nor the sorority and fraternity rushing.

This year has been filled with good times for all of us. Our Sophomore Hop was a social success and climax to a splendid 1946 Christmas season.

We can look forward to two more wonderful years here at Susquehanna, two more years filled with memorable events which each one of us will never forget.

DONALD L. ADAMS

LOUIS P. APRICENO

MIRIAM J. AVERY

ROSALINE BAILEY



BENJAMIN J. BERGSTRESSER

RACHEL BERGSTRESSER

GRACE BILLOW

PAUL R. BINGAMAN



CONSTANCE BLACK

JEAN E. BLECHER

KAY L. BLOOM

JOYCE E. BOTTORFF



D. CAROLYN BOUSUM

ANNA BRINDEL

DALE BRINGMAN

RUSSELL BROWN



ROBERT H. BURB

RUTH M. BUFFINGTON

HARRY W. BUTTS, JR.

BARBARA E. CHILDRESS



VIRGINIA COCHRANE

GEORGE A. COOPER

HARRY C. CULP

MARY LOUISE DALE



MARY DAVISON

GILBERT O. DAY

DORIS A. DECKER

ALOYSIUS DERR





JEAN E. DERR

ROBERT L. DORNSIFE

EDNA ETZRODT

NANCY A. EVERETT

FRANK K. FETTEROLF

MILLARD G. FISHER

ROBERT A. FISHER

EDWARD H. FORD

DONALD W. FOSSELMAN

DOROTHY E. GARDNER

MARY ANN GETSINGER

EUGENE GUNDRUM

J. WILLIAM HEIM

JAMES F. HOWELL

HOWARD S. HUGUS

HARRY K. JAMES

MARY JANE JESSEN

HARRY R. JOHNSTON

MAUDE B. JONES

ALICE M. KALEY

JANET KELLER

JUANITA KELLER

LILLIAN KEPNER

GERALDINE KILHEFNER

JAMES KIMBLE

DONALD KING

ISABEL KISS

RUTH KLINGER

LOUISE KRETSINGER

CHARLES LADY

MARGARET LATTA

GRACE LAU



JAMES LEITZEL, JR.

RICHARD LINDEMANN

MARTHA LUNDAHL

N. FRANCES LYBARGER



ELWOOD M. McALLISTER

WILLIAM McCLURE

MARJORIE McHENRY

JEAN MATTHEWS



DOLORES MATTSON

KENNETH MERZ

STANLEY MUMMEY

WINIFRED MYERS



DOROTHY NITCHMAN

KENNETH ORR

WARREN OUTERBRIDGE

JAMES B. PETERS

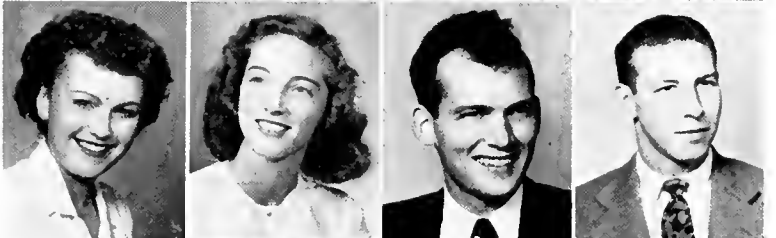


MARJORIE PETHICK

MURIEL PHILLIPS

WARREN J. PIRIE

ROBERT W. RADELL



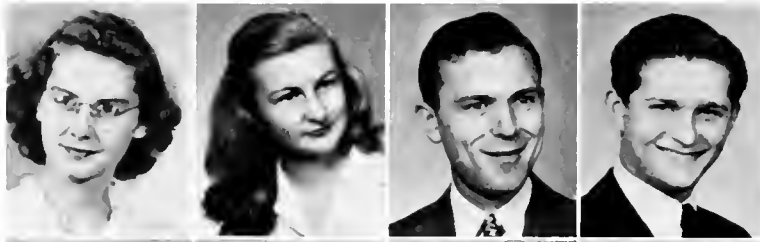
COLUMBUS H. RAUP

MILDRED K. REAVER

JAMES B. REILLY

DANIEL I. REITZ, JR.





ESTHER A. RISHELL

MARION ROBSON

DONALD P. ROHRBACH

WILLIAM R. RUIH



LUCRETIA RUSH

FRANCES SAVIDGE

KATHERINE SCHNEIDER

RITA SCHWEIGHOFER



WAYNE L. SECRIST

DOROTHY SHAFFER

NEVIN SHAFFER

JANET L. SHARROW



SALLY E. SLICER

M. HELEN SMITH

M. JANE SOUTHWICK

GABRIELLE SPEYER



MARIAN STEIGERWALT

EUGENE STEININGER

IRMA R. STRAWBRIDGE

PHYLLIS L. SWARTZ

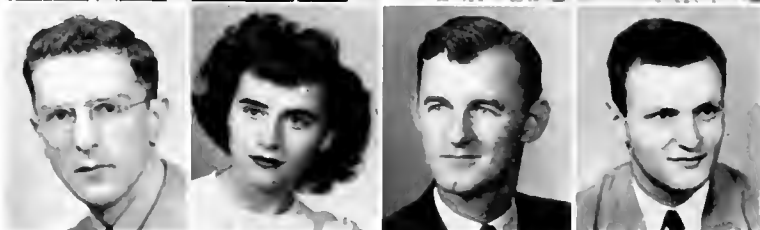


RALPH H. TIETBOHL

CHARLES A. VENNER

DORIS E. WANBAUGH

MARGARET WILLIAMS



RUSSELL WILLIAMS

S. ELAINE WILLIAMS

RICHARD L. WILSON

ROBERT E. WINTER

ROBERT F. WOHLSEN

FANCHER WOLFE



ALVIN J. WOODRING

ANNE B. WRIGHT



WILLIAM P. YANCHO

SHIRLEY J. YARNELL



LOIS J. YOUNG

MAYNARD N. ZERBE



EVAN P. ZLOCK







Seated, Left to Right—Westervelt, Hospodar, Zlock, Fellows, Zeidler, Camerer, Maddocks.
 Standing—Stagg, Pfeiffer, Solomon, Reitz, Witowski, Yeakel, Zubak.

Varsity Basketball 1946-47

RECORD

S. U.—33	Pennsylvania State College	57
S. U.—28	Wagner College	61
S. U.—37	Dickinson College	52
S. U.—50	Hartwick College	41
S. U.—67	Milton Y. M. C. A.	30
S. U.—62	Alumni	29
S. U.—65	Bucknell Junior College	39
S. U.—64	Alfred College	51
S. U.—57	York Junior College	49
S. U.—76	Scranton Junior College	47
S. U.—60	Elizabethtown College	46
S. U.—50	Juniata College	48
S. U.—51	Ursinus College	53
S. U.—55	Philadelphia College of Pharm.	40
S. U.—75	Elizabethtown	53
S. U.—50	Lebanon Valley College	51
S. U.—48	Juniata College	33
	<hr/>	<hr/>
918		780

VARSITY RECORD—Won 12; Lost 5.

JUNIOR VARSITY RECORD—Won 14; Lost 6.

S. U. 33 — PENN STATE 57

In the opening game of the 1946-47 basketball season the Crusaders bowed to the Penn State Lions. Johnny Hospodar, the all-state center from Hazleton was high man with 15 points.

S. U. 28 — WAGNER 61

The Crusaders went down to their second defeat of the young season before the sharp shooting Wagner College five. Again John Hospodar had 8 points for the losing cause.

S. U. 37 — DICKINSON 52

The Dickinson Red Devils got off to a fast start against the Crusaders and were never challenged in their first victory of the hardwood season. For Susquehanna Eye Zlock was high man with 13 points.

S. U. 50 — HARTWICK 41

The Crusaders won their first game of the season waging a brilliant uphill battle to come from behind and defeat a favored Hartwick five. Frank Zeidler led the scorers with 16 points.

S. U. 67 — MILTON YMCA 30

The Orange and Maroon got their second victory overwhelming the invading Milton team with scoring power and manpower. Eye Zlock had 20 points and Dick Westervelt 14 to lead the high flying Crusaders.

S. U. 62 — ALUMNI 29

An Alumni team composed entirely of former Susquehanna stars came to Selinsgrove with high hopes of knocking off the undergraduates but left with the feeling that the Crusaders had a really impressive team. For Susquehanna Eye Zlock once again led the scorers with 21 points, while Jerry Moore topped the Alumni scorers with 6 points.

S. U. 65 — BUCKNELL JUNIOR COLLEGE 41

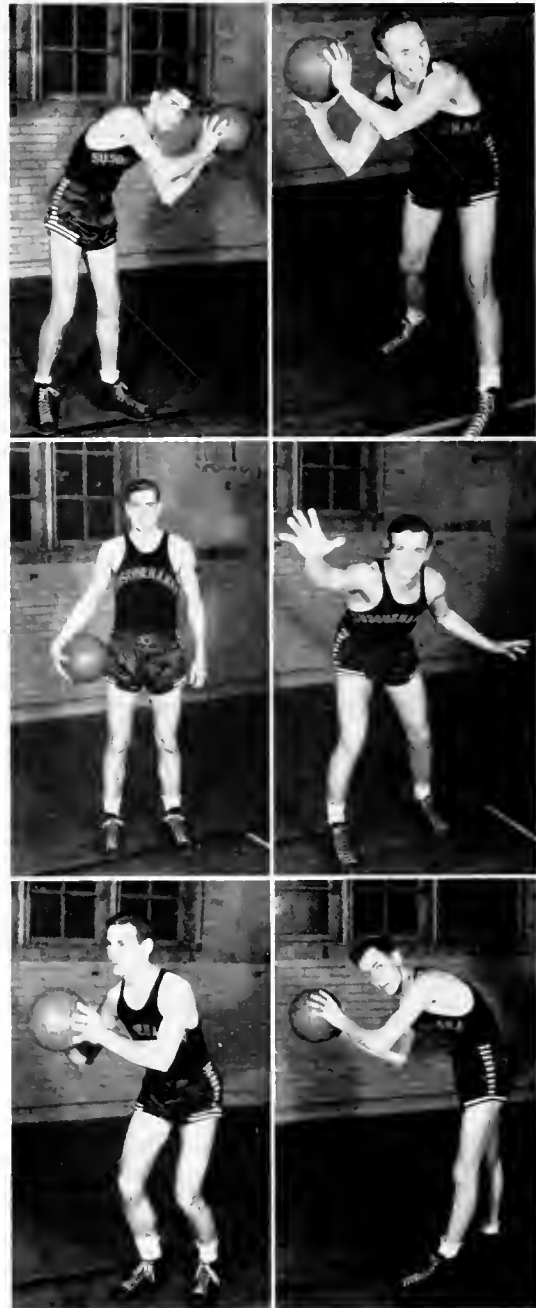
The Susquehanna courtmen ran into difficulties in the first three periods of the game with Bucknell J. C. from Wilkes-Barre, but in the final minutes rolled to an impressive triumph. It marked the fourth win in seven starts for the Crusaders this season. Eye Zlock was the high scorer for the game with 17 points.

S. U. 64 — ALFRED 51

Before 100 cheering fans the Susquehanna Crusaders rolled to their fifth straight victory by trouncing the Alfred College five from upstate New York. Dick Westervelt rolled up 31 points while John Hospodar with 15 and Eye Zlock with 11 points added to the win.

S. U. 57 — YORK JUNIOR COLLEGE 49

Johnny Hospodar with 14 points and Eye Zlock with 12 points led the impressive Crusaders in a hard fought victory over the invading York Junior College quintet. For Susquehanna, it was their sixth straight win.



R. FELLOWS
F. ZEIDLER
J. HOSPODAR

R. WESTERVELT
E. ZLOCK
H. YEAKEL



R. MADDOCKS
E. PFEIFFER
J. REITZ

J. SOLOMON
W. CAMERER
J. WITOWSKI

S. U. 76 — SCRANTON J. C. 47

Coach Stagg used his varsity substitutes to good advantage as the Crusaders overwhelmed the outclassed Scranton Keystone five, 76 to 47. Dick Westervelt, Eve Zlock and Bob Maddocks garnered 16, 12, and 12 points respectively to lead the Susquehanna attack.

S. U. 60 — ELIZABETHTOWN 46

The Crusaders traveled to E-town and showed a last period scoring spree that left the Betsytowners far behind. When the gun went off ending the game the scoreboard read Susquehanna 60, Elizabethtown 46. Eve Zlock, John Hospodar, Dick Westervelt, and Frank Zeidler scored 46 of the Crusader points to figure strongly in the last period rout.

S. U. 50 — JUNIATA 48

Huntington had never before seen as exciting a game as was S. U.'s two point victory over Juniata, 50 to 48. It was nip and tuck all the way with once again Eve Zlock with 24 and Dick Westervelt with 16 leading the Crusaders to their ninth straight victory.

S. U. 51 — URSINUS 53

Susquehanna's winning streak was broken, as they played their thirteenth game of the season, by the Ursinus Bears 53 to 51. Eve Zlock excelled for the Crusaders garnering 25 points.

S. U. 55 — PHILA. COLLEGE OF PHARMACY 40

The Crusaders added another victim to a growing list, by subduing a mediocre P. C. P. five, 55 to 40. Eve Zlock led the scoring parade with 17 points.

S. U. 75 — ELIZABETHTOWN 53

The Orange and Maroon ran up their second highest score of the season as they trampled Elizabethtown 75 to 53. Johnny Hospodar netted 20 points to lead the Crusader attack with Johnny Reitz getting 17 in supporting role.

S. U. 50 — LEBANON VALLEY 51

The Crusaders suffered their second loss in the last thirteen games, in an exciting overtime struggle with the Lebanon Valley "Flying Dutchmen." Once again it was Eve Zlock as high man with 25 points.

S. U. 48 — JUNIATA 33

Susquehanna ended their season in a blaze of glory by defeating a highly touted Juniata team with no trouble at all, 48 to 33. Dick Westervelt and Eve Zlock were the big guns as they netted 14 points apiece.



FRANK CORCORAN
HILDA MARKEY

LENORE GARMAN
NANCY E. MYERS

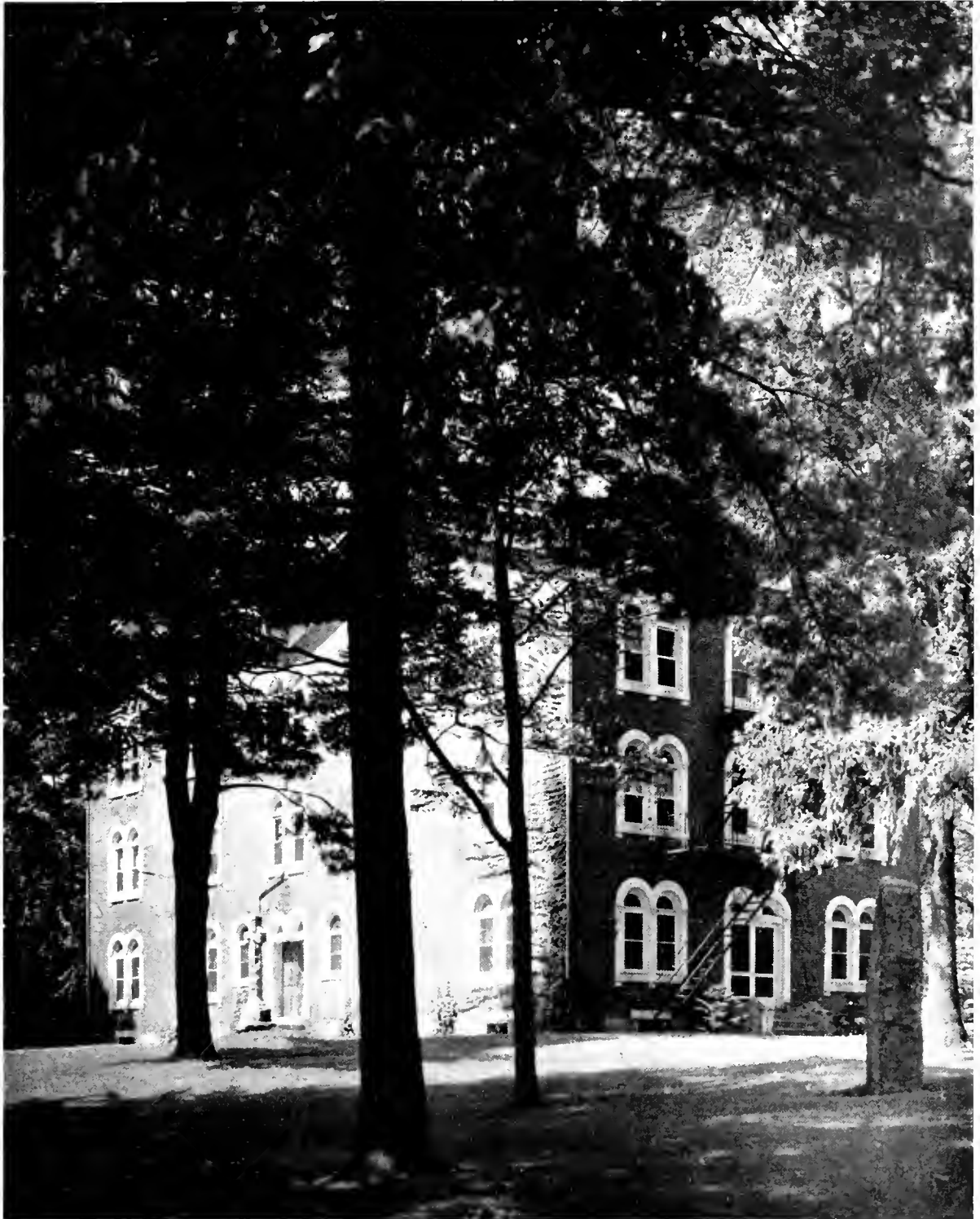
JEAN E. KELLY
JOHN M. REICHARD

JOHN LEACH
O. STANLEY STONESEFER

Who's Who

Each year, the faculty of Susquehanna University selects members of the senior class for inclusion in *Who's Who Among Students*. They are nominated after careful consideration of character, scholarship, and leadership in extra-curricular activities.

Nomination to the volume is an outstanding honor by which deserving students are given recognition. The book establishes a reference volume of authoritative biographies of the leading students in more than 650 of America's Colleges.



SELINGROVE HALL

SPRING

Gentle Spring! in sunshine clad,

Well dost thou thy power display!

For Winter maketh the light heart sad,

And thou, thou makest the sad heart gay,

He sees thee, and calls to his gloomy train,

The sleet, and the snow, and the wind, and

the rain;

And they shrink away, and they flee in fear,

When thy merry step draws near.

— *Longfellow.*



SELINGROVE HALL



Left to Right—J. Kahler, B. Watkins, D. Minnick, V. Blough.

Class of 1950

OFFICERS

<i>President</i>	- - - - -	DONALD MINNICK
<i>Vice President</i>	- - - - -	BARBARA WATKINS
<i>Secretary</i>	- - - - -	VIRGINIA BLOUGH
<i>Treasurer</i>	- - - - -	JEANNE KAHLER

On September 14th, the largest Freshmen class in the history of Susquehanna entered the portals of old S. U. Our class took on the hither-to unknown Freshmen dignity with the ex-servicemen back in our midst. We soon became oriented under the guidance of the efficient Sophomores, and "hazing day" will not be a day soon forgotten.

We've enjoyed every day of this, our Freshmen year, and in the years to come, we feel confident that life at Susquehanna will help us to attain that well rounded personality so necessary for the successful individual.

We hope that the class of '50 will contribute greatly to the tradition that is Susquehanna University.

ROBERT H. AKERS

BARBARA E. ANDERSON

JEAN E. ANDREWS

MARGARET C. APPLEBY



EDITH I. ARBOGAST

DOUGLAS E. ARTHUR

CECILIA B. AUMAN

HAROLD E. AURAND



CHARLES S. BAILES

JANET F. BARR

ANTHONY BARTUSKA

JOYCE BELL

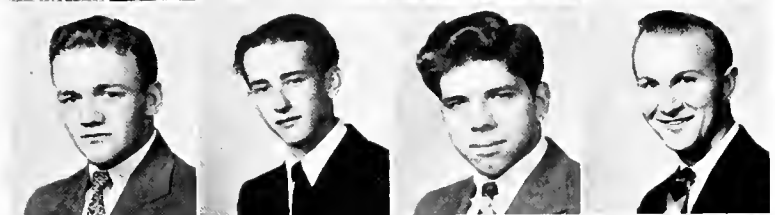


NED O. BENNER

RONALD R. BERKEY

EARL BERNSTINE

ROY R. BILGER



VIRGINIA BLOUGH

MARLIN O. BOBB

JOSEPH BOGAR

ROBERT F. BOGAR



ANNA J. BOLLINGER

HARRY M. BONISH

JAMES H. BOWEN

EDWARD BRESNOCK



MARGIETTA E. BROSIUS

DONALD A. BROTHIERSON

VIRGINIA E. BRULEY

JOHN H. BUFFINGTON

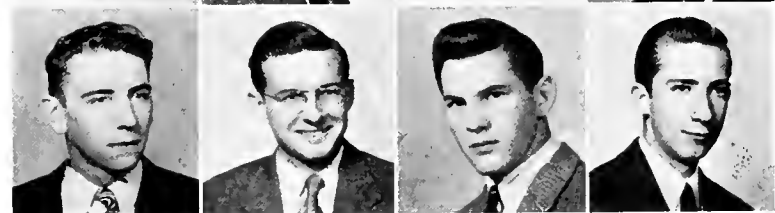


WILBUR BUFFINGTON

FRANK D. CALVERT

RICHARD CAMPBELL

HENRY G. CHADWICK





THEODORE CLARK
FRANK COMPTON
CALVIN CONRAD
DONALD R. DAVIS



THOMAS R. DAVIS
BARBARA DECKER
DIANE G. DEPPEN
THOMAS E. DEPPEN



DONALD J. DERR
JOHN G. DEVINE
JAMES DIAZ
PAUL H. DIETTERLE, JR.



JAY R. DOM
LILLIAN D. DORNBUSCH
CHARLES H. DUNCAN
JOHN R. DUNLAP



MELVIN L. DUNN
ELAINE P. FADDIS
RICHARD E. FELKER
ANNA L. FETTEROLF



RAY E. FLEMING
CHIRI FOLTZ
JOAN FOPEANO
JAMES FRANKENFIELD



ROBERT M. FRANKENFIELD
JAMES C. GEHRIS
DOROTHY I. GETTEL
HANNI GLEASON



ROBERT GOETZ
BEN L. GOODLING
CHARLES L. GOTTSCHALL
DORIS E. GUMBLE



FLORIS GUYER

PAUL R. HAFFLY

DOLORES I. HANCOCK

JAY L. HAND

DENICE E. HARRIS

BARBARA A. HELLER

ALVIN R. HENDERSON

CHARLES I. HESS

SUZANNE HOFFMAN

ROBERT S. HOOVER

JOANN M. HORT

JOHN HOSPODAR, JR.

DORIS I. HOWARD

ROGER C. HOWLING

DANIEL HRKMAN

R. ELAYNE HUNTER

MARJORIE HUTCHISON

MARY J. JACKSON

DORIS E. JANSON

THOMAS M. JENKINS

ROBERT J. JOHNSON

PAUL R. JONES

JEANNE KAHLER

RICHARD P. KERSHNER

EDWARD J. KERCHMAN

SUSAN KLINE

LAWRENCE R. KNECHT

NANCY KOCH

GERTRUDE KOHLWEISS

ROBERTA KOONTZ

R. NELSON KOST

JOYCE KREISEL



HAROLD KUNDIS

EDWARD A. KURLOWICZ

RAYMOND LAUVER

BARBARA LEASE



MILDRED R. LEESER

ANNE LOCKWOOD

JEAN LUDWIG

FAYE McCABE

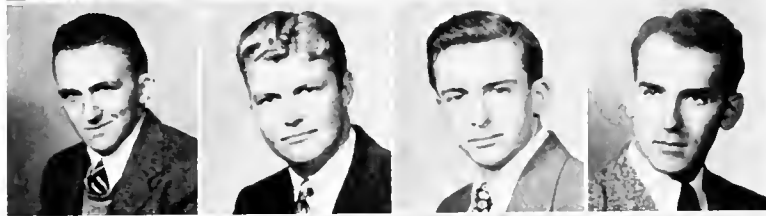


JOHN McCONNELL

ROY McHENRY

GRACE McKEEVER

HELEN MACK



EDWARD D. MADDEN, JR.

EVERETT MANNING

JOHN C. MEERBACH

JOHN R. MERTZ

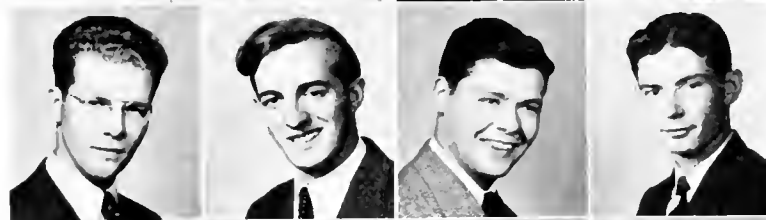


MARY MILLER

ROSEMARY MUSSINA

DONALD MNINICH

ROBERT MILLER



VERNON J. MILLER

EARL MINCEMOYER

CHARLES MORRIS

MARVIN MOYER

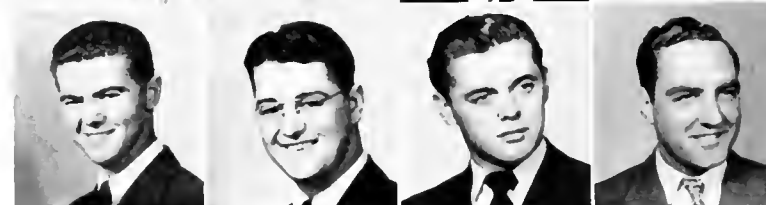


SHIRLEY NICKLIN

JEANNE ORNER

PALMER OTTO

ANNA OYSTER



ROBERT PALLAS

LEWIS O. PAULHAMUS

ROBERT E. PELLMAN

EDWARD F. PFEIFFER

GEORGE PHILLIPS

MERLE H. PHILLIPS

HELEN B. POLANSKY

HELEN POLK



JANET L. POPKEN

ABRAHAM B. PORTZLINE

WILLIAM H. POUST, JR.

JOSEPH F. POWELL



JANE PRICE

BETTY RAUP

ELEANOR E. RAUP

DORIS REEDER

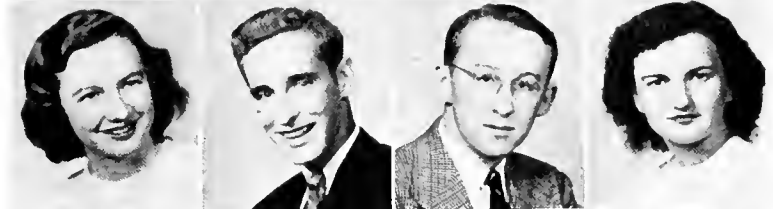


JUSTINE REIFSNIDER

JOHN R. REITZ

JOHN A. REUTHIER

ZOLA A. ROBINSON



CHARLES H. ROHMANN

JEAN A. ROTHERMEL

CHESTER G. ROWE

HAROLD C. ROWE



JAMES O. RUMBAUGH

LOUIS SANTANGELO

MARY SARBA

FAYE SATZLER



GLADYS G. SEAMAN

RICHARD W. SHAFFER

HAROLD L. SHARADIN

MARIA JANE SIETLER



SHIRLEY SHOWALTER

MARK W. SHUEY

NANCY J. SHUNK

DOROTHY E. SMITH





LAWRENCE SMITH
LILLIAN SMITH
MARY E. SNYDER
JACK SOLOMON



MARJORIE SBOGEN
ROLAND E. STAIL
AUDREY C. TERREL
PHYLLIS E. TETER



GEORGE B. THOMAS, JR.
BEVERLY J. TROUTMAN
RICHARD E. TROUTMAN
WALTER A. TROUTMAN



WILLIAM E. ULP
JUSTINE VANDERRILT
WILLIS B. VAN DYKE
RICHARD WAGNER



BARBARA WATKINS
JOIN WEBBER
EDITH WEGNER
KENT R. WELLER



BARBARA WELLIVER
RICHARD WESTERVELT
RICHARD WETZEL
BARBARA WHEAT



PHYLLIS WILLIAMMEE
DONALD D. WILLIAMS
DONALD E. WISSINGER
JOHN J. WITOWSKI



JANET E. WOLF
JOHN H. WRIGHT
GEORGE A. YANOVITCH
ANN E. YORTY



ELIZABETH C. ZUSCHLAG

HAROLD C. ZIMMERMAN

Special Students



CATHERINE BROSIUS

RENNELL R. EDMUNDS

JOHN E. ZUBAK



"The Hasty Heart"





NANCY MYERS
Senior

Susannahanna



LILLIAN KEPNER
Sophomore

JOAN APPLE
Junior

Belles



JOAN FOPEANO
Freshman

MAY DAY



ACTIVITIES





Seated, Left to Right—Gross, Reichard, Dr. Waterbury, Moglia, Packman.
Standing—Dankman, Gundrum, Leach, Bowman.

Men's Student Council

Composed of two representatives from each of the three fraternities, two from the ranks of the non-fraternity men, and a faculty adviser, the Men's Student Council endeavors to effect a closer union of the students as well as to promote a better understanding between the faculty and students.

Duties of the Council include the formulating of rules for orientating the freshmen men students.

Fraternity Senate

The Fraternity Senate serves as the governing body of the three fraternities now on the campus. It is composed of the president and faculty adviser from each of the fraternities, and Dean Galt serves as chairman of the body. The presidency rotates among the houses each year. With its democratic organization, the Fraternity Senate has created a better sense of cooperation among the fraternities.



Seated, Left to Right—Dr. Waterbury, Dr. Galt, Williard.
Standing—Stonesifer, Dr. Russ, Prof. Linbaugh, Leach.

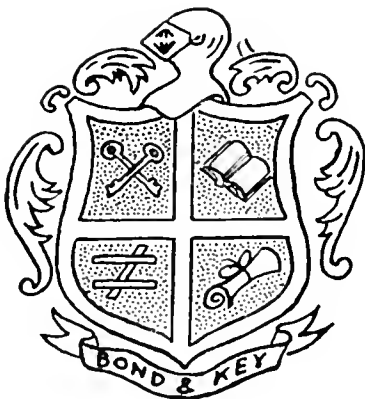


First Row, Left to Right—Yancho, Wolfe, Dr. Woodruff, Outerbridge, Boyer.
 Second Row—Orr, Flock, Butts, Johnston, Derr.
 Third Row—McAllister, Gundrum, Loss, Williard, Gross.
 Fourth Row—Eastep, Fellows, Peters, Richards.

Bond and Key

OFFICERS

<i>President</i>	- - - - -	- JOSEPH WILLIARD
<i>Vice President</i>	- - - - -	- ALOYSIUS DERR
<i>Secretary</i>	- - - - -	- DAVID GROSS
<i>Treasurer</i>	- - - - -	- RALPH BROWN
<i>Sergeant-at-Arms</i>	- - - - -	- WILLIAM YANCHO
<i>Chief Initiator</i>	- - - - -	- RONALD BOYER



ACTIVE MEMBERS

Benjamin Bergstresser
Ronald Boyer
Ralph Brown
Harry Butts
Aloysius Derr
Kenneth Dewitt
Clair Eastep
Robert Fellows

Allen Flock
David Gross
Eugene Gundrum
Edison James
Harry Johnston
Kenneth Loss
Arnold Mix

Warren Outerbridge
Alan Parcells
J. Burleigh Peters
Edward Richards
Paul Stetler
Joseph Williard
William Yancho
Fancher Wolfe

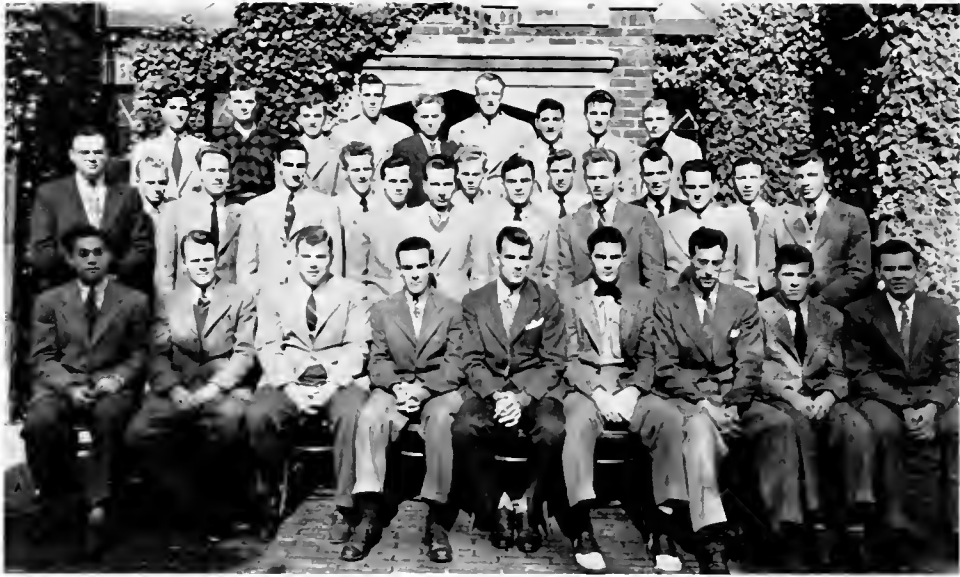
PLEDGES

Robert Akers
Ronald Berkey
John Buffington
Wilbur Buffington
Donald Davis
Gilbert Day, Jr.

Donald Derr
Frank Fetteroff
Nelson Kost
Everett Manning
Roy McHenry
Palmer Otto

Robert Pallas
James Rumbaugh
George Thomas, Jr.
Richard Troutman
Kent Weller
Harold Zimmerman



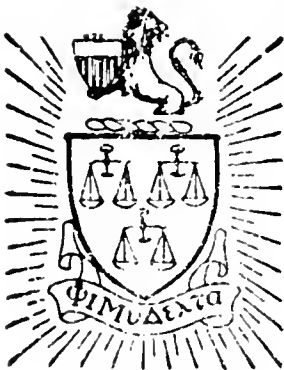


Seated, Left to Right—Weikel, Reichard, Cosgrove, Stowe, Stonesifer, Bougartz, Coreoran, Lady, Maddocks,
 Standing, First Row—Taylor, Woodring, Peyton, Hockstuhhl, Reilly, Solomon, Fisher, Fosselman, Ague, Zeidler,
 Wiley, Pirie, Moglia, Radell, Maneval.
 Standing, Second Row—Welliver, Zlock, Brown, Wobson, Merz, Cooper, Alessi, Lindemann, Vomer.

Phi Mu Delta

OFFICERS

<i>President</i>	-	-	-	-	O. STANLEY STONESIFER
<i>Vice President</i>	-	-	-	-	GEORGE STOWE
<i>Controller</i>	-	-	-	-	JOHN REICHARD
<i>Secretary</i>	-	-	-	-	DENTER WEIKEL
<i>Sergeant-at-Arms</i>	-	-	-	-	VICTOR ALESSI
<i>Chaplain</i>	-	-	-	-	CHARLES LADY



ACTIVE MEMBERS

Charles Ague
 Victor Alessi
 Richard Barry
 Ferdinand Bongartz
 Russell Brown
 George Cooper
 Frank Corcoran
 Donald Cosgrove
 Harry Culp
 Millard Fisher
 Donald Fosselman
 Raymond Hochstuhl

Charles Lady
 Richard Lindemann
 Robert Maddocks
 Marvin Maneval
 Kenneth Merz
 James Milford
 Richard Moglia
 Joseph Peyton
 Warren Pirie
 Robert Radell
 John Reichard
 James Rielly
 Howard Solomon

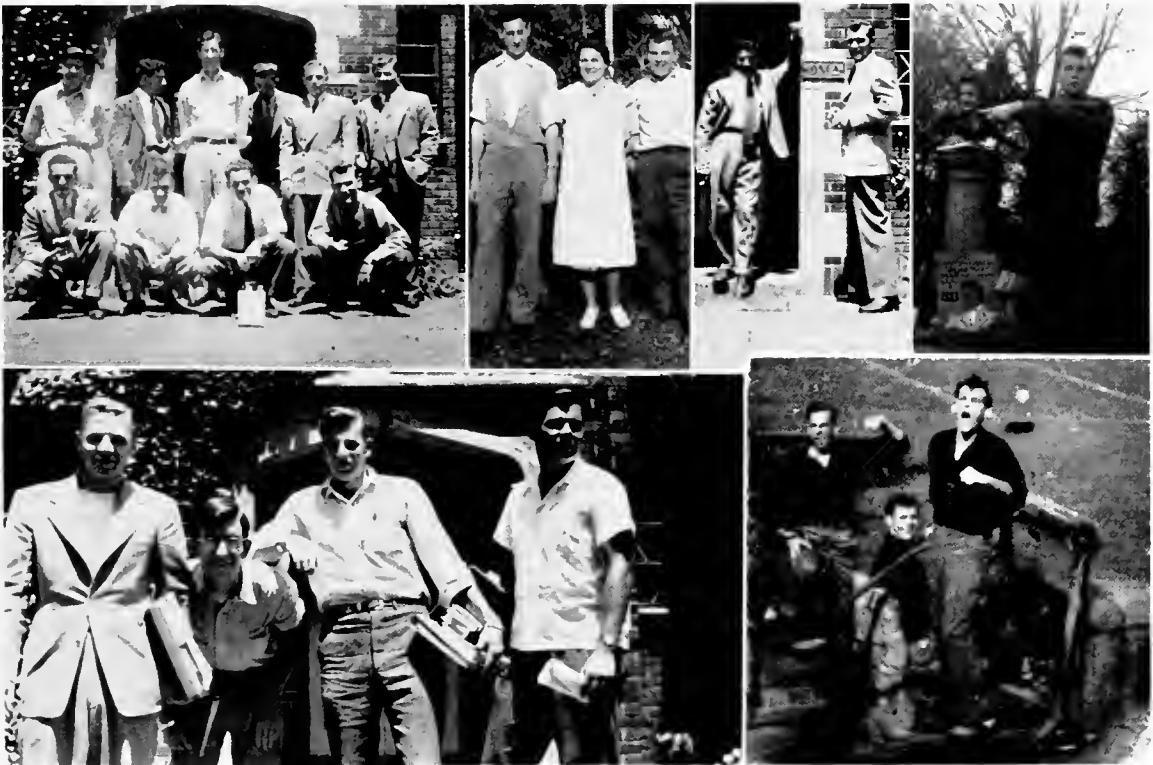
O. Stanley Stonesifer
 George Stowe
 Joseph Taylor
 Richard Wagner
 Dexter Weikel
 Harry Welliver
 John Wiley
 Robert Wohlson
 Alvin Woodring
 Frank Zeidler
 Evan Zlock
 Charles Venner

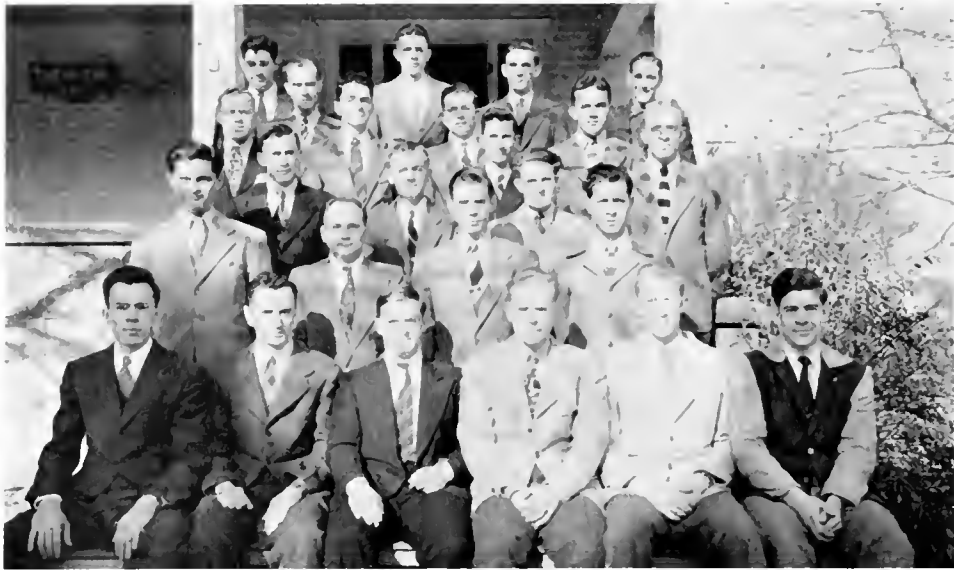
PLEDGES

Anthony Bartuska
 Earl Bernstine
 Roy Bilger
 William Bomgardner
 James Bowen
 Marland Boyer
 Henry Chadwick
 John Devine
 Alvin Henderson

John Hospodar
 Daniel Hrkman
 John Kline
 Edward A. Kurlowicz
 John Meerbach
 Donald Minnich
 Charles Morris
 Edward Pfeiffer

Abraham Portzline
 Charles Rohmann
 Richard Shaffer
 Willis Van Dyke
 Richard Westervelt
 John Witowski
 John Wright
 George Yanovitch
 Harold Yeakel



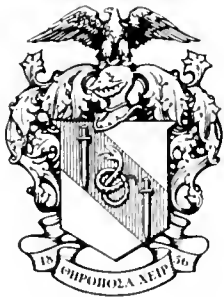


Seated, Left to Right - Mr. Hoover, Bowman, Leach, Tietbohl, Bingham, Bomboy,
 Standing, First Row - Ruhl, Dornisfe, Wolfe, Herman, Tietbohl, Fertig, Apriceno,
 Standing, Second Row - King, Sheetz, Kramer, Bringman, Bubb, McClure,
 Standing, Third Row - Raup, Rothenberg, Hugus, Camerer, Reitz.

Theta Chi

OFFICERS

<i>President</i>	-	-	-	-	-	JOHN LEACH
<i>Vice President</i>	-	-	-	-	-	ROBERT BOWMAN
<i>Secretary</i>	-	-	-	-	-	DAVID BOMBOY
<i>Treasurer</i>	-	-	-	-	-	AUGUSTUS TIETBOHL



ACTIVE MEMBERS

Louis Apriceno
Donald Bashore
Paul Bingaman
David Bomboy
Dale Bringman
Robert Bubb
Robert Camerer
Robert Dornsife

Franklin Fertig
Gene Grandolini
Carl Herman
Howard Hugus
Donald King
Harold Kramer
William McClure
Stanley Nale

Joseph Raup
Daniel Reitz
William Rothenberg
William Ruhl
Wilfred Sheetz
Agustus Tietbohl
Ralph Tietbohl
Franklin Wolfe

PLEDGES

Frank Calvert
James Gerris
Robert Goetz
Paul Hasley

Jay Hand
Raymond Lauver
Robert Miller

Joseph Powell
John Reitz
John Reuther
Chester Rowe





Seated, Left to Right—Wagner, Kelly, Williams, Doss, Gundrum,
Standing—Stout, Lizzio, Steele, Markey, Mrs. Wells, Myers.

Women's Student Council

Composed of representatives from each class, the Women's Student Council holds a meeting the second Monday of each month. That same evening it sponsors a general house-meeting.

Among its many activities the council lists supervision of Seibert and Hassinger Dormitories, jurisdiction of freshman orientation and hazing, regulation of fire drills, sponsorship of Parents' Day activities, decorating Seibert and Hassinger Halls for Christmas, supervision of informal weeknight social dancing, purchase of a subscription to the New York Times for Seibert parlor, and the sale of stamps, "cokes," candy, and other useful articles.

Inter-Sorority Council

This organization is composed of three representatives from each sorority with the Dean of Women as faculty adviser. These three are the president, the vice-president, and one other delegate. The position of president of the Council rotates each year among the three sororities.

Organized to increase understanding and co-operation among the three social sororities, the Inter-Sorority Council meets once every month to regulate freshman rushing, determine pledge quotas, plan rush teas and hikes, sponsor inter-sorority dances, and in general, takes care of all inter-sorority problems.



Seated, Left to Right—Day, Garman, Markey, Lizzio, Gundrum.
Standing—Menzel, Myers, Shook, Doss.

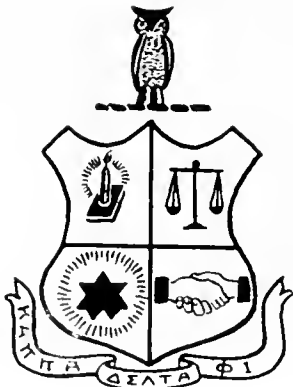


Sented, Left to Right - Lizzio, Johns, Braveman, Williams, Markey, Doss, Walmer, Kelly, Doss, Gibson.
 Standing, First Row - Speyer, Graybill, Klinger, Black, Avery, Yarnell, Gaetz, Clark, Ebert, Frank.
 Standing, Second Row - Hazen, Bousum, Phillips, Dale, Myers, Krotzinger, Steele, Cochrane, Williams,
 Wagener, Roberts, Edhardt

Kappa Delta Phi

OFFICERS

- | | | | | | | | |
|----------------------------|---|---|---|---|---|---------------------|---------------|
| <i>President</i> | - | - | - | - | - | - | HILDA MARKEY |
| <i>Vice President</i> | - | - | - | - | - | - | VIRGINIA DOSS |
| <i>Recording Secretary</i> | - | - | - | - | - | - | RUTH WILLIAMS |
| <i>Financial Secretary</i> | - | - | - | - | - | JACQUELINE BRAVEMAN | |
| <i>Treasurer</i> | - | - | - | - | - | - | GLORIA WALMER |
| <i>Chaplain</i> | - | - | - | - | - | - | MARY LIZZIO |



ACTIVE MEMBERS

Miriam Avery
Constance Black
Carolyn Bousum
Jacqueline Braveman
Gayle Clark
Virginia Cochrane
Mary Louise Dale
Helen Eby Doss
Virginia Doss
Dawn Ebert
Dorothy Eilliardt

Betty Frank
Roberta Gaetz
Anne Gibson
Carolyn Graybill
Mariana Hazen
Margaret Johns
Jean Kelly
Ruth Klinger
Louise Kretsinger
Mary Lizzio
Hilda Markey

Winifred Myers
Muriel Phillips
Mildred Reaver
Gertrude Roberts
Gabrielle Speyer
Eleanor Steele
Gaynelle Wagoner
Gloria Walmer
Elaine Williams
Ruth Williams
Shirley Yarnell

PLEDGES

Jean Andrews
Joan Fopeano

Jean Kahler
Nancy Koch
Helen Polansky

Maria Shetler
Barbara Watkins



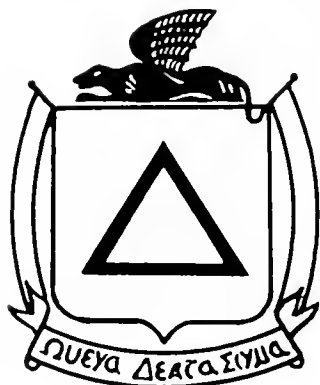


Seated, Left to Right—Reisch, Gundrum, Cryder, Day, Myers, Wolfe, Wagner, Sharwako.
 Standing, First Row—Vanderbilt, Strawbridge, Apple, Matthews, Lybarger, Kepner,
 Reichley, Bathgate, Malkames.
 Standing, Second Row—Robson, Stont, Wright, Bergstresser, Mattson, Smith, Kiss, Dauberman.

Omega Delta Sigma

OFFICERS

<i>President</i>	- - - - -	NANCY MYERS
<i>Vice President</i>	- - - - -	NAOMI DAY
<i>Secretary</i>	- - - - -	JANE GUNDRUM
<i>Treasurer</i>	- - - - -	LEAH CRYDER
<i>Financial Secretary</i>	- - - - -	ADAH WOLFE



ACTIVE MEMBERS

Joan Apple
 Peggy Bathgate
 Rachael Bergstresser
 Anna Brindel
 Leah Cryder
 Lois Dauberman
 Mary Davison
 Naomi Day
 Jane Gundrum
 Lillian Kepner

Isabel Kiss
 Frances Lybarger
 Martha Lundahl
 Ann Malkames
 Jean Matthews
 Delores Mattson
 Nancy Myers
 Gloria Reichley
 Betty Reish

Marian Robson
 Maitha Sharwarko
 Betty Smith
 Marie Stout
 Irma Strawbridge
 Dorothy Wagner
 Adah Wolfe
 Anne Wright
 Justine Vanderbilt
 Lois Young

PLEDGES

Margaret Appleby
 Joyce Bell
 Denice Harris
 Marjorie Hutchinson
 Doris Janson

Helen Mack
 Rosemary Mussina
 Grace Jane McKeever
 Shirley Nicklin

Gladys Seaman
 Shirley Showalter
 Jane Troutman
 Barbara Wheat
 Ann Yorty



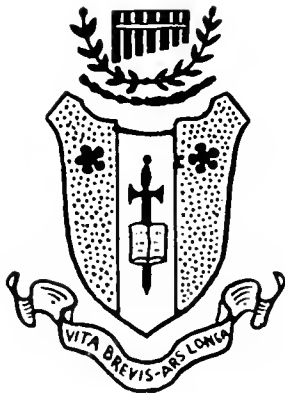


Seated, Left to Right - Talbot, Harbeson, Wood, Garman, Shook, Thompson, Schlick, Hiver.
 Standing, First Row - Rush, Stronse, Swartz, Hallock, Krep, Miller, Steigerwalt, Wanlough.
 Standing, Second Row - Getsinger, Southwick, McHenry, Battorff, Peters, Gould, Jones, Arthur.

Sigma Alpha Iota

OFFICERS

<i>President</i>	- - - - -	-	LENORE GARMAN
<i>Vice President</i>	- - - - -	-	VELMA SHOOK
<i>Corresponding Secretary</i>	- - - - -	-	MARIE TALBOT
<i>Recording Secretary</i>	- - - - -	-	ELISE THOMPSON
<i>Treasurer</i>	- - - - -	-	FROSTA ARSENIU
<i>Chaplain</i>	- - - - -	-	HOPE HARBESON
<i>Sergeant-at-Arms</i>	- - - - -	-	JEANETTE KRAMER
<i>Editor</i>	- - - - -	-	MARY ELLEN WOOD
<i>Magazine Agency Chairman</i>	- - - - -	-	HARRIET GOULD



ACTIVE MEMBERS

Frosta Arseniu
 Cora Mae Arthur
 Joyce Bottorff
 Lenore Garman
 Mary Ann Getsinger
 Harriet Gould
 Virginia Hallock
 Hope Harbeson
 Jean Huver

Maude Jones
 Jeanette Kramer
 Arlene Kreps
 Marjorie Mengel
 Betty Miller
 Marjorie McHenry
 Hope Peters
 Lucretia Rush
 Louise Schlick
 Velma Shook

Jane Southwick
 Marion Steigerwalt
 Florence Strouse
 Marie Talbot
 Elise Thompson
 Phyllis Swartz
 Virginia Walker
 Doris Wanbaugh
 Mary Ellen Wood

PLEDGES

Cecilia Auman
 Jane Bollinger
 Barbara Childress
 Jean Derr

Dorothy Gardner
 Susan Kline
 Frances Leisenring
 Mary Miller
 Nedra Polanchyck

Doris Reeder
 Jean Rothermel
 Mina Sarba
 Phyllis Williammee





Seated, Left to Right—Thompson, Kelly, Williams.
Standing—Phillips, Mrs. Wells, Smith.

Women's Judiciary Committee

Through its activities in dealing out punishments to those girls who infringe upon the rules and regulations set down by the Women's Student Council, the Women's Judiciary Committee maintains respect among the women students for these rules. Justice and impartiality are the keynotes of its decisions.

The Committee is guided in its activities by the Dean of Women and the president of the Women's Student Council. Meetings are held whenever misdemeanors arise and punishments are meted out according to the seriousness of the offense.

Vice President's Council

The Vice Presidents' Council, headed by the House President of Seibert Hall, was organized six years ago to maintain quiet in the girls' dormitories during the study hours designated in the student handbook. Each floor of both Hassinger Hall and Seibert Hall has a certain number of vice presidents, known as "V. P.'s," who enforce quiet hours regulations through the "five minute penalty" system. When a student acquires twenty minutes, her case is brought up before the Women's Judiciary Committee that decides upon a just punishment.



Seated on Floor, Left to Right—Steele, Harbeson, Hallock, Savidge.
Seated—Stout, Sharwarko, Doss, Markey, Reich.
Standing—Doss, Dale, Kreps, Strouse, Childress.



Seated, Left to Right—Smith, Bathgate, Markey, Gaetz, Steele, Miss Hein, Mrs. Wells,
Garman, Williams, Walmer.
Standing—Bomboy, Ruhl, Weikel, Bergstresser, Rev. Heller, Dr. Smith, Dr. Scudder, Hugus.

Student Christian Association Cabinet

Center of many campus activities, the Student Christian Association helps the new students to become a part of the college, to continue church relationships, to establish friendships, and to uphold immediate moral and religious ideals.

In addition to regular meetings every other Thursday night, the S. C. A. conduct chapel each Wednesday, Vespers each Sunday night and special Thanksgiving and Christmas services, sponsors many programs and parties, brings to the campus many excellent guest speakers, oversees the publication of the student handbook, and has charge of assigning "Big Sisters" to incoming freshmen.

Theatre Guild

The Susquehanna Theater Guild, organized for the production of stage plays on campus, has been valuable in helping its members gain practical working experience in acting as well as in back-stage activity.

Several one-act plays are given throughout the year in which casting, directing, costuming, make-up, and scenery construction, as well as acting are handled entirely by various members.

In the fall a commendable presentation of "The Hasty Heart" was given by members of the Theater Guild.



First Row, Left to Right—Graybill, Reichley, Bathgate, Malkames, Sharwarko, Strawbridge, Wright, Wagner, Venner, Tietbohl, Mr. Kleinsorg, Spogen.

Second Row—Gaetz, Cryder, Bousum, Kretsinger, Markey, Phillips, Keller, Keller, Kiss, Koons, Dauherman, Smith, Wohlson, Johns, Childress.

Third Row—Koch, Kepner, Williams, Cochrane, Watkins, Decker, Schriener, Williams, Doss, Walmer, Clark, Moglia, Myers, Getsinger.

Fourth Row—Andrews, Faddis, Wolfe, Koontz, Lau, Etzrodt, Savidge, Sharrow, Bingham, Tietbohl, Bringman, Helm, Van Dyke.

Fifth Row—Gould, Lockwood, Hancock, Zuschlag, Showalter, Kohlweiss, Decker, Mattson, Schlick, Thompson, Lizzio, Matthews, Kelly, Wood, Garman, Dunlap.



Seated, Left to Right—Myers, Tietbohl, Doss.
Standing—Williams, Cryder, Gould.

Alpha Psi Omega

Since its organization five years ago, Alpha Psi Omega, a national honorary dramatic fraternity, has been promoting greater interest in dramatics. This year the fraternity sponsored and directed the production of "The Hasty Heart" under the leadership of Mr. Kleinsorg.

Membership in Theta Phi, the local chapter of Alpha Psi Omega, is bestowed upon those who earn seventy-five points through active participation in plays given by the Susquehanna Theatre Guild. These points are awarded to those in all phases of play production according to the amount of work involved in these activities.

Phi Kappa

Phi Kappa, or the Greek Club is a Greek letter club, the members of which profess interest in things Hellenic.

As an honor organization, Phi Kappa has as its objective the cultivation of a proper appreciation of the Greek language and culture. Its members are urged to enrich themselves with the treasures of the precious Greek heritage.

At its meetings, the members of the Greek Club are asked to discuss the various phases of Greek culture. They are requested, also, to recite in the Greek language selections from the world's great classics. Thus, Phi Kappa genuinely is a Greek club, both in name and in application.



Seated, Left to Right—Outerbridge, Bergstresser, Bomboy, Dr. Ahl, Hugus, Bingaman, Loss.
Standing—Bringman, Haffly, Tietbold, Paulhanus, Miller, Portzline, Ruhl, Miller.



Seated, Left to Right—Lizzio, Kelly, Mrs. Hoover.
Standing—Dr. Russ, Mr. Brungart.

Pi Gamma Mu

Pennsylvania Gamma is the local chapter of the national social science honorary fraternity, Pi Gamma Mu. A minimum average of “B” in twenty or more hours of such social studies as economics, history, and governments are required for admission to the fraternity.

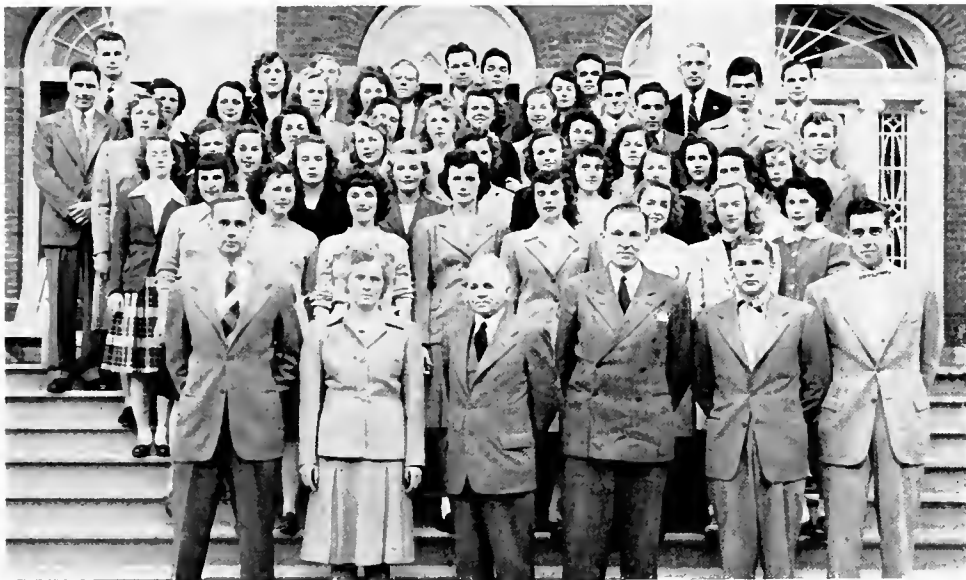
Outside speakers and student lectures are the highlights of the monthly meetings of Pi Gamma Mu, held at the homes of faculty members who belong to the fraternity. At each of these meetings, round table discussions help to clarify and emphasize the points brought under consideration.

Business Society

The purpose of this organization is to promote interest in the various fields of commerce, business and economics, and to establish a closer fellowship among those interested in these subjects. Included in the society are all students enrolled in Business Administration, Commercial Education and the Secretarial courses.

This year the society continued obtaining funds for the Business Society Scholarship which was created last year to furnish assistance to some future business student entering Susquehanna.

In addition, throughout the year the Society has guest speakers to give interesting talks which further educate the student with the field of Business.



First Row, Left to Right—Mr. Strathmeier, Miss Allison, Mr. Graham, Dr. Zagars, Venner, Wohlson,
Second Row—Reichley, Bathgate, Kretsinger, Williams, Wright, Strawbridge, Davison.
Third Row—Wegner, Cryder, Markey, Doss, Walner, Blough, Bruley, Hutchison, Wheat.
Fourth Row—Rischell, Guyer, Everett, Orner, Bousum, Reaver, Roberts, Mussina, Brown.
Fifth Row—Butts, Mattson, Lau, Zueschlag, Etrzrodt, Savidge, Yarnell, Black, Myers, Moglia, Reitz, Seehrist.
Sixth Row—Gross, Buffington, Smith, King, Kramer, Sheetz, Bubb, McClure, Van Dyke.

EDITORIAL STAFF

Seated, Left to Right—Maddocks, Kelly, Braveman.
Standing—Clark, Garard.



BUSINESS STAFF

Left to Right—Walmer, Mr. Graham, Cryder, Bathgate.



THE SUSQUEHANNA



DR. WILSON
Faculty Adviser

<i>Editor-in-Chief</i>	- - - - -	JEAN KELLY
<i>Associate Editor</i>	- - - - -	JACQUELINE BRAVEMAN
<i>Business Manager</i>	- - - - -	LEAH CRYDER
<i>Managing Editor</i>	- - - - -	MARTHA GARARD
<i>News Editor</i>	- - - - -	ELEANOR STEELE
<i>Boys' Sports Editor</i>	- - - - -	ROBERT MADDOCKS
<i>Girls' Sports Editor</i>	- - - - -	GAYLE CLARK
<i>Advertising Manager</i>	- - - - -	PEGGY BATHGATE
<i>Circulation Manager</i>	- - - - -	GLORIA WALMER

The semi-monthly student publication of the college, *The Susquehanna*, records the news of Susquehannans both on campus and out in the world, reflects student opinion, and keeps abreast of the latest gossip.

Staff members who wish a wider training in newspaper work add the course in journalism to their curriculum.



G. ROBERTS
Editor



DR. WILSON
Faculty Adviser



J. APPLE
Business Manager

THE 1948 LANTHORN

To *Susquehanna* we, the Class of 1948, present this LANTHORN in the hope that its contents may bring back happy memories to all of us in the years to come. May it carry the spirit of all we have done to those who come after us, and spur them on to greater accomplishments.



EDITORIAL STAFF

Seated, Left to Right—Gould,
Roberts, Reich.

Standing—Maddocks, Eillardt.



BUSINESS STAFF

Seated, Left to Right — Mr.
Graham, Apple, Malkames,
Wiley.

Standing — Garard, Walmer,
Stout.



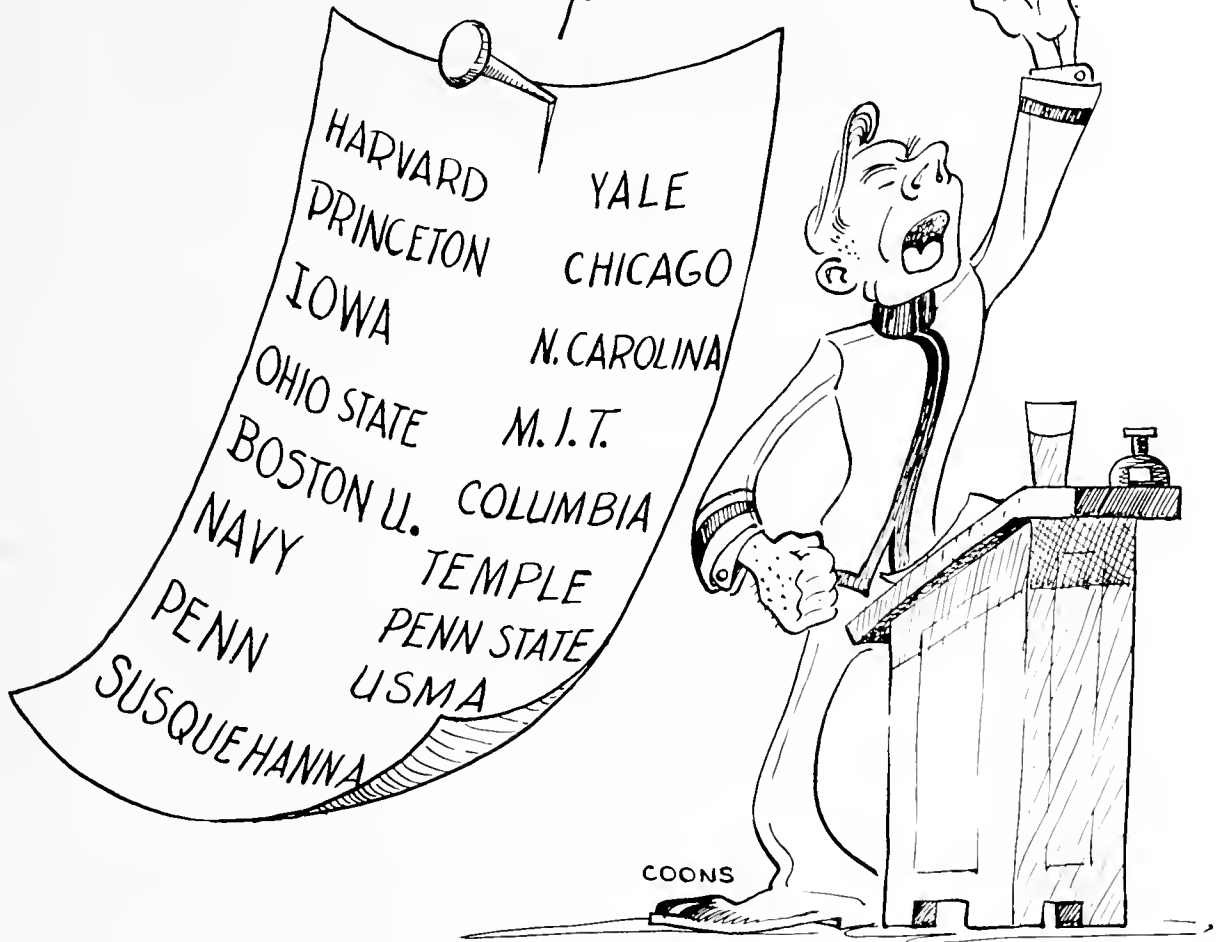
Seated, Left to Right — Bringman, Glanzberg, Dr. Gilbert, Schreiner, Billow, Decker.
Standing—Loss, Butts.

Debate Society

Debating gives the student an opportunity to develop poise and self-expression in public speaking. Throughout the year its members engage in debates with numerous colleges throughout Pennsylvania. Susquehanna has had the rare privilege of sending two of her men debaters to the West Point Tournament in which they competed with debaters of sixteen of the largest colleges of the United States.

SECOND ANNUAL
West Point INVITATIONAL
DEBATE TOURNAMENT

PARTICIPANTS:



FINAL ROUND: SUN. 14 APRIL 1:30 P.M. WAR DEPT. THEATER
George Dell and *Don Dreier* will represent USMA
Preliminaries — Sat. Afternoon



First Row, Left to Right — Williams, Klinger, Avery, Cosgrove, Koons, Smith, Dr. Scudder,
 Mr. Hoover, Herman, Fietzuhl,
 Second Row — Cochrane, Watkins, Graybill, Reichley, Barthgate, Eilhardt, Sheetz,
 Sharrow, Bousum, Dauberman, Boyer,
 Third Row — Wolfe, Reaver, Yarnell, Lam, Malkames, Sharwarko, Schreiner, Krouse, Pethick, Merz, Myers,
 Fourth Row — Myers, Black, Schweighofer, Williams, Nitchman, Killefner, Billow, Keller, Kiss, Keller, Markey,
 Fifth Row — Mattson, Etzrodt, Decker, Kohlweiss, Bingaman, Kretsinger, Gibson.

Biemic Society

Including in its membership all those persons interested in the sciences or mathematics, Biemic Society holds monthly meetings where scientific topics are discussed by the members, or a lecture is given by an outside speaker. Occasionally demonstrations related to scientific work are also given by the members. All interested students are invited to Biemic Society meetings.

From time to time the Society shows interesting and educational movies at its meetings. Through their meetings the members of the Biemic Society develop a richer, broader viewpoint of the significance of science in the world of today.

Concert Orchestra

Conducted by Professor Russell C. Hatz, the Concert Orchestra is composed of musicians from the university. The Concert Orchestra presents an annual Spring Concert in Seibert Hall with featured soloists. Some of the featured soloists of the past are Dorothy Minty, violinist; Bernard Greenhouse, cellist; Zena Gemmallo, clarinetist; and the Susquehanna String Quartet.

Violin—Arsenin, Wolfe, Hallock, Akers, Peters,
Wood, Shook, Flock, Swartz.

Viola—Kreps.

Cello—Huver, Schlick, Gundrum, Childress.

Saxophone—Bollinger, Meerbach.

Flute—Getsinger, Sarba, Heim.

French Horn—Davis, Thompson.

Clarinet—Kershner, McHenry, Garman.

D. Bass—Rhone.

Timpani—Weikel.

Drums—Jones.

Trumpet—Welliver, Auman.

Trombone—Rush, Derr.

Conductor—Mr. Hatz.





Susquehanna Band

The Susquehanna Band under the capable leadership of Mr. Russell C. Hatz has been an important activity on the campus. The Susquehanna Band had been handicapped by the induction of many of its members into the armed forces but with the return of veterans, the Band is returning to its pre-war fame.

Clarinet—Garman, McHenry, Kershner, Swartz.

Saxophone—Bollinger, Meerbach.

Flute—Gettsinger, Sarba, Heim.

French Horn—Davis, Thompson.

Baritone—Peters.

Trumpet—Flock, Welliver, Auman, Derr.

Trombone—Hallock, Wood, Rush, Akers, Derr.

D. Bass—Kreps.

Drums—Jones. *Bass Drum*—Wolfe.

Sousaphone—Rhone.

Cymbals—Weikel.

Timpani—Childress.

Conductor—Mr. Hatz.

Susquehanna Singers

Under the direction of Mr. Elbert Haskins, the Susquehanna Singers, composed of sophomores and juniors in the Conservatory, plus a few musically inclined non-conservatory students, is establishing a fine reputation for tone quality and voice blending.



First Row, Left to Right—Hebel, Mummy, Walker, Gardner, Steigerwalt, Wanbaugh, Jones, Southwick, Mr. Haskins, Arthur, Polanchyck, Strouse, Rush, Getsinger, Arseniu, Huver, Dunlap, Hugus.
Second Row—Welliver, Heim, Bortorff, Kaley, Derr, Gould, Swartz, McHenry, Wood, Leisenring, Miller, Harbeson, Shook, Peters, Childress, James, Leach, Derr.



Seated on Floor, Left to Right—Kretsinger, Speyer, Davison, Kiss, Keller, Steele, Gaetz.
 Seated—Dale, Phillips, Keller, Bathgate, Lizzio, Wagner, Myers, Gibson.
 Standing, First Row—Smith, Wood, Clark, Walmer, Williams, Kelly, Ellhardt, Thompson.
 Standing, Second Row—Graybill, Smith, Sharwarko, Wolfe, Doss, V. Doss, Jones, Laks, Markey, Roberts.

Women's Athletic Association

"Not if you win or lose, but that you have played the game fair and square"—The creed of the Women's Athletic Association signifies good sportsmanship, and that is the purpose of the organization.

The Women's Athletic Association was organized to stimulate a general interest in girls' athletic activities, to regulate girls' intramural sports, and to encourage participation in extracurricular athletics.

Any girl is eligible for membership after she has earned at least two hundred points in intramural sports. She may retain her membership by an additional two hundred points each year thereafter. The system of points is based upon actual participation in the various sports.

The Association holds monthly business meetings, and social activities are conducted throughout the year.



STUDENT ROSTER

Adams, Donald L. (2)	Chestnut St., Milfinburg	Brindel, Anna (2)	12 Pennsylvania Ave., Lewistown
Ague, Charles W. (3)	... Box 26, Hughesville	Brinzman, Dale (2)	R. D. No. 3, Hanover
Akers, Robert H. (1)	13 E. Water St., Muncy	Brosius, Catherine (0)	101 S. 10th St., Sunbury
Alessi, Victor P. (4)	844 Fourth Ave., Coraopolis	Brosius, Margiatta E. (1)	Main St., Rebuck
Anderson, Barbara E. (1)	9 Shady Lane, Johnstown	Brotherson, Donald A. (1)	1824 W. 9th St., Erie
Andrews, Jean E. (1)	150 N. Forest Ave., Rockville Centre, N. Y.	Brown, Ralph C., Jr. (4)	162 Walnut St., Bloomfield, N. J.
Apple, Joan (3)	1122 Market St., Sunbury	Brown, Russell (2)	106 Cherry St., Roaring Spring
Appleby, Margaret C. (1)	34 E. Milford St., Mount Union	Bruley Virginia E. (1)	765 Jefferson Ave., Cliffside Park, N. J.
Apriceno, Louis P. (2)	1136 First Ave., Berwick	Bubb, Robert H. (2)	368 Vine St., Milton
Arbogast, Edith I. (1)	14 W. Mill St., Selinsgrove	Buffington, John H. (1)	86 Linden Ave., Bloomfield, N. J.
Arseniu, Frosta M. (3)	211 W. Market St., Lewistown	Buffington, Ruth M. (2)	Maine St., Valley View
Arthur, Cora Mae (3)	R. D. No. 1, Hughesville	Buffington, Wilbur (1)	29 W. Main St., Elizabethville
Arthur, Douglas E. (1)	731 Union St., Millersburg	Butts, Harry W., Jr. (2)	52 William St., East Orange, N. J.
Auman, Cecilia B. (1)	R. D. No. 1, St. Marys	Calvert, Frank D. (1)	1432 Market St., Ashland
Auman, Fred A., Jr. (1)	618 Duke St., Northumberland	Camerer, William R., Jr. (4)	327 Allegheny St., Jersey Shore
Aurand, Harold E. (1)	308 N. Broad St., Selinsgrove	Campbell, Richard (1)	314 Market St., Sunbury
Avery, Miriam J. (2)	132 W. Dorrance St., Kingston	Chadwick, Henry G. (1)	3607 Pacific Ave., Wildwood, N. J.
Bailes, Charles S. (1)	10 S. Sixth St., Shamokin	Childress, Barbara E. (2)	970 E. Philadelphia St., York
Bailey, Rosaline (2)	313 Chestnut St., Selinsgrove	Clark, Gayle (4)	2229 Lynn Blvd., Drexel Hill
Barr, Janet F. (1)	Main St., Honey Brook	Clark, Theodore (1)	605 Eleventh Ave., Prospect Park
Barry, Richard P., Jr. (3)	601 First Ave., Altoona	Clark, William S. (3)	1 West 5th St., Bloomsburg
Bartuska, Anthony (1)	1207 S. Prospect St., Nanticoke	Cochrane, Virginia (2)	99 Spruce St., Bloomfield, N. J.
Bashore, Donald R. (4)	341 S. Market St., Selinsgrove	Compton, Frank (1)	Fairview Ave., Germania Gardens, Cologne, N. J.
Bathgate, Margaret (3)	Box 783, State College	Conrad, Calvin (1)	1058 Wolverton St., Sunbury
Bell, Joyce (1)	24 W. Market St., Mount Union	Conrad, Theron W. (3)	200 Catawissa Ave., Sunbury
Benner, Ned O. (1)	211 Spruce St., Sunbury	Coons, Gerald F. (1)	Logan and Pearl, Reedsville
Bergstresser, J. Benjamin (2)	18 S. Front St., Selinsgrove	Cooper, George A. (2)	512 W. Central St., S. Williamsport
Bergstresser, Rachel (2)	18 S. Front St., Selinsgrove	Corcoran, Frank (4)	1048 Rose Ave., Coraopolis
Berkey, Ronald R. (1)	906 Washington St., Windber	Cosgrove, Donald R. (3)	151 Ashland Ave., Bloomfield, N. J.
Bernstine, Earl (1)	2375 Hillside Ave., Williamsport	Cryder, Leah M. (4)	Park Ave., Woolrich
Bilger, Roy R. (1)	102 S. High St., Selinsgrove	Culp, Harry C. (2)	212 S. Front St., Sunbury
Billow, Grace (2)	McAlisterville	Dale, Mary (2)	244 Susquehanna Ave., Renovo
Bingaman, Paul R. (2)	E. Main St., Thompsontown	Dankman, Herbert S. (3)	1544 Park Place, Brooklyn, N. Y.
Black, Constance (2)	R. D. No. 1, Millerstown	Dauberman, Lois (3)	Nemacolin
Blecher, Jean E. (2)	311 Front St., Danville	Davis, Donald R. (1)	335 E. Third St., Berwick
Bloom, Kay L. (2)	417 N. Fifth St., Sunbury	Davis, Thomas R. (1)	Shamokin Dam
Blough, Virginia (1)	310 Hickory St., Johnstown	Davison, Mary C. (2)	Guaro, Oriente, Cuba
Bobb, Marlin O. (1)	Front St., Herndon	Day, Gilbert O. (2)	123 Market St., Selinsgrove
Boden, Robert (1)	Oak St., Wiconisco	Day, Naomi E. (4)	221 N. Charles St., Red Lion
Bogar, Joseph (1)	R. D. No. 1, Liverpool	Decker, Barbara (1)	7613 Mountain Ave., Melrose Park
Bogar, Robert F. (1)	S. Market St., Selinsgrove	Decker, Doris A. (2)	W. Main St., Millheim
Bollinger, Anna J. (1)	Carlisle St., New Oxford	Deppen, Diane G. (1)	225 Arch St., Sunbury
Bollinger, Marlin R. (2)	132 Fifth St., Northumberland	Deppen, Thomas E. (1)	Herndon
Bomboy, David E. (3)	714 Market St., Bloomsburg	Derr, Mloysius (2)	R. D. 1, Box 131, Ashland
Bomgardner, William (3)	56 Maple Ave., Hershey	Derr, Donald J. (1)	Buck Run
Bongartz, Ferdinand (1)	28 Morse Ave., Bloomfield, N. J.	Derr, Jean E. (2)	223 Orange St., Selinsgrove
Bonish, Harry M. (1)	16 Woodland St., Ashland	Dervine, John G. (1)	1132 Center St., Ashland
Bottorff, Joyce E. (2)	602 S. Wayne St., Lewistown	Diaz, James (1)	11 E. Lehigh St., Coaldale
Bousum, D. Carolyn (2)	118 Rambler Road, Glenolden	Dietterlo, Paul H., Jr. (1)	R. D. No. 1, Milton
Bowen, James H. (1)	934 Arch St., Williamsport	Dom, Jay R. (1)	51 Parkway Rd., Bronxville, N. Y.
Bowman, Robert T. (4)	856 Baltimore St., Hanover	Doran, John (1)	405 Highland Ave., Downingtown
Boyer, Jack (3)	117 N. Second St., Sunbury	Dornbuseh, Lillian D. (1)	Hammonds Ferry Rd., Linthicum, Md.
Boyer, Marland P. (1)	406 Harrison St., Pottsville	Dornsife, Robert L. (2)	Hobart St., Gordon
Boyer, Ronald H. (3)	24 Market St., Pillow		
Braveman, Jacqueline (4)	215 W. 88th St. New York, N. Y.		
Bresnock, Edward (1)	29 Bast Ave., Ashland		

STUDENT ROSTER

Doss, Helen Eby (4)	227 Mulberry St., Newport	Hancock, Dolores I. (1)	1403 Third St., Altoona
Doss, Virginia A. (3)	14 Adams Ave., Cranford, N. J.	Hand, Jay L. (1)	Muir
Duncan, Burde (1)	7th and Duke Sts., Northumberland	Harbeson, Carolyn (3)	Main St., Milroy
Duncan, Charles H. (1)	1006 Market St., Sunbury	Harris, Denise E. (1)	R. D. 2, New Milford
Dunlap, John R. (1)	204 Susquehanna Rd., Abington	Hazen, Marianna (3)	139 Catawissa Ave., Sunbury
Dunn, Melvin L. (1)	124 S. Enola Drive, Enola	Hebel, Harold Lee (3)	R. D. 1, Liverpool
Eastep, Clair H. (4)	1915 N. Second St., Harrisburg	Heim, J. William (2)	928 Weiser St., Reading
Ebert, Dawn J. (3)	Box 27, Shamokin Dam	Heller, Barbara A. (1)	Genesee Trail, Harrison, N. Y.
Edmunds, RenneL R. (0)	1 N. Water St., Selingsgrove	Henderson, Alvin R. (1)	2714 Buena Vista Rd., Columbus, Ga.
Eilhardt, E. Dorothy (3)	719 Linden St., Clarks Summit	Herman, Carl L. (3)	R. D. 1, Lewisburg
Etzrodt, Edna (2)	979 Richter Ave., Scranton	Hess, Charles I. (1)	363 King St., Northumberland
Everett, Nancy A. (2)	36-41 209th St., Bayside, L. I., N. Y.	Hochstahl, Raymond G. (4)	3 Berkeley Heights Pk. Bloomfield, N. J.
Faddis, P. Elaine (1)	1401 Stirling St., Coatesville	Hoffman, Suzanne (1)	351 E. Linn St., Bellefonte
Felker, Richard E. (1)	Middleburg	Hoover, Robert S. (1)	15 Main St., Elizabethtown
Fellows, Robert C. (4)	1308-21 Ave., Altoona	Hort, JoAnn M. (1)	517½ Catawissa Ave., Sunbury
Felton, H. Grace (4)	1140 N. Front St., Sunbury	Hospodar, John Jr. (1)	R-938 James St., Hazleton
Fertig, Franklin E. (4)	294 King St., Northumberland	Houser, Stanley P. (2)	87 Chestnut St., Lewistown
Fetberolf, Anna L. (1)	Freeburg	Howell, James P. (2)	R. D. 1, Beavertown
Fetterolf, Frank K. (2)	518 Horner St., Johnstown	Howard, Doris I. (1)	551 10th Ave., Prospect Park
Fisher, Millard G. (2)	217 E. 9th St., Berwick	Howling, Roger C. (1)	8 La Salle Road Upper Montclair, N. J.
Fisher, Richard K. (0)	326 S. Market St., Selingsgrove	Hrkman, Daniel (1)	136 Singer St., Johnstown
Fisher, Robert A. (2)	111 S. High St., Selingsgrove	Hugus, Howard S. (2)	Selingsgrove
Fleming, Ray E. (1)	219 7th St., Northumberland	Hunter, R. Elayne (1)	561 Montgomery Ave., Chambersburg
Flickinger, H. Stuard (3)	1047 Miller St., Sunbury	Hutchison, Marjorie (1)	Shirley-Ayr Farms, Mount Union
Flock, Allen W. (4)	745 Edison Ave., Sunbury	Huver, Jean L. (4)	531 N. Fifth St., Allentown
Foltz, Chiri (1)	Main St., Reedsville	Jackson, Mary J. (1)	112 E. 25th St., Wildwood, N. J.
Popeano, Joan (1)	952 Seaside Ave., Absecon, N. J.	James, Harry K. (2)	5630 Stewart St., Philadelphia
Ford, Edward H. (2)	356 Duke St., Northumberland	James, Thomas E. (1)	112 N. Front St., Selingsgrove
Fosselman, Donald W. (2)	238 N. Fourth St., Newport	Janson, Doris E. (1)	886 Prospect St., York
Frank, Betty (3)	485 E. Shore Rd., Great Neck, N. Y.	Jenkins, Thomas M. (1)	645 Dorian Rd., Westfield, N. J.
Frankenfield, James (1)	125 Coral St., Lancaster	Jessen, Mary Jane (2)	824 N. E. Fourth Ave., Camas, Wash.
Frankenfield, Robert M. (1)	125 Coral St., Lancaster	Johns, Margaret H. (1)	1207 East St., Honesdale
Furman, Harry J. (0)	209 Fairmount Ave., Sunbury	Johnson, Robert J. (1)	14 Foster Ave., Coaldale
Gaetz, Roberta M. (3)	128 West Ave., Mt. Carmel	Johnston, Harry R. (2)	22 W. Otterman St., Greensburg
Garard, Martha E. (3)	130 Market St., Lewisburg	Jones, Maude B. (2)	Marshall St., Shamokin
Gardner, Dorothy E. (2)	2528 Union St., Allentown	Jones, Paul R. (1)	12 N. Eighth St., Shamokin
Garman, Lenore (4)	501 N. High St., Selingsgrove	Kabler, Jeanne (1)	Walnut St., Nazareth
Gehris, James C. (1)	119 E. Fifth St., Berwick	Kaley, Alice M. (2)	1133 Sherman St., Williamsport
Getsinger, Mary Ann (2)	400 E. Maple Ave., Wildwood, N. J.	Keller, Janet (2)	Box 313, Windber
Gettel, Dorothy I. (1)	525 Walker Ave., Baltimore 12, Md.	Keller, Juanita (2)	Jefferson, Md.
Gibson, Ann E. (3)	25 Sunset Road, Lewistown	Kelly, E. Jean (4)	20 High St., Goshen, N. Y.
Glanzberg, Alvin (3)	1070 E. Fourth St., Brooklyn, N. Y.	Kemp, Edith (4)	Box 245, Sunbury
Gleason, Hanni (1)	430 N. Seventh St., Sunbury	Kepner, Lillian (2)	224 Washburn Ave., Baltimore 25, Md.
Goetz, Robert (1)	R. D. 1, Millerstown	Kershner, Richard P. (1)	21 Greenwood St., Tamaqua
Goodling, Ben L. (1)	R. D. 3, Middleburg	Kilbuefer, Geraldine (2)	149 E. Chestnut St., Ephrata
Gottschall, Charles L. (1)	412 S. Washington St., Muncy	Kimble, James (2)	606 E. Second Ave., S. Williamsport
Gould, Harriet (3)	307 Olive St., Johnstown	King, Donald (2)	20 S. Seventh St., Sunbury
Grandolini, Gene P. (4)	2212 Boulevard Ave., Scranton	Kirchman, Edward J. (1)	218 Park Ave., Milton
Graybill, Caroline (3)	R. D. 1, McAlisterville	Kiss, Isabel (2)	Marlboro, N. Y.
Gross, William David (4)	7 W. Pine St., Selingsgrove	Kline, John O., Jr. (1)	617 N. Front St., Milton
Gumble, Doris E. (1)	Panpack	Kline, Susan (1)	551 E. Third St., Bloomsburg
Gundrum, Eugene (2)	944 E. Main St., Rockwood	Klinger, Ruth (2)	Sugarloaf, Pa.
Gundrum, Sara Jane (4)	944 E. Main St., Rockwood	Knecht, Lawrence R. (1)	901 N. Fourth St., Sunbury
Guyer, Floris (1)	Tipton		
Haffly, Paul R. (1)	304 W. Main St., Belleville		
Hallock, E. Virginia (4)	Willow Tree Road, Milton, N. Y.		

STUDENT ROSTER

Koch, Nancy (1)	26 West Shore Rd., Manbasset, N. Y.	Morris, Charles (1)	1008 Hunter St., Harrisburg
Kohlweiss, Gertrude (1)	242 Merrick Ave., Merriek, N. Y.	Moyer, Marvin (1)	571 Queen St., Northumberland, Pa.
Koons, Bernadine (3)	235 W. Fifth St., Mt. Carmel	Mummey, Stanley (2)	1279 Highland Ave., Sunbury
Koontz, Roberta (1)	Roule 3, Meyersdale	Mussina, Rosemary (1)	619 N. Front St., Milton
Kost, R. Wilson (1)	219 S. York St., Mechanicsburg	Myers, Nancy E. (4)	156 W. High St., Elizabethtown
Kramer, Harold (3)	1906 Hanover Ave., Allentown	Myers, Winifred (2)	Muncy Valley
Kramer, Jeanette (3)	416 N. Eighth St., Sunbury		
Kreisel, Joyce (1)	211 James Ave., E. McKeesport	Nale, Stanley (4)	1814 Park St., Harrisburg
Kreps, Julia (3)	523 Highland Ave., Lewistown	Narayan, Ongkar (3)	Johanna Cecelia, Essequibo, Br. Guiana
Kretzinger, Louise (2)	1718 Douglas St., NE, Washington D. C.	Nicklin, Shirley (1)	Marlboro, N. Y.
Krouse, Marlin (3)	Box 162, Shamokin Dam	Nitchman, Dorothy (2)	937 S. Queen St., York
Kundis, Harold (1)	423 N. Maple St., Mt. Carmel	Noll, Robert J. (1)	416 N. Eighth St., Selingsgrove
Kunkle, Brady L. (1)	8520 Cadwalader Ave., Elkins Park		
Kurlowicz, Edward A. (1)	38 S. Catherine St., Shenandoah	Orner, Jeanne (1)	Bendersville
		Orr, Kenneth (2)	162 N. 14th St., E. Orange, N. J.
Lady, Charles (2)	R. D. 2, Biglerville	Otto, Palmer (1)	607 N. Fourth St., Sunbury
Laks, Elaine (3)	106 Third Ave., Kingston	Outerbridge, Warren (2)	Shelly Bay, Bermuda
Latta, Margaret (2)	393 Pine St., Lockport, N. Y.	Oyster, Anna (1)	807 S. Second St., Sunbury
Lau, Grace (2)	142 Main St., Spring Grove		
Lauver, Raymond (1)	R. D. 1, McMisterville	Packman, Allen B. (3)	28 S. Montgomery Ave., Atlantic City, N. J.
Leach, John R. (4)	524 S. Market St., Selingsgrove	Pallas, Robert (1)	81 Logan St., Lewistown
Lease, Barbara (1)	443 W. Main St., Somerset	Parcells, Alan (3)	6 Eastern Parkway, Auburn, N. Y.
Leeser, Mildred R. (1)	238 S. Front St., Sunbury	Paulhamus, Lewis O. (1)	R. D. 2, Selingsgrove
Leisenring, Frances (3)	Bear Gap	Pellman, Robert E. (1)	Shamokin Dam
Leitzel, James, Jr. (2)	Richfield	Peters, H. Hope (3)	Reedsville
Lepley, Helen (4)	Winfield	Peters, James B. (2)	Frack Apts., Millersburg
Lindemann, Richard (2)	43 Carteret St., Bloomfield, N. J.	Pethick, Marjorie (2)	318 Fifteenth St., Honesdale
Lizzio, Mary (4)	40 Main St., Conemaugh	Peyton, Joseph P., Jr., (3)	153 Hubbard Park, Red Bank, N. J.
Lockwood, Anne (1)	200 Poplar Ave., Wayne	Pfeiffer, Edward F. (1)	311 Third St., Weatherly
Loss, Kenneth (3)	R. D. 1, Middleburg	Phillips, George (1)	Herndon
Ludwig, Jean (1)	16 S. Water St., Selingsgrove	Phillips, Merle H. (1)	Star Route, Dalmatia
Lundahl, Martha (2)	R. D. 3, Newville	Phillips, Muriel (2)	23 Tomac Ave., Old Greenwich, Conn.
Lybarger, N. Frances (2)	P. O. Box 134, Lampeter	Pirie, Warren J. (2)	36 Brighton Ave., Bloomfield, N. J.
		Plock, William L. (2)	115 Lenker Ave., Sunbury
McAllister, Elwood M. (2)	705 Queen St., Northumberland	Polanchyck, Nedra (3)	60 N. Lehigh Ave., Frackville
McCabe, Faye (1)	2 Church St., Gilberton	Polansky, Helen B. (1)	41 W. Howard Ave., Coaldale
McClure, William (2)	Open Hearth, Lewistown	Polk, Helen (1)	123 St. James Ave., Merchantville, N. J.
McConnell, John (1)	85 Van Reypen St., Jersey City, N. J.	Popken, Janet L. (1)	7 West View Rd., W. Orange, N. J.
McHenry, Marjorie (2)	Stillwater	Portzline, Abraham B. (1)	423 Orange St., Selingsgrove
McHenry, Roy (1)	418 W. Front St., Berwick	Poust, William H., Jr., (1)	647 Third Ave., Williamsport
McKeever, Grace (1)	R. D. 1, Harrisburg	Powell, Joseph F. (1)	1313 Arch St., Ashland
Mack, Helen (1)	Hulmeville Rd., Cornwells Heights	Price, Marian (1)	1514 Market St., Ashland
Madden, Edward D. Jr. (1)	320 Park Ave., N. Y. C.		
Maddocks, Robert (3)	296 Belleville Ave., Bloomfield, N. J.	Radell, Robert W. (2)	627 Second Ave., Williamsport
Malkames, Ann (3)	132 W. Sixth St., Hazleton	Radtke, Elmer G., Jr. (1)	1422 E. Bristol St., Phila.
Maneval, Marvin (3)	445 Gantt St., Newport	Raup, Betty (1)	141 Reagan St., Sunbury
Manning, Everett (1)	126 N. 17th St., E. Orange, N. J.	Raup, Columbus H. (2)	1120 E. Chestnut St., Sunbury
Markey, Hilda (4)	1695 Mt. Rose Ave., York	Ramp, Eleanor E. (1)	306 Oak St., Coudersport
Matthews, Jean (2)	34 Washington St., Middletown, N. Y.	Reaver, Mildred K. (2)	R. D. No. 1, Gettysburg
Mattson, Dolores (2)	R. D. 4, Coatesville	Reeder, Doris (1)	Elliottsburg
Meerbach, John C. (1)	644 Nichols Ave., Stratford, Conn.	Reichard, John M. (4)	1507 Center St., Wilkinsburg
Mengel, Marjorie (3)	Market St., Freeburg		
Mertz, John R. (1)	32 S. Walnut St., Bath	Reichley, Gloria (3)	91 S. Main St., Dover
Merz, Kenneth (2)	6151 Mascher St., Philadelphia 20	Reifsnider, Justine (1)	323 E. Hanover St., Hanover
Milford, James (4)	584 N. Laurel St., Hazleton	Reilly, James B. (2)	250 Mott St., Lawrence, N. Y.
Miller, Elizabeth (4)	2223 Newberry, Williamsport	Reisch, Betty K. (3)	1121 Centre St., Ashland
Miller, Mary (1)	1320 Hillside Ave., Honesdale	Reitz, Daniel L., Jr. (2)	110 Independence St., Selingsgrove
Minnich, Donald (1)	37 Laurence Ave., McKean	Reitz, John R. (1)	110 Independence St., Selingsgrove
Miller, Robert (1)	Liberty	Reuther, John A. (1)	93 North St., Bridgeport 18, Conn.
Miller, Vernon J. (1)	812 N. Front St., Sunbury	Rhone, Earl F. (1)	462 Catawissa Ave., Sunbury
Mincemoyer, Earl (1)	24 Tenth St., Milton		
Mix, Arnold (3)	154 Franklin St., Bloomfield, N. J.		
Moglia, Richard (4)	3 Clark St., Glen Ridge, N. J.		

STUDENT ROSTER

Richards, Edward E. (3)	Mt. Pleasant Mills	Talbot, Marie (4)	149 W. Green St., Reading
Riegel, George E. (4)	944 Elizabeth St., Williamsport	Taylor, Joseph (4)	108 E. Bennett Ave., Wildwood, N. J.
Rishel, Esther A. (2)	32 W. Market St., Marietta	Terrel, Audrey C. (1)	R. D. No. 1, Waymart
Roberts, Gertrude (3)	Keyport Rd., New Monmouth, N. J.	Teter, Phyllis E. (1)	326 Sixth St., Northumberland
Robinson, Zola A. (1)	371 W. Fourth St., Lewistown	Thomas, George B., Jr. (1)	R. D. No. 3, Box 180, Johnstown
Robson, Marion (2)	Box 59, Marlboro, N. Y.	Thompson, Elise C. (4)	37 Burtis St., Lynbrook, N. Y.
Rohmann, Charles H. (1)	Box 24, Ehrenfeld	Tietbohl, Augustus V. (3)	143 Percy St., S. Williamsport
Rohrbaeh, Donald P. (2)	457 Catawissa Ave., Sunbury	Tietbohl, Ralph H. (2)	443 Percy St., S. Williamsport
Rothenberg, William B. (4)	314½ Fairmount Ave., Sunbury	Troutman, Beverly J. (1)	307 Hamilton St., Norristown
Bothermel, Jean A. (1)	Klingerstown	Troutman, Richard E. (1)	Pillow
Rowe, Chester G. (1)	301 E. Pine St., Selingsgrove	Troutman, Walter A., Jr. (1)	57 W. Main St., Elizabethville
Rowe, Harold C. (1)	438 N. Second St., Lykens	Ulp, William E. (1)	314 Orange St., Northumberland
Ruhl, William R. (2)	125 Green St., Mifflinburg	Vanderbilt, Justine (1)	129 Decatur St., Brooklyn, N. Y.
Rumbaugh, James O. (1)	R. D. No. 2, Millerstown	Van Dyke, Willis B. (1)	16 Park Place, Lewistown
Rush, Lucretia (2)	109 Eastman St., Cranford, N. J.	Venner, Charles A. (2)	45 State St., Bloomfield, N. J.
Santangelo, Louis (1)	673 Queen St., Northumberland	Wagner, Dorothy V. (4)	32 W. Magnolia Ave., Aidan
Sarba, Mary (1)	114 Catawissa Ave., Sunbury	Wagner, Richard (1)	100 N. Water St., Selingsgrove
Satzler, Faye (1)	McAlisterville	Wagoner, Gaynelle (3)	Pylesville, Md.
Savidge, Frances (2)	193 Marshall St., Shamokin	Walker, Virginia (3)	81 Main St., Beavertown
Schlick, Louise (4)	85 W. Dorrance, Kingston	Walmer, Gloria (3)	40 S. 24th St., Penbrook-Harrisburg
Schneider, Katherine (2)	243 Catawissa Ave., Sunbury	Wanbaugh, Doris E. (2)	1100 Mt. Rose Ave., York
Sehnure, Margaret Jane (4)	206 N. Market St., Selingsgrove	Watkins, Barbara (1)	730 N. Rebecca Ave., Scranton 4
Schreiner, Carl (3)	416 W. Market St., Williamstown	Webber, John (1)	114 S. Market St., Shamokin
Schweighofer, Rita (2)	Honesdale	Wegner, Edith (1)	154 New St., New Brnswick, N. J.
Seaman, Gladys G. (1)	106 Roff Ave., Palisades Park, N. J.	Weikel, Dexter N. (3)	New Berlin
Secrist, Wayne L. (2)	R. D. No. 1, Millerstown	Weller, Kent R. (1)	Aristes
Shaffer, Dorothy (2)	Box 406, Island Park, Sunbury	Welliver, Barbara (1)	1909 W. Front St., Berwick
Shaffer, Nevin (2)	R. D. No. 1, Sunbury	Welliver, Harry (3)	55 Berwick St., Beaver Meadows
Shaffer, Richard W. (1)	602 S. Market St., Selingsgrove	Westervelt, Richard (1)	36 Charles St., Bloomfield, N. J.
Sharadin, Harold L. (1)	R. D. No. 1, Middleburg	Wetzel, Richard (1)	218 S. Market St., Selingsgrove
Sharrow, Janet L. (2)	112 E. Water St., Muncy	Wheat, Barbara (1)	446 Ridge Road, Cedar Grove, N. J.
Sharwarko, Martha D. (3)	137 Muir Ave., Hazleton	Wiley, John D. (3)	4438 Terrace Ave., Merchantsville, N. J.
Sheesley, Robert E. (1)	403 N. Second St., Lykens	Williammee, Phyllis (1)	R. D. No. 1, Factoryville
Sheetz, Anna M. (3)	142 S. Market St., Mt. Carmel	Williams, Donald D. (1)	429 Chestnut St., Sunbury
Sheetz, Wilfred J. (2)	119 E. Pine St., Selingsgrove	Williams, Margaret (2)	6 N. Walnut St., Mt. Carmel
Shetler, Maria Jane (1)	324 Chestnut St., Spring City	Williams, Russell (2)	21 N. Second St., Sunbury
Shook, Velma G. (3)	238 North Sixth St., Allentown	Williams, Ruth E. (4)	50 Llewellyn Ave., Bloomfield, N. J.
Showalter, Shirley (1)	Millmont	Williams, S. Elaine (2)	50 Llewellyn Ave., Bloomfield, N. J.
Shroyer, Shirley (3)	849 Edison Ave., Sunbury	Williard, Joseph R. (3)	226 Logan St., Lewistown
Shuey, Mark W. (1)	239 Pine St., Middletown	Wilson, Richard L. (2)	842 Edison Ave., Sunbury
Shunk, Nancy J. (1)	222 Walnut St., Sunbury	Winter, Robert E. (2)	735 Center St., Williamsport
Slicer, Sally E. (2)	109 Beachley St., Meyersdale	Wissingner, Donald E. (1)	2923 Walnut Ave., Altoona
Smith, Betty (3)	Woodsboro, Md.	Witowski, John J. (1)	113 Warsaw St., Keiser
Smith, Dorothy E. (1)	R. D. No. 1, Biglerville	Wohlsen, Robert F. (2)	39 Marshall Rd., Yonkers 5, N. Y.
Smith, Lawrence (1)	Freeburg	Wolf, Janet E. (1)	105 Violet St., Johnstown
Smith, Lillian (1)	R. F. D. No. 1, Nescopeck	Wolfe, Adah (4)	Pennsylvania Ave., Mill Hall
Smith, M. Helen (2)	142 Fairmount Ave., Sunbury	Wolfe, Fancher (2)	McConnell Building, Shamokin
Smith, Sara Lee (3)	1020 Poplar St., Scranton	Wolfe, Franklin R. (3)	1 Vaux Ave., Tremont
Snyder, Charles W. (3)	330 N. 10th St., Lebanon	Wood, Mary Ellen (3)	Merritt Road, Farmingdale, N. Y.
Snyder, Mary E. (1)	1417 E. Market St., Sunbury	Woodring, Alvin J. (2)	443 Market St., Bloomsburg
Solomon, Howard (4)	124 W. Southern Ave., S. Williamsport	Wright, Anne B. (2)	322 W. Fourth St., Hazleton
Solomon, Jack (1)	122 Willow St., Athens	Wright, John H. (1)	322 W. Fourth St., Hazleton
Southwick, M. Jane (2)	23 Park Circle, Millburn, N. J.	Yancho, William P. (2)	2 Mayfair Rd., Morris Plane, N. J.
Speyer, Gabrielle (2)	60 Gramercy Park, New York, N. Y.	Yanovitch, George A. (1)	822 College St., Nanticoke
Spogen, Marjorie (1)	P. O. Box 81, Turbotville	Yarnell, Shirley J. (2)	42 Shaw Ave., Lewistown
Stahl, Roland E. (1)	448 Third St., Northumberland	Yeakel, Harold J. (1)	226 N. Third St., Pottsville
Steele, Eleanor (3)	2634 Butler St., Penbrook-Harrisburg	Vorty, Ann E. (1)	Snsquehanna Heights, Selingsgrove
Steigerwalt, Marian (2)	455 Col. St., Schuylkill Haven	Young, Lois J. (2)	154 S. Wayne St., Lewistown
Steininger, Eugene (2)	Middleburg	Zeidler, Frank A. (3)	108 State St., Bloomfield, N. J.
Stetler, Paul B. (3)	Middleburg	Zerbe, Maynard N. (2)	133 N. 12th St., Sunbury
Stonesifer, Oscar S., Jr. (4)	2202 N. Fifth St., Harrisburg	Zimmerman, Harold C. (1)	R. F. D. 1, Hamilton, Sunbury
Stout, Marie (3)	R. D. No. 2, Neptune, N. J.	Zlock, Evan P. (2)	247 Third St., Coaldale
Stow, George C., Jr. (3)	136 Prospect St., Merchantsville, N. J.	Zubak, John E. (0)	667 Sixth St., Trafford
Strawbridge, Irma R. (2)	222 Walnut St., Lemoyne	Zuschlag, Elizabeth C. (1)	1108 Magnolia Rd., W. Englewood, N. J.
Strouse, Florence (3)	Proctor		
Swartz, Phyllis L. (2)	230 W. Fifth St., Lewistown		

GRATITUDE



Our advertisers have assisted greatly in making possible the publication of our 1948 LANTHORN. For this we are sincerely appreciative. They deserve our patronage.

SUSQUEHANNA UNIVERSITY

(Co-educational)

SELINGROVE, PA.

*For Eighty-nine Years in the Service of
Christian Higher Education*



A college with unusual opportunities

Liberal Arts (A.B.)

Business Education (B.S.)

Music Education (B.S.)

THE SUMMER SESSION of 8 weeks



For catalog write:

G. MORRIS SMITH, D.D., LL.D., President

SELINGROVE WATER SUPPLY CO.



FRANK A. EYER
President

H. J. JARRETT
Superintendent

JAMES McCLURE
Treasurer

MIDDLE CREEK VALLEY TELEPHONE COMPANY

Bell System

FRANK A. EYER, *Treasurer*

The
COLLEGE BOOK STORE
STUDENTS SUPPLIES



Schaeffer Inks—Pennants

Monogram Stationery

College Keys and Rings

The Penn State Photo Shop

Commercial and Portrait Photography



R. H. BREON, JR.

Official Photographers for 1948 LANTHORN

214 East College Avenue

STATE COLLEGE, PA.

SUSQUEHANNA RESTAURANT DINER

QUALITY FOOD — EFFICIENT SERVICE

SPACIOUS DINING ROOM

Sunbury — Selinsgrove Highway

W. E. BOOTH

R. J. WEBB

Compliments of

THE FIRST NATIONAL BANK

OF SELINGROVE

BECK & BECK

CLEANERS — DYERS

Operators of

CITY STEAM LAUNDRY

Cash and Carry Store

Next to Hotel Governor Snyder

Compliments of

D. R. ERDMAN

SUNBURY, PENNA.

"CHILDREN'S SHOP"

MARY H. BURNS

Clothes for the College Girl

MILLER'S

Pine and Orange

Where Many College Folk Meet

C. F. Troxell Hardware

113 N. Market St.

SELINGROVE, PA.

The Store of
Good Taste in Men's Wear

KAUFMAN BROS. INC.

SUNBURY, PA.

Higgins Family Shoe Store

SELINGROVE, PA.

RAY L. SWANK, STORE

CLOTHING AND
HABERDASHERY

448 Market St.

SUNBURY, PA.

WHITMER-STEELE COMPANY

Manufacturers of

PINE, HEMLOCK, AND HARDWOOD LUMBER
MINING TIMBER AND TIES

NORTHUMBERLAND, PA.

BENJAMIN T. MOYER,

FURNITURE of Distinction

Phone — 2077

21-23 North Fifth St. SUNBURY, PA.

LOTTIE KEMBERLING DUTCH PANTRY

Pennsylvania Dutch Cooking

We Enjoy Catering to Parties

Phone 67-R-11

Sunbury-Selinsgrove Highway

TAYLOR'S CANDY SHOP

Where Students Meet and Eat

ICE CREAM — SODAS

CONFECTIONERY

12 N. Market St. SELINGROVE, PA.

FLOWERS

for All Occasions at

REICHLÉY'S FLOWER SHOP

614 Market Street

SUNBURY, PA.

Compliments of

THE SANDWICH BAR

GOOD PLATTERS *and*

SANDWICHES

3rd and Market St.

SUNBURY, PA.

MARKLEY-ALTVATER

•
Men's and Boys'

BETTER CLOTHES

•
SUNBURY, PA.

B. K. W. COACH LINE

HUMMELS WHARF, PA.

Charter Trips Solicited



For TAXI Service

Call — SUNBURY 600

Goodyear Service Store

Tires, Tubes and Auto Accessories

Brake Service, Wheel Balancing

Batteries, Tire Recapping

SUNBURY, PA.

Compliments of

GIANT CLEANERS

SELINGROVE, PA.

Sanders Appliance Store

241 Market St.

SUNBURY, PA.

Telephone 546

CHARLES W. KELLER

Distributor

CRYSTAL PURE ICE

The Selinsgrove Times Tribune

•

Printers of

THE SUSQUEHANNA AND
THE ALUMNI QUARTERLY

Hackett's Hardware Stores

HARDWARE, APPLIANCES, GIFTS

PAINT, GLASS

325 Market Street, Sunbury

706 Market Street, Sunbury

Market and Walnut Streets, Middleburg

Compliments of

FEHRS

Compliments of

JOSEPH L. MENTZ

The Stationer

266 Market Sq. SUNBURY, PA.

Compliments of

Bittner's Department Store

SUNBURY, PA.

Compliments of

WILLIAM J. COTT

DRUGGIST

F. A. BRILL CO.

FLOOR COVERINGS
AWNINGS — SHADES
DRAPERIES

Phone 2180

119 Market Street SUNBURY, PA.

For INSURANCE Service — See

ABERDEEN PHILLIPS

127 North Market St.

Phone 68-W

Compliments of

A FRIEND

Watch Repair — Susquehanna Jewelry
Fountain Pens and Pencils

W. M. VALSING

Jeweler SELINGSGROVE, PA.

T. H. SPEIGELMIRE & SONS

SELINGSGROVE, PA.

Specializing In

FEEDS AND REMEDIES FOR
FARM STOCK, POULTRY
FUR BEARING ANIMALS AND DOGS

LEARN'S

FINE FOODS AND
STATIONERY

Greeting Cards for Every Occasion

11 S. Market Street

SELINGSGROVE, PA.

GEORGE SWANK

Market Square
SUNBURY, PA.

THE BON TON

of
SUNBURY, PA.

Compliments of the
PENRITH SHOP

SNAVELY'S
COLLEGE FURNISHINGS
AND SHOES

BOGAR LUMBER CO.
CONTRACTORS — BUILDERS
Manufacturers of and Dealers in
LUMBER, BUILDING SUPPLIES
Phone 74-W SELINGSGROVE, PA.

Compliments of

EBERT'S

5c to \$1.00 STORE
SELINGSGROVE, PA.

Swansdown and Jaunty
Junior Coats and Suits
Exclusive With Us

VOGUE, INC.

Apfelbaums SUNBURY, PA.

COLONIAL TEA ROOM

MR. AND MRS. ROY BOWERSOX

For Reservations and Parties

Call 48W

Compliments of

GEORGE B. RINE

Florist

Hotel Governor Snyder

WALTER E. PINAND, Prop.

SARA A. CORNFORTH, Mgr.

COMPLIMENTS
OF A
FRIEND

P r i n t i n g

We do a variety of Commercial
Printing . . . including Catalogs,
College and School Year Books.
Consult Us before placing your
next order for Printing.

Your

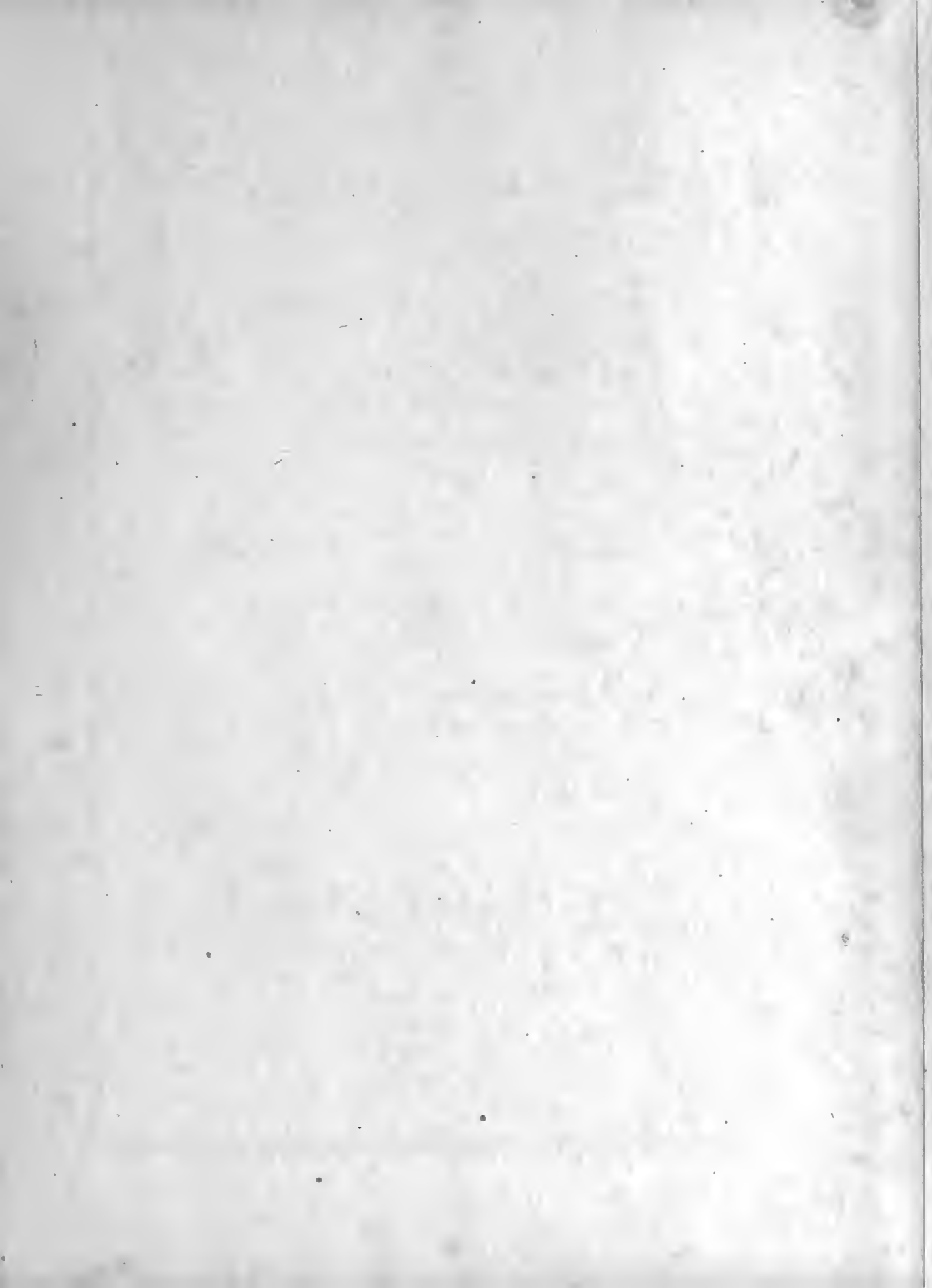
LANTHORN

Was Designed, Engraved,
Printed and Bound in our
College Annual Department

g r i t P u b l i s h i n g C o .

WILLIAMSPORT, PENNA.

**Publishers
Printers
Designers
Engravers**





SUSQUEHANNA UNIVERSITY



3 4998 0027 8157 8

BLOUGH-WEIS LIBRARY
DOES NOT
CIRCULATE
ARCHIVES
SUSQUEHANNA UNIVERSITY

