



Lantern
1950

LIBRARY
SHENANDOAH UNIVERSITY
SHELINGROVE, PA 17870

J. Paul W. Meader

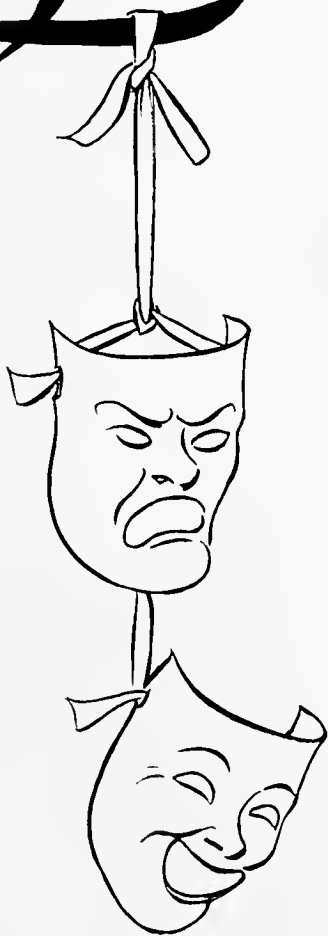


Digitized by the Internet Archive
in 2011 with funding from
Lyrasis Members and Sloan Foundation

<http://www.archive.org/details/lanthorn195000susq>

Lantern

1950



PRESENTED BY
THE JUNIOR CLASS OF
SUSQUEHANNA UNIVERSITY
SELINGROVE, PENNSYLVANIA

Editor-in-Chief - - - - - THEODORE H. CLARK
Business Manager - - - - - DOUGLAS E. ARTHUR

All the world's a stage,
And all the men and women merely players:
They have their exits and their entrances,
And one man in his time plays many parts,
His acts being seven ages. At first the infant,
Mewling and puking in the nurse's arms,
Then the whining school-boy, with his satchel
And shining morning face, creeping like snail
Unwillingly to school. And then the lover,
Sighing like furnace, with a woeful ballad
Made to his mistress' eyebrow. Then a soldier,
Full of strange oaths, and bearded like the pard,
Jealous in honour, sudden and quick in quarrel,
Seeking the bubble reputation
Even in the cannon's mouth. And then the justice,
In fair round belly with good capon lin'd,
With eyes severe and beard of formal cut,
Full of wise saws and modern instances;
And so he plays his part. The sixth age shifts
Into the lean and slipper'd pantaloon,
With spectacles on nose and pouch on side,
His youthful hose, well sav'd, a world too wide
For his shrunk shank; and his big manly voice,
Turning again toward childish treble, pipes
And whistles in his sound. Last scene of all,
That ends this strange eventful history,
Is second childishness and mere oblivion,
Sans teeth, sans eyes, sans taste, sans everything.

“As You Like It”—Act II, Scene VII



FOREWORD

“The whining school boy, with his satchel and shining morning face, creeping like snail unwillingly to school.” For most of us, it has been anything but a snail’s pace—rather the contrary has been all too true. We have just completed an act made intensely alive meeting the challenge of new horizons.

Now as we reach the end of this year, it is with mingled emotions that we make our departure. Long will we cherish the happy hours on campus, the warmth of real friendships, and the fellowship of an understanding faculty.

THE PROGRAM

The Faculty

The Classes

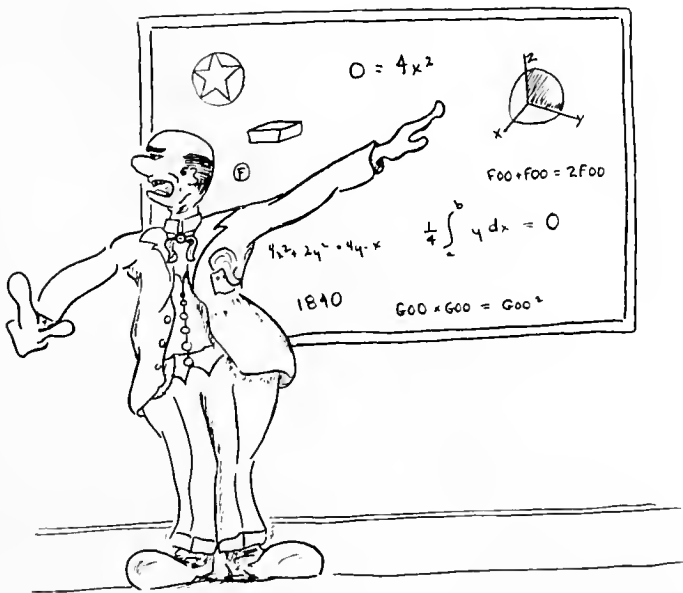
The Athletics

The Activities and
Organizations

The Advertisers

THE FACULTY

These are the directors of our play. Our destinies have been guided by these men and women for the past four years. Their influence will be cherished, and we shall never fully realize how we have been enriched by their understanding and guidance.





PRESIDENT SMITH

President of the College

G. MORRIS SMITH

President

A.B., Roanoke College 1911; A.M., Princeton University 1912; Diploma, Lutheran Theological Seminary, Philadelphia 1919; D.D., Roanoke College 1928; Graduate study, Columbia University; LL.D., Bucknell 1940.



Dean of the College



DEAN GALT



RUSSELL GALT

Dean of the College

A.B., Muskingum College 1919; A.M. 1920 and Ph.D. 1936, Columbia University; School of Oriental Studies, Cairo, Egypt, 1920-22.



ERMA LOUISE SAMBROOK

Dean of Women and Instructor in French.

A.B. 1944 and A.M. 1948, Bucknell University.

Dean of Women



ATHALIA TIBITHA KLINE

Faculty Resident in the Cottage, Instructor in French and Spanish

A.B., Randolph Macon Women's College 1922;
A.M., Duke University 1925.



MRS. CAROL KLINE, A.B.

Perceptress in Hassinger Hall

The Faculty



LENORA ALLISON
*Instructor in Commercial
Education*

A.B., Bowling Green College of
Commerce 1930; Ed.M., Univer-
sity of Pittsburgh 1937.



THOMAS ARMSTRONG, JR.
*Assistant Professor of Business
Administration*

B.S., Wesleyan University 1928;
M.B.A., Harvard University
1930; Ed.D., Temple University
1947.



HOWARD E. DE MOTT
Instructor in Science

B.S., State Teachers College,
Bloomsburg 1935; M.S., Buck-
nell University 1940.



KARL WILLIAM GEISINGER
Instructor in Psychology

A.B., University of Pennsylvania
1947; Ed.M., Temple University
1948.



RUSSELL WIEDER GILBERT
Professor of German

A.B., Muhlenberg College 1927;
A.M. 1929 and Ph.D. 1943,
University of Pennsylvania.



GROVER C. T. GRAHAM
*Associate Professor Economics
and Business Administration*

A.B., William Jewell College
1909; A.M., Brown University
1910; Graduate Study, Brown
University.



BERTHA MABEL HEIN
*Lecturer in Medical-Secretarial
Subjects*

Diploma, Allentown Hospital
Training School for Nurses
1908; R.N., Pennsylvania State
Board for Registration of Nurses
1909; Diploma, Baltimore Lu-
theran Deaconess Training
School 1924.



ROBERT TUNIS HOWLING
Instructor in English

A.B., Rutgers University 1942;
A.M., New York University
1948.



JOHN JACOB HOUTZ
*Associate Professor of Chemistry
and Mathematics*

A.B., Susquehanna University
1908; M.S., Louisiana State Uni-
versity 1912; Sc.D., Carthage
College 1933.



JOSEPH F. INGHAM
*Instructor in Business
Administration*

LL.D., Dickinson Law School
1924.

The Faculty



AXEL R. KLEINSORG

Instructor in English and Dramatics

B.S., Temple University 1935; Graduate study, State University of Iowa and Temple University.

GEORGE MERRITT ROBISON

Associate Professor of Mathematics

A.B., 1916, A.M., 1917, and Ph.D., 1919, Cornell University.



BENJAMIN LOTZ

Assistant Professor in Religion and Philosophy

A.B., Wittenberg College 1923; B.D., Philadelphia Seminary 1928.

WILLIAM ADAM RUSS, JR.

Professor of History and Political Science

A.B., Ohio Wesleyan 1924; A.M., University of Cincinnati 1926; Ph.D., University of Chicago 1933.



SPENCE T. MARKS

Instructor in Physics

B.S., Gettysburg College 1932; Ed.M., Temple University 1946.

RUTH M. SPARHAWK

Instructor in Physical Education

B.S., Kent State University 1945.



ROBERT F. W. MEADER

Instructor in Latin and English

A.B., Middlebury College 1929; A.M., University of Pennsylvania 1931; Graduate study, Harvard University.

AMOS ALONZO STAGG

Advisory Coach

A.B., Yale University 1888; Graduate of International Y. M. C. A. College, Springfield, Mass., 1891; M.P.E., International Y. M. C. A. College, 1912; A.M., Oberlin College, 1923; LL.D., College of Wooster, 1933; Graduate study, Yale University.



MARGARET McCANDLISH

Instructor in Accounting and Business Administration

B.S., Winthrop College 1943.

AMOS ALONZO STAGG, JR.

Professor of Physical Education

Ph.B., 1923 and A.M., 1935, University of Chicago; A.M., Columbia University 1941; Graduate study, University of Chicago.



The Faculty



MILTON F. STANCATI

Instructor of Biology

B.S., 1929 and M.S., 1931, University of Pittsburgh.



FREDERICK C. STEVENS

Assistant Professor in Sociology and History

A.B., University of Minnesota 1926; A.M., Columbia 1932; Graduate study, Columbia University.



KENNETH B. WATERBURY

Assistant Professor of Education and Psychology

B.S., 1930, Ed.M., 1933, and Ed.D., 1939, Pennsylvania State College.



ARTHUR H. WILSON

Professor of English

A.B. 1927, A.M. 1929, and Ph.D. 1931, University of Pennsylvania.



WALDEMAR ZAGARS

Assistant Professor of Economics and Business Administration

Dr. of Economics, University of Riga, Latvia 1931.



FISK W. S. SCUDDER

Deceased.

Conservatory of Music



FREDERIC C. BILLMAN
Instructor in Piano and Theory
Mus.B., Susquehanna University
1936; A.M., Columbia University
1941; Graduate study, Juilliard
Institute 1946-47.

ELBERT DIXON HASKINS
*Instructor in Singing, Choral
Conducting*
A.B., University of Michigan
1923; A.M., New York University
1939; Graduate study, Paris,
France; New York City, and
Feagin School of Dramatic Art,
New York City.



ALLEN FLOCK
Instructor in Band Instruments
B.S., Susquehanna University
1947.

PERCY M. LINEBAUGH
*Professor of Pipe Organ, Piano-
forte, Counterpoint*
Mus.B., Lebanon Valley College
1917; Graduate study, New
York University, Peabody Con-
servatory of Music.



ALICE H. GIAUQUE
*Instructor in Public School
Music Methods*
B.S. in Music Education 1937
and A.M. 1940, Columbia Uni-
versity.

MARY K. POTTIGER
*Instructor in Pianoforte, Sight
Singing*
Mus.B., Susquehanna University
1925; Graduate study, New
York University.



RUSSELL CONDRAN HATZ
*Assistant Professor of Violin,
Harmony, Band, and
Orchestra*
B.S. in Music Education, Leb-
anon Valley College 1937; Grad-
uate study, Temple University,
Juilliard Institute; A.M., Colum-
bia University 1942.

IDA MANEVAL SHELDON
Instructor in History of Music
Mus.B., Susquehanna University
1907; Graduate study, New
York University.



NANCY BOWMAN HATZ
*Instructor in Harmony, Band
Instruments*
B.S. in Music Education, Leb-
anon Valley College 1936; A.M.,
Columbia University 1941.

RALPH H. SIDWAY
Instructor in Voice
New England Conservatory
1934; Paris Conservatoire 1936.





Left to Right—Miss Rohrbach, Mrs. Marks, Miss Barry, Mrs. Stevens, Mrs. Coxe.

Administrative Officers and Staff

<i>Admissions</i>	-	MRS. THOMAS E. COXE, Registrar; MRS. FREDERICK C. STEVENS
<i>Secretary to the Dean</i>	- - - - -	MRS. WILLIAM D. MARKS
<i>Superintendent of Buildings and Grounds</i>	-	EDWIN MONROE BRUNGART, A.M.
<i>Dietician</i>	- - - - -	MRS. ANNA MILLER HUMPHREY
<i>Business Manager</i>	- - - - -	ERNIST T. YORTY
<i>Business Secretary</i>	- - - - -	RUTH E. MCCORKILL, B.S.
<i>Finances</i>	- - - - -	E. BEATRICE HERMAN, Buysaf; OLIVE BARRY
<i>Secretary to the President</i>	- - - - -	JANET ROHRBACH, B.S.

THE CLASSES

These are the actors in our play. There must be others to whom we can entrust our roles, so we bequeath to the classes in our wake to carry on what we have begun.





Left to Right—J. Peters, J. Hospodar, J. Devine, H. Smith.

Senior Class

OFFICERS

<i>President</i>	- - - - -	- BURLEIGH PETERS
<i>Vice President</i>	- - - - -	- JOHN DEVINE
<i>Secretary</i>	- - - - -	M. HELEN SMITH
<i>Treasurer</i>	- - - - -	JOHN HOSPODAR

As seniors, our class willingly accepted the responsibilities and opportunities confronting us this year. In four years on campus, we matured mentally and emotionally as well as physically, as we learned to live, work, and play together in the close relationships of college life. If we learned well, we shall be prepared to take our places in the world with ease and success.

We are grateful for memories of many happy experiences at Susquehanna. In the years to come, may it be our desire to reflect honor upon our Alma Mater in whatever we do, wherever we go.



WHO'S WHO



ANN YORTY



MARGARET APPLEBY

34 E. Milford St.
Mount Union, Pa.

Liberal Arts

Omega Delta Sigma 1, 2, 3,
Financial Secretary 3; Stu-
dent Christian Association 1,
2, 3; Women's Athletic As-
sociation 2, 3; Intramural
Sports 1, 2, 3.

PAUL R. BINGAMAN

Thompsontown, Pa.

Liberal Arts

Theta Chi, Marshal 2, Vice
President 4, Editor "*Crimson
Sword*" 3; Student Christian
Association 1, 2, 3, 4; Biemic
Society 1, 2, 3, 4, President
3; Susquehanna Players 1, 2;
Susquehanna Staff 1, 3, 4;
Phi Kappa 1, 2, Treasurer 1;
Intramural Sports 1, 2, 3, 4;
LANTHORN 3.



MIRIAM J. AVERY
132 W. Dorrance St.
Kingston, Pa.

Liberal Arts

Kappa Delta Phi 1, 2, 3, 4, Sergeant-at-Arms 4; Student Christian Association 1, 2, 3, 4; Biemic Society 1, 2, 3, 4; Women's Athletic Association 3, 4; Intramural Sports 2, 3, 4; Freshmen Counselor 4; Ciceroniani 2, 3, Secretary-Treasurer 3; Oratorio Society 4.

JOYCE BELL
24 W. Market St.
Mount Union, Pa.

Liberal Arts

Omega Delta Sigma 1, 2, 3, Treasurer 2; Student Christian Association 1, 2, 3; Women's Athletic Association 1, 2, 3; Intramural Sports 1, 2, 3.

JEAN B. BERNINGER
311 Front St.
Danville, Pa.

Liberal Arts

Student Christian Association 1, 2, 3; Susquehanna Players 3; Women's Student Council 3; Pi Gamma Mu 2, 3, 4, Vice President 3; Cottage House President 3; Judiciary Committee 3; Freshmen Orientation 3; Day Students' Organization 4.

GRACE BILLOW
Academy St.
McAlisterville, Pa.

Liberal Arts

Student Christian Association, 1, 2, 3, 4; Biemic Society 1, 2; Symphony Orchestra 4; Debate Club 1, 2; Ciceronian 3, 4.

EDWIN BITTENBENDER
621 E. Front St.
Berwick, Pa.

Liberal Arts

Student Christian Association 3, 4, President 4; Phi Kappa 3, 4; Basketball 3; Intramural Sports 4; Tennis Team 3.

JOSEPH E. BOGAR
529 N. Eighth St.
Selinsgrove, Pa.

Liberal Arts

JOYCE BOTTORIF
602 S. Wayne St.
Lewistown, Pa.

Music Education

Sigma Alpha Iota 2, 3, 4, Sergeant-at-Arms 3, Chaplain 4; Student Christian Association 1, 2, 3, 4; Band 3, 4; Susquehanna Singers 2, 3; Fire Captain 4; Oratorio Society 4; Trinity Choir 2; Operetta 2, 3.

MARLAND BOYER
406 Harrison St.
Pottsville, Pa.

Business Administration

Phi Mu Delta; Business Society 2, 3, 4; Intramural Sports 2, 3, 4; Intramural Board 4.



ANNA BRINDEL
12 Pennsylvania Ave.
Lewistown, Pa.

Liberal Arts

Omega Delta Sigma 2, 3, 4; Student Christian Association 1, 2, 3, 4; Susquehanna Players 2, Treasurer 2; Women's Athletic Association 2, 3, 4; Women's Student Council 2, 4; Intramural Sports 1, 2, 3, 4; Cottage President 4; Ciceroniani 3, 4, Quaestor 4; Women's Judiciary Committee 4.

RUTH BUFFINGTON
Maine St.
Valley View, Pa.

Commercial Education

Kappa Delta Phi 3, 4; Student Christian Association 1, 2, 3, 4; Business Society 1, 2, 3, 4; Women's Athletic Association 3, 4; Intramural Sports 1, 2, 3, 4; Freshmen Counselor 4.

VIRGINIA COCHRANE
99 Spruce St.
Bloomfield, N. J.

Liberal Arts

Kappa Delta Phi, Recorder 2, Vice President 3; Student Christian Association 1, 2, 3, 4; Biemic Society 2; Susquehanna Players 1, 2, 3, 4; Vice President Council 2; *Susquehanna* Staff 3, 4, News Editor 4; Inter-Sorority Council 3, 4, Financial Secretary 3, Vice President 4; LANTHORN 3; Freshmen Orientation 3, 4.

CALVIN CONRAD, JR.
14 E. Pine St.
Sellingrove, Pa.

Music Education

Band 2; Susquehanna Singers 2; Operetta 2, 3.

HARRY CULP
212 S. Front St.
Sunbury, Pa.

Liberal Arts

Phi Mu Delta 2, 3, 4; Student Christian Association 1, 2; Biemic Society 1, 2, 3; Susquehanna Players 1; Basketball 1, 2; Football 2; Intramural Sports 1, 2, 3, 4; Baseball 1, 2; Class Officer 1.

CARL DAHLGREN
918 Park Ave.
Williamsport, Pa.

Liberal Arts

Student Christian Association 3, 4, Cabinet 4; Susquehanna Players 3; *Susquehanna* Staff 3; Phi Kappa 3; Lycoming College 1, 2.

THOMAS R. DAVIS
1141 Susquehanna Ave.
Sunbury, Pa.

Business Administration

Bond and Key; Business Society 2, 3, 4.

MARY C. DAVISON
342 S. Market St.
Sellingrove, Pa.

Secretarial

Omega Delta Sigma 2, 3, 4; Student Christian Association 1, 2, 3, 4; Business Society 1, 2, 3; Women's Athletic Association 1, 2, 3, 4, Secretary 3; Hockey Team 2, 3, 4, Captain 4; Basketball 2, 3; Intramural Sports 1, 2, 3, 4; Tau Kappa 3, 4, Secretary-Treasurer 4; Homecoming Queen 3.



Theron W. Conrad
200 Catawissa Ave.
Sunbury, Pa.

Business Administration

Student Christian Association
2, 3; Business Society 1, 2, 3;
Biemic Society 3.

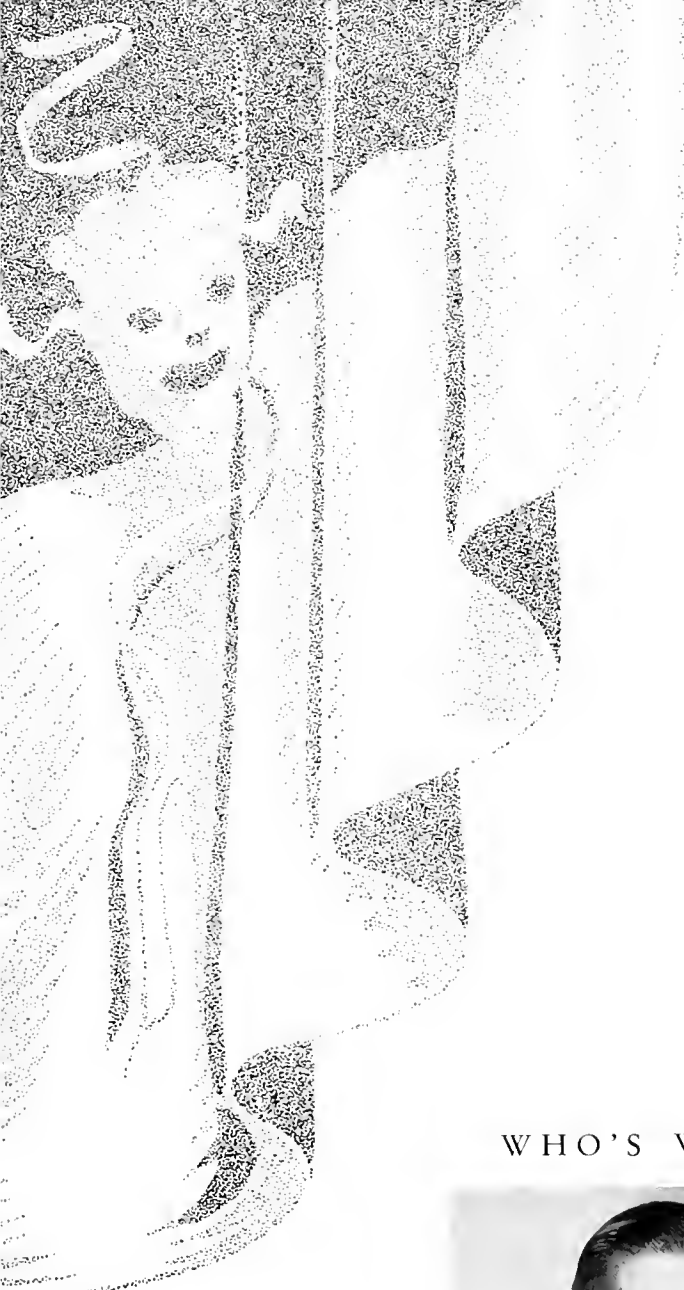
Gilbert Day
123 N. Market St.
Selinsgrove, Pa.

Music Education



EDITH WEGNER

WHO'S WHO



WHO'S WHO



RALPH TIETBOHL



JEAN E. DERR
223 Orange St.
Selinsgrove, Pa.

Music Education

Sigma Alpha Iota 2, 3, 4, Magazine Chairman 4; Student Christian Association 1, 2, 3, 4; Symphony Orchestra 2, 3, 4; Band 1, 2, 3, 4; Susquehanna Singers 2, 3; Intersorority Council 4; Operetta 2, 3; Day Students' Organization 1, 2, 3, 4; Oratorio Society 4.

NANCY A. EVERETT
36-41 209 St.

Bayside L. I., N. Y.

Medical Secretary

Student Christian Association 1, 2, 3, 4; Business Society 2, 3, 4; Biemic Society 3, 4; May Day 1.



JOHN G. DEVINE
1132 Center St.
Ashland, Pa.
Commercial Education

Phi Mu Delta, Sergeant-at-Arms 2, Vice President 3, President 4; Student Christian Association 1, 2; Business Society 1, 2, 3, 4; Basketball 1, 2, 3, 4; Baseball 1; Football 1, 2, 3, 4; Intramural Sports 2, 3, 4; Intramural Board 1; Class Officer 4.

MARGARET DORNSIFE
40 S. Walnut St.
Mt. Carmel, Pa.
Pre-Medical

Student Christian Association 1, 2, 3, 4; Biemic Society 1, 2, 3, 4; Intramural Sports 2.

ROBERT L. DORNSHIL
Hobart St.
Gordon, Pa.
Business Administration

Theta Chi 4; Student Christian Association 4; Business Society 3; Band 2.

EDNA MAE ETZRODT
979 Richter Ave.
Scranton 10, Pa.
Commercial Education

Student Christian Association 1, 2, 3, 4; Business Society 1, 2, 3, 4; Biemic Society 2, 3; Susquehanna Players 2, 3; Women's Athletic Association 3, 4; Intramural Sports 2, 3, 4; LANTHORN 3; May Day 1.

RICHARD E. FFLKER
R. D. 1
Middleburg, Pa.
Liberal Arts

Bond and Key; Phi Gamma Mu 4; Intramural Sports 3, 4; Baseball 3.

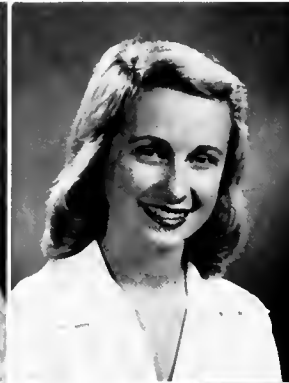
ELLA JANE FITHEROLF
Freeburg, Pa.
Commercial Education

Student Christian Association 1, 2, 3; Business Society 1, 2, 4.

MILLARD G. FISHER
217 East Ninth St.
Berwick, Pa.
Liberal Arts

Phi Mu Delta, President 4; Susquehanna Players 1; Men's Student Council 3, 4, Secretary 3, 4; *Susquehanna* Staff 2; Pi Gamma Mu 3, 4; Inter-Fraternity Senate 4; Debating Club 1, 2; Who's Who 4.

EDWARD FORD
903 Market St.
Sunbury, Pa.
Business Administration



DONALD FOSSELMAN
240 N. Fourth St.
Newport, Pa.
Business Administration

Phi Mu Delta, Chaplain 4; Student Christian Association 1, 2, 4; Business Society 1, 2, 4; Intramural Sports 1, 2, 4; Baseball Manager 2.

DOROTHY GARDNER
2528 Union St.
Allentown, Pa.
Music Education

Sigma Alpha Iota, Treasurer 4; Student Christian Association 1, 2, 3, 4; Susquehanna Players 1, 2; Symphony Orchestra 3; Band 3; Susquehanna Singers 2, 3; Trinity Choir 1, 2, 3; Operetta 2, 3; Oratorio Society 4; String Trio 2.

MARY ANN GETSINGER
400 W. Maple Ave.
Wildwood, N. J.
Music Education

Sigma Alpha Iota, 1, 2, 3, 4, Chaplain 3, Magazine Chairman 3, President 4; Student Christian Association 1, 2, 3, 4; Susquehanna Players 1, 2, 3, 4; Symphony Orchestra 1, 2; Band 1, 2, 3, 4; Susquehanna Singers 2, 3; Intramural Sports 1; Inter-sorority Council, Secretary 4; Alpha Psi Omega 3, 4; Trinity Choir 4; Oratorio Society 4; Cheerleader 1, 2, 3, 4; Freshmen Orientation 3, 4; Operetta 2, 3; "Sun-Up" 2; "Icebound" 3.

ROBERT L. GOITZ
R. D. 1
Millerstown, Pa.
Liberal Arts

Phi Mu Delta 2, 3, 4, Secretary 3, 4; Student Christian Association 1, 2; Biemic Society 2, 3, 4; Operetta 3.

GEORGE HANIS
350 E. Berner Ave.
Hazleton, Pa.
Business Administration

Phi Mu Delta 3, 4; Student Christian Association 3; Business Society 3, 4, Advertising Manager 4; Susquehanna Players 2, 3, 4; Basketball 3, 4; Intramural Sports 2, 3, 4; Alpha Psi Omega 4.

J. WILLIAM HEIM
928 Weiser St.
Reading, Pa.
Music Education

Student Christian Association 1, 2, 3, 4; Susquehanna Players 1, 2, 3, 4; Symphony Orchestra 1, 2, 3; Band 1, 2, 3; Susquehanna Singers 1, 2, 3; Chapel Choir 1, 2, 3; Operetta 2, 3; "You Can't Take It With You" 2; "Mary of Scotland" 4.

BETSY HILL
3322 Beale Ave.
Altoona, Pa.
Liberal Arts

Kappa Delta Phi 3, 4; Student Christian Association 4; Biemic Society 3, 4; Women's Athletic Association 4; Intramural Sports 3, 4.

ROBERT HOOVER
15 W. Main St.
Elizabethville, Pa.
Business Administration

Bond and Key 2, 3, 4; Student Christian Association 1, 2, 3, 4; Business Society 1, 2, 3, 4; Susquehanna Staff 1, 2, 3, 4, Circulation Manager 3, Business Manager 4; Intramural Sports 1, 2, 3, 4.



CHARLES GOTTSCHALL
319 $\frac{1}{2}$ Orange St.
Northumberland, Pa.
Business Administration
Business Society 1; Football 1.

JOHN HOSPODAR, JR.
R-938 James St.
Hazleton, Pa.
Business Administration

Phi Mu Delta 2, 3, 4, Comptroller 3, 4; Business Society 1, 2, 3, 4, Board of Directors 4; Pi Gamma Mu 4; Basketball 1, 2, 3, 4; Intramural Sports 1, 2, 3, 4; Class Officer 4; Who's Who 4.



FRANCES SAVIDGE

WHO'S WHO



WHO'S WHO



PALMER OTTO



STANLEY PAUL HOUSER

87 Chestnut St.
Lewistown, Pa.

Liberal Arts

Student Christian Association
2; Basketball 2; Intramural
Sports 2, 3; Tennis Team
2, 3.

JUANITA KELLER

Jefferson, Maryland

Liberal Arts

Student Christian Association
1, 2, 3, 4; Cabinet 4; Biemic
Society 1, 2, 3, 4; Susque-
hanna Players 1, 2; Women's
Athletic Association 1, 2, 3,
4; Treasurer 4; Sports Man-
ager 3; Women's Student
Council 3; Hockey Team 3,
4; Basketball 3, 4; Intra-
mural Sports 1, 2, 3, 4; Tau
Kappa 3, 4; Vice President 4;
Softball Team 2; May Day 3.



MARJORIE HUTCHISON

Shirley-Ayr Farms
Mt. Union, Pa.

Commercial Education

Omega Delta Sigma 1, 2, 3, Secretary 3; Student Christian Association 1, 2, 3; Business Society 1, 2, 3; Vice President Council 3; Women's Athletic Association 1, 2, 3, Vice President 3; Intramural Sports 1, 2, 3.

MARY JANE JESSEN

124 N. E. Fourth Ave.
Camas, Washington

Liberal Arts

Student Christian Association 2, 3, 4, Cabinet 3; Biemic Society 3; Student Assistant, Hassinger Hall 2, 3, 4; Lutheran Deaconess School 1, 2.

HARRY JOHNSTON

22 W. Otterman St.
Greensburg, Pa.

Business Administration

Bond and Key 2, 3, 4; Business Society 1, 2, 3, 4; *Susquehanna* Staff 4, Circulation Manager 4; Intramural Sports 1, 2, 3, 4; LANTHORN 3; Baseball 2, 3, 4.

MAUDE JONES

162 N. Marshall St.
Shamokin, Pa.

Music Education

Sigma Alpha Iota 1, 2, 3, 4; Student Christian Association 1, 2, 3, 4; Susquehanna Players 2, 3, 4; Band 2; Susquehanna Singers 2, 3; Chapel Choir 3; Women's Athletic Association 1, 2, 3, 4; Hockey Team 3, 4; Intramural Sports 1, 2, 3, 4; Trinity Choir 1, 2, 4; Oratorio Society 4; Operetta 1, 2, 3.

FRIDERICK KELLY, JR.

157 Walnut St.
Sunbury, Pa.

Liberal Arts

Student Christian Association 3, 4; Susquehanna Staff 4; Pi Gamma Mu 4; Men's Day Student Organization President 4; Massachusetts State Teacher's College 1, 2.

LILLIAN KEPNER

224 Washington Ave.
Baltimore 25, Md.

Liberal Arts

Omega Delta Sigma 1, 2, 3, 4, Vice President 4; Student Christian Association 1, 2, 3, 4; Biemic Society 1; Susquehanna Players 1, 2, 3; Women's Athletic Association 2, 3; Women's Student Council 3, 4; Susquehanna Staff 3, 4; Basketball 3; Intramural Sports 1, 2, 3; Inter-Sorority Council 3, 4; Treasurer 4; Alpha Psi Omega 2, 3, 4; Grand Stage Manager 4; May Day 2; Freshmen Orientation 3; "It's My Heart" 2; "Little Women" 2; "You Can't Take It With You" 2; "One Sunday Afternoon" 2; "Suppressed Desires" 3; "Ironbound" 3; "Hawk Island" 3.

JAMES D. KIMBLE

606 E. Second Ave.
S. Williamsport, Pa.

Business Administration

Business Society 1, 2, 4; Baseball 1, 2, 3, 4; Intramural Sports 1, 4.

ISABEL KISS

Box 442
Marlboro, New York

Liberal Arts

Omega Delta Sigma; Student Christian Association 1, 2, 3, 4; Biemic Society 1, 2, 3; Susquehanna Players 1, 2; Women's Athletic Association 1, 2, 3, 4, Badminton Manager 3; Hockey Team 4; Basketball 3, 4; Intramural Sports 1, 2, 3, 4; Tau Kappa 4; Softball Team 4; May Day 3.



HAROLD KUNDIS
423 N. Maple St.
Mt. Carmel, Pa.

Business Administration

Phi Mu Delta 1; Student Christian Association 1, 2; Business Society 1, 2; *Susquehanna* Staff 1, 2; Intramural Sports 1, 2, 3.

MARGARET H. LATTA
393 Pine St.
Lockport, N. Y.

Liberal Arts

Student Christian Association 1, 2, 3, 4; *Susquehanna* Players 2, 3; *Susquehanna* Singers 3; *Susquehanna* Staff 3, 4; Advertising Manager 4; Operetta 3.

GRACE E. LAU
142 Main St.
Spring Grove, Pa.

Business Administration

Student Christian Association 1, 2, 3, 4; Business Society 1, 2, 3, 4; Refreshment Committee 4; Biemic Society 1, 2; *Susquehanna* Players 2, 3, 4; Vice President Council 2; Women's Athletic Association 3, 4; Intramural Sports 2, 3, 4; LANTHORN 3; May Day 1.

RUTH LORRAH
362 Jerome Ave.
Williamsport, Pa.

Commercial Education

Student Christian Association 3, 4; Business Society 3, 4; *Susquehanna* Players 3; Women's Athletic Association 4; Women's Student Council, Judiciary Chairman 4; *Susquehanna* Staff 3; Pi Gamma Mu 4; Intramural Sports 3, 4; Dickinson Junior College 1, 2.

EDWARD MADDEN, JR.
320 Park Ave.
New York, N. Y.

Business Administration

Phi Mu Delta 3, 4; Business Society 1, 2, 3, 4; *Susquehanna* Players 3, 4; *Susquehanna* Staff 1, 2, 3, 4; Basketball 1, 2; Intramural Sports 1, 2, 3, 4; Baseball 2; Intramural Board 2, 3, 4; President 4.

JEAN MATTHEWS
54 Washington St.
Middletown, N. Y.

Liberal Arts

Omega Delta Sigma 1, 2, 3, 4; Student Christian Association 1, 2, 4; *Susquehanna* Players 1, 2, 3, 4; Women's Athletic Association 3, 4; Women's Student Council 4; Intramural Sports 1, 3, 4; Inter-Sorority Council 4; Alpha Psi Omega 4; Cicero-nians 3, 4.

DOLORES MATTSO
R. D. 4
Coatesville, Pa.

Secretarial

Omega Delta Sigma 1, 2, 3, 4; Student Christian Association 1, 2, 3, 4; Business Society 1, 2, 3, 4; Biemic Society 2; Vice President Council 4; Women's Athletic Association 2, 3, 4; Women's Student Council, Secretary-Treasurer 4; Freshmen Counselor 4; Fire Captain 2; Intramural Sports 1, 2, 3, 4.

ELWOOD McALLISTER
705 Queen St.
Northumberland, Pa.

Liberal Arts

Bond and Key 1, 2, 3, 4; Student Christian Association 2; Biemic Society 4; Band 1, 2, 3; Basketball 1; Intramural Sports 1, 2, 3, 4; Cicero-nians 3, 4; Vice President 3.



FRANCES LYBARGER

Box 134
Lampeter, Pa.

Liberal Arts

Omega Delta Sigma: Student Christian Association 1, 2, 3, 4; Susquehanna Players 1, 2; Band 2, 3; Women's Athletic Association 1, 2, 3, 4, Vice President 3, President 4; Women's Student Council 3, 4; Susquehanna Staff 1, 3, 4; Girls Sports Editor 3, 4; Hockey Team 1, 2, 3, 4; Basketball 2, 3, 4; Intramural Sports 1, 2, 3, 4; Lanthorn 3; Class Officer 3; Hassinger Hall House President 3; Debate Club 1; Judiciary Committee 3; Tau Kappa 3, 4, President 4; "Queen's Husband" 3; "Icebound" 3.

MARJORIE MCHENRY

R. D.
Stillwater, Pa.

Music Education

Sigma Alpha Iota 1, 2, 3, 4, Treasurer 3, By-Law Chairman 4; Student Christian Association 1, 2, 3, 4; Symphony Orchestra 1, 2, 3, 4; Band 1, 2, 3, 4; Susquehanna Singers 2, 3; Vice President Council 4; Inter-Sorority Council 4; Operetta 2, 3; Clarinet Quartet 1.

WHO'S WHO



JOHN HOSPODAR



WHO'S WHO



MARY ANN GETSINGER



JOHN C. MEERBACH

644 Nichols Ave.
Stratford, Conn.

Music Education

Phi Mu Delta 2, 3; Student Christian Association 3; Symphony Orchestra 1, 2, 3; Band 1, 2, 3; Susquehanna Players 2, 3; Intramural Sports 1, 2, 3; Operetta 2, 3; Oratorio Society 3.

DOROTHY NITCHMAN

937 S. Queen St.
York, Pa.

Pre-Medical

Student Christian Association 1, 2, 3, 4; Biemic Society 1, 2, 3, 4, Secretary-Treasurer 3; Vice President Council 4.



JOHN MERTZ

32 S. Walnut St.
Bath, Pa.

Business Administration

Phi Mu Delta 1, 2, 3, 4, Steward 3, 4; Student Christian Association 2, 3, 4; Business Society 1, 2, 3, 4, Treasurer 3, President 4; Susquehanna Players 1.

KENNETH M. MIRZ

6151 Mascher St.
Philadelphia 20, Pa.

Liberal Arts

Phi Mu Delta 1, 2, 3.

CHARLES A. MORRIS

1608 Hunter St.
Harrisburg, Pa.

Business Administration

Phi Mu Delta; Student Christian Association 2, 3, 4; Business Society 2, 3, 4; Intramural Sports 2, 3, 4; Baseball 2; Intramural Board 4.

STANLEY MUMMEY

1279 Highland Ave.
Sunbury, Pa.

Music Education

Susquehanna Singers 2, 3, 4; Operetta 2, 3.

KENNETH D. ORR

162 N. Fourteenth St.
E. Orange, N. J.

Business Administration

Bond and Key; Student Christian Association 1, 2, 3; Business Society 1, 2, 3, 4; Football 3, 4; Intramural Sports 1, 2, 3, 4.

PALMER W. OTTO

607 N. Fourth St.
Sunbury, Pa.

Commercial Education

Bond and Key 1, 2, 3, 4, President 2, 3; Student Christian Association 1, 3; Business Society 1, 2, 3; Who's Who 4; Pi Gamma Mu 3; Inter-Fraternity Senate 3, 4.

WARREN OUTERBRIDGE

Shelly Bay
Bermuda

Liberal Arts

Bond and Key 1, 2, 3, 4; Student Christian Association 1, 2, 3; Susquehanna Staff 1, 2, 3, 4, Editor-in-Chief 3; Phi Kappa 1, 2, 3, 4.

LEWIS O. PAULHAMUS

112 Iron St.
Danville, Pa.

Liberal Arts

Student Christian Association 4; Greek Club 4.



JAMES B. PETERS
302 W. Main St.
Lock Haven, Pa.

Liberal Arts

Bond and Key, Vice President 2; Student Christian Association 1; Susquehanna Players 2, 3, 4; Men's Student Council, Vice President 3, Treasurer 4; *Susquehanna* Staff 3; Phi Kappa 1; Basketball 1, 2, 3, 4; Football 1, 2, 3, 4; Intramural Sports 1, 2, 3, 4; Baseball 3, 4; Class Officer 4; "Sun-Up" 2; "You Can't Take It With You" 3; "Mary of Scotland" 4.

MARION C. ROBSON
Marlboro, New York
Liberal Arts

Omega Delta Sigma 1, 2, 3, 4; Student Christian Association 1, 2, 3, 4; Susquehanna Players 1, 2, 3, 4; Women's Athletic Association 3, 4; *Susquehanna* Staff 1, 2, 3; Intramural Sports 1, 2, 3, 4; Ciceroiani 3, 4, Vice President 3; President 4; Debate Club 1, 2; May Day 1, 2, 3; Fire Captain 2; Freshmen Orientation 2, 3.

MURIEL PHILLIPS
7 North St.
Old Greenwich, Conn.

Kappa Delta Phi 1, 2, 3, 4, Pledge President 1, President 4; Student Christian Association 1, 2, 3, 4; Susquehanna Players 1, 2, 3, 4; "Hawk Island" 3; Women's Athletic Association 1, 2, 3, 4, Archery Manager 3, Board 3; Basketball 2, 4; Intramural Sports 1, 2, 3, 4; Inter-Sorority Council 3, 4; Cheerleader 1, 2, 3, 4; Judiciary Committee 2, 3, 4; Freshmen Orientation 3, 4; May Day 1.

CHARLES ROHMANN
Box 24
Ehrenfeld, Pa.
Business Administration

Phi Mu Delta; Student Christian Association 1, 2; Business Society 1, 2, 3, 4; *Susquehanna* Staff 3, 4.

WARREN PIRIE
36 Brighton Ave.
Bloomfield, N. J.

Commercial Education

Phi Mu Delta 1, 2, 3, 4; Student Christian Association 3, 4; Business Society 1, 2, 3, 4, President 3; Susquehanna Players 2, 3, 4, Vice President 2, President 3; Basketball 1; Track 1; Alpha Psi Omega 3, 4, Grand Stage Director 3; Cheerleader, Captain 3, 4; "The Hasty Heart" 2; "You Can't Take It With You" 2; "The Queen's Husband" 3; "Hawk Island" 3; "Mary of Scotland" 4; "Little Women" 3.

WILLIAM R. RUHF
125 Green St.
Millinburg, Pa.
Liberal Arts

Theta Chi 1, 2, 3, 4, House Manager 3; Student Christian Association 1, 2, 3, 4, Cabinet 2, 3, 4, Men's President 4; Men's Student Council 3, 4, Treasurer 3, President 4; Phi Kappa 2, 3, 4, Treasurer 3, 4; Intramural Sports 1, 2, 3, 4; Class Officer 3.

MILDRED REAVER
R. D. 1
Gettysburg, Pa.

Commercial Education

Kappa Delta Phi, Financial Secretary 4; Student Christian Association 1, 2, 3, 4; Business Society 1, 2, 3, 4, Secretary 2, Executive Board 4; Biemic Society 2; Susquehanna Players 3; Women's Athletic Association 3, 4; Intramural Sports 2, 3, 4; LANTHORN 3; Oratorio Society 4.

FRANCES SAVIDGE
193 Marshall St.
Shamokin, Pa.
Commercial Education

Kappa Delta Phi 1, 2, 3, 4, Treasurer 4; Student Christian Association 1, 2, 3, 4; Business Society 1, 2, 3, 4; Susquehanna Players 2, 3, 4; Vice President Council 2; Women's Student Council, President 2; Pi Gamma Mu 4; Lanthorn Editor-in-Chief 4; Freshmen Orientation, Assistant Chairman 3, General Chairman 4; Alpha Psi Omega 3, 4, Grand Business Manager 3, 4; "Sun-Up" 2; "You Can't Take It With You" 2; "They That Sit in Darkness" 3; "The Terrible Mock" 3; "Ironbound" 3; "Mary of Scotland" 4; May Day 1, 2, 3; Who's Who 4.



JAMES B. REILLY
250 Mott St.
Lawrence, N. Y.

Business Administration

Phi Mu Delta, Comptroller 2, 3; Student Christian Association 1, 2, 4; Business Society 1, 2, 4; *Susquehanna* Staff 2, 3; News Editor 3; Basketball 1; Intramural Sports 1, 2, 3, 4; LANTHORN 3.

RITA SCHWEIGHOFER
R. F. 3
Honesdale, Pa.

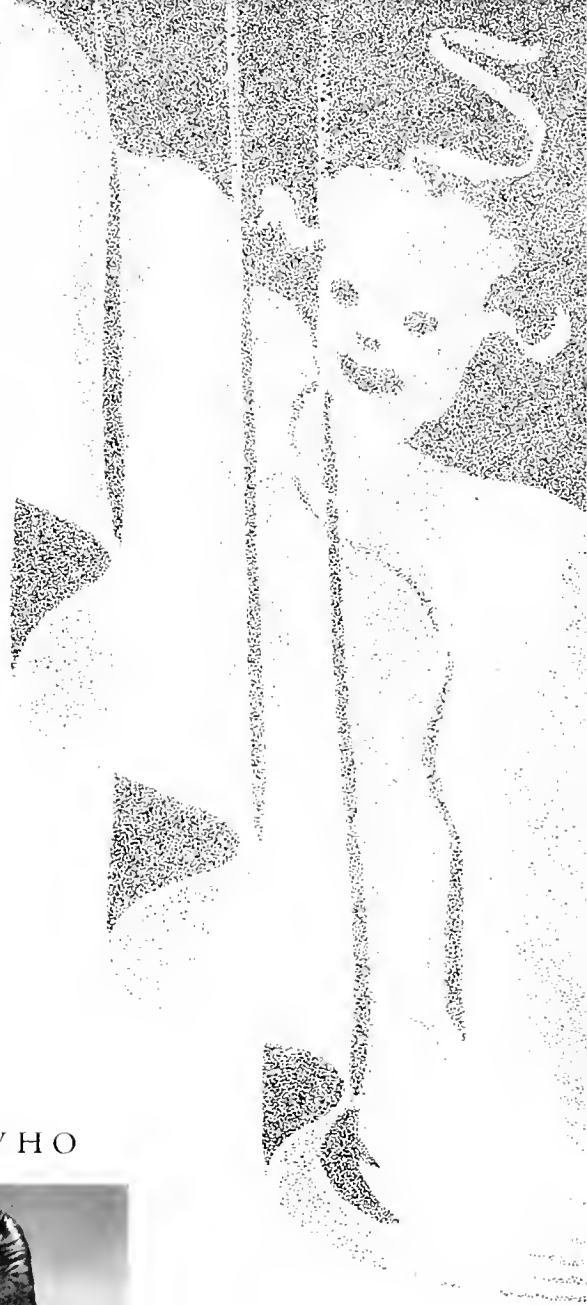
Liberal Arts

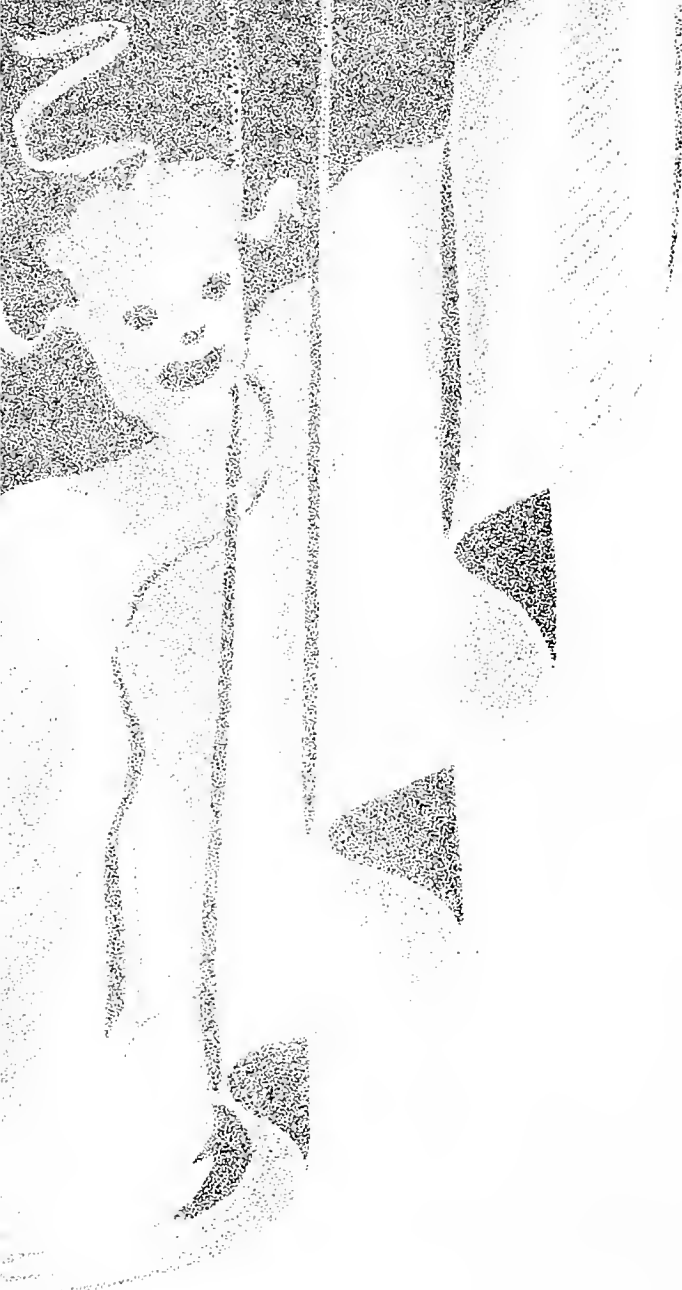
Student Christian Association 1, 3, 4; Cabinet Secretary 4; Biemic Society 1, 2, 3; Women's Athletic Association 4; Intramural Sports 2, 3, 4; Fire Captain 3, 4.

WHO'S WHO



MILLARD FISHER





DOROTHY SHAFER

Box 406, Island Park
Sunbury, Pa.

Liberal Arts

Student Christian Association
1, 2, 4; Women's Athletic
Association 3, 4; Women's
Student Council 4; *Susque-
hanna* Staff 1; LANTHORN 3;
Day Students' Organization
1, 2, 3, 4, Vice President 4.

JANE SOUTHWICK

23 Park Circle
Millburn, N. J.

Music Education

Sigma Alpha Iota 1, 2, 3, 4;
Student Christian Association
1, 2, 3, 4; "Mary of Scot-
land" 4; Band 2, 3, 4; Sus-
quehanna Singers 2, 3; Chap-
el Choir 3; Octet 1, 2; *Sus-
quehanna* Staff 4; Trinity
Choir 1, 2, 3; Operetta 2, 3;
Oratorio Society 4; Class Of-
ficer 1.



RICHARD SHAFFER
602 S. Market St.
Selinsgrove, Pa.
Business Administration

Phi Mu Delta 1, 2, 3, 4;
Business Society 1, 2, 3, 4;
Susquehanna Players 1, 2, 3,
4; Intramurals Sports 4.

G. KENNETH SMALL
23 Rossiter Ave.
Paterson, N. J.
Business Administration

Phi Mu Delta 4; Biemic Soci-
ety 1; Susquehanna Players
1, 2, 3, 4; "Hawk Island" 3;
"Mary of Scotland" 4; Men's
Student Council, Vice Presi-
dent 1; Basketball 1; Intra-
mural Sports 2.

HELEN SMITH
142 Fairmount Ave.
Sunbury, Pa.
Liberal Arts

Kappa Delta Phi 3, 4; Stu-
dent Christian Association 1,
2, 3, 4, Cabinet 4; Women's
Athletic Association 1, 2, 3,
4; *Susquehanna Staff* 4;
Hockey Team 3, 4; Pi Gam-
ma Mu 3, 4, President 4;
LANTHORN 3; Day Students'
Organization 1, 2, 3, 4, Presi-
dent 3, 4; Freshmen Orien-
tation 2, 3, 4; Class Officer
3, 4.

LAWRENCE M. SMITH
Freeburg, Pa.
Business Administration
Student Christian Association
3; Business Society 1, 2, 3.

GABRIELLE P. SPEYER
60 Gramercy Park
New York, N. Y.
Liberal Arts

Kappa Delta Phi 1, 2, 3, 4,
Chaplain 4; Student Chris-
tian Association 1, 2, 3, 4;
Biemic Society 1, 2; Susque-
hanna Players 3, 4; Women's
Athletic Association 2; *Sus-
quehanna Staff* 1, 2; Intra-
mural Sports 1, 2; Freshmen
Orientation 2, 3; May Day
1, 2.

ROY STAHL
341 1/2 Reynold St.
Pittston, Pa.
Music Education

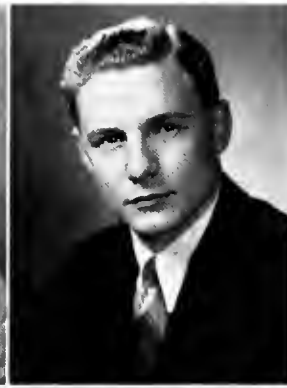
Phi Mu Delta; Student
Christian Association 1, 2, 3,
4; Symphony Orchestra 3;
Susquehanna Singers 3, 4;
Chapel Choir 3; Operetta 3.

MARIAN STIEGERWALT
455 Columbia St.
Schuylkill Haven, Pa.
Music Education

Sigma Alpha Iota 1, 2, 3, 4,
Accompanist 3, Editor and
Program Chairman 4; Stu-
dent Christian Association 1,
2, 3, 4; Susquehanna Players
2, 3, 4; Susquehanna Singers
2, 3; Operetta 2, 3; May Day
2; Oratorio Society, Organ-
ist 4.

IRMA R. STRAWBRIDGE
222 Walnut St.
Lemoync, Pa.
Commercial Education

Omega Delta Sigma, President
4; Student Christian Associa-
tion 1, 3, 4, Cabinet 4; Busi-
ness Society 1, 2, 3, 4; Sus-
quehanna Players 2, 3, 4, Sec-
retary 2, 3, 4; Women's Ath-
letic Association 2, 3, 4; Sus-
quehanna Staff 1, 3, 4, Man-
aging Editor 4; Intramural
Sports 1, 2, 3, 4; Inter-Sorority
Council, President 4; Lanthorn
3; Alpha Psi Omega 4; "Little
Women" 2; "You Can't Take
It With You" 2; "Icebound"
3; May Day 2; Freshmen Ori-
entation 3, 4.



PHYLLIS SWARTZ
230 W. Fifth St.
Lewistown, Pa.

Music Education

Sigma Alpha Iota 1, 2, 3, 4, Vice President 3, Corresponding Secretary 4; Student Christian Association 1, 2, 3, 4; Symphony Orchestra 2, 3; Band 1, 2, 3, 4; Susquehanna Singers 2, 3; Chapel Choir, Organist 4; Women's Student Council 4; Inter-Sorority Council 3; Operetta 2, 3; Seibert Hall President 4; Freshmen Orientation 3, 4.

JOHN WRIGHT
322 W. Fourth St.
Hazleton, Pa.

Business Administration

Phi Mu Delta 2, 3, 4; Business Society 1, 2, 3, 4; Susquehanna Players 1.

RALPH TIETBOHL, JR.
443 Percy St.
S. Williamsport 32, Pa.

Liberal Arts

Theta Chi 1, 2, 3, 4, Historian 2, Secretary 3, President 4; Student Christian Association 1, 2, 3, 4; Biemic Society 1, 2, 3, 4, Vice President 3; Intramural Sports 1, 2, 3; LANTHORN 3; Inter-Fraternity Senate 4, President 4; Who's Who 4.

ANN YORTY
University Heights
Selinsgrove, Pa.

Liberal Arts

Omega Delta Sigma 1, 2, 3; Student Christian Association 1, 2, 3; Susquehanna Players 1, 3; Susquehanna Singers 2, 3; Women's Athletic Association 1, 2, 3; *Susquehanna* Staff 1, 2, 3, Editor-in-Chief 3; Hockey Team 1, 2, 3; Basketball 1, 2, 3; Who's Who 3; Pi Gamma Mu 3; Intramural Sports 1, 2, 3; Softball 2; Tau Kappa 3; Operetta 2; "Mary of Scotland" 3.

CHARLES VENNER
45 State St.
Bloomfield, N. J.

Business Administration

Phi Mu Delta 1, 2, 3, 4; Student Christian Association 1, 2, 3, 4; Business Society 1, 2, 3, 4; Susquehanna Players 3; Basketball 1; Intramural Sports 1, 2, 3, 4; Class Officer 3.

JEAN L. YOUNG
709 Main St.
South Williamsport, Pa.

Liberal Arts

Omega Delta Sigma 3, 4; Student Christian Association 3, 4; Women's Athletic Association 4; *Susquehanna* Staff 3, 4; Intramural Sports 4; Lycoming College 1, 2.

DORIS WANBAUGH
1100 Mt. Rose Ave.
York, Pa.

Music Education

Sigma Alpha Iota 1, 2, 3, 4; Student Christian Association 1, 2, 3, 4; Biemic Society 4; Susquehanna Players 3; Band 1; Susquehanna Singers 2, 3; Chapel Choir 3; Vice President Council 3; Intramural Sports 1; Fire Captain 4.

LOIS JANE YOUNG
154 S. Wayne St.
Lewistown, Pa.

Liberal Arts

Omega Delta Sigma 2, 3, 4; Student Christian Association 1, 2, 3, 4; Susquehanna Players 2, 3; Intramural Sports 1, 2, 3; Ciceroniani 3, 4.



EDITH M. WEGNER
154 New St.
New Brunswick, N. J.
Business Administration

Student Christian Association 1, 2, 3, 4; Girls' Vice President 4; Business Society 1, 2, 3, 4; Freshman Scholarship Award; Magazine Chairman 3, 4; Susquehanna Players 1, 2, 3, 4; Treasurer 4; Women's Athletic Association 3, 4; Women's Student Council 4; Hissinger House President 4; Pi Gamma Mu 3, 4; Vice President 4; Intramural Sports 3, 4; "Little Women" 3; Freshmen Orientation 4; Judiciary Committee 4; Who's Who 4.

CHARLES R. WIAN
159 1/2 Lombard St.
Sunbury, Pa.
Liberal Arts

Football 3, 4.

ELAINE WILLIAMS
50 Llewellyn Ave.
Bloomfield, N. J.
Liberal Arts

Kappa Delta Phi 1, 2, 3, 4; Corresponding Secretary 4; Student Christian Association 1, 2, 3, 4; Biemic Society 1, 2; Susquehanna Players 1, 2, 3, 4; Vice President Council 3; Women's Athletic Association 2, 3, 4; Cabinet 3; Susquehanna Staff 3, 4; Hockey Team 4; Intramural Sports 1, 2, 3, 4; Manager 3; Cheerleader 3, 4; Freshmen Orientation 3, 4; May Day 3; Tau Kappa 4.

ANNI WRIGHT
322 W. Fourth St.
Hazleton, Pa.
Commercial Education

Omega Delta Sigma 1, 2, 3, 4; Student Christian Association 1, 2, 3; Business Society 1, 2, 3, 4; Susquehanna Players 1, 2, 3, 4; Vice President Council 3; Women's Athletic Association 3, 4; Intramural Sports 1, 2, 3, 4; LANTHORN 3; "Little Women" 2; "Queen's Husband" 3; "Hawk Island" 3; Alpha Psi Omega 4.

JEANETTE ZERBI
416 N. Eighth St.
Sunbury, Pa.
Music Education

Sigma Alpha Iota; Student Christian Association 1, 2, 3, 4; Susquehanna Singers 2, 3, 4; Chapel Choir 4; Operetta 2, 3; Octet 2, 3; May Day 1, 2.

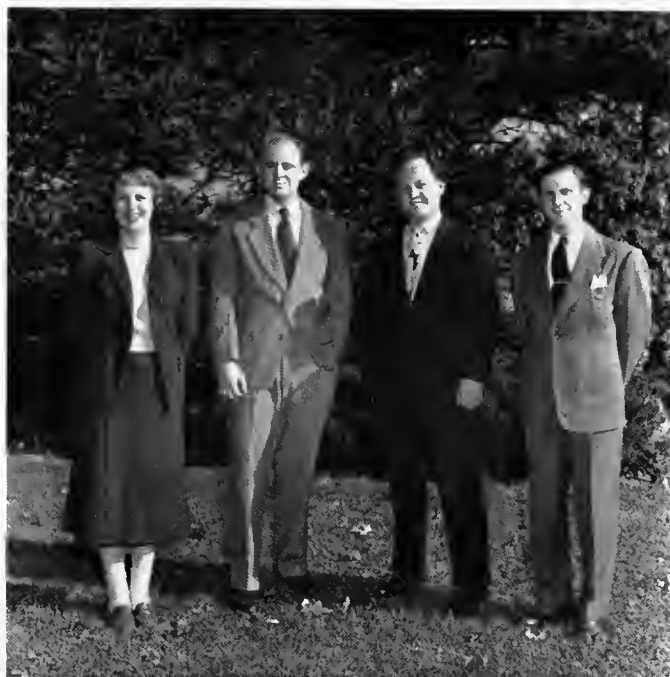
MAYNARD ZERBE
416 N. Eighth St.
Sunbury, Pa.
Liberal Arts

HAROLD ZIMMERMAN
R. D. 1
Sunbury, Pa.
Business Administration

Bond and Key, Vice President 3, 4; Student Christian Association 2, 3, 4; Business Society 2, 3, 4; Susquehanna Staff 4; Pi Gamma Mu 4.

EVAN P. ZLOCK
276 Third St.
Coaldale, Pa.
Liberal Arts

Phi Mu Delta 1, 2, 3, 4; Student Christian Association 1, 2, 3, 4; Biemic Society 3, 4; Susquehanna Players 1, 2, 3; Basketball 1, 2, 3, 4; Baseball 3; Football 1, 2, 3, 4.



Left to Right— M. Shetler, T. Clark, J. Ladika, W. Van Dyke.

Junior Class

OFFICERS

<i>President</i>	- - - - -	WILLIS VAN DYKE
<i>Vice President</i>	- - - - -	JOSEPH LADIKA
<i>Secretary</i>	- - - - -	MARIA SHETLER
<i>Treasurer</i>	- - - - -	THEODORE CLARK

Three years have lapsed; we are already past the zenith of our college life! This year has been important because we have made a definite choice of our field of endeavors. It is also memorable because we have edited the LANTHORN and sponsored that gayest of dances, our springtime Junior Prom.

We now scan the future catching a glimpse of new opportunities, new experiences, new successes. May our determination and perseverance be strengthened as we anticipate our future work.



BARBARA ANDERSON
9 Shady Lane
Johnstown, Pa.
Liberal Arts

Omega Delta Sigma; Student Christian Association 1, 2, 3; Biemic Society 1, 2, 3; Vice President Council 3; Women's Athletic Association 1, 2, 3; Intramural Sports 1, 2, 3.

DOUGLAS E. ARTHUR
731 E. Union St.
Millersburg, Pa.
Business Administration

Bond and Key 2, 3; Business Society 1, 2, 3; Football 1, 2, 3; Intramural Sports 3; LANTHORN 3.

CECILIA AUMAN
R. D. 1, Box 78
E. St. Marys, Pa.
Music Education

Sigma Alpha Iota 2, 3; Student Christian Association 1, 2, 3; Susquehanna Singers 2, 3; Operetta 2.

FRED A. AUMAN, JR.
648 Duke St.
Northumberland, Pa.
Music Education

Phi Mu Delta 2, 3, 4; Symphony Orchestra 2, 3, 4; Band 1, 2, 3, 4; Susquehanna Singers 2, 3; *Susquehanna Staff* 1, 2, 3, 4.

DONALD BABICS
260 Main St.
Conemaugh, Pa.
Business Administration

Student Christian Association 3; Business Society 2, 3; Intramural Sports 2.

H. DANIEL BEIGH, JR.
2310 Hoffer St.
Harrisburg, Pa.
Business Administration

Phi Mu Delta 2, 3; Student Christian Association 2, 3; Business Society 2, 3; Basketball 2, 3; Intramural Sports 2, 3.

EARL BERNSTEIN
2375 Hillside Ave.
Williamsport, Pa.
Pre-Medical

Phi Mu Delta; Biemic Society 2, 3, Vice President 3; Football 1, 2, 3; Intramural Sports 1, 2, 3.

ROY R. BILGER
102 S. High St.
Selinsgrove, Pa.
Business Administration

Phi Mu Delta 1, 2, 3; Business Society 1, 2, 3; Baseball 1, 2; Intramural Sports 2, 3.

VIRGINIA BLOUGH
310 Hickory St.
Johnstown, Pa.

Commercial Education

Kappa Delta Phi 1, 2, 3,
Vice President 3; Student
Christian Association 1, 2, 3;
Business Society 1, 2, 3;
Susquehanna Players 2; Wo-
men's Athletic Association 1,
2, 3; Hockey Team 2, 3;
Intramural Sports 1, 2, 3;
Inter-Sorority Council 3;
Tau Kappa 3; Freshmen Ori-
entation 3; May Day 2; Ora-
torio Society 3; Class Officer
1; Trinity Choir 2.

HARRY BONISH

16 Woodland St.
Ashland, Pa.

Liberal Arts

Intramural Sports 1, 2, 3.

MARLIN BOBB

Ferry St.
Herndon, Pa.

Business Administration

Bond and Key 3; Business So-
ciety 1, 2, 3; Baseball 2.

EDWARD BRESNOCK

29 Bast Ave.
Ashland, Pa.

Commercial Education

Bond and Key 2, 3; Business
Society 1, 2, 3; Football 1, 2,
3; Intramural Sports 1, 2, 3.

ROBERT BOLIG

Hummels Wharf, Pa.

Liberal Arts

Bond and Key; Football 1, 2,
3; Intramural Sports 1, 2, 3.

PAUL BUEHLER

Paupack, Pa.

Business Administration

Theta Chi 2, 3; Student
Christian Association 1, 2,
3; Business Society 1, 2, 3;
Band 2, 3; Intramural Sports
1, 2, 3.

ERMA BONAWITZ

Berrysburg, Pa.

Liberal Arts

Student Christian Association
1, 2, 3.

JOHN BUFFINGTON

86 Linden Ave.
Bloomfield, N. J.

Business Administration

Bond and Key, Steward 2, 3;
Business Society 1, 2, 3; In-
tramural Sports 2.





WILBUR BUFFINGTON

29 W. Main St.
Elizabethville, Pa.

Business Administration

Bond and Key 1, 2, 3; Student Christian Association 1; Business Society 3; Intramural Sports 1, 2, 3; Latin Club, President 3.

FRANK D. CALVERT

1432 Market St.
Ashland, Pa.

Business Administration

Theta Chi 1, 2, 3, Treasurer 3; Student Christian Association 1, 2, 3; Business Society 1, 2, 3.

ERNEST A. CANAIS

67 Birch St.
Bloomfield, N. J.

Liberal Arts

Phi Mu Delta 2, 3; Student Christian Association 1, 2, 3; Susquehanna Players 2, 3; Pi Gamma Mu 3; Intramural Sports 1, 2, 3; LANTHORN 3.

HENRY G. CHADWICK

3607 Pacific Ave.
Wildwood, N. J.

Business Administration

Phi Mu Delta 1, 2, 3; Student Christian Association 1; Business Society 1, 2, 3; Susquehanna Staff 3; Basketball 2, 3; Intramural Sports 1, 2, 3.

THEODORE H. CLARK

605 Eleventh Ave.
Prospect Park, Pa.

Liberal Arts

Phi Mu Delta 2, 3; Student Christian Association 3; Band 1, 2, 3; Football 1, 2; LANTHORN, Editor-in-Chief 3.

VIRGINIA DAHLGREN

210 Broad St.
Montoursville, Pa.

Liberal Arts

Student Christian Association 3; Lycoming College 1, 2.

DONALD R. DAVIS

335 E. Third St.
Berwick, Pa.

Liberal Arts

Bond and Key 1, 2, 3; Biemic Society 1, 2, 3; Symphony Orchestra 1; Band 1, 2, 3; Intramural Sports 1, 2, 3.

BARBARA DECKER

7613 Mountain Ave.
Melrose Park, Pa.

Liberal Arts

Student Christian Association 1, 3; Biemic Society 1, 2, 3; Susquehanna Players 1, 2, 3; Vice President Council 2; Women's Athletic Association 3.

THOMAS E. DEPPEN
Herndon, Pa.
Business Administration

Bond and Key 2, 3; Business Society 1, 2, 3; Baseball 2.

DONALD DERR
Buck Run, Pa.
Liberal Arts

Bond and Key 1, 2, 3; Football 1, 2; Intramural Sports 1, 2, 3.

GEORGE DIMMICK
708 Front St.
Northumberland, Pa.
Liberal Arts

Susquehanna Players 2, 3; Intramural Sports 3.

RICHARD R. DOIG
1215 Main St.
Honesdale, Pa.
Liberal Arts

Phi Mu Delta 1, 2, 3; Student Christian Association 2, 3; Susquehanna Players 2, 3; Intramural Sports 1, 2, 3; Cheerleader 2, 3; Alpha Psi Omega 2, 3.

JOHN DORAN
405 Highland Ave.
Downingtown, Pa.
Business Administration

CHARLES H. DUNCAN
1006 Market St.
Sunbury, Pa.
Liberal Arts

Bond and Key 2, 3.

MELVIN DUNN
124 S. Enola Drive
Enola, Pa.
Business Administration

Phi Mu Delta 2, 3; Student Christian Association 1, 3; Business Society 2, 3; Basketball 2, 3; Football 1, 3; Intramural Sports 1, 2.

ELAINE FADDIS
1401 Stirling St.
Coatesville, Pa.
Liberal Arts

Kappa Delta Phi 2, 3; Student Christian Association 1, 2, 3; Biemic Society 1, 2, 3; Susquehanna Players 1, 2, 3; Vice President Council 3; Women's Athletic Association 1, 2, 3; Intramural Sports 1, 2, 3; Cheerleader 2, 3; Women's Judiciary Committee 2, 3; Secretary 3; Trinity Choir 2; May Day 2; Freshmen Counselor 3.





RAY E. FLEMING

219 Seventh St.
Northumberland, Pa.

Liberal Arts

Symphony Orchestra 2; Band
1, 2; Intramural Sports 2, 3.

CHIRI FOLTZ ✓

1 North Main St.
Reedsville, Pa.

Business Administration

Student Christian Association
1, 2, 3; Business Society 1, 2,
3; Women's Athletic Association
2, 3; Intramural Sports
1, 2, 3.

JAMES CARL GEHRIS

119 E. Fifth St.
Berwick, Pa.

Liberal Arts

Theta Chi, Sports Manager 2;
Student Christian Association
3; Biemic Society 3; Intra-
mural Sports 3.

JOHN GOW

Box 515, Lattintown Rd.
Marlboro, N. Y.

Liberal Arts

Phi Mu Delta 2, 3; Student
Christian Association 2, 3;
Biemic Society 3; Susque-
hanna Players 2, 3.

HAROLD S. GREENLY

R. D. 2
Millville, Pa.

Business Administration

Business Society 3; Lycom-
ing College 1, 2.

DORIS GUMBLE

Paupack, Pa.

Liberal Arts

Omega Delta Sigma 3; Stu-
dent Christian Association 1,
2, 3; Biemic Society 1, 2, 3;
Women's Athletic Association
2, 3; Women's Student
Council 3; Intramural Sports
2, 3; Freshmen Orientation 3.

FLORIS L. GUYER

Tipton, Pa.

Commercial Education

Student Christian Association
1, 2, 3; Business Society 1, 2,
3, Secretary 3; Susquehanna
Players 3; Vice President
Council 3; Women's Athletic
Association 1, 2, 3, Record-
ing Secretary 3; *Susquehanna*
Staff 1; LANTHORN 3; "Sup-
pressed Desires" 2; Freshmen
Orientation 3; Trinity Choir
2; Intramural Sports 1, 2, 3,
Ping Pong Manager 2.

PAUL HAFFLY

304 W. Main St.
Belleville, Pa.

Liberal Arts

Theta Chi, Chaplain 2, 3;
Student Christian Association
1, 2, 3, Treasurer 2, 3; Phi
Kappa 1, 2.

JAY L. HAND
Muir, Pa.

Commercial Education

Theta Chi 1, 2, 3, Social
Chairman 2, 3, Secretary 3;
Student Christian Association
1, 2, 3; Business Society 1, 2,
3; Men's Student Council 3;
Intramural Sports 2, 3.

FORREST HARTER, JR.
319 Burchfield St.
Harrisburg, Pa.

Liberal Arts

Phi Mu Delta 3; Student
Christian Association 2;
Football 2.

A. R. HENDERSON
1331 Emory Circle N. W.
Atlanta, Ga.

Business Administration

Phi Mu Delta 2, 3; Student
Christian Association 1; Busi-
ness Society 1, 3; Baseball,
Manager 1; Football, Manag-
er 1, 2, 3; LANTHORN 2.

PAUL J. HERB
R. D. 1
Sunbury, Pa.

Business Administration

Biemic Society 2; Susquehan-
na Players 3; Track 2; Dick-
inson Junior College 1.

LILLIAN HOOVER
905 Third Ave.
Sterling, Ill.

Liberal Arts

Student Christian Association
2, 3, Cabinet; Biemic Society
2; Susquehanna Singers 2;
Vice President Council 3;
Operetta 2.

JO ANN HORT
517¹/₂ Catawissa Ave.
Sunbury, Pa.

Music Education

Sigma Alpha Iota 1, 2, 3;
Band 2, 3; Susquehanna Sing-
ers 2, 3; Operetta 2; May
Day 1, 2; Day Students' Or-
ganization 1, 2, 3.

PATRICIA HOUTZ
104 Fairmount Ave.
Sunbury, Pa.

Commercial Education

Student Christian Association
2; Business Society 2, 3; Bas-
ketball 2; Intramural
Sports 2.

ROGER C. HOWLING
8 La Salle Rd.
Upper Montclair, N. J.

Business Administration

Phi Mu Delta 2, 3; Student
Christian Association 1, 2;
Business Society 1, 2, 3;
Susquehanna Staff 1, 2, 3;
Cheerleader 3.





DANIEL HRKMAN

136 Singer St.
Johnstown, Pa.

Business Administration

Intramural Sports 1, 2, 3.

CLAIR HUNTINGTON

West Milton, Pa.

Business Administration

Business Society 3; Dickinson
Junior College 1.

MARY J. JACKSON

112 E. 25th St.
Wildwood, N. J.

Liberal Arts

Student Christian Association
1, 2, 3; Vice President Council
2; Women's Athletic Association
1, 2; Intramural Sports
1, 2, 3; May Day 2;
Fire Captain 2.

DORIS JANSON

886 Prospect St.
York, Pa.

Liberal Arts

Omega Delta Sigma 1, 2, 3;
Student Christian Association
1, 2, 3; Biemic Society 3;
Women's Athletic Association
1, 2; Intramural Sports
1, 2; Class Officer 2; Fresh-
men Orientation 2, 3.

THOMAS JENKINS

645 Dorian Rd.
Westfield, N. J.

Liberal Arts

Bond and Key 2, 3; Student
Christian Association 1, 2, 3;
Men's Student Council 2;
Football 1; Intramural Sports
2, 3.

JEANNE KAHLER

345 Walnut St.
Nazareth, Pa.

Liberal Arts

Kappa Delta Phi 1, 2, 3;
Student Christian Association
1, 2, 3; Vice President Council
2; Women's Athletic Association
2, 3; *Susquehanna*
Staff 3; Hockey Team 3; In-
tramural Sports 1, 2, 3; Class
Officer 1.

ROSEMARY KALLIR

285 Riverside Drive
New York, N. Y.

Liberal Arts

Student Christian Association
3; Dean Junior College,
Franklin, Mass., 1, 2.

EDWARD KIRCHMAN

218 Park Ave.
Milton, Pa.

Liberal Arts

SUSAN KEINE
551 E. Third St.
Bloomsburg, Pa.

Music Education

Sigma Alpha Iota 1, 2, 3;
Student Christian Association
1, 2, 3; Susquehanna Singers
2, 3.

ANDREW A. KOCH
202 Samuels Ave.
Hazleton, Pa.

Business Administration

Phi Mu Delta 2, 3; Student
Christian Association 2, 3;
Business Society 1, 2, 3.

NANCY L. KOCH
26 W. Shore Rd.
Manhasset, N. Y.

Liberal Arts

Kappa Delta Phi 1, 2, 3; Student
Christian Association 1,
3; Susquehanna Players 1, 2,
3; "Hawk Island" 2; Women's
Athletic Association 1,
2, Corresponding Secretary 1,
2; *Susquehanna* Staff 3; Basket-
ball 2; Intramural Sports
1, 2, 3.

GERTRUDE KOHLWEISS
242 Merrick Ave.
Merrick, N. Y.

Liberal Arts

Kappa Delta Phi 2, 3; Student
Christian Association 1,
2, 3; Biemic Society 1, 2, 3;
Susquehanna Players 1, 2, 3;
Women's Athletic Associa-
tion 1, 2, 3; *I n t r a m u r a l*
Sports 1, 2, 3, Archery Man-
ager 3; Alpha Psi Omega 2,
3; Tau Kappa 3.

EDWARD KORKUCH
910 Race St.
Shamokin, Pa.

Business Administration

Phi Mu Delta 2, 3; Business
Society 1, 2, 3; Intramural
Sports 1, 2, 3.

NELSON KOST
219 S. York St.
Mechanicsburg, Pa.

Music Education

Bond and Key 1, 2, 3; Stu-
dent Christian Association 1,
2, 3; Susquehanna Singers 1,
2, 3.

BRADY L. KUNKLE
Fairview St.
Port Royal, Pa.

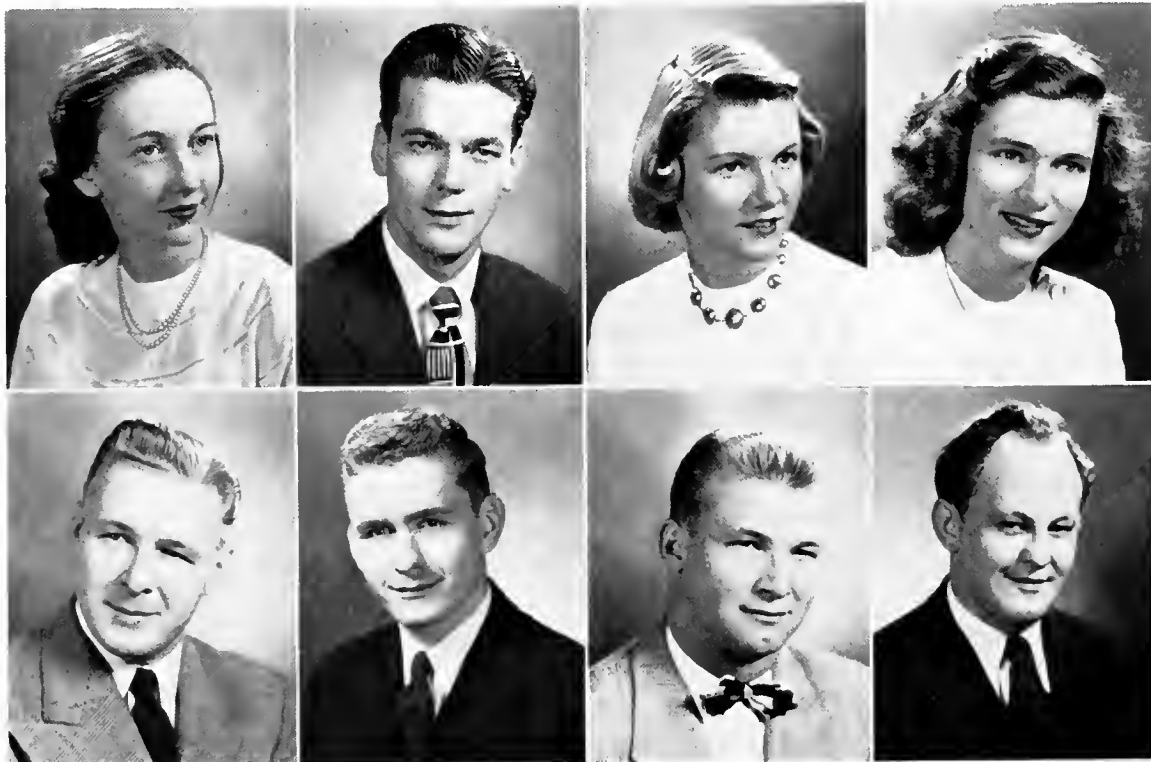
Business Administration

Susquehanna Players 1, 2, 3;
Intramural Sports 1; Alpha
Psi Omega 1, 2, 3; Theater
Guild 1, 2, 3.

JOSEPH A. LADIKA
415 N. Vine St.
Mt. Carmel, Pa.

Pre-Medical

Bond and Key 3; Biemic So-
ciety 3; Intramural Sports 2,
3; Phi Kappa 1, 2, 3; Class
Officer 3.





RAYMOND LAUVER
Richfield, Pa.
Business Administration

Theta Chi 1, 2, 3, Librarian 3; Student Christian Association 1, 2; Business Society 1, 2, 3; Intramural Sports 1, 2, 3.

MILDRED LFESER
238 S. Front St.
Sunbury, Pa.
Liberal Arts

Student Christian Association 1; Pi Gamma Mu 3; Day Students' Organization 1, 2, 3.

ANNE LOCKWOOD
200 Poplar Ave.
Wayne, Pa.
Liberal Arts

Student Christian Association 1, 2, 3; Biemic Society 2, 3; Susquehanna Players 1, 2, 3; Women's Athletic Association 1, 2, 3; *Susquehanna* Staff 3; Hockey Team 3; Intramural Sports 1, 2, 3; Fire Captain 2.

BERNICE D. LOMBARD
222 W. Martin Lane
Norwood, Pa.
Commercial Education

Student Christian Association 1, 2, 3; Business Society 1, 2, 3; Susquehanna Players 3; Band 2, 3; Susquehanna Singers 2, 3; Women's Athletic Association 2, 3; Intramural Sports 1, 2, 3; May Day 2; Trinity Choir 2, 3; Oratorio Society 3.

EVERETT MANNING
126 N. 17th St.
E. Orange, N. J.
Business Administration

Bond and Key 1, 2, 3; Business Society 1, 2, 3.

GRACE J. MCKEEVER
R. D. 1
Harrisburg, Pa.
Liberal Arts

Omega Delta Sigma 1, 2, 3; Student Christian Association 1, 2, 3; Vice President Council 3; Women's Athletic Association 1, 2, 3; Intramural Sports 1, 2, 3; Oratorio Society 3; Freshmen Orientation 3.

MARY J. MILLER
1320 Hillside Ave.
Honesdale, Pa.
Music Education

Sigma Alpha Iota 1, 2, 3; Student Christian Association 1, 2, 3; Susquehanna Singers 2, 3; Chapel Choir 2, 3; Operetta 2; May Day 2; Trinity Choir 2, 3.

ROBERT A. MILLER
R. D. Liberty, Pa.
Liberal Arts

Theta Chi 1, 2, 3; *Susquehanna* Reporter 2; "Crimson Sword" Editor 3; Student Christian Association 1, 2, 3; Pi Gamma Mu 3; Phi Kappa 1, 2, 3, President 3.

VERNON J. MILLER
812 N. Front St.
Sunbury, Pa.
Liberal Arts

Student Christian Association
3; Phi Kappa 3; Day Students' Organization 1, 2, 3.

EARI H. MINCI MOYER
24 Tenth St.
Milton, Pa.
Music Education

Symphony Orchestra 1;
Band 1, 2, 3; Susquehanna
Singers 2; Chapel Choir 2;
Operetta 2.

DONALD M. MINNICH
37 Lawrence Ave.
Bradford, Pa.
Business Administration

Phi Mu Delta 1, 2, 3; Business Society 1, 2, 3; Football 1, 2, 3.

ALBERT P. MOLINARO
245 Grove St.
Montclair, N. J.
Pre-Medical

Phi Mu Delta 2, 3; Biemic Society 2, 3; Susquehanna Players 3; Basketball 2, 3; Football 2, 3; Intramural Sports 2, 3.

MARVIN R. MOYER
571 Queen St.
Northumberland, Pa.
Liberal Arts

Student Christian Association 3; Biemic Society 3; Phi Kappa 3; Baseball 1, 2, 3; Intramural Sports 2, 3.

ROSIMARY MUSSINA
619 N. Front St.
Milton, Pa.
Commercial Education

Omega Delta Sigma 1, 2, 3; Student Christian Association 1, 2, 3; Business Society 1, 2, 3; Women's Athletic Association 2, 3; Intramural Sports 1, 2, 3; Variety Show 2.

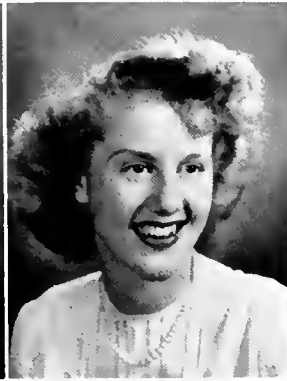
SHIRLEY NICKLIN
Marlboro, New York
Liberal Arts

Omega Delta Sigma 1, 2, 3; Student Christian Association 2, 3; Women's Athletic Association 1, 2, 3; Women's Student Council 2; Susquehanna Staff 2, 3; Hockey Team 1, 2, 3; Intramural Sports 1, 2, 3; LANTHORN 3; Tau Kappa 3.

JEANNE ORNER
Bendersville, Pa.
Secretarial

Student Christian Association 1, 2, 3; Business Society 1, 2, 3; Vice President Council 3; Women's Athletic Association 1, 2, 3; Women's Student Council 3; Intramural Sports 1, 2, 3; Ping Pong Manager 3.





ANNA MAE OYSTER
807 N. Second St.
Sunbury, Pa.

Liberal Arts

Student Christian Association
1, 2, 3; Susquehanna Players
2, 3; "Icebound" 2; Day Stu-
dents' Organization 1, 2, 3.

JEAN PENMAN
18 Front St.
Strong, Pa.

Liberal Arts

Pi Gamma Mu 3; Phi Kappa
2, 3; Secretary 3; Women's
Athletic Association 1; Stu-
dent Christian Association 1,
2; Intramural Sports 1.

EDWARD PFEIFFER
311 Third St.
Weatherly, Pa.

Commercial Education

Phi Mu Delta 1, 2, 3; Stu-
dent Christian Association 1,
2; Business Society 1, 2;
Basketball 1, 2; Intramural
Sports 1, 2; Intramural
Board 2.

GEORGE PHILLIPS
Herndon, Pa.

Business Administration

DEAN PIKULSKI
1219 S. Webster Ave.
Scranton, Pa.

Liberal Arts

Student Christian Association
3; *Susquehanna* Staff 3.

JANET L. POPKEN
7 West View Rd.
W. Orange, N. J.

Liberal Arts

Student Christian Association
1, 2, 3; Women's Athletic
Association 2, 3; *Susqueban-
na* Staff 3; Intramural Sports
1, 2, 3.

ABRAHAM PORTZLINE
N. Eighth St.
Selinsgrove, Pa.

Liberal Arts

Phi Mu Delta 1, 2, 3; Stu-
dent Christian Association 2,
3; *Susquehanna* Players 1, 2,
3; Phi Kappa 1, 2; Intra-
mural Sports 1, 2, 3.

WILLIAM POUST, JR.
647 Third Ave.
Williamsport, Pa.

Business Administration

CHARLES RAU
412 N. Market St.
Selinsgrove, Pa.
Music Education

BETTY JANE RAUP
141 Reagan St.
Sunbury, Pa.
Liberal Arts

JUSTINE REIFSNIDER
323 E. Hanover St.
Hanover, Pa.
Liberal Arts

JOHN A. REUTHER
93 North St.
Nichols, Conn.
Business Administration

Kappa Delta Phi 1, 2, 3;
Student Christian Association
1, 2, 3; Susquehanna Players
3; Women's Athletic Association
3; Intramural Sports 1,
2, 3.

Theta Chi, Assistant Treasurer
3, Caterer 3; Student
Christian Association 1, 3;
Business Society 1, 2, 3, Vice
President 3; Pi Gamma Mu
3; Intramural Sports 1, 2, 3.

ROBERT RICEDORI
W. Main St.
Ickesburg, Pa.
Pre-Medical

ZOLA ROBINSON
371 W. Fourth St.
Lewistown, Pa.
Liberal Arts

JEAN ROTHERMEL
Klingerstown, Pa.
Music Education

FRANCES ROUSH
194 Orange St.
Northumberland, Pa.
Music Education

Theta Chi, Caterer 3; Student
Christian Association 2,
3; Biemic Society 3.

Omega Delta Sigma 2, 3;
Student Christian Association
1, 2, 3; Susquehanna Players
1, 2, 3; Women's Athletic
Association 1, 2, 3; Hockey
Team 2, 3; Basketball 2, 3;
Intramural Sports 1, 2, 3,
Basketball Manager 3; May
Day 2.

Sigma Alpha Iota 1, 2, 3;
Student Christian Association
1, 2, 3; Susquehanna Singers
2, 3; Vice President Council
3; Oratorio Society 3; Oper-
etta 2; May Day 2.

Sigma Alpha Iota 2, 3; Student
Christian Association 3;
Band 2, 3; Susquehanna Sing-
ers 2, 3; Operetta 2; Day
Students' Organization 1,
2, 3.





HAROLD C. ROWE
438 N. Second St.
Lykens, Pa.
Business Administration

Theta Chi 2, 3; Student Christian Association 3; Business Society 3; Intramural Sports 1, 2, 3.

JAMES RUMBAUGH
R. D. 2
Millerstown, Pa.
Pre-Medical

Bond and Key 1, 2, 3, Secretary, 2, 3, Editor of "The Bond" 2, 3; Student Christian Association 1, 2, 3; Biemic Society 1, 2, 3, President 3; *Susquehanna* Staff 2, 3, Proofreader 2, Associate Editor 3; Intramural Sports 1, 2.

LOUIS F. SANTANGELO
673 Queen St.
Northumberland, Pa.
Business Administration

Phi Mu Delta 2, 3; Business Society 1, 2, 3; Baseball 1, 2; Football 1, 2, 3; Intramural Sports 1, 2, 3.

MINA SARBA
144 Catawissa Ave.
Sunbury, Pa.
Music Education

Sigma Alpha Iota 1, 2, 3; Symphony Orchestra 1, 2; Band 1, 2, 3; Susquehanna Singers 2, 3; Operetta 2; Day Students' Organization 1, 2, 3.

FAYE SATZLER ✓
McAlisterville, Pa.
Business Administration

Student Christian Association 1, 2, 3; Business Society 1, 2, 3; Women's Athletic Association 1, 2; Intramural Sports 1, 2, 3.

FRED W. SCHULTZ, JR.
1008 N. Irving Ave.
Scranton 10, Pa.
Pre-Medical

Student Christian Association 3; Biemic Society 3.

MARIA JANE SHETLER
324 Chestnut St.
Spring City, Pa.
Medical Secretarial

Kappa Delta Phi 1, 2, 3; Student Christian Association 1, 2, 3; Business Society 2, 3; Biemic Society 1, 2, 3; Susquehanna Players 2, 3; Women's Athletic Association 2, 3; Hockey Team 2, 3; Basketball 2, 3; Intramural Sports 1, 2, 3; Freshmen Orientation 3; Class Officer 3; Freshmen Counselor 3; May Day 2; Tau Kappa 3.

SHIRLEY SHOWALTER
Box 32, Millmont, Pa.
Liberal Arts

Omega Delta Sigma 1, 2, 3; Student Christian Association 1, 2, 3; Women's Athletic Association 3; Intramural Sports 3.

MARK SHUEY

512 Market St.
Millersburg, Pa.

Liberal Arts

Theta Chi 2, 3; Student Christian Association 1, 2, 3; Intramural Sports 1, 2.

LOUISE SIEMERS

239 Upper Mountain Ave.
Upper Montclair, N. J.

Liberal Arts

Omega Delta Sigma 2, 3; Student Christian Association 3; Biemic Society 1, 2, 3; Women's Athletic Association 2, 3; Hockey Team 2, 3; Basketball 2, 3; Intramural Sports 1, 2, 3; Baseball 1, 2, 3.

LILLIAN C. SMITH

R. F. D. 1, Nescopeck, Pa.
Liberal Arts

Student Christian Association 1, 2, 3; Women's Athletic Association 3; *Susquehanna* Staff 3; Intramural Sports 2, 3.

JACK SOLOMAN

122 Willow St.
Athens, Pa.

Business Administration

Bond and Key 2, 3; Student Christian Association 1, 2; Business Society 1, 2, 3; Basketball 1, 2, 3; Baseball 2, 3; Intramural Sports 1, 2, 3.

JOSEPH M. SOLOMON

337 E. Saylor St.
Atlas, Pa.

Liberal Arts

Susquehanna Players 2, 3; "Hawk Island" 2; "The Terrible Meek" 2; Basketball 2, 3; Intramural Sports 1, 2, 3.

MARJORIE SPOGEN

Box 81, Turbotville, Pa.

Liberal Arts

Student Christian Association 1, 2, 3; Susquehanna Players 1, 2, 3; Women's Athletic Association 1, 2, 3; *Susquehanna* Staff 1, 2, 3; Intramural Sports 1, 2, 3; LANTHORN 3; Alpha Psi Omega 1, 2, 3; Freshmen Orientation 3; "Little Women" 1.

CHARLES SULLIVAN

229 S. Fourth St.
Youngwood, Pa.

Business Administration

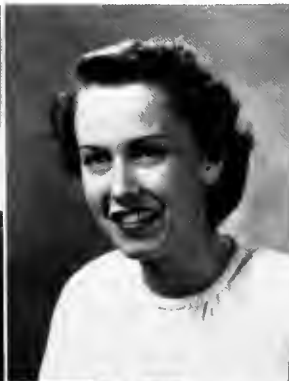
Theta Chi 3; Student Christian Association 2; Business Society 2; Football 2; Intramural Sports 1, 2, 3.

GEORGE B. THOMAS

R. D. 3, Johnstown, Pa.

Pre-Medical

Bond and Key 1, 2, 3; Biemic Society 3; Basketball 1; Intramural Sports 1, 2, 3.





JAMES TREXEL

902 Park Ave.
Johnstown, Pa.

Liberal Arts

University of Pittsburgh 1, 2.

RICHARD TROUTMAN

Pillaro, Pa.

Liberal Arts

Bond and Key 1, 2, 3.

FRANKLIN T. UZMAN

1115 Walnut St.
Williamsport, Pa.

Business Administration

Business Society 3; Susquehanna Players 3.

WILLIS B. VAN DYKE

16 Park Place
Lewistown, Pa.

Commercial Education

Phi Mu Delta 1, 2, 3, Social Chairman 2, Chaplain 3, Pledgemaster 3; Student Christian Association 1, 2, 3; Business Society 1, 2, 3, Treasurer 3; Susquehanna Players 1, 2, 3, Vice President 2; Intramural Sports 1, 2, 3; LANTHORN 3, Advertising Manager 3; Class Officer 3; Alpha Psi Omega Grand Director 3.

PAUL A. WAGNER

Box 43, Milroy, Pa.

Business Administration

Phi Mu Delta 2, 3; Student Christian Association 3; Business Society 2, 3; Susquehanna Players 2, 3; Susquehanna Staff 3.

BARBARA WATKINS

730 N. Rebecca Ave.
Scranton 4, Pa.

Liberal Arts

Kappa Delta Phi 1, 2, 3, Social Chairman 3, Recorder 2; Student Christian Association 1, 2, 3; Biemic Society 1, 2, 3; Susquehanna Players 1, 2, 3; Susquehanna Singers 2; Women's Athletic Association 1, 2, 3; Women's Student Council 1; Hockey Team 3, Manager 2; Basketball Team 2; Pi Gamma Mu 3; Intramural Sports 1, 2, 3; LANTHORN 3, Operetta 2; Class Officer 1; Tau Kappa 3; Freshmen Orientation 2, 3; Trinity Choir 1, 2, 3; Softball 1; May Day 2; Oratorio Society 3.

BARBARA WELLIVER

1909 N. Front St.
Berwick, Pa.

Liberal Arts

Omega Delta Sigma 2, 3; Student Christian Association 1, 2, 3; Women's Athletic Association 2, 3, Corresponding Secretary 3; Intramural Sports 1, 2, 3; May Day 2.

KENT WELLER

Aristes, Pa.

Pre-Medical

Bond and Key 1, 2, 3; Biemic Society 1, 3; Intramural Sports 1, 2.

RICHARD WESTERVELT
36 Charles St.
Bloomfield, N. J.
Liberal Arts

Phi Mu Delta 1, 2, 3; *Susquehanna* Staff 1, 2, 3; Basketball 1, 2, 3; Baseball 1; Intramural Sports 1, 2, 3; Publicity Staff 2.

RICHARD WETZEL
218 S. Market St.
Selinsgrove, Pa.
Business Administration

Theta Chi; Student Christian Association 1, 3; Business Society 1, 2, 3; Intramural Sports 2, 3.

LLOYD T. WILSON
810 Hurton St.
Johnstown, Pa.
Liberal Arts

Student Christian Association 3; Trinity Choir 3; Johnstown Center, University of Pittsburgh 1, 2.

DONALD WISSINGER
2929 Spruce Ave.
Altoona, Pa.

Bond and Key 1, 2, 3, Treasurer 3; Student Christian Association 1, 2, 3; Men's Student Council 3; Basketball 1; Baseball 1, 2; Football 1, 2, 3; Intramural Sports 1, 2, 3.

JOHN J. WITOWSKI
113 Warsaw St.
Keiser, Pa.
Commercial Education

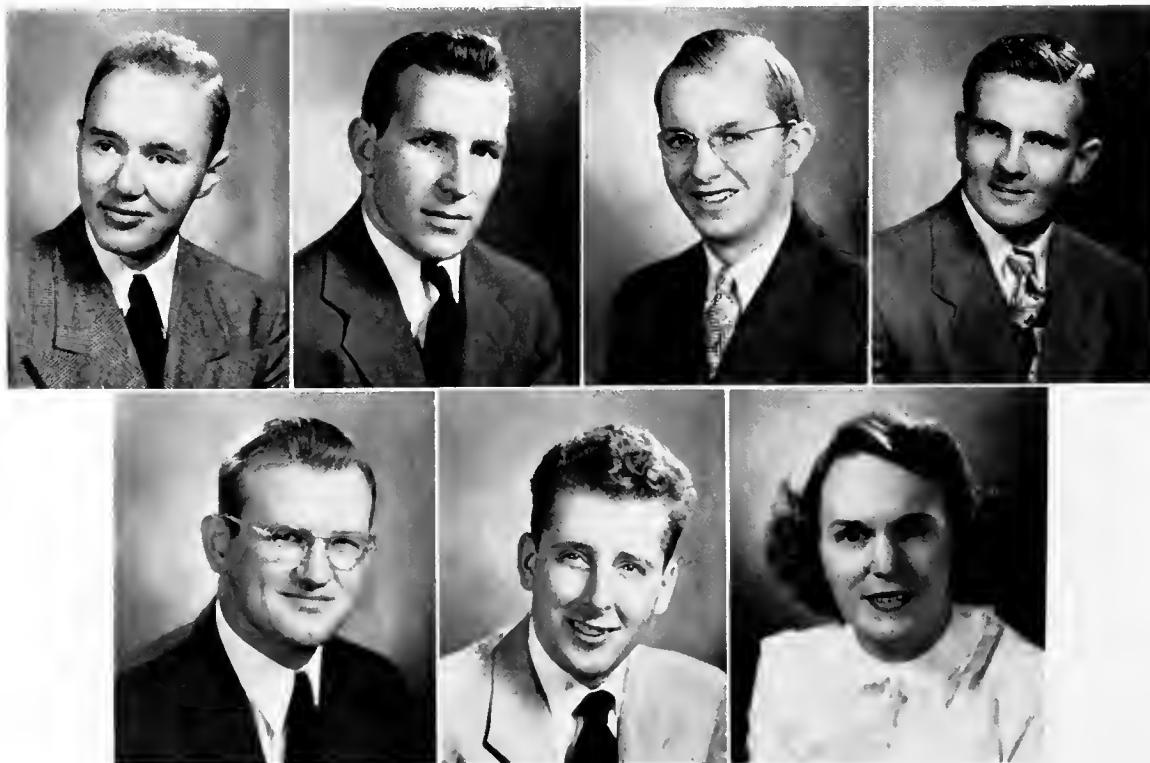
Bond and Key 2, 3; Business Society 1, 2, 3; Basketball 1; Football 1, 2; Intramural Sports 1, 2; "You Can't Take It With You" 1; General Student Assistant Football Coach 3.

DONALD F. WOHLSEN
39 Marshall Rd.
Yonkers 5, N. Y.
Business Administration

Phi Mu Delta 1, 2, 3; Student Christian Association; Intramural Sports 1, 2, 3.

JANET E. WOLF
105 Violet St.
Johnstown, Pa.
Liberal Arts

Student Christian Association 1, 2, 3; *Susquehanna* Players 1, 2; Women's Athletic Association 2, 3; *Susquehanna* Staff 1; Hockey Team 3; Intramural Sports 1, 2, 3, Soccer Manager 3; Freshmen Orientation 3.



Susquehanna Belles

May Queen
JOAN APPLE



Homecoming
Sweetheart
JANE SOUTHWICK

RICHARD ACCIAVATTI

MARTHA ALBERT

MARJORIE ALEXANDER

BEN ALTER



JEANNE ATTINGER

LYN BAILY

FLORA BARNHART

FERN BAUMGARDNER



MARIE BEAM

MARILYN BEERS

ROBERT BITTING

MARSH BOGAR

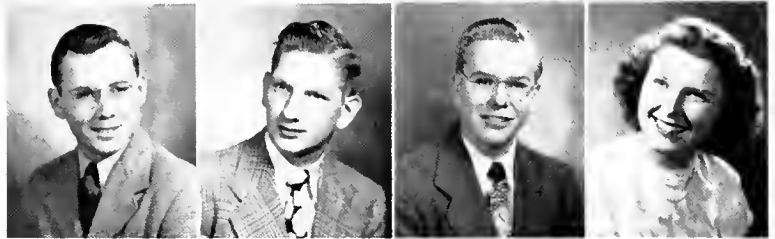


HERBERT BOLLINGER

DONALD BORDNER

WALTER BRANDAU

HAZEL BROBST



JACK BROWN

RHODA BURCHER

ROBERT CALDWELL

NANCY COSGROVE



LEWIS DOVE, JR.

JOSEPH DRISCOLL

BURDI DUNCAN

MARTIN EAGAN



JOHN ECCKER

LEONARD EJDYS

GLADYS ELLIS

DANIEL ERDMAN





MARIANNE FAGUE
BURDELL FAUST
SALLY JANE FAY
ROBERT FINSTIRMACHER



ALTHEA FERGUSON
SUSAN FOLTZ
WILLIAM FOSTER
CARL GAONO



JACK GEARINGER
ALICE GEEGER
CHARLES GRUND
HERBERT HAINS, JR.



DOILEY HAMPLE
JACOB HARDER
CHARLES HAUPT
FREDERICK HAZELTINE



ROBERT HENNINGER
CHARLES HFSS
JEAN HILL
GREGORY KELLY



JOAN KLINGLER
JUNE KLINGLER
JACK LARSEN
BARBARA LEAS



MARY LEHMAN
AUDREY MacNEIL
JAMES MANLFY
GARDINER MAREK

ALFRED MARTIN

MARTHA MARTIN

CAROLYN McCAHAN

REBECCA MEEK



SALLY MITCHELL

GERALD MOORHEAD

ROBERT MOYER

ROBERT O'GARA



ROBERT PATTERSON

IONI POST

JOAN POST

GEORGE ROESSNER



ROLAND ROSSETTI

CHUSTER ROWE

LOIS SEYBRECHT

CHARLES SHAFFER



MERRILL SHAFER

NELDA SHAFER

DONALD SHOEMAKER

ALBERT SHORTT



MARY LOU SLATER

WILLIAM SMELTZ

THOMAS STALLER

DAVID STERRETT



RICHARD STETLER

HARRY STITSER

ANNA STIRN

CHARLES TAYLOR



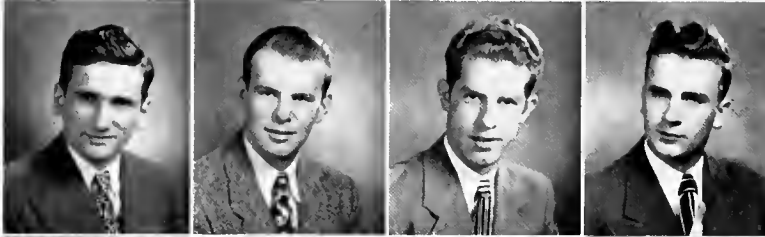


DORIS THOMAS

MARJORIE THOMPSON

RAY TYLER

JEAN VAN VOORHIS

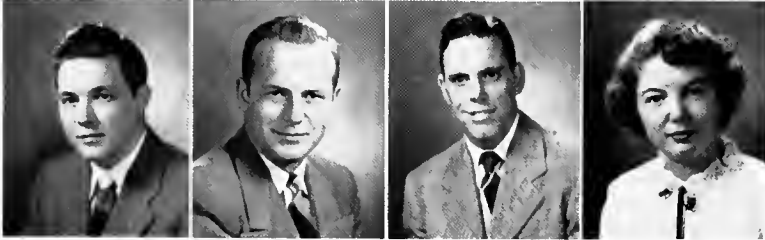


DONALD WAGENSELLER

WALTER WAGNER

JOHN WALLS

LUCIUS WALTON



EMIL WEILER, JR.

CARL WELLER

WALTER WOLSTEN

VIRGINIA YINGER



SHIRLEY YOUNG

ALICE YONGHAUS

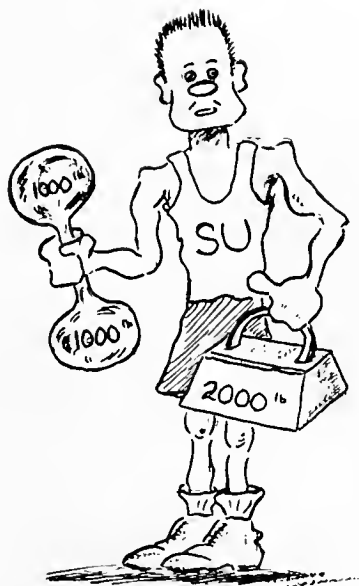


Freshman Class

Achenbach, Helen	Gordon, Lois	Palkovich, Edward
Ackel, Marie	Guise, Elizabeth	Parker, David
Alexander, JoAnn	Heathcote, Patricia	Pfeiffer, Conrad
Allen, Dorothy	Heilman, Lester	Pitello, Robert
Aston, Peggy Ann	Heller, Kathryn	Prichard, William
Barnhart, Barbara	Helter, Nancy	Rarick, Lorraine
Baumgardner, Elmer	Herb, Marion	Renfer, Lois
Beckwith, William	Herman, Dean	Roslander, Ruth
Berninger, Donald	Hill, Kenneth	Rudisill, Phyllis
Beward, Margaret	Horoschak, John	Rumbaugh, Patricia
Biddle, Charlotte	Ingold, William	Schnerr, Kathleen
Bogdanffy, Robert	Jacques, Adah Jeanne	Schultz, Fred
Bombay, Charles	Jochem, Berniece	Shafer, Betty
Brubaker, Maxine	Jones, Richard	Sheaffer, Carolyn
Burkholder, Bruce	Joyce, William Gordon	Shotsberger, Betty
Caldwell, Raymond	Kantner, Ott	Siemer, Herman
Campbell, Carol	Kearns, Richard	Smith, Ruth
Carr, Charles	Keller, Gulielma	Snyder, Alfred
Chadwick, James	Kelz, James	Snyder, George
Chambers, Maxine	Kissinger, Robert	Spangler, Jacob, Jr.
Chubb, Ruth	Kleeman, Carolyn	Spangler, Roman, Jr.
Clarcken, Margaret	Krogman, George	Spotts, Frederic
Clewell, Emerson	LaRue, Kay	Stagg, Barbara
Coleman, Shirley	Lenker, Kenneth	Stock, Gene
Connell, Emma	Leshock, Taenique	Stone, Jesse
Cope, Roy	Lewis, Faye	Stoughton, Nancy
Coulson, Merle	Linn, Donald	Takach, John
Crisman, Patricia	Lutz, Joyce	Thomas, Harold
Day, Gilbert, Jr.	McGrath, Ethel	Thomas, Jean
Demarest, Dorothy	McKeever, Jacquelyn	Thompson, Marjorie
Derick, Robert	McNally, Robert	Throssel, John, Jr.
Dieffenderfer, James	McNiven, Mary	Tomkinson, James
Diehl, John	Martz, Doris	Torromeo, Felix
Dietz, Voylet	Mazura, Walter	Ulsh, Charles
Dildine, Jacquelyn	Mertz, Marilyn	Updegrave, Marjorie
Dowd, Patricia	Miller, Janet	Vogler, Miriam
Durden, Rowie	Mitch, Clair	Volk, David
Easton, Barbara	Momrow, John	Vollmers, G. Allan
Eichmann, Dorothy	Morris, James	Waizeneigger, Edward
Fenstermacher, Gene	Mouery, Olive	Wallace, Thomas
Fisher, William Donald	Musser, Carl, Jr.	Wansock, Irene
Fitzpatrick, Thomas	Nale, William	Warren, Margaret
Fleming, Joseph	Nary, Dorothy	Waters, Eleanor
Fogel, Glenn	Nauss, Julia	Way, Marjorie
Fulmer, Dale	Nolfi, Thomas	Williams, Lorna
Fyler, Richard	Norris, Joan	Wingert, Janet
Gateman, Dale	Nyer, William	Wollaston, Edward
Giaque, Margot	Odenthal, Wilda	Youhon, Nancy
Gloster, Francis		Zlock, Charles

THE ATHLETICS

There are many scenes to our play, and truly, few are as great as that of athletics. In these contests we have learned the sportsmanship and fair play that are so necessary in the drama of life.





Coach Stagg, Jr., Student Assistant John Witowski, Coach Stagg, Sr.

FOOTBALL



First Row, Left to Right—Winn, Minnich, Reese, Walston, Brossnack, Santangello, Peters, O'Gara, Bolig, Devine, Berustine, Orr, Wissinger, Martin.
 Second Row—Kelly, Palkovitch, Duncan, Dunn, Marek, Rosetti, Torromeo, Stone, Barduer, Pitello, Guliano, Eagan, Ingold, Rowe.
 Third Row—Coach Stagg, Sr., Henderson, Mgr., Fitzpatrick, Diefenderfer, Bogdanffy, Lenker, Snyder, Carr, Derrick, Molinaro, Witowski, Student Asst. Coach: Coach Stagg, Jr.

SUSQUEHANNA 13 — CCNY 7

University Field

Once again under the able leadership of our famous father-son combination, the Crusaders opened their season with a 13-7 victory over the favored CCNY eleven at University Field. The determined Crusaders scored mid-way in the first quarter when O'Gara hit Minnich for 25 yards and six points; Wissinger converted. The second score came early in the third period with another O'Gara pass, this time to Wissinger, for six yards and a touchdown. Wissinger's attempt was wide. The lone Beaver score came on the first play of the game when Wagner raced 80 yards off tackle for a score; Teitelbaum converted.



SUSQUEHANNA 6 — ALLEGHANY 14 Eberhard Field

The Crusaders helped to christen Eberhard Field for Allegheny College, but in doing so, they absorbed their first defeat of the season, 14-6. The lone Crusader score came early in the first period when an O'Gara pass to Wissinger covered 10 yards and earned six points for S. U. Wissinger's conversion was wide. The Gator scores were on an aerial from Baker to Scabetta for 80 yards and a sustained drive, following a pass interception. Watson plunged over from the four-yard line for the final score. Utberg converted both times.

SUSQUEHANNA 6 — JUNIATA 14 University Field

Before a sellout homecoming crowd, the Crusaders dropped their second straight game of the season to their bitter rivals from Huntingdon, the Juniata Indians, by a score of 14-6. The Staggmens scored early in the second period on a Zlock pass to Wissinger for 11 yards. Wissinger's attempted conversion was wide. Juniata scored in the second period on a sustained 60-yard touchdown drive, with Dzvonnar plunging over from the seven-yard stripe. Dzvonnar's conversion was good. On the opening kick-off of the second half, Chabody took Minnich's kick on his 15 and outlegged the Crusaders for 85 yards and another Indian score; Dzvonnar converted.

SUSQUEHANNA 0 — UPSALA 7 Ashland Stadium

Under the lights at Ashland Stadium, East Orange, N. J., the visiting Staggmens lost a 7-0 thriller to the Upsala Vikings. The game was played before many faithful fans from Susquehanna and the nearby vicinity. The entire game was featured by some fine playing and hard tackling. One bad break proved fatal to the Crusaders. After Wissinger had recovered a Upsala fumble on the Viking 15, O'Gara passed in the flat where Gergan, the Viking left end, intercepted and raced 85 yards for the lone score of the game. Koproski's attempt for conversion hit the mark. The Crusaders were keyed up for the game and played it right up to the end, but fortune failed to smile on them.

SUSQUEHANNA 12 — P. M. C. 19 University Field

A determined Crusader squad returned to University Field to face a heavily favored P. M. C. eleven, who from every available report, was predicted to romp over the Staggmens. The injury ridden Crusaders, outweighed 20 pounds per man, battled the Cadets touchdown for touchdown in their best game of the

year. The P. M. C. eleven finally won out in the end, 19-12. The Crusader scores were made on a sustained 55-yard drive, with O'Gara hitting Peters with a pass good for 8 yards and six points, and later in the fourth period another O'Gara pass to Peters for 15 yards, the final Susquehanna score. Wissinger failed to hit the mark after each touchdown. The Cadet scores were made on drives of 70 and 54 yards, and a blocked kick; Carlow converted.

SUSQUEHANNA 7 — WAGNER 19 Cherry Hill

This fine, sunny afternoon the Stagmen journeyed to Staten Island, New York, to take on the Seahawks of Wagner College, who had yet to beat a Susquehanna eleven. The Seahawk power was too much for the Crusaders and Wagner ended on the top side of a 19-7 score. Susquehanna was first to score on a 35-yard pass from O'Gara to Santangelo; Wissinger converted. Wagner capitalized on several pass interceptions to set up their score. A pass from Scaffa to Husted, a pass interception, and a 12-yard plunge by Roggenburg accounted for all the Seahawk touchdowns; Qunitana converted.

SUSQUEHANNA 7 — HAVERFORD 21 Walton Field

The "Grand Old Man" and his boys ventured to take on the Haverford Hornets at Walton Field, Haverford. Just prior to kickoff time, a tremendous rain storm swept the field and completely drenched the players, fans, and field. Thus the Stagmen were unable to open up with their aerial attack during the first half. After a scoreless first half, the sun finally came out. The Crusaders tallied late in the fourth quarter on an O'Gara pass to Peters for 7 yards and the lone Susquehanna touchdown; Wissinger converted. Haverford led by the fine running of Test and Hume, scored twice in the third quarter on a 63 and 34-yard plunge off guard by Test. The third Ford score was made by Hume who dashed 30 yards around end early in the fourth quarter. All Test conversions hit their mark.

SUSQUEHANNA 13 — URSINUS 0 University Field

With six seniors playing their last game for Susquehanna, the Crusaders concluded their season by defeating the Ursinus Bears, 13-0, at University Field. The Stagmen scored mid-way in the second period, when Jim Peters in his grid finale, scooted left end for 12 yards and the first Susquehanna score; Wissinger converted. The third quarter featured the play of the day with Frosh Ed Palkovitch, fullback, in the hero role. With second down and eight to go, Ed heaved a tremendous pass downfield to Bruce Burkholder, who juggled the ball, but managed to hold it and race 40 yards for the final touchdown. Wissinger's attempt for conversion was wide. The Crusaders thus concluded the season with a record of 2 wins and 6 losses.





First Row, Left to Right—Peters, Westervelt, Zlock, Pfeiffer, Devine, Bittenbender, Solomon.
 Second Row Madden, C. Zlock, Molinaro, Heminger, Gladwick, Dunn, C. Pfeiffer, Witowski, Coach Stagg

Basketball

1948-49 SCHEDULE

		<i>SU</i>	<i>OPP</i>
December	1—Bucknell University	44	46
December	11—Alumni *	49	31
December	13—Wilkes College *	48	50
January	10—Dickinson College	44	68
January	12—Juniata College *	66	51
January	15—University of Baltimore *	46	58
January	29—Gettysburg College *	57	79
February	4—Philadelphia Textile Institute	70	60
February	5—Elizabethtown College	55	72
February	7—Lebanon Valley	73	86
February	12—Lycoming College *	63	51
February	16—Juniata College	43	52
February	18—Franklin and Marshall College *	72	66
February	21—Wesley College *	100	56
February	25—Ursinus College *	69	60
February	26—Bridgewater College *		
March	1—Elizabethtown College *	79	93
March	4—Upsala College	50	51
March	5—Wagner College	52	72

* Home Games.



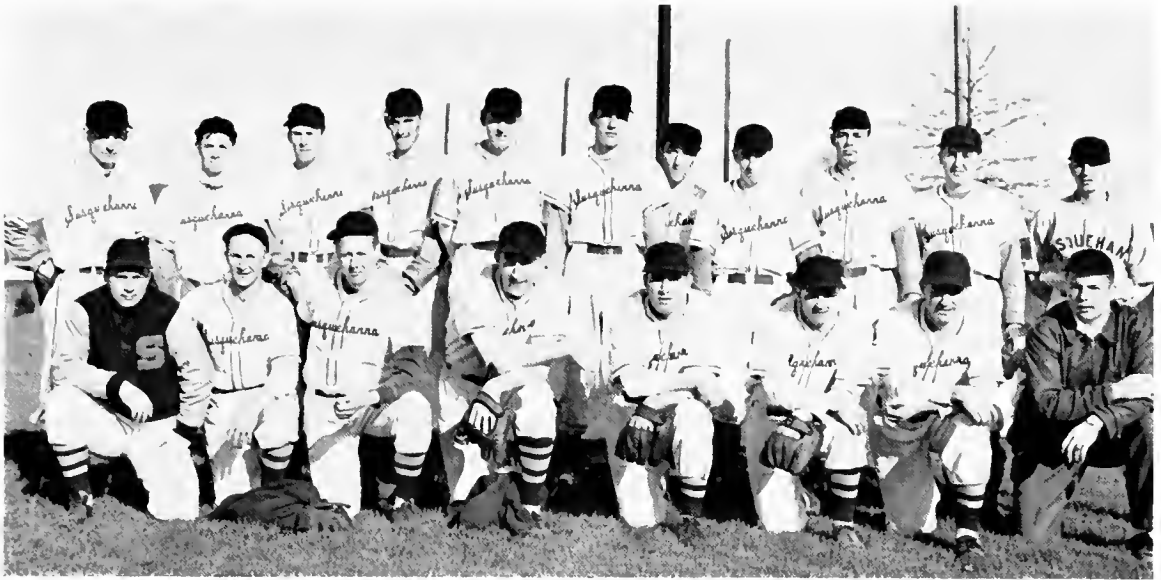
THE VARSITY IN ACTION



Junior Varsity Basketball



First Row, Left to Right Chadwick, Dunn, Zlock, Ingold, Myer, Cope.
 Second Row Elman, C. Pfeiffer, Jones, Wollaston, Witowski, Krogmann, Johnston, Kelz, Moorhead.



First Row, Left to Right—Zubak, Bilger, Shaffer, Stetler, Santangelo, Wissinger, Martin, Cosgrove.
 Second Row—Moyer, Shortt, Kimble, Phillips, Bollinger, Solomon, Deppen, Johnston, Flickinger, Felker, Bailes.

Baseball

Under the reign of Coach John Zubak, the Crusader baseball team concluded their season with three wins and eight losses for a percentage of .273. Top leaders included: Spike Stetler, shortstop, who copped the batting crown with a .333 average; Al Martin, catcher, took the RBI title with 10 RBI; George Phillips, pitcher, finished with a 1-1 record for an even .500 percentage.

1948 RECORD

	<i>S. U.</i>	<i>Opp.</i>
April 7—Bucknell	3	4
April 17—Hartwick *	3	1
April 20—Elizabethtown	2	0
April 22—Lebanon Valley *	8	11
April 24—Wagner	1	7
April 29—Muhlenburg	2	8
May 1—Juniata *	6	3
May 4—Gettysburg *	2	7
May 8—Elizabethtown *	2	7
May 10—Bucknell *	5	12
May 12—Juniata	8	9

* Home Games.

Intramural Board



First Row, Left to Right—Shortt, Boyer, Madden, Alter.
Second Row—Roessner, Korkuch, Sullivan, Jenkins.

The Intramural Board is the organization whose foremost purpose is to create and to maintain a high level of clean sportsmanship on campus. It is composed of men selected from each of the fraternities, men's dormitories, and the day student organization. They set up and direct the intra-mural sports of touch football, basketball, volleyball, and soft-ball. Athletic trophies are given to the winner of each sport.

Intramural Football Champs



First Row, Left to Right - Roessner, Hoover, Derr, Johnston, Thomas
Second Row - Wagner, Jenkins, Manning, Bollington.

Intramural Trophies



The Otto Kuehnert Football Trophy.
The Thomas F. Armstrong Men's Volleyball Trophy.

The A. L. Soper Basketball Trophy.
The L. I. Minnich Softball Trophy.

Cheerleading



First Row. Left to Right—Faddis, Williams, Getsinger, Phillips.
Second Row—Howling, Doig, Pirie.

Retaining the spirit of our games and keeping the crowd cheering are our cheerleaders. This group of seven, wearing maroon sweaters and jumping up and down, shouting and clapping, wears itself out keeping the crowd cheering for our teams.

Honor Hockey Team



First Row, Left to Right—Blough, Siemers, Nicklin, Lybarger, Davison, Shetter, Keller, Phillips.
 Second Row—Watkins, Ferguson, Beers, Stagg, Robinson, Nary, Albert.
 Third Row—Miss Sparhawk, Jones, Meek, Lockwood, Heltter, Thomas, Williams, Lombard, Gordon, Kiss, Rudisill.

Girls' Basketball



First Row, Left to Right—Guise, Heathcote, Ferguson, Albert, Stagg, Achenbach, Miss Sparhawk.
 Second Row—Allen, Lewis, Chambers, Nicklin, Ellis, Keller, Robinson, Watkins, Young, Clarke.
 Third Row—Rumbaugh, Wansack, Norris, Vogler, Kleeman, Gordon, Yinger, Crisman, Gumble.

Girls' Intramural Sports

The girls' intramurals are sponsored by the Women's Athletic Association. The sports participated in include hockey, basketball, badminton, volleyball, tennis, archery, hiking and biking. Participation in these activities is to promote fair play and an interest in girls' sports.



Intramural Hockey and Basketball Champions



First Row, Left to Right: Buffington, Avery, Williams, Wright, Strawbridge, Jones.
Second Row—Kiss, Mattson, Phillips, Reaver, Hutchison, Etzrodt, Young, Keller

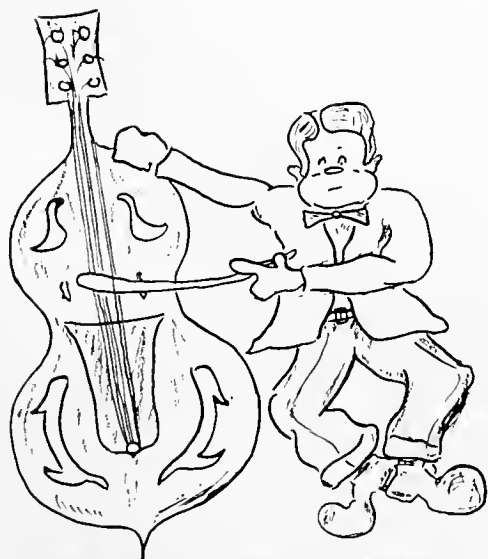
Volleyball Champions



First Row, Left to Right: Avery, Schweighofer, Wegner, Buffington.
Second Row—Brindel, Mattson, Hill, Phillips, Keller.

THE ACTIVITIES AND ORGANIZATIONS

There are so many things to be done, and so little time to do them. These are some of the things that kept us busy and made our college days full of the good things of life.





First Row, Left to Right—Dr. Armstrong, Wegner, Bittenbender, Schweighofer, Mrs. Kline.
 Second Row—Strawbridge, Keller, Smith, Wolf.
 Third Row—Dahlgren, Fague, Hoover, Smeltz.

OFFICERS

- President - EDWIN BITTENBENDER
 Co-Vice Presidents—EDITH WIGNER, WILLIAM RUHL
 Secretary - RITA SCHWEIGHOFER
 Treasurer - PAUL HOFFY
 Stewardship Commission—JUANITA KELLER
 Public Relations Commission, IRMA STRAWBRIDGE
 Religious Life Commission, ILLIAN HOOVER
 World Community Commission
 CARI DAHLGREN
 Fellowship Commission, WILLIAM SMELTZ
 Class Representatives—HELEN SMITH, JANIT WOLF, MARIANNE FAGUI, JOYCE LUTZ

Student Christian Association

The Student Christian Association strives to lead students to accept the Christian faith and to deepen the spiritual life of students who have already obtained this ideal. Membership in this organization is open to persons of all faiths and denominations.

The S. C. A. conducts a varied program dealing with stewardship, public relations, world community relations, religious life, and fellowship. This work is successfully executed by its five commissions. It conducts the regular semi-monthly Tuesday evening meetings, Sunday Vespers, and the Wednesday chapel services. Once a month members take charge of community Vespers of Selinsgrove.

The publications of the organization are the *Student Handbook*, the *S. C. A. Bulletin*, and *The Highlighter*.

Business Society

The Business Society, whose membership includes all business students, was organized to stimulate enthusiasm for commerce, business, and economics.

Monthly meetings are followed by an hour of dancing and refreshments. Various activities, such as skating parties and picnics, are planned throughout the year.

The main efforts of the society have been to increase the society scholarship fund which was set up to furnish assistance to needy students. Increments are brought about through the magazine campaign, the selling of candy, and bazaars and other activities.

First Row, Left to Right—Santangelo, Van Dyke, Heller, Nauss, Seybrecht, Everett, Connell, Miller, Guyer, Mertz. Second Row—Dunn, Houtz, Gordon, Heatheote, Rariff, Blough, Wegner, Hauple, Allen, Post, Devine. Third Row—Hand, Hospodar, Korkuch, Lombard, Lau, Campbell, Orner, Thomas, Mussina, Mertz, Rumbaugh, Hoover. Fourth Row—Otto, Wright, Renfner, Eichmann, Waters, Miss Allison, Miss McCandish, Fetherolf, Lorrain, Snyder, Henninger.



OFFICERS

- President - JOHN MERTZ
 Vice President - JOHN RUTHER
 Secretary - FLORIS GUYER
 Treasurer - WILLIS VAN DYKE

OFFICERS

President - MARION ROBSON
Vice President GRACE BILLOW
Secretary-Treasurer
 ANNA BRINDLE
Social Chairman - LOIS YOUNG



Left to Right—Brindle, Billow, Young, Mr. Meader, Matthews, Robson.

Ciceroniani

The Ciceroniani was founded on campus in April of 1947. The purpose of this organization is to foster and to extend the understanding of the Latin language and culture, to stimulate better scholarship, and to instruct members and the campus as a whole in appreciating and becoming more interested in the classics.

Once a month at the group meeting an outside speaker is heard or one of the members leads in an appropriate group discussion. This past year, the group was very fortunate to have Mr. Meader present slides and lectures about his trip to Italy.

Biemic Society

The Biemic Society is an organization which seeks to develop the students' knowledge and interest in science. Membership includes all those persons who are interested in mathematics or in the various fields of science. Topics of scientific interest are discussed at the monthly meetings, and frequent lectures are given by guest speakers. Educational movies of interest are presented by the society from time to time. Through their meetings, the members of the Biemic Society hope to develop a richer, broader viewpoint of the significance of science in the world of today.

First Row, Left to Right—Schultz, Molinaro, Gorringer, Siemers, Stancatti, Marley, Rumbaugh, Taylor, Bernstine, Mr. Marks, Solomon, Gow, Zlock, E. Zlock. Second Row—S. Young, Siemers, Ellis, Cosgrove, McNeill, Nitchman, Biddle, Ackel, Avery, Swanger, Lewis, Everett, Nary, Faddis, Gumble, Watkins, Baumgardner, Beers, Keller. Third Row—Crisman, Tietbohl, Ricodorf, Gehris, Weller, Acclavatti, Koblweiss, Ladika, Anderson, Hill, Decker, Sterrett, Goetz, Bingham, Davis, Leshak, Van Voorhis, Beam.



OFFICERS

President - JAMES RUMBAUGH
Vice President EARL BERNSTINE
Secretary-Treasurer
 JAMES MANLEY



First Row, Left to Right - Sarba, Klingler, Brobst, Hill, Roush, Smith, Stagg, Coleman.
 Second Row - Davison, Houtz, Petheroff, Oyster, Berlinger, Martz, Brubaker, Raup, Leaser.

OFFICERS

President - M. HELEN SMITH
Vice President, DOROTHY SHAFFER
Secretary-Treasurer
 FRANCIS ROUSH

Women's Day Students' Organization

Non-resident girls attending Susquehanna from the surrounding area are afforded an opportunity to participate in college activities through the Day Students' Organization. In the basement of Hassinger Hall a room has been furnished for their use with facilities for study and lounging.

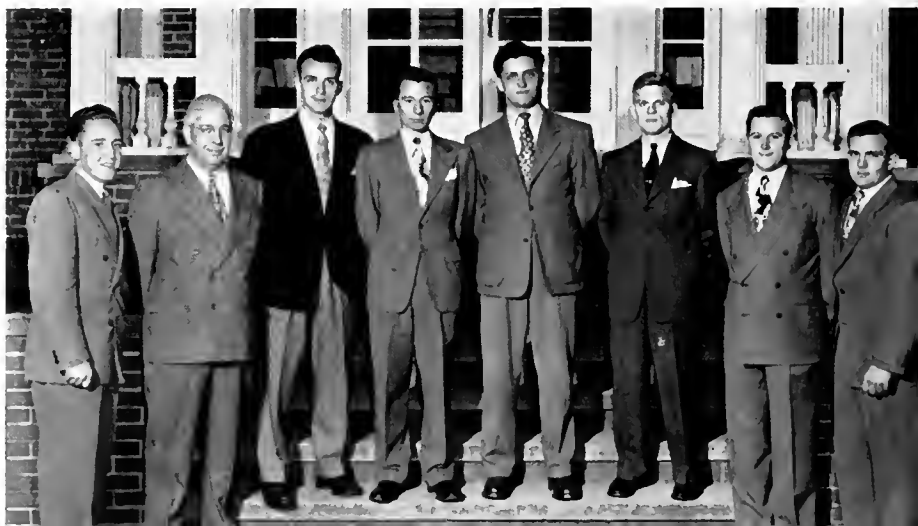
Through this organization, the girls become acquainted with one another and are led to take an active part in campus life. Day students are eager to help in any way with school activities and have an earnest desire to strengthen relationships at all times.

Men's Student Council

It is the purpose of the Men's Student Council to foster college spirit, to create, supervise, and regulate all the customs and traditions pertaining to the men of the college; to effect a closer union of students; to promote a better understanding between faculty and students; to attend to all matters properly belonging to the students of the college; and to investigate any appeal made to it by a student.

The membership consists of two representatives from each fraternity, two non-fraternity men, and one faculty adviser.

Left to Right - Dorn, Dr. Waterbury, Small, Fisher, Ruhl, Peters, Hand, Wissinger.



OFFICERS

President - - WILLIAM RUHL
Vice President - GEORGE SMALL
Secretary - - MILLARD FISHER
Treasurer - - BURLEY PETERS

OFFICERS

President - FRANCIS SAVIDGE
Secretary-Treasurer
 DELORES MATTSON



First Row, Left to Right—Gumble, Wegner, Brindle, Lorrach, Swartz, Savidge,
 Second Row—Miss Sambrooke, Mattson, Kequer, Lybarger, Orner, Seybrecht

Women's Student Council

The Women's Student Council, whose membership is elected by the women students, serves as a legislative body for its electors and as an intermediary between the students and the administration. Its main objective is to effect harmonious living conditions on campus.

Its membership is composed of a president and a secretary-treasurer, the president of each of the three dormitories, the chairman of the Judiciary Committee, and a representative from the W. A. A., the S. C. A., the Day Students' Association, the Inter-Sorority Council, and the freshman and sophomore classes.

Women's Judiciary Committee

As a sub-committee of the Women's Student Council, the Judiciary Committee is responsible for the just punishment of any girl who has broken the rules and regulations which the Council has set down for resident women students.

A series of automatic penalties provides punishment for the more common offenses. When extraordinary circumstances arise, the Committee convenes with the violator and decides upon a punishment in accordance with the seriousness of the offense.

The Committee also considers itself an advisory group. Its duty is to report any special problems involving the girls to the Dean of Women for the purpose of counseling and preventing rule-breaking whenever possible.

First Row, Left to Right—Wegner, Phillips, Brindle, Lorrach, Savidge, Faddis,
 Second Row—Burcher, Barnhart, Swartz, Miss Sambrooke.



OFFICERS

Chairman - - RUTH LORRAH
House Presidents—PHYLLIS SWARTZ, EDITH
 WIGNER, ANNA BRINDLE
President—Student Council,
 FRANCIS SAVIDGE
Class Representatives:
Senior - - MURIEL PHILLIPS
Junior - - ELAINE FADDIS
Sophomore - - RHODA BURCHER
Freshman - BARBARA BARNHART



Left to Right Wegner, McHenry, Lease, Orner, Rothermel, Guyer, Nitchman, Hoover, Mattson, Faddis, Anderson, Swartz.

OFFICERS

- Seibert Hall House *President*
 PHYLLIS SWARTZ
- Hassinger Hall House *President*
 EDITH WIGNER
- Seibert Hall *Vice Presidents*—BARBARA ANDERSON, FLORIS GUYER, LILLIAN HOOVER, BARBARA LEASE, DOROTHY NITCHMAN, and JEANNE ORNER
- Hassinger Hall *Vice Presidents*—MARJORIE MCHENRY, GRACE JANE MCKEIVER, DOLORIS MATSON, ELAINE FADDIS, and JEAN ROTHERMEL

Vice Presidents' Council

In order to maintain quiet in the girls' dormitories during the designated study hours, the Vice Presidents' Council was organized eight years ago. Certain reliable girls are given authority by the Seibert Hall House President to enforce all quiet hour regulations. By using the "five minute penalty" system, these "V. P.'s" maintain the peace and the quiet of the dormitories. When a student acquires twenty minutes her case is referred to the Women's Judiciary Committee, which decides upon a just punishment for the offender.

Women's Athletic Association

The Women's Athletic Association sponsors a program of intramural and varsity athletic activities. The girls participate in seasonal intramural sports, including hockey, basketball, and softball. Play Days and varsity games are scheduled with different colleges and points are given for each sport played. Achievement awards are given as these points accumulate.

The Women's Athletic Association also sponsors many social activities. Among these are an informal dance, the all-campus Variety Show, an annual Play Day, and the May Day program.

First Row, Left to Right—Nicklin, Kiss, Koch, Robinson, Lybarger, Guyer, Keller, Welliver, Spogen, Wolf, Smith, Wright. Second Row—Yorty, Bell, S. Young, Faddis, Klinger, Martin, Schweighofer, Wegner, H. Smith, Faddis, Ellis, Slater, Watkins. Third Row—Orner, Thomas, Mattson, Gibson, Sheller, Stern, Yonghaus, Mussina, Banhart, Attinger, Avery, Brindle, Beers, Seybrecht, Strawbridge. Fourth Row—Greeger, Ferguson, Van Voorhis, Anderson, Popken, Gumble, Lan, Bailey, Lease, Koldweiss, Kahler, Phillips, Hill, Blough, Siemers, Lombard, Beam, Albert.

OFFICERS

- President* - FRANCIS LYBARGER
Vice President
 MARJORIE HUTCHINSON
Recording Secretary, FLORIS GUYER
Corresponding Secretary
 BARBARA WELLIVER
Treasurer - - JUANITA KELLER





Susquehanna University Band

The Susquehanna University Band, one of the most outstanding organizations on the campus, has enjoyed a steadily increasing degree of success and popularity ever since it first made its appearance in the fall of 1917.

This year, the band, under the direction of Mr. Allen Flock, has won wide recognition for its fine musical performance and for its fascinating and colorful drills on the football field. The marching band is composed of forty-two members, one drum major, two majorettes, and two flag bearers.

The band is now regarded as being an indispensable part of many of the major sports events as well as the pep parades and rallies; it also serves its alma mater in various other ways, including its performance at the May Day festivities and its presentation of an annual spring concert.

Chapel Choir

The Chapel Choir, organized at the request of President Smith, consists of twelve voice students selected jointly by Professor Linebaugh, Mr. Haskins, and Mr. Sidway. The Choir performs weekly at the Monday chapel services, as well as at various special services throughout the year.

First Row, Left to Right—Swartz, Seybrecht, Zerbe, Bea, Miller, Hill, Lehman.
Second Row—Dove, Faust, Eecker, Bitting, Raup, Gloster, Mr. Sidway.



ROSTER

Sopranos—Jeanette Zerbe, Shirley Bea, Lois Seybrecht.

Altos—Jean Hill, Mary Miller, Mary Elizabeth Lehman.

Tenors—Lewis Dove, John Eecker, Burdell Faust.

Basses—Robert Bitting, Charles Rau, Francis Gloster.

Student Organist—Phyllis Swartz.

Director—Mr. Sidway.



First Row, Left to Right Jones, Sarba, Barnhart, Stagg, Roush, Mrs. Giauque.
 Second Row - Attinger, McCham, Rothermel, Janson, Giauque.
 Third Row - Greger, Miller, Lombard, Kline, Yorty, Hort.
 Fourth Row - Terbe, Dove, Bollinger, Kost, Rau, Meerbach, Lehman.
 Fifth Row - Becker, Bittig, Tyler, Amman, Stahl, Faust.

The Susquehanna Singers

The Susquehanna Singers, under the direction of Mrs. Alice Giauque, is composed of sophomores and juniors in the Conservatory, as well as interested non-Conservatory students. This group has displayed its talent on various occasions throughout the year, and has gained an excellent reputation for tone quality and voice blending.

In the years 1946 and 1947 the Susquehanna Singers presented Gilbert and Sullivan's "H. M. S. Pinafore" and "The Mikado." This year they are directing their efforts toward concert appearances at neighboring colleges as well as on the home campus.

The Susquehanna Players

OFFICERS

<i>President</i>	- - - - -	WILLIAM FOSTER
<i>Vice President</i>	- - - - -	GEORGE HANIS
<i>Secretary</i>	- - - - -	IRMA STRAWBRIDGE
<i>Director</i>	- - - - -	MR. AXEL R. KLEINSORG

The Susquehanna Players is the organization on campus which is responsible for all of the dramatic productions. It was formed with the purpose of giving interested students an opportunity to perform before the public and to participate in the behind-the-scenes activities in the presentation of a play. All acting, stage work, and make-up for the college productions are done by the members of this group.

This year the Susquehanna Players presented three major productions, which included "Mary of Scotland," "The Patsy," and "I Remember Mamma." This group also enacted "The Terrible Meek" for the Easter play.

First Row, Left to Right Spozza, Wright, Strawbridge, Foster, Meek, Williams, Savidge.
 Second Row - Yorty, Lombard, Vogler, Waters, Yinger.
 Third Row - Koch, Smith, Kohlweiss, Kepner.
 Fourth Row - Solomon, Carols, Mr. Kleinsorg, Van Dyke, Madden.





Hawk Island

CAST

Gregory Sloane
 Donald Parish
 Paul Cooper
 Anthony Bryce
 Captain Westover
 Sally Rogers
 Lynn Rogers
 Barker
 Louise Hollister
 Stella Wayne
 Harriet Cooper
 Tom Austen
 Madeline Austen

G. Kenneth Small
 Warren Pirie
 Brady Kunkle
 Willis Van Dyke
 George Hanis
 Anne Wright
 Skip Madden
 George Dimmick
 Muriel Phillips
 Nancy Koch
 Betty Reisch
 Joe Solomon
 Lillian Kepner



Mary of Scotland

by MAXWELL ANDERSON

CAST

Jamie, a guard
 Monk, a guard
 Tammas, a guard
 John Knox
 James Hepburn, Earl of Bothwell
 A Page
 Chatelard
 Mary Stuart
 Mary Beaton
 Mary Seton
 Mary Livingston
 Mary Fleming
 Elizabeth Tudor
 Lord Burghley
 Lord Darnley
 David Rizzio
 James Stuart, Earl of Moray
 Maitland of Lethington
 Lord Huntley
 Lord Erskine
 Lord Throgmorton
 Lord Ruthven
 Graeme

Brady Kunkle
 Franklin Ulman
 Donald Minnich
 G. Kenneth Small
 Warren Pirie
 Emil Weiler
 William Heim
 Frances Savidge
 Bernice Lombard
 Jane Southwick
 Virginia Yinger
 Ann Yorty
 Barbara Barnhart
 Borleigh Peters
 Paul Herb
 Albert Molinaro
 John Gow
 Abe Portzline
 George Hanis
 Richard Doig
 George Dimmick
 Edward Madden
 William Foster



First Row, Left to Right Guyer, Nicklin, Clark, Editor-in-Chief, Watkins, Van Dyke,
 Second Row Mr. Graham, Spogen, Canals, Yonghaus, Showalter, Faddis, Roessner, Mr Meader.



The Lanthorn

Editor-in-Chief - - - THEODORF CLARK
Literary Editor - - - SHIRLEY NICKLIN
Typing Editor - - - - FLORIS GUYER
Photography Editor - BARBARA WATKINS
Men's Sports Editor - - ERNEST CANALS
Women's Sports Editor - MARJORIE SPOGEN
Business Manager - - - DOUGLAS ARTHUR
Advertising Manager - WILLIS VAN DYKE
Faculty Adviser - ROBERT F. W. MEADER
Faculty Business Adviser GROVER C. T. GRAHAM

Able assistance was also rendered by William Smeltz, Gertrude Kohlweiss, Alice Yonghaus, Elaine Faddis, George Roessner, Louis Santangelo, Shirley Showalter.

The Susquehanna

STAFF

Editor-in-Chief - - - - ANN YORTY
Associate Editor - - - JAMES RUMBAUGH
Business Manager - - - ROBERT HOOVER
Managing Editor - - - IRMA STRAWBRIDGE
News Editor - - - VIRGINIA COCHRAN
Boy's Sports Editor - RICHARD WESTIRVELT
Girl's Sports Editor - - FRANCES LYBARGER
Advertising Manager - - MARGARET LATTA
Circulation Manager - - HARRY JOHNSTON

The Susquehanna, the bi-monthly publication edited "by and for the students of Susquehanna University," was established in 1891 to serve as a record of outstanding campus and world events of interest to students and faculty. All students interested in any of the various phases of journalism and publishing are eligible to serve in the editorial and business departments.

The Susquehanna offers to these students an opportunity to develop their special talents and to acquire wider training in general newspaper work.



First Row, Left to Right—Nicklin, Johnston, Hoover, Yorty, Cochran, Strawbridge,
 Second Row—Lybarger, Zimmerman, Rumbaugh, O'Shirak, Latta.

HOME



THE VICTORIOUS FRESHMAN TEAM 13, SOPHOMORES 6



A SOLID HIT - SUSQUEHANNA 2, GETTYSBURG 3



THE HOMECOMING SWEETHEART



IMPENDING DISASTER - SUSQUEHANNA 6, JUNIATA 14



A GOODLY CROWD WAS THERE

COMING



THETA CHI



SEIBERT HALL



BOND AND KEY



THE COTTAGE



PHI MU DELTA



First Row, Left to Right - Canals, Yorty, Watkins, Wegner, Smith, Savidge,
 Second Row - Miller, Kelley, Fisher, Berninger, Penman, Leaser.
 Third Row - Zimmerman, Dr. Russ, Dr. Zagers, Reuther, Hospodor.

Pi Gamma Mu

OFFICERS

President - - - - HELEN SMITH
Vice President - - - - EDITH WEGNER
Secretary-Treasurer - - - - DR. RUSS

Pi Gamma Mu is a national, social science, honor society whose membership includes faculty, alumni, and undergraduates. Pennsylvania Gamma chapter was organized at Susquehanna University on May 9, 1927. The national society has over one hundred chapters and approximately 18,000 members. Membership is attained through election by the faculty members of the local chapter. Juniors and seniors are eligible upon fulfilling the necessary requirements, which include (1) special interest in social sciences, (2) completion of at least twenty semester hours in the social sciences with a grade of at least "B," (3) a general average of at least "B" in all subjects so far taken, and (4) good character.

Alpha Psi Omega

OFFICERS

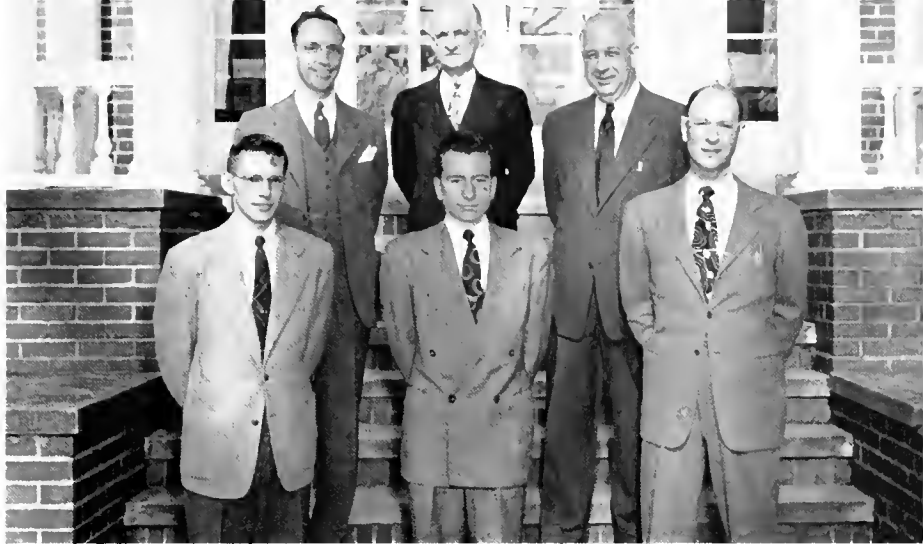
Grand Director - - - WILLIS VAN DYKE
Grand Stage Manager - - LILLIAN KEPNER
Grand Business Manager - FRANCES SAVIDGE

Alpha Psi Omega, the national dramatic honorary fraternity, aims to cultivate a greater appreciation of the drama on college campuses. This aim has been furthered on the campus of Susquehanna by an active membership of twenty students.

A minimum number of seventy-five points is required for admission to join the Theta Phi Cast, the local chapter of Alpha Psi Omega. These points are granted for active participation in any of the various phases of play production.

First Row, Left to Right - Lyburger, Getsinger, Strawbridge, Van Dyke, Savidge, Spogen, Matthews, Kohlweiss.
 Second Row - Harris, Mr. Kleinsorg, Pirie, Foster





First Row, Left to Right: Tidball, Fisher, Otto.
 Second Row Mr. Meader, Mr. Linbaugh, Dr. Waterbury

Inter-Fraternity Senate

It is the purpose of the Inter-Fraternity Senate to maintain harmony among the fraternities, to provide an opportunity for the discussion of problems associated with fraternity life, to improve fraternity life on the campus, and to strengthen the financial and administrative aspects of the fraternity houses.

The Senate is composed of the three fraternity presidents, a faculty adviser from each group, and Dean Galt who serves as chairman.

Inter-Sorority Council

OFFICERS

- President* - - - - IRMA STRAWBRIDGE
Vice President - - - VIRGINIA COCHRANE
Recording Secretary - MARY ANN GETSINGER
Financial Secretary - MARJORIE MCHENRY
Treasurer - - - - LILLIAN KIPNER
Representative to Student Council
 JEAN MATTHEWS

The Inter-Sorority Council, composed of two members and the president of each sorority on campus, holds as its main purpose the promotion of harmony, good will, and co-operation among the three groups represented.

The Dean of Women acts as the faculty adviser of the council while the president of the committee rotates each year among the sorority presidents.

Monthly meetings are concerned with such business as rules for rushing, inter-sorority parties and dances, and general inter-sorority problems.



First Row, Left to Right—Strawbridge, Blough, Derr.
 Second Row—Phillips, Matthews, Getsinger, Cochrane.
 Third Row—Kopner, Miss Sambrooke, McHenry.



First Row, Left to Right—Bollinger, Hoover, Orr, Roessler, Bobb.
 Second Row—Bidding, Bresnock, Mr. Stevens, Bogar.
 Third Row—Witowski, Wolsten, Jenkins, Eagan.
 Fourth Row—Duncan, Staller, Davis, Solomon, Zimmerman.
 Fifth Row—Harter, Manning, Wagner, Sterrett, Otto.



First Row, Left to Right—Hains, Wissinger, Bullington, Peters,
 Second Row—Johnston, Derr, Thomas, Toutman.
 Third Row—McAllister, Davis, Ladika.
 Fourth Row—Weller, Mr. Graham, Kost, Bullington.
 Fifth Row—Duncan, Mr. Flock, Arthur, Dr. Hontz.
 Sixth Row—Deppen, Outerbridge, Oshirak, Rumbaugh, Mr. Linebaugh.

Bond and Key

OFFICERS

<i>President</i>	- - - - -	PALMER OTTO
<i>Vice President</i>	- - - - -	HAROLD ZIMMERMAN
<i>Secretary</i>	- - - - -	JAMES RUMBAUGH
<i>Treasurer</i>	- - - - -	DONALD WISSINGER

Bond and Key Club, Incorporated, was founded in 1914 and is Susquehanna's oldest fraternity. The original membership of twenty-one has now increased to over five hundred actives and honoraries. The organization was established as a local fraternity and has remained so throughout the years, for the men of Bond and Key prefer to keep the entire management among themselves.

The members pledge to live their best "first for Susquehanna and second for Bond and Key." The club colors are black and gold, and the motto is "Bound as Knights."

FRATRES IN FACULTATE

Mr. Frederic Billman
Mr. Allen Flock
Mr. Grover Graham
Mr. Elbert D. Haskins

Dr. John Houtz
Mr. Percy M. Linebaugh
Mr. Spence T. Marks
Dr. George Robison

Mr. Ralph H. Sidway
Mr. Milton S. Stancati
Mr. Frederick Stevens

FRATRES IN COLLEGIO

Douglas Arthur
Robert Bitting
Marlin Bobb
Marsh Bogar
Robert Bolig
Herbert Bollinger
Edward Bresnock
John Buffington
Wilbur Buffington
Richard Campbell
Donald Davis
Thomas Davis
Gilbert Day
Thomas Deppen
Donald Derr

Burde Duncan
Charles Duncan
Martin Eagan
Richard Felker
Herbert Hains
Jacob Harder
Robert Hoover
Thomas Jenkins
Harry Johnston
Nelson Kost
Joseph Ladika
Everett Manning
Elwood McAllister
Kenneth Orr
Alexander Oshirak

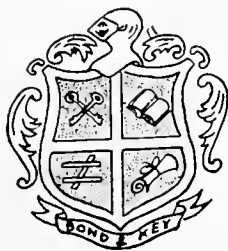
Palmer Otto
Warren Outerbridge
James B. Peters
George Roessner
James Rumbaugh
Jack Soloman
David Sterrett
George Thomas
Richard Troutman
Bruce Wagner
Kent Weller
Donald Wissinger
John Witowski
Walter Wolsten
Harold Zimmerman

FRATRES FUTURI

Richard Acciavatti
William Beckwith
Harold Carr
Roy Cope
Gene Fenstermacher

Charles Grund
Lester Heilman
Charles Hess
Kenneth Hill
William Ingold
James Owen

Dean Pikulski
Robert Pittello
Fred Schultz
Jacob Spangler
Edward Wollaston





First Row, Left to Right - Van Dyke, Zlock, Santangelo, Devine, Bilger, Kundis, Westervelt, Merz, Wright.
 Second Row - Dr. Russ, Portzline, Pirie, Pfeiffer, Hanis, Beigh, Meerbach, Dunn, Morris.
 Third Row - Doig, Culp, Wagner, Chadwick, Henderson, Fosselman, Dr. Wilson, Mr. Howling.

FRATRES IN FACULTATE

Dr. George Fisher
 Mr. Russe'l Hatz
 Mr. Robert Howling

Mr. Axel Kleinsorg
 Mr. Robert Meader
 Dr. William Russ

Dr. Arthur Wilson
 Mr. E. T. Yorty
 Dr. Waldemar Zagars

FRATRES IN COLLEGIO

Ben Alter
 Fred Auman
 Daniel Beigh
 Earl Bernstine
 Roy Bilger
 Marlin Boyer
 Jack Brown
 Ernest Canals
 Henry Chadwick
 Theodore Clark
 Harry Culp
 John Devine
 Richard Doig
 Melvin Dunn
 Jack Eecker
 Burdell Faust
 Millard Fisher
 Donald Fosselman
 William Foster

Robert Goetz
 John Gow
 George Hanis
 Forrest Harter
 Alvin Henderson
 John Hospodar
 Roger Howling
 Andrew Koch
 Edward Korkuch
 Harold Kundis
 Edward Madden
 Gardiner Marek
 Al Martin
 John Meerbach
 John Mertz
 Kenneth Merz
 Donald Minnich
 Albert Molinaro
 Charles Morris

Edward Pfeiffer
 Warren Pirie
 Abe Portzline
 Daniel Reese
 James Reilly
 Charles Rohmann
 Louis Santangelo
 Richard Shaffer
 Donald Shoemaker
 George Small
 Roy Stahl
 Willis Van Dyke
 Charles Venner
 Paul Wagner
 Richard Westervelt
 Donald Wohlson
 Jack Wright
 Evan Zlock

FRATRES FUTURI

Bruce Burkholder
 Jim Chadwick
 Joseph Driscoll
 Carl Gacono
 Fred Hazeltine
 John Horoschak
 Richard Jones

Gordon Joyce
 James Kelz
 George Krogman
 Walter Mazura
 Clair Mitch
 William Nyer
 Edward Palkovitch

Robert Patterson
 Jesse Stone
 Felix Torromeo
 Frank Ulman
 Richard Ush
 Charles Zlock



First Row, Left to Right—Dr. Gilbert, Tietbohl, Manley, Reuther, Calvert, Weiler, Hand, Shortt, Taylor, Fenstermacher.
 Second Row—Ruhl, Riedorf, Shney, Brandau, Miller, Gehris, Sullivan, Dr. Armstrong, Mr. De Mott.
 Third Row—Lauver, Bingaman, Moorhead, Buehler, Jones, Hally, C. Shaffer, M. Shafer, Rowe, Mr. Gensinger.

Theta Chi

OFFICERS

<i>President</i>	- - - - -	RALPH TIETBOHL
<i>Vice President</i>	- - - - -	PAUL BINGAMAN
<i>Secretary</i>	- - - - -	JAY HAND
<i>Treasurer</i>	- - - - -	FRANK CALVERT

Theta Chi National Fraternity was founded April 10, 1856, at Norwich University, Northfield, Vermont. The present approximate membership is thirty-five thousand. The Beta Omega chapter at Susquehanna was initiated in 1942 when the original Beta Kappa Fraternity merged with the Theta Chi Fraternity. Theta Chi Fraternity now has eighty-one chapters.

The colors of the fraternity are military red and white; the motto, "Alma Mater first, and Theta Chi for Alma Mater." "The Rattle," Theta Chi's national fraternity magazine, is published four times a year. The Beta Omega chapter publishes a Chapter and Alumni Bulletin, "The Crimson Sword," four times annually.

FRATRES IN FACULTATE

Dr. Thomas Armstrong
Howard DeMott

Karl Geisinger
Dr. Russell Gilbert

Dr. Kenneth Waterbury

FRATRES IN COLLEGIO

Paul Bingaman
Walter Brandau
Paul Buehler
Frank Calvert
Robert Dornsife
Robert Fenstermacher
Jack Gearinger
James Gehris
Paul Haffly
Jay Hand
Paul Jones

Raymond Lauver
James Manley
Robert Miller
Gerald Moorhead
Charles Rau
Columbus Raup
John Reuther
Robert Ricedorf
Chester Rowe
Harold Rowe
William Ruhl

Merrill Shafer
Charles Shaffer
Albert Shortt
Mark Shuey
Richard Stetler
Charles Sullivan
Willard Taylor
Ralph Tietbohl
Emil Weiler
Richard Wetzel

FRATRES FUTURI

Donald Berninger
Charles Bomboy
Dale Fulmer
Richard Fyler
Francis Gloster

Harold Greenly
Richard Kearns
John Lamade
John Momrow

Carl Musser
William Prichard
Roland Rosetti
James Trexel





First Row, Left to Right—Mrs. Russ, Avery, Speyer, Reaver, Phillips, Blough, Williams, Cochrane.
 Second Row—Kahler, Savidge, Smith, Reifsnnyder, Buffington, Hill.
 Third Row—Yonghaus, Koch, Shetler, Watkins, Ferguson.
 Fourth Row—MaeNeil, Lease, Thomas, Shafer, Alexander, Slater, Kohlweiss, Post, Faddis.

Kappa Delta Phi

OFFICERS

<i>President</i>	-	-	-	-	-	-	-	MURIEL PHILLIPS
<i>Vice President</i>	-	-	-	-	-	-	-	VIRGINIA BLOUGH
<i>Corresponding Secretary</i>	-	-	-	-	-	-	-	ELAINE WILLIAMS
<i>Financial Secretary</i>	-	-	-	-	-	-	-	MILDRED REAVER
<i>Treasurer</i>	-	-	-	-	-	-	-	FRANCES SAVIDGE

Kappa Delta Phi, one of the three sororities on Susquehanna's campus, has a membership of twenty-eight actives. Organized in 1917, it has since endeavored to uphold the high ideals of friendship, loyalty, and character, promoting intellectual development and social fellowship.

The insignia is one of wisdom, the owl. The motto is "Excellence through friendship" and the colors are chocolate brown and lemon yellow.

The very active honorary group is under the able leadership of Mrs. William A. Russ, Jr.

SORORES IN COLLEGIO

Margie Alexander
Miriam Avery
Virginia Blough
Ruth Buffington
Virginia Cochrane
Elaine Faddis
Sally Faye
Althea Ferguson
Jeanne Kahler

Trudy Kohlweis
Barbara Lease
Audrey MacNeil
Muriel Phillips
Ione Post
Mildred Reaver
Justine Reifsnider
Frances Savidge

Nelda Shafer
Maria Shetler
Lou Slater
Helen Smith
Gabriel Speyer
Doris Thomas
Barbara Watkins
Elaine Williams
Alice Yonghaus

SORORES IN CAMPO

Mrs. A. W. Ahl

Mrs. Isabelle Coxe
Miss Beatrice Herman

Mrs. W. A. Russ

SORORES IN FACULTATE

Miss Lenora Allison

Miss Margaret McCandlish

Miss Ruth Sparhawk





First Row, Left to Right - Lybarger, Young, Bell, Appleby, Strawbridge, Kepner, Wright, Kiss, Davison, Young.
 Second Row - Yarty, Nicklm, Hutchison, Matthews, Mattison.
 Third Row - Janson, Mussina, Robinson, Gumble, Foltz, Seybrecht, Welliver, Siemers, Robson.
 Fourth Row - Fague, Beam, Anderson, Showalter, Beers, Albert.

Omega Delta Sigma

OFFICERS

<i>President</i>	-	-	-	-	-	-	-	IRMA STRAWBRIDGE
<i>Vice President</i>	-	-	-	-	-	-	-	LILLIAN KEPNER
<i>Secretary</i>	-	-	-	-	-	-	-	MARJORIE HUTCHISON
<i>Financial Secretary</i>	-	-	-	-	-	-	-	MARGARET APPLEBY
<i>Treasurer</i>	-	-	-	-	-	-	-	JOYCE BELL

Omega Delta Sigma, one of the three sororities on campus, was organized in 1917 by a group of five girls.

This group chose as their colors grey and orange, and as their flower the chrysanthemum. The sorority emblem, the griffen, stands for valor and honesty.

Head of the active group of honorary members is Mrs. Edna Kerber.

SORORES IN COLLEGIO

Martha Albert	Marjorie Hutchison	Zola Robinson
Barbara Anderson	Doris Janson	Marion Robson
Margaret Appleby	Lillian Kepner	Louise Siemers
Betty Beam	Isabel Kiss	Lois Seybrecht
Marilyn Beers	Frances Lybarger	Shirley Showalter
Joyce Bell	Jean Matthews	Irma Strawbridge
Anna Brindel	Dolores Mattson	Barbara Welliver
Mary Davison	Grace Jane McKeever	Ann Wright
Marianne Fague	Rosemary Mussina	Ann Yorty
Sue Foltz	Shirley Nicklin	Jean Young
Doris Gumble		Lois Young

SORORES IN COLLEGIO

Mrs. Allen Flock	Mrs. A. A. Stagg, Sr.
Mrs. John Houtz	Mrs. A. A. Stagg, Jr.
Miss Ruth E. McCorkill	Mrs. Arthur Wilson
Mrs. Carl Marks	Mrs. E. T. Yorty





First Row, Left to Right—Gardner, Jones, Bottorff, Wanbaugh, Getsinger, Derr, McHenry, Swartz, Steigerwalt.
 Second Row—Lehman, Miller, Kline, Hort, Roush, Rothermel.
 Third Row—Barndart, Hill, Attinger, Mrs. Gianque, Greger, McCuban.

Sigma Alpha Iota

National Music Fraternity

OFFICERS

<i>President</i>	- - - - -	MARY ANN GETSINGER
<i>Vice President</i>	- - - - -	JANE BOLLINGER
<i>Acting Vice President</i>	- - - - -	JEAN DERR
<i>Treasurer</i>	- - - - -	DOROTHY GARDNER
<i>Recording Secretary</i>	- - - - -	DORIS WANBAUGH
<i>Corresponding Secretary</i>	- - - - -	PHYLLIS SWARTZ

Sigma Omega, one of Sigma Alpha Iota's eighty-nine chapters, was chartered in 1925. One of the many objectives of this fraternity for women is to form chapters of music students and musicians who shall, by their influence and their musical interest, uphold the highest ideals of a music education.

SORORES IN COLLEGIO

Jean Attinger
Cecilia Auman
Flora Barnhart
Jane Bollinger
Joyce Bottorff
Jean Derr
Dorothy Gardner
Mary Ann Getsinger
Alice Greeger

Jean Hill
Jo Ann Hort
Maude Jones
Susan Kline
Mary E. Lehman
Joy McCahan
Marjorie McHenry
Mary Miller

Sally Mitchell
Jean Rothermel
Frances Roush
Mina Sarba
Jane Southwick
Marian Steigerwalt
Phyllis Swartz
Doris Wanbaugh
Jeanette Zerbe

SORORES IN CAMPO

Mrs. Francis Gilbert
Mrs. Russell Hatz

Mrs. P. M. Linebaugh

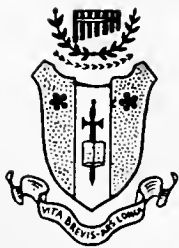
Mrs. Ida Sheldon
Mrs. Frederick Stevens

SORORES IN FACULTATE

Mrs. Alice Giauque

Mrs. Athelia Kline

Miss Mary Potteiger





First Row, Left to Right Williams, Robinson, Nicklin, Davison, Lybarger, Keller, Watkins, Blough.
 Second Row Miss Sparhawk, Siemers, Yorty, Koldweiss, Phillips, Stotler, Kiss.

OFFICERS

President - FRANCIS LYBARGER
Vice President - JUANITA KELLER
Secretary-Treasurer
 MARY DAVISON

Tau Kappa

Tau Kappa is a national women's athletic sorority. The Beta chapter, organized at Susquehanna University last Spring, is now composed of fifteen active members and three honoraries.

The purpose of the organization is to encourage good sportsmanship on campus and arouse a greater interest in women's athletics. Any girl with a junior award or seven-hundred points, earned by participation in varsity or intramural sports, is eligible for membership.

Phi Kappa

The purpose of Phi Kappa, organized in 1930, is to promote interest and development in the classical Greek studies among the students of the college. Those students who have maintained a high standard of scholarship in Greek or have shown interest in things Hellenic are eligible for election to membership.

The success of the organization is due largely to the staunch friendship and sound advice of Dr. A. William Ahl, the society adviser.

First Row, Left to Right Miller, Dr. Ahl, Mrs. Ahl, Mrs. Smith, Penman, Outerbridge, Ruhl.
 Second Row Spangler, Anderson, Joyce, Meyer, Stetser, Moorhead, Miller, Smeltz, Bittenbender, Brandau, Volk.

OFFICERS

President - - ROBERT MILLER
Vice President - VERNON MILLER
Secretary - WILLIAM RUHL
Treasurer - - JUAN PENMAN
Messenger - WALTER BRANDAU



STUDENT ROSTER

- Acciavatti, Richard E. (2) 249 S. Maple St., Mt. Carmel
Achenbach, Helen S. (1) 2219 Yale Ave., Camp Hill
Aekel, Marie T. (1) 259 Pacific Ave., Lawrence, N. Y.
Albert, Martha L. (2) 20 S. Locust St., Myerstown
Alexander, JoAnn L. (1) 201 Maple Ave., Wenonah, N. J.
Alexander, Marjorie B. (2) 617 Freedom Ave., Burnham
Allen, Dorothy M. (1) 5 Lincoln St., Ramsey, N. J.
Alter, Ben C. (2) 520 Bear Valley Ave., Shamokin
Anderson, Barbara E. (3) 9 Shady Lane, Johnstown
Anderson, Herbert O. (2) McClure
Appleby, Margaret C. (3) 31 E. Milford St., Mount Union
Arthur, Cora M. (1) R. D. No. 1, Hughesville
Arthur, Douglas E. (3) 731 E. Union St., Millersburg
Aston, Peggy Ann (1) 35 N. Maple St., Mt. Carmel
Attinger, K. Jeanne (2) Market St., Middleburg
Auman, Cecilia B. (3) R. D. No. 1, Box 78E, St. Marys
Auman, Fred A., Jr. (3) 618 Duke St., Northumberland
Avery, Miriam J. (1) 132 W. Dorrance St., Kingston
- Babies, Donald (3) 260 Main St., Conemaugh
Bailey, Lyn (2) 130 Morningside Drive, New York, N. Y.
Barnhart, Barbara (1) 2650 Austin Blvd., Cicero, Ill.
Barnhart, Flora M. (2) Claysburg
Baumgardner, Elmer (1) 1702 Graham Ave., Windber
Baumgardner, Fern (2) 1702 Graham Ave., Windber
Bea, Shirley A. (1) 210 Chestnut Ave., Hawley
Beam, Marie E. (2) 2507 Graham Ave., Windber
Beckwith, William S. (1) 721 Eighth St., Oakmont
Beers, Marilyn J. (2) 152 Beard-ley Ave., Bloomfield, N. J.
Beigh, Harry D., Jr. (3) 2310 Hoffer St., Harrisburg
Bell, Joyce L. (1) 24 W. Market St., Mount Union
Berninger, Donald C. (1) R. D. No. 2, Bloomsburg
Berninger, Jean B. (1) 311 Front St., Danville
Bernstine, Earl L. (3) 2375 Hillside Ave., Williamsport
Beward, Margaret A. (1) Bridge St., Millintown
Biddle, Charlotte A. (1) 21 Catawissa Road, Ashland
Bilger, Roy R. (3) 102 S. High St., Selinsgrove
Billow, Grace (1) Academy St., McAlisterville
Bingaman, Paul K. (1) Thomsontown
Bittenbender, Edwin L. (1) 621 E. Front St., Berwick
Bitting, Robert L. (2) 234 Valley St., Marysville
Block, Robert L. (3) 5725 N. Park Ave., Philadelphia 11
Bloom, Kay L. (1) 117 N. Fifth St., Sunbury
Blough, Virginia E. (3) 310 Hickory St., Johnstown
Bobb, Marlin O. (3) Ferry St., Herndon
Bogar, Joseph (1) 329 N. Eighth St., Selinsgrove
Bogar, Marsh (2) 2936 Green St., Harrisburg
Bogdanffy, Robert O. (1) 155 Washington Ave., Clifton, N. J.
Boling, Robert M. (3) Hummels Wharf
Bollinger, Herbert O. (2) 132 Fifth St., Northumberland
Bombay, Charles L. (1) 711 Catawissa Ave., Sunbury
Bonarwitz, Erna M. (3) Berrysburg
Bonish, Harry M. (3) 16 Woodland St., Ashland
Bordner, Donald L. (2) 601 Duke St., Northumberland
Bottorff, Joyce E. (1) 602 S. Wayne St., Lewistown
Boyer, Marland P. (1) 106 Harrison St., Pottsville
Brandau, Walter L. (2) 223 Catawissa Ave., Sunbury
Bresnock, Edward A. (3) 29 Bast Ave., Ashland
Brindel, Anna M. (1) 12 Pennsylvania Ave., Lewistown
Brobst, Hazel J. (2) 1012 S. Front St., Sunbury
Brosius, MargieEtta (3) Main St., Rebeck
Brown, Jack A. (2) 1050 Washington St., Indiana
Brubaker, Maxine G. (1) McAlisterville
Buehler, Paul B. (2) Paupack
Buffington, John (3) 86 Linden Ave., Bloomfield, N. J.
Buffington, Ruth M. (1) Maine St., Valley View
Buffington, Wilbur J. (3) 29 W. Main St., Elizab. Thville
Burcher, Rhoda M. (2) 1719 Main St., Honesdale
Burkholder, Bruce C. (1) Lavelle
- Caldwell, Raymond H. (1) R. D. No. 2, Selinsgrove
Caldwell, Robert L. (2) 241 Spruce St., Sunbury
Calvert, Frank D. (3) 1132 Market St., Ashland
Campbell, Carol M. (1) 15 S. Seventeenth St., Camp Hill
- Campbell, Richard E. (3) 353 S. Second St., Sunbury
Canals, Ernest A. (3) 67 Birch St., Bloomfield, N. J.
Carr, Charles H. (1) 129 N. Third St., Bellwood
Chadwick, Henry G. (3) 3607 Pacific Ave., Wildwood, N. J.
Chadwick, James E. (1) 3607 Pacific Ave., Wildwood, N. J.
Chambers, Maxine L. (1) 207 Market St., Millinburg
Chubb, Ruth I. (1) R. D. No. 2, East Berlin
Clark, A. Blair (1) Berlin Ave., New Oxford
Clark, Theodore H. (3) 605 Eleventh Ave., Prospect Park
Clarcken, Margaret A. (1) 15 Aldon Terrace, Bloomfield, N. J.
Clewell, Emerson H. (1) 5 E. Poplar St., West Nanticoke
Cobraene, Virginia W. (1) 99 Spruce St., Bloomfield, N. J.
Coleman, Shirley J. (1) Beavertown
Connell, Emma G. (1) 12 S. Swatthmore Ave., Ridley Park
Conrad, Calvin H., Jr. (4) 11 E. Pine St., Selinsgrove
Conrad, James H. (3) 200 Catawissa Ave., Sunbury
Conrad, Theron W. (1) 200 Catawissa Ave., Sunbury
Cope, Roy H. (1) 7103 Summers Rd., Philadelphia 38
Cosgrove, Nancy J. (2) 202 S. Maple St., Mt. Carmel
Coulson, Merle A. (1) N. Main St., Biglerville
Crisman, Patricia A. (1) Summerhill
Culp, Harry C., Jr. (1) 212 S. Front St., Sunbury
- Day, Gilbert O., Jr. (1) 123 N. Market St., Selinsgrove
Dahlgren, Carl E. (1) 918 Park Ave., Williamsport
Dahlgren, Virginia M. (3) 210 Broad St., Montoursville
Davis, Donald R. (3) 335 E. Third St., Berwick
Davis, Thomas R. (1) 1141 Susquehanna Ave., Sunbury
Davison, Mary C. (1) 312 S. Market St., Selinsgrove
Deekard, Frederick C. (1) 10 E. Mill St., Selinsgrove
Decker, Barbara (3) 7613 Mountain Ave., Melrose Park
Demarest, Dorothy E. (1) 864 Summit Ave., Hackensack, N. J.
Deppen, Thomas E. (3) Herndon
Derrick, Robert T. (1) 100 N. Front St., Sunbury
Derr, Donald J. (3) Buck Run
Derr, Jean E. (1) 223 Prange St., Selinsgrove
Devine, John G. (1) 1132 Center St., Ashland
Dieffenderfer, James W. (1) R. D. No. 2, Millinburg
Diehl, John E. (1) R. D. No. 1, Millinburg
Dietz, Voylet L. (1) 627 Locust St., Wrightsville
Dilline, Jacquelyn T. (1) Box 222, R. D. No. 3, Muncy
Dimmick, George C. (3) 708 Front St., Northumberland
Doig, Richard R. (3) 1215 Main St., Honesdale
Doran, John B. (3) 105 Highland Ave., Downingtown
Dornsife, Margaret W. (1) 10 S. Walnut St., Mt. Carmel
Dornsife, Robert L. (1) Hobart St., Gordon
Dove, Lewis T., Jr. (2) 311 Water St., Northumberland
Dowd, Patricia A. (1) 101 Essex Ave., Bloomfield, N. J.
Driscoll, Joseph P. (2) 11 N. High St., Selinsgrove
Duncan, Burde A., Jr. (2) Seventh and Duke Sts., Northumberland
Duncan, Charles H. (3) 1006 Market St., Sunbury
Dunn, Melvin L. (3) 121 S. Enola Drive, Enola
Durden, Rowie V. (1) Greenwich Towers, Greenwich, Conn.
- Eagan, Martin J. (2) 311 Ampere Parkway, Bloomfield, N. J.
Easton, Barbara J. (1) 558 Glenwood Ave., Johnstown
Eecker, John L. (2) 94 Prospect St., Nanticoke
Eichmann, Dorothy J. (1) 206 E. Lavender Rd., Wildwood Crest, N. J.
Ejdys, Leonard (2) R. D. No. 1, Crofton
Ellis, Gladys L. (2) 310 S. Market St., Muncy
Erdman, Daniel R., Jr. (2) 123 N. Eleventh St., Sunbury
Ezerodi, Edna M. (1) 979 Richter Ave., Scranton 10
Fettrich, Nancy A. (1) 3611 209th St., Bayside, L. I., N. Y.
- Faddis, P. Elaine (3) 1101 Stirling St., Coatesville
Fague, Marianne E. (2) 113 S. Queen St., Lanester
Faust, Burdell S. (2) 511 Second St., Weatherly
Fay, Sally Jane (2) 511 N. Laurel St., Hazleton
Felker, Richard E. (1) R. D. No. 1, Middleburg
Fenstermacher, Gene (1) 1018 N. River Ave., Sunbury
Fenstermacher, Robert J. (2) 1062 Masser Ave., Sunbury
Ferguson, Althea J. (2) 10 S. Main St., Millerstown
Fetheroff, Ella Jane (1) Freeburg

STUDENT ROSTER

- Fisher, Millard G. (1) 215 E. Ninth St., Berwick
 Fisher, William Donald (1) 716 N. High St., Selinsgrove
 Fitzpatrick, Thomas R. (1) 350 Awl St., Sunbury
 Fleming, Joseph R. (1) 52 Highfield Rd., Bloomfield, N. J.
 Fleming, Ray E. (3) 219 Seventh St., Northumberland
 Fogel, Glenn N. (1) 521 Edison Ave., Sunbury
 Foltz, Chiri L. (3) 1 N. Main St., Reedsville
 Foltz, Susan (2) 816 Broad St., Collingsdale
 Ford, Edward H. (1) 903 Market St., Sunbury
 Fosselman, Donald (1) 210 N. Fourth St., Newport
 Foster, William J. (2) Bristol R. D. No. 2, Newportville
 Fulmer, Dale A. (1) R. D. No. 1, Danville
 Fyler, Richard L. (1) R. D. No. 2, Millerstown
- Gacomo, V. Carl (2) 137 W. Hand Ave., Wildwood, N. J.
 Gardner, Dorothy E. (1) 2528 Union St., Allentown
 Galeman, C. Dale (1) Box 135, Elysburg
 Gearinger, Jack W. (2) 82 N. Iron St., Bloomsburg
 Gehris, James C. (2) 119 E. Fifth St., Berwick
 Getsinger, Mary Ann (1) 400 W. Maple Ave., Wildwood, N. J.
 Giauque, Margot H. (6) University Heights, Selinsgrove
 Giuliano, Neil (1) 171 Spruce St., Bloomfield, N. J.
 Gloster, Francis A. (1) Pickertown Road, Eureka
 Goetz, Robert L. (1) R. D. No. 1, Millerstown
 Gordon, Lois V. (1) 344 Washington Ave., Union, N. J.
 Gottschall, Charles L. (1) 319½ Orange St., Northumberland
 Gow, John III (3) Box 515, Lattintown Rd., Marlboro, N. Y.
 Greeger, Alice M. (2) 117 Kathmere Rd., Havertown
 Greenly, Harold S. (3) R. D. No. 2, Millville
 Grund, Charles H. (2) 517 S. Eleventh St., Reading
 Guise, Elizabeth A. (1) R. D. No. 1, Biglerville
 Gumble, Doris E. (3) Paupack
 Guyer, Floris L. (3) Tipton
- Haffly, Paul R. (3) 301 W. Main St., Belleville
 Hains, Herbert R., Jr. (2) 172 N. Seventeenth St., East Orange, N. J.
 Hample, Dolly L. (2) 814 S. Cambria St., Belwood
 Hand, Jay L. (3) Muir
 Hanis, George F. (1) 350 E. Berner Ave., Hazleton
 Harder, Jacob B., Jr. (2) 1604 Letchworth Rd., Camp Hill
 Harter, Forrest J. (3) 319 Burchfield St., Harrisburg
 Haupt, Charles R. (2) 210½ Church St., Sunbury
 Hazeltine, Frederick (2) 318 N. Eleventh St., Sunbury
 Heathcote, Patricia F. (1) 229 E. Cottage Place, York
 Heitman, Lester C. (1) 514 Rural Ave., Williamsport
 Heim, J. William (1) 928 Weiser St., Reading
 Heller, Kathryn E. (1) 208 Washington Park, Nazareth
 Heltter, Nancy J. (1) 223 Oak St., Ephrata
 Henderson, Alvin R. (3) 1331 Emory Circle NW, Atlanta, Ga.
 Henninger, Robert J. (2) 91 King St., Northumberland
 Herb, Marion A. (1) 29 Oakley Ave., Summit, N. J.
 Herb, Paul J. (3) R. D. No. 1, Sunbury
 Herman, Dean A. (1) Wysox
 Hess, Charles I. (2) 363 King St., Northumberland
 Hill, Betsy Jane (1) 3322 Beale Ave., Altoona
 Hill, Jean F. (2) 350 Awl St., Sunbury
 Hill, Kenneth R. (1) 116 Allen St., West Hazleton
 Hoover, Lillian L. (3) 905 Third Ave., Sterling, Ill.
 Hoover, Robert S. (1) 15 W. Main St., Elizabethtown
 Horoschak, John (1) 133 E. College Ave., Atlas
 Hort, JoAnn M. (3) 517½ Catawissa Ave., Sunbury
 Hospodar, John, Jr. (1) R-938 James St., Hazleton
 Houser, Stanley P. (1) 87 Chestnut St., Lewistown
 Houtz, M. Patricia (3) 101 Fairmount Ave., Sunbury
 Howling, Roger C. (3) 8 LaSalle Rd., Upper Montclair, N. J.
 Hrkman, Daniel (3) 136 Singer St., Johnstown
 Huntington, Clair I. (3) West Milton
 Hutchison, Marjorie B. (1) Shirley-Ayr Farms, Mount Union
- Ingold, William G. (1) 31 Grove Ave., Verona, N. J.
- Jackson, Mary Jane (3) 112 E. Twenty-fifth St., Wildwood, N. J.
 Jacques, Adah Jeanne (1) 11 N. High St., Selinsgrove
- Janson, Doris E. (3) 886 Prospect St., York
 Jenkins, Thomas M. (3) 645 Dorian Rd., Westfield, N. J.
 Jessen, Mary Jane (1) 824 N. E. Fourth Ave., Camas, Wash.
 Jochem, Berniece E. (1) 215 Pateron Ave., E. Rutherford, N. J.
 Johnston, Harry R. (1) 22 W. Otterman St., Greensburg
 Jones, Maude B. (1) 162 N. Marshall St., Shamokin
 Jones, Paul R. (2) 12 N. Eighth St., Shamokin
 Jones, Richard K. (1) 121 W. Elm St., Hazleton
 Joyce, William Gordon (1) R. D. No. 1, Bridgeton, N. J.
- Kahler, Jeanne L. (3) 345 Walnut St., Nazareth
 Kallir, Rosemary M. (3) 285 Riverside Rd., New York, N. Y.
 Kautner, Ott B. (1) 508 N. Market St., Selinsgrove
 Kearns, Richard L. (1) Beavertown
 Keller, Gulielma K. (1) Jefferson, Md.
 Keller, Juanita B. (1) Jefferson, Md.
 Kelley, Frederick, Jr. (1) 157 Walnut St., Sunbury
 Kelly, Gregory (2) 329 Fairview Ave., Ambler
 Kelz, James W. (1) Maple Ave., Honesdale
 Kepner, Lillian M. (1) 224 Washburn Ave., Baltimore 25, Md.
 Kilbourne, Arthur L. (1) Stewartstown
 Kimble, James D. (1) 606 E. Second Ave., S. Williamsport
 Kirchman, Edward J. (3) 218 Park Ave., Milton
 Kiss, Isabel (1) Box 112, Marlboro, N. Y.
 Kissinger, Robert P. (1) Freeburg
 Kleeman, Carolyn H. (1) 103 Tuscan Rd., Maplewood, N. J.
 Kline, Susan A. (3) 531 E. Third St., Bloomsburg
 Klingler, Joan L. (2) McClure
 Klingler, June E. (2) Winfield
 Koelt, Andrew A. (3) 202 Samuels Ave., Hazleton
 Koch, Nancy L. (3) 26 W. Shore Rd., Manhasset, N. Y.
 Kohlweiss, Gertrude M. (3) 212 Merrick Ave., Merrick, N. Y.
 Korkuch, Edward J. (3) 919 Race St., Shamokin
 Kost, R. Nelson (3) 219 S. York St., Mechanicsburg
 Krogman, George W. (1) 123 W. Burke Ave., Wildwood, N. J.
 Kundis, Harold (1) 523 N. Maple St., Mt. Carmel
 Kunkle, Brady L. (3) Fairview St., Port Royal
 Ladika, Joseph A. (3) 115 N. Vine St., Mt. Carmel
 Lamade, John Budd (6) 1608 James Rd., Williamsport 39
 Larsen, Jack C. (2) Harborton, Va.
 LaRue, Kay W. (1) 12 Molhegan Village, Tuckahoe Rd., Tuckahoe, N. Y.
 Latta, Margaret H. (1) 393 Pine St., Lockport, N. Y.
 Lau, Grace E. (1) 112 Main St., Spring Grove
 Lauver, Raymond C. (3) Richfield
 Lease, Barbara J. (2) 143 W. Main St., Somerset
 Leaser, Mildred R. (3) 238 S. Front St., Sunbury
 Lehman, Mary E. (2) Newville
 Leisingring, Frances M. (1) Bear Gap
 Lenker, Kenneth A. (1) 114 Ninth St., Sunbury
 Leshner, Charles M. (6) R. D. No. 1, Northumberland
 Leshock, Taenique G. (1) Mahanoy St., Trevorton
 Lewis, Faye R. (1) 30 E. Ruddle St., Conhale
 Linn, Donald A. (1) Harvard St., Lewistown
 Lockwood, Anne M. (3) 200 Poplar Ave., Wayne
 Lombard, Bernice D. (3) 222 W. Martin Lane, Norwood
 Lorrain, Ruth (1) 362 Jerome Ave., Williamsport
 Lutz, Joyce (1) 121 W. Pine St., Mahanoy City
 Lybarger, N. Frances (1) Box 131, Lampeter
- MacNeil, Audrey E. (2) Harding Highway, Richland, N. J.
 McAllister, Elwood M. (1) 705 Queen St., Northumberland
 McCahan, Carolyn J. (2) Milford St., Port Royal
 McCune, John C. (6) Main St., Middleburg
 McGrath, Ethel M. (1) 24 Floyd Ave., Bloomfield, N. J.
 McHenry, Marjorie A. (1) R. D., Stillwater
 McKeever, Grace J. (3) R. D. No. 1, Harrisburg
 McKeever, Jacquelyn L. (1) 1107 Third St., Catasauqua
 McNally, Robert L. (6) 662 Wallace St., Northumberland
 McNeven, Mary H. (1) 604 Tompkins Ave., Mamaroneck, N. Y.
- Madden, Edward D., Jr. (1) 320 Park Ave., New York, N. Y.
 Manley, James W. (2) 1113 Woodmont Ave., New Kensington
 Manning, Everett M. (3) 126 N. Seventeenth St., E. Orange, N. J.

STUDENT ROSTER

Marek, Gardiner (2)	25 East Ave., Atlantic Highlands, N. J.	Rarick, Lorraine F. (1)	N. Warren St., Orwigsburg
Martin, Alfred (2)	207 N. Park St., E. Orange, N. J.	Rau, Charles F. (3)	112 N. Market St., Selinsgrove
Martin, Martha J. (2)	27 S. Third St., Shamokin	Raup, Bettyjane (3)	111 Reagan St., Sunbury
Martz, Doris A. (1)	123 Vine St., Sunbury	Raup, Columbus H. (4)	1120 E. Chestnut St., Sunbury
Mathews, Jean E. (1)	51 Washington St., Middletown, N. Y.	Reaver, Mildred K. (1)	R. D. No. 1, Gettysburg
Mattson, Dolores M. (4)	R. D. No. 1, Coatesville	Reese, Daniel G. (2)	127 Poplar St., Kingston
Mazura, Walter C. (1)	935 Sedalia St., Avalon 2	Reifsnider, Justine M. (3)	323 E. Hanover St., Hanover
Meek, Rebecca (2)	33 E. Mt. Pleasant Ave., Philadelphia 19	Reilly, James B. (1)	250 Mott St., Lawrence, N. Y.
Meerbach, John C. (3)	411 Nichols Ave., Stratford, Conn.	Renfer, Lois (1)	129 Rock St., Pittston
Mertz, John R. (4)	32 S. Walnut St., Bath	Renther, John A. (3)	93 North St., Nichols, Conn.
Mertz, Marilyn M. (1)	225 First St., Neenah, Wis.	Ricedorf, Robert E. (3)	W. Main St., Ikesburg
Merz, Kenneth M. (4)	6151 Mascher St., Philadelphia 20	Robinson, Zola A. (3)	371 W. Fourth St., Lewistown
Miller, Janet C. (1)	723 Walnut St., Ashland	Robson, Marion C. (4)	Marlboro, N. Y.
Miller, Mary J. (3)	1320 Hillside Ave., Honesdale	Roessner, George N. (2)	1121 Springfield Ave., Irvington, N. J.
Miller, Robert A. (3)	R. D., Liberty	Rohmann, Charles H. (4)	Box 24, Ehrenfeld
Miller, Vernon J. (3)	812 N. Front St., Sunbury	Rosetti, Roland R. (2)	Box 17, South Canaan
Mincemoyer, Earl H. (3)	24 Tenth St., Milton	Roslauer, Ruth K. (1)	Shadyside Road, Ramsey, N. J.
Minnich, Donald M. (3)	37 Lawrence Ave., Bradford	Rothermel, Jean A. (3)	Klingerstown
Mitch, Clair S. (1)	521 Walnut St., Millinburg	Roush, Frances J. (3)	194 Orange St., Northumberland
Mitchell, Sally (2)	1082 Reagan St., Sunbury	Rowe, Chester G. (2)	310 E. Pine St., Selinsgrove
Molinaro, Albert P. (3)	245 Grove St., Montclair, N. J.	Rowe, Harold C. (3)	438 N. Second St., Lykens
Mouraw, John H. (1)	324 Fiftieth St., Brooklyn, N. Y.	Rudisill, Phyllis K. (1)	810 Winchester Ave., Hillside, N. J.
Moorhead, Gerald E. (2)	R. D. No. 1, Milton	Ruhl, William R. (4)	125 Green St., Millinburg
Morris, Charles A. (4)	1608 Hunter St., Harrisburg	Rumbaugh, James O. (3)	R. D. No. 2, Millerstown
Morris, James W. (1)	116 N. Water St., Selinsgrove	Rumbaugh, Patricia A. (1)	R. D. No. 2, Millerstown
Money, Olive L. (1)	136 S. Poplar St., Mt. Carmel	Santangelo, Louis F. (3)	673 Queen St., Northumberland
Moyer, Marvin R. (3)	571 Queen St., Northumberland	Sarba, Mary Elmina (3)	114 Catawissa Ave., Sunbury
Moyer, Robert E. (2)	R. D. No. 1, Selinsgrove	Satzler, Faye A. (3)	McAlisterville
Mumme, Stanley H. (4)	1279 Highland Ave., Sunbury	Savidge, Frances A. (1)	193 Marshall St., Shamokin
Musser, Carl, Jr. (1)	Kreamer	Schnerr, Kathleen A. (1)	Annex Apts., Hall Square, Nazareth
Musser, Dale L. (1)	Main St., Troxleville	Scholl, Sylvia J. (2)	Port Trevorton
Mussina, Rosemary (3)	619 N. Front St., Milton	Schultz, Fred W. (0)	1008 N. Irving Ave., Scranton 10
Nale, William R. (1)	R. D. No. 1, Lewistown	Schweighofer, Rita F. (4)	R. D. No. 3, Honesdale
Nary, Dorothy J. (1)	Rice Ave., Biglerville	Seybrecht, Lois L. (2)	1026 Centre St., Ashland
Nauss, Julia E. (1)	120 Locust St., Wrightsville	Shafer, Betty A. (1)	State St., Millville
Nicklin, Shirley A. (3)	Marlboro, N. Y.	Shafer, Merrill W. (2)	Grier City, Barnesville
Nitelman, Dorothy H. (4)	937 S. Queen St., York	Shafer, Nelda M. (2)	Grier City, Barnesville
Nolli, Thomas A. (1)	1726 Montour St., Coraopolis	Shaffer, L. Charles (2)	120 Independence St., Selinsgrove
Norris, Joan A. (1)	308 Myrtle St., Susquehanna	Shaffer, Dorothy I. (1)	Box 106, Island Park, Sunbury
Nyer, William E. (1)	R. D. No. 1, Weatherly	Shaffer, Richard W. (3)	602 S. Market St., Selinsgrove
O'Genthal, Wilda (1)	R. D. 2, Lake Juliet, Boonton, N. J.	Sheaffer, Carolyn B. (1)	531 N. Eighth St., Selinsgrove
O'Gara, Robert M. (2)	18 Dodd St., Bloomfield, N. J.	Shetler, Maria J. (3)	321 Chestnut St., Spring City
Orner, Jeanne M. (3)	Bendersville	Shoemaker, Donald H. (2)	217 Gilliland Pl., Pittsburgh 2
Orr, Kenneth D. (1)	162 N. Fourteenth St., E. Orange, N. J.	Short, Albert (2)	Marlboro, N. Y.
Oshirak, Alexander T. (2)	607 Fellows Ave., Lyndwood, Wilkes-Barre	Shotsberger, Betty J. (1)	106 S. Market St., Selinsgrove
O'to, Palmer W. (4)	607 N. Fourth St., Sunbury	Showalter, Shirley J. (3)	Box 32, Millmont
Outerbridge, Warren S. (1)	Shelly Bay, Bermuda	Shney, Mark W. (3)	512 Market St., Millersburg
Owen, James B. (1)	225 N. Rock St., Shamokin	Siemer, Herman H. (1)	Awosting, Hewitt, N. J.
Oyster, Anna M. (3)	807 N. Second St., Sunbury	Siemers, Louise A. (3)	239 Upper Mountain Ave., Upper Montclair, N. J.
Paige, Joyce V. (1)	R. D., Milroy	Slater, Mary Lou (2)	198 Isabella Ave., Irvington, N. J.
Palkovich, Edward J. (1)	252 E. High St., Coaldale	Small, George K. (3)	23 Rossiter Ave., Paterson, N. J.
Parker, David G. (1)	1560 Sheridan Lane, Norristown	Smeltz, William R. (2)	25 S. Eleventh St., Sunbury
Patterson, Robert R. (2)	321 Hazle St., Tamaqua	Smith, Harry L. (2)	Herndon
Paulhams, Lewis O. (3)	112 Iron St., Danville	Smith, Lawrence M. (4)	Freeburg
Penman, Jean E. (3)	18 Front St., Strong	Smith, Lillian (3)	R. D. No. 1, Nescopeck
Peters, James B. (1)	302 W. Main St., Lock Haven	Smith, M. Helen (4)	112 Fairmount Ave., Sunbury
Pfeiffer, Conrad H. (1)	311 Third St., Weatherly	Smith, Ruth E. (1)	Box 353, Davidsville
Pfeiffer, Edward F. (3)	311 Third St., Weatherly	Snyder, Alfred G. (1)	Richfield
Phillips, George W. (3)	Herndon	Snyder, George F. (1)	515 Market St., Millinburg
Phillips, Muriel A. (4)	7 North St., Old Greenwich, Conn.	Solomon, Jack M. (3)	122 Willow St., Athens
Pikulski, Dean P. (3)	1219 S. Webster Ave., Scranton	Solomon, Joseph M. (3)	337 E. Saylor St., Atlas
Pirie, Warren J. (4)	36 Brighton Ave., Bloomfield, N. J.	Southwick, M. Jane (4)	23 Park Circle, Millburn, N. J.
Pitello, Robert A. (1)	201 S. Vine St., Mt. Carmel	Spangler, Jacob M., Jr. (1)	115 W. Fourth Ave., Roselle, N. J.
Ploek, William L. (4)	160 Lenker Ave., Sunbury	Spangler, Roman M., Jr. (0)	926 Reagan St., Sunbury
Popken, Janet L. (3)	7 West View Rd., W. Orange, N. J.	Speyer, Gabrielle P. (4)	60 Gramercy Park, New York, N. Y.
Portzline, Abraham R., Jr. (3)	N. Eighth St., Selinsgrove	Spogen, Marjorie L. (3)	Box 81, Turbotville
Post, Ione J. (2)	9 Scott St., Colorado Springs, Colo.	Spotts, Frederic N. (1)	2625 Lexington St., Harrisburg
Post, Joan B. (2)	31 Highfield Rd., Bloomfield, N. J.	Stagg, Barbara R. (1)	University Heights, Selinsgrove
Poust, William H., Jr. (4)	647 Third Ave., Williamsport	Stahl, Roy E. (1)	31½ Reynold St., Pittston
Prichard, William H. (1)	Bishop Hollow Rd., Newtown Square	Staller, Thomas O. (2)	212 E. Seventh St., Mt. Carmel
		Steigerwalt, Marian C. (4)	155 Columbia St., Schuylkill Haven

STUDENT ROSTER

Sterrett, J. David (2)	714 Braxton Rd., Ridley Park	Walker, John E., Jr. (2)	336 Queen St., Northumberland
Stetler, Richard A. (2)	117 Orange St., Millintown	Wallace, Thomas C. (1)	75 Hillside Ave., Verona, N. J.
Stetser, Harry G. (2)	Ashland Ave., Somerdale, N. J.	Walls, John E. (2)	759 W. Fayette St., Baltimore, Md.
Stirn, Anna (2)	310 Birch St., Scranton 5	Walton, Lucius L. (2)	110 Spring Valley Ave., Hackensack, N. J.
Stock, Gene L. (1)	Main St., Middleburg	Wanbaugh, Doris E. (1)	1100 Mt. Rose Ave., York
Stone, Jesse H. (1)	108 Third St., New Cumberland	Wausock, Irene F. (1)	1228 First Ave., Berwick
Stoughton, Nancy C. (1)	17 Longview Ave., Madison, N. J.	Warren, Margaret C. (1)	6 Baylis Court, Tarrytown, N. Y.
Strawbridge, Irma R. (1)	222 Walnut St., Lemoyne	Waters, Eleanor J. (1)	77 Hoover Ave., Bloomfield, N. J.
Sullivan, Charles A. (3)	229 S. Fourth St., Youngwood	Watkins, Barbara J. (3)	730 N. Rebecca Ave., Scranton 4
Swanger, Priscilla A. (1)	332 Hepburn St., Milton	Way, Marjorie L. (1)	1819 Ferry St., Easton
Swartz, Phyllis I. (1)	230 W. Fifth St., Lewistown	Wegner, Edith M. (1)	151 New St., New Brunswick, N. J.
		Weiler, Emil, Jr. (2)	354 Liverpool Ave., Egg Harbor City, N. J.
Takaeh, John J. (1)	506 Second St., Leechburg	Weller, Carl A. (2)	60 Melvina St., Montgomery
Taylor, Charles W. (2)	Box 136, Elmhurst	Weller, Kent R. (3)	Aristes
Thomas, Doris A. (2)	72 Houston Road, Lansdowne	Welliver, Barbara S. (3)	1909 W. Front St., Berwick
Thomas, George B., Jr. (3)	R. D. No. 3, Johnstown	Westervelt, Richard (3)	36 Charles St., Bloomfield, N. J.
Thomas, Harold E. (0)	713 Edison Ave., Sunbury	Wetzel, Richard L. (3)	218 S. Market St., Selinsgrove
Thomas, Jenn M. (1)	519 Ludlow Ave., York	Wian, Charles R. (1)	159½ Lombard St., Sunbury
Thompson, Marjorie M. (0)	312 W. Walnut St., Selinsgrove	Williams, Lorna M. (1)	321 E. Arch St., Pottsville
Throssel, John W., Jr. (1)	213 Walnut St., Millflintburg	Williams, S. Elaine (1)	50 Llewellyn Ave., Bloomfield, N. J.
Tietbold, Ralph H., Jr. (1)	113 Percy St., S. Williamsport 32	Wilson, Lloyd T. (3)	810 Hurton St., Johnstown
Tomkinson, James B. (1)	2728 Norwood Ave., Merchantville, N. J.	Wilson, Richard L. (4)	136 Market St., Sunbury
Torromeo, Felix J. (1)	55 Harrison Ave., W. Orange, N. J.	Wingert, Janet L. (1)	1305 Alexander Ave., Chambersburg
Trexel, James A. (3)	902 Park Ave., Johnstown	Wissinger, Donald E. (3)	2929 Spruce Ave., Altoona
Troutman, Richard E. (3)	Pillow	Witowski, John J. (3)	113 Warsaw St., Keiser
Tyler, Ray F. (2)	Hummels Wharf	Wohlsen, Donald F. (3)	39 Marshall Road, Yonkers 5, N. Y.
		Wolf, Janet E. (3)	105 Violet St., Johnstown
Ulman, Franklin T. (3)	1115 Walnut St., Williamsport	Wollaston, Edward A. (1)	14 N. Marion St., Warren
Ush, Charles R. (1)	Port Royal	Wolsten, Walter (2)	36½ Nelson Place, Newark, N. J.
Updegrave, Marjorie A. (1)	1712 Beech Ave., Oak Lane, Philadelphia 26	Wright, Anne B. (1)	322 W. Fourth St., Hazleton
		Wright, John H. (1)	322 W. Fourth St., Hazleton
VanDeusen, Janet A. (1)	1018 Church St., Honesdale		
Vandyke, Willis B. (3)	16 Park Place, Lewistown	Yinger, Virginia L. (2)	815 Pontiac Ave., Baltimore 25, Md.
VanVoorhis, Jean C. (2)	W. Bloomfield Rd., Pittsford, N. Y.	Vonghaus, Alice G. (2)	Prospect Ave., Pompton Plains, N. J.
Varner, Robert I. (1)	898 Orange St., Selinsgrove	Yorty, Ann E. (1)	University Heights, Selinsgrove
Venner, Charles A. III (1)	15 State St., Bloomfield, N. J.	Yonhon, Nancy E. (1)	37 S. Atherton Ave., Kingston
Venner, Leslie F. (2)	15 State St., Bloomfield, N. J.	Young, Jean L. (1)	709 Main St., South Williamsport
Vogler, Miriam M. (1)	315 Penn Ave., Hawley	Young, Lois J. (1)	151 S. Wayne St., Lewistown
Volk, David G. (1)	701 Morris Ave., Boswell	Young, Shirley A. (2)	35 S. Tenth St., Quakertown
Vollmers, G. Allan (1)	511 Belvidere Ave., Plainfield, N. J.		
Vreeland, Gladys R. (1)	120 Mill St., Westwood, N. J.	Zerbe, Jeannette E. K. (1)	116 N. Eighth St., Sunbury
		Zerbe, Maynard N. (1)	416 N. Eighth St., Sunbury
Wagenseller, Donald H. (2)	116 N. Market St., Selinsgrove	Zimmerman, Harold C. (1)	R. D. No. 1, Sunbury
Wagner, Paul A. (3)	Box 13, Milroy	Zlock, Charles (1)	276 Third St., Coaldale
Wagner, Walter B. (2)	369 W. Fifth St., Lewistown	Zlock, Evan P. (1)	276 Third St., Coaldale
Waizeneigzer, Edward R. (1)	737 Walnut St., Ashland		

THE ADVERTISERS

We are sincerely appreciative for the great assistance received from our advertisers. We hope that you will give them your support as willingly as they gave theirs.

CONGRATULATIONS AND BEST WISHES

TO THE CLASS OF '49

MINNICH —STUDIO

portraits that live . . .

Your

LANTHORN

Photographer



Odd Fellows Building
MILTON, PENNA.

Telephone 705-J

THE
COLLEGE BOOK STORE
STUDENTS' SUPPLIES



Sheaffer Inks—Pennants

Monogram Stationery

College Keys and Rings

For S. U. Guys and Girls

THE CAMPUS
SNACK BAR

Just off Campus

• •

Open 7 A. M. to 11 P. M.

SUSQUEHANNA UNIVERSITY

(Co-educational)

SELINGROVE, PA.

*For Ninety Years in the Service of
Christian Higher Education*



A college with unusual opportunities

Liberal Arts (A.B.)

Business Administration (B.S.)

Music Education (B.S.)

THE SUMMER SESSION of 8 weeks



For catalog write:

G. MORRIS SMITH, D.D., LL.D., President

Compliments of the
PENRITH SHOP

National Restaurant

We Serve the Finest

SELINGROVE, PA.

GEORGE B. RINE, Florist

11 North Market Street
SELINGROVE, PA.

Store Phone 74-Z Greenhouse Phone 32-Z

CUT FLOWERS and POTTED PLANTS

Specializing in CORSAGES

Compliments of

WILLIAM J. COTT

Druggist

Compliments of

THE FIRST NATIONAL BANK

of SELINGROVE

The Oldest Bank in Snyder County

Established 1864

Compliments of

EBERT'S

5c to \$1.00 Store

SELINGROVE, PA.

Hotel Governor Snyder

WALTER E. PINAND

Prop.

Compliments of

Mengel's Restaurant

3 West Pine St.

SELINGROVE, PA.

For INSURANCE SERVICE — See

ABERDEEN PHILLIPS

127 North Market St.

Phone 68-W

Compliments of

The

American Legion



POST 44

NORTHUMBERLAND, PENNA.

B. K. W. COACH LINE

HUMMELS WHARF, PA.

Charter Trips Solicited

•

For Taxi Service Call — SUNBURY 600

COLONIAL TEA ROOM

MR. AND MRS. ROY BOWERSOX

For Reservations and Parties

Call 48-W

The Gables Motor Court

U. S. Highways Nos. 11 and 15

MR. AND MRS. BOB REED, *Proprietors*

P. O. Box 131 SHAMOKIN DAM, PA.

DOWNING'S

POTTERY and GIFT SHOP

½ Mile North of Selinsgrove

Routes 11 and 15

Compliments of

Shikellamy Sandwich Shop

Routes 11 and 15

**The
Selinsgrove Times
Tribune**

Printers of

**The Susquehanna and
The Susquehanna Alumnus**

F. A. BRILL CO.

FLOOR COVERINGS
AWNINGS — SHADES
DRAPERIES

Phone 2180

419 Market Street SUNBURY, PA.

STOCKS and BONDS

Bought — And — Sold



Stock Exchange Orders
Executed On Any Exchange

MEMBERS

PHILADELPHIA STOCK EXCHANGE



Theron D. Conrad & Co., Inc.

416 Market Street, SUNBURY, PA.

Telephone 2835

Prompt Friendly Service for Investors

For
NEWS —
of FOLKS
You Know



SUNBURY DAILY ITEM

Watch Repair — Susquehanna Jewelry
Fountain Pens and Pencils

W. M. VALSING

Jeweler SELINGROVE, PA.

Sanders Appliance Store

G. E. APPLIANCES

241 Market St. SUNBURY, PA.

Telephone 546

Compliments of

Melrose Restaurant

TASTY DUTCH HOMECOOKING

SELINGROVE, PA.

SNAVELY'S

College Furnishings
and Shoes

**Lottie Kemberling
Dutch Pantry**

Pennsylvania Dutch Cooking

WE ENJOY CATERING TO PARTIES

Phone 67-R-11

Sunbury—Selingsrove Highway

Miller Bros. Shoe Store

225 Market St.

SUNBURY, PA.

SELINGSGROVE WATER SUPPLY CO.



FRANK A. EYER
President

H. J. JARRETT
Superintendent

JAMES McCLURE
Treasurer

MIDDLE CREEK VALLEY TELEPHONE COMPANY

Bell System

FRANK A. EYER
Treasurer

Secretary

General Manager

PROFESSIONAL DIRECTORY

G. M. BOGAR, M.D.

8 North Market Street

Telephone 137

R. A. HEINBACH, M.D.

3 South Market Street

Telephone 84

Residence Telephone 174

H. F. STRAUB, M.D.

300 West Walnut Street

Telephone 102

F. C. WAGENSELLER, M.D.

116 North Market Street

Telephone 207

B. SHIPE, D.D.S.

30 South Market Street

Telephone 270-W

Residence Telephone 270-Z

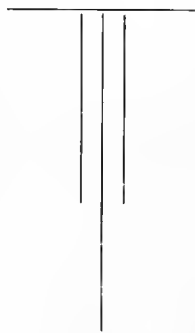
D. M. STIBER, D.D.S.

108 South Market Street

Telephone 120-Z

Residence Telephone 142-X

HARRISBURG LUMBER COMPANY



A Complete Lumber Industry

HARRISBURG, PENNSYLVANIA

WHITMER-STEELE COMPANY

Manufacturers of

PINE, HEMLOCK, AND HARDWOOD LUMBER
MINING TIMBER AND TIES

NORTHUMBERLAND, PA.

BENJAMIN T. MOYER

FURNITURE of Distinction

Phone — 2077

21-23 North Fifth St. Sunbury, Pa.

Compliments of

JOS. L. MENTZ

The Stationer

249 Market Square SUNBURY, PA.

HACKETT'S HARDWARE STORES

HARDWARE, APPLIANCES, GIFTS,
PAINT, GLASS

325 Market Street, Sunbury
706 Market Street, Sunbury
Market and Walnut Streets,
Middleburg

LEARN'S

Fine Foods and Stationery

11 South Market Street

SELINGSGROVE, PA.

Launderers **MERIT** *Cleaners*

Phone 146

SUNBURY, PA.

MARKLEY-ALTVATER

MEN'S AND BOYS'

BETTER CLOTHES

LADIES' TAILORED

SUITS AND COATS

343 Market St. SUNBURY, PA.



BOGAR LUMBER CO.

Contractors — Builders

Manufacturers of and Dealers in
LUMBER, BUILDING SUPPLIES

Phone 285

SELINGROVE, PA.

Compliments of

“DOC” GLASS

When Patronizing These Advertisers

Please Mention

THE LANTHORN

WLOUGH-WEIS LIBRARY
SUSQUEHANNA UNIVERSITY
UNIVERSITY DRIVE, PA 17870

SUSQUEHANNA UNIVERSITY LIBRARY

3 4998 0020 9664 7

SUSQUEHANNA UNIVERSITY LIBRARY
WLOUGH-WEIS LIBRARY
DOES NOT
CIRCULATE
ARCHIVES
SUSQUEHANNA UNIVERSITY

