

# LANCORN


1951



BLOUGH-WALKER LIBRARY

SUSQUEHANNA UNIVERSITY  
BETHLEHEM, PA 17815

LOGS  
PROPERTY OF  
BUREAU OF LAND  
MANAGEMENT



Digitized by the Internet Archive  
in 2011 with funding from  
Lyrasis Members and Sloan Foundation

<http://www.archive.org/details/lanthorn195100susq>



# Lanč

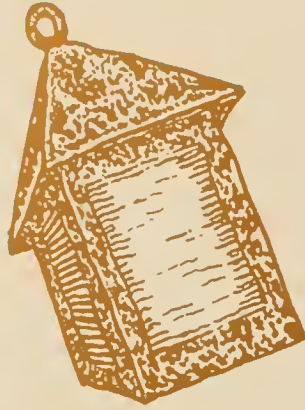
1951



# hopn

Presented by  
The JUNIOR CLASS of  
SUSQUEHANNA UNIVERSITY  
SELINSGROVE, PENNSYLVANIA





## FOREWORD

**D**URING the ninth century A.D. in gracious England, Alfred the Great was trying to figure a systematic way by which to arrange his day. Alfred wished to give an exact division of time and while there were no clocks or watches in those days it was necessary to have some plan for keeping the time so that movements and operations in his large household might proceed without confusion. Alfred invented a plan.


Alfred observed that the wax candles which were used in his castle burned very regularly. He ordered experiments to be made, and finally by means of them he determined on the size of the candles that would burn three inches in an hour. The candles were then made four feet long and each inch marked represented a third of an hour.

However, some difficulties were encountered. The wind which blew through the palaces in those days, even in royal residences, blew at the flames of those horological candles causing an irregularity in the burning of the wax. This of course altered the burning time. Alfred devised a way to protect the candles which were to regulate his day. He ordered horn to be placed in hot water, a process which caused the horn to soften, with the result that it could be made very thin and fashioned into any shape. Alfred had thin plates of horn prepared, made a box with sides cut out, and set the horn in them within which the time-keeping candles could burn undisturbed. Consequently King Alfred has been given the credit for having invented what was then known as a Lanthorn.

Alfred has shown his leadership in other ways. He repaired castles and towns, organized municipal governments and revised laws of the land. Yes, Alfred was the inventor, the educator, the reformer, the leader of the day. Just as Alfred was effective in bringing light to his darkened castle, so was he equally effective in bringing intellectual and moral light to a world of darkened minds. He sought to cultivate peace among peoples, social welfare and understanding. Though he did not achieve education for the masses, his efforts did result in the founding of the great University of Oxford.

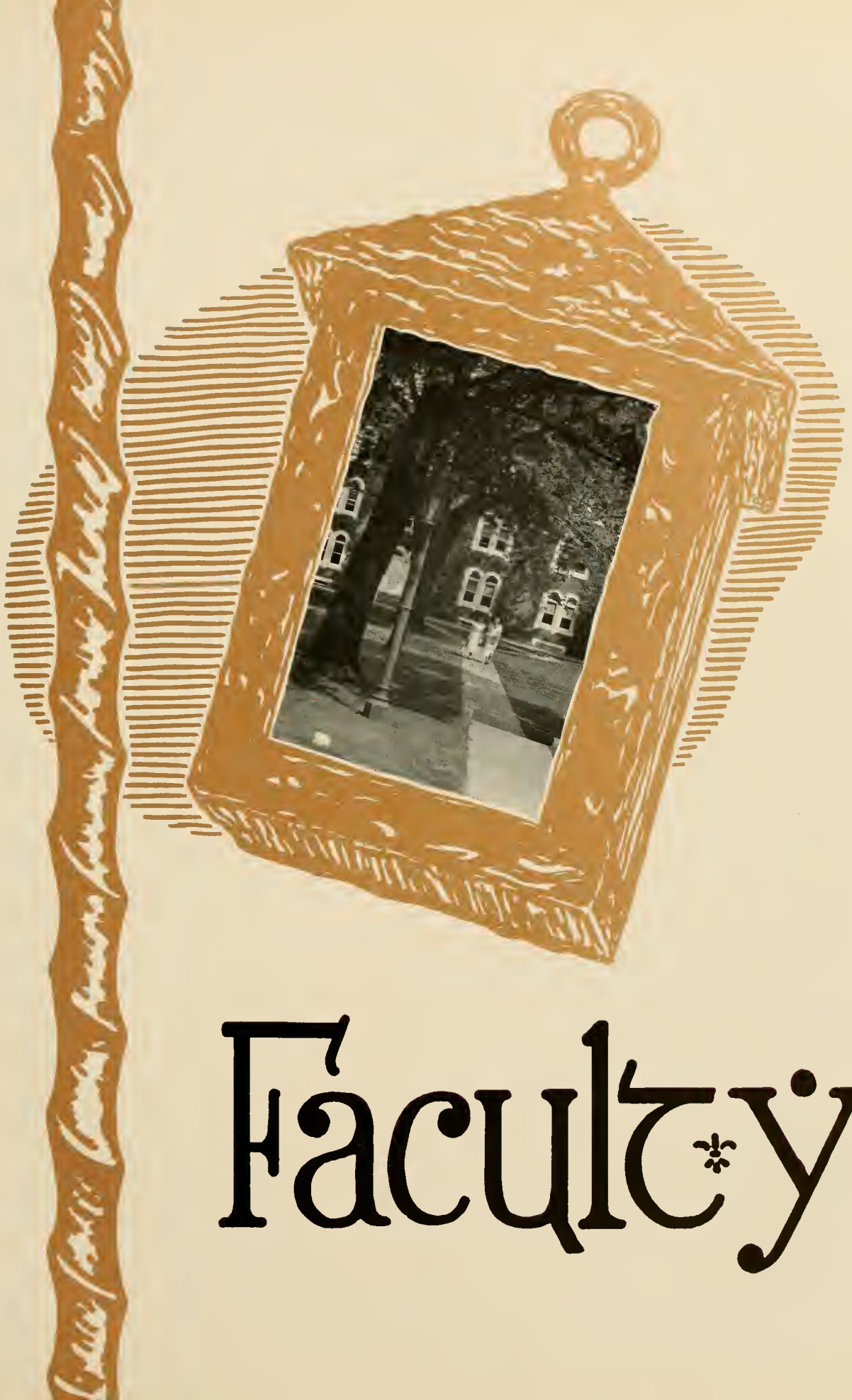
The Lanthorn is an example of the work of this man and a reflection of his foresight and leadership. Our LANTHORN is representative of an institution that reflects similar ideals and aspirations. May the pages of this, our LANTHORN, reflect the achievements and characteristics of a student body who wishes to have the qualities that are characteristic of Alfred, the inventor of the LANTHORN.





Contents  
Faculty  
Classes  
Athletics  
Activities  
Organizations





# Faculty



PRESIDENT SMITH

## President of the College

### G. MORRIS SMITH

*President*

B.A., Roanoke College 1911; M.A., Princeton University 1912; Diploma, Lutheran Theological Seminary, Philadelphia 1919; D.D., Roanoke College 1928; Graduate study, Columbia University; LL.D., Bucknell 1940.





DEAN GALT

## Dean of the College

RUSSELL GALT

*Dean of the College*

B.A., Muskingum College 1919;  
M.A. 1920 and Ph.D. 1936, Colum-  
bia University; School of Oriental  
Studies, Cairo, Egypt, 1920-22.

## Dean of Women

ERMA L. SAMBROOK

B.A. 1944 and M.A. 1948,  
Bucknell University.



DEAN SAMBROOK

## Preceptresses



MISS ATHALIA TABITHA KLINE

B.A., Randolph Macon Woman's College 1922; M.A., Duke University 1925; Graduate Study, University of Madrid 1949.



MRS. CAROL KLINE

Preceptress in Hassinger Hall; B.A., Hood College 1917

## Philosophy and Languages

ROBERT F. W. MEADER

*Instructor in Latin and Art*

B.A., Middlebury College 1929; M.A., University of Pennsylvania 1931; Graduate study, Harvard University.

BENJAMIN LOTZ

*Assistant Professor in Religion and Philosophy*

B.A., Wittenberg College 1923; B.D., Philadelphia Seminary 1928.

ERMA L. SAMBROOK

*Instructor in French*

B.A., 1944 and M.A., 1948, Bucknell University.

ATHALIA TABITHA KLINE

*Instructor in French and Spanish*

B.A., Randolph Macon Woman's College 1922; M.A., Duke University 1925; Graduate study, University of Madrid 1949.



RUSSEL WIEDER GILBERT

*Professor of German*

B.A., Muhlenberg College 1927; M.A., 1929 and Ph.D., 1943, University of Pennsylvania.

AUGUSTUS WILLIAM AHL

*Professor of Greek*

Diploma, Gymnasium and Seminary, Breklum, Germany, 1908; M.A., Susquehanna University 1912; Ph.D., Vanderbilt University 1920; Graduate study, Peabody College for Teachers, Nashville, Tenn.

# Business and Commercial Department



## LENORA ALLISON

*Assistant Professor of Business Education*

B.A., Bowling Green College of Commerce 1930; Ed.M., University of Pittsburgh 1937.

## WALDEMAR ZAGARS

*Assistant Professor of Economics and Business Administration*

Dr. of Economics, University of Riga, Latvia, 1931.

## GROVER C. T. GRAHAM

*Associate Professor of Economics and Business Administration*

B.A., William Jewell College 1909; M.A., Brown University 1909-11; Graduate study, Brown University.

## THOMAS ARMSTRONG, JR.

*Assistant Professor of Business Administration*

B.S., Wesleyan University 1928; M.B.A., Harvard University 1930; Ed.D., Temple University 1947.

## JOHN K. SOULE

*Instructor in Accounting*

B.S., Kent State University 1944; M.B.A., University of Denver 1947.

## KARL WILLIAM GEISINGER

*Instructor in Psychology*

B.A., University of Pennsylvania 1947; Ed.M., Temple University 1948; Graduate study, University of North Carolina 1949.

## KENNETH B. WATERBURY

*Assistant Professor of Education and Psychology*

B.S., 1930, Ed.M., 1933, and Ed.D., 1939, Pennsylvania State College.

## Social Science

## FREDERICK C. STEVENS

*Assistant Professor in Sociology and History*

B.A., University of Minnesota 1926; M.A., Columbia 1932; Graduate study, Columbia University.

## WILLIAM ADAM RUSS, JR.

*Professor of History and Political Science*

B.A., Ohio Wesleyan 1924; M.A., University of Cincinnati 1926; Ph.D., University of Chicago 1933.



# Physical Sciences



PHILIP ALFRED KLINGLOF

*Instructor in Physics*

B.A., 1931, M.A., 1932, Clark University.

HOWARD E. DEMOTT

*Instructor in Science*

B.S., State Teachers College, Bloomsburg 1935; M.S., Bucknell University 1940.

JOHN JACOB HOUTZ

*Associate Professor of Chemistry and Mathematics*

B.A., Susquehanna University 1908; M.S., Louisiana State University 1912; Sc.D., Carthage College 1933.

GEORGE MERRIT ROBISON

*Associate Professor of Mathematics*

B.A., 1916, M.A., 1917, and Ph.D., 1919, Cornell University.

ROBERT LOUIS AMY

*Assistant Professor of Biology*

B.S., Thiel College 1941; M.S., University of Pittsburgh 1949.

ROBERT TUNIS HOWLING

*Instructor in English*

B.A., Rutgers University 1942; M.A., New York University 1948.

ARTHUR H. WILSON

*Professor of English*

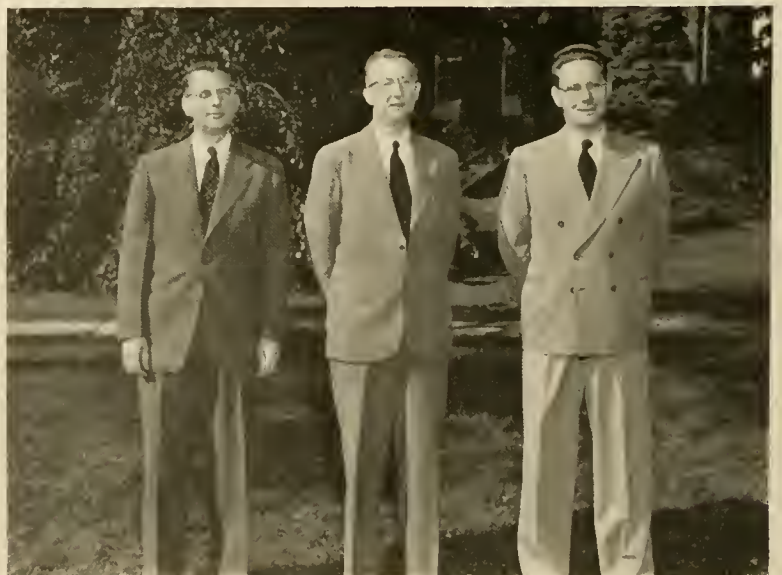
B.A., 1927, M.A., 1929, and Ph.D., 1931, University of Pennsylvania.

AXEL R. KLEINSORG

*Instructor in English and Dramatics*

B.S., Temple University 1935; Graduate study, State University of Iowa and Temple University.

# English Department





# Athletics

RUTH M. SPARHAWK

*Instructor in Physical Education*

B.A., 1945, M.A., 1950, Kent State University; Graduate study, University of Akron.

AMOS ALONZO STAGG

*Advisory Coach*

B.A., Yale University 1888; Graduate of International Y. M. C. A. College, Springfield, Mass., 1891; M.P.E., International Y. M. C. A. College 1912; M.A., Oberlin College 1923; LL.D., College of Wooster, 1933; Graduate study, Yale University; Dr. of Pedagogy, Susquehanna University 1949.



AMOS ALONZO STAGG, JR.

*Professor of Physical Education*

Ph.B., 1923 and M.A., 1935, University of Chicago; M.A., Columbia University 1941; Graduate study, University of Chicago.

JOHN WITOWSKI

# Library

*Librarian* - - - Miss KOLPIN

*Assistant Librarian*

MRS. CHARLES COOK

*Student Assistants*—BEN ALTER, BARBARA DECKER, KERMIT HORNING, BERNICE JOCHEM, CAROL ANN LUTHER, BOB STEFFY



# Conservatory of Music

**ELBERT DIXON HASKINS**

*Instructor in Singing, Choral Conducting*

B.A., University of Michigan 1923; M.A., New York University 1939; Graduate study, Paris, France, New York City, and Feagin School of Dramatic Art, New York City.

**FRANCES MARIE BRUNKHORST**

*Instructor in Voice*

Mus.B., Central College 1941; Special study, Kansas City Conservatory; Graduate study, Columbia University.

**ALICE H. GIAUQUE**

*Instructor in Public School Music Methods*

B.S. in Music Education 1937, and M.A. 1940, Columbia University.

**ALLEN FLOCK**

*Instructor in Band Instruments*

B.S., Susquehanna University 1947; M.A., Columbia University 1949.



**FREDERIC C. BILLMAN**

*Instructor in Piano and Theory*

Mus.B., Susquehanna University 1936; M.A., Columbia University 1941; Graduate study, Juilliard Institute 1946-47.

**NANCY BOWMAN HATZ**

*Instructor in Harmony, Band Instruments*

B.S. in Music Education, Lebanon Valley College 1936; M.A., Columbia University 1941.

**RUSSELL CONDRAN HATZ**

*Assistant Professor of Violin, Harmony, Band, and Orchestra*

B.S. in Music Education, Lebanon Valley College 1937; Graduate study, Temple University, Juilliard Institute; M.A., Columbia University 1942.

**MARY K. POTTEIGER**

*Instructor in Pianoforte, Sight Singing*

Mus.B., Susquehanna University 1925; Graduate study, New York University.

**PERCY M. LINEBAUGH**

*Professor of Pipe Organ, Pianoforte, Counterpoint*

Mus.B., Lebanon Valley College 1917; Graduate study, New York University, Peabody Conservatory of Music.



## Office of Admissions



*Admissions*—MRS. THOMAS E. COXE, Registrar; MRS. FRIDERICK C. STEVENS

*Secretary to the Dean*—MRS. WILLIAM D. MARKS

## Dispensary



MISS BERTHA HEIN, R.N.

## Bursar's Office



*Finances* - - - MISS OLIVE BARRY

*Secretary to the President*—MISS JANET ROHRBACH, B.S.

## Publicity Office



MISS RUTH E. McCORKILL, B.S.  
and RICHARD W. STURVELT





# Classes



Left to Right—L. Santangelo, D. Wissinger, M. Shetler, W. Buffington.

# Senior Class

## OFFICERS

2

<i>President</i>	- - - - -	DONALD WISSINGER
<i>Vice President</i>	- - - - -	LOUIS SANTANGELO
<i>Secretary</i>	- - - - -	MARIA SHETLER
<i>Treasurer</i>	- - - - -	WILBUR BUFFINGTON

As Seniors, we are looking forward to graduation and to the years that follow. We've learned much in our four years at S. U. to prepare us for the future. What is important is that we apply this learning throughout life. We can then face the world with confidence and ease.

Long will we look back and remember the good times we had at Susquehanna. We shall always be proud of our Alma Mater and have the highest respect for it.

**BARBARA ANDERSON**

9 Shady Lane  
Johnstown, Pa.

*Liberal Arts*

Omega Delta Sigma 2, 3, 4, President 4; Student Christian Association 1, 2, 3, 4; Biemic Society 1, 2, 3, 4, Secretary-Treasurer 3; Vice-President Council 3; Women's Athletic Association 1, 2, 3, 4; Women's Student Council 4; Intramural Sports 1, 2, 3, 4; Inter-Sorority Council 4.

**H. DANIEL BEIGH, JR.**

2310 Hoffer St.  
Harrisburg, Pa.

*Business Administration*

Phi Mu Delta 2, 3, 4; Student Christian Association 2, 3, 4; Business Society 2, 3, 4; Basketball Team 2, 3; Intramural Sports 3, 4; Varsity Tennis 3, 4.

**CECILIA AUMAN**

R. D. 1, Box 78E,  
St. Marys, Pa.

*Music Education*

Sigma Alpha Iota 2, 3, 4, Sergeant-at-Arms 4; Student Christian Association 1, 2, 3, 4; Symphony Orchestra 2; Susquehanna Singers 2, 3; Operetta 2; May Day 3; Who's Who 4.

**EARL BERNSTINE**

2375 Hillside Ave.  
Williamsport, Pa.

*Pre-Medical*

Phi Mu Delta 2, 3, 4; Biemic Society 2, 3, 4, Vice President 3; Susquehanna Players 3; Men's Student Council 3, 4, Vice President 4; Football Team 1, 2, 3, 4; Intramural Sports 1, 2, 3, 4.

**FRED AUMAN**

659 Duke St.,  
Northumberland, Pa.

*Music Therapy*

Phi Mu Delta 2, 3, 4; Symphony Orchestra 1, 2, 3, 4; Band 1, 2, 3; *Susquehanna* Singers 2, 3; *Susquehanna* Staff, 1, 2, 3, 4; Intramural Sports 1, 2.

**ROBERT L. BLOCK**

5725 N. Park Ave.  
Philadelphia 41, Pa.

*Business Administration*

Business Society 2, 3, 4.

**DONALD BABICS**

260 Main St.  
Conemaugh, Pa.

*Business Administration*

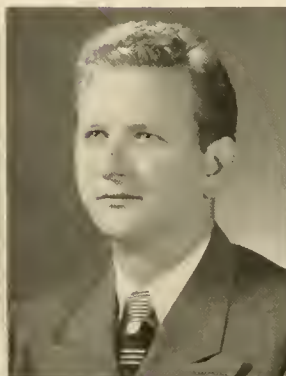
Business Society 1, 2, 3, 4.

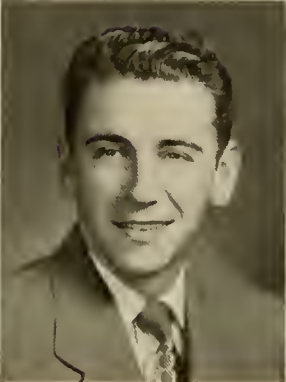
**VIRGINIA BLOUGH**

310 Hickory St.  
Johnstown, Pa.

*Commercial Education*

Kappa Delta Phi 1, 2, 3, 4, Vice President 3, Financial Secretary 4; Student Christian Association 1, 2, 3, 4; Business Society 1, 2, 3, 4; Susquehanna Players 1, 2; Women's Athletic Association 1, 2, 3, 4, Board 2, 3, President 4; Women's Student Council 4; Hockey Team 2, 3, Manager 2, 3; Intramural Sports 1, 2, 3, 4; Inter-Sorority Council 3; Tau Kappa 3, 4; Choral Society 3; May Day 2, 3; Orientation Program 3, 4; Cottage House President 4.





**MARLIN BOBB**  
Herndon, Pa.

*Business Administration*

**ROBERT BOLIG**  
Hummels Wharf, Pa.

*Liberal Arts*

Bond and Key 2, 3, 4; Football Team 1, 2, 3, 4; Intramural Sports 1, 2, 3, 4.

**JANE BOLLINGER**  
213 Carlisle St.  
New Oxford, Pa.

*Music Education*

Sigma Alpha Iota 1, 2, 3, 4, Vice President 3, President 4; Student Christian Association 1, 2, 3, 4; Symphony Orchestra 1; Band 1, 3, 4; Susquehanna Singers 2, 3, 4; Chapel Choir 2, 3; Women's Athletic Association 1; Intersorority Council 3, 4.

**MARGIETTA BROSIOUS**  
Rebuck, Pa.

*Liberal Arts*

Kappa Delta Phi 3, 4; Student Christian Association 1, 2, 3, 4; Women's Athletic Association 1, 2, 3, 4; Intramural Sports 1, 2, 3, 4.

**PAUL B. BUEHLER**  
Paupack, Pike County, Pa.

*Business Administration*

Theta Chi 2, 3, 4, House Manager 3, 4; Student Christian Association 1, 2, 3, 4; Business Society 1, 2, 3, 4; Symphony Orchestra 3, 4; Band 2, 3, 4; *Susquehanna* Staff 4; Intramural Sports 1, 2, 3, 4; LANTHORN 4; Alpha Psi Omega 4.

**JOHN BUFFINGTON**  
86 Linden Ave.  
Bloomfield, N. J.

*Business Administration*

Bond and Key 1, 2, 3, 4, Steward 2, 3; Business Society 1, 2, 3, 4; Intramural Sports 1, 2, 3, 4.

**WILBUR J. BUFFINGTON**  
29 W. Main St.  
Elizabethville, Pa.

*Business Administration*

Bond and Key 1, 2, 3, 4, Treasurer 4; Student Christian Association 1, 2, 4; Business Society 3, 4; Ciceroniani 1, 2, President 2; Intramural Sports 1, 2, 3, 4.

**ROBERT L. CALDWELL**  
241 Spruce St.  
Sunbury, Pa.

*Business Administration*

Business Society 2, 3, 4.



ERNEST A. CANALS  
67 Birch St.  
Bloomfield, N. J.

*Liberal Arts*

Phi Mu Delta 2, 3, 4; Susquehanna Players 1, 2, 3, 4; Pi Gamma Mu 3, 4; Intramural Sports 1, 2, 3, 4; LANTHORN 3; "As You Like It"; "Here Comes Mr. Jordan."

HENRY G. CHADWICK  
3607 Pacific Ave.  
Wildwood, N. J.

*Business Administration*

Phi Mu Delta 1, 2, 3, 4, Chaplain 3, 4; Student Christian Council Administration 1; Business Society 1, 2, 3, 4; *Susquehanna* Staff 3; Basketball Team 2, 3; Intramural Sports 1, 2, 3, 4.

THEODORE H. CLARK  
515 N. Orange St.  
Selinsgrove, Pa.

*Liberal Arts*

Phi Mu Delta 2, 3, 4; Band 1, 2, 3, 4; Football Team 1, 2; LANTHORN 3, Editor; Who's Who 4.

BARBARA A. DECKER  
7613 Mountain Ave.  
Melrose Park, Pa.

*Liberal Arts*

Student Christian Association 1, 3, 4; Biemic Society 1, 2, 3, 4; Susquehanna Players 1, 2, 3, 4; Vice President Council 2; Women's Athletic Association 3, 4, Corresponding Secretary; Pi Gamma Mu 3, 4.

THOMAS DEPPEN  
Herndon, Pa.

*Business Administration*

DONALD DERR  
Buck Run, Pa.

*Liberal Arts*

Bond and Key 1, 2, 3, 4; Football Team 1, 2, 3; Intramural Sports 1, 2, 3, 4.

GEORGE DIMMICK  
708 Front St.  
Northumberland, Pa.

*Liberal Arts*

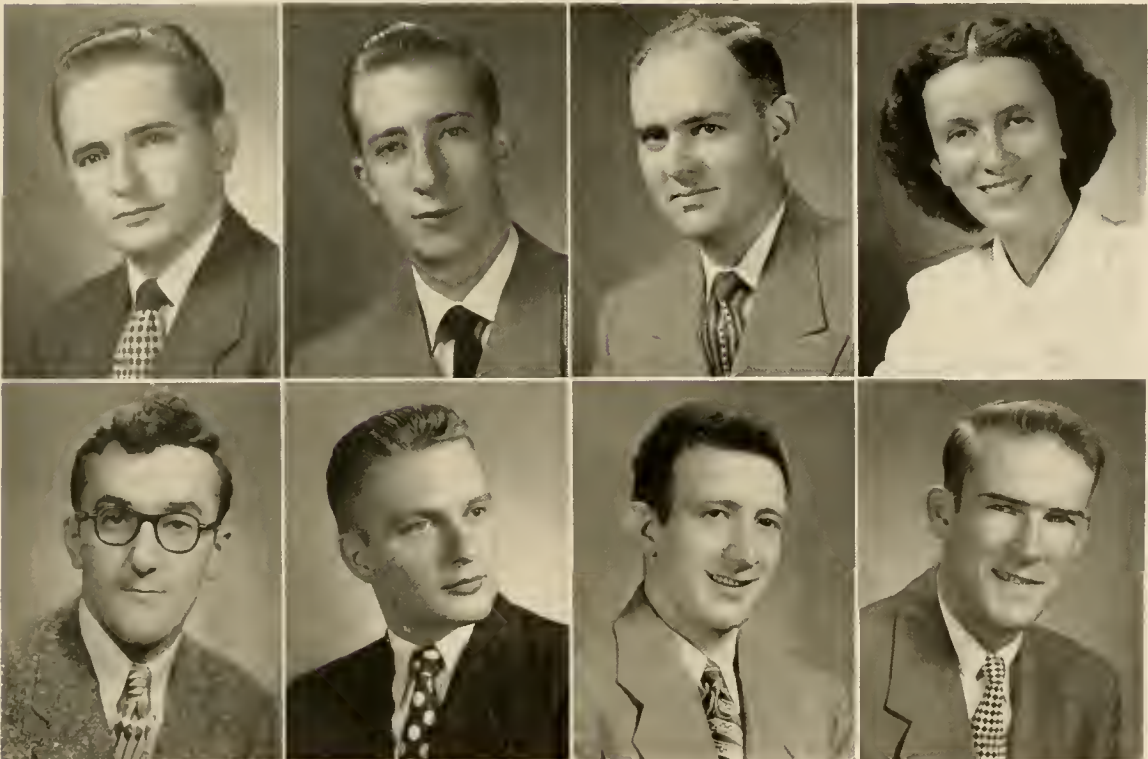
Susquehanna Players 2, 3, 4; Intramural Sports 3.

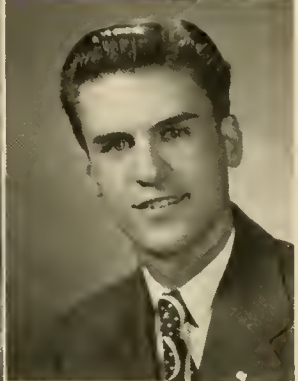
RICHARD R. DOIG

1215 Main St.  
Honesdale, Pa.

*Liberal Arts*

Phi Mu Delta 1, 2, 3, 4, Chapter Editor 4; Student Christian Association 1, 2, 3, 4; Biemic Society 4; Susquehanna Players 1, 2, 3, 4; *Susquehanna* Staff 3, 4; Intramural Sports 1, 2, 3, 4; Alpha Psi Omega 2, 3, 4, Grand Stage Manager 4; Cheerleader 1, 2, 3, 4; Cheer Captain 4; May Day 2; "Queen's Husband"; "Mary of Scotland"; "I Remember Mama"; "Here Comes Mr. Jordan."





JOHN B. DORAN  
405 Highland Ave.  
Downingtown, Pa.

*Business Administration*

Business Society 3, 4; Men's Student Council 3, 4, Treasurer 4.

MELVIN L. DUNN  
1204 S. Enola Drive  
Enola, Pa.

*Business Administration*

Phi Mu Delta 2, 3, 4; Student Christian Association 1, 2, 3, 4; Business Society 2, 3, 4; Basketball Team 2, 3, 4; Football Team 1, 3; Intramural Sports 1, 2, 3, 4.

ELAINE FADDIS  
1401 Sterling St.  
Coatesville, Pa.

*Liberal Arts*

Kappa Delta Phi 2, 3, 4, Corresponding Secretary 4; Student Christian Association 1, 2, 3, 4; Biemic Society 1, 2, 3, 4, Vice President 4; Susquehanna Players 1, 2; Vice President Council 3; Women's Athletic Association 1, 2, 3, 4; Women's Judiciary Committee 1, 2, 3, 4, Secretary 3, 4; Intramural Sports 1, 2, 3, 4; LANTHORN 3; Cheerleader 2, 3, 4; May Day 2, 3; Trinity Choir 2; Freshmen Counselor 3.

RAY E. FLEMING  
219 Seventh St.  
Northumberland, Pa.

*Liberal Arts*

Symphony Orchestra 1, 2; Band 1, 2; Intramural Sports 1, 2, 3.

CHIRI L. FOLTZ  
N. Main St.  
Reedsville, Pa.

*Secretarial*

Business Society 1, 2, 3, 4; Student Christian Association 1, 2, 3, 4; Women's Athletic Association 2, 3; Intramural Sports 1, 2, 3.

JAMES C. GEHRIS  
119 E. Fifth St.  
Berwick, Pa.

*Pre-Medical*

Theta Chi 1, 2, 3, 4, Sports Manager 2, Vice President 4; Student Christian Association 3, 4; Biemic Society 3, 4; Intramural Sports 2, 3, 4.

JOHN GOW  
Lattintown Road  
Marlboro, N. Y.

*Liberal Arts*

Phi Mu Delta 2, 3, 4; Student Christian Association 2, 3; Biemic Society 2, 3; Alpha Psi Omega 3, 4.

HAROLD S. GREENLY  
R. D. 2, Millville, Pa.

*Business Administration*

Theta Chi 3, 4, Assistant Treasurer 4; Student Christian Association 4; Business Society 3, 4; Lycoming College 1, 2.

**CHARLES GRUND**

517 S. 11th St.  
Reading, Pa.

*Business Administration*

Bond and Key 3, 4; Student Christian Association 3, 4; Business Society 3, 4; Intramural Sports 3, 4; Varsity Tennis 3; Penn State 1, 2.

**DORIS GUMBLE**

Paupack, Pike County, Pa.  
*Liberal Arts*

Omega Delta Sigma 2, 3, 4; Student Christian Association 1, 2, 3, 4; Biemic Society 1, 2, 3, 4; Susquehanna Singers 3; Women's Athletic Association 2, 3, 4, Treasurer 4; Basketball Team 2, 3, Manager 3; Intramural Sports 2, 3, 4; Orientation 3, 4; Fire Captain 4.

**FLORIS GUYER**

Typton, Blair County, Pa.  
*Commercial Education*

Student Christian Association 1, 2, 3, 4; Business Society 1, 2, 3, 4, Secretary 3, Vice President 4; Susquehanna Players 1, 2, 3, 4; Vice President Council 3; Women's Athletic Association 1, 2, 3, 4, Recording Secretary 3; Women's Student Council 4, President 4; Women's Judiciary Committee 4; *Susquehanna* Staff 1; Intramural Sports 1, 2, 3, 4; LANTHORN Typing Editor 3; Alpha Psi Omega 4; Freshman Orientation 3, 4, Chairman 4; Social Committee 4; Who's Who 4; "I Remember Mama"; "Suppressed Desires."

**PAUL R. HAFFLY**

304 W. Main St.  
Belleville, Pa.

*Pre-Theological*

Theta Chi 1, 2, 3, 4, Chaplain 2, 3; Student Christian Association 1, 2, 3, 4, Treasurer 2, 3, 4; Phi Kappa 1, 2, 3, 4; Intramural Sports 3, 4.

**JAY HAND**

Muir, Schuylkill County, Pa.  
*Commercial Education*

Theta Chi 1, 2, 3, 4, Social Chairman 3, Secretary 3, President 4; Men's Student Council 3, 4, Secretary 4; Intramural Sports 1, 2, 3, 4; Inter-Fraternity Senate 4.

**FREDERICK HAZELTINE**

318 N. 11th St.  
Sunbury, Pa.

*Liberal Arts*

Phi Mu Delta 3, 4; Student Christian Association 3, 4; Biemic Society 1.

**ALVIN HENDERSON**

1331 Emory Circle, N. E.  
Atlanta, Georgia

*Business Administration*

Phi Mu Delta 1, 2, 3, 4; Student Christian Association 1; Business Society 1, 2; Football Team 1, 2, 3, Manager; Intramural Sports 2, 3; Crusader Football Program Editor 2, 3, 4.

**PAUL HERB**

1141 Susquehanna Ave.  
Sunbury, Pa.

*Business Administration*

Business Society 3, 4; Biemic Society 2; Susquehanna Players 3; Lycoming College 1.





**LILLIAN HOOVER**

905 Third Ave.  
Sterling, Illinois

*Liberal Arts*

Student Christian Association 2, 3, 4; Biemic Society 2; Susquehanna Singers 2; Vice President Council 3, 4; Women's Student Council 4; Women's Judiciary Committee 4, Chairman 4; Student Assistant, Hassinger Hall 4; Lutheran Deaconess School 1, 2.

**JO ANN HORT**

517½ Catawissa Ave.  
Sunbury, Pa.

*Music Education*

Sigma Alpha Iota 1, 2, 3, 4; Symphony Orchestra 3, 4; Band 2, 3, 4; Susquehanna Singers 2, 3; Orientation Committee 3, 4; Operetta 2; May Day 1, 2, 3.

**PATRICIA HOUTZ**

104 Fairmont Ave.  
Sunbury, Pa.

*Commercial Education*

Student Christian Association 2; Business Society 2, 3, 4; Women's Athletic Association 4; Women's Student Council 4; Basketball Team 2, 3, 4; Intramural Sports 3; May Day 3; "Here Comes Mr. Jordan."

**ROGER C. HOWLING**

8 LaSalle Road  
Upper Montclair, N. J.

*Business Administration*

Phi Mu Delta 1, 2, 3, 4; Student Christian Association 1, 2, 3, 4; Business Society 1, 2, 3, 4; *Susquehanna* Staff 1, 2, 4; Cheerleader 3, 4.

**DANIEL HRKMAN**

136 Singer St.  
Johnstown, Pa.

*Business Administration*

**MARY JACKSON**

112 E. 25th St.  
Wildwood, N. J.

*Liberal Arts*

Student Christian Association 1, 2, 3; Vice President Council 2, 4; Women's Athletic Association 1, 2; Intramural Sports 1, 2, 3, 4; May Day 2.

**DORIS JANSON**

886 Prospect St.  
York, Pa.

*Liberal Arts*

Omega Delta Sigma 1, 2, 3, 4; Student Christian Association 1, 2, 3, 4; Biemic Society 3; Susquehanna Singers 3; Women's Athletic Association 1, 2; Intramural Sports 1, 2; Freshman Orientation 2, 3, 4; Freshmen Counselor 3.

**JEANNE KAHLER**

345 E. Walnut St.  
Nazareth, Pa.

*Liberal Arts*

Kappa Delta Phi 1, 2, 3, 4; Student Christian Association 1, 2, 3, 4; Vice President Council 2, 4; Women's Athletic Association 2, 3, 4; Intramural Sports 2, 3, 4; Inter-Sorority Council 4; Vice President 4; Alpha Psi Omega 4; Class Officer 1; "The Patsy"; "The Queen's Husband."

**ROSEMARY KALLIR**

285 Riverside Drive  
New York, N. Y.

*Liberal Arts*

Kappa Delta Phi 3, 4, Social  
Chairman 4; Student Christian  
Association 3, 4; Women's  
Athletic Association 3,  
4; Women's Student Council  
4; Women's Judiciary Com-  
mittee 4; Intramural Sports  
3, 4; Orientation Committee  
4; President of Seibert Hall  
4; Dean Junior College 1, 2.

**SUSAN KLINE**

551 E. Third St.  
Bloomsburg, Pa.

*Music Education*

Sigma Alpha Iota 1, 2, 3, 4;  
Student Christian Association  
1, 2, 3; Susquehanna Singers  
2, 3, 4.

**GERTRUDE KOHLWEISS**

242 Merrick Ave.  
Merrick, N. Y.

*Liberal Arts*

Kappa Delta Phi 2, 3, 4; Stu-  
dent Christian Association 1,  
2, 3, 4; Biemic Society 1, 2,  
3, 4; Susquehanna Players 1,  
2, 3, 4; Band 3; Women's  
Athletic Association 1, 2, 3,  
4; Intramural Sports 1, 2, 3,  
4; Tau Kappa 3, 4, Treasur-  
er 4; Alpha Psi Omega 2,  
3, 4.

**EDWARD KORKUCH**

910 E. Race St.  
Shamokin, Pa.

*Business Administration*

Phi Mu Delta 2, 3, 4; Busi-  
ness Society 4; Intramural  
Sports 1, 2, 3, 4.

**NELSON KOST**

219 S. York St.  
Mechanicsburg, Pa.

*Music Education*

Bond and Key 1, 2, 3, 4;  
Student Christian Association  
1, 2, 3, 4; Susquehanna Sing-  
ers 2, 3; Chapel Organist 2,  
3, 4; Chapel Choir Accom-  
panist 3, 4.

**JOSEPH A. LADIKA**

415 N. Vine St.  
Mt. Carmel, Pa.

*Pre-Medical*

Bond and Key 2, 3, 4; Biemic  
Society 2, 3, 4; Intramural  
Sports 2, 3, 4; Class Officer  
3; Bond and Key Glee Club  
3, 4.

**RAYMOND LAUVER**

R. D. 1  
McAlisterville, Pa.

*Business Administration*

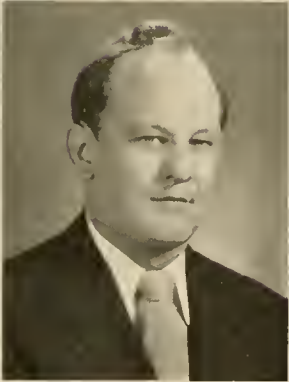
Theta Chi 1, 2, 3, 4, Treasur-  
er 4; Student Christian  
Association 1, 2, 4; Business  
Society 1, 2, 3, 4; Intramural  
Sports 1, 2, 3, 4.

**BARBARA LEASE**

443 W. Main St.  
Somerset, Pa.

*Commercial Education*

Kappa Delta Phi 1, 2, 3, 4;  
Student Christian Association  
1, 2, 3, 4; Business Society 1,  
2, 3, 4; Vice President Coun-  
cil 3, 4; Women's Athletic  
Association 1, 2, 3, 4; Intra-  
mural Sports 1, 2, 3, 4.





MILDRED R. LEESER  
238 S. Front St.  
Sunbury, Pa.

*Liberal Arts*

Student Christian Association  
1, 4; Pi Gamma Mu 3, 4;  
Day Students' Organization.

EVERETT MANNING  
126 N. 17th St.  
East Orange, N. J.

*Business Administration*

Bond and Key 1, 2, 3, 4;  
Business Society 1, 2, 3, 4;  
Intramural Sports 4; Tennis  
Varsity 3.

MARY J. MILLER  
1320 Hillside Ave.  
Honesdale, Pa.

*Music Education*

Sigma Alpha Iota 1, 2, 3, 4;  
Student Christian Association  
1, 2, 3, 4; Symphony Orches-  
tra 3; Band 3; Susquehanna  
Singers 2, 3; Chapel Choir 2,  
3; Operetta 2; Trinity Choir  
2; May Day 2, 3.

ROBERT MILLER  
R. D., Liberty, Pa.

*Liberal Arts*

Theta Chi 1, 2, 3, 4; Editor  
*Crimson Sword* 3; Student  
Christian Association 1, 2, 3,  
4, President 4; Pi Gamma Mu  
3, 4, Vice President 4; Phi  
Kappa 1, 2, 3, 4, President 3;  
Social Committee 4.

VERNON J. MILLER  
812 N. Front St.  
Sunbury, Pa.

*Liberal Arts*

Student Christian Association  
1, 2, 3; Phi Kappa 1, 2, 3,  
Vice President 3.

EARL MINCEMOYER  
24 Tenth St.  
Milton, Pa.

*Music Education*

Symphony Orchestra 1; Band  
1, 2, 3, 4; Susquehanna Sing-  
ers 2; Chapel Choir 2.

DONALD MINNICH  
37 Lawrence Ave.  
Bradford, Pa.

*Business Administration*

Phi Mu Delta 1, 2, 3, 4;  
Business Society 1, 2, 3, 4;  
Football Team 1, 2, 3, 4; In-  
tramural Sports 1, 2, 3, 4.

A. P. MOLINARO, JR.  
245 Grove St.  
Montclair, N. J.

*Pre-Medical*

Phi Mu Delta 2, 3, 4; Biemic  
Society 2, 3, 4; Susquehanna  
Players 3, 4; Basketball Team  
2, 3; Football Team 2, 3; In-  
tramural Sports 2, 3, 4.

MARVIN MOYER  
571 Queen St.  
Northumberland, Pa.  
*Liberal Arts*

Student Christian Association 3; Phi Kappa 3, 4; Intramural Sports 1, 2, 3; Baseball Team 1, 2, 4.

ROSEMARY MUSSINA  
619 N. Front St.  
Milton, Pa.  
*Commercial Education*

Omega Delta Sigma 1, 2, 3, 4, Secretary 4; Student Christian Association 1, 2, 3, 4; Business Society 1, 2, 3, 4, Treasurer 4; Women's Athletic Association 2, 3, 4; Women's Student Council 4, Secretary-Treasurer 4; Intramural Sports 1, 2, 3, 4.

SHIRLEY A. NICKLIN  
Marlboro, N. Y.  
*Liberal Arts*

Omega Delta Sigma 1, 2, 3, 4, Treasurer 4; Women's Athletic Association 1, 2, 3, 4; Women's Student Council 2; *Susquehanna* Staff 4, Girls' Sports Editor; Hockey Team 1, 2, 3; Intramural Sports 1, 2, 3, 4; LANTHORN Literary Editor 3; Tau Kappa 3, 4.

JEANNE ORNER  
Bendersville  
Adams County, Pa.  
*Secretarial*

Student Christian Association 1, 2, 3, 4, Secretary 4; Business Society 1, 2, 3, 4; Vice President Council 3; Women's Athletic Association 1, 2, 3, 4; Women's Student Council 3, 4; Intramural Sports 1, 2, 3, 4.

ANNA MAE OYSTER  
807 S. Second St.  
Sunbury, Pa.  
*Liberal Arts*

Student Christian Association 1, 2, 3, 4; *Susquehanna* Players 2, 3, 4; Day Students' Organization 1, 2, 3, 4; Alpha Psi Omega 3, 4; "Icebound"; "I Remember Mama"; "Here Comes Mr. Jordan."

JEAN PENMAN  
18 Front St.  
Strong, Pa.  
*Liberal Arts*

Student Christian Association 1, 2, 3, 4; Women's Athletic Association 1; Pi Gamma Mu 3, 4; Phi Kappa 2, 3, 4, Secretary 3.

EDWARD PFEIFFER  
311 Third St.  
Weatherly, Pa.  
*Commercial Education*

Phi Mu Delta 1, 2, 3, 4; Student Christian Association 1, 2; Business Society 1, 2, 3, 4; Basketball Team 1, 2, 3, 4; Intramural Sports 1, 2, 3, 4; Baseball Team 3; Intramural Board 2, 3.

GEORGE PHILLIPS  
Herndon, Pa.  
*Business Administration*





A. B. PORTZLINE, JR.  
Eighth St.  
Selinsgrove, Pa.  
*Liberal Arts*

Phi Mu Delta 1, 2, 3, 4; Student Christian Association 1, 2, 3, 4; Susquehanna Players 1, 2, 3, 4; Phi Kappa 1, 2; Intramural Sports 1, 2, 3, 4; "Mary of Scotland"; "Here Comes Mr. Jordan."

BETTYJANE R. RENN  
21 Greenough St.  
Sunbury, Pa.  
*Liberal Arts*

Student Christian Association 1, 2, 4; Ciceroniani 1, 2.

JOHN A. REUTHER  
93 North St.  
Nichols, Conn.  
*Business Administration*

Theta Chi 1, 2, 3, 4, Assistant Treasurer 3; Student Christian Association 1, 3, 4; Business Society 1, 2, 3, 4, Vice President 3; *Susquehanna* Staff, Business Manager 4; Pi Gamma Mu 3, 4, President 4; *Intramural* Sports 1, 2, 3, 4; Alpha Psi Omega 4.

ROBERT RICENDORF  
Ickesburg, Pa.  
*Liberal Arts*

Theta Chi 2, 3, 4; Student Christian Association 1, 2, 3, 4; Biemic Society 2, 3, 4.

ZOLA ROBINSON  
371 W. Fourth St.  
Lewistown, Pa.  
*Liberal Arts*

Omega Delta Sigma 2, 3, 4; Student Christian Association 1, 2, 3, 4; Susquehanna Players 1, 2, 3, 4; Women's Athletic Association 1, 2, 3, 4; Hockey Team 2, 3; Intramural Sports 1, 2, 3, 4; Tau Kappa 3, 4, President 4.

JEAN ROTHERMEL  
R. D. 1  
Klingerstown, Pa.  
*Music Education*

Sigma Alpha Iota 1, 2, 3, 4, Chaplain 4, Student Christian Association 1, 2, 3, 4; Band 3; Susquehanna Singers 2, 3; Vice President Council 3; Operetta 2; May Day 2, 3.

FRANCES ROUSH  
194 Orange St.  
Northumberland, Pa.  
*Music Education*

Sigma Alpha Iota 2, 3, 4, Recording Secretary 4; Student Christian Association 3, 4; Symphony Orchestra 2, 3; Band 1, 2, 3, 4; Susquehanna Singers 2, 3, 4; Day Students' Organization 1, 2, 3, 4, President 4.

HAROLD ROWE  
438 N. Second St.  
Lykens, Pa.  
*Business Administration*

Theta Chi 2, 3, 4; Student Christian Association 3, 4; Business Society 3, 4; Intramural Sports 1, 2, 3, 4.



**JAMES RUMBAUGH**  
R. D. 2, Millerstown, Pa.  
*Pre-Medical*

Bond and Key 1, 2, 3, 4, Secretary 2, 3, President 4, Editor of "The Bond" 2, 3; Student Christian Association 1, 2, 3, 4; Biemic Society 1, 2, 3, 4, President 3; *Susquehanna* Staff Proof Reader 2, Associate Editor 3, Editor 4; Inter-Fraternity Senate 4; Social Committee 4; Who's Who 4.

**FRED W. SCHULTZ**  
1008 N. Irving Ave.  
Scranton 10, Pa.  
*Liberal Arts*

Bond and Key 3, 4; Student Christian Association 3, 4; Biemic Society 3, 4.

**LOUIS SANTANGELO**  
673 Queen St.  
Northumberland, Pa.  
*Business Administration*

Phi Mu Delta 2, 3, 4; Business Society 1, 2, 3, 4; Football Team 1, 2, 3, 4; Intramural Sports 1, 2, 3, 4; Class Officer 4.

**RICHARD SHAFFER**  
602 S. Market St.  
Selinsgrove, Pa.  
*Business Administration*

Phi Mu Delta 1, 2, 3, 4; Business Society 2, 3, 4; *Susquehanna* Players 1, 2, 3, 4; Intramural Sports 2, 3, 4; Alpha Psi Omega 4.

**M. ELMINA SARBA**  
144 Catawissa Ave.  
Sunbury, Pa.  
*Music Education*

Sigma Alpha Iota 1, 2, 3, 4; Symphony Orchestra 1, 2, 3, 4; Band 1, 2, 3, 4; *Susquehanna* Singers 2, 3; Day Students' Organization 1, 2, 3, 4; May Day 1, 2, 3; Operetta 2.

**MARIA SHETLER**  
324 Chestnut St.  
Spring City, Pa.  
*Medical Secretary*

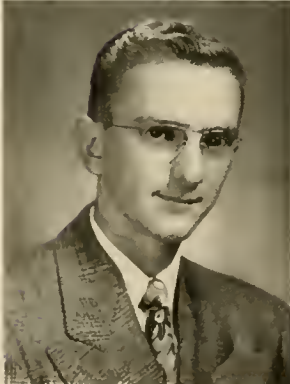
Kappa Delta Phi 1, 2, 3, 4; Student Christian Association 1, 2, 3, 4; Business Society 2, 3, 4; Biemic Society 1, 2, 4; Women's Athletic Association 1, 2, 3, 4; Hockey Team 2, 3, 4; Basketball Team 2; Intramural Sports 1, 2, 3, 4; Freshmen Counselor 3; Tau Kappa 3, 4, Vice President 4; May Day 2; Class Officer 3.

**FAYE SATZLER**  
McAlisterville, Pa.  
*Business Administration*

Student Christian Association 1, 2, 3, 4; Business Society 1, 2, 3, 4; Women's Athletic Association 1, 2; Intramural Sports 1, 2, 3.

**SHIRLEY SHOWALTER**  
Box 32, Millmont, Pa.  
*Liberal Arts*

Omega Delta Sigma 1, 2, 3, 4, Financial Secretary 4; Student Christian Association 1, 2, 3, 4; Women's Athletic Association 3, 4; Intramural Sports 3, 4; LANTHORN 3; Freshmen Counselor 3; May Day 3.





MARK SHUEY  
512 Market St.  
Millersburg, Pa.

*Liberal Arts*

Theta Chi 2, 3, 4; Student Christian Association 1, 2, 3, 4; Intramural Sports 1, 2, 4; Alpha Psi Omega 4.

LOUISE SIEMERS  
239 Upper Mountain Ave.  
Upper Montclair, N. J.

*Liberal Arts*

Omega Delta Sigma 2, 3, 4, Vice President 4; Student Christian Association 2, 3; Biemic Society 2; Women's Athletic Association 2, 3, 4; Women's Student Council 4, Social Chairman 4; Hockey Team 2, 3; Basketball Team 2; Intramural Sports 1, 2, 3, 4; Inter-Sorority Council 4, Secretary 4; Tau Kappa 3, 4, Secretary.

LILLIAN C. SMITH  
R. D. 1, Nescopeck, Pa.

*Liberal Arts*

Student Christian Association 1, 2, 3, 4; Susquehanna Players 2, 3, 4; Vice President Council 3; Women's Athletic Association 3, 4; *Susquehanna* Staff 3, 4, Managing Editor 4; Intramural Sports 1, 2, 3, 4; Alpha Psi Omega 4; "Here Comes Mr. Jordan."

JOSEPH SOLOMON  
337 E. Saylor St.  
Atlas, Pa.

*Pre-Medical*

Biemic Society 2, 3, 4; Susquehanna Players 2, 3, 4; Intramural Sports 2, 3, 4; Alpha Psi Omega 3, 4, Grand Director 4.

MARJORIE SPOGEN  
P. O. Box 167  
Turbotville, Pa.

*Liberal Arts*

Student Christian Association 1, 2, 3, 4; Susquehanna Players 1, 2, 3, 4; Vice President Council 4; Women's Athletic Association 1, 2, 3, 4; *Susquehanna* Staff 1, 2, 3; Intramural Sports 1, 2, 3, 4; LANTHORN 3, Girls' Sports Editor; Alpha Psi Omega 1, 2, 3, 4, Grand Business Manager 4; May Day 3; "Little Women"; "I Remember Mama."

HARRY G. STETSER  
Ashland Ave.  
Somerdale, N. J.

*Liberal Arts*

Student Christian Association 2, 3, 4; Phi Kappa 2, 3, 4; Ciceroniani 4; Muhlenberg 1.

GEORGE THOMAS, JR.  
319 E. Pine St.  
Selinsgrove, Pa.

*Pre-Medical*

Bond and Key 1, 2, 3, 4; Biemic Society 3, 4; Intramural Sports 1, 2, 3, 4.

JACK THORP  
122 Willow St.  
Athens, Pa.

*Business Administration*

Bond and Key 2, 3, 4; Student Christian Association 1, 2; Business Society 1, 2, 3, 4; Basketball Team 1, 2, 3, 4; Intramural Sports 1, 2, 3, 4; Baseball Team 2, 3.

**RICHARD E. TROUTMAN**  
Pillow, Dauphin County, Pa.  
*Liberal Arts*  
Bond and Key 1, 2, 3, 4.

**FRANKLIN T. ULMAN**  
1115 Walnut St.  
Williamsport, Pa.  
*Business Administration*

Phi Mu Delta 3, 4; Business Society 3, 4; Susquehanna Players 3, 4; Basketball Team Manager 3, 4; Intramural Sports 4; Baseball Team Manager 3; Alpha Psi Omega 4.

**PAUL A. WAGNER**  
Box 43, Milroy, Pa.  
*Business Administration*

Phi Mu Delta 3, 4, Comptroller 3, 4; Student Christian Association 2, 3, 4; Business Society 2, 3, 4, President 4; Susquehanna Players 2, 3; *Susquehanna Staff* 3; "The Queen's Husband."

**BARBARA J. WATKINS**  
730 N. Rebecca Ave.  
Scranton 4, Pa.  
*Liberal Arts*

Kappa Delta Phi 1, 2, 3, 4, Recorder 2, Social Chairman 3; President 4; Student Christian Association 1, 2, 3, 4; Biemic Society 1, 2, 3, 4; Susquehanna Players 1, 2; Susquehanna Singers 2; Chapel Choir 1; Women's Athletic Association 1, 2, 3, 4; Women's Student Council 1; Hockey Team 1, 2, 3, 4; Basketball Team 2, 3, 4; Pi Gamma Mu 3, 4; Intramural Sports 1, 2, 3, 4; Inter-Sorority Council 4, President 4; LANTHORN Photographic Editor 3; Freshmen Orientation 2, 3, 4; Operetta 2; May Day 2, 3; Class Officer 1; Tau Kappa 3, 4; Social Committee 4; Who's Who 4.

**KENT WELLER**  
Aristes  
Columbia County, Pa.  
*Liberal Arts*

Bond and Key 1, 2, 3, 4; Biemic Society 1, 3, 4; Intramural Sports 2.

**BARBARA WELLIVER**  
1909 W. Front St.  
Berwick, Pa.  
*Liberal Arts*

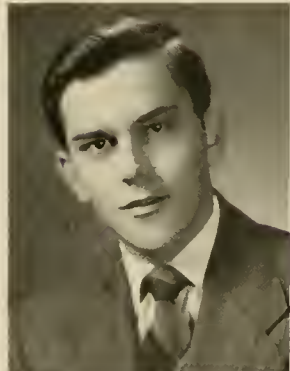
Omega Delta Sigma 2, 3, 4; Student Christian Association 1, 2, 3, 4; Women's Athletic Association 2, 3, 4, Corresponding Secretary 3; Intramural Sports 1, 2, 3, 4; May Day 2.

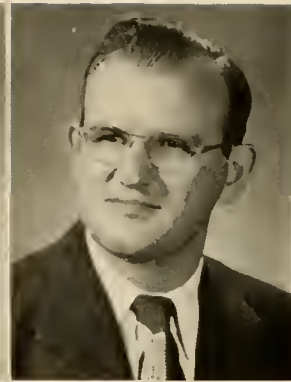
**RICHARD WESTERVELT**  
36 Charles St.  
Bloomfield, N. J.  
*Liberal Arts*

Phi Mu Delta 2, 3, 4, Editor "Triangle" 2; *Susquehanna Staff* 1, 2, 3, 4, Sports Editor 2, 3, 4; Basketball Team 1, 2, 3, 4; Intramural Sports 1, 2, 3, 4; College Publicity 2, 4.

**RICHARD L. WETZEL**  
218 S. Market St.  
Selinsgrove, Pa.  
*Business Administration*

Theta Chi 1, 2, 3, 4; Student Christian Association 1, 2, 3, 4; Business Society 1, 2, 3, 4; Intramural Sports 2, 3, 4.





LLOYD T. WILSON  
18 Hurton St.  
Johnstown, Pa.

*Liberal Arts*

Student Christian Association 3, 4, Cabinet 4; Phi Kappa 3, 4; Johnstown Center, University of Pittsburgh 1, 2.

DONALD WISSINGER  
2929 Spruce Ave.  
Altoona, Pa.

*Liberal Arts*

Bond and Key 2, 3, 4; Student Christian Association 1, 2, 3, 4; Men's Student Council 3, 4, President 4; Football Team 1, 2, 3, 4; Intramural Sports 2, 3, 4; Baseball Team 1, 2, 3; Class Officer 4; Social Committee 4; Who's Who 4.

JOHN J. WITOWSKI  
113 Warsaw St.  
Keiser, Pa.

*Commercial Education*

Bond and Key 2, 3, 4; Business Society 1, 2, 3, 4; Basketball Team 1, 3, 4; Football Team 1, 2; Intramural Sports 1, 2; Assistant Coach Football 3, 4; Junior Varsity Basketball Coach 3, 4; Assistant Baseball Coach 3; Who's Who 4.

DONALD F. WOHLSEN  
39 Marshall Road  
Yonkers, N. Y.

*Business Administration*

Phi Mu Delta 1, 2, 3, 4; Student Christian Association 1, 2; Business Society 2; Basketball Team 1; Intramural Sports 1, 2, 4.

JANET E. WOLF  
105 Violet St.  
Johnstown, Pa.

*Liberal Arts*

Student Christian Association 1, 2, 3, 4, Cabinet 2, 3, 4, Girls' Vice President 4; Susquehanna Players 1, 2, 3; Women's Athletic Association 2, 3, 4; Susquehanna Staff 1; Hockey Team 3, 4; Orientation Committee 3, 4.



*Cecilia Auman*



*Floris Guyer*



*Barbara Watkins*



*Theodore Clark*

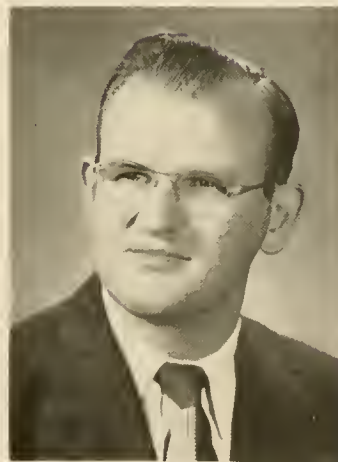
**WHO'S  
WHO**



*James Rumbaugh*



*Donald Wissinger*



*John Witowski*



B. Faust, B. Beam, C. Shaffer, J. Harder.

## Junior Class

### OFFICERS

<i>President</i>	- - - - -	JACOB HARDER
<i>Vice President</i>	- - - - -	BURDELL FAUST
<i>Secretary</i>	- - - - -	MARIE BEAN
<i>Treasurer</i>	- - - - -	CHARLES SHAFFER

We, the Class of '51, have reached the honored ranks of Juniors. For two years we held our own in intramural competition, scholastic honors, and other activities.

The Junior Prom and the LANTHORN stand out in this, our third college year, although we continue to be well represented in all other fields of activity.

In our one remaining year we will earnestly strive to profit by those missteps in the past and to broaden further our vision of life in endeavoring to uphold and perpetuate the traditions and ideals of old S. U.

**MARIHA ALBERT**

20 S. Locust St.  
Myerstown, Pa.

*Liberal Arts*

Omega Delta Sigma 1, 2, 3; Student Christian Association 1, 2, 3; Women's Athletic Association 1, 2, 3, Vice President 3; Hockey Team 1, 2, 3; Basketball Team 1, 2, 3; Captain 2; Intramural Sports, 1, 2, 3; Tau Kappa 3.

**BEN C. ALTLER**

520 Bear Valley Ave.  
Shamokin, Pa.

*Liberal Arts*

Phi Mu Delta 2, 3; Student Christian Association 1; Football Team 1; Intramural Sports 1, 2, 3.

**JANICE ARNER**

320 W. Fifth St.  
East Liverpool, Ohio

*Liberal Arts*

Marion Junior College, Marion, Va. 1, 2; Student Christian Association 3.

**LYN BAILEY**

130 Morningside Drive  
New York 27, N. Y.

*Business Administration*

Omega Delta Sigma 2, 3; Student Christian Association 1, 2, 3; Business Society 1, 2, 3; Women's Athletic Association 1, 2, 3; *Susquehanna* Staff 2; Intramural Sports 1, 2, 3; LANTHORN 3.

**FLORA BARNHART**

Claysburg, Pa.

*Music Education*

Sigma Alpha Iota 1, 2, 3, Vice President 3; Student Christian Association 1, 2, 3; Symphony Orchestra 2, 3; Band 2, 3, *Susquehanna* Singers 2, 3; Women's Athletic Association 1, 2, 3; Basketball Team 1; Intramural Sports 1, 2, 3; Inter-Sorority Council 3.

**FERN BAUMGARDNER**

1702 Graham Ave.  
Windber, Pa.

*Liberal Arts*

Kappa Delta Phi 2, 3; Student Christian Association 1, 2, 3; Biemic Society 1, 2, 3; Women's Athletic Association 1, 2, 3; Intramural Sports 1, 2, 3.

**BETTY BEAM**

2507 Graham Ave.  
Windber, Pa.

*Liberal Arts*

Omega Delta Sigma 1, 2, 3; Student Christian Association 1, 2, 3; Biemic Society 1, 2, 3; Band 3; Women's Athletic Association 1, 2, 3; Women's Judiciary Committee 3; Intramural Sports 1, 2, 3; Class Officer 3; May Day 2.

**MARILYN BEERS**

452 Beardsley Ave.  
Bloomfield, N. J.

*Business Administration*

Omega Delta Sigma 1, 2, 3; Student Christian Association 1, 2, 3; Business Society 1, 2, 3; Biemic Society 1, 2; Women's Athletic Association 1, 2, 3; Hockey Team 1, 2, 3; Intramural Sports 1, 2, 3; Inter-Sorority Council 3.





**ROBERT BITTING**  
234 Valley St.  
Marysville, Pa.

*Music Soloist*

Bond and Key 1, 2, 3; Student Christian Association 1, 2; Band, Drum Major 2, 3; Susquehanna Singers 2, 3; Chapel Choir 1, 2, 3.

**MARSH C. BOGAR**  
2936 Green St.  
Harrisburg, Pa.

*Liberal Arts*

Bond and Key 1, 2, 3; Susquehanna Staff, Circulation Manager 3; Intramural Sports 1, 2, 3.

**WALTER BRANDAU**  
223 Catawissa Ave.  
Sunbury, Pa.

*Liberal Arts*

Theta Chi 1, 2, 3; Student Christian Association 1, 2, 3; Phi Kappa 1, 2, 3.

**HAZEL JANE BROBST**  
1042 S. Front St.  
Sunbury, Pa.

*Liberal Arts*

Student Christian Association 1, 3.

**JACK A. BROWN**  
1050 Washington St.  
Indiana, Pa.

*Pre-Medical*

Phi Mu Delta 1, 2, 3; Student Christian Association 1; Biemic Society 1, 2, 3; Intramural Sports 2, 3.

**NANCY COSGROVE**  
202 S. Maple St.  
Mt. Carmel, Pa.

*Liberal Arts*

Student Christian Association 1; Biemic Society 1, 2, 3; Women's Athletic Association 2, 3.

**JOSEPH P. DRISCOLL**  
11 N. High St.  
Selinsgrove, Pa.

*Liberal Arts*

Phi Mu Delta 2, 3.

**JOHN L. ECCKER**  
94 Prospect St.  
Nanticoke, Pa.

*Music Education*

Phi Mu Delta 1, 2, 3; Symphony Orchestra 1, 2, 3; Band 1, 2, 3; Susquehanna Singers 2, 3; Chapel Choir 2, 3.



MARIANNE FAGUE

443 S. Queen St.  
Lancaster, Pa.

*Liberal Arts*

Omega Delta Sigma 1, 2, 3; Student Christian Association 1, 2, 3, Sophomore Representative 2; Biemic Society 1; Vice President Council 3; Women's Athletic Association 2, 3; Intramural Sports 1, 2, 3; Freshmen Orientation 3; Freshmen Counselor 3.

BURDELL S. FAUST

511 Second St.  
Weatherly, Pa.

*Music Education*

Phi Mu Delta 1, 2, 3; Symphony Orchestra 1, 2, 3; Band 1, 2, 3; Susquehanna Singers 2, 3; Chapel Choir 2, 3.

ALTHEA FERGUSON

40 S. Main St.  
Millerstown, Pa.

*Commercial Education*

Kappa Delta Phi 1, 2, 3; Student Christian Association 1, 2, 3; Business Society 1, 2, 3; Women's Athletic Association 1, 2, 3; Hockey Team 2; Basketball Team 1, 2, 3; Intramural Sports 1, 2, 3; Tau Kappa 3; May Day 2.

SUSAN FOLTZ

816 Broad St.  
Collingdale, Pa.

*Liberal Arts*

Omega Delta Sigma 1, 2, 3; Student Christian Association 1, 2, 3; Women's Athletic Association 1, 2, 3; *Susquehanna* Staff; Intramural Sports 1, 2, 3; Freshman Orientation 3; Freshman Counselor 3; May Day 2.

W. J. FOSTER, JR.

R. D. 2 Bristol  
Newportville, Pa.

*Liberal Arts*

Phi Mu Delta 2, 3; Student Christian Association 1, 2, 3, Cabinet 3; Biemic Society 3; Susquehanna Players 1, 2, 3, President 2; Football Team 1, 2; LANTHORN 3, Editor-in-Chief; Alpha Psi Omega 2, 3.

CARL GACONO

137 W. Hand Ave.  
Wildwood, N. J.

*Business Administration*

Phi Mu Delta 2; Student Christian Association 3; Business Society 3; LANTHORN 3.

JACK W. GLARINGER

82 N. Iron St.  
Bloomsburg, Pa.

*Pre-Medical*

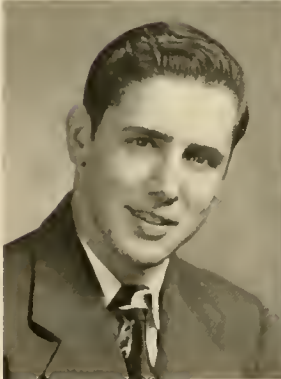
Theta Chi 2, 3; Student Christian Association 1, 2, 3; Biemic Society 1, 2, 3; Intramural Sports 1, 2, 3.

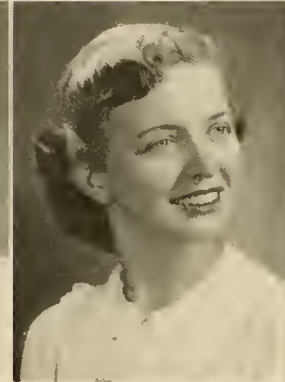
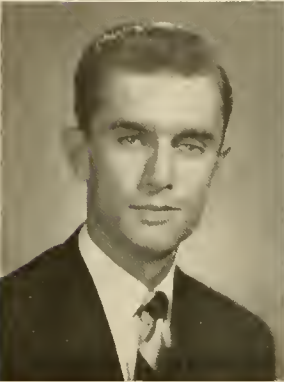
ALICE M. GREGER

117 Kathmere Road  
Havertown, Pa.

*Music Education*

Sigma Alpha Iota 1, 2, 3, Editor 3; Student Christian Association 1, 2, 3; Band 2, 3; Susquehanna Singers 2, 3; Vice President Council 2; Women's Athletic Association 1, 2, 3; Hockey Team 3, Manager; Intramural Sports 1, 2, 3; May Day 1, 2; Freshman Orientation 3; Freshman Counselor 3; Fire Captain 3.





H. R. HAINS, JR.

172 N. 17th St.  
East Orange, N. J.

*Business Administration*

Bond and Key 1, 2, 3, Utility Manager 1, President 2, Steward 3; Business Society 1, 2, 3; Intramural Sports 2; Inter-Fraternity Senate 2; LANTHORN 3, Business and Advertising Manager 3.

J. B. HARDER, JR.

1604 Letchworth Road  
Camp Hill, Pa.

*Business Administration*

Bond and Key 1, 2, 3; Student Christian Association 2, 3; Business Society 2, 3; Men's Student Council 2, 3; *Susquehanna* Staff 2, 3; Intramural Sports 1, 2; President Sophomore Class; President Junior Class.

ROBERT HENNINGER

91 King St.  
Northumberland, Pa.

*Business Administration*

Basketball Team 2, 3.

JEAN HILL

350 Awl St.  
Sunbury, Pa.

*Music Education*

Sigma Alpha Iota 1, 2, 3; Student Christian Association 1, 3; Band 2, 3, Secretary 3; *Susquehanna* Singers 2, 3; Chapel Choir 1, 2, 3; Day Students' Organization 1, 2, 3; May Day 2.

THOMAS JENKINS

645 Dorian Road  
Westfield, N. J.

*Liberal Arts*

Bond and Key 3; Student Christian Association 1, 2, 3; Men's Student Council 2; Intramural Sports 2, 3.

JUNE KLINGLER

Winfield, Pa.

*Liberal Arts*

Kappa Delta Phi 2, 3; Student Christian Association 2; Women's Day Students Organization 2, 3, Secretary 3.

MARY E. LEHMAN

R. D. 2, Newville, Pa.

*Music Education*

Sigma Alpha Iota 1, 2, 3, Treasurer 3; Student Christian Association 1, 2; Symphony Orchestra 2, 3; Band 2, 3; *Susquehanna* Singers 2, 3; Chapel Choir 1, 2, 3.

AUDREY MACNEIL

119 Water St.

Perth Amboy, N. J.

*Liberal Arts*

Kappa Delta Phi 1, 2, 3; Student Christian Association 1, 2, 3; Biemic Society 1, 2, 3; Vice President Council 1; Women's Athletic Association 1, 2, 3.

**GARDNER MAREK**

25 East Ave.  
Atlantic Highlands, N. J.  
*Business Administration*

Phi Mu Delta 1, 2, 3; Student Christian Association 1, 2, 3; Business Society 1, 2, 3; Football Team 1, 2, 3; Intramural Sports 1, 2, 3.

**ALFRED MARTIN**

207 N. Park St.  
East Orange, N. J.  
*Business Administration*

Phi Mu Delta 2, 3; Football Team 1, 2, 3; Intramural Sports 1, 2; Baseball Team 1.

**MARTHA J. MARTIN**

27 S. Third St.  
Shamokin, Pa.

*Commercial Education*

Kappa Delta Phi 2, 3; Student Christian Association 1, 2, 3; Business Society 1, 2, 3, Secretary 3; Women's Athletic Association 1, 2, 3, Secretary 3; Women's Student Council 3; Women's Judiciary Committee 3; Intramural Sports 1, 2, 3; LANTHORN 3, Literary Editor 3; Freshmen Counselor 3; Orientation Committee 3; Hassinger House President 3; Class Officer 2.

**CAROLYN McCAHAN**

Port Royal, Pa.  
*Music Education*

Sigma Alpha Iota 1, 2, 3; Student Christian Association 1, 2, 3; Symphony Orchestra 2, 3; Band 2, 3; Susquehanna Singers 2, 3.

**SALLY MITCHELL**

50 Shoemaker St.  
Forty Fort, Pa.

*Music Education*

Sigma Alpha Iota 1, 2, 3, Corresponding Secretary 3; Student Christian Association 1, 2; Symphony Orchestra 1; Band 1, 2, 3; Susquehanna Singers 2, 3; Vice President Council 3; Freshmen Orientation 2, 3, Assistant Chairman 3; Class Officer 1; Susquehanna Players 3; "Here Comes Mr. Jordan" 3.

**JEAN McDONALD**

Box 634, Marion, Va.

*Liberal Arts*

Marion Junior College, Marion, Va. 1, 2.

**GERALD MOORHEAD**

R. D. 1, Milton, Pa.

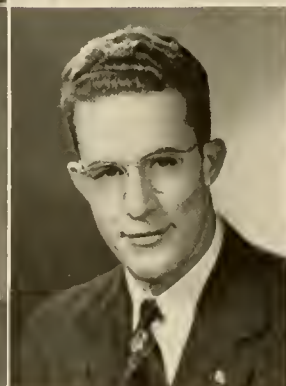
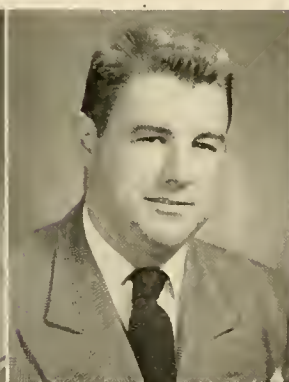
*Liberal Arts*

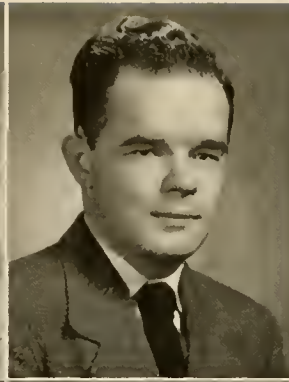
Theta Chi 1, 2, 3; Student Christian Association 1, 2, 3, Junior Class Representative 3; Men's Student Council 3; Phi Kappa 1, 2, 3; Basketball Team, Manager 2, 3; Intramural Sports 1, 2.

**ROBERT MOYER**

R. D. 1, Selinsgrove, Pa.

*Liberal Arts*





**PHILIP J. O'BRIEN**

232 Hone Ave.  
Oil City, Pa.

*Liberal Arts*

Intramural Sports 3.

**ROBERT O'GARA**

18 Dodd St.  
Bloomfield, N. J.

*Business Administration*

Business Society 1, 2, 3;  
Football Team 1, 2, 3; In-  
tramural Sports 1, 2, 3;  
Baseball Team 2.

**ROBERT PATTERSON**

324 Hazel St.  
Tamaqua, Pa.

*Business Administration*

Phi Mu Delta 2, 3; Student  
Christian Association 1, 2,  
3; Business Society 1, 2, 3;  
Susquehanna Players 3; In-  
tramural Sports 1, 2, 3;  
LANTHORN 3; Intramural  
Board 3; "The Patsy."

**JOAN POST**

34 Highfield Road  
Bloomfield, N. J.

*Business Administration*

Student Christian Association  
1, 3.

**DANIEL REESE**

127 Poplar St.  
Kingston, Pa.

*Liberal Arts*

Phi Mu Delta 1, 2, 3; Stu-  
dent Christian Association 1,  
2, 3; Football Team 1, 2, 3;  
Intramural Sports 1, 2, 3;  
Baseball Team 1.

**ROLAND ROSETTI**

Box 47, South Canaan, Pa.

*Business Administration*

Theta Chi 2, 3; Business So-  
ciety 1, 2, 3; Football Team  
1, 2, 3; Intramural Sports 1,  
2, 3; "Here Comes Mr. Jor-  
dan."

**CHESTER ROWE**

301 E. Pine St.  
Selinsgrove, Pa.

*Liberal Arts*

Theta Chi 2, 3; Football  
Team 1, 2, 3.

**MERRILL SHAFER**

Grier City  
Barnesville, Pa.

*Liberal Arts*

Theta Chi 1, 2, 3; Student  
Christian Association 1; Bi-  
emic Society 1; Intramural  
Sports 1, 2, 3; Intramural  
Board 3.

**NELDA SHAFER**

Grier City  
Barnesville, Pa.

*Liberal Arts*

Kappa Delta Phi 1, 2, 3; Student Christian Association 1, 2, 3; Biemic Society 1, 3; Band 3; Vice President Council 3; Women's Athletic Association 2, 3; *Susquehanna* Staff 2; Intramural Sports 1, 2, 3; Freshmen Orientation 3; Freshmen Counselor.

**CHARLES SHAFFER**

120 Independence St.  
Selinsgrove, Pa.

*Liberal Arts*

Theta Chi 1, 2, 3, Historian 2; Student Christian Association 3; Biemic Society 1, 3; Class Officer 3.

**DONALD SHOEMAKER**

217 Gilliland Place  
Bellevue, Pittsburgh 2, Pa.

*Business Administration*

Phi Mu Delta 1, 2, 3; Student Christian Association 1, 2, 3; Business Society 1, 2, 3; Basketball Team 1; Football Team 1, 2; Intramural Sports 1, 2, 3.

**MARY LOU SLATER**

198 Isabella Ave.  
Irvington, N. J.

*Liberal Arts*

Kappa Delta Phi 1, 2, 3; Student Christian Association 1, 2, 3; Biemic Society 3; *Susquehanna* Players 2, 3; Women's Athletic Association 1, 2, 3; *Susquehanna* Staff 2; Football Team 3; Intramural Sports 1, 2, 3.

**WILLIAM SMELTZ**

R.D. 1, Northumberland, Pa.

*Pre-Theology*

Student Christian Association 1, 2, 3, Cabinet 1, 2; *Susquehanna* Players 3; Phi Kappa 1, 2, 3, President 3; Ciceroniani 3; LANTHORN 2, 3; May Day 1.

**J. LA WAYNE SMITH**

118 Willow Ave.  
Honesdale, Pa.

*Commercial Education*

Keystone Junior College 1, 2; Business Society 3.

**THOMAS O. STALIER**

242 E. Seventh St.  
Mt. Carmel, Pa.

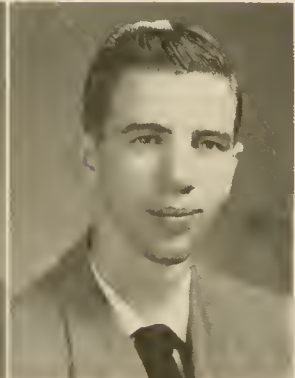
*Business Administration*

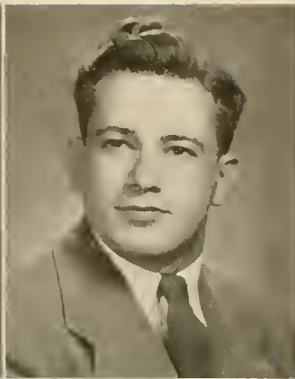
Bond and Key 1, 2, 3; Student Christian Association 1, 2, 3; Business Society 2, 3; *Susquehanna* Staff 2, 3, Associate Editor 3.

**JOHN R. STEIGER**

Newfoundland  
Wayne County, Pa.

Keystone Junior College 1, 2; Student Christian Association 3; Business Society 3; LANTHORN 3.





DAVID STERRETT

744 Braxton Road  
Ridley Park, Pa.

*Liberal Arts*

Bond and Key 1, 2, 3; Student Christian Association 1, 2, 3, Public Relations Chairman 3; Biemic Society 1, 2, 3, President 3; Susquehanna Players 1, 2; Symphony Orchestra 1; Band 1, 2, 3; *Susquehanna* Staff 1, 2, 3, Photographic Editor 3; Basketball Team 1; Intramural Sports 2, 3; *Student Handbook* 3, Editor 3.

RICHARD STETLER

417 Orange St.  
Millintown, Pa.

*Liberal Arts*

Theta Chi 1, 2, 3; Student Christian Association 1; Intramural Sports 2, 3.

CHARLES W. TAYLOR

Elmhurst  
Lackawanna County, Pa.

*Pre-Dental*

Theta Chi 1, 2, 3; Student Christian Association 1, 2, 3; Biemic Society 1, 2, 3; Band 1, 2, 3; *Susquehanna* Staff 1, 2, 3.

RAY TYLER

Hummels Wharf, Pa.  
*Music Education*

Symphony Orchestra 1, 2, 3; Band 1, 2, 3; *Susquehanna Singers* 1, 2, 3.

JEAN VANVOORHIS

West Bloomfield Road  
Pittsford, N. Y.

*Liberal Arts*

Kappa Delta Phi 2, 3; Student Christian Association 1, 2, 3; Biemic Society 1, 2, 3; *Susquehanna* Players 1; Vice President Council 2; Women's Athletic Association 1, 2, 3; Hockey Team 3; Basketball Team 3; Intramural Sports 1, 2, 3; Intramural Board 3.

WALTER B. WAGNER

369 W. Fifth St.  
Lewistown, Pa.

*Business Administration*

Bond and Key 1, 2, 3; Student Christian Association 1, 2; Business Society 1, 2, 3; Basketball Team 1, 2, 3; Intramural Sports 1, 2, 3.

EMIL WEILER, JR.

354 Liverpool Ave.  
Egg Harbor City, N. J.

*Business Administration*

Theta Chi 1, 2, 3; Student Christian Association 1, 2, 3; Business Society 1, 2, 3; *Susquehanna* Players 1, 2, 3; Men's Student Council 3; Football Team 1, 2; Intramural Sports 1, 2, 3.

CARL WELLER

60 Melvina St.  
Montgomery, Pa.

*Liberal Arts*

JOHN WHITE  
222 N. Hyde Park Ave.  
Scranton, Pa.

*Business Administration*

Intramural Sports 3; Keystone Junior College 1, 2.

FANCHER WOLFE  
114 Bishop St.  
Beckley, W. Virginia

*Business Administration*

Bond and Key 1, 2, 3; Student Christian Association 1, 2; Biemic Society 1, 2, 3; Vice President 2; *Susquehanna* Staff; Intramural Sports 1, 2.

WALTER WOLSTEN  
36½ Nelson Place  
Newark, N. J.

*Business Administration*

Bond and Key 1, 2, 3; Business Society 1; Football Team 1, 2, 3; Intramural Sports 1, 2, 3.

VIRGINIA LEE YINGER  
815 Pontiac Ave.  
Baltimore 25, Md.

*Liberal Arts*

Student Christian Association 2, 3, Chairman of World Community Commission 3; Susquehanna Players 2, 3; Women's Athletic Association 2, 3; Basketball Team 2; Intramural Sports 2.

ALICE G. YONGHAUS  
701 Pompton Turnpike  
Pompton Plains, N. J.

*Business Administration*

Kappa Delta Phi 1, 2, 3, Vice President 3; Student Christian Association 1, 2, 3; Business Society 2, 3; Biemic Society 1; Vice President Council 3; Women's Athletic Association 1, 2, 3; Intramural Sports 1, 2, 3; Inter-Sorority Council 3; LANTHORN 2, 3, Assistant Photography Editor 2, Photography Editor 3; Freshmen Orientation 3; Freshmen Counselor 3.

SHIRLEY ANN YOUNG  
35 S. Tenth St.  
Quakertown, Pa.

*Liberal Arts*

Omega Delta Sigma; Student Christian Association 1, 3; Biemic Society 1, 2, 3; Band 1, 2, 3; Vice President Council 3; Women's Athletic Association 1, 2, 3; Basketball Team 2; Intramural Sports 1, 2, 3.



# STAGG DAY





# HOMECOMING





B. Nyer, R. Roslander, G. Joyce, E. Wollaston.

## Sophomore Class

### OFFICERS

<i>President</i>	- - - - -	EDWARD WOLLASTON
<i>Vice President</i>	- - - - -	WILLIAM NYER
<i>Secretary</i>	- - - - -	RUTH ROSLANDER
<i>Treasurer</i>	- - - - -	GORDON JOYCE

This year was highlighted by the freshman-sophomore football game which we won for the second consecutive year. The enthusiastic cheering and an original sophomore band were fine examples of the spirit of our class.

In the short time that we have been at Susquehanna, we have been well represented in the various activities on campus, such as sports, dramatics, music and others.

We sincerely hope that we may profit by our mistakes and by the experiences of preceding classes so that we may go on to a more active and successful life at Susquehanna.

HELEN ACHINBACH

BETTY PEARSON ALBERT

JOANN ALEXANDER

DOROTHY ALLEN

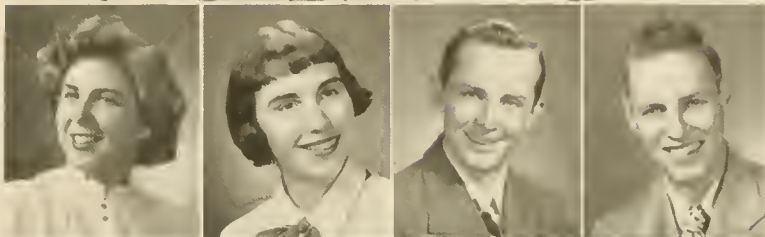


PIGGY ANN ASTON

BARBARA BARNHART

ELMER BAUMGARDNER

WILLIAM BECKWITH

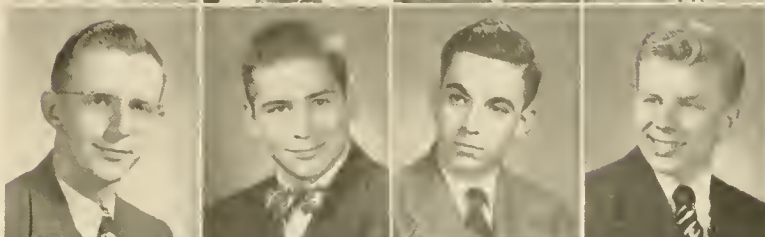


DONALD BERNINGER

ROBERT BOGDANOFF

CHARLES BOMBOY

WILLIAM BOSCH

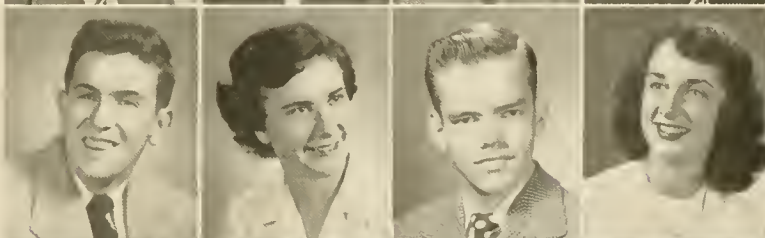


V. EDGAR BOYER

MAXINE BRUBAKER

RAYMOND CALDWELL

CAROL CAMPBELL



JAMES CHADWICK

MAXINE CHAMBERS

EMMA GRACE CONNELL

ROY COPE



PATRICIA CRISMAN

GILBERT O. DAY, JR.

JOHN DIEHL

VOYLET DIETZ

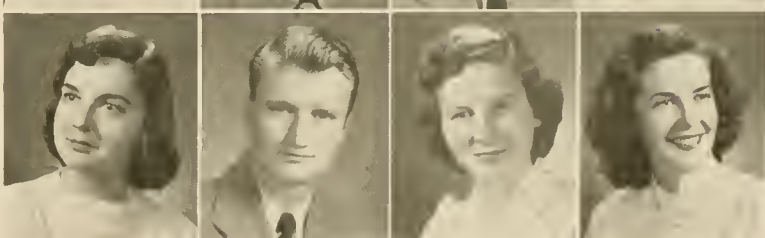


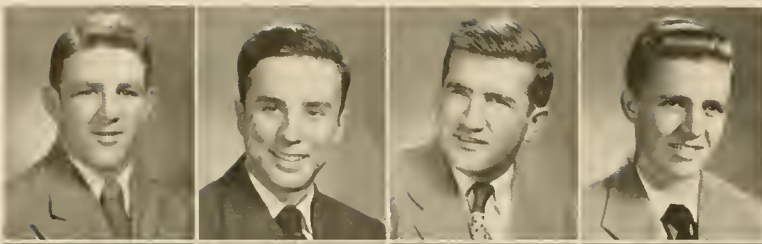
JACQUELYN DILDINE

ROWIE DURDEN

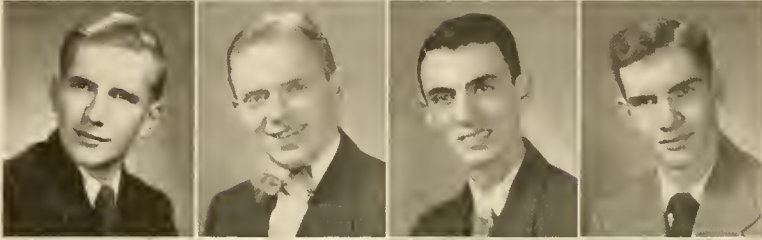
BARBARA EASTON

JOAN EICHMANN

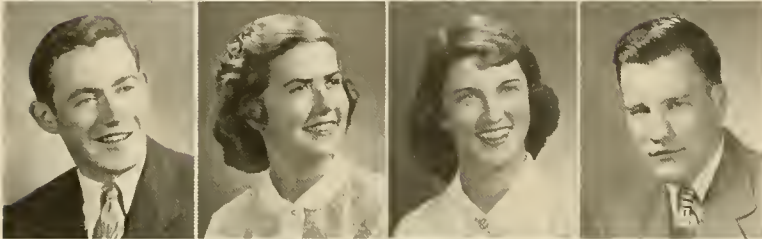




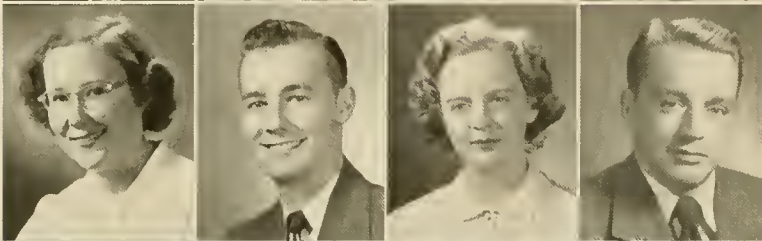
GENE FLNSTERMACHER  
ROBERT FENSTERMACHER  
THOMAS FITZPATRICK  
JOSEPH FLEMING



DALE FULMFR  
RICHARD FYLFR  
ROBERT GAGLIONE  
C. DALE GATEMAN



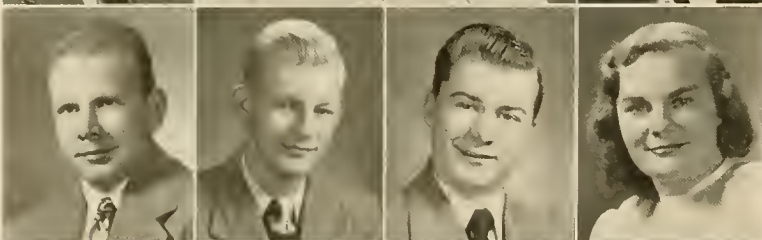
FRANCIS GLOSTER  
LOIS GORDON  
ELIZABETH ANN GUISE  
JAMES HAZLETT



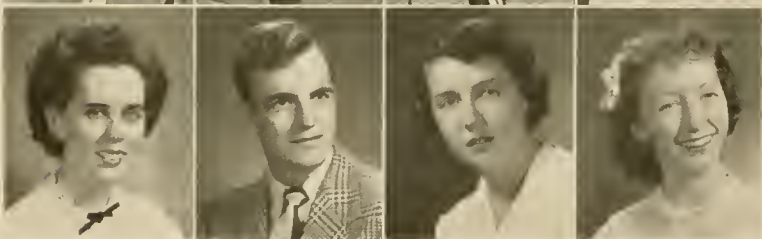
PATRICIA HEATHCOTE  
LESTER HEILMAN  
KATHRYN HELLER  
CHARLES RICHARD HERR



JOHN HOROSCHAK  
ADAH JEANNE JACQUES  
BERNICE JOCHEM  
RICHARD JONES



WILLIAM GORDON JOYCE  
OTT KANTNER  
GEORGE KROGMAN  
KAY LARUE



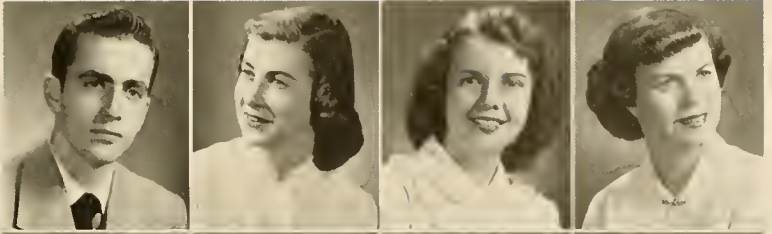
FAYE LIWIS  
DONALD LINN  
JOYCE LUTZ  
DORIS MARTZ

WALTER MAZURA

ETHEL McGRATH

JACQUELYN McKIFFER

MARY McNIVEN

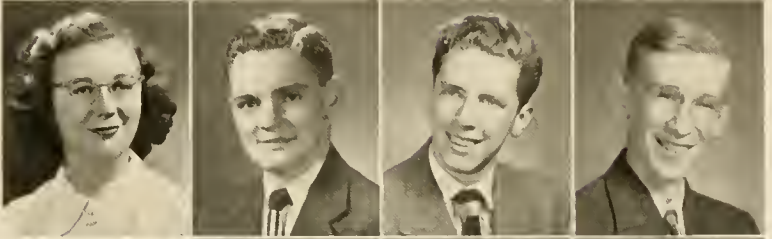


JANET MILLR

CLAIR MITCH

JOHN MOMROW

JAMES MORRIS

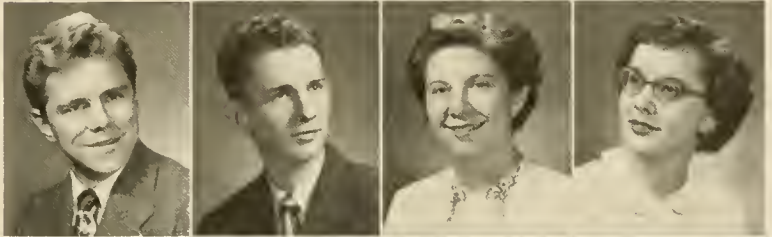


CARL MUSSER

WILLIAM NALE

DOROTHY NARY

JOAN NORRIS

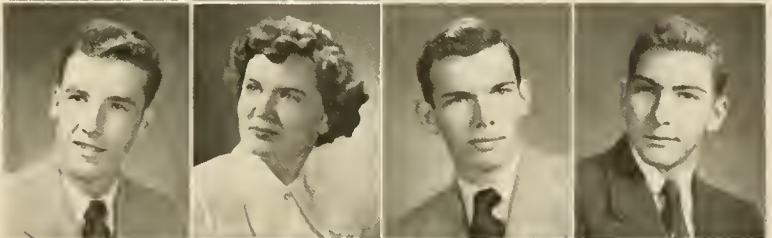


WILLIAM NYER

WILDA ODENTHAL

DAVID PARKER

WILLIAM PRITCHARD



LORRAINE RARICK

LOIS RENFER

RUTH ROSLANDER

PHYLLIS RUDISILL

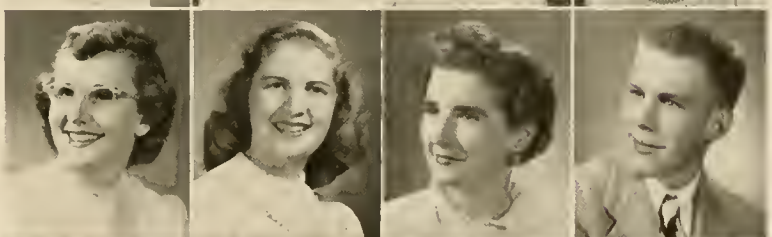


PATRICIA RUMBAUGH

KATHLEEN SCHNERR

C. BELLE SHEAFFER

HERMAN SIEMER

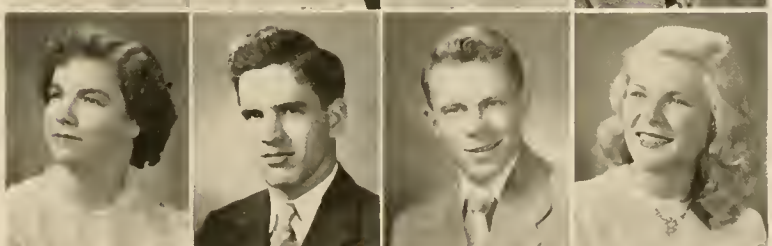


RUTH SMITH

GEORGE SNYDER

JACOB SPANGLER, JR.

BARBARA STAGG





JOHN TAKACH

JAMES TOMKINSON

WILLIAM TRFON

CHARLES ULSH

MIRIAM VOGLER

DAVID VOLK

G. ALLAN VOLLMERS

THOMAS WALLACE

ELEANOR WATERS

MARJORIE WAY

JANET WINGERT

EDWARD WOLLASTON

NANCY YOUHON

CHARLES ZLOCK



NEW COURT

- Lillian Kepner
- Muriel Phillips
- Mary Davison
- Jane Southwick
- Jean Young
- Elaine Williams
- Mary Ann Getsinger



OLD COURT

- Jeanette Zerbe
- Virginia Cochrane
- Barbara Easton
- Mildred Reaver
- Frances Savidge



JANE SOUTHWICK

# May Day

Lady-in-Waiting Spring set the stage well. Crusader Quadrangle was filled with the beauty and color of the redbud, dogwood, azaleas, and evergreens. The air was bright and clear for the official opening of spring—May Day.

Mrs. Carol Kline prepared a unique program for the occasion. After the Queen-of-the-May, Jane Southwick, had been crowned, her grandmother, a visitor, relived the days which she had experienced in her college life. Being the belle of the campus, her meeting of grandfather, and being crowned May Queen were all acted out before grandmother's eyes as she had experienced them. Reliving her past and seeing her granddaughter crowned May Queen made this the happiest of all experiences for grandmother.

The colorful, authentic costumes and the appropriate music rendered by the Gay-Nineties quartet and chorus made this one of Susquehanna's most beautiful and most successful May Days.



B. Maples, J. Miller, J. Stuempfle, C. Jones.

# Freshman Class

## OFFICERS

<i>President</i>	- - - - -	CYDDYLAN JONES
<i>Vice President</i>	- - - - -	BRUCE MAPLES
<i>Secretary</i>	- - - - -	JOYCE MILLER
<i>Treasurer</i>	- - - - -	JEAN STUEMPFLE



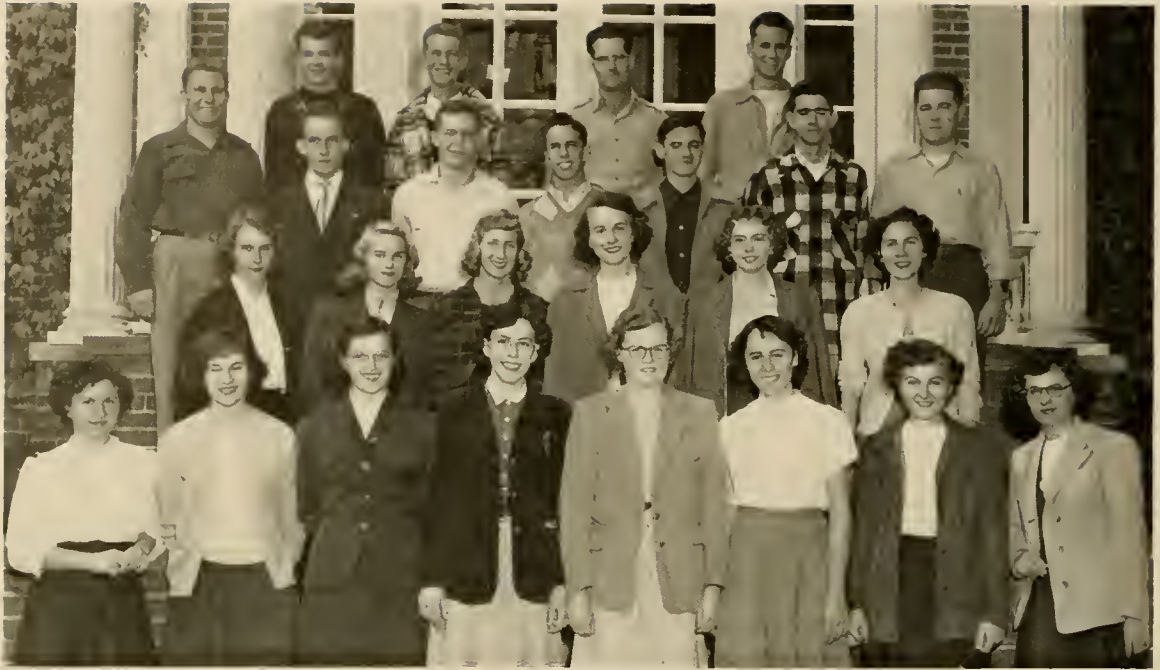


First Row, Left to Right—Dixon, Burnham, Bates, Drumm, Adamick, Doebler, Cressman, Beary.  
 Second Row—Apgar, Cowling, Duboy.  
 Third Row—Albertson, Davenport, Andrews, Covert, Ammerman, Carlson.  
 Fourth Row—Boyle, Deibler, Bottiger.

## Freshman Class



First Row, Left to Right—Fitting, Ford, Fisher, Lee, Gilpin, Lightfoot, Klingelhoeffer, Heffelfinger.  
 Second Row—Keim, Harman, Frost, Lease, Krause, Luther.  
 Third Row—Jones, Henneberg, Kloap, LaMarca.  
 Fourth Row—Kreitner, Foelsch, Horning, Fleisher, Liddiard, Jeffers, Kurtz.



First Row, Left to Right—Magaro, Wegner, Weiser, Williams, Stuter, Stadlander, Barick, Zinda.  
 Second Row—McKinney, McIntyre, McKegg, Rutherford, Reidler, Miller.  
 Third Row—Ryker, Nolte, Myers, Rumpfer, Mitchell, Mesler, Orris.  
 Fourth Row—Mayer, Rice, Miller, Marts.

## Freshman Class



First Row, Left to Right—Smyrl, Thomas, Thompson, Yocum, VonLynn, Wiant, Schweighofer.  
 Second Row—Steele, Staempfle, Salzer, Winey, Wagner.  
 Third Row—Wither, Schoner, Scott, Williamson, Silkman.  
 Fourth Row—Unangst, Tafel, Walker, Townsend, Wyllie, Zodikoff.  
 Fifth Row—Zorn, Steadman.







# Athletics



First Row, Left to Right—Palkovich, Herr, Wolsten, Reese, Martin, Bernstine, Santangelo, Wissinger, Torromeo, Marek, Rosetti, Fenstermacher, Rowe.  
 Second Row—A. A. Stagg, Sr., Witowski, Burley, Fields, Maples, Bronse, Carr, Snyder, Prichard, Balehen, Lenker, Bogdanffy, A. A. Stagg, Jr.  
 Third Row—Tafel, Schoner, Bottiger, Shamp, Boyle, Hazlett, Bennett, Richards, Walters, Torok, Moulton, Walker.

## Amos Alonzo Stagg, Sr.

Picture a silver-haired couple walking onto the gridiron. The woman has a pencil and pad in her hand; the man has a coat over his arm; both have a twinkle in their eyes, and perhaps their hearts beat a little faster as they draw near the teams facing each other on the field. We know this couple. The whole world knows Amos Alonzo Stagg, Sr., and his wife, for they are a symbol—the symbol of the football game.

Coach Stagg is a moral force of extraordinary quality. He has never drunk, smoked, nor sworn. He will not stand for rough play or rough speech or a lack of sportsmanship. Nor does he shout at his team or argue with his men. He doesn't have to because of his affectionate personality. His quietness demands respect, and there isn't a man of us who does not respect the Grand Old Man.

For sixty years Amos Alonzo Stagg, Sr., has coached football teams. For sixty years this man has built character on the field, has refused to believe in commercialized football, and has built young men into the men of tomorrow. This year completes a "Sixty Year Span for the Grand Old Man."

# Football

SUSQUEHANNA 0 — CCNY 59

Lewisohn Stadium

Once again our father-son coach combination took to the gridiron, opening the season against a power-packed CCNY in Lewisohn Stadium in New York City. Although pushed hard all the way, the Stagmen were not lacking in spirit. This can be shown by the passing of Bob O'Gara and Ed Palkovich and the receiving of Don Wissinger. The Beavers were not to be stopped. Outstanding play of the game came when Lasak of CCNY ran 102 yards for a touchdown. Less than twenty-four hours after the game the sports world was shocked by the untimely death of this promising young star.



Student Assistant John Witowski, Coach Stag, Sr.,  
Coach Stag, Jr.

SUSQUEHANNA 27 — WAGNER 41 . . . . . University Field

Thrills were the order from start to finish of this game with the Wagner Seahawks. Wagner scored twice before the Crusaders were able to tally. "Boo" Minnich received an O'Gara pass and made the first S. U. touchdown of the year. Wissinger converted. Before half time Wagner scored two more touchdowns. The Stagmen made their second T. D. by a pass from Palkovich to Snyder. The Seahawks opened the second half by scoring on an interception. Not disheartened, Minnich received another O'Gara pass and went over for his second T. D. of the day. Outstanding play of this game was the last one in which Ed Palkovich received a punt and ran the ball back 90 yards for the final S. U. tally.

SUSQUEHANNA 34 — LYCOMING COLLEGE 6 . . . . . University Field

The "Orange and Maroon" looked like an all-star team throughout the entire game against the Warriors of Lycoming. For the first time in two years the Stagmen gained more yardage on the ground than through the air. Rowe scored first tally early in the game, and it was the Crusaders all the way.



Silkman, Bernstine, and O’Gara plunged over the line to score from the ground, while Wissinger caught an O’Gara pass to go over for another six points. Wissinger scored almost as many points by conversion (five) as the Lycoming team did all afternoon (six).

SUSQUEHANNA 13 — JUNIATA 21 . . . . . College Field

The Stagmen found rough going on a muddy field at Huntingdon on this day. Along with this handicap the Crusaders went into the game with the loss of two of their best running backs, Silkman and Palkovich, both out because of injuries. Despite these facts, the Susquehanna eleven played bang-up football. Bernstine’s running plays and Rosetti’s tackles were heart warming to S. U. and Juniata fans alike. All Indian points were made by one man, Mike Dzvonar. Chet Rowe tallied first for S. U. on an O’Gara pass and Bernstine ran across for the final tally.

SUSQUEHANNA 0 — UPSALA 20 . . . . . University Field

Stagg Day at Susquehanna saw a keyed-up, perhaps over-anxious, Crusader team take the field against a fine performing Viking unit. The Stagmen put up a terrific fight despite the loss of several players injured in previous games. The Vikings got off to a quick start, shocking the fans as well as the team. To make matters worse it rained intermittently throughout the game making it difficult for the passing offense which the Crusaders use so often. Fortunato was the power man for the Upsala team. Marek and Pitello played a superb game for the Susquehanna “Orange and Maroon.”

SUSQUEHANNA 0 — P. M. C. 54 . . . . . Chester

The injury-ridden, out-weighted, Crusader team looked out over the P. M. C. football field and thought of putting on swimming trunks. The field was covered with mud and water and from the start the Stagmen were not able to make use of their passing offensive. If courage were all it takes to win a game, the Crusaders would have won this one. Lenker, Bernstine, Rowe, Marek, and Palkovich put on an outstanding performance throughout the afternoon. Herr, Stone, and Rosetti were injured. The spirit of the entire team didn’t die once as the S. U. men took their fifth defeat of the season.

SUSQUEHANNA 0 — HAVERFORD 7 . . . . . Walton Field

Until the last minute of this game the fans thought it would end in a 0-0 tie, but with only 45 seconds left to play, Ed Test, of Haverford received a Hume pass and ran 20 yards for the only T. D. of the game. It was a heart breaker for the Crusaders who had played gallantly throughout the game. From the beginning it was stop and go for both teams. Bolig, Fenstermacher, and Lenker played conspicuous football for the Stagmen.

SUSQUEHANNA 0 — URSINUS 14 . . . . . Ursinus

Up to this time the Susquehanna Crusaders had won one game and the Bears of Ursinus were looking for their first win of the season. The Ursinus team succeeded in winning this one, both touchdowns being scored by a passing offensive used by the Bears. Five seniors played Crusader football for the last time. They were: Don Minnich, Don Wissinger, Lou Santangelo, Earl Bernstine, and Bob Bolig. Star of the game was Bill “Bosh” Prichard who received most of Bob O’Gara’s passes. Maples and Rosetti played their usual bang-up style of football.





First Row, Left to Right - Uman, Fenstermacher, Pfeiffer, Pfeiffer, Nolfi, Heilman.  
 Second Row—O’Gara, Kimble, Bilger, Rowe, Bastress, Felker, Ingold, Johnston,  
 Wissinger, Witowski.  
 Third Row—Fulmer, Phillips, Thorp, Linn, Takach, Wollaston, Keltz, Wallace, Shortt.

## Baseball

Our new Crusader baseball coach, Bobby Bastress, lead the Susquehanna diamondmen to four wins and seven losses for a season percentage of .364. Batting crown went to catcher, Bob O’Gara, who finished the season with a .324 average. RBI title went to “Inky” Ingold with a total of eight RBI. Tom Wallace, pitcher, finished with a 1-1 record for an even .500 percentage.

		1949 RECORD	S. U.	Opp.
April	2—Gettysburg	.....	1	3
April	9—Lebanon Valley	.....	4	8
April	12—Juniata	.....	6	8
April	27—Dickinson*	.....	7	3
April	29—Wagner*	.....	4	6
April	30—Elizabethtown*	.....	5	2
May	2—Bloomsburg*	.....	1	5
May	6—Juniata*	.....	7	1
May	7—Elizabethtown	.....	0	1
May	9—Bucknell*	.....	3	4
May	13—Wilkes*	.....	6	5

\*Home Games



Left to Right - Condon, Wollaston, Hazlett, Wagner, Henninger, Thorp, Cope, Fleisher.

## Basketball

### RECORD

		<i>S. U.</i>	<i>Opp.</i>
December	3—Ursinus*	30	59
December	7—Penn State*	44	74
December	12—Lebanon Valley	53	89
December	15—Lycoming	48	65
January	7—Juniata	42	59
January	11—Elizabethtown	66	80
January	13—Hartwick	51	54
January	18—Lycoming*	27	65
January	21—Juniata*	35	56
February	11—Dickinson	69	84
February	15—Gallaudet	58	44
February	20—Elizabethtown	42	78
March	3—Philadelphia Textile Institute	50	54

\*Away Games

## Junior Varsity Basketball



First Row, Left to Right—Witowski, Deitch, Steiger, Jones, Pfeiffer, Heilman.  
Second Row—Zorn, Boyer, Jones, Zodikoff, Wylie, Deibler.

## Tennis



Left to Right—Coach Stagg, Zlock, Bittenbender, Manning, Grund, Davis, Sullivan.

There has never been much said about the tennis men of Susquehanna. Until this year there hasn't been much to say, but under the watchful eye of Coach Stagg, Jr., the team finished the season with five wins and five losses for a percentage of .500.

Leaders on the court were Eve Manning and Ed Bittenbender, two of the most outstanding tennis players in the history of S. U.



Left to Right - Doig, Achenbach, McNiven, Aston, Krogman, Faddis, Howling.

## Cheerleaders

There is an eight man co-educational team on our campus that we seldom recognize as a team. The men and women on our cheerleading squad work hard to perfect new cheers and to keep up the spirit and morale of the crowd at our games.

The acting captain of the squad this year is "Puppy" Doig, who may be seen at pep rallies and games pleading for more co-operation from the fans. "Puppy" has introduced many new acrobatic cheers for George Krogman and Peggy Ann Aston to perform. Win, loose, or draw, the faith of our cheerleaders never dies.



## Honor Hockey Team



First Row, Left to Right—Magaro, Fisher, Beers, Robinson, Shetler, Albert, Von Lynn, Wagner, Greeger.  
 Second Row—Miss Sparhawk, Harman, Nary, Thompson, Wegner, VanVoorhis, Stadlander, Frost, Salzer, McIntyre.



## Girls' Basketball



First Row, Left to Right—Frost, Heathcote, Allen, Chambers, Rumbaugh, Albert, Guise, Ferguson, Achenbach, Stagg, Salzer.  
 Second Row—Young, McKegg, Wagner, VonLynn, Duboy, Schweighofer, Krause, Thompson, Smyrl, Easton, Smith, McKinney, Miss Sparhawk.



First Row, Left to Right— Gacono, Jenkins, Alter, Mazura.  
Second Row— Wallace, Monrow, Covert, Vollmers, Wagner, Shafer.

## Intramural Board

The Men's Intramural Board is the organization on campus which was created for the purpose of setting up and controlling men's intramural sports. Members of the board are chosen from each of the fraternities, the men's dormitories, and the day students' organization. Athletic trophies are awarded to the winners of each of four sports: football, basketball, volleyball, and softball. Through the fine work of the board a high level of sportsmanship is upheld at S. U.

## Intramural Football Champions



First Row, Left to Right—Bogar, Grund, Thomas, Buffington.  
Second Row—Thorp, Jenkins, Cope, Wagner, Manning.

The intramural football champs of 1949 are the boys from Bond and Key. This is their second straight year for this honor. Basketball, volleyball, and softball are the other intramural activities for the men. The pictures at the right shows our Faculty intramural basketball team and a wild tussel for the ball during one of the intramural games. This year's basketball championship went to Phi Mu Delta.



## Intramural Baseball Champions



First Row, Left to Right—Smith, Nary, Stagg.  
Second Row—Allen, Rumbaugh, Renfer.

## Intramural Hockey Champions



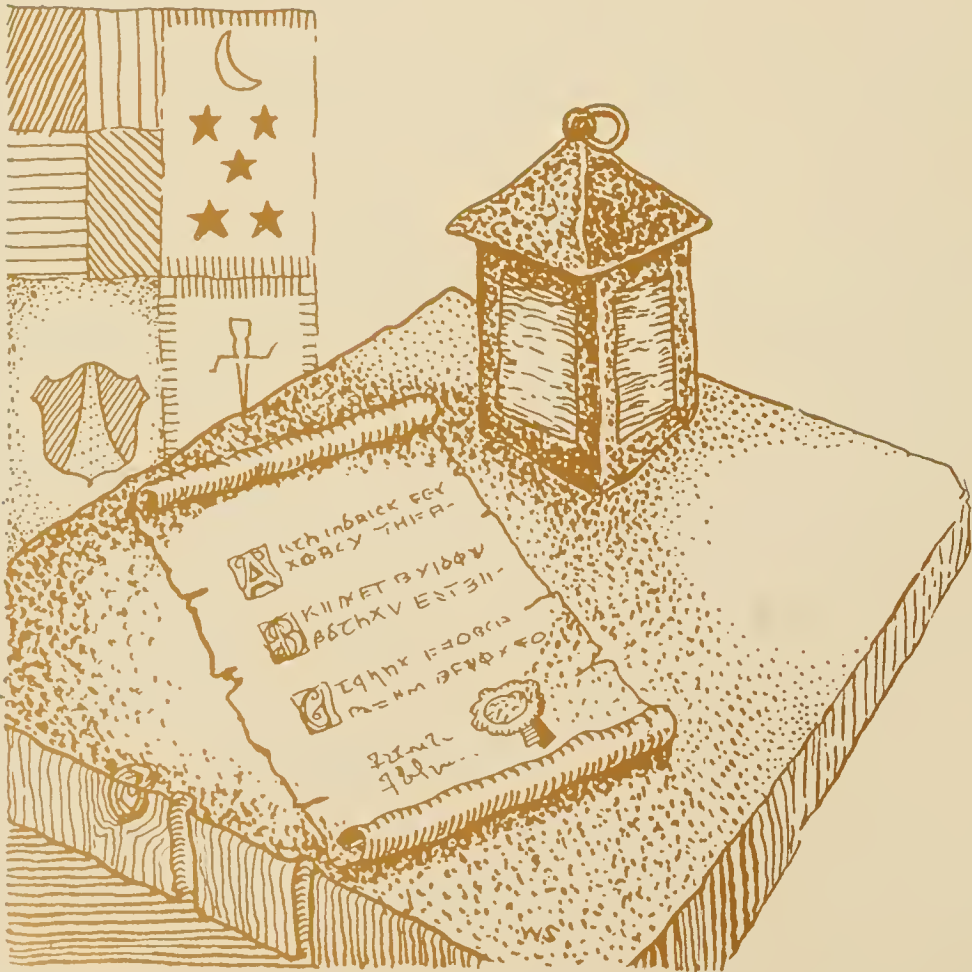
First Row, Left to Right—Rumbaugh, Eichmann, Odenthal, Allen, Gordon.  
Second Row—Roslander, Nary, McGrath, Chambers, Lewis, Heathcote, Heller.





## Girls' Intramural Sports

The girls' intramurals are sponsored by the Women's Athletic Association. The sports participated in include hockey, soccer, volleyball, basketball, ping pong, badminton, tennis, archery, hiking, and biking. Awards are presented to the winners of these sports. Participation in these activities helps to promote fair play, good sportsmanship, and an interest in girls' sports.





# Activities Organizations



First Row, Left to Right—Lewis, Yinger, Hoover, Orner, Wolf.  
 Second Row—Miller, Rev. Mr. Morris, Moorhead, Hadly, Foster, Joyce, Sterrett, Wissinger.

OFFICERS

- President - - ROBERT MILLER
- Girls' Vice President - JANET WOLF
- Boys' Vice President DONALD WISSINGER
- Secretary - - JEANNI ORNER
- Treasurer - - PAUL HADLY
- Stewardship Commission FAYE LEWIS
- Public Relations Commission DAVID STERRETT
- Religious Life Commission LILLIAN HOOVER
- Fellowship Commission WILLIAM FOSTER
- World Community Commission VIRGINIA LEE YINGER
- Senior Representative - LLOYD WILSON
- Junior Representative GERALD MOORHEAD
- Sophomore Representative GORDON JOYCE
- Freshmen Representative GUNNAR ZORN

## Student Christian Association

"And it shall be the duty of the Student Christian Association to foster all Christian activity to the limit of its ability which emerges from within the spirit of the student and to uphold with equal vigor the beliefs and faiths of all the students and faculty members on this campus."

The aim of this organization is to carry the torch of the Christian faith into the lives of each and every student by means of its special interest groups headed by four main commissions. The S. C. A. furnishes opportunities for spiritual enrichment, mental growth, physical development, and social consciousness.

## Business Society

The Business Society was organized to stimulate interest in the fields of business, economics, and commerce. Any business student who shows an active interest in these fields is eligible for membership.

The chief aim of the society is to increase the society's scholarship fund which gives financial aid to worthy and needy business students. Increments are brought about through the selling of magazines, candy, and coasters, and other items.

The monthly meetings are highlighted by dancing and refreshments. Every year the Business Society sponsors a dance.

First Row, Left to Right—Frost, Hantz, Martin, Blough, Beers, Ferguson, Guyer, Smith, Mussina, Second Row—Gordon, Schweighofer, Miller, Shetler, Smith, McKinney, Orner, Lease, Campbell, Yong-laus, Miss Allison. Third Row—Hains, Mr. Graham, Howling, Buehler, Reuther, Wagner, Steiger, Jarvis, Chadwick, Mr. Soule, Mazura, Dr. Armstrong.

OFFICERS

- President - - PAUL WAGNER
- Vice President FLORIS GUYLER
- Secretary - MARTHA MARTIN
- Treasurer ROSEMARY MUSSINA



## OFFICERS

*President* - - DONALD FISHER

*Secretary-Treasurer*

BELL SHAFER



## Ciceroniani

Ciceroniani is a classical organization which was formed on our campus in April, 1947, by a group of Latin students. The object of the organization is to foster and extend the understanding of the Latin language and culture; also, to stimulate good scholarship. Having completed one semester's work in the Latin department and having maintained a class average of "C", a student is eligible for membership. Associate members are those members of the faculty or student body who are not in the department but are interested in the work of the organization. The above-mentioned students must also maintain an average of "C" for eligibility. Meetings are held once a month.

## Biemic Society

The Biemic Society is an organization seeking to develop interest and understanding in science. Its membership includes those persons interested in the various sciences and mathematics. Lectures by guest speakers, movies, and student discussions are all part of the monthly meetings. This year the Biemic Society is particularly interested in vocations in the scientific field. Through their meetings the Biemic Society hopes to develop a greater interest in the rapidly developing scientific world of today.

First Row, Left to Right—Winey, Young, Taylor, Sterrett, Faddis, Wiant, Lease. Second Row—Cosgrove, Odenthal, Watkins, Anderson, Kohlweiss. Third Row—Dr. Houtz, Gearinger, Wolfe, Foster, Solomon. Fourth Row—Mr. Amy, Horoschak, Riceclorf, Schultz. Fifth Row—Muchmore, Mr. DeMott, Dr. Robison. Sixth Row—Chadwick, Doiz, Rumbaugh, Mr. Klinghof.



## OFFICERS

*President* - - DAVID STERRETT

*Vice President* - - EELINE FADDIS

*Secretary-Treasurer*

WILLIAM TAYLOR

*Publicity Chairman*

JEAN VAN VOORHIS



First Row, Left to Right—Albert, Roush, Klingler, Hill, Sarba, Jacques.  
 Second Row—Martz, Oyster, Klingelhoefter, Winey, Hort, Sechrist, Leeser.

#### OFFICERS

*President* - FRANCES ROUSH  
*Vice President*  
 BETTYJANI RAUP RENN  
*Secretary-Treasurer*  
 JUNE KLINGLER

## Women's Day Students' Organization

The Women's Day Students Organization is composed of non-resident students attending Susquehanna from the surrounding areas. Facilities for study and lounging are provided for them in the basement of Hassinger Hall.

Through this organization, the girls become better acquainted with one another and are afforded an opportunity to participate in college activities. Day students are eager to help with school activities and have an earnest desire to strengthen relationships at all times.

## Men's Student Council

The Men's Student Council represents the efforts of the men of S. U. to provide for themselves an active representative student government.

Aside from being a mediator between the men and the administration, the council aims to create college spirit, promote better understanding between faculty and students, and assist in making college life pleasant and worthwhile.

The members of the council include two men from each fraternity, two men from the non-fraternity group, and one faculty adviser.

Left to Right—Bernstine, Small, Doran, Moorhead, Wissinger, Harder, Weiler, Hand.



#### OFFICERS

*President* - DONALD WISSINGER  
*Vice President* EARL BERNSTINE  
*Secretary* - - JAY HAND  
*Treasurer* - - JOHN DORAN

## OFFICERS

*President* - - FLORIS GUYER

*Secretary-Treasurer*  
ROSEMARY MUSSINA



First Row, Left to Right—Blough, Hoover, Guyer, Mussina, Miss Sambrook.  
Second Row—Gumble, Kallir, Orner, Anderson, Dietz, Siemers, Martin.

## Women's Student Council

The Women's Student Council is composed of a president and a secretary-treasurer, presidents of the three dormitories, the chairman of the Judiciary Committee, the social chairman, and a representative from the W. A. A., the S. C. A., the Day Students' Organization, the Inter-Sorority Council, and the freshman and sophomore classes.

Among its many activities the council lists jurisdiction of freshman orientation, regulation of fire drills, sponsorship of Parents' Day activities, supervision of week-night social dancing, and the decorating of the dormitories for Christmas.

## Women's Judiciary Committee

The Women's Judiciary Committee is a sub-committee of the Women's Student Council. It is charged with the responsibility of penalizing any member of the women resident students who has violated any Student Council regulation.

Automatic penalties are provided for the more common offenses. In the event of an extraordinary circumstance, the Committee convenes with the violator, and, after listening to her case, decides upon a just punishment tantamount to the offense.

The Committee also acts as an advisory group. When special problems involving the girls are brought to its attention, it reports them to the Dean of Women for the purpose of counseling and, if possible, the prevention of rule-breaking.

The Dean of Women is an ex-officio member of the Committee.

First Row, Left to Right—Kallir, Blough, Faddis, Martin, Guyer.  
Second Row—Miss Sambrook, Bean, Barnhart, Hoover.



## OFFICERS

*Chairman* - - LILLIAN HOOVER

*House Presidents* — ROSEMARY KALLIR,  
MARTHA MARTIN, VIRGINIA BLOUGH

*Student Council President* - FLORIS GUYER

*Class Representatives:*

*Senior* - - ELAINE FADDIS

*Junior* - - BETTY BEAM

*Sophomore* - BARBARA BARNHART

*Freshman* - - JOAN WIANT



First Row, Left to Right—Kallir, Mitchell, Spogen, Jackson, Kahler, Martin.  
Second Row—Shafer, Fague, Albert, Lease, Young, Yonghaus, Hoover.

#### OFFICERS

Seibert Hall House *President*

ROSEMARY KALLIR

Hassinger Hall House *President*

MARTHA MARTIN

Seibert Hall *Vice Presidents*—MARTHA ALBERTI, MARY JACKSON, JEANNE KAHLER, BARBARA LEASE, MARJORIE SPOGEN

Hassinger Hall *Vice Presidents*—MARIANNE FAGUL, SALLY MITCHELL, NELDA SHAFER, ALICE YONGHAUS, SHIRLEY YOUNG

## Vice Presidents' Council

Nine years ago the Vice Presidents' Council was organized, in order to maintain quiet in the various dormitories during the designed quiet hours. Certain girls are assigned by the respective house presidents to enforce these regulations. By using the "five minute penalty system," these "V. P.'s" maintain the peace and quiet essential for successful dormitory life. Once a student has accumulated twenty minutes, her case is referred to the Women's Judiciary Committee which then decides upon a suitable punishment for the offender.

## Women's Athletic Association

The Women's Athletic Association through its program of intercollegiate and intramural sports gives opportunity for all girls to participate in individual and team activities. Awards for achievement and participation are based on the accumulation of points.

The organization sponsors the refreshment stand during the football and basketball seasons and an annual intercollegiate Play Day. The annual Variety Show and the May Day program are also W. A. A. responsibilities.

The monthly business meetings are held in the W. A. A. room in the basement of Hassinger Hall.

First Row, Left to Right—Foltz, Faddis, Wolf, Guyer, Heller, Albert, Blough, Gumble, Martin, Decker, Miss Sparhawk, Heathcote, Spogen, McNiven, Roslauder, Mussina. Second Row—Guise, Beers, MacNeil, Watkins, Gordon, Bailey, Young, VanVoorhis, Siemers, Ellis, Allen, Robinson, Nicklin, Achenbach, Welliver, Kallir, Brosius, Slater, Cosgrove, Yonghaus. Third Row—Smith, Lease, Orner, Baumgardner, Lewis, Dildie, Kahler, Koldweiss, Fague, Eichmann, Greeger, Vogler, Rumbough, Easton, Waters, Norris, Anderson, Houtz, Beam, Shafer, Chambers, Campbell, Ferguson, McGrath.

#### OFFICERS

*President* - VIRGINIA BLOUGH

*Vice President* MARTHA ALBERT

*Recording Secretary*  
MARTHA MARTIN

*Corresponding Secretary*  
BARBARA DECKER

*Treasurer* - DORIS GUMBLE







## Susquehanna University Band

The Susquehanna University Band, organized in 1917, is one of the most outstanding organizations on campus and has enjoyed a steadily increasing degree of success and popularity.

The marching band is composed of forty-two members, one drum major, two majorettes, and two flag bearers.

The band, under the direction of Mr. Allen W. Flock, has won wide recognition for its fine musical performance and its fascinating and colorful drills.

Along with the annual spring concert, the band is present at all the football games, pep rallies, and May Day.

## Chapel Choir

The Chapel Choir, organized in 1947, is a group of sixteen selected singers. Its main purpose is to perform in Monday morning chapel services. It is under the direction of Elbert D. Haskins, Assistant Professor of Singing.

First Row, Left to Right—Smyrl, Alexander, Easton, Crisman, Kost, Mr. Haskins, Jacques, Watkins, Lehman, Hill. Second Row—Dove, Eecker, Fyler, Carr, Dunlap, Bitting, Faust, Durden.





## I Remember Mama

by JOHN VAN DRUTEN

### CAST

Katrin  
 Mama  
 Papa  
 Dagmar  
 Christine  
 Mr. Hyde  
 Nels  
 Aunt Trina  
 Aunt Sigrid  
 Aunt Jenny  
 Uncle Chris  
 The Woman  
 Mr. Thorkelson  
 Dr. Johnson  
 Arne  
 A Nurse  
 Another Nurse  
 Soda Clerk  
 Madeline  
 Dorothy Schiller  
 Florence Dona Moorehead  
 Bell Boy

Frances Savidge  
 Lillian Kepner  
 Edward Palkovich  
 Floris Guyer  
 Maude Jones  
 David Sterrett  
 Richard Jones  
 Irma Strawbridge  
 Margot Giauque  
 Anna Mae Oyster  
 Joseph Solomon  
 Dorothy Shaffer  
 William Foster  
 Richard Doig  
 Jerry Rhoads  
 Dorothy Allen  
 Ann Yorty  
 Earl Bernstine  
 Nancy Stoughton  
 Margie Spogen  
 Janet Popken  
 George Krogman



## Here Comes Mr. Jordan

by HARRY SEGALL

### CAST

Joe Pendleton  
Mr. Jordan  
Messenger 7013  
Julia Farnsworth  
Tony Abbott  
Bette Logan  
Max Levene  
Mrs. Ames  
Nurse  
Suzie  
Ann  
Williams  
Escort  
Workman  
Lefty  
Doctor  
Plainclothesman

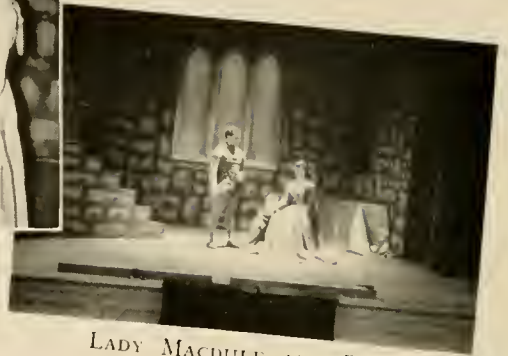
G. Kenneth Small  
Paul Jones  
Robert Dunlap  
Patricia Houtz  
Richard Shaffer  
Sally Mitchell  
Abe Portzline  
Elaine Adamick  
Lillian Smith  
Anna Mae Oyster  
Vera Duboy  
Richard Doig  
William Nolte  
Ernest Canals  
Richard Rother  
Richard Valera  
Roland Rossetti



BANQUET SCENE



AFTER DUNCAN'S  
MURDER



LADY MACBETH AND ROSS

## The Susquehanna Players

*Present*

# Macbeth

*by*

WILLIAM SHAKESPEARE



MACBETH



LADY MACBETH



COSTUME ARRANGEMENT



THE THREE WITCHES



GREASE PAINT AND POWDER

# Macbeth

By WILLIAM SHAKESPEARE

Duncan, King of Scotland	William Nolte
Malcolm, his son	William Foster
Donalbain, his other son	William Kloap
Macbeth, general of the King's army	Joseph Solomon
Banquo, general of the King's army	Justin Myers
MacDuff, Nobleman of Scotland	Paul Jones
Lennox	George Dimmock
Ross	Larry Batchelet
Menteith	Wilbur Buffington
Angus	Larry Bottiger
Fleance, son of Banquo	Louis Santangelo
Siward, Earl of Northumberland	Abe Portzline
Seyton	Robert Paterson
Son of MacDuff	Jerry Rhoads
Doctor	Orville Glass
Sergeant	Jake Spangler
A Porter	Roland Rossetti
An Old Man	Gordon Joyce
First Apparition	Ben Alter
Second Apparition	Neil Rhoads
Third Apparition	Harry Salter
Lady Macbeth	Barbara Barnhart
Lady MacDuff	Elaine Adamick
A Gentlewoman	Grace Magaro
A Guest	Carolyn McIntyre
First Witch	Lorraine Lee
Second Witch	Barbara Gilpin
Third Witch	Anna Mac Oyster
Servant	John Horoshak
Banquo's Ghost	Paul Buchler
Lord	John Deihl
First Murderer	Al Martin
Second Murderer	Ed Palkovick
Third Murderer	Donald Minnick
At the organ ..	Len Carlson



First Row, Left to Right—Mr. Graham, Walker, Hains, Grund, Derr, Beckwith.  
 Second Row—Carr, Herr, Sterrett, Bitting, Hill, Bollinger, Spangler, Fenstermacher.  
 Third Row—Thomas, Harter, Ladika, Bolig, Weller, Kost, Takach, Wollaston, Schultz, Troutman.

# Bond and Key

## OFFICERS

<i>President</i>	-	-	-	-	-	-	-	-	-	-	JAMES RUMBAUGH
<i>Vice President</i>	-	-	-	-	-	-	-	-	-	-	ROBERT BITTING
<i>Secretary</i>	-	-	-	-	-	-	-	-	-	-	KENNETH HILL
<i>Treasurer</i>	-	-	-	-	-	-	-	-	-	-	WILBUR BUFFINGTON
<i>Steward</i>	-	-	-	-	-	-	-	-	-	-	HERBERT HAINS
<i>Utility Manager</i>	-	-	-	-	-	-	-	-	-	-	JOHN BUFFINGTON

Bond and Key, Susquehanna's oldest fraternity, was founded in 1914 as a local organization and has remained so throughout the years, for the members prefer to keep the management among themselves.

The initial membership of 21 has now increased to 550, with members in most of the 48 states and in Hungary, England, Bermuda, Japan, and British Guiana.

Holding to their motto, "Bound as Knights," the members pledge their loyalty "first to Susquehanna, second to Bond and Key." The club colors are black and gold.





First Row, Left to Right—W. Buffington, J. Buffington, Mr. Linebaugh, Mr. Haskins, Mr. Billman, Bogar.  
 Second Row—Dunlap, Thorp, Mr. Klinglof, Rumbaugh, Cope, Wolsten.  
 Third Row—Mr. Amy, Mr. Soule, Wolfe, Wagner, Manning, Jenkins, Dr. Robison, Mr. Flock.

#### FRATRES IN COLLEGIO

William Beckwith  
 Robert Bitting  
 Marlin Bobb  
 Marsh Bogar  
 Robert Bolig  
 Herbert Bollinger  
 John Buffington  
 Wilbur Buffington  
 Richard Campbell  
 Harold Carr  
 Roy Cope  
 Gilbert Day  
 Thomas Deppen  
 Donald Derr  
 John Diehl  
 Rowie Durden  
 Robert Dunlap

Charles Duncan  
 Gene Fenstermacher  
 Charles Grund  
 Herbert Hains  
 Jake Harder  
 Lester Heilman  
 Richard Herr  
 Kenneth Hill  
 Thomas Jenkins  
 Nelson Kost  
 Joseph Ladika  
 Jack Larsen  
 Everett Manning  
 James Morris  
 Robert Pittello  
 James Rumbaugh

Fred Schultz  
 Jacob Spangler  
 Thomas Staller  
 David Sterrett  
 John Takach  
 George Thomas  
 Jack Thorp  
 Richard Troutman  
 Ray Tyler  
 Bruce Wagner  
 John Walker  
 Kent Weller  
 Donald Wissinger  
 John Witowski  
 Fancher Wolfe  
 Edward Wollaston  
 Walter Wolsten

#### FRATRES FUTURI

Virgil Albertson  
 Robert Barner  
 Larry Batschelet  
 William Bosch  
 Donald Boyle  
 Raymond Caldwell  
 Robert Deibler  
 Harvey Jeffers

Robert Kurtz  
 George Liddington  
 Robert Morris  
 Gail Moulton, Jr.  
 Donald Muchmore  
 T. Justin Myers, Jr.  
 Edward Neuman  
 Philip O'Brien

Charles H. Roush, Jr.  
 Frank Schoner  
 Eugene Silkman  
 Donald Steadman  
 John Steiger  
 William Treon  
 J. Norman White  
 Robert Wyllie

#### FRATRES IN FACULTATE

Mr. Robert L. Amy  
 Mr. Frederick Billman  
 Mr. Allen Flock  
 Mr. Grover C. T. Graham

Mr. Elbert Haskins  
 Dr. John J. Houtz  
 Mr. Philip Klinglof

Mr. Percy Linebaugh  
 Dr. George M. Robison  
 Mr. John K. Soule  
 Mr. Frederick C. Stevens



First Row, Left to Right—Dunn, Krogman, Marek, Ush, Santangelo, Jones, Shaffer, Joyce, Martin, Mr. Howling, Alter.  
 Second Row—Wagner, Woldsen, Brown, Palkovich, Shoemaker, Korkuch, Small, Chadwick, Torromeo, Mr. Speiglmeyer, Mr. Kleinsorg.  
 Third Row—Minnick, Chadwick, Doig

# Phi Mu Delta

## OFFICERS

<i>President</i>	- - - - -	GEORGE SMALL
<i>Vice President</i>	- - - - -	ANDREW KOCH
<i>Secretary</i>	- - - - -	ROGER HOWLING
<i>Comptroller</i>	- - - - -	PAUL WAGNER

The Mu Alpha Chapter of Phi Mu Delta was amalgamated in 1925 with its predecessor Alpha Sigma Omega. Two years later the impressive Mu Alpha fraternity house was built and officially opened.

It is the desire of the fraternity to form in its members an integration of scholastic ability, athletic skill, and a flexible and socially adjusted personality. Phi Mu Delta attempts to develop leaders who are a definite asset to the campus, the fraternity, and the community.







First Row, Left to Right—Zlock, Driscoll, Portzline, Gacono, Ulman, Molinaro, Beigh, Westervelt, Howling, Bernstine, Patterson, Canals.  
 Second Row—Poster, Reese, Faust, Auman, Hazeltine, Koch, Horoschak, Henderson, Nyer, Mr. Brungart, Dr. Wilson, Dr. Russ.

### FRATRES IN COLLEGIO

Ben Alter  
 Fred Auman  
 Harry Beigh  
 Earl Bernstine  
 Jack Brown  
 Ernest Canals  
 Henry Chadwick  
 James Chadwick  
 Theodore Clark  
 Richard Doig  
 Joseph Driscoll  
 Melvin Dunn  
 John Eecker  
 Burdell Faust  
 William Foster  
 V. Carl Gacono  
 John Gow

Frederick Hazeltine  
 Alvin Henderson  
 John Horoschak  
 Roger Howling  
 Richard Jones  
 William Gordon Joyce  
 Andrew Koch  
 Edward Korkuch  
 George Krogman  
 Gardiner Marek  
 Alfred Martin  
 Walter Mazura  
 Donald Minnich  
 Clair Mitch  
 Albert Molinaro  
 William Nyer

Edward Palkovich  
 Robert Patterson  
 Edward Pfeiffer  
 Abraham Portzline  
 Daniel Reese  
 Louis Santangelo  
 Richard Shaffer  
 Donald Shoemaker  
 G. Kenneth Small  
 Jesse Stone  
 Felix Torromeo  
 Franklin Ulman  
 Charles Ulsh  
 G. Allan Vollmers  
 Paul Wagner  
 Richard Westervelt  
 Donald Wohlsen

### FRATRES FUTURI

Harmon Andrews  
 David Bennett  
 Robert Bogdanffy  
 Ernest Bottiger  
 Vincent Boyer  
 Richard Burley  
 Leonard Carlson  
 Edward Covert  
 Philip Crawford  
 James Deitch

Thomas Fields  
 Walter Filbert  
 Norman Fleisher  
 Joseph Fleming  
 James Hazlett  
 Walter Iffert  
 Ken Jones  
 Richard Kreitner  
 Robert Mesler  
 David Parker

Richard Rother  
 William Scott  
 Herman Siemer  
 George Snyder  
 James Tomkinson  
 Steve Torok  
 Allen Townsend  
 Edward Unangst  
 Ernest Walker  
 Donald Walter

### FRATRES IN FACULTATE

Dr. George Fisher  
 Mr. Russell Hatz  
 Mr. Robert Howling

Mr. Axel Kleinsorg  
 Mr. Robert Meader  
 Dr. William Russ

Dr. Arthur Wilson  
 Mr. E. T. Yorty  
 Dr. Waldemar Zagars



First Row, Left to Right—Berninger, Wetzel, Lauver, Fyler, Gearinger, Greenly, Fenstermacher, Gloster, Hand, Reuther.  
 Second Row—Dr. Gilbert, Bomboy, Brandan, Baumgardner, Musser, Miller, Taylor, Weiler, Gehris, Rowe.  
 Third Row—Mr. DeMott, Shafer, Hally, Prichard, Gateman, Shafter, Mr. Geisinger, Dr. Armstrong, Rowe, Riedorf.  
 Fourth Row—Morrow, Jones, Moorhead, Fulmer, Buehler, Shney.

# Theta Chi

## OFFICERS

<i>President</i>	- - - - -	JAY HAND
<i>Vice President</i>	- - - - -	JAMES GEHRIS
<i>Secretary</i>	- - - - -	WILLARD TAYLOR
<i>Treasurer</i>	- - - - -	RAYMOND LAUVER

Only as Susquehanna exists, does Theta Chi live.

The Beta Omega chapter is an organization which has as its sole purpose the developing of the best in each man and preparing him to give his all to the world by scholastic attainment, physical growth, and social emanation. As the fulness of life reaches its highest expression in campus activities, so Theta Chi leads its brothers to the greatest of these experiences.

But not only is she intensive in character. Reaching from coast to coast, from Maine to Florida, she envelopes ninety-two chapters with a membership of 35,000 active college students. She binds the nation with the bonds of brotherhood.

Theta Chi gives to her members a common bond which looks forward to peace and unity in a one world of brotherhood.

## FRATRES IN COLLEGIO

Elmer Baumgardner  
Donald Berninger  
Charles Bomboy  
Walter Brandau  
Paul Buehler  
Robert Fenstermacher  
Dale Fulmer  
Richard Fyler  
Dale Gateman  
Jack Gearinger  
James Gebris  
Francis Gloster  
Harold Greenly

Paul Hafly  
Jay Hand  
Paul Jones  
John Lamade  
Raymond Lauver  
Donald Linn  
Robert Miller  
John Momrow  
Gerald Moorhead  
Carl Musser  
William Nale  
William Prichard

Charles Rau  
John Reuther  
Robert Ricedorf  
Roland Rosetti  
Chester Rowe  
Harold Rowe  
Merrill Shafer  
Charles Shaffer  
Mark Shuey  
Richard Stetler  
Willard Taylor  
Emil Weiler  
Richard Wetzel

## FRATRES FUTURI

Thomas Balchen  
Sidney Berezin  
Richard Bidelspach  
Ned Condon  
Albert Jones

Wallace Kutz  
Duane Mitchell  
Kenneth Orris  
Conrad Pfeiffer

Richard Stout  
Richard Valera  
Thomas Wallace  
Arthur Zodikoff  
Gunnar Zorn

## FRATRES IN FACULTATE

Dr. Thomas Armstrong  
Mr. Howard DeMott

Mr. Karl Geisinger

Dr. Russell Gilbert  
Dr. Kenneth Waterbury





First Row, Left to Right—Kullir, Yonghaus, Lease, Watkins, Faddis, Blough, Slater.  
 Second Row—MacNeil, Shetter, Jochem, McNiven, Martin, Ferguson.  
 Third Row—Shafer, Chambers, Klingler, Roslander, Odenthal, Baumgardner, Brosius, Kohlweiss.  
 Fourth Row—Heller, Baruhart, Rumbaugh, LaRue, Way, VanVoorhis, Vogler, Norris, Rudisill.

# Kappa Delta Phi

## OFFICERS

<i>President</i>	- - - - -	BARBARA WATKINS
<i>Vice President</i>	- - - - -	ALICE YONGHAUS
<i>Recording Secretary</i>	- - - - -	ELAINE FADDIS
<i>Financial Secretary</i>	- - - - -	VIRGINIA BLOUGH
<i>Treasurer</i>	- - - - -	BARBARA LEASE

Kappa Delta Phi, one of the three sororities on Susquehanna's campus, was organized in 1917. Since that time it has endeavored to uphold the high ideals of friendship, loyalty, and character, promoting intellectual development, and social fellowship.

The insignia is the owl, signifying wisdom. The motto is "Excellence through friendship," and the sorority colors are chocolate brown and lemon yellow.

The very active honorary group is under the able leadership of Mrs. William A. Russ, Jr.

Kappa Delta Phi has been asked to affiliate with a national sorority. These plans, however, are indefinite.

## SORORES IN COLLEGIO

- |                     |                      |                     |
|---------------------|----------------------|---------------------|
| ✓ Barbara Barnhart  | ✓ Rosemary Kallir    | ✓ Phyllis Rudisill  |
| ✓ Fern Baumgardner  | ✓ June Klingler      | ✓ Patricia Rumbaugh |
| ✓ Virginia Blough   | ✓ Gertrude Kohlweiss | ✓ Nelda Shafer      |
| ✓ Margietta Brosius | ✓ Kay W. LaRue       | ✓ Maria Shetler     |
| ✓ Maxine Chambers   | ✓ Barbara Lease      | ✓ Mary Lou Slater   |
| ✓ Elaine Faddis     | ✓ Audrey MacNeil     | ✓ Jean VanVoorhis   |
| ✓ Althea Ferguson   | ✓ Mary McNiven       | ✓ Miriam Vogler     |
| ✓ Kathryn Heller    | ✓ Martha Martin      | ✓ Barbara Watkins   |
| ✓ Bernice Jochem    | ✓ Joan Norris        | ✓ Marjorie Way      |
| ✓ Jeanne Kahler     | ✓ Wilda Odenthal     | ✓ Alice Yonghaus    |
|                     | ✓ Ruth Roslander     |                     |

## SORORES IN CAMPO

- |                     |                      |                      |
|---------------------|----------------------|----------------------|
| Mrs. Isabel N. Coxe | Miss Beatrice Herman | Mrs. W. A. Russ, Jr. |
| Mrs. Karl Geisinger | Mrs. Robert Howling  | Mrs. Waldemar Zagars |

## SORORES IN FACULTATE

Miss Lenora Allison

Miss Ruth Sparhawk





First Row, Left to Right—Mussina, Siemers, Anderson, Nicklin.  
 Second Row—Janson, Gumble, Showalter, Welliver, Robinson.  
 Third Row—Young, Albert, Beam, Fague, Beers, Foltz.  
 Fourth Row—Stagg, Crisman, Lewis, Smith, Bailey.  
 Fifth Row—Nary, Rarick, Waters, Campbell.

## Omega Delta Sigma

### OFFICERS

<i>President</i>	-	-	-	-	-	-	-	-	-	-	BARBARA ANDERSON
<i>Vice President</i>	-	-	-	-	-	-	-	-	-	-	LOUISE SIEMERS
<i>Secretary</i>	-	-	-	-	-	-	-	-	-	-	ROSEMARY MUSSINA
<i>Financial Secretary</i>	-	-	-	-	-	-	-	-	-	-	SHIRLEY SHOWALTER
<i>Treasurer</i>	-	-	-	-	-	-	-	-	-	-	SHIRLEY NICKLIN

Omega Delta Sigma, one of the three sororities on Susquehanna's campus, has a membership of twenty-four actives.

Organized in 1917, the original group of five girls chose as their colors grey and orange and as their flower the chrysanthemum. The sorority emblem, the griffen, stands for valor and honesty.

Omega Delta Sigma also has an active group of women who are honorary members. Mrs. Edna Kerber is president of this group.

## SORORES IN COLLEGIO

Martha Albert	Susan Foltz	Zola Robinson
Barbara Anderson	Doris Gumble	Shirley Showalter
Lyn Bailey	Doris Janson	Louise Siemers
Betty Beam	Faye Lewis	Ruth Smith
Marilyn Beers	Rosemary Mussina	Barbara Stagg
Carol Campbell	Dorothy Nary	Eleanor Waters
Patricia Crisman	Shirley Nicklin	Barbara Welliver
Marianne Fague	Lorraine Rarick	Shirley Young

## SORORES IN CAMPO

Mrs. Robert Amy	Miss Ruth E. McCorkill	Mrs. Kenneth Waterbury
Mrs. Allen Flock	Mrs. A. A. Stagg, Jr.	Mrs. Arthur Wilson
Mrs. John Houtz	Mrs. A. A. Stagg, Sr.	Mrs. E. T. Yorty





First Row, Left to Right—Miller, Rothermel, Lehman, Bollinger, Mitchell,  
Barnhart, Hort, Mrs. Hatz.  
Second Row—Greeger, Anman, Kline, Roush, McCallan,  
Third Row—Youhon, Hill, Wingert, Dietz.

## Sigma Alpha Iota

### OFFICERS

<i>President</i>	- - - - -	- JANE BOLLINGER
<i>Vice President</i>	- - - - -	- FLORA BARNHART
<i>Recording Secretary</i>	- - - - -	- FRANCES ROUSH
<i>Corresponding Secretary</i>	- - - - -	- SALLY MITCHELL
<i>Treasurer</i>	- - - - -	- MARY LEHMAN

Sigma Omega is one of eighty-nine chapters of the International Music Fraternity for Women, Sigma Alpha Iota.

The chapter was chartered in 1925 through the efforts of the late Dr. E. Edwin Sheldon.

“To study and practice the goodness of life, the beauty of art, and the meaning of music” are some of the aims of the sorority. The colors of the S. A. I. are red and white, the flower is the red rose, and the motto, “Life is short, but art is long.”

Those students who excel in scholarship and possess outstanding musical ability are eligible for membership.



SORORES IN COLLEGIO

Cecelia Auman  
Flora Barnhart  
Jane Bollinger  
Voylet Dietz  
Alice Greeger  
Jean Hill

Jo Ann Hort  
Sue Kline  
Mary Lehman  
Joy McCahan  
Mary Miller

Sally Mitchell  
Jean Rothermel  
Frances Roush  
Mina Sarba  
Janet Wingert  
Nancy Youhon

SORORES IN CAMPO

Mrs. Francis Gilbert

Mrs. P. M. Linebaugh

Mrs. Frederick Stevens

SORORES IN FACULTATE

Mrs. Alice Giauque

Mrs. Russell Hatz  
Miss Athalia Kline

Miss Mary Potteiger





Left to Right—Dr. Waterbury, Kenneth Small, Jay Hand, James Rumbaugh.

## Inter-Fraternity Senate

### OFFICERS

*Chairman* - - - DEAN RUSSELL GALT  
*Secretary-Treasurer* DR. KENNETH WATERBURY  
*Social Chairman* - - - JAMES RUMBAUGH

The Inter-Fraternity Senate aims to maintain harmony among the fraternities by promoting a fair system of rushing regulations and by solving co-operatively problems relating to inter-fraternity relationships.

It is composed of the president and faculty adviser from each fraternity and Dean Galt, who serves as permanent chairman.

There is a secretary-treasurer elected from the three faculty representatives and a social chairman who works with the president of the Inter-Sorority Council in planning the annual Homecoming Dance. He also represents the Senate on the Social Committee.

## Inter-Sorority Council

### OFFICERS

*President* - - - BARBARA WATKINS  
*Vice President* - - - JEANNI KAHLER  
*Secretary-Treasurer* - - - LOUISE SIEMERS  
*Representative to Student Council*  
 BARBARA ANDERSON

The Inter-Sorority Council is composed of three representatives from each sorority, together with the Dean of Women as faculty adviser. Each sorority sends its President, Vice President, and one other elected delegate to the council. The position of president of the council rotates each year among the three sororities.

The purpose of the organization is to increase understanding and co-operation among the sororities. It meets once every month to regulate freshman rushing, determine pledge quotas, plan rush teas and hikes, sponsor inter-sorority dances, and in general to take care of all inter-sorority problems.

First Row, Left to Right—Siemers, Watkins, Kahler, Bollinger,  
 Second Row—Barnhart, Sarba, Yonghaus, Beers, Anderson, Miss Sanbrook.





Left to Right—Chambers, Martin, Buehler, Foster, Smeltz, Yonghaus, Mr. Meader.

# The Lanthorn

## EDITORIAL STAFF

<i>Editor-in-Chief</i> .....	WILLIAM FOSTER
<i>Literary Editor</i> .....	MARTHA MARTIN
<i>Photography Editor</i> .....	ALICE YONGHAUS
<i>Assistant Photography Editor</i> .....	MAXINE CHAMBERS
<i>Sports Editor</i> .....	PAUL BUEHLER
<i>Art Work</i> .....	WILLIAM SMELTZ
<i>Faculty Adviser</i> .....	ROBERT F. W. MEADER

The snapshots and some of the photographic art work were done by David Sterrett and Lloyd Wilson. The typists for our 1951 LANTHORN were Martha Martin, Patricia Rumbaugh, Lorraine Rarick, and Dorothy Allen. We wish to extend many thanks to those who helped in making our 1951 LANTHORN what it is.

## BUSINESS STAFF

<i>Business Manager</i> .....	HERBERT R. HAINS
<i>Advertising Personnel</i> — CARL GACONO, ROBERT JARVIS, ROBERT PATTERSON, JOHN STEIGER	
<i>Typist</i> .....	LYN BAILEY
<i>Faculty Adviser</i> .....	GROVER C. T. GRAHAM

Left to Right—Gacono, Jarvis, Hains, Mr. Graham, Larson.





First Row, Left to Right—Nicklin, Reuther, Rumbaugh, Harder, Smith.  
Second Row—Westervelt, Bogar, Staller, Sterrett, Buehler, Mr. Graham.

STAFF

*Editor-in-Chief* - JAMES RUMBAUGH  
*Associate Editor* - THOMAS STALLER  
*Business Manager* - JOHN REUTHER  
*Managing Editor* - LILLIAN SMITH  
*News Editor* - JACOB HARDER  
*Men's Sports Editor* RICHARD WESTERVELT  
*Girls' Sports Editor* SHIRLEY NICKLIN  
*Photography Editor* DAVID STERRETT  
*Advertising Manager* PAUL BUEHLER  
*Assistant Advertising Manager* LYN BAILLY  
*Circulation Manager* - MARSH BOGAR

## The Susquehanna

Established in 1891, *The Susquehanna*, the university's weekly publication, is published every Tuesday by and for the student body.

It offers opportunity to students interested in the various fields of journalism, headlining, make-up, reporting, editing, circulation, and management.

## The Susquehanna Singers

The Susquehanna Singers, under the direction of Mrs. Alice Giauque, is composed of sophomores and juniors in the Conservatory, as well as interested non-Conservatory students. This group has displayed its talents on various occasions throughout the year and has gained an excellent reputation for tone quality and voice blending.

This year the Susquehanna Singers presented a spring concert on the home campus and also made appearances in neighboring churches and schools.

First Row, Left to Right—Miller, Roush, Mitchell, Bernhart, Aston, Easton, Stagg, Wingert, Youhon, Lehman. Second Row—Lollinger, Guise, McKeever, Dietz, McCahan, Alexander, Demarest, Jacques, Hill. Third Row—Mrs. Giauque, Day, Faust, Durden, Bitting, Tyler, Musser, Dunlap, Fulmer, Tyler, Musser, Eecker, Carr, Gloster.



## OFFICERS

*President* - - ZOLA ROBINSON  
*Vice President* MARIA SHETLER  
*Secretary* - - LOUISE SIEMERS  
*Treasurer* GERTRUDE KOHLWEISS



First Row, Left to Right—Shetler, Robinson, Kohlweiss  
 Second Row—Siemers, Blough, Miss Sparhawk, Watkins, Ferguson.

## Tau Kappa

Tau Kappa is a national women's athletic sorority. The Beta chapter at Susquehanna University is now composed of nine active members and three honoraries.

The purpose of the organization is to encourage good sportsmanship on campus and arouse a greater interest in women's athletics. Any girl with a junior award or seven hundred points, earned by participation in varsity or intramural sports, is eligible for membership.

## Phi Kappa

The Phi Kappa Society was organized in 1930 to develop and promote interest in the classical Greek studies among the students of the college. Those students who have maintained a high standard of scholarship in Greek and show an interest in things Hellenic are eligible for election to membership. Once a month the group meets to discuss some phase of Greek culture.

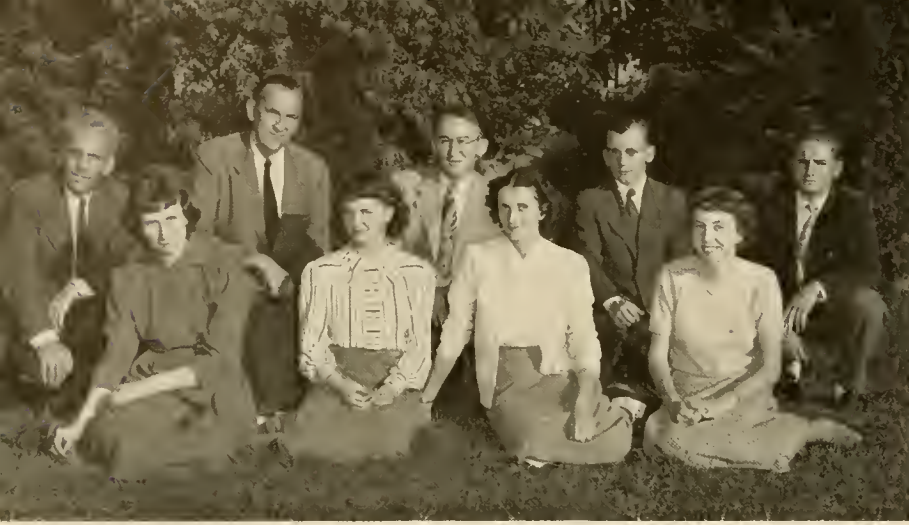
This opportunity is taken to express the society's appreciation of the constant interest and sound advice given by Dr. A. William Ahl, the society's adviser.

First Row, Left to Right—Bottiger, Seiler, Volk, Penman, Wilson, Bomboy, Albertson. Second Row—Smeltz, Spangler, Stetler, Mover, Moorhead, Snyder, Zorn, Dr. Ahl, Perna, Joyce.



## OFFICERS

*Basileus* - - WILLIAM SMELTZ  
*Dentero-basileus*  
 GERALD MOORHEAD  
*Grammatens* - - JEAN PENMAN  
*Tamias* - - LLOYD WILSON  
*Aggelos* - - JACOB SPANGLER



First Row, Left to Right Penman, Leeser, Decker, Watkins.  
 Second Row—Dr. Russ, Dr. Zagers, Reuther, Miller, Canals.

#### OFFICERS

*President* - JOHN REUTHER  
*Vice President* ROBERT MILLER  
*Secretary-Treasurer* - DR. RUSS

## Pi Gamma Mu

Pi Gamma Mu is a national social science honor society whose membership includes faculty, alumni, and undergraduates. Pennsylvania Gamma Chapter was organized at Susquehanna University on May 9, 1927.

The purpose of the organization is to encourage the ideals of scholarship and social science in the study of social problems. Juniors and Seniors are eligible for membership. Eligibility consists of a special interest in social science studies, completion of at least twenty semester hours in social sciences with a grade of "B", good character, and a satisfactory general standing.

## Alpha Psi Omega

The Theta Phi Chapter of Alpha Psi Omega, the largest national honorary fraternity of dramatics in the world, is located here at Susquehanna University.

Membership may be obtained in this Theta Phi Cast by creditable work in college dramatic productions. There is a point system in this organization whereby any person, whether in a cast or helping in any way to promote a play, may obtain a specific number of credits towards gaining admittance to the organization. Seventy-five points are required for membership.

The purpose of the organization is to promote college dramatics, to create a better understanding of dramatic problems, and to promote an interest in dramatics both in the college and in the surrounding community.

First Row, Left to Right—Spogen, Oyster, Kahler, Vogler, Solomon, Kohlweiss, Waters, Guyer.  
 Second Row—Reuther, Shney, Ulman, Foster. Third Row—Mr. Kleinsorg, Buehler.



#### OFFICERS

*Grand Stage Director* - JOSEPH SOLOMON  
*Grand Stage Manager* - RICHARD DOIG  
*Grand Business Manager*, MARJORIE SPOGEN  
*Cast Director and Faculty Adviser*  
 MR. AXEL KLEINSORG

# STUDENT ROSTER

Achenbach, Helen (2)	2219 Yale Avenue, Camp Hill	Caldwell, Raymond (2)	R. D. No. 2, Selinsgrove
Adamick, Elaine (1)	685 Donald Avenue, Perth Amboy, N. J.	Caldwell, Robert (1)	211 Spruce Street, Sunbury
Albert, Betty Pearson (2)	Port Trevorton	Campbell, Carol (2)	15 South Seventeenth Street, Camp Hill
Albert, Martha (3)	20 S. Locust Street, Myerstown	Campbell, Richard (4)	1131 Reagan Street, Sunbury
Albertson, Virgil (1)	Butler Avenue, Conyngham	Canals, Ernest (1)	67 Birch Street, Bloomfield, N. J.
Alexander, JuAnn (2)	201 Maple Avenue, Wenonah, N. J.	Carlson, Leonard (1)	234 Electric Avenue, Lewistown
Allen, Dorothy (2)	5 Lincoln Street, Ramsey, N. J.	Carr, Charles (2)	429 North Third Street, Bellwood
Alter, Ben C. (3)	520 Bear Valley Avenue, Shamokin	Chadwick, Henry (4)	3607 Pacific Avenue, Wildwood, N. J.
Ammerman, G. Lewis (1)	722 Westminster Road, Brooklyn, N. Y.	Chadwick, James (2)	3607 Pacific Avenue, Wildwood, N. J.
Anderson, Barbara (4)	9 Shady Lane, Johnstown	Chambers, Maxine (2)	207 Market Street, Mifflinburg
Andrews, Harmon (1)	21 Wight Place, Tenafly, N. J.	Clark, Theodore (4)	515 North Orange Street, Selinsgrove
Antonucci, Thomas (1)	530 N. Second Street, Sunbury	Condon, Joseph, Jr. (1)	490 King Street, Port Chester, N. J.
Appar, Dorothy (1)	River View Terrace, Mahwah	Connell, Emma Grace (2)	12 S. Swarthmore Avenue, Ridley Park
Arner, Janice (3)	320 West Fifth Street, East Liverpool, Ohio	Conrad, James (4)	200 Catawissa Avenue, Sunbury
Aston, Peggy Ann (2)	35 North Maple Street, Mt. Carmel	Cope, Roy (2)	7403 Sommers Road, Philadelphia
Auman, Cecilia (4)	R. D. No. 1, Box 78E, St. Marys	Cosgrove, Nancy (3)	202 South Maple Street, Mt. Carmel
Auman, Fred (4)	659 Duke Street, Northumberland	Covert, Edward (1)	17 Canoe Brook Parkway, Summit, N. J.
Babies, Donald (4)	260 Main Street, Conemaugh	Cowling, Marvel (1)	258 Cherry Lane, Teaneck, N. J.
Bailey, Lyn (3)	130 Morningside Drive, New York 27, N. Y.	Crawford, Philip (1)	224 West Fourth Street, Bloomsburg
Balchen, Thomas (1)	887 Prince Street, Teaneck, N. J.	Cressman, Helen (1)	R. F. D. No. 2, Bath
Barnes, George (1)	R. D. No. 1, Liverpool	Crisman, Patricia (2)	Summerhill
Barnhart, Barbara (4)	3108 Oak Park Avenue, Berwyn, Ill.	Davenport, William (1)	137 South Maple Avenue, Kingston
Barnhart, Flora (3)	Claysburg	Day, Gilbert O., Jr. (2)	123 North Market Street, Selinsgrove
Bates, Joan (1)	11 Dunham Avenue, Cranford, N. J.	Decker, Barbara (4)	5613 Mountain Avenue, Melrose Park
Batschelet, Harry L. (1)	101 Valley Street, Williamsport	Deibler, Robert (1)	1250 West Fourth Street, Williamsport
Baumgardner, Elmer (2)	1702 Graham Avenue, Windber	Deitch, James (1)	83 North Wyoming Street, Hazleton
Baumgardner, Fern (3)	1702 Graham Avenue, Windber	Deppen, Thomas (4)	Herndon
Beam, Marie (3)	2507 Graham Avenue, Windber	Derr, Donald (4)	Buck Run
Beary, Velma (1)	Marble, Clarion County	Diehl, John (2)	R. D. No. 1, Mifflinburg
Beckwith, William (2)	721 Eighth Street, Oakmont	Dietz, Voylet (2)	627 Locust Street, Wrightsville
Beers, Marilyn (3)	452 Beardsley Avenue, Bloomfield, N. J.	Dildine, Jacquelyn (2)	Box 222, R. D. No. 3, Muncy
Beigh, H. Daniel, Jr. (4)	2316 Hoffer Street, Harrisburg	Dilmick, George (4)	708 Front Street, Northumberland
Bennett, David (1)	739 Broad Street, Montoursville	Dixon, Mary Ann (1)	230 West High Street, Red Lion
Berezin, Sidney (2)	11 Woodland Avenue, East Orange, N. J.	Doehler, Catherine (1)	213 Spruce Street, Sunbury
Berninger, Donald (2)	R. D. No. 2, Bloomsburg	Doig, Richard (4)	1215 Main Street, Honesdale
Bernstine, Earl (4)	2375 Hillside Avenue, Williamsport	Doran, John (4)	105 Highland Avenue, Downingtown
Bidel-pach, Richard (1)	829 Line Street, Sunbury	Dove, Lewis, Jr. (3)	123 East Fourth Street, Bloomsburg
Bitting, Robert (3)	231 Valley Street, Marysville	Dreese, Eugene (1)	Herndon
Block, Robert (4)	5725 North Park Avenue, Philadelphia 41	Driscoll, Joseph (3)	11 North High Street, Selinsgrove
Blough, Virginia (4)	310 Hickory Street, Johnstown	Drum, Frances (1)	111 East Tenth Street, Berwick
Bobb, Marlin (4)	Herndon	Duboy, Vera (1)	186 Whippoorwill Road, Atlantic Highlands, N. J.
Bogar, Marsh (3)	2936 Green Street, Harrisburg	Duncan, Charles (4)	260 Race Street, Sunbury
Bogdanffy, Robert (2)	135 Washington Avenue, Clifton, N. J.	Dunlap, John Robert (2)	4282 El Camino Real, Palo Alto, Calif.
Bolig, James (1)	206 South Market Street, Selinsgrove	Dunn, Melvin (4)	124 South Enola Drive, Enola
Bolig, Nancy (1)	University Heights, Selinsgrove	Durden, Rowie (2)	Greenwich Towers, Greenwich, Conn.
Bolig, Robert (4)	Hummels Wharf	Easton, Barbara (2)	558 Glenwood Avenue, Johnstown
Bollinger, A. Jane (4)	213 Carlisle Street, New Oxford	Ecker, John L. (3)	91 Prospect Street, Nanticoke
Rollinger, Herbert (3)	132 Fifth Street, Northumberland	Eichmann, Joan (2)	206 E. Lavender Road, Wildwood Crest, N. J.
Bombay, Charles (2)	711 Catawissa Avenue, Sunbury	Erdman, Daniel (3)	123 North Eleventh Street, Sunbury
Bonish, Harry (4)	20 East Fourth Street, Mt. Carmel	Faddis, P. Elaine (4)	1401 Stirling Street, Coatesville
Rorsteins, Vija (1)	4 South High Street, Selinsgrove	Fague, Marianne (3)	143 South Queen Street, Lancaster
Bosch, William (2)	5290 73rd Street, Maspeth, L. I., N. Y.	Faust, Burdell (3)	511 Second Street, Weatherly
Battiger, Ernest L. (1)	Box 27, West Milton	Fenstermacher, Gene (2)	101 Front Street, Northumberland
Boyer, V. Edgar (2)	200 Green Street, Mifflinburg	Fenstermacher, Robert (2)	1062 Masser Street, Sunbury
Boyle, Donald (1)	2807 Beale Avenue, Altoona	Ferguson, Althea (3)	10 South Main Street, Millerstown
Brandau, Walter (3)	223 Catawissa Avenue, Sunbury	Fields, Thomas (1)	171 La France Avenue, Bloomfield, N. J.
Brannon, George (1)	East Waterford	Filbert, Walter (1)	129 South Cedar Street, Hazleton
Brobst, Hazel (3)	1012 South Front Street, Sunbury	Fisher, Lois (1)	1814 East 28th Street, Brooklyn 29, N. Y.
Brosius, Margietta (4)	Rebuck	Fisher, William D. (2)	R. D. No. 2, Selinsgrove
Brouse, Eugene (1)	R. D. No. 2, Selinsgrove	Fitting, Betty (1)	83 Embury Avenue, Ocean Grove, N. J.
Brown, Jack A. (3)	1050 Washington Street, Indiana	Fitzpatrick, Thomas (2)	249 Walnut Street, Sunbury
Brown, Mary Jo (1)	1050 Washington Street, Indiana	Fleisher, Norman (1)	811 South Wayne Street, Lewistown
Brubaker, Maxine (2)	McAlisterville	Fleming, Joseph (2)	52 Highfield Road, Bloomfield, N. J.
Buehler, Paul (1)	Paupack, Pike County	Fleming, Ray (4)	219 Seventh Street, Northumberland
Buffington, John (1)	86 Linden Avenue, Bloomfield, N. J.	Fluri, Gennaro (2)	879 Alter Street, Hazleton
Buffington, Wilbur (1)	29 West Main Street, Elizabethville	Foelsch, Donald (1)	3 West 65th Street, New York, N. Y.
Burley, Richard (1)	R. D. No. 1, Montgomery	Foltz, Chiri (1)	North Main Street, Reedsville
Burnham, Elizabeth (1)	Wellsville Avenue, New Milford, Conn.		

# STUDENT ROSTER

Foltz, Susan (3)	816 Broad Street, Collingdale	Kissinger, Robert (2)	Freeburg
Ford, Janice (1)	89 Kendall Boulevard, Oaklyn, N. J.	Kline, Susan (1)	551 East Third Street, Bloomsburg
Foster, William (3)	R. D. No. 2, Bristol, Newportville	Klingelhoeffer, Mary (1)	160 North Eighth Street, Sunbury
Frost, Esther (1)	Route 6, Lancaster	Klingler, June (3)	Winfield
Fulmer, Dale	R. D. No. 1, Danville	Kloap, William (1)	110 Garfield Street, Nanticoke
Fyler, Richard (2)	R. D. No. 2, Millerstown	Koch, Andrew (1)	202 Samuels Avenue, Hazletoa
Gacono, V. Carl (3)	137 West Hand Avenue, Wildwood, N. J.	Kohlweiss, Gertrude (1)	242 Merrick Avenue, Merrick, N. Y.
Gaglione, Robert (2)	21 East Pine Street, Selinsgrove	Korkuch, Edward (1)	910 East Race Street, Shamokin
Gateman, C. Dale (2)	North Market Street, Elysburg	Kost, R. Nelson (1)	210 South York Street, Mechanicsburg
Gearinger, Jack (3)	82 North Iron Street, Bloomsburg	Krause, Jacqueline (1)	534 North Front Street, Steelton
Gelris, James (4)	119 East Fifth Street, Berwick	Kreitner, Richard (1)	319 Ridge Street, Honesdale
Gilpin, Barbara (1)	Newfoundland, Wayne County	Krogman, George (2)	123 West Burk Avenue, Wildwood, N. J.
Glass, Orville (1)	334 Fourth Street, Northumberland	Kutz, H. Robert (1)	5138 N. Fifteenth Street, Philadelphia
Gloster, Francis (2)	Eureka, Bucks County	Kutz, Wallace (1)	921 Augusta Street, Sunbury
Gordon, Lois (2)	344 Washington Avenue, Union, N. J.	Ladika, Joseph (1)	415 North Vine Street, Mt. Carmel
Gow, John (1)	Lattintown Road, Marlboro, N. Y.	Lamade, John Budd (6)	1608 James Road, Williamsport
Greezer, Alice (3)	117 Kathmere Road, Havertown	LaMarca, William (1)	205 Broadway, Coraopolis
Greenly, Harold (1)	R. D. No. 2, Millville	Larsen, Jack (3)	41 93rd Street, Brooklyn, N. Y.
Groce, Richard (1)	315 East Walnut Street, Selinsgrove	LaRue, Kay W. (2)	42 Mohegan Village, Tuckahoe Rd., Tuckahoe, N. Y.
Grund, Charles (4)	517 South Eleventh Street, Reading	Lauver, Raymond (1)	R. D. No. 1, McAlisterville
Guise, Elizabeth (2)	R. D. No. 1, Biglerville	Lease, Barbara (4)	443 West Main Street, Somerset
Gumble, Doris (4)	Paupack, Pike County	Lease, Madaline (1)	443 West Main Street, Somerset
Guyer, Floris (4)	Tipton, Blair County	Lee, Lorraine (1)	9 West 10th Street, Bayonne, N. J.
Haffly, Paul (4)	304 West Main Street, Belleville	Leeser, Mildred (1)	238 South Front Street, Sunbury
Hains, Herbert, Jr. (3)	172 North 15th Street, East Orange, N. J.	Lehman, Mary E. (3)	R. D. No. 2, Newville
Hand, Jay L. (4)	Muir, Schuylkill County	Lenker, Kenneth (2)	413 Ninth Street, Sunbury
Harder, Jacob, Jr. (3)	1601 Letelworth Road, Camp Hill	Leshner, Charles (6)	R. D. No. 1, Northumberland
Harman, Ruth C. (1)	1206 Fourth Avenue, Duncansville	Leshock, Tzenique (2)	Mahanoy Street, Trevorton
Hazeltine, Frederick (1)	318 North Eleventh Street, Sunbury	Lewis, Faye (2)	30 East Ruddle Street, Coldale
Hazlett, James (2)	Box 302, Chicora	Liddiard, James, Jr. (1)	10 North Front Street, Sunbury
Heathcote, Patricia (2)	220 East Cottage Place, York	Liddington, George (1)	321 Orange Street, Northumberland
Heffelfinger, Marguerite (1)	211 West Fifth Street, Bloomsburg	Lightfoot, Lynne (1)	211 Runnymede Avenue, Jenkintown
Heilman, Lester (2)	514 Rural Avenue, Williamsport	Linn, Don (2)	Harvard Street, Lewistown
Heller, Kathryn (2)	208 Washington Park, Nazareth	Lupolt, Wayne (2)	239 South Sixth Street, Shamokin
Henderson, Alvin (1)	1331 Emory Circle N. E., Atlanta, Ga.	Luther, Carol (1)	515 Bedford Street, Windber
Henneberg, H. Carl (1)	1388 Jesup Avenue, New York 52, N. Y.	Lutz, Joyce (2)	124 West Pine Street, Mahanoy City
Henninger, Robert (3)	91 King Street, Northumberland	MacNeil, Audrey (3)	119 Water Street, Perth Amboy, N. J.
Herb, Paul (1)	1141 Susquehanna Avenue, Sunbury	McCahan, Carolyn (3)	Port Royal
Herr, Charles Richard (2)	1021 West Arch Street, Shamokin	McCune, John (6)	Main Street, Middleburg
Hill, Jean (3)	359 Aul Street, Sunbury	McDonald, Jean (3)	Box 634, Marion, Virginia
Hill, Kenneth (1)	12 North Market Street, Selinsgrove	McGrath, Ethel (2)	24 Floyd Avenue, Bloomfield, N. J.
Hoover, Lillian (4)	905 Third Avenue, Sterling, Ill.	McIntosh, Virginia (6)	State Colony, Selinsgrove
Horning, Kermit (1)	R. D. No. 1, McAlisterville	McIntyre, Carolyn (1)	1120 Bellfield Avenue, Drexel Hill
Horoschak, John (2)	133 East Columbia Avenue, Atlas	McKeever, Jacquelyn (2)	1407 Third Street, Catasauqua
Hort, JoAnn (1)	517 1/2 Catawissa Avenue, Sunbury	McKegg, Pamela (1)	249 Belleville Avenue, Bloomfield, N. J.
Houtz, M. Patricia (1)	104 Fairmount Avenue, Sunbury	McKinney, Nancy Anne (1)	3112 Yale Avenue, Camp Hill
Howling, Roger C. (1)	8 La Salle Road, Upper Montclair, N. J.	McNiven, Mary (2)	604 Tomkins Avenue, Mamaroneck, N. Y.
Hrkuan, Daniel (1)	136 Singer Street, Johnstown	Magara, Grace (1)	1436 Vernon Street, Harrisburg
Iffert, Walter (1)	556 Lincoln Street, Hazleton	Manning, Everett (4)	126 N. Seventeenth Street, East Orange, N. J.
Jackson, Mary Jane (1)	112 East 25th Street, Wildwood, N. J.	Maples, Bruce (1)	60 Claremont Avenue, Bloomfield, N. J.
Jacques, Adah Jeanne (2)	11 North High Street, Selinsgrove	Marck, Gardiner (3)	25 East Avenue, Atlantic Highlands, N. J.
Janson, Doris (1)	886 Prospect Street, York	Martin, Alfred (3)	207 North Park Street, East Orange, N. J.
Jarvis, Robert (1)	602 Mohawk Avenue, Norwood	Martin, Martha (3)	27 South Third Street, Shamokin
Jeffers, Harvey (1)	126 Seneca Parkway, Rochester, N. Y.	Marts, Thomas (1)	1774 Morris Street, Camden, N. J.
Jenkins, Thomas (3)	645 Dorian Road, Westfield, N. J.	Martz, Doris (2)	423 Vine Street, Sunbury
Jochem, Bernice (2)	215 Paterson Avenue, East Rutherford, N. J.	Matter, Franke (1)	Main Street, Freeburg
Jones, Albert (2)	811 Fairview Road, Swarthmore	Mayer, John (1)	117 Fifth Avenue, Belmar, N. J.
Jones, Cynddylan (1)	1500 Walnut Street, Ashland	Mazura, Walter (2)	935 Sedalia Street, Avalon, Pittsburgh 2
Jones, Paul (3)	12 North Eighth Street, Shamokin	McLaro, Constance (2)	388 Hulton Road, Oakmont
Jones, Richard (2)	121 West Elm Street, Hazleton	Mesler, Robert (1)	963 Kenyon Avenue, Plainfield, N. J.
Joyce, Wm. Gordon (2)	R. D. No. 1, Bridlepton, N. J.	Miller, George, Jr. (1)	Shamokin Dam
Kalder, Jeanne (1)	315 East Walnut Street, Nazareth	Miller, Howard (1)	Box 73, Richfield
Kallir, Rosemary (1)	285 Riverside Drive, New York, N. Y.	Miller, Janet (2)	723 Walnut Street, Ashland
Kautner, Ott (2)	508 North Market Street, Selinsgrove	Miller, Joyce (1)	100 Stone Street, Honesdale
Keim, Edna Rae (1)	124 North Rock Street, Shamokin	Miller, Mary (1)	1320 Hillside Avenue, Honesdale
		Miller, Robert (1)	R. D. Liberty
		Miller, Vernon (1)	812 North Front Street, Sunbury
		Minnemoyer, Earl (1)	21 Tenth Street, Milton
		Minnich, Donald (1)	37 Lawrence Avenue, Bradford



# STUDENT ROSTER

Mitch, Clair (2)	521 Walnut Street, Millinburg	Salzer, Norma Abby (1)	2004 East 26th Street, Brooklyn 29, N. Y.
Mitchell, Duane (1)	523 North Sixth Street, Clairton	Santangelo, Louis (4)	673 Queen Street, Northumberland
Mitchell, Sally (3)	50 Shoemaker Street, Forty Fort	Sarba, M. Elmira (4)	111 Catawissa Avenue, Sunbury
Molinaro, Albert (4)	245 Grove Street, Montclair, N. J.	Satzler, Faye (4)	McAlisterville
Momrow, John (2)	6092 Fourth Avenue, Brooklyn, N. Y.	Schnerr, Kathleen (2)	Annex Apartmentg, Hall Square, Nazareth
Moorhead, Gerald (3)	R. D. No. 1, Milton	Schoner, Franklin (1)	9 Wellesley Road, Maplewood, N. J.
Morris, James (2)	116 North Water Street, Selinsgrove	Schultz, Fred (1)	1008 North Irving Avenue, Scranton 10
Morris, Robert (1)	116 North Water Street, Selinsgrove	Schweighofer, Doris (1)	R. D. No. 3, Honesdale
Moulton, Gail (1)	6 Ball Road, Mountain Lakes, N. J.	Scott, William (1)	Rehoboth Beach, Delaware
Moyer, Marvin (4)	571 Queen Street, Northumberland	Sechrist, Joan (1)	117 North Twelfth Street, Sunbury
Moyer, Robert (3)	R. D. No. 1, Selinsgrove	Seiler, Mark (1)	R. D. No. 1, Dorusife
Muchmore, Donald (1)	27 Laurel Avenue, Summit, N. J.	Shafer, Betty (2)	State Street, Millville
Musser, Carl (2)	Kreamer	Shafer, Merrill (3)	Grier City, Barnesville
Mussina, Rosemary (4)	619 North Front Street, Milton	Shafer, Nelda (3)	Grier City, Barnesville
Myers, T. Justin, Jr. (1)	100 South Main Street, Hughesville	Shaffer, Charles (3)	120 Independence Street, Selinsgrove
Nale, William (2)	R. D. No. 1, Lewis'own	Shaffer, Richard (4)	602 South Market Street, Selinsgrove
Nary, Dorothy (2)	Rice Avenue, Biglerville	Shamp, Charles (1)	343 South Second Street, Sunbury
Neuman, Edward (1)	828 Florida Avenue, York	Sheaffer, C. Belle (2)	531 North Eighth Street, Selingsgrove
Nicklin, Shirley (1)	Marlboro, N. Y.	Sheldon, Donald (1)	470 Ocean Avenue, Brooklyn, N. Y.
Nolte, Wilfred, Jr. (1)	719 Riverview Avenue, Coraopo's	Shetler, Maria (4)	324 Chestnut Street, Spring City
Norman, Richard (1)	809 North Orange Street, Selinsgrove	Shipton, James (1)	Swengel, Union County
Norris, Joan (2)	Myrtle Street, Susquehanna	Shocemaker, Donald (3)	217 Gilliland Place, Bellevue, Pittsburgh 2
Nyer, William (2)	R. D. No. 1, Weatherly	Sholly, Margaret (1)	723 Susquehanna Avenue, Sunbury
O'Brien, Philip (3)	232 Hone Avenue, Oil City	Shotsberger, Betty (0)	106 South Market Street, Selinsgrove
Odenthal, Wilda (2)	Lake Juliet, Boonton, N. J.	Showalter, Shirley (4)	Box 32, Millmoot
O'Gara, Robert (3)	18 Dodd Street, Bloomfield, N. J.	Shuey, Mark (4)	512 Market Street, Millersburg
Orner, Jeanne (1)	Bendersville, Adams County	Siemer, Herman (2)	Avosting, Hewitt, N. J.
Orris, Kenneth (1)	Ickesburg	Siemers, Louise (4)	239 Upper Mountain Avenue, Upper Montclair, N. J.
Oyster, Anna Mae (4)	807 South Second Street, Sunbury	Silkman, Eugene (1)	431 Spaulding Street, Waverly, N. Y.
Palkovich, Edward (2)	252 East High Street, Coaldale	Slater, Mary Lou (3)	198 Isabella Avenue, Irvington, N. J.
Parker, David (2)	1560 Sheridan Lane, Norristown	Small, G. Kenneth (4)	23 Rossiter Avenue, Paterson, N. J.
Patterson, Robert (3)	324 Hazel Street, Tamaqua	Smeltz, William (3)	R. D. 1, Northumberland
Penman, Jean (4)	18 Front Street, Strong	Smith, Albert (1)	R. D. No. 1, Elysburg
Perna, Anthony (1)	Cocolamus, Juniata County	Smith, Elinor (1)	760 Main Street, Lykens
Pfeiffer, Conrad (2)	311 Third Street, Weatherly	Smith, Harry (3)	Herndon
Pfeiffer, Edward (1)	311 Third Street, Weatherly	Smith, J. LaWayne (3)	118 Willow Avenue, Honesdale
Phillips, George (4)	Herndon	Smith, Lillian (4)	R. D. No. 1, Nescopeck
Pittello, Robert (2)	201 South Vine Street, Mt. Carmel	Smith, Ruth (2)	Box 353, Davidsville
Portzline, A. R., Jr. (4)	Eighth Street, Selinsgrove	Smyrl, Shirley (1)	220 East Bertsch Street, Lansford
Post, Joan (3)	34 Highfield Road, Bloomfield, N. J.	Snyder, Alfred (2)	Freeburg
Prichard, William (2)	Bishop Hollow Road, Newtown Square	Snyder, Charles (1)	Herndon
Rarick, Jean (1)	North Warren Street, Orwigsburg	Snyder, George (2)	515 Market Street, Millinburg
Rarick, Lorraine (2)	North Warren Street, Orwigsburg	Solomon, Joseph (4)	337 East Saylor Street, Atlas
Rau, Charles (4)	412 North Market Street, Selinsgrove	Spangler, Jacob, Jr. (2)	145 West Fourth Avenue, Roselle, N. J.
Reese, Daniel (3)	127 Poplar Street, Kingstoo	Specht, William, Jr. (1)	507 Union Street, Millersburg
Reidler, Katherine (1)	615 Lincoln Street, Hazleton	Spogen, Marjorie (4)	P. O. Box 167, Turbotville
Renfer, Lois (2)	129 Rock Street, Pittston	Stadlander, Marilyn (1)	573 East 38th Street, Brooklyn 10, N. Y.
Renn, Bettyjane Raup (4)	21 Greenough Street, Sunbury	Stagg, Barbara (2)	University Heights, Selinsgrove
Reuther, John (4)	93 North Street, Nichols, Conn.	Staller, Thomas (3)	242 East Seventh Street, Mt. Carmel
Rice, Harry, Jr. (1)	83 Watsessing Avenue, Bloomfield, N. J.	Steadman, Donald (1)	43 Sunset Avenue, Laurence Harbor, N. J.
Ricedorf, Robert (4)	Ickesburg	Steffy, Robert (1)	18 North Front Street, Selinsgrove
Richards, Jay (1)	R. D. No. 3, Lewistown	Steiger, John (3)	Newfoundland, Wayne County
Robinson, Zola (4)	371 West Fourth Street, Lewistown	Sterrett, J. David (3)	774 Braxton Road, Ridley Park
Rosetti, Roland (3)	Box 47, South Canaan	Stetler, Richard (3)	417 Orange Street, Mifflintown
Roslander, Ruth (2)	Shadyside Road, Ramsey, N. J.	Stetser, Harry (4)	Ashland Avenue, Somerdale, N. J.
Rothler, Richard (1)	8631 Fort Hamilton Parkway, Brooklyn, N. Y.	Stork, Gene (2)	Middleburg
Rothermel, Jean (4)	R. D. No. 1, Klingerstown	Stone, Jesse (2)	408 Third Street, New Cumberland
Roush, Arthur (1)	709 North Market Street, Selinsgrove	Stout, Richard (1)	606 Mahoning Street, Lehighton
Roush, Charles (1)	Now Street, Freeburg	Stuenpfle, Jean (1)	122 South Main Street, Hughesville
Roush, Frances (4)	194 Orange Street, Northumberland	Stuter, Mary (1)	Main Street, Belleville
Rowe, Chester (3)	301 East Pine Street, Selinsgrove	Tafel, Louis (1)	8008 Frankford Avenue, Philadelphia 36
Rowe, Harold (4)	438 North Second Street, Lykens	Takach, John (2)	206 Second Street, Leechburg
Rudisill, Phyllis (2)	840 Winchester Avenue, Hillside, N. J.	Taylor, Charles W. (3)	Elmhurst, Lackawanna County
Rumbaugh, James (1)	R. D. No. 2, Millerstown	Thomas, George, Jr. (1)	319 East Pine Street, Selinsgrove
Rumbaugh, Patricia (2)	R. D. No. 2, Millerstown	Thomas, Margretta (1)	24 East Lincoln Street, Shamokin
Rumpler, Leonard (1)	115 Oak Hill Avenue, Pawtucket, R. I.	Thompson, Marilyn (1)	522 Lindberg Way, Lewistown
Rutherford, Caroline (1)	R. D. No. 1, Harrisburg	Thorp, Jack (4)	122 Willow Street, Athens
Ryker, Joseph (1)	15 North Austen Avenue, Ventnor City, N. J.		

# STUDENT ROSTER

- Tompkinson, James (2) 2728 Norwood Avenue, Merchantville, N. J.  
 Torok, Steve (1) 4 Bright Street, South River, N. J.  
 Torromeo, Felix (2) 53 Harrison Avenue, West Orange, N. J.  
 Townsend, Allen (1) 825 Wesley Avenue, Ocean City, N. J.  
 Treon, William (2) 16 East Cherry Street, Mt. Carmel  
 Troutman, Richard (1) Pillow, Dauphin County  
 Tyler, Ray (3) Hummels Wharf
- Ulman, Franklin (4) 1116 Walnut Street, Williamsport  
 Unangst, Edward (1) 541 Shuman Street, Catawissa  
 Ulsh, Charles (2) Port Royal
- Valera, Richard (2) 401 Melrose Street, Keiser  
 VanVoorhis, Jean (3) West Bloomfield Road, Pittsford, N. Y.  
 Vogler, Miriam (2) 315 Penn Avenue, Hawley  
 Volk, David (2) 704 Morris Avenue, Boswell  
 Vollmers, G. Allan (2) 511 Belvidere Avenue, Plainfield, N. J.  
 VonLynn, Helen (1) 12 Central Avenue, Cranford, N. J.
- Wagner, Joyce (1) 2911 Rumson Drive, Harrisburg  
 Wagner, Ned (1) Cowan, R. D. No. 2, Millinburg  
 Wagner, Paul (4) Box 43, Milroy  
 Wagner, Walter (3) 359 West Fifth Street, Lewistown  
 Walker, Ernest (1) 1400 Sunshine Avenue, Johnstown  
 Walker, John, Jr. (3) 336 Queen Street, Northumberland  
 Wallace, Thomas (2) 75 Hillside Avenue, Verona, N. J.  
 Walter, Donald (1) West Milton  
 Walton, Lucius (3) 112 Spring Valley Avenue, Hackensack, N. J.  
 Waters, Eleanor (2) 77 Hoover Avenue, Bloomfield, N. J.  
 Watkins, Barbara (4) 730 North Rebecca Avenue, Scranton 4  
 Way, Marjorie (2) 1849 Ferry Street, Easton  
 Wegner, Audrey (1) Palatine Lake, Elmer, N. J.  
 Wehr, Jane (1) Main Street, Middleburg  
 Weiler, Emil, Jr. (3) 354 Liverpool Avenue, Egg Harbor City, N. J.
- Weiser, E. Maxine (1) East Broadway Ext'd., Red Lion  
 Weller, Carl (3) 60 Melvina Street, Montgomery  
 Weller, Kent (1) Aristes, Columbia County  
 Welliver, Barbara (4) 1909 West Front Street, Berwick  
 Westervelt, Richard (1) 36 Charles Street, Bloomfield, N. J.  
 Wetzel, Richard (1) 218 South Market Street, Selinsgrove  
 White, John (3) 222 North Hyde Park Avenue, Scranton  
 Wiant, Betty (1) 533 Edgar Road, Westfield, N. J.  
 Williams, Clara (1) R. D. No. 1, Drums  
 Williamson, Daniel (1) R. D. No. 2, Holsopple  
 Wilson, Lloyd (4) 810 Hurton Street, Johnstown  
 Winey, Bettie (1) 412 North Eighth Street, Selinsgrove  
 Wingert, Janet (2) 1305 Alexander Avenue, Chambersburg  
 Wissinger, Donald (1) 2929 Spruce Avenue, Altoona  
 Wilther, James (1) 2038 Sheridan Street, Williamsport  
 Witowski, John (4) 113 Warsaw Street, Keiser  
 Wohlsen, Donald (1) 39 Marshall Road, Yonkers, N. Y.  
 Wolf, Janet (4) 105 Violet Street, Johnstown  
 Wolf, Max (0) R. D. No. 2, Selinsgrove  
 Wolfe, Fancher (3) 114 Bishop Street, Beckley, West Virginia
- Wollaston, Edward (2) 14 North Marion Street, Warren  
 Wolsten, Walter (3) 36½ Nelson Place, Newark, N. J.  
 Wylie, Robert (1) 23 Fairview Avenue, North Plainfield, N. J.
- Yinger, Virginia (3) 815 Pontiac Avenue, Baltimore 25, Md.  
 Yocum, Maxine (1) Park Avenue and Stone Road, Laurel Springs, N. J.  
 Yonghaus, Alice (3) 701 Pompton Turnpike, Pompton Plains, N. J.  
 Youhon, Nancy (2) 37 South Atherton Avenue, Kingston  
 Young, Shirley (3) 35 South Tenth Street, Quakertown
- Zinda, Margaret (1) Fisher Avenue, Catawissa  
 Zlock, Charles (2) 276 Third Street, Coaldale  
 Zodikoff, Arthur (1) 113 First Street, Newburgh, N. Y.  
 Zorn, Gunnar (1) 330 East 22nd Street, Baltimore 18, Md.

## Patronize our Advertisers

---

WITHOUT them, this, the LANTHORN of 1951, would not have been possible. We hope that you will give our advertisers your support as they have so willingly given theirs.

# SUSQUEHANNA UNIVERSITY

(Co-educational)

SELINGROVE, PA.

*For Ninety-one Years in the Service of  
Christian Higher Education*



A College with unusual opportunities

Liberal Arts (A.B.)

Business Administration (B.S.)

Music Education (B.S.)



For catalog write:

G. MORRIS SMITH, D.D., LL.D., President

The  
COLLEGE STORE

STUDENTS' SUPPLIES



SHEAFFER INKS — PENNANTS

MONOGRAM STATIONERY

COLLEGE KEYS AND RINGS

---

*Compliments of*

D. R. ERDMAN

Lumber Yard — Planing Mill

Roofing — Insulation — Plywood

168 South Tenth Street

SUNBURY, PENNA.

Tel. 877

# SELINGSGROVE WATER SUPPLY CO.



FRANK A. EYER  
*President*

H. J. JARRETT  
*Superintendent*

JAMES McCLURE  
*Treasurer*

# MIDDLE CREEK VALLEY TELEPHONE COMPANY

---

*Bell System*

---

FRANK A. EYER  
*Treasurer*

*Secretary*

*General Manager*

# STOCKS and BONDS

Bought —and — Sold



Stock Exchange Orders  
Executed on Any Exchange

MEMBERS

Philadelphia      Baltimore

Stock Exchange



Theron D. Conrad & Co., Inc.

416 Market St., SUNBURY, PA.

Telephone 2835

*Prompt Friendly Service for Investors*

Compliments of

**THE  
AMERICAN LEGION**



Milton Jarrett Norman

Post 201

SUNBURY, PA.



Compliments of  
The  
American Legion



POST 44  
NORTHUMBERLAND, PENNA.

---

For S. U. Guys and Girls

THE CAMPUS  
SNACK BAR

Just off Campus



Open 7 A. M. to 11 P. M.

**BOGAR LUMBER CO.**

*Contractors — Builders*

Manufacturers of and Dealers in  
LUMBER, BUILDING SUPPLIES

Phone 285 SELINGSGROVE, PA.

**National Restaurant**

The Best In Food  
Always

SELINGSGROVE, PA.

**GEORGE B. RINE, Florist**

11 North Market Street

SELINGSGROVE, PA.

Store Phone 74-Z Greenhouse Phone 32-Z

CUT FLOWERS and POTTED PLANTS

*Specializing in CORSAGES*

Compliments of

**WILLIAM J. COTT**

*Druggist*

Compliments of

**THE FIRST NATIONAL BANK**

of SELINGSGROVE



Established 1861

Compliments of

**EBERT'S**

5c to \$1.00 Store

SELINGSGROVE, PA.

**Hotel Governor Snyder**

WALTER E. PINAND

*Prop.*

**LEARN'S**

Fine Foods and Stationery  
*Greeting Cards*

11 S. Market St. SELINGSGROVE, PA.

For INSURANCE SERVICE — See

**ABERDEEN PHILLIPS**

127 North Market St.

Phone 68-W

# WHITMER-STEELE COMPANY

*Manufacturers of*

PINE, HEMLOCK, AND HARDWOOD LUMBER

MINING TIMBER AND TIES

NORTHUMBERLAND, PA.



## HACKETT'S HARDWARE STORES

HARDWARE, APPLIANCES, GIFTS,  
PAINT, GLASS

325 Market Street, Sunbury  
706 Market Street, Sunbury  
Market and Walnut Streets,  
MIDDLEBURG

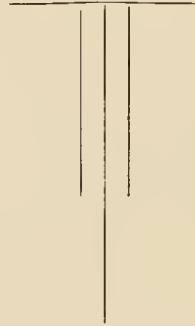
## F. A. BRILL CO.

FLOOR COVERINGS  
AWNINGS — SHADES  
DRAPERIES

Phone 2180

419 Market Street      SUNBURY, PA.

# HARRISBURG LUMBER COMPANY



A Complete Lumber Industry

HARRISBURG, PENNSYLVANIA

# PROFESSIONAL DIRECTORY

---

**R. A. HEINBACH, M.D.**

3 South Market Street

Telephone 84

Residence Telephone 174

---

**H. F. STRAUB, M.D.**

300 West Walnut Street

Telephone 102

---

**B. SHIPE, D.D.S.**

30 South Market Street

Telephone 270-W

Residence Telephone 270-Z

---

**D. M. STIBER, D.D.S.**

108 South Market Street

Telephone 120-Z

Residence Telephone 142-X

---

**B. K. W. COACH LINE**

HUMMELS WHARF, PA.

Charter Trips Solicited

★

For Taxi Service Call — SUNBURY 600

*For*  
NEWS—  
of FOLKS  
You Know

---

## SUNBURY DAILY ITEM

---

Watch Repair — Susquehanna Jewelry  
Fountain Pens and Pencils

**W. M. VALSING**

*Jeweler*                      SELINGSGROVE, PA.

---

**Sanders Appliance Store**

G. E. APPLIANCES

241 Market St.                      SUNBURY, PA.

Telephone 546

---

Compliments of

**Melrose Restaurant**

TASTY DUTCH HOMECOOKING

SELINGSGROVE, PA.

Compliments of

**“DOC” GLASS**

---

**LEE R. SNAVELY**

CLOTHING AND SHOES

*for*

*The Family*

---

**Miller Bros. Shoe Store**

*“At the Bus Stop”*

SUNBURY, PA.

CONGRATULATIONS AND BEST WISHES

TO THE CLASS OF '50

# MINNICH —STUDIO

*portraits that live . . .*

*Your*  
LANTHORN  
*Photographer*



Odd Fellows Building  
MILTON, PENNA.  
Telephone 705-J

**BENJAMIN T. MOYER**

FURNITURE *of Distinction*

Phone — 2077

21-23 N. Fifth St.      SUNBURY, PA.

Compliments of

**JOS. L. MENTZ**

The Stationer

249 Market Square      SUNBURY, PA.

**REICHLEY'S**

SPORTING GOODS

13½ N. Market St.      Selinsgrove, Pa.

**CHRYSLER-PLYMOUTH**

SALES — SERVICE



**FISHER MOTORS**

GAS AND OIL

SELINGROVE      Tel. 17-X

**Smith's Tydol Station**

GAS — OIL — REPAIRS

S. Market Street      SELINGROVE

Compliments of

**HILL'S CANDY STORE**

Open 9 A. M. — 11:15 P. M.

Compliments of

**LOSE SALES COMPANY**

SELINGROVE, PA.

Compliments of

**Shikellamy Sandwich Shop**

Routes 11 and 15

**TROUTMAN'S  
GULF SERVICE**

SELINGROVE, PA.

Greasing — Washing  
Tires — Tubes — Batteries  
Accessories

Compliments of

**Whiteleys Tourist Home**

South Market Street

SELINGROVE      Tel. 151-W



Compliments of  
**BITTNER'S DEPARTMENT  
STORE**  
SUNBURY, PA.

---

**COLONIAL TEA ROOM**

MR. AND MRS. ROY BOWERSOX

*For RESERVATIONS AND PARTIES*

Call 48-W

**The  
Selinsgrove Times  
Tribune**

*Printers of*

THE SUSQUEHANNA AND  
THE SUSQUEHANNA ALUMNUS

---

Compliments of

**MENGLE'S RESTAURANT**

3 West Pine Street

SELINGROVE, PA.

---

When Patronizing  
These Advertisers  
Please Mention

**THE LANTHORN**

# 1914 BOND KEY 1950

Honors Its Graduates of 1950

Richard Campbell	John Witowski	Jack Thorp
Charles Duncan	Marlin Bobb	Joseph Ladika
Robert Bolig	Tom Deppen	Tom Jenkins
James Rumbaugh	Charles Grund	Richard Troutman
Kent Weller	Fred Shultz	Don Derr
Nelson Kost	George Thomas	John Buffington
Everett Manning	Donald Wissinger	Wilbur Buffington

## PHI MU DELTA

How dear to one and all the name  
Their Alma Mater bears,  
When they have left its classic halls,  
To shoulder worldly cares.

Richard Shaffer	Roger Howling	Ernest Canals
Abraham Portzline	Harry Beigh	Earl Bernstine
Donald Minnich	Franklin Ulman	Edward Pfeiffer
Paul Wagner	Henry Chadwick	Richard Westervelt
Andrew Koch	Theodore Clark	George Small
Edward Korkuch	John Gow	Donald Wholsen
Albert Molinaro	Richard Doig	Melvin Dunn
Lonis Santangelo	Alvin Henderson	Fred Hazeltine
Fred Auman		

## THETA CHI

Congratulates Its Graduates of 1950

Paul Buehler	James Gehris	John Reuther
Paul Haffly	Harold Greenly	Robert Riccedorf
Jay Hand	Robert Miller	Harold Rowe
John Lamade	Charles Rau	Mark Shuey
Raymond Lauver	Richard Wetzel	



*Your*

# LANTHORN

Was Designed, Engraved, Printed  
and Bound in our College Annual  
Department.



We do a variety of Commercial  
Printing—including Catalogs,  
College and School Year Books.  
Consult Us before placing your next  
order for Printing.

## GRIT PUBLISHING COMPANY

WILLIAMSPORT, PENNA.



# AUTOGRAPHS





SUSQUEHANNA UNIVERSITY



3 4998 0027 8146 1

SUSQUEHANNA UNIVERSITY LIBRARY  
BLOUGH-WEIS LIBRARY  
DOES NOT  
CIRCULATE  
ARCHIVES  
SUSQUEHANNA UNIVERSITY

