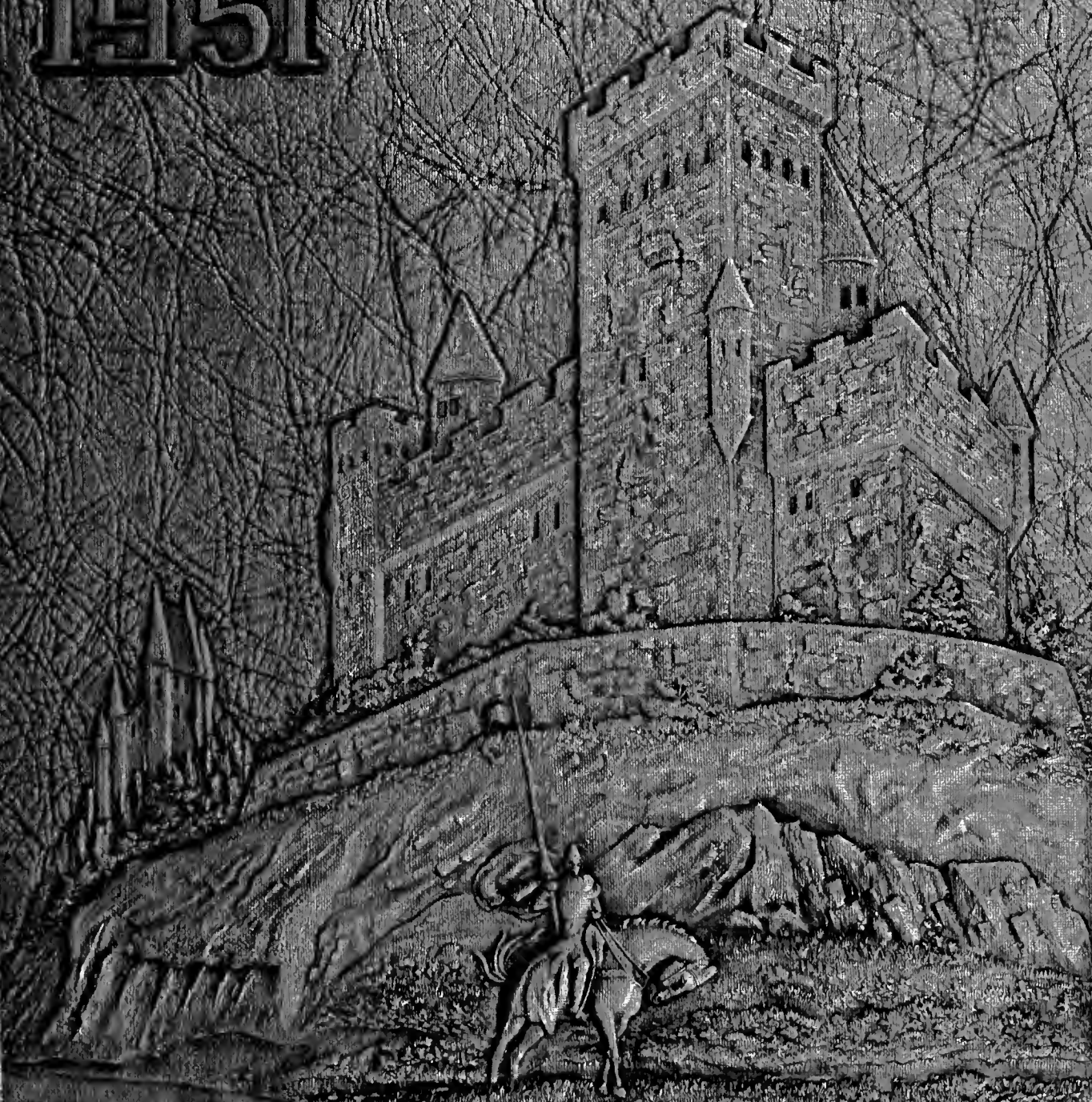


LANC'DORN

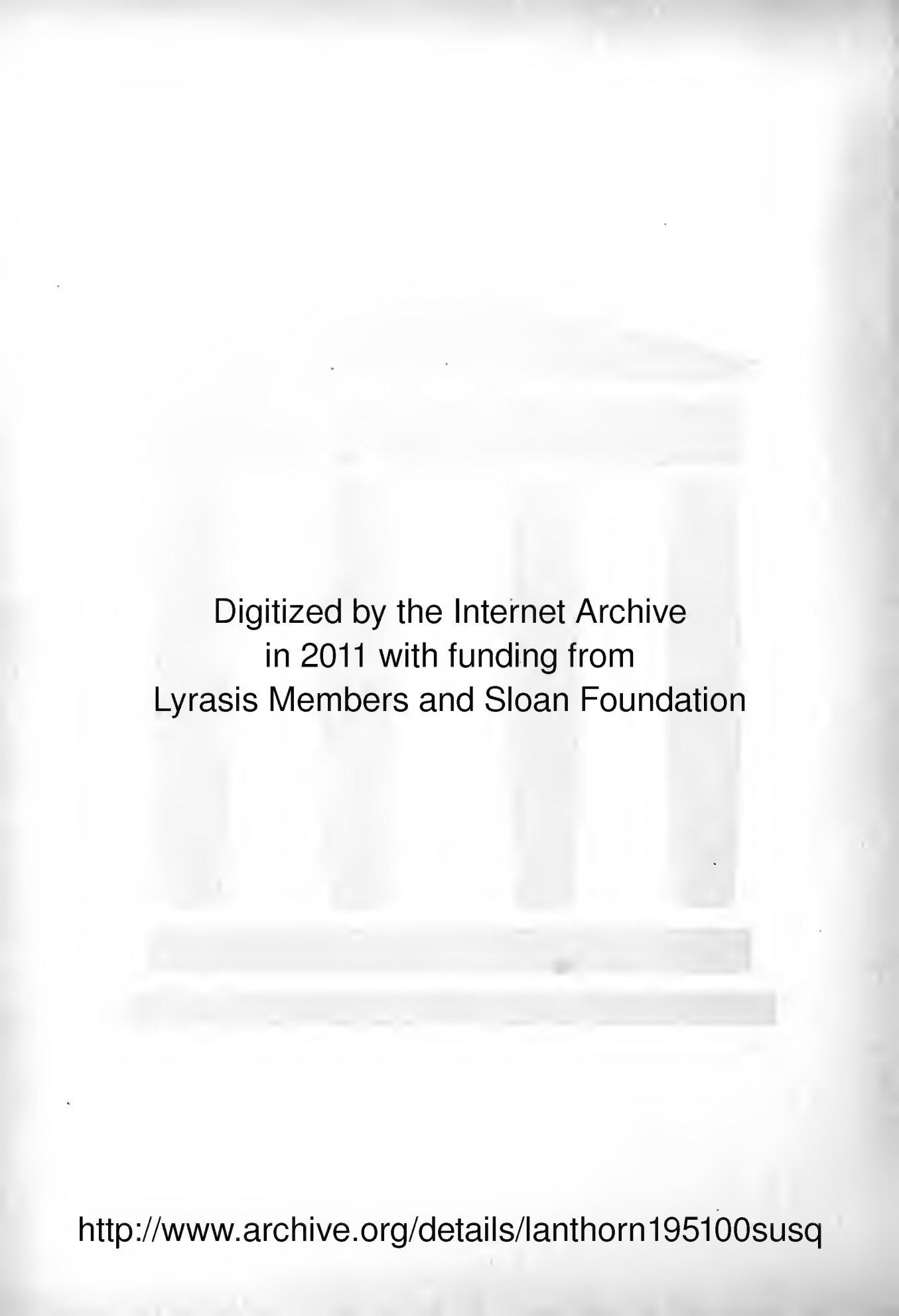
1951



BLOUGH-WEIS LIBRARY

BUSQUHANNA UNIVERSITY
BELLINGHAM, WA 98225

BLOUGH
PROSECUTOR
VERMONT
MONTPELIER



Digitized by the Internet Archive
in 2011 with funding from
Lyrasis Members and Sloan Foundation

<http://www.archive.org/details/lanthorn195100susq>



Lanç

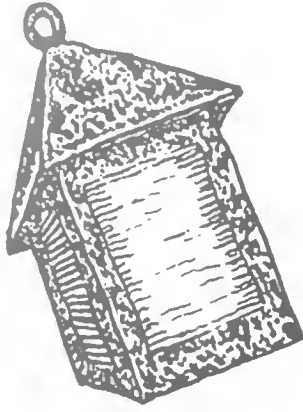
1951



hopn

Presented by
The JUNIOR CLASS of
SUSQUEHANNA UNIVERSITY
SELINSGROVE, PENNSYLVANIA





FOREWORD


DURING the ninth century A.D. in gracious England, Alfred the Great was trying to figure a systematic way by which to arrange his day. Alfred wished to give an exact division of time and while there were no clocks or watches in those days it was necessary to have some plan for keeping the time so that movements and operations in his large household might proceed without confusion. Alfred invented a plan.

Alfred observed that the wax candles which were used in his castle burned very regularly. He ordered experiments to be made, and finally by means of them he determined on the size of the candles that would burn three inches in an hour. The candles were then made four feet long and each inch marked represented a third of an hour.

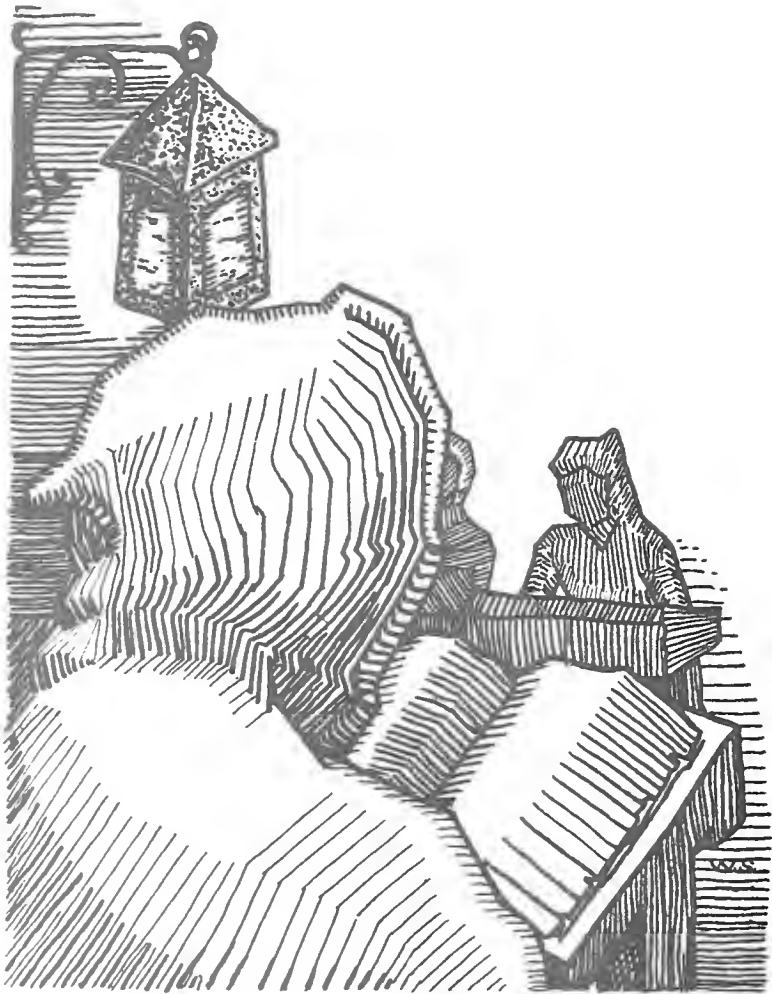
However, some difficulties were encountered. The wind which blew through the palaces in those days, even in royal residences, blew at the flames of those horological candles causing an irregularity in the burning of the wax. This of course altered the burning time. Alfred devised a way to protect the candles which were to regulate his day. He ordered horn to be placed in hot water, a process which caused the horn to soften, with the result that it could be made very thin and fashioned into any shape. Alfred had thin plates of horn prepared, made a box with sides cut out, and set the horn in them within which the time-keeping candles could burn undisturbed. Consequently King Alfred has been given the credit for having invented what was then known as a Lanthorn.

Alfred has shown his leadership in other ways. He repaired castles and towns, organized municipal governments and revised laws of the land. Yes, Alfred was the inventor, the educator, the reformer, the leader of the day. Just as Alfred was effective in bringing light to his darkened castle, so was he equally effective in bringing intellectual and moral light to a world of darkened minds. He sought to cultivate peace among peoples, social welfare and understanding. Though he did not achieve education for the masses, his efforts did result in the founding of the great University of Oxford.

The Lanthorn is an example of the work of this man and a reflection of his foresight and leadership. Our LANTHORN is representative of an institution that reflects similar ideals and aspirations. May the pages of this, our LANTHORN, reflect the achievements and characteristics of a student body who wishes to have the qualities that are characteristic of Alfred, the inventor of the LANTHORN.



Contents
Faculty
Classes
Athletics
Activities
Organizations





Faculty



PRESIDENT SMITH

President of the College

G. MORRIS SMITH

President

B.A., Roanoke College 1911; M.A., Princeton University 1912; Diploma, Lutheran Theological Seminary, Philadelphia 1919; D.D., Roanoke College 1928; Graduate study, Columbia University; LL.D., Bucknell 1940.





DEAN GALT

Dean of the College

RUSSELL GALT

Dean of the College

B.A., Muskingum College 1919;
M.A. 1920 and Ph.D. 1936, Colum-
bia University; School of Oriental
Studies, Cairo, Egypt, 1920-22.

Dean of Women

ERMA L. SAMBROOK

B.A. 1944 and M.A. 1948,
Bucknell University.



DEAN SAMBROOK

Preceptresses



MISS ATHALIA TABITHA KLINE

B.A., Randolph Macon Woman's College 1922; M.A., Duke University 1925; Graduate Study, University of Madrid 1949.



MRS. CAROL KLINE

Preceptress in Hassinger Hall; B.A., Hood College 1917

Philosophy and Languages

ROBERT F. W. MEADER

Instructor in Latin and Art

B.A., Middlebury College 1929; M.A., University of Pennsylvania 1931; Graduate study, Harvard University.

BENJAMIN LOTZ

Assistant Professor in Religion and Philosophy

B.A., Wittenberg College 1923; B.D., Philadelphia Seminary 1928.

ERMA L. SAMBROOK

Instructor in French

B.A., 1944 and M.A., 1948, Bucknell University.

ATHALIA TABITHA KLINE

Instructor in French and Spanish

B.A., Randolph Macon Woman's College 1922; M.A., Duke University 1925; Graduate study, University of Madrid 1949.



RUSSEL WIEDER GILBERT

Professor of German

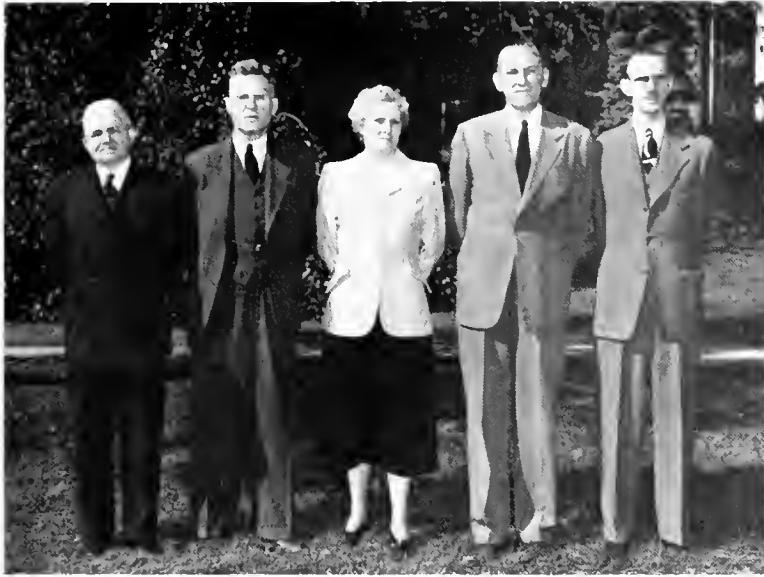
B.A., Muhlenberg College 1927; M.A., 1929 and Ph.D., 1943, University of Pennsylvania.

AUGUSTUS WILLIAM AHL

Professor of Greek

Diploma, Gymnasium and Seminary, Breklum, Germany, 1908; M.A., Susquehanna University 1912; Ph.D., Vanderbilt University 1920; Graduate study, Peabody College for Teachers, Nashville, Tenn.

Business and Commercial Department



LENORA ALLISON

Assistant Professor of Business Education

B.A., Bowling Green College of Commerce 1930; Ed.M., University of Pittsburgh 1937.

WALDEMAR ZAGARS

Assistant Professor of Economics and Business Administration

Dr. of Economics, University of Riga, Latvia, 1931.

GROVER C. T. GRAHAM

Associate Professor of Economics and Business Administration

B.A., William Jewell College 1909; M.A., Brown University 1909-11; Graduate study, Brown University.

THOMAS ARMSTRONG, JR.

Assistant Professor of Business Administration

B.S., Wesleyan University 1928; M.B.A., Harvard University 1930; Ed.D., Temple University 1947.

JOHN K. SOULE

Instructor in Accounting

B.S., Kent State University 1944; M.B.A., University of Denver 1947.

KARL WILLIAM GEISINGER

Instructor in Psychology

B.A., University of Pennsylvania 1947; Ed.M., Temple University 1948; Graduate study, University of North Carolina 1949.

KENNETH B. WATERBURY

Assistant Professor of Education and Psychology

B.S., 1930, Ed.M., 1933, and Ed.D., 1939, Pennsylvania State College.

Social Science

FREDRICK C. STEVENS

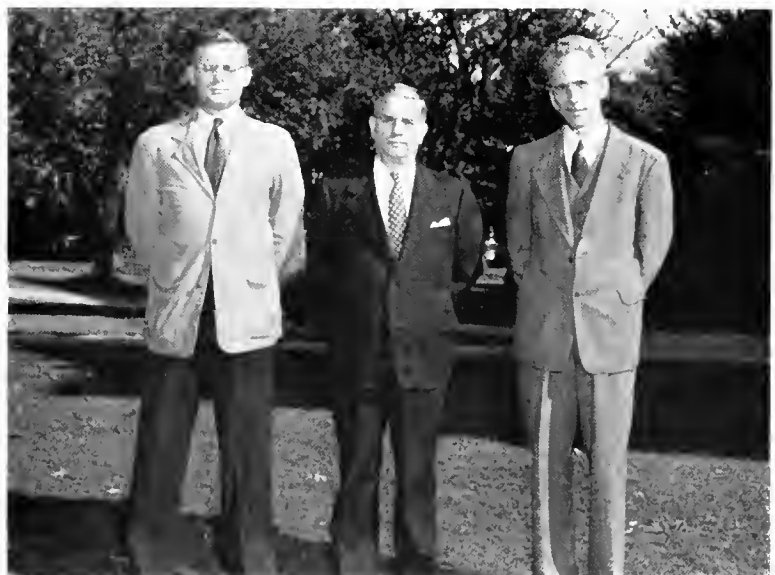
Assistant Professor in Sociology and History

B.A., University of Minnesota 1926; M.A., Columbia 1932; Graduate study, Columbia University.

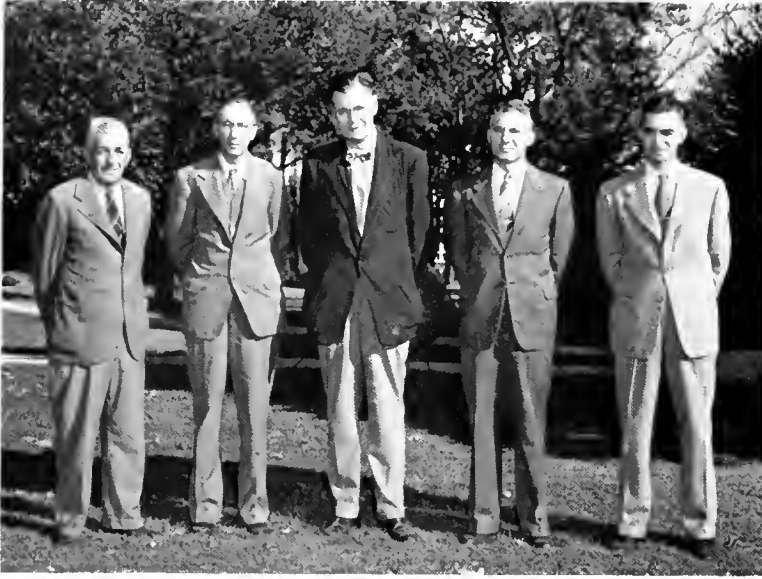
WILLIAM ADAM RUSS, JR.

Professor of History and Political Science

B.A., Ohio Wesleyan 1924; M.A., University of Cincinnati 1926; Ph.D., University of Chicago 1933.



Physical Sciences



PHILIP ALFRED KLINGLOI

Instructor in Physics

B.A., 1931, M.A., 1932, Clark University.

HOWARD E. DEMOTT

Instructor in Science

B.S., State Teachers College, Bloomsburg 1935; M.S., Bucknell University 1940.

ROBERT LOUIS AMY

Assistant Professor of Biology

B.S., Thiel College 1941; M.S., University of Pittsburgh 1949.

ROBERT TUNIS HOWLING

Instructor in English

B.A., Rutgers University 1942; M.A., New York University 1948.

ARTHUR H. WILSON

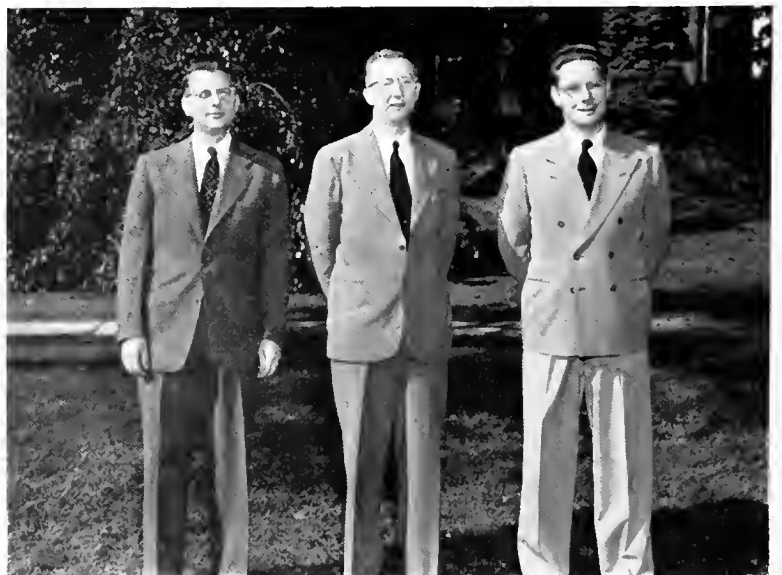
Professor of English

B.A., 1927, M.A., 1929, and Ph.D., 1931, University of Pennsylvania.

AXIL R. KLINSORG

Instructor in English and Dramatics

B.S., Temple University 1935; Graduate study, State University of Iowa and Temple University.



English Department

Athletics

RUTH M. SPARHAWK

Instructor in Physical Education

B.A., 1945, M.A., 1950, Kent State University; Graduate study, University of Akron.

AMOS ALONZO STAGG

Advisory Coach

B.A., Yale University 1888; Graduate of International Y. M. C. A. College, Springfield, Mass., 1891; M.P.E., International Y. M. C. A. College 1912; M.A., Oberlin College 1923; LL.D., College of Wooster, 1933; Graduate study, Yale University; Dr. of Pedagogy, Susquehanna University 1949.



AMOS ALONZO STAGG, JR.

Professor of Physical Education

Ph.B., 1923 and M.A., 1935, University of Chicago; M.A., Columbia University 1941; Graduate study, University of Chicago.

JOHN WITOWSKI

Library



Librarian - - - Miss KOLPIN

Assistant Librarian

MRS. CHARLES COOK

Student Assistants—BEN ALTER, BARBARA DLCKER, KERMIT HORNING, BERNICE JOCHEM, CAROL ANN LUTHER, BOB STELLY

Conservatory of Music

ELBERT DIXON HASKINS

Instructor in Singing, Choral Conducting

B.A., University of Michigan 1923; M.A., New York University 1939; Graduate study, Paris, France, New York City, and Feagin School of Dramatic Art, New York City.

FRANCIS MARIE BRUNKHORST

Instructor in Voice

Mus.B., Central College 1941; Special study, Kansas City Conservatory; Graduate study, Columbia University.

ALICE H. GIAUQUE

Instructor in Public School Music Methods

B.S. in Music Education 1937, and M.A. 1940, Columbia University.

ALLEN FLOCK

Instructor in Band Instruments

B.S., Susquehanna University 1947; M.A., Columbia University 1949.



FREDERIC C. BILLMAN

Instructor in Piano and Theory

Mus.B., Susquehanna University 1936; M.A., Columbia University 1941; Graduate study, Juilliard Institute 1946-47.

NANCY BOWMAN HATZ

Instructor in Harmony, Band Instruments

B.S. in Music Education, Lebanon Valley College 1936; M.A., Columbia University 1941.

RUSSELL CONDRAN HATZ

Assistant Professor of Violin, Harmony, Band, and Orchestra

B.S. in Music Education, Lebanon Valley College 1937; Graduate study, Temple University, Juilliard Institute; M.A., Columbia University 1942.

MARY K. POTTEIGER

Instructor in Pianoforte, Sight Singing

Mus.B., Susquehanna University 1925; Graduate study, New York University.

PERCY M. LINEBAUGH

Professor of Pipe Organ, Pianoforte, Counterpoint

Mus.B., Lebanon Valley College 1917; Graduate study, New York University, Peabody Conservatory of Music.



Office of Admissions



Admissions—MRS. THOMAS E. COXE, Registrar; MRS. FRIDRICK C. STEVENS

Secretary to the Dean—MRS. WILLIAM D. MARKS

Dispensary



MISS BERTHA HILN, R.N.

Bursar's Office



Finances - - - MISS OLIVE BARRY

Secretary to the President—MISS JANLI ROHRBACH, B.S.

Publicity Office



MISS RUTH E. MCCORKILL, B.S.
and RICHARD W. STURVELT





Classes



Left to Right—L. Santangelo, D. Wissinger, M. Shetler, W. Buffington.

Senior Class

OFFICERS

<i>President</i>	- - - - -	DONALD WISSINGER
<i>Vice President</i>	- - - - -	LOUIS SANTANGELO
<i>Secretary</i>	- - - - -	MARIA SHETLER
<i>Treasurer</i>	- - - - -	WILBUR BUFFINGTON

As Seniors, we are looking forward to graduation and to the years that follow. We've learned much in our four years at S. U. to prepare us for the future. What is important is that we apply this learning throughout life. We can then face the world with confidence and ease.

Long will we look back and remember the good times we had at Susquehanna. We shall always be proud of our Alma Mater and have the highest respect for it.

BARBARA ANDERSON

9 Shady Lane
Johnstown, Pa.

Liberal Arts

Omega Delta Sigma 2, 3, 4, President 4; Student Christian Association 1, 2, 3, 4; Biemic Society 1, 2, 3, 4, Secretary-Treasurer 3; Vice-President Council 3; Women's Athletic Association 1, 2, 3, 4; Women's Student Council 4; Intramural Sports 1, 2, 3, 4; Inter-Sorority Council 4.

H. DANIEL BEIGH, JR.

2310 Hoffer St.
Harrisburg, Pa.

Business Administration

Phi Mu Delta 2, 3, 4; Student Christian Association 2, 3, 4; Business Society 2, 3, 4; Basketball Team 2, 3; Intramural Sports 3, 4; Varsity Tennis 3, 4.

CECILIA AUMAN

R. D. 1, Box 78E,
St. Marys, Pa.

Music Education

Sigma Alpha Iota 2, 3, 4, Sergeant-at-Arms 4; Student Christian Association 1, 2, 3, 4; Symphony Orchestra 2; Susquehanna Singers 2, 3; Operetta 2; May Day 3; Who's Who 4.

EARL BERNSTINE

2375 Hillside Ave.
Williamsport, Pa.

Pre-Medical

Phi Mu Delta 2, 3, 4; Biemic Society 2, 3, 4, Vice President 3; Susquehanna Players 3; Men's Student Council 3, 4, Vice President 4; Football Team 1, 2, 3, 4; Intramural Sports 1, 2, 3, 4.

FRID AUMAN

659 Duke St.,
Northumberland, Pa.

Music Therapy

Phi Mu Delta 2, 3, 4; Symphony Orchestra 1, 2, 3, 4; Band 1, 2, 3; Susquehanna Singers 2, 3; Susquehanna Staff, 1, 2, 3, 4; Intramural Sports 1, 2.

ROBERT L. BLOCK

5725 N. Park Ave.
Philadelphia 41, Pa.

Business Administration

Business Society 2, 3, 4.

DONALD BABICS

260 Main St.
Conemaugh, Pa.

Business Administration

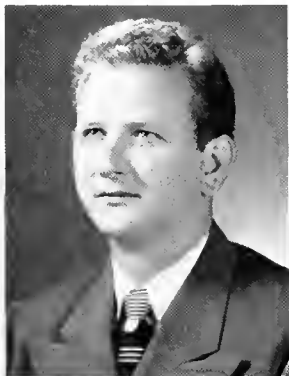
Business Society 1, 2, 3, 4.

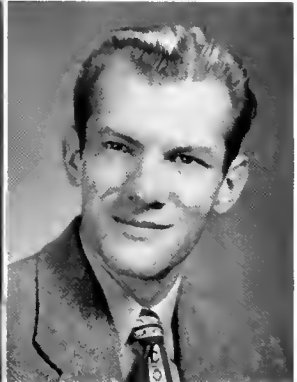
VIRGINIA BLOUGH

310 Hickory St.
Johnstown, Pa.

Commercial Education

Kappa Delta Phi 1, 2, 3, 4, Vice President 3, Financial Secretary 4; Student Christian Association 1, 2, 3, 4; Business Society 1, 2, 3, 4; Susquehanna Players 1, 2; Women's Athletic Association 1, 2, 3, 4, Board 2, 3, President 4; Women's Student Council 4; Hockey Team 2, 3, Manager 2, 3; Intramural Sports 1, 2, 3, 4; Inter-Sorority Council 3; Tau Kappa 3, 4; Choral Society 3; May Day 2, 3; Orientation Program 3, 4; Cottage House President 4.





MARLIN BOBB
Herndon, Pa.

Business Administration

ROBERT BOLIG
Hummels Wharf, Pa.

Liberal Arts

Bond and Key 2, 3, 4; Football Team 1, 2, 3, 4; Intramural Sports 1, 2, 3, 4.

JANE BOLLINGER
213 Carlisle St.
New Oxford, Pa.

Music Education

Sigma Alpha Iota 1, 2, 3, 4, Vice President 3, President 4; Student Christian Association 1, 2, 3, 4; Symphony Orchestra 1; Band 1, 3, 4; Susquehanna Singers 2, 3, 4; Chapel Choir 2, 3; Women's Athletic Association 1; Intersorority Council 3, 4.

MARGIETTA BROSIOUS
Reback, Pa.

Liberal Arts

Kappa Delta Phi 3, 4; Student Christian Association 1, 2, 3, 4; Women's Athletic Association 1, 2, 3, 4; Intramural Sports 1, 2, 3, 4.

PAUL B. BUEHLER
Paupack, Pike County, Pa.

Business Administration

Theta Chi 2, 3, 4, House Manager 3, 4; Student Christian Association 1, 2, 3, 4; Business Society 1, 2, 3, 4; Symphony Orchestra 3, 4; Band 2, 3, 4; *Susquehanna* Staff 4; Intramural Sports 1, 2, 3, 4; LANTHORN 4; Alpha Psi Omega 4.

JOHN BUFFINGTON
86 Linden Ave.
Bloomfield, N. J.

Business Administration

Bond and Key 1, 2, 3, 4, Steward 2, 3; Business Society 1, 2, 3, 4; Intramural Sports 1, 2, 3, 4.

WILBUR J. BUFFINGTON
29 W. Main St.
Elizabethville, Pa.

Business Administration

Bond and Key 1, 2, 3, 4, Treasurer 4; Student Christian Association 1, 2, 4; Business Society 3, 4; Ciceroniani 1, 2, President 2; Intramural Sports 1, 2, 3, 4.

ROBERT L. CALDWELL
241 Spruce St.
Sunbury, Pa.

Business Administration

Business Society 2, 3, 4.

ERNEST A. CANALS
67 Birch St.
Bloomfield, N. J.

Liberal Arts

Phi Mu Delta 2, 3, 4; Susquehanna Players 1, 2, 3, 4; Pi Gamma Mu 3, 4; Intramural Sports 1, 2, 3, 4; LANTHORN 3; "As You Like It"; "Here Comes Mr. Jordan."

HENRY G. CHADWICK
3607 Pacific Ave.
Wildwood, N. J.

Business Administration

Phi Mu Delta 1, 2, 3, 4, Chaplain 3, 4; Student Christian Council Administration 1; Business Society 1, 2, 3, 4; *Susquehanna* Staff 3; Basketball Team 2, 3; Intramural Sports 1, 2, 3, 4.

THEODORI H. CLARK
515 N. Orange St.
Selinsgrove, Pa.

Liberal Arts

Phi Mu Delta 2, 3, 4; Band 1, 2, 3, 4; Football Team 1, 2; LANTHORN 3, Editor; Who's Who 4.

BARBARA A. DECKER
7613 Mountain Ave.
Melrose Park, Pa.

Liberal Arts

Student Christian Association 1, 3, 4; Biemic Society 1, 2, 3, 4; Susquehanna Players 1, 2, 3, 4; Vice President Council 2; Women's Athletic Association 3, 4, Corresponding Secretary; Pi Gamma Mu 3, 4.

THOMAS DEPPEN
Herndon, Pa.

Business Administration

DONALD DERR
Buck Run, Pa.

Liberal Arts

Bond and Key 1, 2, 3, 4; Football Team 1, 2, 3; Intramural Sports 1, 2, 3, 4.

GEORGE DIMMICK
708 Front St.
Northumberland, Pa.

Liberal Arts

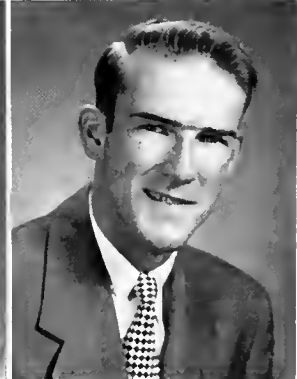
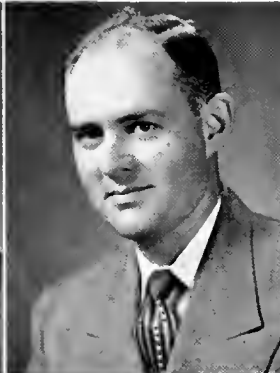
Susquehanna Players 2, 3, 4; Intramural Sports 3.

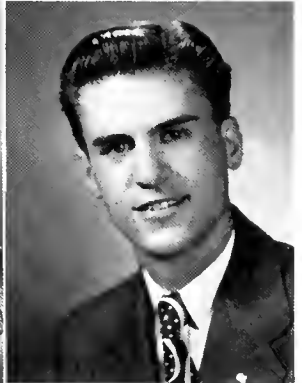
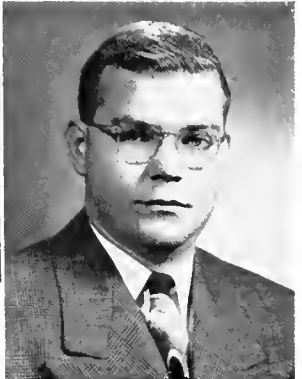
RICHARD R. DOIG

1215 Main St.
Honesdale, Pa.

Liberal Arts

Phi Mu Delta 1, 2, 3, 4, Chapter Editor 4; Student Christian Association 1, 2, 3, 4; Biemic Society 4; Susquehanna Players 1, 2, 3, 4; *Susquehanna* Staff 3, 4; Intramural Sports 1, 2, 3, 4; Alpha Psi Omega 2, 3, 4, Grand Stage Manager 4; Cheerleader 1, 2, 3, 4; Cheer Captain 4; May Day 2; "Queen's Husband"; "Mary of Scotland"; "I Remember Mama"; "Here Comes Mr. Jordan."





JOHN B. DORAN
405 Highland Ave.
Downingtown, Pa.

Business Administration

Business Society 3, 4; Men's Student Council 3, 4; Treasurer 4.

MELVIN L. DUNN
1204 S. Enola Drive
Enola, Pa.

Business Administration

Phi Mu Delta 2, 3, 4; Student Christian Association 1, 2, 3, 4; Business Society 2, 3, 4; Basketball Team 2, 3, 4; Football Team 1, 3; Intramural Sports 1, 2, 3, 4.

ELAINE FADDIS
1401 Sterling St.
Coatesville, Pa.

Liberal Arts

Kappa Delta Phi 2, 3, 4, Corresponding Secretary 4; Student Christian Association 1, 2, 3, 4; Biemic Society 1, 2, 3, 4, Vice President 4; Susquehanna Players 1, 2; Vice President Council 3; Women's Athletic Association 1, 2, 3, 4; Women's Judiciary Committee 1, 2, 3, 4, Secretary 3, 4; Intramural Sports 1, 2, 3, 4; LANTHORN 3; Cheerleader 2, 3, 4; May Day 2, 3; Trinity Choir 2; Freshmen Counselor 3.

RAY E. FLEMING
219 Seventh St.
Northumberland, Pa.

Liberal Arts

Symphony Orchestra 1, 2; Band 1, 2; Intramural Sports 1, 2, 3.

CHIRI L. FOLTZ
N. Main St.
Reedsville, Pa.

Secretarial

Business Society 1, 2, 3, 4; Student Christian Association 1, 2, 3, 4; Women's Athletic Association 2, 3; Intramural Sports 1, 2, 3.

JAMES C. GEHRIS
119 E. Fifth St.
Berwick, Pa.

Pre-Medical

Theta Chi 1, 2, 3, 4, Sports Manager 2, Vice President 4; Student Christian Association 3, 4; Biemic Society 3, 4; Intramural Sports 2, 3, 4.

JOHN GOW
Lattintown Road
Marlboro, N. Y.

Liberal Arts

Phi Mu Delta 2, 3, 4; Student Christian Association 2, 3; Biemic Society 2, 3; Alpha Psi Omega 3, 4.

HAROLD S. GREENLY
R. D. 2, Millville, Pa.

Business Administration

Theta Chi 3, 4, Assistant Treasurer 4; Student Christian Association 4; Business Society 3, 4; Lycoming College 1, 2.

CHARLES GRUND

517 S. 11th St.
Reading, Pa.

Business Administration

Bond and Key 3, 4; Student Christian Association 3, 4; Business Society 3, 4; Intramural Sports 3, 4; Varsity Tennis 3; Penn State 1, 2.

DORIS GUMBLE

Paupack, Pike County, Pa.
Liberal Arts

Omega Delta Sigma 2, 3, 4; Student Christian Association 1, 2, 3, 4; Biemic Society 1, 2, 3, 4; Susquehanna Singers 3; Women's Athletic Association 2, 3, 4, Treasurer 4; Basketball Team 2, 3, Manager 3; Intramural Sports 2, 3, 4; Orientation 3, 4; Fire Captain 4.

FLORIS GUYER

Typton, Blair County, Pa.
Commercial Education

Student Christian Association 1, 2, 3, 4; Business Society 1, 2, 3, 4, Secretary 3, Vice President 4; Susquehanna Players 1, 2, 3, 4; Vice President Council 3; Women's Athletic Association 1, 2, 3, 4, Recording Secretary 3; Women's Student Council 4, President 4; Women's Judiciary Committee 4; *Susquehanna* Staff 1; Intramural Sports 1, 2, 3, 4; *Lanthers* Typing Editor 3; Alpha Psi Omega 4; Freshman Orientation 3, 4, Chairman 4; Social Committee 4; Who's Who 4; "I Remember Mama"; "Suppressed Desires."

PAUL R. HAITTY

304 W. Main St.
Belleville, Pa.

Pre-Theological

Theta Chi 1, 2, 3, 4, Chaplain 2, 3; Student Christian Association 1, 2, 3, 4, Treasurer 2, 3, 4; Phi Kappa 1, 2, 3, 4; Intramural Sports 3, 4.

JAY HAND

Muir, Schuylkill County, Pa.
Commercial Education

Theta Chi 1, 2, 3, 4, Social Chairman 3, Secretary 3, President 4; Men's Student Council 3, 4, Secretary 4; Intramural Sports 1, 2, 3, 4; Inter-Fraternity Senate 4.

FREDERICK HAZELTINI

318 N. 11th St.
Sunbury, Pa.

Liberal Arts

Phi Mu Delta 3, 4; Student Christian Association 3, 4; Biemic Society 1.

ALVIN HENDERSON

1331 Emory Circle, N. E.
Atlanta, Georgia

Business Administration

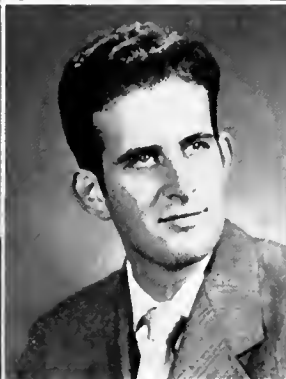
Phi Mu Delta 1, 2, 3, 4; Student Christian Association 1; Business Society 1, 2; Football Team 1, 2, 3, Manager; Intramural Sports 2, 3; Crusader Football Program Editor 2, 3, 4.

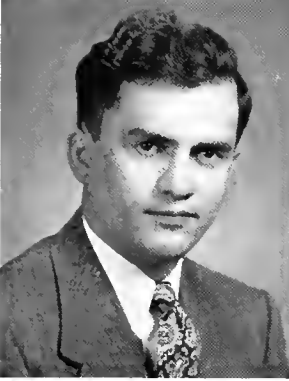
PAUL HERB

1141 Susquehanna Ave.
Sunbury, Pa.

Business Administration

Business Society 3, 4; Biemic Society 2; Susquehanna Players 3; Lycoming College 1.





LILLIAN HOOVER

905 Third Ave.
Sterling, Illinois

Liberal Arts

Student Christian Association 2, 3, 4; Biemic Society 2; Susquehanna Singers 2; Vice President Council 3, 4; Women's Student Council 4; Women's Judiciary Committee 4, Chairman 4; Student Assistant, Hassinger Hall 4; Lutheran Deaconess School 1, 2.

JO ANN HORT

517½ Catawissa Ave.
Sunbury, Pa.

Music Education

Sigma Alpha Iota 1, 2, 3, 4; Symphony Orchestra 3, 4; Band 2, 3, 4; Susquehanna Singers 2, 3; Orientation Committee 3, 4; Operetta 2; May Day 1, 2, 3.

PATRICIA HOUTZ

104 Fairmont Ave.
Sunbury, Pa.

Commercial Education

Student Christian Association 2; Business Society 2, 3, 4; Women's Athletic Association 4; Women's Student Council 4; Basketball Team 2, 3, 4; Intramural Sports 3; May Day 3; "Here Comes Mr. Jordan."

ROGER C. HOWLING

8 LaSalle Road
Upper Montclair, N. J.

Business Administration

Phi Mu Delta 1, 2, 3, 4; Student Christian Association 1, 2, 3, 4; Business Society 1, 2, 3, 4; *Susquehanna* Staff 1, 2, 4; Cheerleader 3, 4.

DANIEL HRKMAN

136 Singer St.
Johnstown, Pa.

Business Administration

MARY JACKSON

112 E. 25th St.
Wildwood, N. J.

Liberal Arts

Student Christian Association 1, 2, 3; Vice President Council 2, 4; Women's Athletic Association 1, 2; Intramural Sports 1, 2, 3, 4; May Day 2.

DORIS JANSON

886 Prospect St.
York, Pa.

Liberal Arts

Omega Delta Sigma 1, 2, 3, 4; Student Christian Association 1, 2, 3, 4; Biemic Society 3; Susquehanna Singers 3; Women's Athletic Association 1, 2; Intramural Sports 1, 2; Freshman Orientation 2, 3, 4; Freshmen Counselor 3.

JEANNE KAHLER

345 E. Walnut St.
Nazareth, Pa.

Liberal Arts

Kappa Delta Phi 1, 2, 3, 4; Student Christian Association 1, 2, 3, 4; Vice President Council 2, 4; Women's Athletic Association 2, 3, 4; Intramural Sports 2, 3, 4; Inter-Sorority Council 4, Vice President 4; Alpha Psi Omega 4; Class Officer 1; "The Patsy"; "The Queen's Husband."

ROSEMARY KALLIR
285 Riverside Drive
New York, N. Y.

Liberal Arts

Kappa Delta Phi 3, 4, Social Chairman 4; Student Christian Association 3, 4; Women's Athletic Association 3, 4; Women's Student Council 4; Women's Judiciary Committee 4; Intramural Sports 3, 4; Orientation Committee 4; President of Seibert Hall 4; Dean Junior College 1, 2.

SUSAN KIINI
551 E. Third St.
Bloomsburg, Pa.

Music Education

Sigma Alpha Iota 1, 2, 3, 4; Student Christian Association 1, 2, 3; Susquehanna Singers 2, 3, 4.

GERTRUDE KOHLWEISS
242 Merrick Ave.
Merrick, N. Y.

Liberal Arts

Kappa Delta Phi 2, 3, 4; Student Christian Association 1, 2, 3, 4; Biemic Society 1, 2, 3, 4; Susquehanna Players 1, 2, 3, 4; Band 3; Women's Athletic Association 1, 2, 3, 4; Intramural Sports 1, 2, 3, 4; Tau Kappa 3, 4, Treasurer 4; Alpha Psi Omega 2, 3, 4.

EDWARD KORKUCH
910 E. Race St.
Shamokin, Pa.

Business Administration

Phi Mu Delta 2, 3, 4; Business Society 4; Intramural Sports 1, 2, 3, 4.

NELSON KOST
219 S. York St.
Mechanicsburg, Pa.

Music Education

Bond and Key 1, 2, 3, 4; Student Christian Association 1, 2, 3, 4; Susquehanna Singers 2, 3; Chapel Organist 2, 3, 4; Chapel Choir Accompanist 3, 4.

JOSEPH A. LADIKA
415 N. Vine St.
Mt. Carmel, Pa.

Pre-Medical

Bond and Key 2, 3, 4; Biemic Society 2, 3, 4; Intramural Sports 2, 3, 4; Class Officer 3; Bond and Key Glee Club 3, 4.

RAYMOND LAUVER
R. D. 1
McAlisterville, Pa.

Business Administration

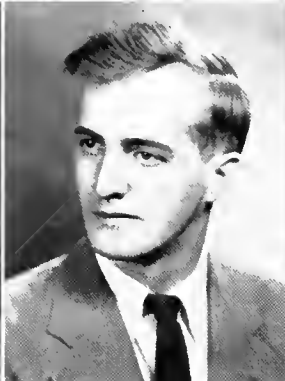
Theta Chi 1, 2, 3, 4, Treasurer 4; Student Christian Association 1, 2, 4; Business Society 1, 2, 3, 4; Intramural Sports 1, 2, 3, 4.

BARBARA LEASE
443 W. Main St.
Somerset, Pa.

Commercial Education

Kappa Delta Phi 1, 2, 3, 4; Student Christian Association 1, 2, 3, 4; Business Society 1, 2, 3, 4; Vice President Council 3, 4; Women's Athletic Association 1, 2, 3, 4; Intramural Sports 1, 2, 3, 4.





MILDRED R. LEESER
238 S. Front St.
Sunbury, Pa.

Liberal Arts

Student Christian Association
1, 4; Pi Gamma Mu 3, 4;
Day Students' Organization.

EVERETT MANNING
126 N. 17th St.
East Orange, N. J.

Business Administration

Bond and Key 1, 2, 3, 4;
Business Society 1, 2, 3, 4;
Intramural Sports 4; Tennis
Varsity 3.

MARY J. MILLER
1320 Hillside Ave.
Honesdale, Pa.

Music Education

Sigma Alpha Iota 1, 2, 3, 4;
Student Christian Association
1, 2, 3, 4; Symphony Orches-
tra 3; Band 3; Susquehanna
Singers 2, 3; Chapel Choir 2,
3; Operetta 2; Trinity Choir
2; May Day 2, 3.

ROBERT MILLER
R. D., Liberty, Pa.

Liberal Arts

Theta Chi 1, 2, 3, 4; Editor
Crimson Sword 3; Student
Christian Association 1, 2, 3,
4, President 4; Pi Gamma Mu
3, 4, Vice President 4; Phi
Kappa 1, 2, 3, 4, President 3;
Social Committee 4.

VERNON J. MILLER
812 N. Front St.
Sunbury, Pa.

Liberal Arts

Student Christian Association
1, 2, 3; Phi Kappa 1, 2, 3,
Vice President 3.

EARL MINCEMOYER
24 Tenth St.
Milton, Pa.

Music Education

Symphony Orchestra 1; Band
1, 2, 3, 4; Susquehanna Sing-
ers 2; Chapel Choir 2.

DONALD MINNICH
37 Lawrence Ave.
Bradford, Pa.

Business Administration

Phi Mu Delta 1, 2, 3, 4;
Business Society 1, 2, 3, 4;
Football Team 1, 2, 3, 4; In-
tramural Sports 1, 2, 3, 4.

A. P. MOLINARO, JR.
245 Grove St.
Montclair, N. J.

Pre-Medical

Phi Mu Delta 2, 3, 4; Biemic
Society 2, 3, 4; Susquehanna
Players 3, 4; Basketball Team
2, 3; Football Team 2, 3; In-
tramural Sports 2, 3, 4.

MARVIN MOYER
571 Queen St.
Northumberland, Pa.
Liberal Arts

Student Christian Association 3; Phi Kappa 3, 4; Intramural Sports 1, 2, 3; Baseball Team 1, 2, 4.

ROSEMARY MUSSINA
619 N. Front St.
Milton, Pa.
Commercial Education

Omega Delta Sigma 1, 2, 3, 4, Secretary 4; Student Christian Association 1, 2, 3, 4; Business Society 1, 2, 3, 4, Treasurer 4; Women's Athletic Association 2, 3, 4; Women's Student Council 4, Secretary-Treasurer 4; Intramural Sports 1, 2, 3, 4.

SHIRLEY A. NICKLIN
Marlboro, N. Y.
Liberal Arts

Omega Delta Sigma 1, 2, 3, 4, Treasurer 4; Women's Athletic Association 1, 2, 3, 4; Women's Student Council 2; *Susquehanna* Staff 4, Girls' Sports Editor; Hockey Team 1, 2, 3; Intramural Sports 1, 2, 3, 4; LANTHORN Literary Editor 3; Tau Kappa 3, 4.

JEANNE ORNER
Bendersville
Adams County, Pa.
Secretarial

Student Christian Association 1, 2, 3, 4, Secretary 4; Business Society 1, 2, 3, 4; Vice President Council 3; Women's Athletic Association 1, 2, 3, 4; Women's Student Council 3, 4; Intramural Sports 1, 2, 3, 4.

ANNA MAE OYSTER
807 S. Second St.
Sunbury, Pa.
Liberal Arts

Student Christian Association 1, 2, 3, 4; *Susquehanna* Players 2, 3, 4; Day Students' Organization 1, 2, 3, 4; Alpha Psi Omega 3, 4; "Icebound"; "I Remember Mama"; "Here Comes Mr. Jordan."

JEAN PENMAN
18 Front St.
Strong, Pa.
Liberal Arts

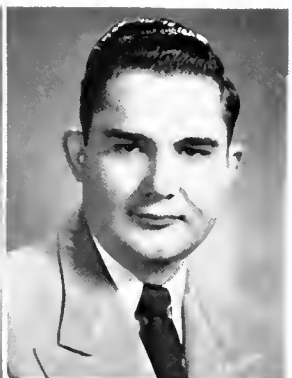
Student Christian Association 1, 2, 3, 4; Women's Athletic Association 1; Pi Gamma Mu 3, 4; Phi Kappa 2, 3, 4, Secretary 3.

EDWARD PFEIFFER
311 Third St.
Weatherly, Pa.
Commercial Education

Phi Mu Delta 1, 2, 3, 4; Student Christian Association 1, 2; Business Society 1, 2, 3, 4; Basketball Team 1, 2, 3; Intramural Sports 1, 2, 3, 4; Baseball Team 3; Intramural Board 2, 3.

GEORGE PHILLIPS
Herndon, Pa.
Business Administration





A. B. PORTZLINE, JR.
Eighth St.
Selinsgrove, Pa.
Liberal Arts

Phi Mu Delta 1, 2, 3, 4; Student Christian Association 1, 2, 3, 4; Susquehanna Players 1, 2, 3, 4; Phi Kappa 1, 2; Intramural Sports 1, 2, 3, 4; "Mary of Scotland"; "Here Comes Mr. Jordan."

BETTYJANE R. RENN
21 Greenough St.
Sunbury, Pa.
Liberal Arts

Student Christian Association 1, 2, 4; Ciceroniani 1, 2.

JOHN A. REUTHER
93 North St.
Nichols, Conn.
Business Administration

Theta Chi 1, 2, 3, 4, Assistant Treasurer 3; Student Christian Association 1, 3, 4; Business Society 1, 2, 3, 4, Vice President 3; *Susquehanna* Staff, Business Manager 4; Pi Gamma Mu 3, 4, President 4; Intramural Sports 1, 2, 3, 4; Alpha Pi Omega 4.

ROBERT RICENDORF
Ickesburg, Pa.
Liberal Arts

Theta Chi 2, 3, 4; Student Christian Association 1, 2, 3, 4; Biemic Society 2, 3, 4.

ZOLA ROBINSON
371 W. Fourth St.
Lewistown, Pa.
Liberal Arts

Omega Delta Sigma 2, 3, 4; Student Christian Association 1, 2, 3, 4; Susquehanna Players 1, 2, 3, 4; Women's Athletic Association 1, 2, 3, 4; Hockey Team 2, 3; Intramural Sports 1, 2, 3, 4; Tau Kappa 3, 4, President 4.

JEAN ROTHERMEL
R. D. 1
Klingerstown, Pa.
Music Education

Sigma Alpha Iota 1, 2, 3, 4, Chaplain 4, Student Christian Association 1, 2, 3, 4; Band 3; Susquehanna Singers 2, 3; Vice President Council 3; Operetta 2; May Day 2, 3.

FRANCES ROUSH
194 Orange St.
Northumberland, Pa.
Music Education

Sigma Alpha Iota 2, 3, 4, Recording Secretary 4; Student Christian Association 3, 4; Symphony Orchestra 2, 3; Band 1, 2, 3, 4; Susquehanna Singers 2, 3, 4; Day Students' Organization 1, 2, 3, 4, President 4.

HAROLD ROWE
438 N. Second St.
Lykens, Pa.
Business Administration

Theta Chi 2, 3, 4; Student Christian Association 3, 4; Business Society 3, 4; Intramural Sports 1, 2, 3, 4.

JAMES RUMBAUGH
R. D. 2, Millerstown, Pa.
Pre-Medical

Bond and Key 1, 2, 3, 4, Secretary 2, 3, President 4, Editor of "The Bond" 2, 3; Student Christian Association 1, 2, 3, 4; Biemic Society 1, 2, 3, 4, President 3; *Susquehanna* Staff Proof Reader 2, Associate Editor 3, Editor 4; Inter-Fraternity Senate 4; Social Committee 4; Who's Who 4.

FRED W. SCHULTZ
1008 N. Irving Ave.
Scranton 10, Pa.
Liberal Arts

Bond and Key 3, 4; Student Christian Association 3, 4; Biemic Society 3, 4.

LOUIS SANTANGELO
673 Queen St.
Northumberland, Pa.
Business Administration

Phi Mu Delta 2, 3, 4; Business Society 1, 2, 3, 4; Football Team 1, 2, 3, 4; Intramural Sports 1, 2, 3, 4; Class Officer 4.

RICHARD SHAFFER
602 S. Market St.
Selinsgrove, Pa.
Business Administration

Phi Mu Delta 1, 2, 3, 4; Business Society 2, 3, 4; *Susquehanna* Players 1, 2, 3, 4; Intramural Sports 2, 3, 4; Alpha Psi Omega 4.

M. EIMINA SARBA
144 Catawissa Ave.
Sunbury, Pa.
Music Education

Sigma Alpha Iota 1, 2, 3, 4; Symphony Orchestra 1, 2, 3, 4; Band 1, 2, 3, 4; *Susquehanna* Singers 2, 3; Day Students' Organization 1, 2, 3, 4; May Day 1, 2, 3; Opera 2.

MARIA SHUTTER
324 Chestnut St.
Spring City, Pa.
Medical Secretary

Kappa Delta Phi 1, 2, 3, 4; Student Christian Association 1, 2, 3, 4; Business Society 2, 3, 4; Biemic Society 1, 2, 4; Women's Athletic Association 1, 2, 3, 4; Hockey Team 2, 3, 4; Basketball Team 2; Intramural Sports 1, 2, 3, 4; Freshmen Counselor 3; Tau Kappa 3, 4, Vice President 4; May Day 2; Class Officer 3.

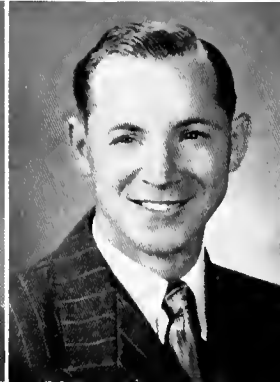
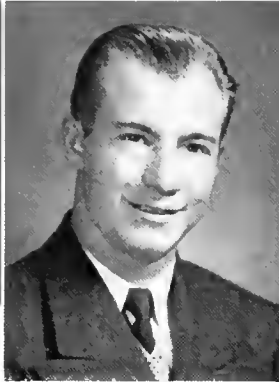
FAYE SAIZLER
McAlisterville, Pa.
Business Administration

Student Christian Association 1, 2, 3, 4; Business Society 1, 2, 3, 4; Women's Athletic Association 1, 2; Intramural Sports 1, 2, 3.

SHIRLEY SHOWALTER
Box 32, Millmont, Pa.
Liberal Arts

Omega Delta Sigma 1, 2, 3, 4, Financial Secretary 4; Student Christian Association 1, 2, 3, 4; Women's Athletic Association 3, 4; Intramural Sports 3, 4; LANTHORN 3; Freshmen Counselor 3; May Day 3.





MARK SHUEY
512 Market St.
Millersburg, Pa.

Liberal Arts

Theta Chi 2, 3, 4; Student Christian Association 1, 2, 3, 4; Intramural Sports 1, 2, 4; Alpha Psi Omega 4.

LOUISE SILMERS
239 Upper Mountain Ave.
Upper Montclair, N. J.

Liberal Arts

Omega Delta Sigma 2, 3, 4, Vice President 4; Student Christian Association 2, 3; Biemic Society 2; Women's Athletic Association 2, 3, 4; Women's Student Council 4, Social Chairman 4; Hockey Team 2, 3; Basketball Team 2; Intramural Sports 1, 2, 3, 4; Inter-Sorority Council 4, Secretary 4; Tau Kappa 3, 4, Secretary.

LILLIAN C. SMITH
R. D. 1, Nescopeck, Pa.

Liberal Arts

Student Christian Association 1, 2, 3, 4; Susquehanna Players 2, 3, 4; Vice President Council 3; Women's Athletic Association 3, 4; *Susquehanna* Staff 3, 4, Managing Editor 4; Intramural Sports 1, 2, 3, 4; Alpha Psi Omega 4; "Here Comes Mr. Jordan."

JOSEPH SOLOMON
337 E. Saylor St.
Atlas, Pa.

Pre-Medical

Biemic Society 2, 3, 4; Susquehanna Players 2, 3, 4; Intramural Sports 2, 3, 4; Alpha Psi Omega 3, 4, Grand Director 4.

MARJORIE SPOGEN
P. O. Box 167
Turbotville, Pa.

Liberal Arts

Student Christian Association 1, 2, 3, 4; Susquehanna Players 1, 2, 3, 4; Vice President Council 4; Women's Athletic Association 1, 2, 3, 4; *Susquehanna* Staff 1, 2, 3; Intramural Sports 1, 2, 3, 4; LANTHORN 3, Girls' Sports Editor; Alpha Psi Omega 1, 2, 3, 4, Grand Business Manager 4; May Day 3; "Little Women"; "I Remember Mama."

HARRY G. STETSER
Ashland Ave.
Somerdale, N. J.

Liberal Arts

Student Christian Association 2, 3, 4; Phi Kappa 2, 3, 4; Ciceroniani 4; Muhlenberg 1.

GEORGE THOMAS, JR.
319 E. Pine St.
Selinsgrove, Pa.

Pre-Medical

Bond and Key 1, 2, 3, 4; Biemic Society 3, 4; Intramural Sports 1, 2, 3, 4.

JACK THORP
122 Willow St.
Athens, Pa.

Business Administration

Bond and Key 2, 3, 4; Student Christian Association 1, 2; Business Society 1, 2, 3, 4; Basketball Team 1, 2, 3, 4; Intramural Sports 1, 2, 3, 4; Baseball Team 2, 3.

RICHARD E. TROUTMAN
Pillow, Dauphin County, Pa.
Liberal Arts
Bond and Key 1, 2, 3, 4.

FRANKLIN T. ULMAN
1115 Walnut St.
Williamsport, Pa.
Business Administration

Phi Mu Delta 3, 4; Business Society 3, 4; Susquehanna Players 3, 4; Basketball Team Manager 3, 4; Intramural Sports 4; Baseball Team Manager 3; Alpha Psi Omega 4.

PAUL A. WAGNER
Box 43, Milroy, Pa.
Business Administration

Phi Mu Delta 3, 4, Comptroller 3, 4; Student Christian Association 2, 3, 4; Business Society 2, 3, 4, President 4; Susquehanna Players 2, 3; *Susquehanna Staff* 3; "The Queen's Husband."

BARBARA J. WATKINS
730 N. Rebecca Ave.
Scranton 4, Pa.
Liberal Arts

Kappa Delta Phi 1, 2, 3, 4, Recorder 2, Social Chairman 3, President 4; Student Christian Association 1, 2, 3, 4; Biemic Society 1, 2, 3, 4; Susquehanna Players 1, 2; Susquehanna Singers 2; Chapel Choir 1; Women's Athletic Association 1, 2, 3, 4; Women's Student Council 1; Hockey Team 1, 2, 3, 4; Basketball Team 2, 3, 4; Pi Gamma Mu 3, 4; Intramural Sports 1, 2, 3, 4; Inter-Sorority Council 4, President 1; LANTHORN Photographic Editor 3; Freshmen Orientation 2, 3, 4; Operetta 2; May Day 2, 3; Class Officer 1; Tau Kappa 3, 4; Social Committee 1; Who's Who 1.

KENT WELLER
Aristes
Columbia County, Pa.
Liberal Arts

Bond and Key 1, 2, 3, 4; Biemic Society 1, 3, 4; Intramural Sports 2.

BARBARA WELLIVER
1909 W. Front St.
Berwick, Pa.
Liberal Arts

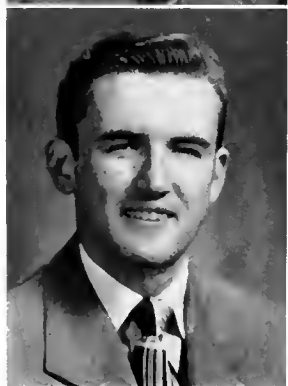
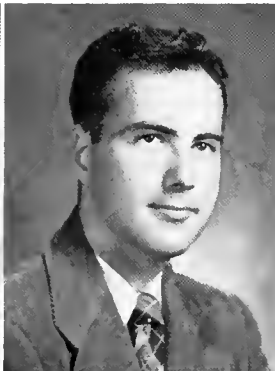
Omega Delta Sigma 2, 3, 4; Student Christian Association 1, 2, 3, 4; Women's Athletic Association 2, 3, 4, Corresponding Secretary 3; Intramural Sports 1, 2, 3, 4; May Day 2.

RICHARD WESTERVELT
36 Charles St.
Bloomfield, N. J.
Liberal Arts

Phi Mu Delta 2, 3, 4, Editor "Triangle" 2; *Susquehanna Staff* 1, 2, 3, 4, Sports Editor 2, 3, 4; Basketball Team 1, 2, 3, 4; Intramural Sports 1, 2, 3, 4; College Publicity 2, 4.

RICHARD L. WETZEL
218 S. Market St.
Selingsgrove, Pa.
Business Administration

Theta Chi 1, 2, 3, 4; Student Christian Association 1, 2, 3, 4; Business Society 1, 2, 3, 4; Intramural Sports 2, 3, 4.





LLOYD T. WILSON

18 Hurton St.
Johnstown, Pa.

Liberal Arts

Student Christian Association 3, 4, Cabinet 4; Phi Kappa 3, 4; Johnstown Center, University of Pittsburgh 1, 2.

DONALD WISSINGER

2929 Spruce Ave.
Altoona, Pa.

Liberal Arts

Bond and Key 2, 3, 4; Student Christian Association 1, 2, 3, 4; Men's Student Council 3, 4, President 4; Football Team 1, 2, 3, 4; Intramural Sports 2, 3, 4; Baseball Team 1, 2, 3; Class Officer 4; Social Committee 4; Who's Who 4.

JOHN J. WITOWSKI

113 Warsaw St.
Keiser, Pa.

Commercial Education

Bond and Key 2, 3, 4; Business Society 1, 2, 3, 4; Basketball Team 1, 3, 4; Football Team 1, 2; Intramural Sports 1, 2; Assistant Coach Football 3, 4; Junior Varsity Basketball Coach 3, 4; Assistant Baseball Coach 3; Who's Who 4.

DONALD F. WOHLSEN

39 Marshall Road
Yonkers, N. Y.

Business Administration

Phi Mu Delta 1, 2, 3, 4; Student Christian Association 1, 2; Business Society 2; Basketball Team 1; Intramural Sports 1, 2, 4.

JANET E. WOLF

105 Violet St.
Johnstown, Pa.

Liberal Arts

Student Christian Association 1, 2, 3, 4, Cabinet 2, 3, 4, Girls' Vice President 4; Susquehanna Players 1, 2, 3; Women's Athletic Association 2, 3, 4; *Susquehanna* Staff 1; Hockey Team 3, 4; Orientation Committee 3, 4.



Cecilia Auman



Floris Guyer



Barbara Watkins



Theodore Clark

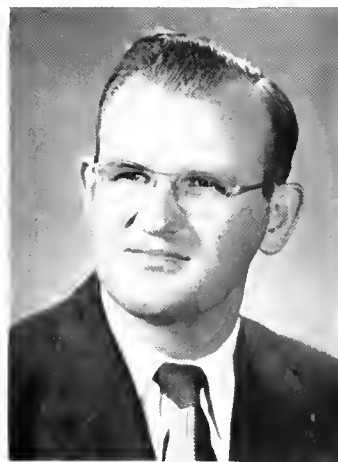
**WHO'S
WHO**



James Rumbaugh



Donald Wissinger



John Witoski



B. Faust, B. Beam, C. Shaffer, J. Harder.

Junior Class

OFFICERS

<i>President</i>	- - - - -	JACOB HARDER
<i>Vice President</i>	- - - - -	BURDELL FAUST
<i>Secretary</i>	- - - - -	MARIE BEAN
<i>Treasurer</i>	- - - - -	CHARLES SHAFFER

We, the Class of '51, have reached the honored ranks of Juniors. For two years we held our own in intramural competition, scholastic honors, and other activities.

The Junior Prom and the LANTHORN stand out in this, our third college year, although we continue to be well represented in all other fields of activity.

In our one remaining year we will earnestly strive to profit by those missteps in the past and to broaden further our vision of life in endeavoring to uphold and perpetuate the traditions and ideals of old S. U.

MARIHA ALBERT

20 S. Locust St.
Myerstown, Pa.

Liberal Arts

Omega Delta Sigma 1, 2, 3; Student Christian Association 1, 2, 3; Women's Athletic Association 1, 2, 3, Vice President 3; Hockey Team 1, 2, 3; Basketball Team 1, 2, 3; Captain 2; Intramural Sports, 1, 2, 3; Tau Kappa 3.

BEN C. ALTR

520 Bear Valley Ave.
Shamokin, Pa.

Liberal Arts

Phi Mu Delta 2, 3; Student Christian Association 1; Football Team 1; Intramural Sports 1, 2, 3.

JANICE ARNER

520 W. Fifth St.
East Liverpool, Ohio

Liberal Arts

Marion Junior College, Marion, Va. 1, 2; Student Christian Association 3.

LYN BAILEY

130 Morningside Drive
New York 27, N. Y.

Business Administration

Omega Delta Sigma 2, 3; Student Christian Association 1, 2, 3; Business Society 1, 2, 3; Women's Athletic Association 1, 2, 3; *Susquehanna* Staff 2; Intramural Sports 1, 2, 3; LANTHORN 3.

FLORA BARNHART

Claysburg, Pa.

Music Education

Sigma Alpha Iota 1, 2, 3, Vice President 3; Student Christian Association 1, 2, 3; Symphony Orchestra 2, 3; Band 2, 3; *Susquehanna* Singers 2, 3; Women's Athletic Association 1, 2, 3; Basketball Team 1; Intramural Sports 1, 2, 3; Inter-Sorority Council 3.

PIRN BAUMGARDNER

1702 Graham Ave.
Windber, Pa.

Liberal Arts

Kappa Delta Phi 2, 3; Student Christian Association 1, 2, 3; Biemic Society 1, 2, 3; Women's Athletic Association 1, 2, 3; Intramural Sports 1, 2, 3.

BETTY BLAM

2507 Graham Ave.
Windber, Pa.

Liberal Arts

Omega Delta Sigma 1, 2, 3; Student Christian Association 1, 2, 3; Biemic Society 1, 2, 3; Band 3; Women's Athletic Association 1, 2, 3; Women's Judiciary Committee 3; Intramural Sports 1, 2, 3; Class Officer 3; May Day 2.

MARILYN BEERS

452 Beardsley Ave.
Bloomfield, N. J.

Business Administration

Omega Delta Sigma 1, 2, 3; Student Christian Association 1, 2, 3; Business Society 1, 2, 3; Biemic Society 1, 2; Women's Athletic Association 1, 2, 3; Hockey Team 1, 2, 3; Intramural Sports 1, 2, 3; Inter-Sorority Council 3.





ROBERT BITTING

234 Valley St.
Marysville, Pa.

Music Soloist

Bond and Key 1, 2, 3; Student Christian Association 1, 2; Band, Drum Major 2, 3; Susquehanna Singers 2, 3; Chapel Choir 1, 2, 3.

MARSH C. BOGAR

2936 Green St.
Harrisburg, Pa.

Liberal Arts

Bond and Key 1, 2, 3; Susquehanna Staff, Circulation Manager 3; Intramural Sports 1, 2, 3.

WALTER BRANDAU

223 Catawissa Ave.
Sunbury, Pa.

Liberal Arts

Theta Chi 1, 2, 3; Student Christian Association 1, 2, 3; Phi Kappa 1, 2, 3.

HAZEL JANE BROBST

1042 S. Front St.
Sunbury, Pa.

Liberal Arts

Student Christian Association 1, 3.

JACK A. BROWN

1050 Washington St.
Indiana, Pa.

Pre-Medical

Phi Mu Delta 1, 2, 3; Student Christian Association 1; Biemic Society 1, 2, 3; Intramural Sports 2, 3.

NANCY COSGROVE

202 S. Maple St.
Mt. Carmel, Pa.

Liberal Arts

Student Christian Association 1; Biemic Society 1, 2, 3; Women's Athletic Association 2, 3.

JOSEPH P. DRISCOLL

11 N. High St.
Selinsgrove, Pa.

Liberal Arts

Phi Mu Delta 2, 3.

JOHN L. ECCKER

94 Prospect St.
Nanticoke, Pa.

Music Education

Phi Mu Delta 1, 2, 3; Symphony Orchestra 1, 2, 3; Band 1, 2, 3; Susquehanna Singers 2, 3; Chapel Choir 2, 3.

MARIANNE FAGUF

443 S. Queen St.
Lancaster, Pa.

Liberal Arts

Omega Delta Sigma 1, 2, 3; Student Christian Association 1, 2, 3, Sophomore Representative 2; Biemic Society 1; Vice President Council 3; Women's Athletic Association 2, 3; Intramural Sports 1, 2, 3; Freshmen Orientation 3; Freshmen Counselor 3.

BURDILL S. FAUST

511 Second St.
Weatherly, Pa.

Music Education

Phi Mu Delta 1, 2, 3; Symphony Orchestra 1, 2, 3; Band 1, 2, 3; Susquehanna Singers 2, 3; Chapel Choir 2, 3.

ALTHEA FERGUSON

40 S. Main St.
Millerstown, Pa.

Commercial Education

Kappa Delta Phi 1, 2, 3; Student Christian Association 1, 2, 3; Business Society 1, 2, 3; Women's Athletic Association 1, 2, 3; Hockey Team 2; Basketball Team 1, 2, 3; Intramural Sports 1, 2, 3; Tau Kappa 3; May Day 2.

SUSAN FOITZ

816 Broad St.
Collingdale, Pa.

Liberal Arts

Omega Delta Sigma 1, 2, 3; Student Christian Association 1, 2, 3; Women's Athletic Association 1, 2, 3; *Susquehanna* Staff; Intramural Sports 1, 2, 3; Freshman Orientation 3; Freshman Counselor 3; May Day 2.

W. J. FOSTER, JR.

R. D. 2 Bristol
Newportville, Pa.

Liberal Arts

Phi Mu Delta 2, 3; Student Christian Association 1, 2, 3; Cabinet 3; Biemic Society 3; Susquehanna Players 1, 2, 3; President 2; Football Team 1, 2; LANTHORN 3, Editor-in-Chief; Alpha Psi Omega 2, 3.

CARL GACONO

137 W. Hand Ave.
Wildwood, N. J.

Business Administration

Phi Mu Delta 2; Student Christian Association 3; Business Society 3; LANTHORN 3.

JACK W. GLARINGER

82 N. Iron St.
Bloomsburg, Pa.

Pre-Medical

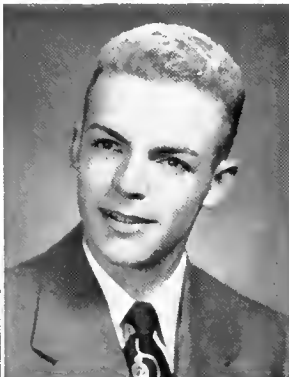
Theta Chi 2, 3; Student Christian Association 1, 2, 3; Biemic Society 1, 2, 3; Intramural Sports 1, 2, 3.

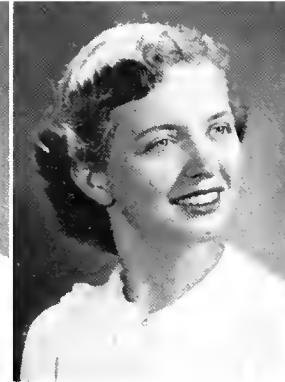
ALICI M. GREGER

117 Kathmere Road
Havertown, Pa.

Music Education

Sigma Alpha Iota 1, 2, 3, Editor 3; Student Christian Association 1, 2, 3; Band 2, 3; Susquehanna Singers 2, 3; Vice President Council 2; Women's Athletic Association 1, 2, 3; Hockey Team 3, Manager; Intramural Sports 1, 2, 3; May Day 1, 2; Freshman Orientation 3; Freshman Counselor 3; Fire Captain 3.





H. R. HAINS, JR.
172 N. 17th St.
East Orange, N. J.
Business Administration

Bond and Key 1, 2, 3, Utility Manager 1, President 2, Steward 3; Business Society 1, 2, 3; Intramural Sports 2; Inter-Fraternity Senate 2; LANTHORN 3, Business and Advertising Manager 3.

J. B. HARDER, JR.
1604 Letchworth Road
Camp Hill, Pa.
Business Administration

Bond and Key 1, 2, 3; Student Christian Association 2, 3; Business Society 2, 3; Men's Student Council 2, 3; *Susquehanna* Staff 2, 3; Intramural Sports 1, 2; President Sophomore Class; President Junior Class.

ROBERT HENNINGER
91 King St.
Northumberland, Pa.
Business Administration

Basketball Team 2, 3.

JEAN HILL
350 Awl St.
Sunbury, Pa.
Music Education

Sigma Alpha Iota 1, 2, 3; Student Christian Association 1, 3; Band 2, 3, Secretary 3; *Susquehanna* Singers 2, 3; Chapel Choir 1, 2, 3; Day Students' Organization 1, 2, 3; May Day 2.

THOMAS JENKINS
645 Dorian Road
Westfield, N. J.
Liberal Arts

Bond and Key 3; Student Christian Association 1, 2, 3; Men's Student Council 2; Intramural Sports 2, 3.

JUNE KLINGLER
Winfield, Pa.
Liberal Arts

Kappa Delta Phi 2, 3; Student Christian Association 2; Women's Day Students Organization 2, 3, Secretary 3.

MARY E. LEHMAN
R. D. 2, Newville, Pa.
Music Education

Sigma Alpha Iota 1, 2, 3, Treasurer 3; Student Christian Association 1, 2; Symphony Orchestra 2, 3; Band 2, 3; *Susquehanna* Singers 2, 3; Chapel Choir 1, 2, 3.

AUDREY MACNEIL
119 Water St.
Perth Amboy, N. J.
Liberal Arts

Kappa Delta Phi 1, 2, 3; Student Christian Association 1, 2, 3; Biemic Society 1, 2, 3; Vice President Council 1; Women's Athletic Association 1, 2, 3.

GARDNER MAREK
25 East Ave.
Atlantic Highlands, N. J.
Business Administration

Phi Mu Delta 1, 2, 3; Student Christian Association 1, 2, 3; Business Society 1, 2, 3; Football Team 1, 2, 3; Intramural Sports 1, 2, 3.

ALFRED MARTIN
207 N. Park St.
East Orange, N. J.
Business Administration

Phi Mu Delta 2, 3; Football Team 1, 2, 3; Intramural Sports 1, 2; Baseball Team 1.

MARTHA J. MARTIN
27 S. Third St.
Shamokin, Pa.
Commercial Education

Kappa Delta Phi 2, 3; Student Christian Association 1, 2, 3; Business Society 1, 2, 3, Secretary 3; Women's Athletic Association 1, 2, 3, Secretary 3; Women's Student Council 3; Women's Judiciary Committee 3; Intramural Sports 1, 2, 3; LANTHORN 3, Literary Editor 3; Freshmen Counselor 3; Orientation Committee 3; Hassinger House President 3; Class Officer 2.

CAROLYN McCAHAN
Port Royal, Pa.
Music Education

Sigma Alpha Iota 1, 2, 3; Student Christian Association 1, 2, 3; Symphony Orchestra 2, 3; Band 2, 3; Susquehanna Singers 2, 3.

SALLY MITCHELL
50 Shoemaker St.
Forty Fort, Pa.
Music Education

Sigma Alpha Iota 1, 2, 3, Corresponding Secretary 3; Student Christian Association 1, 2; Symphony Orchestra 1; Band 1, 2, 3; Susquehanna Singers 2, 3; Vice President Council 3; Freshmen Orientation 2, 3, Assistant Chairman 3; Class Officer 1; Susquehanna Players 3; "Here Comes Mr. Jordan" 3.

JEAN McDONALD
Box 634, Marion, Va.
Liberal Arts

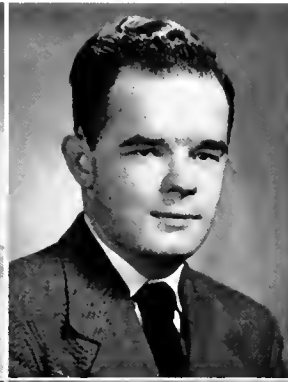
Marion Junior College, Marion, Va. 1, 2.

GIRALD MOORHEAD
R. D. 1, Milton, Pa.
Liberal Arts

Theta Chi 1, 2, 3; Student Christian Association 1, 2, 3, Junior Class Representative 3; Men's Student Council 3; Phi Kappa 1, 2, 3; Basketball Team, Manager 2, 3; Intramural Sports 1, 2.

ROBERT MOYER
R. D. 1, Selinsgrove, Pa.
Liberal Arts





PHILIP J. O'BRIEN

232 Hone Ave.
Oil City, Pa.

Liberal Arts
Intramural Sports 3.

ROBERT O'GARA

18 Dodd St.
Bloomfield, N. J.

Business Administration
Business Society 1, 2, 3;
Football Team 1, 2, 3; In-
tramural Sports 1, 2, 3;
Baseball Team 2.

ROBERT PATTERSON

324 Hazel St.
Tamaqua, Pa.

Business Administration
Phi Mu Delta 2, 3; Student
Christian Association 1, 2,
3; Business Society 1, 2, 3;
Susquehanna Players 3; In-
tramural Sports 1, 2, 3;
LANTHORN 3; Intramural
Board 3; "The Patsy."

JOAN POST

34 Highfield Road
Bloomfield, N. J.

Business Administration
Student Christian Association
1, 3.

DANIEL REESE

127 Poplar St.
Kingston, Pa.

Liberal Arts
Phi Mu Delta 1, 2, 3; Stu-
dent Christian Association 1,
2, 3; Football Team 1, 2, 3;
Intramural Sports 1, 2, 3;
Baseball Team 1.

ROLAND ROSETTI

Box 47, South Canaan, Pa.

Business Administration
Theta Chi 2, 3; Business So-
ciety 1, 2, 3; Football Team
1, 2, 3; Intramural Sports 1,
2, 3; "Here Comes Mr. Jor-
dan."

CHESTER ROWE

301 E. Pine St.
Selinsgrove, Pa.

Liberal Arts
Theta Chi 2, 3; Football
Team 1, 2, 3.

MERRILL SHAFER

Grier City
Barnesville, Pa.

Liberal Arts
Theta Chi 1, 2, 3; Student
Christian Association 1; Bi-
emic Society 1; Intramural
Sports 1, 2, 3; Intramural
Board 3.

NELDA SHAFER

Grier City
Barnesville, Pa.

Liberal Arts

Kappa Delta Phi 1, 2, 3; Student Christian Association 1, 2, 3; Biemic Society 1, 3; Band 3; Vice President Council 3; Women's Athletic Association 2, 3; *Susquehanna* Staff 2; Intramural Sports 1, 2, 3; Freshmen Orientation 3; Freshmen Counselor.

CHARLES SHAFER

120 Independence St.
Selinsgrove, Pa.

Liberal Arts

Theta Chi 1, 2, 3, Historian 2; Student Christian Association 3; Biemic Society 1, 3; Class Officer 3.

DONALD SHOLMAKER

217 Gilliland Place
Bellevue, Pittsburgh 2, Pa.

Business Administration

Phi Mu Delta 1, 2, 3; Student Christian Association 1, 2, 3; Business Society 1, 2, 3; Basketball Team 1; Football Team 1, 2; Intramural Sports 1, 2, 3.

MARY LOU SLATER

198 Isabella Ave.
Irvington, N. J.

Liberal Arts

Kappa Delta Phi 1, 2, 3; Student Christian Association 1, 2, 3; Biemic Society 3; *Susquehanna* Players 2, 3; Women's Athletic Association 1, 2, 3; *Susquehanna* Staff 2; Football Team 3; Intramural Sports 1, 2, 3.

WILLIAM SMELTZ

R. D. 1, Northumberland, Pa.

Pre-Theology

Student Christian Association 1, 2, 3, Cabinet 1, 2; *Susquehanna* Players 3; Phi Kappa 1, 2, 3, President 3; Cicero-
nians 3; LANTHORN 2, 3; May Day 1.

J. LA WAYNE SMITH

118 Willow Ave.
Honesdale, Pa.

Commercial Education

Keystone Junior College 1, 2; Business Society 3.

THOMAS O. STALLER

242 E. Seventh St.
Mt. Carmel, Pa.

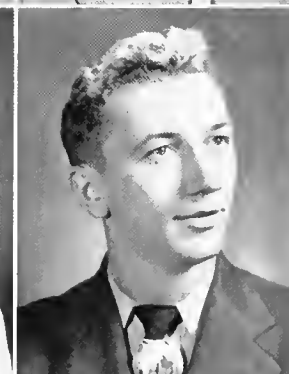
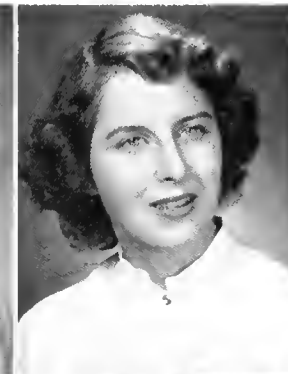
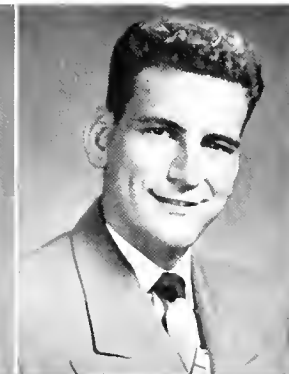
Business Administration

Bond and Key 1, 2, 3; Student Christian Association 1, 2, 3; Business Society 2, 3; *Susquehanna* Staff 2, 3, Associate Editor 3.

JOHN R. STEIGER

Newfoundland
Wayne County, Pa.

Keystone Junior College 1, 2; Student Christian Association 3; Business Society 3; LANTHORN 3.





DAVID STURRETT

744 Braxton Road
Ridley Park, Pa.

Liberal Arts

Bond and Key 1, 2, 3; Student Christian Association 1, 2, 3, Public Relations Chairman 3; Biemic Society 1, 2, 3, President 3; Susquehanna Players 1, 2; Symphony Orchestra 1; Band 1, 2, 3; *Susquehanna Staff* 1, 2, 3, Photographic Editor 3; Basketball Team 1; Intramural Sports 2, 3; *Student Handbook* 3, Editor 3.

RICHARD STETLER

417 Orange St.
Millintown, Pa.

Liberal Arts

Theta Chi 1, 2, 3; Student Christian Association 1; Intramural Sports 2, 3.

CHARLES W. TAYLOR

Flinhurst
Lackawanna County, Pa.

Pre-Dental

Theta Chi 1, 2, 3; Student Christian Association 1, 2, 3; Biemic Society 1, 2, 3; Band 1, 2, 3; *Susquehanna Staff* 1, 2, 3.

RAY TYLER

Hummels Wharf, Pa.
Music Education

Symphony Orchestra 1, 2, 3;
Band 1, 2, 3; *Susquehanna Singers* 1, 2, 3.

JEAN VANVOORHIS

West Bloomfield Road
Pittsford, N. Y.

Liberal Arts

Kappa Delta Phi 2, 3; Student Christian Association 1, 2, 3; Biemic Society 1, 2, 3; Susquehanna Players 1; Vice President Council 2; Women's Athletic Association 1, 2, 3; Hockey Team 3; Basketball Team 3; Intramural Sports 1, 2, 3; Intramural Board 3.

WALTER B. WAGNER

369 W. Fifth St.
Lewistown, Pa.

Business Administration

Bond and Key 1, 2, 3; Student Christian Association 1, 2; Business Society 1, 2, 3; Basketball Team 1, 2, 3; Intramural Sports 1, 2, 3.

EMIL WEILER, JR.

354 Liverpool Ave.
Egg Harbor City, N. J.

Business Administration

Theta Chi 1, 2, 3; Student Christian Association 1, 2, 3; Business Society 1, 2, 3; Susquehanna Players 1, 2, 3; Men's Student Council 3; Football Team 1, 2; Intramural Sports 1, 2, 3.

CARL WELLER

60 Melvina St.
Montgomery, Pa.

Liberal Arts

JOHN WHITE
222 N. Hyde Park Ave.
Scranton, Pa.

Business Administration

Intramural Sports 3; Keystone Junior College 1, 2.

FANCHER WOLFE
114 Bishop St.
Beckley, W. Virginia

Business Administration

Bond and Key 1, 2, 3; Student Christian Association 1, 2; Biemic Society 1, 2, 3; Vice President 2; *Susquehanna* Staff; Intramural Sports 1, 2.

WALTER WOLSTEN
36½ Nelson Place
Newark, N. J.

Business Administration

Bond and Key 1, 2, 3; Business Society 1; Football Team 1, 2, 3; Intramural Sports 1, 2, 3.

VIRGINIA LEE YINGER
815 Pontiac Ave.
Baltimore 25, Md.

Liberal Arts

Student Christian Association 2, 3, Chairman of World Community Commission 3; Susquehanna Players 2, 3; Women's Athletic Association 2, 3; Basketball Team 2; Intramural Sports 2.

ALICE G. YONGHAUS
701 Pompton Turnpike
Pompton Plains, N. J.

Business Administration

Kappa Delta Phi 1, 2, 3, Vice President 3; Student Christian Association 1, 2, 3; Business Society 2, 3; Biemic Society 1; Vice President Council 3; Women's Athletic Association 1, 2, 3; Intramural Sports 1, 2, 3; Inter-Sorority Council 3; LANTHORN 2, 3, Assistant Photography Editor 2, Photography Editor 3; Freshmen Orientation 3; Freshmen Counselor 3.

SHIRLEY ANN YOUNG
35 S. Tenth St.
Quakertown, Pa.

Liberal Arts

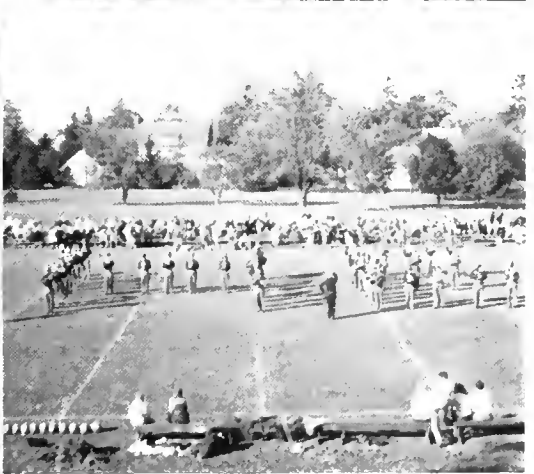
Omega Delta Sigma; Student Christian Association 1, 3; Biemic Society 1, 2, 3; Band 1, 2, 3; Vice President Council 3; Women's Athletic Association 1, 2, 3; Basketball Team 2; Intramural Sports 1, 2, 3.



STAGG DAY



HOMECOMING





B. Nyer, R. Roslander, G. Joyce, E. Wollaston.

Sophomore Class

OFFICERS

<i>President</i>	- - - - -	EDWARD WOLLASTON
<i>Vice President</i>	- - - - -	WILLIAM NYER
<i>Secretary</i>	- - - - -	RUTH ROSLANDER
<i>Treasurer</i>	- - - - -	GORDON JOYCE

This year was highlighted by the freshman-sophomore football game which we won for the second consecutive year. The enthusiastic cheering and an original sophomore band were fine examples of the spirit of our class.

In the short time that we have been at Susquehanna, we have been well represented in the various activities on campus, such as sports, dramatics, music and others.

We sincerely hope that we may profit by our mistakes and by the experiences of preceding classes so that we may go on to a more active and successful life at Susquehanna.

HILLEN ACHENBACH
 BETTY PEARSON ALBERT
 JOANN ALEXANDER
 DOROTHY ALLEN



PIGGY ANN ASTON
 BARBARA BARNHART
 ELMER BAUMGARDNER
 WILLIAM BICKWITH



DONALD BERNINGER
 ROBERT BOGDANFFY
 CHARLES BOMBOY
 WILLIAM BOSCH



V. EDGAR BOYER
 MAXINE BRUBAKER
 RAYMOND CALDWELL
 CAROL CAMPBELL



JAMES CHADWICK
 MAXINE CHAMBERS
 EMMA GRACE CONNFLL
 ROY COPE



PATRICIA CRISMAN
 GILBERT O. DAY, JR.
 JOHN DIEHL
 VOYLET DIETZ



JACQUELYN DILDINE
 ROWIE DURDEN
 BARBARA EASTON
 JOAN FICHMANN





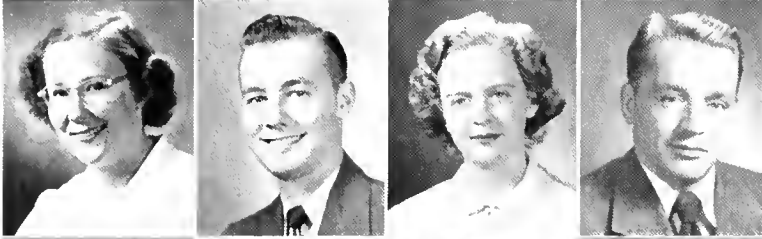
GLENE FINSTERMACHER
 ROBERT FINSTERMACHER
 THOMAS FITZPATRICK
 JOSEPH FLIMING



DALL FULMER
 RICHARD FYLER
 ROBERT GAGLIONI
 C. DALL GATEMAN



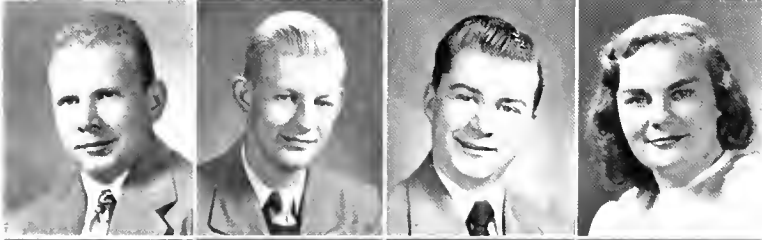
FRANCIS GLOSTER
 LOIS GORDON
 ELIZABETH ANN GUISE
 JAMES HAZLETT



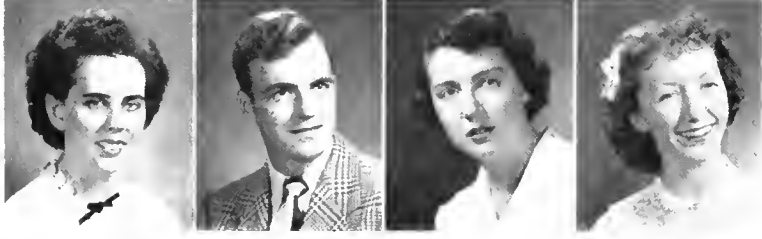
PATRICIA HEATHCOTT
 LESTER HILMAN
 KATHRYN HILLER
 CHARLES RICHARD HERR



JOHN HOROSCHAK
 ADAH JEANNE JACQUES
 BERNICE JOCHEM
 RICHARD JONES



WILLIAM GORDON JOYCE
 OTT KANTNER
 GEORGE KROGMAN
 KAY LARUE



FAYE LEWIS
 DONALD LINN
 JOYCE LUTZ
 DORIS MARTZ

WALTER MAZURA

ETHEL McGRATH

JACQUelyn McKIVIR

MARY McNIVEN



JANET MILLER

CLAIR MITCH

JOHN MOMROW

JAMIS MORRIS



CARI MUSSER

WILLIAM NALE

DOROTHY NARY

JOAN NORRIS



WILLIAM NYER

WILDA ODONTAL

DAVID PARKER

WILLIAM PRITCHARD



LORRAINE RARICK

LOIS RENFER

RUTH ROSLANDER

PHYLLIS RUDISILL



PATRICIA RUMBAUGH

KATHLEEN SCHNERR

C. BELL SHEAFFER

HERMAN SIEMER



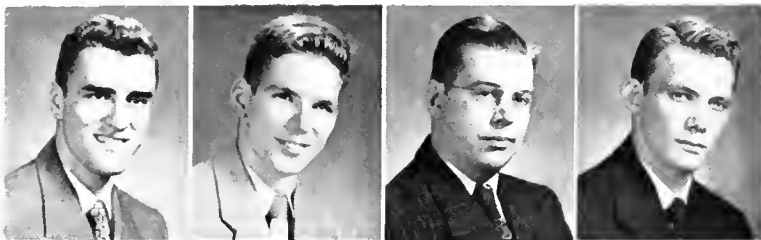
RUTH SMITH

GEORGE SNYDER

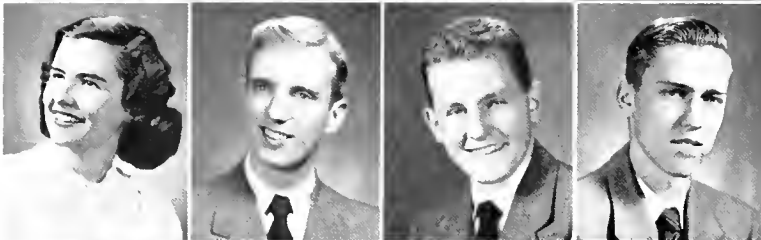
JACOB SPANGLER, JR.

BARBARA STAGG





JOHN TAKACH
JAMES TOMKINSON
WILLIAM TRFON
CHARLES ULSH



MIRIAM VOGLER
DAVID VOLK
G. ALLAN VOLLMERS
THOMAS WALLACE



ELFANOR WATERS
MARJORIE WAY
JANET WINGERT
EDWARD WOLLASTON



NANCY YOUHON
CHARLES ZLOCK



NEW COURT

Lillian Kepner
Muriel Phillips
Mary Davison
Jane Southwick
Jean Young
Elaine Williams
Mary Ann Getsinger



OLD COURT

Jeanette Zerbe
Virginia Cochrane
Barbara Easton
Mildred Reaver
Frances Savidge



JANE SOUTHWICK

May Day

Lady-in-Waiting Spring set the stage well. Crusader Quadrangle was filled with the beauty and color of the redbud, dogwood, azaleas, and evergreens. The air was bright and clear for the official opening of spring—May Day.

Mrs. Carol Kline prepared a unique program for the occasion. After the Queen-of-the-May, Jane Southwick, had been crowned, her grandmother, a visitor, relived the days which she had experienced in her college life. Being the belle of the campus, her meeting of grandfather, and being crowned May Queen were all acted out before grandmother's eyes as she had experienced them. Reliving her past and seeing her granddaughter crowned May Queen made this the happiest of all experiences for grandmother.

The colorful, authentic costumes and the appropriate music rendered by the Gay-Nineties quartet and chorus made this one of Susquehanna's most beautiful and most successful May Days.



B. Maples, J. Miller, J. Stuempfle, C. Jones.

Freshman Class

OFFICERS

<i>President</i>	- - - - -	CYDDYLAN JONES
<i>Vice President</i>	- - - - -	BRUCE MAPLES
<i>Secretary</i>	- - - - -	JOYCE MILLER
<i>Treasurer</i>	- - - - -	JEAN STUEMPFLE



First Row, Left to Right — Dixon, Burnham, Bates, Drum, Adamick, Doehler, Cressman, Beary.
 Second Row—Apgar, Cowling, Dnboy.
 Third Row — Albertson, Davenport, Andrews, Covert, Ammerman, Carlson.
 Fourth Row — Boyle, Dohler, Bottiger.

Freshman Class



First Row, Left to Right — Fitting, Ford, Fisher, Lee, Gilpin, Lightfoot, Klingchoeffler, Heffelfinger.
 Second Row — Keim, Harman, Frost, Leise, Krause, Luther.
 Third Row — Jones, Hennelberg, Kloap, LaMarea.
 Fourth Row—Kreitner, Foelsch, Dorning, Fleisher, Libliard, Jeffers, Kutz.



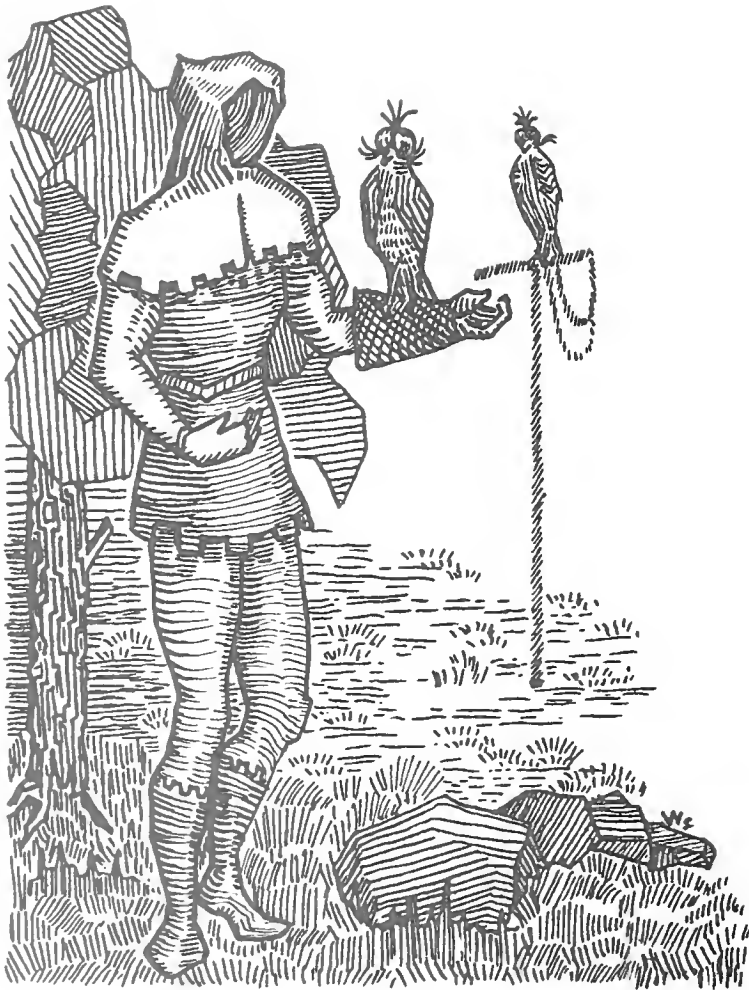
First Row, Left to Right Magaro, Wegner, Weiser, Williams, Stuter, Stadlander, Barick, Zinda,
 Second Row—McKinney, McIntyre, McKegg, Rutherford, Reidler, Miller,
 Third Row—Byker, Nolte, Myers, Rumpfer, Mitchell, Mosler, Orris,
 Fourth Row—Mayer, Rice, Miller, Marts.

Freshman Class



First Row, Left to Right—Smyrl, Thomas, Thompson, Yocum, VanLynn, Wiant, Schweighofer,
 Second Row—Steele, Stenupfle, Salzer, Winey, Wagner,
 Third Row—Wither, Schoner, Scott, Williamson, Silkman,
 Fourth Row—Unangst, Tafel, Walker, Townsend, Wyllie, Zodikoff,
 Fifth Row—Zorn, Steadman.







Athletics



First Row, Left to Right—Palkovich, Herr, Wolsten, Reese, Martin, Bernstine, Santangelo, Wissinger, Torromeo, Marek, Rosetti, Fenstermacher, Rowe.
 Second Row—A. A. Stagg, Sr., Witowski, Burley, Fields, Maples, Bronse, Carr, Snyder, Prichard, Balehen, Lenker, Bogdanffy, A. A. Stagg, Jr.
 Third Row—Tafel, Schoner, Bottiger, Shamp, Boyle, Hazlett, Bennett, Richards, Walters, Torok, Moulton, Walker.

Amos Alonzo Stagg, Sr.

Picture a silver-haired couple walking onto the gridiron. The woman has a pencil and pad in her hand; the man has a coat over his arm; both have a twinkle in their eyes, and perhaps their hearts beat a little faster as they draw near the teams facing each other on the field. We know this couple. The whole world knows Amos Alonzo Stagg, Sr., and his wife, for they are a symbol—the symbol of the football game.

Coach Stagg is a moral force of extraordinary quality. He has never drunk, smoked, nor sworn. He will not stand for rough play or rough speech or a lack of sportsmanship. Nor does he shout at his team or argue with his men. He doesn't have to because of his affectionate personality. His quietness demands respect, and there isn't a man of us who does not respect the Grand Old Man.

For sixty years Amos Alonzo Stagg, Sr., has coached football teams. For sixty years this man has built character on the field, has refused to believe in commercialized football, and has built young men into the men of tomorrow. This year completes a "Sixty Year Span for the Grand Old Man."

Football

SUSQUEHANNA 0 — CCNY 59

Lewisohn Stadium

Once again our father-son coach combination took to the gridiron, opening the season against a power-packed CCNY in Lewisohn Stadium in New York City. Although pushed hard all the way, the Stagmen were not lacking in spirit. This can be shown by the passing of Bob O'Gara and Ed Palkovich and the receiving of Don Wissinger. The Beavers were not to be stopped. Outstanding play of the game came when Lasak of CCNY ran 102 yards for a touchdown. Less than twenty-four hours after the game the sports world was shocked by the untimely death of this promising young star.



Student Assistant John Witowski, Coach Stag, Sr.,
Coach Stag, Jr.

SUSQUEHANNA 27 — WAGNER 41 University Field

Thrills were the order from start to finish of this game with the Wagner Seahawks. Wagner scored twice before the Crusaders were able to tally. "Boo" Minnich received an O'Gara pass and made the first S. U. touchdown of the year. Wissinger converted. Before half time Wagner scored two more touchdowns. The Stagmen made their second T. D. by a pass from Palkovich to Snyder. The Seahawks opened the second half by scoring on an interception. Not disheartened, Minnich received another O'Gara pass and went over for his second T. D. of the day. Outstanding play of this game was the last one in which Ed Palkovich received a punt and ran the ball back 90 yards for the final S. U. tally.

SUSQUEHANNA 34 — LYCOMING COLLEGE 6 University Field

The "Orange and Maroon" looked like an all-star team throughout the entire game against the Warriors of Lycoming. For the first time in two years the Stagmen gained more yardage on the ground than through the air. Rowe scored first tally early in the game, and it was the Crusaders all the way.



Silkman, Bernstine, and O’Gara plunged over the line to score from the ground, while Wissinger caught an O’Gara pass to go over for another six points. Wissinger scored almost as many points by conversion (five) as the Lycoming team did all afternoon (six).

SUSQUEHANNA 13 — JUNIATA 21 College Field

The Stagmen found rough going on a muddy field at Huntingdon on this day. Along with this handicap the Crusaders went into the game with the loss of two of their best running backs, Silkman and Palkovich, both out because of injuries. Despite these facts, the Susquehanna eleven played bang-up football. Bernstine’s running plays and Rosetti’s tackles were heart warming to S. U. and Juniata fans alike. All Indian points were made by one man, Mike Dzvonar. Chet Rowe tallied first for S. U. on an O’Gara pass and Bernstine ran across for the final tally.

SUSQUEHANNA 0 — UPSALA 20 University Field

Stagg Day at Susquehanna saw a keyed-up, perhaps over-anxious, Crusader team take the field against a fine performing Viking unit. The Stagmen put up a terrific fight despite the loss of several players injured in previous games. The Vikings got off to a quick start, shocking the fans as well as the team. To make matters worse it rained intermittently throughout the game making it difficult for the passing offense which the Crusaders use so often. Fortunato was the power man for the Upsala team. Marek and Pitello played a superb game for the Susquehanna “Orange and Maroon.”

SUSQUEHANNA 0 — P. M. C. 54 Chester

The injury-ridden, out-weighted, Crusader team looked out over the P. M. C. football field and thought of putting on swimming trunks. The field was covered with mud and water and from the start the Stagmen were not able to make use of their passing offensive. If courage were all it takes to win a game, the Crusaders would have won this one. Lenker, Bernstine, Rowe, Marek, and Palkovich put on an outstanding performance throughout the afternoon. Herr, Stone, and Rosetti were injured. The spirit of the entire team didn’t die once as the S. U. men took their fifth defeat of the season.

SUSQUEHANNA 0 — HAVERFORD 7 Walton Field

Until the last minute of this game the fans thought it would end in a 0-0 tie, but with only 45 seconds left to play, Ed Test, of Haverford received a Hume pass and ran 20 yards for the only T. D. of the game. It was a heart breaker for the Crusaders who had played gallantly throughout the game. From the beginning it was stop and go for both teams. Bolig, Fenstermacher, and Lenker played conspicuous football for the Stagmen.

SUSQUEHANNA 0 — URSINUS 14 Ursinus

Up to this time the Susquehanna Crusaders had won one game and the Bears of Ursinus were looking for their first win of the season. The Ursinus team succeeded in winning this one, both touchdowns being scored by a passing offensive used by the Bears. Five seniors played Crusader football for the last time. They were: Don Minnich, Don Wissinger, Lou Santangelo, Earl Bernstine, and Bob Bolig. Star of the game was Bill “Bosh” Prichard who received most of Bob O’Gara’s passes. Maples and Rosetti played their usual bang-up style of football.



First Row, Left to Right — Finnan, Fenstermacher, Pfeiffer, Pfeiffer, Nolfi, Heilman.
 Second Row—O’Gara, Kimble, Bilger, Rowe, Bastress, Felker, Ingold, Johnston,
 Wissinger, Witowski.
 Third Row —Fulmer, Phillips, Thorp, Linn, Takach, Wollaston, Keltz, Wallace, Shortt.

Baseball

Our new Crusader baseball coach, Bobby Bastress, lead the Susquehanna diamondmen to four wins and seven losses for a season percentage of .364. Batting crown went to catcher, Bob O’Gara, who finished the season with a .324 average. RBI title went to “Inky” Ingold with a total of eight RBI. Tom Wallace, pitcher, finished with a 1-1 record for an even .500 percentage.

1949 RECORD		S. U.	Opp.
April 2—	Gettysburg	1	3
April 9—	Lebanon Valley	4	8
April 12—	Juniata	6	8
April 27—	Dickinson*	7	3
April 29—	Wagner*	4	6
April 30—	Elizabethtown*	5	2
May 2—	Bloomsburg*	1	5
May 6—	Juniata*	7	1
May 7—	Elizabethtown	0	1
May 9—	Bucknell*	3	4
May 13—	Wilkes*	6	5

*Home Games



Left to Right—Condon, Wollaston, Hazlett, Wagner, Henninger, Thorp, Cope, Fleisher.

Basketball

RECORD

		S. U.	Opp.
December	3—Ursinus*	30	59
December	7—Penn State*	44	74
December	12—Lebanon Valley	53	89
December	15—Lycoming	48	65
January	7—Juniata	42	59
January	11—Elizabethtown	66	80
January	13—Hartwick	51	54
January	18—Lycoming*	27	65
January	21—Juniata*	35	56
February	11—Dickinson	69	84
February	15—Gallaudet	58	44
February	20—Elizabethtown	42	78
March	3—Philadelphia Textile Institute	50	54

*Away Games

Junior Varsity Basketball



First Row, Left to Right—Witowski, Deitch, Steiger, Jones, Pfeiffer, Heilman.
Second Row—Zorn, Boyer, Jones, Zadikoff, Wyllie, Deibler.

Tennis



Left to Right—Coach Stagg, Zloek, Bittenbender, Manning, Grund, Davis, Sullivan.

There has never been much said about the tennis men of Susquehanna. Until this year there hasn't been much to say, but under the watchful eye of Coach Stagg, Jr., the team finished the season with five wins and five losses for a percentage of .500.

Leaders on the court were Eve Manning and Ed Bittenbender, two of the most outstanding tennis players in the history of S. U.



Left to Right—Doig, Achenbach, McNiven, Aston, Krogman, Faddis, Howling.

Cheerleaders

There is an eight man co-educational team on our campus that we seldom recognize as a team. The men and women on our cheerleading squad work hard to perfect new cheers and to keep up the spirit and morale of the crowd at our games.

The acting captain of the squad this year is "Puppy" Doig, who may be seen at pep rallies and games pleading for more co-operation from the fans. "Puppy" has introduced many new acrobatic cheers for George Krogman and Peggy Ann Aston to perform. Win, loose, or draw, the faith of our cheerleaders never dies.



Honor Hockey Team



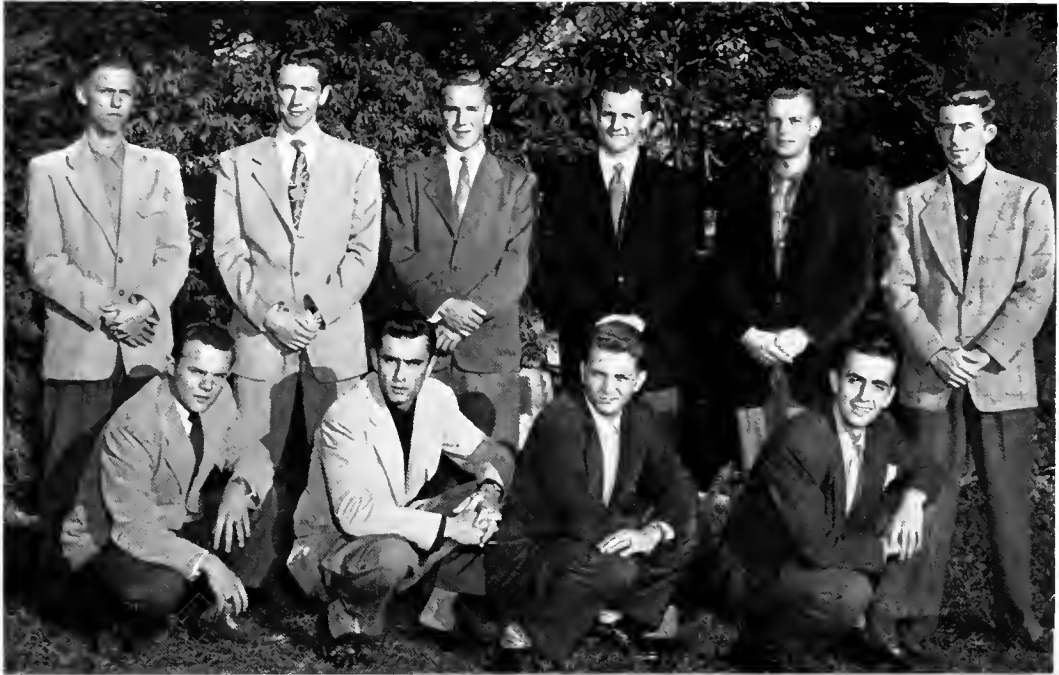
First Row, Left to Right—Magaro, Fisher, Beers, Robinson, Shetler, Albert, Von Lynn, Wagner, Greger.
 Second Row—Miss Sparhawk, Harman, Nary, Thompson, Wegner, VanVoorhis, Stadlander, Frost, Salzer, McIntyre.



Girls' Basketball



First Row, Left to Right—Frost, Heathcote, Allen, Chambers, Rumbaugh, Albert, Guise, Ferguson, Achenbach, Stagg, Salzer.
 Second Row—Young, McKegg, Wagner, VonLynn, Duboy, Schweighofer, Krause, Thompson, Snyrl, Easton, Smith, McKinney, Miss Sparhawk.



First Row, Left to Right— Gacono, Jenkins, Alter, Mazura.
Second Row —Wallace, Monrow, Covert, Vollmers, Wagner, Shafer.

Intramural Board

The Men's Intramural Board is the organization on campus which was created for the purpose of setting up and controlling men's intramural sports. Members of the board are chosen from each of the fraternities, the men's dormitories, and the day students' organization. Athletic trophies are awarded to the winners of each of four sports: football, basketball, volleyball, and softball. Through the fine work of the board a high level of sportsmanship is upheld at S. U.

Intramural Football Champions



First Row, Left to Right—Bogar, Grund, Thomas, Billington.
Second Row—Thorp, Jenkins, Cope, Wagner, Manning.

The intramural football champs of 1949 are the boys from Bond and Key. This is their second straight year for this honor. Basketball, volleyball, and softball are the other intramural activities for the men. The pictures at the right shows our Faculty intramural basketball team and a wild tussel for the ball during one of the intramural games. This year's basketball championship went to Phi Mu Delta.



Intramural Baseball Champions



First Row, Left to Right—Smith, Nary, Stagg
Second Row—Allen, Rumbaugh, Renfer.

Intramural Hockey Champions

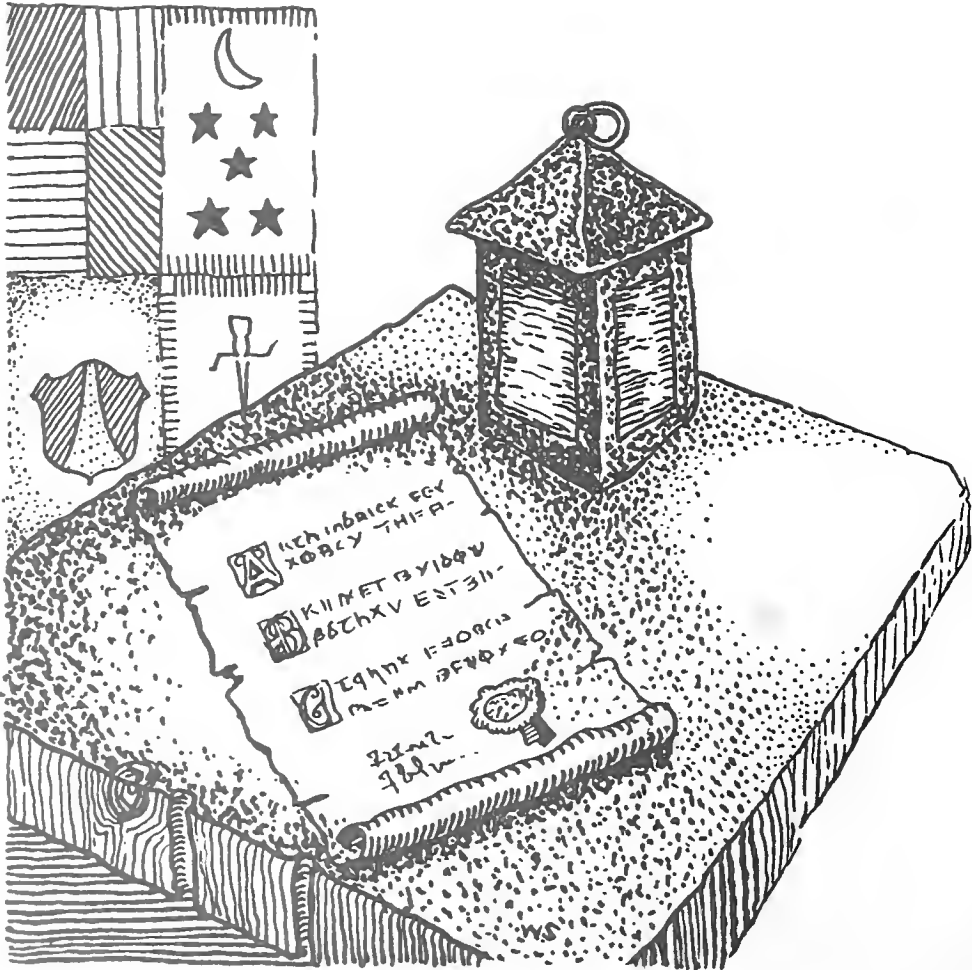


First Row, Left to Right—Rumbaugh, Eichmann, Odenthal, Allen, Gordon,
Second Row—Roshander, Nary, McGrath, Chambers, Lewis, Heathcote, Heller.



Girls' Intramural Sports

The girls' intramurals are sponsored by the Women's Athletic Association. The sports participated in include hockey, soccer, volleyball, basketball, ping pong, badminton, tennis, archery, hiking, and biking. Awards are presented to the winners of these sports. Participation in these activities helps to promote fair play, good sportsmanship, and an interest in girls' sports.





Activities Organizations



First Row, Left to Right—Lewis, Yinger, Hoover, Orner, Wolf.
 Second Row—Miller, Rev. Mr. Morris, MootLead, Halfly, Foster, Joyce, Sterrett, Wissinger.

- OFFICERS**
- President* - - ROBERT MILLER
Girls' Vice President - JANET WOLF
Boys' Vice President DONALD WISSINGER
Secretary - - JUANNI ORNER
Treasurer - - PAUL HALFLY
Stewardship Commission FAYE LEWIS
Public Relations Commission DAVID STERRETT
Religious Life Commission LILLIAN HOOVER
Fellowship Commission WILLIAM FOSTER
World Community Commission VIRGINIA LEE YINGER
Senior Representative - LLOYD WILSON
Junior Representative GERALD MOORHEAD
Sophomore Representative GORDON JOYCE
Freshmen Representative GUNNAR ZORN

Student Christian Association

"And it shall be the duty of the Student Christian Association to foster all Christian activity to the limit of its ability which emerges from within the spirit of the student and to uphold with equal vigor the beliefs and faiths of all the students and faculty members on this campus."

The aim of this organization is to carry the torch of the Christian faith into the lives of each and every student by means of its special interest groups headed by four main commissions. The S. C. A. furnishes opportunities for spiritual enrichment, mental growth, physical development, and social consciousness.

Business Society

The Business Society was organized to stimulate interest in the fields of business, economics, and commerce. Any business student who shows an active interest in these fields is eligible for membership.

The chief aim of the society is to increase the society's scholarship fund which gives financial aid to worthy and needy business students. Increments are brought about through the selling of magazines, candy, and coasters, and other items.

The monthly meetings are highlighted by dancing and refreshments. Every year the Business Society sponsors a dance.

First Row, Left to Right—Frost, Hantz, Martin, Blough, Beers, Ferguson, Guyer, Smith, Mussina, Second Row—Gordon, Schweighofer, Miller, Shetler, Smith, McKinney, Orner, Lease, Campbell, Yon-laus, Miss Allison. Third Row—Hains, Mr. Graham, Howling, Buehler, Reuther, Wagner, Steiger, Jarvis, Chadwick, Mr. Soule, Mazura, Dr. Armstrong.



OFFICERS

- President* - - PAUL WAGNER
Vice President FLORIS GUYER
Secretary - MARTHA MARTIN
Treasurer ROSEMARY MUSSINA

OFFICERS

President - - DONALD FISHER

Secretary-Treasurer

BELLE SHAMLER



Ciceroniani

Ciceroniani is a classical organization which was formed on our campus in April, 1947, by a group of Latin students. The object of the organization is to foster and extend the understanding of the Latin language and culture; also, to stimulate good scholarship. Having completed one semester's work in the Latin department and having maintained a class average of "C", a student is eligible for membership. Associate members are those members of the faculty or student body who are not in the department but are interested in the work of the organization. The above-mentioned students must also maintain an average of "C" for eligibility. Meetings are held once a month.

Biemic Society

The Biemic Society is an organization seeking to develop interest and understanding in science. Its membership includes those persons interested in the various sciences and mathematics. Lectures by guest speakers, movies, and student discussions are all part of the monthly meetings. This year the Biemic Society is particularly interested in vocations in the scientific field. Through their meetings the Biemic Society hopes to develop a greater interest in the rapidly developing scientific world of today.

First Row, Left to Right—Winey, Young, Taylor, Sterrett, Faddis, Wiant, Lease. Second Row—Covzova, Odenthal, Watkins, Anderson, Kohlweiss. Third Row—Dr. Houtz, Gearing, Wolfe, Foster, Solomon. Fourth Row—Mr. Amy, Horoschak, Riederer, Schmitz. Fifth Row—Muchmore, Mr. DeMott, Dr. Rabison. Sixth Row—Chadwick, Doiz, Rumbough, Mr. Klinghof.



OFFICERS

President - - DAVID STURRETT

Vice President - - ELAINE FADDIS

Secretary-Treasurer

WILLIAM TAYLOR

Publicity Chairman

JUAN VAN VOORHIS



First Row, Left to Right —Albert, Roush, Klingler, Hill, Sarba, Jacques.
 Second Row —Martz, Oyster, Klingelhoefler, Winey, Hort, Seelrist, Leeser.

OFFICERS

President - FRANCIS ROUSH
Vice President
 BETTYJANI RAUP RENN
Secretary-Treasurer
 JUNI KLINGLER

Women's Day Students' Organization

The Women's Day Students Organization is composed of non-resident students attending Susquehanna from the surrounding areas. Facilities for study and lounging are provided for them in the basement of Hassinger Hall.

Through this organization, the girls become better acquainted with one another and are afforded an opportunity to participate in college activities. Day students are eager to help with school activities and have an earnest desire to strengthen relationships at all times.

Men's Student Council

The Men's Student Council represents the efforts of the men of S. U. to provide for themselves an active representative student government.

Aside from being a mediator between the men and the administration, the council aims to create college spirit, promote better understanding between faculty and students, and assist in making college life pleasant and worthwhile.

The members of the council include two men from each fraternity, two men from the non-fraternity group, and one faculty adviser.

Left to Right—Bernstine, Small, Doran, Moorhead, Wissinger, Harder, Weiler, Hand.

OFFICERS

President - DONALD WISSINGER
Vice President EARL BURNSTINE
Secretary - - JAY HAND
Treasurer - - JOHN DORAN



OFFICERS

President - - - FLORIS GUYER

Secretary-Treasurer
ROSEMARY MUSSINA



First Row, Left to Right—Blough, Hoover, Guyer, Mussina, Miss Sambrook.
Second Row—Gumble, Kallir, Ornel, Anderson, Dietz, Siemers, Martin.

Women's Student Council

The Women's Student Council is composed of a president and a secretary-treasurer, presidents of the three dormitories, the chairman of the Judiciary Committee, the social chairman, and a representative from the W. A. A., the S. C. A., the Day Students' Organization, the Inter-Sorority Council, and the freshman and sophomore classes.

Among its many activities the council lists jurisdiction of freshman orientation, regulation of fire drills, sponsorship of Parents' Day activities, supervision of week-night social dancing, and the decorating of the dormitories for Christmas.

Women's Judiciary Committee

The Women's Judiciary Committee is a sub-committee of the Women's Student Council. It is charged with the responsibility of penalizing any member of the women resident students who has violated any Student Council regulation.

Automatic penalties are provided for the more common offenses. In the event of an extraordinary circumstance, the Committee convenes with the violator, and, after listening to her case, decides upon a just punishment tantamount to the offense.

The Committee also acts as an advisory group. When special problems involving the girls are brought to its attention, it reports them to the Dean of Women for the purpose of counseling and, if possible, the prevention of rule-breaking.

The Dean of Women is an ex-officio member of the Committee.

First Row, Left to Right—Kallir, Blough, Faddis, Martin, Guyer.
Second Row—Miss Sambrook, Beana, Barnhart, Hoover.



OFFICERS

Chairman - - - LILLIAN HOOVER

House Presidents — ROSEMARY KALLIR,
MARTHA MARTIN, VIRGINIA BLOUGH

Student Council President — FLORIS GUYER

Class Representatives:

Senior - - - FLAINE FADDIS

Junior - - - BETTY BEAN

Sophomore - - BARBARA BARNHART

Freshman - - - JOAN WIANI



First Row, Left to Right—Kallir, Mitchell, Spogen, Jackson, Kahler, Martin.
 Second Row—Shafer, Fague, Albert, Lease, Young, Yonghaus, Hoover.

OFFICERS

Seibert Hall House *President*

ROSI MARY KALLIR

Hassinger Hall House *President*

MARIHA MARTIN

Seibert Hall *Vice Presidents*—MARTHA ALBERT, MARY JACKSON, JEANNE KAHLER, BARBARA LEASE, MARJORIE SPOGEN

Hassinger Hall *Vice Presidents*—MARIANNE FAGUI, SALLY MITCHELL, NELDA SHAFER, ALICE YONGHAUS, SHIRLEY YOUNG

Vice Presidents' Council

Nine years ago the Vice Presidents' Council was organized, in order to maintain quiet in the various dormitories during the designed quiet hours. Certain girls are assigned by the respective house presidents to enforce these regulations. By using the "five minute penalty system," these "V. P.'s" maintain the peace and quiet essential for successful dormitory life. Once a student has accumulated twenty minutes, her case is referred to the Women's Judiciary Committee which then decides upon a suitable punishment for the offender.

Women's Athletic Association

The Women's Athletic Association through its program of intercollegiate and intramural sports gives opportunity for all girls to participate in individual and team activities. Awards for achievement and participation are based on the accumulation of points.

The organization sponsors the refreshment stand during the football and basketball seasons and an annual intercollegiate Play Day. The annual Variety Show and the May Day program are also W. A. A. responsibilities.

The monthly business meetings are held in the W. A. A. room in the basement of Hassinger Hall.

First Row, Left to Right—Foltz, Faddis, Wolf, Guyer, Heller, Albert, Blough, Gumble, Martin, Decker, Miss Sparhawk, Heathcote, Spogen, McNiven, Roslander, Mussina. Second Row—Guise, Beers, MacNeil, Watkins, Gordon, Bailey, Young, VanVoorhis, Siemers, Ellis, Allen, Robinson, Nicklin, Achenbach, Welliver, Kallir, Brosius, Slater, Cosgrove, Yonghaus. Third Row—Smith, Lease, Orner, Baumgardner, Lewis, Dilline, Kahler, Kohlweiss, Fague, Eichmann, Greeger, Vogler, Rumbough, Easton, Waters, Norris, Anderson, Hontz, Beam, Shafer, Chambers, Campbell, Ferguson, McGrath.

OFFICERS

President - VIRGINIA BLOUGH

Vice President MARTHA ALBERT

Recording Secretary
 MARTHA MARTIN

Corresponding Secretary
 BARBARA DECKER

Treasurer - DORIS GUMBLE





Susquehanna University Band

The Susquehanna University Band, organized in 1917, is one of the most outstanding organizations on campus and has enjoyed a steadily increasing degree of success and popularity.

The marching band is composed of forty-two members, one drum major, two majorettes, and two flag bearers.

The band, under the direction of Mr. Allen W. Flock, has won wide recognition for its fine musical performance and its fascinating and colorful drills.

Along with the annual spring concert, the band is present at all the football games, pep rallies, and May Day.

Chapel Choir

The Chapel Choir, organized in 1947, is a group of sixteen selected singers. Its main purpose is to perform in Monday morning chapel services. It is under the direction of Elbert D. Haskins, Assistant Professor of Singing.

First Row, Left to Right—Smyrl, Alexander, Easton, Crisman, Kost, Mr. Haskins, Jacques, Watkins, Lehman, Hill. Second Row—Dove, Eecker, Fyler, Carr, Dunlap, Bitting, Faust, Durden.





I Remember Mama

by JOHN VAN DRUTEN

CAST

Katrin
 Mama
 Papa
 Dagmar
 Christine
 Mr. Hyde
 Nels
 Aunt Trina
 Aunt Sigrid
 Aunt Jenny
 Uncle Chris
 The Woman
 Mr. Thorkelson
 Dr. Johnson
 Arne
 A Nurse
 Another Nurse
 Soda Clerk
 Madeline
 Dorothy Schiller
 Florence Dona Moorehead
 Bell Boy

Frances Savidge
 Lillian Kepner
 Edward Palkovich
 Floris Guyer
 Maude Jones
 David Sterrett
 Richard Jones
 Irma Strawbridge
 Margot Giauque
 Anna Mae Oyster
 Joseph Solomon
 Dorothy Shaffer
 William Foster
 Richard Doig
 Jerry Rhoads
 Dorothy Allen
 Ann Yorty
 Earl Bernstine
 Nancy Stoughton
 Margie Spogen
 Janet Popken
 George Krogman



Here Comes Mr. Jordan

by HARRY SEGALL

CAST

Joe Pendleton
Mr. Jordan
Messenger 7013
Julia Farnsworth
Tony Abbott
Bette Logan
Max Levene
Mrs. Ames
Nurse
Suzie
Ann
Williams
Escort
Workman
Lefty
Doctor
Plainclothesman

G. Kenneth Small
Paul Jones
Robert Dunlap
Patricia Houtz
Richard Shaffer
Sally Mitchell
Abe Portzline
Elaine Adamick
Lillian Smith
Anna Mae Oyster
Vera Duboy
Richard Doig
William Nolte
Ernest Canals
Richard Rother
Richard Valera
Roland Rossetti



BANQUET SCENE



AFTER DUNCAN'S MURDER



LADY MACBETH AND ROSS

The Susquehanna Players

Present

Macbeth

by

WILLIAM SHAKESPEARE



MACBETH



LADY MACBETH



COSTUME ARRANGEMENT



THE THREE WITCHES



GREASE PAINT AND POWDER

Macbeth

By WILLIAM SHAKESPEARE

Duncan, King of Scotland	William Nolte
Malcolm, his son	William Foster
Donalbain, his other son	William Kloap
Macbeth, general of the King's army	Joseph Solomon
Banquo, general of the King's army	Justin Myers
MacDuff, Nobleman of Scotland	Paul Jones
Lennox	George Dimmock
Ross	Larry Batchelet
Menteith	Wilbur Buffington
Angus	Larry Bottiger
Fleance, son of Banquo	Louis Santangelo
Siward, Earl of Northumberland	Abe Portzline
Seyton	Robert Paterson
Son of MacDuff	Jerry Rhoads
Doctor	Orville Glass
Sergeant	Jake Spangler
A Porter	Roland Rossetti
An Old Man	Gordon Joyce
First Apparition	Ben Alter
Second Apparition	Neil Rhoads
Third Apparition	Harry Salter
Lady Macbeth	Barbara Barnhart
Lady MacDuff	Elaine Adamick
A Gentlewoman	Grace Magaro
A Guest	Carolyn McIntyre
First Witch	Lorraine Lee
Second Witch	Barbara Gilpin
Third Witch	Anna Mae Oyster
Servant	John Horoshak
Banquo's Ghost	Paul Buchler
Lord	John Deihl
First Murderer	Al Martin
Second Murderer	Ed Palkovick
Third Murderer	Donald Minnick
At the organ ..	Len Carlson



First Row, Left to Right—Mr. Graham, Walker, Iflius, Grund, Derr, Beckwith.
 Second Row—Carr, Herr, Sterrett, Bitting, Hill, Bollinger, Spaugler, Fenstermacher.
 Third Row—Thomas, Harder, Ladika, Bolig, Weller, Kost, Takach, Wollaston, Schultz, Troutman.

Bond and Key

OFFICERS

<i>President</i>	-	-	-	-	-	-	-	-	-	-	-	-	-	-	-	-	-	-	JAMES RUMBAUGH
<i>Vice President</i>	-	-	-	-	-	-	-	-	-	-	-	-	-	-	-	-	-	-	ROBERT BITTING
<i>Secretary</i>	-	-	-	-	-	-	-	-	-	-	-	-	-	-	-	-	-	-	KENNETH HILL
<i>Treasurer</i>	-	-	-	-	-	-	-	-	-	-	-	-	-	-	-	-	-	-	WILBUR BUFFINGTON
<i>Steward</i>	-	-	-	-	-	-	-	-	-	-	-	-	-	-	-	-	-	-	HERBERT HAINS
<i>Utility Manager</i>	-	-	-	-	-	-	-	-	-	-	-	-	-	-	-	-	-	-	JOHN BUFFINGTON

Bond and Key, Susquehanna's oldest fraternity, was founded in 1914 as a local organization and has remained so throughout the years, for the members prefer to keep the management among themselves.

The initial membership of 21 has now increased to 550, with members in most of the 48 states and in Hungary, England, Bermuda, Japan, and British Guiana.

Holding to their motto, "Bound as Knights," the members pledge their loyalty "first to Susquehanna, second to Bond and Key." The club colors are black and gold.





First Row, Left to Right - W. Buffington, J. Buffington, Mr. Linebaugh, Mr. Haskins, Mr. Billman, Bogar,
 Second Row - Dunlap, Thorp, Mr. Klinglof, Rumbaugh, Cope, Wolsten
 Third Row - Mr. Amy, Mr. Soule, Wolfe, Wagner, Manning, Jenkins, Dr. Robison, Mr. Flock.

FRATRES IN COLLEGIO

William Beckwith
 Robert Bitting
 Marlin Bobb
 Marsh Bogar
 Robert Bolig
 Herbert Bollinger
 John Buffington
 Wilbur Buffington
 Richard Campbell
 Harold Carr
 Roy Cope
 Gilbert Day
 Thomas Deppen
 Donald Derr
 John Diehl
 Rowie Durden
 Robert Dunlap

Charles Duncan
 Gene Fenstermacher
 Charles Grund
 Herbert Hains
 Jake Harder
 Lester Heilman
 Richard Herr
 Kenneth Hill
 Thomas Jenkins
 Nelson Kost
 Joseph Ladika
 Jack Larsen
 Everett Manning
 James Morris
 Robert Pittello
 James Rumbaugh

Fred Schultz
 Jacob Spangler
 Thomas Staller
 David Sterrett
 John Takach
 George Thomas
 Jack Thorp
 Richard Troutman
 Ray Tyler
 Bruce Wagner
 John Walker
 Kent Weller
 Donald Wissinger
 John Witowski
 Fancher Wolfe
 Edward Wollaston
 Walter Wolsten

FRATRES FUTURI

Virgil Albertson
 Robert Barner
 Larry Batschelet
 William Bosch
 Donald Boyle
 Raymond Caldwell
 Robert Deibler
 Harvey Jeffers

Robert Kurtz
 George Liddington
 Robert Morris
 Gail Moulton, Jr.
 Donald Muchmore
 T. Justin Myers, Jr.
 Edward Neuman
 Philip O'Brien

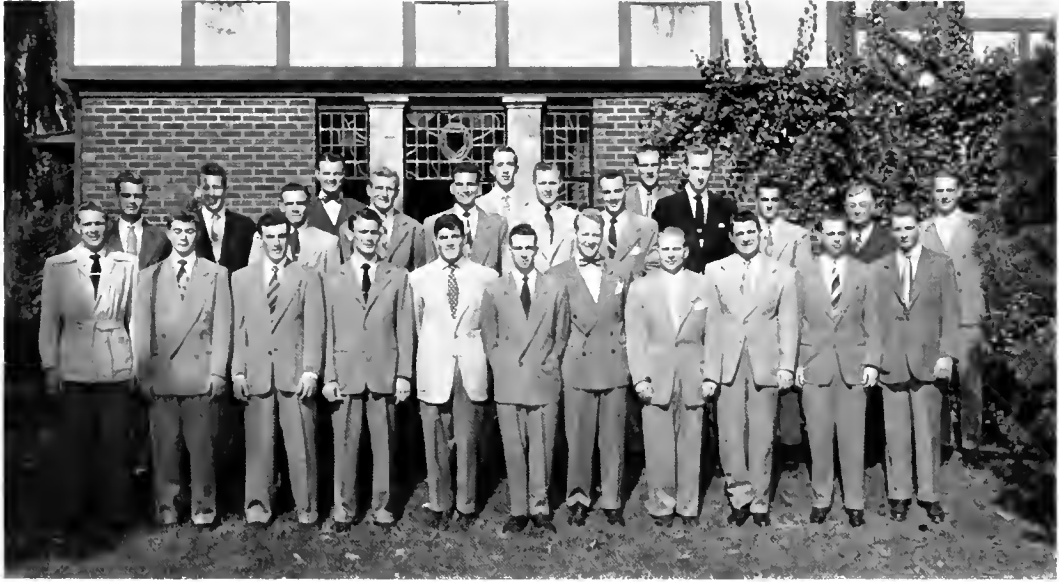
Charles H. Roush, Jr.
 Frank Schoner
 Eugene Silkman
 Donald Steadman
 John Steiger
 William Treon
 J. Norman White
 Robert Wyllie

FRATRES IN FACULTATE

Mr. Robert L. Amy
 Mr. Frederick Billman
 Mr. Allen Flock
 Mr. Grover C. T. Graham

Mr. Elbert Haskins
 Dr. John J. Houtz
 Mr. Philip Klinglof

Mr. Percy Linebaugh
 Dr. George M. Robison
 Mr. John K. Soule
 Mr. Frederick C. Stevens



First Row, Left to Right—Dunn, Krogman, Marek, Ush, Santangelo, Jones, Shaffer, Joyce, Martin, Mr. Howling, Alter.
 Second Row—Wagner, Wollsen, Brown, Palkovich, Shoemaker, Korkuch, Small, Chadwick, Torronco, Mr. Speiglmeyer, Mr. Kleinsorg.
 Third Row—Minniek, Chadwick, Doig

Phi Mu Delta

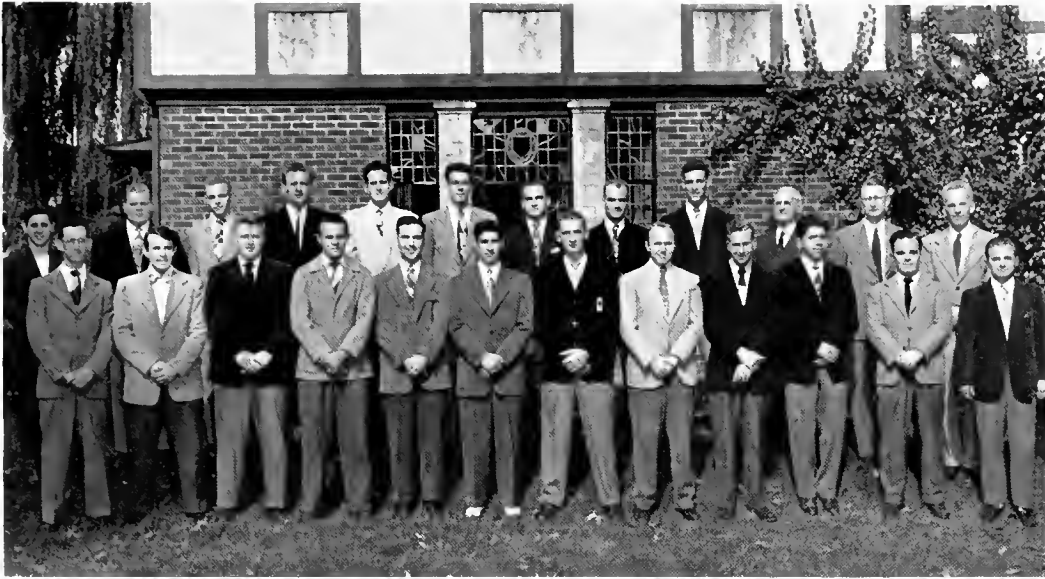
OFFICERS

<i>President</i>	- - - - -	GEORGE SMALL
<i>Vice President</i>	- - - - -	ANDREW KOCH
<i>Secretary</i>	- - - - -	ROGER HOWLING
<i>Comptroller</i>	- - - - -	PAUL WAGNER

The Mu Alpha Chapter of Phi Mu Delta was amalgamated in 1925 with its predecessor Alpha Sigma Omega. Two years later the impressive Mu Alpha fraternity house was built and officially opened.

It is the desire of the fraternity to form in its members an integration of scholastic ability, athletic skill, and a flexible and socially adjusted personality. Phi Mu Delta attempts to develop leaders who are a definite asset to the campus, the fraternity, and the community.





First Row, Left to Right—Zlock, Driscoll, Portzline, Gacono, Ulman, Molinaro, Beigh, Westervelt, Howling, Bernstine, Patterson, Canals.
 Second Row—Poster, Reese, Faust, Auman, Hazeltine, Koch, Horoschak, Henderson, Nyer, Mr. Brungart, Dr. Wilson, Dr. Russ.

FRATRES IN COLLEGIO

Ben Alter
 Fred Auman
 Harry Beigh
 Earl Bernstine
 Jack Brown
 Ernest Canals
 Henry Chadwick
 James Chadwick
 Theodore Clark
 Richard Doig
 Joseph Driscoll
 Melvin Dunn
 John Eccker
 Burdell Faust
 William Foster
 V. Carl Gacono
 John Gow

Frederick Hazeltine
 Alvin Henderson
 John Horoschak
 Roger Howling
 Richard Jones
 William Gordon Joyce
 Andrew Koch
 Edward Korkuch
 George Krogman
 Gardiner Marek
 Alfred Martin
 Walter Mazura
 Donald Minnich
 Clair Mitch
 Albert Molinaro
 William Nyer

Edward Palkovich
 Robert Patterson
 Edward Pfeiffer
 Abraham Portzline
 Daniel Reese
 Louis Santangelo
 Richard Shaffer
 Donald Shoemaker
 G. Kenneth Small
 Jesse Stone
 Felix Torromeo
 Franklin Ulman
 Charles Ulsh
 G. Allan Vollmers
 Paul Wagner
 Richard Westervelt
 Donald Wohlsen

FRATRES FUTURI

Harmon Andrews
 David Bennett
 Robert Bogdanffy
 Ernest Bottiger
 Vincent Boyer
 Richard Burley
 Leonard Carlson
 Edward Covert
 Philip Crawford
 James Deitch

Thomas Fields
 Walter Filbert
 Norman Fleisher
 Joseph Fleming
 James Hazlett
 Walter Iffert
 Ken Jones
 Richard Kreitner
 Robert Mesler
 David Parker

Richard Rother
 William Scott
 Herman Siemer
 George Snyder
 James Tomkinson
 Steve Torok
 Allen Townsend
 Edward Unangst
 Ernest Walker
 Donald Walter

FRATRES IN FACULTATE

Dr. George Fisher
 Mr. Russell Hatz
 Mr. Robert Howling

Mr. Axel Kleinsorg
 Mr. Robert Meader
 Dr. William Russ

Dr. Arthur Wilson
 Mr. E. T. Yorty
 Dr. Waldemar Zagars



First Row, Left to Right—Berninger, Wetzel, Lanver, Fyler, Gearinger, Greenly, Fenstermacher, Gbster, Hand, Reuther.
 Second Row—Dr. Gilbert, Bomboy, Brandon, Baumgardner, Musser, Miller, Taylor, Weiler, Gehris, Rowe.
 Third Row—Mr. DeMott, Shafer, Hally, Prichard, Gateman, Shafter, Mr. Geisinger, Dr. Armstrong, Rowe, Ricolorf.
 Fourth Row—Morrow, Jones, Moorhead, Fulmer, Buehler, Shuey.

Theta Chi

OFFICERS

<i>President</i>	- - - - -	JAY HAND
<i>Vice President</i>	- - - - -	JAMES GEHRIS
<i>Secretary</i>	- - - - -	WILLARD TAYLOR
<i>Treasurer</i>	- - - - -	RAYMOND LAUVER

Only as Susquehanna exists, does Theta Chi live.

The Beta Omega chapter is an organization which has as its sole purpose the developing of the best in each man and preparing him to give his all to the world by scholastic attainment, physical growth, and social emanation. As the fulness of life reaches its highest expression in campus activities, so Theta Chi leads its brothers to the greatest of these experiences.

But not only is she intensive in character. Reaching from coast to coast, from Maine to Florida, she envelopes ninety-two chapters with a membership of 35,000 active college students. She binds the nation with the bonds of brotherhood.

Theta Chi gives to her members a common bond which looks forward to peace and unity in a one world of brotherhood.

FRATRES IN COLLEGIO

Elmer Baumgardner
Donald Berninger
Charles Bomboy
Walter Brandau
Paul Buehler
Robert Fenstermacher
Dale Fulmer
Richard Fyler
Dale Gateman
Jack Gearinger
James Gehris
Francis Gloster
Harold Greenly

Paul Haffly
Jay Hand
Paul Jones
John Lamade
Raymond Lauver
Donald Linn
Robert Miller
John Momrow
Gerald Moorhead
Carl Musser
William Nale
William Prichard

Charles Rau
John Reuther
Robert Riccdorf
Roland Rosetti
Chester Rowe
Harold Rowe
Merrill Shafer
Charles Shaffer
Mark Shuey
Richard Stetler
Willard Taylor
Emil Weiler
Richard Wetzel

FRATRES FUTURI

Thomas Balchen
Sidney Berezin
Richard Bidelspach
Ned Condon
Albert Jones

Wallace Kutz
Duane Mitchell
Kenneth Orris
Conrad Pfeiffer

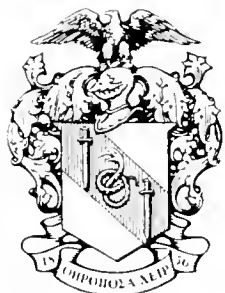
Richard Stout
Richard Valera
Thomas Wallace
Arthur Zodikoff
Gunnar Zorn

FRATRES IN FACULTATE

Dr. Thomas Armstrong
Mr. Howard DeMott

Mr. Karl Geisinger

Dr. Russell Gilbert
Dr. Kenneth Waterbury





First Row, Left to Right—Kallir, Yonghaus, Lease, Watkins, Faddis, Blough, Slater.
 Second Row—MacNeil, Shetler, Jochem, McNiven, Martin, Ferguson.
 Third Row—Shafer, Chambers, Klingler, Roslander, Odenthal, Baumgardner, Brosius, Kohlweiss.
 Fourth Row—Heller, Baruhart, Rumbough, LaRue, Way, VanVoorhis, Vogler, Norris, Rudisill.

Kappa Delta Phi

OFFICERS

<i>President</i>	- - - - -	BARBARA WATKINS
<i>Vice President</i>	- - - - -	ALICE YONGHAUS
<i>Recording Secretary</i>	- - - - -	ELAINE FADDIS
<i>Financial Secretary</i>	- - - - -	VIRGINIA BLOUGH
<i>Treasurer</i>	- - - - -	BARBARA LEASE

Kappa Delta Phi, one of the three sororities on Susquehanna's campus, was organized in 1917. Since that time it has endeavored to uphold the high ideals of friendship, loyalty, and character, promoting intellectual development, and social fellowship.

The insignia is the owl, signifying wisdom. The motto is "Excellence through friendship," and the sorority colors are chocolate brown and lemon yellow.

The very active honorary group is under the able leadership of Mrs. William A. Russ, Jr.

Kappa Delta Phi has been asked to affiliate with a national sorority. These plans, however, are indefinite.

SORORES IN COLLEGIO

- | | | |
|---------------------|----------------------|---------------------|
| ✓ Barbara Barnhart | ✓ Rosemary Kallir | ✓ Phyllis Rudisill |
| ✓ Fern Baumgardner | ✓ June Klingler | ✓ Patricia Rumbaugh |
| ✓ Virginia Blough | ✓ Gertrude Kohlweiss | ✓ Nelda Shafer |
| ✓ Margietta Brosius | ✓ Kay W. LaRue | ✓ Maria Shetler |
| ✓ Maxine Chambers | ✓ Barbara Lease | ✓ Mary Lou Slater |
| ✓ Elaine Faddis | ✓ Audrey MacNeil | ✓ Jean VanVoorhis |
| ✓ Althea Ferguson | ✓ Mary McNiven | ✓ Miriam Vogler |
| ✓ Kathryn Heller | ✓ Martha Martin | ✓ Barbara Watkins |
| ✓ Bernice Jochem | ✓ Joan Norris | ✓ Marjorie Way |
| ✓ Jeanne Kahler | ✓ Wilda Odenthal | ✓ Alice Yonghaus |
| | ✓ Ruth Roslander | |

SORORES IN CAMPO

- | | | |
|---------------------|----------------------|----------------------|
| Mrs. Isabel N. Coxe | Miss Beatrice Herman | Mrs. W. A. Russ, Jr. |
| Mrs. Karl Geisinger | Mrs. Robert Howling | Mrs. Waldemar Zagars |

SORORES IN FACULTATE

Miss Lenora Allison

Miss Ruth Sparhawk





First Row, Left to Right—Mussina, Siemers, Anderson, Nicklin.
 Second Row—Janson, Gumble, Showalter, Welliver, Robinson.
 Third Row—Young, Albert, Beam, Fague, Beers, Foltz.
 Fourth Row—Stagg, Crisman, Lewis, Smith, Bailey.
 Fifth Row—Nary, Rarick, Waters, Campbell.

Omega Delta Sigma

OFFICERS

<i>President</i>	- - - - -	BARBARA ANDERSON
<i>Vice President</i>	- - - - -	LOUISE SIEMERS
<i>Secretary</i>	- - - - -	ROSEMARY MUSSINA
<i>Financial Secretary</i>	- - - - -	SHIRLEY SHOWALTER
<i>Treasurer</i>	- - - - -	SHIRLEY NICKLIN

Omega Delta Sigma, one of the three sororities on Susquehanna's campus, has a membership of twenty-four actives.

Organized in 1917, the original group of five girls chose as their colors grey and orange and as their flower the chrysanthemum. The sorority emblem, the griffen, stands for valor and honesty.

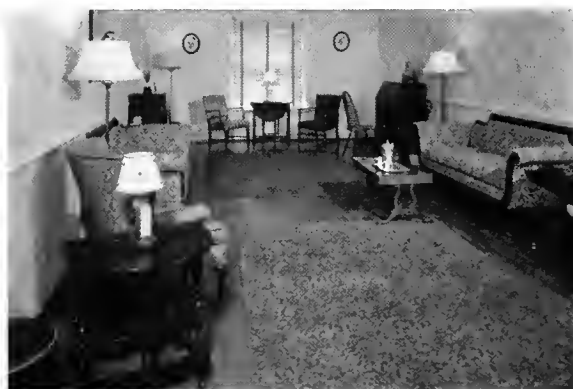
Omega Delta Sigma also has an active group of women who are honorary members. Mrs. Edna Kerber is president of this group.

SORORES IN COLLEGIO

Martha Albert	Susan Foltz	Zola Robinson
Barbara Anderson	Doris Gumble	Shirley Showalter
Lyn Bailey	Doris Janson	Louise Siemers
Betty Beam	Faye Lewis	Ruth Smith
Marilyn Beers	Rosemary Mussina	Barbara Stagg
Carol Campbell	Dorothy Nary	Eleanor Waters
Patricia Crisman	Shirley Nicklin	Barbara Welliver
Marianne Fague	Lorraine Rarick	Shirley Young

SORORES IN CAMPO

Mrs. Robert Amy	Miss Ruth E. McCorkill	Mrs. Kenneth Waterbury
Mrs. Allen Flock	Mrs. A. A. Stagg, Jr.	Mrs. Arthur Wilson
Mrs. John Houtz	Mrs. A. A. Stagg, Sr.	Mrs. E. T. Yorty





First Row, Left to Right—Miller, Rothemel, Lehman, Bollinger, Mitchell,
Barnhart, Hort, Mrs. Hatz.
Second Row—Greeger, Anman, Kline, Roush, McCallan.
Third Row—Youhon, Hill, Wingert, Dietz.

Sigma Alpha Iota

OFFICERS

<i>President</i>	- - - - -	- JANE BOLLINGER
<i>Vice President</i>	- - - - -	- FLORA BARNHART
<i>Recording Secretary</i>	- - - - -	- FRANCES ROUSH
<i>Corresponding Secretary</i>	- - - - -	- SALLY MITCHELL
<i>Treasurer</i>	- - - - -	- MARY LEHMAN

Sigma Omega is one of eighty-nine chapters of the International Music Fraternity for Women, Sigma Alpha Iota.

The chapter was chartered in 1925 through the efforts of the late Dr. E. Edwin Sheldon.

“To study and practice the goodness of life, the beauty of art, and the meaning of music” are some of the aims of the sorority. The colors of the S. A. I. are red and white, the flower is the red rose, and the motto, “Life is short, but art is long.”

Those students who excel in scholarship and possess outstanding musical ability are eligible for membership.

SORORES IN COLLEGIO

Cecelia Auman
Flora Barnhart
Jane Bollinger
Voylet Dietz
Alice Greger
Jean Hill

Jo Ann Hort
Sue Kline
Mary Lehman
Joy McCahan
Mary Miller

Sally Mitchell
Jean Rothermel
Frances Roush
Mina Sarba
Janet Wingert
Nancy Youhon

SORORES IN CAMPO

Mrs. Francis Gilbert

Mrs. P. M. Linebaugh

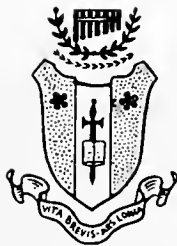
Mrs. Frederick Stevens

SORORES IN FACULTATE

Mrs. Alice Giauque

Mrs. Russell Hatz
Miss Athalia Kline

Miss Mary Potteiger





Left to Right- Dr. Waterbury, Kenneth Small, Jay Hand, James Rumbaugh.

Inter-Fraternity Senate

OFFICERS

Chairman - - - DEAN RUSSELL GALT
Secretary-Treasurer DR. KENNETH WATERBURY
Social Chairman - - JAMES RUMBAUGH

The Inter-Fraternity Senate aims to maintain harmony among the fraternities by promoting a fair system of rushing regulations and by solving co-operatively problems relating to inter-fraternity relationships.

It is composed of the president and faculty adviser from each fraternity and Dean Galt, who serves as permanent chairman.

There is a secretary-treasurer elected from the three faculty representatives and a social chairman who works with the president of the Inter-Sorority Council in planning the annual Homecoming Dance. He also represents the Senate on the Social Committee.

Inter-Sorority Council

OFFICERS

President - - - BARBARA WATKINS
Vice President - - JEANNI KAHLER
Secretary-Treasurer - - LOUISE SIEMERS
Representative to Student Council
 BARBARA ANDERSON

The Inter-Sorority Council is composed of three representatives from each sorority, together with the Dean of Women as faculty adviser. Each sorority sends its President, Vice President, and one other elected delegate to the council. The position of president of the council rotates each year among the three sororities.

The purpose of the organization is to increase understanding and co-operation among the sororities. It meets once every month to regulate freshman rushing, determine pledge quotas, plan rush teas and hikes, sponsor inter-sorority dances, and in general to take care of all inter-sorority problems.

First Row, Left to Right- Siemers, Watkins, Kahler, Bollinger.
 Second Row - Barnhart, Sarba, Youghans, Beers, Anderson, Miss Sambrook.





Left to Right—Chambers, Martin, Buehler, Foster, Smeltz, Yonghaus, Mr. Meader.

The Lanthorn

EDITORIAL STAFF

<i>Editor-in-Chief</i>	WILLIAM FOSTER
<i>Literary Editor</i>	MARTHA MARTIN
<i>Photography Editor</i>	ALICE YONGHAUS
<i>Assistant Photography Editor</i>	MAXINE CHAMBERS
<i>Sports Editor</i>	PAUL BUEHLER
<i>Art Work</i>	WILLIAM SMELTZ
<i>Faculty Adviser</i>	ROBERT F. W. MEADER

The snapshots and some of the photographic art work were done by David Sterrett and Lloyd Wilson. The typists for our 1951 LANTHORN were Martha Martin, Patricia Rumbaugh, Lorraine Rarick, and Dorothy Allen. We wish to extend many thanks to those who helped in making our 1951 LANTHORN what it is.

BUSINESS STAFF

<i>Business Manager</i>	HERBERT R. HAINS
<i>Advertising Personnel</i> — CARL GACONO, ROBERT JARVIS, ROBERT PATTERSON, JOHN STEIGER	
<i>Typist</i>	LYN BAILEY
<i>Faculty Adviser</i>	GROVER C. T. GRAHAM

Left to Right—Gacono, Jarvis, Hains, Mr. Graham, Larson.





First Row, Left to Right—Nicklin, Rentler, Rumbaugh, Harder, Smith.
Second Row—Westervelt, Bogar, Staller, Sterrett, Buehler, Mr. Graham.

STAFF

<i>Editor-in-Chief</i>	-	JAMES RUMBAUGH
<i>Associate Editor</i>	-	THOMAS STALLER
<i>Business Manager</i>	-	JOHN REUTHER
<i>Managing Editor</i>	-	LILLIAN SMITH
<i>News Editor</i>	-	JACOB HARDER
<i>Men's Sports Editor</i>		RICHARD WESTERVELT
<i>Girls' Sports Editor</i>		SHIRLEY NICKLIN
<i>Photography Editor</i>		DAVID STERRETT
<i>Advertising Manager</i>		PAUL BUEHLER
<i>Assistant Advertising Manager</i>		LYN BAILY
<i>Circulation Manager</i>	-	MARSH BOGAR

The Susquehanna

Established in 1891, *The Susquehanna*, the university's weekly publication, is published every Tuesday by and for the student body.

It offers opportunity to students interested in the various fields of journalism, headlining, make-up, reporting, editing, circulation, and management.

The Susquehanna Singers

The Susquehanna Singers, under the direction of Mrs. Alice Giauque, is composed of sophomores and juniors in the Conservatory, as well as interested non-Conservatory students. This group has displayed its talents on various occasions throughout the year and has gained an excellent reputation for tone quality and voice blending.

This year the Susquehanna Singers presented a spring concert on the home campus and also made appearances in neighboring churches and schools.

First Row, Left to Right—Miller, Roush, Mitchell, Bernhart, Aston, Easton, Stagg, Wingert, Youhon, Lehman. Second Row—Kollinger, Guise, McKeever, Dietz, McCahan, Alexander, Demarest, Jacques, Hill. Third Row—Mrs. Giauque, Day, Faust, Durden, Bitting, Tyler, Mussler, Dmlap, Fulmer, Tyler, Mussler, Eeeker, Carr, Gloster.



OFFICERS

President - - ZOIA ROBINSON
Vice President - MARIA SHELLER
Secretary - - LOUISE SIEMERS
Treasurer - GERTRUDE KOHLWEISS



First Row, Left to Right - Sheller, Robinson, Kohlweiss
 Second Row - Siemers, Blough, Miss Sparhawk, Watkins, Ferguson.

Tau Kappa

Tau Kappa is a national women's athletic sorority. The Beta chapter at Susquehanna University is now composed of nine active members and three honoraries.

The purpose of the organization is to encourage good sportsmanship on campus and arouse a greater interest in women's athletics. Any girl with a junior award or seven hundred points, earned by participation in varsity or intramural sports, is eligible for membership.

Phi Kappa

The Phi Kappa Society was organized in 1930 to develop and promote interest in the classical Greek studies among the students of the college. Those students who have maintained a high standard of scholarship in Greek and show an interest in things Hellenic are eligible for election to membership. Once a month the group meets to discuss some phase of Greek culture.

This opportunity is taken to express the society's appreciation of the constant interest and sound advice given by Dr. A. William Ahl, the society's adviser.

First Row, Left to Right—Bottiger, Seiler, Volk, Penman, Wilson, Bomboy, Albertson. Second Row—Smeltz, Spangler, Steiler, Moyer, Moorhead, Snyder, Zorn, Dr. Ahl, Perna, Joyce.



OFFICERS

Basileus - - WILLIAM SMELTZ
Dextero-basileus
 GIRAID MOORHEAD
Grammatilus - - JUAN PINMAN
Tannas - - LLOYD WILSON
Aggelos - - JACOB SPANGLER



First Row, Left to Right—Penman, Leaser, Decker, Watkins.
 Second Row—Dr. Russ, Dr. Zagers, Reuther, Miller, Canals.

OFFICERS

President - JOHN RUTHIER
Vice President - ROBERT MILLER
Secretary-Treasurer - DR. RUSS

Pi Gamma Mu

Pi Gamma Mu is a national social science honor society whose membership includes faculty, alumni, and undergraduates. Pennsylvania Gamma Chapter was organized at Susquehanna University on May 9, 1927.

The purpose of the organization is to encourage the ideals of scholarship and social science in the study of social problems. Juniors and Seniors are eligible for membership. Eligibility consists of a special interest in social science studies, completion of at least twenty semester hours in social sciences with a grade of "B", good character, and a satisfactory general standing.

Alpha Psi Omega

The Theta Phi Chapter of Alpha Psi Omega, the largest national honorary fraternity of dramatics in the world, is located here at Susquehanna University.

Membership may be obtained in this Theta Phi Cast by creditable work in college dramatic productions. There is a point system in this organization whereby any person, whether in a cast or helping in any way to promote a play, may obtain a specific number of credits towards gaining admittance to the organization. Seventy-five points are required for membership.

The purpose of the organization is to promote college dramatics, to create a better understanding of dramatic problems, and to promote an interest in dramatics both in the college and in the surrounding community.

First Row, Left to Right—Spogen, Oyster, Kahler, Vogler, Solomon, Kohlweiss, Waters, Guyer.
 Second Row—Reuther, Shuey, Ulman, Foster. Third Row—Mr. Kleinsorg, Buellier.

OFFICERS

Grand Stage Director - JOSEPH SOLOMON
Grand Stage Manager - RICHARD DOIG
Grand Business Manager, MARJORIE SPOGEN
Cast Director and Faculty Adviser
 MR. AXEL KLEINSORG



STUDENT ROSTER

- Archenbach, Helen (2) 2219 Yale Avenue, Camp Hill
 Adamick, Elaine (1) 685 Donald Avenue, Perth Amboy, N. J.
 Albert, Betty Pearson (2) Port Trevorton
 Albert, Martha (3) 20 S. Locust Street, Myerstown
 Albertson, Virgil (1) Butler Avenue, Conyngham
 Alexander, JoAnn (2) 201 Maple Avenue, Wenonah, N. J.
 Allen, Dorothy (2) 5 Lincoln Street, Ramsey, N. J.
 Alter, Ben C. (3) 520 Bear Valley Avenue, Shamokin
 Ammerman, G. Lewis (1) 722 Westminster Road, Brooklyn, N. Y.
 Anderson, Barbara (4) 9 Shady Lane, Johnstown
 Andrews, Harmon (1) 21 Wight Place, Tenafly, N. J.
 Antonucci, Thomas (1) 330 N. Second Street, Sunbury
 Apgar, Dorothy (1) River View Terrace, Mahwah
 Arner, Janice (3) 320 West Fifth Street, East Liverpool, Ohio
 Aston, Peggy Ann (2) 35 North Maple Street, Mt. Carmel
 Auman, Cecelia (4) R. D. No. 1, Box 78E, St. Marys
 Auman, Fred (4) 659 Duke Street, Northumberland
- Babies, Donald (4) 260 Main Street, Conemaugh
 Bailey, Lyn (3) 130 Morningside Drive, New York 27, N. Y.
 Balchen, Thomas (1) 887 Prince Street, Teaneck, N. J.
 Barner, George (1) R. D. No. 1, Liverpool
 Barnhart, Barbara (2) 3108 Oak Park Avenue, Berwyn, Ill.
 Barnhart, Flora (3) Claysburg
 Bates, Joan (1) 11 Dunham Avenue, Cranford, N. J.
 Batschelet, Harry L. (1) 101 Valley Street, Williamsport
 Baumgardner, Elmer (2) 1502 Graham Avenue, Windber
 Baumgardner, Fern (3) 1502 Graham Avenue, Windber
 Beam, Marie (3) 2507 Graham Avenue, Windber
 Beary, Vebna (1) Marble, Clarion County
 Beckwith, William (2) 721 Eighth Street, Oakmont
 Beers, Marilyn (3) 452 Beardsley Avenue, Bloomfield, N. J.
 Beigh, H. Daniel, Jr. (4) 2310 Hoffer Street, Harrisburg
 Bennett, David (1) 739 Broad Street, Montoursville
 Berezin, Sidney (2) 11 Woodland Avenue, East Orange, N. J.
 Berninger, Donald (2) R. D. No. 2, Bloomsburg
 Bernstine, Earl (4) 2375 Hillside Avenue, Williamsport
 Bidelspach, Richard (1) 829 Line Street, Sunbury
 Bitting, Robert (3) 234 Valley Street, Marysville
 Block, Robert (4) 5725 North Park Avenue, Philadelphia 41
 Blough, Virginia (4) 310 Hickory Street, Johnstown
 Bobb, Marlin (4) Herndon
 Bogar, Marsh (3) 2936 Green Street, Harrisburg
 Bogdanffy, Robert (2) 135 Washington Avenue, Clifton, N. J.
 Bolig, James (1) 206 South Market Street, Selinsgrove
 Bolig, Nancy (1) University Heights, Selinsgrove
 Bolig, Robert (4) Hummels Wharf
 Bollinger, A. Jane (4) 213 Carlisle Street, New Oxford
 Bollinger, Herbert (3) 132 Fifth Street, Northumberland
 Bomboy, Charles (2) 711 Catawissa Avenue, Sunbury
 Bonish, Harry (4) 20 East Fourth Street, Mt. Carmel
 Borsteins, Vija (1) 4 South High Street, Selinsgrove
 Bosch, William (2) 5290 73rd Street, Maspeth, L. I., N. Y.
 Bottiger, Ernest L. (1) Box 27, West Milton
 Boyer, V. Edgar (2) 200 Green Street, Millinburg
 Boyle, Donald (1) 2807 Beale Avenue, Altoona
 Brandau, Walter (3) 223 Catawissa Avenue, Sunbury
 Brannon, George (1) East Waterford
 Brobst, Hazel (3) 1012 South Front Street, Sunbury
 Brosius, Margietta (4) Rebeck
 Brouse, Eugene (1) R. D. No. 2, Selinsgrove
 Brown, Jack A. (3) 1050 Washington Street, Indiana
 Brown, Mary Jo (1) 1050 Washington Street, Indiana
 Brubaker, Maxine (2) McAlisterville
 Buchler, Paul (4) Paupack, Pike County
 Buffington, John (4) 86 Linden Avenue, Bloomfield, N. J.
 Buffington, Wilbur (1) 29 West Main Street, Elizabethtown
 Burley, Richard (1) R. D. No. 1, Montgomery
 Burnham, Elizabeth (1) Wellsville Avenue, New Milford, Conn.
- Caldwell, Raymond (2) R. D. No. 2, Selinsgrove
 Caldwell, Robert (4) 211 Spruce Street, Sunbury
 Campbell, Carol (2) 15 South Seventeenth Street, Camp Hill
 Campbell, Richard (4) 1131 Reagan Street, Sunbury
 Canals, Ernest (4) 65 Birch Street, Bloomfield, N. J.
 Carlson, Leonard (1) 231 Electric Avenue, Lewistown
 Carr, Charles (2) 129 North Third Street, Bellwood
 Chadwick, Henry (4) 3607 Pacific Avenue, Wildwood, N. J.
 Chadwick, James (2) 3607 Pacific Avenue, Wildwood, N. J.
 Chambers, Maxine (2) 207 Market Street, Millinburg
 Clark, Theodore (4) 515 North Orange Street, Selinsgrove
 Condon, Joseph, Jr. (1) 490 King Street, Port Chester, N. J.
 Connell, Emma Grace (2) 12 S. Swarthmore Avenue, Ridley Park
 Conrad, James (4) 200 Catawissa Avenue, Sunbury
 Cope, Roy (2) 7403 Sommers Road, Philadelphia
 Cosgrove, Nancy (3) 202 South Maple Street, Mt. Carmel
 Covert, Edward (1) 17 Camme Brook Parkway, Summit, N. J.
 Cowling, Marvel (4) 258 Cherry Lane, Teaneck, N. J.
 Crawford, Philip (1) 221 West Fourth Street, Bloomsburg
 Cressman, Helen (1) R. F. D. No. 2, Bath
 Crisman, Patricia (2) Summerhill
- Davenport, William (1) 137 South Maple Avenue, Kingston
 Day, Gilbert O., Jr. (2) 123 North Market Street, Selinsgrove
 Decker, Barbara (4) 7613 Mountain Avenue, Melrose Park
 Deibler, Robert (1) 1250 West Fourth Street, Williamsport
 Deitch, James (1) 83 North Wyoming Street, Hazleton
 Deppen, Thomas (4) Herndon
 Derr, Donald (4) Buck Run
 Diehl, John (2) R. D. No. 1, Millinburg
 Dietz, Voylet (2) 627 Locust Street, Wrightsville
 Dildine, Jacquelyn (2) Box 222, R. D. No. 3, Muncy
 Dismick, George (4) 708 Front Street, Northumberland
 Dixon, Mary Ann (1) 230 West High Street, Red Lion
 Doebler, Catherine (1) 213 Spruce Street, Sunbury
 Doig, Richard (4) 1215 Main Street, Honesdale
 Doran, John (1) 105 Highland Avenue, Downingtown
 Dove, Lewis, Jr. (3) 123 East Fourth Street, Bloomsburg
 Dreese, Eugene (1) Herndon
 Driscoll, Joseph (3) 11 North High Street, Selinsgrove
 Drumm, Frances (1) 111 East Tenth Street, Berwick
 Duboy, Vera (1) 186 Whippoorwill Road, Atlantic Highlands, N. J.
 Dunean, Charles (4) 260 Race Street, Sunbury
 Dunlap, John Robert (2) 4252 El Camino Real, Palo Alto, Calif.
- Dunn, Melvin (4) 124 South Enola Drive, Enola
 Durden, Rowie (2) Greenwich Towers, Greenwich, Conn.
- Easton, Barbara (2) 558 Glenwood Avenue, Johnstown
 Eckcr, John L. (3) 91 Prospect Street, Nanticoke
 Eichelmann, Joan (2) 206 E. Lavender Road, Wildwood Crest, N. J.
 Erdman, Daniel (3) 123 North Eleventh Street, Sunbury
- Eaddis, P. Elaine (4) 1401 Stirling Street, Coatesville
 Eague, Marianne (3) 443 South Queen Street, Lancaster
 Faust, Burdell (3) 511 Second Street, Weatherly
 Fenstermacher, Gene (2) 101 Front Street, Northumberland
 Fenstermacher, Robert (2) 1062 Masser Street, Sunbury
 Ferguson, Althea (3) 40 South Main Street, Millerstown
 Fields, Thomas (1) 171 La France Avenue, Bloomfield, N. J.
 Filbert, Walter (1) 129 South Cedar Street, Hazleton
 Fisher, Lois (1) 1814 East 28th Street, Brooklyn 29, N. Y.
 Fisher, William D. (2) R. D. No. 2, Selinsgrove
 Fitting, Betty (1) 83 Embury Avenue, Ocean Grove, N. J.
 Fitzpatrick, Thomas (2) 249 Walnut Street, Sunbury
 Fleisher, Norman (1) 811 South Wayne Street, Lewistown
 Fleming, Joseph (2) 52 Highfield Road, Bloomfield, N. J.
 Fleming, Ray (4) 219 Seventh Street, Northumberland
 Fluri, Gennaro (2) 879 Alter Street, Hazleton
 Foelsch, Donald (1) 3 West 65th Street, New York, N. Y.
 Foltz, Chiri (4) North Main Street, Reedsville

STUDENT ROSTER

Foltz, Susan (3)	816 Broad Street, Collingdale	Kissinger, Robert (2)	Freeburg
Ford, Janice (1)	89 Kendall Boulevard, Oaklyn, N. J.	Kline, Susan (1)	551 East Third Street, Bloomsburg
Foster, William (3)	R. D. No. 2, Bristol, Newportville	Klingelhoefter, Mary (1)	160 North Eighth Street, Sunbury
Frost, Esther (1)	Route 6, Lancaster	Klingler, June (3)	Winfield
Fulmer, Dale	R. D. No. 1, Danville	Kloap, William (1)	110 Garfield Street, Nanticoke
Fyler, Richard (2)	R. D. No. 2, Millerstown	Koch, Andrew (1)	202 Samuels Avenue, Hazleto
Gacono, V. Carl (3)	137 West Hand Avenue, Wildwood, N. J.	Kohlweiss, Gertrude (4)	242 Merrick Avenue, Merrick, N. Y.
Gaglione, Robert (2)	21 East Pine Street, Selinsgrove	Korkuch, Edward (1)	910 East Race Street, Shamokin
Gateman, C. Dale (2)	North Market Street, Elysburg	Kost, R. Nelson (1)	210 South York Street, Mechanicsburg
Gearinger, Jack (3)	82 North Iron Street, Bloomsburg	Krause, Jacqueline (1)	531 North Front Street, Steelton
Gehris, James (1)	119 East Fifth Street, Berwick	Kreitner, Richard (1)	319 Ridge Street, Honesdale
Gilpin, Barbara (1)	Newfoundland, Wayne County	Krogman, George (2)	123 West Burk Avenue, Wildwood, N. J.
Glass, Orville (1)	331 Fourth Street, Northumberland	Kurtz, H. Robert (1)	5138 N. Fifteenth Street, Philadelphia
Gloster, Francis (2)	Eureka, Bucks County	Kutz, Wallace (1)	921 Augusta Street, Sunbury
Gordon, Lois (2)	311 Washington Avenue, Union, N. J.	Ladika, Joseph (1)	115 North Vine Street, Mt. Carmel
Gow, John (1)	Lattintown Road, Marlboro, N. Y.	Lamade, John Budd (6)	1608 James Road, Williamsport
Greeger, Alice (3)	117 Kathmere Road, Havertown	LaMarca, William (1)	295 Broadway, Coraopolis
Greenly, Harold (1)	R. D. No. 2, Millville	Larsen, Jack (3)	11 93rd Street, Brooklyn, N. Y.
Groce, Richard (1)	315 East Walnut Street, Selinsgrove	LaRue, Kay W. (2)	12 Mohegan Village, Tuckahoe Rd., Tuckahoe, N. Y.
Grund, Charles (1)	517 South Eleventh Street, Reading	Lauver, Raymond (1)	R. D. No. 1, McAlisterville
Guise, Elizabeth (2)	R. D. No. 1, Biglerville	Lease, Barbara (1)	413 West Main Street, Somerset
Gumblie, Doris (1)	Paupack, Pike County	Lease, Madaline (1)	113 West Main Street, Somers
Guyser, Floris (1)	Tipton, Blair County	Lee, Lorraine (1)	9 West 10th Street, Bayonne, N. J.
Hafily, Paul (1)	304 West Main Street, Belleville	Leeser, Mildred (1)	238 South Front Street, Sunbury
Hains, Herbert, Jr. (3)	172 North 17th Street, East Orange, N. J.	Lehman, Mary E. (3)	R. D. No. 2, Newville
Hand, Jay L. (1)	Muir, Schuylkill County	Lenker, Kenneth (2)	413 Ninth Street, Sunbury
Harder, Jacob, Jr. (3)	1601 Letchworth Road, Camp Hill	Leshier, Charles (6)	R. D. No. 1, Northumberland
Harman, Ruth C. (1)	1206 Fourth Avenue, Duncansville	Leshock, Taenique (2)	Mahanoy Street, Trevorton
Hazeltine, Frederick (1)	318 North Eleventh Street, Sunbury	Lewis, Faye (2)	30 East Ruddle Street, Coldale
Hazlett, James (2)	Box 302, Chicora	Liddiard, James, Jr. (1)	10 North Front Street, Sunbury
Heathote, Patricia (2)	220 East Cottage Place, York	Lidlington, George (1)	321 Orange Street, Northumberland
Heffelfinger, Marguerite (1)	211 West Fifth Street, Bloomsburg	Lightfoot, Lynne (1)	211 Runnymede Avenue, Jenkintown
Heilman, Lester (2)	511 Rural Avenue, Williamsport	Linn, Don (2)	Harvard Street, Lewistown
Heller, Kathryn (2)	208 Washington Park, Nazareth	Lupolt, Wayne (2)	239 South Sixth Street, Shamokin
Henderson, Alvin (1)	1331 Emory Circle N. E., Atlanta, Ga.	Luther, Carol (1)	515 Bedford Street, Windber
Henneberg, H. Carl (1)	1388 Jesup Avenue, New York 52, N. Y.	Lutz, Joyce (2)	124 West Pine Street, Mahanoy City
Heminger, Robert (3)	91 King Street, Northumberland	MacNeil, Audrey (3)	119 Water Street, Perth Amboy, N. J.
Herb, Paul (1)	1111 Susquehanna Avenue, Sunbury	McCahan, Carolyn (3)	Port Royal
Herr, Charles Richard (2)	1021 West Arch Street, Shamokin	McCune, John (6)	Main Street, Middleburg
Hill, Jean (3)	350 Aul Street, Sunbury	McDonah, Jean (3)	Box 634, Marion, Virginia
Hill, Kenneth (1)	12 North Market Street, Selinsgrove	McGrath, Ethel (2)	24 Floyd Avenue, Bloomfield, N. J.
Houyer, Lillian (1)	905 Third Avenue, Sterling, Ill.	McIntosh, Virginia (6)	State Colony, Selinsgrove
Horning, Kermit (1)	R. D. No. 1, McAlisterville	McIntyre, Carolyn (1)	1120 Belfield Avenue, Drexel Hill
Horoschak, John (2)	133 East Columbia Avenue, Atlas	McKeever, Jacquelyn (2)	1107 Third Street, Catasauqua
Hort, JoAnn (1)	517 1/2 Catawissa Avenue, Sunbury	McKegg, Pamela (1)	219 Belleville Avenue, Bloomfield, N. J.
Houtz, M. Patricia (1)	101 Fairmount Avenue, Sunbury	McKinney, Nancy Anne (1)	3112 Yale Avenue, Camp Hill
Howling, Roger C. (1)	8 La Salle Road, Upper Montclair, N. J.	McNiven, Mary (2)	604 Tomkins Avenue, Mamaroneck, N. Y.
Hrkman, Daniel (1)	136 Singer Street, Johnstown	Magaro, Grace (1)	1136 Vernon Street, Harrisburg
Iffert, Walter (1)	556 Lincoln Street, Hazleton	Manning, Everett (1)	126 N. Seventeenth Street, East Orange, N. J.
Jackson, Mary Jane (1)	112 East 25th Street, Wildwood, N. J.	Maples, Bruce (1)	60 Claremont Avenue, Bloomfield, N. J.
Jacques, Adah Jeanne (2)	11 North High Street, Selinsgrove	Mark, Gardiner (3)	25 East Avenue, Atlantic Highlands, N. J.
Janson, Doris (1)	886 Prospect Street, York	Martin, Alfred (3)	207 North Park Street, East Orange, N. J.
Jarvis, Robert (1)	602 Mohawk Avenue, Norwood	Martin, Martha (3)	27 South Third Street, Shamokin
Jeffers, Harvey (1)	126 Seneca Parkway, Rochester, N. Y.	Marts, Thomas (1)	1771 Morris Street, Camden, N. J.
Jenkins, Thomas (3)	615 Durian Road, Westfield, N. J.	Martz, Doris (2)	123 Vine Street, Sunbury
Juchem, Bernice (2)	215 Paterson Avenue, East Rutherford, N. J.	Matter, Franke (1)	Main Street, Freeburg
Jones, Albert (2)	811 Fairview Road, Swarthmore	Mayer, John (1)	117 Fifth Avenue, Belmar, N. J.
Jones, Cynddylan (1)	1500 Walnut Street, Ashland	Mazura, Walter (2)	935 Sedalia Street, Avalon, Pittsburgh 2
Jones, Paul (3)	12 North Eighth Street, Shamokin	McLaro, Constance (2)	388 Hulton Road, Oakmont
Jones, Richard (2)	121 West Elm Street, Hazleton	Mesler, Robert (1)	963 Kenyon Avenue, Plainfield, N. J.
Joyce, Wm. Gordon (2)	R. D. No. 1, Bridgeton, N. J.	Miller, George, Jr. (1)	Shamokin Dam
Kalder, Jeanne (1)	315 East Walnut Street, Nazareth	Miller, Howard (1)	Box 73, Richfield
Kallir, Rosemary (1)	285 Riverside Drive, New York, N. Y.	Miller, Janet (2)	723 Walnut Street, Ashland
Kantner, Ott (2)	308 North Market Street, Selinsgrove	Miller, Joyce (1)	100 Stone Street, Honesdale
Keim, Edna Rae (1)	121 North Rock Street, Shamokin	Miller, Mary (1)	1320 Hillside Avenue, Honesdale
		Miller, Robert (1)	R. D., Liberty
		Miller, Vernon (1)	812 North Front Street, Sunbury
		Mincemoyer, Earl (1)	21 Tenth Street, Milton
		Minnich, Donald (1)	37 Lawrence Avenue, Bradford

STUDENT ROSTER

Mitch, Clair (2) 321 Walnut Street, Millinburg
 Mitchell, Duane (1) 323 North Sixth Street, Clairton
 Mitchell, Sally (3) 50 Shoemaker Street, Forty Fort
 Molinaro, Albert (4) 245 Grove Street, Montclair, N. J.
 Morrow, John (2) 6092 Fourth Avenue, Brooklyn, N. Y.
 Moorhead, Gerald (3) R. D. No. 1, Milton
 Morris, James (2) 116 North Water Street, Selinsgrove
 Morris, Robert (1) 116 North Water Street, Selinsgrove
 Moulton, Gail (1) 6 Ball Road, Mountain Lakes, N. J.
 Moyer, Marvin (4) 571 Queen Street, Northumberland
 Moyer, Robert (3) R. D. No. 1, Selinsgrove
 Muchmore, Donald (1) 27 Laurel Avenue, Summit, N. J.
 Musser, Carl (2) Kreamer
 Mussina, Rosemary (1) 619 North Front Street, Milton
 Myers, T. Justin, Jr. (1) 100 South Main Street, Hughesville

 Nale, William (2) R. D. No. 1, Lewistown
 Nary, Dorothy (2) Rice Avenue, Biglerville
 Neuman, Edward (1) 828 Florida Avenue, York
 Nicklin, Shirley (1) Marlboro, N. Y.
 Nolte, Wilfred, Jr. (1) 719 Riverview Avenue, Coraopolis
 Norman, Richard (1) 809 North Orange Street, Selinsgrove
 Norris, Joan (2) Myrtle Street, Susquehanna
 Nyer, William (2) R. D. No. 1, Weatherly

 O'Brien, Philip (3) 232 Hone Avenue, Oil City
 Odenthal, Wilda (2) Lake Juliet, Boonton, N. J.
 O'Gara, Robert (3) 18 Dodd Street, Bloomfield, N. J.
 Orner, Jeanne (1) Bendersville, Adams County
 Otris, Kenneth (1) Ickesburg
 Oyster, Anna Mae (4) 807 South Second Street, Sunbury

 Palkovich, Edward (2) 252 East High Street, Coaldale
 Parker, David (2) 1560 Sheridan Lane, Norristown
 Patterson, Robert (3) 324 Hazel Street, Tamaqua
 Penman, Jean (4) 18 Front Street, Strong
 Perna, Anthony (1) Cocolamus, Juniata County
 Pfeiffer, Conrad (2) 311 Third Street, Weatherly
 Pfeiffer, Edward (4) 311 Third Street, Weatherly
 Phillips, George (4) Herndon
 Pittello, Robert (2) 201 South Vine Street, Mt. Carmel
 Portzline, A. B., Jr. (4) Eighth Street, Selinsgrove
 Post, Joan (3) 34 Highfield Road, Bloomfield, N. J.
 Prichard, William (2) Bishop Hollow Road, Newtown Square

 Rarick, Jean (1) North Warren Street, Orwigsburg
 Rarick, Lorraine (2) North Warren Street, Orwigsburg
 Rau, Charles (4) 412 North Market Street, Selinsgrove
 Reese, Daniel (3) 127 Poplar Street, Kingston
 Reidler, Katherine (1) 615 Lincoln Street, Hazleton
 Renfer, Lois (2) 129 Rock Street, Pittston
 Renn, Bettyjane Raup (4) 21 Greenough Street, Sunbury
 Reuther, John (4) 93 North Street, Nichols, Conn.
 Rice, Harry, Jr. (1) 83 Watsessing Avenue, Bloomfield, N. J.
 Ricedorf, Robert (4) Ickesburg
 Richards, Jay (1) R. D. No. 3, Lewistown
 Robinson, Zola (4) 371 West Fourth Street, Lewistown
 Rosetti, Roland (3) Box 17, South Canaan
 Roslander, Ruth (2) Shadyside Road, Ramsey, N. J.
 Rother, Richard (1) 8631 Fort Hamilton Parkway, Brooklyn, N. Y.
 Rothermel, Jean (4) R. D. No. 1, Klingerstown
 Roush, Arthur (1) 709 North Market Street, Selinsgrove
 Roush, Charles (1) New Street, Freeburg
 Roush, Frances (4) 194 Orange Street, Northumberland
 Rowe, Chester (3) 304 East Pine Street, Selinsgrove
 Rowe, Harold (4) 438 North Second Street, Lykens
 Rudisill, Phyllis (2) 840 Winchester Avenue, Hillside, N. J.
 Rumbaugh, James (4) R. D. No. 2, Millerstown
 Rumbaugh, Patricia (2) R. D. No. 2, Millerstown
 Rimpler, Leonard (1) 145 Oak Hill Avenue, Pawtucket, R. I.
 Rutherford, Caroline (1) R. D. No. 1, Harrisburg
 Ryker, Joseph (1) 15 North Austen Avenue, Ventnor City, N. J.

Salzer, Norma Abby (1) 2004 East 26th Street, Brooklyn 29, N. Y.
 Santangelo, Louis (1) 673 Queen Street, Northumberland
 Sarba, M. Elmina (4) 111 Catawissa Avenue, Sunbury
 Satzler, Paye (1) McAlisterville
 Scherr, Kathleen (2) Annex Apartment, Hall Square, Nazareth
 Schoner, Franklin (1) 9 Wellesley Road, Maplewood, N. J.
 Schultz, Fred (4) 1008 North Irving Avenue, Scranton 10
 Schweighofer, Doris (1) R. D. No. 3, Honesdale
 Scott, William (1) Rehoboth Beach, Delaware
 Sechrist, Joan (1) 117 North Twelfth Street, Sunbury
 Seiler, Mark (1) R. D. No. 1, Dornsife
 Shafer, Betty (2) State Street, Millville
 Shafer, Merrill (3) Grier City, Barnesville
 Shafer, Nella (3) Grier City, Barnesville
 Shaffer, Charles (3) 120 Independence Street, Selinsgrove
 Shaffer, Richard (4) 602 South Market Street, Selinsgrove
 Shamp, Charles (1) 313 South Second Street, Sunbury
 Sheaffer, C. Belle (2) 531 North Eighth Street, Selinsgrove
 Sheldon, Donald (1) 470 Ocean Avenue, Brooklyn, N. Y.
 Shetter, Maria (4) 324 Chestnut Street, Spring City
 Shipton, James (1) Swengel, Union County
 Shoemaker, Donald (3) 217 Gilliland Place, Bellevue, Pittsburgh 2
 Sholly, Margaret (1) 723 Susquehanna Avenue, Sunbury
 Shosberger, Betty (0) 106 South Market Street, Selinsgrove
 Showalter, Shirley (4) Box 32, Millmont
 Shuey, Mark (4) 512 Market Street, Millersburg
 Siemer, Herman (2) Avosting, Hewitt, N. J.
 Siemers, Louise (1) 239 Upper Mountain Avenue, Upper Montclair, N. J.
 Silkman, Eugene (1) 431 Spaulding Street, Waverly, N. Y.
 Slater, Mary Lou (3) 198 Isabella Avenue, Irvington, N. J.
 Small, G. Kenneth (4) 23 Rossiter Avenue, Paterson, N. J.
 Smeltz, William (3) R. D. 1, Northumberland
 Smith, Albert (1) R. D. No. 1, Elysburg
 Smith, Elinor (1) 760 Main Street, Lykens
 Smith, Harry (3) Herndon
 Smith, J. LaWayne (3) 118 Willow Avenue, Honesdale
 Smith, Lillian (4) R. D. 1, Nescopeck
 Smith, Ruth (2) Box 353, Davidsville
 Smyrl, Shirley (1) 220 East Bertsch Street, Lansford
 Snyder, Alfred (2) Freeburg
 Snyder, Charles (1) Herndon
 Snyder, George (2) 515 Market Street, Millinburg
 Solomon, Joseph (1) 337 East Saylor Street, Atlas
 Spangler, Jacob, Jr. (2) 115 West Fourth Avenue, Roselle, N. J.
 Specht, William, Jr. (1) 307 Union Street, Millersburg
 Spogen, Marjorie (4) P. O. Box 167, Turbotville
 Stadthander, Marilyn (1) 873 East 38th Street, Brooklyn 10, N. Y.
 Stagg, Barbara (2) University Heights, Selinsgrove
 Staller, Thomas (3) 242 East Seventh Street, Mt. Carmel
 Steadman, Donald (1) 43 Sunset Avenue, Laurence Harbor, N. J.
 Steffy, Robert (1) 18 North Front Street, Selinsgrove
 Steiger, John (3) Newfoundland, Wayne County
 Sterrett, J. David (3) 774 Braxton Road, Ridley Park
 Stetler, Richard (3) 417 Orange Street, Millintown
 Stetser, Harry (4) Ashland Avenue, Somerdale, N. J.
 Stock, Gene (2) Middleburg
 Stone, Jesse (2) 408 Third Street, New Cumberland
 Stout, Richard (1) 606 Mahoning Street, Lehighton
 Stuempfle, Jean (1) 122 South Main Street, Hughesville
 Stuter, Mary (1) Main Street, Belleville

 Tafel, Louis (1) 8008 Frankford Avenue, Philadelphia 36
 Takach, John (2) 206 Second Street, Leechburg
 Taylor, Charles W. (3) Elmhurst, Lackawanna County
 Thomas, George, Jr. (1) 319 East Pine Street, Selinsgrove
 Thomas, Margretta (1) 21 East Lincoln Street, Shamokin
 Thompson, Marilyn (1) 522 Lindberg Way, Lewistown
 Thorp, Jack (1) 122 Willow Street, Athens

STUDENT ROSTER

Tompkinson, James (2) 2728 Norwood Avenue, Merchantville, N. J.
 Forok, Steve (1) 4 Bright Street, South River, N. J.
 Torronco, Felix (2) 55 Harrison Avenue, West Orange, N. J.
 Townsend, Allen (1) 825 Wesley Avenue, Ocean City, N. J.
 Treon, William (2) 16 East Cherry Street, Mt. Carmel
 Troutman, Richard (1) Pillow, Dauphin County
 Tyler, Ray (3) Hummels Wharf

 Ulman, Franklin (4) 1116 Walnut Street, Williamsport
 Unangst, Edward (1) 541 Shuman Street, Catawissa
 Ulsh, Charles (2) Port Royal

 Valera, Richard (2) 101 Melrose Street, Keiser
 VanVoorhis, Jean (3) West Bloomfield Road, Pittsford, N. Y.
 Vogler, Miriam (2) 315 Penn Avenue, Hawley
 Volk, David (2) 704 Morris Avenue, Boswell
 Vollmers, G. Allan (2) 514 Belvidere Avenue, Plainfield, N. J.
 VonLynn, Helen (1) 12 Central Avenue, Cranford, N. J.

 Wagner, Joyce (1) 2911 Rumson Drive, Harrisburg
 Wagner, Ned (1) Cowan, R. D. No. 2, Millinburg
 Wagner, Paul (4) Box 43, Milroy
 Wagner, Walter (3) 369 West Fifth Street, Lewistown
 Walker, Ernest (1) 1100 Sunshine Avenue, Johnstown
 Walker, John, Jr. (3) 336 Queen Street, Northumberland
 Wallace, Thomas (2) 75 Hillside Avenue, Verona, N. J.
 Walter, Donald (1) West Milton
 Walton, Lucius (3) 112 Spring Valley Avenue, Hackensack, N. J.
 Waters, Eleanor (2) 77 Hoover Avenue, Bloomfield, N. J.
 Watkins, Barbara (1) 730 North Rebecca Avenue, Scranton 4
 Way, Marjorie (2) 1849 Ferry Street, Easton
 Wegner, Audrey (1) Palatine Lake, Elmer, N. J.
 Wehr, Jane (1) Main Street, Middleburg
 Weiser, Emil, Jr. (3) 351 Liverpool Avenue, Egg Harbor City, N. J.

 Weiser, E. Maxine (1) East Broadway Ext'd., Red Lion
 Weller, Carl (3) 60 Melvina Street, Montgomery
 Weller, Kent (1) Aristes, Columbia County
 Welliver, Barbara (1) 1909 West Front Street, Berwick
 Westervelt, Richard (1) 36 Charles Street, Bloomfield, N. J.
 Wetzel, Richard (1) 218 South Market Street, Selingsgrove
 White, John (3) 222 North Hyde Park Avenue, Scranton
 Wiant, Betty (1) 533 Edgar Road, Westfield, N. J.
 Williams, Clara (1) R. D. No. 1, Drums
 Williamson, Daniel (1) R. D. No. 2, Holsopple
 Wilson, Lloyd (1) 810 Harton Street, Johnstown
 Winey, Bettie (1) 412 North Eighth Street, Selingsgrove
 Wingert, Janet (2) 1305 Alexander Avenue, Chambersburg
 Wissinger, Donald (1) 2929 Spruce Avenue, Altoona
 Wilther, James (1) 2038 Sheridan Street, Williamsport
 Witowski, John (1) 113 Warsaw Street, Keiser
 Wohlsen, Donald (1) 39 Marshall Road, Yonkers, N. Y.
 Wolf, Janet (1) 105 Violet Street, Johnstown
 Wolf, Max (0) R. D. No. 2, Selingsgrove
 Wolfe, Fancher (3) 111 Bishop Street, Beckley, West Virginia
 Wollaston, Edward (2) 14 North Marion Street, Warren
 Wolsten, Walter (3) 36½ Nelson Place, Newark, N. J.
 Wylie, Robert (1) 23 Fairview Avenue, North Plainfield, N. J.

 Yinger, Virginia (3) 845 Pontiac Avenue, Baltimore 25, Md.
 Younm, Maxine (1) Park Avenue and Stone Road, Laurel Springs, N. J.
 Yeaghans, Alice (3) 701 Pompton Turnpike, Pompton Plains, N. J.
 Youhon, Nancy (2) 37 South Atherton Avenue, Kingston
 Young, Shirley (3) 35 South Tenth Street, Quakertown

 Zinda, Margaret (1) Fisher Avenue, Catawissa
 Zlock, Charles (2) 276 Third Street, Coaldale
 Zodikoff, Arthur (1) 113 First Street, Newburgh, N. Y.
 Zorn, Gunnar (1) 330 East 22nd Street, Baltimore 18, Md.

Patronize our Advertisers

WITHOUT them, this, the LANTHORN of 1951, would not have been possible. We hope that you will give our advertisers your support as they have so willingly given theirs.

SUSQUEHANNA UNIVERSITY

(Co-educational)

SELINGROVE, PA.

*For Ninety-one Years in the Service of
Christian Higher Education*



A College with unusual opportunities

Liberal Arts (A.B.)

Business Administration (B.S.)

Music Education (B.S.)



For catalog write:

G. MORRIS SMITH, D.D., LL.D., President

The
COLLEGE STORE

STUDENTS' SUPPLIES



SHEAFFER INKS — PENNANTS

MONOGRAM STATIONERY

COLLEGE KEYS AND RINGS

Compliments of

D. R. ERDMAN

Lumber Yard — Planing Mill

Roofing — Insulation — Plywood

168 South Tenth Street

SUNBURY, PENNA.

Tel. 877

SELINGSGROVE WATER SUPPLY CO.



FRANK A. EYER
President

H. J. JARRETT
Superintendent

JAMES McCLURE
Treasurer

MIDDLE CREEK VALLEY TELEPHONE COMPANY

Bell System

FRANK A. EYER
Treasurer

Secretary

General Manager

STOCKS and BONDS

Bought —and — Sold



Stock Exchange Orders
Executed on Any Exchange

MEMBERS

Philadelphia Baltimore
Stock Exchange



Theron D. Conrad & Co., Inc.

416 Market St., SUNBURY, PA.

Telephone 2835

Prompt Friendly Service for Investors

Compliments of

**THE
AMERICAN LEGION**



Milton Jarrett Norman

Post 201

SUNBURY, PA.

Compliments of
The
American Legion



POST 44
NORTHUMBERLAND, PENNA.

For S. U. Guys and Girls

THE CAMPUS
SNACK BAR

Just off Campus



Open 7 A. M. to 11 P. M.

BOGAR LUMBER CO.

Contractors — Builders

Manufacturers of and Dealers in
LUMBER, BUILDING SUPPLIES

Phone 285 SELINGSGROVE, PA.

National Restaurant

The Best In Food
Always

SELINGSGROVE, PA.

GEORGE B. RINE, Florist

11 North Market Street

SELINGSGROVE, PA.

Store Phone 71-Z Greenhouse Phone 32-Z

CUT FLOWERS and POTTED PLANTS

Specializing in CORSAGES

Compliments of

WILLIAM J. COTT

Druggist

Compliments of

THE FIRST NATIONAL BANK

of SELINGSGROVE



Established 1861

Compliments of

EBERT'S

5c to \$1.00 Store

SELINGSGROVE, PA.

Hotel Governor Snyder

WALTER E. PINAND

Prop.

LEARN'S

Fine Foods and Stationery
Greeting Cards

11 S. Market St. SELINGSGROVE, PA.

For INSURANCE SERVICE — See

ABERDEEN PHILLIPS

127 North Market St.

Phone 68-W

WHITMER-STEELE COMPANY

Manufacturers of

PINE, HEMLOCK, AND HARDWOOD LUMBER

MINING TIMBER AND TIES

NORTHUMBERLAND, PA.



HACKETT'S HARDWARE STORES

HARDWARE, APPLIANCES, GIFTS,
PAINT, GLASS

325 Market Street, Sunbury
706 Market Street, Sunbury
Market and Walnut Streets,
MIDDLEBURG

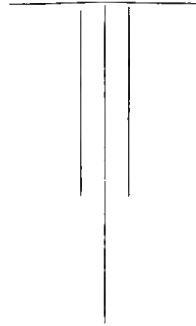
F. A. BRILL CO.

FLOOR COVERINGS
AWNINGS — SHADES
DRAPERIES

Phone 2180

419 Market Street SUNBURY, PA.

HARRISBURG LUMBER COMPANY



A Complete Lumber Industry

HARRISBURG, PENNSYLVANIA

PROFESSIONAL DIRECTORY

R. A. HEINBACH, M.D.

3 South Market Street

Telephone 84

Residence Telephone 174

H. F. STRAUB, M.D.

300 West Walnut Street

Telephone 102

B. SHIPE, D.D.S.

30 South Market Street

Telephone 270-W

Residence Telephone 270-Z

D. M. STIBER, D.D.S.

108 South Market Street

Telephone 120-Z

Residence Telephone 142-X

B. K. W. COACH LINE

HUMMELS WHARF, PA.

Charter Trips Solicited

★

For Taxi Service Call — SUNBURY 600

For
NEWS—
of FOLKS
You Know



SUNBURY DAILY ITEM

Watch Repair — Susquehanna Jewelry
Fountain Pens and Pencils

W. M. VALSING

Jeweler SELINGSGROVE, PA.

Sanders Appliance Store

G. E. APPLIANCES

241 Market St. SUNBURY, PA.

Telephone 546

Compliments of

Melrose Restaurant

TASTY DUTCH HOMECOOKING

SELINGSGROVE, PA.

Compliments of

“DOC” GLASS

LEE R. SNAVELY

CLOTHING AND SHOES

for

The Family

Miller Bros. Shoe Store

“At the Bus Stop”

SUNBURY, PA.

CONGRATULATIONS AND BEST WISHES

TO THE CLASS OF '50

MINNICH —STUDIO

portraits that live . . .

Your
LANTHORN
Photographer



Odd Fellows Building
MILTON, PENNA.
Telephone 705-J

BENJAMIN T. MOYER

FURNITURE *of Distinction*

Phone — 2077

21-23 N. Fifth St. SUNBURY, PA.

Compliments of

JOS. L. MENTZ

The Stationer

249 Market Square SUNBURY, PA.

REICHLEY'S

SPORTING GOODS

13½ N. Market St. Selinsgrove, Pa.

CHRYSLER-PLYMOUTH

SALES — SERVICE



FISHER MOTORS

GAS AND OIL

SELINGROVE Tel. 17-X

Smith's Tydol Station

GAS — OIL — REPAIRS

S. Market Street SELINGROVE

Compliments of

HILL'S CANDY STORE

Open 9 A. M. — 11:15 P. M.

Compliments of

LOSE SALES COMPANY

SELINGROVE, PA.

Compliments of

Shikellamy Sandwich Shop

Routes 11 and 15

**TROUTMAN'S
GULF SERVICE**

SELINGROVE, PA.

Greasing — Washing
Tires — Tubes — Batteries
Accessories

Compliments of

Whiteleys Tourist Home

South Market Street

SELINGROVE Tel. 151-W

Compliments of
**BITTNER'S DEPARTMENT
STORE**
SUNBURY, PA.

COLONIAL TEA ROOM

MR. AND MRS. ROY BOWERSOX
For RESERVATIONS AND PARTIES
Call 48-W

**The
Selinsgrove Times
Tribune**

Printers of
THE SUSQUEHANNA AND
THE SUSQUEHANNA ALUMNUS

Compliments of
MENGLE'S RESTAURANT

3 West Pine Street

SELINGSGROVE, PA.

When Patronizing
These Advertisers
Please Mention

THE LANTHORN

1914 BOND KEY 1950

Honors Its Graduates of 1950

Richard Campbell	John Witowski	Jack Thorp
Charles Duncan	Marlin Bobb	Joseph Ladika
Robert Bolig	Tom Deppen	Tom Jenkins
James Rumbaugh	Charles Grund	Richard Troutman
Kent Weller	Fred Shultz	Don Derr
Nelson Kost	George Thomas	John Buffington
Everett Manning	Donald Wissinger	Wilbur Buffington

PHI MU DELTA

How dear to one and all the name
Their Alma Mater bears,
When they have left its classic halls,
To shoulder worldly cares.

Richard Shaffer	Roger Howling	Ernest Canals
Abraham Portzline	Harry Beigh	Earl Bernstine
Donald Minnich	Franklin Uman	Edward Pfeiffer
Paul Wagner	Henry Chadwick	Richard Westervelt
Andrew Koch	Theodore Clark	George Small
Edward Korkuch	John Gow	Donald Wholsen
Albert Molinaro	Richard Doig	Melvin Dunn
Louis Santangelo	Alvin Henderson	Fred Hazeltine
Fred Auman		

THETA CHI

Congratulates Its Graduates of 1950

Paul Buehler	James Gehris	John Reuther
Paul Haffly	Harold Greenly	Robert Ricedorf
Jay Hand	Robert Miller	Harold Rowe
John Lamade	Charles Rau	Mark Shuey
Raymond Lauver	Richard Wetzel	



Your

LANTHORN

Was Designed, Engraved, Printed
and Bound in our College Annual
Department.



We do a variety of Commercial
Printing—including Catalogs,
College and School Year Books.
Consult Us before placing your next
order for Printing.

GRIT PUBLISHING COMPANY

WILLIAMSPORT, PENNA.



AUTOGRAPHS

SUSQUEHANNA UNIVERSITY



3 4998 0027 8146 1

BLOUGH-WEIS LIBRARY
DOES NOT
CIRCULATE
ARCHIVES
SUSQUEHANNA UNIVERSITY

