

LANTHORN



NINETEEN FIFTY TWO

MEM'S TENNIS COURTS

gym

WOMEN

ATHLETIC FIELD

HASSINGER HALL

BOGAR

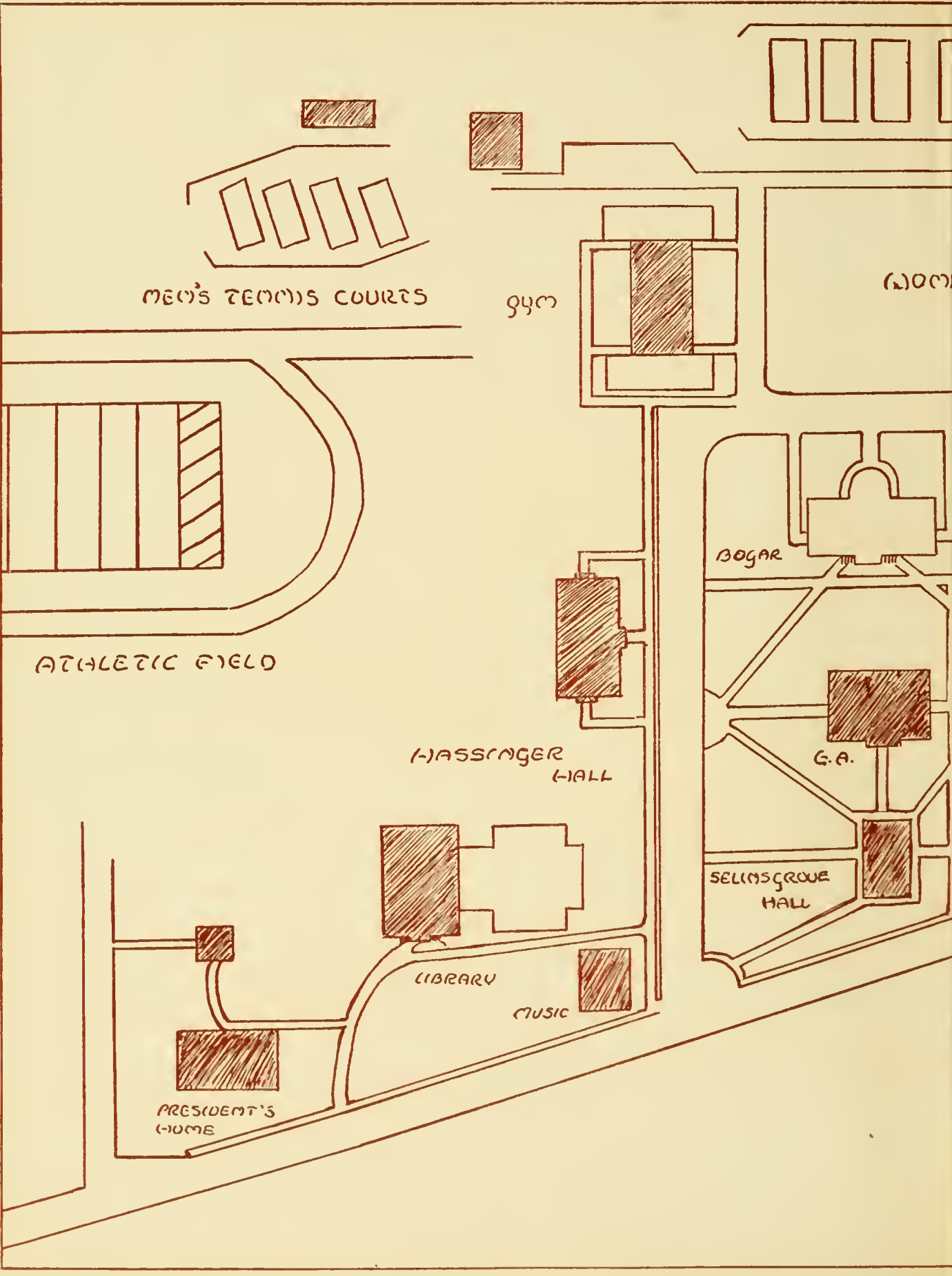
G.A.

SELMSGROVE HALL

LIBRARY

MUSIC

PRESIDENT'S HOME



WOMEN'S
TENNIS
COURTS

BLOUGH-WEIS LIBRARY

SUSQUEHANNA UNIVERSITY
UNIVERSITY DRIVE PA 17878

ATHLETIC
FIELD


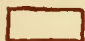
FUTURE
MUSIC
HALL

RECITATION


STEELE

FACULTY HOMES

SEIGERT
HALL

 Present Buildings
 Future Expansion

SUSQUEHANNA
UNIVERSITY
Campus Expansion



Digitized by the Internet Archive
in 2011 with funding from
Lyrasis Members and Sloan Foundation

<http://www.archive.org/details/lanthorn195200susq>

Grover C. T. Graham





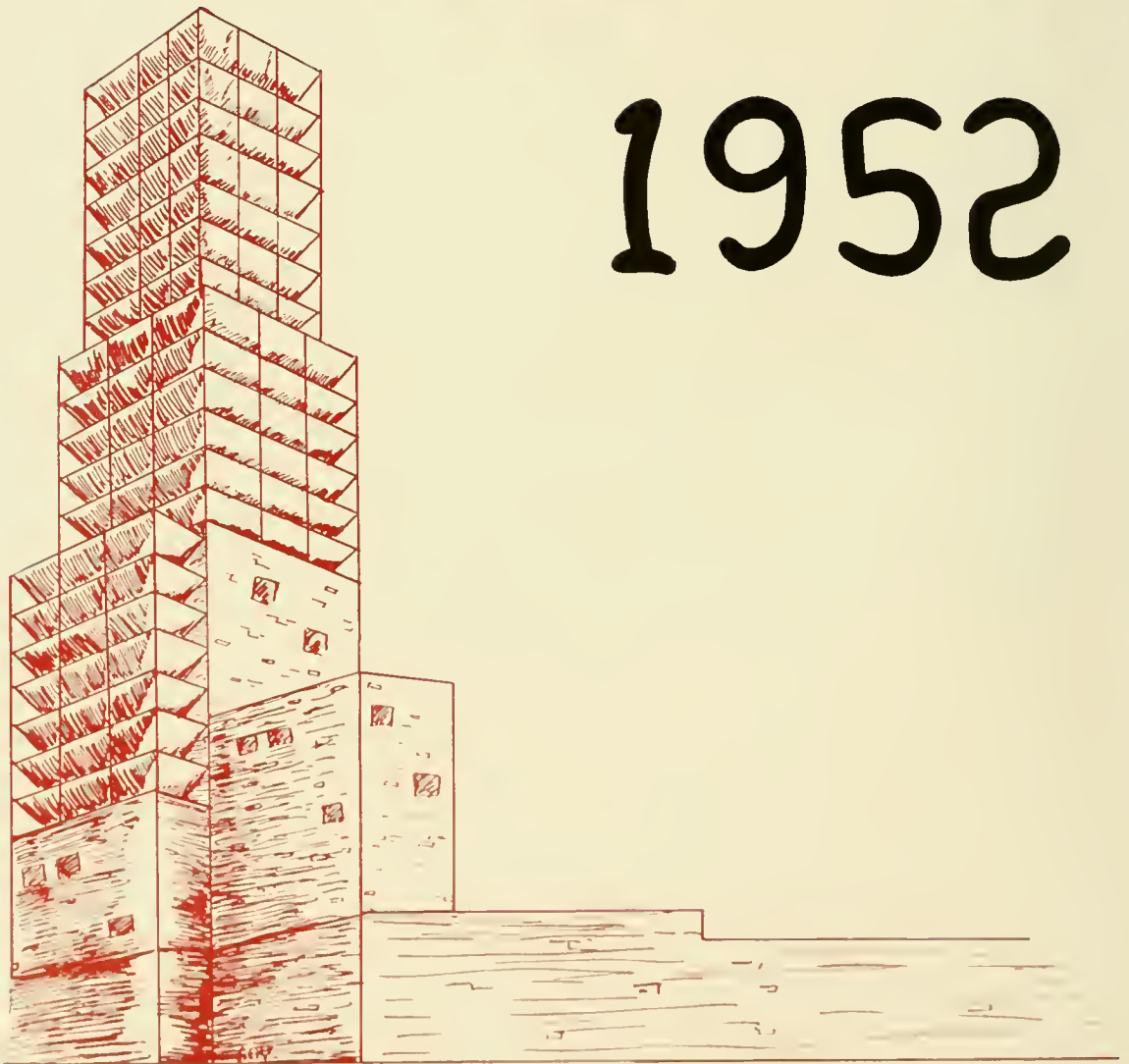
Steel Science Hall



New Bogar Hall

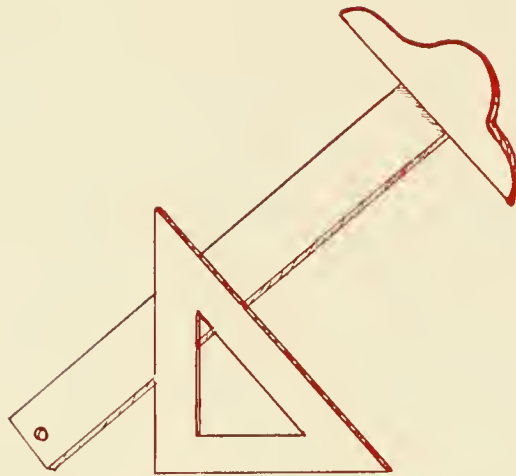
Lant

1952



horn

Presented by
The JUNIOR CLASS of
SUSQUEHANNA UNIVERSITY
SELINGROVE, PENNSYLVANIA



FOREWORD

IN the beginning God created the heaven and the earth. And the earth was without form, and void . . . And God saw that it was good.

In this manner all construction and development are dominated by the universal plan. In the beginning there is an idea and then a plan as it is with the architect when he draws up a set of blueprints. After the plans have been laid, the materials, like the brick and cement, are gathered together. The next step requires the worker to make use of the materials in order to turn out the finished product. If the idea, plan, materials, and work are good, the result must be good.

Education follows the same universal pattern. The professors and instructors lay the plans just as the architect draws the blueprint. The classes are substituted for the materials of cement and brick. The extra-curricular work of the students is then divided between athletics and organizations just as the work of the laborers is divided between the unskilled and skilled.

All the ingredients are present . . . And God saw that it was good.



Contents

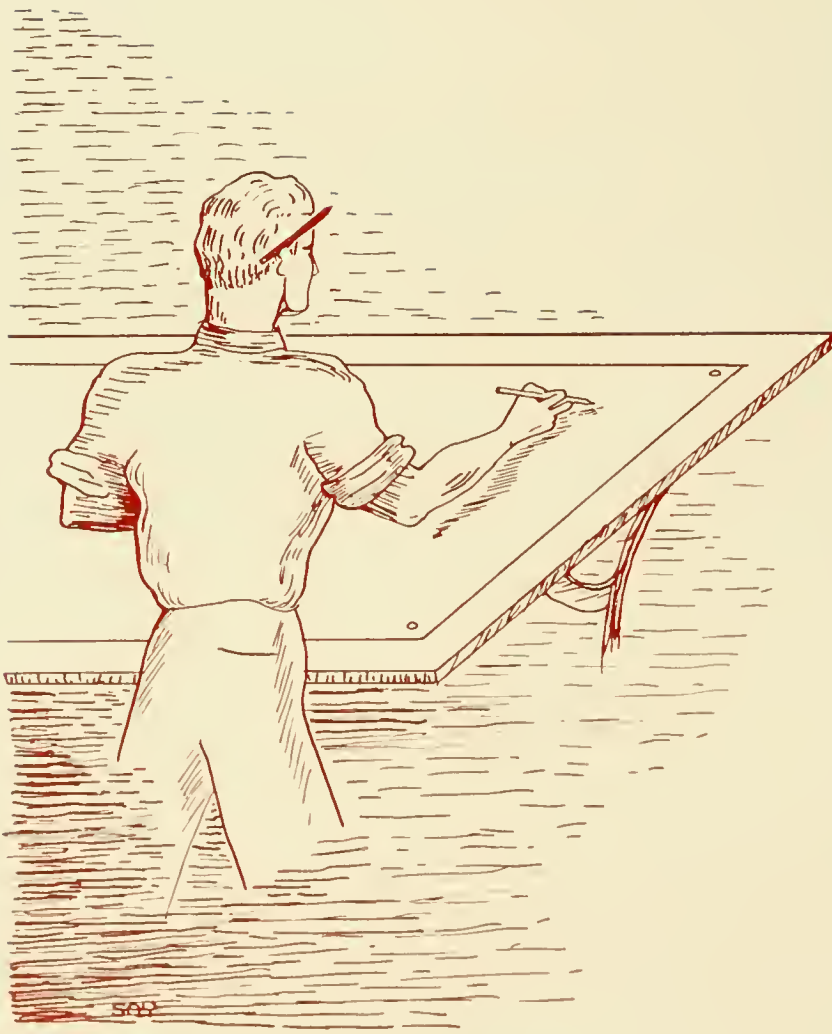
Faculty

Classes

Athletics

Activities

Organizations





Faculty



PRESIDENT SMITH

President of the University

G. MORRIS SMITH

President

A.B., Roanoke College 1911; M.A., Princeton University 1912; Diploma, Lutheran Theological Seminary, Philadelphia 1919; D.D., Roanoke College 1928; Graduate study, Co'umbia University; LL.D., Bucknell 1940.



Dean of the College

RUSSELL GALT

A.B., Muskingum College 1919; M.A., 1920
and Ph.D., 1936, Columbia University; School
of Oriental Studies, Cairo, Egypt, 1920-22.



DEAN GALT



DEAN SAMBROOK

Dean of Women

ERMA L. SAMBROOK
Dean of Women

A.B., 1944 and M.A., 1948, Bucknell Uni-
versity.



The Faculty

AUGUSTUS WILLIAM AHL

Professor of Greek

Diploma, Gymnasium and Seminary, Breklum, Germany, 1908; M.A., Susquehanna University 1912; Ph.D., Vanderbilt University 1920; Graduate study, Peabody College for Teachers, Nashville, Tenn.

LENORA ALLISON

Assistant Professor of Commercial Education

A.B., Bowling Green College of Commerce 1930; M.Ed., University of Pittsburgh 1937.

ROBERT LOUIS AMY

Assistant Professor of Biology

B.S., Thiel College 1941; M.S., University of Pittsburgh 1949.



THOMAS ARMSTRONG, JR.

Assistant Professor of Business Administration

B.S., Wesleyan University 1928; M.B.A., Harvard University 1930; Ed.D., Temple University 1947.

FREDERICK C. BILLMAN

Instructor in Piano

Mus.B., Susquehanna University 1936; M.A., Columbia University 1941; Graduate study, Juilliard Institute 1946-47.

FRANCES M. BRUNKHORST

Instructor in Voice

Mus.B., Central College 1941; Special study, Kansas City Conservatory; Graduate study, Columbia University.



HOWARD E. DIMOTT

Instructor in Science

B.S., State Teachers College, Bloomsburg 1935; M.S., Bucknell University 1940.

KARL WILLIAM GUISINGER

Instructor in Psychology

A.B., University of Pennsylvania 1947; M.Ed., Temple University 1948; Graduate study, University of North Carolina 1949.

ALICE H. GAUQUI

Instructor in Public School Music Methods

B.S. in Music Education 1937, and M.A. 1940, Columbia University.

The Faculty



RUSSELL WIEDER GILBERT

Professor of German

A.B., Muhlenberg College 1927;
M.A., 1929 and Ph.D., 1943, Uni-
versity of Pennsylvania.

GROVER C. T. GRAHAM

*Associate Professor of Business Ad-
ministration*

A.B., William Jewell College 1909;
M.A., Brown University 1909-11;
Graduate study, Brown University.

RICHARD E. GROVE

Instructor in Physics

B.S., Randolph-Macon College 1947;
M.A., Johns Hopkins University
1950.



ELBERT DIXON HASKINS

Associate Professor of Voice

A.B., University of Michigan 1923;
M.A., New York University 1939;
Graduate study, Paris, France, New
York City, and Feagin School of
Dramatic Art, New York City.

NANCY BOWMAN HATZ

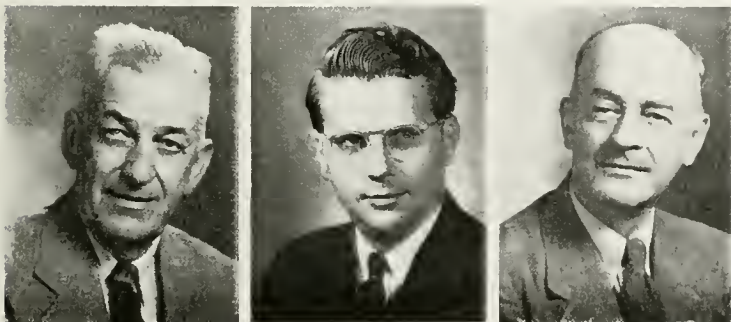
Instructor in Harmony

B.S. in Music Education, Lebanon
Valley College 1936; M.A., Colum-
bia University 1941.

RUSSELL CONDRAN HATZ

Assistant Professor of Violin

B.S. in Music Education, Lebanon
Valley College 1937; Graduate
study, Temple University, Juillard
Institute; M.A., Columbia Univer-
sity 1942.



JOHN JACOB HOUTZ

Associate Professor of Chemistry

A.B., Susquehanna University 1908;
M.S., Louisiana State University
1912; Sc.D., Carthage College 1933.

ROBERT TUNIS HOWLING

Instructor in English

A.B., Rutgers University 1942;
M.A., New York University 1948.

JOSEPH F. INGHAM

Lecturer in Business Law

LL.B., Dickinson Law School 1924.



The Faculty

AXEL R. KLEINSORG

Instructor in English

B.S., Temple University 1935; Graduate study, State University of Iowa and Temple University.

ATHALIA TABITHA KLINE

Assistant Professor of Romance Languages

A.B., Randolph Macon Woman's College 1922; M.A., Duke University 1925; Graduate study, University of Madrid 1949.

JOHN ROBERT LEACH

Instructor in Band Instruments

B.S. in Music Education, Susquehanna University 1947; A.M., Teachers College, Columbia University 1949; Residence requirements toward Ed.D., completed 1950.



PERCY M. LINEBAUGH

Professor of Pipe Organ

Mus.B., Lebanon Valley College 1917; Graduate study, New York University, Peabody Conservatory of Music.

BENJAMIN LOTZ

Assistant Professor of Religion and Philosophy

A.B., Wittenberg College 1923; B.D., Philadelphia Seminary 1928.

ROBERT F. W. MEADER

Instructor in Latin

A.B., Middlebury College 1929; M.A., University of Pennsylvania 1931; Graduate study, Harvard University.



MARY K. POTTIGER

Instructor in Piano

Mus.B., Susquehanna University 1925; Graduate study, New York University.

GEORGE MERRITT ROBISON

Associate Professor of Mathematics

A.B., 1916, M.A., 1917, and Ph.D., 1919, Cornell University

WILLIAM ADAM RUSS, JR.

Professor of History

A.B., Ohio Wesleyan 1924, M.A., University of Cincinnati 1926, Ph.D., University of Chicago 1933

The Faculty



JOHN K. SOULE

Instructor in Business Administration

B.S., Kent State University 1944;
M.B.A., University of Denver 1947.



RUTH M. SPARHAWK

Instructor in Physical Education

A.B., 1945, M.A., 1950, Kent State University; Graduate study, University of Akron.



AMOS ALONZO STAGG

Advisory Coach

A.B., Yale University 1888; Graduate of International Y. M. C. A. College, Springfield, Mass., 1891; M.P.E., International Y. M. C. A. College 1912; M.A., Oberlin College 1923; LL.D., College of Wooster, 1933; Graduate study, Yale University; Dr. of Pedagogy, Susquehanna University 1949.



AMOS ALONZO STAGG, JR.

Professor of Physical Education

Ph.B., 1923 and M.A., 1935, University of Chicago; M.A., Columbia University 1941; Graduate study, University of Chicago.



FREDERICK C. STEVENS

Assistant Professor of Sociology

A.B., University of Minnesota 1926; M.A., Columbia University 1932, Graduate study, Columbia University.



KENNETH B. WATERBURY

Associate Professor of Education

B.S., 1930, M.Ed., 1933, and Ed.D., 1939, Pennsylvania State College.



ARTHUR HERMAN WILSON

Professor of English

A.B., 1927, M.A., 1929, and Ph.D., 1931, University of Pennsylvania.



WALDEMAR ZAGARS

Assistant Professor of Economics

Dr. of Economics, University of Riga, Latvia, 1931.

Preceptress, Hassinger Hall



MRS. CAROL KLINE
B.A., Hood College 1917.

Dispensary



MISS BERTHA HEIN, R. N.

Library Staff

Librarian - - - - - Miss KOLPIN
Assistant Librarian - - - - - MRS. CHARLES COOK
Student Assistants—Ben Alter, Barbara Decker, Kermit Horning, Bernice Jochem, Carol Ann Luther, Bob Steffy.



Director of Public Relations



MR. DANIEL MACCUISH

General Alumni Secretary

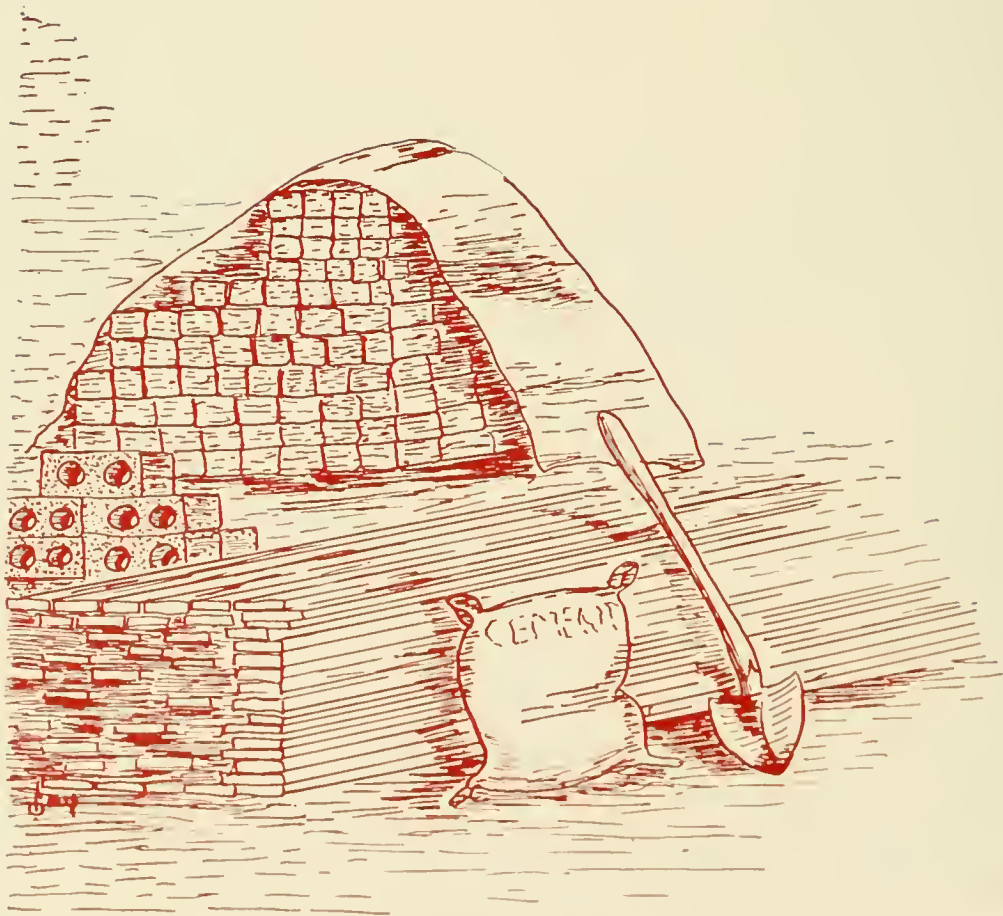


MISS RUTH MCCORKLE

Office of Admissions



Left to Right—Miss Rohrbach, Mrs. Marks, Miss Barry, Mrs. Stevens, Mrs. Cox.





Classes



S. ater—Slater.
Standing—Alter, Shaffer, Hains.

Senior Class

OFFICERS

<i>President</i>	- - - - -	HERBERT HAINS
<i>Vice President</i>	- - - - -	BEN ALTER
<i>Secretary</i>	- - - - -	MARY LOU SLATER
<i>Treasurer</i>	- - - - -	CHARLES SHAFFER

Now, as seniors, we are fast approaching the completion of our four years at Susquehanna. It is with some anticipation and sense of preparedness that we face our future and realize that our lives will depend solely on ourselves and how we will approach any problems that will undoubtedly face us. Yet, we are confident. We may take our place in society and contribute freely of our abilities and talents toward any task which we may undertake.

It is not, however, without a longing look back at the memories acquired in the four years of happiness and progress attained at our Alma Mater. These memories are everlasting.



Top row:

MARTHA ALBERT

Liberal Arts 20 S. Locust St., Myerstown, Pa.

Alpha Delta Pi 2, 3, 4, Treasurer 4; Student Christian Association 1, 2, 3, 4; Vice President Council 3; Women's Athletic Association 1, 2, 3, 4, President 4; Women's Student Council 4, Secretary-Treasurer 4; Hockey Team 1, 2, 3, 4; Basketball Team 1, 2, 3; Tau Kappa 3, 4, Secretary 4; Intramural Sports 1, 2, 3, 4; Who's Who 4.

BEN C. ALTER

Liberal Arts 520 Bear Valley Ave., Shamokin, Pa.

Phi Mu Delta 2, 3, 4, Secretary 3; Student Christian Association 1; Men's Student Council 4; Football Team 1; Intramural Sports 1, 2, 3, 4; "Macbeth" 3.

JANICE ARNER

Liberal Arts 320 W. Fifth St., East Liverpool, Ohio

Alpha Delta Pi 3, 4, Recording Secretary 4; Student Christian Association 3, 4; Biemic Society 4; Marion Junior College 1, 2.

LYN BAILEY

Business Administration 130 Morningside Drive, New York 27, N. Y.

Alpha Delta Pi 2, 3, 4, Vice President 4; Student Christian Association 1, 2, 3, 4; Business Society 1, 2, 3, 4; Biemic Society 4; Band 4; Vice President Council 4; President Seibert Hall 4; Women's Athletic Association 1, 2, 3, 4; Women's Judiciary Committee 4; *Susquehanna* Staff 2, 3; Panhellenic Council 4; LANTHORN 3; Intramural Sports 1, 2, 3, 4.

Bottom row:

FLORA BARNHART

Music Education Claysburg, Pa.

Sigma Alpha Iota 1, 2, 3, 4, Corresponding Secretary 4; Student Christian Association 1, 2, 3, 4; Symphony Orchestra 2, 3, 4; Band 2, 3, 4; *Susquehanna* Singers 2, 3; Chapel Choir Organist 4; Women's Athletic Association 1, 2, 3, 4; Women's Student Council 4; Basketball Team 1; Intramural Sports 1, 2, 3, 4; Inter-Sorority Council 3; Freshman Orientation 4.

FERN BAUMGARDNER

Liberal Arts 1702 Graham Ave., Windber, Pa.

Kappa Delta 2, 3, 4; Student Christian Association 1, 2, 3, 4; Biemic Society 1, 2, 3, 4; Women's Athletic Association 1, 2, 3, 4; Intramural Sports 1, 2, 3, 4; Tau Kappa 3, 4.

MARIE E. BEAM

Liberal Arts 2507 Graham Ave., Windber, Pa.

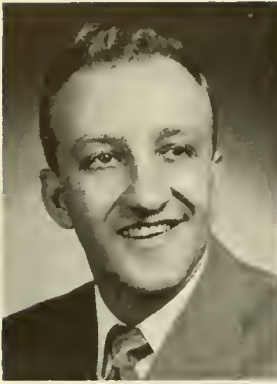
Alpha Delta Pi 1, 2, 3, 4, Reporter and Historian 4; Student Christian Association 1, 2, 3, 4; Biemic Society 1, 2, 3; Band 3, 4; Women's Athletic Association 1, 2, 3, 4; Women's Judiciary Committee 3, 4; *Susquehanna* Staff 2, 4; Intramural Sports 1, 2, 3, 4; Tau Kappa 4; Class Officer 3.

MARILYN BEERS

Business Administration 452 Beardsley Ave., Bloomfield, N. J.

Alpha Delta Pi 1, 2, 3, 4; Student Christian Association 1, 2, 3, 4; Business Society 1, 2, 3, 4; Biemic Society 1, 2, 4; Vice President Council 3; Women's Athletic Association 1, 2, 3, 4; Hockey Team 1, 2, 3, 4; Intramural Sports 1, 2, 3, 4; Panhellenic Council 3, 4, President 4; Tau Kappa 3, 4, President 4.





Top row:

ROBERT BITTING

Music Soloist 234 Valley St., Marysville, Pa.

Bond and Key 1, 2, 3, 4, Vice President 3; Student Christian Association 1, 2; Band; Susquehanna Singers 2, 3, 4; Chapel Choir 1, 2, 3, 4.

MARSH BOGAR

Liberal Arts 2936 Green St., Harrisburg, Pa.

Bond and Key 1, 2, 3, 4; *Susquehanna* Staff 3; Intramural Sports 1, 2, 3.

HERBERT BOLLINGER

Music Education 132 Fifth St., Northumberland, Pa.

Bond and Key 2, 3, 4; Band 1, 2, 3, 4; Susquehanna Singers 2, 3.

WILLIAM BOSCH

Liberal Arts 5290 73rd St., Maspeth, Long Island, N. Y.

Bond and Key 3, 4; Student Christian Association 3, 4; Biemic Society 3, 4; Intramural Sports 3, 4.

Bottom row:

WALTER BRANDAU

Liberal Arts 223 Catawissa Ave., Sunbury, Pa.

Theta Chi 1, 2, 3, 4; Student Christian Association 1, 2, 3, 4; Pi Gamma Mu 4; Phi Kappa 1, 2, 3, 4; Ciceroniani 4.

HAZEL JANE BROBST

Liberal Arts 1042 S. Front St., Sunbury, Pa.

Student Christian Association 1, 2; Ciceroniani 3, 4.

JACK A. BROWN

Pre-Medical 1050 Washington St., Indiana, Pa.

Phi Mu Delta 1, 2, 3, 4, Vice President 4; Student Christian Association 1; Biemic Society 1, 2, 3, 4; Intramural Sports 2, 3, 4.

JAMES CONRAD

Business Administration 200 Catawissa Ave., Sunbury, Pa.

Business Society 1, 2, 3, 4.





Top row:

NANCY COSGROVE

Liberal Arts 202 S. Maple St., Mt. Carmel, Pa.
Kappa Delta 3, 4; Student Christian Association 1, 2, 4; Biemic Society 1, 2, 3, 4; Secretary-Treasurer 4; Women's Athletic Association 2, 3, 4; Ciceroniani 4; Intramural Sports 1, 2, 3, 4.

LEWIS U. DOVE, JR.

Music Education 123 East Fourth St., Bloomsburg, Pa.
Symphony Orchestra 2, 3, 4; Band 1, 2, 3, 4, Student Director 3; Susquehanna Singers 2, 3; Chapel Choir 1, 2, 3.

JOSEPH P. DRISCOLL

Liberal Arts 29 S. Market St., Selinsgrove, Pa.
Phi Mu Delta 2, 3, 4; Men's Student Council 3, 4.

JOHN L. ECCKER

Music Education 94 Prospect St., Nanticoke, Pa.
Phi Mu Delta 1, 2, 3, 4; Symphony Orchestra 1, 2, 3, 4; Band 1, 2, 3, 4; Susquehanna Singers 2, 3; Chapel Choir 2, 3.

Bottom row:

DANIEL ERDMAN

Business Administration 123 North Eleventh St., Sunbury, Pa.
Student Christian Association 1, 2, 3, 4; Business Society 2, 3, 4.

MARIANNE FAGUE

Liberal Arts 443 S. Queen St., Lancaster, Pa.
Alpha Delta Pi 1, 2, 3, 4; Student Christian Association 1, 2, 3, 4; Biemic Society 1, 4; Susquehanna Players 1; Vice President Council 3; Women's Athletic Association 2, 3, 4; Intramural Sports 2, 3, 4; Freshman Orientation 3, 4; Freshman Counselor 3.

BURDELL S. FAUST

Music Education 511 Second St., Weatherly, Pa.
Phi Mu Delta 1, 2, 3, 4; Symphony Orchestra 1, 2, 3; Band 1, 2, 3, 4; Susquehanna Singers 2, 3; Chapel Choir 2, 3, 4.

ALTHEA FERGUSON

Commercial Education 40 S. Main St., Millerstown, Pa.
Kappa Delta 1, 2, 3, 4; Student Christian Association 1, 2, 3, 4; Business Society 1, 2, 3, 4; Women's Athletic Association 1, 2, 3, 4; Hockey Team 2; Basketball Team 1, 2, 3; Intramural Sports 1, 2, 3, 4; Tau Kappa 3, 4, Vice President 4.





Top row:

WILLIAM D. FISHER

Business Administration R. D. 2, Selinsgrove, Pa.
Business Society 3, 4; Ciceroniani 2, 3, 4, President 2; Intramural Sports 2, 3.

SUSAN FOLTZ

Liberal Arts 816 Broad St., Collingdale, Pa.
Alpha Delta Pi 1, 2, 3, 4, President 4; Student Christian Association 1, 2, 3, 4; Biemic Society 1, 2; Women's Athletic Association 1, 2, 3, 4; Women's Student Council 4; Women's Judiciary Committee 4; *Susquehanna* Staff 3, 4; Intramural Sports 1, 2, 3, 4; Panhellenic Council 4; Freshman Orientation 3, 4; Freshman Counselor 3.

WILLIAM J. FOSTER, JR.

Liberal Arts R. D. 2, Bristol, Newportville, Pa.
Phi Mu Delta 2, 3, 4; Student Christian Association 1, 2, 3, 4; Biemic Society 3, 4; *Susquehanna* Players 1, 2, President 2; Football Team 1, 2; LANTHORN, Editor-in-Chief 3; Alpha Psi Omega 2, 3, 4; "Icebound" 2, "Mary of Scotland" 2, "Macbeth" 3, "I Remember Mama" 3, "Taming of the Shrew" 4; Who's Who 4.

ALICE M. GREGER

Music Education 117 Kathmere Road, Havertown, Pa.
Sigma Alpha Iota 1, 2, 3, 4, President 4; Student Christian Association 1, 2, 3, 4; Band 2, 3; *Susquehanna* Singers 2, 3; Women's Athletic Association 1, 2, 3, 4; Vice President Council 2, 3; Hockey Team 2, 3; Intramural Sports 1, 2, 3, 4; Panhellenic Council 4; Freshman Orientation 3, 4; Freshman Counselor 3.

Bottom row:

HERBERT R. HAINS, JR.

Business Administration 172 N. 17th St., East Orange, N. J.
Bond and Key 1, 2, 3, 4, President 2; Student Christian Association 1, 2, 3; Business Society 1, 2, 3, 4; *Susquehanna* Staff 3, 4, Business Manager 4; Pi Gamma Mu 4; Intramural Sports 2; Fraternity Senate 2; LANTHORN, Business Manager 3; President of Senior Class.

JACOB B. HARDER, JR.

Business Administration 1604 Letchworth Road, Camp Hill, Pa.
Bond and Key 1, 2, 3, 4; Student Christian Association 1, 2, 3, 4; Business Society 1, 2, 4; Biemic Society 4; Men's Student Council 3, 4, President 4; *Susquehanna* Staff 2, 3, 4; Intramural Sports 1, 2; Social Committee 4; Who's Who 4.

ROBERT HENNINGER

Business Administration 91 King St., Northumberland, Pa.
Student Christian Association 4; Business Society 1, 2, 3; Basketball Team 1, 3; Intramural Sports 1, 2, 3.

JEAN HILL

Music Education 350 Awl St., Sonbury, Pa.
Sigma Alpha Iota 1, 2, 3, 4; Student Christian Association 1, 2, 4; Band 2, 3, 4; *Susquehanna* Singers 2, 3; Chapel Choir 1, 2, 3; Women's Student Council 4.





Top row:

PAUL JONES

Liberal Arts 12 North Eighth St., Shamokin, Pa.
Theta Chi, President 4; Theta Chi 1, 2, 3, 4; Susquehanna
Players 3, 4.

JUNE KLINGLER

Liberal Arts Winfield, Pa.
Kappa Delta 2, 3, 4; Student Christian Association 1, 2;
Biemic Society 4; Intramural Sports 4; President of Women
Day Students 4.

JOHN B. LAMADE

Liberal Arts 1608 James Road, Williamsport, Pa.
Theta Chi 1, 2, 3, 4; Student Christian Association 1, 2, 3, 4;
Biemic Society 1, 2, 3, 4.

JACK C. LARSEN

Business Administration 41 93rd St., Brooklyn, N. Y.
Bond and Key 2, 3, 4; Student Christian Association 1, 2, 3,
4; Business Society 2, 3, 4; LANTHORN 3.

Bottom row:

MARY ELIZABETH LEHMAN

Music Education R. D. 2, Newville, Pa.
Sigma Alpha Iota 1, 2, 3, 4, Treasurer 3; Student Christian
Association 1, 2, 3, 4; Symphony Orchestra 2; Band 2;
Susquehanna Singers 2, 3; Chapel Choir 1, 2, 3; Freshman
Orientation 3, 4; Freshman Counselor 3.

C. JOY McCAHAN

Music Education Port Royal, Pa.
Sigma Alpha Iota 1, 2, 3, 4, Chaplain 4; Student Christian
Association 1, 2, 3, 4; Symphony Orchestra 2, 3, 4; Band
2, 3, 4; Susquehanna Singers 2, 3; Panhellenic Council 4.

JEAN McDONALD

Liberal Arts Box 634, Marion, Va.
Alpha Delta Pi 3, 4, Corresponding Secretary 4; Student
Christian Association 3, 4; *Susquehanna* Staff 3; Marion
Junior College 1, 2.

AUDREY MacNEIL

Liberal Arts 119 Water St., Perth Amboy, N. J.
Kappa Delta 1, 2, 3, 4; Student Christian Association 1, 2, 3,
4; Biemic Society 1, 2, 3, 4; Vice President Council 1; Wo-
men's Athletic Association 1, 2, 3, 4; Intramural Sports 1, 2,
3, 4; Tau Kappa 3, 4; Freshman Orientation 2, 3.





Top row:

GARDINER MAREK

Business Administration

25 East Ave., Atlantic Highlands, N. J.

Phi Mu Delta 1, 2, 3, 4; Student Christian Association 1, 2, 3, 4; Business Society 1, 2, 3, 4; Football Team 1, 2, 3, 4; Intramural Sports 1, 2, 3, 4.

MARTHA J. MARTIN

Commercial Education

27 S. Third St., Shamokin, Pa.

Kappa Delta 2, 3, 4, Recording Secretary 4; Student Christian Association 1, 2, 3, 4; Business Society 1, 2, 3, 4, Secretary 3; Chapel Choir 4; Vice President Council 3; Women's Athletic Association 1, 2, 3, 4, Recording Secretary 3; Women's Student Council 3, 4, President 4; Women's Judiciary Committee 3, 4; Intramural Sports 1, 2, 3, 4; LANTHORN 3; Freshman Orientation 3, 4; Freshman Counselor 3; Who's Who 4.

SALLY MITCHELL

Music Education

50 Shoemaker St., Forty Fort, Pa.

Sigma Alpha Iota 1, 2, 3, 4, Recording Secretary 4; Student Christian Association 1, 2; Susquehanna Players 3, 4; Symphony Orchestra 1, 3; Band 1, 2, 3, 4; Susquehanna Singers 2, 3; Vice President Council 3; Alpha Psi Omega 4; Freshman Orientation 3, 4, Chairman 4; "Here Comes Mr. Jordan," "Our Hearts Were Young and Gay"; Freshman Counselor 3; Who's Who 4.

GERALD MOORHEAD

Pre-Theological

R. D. 1, Milton, Pa.

Theta Chi 1, 2, 3, 4, Vice President 4; Student Christian Association 1, 2, 3, 4, Vice President 4; Men's Student Council 3, 4, Treasurer 4; Susquehanna Staff 4; Pi Gamma Mu 3, 4, President 4; Phi Kappa 1, 2, 3, Vice President 3; Basketball Manager 2, 3, 4; Intramural Sports 1, 2, 3, 4.

Bottom row:

ROBERT MOYER

Liberal Arts

R. D. 1, Selinsgrove, Pa.

ROBERT PATTERSON

Business Administration

324 Hazel St., Tamaqua, Pa.

Phi Mu Delta 2, 3, 4; Student Christian Association 1, 2, 3, 4; Business Society 1, 2, 3, 4; Susquehanna Players 3; Susquehanna Staff 4; Intramural Sports 1, 2, 3, 4; LANTHORN 3; "Patsy," "Macbeth."

ROLAND ROSETTI

Business Administration

Box 47, South Canaan, Pa.

Theta Chi 2, 3, 4; Student Christian Association 1; Business Society 1, 2, 3, 4; Susquehanna Players 2, 3, 4; Football Team 1, 2, 3, 4; Intramural Sports 1, 2, 3, 4; "Patsy," "Macbeth," "Taming of the Shrew."

CHARLES SHAFFER

Liberal Arts

120 Independence St., Selinsgrove, Pa.

Theta Chi 1, 2, 3, 4; Student Christian Association 1, 3; Biemic Society 1, 3.





Top row:

MERRILL SHAFER

Liberal Arts Grier City, Barnesville, Pa.
Theta Chi 1, 2, 3, 4; Student Christian Association 1, 4;
Biemic Society 1, 3; Intramural Sports 1, 2, 3, 4.

NELDA SHAFER

Liberal Arts Grier City, Barnesville, Pa.
Kappa Delta 1, 2, 3, 4, Treasurer 4; Student Christian Association 1, 2, 3, 4; Biemic Society 1, 3, 4; Band 3, 4; Vice President Council 3, 4; Women's Athletic Association 2, 3, 4; *Susquehanna* Staff 1; Pi Gamma Mu 4; Intramural Sports 2, 3, 4; Freshman Orientation 3, 4; Freshman Counselor 3.

DONALD SHOEMAKER

Business Administration 217 Gilliland Place, Bellevue, Pittsburgh 2, Pa.
Phi Mu Delta 1, 2, 3, 4, President 4; Student Christian Association 1, 2, 3, 4; Business Society 1, 2, 3, 4; *Susquehanna* Players 3, 4; Basketball Team 1; Football Team 1, 2; Intramural Sports 1, 2, 3, 4; Fraternity Senate 4; Who's Who 4.

MARY LOU SLATER

Liberal Arts 198 Isabella Ave., Irvington, N. Y.
Kappa Delta 1, 2, 3, 4; Student Christian Association 1, 2, 3, 4; Biemic Society 3, 4; *Susquehanna* Players 2, 3, 4; Women's Athletic Association 1, 2, 3, 4; Women's Student Council 4; *Susquehanna* Staff 2; Ciceroniani 4; Intramural Sports 1, 2, 3, 4; Alpha Psi Omega 4; "The Patsy."

Bottom row:

WILLIAM SMELTZ

Pre-Theological R. D. 1, Northumberland, Pa.
Student Christian Association 1, 2, 3, 4, President 4; *Susquehanna* Players 3, 4; Pi Gamma Mu 4; Phi Kappa 1, 2, 3, 4, President 3; Ciceroniani 3, 4; LANTHORN 2, 3; Alpha Psi Omega 4; Who's Who 4.

HAROLD SMITH

Liberal Arts Herndon, Pa.

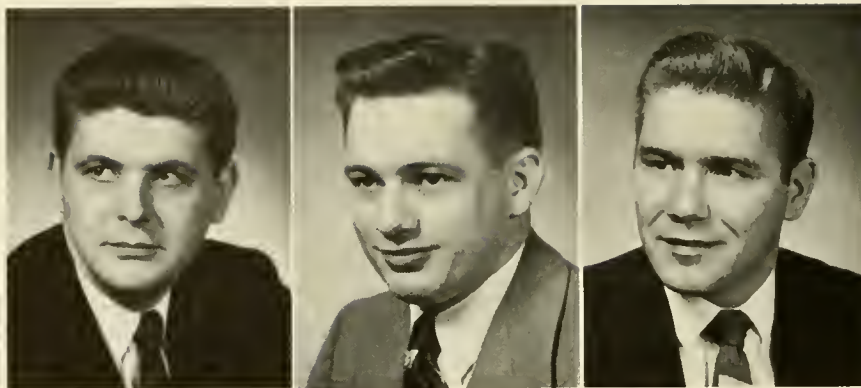
THOMAS O. STALLER

Business Administration 242 E. Seventh St., Mt. Carmel, Pa.
Bond and Key 1, 2, 3, 4, Secretary 3, President 4; Student Christian Association 1, 2, 3, 4; Business Society 1, 2, 3, 4; Biemic Society 4; *Susquehanna* Staff 2, 3, 4, Editor 4; Pi Gamma Mu 4; Fraternity Senate 4.

JOHN R. STEIGER

Business Administration Newfoundland, Wayne County, Pa.
Bond and Key 3, 4, Secretary 4; Student Christian Association 3, 4; Business Society 3, 4, Vice President 4; *Susquehanna* Staff 3, 4, Managing Editor 4; Basketball Team 4; Intramural Sports 3, 4; LANTHORN 3; Keystone Junior College 1, 2.





Top row:

J. DAVID STERRETT

Liberal Arts 744 Braxton Road, Ridley Park, Pa.

Bond and Key 1, 2, 3, 4; Student Christian Association 1, 2, 3, 4; Biemic Society 1, 2, 3, 4, President 3; Susquehanna Players 2, 3, 4; Symphony Orchestra 1, 2; Band 1, 2, 3, 4; Susquehanna Singers 3; Chapel Choir 4; *Susquebanna* Staff 2, 3, 4; Basketball Team 1; Intramural Sports 1, 2, 3, 4; LANTHORN Photographer 3; "I Remember Mama," "Taming of the Shrew."

RICHARD STETLER

Liberal Arts 417 Orange St., Mifflintown, Pa.

Theta Chi 1, 2, 3, 4; Student Christian Association 1, 2, 3, 4; Intramural Sports 2, 3, 4.

CHARLES SULLIVAN

Business Administration

Theta Chi 3, 4; Student Christian Association; Business Society; Tennis Team.

Bottom row:

C. WILLARD TAYLOR

Pre-Dental Elmhurst, Lackawanna County, Pa.

Theta Chi 1, 2, 3, 4, Secretary 4; Student Christian Association 1, 2, 3, 4; Biemic Society 1, 2, 3, Secretary and Treasurer 3; Band 1, 2, 3, 4; *Susquebanna* Staff 1, 2, 3, 4.

RAY TYLER

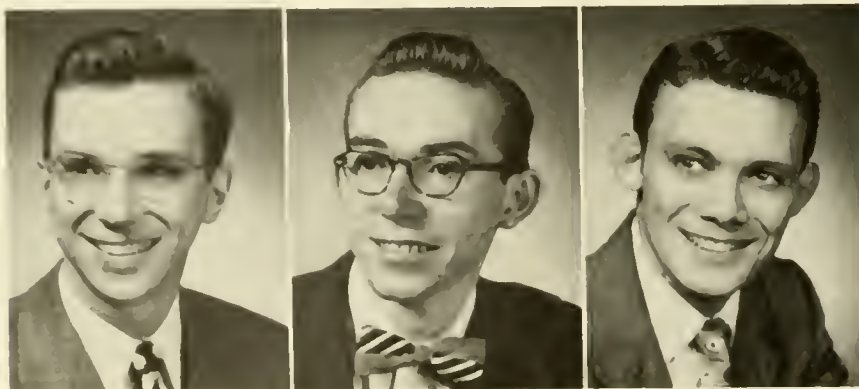
Music Education Hummels Wharf, Pa.

Bond and Key 3, 4; Student Christian Association 4; Symphony Orchestra 1, 2, 3, 4; Band 1, 2, 3, 4; Susquehanna Singers 2, 3.

C. RICHARD ULSH

Business Administration Port Royal, Pa.

Phi Mu Delta 2, 3, 4; Student Christian Association 3; Business Society 1, 2, 3; Intramural Sports 1, 2.





Top row:

RICHARD VALERA

Liberal Arts

401 Melrose St., Keiser, Pa.

Theta Chi 3, 4; "Here Comes Mr. Jordan."

Bottom row:

JOHN E. WALKER, JR.

Business Administration

336 Queen St., Northumberland, Pa.

Bond and Key; Student Christian Association; Business Society; Biemic Society.

JEAN VanVOORHIS

Liberal Arts

West Bloomfield Road, Pittsford, N. Y.

Kappa Delta 2, 3, 4; Student Christian Association 1, 2, 3, 4; Biemic Society 1, 2, 3, 4; Susquehanna Players; Vice President Council 2; Women's Athletic Association 1, 2, 3, 4; Hockey Team 3, 4; Ciceroniani 4; Intramural Sports 1, 2, 3, 4; Tau Kappa 4.

EMIL WEILER, JR.

Business Administration

354 Liverpool Ave., Egg Harbor City, N. J.

Theta Chi 1, 2, 3, 4; Student Christian Association 1, 2, 3, 4; Business Society 1, 2, 3, 4; Susquehanna Players 1, 2; Men's Student Council 2, 3, 4, Secretary 4; Football Team 1, 2; Intramural Sports 1, 2, 3, 4; "Queen's Husband," "Mary Queen of Scotland."

WALTER WAGNER

Business Administration

369 W. Fifth St., Lewistown, Pa.

Bond and Key 1, 2, 3, 4; Student Christian Association 1, 2; Business Society 1, 2, 3; Basketball Team 1, 2, 3; Intramural Sports 1, 2, 3.

CARL WELLER

Liberal Arts

60 Melvina St., Montgomery, Pa.

Biemic Society 3, 4.





Top row:

J. NORMAN WHITE

Business Administration 222 N. Hyde Park Ave., Scranton, Pa.

Bond and Key 3, 4; Business Society 3, 4; Intramural Sports 3, 4; Keystone Junior College 1, 2.

FANCHER E. WOLFE

Business Administration 114 Bishop St., Beckley, W. Va.

Bond and Key 1, 2, 3, 4; Student Christian Association 1, 2; Business Society 3, 4; Biemic Society 1, 2, 3, 4, Vice President 2, President 4; *Susquehanna* Staff 1, 2, 3; Intramural Sports 1, 2; Cheerleader 3, 4, Captain 4.

WALTER WOLSTEN

Business Administration 36½ Nelson Place, Newark, N. J.

Bond and Key 1, 2, 3, 4; Business Society 1; Football Team 1, 2, 3, 4; Intramural Sports 1, 2, 3, 4.

Bottom row:

VIRGINIA LEE YINGER

Liberal Arts 815 Pontiac Ave., Baltimore 25, Md.

Student Christian Association 2, 3, 4; Biemic Society 4; *Susquehanna* Players 2, 3, 4; *Susquehanna* Singers 4; Women's Athletic Association 2, 3, 4; *Susquehanna* Staff 4; Basketball Team 2; Intramural Sports 2, 3, 4; "Mary Queen of Scotland," "Taming of the Shrew"; Phi Kappa.

ALICE YONGHAUS

Business Administration

701 Pompton Turnpike, Pompton Plains, N. J.

Kappa Delta 1, 2, 3, 4, Vice President 3, President 4; Student Christian Association 1, 2, 3, 4; Business Society 2, 3, 4; Biemic Society 1; Band 4; Vice President Council 1, 3; Women's Athletic Association 1, 2, 3, 4, Treasurer 4; Intramural Sports 1, 2, 3, 4; Inter-Sorority Council 3, 4; LANTHORN 2, 3, Photography Editor 3; Freshman Orientation 3, 4; Freshman Counselor 3; Who's Who 4.

SHIRLEY A. YOUNG

Liberal Arts

35 S. Tenth St., Quakertown, Pa.

Alpha Delta Pi 2, 3, 4, Guard 4; Student Christian Association 1, 2, 4; Biemic Society 1, 2, 3, 4; Band 1, 2, 3, 4; Vice President Council 3; Women's Athletic Association 1, 2, 3, 4; Basketball Team 2; Intramural Sports 1, 2, 3, 4; LANTHORN 4, Art Editor; Tau Kappa 4, Treasurer 4; Freshman Orientation 3, 4; Freshman Counselor 3.



Who's Who



MARTHA ALBERT
Myerstown, Pa.



WILLIAM FOSTER
Newportville, Pa.



JACOB HARDER
Camp Hill, Pa.



MARTHA MARTIN
Shamokin, Pa.



SALLY MITCHELL
Forty Fort, Pa.



DONALD SHOEMAKER
Pittsburgh, Pa.



WILLIAM SMELTZ
Northumberland, Pa.



ALICE YONGHAUS
Pompton Plains, N. J.



Seated—Roslander, Gordon.
Standing—Palkovich, Pitello.

Junior Class

OFFICERS

<i>President</i>	- - - - -	ROBERT PITELLO
<i>Vice President</i>	- - - - -	EDWARD PALKOVICH
<i>Secretary</i>	- - - - -	RUTH ROSLANDER
<i>Treasurer</i>	- - - - -	LOIS GORDON

Each year the members of the class of '52 have proven themselves worthy of becoming future graduates from Susquehanna University.

During the freshman year the class of '51 was overrun in the traditional Homecoming Freshman-Sophomore Football Game. The freshmen were victorious. The Sophomore Hop with its ceiling of dancing snow flakes was the talk of the campus for weeks.

During this year the LANTHORN and the unforgettable Junior Prom with its novel ideas proved to be further milestones in our Class Activities "Record Book."

We extend best wishes to the present senior class and look forward with anticipation to next year's climax of activities for the class of '52.

BETTY P. ALBERT
Port Trevorton, Pa.
Liberal Arts

Student Christian Association
1, 2, 3.

JOANN ALEXANDER
201 Maple Avenue
Wenonah, N. J.
Music Education

Student Christian Association
1, 3; Susquehanna Singers 2,
3; Chapel Choir 2, 3.

PEGGY ANN ASTON
35 North Maple Street
Mount Carmel, Pa.
Music Education

Student Christian Association
1, 2, 3; Biemic Society 3;
Susquehanna Singers 2, 3;
Cheerleader 1, 2, 3, Co-Cap-
tain 3.

ELINOR T. AURAND
126 Spruce Street
Sunbury, Pa.
Liberal Arts

Women Day Students Or-
ganization 3.



ELMER BAUMGARDNER
1702 Graham Avenue
Windber, Pa.
Business Administration

Student Christian Association
2, 3; Business Society 1, 2;
Theta Chi 1, 2, 3.

WILLIAM BECKWITH
721 Eighth Street
Oakmont, Pa.
Music Education

Bond and Key 1, 2, 3; Sym-
phony Orchestra 1, 2, 3;
Band 1, 2, 3; Susquehanna
Singers 2, 3; Chapel Choir 2,
3; Intramural Sports 1.

DONALD BERNINGER
R. D. 2
Bloomsburg, Pa.
Music Education

Student Christian Association
2, 3; Theta Chi 1, 2, 3;
Symphony Orchestra 1, 2, 3;
Band 1, 2, 3; Susquehanna
Singers 2, 3; Chapel Choir 3;
Intramural Sports 1, 2, 3;
Baseball Team 1, 2, 3.

ROBERT BOGDANFFY
155 Washington Avenue
Clifton, N. J.
Business Administration

Student Christian Association
1, 2, 3; Business Society 1, 2,
3; Phi Mu Delta 2, 3; Sus-
quehanna Players 3; Football
Team 1, 2, 3; Intramural
Sports 1, 2, 3; "The Taming
of the Shrew" 3.

CHARLES BOMBOY
711 Catawissa Avenue
Sunbury, Pa.

Liberal Arts

Student Christian Association
1, 2, 3; Theta Chi 1, 2, 3;
Phi Kappa 2, 3.

VINCENT E. BOYER
200 Green Street
Mifflinburg, Pa.

Liberal Arts

Student Christian Association
2, 3; Phi Mu Delta 2, 3;
Basketball Team 2, 3; Intra-
mural Sports 2, 3.

RAYMOND CALDWELL
R. D. 2
Selinsgrove, Pa.

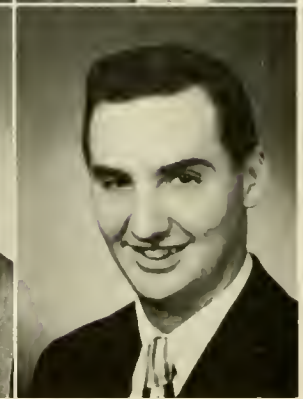
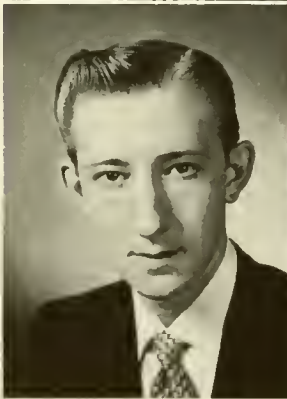
Business Administration

Student Christian Association
1, 2; Biemic Society 2; Bond
and Key 2, 3; Cicconiani
2, 3.

HAROLD CARR
429 North Third Street
Bellwood, Pa.

Music Education

Student Christian Association
2; Bond and Key 1, 2, 3;
Band 1, 2, 3; Susquehanna
Singers 1, 2, 3; Chapel Choir
1, 2, 3; Football Team 1, 2,
3; Intramural Sports 1, 2, 3.



JAMES CHADWICK
3607 Pacific Avenue
Wildwood, N. J.

Liberal Arts

Student Christian Association
1, 2; Biemic Society 2; Phi
Mu Delta 1, 2, 3; Intramural
Sports 1, 2, 3.

MAXINI CHAMBERS
207 Market Street
Mifflinburg, Pa.

Liberal Arts

Student Christian Association
1, 2, 3; Biemic Society 1, 2,
3; Kappa Delta 1, 2, 3,
Pledge President 1, Chapter
Editor 3; W. A. A. 1, 2, 3;
W. A. A. Board 2, 3, Re-
cording Secretary 3; Hockey
Team 1; Basketball Team 1,
2, 3; Intramural Sports 1, 2,
3; LANTHORN 2, 3; Tau
Kappa 2, 3; Freshman Coun-
selor 3; May Day 1, 2; Fire
Captain 3.

FRANK V. COMPTON
206 Philadelphia Avenue
Egg Harbor City, N. J.

Business Administration

Student Christian Association
1, 2, 3; Business Society 2,
3; Phi Mu Delta 2, 3; Intra-
mural Sports 1, 2, 3; Cheer-
leader 1, 2.

ROY H. COPI
7403 Sommers Road
Philadelphia, Pa.

Business Administration

Student Christian Association
1, 2, 3; Business Society 1, 2,
3; Bond and Key 1, 2, 3;
Basketball Team 1, 2, 3; In-
tramural Sports 1, 2, 3.

PATRICIA CRISMAN

Summerhill, Pa.

Liberal Arts

Student Christian Association 1; Biemic Society 1, 3; Alpha Delta Pi 1, 2, 3; Chapel Choir 2; W. A. A. 1, 2, 3; Basketball Team 1; Intramural Sports 1, 2, 3; LANTHORN 3; Literary Editor 3; May Day 1.

JOHN DIEHL

R. D. 1

Mifflinburg, Pa.

Liberal Arts

Student Christian Association 1; Biemic Society 2, 3, Vice President 3; Bond and Key 1, 2, 3; Intramural Sports 1, 2, 3; Susquehanna Players 2; "Macbeth" 2.

VOYLET DILTZ

627 Locust Street

Wrightsville, Pa.

Music Education

Student Christian Association 1, 2, 3; Sigma Alpha Iota 1, 2, 3, Vice President 3; Symphony Orchestra 2, 3; Susquehanna Singers 2, 3; Vice President Council 3; Women's Student Council 1, 2; Inter-Sorority Council 3; Trinity Choir 3; Freshman Counselor 3; Orientation 2, 3.

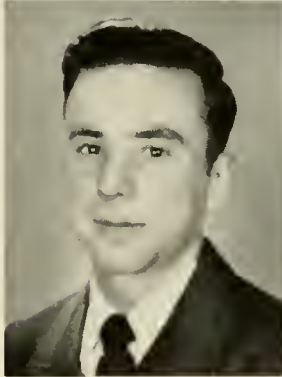
BARBARA EASTON

558 Glenwood Avenue

Johnstown, Pa.

Music Education

Student Christian Association 1, 2, 3; Sigma Alpha Iota 2, 3; Susquehanna Players 2, 3; Susquehanna Singers 2, 3; Chapel Choir 2; W. A. A. 1, 2, 3; Basketball Team 2; Intramural Sports 1, 2, 3; "Our Hearts Were Young and Gay" 2.



R. FENSTERMACHER

1062 Masser Street
Sunbury, Pa.

Business Administration

Student Christian Association 2, 3; Business Society 3; Theta Chi 1, 2, 3; Intramural Sports 1, 2, 3.

G. FENSTERMACHER

101 Front Street
Northumberland, Pa.

Liberal Arts

Bond and Key 1, 2, 3; Football Team 1, 2, 3; Baseball Team 1, 2, 3.

THOMAS FITZPATRICK

249 Walnut Street
Sunbury, Pa.

Commercial Education

Football Team 1.

JOSEPH FLEMING

52 Highfield Road
Bloomfield, N. J.

Business Administration

Business Society 1, 3; Phi Mu Delta 2, 3; Football Team Manager 2, 3; Intramural Sports 1, 2, 3.

GENNARO J. FLURI
879 Alter Street
Hazleton, Pa.
Business Administration

Phi Mu Delta 3; Football Team 3.

DALE A. FULMER
R. D. 1
Danville, Pa.
Music Education

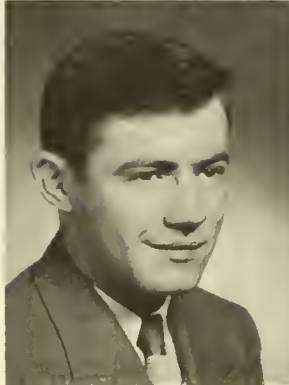
Student Christian Association 3; Theta Chi 1, 2, 3; Band 1, 2, 3; Susquehanna Singers 2, 3; Intramural Sports 1, 2, 3; Baseball Team 1, 3.

RICHARD FYLER
R. D. 2
Millerstown, Pa.
Music Education

Student Christian Association 1, 2, 3; Theta Chi 1, 2, 3; Band 2; Susquehanna Singers 2, 3; Chapel Choir 2, 3.

C. DALE GATMAN
North Market Street
Elysburg, Pa.
Music Education

Student Christian Association 2, 3; Theta Chi 1, 2, 3, Secretary 3; Band 1, 2, 3; Susquehanna Singers 2, 3; Chapel Choir 3; Intramural Sports 1; CHFY Octette 2.



FRANCIS GLOSTER
Iureka
Bucks County, Pa.
Music Education

Student Christian Association 1; Theta Chi 1, 2, 3; Symphony Orchestra 1, 2, 3; Band 1, 2, 3; Susquehanna Singers 2, 3; Chapel Choir 1; Intramural Sports 1, 2, 3.

MARY GLOSTER
604 Tomkins Avenue
Mamaroneck, N. Y.
Medical Secretarial

Student Christian Association 1, 2, 3; Business Society 1, 2, 3; Kappa Delta 1, 2, 3; Chaplain 3; W. A. A. 1, 2, 3; Intramural Sports 1, 2.

LOIS GORDON
344 Washington Avenue
Union, N. J.
Commercial Education

Student Christian Association 1, 3; Business Society 1, 2, 3; Susquehanna Players 2, 3; W. A. A. 1, 2, 3; W. A. A. Board 2, 3; Hockey Team 1; Basketball Team 1; Intramural Sports 1, 2, 3; Tau Kappa 2, 3; "Our Hearts Were Young and Gay" 2.

E. ANN GUISE
R. D. 1
Biglerville, Pa.
Music Education

Student Christian Association 1, 2, 3; Band 1, 2, 3; Susquehanna Singers 2, 3; W. A. A. 1, 2, 3; Basketball Team 1, 2, 3; Intramural Sports 1, 2, 3; Freshman Counselor 3; Fire Marshal 1, 3; Trinity Choir 1, 2, 3; Orientation 3.

JAMES HAZLETT

Box 302
Chicora, Pa.

*Commercial Education
and Math*

Student Christian Association
1, 2, 3; Phi Mu Delta 2, 3;
Basketball Team 1, 2, 3;
Football Team 1, 2, 3; Base-
ball Team 1, 2, 3.

PATRICIA HEATHCOTE

220 East Cottage Place
York, Pa.

Business Administration

Student Christian Association
1, 2, 3; Business Society 1,
2, 3; Alpha Delta Pi 2, 3;
Vice President Council 1;
W. A. A. 1, 2, 3; W. A. A.
Board 2, 3; Basketball Team
1, 2, 3; Intramural Sports 1,
2, 3; Tau Kappa 2, 3; Fire
Captain 2; May Day 2.

LESTER HEILMAN

514 Rural Avenue
Williamsport, Pa.

Liberal Arts

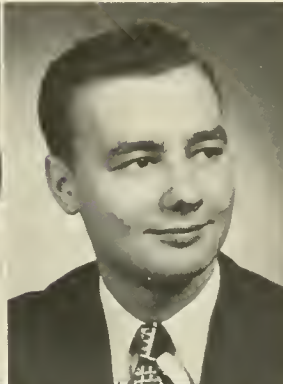
Student Christian Association
1; Bond and Key 1, 2, 3,
Vice President 3, Assistant
Steward 3; *Susquehanna*
Staff 3; Advertising Manag-
er 3; Basketball Manager 2;
Baseball Manager 1, 2.

C. RICHARD HERR

1021 West Arch Street
Shamokin, Pa.

Commercial Education

Bond and Key 1, 2, 3; Foot-
ball Team 1, 2, 3.



JOHN HOROSCHAK

133 East Columbia Avenue
Atlas, Pa.

Pre-Medical

Student Christian Association
1, 2, 3; Biemic Society 3;
Phi Mu Delta 2, 3; Sergeant-
at-Arms 3; Intramural
Sports 1, 2, 3; Susquehanna
Players 2; "Maebeth" 2.

BERNICE JOCHEM

215 Paterson Avenue
East Rutherford, N. J.

Liberal Arts

Student Christian Association
1, 2, 3; Biemic Society 3;
Kappa Delta 1, 2, 3; Sus-
quehanna Singers 3; Vice
President Council 2; W. A.
A. 2, 3; Intramural Sports
1, 2, 3; May Day 2.

ALBERT JONES

811 Fairview Road
Swarthmore, Pa.

Liberal Arts

Muhlenberg College 1; The-
ta Chi 2, 3; Basketball Team
2, 3; Football Team 2, 3.

RICHARD K. JONES

121 West Elm Street
Hazleton, Pa.

Business Administration

Business Society 1, 2, 3; Phi
Mu Delta 1, 2, 3. Comp-
troller 2, 3; Susquehanna
Players 2; Band 1, 2, 3; Bas-
ketball Team 1, 2, 3; Intra-
mural Sports 1, 2, 3; "Mary
of Scotland," "I Remember
Mama," "Our Hearts Were
Young and Gay."

WM. GORDON JOYCE
R. D. 1
Bridgeton, N. J.

Liberal Arts

Student Christian Association 1, 2, 3; Class Representative 2, 3; Phi Mu Delta 1, 2, 3; Social Chairman 2; Chaplain 3; Chapter Editor 3; Phi Kappa 1, 2, 3; Secretary 2; Susquehanna Players 2, 3; "Macbeth" 2; "Taming of the Shrew" 3; Class Treasurer 2.

KENNETH LENKER
443 Ninth Street
Sunbury, Pa.

Business Administration

Business Society 2, 3; Football Team 1, 2, 3; Intramural Sports 1, 2; Baseball Team 2.

FAYE LEWIS
30 East Ruddle Street
Coaldale, Pa.

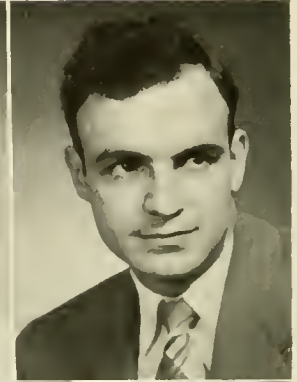
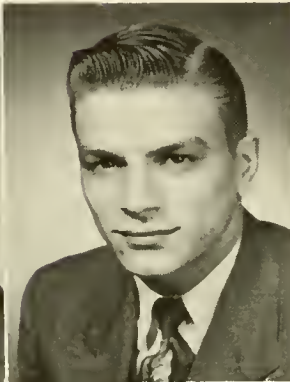
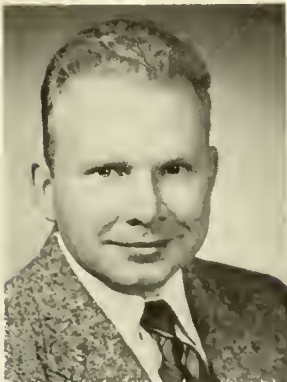
Liberal Arts

Student Christian Association 1, 2, 3; Secretary 3; Biemic Society 1, 3; Alpha Delta Pi 1, 2, 3; Vice President Council 1; W. A. A. 1, 2, 3; W. A. A. Board 2, 3; Basketball Team 1; Intramural Sports 1, 2, 3; LANTHORN Editor 3; Tau Kappa 3.

DONALD LINN
Harvard Street
Lewistown, Pa.

Business Administration

Business Society 2, 3; Theta Chi 2, 3; Intramural Sports 2, 3; LANTHORN 3.



WAYNE LUPOLT
942 N. Walnut Street
Shamokin, Pa.

Liberal Arts

ETHEL McGRATH
24 Floyd Avenue
Bloomfield, N. J.

Liberal Arts

Alpha Delta Pi 2, 3; Vice President Council 2, 3; Women's Athletic Association 1, 2, 3; Basketball Team 1; Intramural Sports 1, 2, 3; Tau Kappa 3; Orientation 3.

GRACE McKIEVER
R. D. 1
Harrisburg, Pa.

Liberal Arts

Alpha Delta Pi 3, 4; Student Christian Association 1, 2, 3; Biemic Society 1, 4; Susquehanna Players 4; Vice President Council 3; Women's Athletic Association 1, 2, 3, 4; Susquehanna Staff 3; Intramural Sports 1, 2, 3, 4.

J. McKIEVER
1107 Third Street
Catasauqua, Pa.

Music Education

Sigma Alpha Iota 2; Student Christian Association; Symphony Orchestra 2, 3; Susquehanna Singers 2, 3.

WALTER G. MAZURA

935 Sedalia Street
Avalon, Pittsburgh 2, Pa.
Business Administration

Phi Mu Delta 2, 3; Social
Chairman 3; Student Chris-
tian Association 1, 2, 3;
Business Society 1, 2, 3;
President 3; Susquehanna
Players 1; Men's Student
Council 3; Intramural Sports
1, 2, 3; "Patsy" 2; Intra-
mural Board 2, 3.

CLAIR MITCH

521 Walnut Street
Mifflinburg, Pa.
Liberal Arts

Phi Mu Delta 1, 2, 3; Stu-
dent Christian Association 1,
2, 3; Biemic Society 1, 2, 3;
Band 1, 2; Intramural Sports
1, 2.

JOHN H. MOMROW

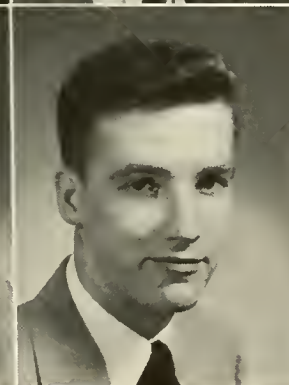
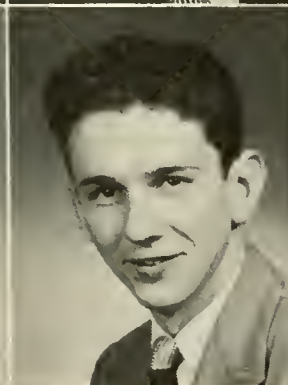
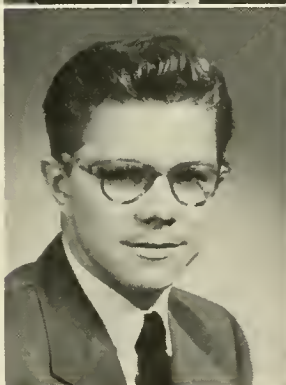
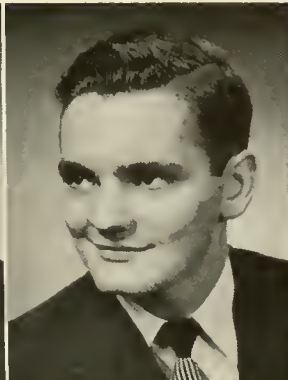
6002 Fourth Avenue,
Brooklyn, N. Y.
Business Administration

Theta Chi 1, 2, 3; Student
Christian Association 1, 2, 3;
Business Society 1, 2, 3; In-
tramural Sports 1, 2, 3; In-
tramural Board 2, 3.

JAMES MORRIS

116 North Water Street
Selinsgrove, Pa.
Liberal Arts

Bond and Key 2, 3; Student
Christian Association 1, 2, 3;
Cabinet 3; Biemic Society 3;
Men's Student Council 3;
Intramural Sports 1, 2, 3;
Intramural Board 1.



CARL MUSSFER

Kreamer, Pa.
Music Education

Theta Chi 1, 2, 3; Student
Christian Association 2, 3;
Symphony Orchestra 1, 2, 3;
Band 1, 2, 3; Susquehanna
Singers 2, 3; Intramural
Sports 2, 3.

WILLIAM NALE

R. D. 1
Lewistown, Pa.
Business Administration

Theta Chi 2, 3, Treasurer 3;
Student Christian Association
3; Business Society 1, 2, 3;
Intramural Sports 1, 2, 3;
LANTHORN 3; Baseball
Team 1.

WILLIAM NYER

R. D. 1
Weatherly, Pa.
Business Education

Phi Mu Delta 1, 2, 3; Stu-
dent Christian Association
3; Business Society 1, 2, 3,
Treasurer 2; Basketball
Team 1, 2.

WILDA ODENTHAL

Lake Juliet
Boonton, N. J.
Liberal Arts

Kappa Delta 1, 2, 3; Student
Christian Association; Biemic
Society 2, 3; Women's
Athletic Association 2, 3;
Women's Student Council 3;
Susquehanna Staff 3; Intra-
mural Sports 2, 3; Panhel-
lenic Council 3, Secretary-
Treasurer 3.

EDWARD PALKOVICH
252 East High Street
Coaldale, Pa.

Business Administration

Phi Mu Delta 1, 2, 3; Business Society 1; Football Team 1, 2, 3; Intramural Sports 1, 2, 3; "Macbeth," "I Remember Mama," "Our Hearts Were Young and Gay."

DAVID PARKER
1560 Sheridan Lane
Norristown, Pa.

Business Administration

Phi Mu Delta 2, 3; Business Society 1, 2, 3; Student Christian Association 1, 2, 3.

LEWIS PAULHAMUS
112 Iron Street
Danville, Pa.

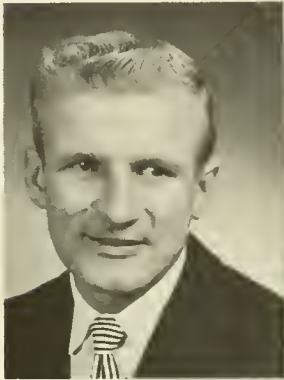
Liberal Arts

Student Christian Association 3; Chapel Choir 1.

ROBERT A. PITTELLO
201 South Vine Street
Mt. Carmel, Pa.

Commercial Education

Bond and Key 1, 2, 3; Business Society 1, 2, 3; Football Team 1, 2, 3; Intramural Sports 1, 2, 3.



WILLIAM PRICHARD
Bishop Hollow Road
Newton Square, Pa.

Business Administration

Theta Chi 2, 3; Student Christian Association 1, 2, 3; Business Society 1, 2, 3; Basketball Team 1, 2, 3; Football Team 1, 2, 3; "Our Hearts Were Young and Gay."

LORRAINE RARICK
North Warren Street
Orwigsburg, Pa.

Commercial Education

Alpha Delta Pi 1, 2, 3; Student Christian Association 1, 2, 3; Business Society 1, 2, 3; Vice President Council 3; Women's Athletic Association 2, 3; Intramural Sports 3; Freshman Orientation 3.

LOIS RENIER
129 Rock Street
Pittston, Pa.

Liberal Arts

Alpha Delta Pi 2, 3; Registrar 3; Student Christian Association 1, 2, 3; Biemic Society 1, 3; Women's Athletic Association 1, 2, 3; Intramural Sports 1, 2, 3; LANTHORN 3.

RUTH ROSLANDER
Shadyside Road
Ranscy, N. J.

Secretarial

Kappa Delta 1, 2, 3; Student Christian Association 1; Business Society 1, 3; Vice President Council 3; Orientation 3; Women's Athletic Association 1, 2, 3; Corresponding Secretary 3; Intramural Sports 1, 2, 3; Class Secretary 2, 3.

PATRICIA RUMBAUGH
R. D. 2
Millerstown, Pa.

Commercial Education

Kappa Delta 1, 2, 3, Assistant Treasurer 3; Student Christian Association 1, 2, 3; Business Society 1, 2, 3; Biemic Society 2; Vice President Council 3; Orientation 3; Women's Student Council 3; Women's Athletic Association 1, 2, 3, Vice President 3; *Susquehanna* Staff 3; Basketball Team 1, 2; Intramural Sports 1, 2, 3; Tau Kappa 2, 3.

KATHLEEN SCHINERR
Annex Apartments
Hall Square, Nazareth, Pa.

Medical Secretary

Kappa Delta 2, 3; Student Christian Association 1, 2, 3; Business Society 1, 2, 3; Biemic Society 3; Women's Athletic Association 2, 3; Intramural Sports 2, 3.

JOHN SCHWARTZ
27 John Street
Hummelstown, Pa.

Liberal Arts

BETTY A. SHAFER
State Street
Millville, Pa.

Business Administration

Student Christian Association 1, 3; Biemic Society 3; Intramural Sports 3.



ALBERT SMITH
R. D. 1
Elysburg, Pa.

Business Administration

RUTH SMITH
Box 353
Davidsville, Pa.

Commercial Education

Alpha Delta Pi 1, 2, Chaplain 3; Student Christian Association 1, 2, 3; Business Society 1, 2, 3; Vice President Council 3; Women's Athletic Association 1, 2, 3; Women's Student Council 3; Basketball Team 2; Intramural Sports 1, 2, 3; LANTHORN 3; Orientation 3.

GEORGE F. SNYDER
515 Market Street
Mifflinburg, Pa.

Business Administration

Phi Mu Delta 2, 3; Business Society 1; Football Team 1, 2.

J. M. SPANGLER, JR.
145 W. Fourth Avenue
Roselle, N. J.

Liberal Arts

Bond and Key 1, 2, 3; Student Christian Association 1, 2, 3; Biemic Society 3; *Susquehanna* Players 2, 3; *Susquehanna* Staff 2, 3; Phi Kappa 1, Angelos 2; Football Team 1, 2, 3; Intramural Sports 1, 2, 3; LANTHORN 3; "Macbeth," "Taming of the Shrew."

GENE STOCK

Middleburg, Pa.

Business Administration

JESSE STONE

408 Third Street

New Cumberland, Pa.

Business Administration

Phi Mu Delta 1, 2, 3; Business Society 1, 2, 3; Football Team 1, 2, 3.

JOHN TAKACH

206 Second Street

Leechburg, Pa.

Liberal Arts

Bond and Key 1, 2, 3; Intramural Sports 1, 2, 3; Baseball Team 1, 2, 3.

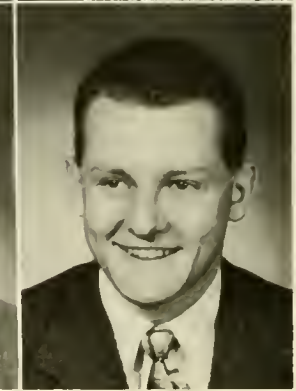
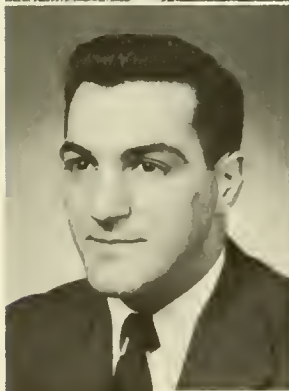
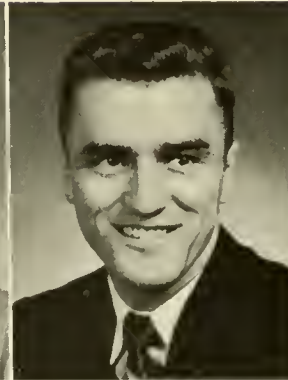
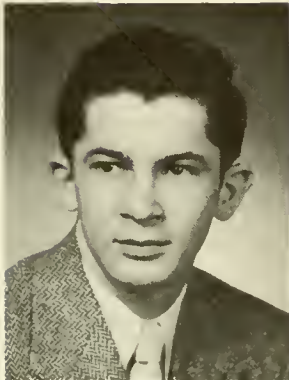
JAMES TOMKINSON

2728 Norwood Avenue

Merchantville, N. J.

Business Administration

Phi Mu Delta 3; Business Society 1, 2, 3; Intramural Sports 1, 2, 3.



FELIX TORROMEO

55 Harrison Avenue
West Orange, N. J.

Business Administration

Phi Mu Delta 1, 2, 3; Student Christian Association 1, 2, 3; Football Team 1, 2, 3; Intramural Sports 1, 2, 3; Baseball Team 1.

MIRIAM VOGIER

315 Penn Avenue
Hawley, Pa.

Liberal Arts

Kappa Delta 1, 2, 3, Vice President 3; Student Christian Association 1, 2, 3; Bimic Society 3; Susquehanna Players 1, 2, 3; Alpha Psi Omega 2, 3; Women's Athletic Association 1, 2, 3; Women's Judiciary Committee 3; Basketball Team 1; Intramural Sports 1, 2, 3; Panhellenic Council 3.

DAVID G. VOLK

704 Morris Avenue
Boswell, Pa.

Liberal Arts

Student Christian Association 1, 2, 3; Band 1, 2, 3; Phi Kappa 1, 2, 3.

ALLAN VOLLMERS

511 Belvidere Avenue
Plainfield, N. J.

Business Administration

Phi Mu Delta 1, 2, 3; Business Society 1, 2, 3; Football Team 2, 3; Intramural Sports 1, 2, 3; Intramural Board 2.

MARJORIE WAY

1849 Ferry Street
Easton, Pa.

Liberal Arts

Kappa Delta 1, 2, 3; Student Christian Association 1, 3; Biemic Society 3; Susquehanna Singers 3; Women's Athletic Association 2, 3.

JANET WINGERT

1305 Alexander Avenue
Chambersburg, Pa.

Music Education

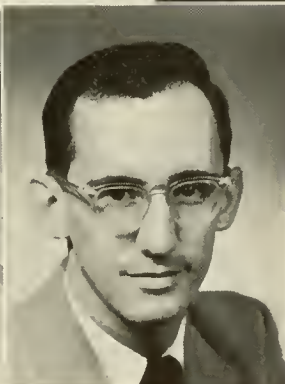
Sigma Alpha Iota 1, 2, Editor 3; Student Christian Association 1, 2, 3; Band 1, 2, 3; Susquehanna Singers 1, 2; Chapel Choir 3; Orientation 3.

ED WOLLASTON

14 North Marion Street
Warren, Pa.

Business Administration

Bond and Key 1, 2, 3; Student Christian Association 1; Business Society 1, 2, 3; Men's Student Council Vice President 3; Basketball Team 1, 2; Intramural Sports 1, 2, 3; Baseball Team 1, 2.



NANCY YOUHON

37 South Atherton Avenue
Kingston, Pa.

Music Education

Sigma Alpha Iota 1, 2, Treasurer 3; Student Christian Association 1; Band 2, 3; Susquehanna Singers 2, 3; Chapel Choir 3; Vice President Council 1, 3; Intramural Sports.

CHARLES ZLOCK

276 Third Street
Coaldale, Pa.

Pre-Dental

Phi Mu Delta 1, 2, 3; Student Christian Association 3; Biemic Society 1, 3; Basketball Team 1, 2, 3; Football Team 2; Intramural Sports 1, 2, 3; Baseball Team 1.



*Seated—Wagner, Dixon.
Standing—Neuman, Jones.*

Sophomore Class

OFFICERS

<i>President</i>	- - - - -	CYNDDYLAN JONES
<i>Vice President</i>	- - - - -	EDWARD NEUMAN
<i>Secretary</i>	- - - - -	JOYCE WAGNER
<i>Treasurer</i>	- - - - -	MARY ANN DIXON

We, the seniors of '53, have come to the half way mark of our college career. In the past two years at Susquehanna we have found our place in varsity and intramural sports, dramatics, and music.

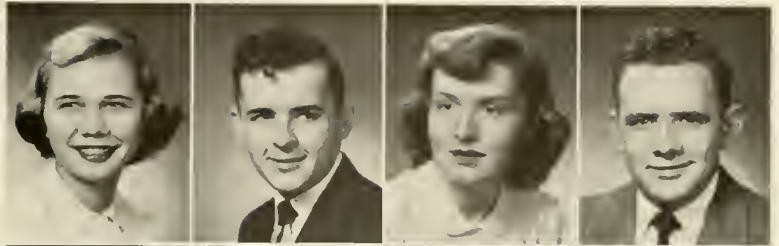
Now we are looking forward to our junior and senior years and hope that we can profit by our mistakes and that our class will be one of which S. U. will be proud.

ELAINE ADAMICK

HARMON ANDREWS

DOROTHY APGAR

RUSSELL BARTLE



JOAN BATES

LARRY BATSCHELET

VELMA BEARY

DAVID BENNETT

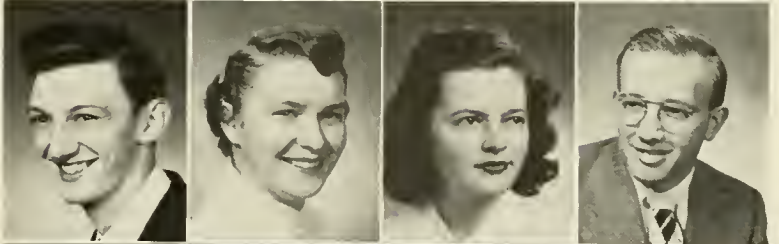


RICHARD BIDELSPACH

NANCY BOLIG

VIJA BORSTEINS

ERNEST BOTTIGER



DONALD BOYLE

EUGENE BROUSE

MARY JO BROWN

RICHARD BURLEY

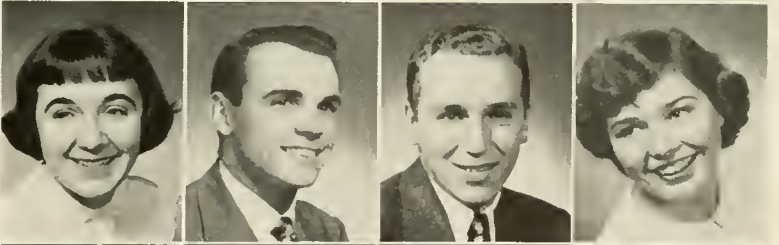


ELIZABETH BURNHAM

LEONARD CARLSON

EDWARD COVERT

MARVEL COWLING



PHILLIP CRAWFORD

HELEN CRESSMAN

WILLIAM DAVENPORT

ROBERT DEIBLER

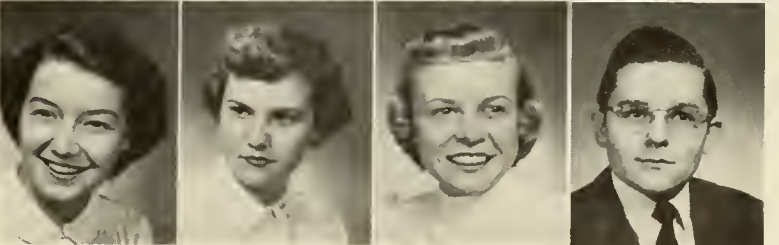


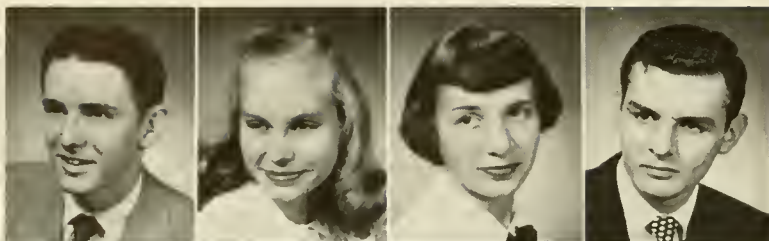
MARY DIXON

FRANCES DRUMM

VERA DUBOY

GEORGE FERREY

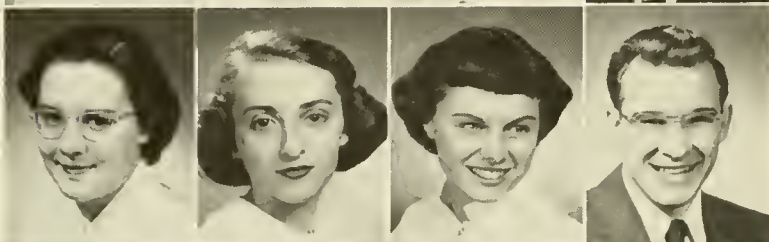




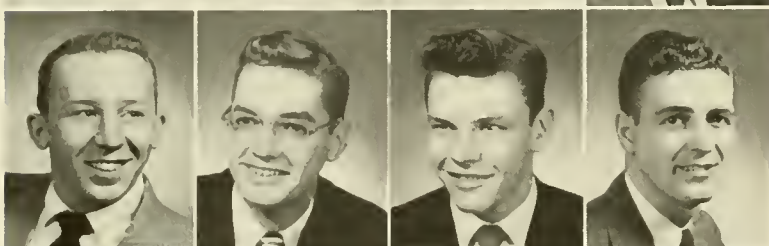
WALTER FILBERT
LOIS FISHER
BETTY FITTING
NORMAN FLEISHER



JANICE FORD
RUTH FREED
ESTHER FROST
ORVILLE GLASS



CHRISTINE HARMAN
SYLVIA HAUPT
MARGARET HEFFLINGER
KERMIT HORNING



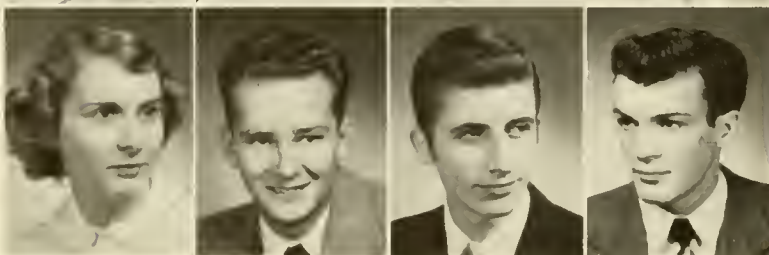
WALTER IFFERT
ROBERT JARVIS
HARVEY JEFFERS
CYNDDYLAN JONES



WILLIAM KLOAP
JACQUELINE KRAUSI
ROBERT KURTZ
WILLIAM LAMARCA



MADALINE LEASE
LORRAINE LEI
LYNN LIGHTFOOT
PAMULA MCKIGG



NANCY MCKINNEY
THOMAS MARTS
CHARLES MASON
JOHN MAYER

ROBERT MESLER

JOYCE MILLER

ROBERT MORRIS

BEATRICE MORROW

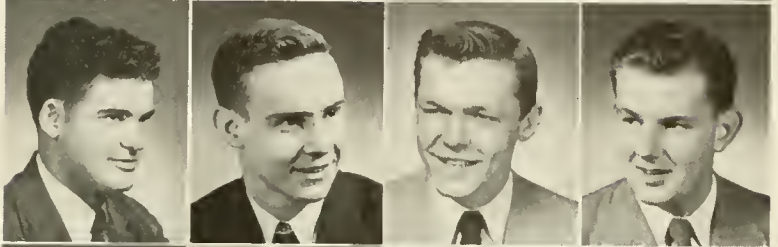


GAIL MOULTON

DONALD MUCHMORE

JUSTIN MYERS

EDWARD NEUMAN

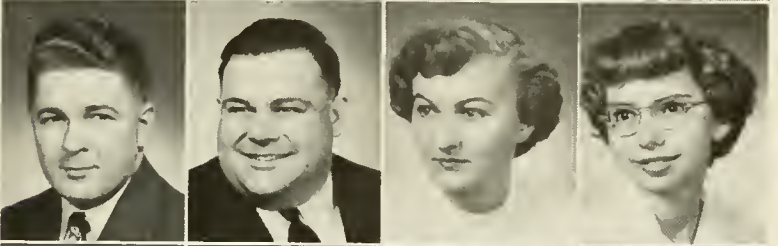


KENNETH ORRIS

ANTHONY PERNA

JEAN RARICK

CAROL RFDIFR

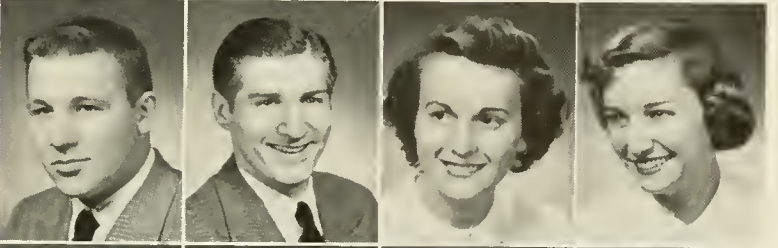


JOHN RHODES

CHARLES ROUSH

CAROLINE RUTHERFORD

ABBY SAIZER



DORIS SCHWEIGHOFER

JOAN SECHRIST

CHARLES SHAMP

DONALD SHFLDON

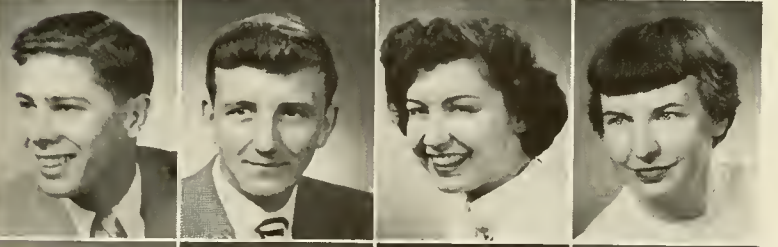


JAMES SHIPTON

EDWARD SHORE

ELINOR SMITH

SHIRLEY SMYRL

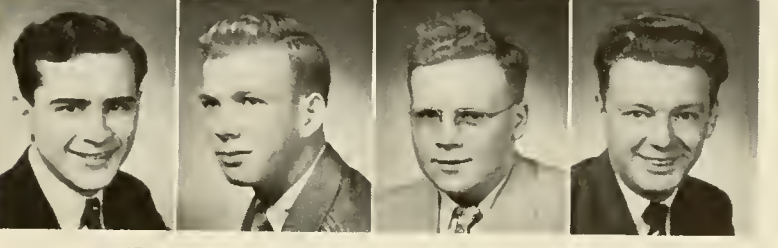


CHARLES SNYDER

WILLIAM SPECHT

DONALD STEADMAN

ROBERT STEFFY

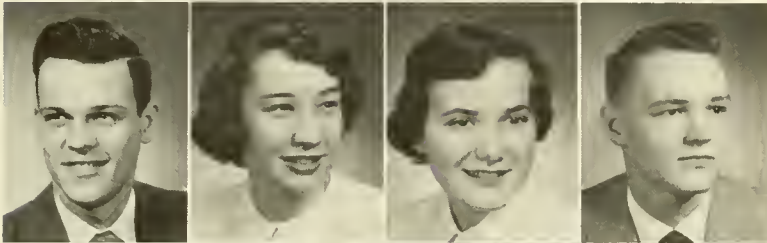




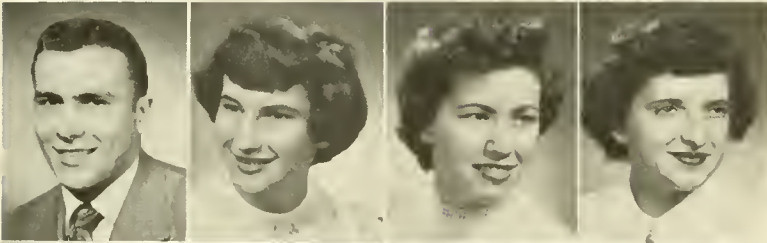
RICHARD STOUT
JEAN STUEMPFLE
MARY STUTER
LOUIS TAFEL



MARGRETTA THOMAS
MARILYN THOMPSON
STEPHEN TOROK
ALLEN TOWNSEND



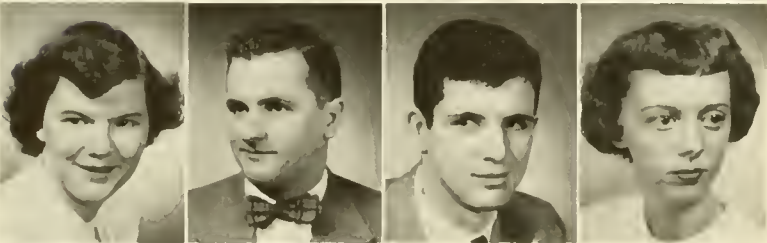
EDWARD UNANGST
HELEN VonLYNN
JOYCE WAGNER
ERNEST WALKER



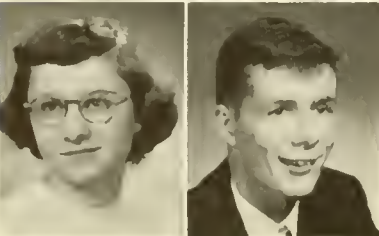
DONALD WALTER
AUDREY WTGNIR
JANE WEHR
MAXINE WEISER



LILLIAN WHITTINGTON
BETTY WIA NT
CLARA WILLIAMS
DANIFL WILLIAMSON



BETH WINFY
JAMES WTTH R
ROBERT WYLTH
MAXINE YOCUM



MARGARET ZINDA
GUNNAR ZORN



First Row, Left to Right Adgers, DiPersio, Fritz, Tattio, Diggan, Corbe, Kepner, Hayett, Steinhardt,
Lucas, Shimko, Kostenbauder,
Second Row Ramano, Hartman, Craft, Topolskie, Becker, Boyd, Funderkoller, Goodman, Lengel,
Detar, Stahl, Fetterolf.

Freshman Class



First Row, Left to Right Hess, Rowe, Morris, Moshudder
Second Row Snyder, Lane, Keleg, Cline, Haggerty, Riehl, Hultz, Harmon, Henderson, Van Kronsse,
Third Row Lamb, Reynolds, Zimmerman, Ross, Henry, Winey, Keener, Nestler, Vogler, Winkler, Arlogast.



First Row, Left to Right—Solomon, Green, Schweighoffer, Perkins, Sharretts, Steffy, Sites, Bell, Gilbert, Thompson, Heintz, Treese, Davies.
 Second Row—Kelly, Albright, Washbourne, Shannon, Tomlinson, Manning, Kopf, Bobb, Klose, Johnson, Liddington.

Freshman Class



First Row, Left to Right—Meerbach, Vincent, Borski, Slade, Webber.
 Second Row—Hoover, Schraeder, Planko, Fetterolf, Schumacher, Wick, Newman, Miller, Weisenfluh, Baer, Solomon.
 Third Row—Baker, Edmunds, Walker, Rohrbach, Schreffler, Bell, Carmichael, Stringer, Olson.





Athletics



First Row, Left to Right—Stone, Torromeo, Marek, Rosetti, Wolsten, Pitello, Fenstermacher, Moulton, Torok, Walters, Lenker.
 Second Row—Young, Palkovick, Carr, Brouse, Prichard, Balchen, Porter, Hazlett, Shamp, Menapace, Thomas.
 Third Row—Coach Stagg, Sr., Delbough, Jones, Vollmers, Rogianfy, Battiger, Flowers, Rhodes, Livermore, Walker, Martin, Coach Stagg, Jr.
 Fourth Row—Spangler, Fleisher, MacNamara, Campbell, Stamfel, Shore, Carmichael, Tkaczyk, Reimensnyder, Koch, Fleming.

FOOTBALL

With the cry of one-up, two-up, three-up, four-up, the Crusader eleven snapped into action this year with a 27-0 victory over Lycoming College. Getting off to a slow start in the early quarters of the game, the Orange and Maroon got clicking the first time they took possession of the ball in the third quarter. Rich Young, a new face on the Crusader squad this year, but not new in the football circles, carried from Lycoming's 45 to the 33 yard line where Don Walters cracked the middle to the 28. Young then danced, twirled, shifted and squirmed through the entire Lycoming team to grab the first chunk of pay dirt for the Crusaders.

As time ran out in the third quarter, S. U. was again knocking at the Lycoming 6 after good runs



by Young and Ed Menapace. On the first play of the fourth quarter Menapace slashed off tackle to make it 13-0.

Ken Lenker playing his usual outstanding game set up another T. D. with his brilliant runbacks on kicks. A Young to Lenker pass put the Crusaders deep in the enemy territory where Young and Menapace stayed on the ground to tally. The fourth score came after Gene Brouse recovered a Lycoming fumble on their 34. Young's running and a 15 yard Young to Bill Prichard pass put the ball on the one from where Sam Porter poured through to score. Torok went three for four on his placement kicks to make the total score 27-0.



Left to Right—Stagg, Sr., Stagg, Jr., Masciantonio.

The next game saw the Orange and Maroon travel to Staten Island, N. Y. to take on the Seahawks of Wagner College. With a good send-off and lots of spirit behind them the Crusaders returned victorious.

The father and son team of Staggs showed up with another fine display of the defensive art of football and were fast getting off to an unscored upon season. The lone tally came in this hard fought battle in the second quarter when a Young to Menapace pass placed the ball on the Seahawks one. The next play Menapace bulled over for the only score of the game. Hindered by penalties in the second half both teams failed to impress the crowd except for the defense of the Stagg line which never allowed the Seahawks within their seventeen yard line.

Things looked good for the Crusaders, who had lost only Ed Palkovich to injuries sustained in the Lycoming game, until the following Saturday when they traveled away to Baltimore, Md., to take on a new opponent, the Blue Jays of Johns Hopkins. The tide was turned as the Staggs suffered a trouncing of 34-0. Without Coach Al Masciantonio around, the line seemed to crumble on defense and collapsed on the offense. The backfield and then the ends moved up too quickly a few times, only to see the Blue Jay backs skirt the ends and go for paydirt. The most sensational play of the game was a fourth down and five for the Blue Jays inside the Crusader 20, in the second quarter. The man pulled out around end with the ball, only to be trapped by a host of Crusaders. He promptly reversed his field and outran everybody to the goal line. S. U. made only one sustained drive which got stalled by the hard charging Blue Jay line. Buss Carr turned up the first head injury of the season in this game which proved a great disappointment to the squad who were out there to win but couldn't penetrate any deeper than the Hopkins 35.

The team worked hard all week to get ready for Juniata, arch rivals of the Orange and Maroon. Before an enthusiastic Parents' Day crowd at University Field the Crusaders didn't seem to be able to snap out of their losing streak in the first half. When the half gun went off, the new score board showed the Staggs behind 19-6. The Crusaders lone tally in the first half came in closing minutes of the period when Young passed to Lenker and sent it to Gene Fenstermacher, versatile back from Northumberland, Penna. Fenstermacher smashed through the tackle to score. The conversion by Torok went wide and the Crusaders trudged to the locker room trailing by two touchdowns.

As the gun went off to start the second half the Staggs looked as if they had caught fire again as Young returned the opening kickoff 15 yards to the Crusaders 21. With Young running and passing to Fenstermacher and Lenker, the Crusaders moved to the Indians 27. On the next play Young snapped one to Lenker in the end zone to make it 19-12. After Juniata received, the Crusader forward defensive wall stopped them cold. The Crusader drive bogged down under several penalties and the game turned

into a kicking duel between Art Stanfel and the Indians. The game ended with S. U. driving deep into Juniata territory. Time ran out and the Crusaders were left with a .500 average.

After a two weeks rest, the Stagmen were ready for a highly favored C. C. N. Y. eleven. The Violets made it clear that they wanted this game but the forward defensive wall of S. U. said "NO." Ken Lenker played his usual beautiful game at safety for the Orange and Maroon, and threw his 5'7" stature high in the air over and over again to stop the C. C. N. Y. passing attack. Not only did Ken baffle the Violets defensively but offensively too, as he snapped a 15 yard chuck from Rich Young to get the first paydirt late in the second period. Steve Torok came through to score the winning point of the game on his conversion as the Crusaders left the field at the half leading 7-0.

The Crusaders defense didn't falter 'till late in the fourth period. With both teams threatening dangerously from the starting guns of the second half C. C. N. Y. finally intercepted a Young pass on the 50 yard line. Running the ball to the ten the Violet went to the air to score. After two unsuccessful attempts stopped by Mr. Lenker, finally, Maticas hit Pizzarelli in the end zone. But Lenker raced in to block the conversion and the game ended 7-6.

Having only seven games this year the Stagmen took another two weeks rest to sharpen up for Haverford. Haverford was having a good season and were picked to be such favorites that one Philadelphia paper called the Crusaders a "Soft Touch." Immediately the campus and the coaches took up the cry and plastered a big sign in varsity lockerroom reading SOFT TOUCH! Nothing was said by the team; this was Homecoming. At the rally the night before the game Captains Bob Pittello, Jess Stone, and Gardiner Marek just said, "We want to win!"

Before the game started, Coach Stagg, Jr. challenged them severally as to whether or not they had the guts to win.

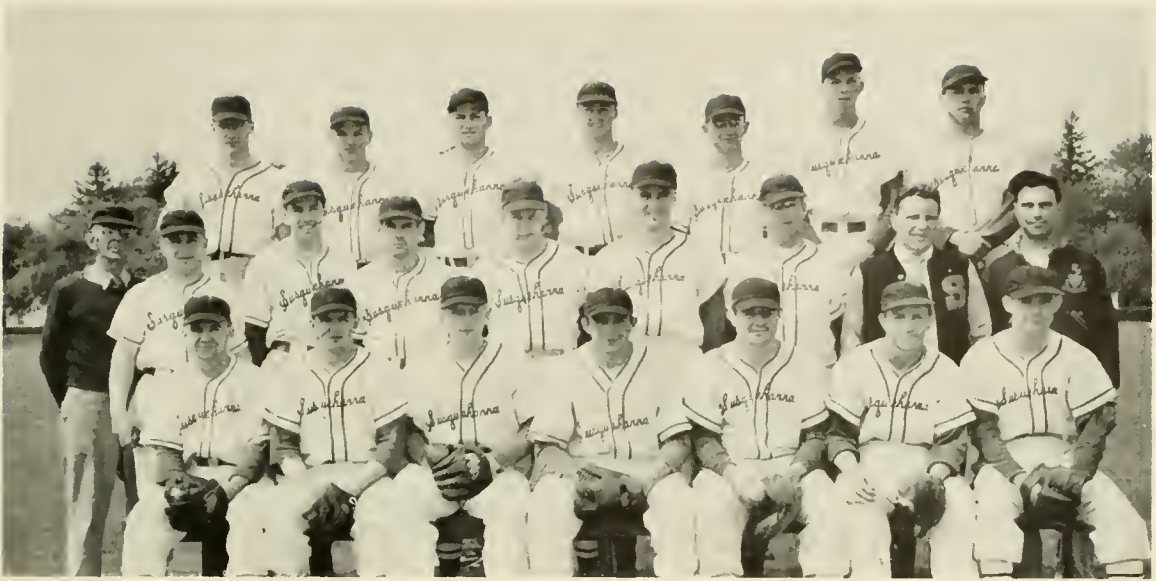
The kick finally came with the red and black receiving. They drove quickly to the 5 but the Crusader line froze solid and that was the story of the game. The half ended 0-0 but Crusader spirits were high. They had already stopped Haverford three times inside the ten yard line and once on the two foot line they held for two downs.

Early in the third period Young went off tackle to culminate a 63 yard drive and S. U. was ahead 6-0. The conversion went wide but the Haverford machine was stalled again and the Crusaders took over possession of the ball. This time the Fords held and then blocked the kick to set up their T. D. A pass was good to the two then Jim Boyd cracked through to score. Briods conversion was good and Haverford led 7-6.

The Crusaders received and proceeded to roll up the yardage. A pass from Young to Don Walters who ran nicely was good for 40 yards. On the next play Young handed off to Walters who galloped to the one yard line where Young cracked over to make it 12-7. That is the way it ended but the real story was written by Al Masciantonio who was responsible for the fine condition of the team and the stellar line play in which, Jess Stone, Gene Brouse, Bob Pittello and Dick Herr were standouts as they tossed the Fords for several long losses. The Crusaders defended twice on the two foot line, once on the one foot line and many times inside the ten to beat the Fords 12-7.

The last game of the season was saved by the father and son masterminding combination. The opponents were the Ursinus Bears. The game was mostly a kicking duel but the Crusaders threatened over and over again and kept the Bears in the hole. Finally in the second quarter Ursinus was forced to kick from their own end zone. Sophomore guard Gail Moulton roared in to block the kick and end Jess Stone jumped on it for the T. D. The score remained at 6-0 till late in the fourth period when Ursinus clicked on passes to score. Ken Lenker led a host of Crusaders in to block the conversion and the game ended in a 6-6 tie.

Coach Stagg loses only three men this year and the future for next year looks very bright with a wealth of material if Uncle Sam doesn't send too many greetings.



First Row, Left to Right—Rowe, Wissinger, Berninger, Menapace, Martin, Fenstermacher, Moyer.
 Second Row—Schuck, Orris, Tafel, Porter, Hazlett, Takach, Miller, Coach Bastress.
 Third Row—Wollaston, Leuker, Burley, Condon, Boyle, Specht, Walters.

Baseball

Coach Bob Bastress and his Crusader nine turned in a good season this year with six wins against seven defeats for a percentage of .461 as opposed to last year's season percentage of .364. Ned Condon took the pitching laurels with his 4-3 win over Bucknell University which was without a doubt the highlight of the season. Batting and playing honors were earned by Ed Menapace, Ken Orris, and Don Wissinger. Marv Moyer made the story of the year by returning to the line-up after doctors had told him he would never play again.

1950 RECORD

	<i>S. U.</i>	<i>Opp.</i>
Dickinson	9	7
Wagner	8	13
Keystone	10	3
Elizabethtown	2	11
Juniata	10	7
Wilkes	4	3
Juniata	8	9
Elizabethtown	6	11
Albright	14	24
Bucknell	4	3
Lycoming	9	2
Lycoming	10	12
Wilkes	1	7



Left to Right, Young, R. Jones, Zlock, Menapace, Hazlett, Stone, Henninger, Shore, Manning, Fleisher.

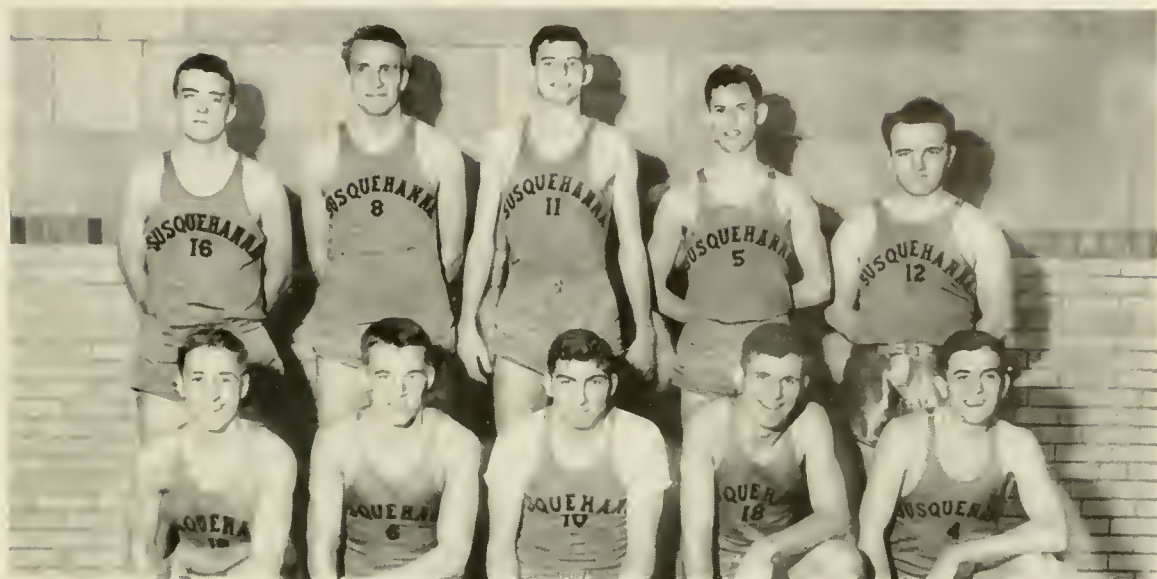
Basketball

RECORD

	<i>S. U.</i>	<i>Opp.</i>
December 9—Ursinus	71	102
December 12—Keystone	55	46
December 14—Wilkes*	47	68
January 8—Lebanon Valley	77	91
January 13—Elizabethtown*	33	64
January 20—Juniata	50	61
February 3—Lycoming*	46	97
February 10—Franklin and Marshall	34	78
February 15—Lycoming	62	97
February 17—Alumni	74	72
February 19—Wilkes	66	77
February 21—Philadelphia Textile Institute*	58	68
February 24—Dickinson*	49	67
February 28—Juniata*	59	64
March 3—Elizabethtown	50	43

* Away Games

Junior Varsity Basketball



First Row, Left to Right—Richards, Foor, Prichard, Wiley, Boyer.
Second Row—Waney, Deibler, Tomlinson, Reimensnyder, Deitsch.

Tennis

The presence of Barbara Stagg on this year's tennis team marked the end of a ninety-two year tradition at Susquehanna. Barbara was the first girl to break into the ranks of a Susquehanna tennis team and helped the team, coached by her father, Coach Stagg, Jr., to several well-deserved victories.



First Row, Left to Right—Rumpler, Stagg, Grund.
Second Row—Seimers, Reigh, Sullivan, Alter.



First Row, Left to Right—Boyd, Adamick, Craft, Taddeo, Wolfe, Aston.
Second Row—Lauver, Lane, Beckwith, Diggan, Rice.

Cheerleaders

The large cheering squad this year is composed mostly of freshmen who have had cheering experience in high school. The two veterans of last year's squad, Peggy Ann Aston and Fancher Wolfe are co-captains following the withdrawal from college of Captain Mary McNiven Gloster.

The squad has done a great piece of work this year, leading the cheering crowds and inspiring the teams. Their work is appreciated by everyone and we hope they are just as successful next year.





First Row, Left to Right— Monrow, Mazura, Reese, Takach, Wagner.
Second Row—LaMarea, Dolson, Manning, Berninger, Topolski, Shafer.

Intramural Board

The Men's Intramural Board is the organization on campus which was created for the purpose of setting up and controlling men's intramural sports. Members of the board are chosen from each of the fraternities, the men's dormitories, and the day students' organization. Athletic trophies are awarded to the winners of each of four sports: football, basketball, volleyball, and softball. Through the fine work of the board a high level of sportsmanship is upheld at S. U.

Intramural Football Champions



First Row, Left to Right Spangler, Stedman, Boyle, Bogar.
Second Row—Wohlsen, Takachi, Wiley, Cope.

Intramural Basketball Champions



First Row, Left to Right Ross, Johnson, Henry, Wollaston.
Second Row Takachi, Porter, Monapoco, Voelker.



Girls' Intramural Sports

Each year the call for women participants in intramural sports is met with enthusiastic response of girls from all four student classes. Intramurals are regarded as being among the important campus activities by these girls who exhibit fine athletic ability as well as good sportsmanship in the game. Sports included in the intramurals are hockey, soccer, volleyball, basketball, ping pong, badminton, tennis, archery, hiking, and biking. The winners of these sports receive recognition in the form of an award presented to them by the Women's Athletic Association, sponsor of Girls' Intramural Sports.

Four Sport Intramural Champions



Front Row, Left to Right—Lewis, Roslauder, Vogler, McGrath, Crismon, Henthote.
Back Row—Guise, Odenthal, Gordon, Chambers, Rumbaugh, Smith.

Hockey Champions



Front Row, Left to Right—Whittington, Whit, Weiser, VonLyn
Second Row—Schwobhofer, Fisher, Frost, Sulzer, Krause, Freed.
Third Row—Smyrl, McKhuey, Thompson, Rutherford, Wagner, Harman

Honor Hockey Team



Front Row, Left to Right—Boers, Clue, Hess, Miss Sparhawk, Weiser, Wegner, Wiant.
Back Row—Frost, Albert, VanVoorhis, Cowling, Freed, Whittington.

Girls' Basketball Team



First Row, Left to Right—D. Schweighofer, Duboy, Heathcote, Bogar, McGrath.
Second Row—Guise, Chambers, Albert, Ferguson, VonLynn.
Third Row—Sparhawk, McKinney, Lewis, Smyrl, Crisman, Salzer, Frost, VanVoorhis.





Activities & Organizations

OFFICERS

President - WILLIAM SMELTZ
Secretary - - FAYE LEWIS
Treasurer - JAMES MORRIS
Girls' Vice President
 CAROL REIDLER
Boys' Vice President
 GERALD MOOREHEAD



Front Row, Left to Right - Joyce, Salzer, Smeltz, Lewis.
 Back Row - Yiager, Morris, Moorehead, Volk, Fague.

Student Christian Association

Throughout the school year, the Student Christian Association attempts to give all students an opportunity for spiritual, moral, and social growth. It is the purpose of the organization to bring each student into a more nearly complete realization of the possibilities that lie in applying Christian principles to every phase of life.

Highlights in the activities of the group are college vespers, Tuesday evening commission and general meetings, Lenten meditations, and the Fasnacht and Christmas caroling parties.

This year the advisory board consisting of Mr. DeMott, Pastor Heller, Professor Lotz, Pastor Morris, Dr. Smith, and Dr. Wilson has been especially helpful with its creative suggestions and fine constructive guidance.

Business Society

The Business Society stimulates interest in the fields of business, economics, and commerce. Those students enrolled in the business administration, commercial education, and secretarial courses are eligible for membership.

Each year the Business Society endeavors to increase its scholarship fund by selling magazines, stationery, candy, and coasters. The scholarship is given to a worthy and needy business student.

At the monthly meeting there is dancing and refreshments. Each year the society sponsors a dance.

First Row, Left to Right - Richie, Snyel, McKegg, Cressman, Gordon, Roshander, Bailey, Beary, Yonghans, Fetterhof, Brown.

Second Row - Mr. Graham, Kreig, Smith, Cowling, Rumbough, Smith, Barick, Wick, Frost, Schweighofer, Miller, Miss Allison.

Third Row - Mr. Armstrong, Lamb, Baumgardner, Neumann, Henry, Winkler, Koener, Tomlinson, Tompkins, Shoemaker, Parker, Vogler, Mazura, Mr. South.



OFFICERS

President - WALTER MAZURA
Vice President - JOHN STIGLER
Secretary-Treasurer
 WILLIAM NYER
Adviser
 PROFESSOR LENORA ALLISON



First Row, Left to Right - Borsteins, Bolig.
 Second Row - Smeltz, Mr. Mender, Caldwell.

OFFICERS

- President* - - NANCY BOLIG
Vice President
 RAYMOND CALDWELL
Secretary-Treasurer
 HAZEL BROBST

Ciceroniani

Ciceroniani is a classical organization which was formed on our campus in April 1947, by a group of Latin students. The object of the organization is to foster and extend the understanding of the Latin language and culture; also, to stimulate good scholarship. Having completed one semester's work in the Latin department and having maintained a class average of "C", a student is eligible for membership. Associate members are those members of the faculty or student body who are not in the department but are interested in the work of the organization. The above mentioned students must also maintain an average of "C" for eligibility. Meetings are held once a month.

Biemic Society

The Biemic Society is an organization devoted to the development of knowledge and interest in the various fields of science and mathematics. Its membership includes those students who are interested in these fields of science. Topics of interest are discussed at the monthly meetings. Movies, field trips, and lectures by guest speakers all aid in demonstrating how better living can be obtained through science.

First Row, Left to Right—Adamick, Odenthal, Wegner, Whittington, Wehr, DiPersio, Arner, Harmon, Dickson, McKegg.
 Second Row—Leuse, Yokum, Beers, Heinly, Schmacher, Huywett, Planko, Thompson, Lightfoot, Jochem, Bailey, Young, Vogler.
 Third Row—Dr. Robison, Mr. Amy, Way, Reufer, Yinger, Sterrett, Chambers, Wolfe, Cosgrove, Crisman, Schweighofer, Perkins, Dr. Hontz, Mr. DeMott.
 Fourth Row—Lewis, Bolig, Baumgardner, Von Lynn, Wagner, Shaffer, Fetterof, Jarvis, Taylor, VanVoorhis, Slater, Winey, Rutherford, Wiant, Duboy, MacNeil.

OFFICERS

- President* - FANCHER WOLFE
Secretary-Treasurer
 NANCY COSGROVE



OFFICERS

President - - JUNE KLINGER
Secretary - CATHERINE DOEBLER
Student Council Representative
JEAN HILL



First Row, Left to Right—Sechrist, Haupt, Albert, Klinger, Hill, Doebler.
Second Row—Lepley, Osborn, Klingelhoeffer, Aundra, Smith, Borsteins.

Women Day Students' Organization

The Women Day Students' Organization, composed of non-resident women students attending Susquehanna, was organized to develop in its members a greater interest in college activities and to increase their understanding and cooperation.

Study and lounging facilities are provided in the basement of Hassinger Hall. Special events include a Christmas dinner and a picnic in the spring.

Men's Student Council

The Men's Student Council represents the efforts of the men of S. U. to provide for themselves an active representative student government.

Aside from being a mediator between the men and the administration, the council aims to create college spirit, promote better understanding between faculty and students, and assist in making college life pleasant and worthwhile.

The members of the council include two men from each fraternity, two men from the non-fraternity group, and one faculty adviser.

First Row, Left to Right—Dr. Waterbury, Harder, Moorhead.
Second Row—Driscoll, Alter, Wollaston, Mazura.



OFFICERS

President - - JACOB HARDER
Vice President
EDWARD WOLLASTON
Secretary - - EMIL WHEELER
Treasurer - GERALD MOORHEAD



First Row, Left to Right—Hill, Odenthal, Foltz, Martin, Dickson, Barnhart.
Second Row—Smith, Rumbaugh, Dean Sumbrook, Albert, Bailey.

OFFICERS

President - MARTHA MARTIN
Secretary-Treasurer
MARTHA ALBERT

Women's Student Council

The Women's Student Council is the governing body for all women students. Activities of the Council include jurisdiction of freshman orientation and hazing, sponsorship of Parents' Day activities and week-night social dancing, decorating of the dormitories for the holiday season, and the several open houses in the dormitories. The Council also conducts the sale of stamps, cokes, candy, and other useful articles within the dormitory and supervises house meetings and fire drills.

The Women's Student Council is composed of a president and a secretary-treasurer, president of the two dormitories, the chairman of the Judiciary Committee, the social chairman, and a representative from the S. C. A., the W. A. A., the Day Students' Organization, the Panhellenic Council, and the freshman and sophomore classes.

Women's Judiciary Committee

The Judiciary Committee, a sub-committee of the Women's Student Council, serves two purposes. It has the responsibility of penalizing any one of the women student residents who has violated a Student Council regulation. Also, it acts as an advisory group reporting special problems involving the girls to the Dean of Women for the purpose of counseling and preventing rule-breaking whenever possible.

Automatic penalties are given for common offenses. Whenever extraordinary circumstances arise, the committee convenes with the violator meting just punishment according to the seriousness of the offense.

The group is made up of representatives from the various classes and members of the Women's Student Council with the Dean of Women as an ex-officio member.

First Row, Left to Right—Wiant, Foltz, Martin, Bailey.
Second Row—Beam, Rumbaugh, Dean Sumbrook, Vogler.

OFFICERS

Chairman - - SUSAN FOLTZ
President of Student Council
MARTHA MARTIN
House Presidents
PATRICIA RUMBAUGH AND LYN BAILEY
Class Representatives
Senior - - BETTY BEAM
Junior - - MIRIAM VOGLER
Sophomore - - JOAN WIAANT
Freshman - - SHIRLEY BELL





First Row, Left to Right—Guise, McGrath, Barick, Martin, Bailey.
Second Row—Chambers, Rumbaugh, Shaffer, Dean Sumbrook, Smith, Dietz.

Vice Presidents' Council

The Vice Presidents' Council was organized ten years ago for the purpose of maintaining quiet in the girls' dormitories during the designated study hours. The Seibert Hall House President appoints "V. P.'s" and authorizes them to enforce all quiet hour regulations. By using the "five-minute penalty" system, these girls maintain the peace and quiet of the dormitories. Upon the accumulation of twenty minutes, a girl must appear before the Women's Judiciary Committee, which decides upon a just punishment.

Women's Athletic Association

The Women's Athletic Association, one of the larger organizations on campus, sponsors an extensive program of intramural and varsity sports for all the girls. The seasonal activities include hockey, soccer, basketball, volleyball, tennis, badminton, archery, and baseball. Points are awarded for activity in the sport and awards are given as these points accumulate.

Social activities sponsored by the W. A. A. include Play Day, informal dance, variety show, May Day Program, and the concession stand for the football and basketball games.

First Row, Left to Right—Odenthal, Easton, Guise, Cowling, VanVoorhis, McKinney, Frost, VonLynn, Wagner, Whant.

Second Row—Lewis, Barnhart, Foltz, Bean, Slater, Cosgrove, Smyrl, Smith, Ford, Beers, Harmon, Schweighoffer, Salzer.

Third Row—McKegg, Jochem, Krause, Wegner, Appar, Adamick, Gordon, Deatheote, McGrath, Crisman, Ferguson, MacNeil, Yinger, Rutherford, Fisher, Vogler.

Fourth Row—Miss Sparhawk, Lense, Yokum, Way, Shaffer, Fague, Rumbaugh, Yonghaus, Albert, Chambers, Roslander, Young, Greger, Smith, Barick, Renfer, Stuenkel.



OFFICERS

President - MARTHA ALBERT

Vice President - PAT RUMBAUGH

Corresponding Secretary
RUTH ROSLANDER

Recording Secretary
MAXINE CHAMBERS

Treasurer - ALICE YONGHAUS

Student Council Representative
RUTH SMITH



First Row, Left to Right—Durden, Unangst, Orris, Ecker, Baruhart, Sinter, Taylor, Treon, Zinda, Guise, Lee, Smith, Mitchell, McKegg, Shafer.
 Second Row—Bailey, Yonghaus, Berninger, Faust, Musser, Bidelspach, Crawford, Bastian, Bollinger, Snyder, McCahan, Mr. Leach.
 Third Row—Demur, H. Vogler, Richards, Fulmer, Beckwith, Albright, Volk, Hill, Wingert, Sheldon, Detar, Jones.

Susquehanna University Band

The Susquehanna University Band, under the direction of Mr. John Leach, recent addition to the faculty, is one of the outstanding organizations on the campus.

Organized in 1917, the band has had increasing success and has won wide recognition for its fine performances and drills. In the band there are forty-two members, one drum major, two majorettes, and two flag bearers.

The band is present at all football games, pep rallies, and May Day. Its outstanding performance is the annual spring concert.

Varsity "S" Club

Membership in the Varsity "S" Club is composed of those men who have at least one varsity letter and are of at least Sophomore standing.

First Row, Left to Right—Spangler, Hazlett, Fenstermacher, Pitello, Orris, Wollaston, Carr.
 Second Row—Marek, Torromeo, Burley, Reese, Pritchard, Sullivan, Lenker, Menapace.
 Third Row—Brouse, Torok, Moorhead, Nyer, Stone, Palkovich, Vollmers, Berninger.





"The Patsy"

by

BARRY CONNERS

Mr. Harrington

Mrs. Harrington

Grace Harrington

Patricia Harrington

Billy Caldwell

Tony Anderson

Guisseppi Torrenti

"Trip" Busty

Joseph Solomon

Miriam Vogler

Jean Kahler

Eleanor Waters

Walter Mazura

Frank Ulman

Roland Rosetti

John Devine





"Our Hearts Were Young and Gay"

Steward
 Mrs. Skinner
 Cornelia Otis Skinner
 Otis Skinner
 Emily Kimbrough
 Purser
 Stewardess
 Dick Winters
 Admiral
 Harriet St. John
 Winifred Blaugh
 Leo McEvoy
 Inspector
 Therese
 Madame Elise
 Monsieur de la Croix
 Window Cleaner

Larry Batschelet
 Sally Mitchell
 Barbara Easton
 Ray Fleming
 Eleanor Waters
 Edward Palkovich
 Lois Gordon
 Richard Jones
 William Prichard
 Janet Miller
 Mary McNiven
 Donald Walter
 Dorothy Allen
 Vija Borsteins
 Floris Guyer
 Robert Dunlap
 Kenneth Hemstead





The
Susquehanna
University
Players





"The Taming of The Shrew"

by

WILLIAM SHAKESPEARE

CAST

Christopher Sly
Hostess
A Lord
First Hunter
Second Hunter
Messenger
First Servant
Second Servant
Third Servant
Bartholomew
Lucentio
Tranio
Baptista
Gremio
Hortensio
Katharina
Bianca
Biondello
Petruchio
Grumio
Page
Curtis
Servants to Petruchio
Pedant
Haberdasher
Tailor
Vincentio
Officer
Widow
Wedding Guest

Kenneth Hill, Edward Palkovich, Robert Morris, Edward Koch

Harry Rice
Lorraine Lee
Herbert Krauss
Paul Nestler
Anthony Dobson
Stuart Lengel
Roger Rorhbaugh
Todd Soloman
William Kloap
Tim Bobb
Justin Myers
Larry Batschelet
Jacob Spangler
Kenneth Hempstead
Charles Rousch
Elaine Adamick
Nancy Bogar
Robert Bogdanffy
Paul Jones
William Foster
Jerry Rhoades
Greta Thomas
Orville Glass
Edward Menapace
Roland Rosetti
Gordon Joyce
Samuel Carmichael
Shirley Smyrl
Virginia Lee Yinger



First Row, Left to Right—Yinger, Rumbaugh, Salzer.
 Second Row—Dr. Wilson, Sterrett, Staller, Steiger, Spangler.

The Susquehanna

EDITORIAL STAFF

<i>Editor</i>	- - - - -	TOM STALLER
<i>Managing Editor</i>	- - - - -	JOHN STEIGER
<i>News Editor</i>	- - - - -	VIRGINIA LEE YINGER
<i>Editorial Adviser</i>	- - - - -	DR. ARTHUR H. WILSON

BUSINESS STAFF

<i>Business Manager</i>	- - - - -	HERB HAINS
<i>Advertising Manager</i>	- - - - -	LES HEILMAN
<i>Circulation Manager</i>	- - - - -	MARSH BOGAR
<i>Business Adviser</i>	- - - - -	PROFESSOR GROVER GRAHAM

The Susquehanna is a weekly newspaper published every Tuesday by the students. Established in 1891, it is one of the oldest college newspapers in this country.

It offers an opportunity for students interested in journalism to get practical experience in headlining, make-up, reporting, editing, circulation, and management.

First Row, Left to Right—Hains, Prof. Graham.
 Second Row—Bogar, Heilman.





First Row, Left to Right—Dr. Wilson, Spangler.
Second Row—Chambers, Crisman, Lewis, Renfer, Smith.

The Lanthorn

EDITORIAL STAFF

<i>Editor-in-Chief</i>	- - - - -	FAYE LEWIS
<i>Literary Editor</i>	- - - - -	PATRICIA CRISMAN
<i>Assistant Literary Editor</i>	- - - - -	MARY ANN DIXON
<i>Photography Editor</i>	- - - - -	MAXINE CHAMBERS
<i>Assistant Photography Editor</i>	- - - - -	LOIS RENFER
<i>Sports Editor</i>	- - - - -	JACOB SPANGLER
<i>Art Editor</i>	- - - - -	SHIRLEY YOUNG
<i>Typist</i>	- - - - -	RUTH SMITH
<i>Faculty Adviser</i>	- - - - -	DR. ARTHUR H. WILSON

The snapshots and some of the photographs were done by David Sterrett. The typing was done by Ruth Smith, Martha Martin, Shirley Smyrl, and Marvel Cowling. To these and others who helped in any way, we extend our thanks.

BUSINESS STAFF

<i>Business Manager</i>	- - - - -	DONALD LINN
<i>Advertising Personnel</i>	- - - - -	WILLIAM NALE, CHARLES TAYLOR
<i>Faculty Adviser</i>	- - - - -	PROF. GROVER C. T. GRAHAM

Left to Right—Taylor, Prof. Graham, Linn, Nale.





First Row, Left to Right Brouse, Mr. Graham, Hains, Ratschelet, Bollinger, Liddington, Ronsch, Wolfe.
 Second Row—Wollaston, Caldwell, Bidding, Durden, Fenstermacher, Bogar, Walker, Wolston, Steiger, White.
 Third Row—Mr. Lotz, Mr. Soule, Staller, Beckwith, Sterrett, Hurr, Wagner, Steadman, Dr. Robison.

Bond and Key

OFFICERS

<i>President</i>	- - - - -	THOMAS STALLER
<i>Vice President</i>	- - - - -	LESTER HEILMAN
<i>Treasurer</i>	- - - - -	JOHN WALKER
<i>Secretary</i>	- - - - -	JOHN STEIGER
<i>Steward</i>	- - - - -	HERB HAINES

Bond and Key, Susquehanna's oldest fraternity, was founded in 1914 as a local organization and has remained so throughout the years.

From an initial membership of 21, it has grown to a membership of 540 with alumni members scattered throughout the United States and all over the world.

Bond and Key has contributed greatly since its founding and holding to its motto, "Bound as knights," the members pledge loyalty "first to Susquehanna, second to Bond and Key."



FRATRES IN COLLEGIO

Larry Batschelet
 William Beckwith
 Robert Bitting
 Marsh Bogar
 Herbert Bollinger
 William Bosch
 Eugene Brouse
 Raymond Caldwell
 Kay Campbell
 Harold Carr
 Roy Cope
 Gilbert Day
 Robert Deibler
 John Diehl
 Rowie Durden
 Gene Fenstermacher
 Donald Foelsch

Herbert Hains
 Jacob Harder
 Lester Heilman
 Richard Herr
 Kenneth Hill
 Robert Jarvis
 Harvey Jeffers
 Robert Kurtz
 George Liddington
 James Morris
 Robert Morris
 Gail Moulton
 Donald Muchmore
 Justin Myers
 Edward Neuman
 Robert Pitello
 Charles Roush

Charles Shamp
 Jacob Spangler
 Thomas Staller
 Donald Steadman
 John Steiger
 David Sterrett
 John Takach
 William Treon
 Ray Tyler
 Walter Wagner
 John Walker
 Norman White
 Fancher Wolfe
 Edward Wollaston
 Walter Wolsten
 Robert Wyllie

FRATRES IN FUTURI

Henry Albright
 Carl Baker
 William Delbaugh
 James Dell
 James Diemer
 Orville Glass
 Walter Henry

Vernon Hoover
 Harold Johnson
 Herbert Krauss
 Paul Ludig
 Stuart Lengel
 Robert MacNamara
 Stanley Manning

John Mayer
 Edwin Menapace
 Rodger Rohrbaugh
 John Shannon
 Robert Trezek
 Harold Vogler
 Arthur Zimmerman

FRATRES IN CAMPO

Mr. Robert Amy
 Mr. Fred Billman
 Mr. Grover Doyle
 Mr. Grover Graham

Mr. Elbert Haskins
 Dr. John Houtz
 Mr. Percy Linebaugh
 Mr. Benjamin Lotz

Mr. Raymond Morris
 Dr. George Robison
 Mr. John Soule
 Mr. Fred Stevens

First Row, Left to Right Heilman, Boyle, Treon, Kurtz, Pitello.
 Second Row Newman, Schoner, Carr, Spangler, Moulton, Myers.
 Third Row—Bosch, Muchmore, Wyllie, Deitch, Cope, Harder, Takach.





First Row, Left to Right—Ecker, Fleming, Joyce, Jones, Patterson, Horoschak, Mazura, Zlock.
 Second Row—Reese, Fish, Brown, Marek, Snyder, Mitch, Vollmers, Hazlett, Stone.
 Third Row—Boyer, Dunn, Palkovick, Nyer, Shoemaker, Chadwick, Parker, Compton, Mr. Meader.

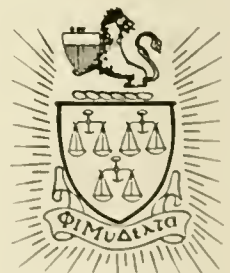
Phi Mu Delta

OFFICERS

<i>President</i>	- - - - -	DONALD SHOEMAKER
<i>Vice President</i>	- - - - -	JACK BROWN
<i>Secretary</i>	- - - - -	BEN ALTER
<i>Chaplain</i>	- - - - -	GORDON JOYCE

Phi Mu Delta is starting a second quarter-century of activities on Susquehanna University's spacious campus. She is expecting to hold for her members the same guidance and opportunities that she has given them in the past and pledges her loyalty and devotion to the university whose cooperation made possible the forming of the Mu Alpha chapter of Phi Mu Delta fraternity.

It is the aim of this fraternity to foster better interfraternity cooperation and understanding and to exert a wholesome influence in the fraternity house, on the campus, and in civic affairs.



FRATRES IN COLLEGIO

Ben Alter
 Harmon Andrews
 Dave Bennett
 Robert Bogdanfy
 Larry Bottiger
 Vincent Boyer
 Jack Brown
 Richard Burley
 Len Carlson
 Jim Chadwick
 Frank Compton
 Edward Covert
 James Crawford
 James Deitch
 Joe Driscoll
 Melvin Dunn
 John Eccker
 Burdell Faust
 Thomas Fields

Walter Filbert
 Norman Fleisher
 Joseph Fleming
 Genaro Fluri
 William Foster
 James Hazlett
 John Horoschak
 Walter Ifert
 Cynddylan Jones
 Richard Jones
 Gordon Joyce
 Gardner Marek
 Walter Mazura
 Robert Mesler
 Clair Mitch
 William Nyer
 Edward Palkovich
 Dave Parker

Robert Patterson
 Dan Reese
 Richard Rother
 Donald Shoemaker
 George Snyder
 Jesse Stone
 William Scott
 James Tompkinson
 Steve Torok
 Felix Torromeo
 Allen Townsend
 Richard Ulsh
 Bud Unangst
 Allen Vollmers
 Ernie Walker
 Don Walter
 James Withers
 Charles Zlock

FRATRES IN FUTURI

George B. Backer
 Russel C. Barthel
 Richard Boyd
 Sam Carmichael
 Herbert Craft
 Bert Edmunds
 Harry Feltman, Jr.
 D. Willis Hartman
 Dwight Keener

Edward Koch
 Edward P. Kopf
 William P. LaMarca
 Thomas Marts
 Robert Moore
 Arthur Olson
 DeWitt Reynolds
 John Rhodes
 Harry M. Rice, Jr.

Francis Schaffer
 Jack Schreffler
 Jack Shraeder
 Robert T. Shade
 Edward Shore
 John T. Snyder
 Gene Stock
 Louis Szabo
 George Washburn

FRATRES IN CAMPO

Dr. George Fisher
 Mr. Russell Hatz
 Mr. Robert Howling

Mr. Axel Kleinsorg
 Mr. Robert Meader
 Dr. William Russ

Dr. Arthur Wilson
 Mr. E. T. Yorty
 Dr. Waldemar Zagars

First Row, Left to Right—Ifert, Rother, Unangst, Bonnet, Burley, Walter, Torromeo.

Second Row—Crawford, Fields, Carlson, Scott, Filbert, Townsend, Andrews, Deitch.

Third Row—Jones, Covert, Fleisher, Walker, Mesler, Tompkinson, Torok, Bogdanffy, Dr. Wilson.





First Row, Left to Right Mr. DeMott, Dr. Armstrong, Snyder, Weiler, Newcomer, Brandau, Dr. Gilbert, Dr. Dunkleberger.
 Second Row Hemstead, Stout, P. Jones, Monrow, Specht, A. Jones, Bouboy, Fenstermacher.

Theta Chi

OFFICERS

<i>President</i>	- - - - -	PAUL JONES
<i>Vice President</i>	- - - - -	GERALD MOOREHEAD
<i>Secretary</i>	- - - - -	DALE GATIMAN
<i>Treasurer</i>	- - - - -	WILLIAM NALT

Theta Chi, along with other fraternities, is a growing, progressive organization, always looking to greater things in the future.

The purpose of the Beta Omega chapter is to develop the best in each man and prepare him to give his all to the world by scholastic achievement, physical growth, and social emanation. Theta Chi gives to her members a common bond which looks forward to peace and unity in a world of brotherhood.



FRATRES IN COLLEGIO

Thomas Balchen
Elmer Baumgardner
Donald Berninger
Richard Bidelspach
Charles Bomboy
Walter Brandau
Robert Fenstermacher
Dale Fulmer
Richard Fyler
Dale Gateman
Jack Gearinger
Francis Gloster
Kenneth Hemstead

Albert Jones
Paul Jones
John Lamade
Don Linn
Duane Mitchell
John Momrow
Gerald Moorhead
Carl Musser
William Nale
Jesse Newcomer
Kenneth Orris
William Prichard
Roland Rosetti

Merrill Shafer
Charles Shaffer
Donald Sheldon
Alfred Snyder
William Specht
Richard Stetler
Richard Stout
Charles Sullivan
Willard Taylor
Richard Valera
Emil Weiler
Daniel Williamson
Gunnar Zorn

FRATRES IN FUTURI

Roy Foor
William Kelley
Harold Klose
Edward Lamb
Orville Lauver

Charles Mason
Paul Nestler
Edward Romano
Samuel Ross
John Schwartz

Todd Solomon
William Stringer
Stewart Tomlinson
Edward Topolski
Fred Winckler

FRATRES IN CAMPO

Dr. Thomas F. Armstrong, Jr.
Mr. Howard DeMott

Mr. Karl Geisinger
Dr. Russell Gilbert

Mr. John Leach
Dr. Kenneth Waterbury

First Row, Left to Right—Gloster, Jarvis, Taylor, Bidelspach, Orris.
Second Row—Williamson, Baumgardner, C. Shaffer, M. Shaffer, Fyler, Linn, Rosetti.
Third Row—Gateman, Berninger, Nale, Valera, Moorhead, Fulmer, Sheldon, Sullivan.





First Row, Left to Right—Lease, Krause, Bolig, Slater, Baumgardner, Smith, Roslander.
 Second Row—McKegg, Odenthal, Rumbaugh, N. Shafer, Martin, Yonghaus, Vogler, Chambers, Jochem,
 MacNeil, Gloster.
 Third Row—Adamick, Cosgrove, Schuerr, Stempfle, Way, VanVoorhis, Wehr, Ferguson, Klingler, Yocum,
 Smyrl, Borsteius, Wiant.

Kappa Delta

OFFICERS

<i>President</i>	- - - - -	ALICE YONGHAUS
<i>Vice President</i>	- - - - -	MIRIAM VOGLER
<i>Secretary</i>	- - - - -	MARTHA MARTIN
<i>Treasurer</i>	- - - - -	NELDA SHAFER

Kappa Delta is a national social sorority which was founded October 23, 1897, by four young women at Virginia State Normal School, Farmville, Virginia. The Beta Upsilon chapter on Susquehanna's campus is one of seventy-eight chapters all over the country. The sorority is also a prominent member of the National Panhellenic Council.

As a sorority, Kappa Delta endeavors to promote true friendship, high scholarship, and active participation in campus activities. The open motto is "Let us strive for that which is honorable, beautiful, and highest." The insignia is the diamond shield which is ever held high in the hearts of Kappa Deltas and green and white are the colors.

SORORES IN COLLEGIO

Elaine Adamick	Madaline Lease	Mary Lou Slater
Fern Baumgardner	Audrey MacNeil	Elinor Smith
Nancy Bolig	Martha Martin	Shirley Smyrl
Vija Borsteins	Pamela McKegg	Jean Stuempfle
Maxine Chambers	Wilda Odenthal	Jean VanVoorhis
Nancy Cosgrove	Carol Reidler	Miriam Vogler
Althea Ferguson	Ruth Roslander	Marjorie Way
Mary Gloster	Patricia Rumbaugh	Jane Wehr
Bernice Jochem	Kathleen Schnerr	Joan Wiant
June Klingler	Nelda Shafer	Maxine Yocum
Jacqueline Krause		Alice Yonghaus

SORORES IN CAMPO

Miss Frances Brunkhorst	Mrs. Ann Ulsh
Miss Norma Hazen	Miss Emily VanDyke
Miss Ruth Sparhawk	





Front Row, Left to Right—Miller, Schweighofer, Fitting, Duboy, VonLynn, Wagner.
 Second Row—Beam, Young, Albert, Bailey, Foltz, Arner, McDonald, Fague, Beers.
 Third Row—G. J. McKeever, Heathote, Brown, McGrath, Renfer, Crisman, Barick, Lewis, Wegner, Dixon, Smith.

Alpha Delta Pi

OFFICERS

<i>President</i>	- - - - -	SUSAN FOLTZ
<i>Vice President</i>	- - - - -	LYN BAILEY
<i>Secretary</i>	- - - - -	JANICE ARNER
<i>Treasurer</i>	- - - - -	MARTHA ALBERT

Gamma Omicron Chapter of Alpha Delta Pi, installed as the first national sorority on Susquehanna's campus, received its charter on April 29, 1950. This chapter was the former local sorority Omega Delta Sigma, founded in 1917.

Alpha Delta Pi, the oldest secret society for college women in the world, will celebrate a century of sisterhood on May 15, 1951.

Founded for the purpose of promoting intellectual growth and cultural standards, Alpha Delta Pi inspires its 33,000 members to all that is good and true.

SORORES IN COLLEGIO

Martha Albert	Vera Duboy	Lorraine Rarick
Janice Arner	Marianne Fague	Lois Renfer
Lyn Bailey	Susan Foltz	Joan Sechrist
Marie Beam	Patricia Heathcote	Ruth Smith
Marilyn Beers	Faye Lewis	Helen Von Lynn
Mary Jo Brown	Joyce Miller	Joyce Wagner
Patricia Crisman	Jean McDonald	Audrey Wegner
Mary Ann Dixon	Ethel McGrath	Shirley Young
	Grace Jane McKeever	

SORORES FUTURAE

Betty Fitting	Doris Schweighofer
---------------	--------------------

SORORES IN CAMPO

Mrs. Russell Gilbert	Mrs. A. A. Stagg, Jr.
Mrs. John Houtz	Mrs. Kenneth Waterbury
Mrs. Russell Learn	Mrs. Arthur Wilson



SORORES IN COLLEGIO

Flora M. Barnhart

Voylet Dietz

Barbara J. Easton

Alice M. Greeger

Jean Hill

Lorraine Lee

Mary E. Lehman

C. Joy McCahan

Jacquelyn McKeever

Sally Mitchell

Jean Rarick

Josephine Stuter

Clara M. Williams

Janet L. Wingert

Nancy E. Youhon

Margaret Zinda

SORORES IN CAMPO

Mrs. Russell Hatz

Mrs. Percy Linebaugh

Miss Athalia Kline



OFFICERS

Chairman - DEAN RUSSELL GALT

President DONALD SHOEMAKER

Secretary-Treasurer

DR. KENNETH WATERBURY



First Row, Left to Right—Shoemaker, Dr. Galt.
Second Row Mr. Linbaugh, Jones, Mr. Mender.

Fraternity Senate

The Fraternity Senate is composed of Dean Galt, who serves as permanent chairman, and the president and a faculty adviser from each fraternity. One of the student members acts as chairman of the social committee.

It is the purpose of the Senate to maintain harmony among the fraternities, and to provide an opportunity for the discussion of problems associated with fraternity life.

Duties of the Fraternity Senate include the making of rules concerning fraternity rushing and planning for all interfraternity social events.

Panhellenic Council

The Panhellenic Association is composed of three representatives from each sorority, together with the Dean of Women as faculty adviser. Each sorority is represented by its President, Vice President, and one elected delegate. The office of president of the association rotates each year between the two active members, Sigma Alpha Iota being an associate member.

The purpose of the Association is to maintain on a high plane fraternity life and interfraternity relations within our college. It meets once every month to discuss such problems as regulating freshman rushing, determining pledge quotas, planning rush parties, and sponsoring intersorority dances.

First Row, Left to Right—Greeger, Dean Sambrook, Beers, Odenthal, Foltz.
Second Row—McCalm, Bailey, Younghaus, Dietz, Vogler



OFFICERS

President - MARYLYN BEERS

Secretary-Treasurer

WILDA ODENTHAL



First Row, Left to Right—Heathcote, Young, Sparhawk, Albert, Beers, Ferguson, MacNeil.
 Second Row—Baingardner, Chambers, Bean, VanVoorhis, Rumbough, McGrath, Gordon.

OFFICERS

- President* - - MARILYN BEERS
Vice President ALTHEA FERGUSON
Secretary - - MARTHA ALBERT
Treasurer - - SHIRLEY YOUNG

Tau Kappa

Tau Kappa is a national honorary sorority in athletics for women. Any girl upon acquiring 600 points becomes pledged to the sorority and 700 points entitles a girl to full membership. The purpose of the sorority is to encourage the girls to participate in sports and to show good sportsmanship while playing. Tau Kappa sponsors the Sadie Hawkins dance as one of its social activities.

Phi Kappa

The Phi Kappa Society was organized in 1930 to develop and promote interest in the classical Greek studies among the students of the college. Those students who have maintained a high standard of scholarship in Greek and show an interest in things Hellenic are eligible for election to membership. Once a month the group meets to discuss some phase of Greek culture.

This opportunity is taken to express the society's appreciation of the constant interest and sound advice given by Dr. A. William Ahl, the society's adviser.

First Row, Left to Right—Bomboy, Morrow, Burnham, Volk, Joyce, Dr. Ahl, Lupolt.
 Second Row—Smeltz, Koch, Snyder, Zorn, Reimensnyder, Shade, Jones, Moore.

OFFICERS

- Basileus* - - GORDON JOYCE
Deutero-basileus - DAVID VOLK
Grammateus - BETTY BURNHAM
Tamias - - CHARLES BOMBOY
Aggelos - - CHARLES SNYDER



OFFICERS

President - GERALD MOOREHEAD

Secretary-Treasurer

DR. WILLIAM RUSS



First Row, Left to Right—Hains, Shaffer, Moorehead,
Second Row—Brandau, Staller, Bogar, Smeltz.

Pi Gamma Mu

Pi Gamma Mu is a national honor society in social studies. Its membership includes faculty, alumni, and undergraduates. Pennsylvania Gamma Chapter was organized at Susquehanna University on May 9, 1927.

The purpose of the organization is to encourage the ideals of scholarship in the study of social problems. Juniors and seniors are eligible for membership. Eligibility consists of a special interest in social studies, completion of at least twenty semester hours in social studies with a grade of "B", good character, and a satisfactory general standing.

Alpha Psi Omega

The Theta Phi Chapter of Alpha Psi Omega, the largest national honorary fraternity of dramatics in the world, is located here at Susquehanna University.

Membership may be obtained in this Theta Phi Cast by creditable work in college dramatic productions. There is a point system in this organization whereby any person, whether in a cast or helping in any way to promote a play, may obtain a specific number of credits towards gaining admittance to the organization. Seventy-five points are required for membership.

The purpose of the organization is to promote college dramatics, to create a better understanding of dramatic problems, and to promote an interest in dramatics both in the college and in the surrounding community.

First Row, Left to Right—Adamick, Vogler, Foster, Mitchell, Slater,
Second Row—Mr. Kleinsorg, Andrews, Shoemaker, Jones, Smeltz, Batschelet.





First Row, Left to Right—Guise, Zinda, Rarick, Drumm, Lee, Bates, Lightfoot, Jochem, Aston, Hefflinger, Yokum, Weiser, Stuter.
 Second Row—Giauque, Dietz, Williams, Yinger, Adamick, Easton, Lane, Wingert, Freed, Meerbach, Thomas, McKeever, Alexander, Stumpfle, Bell, Way, Mrs. Giauque.
 Third Row—Gloister, Crawford, Durden, Carlson, Gateman, Fulmer, Bidding, Berninger, Fyler, Beckwith, Sheldon, Orris, Day.

The Susquehanna Singers

The Susquehanna Singers is a group of sophomores and juniors. Its membership is open to the entire student body. Consistent excellence in performance is due in part to the inspired direction of Mrs. Alice Giauque to whom many thanks are here given.

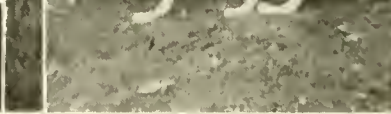
Chapel Choir

The Chapel Choir was organized in 1947. It was then composed of eight members and has grown in size since then to thirty members. This year for the first time there were tryouts for the Choir and anyone who desired to sing was eligible. The Choir sings in Chapel every Monday morning. Last year the Choir went on several singing engagements to some towns nearby and also down to Bedford, Pennsylvania. This year they will travel again. They are becoming better known each year.

This opportunity is taken to acknowledge gratefully the constant interest and excellent leadership of the director, Professor Elbert Haskins.

First Row, Left to Right—Barnhart, Shade, Martin, Lane, Meerbach, Youhon.
 Second Row—Thomas, Weiser, Bates, Alexander, McKeever, Smyrl, Richie, Haggerty, Freed, Bell, Wingert.
 Third Row—Mr. Haskins, Beckwith, Fyler, Carr, Gateman, Fulmer, Berninger, Bidding, Walker, Durden.





STUDENT ROSTER

- Adamick, Elaine D. (2) 685 Donald Avenue, Perth Amboy, N. J.
- Adgers, Elza (1) R. D., Reedsville
- Ahr, Carol (1) 16 Union Avenue, Slingerlands, N. Y.
- Albert, Betty Pearson (3) 301 E. Pine Street, Selinsgrove
- Albert, Martha L. (4) 20 South Locust Street, Myerstown
- Albright, Henry (1) 1116 East Chestnut Street, Sunbury
- Alexander, JoAnn (3) 201 Maple Avenue, Wenonah, N. J.
- Alter, Ben C. (4) 52 Post Avenue, Rochester, N. Y.
- Andrews, Harmon (2) 21 Wight Place, Tenafly, N. J.
- Apgar, Dorothy (2) River View Terrace, Mahwah, N. J.
- Arbogast, Ned (1) 722 Elliott Avenue, Alexandria Park, Portsmouth, Va.
- Arner, Janice (4) 320 West Fifth Street, East Liverpool, O.
- Aston, Peggy Ann (3) 35 North Maple Street, Mt. Carmel
- Aurand, Mrs. Elinor (3) 126 Spruce Street, Sunbury
- Backer, George (1) Shamokin Dam
- Baer, Ruth Adele (1) 24 Huron Avenue, Norwood
- Bailey, Lyn (4) 130 Morningside Drive, New York, 22, N. Y.
- Baker, Carl (1) Route 1, Millerstown
- Balchen, Thomas (2) 887 Prince Street, Teaneck, N. J.
- Barnhart, Flora (4) Claysburg
- Bartle, Russell (2) 100 South Maple Avenue, Kingston
- Bastian, William (1) 247 Ridge Avenue, Sunbury
- Bates, Joan (2) 11 Dunham Avenue, Cranford, N. J.
- Batschelet, Harry L. (2) 101 Valley Street, Williamsport
- Baumgardner, Elmer (3) 1702 Graham Avenue, Windber
- Baumgardner, Fern (4) 1702 Graham Avenue, Windber
- Beam, Marie E. (4) 2507 Graham Avenue, Windber
- Beary, Velma (2) Marble, Clarion County
- Beckwith, William (3) 721 Eighth Street, Oakmount
- Beers, Marilyn (4) 452 Beardsley Avenue, Bloomfield, N. J.
- Bell, Shirley (1) 808 Goucher Street, Johnstown
- Bennett, David (2) 739 Broad Street, Montoursville
- Berninger, Donald (3) R. D. 2, Bloomsburg
- Bidelspach, Richard (2) 829 Line Street, Sunbury
- Bilger, Roy (0) 102 South High Street, Selinsgrove
- Bitting, Robert (4) 217 Woodbine Street, Harrisburg
- Bobb, Bruce (1) 311 Reagan Street, Sunbury
- Bogar, Marsh (4) 2936 Green Street, Harrisburg
- Bogar, Nancy (0) South Market Street, Selinsgrove
- Bogdanffy, Robert (3) 155 Washington Avenue, Clifton, N. J.
- Bolig, Nancy (2) University Heights, Selinsgrove
- Bollinger, Anna (4) 213 Carlisle Street, New Oxford
- Bollinger, Herbert (4) 611 King Street, Northumberland
- Bomboy, Charles (3) 711 Catawissa Avenue, Sunbury
- Borski, Eleanor (1) 62 Crestview Place, New Rochelle, N. Y.
- Borsteins, Vija (2) R. D. 2, Mifflintown
- Bosch, William (4) 5290 73rd Street, Maspeth, L. L. N. Y.
- Bottiger, Ernest, Jr. (2) Box 27, West Milton
- Boyd, Richard (1) 109 Overlook Terrace, Bloomfield, N. J.
- Boyer, Vincent (3) 200 Green Street, Mifflinburg
- Boyle, Donald (2) 2507 Beale Avenue, Altoona
- Brandau, Walter (4) 223 Catawissa Avenue, Sunbury
- Brobst, Hazel (4) 1042 South Front Street, Sunbury
- Brouse, Eugene (2) R. D. 2, Selinsgrove
- Brown, Jack (4) R. D. 1, Penn Run
- Brown, Mary Jo (2) R. D. 1, Penn Run
- Burgess, Edward (0) Box 224, Selinsgrove
- Burley, Richard (2) R. D. 1, Montgomery
- Burnham, Elizabeth (2) Wellsville Avenue, New Milford, Conn.
- Byers, Walter (1) Snyderstown
- Caldwell, Raymond (3) R. D. 2, Selinsgrove
- Campbell, Kay (2) 340 Arch Street, Sunbury
- Carlson, Leonard (2) 234 Electric Avenue, Lewistown
- Carmichael, Samoel (1) Wertz Road, Johnstown
- Carr, C. Harold (3) 429 North Third Street, Bellwood
- Cawley, George (1) R. D. 2, Selinsgrove
- Chadwick, James (3) 3607 Pacific Avenue, Wildwood, N. J.
- Chambers, Maxine (3) 207 Market Street, Mifflinburg
- Clark, Davis (1) 2 South Front Street, Selinsgrove
- Cline, Jane (1) 40 Cowdrey Street, Yonkers 2, N. Y.
- Compton, Frank (3) 206 Philadelphia Avenue, Egg Harbor City, N. J.
- Conrad, James (4) 200 Catawissa Avenue, Sunbury
- Cope, Roy (3) 7403 Sommers Road, Philadelphia 38
- Corbe, Grace (1) Box 112, New Kingston
- Cosgrove, Nancy (4) 202 South Maple Street, Mt. Carmel
- Covert, Edward (2) 17 Canoe Brook Parkway, Summit, N. J.
- Cowling, Marvel (2) 258 Cherry Lane, Teaneck, N. J.
- Craft, Herbert (1) 5202 Wayne Avenue, Philadelphia
- Crawford, Phillip (2) 224 West Fourth Street, Bloomsburg
- Cressman, Helen (2) R. D. 2, Bath
- Crisman, Patricia (3) 127 Arlington Street, Johnstown
- Davenport, William (2) 137 South Maple Avenue, Kingston
- Davies, Rebecca (1) 521 Delaware Street, Forest City
- Day, Gilbert (3) 123 North Market Street, Selinsgrove
- Deibler, Robert (2) 1250 West Fourth Street, Williamsport
- Deitch, James (2) 83 North Wyoming Street, Hazleton
- Delbaugh, William (1) 417 Walnut Street, Sunbury
- Dell, James (1) 143 West McClure Street, New Bloomfield
- Detar, Reed (1) Danville State Hospital, Danville
- Diehl, John (3) R. D. 1, Mifflinburg
- Diemer, James (1) 233 Arch Street, Sunbury
- Dietz, Voylet (3) 627 Locust Street, Wrightsville
- Diggan, Reda (1) 274 South Main Street, Hughesville
- DiPersio, Theresa (1) 4025 Carpenter Avenue, Bronx 66, N. Y.
- Dixon, Mary (2) 230 West High Street, Red Lion
- Dobson, Anthony (1) 330 Main Street, Ranshaw
- Doebler, Catherine (2) 243 Spruce Street, Sunbury
- Dove, Lewis (4) 123 East Fourth Street, Bloomsburg
- Driscoll, Joseph (4) 29 South Market Street, Selinsgrove
- Drumm, Frances (2) 111 East Tenth Street, Berwick
- Duboy, Vera (2) 186 Whippoorwill Road, Atlantic Highlands, N. J.
- Duceman, John (1) 848 West Pine Street, Shamokin
- Dunn, Melvin (4) 124 South Enola Drive, Enola
- Durden, Rowie (3) Greenwich Towers, Greenwich, Conn.
- Easton, Barbara (3) 558 Glenwood Avenue, Johnstown
- Ecker, John (4) 94 Prospect Street, Nanticoke
- Edmunds, Wilbert (1) 8 North Rock Street, Shamokin
- Erdman, Daniel, Jr. (4) 123 North Eleventh Street, Sunbury
- Fagne, Marianne (4) 413 South Queen Street, Lancaster
- Faust, Burdell (4) 511 Second Street, Weatherly
- Feltman, Harry (1) Market Street, Middleburg

STUDENT ROSTER

Fenstermacher, Gene (2)	101 Front Street, Northumberland	Hemstead, Kenneth (2)	456 Willett Avenue, Port Chester, N. Y.
Fenstermacher, Robert (3)	1062 Masser Street, Sunbury	Henderson, Margaret (1)	8A Colfax Manor, Roselle Park, N. J.
Ferguson, Althea (4)	10 South Main Street, Millerstown	Henninger, Robert (4)	91 King Street, Northumberland
Ferrey, George (2)	Main Street, Conyugham	Henry, Walter (1)	R. D. 2, MacDonald Hights, York
Fetterman, John (1)	R. D. 1, Ashland	Herr, C. Richard (3)	31 North Shamokin Street, Shamokin
Fetterolf, Marilyn (1)	1635 Menoher Boulevard, Johnstown	Hess, Patricia (1)	412 North Market Street, Elizabethtown
Fetterolf, Ronald (1)	Box 81, Beavertown	Hill, Jean (4)	350 Awl Street, Sunbury
Fields, Thomas (2)	171 La France Avenue, Bloomfield, N. J.	Hill, Kenneth (2)	12 North Market Street, Selingsgrove
Filbert, Walter (2)	45 South Cedar Street, Hazleton	Hoover, Vernon (1)	110 Clinton Street, Danville
Fisher, Lois (2)	1811 East 28th Street, Brooklyn, N. Y.	Horning, Kermit (2)	R. D. 1, McAlisterville
Fisher, Marilyn K. (2)	204 North Market Street, Selingsgrove	Horoschak, John (3)	133 East Columbia Avenue, Atlas
Fisher, William D. (1)	204 North Market Street, Selingsgrove	Hults, Margarete (1)	4 Hardwell Road, Short Hills, N. J.
Fitting, Betty (2)	83 Embury Avenue, Ocean Grove, N. J.	Huyett, Marilyn (1)	210 McClellan Street, Reading
Fitzpatrick, Thomas (3)	255 Walnut Street, Sunbury	Ifert, Walter (2)	556 Lincoln Street, Hazleton
Fleisher, Norman (2)	811 South Wayne Street, Lewistown	Jarvis, Robert (2)	602 Mohawk Avenue, Norwood
Fleming, Joseph (3)	52 Highfield Road, Bloomfield, N. J.	Jeffers, Harvey (2)	358 North Greece Road, Hilton, N. Y.
Flowers, Edward (1)	110 East Columbia Avenue, Atlas	Jochem, Bernice (3)	215 Paterson Avenue, East Rutherford, N. J.
Fluri, Genaro (3)	879 Alter Street, Hazleton	Jones, Albert (3)	811 Fairview Road, Swarthmore
Foelsch, Donald (2)	3 West 65th Street, New York, N. Y.	Jones, Cynddylan (2)	1500 Walnut Street, Ashland
Foltz, Susan (4)	816 Broad Street, Collingdale	Jones, Paul (4)	12 North Eighth Street, Shamokin
Foor, Roy (1)	East Second Street, Everett	Jones, Richard (3)	121 West Elm Street, Hazleton
Ford, Janice (2)	89 Kendall Boulevard, Oaklyn, N. J.	Johnson, Harold (1)	Box 156, Nicholson
Foster, William (4)	R. D. 2, Bristol, Newportville	Joyce, William G. (3)	R. D. 1, Bridgeton, N. J.
Freed, Ruth (2)	319 Main Street, Red Hill	Keener, Dwight (1)	2553 North Sixth Street, Harrisburg
Fritz, Betty (1)	1813 48th Street, Pennsauken, N. J.	Kelly, William (1)	136 Market Street, Sunbury
Frost, Esther (2)	Route 6, Lancaster	Kepner, Vivian (1)	48 South Harrisburg Street, Steelton
Fulmer, Dale (3)	R. D. 1, Danville	Kershner, Danalee (1)	499 North High Street, Selingsgrove
Fyler, Richard (3)	R. D. 2, Millerstown	Kissinger, Robert (3)	Freeburg
Galski, John (0)	711 Lincoln Street, Hazleton	Klingelhoeffer, Mary (2)	460 North Eighth Street, Sunbury
Gass, John (1)	48 North Third Street, Shamokin	Klingler, June (4)	Winfield
Gateman, C. Dale (3)	North Market Street, Elysburg	Kloap, William (2)	110 Garfield Street, Nanticoke
Gaugler, George (0)	Port Trevorton	Klose, Harold (1)	308 Market Street, Millinburg
Gearinger, Jack (4)	82 North Iron Street, Bloomsburg	Koch, Edward A. (1)	1513 Walnut Street, Ashland
Gilbert, Joyce (1)	302 North Eighth Street, Selingsgrove	Kopf, Edward P. (1)	61 Morse Avenue, Bloomfield, N. J.
Glass, Orville (2)	334 Fourth Street, Northumberland	Kostenbauder, E. Faye (1)	R. D. 1, Danville
Gloster, Francis (3)	123 North Market Street, Selingsgrove	Krause, Jacqueline (2)	531 North Front Street, Steelton
Gloster, Mrs. Mary (3)	123 North Market Street, Selingsgrove	Krauss, Herbert (1)	247 South Pine Street, York
Goodman, Ronald (1)	418 Erie Street, Honesdale	Krieg, Nancy (1)	737 Country Club Road, Camp Hill
Gordon, Lois (3)	344 Washington Avenue, Union, N. J.	Kurtz, H. Robert (2)	5138 North 15th Street, Philadelphia 41
Grabar, Alice (1)	22 Warwick Avenue, Scarsdale, N. Y.	Lam, Pok Wo (3)	16 Rue Lefebvre, Saigon, Indochina
Gree, Rita (1)	128 West Saylor Street, Atlas	Lamb, Edward (1)	17 Sterner Avenue, Broomall
Greger, Alice (4)	117 Kathmere Road, Havertown	Lamade, John (4)	1608 James Road, Williamsport
Guise, E. Ann (3)	R. D. 1, Biglerville	LaMarca, William (2)	205 Broadway, Coraopolis
Haggerty, Clair (1)	160 Price Street, Kingston	Larsen, Jack (4)	456 South Market Street, Selingsgrove
Hains, Herbert (4)	172 North 15th Street, East Orange, N. J.	Laudig, Paul (2)	841 Prescott Avenue, Scranton 10
Harder, Jacob (4)	1604 Letchworth Road, Camp Hill	Lane, Janet (1)	14 Herriek Drive, Lyndbrook, N. Y.
Harman, Christine (2)	1206 Fourth Avenue, Duncansville	Lauver, Orville (1)	McAlisterville
Harmon, Wanda (4)	Walnut Street, Reedsville	Lense, Madaline (2)	443 West Main Street, Somerset
Hartman, Donald (1)	204 East Main Street, Palmyra	Lee, Lorraine (2)	9 West 10th Street, Bayonne, N. J.
Haupt, Sylvia (2)	Port Trevorton	Lehman, Mary (4)	Newville
Hazlett, James (3)	Box 302, Chicora	Lengel, Stuart (1)	R. R. 2, Richfield
Heathcote, Patricia (3)	220 East Cottage Place, York	Lenker, Kenneth (3)	143 Ninth Street, Sunbury
Heffelinger, Margaret (2)	211 West Fifth Street, Bloomsburg	Lepley, Nancy (1)	Winfield, R. D.
Heffner, Joseph (1)	1077 Reagan Street, Sunbury	Lewis, Faye (3)	30 East Ruddle Street, Coaldale
Heffner, Marlin (4)	130 Lombard Street, Sunbury	Liddington, George (1)	321 Orange Street, Northumberland
Hellman, Lester (3)	517 Stevens Street, Williamsport		
Heinly, Joanne (1)	21 East James Street, Lancaster		

STUDENT ROSTER

Lightfoot, Lynne (2)	214 Runnymede Avenue, Jenkintown	Osborn, Ruth (1)	16th & Queen Street, Northumberland
Linn, Don (3)	202 East Pine Street, Selingsgrove	Palkovitch, Edward (4)	252 East High Street, Coaldale
Lose, Graydon (1)	Main Street, Middleburg	Parker, David (3)	1560 Sheridan Lane, Norristown
Lucas, Carolyn (1)	228 East Washington Street, Chambersburg	Patterson, Robert (4)	324 Hazle Street, Tamaqua
Lupolt, Wayne (3)	912 North Walnut Street, Shamokin	Paulhamus, Lewis (3)	R. D. 2, Selingsgrove
MacNamara, Robert (2)	224 North 11th Street, Sunbury	Perkins, Tamsen (1)	223 16th Street, Honesdale
MacNeil, Audrey (1)	119 Water Street, Perth Amboy, N. J.	Perna, Anthony (2) Cocolamus
McCahan, Carolyn (1)	Port Royal	Pitello, Robert (3)	201 South Vine Street, Mt. Carmel
McDonald, Jean (4)	Box 631, Marion, Va.	Planko, Louise (1)	110 North Maple Street, Mt. Carmel
McGrath, Ethel (3)	21 Floyd Avenue, Bloomfield, N. J.	Porter, Samuel (3)	120 West Bough Street
McIntosh, Virginia (0)	State Colony, Selingsgrove	Poulos, Thomas (1)	R. D. 2, Sunbury
McKeever, Grace-Jane (3)	R. D. 1, Harrisburg	Prichard, William (2)	Dutton Mill Road, R. D. 2, Malvern
McKeever, Jacquelyn (3)	1107 Third Street, Catawqua	Rarick, Jean (2)	North Warren Street, Orwigsburg
McKegg, Pamela (2)	249 Belleville Avenue, Bloomfield, N. J.	Rarick, Lorraine (3)	North Warren Street, Orwigsburg
McKinney, Nancy (2)	2112 Eleventh Street, Altoona	Reese, Daniel (2)	127 Poplar Street, Kingston
McPherson, James (1)	630 Queen Street, Northumberland	Reidler, Carol (2)	615 Lincoln Street, Hazleton
Manning, Stanley (1)	126 North 17th Street, East Orange, N. J.	Reimensnyder, Thomas (1)	729 Hepburn Street, Milton
Marek, Gardiner (4)	26 East Avenue, Atlantic Highlands, N. J.	Renfer, Lois (3)	129 Rock Street, Pittston
Martin, Martha (4)	27 South Third Street, Shamokin	Reynolds, DeWitt (1)	172 Davey Street, Bloomfield, N. J.
Marts, Thomas (2)	1774 Norris Street, Camden, N. J.	Rhodes, John (2)	204 Bratton Avenue, Lewistown
Mason, Charles (2)	6432 31st Street, N. W., Washington 15, D. C.	Rice, Harry, Jr. (1)	83 Watsessing Avenue, Bloomfield, N. J.
Mayer, John (2)	417 Fifth Avenue, Belmar, N. J.	Richards, Frank (1)	326 South Market Street, Selingsgrove
Mazura, Walter (3)	935 Sedalia Street, Avalon, Pittsburgh	Richie, Jane (1)	612 North Shamokin Street, Shamokin
Meerbach, Irene (1)	231 Freeman Avenue, Stratford, Conn.	Riegel, Carl (1)	Main Street, Shamokin Dam
Menapace, Edwin (3)	201 West Girard Street, Atlas	Rohrbaugh, Rodger (1)	44 East Ninth Avenue, York
Mesler, Robert (2)	963 Kenyon Avenue, Plainfield, N. J.	Romano, Edward (1)	344 East 115th Street, New York, N. Y.
Micklavage, Robert (1)	40 Oakland Avenue, Ashland	Rosetti, Roland (1)	Box 41, South Canaan
Miller, Howard (2)	Box 446, Richfield	Roslander, Ruth (3)	Shadyside Road, Ramsey, N. J.
Miller, Janet (1)	2959 Maple Road, Camp Hill	Ross, Samuel (1)	208 Wischman Avenue, Oreland
Miller, Joyce (2)	100 Stone Street, Honesdale	Rother, Richard (2)	8631 Fort Hamilton Parkway, Brooklyn, N. Y.
Mitch, Clair (3)	521 Walnut Street, Mifflinburg	Roush, Arthur (2)	709 North Market Street, Selingsgrove
Mitchell, Duane (2)	523 North Sixth Street, Clairton	Roush, Charles, Jr. (2)	New Street, Freeburg
Mitchell, Sally (1)	50 Shoemaker Street, Forty Fort	Rowe, Phyllis (1)	Route 2, Smithsburg, Md.
Momrow, John (3)	6002 Fourth Avenue, Brooklyn, N. Y.	Runbaugh, Patricia (3)	Millerstown
Moore, Robert (1)	720 Jackson Street, Easton	Ruetherford, Caroline (2)	Route 1, Harrisburg
Moorhead, Gerald (1)	R. D. 1, Milton	Salzer, Abby (2)	2004 East 26th Street, Brooklyn, N. Y.
Morris, Barbara (1)	Sadsburyville	Scherr, Kathleen (3)	Annex Apartments, Hall Square, Nazareth
Morris, James (3)	116 North Water Street, Selingsgrove	Schoner, Frank (1)	9 Wellesley Road, Maplewood, N. J.
Morris, Robert (2)	116 North Water Street, Selingsgrove	Schraeder, John (1)	218 Allen Street, West Hazleton
Morrow, Beatrice (2)	Glasgow	Schreffler, Jack (1)	862 North Fourth Street, Sunbury
Mosholder, Joann (1)	R. D. 2, Rockwood	Schumacher, Ann (1)	212-02 33rd Road, Bayside, N. Y.
Moulton, Gail (2)	6 Ball Road, Mountain Lakes, N. J.	Schweighofer, Alice (1)	R. D. 3, Honesdale
Muehmore, Donald (2)	27 Laurel Avenue, Summit, N. J.	Schweighofer, Doris (2)	R. D. 3, Honesdale
Moyer, Robert (4)	R. D. 1, Selingsgrove	Schwartz, John (3)	27 John Street, Hummelstown
Musser, Carl (3)	Kreamer	Scott, William (2)	Dewey Beach, Rehoboth, Del.
Myers, Justin (2)	400 South Main Street, Hughesville	Schrist, Joan (2)	117 North 12th Street, Sunbury
Nale, William (3)	R. D. 1, Lewistown	Shade, Rebecca (1)	Mooresburg, Danville Route 1
Nestler, Paul, Jr. (1)	Green Lane	Shade, Robert (1)	1941 Chestnut Street, Harrisburg
Neuman, Charlotte (1)	828 Florida Avenue, York	Shafer, Betty (3)	State Street, Millville
Neumar, Edward (2)	828 Florida Avenue, York	Shafer, Merrill (4)	Grier City, Barnesville
Newcomer, Jesse (2)	322 West Mill Street, Selingsgrove	Shafer, Nelda (4)	Grier City, Barnesville
Nyer, William (3)	R. D. 1, Weatherly	Shaffer, Charles (1)	120 Independence Street, Selingsgrove
Odenthal, Wilda (3)	Lake Juliet, Boonton, N. J.	Shaffer, Francis (1)	37 North Market Street, Shamokin
Olson, Arthur (1)	8802 Ridge Boulevard, Brooklyn 9, N. Y.	Shamp, Charles (2)	343 South Second Street, Sunbury
Orris, Kenneth (2)	Ikesburg	Shaannon, John (1)	202 Pine Street, Sunbury
		Sharretts, Delecy (1)	R. D. 1, Sunbury

STUDENT ROSTER

Sheldon, Donald (2)	312 Maple Avenue, East Hempstead, L. I., N. Y.	Townsend, Allen (2)	825 Wesley Avenue, Ocean City, N. J.
Shimko, Dolores (1)	21 Second Street, Strong	Treese, Rita (1) ...	614 West Third Street, Williamsburg
Shipton, James (2)	Swengel	Treom, William (2)	15 East Cherry Street, Mt. Carmel
Shoemaker, Donald (4)	217 Gilliland Place, Pittsburgh 2	Trezek, Robert (1), 50	Exton Avenue, North Arlington, N. J.
Shore, Edward (2)	43 Terrace Boulevard, Lewistown	Tyler, Ray (4)	Hummels Wharf
Sites, Dorothy (1)	219 Garfield Street, Chambersburg	Ulsh, C. Richard (4)	203 West Vine Street, Selingsgrove
Slater, Mary Lou (4)	198 Isabella Avenue, Irvington, N. J.	Unangst, Edward (2)	511 Shuman Street, Catawissa
Smeltz, William (1)	R. D. 1, Northumberland	Underkoffler, Owen (1)	1300 Market Street, Sunbury
Smethers, Herbert (0)	North Main Street, Herndon	Valera, Richard (3)	101 Melrose Street, Keiser
Smith, Albert (3)	R. D. 1, Elysburg	VanVoorhis, Jean (1), West	Bloomfield Road, Pittsford, N. Y.
Smith, Elinor (2)	760 Main Street, Lykens	Vincent, Betty (1) ...	207 Ryan Street, Hillside, N. J.
Smith, Harry (4)	Herndon	Vogler, Harold (1)	315 Penn Avenue, Hawley
Smith, Lucian (1)	345 Arch Street, Sunbury	Vogler, Miriam (3)	315 Penn Avenue, Hawley
Smith, Ruth (3) ...	Box 353, Davidsville	Volk, David (3)	704 Morris Avenue, Boswell
Smyrl, Shirley (2)	220 East Bertsch Street, Lansford	Vollmers, G. Allan (3), 511	Belvidere Avenue, Plainfield, N. J.
Snyder, Alfred (3)	Freeburg	VonLynn, Helen (2)	12 Central Avenue, Cranford, N. J.
Snyder, Charles (2)	Herndon	Vought, Margaret (1)	Shuman Street, Middleburg
Snyder, George (3)	1042 South Front Street, Sunbury	Wagner, Joyce (2)	2911 Rumson Drive, Harrisburg
Snyder, John (1)	79 North Market Street, Elizabethville	Wagner, Walter (4)	369 West Fifth Street, Lewistown
Solomon, Pearl (1)	337 East Saylor Street, Atlas	Walker, Edward (4)	13 Stanley Oval, Westfield, N. J.
Solomon, Todd (1)	553 Harvard Avenue, Hillside, N. J.	Walker, Ernest (2) ...	1700 Sunshine Avenue, Johnstown
Spangler, Jacob (3)	115 West Fourth Avenue, Roselle, N. J.	Walker, John, Jr. (4)	336 Queen Street, Northumberland
Specht, William, Jr. (2)	507 Union Street, Millersburg	Walter, Donald (2)	High Street, West Milton
Stahl, Karl (1)	221 Green Street, Honesdale	Walton, Lucius (4)	23 East Pine Street, Selingsgrove
Staller, Thomas (4)	242 East Seventh Street, Mt. Carmel	Warnets, Audrey (1)	Penns Creek
Stamfer, Arthur (1)	Ninth Street, Northumberland	Washbourne, Geo. (1), 109	East Market Street, Williamstown
Steadman, Donald (2)	13 Sunset Avenue, Laurence Harbor, N. J.	Way, Marjorie (3)	1849 Ferry Street, Easton
Steffey, Eleanor (1)	Belleville	Webber, Margaret (1)	174 Westville Avenue, Caldwell, N. J.
Steffy, Robert (2)	18 North Front Street, Selingsgrove	Wegner, Audrey (2)	Palatine Lake, Elmer, N. J.
Steiger, John (1)	Newfoundland	Wehr, Jane (2)	Main Street, Middleburg
Steinhards, Nora (1)	101 South Prince Street, Lancaster	Weiler, Emil (4)	354 Liverpool Avenue, Egg Harbor, N. J.
Sterrett, J. David (4)	774 Braxton Road, Ridley Park	Weisenfluh, Betty (1)	326 Main Street, Old Forge
Stetler, Richard (4)	417 Orange Street, Mifflintown	Weiser, Maxine (2) ...	R. D. 1, Red Lion
Still, Shirley (1)	Hummels Wharf	Weller, Carl (4) ...	421½ South Fourth Street, Sunbury
Stock, Gene (3)	7 New Street, Glen Rock	White, J. Norman (4)	222 North Hyde Park Avenue, Scranton
Stone, Jesse (3)	308 Reno Street, New Cumberland	Whittington, Lillian (2)	1253 Hudson Street, Harrisburg
Stout, Richard (2)	606 Mahoning Street, Lehighton	Wiant, Betty (2)	533 Edgar Road, Westfield, N. J.
Stoughton, Nancy (0)	7 DeForest Avenue, Summit, N. J.	Wick, Miriam (1)	960 Arrott Street, Philadelphia
Stringer, William (1)	118 North Martindale Avenue, Ventnor, N. J.	Williams, Clara (2)	R. D. 1, Drums
Stuempfle, Jean (2)	122 South Main Street, Hughesville	Williamson, Daniel (2)	R. D. 2, Holsopple
Stuter, Mary (2)	Main Street, Belleville	Winekler, Fred, Jr. (1)	281 Prospect Avenue, West Orange, N. J.
Sullivan, Charles (1)		Winey, Bettie (2)	412 Eighth Street, Selingsgrove
Szabo, Louis (1)	22 Belmont Avenue, South River, N. J.	Winey, Carl (1)	Box 112, Richfield
Taddeo, Antoinette (1)	101 William Street, Williamsport	Wingert, Janet (3)	1305 Alexander Avenue, Chambersburg
Tafel, Louis (2)	8008 Frankford Avenue, Philadelphia	Wither, James (2)	2038 Sheridan Street, Williamsport
Takach, John (3)	506 Second Street, Leechburg	Wolfe, Fancher (4)	7 Mrs. H. L. Austin, Mountain Top
Taylor, Charles (4)	Elmhurst	Wollaston, Edward (3)	14 North Marion Street, Warren
Templin, William (1)	1016 Luzerne Street, Johnstown	Wolsten, Walter (4)	1 Homestead Park, Newark, N. J.
Thomas, Margretta (2), 135	East Spurzheim Street, Shamokin	Wyllie, Robert (2)	23 Fairview Avenue, North Plainfield, N. J.
Thompson, Marilyn (2)	522 Lindberg Way, Lewistown	Yinger, Virginia (1)	815 Pontiac Avenue, Baltimore 25, Md.
Thompson, Shirley (1)	R. D. 1, Paradise	Yocum, Maxine (2)	Park Avenue & Stone Road, Laurel Springs, N. J.
Tkaczyk, Walter (1)	442 Columbia Avenue, Atlas	Youghans, Alice (1)	Box 395, Pocompton Plains, N. J.
Tomkinson, James (3)	2728 Norwood Avenue, Merchantville, N. J.	Yorty, Ann (0)	University Heights, Selingsgrove
Tomlinson, Stewart (1)	225 Eighth Avenue, Burnham	Youhou, Nancy (3)	37 South Atherton Avenue, Kingston
Topolski, Edward (1)	243 West Second Street, Wilburton	Young, Richard (1)	616 Queen Street, Northumberland
Torok, Steve (2)	4 Bright Street, South River, N. J.	Young, Shirley (1)	35 South 10th Street, Quakertown
Torromeo, Felix (3), 55	Harrison Avenue, West Orange, N. J.	Ziamba, Theresa (1)	Mountain Street, Trevorton
		Zimmerman, Arthur (1)	509 Packer Street, Sunbury
		Zinda, Margaret (2)	Fisher Avenue, Catawissa
		Zoek, Charles (4)	276 Third Street, Coaldale
		Zorn, Gunnar (2)	2048 Cecil Avenue, Baltimore 18, Md.



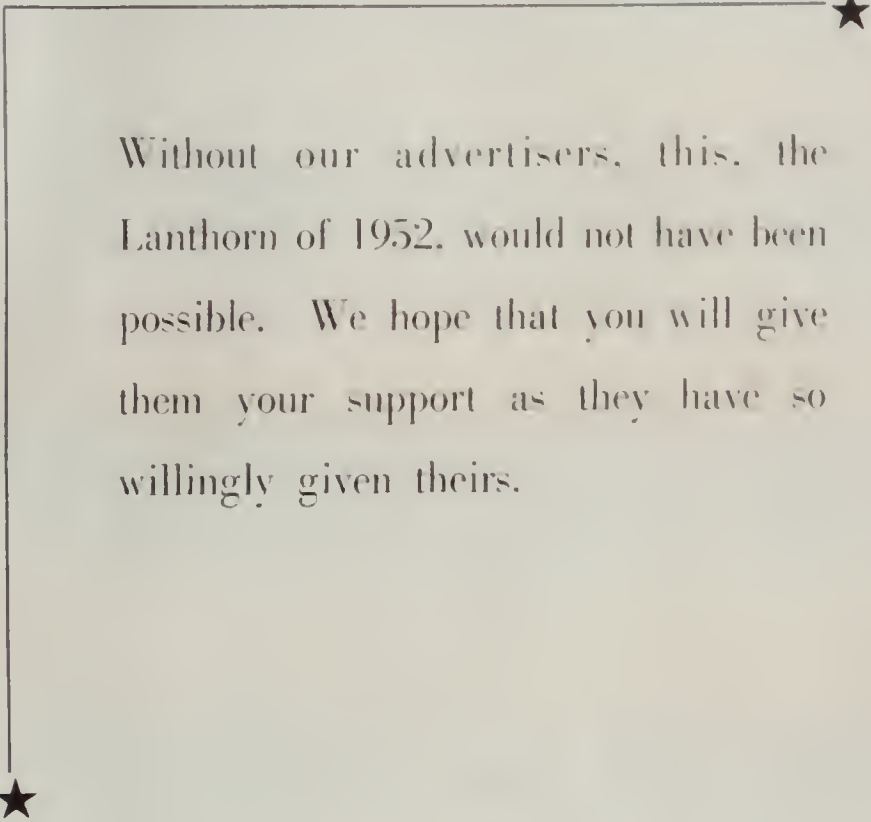
HASSINGER HALL



SEIBERT HALL

Patronize

Our Advertisers



Without our advertisers, this, the
Lanthorn of 1952, would not have been
possible. We hope that you will give
them your support as they have so
willingly given theirs.

SUSQUEHANNA UNIVERSITY

(Co-educational)

SELINGROVE, PA.

*For ninety-two years in the Service of
Christian Higher Education*



A college with unusual opportunities

Liberal Arts (A.B.)

Business Administration (B.S.)

Music Education (B.S.)



For catalog write:

G. MORRIS SMITH, D.D., LL.D., President

The
COLLEGE STORE
STUDENT SUPPLIES

• •

SHEAFFER INKS — PENNANTS

MONOGRAM STATIONERY

COLLEGE RINGS

Compliments of

D. R. ERDMAN

Lumber Yard — Planing Mill

Roofing — Insulation — Plywood

168 South Tenth Street

SUNBURY, PENNA.

Telephone 877

SELINGSGROVE

WATER SUPPLY CO.

FRANK A. EYER

President

JAMES MCCLURE

Treasurer

MIDDLE CREEK VALLEY
TELEPHONE COMPANY

Bell System

FRANK A. EYER

Treasurer

Secretary

General Manager

STOCKS and BONDS

Bought — and — Sold



Stock Exchange Orders
Executed on Any Exchange

MEMBERS

Philadelphia Baltimore
Stock Exchange



Theron D. Conrad & Co., Inc.

416 Market St., SUNBURY, PA.
Telephone 2835

Prompt Friendly Service for Investors

Builders of the NEW BOGAR HALL

S. H. Evert Company, Inc.

CONTRACTORS

BLOOMSBURG, PENNSYLVANIA

JOHN F. MILES

1016-1018 Chestnut St.

KULPMONT, PA.

Phone 2251



Heating

Ventilating

Plumbing

Roofing

Electrical Work

Hardware

Compliments of

THE
AMERICAN LEGION



POST 44

Northumberland, Pennsylvania

CAMPUS SNACK BAR



Open 7 a. m. to 11 p. m.

BOGAR LUMBER CO.

Contractors — Builders

Manufacturers of and dealers in
LUMBER, BUILDING SUPPLIES

Phone 285

SELINGSGROVE, PA.

GEORGE B. RINE, Florist

11 N. Market St. SELINGSGROVE, PA.

Store Phone 74-Z

Greenhouse Phone 32-Z

CUT FLOWERS and POTTED PLANTS

Specializing in CORSAGES

National Restaurant

*The Best in Food
Always*

SELINGSGROVE, PA.

Compliments of

WILLIAM J. COTT

Druggist

Compliments of

THE FIRST NATIONAL BANK

of SELINGSGROVE



Serving Selingsgrove and Surrounding Area Since 1861

Compliments of

EBERT'S

5c to \$1.00 Store

SELINGSGROVE, PA.

Hotel Governor Snyder

WALTER E. PINAND

Proprietor

LEARN'S

Fine Foods and Stationery
Greeting Cards

11 S. Market St.

SELINGSGROVE, PA.

LOTTIE KEMBERLING DUTCH PANTRY

Penna. Dutch Cooking

We Enjoy Catering to Parties

Phone 67-R-11

SUNBURY — Selingsgrove Highway

WHITMER-STEELE COMPANY

Manufacturers of

PINE, HEMLOCK, and HARDWOOD LUMBER
MINING TIMBER and TIES

NORTHUMBERLAND, PA.



HACKETT'S HARDWARE STORES

HARDWARE, APPLIANCES, GIFTS,
PAINT, GLASS

325 Market Street, SUNBURY
706 Market Street, SUNBURY
Market and Walnut Streets
MIDDLEBURG

F. J. ALTVATER, Inc.

Sixth and Market Streets

SUNBURY, PA.

HARRISBURG LUMBER COMPANY



A Complete Lumber Industry

HARRISBURG, PENNSYLVANIA

PROFESSIONAL DIRECTORY

R. A. HEINBACH, M.D.

125 South Market Street

Telephone 84

Residence Telephone 171

H. F. STRAUB, M.D.

300 West Walnut Street

Telephone 102

B. SHIPE, D.D.S.

30 South Market Street

Telephone 270-W

Residence Telephone 270-Z

EDWARD A. PHILLIPS, D.D.S.

16 North Water Street

Telephone 326

G. M. BOGAR, M.D.

8 North Market Street

Telephone 137

R. W. JOHNSTON, M.D.

116 South Market Street

Telephone 46

B. K. W. COACH LINE

HUMMELS WHARF, P.A.

Charter Trips Solicited



For Taxi Service Call — SUNBURY 600

Watch Repair — Susquehanna Jewelry
Fountain Pens and Pencils

W. M. VALSING

Jeweler

SELINGSGROVE, P.A.

Sanders Appliance Store

G. E. APPLIANCES

211 Market St.

SUNBURY, P.A.

Telephone 546

For

NEWS—

of FOLKS

You Know



SUNBURY DAILY ITEM

Compliments of
"DOC" GLASS

Compliments of
Melrose Restaurant
Tasty Dutch Homecooking
SELINGROVE, PA.

BENJAMIN T. MOYER
FURNITURE of Distinction
Phone 2077
21-23 N. 5th St. SUNBURY, PA.

Compliments of
JOS. L. MENTZ
The Stationer
219 Market Square SUNBURY, PA.

Chrysler — Plymouth
SALES — SERVICE

—♦—
FISHER MOTORS
Gas and Oil
Telephone 17-X SELINGROVE, PA.

LEE R. SNAVELY
CLOTHING AND SHOES
for
the Family

Miller Bros. Shoe Store
"At the Bus Stop"
SUNBURY, PA.

Compliments of
HILL'S CANDY STORE
Open 9 a. m.—11:15 p. m.

Compliments of
LOSE SALES COMPANY
SELINGROVE, PA.

TROUTMAN'S
GULF SERVICE
SELINGROVE, PA.

Greasing — Washing
Tires — Tubes — Batteries
Accessories

The PHOTOGRAPHY in This Book

Has Been Done by

THE PENN STATE PHOTO SHOP



Studios Located in

STATE COLLEGE and LOCK HAVEN, PA.

REICHLEY'S

SPORTING GOODS

13½ N. Market St., SELINGSGROVE, PA.

Smith's Tydol Station

GAS — OIL — REPAIRS

S. Market St. SELINGSGROVE, PA.

Compliments of

BITTNER'S DEPARTMENT STORE

SUNBURY, PA.

Compliments of

Shikellamy Sandwich Shop

Routes 11 and 15

Compliments of

Whiteley's Tourist Home

South Market Street
SELINGSGROVE, PA. Telephone 151-W

COLONIAL TEA ROOM

Mrs. AND MRS. ROY BOWENSON

For RESERVATIONS AND PARTIES

Call 48-W

Your LANTHORN

was Engraved, Printed and Bound
in our School Annual Department.

GRIT offers complete services in commercial art for design and layout, photography, photo-engraving for black and white and color plates, a modern letterpress plant and a bindery with facilities for every phase of the work.

You can depend on GRIT'S service and quality workmanship. Consult us before placing your next order for printing.

GRIT PUBLISHING COMPANY

WILLIAMSPORT, PA.

**DOWNING'S
POTTERY and GIFT SHOP**

$\frac{1}{2}$ Mile North of Selinsgrove
Routes 11 and 15

Compliments of the
PENRITH SHOP

Compliments of the
**SELINGROVE CANDY
COMPANY**

The
**Selinsgrove Times
Tribune**

Printers of

THE SUSQUEHANNA AND
THE SUSQUEHANNA ALUMNUS

The Gables Motor Court

U. S. Highways Nos. 11 and 15

MR. AND MRS. BOB REID, *Props.*

P. O. Box 131 SHAMOKIN DAM, PA.

C. F. TROXEL, Hardware

113 North Market Street

Sporting Goods — Devco Paints
Crosley Appliances

**YANK'S ATLANTIC
SERVICE STATION**

Mill and Market Streets

Let YANK Fill Your Tank
Don't Crank—See YANK

Compliments of
**MENGLE'S
RESTAURANT**



3 West Pine Street

Phone 122-Y

WHEN PATRONIZING THESE ADVERTISERS
PLEASE MENTION

THE LANTHORN

THETA CHI

Congratulates Its Graduates of 1951

Walter Brandau
Jack Gearinger
Paul Jones, Jr.
John Lamade

Gerald Moorhead
Roland Rossetti
Merrill Shafer
Charles Shaffer

Richard Stetler
Charles Sullivan
C. Willard Taylor
Emil Weiler, Jr.

1914 BOND & KEY 1951

Honors Its Graduates of 1951

Robert Bitting
Marsh Bogar
Herbert Bollinger
William Bosch
Gene Fenstermacher

Herbert Hains
Jacob Harder, Jr.
Thomas Staller
John Steiger
Dave Sterrett

Bruce Wagner
J. Edwin Walker, Jr.
J. Norman White
Fancher Wolfe
Walter Wolsten

PHI MU DELTA

*How dear to one and all the name
Their Alma Mater bears,
When they have left its classic halls,
To shoulder worldly cares.*

Ben Alter
Jack Brown
Joseph Driscoll
Jack Eecker

Burdell Faust
Bill Foster
Gardner Marek

Bob Patterson
Don Shoemaker
Jesse Stone
Mel Dunn

men's TENNIS COURTS

gym

(200)

ATHLETIC FIELD

HASSINGER HALL

BOGAR

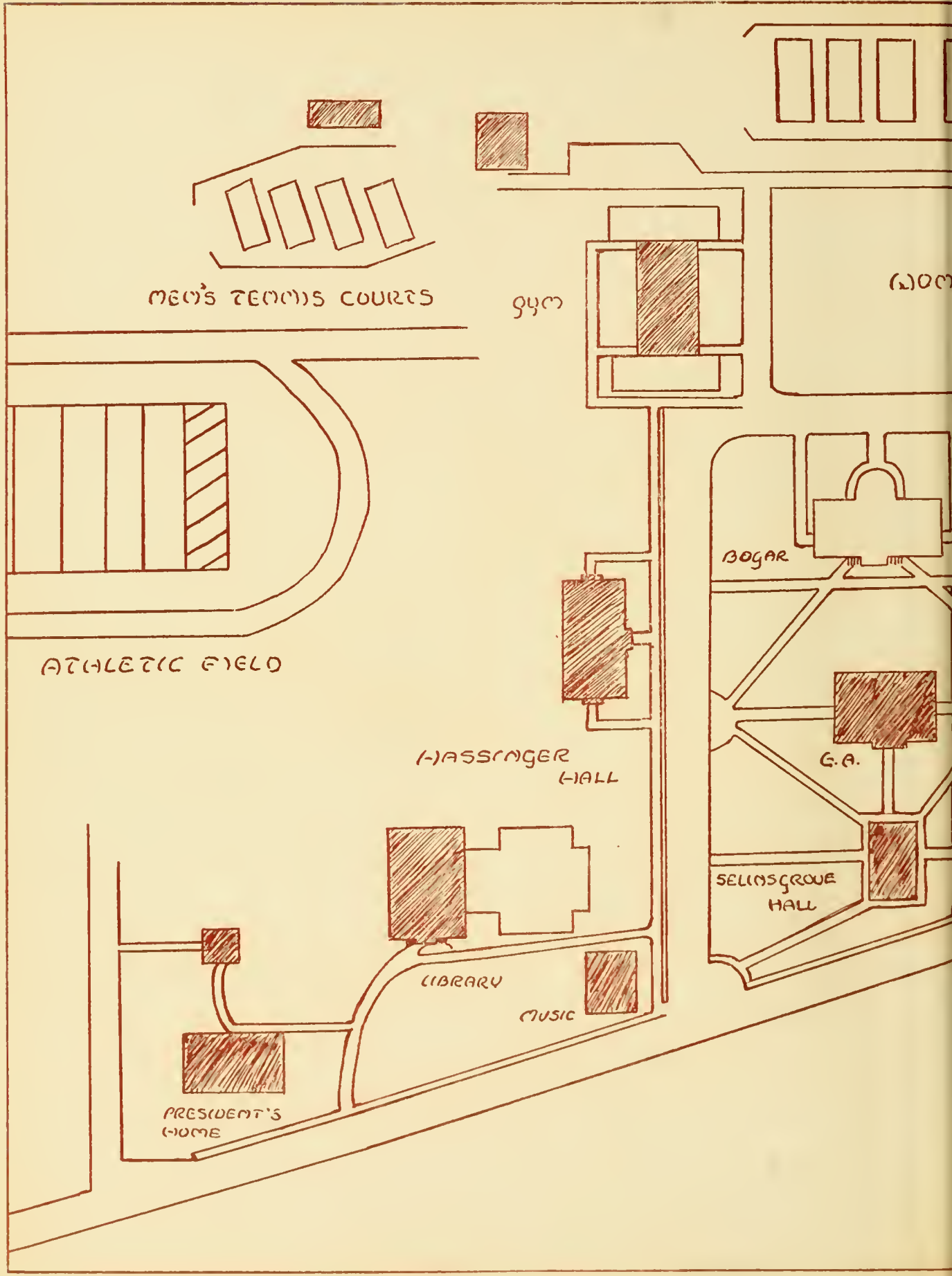
G.A.

SELINGROVE HALL

LIBRARY

MUSIC

PRESIDENT'S HOME



BLOUGH-WEIS LIBRARY

SUSQUEHANNA UNIVERSITY
SELINGROVE, PA 17070

WOMEN'S
TENNIS
COURTS

ATHLETIC
FIELD

FUTURE
MUSIC
HALL

RECITATION

STEELE

SUSQUEHANNA UNIVERSITY LIBRARY



3 4998 0020 9666 2

ACULTY HOMES

SEIGERT
HALL

SUSQUEHANNA UNIVERSITY LIBRARY
BLOUGH-WEIS LIBRARY
DOES NOT
CIRCULATE
ARCHIVES
SUSQUEHANNA UNIVERSITY

SUSQUEHANNA
UNIVERSITY
Campus Expansion

-  Present Buildings
-  Future Expansion

