


The background of the cover is a dark brown, textured surface with an embossed pattern of a ship's rigging, including masts, ropes, and a large oval shape, possibly a lifebuoy or a part of the ship's structure.

The  
Lantern  
1954

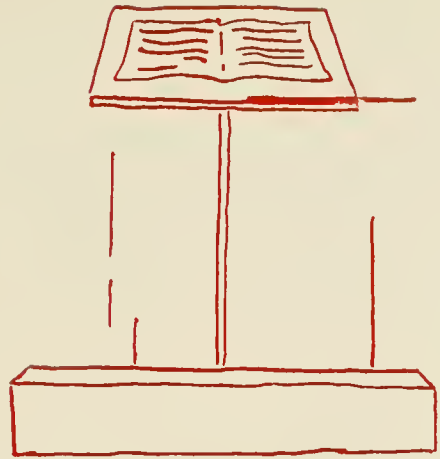
Alumni Office



Digitized by the Internet Archive  
in 2011 with funding from  
Lyrasis Members and Sloan Foundation

<http://www.archive.org/details/lanthorn195400susq>





**Ex Libris**



*the* **Lantern** 1954

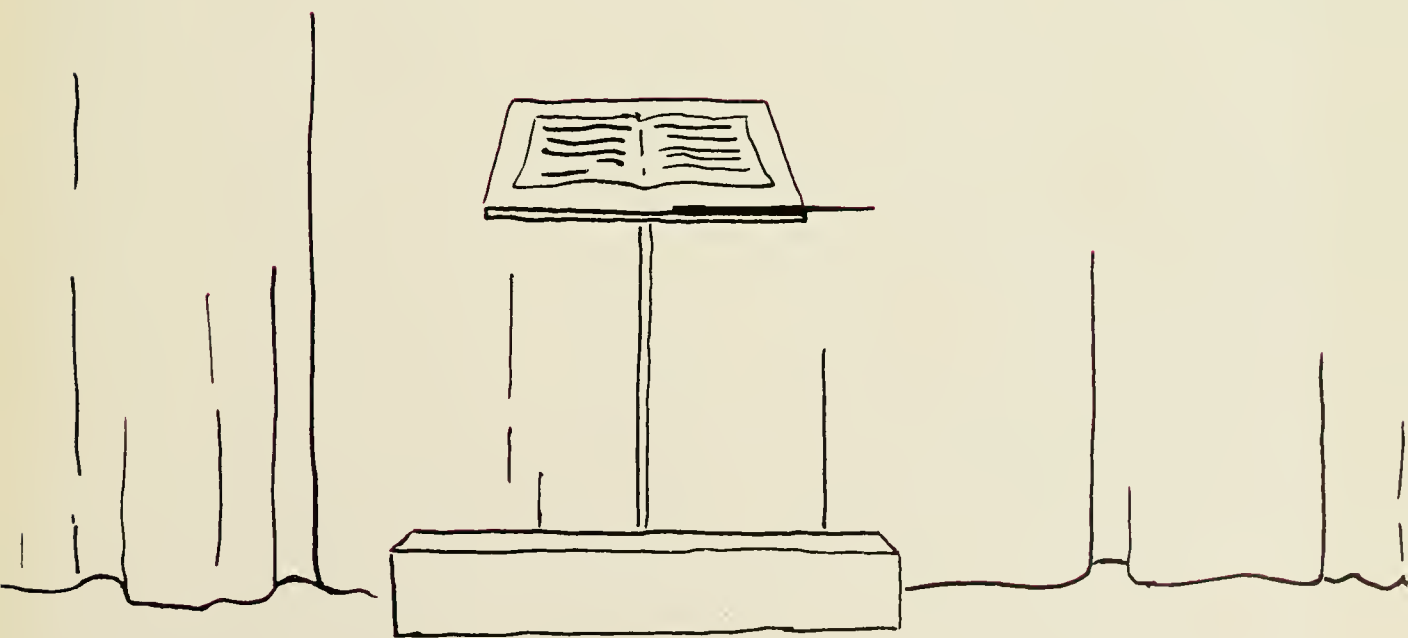
*Presented by*

**THE JUNIOR CLASS**

Susquehanna University

SELINGROVE, PA.







## Alma Mater

The Story we would tell you, friends,  
    Would cover many a book;  
The subject matter of the same  
    Is found in every nook  
Of old S. U.'s broad campus,  
    The common battleground,  
Whose trees might whisper secrets grave,  
    Amusing, and profound.

### *Chorus*

Of Susquehanna now we sing;  
Let Susquehanna's praises ring;  
Loyal to her by night and by noon,  
We'll raise the Orange and Maroon;  
Loyal to her by night and by noon,  
We'll raise the Orange and Maroon.

How dear to one and all the name  
    Their Alma Mater bears,  
When they have left its classic halls,  
    To shoulder worldly cares,  
Of winning maids and noble lords  
    Of dear old college days,  
Come join in recollections fond,  
    And tell us of your ways.

In classroom and on gridiron, friends,  
    S. U. will stand the test;  
Defeat to her a word unknown,  
    Her motto, "Do your best."  
With vim, then let us give the yell;  
    Display her banner bright,  
That all may know of old S. U.  
    She stands for God and Right.

—E. EDWIN SHELDON

*"Of all the liberal arts, music has the greatest influence over the emotions, and is that art to which the lawmaker should give great attention."*

—NAPOLEON BONAPARTE





LIBRARY



BOGAR HALL



G. A. LOUNGE

SEIBERT HALL



ATHLETIC  
FIELD



HASSINGER HALL



# TO R E L I D E

*"All one's life is music, if one touches the notes  
rightly, and in time."*

—RUSKIN

Through the ages music has become for mankind the noblest and purest of arts. What magnificence the musical genius of the world has created from invisible sound! Beautiful, melodious strains have the power of penetrating and melting human hearts, enriching them with an overflow of emotional ecstasy.

Our task is to appreciate more deeply the language of melody, for it develops character and adds to life. Life is like a song: it has both high notes and low notes, but always there is harmony if we wish to find it.

We at Susquehanna are looking forward with great anticipation and eagerness to a new music building. May our dream soon become reality! Because of its countless contributions on our campus, Susquehanna's department of music truly merits a new home.

---

---

CONDUCTORS

ENSEMBLE

EXCERPTS

CON MOTO

PROGRAMMA  
ANNUNZIO





CONDICEDORS

# The President



G. MORRIS SMITH

*President*

A.B., Roanoke College 1911; M.A.,  
Princeton University 1912; Diploma,  
Lutheran Theological Seminary, Phila-  
delphia 1919; D.D., Roanoke College  
1928; LL.D., Bucknell 1940.

*Congratulations on your twenty-five years at Susquehanna!*



# The Dean



RUSSELL GALT

*Dean*

A.B., Muskingum College 1919; M.A., 1920 and Ph.D., 1936, Columbia University; School of Oriental Studies, Cairo, Egypt, 1920-22.

*"Music is the expression of a refined nature."*—SCHUMANN

# The Faculty and Staff



AUGUSTUS WILLIAM AHL  
*Professor of Greek*  
Ph.D., Vanderbilt University 1920.



ROBERT LEWIS AMY  
*Assistant Professor of Biology*  
M.S., University of Pittsburgh 1949.



THOMAS F. ARMSTRONG, JR.  
*Assistant Professor of  
Business Administration*  
Ed.D., Temple University 1947.



OLIVE BARRY  
*Bursar's Office*  
Mus.B., Susquehanna University 1913.



JEAN B. BEAMENDERFER  
*Instructor in Commercial Education*  
M.S., Bucknell University 1948.



FREDERIC C. BILLMAN  
*Assistant Professor of Music*  
M.A., Columbia University 1941.



PHILIP C. BOSSART  
*Instructor in Psychology*  
M.S., University of Pittsburgh 1948.

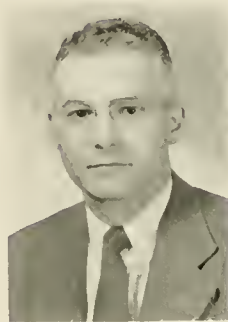


FRANCES M. BRUNKHORST  
*Instructor in Music*  
M.A., Columbia University 1951.

# The Faculty and Staff



JANICE M. CHRISTIAN  
*Instructor in Physical Education*  
B.S., Ursinus College 1952.



HOWARD E. DEMOTT  
*Assistant Professor of Science*  
M.S., Bucknell University 1940.



MARGARET GABEL  
*Assistant Librarian*  
B.S., Kutztown State Teachers  
College 1950.



ALICE H. GIAUQUE  
*Assistant Professor of Music*  
M.A., Columbia University 1940.



RUSSELL WIEDER GILBERT  
*Professor of German*  
Ph.D., University of Pennsylvania 1943.



GROVER C. T. GRAHAM  
*Associate Professor of  
Business Administration*  
M.A., Brown University 1910.



RICHARD E. GROVE  
*Instructor in Physics*  
M.A., Johns Hopkins University 1949.

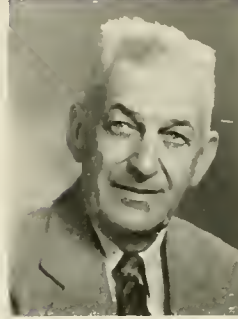


MRS. NANCY BOWMAN HATZ  
*Instructor in Music*  
M.A., Columbia University 1941.

# The Faculty and Staff



RUSSELL CONDRAN HATZ  
*Assistant Professor of Music*  
M.A., Columbia University 1942.



JOHN JACOB HOUTZ  
*Associate Professor of Chemistry*  
Sc.D., Carthage College 1933.



MRS. ANNA MILLER HUMPHREY  
*Dietitian*



LAMAR D. INNERS  
*Instructor in Accounting*  
M.Ed., Temple University 1944.



MARY E. KENNEDY  
*Assistant to the Dean of Women*  
St. Joseph's Hospital School of  
Nursing, R.N., 1927.



AXEL R. KLEINSORG  
*Instructor in English*  
B.S., Temple University 1935.



ATHALIA TABITHA KLINE  
*Assistant Professor of Romance  
Languages*  
M.A., Duke University 1925.



MRS. CAROL KLINE  
*Preceptress in Hussinger Hall*  
A.B., Hood College 1917.

# The Faculty and Staff



HILDA G. KOLPIN

*Librarian*

M.L.S., Syracuse University 1952.



BERNARD W. KRAPF

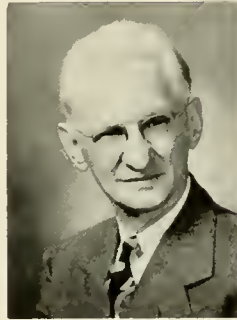
*Business Manager*



JOHN ROBERT LEACH

*Instructor in Music*

M.A., Teachers College, Columbia University 1949.



PERCY MATHIAS LINEBAUGH

*Professor of Music*

Mus.D., Susquehanna University 1951.



BENJAMIN LOTZ

*Assistant Professor of Religion and Philosophy*

B.D., Philadelphia Seminary 1928.



RUTH E. McCORKILL

*General Alumni Secretary*

B.S., Susquehanna University 1943.



DANIEL MACCUISH

*Director of Public Relations*

B.S., Columbia University 1935.



MRS. ARLA B. MARKS

*Secretary to the Dean*

# The Faculty and Staff



ROBERT F. W. MEADER  
*Assistant Professor of Latin*  
M.A., University of Pennsylvania 1931.



RUTH A. MEISTER  
*Dean of Women*  
M.A., Ohio State University 1937.



BRUCE H. MITCHELL  
*Lecturer in Art*



MARY K. POTTEIGER  
*Instructor in Music*  
Mus.B., Susquehanna University 1925.



LAVAN R. ROBINSON  
*Instructor in Music*  
M.M., Louisiana State University 1950.



GEORGI MERRITT ROBISON  
*Associate Professor of Mathematics*  
Ph.D., Cornell University 1919.

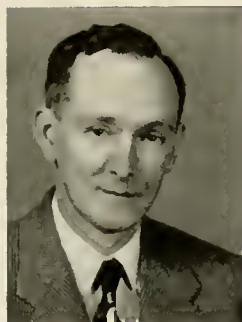


JANET ROHRBACH  
*Secretary to the President*  
B.S., Susquehanna University 1946.



WILLIAM ADAM RUSS, JR.  
*Professor of History*  
Ph.D., University of Chicago 1933.

# The Faculty and Staff



HUGH L. SEELYE

*Bursar*

B.S., Mansfield State Teachers  
College 1929.



AMOS ALONZO STAGG

*Advisory Coach*

Pd.D., Susquehanna University 1949.



AMOS ALONZO STAGG, JR.

*Professor of Physical Education*

M.A., Columbia University 1941.



FREDERICK C. STEVENS

*Assistant Professor of Sociology*

M.A., Columbia University 1932.



MRS. SARAH BRUNGART STEVENS

*Acting Registrar*

A.B., Susquehanna University 1925.



ARTHUR HERMAN WILSON

*Professor of English*

Ph.D., University of Pennsylvania 1931.



WALDEMAR ZAGARS

*Associate Professor of Economics*

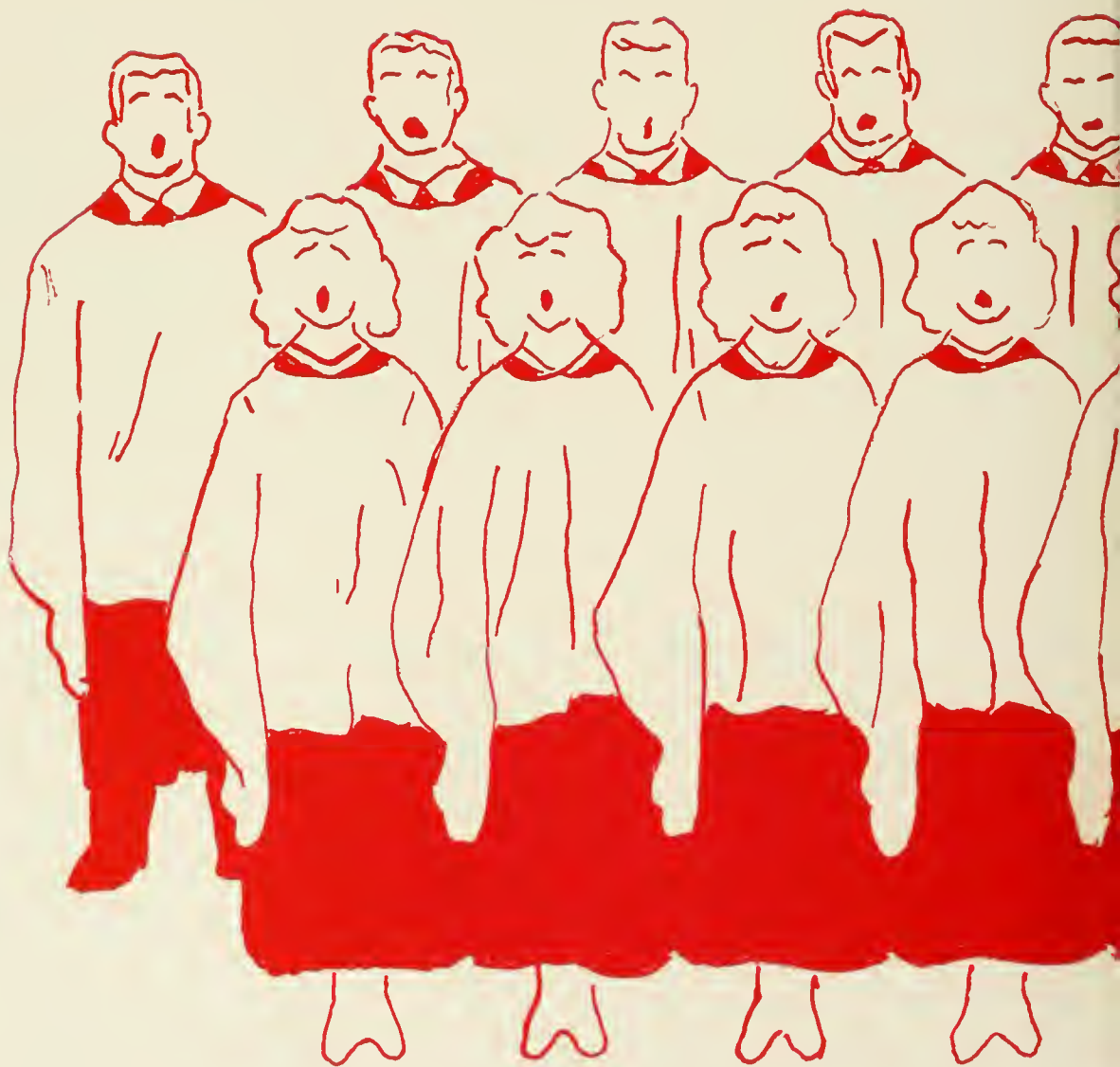
Econ.D., University of Riga,  
Latvia, 1931.



ALBERT A. ZIMMER

*Assistant Professor of Education*

Ed.D., University of Pittsburgh 1951.





F  
N  
S  
E  
M  
B  
L  
E





"Music is to the mind as is air to the body."—PLATO

# Class of 1953

## OFFICERS

<i>President</i>	- - - - -	- ROBERT MACNAMARA
<i>Vice-President</i>	- - - - -	- DAVID BENNETT
<i>Secretary</i>	- - - - -	- RUTH FREED
<i>Treasurer</i>	- - - - -	- ORVILLE GLASS

As seniors, we are fast nearing the goal toward which we have striven for the past four years. Upon leaving Susquehanna, we carry with us many pleasant memories of our activities throughout those years. With these memories, we would also take the words of Disraeli, "The secret of success is constancy of purpose," that we might realize a new goal and be prompted to reach that goal by setting a course and following it.

For those who follow us, we leave this thought: The time to work is now. The way to succeed is to forget yesterday, keep busy today, and expect great things tomorrow.



*First Row, Left to Right—Mac-Namara, Freed. Second Row—Bennett, Glass.*



Upper row:

**DOROTHY J. APGAR**

River View Terrace, Mahwah, New Jersey

*Liberal Arts*

Kappa Delta 2, 3, 4, Secretary 4; Biemic Society 2, 3, 4; Student Christian Association 2; Susquehanna Players 4; Susquehanna Singers 3; Women's Athletic Association 1, 2, 3, 4; *The Susquehanna* Staff 4; Intramural Sports 1, 2, 3, 4; Tau Kappa 3, 4, Vice-President 4; May Day 1, 2; "Two Blind Mice."

**THOMAS P. BALCHEN**

887 Prince Street, Teaneck, New Jersey

*Liberal Arts*

Theta Chi 2, 3, 4; Student Christian Association 1; Football Team 1, 2, 3, 4; Intramural Sports 1, 2, 3, 4; "In the Zone."

**JOAN A. BATES**

11 Dunham Avenue, Cranford, New Jersey

*Music Education*

Sigma Alpha Iota 2, 3, 4, Patroness Secretary 4; Student Christian Association 1, 2, 3, 4; Susquehanna Players 2, 3, 4; Concert Orchestra 3; Susquehanna Singers 2, 3; Chapel Choir 2, 3, 4; Vice-Presidents' Council 3, 4; Women's Athletic Association 1, 2, 3; *The Susquehanna* Staff 2, 3, 4; Intramural Sports 1, 2; "The Taming of the Shrew"; "The Willow and I"; "The Barretts of Wimpole Street"; "The Merchant of Venice"; "Ladies In Retirement"; Alpha Psi Omega 3, 4, Secretary-Treasurer 4; Freshman Counselor 3; Freshman Orientation 2, 3, 4; Trinity Choir 1, 2, 3, 4; May Day 2; Charles E. Covert Memorial Prize 3; Who's Who 4.

**DAVID W. BENNETT**

739 Broad Street, Montoursville, Pennsylvania

*Business Administration*

Phi Mu Delta 2, 3, 4, Vice-President 3; Student Christian Association 1, 2, 3, 4; Business Society 2, 3, 4; Men's Student Council, Vice-President 3, President 4; Football Team 1; LANTHORN Staff, Business Manager 3; Class Vice-President 4.

Lower row:

**RICHARD L. BIDEISPACH**

829 Line Street, Sunbury, Pennsylvania

*Music Education*

Theta Chi 1, 2, 3, 4; Student Christian Association 1, 2, 4; Concert Orchestra 2, 3, 4; Band 1, 2, 3, 4; Susquehanna Singers 2, 3; Intramural Sports 1, 2, 3, 4.

**CAROL R. BOTTIGER**

8 West Walnut Street, Selinsgrove, Pennsylvania

*Business Administration*

Kappa Delta 1, 2, 3, 4; Student Christian Association 1, 2, 3, 4, Girls' Vice-President 2; Business Society 1, 2, 3, 4.

**ERNEST L. BOTTIGER, JR.**

8 West Walnut Street, Selinsgrove, Pennsylvania

*Liberal Arts*

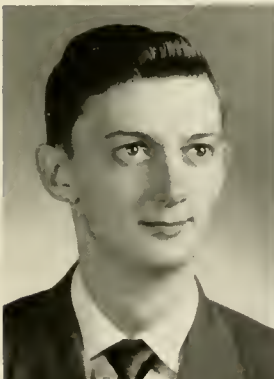
Phi Mu Delta 1, 2, 3, 4; Student Christian Association 1, 2, 3, 4; Susquehanna Players 1; Phi Kappa 1, 2, 3, 4; Football Team 1, 2; Intramural Sports 1, 4; "Macbeth."

**EUGENE P. BROUSE**

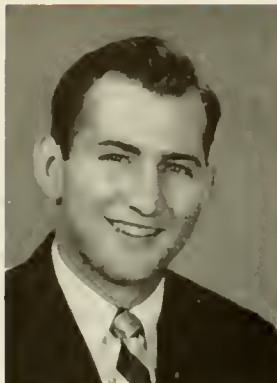
Selinsgrove R. D. 2, Pennsylvania

*Business Administration*

Bond and Key 1, 2, 3, 4; Student Christian Association 4; Business Society 4; Football Team 1, 2, 3, 4; Intramural Sports 3, 4.



**SENIORS . . .**



*Upper row:*

**RICHARD C. BURLEY**

Montgomery, Pennsylvania  
*Business Administration*

Phi Mu Delta 1, 2, 3, 4; Student Christian Association 1, 2, 3, 4; Business Society 1, 2, 3, 4; Football Team 1; Intramural Sports 1, 2, 3, 4; Baseball Team 1; Intramural Board 4.

**ELIZABETH C. BURNHAM**

Wellsville Avenue, New Milford, Connecticut  
*Liberal Arts*

Student Christian Association 1, 2, 3, 4; Biemic Society 2; Women's Athletic Association 3, 4; Phi Kappa 1, 2, Secretary 2; Intramural Sports 3, 4.

**KAY G. CAMPBELL**

531 Phelps Avenue, Kalamazoo, Michigan  
*Liberal Arts*

Bond and Key 2, 3, 4, Vice-President 4; Student Christian Association 4; Biemic Society 3, 4, Vice-President 4; Men's Student Council 2, 3, 4; Basketball Team 1; Football Team 2, 3, 4; Intramural Sports 1, 2, 3, 4; Presbyterian College 1.

**LEONARD A. CARLSON**

325 Electric Avenue, Lewistown, Pennsylvania  
*Soloist—Music*

Phi Mu Delta 1, 2, 3, 4; Student Christian Association 1, 2, 3; Biemic Society 3; Susquehanna Players 1, 2, 3; Susquehanna Singers 2, 3; Chapel Choir 3, 4; Chapel Organist 3, 4.

*Lower row:*

**MARVEL I. COWLING**

258 Cherry Lane, Teaneck, New Jersey  
*Secretarial*

Kappa Delta 3, 4; Student Christian Association 1, 2, 3, 4; Business Society 1, 2, 3, 4; Biemic Society 4; Women's Athletic Association 1, 2, 3, 4; *The Susquehanna* Staff 3, 4; Hockey Team 1, 2, 3, 4; Basketball Team 1, 2; Intramural Sports 1, 2, 3, 4; LANTHORN Staff 2, 3; Tau Kappa 4; May Day 3.

**PHILLIP J. CRAWFORD**

255 West Fourth Street, Bloomsburg, Pennsylvania  
*Music Education*

Phi Mu Delta 1, 2, 3, 4; Student Christian Association 1, 2, 3, 4; Business Society 4; Concert Orchestra 1, 2, 3, 4; Band 1, 2, 3, 4; Susquehanna Singers 2, 3; Chapel Choir 3, 4; Trinity Choir 1, 2.

**HELEN E. CRESSMAN**

R. D. 2, Bath, Pennsylvania  
*Medical Secretarial*

Alpha Delta Pi 2, 3, 4; Student Christian Association 1, 2; Business Society 1, 2, 3, 4; Biemic Society 3, 4; Women's Athletic Association 3, 4.

**WILLIAM C. DAVENPORT**

137 South Maple Avenue, Kingston, Pennsylvania  
*Liberal Arts*

Student Christian Association 1, 2, 3, 4; Business Society 3, 4; Susquehanna Players 2, 3, 4; *The Susquehanna* Staff 3; Intramural Sports 1, 2, 3, 4; LANTHORN Staff 3, 4; Alpha Psi Omega 3, 4; *W'bo's W'bo* 4.





Upper row:

**JAMES A. DEITCH**

83 North Wyoming Street, Hazleton, Pennsylvania  
*Business Administration*

Phi Mu Delta 1, 2, 3, 4; Student Christian Association 1, 2, 3, 4; Business Society 1, 2, 3, 4; Basketball Team 1, 2; Intramural Sports 1, 2, 3, 4.

**ANTHONY DIKOVICKY**

73 Armstrong Avenue, South River, New Jersey  
*Business Administration*

Business Society 4; Football Team 3, 4; Intramural Sports 3, 4; Tusculum College 1, 2.

**MARY ANN DIXON**

Red Lion R. D. 1, Pennsylvania  
*Liberal Arts*

Alpha Delta Pi 1, 2, 3, 4; Social Chairman 3; President 4; Student Christian Association 1, 2, 3; Biemic Society 2, 3, 4; Susquehanna Players 3, 4; Vice-Presidents' Council 3; Women's Athletic Association 3, 4; Women's Student Council 1, 2, 3, 4; Women's Judiciary Committee 3, 4; Chairman 4; Intramural Sports 3; Panhellenic Council 3, 4; LANTHORN Staff 3; The Susquehanna Staff 4; "Ladies in Retirement"; "Two Blind Mice"; Class Treasurer 2, 3; Freshman Counselor 3; Freshman Orientation 2, 3, 4; Chairman 4; Hassinger House President 3; May Day 1, 2; Homecoming Queen 3; Who's Who 4.

**FRANCES A. DRUMM**

111 East Tenth Street, Berwick, Pennsylvania  
*Music Education*

Sigma Alpha Iota 3, 4; Student Christian Association 1, 2, 3, 4; Susquehanna Singers 2, 3; Chapel Choir 3, 4; Trinity Choir 3, 4.

Lower row:

**LEWIS R. DRUMM**

200 Park Place, Irvington, New Jersey  
*Liberal Arts*

Phi Mu Delta 3, 4; Student Christian Association 3, 4; Band 3, 4; Intramural Sports 3, 4; "The Merchant of Venice"; Muhlenberg College 1, 2.

**LOIS A. FISHER**

1814 East 28th Street, Brooklyn 29, New York  
*Liberal Arts*

Alpha Delta Pi 2, 3, 4; Guard 4; Student Christian Association 1, 2, 4; Women's Athletic Association 1, 2, 3, 4; Hockey Team 1, 3; Intramural Sports 1, 2, 3, 4; Tau Kappa 3, 4; Secretary 4; "So Wonderful In White."

**JANICE A. FORD**

89 Kendall Boulevard, Oaklyn, New Jersey  
*Secretarial*

Kappa Delta 2, 3, 4; Student Christian Association 1, 2, 3, 4; Business Society 1, 2, 3, 4; Biemic Society 1, 2, 3; Susquehanna Players 4; Susquehanna Singers 3; Vice-Presidents' Council 2; Women's Athletic Association 1, 2, 3, 4; Intramural Sports 1, 2, 3, 4; LANTHORN Staff 3; "Two Blind Mice."

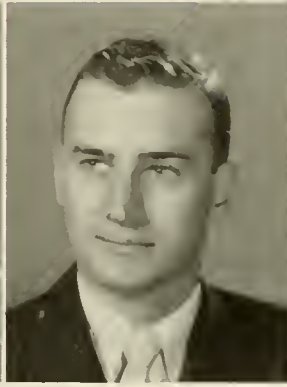
**RUTH E. FREED**

Red Hill, Pennsylvania  
*Music Education*

Sigma Alpha Iota 2, 3, 4; President 4; Student Christian Association 2, 3, 4; Susquehanna Players 4; Band 3, 4; Susquehanna Singers 2, 3; Chapel Choir 2, 3, 4; Organist 4; Vice-Presidents' Council 3, 4; Women's Athletic Association 2, 3, 4; Women's Student Council 4; Women's Judiciary Committee 3, 4; Hockey Team 2; "Two Blind Mice"; Class Secretary 3, 4; Freshman Orientation 4; Trinity Choir 2, 3; Seibert House President 4; Methodist Choir Director 3, 4; Homecoming Queen 4; Westminster College 1; Who's Who 4.



**SENIORS . . .**



*Upper row:*

**VENICE C. GACONO**

Third Avenue and Queen Street, Annville, Pennsylvania  
*Business Administration*

Phi Mu Delta 2, 3, 4; Student Christian Association 1, 2, 3, 4; Business Society 1, 2, 3, 4; Intramural Sports 1, 2, 3, 4; LANTHORN Staff 3.

**ORVILLE W. GLASS**

334 Fourth Street, Northumberland, Pennsylvania  
*Business Administration*

Bond and Key 2, 3, 4, Assistant Treasurer 4; Student Christian Association 4; Business Society 3, 4, Vice-President 4; Susquehanna Players 1, 2; Band 2, 3, 4; *The Susquehanna* Staff, Advertising Manager 4; Class Treasurer 4; "Macbeth"; "The Taming of the Shrew."

**WALLACE E. GORDON**

409 South Abington Road, Clarks Green, Pennsylvania  
*Business Administration*

Bond and Key 3, 4; Keystone Junior College 1, 2.

**R. CHRISTINE HARMAN**

1206 Fourth Avenue, Duncansville, Pennsylvania  
*Liberal Arts*

Student Christian Association 1, 2, 3, 4, Cabinet 4; Biemic Society 2, 3, 4, Secretary-Treasurer 4; Susquehanna Players 3, 4; Concert Band 2, 3, 4; Vice-Presidents' Council 3, 4; Women's Athletic Association 1, 2, 3, 4; *The Susquehanna* Staff 4; Hockey Team 1, 2, 3; Intramural Sports 1, 2, 3, 4; LANTHORN Staff 3; Tau Kappa 3, 4, Treasurer 4; Alpha Psi Omega 3, 4; May Day 1, 2, 3.

*Lower row:*

**MARGUERITE L. HEFFELFINGER**

211 West Fifth Street, Bloomsburg, Pennsylvania  
*Music Education*

Sigma Alpha Iota 3, 4; Student Christian Association 1, 2, 3, 4; Concert Orchestra 3, 4; Band 1, 2, 3, 4; Susquehanna Singers 2, 3; Chapel Choir 3, 4; "The Taming of the Shrew."

**JOSEPH H. HEFFNER**

1077 Reagan Street, Sunbury, Pennsylvania  
*Business Administration*

Theta Chi 3, 4; Student Christian Association 1, 2, 3, 4; Business Society 4.

**KENNETH R. HEMSTEAD**

456 Willett Avenue, Port Chester, New York  
*Liberal Arts*

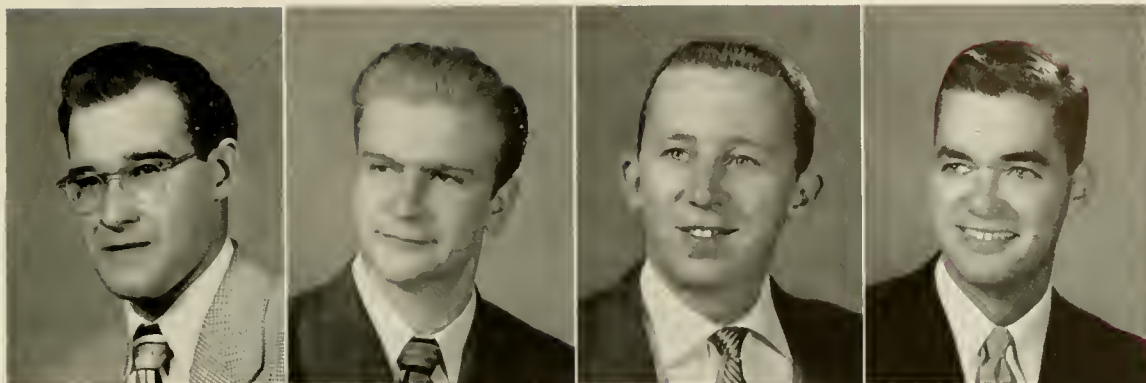
Theta Chi 2, 3, 4; Susquehanna Players 2, 3; Basketball Team 2; Intramural Sports 2, 3, 4; "Our Hearts Were Young and Gay"; "The Taming of the Shrew"; "Broken Dishes"; "In the Zone"; "Two Blind Mice"; May Day 2, 3, 4; Syracuse University 1.

**KENNETH R. HILL**

12 North Market Street, Selingsgrove, Pennsylvania  
*Business Administration*

Bond and Key, Secretary 1, 2, 3, President 4; Student Christian Association 1, 2, 4; Biemic Society 2, 4; Concert Orchestra 1; *The Susquehanna* Staff 1, 2, 3, 4; Fraternity Senate, President 4; "Macbeth"; "The Taming of the Shrew"; "Broken Dishes"; "The Barretts of Wimpole Street"; Trinity Choir 1; May Day 1, 2.





Upper row:

**KERMIT G. HORNING**

McAlisterville R. D. 1, Pennsylvania

*Liberal Arts*

Student Christian Association 1, 2, 4; Biemic Society 4.

**CARLTON R. HOWELLS**

1141 Scott Street, Kulpmont, Pennsylvania

*Liberal Arts*

Bond and Key 3, 4; Student Christian Association 3, 4; Phi Kappa 3, 4; Pre-Theological Club, President 4; Pottsville Penn State Center 1, 2.

**WALTER H. IFFERT, JR.**

556 Lincoln Street, Hazleton, Pennsylvania

*Business Administration*

Phi Mu Delta 1, 2, 3, 4; Student Christian Association 2, 3; Business Society 1, 2, 3, 4; Biemic Society 3; Basketball Team 1; Intramural Sports 1, 2, 3, 4.

**ROBERT B. JARVIS**

602 Mohawk Avenue, Norwood, Pennsylvania

*Business Administration*

Bond and Key 2, 3, 4; Student Christian Association 1, 2, 3, 4; Business Society 1, 2, 3, 4; Intramural Sports 1, 2, 3, 4; LANTHORN Staff 1.

Lower row:

**HARVEY P. JEFFERS**

358 North Greece Road, Hilton, New York

*Liberal Arts*

Bond and Key 1, 2, 3, 4; Student Christian Association 1, 2, 3, 4; Business Society 2; Biemic Society 3; *The Susquehanna* Staff 2, 4; Intramural Sports 1, 2, 3, 4; Cheerleader 3, 4; Intramural Board 2, 3; May Day 2, 3.

**DANALEE M. KERSHNER**

499 North High Street, Selinsgrove, Pennsylvania

*Liberal Arts*

Student Christian Association 1, 2, 3, 4; Biemic Society 2; Women's Athletic Association 3, 4; Women Day Students' Organization 1, 2, 3, 4, President 4; May Day 1.

**MARY KLINGELHOEFFER**

R. D. 2, Sunbury, Pennsylvania

*Liberal Arts*

Student Christian Association 1, 2, 3, 4; Biemic Society 4; Concert Orchestra 1, 2, 3, 4; Women's Athletic Association 3, 4; *The Susquehanna* Staff 3, 4; Women Day Students' Organization 1, 2; May Day 3.

**WILLIAM P. KLOAP**

110 Garfield Street, Nanticoke, Pennsylvania

*Business Administration*

Student Christian Association 3, 4; Business Society 3, 4; Pi Gamma Mu 3, 4, Vice-President 4; Phi Kappa 4; Intramural Sports 2, 3, 4; Intramural Board 4; "Macbeth"; "The Taming of the Shrew"; "The Willow and I"; *Who's Who* 4.



**SENIORS . . .**



*Upper row:*

**EDWARD P. KOPF**

61 Morse Avenue, Bloomfield, New Jersey  
*Business Administration*

Phi Mu Delta 1, 2, 3, 4, Social Chairman 2, 3; Business Society 1, 2, 3; Intramural Sports 1, 2, 3; Alpha Psi Omega 2, 3.

**RONALD S. KROUT**

742 Atlantic Avenue, York, Pennsylvania  
*Business Administration*

Bond and Key 3, 4; Student Christian Association 3, 4; Business Society 3, 4.

**WILLIAM P. LaMARCA**

306 South Market Street, Selingsgrove, Pennsylvania  
*Business Administration*

Phi Mu Delta 2, 3, 4; Student Christian Association 1, 2, 3, 4; Business Society 1, 2, 3, 4; Biemic Society 1; Susquehanna Players 1, 2, 3, 4; Intramural Sports 1, 2, 3; Intramural Board 2; "In the Zone"; "The Barretts of Wimpole Street"; "The Taming of the Shrew"; "Macbeth"; "The Willow and I."

**MADALINE M. LEASE**

443 West Main Street, Somerset, Pennsylvania  
*Liberal Arts*

Kappa Delta 1, 2, 3, 4, Treasurer 4; Student Christian Association 1, 2, 3, 4; Biemic Society 1, 2, 3, 4; Vice-Presidents' Council 3, 4; Women's Athletic Association 1, 2, 3, 4; LANTHORN Staff, Editor 3.

*Lower row:*

**LORRAINE S. LEE**

9 West Fortieth Street, Bayonne, New Jersey  
*Music Education*

Sigma Alpha Iota 1, 2, 3, 4, Secretary 3, 4; Student Christian Association 1, 2; Susquehanna Players 1, 2; Band 2, 3, 4; Susquehanna Singers 2, 3; Chapel Choir 3, 4; Women's Athletic Association 1, 2; *The Susquehanna* Staff 1; LANTHORN Staff 3; Trinity Choir 3; "Macbeth"; "The Taming of the Shrew."

**PAMELA J. McKEGG**

249 Belleville Avenue, Bloomfield, New Jersey  
*Secretarial*

Kappa Delta 1, 2, 3, 4; Student Christian Association 1, 3, 4; Business Society 1, 2, 4; Biemic Society 2; Band, Majorette 1, 2, 3, 4; Women's Athletic Association 1, 2, 3, 4; *The Susquehanna* Staff 1, 4; Basketball Team 1; Intramural Sports 1, 2, 3, 4; Tau Kappa 4; May Day 1, 2, 3.

**ROBERT J. MACNAMARA, JR.**

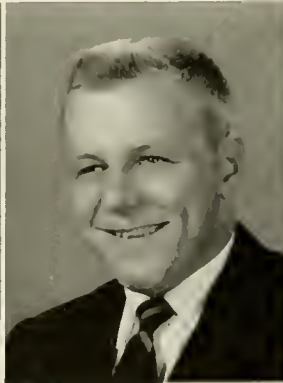
804 Ardmore Avenue, Ardmore, Pennsylvania  
*Liberal Arts*

Bond and Key 2, 3, 4, Pledgemaster 4; Student Christian Association 2, 3, 4; Pi Gamma Mu 4; Basketball Team 2, 3, 4; Football Team 2, 3, 4; Intramural Sports 2, 3, 4; Baseball Team 2; Class Vice-President 3, Class President 4; May Day 3; Franklin and Marshall College 1; *W'bo's W'bo* 4.

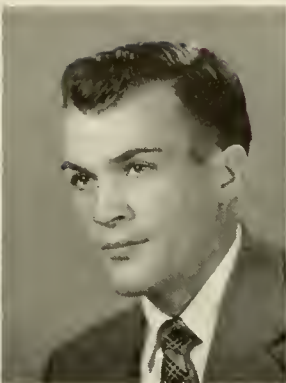
**THOMAS E. MARTS**

1774 Norris Street, Camden 4, New Jersey  
*Business Administration*

Phi Mu Delta 2, 3, 4, President 4; Student Christian Association 1, 2, 3, 4; Business Society 1, 2, 3, 4; Biemic Society 2; Susquehanna Players 2, 3, 4; Fraternity Senate 4; Baseball Team 1; Alpha Psi Omega 3, 4; "The Willow and I"; "The Barretts of Wimpole Street"; "The Merchant of Venice"; "Two Blind Mice"; *W'bo's W'bo* 4.







Upper row:

CAROLINE R. MASON

R. D. 1, Harrisburg, Pennsylvania  
*Liberal Arts*

Student Christian Association 1, 2, 3, 4; Biemic Society 2, 4; Women's Athletic Association 1, 2, 3, 4; Pi Gamma Mu 4; Intramural Sports 1, 2, 3, 4.

CHARLES N. MASON, JR.

6432 31st Street, Northwest, Washington 15,  
District of Columbia  
*Business Administration*

Theta Chi 2, 3, 4, Secretary 4; Student Christian Association 3, 4, Cabinet 3; Business Society 4; Susquehanna Players 2; Intramural Sports 2, 3, 4; LANTHORN Staff, Art Editor 3; "Broken Dishes"; Rocky Mountain College 1.

JOHN W. MAYER

1733 River Road, Belmar, New Jersey  
*Liberal Arts*

Bond and Key 2, 3, 4; Student Christian Association 1, 2, 4; Business Society 4; Intramural Sports 1, 2, 3, 4; "The Merchant of Venice"; "Two Blind Mice"; Jamestown College 1.

ROBERT A. MESLER

422 Tappan Avenue, North Plainfield, New Jersey  
*Business Administration*

Phi Mu Delta 1, 2, 3, 4; Student Christian Association 1, 2, 3, 4; Business Society 1, 2, 3, 4; Intramural Sports 1, 2, 3, 4.

Lower row:

JOYCE E. MILLER

100 Stone Street, Honesdale, Pennsylvania  
*Commercial Education*

Alpha Delta Pi 1, 2, 3, 4, Recording Secretary 4; Student Christian Association 1, 2, 3, 4; Business Society 1, 2; Biemic Society 4; Women's Athletic Association 3, 4; Intramural Sports 3, 4; Class Secretary 1; May Day 1, 2.

BEATRICE M. MORROW

Glasgow, Pennsylvania  
*Liberal Arts*

Student Christian Association 2, 3, 4, Cabinet 3, President 4; *The Susquehanna* Staff, Associate Editor 4; Phi Kappa 2, 3, Secretary 3; Student Assistant at Hassinger Hall 2, 3, 4; Graduate of Lutheran Deaconess Training School.

T. JUSTIN MYERS, JR.

400 South Main Street, Hughesville, Pennsylvania  
*Business Administration*

Bond and Key 1, 2, 3, 4; Business Society 2, 3, 4; Susquehanna Players 1, 2, 3, 4; Intramural Sports 1, 2, 3, 4; Alpha Psi Omega 4; "Macbeth"; "The Taming of the Shrew"; "The Merchant of Venice"; "Two Blind Mice."

PAUL R. NESTLER, JR.

Green Lane, Pennsylvania  
*Business Administration*

Theta Chi 1, 2, 3, 4; Student Christian Association 1, 3; Business Society 1, 2, 3, 4; Susquehanna Players 1; Band 1, 2, 3.



SENIORS . . .



Upper row:

EDWARD W. NEUMAN

Sleepy Hollow Road, York, Pennsylvania  
*Business Administration*

Bond and Key 1, 2, 3, 4; Student Christian Association 2;  
Business Society 1, 2, 3, 4, President 4; *The Susquehanna*  
Staff 2, 3, 4, Business Manager 4; Class Vice-President 2.

ARTHUR K. OLSON

8802 Ridge Boulevard, Brooklyn 9, New York  
*Business Administration*

Phi Mu Delta 1, 2, 3, Comptroller 2, 3; Business Society 1, 3;  
Chapel Choir 3; Pi Gamma Mu 3.

KENNETH E. ORRIS

Ickesburg, Pennsylvania  
*Music Education*

Theta Chi 1, 2, 3, 4, Secretary 3; Student Christian Association 2, 3, 4; Concert Orchestra 1, 2, 3, 4; Band 1, 2, 3, 4; Susquehanna Singers 2, 3; Chapel Choir 1, 2, 3; Intramural Sports; Baseball Team 1, 2, 3, 4.

JEAN M. RARICK

North Warren Street, Orwigsburg, Pennsylvania  
*Music Education*

Sigma Alpha Iota 1, 2, 3, 4; Student Christian Association 1, 2; Susquehanna Singers 2, 3.

Lower row:

ARTHUR W. ROUSH

702 North Market Street, Selinsgrove, Pennsylvania  
*Liberal Arts*

Student Christian Association 3, 4; Biemic Society 1, 2, 4.

DEAN E. RUPE

1407 First Avenue, Altoona, Pennsylvania  
*Liberal Arts*

Student Christian Association 3, 4; Pi Gamma Mu 4; Phi Kappa 3, 4, Treasurer 4; Pre-Theological Club, Vice-President 4; Penn State 1, 2.

CHITOSE KEI SASAKI

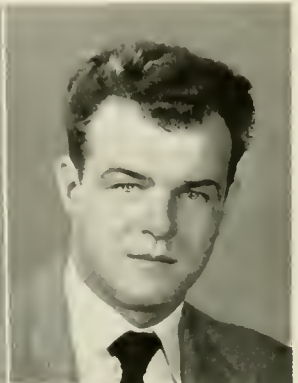
Hanabusa-mura, Kikuchi, Kumamoto, Japan  
*Liberal Arts*

Student Christian Association 3, 4.

WILLIAM L. SCOTT

Dewey Beach, Rehoboth Beach, Delaware  
*Business Administration*

Phi Mu Delta 1, 2, 3, 4, Pledgemaster 4; Student Christian Association 1, 2, 3, 4; Business Society 1, 2, 3, 4; Football Team 1; Intramural Sports 1, 2, 3, 4; Alpha Psi Omega 3, 4.





Upper row:

**JOAN G. SECHRIST**

117 North Twelfth Street, Sunbury, Pennsylvania  
*Liberal Arts*

Alpha Delta Pi 1, 2, 3, 4, Chaplain 3, 4; Student Christian Association 1, 2, 3, 4; Biemic Society 1, 2, 3, 4; Band 1, 4; Women's Athletic Association 1, 2, 3, 4; Women's Student Council 3, 4; *The Susquehanna* Staff 3, 4; Intramural Sports 1, 2, 3, 4; Panhellenic Council, Secretary-Treasurer 3, President 4; Women Day Students' Organization 1, 2, 3, 4; May Day 1, 2, 3.

**DONALD R. SHELDON**

50 Webb Avenue, Hempstead, New York  
*Liberal Arts*

Theta Chi 1, 2, 3, 4; Susquehanna Players 3; Concert Orchestra 1, 2; Band 1, 2; Susquehanna Singers 2; Intramural Sports 1, 2, 3, 4; "The Merchant of Venice."

**ELINOR M. SMITH**

760 East Main Street, Lykens, Pennsylvania  
*Commercial Education*

Kappa Delta 1, 2, 3, 4, Vice-President 3; Student Christian Association 1, 2, 3, 4; Business Society 1, 2, 3, 4, Secretary 4; Biemic Society 2, 3; Vice-Presidents' Council 3; Women's Athletic Association 1, 2, 3, 4; *The Susquehanna* Staff, Managing Editor 3; Intramural Sports 1, 2, 3, 4; LANTHORN Staff 3; Freshman Counselor 3; Freshman Orientation 3, 4.

**CHARLES A. SNYDER, JR.**

North Main Street, Herndon, Pennsylvania  
*Liberal Arts*

Bond and Key 2, 3, 4, Chaplain 3; Student Christian Association 1, 2, 3, 4, Boys' Vice-President 4; *The Susquehanna* Staff 4; Phi Kappa 1, 2, 3, 4, President 4; Intramural Sports 3.

Lower row:

**ROBERT D. STEFFY**

18 North Front Street, Selingsgrove, Pennsylvania  
*Commercial Education*

**RICHARD P. STOUT**

606 Mahoning Street, Lehighton, Pennsylvania  
*Business Administration*

Theta Chi 1, 2, 3, 4; Business Society 2, 4; Men's Student Council 2, 3, 4; *The Susquehanna* Staff, Men's Sports Editor 3, 4; Intramural Sports 1, 2, 3, 4; Intramural Board 2, 3; LANTHORN Staff 3.

**M. JOSEPHINE STUTER**

West Main Street, Belleville, Pennsylvania  
*Music Education*

Sigma Alpha Iota 1, 2, 3, 4, Vice-President 3, Chaplain 4; Student Christian Association 1, 2, 3, 4; Band 1, 2, 3, 4; Susquehanna Singers 2, 3; Vice-Presidents' Council 2; May Day 1, 2.

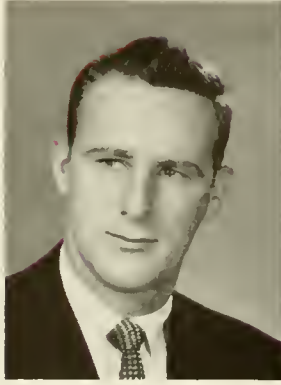
**MARGRETTA A. THOMAS**

135 Spurzheim Street, Shamokin, Pennsylvania  
*Music Education*

Sigma Alpha Iota 2, 3, 4; Student Christian Association 1, 2, 4; Susquehanna Singers 2, 3; Chapel Choir 2, 3, 4; Women's Athletic Association 2; Basketball Team 1; Intramural Sports 1, 2; "The Taming of the Shrew."



**SENIORS . . .**



*Upper row:*

**STEVE F. TOROK**

4 Bright Street, South River, New Jersey  
*Liberal Arts*

Phi Mu Delta 1, 2, 3, 4; Student Christian Association 1; Biemic Society 3, 4; *The Susquehanna* Staff 4; Football Team 1, 2, 3, 4; Intramural Sports 1, 2, 3, 4; Intramural Board 1, 2, 3; May Day 1, 2, 3.

**EDWARD T. UNANGST**

541 Shuman Street, Catawissa, Pennsylvania  
*Music Education*

Phi Mu Delta 1, 2, 3, 4; Student Christian Association 2, 3, 4; Business Society 4; Concert Orchestra 2, 3, 4; Band 1, 2, 3, 4; Susquehanna Singers 2, 3; Intramural Sports 1, 2, 3, 4.

**HELEN E. VONLYNN**

12 Central Avenue, Cranford, New Jersey  
*Liberal Arts*

Alpha Delta Pi 1, 2, 3, 4. Corresponding Secretary 4; Student Christian Association 1, 2, 3, 4; Biemic Society 1, 2, 3, 4; Women's Athletic Association 1, 2, 3, 4, Board 4; Women's Student Council, Secretary-Treasurer 4; Hockey Team 1, 2, 3, 4, Captain 4; Basketball Team 1, 2, 3, 4; Intramural Sports 1, 2, 3, 4; Panhellenic Council 3; Tau Kappa 2, 3, 4, President 4; May Day 2, 3.

**JOYCE L. WAGNER**

4113 Green Court, Harrisburg, Pennsylvania  
*Liberal Arts*

Alpha Delta Pi 1, 2, 3, 4, Vice-President 4; Student Christian Association 1, 2, 3, 4; Biemic Society 1, 2, 3, 4, Secretary-Treasurer 3; Vice-Presidents' Council 2, 3; Women's Athletic Association 1, 2, 3, 4, Vice-President 3, President 4; Women's Student Council, President 4; Women's Judiciary Committee 4; Hockey Team 1, 2, 3, 4; Basketball Team 1; Intramural Sports 1, 2, 3, 4; Tau Kappa 2, 3, 4; Class Secretary 2; Freshman Counselor 3; May Day 2, 3; Freshman Orientation 2, 3, 4.

*Lower row:*

**ERNEST R. WALKER**

1700 Sunshine Avenue, Johnstown, Pennsylvania  
*Liberal Arts*

Phi Mu Delta 1, 2, 3, 4; Student Christian Association 1, 2, 3, 4; Football Team 1, 2; Intramural Sports 4.

**DONALD N. WALTER**

West Milton, Pennsylvania  
*Liberal Arts*

Phi Mu Delta 1, 2, 3, 4; Biemic Society 1, 2, 3, 4, President 3; Football Team 1, 2, 3, 4; Intramural Sports 1, 2, 3, 4; Baseball Team 1, 2; "Our Hearts Were Young and Gay."

**JANE L. WEHR**

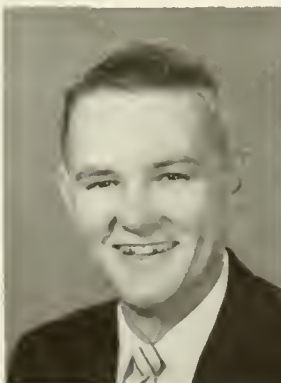
Middleburg, Pennsylvania  
*Liberal Arts*

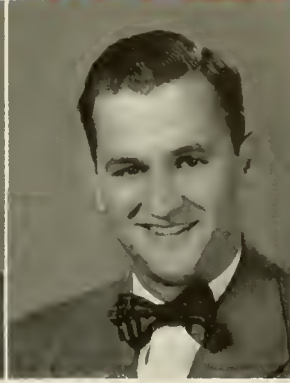
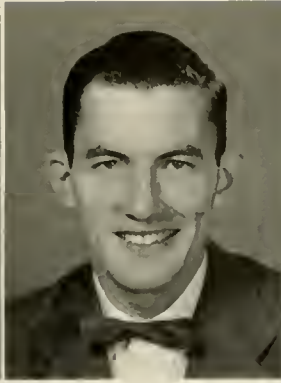
Kappa Delta 1, 2, 3, 4, Editor 3, 4; Student Christian Association 2, 3, 4; Women's Athletic Association 3, 4; Basketball Team 3; Pi Gamma Mu 3, 4, President 4; LANTHORN Staff, Photography Editor 3; Freshman Orientation 4.

**LILLIAN M. WHITTINGTON**

1253 Hudson Street, Harrisburg, Pennsylvania  
*Liberal Arts*

Student Christian Association 2, 3, 4; Biemic Society 2, 3, 4; Vice-Presidents' Council 3; Women's Athletic Association 2, 3, 4; Hockey Team 2; Intramural Sports 2, 3, 4; LANTHORN Staff 3; May Day 2, 3; Gettysburg College 1.





Upper row:

CLARA MAE WILLIAMS

Drums, Pennsylvania  
*Music Education*

Sigma Alpha Iota 1, 2, 3, 4, Pianist 3, Editor 4; Student Christian Association 1; Band 2, 3, 4; Susquehanna Singers 2, 3; Chapel Choir 3, 4.

DANIEL W. WILLIAMSON

R. D. 2, Holsopple, Pennsylvania  
*Business Administration*

Theta Chi 1, 2, 3, 4, President 4; Student Christian Association 1, 2, 3, 4; Business Society 1, 2, 3, 4; Intramural Sports 3, 4; Fraternity Senate 4.

JAMES D. WITHER, JR.

2038 Sheridan Street, Williamsport, Pennsylvania  
*Business Administration*

Phi Mu Delta 2, 3, 4; Student Christian Association 1; Business Society 1, 2, 4; Biemic Society 3; Susquehanna Singers 4; Chapel Choir 4; Intramural Sports, 1, 2, 3, 4.

Lower row:

ROBERT C. WYLLIE

23 Fairview Avenue, North Plainfield, New Jersey  
*Business Administration*

Bond and Key 1, 2, 3, 4, Treasurer 3, 4; Student Christian Association 1; Business Society 1; Men's Student Council 2, 3, 4, Treasurer 4; Basketball Team 1, 2, 3, 4; Intramural Sports 1, 2, 3, 4; Intramural Board 2, 3, 4.

MAXINE YOCUM

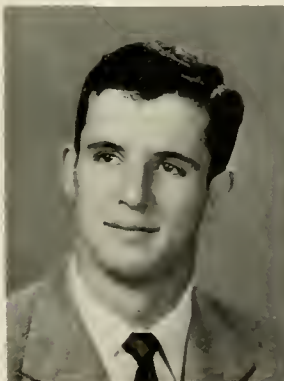
29 West Park Avenue, Lindenwold, New Jersey  
*Liberal Arts*

Kappa Delta 1, 2, 3, 4; Student Christian Association 1, 2, 3, 4; Biemic Society 2, 3, 4; Women's Athletic Association 1, 2, 3, 4; Women's Student Council 4; Pi Gamma Mu 4; Intramural Sports 1, 2, 3, 4; LANTHORN Staff, Literary Editor 3; May Day 1, 3.

MARGARET I. ZINDA

Fisher Avenue, Catawissa, Pennsylvania  
*Music Education*

Sigma Alpha Iota 1, 2, 3, 4, Treasurer 3, Corresponding Secretary 4; Student Christian Association 1, 2, 4; Concert Orchestra 1, 2, 3, 4; Band 1, 2, 3, 4; Susquehanna Singers 2, 3; Women's Judiciary Committee 4; Freshman Orientation 4; M. E. N. C. 2, 3, 4; Fire Marshall 4.





WILLIAM DAVENPORT  
Kingston, Pa.



JOAN BATES  
Cranford, N. J.

## WHO'S WHO



MARY ANN DIXON  
Red Lion, Pa.



RUTH FREED  
Red Hill, Pa.

In American Colleges  
and Universities



THOMAS MARTS  
Camden, N. J.

WILLIAM KLOAP  
Nanticoke, Pa.



ROBERT MACNAMARA  
Ardmore, Pa.

"Music is a higher manifestation than all wisdom and philosophy."—BEETHOVEN



## Class of 1954

### OFFICERS

<i>President</i>	- - - - -	REUBEN HENRY
<i>Vice-President</i>	- - - - -	- SAMUEL ROSS
<i>Secretary</i>	- - - - -	- JOYCE GILBERT
<i>Treasurer</i>	- - - - -	- DWIGHT KEENER

Now that we are juniors, we realize that we are rapidly approaching the peak of our college careers. These three happy and prosperous years at Susquehanna have contributed greatly toward the molding of each student's character and toward his preparation for an enriched life of service to mankind. Through our associations and adjustments in these three years, we have become a part of our alma mater just as it has become a part of us. May our final year at Susquehanna be another profitable step on the path which guides us toward a wise and intelligent approach to the problems and challenges confronting us in life!

We, the Class of 1954, sincerely hope that these pages will present a panorama of life here at Susquehanna and that all who read them may acquire a deeper appreciation of the traditions and ideals close to the heart of every student at old S. U.—old in years but young in vitality.



*First Row, Left to Right—Gilbert, Keener. Second Row—Ross, Henry.*

# JUNIORS . . .

**HENRY R. ALBRIGHT**

1146 East Chestnut St.,  
Sunbury, Pa.  
*Liberal Arts*

Bond and Key 1, 2, 3; Student Christian Association 1, 2, 3; Band 1, 2; Pi Gamma Mu 3; Ciceroniani 1, 2, 3, Consul 2.

**NED M. ARBOGAST**

108 South Eleventh St.,  
Sunbury, Pa.  
*Liberal Arts*

Bond and Key 2, 3; Student Christian Association 2; Basketball Team 1; Intramural Sports 1, 2, 3; Baseball Team 2.

**GEORGE B. BACKER**

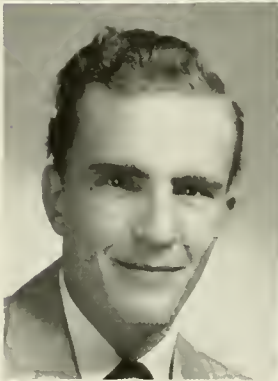
Shamokin Dam, Pa.  
*Pre-Medical*

Phi Mu Delta 1, 2, 3; Student Christian Association 1; Biemic Society 3; Intramural Sports 1, 2.

**WILLIAM F. BASTIAN**

247 Ridge Ave.,  
Sunbury, Pa.  
*Music Education*

Bond and Key 2, 3; Student Christian Association 1, 2, 3; Concert Orchestra 3; Band 1, 2, 3; Susquehanna Singers 2, 3; Chapel Choir 1, 2, 3; Franklin and Marshall College 1.



**BRUCE T. BOBB**

311 Reagan St.,  
Sunbury, Pa.  
*Liberal Arts*

Bond and Key 1, 2, 3; Student Christian Association 1; Susquehanna Players 1, 2, 3; Intramural Sports 1, 2, 3; "The Taming of the Shrew"; "The Barretts of Wimpole Street"; "The Merchant of Venice."

**LORETTA F. BORRY**

R. D. 1, Stevens, Pa.  
*Business Administration*

Student Christian Association 3; Business Society 2, 3; Moravian College for Women 1.

**ELEANOR L. BORSKI**

62 Crestview Place,  
New Rochelle, N. Y.  
*Music Education*

Sigma Alpha Iota 1, 2, 3, Treasurer 3; Student Christian Association 1; Susquehanna Singers 2, 3; Chapel Choir 3; Women's Athletic Association 1, 2, 3; *The Susquehanna Staff* 2; Intramural Sports 1, 2, 3; Freshman Orientation 3; May Day 2.

**K. H. BOTHWILL, JR.**

211 Runnymede Parkway,  
New Providence, N. J.  
*Liberal Arts*

Bond and Key 3; Student Christian Association 3; Business Society 3; Biemic Society 3; Intramural Sports 3; New Jersey State Teachers College 1, 2.



**RICHARD K. BOYD**  
109 Overlook Terrace,  
Bloomfield, N. J.  
*Music Education*

Phi Mu Delta 1, 2, 3, Vice-President 3; Student Christian Association 1, 2, 3; Business Society 1; Susquehanna Singers 2, 3; Chapel Choir 2, 3; *The Susquehanna Staff* 2; Cheerleader 1.

**PHILIP G. BUKER, JR.**  
Sidney, N. Y.  
*Business Administration*

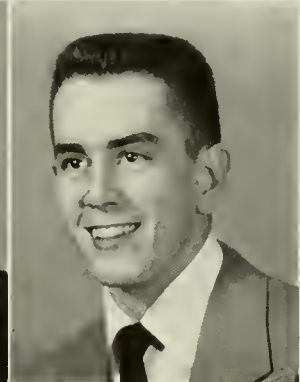
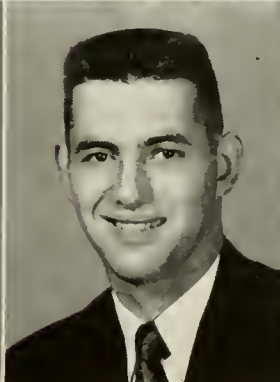
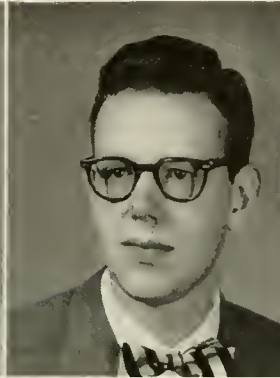
Student Christian Association 3; Business Society 3; Intramural Sports 3; Hershey Junior College 1, 2.

**WALTER B. BYERS**  
Snydertown, Pa.  
*Music Soloist*

Student Christian Association 1, 2, 3; Susquehanna Singers 2, 3.

**JANE K. CLINE**  
40 Cowdrey St.,  
Yonkers 2, N. Y.  
*Liberal Arts*

Kappa Delta 1, 2, 3, President 3; Student Christian Association 1, 2, 3; Biemic Society 1, 2, 3; Susquehanna Players 2, 3; Susquehanna Singers 1; Chapel Choir 3; Vice-Presidents' Council 3; Women's Athletic Association 1, 2, 3, Corresponding Secretary 3; Hockey Team 1, 2, 3; Basketball Team 2; Intramural Sports 1, 2, 3; Panhellenic Council 2, 3; Tau Kappa 3; Alpha Psi Omega 3; Freshman Counselor 3; Freshman Orientation 3; Trinity Choir 3; May Day 1, 2.



**JAMES H. CURRY**  
134 Maple Ave.,  
Hershey, Pa.  
*Business Administration*

Student Christian Association 3; Business Society 3; Hershey Junior College 1, 2.

**JAYNE M. DAILY**  
451 Delaware St.,  
Woodbury, N. J.  
*Music Soloist*

Sigma Alpha Iota 2, 3; Student Christian Association 2, 3; Susquehanna Players 3; Band 3; Susquehanna Singers 2, 3; Chapel Choir 2, 3; Vice-Presidents' Council 3; Women's Athletic Association 1, 2, 3; Freshman Counselor 3; Freshman Orientation 3; Trinity Choir 2, 3; May Day 2; "Two Blind Mice."

**JAMES C. DELL**  
143 West McClure St.,  
New Bloomfield, Pa.  
*Business Administration*

Bond and Key 1, 2, 3; Student Christian Association 1; Business Society 1; Football Team 1, 2, 3; Intramural Sports 1, 3; Baseball Team 1, 2, 3.

**REED L. DETAR**  
State Hospital, Danville, Pa.  
*Liberal Arts*

Student Christian Association 1, 2, 3; Biemic Society 3; Concert Orchestra 1, 2, 3; Band 1, 2, 3.

**JUNIORS . . .**

**JOAN R. DIGGAN**

274 South Main St.,  
Hughesville, Pa.

*Medical Secretary*

Student Christian Association 1, 2, 3; Business Society 1, 2, 3; Women's Athletic Association 1, 2, 3; Hockey Team 3; Basketball Team 1; Intramural Sports 1, 2, 3; Cheerleader 1, 2, 3; May Day 2.

**JOHN A. DUCEMAN**

1121 West Arch St.,  
Shamokin, Pa.

*Liberal Arts*

Biemic Society 3; Intramural Sports 1, 2, 3.

**MARILYN J. FETTEROLF**

1635 Menoher Blvd.,  
Johnstown, Pa.

*Business Administration*

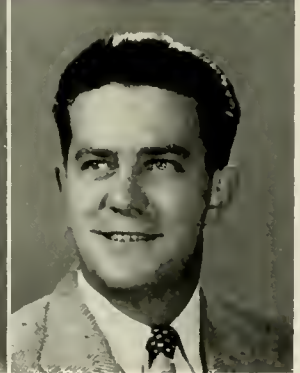
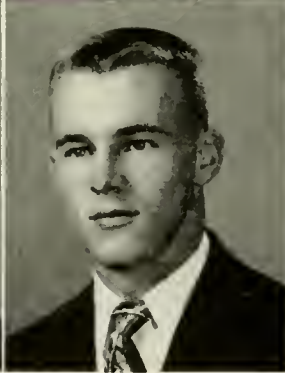
Alpha Delta Pi 1, 2, 3, Treasurer 3; Student Christian Association 1, 2, 3; Business Society 1, 2, 3; Vice-Presidents' Council 3; Women's Athletic Association 1, 2, 3; Freshman Counselor 3; Freshman Orientation 3; May Day 2.

**RONALD A. FETTEROLF**

Box 81, Beavertown, Pa.

*Liberal Arts*

Student Christian Association 1, 2, 3; Biemic Society 1, 3; Intramural Sports 1, 2, 3.



**EDWARD J. FLOWERS**

140 East Columbia Ave.,  
Atlas, Pa.

*Business Administration*

Phi Mu Delta 3; Business Society 2, 3; Football Team 1, 2, 3.

**ROY A. FOOR**

East Second St., Everett, Pa.  
*Business Administration*

Theta Chi 1, 2, 3; Student Christian Association 1, 2; Business Society 1, 2; Basketball Team 1, 2, 3; Intramural Sports 1, 2, 3; Baseball Team 1, 2.

**MARIAN L. FRUTCHEY**

1798 Ford Ave., Akron 5,  
Ohio

*Music Education*

Student Christian Association 3; Concert Orchestra 3; Band 3; Susquehanna Singers 3; Women Day Students' Organization 3; University of Akron 1, 2.

**JOHN W. GASS**

48 North Third St.,  
Shamokin, Pa.

*Business Administration*

Student Christian Association 3; Business Society 3.

**CLASS OF 1954**

**JOYCE K. GILBERT**  
302 North Eighth St.,  
Selinsgrove, Pa.  
*Liberal Arts*

Alpha Delta Pi 1, 2, 3, Rush  
Chairman 3; Student Christian  
Association 1, 2, 3; Women's  
Athletic Association 1, 2, 3;  
*The Susquehanna Staff* 3;  
Intramural Sports 1, 2, 3;  
Panhellenic Council 3; LANTHORN  
Staff, Editor-in-Chief 3; Women  
Day Students' Organization 1, 2, 3;  
Class Secretary 3; Freshman  
Orientation 2, 3; Trinity Choir 1,  
2, 3.

**RONALD F. GOODMAN**  
418 Erie St., Honesdale, Pa.  
*Music Education*

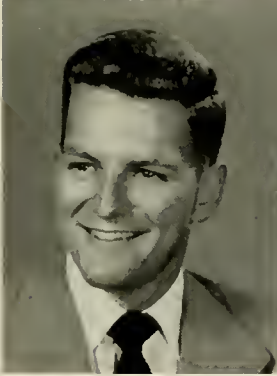
Student Christian Association  
1, 2; Concert Orchestra 2, 3;  
Susquehanna Singers 2, 3.

**CLAIRE A. HAGGERTY**  
160 Price St., Kingston, Pa.  
*Liberal Arts*

Kappa Delta 2, 3; Student  
Christian Association 1, 2, 3;  
Biemic Society 1, 2, 3; Chapel  
Choir 1; Women's Athletic  
Association 2, 3; Intramural  
Sports 1, 2, 3.

**MARGARET HENDERSON**  
123 North Walnut St.,  
Wernersville, Pa.  
*Medical Secretarial*

Kappa Delta 1, 2, 3; Student  
Christian Association 1, 2, 3;  
Business Society 1, 2, 3; Women's  
Athletic Association 1, 2, 3;  
Women's Student Council 2, 3;  
Women's Judiciary Committee 3;  
Basketball Team 1, 2, 3; Intramural  
Sports 1, 2, 3; Panhellenic  
Council, Secretary-Treasurer 3;  
Freshman Orientation 3;  
May Day 1, 2.



**W. REUBEN HENRY**  
R. D. 2, MacDonald Heights,  
York, Pa.  
*Business Administration*

Bond and Key 1, 2, 3; Business  
Society 1, 2, 3; Student  
Christian Association 1, 2, 3;  
Susquehanna Players; Men's  
Student Council 3; Football  
Team 3; Intramural Sports 1,  
2, 3; Class Vice-President 1;  
Class President 2, 3; "The  
Willow and I."

**PATRICIA A. HESS**  
412 North Market St.,  
Elizabethtown, Pa.  
*Medical Secretarial*

Kappa Delta 1, 2, 3, Vice-  
President 3; Business Society  
1, 2, 3, Social Chairman 3;  
Vice-Presidents' Council 3;  
Women's Athletic Association  
1, 2, 3; Hockey Team 1,  
2, 3; Cheerleader 3; Fresh-  
man Orientation 2, 3; Fresh-  
man Counselor 3.

**MARGARETE J. HULTS**  
4 Hardwell Rd.,  
Short Hills, N. J.  
*Music Education*

Sigma Alpha Iota 2, 3;  
Susquehanna Singers 2, 3;  
Chapel Choir 3.

**MARILYN J. HUYETT**  
210 McClellan St.,  
Reading, Pa.  
*Liberal Arts*

Student Christian Association  
1, 2; Biemic Society 1, 3;  
Concert Orchestra 1, 2, 3;  
Women's Athletic Association  
1, 2, 3, Board 3; *The  
Susquehanna Staff* 3; Cicero-  
nians 2, 3, Quaestor-Aedile  
3; Intramural Sports 1, 2, 3;  
Trinity Choir 1, 2, 3.

## JUNIORS . . .

**HAROLD N. JOHNSON**

Nicholson, Pa.

*Business Administration*

Bond and Key 1, 2, 3; Student Christian Association 1; Business Society 1; Pi Gamma Mu 3; Intramural Sports 1, 2, 3; LANTHORN Staff, Business Manager 3; Baseball Team 1, 2.

**DWIGHT E. KEENER**

2553 North Sixth St.,

Harrisburg, Pa.

*Business Administration*

Phi Mu Delta 1, 2, 3; Student Christian Association 1, 2, 3; Business Society 1, 2, 3, Secretary 2; Biemic Society 2; Intramural Sports 1, 2, 3; Cheerleader 3; Class Treasurer 3.

**V. LUCILLE KEPNER**

48 South Harrisburg St.,

Steelton, Pa.

*Liberal Arts*

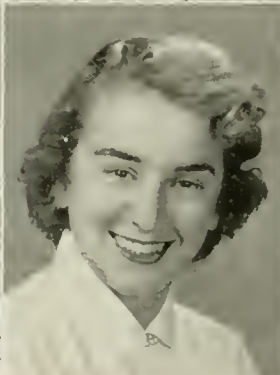
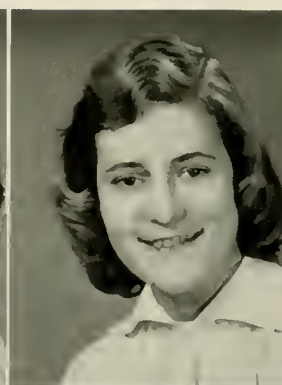
Kappa Delta 1, 2, 3, Assistant Treasurer 3; Student Christian Association 1, 2, 3; Biemic Society 1, 2, 3; Women's Athletic Association 1, 2, 3; Intramural Sports 1, 2, 3; LANTHORN Staff, Photography Editor 3; Freshman Orientation 3.

**E. FAYE KOSTENBAUDER**

Route 1, Danville, Pa.

*Liberal Arts*

Student Christian Association 1, 2, 3; Women's Athletic Association 2, 3; Intramural Sports 1, 2.



**HERBERT N. KRAUSS**

247 South Pine St., York, Pa.

*Business Administration*

Bond and Key 1, 2, 3, Social Chairman 2, 3; Student Christian Association 1, 2, 3; Business Society 1, 2, 3, Treasurer 3; Susquehanna Players 1, 2, 3; Class Treasurer 2; May Day 2; "The Barretts of Wimpole Street"; "The Merchant of Venice"; "The Taming of the Shrew"; "Two Blind Mice."

**EDWARD E. LAMB**

17 Sterner Ave.,

Broomall, Pa.

*Business Administration*

Theta Chi 1, 2, 3; Student Christian Association 1; Business Society 1, 3; Basketball Team 1; Intramural Sports 1, 2, 3; Baseball Team 1.

**JANET L. LAUE**

14 Herrick Drive,

Lynbrook, N. Y.

*Liberal Arts*

Kappa Delta 1, 2, 3, Rush Chairman 3; Student Christian Association 1, 2, 3; Susquehanna Players 1, 2, 3; Band 2, 3; Susquehanna Singers 1; Chapel Choir 1, 2, 3; Vice-Presidents' Council 3; Women's Athletic Association 1, 2, 3; Hockey Team 3; Basketball Team 2; Intramural Sports 1, 2, 3; Panhellenic Council 3; Alpha Psi Omega 2, 3; Vice-President 3; Cheerleader 1, 2, 3; Class Secretary 1; May Day 2.

**ORVILLE H. LAUER**

Richfield, Pa.

*Business Administration*

Theta Chi 1, 2, 3; Student Christian Association 1, 2, 3; Business Society 3; Men's Student Council 2, 3, Secretary 3; Cheerleader 1.

**CLASS OF 1954**

**STUART H. LENGEL, JR.**

Route 2, Richfield, Pa.

*Liberal Arts*

Bond and Key 2, 3; Student Christian Association 1, 2, 3; Susquehanna Players 1, 2; *The Susquehanna Staff* 2, 3; Phi Kappa 2, 3; Basketball Team, Manager 1; Football Team, Manager 2; Intramural Sports 1, 2, 3; Baseball Team, Manager 1; "The Taming of the Shrew"; Pre-Theological Club 3.

**NANCY L. LEPLCY**

Winfield, Pa.

*Music Education*

Sigma Alpha Iota 2, 3; Concert Orchestra 3; Susquehanna Singers 2, 3; Chapel Choir 2, 3; Women Day Student's Organization 1, 2, 3; Student Christian Association 3.

**GEORGE C. LIDDINGTON**

321 Orange St.,  
Northumberland, Pa.

*Business Administration*

Bond and Key 1, 2, 3, Treasurer 2; Student Christian Association 1, 2, 3; Business Society 1, 2, 3; Chapel Choir 2, 3; LANTHORN Staff, Advertising Manager 3.

**GRAYDON I. LOSE**

531 Main St.,  
Middleburg, Pa.

*Business Administration*

Bond and Key 2, 3; Student Christian Association 1, 2, 3; Business Society 3.



**CAROLYN R. LUCAS**

228 East Washington St.,  
Chambersburg, Pa.

*Liberal Arts*

Student Christian Association 1; Biemic Society 1, 3; Concert Orchestra 1, 3; Women's Athletic Association 1, 2, 3, Board; *The Susquehanna Staff* 3; Intramural Sports 1, 2, 3; LANTHORN Staff, Literary Editor 3; Trinity Choir 1, 2, 3.

**STANLEY S. MANNING**

126 North Seventeenth St.,  
East Orange, N. J.

*Business Administration*

Bond and Key 1, 2, 3; Student Christian Association 1; Business Society 1; Basketball Team 1, 2, 3; Intramural Sports 1, 2, 3; Intramural Board 3.

**IRENE F. MEERBACH**

234 Freeman Ave.,  
Stratford, Conn.

*Liberal Arts*

Alpha Delta Pi 1, 2, 3, Registrar 3; Student Christian Association 1, 2, 3; Susquehanna Singers 1; Chapel Choir 1; Vice-Presidents' Council 3; Women's Athletic Association 1, 2, 3; *The Susquehanna Staff*, News Editor 3; Hockey Team 2, 3; Cicero-nians 2, 3, Praetor 3; LANTHORN Staff 3; Tau Kappa 3; Freshman Counselor 3; Freshman Orientation 3; May Day 1, 2.

**ROBERT MICKATAVAGE**

40 Oakland Ave.,  
Ashland, Pa.

*Pre-Medical*

Phi Mu Delta 1, 2, 3, Vice-President 3; Biemic Society 1, 2, 3, President 3; Intramural Sports 1, 2, 3; LANTHORN Staff, Sports Editor 3.

## JUNIORS . . .

### JOANN D. MOSHOLDER

R. D. 2, Rockwood, Pa.

*Liberal Arts*

Alpha Delta Pi 1, 2, 3; Social Chairman 3; Student Christian Association 1, 2, 3; Biemic Society 1, 2, 3; Women's Athletic Association 1, 2, 3; Board 2, 3; Hockey Team 1, 2, 3; Basketball Team 1, 2, 3; Intramural Sports 1, 2, 3; LANTHORN Staff 3; Tau Kappa 3; May Day 2.

### CLEMENT R. NARDELL

118 East Union St.,  
Schuylkill Haven, Pa.

*Business Administration*

Business Society 2, 3.

### CHARLES NEWCOMER

381 Front St.,  
Northumberland, Pa.

*Commercial Education*

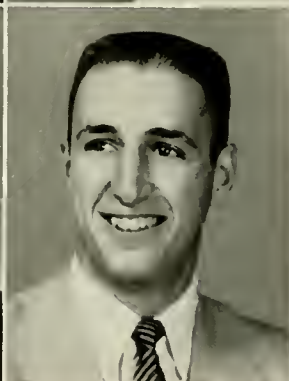
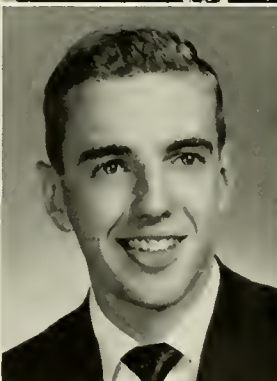
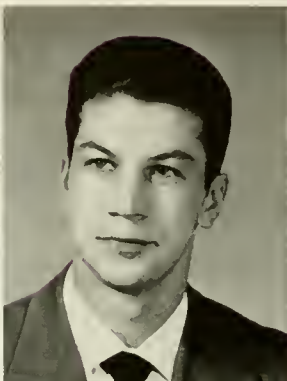
Student Christian Association 3; Susquehanna Players 3; "Two Blind Mice"; Hershey Junior College 1, 2.

### IRENE K. OLDT

Winfield, Pa.

*Liberal Arts*

Alpha Delta Pi 2, 3; Student Christian Association 2, 3; Biemic Society 3; Susquehanna Singers 2; Vice-Presidents' Council 2; Women's Athletic Association 2, 3; Recording Secretary 3; *The Susquehanna Staff* 3; Hockey Team 3; Intramural Sports 2, 3; Westminster College 1.



### RUTH E. OSBORN

Sixteenth and Queen Sts.,  
Northumberland, Pa.

*Liberal Arts*

Alpha Delta Pi 1, 2, 3; Reporter-Historian 3; Student Christian Association 1, 2, 3; Secretary 3; Biemic Society 1, 2, 3; Susquehanna Players 1, 2, 3; Susquehanna Singers 2; Vice-Presidents' Council 3; Women's Athletic Association 1, 2, 3; Women's Student Council 3; *The Susquehanna Staff*, News Editor 2, Editor-in-Chief 3; Basketball Team 2; *Circumlocution* 1, 2, 3; *Quaestor & Aedile* 2; Intramural Sports 1, 2, 3; LANTHORN Staff, Assistant Editor 3; Women Day Students' Organization 1; Freshman Counselor 3; Freshman Orientation 3; "Broken Dishes"; "Ladies in Retirement"; "Two Blind Mice."

### TAMSEN K. PERKINS

323 Sixteenth St.  
Honesdale, Pa.

*Medical Secretarial*

Alpha Delta Pi 1, 2, 3; Student Christian Association 1, 2, 3; Business Society 3; Biemic Society 1, 2; Women's Athletic Association 1, 2, 3; Intramural Sports 1, 2, 3; May Day 1, 2.

### DEWITT C. REYNOLDS

145 Williamson Ave.,  
Bloomfield, N. J.

*Business Administration*

Bond and Key 1, 2, 3; Student Christian Association 1, 2; Business Society 1, 2, 3; Intramural Sports 1, 2, 3; May Day 2.

### FRANK D. RICHARDS

326 South Market St.,  
Selinsgrove, Pa.

*Business Administration*

Phi Mu Delta 2, 3; Business Society 3; Band 1; Basketball Team 1, 3; Intramural Sports 1, 2, 3; Intramural Board 2, 3.

**CLASS OF 1954**

**JAMES M. RISING**

R. D. 1, Northumberland, Pa.

*Liberal Arts*

*The Susquehanna Staff* 3; Football Team 2, 3; Gettysburg College 1.

**RODGER E. ROHRBAUGH**

44 East Ninth Ave.,  
York, Pa.

*Liberal Arts*

Bond and Key 1, 2, 3; Student Christian Association 1, 2, 3; *The Susquehanna Staff* 1; Phi Kappa 2, 3; Intramural Sports 1; "The Taming of the Shrew."

**SAMUEL D. ROSS**

Oreland, Pa.

*Liberal Arts*

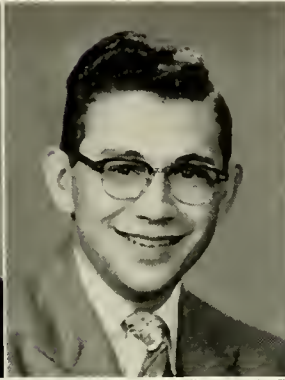
Theta Chi 1, 2, 3, Vice-President 3; Student Christian Association 1; Biemic Society 2, 3; Football Team 2, 3; Intramural Sports 1, 2, 3; Baseball Team 1, 2, 3.

**P. JEAN ROWE**

R. D. 2, Smithsburg, Md.

*Commercial Education*

Alpha Delta Pi 1, 2, 3; Student Christian Association 1, 2, 3, Treasurer 3; Business Society 1, 2, 3; Biemic Society 2; Women's Athletic Association 1, 2, 3, Board 2, 3; Women's Student Council 1, 2; *The Susquehanna Staff* 2, 3, Managing Editor 3; Intramural Sports 1, 2, 3; LANTHORN Staff, Typist 3; Freshman Orientation 2, 3; May Day 1.



**JOHN H. SCHRAEDER**

218 Allen St.,  
West Hazleton, Pa.

*Music Education*

Phi Mu Delta 1, 2, 3; Student Christian Association 1; Concert Orchestra 3; Band 1, 2, 3; Susquehanna Singers 2, 3; Chapel Choir 1, 2, 3; Basketball Team 1; Intramural Sports 1, 2; Intramural Board 3; May Day 1, 2.

**LOTHAR G. SEEGER**

6 Pestalozzi Platz,  
Frankfurt, Germany

*Pre-Theological*

Bond and Key Honorary 3; Heinrich Von Gager Gymnasium, Frankfurt, Germany.

**REBECCA J. SHADE**

R. D. 1, Danville, Pa.

*Music Education*

Student Christian Association 1, 2; Susquehanna Singers 2, 3; Chapel Choir 1; Women's Athletic Association 2, 3.

**ROBERT T. SHADY**

1944 Chestnut St.,  
Harrisburg, Pa.

*Liberal Arts*

Phi Mu Delta 1, 2, 3; Student Christian Association 2, 3; Biemic Society 1; Phi Kappa 1, 2; Intramural Sports 1, 2, 3; Class Vice-President 2; May Day 1, 2.

# JUNIORS . . .

**JOHN F. SHANNON**

202 Pine St., Sunbury, Pa.  
*Liberal Arts*

Bond and Key 1, 2, 3; Men's Student Council 3; Intramural Sports 1, 2, 3; LANTHORN Staff, Artist 3.

**DOROTHY M. SITES**

219 Garfield St.,  
Chambersburg, Pa.  
*Music Education*

Alpha Delta Pi 2, 3; Student Christian Association 1, 2, 3; Band 1, 3; Susquehanna Singers 2, 3; Women's Athletic Association 1, 2, 3.

**LUCIAN O. SMITH**

345 Arch St., Sunbury, Pa.  
*Liberal Arts*

Kappa Delta 3; Concert Orchestra 1, 2, 3; Band 1, 2, 3; *The Susquehanna* Staff 2, 3; Ciceroniani 2, 3; Women Day Students' Organization 1, 2, 3; Student Christian Association 1, 3.

**TODD E. M. SOLOMON**

553 Harvard Ave.,  
Hillside, N. J.  
*Liberal Arts*

Theta Chi 1, 2, 3; Student Christian Association 1; Biemic Society 1, 2; Susquehanna Players 1, 2, 3; "The Taming of the Shrew"; "The Willow and I"; "The Merchant of Venice"; "The Barretts of Wimpole Street."



**KARL N. STAHL**

221 Green St., Honesdale, Pa.  
*Music Education*

Student Christian Association 1; Concert Orchestra 2, 3; Susquehanna Singers 2, 3.

**ELEANORE R. STEFFEY**

Belleville, Pa.  
*Commercial Education*

Kappa Delta 3; Student Christian Association 1, 2, 3; Business Society 1, 2, 3; Women's Athletic Association 1, 2, 3; Basketball Team; Intramural Sports 1, 2, 3; Class Secretary 2; Freshman Orientation 2.

**NORA STEINHARDS**

331 East Hancock St.,  
Milledgeville, Ga.  
*Liberal Arts*

Student Christian Association 1, 2, 3; Biemic Society 1, 2, 3; Hockey Team 1, 2, 3; Intramural Sports 1, 2, 3.

**JOHN B. STOUTD**

411 Market St.,  
Millinburg, Pa.  
*Liberal Arts*

Student Christian Association 1; Chapel Choir 3; Bucknell University 1.



. . . **CLASS OF 1954**

**LOUIS A. SZABO**

22 Belmont Ave.,  
South River, N. J.

*Liberal Arts*

Phi Mu Delta 1, 2, 3; Biemic Society 3; Football Team 1, 2, 3; Intramural Sports 1, 2, 3; Intramural Board 3.

**SHIRLEY A. THOMPSON**

R. D. 1, Paradise, Pa.

*Liberal Arts*

Alpha Delta Pi 1, 2, 3, Scholarship Chairman 3; Student Christian Association 1, 2, 3, Girls' Vice-President 3; Biemic Society 1, 2, 3; Vice-Presidents' Council 3; Women's Athletic Association 1, 2, 3, Treasurer 3; Women's Student Council 3; Women's Judiciary Committee 3; Intramural Sports 1, 2, 3; Freshman Counselor 3; Freshman Orientation 3; Trinity Choir 2; Hassinger House President 3.

**THOMAS L. TRACZYK**

436 East Columbia Ave.,  
Atlas, Pa.

*Liberal Arts*

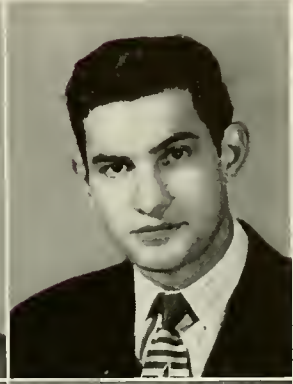
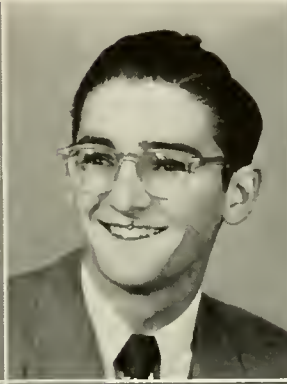
Biemic Society 3; Band 2; Intramural Sports 2, 3; Franklin and Marshall College 1.

**WALTER TRACZYK**

442 Columbia Ave., Atlas, Pa.

*Liberal Arts*

Phi Mu Delta 2, 3; Biemic Society 3; Football Team 1, 2, 3; Intramural Sports 1, 2, 3.



**STEWART TOMLINSON**

225 Eighth Ave.,  
Burnham, Pa.

*Business Administration*

Theta Chi 1, 2, 3, Treasurer 2, 3; Student Christian Association 1; Business Society 1; Basketball Team 1, 2, 3; Intramural Sports 1, 2, 3; Intramural Board 3.

**RITA J. TRLESI**

614 West Third St.,  
Williamsburg, Pa.

*Secretarial*

Alpha Delta Pi 1, 2, 3; Student Christian Association 1, 2, 3; Business Society 1, 2, 3; Vice-Presidents' Council 2; Women's Athletic Association 1, 2, 3; Intramural Sports 1, 2, 3; *The Susquehanna Staff* 2, 3.

**OWEN UNDERKOFFLER**

1300 Market St., Sunbury, Pa.

*Liberal Arts*

**BETTE M. VINCENT**

207 Ryan St., Hillside, N. J.

*Music Education*

Sigma Alpha Iota 2, 3; Susquehanna Players 2; Concert Orchestra 2, 3; Band 2, 3; Susquehanna Singers 2, 3; Chapel Choir 2, 3; Women's Athletic Association 1, 2, 3; Trinity Choir 2; "The Merchant of Venice."

## JUNIORS . . .

**HAROLD E. VOGLER**  
315 Penn Ave., Hawley, Pa.  
*Business Administration*

Bond and Key 1, 2, 3; Student Christian Association 1, 2, 3; Business Society 1, 3; Band 1, 2, 3; Intramural Sports 1, 2, 3; "The Taming of the Shrew."

**AUDREY M. WARNETS**  
Penns Creek, Pa.  
*Commercial Education*

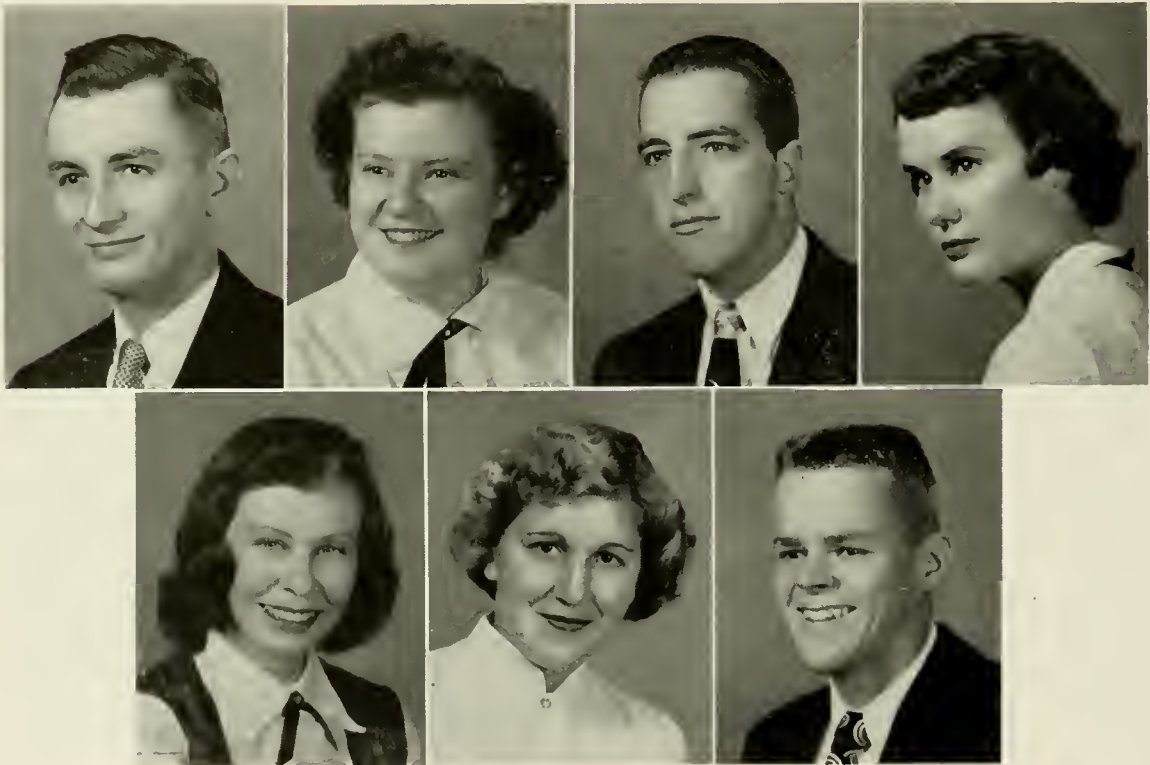
Kappa Delta 3; Student Christian Association 3; Business Society 1, 2, 3; Women Day Students' Organization 1, 2, 3, Secretary 3.

**GEORGE WASHBOURNE**  
109 East Market St.,  
Williamstown, Pa.  
*Liberal Arts*

Phi Mu Delta 3; Student Christian Association 3; Biemic Society 2; Ciceroniani 1; Intramural Sports 3; Baseball Team 2; Intramural Board 2.

**MARGARET K. WEBBER**  
24 Pine St.,  
Basking Ridge, N. J.  
*Music Education*

Sigma Alpha Iota 2, 3, Vice-President 3; Student Christian Association 1, 2, 3; Band 2, 3; Susquehanna Singers 2, 3; Chapel Choir 3; Women's Athletic Association 1, 2, 3; Basketball Team 1.



**BETTY L. WEISENFLUH**  
326 Main St., Old Forge, Pa.  
*Music Education*

Alpha Delta Pi 2, 3; Student Christian Association 1, 2, 3; Biemic Society 1, 2, 3; Band 3; Susquehanna Singers 2, 3; Vice-Presidents' Council 3; Women's Athletic Association 1, 2, 3; Intramural Sports 1, 2; Freshman Counselor 3; Freshman Orientation 3; Trinity Choir 2.

**MIRIAM E. WICK**  
961 Arrott St.,  
Philadelphia, Pa.  
*Commercial Education*

Alpha Delta Pi 1, 2, 3; Student Christian Association 1, 2, 3, Cabinet 3; Business Society 1, 2, 3; Biemic Society 2; Women's Athletic Association 1, 2, 3, Vice-President 3; *The Susquehanna Staff* 3; Intramural Sports 1, 2, 3; Vice-Presidents' Council 3.

**FRED B. WINCKLER, JR.**  
66 Elmwood Drive,  
Livingston, N. J.  
*Business Administration*

Theta Chi 1, 2, 3; Business Society 1, 3; Intramural Sports 1, 2, 3.

"Music is a stimulant to mental exertion."—DISRAELI



# Class of 1955

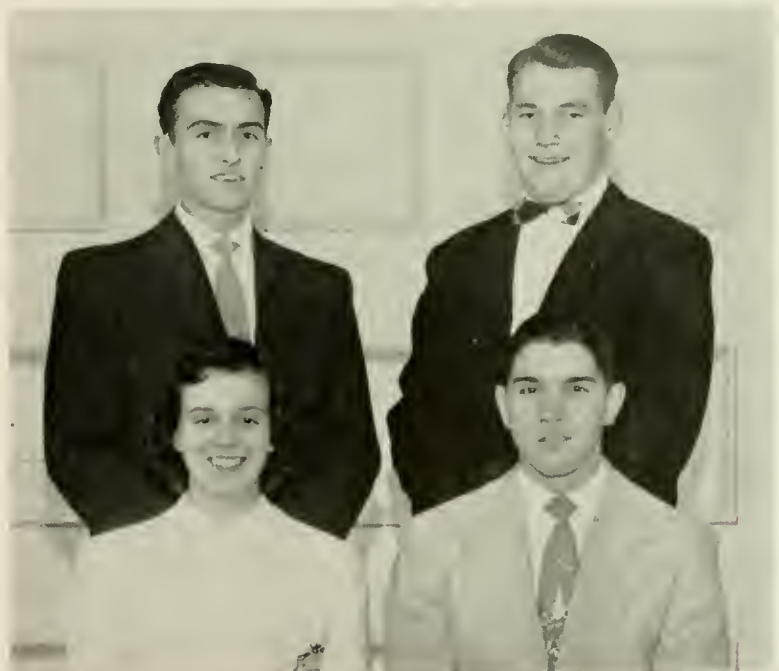
## OFFICERS

<i>President</i>	- - - - -	RICHARD McCARTY
<i>Vice-President</i>	- - - - -	JAMES SHOWALTER
<i>Secretary</i>	- - - - -	LANA ANN FEGLEY
<i>Treasurer</i>	- - - - -	WALTER ALBERT

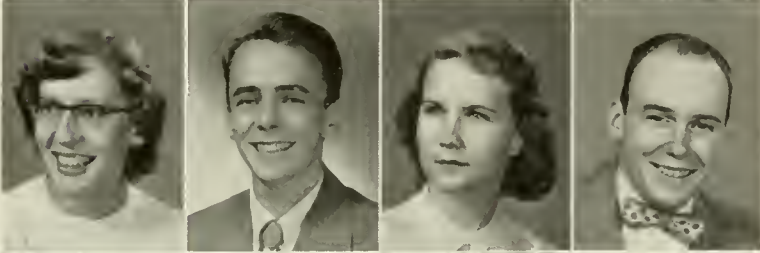
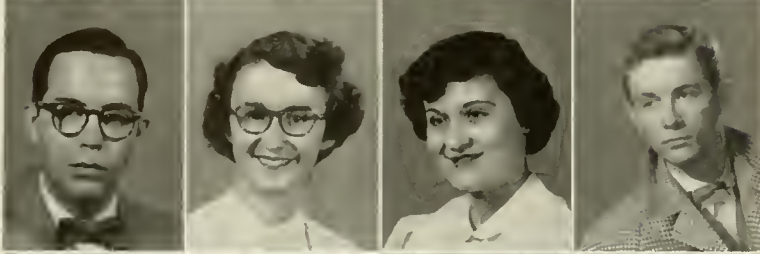
After completing two years at Susquehanna University we, the Class of 1955, have learned the true meaning and value of education. This training has taught us to emphasize discipline and development by means of studying and learning.

The world today could be compared to a room with two doors, the first an opening to ignorance and stagnancy, the second the door to the horizon of achievement. Susquehanna holds the key to the second door. As sophomores we have learned to grasp this key and place it in the door of advancement.

We have come to love this university; she is our guide, comforter, friend, and leader. She gives us the confidence needed to enter the door of the future, to face it with deliberation and the realization that the key to any achievement is education.



*First Row, Left to Right—Fegley, McCarty. Second Row—Albert, Showalter.*



WALTER C. ALBERT

JAMES J. ANOIA

ANNE C. AUSTIN

IVARS AVOTS

GLENN L. BAUMGARDNER

ELEANOR F. BENNER

E. JOANNE BENNER

LARRY R. BINGAMAN

MARY A. BINGAMAN

ROGER T. BLEGEN

ANNABEL L. BROESKE

SAMUEL N. CARMICHAEL

CHARLES W. COATES

CAROL M. CORNELIUS

PHYLLIS A. CRUMBLING

GILBERT E. DAVIS

RALPH W. DERSHAM

ELEANOR S. DIVELY

KENNETH F. ERDLEY

ROBERT V. FTTARI

LANA A. FEGLEY

AUDREY E. FINKENSTADT

POLLY A. FISHER

BARBARA M. FRANK

RUSSELL E. FURMAN

ARLAN K. GILBERT

LAWRENCE A. GINGRICH

MARGARET R. GORDON

JAMES J. GORMLEY

HELEN B. GRIFFITHS

MARILYN K. GUNNET

DONALD S. HAAG



BARBARA J. HARPER

DAVID H. HARRIS

HELEN L. HASSINGER

DONALD E. HEILMAN

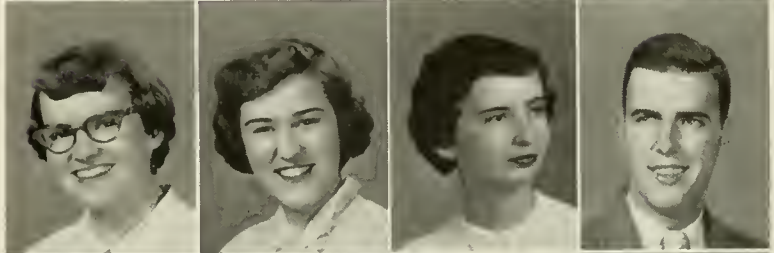


J. NANCY HENDERSON

ELIZABETH HOLLENBECK

BARBARA A. KNOWLES

HARRY F. KOCHER

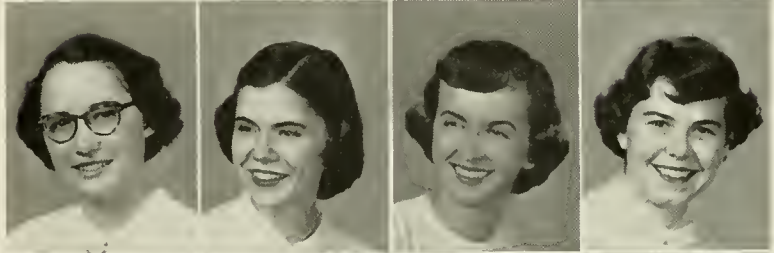


MARY E. KREBS

ELIZABETH A. LACOCK

CARLENE M. LAMADE

WANDA H. LAMARCA

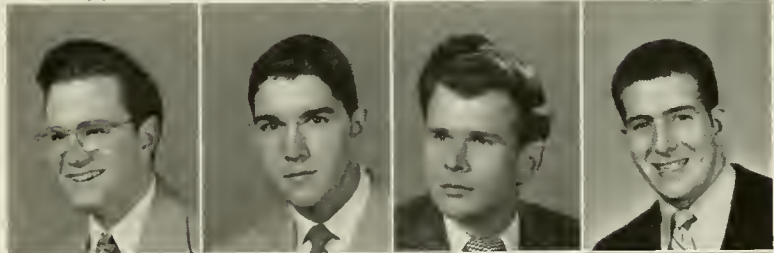


W. DEEN LAUVER

RICHARD E. McCARTY

VAUGHN L. McGOUGH

ARNOLD K. MARTIN

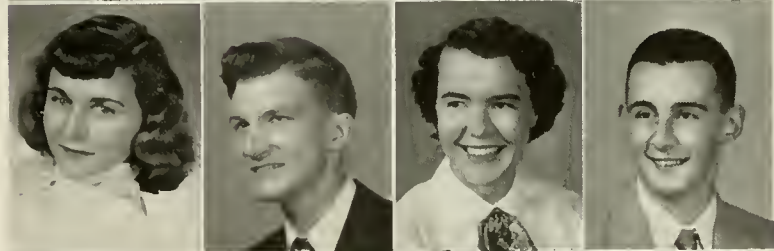


BARBARA W. MAY

WAYNE E. MILLER

GLADYS A. MOORE

H. ARTHUR MOUSLEY



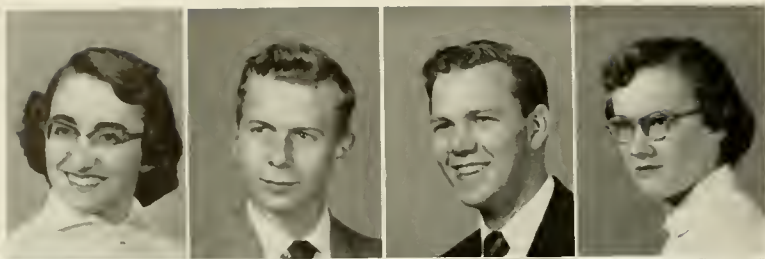
EDGAR W. OESTREICH

RICHARD W. OWENS

JOANNE H. QUICK

NANCY W. RICHARDS



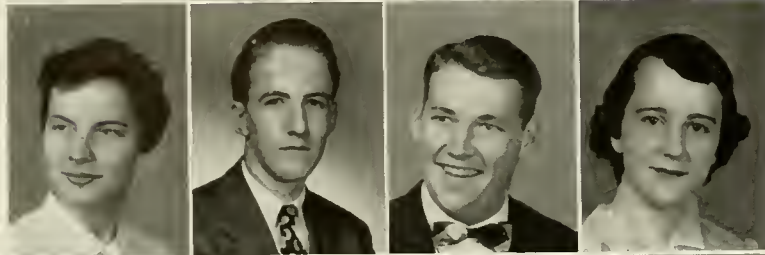


MELVA L. SCHMELTZ

WILLIAM C. SCHREFFLER

ROBERT D. SCHWAB

RUTH E. SCOTT

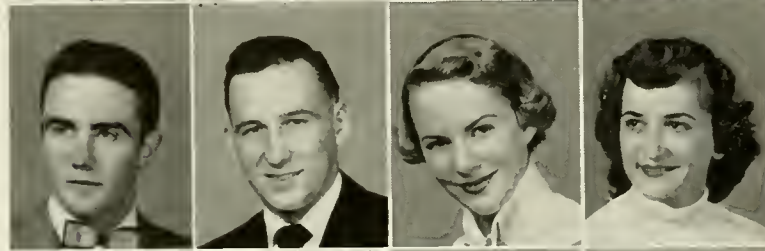


ROSE M. SHARRETTS

FREDERICK L. SHILLING

JAMES G. SHOWALTER

MARY J. SILVEY

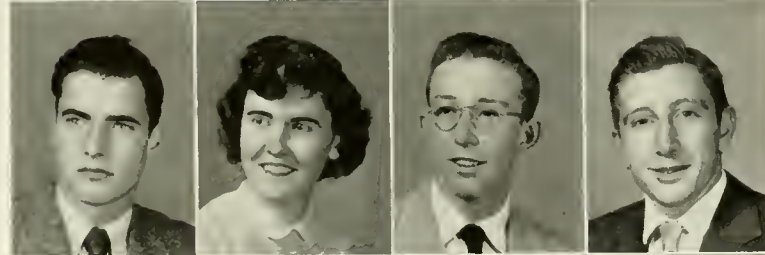


JOHN A. SMALTZ

FRANKLIN G. SMITH

HELEN K. SPAETH

SANDRA N. SWINEHART

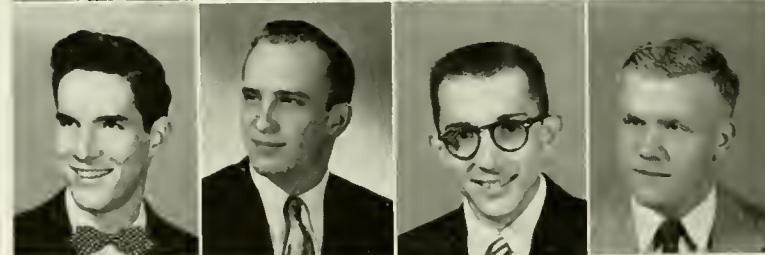


ALBERT R. SWITHERS

ANNA B. THOMAS

FRED J. TYLER

MERLE F. ULSH

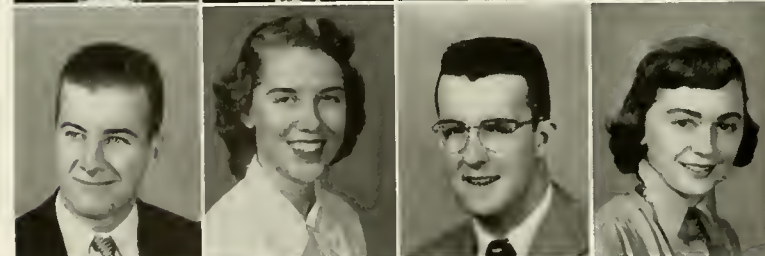


WILLIAM H. VANDERHOOF

HARRY D. WAGNER

D. RICHARD WALK

H. LEE WALKER



JOHN G. WICKS

HELEN G. WILLIAMS

CARL R. WINEY

LORETTA M. WISE



M. SANDRA YOAS

MARVIN J. YODER

CHARLES W. ZIEGENFUSS

"Music is a life and a world in itself."—M. B. EDWARDS



# Class of 1956

## OFFICERS

<i>President</i>	- - - - -	WILLIAM DONEY
<i>Vice-President</i>	- - - - -	JOHN BARRETT
<i>Secretary</i>	- - - - -	PATRICIA GALLOWAY
<i>Treasurer</i>	- - - - -	HENRY COOK

The freshman class of old S. U.

Is pleased to be a part  
Of the great Crusader family  
So close to every heart.

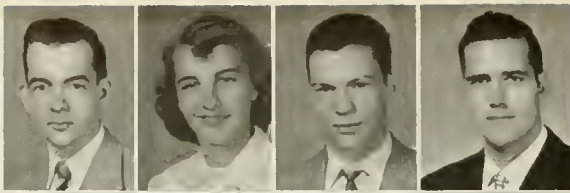
We've found a goal to strive for  
And in our future strife  
'T will be S. U. that guides us on  
To better things in life.

We salute our Susquehanna  
And raise our hearts to pray  
That we may bear her standards  
To greater heights some day.

—JOHN BARRETT AND PATRICIA GALLOWAY



*First Row, Left to Right—Doney,  
Galloway. Second Row—H. Cook,  
Barrett.*



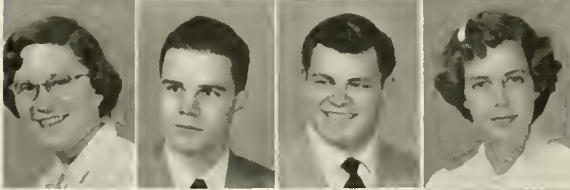
ALLEN F. ACOR  
BERTRICE A. AURAND  
JOHN E. BARRETT  
BRUCE A. BELL



JOHN A. BENNETT  
HAROLD E. BINGAMAN  
WINIFRED A. BONSTALL  
MARGARET J. BRADY



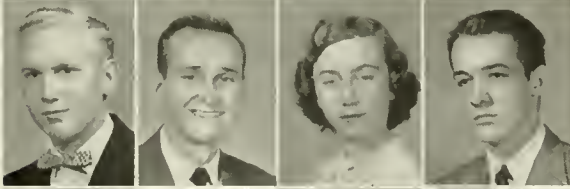
JANET E. BRANDES  
JANE M. BRASSINGTON  
RUTH C. BROBST  
JANET H. BROWN



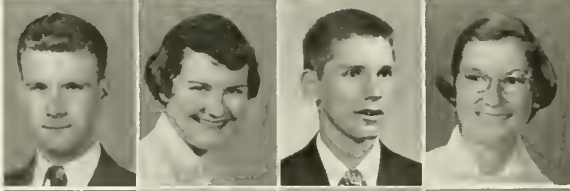
SALLY M. BROWN  
JOHN C. BUNKE  
WILLIAM A. CANNON  
HAZEL M. COLEMAN



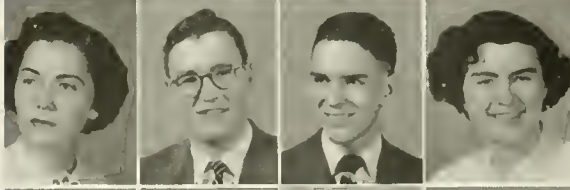
HENRY S. COOK  
PATRICIA A. COPE  
CAROL B. DAUBERMAN  
DIANE L. DeGELLKE



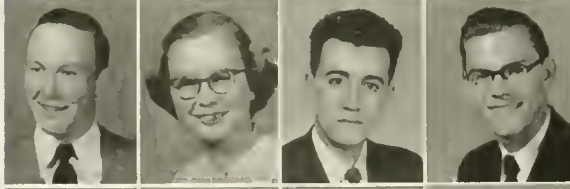
WALTER DeWITT  
WILLIAM K. DONEY  
ANNA L. DORWARD  
CHARLES H. DUNCAN



JAMES L. EDWARDS  
CAROL M. ENTZ  
RICHARD L. EYSTER  
SARA J. FAGUE



JoANN FAIRSERVIS  
MAURICE R. FELDMAN  
FREDERICK R. FROST  
PATRICIA A. GALLOWAY



HENRY W. GISS  
JANET A. GERNFR  
DJAMSHID J. GHATAN  
WILLIAM J. GODFREY



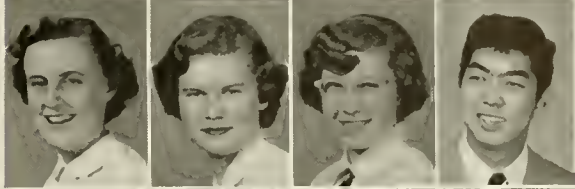
ROBERT M. GOLDBERG  
ELSIE L. GRUBER  
ROBERT W. GULICK  
AFIFIE J. HADDAD



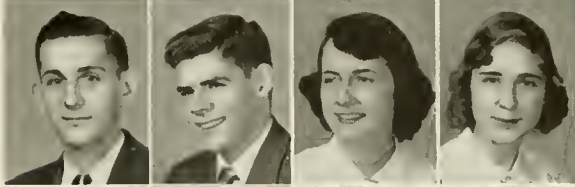
DONALD L. HARTMAN  
BARBARA F. HARTRANFT  
ANNE L. HEPLER  
DALE W. HOFFMAN



VIVIAN C. HOLLERAN  
PATRICIA C. HONSBERGER  
ELOISE W. IMRIE  
CHARLES S. ISHII



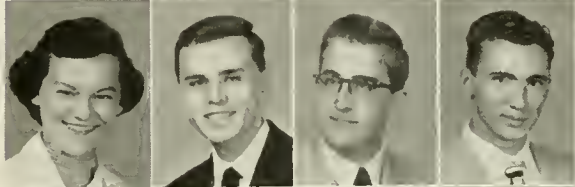
JOHN E. KARASEVICH  
SETH E. KEENER  
LOIS E. KISFCKER  
NANCY L. KLINE



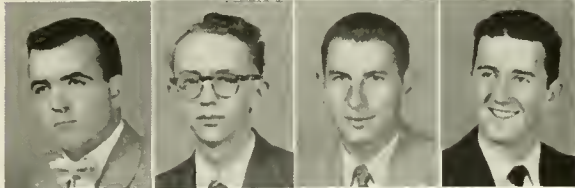
EUGENE F. KOLVA  
MARJORIE KOSTENBAUDER  
DEBORAH KRAPP  
JEANNE M. KROGH



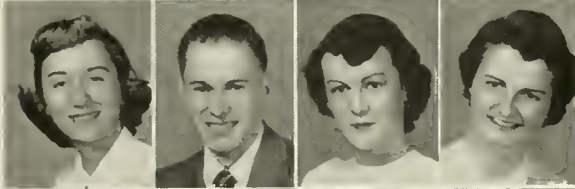
MARGIE A. LAMON  
DONALD W. LANGLOTZ  
CLAYTON E. LEACH  
HARRY M. LEISTER



ARTHUR C. LEONARD  
WALTER B. LONCOSKY  
EUGENE F. LONSKI  
THOMAS P. McCORMICK



NANCY J. McCULLOUGH  
WILLIAM W. MacDONALD  
CAROLYN M. MAJOR  
CHARLOTTE R. MEERBACH



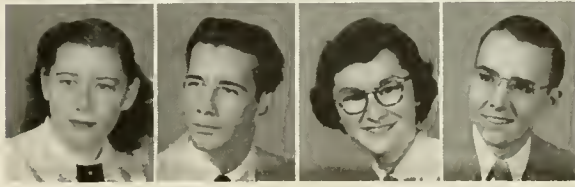
CARROLL S. MILLARD  
DORIS L. MOON  
ANNA J. MOYER  
JACQUELINE M. MULCEY

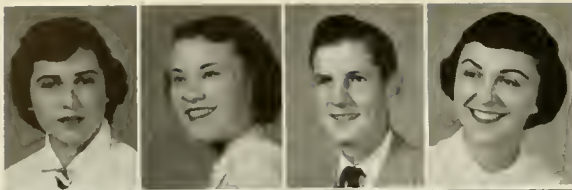


JOANNE M. MUMMERT  
MARY H. NAUGLE  
HELENE A. NESTLER  
MARGARET E. PADGETT

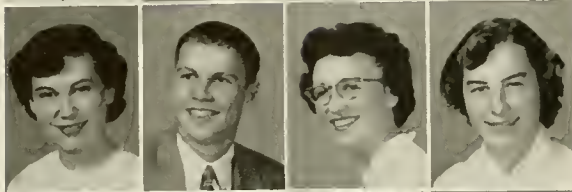


BEVERLY E. PECHT  
NICHOLAS T. PETERSON  
JOYCE M. PONTIUS  
DONALD M. REAMER

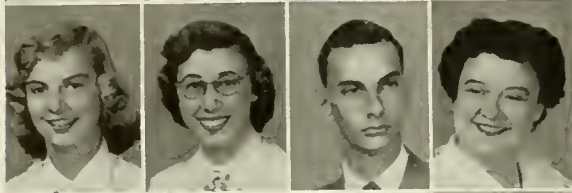




AREA J. REGOLI  
 RUTH E. RICHARDS  
 GLACE A. RIEGEL  
 JACQUIFYN ROCKAFELLOW



MARIA S. RONNGREN  
 DONALD E. ROOK  
 GERALDINE V. ROSENBAUM  
 CLAIRE E. ROSENGARTEN



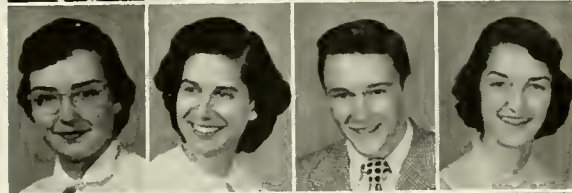
CHARLOTTE J. SANDT  
 DIANE H. SCHILKE  
 DAVID E. SCHOCH  
 MARY R. SCHWEIKLE



NORMA J. SHAFFER  
 BETSY L. SHIRK  
 PATRICIA A. SIPE  
 GARY M. SMITH



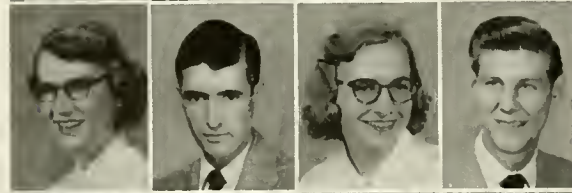
GLEN E. SMITH  
 JESSIE P. SMITH  
 PATRICIA L. SMITH  
 THOMAS C. SMITH



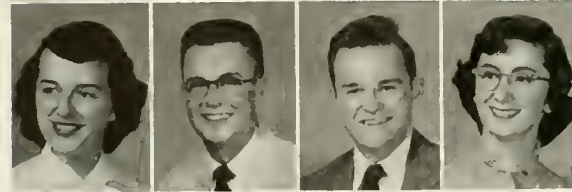
SUZANNE M. SNYDER  
 MARY J. SOLOMON  
 GENE A. STETTLER  
 NANCY L. STONER



MARGARET D. SULTZBAUGH  
 GENEVIEVE L. THOMAS  
 HAROLD M. TRABOSH  
 BESSIE G. TRATE



ALICE L. VALSING  
 ROBERT VanDEUSEN  
 AUDREY J. VOLLMAN  
 WILLIAM B. WALSHAW



MARIE J. WESTLAKE  
 SETH P. WHEELAND  
 GERALD E. WILSON  
 ANN L. WISE



JOHN C. ZERBY

# Homecoming



BOND AND KEY



THETA CHI



HOMECOMING QUEEN  
RUTH FREED



PHI MU DELTA

Freshmen hazing, the Frosh-Soph football game, alumni gatherings, the Susquehanna-Juniata football game, fraternity banquets, sorority teas, and the traditional dance sparked Susquehanna's Homecoming events. The Senior Class is the proud possessor of the 1952 Homecoming Queen, Ruth Freed. Jane Cline, Helen Spaeth, and Suzanne Snyder, sweethearts of the Junior, Sophomore, and Freshman classes respectively, attended Ruth on one of her most memorable days.

*"Music is almost all we have of heaven on earth."*—ADDISON

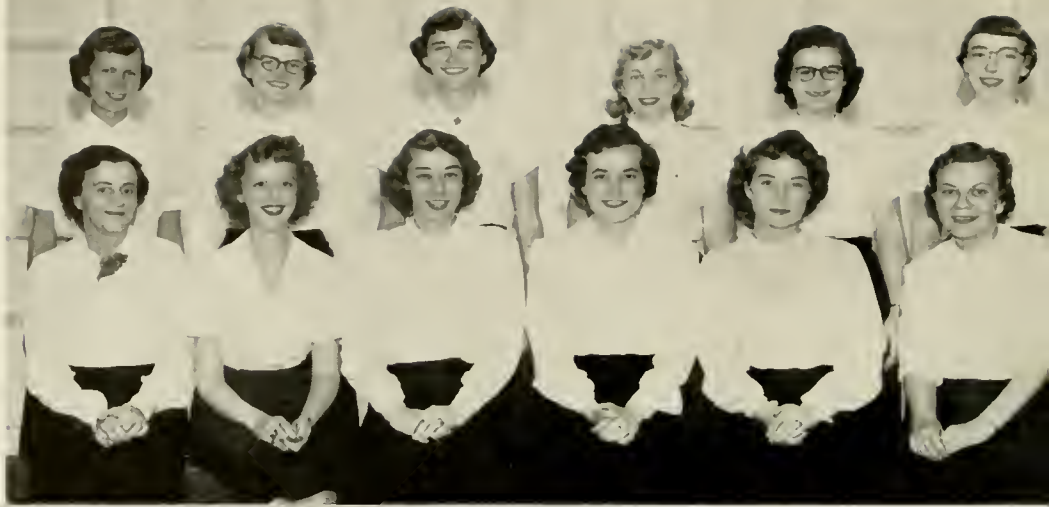


# EXCELSORS



## Women's Student Council

*First Row, Left to Right—Miss Meister, Yocum, VonLynn, Wagner, Dixon, Sechrist. Second Row—Cornelius, N. Henderson, Freed, M. Henderson, Thompson, Osborn.*



## Men's Student Council

*First Row, Left to Right—Lauver, Bennett, Wyllie, Henry. Second Row—Carmichael, Campbell, Stout, Shannon.*



## Women's Student Council

### OFFICERS

*President* - - - - JOYCE WAGNER  
*Secretary-Treasurer* - - HELEN VONLYNN

The Women's Student Council attempts to keep harmony among the "femme fatale" of the campus. The Council tries to lessen the sophomore severity during freshman hazing. It also sponsors the Parents' Day activities, Homecoming Queen elections, and social dancing.

The members of the Council are the presidents of the two dormitories, the chairman of the Judiciary Committee, the social chairman, and a representative from the S. C. A., the W. A. A., the Women Day Students' Organization, the Panhellenic Council, and the freshman and sophomore classes.

## Men's Student Council

### OFFICERS

*President* - - - - DAVID BENNETT  
*Vice-President* - - - REUBEN HENRY  
*Secretary* - - - - ORVILLE LAUVER  
*Treasurer* - - - - ROBERT WYLLIE

The Men's Student Council is "the law" as far as the men on the Susquehanna campus are concerned. It serves as a mediator between the men and the administration; creates, supervises, and regulates all the customs and traditions associated with the men of the college; effects a closer union among students; and investigates appeals brought before the Council by students.

Membership in the Council includes two men from each fraternity, two men from the non-fraternity group, and one faculty adviser.

## Judiciary Committee

*Chairman* - - - - MARY ANN DIXON  
*President of Student Council* — JOYCE WAGNER  
*House Presidents*  
 RUTH FREED, SHIRLEY THOMPSON

The Judiciary Committee is the strong arm of the law for women on the campus. It penalizes any who have violated the Women's Student Council regulations. The Committee acts as a disciplinary force in an attempt to prevent rule-breaking.

Those who belong to this group are the presidents of the women's dormitories, the president of the Women's Student Council, representatives from each class, and the Dean of Women as an ex-officio member.

## Vice-Presidents' Council

Ten years ago the Vice-Presidents' Council was organized with an eye to maintaining quiet in the girls' dorms during the designated study hours. Perfect peace and quiet will never come in our lifetime, but at least these girls help to curb the noise. The Seibert Hall House President appoints the "VP's" and authorizes them to give a penalty of five minutes each time an offense is committed. When twenty minutes are recorded, the offender must appear before the Women's Judiciary Committee which will mete out the punishment. Six girls in Seibert Hall and the junior counselors in Hassinger Hall act as "VP's."

### Women's Judiciary Council

*First Row, Left to Right—*  
 Zinda, Dixon, Freed, Silvey.  
*Second Row—* Miss Meister,  
 Thompson, Fague, Wagner,  
 M. Henderson.



### Vice-Presidents' Council

*First Row, Left to Right—*  
 Lease, Laue, Hess, Wick,  
 Weisenfluh, Fetterolf, Daily.  
*Second Row* Meerbach,  
 Cline, Bates, Harman,  
 Freed, Thompson, Osborn.

**Panhellenic Council**

*First Row, Left to Right—  
M. Henderson, Sechrist,  
Laue. Second Row—Gilbert,  
Dixon, Miss Meister, Cline.*



**Fraternity Senate**

*First Row, Left to Right—  
Dr. Armstrong, Dean Galt,  
Mr. Meader. Second Row—  
Williamson, K. Hill, Marts,  
Mr. Amy.*

**Panhellenic Council**

**OFFICERS**

*President* - - - - - JOAN SECHRIST  
*Secretary-Treasurer* - - MARGARET HENDERSON

The Panhellenic Council is composed of the president, rush chairman, and one elected delegate from each sorority with the Dean of Women as the faculty adviser. The office of the president rotates each year between the two active members, Alpha Delta Pi and Kappa Delta. The purpose of the council lies in maintaining fraternity relations on a high plane. In the fall, a picnic is planned for all non-sorority girls, and the Homecoming Dance is sponsored in conjunction with the Fraternity Senate. The council also establishes rushing rules and sponsors the Pledge Dance in February.

**Fraternity Senate**

**OFFICERS**

*Chairman* - - - - - DEAN RUSSELL GALT  
*President* - - - - - KENNETH HILL

The Fraternity Senate is composed of the three fraternity presidents, a faculty adviser from each fraternity, and the Dean of the University, who serves as permanent chairman. The chairman of the fraternity social committee is one of the student members. The purpose of the Senate is to maintain harmony among the fraternities and to provide an opportunity for discussion of fraternity-life problems. The duties of the Fraternity Senate include the making of rushing rules and planning of interfraternity social events.



## Student Christian Association

### OFFICERS

<i>President</i>	- - -	- BEATRICE MORROW
<i>Girls' Vice-President</i>	- -	- SHIRLEY THOMPSON
<i>Boys' Vice-President</i>	- -	- CHARLES SNYDER
<i>Secretary</i>	- - - -	- RUTH OSBORN
<i>Treasurer</i>	- - - -	- JEAN ROWE

The Student Christian Association gives students of all faiths an opportunity to meet together in Christian fellowship. Activities sponsored by the S. C. A. include cabinet meetings, campus night programs, informal fireside chats, vespers, and special presentations for Christmas, Fastnacht, Easter, and Lent. In addition, the S. C. A. publishes the *Student Handbook*.

## Women Day Students' Organization

### OFFICERS

<i>President</i>	- - - -	DANALEE KERSHNER
<i>Secretary</i>	- - - -	AUDREY WARNETS
<i>Student Council Representative</i>	-	JOAN SECHRIST

This organization is composed of all women students who do not live in the dorms. The group strives to emphasize co-operation and university spirit among its members.

A room for study and lounging in the basement of Hassinger Hall houses the students in their free moments. Every year the girls hold a Christmas dinner, and in the spring a picnic is given for the senior members. Last year the group adopted a formal constitution which provides for monthly meetings and numerous other activities.

### Student Christian Association

*First Row, Left to Right*  
Dively, Osborn, Snyder, Morrow, Thompson, Rowe. *Second Row*—Coleman, Wick, Howells, Harris, Gilbert, Harman.

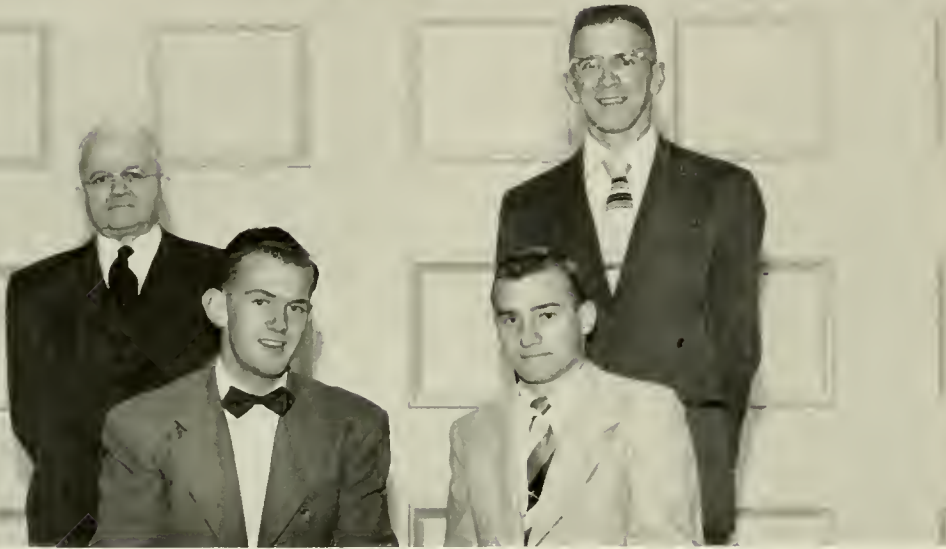


### Women Day Students' Organization

*First Row, Left to Right*—Pecht, Gilbert, Smith, Doebler, Kershner, Fisher, Lepley, E. Benner, Padgett. *Second Row*—Moon, Moyer, Lamon, Valsing, Krapf, Pontius, Hepler.

**The Susquehanna  
Editorial Staff**

*First Row, Left to Right—  
Rowe, Osborn, Meerbach.  
Second Row—Dively, Lucas,  
Wick, Morrow.*



**The Susquehanna  
Business Staff**

*First Row, Left to Right—  
Neuman, Glass, Second Row  
—Mr. Graham, Lenzel.*

# The Susquehanna

**EDITORIAL STAFF**

*Editor-in-Chief* - - RUTH OSBORN  
*Associate Editor* BEATRICE MORROW  
*Managing Editor* - JEAN ROWE  
*News Editor* - - IRENE MEERBACH  
*Women's Sports Editor* MIRIAM WICK  
*Men's Sports Editor* - RICHARD STOUT  
*Photography Editor* WAYNE MILLER  
*Editorial Staff Adviser—*  
 DR. ARTHUR H. WILSON

**BUSINESS STAFF**

*Business Manager* EDWARD NEUMAN  
*Advertising Manager* ORVILLE GLASS  
*Circulation Manager* DONALD HEILMAN  
*Business Staff Adviser—*  
 ASSOCIATE PROFESSOR G. C. T. GRAHAM

*The Susquehanna* was established in 1891 and is one of the oldest university newspapers in this country. It is a weekly publication edited "by and for the students of Susquehanna University."

*The Susquehanna* offers an opportunity to those interested in journalism to develop their interests and abilities in the various phases of newspaper work: headline writing, newspaper make-up, features, sports, general reporting, and editing. This knowledge and experience will be an asset to the student who desires a position in the literary field.

# The Lanthorn

## EDITORIAL STAFF

<i>Editor-in-Chief</i>	- - - - -	JOYCE GILBERT
<i>Assistant Editor</i>	- - - - -	RUTH OSBORN
<i>Literary Editor</i>	- - - - -	CAROLYN LUCAS
<i>Assistant Literary Editor</i>	- - - - -	IRENE MEERBACH
<i>Photography Editor</i>	- - - - -	LUCILLE KEPNER
<i>Assistant Photography Editor</i>	- - - - -	JOANN MOSHOLDER
<i>Sports Editor</i>	- - - - -	ROBERT MCKATAVAGE
<i>Typist</i>	- - - - -	JEAN ROWE
<i>Artist</i>	- - - - -	JOHN SHANNON
<i>Faculty Adviser</i>	- - - - -	DR. ARTHUR H. WILSON

## BUSINESS STAFF

<i>Business Manager</i>	- - - - -	HAROLD JOHNSON
<i>Advertising Personnel</i>	- - - - -	GEORGE LIDDINGTON
<i>Faculty Adviser</i>	- - - - -	ASSOCIATE PROFESSOR GROVER C. T. GRAHAM

The 1954 yearbook marks the fifty-fifth anniversary of LANTHORN publications by the junior class. We hope all who read these pages many years from now will have pleasant memories of their university years at Susquehanna.

### The Lanthorn Editorial Staff

*First Row, Left to Right—Kepner, Gilbert, Osborn.  
Second Row—Rowe, Mosholder, Lucas, Meerbach.*



### The Lanthorn Business Staff

*Left to Right—Mr. Graham, Johnson, Liddington.*





*Scenes from "The Merchant of Venice"*

## The Susquehanna University Players

The Little Theater was the scene of the most successful Shakespearean Festival held on the Susquehanna campus when "The Merchant of Venice" was presented to capacity audiences for two successive weeks. The prime function of the festival is to give the students at Susquehanna a better understanding of Shakespeare and his works. It is also used as entertainment, part of an academic and cultural program, and publicity for Susquehanna University.

Night after night audiences were thrilled by the tender lines of Portia and Bassanio and the scheming lines of Shylock. Outstanding performances were given by all the actors and actresses which became evident as the curtain fell to roaring applause. After the final performance pretty bouquets, which were presented to the leading ladies, added a final touch of splendor to a thrilling Shakespearean Festival.

The Susquehanna Players scored another success when "Two Blind Mice" made its bow before the Susquehanna footlights. This State Department satire was quite amusing



**FOOTLIGHT**

Scenes from  
"Two Blind Mice"



and comical, and the audiences were well pleased with a delightful evening of entertainment. Outstanding performances were given by the actors and actresses, and many newcomers made their debut on the Susquehanna stage.

The Susquehanna Players presented "Craig's Wife," a melodrama, for their February production. The season closed with the presentation of "A Midsummer Night's Dream" during the Shakespearean Festival.



## HARMONICS





*First Row, Left to Right—Osborn, Oldt, Mosholder, Weisenfuh, Lucas, Huyett, Steinhards. Second Row—Mason, Whittington, Yocum, Lease, Mickatavage, Campbell, Harman, VonLynn, Wagner. Third Row—Hill, Dr. Houtz, Mr. DeMott, Klingelhoeffer, E. Smith, Apgar, Ford, Mr. Grove, Mr. Amy. Fourth Row—Haggerly, Thompson, R. Fetterolf, Washbourne, Showalter, Vogler, Walk, Cowling, Richards.*

## Biemic Society

### OFFICERS

<i>President</i>	- - - - -	ROBERT MICKATAVAGE
<i>Vice-President</i>	- - - - -	KAY CAMPBELL
<i>Secretary-Treasurer</i>	- - - - -	CHRISTINE HARMAN

The Biemic Society was organized in order to create an interest in the various fields of science. Membership includes those students who have an interest in scientific developments. The monthly meetings consist of movies, lectures by guest speakers, and student discussions. The members of the Society strive to develop a richer, broader viewpoint of the significance of science in the world of today.

# Business Society

## OFFICERS

<i>President</i>	- - - - -	EDWARD NEUMAN
<i>Vice-President</i>	- - - - -	ORVILLE GLASS
<i>Secretary</i>	- - - - -	ELINOR SMITH
<i>Treasurer</i>	- - - - -	HERBERT KRAUSS
<i>Social Chairman</i>	- - - - -	PATRICIA HESS

Students majoring in business administration, commercial education, and economics are members of the Business Society. In their monthly business meetings they discuss finance, business, and similar fields.

The Society annually increases a fund to aid needy business students. The group also gives the business students a goal for which to strive—the silver trophy cup given to the sophomore with the highest scholastic record for the preceding year. Candy and magazine sales, a dance, and auctions are held each year.



*First Row, Left to Right—Haddad, Shirk, Thomas, Brown, Kisecker, Kline, A. Wise, M. Henderson. Second Row—Ford, McKegg, Hess, Krauss, Glass, Neuman, E. Smith, Cowling, Wick. Third Row—Krogh, Stoner, McCullough, Quick, Lacock, Anrand, Rosenbaum, Rowe. Fourth Row—Cook, Bunke, Vogler, Sipe, Honsberger, Brady, Keener, Heilman, Burley.*

*"Music is the art of the prophets, the only art that can calm the agitation of the soul; it is one of the most magnificent and delightful presents God has given us."*

—LUTHER



*First Row, Left to Right—Heffelfinger, Solomon, Daily, Thomas, Webber, C. Williams, Cline, Krebs, Laue.  
Second Row—Lepley, Vincent, Bates, Hults, Freed, Padgett, Ford, Borski, Drumm, Lee, Mr. Robinson.  
Third Row—Wither, Liddington, Wilson, Davis, Wheeland, Carlson, Stoudt, Boyd, Yoder, Schraeder,  
Olson, Crawford, Blegen, Bastian, Gulick.*

## Chapel Choir

The Chapel Choir, organized in 1947, was originally composed of eight members. Since then it has grown in membership to approximately thirty voices. Membership is open to the student body and tryouts are held in the fall of each year. The Chapel Choir contributes to the enrichment of the chapel service every Monday morning and presents other public performances throughout the year.



*"Music is the art of moving, by a systematic combination of sounds, the affections of intelligent, receptive, and cultivated beings."*

—BERLIOZ

## Susquehanna Singers

The Susquehanna Singers is composed of sophomore and junior students with an interest in music. This group has displayed its talent on various occasions throughout the year and has gained an excellent reputation for tone quality and voice blending.



*First Row, Left to Right—Griffiths, Daily, Sites, LaMarca, Lepley, Harper, Webber, Borski, Krebs, Second Row—Mrs. Giaque, Weisenfluh, Crumblin, Gunnet, Shade, Hults, H. Williams, DeGelleke, Sharretts, H. Wagner. Third Row—Wither, Swithers, Ziegenfuss, Goodman, Boyd, Yoder, Byers, Bastian, Stahl.*

*"I regard music not only as an art whose object it is to please the ear, but as one of the most powerful means of opening our hearts and of moving our affections."*

—GLUCK



*First Row, Left to Right—Daily, Sharretts, Vincent, McKegg, P. Smith. Second Row—Crawford, Bidelspach, Bastian, Dr. Zimmer, Griffiths, Gerner. Third Row—Bingaman, Wilson, Shilling, Crumbling. Fourth Row—Nestler, Lee, L. Smith, Williams, Zinda, Hartman. Fifth Row—Feldman, Geiss, Weisenfluh, Schmeltz, Stuter, Krebs, Gilbert. Sixth Row—Orris, Unangst, Wagner, Vogler, Sultzbaugh, Schreffler, Leach. Seventh Row—T. Smith, Kaufman, Yoder. Eighth Row—Walker, Detar, Gulick, Mr. Leach.*

## The Band

The Susquehanna marching band was organized in 1917 and is composed of thirty-six members, three major-ettes, and two flag bearers.

This year the band appeared at the Swarthmore and Johns Hopkins games, as well as all home games. We are proud that our band was a prize winner at Sunbury in competition with bands from a wide area of Central Pennsylvania. The band creates a greater love and understanding of music by providing entertainment at the annual spring concerts.

"Music is a pleasing accomplishment; let the fair learn to sing."—OVID

## Concert Orchestra

The concert orchestra is composed of approximately forty members. For its annual spring concert the orchestra presents a varied program to suit all musical tastes. Membership is open to the entire student body.

### ORCHESTRA PERSONNEL

#### *Violins*

Martha Tischke, *Concertmaster*  
Mary Ellen Krebs  
Mrs. Willard Zimmerman  
Shirley Hoenstine  
Carolyn Lucas  
John Dagle  
Marilyn Huyett  
Gertrude Ropeter  
Betty Winey  
Jacqueline McKeever

#### *Violas*

Mrs. Alice Giauque  
Chester Acaley  
Frederick Lowe

#### *Contrabass*

Ray Tyler  
Gilbert Day  
George Ferrey

#### *Cellos*

Joanne Heinly  
Marian Attinger  
Voylet Dietz  
Mary Klingelhoefter

#### *Flutes*

Lucian Smith  
Keith Brion

#### *Clarinets*

Rowie Durden  
Margaret Zinda  
Ann Guise

#### *Bass Clarinet*

Margaret Zinda

#### *French Horns*

Francis Gloster  
Lewis Dove  
Joy McCahan

#### *Trumpets*

John Eccker  
Donald Berninger  
Kenneth Orris

#### *Trombones*

Carl Musser  
Phillip Crawford

#### *Percussion*

William Beckwith  
Donald Sheldon

#### *Librarian*

Phillip Crawford





*First Row, Left to Right—Haag, Heilman, Foelsch, Martin, Lauver, McCarty, Ettari, Rohrbaugh. Second Row—Brouse, Henry, Baker, Campbell, Hill, Wyllie, Liddington, Howells, Glass. Third Row—Dr. Ahl, Mr. Amy, Krout, Lengel, Vogler, Jeffers, Shannon, MacNamara, Snyder, Dr. Houtz, Mr. Graham.*

## Bond and Key



*First Row, Left to Right—Davis, Yoder, Johnson. Second Row—Neuman, Reynolds, Myers, Menapace, Mayer, Jarvis, Bastian, Arbogast. Third Row—Mr. Inners, Krauss, Albright, Manning, Harris, Lose, Dell, Mr. Lotz.*



Bond and Key, the oldest fraternity on the campus, was founded in 1914 as a local organization and it has remained one ever since. From an initial membership of twenty-one, it now has over six hundred alumni members scattered throughout the United States. Holding to its motto, "Bound as Knights," the members pledge loyalty "first to Susquehanna and second to Bond and Key." Bond and Key's purpose is to build a better Susquehanna by active participation in all school activities and to spread her name throughout the world.

#### FRATRES IN COLLEGIO

Henry Albright	Donald Haag	Stanley Manning
Ned Arbogast	David Harris	Arnold Martin
Carl Baker	Donald Heilman	John Mayer
William Bastian	Reuben Henry	Edwin Menapace
Bruce Bobb	Kenneth Hill	Justin Myers
Kenneth Bothwell	Carlton Howells	Edward Neuman
Eugene Brouse	Robert Jarvis	DeWitt Reynolds
Kay Campbell	Harvey Jeffers	Rodger Rohrbaugh
William Church	Harold Johnson	Lothar Seegar
Gilbert Davis	Herbert Krauss	John Shannon
James Dell	Ronald Krout	Charles Snyder
Robert Ettari	Dean Lauver	Fred Tyler
Donald Foelsch	Stuart Lengel	Harold Vogler
Russell Furman	George Liddington	John Wicks
Orville Glass	Graydon Lose	Robert Wyllie
Wallace Gordon	Richard McCarty	Marvin Yoder
	Robert MacNamara	

#### FRATRES IN FUTURO

Bruce Bell	William Doney	Eugene Lonski
John Bennett	Robert Goldberg	Thomas McCormick
Harold Bingaman	Robert Gulick	Glace Riegel
John Bunke	Arthur Leonard	Gary Smith
William Cannan		Thomas Smith

#### FRATRES IN CAMPO

Dr. William Ahl	Mr. Richard Grove	Dr. Percy Linebaugh
Mr. Robert Amy	Dr. John Houtz	Rev. Benjamin Lotz
Mr. Frederic Billman	Mr. Lamar Inners	Dr. George Robison
Mr. Grover Graham		Mr. Frederick Stevens

#### OFFICERS

<i>President</i>	- - - -	KENNETH HILL
<i>Vice-President</i>	- - - -	KAY CAMPBELL
<i>Secretary</i>	- - - -	CARL BAKER
<i>Treasurer</i>	- - - -	ROBERT WYLLIE





*First Row, Left to Right—Crawford, Deitch, Burley, Scott, Walter, Bottiger, Wither, LaMarca, Ifert. Second Row—Drumm, Gacono, Carlson, Mesler, Marts, Kopf, E. Walker, Bennett. Third Row—Richards, Backer, R. Shade, Torok, Boyd, D. Keener, Schraeder, Mr. Meader.*

## Phi Mu Delta



*First Row, Left to Right—Schreffler, Erdley, Vanderhoof, Bingaman, Swithers, Ziegenfuss, Miller, H. Walker. Second Row—Flowers, Szabo, Albert, Coates, Schwab, Mickatavage, Owens, Mr. Kleinsorg. Third Row—Anoja, Tkaczyk, Showalter, Oestreich, Kocher, Avots, Washbourne, Carmichael.*

The Mu Alpha Chapter of Phi Mu Delta was incorporated at Susquehanna University in 1925 and its spacious chapter home was built in 1927. It is the aim of the fraternity to pledge loyalty and devotion to the opportunities of the university. Phi Mu Delta desires to mold its brothers into the leaders of tomorrow by its high ideals in scholarship, loyalty, and character.



FRATRES IN COLLEGIO

Walter Albert  
James Anoa  
Ivars Avots  
George Backer  
David Bennett  
Larry Bingaman  
Ernest Bottiger  
Richard Boyd  
Richard Burley  
Leonard Carlson  
Samuel Carmichael  
Charles Coates  
Phillip Crawford  
James Deitch  
Lewis Drumm  
Kenneth Erdley

Edward Flowers  
Venice Gacono  
Walter Iffert  
Dwight Keener  
Harry Kocher  
Edward Kopf  
William LaMarca  
Thomas Marts  
Robert Mesler  
Robert Mickatavage  
Wayne Miller  
Edgar Oestreich  
Arthur Olson  
Richard Owens  
Frank Richards  
John Schraeder  
William Schreffler

Robert Schwab  
William Scott  
Robert Shade  
James Showalter  
Albert Swithers  
Louis Szabo  
Walter Tkaczyk  
Steve Torok  
Edward Unangst  
William Vanderhoof  
Ernest Walker  
Lee Walker  
Donald Walter  
George Washbourne  
James Wither  
Charles Ziegenfuss

FRATRES IN FUTURO

Allen Acor  
John Barrett  
Henry Cook  
Charles Duncan

Henry Geiss  
William Godfrey  
Seth Keener  
Eugene Kolva  
Carroll Millard

Donald Reamer  
Glen Smith  
Thomas Tkaczyk  
John Zerby

FRATRES IN CAMPO

Mr. Russell Hatz  
Mr. Axel Kleinsorg  
Mr. Daniel MacCuish

Mr. Robert Meader  
Mr. Bruce Mitchell

Dr. William Russ  
Dr. Arthur Wilson  
Dr. Waldemar Zagars

OFFICERS

*President* - - - - THOMAS MARTS  
*Vice-President* - - - - RICHARD BOYD  
*Secretary* - - - - DONALD WALTER  
*Comptroller* - - - - ARTHUR OLSON





*First Row, Left to Right—Solomon, Mason, Gilbert, Baumgardner, Bidelspach, Nestler, Williamson, Lamb, Second Row—Orris, Walk, Shilling, Hemstead, Condon, Foor, Lauver, Mitchell, Wagner. Third Row—Mr. DeMott, Gingrich, Ross, Winey, Tomlinson, Heffner, Winckler, Dersham, Dr. Armstrong.*

## Theta Chi

### OFFICERS

<i>President</i>	- - - - -	DANIEL WILLIAMSON
<i>Vice-President</i>	- - - - -	SAMUEL ROSS
<i>Secretary</i>	- - - - -	CHARLES MASON
<i>Treasurer</i>	- - - - -	STEWART TOMLINSON

Beta Omega Chapter of Theta Chi is a member of one of the largest fraternal organizations in the United States. The motto, "Alma Mater First and Theta Chi for Alma Mater," encourages the development of scholastic achievement, physical growth, and social ability in each of its members. Theta Chi gives to her members a common bond of brotherhood which will aid them in the world of tomorrow.



## FRATRES IN COLLEGIO

Thomas Balchen	Kenneth Hemstead	Frederick Shilling
Glenn Baumgardner	Edward Lamb	Todd Solomon
Richard Bidelspach	Orville Lauver	Richard Stout
Joseph Condon	Charles Mason	Stewart Tomlinson
Ralph Dersham	Richard Matha	Harry Wagner
Roy Foor	Duane Mitchell	Richard Walk
Arlan Gilbert	Paul Nestler	Daniel Williamson
Lawrence Gingrich	Kenneth Orris	Fred Winckler
Joseph Heffner	Samuel Ross	Carl Winey
	Donald Sheldon	

## FRATRES IN FUTURO

Philip Buker	Clayton Leach	Donald Rook
James Curry	Walter Loncosky	David Schoch
James Edwards	Nicholas Peterson	Ralph Sheldon
Frederick Frost		Gerald Wilson

## FRATRES IN CAMPO

Dr. Thomas Armstrong	Dr. Russell Gilbert	Mr. John Leach
Mr. Howard DeMott		Dr. Albert Zimmer





*First Row, Left to Right—Oldt, Cressman, VonLynn, Wagner, Dixon, Fetterolf, Miller, Fisher, Seclrist.  
 Second Row—Sites, Meerbach, Mosholder, Perkins, Wick, Treese, Thompson, Osborn, Weisenfluh, Rowe.  
 Third Row—Gordon, J. Benner, Cornelius, Broeske, Lamade, Schmeltz, Gilbert, Scott, Bingaman.*

## Alpha Delta Pi

### OFFICERS

<i>President</i>	- - - - -	MARY ANN DIXON
<i>Vice-President</i>	- - - - -	JOYCE WAGNER
<i>Secretary</i>	- - - - -	JOYCE MILLER
<i>Treasurer</i>	- - - - -	MARILYN FETTEROLF

Gamma Omicron Chapter of Alpha Delta Pi was installed as the first national sorority on the Susquehanna campus on April 29, 1950. Founded in 1851 at Wesleyan Female College, Macon, Georgia, Alpha Delta Pi celebrated a century of sisterhood on May 15, 1951.

The purpose of every Alpha Delta Pi is that of promoting intellectual growth and cultural standards, and its open motto is "We live for each other." The tiny violet is the sorority flower; the colors, blue and white.

## SORORES IN COLLEGIO

Joanne Benner  
Mary Ann Bingaman  
Annabel Broeske  
Carol Cornelius  
Helen Cressman  
Mary Ann Dixon  
Marilyn Fetterolf  
Lois Fisher  
Joyce Gilbert  
Margaret Gordon  
Carlene Lamade  
Barbara May  
Irene Meerbach  
Joyce Miller  
Joann Mosholder

Irene Oldt  
Ruth Osborn  
Tamsen Perkins  
Jean Rowe  
Melva Schmeltz  
Ruth Scott  
Joan Sechrist  
Dorothy Sites  
Shirley Thompson  
Rita Treese  
Helen VonLynn  
Joyce Wagner  
Betty Weisenfluh  
Miriam Wick

## SORORES FUTURAE

Helen Hassinger

Jane Silvey

Sandra Swinehart

## SORORES IN CAMPO

Mrs. Russell Gilbert  
Miss Athalia Kline  
Mrs. Benjamin Lotz

Miss Ruth McCorkill  
Mrs. A. A. Stagg, Jr.  
Mrs. Arthur Wilson





*First Row, Left to Right—Yocum, Wehr, Kepner, Lease, Cline, Hess, Apgar, Laue, Cowling. Second Row—Quick, Wise, Fegley, Richards, McKeegz, E. Benner, Steffey, Henderson. Third Row—Warnets, Haggerty, Frank, Fisher, E. Smith, L. Smith, Ford.*

## Kappa Delta

### OFFICERS

<i>President</i>	-	-	-	-	-	-	-	-	-	JANE CLINE
<i>Vice-President</i>	-	-	-	-	-	-	-	-	-	PATRICIA HESS
<i>Secretary</i>	-	-	-	-	-	-	-	-	-	DOROTHY APGAR
<i>Treasurer</i>	-	-	-	-	-	-	-	-	-	MADALINE LEASE

Kappa Delta was founded in 1897 at Virginia State Normal School at Farmville, Virginia. The Beta Upsilon Chapter is one of eighty-one chapters located all over the country.

As a sorority, Kappa Delta endeavors to promote true friendship, high scholarship, and active participation in campus activities. Kappa Delta's open motto is "Let us strive for that which is honorable, beautiful, and highest." The white rose is the flower of the sorority, and the colors are green and white.

SORORES IN COLLEGIO

Dorothy Apgar

Eleanor Benner

Carol Bottiger

Jane Cline

Marvel Cowling

Lana Ann Fegley

Polly Ann Fisher

Janice Ford

Barbara Frank

Claire Haggerty

Margaret Henderson

Patricia Hess

Lucille Kepner

Janet Laue

Madaline Lease

Pamela McKegg

Nancy Richards

Elinor Smith

Lucian Smith

Eleanore Steffey

Audrey Warnets

Jane Wehr

Maxine Yocum

SORORES FUTURAE

Joanne Quick

Loretta Wise

SORORES IN CAMPO

Miss Frances Brunkhorst

Mrs. Ann Ulsh

Mrs. Sue Zimmerman





First Row, Left to Right—Rarick, C. Williams, Zinda, Lee, Freed, Webber, Borski, Stuter, Heffelfinger.  
 Second Row—Griffiths, Drumm, Thomas, Bates, Hulst, H. Williams, Daily, Vincent, Krebs, Lepley.

## Sigma Alpha Iota

### MEMBERS

Joan Bates  
 Eleanor Borski  
 Jayne Daily  
 Frances Drumm  
 Ruth Freed  
 He'len Griffiths  
 Marguerite Heffelfinger  
 Margarete Hulst  
 Mary Ellen Krebs  
 Lorraine Lee  
 Nancy Lepley

Jean Rarick  
 Rose Marie Sharretts  
 Dorothy Sites  
 Josephine Stuter  
 Margretta Thomas  
 Bette Vincent  
 Margaret Webber  
 Clara Mae Williams  
 Helen Williams  
 Margaret Zinda

Mrs. Alice Giauque  
 Mrs. Russell Hatz  
 Miss Athalia Kline  
 Mrs. Carol Kline  
 Mrs. John Leach

Mrs. Percy Linebaugh  
 Miss Mary Potteiger  
 Miss Janet Rohrbach  
 Mrs. Frederick Stevens

### OFFICERS

*President* - - - - RUTH FREED  
*Vice-President* - - - MARGARET WEBBER  
*Secretary* - - - - LORRAINE LEE  
*Treasurer* - - - - ELEANOR BORSKI

Sigma Alpha Iota, national professional musical fraternity for women, was founded in 1903 to promote the highest standard of professional ethics and culture among women music students.

Sigma Omega Chapter is one of ninety-seven active chapters. The girls of S. A. I. proudly wear their colors of red and white and strive to uphold their motto, "Life is short, but art is long."

## Alpha Psi Omega

### OFFICERS

*Director* - - - HARMON ANDREWS  
*Substitute Director* - - - JANET LAUE  
*Secretary-Treasurer* - - - JOAN BATES

Located on the Susquehanna campus is the Theta Phi Chapter of the largest national honorary fraternity of dramatics in the world. Alpha Psi Omega aims to cultivate through its members a greater appreciation of the drama.

A student may become a member of the local chapter through active participation in any of the various phases of play production. Seventy-five points are necessary for membership.

## Pi Gamma Mu

### OFFICERS

*President* - - - - - JANE WEHR  
*Secretary-Treasurer* - - - DR. WILLIAM RUSS

Pi Gamma Mu is a national honor society in social science. Its membership includes faculty, alumni, and undergraduates. May 9, 1927 marked the opening of Pennsylvania Gamma Chapter at Susquehanna.

This organization attempts to encourage the ideals of scholarship in the field of social studies. Membership is open only to those juniors and seniors who have at least twenty semester hours in social studies with a "B" average.

### Alpha Psi Omega

*First Row, Left to Right*—Scott, Bates, Laue, Marts. *Second Row*—Davenport, Kopf, Mr. Kleinsorg, Harman.



### Pi Gamma Mu

*First Row, Left to Right*—Miss Kline, Wehr, Yocum. *Second Row*—Dr. Zagars, Rupe, Kloap, Mr. Lctz.

### Ciceroniani

First Row, Left to Right—Rockafellow, Osborn, Huyett, Gilbert, Meerbach, L. Smith, Coleman.  
 Second Row—Seeger, Mr. Meader, Fairservis, Moyer, Moore, Walker, Schreffler.



### Phi Kappa

First Row, Left to Right—Rupe, Snyder, Dr. Ahl, H. Walker, Bottiger, Shilling, Howells, Rohrbaugh.  
 Second Row—McGough, Kloap, Lengel, Harris, Oestreich, Coates, Swithers, Adams.  
 Third Row—Bingaman, Fetter, Yund, Barrett, Zerby.

## Ciceroniani

### OFFICERS

Consul - - - - - ARLAN GILBERT  
 Practor - - - - - IRENE MEERBACH  
 Quaestor-Aedile - - - - - MARILYN HUYETT

Ciceroniani was organized on the Susquehanna campus in April, 1947, in order to promote an understanding of the Latin language and culture, to stimulate good scholarship, and to instruct members in appreciating and becoming more interested in the classics of old. Membership can be gained by students who have completed a semester's work in Latin and who have maintained a "C" average. Any member of the faculty or student body who has an interest in Latin may become an associate member.

## Phi Kappa

### OFFICERS

Basileus - - - - - CHARLES SNYDER  
 Deutero-Basileus - - - - - ERNEST BOTTIGER, JR.  
 Grammateus - - - - - FREDERICK SHILLING  
 Tamias - - - - - DEAN RUPE  
 Aggelos - - - - - LEE WALKER

Phi Kappa was organized at Susquehanna in 1930 to foster interest in the classical Greek studies. The club consists of students who maintain a high standard of scholarship and show an interest in Greek. The organization meets once a month to discuss different phases of Greek civilization.



CON  
MOTO



# Pigskin Parade



JIM ANZIA  
*Tackle*

TOM BALCHEN  
*Guard*



JACK BENNETT  
*Guard*

GENE BROUSE  
*Tackle*



KAY CAMPBELL  
*Back*

BILL CANNAN  
*Tackle*



SAM CARMICHAEL  
*Guard*

BILL CHURCH  
*Back*



CHARLES COATES  
*Center*

GIB DAVIS  
*Back*

JIM DELL  
*Back*

Once again the curtain rings down on a successful football season here at S. U. The Crusaders, ably coached by A. A. Stagg, Jr. and his famous father, the Grand Old Man of Football, turned in a commendable 1952 season by winning four out of seven games. The season was both eventful and exciting and a few breaks either way could have turned a successful season into a perfect one.

To have a good team such as ours has been is one thing, and to have a good coach is another, but when a school has the greatest coach in America, his son, and a good team, it has an unbeatable combination.

Many players about whom you will read in the following pages will not be on the roster of S. U. when the next gridiron season rolls around, but their noble efforts, which they so ably displayed, will live forever in the annals of sport history at S. U.

Coach Stagg, Sr., now ninety years of age, expressed the sentiment of the entire student body when he said to the team, as they bade him farewell to his California home, "God bless you boys. We love you all."

NATIONAL AGGIES 0 SUSQUEHANNA 26

The Stagmen initiated their 1952 football campaign by trouncing the National Agricultural Institute, 26-0. Sparked by Walter and Little All-American Young, the Crusaders recorded a tally in each period. Walter drove for two touchdowns and accounted for two hundred and nine yards from scrimmage before he was given a rest late in the third period. The Crusaders ploughed through for their first score with seconds remaining in the first period. Young converted the extra point. A Young pass to Ross

accounted for S. U.'s second touchdown. Walter smashed over center in the third period to make the score 19-0. Young's placement was good. The Crusaders' final score came in the last period when Ross' pass to Rising in the end-zone was completed. A hard-charging Crusader line prevented the Aggies from obtaining a first down until midway into the third period.

URSINUS 0                      SUSQUEHANNA 16

The Crusaders chalked up another victory by a decisive win over the Ursinus Bears before a Parents' Day crowd of two thousand at University Field. This win lengthened S. U.'s victory streak to a total of eight, while the unbeaten record stood at eleven. This is the longest winning streak in the history of the Orange and Maroon. Sparked by Don Walter, the S. U. eleven recorded their first score on the first play of the second period. Young added the bonus point from placement. A bad pass from center on the part of Ursinus gave the Stagmen a safety. A spectacular catch by Rising gave the Crusaders their final touchdown. The rock-like Crusader line was sparked by the brilliant play of Gene Brouse.

SWARTHMORE 20                      SUSQUEHANNA 24

The Susquehanna Crusaders gained their ninth straight victory and increased their undefeated string to twelve games by topping Swarthmore College 24-20 at Swarthmore. The pass combination of Young to Rising, sparked by the performance of Jim Dell, accounted for S. U.'s first score. Young's conversion added the bonus point. A blocked kick by Brouse opened the way to S. U.'s second score which ended in an eight yard

TONY DIKOVICKY  
*Back*

KEN ERDLEY  
*Back*

ED FLOWERS  
*Guard*

ROBERT GOLDBERG  
*Guard*

DON HAAG  
*Back*

RUBI HENRY  
*Tackle*

ART LONARD  
*Tackle*

NORM LIVERMORE  
*Guard*

EUGENE LONSKI  
*End*

PAT McCORMICK  
*End*

BOB MACNAMARA  
*Center*





MIKE RISING  
*End*

SAM ROSS  
*Back*



BOB SCHWAB  
*Tackle*

CLIFF STAMELL  
*Back*



LOU SZABO  
*Guard*

WALT TRACZYK  
*End*



STEVE TOROK  
*End*

DON WALTER  
*Back*



JOHN WICKS  
*Guard*

RICH YOUNG  
*Back*

plunge by Don Walter. S. U.'s final tally came in the closing seconds of the first half when Young's thirty-eight-yard pass to Torok paid off. Young's placement ended S. U.'s scoring for the day. Swarthmore dominated play in the second half, but a hard charging Crusader line, led by Brouse and frosh Art Leonard, turned back the Garnets' last futile attempt and gave the Crusaders a well-earned victory.

JOHNS HOPKINS 28 SUSQUEHANNA 20

S. U.'s unbeaten victory string came to an abrupt end as the team was trounced by a superior Johns Hopkins eleven and a speedy halfback named Ed Sempler. In displaying a wide open offense, the Blue Jays marched eighty yards to draw first blood. S. U. became the victim of father time as Young's pass to Stamfel left the Crusaders one foot from the promised land at the close of the first half. Passes from Young to Rising accounted for S. U.'s first two scores, while a plunge by Young ended the Crusaders' scoring for the day. Even in defeat, Balchen, Torok, Young, and Rising turned in an outstanding performance. S. U. suffered another blow in this game when the versatile halfback, Kay Campbell, received a severe knee injury.

JUNIATA 12 SUSQUEHANNA 7

Before a Homecoming crowd of three thousand at University Field, S. U. suffered its second setback of the season. After scoring late in the first period on a miraculous catch by Rising and a conversion by Young, S. U. led 7-0. It was well into the third period before the Indians displayed their first serious offensive threat, but a stone-wall defense

sparked by Flowers, Bennett, and Dikovicky prevented a score. The Indians, however, were not to be denied, and a pass from Segalovich to Wampler gave the visitors their first score. S. U.'s hopes remained high as the try for the extra point failed. An interception by Juniata gave the Indians a 12-7 lead. The Orange and Maroon team then started the most thrilling "do or die" marches ever witnessed on University Field, and the close of the game found S. U. knocking on the Juniata goal line. Livermore, Szabo, MacNamara, and Tkaczyk proved themselves able linemen.

WAGNER 32                      SUSQUEHANNA 26

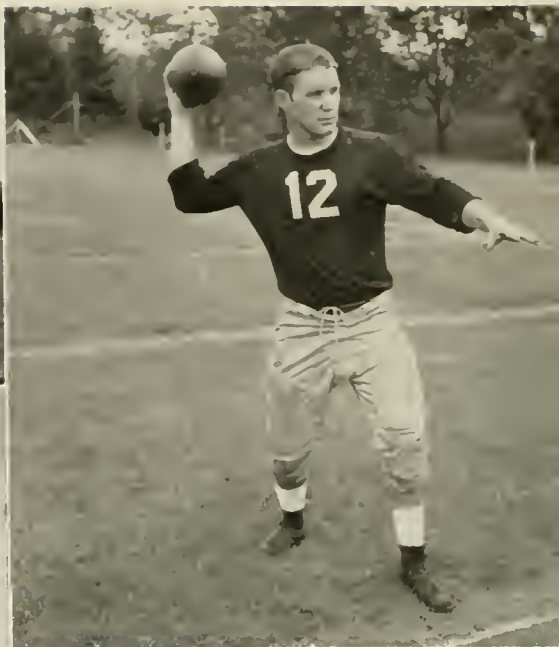
The Stag men were defeated for the third time as a disputed pass completion gave the Wagner Sea Hawks a hard fought victory. S. U., led by the brilliant passing of Sam Ross, who took the place of the injured Young, tied the score with three minutes remaining in the game. But the Sea Hawks, inspired by a partisan

Homecoming crowd, scored with seconds remaining in the game. The Susquehanna team returned from Staten Island defeated but not outplayed.

HAVERFORD 14                      SUSQUEHANNA 47

S. U.'s Crusaders ended their 1952 football season with a convincing victory over the Haverford Fords before a rain-drenched crowd at Crusader Field. Exhibiting the razzle-dazzle Stag technique, the Crusaders, fired by the passing wizardry of Sam Ross, completely out-classed the hapless Fords. Playing their last game for S. U. in fine fashion were such standouts as Rich Young, Bob MacNamara, Gene Brouse, Tom Balchen, Tony Dikovicky, Steve Torok, and Don Walter, not to mention the injured Kay Campbell who was lost during mid-season. College football is over for these stalwart performers of S. U., but the happy memories which they shared with the many loyal S. U. followers will never be forgotten.





## Court Echoes

Despite the lack of height, the S. U. cagemen initiated the basketball season with an impressive victory over the National Aggies of Doylestown. Spearheaded by seniors Ned Condon and Bob Wyllie, plus several new freshman personalities, the Pfeiffer-coached five had hopes of topping last year's mediocre record, but the scores cannot be denied, and S. U. ended on the losing side of the slate.



*First Row, Left to Right—Richards, Smith. Second Row—Stettler, Wyllie, Condon, Manning, Tomlinson, Buker. Third Row—Mr. Pfeiffer, Foor, Owens, Doney, Curry, Peterson, McCarty, Acor.*



First Row, Left to Right—Lengel, Fenstermacher, Ross, Berninger, Orris, Porter, Rowe, Young. Second Row—Boyle, Lamb, Topolski, Burley, Schreffler, Washbourne, Johnson. Third Row—Hazlett, Menapace, Wallace, Foor, Kaseuan, Lenker, Walter.

## Hits of the Season

Susquehanna started its baseball season in fine fashion, but a combination of tough breaks and erratic pitching in spots accounted for a total of seven losses. Ned Condon led the pitching staff while Don Berninger, Rich Young, and Chet Rowe captured batting honors. The highlight of the season was S. U.'s victory over Lebanon Valley.

### RECORD

	S. U.	Opp.
April 19—National Aggies	17	2
April 23—Lebanon Valley	6	4
April 30—Juniata	7	8
May 2—Dickinson	12	13
May 7—Lycoming	9	6
May 9—Bucknell	5	7
May 10—Juniata	2	5
May 16—Bucknell	1	2
May 17—Wilkes	7	5
May 19—Lycoming	0	2
May 21—Elizabethtown	6	7



# Staccatos

Of no small importance to the success of our teams is that popular group known as the cheerleaders. As a source of inspiration and encouragement, these individuals have instilled the campus with a spirit which is unbeatable and which will linger forever in the hearts of all who have seen them perform.



*First Row, Left to Right— Laue, Diggan. Second Row—Richards, Hess, Lamon.  
Third Row—S. Keener, Jeffers, D. Keener, Albert.*



*First Row, Left to Right—Broeske, Cornelius, Silvey, Diggan, Laue, Perkin, Richards, Hess, Thomas. Second Row—Lease, Yocum, Cline, Oldt, Wagner, Wick, Thompson, Harman, Klingelhoeffer. Third Row—Dixon, Miss Christian, Whittington, Mason, McKegg, Ford, E. Smith, Cowling, Apgar, Huyett. Fourth Row—Burnham, Rowe, Mosholder, Steffey, M. Henderson, Miller, Fisher, VonLynn, Lucas.*

## Women's Athletic Association

### OFFICERS

<i>President</i>	- - -	JOYCE WAGNER
<i>Vice-President</i>	- - -	MIRIAM WICK
<i>Corresponding Secretary</i>	- - -	JANE CLINE
<i>Recording Secretary</i>	- - -	IRENE OLDT
<i>Treasurer</i>	- - -	SHIRLEY THOMPSON

The Women's Athletic Association offers an extensive program of intramural and varsity sports for the women at Susquehanna University. Any woman student is eligible for membership upon acquiring fifty points.

### MEMBERS

Apgar, D.	Gilbert, J.	Mason, C.	Silvey, J.
Benner, J.	Gordon, M.	Meerbach, C.	Sites, D.
Bingaman, M.	Gruber, E.	Meerbach, I.	Smith, E.
Bonsall, W.	Gunnet, M.	Miller, J.	Smith, J.
Borski, E.	Haggerty, C.	Moore, G.	Smith, P.
Broeske, A.	Harman, C.	Mosholder, J.	Steffey, E.
Brown, J.	Harper, B.	Mummert, J.	Steinhards, N.
Burnham, E.	Hassinger, H.	Oldt, I.	Swinehart, S.
Cline, J.	Henderson, M.	Osborn, R.	Thomas, A.
Cope, P.	Hess, P.	Perkins, T.	Thompson, S.
Cornelius, C.	Huyett, M.	Quick, J.	Treese, R.
Cowling, M.	Kepner, L.	Regoli, A.	Vollman, A.
Cressman, H.	Klingelhoeffer, M.	Richards, N.	VonLynn, H.
Crumbling, P.	Kostenbauder, F.	Ronngren, M.	Wagner, J.
Diggan, J.	Kostenbauder, M.	Rowe, J.	Webber, M.
Dixon, M.	Krebs, M.	Sandt, C.	Wehr, J.
Entz, C.	Lacock, E.	Schweik'le, M.	Weisenfluh, B.
Fague, S.	Lamade, C.	Scott, R.	Whittington, L.
Fairservis, J.	Laue, J.	Sechrist, J.	Wick, M.
Fetterolf, M.	Lease, M.	Shade, R.	Wise, A.
Fisher, L.	Lucas, C.	Sharretts, R.	Yoas, S.
Ford, J.	McKegg, P.	Shirk, B.	Yocum, M.

## Tau Kappa

### OFFICERS

<i>President</i>	- - -	HELEN VONLYNN
<i>Vice-President</i>	- - -	DOROTHY APGAR
<i>Secretary</i>	- - -	LOIS FISHER
<i>Treasurer</i>	- - -	CHRISTINE HARMAN
<i>National Representative</i>	- -	JOYCE WAGNER

Tau Kappa is a national honorary athletic sorority for women. Any girl who obtains seven hundred points in intramural sports is entitled to membership in Tau Kappa. The purpose of the sorority is to encourage girls to participate in sports and to show good sportsmanship in games. Its main social event this year was the Snowball Dance.

## Intramural Board

Harmony is necessary in all sports. Here at Susquehanna an organization known as the Intramural Board regulates and is responsible for the sports program within the school. Under the able leadership of Coach Stagg, this organization has become an indispensable part of our sports system.

### Tau Kappa

*First Row, Left to Right—Apgar, VonLynn, Harman. Second Row Fisher, Miss Christian, Wagner.*



### Intramural Board

*First Row, Left to Right Schraeder, Richards. Second Row Martin, Tomlinson, Kloap.*





*First Row, Left to Right—Cline, Hess, Wagner, VonLynn, Cowling, Oldt, Diggan. Second Row—Richards, Lacock, Sandt, N. Shaffer, M. Kostenbauder, Laue, Meerbach, Mosholder. Third Row—Schweikle, Vollman, A. Wise, Fague, P. Smith, Cope, Ronngren, Miss Christian.*

## Girls' Sports

After several unsuccessful seasons, the girls' Honor Hockey Team, pictured above, brought victory to Susquehanna last fall during the hockey Play Day at Bucknell. The climax of the hockey season is the annual game with the alumnae on Homecoming Day.

Besides hockey, points are awarded for participation in numerous other sports, such as soccer, volleyball, basketball, ping pong, archery, tennis, softball, swimming, and bowling. Points gained through recreational and competitive intramural sports admit a girl into membership in the Women's Athletic Association.

# MAY DAY

"Western Fiesta" was the theme of the May Day festivities given in honor of 1952 Queen Ann Guise and her court. Queen Ann reigned, attended by her Maid of Honor, Marjorie Way, and her royal court composed of six senior girls, Peggy Aston, Barbara Easton, Lynne Lightfoot, Ethel McGrath, Jacqueline McKeever, and Ruth Roslander.

After the processional to the throne, Queen Ann and her court were entertained by western folk with many songs and dances. The crowds which had gathered were entertained by the lovely vocal selections and the novel western dances. The highlight of the celebration was the picturesque May Pole Dance which was performed by dancers costumed in peasant blouses and skirts. To the strains of "Home on the Range," Miss Guise led her court in a recessional from the "Western Fiesta."



# INTERLUDES





*"It is Nature who forces us to break forth into singing when our heart is moved by great and sudden emotion—in the wail of grief, in the exaltation of joy, in the sigh of melancholy longing."*

—CICERO

## STUDENT ROSTER

Acor, Allen F. (1)	715 Ash Street, Watsonstown	Baker, Philip G., Jr. (3)	33 Riverside, Sidney, N. Y.
Adams, William, Jr. (0)	North Eighth Street, Selinsgrove	Bonke, John C. (1)	164 Rose Hill Avenue, New Rochelle, N. Y.
Albert, Walter C., Jr. (2),	5029 Duffield Street, Philadelphia 24	Burley, Richard C. (1)	R. D. 1, Montgomery
Albright, Henry R. (3)	1146 E. Chestnut Street, Sunbury	Burnham, Elizabeth C. (1)	Wellsville Avenue, New Milford, Conn.
Anoia, James J. (2)	146 W. Girard Street, Atlas	Byers, Walter B. (3)	Snydertown
Apgar, Dorothy J. (4)	River View Terrace, Mahwah, N. J.	Campbell, Kay G. (1)	531 Phelps Avenue, Kalamazoo, Mich.
Arbogast, Ned M. (3)	108 S. Eleventh Street, Sunbury	Cannan, William A., Jr. (1)	313 Richmond Avenue, S. Orange, N. J.
Aurand, Bertrice A. (1)	R. D. 3, Lewistown	Carlson, Leonard A. (1)	325 Electric Avenue, Lewistown
Austin, Anne C. (2)	2113 Chestnut Street, Camp Hill	Carmichael, Samuel N. (2)	Wertz Road, Johnstown
Avois, Ivars (2)	212 Bloom Street, Danville	Church, William C. (3)	180 Grove Avenue, Verona, N. J.
Backer, George B. (3)	Shamokin Dam	Clement, Carol A. (1)	233 S. Spring Street, Blairsville
Baker, Carl M. (3)	R. D. 1, Millerstown	Cline, Jane K. (3)	40 Cowdrey Street, Yonkers 2, N. Y.
Balehen, Thomas D. (1)	887 Prince Street, Teaneck, N. J.	Coates, Charles W. (2)	940 W. Main Street, Bloomsburg
Barrett, John E. (1)	1315 Friendship Street, Philadelphia	Coleman, Hazel M. (1)	R. D. 1, Box 109, Friedens
Bastian, William F. (3)	247 Ridge Avenue, Sunbury	Condon, Joseph E., Jr. (3)	490 King Street, Port Chester, N. Y.
Bates, Joan A. (1)	11 Dunham Avenue, Cranford, N. J.	Cook, Henry S. (1)	19 Broce Road, Montclair, N. J.
Baumgardner, Glenn L. (2)	1604 Baumgardner Avenue, Windber	Cook, Thomas J. (1)	106 20th Street, S. Brigantine, N. J.
Beamenderfer, Jean (0)	304 N. Eighth Street, Selinsgrove	Cope, Patricia A. (1)	2831 Springfield Road, Broomall
Bell, Bruce A. (1)	553 Second Street, Northumberland	Cornelius, Carol M. (2)	133 Ramapo Avenue, Pompton Lakes, N. J.
Benner, Eleanor (2)	12 N. Main Street, Middleborg	Cowling, Marvel I. (1)	258 Cherry Lane, Teaneck, N. J.
Benner, E. Joanne (2)	158 King Street, Northumberland	Crawford, Philip J. (4)	255 W. Fourth Street, Bloomsburg
Bennett, David W. (4)	739 Broad Street, Montoursville	Cressman, Helen E. (1)	R. D. 2, Bath
Bennett, John A. (1)	419 Jordan Avenue, Montoursville	Crumbling, Phyllis A. (2)	155 Chestnut Street, Troy
Bidelspach, Richard L. (1)	829 Line Street, Sunbury	Curry, James H. (3)	134 Maple Avenue, Hershey
Bingaman, Harold E. (1)	207 W. Snyder Street, Selinsgrove	Daily, Jayne M. (3)	451 Delaware Street, Woodbury, N. J.
Bingaman, Larry R. (2)	82 E. Main Street, Elizabethtown	Dauberman, Carl B. (1)	301 S. High Street, Selinsgrove
Bingaman, Mary Ann (2)	E. Main Street, Thompsontown	Davenport, William C. (1)	137 S. Maple Avenue, Kingston
Blegen, Roger T. (2)	2240 13th Street, S. E., Washington, D. C.	Davis, Gilbert E. (2)	Box 335, Hol-appele
Boob, Bruce T. (3)	311 Reagan Street, Sunbury	DeGelleke, Diane L. (1)	14 Fenton Place, Lynbrook, N. Y.
Bonsall, Winifred A. (1)	R. D. 1, Millerstown	Deitch, James A. (4)	83 N. Wyoming Street, Hazleton
Borchardt, Mrs. Gertrude (0)	124 Market Street, Sunbury	Dell, James (3)	113 W. McClure Street, New Bloomfield
Borchardt, Henry (0)	124 Market Street, Sunbury	Dersham, Ralph W. (2)	Millmont
Borry, Loretta F. (3)	R. D. 1, Stevens	Detar, Reed (3)	State Hospital, Danville
Borski, Eleanor L. (3)	62 Crestview Place, New Rochelle, N. Y.	DeWitt, Waller (1)	547 Reagan Street, Sunbury
Bothwell, Kenneth H. (3)	211 Runnymede Parkway, New Providence, N. J.	Diggan, Joan (3)	274 S. Main Street, Hughesville
Bottiger, Carol R. (4)	615 Lincoln Street, Hazleton	Dikovicky, Anthony (1)	73 Armstrong Avenue, South River, N. J.
Bottiger, Ernest L., Jr. (4)	Box 27, West Milton	Dively, Eleanor S. (2)	908 N. Broadway, Berlin
Boyd, Richard K. (3)	109 Overlook Terrace, Bloomfield, N. J.	Dixon, Mary Ann (4)	R. D. 1, Red Lion
Brady, Margaret J. (1)	289 Western Avenue, Brookville	Doebler, Catherine A. (1)	243 Spruce Street, Sunbury
Brandes, Janet E. (1)	331 North Broad Street, Allentown	Donay, William K. (1)	20 Race Street, Weatherly
Brassington, Jane M. (1)	118 S. Ninth Street, Ashland	Drumward, Anna L. (1)	508 Haig Boulevard, Reading
Brobst, Ruth C. (1)	119 N. Pine Street, Hazleton	Drumm, Frances A. (1)	111 E. Tenth Street, Berwick
Broeske, Annabel L. (2)	Montgomeryville	Drumm, Lewis R. (4)	200 Park Place, Irvington, N. J.
Brouse, Eugene P. (1)	R. D. 2, Selinsgrove	Duncan, John A. (3)	1121 W. Arch Street, Shamokin
Brown, Janet H. (1)	1441 Pacific Avenue, Brackenridge	Duncan, Charles H. (1)	123 Chestnut Street, Ashland
Brown, Sally M. (1)	1442 Myrtle Street, Scranton	Ebert, Mrs. J. K. (0)	5 S. Market Street, Selinsgrove
Brucklacher, Thomas C. (1)	715 Third Street, New Cumberland	Edwards, James L. (1)	935 River Road, Teaneck, N. J.



# STUDENT ROSTER

Entz, Carol M. (1)	1093 Cherry Street, Montoursville	Hartrafft, Barbara F. (1)	R. D. 1, Watons town
Erdley, Kenneth F., Jr. (2)	610 Green Street, Millinburg	Hassinger, Helen L. (2)	14 Willow Avenue, Middleburg
Ettari, Robert V. (2)	51 Northfield Road, New Rochelle, N. Y.	Hay, Mrs. Margaret B. (0)	Buck Run
Eyster, Richard L. (1)	912 Reagan Street, Sunbury	Heffelfinger, Marguerite (4)	211 W. Fifth Street, Bloomsburg
Fague, Sara J. (1)	413 S. Queen Street, Lancaster	Heffner, Joseph H. (4)	1077 Reagan Street, Sunbury
Fairservis, Jo Ann (1)	1700 Topping Avenue, New York 57, N. Y.	Heffner, Marlin V. (3)	130 Lombard Street, Sunbury
Fegley, Lana A. (2)	Fernville, Box 75, Bloomsburg	Heilman, Donald E. (2)	1622 Derry Street, Harrisburg
Feldman, Maurice R. (1)	3739 Nostonia Road, Baltimore 16, Md.	Heinbach, Mrs. Robert (0)	10 W. Walnut Street, Selingsgrove
Fetter, David E. (1)	327 S. Third Street, Sunbury	Heinkey, Alan G. (1)	2053 Valentine Avenue, New York 57, N. Y.
Fetterolf, Marilyn J. (3)	1635 Menoher Boulevard, Johnstown	Hemstead, Kenneth R. (1)	456 Willett Avenue, Port Chester, N. Y.
Fetterolf, Ronald A. (3)	Box 81, Beavertown	Henderson, Margaret A. (3)	123 Walnut Street, Wernersville
Feudale, Arthur J. (0)	51 S. Franklin Street, Shamokin	Henderson, Nancy (2)	S. Market Street, Elysburg
Finkstadt, Audrey E. (2)	37 W. Milton Street, Freeport, N. Y.	Henry, W. Reuben (3)	R. D. 2, MacDonald Heights, York
Fisher, Lois A. (1)	1811 E. 28th Street, Brooklyn, N. Y.	Hepler, Anne L. (1)	Gratz
Fisher, Polly A. (2)	R. D. 2, Selingsgrove	Hess, Patricia A. (3)	412 N. Market Street, Elizabethtown
Flowers, Edward J. (3)	110 E. Columbia Avenue, Atlas	Hill, James L. (0)	12 N. Market Street, Selingsgrove
Foelsch, Donald H. (1)	2770 Marin, Berkeley, Calif.	Hill, Kenneth R. (1)	12 N. Market Street, Selingsgrove
Foor, Roy A. (3)	E. Second Street, Everett	Hoffman, Dale W. (1)	40 W. Grand Avenue, Tower City
Ford, Elizabeth (1)	85 Dunkirk Road, Baltimore 12, Md.	Hollenbeck, Elizabeth (2)	561 E. Seventeenth Street, Brooklyn, N. Y.
Ford, Janice A. (3)	89 Kendall Boulevard, Oaklyn, N. J.	Holleran, Vivian C. (1)	151 Headly Terrace, Irvington, N. J.
Frank, Barbara M. (2)	510 Union Avenue, Delanco, N. J.	Honsberger, Patricia C. (1)	323 Oak Road, Glenside
Freed, Ruth E. (1)	319 Main Street, Red Hill	Horning, Kermit G. (4)	R. D. 1, McAlisterville
Frost, Frederick R. (1)	201 Orange Street, Selingsgrove	Houseworth, Mrs. Catherine (0)	816 Catawissa Avenue, Sunbury
Frutchey, Marian L. (3)	1798 Ford Avenue, Akron 5, Ohio	Howells, Carlton R. (1)	1141 Scott Street, Kulpmont
Furman, Russell E. (2)	205 Fairmount Avenue, Sunbury	Hults, Margarete J. (3)	4 Hardwell Road, Short Hills, N. J.
Gacono, V. Carl (1)	Third Avenue and Queen Street, Annville	Huyett, Marilyn J. (3)	210 McClellan Street, Reading
Galloway, Patricia A. (1)	415 Rich Avenue, Mt. Vernon, N. Y.	Iffert, Walter H., Jr. (1)	234 E. Mine Street, Hazleton
Gass, John W. (3)	48 N. Third Street, Shamokin	Imrie, Eloise W. (1)	1516 Pratt Street, Philadelphia 24
Geiss, Henry W. (1)	715 S. Main Avenue, Scranton	Ishii, Charles S. (1)	Libue, Kauai, Hawaii
Gerner, Janet A. (1)	314 Vanneman Avenue, Swedesboro, N. J.	Jarvis, Robert B. (1)	602 Mohawk Avenue, Norwood
Ghatan, Djamshid Jack (1)	Seray Amir, Teheran, Iran	Jeffers, Harvey P. (1)	358 N. Greece Road, Hilton, N. Y.
Gilbert, Arlan K. (2)	302 N. Eighth Street, Selingsgrove	Johnson, Harold N. (3)	Box 156, Nicholson
Gilbert, Joyce K. (3)	302 N. Eighth Street, Selingsgrove	Karasevich, John E. (1)	249 S. Spruce Street, Mount Carmel
Gingrich, Lawrence A. (2)	Market Street, Freeburg	Kauffman, Clyde R. (0)	40 W. Grand Avenue, Tower City
Gloss, Orville W. (1)	331 Fourth Street, Northumberland	Keener, Dwight E. (3)	2553 N. Sixth Street, Harrisburg
Godfrey, William (1)	R. F. D. 2, Hegins	Keener, Seth E. (1)	2926 Parkside Lane, Harrisburg
Goldberg, Robert M. (1)	25 N. Newark Avenue, Ventnor, N. J.	Kepner, V. Lucille (3)	48 S. Harrisburg Street, Steelton
Goodman, Ronald F. (3)	118 Erie Street, Honesdale	Kershner, Danalee M. (1)	499 N. High Street, Selingsgrove
Gordon, Margaret R. (2)	510 Carpenter Lane, Philadelphia 19	Kessler, Mrs. Ethel (0)	Hummels Wharf
Gordon, Wallace E. (3)	409 S. Abington Road, Clarks Green	Kisecker, Lois E. (1)	131 Clayton Avenue, Waynesboro
Gormley, James J. (2)	1688 Harrison Street, Philadelphia 24	Kline, Nancy L. (1)	810 S. Pine Street, York
Griffiths, Helen B. (2)	1709 Griscom Street, Philadelphia 24	Klingelhoefter, Mary (4)	R. D. 2, Sunbury
Groce, Mrs. Dorothy (0)	6 S. Front Street, Selingsgrove	Kloap, William P. (4)	110 Garfield St., Nanticoke
Gruber, Elsie L. (1)	3069 N. Hutchinson Street, Philadelphia 19	Knowles, Barbara A. (2)	100 Volan Street, Merchantville, N. J.
Gulick, Robert W. (1)	12 N. Front Street, Sunbury	Kocher, Harry F., Jr. (2)	King Street, Torbotville
Gunnet, Marilyn K. (2)	2059 W. Philadelphia Street, York	Kolva, Eugene F. (1)	R. D. 1, Halifax
Haag, Donald S. (2)	389 S. Main Street, Hughesville	Kopf, Edward P. (1)	61 Morse Avenue, Bloomfield, N. J.
Haddad, Afife J. (1)	721 E. Philadelphia Avenue, Boyertown	Kostenbauder, E. Faye (3)	R. D. 1, Danville
Haggerty, Claire A. (3)	160 Price Street, Kingston	Kostenbauder, Marjorie (1)	R. D. 1, Daoville
Hanna, R. Christine (1)	1206 Fourth Avenue, Duncansville	Krapf, Deborah (1)	University Heights, Selingsgrove
Harper, Barbara J. (2)	63 N. Eighteenth Street, Harrisburg	Krauss, Herbert N. (3)	247 S. Pine Street, York
Harris, David H. (2)	112 W. King Street, York	Krebs, Mary Ellen (2)	Beavertown
Hartman, Donald L. (1)	477 Sixth Street, Northumberland	Krogh, Jeanne M. (1)	301 W. Waverly Road, Glenside
		Krout, Ronald S. (1)	712 Atlantic Avenue, York

# STUDENT ROSTER

- Lacock, Elizabeth A. (2) 305 Audubon Avenue, Wayne  
 Lamade, Carlene (2) 635 Charles Avenue, Kingston  
 LaMarca, Wanda H. (3) 306 S. Market Street, Selingsgrove  
 LaMarca, William P. (4) 306 S. Market Street, Selingsgrove  
 Lamb, Edward E., Jr. (3) 17 Sterner Avenue, Broomall  
 Lamon, Margie Ann (1) 216 Market Street, Selingsgrove  
 Langlotz, Donald W. (1) 1809 Jonestown Road, Harrisburg  
 Laue, Janet L. (3) 11 Hernick Drive, Lynbrook, N. Y.  
 Lauver, Orville H. (3) Richfield  
 Lauver, William Deen (2) McAlisterville  
 Leach, Clayton E., Jr. (1) 524 S. Market Street, Selingsgrove  
 Lease, Madaline M. (1) 113 W. Main Street, Somerset  
 Lee, Mrs. Anne R. (0) 130 King Street, Northumberland  
 Lee, Lorraine S. (4) 9 W. Fortieth Street, Bayonne, N. J.  
 Leister, Harry M., Jr. (1) McAlisterville  
 Lengel, Stuart H. (3) R. D. 2, Richfield  
 Leonard, Arthur C. (1) Box 301, Jerome  
 Lepley, Nancy L. (3) Winfield  
 Liddington, George C. (3), 321 Orange Street, Northumberland  
 Livermore, Norman B. (2) 1022 Coe Street, Tarentum  
 Loncosky, Walter B. (1) R. D. 3, Danville  
 Lose, Graydon I. (3) 531 Main Street, Middleburg  
 Lonski, Eugene F. (1) 3 Chestnut Street, South River, N. J.  
 Lucas, Carolyn R. (3) 228 E. Washington Street, Chambersburg  
 Lutz, Ralph H. (1) Reinerton  
 MacDonald, William W. (1) 520 Corliss Avenue, Phillipsburg, N. J.  
 MacNamara, Robert J., Jr. (1) 804 Ardmore Avenue, Ardmore  
 McCarty, Richard E. (2) Picture Rocks  
 McCormick, Thomas P. (1) 914 Poplar Street, Williamsport  
 McCullaugh, Nancy J. (1) 110 Waverly Road, Wyncote  
 McCune, John C. (0) R. D., Selingsgrove  
 McGough, Vaughn L. (2) 1322 Solomon Street, Johnstown  
 McKegg, Pamela J. (1) 219 Belleville Avenue, Bloomfield, N. J.  
 Major, Carolyn M. (1) Brooklyn, Pa.  
 Manning, Stanley S. (3), 126 N. 17th Street, East Orange, N. J.  
 Martin, Arnold K. (2) 500 Springfield Avenue, Newark, N. J.  
 Marts, Thomas E. (1) 1774 Norris Street, Camden 4, N. J.  
 Mason, Charles N. (4) 6432 31st Street N. W., Washington, D. C.  
 Matha, Richard G. (1) 307 Harrison Street, Sayre  
 May, Barbara W. (2) 16 Carlton Place, Baldwin, N. Y.  
 Mayer, John W. (4) 720 Ninth Avenue, Belmar, N. J.  
 Meerbach, Charlotte R. (1) 234 Freeman Avenue, Stratford, Conn.  
 Meerbach, Irene F. (3) 234 Freeman Avenue, Stratford, Conn.  
 Menapace, Edwin J. (1) 8307 11th Avenue, Hyattsville, Md.  
 Mertz, Mrs. Hildegard (0) R. D. 1, Northumberland  
 Mesler, Robert A. (4) 122 Tappan Avenue, N. Plainfield, N. J.  
 Mickatavage, Robert C. (3) 10 Oakland Avenue, Ashland  
 Millard, Carroll S. (1)  
 Miller, Joyce E. (1) 100 Stone Street, Honesdale  
 Miller, Wayne E. (2) 106 Shamokin Street, Trevorton  
 Mitchell, Duane (3) 523 N. Sixth Street, Clairton  
 Moon, Doris L. (1) N. Main Street, Herndon  
 Moore, Gladys A. (2) R. D. 1, Berwick  
 Morrow, Beatrice M. (4) Glasgow  
 Mosholder, Joann D. (3) R. D. 2, Rockwood  
 Mousley, Henry A. (2) 58 Southern Slope Dr., Millburn, N. J.  
 Moyer, Anna J. (1) 112 Arch Street, Sunbury  
 Mulcey, Jacqueline M. (1) R. D. 2, Overbrook Road, Dallas  
 Mummet, Joanne M. (1) 1322 Bannister Street, York  
 Myers, T. Justin, Jr. (4) 400 S. Main Street, Hughesville  
 Nardell, Clement R. (3) 118 E. Union Street, Schuylkill Haven  
 Naugle, Mary E. (1) Rear 123 W. Walnut Street, Selingsgrove  
 Nestler, Helene A. (1) Walnut Street, Green Lane  
 Nestler, Paul R., Jr. (3) Walnut Street, Green Lane  
 Neuman, Edward W. (1) 828 Florida Avenue, York  
 Newcomer, Charles A., Jr. (3) Box 43, Northumberland  
 Oestreich, Edgar W. (2) 1704 Walnut Street, Ashland  
 Oldt, Irene K. (3) R. D. 1, Winfield  
 Olson, Arthur K. (4), 8802 Ridge Boulevard, Brooklyn 9, N. Y.  
 Orris, Kenneth E. (4) Ickesburg  
 Osborn, Ruth E. (3), 16th and Queen Streets, Northumberland  
 Owens, Richard W. (2) 20 N. Ninth Street, Stroudsburg  
 Padgett, Margaret E. (1) 518 Race Street, Sunbury  
 Pehl, Beverly E. (1) R. D. 2, Mt Pleasant Mills  
 Perkins, Tamsen K. (3) 323 Sixteenth Street, Honesdale  
 Peterson, Nicholas T. (1) 204 Evergreen Avenue, Bradley Beach, N. J.  
 Pontius, Joyce M. (1) 108 Broad Street, Selingsgrove  
 Quick, Joanne H. (2) 135 Carol Street, New Cumberland  
 Rarick, Jean M. (1) N. Warren Street, Orwigsburg  
 Reamer, Donald M. (1) Box 80, Laurelton  
 Regoli, Arca J. (1) 591 Fourth Avenue, Bradley Beach, N. J.  
 Reynolds, DeWitt C. (3) 115 Williamson Avenue, Bloomfield, N. J.  
 Richards, Frank D. (3) 326 S. Market Street, Selingsgrove  
 Richards, Nancy W. (2) 229 S. Seventh Street, North Wales  
 Richards, Ruth E. (1) 228 Stone Avenue, Clarks Summit  
 Riegel, Glace A. (1) Hummels Wharf  
 Rising, James M. (3) R. D. 1, Northumberland  
 Rockafellow, Jacquelyn (1) 556 Mt. View Terrace, Dunellen, N. J.  
 Rohrbaugh, Rodger E. (3) 41 E. Ninth Avenue, York  
 Ronngren, Maria S. (1) 4417 Terrace Avenue, Pennsauken 8, N. J.  
 Rook, Donald E. (1) Second Street, Pike, Southampton  
 Rosenbaum, Geraldine V. (1) R. D. 3, Lewistown  
 Rosengarten, Claire E. (1) 1614 Ridgeway Road, Havertown  
 Ross, Samuel D. (3) 208 Wischman Avenue, Oreland  
 Roush, Arthur W. (1) 702 N. Market Street, Selingsgrove  
 Rowe, F. Jean (3) R. D. 2, Smithsburg, Md.  
 Rupe, Dean E. (4) 1608 22nd Avenue, Altoona  
 Rutherford, Caroline J. (4) R. D. 1, Harrisburg  
 Sandt, Charlotte J. (1) 2 Colfax Road, Havertown  
 Sasaki, Chitose Kei (4) Kumamoto, Japan  
 Schilke, Diane H. (1) 22 Maple Avenue, Canajoharie, N. Y.  
 Schmeitz, Melva L. (2) R. D. 1, Hegins  
 Schoch, David E. (1) 204 W. Snyder Street, Selingsgrove  
 Schraeder, John H. (3) 218 Allen Street, West Hazleton  
 Schreffler, William C. (2) R. D. 1, Halifax

# STUDENT ROSTER

Schwab, Robert D. (2)	704 Westwood Avenue, Long Branch, N. J.	Tkaczyk, Thomas (3)	436 E. Columbia Avenue, Atlas
Schweikle, Mary R. (1)	334 Market Street, South Williamsport	Tkaczyk, Walter (3)	442 E. Columbia Avenue, Atlas
Scott, Ruth K. (2)	R. D. 1, Parkesburg	Tomlinson, Stewart L. (3)	225 Eighth Avenue, Burnham
Scott, William L. (4)	Dewey Beach, Rehoboth, Del.	Torok, Steve F. (4)	4 Bright Street, South River, N. J.
Sechrist, Joan G. (4)	117 N. Twelfth Street, Sunbury	Trabush, Harold M. (1)	Box 97T, R. D. 3, Hamburg
Seeger, Lothar G. (3)	6 Pestalozzi Platz, Frankfurt, Germany	Trate, Bessie G. (1)	676 S. Front Street, Milton
Shade, Rebecca J. (3)	R. D. 1, Danville	Treese, Rita J. (3)	614 W. Third Street, Williamsburg
Shade, Robert T. (3)	1944 Chestnut Street, Harrisburg	Tyler, Fred J. (2)	Hummels Wharf
Shaffer, Norma J. (1)	512 Haldeman Avenue, New Cumberland	Ush, Merle F. (2)	Port Trevorton
Shannon, John F. (3)	202 Pine Street, Sunbury	Unangst, Edward T. (4)	511 Shuman Street, Catawissa
Sharretts, Rose Marie (2)	147 W. Fifth Street, Bloomsburg	Underkoffler, Owen W. (3)	1300 Market Street, Sunbury
Sheldon, Donald R. (1)	50 Webb Avenue, Hempstead, N. Y.	Valsing, Alice L. (1)	524 N. Market Street, Selingsgrove
Sheldon, Ralph B., Jr. (1)	20 Wyoming Avenue, Tunkhannock	Vanderhoof, William H., Jr. (2)	97 Waldo Avenue, Bloomfield, N. J.
Shilling, Frederick L. (2)	Davidsville	VanDeusen, Robert (1)	1018 Church Street, Honesdale
Shirk, Betsy L. (1)	Valley Road, Pomeroy	Vincent, Bette M. (3)	207 Ryan Street, Hillside, N. J.
Showalter, James G. (2)	Millmont	Vogler, Harold E. (3)	315 Penn Avenue, Hawley
Silvey, Mary Jane (2)	869 W. Walnut Lane, Philadelphia 14	Vollman, Audrey J. (1)	933 High Street, Bethlehem
Sipe, Patricia Ann (1)	39 N. Vernon Street, York	VonLynn, Helen E. (4)	12 Central Avenue, Cranford, N. J.
Sites, Dorothy M. (3)	219 Garfield Street, Chambersburg	Wagner, Harry D. (2)	R. D. 2, Box 473A, Pottsville
Smaltz, John A. (2)	59 Center Street, Hughestown, Pittston	Wagner, Joyce L. (4)	4113 Green Court, Harrisburg
Smith, Elinor M. (4)	760 Main Street, Lykens	Walk, D. Richard (2)	Main Street, Reedsville
Smith, Franklin G. (2)	67 Race Street, Mauch Chunk	Walker, Ernest R. (4)	1700 Sunshine Avenue, Johnstown
Smith, Gary M. (1)	239 Westover Drive, New Cumberland	Walker, H. Lee (2)	R. D. 5, Somerset
Smith, Glen E. (1)	Dornsife	Walshaw, William B. (1)	34 N. River Avenue, Sunbury
Smith, Jessie P. (1)	760 Main Street, Lykens	Walter, Donald N. (4)	West Milton
Smith, Lucian O. (3)	315 Arch Street, Sunbury	Warnets, Audrey M. (3)	Pedns Creek
Smith, Patricia L. (1)	657 Maple Lane, Sewickley	Washbourne, George W. (3)	109 E. Market Street, Williamstown
Smith, Mrs. Ruth J. (0)	Pine Lawn, Selingsgrove	Webber, Margaret K. (3)	24 Pine Street, Basking Ridge, N. J.
Smith, Thomas C. (1)	R. D. 1, Kennett Square	Wehr, Jane (4)	109 Main Street, Middleburg
Snyder, Charles A., Jr. (4)	N. Main Street, Herndon	Weis, Robert F. (0)	20 N. Front Street, Sunbury
Snyder, Suzanne M. (1)	324 Fifteenth Street, New Cumberland	Weisenfluh, Betty L. (3)	326 Main Street, Old Forge
Solomon, Mary Jane (1)	New Berlin	Westlake, Marie J. (1)	415 Lawn Avenue, Sellersville
Solomon, Todd E. M. (3)	553 Harvard Avenue, Hillside, N. J.	Wheeland, Seth P. (1)	850 S. Front Street, Sunbury
Spaeth, Helen K. (2)	2804 Hillcrest Road, Drexel Hill	Whitney, Mrs. Lois (0)	948 S. Front Street, Sunbury
Stahl, Karl N. (5)	221 Green Street, Honesdale	Whittington, Lillian M. (1)	1253 Hudson Street, Harrisburg
Stamfel, Arthur C. (5)	Ninth Street, Northumberland	Wick, Miriam E. (3)	961 Arrott Street, Philadelphia 24
Steffey, Eleanore (3)	Belleville	Wicks, John G. (2)	27 Sunnyside Boulevard, Dumont, N. J.
Steffy, Robert D. (1)	18 N. Front Street, Selingsgrove	Williams, Clara M. (1)	R. D. 1, Drums
Steinhardt, Nora (3)	331 E. Hancock Street, Milledgeville, Ga.	Williams, Helen G. (2)	1131 Market Street, Harrisburg
Stettler, Gene A. (1)	R. D. 3, Middleburg	Williamson, Daniel W. (1)	R. D. 2, Holsopple
Stoler, Sigmund (0)	215 Chestnut Street, Sunbury	Wilson, Gerald E. (1)	409 River Street, Hawley
Stoner, Nancy Lee (1)	306 Beverly Road, Camp Hill	Winekler, Fred B., Jr. (3)	66 Elmwood Drive, Livingston, N. J.
Stoudt, John B. (3)	411 Market Street, Millinburg	Winey, Carl R. (2)	Box 112, Richfield
Stout, Richard P. (4)	606 Mahoning Street, Lehighton	Wise, Ann L. (1)	404 Fourth Street, New Cumberland
Stuter, M. Josephine (4)	Belleville	Wise, Loretta M. (2)	404 Fourth Street, New Cumberland
Sultzbaugh, Margaret D. (1)	Berrysburg	Wither, James D., Jr. (4)	2038 Sheridan Street, Williamsport
Swinehart, Sandra N. (2)	737 Walnut Street, Pottstown	Wyllie, Robert C. (4)	23 Fairview Avenue, N. Plainfield, N. J.
Swithers, Albert R. (2)	R. D. 2, Hunlock Creek	Yoas, M. Sandra (2)	113 W. Gay Street, Red Lion
Szabo, Louis A. (3)	22 Belmont Avenue, South River, N. J.	Yocum, Maxine (1)	Park and Linden Avenues, Laurel Springs, N. J.
Thomas, Anna Belle (2)	20 Brown Street, Lewisburg	Yoder, Marvin J. (2)	8 Pleasant Street, Belleville
Thomas, Genevieve L. (1)	110 Hickory Street, Davidsville	Young, Richard N. (3)	616 Queen Street, Northumberland
Thomas, Margretta A. (4)	135 Spurzheim Street, Shamokin	Yund, Dwight W. (1)	Box 81, Sipesville
Thompson, Shirley Ann (3)	R. D. 1, Paradise	Zerby, John C. (1)	McKnight Street, Gordon
		Ziegenfuss, Charles W. (2)	104 E. Main Street, Mechanicsburg
		Zinda, Margaret I. (4)	361 Fisher Avenue, Catawissa

## POSTLUDE

### In Appreciation

The editor would like to take this opportunity to thank all those who have contributed their time, services, and cooperation toward the completion of the 1954 LANTHORN.

### Patronize Our Advertisers

Without our advertisers, this, the LANTHORN of 1954, would not have been possible. We hope that you will give them your support as they have so willingly given theirs.

# SUSQUEHANNA UNIVERSITY

(Co-educational)

Selinsgrove, Pa.

*For ninety-five years in the Service of  
Christian Higher Education*



**A college with unusual opportunities**

**Liberal Arts (A.B.)**

**Business Administration (B.S.)**

**Music Education (B.S.)**



*For catalog write:*

**G. MORRIS SMITH, D.D., LL.D., President**

Compliments of

*Aunt Nellie's* **QUALITY FOODS**

*"The Family Favorite"*

*"Enjoyed by Millions"*

At Your

Independent Retail Grocer

---

**THE BOOK STORE**

*Students' Supplies*



Visit our Store for School  
and Personal Needs, Gifts,  
and Specialties.

**NATIONAL RESTAURANT**

Selinsgrove

*“Home Cooking”*

•

The place where you  
meet your friends.

---

**REICHLLEY’S FLOWER SHOP**

*Flowers of Distinction*

614 Market St.

Sunbury

Phone 988

*“We Telegraph Flowers”*

**BENJAMIN T. MOYER**

**Furniture and  
Carpets**

•

21-23 North Fifth St.

SUNBURY, Pa.

---

**BECK AND BECK INC.**  
and  
**City Steam Launderers Inc.**

Next to Hotel Governor Snyder

SELINGSGROVE

---

Compliments of the

**HOLSUM BAKERS**

---

**REAL FRENCH CLEANERS**

*Quality* DRY CLEANING

and

FUR STORAGE

HUMMELS WHARF

Compliments of

**RIEGEL’S JEWELRY STORE**

SELINGSGROVE

*Compliments of*

# **AMERICAN LEGION POST 44**

**NORTHUMBERLAND, PA.**

---

**Lottie Kemberling**

## **DUTCH PANTRY**

*Restaurants*

**SELINGSGROVE**

Routes 11 and 15

**LEMOYNE**

304 Market Street

**STATE COLLEGE**

230 East College Avenue

---

Compliments of

**Bittner's Department Store**

**SUNBURY, PA.**

**KEPLER'S CHEVROLET**

**SALES and SERVICE**

•

U. S. Route 11 and 15

North of Selingsgrove



Compliments of

# **D. R. ERDMAN**

**Lumber Yard**

**Planing Mill**

**Roofing**

**Insulation**

**Plywood**

*Telephone 877*

**168 South Tenth Street**

**Sunbury, Pa.**

---

For S. U. Men and Women

**COLLEGE**

**SNACK BAR**



Open 8 A. M. to 10 P. M.

**SELINGSGROVE**

**WATER SUPPLY CO.**

Water From 500 ft. Wells



**FRANK A. EYER**

*President*

**JAMES McCLURE**

*Treasurer*

---

**M**IDDLE CREEK VALLEY  
TELEPHONE COMPANY

Entire System Dial Operated

*Bell System*

**FRANK A. EYER**

*Treasurer*

*Secretary*

*General Manager*

# PROFESSIONAL DIRECTORY

---

**R. A. HEINBACH, M.D.**

125 South Market Street

Telephone 2611

Residence Telephone 6131

---

**R. W. JOHNSTON, M.D.**

116 South Market Street

Telephone 2321

---

**B. SHIPE, D.D.S.**

30 South Market Street

Telephone 9031

Residence Telephone 9032

---

**EDWARD A. PHILLIPS, D.D.S., Class "17"**

16 North Water Street

Telephone 7422

---

**G. M. BOGAR, M.D.**

8 North Market Street

Telephone 3511

---

**DANIEL H. SHUCK, D.D.S.**

108 South Market Street

Telephone 3044

# NEIDIG'S DAIRY

*The Home of Quality DAIRY PRODUCTS*

160 Reagan Street

SUNBURY, PA.

Phone 1839 J

*"Where Customers Send Their Friends"*

---

## FISHER MOTORS

CHRYSLER—PLYMOUTH

*Sales and Service*

*"Home of Quality Used Cars"*

Phone 6741

SELINGROVE

## EBERT'S

5c to \$1.00 Store

SCHOOL SUPPLIES

Selinsgrove, Pa.

---

## Sanders Appliance Store

GENERAL ELECTRIC  
APPLIANCES

241 Market St.

Sunbury, Pa.

Telephone 546

---

# HACKETT HARDWARE STORES

325 Market St., SUNBURY, PA.  
FINE HARDWARE FOR 80 YEARS

706 Market St., SUNBURY, PA.  
APPLIANCES—GIFTS—TOYS

MIDDLEBURG, PA.  
Our Newest Store  
Fully Equipped and Stocked

Compliments of

**H. R. HEINTZELMAN & SON**

Mt. Pleasant Mills, Pa.

Compliments of

**MENGLE'S RESTAURANT**

3 West Pine Street

Selinsgrove, Pa.

---

**COLE DRUGS INC.**

**Walgreen Agency**

**7-9 S. Market Street**

**Selinsgrove, Pa.**

**Phone 6121**

---

**WHITMER-STEELE COMPANY**

**Northumberland, Pa.**

---

Compliments of

**REA & DERICK INC.**

Your Dependable Drug Store

Market and Pine Streets

**SELINGSGROVE**

---

MILK

**ENGLE'S**

ICE CREAM

**Ferguson Esso Service Center**

Market and Spruce Streets

Willys Cars

R C A-Victor Radios and Television

**SELINGSGROVE**

**HARRISBURG LUMBER  
COMPANY**

•

*A Complete  
Lumber Industry*

•

**HARRISBURG, PENNSYLVANIA**

Congratulations and Best Wishes

to the Class of '53

**PENN STATE PHOTO SHOP**

*modern portraits*

*Your*

**LANTHORN**

*Photographer*

**214 East College Avenue**

**State College, Pa.**

**BOGAR FEED  
AND LUMBER SUPPLY**

*Contractors—Builders*

Manufacturers of and dealers in  
LUMBER, BUILDING SUPPLIES

Phone 7011 SELINGROVE, PA.

Watch Repair—Susquehanna Jewelry  
Fountain Pens and Pencils

**W. M. VALSING**

*Jeweler*

SELINGROVE, PA.

**GEORGE B. RINE, Florist**

11 N. Market St. SELINGROVE, PA.

Store Phone 3162 Greenhouse Phone 2263

CUT FLOWERS and POTTED PLANTS  
Specializing in CORSAGES

**LEE R. SNAVELY**

CLOTHING AND SHOES

*for  
the Family*

**B. K. W. COACH LINE**

Hummels Wharf, Pa.

Charter Trips Solicited



For Taxi Service Call — SUNBURY 600

**BING'S TYDOL SERVICE**

South Market St.

SELINGROVE, PENNSYLVANIA

State Inspection—General Car Repairs

Car Washing—Greasing

Phone: 7066

**TROUTMAN'S**

**GULF SERVICE**

Phone 7521

SELINGROVE, PA.

Greasing — Washing

Tire — Tubes - - Batteries

Accessories



**BENNER MOTORS INC.**

*Ford*

**Selinsgrove and Mifflinburg**

---

**YANK'S ATLANTIC  
SERVICE STATION**

Mill and Market Streets  
Let YANK Fill Your Tank  
Don't Crank — See YANK

Compliments of

**MR. AND MRS. HILL**

---

**LEARN'S**

Fine Foods and Stationery  
*Greeting Cards*

11 S. Market St.      SELINSGROVE, PA.

Compliments of

**MELROSE RESTAURANT**

Tasty Dutch Homecooking

SELINSGROVE, PA.

---

For

NEWS —

of FOLKS

You Know



**SUNBURY DAILY ITEM**

## COLONIAL TEA ROOM

MR. AND MRS. ROY BOWERSOX  
For Reservations and Parties  
Call 2371

## REICHLEY'S

*Sporting Goods*

12 N. Market St. Selinsgrove, Pa.

## Arbogast and Son Garage

Oldsmobile Sales and Service  
Electric and Acetylene Welding  
514 South Market St. Telephone 6184  
SELINGSGROVE, PA.

Compliments of

## THE CUSTARD CUP

Routes 11 and 15—Shamokin Dam, Pa.



## JARRETT and SECHRIST

Sunoco Service Station  
Phone 2041  
Corner Market and Walnut Streets  
SELINGSGROVE, PA.

## Hotel Governor Snyder

WALTER E. PINAND  
*Proprietor*

## F. J. ALTVATER, INC.

Market at Sixth

SUNBURY, PA.



## COUNTY SALES AND SERVICE

High and Bridge Streets

SELINGROVE, PA.

Phone 6311

Compliments of

## FIRST NATIONAL BANK OF SELINGROVE



Serving Selingsgrove and Surrounding Area

Since 1864

Compliments of

**JOS. L. MENTZ**

*The Stationer*

249 Market Square

SUNBURY, PA.

**Miller Bros. Shoe Store**

"At the Bus Stop"

SUNBURY, PA.

## The Selingsgrove Times Tribune

*Printers of*

THE SUSQUEHANNA AND

THE SUSQUEHANNA ALUMNUS

## PHI MU DELTA

*"Afoot and light-hearted I take to the open road, healthy, free, the world be for me."  
—Walt Whitman*

HARMON ANDREWS	LEWIS DRUMM	ARTHUR OLSON
DAVID BENNETT	V. CARL GACONO	WILLIAM SCOTT
LARRY BOTTIGER	WALTER IFFERT	STEVE TOROK
RICHARD BURLEY	EDWARD KOPF	EDWARD UNANGST
LEONARD CARLSON	THOMAS MARTS	ERNEST WALKER
PHILLIP CRAWFORD	WILLIAM LAMARCA	DONALD WALTER
JAMES DEITCH	ROBERT MESLER	JAMES WITHER

---

## BOND and KEY

*"This is the house of the molder of men; of men who are steadfast and true."*

EUGENE BROUSE	ROBERT JARVIS	EDWIN MENAPACE
DONALD FOELSCH	HARVEY JEFFERS	JUSTIN MYERS
ORVILLE GLASS	RONALD KROUT	EDWARD NEUMAN
KENNETH HILL	ROBERT MACNAMARA	CHARLES SNYDER
CARLTON HOWELLS	JOHN MAYER	ROBERT WYLLIE

---

## THETA CHI

Congratulates Its Graduates of 1953

THOMAS BALCHEN	KENNETH HEMSTEAD	KENNETH ORRIS
RICHARD BIDEISPACII	CHARLES MASON	DONALD SHIELDON
JOSEPH CONDON	PAUL NESTLER, JR.	RICHARD STOUT
JOSEPH HEFFNER		DANIEL WILLIAMSON





SUSQUEHANNA UNIVERSITY



3 4998 0028 1254 8

**BLOUGH-WEIS LIBRARY  
DOES NOT  
CIRCULATE  
ARCHIVES  
SUSQUEHANNA UNIVERSITY**

