



the Lanthorn

1957

UNIVERSITY
SHILSBORO, PA 17870

Robert W Meade

1952

BLOO

SUSQUEHANNA UNIVERSITY
SELINGROVE, PA 17870



Digitized by the Internet Archive
in 2011 with funding from
Lyrasis Members and Sloan Foundation

<http://www.archive.org/details/lanthorn195700susq>

Lanthorn – 1957
SUSQUEHANNA UNIVERSITY
SELINGROVE, PENNSYLVANIA

Presented by

The Class of 1957

Susquehanna University
Selinsgrove, Pennsylvania



Clarence L. Lorah, *Editor*

Lanthorn

Douglas C. Smith, *Business Manager*



AMOS ALONZO STAGG, JR.

We are proud to dedicate the 1957 Lanthorn to . . .

Professor Amos Alonzo Stagg, Jr.



Famous son of a famous father, and also in turn progenitor of son and grandson, so that the name of Amos Alonzo Stagg continues to the fourth generation by the Grace of God . . .

Susquehanna University salutes you as a beloved member of the university family, always cognizant of your greatness, your loyalty, and your devotion to the education of Christian youth through the certain principle that a sound mind in a sound body sets a wise pattern for American manhood.

Susquehanna University is mindful that for more than twenty years you have labored faithfully to build men in the pattern of Christian sportsmanship, fairness, and humility.

Often your labors have gone unsung. Often the midnight hours of your forward-seeing have been unknown and unwatched . . . except by those who understand your complete devotion and moving love for the university that has been a large part of your life.

Professor of Physical Education at Susquehanna University since 1935; in 1923 Bachelor of Philosophy and in 1935 Master of Arts from the University of Chicago; likewise in 1941 Master of Arts from Columbia University.

Your friends cherish you as an honest man; as a lover of nature, particularly of the magnificent mountains that God has given to the great American West that you know and love; and as one who in the silence of his heart knows when Eternity speaks.

The Class of 1957 is proud to cite the name of Amos Alonzo Stagg, Jr. History will remember what no living man can forget: Christian Devotion!

Presenting



*"Lives of great men all remind us
We can make our lives sublime,
And, departing, leave behind us
Footprints on the sands of time."*

—LONGFELLOW

ADMINISTRATION



The President

DR. G. MORRIS SMITH

As President of the University, chairman of various committees, and friend of the students, Dr. G. Morris Smith has been an active part of Susquehanna for the past twenty-eight years.

Born in Strasburg, Virginia, he began studying for the ministry in 1907 at Roanoke College. He received his A.B. degree from Roanoke in 1911, and then began graduate study at Princeton University from which he received his A.M. degree in 1912. In 1919, Dr. Smith received his diploma from the Lutheran Theological Seminary in Philadelphia. Dr. Smith continued to ardently study the scriptures and preach the Word of God, and in 1928 he received the degree of Doctor of Divinity from his Alma Mater, Roanoke College. Dr. Smith continued his graduate study at Columbia University and in 1940 he received the degree of LL.D. from Bucknell University.

Through his bright personality and assuring smile, Dr. Smith has gained the respect and admiration of the entire student body. Along with the strenuous task as president

of the university, Dr. Smith still finds time to receive numerous students into his office and to offer them advice and guidance.

The home of the President, a beautiful example of Georgian architecture, is known to all students as Pine Lawn. Here, the president and his charming wife are gracious hosts to dozens of campus organizations and a large number of visitors throughout the year.

Dr. Smith has more than succeeded in upholding the purpose and objectives of Susquehanna University. Through his guidance Susquehanna provides for its students adequate educational facilities and competent Christian scholars as teachers. We speak so much of the atmosphere of Susquehanna University, and when we stop to think, we find that it radiates from the true Christian character of our President. We rarely realize how much we as students owe this man, but on that spring day in May when he offers the Convocation clasp, we know that we have been led through the paths of Christian Devotion.

The Deans



The Dean of the University

DR. RUSSELL GALT

One of the busiest individuals at Susquehanna University is our dean, who has the demanding task of serving as liaison officer between the students and faculty, the president and the students. He must be, and is, equipped to handle problems both academic and social, to tackle routine tasks of organization and unusual situations which may arise.

Dr. Russell Galt, dean of the University, is both a wise and understanding administrator. He received his A.B. degree from Muskingum College in 1919, his M.A. and Ph.D. degrees from Columbia University in 1920 and 1936 respectively. From 1920 to 1922 he was located at the School of Oriental Studies in Cairo, Egypt.

Constantly students are filing into his office on matters of advice, consolation, or, on occasion, leniency. In spite of his exceptionally heavy schedule, Dr. Galt finds time to take part in various campus activities and functions. As a speaker he is unexcelled and is in constant demand by various organizations and associations. Dr. Galt has proved to be a man of exceptional ability, integrity, and understanding.



The Dean of Women

MISS RUTH A. MEISTER

Miss Ruth A. Meister, dean of women, deserves much of the credit for the smooth functioning of the Women's Student Council, the Women's Judiciary Committee, and the general *esprit de corps* among the women students.

Miss Meister received her A.B. degree from Marietta College in 1936, and her M.A. degree from Ohio State University in 1937. Her graduate study carried her to various intellectual centers of the world, among them Paris, Cincinnati, and New York.

In addition to the task of administration Miss Meister is also an Assistant Professor of French here at Susquehanna. She is known throughout the University as a consultant on etiquette and manners. Because of this fact, the students lean heavily upon her, constantly seeking advice along these lines. We at Susquehanna undoubtedly owe her much for her countless contributions to the friendly pleasant atmosphere of our campus.

The Faculty and Staff



DR. ROBERT L. AMY
Associate Professor of Biology
Ph.D., University of Virginia 1955



DR. THOMAS F. ARMSTRONG, JR.
Assistant Professor of Business Administration
Ed.D., Temple University 1947



DR. JANE F. BARLOW
Assistant Professor of Classical Languages
Ph.D., Johns Hopkins University 1952



MISS OLIVE L. D. BARRY
Assistant in the Bursar's Office
Mus.B., Susquehanna University 1913



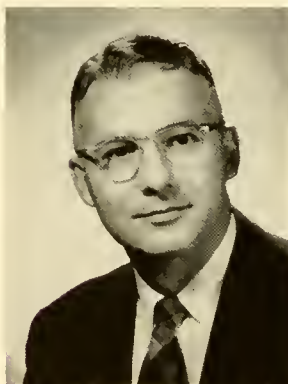
MISS JEAN B. BEAMENDERFER
Instructor in Business Education
M.S., Bucknell University 1948



MR. FREDERIC C. BILLMAN
Assistant Professor of Music
M.A., Columbia University 1941



MISS ANN LEE DAY
Secretary in Public Relations Office



MR. HOWARD E. DEMOTT
Assistant Professor of Science
M.S., Bucknell University 1940



MISS MARGARET GABEL
Assistant Librarian
B.S., Kutztown State Teachers College 1950



MRS. ALICE H. GLAUQUE
Assistant Professor of Music
M.A., Columbia University 1940



DR. RUSSELL W. GILBERT
Professor of German
Ph.D., University of Pennsylvania 1943



MR. HAROLD W. GULLBERGH
Assistant Professor of Psychology
Ed.M., Rutgers University 1949



MRS. NANCY B. HATZ
Instructor in Music
M.A., Columbia University 1941



MR. RUSSELL C. HATZ
Assistant Professor of Music
M.A., Columbia University 1942



DR. JOHN J. HOUTZ
Associate Professor of Chemistry
Sc.D., Carthage College 1933



MR. CHARLES HOWER
Superintendent of Buildings and Grounds



MRS. ANNA M. HUMPHREY
Dietitian



MR. LAMAR D. INNERS
Instructor in Accounting
M.Ed., Temple University 1952



MR. AXEL R. KLEINSORG
Instructor in English
B.S., Temple University 1935



MISS ATHALIA T. KLINE
Assistant Professor of Romance Languages
M.A., Duke University 1925



MISS A. MARGRET KOMMEL
Instructor in Music
B.M., Wittenberg College 1942



MISS HILDA G. KOLPIN
Librarian
M.L.S., Syracuse University 1952



THE REV. BERNARD W. KRAPP
Business Manager
Philadelphia Seminary 1928



DR. JOHN R. LEACH
Assistant Professor of Music
Ed.D., Columbia University 1953

The Faculty and Staff



MRS. MARTHA LEACH
Secretary to the Dean



DR. PERCY M. LINEBAUGH
Professor of Music
Mus.D., Susquehanna University 1951



THE REV. BENJAMIN LOTZ
Assistant Professor of Religion and Philosophy
B.D., Philadelphia Seminary 1928



MR. DAN MACCUISH
Director of Public Relations
B.S., Columbia University 1935



MISS BETSY JANE MCDOWELL
Instructor in Physical Education
A.B., Luther College 1955



MR. ROBERT F. W. MEADER
Assistant Professor of English
M.A., University of Pennsylvania 1931



MRS. MARGARET J. MILLER
Head Resident in Seibert Hall
Thompson Business College 1929



MRS. GOLDIE MOYER
Secretary in the Alumni Office



MISS MARY K. POTTEIGER
Instructor in Music
Mus.B., Susquehanna University 1925



MR. LAVAN B. ROBINSON
Instructor in Music
Mus.M., Louisiana State University 1950



DR. GEORGE M. ROBISON
Associate Professor of Mathematics
Ph.D., Cornell University 1919



MISS JANET ROHRBACH
Secretary to the President
B.S., Susquehanna University 1946



DR. WILLIAM A. RUSS, JR.
Professor of History
Ph.D., University of Chicago 1933



MR. HUGH L. SEELYE
Bursar
B.S., Mansfield State Teachers College 1929



DR. T. TOWNSEND SMITH
Professor of Physics
Ph.D., Harvard University 1916



MR. AMOS ALONZO STAGG, JR.
Professor of Physical Education
M.A., Columbia University 1941



MR. FREDERICK C. STEVENS
Assistant Professor of Sociology
M.A., Columbia University 1932



MRS. SARA B. STEVENS
Registrar
A.B., Susquehanna University 1925



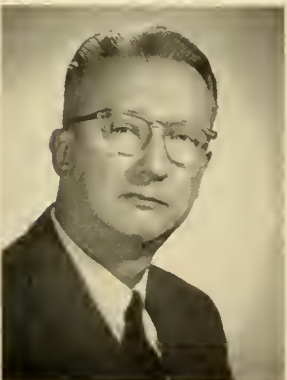
MRS. RACHEL M. THOMSON
Head Resident in Hassinger Hall



DR. LYDER L. UNSTAD
Assistant Professor of Business Administration
Ph.D., Ohio State University 1937



MISS ALMA URFFER
College Nurse
B.S., Columbia University 1938



DR. ARTHUR H. WILSON
Professor of English
Ph.D., University of Pennsylvania 1931



DR. WALDEMAR ZAGARS
Associate Professor of Economics
Econ.D., University of Riga, Latvia 1931



DR. ALBERT A. ZIMMER
Assistant Professor of Education
Ed.D., University of Pittsburgh 1951

Presenting



*I sit beside my lonely fire
And pray for wisdom yet:
For calmness to remember
Or courage to forget.*

—AIDE

CLASSES



WILLIAM DONEY
President



GLEN SMITH
Vice-President

The Senior Class



DEBORAH KRAPF
Secretary



DONALD REAMER
Treasurer



BERTRICE A. AURAND
Business Education

Student Christian Association 1, 2, 3, 4; Susquehanna Singers 3; Future Teachers of America 2, 3, 4, Council 3, 4; Biemic Society 4; Business Society 1, 2, 3, 4; Intramurals 1, 2.



CHARLES S. BAILES
Liberal Arts

Student Christian Association 1, 2, 3, 4; Bond and Key 2, 3, 4; Pi Gamma Mu 4; Biemic Society 3, 4; Veterans' Organization 3; *The Susquehanna Staff* 4; Intramurals 1, 2, 3, 4; Football 1, 3; Baseball 2.

RICHARD P. BARRY
Business Education

Phi Mu Delta 1, 2, 3, 4; Susquehanna Singers 1, 2; Pi Gamma Mu 4; Business Society 1, 2, 3; *The Susquehanna Staff* 3; Intramurals 1, 2, 3; Basketball 1, 2; Baseball 1.

JANET E. BRANDES
Liberal Arts

Student Christian Association 1, 2, 3, 4; Pi Gamma Mu 3, 4; Biemic Society 3; Women Day Students' Organization 4; Intramurals 1, 2, 3, 4.

RUTH C. BROBST
Music Education

Student Christian Association 1, 2, 3, 4; Sigma Alpha Iota 1, 2, 3, 4, Treasurer 3, Choral Director 4; May Day 1, 2; Susquehanna Singers 2, 3; Chapel Choir 2, 3, 4; Concert Band 2; Concert Orchestra 3, 4; Marching Band 2, 3, 4; Women's Athletic Association 1, 2, 3; Counselor 3; Orientation 3, 4; Intramurals 1, 2.





JANET H. BROWN
Liberal Arts

Student Christian Association 1, 2, 3, 4; Kappa Delta 2, 3, 4; Alpha Psi Omega 3, 4; Susquehanna Players 2, 3; May Day 1, 2, 3; Biemic Society 1, 2, 3, 4; Women's Athletic Association 1, 2, 3, 4; Tau Kappa 3, 4; Intramurals 1, 2, 3, 4; Hockey 1, 2; Basketball 1, 2; Panhellenic Council 4.



SALLY M. BROWN
Secretarial

Student Christian Association 1, 2, 3, 4; Kappa Delta 1, 2, 3, 4, Assistant Treasurer 3, 4; Susquehanna Players 3, 4; May Day 1, 2, 3; Business Society 1, 2, 3, 4, Secretary 3, 4; Intramurals 1; Orientation 2.

JOHN C. BUNKE
Business Administration

Student Christian Association 1, 2, 3; Bond and Key 1, 2, 3, 4; Business Society 1, 2, 3; Intramurals 1, 2, 3, 4, Board 2, 3, 4.

HENRY S. COOK
Business Administration

Student Christian Association 1, 2, 3, 4, Treasurer 4; Phi Mu Delta 1, 2, 3, 4, House Manager 3, Pledge Master 4; Class Treasurer 1; Susquehanna Players 1, 3; Business Society 1, 2, 3, 4; Intramurals 1, 2, 3, 4; Baseball 2, 3, 4; Men's Student Council 3, 4, Secretary 4.

CAROL B. DAUBERMAN
Music Education

Student Christian Association 1, 2, 3, 4; Sigma Alpha Iota 1, 2, 3, 4; May Day 2; Susquehanna Singers 2, 3; Chapel Choir 3, 4; Concert Band 2; Concert Orchestra 3; Marching Band 2, 3, 4; Women Day Students' Organization 2; *The Susquehanna Staff* 1, 2; Orientation 2; Chamber Music 3, 4.





ELEANOR S. DIVELY
Liberal Arts

Student Christian Association 1, 2, 4; Religion in Life (chairman) 2; Susquehanna Singers 4; *The Susquehanna Staff* 2, 4; Vice-Presidents' Council 4; Lutheran Deaconess Mother House 3.



WILLIAM K. DONEY
Liberal Arts

Student Christian Association 1, 2, 3, 4, President 4; Bond and Key 3, 4, President 4; Class President 1, 2, 3, 4; Phi Kappa 3, 4; Pre-Theological Club 1, 2, 3, 4; Orientation 4; Intramurals 1, 2, 3, 4; Baseball 1, 2; Fraternity Senate 4; *Who's Who Among Students in American Universities and Colleges* 4.

ANNA L. DORWARD
Music Education

Student Christian Association 1, 2, 3, 4; Sigma Alpha Iota 3, 4; May Day 1, 2, 3; Susquehanna Singers 2, 3; Chapel Choir 2, 3; Concert Band 2, 3, 4; Concert Orchestra 2, 3; Marching Band 2, 3, 4; Future Teachers of America 2, 3; Women's Athletic Association 1, 2, 3, 4; Intramurals 1, 2, 3; Orientation 3.

CHARLES H. DUNCAN
Liberal Arts

Student Christian Association 1, 2, 3, 4; Phi Mu Delta 1, 2, 3, 4; Susquehanna Players 1, 2, 3, 4; Chapel Choir 1, 2, 3; May Day 1, 2; Biemic Society 1, 2; Pre-Theological Club 1, 2, 3, 4; Intramurals 1, 2, 3, 4, Board 3.

RICHARD L. EYSTER
Business Administration

Student Christian Association 1, 2, 3, 4; Phi Mu Delta 2, 3, 4, Vice-President 3; Business Society 1, 2, 3, 4; Football Program 3, 4, Advertising Manager 3.





MAURICE R. FELDMAN

Music Education

Theta Chi 2, 3, 4, President 4; May Day 2; Susquehanna Singers 2; Chapel Choir 2, 3, 4; Concert Band 1, 2, 3, 4; Concert Orchestra 1, 2, 3, 4; Marching Band 1, 2, 3, 4; Collegiate Band 1, 2; Collegiate Orchestra 3.



DAVID E. FETTER

Liberal Arts

Student Christian Association 1, 2; Pre-Theological Club 1, 2, 3; Phi Kappa 1, 2.

ELIZABETH J. FORD

Music Education

Student Christian Association 1, 2, 3, 4; Sigma Alpha Iota 2, 3, 4; May Day 1, 2; Susquehanna Singers 2, 3; Chapel Choir 1, 2, 3, 4; Concert Orchestra 3; Marching Band 3, 4; Future Teachers of America 3; *The Susquehanna Staff* 3, 4; Orientation 3, 4; Chamber Music 3, 4; Motet Choir Director 3, 4.

FREDERICK R. FROST

Business Administration

Student Christian Association 1, 2, 3; Theta Chi 1, 2, 3, 4; LANTHORN 3, Advertising Manager 3.

HENRY W. GEISS

Liberal Arts

Student Christian Association 1, 2, 3, 4; Phi Mu Delta 1, 2, 3, 4; Concert Band 1, 3, 4; Concert Orchestra 1; Marching Band 1, 2, 3, 4; Biemic Society 1, 2, 3, 4.





JANET A. GERNER
Music Education

Student Christian Association 1, 2, 3, 4, Girls' Vice-President 4; Sigma Alpha Iota 1, 2, 3, 4, Vice-President 3, President 4; May Day 1, 2, 3; Susquehanna Singers 2, 3; Chapel Choir 2, 3, 4; Concert Band 1, 2, 3, 4; Marching Band 1, 2, 3, 4; Future Teachers of America 3; Women's Athletic Association 1, 2, 3; Intramurals 1, 2; Counselor 3; Orientation 3, 4.

WILLIAM J. GODFREY
Liberal Arts

Student Christian Association 1, 2, 3, 4; Phi Mu Delta 1, 2, 3, 4; Biemic Society 1, 2, 3, 4; Intramurals 1, 2.



ELSIE L. GRUBER
Liberal Arts

Student Christian Association 1, 2, 3, 4, Treasurer 2; Alpha Delta Pi 1, 2, 3, 4, Vice-President 3, President 4; May Day 1, 2; Class Secretary 3; Vice-Presidents' Council 1, 2, 3; Women's Athletic Association 1, 2, 3, 4, Vice-President 3; Counselor 3; Hassinger Hall President 3; Orientation 2, 3, 4, Chairman 4; Panhellenic Council 4; Women's Student Council 1, 2, 3, 4, President 4; Women's Judiciary Committee 3, 4, Chairman 3; *Who's Who Among Students in American Universities and Colleges* 4.

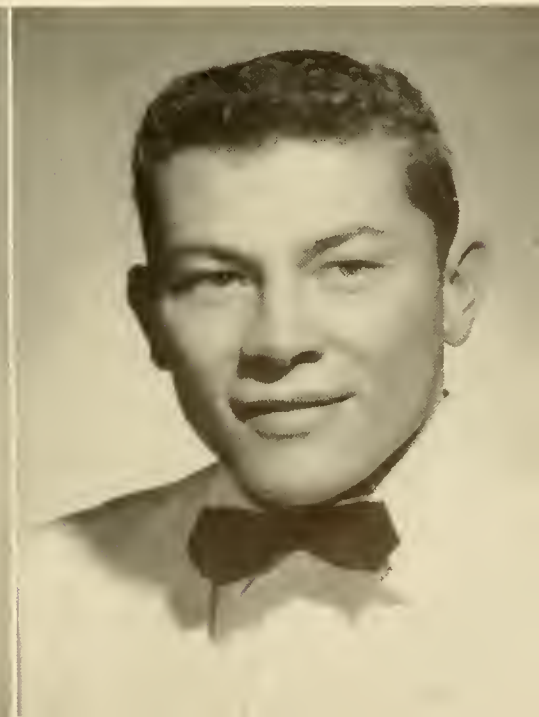


D. JACK GHATAN
Liberal Arts

Student Christian Association 1, 2, 3, 4; Bond and Key Honorary 1, 2, 3, 4; Biemic Society 1, 2, 3, 4; Intramurals 1, 2, 3, 4.

ROBERT W. GULICK
Music Education

Student Christian Association 1, 2; Bond and Key 1, 2, 3, 4, Vice-President 4; May Day 3; Susquehanna Singers 2; Chapel Choir 1, 2, 3, 4; Concert Band 1, 2, 3, 4; Concert Orchestra 1; Marching Band 1; Future Teachers of America 4; *The Susquehanna Staff* 3, 4; Intramurals 1, 2, 3, 4; Football 2, 3, 4; Baseball 1, 2, 3, 4.





ROBERT L. HACKENBERG
Business Administration

Student Christian Association 1, 2, 3; Phi Mu Delta 2, 3, 4; Susquehanna Players 1, 2, 3, 4; Alpha Psi Omega 4; Business Society 2, 3; Veterans' Organization 2, 3; Intramurals 1, 2, 3, 4.



DONALD L. HARTMAN
Liberal Arts

Student Christian Association 1; Concert Band 2; Marching Band 1.

BARBARA F. HARTRANFT
Music Education

Student Christian Association 1, 2, 3, 4; Sigma Alpha Iota 2, 3, 4, Recording Secretary 3; May Day 1, 2; Susquehanna Singers 2, 3; Chapel Choir 3, 4; Concert Band 3, 4; Future Teachers of America 2, 3, 4, Council 3; Women's Athletic Association 1; Intramurals 1; Counselor 3; Orientation 3, 4; Seibert Hall President 4; Women's Student Council 2, 4; Women's Judiciary Committee 4.

NANCY J. HENDERSON
Liberal Arts

Student Christian Association 1, 2, 4; Women's Student Council 1; Lutheran Deaconess Mother House 3.

ANNE L. HEPLER
Music Education

Student Christian Association 1, 2, 3, 4; May Day 2; Susquehanna Singers 2, 3; Chapel Choir 2, 3, 4; Concert Band 2; Concert Orchestra 4; Marching Band 2, 3; Future Teachers of America 3, 4; Women Day Students' Organization 1, 2, 3, 4, Vice-President 3.





EVELYN E. HERBSTRIITH

Liberal Arts

Student Christian Association 3, 4; Phi Kappa Phi 4; Biemic Society 3, 4; Women's Athletic Association 4; Intramurals 3, 4; Pennsylvania State University 1, 2.



ELOISE W. IMRIE

Liberal Arts

Student Christian Association 1, 2, 3, 4; Alpha Delta Pi 3, 4; May Day 1; Susquehanna Singers 3; Pi Gamma Mu 3, 4, Vice-President 4; Biemic Society 2, 3, 4; Women's Athletic Association 2, 3; *The Susquehanna Staff* 4; Proofreader 4; Intramurals 3, 4; Orientation 3, 4; LANTHORN 3.

JOHN E. KARISS

Liberal Arts

Student Christian Association 1, 2; Phi Mu Delta 1, 2, 3, 4; Biemic Society 1, 2, 3, 4; Intramurals 1, 2, 3.

SETH E. KEENER, JR.

Business Administration

Student Christian Association 1, 2, 3, 4; Phi Mu Delta 1, 2, 3, 4, Treasurer 2, 3; Susquehanna Players 1; Biemic Society 3, 4; Business Society 1, 2, 3, 4; Cheerleader 1.

MARJORIE M. KOSTENBAUDER

Medical Secretary

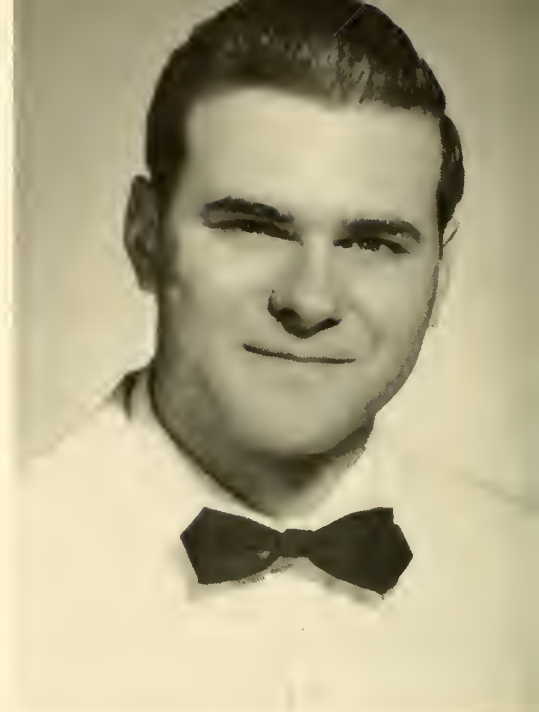
Student Christian Association 1, 2, 3, 4; May Day 1, 2, 3; Biemic Society 1, 3; Business Society 2, 3; Women's Athletic Association 1, 2, 3, 4; Tau Kappa 3, 4, Vice-President 4; Intramurals 1, 2, 3, 4, Board 2, 3; Hockey 1, 2; Orientation 3, 4.





DEBORAH B. KRAPF
Liberal Arts

Student Christian Association 1, 2, 3, 4; Kappa Delta 1, 2, 3, 4; Treasurer 3, 4; Homecoming 2; May Day 1, 2; Class Vice-President 3; Secretary 4; Biemic Society 2, 3; Women's Athletic Association 1, 2, 3, 4; Women Day Students' Organization 1, 2; Intramurals 1, 2, 3, 4; Orientation 3; Women's Student Council 4; Secretary-Treasurer 4; *Who's Who Among Students in American Universities and Colleges* 4.



H. ROBERT KURTZ
Business Administration

Student Christian Association 1, 2, 3; Bond and Key 1, 2, 3, 4; Future Teachers of America 4; Business Society 1; *The Susquehanna Staff* 3; Orientation 2; Intramurals 1, 2; Football Manager 2, 3.

CLAYTON E. LEACH, JR.
Business Administration

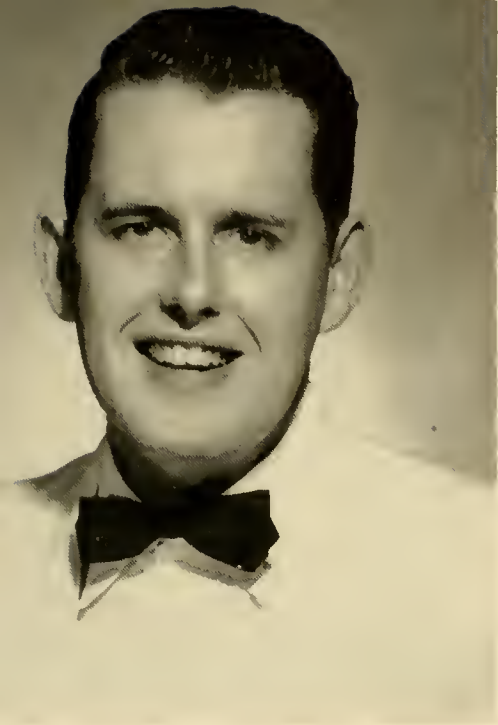
Theta Chi 1, 2, 3, 4, Pledge Marshal 3; Secretary 4; Concert Band 1, 2, 3, 4; Marching Band 1, 2, 3, 4; Future Teachers of America 2, 3, 4; Treasurer 4; Council 4; Business Society 3, 4; LANTHORN 3; Advertising Manager 3.

HARRY M. LEISTER, JR.
Business Administration
Phi Mu Delta 2, 3, 4.

NANCY J. McCULLOUGH
Secretarial

Student Christian Association 1, 2, 3, 4; Kappa Delta 1, 2, 3, 4; Guard 2, 3; Activities Chairman 2, 3, 4; Order Chairman 2, 3, 4; Susquehanna Players 4; Secretary 4; May Day 1, 2, 3; Business Society 1, 2, 3, 4; Treasurer 4; Women's Athletic Association 1, 2, 3, 4; Recording Secretary 3; Intramurals 1, 2, 3, 4.





RICHARD G. MATHA
Business Administration

Theta Chi 1, 2, 3, 4; Veterans' Organization 3, 4; Business Society 1, 2, 3, 4; Intramurals 1, 2, 3, 4, Board 3, 4.



CHARLOTTE R. MEERBACH
Liberal Arts

Student Christian Association 1, 2, 3, 4; Alpha Delta Pi 1, 2, 3, 4, Guard 3, Recording Secretary 4; May Day 1, 2, 3; Future Teachers of America 2, 3, 4, Secretary 3, Council 3; Phi Kappa Phi 4; Women's Athletic Association 1, 2, 3, 4; Tau Kappa 3, 4, Secretary 4; *The Susquehanna Staff* 3; Counselor 3; Orientation 2, 3, 4; Intramurals 1, 2, 3, 4, Board President 4; Basketball 1, 2; Women's Student Council 3.

CARROLL S. MILLARD
Business Administration

Student Christian Association 1, 2, 3, 4; Phi Mu Delta 1, 2, 3, 4, Treasurer 1, 2; Susquehanna Players 1, Assistant Business Manager 1; Business Society 1, 2; Pi Gamma Mu 3; Veterans' Organization 3; *The Susquehanna Staff* 3, Circulation Manager 3; LANTHORN 3, Editor 3; Intramurals 1, 2, 3, 4, Board 3; Football Program 2, 3, 4, Advertising Manager 2, Editor 3; Business Society Freshman Scholarship Cup 1.

DORIS L. MOON
Liberal Arts

May Day 2; Future Teachers of America 2, 3, 4; Biemic Society 2, 3, 4; Women Day Students' Organization 1; Orientation 3.

SR. GLADYS A. MOORE
Liberal Arts

Student Christian Association 1, 2, 4; Phi Kappa 1, 2; Women's Athletic Association 1, 2; Intramurals 1, 2; Assistant Housemother, Hassinger Hall 4; Lutheran Deaconess Mother Sr. House 3.





ANNA JANE MOYER
Liberal Arts

Student Christian Association 1, 2, 3, 4, Girls' Vice-President 3; Alpha Delta Pi 1, 2, 3, 4, Historian 3, 4, Reporter 3, 4; May Day 1, 2, Pageant Author 2; Susquehanna Singers 1; Phi Kappa Phi 3, 4, President 3; Future Teachers of America 1, 2, 3, 4, Vice-President 3, President 4; *The Susquehanna Staff* 1, 2, 3, 4, Managing Editor 3, Editor 4; Women Day Students' Organization 1, 2, 3, 4, Social Chairman 1, 2; Orientation 2, 3; Women's Student Council 2, 3; *Who's Who Among Students in American Universities and Colleges* 4; Lutheran Brotherhood Scholarship 3; Charles E. Covert Memorial Prize 3.

HELENE A. NESTLER
Music Education

Student Christian Association 1, 2, 3, 4; Kappa Delta 2, 3, 4, Scholarship Chairman 3, 4; May Day 2; Susquehanna Singers 2, 3; Chapel Choir 3, 4; Concert Orchestra 3; Vice-Presidents' Council 4; Future Teachers of America 3, 4; Biemic Society 2.



NEDEBIAH H. PECK

Business Society 3, 4; Syracuse University 1, 2.

MARY E. NAUGLE
Music Education

Student Christian Association 1, 2, 3, 4; Sigma Alpha Iota 2, 3, 4; May Day 1, 2, 3, 4; Susquehanna Singers 2, 3; Concert Band 3; Concert Orchestra 3, 4; Chapel Choir 3; Future Teachers of America 2, 3, 4; Women Day Students' Organization 1, 2, 3, 4.

DONALD M. REAMER
Liberal Arts

Student Christian Association 1, 2, 3; Phi Mu Delta 1, 2, 3, 4, Secretary 4; Class Treasurer 4; Biemic Society 1, 2, 3, 4, Vice-President 3, President 4; Intramurals 1, 2, 3, 4.





AREA J. REGOLI
Medical Secretary

Student Christian Association 1, 2, 3, 4; Alpha Delta Pi 1, 2, 3, 4, Registrar 2, Corresponding Secretary 4, Rush Chairman 3; Susquehanna Players 3, 4; May Day 1, 2; Biemic Society 3, 4; Business Society 1, 2, 3, 4; Women's Athletic Association 1, 2, 3, 4; Intramurals 1, 2, 3, 4; Panhellenic Council 2, 3.



MARIA S. RONNGREN
Business Administration

Student Christian Association 1, 2, 3, 4, Treasurer 3; Alpha Delta Pi 1, 2, 3, 4, Chaplain 3, Treasurer 4; May Day 1, 2, 3; Class Treasurer 3; Pi Gamma Mu 3, 4, President 4; Business Society 1, 2, 3, 4; Women's Athletic Association 1, 2, 3, 4, Treasurer 3; Tau Kappa 3, 4, President 4; LANTHORN 3, Business Manager 3; Counselor 3; Orientation 2, 3, 4; Intramurals 1, 2, 3, 4, Board 3; Women's Student Council 3; Women's Judiciary Committee 3; *Who's Who Among Students in American Universities and Colleges* 4.

DONALD E. ROOK
Business Administration

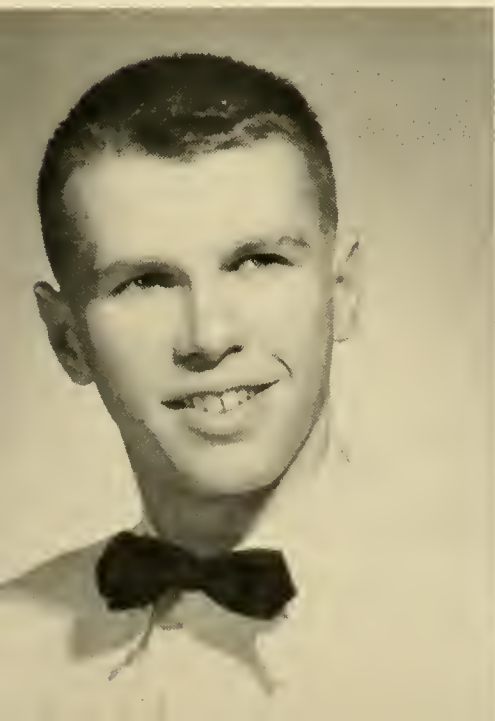
Student Christian Association 1, 2; Theta Chi 1, 2, 3, 4, Librarian 3; Susquehanna Players 1; May Day 1; Business Society 1, 2; *The Susquehanna Staff* 3; Baseball Manager 1.

CHARLOTTE J. SANDT
Medical Secretary

Student Christian Association 1, 2, 3, 4; Kappa Delta 1, 2, 3, 4, Rush Chairman 3, 4; Susquehanna Players 1, 3; Homecoming 3, 4, Queen 4; May Day 1; Biemic Society 1, 3, 4; Women's Athletic Association 1, 2, 3, 4, President 4; Tau Kappa 2, 3, 4, Vice-President 3, Treasurer 4, National Treasurer 4; Cheerleader 2, 3, 4, Captain 4; Hockey 1, 2; Intramurals 1, 2, 3, 4, Board 3; *The Susquehanna Staff* 4, Women's Sports Editor 4; Basketball 1, 2, 3, Manager 3; Panhellenic Council 3, 4, President 4.

DIANE H. SCHILKE
Music Education

Student Christian Association 1, 2, 3, 4, Secretary 3; Sigma Alpha Iota 1, 2, 3, 4, Corresponding Secretary 3, Chaplain 4; Susquehanna Players 3; May Day 2; Susquehanna Singers 2, 3; Chapel Choir 2, 3, 4; Concert Orchestra 3, 4; Marching Band 3, 4; Future Teachers of America 3; Women's Student Council 3, 4.





RALPH B. SHELDON
Business Administration

Student Christian Association 1, 2, 3, 4; Bond and Key 1, 2, 3, 4, Steward 3, President 4; Fraternity Senate 4; Business Society 1, 2, 3, 4; Intramurals 1, 2, 3, 4; Baseball 1, 2, 3.



PATRICIA A. SIPE
Secretarial

Student Christian Association 1, 2, 3, 4; May Day 2, 3; Susquehanna Singers 1, 2, 3; Biemic Society 4; Business Society 1, 2, 3, 4; Vice-Presidents' Council 4; *The Susquehanna Staff* 1, 2, 3, 4; Orientation 3.

GARY M. SMITH
Business Administration

Student Christian Association 1, 3; Bond and Key 1, 2, 3, 4, House Manager 3, Secretary 4; Susquehanna Players; May Day 3; Business Society 1, 2, 4, Vice-President 4; Orientation Co-chairman 4; Intramurals 1, 2, 3, 4; Men's Student Council 2, 3, 4, Treasurer 3, 4; Basketball 2.

GLEN E. SMITH
Liberal Arts

Student Christian Association 1, 2, 3; Phi Mu Delta 1, 2, 3, 4, President 4; Class Vice-President 4; Biemic Society 1, 2, 3, 4, Secretary-Treasurer 4; Business Society 1; Intramurals 1, 2, 3, 4; Fraternity Senate 4; Campus Social Committee 3, 4; *Who's Who Among Students in American Universities and Colleges* 4.

JESSIE P. SMITH
Liberal Arts

Student Christian Association 1, 2, 3, 4; Kappa Delta 1, 2, 3, 4; Sergeant-at-Arms 3, President 4; Vice Presidents' Council 3; May Day 2; Future Teachers of America 3, 4, Librarian 3, Council 3; Biemic Society 1; Women's Athletic Association 1, 2, 3, 4, Treasurer 4; Orientation 3; Intramurals 1, 2, 3, 4, Board 3; Panhellenic Council 3, 4, Secretary-Treasurer 3; Women's Student Council 3.





MARY JANE SOLOMON
Music Education

Student Christian Association 3, 4; Sigma Alpha Iota 3, 4, Corresponding Secretary 4; Susquehanna Players 4; Susquehanna Singers 2, 3; Chapel Choir 1, 2, 3, 4; Vice-Presidents' Council 4; Women Day Students' Organization 1; *The Susquehanna Staff* 3, 4; LANTHORN 3, Assistant Literary Editor 3.



GENE A. STETTLER
Business Administration

Student Christian Association 1, 2, 3, 4; Bond and Key 2, 3, 4, Secretary 3; Business Society 3, 4.

GENE L. STOCK
Business Administration

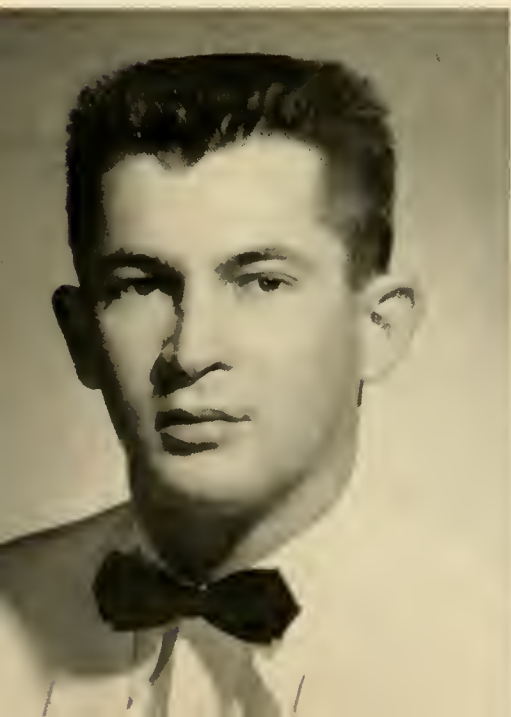
Student Christian Association 1, 2; Bond and Key 4; Business Society 1, 2; Intramurals 1, 2, 3, 4; Basketball 2.

MARGARET D. SULTZBAUGH
Music Education

Student Christian Association 1, 2, 3, 4; Sigma Alpha Iota 3, 4, Vice-President 4; May Day I, 2, 3; Susquehanna Singers 2, 3; Chapel Choir 2, 3, 4; Concert Band 1, 2, 3, 4; Marching Band 1, 2, 3, 4; Future Teachers of America 2, 3, 4; Orientation 3.

GENEVIEVE L. THOMAS
Business Education

Student Christian Association 1, 2, 3, 4; Kappa Delta 1, 2, 3, 4, Chaplain 3, Secretary 4; Future Teachers of America 2, 3, 4; Women's Athletic Association 2, 3, 4; Business Society 1, 2, 3, 4; LANTHORN 3; Intramurals 1, 2, 3, 4; Women's Judiciary Committee 4.





HAROLD M. TRABOSH

Liberal Arts

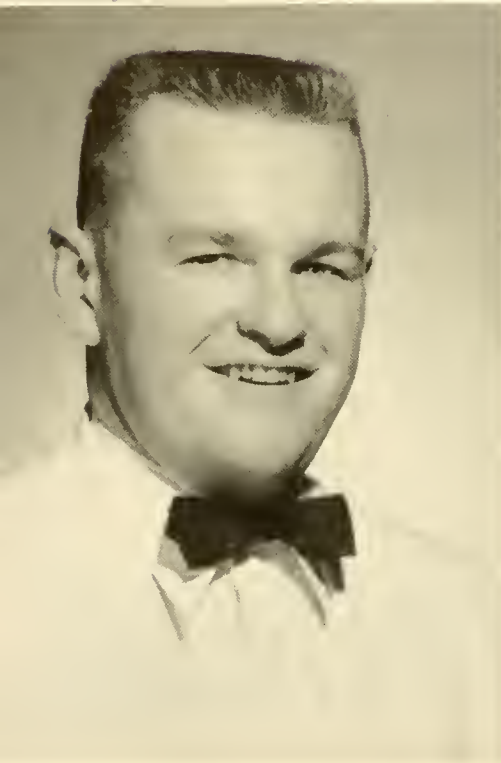
Phi Mu Delta 1, 2, 3, 4; Susquehanna Players 2; Biemic Society 1, 2, 3, 4; Intramurals 1, 2, 3, 4.



SETH P. WHEELAND

Liberal Arts

Student Christian Association 1, 2, 3, 4; Bond and Key 2, 3, 4; Chapel Choir 1; Intramurals 2.



GERALD E. WILSON

Business Administration

Student Christian Association 1; Theta Chi 1, 2, 3, 4, Treasurer 3, Vice-President 4; Chapel Choir 1, 4; Concert Band 1, 2, 3, 4; Marching Band 1; Business Society 1, 4; Veterans' Organization 2, 3; Orientation 4; Intramurals 1, 2, 3, 4; Football 2, 3, 4; Men's Student Council 2, 3, 4.



JOHN D. YEICH

Liberal Arts

Student Christian Association 1, 2, 3, 4, Men's Vice-President 4; Susquehanna Players 2, 3, 4; Alpha Psi Omega 4; May Day 3; Chapel Choir 3, 4; Pi Gamma Mu 3, 4; Phi Kappa 1, 2; Pre-Theological Club 1, 2, 3, 4, President 4; Orientation 4; Intramurals 3; Baseball 2; Men's Student Council 3, 4, Vice-President 3, President 4; *Who's Who Among Students in American Universities and Colleges* 4.

The Special Students



AVIS M. FLEMING



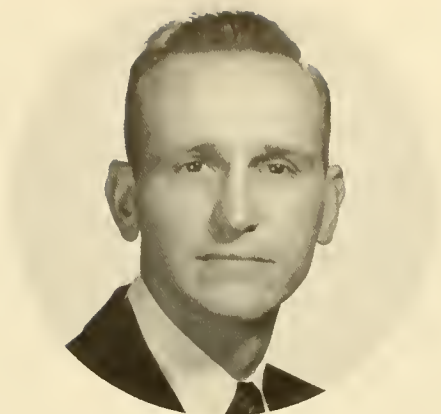
RALPH W. FORTNA



FAYE J. LEWIS

WHO'S WHO

Among Students in
American Universities
and Colleges



WILLIAM K. DONEY



ELSIE L. GRUBER



CLYDE R. KAUFFMAN



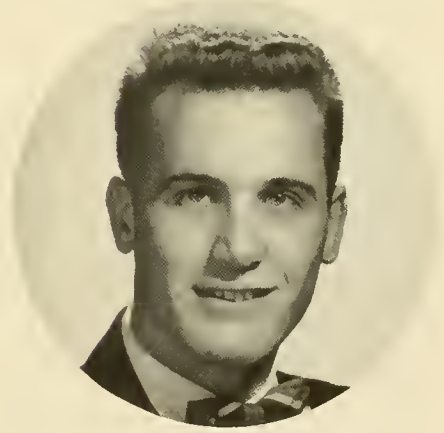
DEBORAH B. KRAPP



ANNA JANE MOYER



MARIA S. RONNGREN



GLEN E. SMITH

O this learning, what
a thing it is!

—SHAKESPEARE



JOHN D. YEICH

The Junior Class



PETER M. NUNN
President



EDWARD R. RHODES, JR.
Vice-President



MARY ELLEN STRAUCH
Secretary



NELSON E. BAILEY
Treasurer

SCOTT E. ANDERSON

Liberal Arts



NELSON E. BAILEY

Liberal Arts

Student Christian Association 2, 3; Cabinet 3; Bond and Key 2, 3; Susquehanna Players 3; Class Treasurer 3; LANTHORN 3; Intramurals 2, 3; Lock Haven State Teachers College 1.

JACK K. BISHOP

Business Administration

Student Christian Association 1, 2; Theta Chi 1, 2, 3, 4, Treasurer 3; Biemic Society 1; Business Society 1, 2, 3; Orientation 3; Intramurals 1, 2, 3; Football 3; Men's Student Council 3.



BARBARA L. BOOB

Music Education

Student Christian Association 1, 2, 3; Sigma Alpha Iota 2, 3; Susquehanna Players 1, 3; May Day 1, 2; Susquehanna Singers 2, 3; Chapel Choir 3; Concert Band 1, 2, 3; Concert Orchestra 3; Marching Band 1, 2, 3; Future Teachers of America 3; Business Society 1, 2, 3; *The Susquehanna Staff* 3; Intramurals 1, 2, 3.

GEORGE R. CAWLEY

Business Administration



FRANK A. CHANGO

Liberal Arts

Student Christian Association 1, 2, 3; Phi Mu Delta 1, 2, 3, Social Chairman 3; Alpha Psi Omega 3; Susquehanna Players 1, 2, 3; Biemic Society 1, 2, 3.

CARLETTA F. CHUBB

Liberal Arts

Student Christian Association 1, 2, 3; Alpha Delta Pi 2, 3; May Day 1, 2; Vice-Presidents' Council 3; Future Teachers of America 3, Council 3; Biemic Society 1, 2, 3; Women's Judiciary Committee 3, Recorder 3; *The Susquehanna Staff* 1, 2, 3, Proofreader 3; Counselor 3; Orientation 3.



PAUL J. CLUGSTON

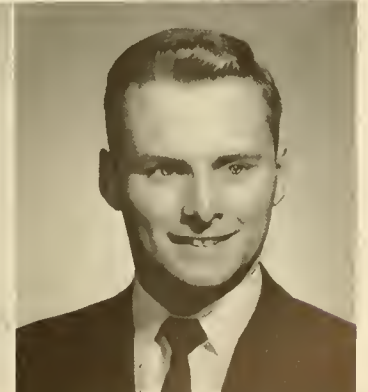
Liberal Arts

Biemic Society 1, 2, 3.

JANET M. COLE

Medical Secretary

Student Christian Association 1, 2, 3; Alpha Delta Pi 1, 2, 3; May Day 1, 2; Biemic Society 1; Business Society 1, 2; Orientation.



ELWOOD H. COX, JR.

Business Administration

Student Christian Association 1, 3; Bond and Key 1, 2, 3, Assistant Treasurer 2, Steward 3; Business Society 1, 2, 3; *The Susquehanna Staff* 3, Circulation Manager 3, Business Manager 3; LANTHORN 3; Intramurals 1, 2, 3; Orientation 2; Men's Student Council 2, 3.



CHARLES P. DEITRICH

Liberal Arts

Student Christian Association 1, 2, 3; Theta Chi 2, 3; May Day 1; Future Teachers of America 3; Intramurals 2, 3.

MARION D. DRUMHELLER

Business Education

Student Christian Association 1, 2, 3; May Day 1, 2; Future Teachers of America 1, 2, 3; Business Society 1, 2, 3; Women's Athletic Association 1, 2, 3, Intramural Board 3; Tau Kappa 2, 3; Intramurals 1, 2, 3; Varsity Basketball 1.



MARTHA FLOOD

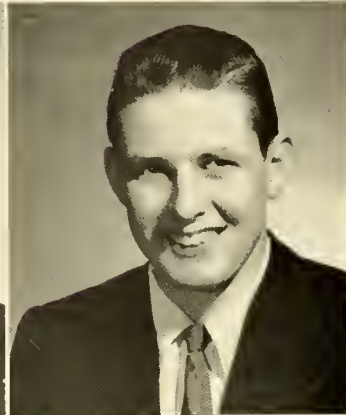
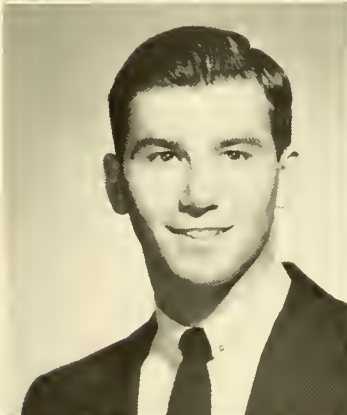
Music Education

Student Christian Association 1, 2, 3; Sigma Alpha Iota 2, 3, Treasurer 3; Susquehanna Singers 2, 3; Concert Orchestra 2, 3; Future Teachers of America 1, 2.

NANCY L. FORREST

Business Administration

Student Christian Association 1, 2, 3; Alpha Delta Pi 1, 2, 3, Guard 3, Rush Chairman 3; Susquehanna Singers 1; May Day 1, 2; Business Society 1, 2, 3.



RONALD E. FOUCHE

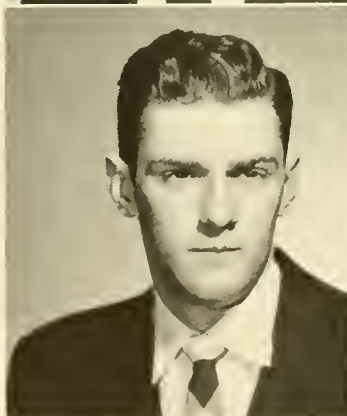
Business Administration

Student Christian Association 3; Business Society 3; Hershey Junior College 1, 2.

GUY C. FRISK

Liberal Arts

Biemic Society 3; Grove City College 1, 2.



CHARLES A. GERBE

Business Administration

WAYNE R. GEMBERLING

Business Administration



ROBERT D. GRECO

Liberal Arts

Student Christian Association 1; Phi Mu Delta 1, 2, 3; Susquehanna Players 1; Biemic Society 2, 3; Intramurals 1, 2, 3.

CHESTER A. HALL, JR.

Business Administration

Student Christian Association 1, 2; Theta Chi 1, 2, 3, Assistant Treasurer 3, Social Chairman 3; May Day 1, 2, 3; Chapel Choir 1; Concert Band 1, 2, 3; Marching Band 1, 2, 3; Business Society 1, 2, 3; The Susquehanna Staff 3; Orientation 3.

DAVID A. HARRINGTON

Business Administration

Student Christian Association 1, 2, 3; Bond and Key 1, 2, 3, Treasurer 2, 3; Business Society 1, 2, 3; Orientation 3; Intramurals 1, 2, 3.

C. LYNN HASSINGER

Business Education

Student Christian Association 1, 2, 3; Concert Band 1, 2, 3; Concert Orchestra 1, 2; Marching Band 3; Future Teachers of America 1, 2, 3; Business Society 1, 2, 3; Women Day Students' Organization 1, 2, 3; LANTHORN 3; Orientation 3, Assistant Chairman 3.

PARK H. HAUSSLER

Business Administration

Theta Chi 1, 2, 3, Chaplain 2; LANTHORN 3.

DONALD R. HENNINGER

Business Administration

Student Christian Association 1, 3; Business Society 3; Veterans' Organization 2, 3; Intramurals 1, 2.

ELEANOR T. HINKLE

Music Education

May Day 1, 2, 3; Susquehanna Singers 2, 3; Concert Band 1, 2, 3; Concert Orchestra 1, 2, 3; Marching Band 1, 2, 3; Future Teachers of America 1, 2, 3; Women Day Students' Organization 1, 2, 3, Treasurer 2; LANTHORN 3; Orientation 2, 3.

EARL F. KLEINTOP

Business Administration

Student Christian Association 1, 2, 3; Alpha Psi Omega 3; Susquehanna Players 1, 2, 3; Chapel Choir 1; Business Society 1, 2, 3; Veterans' Organization 2.

JAMES D. KOONES

Liberal Arts

Phi Kappa Phi 3; Pre-Theological Club 2, 3; Lycoming College 1.

MILAN J. KRATZER

Liberal Arts

Student Christian Association 1, 2, 3; Phi Mu Delta 1, 2, 3; LANTHORN 3; Intramurals 1, 2, 3; Baseball 1, 2, 3.

WALLACE D. KUTZ, JR.

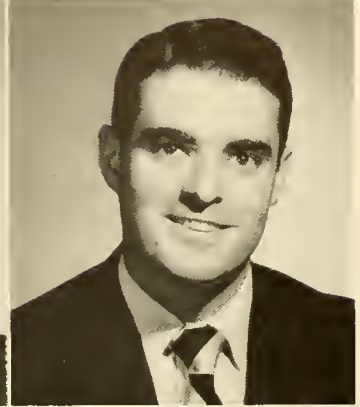
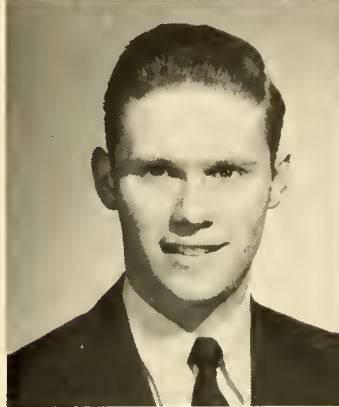
Music Education

Theta Chi 1, 2, 3; May Day 1, 2, 3; Susquehanna Singers 2, 3; Chapel Choir 2; Concert Band 1, 2, 3; Marching Band 1.

CLARENCE L. LORAH

Liberal Arts

Student Christian Association 1, 2, 3; Phi Mu Delta 1, 2, 3; Susquehanna Players 1; May Day 1, 2; Biemic Society 1, 2, 3, Publicity Chairman 3; *The Susquehanna Staff* 2, 3, Photography Editor 3; LANTHORN 3, Editor-in-Chief 3; Orientation 2, 3.





NANCY L. MAREK

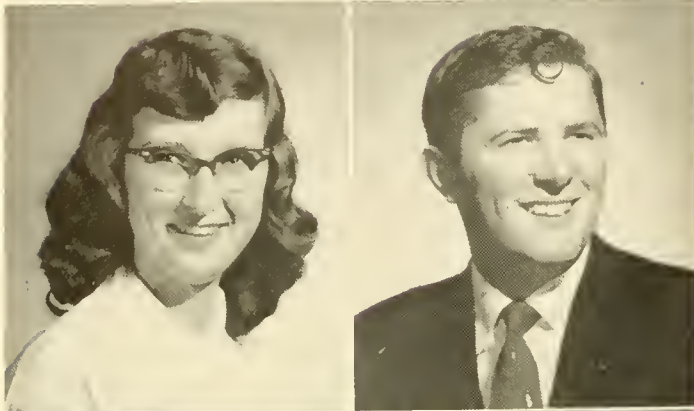
Business Education

Student Christian Association 1, 2, 3, Junior Class Representative; Alpha Delta Pi 1, 2, 3; May Day 1, 3; Future Teachers of America 1, 2, 3; Business Society 1, 2, 3; Women's Athletic Association 2, 3, Vice-President 3; LANTHORN 3, Typist 3; Orientation 3; Intramurals 1, 2, 3; Panhellenic Council 2, 3, Secretary-Treasurer 3; Women's Student Council 3.

GLORIA D. MASTELLER

Business Education

Student Christian Association 1, 2, 3; Alpha Delta Pi 1, 2, 3; May Day 1, 2, 3; Susquehanna Singers 1; Concert Band 1, 2, 3; Business Society 1, 2, 3.



BONNIE L. MILLER

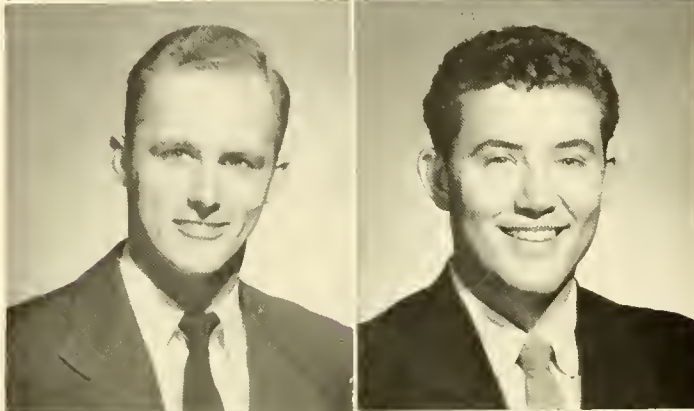
Business Education

Student Christian Association 1, 2, 3; May Day 1; Future Teachers of America 2, 3, Council 3; Business Society 1, 2, 3; Intramurals 3.

PETER M. NUNN

Business Administration

Student Christian Association 1, 2, 3; Phi Mu Delta 1, 2, 3, Vice-President 3; May Day 1; Class Treasurer 1; Class Vice-President 2; Class President 3; Pi Gamma Mu 3; Business Society 1, 2, 3, Vice-President 2, President 3; Orientation 3; Intramurals 1, 2, 3; Football 1, 2.



GEORGE W. ORREN, JR.

Business Administration

Student Christian Association 2, 3; Phi Mu Delta 2, 3; Susquehanna Players 2, 3; Pi Gamma Mu 3; Veterans' Organization 2, 3; Orientation 3; Intramurals 2, 3; Football 3.

GEORGE H. POSPISIL

Business Administration

Bond and Key 1, 2, 3; Susquehanna Players 1, 2, 3; May Day 2; Class Vice-President 1; Class President 2; Business Society 1; Veterans' Organization 2; *The Susquehanna* Staff 1, 2, 3, Sports Editor 2, 3; LANTHORN 2; Orientation 3; Intramurals 1, 2, 3; Football 1, 2; Basketball 1; Men's Student Council 2, 3, Vice-President 3.



LEONARD L. QUICK

Business Administration

Student Christian Association 1, 3; Bond and Key 1, 2, 3, Assistant Steward 1, Steward 2; Business Society 3; Veterans' Organization 2; Intramurals 2, 3; Football 1, 2; Baseball 1.

JOAN C. RAUDENBUSH

Medical Secretary

Student Christian Association 1, 2, 3; Alpha Delta Pi 1, 2, 3; May Day 1, 2; Susquehanna Singers 2; Chapel Choir 1; Biemic Society 3; Business Society 1, 2, 3; Women Day Students' Organization 1, 2, 3; LANTHORN 3.



THIRY E. REAMER

Liberal Arts

Student Christian Association 1, 2, 3; Alpha Delta Pi 1, 2, 3; Susquehanna Players 1, 2, 3; *The Susquehanna* Staff 1, 2, 3.

EDWARD R. RHODES, JR.

Business Administration

Student Christian Association 2, 3; Bond and Key 1, 2, 3; May Day 2; Class Treasurer 2; Class Vice-President 3; Business Society 1, 2, 3; Veterans' Organization 2; Orientation 3; Intramurals 1, 2, 3.

PAUL W. ROGERS

Music Education

Student Christian Association 1, 2, 3; Susquehanna Players 1, 2, 3; May Day 2, 3; Susquehanna Singers 2, 3; Chapel Choir 1, 2, 3; Concert Band 2, 3; Chamber Music Society 2, 3.

FRANK L. ROMANO

Liberal Arts

Theta Chi 2, 3; Intramurals 1, 2, 3; Basketball 2, 3; Baseball 2.

LARRY G. ROMIG

Business Education

Student Christian Association 1, 2, 3; Bond and Key 1, 2, 3; Susquehanna Players 1, 2; Veterans' Organization 2; *The Susquehanna Staff* 3, Advertising Manager 3; Intramurals 1, 2, 3; Baseball 1.

JOHN A. ROSHON

Liberal Arts

Student Christian Association 3; Phi Kappa Phi 3; Biemic Society 3; Pre-Theological Club 3; Johnstown Center, University of Pittsburgh 1, 2.

CAROLE A. SADOSUK

Liberal Arts

Student Christian Association 1, 2, 3; Alpha Delta Pi 1, 2, 3, Vice-President 3; May Day 1, 2; Concert Band 1; Vice-Presidents' Council 3; Future Teachers of America 2, 3, Vice-President 3, Council 3; Phi Kappa Phi 1, 2, 3, Secretary 2, Vice-President 3; Biemic Society 1; Women's Athletic Association 1, 2, 3; Tau Kappa 2, 3; *The Susquehanna Staff* 1, 2, 3, Proofreader 2, News Editor 3; LANTHORN 3, Assistant Editor 3; Counselor 3; Orientation 2, 3; Intramurals 1, 2, 3, Board 3; Women's Judiciary Committee 3, Chairman 3; Women's Student Council 1, 2, 3.

GALEN W. SCHLICHTER

Liberal Arts

Student Christian Association 1, 2; Susquehanna Players 2; Chapel Choir 1, 3; Future Teachers of America 1, 2, 3; Council 3; Phi Kappa Phi 3; *The Susquehanna Staff* 2, 3, Editorial Assistant 3; LANTHORN 3, Proofreader 3; Orientation 3.

GEORGE F. SCHLUCHTERER

Business Administration

Student Christian Association 1, 2, 3; Phi Mu Delta 1, 2, 3, Treasurer 3; Class President 1; Business Society 1, 2, 3; Orientation 3; Intramurals 1, 2, 3; Football 1; Baseball 1, 2, 3; Men's Student Council 2, 3.

GARY K. SCHROEDER

Business Administration

Student Christian Association 1, 2; Theta Chi 1, 2, 3; Business Society 1, 2, 3; Intramurals 1, 2, 3; Football 1; Basketball Manager 3; *The Susquehanna Staff* 1, 2.

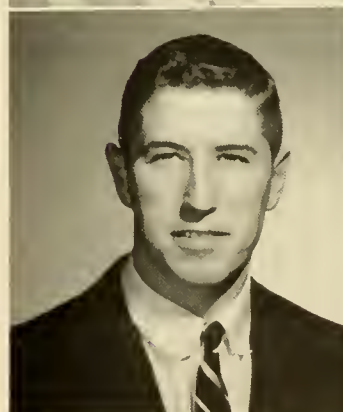
STANLEY R. SHILLING

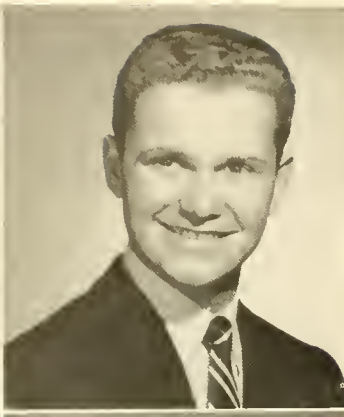
Business Administration

Student Christian Association 1, 2, 3; Theta Chi 1, 2, 3; Intramurals 1, 2, 3; Basketball Manager 1, 2, 3; Business Society 1, 2.

EDWARD C. SHORE

Liberal Arts





M. MARILYNN SLYOFF

Music Education

Student Christian Association 2; May Day 2; Susquehanna Singers 2; Chapel Choir 2, 3; Concert Band 2, 3; Concert Orchestra 2, 3; Concert Master 3; Marching Band 3; Harrisburg Symphony 1, 2, 3; Collegiate Orchestra 3; Concert Master 3; Chamber Music Society 2, 3; Lebanon Valley 1.

DOUGLAS C. SMITH

Liberal Arts

Student Christian Association 1, 2, 3; Phi Mu Delta 1, 2, 3; Alpha Psi Omega 2, 3; Susquehanna Players 1, 2, 3; May Day 1, 2, 3; Concert Band 1, 2, 3; Concert Orchestra 1; Marching Band 1, 2, 3; Future Teachers of America 1, 2, Council 1, 2; Biemic Society 2; Pre-Theological Club 3; LANTHORN 3, Business Manager 3; Orientation 2, 3; Phi Kappa Phi 3.



ELIZABETH A. STRADLING

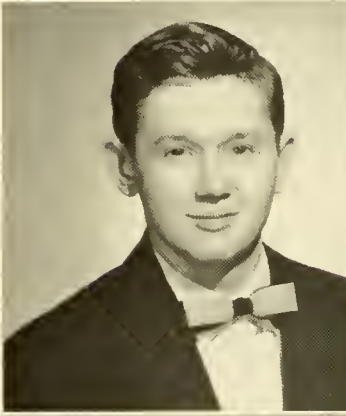
Music Education

Student Christian Association 1, 2, 3; Homecoming 3; May Day 1, 2; Susquehanna Singers 2, 3; Chapel Choir 2, 3; Marching Band 2, 3; Women's Athletic Association 1, 2, 3; LANTHORN 3; Intramurals 1, 3.

MARY ELLEN STRAUCH

Music Education

Student Christian Association 1, 2, 3; Sigma Alpha Iota 2, 3; Homecoming 1, 2; May Day 2; Class Secretary 3; Susquehanna Singers 2, 3; Chapel Choir 1, 2, 3; Concert Band 1, 2, 3; Concert Orchestra 1, 2, 3; Marching Band 1, 2, 3; Drum Majorette 2, 3; Vice-Presidents' Council 3; Women's Judiciary Committee 3; *The Susquehanna Staff* 2; LANTHORN 3, Literary Editor 3; Counselor 3; Hasinger House President 3; Orientation 3.



FRANKLIN G. STUGART

Liberal Arts

Student Christian Association 1; Phi Mu Delta 1, 2, 3; May Day 1, 2; Biemic Society 2, 3.

JANET R. SWENSON

Business Education

Student Christian Association 1, 3; May Day 1, 2; Future Teachers of America 1, 2, 3; Business Society 1, 2, 3; Women's Athletic Association 1, 2, 3; *The Susquehanna Staff* 1, 2, 3; Orientation 3; Counselor 3; Intramurals 1, 2, 3.



RUTH ANN ULSH

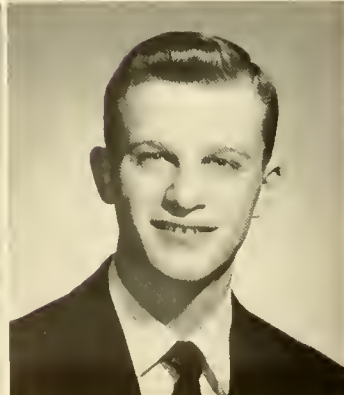
Liberal Arts

Student Christian Association 1; Alpha Delta Pi 2, 3; May Day 1, 2; Business Society 1; Women's Athletic Association 1, 2, 3; Intramurals 1, 2, 3.

SUZANNE F. WAHL

Liberal Arts

Student Christian Association 1, 2, 3; Alpha Delta Pi 1, 2, 3, Chaplain 3; May Day 1, 2; Vice-Presidents' Council 2; Future Teachers of America 2, 3, Program Chairman 3, Council 3; Business Society 1; Women's Athletic Association 1, 2, 3; *The Susquehanna Staff* 1, 2, 3; LANTHORN 3, Assistant Literary Editor 3; Orientation 2, 3; Intramurals 1, 2, 3; Intramural Board 3.



PATRICIA A. WALKER

Liberal Arts

Student Christian Association 1, 2; Alpha Delta Pi 1, 2, 3, Registrar 3; May Day 1, 2, 3; Vice-Presidents' Council 3; Biemic Society 1, 2, 3; Business Society 1; Women's Athletic Association 2, 3; Counselor 3; Orientation 2, 3; Intramurals 1, 2.

ERHARD O. WERNER

Liberal Arts

Student Christian Association 1, 3; May Day 1, 2, 3; Chapel Choir 1; Concert Band 1, 2, 3; Future Teachers of America 2, 3; Biemic Society 3; Business Society 1.

PEGGY ANN WILDMAN

Liberal Arts

NATALIE D. WILHOUR

Business Education

Student Christian Association 1, 2, 3; Alpha Delta Pi 2, 3; May Day 1, 2; Business Society 1, 2, 3; Future Teachers of America 1, 2, 3; Women's Athletic Association 3; Intramurals 2, 3.

DAVID C. WISE

Liberal Arts

Student Christian Association 2, 3; Phi Mu Delta 2, 3; Concert Orchestra 1; Concert Band 2, 3, 4; Phi Kappa 1; Biemic Society 2, 3, Vice-President 3; *The Susquehanna Staff* 2, 3; Orientation 3.

DORIS A. WITTES

Business Education

Student Christian Association 1, 2, 3; Kappa Delta 2, 3; Future Teachers of America 2, 3; Business Society 1, 2, 3; Women Day Students' Organization 1, 2, 3; Intramurals 2, 3.

LEROY B. WOLFE

Business Administration

Phi Mu Delta 1, 2, 3, Steward 3; Business Society 3.

LINDA J. YOUHON

Music Education

Student Christian Association 1, 2, 3; Sigma Alpha Iota 1, 2, 3, Secretary 3; May Day 1, 2; Susquehanna Singers 2, 3; Chapel Choir 2, 3; Concert Orchestra 3; Marching Band 3.

ARTHUR A. ZIMMERMAN

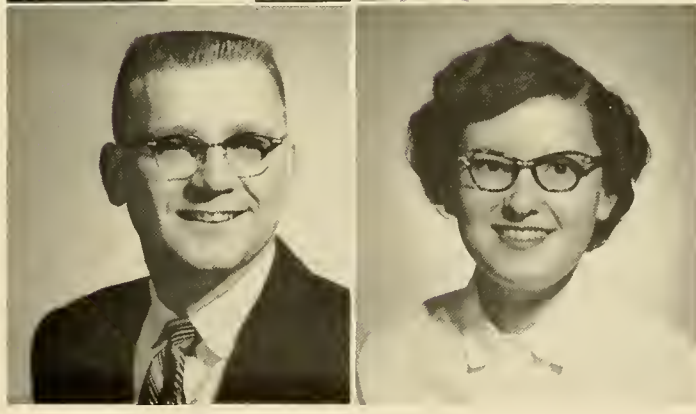
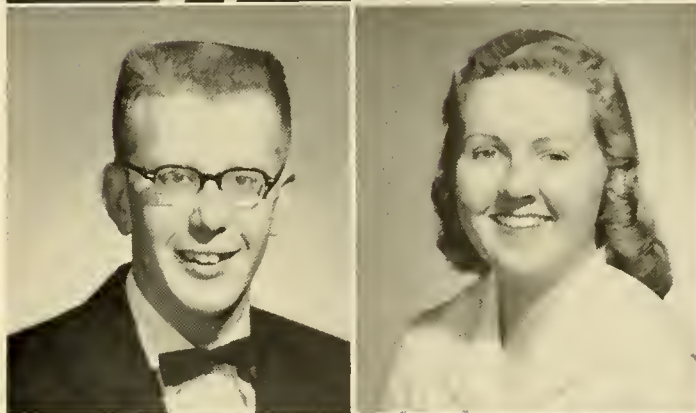
Business Administration

Bond and Key 1, 2, 3; Business Society 1, 2, 3; Veterans' Organization 2; Intramurals 1, 2, 3.

M. RUTH ZIMMERMAN

Liberal Arts

Student Christian Association 1, 2, 3; Biemic Society 1, 2, 3, Secretary-Treasurer 2; Women Day Students' Organization 1, 2, 3, Vice-President 3.



The Sophomore Class



JAMES W. WHITE
President



ROBERT L. HASWELL
Vice-President



GAIL M. WOOLBERT
Secretary



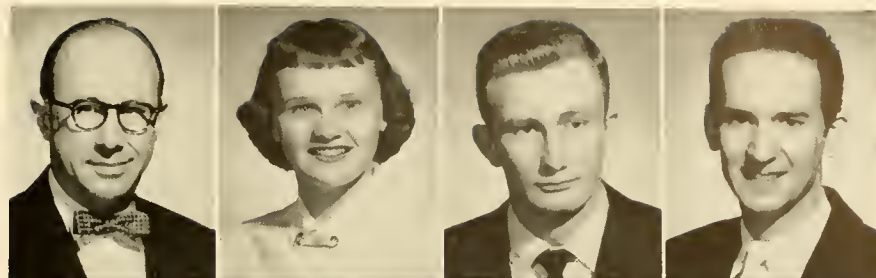
RICHARD C. SMITH
Treasurer

SAMUEL S. ADAMS

ANN M. AMBROMAVAGE

JOHN H. ANTHONY

ROBERT T. ARTZ

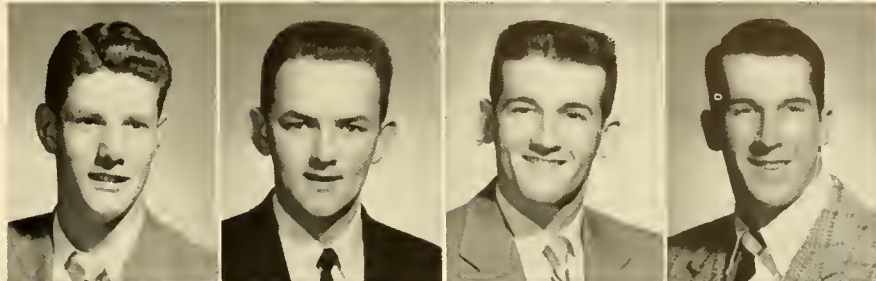


WILLIAM R. ASPRAY

ROBERT H. BARTELS

RONALD E. BARTHOLOMEW

CHALMERS W. BARTLOW

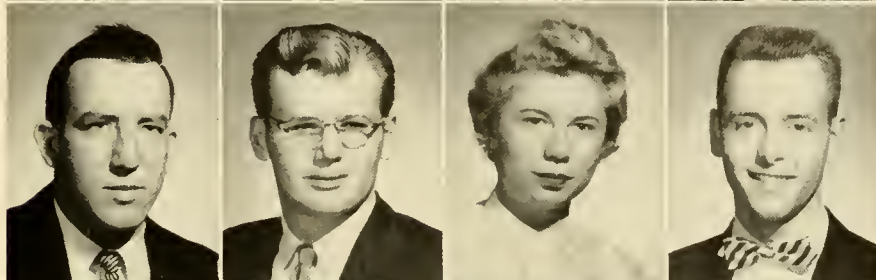


WALTER P. BENIAM, JR.

JOHN L. BIBER

BARBARA A. BILL

DAVID A. BOLTZ

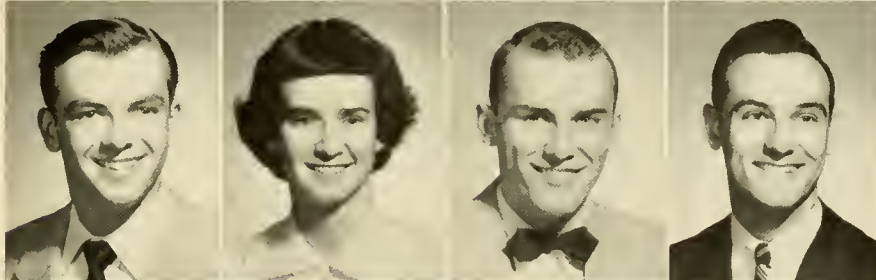


DAVID R. BOYER

NANCY E. BUMBARGER

RICHARD H. CAIN

FRED J. CHRVALA



BAIRD E. COLLINS

JEANETTE P. COOLEY

LYNNE E. CRAMER

GARY L. CRUM



ROBERT H. DAVIES

PATRICIA L. DAWN

STANLEY E. DeCAMP

DONALD P. DeLAUTER



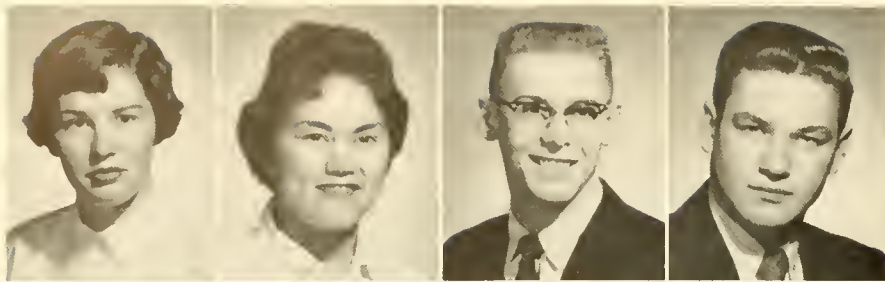
GEORGE S. DODGE

DAWN L. DOUGLAS

BARBARA A. ENCK

LEE E. ERHOLM





MARY LOU ERNST

THERESA FELICIANO

RONALD E. FELTMAN

RONALD D. FLEMING

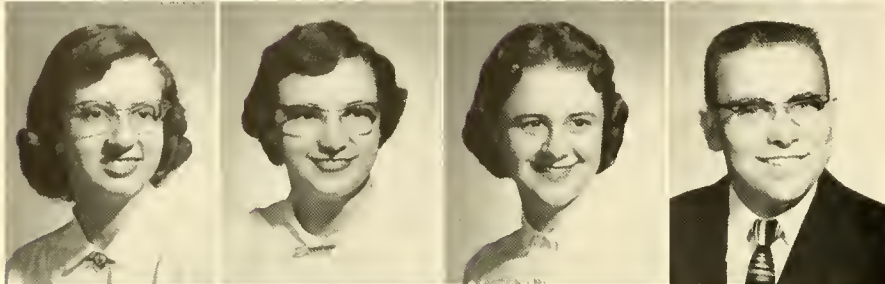


RANDALL J. FOX

HELEN FRERICHS

GETELL FRIEDMAN

JILL A. FULLER

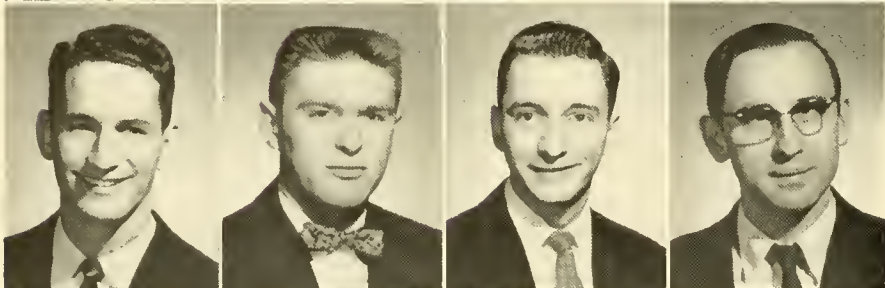


CAROLYN C. GILLASPIE

JANET L. GORDON

MARILYN L. GRUNDY

CHARLES W. GRUVER



WILLIAM R. HAND

CHARLES R. HARVEY

ROBERT L. HASWELL

DAVID R. HAUCK

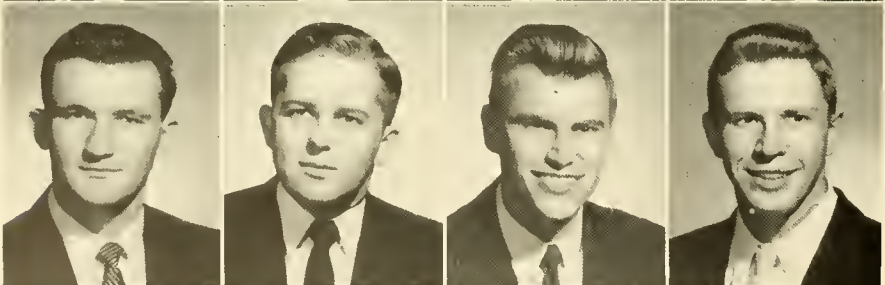


H. ALLAN HAZEN

RAYMOND L. HEFFNER

LOUIS J. HEINZE

JOHN S. HENDRICKS



GERALD C. HERBSTER

WADE L. HOFFMAN

VERNON V. HOOVER

DWIGHT A. HUSEMAN



DONALD JAMES

SHeldon A. JOHNSON

FERN M. KEEFER

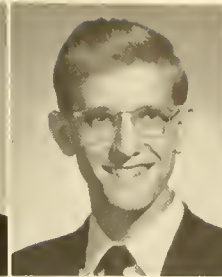
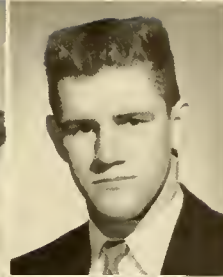
EVALEEN F. KEEN

DORIS M. KEENER

JAMES A. KEISER

ROBERT A. KERCHOFF

LINDA D. KILBOURNE



BETTY A. KILGORE

RICHARD L. KISLAK

KAY N. KLINE

JOY M. KLINGLER



NICHOLAS W. KLOAP

CAROL L. KOGEL

PAUL H. KURKOWSKI

GLADYS L. LAWVER



DOROTHY L. LEHMER

NANCY J. LOCKETT

RICHARD H. LOVE

MARK S. LYTLE



JOHN D. McLAIN

MARTHA J. McNITT

JOSEPH C. MAHER

ROGER J. MAHILU



VERYL J. MILROY

MARY G. MOORE

BARBARA A. MOTTERN

FREDERICK M. MURSCH



GLORIA A. MYERS

MARY L. NEAL

RUTH M. NYHART

BETTY A. ORMOND



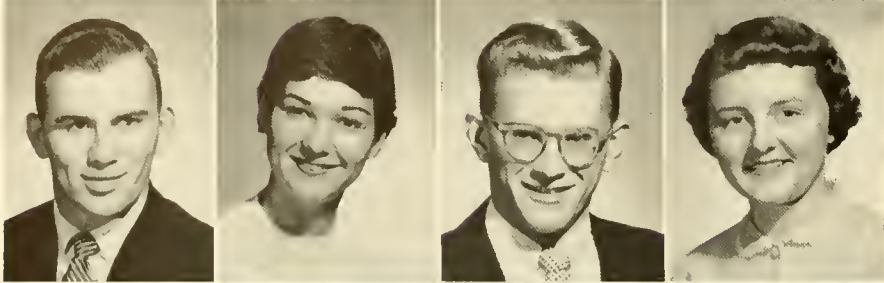


RICHARD H. OVERGAARD

ALICE A. PATTERSON

JANICE L. PAUL

LEWIS E. POST

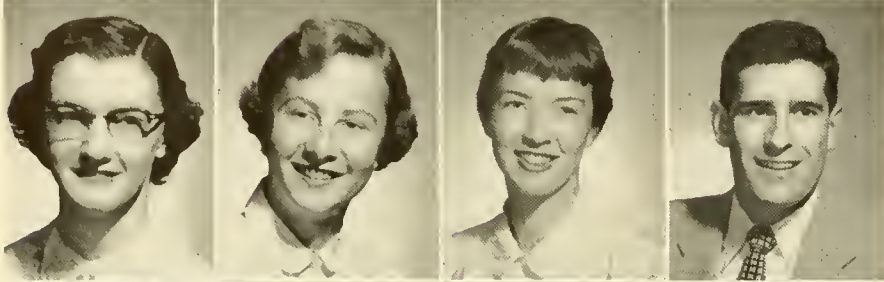


RICHARD L. PURNELL

JANIS E. QUIGLEY

L. JOHN RENSHAW

JOAN A. RICHIE

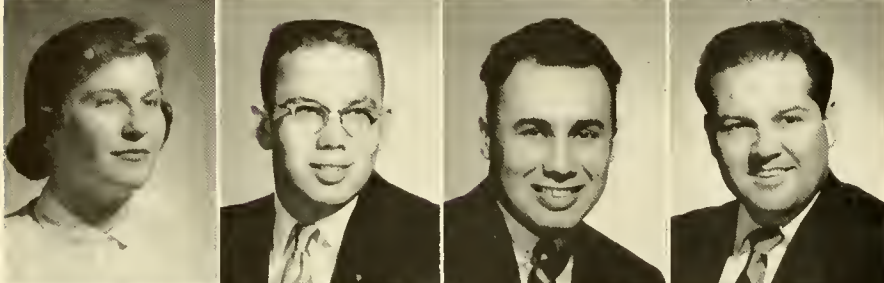


SHIRLEY M. RICKARD

NANCY L. RIDINGER

D. ARLENE ROBERTS

WILLIAM M. ROHRBACH

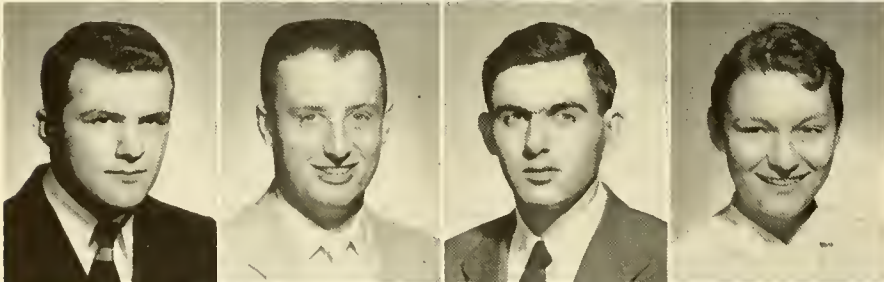


THELMA M. ROSETTI

GILBERT R. ROWE

WAYNE W. RUTZ

WILLIAM H. SALTERN

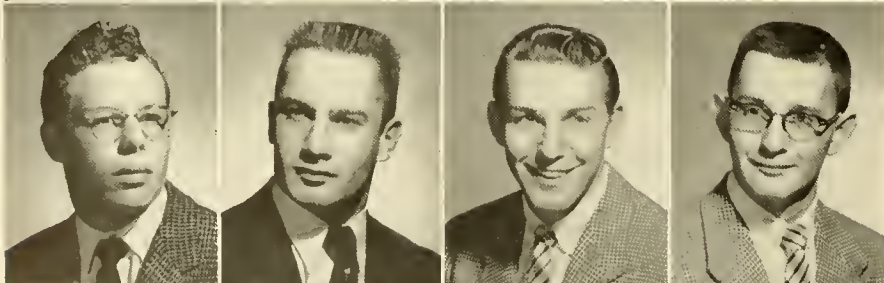


JOHN R. SCHELL

JOSEPH J. SCULLY

JAMES L. SEASHOLTZ

CORRINE R. SEEBOLD

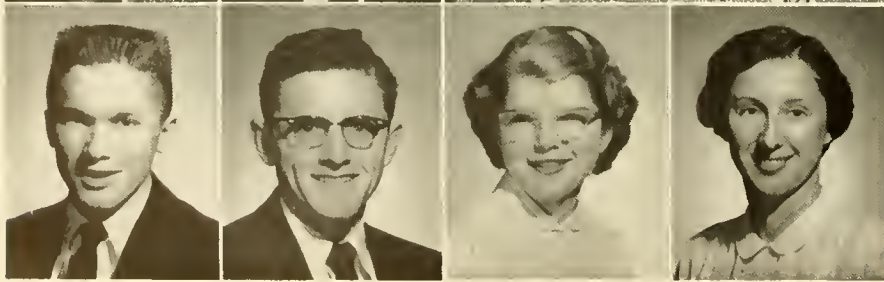


WILLIAM A. SHAFFER

WILLIAM L. SHEPHERD

JOHN S. SHILLINGSFORD

KENNETH L. SHILLINGSFORD, JR.



EDGAR E. SIMONDS

RICHARD C. SMITH

JOANNE C. SMOZINSKY

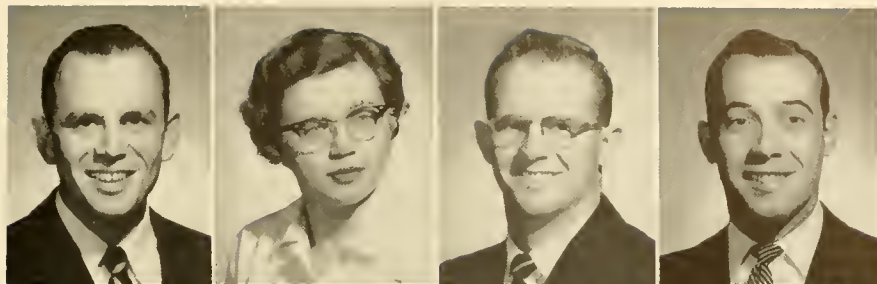
MARY E. SOUDEN

ALBERT M. STANTON, III

SUZANNE E. THARP

GORDON C. THOMPSON

DONALD L. TRIMMER



FLO A. TROUTMAN

SARA V. TROUTMAN

MATTHEW A. WATERS

GAIL R. WEIKEL



JANET A. WELCH

JAMES W. WHITE

ROBERT C. WHITE

ROBERT A. WILLAUER

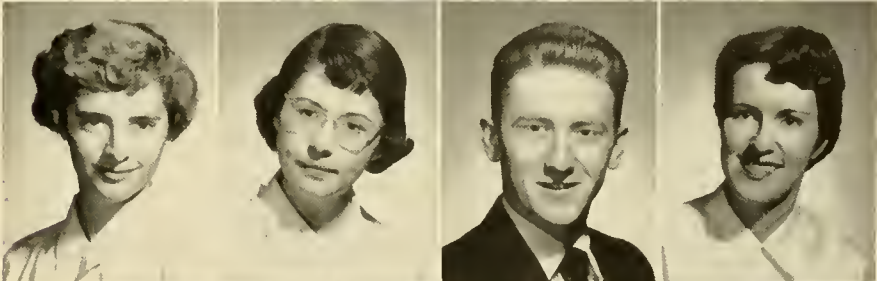


TWILA R. M. WOLF

GAIL M. WOOLBERT

JAMES W. WBRIGHT

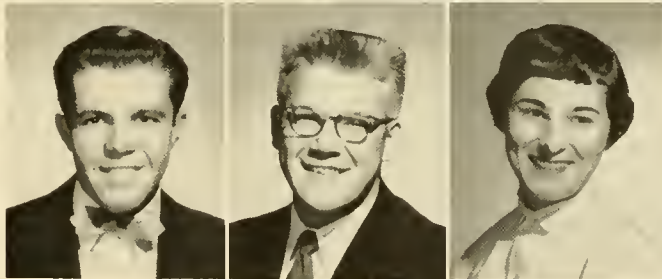
MARILYN R. WRIGLEY



ROBERT G. YERGER

KENNETH E. ZIMMERMAN

CAROLANN ZUST





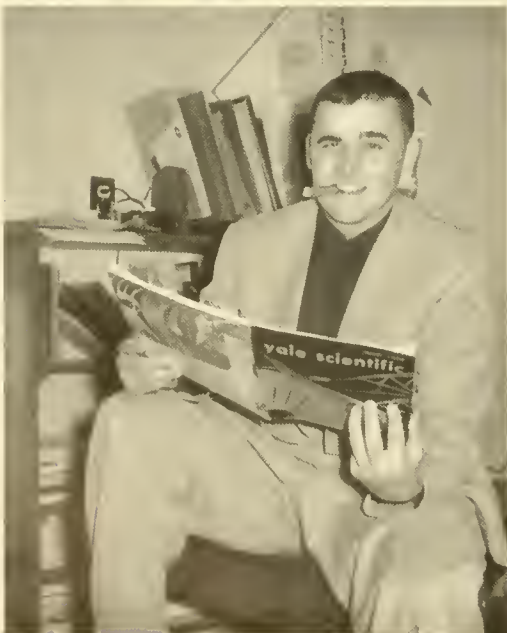
GLENN R. SHOWALTER
Vice-President



ANTHONY F. GRIGALUNAS
President



GAIL M. MULLER
Secretary



JOSEPH M. BARLOW
Treasurer

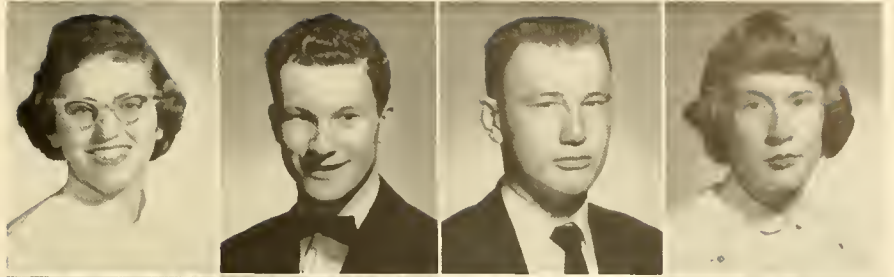
The Freshman Class

JANIS I. ADAMS

JOHN R. ALBRIGHT, JR.

RONALD G. ALLER

NANCY B. ALTLAND

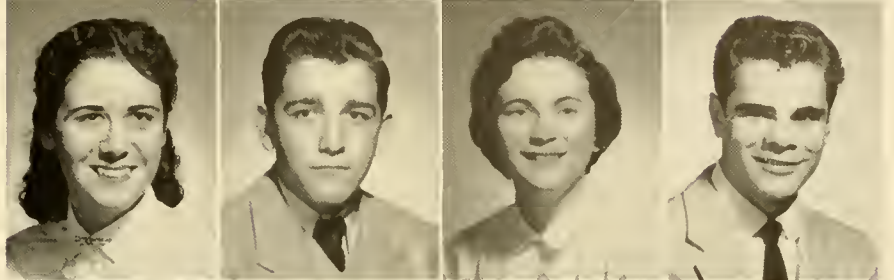


JUDITH C. ANDERSON

ROBERT M. ANDERSON

D. LOIS ANDREN

GARY E. AUCKER

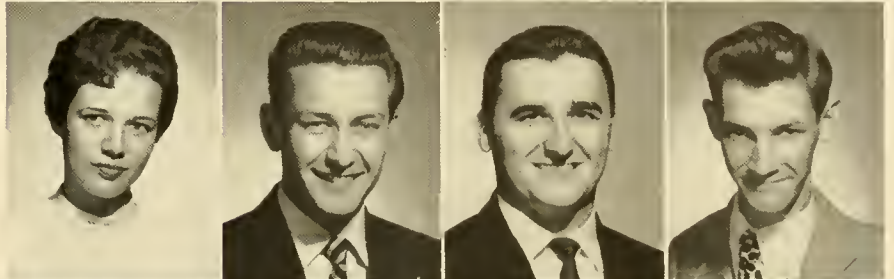


MAUREEN J. BALL

GILBERT G. BANNERMAN II

JOSEPH M. BARLOW

JOHN T. BASKIN



SUSAN J. BATES

JAMES T. BAYRUNS

CLAUDETTE V. BEDEAUX

MURIEL W. BEHRENS



WILLIAM M. BERGER

PAUL D. BERGMAN

CAROLYN A. BIRKHMIR

H. JOAN BITTINGER



ALAN T. BORTLE

MARIAN E. BOWMAN

DONALD R. BOYER

NANCY L. BOYER



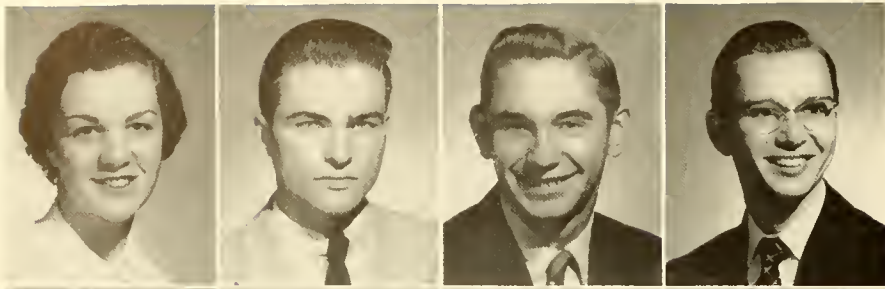
JAMES E. BRASTED

JUDITH I. BROWN

LESTER L. BRUBAKER

PEGGY D. BURNS





SUE A. CARMINT

GILBERT H. CASSELBERRY III

CARL R. CATHERMAN

JACK E. CISNEY

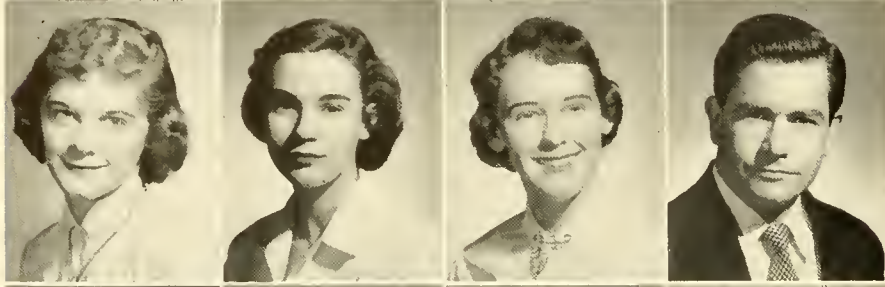


HARRY L. CLARK, JR.

RUTH E. COLEMAN

RONALD R. COMP

SANDRA J. CROTHERS

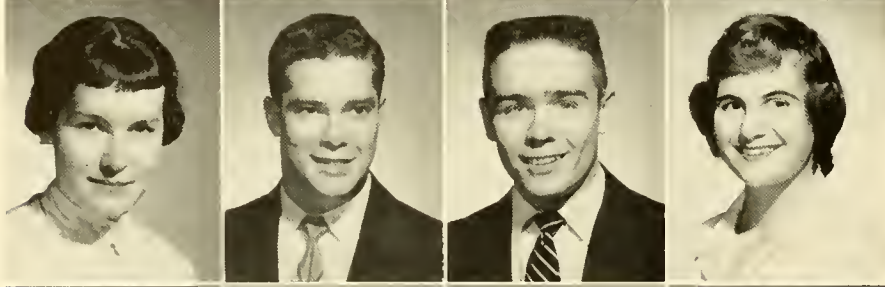


GEORGIA M. CURTIS

CAROL A. DAILY

MARGARET E. DALBY

HERBERT N. DANIELS



MARY F. DAVIS

CHARLES G. DEUTERMANN

BRIAN L. DONLEY

BARBARA C. DORIAN

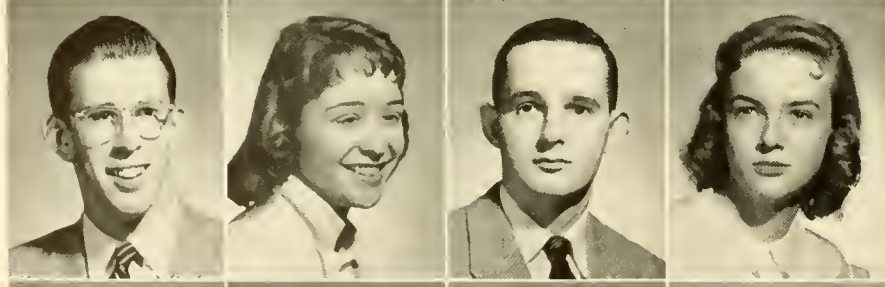


NANCY L. EISERMAN

ELEANOR P. ERDLEY

FRITZ J. FICHTNER

ROBERT L. FISCUS

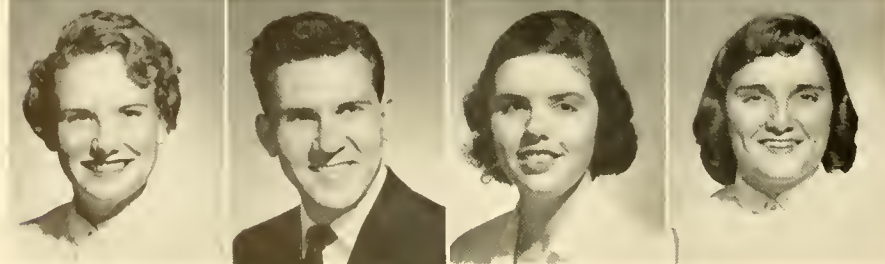


GERALD O. FLETCHER

BETTY J. FLOOD

RICHARD D. FRANK

ELISABETH A. GAGE



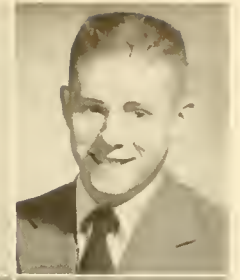
KATHLEEN GALLAGHER

ANTHONY F. GRIGALUNAS

MARY W. HAAS

ELIZABETH J. HANCOCK

ROBERT G. HANDZO

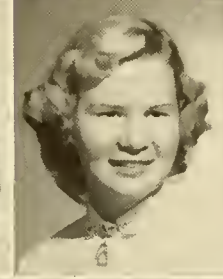


HARRY F. HANEY

MOLLY E. HASSENPLUG

JON B. HAUSSLER

MABEL B. HAYS



MARY ANN HECK

CATHERINE C. HENRY

BABETTA M. HEWITT

JANICE V. HIDDEMEN

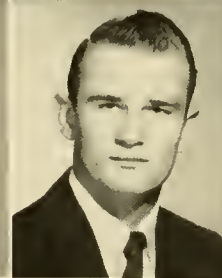


JESSE C. HILL

BEVERLY A. HOFECKER

JOAN H. HOFFMAN

M. JANE HOLLAND



ROGER A. HOLTZAPPLE

LAWRENCE R. HOOVER

BETTY LOU HUBLER

JANE L. JOHNS

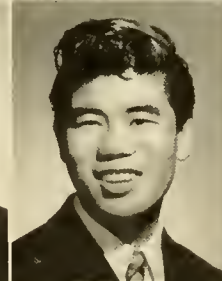


NATHAN A. KALE, JR.

KATHRYN E. KEENER

NANCY E. KLNDALL

ROBERT H. KENYON

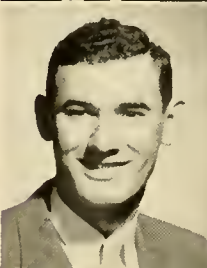


TIMOTHY H. K. KIM

PATRICIA A. KLASE

MARY E. KLINGLER

ROBERT M. KNEPP



LOIS M. KOHL

JOHN H. E. KROHN

JOSEPH C. LAUN

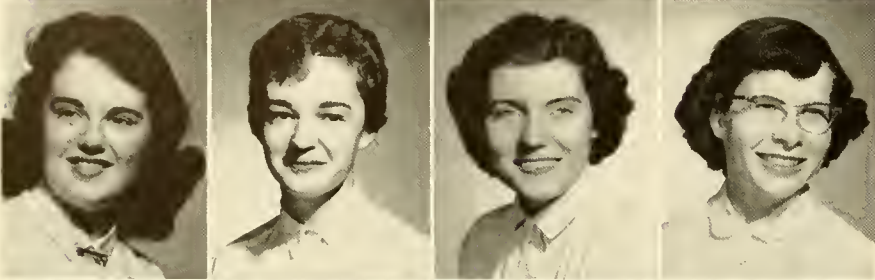


ELISABETH A. LAWVER

EILEEN R. LEDDY

SUSAN E. LEHMAN

HARRY E. LEONARD, JR.



DOROTHY L. LINGENFELTER

SANDRA J. LOCKE

SANDRA M. LYTLE

SARA L. MCCAHAN

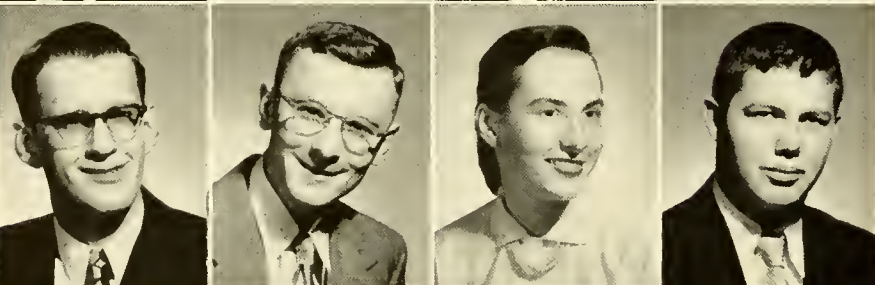


FOSTER R. McCURLEY

ELINOR H. McKIM

RUSSELL L. McTAGUE

CAROL A. MARSHALL



ANDREW G. MELNICK

JOSEPH MERENA

SANDRA M. MEYER

LEROY T. MILLER



GAIL M. MULLER

ALYCE M. NAGIE

MARJORIE C. NASH

ROSEMARY E. NELSON

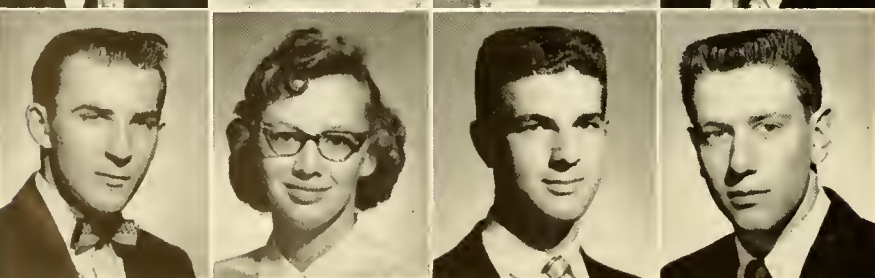


GEORGE M. NESBITT, JR.

DENECE P. NEWHARD

SIDNEY B. OCKER

PAUL D. OLBRICH



JOSEPH OSINCHAK

MARY M. OVEBLY

PETER P. PACE

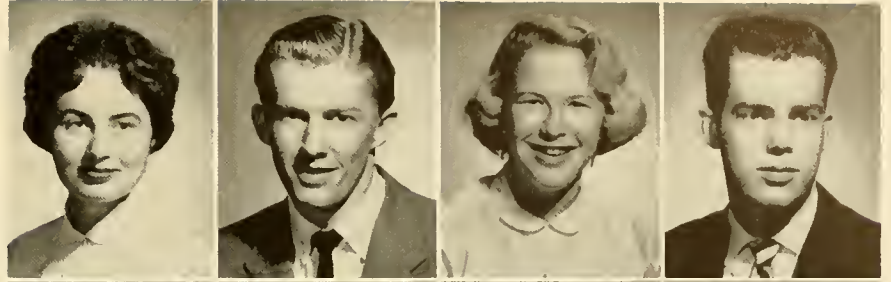
GARY D. PAGE

ROBIN H. PALMER

DALE L. PATTERSON

MARGARET L. PATTYSON

LARRY D. POTTEIGER

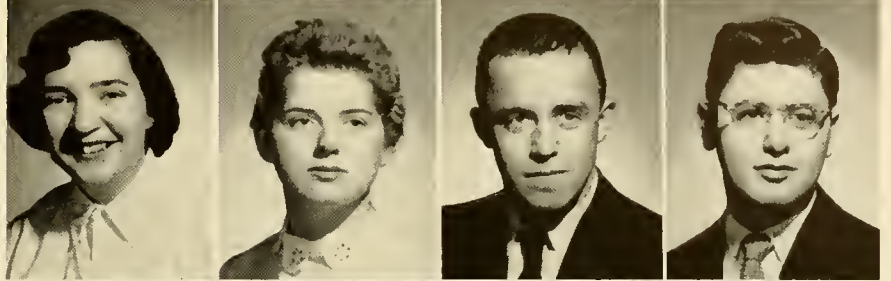


ELEANOR K. POURRON

GLADYS L. RANSOM

GENE A. RAY

JOSEPH E. REED

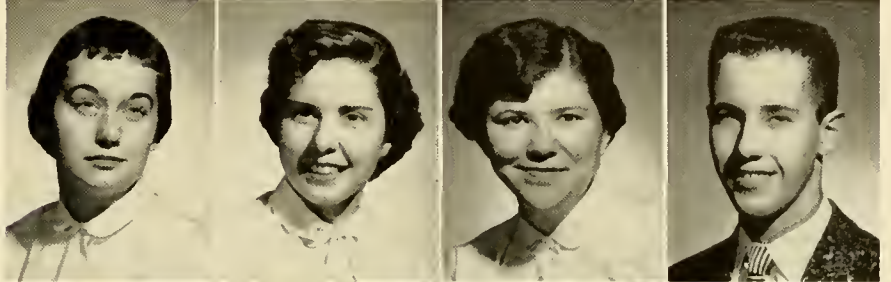


HAZEL N. REVER

ANNE E. REYNOLDS

LOIS R. RICHARD

SIDNEY F. RICHARD

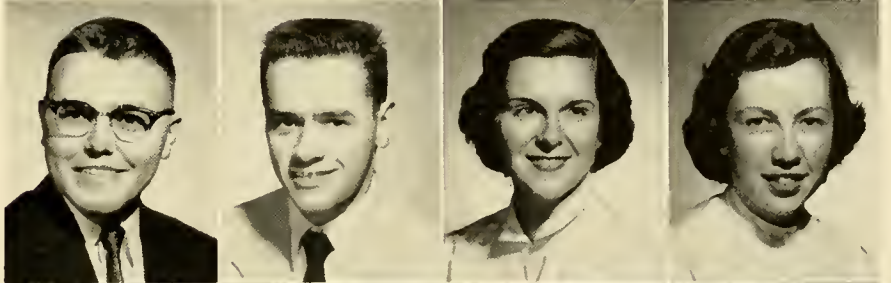


KENNETH D. RICHENS

RONALD R. ROESEBERG

JANET L. ROHRBACH

RUTH C. ROSS

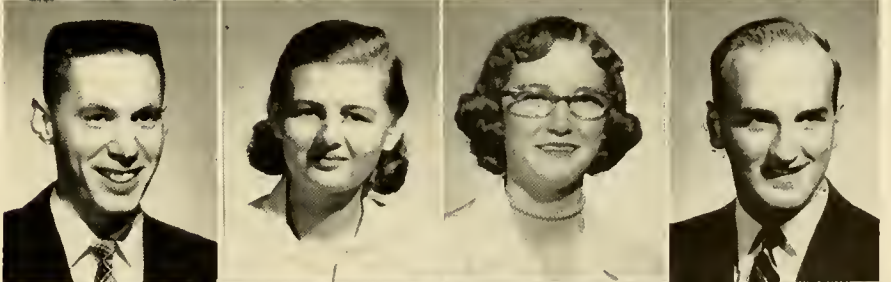


LESTER E. RUDISILL

URVE SAARSE

DORIS E. SCHUMACIER

ROLAND T. SLES

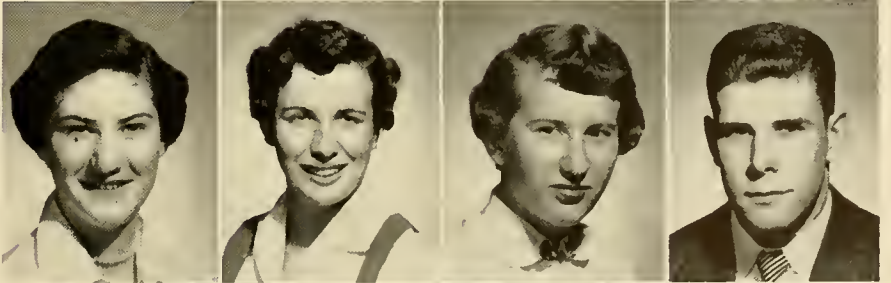


GEORGENA G. SHARADIN

THELMA N. SHEESLEY

JOAN SHETTERLY

CARL S. SHOEMAKER

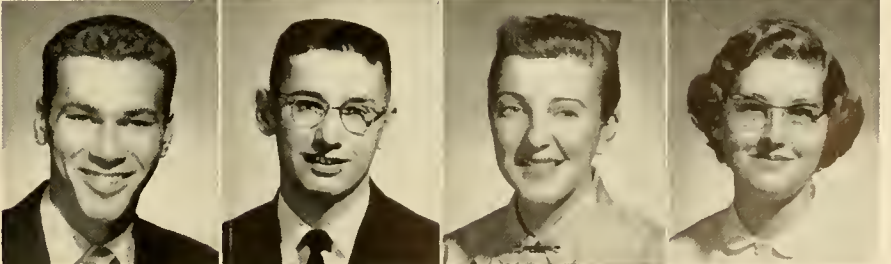


GLENN R. SHOWALTER

JOSEPH F. SHUPINSKI

SUE SIEBER

BARBARA J. SMITH



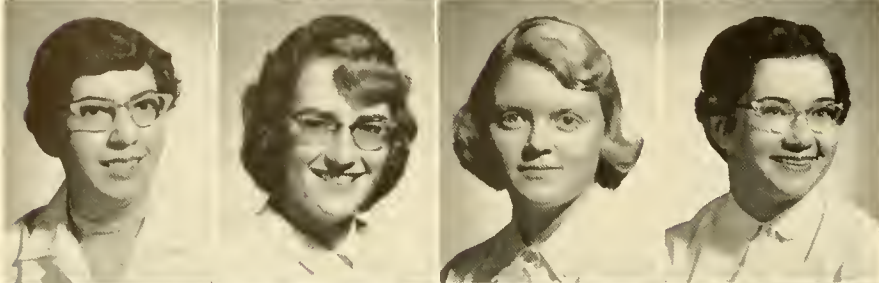


JANET K. SMITH

WALLACE G. SMITH

JANET L. SNYDER

DAVID E. SOLOMON

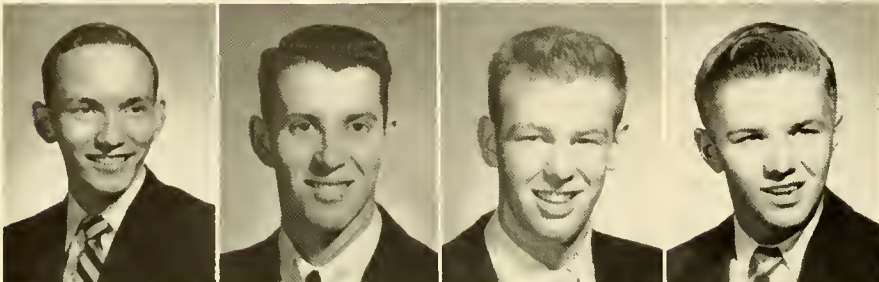


JOYCE A. SPIGELMYER

NANCY I. STATES

JULIE F. STAUFFER

VIRGINIA I. STEIGERWALT



RAYMOND W. STIELER

JAMES STONE

GEORGE H. THIES

LANNY E. THOMAS

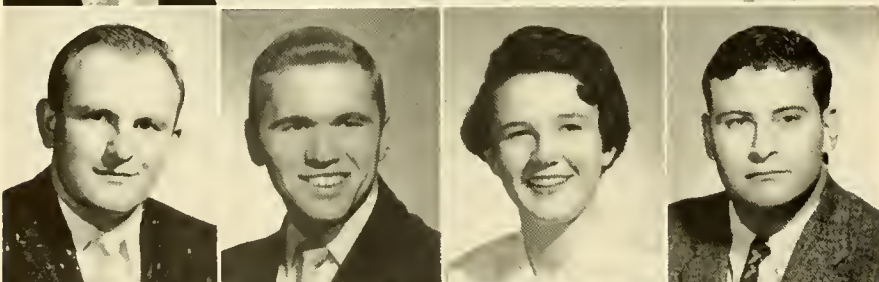


MICHAEL G. TOBIAS

JAYNE E. TOLSON

BARBARA J. TONGUE

NANCY W. VASTINE

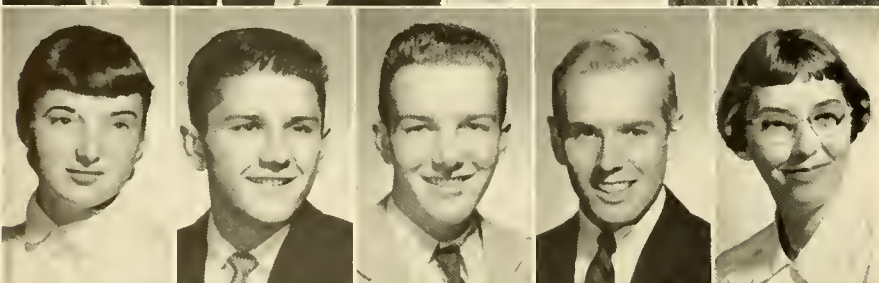


GEORGE VINC

JOHN M. VOUGHT, JR.

M. ELIZABETH WALKER

JAMES D. WILLMAN



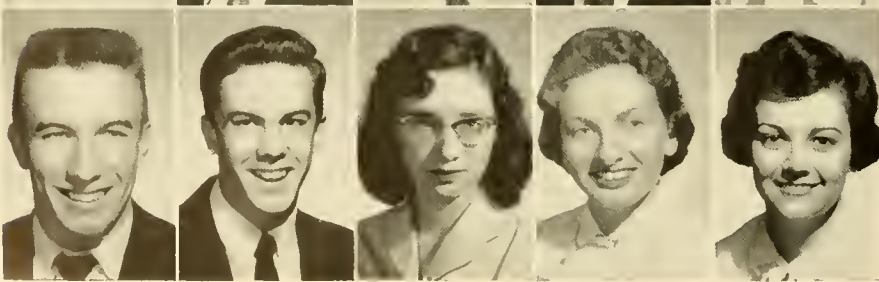
LEONA F. WIRT

EUGENE WITIAK

WILLIAM C. WOELKERS

CLYDE H. WOOD

CECILE A. YEAKLEY



RAY J. YEINGST

NICHOLAS S. YOST

ROSALYN M. YOUNG

CAROL C. ZACHARIAS

NANCY M. ZIMMERMAN



Chapel's out!



Tickets for *Hamlet*



Last minute cramming.



Laundry Day.



And the pledges washed cars.

Presenting



*A mystic band of brotherhood
makes all men one.*

—SCOTT

FRATERNITIES



Seated, Left to Right—M. Waters, A. Zimmerman, J. Keiser, D. Ghatan, J. Shillingsford, F. Chevala, K. Shillingsford. Standing—G. Herbster, R. Lewis, V. Milroy, R. Purnell, S. Wheeland, G. Pospisil, L. Romig, W. Doney, C. Bartlow, Mr. Lotz.

Bond and Key Club



OFFICERS

WILLIAM DONEY
President

ROBERT GULICK
Vice-President

GARY SMITH
Secretary

DAVE HARRINGTON
Treasurer

DR. ROBERT L. AMY
Adviser

Bond and Key, the oldest fraternity on the campus, was established in 1914 as a local organization, and the members have continued to keep the management among themselves.

A large number of the faculty are among the distinguished honoraries of Bond and Key. Through their guidance and cooperation an excellent educational and social program is maintained.

During the school year Bond and Key maintains a constant program of activities. For the past few years the fraternity has worked on a project of house renovation. This year the brothers redecorated the study rooms and planted shrubbery around the house. Bond and Key played host to faculty members and their families at dinners throughout the year. Banquets centered around special holidays and events were also held at the house. Some of the outstanding social events this year were the Hallowe'en party, the Pledge Dance and the formal spring dance. Always strong in intramural athletics, Bond and Key has again captured the softball trophy and also the football trophy and at the present time is competing for the A. A. Stagg award.

The brothers of Bond and Key, in their associations together, emphasize loyalty to Susquehanna and they uphold the club motto, "Bound as Knights."

Leadership in campus organizations and participation in collegiate athletics are evidence that from Bond and Key come the kind of men the world is proud to claim.

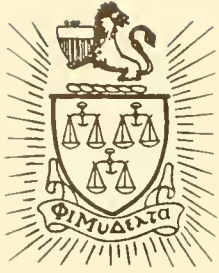
Bond and Key Club



Go Brownie, Go!

Seated, Left to Right—G. Stock, J. McLain, L. Quick, R. Kurtz, W. Cox, R. Gulick, C. Bailes, N. Bailey.
Standing—B. Collins, G. Stettler, D. Harrington, G. Smith, J. Morgan, W. Shaffer, E. Rhodes, R. Sheldon,
J. Bunke, Dr. Amy.





Phi Mu Delta

Behind the walls of the old English style, high-gabled residence on West Walnut Street live the men of the largest fraternity on the campus—Phi Mu Delta. During its years of activity as a member of the national fraternity, the local Mu Alpha Chapter has attained a first-place position among its fellow chapters.

The program of Phi Mu Delta consists of two phases: educational and social. To supplement the college studies, the fraternity sponsors educational forums which bring prominent speakers from all walks of life to the Susquehanna campus. All members of the student body and faculty are invited to attend these informal lectures. The fraternity is proud to have won the interfraternity scholarship cup for the past two years and is looking forward to attaining the same goal in the coming year. A third win would entitle the fraternity to keep the cup. Among the outstanding social events held at the fraternity this year were the annual spring and winter formals, a Hallowe'en Dance, the traditional Ladies' Night, and numerous informal gatherings after campus social events. Another new and outstanding event was the Faculty Card Party, which will be an annual event in the future.

Brothers of Phi Mu Delta work together to produce men of character and ability who hold high the ideals of brotherhood, democracy, and service in the college community and in modern society.

OFFICERS

GLEN SMITH
President

PETER NUNN
Vice-President

DONALD REAMER
Secretary

GEORGE SCHLUCHTERER
Treasurer

MR. AXEL KLEINSORG
Adviser

Seated, Left to Right—R. White, R. Greco, R. Eyster, M. Kratzer, C. Lorah, R. Hackenberg, G. Schluchterer, H. Trabosh, W. Hoffman. Standing—L. Post, J. White, A. Hazen, P. Nunn, Mr. Kleinsorg, J. Maher, F. Chango, G. Weikel, R. Artz.





Phi
Mu
Delta

And Hoppie played . . .

Seated, Left to Right—D. Smith, C. Duncan, G. Smith, F. Stugart, L. Wolfe. Standing—W. Hand, R. Haswell, R. Smith, D. Wise, D. Reamer, G. Thompson, R. Bartels, J. Biber, W. Aspray, F. Barry, H. Cook.





Seated, *l left to right*—R. Fox, S. Shilling, P. Kurkowski, W. Rutz, J. Anthony, J. Seasholtz, J. Renshaw, F. Mursch, M. Feldman. *Standing*—R. Kisslak, C. Deitrich, F. Romano, R. Mahieu, D. James.



Theta Chi

Clad in their bright red and white jackets, the members of Beta Omega chapter on campus are proud to belong to Theta Chi, one of the largest national fraternities in the United States. Theta Chi was nationally founded in 1856 and originated on the campus of Susquehanna University in 1942. Beta Omega chapter is quite active nationally, and through attendance at regional and national conferences, the members of the chapter keep in close contact with their national organization each year.

The brothers have organized a well-rounded schedule of activities, both academic and social. The 1956 social calendar was literally filled with activities, since this was the "Theta Chi Centennial" year. The brothers took active part in the national celebration by attending various conferences with a sister chapter at Dickinson College. The brothers also staged various activities on the Susquehanna campus, providing entertainment for the entire student body.

Some of the other outstanding social events of the year were the annual Esquire party, the Christmas party, and numerous informal house parties.

Together with a fine spirit of cooperation with the University and each other, the brothers loyally uphold their motto: "Alma Mater first and Theta Chi for Alma Mater."

OFFICERS

MAURICE FELDMAN
President

GERALD WILSON
Vice-President

CLAYTON LEACH
Secretary

JACK BISHOP
Treasurer

MR. HOWARD DEMOTT
Adviser



Theta Chi



A "Big Red" Specialty.

Left to Right—D. Boltz, G. Schroeder, C. Hall, G. Crum, Dr. Armstrong, G. Wilson, S. DeCamp, G. Rowe, J. Bishop, W. Shepherd, D. Huseman.



Alpha Delta Pi

Alpha Delta Pi, the oldest secret society for college women in the world, was founded in 1851 at Wesleyan College for Women in Macon, Georgia. This summer the one hundred and fourth anniversary convention was held at Wentworth-by-the-Sea, in Portsmouth, New Hampshire. Some eighty-two collegiate chapters, as well as alumnae groups, were represented. Since the convention in June, Alpha Delta Pi has installed two new collegiate chapters. The membership has increased to over 34,000. At convention, Susquehanna's chapter of Alpha Delta Pi received the Chapter Efficiency Award and also a Special Recognition Award. These awards, a silver tea set and tray, are on display in the chapter room. Next year the biennial convention will be held in the Bahamas.

Gamma Omicron chapter of Alpha Delta Pi received its charter on April 29, 1950. Both nationally and locally members strive for "Intellectual and moral worth, dignity of character and propriety of deportment."

The national organization is active in philanthropic work, giving scholarships to foreign students as outright gifts so that these foreign students who so desire may continue their education in this country. Scholarships are also given to Alpha Delta Pi girls who wish to study abroad. These scholarships, in addition to smaller grants are given to exchange students. There is also a Memorial Fellowship Fund which grants money to active members who are in need of such assistance. Alpha Delta Pi is also affiliated with the National Society for Crippled Children and Adults; a sizable contribution to this organization is made. Participation in the Easter Seal campaign is also in the sorority's program. The *Adelphean* endowment fund provides for

a quarterly magazine to which all members are life subscribers upon initiation.

Locally, the girls of Alpha Delta Pi are kept very busy. The major events of the year included a weiner roast, the alumnae and patroness party, Thanksgiving and Christmas caroling, a Christmas party for children in the Selinsgrove area, the annual rush party, participation in the inter-fraternity-sorority sing, and the dessert party given by the alumnae. At Eastertime the girls distributed baskets to needy children in the area. Work with the local Brownies and Girl Scouts is another activity of the chapter.

The year was brought to a close with an annual highlight of the sorority, the senior-pledge banquet held at the Pine Barn Inn at Danville, Pennsylvania. At this banquet several awards were given. An "Outstanding Pledge Award," based upon the criteria of scholarship, leadership, and contribution to sorority and campus life, is presented annually by the Philadelphia Alumnae Chapter. A Merit Award is given to the outstanding senior each year by the Selinsgrove Alumnae Association. The local chapter presents an award to the girl who has shown the most improvement in scholarship during the year.

Members of Alpha Delta Pi strive to promote intellectual growth and cultural standards, and for their attainments the chapter has been awarded the inter-sorority scholarship cup each year for the past three years. This cup is now a permanent possession of Gamma Omicron chapter of Alpha Delta Pi.

The sisters who wear the blue and white foster social growth through ties of deep and lasting friendship—their motto being, "We live for each other."

First Row, Left to Right—T. Reamer, J. Raudenbush, R. A. Ullsh, N. Wilhour, B. Enck, A. Roberts, J. Cole, N. Marek, A. Ambromovage, G. Friedman, S. Wahl, N. Ridinger. Second Row—L. Kilbourne, E. Gruber, N. Forrest, C. Sadosuk. Third Row—J. Cooley, J. Fuller, T. Rosetti, J. Klingler, G. Masteller, C. Chubb, C. Meerbach, E. Imrie, D. Douglas, A. J. Moyer, N. Lockett, M. Ronngren, A. Regoli.





Alpha
Delta
Pi



OFFICERS

ELSIE GRUBER	- - - - -	President
CAROLE SADOSUK	- - - - -	Vice-President
CHARLOTTE MEERBACH	- - - - -	Recording Secretary
AREA REGOLI	- - - - -	Corresponding Secretary
MARIA RONNGREN	- - - - -	Treasurer

Kappa Delta

Kappa Delta Sorority was founded October 23, 1897, at the Virginia State Normal School in Farmville, Virginia, by four college women. A national convention is held biennially with all chapters and many alumnae associations represented. The 1956 Convention was held July 11 to July 15 at the Bedford Springs Hotel, Bedford, Pennsylvania. Kappa Delta has 91 active college chapters, 239 alumnae associations, and a total membership of more than 36,500.

Beta Upsilon Chapter of Kappa Delta located at Susquehanna University received its charter in May, 1950. The sorority stresses good scholarship, general participation in campus activities, and gracious living.

As a national organization, Kappa Delta makes available loans for worthy Kappa Deltas through the Kappa Delta Student Loan Fund, thus enabling them to complete their college education. The support of the Crippled Children's Hospital in Richmond, Virginia, is the national philanthropy, and contributions are received from individual members and from the Kappa Delta Christmas seals, which are unique in the Greek world. Another philanthropy is the annual Research Fellowship of \$1,000 given for outstanding work in Orthopedics. Several newspapers and books are published by the sorority, including a quarterly magazine, *The Angelos*. Other projects include the Endowment Fund and the Chapter House Loan Fund.

Throughout the year, Beta Upsilon Chapter holds several parties, dinners, and teas, including social functions each month with its patronesses, informal get-togethers with its sister chapter at Bucknell and an annual faculty tea. At Christmas and Eastertime, there are baskets given to needy families in this area, and throughout the year members act

as baby sitters for mothers in the community enabling them to go to P. T. A. meetings. Two years ago, Kappa Delta initiated the annual Panhellenic Picnic for sorority women and three years ago Kappa Delta initiated the idea of a sorority float taking part in the Homecoming Parade. Last year Kappa Delta instituted two new customs into their chapter. One was a serenade to the college dormitories and fraternities, and the other was an annual hayride. Also this year, the chapter started the custom of Christmas caroling right before the start of Christmas vacation, with refreshments being served at the home of a patroness.

For the first time this year, Kappa Delta presented a series of programs to six elementary schools in Snyder County during National Education Week. This will be an annual activity of the sorority in the years to come. Kappa Delta, for the last few years, has sponsored the Red Cross Blood Mobile. The Kappa Delta fashion show is an annual event and was instituted for the benefit of crippled children in this area. Nationally and locally, Kappa Delta aspired for high scholarship. Two years ago and for the third successive year, Beta Upsilon earned the Panhellenic Scholarship Cup. Now it is theirs to keep and Kappa Delta was proud to be the first sorority in fifteen years of competition to be the permanent possessor of the cup.

As a sorority, Kappa Delta endeavors to promote true friendship, high scholarship, and active participation in campus activities. Kappa Delta's open motto is "Let us strive for that which is honorable, beautiful, and highest." The white rose is the flower of the sorority, and the colors are green and white.

First Row, Left to Right—B. A. Ormond, S. Brown, M. L. Ernst, T. Wolf, H. Frerichs, L. Kramer, C. Kogel, N. McCullough, H. Nestler. Second Row—G. Thomas, J. Paul, J. Brown, J. Smith, C. Sandt. Third Row—C. Seebold, M. McNitt, K. Kline, P. Dawn, S. Tharp, B. Kilgore.





Kappa
Delta



OFFICERS

JESSIE SMITH	- - - - -	President
BETTY KILGORE	- - - - -	Vice-President
GENEVIEVE THOMAS	- - - - -	Secretary
DEBORAH KRAPF	- - - - -	Treasurer
MRS. ALBERT ZIMMER	- - - - -	Adviser



First Row, Left to Right—L. Youhon, A. Dorward, M. J. Solomon. Second Row—J. Gerner, B. Boob, M. Sultzbaugh, B. Hartranft, M. Flood. Third Row—M. E. Strauch, C. Dauberman, J. Gordon, D. Shilke, C. Zust, C. Gillaspie, M. Moore, G. Myers, A. Roberts, A. A. Patterson, E. Ford, R. Brobst.

Sigma Alpha Iota

Sigma Alpha Iota, a national honorary fraternity for women, was founded in 1903 at the University School of Music, Ann Arbor, Michigan. The Sigma Omega is one of a 106 active college chapters of Sigma Alpha Iota.

Being a professional fraternity, Sigma Alpha Iota strives to promote the highest standards of professional ethics and culture among women music students. One of its primary purposes is to promote American Music and American Composers through the American Musicale which is presented annually. The sorority members broadcast periodically over Station WKOK in Sunbury. Another annual project of the sorority is sponsoring the Inter-Fraternity-Sorority Sing.

This year the Sigma Alpha Iota chorus was very favorably received at the Pennsylvania Music Educator's Convention held at Harrisburg. The chorus, under the capable direction of Miss Ruth Brobst, illustrated a talk given by Doctor John Leach of the music faculty, on the approach to the understanding of contemporary music.

This has been a very productive year for the sorority. The members presented a musical farce, "Jack and Jill," so convincingly that they were invited to tour several schools in the area. In addition, there have been several little get-togethers at the homes of patronesses.

Sigma Omega is a member of Eta Province. The sisters were very happy to receive Mrs. Ruth Gould, President of Eta Province, this year. She visited with the actives, alumni, and patronesses for two days.

Perhaps the outstanding event of the year occurred last fall. It has long been the custom that every year Sigma Omega invite a guest artist to come to the campus and present a concert. Mrs. Sara Feldman, first violinist of the Baltimore Symphony, consented to be guest soloist this year. The whole campus was amazed at her distinct virtuosity and lovely personality. She, with Helen Griffiths, and alumna of Sigma Alpha Iota, as accompanist, presented one of the most outstanding programs of all times.

Following the concert, Mrs. Feldman was initiated into Sigma Alpha Iota as an honorary member of Sigma Omega Chapter. Mrs. Sara Feldman has thus taken her place among the truly great professional women musicians. Among the honorary members of Sigma Alpha Iota are to be found such famous names as Rise Stevens, Patrice Munsel, Kirsten Flagstad, Irene Dunne, Jeanette MacDonald and many others.

The fraternity's colors are crimson and white, and the sisters strive to uphold their motto "Life is Short, but Art is Long."



Sigma
Alpha
Iota



OFFICERS

JANET GERNER	- - - - -	<i>President</i>
MARGARET SULTZBAUGH	- - - - -	<i>Vice-President</i>
BARBARA HARTRANFT	- - - - -	<i>Secretary</i>
MARTHA FLOOD	- - - - -	<i>Treasurer</i>
MRS. ALICE GIAUQUE	- - - - -	<i>Adviser</i>



Presenting



*And your strength is in your union.
All your danger is in discord.
Therefore be at peace henceforward,
And as brothers live together.*

—LONGFELLOW—

ORGANIZATIONS



Left to Right—N. Forrest, J. Smith, J. Brown, C. Sandt, E. Gruber, N. Marek.

Panhellenic Council

The President, two representatives from each sorority, and the Dean of Women form the Panhellenic Council which is affiliated with the National Panhellenic Conference. In addition to promoting cooperation and good will among the sororities, the council's biggest job is to settle any problems that may arise during rushing and pledging. It also acts as a forum for the discussion of questions of common interest and establishes the policies of the group.

During rushing the Panhellenic Council sponsors the Panhellenic Tea which formally opens rushing. As a climax to the two-week rushing period, a formal Pledge Dance is held in the gymnasium. The Panhellenic Picnic is another outstanding event of the school year.

During the Spring semester, a scholarship cup is presented to the sorority attaining the highest average for the previous year. This year's cup went to Alpha Delta Pi. Panhel encourages high scholarship among all sorority women on campus.

Fraternity Senate

During the past year, the Fraternity Senate was responsible for carrying out many of the vital functions of fraternity life at Susquehanna. Acting as the governing body of the fraternities, the senate served as a go-between for the fraternities and administration. Acting as counselor for the fraternities, the Senate presides over fraternity rush week and sets the standards for pledging and other rushing activities.

Comprised of the presidents and faculty advisers of each of the fraternities, with Dean Galt as permanent chairman, the Senate succeeds in maintaining a feeling of harmony among the three fraternities. The presidency alternates yearly among the three fraternities comprising the Senate.

This governing body also plays an important part in campus life by planning and executing all inter-fraternity social events. Another prime aim of the Senate is the encouragement of high scholastic attainment among the members of the various brotherhoods.



Left to Right—Dr. Amy, W. Doney, G. Smith, Dean Galt, Mr. Kleinsorg, M. Feldman, Mr. DeMott.



Left to Right—C. Chubb, S. Bates, M. E. Strauch, C. Sadosuk, N. Ridinger, E. Gruber, G. Thomas.

Women's Judiciary Committee

The Judiciary Committee functions as a part of the Women's Student Council. It is the duty of the committee to deal with all persons guilty of violating any of the rules or regulations set forth in the Constitution of the Women's Student Council. The Committee also acts as an advisory group. When special problems involving the women are brought to its attention, they are reported to the Dean of Women for the purpose of counseling and of preventing rule-breaking whenever possible.

The Judiciary Committee consists of a chairman, one representative from each of the four classes, the president of Women's Student Council, and the House Presidents. The Dean of Women is an *ex-officio* member.

Women's Student Council

The Women's Student Council is the governing and law-making body for all women students on the campus. It plays a very important part in maintaining high standards among women students here at Susquehanna.

This year the members of the council supervised Freshmen orientation, held an informal tea in the student lounge on Parent's Day, and conducted Homecoming Queen elections. Several informal dances have been sponsored by Women's Student Council this year.

In addition, the council sponsored an open house in the four dormitories on Parent's Day, and arranged for decorating the dormitories at Christmas time. Their project this year has been in the nature of beautifying the parlors of the two women's residences.



Left to Right—E. Gruber, C. Sadosuk, D. Krapf, B. Hartranft, G. G. Lauver, Miss Meister, T. Rosetti, M. E. Strauch, D. Schilke.



Left to Right—Dr. Amy, G. Smith, G. Schluchterer, H. Cook, J. Yeich, G. Wilson, J. Bishop, E. Cox.

Men's Student Council

The name of the organization governing the activities of men students at Susquehanna University is the Men's Student Council. This organization was headed this past year by John Yeich, who was its president.

The purpose of this council is to foster college spirit; to create, supervise, and regulate all the customs and traditions pertaining to the men of the college; to effect a closer union of the students; to promote a better understanding between faculty and students; to attend to all matters properly belonging to the students of the college; and to investigate any appeal made to it by a student.

The members of this council include two representatives from each fraternity and two from the non-fraternity group, as well as one faculty adviser.



First Row, Left to Right—Mr. Lotz, Mrs. Miller, W. Doney, Mr. DeMott, Mr. Steigerwalt.
Second Row—T. Wolf, J. Smith, S. Rickard, D. Schilke, J. Gerner, J. Yeich, N. Marek, D. Trimmer, H. Cook, A. Hazen.

Student Christian Association

The purpose of the Student Christian Association is to meet the socio-religious needs and problems of the students; to influence and deepen the spiritual life of the student; and to reveal the challenge and responsibilities of a Christian student in our present turbulent world.

General meetings are held on the third Tuesday of each month in the Seibert Social Rooms.

The general activities of the organization include helping with freshmen orientation, big sister-little sister policy, and the publishing of the handbook.

The social phase of the S. C. A. includes a dance, a Christmas sing during December, a Fastnacht celebration, an opening university dance, and a Carnival.

The Pre-Theological Club

The Pre-Theological Club, was founded with the purpose of studying the duties and life of a pastor, chaplain or missionary, so that the student may obtain a better basis for going forward in his education and may be provided with better Christian growth in faith and character. Membership is open to all students who intend to become ministers of the Gospel and who accept Jesus Christ as their Lord and Saviour.

Meetings are held monthly under the supervision of members of the faculty and the local clergy, who, in conjunction with officers of the organization, plan discussion groups on classical life and the beginnings of Christian thought. These informal discussions help the prospective minister to comprehend more fully the problems existing in today's world.



First Row, Left to Right—Mr. Lotz, J. Yeich, Dr. Turnbach. Second Row—L. Rudisill, F. McCurley, J. Vought, A. Roshon, D. DeLauter, J. Koons, K. Zimmerman, D. Huseman, D. Smith, A. Hazen, G. Nesbitt, D. Hauck, B. Kerchoff, N. Kale.



First Row, Left to Right—E. Hinkle, D. Wittes, J. Raudenbush, C. Yeagley. Second Row—B. Zimmerman, B. Pecht, L. Hassinger, G. Lawver. Third Row—B. Mlottern, J. Smozinsky, N. Sheesley, E. Keen, J. Brandes, J. Shetterly, R. Young.

Women Day Students' Organization

The Women Day Students' Organization is a group of girls who commute to the campus each day from Selingsgrove and the surrounding area. Their headquarters, so to speak, is a well equipped basement room of Seibert Hall. Between classes, after lunch, or while waiting for a ride home, they enjoy the radio, comfortable furniture, and reading tables of the Women Day Students' Lounge. The piano and ping-pong table in the recreation room of Seibert are also available for use by the day students.

W. D. S. O. directs its own affairs and plans many activities to correlate with other campus groups. The girls plan delicious dinners and very often invite the "lucky" men day students to have dinner with them. Some of the other social activities include a wiener roast in the fall, a Christmas party, a picnic, and an annual senior dinner.



First Row, Left to Right—C. Sadosuk, N. McCullough, J. Brown, D. Krapf. Second Row—M. Kostenbauder, N. Marek, M. McNitt, T. Wolf, C. Sandt. Third Row—Miss McDowell, M. Drumheller, M. Ronngren, A. Regoli, G. Thomas, E. Gruber, R. A. Ulsh, S. Wahl, E. Imrie, J. Swenson, P. Walker.

Women's Athletic Association

Through its extensive program of intercollegiate and intramural sports, the Women's Athletic Association gives opportunity for all girls to participate in individual and team activities. An extensive program of sports is planned each year. Any woman student is eligible for membership upon acquiring fifty points.

The members of W. A. A. work at the concession stand during the football games and also serve refreshments at the basketball games. This year our chapter of W. A. A. has made possible and has attended several "Play Days."

This year the W. A. A. has established a tradition which is new on this campus. This new tradition is the Coronation of the Homecoming Queen, which is the formal beginning of the Homecoming festivities.

Vice-Presidents' Council

Under the advisership of Miss Ruth A. Meister, the Vice-Presidents' Council plays an important part in maintaining peace and quiet in the girls' dormitories during study hours. The house president of Seibert Hall appoints six "V. P.'s" to assist her in maintaining order. These girls have the authority to give "minutes" as penalties for breaking the house rules. This year Seibert Hall's president, Barbara Hartranft, chose Janet Brown, Eleanor Dively, Nancy Henderson, Helene Nestler, Patricia Sipe, Mary Jane Solomon, and Mary Souden as her assistants. The junior counselors in Hassinger Hall, appointed by the dean of women, also constitute a part of the Vice-Presidents' Council. Mary Ellen Strauch, the house president of Hassinger Hall, has five counselors under her, all of whom help to enforce the rules in that dormitory.



First Row, Left to Right—C. Sadosuk, M. E. Strauch, J. Brown, P. Walker. Second Row—S. Rickard, C. Chubb, N. Henderson, J. Swenson, E. Dively, P. Sipe.



Left to Right—M. Kostenbauder, C. Sadosuk, M. Drumheller, M. Ronngren, J. Brown, C. Meerbach, C. Sandt.

Tau Kappa

Tau Kappa, National Honorary Athletic Fraternity for Women, has as its main aims the encouragement of good sportsmanship on campus and the arousing of a greater interest in women's athletics in colleges and universities throughout the United States. The Beta Chapter was installed at Susquehanna in March, 1948, and has been an active campus organization since that time. Under the capable supervision of Miss McDowell, the organization has held a key spot in the field of women's athletics during the past year.

Although Tau Kappa is a small organization, nevertheless it is an active one. During the past year the local chapter of Tau Kappa sponsored a Harvest Dance in the gymnasium and entertained its patronesses at a Christmas party. Recently the group also instituted the selling of sandwiches in the women's dormitories.

Presenting



*Ideals are like stars; you will not
succeed in touching them with your
hands. But in following them you
will reach your destiny.*

—SCHURZ

FACULTIES

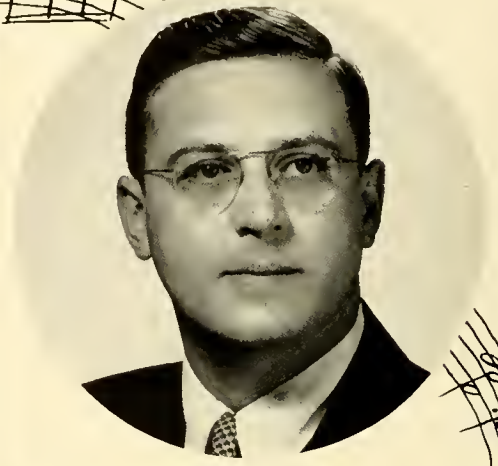
Faculty of Music



MR. FREDERIC BILLMAN



DR. PERCY LINEBAUGH



DR. JOHN LEACH



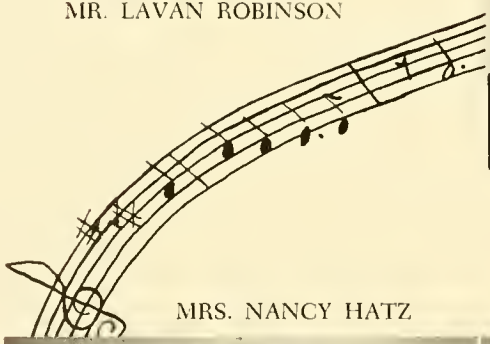
MR. LAVAN ROBINSON



MR. RUSSEL HATZ



MISS ALICE GIAUQUE



MRS. NANCY HATZ



MISS MARGRET KOMMEL



MISS MARY POTTEIGER



MISS MARGRET KOMMEL



Chapel Choir

Sopranos

Barbara Boob
Ruth Brobst
Anna Dorward
Barbara Hartranft
Mary Ann Heck
Anne Hepler
Carol Kogel
Gloria Myers
Helene Nestler
Dence Newhard
Ruth Nyhart
Arlene Roberts
Mary Jane Solomon

Elizabeth Stradling
Mary Ellen Strauch
Margaret Sultzbaugh
Linda Youhon
Carolann Zust

Altos

Claudette Bedeaux
Sue Carmint
Lynne Cramer
Carol Dauberman
Mary Davis
Elizabeth Ford

Janet Gerner
Carolyn Gillaspie
Nancy Kendall
Alice Ann Patterson
Diane Schilke
Marilynn Slyoff

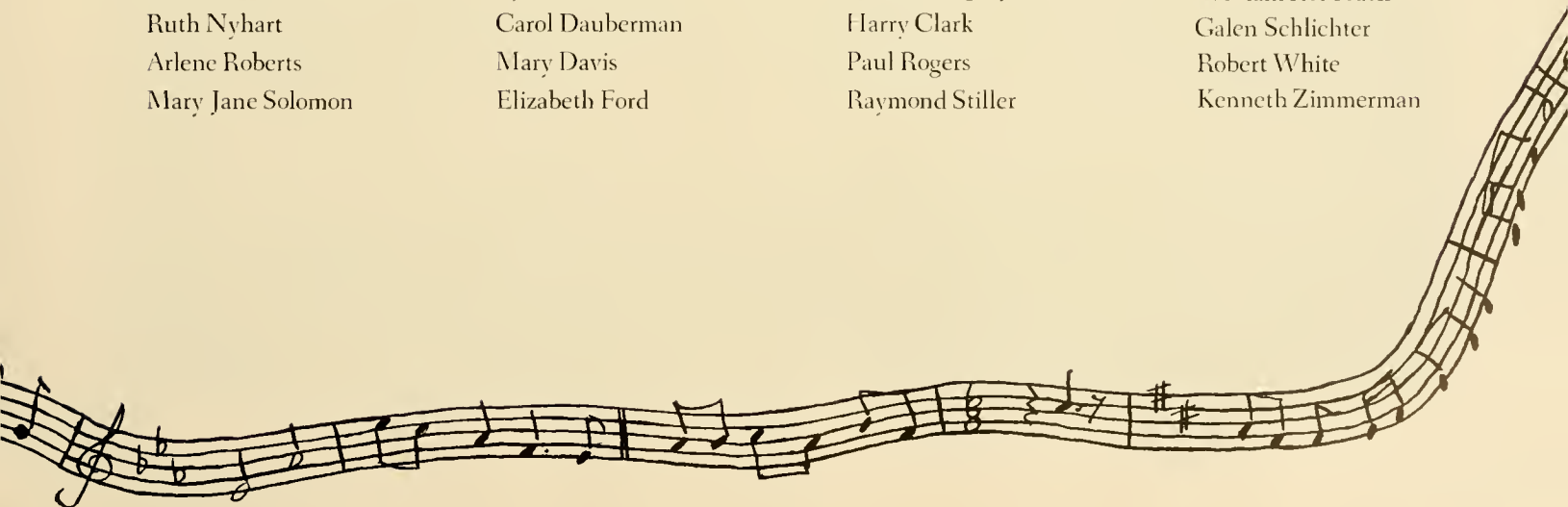
Tenors

John Albright
Robert Artz
William Aspray
Harry Clark
Paul Rogers
Raymond Stiller

Robert Willauer
John Yeleh

Basses

David Boltz
Ronald Comp
Maurice Feldman
Robert Gulick
Richard Kisslack
Russell McTague
Frederick Mursch
William Rohrbach
Galen Schlichter
Robert White
Kenneth Zimmerman



Susquehanna Singers

The Susquehanna Singers is primarily a chorus class for those students enrolled in the music education course and the music soloist course. The purpose of this choral group is to familiarize those participating in the group with a variety of secular as well as sacred choral music. Even though it is mainly for the music students, any other person enrolled at Susquehanna University is welcome to become part of its membership. The Susquehanna Singers appear on many musical programs throughout the college year under the direction of Mrs. Alice Giauque.

PERSONNEL

David Boltz
Barbara Boob
Gary Crum
Eleanor Dively
Martha Flood
Carolyn Gillaspie
Janet Gordon
Eleanor Hinkle

Paul Kurkowski
Wallace Kutz
Gloria Myers
Mary Neal
Alice Ann Patterson
Paul Rodgers
Elizabeth Stradling

Mary Ellen Strauch
Gail Weikel
Robert White
Robert Willauer
Armor Wolfe, Jr.
Marilyn Wrigley
Linda Youhon
Carolann Zust





Guest Batonist—Tommy Enterline.

Marching Band

PERSONNEL

Drum Majorettes

Mary Ellen Strauch
Nancy Kendall
(substitute)

Cornets

Margaret Sultzbaugh
Clayton Leach
Richard Overgaard
William Saltern
Raymond Stiller
Wayne Hiller

French Horns

Fredrick Mursch
Kenneth Richens

Baritone Horns

Barbara Boob
Don DeLauter

Trombones

Clyde Kauffman
Anna Dorward
Ken Shillingsford
William Woelkers

Bass Horns

Paul Kurkowski
Robert Willauer

Snare Drums

John Shillingsford
Charles Gruver
Harry Clark
Gary Aucker

Tenor Drum

Douglas Smith

Cymbals

Ruth Brobst

Bass Drum

Janet Gerner

Piccolos

Mary Klingler
Marilynn Slyoff
Alice A. Patterson

Clarinets

Eleanor Hinkle
Gary Crum
Barbara Enck
Baird Collins
Chester Hall
Carol Daily
Mary Bowman
Mary Neal

Alto Saxophones

Maurice Feldman
Robert White
John Albright

Tenor Saxophone

Lynne Cramer

Baritone Saxophone

Henry Geiss

Bell Lyre

Marilyn Wrigley

Baton Twirlers

Nancy Lockett
Nancy Vastine

Color Guards

Elizabeth Ford
Diane Schilke
Elizabeth Stradling
Carol Dauberman
Linda Youhon
Carolann Zust



The Concert Band

PERSONNEL

Flutes

Marilynn Slyoff
 Alice A. Patterson
 Mary Klingler
 Mary Ann Heck
 Nancy Boyer

Oboe

Lynne Cramer

Bassoon

Gail Weikel

Clarinets

Maurice Feldman
 Eleanor Hinkle
 Gary Crum
 Barbara Enck
 Mary Neal
 John Albright
 Carol Daily

Baird Collins

Marian Bowman
 Flo Troutman
 Sarah Troutman
 Gloria Myers
 Chester Hall
 Erhard Werner

Bass Clarinet

Richard Kisslak

Cornets

Wallace Kutz
 Margaret Sultzbaugh
 William Saltern
 Armor Wolfe
 Wayne Hiller
 Clayton Leach
 Ray Stiller
 Richard Overgaard

French Horns

David Wise
 Fred Mursch
 Marilyn Wrigley
 Kenneth Richens
 Mary Moore

Baritone Horns

Gerald Wilson
 Barbara Boob
 Mary E. Strauch

Trombones

Clyde Kauffman
 Anna Dorward
 William Woelkers
 Carolann Zust

Bass Horns

Robert Willauer
 Paul Kurkowski

String Bass

Lynn Hassinger

Alto Saxophones

Robert White
 Dorothy Lingenfelter

Tenor Saxophone

Janet Gordon

Baritone Saxophone

Henry Geiss

Snare Drums

Harry Clark
 Gary Aucker

Cymbals

Robert Gulick

Bass Drum

Janet Gerner

Tympani

Douglas Smith



Director: DR. JOHN LEACH

PROGRAM

The National Anthem
 March of the Steel Men
 Jesu, Joy of Man's Desiring
 Mozart Clarinet Concerto
 Euryanthe
 Greensleeves
 Italian Polka
 El Capitan
 Colonel Bogey
 Introduction to Act III Lohengrin
 Andante
 Dance of the Reed Pipes
 Trepak
 Begin the Beguine
 The Thunder Song
 King Cotton

Charles S. Belsterling
 Johann Sebastian Bach
 Wolfgang A. Mozart
 C. M. von Weber
 Old English Air
 Sergei Rachmaninoff
 John Philip Sousa
 Kenneth J. Alfred
 Richard Wagner
 Albert M. Ingalls
 Peter I. Tchaikowsky
 Peter I. Tchaikowsky
 Cole Porter
 Walter Finlayson
 John Philip Sousa



Symphony Orchestra

PERSONNEL

Violins

Marilynn Slyoff

Concertmaster

Nancy Kendall

William Woelkers

John Repko

Mary L. Runkle

John Dagle

Mrs. Zimmerman

Ruth Brobst

Mary Naugle

Martha Flood

Leona Wirt

Nathan Kale

Violas

David Boltz

Anne Hepler

Linda Youhon

Cellos

Clyde Kauffman

Ray Tyler

Diane Schilke

Mary Ellen Strauch

Grace Sharadin

String Basses

Paul Kurkowski

Robert Willauer

Harry Clark

Flutes

Alice A. Patterson

Nancy Boyer

Mary Ann Heck

Mary Klingler

Oboe

Lynne Cramer

Clarinets

Maurice Feldman

Eleanor Hinkle

Gary Crum

Bassoon

Gail Weikel

French Horns

Fred Mursch

Marilyn Wrigley

Mary Davis

Trumpets

William Saltern

Wayne Hiller

Ray Stiller

Trombones

Carl Musser

Barbara Boob

Tympani

Robert Gulick



Conductor: MR. RUSSELL HATZ

PROGRAM

Der Freischutz (Overture)

C. M. von Weber

Symphony No. 101 (The Clock)

Joseph Haydn

Concerto (Clarinet Solo)

C. M. von Weber

Rumanian Rhapsody No. 1

Georges Enesco

Irish Suite

Leroy Anderson

Faculty of Science

With the recent increase in student enrollment and greater interest in the Pre-Engineering Course, the Susquehanna University Science Department has undergone various changes. The laboratory facilities have been improved and additions in the line of equipment have been made. Students majoring in science can obtain degrees in such fields as Chemistry, Biology, Physics, and Mathematics, in addition to training for such professions as medicine, dentistry, medical technology, and others. Science students at Susquehanna are given close personal supervision by an adequate group of science professors experienced in preparing students for work in this field.

Students interested in Biology or any of its numerous divisions are under the advisorship of Dr. Robert L. Amy, a graduate of the University of Virginia. Those interested in Chemistry or any of the medical sciences are under the direction of Dr. John Houtz, who trained at Susquehanna University, and Mr. Howard DeMott, a graduate of Bucknell University. Dr. T. Townsend Smith, a Harvard graduate, is adviser to students of Pre-Engineering and Physics. Adviser in the field of Mathematics is Dr. George M. Robison, who graduated from Cornell University. It is obvious from this short roll-call that students majoring in science, are well prepared in their respective fields.

Science activities are housed in Steele Science Hall. The building was completed and dedicated on June 10, 1913. It was built largely through the gifts of the Honorable Charles Steele, other directors of the Board, and friends of the college. It contains the chemistry, physics, and biological laboratories, and a large amphitheatre for laboratory demonstrations and visual education programs. Visual education plays an important part in the study of science and Susquehanna is well equipped along these lines. The projection equipment ranges from micro-projection equipment to motion pictures.

Biologically, the science department is equipped to train students for research and teaching in such fields as zoology, botany, anatomy, histology, physiology, bacteriology, genetics, embryology, and others. Since the microscope plays the leading role in biology, the department offers extensive training in the use of microscopes ranging from the standard light scope to phase microscopy.

The chemistry department offers such courses as general chemistry which is primarily designed to orientate the beginning student, analytical chemistry, both qualitative and quantitative, organic chemistry, physical chemistry and biochemistry.

Students of physics and mathematics receive training ranging from elementary college algebra to projective geometry and advanced calculus, and physics courses from introductory physics to thermodynamics and electricity.

The biology and chemistry departments offer seminars in their respective fields. These are informal courses primarily for majors. In the biology seminar various biological topics are discussed and the special interests of individual students are considered. The chemistry seminar is also directed towards the interests of the individual student and work is done primarily along lines of his choice.



DR. ROBERT L. AMY



DR. GEORGE ROBISON

MR. HOWARD DEMOTT



DR. JOHN J. HOUTZ



DR. T. TOWNSEND SMITH







OFFICERS

DONALD REAMER

President

DAVE WISE

Vice-President

GLEN SMITH

Secretary

CLARENCE LORAH

Publicity

DR. ROBERT AMY

Adviser

The Biemic Society

The Biemic Society is an organization primarily founded for the purpose of supplementing classroom-learning and creating a better understanding of scientific problems among the students of various science departments. Membership in the organization is open to all students interested in the biological, chemical, and physical sciences. The society meets the second and fourth Mondays of each month, at which time programs are presented by seniors, faculty members, and guest speakers.

During the past year, the society's programs were widely diversified and highly interesting. On November 14, 1955, Dr. Richard Chase of the Merck Chemical Company was the guest speaker. His lecture, supplemented by an elaborate demonstration, was entitled "Ion Exchange Resins." Mr. Thomas B. Richards, superintendent of the Steam Electric Plant in Shamokin Dam, spoke on October 10, 1955. He explained the working principles of the Steam Electric

Plant at Shamokin Dam, which is owned and operated by the Pennsylvania Power and Light Company. The plant is the largest of its kind in the world.

Keeping in line with modern trends in science, Dr. T. Townsend Smith, of the Susquehanna University Physics Department, spoke on relativity and Einstein's theory. The meeting was held on December 12, 1955. Another topic in the educational series was delivered by Professor Robert Meader on January 9, 1956. Mr. Meader spoke on Archeology in Rome and Pompeii. The highlight of the year's activities was an address given by Dr. Harold Heine, Professor of Chemistry, Bucknell University. Dr. Heine has recently been credited with work toward the syntheses of 3-bromo, 4-nitrophenol, an organic compound which selectively kills lamprey larvae which have been wiping out commercial fishing in the Great Lakes.



The Biemic Society

Samuel Adams
 John Albright
 Nancy Altland
 Ann Ambromavage
 Beatrice Aurand
 Charles Bailes
 Gilbert Bannerman
 Dave Bergman
 Susan Bates
 David Boyer
 Jan Brown
 Sue Carmint
 Frank Chango
 Sandy Crothers
 Carletta Chubb
 Margaret Dalby
 Charles Deutermann
 Brian Donley
 Dawn Douglas

Mary Lou Ernst
 Theresa Feliciano
 Robert Fiscus
 Gerald Fletcher
 Randall Fox
 Guy Frisk
 Henry Geiss
 Robert Greco
 Anthony Grigalunas
 Robert Handzo
 Evelyn Herbstrith
 Babetta Hewitt
 Jesse Hill
 Lawrence Hoover
 Sheldon Johnson
 Fern Keefer
 Doris Keener
 Joy Klingler

Eileen Leddy
 Sandy Locke
 Clarence Lorah
 Richard Love
 Sandy Lytle
 Elinor McKim
 Carol Marshall
 Doris Moon
 Sidney Ocker
 Joseph Osinchak
 Richard Overgaard
 Janis Paul
 Donald Reamer
 Joseph Reed
 Thelma Rosetti
 Joan Shetterly
 Glenn Showalter
 Joseph Shupinski

Sue Sieber
 Patricia Sipe
 Glen Smith
 Walter Smith
 David Solomon
 Mary Souden
 Miles Stanton
 Frank Stugart
 Harold Trabosh
 Patricia Walker
 Erhard Werner
 Leona Wirt
 Dave Wise
 Gene Witiak
 Twila Wolf
 Cecile Yeakley
 Nicholas Yost
 Carol Zacharias
 Ruth Zimmerman

Faculty of Business

The facilities in the business department are extensive. In Bogar, there are large laboratories, for machine and straight accounting in which the students work with the most modern equipment found in the business world. A large typing room provides equipment for the many students enrolled in both secretarial and education courses.

The Business students are given expert counseling in preparing them to meet the most rigid requirements in the field of big business. There are four main fields in the faculty of Business. These are Business Administration, Business Education, Economics, and the two-year secretarial course.

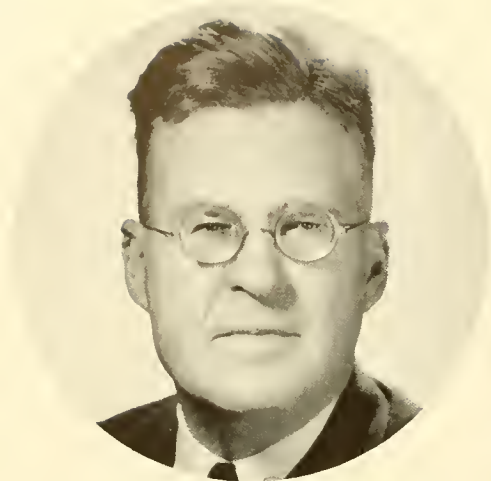
The Bachelor of Science degree is awarded to those who finish the four-year course in Business Administration. This course is taken by students planning to enter the fields of accounting, salesmanship, personnel administration, federal civil service, or other specialized fields. The professors who guide students in this particular field are Dr. Thomas F. Armstrong, Dr. Lyder L. Unstad, and Mr. Lamar D. Inners.

The Bachelor of Science degree is also awarded to those who finish the four year course in Business Education. This curriculum permits the graduate to secure a college provisional certificate licensing him to teach the business subjects in the schools of Pennsylvania. Miss Jean Beamenderfer is in charge of seeing that these prospective teachers reap the greatest benefits from the courses required. These required courses total 55 semester hours. In addition the student will follow courses in Business Education to bring the grand total of semester hours up to the number required for graduation.

In addition to the two-year Secretarial course, there is a four-year Secretarial course, and both a two and a four-year Medical Secretarial. The degree of Bachelor of Science is offered to those who complete the four-year Medical Secretarial and the four-year straight secretary course. A diploma is given to the students completing the two-year secretarial course both in straight secretary and in medical.

Economics is a very important field in itself. It is, however, undeniably closely connected with business. Dr. Waldemar Zagars is head of this department.

The business department is indeed an active faculty of Susquehanna. The society which is most closely connected with it is the Business Society.



DR. THOMAS ARMSTRONG, JR.



MISS JEAN BEAMENDERFER

MR. LAMAR D. INNERS



DR. LYDER UNSTAD



DR. WALDEMAR ZAGARS





Typewriting



Mimeographing



Stenciling



Accounting



Dictation



OFFICERS

PETER NUNN

President

GARY SMITH

Vice-President

SALLY BROWN

Secretary

NANCY McCULLOUGH

Treasurer

DR. ARMSTRONG

MISS BEAMENDERFER

Advisers

Business Society

The Business Society is an organization of students enrolled in the departments of administration, commercial education, and economics. Secretarial students are urged to belong to this society, also. The society endeavors to promote group discussions of problems relating to education and business.

The Business Society encourages students to attain high scholastic attainment. In view of this fact, the group sponsors a scholarship trophy, which is presented each fall to the sophomore with the highest record for the preceding year. Through its scholarship fund, it gives financial aid each year to a worthy student.

At monthly meetings the members plan programs which pertain to finance, education, and several related fields. At each monthly meeting, either a student, faculty member, or an imported speaker discusses some problem pertinent

to business. At various intervals field trips are taken. This year the society visited the Magee Carpet Company in Bloomsburg, Pennsylvania.

During the past year, the society has been active in many varied campus activities. One of the main and most enjoyable events was the annual auction by the sun-dial. This is really a riot. Various articles are contributed by students and the townspeople of Selinsgrove. "Slightly ridiculous" would be an appropriate description. Grotesque hats come out of closets to reap money for the Business Society. Everyone stands around the sun-dial and laughs even to the point of forgetting to bid on a beautiful beaded necklace or a gold bracelet.

The officers who were elected to serve the 1955-56 school year were: Peter Nunn, president; Sally Brown, secretary; Nancy McCullough, treasurer.



Business Society

Terry Feliciano
 Bob Bartels
 Carol Kogel
 Lew Post
 Helen Frerichs
 Barbara Enck
 Nancy Lockett
 Albert Stanton
 Jane Holland
 Gail Muller
 Ronald Fouche
 Gil Bannerman
 John Renshaw
 Wayne Rutz
 Roger Holtzapple
 Fred Chrvala
 Vernon Hoover
 Louis Heinze
 Gladys Lawver
 Evaleen Keen
 Eleanor Erdley
 Margie Nash
 Judy Brown
 Doris Wittes

Nancy Forrest
 Barbara Boob
 Jayne Tolson
 Joan Hoffman
 Marian Bowman
 Jack Cisney
 Robert Artz
 Max Kleintop
 Patsy Klase
 Sidney Richard
 Jim Stone
 Lillian Troutman
 Elwood Cox
 Wade Hoffman
 Lynn Hassinger
 Peter Nunn
 Gary Smith
 Janis Quigley
 Nancy Marek
 Marion Drumheller
 Dave Harrington
 Leroy Wolfe
 George Schluchterer
 John Biber

Robert Hackenberg
 Henry Cook
 Gary Page
 Gordon Thompson
 Lois Richards
 Janis Adams
 Barbara Tongue
 Peggy Burns
 Judy Anderson
 Carl Shoemaker
 Mabel Hays
 Julie Stauffer
 Arthur Zimmerman
 Edward Rhodes
 John Hendricks
 Janet Swenson
 Janet Smith
 Janet Snyder
 Rosalyn Young
 Sara Troutman
 Flo Troutman
 Beatrice Aurand
 James Seasholtz
 Joanne Smozinsky

Sally Brown
 Pat Sipe
 Nancy McCullough
 Gloria Masteller
 Bonnie Miller
 Marty McNitt
 Nat Willhour
 Gary Schroeder
 Joyce Hancock
 Georgia Curtis
 Janice Hiddeman
 Janet Rohrbach
 Barbara Dorian
 Chester Hall
 Seth Keener
 Don Henninger
 Clayton Leach
 Gene Stettler
 Bob Haswell
 Robert Kenyon
 Robert Fiscus
 Area Regoli
 Jack Bishop
 Leonard Quick

Faculty of Languages



DR. JANE BARLOW



DR. RUSSELL GILBERT



MR. AXEL KLEINSORG



MISS ATHALIA KLINE

MR. ROBERT MEADER



MISS RUTH MEISTER



DR. ARTHUR WILSON



PHI KAPPA PHI

First Row, Left to Right—C. Sadosuk, Dr. Barlow, G. Nesbitt. Second Row—B. Walker, D. Trimmer, A. Hazen, G. Fletcher, E. Herbstrith, J. Koones, D. Smith, C. Meerbach, J. Schlichter, J. Roshon.



Phi Kappa Phi

Phi Kappa Phi is an organization of students who are interested in the cultivation of a proper appreciation of the classical languages, Latin and Greek, and the culture of the ancients. This organization, which is the youngest one on the campus, is the result of a merger between Ciceroniani, the Latin club, and Phi Kappa, the Greek club. Its members endeavor to enrich themselves with the treasury of the classical heritage.

At its meetings phases of ancient classical literature and civilization are discussed by people of authority who are familiar with the early ages of modern man; occasionally motion pictures or slides are shown which further assist the student in understanding the complexities of the ancients.

Another interesting endeavor in addition to authoritative lectures is a study of classical literature. Through this method it is possible to re-create the early life and thought that is basic in understanding the development of man as a rational being. Much of early Grecian philosophy remains with us today through the efforts of Plato and Aristotle. Christian philosophy can be traced to these early teachings, making a thorough study of classical philosophy mandatory for all those intending to enter some religious field.

During the past year the members of Phi Kappa Phi heard general lectures on Egypt and Rome, and illustrated lectures on Pompeii and the Holy Land.

Alpha Psi Omega

Drama! Mystery! Comedy! Adventure! All these and more are present when Alpha Psi Omega takes the stage. Alpha Psi Omega consists of a group of interested individuals who have earned seventy-five points through creditable work done in the various phases of play production. It is the largest national honorary fraternity of dramatics in the world. The Theta Phi chapter of Alpha Psi Omega that is located here at Susquehanna holds as one of its main aims the cultivation of a greater appreciation of the drama among its members. The group works hand in hand with the Susquehanna Players, taking an active part in their many productions. The members of Alpha Psi Omega do not confine their dramatic talents to acting alone, but also gain considerable experience in set designing, costuming, make-up, lighting, and bookholding.

The group, although small, has helped to add to the social life on campus in several ways. As previously mentioned, they have taken part in many phases of play production, sponsored a Variety Show, and participated in the Student Christian Association's Campus Carnival. They hold regular monthly meetings over which the elected director presides.



ALPHA PSI OMEGA

First Row, Left to Right—C. Kauffman, C. Sandt, R. Hackenberg. Second Row—E. Chango, J. Brown, J. B'ber, D. Smith, J. Yeich, S. Brown, A. Stanton, Mr. Kleinsorg, G. Pospisil.

PRODUCTIONS—1955-56

"The Late George Apley"

"So Wonderful In White"

"Time Out For Ginger"

"Hamlet"

The house lights dimmed, soft music began in the background, the curtain parted, and the Susquehanna Players brought forth another sparkling performance. The Players, under the capable direction of Mr. Axel Kleinsorg, are responsible for much of the entertainment at Susquehanna University. The group is made up of students from all departments of the University and provides them with an opportunity to participate in the many aspects of play production.

The productions range from delightful heartwarming comedies to dramatic powerful Shakespearian productions such as *Hamlet*. In honor of their fine work in the field of dramatics, we dedicate these pages

TO the Susquehanna
players—they make
the show





The Susquehanna



C. MILLARD
Business Manager



C. SADOSUK
News Editor



C. GILLASPIE
Managing Editor



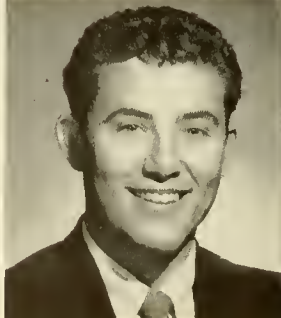
D. TRIMMER
Feature Editor



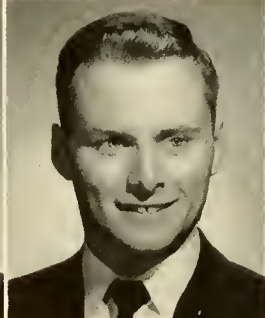
C. LORAH
Photography



C. SANDT
Women's Sports



G. POSPISIL
Men's Sports



E. COX
Circulation



L. RONIG
Advertising



J. SCHLICHTER
Editorial Assistant



MISS BEAMENDERFER
Business Adviser



DR. A. H. WILSON
Editorial Adviser

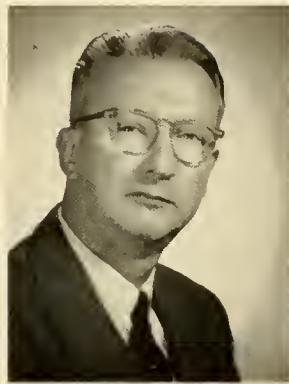


ANNA JANE MOYER
Editor

The Lanthorn



MISS BEAMENDERFER
Business Adviser



DR. A. H. WILSON
Editorial Adviser



D. SMITH
Business Manager



C. SADOSUK
Assistant Editor



M. E. STRAUCH
Literary Editor



CLARENCE L. LORAH
Editor



S. WAHL
Assistant Literary Editor



N. MAREK
Chief Typist



N. BAILEY
Advertising



M. KRATZER
Athletics



J. SCHLICHTER
Proofreader



E. COX
Circulation

Faculty of Social Science

Are you able to motivate a high school class successfully? Can you list five proofs for the existence of God? Do you know the difference between a psychosis and a neurosis? Can you name the three great human groups on this earth? Are you able to give an extensive definition of "manifest destiny?" The student might be asked these questions by the members of the faculty of the social sciences. This field includes the general subjects of education, philosophy, psychology, sociology, and history and prepares students for high school teaching, the ministry, guidance and counseling, and the professional field of social work.

Those students interested in teaching any of the liberal arts, scientific, or business subjects in the secondary school are in the capable hands of Dr. Albert Zimmer who received his doctorate in education from the University of Pittsburgh. The progress which a prospective teacher makes in the several education courses which he is required to take are put into practice during the senior year when he embarks upon his student teaching experience.

The pre-ministerial students are subjected to a generous amount of philosophical and religious experiences in the classroom and elsewhere under the watchful eye of the Reverend Mr. Benjamin Lotz who acts as adviser, counselor, and stimulating teacher for this group. Mr. Lotz received an A.B. from Wittenberg College in 1923 and a B.D. from the Lutheran Theological Seminary, Philadelphia.

Any students who are interested in the various jobs open to psychology majors will gain a firm foundation in this subject here at Susquehanna. They study the psychology of the child, the adolescent, the student, and the abnormal person and the practical applications of this subject as taught by Dr. Zimmer and Mr. Harold Gullbergh. Mr. Gullbergh, a newcomer to the campus and assistant professor of psychology, holds four degrees and is at present working on his Ph.D. at Syracuse University.

Those students who are preparing to enter the field of social work are under the direction of Assistant Professor Frederick Stevens. Mr. Stevens, after graduating from the University of Minnesota, undertook further study at Columbia University and received an M.A. degree in 1932. Those who continue their study of sociology after graduation from Susquehanna are able to enter such fields as college teaching, and private and government research and industry.

Students who are majoring in history are aided in their endeavors by Dr. William A. Russ. Dr. Russ graduated from Ohio Wesleyan, received his M.A. from the University of Cincinnati, and the Ph.D. degree from the University of Chicago. These students are subjected not only to the usual subjects such as History of West Europe and United States History, but also to more advanced courses.



DR. WILLIAM RUSS



DR. ALBERT ZIMMER

MR. HAROLD GULLBERGH



THE REV. BENJAMIN LOTZ



MR. FREDERICK STEVENS



FUTURE TEACHERS OF AMERICA

First Row, Left to Right—B. Walker, D. Wittes, C. Henry. Second Row—S. Wahl, Mrs. Giauque, Dr. Zimmer, A. J. Moyer, C. Sadosuk, J. Gordon. Third Row—J. Spigelmyer, B. Aurand, N. Zimmerman, J. Schlichter, M. Neal, C. Dietrich, J. Swenson, E. Hinkle, R. Kurtz, C. Chubb, C. Meerbach, M. Overly.



Future Teachers of America

The Susquehanna University Chapter of the Future Teachers of America has completed its third year of existence on our campus. In just this short time it has become the largest college F. T. A. chapter in the state of Pennsylvania.

The officers of the F. T. A. for this year were: president, Anna Jane Moyer; vice-president, Carole Sadosuk; secretary, Lynn Hassinger; treasurer, Clayton Leach; and faculty advisers, Mrs. Alice Giauque and Miss Jean Beamenderfer.

One of the first activities of the F. T. A. this year was its participation in the observance of American Education Week. During this week various programs were held, among which were a one-act play, presented locally in the high schools, and a radio panel.

The F. T. A. meets the first Thursday evening of each month in Bogar Hall. Among the various interesting and educational programs planned for each meeting were a student-teacher and in-service teacher panel, guest speakers, and films on education. The group also made a trip to Bloomsburg State Teachers College to see how F. T. A. chapters function on other campuses.

Pi Gamma Mu

Pi Gamma Mu is a national, social science, honor society whose membership includes faculty, alumni, and junior and senior undergraduates who are able to meet the necessary requirements for membership. These requirements are as follows: (1) special interest in social sciences; (2) completion of at least twenty semester hours in the social sciences with an average grade of "B"; (3) good character; and (4) high scholastic standing in the other college subjects of the individual.

The national society, consisting of 130 chapters with a membership of over 19,000, was established to encourage and reward undergraduate interest in the social studies field. This ideal was fully realized this past year when the Susquehanna chapter sponsored an open meeting at which time Dr. Maurice A. Mook, noted anthropologist and authority on the Mennonite sect, spoke on "The Plain People of Pennsylvania."

Monthly meetings of the group are held throughout the school year. The program for this year consisted of such varied activities as lectures on commercial art, socialized medicine, archaeology, and the educational prerequisites for law; two book reports; a panel discussion; and the annual spring banquet. A faculty member acts as host for each meeting.



PI GAMMA MU

First Row, Left to Right—Miss Kline, M. Bonngren, E. Imrie. Second Row—P. Nunn, Mr. Lotz, Dr. Zagars, Dr. Russ, Mr. Meader, J. Brandes.

It's in



"The University provides a variety of entertainment . . ."



"Freshmen are not permitted to use the main doors of G. A. Hall . . ."



"Socks are not permitted in the college dining room . . ."



"Susquehanna offers a friendly atmosphere and . . ."

the Book



"Most courses will require outside reading . . ."



"Dormitory rooms are to be cleaned regularly . . ."



"The administration maintains the right to suspend students . . ."



"Students receive personal faculty attention . . ."

Presenting



*To set the cause above renown,
To love the game above the prize,
To honor, while you strike him down,
The foe that comes with fearless eyes.*

—NEWBOLT

ATHLETICS

Athletic Administration

When the Susquehanna students returned to campus this year, they found a number of changes had taken place in the athletic administration. Coach Amos Alonzo Stagg, Jr. after serving as head football coach for seventeen years, resigned his position and is now head of the Physical Education Department. Mr. Stagg also serves as faculty adviser to the Intramural Board. He was succeeded as coach by Henry "Whitey" Kiel, a Susquehanna alumnus. Mr. Kiel was formerly football coach in the high school in Union City, N. J. Previous to that, he had done some coaching in colleges. Coach Kiel piloted the Crusader team this season and led the team to a victory over Wagner in one of the most memorable Homecomings in many years.

Another addition to the athletic administration is the new women's physical education director, Miss Betsy McDowell. Miss McDowell came to Susquehanna from Luther College in Wisconsin, and under her capable supervision, the girls had a well organized intramural program. Although there were no varsity sports, various teams did participate in playdays. These playdays consisted of inter-collegiate competition in various organized sports with such teams as Dickinson, Lycoming, Bucknell, and Lock Haven.

With the opening of basketball season one might have found a steady commuter between Northumberland and Selingsgrove in the person of Mr. Edward Pfeiffer, the basketball coach who led the Orange and Maroon on to a successful year. The entire student body cooperated in producing one of the greatest exhibitions of school spirit ever displayed at S. U.

Coach Robert Bastress from Selingsgrove headed the baseball team last year. He did a fine job, but resigned this year in order that he might have more time to spend at his job as assistant superintendent of Snyder County schools. This year the coaching duties will be taken over by Mr. Richard Hummel.



MR. AMOS ALONZO STAGG, JR.



MISS BETSY McDOWELL

MR. ROBERT BASTRESS



MR. HENRY KIEL



MR. EDWARD PFEIFFER



Intramurals



Baseball



Wrestling



Softball



Basketball



Track



The Team

THE TEAM

John Anthony
Chalmers Bartlow
Walter Benham
Jack Bishop
Fritz Fichtner
Ronald Forster
Robert Gulick
Harry Haney
James Keiser
Robert Lewis
Veryl Milroy
Richard Purnell
John Schell
Joseph Scully
Ted Sees
William Shaffer
Carl Shoemaker
Lanny Thomas
John Vought
Gerald Wilson
Ray Yeingst
Robert Yerger
Joseph Yocum

THE COACHES

Henry "Whitey" Kiel
Robert Pittello

THE MANAGERS

Tony Grigalunas
Jerry Fletcher
Dick Frank



THE SENIORS



ROBERT GULICK, *back*



GERALD WILSON, *guard*



Third Row, Left to Right—F. Romano, G. Witiak, D. Huseman, J. Stone, J. Anthony, E. Pfeiffer, Coach.
 Second Row—J. Osinchak, R. Purnell, B. Donley, J. Herbster, R. Fiscus. Front—Edward and Elwood Stetler,
 Mascots.

Basketball

THE TEAM

FRANK ROMANO
 GENE WITIAK
 DWIGHT HUSEMAN
 JERRY HERBSTER
 DICK PURNELL
 JOE OSINCHAK
 BRIAN DONLEY
 JIM STONE
 BOB FISCUS
 JACK ANTHONY
 EDWARD PFEIFFER, *Coach*

Forward
 Forward
 Center
 Guard
 Guard
 Juniata
 Ursinus
 Lycoming
 Wilkes
 Lycoming
 Dickinson
 College of So. Jersey
 National Aggies
 Drexel
 Hartwick
 Juniata
 Franklin and Marshall
 Elizabethtown
 Western Maryland
 Washington College
 Haverford
 Elizabethtown
 Phila. Textile Inst.

BASKETBALL SCORES

S. U.	Opp.
70	87
71	59
57	62
70	72
69	84
77	62
83	68
101	88
68	62
85	79
76	84
72	68
66	110
71	57
85	75
77	85
72	78
64	61





Baseball

THE TEAM

Robert Gulick
 Richard McCarty
 Gerald Herbster
 Harry Koehler
 Richard Smith
 Gordon Thompson
 Jim White
 Randall Fox
 George Schluchterer
 Frank Romano
 Milan Kratzer
 Robert Lewis
 Richard Purnell
 Stanley Shilling
 John Rodkey
 Ralph Sheldon
 Ronald Fleming
 Robert Bastress, *Coach*

National Aggies
 Gettysburg
 Wilkes
 Elizabethtown
 Juniata
 Lycoming
 Drexel
 Temple
 Albright
 Lebanon Valley
 Bucknell
 Bucknell
 Dickinson

THE SCORES, 1955

	<i>Opp.</i>	<i>S. U.</i>
National Aggies	5	6
Gettysburg	10	2
Wilkes	4	10
Elizabethtown	2	1
Juniata	4	2
Lycoming	7	10
Drexel	8	9
Temple	10	8
Albright	9	10
Lebanon Valley	13	8
Bucknell	8	0
Bucknell	20	1
Dickinson	5	4



Kneeling, Left to Right—G. Casselbury, A. Hazen. Standing—L. Kohl, B. Ormond, C. Sandt, Captain; M. Dalby.

The Cheerleaders

Yea!

Fall at Susquehanna saw the cheerleaders again take the zest and life within themselves to infect the thousands watching Susquehanna's efforts against rivaling teams.

Rah!

Rah!

Through the tireless efforts of Charlotte Sandt, captain of the squad, the cheering was not only a little louder, but also supplemented by various demonstrations of school spirit. Pep parades, dances, and bonfires also added to the season's activity.

Yea!

At various times throughout the football season, the W. A. A. Clowns, impersonated by Pat Walker and Janet Cole, aided the cheerleaders in keeping the Susquehanna spirit high. The clowns could be seen everywhere making people laugh, and greatly improving the relations between Susquehanna and her opponent.

Yea!

Pep rallies, a constant spirit lifter throughout the season, provided release for the bubbling enthusiasm of the student body and inspiration for the team. The optimum of rallies saw the students come out to really encourage the team for the Wagner game. It was Homecoming for Susquehanna and the cheerleaders led the student body through the streets of Selinsgrove offering an unexcelled demonstration of school spirit. After the pep parade a bonfire was held behind the gymnasium and a gigantic outburst of enthusiasm was evident once more. Following the rally a record dance was sponsored in the student lounge. Later when Susquehanna upset Wagner by a score of 21-19, a mass demonstration saw the goal posts torn down and distributed among rejoicing students.

Rah!

Rah!

Yea!

Women's
Athletics



baseball golf



gymnastics

playday



interior

basketball dancing

Presenting



*For the cause that lacks assistance,
For the wrong that needs resistance,
For the future in the distance.*

—BANKS

ACTIVITIES

Homecoming

*A flowing gown,
a magic wand,*



CHARLOTTE SANDT
The Queen



ELIZABETH STRADLING
*Junior
Representative*

Queens

*The essence of
a dream come true.*



JANIS QUIGLEY

*Sophomore
Representative*



JOAN HOFFMAN

*Freshman
Representative*

Homecoming - 1955

MISS CHARLOTTE SANDT

The Queen



Red and yellow leaves rustled in the trees. It was breezy, spicy, and cool. The joyous greetings of old friends filled the air. Homecoming was here once again. Ah, and what a festive occasion it was!

The big weekend really began on Friday evening. Of course, previous to this time the classes had held separate elections to choose their representatives to the Homecoming court. The papers were filled with speculations as to who the lovely queen would be.

The four beauties vying for honors were Charlotte Sandt, senior representative; Elizabeth Stradling, junior representative; Janis Quigley, sophomore representative; Joan Hoffman, freshman representative.

The suspense had been terrible. Who—oh who would be the Homecoming Queen? And then, Boom! Just like that, it arrived! But no one was ready. Gowns which needed to be pressed were hanging on the backs of closet doors; signs were frantically being put up to welcome the alums. Oh yes, we can't forget those "Susquehanna vs. Wagner" signs.

One of the finest additions to our Homecoming celebration was the Coronation ceremony on Friday night. At 8:00 o'clock everyone gathered in the Chapel anxiously awaiting the announcement as to who the queen would be.

As the organ played the "Coronation March," the glamorous queens walked slowly down the aisle. When all the girls were on the stage, John Yeich, president of the Men's Student Council, stepped out and proclaimed the glad tidings. Lifting the crown high into the air, he said, "I crown you Queen Charlotte, Homecoming Queen of 1955!" The student body expressed their hearty approval with a loud and long ovation for their very beautiful queen.

After the coronation, Queen Charlotte and her majestic court were escorted through Selinsgrove. The band led the procession, followed by the fraternity and sorority floats, and a crowd of effervescent freshmen.

Even the bitter cold weather didn't keep the celebrating students of Susquehanna away from the pep rally and bon-fire

behind the gymnasium. The cheerleaders led the rally and Queen Charlotte gave the team words of encouragement. A record dance followed in the student lounge.

Friday night weary heads dropped into soft pillows. What a day! But this was only the beginning. Saturday morning, bright and early, the alumni registered. Many of Susquehanna's "old grads" had returned for the memorable day.

The Freshman-Sophomore football game was another big event of the weekend. The game was played Saturday morning, but the freshmen just couldn't do it. The sophomores beat the freshmen 6-0.

The pre-game ceremonies started at one o'clock. The Queen and her court rode around the track waving greetings and welcomes to everyone. Queen Charlotte then presented the award for the best Homecoming decorations. First place went to Theta Chi, followed by Phi Mu Delta and Bond and Key.

The highlight of the big weekend was the football victory over Wagner College. This was the Crusaders' first win since 1952. The capacity crowd of 2,000 spectators and students was thrilled because of the victory.

The weekend was brought to a close by the formal dance in the gym sponsored by the Fraternity Senate and the Panhellenic Council. The gym was beautifully decorated by very unusual lighting effects and scenery. At twelve o'clock, lest all the beautiful dreams turn into pumpkins, the couples left the dance sighing nostalgically over a wonderful Homecoming Weekend.



Bond and Key



The Dance



Theta Chi



Phi Mu Delta



The Kappa Delta Float



The Coronation Throne



The crowning of Queen Carlene Lamade
by Miss Eleanor Steffey, 1954 May Queen.



May Day - 1955

"The Queen is coming! The Queen is coming!" Flags are flying in the May sunlight; the band is playing "Cheerio"; friends and alumni are coming to see Susquehanna University revel in the May Day festivities. This is May Day, 1955.

Carlene Lamade was elected queen for the second time during her senior year. After reigning over Homecoming in the fall, the students of Susquehanna again chose Carlene to be their Queen for May Day. Carlene's lovely lady-in-waiting was Barbara May. The members of the court were Barbara Frank, Margaret Gordon, Nancy Herman, Ruth Scott, Rose Marie Sharetts, Ann Lacock.

The May Day pageant was based on "Hans Christian Andersen's Tales of May." Of course that ever lovable Hans Christian Anderson was the leading character. He was portrayed by Larry Bingaman, a senior.

The scene was laid on the waterfront. The set committee, led by Ruth Ann Ulsh, did a very commendable job. She directed the construction of a very charming town which was used as back-drop for the play. The set consisted of three buildings: a bait shop, a cozy little home, and . . . (What's missing?) . . . Why yes, of course, it's the "Gov'nor Tavern." Beside the little town "The Naughty Lady," a ship complete with mast and sails, nestled in a bay of green.

The overture was played by the band under the direction of Dr. John Leach. As the closing strains of "Smoke Gets In Your Eyes" drifted off into the bright sunlight, the set came alive when all the townspeople and children, singing "Wonderful, Wonderful Copenhagen," rushed down the main street

of the town. The children and grownups alike were happy and gay because it was May Day. Sometime during that day they knew that the Queen of all the land would pass through their town. She would bow and curtsy and they would look upon her beautiful face.

Hans Christian Andersen needed little encouragement to tell a good story. He narrated the "Ugly Duckling" as Al Hazen, a freshman, portrayed it in song and dance.

"The King's New Clothes" was enacted by Charles Coates, a senior, in his bright red underwear. It is a proven fact that "old soldiers never die," for who could ever forget John Yeich's infantry drill with all of the "old soldiers" participating in it.

Hans put the people in a pensive mood for a while as he depicted the story of the little match girl. Mary Ellen Strauch, a sophomore, danced a solo modern dance to it as he unfolded the sad story. Betty Ann Ormond, a freshman, did a very beautiful dance while Hans sang "Anywhere I Wander."

Then Larry, as jolly Mr. Hans Christian Andersen, put everyone in a gay mood by dancing and singing with the children.

The Inch-Worms, a group of modern dancers, measured out the next number as the children sang the clever "Inch Worm" song in the background.

Next the Queen and her court with jesters and fools came across the green and down into the town. The May Pole dancers then wound the bright streamers around the pole in honor of the Queen.

The Editor Wishes to Thank . . .

Dr. Arthur Wilson, editorial adviser, for assistance, suggestions, and unlimited patience.

Miss Jean Beamenderfer, business adviser, for her outstanding work with the business staff.

Mr. James Frailey, Grit Publishing Co., for his countless trips to Susquehanna and boundless patience.

Mr. James Yoder, Prim Studios, for his photographic assistance and understanding.
Marilynn Slyoff and Elizabeth Stradling, who did much of the typing of the original copy.

Linda Youhon, for the artwork in this volume.

Joan Raudenbush, for her outstanding work with the advertising section.

The entire Staff, for their cooperation and assistance.

The Student Body, for a year of patience.

The Advertisers, for helping make this book possible.

The commercial photography in the 1957 LANTHORN is the work of the Prim Studios, Mount Carmel, Pennsylvania. The general photography is by the editor. The book was published by the Grit Publishing Company, Williamsport, Pennsylvania.

CLARENCE L. LORAIN,
Editor.

Unpictured Students

Seniors

Gordon Boop
Clyde Kauffman
Beverly Pecht
Ray Tyler

Special

Rosine Bucher
Russel Fry
Russel Grugan
Carl Harlacker
Patricia Martin
Joseph Sims

Junior

Armor Wolfe

Sophomores

James Bergen
James Killgore
David Lordon
James Morgan
John Rodkey

Freshmen

Ron Fenstermacher
Ronald Forster
Wayne Hiller
Melvin Leib
Garnar Mapston
Russel Mertz
Donald Middlesworth
Richard Neff
Christian Schneider
Barry Siegfried
Gleason Whipple
Joseph Yocum

Student Directory

- Adams, Janis (1) 27 E. 6th St., Mt. Carmel
 Adams, Samuel (2) 810 Catawissa Ave., Sunbury
 Albright, John (1) Reamstown
 Aller, Ronald (1) 3115 N. 4th St., Harrisburg
 Altland, Nancy Rae (1) 1303 Bridge St., New Cumberland
 Ambromavage, Ann (2) Maizeville, Gilberton
 Anderson, Judith (1) 186 Blvd., Keniworth, N. J.
 Anderson, Robert (1) 304 W. Snyder St., Selingsgrove
 Anderson, Scott (3) 950 W. Pine St., Shamokin
 Andren, Darla (1) 211 Niblick St., Point Pleasant, N. J.
 Anthony, John (2) 497 N. Courtland St., E. Stroudsburg
 Artz, Robert (2) 501 Charmont Ave., Folcroft
 Aspray, William (2) Lyons Rd., Liberty Corner, N. J.
 Aucker, Gary (1) 400 Orange St., Selingsgrove
 Aurand, Beatrice (4) R. D. 3, Lewistown
- Ball, Maureen (1) 100 Parkway, Point Pleasant, N. J.
 Bailes, Charles (4) 10 S. 6th St., Shamokin
 Bailey, Nelson (3) 324 Orange St., Selingsgrove
 Bannerman, Gilbert (1) 870 Windermere Ave., Drexel Hill
 Barlow, Joseph (1) 1909 Center St., Ashland
 Barry, Richard (4) 525 E. Wopsononock Ave., Altoona
 Bartels, Robert (2) 612 E. Olney Ave., Philadelphia
 Bartholomew, Ronald (2) 35 S. 7th St., Sunbury
 Bartlow, Chalmers (2) R. D. 2, Sunbury
 Baskin, John (1) University Heights, Selingsgrove
 Bates, Susan (1) 11 Dunham Ave., Cranford, N. J.
 Bayruns, James (1) 110 S. 33rd St., Camden, N. J.
 Bedeaux, Claudette (1) 115 N. Market St., Selingsgrove
 Behrens, Muriel (1) 116 W. Clinton Ave., Tenafly, N. J.
 Benham, Walter (2) 224 Jackson Ave., Lansdowne
 Bergen, James (2) 224 Park Ave., Milton
 Berger, William (1) Hobart St., Gordon
 Bergman, Paul (1) 2024 Bedford St., Johnstown
 Biber, John (2) 324 Ohio St., Johnstown
 Bill, Barbara (2) 262 Hamilton Ave., Long Branch, N. J.
 Birkhimer, Carolyn (1) 115 Highland Ave., Highland Park, N. J.
 Bishop, Jack (3) 3421 N. 4th St., Harrisburg
 Bittinger, Joan (1) Hummels Wharf
 Boltz, David (2) 19 N. 10th St., Lebanon
 Boob, Barbara (3) Penn St., Millheim
 Boop, Gordon (4) 409 Thompson St., Mifflinburg
 Bortle, Alan (2) 2622 Cynwyd Ave., Broomall
 Bowman, Marian (1) 363 W. Catherine St., Somerset
 Boyer, David (2) 2604 Robin Ave., Altoona
 Boyer, Donald (1) Cedarbridge Rd., Adamston, N. J.
 Boyer, Nancy (1) 400 W. Simpson St., Mechanicsburg
 Brasted, James (1) 301 Orchard St., Johnstown
 Brobst, Ruth (4) 119 N. Pine St., Hazleton
 Brown, Janet (4) 1411 Pacific Ave., Brackenridge
 Brown, Judith (1) 1412 Myrtle St., Scranton
 Brown, Sally (4) 1412 Myrtle St., Scranton
 Brubaker, Lester (1) R. D. 2, Selingsgrove
 Bucher, Rosine (0) Pillow
 Bumbarger, Nancy (2) R. D. 2, Somerset
 Bunke, John (4) 161 Rose Hill Ave., New Rochelle, N. Y.
 Burns, Peggy (1) 340 Third Ave., Garwood, N. J.
- Cahn, Richard (2) 480 3rd St., Northumberland
 Carmint, Sue (1) 212 Station Ave., Northwoods
 Casselberry, Gilbert (1) 4721 N. 15 St., Philadelphia 41
 Catherman, Carl (1) Locust Drive, Vicksburg
- Cawley, George (3) 522 N. 8th St., Selingsgrove
 Chango, Frank (3) 228 S. Oak, Mt. Carmel
 Chrvala, Fred (2) 231 Hillside Ave., Hillside, N. J.
 Chubb, Carletta (3) R. D. 2, McAlisterville
 Cisney, Jack (1) 363 E. King St., Shippensburg
 Clark, Harry (1) 262 Bonair Ave., Hatboro
 Clugston, Paul (3) R. D. 2, Mifflintown
 Cole, Janet (3) Oak St., Metamoras
 Coleman, Ruth (1) R. D. 1, Friedens
 Collins, Baird (2) Loysville
 Comp, Ronald (1) 126 Beverly Dr., Allentown
 Cook, Henry (4) 19 Bruce Rd., Montclair, N. J.
 Cooley, Jeanette (2) 1101 E. Front St., Berwick
 Cox, Elwood (3) 227 Arbor St., Cranford, N. J.
 Cramer, Lynne (2) Jacksonville Road, Burlington, N. J.
 Crothers, Sandra (1) 25 E. Second St., Media
 Crum, Gary (2) Box 32, Biglerville
 Curtis, Georgia (1) 30 Verbena Ave., No. Merrick, N. Y.
- Daily, Carol (1) 410½ 7th St., Windber
 Dalby, Margaret (1) Box 297, Main St., Marlboro, N. Y.
 Daniels, Herbert (1) 2633 W. Westmoreland, Philadelphia
 Dauberman, Carol (4) 220 W. Chestnut St., Selingsgrove
 Davies, Robert (2) 104 E. Coover St., Mechanicsburg
 Davis, Mary (1) 128 Grand Ave., Ridgefield Park, N. J.
 Dawn, Patricia (2) 35 Evergreen Ave., Broomall
 DeCamp, Stanley (2) 1420 Concord Place, Elizabeth, N. J.
 Deitrich, Charles (3) 113 W. Main St., New Bloomfield
 DeLauter, Donald (2) 3 S. 3rd St., Mifflintown
 Deutermann, Charles (1) Box 16, R. D. 1, Pound Ridge, N. J.
 Dively, Eleanor (4) 908 N. Broadway, Berlin
 Dodge, George (2) 103 Queen St., Northumberland
 Doney, William (4) 20 Race St., Weatherly
 Donley, Brian (1) 353 Park Ave., New Cumberland
 Dorian, Barbara (1) 214 Elizabeth Ave., Cranford, N. J.
 Dorward, Anna (4) 308 Haig Blvd., Reading
 Douglas, Dawn (2) 134 Tudor Oval, Westfield, N. J.
 Drumheller, Marion (3) Rebeck
 Duncan, Charles (4) 123 Chestnut St., Ashland
- Eiserman, Nancy (1) 121 W. Garfield Ave., Norwood
 Enck, Barbara (2) 24 Broad St., Ephrata
 Erdley, Eleanor (1) R. D. 2, Mifflinburg
 Erholm, Lee (2) Box 215, Little Falls, N. J.
 Ernst, Mary Lou (2) 212 W. Pine St., Selingsgrove
 Eyster, Richard (4) 416 N. 8th St., Sunbury
- Feldman, Maurice (4) 3739 Nortonia Rd., Baltimore, Md.
 Feliciano, Theresa (2) Waimea, Kauai, Hawaii
 Feltman, Ronald (2) 118 Market St., Middleburg
 Fenstermacher, Ronald (1) 1062 Masser St., Sunbury
 Fetter, David (4) 211 Pine St., Sunbury
 Fichtner, Fritz (1) 1500 Farr Rd., Reading
 Fiscus, Robert (1) R. D. 1, Clearfield
 Fleming, Avis (0) 125 S. Market St., Selingsgrove
 Fleming, Ronald (2) 125 S. Market St., Selingsgrove
 Fletcher, Gerald (1) 32 Narbrook Park, Narberth
 Flood, Betty (1) Port Royal
 Flood, Martha (3) Port Royal
 Ford, Elizabeth (4) 85 Dunkirk Rd., Baltimore 12, Md.
 Forrest, Nancy (3) 1100 Collings Rd., Camden 4, N. J.
 Forster, Ronald (1) 12 S. High St., Selingsgrove

Student Directory

- Fortna, Ralph (0)
- Fouche, Ronald (3)
- Fox, Randall (2)
- Frank, Richard (1)
- Frerichs, Helen (2)
- Friedman, Getell (2)
- Frisk, Guy (3)
- Frost, Frederick
- Fry, Russell (0)
- Fuller, Jill (2)
- Gage, Elizabeth (1)
- Gallagher, Kathleen (1)
- Geiss, Henry (4)
- Gerbe, Charles (3)
- Gemberling, Wayne (3)
- Gerner, Janet (4)
- Ghatan, Djamshid Jack (4)
- Gillaspie, Carolyn (2)
- Godfrey, William (4)
- Gordon, Janet (2)
- Greco, Robert (3)
- Grigalunas, Anthony (1)
- Gruber, Elsie (4)
- Grugan, Russel (0)
- Grundy, Marilyn (2)
- Gruver, Charles (2)
- Gulick, Robert (4)
- Haas, Mary (1)
- Hackenberg, Robert (4)
- Hall, Chester (3)
- Hancock, Joyce (1)
- Hand, William (2)
- Handzo, Robert (1)
- Haney, Harry (1)
- Harlacker, Carl (0)
- Harrington, David (3)
- Hartman, Donald (4)
- Hartranft, Barbara (4)
- Harvey, Charles (2)
- Hassenplug, Molly (1)
- Hassinger, Lynn (3)
- Haswell, Robert (2)
- Hauck, David (2)
- Haussler, Jon (1)
- Haussler, Park (3)
- Hays, Mabel (1)
- Hazen, Howard (2)
- Heck, Mary Ann (1)
- Heffner, Raymond (2)
- Heinze, Louis (2)
- Henderson, Nancy (4)
- Hendricks, John (2)
- Henninger, Donald (3)
- Henry, Catherine (1)
- Hepler, Anne (4)
- Herbster, Gerald (2)
- Herbstrith, Evelyn (4)
- Hewitt, Babetta (1)
- Hiddemen, Janice (1)
- Hill, Jesse (1)
- Aristes
23 N. Grant St., Palmyra
R. D. 1, Box 171, Shamokin
36 John St., Cranford, N. J.
9714 Remington St., Jamaica, N. Y.
310 Center Ave., Clarks Summit
617 St. Clair St., Latrobe
210 Orange St., Selinsgrove
510 S. 9th St., Trevorton
503 Allegheny St., Jersey Shore
- 5930 N. 11th St., Philadelphia 41
Lafayette Rd., Harrington Park, N. J.
715 S. Main Ave., Scranton
138-36, 249 St., Rosedale, N. Y.
106 N. Front St., Selinsgrove
314 Vanneman Ave., Swedesboro, N. J.
Seray Amir, Teheran, Iran
R. D. 1, Box 593, Altoona
R. D. 2, Hegins
409 S. Abington Rd., Clarks Green
128 W. Taylor St., Atlas
114 Water St., New Philadelphia
2069 N. Hutchinson St., Philadelphia
29 S. Market St., Selinsgrove
25 Woodside Ave., Haledon, N. J.
907 Elm St., Watsonstown
925 Packer St., Sunbury
- Bittings Grove, Ringtown
69 E. Chestnut St., Mifflinburg
500 High St., Duncannon
Hoke St., Spring Grove
938 Shamokin St., Trevorton
863 Townley Ave., Union, N. J.
417 Walnut St., Mifflinburg
605 Shamokin St., Trevorton
311 Clearbrook Ave., Lansdowne
477 6th St., Northumberland
R. D. 1, Watsonstown
Huntington Mills
510 Glenwood Ave., Williamsport
1261 Market St., Sunbury
Box 70, Beech St., Waverly
New Berlin
R. D. 3, Sunbury
R. D. 3, Sunbury
300 N. Hanover St., Carlisle
871 30th St., Altoona
1347 Florence St., Dayton 3, Ohio
1077 Reagan St., Sunbury
717 Fronheiser St., Johnstown
Elysburg
228 N. 12th St., Sunbury
56½ Queen St., Northumberland
313 Rosewood Terr., Linden, N. J.
Gratz
325 Orange St., Selinsgrove
464 Roslyn Ave., Glenside
R. D. 4, Dallas
162 S. Worwinder Dr., Springfield
221 E. Liberty St., Schuylkill Haven
- Hiller, Wayne (1)
- Hinkle, Eleanor (3)
- Hofecker, Beverly (1)
- Hoffman, Joan (1)
- Hoffman, Wade (2)
- Holland, Jane (1)
- Holtzapple, Roger (1)
- Hoover, Lawrence (1)
- Hoover, Vernon (2)
- Hubler, Betty (1)
- Huseman, Dwight (2)
- Imrie, Eloise (4)
- James, Donald (2)
- Johns, Jane (1)
- Johnson, Sheldon (2)
- Kale, Nathan (1)
- Kariss, John (4)
- Kauffman, Clyde (4)
- Keefer, Fern (2)
- Keen, Evaleen (2)
- Keener, Doris (2)
- Keener, Kathryn (1)
- Keener, Seth (4)
- Keiser, James (2)
- Kendall, Nancy (1)
- Kenyon, Robert (1)
- Kerchoff, Robert (2)
- Kilbourne, Linda (2)
- Kilgore, Betty (2)
- Killgore, James (2)
- Killgore, Janet (4)
- Kim, Timothy (1)
- Kisslak, Richard (2)
- Klase, Patricia (1)
- Kleintop, Earl (3)
- Kline, Kay (2)
- Klingler, Joy (2)
- Klingler, Mary (1)
- Kloap, Nicholas (2)
- Knepp, Robert (1)
- Kogel, Carol (2)
- Kohl, Lois (1)
- Koones, James (3)
- Kostenbauder, Marjorie
- Krapf, Deborah (4)
- Kratzer, Milan (3)
- Krohn, John (1)
- Kurkowski, Paul (2)
- Kurtz, Robert (4)
- Kutz, Wallace (3)
- Laun, Joseph (1)
- Lawver, Elizabeth (1)
- Lawver, Gladys (2)
- Leddy, Eileen (1)
- Lehman, Susan (1)
- Lehmer, Dorothy (2)
- Leach, Clayton (4)
- Leib, Melvin (1)
- 564 Laughlin Rd., W. Stratford, Conn.
218 N. 12th St., Sunbury
2617 Bedford St., Johnstown
101 Center St., Athens
728 Walnut St., Ashland
1 Summit St., Duncannon
400 Buffalo Road, Lewisburg
Berrysburg
110 Clinton St., Danville
14 W. Biddle St., Gordon
East Side Boro, White Haven
- 1546 Pratt St., Philadelphia 24
- 422 Woodland Ave., Hawley
834 Grayson Ave., Roanoke, Va.
South Front St., Selinsgrove
- 3733 10th St., Baltimore 25, Md.
249 Spruce St., Mt. Carmel
40 W. Grand Ave., Tower City
Roberts Valley Road, Harrisburg
12 N. Front St., Selinsgrove
Leck Kill
Leck Kill
3445 N. 5th St., Harrisburg
507 Eighth St., Selinsgrove
325 Canton St., Troy
Genesee
572 Rockland St., Lancaster
60 Durand Pl., Irvington, N. J.
424 Lucille Ct., Ridgewood, N. J.
Shamokin Dam
Shamokin Dam
1218 Lauhala St., Honolulu, Hawaii
721 Riverside Ave., Johnstown
435 Fairmount Ave., Sunbury
656 Franklin Ave., Palmerton
Rt. 1, Selinsgrove
R. D. 1, Winfield
R. D. 1, Selinsgrove
110 Garfield St., Nanticoke
Hummels Wharf
1542 E. Pastorius St., Philadelphia
17 Elm Place, Irvington, N. J.
1153 Poplar St., Kulpmont
R. D. 1, Danville
University Heights, Selinsgrove
Dalmatia
522 N. 8th St., Selinsgrove
539 Beech St., Scranton
499 N. High St., Selinsgrove
240½ S. 10th St., Sunbury
- 2442 43rd St., Pennsauken, N. J.
501 E. Front St., Berwick
R. D. 2, Selinsgrove
629 Duquesne Terrace, Union, N. J.
239 Butler St., Kingston
210 Montrose St., Harrisburg
522 S. Market St., Selinsgrove
203 N. 9th St., Ashland

Student Directory

Leister, Harry (4)	R. D. 2, McAlisterville	Ormond, Betty (2)	Canoe Brook C. C., Summit, N. J.
Leonard, Harry (1)	230 Sayford St., Harrisburg	Orren, George (3)	627 N. Wyoming St., Hazleton
Lewis, Faye (0)	417 N. 8th St., Selinsgrove	Osinchak, Joseph (1)	8 Lower St., Morea
Lewis, Robert (2)	417 N. 8th St., Selinsgrove	Overgaard, Richard (2)	Laurens, N. Y.
Lingenfelter, Dorothy (1)	Main St., Claysburg	Overly, Mary (1)	R. D. 1, Bareville
Locke, Sandra (1)	376 Morris Ave., Mt. Lakes, N. J.		
Lockett, Nancy (2)	600 Main St., Moosic	Pace, Peter (1)	1345 E. 51st St., Brooklyn, N. Y.
Lorah, Clarence (3)	Gordon	Page, Gary (1)	McAlisterville
Lordon, David (2)	142 Rider Ave., Malverne, N. Y.	Palmer, Robin (1)	Forbes Ave., Carlisle Barracks
Love, Richard (2)	2629 Lark Ave., Altoona	Patterson, Alice Ann (2)	45 Main St., Glen Rock
Lytle, Mark (2)	15 Bacon St., Wellsboro	Patterson, Dale (1)	123 N. 12th St., Sunbury
Lytle, Sandra (1)	R. D. 1, Sunbury	Pattysyn, Margaret (1)	185 Clairmont Terrace, Orange, N. J.
		Paul, Janice (2)	788 Lyons Ave., Irvington, N. J.
McCahan, Sara (1)	R. D. 1, McClure	Pecht, Beverly (4)	R. D. 2, Mt. Pleasant Mills
McCullough, Nancy (4)	110 Waverly Rd., Wyncote	Peck, Nedebiah (4)	Hummels Wharf
McCurlley, Foster (1)	58 Broad St., Beaver Meadows	Pospisil, George (3)	2091 Gless Ave., Union, N. J.
McKim, Elinor (1)	115 Orange Ave., Cranford, N. J.	Post, Lewis (2)	34 Highfield Rd., Bloomfield, N. J.
McClain, John (2)	804 Lancaster St., Albany, N. Y.	Potteiger, Larry (1)	421 Hummel St., Harrisburg
McNitt, Martha (2)	R. D. 1, Reedsville	Pourron, Eleanor (1)	1433 Luzerne St. Ext., Johnstown
McTague, Russell (1)	1121 Estelle St., Point Pleasant, N. J.	Purnell, Richard (2)	1438 Centre St., Ashland
Maher, Joseph (2)	Herndon		
Mahieu, Roger (2)	38 Wagaraw Blvd., Paterson, N. J.	Quick, Leonard (3)	Munson
Mapston, Garner (1)	114 Grand St., Danville	Quigley, Janis (2)	26 Fairview St., Boyertown
Marek, Nancy (3)	26 E. Ave., Atlantic Highlands, N. J.		
Marshall, Carol (1)	310 Hale St., Pennington, N. J.	Ransom, Gladys (1)	15-38th St., Irvington, N. J.
Martin, Patricia (0)	226 18th Ave., N. E., St. Petersburg, Fla.	Raudenbush, Joan (3)	403 8th St., Selinsgrove
Masteller, Gloria (3)	434 E. 3rd St., Bloomsburg	Ray, Gene (1)	338 4th St., Northumberland
Matha, Richard (4)	307 Harrison St., Sayre	Reamer, Donald (4)	Laurelton
Meerbach, Charlotte (4)	234 Freeman Ave., Stratford, Conn.	Reamer, Thiry (3)	Laurelton
Melnick, Andrew (1)	143 E. Saylor St., Atlas	Reed, Joseph (1)	Main St., Gratz
Merena, Joseph (1)	Excelsior	Reed, Norman (1)	R. D. 5, Danville
Mertz, Russell (1)	1041 Center St., Shamokin	Regoli, Area (4)	501 4th Ave., Bradley Beach, N. J.
Meyer, Sandra (1)	170 E. Cedar St., Livingston, N. J.	Renshaw, John (2)	R. D. 1, Camp Hill
Middlesworth, Donald (1)	626 S. Wayne St., Lewistown	Rever, Hazel (1)	837 State Rd., Andalusia
Millard, Carroll (4)	40 N. Water St., Selinsgrove	Reynolds, Anne (1)	22 Crestview Hill Rd., Livingston, N. J.
Miller, Bonnie (3)	R. D. 1, Mt. Wolf	Rhodes, Edward (3)	261 E. 4th St., Lewistown
Miller, Leroy (1)	316 Church St., Milton	Richard, Lois (1)	247 Sagamore Rd., Havertown
Milroy, Veryl (2)	West Milton	Richard, Sidney (1)	368 Main St., Red Hill
Moon, Doris (4)	Herndon	Richens, Kenneth (1)	431 9th St., Sunbury
Moore, Gladys (4)	R. D. 1, Berwick	Richie, Joan (2)	927 Mahanoy St., Trevorton
Moore, Mary (2)	305 E. McKinley St., Chambersburg	Rickard, Shirley (2)	Levettsville, Va.
Morgan, James (2)	302 King St., Northumberland	Ridinger, Nancy (2)	3819 Walnut St., Harrisburg
Mottern, Barbara (2)	Shamokin Dam	Roberts, Arlene (2)	14 Main St., Conemaugh
Moyer, Anna (4)	142 Arch St., Sunbury	Rodkey, John (2)	R. D. 2, Middleburg
Muller, Gail (1)	624 Sheridan Ave., Roselle Park, N. J.	Roseberg, Ronald (1)	5 Sherman Dr., Analine Village, Del.
Mursch, Frederick (2)	52 Gold St., E. Stroudsburg	Rogers, Paul (3)	233 S. Arlington Ave., Harrisburg
Myers, Gloria (2)	2254 S. Quinn St., York	Rohrbach, Janet (1)	327 S. States St., Ephrata
		Rohrbach, William (2)	1021 Penn St., Sunbury
Nagie, Alyce (1)	15 Hill St., Morristown, N. J.	Romano, Frank (3)	210 6th St., Weatherly
Nash, Marjorie (1)	1417 Myrtle St., Scranton	Romig, Larry (3)	R. D. 1, Lewisburg
Naugle, Mary (4)	2 W. Sassafras St., Selinsgrove	Ronngren, Maria (4)	4447 Terrace Ave., Pennsauken 8, N. J.
Neal, Mary (2)	Liberty	Rook, Donald (4)	Southampton
Neff, Richard (1)	14 Hudson Ave., Maplewood, N. J.	Rosetti, Thelma (2)	Box 47, South Canaan
Nelson, Rosemary (1)	8 Francis Place, Caldwell, N. J.	Roshon, John (3)	1149 Solomon St., Johnstown
Nesbitt, George (1)	473 Kenwood Ave., Conemaugh	Ross, Ruth (1)	606 S. Market, Selinsgrove
Nestler, Helene (4)	Walnut St., Green Lane	Rowe, Gilbert (2)	R. D. 2, Selinsgrove
Newhard, Denece (1)	625 Green St., Allentown	Rudisill, Lester (1)	815 Reservoir St., Lancaster
Nunn, Peter (3)	146 Bortle Ave., Newark, N. Y.	Rutz, Wayne (2)	626 W. Louthier St., Carlisle
Nyhart, Ruth (2)	R. D. 1, Clarks Summit		
		Saarse, Urve (1)	5526 Washington Ave., Pennsauken, N. J.
Ocker, Sidney (1)	R. D. 2, Mifflinburg	Sadosuk, Carole (3)	100 State St., Mt. Union
Olbrich, Paul (1)	640 Union St., Orange, N. J.	Saltern, William (2)	513 George St., Pen Argyl

Student Directory

- Sandt, Charlotte (4) 4 Colfax Rd., Havertown
- Schell, John (2) 450 N. 2nd St., Lykens
- Schilke, Diane (4) 22 Maple Ave., Canajoharie, N. Y.
- Schlichter, Galen (3) 1631 N. 2nd St., Harrisburg
- Schluchterer, George (3) 633 Roseland Ave., Philadelphia 11
- Schneider, Christian (1) 216 S. Hickory St., Mt. Carmel
- Schroeder, Gary (3) Prompton
- Schumacher, Doris (1) 235 Parkway, Schuylkill Haven
- Scully, Joseph (2) Gilbert Ave., Westville, N. J.
- Seasholtz, James (2) 141 Spruce St., Sunbury
- Seebold, Corinne (2) 711 Elm St., Watsontown
- Sees, Roland (1) 598 Orange St., Northumberland
- Shaffer, William (2) 39 W. Market St., Shamokin
- Sharadin, Georgena (1) 40 Wausau Rd., Middleburg
- Sheesley, Thelma (1) 855 Orange St., Selingsgrove
- Sheldon, Ralph (4) 20 Wyoming Ave., Tunkhannock
- Shepherd, William (2) 185 Kent Place Blvd., Summit, N. J.
- Shetterly, Joan Bridge St., Selingsgrove
- Shilling, Stanley (3) 114 Pleasant St., Hanover
- Shillingsford, John (2) 312 N. Market St., Selingsgrove
- Shillingsford, Kenneth (2) 312 N. Market St., Selingsgrove
- Shoemaker, Carl (1) Biddle St., Gordon
- Shore, Edward (3) 43 Terrace Blvd., Lewistown
- Showalter, Glenn (1) Millmont
- Shupinski, Joseph (1) 300 N. Oak St., Mt. Carmel
- Sieber, Sue (1) Thompsonstown
- Siegfried, Barry (1) 207 E. Pine St., Selingsgrove
- Simonds, Edgar (2) 1178 Burnett Ave., Union, N. J.
- Sims, Joseph (0) 109 N. Jardin St., Shenandoah
- Sipe, Patricia (4) 30 N. Vernon St., York
- Slyoff, Martha (3) 40 N. Penn St., Hatboro
- Smith, Barbara (1) 108 N. Broad St., Selingsgrove
- Smith, Douglas (3) 811 Lyons Ave., Irvington, N. J.
- Smith, Gary (4) 239 Westover Dr., New Cumberland
- Smith, Glen (4) Dornsife
- Smith, Janet (1) 524 Rosemont Ave., Lansdale
- Smith, Jessie (4) 102 Parkway, Schuylkill Haven
- Smith, Richard (2) R. D. 1, Dover
- Smith, Wallace (1) 317 Susquehanna Ave., Lock Haven
- Smozinsky, Joanne (2) R. D. 2, Lewisburg
- Snyder, Charles (3) 251 Garfield Ave., Milton
- Snyder, Janet (1) 324 15th St., New Cumberland
- Solomon, David (1) High Street, West Milton
- Solomon, Mary Jane (4) New Berlin
- Souden, Mary (2) 104 W. Market St., Danville
- Spigelmyer, Joyce (1) 124 S. Logan Blvd., Burnham
- Stanton, Albert (2), 384 Upper Mountain Ave., Upper Montclair, N. J.
- States, Nancy (1) 223 Taft St., Bristol
- Stauffer, Julie (1) Red Oaks, R. D. 1, New Holland
- Steigerwalt, Virginia (1) 120 S. Market St., Selingsgrove
- Stettler, Gene (4) R. D. 3, Middleburg
- Stiller, Raymond (1) 77 Water St., Wilkes-Barre
- Stock, Gene (4) 7 New St., Glen Rock
- Stone, James (1) 10 Elizabeth St., S. Bound Brook, N. J.
- Stradling, Elizabeth (3) Barclay
- Strauch, Mary (3) R. D. 4, Benton
- Stugart, Franklin (3) 91 Wayner Ave., Montgomery
- Sultzbaugh, Margaret (4) Berrysburg
- Swenson, Janet (3) R. D. 1, Boyertown
- Tharp, Suzanne (2) 512 8th St., Selingsgrove
- Thies, George (1) 665 Suffern Rd., Teaneck, N. J.
- Thomas, Genevieve (4) 110 Hickory St., Davidsville
- Thomas, Lanny (1) 427 Howard St., S. Williamsport
- Thompson, Gordon (2) R. D. 2, Dover
- Tobias, Michael (1) 227 Shamokin St., Trevorton
- Tolson, Jayne (1) 421 Sycamore Ave., Merion
- Tongue, Barbara (1) 2139 Guernsey Ave., Abington
- Trabosh, Harold (4) Box 26, Hamburg
- Frimmer, Donald (2) R. D. 2, York Springs
- Troutman, Flo (2) Millerstown
- Troutman, Lillian (3) R. D., Herndon
- Troutman, Sara (2) Millerstown
- Tyler, Ray (4) Hummels Wharf
- Ulsb, Ruth Ann (3) 162 N. Walnut St., Lewistown
- Vastine, Nancy (1) 154 E. Clay Ave., Roselle Park, N. J.
- Vinc, George (1) 233 S. Mill St., St. Clair
- Vought, John (1) R. D. 2, Mifflinburg
- Wahl, Suzanne (3) 3031 N. 2nd St., Harrisburg
- Walker, Mary (1) 1700 Sunshine Ave., Johnstown
- Walker, Patricia (3) Box 27, Cheyney
- Waters, Matthew (2) 200 N. Jardin St., Shenandoah
- Weikel, Gail (2) New Berlin
- Welch, Janet (2) Box 259, R. D. 1, Lock Haven
- Werner, Erhard Otto (3) 111 Elm Pl., Park Ridge, N. J.
- Wheeland, Seth (4) 850 S. Front St., Sunbury
- Whipple, Gleason (1) 829 Line St., Sunbury
- White, James (2) 2132 Centre St., Ashland
- White, Robert (2) 260 Hillcrest Ave., Norrisville
- Wildman, Peggy Ann (3) Susquehanna University, Selingsgrove
- Willauer, Robert (2) 731 Washington St., Easton
- Wilhour, Natalie (3) R. D. 1, Herndon
- Willman, James (1) 17 Hoskier Rd., S. Orange, N. J.
- Wilson, Gerald (4) 409 River St., Hawley
- Wirt, Leona (1) 126 S. 4th St., Sunbury
- Wise, David (3) Stratford Dr., Philadelphia 11
- Witiak, Eugene (1) 115 Haverford Road, Millmont Park
- Wittes, Doris (3) 633 N. 8th St., Selingsgrove
- Woelkers, William (1) 2017 Ash St., Scranton
- Wolf, Twila (2) R. D. 10, York
- Wolfe, Armor (3) 234 Penna. Ave., Mill Hall
- Wolfe, Leroy (3) 1150 Scotland Ave., Chambersburg
- Wood, Clyde (1) 1532 Garfield Ave., Wyomissing
- Woolbert, Gail (2) 130 Main St., Shavertown
- Wrigley, Marilyn (2) R. D. 2, Dalton
- Wright, James (2) R. D. 2, Friedens
- Yeakley, Cecile (1) R. D. 2, Port Trevorton
- Yeich, John (4) R. D. 1, Selingsgrove
- Yeingst, Ray (1) 502 Parkway Rd., Harrisburg
- Yerger, Robert (2) 200 N. Water St., Selingsgrove
- Yocum, Joseph (1) 11 Orange St., Northumberland
- Yost, Nicholas (1) 1124 Belmont Ave., Wyomissing
- Youhon, Linda (3) 37 S. Atherton Ave., Kingston
- Young, Rosalyn (1) 140 Park Ave., Northumberland
- Zacharias, Carol (1) 944 E. Walnut St., Hanover
- Zimmerman, Arthur (3) 509 Packer St., Sunbury
- Zimmerman, Kenneth (2) 63 3rd St., Strong
- Zimmerman, Marian (3) 44 S. 4th St., Sunbury
- Zimmerman, Nancy (1) Aaronsburg
- Zust, Carolann (2) 1103 N. Wood Ave., Roselle, N. J.

SUSQUEHANNA UNIVERSITY

(Co-Educational)

SELINGROVE, PENNSYLVANIA

*For Ninety-Eight Years in the Service of
Christian Higher Education*



a college with unusual opportunities

Liberal Arts (A.B.)

Business Administration (B.S.)

Music Education (B.S.)



For catalog write:

G. MORRIS SMITH, D.D., L.L.D., President

COLE DRUGS, INC.

Walgreen Agency

7-9 South Market Street Selinsgrove, Pennsylvania

Phone 6121

Compliments of

First National Bank of Selinsgrove

Serving Selinsgrove and Surrounding Area

Since 1864

Lottie Kemberling

DUTCH PANTRY, INC.

Restaurants

**Selinsgrove
U. S. Routes 11 and 15**

**Lemoyne
304 Market Street**

**State College
230 East College Avenue**

Compliments of the

HOLSUM BAKERS

SUNBURY, PENNSYLVANIA

Compliments of

MENGLE'S RESTAURANT

3 West Pine Street

Phone 6542

SELINGROVE

Compliments of

JOS. L. MENTZ

The Stationer

249 Market Square

Sunbury, Pennsylvania

SANDERS APPLIANCE STORE

GENERAL ELECTRIC
APPLIANCES

241 Market Street

Sunbury, Pennsylvania

Phone AT6-1251

SMITH'S ATLANTIC SERVICE

Next to Shell Diner

Washing • Lubricating • Repairs

Phone Selingsrove 7591

D. R. ERDMAN

LUMBER • PLANING MILL

Office and Mill
168 Tenth Street

Phone AT6-1721
Sunbury, Pennsylvania

**SALLY BOLIG'S
STYLE SHOP**

**COATS, SUITS, DRESSES
ACCESSORIES**

7 West Pine Street

Telephone 9552

PEPSI-COLA

DISTRIBUTING

C. J. MIDDLESWARTH

Distributor of

**Pepsi-Cola
and**

Cloverdale Soft Drinks

Phone—Warehouse
Selinsgrove 5356

Phone Residence
Beaver Springs 2351

EBERT'S 5¢ to \$1.00 Store

School Supplies

SELINGROVE and MIDDLEBURG

**For
NEWS —
OF FOLKS
YOU KNOW**



SUNBURY DAILY ITEM

**BOGAR FEED
and LUMBER SUPPLY**

Contractors and Builders

Manufacturers of and dealers in
LUMBER, BUILDING SUPPLIES

Phone 7011

Selinsgrove

Compliments of

THE CHIMNEY

"Specialty"

CHARCOAL BROILED FOODS

Curb Service

U. S. Route 11 and 15

Compliments of

THE CUSTARD CUP

U. S. Route 11 and 15

Shamokin Dam, Pennsylvania

FRAN'S DRESS SHOPPE

Featuring

JUNIOR HOUSE OF MILWAUKEE

KARBRO OF TEXAS

PETER PAN BRAS

COLONIAL TEA ROOM

MR. AND MRS. ROY BOWERSOX

for Reservations and Parties

Call Selinsgrove 2371

Compliments of

FEHR'S STYLE SHOP

359 Market St.

SUNBURY, PA.

Compliments of

SMITH PACKARD, INC.

"Let the Ride Decide"

JOHN DAGLE

Registered Jeweler

American Gem Society

Fifth and Market Streets

Sunbury, Pa.



KEPLER'S CHEVROLET

SALES and SERVICE

U. S. Route 11 and 15

North of Selinsgrove

Compliments of

AMERICAN NATIONAL INS. CO.

G. M. WIND, Mgr.

361 Market St.

SUNBURY, PA.



Sunbury — Selinsgrove
Highway

The
Selinsgrove Times
Tribune



Printers of

THE SUSQUEHANNA,

THE SUSQUEHANNA ALUMNUS,

SUSQUEHANNA UNIVERSITY STUDIES

Across from Post Office

JARRETT AND SECHRIST
SUNOCO SERVICE STATION

Washing and Lubricating
Kelly-Springfield Tires and Tubes
Full Line of Batteries and Accessories

Corner Market and Walnut Streets

Phone 2041

YANK'S ATLANTIC
SERVICE STATION

Mill and Market Streets

Let Yank fill your tank

Don't crank—See Yank

Compliments of

PORTZLINE'S WESTERN AUTO
ASSOCIATE STORE

24-28 South Market Street

Selinsgrove

FERGUSON ESSO SERVICE CENTER

Washing, Lubrication and Tune-Up

Market and Spruce Streets

KAISER AND WILLYS CARS

SELINGROVE

COUNTY SALES AND SERVICE

High and Bridge Streets

SELINGROVE, PENNSYLVANIA

Phone 6311

BLUE HILL

New Modern Dining Room and "If" Room

SELINGROVE R. D. 2

Intersection 11 and 15

At the Traffic Circle

Our Slogan Is: "*Gracious Dining and Friendly Atmosphere*"

PAUL S. CREBS

Moving and Storage

NORTHUMBERLAND, PA.

Phone GREENWOOD 3-3641

BAUM'S SPORTING GOODS, INC.

Wholesale and Retail

**CLUB AND SCHOOL
ATHLETIC EQUIPMENT**

Third and Market Streets
SUNBURY, PENNSYLVANIA

Compliments of

The Plaza Farmer's Market

CENTRAL PENNSYLVANIA'S

MOST COMPLETE

SHOPPING CENTER

Merit Laundry and Dry Cleaning Company

1222 Edison Ave.

SUNBURY, PA.

On Campus
Pick Up and Delivery
Service

Call
SUNBURY
ATLANTIC-6
0351
6488
6489

Compliments of

SUNBURY MILK PRODUCTS COMPANY

BOND AND KEY

"This is the house, the molder of men, of men who are steadfast and true"

CHARLES BAILES

RALPH SHELDON

JOHN BUNKE

GARY SMITH

WILLIAM DONEY

GENE STETTLER

JACK GHATAN

GENE STOCK

ROBERT GULICK

SETH WHEELAND

PHI MU DELTA

The Leaders of Tomorrow

RICHARD BARRY

JOHN KARISS

HENRY COOK

SETH KEENER

CHARLES DUNCAN

HARRY LEISTER

RICHARD EYSTER

CARROLL MILLARD

HENRY GEISS

DONALD REAMER

WILLIAM GODFREY

GLEN SMITH

ROBERT HACKENBERG

HAROLD TRABOSH

THETA CHI

Theta Chi Congratulates Its Graduates of 1956

MAURICE R. FELDMAN

RICHARD G. MATHA

FREDERICK R. FROST

DONALD E. ROOK

CLAYTON E. LEACH, JR.

GERALD E. WILSON

"Alma Mater First; Theta Chi for Alma Mater"

ALPHA DELTA PI

"We Only Part to Meet Again."—GAY

ELSIE L. GRUBER

ANNA JANE MOYER

ELOISE W. IMRIE

MARIA S. RONNGREN

CHARLOTTE R. MEERBACH

AREA REGOLI

KAPPA DELTA

"Let us strive for that which is honorable, beautiful, and highest"

JANET H. BROWN

HELENE A. NESTLER

SALLY M. BROWN

CHARLOTTE J. SANDT

DEBORAH B. KRAPF

JESSIE P. SMITH

NANCY J. McCULLOUGH

GENEVIEVE L. THOMAS

SIGMA ALPHA IOTA

(National Professional Music Fraternity for Women)

"Life is Short, but Art is Long"

RUTH BROBST

BARBARA HARTRANFT

CAROL DAUBERMAN

MARY NAUGLE

ANNA DORWARD

DIANE SCHILKE

ELIZABETH FORD

MARY JANE SOLOMON

JANET GERNER

MARGARET SULTZBAUGH

**THE
FIRST NATIONAL BANK
OF SUNBURY**

SUNBURY, PENNSYLVANIA

Capital, Surplus and Undivided Profits	\$ 1,712,407.05
Total Deposits	\$16,796,137.72
Total Resources	\$18,619,180.15
Total Trust Funds	\$ 6,527,430.52

Organized 1831

Years and Experience Do Count

FOR OVER 80 YEARS IT HAS BEEN

**HACKETT
HARDWARE
STORES INC.**

SUNBURY — MIDDLEBURG

3 Stores to Serve You

SELINGROVE MOTORS

Sales - - - Ford - - - Service

SELINGROVE, PENNSYLVANIA

Phone 6521

The Best in Commercial Printing

CLIFFORD SHEESLEY
Printing

P. O. BOX 214

SELINGROVE, PA.

PHONE 3855

20 Ultra Modern Units

Air Conditioned

GOLDEN ARROW MOTEL

U. S. 11 and 15, SHAMOKIN DAM, PA.

Mailing Address R. F. D. No. 2, Selinsgrove, Pa.

Phone Selinsgrove 7814

Dorothy Hazlett, Manager R. W. Kessler, Inc., Owner

JANE SCHNURE FLOWERS

1 EAST WALNUT STREET

SELINGROVE, PENNSYLVANIA

Telephone 6841 or 7354

World Wide Wire Service

NATIONAL RESTAURANT

SELINGROVE

“Home Cooking”

The place where you meet your friends.

SHIKELLAMY SANDWICH SHOP

Shamokin Dam, Pennsylvania

"Where Customers Send Their Friends"

THE LEATHER GOODS STORE

SAM S. ADAMS

357 Market St.

SUNBURY, PA.

BENJAMIN T. MOYER

Furniture of Distinction

21-23 North Fifth Street

SUNBURY, PENNSYLVANIA

SUNBURY SUPPLY CO.

LENKER'S COAL YARD

Phone AT6-1271

599 Chestnut St.

COAL, BUILDING and PLUMBING SUPPLIES

Compliments of

THE MUSIC MART

SHOP FOR COLLEGE FASHIONS

at

Rosenblum's

Feminine Apparel

SUNBURY, PA.

GOOD THINGS TO EAT

KEITHAN'S

340 Market Street

SUNBURY

Compliments of

GEBHARDT'S

Jewelers

BECK and BECK, INC.

and

CITY STEAM LAUNDERERS, INC.

10 West Pine St.

SELINGROVE

REICHLEY'S FLOWERS

Flowers By Wire

614 Market St., Sunbury, Pa.

Phone AT6-1861

MILLER BROS. SHOE STORE

"At the bus stop"

SUNBURY, PENNSYLVANIA

Compliments of

SPEEDWAY CARRIERS, INC.

Route 15

SELINGROVE, PA.

Why Buy

2 Sheets

2 Face Towels

INDIVIDUALLY PACKAGED

We Supply

1 Pillow Case

2 Bath Towels

EXCHANGED WEEKLY

COLLEGE LINEN SUPPLY, INC.

B. K. W. COACH LINE

HUMMELS WHARF, PENNSYLVANIA

Phone Selinsgrove 3581

Charter Trips Anyplace in United States

Taxi Service Call Sunbury AT6-1331

HOTEL GOVERNOR SNYDER

S. OSTERLING

Proprietor

MIDDLE CREEK VALLEY
TELEPHONE COMPANY

Entire System Dial Operated

Bell System

FRANK A. EYER, *Secretary-Treasurer*

SELINSGROVE

WATER SUPPLY COMPANY

Water From 500-foot Wells



FRANK A. EYER

President

JAMES McCLURE

Treasurer

Compliments of

M. D. DRUMHELLER GENERAL STORE

REBUCK, PA.



SIGNS OF PROGRESS



A community is made up of a number of things—the caliber of its citizens and public servants . . . the high standards of its schools and the sportsmanship of its athletic teams . . . the leadership of its churches . . . the good accomplished by its charitable organizations . . . the quality of products and services supplied by its workers.

Wood-Metal Custom Kitchens and Institutional Equipment are as fine as are produced anywhere! They carry the Snyder County name and brand of superior craftsmanship to all parts of the country.

WOOD-METAL INDUSTRIES, INC.
Kreamer, Snyder County, Penna.

Compliments of

The Campus Book Store

of

Susquehanna University

Established to Serve Students, Alumni and Friends

For S. U. MEN and WOMEN

**COLLEGE
SNACK BAR**



Open 8 A. M. to 10 P. M.

PROFESSIONAL DIRECTORY

R. F. BERTRAM, D.D.S.

19 SOUTH MARKET STREET

Telephone 5944

Residence Telephone 3290

R. A. HEINBACH, M.D.

125 SOUTH MARKET STREET

Telephone 2611

Residence Telephone 6131

B. SHIPE, D.D.S.

30 SOUTH MARKET STREET

Telephone 9031

Residence Telephone 9032

D. H. SHUCK, D.D.S.

108 SOUTH MARKET ST.

Telephone 3474

H. F. STRAUB, M.D.

306 WEST WALNUT STREET

Telephone 3121

M. D. WOLFBERG, O.D.

105 WEST PINE STREET

Telephone 5071

HARRISBURG LUMBER COMPANY

•

**A Complete
Lumber Industry**

•

HARRISBURG, PENNSYLVANIA

BLOUGH-WEIS LIBRARY

SUSQUEHANNA UNIVERSITY
LEWISBURG, PA 17870

SUSQUEHANNA UNIVERSITY LIBRARY

3 4998 0020 9671 2

SUSQUEHANNA UNIVERSITY LIBRARY
**BLOUGH-WEIS LIBRARY
DOES NOT
CIRCULATE
ARCHIVES**
SUSQUEHANNA UNIVERSITY LIBRARY

