

THE LANTHORN

FOR THE CLASS OF 1960

SUSQUEHANNA UNIVERSITY

SELINGROVE, PENNSYLVANIA

CHARLES T. RASMUSSEN  
editor

EDWARD L. JONES  
business manager



# WE DEDICATE THE 1960 LANTHORN

to

**Dr. Russell W. Gilbert**  
Professor of German

## Der Samann

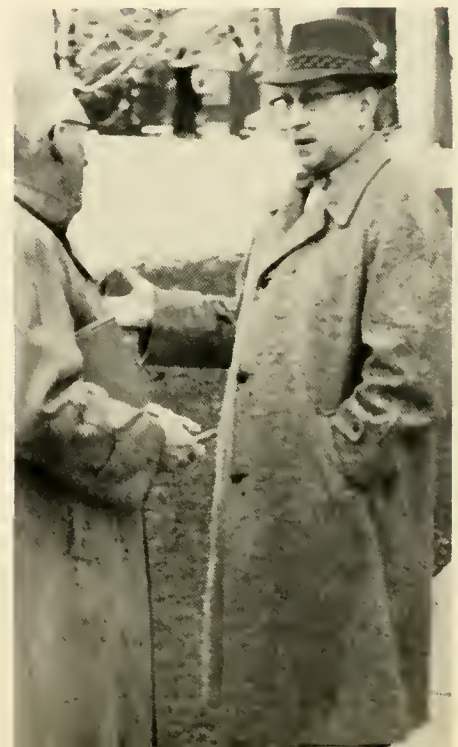
Siehe, voll Hoffnung vertraust die der Erde den goldenen Samen  
Und erwartest im Lenz frohlich die kiemende Saat.  
Nur in die Furche der Zeit dei Gedenkst dich Thaten zu streuen,  
Die, von Weisheit gesat, still fur die Ewigkeit bluhn.



## The Sower

See! with a heart full of hope, to the earth golden seed thou entrustest  
And with joy in the Spring waitest to see it appear.  
Thou art mindful to strew in the furrows of Time worthy actions,  
Which for eternity bloom, calmly by wisdom's hand sown.

—By FREDERICK SCHILLER









LYDER L. UNSTAD  
Ph.D.

We respect the memory of his inquisitive and independent spirit which epitomized the end of all scholarship: the search for truth.



HENRY C. BENZENBERG  
M.D.

His steady hand mended the broken body. His genuine concern brought light to the troubled mind. We will remember him as physician and friend.

**WE REMEMBER**





F

ACULTY AND ADMINISTRATION

*. . . deans, professors and instructors  
. . . the administrators who give  
direction toward the future . . . .*

15

A

CTIVITIES AND ORGANIZATIONS

*. . . events, clubs and parties . . .  
sports and Greek societies which  
feud and cooperate . . . . .*

25

C

LASSES

*. . . graduates, juniors, sophomores  
and freshmen . . . the officers who  
politick for them . . . . .*

85

# THROUGH CHANGING



# SEASONS . . .



*A new life begins.*

*The path is a strange one  
but we are nourished with the stimulation of  
knowledge*

*with the delights of friendship and love*

*with the elation of being free*

*to find our own way.*

*We feel the invigoration of growth in us and  
around us.*

*We are young and we are alive.*

EACH DAY ADDS . . .







*Some things must die.*

*Ideas from other times, "I" — centered worlds, narrow visions  
all these must pass.*

*For a while we stand alone between the old and the new  
and there is a cold emptiness which cannot be explained.*

*In the void we wonder why . . . why . . . why . . .*



# TO OUR AWARENESS

*The great calm comes.*

*The once-strange path has become a  
familiar direction.*

*We are aware of a clear light which  
shows us the way*

*a light of knowledge  
of friendship and love  
of freedom.*

*We have found reason to go on  
and we are aware that we can go on.*





GUSTAVE W. WEBER, TH.D.

# PRESIDENT OF THE UNIVERSITY



Dr. and Mrs. Weber at  
the entrance to Pine Lawn.

FACU  
LTYA  
NDAD  
MINI  
STRA  
TION





## DEANS

WILHELM REUNING, PH.D.  
*Dean of the University*  
*Professor of History*



ALBERT A. ZIMMER, ED.D.  
*Dean of Students*  
*Professor of Education*



RUTH A. MEISTER, M.A.  
*Dean of Women*  
*Assistant Professor of French*

FRANCES D. ALTERMAN, M.A.  
*Instructor in Music*



THOMAS F. ARMSTRONG, JR., Ed.D.  
*Associate Professor of Business*



JANE F. BARLOW, PH.D.  
*Assistant Professor of Classical Languages*



ROBERT M. BASTRESS, M.A.  
*Assistant Professor of Education*

JEAN B. BEAMENDERFER, M.S.  
*Assistant Professor of Business Education*

WILLIAM H. BETZ  
*Lecturer in Business Administration*

FREDERIC C. BILLMAN, M.A.  
*Associate Professor of Music*



PHILIP C. BOSSART, M.S.  
*Assistant Professor of Psychology*



FRANCIS W. BROWN, PH.D.  
*Associate Professor of Chemistry*







RICHARD C. COX  
*Lecturer in Business Administration*

GALEN HERB DEIBLER, M.MUS.  
*Instructor in Music*

HOWARD E. DEMOTT, M.S.  
*Associate Professor of Biology*

VADIM G. DROZIN, PH.D.  
*Physics Department*

ALICE H. GIAUQUE, M.A.  
*Assistant Professor of Music*

RUSSELL W. GILBERT, PH.D.  
*Professor of German*



IRVIN GRAYBILL, JR.  
*Lecturer in Business Administration*

BRUCE W. HANSEN, M.S.  
*Assistant Professor of Biology*

NANCY B. HATZ, M.A.  
*Assistant Professor of Music*



RUSSELL C. HATZ, M.A.  
*Associate Professor of Music*

BLAIR L. HEATON, B.A.  
*Instructor in Mathematics*

JOHN HOUTZ, Sc.D.  
*Professor of Chemistry*

LAMAR D. INNERS, M.ED.  
*Assistant Professor of Accounting*

HILDA KARNIOL  
*Instructor in Art*

ATHALIA T. KLINE, M.A.  
*Assistant Professor of Romance Languages*



BENJAMIN LOTZ, M.A.  
*Associate Professor of Religion and Philosophy*

MARJORIE McCUNE, B.A.  
*Instructor in English and Latin*

BETSY JANE MCDOWELL, B.A.  
*Instructor in Physical Education*

JOAN ROKUS, B.S.  
*Physical Education Department*

DAVID E. MCKENTY, M.A.  
*Instructor in English*

KENNETH F. MAILLOUX, PH.D.  
*Assistant Professor of History*

ARTHUR J. NORRIS, B.S.  
*Instructor in Business Administration*



JAMES J. PETERSON, M.A.  
*Instructor in English*

WARREN J. PIRIE, M.S.  
*Instructor in Psychology*

MARY K. POTTEIGER, B.MUS.  
*Assistant Professor of Music*

OTTO REINHERR, PH.D.  
*Assistant Professor of Philosophy  
and Religion*

LAVAN R. ROBINSON, M.MUS.  
*Assistant Professor of Music*

GEORGE M. ROBISON, PH.D.  
*Professor of Mathematics*



WILLIAM A. RUSS, JR., PH.D.  
*Professor of History*

ARTHUR M. SCHAEFER, B.S.  
*Instructor in Economics*

AMOS ALONZO STAGG, JR., M.A.  
*Professor of Physical Education*



JAMES B. STEFFY, M.ED.  
*Instructor in Music*

FREDERICK C. STEVENS, M.A.  
*Associate Professor of Sociology*

CHARLES F. STICKNEY, M.A.  
*Physics Department*

DEXTER WEIKEL, B.S.  
*Instructor in Organ*

ARTHUR HERMAN WILSON, PH.D.  
*Professor of English*

RAYMOND YOUNG, PH.D.  
*Physics Department*





BERNARD W. KRAPF  
*Business Manager*

PETER W. ELKINGTON, M.ED.  
*Registrar*

DAN MACCUIII, B.S.  
*Director of Admissions*

GEORGE R. F. TANKE, M.A.  
*Director of Public Relations*

DONALD E. WISSINGER, M.ED.  
*Director of Alumni Relations*

HUGH L. SEELYE, B.S.  
*Bursar*



THOMAS S. DODGE, B.C.S.  
*Assistant Business Manager*

MARGARET J. KRAPF  
*Campus Book Store Manager*

JOYCE GILBERT, B.A.  
*Assistant Registrar*



DOROTHY L. HOYER, B.S.  
*Assistant Librarian*

HELOISE MAILLOUX, M.S.  
*Assistant Librarian*

HILDA G. KOLPIN, M.S.  
*Librarian*

JANET L. ROBINSON, B.S.  
*(seated)*  
MARGARET ZIMMERMAN  
DOROTHY LONGACRE  
DIANE FISHER  
GRACE MOELLER  
MARGARET ERNST  
*Secretarial Staff*



JEAN A. BRANDAU, R.N.  
*Assisting Nurse*

SHIRLEY A. MECKLEY, R.N.  
*University Nurse*

ELIZABETH SCHARF  
LOIS GALT  
*Assistants in the Library*



ERNESTINE S. CONNOR  
*Head of Seibert Hall*

GRACE R. MILLER, B.A.  
*Head of Hassinger Hall*

CHARLES HOWER  
*Superintendent of Buildings and Grounds*



PAULINE LAUVER  
*Dietitian (at right) and her staff*

MAINTENANCE STAFF

SNACK BAR STAFF





*Let's raise the curve.*

## THE FACULTY ABOUT CAMPUS



*The professor enjoys life's sweetest lesson: la belle dame.*



*How much farther?*



*We'll never put Peyton Place on our bookshelves!*

*Sorry, wrong year.*





ACTI  
VITIE  
SANDO  
RGAN  
IZAT  
IONS





*The Full and Active University Life*



Graciously ruling over the activities of the day are, *left to right*: Nancy Kendall, Betsy Walker, Bobbie Hewitt, Mary Ann Heck, Queen Sandra Myer, Alyce Zimmer, Lois Andren, Sandra Locke, Lois Kohl.

## MAY DAY 1959



Queen Sandra and her court reflect the enjoyment of the crowd overflowing Heilman lawn as the students present the sparkling "May Day in New York," with musical acts from such Broadway hits as *South Pacific*, *My Fair Lady*, and *Oklahoma!*

# INAUGURATION

Firmly established in the strength of the Lutheran Church, Susquehanna University continues to draw inspiration and leadership from the clergy as Dr. Gustave W. Weber is installed thirteenth President of the institution.



Visiting dignitaries take part in the installation service, *left to right*: Dr. John Harkins, Dr. Weber, Dr. Ralph C. Robinson, Dr. Frank Fife, the Reverend Mr. Benjamin Lotz, Mr. John Horn.





First Row: T. Deibler, N. Rebnck, V. Maneval, E. Okamura, S. Jablonski, James, L. Purcell, R. Fiscus, L. Updegrove, R. Higgins, K. Hauser, M. Fahey, W. Weichelt, N. Crickenberger, R. Welker, G. Sadosuk. Second Row: K. L. Butler, J. McDaniel, Coach R. Hummel.

## BASEBALL

KEN JAMES



### SCORES

	S. U.	Opp.
Bucknell	6	9
Lycoming	7	8
Elizabethtown	6	14
Wilkes	5	10
Wilkes	4	3
Dickinson	3	7
Scranton	4	9
Lebanon Valley	5	10
Juniata	1	6

MIKE FAHEY





WILLI WEICHEL



LARRY UPDEGROVE



VANCE MANEVAL

High spirits and the will to win didn't provide enough tonic for the 1959 Crusader baseball aggregation. The diamond representatives managed to salvage only one victory from a nine game season. Lack of stable pitching and several injuries to key players proved fatal to the game squad.

After dropping their first four starts, the Crusaders returned home and entered the victory column in a ten inning cliff-hanger with Wilkes. Frosh Elias Okamura drove home the winning run for the 4-3 triumph. Then followed four more setbacks to finish the season.



# TENNIS



J. Rhodes, J. Wurster, R. Anthony, E. Strayer, P. Clark, E. Jones, J. Osinchak, G. Witiak, B. Deusinger, Coach A. Stagg.



With muscles contracted and fine form exhibited, John Yanuklis clears high jump bar.

## INTRAMURAL TRACK MEET



The tape snaps as Jim Maurer grits home with first place honors in the 220 yard dash.





*The stately procession, the bowed heads, the congratulatory handshakes—all are part of the proud day which means beginning. It is a climactic day, but only one of many which have worked their magic in the development of an outstanding group of Susquehanna graduates.*

## COMMENCEMENT



# ORIENTATION . . .



Guiding the freshmen in their introduction to college life are Ginny Alexander and Hal Bingaman, Co-Chairmen of the Orientation Committee.



# REGISTRATION . . .

# AND



The frosh find their Handbook a necessary guide during Orientation Week. This publication was made possible through the efforts of Dave Diehl, Editor (*left*); and his assistants, Ed Huber (*right*), Gil Askew, Joe Aleknavage, and Stephanie Haase.





One of the first organizations to activate the interest of the new students is the Student Christian Association, *left to right:* Alice

Taylor, Lou Coons, Gil Askew, Ed Strayer, *President;* Barbara Shilling, Joan Whitson, Dorothy Anderson, Joyce Bond.

## A NEW BEGINNING





## STUDENT COUNCIL

Janet Zortman, Stephanie Haase, Ralph Ferraro, Glenn Bowman, Willi Weichelt, Robert Probert, George Gopie, *President*; Jean Ewald, George Sadosuk, June Nonnemacher, Virginia Alexander, Richard Derrick, Karen Goeringer.



## MEN'S JUDICIARY COMMITTEE

Thomas Hanshaw, James Updegrove, William Molin, David Diehl, Donald Coleman, *President*; Richard Reichard, Theodore Fuhrer, Harold Bingaman.



## WOMEN'S JUDICIARY COMMITTEE

Marilyn Hess, Ann Schaefer, Mildred Barabas, Judith Behrens, Stephanie Haase, *President*; June Nonnemacher, Caroline Shryock, Nancy Davis, Nancy Dunster, Pat Taylor.

# STUDENT GOVERNMENT

# ARTIST SERIES

LEVERN HUTCHERSON  
LUCIA HAWKINS  
AVON LONG



## PORGY AND BESS SINGERS

"Summertime, and the livin' is easy . . ." An international group of artists moves the student body with the magic of George Gershwin.

An evening of Debussy, Scarlatti, Rameau, Ravel, Chopin, Beethoven and Barber is brought to an appreciative audience by an outstanding artist.

MARGARET MITCHELL



# FUTURE TEACHERS ASSOCIATION



*First Row:* Don Winey, *President*; Dave Stocum, *Vice-President*; Judy Blee, *Secretary*; Judy Brndjar, *Treasurer*. *Second Row:* Peg Web, Pat Bodle, Cindy Berry, Caroline Shryock, June Nonnemacher, Susan Apgar. *Third Row:* Joan

Brenneman, Gloria Graybill, Gayle Troxell, Mary Lou McCann, Nancy Davis. *Fourth Row:* Sally Myers, Robert Clark, Robert Summers, William Mohin, Don Coleman, John Curry, Larry Wingard.

# PRE-THEOLOGICAL ASSOCIATION

*First Row:* Mr. Lotz, *Adviser*; Ron McClung, *Vice-President*; Ed Strayer, *President*; Pat Bodle, *Secretary-Treasurer*. *Second Row:* Elias Okamura, Elwood Hipple, Pete Kuebler, Ed Huber, Curtis Barry, John Ohst, Don Cornelius. *Third*

*Row:* Dotty Anderson, Carol Daily, Carolyn Moyer, Ann Watmough, Jocelyn Swope, Phil Zimmerman. *Fourth Row:* Richard Reichard, Barbara Shilling, Carlton Smith, Fred Fisher.





I remember . . .



Viva la difference!



You make me hap-PY . . .



Ah, college life . . . sophistication . . . maturity.

# FROSH STUNT NIGHT

The ashean is a fruit salad on a lemon meringue frying pan with a beer bottle clothesline.





Completed pass or heartbreaking fumble—Coach Keil and Assistant Coach Pittello live through every moment of every play.



GERRY BERNSTEIN  
Senior



RALPH FERRARO  
Senior Co-Captain



## FOOTBALL 1959

### CENTERS

Kent Baldwin, Ned Coates, Ralph Ferraro, Tom Samuels.

### GUARDS

Gerry Bernstein, Don Cave, Ben DiFrancesco, Bob Cimbalista, Charles Leathery, Mike Voiles, John Wademan.

### TACKLES

George Campbell, William Casler, Don Davis, Ron Kahn, Neal Markle, Joe Perfilio, Richard Rohland.

### ENDS

Allan Aungst, Enoch Beltz, Ken Hauser, Edward Jones, George Moor, Allen Nace, Elwood Starr, Samuel Tyler, Nate Ward.

### BACKS

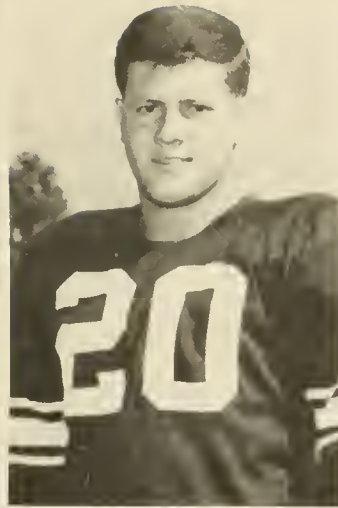
Chuck Bowen, Glenn Bowman, Dick Derrick, Fred Fisher, Barry Hackenberg, Stan Jablonski, George Kindon, John Luscko, John Pignatore, Frank Procopio, Neal Rebuck, Ray Richie, John Treon, John Yanuklis.

Henry J. Keil, Head Coach; Robert Pittello, Blair Heaton, Assistant Coaches. Bill Kahl, Ken Munster, Managers; Elias Okamura, Trainer.





RAY RICHIE  
Senior Co-Captain



JOHN YANUKLIS  
Senior



Mr. Stagg and Mr. Heaton in their respective positions of scout and assistant coach keenly watch for strengths and weaknesses.



THE RECORD

Susquehanna	63	Ursinus	0
Susquehanna	61	Swarthmore	13
Susquehanna	15	Upsala	21
Susquehanna	14	Shepherd College	0
Susquehanna	7	Wilkes	12
Susquehanna	6	Wagner	28
Susquehanna	30	Haverford	0
	<hr/>		<hr/>
Totals	196		74

## FIRST WINNING SEASON SINCE 1952

The Crusaders, although outweighed every Saturday by teams from larger schools, emerged from the 1959 campaign with a winning record, their first since 1952. There were other notable achievements: the team's 196 points made it the highest scoring squad in Susquehanna's history; Blair Heaton was added to the coaching staff; Ralph Ferraro and John Yanuklis received Little All-American honors; and next year's prospects favor another successful season.

### URSINUS

The scoreboard lights danced like an electric coin machine tally as the Crusaders racked-up 63 points to win the jackpot—the opening game victory over the Ursinus Bears at Collegetville. The flabbergasted bruins watched their opponents move the ball through, over and around them in scoring more than a point a minute while they scored none. The scoring spree was started by Glenn Bowman who returned a punt 70 yards mid-way in the first period.

### SWARTHMORE

In a game dedicated to him, the Crusaders paid tribute to the late Doctor Henry Benzenberg, team physician, who died a few days before this first home struggle. The inspired Kielmen never eased the pressure on their favored opponents who after being on the short end of a 21-13 halftime score, completely collapsed under the surging Susquehanna eleven. The pass receiving o Hauser and the quarterbacking of Derrick and Hackenberg were outstanding, while Yanuklis, Rebuck, and Bowman thrilled the Parents' Day crowd with many spectacular romps.

### UPSALA

The Crusaders played gallantly while absorbing their first loss to the powerful Upsala Vikings, 21-15, at East Orange, New Jersey. Though greatly outweighed, the



1959 Football Crusaders of Susquehanna University, Selingsgrove, Pa., are, left to right: First Row: Ben DiFrancesco, Atlas, Pa.; Frank Procopio, Kulpmont, Pa.; John Yanuklis, Union City, N. J.; Ray Riche, Shamokin, Pa.; Ralph Ferraro, Jersey City, N. J.; Gerry Bernstein, Wilkes-Barre, Pa.; Al Nace, Selingsgrove, Pa.; Don Davis, Ardmore, Pa.; Dick Derrick, Morristown, N. J.; Ron Kahn, Ashland, Pa. Second Row: Coach "Whitey" Keil, Fort Lee, N. J.; Bob Brenner, Alloway, N. J.; Glenn Bowman, York, Pa.; Woody Starr, Selingsgrove, Pa.; George Moore, Gordon, Pa.; Ned Coates, Bloomsburg, Pa.; Stan Jablonski, Northumberland, Pa.; Tom Hanshaw, Harrisburg, Pa.; Lee Conrad, Sunbury, Pa.; Neal Rebuck, Dornsife, Pa.; Ken Hauser, River Vale, N. J.; Elias Okamura, trainer, Western, Caroline Island. Third Row: Assistant Coach Bob Pittello, Mt. Carmel, Pa.; Dick Rohland, Plainfield, N. J.; Mike Voiles, Windgap, Pa.; Lew Dimler, Ashland, Pa.; John Luscko, Mount Ephraim, N. J.; Al Aungst, Pine Grove, Pa.;

visitors, led by the outstanding play of fullback Neil Rebuck and guard Butch DiFrancesco, matched the host club in everything but score. The large crowd, which included the Crusader band and many S. U. students and partisans, helplessly watched the Orange and Maroon accept the season's most heart-breaking defeat.

### SHEPHERD STATE

"Slipping in the mud is no excuse for poor blocking and tackling," warned Coach Pittello before the Crusaders took the field at Shepherdstown, West Virginia. His words went unheeded, however, as every player took his share of untimely dives into the mire. But the S. U. team needed no excuses, for they emerged victors by a 14-0 count. After a scoreless first half, the Crusaders finally entered the end-zone by way of a Derrick to Yanuklis pass play in the third quarter. Procopio later added the insurance tally by slithering 48 yards to pay mud.

Yanuklis evades tackle during one of his many long runs at Haverford.



Coach Keil outlines strategy for Haverford game as Manager Kahl makes notations.





Neal Markle, Sunbury, Pa.; Paul Tressler, Telford, Pa.; Chuck Leathery, York, Pa.; Tom Samuel, Mount Ephraim, N. J.; John Pignatore, Manchester, Vt.; Ken Munster, Assistant Manager, Pittsburgh, Pa. *Fourth Row:* Assistant Coach Blair Heaton, Selinsgrove, Pa.; Bob Cimbalista, Riddleberg, Pa.; Nathan Ward, Berlin, Pa.; Enoch Beltz, Bridgeport, Conn.; Don Cave, Havertown, Pa.; Barry Hackenberg, Mifflinburg, Pa.; Joe Perfilio, Jersey City, N. J.; Bill Casler, Hoboken, N. J.; Kent Baldwin, Williamsport, Pa.; George Campbell, Hillsdale, N. J.; Fred Fisher, Pine Grove, Pa.; John Treon, Sunbury, Pa.; Ron Schlader, Ashland, Pa.; Dave Smith, York, Pa.; Bill Kahl, Head Manager, Johnstown, Pa. *Missing from picture:* Chuck Bowen, Selinsgrove, Pa.; Ed Jones, Bristol, Pa.



Turf flies as Yanuklis drives ahead in Wilkes game.

## WILKES

A disappointed Homecoming crowd watched sluggish Susquehanna lose to the Wilkes Colonels, 12-7. Hampered by the loss of quarterback Derrick, who received an injury in the second period, the Crusaders seemed continually to come up with penalties or missed assignments which nullified many would-be advances, as they dropped the game to an inferior, but determined opponent.

## WAGNER

The pin-point passing of Don Cavalli dazzled the Crusader secondary into helplessness as Wagner handed S. U. its second home defeat, 28-6. The giant Sea Hawk ends simply outreached the defenders in grabbing pass after pass, while amassing all their 28 points by halftime,

while the Crusaders scored once to climax a 67-yard drive in the second period. The second half, however, found Susquehanna readjusted and was a scoreless stalemate.

## HVERFORD

Although it was a team victory, no one could deny that John Yanuklis was a show in himself, scoring three touchdowns, as Susquehanna finished the campaign with an impressive 30-0 shut-out at Haverford. The Crusaders' arch-rivals were outclassed from the start, although they allowed only one score in the first half. Tremendous defensive play by the line led by Ferraro and Bernstein, as well as the stellar running of Yanuklis, Richie, and Jablonski broke the game open in the second half, and gave Coach Keil his first winning season at Susquehanna.

After pass reception, Luseko takes advantage of an Ed Jones block to gain extra yardage.



## WOMEN DAY STUDENTS



Ginny Alexander, Isabell Carroll, Millie Barabas, Carol Bansner, *President*; Barbara Shilling, Carol Daily.



*Seated*—Mary Ann Adams, *President*; Jane Reichenbach, Gloria Graybill, Maureen Davenport. *Standing*—Mary Ann Valunas, Carol Gresh, Mary Jablonski, Sanda Sholley, Diana Graybill, Donna Graybill, Connie Leitner, Linda Kent, Dana Wilson, Ellie Smith, Jean Harner.

## WOMEN'S ATHLETIC ASSOCIATION

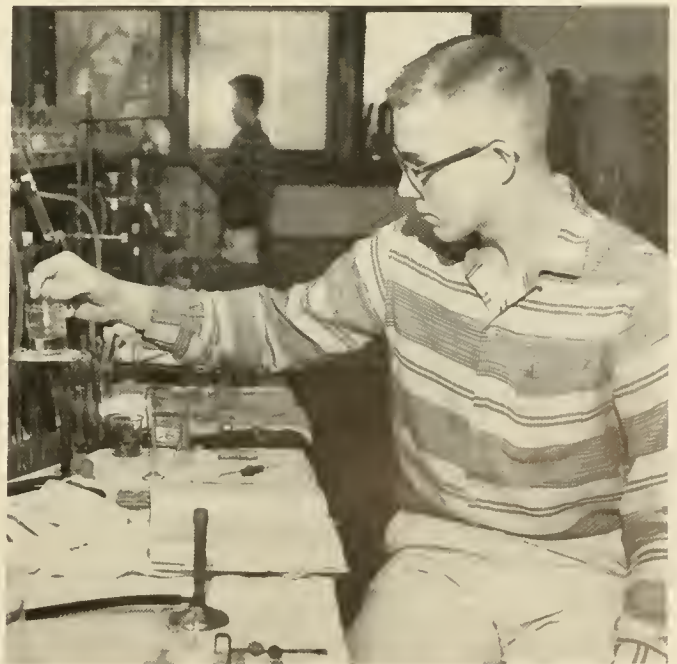
*First Row*—Pat Goetz, Stephanie Haase, Pat Campbell, Ginny Alexander, *President*; Ginny Kratz, Joan Whitson. *Second Row*—Judy Diehl, Jane Kistner, Helen Rhoads, Barbara Shilling, Jean Ewald, Carol Daily. *Third Row*—Gail Whitson, Judy Behrens, Joan Lawley, Ann Ostheim, Gloria Graybill.





First Row—Nancy Phillips, *President*; Dick Derrick, Susan Turnbach, Second Row—Jean Diebel, Nellie Keller, Janet Zortman, Willie Weichelt, Don Winey, Millie Barabas, Dave Hutchison. Third Row—Diana Graybill, Pat Ney, Jane Reichenbach, Ann Ostheim, Gloria Graybill, Ruth Roberts, Caroline Shryock.

## BIEMIC SOCIETY





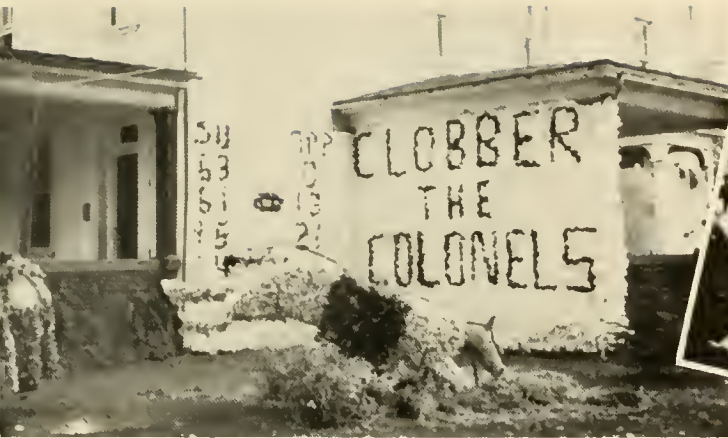
Pictured above in dreamland are Homecoming Queen Mildred Barabas and the members of her court: Jane Beers, *freshman representative*; Susan Sload, *sophomore representative*; and Elaine Turner, *junior representative*.



Our lovely Queen Millie is shown immediately after her Coronation and braving the storm at the Homecoming game.



Friday evening in the dining hall saw many frosh dressed in various forms of attire.



Lambda Chis display their spirit through the house decorations and most unusual fire brigade.



"The fummin demon has Wilkes screamin" was enough for Theta Chi to recapture the trophy for the second consecutive year.



Phi Mu Delts add suspense to the bonfire with their traditional Ku Klux Klan, and also add to the weekend's festivities with their house decorations.





Saturday's multitude of events commenced with the dedication of Landes Memorial Gateway. Participating in the ceremony were Dr. John I. Woodruff, Mrs. Latimer S. Landes, and Dr. Gustave Weber.



DiFrancesco executes fine block in vain as Yanuklis fights for yardage.



Rebuck sees opening after taking Derrick handoff.



The opinions of the student body are reflected in an offguard shot of the Queen and her court. "Oh no, not again!" "But team, we're supposed to win the game."







Alpha Delta Pi's battleship floated to first place as the sisters once again took possession of the coveted trophy.



Pre-game festivities included a parade of floats, each one bigger and better than the previous year when the tradition was initiated.



# MARCHING BAND



## *Drum Majorette*

Ardith Renning

## *Majorettes*

Isabelle Carroll  
Sally Lockett

## *Flutes*

Elizabeth Roberts  
Martha Menko  
Naomi Weaver  
Patricia Estep

## *Clarinets*

Paul Martin  
Marie Bouchard  
Dana Wilson  
Annamae Hockenbrock  
Barbara Yoder  
Sandra Schell  
Gail Henderson  
Judy Nelson  
Dorothy Kunkle

## *Saxophones*

Gloria Albert  
Harriet Gearhart  
Lillian Holcombe  
Robert Summer  
Carl Moyer

## *French Horns*

Sandra Troutman  
David Lisi  
Jacquelyn Barber  
Shirley Foehl

## *Cornets*

Judith Blec  
Steve Toy  
Fred Guinn  
Donald Gray  
William Molin  
David Hackenberg  
Ralph Shaffer  
Raymond Dobson  
Helen Rhoads  
Beverly Braun  
Sandra Eyster

## *Trombones*

David Diehl  
Robert Dreisbaugh  
Nathan Ward

## *Baritones*

Lynn Lerew  
Linda Leonard  
Carol Marburger

## *Basses*

Abram Grove  
Larry Wingard

## *Percussion*

Herman Hopple  
William Werner  
Roy Voneida  
Robert Valentine  
Thomas Casey  
William Shuker  
Jeannette Harvey  
Joseph Aleknavage

## *Color Guards*

Susan Apgar  
Jocelyn Swope  
Sarah Myers  
Diane Hogeland  
Joan Lawley  
Jennie Anderson  
Nita Zimmerman



# FACULTY RECITALS

Mrs. Alterman and Mr. Robinson combined their vocal talents in a wide range of presentation from Mozart to Rodgers.

Mr. Deibler immediately received a warm reception in his Susquehanna debut with a program of Sarti, Beethoven, and Debussy.



MRS. FRANCES ALTERMAN



MR. LAVAN ROBINSON

MR. GALEN DEIBLER



## PI GAMMA MU



*First Row*—Don Coleman, *President*; Janet Zortman, Mary Lou McCann, Pat Bodle, Pat Campbell, Carlton Smith. *Second Row*—Virginia Alexander, Richard Reichard, Marilyn Faiss, Mike Fahey, Barbara Shilling, Gerald Bernstein.

## PHI KAPPA PHI

*First Row*—Ed Strayer, Ron McClung, William Werner, Gilbert Askew, *President*; Richard Reichard. *Second Row*—Don Coleman, Elwood Hipple, Curtis Barry, Peg Sewall, Ed Huber.





## BUSINESS SOCIETY

*Seated*—William Kahl, Lou Coccodrilli, Dave Hutchison. *Standing*—Jean Deibel, Pat Goetz, Dick Derrick, Nellie Keller, June Nonnemacher, Pat Campbell, Ann Ostheim, Gloria Graybill, Caroline Shryock. President Denny Shank not pictured.



# THE SUSQUEHANNA

## *Tryouts for a New Play . . .*



## *Feverish Preparation . . .*



# PLAYERS

## *The Plays The Thing*

### WHERE THE CROSS IS MADE

by EUGENE O'NEILL

#### CAST

WILLIAM WERNER  
BONITA SCHAFFER  
JOHN BOYLON  
DAVID MARTIN

Directed by WALTER FOX and  
MR. JAMES J. PETERSON



### THE VALIANT

by HOLSWORTHY and HALL

#### CAST

JOHN PIGNATORE  
ROSEMARY LOSCH  
JAMES CAMPBELL  
LANNING PHETHEAN  
FRANCOIS ENGEL

Directed by LYNN MANNING



## *And A New Play in the Making*





Elaine Turner, Captain; Bette Davis, Judy Diehle, Patricia Goetz, Merdic Meyer, Barbara Schultz, Darla Jane Shuman, Peggy Thoman.

C (ch-ch-ch) R (ch-ch-ch)  
... echoes off the gym walls.



The tang of the autumn air carries the enthusiasm of the cheerleaders from grandstand to playing field.

*First Row*—Jim Updegrove, Ted Schultz, Roy Burns, Al Fuller, Richard Rowe, Mike Yohe, Tom Leiby. *Second Row*—Assistant Coach Peter Elkington, Bob Williams, Dan Snyder, Al Kiel, Frank Yaggi, Len Purcell, Bob McKee, Wes Hunt, Head Coach William Heim.







The members of the Interfraternity Senate: *Seated*—Gilbert Askew, Richard Handley, Ralph Ferraro. *Standing*—Mr. Philip Bossart, Dr. Albert Zimmer, Mr. Lamar Inners.

## INTERFRATERNITY SENATE

"The Interfraternity Senate strives to decide . . . by intelligent discussion, the most beneficial policy for the fraternity as a whole, and aims to protect each fraternity against unfair discrimination."

Lambda Chi Alpha  
Phi Mu Delta  
Theta Chi



The past year saw successful athletic, social, and rush activities at 309 University Avenue—home of Lambda Chi Alpha Fraternity.

Socially, Lambda Chi once again joined with Alpha Delta Pi Sorority in sponsoring a Christmas party at the fraternity house for underprivileged children in the area, sponsored the annual Campus Bicycle Race, held a Watermelon Bust during the first month of school for freshman women, and held the usual number of regular Saturday night parties.

In the field of athletics, the brotherhood once again proved it was a power to be reckoned with intramurally, and the Fraternity had a large representation on S. U.'s varsity teams. Lambda Chi Alpha had a successful rush week, taking thirty pledges into its midst.

The year 1960 marks a most important milestone in the history of the local chapter of Lambda Chi Alpha, as its members are spending a final year in the tradition-steeped house. Soon the brotherhood will move into its new quarters—a brand new fraternity house located in the orchard section of University Heights. So, in actuality, this year marked the closing of an era in the history of Susquehanna's oldest social fraternity.

## *“Every Man a Man”*

### OFFICERS

President - - - RALPH FERRARO  
 Vice President - - MAURICE BOBST  
 Secretary - - - GEORGE GOPIE  
 Treasurer - - GERALD KUNKLE





*First Row*—Hal Bingaman, Amos Kunkle, Ralph Ferraro, *President*; William MacDonald, Don Lehmer. *Second Row*—Paul Snyder, Eugene Alichwer, John Yanuklis, Ken Hauser, Ray Richie, Charles Rovenolt, Lee Conrad.

## LAMBDA CHI ALPHA

*First Row*—Ted Schultz, Phil Pemberton, Frank Procopio, Benedict DeFrancesco, Dave Fuller. *Second Row*—John Kind, Tom Deibler, Stanford Sholley, Dick Rohland, John Williams, Ron Kahn, George Sadosuk, Tom Helvig, Bill Chamberlain, Bob Brenner. *Third Row*—Maurice Bobst, Bob Probert, Harry Powers. *Not Pictured*—Frank Beatty, George Gopie, Abram Grove, Tom Hanshaw, Dave Hutchison, James McDaniel, George Moore, Allan Nace, John O'Malley, Neal Rebeck, Larry Robbins, Elwood Starr, Bill Squires, Keith Tyler, Eugene Witmer, William Shutt.





*First Row*—Mike Fahey, Joe Aleknavage, Alan Fiscus, Richard Handley, *President*; Richard Derrick, George Swann. *Second Row*—James Maurer, Bill Weichelt, Bill Ecenbarger, Larry Updegrove, Jerry Bernstein, Vance Maneval, Chuck Nelson, James Middleswarth, Brian Donley, Alan Rowe. *Third Row*—Richard Reichard, Walter Campbell, Bill Schell, Jack Snider.

## PHI MU DELTA

*First Row*—Mike Yohe, Ken Keib, Ronald Hardnock, Leonard Purcell, Stan Jablonski, Ray Sharrow. *Second Row*—Charles Krimmel, Roger Trexler, Dick Davis, Chuck Bowen, Wayne Minami, Edward Jones, Norm Crickenberger, Mack Ward, Ned Coates, Robert Smith, Jack Fries. *Third Row*—Bill Kahl, Thomas Leiby, Marlin Inch, Alan Thomas. *Not Pictured*—Elliot Edwards, Wes Hunt, Bill Kissinger, Bud Pressley, Dennis Shank, Ronald Smith, James Strausser, Alan Wernau.



Phi Mu Delta House was given a "new look" this year; many improvements were made, such as the addition of a new recreation room, and the redecoration of the living- and dining-rooms.

Socially, "The Jones Boys," a night-club act from Philadelphia, provided the entertainment for the first party, the Winter Formal, and the Spring Formal. The Orange and Black intramural teams were successful in capturing the Softball Trophy, the Football Trophy, top honors in the Track Meet, and the 1959 Amos Alonzo Stagg Trophy which is emblematic of intramural athletic competency.

Homecoming at Phi Mu Delta was marked by the return of many familiar faces. The festivities included an alumni meeting, an informal luncheon, and a banquet at the Blue Hill Restaurant.

Rush Week was a success at Phi Mu Delta with nineteen prospective brothers being accepted in early December.

Future plans to be completed shortly include the installation of an athletic training room with electric massaging equipment for the Orange and Black intramural athletes, construction of a new front sidewalk, and the black-topping of the parking lot.



### *"The Leaders of Tomorrow"*



#### OFFICERS

- President* - - - DICK HANDLEY
- Vice President* - - DICK DERRICK
- Secretary* - - - JOE ALEKNAVAGE
- Treasurer* - - - AL FISCUS





*First Row*—Ted Fuhrer, Jim Papada, Glenn Bowman, Carlton Smith, Gilbert Askew, *President*; Lou Coons, Phil Clark, Paul Tressler. *Second Row*—Ron Foy, Carl Hitchner, Bob Clark, Les Butler, Paul Martin, John Raab, Mel Finkelstein, Dave Diehl, Don Cave, Dick Tietbohl, Don Winey, Ron McClung, Howard Speck, Herman Hopple.

## THETA CHI

*First Row*—Bill Hockensmith, Ken James, Terry Moll, Jim Coolbaugh, Steve Toy, Dave Stocum, Bob Leighty, Larry Richter. *Second Row*—Ed Huber, Bill Molin, John Curry, Larry Wingard, Jack McLaughlin, John Schlotzhauer, Larry Miller, Jim Parker, Walter Fox, Dick Melander, Don Davis, Dick Ditmars, Chuck Rasmussen, Don Coleman, Frank Reiger, Ron Anthony, Roy Burns.





From Beatnik party to scholarship honors, the brothers of Theta Chi enjoyed the full range of college life in the 1959-60 year.

It was, first of all, a year of memorable fun. The pledge-designed Hawaiian dance, the old country flavor of the Dutch party, Hallowe'en costumes, Thanksgiving cornucopias, "beat" art, Valentine hearts—all were part of the colorful memories of the Big Reds and their dates.

It was a year of honors. The Green Dragon brought the Homecoming Decoration Trophy back to the mantel of 400 W. Pine Street for the second year, and the Scholarship Cup for academic achievement was proudly accepted.

And more memories: the spring bicycle race (with a straw hat as first prize), the rousing Theta Beta Band, some lusty singing, and a lot of rugged intramurals.

The year of 1959-60 was the year of the big change at the Beta Omega Chapter. Dressed in newly designed jackets, strengthened with a pledge class of twenty-nine, the brothers prepared to leave their Pine Street home to continue a full fraternity life in a modern house.

*“Alma Mater First  
and Theta Chi  
for Alma Mater”*

OFFICERS

- President* - - - GILBERT ASKEW
- Vice President* - - - GLENN BOWMAN
- Second Vice President* - ED STRAYER
- Secretary* - - - CARLTON SMITH
- Treasurer* - - - LOU COONS





The brothers soon learn the demands and uses of the "House."



Bill Schell churns and cuts for added yardage as Keith Tyler moves in for the tag in intramural touch-football game.

## THE SPIRIT OF FRATERNITY



In the basket for . . .

SKOAL!





# CHRISTMAS FORMAL



Why Santa leaves Mrs. Claus at home.



"Your hand feels so grand in mine . . ."





*"If Winter Comes . . ."*





## CHAPEL CHOIR

### *Sopranos*

Judy Blee  
 Joyce Bond  
 Mary Margaret Craft  
 Joan Dechert  
 Nancy Lee Dunster  
 June Hackman  
 Jeanette Harvey  
 Gail Henderson  
 Annamae Hockenbrock  
 Diane Hogeland  
 Doris Hoover  
 Sally Myers  
 Mary Neece  
 Patsy Paterson  
 Helen Rhoads  
 Betsy Roberts  
 Bonita Schaffer  
 Sue Sload  
 Peggy Walters  
 Dana Wilson  
 Nancy Zimmerman

### *Altos*

Gloria Albert  
 Genevieve Anderson  
 Pat Bodle  
 Pat Brownell  
 Linda Dries  
 Jean Ewald  
 Dorothy Kunkle  
 Joan Lawley  
 Sally McKalip  
 Marty Menko  
 Ann Ostheim  
 Janice Rogers  
 Caroline Shryock  
 Janice Stahl  
 Sally Stephenson  
 Darlene Strockbine  
 Peggy Thoman  
 Nita Zimmerman

### *Tenors*

Kent Baldwin  
 John Curry  
 Dave Hutchison  
 Bill Molin  
 John Rowe  
 Robert Summer  
 Lloyd Wolf

### *Basses*

Bill Brandt  
 James DeLong  
 David Diehl  
 Jack Frank  
 Herman Hopple  
 John Korus  
 Lynn Lerew  
 David Martin  
 Paul Martin  
 Richard Reichard  
 Paul Snyder

*Accompanist*—JEAN HARNER

*Business Manager*—DAVID DIEHL

When we leave the intellectual stimulation of the classroom, we eagerly try to apply what we have learned to the situations around us.



## AROUND THE



The library has many uses.



We are poised . . .

# CAMPUS

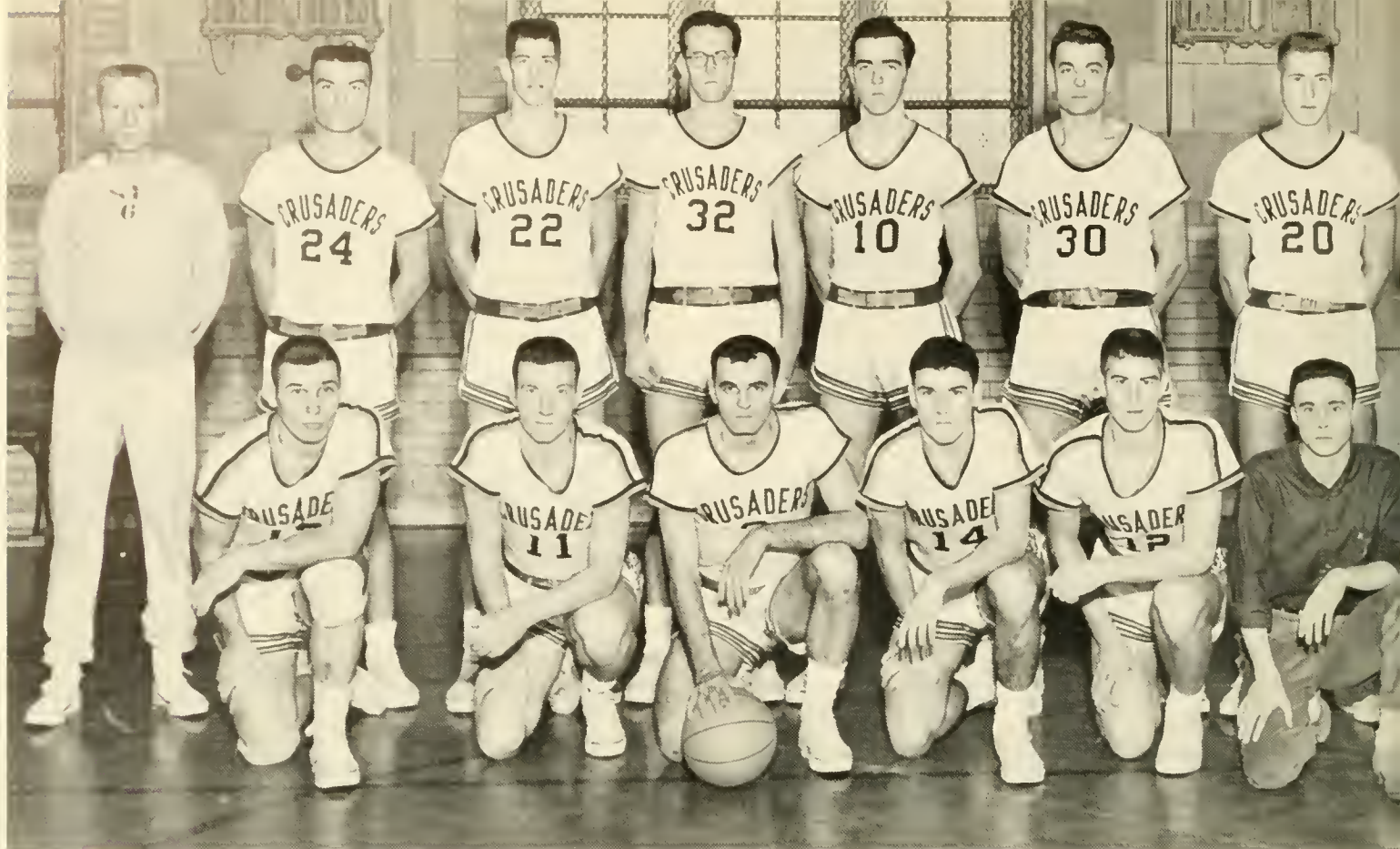


distinguished . . .  
and socially adjusted.



Press on.





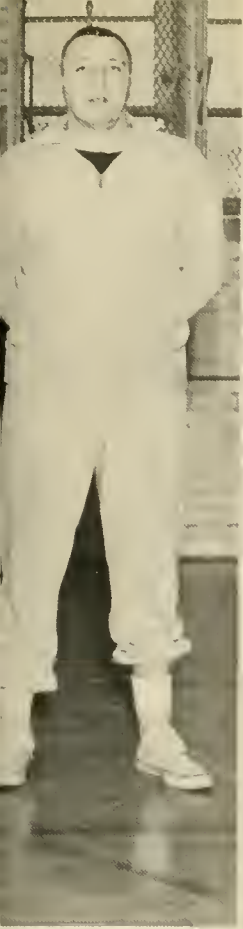
Front Row: Keith Tyler, George Moore, Robert Probert, Alan Kiel, Clark Mosier, Thomas Helvig, Student Manager. Back Row: Blair Heaton, Assistant Coach; Allan Wernau, Maurice Bobst, Harry Powers, James Gallagher, William Moore, Wesley Hunt, John Barr, Coach.

## BASKETBALL

JOHN BARR  
Head Coach

	SCORES			
	S. U.	Opp.	S. U.	Opp.
Temple	61	93	Washington	78 76
Wilkes	69	73	Dickinson	73 82
Rider	59	78	Hofstra	60 70
Wagner	70	74	Seranton	95 80
Ursinus	67	74	Philadelphia Textile	77 75
Lebanon Valley	69	79	Franklin and Marshall	102 74
Hartwick	74	82	Stevens Institute	103 72
Upsala	83	96	Lyeoming	79 49
Juniata	62	79	Rutgers of S. Jersey	101 43
Western Maryland	101	69	Mansfield State	72 66





BOB PROBERT  
Senior Co-captain

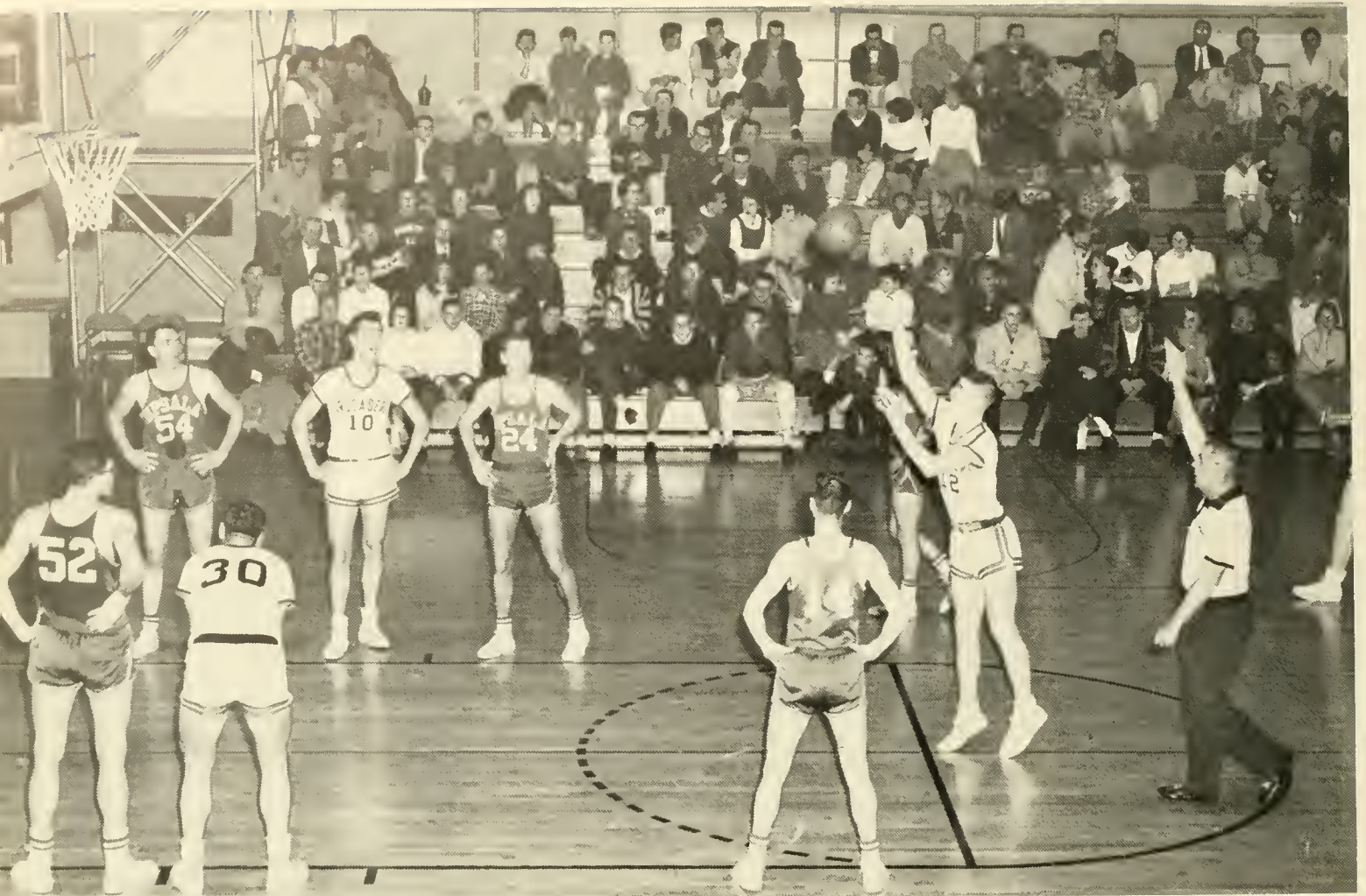


MAURY BOBST  
Junior Co-captain

CLARK MOSIER

Crusader fans can expect to see this Frosh sensation set the pace for the young and growing team during the next three seasons.

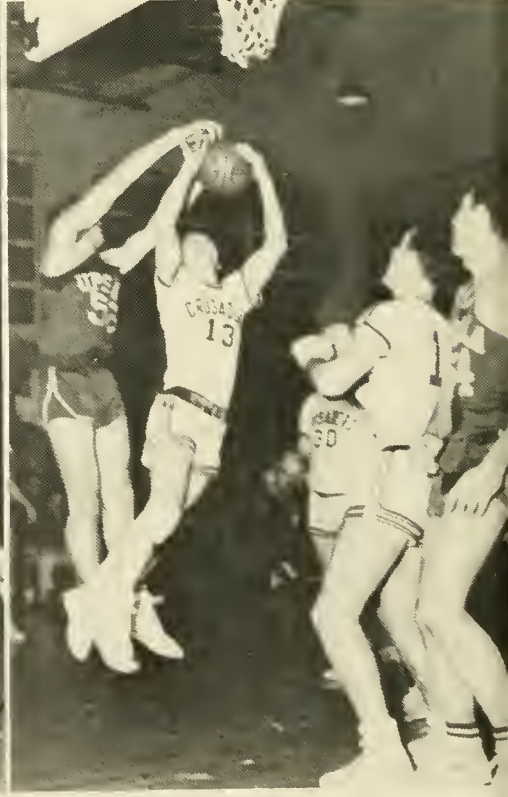
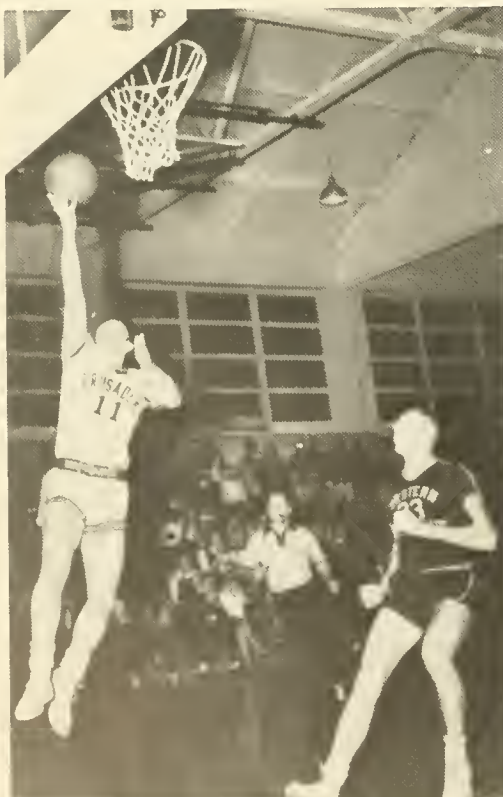




George Moore scores to complete successful fast break as unhappy Western Maryland player pursues in vain.

Bill Moore and Jim Gallagher scramble for loose ball in Crusaders' first victory.

Keith Tyler out-maneuvers Upsala giant to haul in rebound.







## J. V. BASKETBALL

Blair Heaton's J. V. team became a new addition to Susquehanna's athletic program with the opening of the 1959-1960 season. The yearling squad was established to provide experience through game competition for the younger players. An informal schedule included such teams as the Dickinson and Scranton J. V.'s, the Apollos from Ashland, and the team of the Sunbury Y. M. C. A.

Al Kiel gains the reach advantage in a wild arm scramble for rebound in J. V.-Apollo game.

First Row: J. Wurster, R. Trexler, M. Yohe, K. Fish, R. Curtis, A. Kiel, Manager, B. Kauffman. Second Row: Coach Blair Heaton, F. Trenery, G. Hostetter, J. VanZandt, F. Dunkelberger, R. McKee, J. Graham.





# SIGMA ALPHA IOTA

*Seated*—Peggy Walters, Helen Rhoads, Jean Ewald, Sandra Swab, Alice Taylor. *Standing*—Janice Stahl, Maureen Daveuport, Mary Neece, Linda Leonard, Dana Wilson, Susan Sload.

## OFFICERS

- President* - - - SUSAN APGAR  
*Vice President* - HARRIET GEARHART  
*Secretary* - - - JOYCE BOND  
*Treasurer* - - - JACKIE BARBER



*Seated*—Beverly Braun, Harriet Gearhart, Susan Apgar, Joyce Bond, Gloria Albert. *Standing*—Jean Harner, Sally Myers, Sandra Schell, Jacquelyn Barber, Helen Harding, Marie Bouchard, Jocelyn Swope, Lillian Holcombe.

From the opening tea for freshman women music students in September to the senior farewell party and banquet in May, the sisters of SAI follow a crowded social calendar.

Music is heard throughout the year as the sisters go caroling at the colony in December, take part in the annual American Musicale in February, perform over radio station WKOK in April, and sponsor the Interfraternity-Sorority Sing in May.

Also included on the busy schedule are the Incorporation Day Tea, the party for faculty members in the conservatory, and the formal pledge dance highlighting the year's activities.

# PANHELLENIC COUNCIL



The members of the Panhellenic Council: Caroline Shryock, Miss Ruth Meister, Susan Myers, Jane Kistner, June Nonnemacher, Millie Barabas, *President*; Karen Goeringer, Janet Zortman, Ginny Alexander, Ginny Kratz.

Nationally, the Council is the cooperating body of women's fraternities established ". . . to maintain on a high plane fraternity life and interfraternity relationships, to cooperate with college authorities in their efforts to maintain high social standards throughout the whole college and to be a forum for the discussion of questions of interest to the college and the fraternity world."

Locally, the Council serves to promote understanding and cooperation among the three sororities. The high spirit of friendship is maintained by the women working together on such projects as the Freshman PJ Party, the Homecoming Formal, the Annual Pledge Dance and the Panhellenic Rush Tea.

Alpha Delta Pi  
Alpha Xi Delta  
Kappa Delta



*First Row*—Barbara Shilling, Eleanor Ambromavage, Nancy Davis, Virginia Alexander, *President*; Elaine Turner, Carol Daily, Pat Campbell. *Second Row*—Jacqueline Fuller, Isabell Carroll, Ginny Kratz, Stephanie Haase, Ann Hewes, Barbara Angle, Jean Ewald, Carol Bansner, Janet Zortman.

## ALPHA DELTA PI

*First Row*—Sharon Martin, Bette Davis, Helen Rhoads, Ann Wilson, Betsy Roberts, Linda Traub, Sally Lockett, Ann Ostheim. *Second Row*—Joan Whitson, Joan Haeffe, Joan Gandy, Mardee Altland, Lou Coccodrilli, Judy Diehl, Charlotte Downer, Pat Goetz, Marilyn Meyer.





*"We Live for  
Each Other"*



"Come on, kids, join the party!" This was the friendly greeting of the sisters of Alpha Delta Pi at the Christmas and Easter parties held for the needy children of the Selinsgrove area. It was fun for the sisters because it was fun for the children.

The parties for the children were typical of the service given by ADPi in the past year. Spring and winter programs at the Selinsgrove State School, serenading the various campus residences, contributing to national philanthropic organizations—each was an expression of the enjoyment which the sisters found in giving to others.

What? A picnic on a cold day! Yes, this was ADPi's annual outing at Halfway Dam where the girls and their dates enjoyed a full day.

Alpha Delta Pi proudly holds the Interfraternity-Sorority Sing Cup, the Homecoming Float Trophy, and the Inter-sorority Scholarship Cup.

#### OFFICERS

<i>President</i>	- -	VIRGINIA ALEXANDER
<i>Vice President</i>	- - -	NANCY DAVIS
<i>Secretary</i>	- - -	PAT CAMPBELL
<i>Treasurer</i>	- - -	ELAINE TURNER





"Chestnuts roasting on an open fire," sang the sisters of Alpha Xi Delta Sorority at the Christmas Formal which they sponsored as a part of their service to the school. Many students were tired on the end-of-exam-week night, but the very hard work and the very good singing of Alpha Xi Delta gave a real pre-holiday lift.

Conscious of the great need for volunteer help at the near-by Selinsgrove State School, the sisters gave of their time as receptionists for the guests of patients, thereby showing a wish to serve beyond the campus.

A world's record for falls on the snow-covered ice was made by the AXiD's at the summer home of President Goeringer. But bruises were soon forgotten in the warmth of the cozy log fire.

Alpha Xi Delta, Susquehanna's newest sorority, has shown a strong willingness to enter into a true fraternal spirit.



*"We Seek Truth, Justice,  
and Friendship"*

OFFICERS

- |                       |       |                 |
|-----------------------|-------|-----------------|
| <i>President</i>      | - -   | KAREN GOERINGER |
| <i>Vice President</i> | - -   | MILDRED BARABAS |
| <i>Secretary</i>      | - - - | MARILYN FAISS   |
| <i>Treasurer</i>      | - -   | NANCY PHILIPS   |





*First Row—Marilyn Faiss, Millie Barabas, Karen Goering, President; Sally Myers, Caroline Shryock. Second Row—Joyce Arnold, Ruth Roberts, Nancy Phillips, Peggy Webb, Pat Ney, Barbara Irre.*

## ALPHA XI DELTA

*First Row—Ann Schaefer, Susan Turnbach, Jackie Gantz, Judy Brndjar, Joan Brenneman. Second Row—Gayle Troxell, Marilyn Hess, Lynn Manning, Lois Master, Pat Bodle, Mary Lou McCann.*





*First Row*—Nita Zimmerman, Betty Branthoffer, Phyllis Betz, Nancy Lee Dunster. *Second Row*—Susie Myers, Judy Behrens, Judy Arnold, June Nonnemacher, *President*; Carol McCloy, Gwen Park, Jane Kistner.

## KAPPA DELTA

*First Row*—Joan Connor, Judy Klein, Karen Geiger, Bev Schane, Joan Morris. *Second Row*—Martha Menko, Joanna Smith, Kathy Smith, Ardith Renning, Grace Johnson, Mary Ann Trayer, June Hackman.







"Need your car washed? Any KD would be glad to assist!" Thus began the all-campus car wash sponsored by Kappa Delta Sorority to raise money for continued assistance in community needs. Maybe the cars showed streaks in bright sunlight, but the crippled children who benefited didn't mind.

There were Christmas food baskets distributed, aid given to a crippled-children's hospital, and Christmas carols sung in a local hospital.

Campus-wise the sisters were kept busy decorating the Homecoming float, putting on their annual fashion show, and serenading their favorite sex.

Good times? Sure—ask any guy who danced with a sarong-clad KD girl in the gay atmosphere of palm trees and sea shells at the spring Jamaica party.

Kappa Delta continues to strive for the high ideals of its motto.

*"Let Us Strive for That  
Which Is Honorable,  
Beautiful and Highest"*



OFFICERS

- President* - - - JUNE NONNEMACHER
- Vice President* - - - JUDY BEHRENS
- Secretary* - - - JUDY ARNOLD
- Treasurer* - - - GWEN PARK



# SYMPHONY ORCHESTRA

Director — RUSSELL C. HATZ

## VIOLINS

Sandra Swab, *Concertmaster*  
 Alice Taylor  
 Jean Ewald  
 Emily Partridge  
 Thomas Donlan  
 Joan Dechert  
 John Repko  
 Susan Apgar  
 Jacquelyn Barber  
 Bonita Schaffer  
 Ann Watmough  
 Frederick Fisher  
 Tanna Burns  
 Sally Unger

## VIOLAS

Dana Wilson  
 Carolyn Moyer  
 Marie Bouchard  
 Gwennlian Park

## CELLOS

Shirley Foehl  
 Bette Davis  
 Helen Harding  
 Ray Tyler

## STRING BASSES

Herman Hopple  
 Larry Wingard  
 Roy Voneida

## FLUTES

Martha Menko  
 Elizabeth Roberts  
 Judith Tuma

## OBOES

Harold Grow  
 Dana Wilson

## BASSOONS

Jack Fries  
 John Korus

## CLARINETS

Paul Martin  
 Annamae Hockenbrock  
 Gail Henderson

## FRENCH HORNS

Sandra Troutman  
 Janet White  
 William Molin

## TRUMPETS

David Hackenberg  
 Judith Blee  
 Raymond Dobson

## TROMBONES

Robert Dreisbaugh  
 Nathan Ward  
 Lynn Lerew

## TYMPANI

Jocelyn Swope



## SYMPHONIC BAND

*Director* — JAMES B. STEFFY

### PICCOLO

Naomi Weaver

### FLUTES

Martha Menko  
Elizabeth Roberts  
Judy Tuma  
Naomi Weaver  
Patricia Estep

### OBOE

Dana Wilson

### BASSOON

John Fries

### CLARINETS

Paul Martin  
Marie Bouchard  
Sarah Broscious  
Annamae Hockenbrock  
Barbara Yoder  
Sandra Schell  
Gail Henderson  
Judy Nelson  
Dorothy Kunkle  
Nancy Hess

### BASS CLARINET

Jeannette Harvey

### ALTO SAXOPHONES

Gloria Albert  
Linda Wassam

### TENOR SAXOPHONE

Lillian Holcombe

### BARITONE SAXOPHONE

Harriet Gearhart

### CORNETS

Judith Blee  
William Molin  
David Hackenberg  
Donald Gray  
Ronald Dobson  
Ralph Shaffer  
Sandra Eyster

### TROMBONES

David Diehl  
Robert Dreisbaugh  
Nathan Ward  
Bette Davis

### TRUMPETS

Steve Toy  
Helen Rhoads

### BARITONE HORNS

Lynn Lerew  
Linda Leonard  
Carol Marburger

### BASSES

Abram Grove  
Larry Wingard

### SNARE DRUMS

Herman Hopple  
William Shuker  
Thomas Casey

### CYMBALS

Thomas Casey

### BASS DRUM

Robert Valentine

### TYMPANI

Jocelyn Swope

### STUDENT ASSISTANT

Herman Hopple





Judy Behrens, Ron McClung, Pat Goetz, Ginny Alexander, Hal Bingaman, Ginny Kratz, Al Thomas, John Raab, Chuck Rasmussen.

Hal Bingaman, Ginny Kratz, and Ginny Alexander read the latest issue of the CRUSADER.



# CRUSADER

## STAFF

<i>Editor</i>	- - - -	HAROLD BINGAMAN
<i>Associate Editor</i>	- -	VIRGINIA KRATZ
<i>News Editor</i>	- - -	VIRGINIA ALEXANDER
<i>News Editor</i>	- - -	STEPHANIE HAASE
<i>Sports Editor</i>	- - - -	BILL ECENBARGER
<i>Assistant Sports Editor</i>	-	GEORGE SADOSUK
<i>Assistant Sports Editor</i>	- - -	AL THOMAS
<i>Assistant Editor</i>	- - - -	JUDY BEHRENS
<i>Staff Photographer</i>	- -	DICK ROHLAND
<i>Assistant to the Editors</i>	- -	PAT GOETZ
<i>Business Manager</i>	- - -	GERALD KUNKLE
<i>Advertising Manager</i>	- -	THOMAS HELVIC
<i>Circulation Manager</i>	-	CHARLES RASMUSSEN
<i>Assistant Circulation Manager</i>	-	JOHN RAAB



*The Taming of the Shrew* — a colossal success!

*. . . and a few things  
that turned up  
after our deadline . . .*



Dick helped Gil and Frank break ground for their new houses.

One of two new dorms for September 1961.



WOMEN'S DORMITORY BUILDING

SENI  
ORSA  
NDOT  
HERC  
LAS  
SES





# THE SENIOR CLASS

SENIOR CLASS OFFICERS: Dick Reichard, *President*; Denny Shank, *Vice-President*; Don Winey, *Treasurer*; Virginia Alexander, *Secretary*.



**JOSEPH S. ALEKNAVAGE**  
*Business Administration*

Student Christian Association 1, 2, 3, 4; Phi Mu Delta 1, 2, 3, 4; Vice-President 3; Secretary 4; Marching Band 1, 2, 3, 4; Business Society 1, 2, 3, 4; Class Treasurer 2; Class Vice-President 3; LANTHORN, Editor-in-Chief 3; Intramurals 1, 2, 3, 4.

**SUSAN M. APGAR**  
*Music Education*

Student Christian Association 1, 2, 3, 4; Sigma Alpha Iota 3, 4; President 4; Symphony Orchestra 1, 2, 3, 4; Chapel Choir 1, 2, 3; Marching Band 2, 3, 4; Concert Band 3; Music Educators' National Conference 2, 3, 4; Future Teachers of America 4; Homecoming Representative 2; May Day 1; Orientation 2.

**VIRGINIA G. ALEXANDER**  
*Liberal Arts*

Student Christian Association 1, 2, 3, 4; Alpha Delta Pi 1, 2, 3, 4; Activities and Honors Chairman 2; Vice-President 3; President 4; Class Secretary 2, 3, 4; Pi Gamma Mu 4; Student Council 3, 4; Secretary-Treasurer 3; Secretary 4; Women's Athletic Association 2, 3, 4; Secretary 3; President 4; Tau Kappa 4; *The Crusader* 2, 3, 4; Co-News Editor 4; LANTHORN, Assistant Editor 3; Panhellenic Council 4; Future Teachers of America 4; Sophomore Tribunal 2; Orientation 2, 3, 4; Assistant Chairman 3; Co-Chairman 4; Homecoming 2, 3, 4; May Day 1, 3; Student Director 3; Intramurals 1, 2, 3, 4; *Who's Who Among Students in American Universities and Colleges* 4.

**JOYCE M. ARNOLD**  
*Liberal Arts*

Student Christian Association 1, 2, 3, 4; Nu Sigma Tau 1; Journal Correspondent 1; Alpha Xi Delta 2, 3, 4; Historian 4; Biemic Society 2, 3, 4; *The Crusader* 1, 2, 3, 4; LANTHORN 3; Susquehanna Players 4; May Day 1, 3; Intramurals 1, 3.



**MILDRED A. BARABAS**  
*Medical Secretarial*

Nu Sigma Tau 1; Recording Secretary; Alpha Xi Delta 2, 3, 4; Recording Secretary 2; Vice-President 3, 4; Panhellenic Council 3, 4; Secretary, President 4; Student Council 2; Women's Judiciary Council 4; Biemic Society 2, 3, 4; Women's Athletic Association 2, 3, 4; Vice-President 3; Tau Kappa 3, 4; Vice-President 4; Homecoming Representative 3, 4; Queen 4; Intramurals 1, 2, 3, 4; Orientation 4; Homecoming 3, 4; *Who's Who Among Students in American Universities and Colleges* 4.

**BARRY B. BEALOR**  
*Liberal Arts*

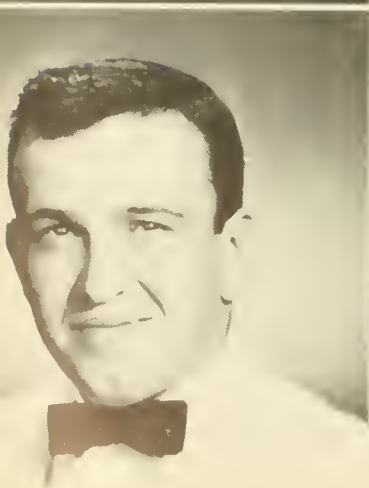
Student Christian Association 1; Future Teachers of America 3; Biemic Society 4.

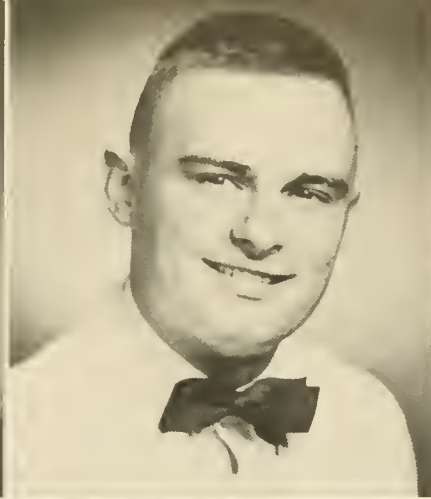
**HAROLD E. BINGAMAN**  
*Liberal Arts*

Student Christian Association 1, 2, 3; Bond and Key 1; Lambda Chi Alpha 2, 3, 4; Alumni Secretary 3; Susquehanna Players 1, 2, 3, 4; Alpha Psi Omega 4; *The Crusader* 1, 4; Assistant Sports Editor 1; Editor 4; Phi Kappa Phi 1; Men's Judiciary Council 4; Football Announcer 2, 3, 4; Student Director of Sports Publicity 3, 4; Orientation Co-Chairman 4; *Who's Who Among Students in American Universities and Colleges* 4.

**GERALD BERNSTEIN**  
*Business Administration*

Student Christian Association 4; Phi Mu Delta 1, 2, 3, 4; Pledge-master 4; Pi Gamma Mu 3, 4; Business Society 1, 2, 3, 4; Varsity Football 1, 2, 3, 4; LANTHORN, Sports Editor 3; Intramurals 1, 2, 3, 4; May Day 3.





PATRICIA A. BODLE

*Liberal Arts*

Student Christian Association 1, 2, 3, 4, Cabinet 4; Nu Sigma Tau 1; Alpha Xi Delta 2, 3, 4, Corresponding Secretary 2; Future Teachers of America 2, 3, 4; Pre-Theological Association 1, 2, 3, 4, Secretary-Treasurer 3, 4; Chapel Choir 1, 2, 3, 4; *The Crusader* 1, 2, 3, 4; LANTHORN Co-Literary Editor 3; Phi Kappa Phi 2, 4; Pi Gamma Mu 4; Co-Chairman of Stunt Night; Hassinger Counselor 3; May Day 1, 3.

EDWARD BOLLINGER

*Liberal Arts*

Student Christian Association 1, 4; Theta Chi 1, 2, 3, 4; Biemic Society 4.



JOYCE E. BOND

*Music Education*

Student Christian Association 1, 2, 3, 4, Secretary 3; Sigma Alpha Iota 2, 3, 4, Secretary 3; Chapel Choir 1, 2, 3, 4; Music Educators' National Conference 3, 4; Future Teachers of America 1, 2, 3; LANTHORN 3; Senior House President 4; Orientation 3, 4; May Day 1, 2, 3.

MARIE BOUCHARD

*Music Education*

Student Christian Association 1, 2, 3, 4; Sigma Alpha Iota 3, 4, Sergeant-at-Arms 3; Marching Band 1, 2, 3, 4; Concert Band 1, 2, 3, 4; Orchestra 3, 4; Student Council 2; Future Teachers of America 1, 2; Music Educators' National Conference 2, 3, 4.

BEVERLY F. BRAUN

*Music Education*

Student Christian Association 1, 2, 3; Sigma Alpha Iota 2, 3, 4, Chaplain 4; Marching Band 2, 3, 4; Concert Band 2, 3; Future Teachers of America 1, 2, 3.

PATRICIA M. CAMPBELL

*Business Administration*

Student Christian Association 1, 2, 3; Alpha Delta Pi 2, 3, 4, Registrar 3, Recording Secretary 4; Pi Gamma Mu 4; Business Society 3, 4; Vice-Presidents' Council 3, 4; Women's Athletic Association 2, 3, 4, Secretary 4; LANTHORN 3; Intramurals 1, 2, 3, 4; Playdays 2; May Day 1, 3; Homecoming 3.

ISABELL N. CARROLL

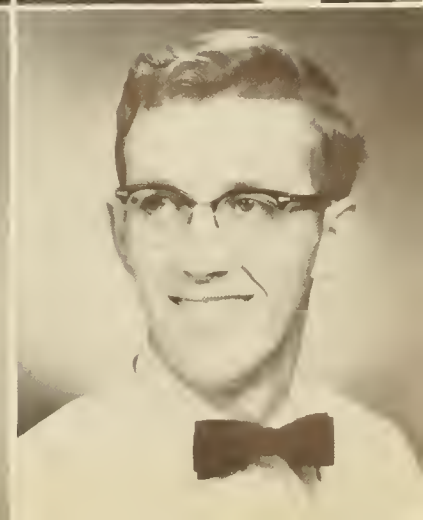
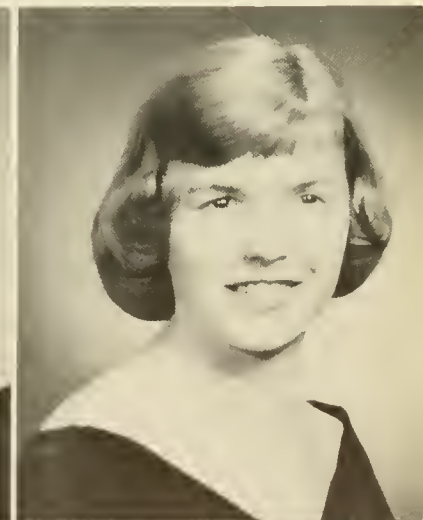
*Liberal Arts*

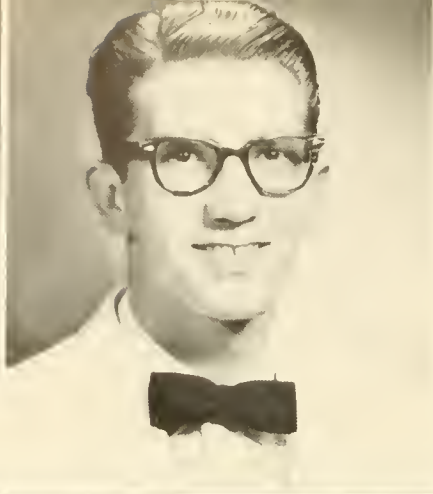
Student Christian Association 1, 2, 3, 4; Alpha Delta Pi 1, 2, 3, 4, Social Chairman 3, Standards Chairman 4; Tau Kappa 4, Secretary 4; Susquehanna Players 2, 3; *The Crusader* 3, 4; Women's Athletic Association 1, 2, 3, 4; Future Teachers of America 2, 3, 4; Majorette 1, 2, 3, 4; Orientation 2, 3; May Day 3; Homecoming 4.

ROBERT A. CLARK

*Liberal Arts*

Student Christian Association 1, 2, 3, 4; Theta Chi 2, 3, 4; Future Teachers of America 3, 4; Biemic Society 3, 4.





DONALD E. COLEMAN

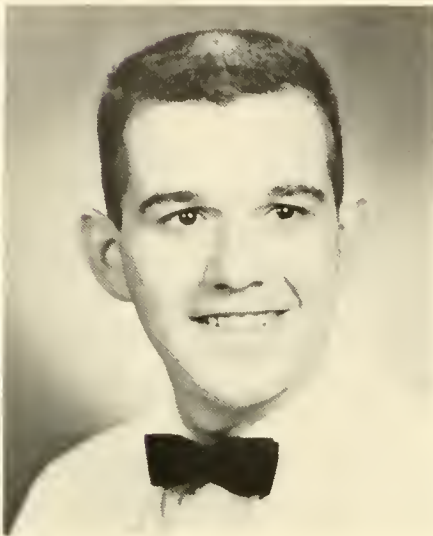
*Liberal Arts*

Student Christian Association 1, 2, 3, 4; Theta Chi 1, 2, 3, 4; Pi Gamma Mu 3, 4, President 4; Student Council 3, 4, Men's Vice-President 4; Marching Band 2, 3; Concert Band 2, 3; Chapel Choir 2, 3; Future Teachers of America 3, 4; Orientation 3, 4; Homecoming 3, 4; *Who's Who Among Students in American Universities and Colleges* 4.

LAWRENCE W. CULP

*Music Education*

Student Christian Association 1, 3; Theta Chi 2; Marching Band 1, 2, 3; Concert Band 1, 2, 3; Chapel Choir 2, 3.



CAROL A. DAILY

*Liberal Arts*

Student Christian Association 1, 2, 4, Secretary 2; Alpha Delta Pi 1, 2, 4, Efficiency Chairman 4; Tau Kappa 4; *The Crusader* 2; Women's Athletic Association 1, 2, 4; Pre-Theological Association 2, 4; Vice-Presidents' Council 4; Marching Band 1, 2; Concert Band 1, 2; Intramurals 1, 2, 4; Playday 2.

DAVID J. DIEHL

*Music Education*

Student Christian Association 1, 2, 3, 4; Theta Chi 1, 2, 3, 4, Steward 2, 3, 4, Song Director 1, 2, 3, 4; Marching Band 4; Concert Band 1, 2, 3, 4; Symphony Orchestra 1, 2, 3; Chapel Choir 1, 2, 3, 4, Business Manager 4; Music Educators' National Conference 2, 3, 4; Men's Judiciary Council 4; Motet Choir 1; Operetta 1, 2; Intramurals 1, 2, 3, 4; May Day 1; Orientation 2; Homecoming 2, 4.

RICHARD M. DITMARS

*Liberal Arts*

Student Christian Association 1, 2, 3, 4; Theta Chi 1, 2, 3, 4; Biemic Society 1, 2, 3, 4; American Institute of Physics 3; Intramurals 1, 2, 3, 4; Homecoming 3; Orientation 2, 3.

BRIAN DONLEY

*Business Administration*

Student Christian Association 1, 2, 3, 4; Phi Mu Delta 1, 2, 3, 4; Business Society 1, 2, 3, 4; Biemic Society 1, 2; *The Crusader* 1; Susquehanna Players 1; Intramurals 1, 2, 3, 4.

WILLIAM A. ELMER

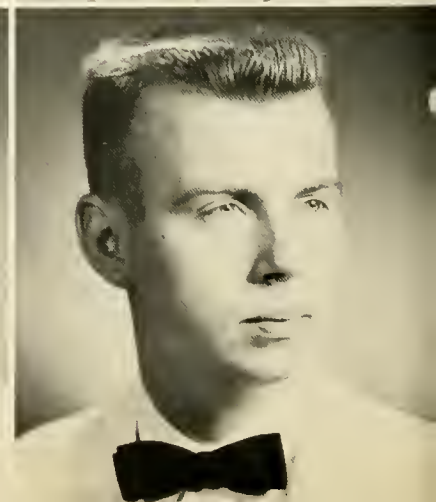
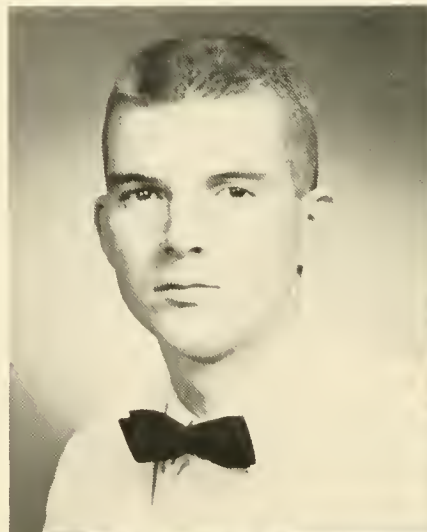
*Liberal Arts*

Student Christian Association 1, 2, 3, 4; Theta Chi 1, 2, Librarian 2; Marching Band 1; Sophomore Tribunal 2; Biemic Society 1, 2, 3, 4; Intramurals 1, 2, 3, 4.

MICHAEL F. FAHEY, JR.

*Business Administration*

Student Christian Association 1, 2, 3, 4; Phi Mu Delta 1, 2, 3, 4; Pi Gamma Mu 3, 4; Business Society 1, 2, 3, 4; Susquehanna Players 2, 3; *The Crusader* 2, 3, 4; LANTHORN 3; Varsity Baseball 1, 2, 3, 4; Intramurals 1, 2, 3, 4.



MARILYN FAISS

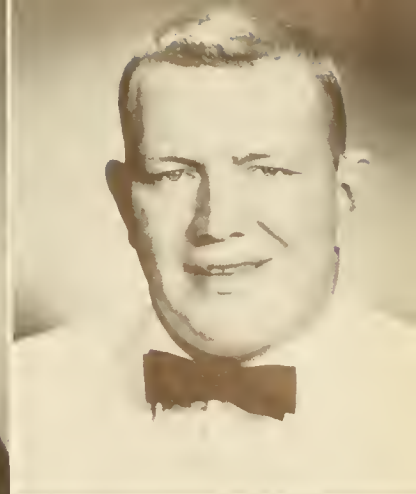
*Liberal Arts*

Student Christian Association 1, 2, 3, 4; Nu Sigma Tau 1, Sergeant-at-Arms 1; Alpha Xi Delta 2, 3, 4, Recording Secretary 3, 4; Pi Gamma Mu 4; Orientation 3, 4; May Day 3.

RALPH W. FERRARO

*Business Administration*

Lambda Chi Alpha 1, 2, 3, 4, Pledgemaster 2, President 4; Fraternity Senate 3, 4, President 4; Student Council 4; Business Society 4; Varsity Football 1, 2, 3, 4, Co-Captain 3, 4; Varsity Baseball 1; Freshman Handbook 2; Intramurals 1, 2, 3, 4; Athletic Committee, Chairman 4; Homecoming 4; *Who's Who Among Students in American Universities and Colleges* 4.



MELVYN C. FINKELSTEIN

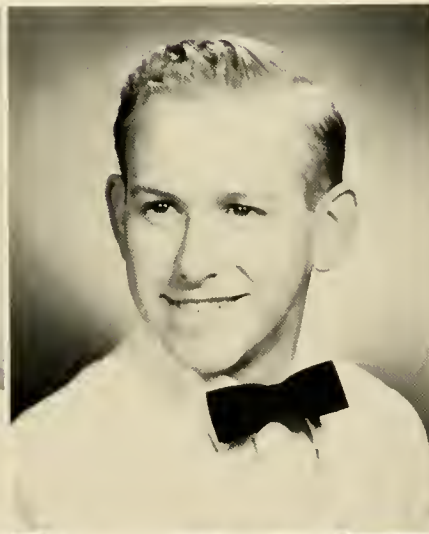
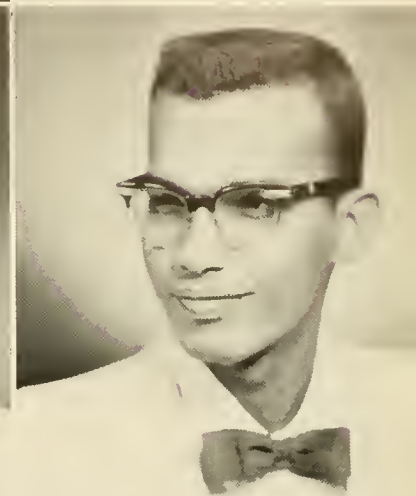
*Business Administration*

Student Christian Association 1, 2, 3, 4; Theta Chi 1, 2, 3, 4, House Manager 3, 4; Business Society 1, 2, 3, 4; Baseball Scorer and Manager 1, 2, 3, 4; Intramurals 1, 2, 3, 4.

GEORGE W. GOPIE

*Liberal Arts*

Student Christian Association 1, 2, 3, 4; Lambda Chi Alpha 1, 2, 3, 4, Social Chairman 2, Secretary 3; Student Council 3, 4, President 4; Chapel Choir 2, 3; *The Crusader* 2, 3, 4, Feature Editor 4; LANTHORN, Literary Editor 3.



DONALD GRAY

*Liberal Arts*

Student Christian Association 1, 2, 3, 4; Marching Band 2, 3, 4; Concert Band 1, 2, 3, 4; Biemic Society 2, 3, 4; Physics Club 3; *Who's Who Among Students in American Universities and Colleges* 4.

FREDERICK GUINN

*Liberal Arts*

Student Christian Association 1, 2, 3, 4; Theta Chi 1, 2, 3, 4; Marching Band 1, 2, 4; Concert Band 1, 2; Pre-Theological Association 1, 2; Future Teachers of America 4; Intramurals 2, 3, 4.

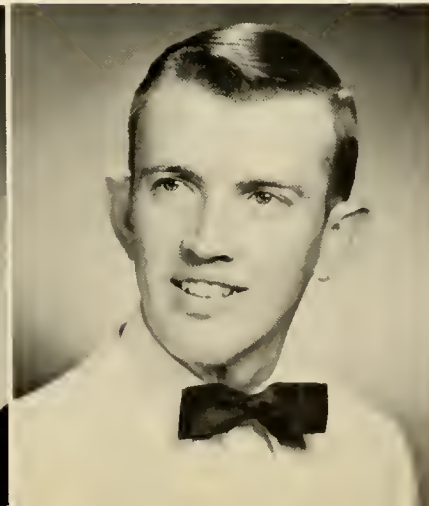
STEPHANIE A. HAASE

*Liberal Arts*

Student Christian Association 1, 2, 3, 4, Fellowship Commission 2, Women's Vice-President 3; Alpha Delta Pi 1, 2, 3, 4, Treasurer 3, Reporter-Historian 4; Student Council 3, 4, Women's Vice-President 4; Women's Judiciary Council Chairman 4; *The Crusader*, Co-News Editor 4; LANTHORN, Literary Editor 3; Biemic Society 2; Women's Athletic Association 3, 4; Intramurals 2, 3, 4; Orientation 2, 3, 4; Homecoming 2, 3; May Day 1, 2, 3; Assistant Housemother—Krapf House 4; *Who's Who Among Students in American Universities and Colleges* 4.

GARY A. HACKENBERG

*Liberal Arts*



**RICHARD HANDLEY**

*Business Administration*

Phi Mu Delta 3, 4, President 4;  
Fraternity Senate 4.

**HELEN R. HARDING**

*Music Education*

Student Christian Association 1, 2, 3, 4; Sigma Alpha Iota 1, 2, 3, 4, Scrapbook Chairman 2, Accompanist 3, Editor 4; Women's Judiciary Council Recorder 4; Marching Band 2; Symphony Orchestra 3, 4; Chapel Choir 3; Music Educators' National Conference 2, 3, 4; Future Teachers of America 1, 2, 3; Susquehanna Singers 1; Hassinger Hall Counselor 3.



**JEAN E. HARNER**

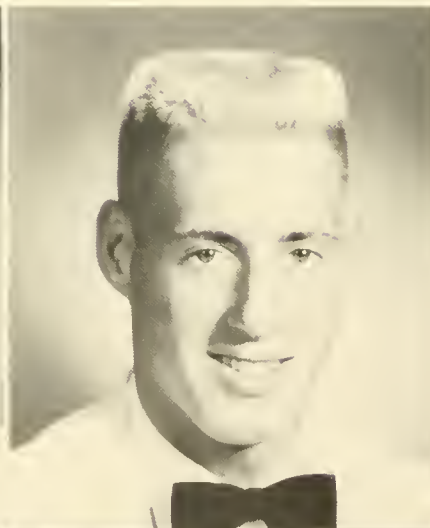
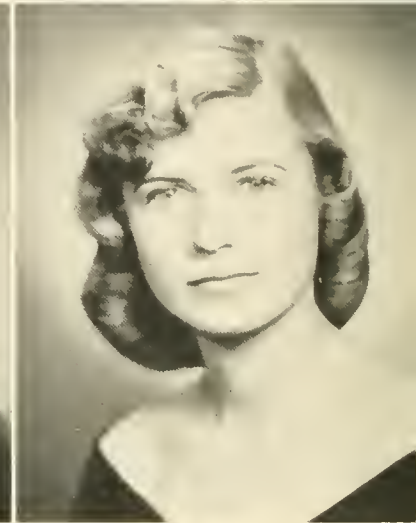
*Music Education*

Student Christian Association 1, 3; Sigma Alpha Iota 2, 3, 4; Chapel Choir 1, 2, 3, 4; Music Educators' National Conference 2, 3, 4; Future Teachers of America 1, 2, 3.

**LILLIAN HOLCOMBE**

*Music Education*

Student Christian Association 1, 2, 3, 4; Sigma Alpha Iota 2, 3, 4, Chaplain 3, Choral Director 4; Marching Band 1, 2, 3, 4; Concert Band 1, 2, 3, 4; Chapel Choir 2, 3; Future Teachers of America 1, 2, 3, 4.



**EDWARD HUBER**

*Liberal Arts*

Student Christian Association 2, 3, 4; Phi Kappa Phi 2, 3, 4; *The Crusader* 3, 4; Pre-Theological Association 2, 3, 4.

**C. WESLEY HUNT**

*Business Administration*

Student Christian Association 1, 2, 3, 4; Phi Mu Delta 1, 2, 3, 4, Sergeant-at-Arms 4; Susquehanna Players 2; Business Society 1, 2, 3, 4; Varsity Basketball 3, 4; Varsity Soccer 4; Intramurals 1, 2, 3, 4.



**KENNETH JAMES**

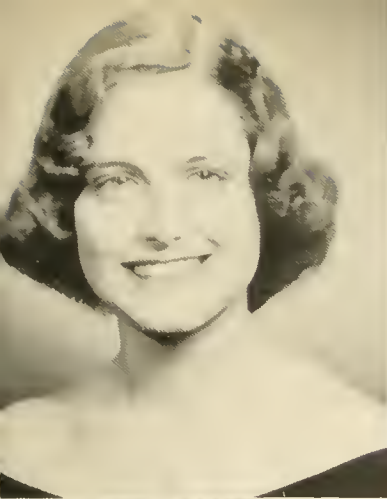
*Business Administration*

Student Christian Association 1, 2, 3, 4; Theta Chi 1, 2, 3, 4; Business Society 1, 2, 3, 4; *The Crusader* 1; Future Teachers of America 1; Concert Band 2, 4; Co-Chairman of Stunt Night 1; Football Manager 1, 2; Varsity Basketball 1; Varsity Baseball 1, 2, 3, 4; Intramurals 1, 2, 3, 4.

**NATHAN A. KALE**

*Liberal Arts*

Student Christian Association 1, 2, 3, 4; Phi Kappa Phi 1, 2; Pre-Theological Association 1, 2, 3, 4; *The Crusader* 1, 2, 3, 4; Symphony Orchestra 1, 2, 3, 4; Chapel Choir 3.



KATHRYN KEENER

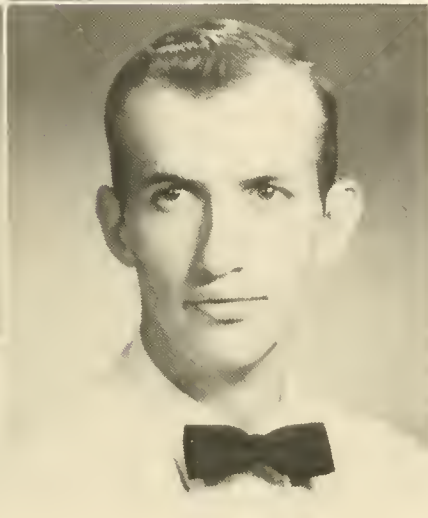
*Liberal Arts*

Student Christian Association 1, 2, 4; Pre-Theological Association 2, 4; Women's Athletic Association 1, 2.

SALLY A. KEHLER

*Liberal Arts*

Student Christian Association 1, 4; Biemic Society 1, 3, 4; Future Teachers of America 1, 3, 4; Susquehanna Players 3, 4; Women's Athletic Association 3, 4; *The Crusader* 4; Intramurals 1, 3, 4.



AMOS G. KUNKLE, JR.

*Business Administration*

Student Christian Association 1, 2, 3, 4; Lambda Chi Alpha 1, 2, 3, 4, Treasurer 4; *The Crusader* 2, 3, 4, Advertising Manager 2, 3, Business Manager 4; Business Society 2, 3, 4.

DONALD C. LEHMER

*Business Administration*

Student Christian Association 1, 2, 3, 4; Lambda Chi Alpha 1, 2, 3, 4, Librarian 2, 3; Business Society 1, 2, 3; *The Crusader* 2, 3, Circulation Manager 2, 3; Intramurals 1, 2, 3, 4.

WILLIAM W. MACDONALD

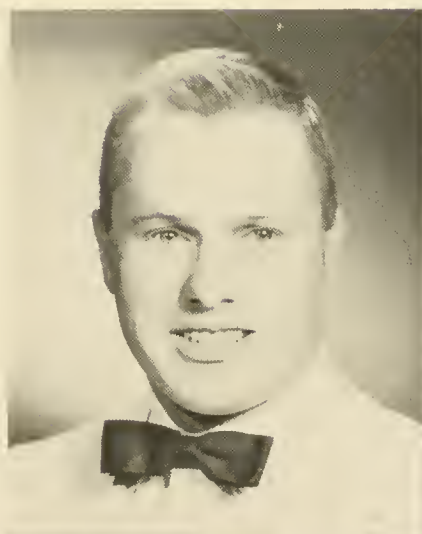
*Business Administration*

Student Christian Association 1; Bond and Key 1, 2, 3, Treasurer 2, 3, House Manager 3; Lambda Chi Alpha 4, Secretary 4; Business Society 1, 2, 3, 4; Intramurals 1, 2, 3, 4.

SISTER SALLY McCAHAN

*Liberal Arts*

Student Christian Association 1, 2, 4; Pre-Theological Association 1, 2, 4; Women's Athletic Association 1, 2; Hassinger Hall Counselor 4.



MARY L. McCANN

*Liberal Arts*

Student Christian Association 1, 2, 3, 4; Nu Sigma Tau 1; Alpha Xi Delta 2, 3, 4, Corresponding Secretary 3, Marshal 2, 4; Pi Gamma Mu 4; Future Teachers of America 2, 3, 4; *The Crusader* 1, 2, 3, 4; Chapel Choir 1; Hassinger Hall Counselor 3; Orientation 2, 3.

RONALD H. McCLUNG

*Liberal Arts*

Student Christian Association 2, 3, 4; Theta Chi 2, 3, 4; Phi Kappa Phi 2, 3; Pre-Theological Association 2, 3, 4; *The Crusader* 4; Susquehanna Players 2, 3.



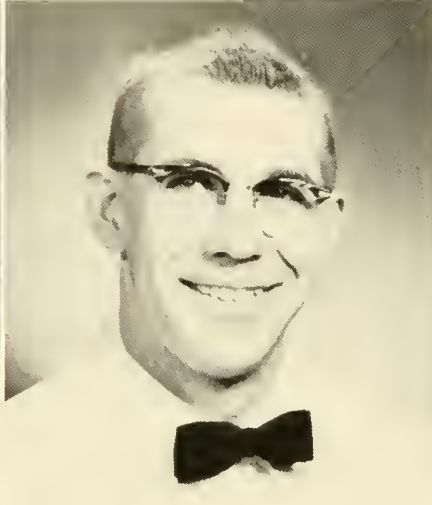
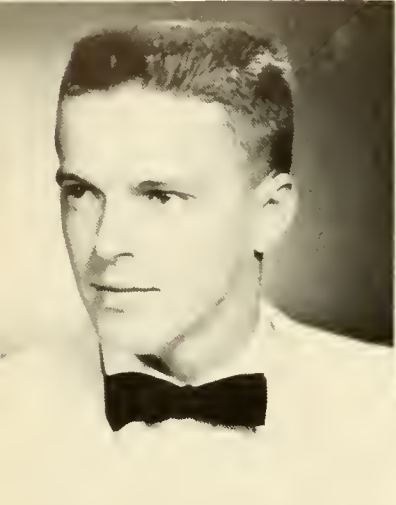


VANCE MANEVAL  
*Liberal Arts*

Student Christian Association 2, 3; Phi Mu Delta 1, 2, 3, 4; Varsity Football 1; Varsity Baseball 2, 3, 4; Intramurals 1, 2, 3, 4.

EDWARD F. MARBURGER, JR.  
*Liberal Arts*

Student Christian Association 2, 3; Future Teachers of America 4; Susquehanna Players 3.



JAMES R. MAURER  
*Business Administration*

Student Christian Association 1, 2, 3; Phi Mu Delta 1, 2, 3, 4, Athletic Director 4; Business Society 1, 2, 3, 4; Chapel Choir 1; Varsity Baseball 1, 2; Intramural Board 4; Intramurals 1, 2, 3, 4; Homecoming 1, 2, 3.

JAMES R. MIDDLESWATH  
*Business Administration*

Student Christian Association 1, 2, 3, 4; Phi Mu Delta 1, 2, 3, 4; Business Society 1, 2, 3, 4; Susquehanna Players 1, 3; LANTHORN 3.

SARAH L. MYERS  
*Music Education*

Student Christian Association 1, 2, 3; Nu Sigma Tau 1; Alpha Xi Delta 2, 3, 4, Chaplain 2, Marshal 3, Corresponding Secretary 4; Sigma Alpha Iota 2, 3, 4, Yearbook Editor 4; Marching Band 4; Concert Band 2, 3, 4; Chapel Choir 3, 4; Future Teachers of America 1, 2, 3, 4; Music Educators' National Conference 2, 3, 4; May Day 1, 3.

JUNE O. NONNEMACHER  
*Business Education*

Student Christian Association 1, 2, 3, 4; Kappa Delta 1, 2, 3, 4, President 3, 4; Student Council 3, 4; Women's Judiciary Council 3, 4; Panhellenic Council 3, 4; LANTHORN 3; Business Society 1, 2, 3, 4; Future Teachers of America 3, 4; Hassinger Hall Counselor 3, House President 3; Assistant Housemother—Leach House 4; Orientation 2, 3; May Day 3; *Who's Who Among Students in American Universities and Colleges* 4.



JOHN MATTHEW O'MALLEY  
*Business Administration*

Student Christian Association 1, 2, 3; Lambda Chi Alpha 1, 2, 3, 4, Alumni Correspondent 4; Pi Gamma Mu 3, 4, Vice-President 3, 4; *The Crusader* 1, 4; LANTHORN 3; Susquehanna Players 2; Football Program Committee 2, 3; Sophomore Tribunal 2; Intramurals 1; Orientation 2; Homecoming 2.

GWENLLIAN E. PARK  
*Music Education*

Student Christian Association 1, 2; Kappa Delta 1, 2, 3, 4, Assistant Treasurer 3, Treasurer 4; Future Teachers of America 1, 2; Music Educators' National Conference 2, 3, 4; Symphony Orchestra 3, 4; Women's Athletic Association 2, 3; Intramurals 1, 2, 3.





NANCY L. PHILLIPS

*Liberal Arts*

Student Christian Association 1, 2, 3, 4; Nu Sigma Tau 1; Alpha Xi Delta 2, 3, 4, Assistant Treasurer 2, Treasurer 3, 4; Biemic Society 1, 2, 3, 4, Vice-President 3, President 4; Chapel Choir 1, 2, 3.

HARRY POWERS

*Liberal Arts*

Student Christian Association 2, 3; Lambda Chi Alpha 3, 4; Phi Kappa Phi 2; Future Teachers of America 2; Varsity Basketball 1, 2, 3, 4; Varsity Baseball 1, 2; Intramurals 1, 2, 3, 4.



ROBERT S. PROBERT, JR.

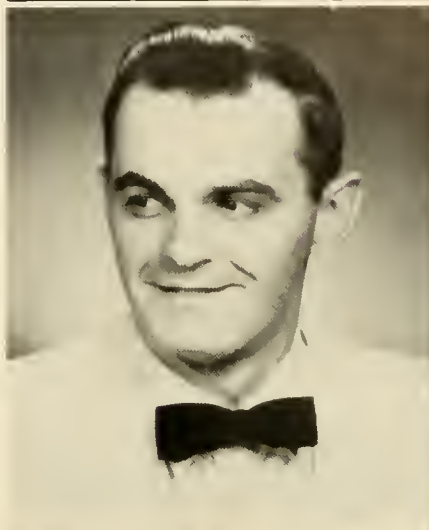
*Liberal Arts*

Student Christian Association 4; Lambda Chi Alpha 4; Student Council 3, 4; Future Teachers of America 4; Varsity Basketball 1, 2, 3, 4, Co-Captain 3, 4; Intramurals 1, 2, 3, 4.

ESTHER M. REBUCK

*Liberal Arts*

Student Christian Association 1, 2, 3; Future Teachers of America 1, 2, 3, 4.



RICHARD D. REICHARD

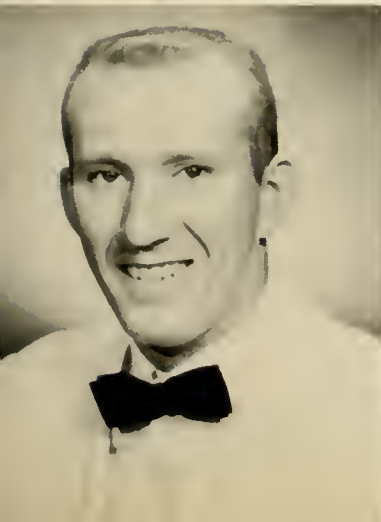
*Liberal Arts*

Student Christian Association 1, 2, 3, 4, President 3; Phi Mu Delta 1, 2, 3, 4, Chaplain 3, Parliamentarian 4; Pi Gamma Mu 4; Alpha Psi Omega 2, 3, 4, President 4; Pre-Theological Association 1, 2, 3, 4; Phi Kappa Phi 1, 2, 3, 4, President 3; Chapel Choir 4; Class President 2, 3, 4; Handbook Editor 1; Charles E. Covert Memorial Award 3; *Who's Who Among Students in American Universities and Colleges* 4.

JAMES RHODES

*Liberal Arts*

Student Christian Association 3; Theta Chi 1, 2; Pre-Theological Association 1; Chapel Choir 2; Varsity Tennis 3, 4; Intramurals 3, 4.



RAY E. RICHIE

*Liberal Arts*

Student Christian Association 1; Lambda Chi Alpha 1, 2, 3, 4; Future Teachers of America 3; Varsity Football 1, 2, 3, 4, Co-Captain 3, 4; Intramurals 1, 2, 3, 4.

KERMIT R. RITTER

*Business Administration*

**CHARLES A. ROVENOLT**

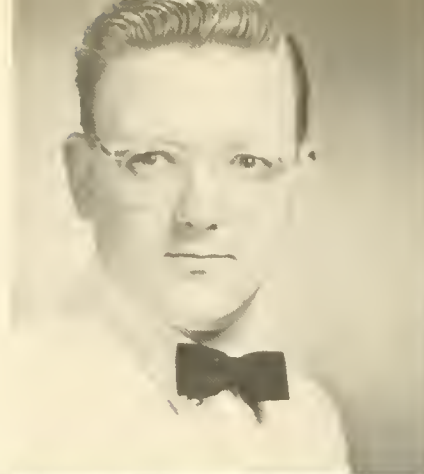
*Liberal Arts*

Susquehanna Players 1, 2, 3, 4; Future Teachers of America 3, 4; Biemic Society 2, 3, 4; Intramurals 1; Lambda Chi Alpha 2, 3, 4; Student Christian Association 1, 2, 3, 4.

**ALLEN I. ROWE**

*Business Administration*

Student Christian Association 1, 2, 3, 4; Phi Mu Delta 1, 2, 3, 4; Business Society 1, 2, 3, 4; Intramurals 1, 2, 3, 4.



**JOHN P. ROWE**

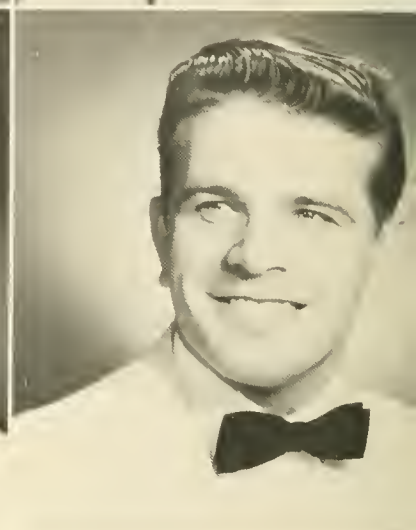
*Business Administration*

Student Christian Association 1, 2, 3, 4; Theta Chi 1, 2, 3, 4; Business Society 1, 2, 3, 4; Biemic Society 3; Susquehanna Players 1, 2; Chapel Choir 1, 2, 3, 4; *The Crusader* 3; Orientation 2, 3; May Day 2; Intramurals 1, 2, 3, 4.

**PAUL P. SEMICEK**

*Music Education*

Symphony Orchestra 2.



**DENNY SHANK**

*Business Administration*

Student Christian Association 1, 2, 3, 4, Treasurer 3; Phi Mu Delta 1, 2, 3, 4, Steward 3, 4; Business Society 1, 2, 3, 4, Treasurer 3, President 4; Class Treasurer 3, Vice-President 4; Varsity Basketball 1; Intramurals 1, 2, 3, 4; Orientation 2, 3.

**BARBARA M. SHILLING**

*Liberal Arts*

Student Christian Association 1, 2, 3, 4, Social Chairman 3, Women's Vice-President 4; Alpha Delta Pi 2, 3, 4, Chaplain 3, Corresponding Secretary 4; Pi Gamma Mu 3, 4; Phi Kappa Phi 2, 3, 4, Secretary 4; Tau Kappa 4, Treasurer 4; Pre-Theological Association 1, 2, 4; Women's Athletic Association 2, 3, 4; Concert Band 1, 2, 3, 4; Symphony Orchestra 1, 2; Sophomore Tribunal 2; Seibert Hall President 4; Intramurals 1, 2, 3, 4; Orientation 3, 4; Homecoming 4; May Day 2, 3.



**CAROLINE L. SHRYOCK**

*Business Education*

Student Christian Association 1, 2, 3, 4; Nu Sigma Tau 1; Alpha Xi Delta 2, 3, 4, Membership Chairman 4; Panhellenic Council 4; Women's Judiciary Council 4; Business Society 3, 4; Future Teachers of America 3, 4; Women's Athletic Association 3, 4; Chapel Choir 3, 4; Intramurals 1, 2, 3; Orientation 4.

**WILLIAM SHUTT**

*Business Administration*

Lambda Chi Alpha 2, 3, 4; Business Society 4; Intramurals 2, 3, 4.

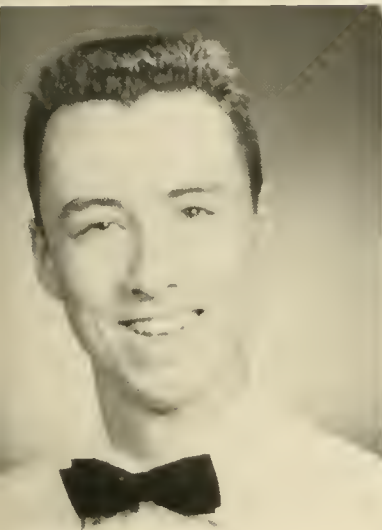


CARLTON B. SMITH  
*Liberal Arts*

Student Christian Association 1, 2, 3, 4; Theta Chi 1, 2, 3, 4; Pi Gamma Mu 4; Phi Kappa Phi 1, 2, 3; *The Crusader* 1, 2, 3, Managing Editor 3; Pre-Theological Association 1, 2, 3.

RONALD L. SMITH  
*Liberal Arts*

Student Christian Association 1, 2, 3; Phi Mu Delta 1, 2, 3, 4; Biemic Society 1, 2, 3, 4; Physics Club 3, Proctor 2.



HOWARD SPECK  
*Liberal Arts*

Student Christian Association 2, 3, 4; Theta Chi 1, 2, 3, 4; Phi Kappa Phi 2, 3, 4; Biemic Society 1, 2; Future Teachers of America 3, 4.

JAMES D. STRAUSSER  
*Liberal Arts*

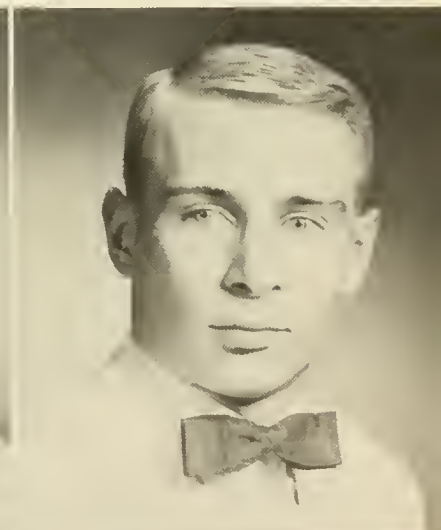
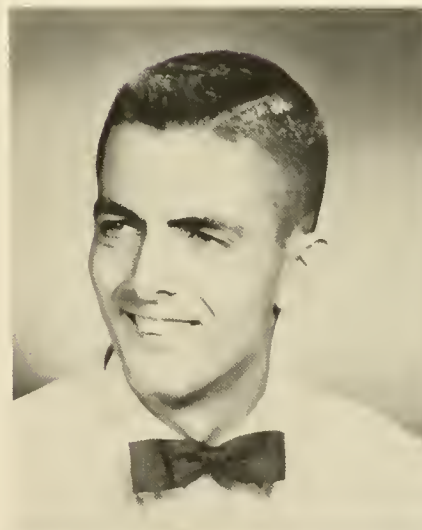
Student Christian Association 1, 2; Phi Mu Delta 1, 2, 3, 4; Biemic Society 1, 2, 3, 4.

EDWARD P. STRAYER  
*Liberal Arts*

Student Christian Association 1, 2, 3, 4, Vice-President 3, President 4; Theta Chi 1, 2, 3, 4, Chaplain 3, Second Vice-President 4; Phi Kappa Phi 1, 2, 3, 4, Treasurer 3; Pre-Theological Association 1, 2, 3, 4, Vice-President 3, President 4; Susquehanna Players 2; Varsity Tennis 3, 4; Orientation 2, 3, 4; Intramurals 1, 2, 3, 4.

GEORGE SWANN  
*Business Administration*

Student Christian Association 1, 2, 3, 4; Phi Mu Delta 1, 2, 3, 4; Varsity Football 1, 2; Intramurals 1, 2, 3, 4.



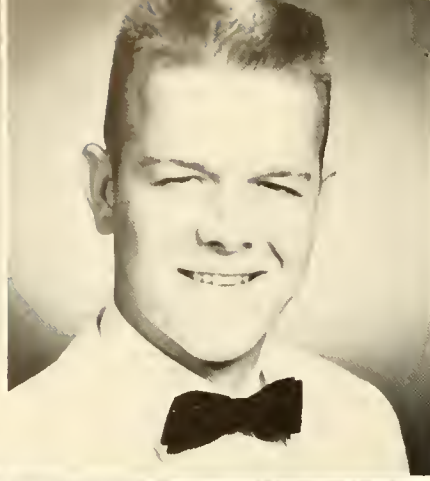
SHIRLEY M. SWEISFORD  
*Business Administration*

Student Christian Association 1, 2, 4; Biemic Society 2; Chapel Choir 2, 3; Hassinger Hall Counselor 3; Intramurals 2, 3, 4.

GAYLE C. TROXELL  
*Liberal Arts*

Student Christian Association 1, 2, 3; Nu Sigma Tau 1; Alpha Xi Delta 2, 3, 4, Scholarship Chairman 2, 3, Assistant Treasurer 3; Future Teachers of America 1, 2, 3, 4, Treasurer 3; Women's Athletic Association 2, 3, 4; Intramurals 1, 2, 3; Hassinger Hall Counselor 2.





LARRY UPDEGROVE

*Liberal Arts*

Student Christian Association 1, 2, 3, 4; Phi Mu Delta 1, 2, 3, 4, Scholarship Chairman 4; Biemic Society 2, 3, 4; Varsity Baseball 1, 2, 3, 4; Intramurals 1, 2, 3, 4.

WILLI K. E. WEICHELT

*Liberal Arts*

Student Christian Association 1, 3, 4; Phi Mu Delta 1, 2, 3, 4, House Manager 4; Student Council 3, 4, Treasurer 4; Biemic Society 1, 2, 3, 4; Susquehanna Players 3; Football Program Committee 3, 4, Assistant Business Manager 3, Business Manager 4; Varsity Baseball 1, 2, 3, 4; Intramurals 1, 2, 3, 4; Orientation 3.



DONALD A. WINEY

*Liberal Arts*

Student Christian Association 1, 2, 3, 4; Theta Chi 1, 2, 3, 4; Future Teachers of America 3, 4, Vice-President 3, President 4; Biemic Society 1, 2, 3, 4; Class Treasurer 4; LANTHORN 3; Susquehanna Players 1.

LARRY A. WINGARD

*Liberal Arts*

Student Christian Association 1, 2, 3, 4; Theta Chi 1, 2, 3, 4; Marching Band 1, 2, 3, 4; Concert Band 1, 2, 3, 4; Symphony Orchestra 1, 2, 3, 4; Future Teachers of America 1, 2, 3, 4; Susquehanna Players 3.

JOHN P. YANUKLIS

*Business Administration*

Lambda Chi Alpha 1, 2, 3, 4, Assistant Steward 2, Sergeant-at-Arms 2, Social Chairman 4; Business Society 1, 4; Susquehanna Players 1; Varsity Football 1, 2, 3, 4; Intramurals 1, 2, 3, 4.

BARBARA J. YODER

*Music Education*

Music Educators' National Conference 2, 3, 4; Future Teachers of America 2, 3; Concert Band 1, 2, 3, 4; Marching Band 3, 4.

JANET G. ZORTMAN

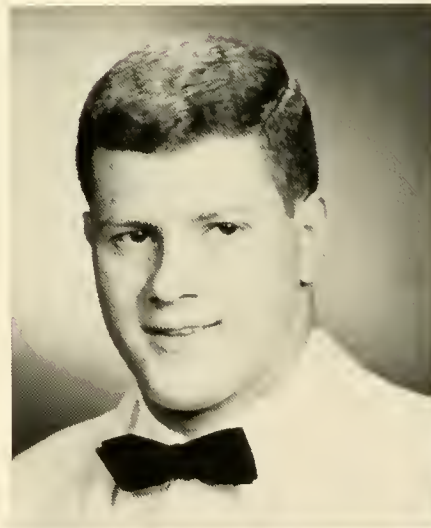
*Medical Secretarial*

Student Christian Association 1, 2, 3, 4, Class Representative 3; Alpha Delta Pi 1, 2, 3, 4, Registrar 2, Scholarship Chairman 3, Corresponding Secretary 3, Panhellenic Representative 4; Panhellenic Council 4, Treasurer 4; Pi Gamma Mu 4; Student Council 3, 4; Women's Judiciary Council 2, 3, Chairman 3; Women's Athletic Association 2, 3, 4; Biemic Society 2, 4; Hassinger Counselor 3; Head Resident—Cottage 4; Orientation 2, 3; May Day 1; Intramurals 1, 2, 3, 4; *Who's Who Among Students in American Universities and Colleges* 4.

NOT  
PICTURED

WALTER A. CAMPBELL

RICHARD J. TIETBOHL



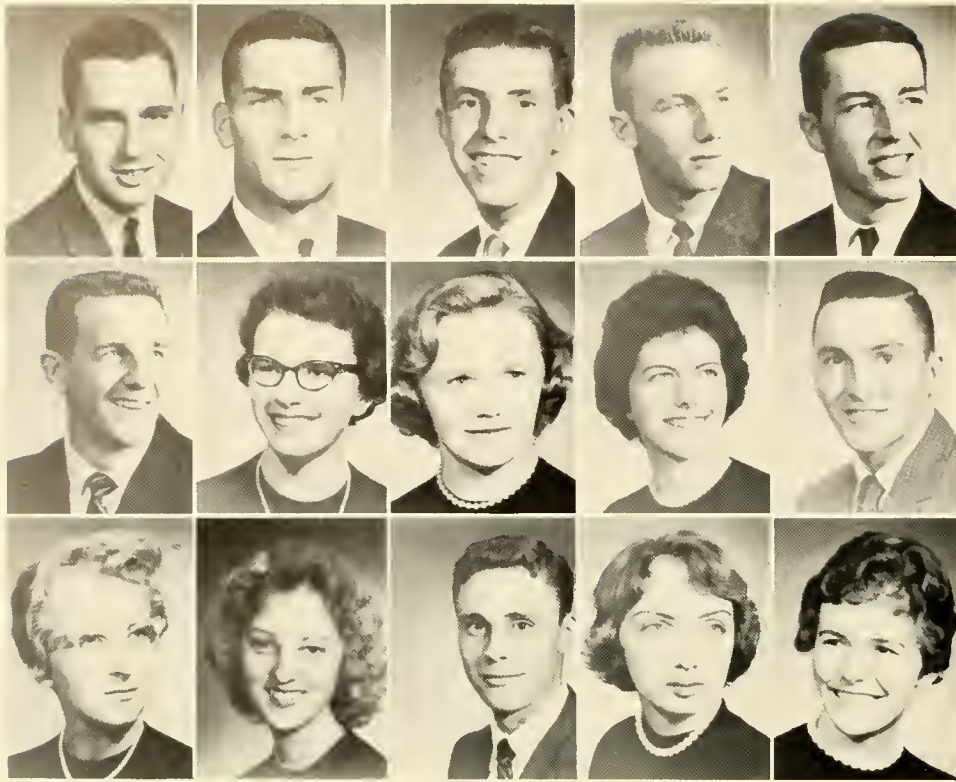


JUNIOR CLASS OFFICERS: Karen Goeringer, *Secretary*; Gil Askew, *President*; Jaek Fries, *Vice-President*; Louis Coons, *Treasurer*.

## THE JUNIOR CLASS

GLORIA ALBERT  
 EUGENE ALICHWER  
 BARBARA ANGLE  
 GILBERT ASKEW  
  
 CAROL BANSNER  
 JACQUELYN BARBER  
 FRANKLYN BEATTY  
 MAURICE BOBST  
  
 GLENN BOWMAN  
 MARVIN BRUBAKER  
 ROY BURNS  
 DON CAVE  
  
 LOUIS COONS  
 JOHN CURRY  
 DON DAVIS  
 NANCY DAVIS





RICHARD DAVIS  
 RICHARD DERRICK  
 THEODORE FUHRER  
 R. ALLEN FISCUS  
 JOHN FRIES

ALAN FULLER  
 HARRIET GEARHART  
 KAREN GOERINGER  
 GLORIA GRAYBILL  
 RAY HACKENBERG

JUNE HACKMAN  
 JEANNETTE HARVEY  
 THOMAS HELVIC  
 MARILYN HESS  
 ANN HEWES

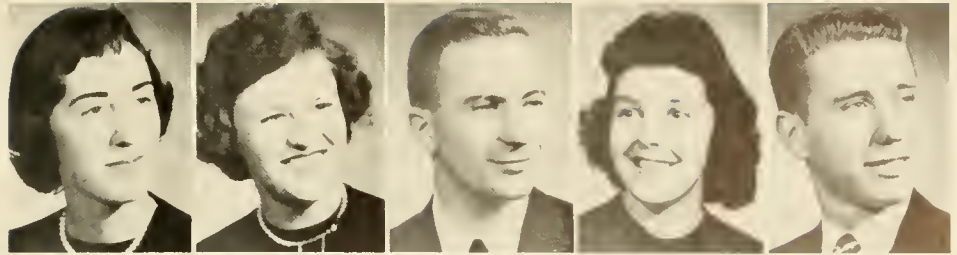
ANNAMAE HOCKENBROCK  
 HERMAN HOPPLE  
 MARLIN INCH  
 BARBARA IRRE  
 EDWARD JONES

JOHN KASHMERE  
 THOMAS KEENER  
 JANE KISTNER  
 VIRGINIA KRATZ  
 LINDA LEONARD

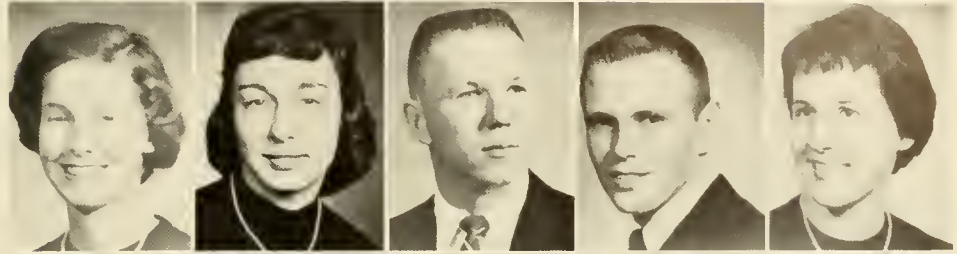
ROBERT LEIGHTY  
 PAUL MARTIN  
 CAROL McCLOY  
 RICHARD MELANDER  
 GARY MOORE



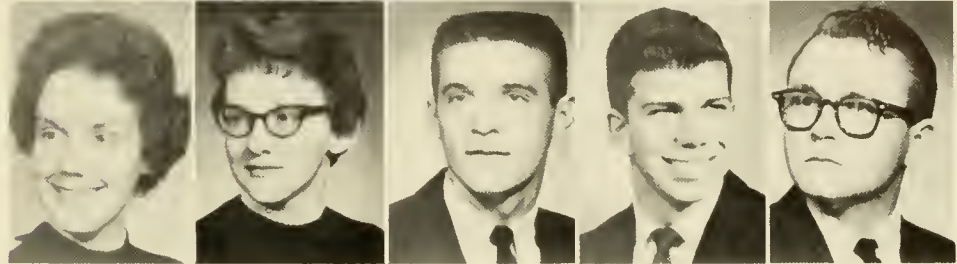
JOAN MORRIS  
 MARY NEECE  
 CHARLES NELSON  
 PAT NEY  
 CHARLES RASMUSSEN



JANE REICHENBACH  
 HELEN RIOADS  
 W. FRANK RIEGER  
 LARRY ROBBINS  
 BETSY ROBERTS



RUTH ROBERTS  
 SANDY SCHELL  
 WILLIAM SCHELL  
 TED SCHULTZ  
 TERRY SHAEFFER



RAYMOND SHARROW  
 JACK SNIDER  
 JANICE STAHL  
 DAVID STOCUM  
 JOCELYN SWOPE

STEPHEN TOY  
 LINDA TRAUB  
 ELAINE TURNER  
 MARGARET WEBB  
 ROBERT WELKER

ALLAN WERNAU  
 ANNE WILSON  
 DANA WILSON  
 JACK WURSTER  
 PAUL ZIMMERMAN



SOPHOMORE CLASS OFFICERS: Judy Brndjar, *Secretary*; George Sadosuk, *President*; Ron Hardnock, *Vice-President*; *not pictured*, Thomas Hanshaw, *Treasurer*.

# THE SOPHOMORE CLASS

MARDEE ALTLAND  
 ELEANOR AMBROMOVAGE  
 DOROTHY ANDERSON  
 GENEVIEVE ANDERSON  
 JUDY ARNOLD  
 JUDY BEHRENS

LEONARD BETKOSKI  
 PHYLLIS BETZ  
 SARAH BLASKOVITZ  
 JUDITH BLEE  
 GAY BOUCHARD  
 CHARLES BOWEN

BETTY BRANTHOFFER  
 ROBERT BREITWIESER  
 ALICE BROWN  
 JUDITH BRNDJAR  
 LESLIE BUTLER  
 LYDIA CHARLES





PHIL CLARK  
 WILLIAM CLARK, JR.  
 NED COATES  
 LOU COCCODRILLI  
 JIM COOLBAUGH  
 JOAN CONNOR



RAY CRAGLE  
 NORMAN CRICKENBERGER  
 BETTE DAVIS  
 JAMES DeLONG  
 JUDY DIEHLE  
 CHARLOTTE DOWNER



NANCY LEE DUNSTER  
 JEAN EWALD  
 WILLIAM FAUSEY  
 SANDRA FORSE  
 RONALD FOYE  
 JACQUELINE FULLER



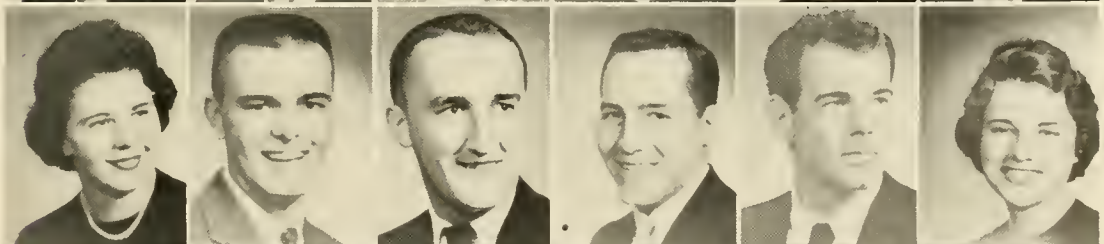
JOAN GANDY  
 KAREN GEIGER  
 PATRICIA GOETZ  
 JOAN HAEFLE  
 THOMAS HANSHAW  
 RONALD HARDNOCK



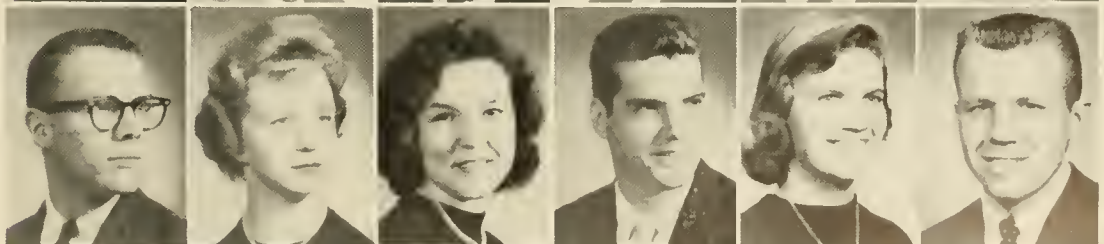
KENNETH HAUSER  
 CARL HITCHNER  
 WILLIAM HOCKENSMITH  
 DIANE HOGELAND  
 MARY JABLONSKI  
 STAN JABLONSKI



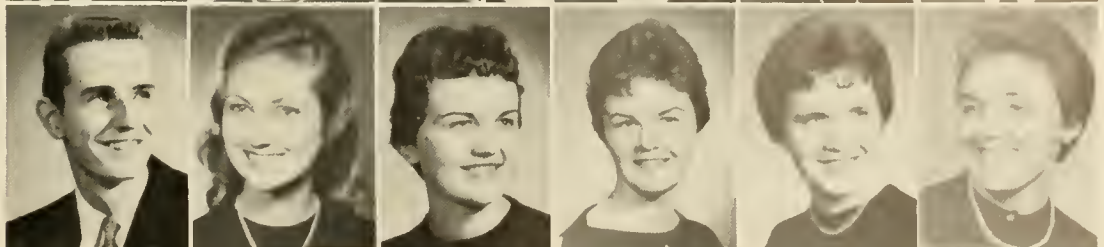
GRACE JOHNSON  
 WILLIAM KAHL  
 KENNETH KEIB  
 JOHN KIND  
 WILLIAM KISSINGER  
 JUDITH KLEIN



CHARLES KRIMMEL  
 DOROTHY KUNKLE  
 BERNICE LANKARD  
 NORMAN LAUER  
 JOAN LAWLEY  
 THOMAS LEIBY



DAVID LISI  
 SALLY LOCKETT  
 ROSEMARY LOSCH  
 LYNN MANNING  
 SHARON MARTIN  
 LOIS MASTER





MARTHA MENKO  
 MARILYN MEYER  
 LOIS MILES  
 HELEN MILLER  
 WAYNE MINAMI  
 NEAL MITCHELL

WILLIAM MOLIN  
 SUSAN MYERS  
 LUCY NORTH  
 ELIAS OKAMURA  
 ANNE OSTHEIM  
 JAMES PARKER

PHILIP PEMBERTON  
 ELIZABETH PHILLIPS  
 LEONARD PURCELL  
 JOHN RAAB  
 ARDITH RENNING  
 LARRY RICHTER

RICHARD ROHLAND  
 GEORGE SADOSUK  
 ANN SCHAEFER  
 BEVERLY SCHANE  
 JOHN SCHOTZHAUER  
 JOYCE SHEESLEY

STANFORD SHOLLEY  
 DOROTHY SHOMPER  
 DARLA SHUMAN  
 SUSAN SLOAD  
 JOANNA SMITH  
 KATHY SMITH

ROBERT SMITH  
 PAUL SNYDER  
 ELWOOD STARR  
 RUTH STEFANIK  
 SANDRA SWAB  
 ALICE TAYLOR

ALAN THOMAS  
 MARY ANN TRAHER  
 ROGER TREXLER  
 SUSAN TURNBACH  
 SAM TYLER  
 ROBERT VALENTINE

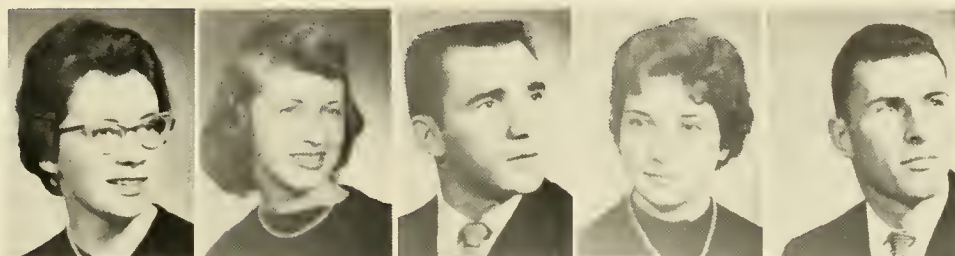
JAMES WARD  
 MARIA WERNIKOWSKI  
 GALE WHITSON  
 JOAN WHITSON  
 MICHAEL YOHE  
 NITA ZIMMERMAN



FRESHMAN CLASS OFFICERS: Jane Beers, *Secretary*; Don White, *President*;  
Herb Yingling, *Treasurer*; Robert Squires, *Vice-President*.

# THE FRESHMAN CLASS

HELEN ADAMS  
JUDY ALLER  
ALLEN AUNGST  
MARY BAGENSTOSE  
KENT BALDWIN



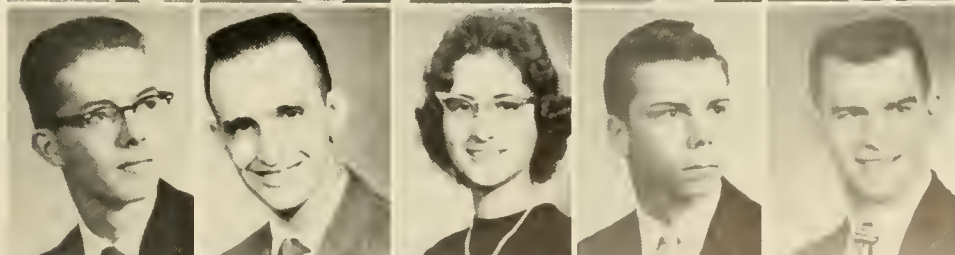
CURTIS BARRY  
BONNIE BATTISTELLA  
MARY ANN BECK  
JUDY BECKER  
JANE BEERS



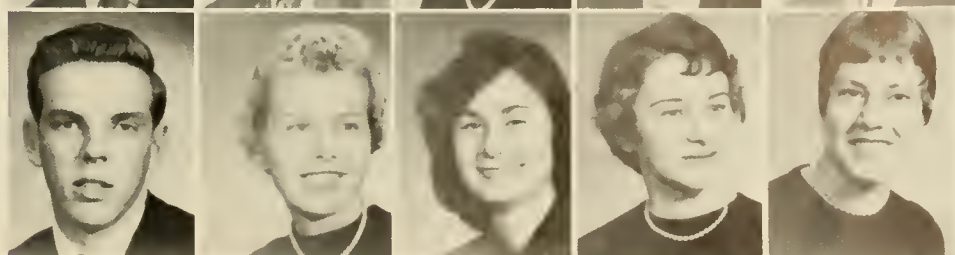
JAY BERMAN  
CYNTHIA BERRY  
LOIS BINNIE  
JAMES BLACK  
MARGIE BLAIR



JAMES BLESSING  
CARL BOGAR  
LOIS BONSALE  
STANLEY BOWER  
FRED BRANDT



ERIC BROADT  
GEORGIANN BRODISCH  
SARAH BROSCIOUS  
MARY BROWN  
MIRIAM BROWN





PAT BROWNELL  
 CAROL CAIRNS  
 JAMES CAMPBELL  
 FRANK CASEY  
 MARY CRISTOFARO  
 EILEEN CLEMENS

MICHAEL CORDAS  
 DON CORNELIUS  
 ANN LOUISE CORSON  
 MARY MARGARET CRAFT  
 ROBERT CURTIS  
 JEAN DEEBEL

ANTHONY DELLAIRA  
 LEW DEMLER  
 BARBARA DEROBA  
 JOAN DECHERT  
 HARRY DIETRICH  
 NANCY DIETRICK

ARLENE DIETZEL  
 EUGENE DOBSON  
 LYNDA DRIES  
 SANDRA DUNKLE  
 HERBERT EDWARDS  
 FRANCOIS ENGEL

SONJA ERNST  
 PAT ESTEP  
 IRENE ETTER  
 SANDRA EYSTER  
 RENA FERRARA  
 ANN FERRENCE

CANDY FINK  
 KENNETH FISH  
 WILLIAM FISHBURN  
 FRED FISHER  
 RUSSELL FISHER  
 SHIRLEY FOEHL

JACK FRANK  
 JAMES GALLAGHER  
 STEVE GETTIER  
 NANCY GOOD  
 CAROLYN GRABAU  
 JOHN GRAHAM

DIANA GRAYBILL  
 DONNA GRAYBILL  
 CAROL ANN GRESH  
 BARBARA GROCE  
 DONNA GULICK  
 DAVID HACKENBERG

LINDA HARDY  
 BETTY HEADINGS  
 CYNTHIA HEIST  
 GAIL HENDERSON  
 JOSEPH HERB  
 JAMES HERROLD



CAROL HERTZ  
 NANCY HESS  
 ELWOOD HIPPLE  
 CAROL HIRSCHMANN  
 CAROL HOBBS  
 CYNTHIA HOFFMAN



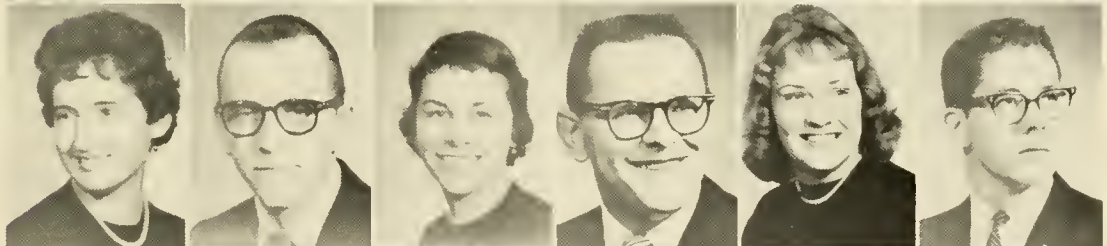
DORIS HOOVEN  
 SHELDON HORNE  
 GLEN HOSTETTER  
 SUE HOUSEWORTH  
 BONNIE JONES  
 BARBARA JORDAN



JOSEPH JOYCE  
 BARRY KAUFFMAN  
 ALAN KIEL  
 NELLIE KELLER  
 LINDA KENT  
 GEORGE KINDON



JUDY KIPP  
 JOSEPH KLEINBAUER  
 D'ARLENE KLUS  
 WILLIAM KORBICH  
 KAREN KROMBEIN  
 PETER KUEBLER



JANE KUMP  
 ROBERT McKEE  
 SALLY McKALIP  
 ANN McLEAR  
 WILLIAM McCAHAN  
 CAROL LARGE



LYNN LEREW  
 LINDA LEACH  
 CHARLES LEATHERY  
 CONNIE LEITNER  
 JOYCE LUNDY  
 JOHN LUSCKO



LINDA MACK  
 MARVIN MALONE  
 EDWARD MANNELLO  
 CAROL MARBURGER  
 NEAL MARKLE  
 NEAL MARTIN





TED MAURER  
 TERRY MOLL  
 WILLIAM MOORE  
 CLARK MOSIER  
 CARL M. MOYER  
 CAROLYN MOYER

CARL W. MOYER  
 KENNETH MUNSTER  
 JEAN MURRAY  
 DORIS NEFF  
 JUDITH NELSON  
 JOHN OHST

ELIAS OKAMURA  
 FLORENCE OLSON  
 ANTHONY PADULA  
 ANNE PARSON  
 EMILY PARTRIDGE  
 DORIS PEDERSON

PATRICIA PETTERSON  
 JEAN PETTICOFFER  
 EILEEN PETTIT  
 LANNING PHETHEAN  
 JOHN PIGNATORE  
 KAY POTTS

JOSEPH PERFILIO  
 DAVID RECONNU  
 ANN REED  
 JANET RETTINGER  
 ANN NETA RIESMEYER  
 KAROLYNN RINN

EILEEN ROLSTON  
 JAMES ROGERS  
 JANICE ROGERS  
 RICHARD ROWE  
 ANITA RUHLING  
 MURIEL SAGE

THOMAS SAMUEL  
 LYNN SANBERG  
 BONNIE SCHAFFER  
 PHIL SCHNEE  
 BARBARA SCHULTZ  
 JANE SCHUYLER

MARGARET SEWELL  
 LEE SHAMORY  
 CAROL SHESLER  
 SAMUEL SHIREY  
 WALTER SHIRK  
 WILLIAM SHUKER

ANN SIPLE  
 DAVID SMITH  
 NEIL SMITH  
 ELEANOR SMITH  
 PAUL SNYDER  
 DOUGLAS SPOTTS



ROBERT SQUIRES  
 NANCY STAMBAUGH  
 PENELOPE STAMPS  
 SALLY STEPHENSON  
 DARLENE STROCKBINE  
 ROBERTA STRUBHAR



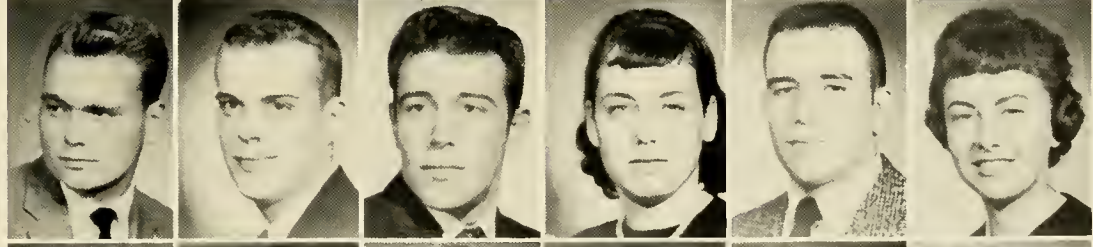
ROBERT SUMMER  
 PATRICIA TAYLOR  
 PAMELA TERRY  
 MARGARET THOMAN  
 FRANK TRENERY  
 SANDRA TROUTMAN



JUDITH TUMA  
 ROBERT TUSHINSKI  
 JAMES UPDEGROVE  
 MARY ANN VALUNAS  
 MADELYN VALUNAS  
 MARILYN VEKASSY



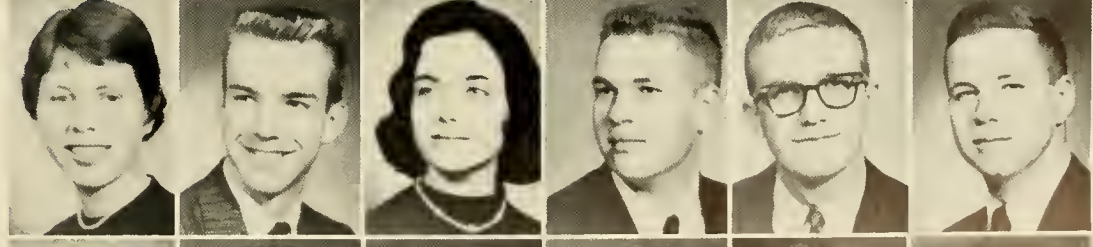
MICHAEL VOILES  
 ROY VONEIDA  
 JOHN WADEMAN  
 LOIS WAGNER  
 NATHAN WARD  
 LINDA WASSAM



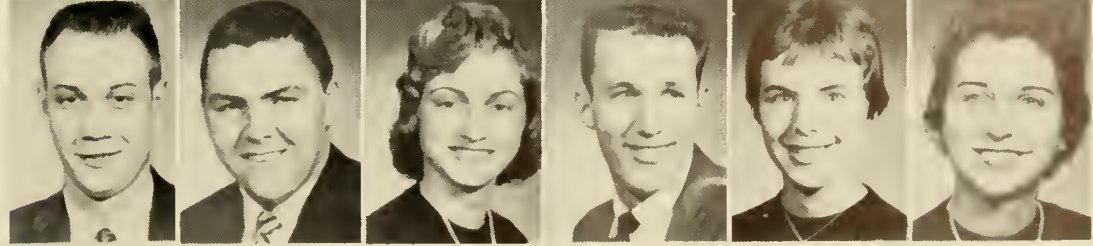
ANN WATMOUGH  
 WENDY WATKINS  
 GERALDINE WEBSTER  
 NAOMI WEAVER  
 MARY WEATHERLOW  
 JEAN WEATHERED



KAREN WATT  
 DONALD WHITE  
 JANET WHITE  
 JEFFREY WHITNEY  
 SAMUEL WILLIAMS  
 DENNIS WOODRUFF



HERBERT YINGLING  
 FRANK YAGGI  
 JUDITH ZACHARIAS  
 JAMES VanZANDT  
 MARCIA ZANGENBERG  
 NANCY ZIMMERMAN



# WHO'S WHO

Among Students In  
American Universities and Colleges

"We may affirm absolutely that nothing great in the world  
has been accomplished without passion."

G. W. F. HEGEL,  
*Philosophy of History*



VIRGINIA ALEXANDER

RALPH FERRARO



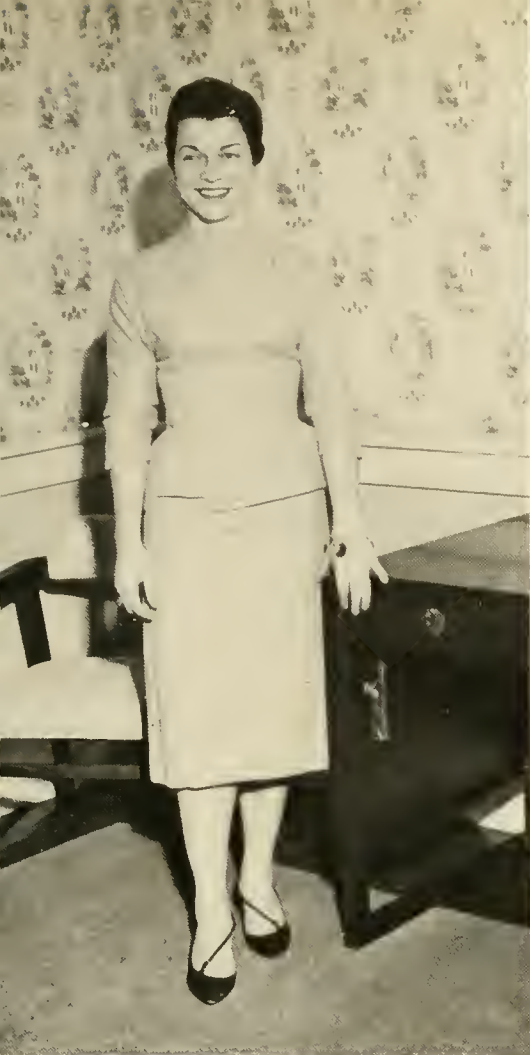
DONALD GRAY



STEPHANIE HAASE







MILDRED BARABAS



HAROLD BINGAMAN



DONALD COLEMAN



JUNE NONNEMACHER



RICHARD REICHARD



JANET ZORTMAN



# BOARD OF DIRECTORS

## OFFICERS OF THE BOARD

THE REV. JOHN F. HARKINS	- - - - -	<i>President</i>
CLAUDE G. AIKENS, B.S.	- - - - -	<i>First Vice President</i>
JOHN HORN, A.B.	- - - - -	<i>Second Vice President</i>
FRANK EYER, D.B.A.	- - - - -	<i>Secretary-Treasurer</i>
FIRST NATIONAL BANK, SUNBURY, PA.	- - - - -	<i>Endowment Treasurer</i>

## EXECUTIVE COMMITTEE

GUSTAVE W. WEBER, *President*

JERRY D. BOGAR, JR.	FRANK EYER
JOHN R. MILLER	ORLANDO W. HOUTS
JOHN C. HORN	CHARLES A. NICELY

JOHN HARKINS, *ex officio*

## OFFICERS OF THE ALUMNI ASSOCIATION

DR. JOHN I. WOODRUFF '88	- - - - -	<i>Honorary President</i>
LAWRENCE M. ISAACS '43	- - - - -	<i>President</i>
PAUL M. HAINES '31	- - - - -	<i>Vice President</i>
MARY FARLLING HOLLWAY '28	- - - - -	<i>Vice President</i>
JANET R. ROBINSON '46	- - - - -	<i>Recording Secretary</i>
W. DAVID GROSS '47	- - - - -	<i>Treasurer</i>
RAYMOND P. GARMAN, SR. '30, PETER SHUTY '38	- -	<i>Members-at-Large</i>
PERCE APPELYARD '22, JOHN M. AUTEN '28		<i>Representatives to the Athletic Committee</i>



## EDITOR'S NOTE

The world is changing, and so too is Susquehanna University. Like the school which it reflects, the LANTHORN is undergoing many changes. It is my sincere hope, and that of the entire staff, that the changes seen here in the 1960 LANTHORN will be viewed as improvements, a few more steps forward.

With the production of almost every yearbook, there is a list of individuals "without whose help this book would not have been possible." The 1960 LANTHORN is no exception.

I would like to extend special thanks to Mr. G. ("Uncle George") Tamke for his technical assistance,

encouragement and sharp wit; to Ed Huber for his perseverance; and to Glen Hostetter for his endurance.

I would also like to express my gratitude to: Mr. James Frailey and the Grit Publishing Co. for their patience and expert help; to Mr. Cooper Schuyler of the Schuyler Press for his generosity in producing our full-color insert without charge; the staff, who gave of their time and effort; the faculty and administration for their interest; Mr. Krapf for pulling us through in a pinch; and all those who asked, "Can I help?" A personal note of sincere thanks goes to J. B. for a constant boost in morale.

CHUCK

# Student Directory

- Adams, Helen J. (1) 229 Brookline Blvd., Havertown  
 Adams, Mary A. (3) 1100 Chestnut St., Mifflinburg  
 Akelaitis, Leonard (1) 228 S. Vine St., Mt. Carmel  
 Albert, Gloria (3) Beavertown  
 Aleknavage, Joseph (4) 1726 Walnut St., Ashland  
 Alexander, Virginia (4) 89 S. Clinton St., Doylestown  
 Alichwer, Eugene (3) R. D. 1, Lake Ariel  
 Aller, Judy (1) 46 Eastwood Rd., Berwyn  
 Altland, Martha (2) 1303 Bridge St., New Cumberland  
 Ambromovage, Eleanor (2) Maizeville, Gilberton  
 Anderson, Dorothy (2) 39 Lanfair Road, Cheltenham  
 Anderson, Genevieve (2) Centre Hall  
 Angle, Barbara (3) 96 Westerly Road, Camp Hill  
 Anthony, Ronald (3) 497 N. Courtland St., E. Stroudsburg  
 Apgar, Susan (4) 205 Martin St., Roselle, N. J.  
 Arnold, Joyce (4) 1711 Anna St., New Cumberland  
 Arnold, Judith (2) 5707 High St., Pennsauken 8, N. J.  
 Askeu, Gilbert (3) 3707 Third St., Baltimore 25, Md.  
 Augst, Allen (1) R. D. 1, Pine Grove
- Bagenstose, Mary (1) 228 Noble Ave., Shoemakersville  
 Bagger, Mrs. Elizabeth (1) Box 41, Hegins  
 Baldwin, Kent (1) R. D. 2, Williamsport  
 Bansner, Carol (3) 425 S. 5th Ave., W. Reading  
 Barabas, Mildred (4) 8570 Third Ave., N. Bergen, N. J.  
 Barber, Jacquelyn (3) 220 Dorset Road, Devon  
 Barry, Curtis (1) 29 Redman Terrace, W. Caldwell, N. J.  
 Battistella, Bonnie (1) R. D. 1, Box 20, Shirleysburg  
 Bealor, Barry (4) 102 W. Sunbury St., Shamokin  
 Beatty, Franklin (3) 25 Bound Ave., Milton  
 Beck, Mary Ann (1) 209 Herr St., Harrisburg  
 Becker, Judy (1) R. D. 1, Mechanicsburg  
 Beers, Jane (1) 339 S. 18th St., Allentown  
 Behrens, Judith (2) 116 N. Clinton Ave., Tenafly, N. J.  
 Beltz, Enoch (1) 763 Maple St., Bridgeport, Conn.  
 Bernstein, Gerald (4) R. D. 4, Dallas  
 Berman, Jay (1) Wilson St. and Grandview Rd., Pottstown  
 Berry, Cynthia (1) 515 Morgan Ave., Palmyra, N. J.  
 Betkoski, Leonard (2) 119 Newport St., Glen Lyon  
 Betz, Phyllis (2) 140 N. Eleventh St., Sunbury  
 Bingaman, Harold (4) 207 W. Snyder St., Selinsgrove  
 Binnie, Lois (1) 270 Susquehanna St., Johnstown  
 Black, James (1) 138 N. Eleventh St., Sunbury  
 Blair, Marjorie (1) R. D. 3, Lewisburg  
 Blaskovitz, Sarah (2) 16 Marlborough Rd., Upper Darby  
 Blee, Judith (2) Beavertown  
 Blessing, James (1) 28 W. Main St., New Bloomfield  
 Bobst, Maurice (3) 450 Highland St., Hawley  
 Bodle, Patricia (4) 810 Fourth Ave., Williamsport  
 Bogar, Carl (3) 212 E. Pine St., Selinsgrove  
 Bollinger, Edward (4) 4102 Crestview Rd., Harrisburg  
 Bonsall, Lois (1) 429 Iroquis St., Lester  
 Bond, Joyce (4) R. D. 5, Box 80A, Stroudsburg  
 Bouchard, Gay (2) 69 Wooster Ave., Stratford, Conn.  
 Bouchard, Marie (4) 69 Wooster Ave., Stratford, Conn.  
 Bowen, Charles (2) 207 W. Chestnut St., Selinsgrove  
 Bower, Stanley (1) 21 N. Front St., Milton  
 Bowman, Glenn (3) 9 Pearl St., York  
 Brandt, F. William (1) R. D. 1, Osterburg  
 Branthoffer, Betty (2) Pine St., Thompsettown  
 Braun, Beverly (4) 1403 Penna. Ave., Natrona Heights  
 Breitwieser, Robert (2) 4166 Clinton St., West Seneca, N. Y.
- Brenneman, Joan (3) Lewisburg  
 Brenner, Robert (2) Canal St., Alloway, N. J.  
 Brndjar, Judith (2) 46 Spring St., Danbury, Conn.  
 Broadt, Eric (1) 23 N. 15th St., Lewisburg  
 Brodisch, Georgiann (1) 1515 Bristol Pike, Cornwells Hts.  
 Brosacious, Sarah (1) 715 Catawissa Ave., Sunbury  
 Brown, Alice (2) 530 Laurel Rd., Yeaton  
 Brown, Mary (1) 244 E. Cottage Pl., York  
 Brown, Miriam (1) Williamsport  
 Brownell, Patricia (1) Starrucca  
 Brubaker, Marvin (3) R. D. 2, Selinsgrove  
 Burns, Roy (3) Thompsettown  
 Butler, Leslie (2) 108 Pitman Ave., Pitman, N. J.
- Cairns, Carol (1) 848 E. Madison St., Lancaster  
 Cairns, Robert (1) P. O., Shamokin Dam  
 Campbell, George (1) 36 Hillsdale Ave., Hillsdale, N. J.  
 Campbell, James (1) 517 N. High St., Selinsgrove  
 Campbell, Patricia (4) 3005 York Ave., Camp Hill  
 Campbell, Walter (4) 25 N. 7th St., Shamokin  
 Carroll, Isabell (4) 57 Fairmount Ave., Clifton, N. J.  
 Casey, Frank (1) 206 Crooked Billet Rd., Hatboro  
 Cave, MacDonald (3) 132 Woodbine Rd., Havertown  
 Chamberlain, William (3) Wood St., Ringtown  
 Charles, Lydia (2) 230 E. Fourth St., Media  
 Christofaro, Mary (1) R. D. 1, Emmaus  
 Cimbalista, Robert (1) Riddlesburg  
 Clark, Philip (2) 404 Linden Ave., Glenside  
 Clark, Robert (4) Box 1, McClure  
 Clark, William H. (2) 119½ N. Second St., Lewisburg  
 Clemens, Eileen (1) R. D. 1, Milton  
 Coates, Ned (2) 940 W. Main St., Bloomsburg  
 Coccodrilli, Louella (2) 723 Pleasant Ave., Peckville  
 Coleman, Donald (4) General Delivery, Elysburg  
 Connor, Joan (2) 20 E. Water St., Mt. Union  
 Conrad, Lee (3) R. D. 1, Sunbury  
 Coolbaugh, James (2) R. D. 1, Towanda  
 Coons, Louis (3) Star Route, Seelyville  
 Corson, Ann Louise (1) 225 S. Main St., Hughesville  
 Cordas, Michael (1) 819 N. Second St., Steelton  
 Cornelius, Donald (1) 418 Ridge Ave., Souderton  
 Craft, Mary (1) York Haven  
 Cragle, Ray (2) R. D. 5, Bloomsburg  
 Crickenberger, Norman (2) 1524 Faulkland Rd., Wilmington 5, Del.  
 Culp, Lawrence (4) 1112 School Lane, Cornwell Hts.  
 Curry, John (3) 32 Glenmere Ave., Florida, N. Y.  
 Curtis, Robert (1) 1553 Tinsman Ave., Pennsauken, N. J.
- Daily, Carol (4) 811 Washington St., Windber  
 Davenport, Maureen (2) R. D. 1, Sunbury  
 Davis, Bette (2) 72 Cray Terr., Fanwood, N. J.  
 Davis, Donald (4) 2308 Bryn Mawr Ave., Ardmore  
 Davis, Nancy (3) Bendersville  
 Davis, Richard (3) Centennial Lake, Marlton, N. J.  
 Dechert, Joan (1) 320 S. 12th St., Lebanon  
 Deebel, Jean (1) 268 W. Main St., Ringtown  
 Deibler, Thomas (2) 1142 Susquehanna St., Trevorton  
 Dellaira, Anthony (1) 64 McKinley Ave., Trenton, N. J.  
 DeLong, James (2) 21 Sager Road, M. R. 5, Elizabethtown  
 Derk, Terry (1) 631 Market St., Trevorton  
 Deroba, Barbara (1) 601 Mountain St., Trevorton  
 Derrick, Richard (3) 9 Delmar Ave., Morris Plains, N. J.

# Student Directory

- Diehl, David (4) 303 Union St., Fullerton  
 Diehl, Larry (1) R. D. 2, Watsonstown  
 Diehle, Judith (2) Almshouse Rd., Richboro  
 Dietrich, Harry (1) R. D. 1, Lewisburg  
 Dietrick, Nancy (1) Maizeville, Gilberton  
 Dietzel, Arlene (1) 213 E. Main St., Ephrata  
 DiFrancesco, Benedict (2) 224 W. Saylor St., Atlas  
 Dimler, Lewis (1) 1539 Market St., Ashland  
 Ditmars, Richard (4) 15 Young St., Somerville, N. J.  
 Dobson, Raymond (1) 50 N. Main St., Yeagertown  
 Donlan, Thomas (1) 1220 W. Walnut St., Shamokin  
 Donley, Brian (3) 353 Park Ave., New Cumberland  
 Downer, Charlotte (2) 42 S. Delsea Dr., Glassboro, N. J.  
 Dreisbaugh, Robert (1) 324 Walnut St., Catawissa  
 Dries, Lynda (1) 1587 Church Rd., Wantagh, L. I., N. Y.  
 Dunkelberger, Fred (1) 1096 Wolverton St., Sunbury  
 Dunkle, Sandra (1) 20 N. Broad St., Jersey Shore  
 Dunster, Nancy Lee (2) 24 W. Oak St., Basking Ridge, N. J.
- Ecenbarger, William (3) 46 Liberty Ave., Lindenhurst, N. Y.  
 Edward, Elliot (2) 1812 Parkway Dr., Honesdale  
 Edwards, Herbert (1) 1130 Reagan St., Sunbury  
 Eiche, Elmer (3) 338 S. Lehigh Ave., Frackville  
 Elmer, William (4) 67 Institute Place, Bridgeton, N. J.  
 Engel, Francois (1) 1235 Meinel Rd., Huntingdon Valley  
 Ernst, Sonja (1) 212 W. Pine St., Selingsgrove  
 Estep, Patricia (1) 300 Lincolnway W., New Oxford  
 Etter, Irene (1) Route 6, Chambersburg  
 Ewald, Jean (2) 233 E. Moreland Ave., Hatboro  
 Eyster, Sandra (1) R. D. 1, Herndon
- Fahey, Michael (4) 837 Summit Ave., Westfield, N. J.  
 Faiss, Marilyn (4) 102 Elmwood Rd., Verona, N. J.  
 Fausey, Richard (3) 237 Spruce St., Sunbury  
 Fausey, William (2) Star Route, Selingsgrove  
 Ferrara, Rena (1) Box 711, Norwich, Conn.  
 Ferraro, Ralph (4) 2280 Blvd., Jersey City, N. J.  
 Ferrence, Ann (1) 52 Mayfield St., Dover  
 Fink, Candace (1) 2329 Fairview Terrace, Williamsport  
 Finklestein, Melvyn (4) 3417 N. Fourth St., Harrisburg  
 Fiscus, Roy (3) R. D. 1, Clearfield  
 Fish, Kenneth (1) 5 E. State St., Media  
 Fishburn, William (1) R. D. 1, Northumberland  
 Fisher, Frederick (1) Route 3, Pine Grove  
 Fisher, Russell (1) 110 S. Front St., Selingsgrove  
 Foehl, Shirley (1) 251 E. Woodland Ave., Springfield  
 Forry, Jack (2) 217 Chestnut St., Sunbury  
 Forse, Sandra (2) R. D. 2, Montoursville  
 Fox, Walter (2) 2370 Spruce St., Seaford, N. Y.  
 Foye, Ronald (2) R. D. 1, Liverpool  
 Frank, John K. (1) 32 N. Maple St., Mt. Carmel  
 Fries, John (3) 639 N. Bromley Ave., Scranton  
 Fuhrer, Theodore (3) 432 Alder St., Scranton  
 Fuller, Clara (2) 503 Allegheny St., Jersey Shore  
 Fuller, David (3) New Bloomfield
- Gahan, David (1) 8 W. Walnut St., Selingsgrove  
 Gallagher, James (1) Locust Ave., Centralia  
 Gandy, Joan (2) Hamilton Dr., Hackettstown, N. J.  
 Gantz, Jacqueline (3) 30 E. Middle St., Hanover  
 Gearhart, Harriet (3) 1293 Highland Ave., Sunbury
- Geiger, Karen (2) 187 Devon Rd., Westwood, N. J.  
 Gettier, Stephen (1) Main St., Biglerville  
 Goeringer, Karen (3) 2113 Porter St., Philadelphia  
 Goetz, Patricia (2) 9 N. Locust St., Hazleton  
 Good, Nancy (1) R. D. 5, Menoher Hgts., Johnstown  
 Gopic, George (4) Berbice, British Guiana  
 Grabau, Carolyn (1) 15 Fairway, Bloomfield, N. J.  
 Graham, John (1) 946 Carver St., Philadelphia  
 Gray, Donald (4) 403 Beaver St., Milton  
 Graybill, Diana (1) R. D. 1, Port Trevorton  
 Graybill, Donna (1) R. D., McAlisterville  
 Graybill, Gloria (3) R. D. 1, Port Trevorton  
 Gresh, Carol (1) 253 Sixth St., Northumberland  
 Groce, Barbara (1) 428 N. Orange St., Selingsgrove  
 Grove, Abram (3) 213 Lawn Ave., Sellersville  
 Guinn, Frederick (4) 261 N. Eleventh St., Sunbury  
 Gulick, Donna (1) 1814 Borbeck Ave., Philadelphia
- Haase, Stephanie (4) 50 Sturges Ridge Rd., Wilton, Conn.  
 Hackenberg, Barry (2) S. 11th St., Mifflinburg  
 Hackenberg, Charles (3) 602 S. Market St., Selingsgrove  
 Hackenberg, David (1) 565 King St., Northumberland  
 Hackenberg, Gary (4) New Berlin  
 Hackman, June (3) 70 Lane of Acres, Haddonfield, N. J.  
 Haeffe, Joan (2) Budd Lake Rd., Hackettstown, N. J.  
 Handley, F. Richard (4) Apple Ave., Middletown  
 Hanshaw, Thomas (2) 2446 Logan St., Harrisburg  
 Harding, Helen (4) 33 S. Atherton Ave., Kingston  
 Hardnock, Ronald (2) 816 Brock St., Ashland  
 Hardy, Linda (1) Shirley St., Mt. Union  
 Harner, Jean (4) 701 Market St., Ashland  
 Harter, Paul (3) 121 Independence St., Selingsgrove  
 Harvey, Essene J. (3) Huntingdon Mills  
 Hauser, Kenneth (2) 703 Westwood Ave., River Vale, N. J.  
 Headings, Betty (1) 146 E. Shirley St., Mt. Union  
 Heist, Cynthia (1) 1129 N. St. Lucas St., Allentown  
 Helvig, Thomas (3) 100 Charles Ave., Selingsgrove  
 Henderson, Gail (1) 464 Third Ave., Kingston  
 Herb, Joseph (1) Snyderstown  
 Herrold, James (1) 411 E. Cameron St., Shamokin  
 Hertz, Carol (1) 67 Spencer Ave., Lancaster  
 Hess, Marilyn (3) 163 Schuylkill Ave., Shenandoah  
 Hess, Nancy (1) 24 Beech St., Arlington, N. J.  
 Hewes, Ann (3) Glendale 22, Mo.  
 Hipple, Elwood (1) 642 Ocean Ave., Lancaster  
 Hirschmann, Carol Ann (1) 19 Wendslow Rd., Lutherville, Md.  
 Hitchner, Carl (2) R. D. 1, Bridgeton, N. J.  
 Hobbes, Carol (1) R. D. 1, Milton  
 Hockenbrock, Annamae (3) R. D., Thompsontown  
 Hockensmith, William (2) 11 McCreary St., Johnstown  
 Hoffman, Cynthia (1) 1018 River Ave., Sunbury  
 Hogeland, Diane (2) Feasterville  
 Holcombe, Lillian (4) R. D. 1, Towanda  
 Hooven, Doris (1) 402 Hickory St., Ridgway  
 Hopple, Herman (3) Thompsontown  
 Horn, Richard (4) 6118 Columbia Ave., Philadelphia  
 Horne, H. Sheldon (1) 201 Lower Mulberry St., Danville  
 Hostetter, Glen (1) 2133 Fairview St., W. Lawn  
 Houseworth, Sue (1) Route 3, Bedford  
 Huber, C. Edward (4) 705 Harvey St., Baltimore 30, Md.  
 Hunt, C. Wesley (4) 1804 Berkshire Dr., Union, N. J.  
 Hutchison, Dave (3) 400 N. Orange St., Selingsgrove

# Student Directory

- Inch, Marlin (3)  
 Irre, Barbara (3)
- Jablonski, Mary (2)  
 Jablonski, Stanley (2)  
 James, Kenneth (4)  
 Johnson, Grace (2)  
 Johnson, Linda (2)  
 Jones, Bonnie (1)  
 Jones, Edward (3)  
 Jordan, Barbara (1)  
 Joyce, Joseph (1)
- Kahl, William (2)  
 Kahn, Ronald (3)  
 Kale, Nathan (4)  
 Kashmere, John (3)  
 Kauffman, Barry (1)  
 Keefer, Ronald (1)  
 Keener, Kathryn (4)  
 Keener, Thomas (3)  
 Kehler, Sally (4)  
 Keib, Kenneth (2)  
 Keller, Nellie (1)  
 Kent, Linda (1)  
 Kiel, Alan (1)  
 Kind, John (2)  
 Kindon, George (1)  
 Kipp, Judith (1), Reeser's Summit, Mounted Route, New Cumberland  
 Kissinger, William  
 Kistner, Jane (3)  
 Klein, Judith (2)  
 Kleinbauer, Joe (1)  
 Klus, D'Arlene (1)  
 Kocher, Ronald (1)  
 Korbich, William (2)  
 Korus, John (3)  
 Kratz, Virginia (3)  
 Kratzer, Larry (3)  
 Krimmel, Charles (2)  
 Krombein, Karen (1)  
 Kuebler, Peter (1)  
 Kump, Jane (1)  
 Kunkle, Amos (4)  
 Kunkle, Dorothy (2)
- Large, Carol (1)  
 Lankard, Berenice (1)  
 Lauer, Norman (2)  
 Lawley, Martha (2)  
 Leach, Linda (1)  
 Leathery, Charles (1)  
 Lehmer, Donald (4)  
 Leiby, Thomas (2)  
 Leighty, Robert (3)  
 Leitner, Connie (2)  
 Leonard, Linda (3)  
 Lerew, Lynn (1)  
 Lewis, John (1)  
 Lindemuth, Robert (2)  
 Lisi, David (2)  
 Lockett, Sarah (2)
- 205 Third St., Selinsgrove  
 Box 316, Riviera Beach, N. J.
- 158 Spruce St., Sunbury  
 269 Seventh St., Northumberland  
 45 Hanover St., Glen Rock  
 1005 Gated Lane, West Chester  
 1477 Brookside Dr., Union, N. J.  
 80 Village Line Rd., Babylon, N. Y.  
 232 Hayes St., Bristol  
 540 St. John's Dr., Camp Hill  
 1232 Walnut St., Ashland
- 139 Venango St., Johnstown  
 200 Hobart St., Gordon  
 3733 Tenth St., Baltimore 25, Md.  
 30 W. Girard St., Atlas  
 25 E. Lemon St., Lititz  
 35 Rose St., Milton  
 312 N. Fifth St., Emmaus  
 312 N. Fifth St., Emmaus  
 Box 157c, R. D. 1, Shamokin  
 R. 809 Prospect Ave., Scranton  
 R. D. 1, Accomac Rd., Hellam  
 934 Reagan St., Sunbury  
 Box 249, New Hope  
 2509 Agate St., Harrisburg  
 7504 Newland St., Philadelphia  
 Box 101, Kreamer  
 722 Mill St., Danville  
 5 Goodale Circle, New Brunswick, N. J.  
 12 E. Market St., Middleburg  
 6950 Germantown Ave., Philadelphia  
 King St., Turbotville  
 112 S. Franklin St., Shamokin  
 413 Jones St., Nanticoke  
 653 Norwood Dr., Danville, Va.  
 203 Market St., Middleburg  
 5601½ Chew St., Philadelphia  
 18 Mile Creed Rd., Derby, N. Y.  
 27 E. Holland St., Summit Hill  
 543 S. Franklin St., Hanover  
 S. Elm St., Annville  
 727 Marshall Dr., West Chester
- 1410 Spruce St., Ashland  
 30 W. Milford St., Mt. Union  
 1503 W. Mulberry St., Shamokin  
 36 W. Mill Rd., Flourtown  
 809 Park Rd., Windber  
 1770 Altland Ave., York  
 3204 Elm St., Harrisburg  
 R. D., Pennsburg  
 72 K St., Johnstown  
 21 E. Bough St., Selinsgrove  
 McAllisterville  
 Bendersville  
 911 Ormond Ave., Drexel Hill  
 404 N. Maple St., Mt. Carmel  
 909 Center St., Millersburg  
 600 Main St., Moosic
- Losch, Rosemary (2)  
 Lundy, Joyce (1)  
 Luscko, John (1)
- MacDonald, William (4)  
 McCahan, Sara (4)  
 McCahan, Walter (1)  
 McCann, Mary Lou (4)  
 McCloy, Carol (3)  
 McClung, Ronald (4)  
 McDaniel, James (2)  
 McGlaughlin, Ronald (2)  
 McKalip, Sarah (1)  
 McKee, Robert (1)  
 McLaughlin, Jack (3)  
 McLear, Ann (1)  
 Mack, Linda (1)  
 Malone, Marvin (1)  
 Maneval, Vance (4)  
 Mannello, Edward (1)  
 Manning, Lynn (2)  
 Marburger, Carol (1)  
 Marburger, Edward (4)  
 Markle, Neal (1)  
 Martin, David (1)  
 Martin, Paul (3)  
 Martin, Sharon (2)  
 Master, Lois (2)  
 Maurer, Ted (1)  
 Maurer, James (4)  
 Melander, Richard (3)  
 Menko, Martha (2)  
 Meyer, Marilyn (2)  
 Middleswarth, James (4)  
 Miles, Lois (2)  
 Miller, Helen (2)  
 Miller, Laurance (3)  
 Miller, Milford (1)  
 Milroy, Lyman (2)  
 Minami, Wayne (2)  
 Mitchell, Neal (2)  
 Molin, William (2)  
 Moll, Terry (2)  
 Moore, Gary (3)  
 Moore, George (3)  
 Moore, William (1)  
 Morris, Joan (3)  
 Mosier, Clark (1)  
 Moyer, Carl M. (1)  
 Moyer, Carolyn (1)  
 Munster, Kenneth (1)  
 Murray, Jean (1)  
 Myers, Sarah (4)  
 Myers, Susan (2)
- 111 University Ave., Selinsgrove  
 198 N. Main St., Hughesville  
 38 Fifth Ave., Mt. Ephraim, N. J.
- 520 Corliss Ave., Phillipsburg, N. J.  
 R. D. 1, McClure  
 18 E. Pine St., Selinsgrove  
 R. D. 2, Holsopple  
 Box 15AB, R. D. 1, Mays Landing, N. J.  
 3605 St. Victor St., Baltimore 25, Md.  
 R-55 Filbert St., Milton  
 McClure  
 215 E. Main St., Smethport  
 38 S. Delancy Pl., Atlantic City, N. J.  
 124 Seneca St., Johnstown  
 916 Paoli Pike, West Chester  
 Mahoning Manor, Milton  
 R. D. 1, Delta  
 Main St., Dewart  
 513 Chestnut St., Kulpmont  
 3618 Centerfield Rd., Harrisburg  
 100 N. Warren St., Orwigsburg  
 512 E. Main St., Middleburg  
 507 Oreland Mill Rd., Oreland  
 2556 N. 5th St., Harrisburg  
 1121 Fillmore St., Philadelphia  
 179 Lockwood Ave., Woodbridge, N. J.  
 Beaver Springs  
 Main St., Helfenstein  
 Main St., Helfenstein  
 423 Stuyvesant Ave., Rutherford, N. J.  
 157 Prospect Ave., Woodbridge, N. J.  
 170 E. Cedar St., Livingston, N. J.  
 Laurelton  
 336 W. 16th St., New Cumberland  
 421 Market St., Mifflinburg  
 201 Orange St., Selinsgrove  
 73 N. Main St., Montgomery  
 West Milton  
 5124 44th St., Washington 16, D. C.  
 1202 Mifflin St., Saxton  
 423 Houston Rd., Ambler  
 228 W. Independence St., Shamokin  
 512 Grant St., Reynoldsville  
 615 McKnight St., Gordon  
 815 E. Cameron St., Shamokin  
 James St., Morristown, N. J.  
 R. D. 1, Dallas  
 1610 Clive Rd., Oreland  
 723 Columbia Ave., Lansdale  
 7330 Schoyer Ave., Pittsburgh  
 1505 E. Walton Ave., Altoona  
 416 S. Washington St., Greencastle  
 1201 Packer St., Williamsport
- I N. Water St., Selinsgrove  
 1200 Walnut St., Williamsport  
 440 N. Second St., Sunbury  
 825 Knorr St., Philadelphia  
 29 Hickory Rd., Binghamton, N. Y.  
 300 S. Main, Pine Grove  
 616 Fifth St., Catasauqua  
 Reedsville

# Student Directory

- Ohst, John (1) 57 Catherine St., Lyons, N. Y.  
 Okamura, Elias (2) Zion Lutheran Church, Sunbury  
 Olson, Florence (1) 3460 Surele Rd., Wantagh, N. Y.  
 O'Malley, John (4) 148-37 St., Union City, N. J.  
 Ostheim, Anne (2) 818 Drexel Ave., Johnstown
- Padula, Anthony (1) 1253 Scott St., Kulpmont  
 Papada, James (3) 330 Cherry St., Minersville  
 Park, Gwenllian (4) Eagles Mere  
 Parker, James (2) 2115 Oakmont Ave., Havertown  
 Parson, Anne (1) 7210 Magoun, Hammond, Indiana  
 Partridge, Emily (1) 567 Ridgewood Rd., Maplewood, N. J.  
 Pedersen, Doris (1) 1722 Gordon Rd., Hagerstown, Md.  
 Pemberton, Philip (2) 95 Kenilworth Pl., Brooklyn 10, N. Y.  
 Perfilio, Joseph (1) 59 College St., Jersey City, N. J.  
 Petterson, Patricia (1) 31 Evergreen Ave., Lynbrook, N. Y.  
 Peticcoffer, Jean (1) 81 E. Pine St., Ephrata  
 Pettit, Eileen (1) 102 Richmond St., Brooklyn 8, N. Y.  
 Phethean, Danning (1) 128 Willow Dr., Berwick  
 Phillips, Elizabeth (2) 1 Summit Ave., Atlantic Highlands, N. J.  
 Phillips, Nancy (4) 34 N. Marshall St., Shamokin  
 Pignatore, John (1) Ormsby Hill, Manchester, Vt.  
 Porter, Gerald (2) 803 Goshen St., West Chester  
 Potts, Kay (1) 72 High St., Pine Grove  
 Powers, Harry (4) 406 W. Pine St., Selinsgrove  
 Pressley, George (2) 540 Princeton Blvd., Wilkinsburg  
 Probert, Robert (4) 5 S. High St., Selinsgrove  
 Procopio, Frank (3) 1161 Chestnut St., Kulpmont  
 Purcell, Leonard (3) 854 Maple Ave., Elmira, N. Y.
- Raab, John (2) 386 Forest Ave., Glen Ridge, N. J.  
 Rasmussen, Charles T. (3) 1713 N. 62nd St., Philadelphia  
 Rebeck, Esther (4) Box 87, R. D. 1, Klingerstown  
 Rebeck, Neal (4) R. D. 1, Dornsife  
 Reconnu, David (1) 1161 Cooper Rd., Scotch Plains, N. J.  
 Reed, Ann (1) 321 Walnut Ave., Cranford, N. J.  
 Reichard, Richard (4) 840 Maryland Ave., York  
 Reichenbach, Jane (3) 114 S. Fourth St., Sunbury  
 Renning, Ardith (2) 401 Strawbridge Ave., Collingswood, N. J.  
 Rettinger, Janet (1) 609 Hillcroft Ave., Schuylkill Haven  
 Rhoads, Helen (3) 901 Spruce St., Hollidaysburg  
 Rhodes, James (4) 516 Jones St., Hollidaysburg  
 Richie, Ray (4) R. D. 2, Box 433, Shamokin  
 Richter, Larry (2) 1006 Lincoln Heights Ave., Ephrata  
 Rieger, Williard (3) R. D. 4, Bridgeton, N. J.  
 Riesmeyer, Ann (1) 5818 Aylesboro Ave., Pittsburgh  
 Rinn, Karolynn (3) 455 Birch St., Lock Haven  
 Ritter, Kermit (4) R. D. 2, Selinsgrove  
 Robbins, Larry (3) 536 Catawissa Ave., Sunbury  
 Roberts, Elizabeth (3) 114 Center St., Forty Fort  
 Roberts, Ruth (3) 109 N. Broad St., W. Hazleton  
 Rogers, James (1) 44 Garden St., Patten, Me.  
 Rogers, Janice (1) 207 Clark St., Lemoyne  
 Rohland, Richard (2) 547 E. Second St., Plainfield, N. J.  
 Rolston, Eileen (1) 123 McClellan St., Box 52, N. Y.  
 Rovenolt, Charles (4) 42 Columbia Ave., Mt. Joy  
 Rowe, Allen (4) 208 N. Water St., Selinsgrove  
 Rowe, John (4) 190 Highfield Lane, Nutley, N. J.  
 Rowe, Richard (1) 364 Glenwood Ave., New London, Conn.  
 Ruhling, Anita (1) 8320 Garland Ave., Takoma Park, Md.
- Sadosuk, George (2) 100 State St., Mt. Union  
 Sage, Muriel (1) 2602 King St., Endicott, N. Y.  
 Samson, Gerald (1) Lake Ariel  
 Samuel, Thomas (1) 37 Warrington Ave., Mt. Ephraim, N. Y.  
 Sanberg, Lynn (1) Duke Center  
 Schaefer, Ann (2) 327 Howard St., South Williamsport  
 Schaffer, Bonita (1) Lattimer Mines  
 Schane, Beverly (2) 103 W. Widener St., Philadelphia  
 Schell, Sandra (3) Box 86, Mifflintown  
 Schell, William (3) Main St., Turbotville  
 Schlader, Ronnie (1) 803 Arch St., Ashland  
 Schlotzhauer, John (2) Box 43, Idaville  
 Schnee, Phillip (2) 104 S. 11th St., Sunbury  
 Schnee, Ronald (1) 104 S. 11th St., Sunbury  
 Schultz, Barbara (1) 1716 Linwood Ave., Lancaster  
 Schultz, Thomas (3) 1716 Linwood Ave., Lancaster  
 Schuyler, Jane (1) 616 Bangs Ave., Asbury Park, N. J.  
 Semicek, Paul (4) 219 N. Park, Mt. Carmel  
 Sewell, Margaret (1) 57 S. Union Ave., Cranford, N. J.  
 Shaffer, Alfred (3) 146 Market St., Sunbury  
 Shaffer, Ralph (1) 1643 Florida Ave., Johnstown  
 Shamory, Lee (1) Troxelville  
 Shank, Denny (4) 59 Gates Ave., Indiana  
 Sharrow, Raymond (3) 503 E. Fifth St., Bloomsburg  
 Sheaffer, Lewis (1) Paxinos  
 Sheesley, Joyce (2) 1842 N. St., Harrisburg  
 Shesler, Carol (1) 18 Midrocks Dr., Norwalk, Conn.  
 Shilling, Barbara (4) 320 Penna. Ave., York  
 Shirey, Samuel (1) 70 Catherine St., Lewistown  
 Shirk, Walter (1) Pleasant Gap  
 Sholley, Sandra (1) 1212 Market St., Lewisburg  
 Sholley, Stanford (2) 1212 Market St., Lewisburg  
 Shomper, Dorothy (2) 138 E. Lincoln St., Shamokin  
 Shryock, Caroline (4) 1833 W. Phila. St., York  
 Shuker, William (1) 14 Charles Ave., Selinsgrove  
 Shuman, Darla (2) 301 N. 3rd St., Bloomsburg  
 Shutt, William (4) 1330 Spruce St., Ashland  
 Siple, Ann (1) Auburn  
 Sload, Susan (2) 2147 Woodlawn Ave., Glenside  
 Smith, Carlton (4) 39 Cottage Ave., Glen Rock  
 Smith, David (2) 140 Elmwood Court, Emporium  
 Smith, David (1) 1551 W. Princess St., York  
 Smith, Eleanor (1) 422 Fairmount Ave., Sunbury  
 Smith, Joanna (2) 32 S. Hellertown Ave., Quakertown  
 Smith, Katherine (2) 917 Market St., Williamsport  
 Smith, Robert (2) 3950 Waverly Ave., Seaford, N. Y.  
 Smith, Neal (1) Dornsife  
 Smith, Ronald (4) Dornsife  
 Snider, Jack (3) 827 Diamond St., Williamsport  
 Snyder, Daniel (1) 85 W. Oneida St., Oswego, N. Y.  
 Snyder, Larry (1) 216 Pine St., Sunbury  
 Snyder, Lynn (2) 235 Pine St., Sunbury  
 Snyder, Paul (2) Dornsife  
 Sokol, Robert (3) 225 S. Locust St., Mt. Carmel  
 Speck, Howard (4) 2260 Finley Ave., Cornwells Hts.  
 Spotts, Douglas (1) New Britain  
 Squires, Robert (1) 2736 Lexington St., Harrisburg  
 Squires, Bill (3) 2736 Lexington St., Harrisburg  
 Stahl, Janice (3) R. D. 2, Lewisburg  
 Stambaugh, Nancy (1) R. D., Elliptsburg  
 Stamps, Penelope (1) 300 E. Verona Ave., Pleasantville, N. J.  
 Starner, Larry (1) 3132 N. Sixth St., Harrisburg

# Student Directory

- Starr, Elwood (2) 110 University Ave., Selinsgrove  
 Stefanik, Ruth (2) 1468 Gertrude Court, Johnstown  
 Stephenson, Sally (1) 92 Oakview Ave., Maplewood, N. J.  
 Stoecum, David (3) 327 Elm St., Jersey Shore  
 Strausser, James (4) 951 Mountain St., Trevorton  
 Strayer, Edward (4) 1500 Bedford St., Johnstown  
 Strockbine, Darlene (1) 1636 Spruce St., Ashland  
 Strubhar, Roberta (1) R. D. 1, Pequea  
 Summer, Robert (1) 379 Carroll St., Riverside, N. J.  
 Swab, Sandra (2) 2040 Green St., Harrisburg  
 Swann, George (4) Box 188, M. R. 1, Hazlet, N. J.  
 Sweisford, Shirley (4) Boring, Md.  
 Swope, Jocelyn (3) 3224 Cloverfield Rd., Harrisburg
- Taylor, Alice (2) 109 Calder St., Harrisburg  
 Taylor, Patricia (1) 822 East St., Altoona  
 Terry, Mary (1) 103 Church St., Loek Haven  
 Thoman, Peggy (1) 108 Manchester St., Glen Rock  
 Thomas, Alan (2) 114 Cherry St., E. Greenville  
 Tietbohl, Richard (4) R. D. 2, Montoursville  
 Toy, Stephen (3) 214 S. Maple St., Mt. Carmel  
 Traher, Mary Ann (2) Selinsgrove  
 Traub, Linda (3) 16 Fourth St., Feasterville  
 Trenery, Frank (1) 220 Beynon Dr., Clarks Green  
 Treon, John (1) 1055 Paeker St., Sunbury  
 Tressler, Paul (2) 205 Lincoln Ave., Telford  
 Trexler, Roger (2) 189 Greenleaf St., Emmaus  
 Troutman, Sandra (1) R. D., Herndon  
 Troxell, Gayle (4) Mountaintdale  
 Tuma, Judith (1) 5 Maryland Ave., Havertown  
 Turnbach, Susan (2) 401 W. King St., Shippensburg  
 Turner, Elaine (3) Second St., Pike, Richboro  
 Tushinski, Robert (1) 61 Coal St., Glen Lyon  
 Tyler, Keith (3) R. D. 2, Weatherly  
 Tyler, Samuel (2) R. D. 2, Selinsgrove
- Updegrove, James (1) First Street, Muir  
 Updegrove, Larry (4) High St., Millerstown
- Valentine, Robert (2) 318 Thompson St., Mifflinburg  
 Valunas, Madelyn (1) 5 N. Water St., Selinsgrove  
 Valunas, Mary Ann (2) 5 N. Water St., Selinsgrove  
 VanKirk, Donald 314 Center St., Shamokin  
 VanZandt, James (1) 661 Hawthorne Ave., Pottstown  
 Vekassy, Marilyn (1) 9104 Homebrook St., Pico Rivera, Calif.  
 Voiles, Michael Roosevelt St., Wind Gap  
 Voneide, Roy (1) 85 Chestnut St., Mifflinburg
- Wademan, John (1)  
 Wagner, Lois (1)  
 Walters, Peggy (2)  
 Ward, Harry Nathan (1)  
 Ward, James (2)  
 Wassam, Linda (1)  
 Watkins, Wendy (1)  
 Watmough, Ann (1)  
 Watt, Karen (1)  
 Weathered, Jeannie (1)  
 Weatherlow, Mary (1)  
 Weaver, Naomi (1)  
 Webb, Margaret (3)  
 Webster, Geraldine (1)  
 Weichelt, Willi (4)  
 Welker, Robert (3)  
 Wernau, Allan (3)  
 Werner, William (1)  
 Wernikowski, Maria (2), 3861 Country Club Rd., Johnson City, N. Y.  
 White, Donald (1)  
 White, Janet (1)  
 Whitney, Jeffrey (1)  
 Whitson, Gale (2)  
 Whitson, Joan (2)  
 Williams, John R. (2)  
 Williams, Samuel (1)  
 Wilson, Anne  
 Wilson, Dana (3)  
 Winey, Donald (4)  
 Wingard, Larry (4)  
 Witmer, Eugene (2)  
 Wolf, Lloyd (2)  
 Woodruff, Dennis (1)  
 Wurster, Jack (3)
- Yaggi, Frank (1)  
 Yanuklis, John (4)  
 Yingling, Herbert (1)  
 Yoder, Barbara (4)  
 Yohe, Michael (2)  
 Yori, James (1)
- Zacharias, Judith (1)  
 Zangenberg, Marcia (1)  
 Zimmerman, Nancy (1)  
 Zimmerman, Nita (2)  
 Zimmerman, Paul (3)  
 Zimmerman, Roger (1)  
 Zortman, Janet (4)
- 327 Warren St., Harrison, N. J.  
 115 Rorer St., Philadelphia  
 2297 N. Sherman St., York  
 R. D. 1, Garrett  
 201 Kensington Rd., Lynbrook, N. Y.  
 R. D. 2, Millerstown  
 212 Pettebone St., Wyoming  
 Paoli Pike, R. D. 2, Malvern  
 3747 Drummond Rd., Toledo, Ohio  
 50 Smith St., Niantic, Conn.  
 1595 Wabank Rd., Lancaster  
 225 Mulberry St., Catasauqua  
 Box 621, Route 2, Joppa  
 89-27 117th St., Richmond Hill 18, N. Y.  
 1529 Pennsylvania Ave., Prospect Park  
 21 N. Market St., Selinsgrove  
 97 Madison Ave., Clifton, N. J.  
 309 Bienwood Ave., Haddonfield, N. J.  
 3861 Country Club Rd., Johnson City, N. Y.  
 1221 South St., Pottstown  
 Box 433, R. D. 3, Norristown  
 83 Bank St., Valley Stream, N. Y.  
 Wyncrest Rd., Marlboro, N. J.  
 Wyncrest Rd., Marlboro, N. J.  
 704 Warren Ave., Ho-Ho-Kus, N. J.  
 40 S. Walnut St., Mt. Carmel  
 Selinsgrove  
 Sunbury  
 Box 112, Richfield  
 3431 Graham Ave., Windber  
 R. D., Dalmatia  
 828 Susquehanna Ave., Sunbury  
 310 N. 19th St., Camp Hill  
 325 S. Pitt St., Carlisle
- 1001 Lindale Ave., Drexel Hill  
 636 38th St., Union City, N. J.  
 209 Dry Valley Rd., Burnham  
 R. D. 1, Port Royal  
 Old Forge Heights, Spring Grove  
 750 N. Eighth St., Sunbury
- 944 E. Walnut St., Hanover  
 237 Mill St., Westwood, N. J.  
 28 Crescent Rd., Livingston, N. J.  
 221 W. Market St., Orwigsburg  
 Aaronsburg  
 P. O. Box 38, Shamokin Dam  
 319 S. Queen St., York



*Compliments of*

**Susquehanna University**

SELINGSGROVE, PENNSYLVANIA

**to the Class of 1960**



*We congratulate our graduates on their  
accomplishments and extend to them our best  
wishes for a happy and helpful life.*



GUSTAVE W. WEBER, A.B., B.D., S.T.M., Th.D., *President*

# *Complete* COMMERCIAL PRINTING SERVICES

- Offset and Letterpress Printing
- Designing and Art
- Photography
- Engraving
- Binding

A streamlined, modernly equipped Printing Plant with facilities for every type of Commercial Printing. Whatever you need . . . letterheads, forms, direct mailing pieces, price lists, booklets, catalogs and school and college annuals . . . you can depend on GRIT'S services, craftsmanship and quality. Consult us before placing your next order for printing.



Write or phone Commercial Departments

## GRIT PUBLISHING COMPANY

WILLIAMSPORT, PA.

BEST WISHES  
TO THE  
CLASS OF 1960



STUDENT CHRISTIAN ASSOCIATION

---

STAY

ON TOP

OF THE NEWS



**DAILY ITEM**  
SUNBURY, PENNSYLVANIA



---

**PEPSI-COLA** DISTRIBUTING

C. J. MIDDLESWARTH

Distributor of

Phone Warehouse  
DRake 4-4676

Pepsi-Cola  
and  
Cloverdale Soft Drinks

Phone Residence  
OLympia 8-5461

SELINGSGROVE, PA.

---

*Why Buy*

2 Sheets

2 Face Towels

INDIVIDUALLY PACKAGED

*We Supply*

1 Pillow Case

2 Bath Towels

EXCHANGED WEEKLY

**COLLEGE LINEN SUPPLY, INC.**

THE FIRST NATIONAL BANK  
OF SUNBURY

SUNBURY, PENNSYLVANIA

"We solicit your account"

*Member Federal Deposit Insurance Corporation*

*Member Federal Reserve Bank*

The  
Selinsgrove Times  
Tribune



*Printers of* SUSQUEHANNA UNIVERSITY STUDIES

*Across from Post Office*

COLE DRUGS, INC.

7-9 South Market Street

Selinsgrove, Pennsylvania

DRake 4-6121

# THE LAMP POST



*''WHERE FRIENDS MEET TO EAT  
WHEN AWAY FROM HOME''*

---

## BICKHART'S HARDWARE, INC.

GENERAL HARDWARE

HOUSEHOLD ITEMS

Phone DR 4-8933

24 South Market Street

SELINGROVE, PENNSYLVANIA

---

## MERIT LAUNDRY AND DRY CLEANING COMPANY

1222 EDISON AVENUE

SUNBURY, PA.



ON CAMPUS  
PICK UP AND DELIVERY  
SERVICE AT  
HARRIS HALL AGENCY

CALL  
SUNBURY  
ATLANTIC 6-0351  
6488—6489

Compliments of the

# Holsum Bakers

© HOLSUM UNIFIED BAKERS

SUNBURY, PENNSYLVANIA

Compliments of

## HOUTZ TOBACCO COMPANY

SUNBURY, PENNA.

"WHAT'LL YOU HAVE"

## L. FRANK KOCHER

Plumbing and Heating Material  
Wholesale — and Retail

Largest Stock in Snyder County

SELINGSGROVE, PA.

Phone  
DR 4-2354

## B. K. W. COACH LINE

HUMMELS WHARF, PENNSYLVANIA

Phone Drake 4-0581

Charter Trips Anywhere in the United States    Taxi Service Call Sunbury AT 6-1331

**JANE SCHNURE**

*Flowers*

15 North Market Street

SELINGSGROVE, PENNSYLVANIA

Drake 4-6841

KEEPSAKE DIAMONDS

**W. M. VALSING**

*Jeweler*

SELINGSGROVE, PENNSYLVANIA

**JARRETT AND SECHRIST  
SUNOCO SERVICE STATION**

Washing and Lubricating  
Kelly-Springfield Tires and Tubes  
Full Line of Batteries and Accessories

Corner Market and Walnut Streets

Drake 4-1041

**SIGMA ALPHA IOTA**



*"Life Is Short,  
But Art Is Long"*

**BOGAR**

**Feed and Building Supply, Inc.**

**LUMBER and  
BUILDING MATERIAL**

Drake 4-7011

SELINGSGROVE, PA.

Compliments of

**FEHR'S STYLE SHOP**

359 Market St.

SUNBURY, PA.

**JOHN DAGLE**

**Registered Jeweler  
American Gem Society**

434 Market Street

SUNBURY, PA.

**Women's Athletic Association**

of

**Susquehanna University**



## ACORN MOTEL

Drake 4-7687

Routes — 11 and 15

100% Air-Conditioning — Television

The Best in Commercial Printing

CLIFFORD SHEESLEY  
*Printing*

P. O. BOX 214

SELINGROVE, PA.

Drake 4-0855

Best Wishes From

# WEIS MARKETS

SUNBURY, PA.

Serving Central Pennsylvania Families Since 1914

Compliments of

## A FRIEND

FOR OVER 80 YEARS IT HAS BEEN

**H**ACKETT  
HARDWARE  
STORES INC.

SUNBURY — MIDDLEBURG

3 Stores to Serve You

# LAMBDA CHI ALPHA

*"Every Man a Man"*

HAROLD BINGAMAN  
RALPH FERRARO  
GEORGE GOPIE  
GERALD KUNKLE

WILLIAM MacDONALD  
RAY RICHIE  
CHARLES ROVENOLT  
JOHN YANUKLIS

---

# PHI MU DELTA

*The Leaders of Tomorrow*

RICHARD HANDLEY  
JOSEPH ALEKNAVAGE  
GERALD BERNSTEIN  
WALTER CAMPBELL  
BRIAN DONLEY  
MICHAEL FAHEY  
WESLEY HUNT  
VANCE MANEVAL  
JAMES MAURER

JAMES MIDDLESWARTH  
RICHARD REICHARD  
ALLEN ROWE  
DENNY SHANK  
RONALD SMITH  
JAMES STRAUSSER  
GEORGE SWANN  
LARRY UPDEGROVE  
WILLI WEICHEL

---

# THETA CHI

*Theta Chi Congratulates Its Graduates of 1960*

EDWARD BOLLINGER  
ROBERT CLARK  
DONALD COLEMAN  
DAVID DIEHL  
RICHARD DITMARS  
MELVYN FINKELSTEIN  
FREDERICK GUINN  
EDWARD HUBER

KENNETH JAMES  
RONALD McCLUNG  
JOHN ROWE  
CARLTON SMITH  
HOWARD SPECK  
EDWARD STRAYER  
RICHARD TEITBOHL  
DONALD WINEY

LARRY WINGARD

## ALPHA DELTA PI

*"We Only Part to Meet Again." — Gay*

VIRGINIA ALEXANDER  
PATRICIA CAMPBELL  
ISABELL CARROLL

STEPHANIE HAASE  
BARBARA SHILLING  
JANET ZORTMAN

---

## ALPHA XI DELTA

*"We Strive for Truth, Friendship, and Justice"*

JOYCE ARNOLD  
MILDRED BARABAS  
PATRICIA BODLE  
MARILYN FAISS

MARY LOU McCANN  
SARAH MYERS  
NANCY PHILLIPS  
CAROLINE SHRYOCK  
GAYLE TROXELL

---

## KAPPA DELTA

*"Let us strive for that which is honorable,  
beautiful, and highest"*

JUNE NONNEMACHER

GWENLLIAN PARK

## BLUE HILL RESTAURANT

New Modern Dining Room and "If" Room

SELINGSGROVE R. D. 2

Intersection 11 and 15

At the Traffic Circle

Our Slogan Is: *"Gracious Dining and Friendly Atmosphere"*

Compliments of

THE MUSIC MART

Phone DR 4-9006

WALT'S  
SUNOCO SERVICE STATION

SUNOCO GAS AND OIL  
LUBRICATION — TIRES AND BATTERIES

HUMMELS WHARF, PA.

# Business Society of SUSQUEHANNA UNIVERSITY

## PROFESSIONAL DIRECTORY

R. F. BERTRAM, D.D.S.

116 SOUTH MARKET STREET

Telephone 5944

Residence Drake 4-5944

R. A. HEINBACH, M.D.

125 SOUTH MARKET STREET

Telephone 2611

Residence Drake 4-2611

**MONTGOMERY WARD**

*Department Store*

SUNBURY, PENNSYLVANIA

---

**BAUM'S SPORTING GOODS**

SUNBURY, PENNSYLVANIA

**UNITED ARMY NAVY STORE**

SUNBURY, PENNSYLVANIA

---

**SCHREFFLER  
PONTIAC-CADILLAC, INC.**

Market at 8th Street

SUNBURY, PA.

Phone AT 6-4541

---

**Real Estate  
Insurance**



**7 No. Market St.  
Selinsgrove, Pa.**

---

**STRAND MOVIE**

SUNBURY, PENNSYLVANIA

For S. U. Men and Women

# COLLEGE SNACK BAR

Open 8 a. m. to 10 p. m.

---

**GEBHARDT'S**

SUNBURY, PENNSYLVANIA

**Schindler's**  
*Photography*

SUNBURY, PENNSYLVANIA

---

Phone — DR 4-9292

**Bottiger and Stuck Lumber Co.**

LUMBER — BUILDING SUPPLIES

Routes 11-15

SELINGSGROVE, PA.

---

JEWELER

**DR. CHARLES M. STONER**

OPTOMETRIST

246 Market Square

AT-6-4161

SUNBURY, PA.

---

Compliments of

**THE CAMPUS BOOK STORE**

of

**Susquehanna University**

*Established to Serve Students, Alumni, and Friends*

## HOTEL GOVERNOR SNYDER

Dining Room Open Daily Except Sunday

*"Largest Hotel in Selinsgrove"*

**BOB McFALL, Proprietor**

## BECK and BECK, INC.

and

## CITY STEAM LAUNDERERS, INC.

10 West Pine St.

SELINGSGROVE



*"When you care enough to send the very best"*

## THE CARD SHOP

SELINGSGROVE, PENNSYLVANIA

## LEE R. SNAVELY

**Clothing and Shoes**

SELINGSGROVE, PENNSYLVANIA

State College

Lemoyne

## DUTCH PANTRY, INC. FAMILY RESTAURANTS

Sunbury — Selinsgrove

910 North Fourth St.

U. S. Routes 11 and 15

St. Petersburg

Clearwater

## SALLY BOLIG'S

*Style Shop*

Coats, Suits, Dresses  
Accessories

22 South Market Street

Telephone DRake 4-4202

Compliments of

## Sunbury Coca-Cola Bottling Works, Inc.

Atlantic 6-2261

G. RUFUS HETTINGER, Mgr.

## TAU KAPPA

SHOP FOR COLLEGE FASHIONS

at

## Rosenblum's

*Feminine Apparel*

SUNBURY, PA.

## EBERT'S 5c to \$1.00 Store

**School Supplies**

SELINGSGROVE and MIDDLEBURG

## BOWMAN'S SUNBURY, INC. DEPARTMENT STORE

Phone Atlantic 6-4561

Sunbury, Pa.

Compliments of

## FIRST NATIONAL BANK OF SELINGSGROVE

*Serving Selinsgrove and Surrounding Area  
Since 1864*

## *“Final tests” begin: This JUNE*

For nearly four years you've been passing tests. Not only in the classroom, but in the workshop of experience. You've become more self-reliant. You've made increasingly important decisions. You may be supporting yourself. And many times, you've appreciated a helping hand from your parents, friends, instructors, minister.

Starting the day you graduate, you'll face the *real* “final tests”—the ones you've been preparing for all these years: earning a living, marriage, children, providing a home. You'll want to meet these new challenges with the same maturity that has helped you toward graduation. And you can get off to a fast start with another foundation block for

your future—life insurance with Lutheran Brotherhood.

Because you are a Lutheran, you can own the outstanding Brotherhood Provider Plan and at remarkably favorable rates. For instance, you can start your insurance estate with a \$10,000 Brotherhood Provider Plan for just 44¢ a day\*—less than you pay for lunch.

When you face that first test out of college—when you know you must *provide*—remember you are a Lutheran and can turn to our Brotherhood Provider Plan. Call your Lutheran Brotherhood Campus Representative today.

\*Based on age 21 and current dividend rate, not guaranteed.

## LUTHERAN BROTHERHOOD Life Insurance

*A legal reserve life insurance society*

701 Second Ave. So., Minneapolis 2, Minn.

*free* Full-color reproduction of Martin Luther window (18" x 24"), suitable for framing and display in home or classroom. Write Lutheran Brotherhood.



*Congratulations to*

**THE CLASS OF 1960**

*from*

**THE LANTHORN STAFF**





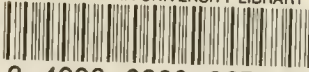


BLOUGH-WEIS LIBRARY  
SUSQUEHANNA UNIVERSITY  
DOES NOT  
DATE  
3  
SUSQUEHANNA UNIVERSITY

**BLOUGH-WEIS LIBRARY**

SUSQUEHANNA UNIVERSITY  
GROVE, PA 17878

SUSQUEHANNA UNIVERSITY LIBRARY



3 4998 0020 9674 6

