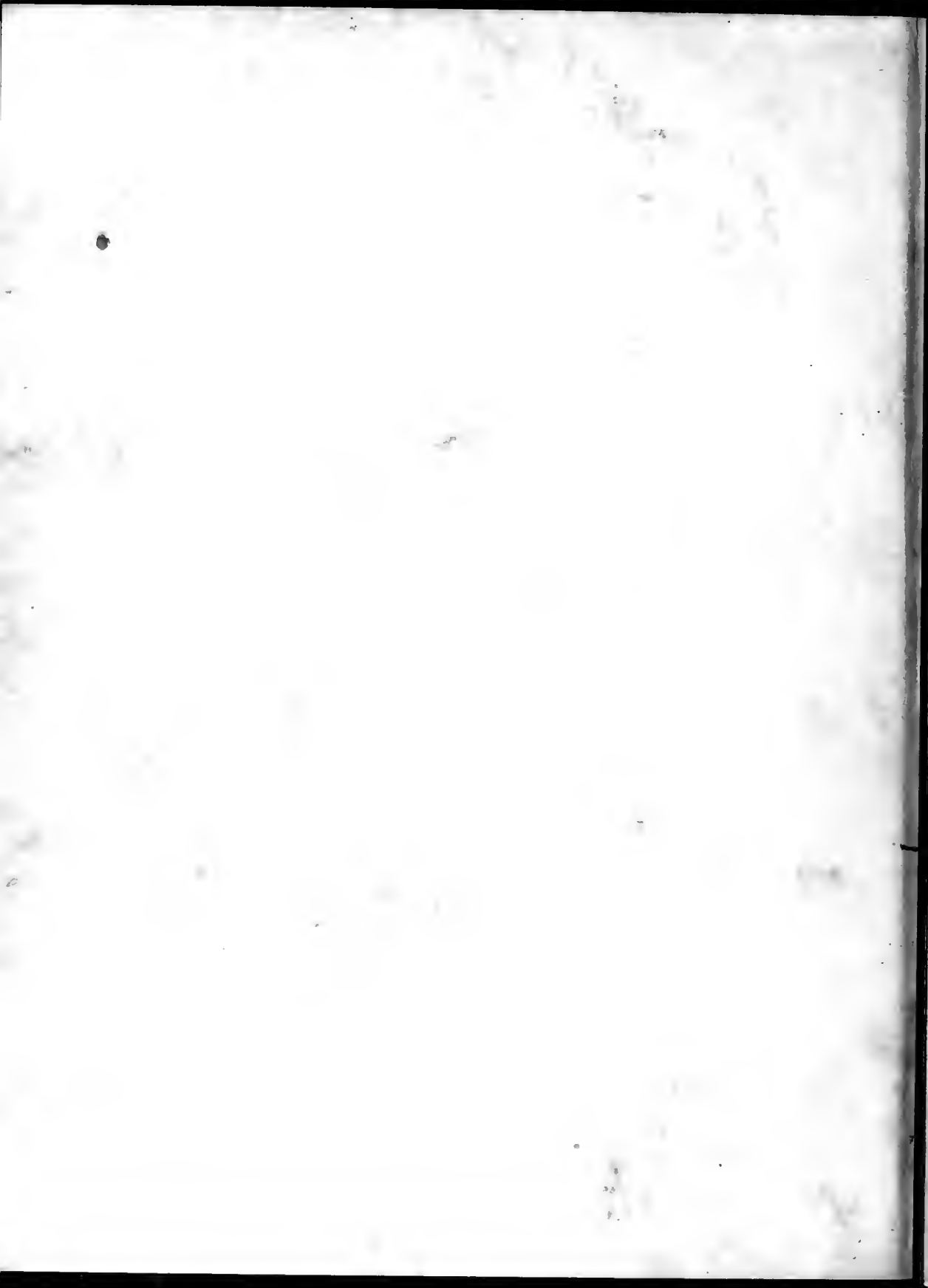
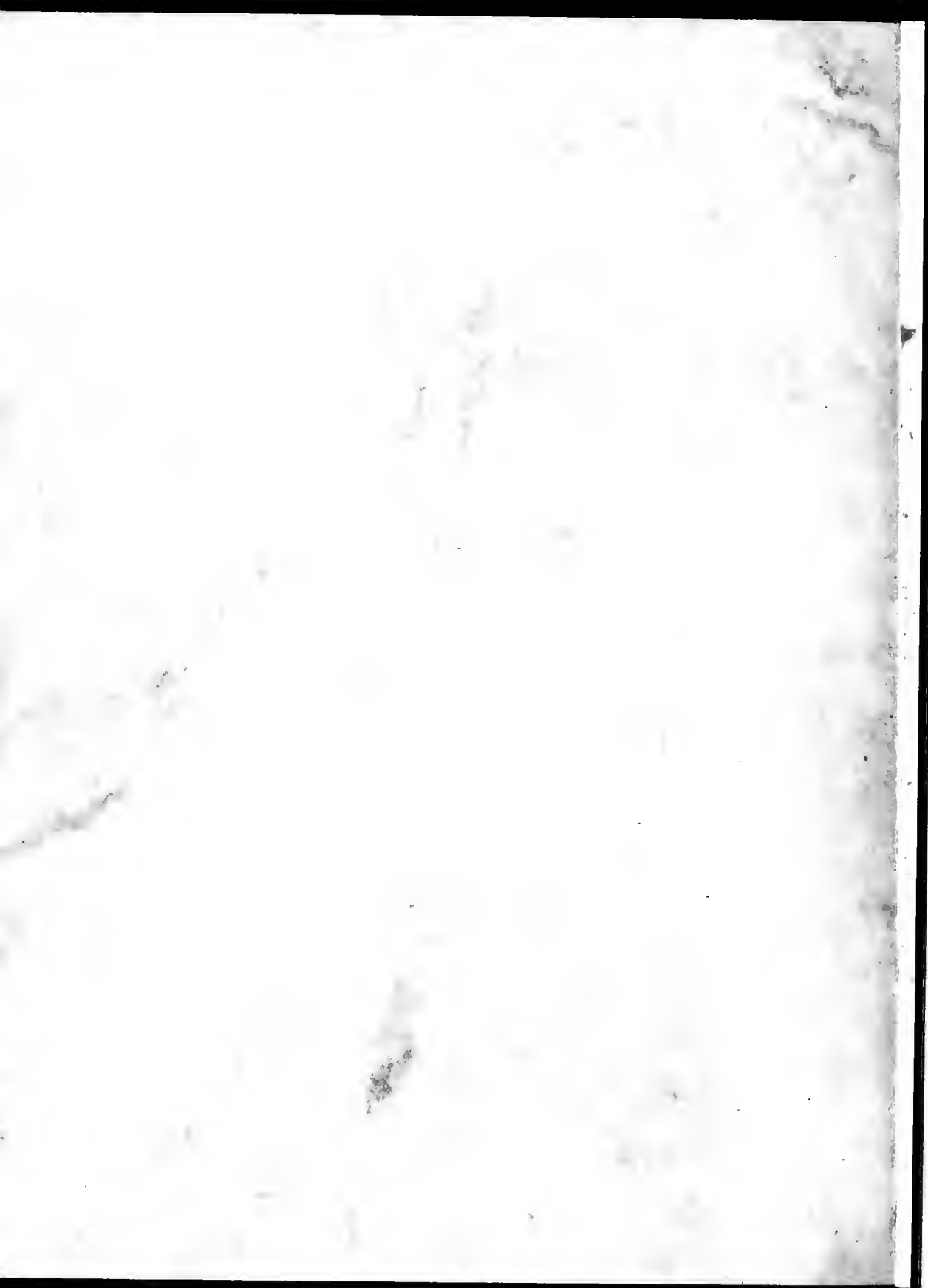




The
Laurel
Nineteen
Twenty
Eight



John A. McLeod





Copyright
1928

RAYMOND LONG
Managing Editor

KATHERINE ROBERTS
Literary Editor

EDWARD HARRELL
Business Manager

LAUREL

1928



THE ANNUAL PUBLICATION
OF THE
SENIOR CLASS OF
MARS HILL COLLEGE

*"Beyond the Blue Ridge
Lies Mars Hill"*



Dedication

Our beloved friend and adviser,
who administers to our souls as
well as our bodies, and whose
religion is a reality, not philos-
ophy or theology---to her who
has inspired us by her beauty of
character and rare understand-
ing, we hold it a privilege to
dedicate the nineteen twenty-
eight edition of the Laurel.



NORA KELLY



Foreword

LOOKING forward to the rise of a new and greater Mars Hill; looking backward to see how far along the road of progress we have come; drawing accurately a cross section of one year of the transition between the old and new; pausing for a while to view as a whole the activities of college days—in that list our aims in compiling the 1928 Laurel receive full expression. 🌀 🌀 🌀



Contents



College

Faculty

Seniors

Junior College Juniors

Academic Seniors

Religion

Literary

Athletics

Advertisements



RAYMOND LONG
MANAGING EDITOR



KATHERINE ROBERTS
LITERARY EDITOR



MAUD ASHWORTH
SENIOR EDITOR

STAFF 1928



EDWARD HARRELL BUSINESS MGR



ALICE MCKITTRICK
PHOTOGRAPHIC EDITOR



EDWIN HAYNES ADVERTISING MANAGER



WM. GERALD CIRCULATION MGR



GLENN TRAVIS ATHLETIC EDITOR



MARYON HOFFMAN
ART EDITOR



WILLIAM LOGAN EDITOR



RAYMONIA GILLESPIE
JOKE EDITOR



COLLEGE

GAURRL '28



ROBERT LEE MOORE HALL
McCONNELL GYMNASIUM



MONTAGUE LIBRARY
ACROSS THE CAMPUS



R.L. ELLIOTT A.B.M.A.
VICE PRESIDENT
PROF. OF ENGLISH



R.L. MOORE A.B.
PRESIDENT
- GREEK



I.N. CARR A.B.M.A.
DEAN
PROF. OF SOCIAL SCIENCE



MISS CORNELIA HOWELL A.B.M.A.
DEAN OF WOMEN
PROF. OF MODERN LANGUAGES



J.W. HUFF A.B.M.A.
REGISTRAR
PROF. OF ANCIENT LANGUAGES



R.M. LEE A.B.
PRINCIPAL OF ACADEMY
HISTORY - ECONOMICS



M.W.F. ROBINSON A.B.M.A.
PROF. MATHEMATICS

OFFICERS & HEADS OF DEPARTMENTS.



A.N. CORPENING A.B.M.A.
PROF. OF BIBLE



P.E. STRINGFIELD A.B.M.A.
PROF. OF EDUCATION



MISS MARTHA BIGGERS
HEAD OF MUSIC DEPT.



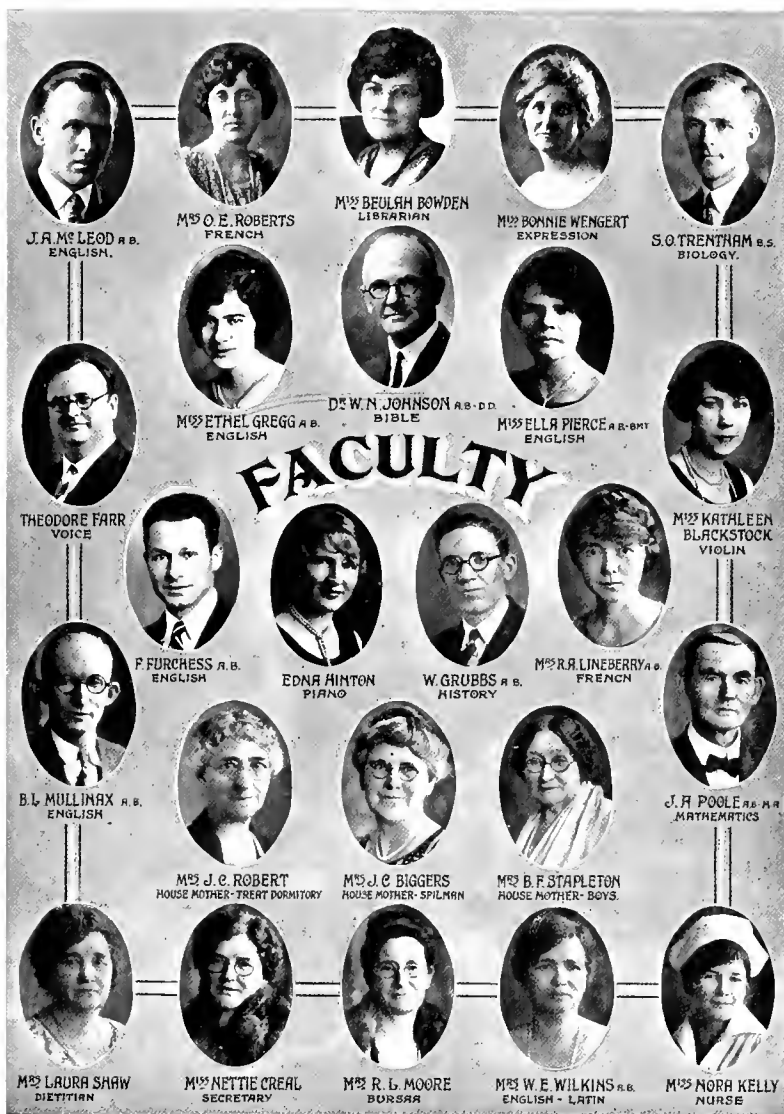
R.A. LINEBERRY B.S.M.S.
PROF. OF NATURAL SCIENCE



O.E. ROBERTS
COACH ATHLETICS
PHYSICAL EDUCATION



REV. J.R. OWEN
PASTOR
RELIGIOUS EDUCATION



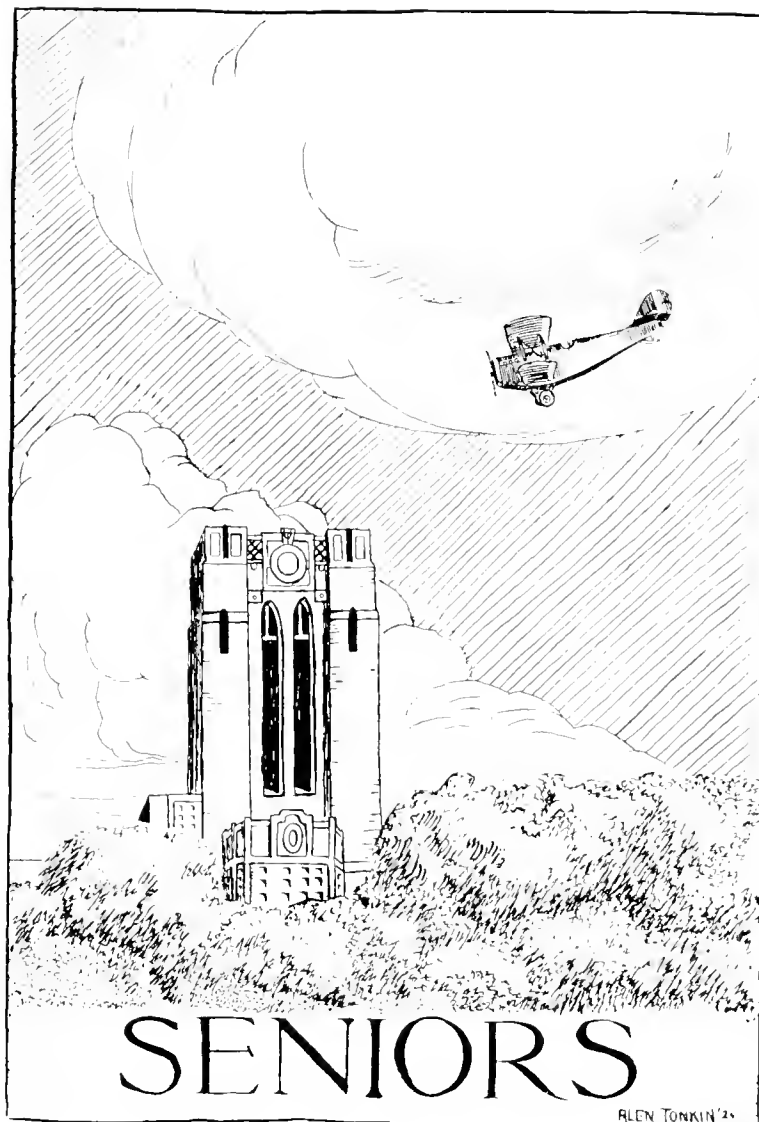
Alma Mater

*Oh, dear Alma Mater, we praise thy great name
For the lives of the ones thou has taught;
Through struggles and cares thou hast won thy great fame,
And great are the deeds thou hast wrought.
Thy sons and thy daughters hold mem'ries of days
When they labored and toiled in thy care;
They are blessing the world and are giving the praise
To thy name, Alma Mater, so fair.*

*Oh, wonderful teacher, thy beauties and truths
Are moulding our own lives like thine;
A model thou art for thousands of youths;
Thy truths with our lives we entwine.
We share all thy gains; thy losses are ours,
As thou art may we ever be;
May we give all our lives with their talents and powers
In service learned here from thee.*

*Thy hills in their beauty inspire us to climb
To the heights that are noble and great;
Thy rippling brooks and thy bowers sublime
Have lessons for each to relate.
Should we live to old age, our hair silv'ry gray,
Ever faithful and true we would be;
And with hearts full of love we would bless the day
When destiny led us to thee.*

FAITHFUL 25



SENIORS

ALEX TONKIN '20

LAUREL '28



MRS. FLORA HARDING ROBINSON
Sponsor

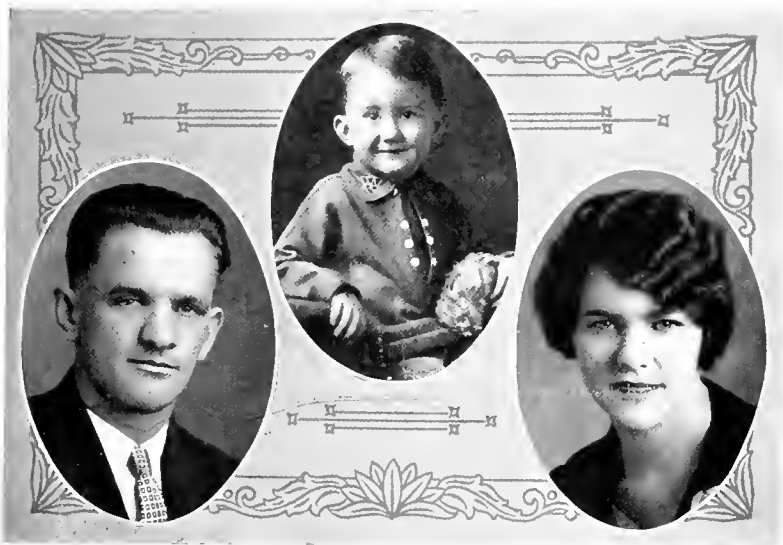


IN MEMORY

of

CHARLES W. ROPER

Who heard the call to serve his country in the World War, who later heard the call to serve his God as a minister, and who has answered now the last great call that comes to a loyal Soldier of the cross. His truthfulness, patience, purity, faithfulness, and love evidenced his having put on the whole armor of God; and his daily living influenced countless numbers to a holier life.



EARLE L. BRADLEY

Philomathian

ASHEVILLE, N. C.

"Steel true, and blade straight."

Earle is president of the class, and he is one with one-hundred per cent plus of pep and business sense, and a one-hundred per cent pal as well. He is recognized as an outstanding debater, and his medals testify to that fact. To Earle goes the best wishes and love of his fellow students, for his high ideals and "four squareness" command their highest respect.

President Class '28; Vice-President Class '27; Winner Commencement Debater's Medal '24; Anniversary Debater '27-'28; Inter-collegiate Debater '26-'27-'28; Commencement Declaimer '27-'28; President Debater's Club '27-'28; President Buncombe County Club '26-'27; Officer Buncombe County Club '27.

DAVID MOORE ROBERTS

This is "just David" and, although only two and a half years old, he has had many honors.

The Athletic students claim him because he is the only son of Coach Roberts. The whole college, both faculty and student body, claim him because he is the only grandchild of President Moore. And because of all this, and his sweet, attractive personality, the Senior Class conferred upon him the highest honor that it is able to give to one so young—"Class Mascot."

EMMA MARGARET HARTSELL

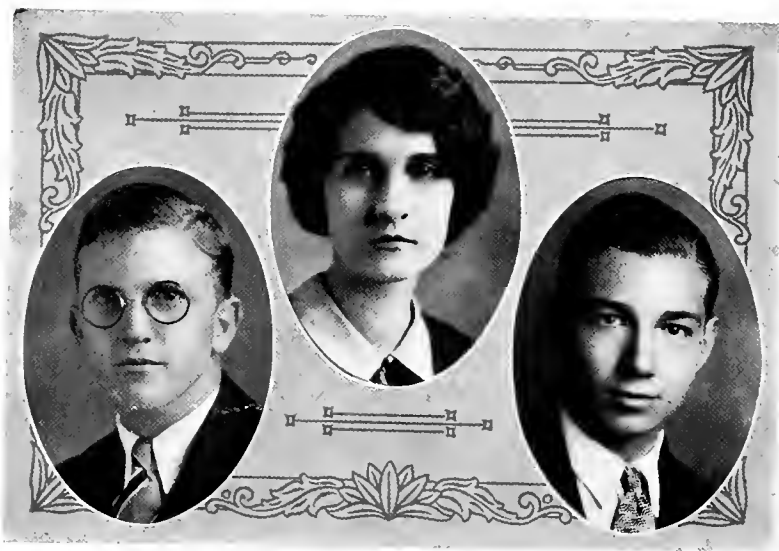
Clio

BREVARD, N. C.

*"For a girl more able, capable and fine,
You may search the world o'er and never find."*

Emma's noble character speaks for itself. Her amiable disposition causes those who know her best to like her most. She is friendly, sincere and dependable. Her high ideals, true conviction, moral courage and perseverance in the paths of right make her an inspiration to all with whom she comes in contact.

Secretary Senior Class; Officer S. S. '27-'28; Officer B. Y. P. U. '26-'27; Y. W. A. Officer '26-'27; Debate Club '27-'28; Y. W. A. Council '27-'28; Phi Anniversary Marshal '27; Orchestra '26-'27-'28; Band '27-'28; Inter-collegiate Debater '28.



WILLIAM L. PARKER

Euthalian

GOLDSBORO, N. C.

"None but himself can be his parallel."

Bill's character, ability, willingness and sincerity have given him a place on our campus that only he can fill. His creditable scholastic record, his participation in both school and society activities, and above all, his conscientious, Christian leadership, make Bill one of our best all-round students.

Head President C. O. D. of S. S. '27-'28; Vice-President C-II Class '27-'28; Anniversary Representative '27; Officer Society '26-'27; Officer S. S. '26; Officer B. Y. P. U. '26-'27; "Collegiate Ramblers" '27-'28; Dramatic Club '27-'28; Inter-collegiate Debater '27; Eu-Non Orchestra '27-'28; Orchestra '27-'28; Forensic Council '27-'28; Scribleris Club '27-'28.

RAYMONIA M. GILLESPIE

Nonpareil

CANTON, N. C.

*"The good stars met in your horoscope,
Made you of spirit, fire and dew....."*

Raye is all lights and shadows. Beauty and brains are a rare combination, and she is not lacking in either. She has an outstanding scholastic record and holds several offices as well.

Officer Society '26-'28; Officer S. S. '26; Chorus '26; Secretary B. Y. P. U. '26; Anniversary Representative '26; Scribleris Club '27-'28; President S. S. Class '27; Y. W. C. A. Council '27; Inter-collegiate Debater '27; Vice-President Society '27; *Hill Top* Staff '27; *Laurel* Staff '27-'28; Charter Member Debate Club; Dramatic Club '27-'28; Inner Circle '27; Secretary Debate Club '27; Anniversary Marshal '27.

EDWARD TRUETT HARRELL

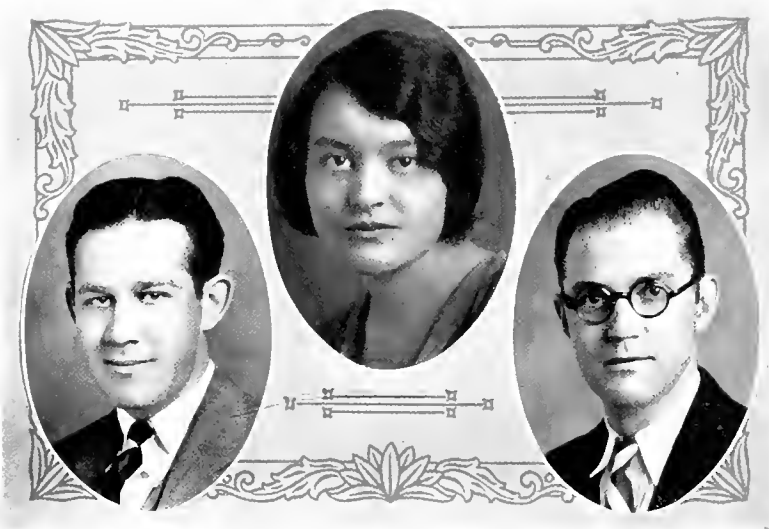
Philomathian

ROSEMARY, N. C.

"Daniel Webster had nothing on him."

"Ed" possesses a versatility and a genial nature which places him by popular choice in the front ranks of all college activities. He is a thorough gentleman, a born actor, a music lover and an eloquent orator; these elements combined make him a leader.

Business Manager *Laurel* '27-'28; President Dramatic Club '27; President B. Y. P. U. '27; Head Chorister of B. Y. P. U. '27-'28; Officer B. Y. P. U. '27-'28; Officer S. S. '26-'27; Alternate Commencement Orator '27; Anniversary Orator '27; Commencement Orator '28; Officer Society '26-'27; Scribleris Club '27-'28; Glee Club '27-'28; Chorus '26-'27-'28; College Quartette '27-'28.



RAYMOND LONG

Philomathian

GASTONIA, N. C.

"For if you put by little to little, and do so often, it will quickly become much; for by trying the Greeks got into Troy."

Raymond is our class Apollo. The mystery to us is—how did he ever, with all his good looks, hold down the class presidency for two years as well as numerous other offices? He certainly isn't a shirker, and once he knows what is to be done he does it. He is very popular because he just can't help it. Raymond is a speaker of ability—three medals testify to that fact.

President C-I Class '26-'27; President Society '26; Society Commencement Orator '27; Anniversary Debater '27; Commencement Orator '28; President Debaters Club '28; President Gaston County Alumni Association '26-'27; Officer B. Y. P. U. '27; Officer S. S. '27; Editor-in-chief of *The Laurel* '28.

KATHERINE ROBERTS

Nonpareil

MARS HILL, N. C.

*"Mark her majestic fabric; she's a temple Her soul's the Deity that lodges there;
Sacred by birth, and built by hands divine; Nor is the pile unworthy of the God."*

In Katherine we find the qualities of an all-round student. Faithfulness and loyalty of her Alma Mater; the love and admiration of her fellow students; an optimistic, fun-loving nature; together with a gracious dignity and winsomeness of manner, make her a leader in campus activities, both religious and literary. In losing "Katt" we lose one of our best.

Literary Editor *Laurel* '28; Corresponding Secretary B. S. U. '27-'28; President Society '28; Secretary C-I Class '26-'27; Euthalian Anniversary Marshal '27; Secretary Scribleris Club '27-'28; Secretary Society '27; Anniversary Essayist '27; Dramatic Club '26-'27; Officer B. Y. P. U. '26-'27; Officer Y. W. C. A. '26-'27; Officer Society '26-'27; Scribleris Club '26-'27-'28; Teacher S. S. '26-'27-'28.

CHARLES W. ROPER

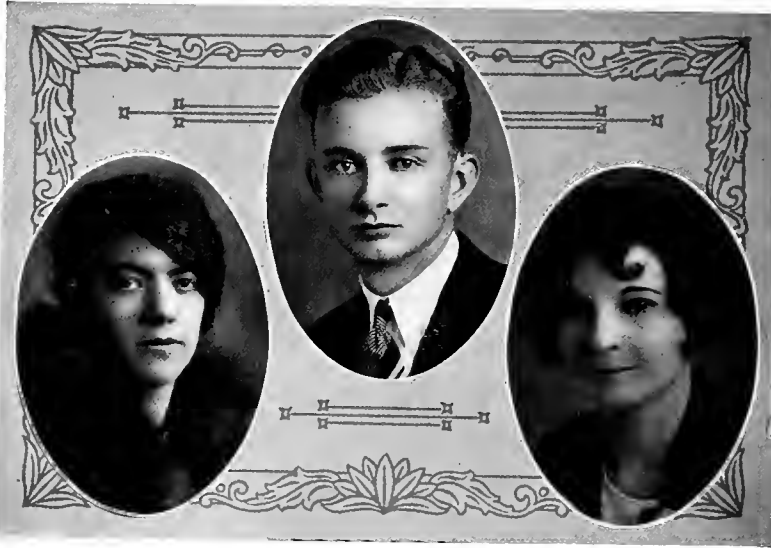
Euthalian

HONEA PATH, S. C.

*"Who if he rise to station of command, On honorable terms, or else retire
Rises by open means; and there will stand And in himself possess his own desire."*

Wanted—a pal, brother, friend, adviser, good student—just all of them, that's Charlie! Of honors he has had a great share, not because he sought them but, because his fellow students wanted him.

Head President B. Y. P. U. '26-'27; Officer S. S. '26-'27; Officer Society '27; Officer C-I Class '26-'27; Anniversary Representative '26-'27; Commencement Representative '26; President South Carolina Club '27; President Scribleris Club '27; Commencement Representative '28; Winner Society Orator's Medal '27.



REBA M. LOWE

Nonpareil

KWEILIN, KWANGSI, CHINA

*"A lavish planet reigned when she was born
And made her such kindred mould to heav'n
She seems more heaven's than ours."*

Among the few students who hold rank in important places of the College activities, and in the class room, Reba is one. She is an all-round student; loved by every one with whom she comes in contact. Though her virtue be unknown it will bring pleasantness and peace.

Charter member Scribleris Club; Secretary Scribleris Club '26; Science Club '26-'28; Secretary Science Club '27; Officer S. S. '26-'27-'28; Officer B. Y. P. U. '26-'28; Chorus '25-'26-'27-'28; Glee Club '27-'28; Vice-President Society '27; Officer Society '26; President Society '27; General President Y. W. A. '26-'27; Winner Society Essay Medal '27; Hill Top Staff '27-'28; Inter-collegiate Debater '28; Class Basketball '28.

LLOYD WALTER CAIRNES

Philomathian

HORSE SHOE, N. C.

"Life has a golden medium; find it."

As a friend Lloyd is always sympathetic, and it is easy to put all of one's faith in him; he is one of those few persons who know when to be gay and when to be serious. With his strong determination and his unusual qualities as a student, he will contribute to his native country a life of service.

Basketball Squad '26-'27; Officer S. S. Class '27; Officer B. Y. P. U. '27; Circulation Manager College Publication '27-'28; Science Club '27-'28.

NELLIE GERTRUDE BOWLES

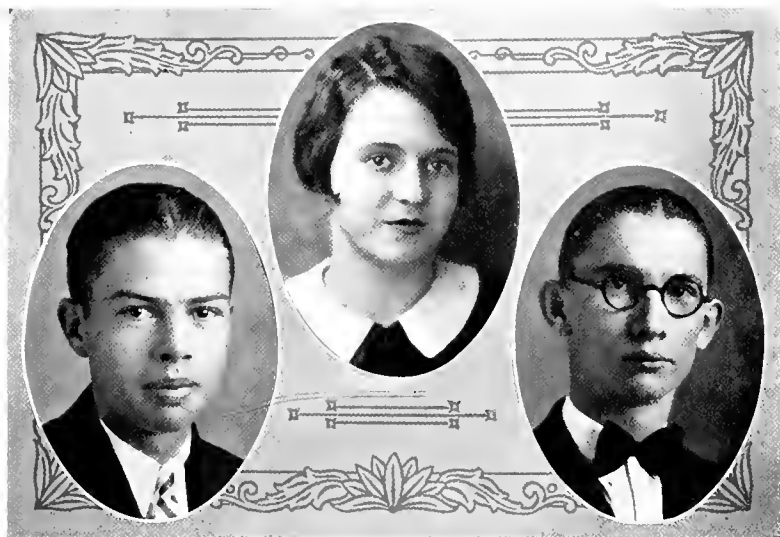
Clio

ATLANTA, GA.

"Hearts that feel and eyes that smile are the dearest gifts that Heaven supplies."

During Nell's trio of years with us she has given us a standard by which we are able to judge loyal students and true friends. Possessed with a modest, unselfish and sincere character, she makes goodness fascinating to those with whom she comes in contact. Besides being faithful in academic work she has been a conscientious worker in extra curricula activities.

Officer B. Y. P. U. '25-'26-'27; Officer S. S. '26-'27; President S. S. '27; Member Y. W. A. Council '26-'27; Officer Y. W. A. '27; Society Officer '27; Vice-President Society '27; Anniversary Representative '26; Glee Club '26-'27-'28; Winner Society Improvement Medal '27; Chorus '26-'27-'28.



BURT POWERS JOHNSON

Euthalian

LILLINGTON, N. C.

*"Not too serious, not too gay.
But a rare good fellow in every way."*

Burt is a conscientious worker in society, an able public speaker, and an outstanding athlete. As he enters into the political world, uplifted by ambitious and high ideals of princely character, we assure him of success.

"M" Club '27-'28; International Relations Club '27-'28; Officer S. S. '27; Vice-President Eastern Carolina Club '27-'28; Officer Society '27; Nonpareil Anniversary Marshal '27; Anniversary Orator '27; Officer B. Y. P. U. '26; Manager C-I Track Team '27; Varsity Basketball '26-'27-'28; Varsity Baseball '27; Football Squad '26; Reporters' Club '27-'28.

BARBARA FREEMAN

Nonpareil

ASHEVILLE, N. C.

"A happy genius is the gift of nature."

From whence did the gods assemble the ingredients for this unique personality? A bold adventuress in the conquest of truth, a clear-cut thinker with a heroism that speaks straight from the shoulder, a liberty-loving spirit, as gentle as the snow-flake, and as Oynamic as the thunderbolt. "Bobby" is not always given to joke or jest, but she "Kids" very "Well." She has, with all her idealism, a delightful simplicity. "Bobby" has a personality all her own.

Leader Y. W. A. Circle '26-'27; Class Officer '25-'26-'27-'28; Vice-President Society '26-'27; Officer B. Y. P. U. '25-'26-'27; Officer S. S. '25-'26-'27; Scribblers' Club '26-'27-'28; Dramatic Club '26-'27-'28; Secretary Dramatic Club '27; Officer Society '25-'26-'27-'28; Anniversary Representative '25-'26-'27; Commencement Orator '27; College Cheer Leader '26-'27-'28; Glee Club '28; Euthalian Anniversary Marshal '27; Secretary Debate Club '28; Inter-collegiate Debater '27; *Hill Top* '27-'28.

OLIVER JACKSON MURPHY

Euthalian

LOUISBURG, N. C.

"The man who sleeps till noon cannot know how beautiful is the sunrise."

Always smiling, ever looking on the bright side of life, never too busy to help a friend in distress—that's Jack. Indeed, a master of expression! The society hall and Dramatic Club are proud of him.

President Society '27; President Eastern Carolina Club '27; Vice-President Dramatic Club '27; Debaters Club '27; International Relations Club '27; Marshal Non Anniversary '27; Officer S. S. '26-'27; Secretary Society '27; Officer B. Y. P. U. '26-'27; Anniversary Representative '27; Joke Editor *Hill Top* '27; Commencement Representative '27.



DAISY PHYLLIS MARTIN

Nonpareil

GREENVILLE, S. C.

"Hold to the golden mean."

A buoyant step—Daisy, a hearty laugh—Daisy, cheering some discouraged fellow-student; a dignified though graceful poise—Daisy, conducting business. Yes, Daisy is indeed an all-round girl; a staunch friend, jolly comrade, capable worker and sympathetic confidence.

Officer S. S. '26-'27; President S. S. Class '27; B. Y. P. U. Officer '27; Officer Society '27; Secretary South Carolina Club '26-'27; B. Y. P. U. Secretary '27; Y. W. A. Council '27-'28; Officer South Carolina Club '27-'28; Vice-President Society '27; Society Anniversary Marshal '27.

EDWIN HAYNES

Philomathian

WAYNESVILLE, N. C.

"Hitch your wagon to a star and drive on."

Ed is a typical mountain boy. By his wonderful personality and congeniality, he has found a warm place in the heart of the student body. Yes, Ed is going to be a lawyer and his ability to do things has been shown in the various organizations of which he is a member.

President Society '28; Society Anniversary Representative '27; Alternate Inter-collegiate Debater '27-'28; Alternate Commencement Debater '28; Advertising Manager *The Laurel* '28; Advertising Manager *Hill Top* '27-'28; Clio Anniversary Marshal '27; Class Cheer Leader '27-'28; Manager Senior Basketball Squad '27-'28; International Relations Club '27-'28; Forensic Council '28.

ELIZABETH CAROLYN COX

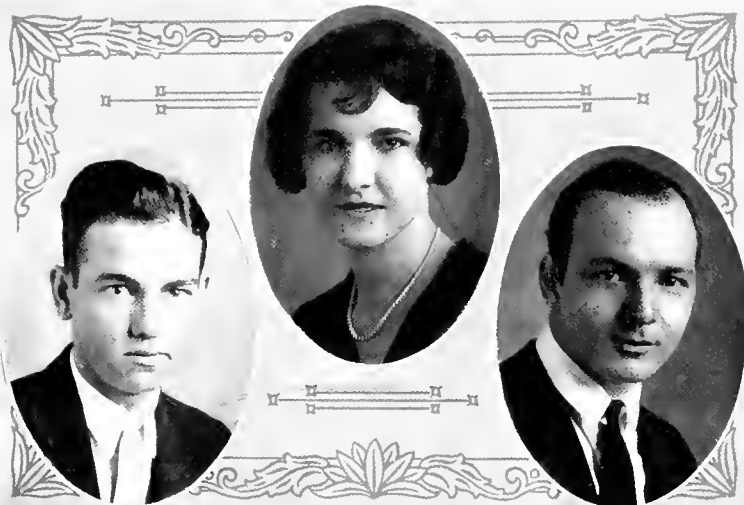
Nonpareil

WILMINGTON, N. C.

"Her air, her manners all who saw admired; courteous though coy, and gentle though retired; happiness her laughing eyes displayed and ease of heart her every look conveyed."

Elizabeth, by her modesty, refined manners and unselfishness, makes all who know her—soon adore her. She has a very unique way of her own when it comes to making and keeping friends and it is not through power of speech that she wins them but through the nobleness portrayed in her daily life.

Officer S. S. '27; Secretary S. S. '27; B. Y. P. U. Officer '27; Secretary B. Y. P. U. '26; Officer Y. W. A. '27; Officer Society '27.



JAMES NEWTON BROWN

Philomathian

STATESVILLE, N. C.

"Any fool can get a notion, but it needs training to drive the thing through."

James has won a name for himself and those who know him like him. We have found him to be a true friend and a loyal classmate. He ranks very high among his fellow students, both in classroom work and in campus activities.

Vice-President Science Club '27; Officer S. S. '27; Officer B. Y. P. U. '27.

MARYON HOFFMAN

Clio

MOUNT HOLLY, N. C.

*"Here's to the girl with a heart and a smile
That makes the bubble of life worth while."*

The casual observer would be led to believe that Maryon is rather reserved, but once you have seen her mingling with her friends you know that she is joyously alive. She is interested in all student activities and ever "up and about" and in the swing of things. She possesses the rare charm of being the same wherever you see her. To be sure, her distinct personality has won for her a wide circle of friends.

Now 'tis time to say, "Bon Voyage", for Maryon boards her ship and goes out into the sea of life, but never a fear comes to us, for we know that she will have smooth sailing.

Corresponding Secretary Senior Class '28; Y. W. A. Officer '26-'27; Officer B. Y. P. U. '26-'27; President Gaston County Club '27-'28; Anniversary representative '26-'27; Officer S. S. '26-'27; Art Editor of *Laurel* '27-'28; Glee Club '26; Officer Society '27; Y. W. A. Council '27-'28.

CHARLTON H. SULLIVAN

Euthalian

LAURENS, S. C.

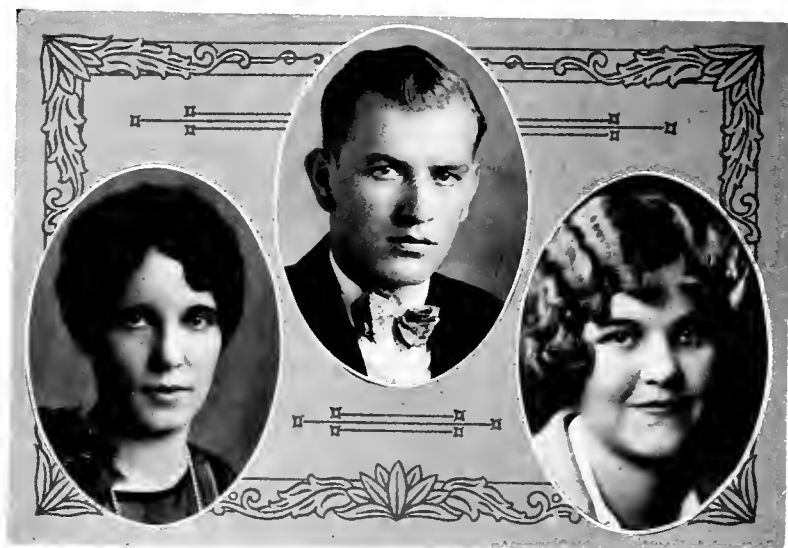
"Before honor is humility."

"Plain living," "High thinking" and "Sullivan" are near synonymous terms.

The ministry is his vocation, the muses his hobby, and boxing his pastime. At work or play, cheerful to help or counsel, ready to laugh or sympathize—the ministry and the world need more like him.

Assistant Teacher S. S. '26-'27-'28; President Society '27; Commencement Orator '27-'28; Anniversary Orator '27; Vice-President Scribleris Club '27-'28.

LAUREL '28



ADA TERESA BAREFOOT

Nonpareil

DUNN, N. C.

*"Call in sweet music. I have heard soft airs
Can charm our senses and expel our cares."*

All the world admires a joyful heart. To our campus Ada has brought this joy by scattering sunshine into many lives filled with darkening shadows, by making lighter a number of hearts once heavy, and by disclosing a spirit of genuine kindness to all. The mirthful spirit and the happy songs of Ada will linger long in our memories after the text-books and the class work have been forgotten.

Officer Society '27-'28; Officer B. Y. P. U. '26-'27; Officer S. S. '26-'27; Chorus '26-'27; Orchestra '26-'27; Glee Club '26-'27; Secretary Eastern Carolina Club '27; Anniversary Representative '27.

CHARLES C. BRUCE, JR.

MARS HILL, N. C.

*"Whate'er he did, was done with so much ease,
In him alone 'twas natural to please."*

Charles is a very unusual boy. He has a noble character, great ability, generosity and gentility, a rare combination of virtues. He has an admirable personality and makes friends as he makes acquaintances. He believes in taking life easy and never worries over things that are doomed to happen. Being a jolly good sport he is liked by every student. He appreciates the best things in life, for he is a great admirer of music and a lover of the beautiful.

Member of choir and Glee Club.

MAE ELIZABETH GIBSON

Nonpareil

SWANNANOVA, N. C.

"To live in hearts we leave behind, is not to die."

Mae, coming to us two years ago, hails from Swannanoa. Her two years with us have been enough to set her plainly before us as one of the highest types of young womanhood. Her modesty and her gentle nature speak in a language which places her far above the mere flapperish type which men forget.

Officer S. S. '26-'28; Officer Buncombe County Club '26; Science Club '26-'27; Manager C-I Class Basketball '26; Officer Y. W. A. '26.



EDITH BESSIE HAYES

Nonpareil

LEICESTER, N. C.

"Her voice is low and sweet."

Edith is so gentle and serene that her very presence has a soothing effect upon those around her. Yet she is very strong to persevere, and does well whatever she undertakes, both in the classroom and on the campus. She is a most lovable girl.

Officer B. Y. P. U. '27; General Treasurer B. Y. P. U. '27-'28.

WALTER N. POPE

Philomathian

WADESBORO, N. C.

"Who so would be a man must be a non-conformist."

Pope has not been with us all the time for the past two years, but he has gained many friends while here. He is a kind, peaceable and congenial fellow, and has developed a keen interest in every phase of school activities. He is especially brilliant in chemistry, and his classmates are expecting him to attain renown in this particular phase of science.

Science Club '26-'27; Assistant in Chemistry '27-'28.

MILDRED CONSTANCE HAYES

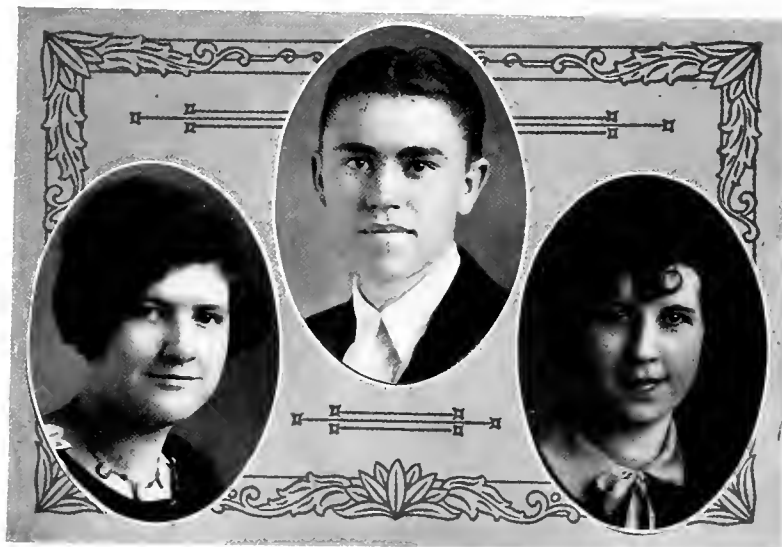
Nonpareil

LEICESTER, N. C.

"In her company we are at our best."

A happy, good-natured little lassie with highest ideals and rare common sense, is Mildred. She is modest and unassuming in manner, unselfish and dependable in her relations with others. These qualities make her easy to get along with and helpful to all who know her.

Officer B. Y. P. U. '27; General Treasurer Y. W. A. '27-'28.



BONNIE CAREY HILDEBRAND

Nonpareil

HICKORY, N. C.

*"A smile for all, a greeting glad,
A lovable, jolly way she had."*

"Happy-go-lucky" Bonnie is not only a pal, but also an honest, loyal friend. Her friendship is solid; there's not anything she wouldn't do for you. Her sweet disposition is her chief possession, and her never-failing smile wins her a place wherever she goes.

General Secretary of B. Y. P. U. '27-'28; Officer Y. W. A. '27; Dramatic Club '27; Anniversary Representative '27; Officer B. Y. P. U. '26-'27; Censor Society '27.

JESSE WALTON KITCHIN

Philomathian

HORSE SHOE, N. C.

"A man's a man for a' that."

If one wishes to build for himself an everlasting memorial, let him win friends. A quiet unassuming lad came to college. He labored hard and wrought well. He won for himself a large space in our hearts. He has simplicity, yet he is not simple, optimism yet seriousness; Kitchin has a big heart and a warm smile.

Secretary Society '27; Officers S. S. '27; President Science Club '27; Officer B. Y. P. U. '26-'27; Basketball Squad '26-'27; Class Basketball '27.

PAULINE ELIZABETH FRYE

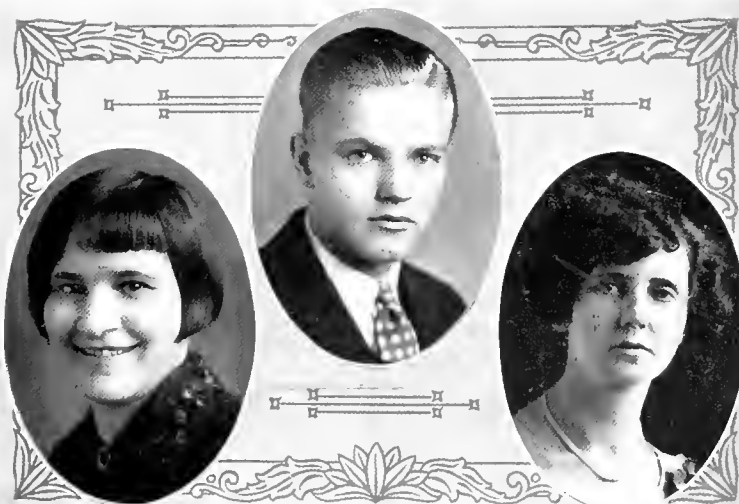
Nonpareil

HICKORY, N. C.

*"Her smiles show her happiness,
Her friends her popularity."*

We call her "Polly" 'cause we all love her, you see. She came to Mars Hill two years ago and has steadfastly proved herself a capable all-round girl. Her life is an open book, and we greatly admire her for her loyalty, kindness, conscientiousness, firmness and love of a pure Christian life. Polly's smiles and personality are such an inspiration to us that we shall never forget them. She believes in "keeping at it", and we predict for her a happy and useful life.

Y. W. A. Council '27-'28; Officer B. Y. P. U. '27; Officer Y. W. A. '27; Officer S. S. '26-'27; Anniversary Representative '27; Secretary Society '27-'28; Inter-collegiate Debater '28; Scribleris Club '27-'28.



BESSIE SUSANNA LEIBY

Nonpareil

READING, PENN.

*"First then she will or won't, depend on it;
If she will do 't, she will, and there's an end on 't."*

Bessie is our Yankee who argues with Kat over the respective virtues of Grant and Lee, and who closes the arguments by a hearty hug. Clever? Lovable? Loyal? Yes, and dozens of other qualities as well. It does not pay to tease Bessie, for she always has a comeback that leaves you stranded. Take our advice and "leave her be" unless you want her for a sincere, good pal. If all Yankees are like Bessie, there will be no more Civil Wars.

Officer Society '26-'27, '27-'28; Officer S. S. '26-'27; Officer B. Y. P. U. '26-'27; Assistant Secretary C-I Class '26-'27; Stenographer *Hill Top* '27-'28; Class Basketball '26-'27, '27-'28; Y. W. A. Officer '26-'27; Science Club '26-'27-'28; Secretary Science Club '26-'27; Y. W. A. Council '27-'28; Chorus '26-'27-'28; Vice-President Society '28.

MOODY G. HENDERSON

Euthalian

CAMPBELL, S. C.

"I count life just a stuff to try the soul's strength on."

"What's the matter with Moody? He's all right!" Sure he's all right as anyone on the campus will testify. He has a teasing smile and an engaging manner. He is as good a pal as anyone could wish. We predict for Moody a successful career, for with his comradery and good sense he commands the respect and admiration of all his associates.

Officer South Carolina Club '27-'28; Officer B. Y. P. U. '27; Officer S. S. '27; Monitor Brown Dormitory '27-'28; Gym Director '27-'28; Officer Society '27-'28; President Anniversary Debate '27.

MOLLIE JUNE COOPER

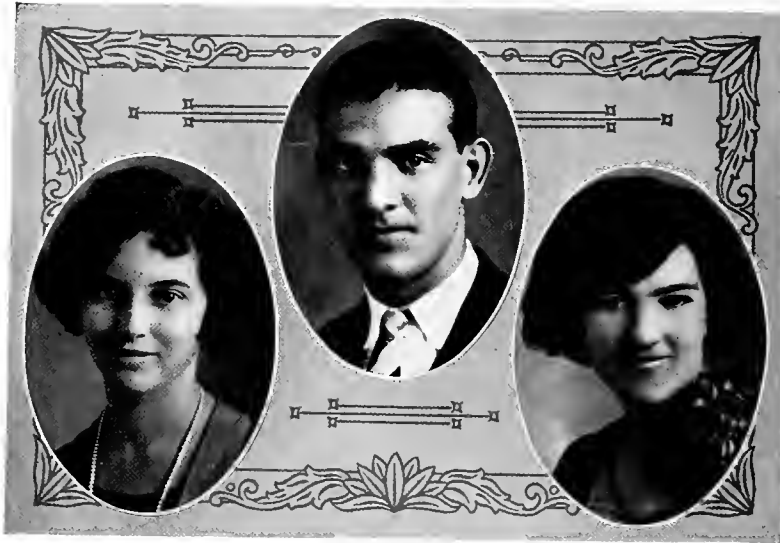
Nonpareil

TRAVELERS REST, S. C.

"A personality unsurpassed; a spirit to be downed never; a heart as pure as gold, a sweet disposition—beautiful in its tender thoughtfulness of others."

Mollie June is a very conscientious student—a girl of noble character and lofty ideals. Her cheerfulness and fun-loving nature make her a favorite among the boys and girls with whom she associates.

Officer S. S. '26-'27; Officer B. Y. P. U. '27; Class Basketball '26-'27, '27-'28; South Carolina Club '26-'27, '27-'28; Officer Y. W. A. '26-'27; Officer Inner Circle '26-'27; Y. W. A. Council '27-'28; Anniversary Representative '26-'27; Chorus '26-'27, '27-'28; Glee Club '26-'27, '27-'28.



RUBY IRENE FLEMING

Nonpareil

BOONVILLE, N. C.

"She delights to serve those about her and to make them happy and content."

Ruby is one who never worries when things go wrong; for she makes the best of life and is happy at any place, any time, any where. She is always doing a deed of kindness for someone and never grows tired of explaining mathematical problems to her less-gifted classmates. In her future career we hope that she may be as happy, content and successful as she is at present.

Dramatic Club '26-'27; Officer B. Y. P. U. '26-'27; Officer Y. W. A. '27.

WILLIAM DOCKERY

Philomathian

MARSHALL, N. C.

"Where there's a will there's a way."

Bill has been with us "since the mind of man runneth not to the contrary"—and his usefulness and popularity have increased with the years. How can the boarding department of the College run without him? And what will the football squad do without Capt. Dockery? Bill has a will to do things as they should be done, and he usually does them. Whether he "tackles" in football or in his studies, he generally overcomes.

Varsity Football '25-'26-'27; Capt. Football '27; Officer Society '27; Officer S. S. '25; Secretary "M" Club '26; Chief Marshal Society Anniversary '27.

STELLA REDD

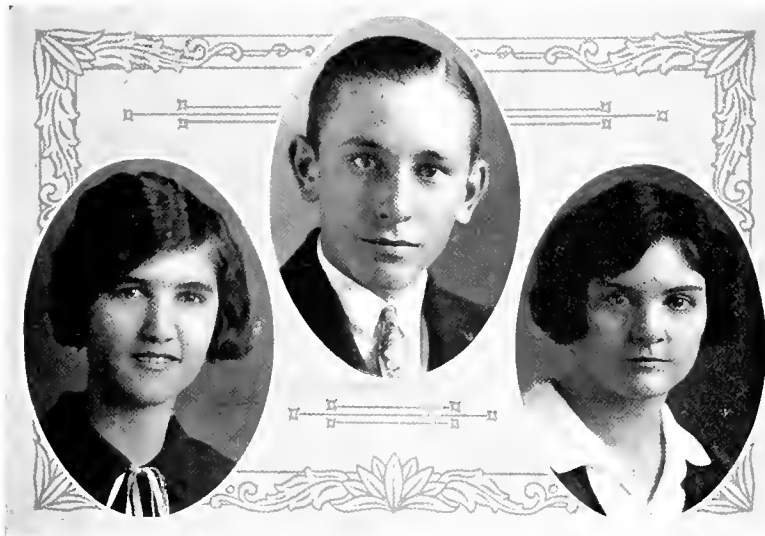
Clio

GREER, S. C.

*"When you are sad and lonely, smile,
Smile, when disappointed and blue,
When all about you goes wrong, smile
And the world will smile back at you."*

During the two years Stella has been with us, she has proved herself to be a faithful worker. Her "hearty laughs" can often be heard ringing through the halls of the dormitories and about the campus. Her one outstanding quality is unselfishness; she would give up her all to make others happy. With the hope of such a bright future, we know she will succeed.

Officer S. S. '26-'27; Officer B. Y. P. U. '27; Officer Y. W. A. '26-'27.



MARY MARTHA HARRIS

Nonpareil

LINCOLNTON, N. C.

"True worth is in being, not seeming."

A very faithful picture of noblest womanhood—that's Mary. She is admired for her modesty, affable and liberal spirit, kindness and lovable personality which are combined with strength of purpose. During her stay at Mars Hill she has gained the confidence and ardent affections of both faculty and students.

Secretary College Church '27-'28; Assistant Chief Marshal Euthalian Anniversary '27; Officer B. Y. P. U. '27; Officer Y. W. A. '27; Dramatic Club '27; Officer Society '27; Anniversary Representative '27.

TROY EDWARD JONES

Philomathian

VARINA, N. C.

"Where he set his heart, there he put his hand to do the thing he willed, and bore it through."

Troy possesses all the qualities that it takes to make a true Christian gentleman. He is highly esteemed for his lofty ideals and his interest and efforts in helping promote the welfare of others. He has earnestly sought the best things attainable at Mars Hill, and we are positive of his future success in his chosen field of work.

President S. S. Class '27-'28; Alternate Anniversary Declaimer '27; Glee Club '27-'28; Secretary Ministerial Conference '27; Dramatic Club '27-'28; Officer Society '26-'27; Officer Dramatic Club '27; Officer S. S. Class '26-'27-'28; Officer B. Y. P. U. '27-'28; Chorus '26-'27-'28.

ALMA BONNIE CHANDLER

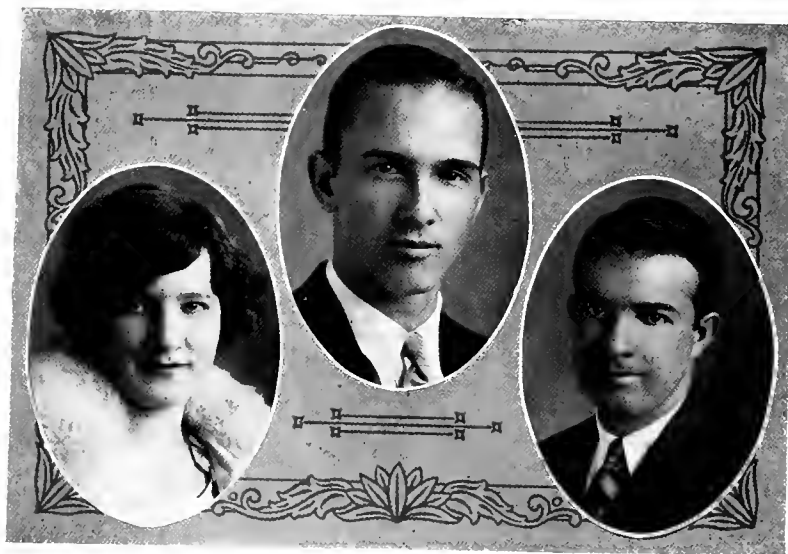
Clio

WEAVERVILLE, N. C.

"They who think of others most are the happiest folks that live."

Bonnie is even more than her name implies—pretty, sweet, gay and cheerful. Her loyalty, firmness, honesty, patience, truthfulness, and strength of character are admired by all who know her. Her tender smiles and cheerful words meet responses wherever she goes.

Officer B. Y. P. U. '25-'26-'27; General Secretary B. Y. P. U. '26-'27; Officer S. S. '26-'27; Class Basketball '25-'26; Secretary Buncombe County Club '26; Officer Society '26-'27; Officer Inner Circle '26-'27; Hill Top Staff '27.



SARA ELOURA OSBORNE

Clio

SPARTANBURG, S. C.

"Two eyes of blue come smilin' through."

There is a chamber in the soul of her friends, in which space will dwell ever, the memory of this fair maiden, fair as the world saw her, yet fairer as it knew her. She's just a pleasant mixture of seriousness and near-seriousness, optimism and frankness, while jovialty expressed by an appreciative smile roams through her very nature. She has those rare qualities that make the noblest of all creatures—a lady.

Chorus '26-'27; Officer S. S. '26-'27; Secretary of Society '27.

CHARLES A. MADDY

Philomathian

DURHAM, N. C.

"To the stars through difficulties."

Charles is one whom we all admire; a youth of unusual ability, and one who bears well responsibility. As a student he has the determination that makes him successful; as a figure in college activities he takes the lead. As a boy he is a true and ever helpful friend; one who loves and cherishes his memories of "back on the farm."—He is just one of the boys.

President B. S. U. '27-'28; Vice-President Society '27; Vice-President General B. Y. P. U. '27; President S. S. Class '27; Anniversary Representative '27; President B. Y. P. U. '27; Science Club '27-'28; Scribleris Club '27-'28; Officer Ministerial Conference '27; Inter-collegiate Alternate '27; Chorus '27; Commencement Orator '28; Inter-collegiate debater '28.

FRED B. DRAKE

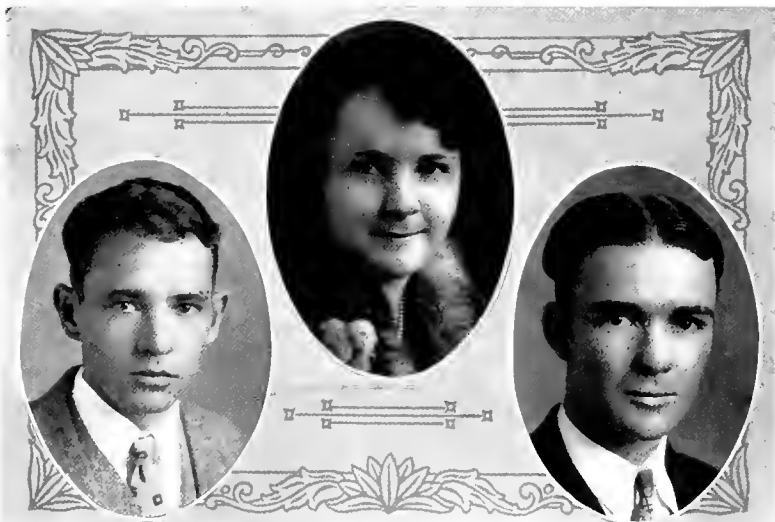
Philomathian

HENOERSONVILLE, N. C.

"He who does less than he can, does ill."

A youth of rare personality, yet a personality that shows little of what he really is. The greater portion of him is hidden behind an innocent expression, a pleasing smile, and eyes that express the presence of a noble spirit. His serenity declares his soberness. Are these things help to make our good friend "Drake."

Officer S. S. '27; Officer Society '27; Science Club '27; Chorus '26-'27; Football Squad '26-'27.



JESSE M. WINGO

Euthalian
CAMPOBELLO, N. C.

"Truth alone is not sufficient; truth is the arrow, but man is the bow that sends it home."

Jesse has been a remarkable student. He always thinks someone can perform certain tasks better than he, but when it comes to a showdown, Jesse is as good as any. His determination to get the best out of college life has been proven to us, for he participates in all the college activities. We hope he will have success in life, for he surely deserves it.

Officer B. Y. P. U. '27; Officer S. S. '26-'27; Officer Society '27; Officer Ministerial Conference '27; Chorus '26.

ELIZABETH SPANGLER

Clio
ASHEVILLE, N. C.

*"Original wit, a heart of gold,
Winning personality and grace untold."*

"Lib's" smiling eyes tell us she is happy, and her smile always gets one in return. Happiness comes through friendship, and she has many friends because she is a friend. We admire "Lib", and because of her many talents we expect much of her. Music is a part of her life, and with music in her soul we predict great success for her.

B. Y. P. U. Officer '26-'27; S. S. Officer '26-'27; Y. W. A. Officer '26-'27; Society Officer '26-'27; Chorus '26-'27-'28; Secretary Cleveland County Club, Anniversary Representative '26-'27; General B. Y. P. U. Officer '27-'28; Phi Anniversary Marshal '27; Glee Club '27-'28; Cleveland County Club '27-'28.

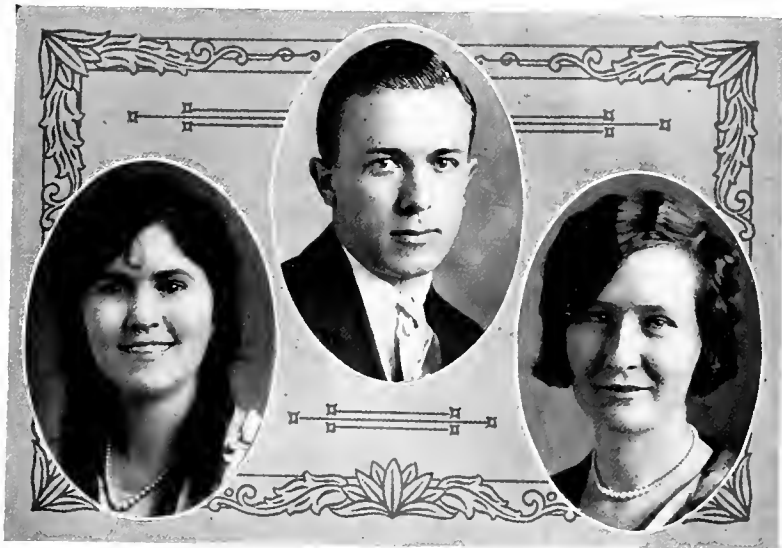
JAMES H. SMITH

Euthalian
MARION, N. C.

*"Tall and big of heart and mind—
To know him is to love him,
For he's a boy of the very best kind."*

"Jimmie" is a boy whose sincerity of heart and congeniality of spirit have won for him the esteem and admiration of all his classmates. He goes about his work quietly with a purpose and determination which deserves success. It is hard to believe that there was ever a better natured fellow than he.

President Ministerial Conference '27; President S. S. '27; B. Y. P. U. Officer '27; Alternate Anniversary Debater '27; Officer Society '27; Winner in mile race of Athletic Contest '27.



JENNIE LOUISE BEAM

Clio

ELLENBORO, N. C., ROUTE 2

*"Without love and laughter, life is nothing,
Not for herself, but for the World she lives."*

Louise has a sweet disposition, winsome manners, a smiling countenance prompted by a loving heart, and is true to her high ideals. She has proved herself to be an ideal lady with a cultured, refined and noble Christian character. May she live to bless other lives with the same loving-kindness that has blessed ours.

Officer S. S. '26; B. Y. P. U. Officer '26-'27; President Inner Circle '26-'27; Officer Y. W. A. '27; President S. S. Class '27; Vice-President Inner Circle '27; Officer Society '27.

MARK PLEMMONS

Philomathian

LOCKHART, S. C., BOX 51

*"Sweet are the thoughts that savor of content;
The quiet mind is richer than a crown."*

During Mark's extended stay at Mars Hill, he has exemplified the character of a Christian gentleman. Dependability is one of his outstanding traits. He is faithful and honest in all duties; loyal and true to his associates and to his Alma Mater. He desires to play the game of life fairly and squarely.

President S. S. Class '27; Officer S. S. '23-'24, '26-'27; Vice-President B. Y. P. U. '25; Officer B. Y. P. U. '26; Officer Society '23-'24.

LOLLIE JANE TURK

Clio

BELTON, S. C.

*"Somebody said it couldn't be done,
But she with a chuckle replied,
That maybe it couldn't, but she'd be one
Who wouldn't say so 'till she'd tried."*

Lollie came to us from South Carolina and has proved an apt scholar in every subject. Her chief characteristics are honesty and loyalty. She has won a warm place in our hearts that no one else can ever fill. We predict for her a bright and successful future.

Officer Y. W. A. '27; Officer B. Y. P. U. '26-'27; Officer S. S. '27; South Carolina Club '26-'27; Inner Circle '27; Officer Society '27.



LUNA ANITA CRANFILL
Clio

COURTNEY, N. C.

"A cheerful disposition is a fund of ready capital."

Does Luna ever laugh? Well, without this real life of jolliness what would we do? She is just an all-round girl whom you can not help loving when you know her. She is capable, self-reliant, friendly, and considerate of others. She has many friends who love and admire her. It would be hard to find a more sincere girl; or a truer friend. You may be sure that whatever she does is her best.

Dramatic Club '26-'27; Officer Society '27; Officer of S. S. '26.

CLYDE PALMER STINSON
Philomathian

GOLDSTON, N. C.

"If it is hard now, it will not be so always."

To know Stinson is to know what he thinks. He likes a sensible argument whether the subject be within reason or not. Hard to convince; true to his convictions, yet ready ever to admit a changed mind. He is a respected friend to all. To him the called minister has no greater mission than the called lawyer. But he he preacher or candle maker, success has him enfolded in her arms.

Vice-President B. Y. P. U. '27; Officer S. S. '27; Secretary B. Y. P. U. '28.

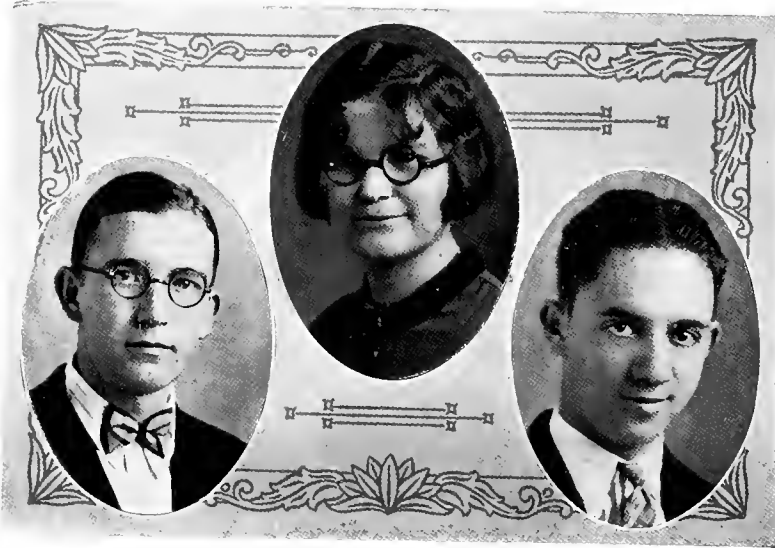
EDITH IRENE KING
Clio

HAGAN, VIRGINIA

*"Life is to be fortified by many friendships, to love, and be loved
is the greatest happiness of existence."*

Edith is pleasant but positive, gentle yet true. She bears a tender regard for her fellow students and they in turn know that she maintains a ready spirit of service. A part of happiness is expressed through her voice in sweet song. With these natural abilities, we can say of Edith, that she has chosen the better part. She is active in Christian learning and practice.

Glee Club '26-'28; Chorus '26-'28; Officer B. Y. P. U. '27; S. S. Officer '26-'27; Society Officer '27.



HENRY LEE BRIDGES

Euthalian

125 CHAMBERLAIN ST., RALEIGH, N. C.

"I would be true, for there are those who trust me."

Henry believes in the glorious ideals for which his Alma Mater stands, and his loyalty to her has made him a part of the ideal Mars Hill. His upright Christian character, his desire for the choicest things attainable, and his useful life on the campus have won for him the admiration of his fellow students. Mars Hill claims him as one of her very best sons.

President S. S. Class '26-'27; President B. Y. P. U. '27; Officer Society '27.

MABEL KIMREY

Clio

ALBEMARLE, N. C.

*"Pure, sweet, and always kind;
A better friend no one can find."*

Mabel is the highest type of a girl, and the truest kind of a pal. She has shared all her joys and sorrows with us. She has proved to be a clear thinker and a capable student. We are confident that whatever her life's work may be, she will bring honor to our dear old Alma Mater.

Officer Society '27.

GEORGE BYRAN WAGONER

Philomathian

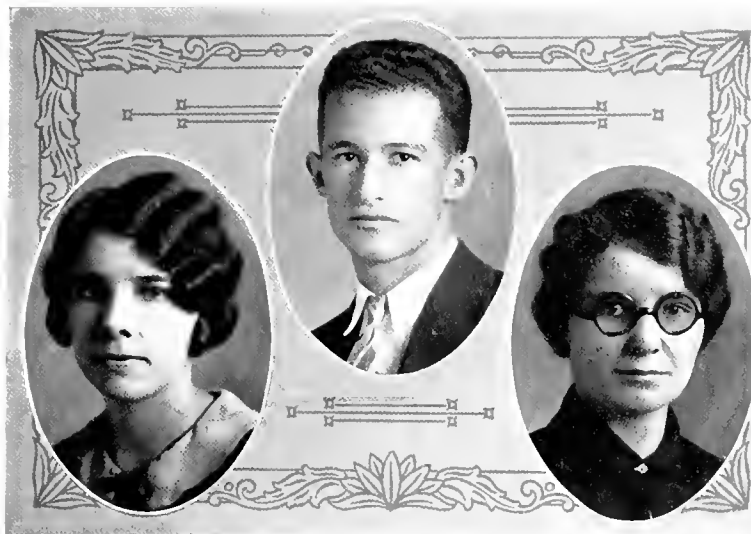
CLEMMONS, N. C.

"Success may cost dearly, but life is the price of failure."

If you're looking for a studious fellow, who believes in right against might, it's George. He believes in doing big things silently. His great determination to master mathematics has been realized by others. He is a friend to each one on the campus; he has shown it by lending them a helping hand.

As he enters the business world we bestow upon him our best and most sincere wishes.

B. Y. P. U. Officer '26; Officer S. S. '27.



MAE PLEMMONS

Clio

LOCKHART, S. C.

"Better be small and shine, than be large and cast a shadow."

Mae is the kind of a girl "that we need more like." She is always ready to respond to college activities, but in doing so she does not neglect her studies. She is greatly interested in expression and displays real ability in that line.

President S. S. Class '27; Officer B. Y. P. U. '27; Secretary Society '27; President B. Y. P. U. '27; Officer Y. W. A. '26-'27; Commencement Representative '27; Anniversary Representative '26-'27; Dramatic Club '25-'26, '27-'28; South Carolina Club '25-'26.

ALBERT BURKE FURCHES

Philomathian

MOCKSVILLE, N. C.

"An honest man is the noblest work of God."

Burke's honesty, sincerity of purpose, unselfishness and—the glint of mischief in his eyes have won for him the true friendship of the student body; yet few of his friends have realized his spiritual strength or his desire to attain the noblest of God's creations, "A Man Four-Square."

Varsity Football '24-'25-'26-'27; Varsity Basketball '26; Varsity Baseball '26-'27; President "M" Club '26-'27-'28; Basketball Squad '25-'27; Baseball Squad '25.

OPAL PRYOR

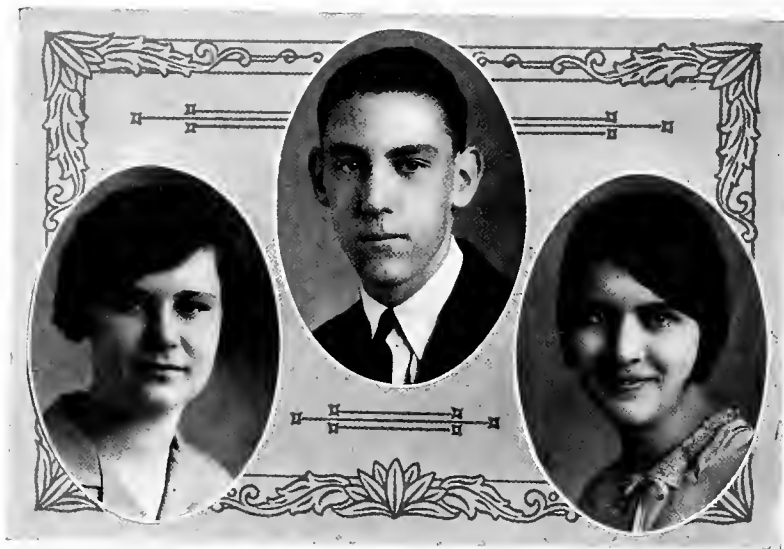
Clio

BEAR WALLOW, N. C.

*"He who smiles and laughs away
The little trials of life today;
Will live to smile and laugh away,
A greater trial another day."*

A light hearted; good natured girl is Opal. She is a good student and takes part in all activities. Her personality and ability has won the esteem and respect of her classmates and teachers.

Officer S. S. '26-'27; B. Y. P. U. Officer '27; Y. W. A. Officer '26-'27; Officer Society '27; Chorus '26-'27; Anniversary Representative '26-'27; Commencement Representative '27.



LUCY BLANCHE PARKER

Clio

YADKINVILLE, N. C.

*"I know the nature of women. When you request they refuse;
when you forbid, they are sure to do it."*

Pep, variety, determination, wit, and a frankness of manner like a breath of fresh air—is Lucy. Besides being an all-round good sport, she is an earnest, conscientious student. Lucy is able to take care of herself and several others as well—just ask those who tried to help celebrate her birthday! We'll predict (from experience) an entertaining future for those associated with Lucy.

Officer Y. W. A. '26-'27; Officer S. S. '26-'27; Officer Society '27; Officer B. Y. P. U. '26-'27; Chorus '26-'27-'28; Class Basketball '26-'27-'28.

JOSEPH GLENN TRAVIS

Euthalian

WEST ASHEVILLE, N. C.

"Time and the hour runs through the roughest day."

Glenn is a fine example of symmetrical development—physical, mental, and spiritual. He stands in first rank as an athlete, student, and counselor; a logical thinker, of few words, he speaks to the point. These noble traits of character have won him many trusty friends. Lonely, in the great throng of men there is a firm place and a blessed work for him.

Editor *The Hill Top*; President Euthalian Literary Society '27; Varsity Basketball '27-'28; Scribblers Club '27-'28; "M" Club '27-'28; Officer S. S. '27.

MAUDE ASHWORTH

Clio

FAIRVIEW, N. C.

"I would be giving and forget the gift."

Maude is worthy of all the good that can be said of her. In her room, in class, on the campus, and in all the games of life, she plays her part as only a genuine girl can. While her teachers class her as an "A" student, we class her as an "A" friend. She is true to herself, her friends and her duty always.

General Secretary C. O. D. of S. S. '27-'28; Senior Editor *Laurel* '27-'28; Science Club '27-'28; Chief Marshal Society Anniversary '27; B. Y. P. U. Officer '27; Officer S. S. '26-'27; Officer Society '27; Chorus '26; Y. W. A. Officer '26; Anniversary Representative '26; Vice-President Society '27.



BERNICE STONE

Nonpareil
ORRUM, N. C.

*"Give to the world the best you have,
And the best will come back to you."*

Bernice is a very studious girl. We find her ready and willing to do anything for the good of her classmates. At first sight she seems to be reserved, but when you know her she is indeed a jolly good sport, ready to meet whatever comes.

Officer B. Y. P. U. '26-'27; Officer S. S. '26-'27; Officer Y. W. A. '26-'27; Glee Club '27-'28; Anniversary Representative '26-'27.

S. WILLIAM HUGHES

Euthalian
SHEPBY, N. C.

*"Music! O how faint, how weak,
Language fades before thy spell!
Why should feeling ever speak
When thou canst breathe her soul so well?"*

"Sweet music's power!" The music in "Bill's" life bursts forth in every word and smile as the bluebird's song in springtime, and cheers many hearts about him. "Frosty" also has an artistic temperament, and technical skill which testify to his genius. We shall be disappointed if "Bill" does not write his name high on the scroll of fame.

Glee Club '27-'28; Chorus '27-'28; Anniversary Representative '26-'27; Society Officer '27-'28; Officer S. S. '27; B. Y. P. U. Officer '27.

INEZ BARDEN

Nonpareil
ORRUM, N. C.

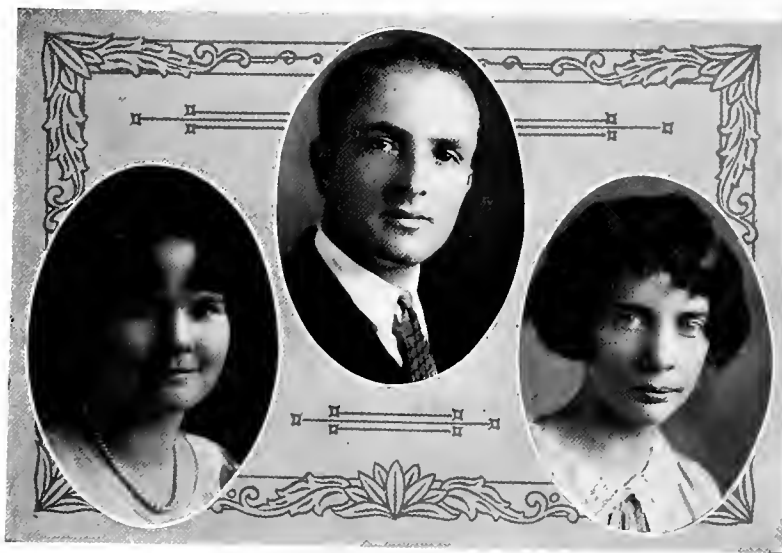
"To know her is to love her."

Inez is a charter member of our class and one who is loved by all. The quotation truly applies to her, for if you know her, you are sure to love her.

Through her quiet mood and pleasant disposition she has become a friend to the entire class.

B. Y. P. U. Officer '26-'27; Anniversary Representative '27.

LAUREL '28



ALICE LOUISE MCKITTRICK

Nonpareil

MOUNTVILLE, S. C.

*"Her voice was ever gentle, soft and low
An excellent thing in woman."*

Alice has been with us for two years, and every one who has met her has found her to be an excellent girl. As a friend she is loyal, sincere, and unparalleled. As a student she is quiet, serene, thoughtful, sensible, and successful in all of her work. With her splendid qualities, her unusual talents, and her abilities and aspirations we know that some day she will have reached the utmost heights of success.

Secretary B. S. U. '27-'28; Officer Society '27; Officer S. S. '26; Officer B. Y. P. U. '26-'27; South Carolina Club '26-'27-'28; Photographic Editor *The Laurel* '27-'28; Scribblers Club '27-'28.

ALTON PARKER GOODMAN

Philomathian

WEST JEFFERSON, N. C.

"To whom every cloud has a silvery lining."

A quiet, unassuming boy is Parker. Because of this he is liked by everyone on the campus and naturally has many friends. He has proved himself to be an all-round sport and also a Christian gentleman. As a student he ranks among the best. With a character and nature like Parker's, success is sure to come his way in the future.

President S. S. '28; Officer S. S. '26-'27; Officer B. Y. P. U. '26-'27; Band '27-'28; International Relations Club '27-'28; Officer Society '27.

MABEL HUNT

Clio

WAKE FOREST, N. C.

"Her ways are true, her conduct blameless, her friendship lasting."

On first acquaintance Mabel maintains a quiet, gentle, dignified reserve. Her unassuming manner and genuine kindness of spirit has stamped her name upon our hearts so deep that none of us will ever forget her. She is a loyal friend and a good student. Since she usually gets what she goes after, we feel confident that she will attain the heights of success.

Officer B. Y. P. U. '26-'27; Officer S. S. '27; Y. W. A. Council '27-'28; B. S. U. Council '27-'28; Eastern Carolina Club '27-'28.



HELEN MAE MORRIS

Nonpareil

CANDLER, N. C.

*"Loyal-hearted, strong of mind,
A truer friend nowhere you'll find."*

Helen stands out as the highest type of girl and the truest kind of friend. She is a girl whose sincerity of heart and congeniality of spirit have won the esteem and admiration of everyone. She's the best sort of a pal, a conscientious worker, and a quite charming girl. She tackles whatever there is to be done cheerfully and willingly and with a determination that invariably brings success.

Officer S. S. '26-'27; President S. S. '27; Officer B. Y. P. U. '26-'27; Officer Society '27; Buncombe County Club '26-'27-'28.

WADE WILEY WORLEY

Philomathian

ASHEVILLE, N. C.

"And the elements so mixed in him, that nature might say, this is a man!"

In Wade we find one who is ever true to his class and his friends. If you see him start out to do a thing, you may be sure that that thing will be done and well done. His ability as an actor has been clearly shown by the number of plays in which he has taken part. The quaint mixture of seriousness and frivolity which is his, makes him a friend to everyone.

College Cheer Leader '26-'27; Junior Class Poet '26-'27; Anniversary Representative '26; Commencement Representative '27; Anniversary Representative '27; Senior Class Poet '28; B. Y. P. U. President '27; Officer S. S. '27; Dramatic Club '26-'27-'28.

ZELMA KATE BENNETT

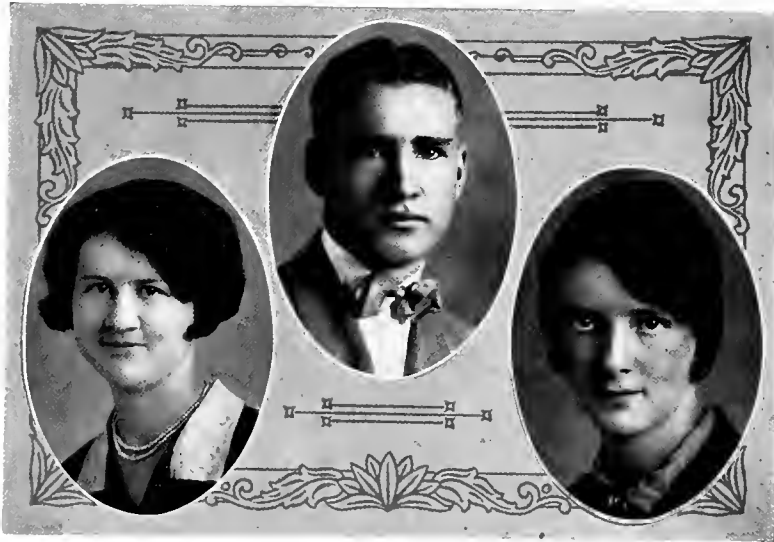
Nonpareil

CANDLER, N. C.

*"What's a fine person, or a beauteous face,
Unless deportment gives them decent grace?"*

Zelma's worth has been estimated by both faculty and student body and has proved to be a blessing to both. She is envied because of her real goodness of heart, the greatness of her soul, and the purity and sweetness of her character. She is possessor of one of Heaven's greatest gifts—making others happy.

Officer S. S. '26-'27; Officer B. Y. P. U. '26-'27; Officer Society '26-'27; Officer Buncombe County Club '26; *Hill Top* Staff '27-'28; Y. W. A. Council '27-'28; Non Anniversary Marshal '27.



MARY ELIZABETH BRADLEY

Nonpareil

MARS HILL, N. C.

"A sweet disposition is the chiefest of all possessions."

Mary, with her calm, gentle disposition, and friendly smiles, wields an uplifting influence on our campus. Quietly she moves among the students, genuinely admired by them for her lovely character, her unselfish spirit, and her lofty ideals. With her quiet, unassuming attitude she has won the hearts of her fellow students and teachers alike.

Y. W. A. Officer '26; Officer Society '25; Class Basketball '26; Officer S. S. '26-'27.

CECIL C. BOST

Philomathian

NEW LONDON, N. C.

"The pathway to success is stony; only the roughshod can tread it."

A man is admired for what he is and for what he can do. For both of these qualities we admire Bost. He is the kind of a chap who does not breed within his soul seeds of discontent. He is happy in his studies, for these are his businesses. He believes in a sound mind well trained and in a healthy body. These things with his other good qualities will make him successful.

Officer S. S. '26; Officer B. Y. P. U. '26; Varsity Football Squad '27; Varsity Basketball Squad '25-'26-'27-'28; Varsity Baseball Squad '26-'27.

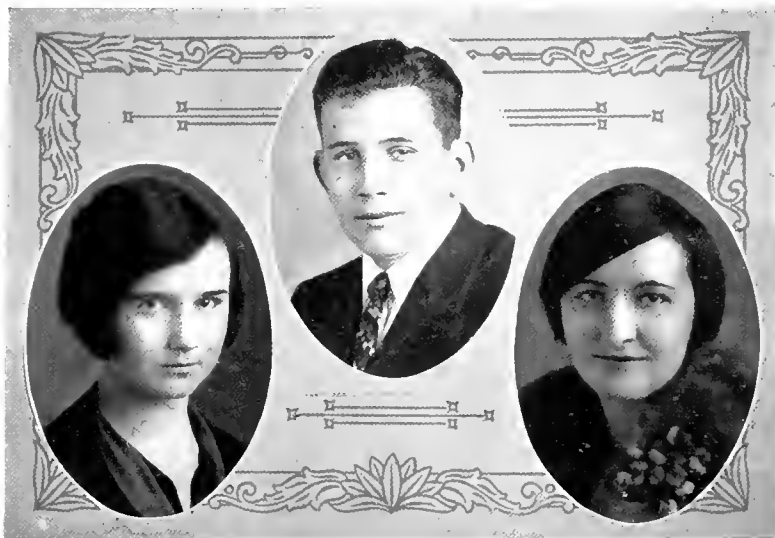
RUBY EDWARDS

MARS HILL, N. C.

"Often in a wooden house a golden room we find."

Ruby is one of the jolliest of C-II's, but her jollity is sincere and refreshing. She has a ready smile all her own that winds its way into one's heart and when trouble comes, Ruby proves herself to be an untiring worthy friend. Her sincerity and kind simplicity chases away the clouds and leaves only the blue of skies. She is a good student and a worthy pal. We're glad she's one of us!

Secretary Intermediate Department S. S. '24-'28; Leader Intermediate B. Y. P. U. '27-'28; Secretary Y. W. A. '25-'26.



MITCHELL WILLIAMS

Nonpareil

KINGS MOUNTAIN, N. C.

*"When a task is first begun
She never quits until it's done."*

Truly the above can be said of Mitchell, for her patience and endurance are unsurpassed by her class-mates. We shall remember her by her frankness, her loyalty, her cheery smiles, and her sunny disposition. She possesses those qualities of modesty, gentleness, and kindness which are desirable in every true woman.

Officer S. S. '26-'27; Officer Y. W. A. '26-'27; Chorus '26; Officer B. Y. P. U. '27; Cleveland County Club '27-'28.

FRED TATE ANDREWS

Euthalian

HIGH POINT, N. C.

"Never has the world needed and demanded educated leaders as it does to-day."

Tate has one of the biggest hearts in the world. He would do without in order to help a friend. This great characteristic has drawn about him a circle of friends. As a speaker with a tone of volume, he is rarely excelled; as an athlete he has proved himself efficient; and his friendship for his teachers and fellow class-mates has been expressed in his attitude toward them.

Football Squad '26-'27; Class Track '26; Dramatic Club; Officer S. S. '26-'27; Officer B. Y. P. U. '26-'27; Commencement Declaimer '27.

MARY HESTER ELLIS

Nonpareil

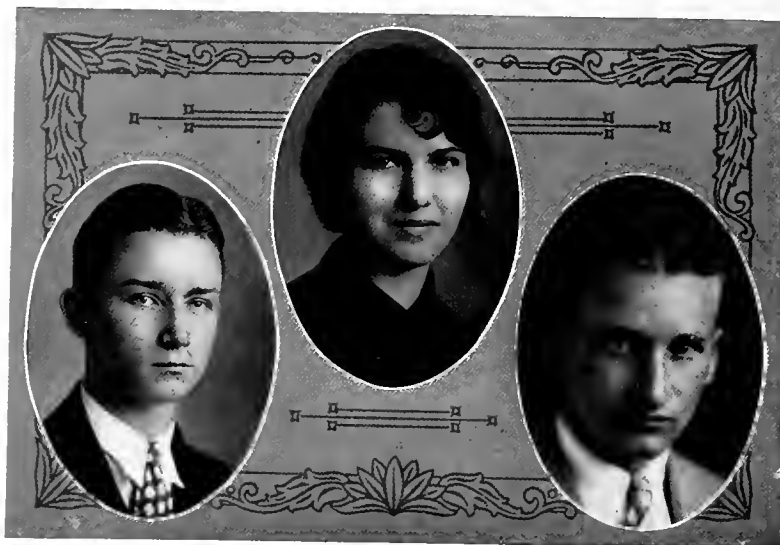
SHELBY, N. C.

"Know thyself and don't tell everybody about it."

If Mary is your friend, then you may be assured that she will do anything in her power for you. In her, you may find cheerfulness, unselfishness, and sincerity so beautifully blended that in her friendship you possess a priceless jewel. Her heart's desire is to become a nurse, and in that calling she will be able to serve humanity beautifully and helpfully.

B. Y. P. U. Officer '27; Officer S. S. '26-'27; Cleveland County Club Officer '27-'28; Glee Club '27-'28; Chorus '26-'27-'28.

LAUREL '28



ROBERT W. CRUTCHFIELD

Euthalian

COLUMBIA, N. C.

"No man can climb out beyond the limitations of his own character."

An admirable personality and a big-hearted friend well describes Bob. These characteristics have brought about him many friends. He has shown his friendship to others by his willingness to help them. As a student he is one of our best; as a musician he has shown his talent.

Officer S. S. '27; Officer B. Y. P. U. '27; Science Club '27-'28; Dramatic Club '27-'28; Chorus '26; Orchestra '26-'27; Band '27-'28.

RACHEL FROST CHAFFIN

Clio

CLEMMONS, N. C.

*"She never found fault with you, never implied your wrong by her right;
and yet men at her side grew nobler, girls purer."*

With all her admirable characteristics—lovableness, sincerity, modesty, congeniality, and wit, linked with reverence for all that is good, Rachel is always calm, dependable and resolute. It is a beneficial joy to be in her presence because into her fun she weaves such inspiring ideals that young men at her side "grow nobler, girls purer."

President Inner Circle '27; Officer B. Y. P. U. '26-'27; Society Officer '27-'28; Debaters Club '27; Science Club '27; Officer S. S. '26.

LENORE C. HONYCUTT

Philomathian

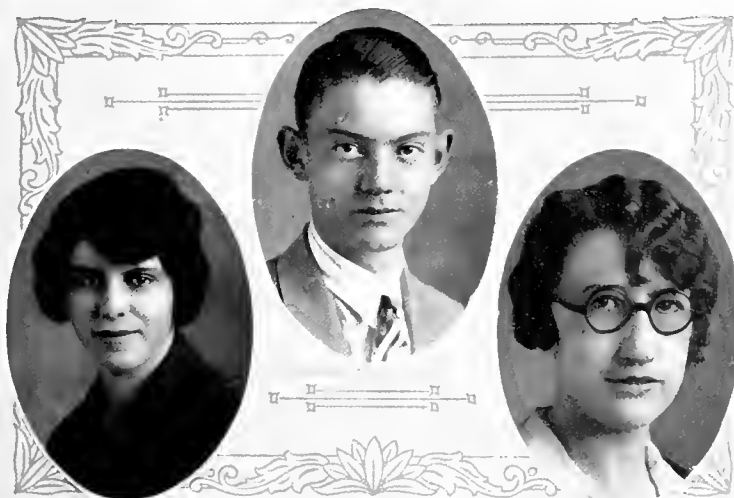
BURNSVILLE, N. C.

"So earnest in work and fun we know not half the work he's done."

Two years ago at Christmas time "Crip" came to us from Burnsville. He has meant much to Mars Hill College. He is outstanding in his class work, and is popular on the campus. As an athlete he is hard to beat—always fighting, and never beaten until the last whistle has blown, or the last ball is pitched.

We wish Lenore even greater success in the future than he has had at Mars Hill.

Varsity Baseball '26-'27; Varsity Basketball '26-'27-'28; Officer Society '26; Officer S. S. '26-'27; President Yancy County Club '26; Marshal Phi Anniversary '27.



MARY ELIZABETH HAMBY

Clio

MARS HILL, N. C.

"Beautiful as sweet, young as beautiful and soft as young, and gay as soft and innocent as gay."

Mary is one of our foremost Seniors. Diligent in all she undertakes. We'll never forget the lovely anniversary program over which she so gracefully presided. Nor shall we forget her wonderful work with The Sunbeams, B. Y. P. U., Y. W. A. and all her other religious activities. Surely Mary can not be surpassed and she shall as surely keep her place in our hearts forever.

President Society '27; Secretary Scribleris Club '27; Associate Editor *Hill Top* '27-'28; Officer B. Y. P. U. '26-'27; Vice-President Society '26; Officer S. S. '26; Officer Y. W. A. '26.

JAMES BROOKS REID

Euthalian

CAMPOBELLO, S. C.

"In all contentions put a bridle on your tongue."

Brooks is a sincere, hard-working fellow, courteous at all times and always thoughtful of others. He is not satisfied with the meager things of life, but wants the best. Brooks has plenty of initiative and is successful in all that he undertakes. As a student few surpass him; as a friend you will find no better. May the future hold in store for him much success and happiness.

Officer Society '27; International Relations Club '27-'28; Officer South Carolina Club '27.

VISTA ELLEN STINES

Clio

MARS HILL, N. C.

*"Small, but big of heart and mind; to know her is to love her,
for she is a friend of the very best kind."*

With quiet dependability and unassuming effort, Vista responds to every call of duty and faithfulness. She is very modest, but those who know her best appreciate her friendly spirit and sense of humor. Her appealing personality has won her many friends. She is dependable, loyal and worthwhile; always ready for work or play. She's just the kind of girl that we can't forget.

President Y. W. A. '26; Secretary B. Y. P. U. '27; Officer Y. W. A. '27; Officer B. Y. P. U. '26-'27; Officer S. S. '26-'27; Officer Society '26.



MARY LOUISE WEBSTER

Clio

MARS HILL, N. C.

"It is a good thing to be rich and a good thing to be strong; but it is a better thing to be loved by a throng."

Louise is a girl worth knowing and a friend worth having. Her lovable disposition causes those who know her best to love her most. We value her friendship because of her loyalty, her clear sweet personality.

Secretary Senior Dept. of S. S. '27; Anniversary Marshal '27.

EDWARD CLAYTON GLASGOW

Euthalian

CASTALIA, N. C.

"When I die, I want the grave to say, 'Here comes a man.'"

On the gridiron, on the campus, and in the class room Glasgow has proved to be true and to put his best into his work. He has not failed to be a friend. He has a word of cheer for every one; and if he is discouraged, no one knows about it. Glasgow has made his own way, and by hard work he has become one of the outstanding students.

President Society '28; President B. Y. P. U. '27; President "M" Club '27; Monitor Boys' Dormitory '27; Varsity Football '26-'27; Dramatic Club '27-'28; Science Club '27-'28; International Relationship Club '27; Officer Society '25-'26-'27-'28; Officer B. Y. P. U. '26-'27-'28; Anniversary Representative '27; Commencement Representative '28.

MARY POOLE

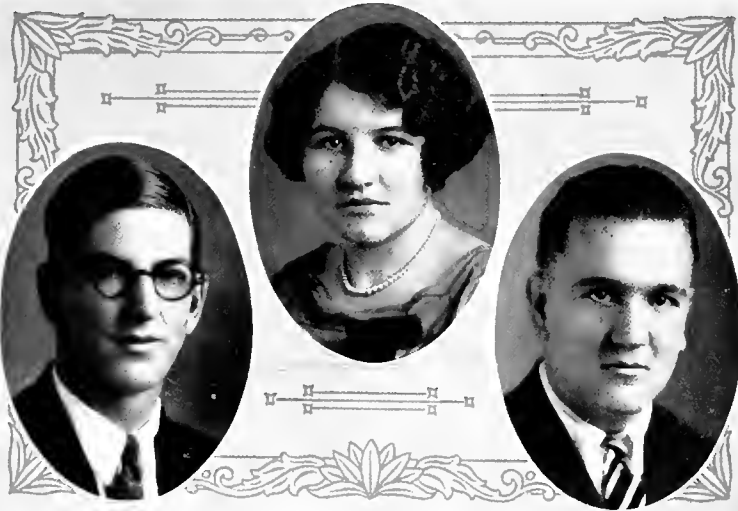
Clio

MARS HILL, N. C.

*"How noble her thoughts,
How sweet, how pure their dwelling place."*

Here is a classmate we all respect and admire. She is never satisfied until she has done her best in everything. Her unselfish character has won for her a place in the hearts of those who know her. Mary is ever loyal and conscientious in her work, cheerfully laboring on under difficulties, and determined to win. Underneath her smile one finds many deep thoughts and high ideals. Those who have seen deeper into her life realize that there is genuine goodness in her character.

Officer Society '27-'28; President B. Y. P. U. '27; Officer B. Y. P. U. '26-'27; Officer S. S. '26-'27-'28; Sunbeam Leader '27-'28; Officer Y. W. A. '27-'28.



KARL EDWIN LOVING

Philomathian
CAMERON, N. C.

Karl is a Loving fellow. He is kind, generous, congenial, and an all-round good sport. He especially falls for the girls, probably that is because of his Loving name.

As a student Karl is industrious, studious and punctual. As a friend, he is ever faithful, dependable, and as immovable as the Rock of Gibraltar.

With his splendid personality, with his ability, and with his endowment of stickability we know that he will well succeed.

Karl is just a human, but "A man for a'that."

B. Y. P. U. Officer '26-'27; S. S. Officer '27-'28; B. Y. P. U. Officer '27-'28.

JESSIE JUANITA BOWMAN

Clio
MARION, N. C.

*"Through all the windings of my heart
My search let heavenly wisdom guide."*

Intellectual, studious, guileless, affable, gentle, lovable—that's Jess, who, with thoroughness and without compromise, masters her own problems and then faces others, with a smile, ready to help with theirs. Her sterling character and exalted purpose should carry her far in her chosen profession of teaching.

Officer Y. W. A. '26; Officer B. Y. P. U. '26-'27.

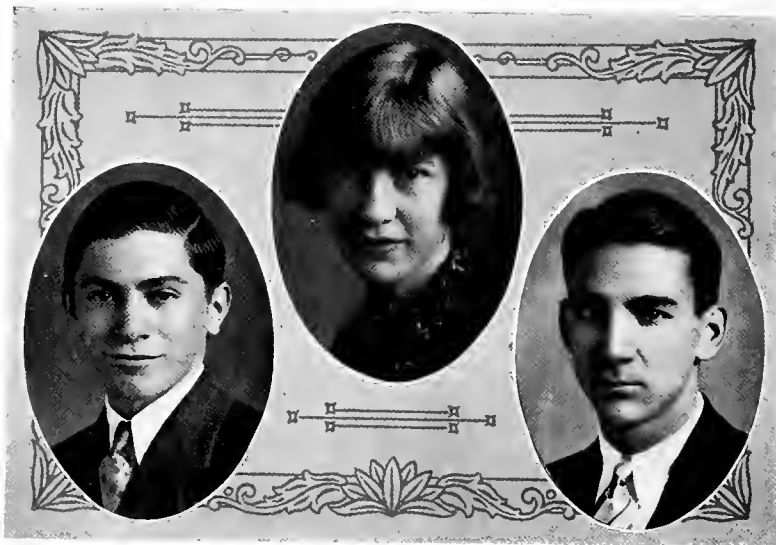
KELLY RAY

Euthalian
PAINT FORK, N. C.

*"Sense, sincerity, sympathy,
The three graces of a gentleman."*

Kelly is the boy who is a good pal to everyone; he is the boy who has a smile for all, and is always ready to enter into anything his classmates want to do. He is a good worker, and never refuses to help when help is asked. Though rather quiet, he is always missed by his classmates when he is absent from any of their gatherings. Ambitious, sensible, full of fun, that is Kelly Ray. May he attain great success in his chosen life-work!

B. Y. P. U. Officer '26-'27; Officer S. S. '26-'27; Representative B. S. U. Conference '27.



WADE E. BROWN
Philomathian
 BLOWING ROCK, N. C.

*"A faithful friend is a strong defense,
 And he that hath found such hath found a treasure."*

"Sticktoitiveness" and natural ability are Wade's qualities. He does not shrink from hard tasks, nor does he leave them until they have been finished. He has the grit and determination that wins. These qualities together with his friendliness and simplicity have won him a place in the class room—yes, in mathematics and physics, if you please, in the society hall, and on the athletic field. We believe that he will persevere in the great perplexing world.

President B. Y. P. U. '26; Officer S. S. '26; Officer Society '26-'27; Treasurer Senior Class; Officer B. Y. P. U. '27; Monitor in Dormitory; Alumni Editor *Hill Top*.

VIRGINIA ELIZABETH FRADY
Clio
 BILTMORE, N. C.

"Give me true friends and music, and life will be a pleasure."

Here is a girl who is sweet, broad-minded, and faithful. Her genial disposition and high ideals have placed her high among the students at M. H. C. If you are seeking a true friend, here she is. "Work, study, and love; but the greatest of these is love," is Virginia's motto. May her musical career be a success!

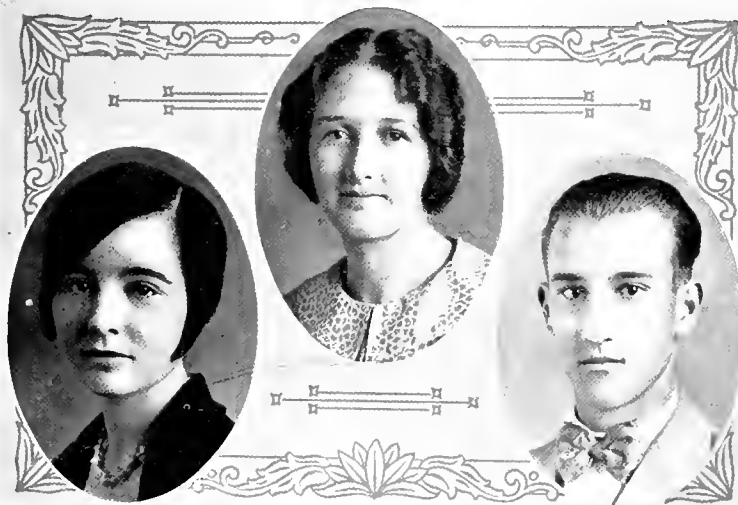
Officer Society '26-'27; Officer S. S. Class '26-'27; Officer Y. W. A. '27; Officer B. Y. P. U. '27; Buncombe County Club '26-'27-'28.

LETHCO BROCK
Philomathian
 INMAN, S. C.

"A fool has no chance therefore I will be wise."

Lethco can usually see the funny side of anything, and in a quiet way. Too, he is a steady, toiling kind of fellow. As the familiar adage puts it, "He doesn't say much, but he does a good deal." A man of stickability! These are good traits of character for a man in the business world which he is planning to enter. Certainly, he will be a great success and a great blessing to this country.

Officer Society '27; Officer B. Y. P. U. '27.



MARY ELOISE BROOKS

Nonpareil
VASS, N. C.

"Long will we search before we find a heart so gentle and so kind."

Unless you know Eloise you cannot truly appreciate her. Quietly she steals her way into your heart where there is a spot reserved for her. She upholds the truest ideals of womanhood by her gentleness, loveliness, kindness, patience, and modesty. As through life she goes, our thoughts and love will follow her as well as our sincerest wishes for a glorious success in whatever she attempts.

Y. W. A. Officer '26-'27; Eastern Carolina Club '27-'28.

NELLIE ALTA GLAZENER

Clio
CHASE CITY, VA.

*"She that was ever fair and never proud
Had tongue at will, but never loud."*

Alta stole her way into our hearts two years ago when she came to us. In her quiet manner and by her good work she has endeared herself to all. She has proved herself worthy of a diploma in being loyal to the traditions of the school, as well as being successful in her studies. We wish her only the good things in life.

Officer S. S. '26-'27; B. Y. P. U. Officer '26-'27.

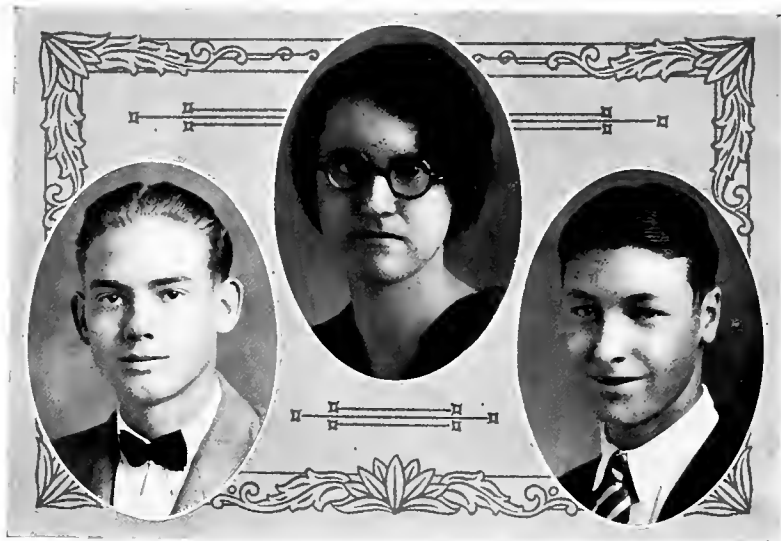
FRED WILSON ANERSON

Philomathian
MARS HILL, N. C.

"It's not so much what I am, but what I aspire to be."

Fred is steady, lovable, ambitious, faithful, and has a concrete purpose. He has likewise proved himself a clean thinker and a capable student. We know that the future has its work for Fred; and we feel confident, after future preparation, that he will render undreamed of service in this chosen field.

President Y. R. B., S. S. Class '25-'26-'28; President B. Y. P. U. '25-'27; Teacher boys' S. S. Class in Intermediate Department '26-'27; Assistant Superintendent Intermediate Department '26-'27; President "Madison County Club" '27-'28; Officer Phi Society '26-'27; Leader of the R. A. boys.



GLENN DAVID FREEMAN

Philomathian

RUTHERFORDTON, N. C., R. 4.

"What you would seem to be, be really."

Here is a student whose quiet, unpretentious manners tell the story of his daily life. The world admires a man with a calm, gentle spirit and a character free from blots. Freeman has these qualities in addition to a clear, keen intellect. In scholarship he holds the high esteem of his teachers and classmates. His Alma Mater takes much pride in claiming him as her very own.

S. S. Officer '26-'27; Anniversary Representative '27; Officer Society '27; Officer International Relations Club '27; Science Club '27.

HELEN NELON

Nonpareil

ASHEVILLE, N. C.

"Speech is silver; silence is golden."

Helen is another one of our quiet Seniors, but we find her to be sincere and sympathetic, always willing to do her part in anything. Helen is a very studious girl. At first sight she seems to be reserved, but when you know her you find a true pal. She rather secludes herself, but when we find our way into the corner of her heart, we find rare gems with qualities to be valued high.

Officer S. S. '27-'28; Officer B. Y. P. U. '27.

LENARD LEE WARLICK

Euthalian

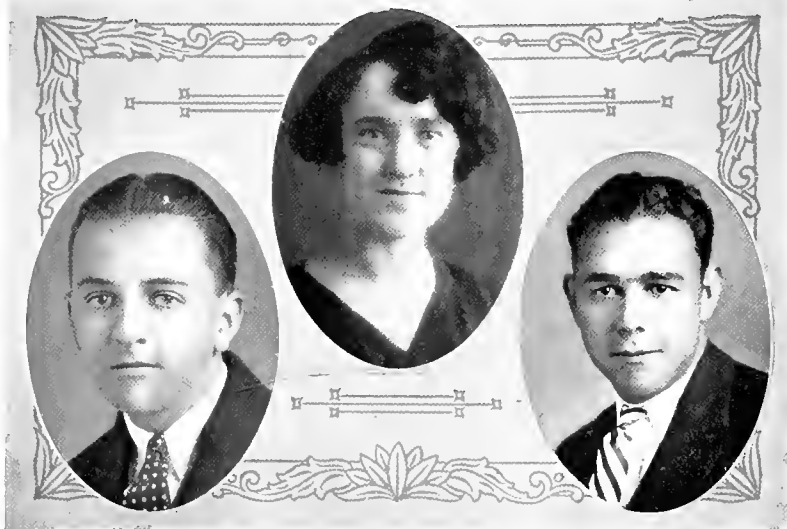
LAWNDALE, N. C.

"I meddle with no man's business but my own."

Lenard has lived quietly among us for two years, but his sincerity and his definite purpose have been well expressed. He is a conscientious worker, both in his religious and social activities, never shirking his duty. These noble characteristics, interwoven with a princely character, have won him the friendship of the entire student body.

We know that he is on the road to "Success", and our best wishes are always for him.

Officer S. S. '27; Class Basketball '27-'28.



THOMAS B. WALKER

Euthalian

STATESVILLE, N. C.

"Go forth to meet the shadowy future without fear, and with a manly heart."

"Biddie" is admired by all on the campus. He is self-reliant but always quiet and reserved. He is truly sincere—in his friendship for others, in his class work and in anything that he undertakes. We give him a cheer for good luck and success in the future.

Officer S. S. '27; Chorus '26-'27-'28; Class Basketball '27.

BLANCHE CUSHMAN PENLAND

Clio

CLINTWOOD, VA.

"If you would be her parallel you must raise your ideals for she will not lower hers."

The soul of Blanche is a storehouse of virtues. Her life represents the things for which all true women strive but few attain. She is kind, gentle, considerate, studious, and ever attempts to uphold all that is noble and good in life. Her greatest ambition is to serve those around her. She has done this in a great way at Mars Hill. With her master mind, lovable disposition, and gentle spirit,—she is sure to fill a worthwhile place wherever she chooses.

Officer B. Y. P. U. '28; Officer S. S. '28; Scribleris Club '28; Officer Society '28; President Society '28.

FRANK PETHEL JOYNER

Euthalian

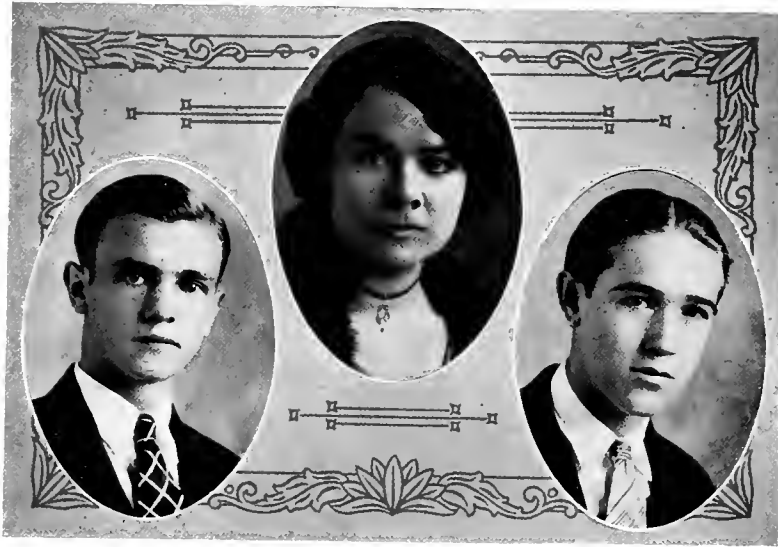
ROCKY MOUNT, N. C.

"Through the beginning of love brings delight, the end bringeth destruction."

Frank is a boy whom we admire because of his friendliness toward every student. One will not know him at the first glance, but after he is known, he has a place in your heart.

He is a stalwart fellow—an outstanding athlete of the Class of '28. During his stay at Mars Mill he has won many friends. We bestow upon him our regards and best wishes and bespeak for him success.

Varsity Football '26-'27; Varsity Baseball '27; Basketball Squad '26-'27; "M" Club '26-'27-'28.



SAMUEL MILLER

Philomathian
ASHEBORO, N. C.

"All that you do, do with your might; for things done by halves are never done right."

There is just one Sammie. Often he is misunderstood by those who do not know his inner life; always he is as sincere as men are made. Yes, he likes to argue, and is given to losing himself when so engaged. Besides his studies, he likes to play baseball and write "leads" for a sport stories.

Officer S. S. '26-'27; Officer B. Y. P. U. '27; Officer Society '27; Vice-President International Relations Club '27; Varsity Baseball '27; "M" Club '27-'28; Science Club '27; Dramatic Club '27; C-I Track Team '27; Athletic Editor *Hill Top* '27-'28; Inter-collegiate Debater '28; Debate Club '28.

SADIE GREENE

Clio
GREENVILLE, S. C.

"Deeds, not words."

Modest and unassuming, Sadie is one of those persons whose character is only fully revealed to those with whom she comes in daily contact. To know her is to love her. She is a good student, a faithful friend, and a true Christian. Her philosophy is service.

Officer B. Y. P. U. '27.

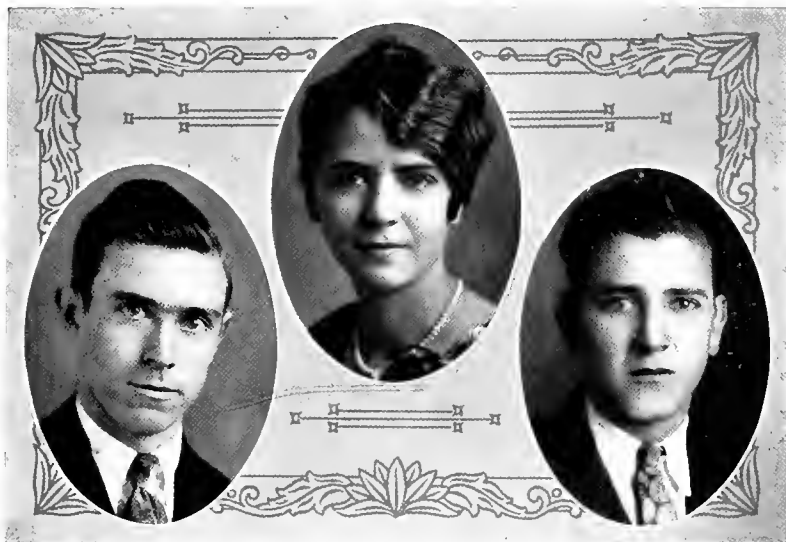
WILLIAM HENRY OVERMAN

Philomathian
TROTTSVILLE, N. C.

"Give to the world the best you have, and the best will come back to you."

Henry is a fellow whom we all admire. His big heart and personality have won him many trustworthy friends. As a student, he ranks high. If perseverance brings success, we know his ideals will be accomplished. As he enters into the field of politics, we bestow upon him our best wishes.

Officer S. S. '27; Officer B. Y. P. U. '27; International Relations Club '27-'28; Member Science Club.



CARR E. BROWN

Euthalian

NORTH WILKESBORO, N. C.

"It matters not what you are thought to be, but what you are."

As a good-natured, all-round sport, Carr can't be beaten. He made his debut at the "Hill" this year, and is a loyal member of the Senior class. You never find him in a grouchy mood, and he has a sincerity of purpose which will certainly win for him a place of distinction in the years to come. Our best wishes accompany him wherever he goes.

International Relationship Club.

ETHEL YOUNG

Clio

COOLESMEE, N. C.

"So unaffected, so composed a mind; so firm, yet soft, so strong, yet so refined."

Although Ethel has been with us only one year she has those characteristics of womanliness and winsomeness which make a girl lovable. She is jolly, yet not frivolous; serious, yet not solemn. Her ability as a student, her helpful sympathetic understanding of her friends and her consideration for the other fellow make Ethel a girl whom we are happy to call friend.

Officer B. Y. P. U. '28.

PERCY PARKER

Philomathian

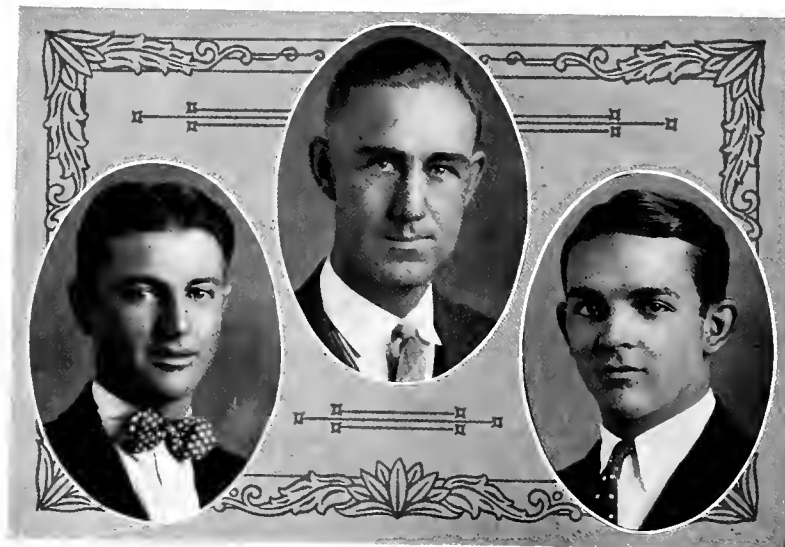
SYLVA, N. C.

"To be trusted is perhaps a greater compliment than to be loved."

"Perk" has only been with us just a little while, but we appreciate his presence.

He is very musical, and renders many sweet melodies with his "Uke."

As a student, "Perk" is studious; as a friend, he is sociable; and as an associate, he has no parallel. After all is said and done the Institution should be uplifted by having had his attendance here. And we know that he will make a great success as a leader some day.



RAY BENNETT
Philomathian
 BURNSVILLE, N. C.

"Genius does what it must, talent does what it can."

Ray and two buddies seemed disposed to organize a "Bachelor's Club", but Fate decreed otherwise. Ray is one of our intellectuals—he is a member of the Scribleris Club and a promising one. He is a persistent worker and gets things done, though never to his satisfaction, for he heartily agrees with Browning that, "A man's reach should exceed his grasp or what's a Heaven for?" Yes, Ray is a "regular fellow."

Scribleris Club '27-'28; International Relations Club '27-'28; Officer Society '28; Baseball Squad '27-'28.

W. M. GERALD
Philomathian
 NICHOLS, S. C.

"Eventually, why not now?"

This is "Bill", a happy-go-lucky, but a good fellow. We all like him and enjoy his presence. He is tall and slender, as is shown by his big ears, but he is as dependable as any man. "Bill" is industrious, intelligent, and studious; and we are all expecting to see him rise to importance some day, and fill the rostrum of some prominent church, as he is a man of great foresight, vision, and worth.

President B. Y. P. U. '27; Officer B. Y. P. U. '26-'27; Officer Society '26-'27; Officer S. S. '26-'27; Chorus '26-'27.

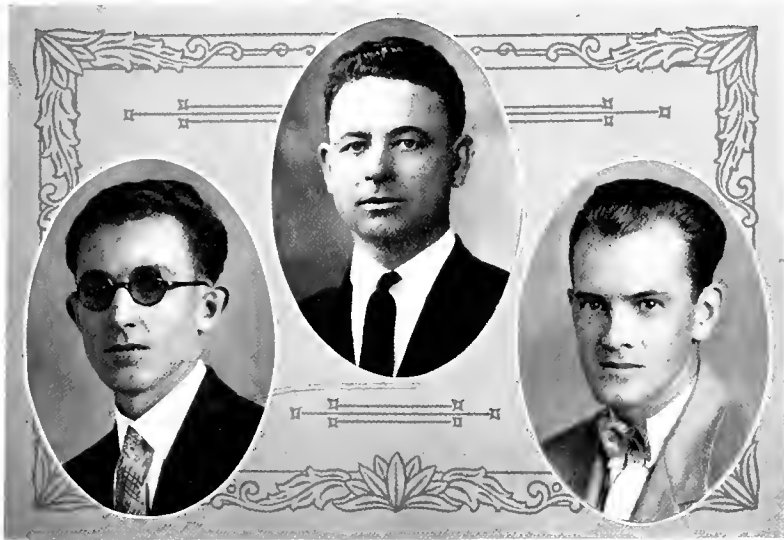
PAUL LAUGHRUN
Philomathian
 BURNSVILLE, N. C.

"Charms strike the sight, but merit wins the soul."

Paul is a very dignified student. He is studious, industrious, intelligent, and an all-round good fellow. He neither lacks humor, nor sagacity; but, like others, he seeks membership in the "Bachelor's Club."

As a friend, he is ever faithful and unfaltering; as an associate he is above the average. And full well it can be said of him: "Associate yourself with men of good quality, if you esteem your reputation; for it is better to be alone than to be in bad company."

International Relations Club '27-'28; Officer International Relations Club '27; Science Club '27-'28.



FRANK H. LEATHERWOOD

Euthalian

WAYNESVILLE, N. C.

"It is better to rule your own spirit well than to be the conqueror of many nations."

The desire to live a useful life, the courage to rise above obstacles, and the determination to build a lasting character—have urged Frank upward and onward to nobler heights. He is not a genius; yet he is more than this: a student who has caught a vision, seeing beyond the world; a student who has toiled, knowing that beyond labor lies victory; a student who has conquered, feeling the matchless thrill of priceless accomplishments, yet in modesty has lived.

Officer Society '25-'27; Officer S. S. '26-'27; Vice-President Minister's Conference '25-'27.

E. F. BAKER

Philomathian

MARS HILL, N. C.

*"A rare compound of quality, noble and true,
With plenty of sense and good humor, too."*

Jolly, loyal, sincere and unselfish is Baker. His friendly spirit and sense of humor make him a friend to all his classmates. He has displayed marked ability as a student, speaker and baseball athlete. There are implanted in his life those principles and aspirations that make for true nobility of character. He lives a true and wholesome life uplifting those with whom he comes in contact.

President B. S. U. '25-'26; Vice-President Society '26; President Society '27; Anniversary Representative '25-'26-'27; Commencement Representative '25-'27; Debate Council '27-'28; Inter-collegiate Debater '26-'27; Varsity Baseball '24-'25; Captain Baseball '25.

CLARENCE DAVIS

Philomathian

ARLEY, ALA.

*"He walks among us with pleasant mien and quiet,
A presence to be felt."*

Faithful, determined, unassuming, you have won the confidence of all of us. Although you have been too busy for many extra curricula activities, you have been very conscientious in your academic work and we wish for you the best in life.

And, Clarence, if you have any difficulty in winning her, we unanimously suggest that you invite her to the kitchen to taste your good rolls.

Officer B. Y. P. U. '26-'27; Officer Science Club '27.

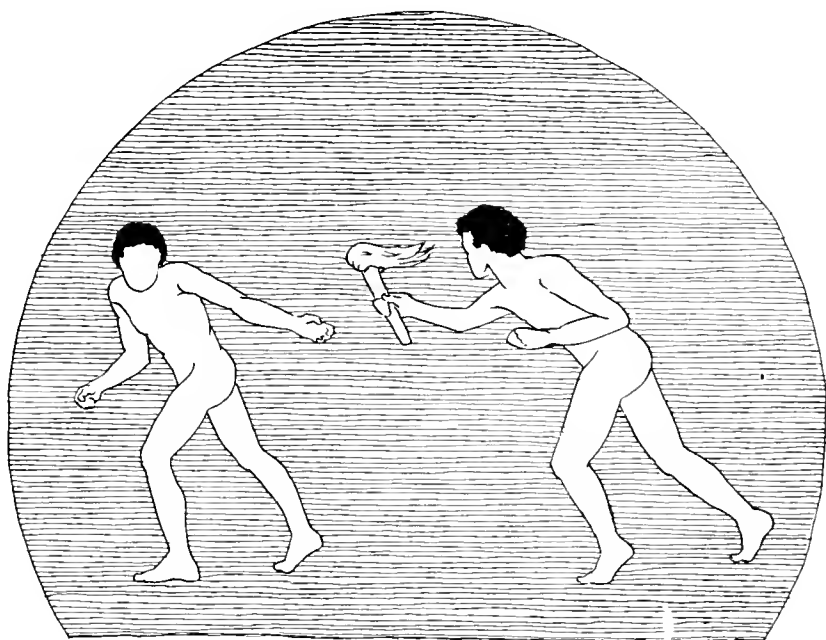


SNAPSHOTS



SNAPSHOTS

PAGE 56



JUNIORS

GLEBE '23

[illegible]

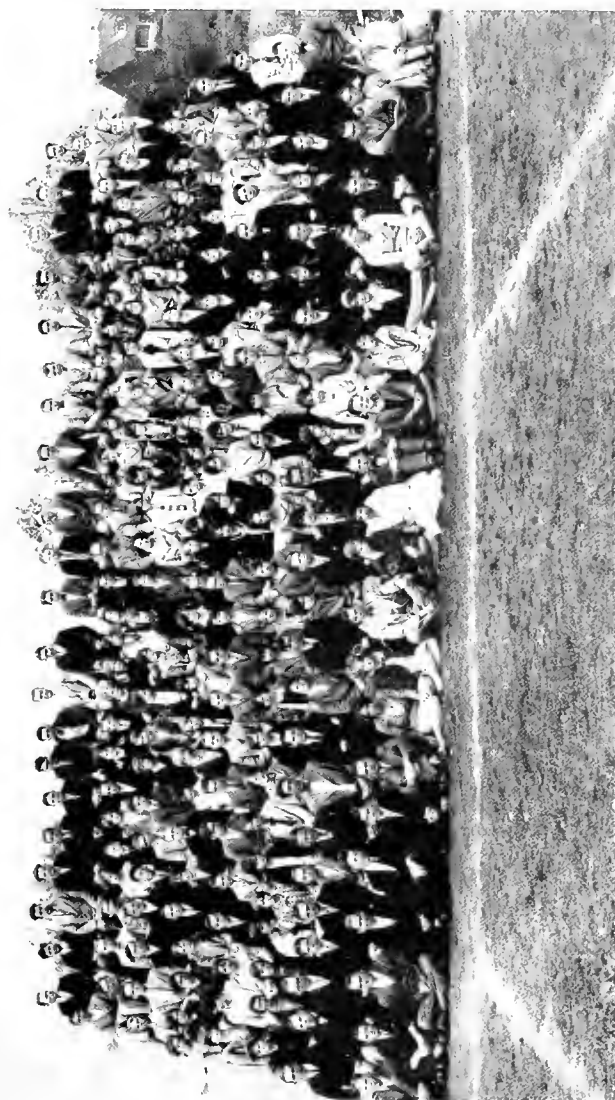
ROLL

ANDERSON, RICHARD
ANDERSON, HARRY L.
ALLISON, FLORA
ANDERSON, CATHERINE
ANDERSON, GLADYS
ANDERSON, JAMIE
ANDERSON, NANCY
BAKER, JESSE
BAILEY, JAMES
BARNETTE, LOWELL
BEAM, THOMAS
BLACKBURN, JOHN
BRADLEY, LESTER
BRADLEY, ELTON
BRITT, ALTON
BROOKS, NATHAN
BROWN, CARL
BROWN, REX
BRYSON, ROBERT
BUCKNER, JAMES
BUCKNER, TILLERY
BUCKNER, JOHN
BYRD, LOMENS
BLACKWELDER, WM.
BOONE, FLOYE
BRADLEY, BERNARD
BRIGGS, PAUL
BOWMAN, RAY
BARRETT, JAMES
BUCKNER, MURIEL
BAITY, GILMA
BARTON, THELMA
BECKWITH, ALICE
BOBO, RUTH
BOONE, ETHEL
BRIGGS, FOY
BRIGMAN, AGNES
BROCK, MARY
BROWN, MARY
BUCKNER, MAIRA
BENNETT, CATHERINE
CASTLELOW, BASIL
CAUDLE, WILLIAM
CHILES, WALTER
CHILES, JOHN
CONNOR, JOSEPH
CORBIN, CARL
CABINESS, NINA
CAMPBELL, LULA
CARTER, SARA
CARVER, RUTH
CAUSEY, EUNICE
COBB, VIRGINIA
COCKERELL, LOIS
COFFEY, JOE
COLLINS, MARY
CORNWELL, LILLIAN
CORNWELL, PEARL
CLARK, LOUISE
CASEY, JEAN
DAVIS, MILDRED

DEATON, NOVELLA
EDWARDS, PHYLLIS
EDWARDS, GLADYS
EDWARDS, JUDSON
EDWARDS, RUBY
EGERTON, WILLIAM
ELLER, MARY
ELMORE, MYRTLE
EDWARDS, CATHERINE
ESTRIDGE, KATHLEEN
FELMET, JACK
FOREHAND, OSDELL
FRANCIS, HERMAN
FARMER, GLADYS
FINCHER, VELMA
FITE, LEMMIE
FOWLER, RUBY
FRANCIS, MARGARET
GAINES, TRACEY
GARBE, HAROLD
GARRISON, FRANK
GIBBS, GEORGE
GRAHAM, OSCAR
GROGAN, WILLIAM
GRUBBS, PAUL
GLORE, ERNEST
GLORE, OLLIE
GIBBS, MARTHA
GOLD, AILEEN
GRIBBLE, MARY
HAGER, BARTLETT
HAYNES, JETER
HELMS, JAMES
HELMS, FRONDIS
HENDERSON, JESSE
HILL, ONNIE
HINES, ERNEST
HUMPHREY, BOYD
HUSKINS, FRANK
HAMBY, LUCILE
HANNOX, EVELYN
HAWKINS, ELIZABETH
HENDERSON, IRMA
HENDERSON, BERDELL
HIGGINS, MARY
HUNNICUTT, MRS. H. II.
HOWELL, RENWICK
HAWKINS, MRS. D.
JARVIS, CARMEL
JARVIS, ROLLINS
JARVIS, RUTH
JOHNSON, WARD
JONES, ELLEN
JONES, THOMAS
JUSTICE, EMMA
JOYNER, JAMES
KEMP, WORTH
KIMPEY, ALBERT
KING, FRANCES
KIRK, JOHN
KISER, ALBERT

LAWRENCE, HILDA
LANCE, HALL
LANE, MCRALEIGH
LEDFORD, GLENN
LEWIS, CHARLES
LOGAN, WILLIAM
LILES, T. BERRY
LANDERS, KATE
LATTIMORE, VIRGINIA
LATTIMORE, MARY
MASSIE, FRANCIS
MASON, IRVING
MEARES, CARL
MEARES, LUTHER
MEDLIN, WILLIAM
MILLER, LEONARD
MOORE, HERBERT
MORSE, SAMMY
MURPHY, ORIS
MANLY, ARTIE
MARTIN, VERNIE
MAXWELL, ELEANOR
MAY, MADELINE
MINTON, ELIZABETH
MITCHELL, VONNIE
MOON, ATTIE
MORGAN, OLLIE
MUMFORD, LOUISE
MCDARIS, GRANT
MCBRAYER, ELSIE
MCCURRY, CLARA
MCDARIS, BONNIE
MCKINNEY, BERTHA
MCMAHAN, ORLENA
NEWBROUGH, JOE
NORMAN, HENRY
NAVY, ELLEN
NORWOOD, FOY
NYE, CAROLYN
O'DELL, LAURA
PARRISH, MAURICE
PARROTT, CARLYLE
PATRICK, CLARENCE
PLUMLEE, MILLARE
POPLIN, CRAWFORD
POWELL, VAN
PRYOR, EARL
PACKARD, JENNIE
PAGE, CLARA M.
PAYNE, LORENE
PEELER, EVANGELINE
PONDER, VIRGIE
POPE, MARY
PRICE, RACHEL
PLUNLEY, MYRTLE
PHILLIPS, ROSCOE W.
POTTER, H. M.
QUALLS, ARCHIE G.
RANSDALL, NEROS F.
READING, HUBERT F.
REEVES, WILLIAM E.

RENFROW, PELHAM
ROBERTS, MAX M.
ROBERTS, WILLIAM B.
ROBERTS, CLYDE M.
ROBINSON, WILLARD F.
ROBINSON, RAYMOND M.
ROSS, HOWARD W.
ROUSE, MARVIN H.
HICKS, HENRY
RAMPEY, MRS. LILA S.
RAMSEY, MARY H.
RICH, FRANCES C.
RIDDLE, GRACE M.
ROBERTS, JUDITH I.
ROGERS, BONNIE E.
ROGERS, MARTHA M.
SAMS, ROBERT L.
SMITH, ARTHUR H.
SMITH, JAMES B.
SMITH, ROLAND, A.
SOUTHERLAND, WM. B.
SPRINKLE, HORACE R.
STEVENS, JAMES B.
STROM, SAMUEL T.
SUMNER, JOHN I.
SUTTON, GEORGE R.
SHEARIN, MAUD
SHERRILL, MARGARET J.
SINGLETON, EDWANDA R.
SMILEY, MARJORIE M.
SNEELSON, ADDIE E.
SNYDER, MATTIE D.
STONE, RUTH E.
STROM, MARY I.
SWANSON, ETHEL E.
TEAGUE, THOMAS C.
TALLANT, RUBY M.
VAUGHN, CRAIG B.
VIPPERMAN, RUTH V.
WALTERS, PERCY
WARE, MERRITT T.
WARLICK, GLENARD L.
WEAVER, RALPH E.
WELLS, HERMAN T.
WESTALL, BENFORD S.
WHITE, EDGAR S.
WHITESIDES, SAM
WILLIAMS, WEBSTER F.
WILLIS, DEWEY E.
WOOD, PRALO
WORLEY, JOHN
WATSON, MATTIE E.
WHITAKER, INA L.
WHITMIRE, RUBY L.
WILLIAMS, MAE A.
WILLIAMS, MAUD L.
WILLIS, RUTH E.
WILLIS, MARIE
WILSON, EULA M.
WATKINS, FRANCES



JUNIOR COLLEGE JUNIORS

The HILL Top



J. GLENN TRAVIS
EDITOR



A. N. CORPENING
FACULTY DIRECTOR



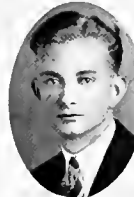
MARY HAMBY
ASSOCIATE EDITOR



CARL MEARES
BUSINESS MANAGER



EDWIN HAYNES
ADV. MGR.



LLOYD CAIRNES
CIR. MGR.



BESSIE LEIBY
STENOGRAPHER



WADE BROWN
ALUMNI



REBA LOWE
RELIGIOUS



E. T. HARRELL
SOCIETY



BARBARA FREEMAN
CLUBS



O. J. MURPHY
JOKES



WILLIAM LOGAN
REPORTER



ZELMA BENNETT
EXCHANGE



SAM MILLER
ATHLETICS



RAYMONIA GILLESPIE
POETRY



GELNN WHITT
COMMUNITY

THE HILL TOP STAFF



EVELYN McLEOD, *Mascot*

ACADEMIC SENIORS



MRS. CORNELIA HOWELL VANN

NELLIE BOWDEN POWELL

Nonpareil

PORTSMOUTH, VA.

"There is none like her."

Nellie has been an active leader in her class activities and a great worker in her society. Her inborn talent for music cannot be excelled. When she appears on the stage there is a charm, a power that stills the audience. Her future may be interpreted by her scholastic and social achievement.

President A-IV Class '27; President A-III Class '26; Secretary A-II Class '25; Officer Society '25-'26-'27; Virginia Club '26; Vice-President Girls' Glee Club '24-'25-'26; Scribleris Club '27-'28; Glee Club '27-'28; Chorus '24-'25-'26-'27; Officer B. Y. P. U. '24; Marshal Commencement '27; College Co-ed Quartette '25; Director Non-Eu Orchestra '26-'27.

RAN A. WALL

Euthalian

CLAYTON, N. C.

"The best portion of a man's life—

His little nameless acts of kindness and of love."

Everywhere we find Ran the same—laughing, joyous, optimistic, kind, sympathetic, and loyal to his friends. His appealing personality and willingness to help others place him in our hearts as one whom we can not forget.

WILLIAM BOGER

Euthalian

CHARLOTTE, N. C.

"All but God is changing day by day."

Bill is one of our popular and well liked classmates. He has won his many friends by his good nature and his laughing blue eyes. The girls worry him little and his studies less. Our wish for him is, that he will be to others what he has been to us.

Officer S. S. '26-'27; Society A-IV Class '27-'28; President A-II Mathematics Class; A-III Basketball '26-'27; Captain and Manager A-IV Basketball '27-'28.

KATHLEEN YOUNG

Clio

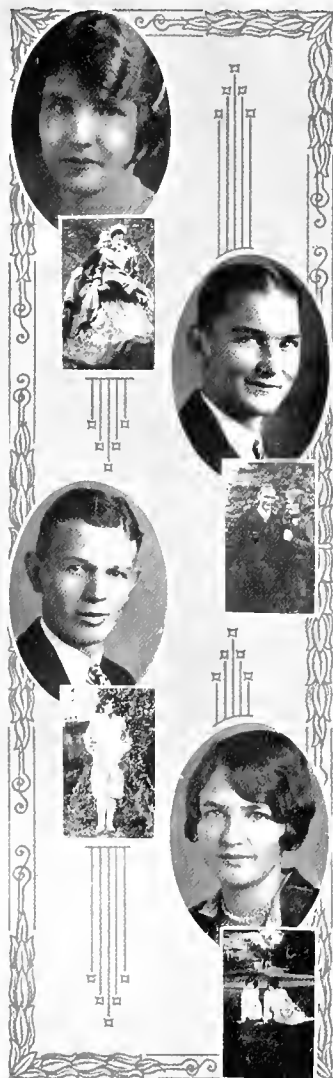
SHELBY, N. C.

"She's lucky, she's kind, sincere and just;

Quite studious, more generous than most of us."

Kathleen is generous of heart and this constitutes a character we all envy. She has a talent for music which will win her success wherever she goes. Kathleen makes friends easily by her sweet disposition and winning ways.

Treasurer A-IV Class; President Geometry Class; Officer S. S. '27; Officer B. Y. P. U. '27; Officer Y. W. A. '27; Chorus '26-'27.





WILLIAM RUTH COOPER

Clio

ENOREE, S. C.

"Every graceful and generous quality of womanhood harmoniously blended in her nature."

Ruth has a personality that wins for her friends anywhere she goes. Her dignity, independence and sincerity of purpose, combined with a determination to do well anything undertaken, have won for her the respect and admiration of both faculty and students.

Officer B. Y. P. U. '27; Officer S. S. '27; Vice-President South Carolina Club '27; Vice-President A-IV Class '28; Officer Y. W. A. '27-'28; Prophet A-IV Class '28.

BENJAMIN A. STRICKLAND, JR.

Euthalian

WHITTAKER, N. C.

"Girls—what foolish things they are!

Yet, how drear the world would be without them."

Ben is usually a quiet, conservative sort of chap, and an extremely talented violinist. He is not always very studious, but when he does study no one in the class learns more quickly than he.

Debaters Club '27-'28; Football '27; Orchestra '27-'28; Chorus '27-'28.

HAZEL WELCH

Nonpareil

BUSHNELL, N. C.

"Meet her, know her, and you'll never forget her."

Hazel is one of the fairest of the fair. To know her is to love her. She is ever ready to do her best for class, society, and religious activities. Hazel is a skilled artist and we predict a great future for her.

Officer S. S. '26-'27; Officer B. Y. P. U. '25-'26-'27; Officer Y. W. A. '25-'26; Class Basketball '25-'26-'27-'28; Officer Society '27; Class Testor '28.

CHARLES P. STOWE

Philomathian

BELMONT, N. C.

*"Whistling, laughing, or singing a song,
Happy and contented he joys along."*

Charles came to us his Senior year from Belmont High School, he is better known on the campus as "Chick." Gloom spreads its wings and sails to foreign realms when "Chick" comes smiling around. What "Chick" says he means, whether it is seriousness, sarcasm or jest.

Class Basketball '27-'28.

AUDREY EMOGENE ALLEN

Nonpareil

NEW ORLEANS, LA.

*"Oh, she was made up of love and charms,
Delight of every eye when she appears."*

The word *unusual* just suits Gene. She has about her that quality that boys respect and girls admire—sportsmanship. Pep personified, originality plus, a bit of sunshine, heaps of fun, a bundle of talent, sincerity, our admiration—Gene.

Band '27-'28; Orchestra '27-'28; Chorus '27-'28; En-Non Orchestra '27-'28; Officer Band '27-'28.

WILLIAM SUGGS

CHAPEL HILL, N. C.

"Mighty in strength."

Bill has been with us for three years now, during this time he has displayed his wonderful ability in football—what are we going to do without him? Neatness and good looks add to his popularity. He is not conceited and on the campus he has a wide circle of friends.

Football '24-'26-'27.

LUCINDA HANNA

Nonpareil

NEW ORLEANS, LA.

*"She's lovely, sweet and all the rest that might
be said about her; but all I'd say, this is
best—We couldn't do without her."*

Those who know her love her. She is a true, kind, and sympathetic friend; one always ready to lend a helping hand—yes, that's Lucinda. Because of her innumerable qualities we shall always remember her.

CARL MOINS BABER

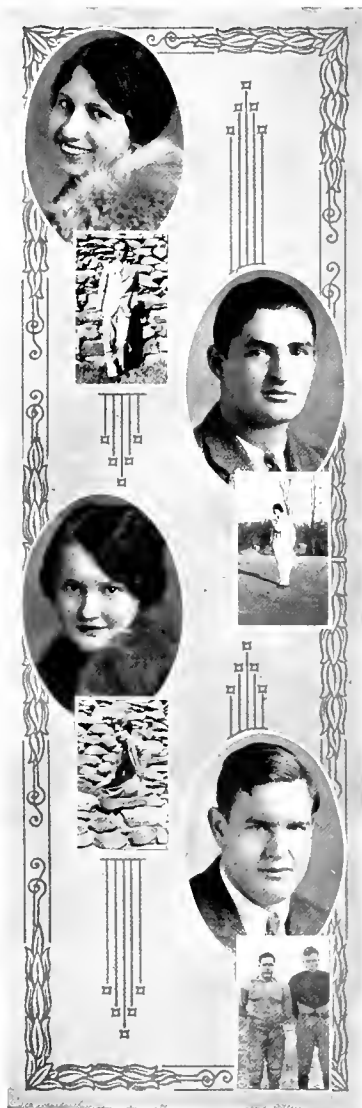
Euthalian

GASTONIA, N. C.

"I would be pure, for there are those who care."

Baber is one of the leading football players of Mars Hill. He is ending his fourth year on the campus as a quiet but popular boy. He has the esteem of both faculty and students. May he continue with us!

Varsity Football '25-'26-'27; Secretary "M" Club '27.





JAMES E. GREENE

Euthalian

RALEIGH, N. C.

"Faithfulness and sincerity first of all."

James never crosses his bridges until he comes to them, therefore, we all look to him for help to solve our troubles. His solution is ever a smile and a helping hand. It is impossible to forget him and we wish for him the best of success.

Officer Society '27; Officer S. S. '27-'28; Officer B. Y. P. U. '27-'28.

DOROTHY C. WHITAKER

Nonpareil

BARNARDSVILLE, N. C.

"Let me have music and I seek no more delight."

In "Dot" we find a faithful and conscientious friend. She is one of those few persons who know when to be gay and when to be serious. As a friend it is easy to put all one's faith in her. She is a good all-round sport with a cheery smile and a charming personality, accompanied by a talent for music.

Officer B. Y. P. U. '27; Chorus '27; Officer Society '27.

AMANDA SPRINGS

Nonpareil

WILMINGTON, N. C.

"Generosity is her greatest asset."

Amanda is, without doubt, one of the most generous girls at M. H. C. But generosity is not her only likable quality. She is friendly to everyone, and liked by her fellow students.

During the track season last spring she showed her remarkable athletic ability by throwing herself unreservedly into every activity.

Officer S. S. '26-'27; Officer Y. W. A. '26-'27; Chorus '26-'27-'28.

RUTH VIRGINIA WHITMIRE

Clio

CHERRYFIELD, N. C.

"Sweet, true and always kind, a better pal no one can find."

The best friend you ever had—that's Ruth. She is always cheerful, sincere and sweet. If you need help or sympathy go to Ruth, and she will help you. Ruth likes expression and shows her ability in the parts she takes in plays.

Officer Society '27; Dramatic Club '26-'27; Officer B. Y. P. U. '27; Class Historian '27; Anniversary Representative '26-'27.

PAUL C. HUNDLEY, JR.
Philomathian
 ENREE, S. C.

*"A big heart wishing to do right,
 And to be friends with everybody."*

Paul came to us in his Senior Year and he has proved to us that he is a real gentleman. He is loyal, unselfish, firm, and self-determined. He is ready at any time to help anyone he can. Paul is a boy of high ideals, perseverance, clear thinking and noble acting, and a good student. We predict for him a great future in the business world as well as in other activities of life.

Football Squad '27.

BEULAH MAE FERGUSON
Clio

WAYNESVILLE, N. C.

*"Pep, wisdom, joy, everything worth while;
 Beulah has them all, plus a pleasant smile."*

All efforts to describe her are futile, but we are convinced that Waynesville sent us one of her best. Beulah has been with us for three years and has won innumerable friends while here. Beulah, we wish for you happiness and success in everything you undertake!

Officer S. S. '26-'27; Class Basketball Manager '26-'27; Class Officer '27-'28.

HELEN JEANETTE WOODY
Nonpareil

BURNSVILLE, N. C.

*"Not too serious, not too gay; but a true-blue
 girl in every way."*

Helen came to us last year for her Junior work. This year she is a grown-up Senior, although she is the baby of our class. She has won many friends while here. We admire her for her sweet disposition. Helen, here's wishing you success and happiness always!

R. COBB HINSON
Philomathian
 GOLDSBORO, N. C.

"Without love and laughter, life is nothing."

Hinson is one of those persons who can be gay, happy, sympathetic, and yet you know that beneath his smiles there's a soul of love, purity and music, and one who knows how to be silent and calm. His friends consist of the whole student body, and we are spelling S-U-C-C-E-S-S for him.





MULLINS J. ANDREWS

Philomathian
WINTON, N. C.

"Character is like a diamond that scratches every other stone."

Mullins is a happy-go-lucky boy who seldom worries over anything. He is inclined to be mischievous, but he is so innocent-looking he never gets caught. We are traveling on a road with detour after detour, but we feel that when we reach the ultimate end of the path, we will find Mullins there in all the glory that could be gathered in the course of the long journey.

Member of Eastern Carolina Club.

EDNA WILHIDE

Nonpareil
BUSHNELL, N. C.

"From the fields of her soul a fragrance celestial ascended—charity, meekness, love, hope, forgiveness, and patience."

When Edna appears on the campus, our faces naturally brighten, and a smile appears, for Edna always has a smile and "cute saying" for everyone. Studious, generous, kind, witty, optimistic, good-hearted, laughing, and always talking—that's "Our" Edna.

Officer Y. W. A. '26; Officer B. Y. P. U. '27; Officer Society '27; Chorus '26-'27; Officer S. S. '26-'27.

GREGORY CASTRO

Euthalian
GUAYOS, PROVINCE SANTA CLARA, CUBA

"Every man is a volume if you know how to read him."

Success is not for the man who seeks popularity or honors, but for him who seeks the truth and does right.

B. Y. P. U. Officer '25-'27-'28.

WINIFRED WHITE

Nonpareil
GASTONIA, N. C.

*"Whatsoever things are lovely,
Think on these things."*

Although this is "Fred's" first year, it has not taken us long to learn to love her. Everytime she is seen, whether on the campus or in class, she is seen smiling. Of course she's lovely, and we are always thinking about her. Chorus '27-'28.

WILLIAM M. O'KELLEY

Euthalian
RALEIGH, N. C.

*"I must live my own life, do my own work,
in my own way; for I'm responsible for both."*

Bill is one of the few boys on our campus who is aspiring to be a musician. Although he is the least bit bashful, he is popular among the student body. We are expecting great things from him in the future.

Society Officer '27-'28.

NANNIE "JACK" SEARS

Nonpareil
NASHVILLE, N. C.

*"She is pretty to walk with, witty to talk with,
and pleasant to think on."*

"Jack" is one of the most loved members of our class. She is not only lovable but also attractive. Both girls and boys are attracted by her winsome ways. She is popular, too, but not too popular to keep up with her school work.

PRUETT P. HARTSELL

Philomathian
MARS HILL, N. C.

*"There is nothing so kingly as kindness, and
nothing so royal as truth."*

You will find in Pruett Hartsell a friend that is jovial, congenial and true. He is an earnest and dependable worker in all campus activities. We are expecting him to be of much service both to God and to his fellow-man in the field of the ministry.

Officer S. S. '26; President S. S. Class '27.

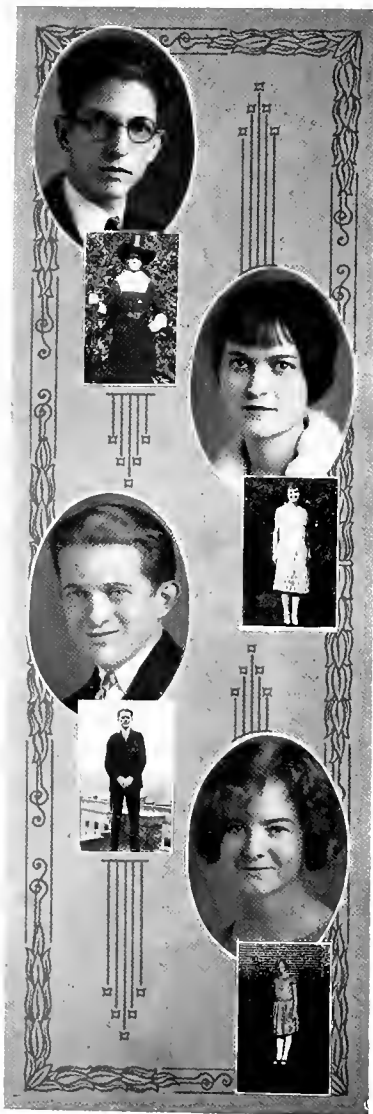
MILDRED INA MEARES

Cho
NICHOLS, S. C.

*"There is in the heart of women such a deep
well of love that no age can freeze it."*

Mildred's heart is a well of goodness, happiness, loyalty, sincerity and frankness, whose waters never cease to flow. She is a valuable friend to all. Her charming personality and lovable disposition will linger in the memory of all her friends after she has gone.





G. GLYNN BOLCH

Philomathian
HICKORY, N. C.

"His purpose is as true as steel and diligence works out his plans."

Noble purpose, high ideals, and reverence for the best things in life are some of the strong qualities that characterize Bolch. His ready smile, his untiring zeal, and his eagerness to fulfill his mission in life will surely lead him to broad fields of service.

S. S. Teacher '26; Chorus '26-'27-'28; Officer S. S. '27; President B. Y. P. U. '27; Officer Ministerial Conference '27; Head President B. Y. P. U. '27-'28; Glee Club '27-'28; Officer Society '27.

JULIA ROUSE

Clio

LA GRANGE, N. C.

"If music be the food of love, play on."

"Sunshine" came to us only this year, but with her she brought a winning personality and a sweet disposition that makes us all love her. She is the type of young lady that holds up true Christian womanhood. She has made many of our lives purer and richer. She has a wonderful talent for music.

Teacher Beginners S. S. '27-'28; Officer B. Y. P. U. '27; Glee Club '27-'28; Chorus '27-'28; Pianist for Junior B. Y. P. U. '27-'28.

H. GLENN WILLIAMS

Euthalian

ANDREWS, N. C.

"Give happiness unto others."

"Red" has only been with us this year but he has proven himself capable of good work. He has a word for each one he meets, and is liked by all his classmates. In preparing for an engineering course he has made a good start. Success to you, "Red"!

ZULA MAE THOMAS

Clio

MICAVILLE, N. C.

"Hearts that feel and eyes that smile are the dearest gifts that Heaven supplies."

A quiet step, a smile and in slips Zula, a genuine lady. The first glance assures you that Zula never fails to lend a helping hand—never satisfied until she has done the best in everything. We see for her in the future a life of universal worth and usefulness.

HOUSTON E. ERVIN

Euthalian

KERSHAW, S. C.

*"When the fight begins within himself,
A man's worth something."*

Ervin is a likable fellow. That's fine, but he is more than likable; he is dependable, clean and upright in daily life. A speaker of distinction in his society, a good student, a noble character are only a few of his finer qualities. Mars Hill College is sincerely glad to call him one of her very own.

Winner Scrugg's Debaters' Medal, International Relationship Club '27-'28; Officer S. S. '27.

SARA ELIZABETH COACHMAN

Clio

CLEARWATER, FLA.

*"Love, sweetness, goodness, in her person
shined."*

"Sara Ann" is a good all-round sport, always laughing, talking, jolly as can be. She has won many friends although she has only been here one year.

E. M. LEONARD, JR.

Philomathian

CHATTANOOGA, TENN.

"The only way to have a friend is to be one."

Here is a man of true worth, a hard-working student, and he learns for a purpose or not at all. He is earnest, sincere, dignified, polite and considerate. He practices what he believes to be right. Truly, God has a noble Christian work for him in this great rushing world.

ODUS L. MCGINNIS

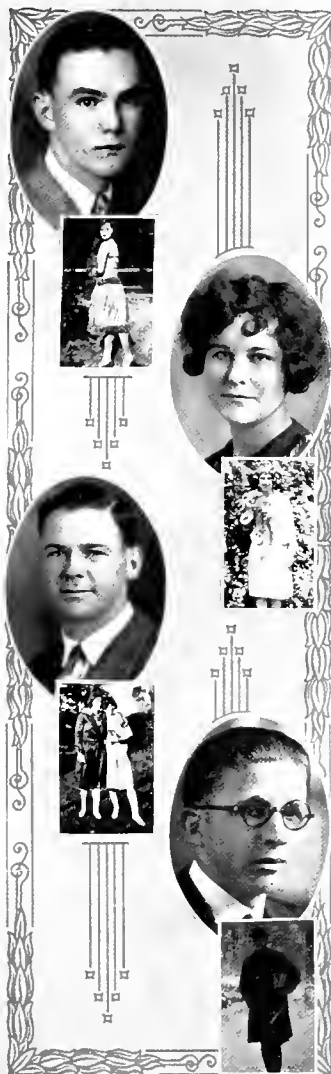
Philomathian

GASTONIA, N. C.

*"Such men as he be never at heart's ease
Whilst they behold a greater than themselves."*

"Mack", another splendid fellow from Gaston County, is energetic and zealous in all good works with an insight for a great future. He is a boy of high ideals with an inner urge that never lets him rest until he has gained the highest things.

Officer B. Y. P. U. '25-'26-'27; Officer S. S. '24; President Personal Workers '25; Officer Society '25; Secretary Ministerial Conference '25; President Ministerial Conference '26; President Summer S. S.'s '26; Monitor Boys' Dormitory '26; Group Captain Ministerial Conference '26.



GAURBL '28



LAUREL '28



CHARLES MADDRY
PRESIDENT

B·S·U OFFICERS

ALICE MCKITTRICK
SECRETARY

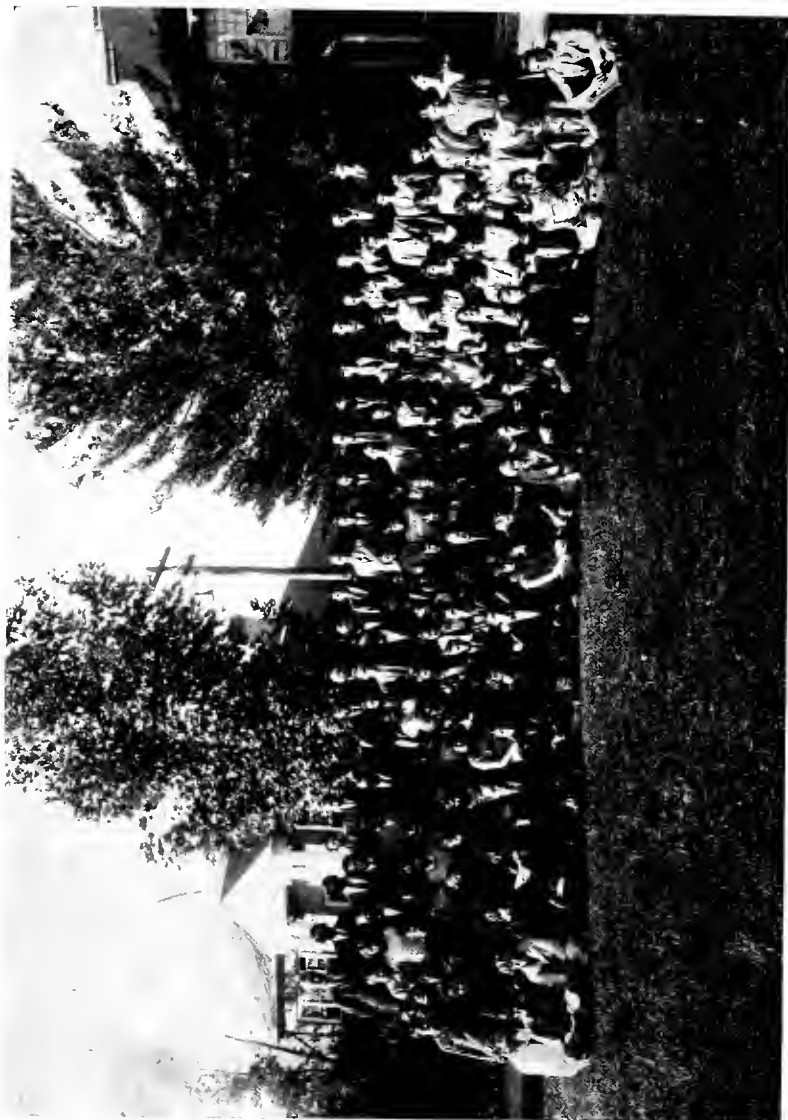
KATHERINE ROBERTS
CORRES. SECRETARY



B·S·U. COUNCIL



SUNDAY SCHOOL OFFICERS



B. Y. P. U. OFFICERS



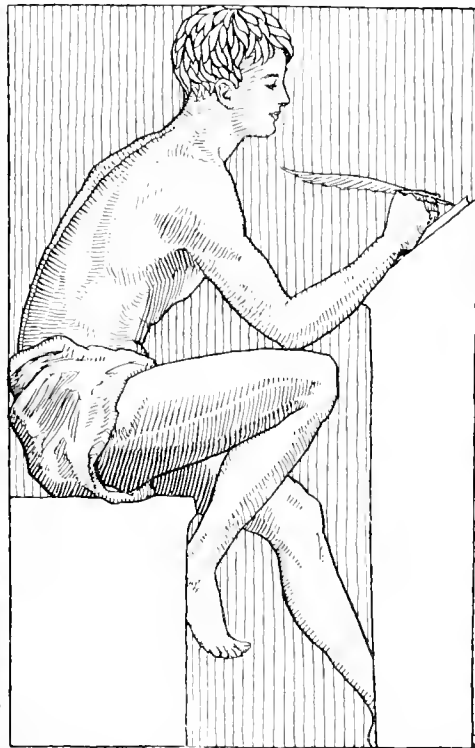
MINISTERIAL GROUP

FOUR, 29

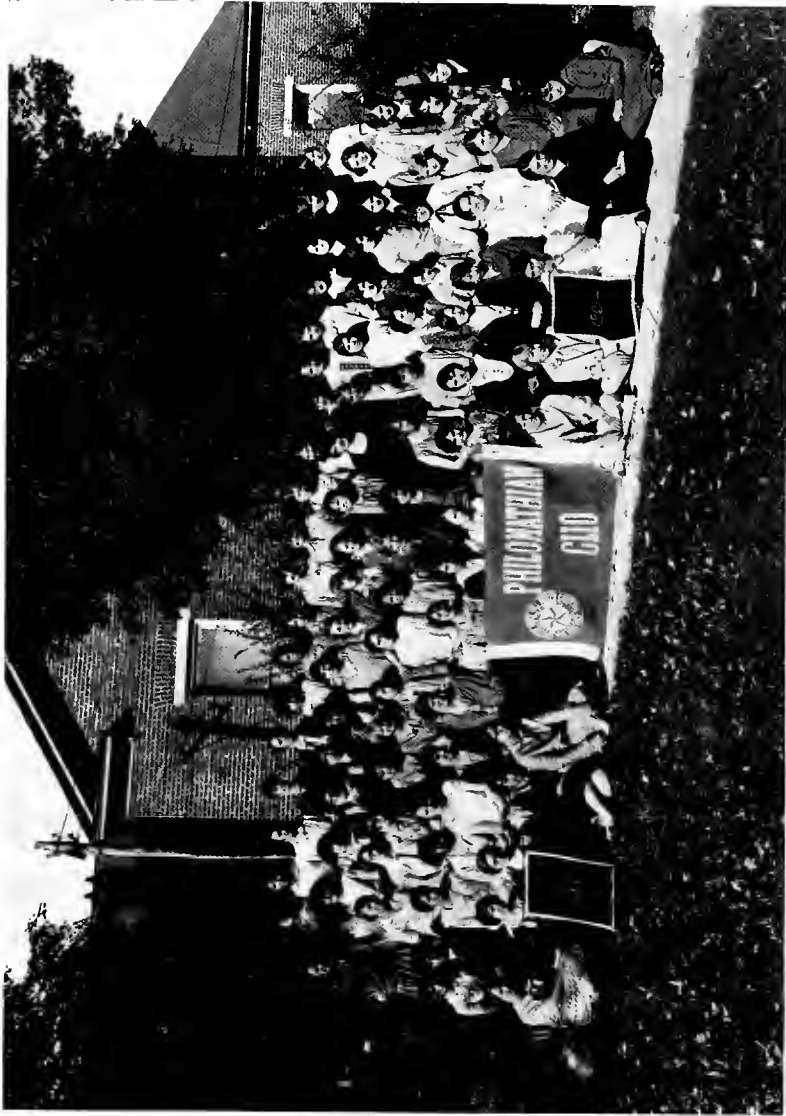


Y. W. A. OFFICERS
INNER CIRCLE

LITERARY



FRANK LONG '23



CLIO LITERARY SOCIETY



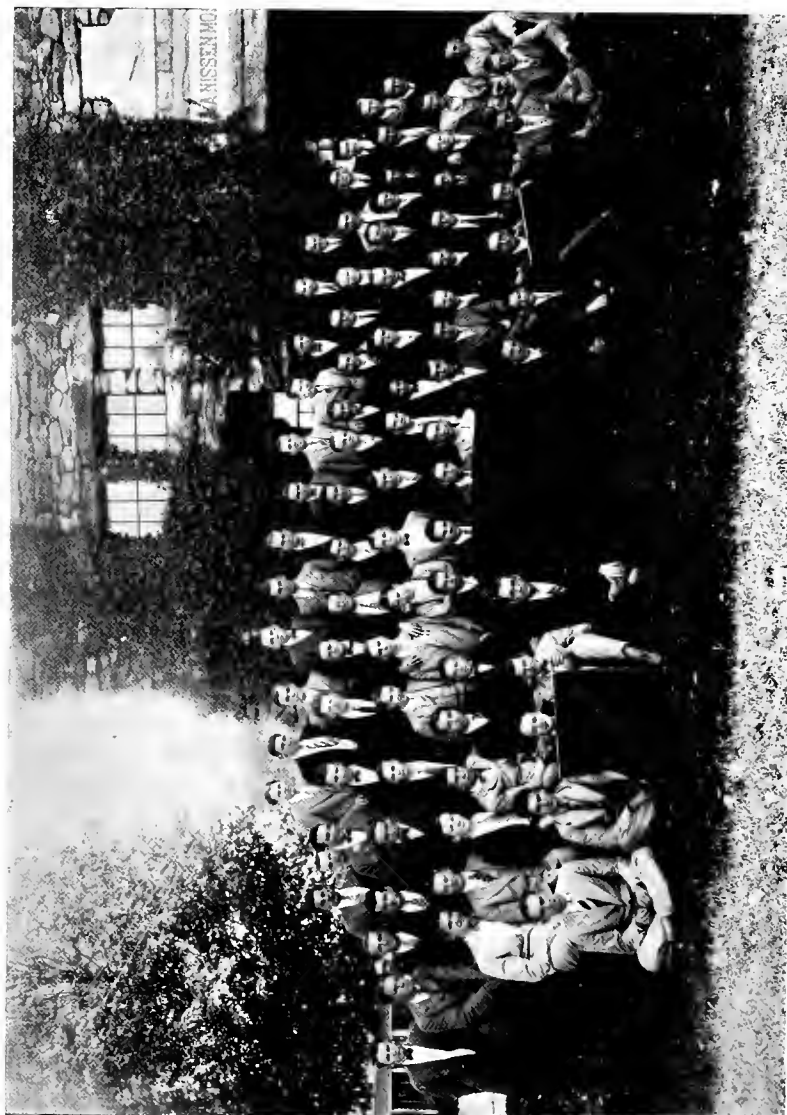
PHILOMATHIAN LITERARY SOCIETY



EU-NON HALL
PHI-CLIO HALL



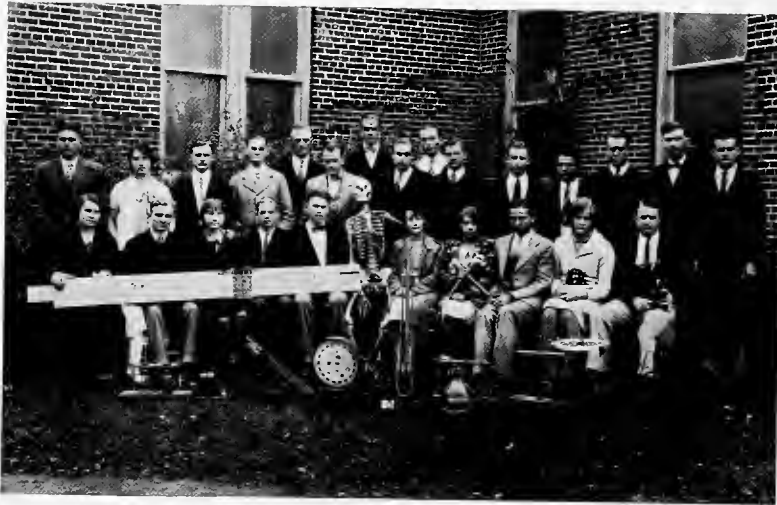
NONPAREIL LITERARY SOCIETY



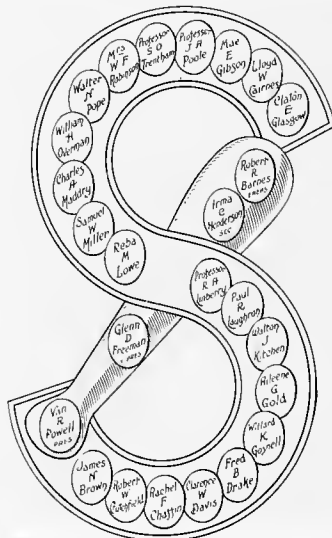
EUTHALIAN LITERARY SOCIETY

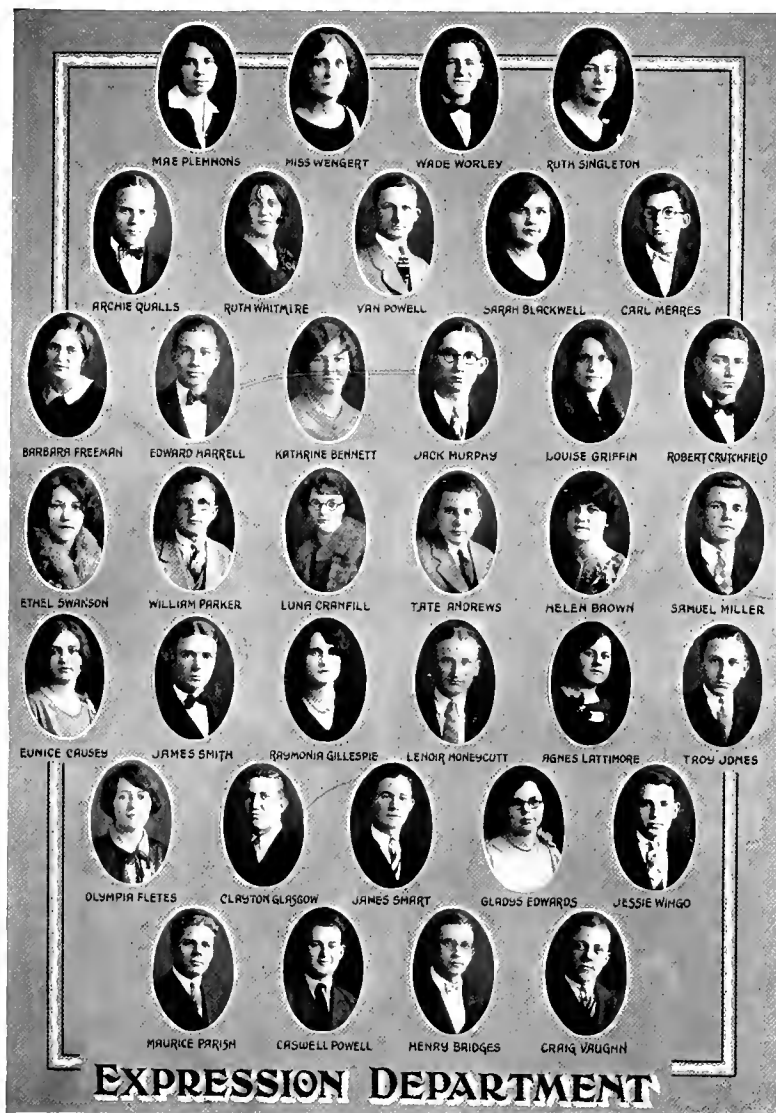


LAUREL '28



SCIENCE CLUB





OFFICERS

EULA WILSON
MAE GIBSON
BONNIE ROGERS
VIRGINIA FRADY
SAMMIE MORSE
BARBARA FREEMAN
WILLIAM LOGAN
JAMES BAILEY, JR.
ARTIE MANLEY
IRMA HENDERSON

LEONARD MILLER
MAUDE ASHWGRTH
HAL LANCE
BEATRICE McBRAYER
WADE WORLEY
INA WHITTAKER
GLENN TRAVIS
ZELMA BENNETT
HELEN MORRIS
DORTHY WHITTAKER

PAGE 88



"M" CLUB



MADISON COUNTY CLUB

LAUREL '28



Eastern Carolina Club

OFFICERS

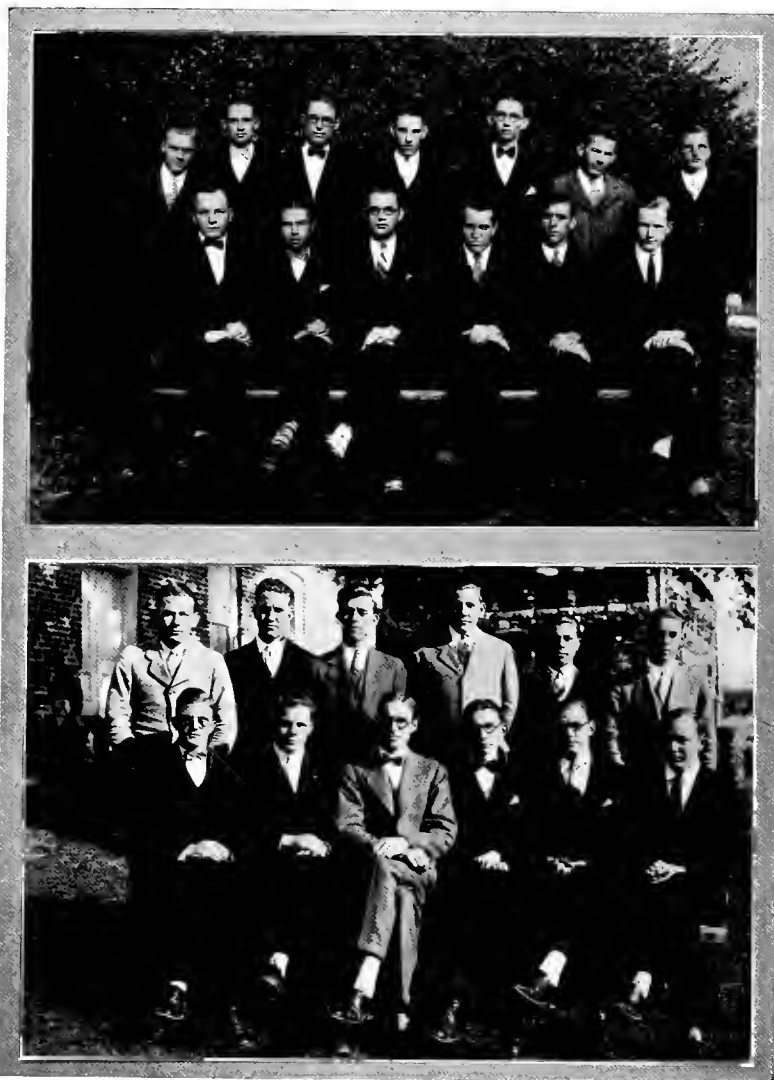
JACK MURPHY - - - - - *President*
 ADA BAREFOOT - - - - - *Secretary*

ROLL

MISS HINTON
 MISS PIERCE
 MISS BLACKSTOCK
 MR. LEE
 ROBERT LINEBERRY
 JULIA ROUSE
 ELIZABETH COX
 EUNICE CAUSEY
 ROBERT GREENE
 VONNIE MITCHELL
 LONNIE REVIS
 PELHAM RENFROW
 FRANCES KING
 ELLEN ROYALL JONES
 ELOISE BROOKS
 MABEL HUNT

ELIZABETH MINTON
 WADE BAKER
 HENRY OVERMAN
 IRVING MASON
 AMANOA SPRINGS
 HARRY WARD
 JAMES STEVENS
 HELEN BROWN
 J. P. HENDERSON
 JACK SEARS
 CHARLES LEWIS
 WILLIAM O'KELLEY
 EDWARD HARRELL
 RAN WALL
 BURT JOHNSON
 ALLEN BRITT
 HENRY BRIDGES

FANNIE GUPTON
 GLENN NORMAN
 MARY BROCK
 TROY JONES
 VIRGINIA COBB
 MULLINS ANDREWS
 J. R. JOYNER
 CRAIG VAUGHN
 BASIL CASTELLO
 CARL MEARES
 BEN STRICKLAND
 WILLIAM RICHARDSON
 BOYD HUMPHREY
 WORTH KEMP
 WILLIAM MCLESTER
 MASSIE HOLDEN



EUTHALIAN ANNIVERSARY REPRESENTATIVES
EUTHALIAN COMMENCEMENT REPRESENTATIVES



PHIOMATHIAN ANNIVERSARY REPRESENTATIVES
PHIOMATHIAN COMMENCEMENT REPRESENTATIVES



COLLEGIATE RAMBLERS
GLEE CLUB



MUSIC DEPARTMENT



INTERNATIONAL RELATIONS CLUB
DEBATERS CLUB



Tennessee Club

OFFICERS

MARY LAMARR REYNOLDS -	-	-	-	-	-	-	-	-	-	-	<i>President</i>
HAZEL WELCH -	-	-	-	-	-	-	-	-	-	-	<i>Vice-President</i>
E. M. LEONARD -	-	-	-	-	-	-	-	-	-	-	<i>Treasurer</i>

ROLL

WALTER CHILES
JOHN CHILES
MILDRED DAVIS
E. M. LEONARD
LAURA MAE ODELL

CLARENCE PATRICK
MARY LAMARR REYNOLDS
FRANCES SNYDER
HAZEL WELCH
THOMAS WALKER

FLOYD WILLIAMS



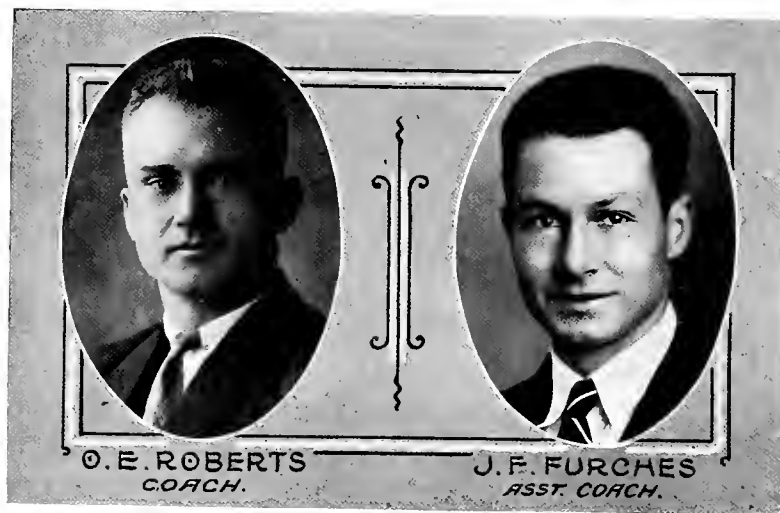
INTER-COLLEGIATE DEBATERS '28

ATHLETICS



FRANK LONG '25

LAUREL '28



The 1928 Football Scores

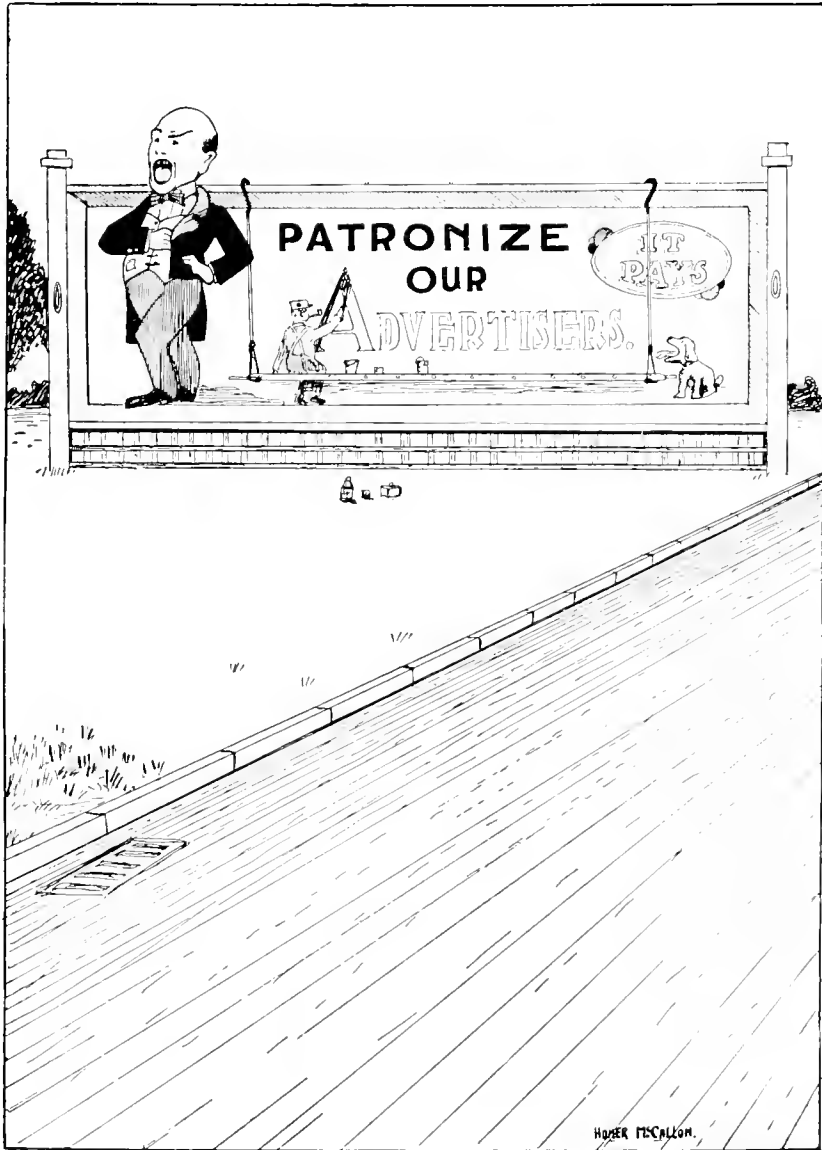
Mars Hill.....	0	Milligan	12
Mars Hill.....	14	Catawba	2
Mars Hill.....	69	Boiling Springs.....	0
Mars Hill.....	0	Oak Ridge	19
Mars Hill.....	6	Tennessee Wesleyan	18
Mars Hill.....	18	East Tenn. Teachers College.....	0
Mars Hill.....	58	Asheville Farm School.....	0
Mars Hill.....	33	Hiawassee	0
Mars Hill.....	0	Bluefield	19
Mars Hill.....	7	Piedmont	0
Total 205		Total 70	



TEAM IN FORMATION
FOOTBALL SQUAD



1928 CAGERS
BASEBALL SQUAD



MARS HILL COLLEGE

I. The Junior College

Required for Admission: Fifteen units.

Required for Graduation: Sixty-six semester hours of college work.

Courses offered: One hundred fifty-two hours in nine "Departments." 44 hours required, 22 electives.

Diploma: "Associate in Arts" admitting to the Junior Class of four-year standard colleges, provided one's subjects are taken in accordance with the degree desired.

II. The Academy

Course A follows the line of the old Classical Course, requiring Latin and other Foreign Language.

Course B allows considerable selection to meet the entrance requirements of Technical Colleges and the needs of those who cannot attend higher institutions. Only Junior and Senior years are offered.

Both Courses lead to certificates.

General Information

Value of the College plant, \$300,000.

Endowment, \$25,000.

Loan and Aid Funds, \$12,000.

Tuition: Academy, \$22.50; Junior College, \$27.50 per semester.

Fees, \$20.00 a semester.

Board and room, \$90 a semester.

Length of session, 36 weeks.

Catalogue On Request

R. L. MOORE, PRESIDENT

MARS HILL, N. C.

WE Extend Our Congratulations to
the Class of 1928 with an expres-
sion of Confidence in Mars Hill College
and of Appreciation to Mars Hill Men and
Women Everywhere.



N. S. WHITAKER

DEPARTMENT STORE

Our Business is to Serve Mars Hill

**The Only Exclusive Two Pants Suit House in
Asheville**

**"Insist upon a two pants suit—It's a rich man's choice,
and a student's necessity."**

See the Mars Hill Model



Successors to TRIVERS CLOTHES

30 PATTON AVENUE

NEXT TO

IMPERIAL THEATRE

Bill Logan: "Are you a professional saxophonist?"

Helen Brown: "Oh, no, I just play for my own amazement."

Charles Maddy: "Isn't it funny the way things turn up?"

Earle Bradley: "Yes, especially noses."

When completion is only commencement

COMPLETION of the college course marks the commencement of a career for most of the graduates. To each of you who complete the course this year, we offer our hearty congratulations and sincere wishes for success and happiness in whatever vocation you individually pursue.

On the eve of your entry into a career or an advanced course of study we ask you to ever bear in mind our wish to be of service to you.

THE AMERICAN NATIONAL BANK

ASHEVILLE, N. C.

A. E. RANKIN, President

L. L. JENKINS, Vice-Pres.

R. E. CURRENCE, Cashier

PHOTOGRAPHS IN THIS "LAUREL"

Made by

DEES STUDIO

Commercial and Portrait Photography

KODAK FINISHING

8 Hour Service

:::::

For Special Appointment Phone 747

:::::

415½ HAYWOOD ROAD

WEST ASHEVILLE

NORTH CAROLINA

Stella Redd: "I wish I were dead."

Lloyd Cairnes: "So do I."

Stella Redd: "Why, what's your trouble?"

Lloyd Cairnes: "Nothing. I'm thinking of you."

*This Advertisement Placed Through the
Courtesy of*

Bon Marche'
"Asheville's Quality Department Store"

ASHEVILLE

NORTH CAROLINA

"Thirty-eight Years of Faithful Service"

FURMAN UNIVERSITY

GREENVILLE, S. C.

:::::

A Christian College of highest grade, granting B.A., B.S., and Law degrees. Living conditions most favorable. Strong faculty, excellent equipment, successful student activities. For catalogue address

W. J. McGLOTHLIN

PRESIDENT

Red Massie: "Margaret Sherrill's complexion is just like strawberries and cream, isn't it?"
Mack Lane: "Yeah, something like strawberries—it comes in a box."

Mr. Stringfield to Mae Gibson: "Miss Mae, I made two pictures of you the other day and did not get a thing but your feet."

EFIRDS

Asheville's Newest Department Store

:::::

SPECIALIZING

CLASS ROOM AND GRADUATION FROCKS

For the College Miss

:::::

QUALITY WITH PRICE

*Style
Quality*

*Value
Service*

Denton's

ASHEVILLE'S LEADING STORE

*Fashionable Apparel and Accessories for
Every Occasion*

Teacher: "Teddy, if your father earned forty dollars a week and gave your mother half what would she have?"

Teddy Farr: "Heart failure."

Harry Ward: "Boyd, you are just like an aeroplane."

Boyd Humphrey: "Why, 'cause I fly so high?"

Harry Ward: "No, you're no use on earth."

MEREDITH COLLEGE

RALEIGH, N. C.

:::::

A STANDARD COLLEGE FOR YOUNG WOMEN

Offers courses of study leading to the A. B.
degree and to diplomas in Music and Art.
For catalogue or further information, write

CHAS. E. BREWER *President*

RALEIGH, N. C.

EAT
THE ASHEVILLE BAKING CO.'S
Butter-Krust

BREAD AND CAKE

"It's Quality"

Katherine Bennett: "What would you do if you could play the piano like I can?"
Mary LaMare: "I'd take lessons."

For all News of Interest, make a daily habit of reading
the CITIZEN

\$7 PER YEAR—\$3.75 FOR SIX MONTHS—\$2.00 FOR THREE MONTHS

THE ASHEVILLE CITIZEN

DAILY

AND

SUNDAY

Commercial Photography - Photo Finishing - Framing

ASHEVILLE PHOTO SERVICE

CAMERA, KODAK, MOTION PICTURE CAMERA, PROJECTOR,
FILM, FILM PACK, AND PHOTOGRAPHIC SUPPLIES

12 CHURCH STREET

ASHEVILLE, N. C.

CARSON AND NEWMAN COLLEGE

An accredited Christian College for aspiring young men and young women.
Directed by a faculty of college trained men and women.
Offers standard college courses leading to degrees B. A. and B. S.
Maintains departments of Music, Art, and Expression.
Has a beautiful campus, comfortable buildings, and excellent equipment.
Fosters wholesome athletics, and has a fine gymnasium and swimming pool.
Rooms should be reserved early.

A. E. CATE, Dean

JAMES T. WARREN, President

JEFFERSON CITY, TENN.

Eunice Causey: "Jack, what's that on your neck?"

Jack Murphy: "A freckle."

Eunice Causey: "That's funny; it's the first time I ever saw a freckle walk."

J. R. Rich Company

PLUMBING AND
HEATING

Pipe, Valves, Fittings
and
Myers Pumps

TELEPHONE 364

40
NORTH LEXINGTON
ASHEVILLE, N. C.

CAPITAL AND SURPLUS
\$1,000,000.00

:::::

More than 21,000 Western North
Carolina people have selected Cen-
tral as their banking home.

**The Central
Bank & Trust Co.**

SOUTH PACK SQUARE
PATTON AT HAYWOOD

ASHEVILLE
NORTH CAROLINA

4 Percent Interest on Savings and
Certificates of Deposit

Founded 1832

Chartered 1833

Wake Forest College

WAKE FOREST, N. C.

A College of liberal arts with an established reputation for high standards, noble traditions, and progressive policies.

EXPENSES REASONABLE

Graduate Courses in All Departments

Summer Law School begins June 5,
Academic Summer School June 11,
Regular Session September 10.

For Catalogue, address

F. P. GAINES, President

Cecil's Business Colleges

Are Fully Accredited by the National Association of Accredited Commercial Schools

The private Business College is the business man's source of supply for office-trained help and opens the way to immediate employment.

Here you are trained in the subjects business requires: Penmanship, Spelling, Arithmetic, Business English, Bookkeeping, Accounting, Typewriting, Shorthand, Stenotypy, Secretarial duties; skill in handling Comptometer, Adding Machines, Commercial Posting and Bank Bookkeeping Machines.

The privilege of free service in the employment department of accredited schools in every part of the United States and Canada assures a favorable introduction in the field of business.

**CECIL'S
BUSINESS COLLEGES**
Asheville - Spartanburg

Glenn Travis: "I've discovered the cause of one hundred per cent of all divorces!"

Clarence Patrick: "Just what is it, I'd like to know."

Glenn Travis: "Marriage."

ASK FOR—

BLUE RIDGE TRAIL BUS

Shortest and Quickest Route Between Asheville
Charlotte

TICKETS—THROUGH BUS LEAVES

8:00 a. m.

and

2:00 p. m.

J. A. BAKER PACKING CO.

ASHEVILLE, N. C.

MANUFACTURERS OF

Blue Ridge Brand Hams, Bacon, Sausage and Lard

COKER COLLEGE

Fully Accredited. Attractively equipped—Liberal-ly endowed. \$460 pays total expenses for the year, includ- ing fees for registration, laboratories and literary tuition, board and room, laundry, infirmary services, athletics, student activities.

Student body limited to 300. Approximately 115 Freshmen can be accepted for the new year. Applica- tions for admission should be made before July.

Catalogue and book of views on request

CARLYLE CAMPBELL, PRESIDENT

HARTSVILLE

SOUTH CAROLINA

Earl Stanley: "Whatever I say goes!"

Louise Mumford: "Then talk to yourself awhile."

Compliments

OF

FINKLESTEIN'S

23-25 BILTMORE AVENUE

*Mars Hill College and its
Graduates always have
our Best Wishes*

**CHERO-COLA
BOTTLING CO.**

ASHEVILLE, N. C.

**HARRIS-DAVIS
COMPANY**

(NOT INCORPORATED)

Merchandise

Brokers and Distributors
ASHEVILLE, N. C.

STERCHI BROTHERS

Incorporated

52-54-56 BILTMORE AVE.
ASHEVILLE, N. C.

Complete

Home Furnishers
HOOSIER KITCHEN CABINETS
ORTHOPHONIC VICTROLAS
MAJESTIC RANGES

**DRUGS WITH A REPUTATION
SMITH'S**

You are always Welcome at Smith's

ESTABLISHED 1869

Pack Square and Biltmore Ave.

Asheville, N. C.

CALLING CARDS

WEDDING ANNOUNCEMENTS

**ASHEVILLE PRINTING & ENGRAVING
COMPANY**

Printing and Engraving

DESIGNING

EMBOSSING

8 GOVERNMENT ST.

ASHEVILLE, N. C.

Charlie Parker: "Pass your Greek, Raymond?"

Raymond Long: "It was this way—."

C. Parker: "Neither did I. Shake."

**McCormick Lumber
Company**

L U M B E R

SASH—DOORS

Ru-ber-oid Roofing

PHONE 423

BILTMORE, N. C.

Chas. C. Cullen & Co.

Incorporated

IMPORTERS—JOBBERs

CHINA SILVER GLASS

**Hotel, Restaurant and Institutional
Equipment**

KNOXVILLE - TENNESSEE

**BOWDEN'S SHOE
SHOP**

For Quality

31 COLLEGE STREET

ASHEVILLE, N. C.

... to the student body of MARS HILL COLLEGE

WE invite you to come to our store and inspect our line of Clothing, Hats, Furnishings, etc. This is one of the little shops you seldom find but always remember. And remember — we guarantee positive satisfaction on every garment. Ask to see our new line of spring apparel.

Furnishings:

WE CARRY THE FAMOUS LINE
OF WILSON'S FURNISHINGS
FOR MEN AND YOUNG MEN

DON'T COME TO ASHEVILLE UNLESS YOU CALL ON US

SMITH-BRUNS CLOTHING CO.
CLOTHIERS AND FURNISHERS

BROADWAY

PHONE 214

Clothing:

ADLER COLLEGIAN CLOTHES
AND HYDE PARK BRAND
CLOTHING
FEATURING 2 PANTS SUITS

Hats:

SCHOBLE AND EMERSON'S—
NO BETTER HAT IN
THE WORLD FOR \$5.00

LANGREN HOTEL BLDG.

Boyd Humphrey: "I saw a woman on the street the other day with one side of her face entirely black."

Walter Childs: "It isn't possible!"

Boyd Humphrey: "Sure; the other side was black too."

HALF
TONES
ART
WORK



ZINC
ETCHINGS
RE-
TOUCHING

611 1/2 S. GAY ST. KNOXVILLE, TENN.
PHONES: HW 3188 - HW 2319
Quick Service Highest Quality

MAKERS OF FINE PRINTING PLATES
SPECIALISTS IN
NEWSPAPER, MAGAZINE AND SCHOOL ANNUAL CUTS

*Faculty and Students
of M. H. C. . .*

We trust you have
enjoyed our "eats" in the
same way as we have en-
joyed serving you.

Shelton-Tweed Co.
WHOLESALE
GROCERS
MARSHALL, N. C.



KODAK and GROUP PICTURES
IN "THE LAUREL" MADE AT
College Photo Shop
MARS HILL, N. C.
BEST SERVICE BY CAREFULLY
TRAINED STUDENTS

HOLCOMB & TILSON

WE GIVE BEST SERVICE
TO TEACHERS AND
STUDENTS

SCHOOL SUPPLIES
GROCERIES
DRY GOODS

and

"SELZ SHOES"

"We need your Change"

Uncle Charlie: "You've been wanting some shoes, Ada. A gigantic shoe sale is advertised in the paper."

Ada Barefoot: "You'd better get a pair yourself. I don't wear gigantic shoes."

Ammons & Crowder's

SERVICE STORE

GROCERIES

Confections

We Carry A Complete Line of
FRUITS, VEGETABLES, SEEDS

AND HARDWARE

WE DON'T MEET PRICES—WE

MAKE THEM

MARSHILL, N. C.

IF YOU WANT GOOD SERVICE
RIDE WITH US

MARS HILL BUS LINE

MARS HILL, N. C.

Lv. Mars Hill	Lv. Asheville
7:30 A.M.	9:00 A.M.
10:00 A.M.	12:00 A.M.
1:00 P.M.	3:00 P.M.
4:00 P.M.	5:00 P.M.

Reserved Cars for Special Trips

—CALL FOR—

E. A. CARTER W. L. EDGE

The News-Record

Published Every Friday

The News of Madison County

SEND US YOUR JOB PRINTING

H. L. STORY

Publisher

MARSHALL, N. C.

Let us Move you!
S. L. Carter & Son
TRANSFER
ICE and COAL
 The World CARTS—So Does
CARTER!

FOR BEST
MILK AND MEATS
SEE
HUFF'S MARKET

Courtesy
Quality Service

The
College Pharmacy

Make Our Drug Store
Your Headquarters

YOU ARE ALWAYS
WELCOME

S. A. SLACK - - - Manager

Nell Bowles: "Miss Kelly I want a glass full of castor oil."
 Miss Kelly: "I suppose you want the tasteless kind, Nell."
 Nell: "No ma'm, I want it for Reba."

Faculty and Students

We want to take this opportunity to express to you our appreciation of the nice volume of business you have given us during the past school year. We are proud of the confidence you have placed in us and our merchandise, and as you go out for another vacation may it be the biggest ever, and may you come back full of "Pep" and Vigor to do greater work in 1928-29.

Having known you and your wants, we feel that we can be better prepared to take care of your wants next year.

T. L. Bramlett & Co.

"THE STORE OF QUALITY, SERVICE AND SATISFACTION"

THE OLD BANK

Established 1903

THE STRONG BANK

THE BANK OF FRENCH BROAD

MARSHALL, N. C.

Capital and Surplus \$75,000.00

OVER 25 YEARS CONTINUOUS AND MERITED GROWTH

YOUR ACCOUNT INVITED



North Pack Square and Broadway
ASHEVILLE, N. C.

PATRONIZE OUR ADVERTISERS

They Have Helped To Make This Annual Possible

—THE STAFF

Mary Sue Gribble: "We have some enormous birds in Sylvia. Why once I was standing in our zoological garden and saw a man come in on an eagle."

Francis King: "Lady, that's nothing. Once while I was down at the ball field I saw Burt go out on a fly."

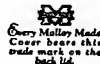
*The
Cream of the South*

THE
VELVET KIND
Ice Cream

SOUTHERN DAIRIES
INC.

ASHEVILLE, N. C.

The cover for
this annual
was created by
The DAVID J.
MOLLOY CO.
2857 N. Western Avenue
Chicago, Illinois



A decorative border surrounds the text. It features two vertical columns on either side, adorned with floral garlands. At the top and bottom of the border are three open books, each displaying intricate designs. The background within the border has a hatched or woven texture.

KNOXVILLE LITHOGRAPHING COMPANY

DESIGNERS AND PRINTERS
OF
FINE COLLEGE ANNUALS

KNOXVILLE, TENN.
U. S. A.

*Personal co-operation with
the staff in the planning
and designing of the -
annual is a definite -
part of our service.*

