

F
104
.W46B13

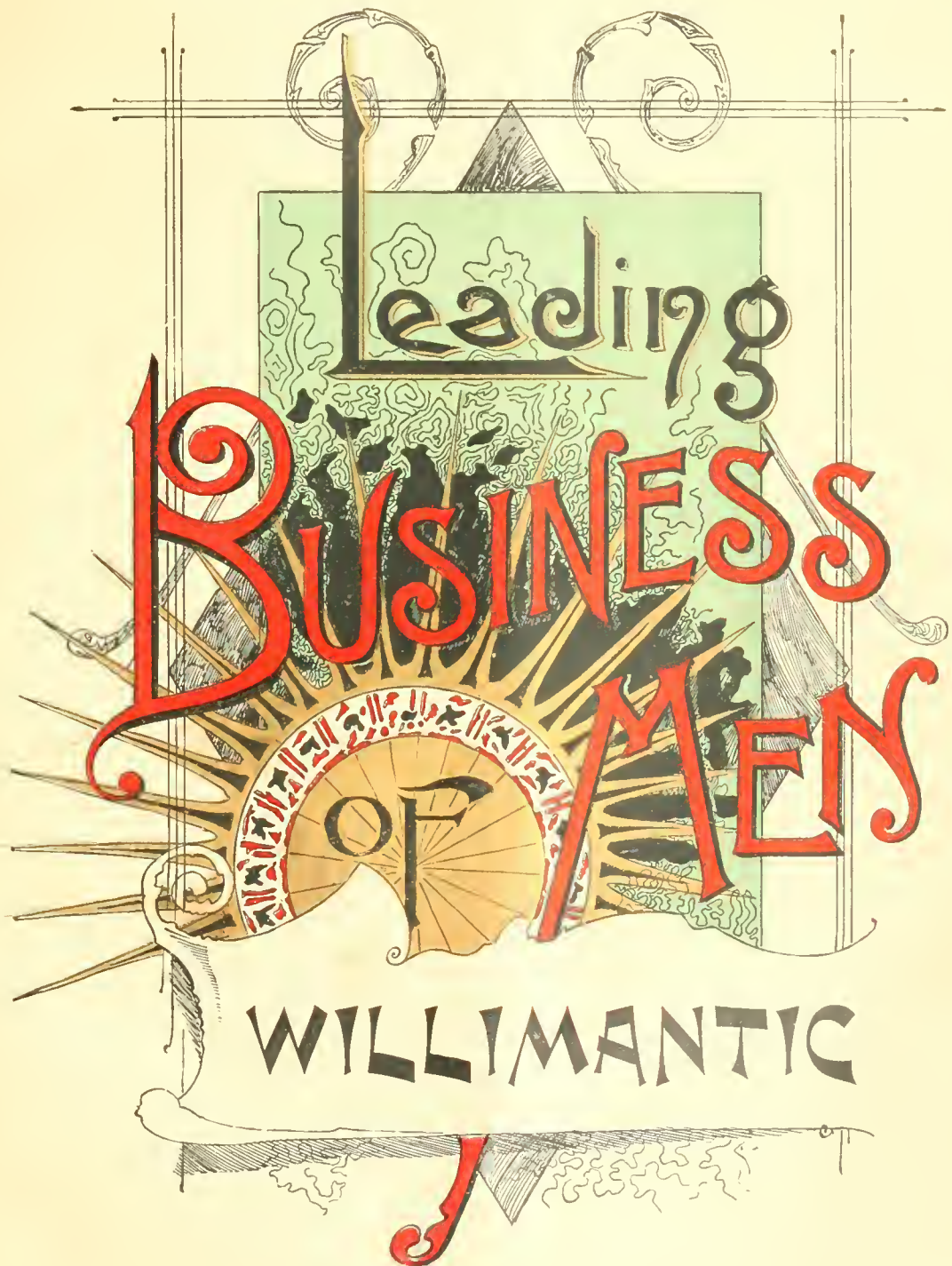


Class _____

Book _____

COPYRIGHT DEPOSIT





Leading

BUSINESS
OF
MEN

WILLIMANTIC



THE
LEADING BUSINESS MEN
OF
WILLIMANTIC
AND
COLCHESTER.

ILLUSTRATED.



BOSTON :
MERCANTILE PUBLISHING COMPANY,
No. 258 PURCHASE STREET.

1890.

81 +
N. 4. 1. 15

PREFACE.

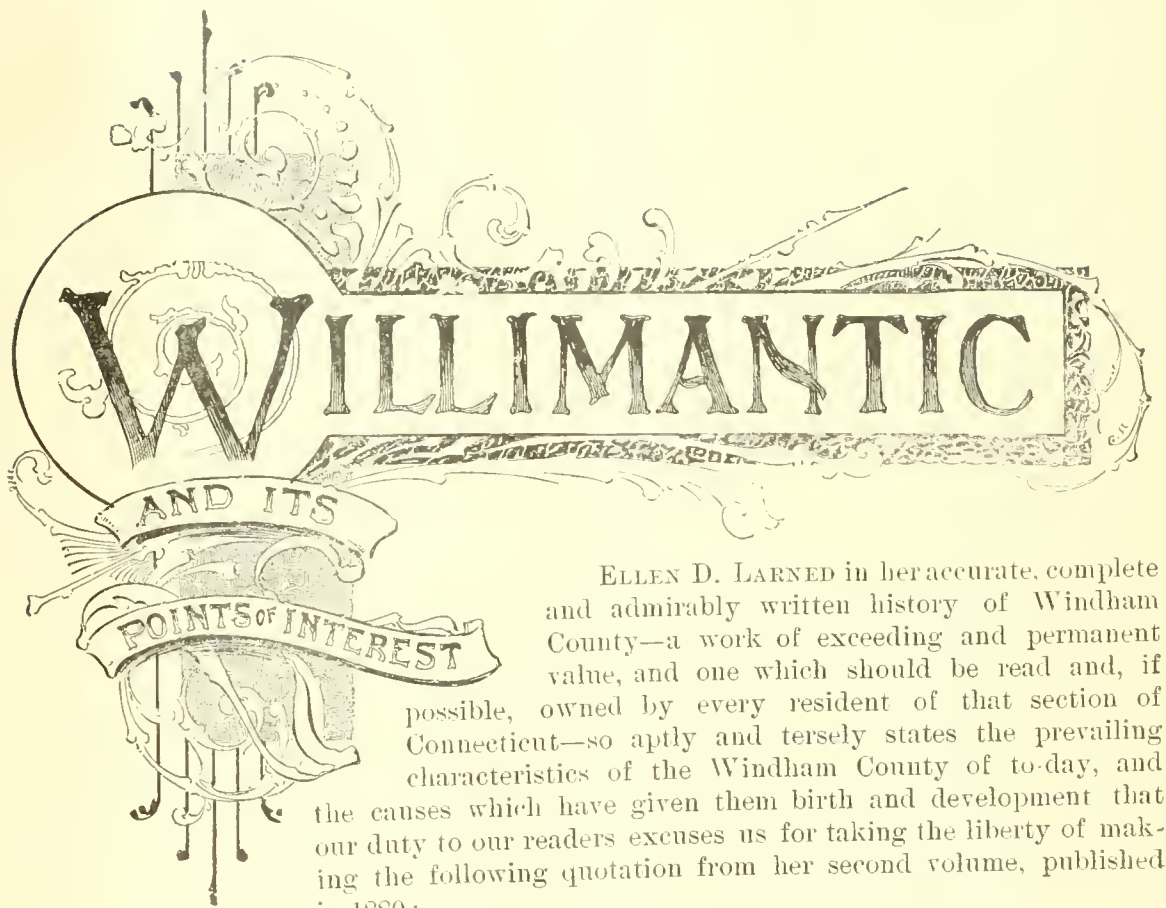
In this historical and statistical review of the commercial and manufacturing interests of Willimantic, it has been our purpose in as thorough a manner as was possible to justly describe those enterprises which have contributed so largely during the last half century to the material advancement of the city. History plainly shows that many large cities owe their prosperity and growth chiefly to advantages of situation, great influx of foreign people, and similar causes: the present prosperity of Willimantic, however, is due also to the genius and efforts of its people. A study of these facts, and of its varied mercantile interests, which are presented herewith, must show clearly, we think, the rich harvests that have been reaped from the exertions and foresight of the past, the present flourishing and influential position of Willimantic as a commercial centre, and its bright outlook for many lines of growth in the time to come.

MERCANTILE PUBLISHING CO.

COPYRIGHT.

MERCANTILE PUBLISHING CO.

1890.



WILLIMANTIC

AND ITS
POINTS OF INTEREST

ELLEN D. LARNED in her accurate, complete and admirably written history of Windham County—a work of exceeding and permanent value, and one which should be read and, if possible, owned by every resident of that section of Connecticut—so aptly and tersely states the prevailing characteristics of the Windham County of to-day, and the causes which have given them birth and development that our duty to our readers excuses us for taking the liberty of making the following quotation from her second volume, published in 1880:

“Modern Windham dates its birth from the first whistle of the steam engine. That clarion cry awoke the sleeping valleys. Energy, enterprise, progress followed its course. At every stopping place new life sprung up. Factory villages received immediate impetus, and plentiful supply of cotton. Larger manufacturing enterprises were speedily planned and executed, foreign help brought in; capital and labor, business and invention rushed to the railroad stations; innumerable interests and industries developed—and in less than a score of years the county was revolutionized. The first had become last and the last first. The turnpike was overgrown, stage coach and cotton team had vanished, the old hill villages had lost the leadership, and new railroad centres held the balance of power, and drew to themselves the best blood and energies of the towns. As other railroads were opened and business facilities increased its progress became more rapid, and the Windham County of 1880 is far more populous and prosperous than that of 1840. It has within its four railroads and admirable business facilities. A few hours ride connects it with, Providence, Worcester, Boston, and New York. It has five or six newspapers

of its own, and leading city dailies; telegraphs, telephones and other modern improvements. It has manufacturing establishments unsurpassed in the country. It has its graded schools, elaborate church edifices, public cemeteries, lofty town buildings, its summer visitors, its market of gardens, its Roseland Park * * * and all the usual accompaniments of modern civilization. The Windham County of to-day, as typified by its business centres, is wide-awake, progressive; a true child of the Nineteenth Century."

These words apply with special force to the borough of Willimantic, for the concentration of manufacturing enterprises at that point, and the zeal and ability with which they have been carried on, have not only arrested the decline of Windham—which at one time was rapidly going on and was attended by the removal of the county seat to Brooklyn—but have made that town the richest and the first in population of any in the county. Of course, "Windham Green"—the old shire town—is not what it was. Gradually but surely her business interests have been abandoned or transferred to Willimantic, her powers and privileges have been greatly diminished and the reins of government have been given over to younger and stronger hands, until now she is in much the same position as an old and dignified matron who has relinquished to her sturdy children the duties she once performed so well herself. Although very old, she is by no means unattractive, on the contrary no more pleasant village can be found in the State, and some of her most distinguished sons have returned to her at the close of their active careers, while many visit her every summer and enjoy the pure air, beautiful scenery, delightful drives, and historic associations of the old town.

A portion of the power available at Willimantic Falls was utilized at an early date, and at the time of the breaking out of the second war with England, in 1812, manufacturing was already quite extensively carried on at that point, Clark & Gray's paper mill being the most important establishment. A carding machine, grist mill, and saw mill were also in operation, and the clothery business was a prominent industry, the cloth woven at farm houses throughout that section being taken to this establishment to be dyed and pressed. The carding machine had been set up some six years before, as will be seen from the following advertisement published in the *Windham Herald*, June 20, 1806:

"CARDING MACHINE.—Notice is hereby given that the machine for picking, oiling, and carding wool, erected on the Falls of Willimantic River in Windham, at the mills of Messrs. Clark & Gray, is now ready to do business. Those gentlemen that will favor the proprietors with their custom may depend on having their work done with neatness and dispatch, and all favors gratefully acknowledged. Price for breaking and carding, cash in hand, seven cents per pound, eight cents other pay; for picking and oiling, two cents per pound, cash in hand; other pay, three cents."

The proprietors had no reason to complain of lack of custom, for the advantages gained by patronizing him were so apparent that home carding was practically abandoned, and during the same year, 1806, machines were set up in many places throughout the county. The production of yarn and of woollen fabrics was greatly stimulated and their quality materially improved, but the ancient and unquestioned rule of wool as the king of textile fibres was now about to be disputed, for there was "another Richmond in the field," who in after years was to be crowned and duly acknowledged as "King Cotton." Samuel Slater, "the father of cotton manufacturing in America," had been patiently experimenting with machinery for spinning cotton by water power, being associated with Moses Brown, a Providence capitalist, who furnished the money for the prosecution of the enterprise. After a year's hard work

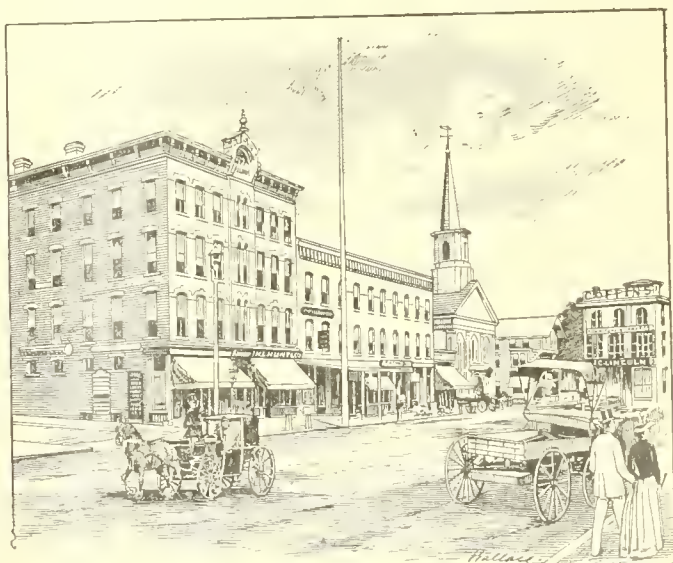


MAIN STREET COR. RAILROAD STREET.

Slater produced the first practical power cotton spinning machinery ever made in this country, and after mills had been established in Providence and Pawtucket, R. I., Ozias Wilkinson, Slater's father-in-law, combined with a number of others to erect a cotton mill in this State, the Quinebaug Falls in Pomfret affording a most eligible site. Formal organization was effected under the name of the Pomfret Manufacturing Company, January 1, 1806, and although there was much to do and the facilities to work with were

meagre as compared with those of the present time, the undertaking was so vigorously pushed that the factory began operations April 1, 1807. This was the first cotton mill in Windham County and was much more than a "nine days wonder" in the vicinity, people coming from miles around to see it in operation. The building was four stories in height and 100 x 32 feet in dimensions, and the original force of operatives consisted of four men and nine boys and girls, the children of neighboring farmers.

As this enterprise proved an immediate and decided success investors were encouraged to equip similar establishments, and the many valuable mill privileges in Windham County made that a favorite field of operation. The Sterling Manufacturing Company began to operate its factory on the Moosup River in 1809; the Plainfield Union Manufacturing Company began business the same year, on the same stream; the Danielsonville Manufacturing Company opened its mill in 1810, and companies located at Thompson, Killingly, and Plainfield soon followed. The production of domestic goods was greatly stimulated by the troubles with England and the consequent shutting off of imported fabrics, and what would now be called a genuine "boom" in manufacturing was the natural result. Of course the conservative element predicted overproduction, shrinkage of values and ultimate disaster, and equally of course the



MAIN STREET COR. CHURCH STREET.

enterprising capitalists paid no heed whatever to the doleful prophecies but went ahead with renewed vigor to establish plants to enable themselves to follow the ancient adage, "make hay while the sun shines." Some of us are accustomed to think of our ancestors as slow and old-fogyish, but many of them were fully as progressive and venturesome as any of their descendants have proved to be, and indeed, considering their facilities and the poverty of the country, they showed more enterprise than ninety-nine out of one hundred modern capitalists do.

The following extract from the *Windham Herald* of November, 1811, will give some idea of their capacity for "pushing things:"

"In November, 1809, there were within thirty miles of Providence, twenty-six cotton mills in operation, containing 20,000 spindles, and thirteen erected not then ready to run. At the present time there are seventy-four mills within the same distance, containing 51,454 spindles, making an increase of thirty-six mills and 31,454 spindles in less than two years! Are not the people running *cotton mill mad?*"

Many woolen mills were also built and at last the people began to see some good in the rapid rivers which had caused them so much trouble and expense in the past by sweeping away bridges, washing out roads, and otherwise drawing upon their scanty resources. But these streams still caused much strife and contention, for the residents of that part of a town which was most directly benefitted by them would ask for better bridges and other improvements, only to be refused by their fellow townsmen who naturally did not care to increase their own burden of taxation to help their neighbors. Such was the case in Windham, the rapidly growing village of Willimantic asking for a new bridge and a better road, and other sections of the town making various demands, so that the people as whole were at their wits end to know how to make both ends meet, for the town was poor as yet and it seemed as if every dollar that could be raised by taxation had a dozen claimants. There was pressing need of a new turnpike to Killingly, a new poorhouse and better schoolhouses, and the efforts being made to remove the county seat had to be resisted at considerable expense. The war with England entailed special taxes at this time, and the wealth and population of the town threatened to be suddenly and seriously diminished, for Scotland Parish wanted to be set apart and the central district also insisted upon being divorced from the parent town. Five large bridges were already maintained and a hard fight was made against having to build another, but the County Court issued an order requiring the construction of "Horseshoe Bridge over and across Natchaug River on road leading to paper mill." This bridge was built in 1818.

The following year Windham was dealt the most staggering blow yet received, the courts and jail being removed to Brooklyn. The townspeople did not lose heart, however, but set earnestly to work to recover as much as possible from the wreck, and spared neither trouble nor expense to have the town given half-shire privileges, consoling themselves with the thought that "Half a loaf is better than no bread." But even this consolation was denied them finally, for after some nine years of agitation it became evident that the struggle was hopeless and the town voted to sell the jail and courthouse so long unused. Meantime, while old Windham had bent all her energies to the task of regaining a portion of what she had lost, young Windham had instituted and vigorously prosecuted new enterprises, and was now beginning to feel the benefit of them. The "manufacturing fever" raged in different parts of the town, cotton factories were now in operation at Willimantic, and North and South Windham were also profiting by new and remunerative industries. Pro vi

dence capitalists had come to the front at Willimantic and had established plants and gone to work with characteristic energy. Land and privilege on the Willimantic near its junction with the Natchaug, were bought by Perez O. Richmond, in September, 1822, and a factory and number of dwellings were soon built. Another enterprise was started by the brothers Jillson of Dorchester, in 1824, they being followed by the Windham Company, and a small factory was built and operated by Charles Lee, of Windham, at about the same time. It is said "Great good brings great evil in its train," and so it proved at Willimantic, for the immense influx of foreign laborers, the comparatively bountiful supply of money in circulation and the absence of police protection, all combined to make things decidedly lively for a time. A two-story rum shop called the "Lighthouse," was the first public building and the centre of attraction, especially Sundays, and it was not unaptly named either, for it marked a spot to be shunned by those who wished to escape wreck. Rum and other spirits were cheap, beer and ales were unknown, and as a consequence the frequenters of the "Lighthouse" imbibed early, often and freely, and drank nothing but hard liquors. Scenes of riot were of daily occurrence and the neighborhood gained such a reputation that the village about Richmond's mill was known as "Sodom," and P. O. Richmond was dubbed "Poor Old Richmond," in the neighborhood. But these disturbances, like the "growing pains" of a healthy youngster, were but a temporary and inevitable consequence of rapid development, and after the laborers had departed and the factories got under full headway, the New England spirit asserted itself and law and order regained supremacy, among the first results of this condition of affairs being the building of a school house and the erection of stores and other public buildings, including a handsome hotel. The old highway was widened and named Main street, and the growth of Willimantic was now fairly inaugurated.

The semi-centennial of the Nation's birth afforded occasion for a grand celebration, and July 4, 1826, is memorable in Willimantic's annals as the day on which the first public demonstration of that community was made. It was a typical Fourth-of-July celebration. There was a procession, a brass band, cannonading, speech making and a banquet at which twenty-four toasts were offered, noteworthy among which is number eight:

"RIVER WILLIMANTIC.—Like the autumnal harvest is constantly bringing in its rich treasures to repay the labors of industry and art, and opens her wide extended arms to embrace the farms, manufactures and mechanics through the country which it flows.

Another toast was:

"THE TREE OF LIBERTY planted on Columbia's broad plains, of but fifty years growth, its massing branches have reached the centre and this day there are more than twelve millions of souls basking under its shade."

The language of these toasts may perhaps be regarded as rather "mixed," but their sentiment is all right, and the strength of the punch served in those days excuses any inaccuracy of expression.

Various church, temperance and other societies were soon organized, and as the population rapidly and steadily increased and local needs multiplied the residents asked that Willimantic be given town privileges. This petition was denied, but Willimantic borough was constituted in May, 1833, the first meeting being held in July. The village had had a post office since 1827 and a fire engine company since 1830; but it also had a comparatively large "floating population" and many drinking resorts, and the conditions of living were favorable neither to health nor morals. After receiving power to regulate their own roads, etc., the better element among the resi-

dents set actively to work to make necessary public improvements and accomplished a good deal, considering the difficulties with which they had to contend. In 1835 Willimantic contained three meeting houses, six cotton factories, a satinet factory, and a paper mill, besides numerous stores, etc. Development steadily continued and the population not only gained in number but in character, for as the business opportunities increased they attracted a class of people who came with the idea of settling permanently, and had the intelligence to realize that what was of benefit to the community as a whole was beneficial to each member of it. Money was liberally voted for school houses, roads, etc., many comfortable and tasty dwelling houses were built, and the citizens worked both individually and collectively to beautify the borough and make it as desirable to live in as to do business in. Asa Jillson and other prominent men were early awake to the vast benefits which would be gained could the borough secure railroad accommodations, and they worked in season and out of season to inspire their fellow townsmen with their own feelings on the subject—a task in which material aid was rendered by the *Willimantic Journal*, which was founded in 1848 by John Evans, and from that date up to the present day has been a power for good in the community. Their efforts were finally crowned with success, and when the Hartford and Providence and New London and Northern Railroads began business in 1854, the last obstacle to Willimantic's progress was removed and a radically new order of things inaugurated which swept away old methods and old traditions, made the impossible easy of accomplishment and has its fruition in the Willimantic of to-day—a city in population, wealth, commerce, and facilities, and one that is destined to rival the foremost cities of New England in all that distinguishes a great modern commercial and manufacturing centre. Since the days of "Sodom" and the "Lighthouse" the manufacturing establishments of the borough have been greatly changed in character as well as greatly increased in number, and the centralization tendencies of the age are well typified in the exceptional magnitude of some local enterprises, one of which utilizes all the space formerly occupied by a dozen manufacturing plants. This is truly "the age of combination," and Willimantic offers so many advantages for the prosecution of vast industrial undertakings that her facilities are sure to be taken into account by well informed manufacturers seeking a location admitting of almost indefinite expansion of their operations. Since the opening of the line now operated by the New York and New England Railroad Company, the town has enjoyed railway transportation facilities equal to any in New England, and it would be impossible to name a city or town offering a more desirable combination of advantages to manufacturers and merchants. Here, to begin with, is a healthful and pleasant place of residence, a well organized and efficient fire department, one of the most satisfactorily managed police departments in Connecticut, a well-planned and thoroughly constructed system of water works, banking accommodations equal to the best, good schools, an abundance of churches of various denominations, well-equipped public libraries, and various other accommodations of a public and semi-public character.

Unlike many manufacturing towns, the borough of Willimantic is very attractively situated and the residential portion of it is on high ground, affording beautiful and varied views, and air as pure as that in most country villages. The village lies on both sides of the Willimantic River, and the rising ground on either side affords sites for many tastily designed residences, among them being some of remarkable beauty. New buildings are continually going up, for the population of the borough is increasing regularly and rapidly and it is expected that the census of 1890 will show a population

of 11,000 or more. The census of 1870 gives a population of 4,048, that of 1880, 6,612—a gain of more than sixty-three per cent. in a decade. A similar ratio of increase would give 10,799 as the population in 1890, and there is reason to believe that those figures will be considerably exceeded in the announcement of the result of the enumeration.

The transportation facilities available form so important an item when reckoning up the advantages of a manufacturing centre that it is worth while to go somewhat into detail concerning those of Willimantic. The New York and New England Railroad runs from Boston to the Hudson River at Newburgh, 220 miles, passing through Willimantic, Hartford, New Britain, Waterbury, and Danbury. The road has direct connection with the Pennsylvania coal and oil fields and all western points, via the Poughkeepsie Bridge; and an important branch runs from Willimantic to Providence, 58 miles distant. Other noteworthy branches are the Connecticut Central, from Hartford



BIRD'S EYE VIEW OF WILLIMANTIC.

to Springfield, Mass., and the Norwich and Worcester road, run in connection with the Norwich and New York Steamboat Line. Direct communication with New York City is had by means of the Air Line and New York, New Haven and Hartford roads, both of which are under one management, and over the New England by way of Hartford. The New London and Northern Railroad passes through Willimantic, running northerly until it makes a junction with the Vermont Central System, of which it forms a part, and also making connection with the Boston and Albany Railroad at Palmer, Mass. As the three roads running through Willimantic are under different managements and are likely to remain so, the town will doubtless enjoy the present advantages of competitive freight rates for an indefinite period. It is only sixteen miles to tide-water at Norwich, communication with which is direct by the New London Northern Railroad, and which may also be reached by rail over the New England road, by way of Plainfield. Tide-water at New Haven is distant fifty-four miles and may be reached by the Air Line road, while tide-water at Providence is fifty-eight miles

distant, and at Hartford, thirty miles—both of these points being reached over the New England road. Boston rates are quoted on all freights from the West, and the passenger service is as efficient as the freight service, trains being frequent and some of them being very fast; Boston being within two hours ride, and New York three hours ride. Willimantic is almost midway between the metropolis of New England and the commercial centre of world; Boston being 86 and New York 117 miles distant. Philadelphia, Washington, Chicago and other distant cities can be reached without change of cars.

There are many factory sites available along the railroads and responsible parties are always welcome, and will be afforded all possible facilities and assistance. Taxation is moderate, property being assessed not to exceed sixty per cent. of its market valuation; the combined borough and town tax rate being about sixteen and one-half mills on the dollar. The insurance rates in Willimantic are probably lower than in any other Connecticut city or town, and the local risks are considered so desirable that all the best companies have agents in town. The low rates are chiefly due to the remarkable efficiency of the water service, the water being taken from a reservoir on Hosmer Mountain, having a capacity of 5,000,000 gallons. The pumping capacity is 2,000 gallons per minute, the pumping station being connected by telephone with the village and the Water Commissioner's office. The water is remarkably pure and is taken from Natchaug River. The pressure is sufficient to throw a stream over any building in town. There is an electric fire alarm system, several hose companies, and a hook and ladder company.

Half of the civil and criminal terms of the Windham County Superior Court are held in Willimantic, the Court House being one of the most elegant and convenient in the State. The hotel accommodations are first-class, five large and comfortable houses being open. The facilities for telegraphic communication are also as good as the best and the same may be said of the telephone service; while a powerful electric light plant furnishes illumination for many stores and other buildings. Excellent schools are provided, so excellent in fact that many out of town scholars attend, but there is plenty of room for all and the borough is always ready to make any reasonable expenditure to secure valuable educational results. There are two free public libraries in the borough, the total number of volumes approximating 8,000.

We have already spoken of the beautiful scenery in Willimantic and vicinity, and it is hardly necessary to add that there are many charming drives in the borough and adjacent towns, the roads being generally excellent. Willimantic's Main street is nearly two miles in length, and as the Court House, the hotels and banks, the Willimantic Fair Grounds, several large mills, and many stores are located on this thoroughfare, a general idea of the place may be gained by driving from one end to the other. Although one's first impressions of Willimantic are almost sure to be favorable, it takes time to really appreciate the beauties and advantages of the borough, and the longer one lingers the less surprise is felt that the place has grown so rapidly in the past, and the more confidence is gained that this past development will be more than duplicated in the near future.

The attractive drives in the vicinity of Willimantic are fully described in the following from the "Borough of Willimantic," which was published by the Board of Trade in 1887:

"For pleasant drives Willimantic and vicinity offers unusual attractions. The main street from the eastern to the western limit furnishes a drive of nearly two miles, and gives the stranger a very good idea of the place, passing as he does through

the business portion of the town. The Opera House, Court House, all the hotels and banks, the Linen Company's four large mills, the Smithville and Windham companies' mills, and the Willimantic Fair Grounds, are located on this thoroughfare. In the outside drives, a favorite one is one easterly over Bricktop hill to Windham, the centre of one of the oldest towns in the country, and a historic one. It was the stopping place for the New York, Providence, and Boston stage line before the days of the railway. Continuing a mile or so south, South Windham is reached, a thrifty little village on the line of the New London and Northern Railroad. Returning, Willimantic is entered on Pleasant street, on the south side of the river, and running parallel with it. From this street a ten minutes' climb will take one to the top of Hosmer Mountain, the location of the reservoir, from which the village receives its supply of water. From this point is had a fine view of the surrounding country, and also the approaches by railroad to Willimantic. It is a comprehensive picture,



NORTH SIDE MAIN STREET, WILLIMANTIC, COR. BANK STREET.

showing the beautiful Willimantic River winding its way through the meadows to the north, the New London Northern Railroad running parallel with it, the New York and New England Railroad at the left running west, the Air Line road to the southwest, and on the right the eastern divisions of these three roads, the Natchaug wreathing its serpentine course through hill and vale, as if in no hurry to leave its pleasant surroundings, the Mansfield, Coventry, Lebanon, and Columbia hills, dotted here and there with villages and thrifty farm houses, and the village of Willimantic below, with its mills, workshops, business blocks, and fine residences. In the way of longer drives may be mentioned one to the south over Village hill to Lebanon, about seven miles, and to the west to Columbia Green and the Columbia reservoir, a very popular resort for fishing and picnicing parties; another to the north to South Coventry, noted as the site of the monument to Nathan Hale, of Revolutionary fame. To the west of the village lies Lake Wangumbaug, a very pretty sheet of water, and

quite celebrated locally for its fine black bass fishing. Yet another fine drive, but somewhat longer, is the one north through Mansfield street to the Storrs Agricultural School. On this route is passed the Willimantic water works pumping station. The Natchaug river is dammed at this point, forming a beautiful lake, with grounds laid out very tastily as a small park. This is fast becoming a very popular resort for Willimantic people in summer, being only a short drive of two and a half miles from the place. There are also other fine drives over good roads.

“In the way of places of amusements, reference can be made with pardonable pride to the Opera House, erected and owned by S. F. Loomer. It is undoubtedly one of the finest opera houses of its size in New England, being fitted with all modern improvements, and has a seating capacity of 1,100. Some of the foremost stars in the dramatic and operatic profession have appeared upon its commodious stage.

“The Willimantic Fair Association is in a thrifty condition, with good grounds, new, roomy and substantial buildings, and the best half-mile race track in the country. Horsemen with national reputations have spoken in the highest terms of the superior advantages of this track for horse trotting, and of the management. All the exhibitions have been eminently successful, and the prospects are flattering for the future.

“In the excursion season various points of interest are easily accessible to the pleasure seeker. There is scarcely a day in summer that does not have its special or regular excursion. The New London Northern Railroad runs its excursion trains regularly (Sundays excepted) to Block Island, via New London, the steamer stopping at Watch Hill and Lyle's Beach. This road also runs special excursions to Lake Pleasant and Mount Toby. The New York and New England road runs special excursions to Rocky Point and Oakland Beach via Providence, also Nantasket Beach via Boston, usually once a week.

“In fact, Willimantic is well provided with opportunities for obtaining pleasure in leisure hours. The unusually good facilities for reaching directly by rail almost any point, gives the place great advantages over most inland towns in the east.”

WILLIMANTIC BOARD OF TRADE.

CHARTER MEMBERS.

1890.

G. H. ALFORD,	H. H. FLINT,	J. E. MURRAY,
ANSEL ARNOLD,	C. J. FOX,	G. K. NASON,
WM. B. AVERY,	S. B. FORD,	C. B. POMEROY,
G. A. ASHLEY,	J. M. HALL,	C. M. PALMER,
H. R. ALFORD,	A. M. HATHEWAY,	W. N. POTTER,
A. C. ANDREW,	JOHN HICKEY,	O. H. K. RISLEY,
C. N. ANDREW,	T. M. HILLS,	FREDERICK ROGERS,
S. E. AMIDON,	A. B. HOLMES,	J. H. ROSS,
A. B. ADAMS,	W. J. HASTINGS,	H. E. REMINGTON,
G. W. BURNHAM,	WM. C. JILLSON,	O. A. SESSIONS,
W. H. BINGHAM,	J. G. KEIGWIN,	GEO. E. STILES,
E. E. BURNHAM,	DUMONT KINGSLEY,	C. E. STRONG,
J. B. BALDWIN,	FRANK LARRABEE,	Geo. TIFFANY,
J. D. BENTLEY,	H. C. LATHROP,	L. H. TIFFANY,
A. J. BOWEN,	A. B. LINCOLN,	J. A. TURNER,
D. C. BARROWS,	J. C. LINCOLN,	A. S. TURNER,
F. E. BEACH,	H. R. LINCOLN,	A. G. TURNER,
A. I. BILL,	W. H. LATHAM,	GEO. F. TAYLOR,
A. B. CARPENTER,	S. F. LOOMER,	MARSHALL TILDEN,
GEO. A. CONANT,	G. W. MELONY,	C. R. UTLEY,
E. F. CASEY,	H. C. MURRAY,	WM. VANDERMAN,
A. L. CALKINS,	S. J. MILLER,	F. M. WILSON,
H. M. CHAPMAN,	J. A. MCAVOY,	F. F. WEBB,
E. D. CARD,	W. G. MORRISON,	A. T. WALKER,
GEO. C. ELLIOTT,	A. R. MORRISON,	J. L. WALDEN,
A. T. FOWLER,	J. A. McDONALD,	H. N. WALES.

INDEX TO BUSINESS NOTICES.

BANKS.		HARNESS MANUFACTURERS AND DEALERS.	
Colchester Savings Bank.....	44	Jackson, G. O.....	45
First National Bank.....	17	Manley, Joseph.....	26
BOOKSELLERS, NEWS DEALERS, ETC.		LUMBER, COAL AND BUILDERS' MATERIALS.	
Sweeney & Dunn.....	24	Buck, E. A. & Co.....	30
Utley, Chas. R.....	32	Hillhouse & Taylor.....	35
BOOTS AND SHOES.		Lincoln & Boss.....	33
Potter, W. N.....	26	Strong & Backus.....	45
Union Shoe Store (Julius Pinney).....	34	MEATS AND PROVISIONS.	
BUILDERS.		North Street Meat Market (H. Howey, agent).....	29
Latham, W. H. & Co.....	36	Strong, J. N.....	46
Park & Hammar.....	45	Turner, C. W. & Son.....	82
DRY AND FANCY GOODS.		Trudo, P. A. & Co.....	30
Chase, Barker & Co., Ladies' Store.....	31	Webb, J. W.....	36
Murray, H. C. (Boston store).....	23	MILLINEBY.	
Palmer, C. M. & Co.....	17	Kingsley D. Mrs.....	34
Pease & Edwards.....	34	Kenyon, E. L. Mrs.....	47
Tilden & Courtney.....	20	MISCELLANEOUS.	
DRUGGISTS.		Chappell, H. R. (house and sign painter).....	31
Baker, John T.....	18	Durkee, Stiles & Co. (wholesale grocers).....	33
Buell, H. P.....	43	Eldredge & Adams (granite and marble).....	25
David, A. D. & Co.....	25	Grant, W. D. (commission merchant).....	29
Otis, Wm. B.....	44	Heydecker, Geo. J. (baker).....	47
Rogers, Fred.....	35	Lewis, Henry F. (roofing and jobbing).....	23
Turner, A. S.....	38	Maddock & McPherson (job printing).....	31
Wilson, Frank M. & Co.....	23	Maverick Steam Laundry (W. J. Asher).....	27
FURNITURE, CARPETS, ETC.		Royce, Henry F. (western mortgages).....	22
Casey, E. F. (Boston Furniture Store).....	24	Sadd, T. R. (notions).....	26
Dawley, P. A.....	46	Smithville Manufacturing Co. (cotton goods).....	27
Lincoln, J. C.....	30	Simmons, F. F. (confectionery, etc.).....	34
Murray, H. C. (Boston store).....	23	Snow, E. C. (blacksmith).....	46
Tilden, Marshall.....	20	Townsend, C. H. (photographer).....	29
FLOUR, FEED, GRAIN, ETC.		Willimantic Linen Co., The.....	18
Arnold, Ansel & Co.....	32	Willimantic Electric Light Co.....	19
Buck, E. A. & Co.....	30	Williams, W. L. (livery and sale stable).....	37
Durkee, Stiles & Co.....	33	STOVES, RANGES AND FURNACES; ALSO PLUMBERS, ETC.	
Grant, W. D.....	29	Avery, F. T.....	47
Strong & Backus.....	38	Holmes, E. H. & Co.....	19
GROCERIES AND GENERAL STORES.		Tilden, Marshall.....	20
Adams, J. N.....	44	Vanderman, Wm.....	28
Amidon, S. E. & Co.....	31	TAILORS AND CLOTHIERS.	
Amidon & Dimmick.....	32	Bowman, John.....	36
Brown, L. C. & C. F.....	43	Carey, P. J. (People's Clothing House).....	35
Bailey, C. H.....	45	Hunt, H. L. & Co.....	18
Carpenter, C. E. & Co.....	22	Henken, D. H.....	28
Mullen & Legendre.....	25	Jones, R. C.....	47
Trudo, P. A. & Co.....	30	Remington, H. E. & Co.....	21
Tripp Bros.....	29	UNDERTAKERS.	
Wales & Hyde.....	23	Cummings, Wm. G.....	36
HOTELS AND RESTAURANTS.		Dawley, P. A.....	46
Colchester House.....	46	Sessions, O. A.....	22
Kingsley, D.....	21	WATCHES, CLOCKS AND JEWELRY.	
Windham Hotel.....	37	Barrows, D. C.....	24
HARDWARE, ETC.		Freeman & Tracy.....	37
Carpenter & Jordan.....	21		
Fowler, A. T. & Son.....	33		

LEADING BUSINESS MEN OF WILLIMANTIC.



First Nat'l Bank, Willimantic.—There is no question but that the First National Bank of Willimantic is one of the best-known and most highly regarded institutions of the kind in Connecticut, and indeed there is every reason why such

should be the case, for the bank has long held a prominent, and in fact a leading position, and has identified with it some of the most active and successful business men in Willimantic. It has a capital of \$100,000, a surplus of \$20,000, and deposits of \$275,000, and in every way is most excellently equipped for the carrying on of a general banking business including the reception of deposits, the collection of drafts, the purchase and sale of government and other standard securities, and the discounting of approved commercial paper. Through its correspondents and agents in cities and towns throughout the country the First National Bank is in a position to offer a most efficient and prompt service in the matter of draft collecting, and returns are so carefully and accurately made as to obviate much annoyance and delay. The bank officials are courteous and obliging at all times and although of course the interests of the institution are first in their estimation they do business on a broad and liberal basis being convinced that in many respects the interests of bank and patrons are identical, but the management do not forget that progress is the watchword of the day and hence do not allow extreme conservatism to hamper the institution's capacity for usefulness. But the general character of any board of officers can best be judged

from the character of the individuals composing it, and therefore we may save time and space by presenting the following list for the examination of our readers: William C. Jillson, President; Ansel Arnold, Vice-President; Oliver H. K. Risley, Cashier; Directors, W. C. Jillson, Ansel Arnold, O. H. K. Risley, A. T. Fowler, S. G. Risley, E. S. Henry.

C. M. Palmer & Co., dealers in Dry Goods. Black Goods a specialty. 110 Main street, Willimantic, Conn.—A very interesting book might be written on the evolution of the dry goods business, for its evolution has been steady, rapid and pronounced and unless all present signs fail it is as yet by no means completed but is destined to advance far beyond its existing stage. This branch of trade can be successfully studied right here in Willimantic, for we have many well-managed dry goods establishments in town, prominent among which is that carried on by Messrs. C. M. Palmer & Co., at their new location, No. 110 Main street, formerly occupied by J. M. Alpaugh, giving them double the room formerly occupied. This business was founded in 1874 and has increased steadily from year to year until it has reached its present development—a development which gives promise of what may be expected in the immediate future. The firm deal in dry and fancy goods, notions, children's wear, etc., carrying a large and skillfully chosen stock and making a specialty of black goods. The limits of our space forbid a detailed description of the assortment offered, and even could it be given it would be incomplete before this article will reach our readers, for the stock is continually being added to, and always contains the very latest novelties in its various departments. Messrs. C. M. Palmer & Co. employ five assistants and spare no pains to ensure prompt and courteous attention to every caller. Experienced shoppers know that the assortment offered by this house is always worthy of careful examination and they also know that no concern in this section of the State quotes lower prices on equally desirable goods.

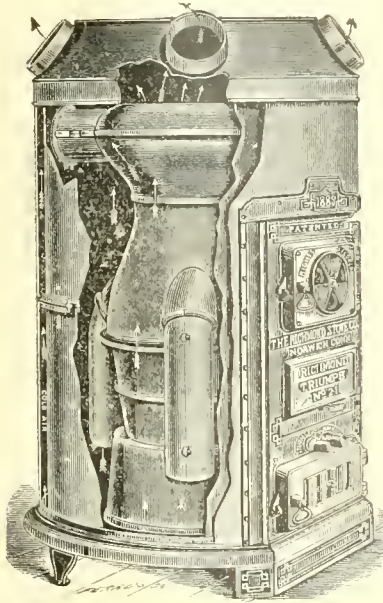
The Willimantic Linen Co., Willimantic, Conn.—A spool of thread is not a very imposing looking article, and nothing in its appearance suggests the employment of millions of capital and thousands of hands in its production, and yet there is a single concern in this city—the Willimantic Linen Co.—which makes a specialty of the manufacture of cotton thread. This company has a capital of \$2,000,000 and gives employment to more than 2000 people. The plant utilized is one of the largest and probably the most perfect of the kind in the world, there being four immense mills occupied which are fitted up in every department with the most efficient machinery ingenuity can produce and money can buy. The wonderful development of this enterprise since the present company was incorporated, in 1856, speaks volumes for the energy and ability of those having charge of its management, for success has been attained against close and persistent competition and in the face of a once general prejudice against all thread of domestic origin. The Willimantic Linen Company have conclusively proved that American manufacturers can produce not only as good but better thread than is made in any other part of the world, and so universally has this truth been brought home to the people that there is no civilized nation in which this company's productions are not known and appreciated. Years of hard and faithful work have been required to bring about this result and sums have been expended in experimenting and otherwise that would have swamped a concern having a weaker financial backing, and would have frightened and discouraged men of less pluck and confidence, but the stockholders and officers have always had firm faith in the ability of the company to compete with the world when once fairly on its feet, and the position now held grandly vindicates the policy of progression which has been adhered to from the start. In spite of the vast magnitude of the business, the most perfect system is noticeable in all its departments and one who visits the mills observes the care shown in the selection of material, the close supervision each of the processes of manufacture receives, the wonderful expertness of the employees, and the nice accuracy of the machinery used, cannot help being convinced that the leading position of the company's products is but the legitimate result of the methods employed and is bound to be retained as long as the present policy is continued. The ideal thread is that which combines the most perfect uniformity of size with the greatest strength, and judged by this rule the productions of the Willimantic Linen Company stand without a rival, being unequalled either for hand or machine use. The demand for them, immense as it now is, is constantly increasing and the vast resources of the company are at times severely tried in the attempt to keep up with the many orders received. The gentlemen identified with this enterprise are very prominent in the community and have done much to make

Willimantic the flourishing city it now is, such an undertaking as theirs not only being of much importance itself but giving rise to numerous tributary enterprises and thus affording employment to many besides those in the direct service of the company. The president and treasurer is Mr. Lucius A. Barbour; the secretary is Mr. E. H. Clark; the agent is Mr. E. S. Boss, and the superintendent, Mr. John Scott.

H. L. Hunt & Co., dealers in Ready-made Clothing, Hats and Caps, Gents' Furnishing Goods, etc., 111 Main Street, Willimantic, Conn.—There is a certain feeling going with the consciousness of being well-dressed, that has often been remarked upon, and which none of our readers can fail to be familiar with. It is neither pride nor self-satisfaction, but invariably makes the subject of it more self respecting and respectful to others, and hence is deserving of the utmost encouragement. H. L. Hunt & Co. of No. 111 Main street, are certainly doing all in their power to encourage the wearing of fashionable and tasteful apparel, for since they succeeded Messrs. Harrington & Co., in 1888, they have offered such pronounced and unusual inducements in the way of clothing that hundreds have taken advantage of the opportunities extended to buy durable, stylishly-cut and reasonable garments at really remarkably low rates. Mr. Hunt is a native of Clinton, Mass. The premises in use are of the dimensions of 68×20 feet. Two reliable assistants are employed and the strict personal attention of the firm is given to their patrons. Fine ready-made clothing, hats and caps, are on hand in great variety, and a most extensive and skillfully selected assortment of gents' furnishings is offered comprising many English novelties, and marked at prices that insure their early sale.

John T. Baker, Druggist, 174 Main Street, next door to Post-Office, Willimantic, Conn.—It would be difficult to find an establishment of more genuine value to the community than that carried on by Mr. John T. Baker at No. 174 Main street, next door to post-office. This undertaking was founded in 1874, and since June, 1889, has been under the able management of its present proprietor, and has since largely developed as its influence to the public became more plainly manifest. Drugs, medicines, and chemicals are supplied at both wholesale and retail, at the lowest rates that can be named on first-class goods, and as the filling of prescriptions is given especial attention, customers may feel assured of their favors being appreciated, and of their orders being handled with that skill and accuracy so desirable in this connection. Every precaution is observed that will tend to reduce the liability of error to the smallest possible amount, and every facility is at hand that can aid in attaining this result. Mr. Baker is moderate in his charges, and certainly has solved the problem of combining reliable ser-

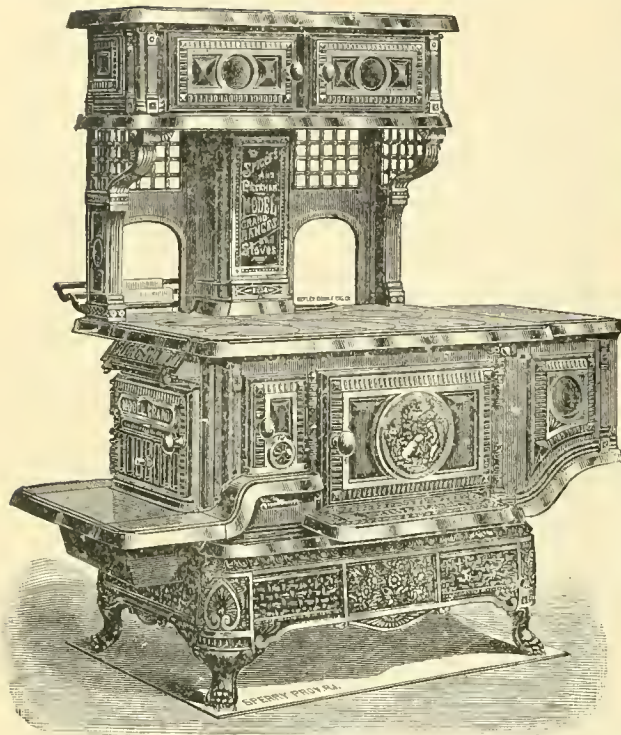
vice with popular prices. The sale of fancy toilet articles and druggists' sundries forms another important department of his business, and is conducted on the same liberal scale that characterizes the management of his drug trade. The stock carried is fresh, varied and acceptable, and as two competent assistants are employed, customers are treated with courtesy and consideration.



E. H. Holmes & Co., Successors to Keigwin & Clark, Willimantic, Conn.—The firm of E. H. Holmes & Co. was not formed until 1889 but the enterprise it carries on is of much earlier origin, having been inaugurated by Messrs. Keigwin & Clark in 1879. In 1885 the firm name became Clark & Moriarty, but Messrs. Keigwin & Clark resumed control in 1887 and retained it

until succeeded by the present firm. The recent change was caused by the withdrawal of Mr. John G. Keigwin after a very successful business career of nearly forty years in Willimantic. Mr. E. H. Holmes is a native of South Windham and is very widely known, having been prominent in business and financial circles for many years. Messrs. William F. Murphy and Patrick F. Moriarty, the silent members, natives of Windham and Mansfield respectively, have been in the employ of Keigwin & Clark for many years. The premises occupied comprise four spacious floors, and are located at 99 Main street, being known as Commercial Block. So heavy and varied a stock is constantly carried that an attempt to describe it in detail with our necessarily limited space would surely result in failure, and we will therefore name only the more prominent articles it includes, as, for instance: china, crockery, glassware, lamps, cutlery and house furnishing goods, stoves, ranges, furnaces, etc. It will be seen that the assortment is unusually varied and examination will prove that the firm handle only such goods as they have reason to believe will give satisfaction. Particular attention is given to plumbing, steam and gas fitting, none but first-class mechanics being employed in this important branch of the business. Roofing, jobbing and sheet metal work of every description. They also make a specialty of factory work. All work done in a superior manner and at moderate rates. Satisfaction guaranteed.

Willimantic Electric Light Company, Waterhouse System, Willimantic, Conn.—The advantages possessed by the electric light over any other means of artificial illumination are too generally understood nowadays to render it necessary for us to enter into detailed explanation of them, for although a decade has hardly elapsed since electricity was first put to regular commercial use for illuminating purposes in this country, the public have become thoroughly familiar with its most prominent characteristics, and are so favorably impressed by them that the fierce struggle it was predicted would take place between gas and electricity has never occurred, for the simple reason that the superiority of the latter is too manifest to render successful competition possible. Scientific men predict that cooking and heating will be done by gas in the near future, and that the illuminating gas plants now in operation will be utilized for the manufacture of fuel gas which can be made much cheaper and gives a hotter flame than the gas now in use. After the introduction of the electric light it soon became manifest that, generally speaking, the arc light was particularly adapted for out-of-door lighting while the incandescent was peculiarly fitted for interior use, and thousands of dollars were spent in experimenting with different devices intended to make it possible to use both kinds of lamps on the same circuit, but there were serious mechanical difficulties to be overcome and it was a good while before any practical and dependable means was discovered. The Willimantic Electric Light Company use the Waterhouse system, and as this company were not incorporated until 1887 and the men composing it had ample opportunity to study the various systems in practical use up to that date, it is but reasonable to suppose that they chose a system equal to the best. At all events it gives the best of satisfaction to the company's customers, and the number of these is increasing so rapidly that it seems hardly worth while to give the number of lamps supplied at present writing, excepting, perhaps as a matter of record. There are fifty arc lights furnished for street lighting, thirty-two arc lights for commercial lighting, and seventy-two Bernstein series incandescent lamps. The dynamos are at present located on the premises of the W. G. & A. R. Morrison Company, and are driven by a seventy-five horse engine of the latest type. A new station with increased facilities is contemplated. The original capital of the company was \$10,000, but this has been doubled, and every dollar of the increased capital is paid in. Mr. Edwin Bugbee is president of the company, Mr. A. R. Morrison being vice-president, Mr. H. F. Royce, secretary and treasurer, and Mr. A. H. Lynch, superintendent. The office is in Room 3, over the First National Bank, where full information as to rates, etc., will promptly be given on application. The service is uniformly reliable and invariably gives excellent satisfaction wherever introduced.



Marshall Tilden, Furniture, Carpets, House Furnishing Goods, No. 100 Main Street, Willimantic, Conn.—There is so great a variety of goods coming under the head of “house furnishings,” and there is so great a variety of tastes among the purchasers of such articles that it is absolutely necessary for any dealer who means to cater successfully to all classes of trade to carry a very extensive and complete stock. An examination of the assortment offered by Mr. Marshall Tilden, at No. 100 Main street, will go far to explain the exceptional popularity of his establishment, for the stock in question is not only very large but is carefully and skillfully selected, and comprises late novelties as well as full lines of staple articles. Mr. Tilden succeeded Mr. E. C. Potter, in 1879, and has developed the business materially in every department. The premises utilized by him comprise the basement of the of the entire block, and three floors of the respective dimensions of 60×30, 110×30 and 60×30 feet. Among the leading commodities dealt in may be mentioned furniture, carpets, stoves, crockery and glass ware, together with lamps, pictures and house furnishing goods in general. Employment is given to five efficient assistants and callers are waited upon promptly and politely, being given every opportunity to choose intelligently and being fully assured that every article will prove just as represented. Mr. Tilden has a well-earned reputation for quoting bottom prices on strictly dependable goods, and he does not allow himself to be undersold in any department of his business.

Tilden & Courtney, Dry and Fancy Goods, Tilden Block, Willimantic.—As a firm, Messrs. Tilden & Courtney may not be very familiar to the general public, for they have but recently become associated, but as individuals few if any of Willimantic’s business men are better and more favorably known; Mr. Tilden having for a long time been classed among the leading furniture men of Connecticut; and Mr. Courtney being a life-long resident of this city and having had sixteen years varied experience in the dry goods business. The firm have just opened a spacious and finely appointed store in Tilden Block, and deal extensively in dry and fancy goods of every description, the productions of the most prominent and reputable foreign and domestic manufacturers being represented. A large stock is carried and it is worthy of note that it is composed exclusively of new, fresh and attractive goods, being in fact an exceptionally “clean” assortment throughout. We have not the space to specify the individual inducements offered in the various departments, such as gloves, hosiery, small wares, dress goods, notions, etc., but it may be truthfully stated that quality for quality and price for price, the goods handled by this enterprising house are not surpassed in Willimantic. We need hardly say that they are in every instance guaranteed to prove precisely as represented, and that the firm spare no pains to completely satisfy every reasonable customer. A large force of competent assistants is employed and callers are assured immediate and polite attention, goods being cheerfully shown and all desired information freely given. Callers are waited upon with a promptness and courtesy which go far to explain the exceptional popularity this establishment already enjoys throughout this section. Dependable goods, bottom prices, strictly honorable dealing—all these are characteristics of this store and all combine to make the enterprise a credit to the community no less than to the proprietors themselves.

CARPENTER & JORDAN,

(Formerly of Carpenter & Fowler.)

Dealers in Hardware, Iron and Steel, Mill Supplies, Builders' Supplies, Machinists' Tools, Wooden Ware, Wire Fencing, Drain Tile.

96 MAIN STREET,

- - - WILLIMANTIC, CONN.

There is no lack of handsomely-appointed stores in the enterprising city of Willimantic, but there are but few establishments in town which can compare with that conducted by Messrs. Carpenter & Jordan, at No. 96 Main street, next door to Marshal Tilden, for this is a new store, contains a new stock and is fitted up without regard to expense. The proprietors do not lack practical business experience, however, by any means, even if they do carry on a "brand new" establishment, for Mr. Carpenter was engaged in the same line of business on the corner of Railroad and Main streets for a quarter of a century, for four-fifths of which time he was in business for himself, as a member of the firm of Carpenter & Fowler. He is a native of this city, and in 1889 became associated with Mr. Jordan, who was born in Lebanon. The firm handle hardware of every description, and some idea of the magnitude of the stock carried may be gained from the fact that the premises occupied comprise four large rooms, two of which measure 65 × 24 feet each, and the other two 46 × 24 feet each. Another fact worth noting concerning this stock is that it is entirely fresh and new in every department, being made up exclusively of desirable and salable goods from the most reputable manufacturers. Those who were conversant with the methods employed by Mr. Carpenter before he opened his present store will not be surprised to hear that the new firm quote the very lowest market rates, and that all orders, large or small, are filled without delay, employment being given to two efficient assistants and no pains being spared to ensure absolute accuracy. Both a wholesale and retail business is done and the trade is not only already extensive but is rapidly and steadily increasing.

H. E. Remington & Co., Clothing, Gents' Furnishings, etc., Willimantic.—The question of where to purchase clothing to the best advantage is one that appeals to all classes in the community, for the expense of dress forms an important item in the cost of living, and the rapid increase in the number of clothing stores of late years complicates the question by giving more latitude of choice, but many residents of Willimantic and vicinity have very satisfactorily solved the problem by making it a rule to patronize the establishment conducted by Messrs. Remington & Co. at No. 164 Main street. The reasons for this decision are many and sound but they may be summed up in very few words—the assurance of receiving full value for every dollar expended. Some houses may assume to do even more than this, to sacrifice goods at less than cost and give their retail patrons even more than wholesale values, but the justice of such claims is, to say the least, doubtful, although Messrs. Remington and Co., in common with all other energetic business firms may at times find it advisable to dispose of certain goods at or even below actual cost. But the main point is, does this concern ordinarily quote bottom prices on dependable goods? and we have no hesitation in saying that no firm in this section of the State has a better record in this respect. The premises utilized are very spacious, the main store being 30 × 90 feet in size, and there being a trunk and blanket department upstairs measuring 30 × 38 feet, this one apartment being considerably larger than the entire establishment was when Messrs. H. E. Remington & Co. assumed control in 1876. A very extensive and desirable stock of clothing and gentlemen's furnishings, trunks, blankets, etc., is constantly carried, both a wholesale and retail business being done, but a specialty being made of the latter. Employment is given to three assistants and prompt and polite attention is assured to every caller. The partners are Messrs. H. E. Remington and C. A. Capen, the

former a native of Waterbury, Vt., and the latter of this city. Mr. Capen has held various local offices and was chosen as State representative in the fall of 1888, and both Mr. Capen and Mr. Remington are very widely and favorably known in business circles throughout this section.


Kingsley's Dining Rooms, 118 Main Street, Willimantic.—A good natured hungry man is a phenomenon very rarely seen, for when anyone is really hungry, he is apt to forget politeness and everything else except his desire to be well fed as soon as possible. Good nature is a highly desirable thing for every man to have, and as the satisfying of hunger will go far towards assuring it, we take pleasure in calling the attention of our readers to Kingsley's Dining Rooms, located at No. 118 Main street, for every man eating at that popular resort is sure to leave it in a happy frame of mind, that is, if a hearty and nutritious meal at fair prices can bring about that result. The proprietor of this establishment is Mr. D. Kingsley, who is a native of Lebanon, and founded the undertaking in question about ten years ago. The premises utilized are spacious and centrally located, desirable rooms being available for the accommodation of lodgers. Temporary or permanent sojourners in Willimantic will find it difficult to form a more satisfactory plan of living than to lodge and board at this establishment, for it combines the advantages of a hotel with those of a boarding house, and has few if any of the drawbacks of either. Mr. Kingsley supplies his table with plenty of healthful, nutritious, and seasonable food, stinting neither in quality or quantity. Employment is given to three competent assistants, the service is prompt, and the cooking good, and in fact the person who can't be satisfied here must be hard to suit. A fine line of confectionery, kept fresh by frequent renewals, is offered at low prices; also cigars; ice-cream in the summer a specialty.

O. A. SESSIONS

FURNISHING & UNDERTAKER,

106 HAMLIN BLOCK,

WILLIMANTIC, CONN.

CASKETS, COFFINS, SHROUDS, FLORAL DESIGNS, HEARSE, CARRIAGES,
ETC.  LADY ASSISTANT.

~> Personal Attention given in all Cases <~

Residence West End of Prospect Street, Second House from High Street, Right Hand Side going West.

Henry F. Royce, Western Farm Mortgages, Room 3, over First National Bank, Willimantic, Conn.—Many of our readers would be surprised to learn the immense amount of eastern capital which is invested in farm mortgages, for a large proportion of the most experienced and shrewd investors have placed very extensive sums in this way of late years and the results attained have been highly gratifying to all parties concerned, in the majority of instances. Of course it is necessary to use reasonable discrimination in the making of these loans, as it is when purchasing manufacturing, railroad, or even bank stock, but the experience of hundreds of large and small investors has proved that it is possible and in fact easy to place money profitably and safely, provided that the proper channels be utilized. But generalities are very unsatisfactory, particularly when financial matters are being discussed, and therefore we will without further preface direct the attention of our readers to the facilities offered by Mr. Henry F. Royce, doing business in room 3, over the First National Bank. This gentleman is a native of Lebanon, Conn., and is very widely and favorably known in financial and general business circles in Willimantic and vicinity, having served as secretary and treasurer of the Willimantic Savings Institution for twenty-one years, or up to March, 1888. He became engaged in handling Western farm mortgages in 1875, and his ability and the character of his methods are most clearly indicated by the simple fact that in the course of fourteen years of active operations, \$1,300,000 in loans has been sold. Nothing can be added to this plain statement of fact, which may well induce those who are accustomed to regard all western investments as of the "wild cat" order to open their eyes and ears and gain a more nearly correct idea of what is going on.

C. E. Carpenter & Co., dealers in Choice Family Groceries, Provisions, Flour, Corn and Feed, Dry and Fancy Goods, Boots and Shoes, Crockery, Glassware and Woodenware, Main Street, Willimantic, Conn.—The enterprise conducted by Messrs C. E. Carpenter & Co., is deserving of particularly prominent mention in any review of the representative business undertakings of Willimantic and vicinity, not only on account of the great extent to which it has been developed, but also by reason of the high personal standing its proprietors have in the community, and the fact that they are the oldest established merchants in town, having begun operations here in 1858. Messrs. C. E., and J. B. Carpenter are both natives of Attleboro, Mass., and both have been burgesses, while Mr. C. E. Carpenter has served on the school board for seven years. The premises occupied by the firm are located on Main street, and comprise an entire three-story building of the dimensions of 80 × 35 feet, so that there is abundant room to accommodate a very heavy stock, and this room is fully utilized, the assortment on hand being remarkably varied and exceptionally complete in every department. It is made up of choice staple and fancy groceries, selected especially for family use, provisions, flour, corn and feed, together with dry and fancy goods, boots and shoes; crockery, glassware and wooden ware. These articles are in every instance guaranteed to prove precisely as represented and are offered at prices that will bear the most severe examination and comparison, for Messrs. C. E. Carpenter & Co., have always made it a rule not to allow themselves to be undersold in the handling of dependable goods, and the firm were never better prepared than now to successfully meet all honorable competition. Employment is given to two efficient assistants, and every caller is assured prompt and courteous attention, orders being accurately delivered at short notice.

FRANK M. WILSON & CO.,

© APOTHECARIES. ©

WILLIMANTIC,

CONN

WILLIMANTIC PHARMACY,
Established, 1829.

○

FRANK M. WILSON.

WM. P. JORDAN.

Wales & Hyde, Groceries and Provisions, 28 Church Street, Willimantic, Conn.—Among those establishments which merit mention in this book, that conducted by Messrs. Wales & Hyde should be given a place, for although this store makes no great pretensions still it is worthy of the most liberal patronage for the simple reason that no goods are sold under false pretences, every article being guaranteed to prove just as represented in every respect. Messrs. Wales & Hyde have built up quite a large business, for the public are not slow to appreciate fair dealing and enterprise and are pretty sure to support any undertaking in the management of which both of these are combined. The premises are located at 28 Church street, and contain a carefully selected stock of choice family groceries and provisions. This firm does not claim to sell lower than everybody else or to be constantly offering goods “below cost,” but they are content with a small margin of profit, and a dollar will go about as far in this store as at any similar establishment in town. Orders are promptly filled, every caller receiving careful and polite attention, both from the proprietors and their well-informed assistants.

Boston Store, H. C. Murray, Dry Goods and Carpets, 147-151 Main Street, Willimantic, Conn.—The “Boston Store” has been carried on by its present proprietor, Mr. H. C. Murray, for more than a decade, for it was opened in 1879, and the residents of this vicinity have therefore had ample time to become thoroughly acquainted with the methods employed in its management and to judge how far its name is justified by the facts. So far as the latter point is concerned, that depends upon the prevailing characteristics of genuine “Boston Stores,” but if the chief of these are the carrying of an extremely heavy and varied stock, the quoting of bottom prices and the extending of prompt and polite attention to every caller, then Mr. Murray’s establishment is indeed a “Boston Store” in the full sense of the term. The proprietor is a native of Scotland, and owes his success chiefly to his intimate knowledge of his business in every detail and his habit of giving it close and constant personal supervision. The premises occupied are located at Nos. 147, 149 and 151 Main street, and have a frontage of 56 feet

and a depth of 86 feet, every inch of available space being required to accommodate the heavy stock of dry goods and carpetings which is constantly carried. Mr. Murray does both a wholesale and retail business and employs twenty assistants, who will be found well informed and courteous, goods being cheerfully shown at all times. To fitly describe such a magnificent stock as is here carried is a manifest impossibility when the limits of our space are considered, and we will therefore content ourselves with remarking that it is wonderfully complete in every department and fully represents the very latest fashionable novelties. Mr. Murray has always kept good faith with his customers, and the purchasing public have come to thoroughly understand that he not only quotes the very lowest market rates but furnishes goods that can be implicitly depended upon.

Henry F. Lewis, Roofing and Jobbing, No. 241 Main Street, Willimantic, Conn.—It goes without saying that the roof is by far the most practically important part of a house, for the most elegant and costly building may be uninhabitable if it have a leaky roof, while a very modest and humble structure may be thoroughly home-like and comfortable if the roof is sound and “weather-proof.” The only way to be sure of securing this latter result is to have the work done by thoroughly competent and reliable hands, and the residents of Willimantic and vicinity can do no better than to place their orders with Mr. Henry F. Lewis, for he makes a specialty of roofing and jobbing of all kinds, including stove and furnace repairing and cleaning, and has the necessary facilities to enable him to execute all commissions at short notice and in thoroughly first-class and durable style. Mr. Lewis was born in Columbia, Conn., and began operations in this city in 1887. His shop is located at No. 241 Main street, and all orders, whether given in person or sent by mail, are assured prompt and painstaking attention. Employment is given to three experienced and careful assistants, and Mr. Lewis makes a practice of carefully supervising operations, so that thorough and lasting work can be confidently expected in every instance. Repairing is made a specialty, and moderate charges are the rule in this as in all other departments of the business.

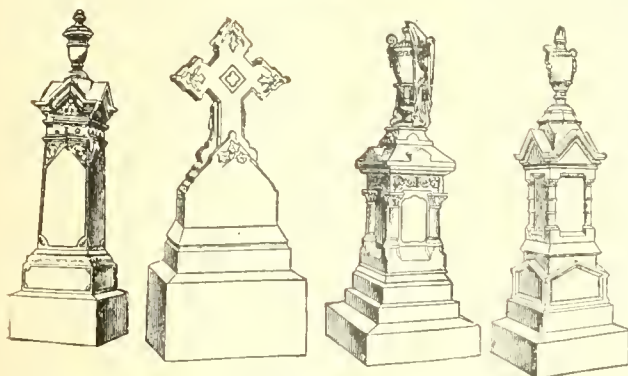


D. C. Barrows, dealer in Diamonds, Watches, Clocks, Jewelry, Solid Silver and Silver Plated Ware. Repairing of Fine Watches a Specialty. 139 Main Street, Willimantic, Conn.—There are no jewelry stores in this portion of the State that are better known than that carried on by Mr. D. C. Barrows at No. 139 Main street, and it goes without saying that this establishment is as favorably as it is widely known, for otherwise no such immense patronage would be enjoyed as is now the case. Mr. Barrows is a native of Chaplin, Conn., and inaugurated the enterprise in question in 1879. The premises occupied are 18×70 feet in dimensions and contain a really magnificent stock of diamonds, watches, clocks, jewelry, silver ware, etc., which is made up entirely of trustworthy goods and which is offered at the lowest market rates that can be quoted on standard articles of equal value. Employment is given to two courteous and efficient assistants, and every caller is assured prompt attention and strictly honorable treatment. Repairing, both of watches and jewelry is given special attention, and owners of fine chronometers may leave their time-pieces here with the full assurance that they will be handled in a skillful manner and put into the best possible condition. All standard makes of watches are sold and bargains may be had either in the purchase of a cheap movement or in the most elaborate productions of the watch-maker's art. Clocks of many kinds are also extensively dealt in, and solid and plated silver ware is sold at the lowest market rates.

E. F. Casey, Proprietor of the Boston Furniture Store; Furniture, Carpets, Crockery, Stoves, Ranges, and everything in the House Furnishing Line. Also Steam-ship Tickets Sold. Lower Main Street, opposite Thread Mill No. 1, Willimantic, Conn.—The stock carried by Mr. E. F. Casey doing business on lower Main street opposite Thread Mill No. 1 is very large and attractive and shows evidence of great care and skill in its selection, but what especially makes this establishment a favorite with the purchasing public is the fair-minded and accommodating spirit displayed in its management. Mr. Casey sells furniture and household goods of all kinds for cash, or on installments, and since beginning operations in

1876 has made a record for enterprise and honorable dealing which commends him to all who appreciate straightforward business methods. Every article sold at the Boston Furniture Store is guaranteed to prove just as represented, there is no evasion and no attempt to shift responsibility. If certain goods be warranted to have certain qualities, the guarantee is strictly adhered to, and should it prove not to be justified by the facts, the matter will be made right, promptly and cheerfully, for this gentleman acts on the policy that he *cannot afford to have an honestly dissatisfied customer*, and he don't propose to have one if he can avoid it. The premises comprise four floors, and include twelve rooms. Three reliable assistants are employed, and furniture, carpets, crockery, stoves, ranges and everything in the housekeeping line, is dealt in. He also does undertaking, carrying a line of coffins, caskets and funeral goods. Mr. Casey is a native of Moulton, Mass., and is very well known throughout Willimantic, where he has been tax collector for two years. He gives careful personal attention to all departments of his business, and not only offers a very complete assortment of honestly made goods to choose from, but quotes bottom prices on every article.

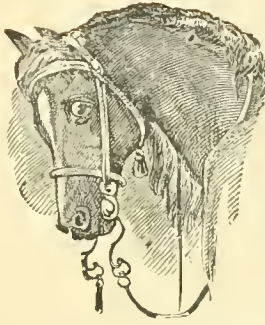
Sweeney & Dunn, Stationers, Booksellers and Newsdealers, 170 Main Street; also Willimantic News Depot, Periodicals, Cigars and Tobacco, 119 Main Street, Willimantic.—The business carried on by Messrs. Sweeney & Dunn, at No. 170 Main street, was founded about thirty-five years ago, operations having been begun by Mr. James Walden in 1855, and he being succeeded by the present proprietors in 1887 (who also maintain an establishment at No. 119 Main street, known as the Willimantic News Depot, devoted to cigars, tobacco, and periodicals, where they first started in 1884). The firm deal in stationery, books, periodicals, newspapers, paper hangings, etc., and carry a very heavy stock, both a wholesale and retail business being done. The very latest novelties in fashionable stationery are always to be found at their establishments, together with a complete line of commercial stationery, blank books, etc. All the leading magazines are also placed on sale at the earliest possible time after publication, and subscriptions will be received at publisher's rates, both for periodicals and newspapers. Novels and other books are dealt in quite extensively, the firm being prepared to furnish any book at short notice, at the regular retail price. Pens, pencils and writing materials of all kinds, both plain and ornamental, are carried in stock, as is also as carefully a chosen an assortment of paper hangings as the city can show. This comprises wall-papers of the very latest and most artistic designs, and as the prices quoted are uniformly moderate when compared with those named on similar goods elsewhere, it is not at all surprising that this should be one of the most popular departments of the business.



Eldredge & Adams, Granite and Marble Works, Monuments, Headstones, and Cemetery Work of all kinds. Scotch Granite a specialty. Rockville, Conn. A. P. Benner, Agent, Willimantic, Conn.—It is not at all surprising that the monuments and tablets which were acceptable a score or more of years ago should no longer be called for by the more fastidious portion of the public, for the taste of the community has been very considerably cultivated and improved within the past twenty years and it is obvious that a distinctly higher grade of monumental work should be demanded. It is owing to the ability and enterprise shown in catering to this demand that the firm of Eldredge & Adams have built up so extensive and desirable a business, for they make a specialty of new and original designs and at the same time produce the very highest grade of workmanship. Granite and marble monuments, tablets, headstones, curbing, statuary and cemetery work of all kinds are furnished at short notice and at moderate rates, estimates being promptly and cheerfully made on application. Particular attention is given to work in Scotch granite, some very beautiful effects being obtainable by the use of this material, which also ranks with the most durable of ornamental stones. Messrs. Eldredge & Adams are located in Rockville, Conn., but they have a Willimantic agent at No. 64 Union street, in the person of Mr. A. P. Benner, who is very widely and favorably known hereabouts and is prepared to make just as favorable rates as can be obtained by dealing with the firm directly. The agency was established in 1874 and was formerly located in the Bank Building, being removed to the present location in 1886. Mr. Benner is also agent for the white bronze monuments, etc., made by the Monumental Bronze Co., of Bridgeport, Conn. These are offered in over 500 different designs, and are indestructible, tasteful and moderate in price. Although but lately introduced there are already more than 20,000 of them now erected in this country, and half a million dollars' worth were put up last year. These monuments were awarded a gold medal at the New Orleans exposition, and are endorsed by scientists as furnishing a handsome, tasteful and durable monument at a moderate price.

A. D. David & Co., Pharmacie Française, 209 Main Street, Willimantic, Conn.—An establishment which well deserves special mention in a book intended to be distributed among the people, is that carried on by Messrs. A. D. David & Co. at No. 209 Main street, Willimantic, for this establishment is one of the most reliable pharmacies to be found in this vicinity. A. D. David & Co. began business in 1883, at their present location, and have since built up a large wholesale and retail trade, not only in the immediate vicinity, but also for quite a distance around, for the care and skill shown in the compounding of physicians' prescriptions, have excited no little favorable comment, and has resulted in Messrs. A. D. David & Co.'s name being placed among the best-equipped dispensing chemists in town. They have the assistance of two competent clerks, and the details of the business are most ably managed. A store 22×35 feet is utilized and as might be expected a large and varied assortment of drugs, medicines and chemicals is constantly carried. Also toilet and fancy articles, and all druggists' sundries, are to be had here, and as the store is centrally located, our readers should make it a point to call and test the resources of this deserving establishment. Courteous attention and prompt service is guaranteed to every caller, while no exorbitant charges are made.

Mullen & Legendre, dealers in Groceries, Teas, Coffees, Spices, Fruit and Confectionery, Cigars and Tobacco, 25 Union Street, corner Jackson, Willimantic.—All housekeepers are aware that there are a variety of articles which while included under the head of groceries, are still not to be bought to advantage in every grocery store. These goods are generally called fancy groceries and include the latest novelties in relishes, condiments, etc. A house which while dealing in all descriptions of family groceries, still makes a specialty of teas, coffees, spices, fruits and confectionery, is that of which Messrs. Mullen & Legendre are the proprietors. This enterprise was inaugurated in 1889, and the public were quick to appreciate the advantages attendant upon dealing with this firm. The premises in use are 20×60 feet in dimensions, and contain an attractive stock attractively arranged. Both partners give close personal attention to the business, and being well posted in its various details, are able to maintain the high standard of efficiency they have established. Employment is given to experienced and polite assistants, and callers are in all cases shown due consideration and assured being waited upon at the earliest possible moment. In addition to the handling of the goods already mentioned a fine line of cigars and tobacco is always carried. Purchasers may depend upon the articles bought for no misrepresentation is allowed here, and the prices are always low. We would advise all interested readers to patronize this establishment which is located at No. 25 Union street.



Joseph Manley, manufacturer of and dealer in Harness, Robes, Blankets, Brushes, Whips, etc.; Trunks and Traveling Bags a Specialty. Repairing in all its Branches, Card's Block, Main Street, Willimantic, Conn.—Harness goods, etc., are difficult things to buy unless you know just whom you are trading with, for it is

hard to judge of the true value of such articles simply by personal inspection. Nothing can equal the test of wear, of course, but one thing can be done at all events, and that is to deal with a house that is unquestionably reliable and unquestionably moderate in its prices. No better example of such a concern could be wished for than that afforded by the enterprise conducted by Joseph Manley at No. 157 Main street. This has certainly been carried on long enough to enable some insight to be gained concerning its characteristics, for it was inaugurated in 1889. Mr. Manley was born in North Haven, and owing to his upright business methods is very generally known in this vicinity, and is as generally respected as he is known. The premises made use of comprise two rooms, one 20 × 30, and one 20 × 50 feet in dimensions, and employment is given to three assistants. Mr. Manley manufactures harnesses of all grades, and deals in robes, blankets, brushes, whips, trunks and traveling bags, etc., and is in a position to supply a standard article at the lowest market rate. Every article manufactured or sold by him, is warranted to prove as represented, and integrity and honor are the distinguishing characteristics of his business methods. Custom work is promptly and skillfully attended to, and particular attention is paid to repairing, such work being done neatly, but as strong and durably as possible.

T. R. Sadd, Cash Buyer and Seller of House Furnishing Goods and Notions, Willimantic, Conn.—The trade in house-furnishing goods has reached enormous proportions of late years, for every year there are new families to supply, and every year the ability of the average man to furnish his home with comforts and even luxuries seems to increase, judging from the furnishing of the ordinary home of to-day, as compared with that of a decade or so ago. Undoubtedly this is largely due to the cheapness of house furnishings at the present time, for there is no denying the fact that a dollar will go farther in the purchase of such goods nowadays than was ever before the case. Of course it is assumed that the dollar be invested to the best advantage, for there are some dealers who apparently have not heard of the drop in prices and therefore adhere to the old and comparatively high rates, but no one would think of placing Mr. T. R. Sadd in this class, for

no man in this city has done more to reduce the cost of house furnishings to consumers. He was born in Ellington, Conn., and began business here in Willimantic in 1885, since which time his store has become one of the representative establishments of this section of the State. It is located in the Bank Building on Main street, and comprises two floors of the dimensions of 80 × 20 feet; all this large amount of space being required to accommodate the exceptionally heavy and varied stock which is constantly carried, and which includes house-furnishing goods and notions in almost endless variety. Mr. Sadd buys and sells for cash, and hence is enabled to quote positively bottom prices on all the articles he handles, especially as he enjoys the most favorable relations with producers, and is one of the largest buyers in the business, his Willimantic establishment being but one of four with which he is identified, the others being located at New London, New Britain and at Putnam. Every article is fully guaranteed to prove as represented, and callers are always assured prompt and polite attention, as a large force of assistants is employed and uniformly courteous service is extended to all.

W. N. Potter, Boots and Shoes, Leather and Findings, Willimantic, Conn.—It is said by those who have given the matter careful study, that there is not the slightest need of anybody's having corns or bunions, and that in the cases where such are present, it is only because ill-fitting or badly-shaped shoes have been worn. Now although many, and in fact most of the sufferers from corns, etc., will stoutly deny that they have ever worn shoes too small for them, still it should be remembered that although a shoe may be plenty large enough, taken as a whole, still it may press so hard upon a certain portion of the foot as to cause serious inconvenience, and finally bring about the formation of the painful excrescences we have previously alluded to. The remedy is simple. Purchase your boots and shoes from a house that carries so large and varied a stock as to enable all feet to be perfectly fitted, and that includes the productions of some of the best makers known. It is just such an assortment as this that is offered by Mr. W. N. Potter, located at the junction of Main and Union streets. This enterprise was founded in May, 1870, by Messrs. Martin & Potter, and in December, 1870, Mr. W. N. Potter assumed the entire control of the business and has attained a very large and rapidly increasing patronage. Mr. Potter is a native of Willimantic, and very well and favorably known here. Realizing that there is a continuous demand in this vicinity for durable and thoroughly made footwear, at fair prices, he has endeavored to fully meet it, and his success is a matter of general comment. His store comprises one floor and basement, each 76 × 23 feet in dimensions, and two polite and efficient assistants are in attendance, and all visitors are assured prompt and courteous attention.



Smithville Manufacturing Co., Cotton Goods, Twills and Prints, Bridge Street, Willimantic.—It may be an exaggeration to state that the cheaper and more common a product is, the more costly is the plant of machinery utilized in its making, but it is nevertheless a fact that many of the articles which are sold at figures within the means of all, represent an investment of thousands of dollars, for they owe their cheapness to the wonderful efficiency of the machinery by which they are made. This is especially true in the case of textile fabrics and particularly of cotton goods, as may be seen by visiting such an establishment as that conducted by the Smithville Manufacturing Co., on Bridge street, for this company are very extensively engaged in the production of cotton goods, twills and prints, and operate one of the most complete plants of machinery in the State. The business was founded some forty years ago and has long ranked as one of Willimantic's truly representative industries. The premises utilized comprise a four-story building of the dimensions of 250 × 50 feet, with an ell measuring 150 × 50 feet, and the mills are equipped throughout with improved machinery, including 20,856 spindles, 508 looms, three water wheels, and a large, double, Corliss engine. Employment is given to 300 operatives, and the product is in active and continual demand, it having a reputation by no means confined to this section. Many original and tasteful designs are turned out here every season, and the company are prepared to meet all honorable competition both as regards quality and price. Mr. Stephen A. Jencks is president of the company, Mr. O. A. Washburn, Jr., being agent and treasurer.

Maverick Steam Laundry, Wm. J. Asher, Proprietor, 200 Main Street, opposite Hooker House, Willimantic, Conn.—New England people as a general thing are rather conservative, and are

not given to making changes without some good reason exists for doing so, but on the other hand, they are quick to recognize genuine merit, and hence may be depended upon to patronize any really worthy enterprise to which their attention may be called. As a case in point, let us refer to the high degree of success attained by the Maverick Steam Laundry, of which Mr. Wm. J. Asher is the proprietor, located at No. 200 Main street, Willimantic. This enterprise was inaugurated in February, 1889, and as soon as the fine character of the work turned out became known, and it was learned that the prices were as reasonable as the work was satisfactory, a large patronage was accorded the proprietor, and this has steadily and rapidly increased up to the present time. Mr. Wm. J. Asher, the proprietor of the Maverick Steam Laundry is a native of Springfield, Mass., and to him must due credit be given for the establishment of an industry so useful to the community, for he has worked hard and earnestly to maintain his motto, "Good work and promptness." The premises utilized by Mr. Asher comprise two floors 70 × 18, and 25 × 18 feet respectively, in dimensions. Four competent assistants are employed, and special prices are given on family work. Goods are called for and delivered free of charge, orders by postal card, or otherwise, delivered, will receive prompt attention. The public has long since discovered that the cock-and-bull stories circulated by certain interested parties, calculated to convey the impression that goods intrusted to a public laundry would be soon destroyed, was entirely unworthy of credence for however it may be with other concerns the Maverick Steam Laundry employs no agents nor machines that could possibly harm the articles laundered by them. It is noticeable that although two other steam laundries were started in Willimantic previous to this one, the Maverick is the only one in existence at present.

William Vanderman, Plumber, Steam and Gas Pipe Fitter, and dealer in Manufacturers' and Engineers' Supplies. First-class Plumbing and Low Pressure Steam Heating a Specialty. 21 Church Street, Willimantic, Conn.—It is far better to have no plumbing at all in a house than to have what plumbing there is improperly done, and the same thing may be said concerning steam heating or hot water apparatus; for furnaces or even stoves will give better satisfaction than the most efficient steam apparatus, if the latter is so wrongly put up as not to have a chance to prove its advantages. This is no theory of ours, but has been repeatedly proved by practical experience, so we say to our readers "have no plumbing, steam or gas fitting done unless you can have it done right." Fortunately there is no trouble in having such work properly done if you reside in Willimantic or vicinity, it being necessary only to place the order with Mr. William Vanderman, doing business at No. 21 Church street, for he has had twenty years of varied experience and has unequalled facilities for the filling of the very largest orders at short notice; satisfaction being guaranteed to every customer. Mr. Vanderman was born in Hartford and learned his trade there and has been a practical plumber, steam and gas fitter for more than a score of years. He makes a specialty of first-class plumbing and low pressure steam and hot water heating, and those wishing proof of his ability to satisfy the most critical in this kind of work are respectfully referred to Vanderman's out of town work in 1889, viz: At Webster, Mass., Tracy block, F. F. Chase's dwelling, A. B. Atkinson's dwelling, Richard Thompson's dwelling, Mrs. E. G. Lamb's dwelling, Nicholas F. Gilleis dwelling, John B. McQuaid's dwelling, L. H. Tiffany's dwelling, F. A. Upham's dwelling, Roderick Johnson's dwelling; at Pomfret, Benjamin Grosvenor's dwelling, Charles Grosvenor's dwelling; at Thompson, J. W. Doane's dwelling; at Wauregan, L. P. Lamoureux's dwelling; at Putnam, C. H. Kelley, B. M. Kent, Putnam Water Company, Putnam Convent; A. C. Gordon, Woodstock; Convent, Baltic; Tolland County Children's Home, Vernon; Rev. J. H. Fitzmaurice, South Coventry; W. T. Williams, Yantic; Chase Bros., Chaplin; Charles H. Hammond, Colchester. In connection with plumbing he also manufactures quite a number of his patent plumbing specialties, and is receiving orders from all parts of the United States. He has just completed a cast iron boiler for hot water and steam heating and it is conceded by those acquainted with heaters to be a first-class boiler and has quite a number of advantages not possessed by other boilers. Small and large orders are given equally careful attention and from ten to fifteen assistants are constantly employed, a branch shop being maintained in Putnam. Mr. Vanderman deals largely in manufacturers' and engineers' supplies and is in a position to quote bottom prices on them; carrying a sufficiently large stock to enable all orders to be filled without delay.

C. W. Turner & Son, Market, 223 Main Street, Willimantic, Conn.—There is probably no house-keeper but what has experienced more or less difficulty in obtaining entirely satisfactory meats, for the payment of the highest market rates by no means assures the purchaser of getting first-class goods, as many of our readers undoubtedly know from practical experience. This is not always the fault of the dealer, for mistakes are sure to happen in every line of business and sometimes these mistakes are entirely excusable, but nevertheless it is perfectly safe to say that, generally speaking, those who are willing to pay for high grade meats should be able to depend upon being supplied with such, and in this connection we may very fittingly call attention to the facilities offered at the C. W. Turner & Son's Market, 223 Main street, for here may always be found a first-class assortment of fresh, salted and smoked meats, and those who want choice cuts of beef, mutton or lamb should by all means give this popular establishment a call. The proprietors are Messrs. C. W. Turner & Son, and the members of the firm give personal attention to the filling of orders, besides employing a number of efficient assistants, so that callers are sure of prompt and courteous service. Vegetables, country produce, etc., are largely dealt in, and the prices quoted on all the goods handled will be found strictly in accordance with the lowest market rates, while at the same time every article may be fully depended upon to prove as represented. Orders will be promptly and accurately delivered, and no trouble is spared to satisfy every reasonable customer.

D. H. Henken, Merchant Tailor, the Most Fashionable Styles and First-Class Workmanship; Tailors' Trimmings of all kinds; Atwood Block, 129 Main Street, Willimantic, Conn.—The money put into a thoroughly and skillfully made custom suit or garment is very well invested, for people must have clothes and there is much to be gained by dressing neatly, tastefully and fashionably. "The apparel oft proclaims the man," and other persons' judgment of us as well as our judgment of them depends largely upon the character of the clothes worn, so that all business men who appreciate the advantage of making a favorable impression should also appreciate the importance of wearing well-made and perfect-fitting garments. It is not necessary to pay a fancy price in order to obtain such, and if any of our readers doubt this fact we would most certainly advise them to visit the establishment conducted by Mr. D. H. Henken, at No. 129 Main street, Atwood Block, for he is a merchant tailor of long and varied experience, and has a well-earned reputation for producing thoroughly satisfactory garments at thoroughly satisfactory prices. Mr. Henken was born in Germany, but has lived in this country for many years, having founded his present business in 1861. His premises have an area of 1800 square feet, and contain a beautiful, extensive and tastefully chosen stock of foreign and domestic fabrics

for gentlemen's wear, and a full line of all kinds of tailors' trimmings. Suits or single garments will be made up in accordance with the very latest styles, a perfect fit and first-class workmanship being guaranteed and orders being filled at short notice. Mr. Henken is very reasonable in his prices, no tailor in the city quoting lower figures on equally desirable work.

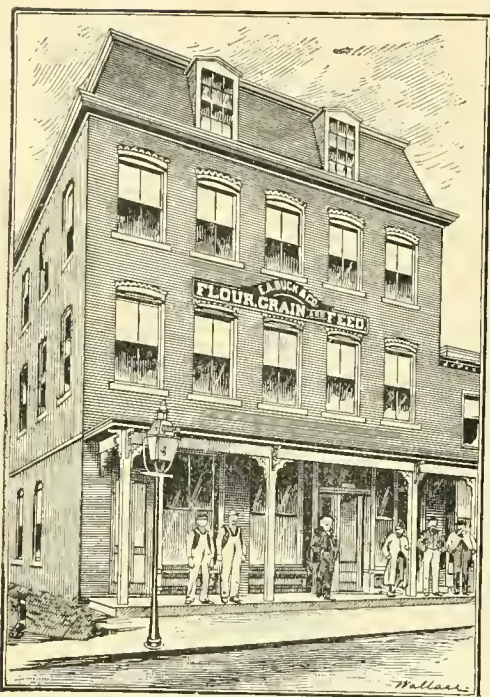
C. H. Townsend, Photographer, Corner Main and Railroad Streets, Willimantic, Conn.—Probably in no branch of the arts have more improvements been made during recent years than in that of photography; and the avidity with which the inventions of late days have been availed of by the profession, is a convincing proof of the spirit of enterprise which has been a distinguishing feature of those concerned in the business. Mr. C. H. Townsend has been established here since 1868, as a photographic artist, and has a long and practical experience. His studio is located at the corner of Main and Railroad streets, in Basset's Block, and is considered one of the finest in Willimantic. Mr. Townsend is an example of a painstaking, thorough artist. A visit to his studio will amply repay the lover of the beautiful and artistic. Mr. Townsend is a native of Athens, Ohio, and served in the army as private for two years and nine months during our late Southern war. He is well known in social as well as business circles of this community, where he has achieved most honorable distinction as one of the best known photographic artists in Willimantic.

W. D. Grant, Commission Merchant, and wholesale dealer in Baled Hay, Flour, Grain, Feed, Grass Seeds, etc., cor. Valley and Jackson Streets, Willimantic, Conn.—The commission houses of this city, taken as a whole, have a very high reputation for the making of prompt returns and the general carrying out of a perfectly honorable business policy, and it is unquestionably a fact that they have much to do with making Willimantic the important business centre it has been for some years. To occupy a leading position in a branch of trade where the general average is so high is no light honor, and we therefore take especial pleasure in recording the fact that the enterprise conducted by Mr. W. D. Grant is fully worthy of such a position and in fact has held it for quite a long time, almost from the date of its inauguration, in 1877. The undertaking was founded by Messrs. E. Bugbee & Co., who were succeeded in 1881, by Messrs. J. C. Bugbee & Co., this firm giving place to Messrs. Bugbee & Grant in 1885, and the present proprietor assuming sole control three years later. He is a native of Ashford, Conn., and is too well known in Willimantic to require extended personal mention. Mr. Grant is a commission merchant, and wholesale dealer in baled hay, flour, grain, feed, grass seed, etc., and utilizes spacious

premises at the corner of Valley and Jackson streets, carrying a very heavy stock and doing both a wholesale and retail business. Employment is given to two assistants and large and small orders are promptly filled.

Tripp Bros., dealers in Fine Family Groceries, Willimantic, Conn.—That it is poor economy to use poor groceries will be readily agreed by all experienced housekeepers and the importance of discrimination in the selection of these goods is due, not alone to this fact, but also to the influence of the food upon the health, an influence which is now conceded to be much stronger than would once have been admitted. Fortunately the residents of Willimantic and vicinity need have no difficulty in securing reliable groceries, for there are many honorable dealers in such goods to be found here, and one of the most prominent of them is the firm of Tripp Bros., doing business on Main street, opposite Adams Express Office. These gentlemen succeeded Mr. O. D. Brown in their present enterprise February 25, 1889. Messrs. Tripp Brothers are both natives of East Charleston, Vt., and are very well and favorably known throughout Willimantic. The premises utilized comprise two floors each 20×60 feet in dimensions, and contain a large and varied assortment of fancy and staple products especially adapted to family use. The teas and coffees are of exceptionally fine flavor, while the assortment of canned goods, etc., is made up of the productions of the most reputable and popular packers. All the favorite brands of flour are offered at the lowest market rates, and orders are delivered promptly.

The North Street Meat Market, Fresh and Salt Meats and Canned goods, H. Howey, Agent, Willimantic, Conn.—Notwithstanding the large number of meat markets to be found in Willimantic, there are none too many of them where strictly dependable goods are sold at fair rates, for it is notorious that at some establishments of this kind it is practically impossible to obtain first-class meats at any price. There is an extensive and constantly increasing demand for the better grades of meats, and we can give no better advice to such of our readers as may want anything in this line than to call at the North Street Meat Market, conducted by Mr. H. Howey, on North street. He is thoroughly acquainted with his business in every detail, and as he gives personal attention to the filling of orders he is in a position to guarantee prompt and careful service to his patrons. The stock on hand comprises fresh, salt, smoked and pickled meats of every description, and whether you want a choice cut or a piece of soup stock you can buy it here to the best possible advantage, for Mr. Howey caters to all classes of trade and quotes bottom prices on all the goods he handles. Not only meats but vegetables and fruit are largely dealt in, together with fresh country produce of all kinds.



E. A. Buck & Co., dealers in Flour, Grain, Feed, Lumber, etc. Willimantic Steam Mill, Willimantic, Conn.—As truly representative a business firm as can be found in this city is that of E. A. Buck & Co., for this concern carry on one of the most important enterprises in town and are conceded on all sides to be the leaders in their special line. They are millers, and contractors for all kinds of hard-wood lumber, railroad ties, etc., and do both a wholesale and retail business, being prepared to furnish anything in their line in quantities to suit at positively bottom prices. Of course in order to do this they must have unsurpassed facilities and these they most certainly possess, their establishment being one of the most conveniently arranged of the kind in the State. It is located at No. 89 Main street, and comprises two mills, of the dimensions of 30 × 95 and 30 × 65 respectively. The premises are directly on the line of the railroad, so that goods can be received and shipped at a minimum of trouble and expense. The machinery in use is driven by steam-power and is of the latest-improved type, the meal produced being made from carefully selected material and having a very high reputation in the market. Seed oats, grass seed, salt, fertilizers, etc., are also dealt in, together with hard-wood lumber, railroad ties, etc., these latter commodities being furnished in extensive lots at very short notice. The firm is constituted of Mr. E. A. Buck and his son, Mr. W. A. Buck, both of whom are natives of Ashford, Conn. The senior partner has held about all the town offices, and has also served as State senator, representative and treasurer, holding the latter position from 1876 to 1878. The firm are constantly

enlarging their operations, and in addition to their Willimantic establishment they carry on a hardware store at Stafford Springs, Conn., and at Palmer, Mass., being engaged in the oil business also in the latter town.

J. C. Lincoln, dealer in Furniture, Mattresses, Carpets and Wall Papers, junction of Main and Union Streets, Willimantic, Conn.—In buying furniture it is always well to remember that durability is at least as important as appearance, and the only way to get durable as well as handsome goods is to patronize a dealer who not only guarantees his articles to prove as represented but whose guarantee is worth something. No one can successfully deny that Mr. J. C. Lincoln “fills the bill” in both these respects, for such a denial would need no stronger refutation than that offered by the record this gentleman has made during the many years that he has carried on business here. The establishment in question was founded by Messrs. Clark & Lincoln, and has been for some time under the sole management of Mr. Lincoln. The premises made use of are located at the junction of Main and Union streets, and comprise four floors including eleven large rooms. An immense stock is carried, made up of furniture, mattresses, carpets, wall-papers, stoves, crockery ware, and house-furnishing goods in general, and the latest novelties as well as a full line of staple articles are always to be had here at the lowest market rates. Three competent assistants are constantly in attendance and all customers are served in a polite and intelligent manner, and every order is assured prompt and painstaking attention.

P. A. Trudo & Co., dealers in Groceries, Provisions, Canned Goods, Maple Syrup, Tobacco and Cigars, 227 Main Street, Willimantic, Conn.—Many a housekeeper is looking for just such an establishment as that carried on by Messrs. P. A. Trudo & Co., at No. 227 Main street, and we take pleasure in commending this enterprise to such inquirers for we know that Messrs. Trudo & Co.’s methods are bound to please, and we know that those who have business dealings with this concern are outspoken in their approval of the accommodations offered. Operations were begun in 1889 and the trade has since been steadily increasing. Mr. Trudo is a native of Canada, and has a large circle of friends in this vicinity. The premises utilized are of the dimensions of 30 × 30 feet, and the stock on hand is not only large but unusually varied as well, as it includes groceries, provisions and canned goods of all kinds, also cigars and tobacco. It will be seen that the greater part of the household food supply may be obtained of Messrs. Trudo & Co., and as their prices are all that can be reasonably desired as regards fairness, etc., it is well worth while giving them a call. The groceries and provisions comprise the best the markets afford, and the canned goods handled

are various in kind and best in quality, while everything handled in stock is received direct from the producers and are quoted at prices as low as the lowest.

S. E. Amidon & Co., dealers in Fine Family Groceries, West Main Street, Willimantic, Conn.—Should a person thoroughly acquainted with the comparative standing of the various business houses of this city be asked to name half a dozen of the leading grocery firms of Willimantic he would unquestionably include Messrs. S. E. Amidon & Co. in the list, for this concern have long held their present high position and are generally conceded to have few if any rivals in their particular line. The reasons for this favorable judgment are not difficult to learn, for no one can visit their establishment without being impressed by the magnitude and variety of the stock carried, the dependable character of the goods and the low prices quoted on the same, while the prompt and courteous attention extended to every caller is of itself enough to entitle this representative concern to particularly favorable mention. The premises made use of comprise three floors and are located in the Windham County Building, on West Main street, the great amount of space available enabling a very heavy and complete stock to be carried, and the goods to be displayed to excellent advantage. Choice staple and fancy groceries of every description are dealt in, and as employment is given to four competent assistants all orders can be accurately filled at short notice. It is doubtful if any other grocery firm in town has so large a proportion of regular customers, for Messrs. S. E. Amidon & Co. cater so intelligently and successfully to family trade that the inducements they offer cannot easily be paralleled elsewhere. The lowest market prices are quoted, every article being warranted to prove as represented. Mr. Amidon is a native of Sturbridge, Mass., and is universally known in Willimantic and vicinity, having served as burgess in 1886 and 1887, and as first selectman the following year, 1888.

H. R. Chappell, House and Sign Painter, Paper Hanger, and dealer in Paints, Oils, Glass, etc., Lower Main Street, Willimantic, Conn.—Much of the protective value of paints, oils, etc., depends upon the character of the ingredients used in their composition, and as these articles are used quite as much for their preservative as for their decorative qualities, it follows that care should be taken to purchase them from a concern which may be depended upon to furnish honest and reliable goods. No dealer in these articles in Willimantic has a better record in this respect than Mr. H. R. Chappell, and his customers enjoy an additional advantage in the fact that the stock carried is so large and varied that it is easy to find goods therein which are particularly suited to the present business in hand. Mr. Chappell also

gives particular attention to painting, paper-hanging, etc., and employs several experienced workmen for this department. The premises utilized comprise a building two stories in height and covering an area of 60 × 40 feet, and employment is given to a sufficient force of assistants to properly attend to all the many details of the large and steadily increasing business transacted. Paints, oils and glass will be supplied in quantities to suit at the very lowest market rates. All orders being accurately filled at short notice. Mr. Chappell's business is increasing steadily and it is pleasant to note a success so honestly won.

Maddock & McPherson,

GENERAL

JOB PRINTERS.

All kinds of Book and Job Printing, Business Cards,
Note Heads, Letter Heads, Statements,
Bill Heads, Etc.

38 MAIN ST., WILLIMANTIC, CONN.

The establishment conducted by this firm enjoys a fine trade in job printing of all descriptions and is well patronized by those who appreciate work done in first-class style, at short notice and at moderate rates. A specialty is made of mercantile printing, bill, letter, and note heads, statements, circulars, envelopes, tags, dodgers, etc., being printed in a neat and attractive fashion in quantities to suit. Ornamental work such as menus, wedding and visiting cards, programmes, ball orders, etc., is given careful attention, while tickets, bills and dodgers for lectures and other entertainments will be furnished at very short notice if desired. Estimates will be cheerfully and promptly furnished, and business from all parts of the State is solicited, orders by mail being assured immediate and satisfactory attention. First-class work is guaranteed in every instance, and those wishing anything done in the printing line should make it a point to call on or send to Maddock & McPherson, No. 38 Main street.

“The Ladies’ Store,” Chase, Barker & Co., 190 Main Street, Chapman Block, Willimantic.—The name of the “Ladies’ Store,” may properly be said to have a double meaning, for not only is the establishment in question devoted expressly to the handling of goods for ladies’ use, but the proprietors are all ladies, the firm Chase, Barker & Co., consisting of Mrs. A. H. Chase, Miss A. E. Barker and the Misses Chase, there being four partners altogether. This enterprise was inaugurated in 1888, but the business experience of those

constituting the firm is by no means confined to the comparatively brief period since intervening, as indeed might be guessed from the ability evident in the management of the undertaking. Mrs. Chase was formerly postmistress at Clayton, N. J., and in conjunction with her daughters carried on a drug store in that town. She is a native of Maine, as are also the Misses Chase, while Miss Barker was born in New York State. "The Ladies' Store," is located in Chapman's Block, No. 190 Main street, and contains as carefully and tastefully chosen a stock of ladies' and children's furnishings, etc., as can be found in the city. It is very popular with ladies residing in Willimantic and vicinity, and well deserves to be, for not only are the goods dependable, the latest novelties offered and the prices low, but prompt and courteous attention on the part of some member of the firm is assured to every caller so that lady patrons may depend upon being served by ladies—an advantage the importance of which our readers will readily understand.

Chas. R. Utley, dealer in Books and Stationery, Paper Hangings, Shades, Fixtures, etc., 112 Main Street, Willimantic, Conn.—It would certainly be an unpardonable omission did we fail to make mention of the enterprise carried on by Mr. Chas. R. Utley, at No. 112 Main street, for this is a representative house of its kind, and ranks with the most prominent in this section of the city. Operations were begun in 1877, by Mr. C. C. Crandall, who was succeeded by the present proprietor in 1879. Mr. Charles R. Utley is a native of Chaplin, Conn., and was burgess for 1888 and 1889. An extensive wholesale and retail business is done, and books, stationery, paper hangings, shades, fixtures, etc., are constantly handled. The premises now utilized comprise one floor 85 × 20 feet, with basement. This store was taken owing to lack of space at the old location for the rapidly increasing business. Where so varied a supply of articles is carried, it is impossible in a notice so brief as the exigencies of space require this to be, to make proper detailed mention of the many commodities contained within it, but it may be broadly stated that whatever Mr. Utley offers to his customers, is sure to be reliable, and fully worth the price set upon it. The books handled are varied in binding as well as in subject, and not only is a fine assortment of the most popular work carried, but orders will be taken for any desired book, the volume being supplied at the regular market price. Some beautiful patterns are shown in wall papers, and shades and fixtures, and choice designs are offered at low rates.

Amidon & Dimmick, dealers in Fine Groceries, Flour, Teas, Coffees, Canned Goods, etc., junction of Main and Union Streets, Willimantic, Conn.—The enterprise carried on by

Messrs. Amidon & Dimmick was inaugurated a good many years ago, and ranks with the best-known and most genuinely popular undertakings of the kind in the city. Both members of the firm are natives of Willimantic and have a very extensive business here as they carry a heavy and varied stock of choice staple and fancy groceries, flour, teas, coffees, spices, canned goods, etc., being prepared to furnish these commodities at the very lowest market rates and to guarantee that the goods shall prove precisely as represented. The premises utilized are located at the junction of Main and Union streets, and comprise two spacious apartments, the respective dimensions of which are 40 × 90 and 50 × 90 feet. The promptness with which customers are waited upon is one of the most noticeable and gratifying characteristics of the business, for Messrs. Amidon & Dimmick employ five experienced assistants and are consequently in a position to fill all orders at very short notice. Particular attention is given to family trade, and no grocery house in the city is better prepared to furnish dependable and thoroughly satisfactory goods at the very lowest market rates.

Ansel Arnold & Co., Commission Merchants, and wholesale dealers in Flour, Grain, Meal and Grass Seeds, Willimantic, Conn.—The enterprise conducted by Messrs. Ansel Arnold & Co., has for many years held a leading position among similar undertakings throughout this portion of the State, for it was inaugurated in 1870 and soon gained the high rank it has since retained. Operations were begun by Mr. Ansel Arnold alone, but in 1878 he became associated with Mr. H. N. Chapman, and the existing firm-name was adopted. The senior partner is a native of Somers, Conn., while Mr. Chapman was born in Ellington, in the same State. Both members of the firm are widely known throughout this section, particularly Mr. Arnold, for he has held various public offices and is also prominently identified with other important business undertakings besides the one now under consideration, he being president of the Morris Machine Company, president board of trade, vice-president of the First National Bank, vice-president of the Dime Saving's Bank, and has been representative to the general assembly in 1857 and 1876. The firm utilize very extensive premises at No. 196 Main street, six floors being occupied in all, and an immense stock of flour, grain, meal and grass seeds being constantly carried. A very large commission business is done, and the commodities mentioned will be furnished in any desired quantities without delay, both wholesale and retail customers being supplied. It is almost unnecessary to add that Messrs. Ansel Arnold & Co., are in a position to quote positively the lowest market rates, or that prompt attention is assured to every order.

A. T. FOWLER & SON,

(SUCCESSORS TO CARPENTER & FOWLER.)

—DEALERS IN—

Hardware, Manufacturers' and Builders' Supplies,

CARPENTERS', MACHINISTS' AND FARMING TOOLS, SEEDS, AMMUNITION, CUTLERY,
FISHING TACKLE, IRON AND STEEL.

Steam Pipe and Drain Pipe.

Cor. Main and Railroad Sts.

WILLIMANTIC, CONN.

The extent and variety of the manufacturing and building interests of Willimantic and vicinity create a large and constant demand for manufacturers' and builders' supplies, making the business of those engaged in supplying such commodities a very important one, so that no apology is necessary for calling our readers' attention to the enterprise conducted by Messrs. A. T. Fowler & Son, this firm being very prominently identified with the line of trade in question. The business was founded in 1869, by Messrs. Carpenter & Fowler, and so continued until 1889, when the present firm name was established. The premises utilized by this firm are located at the corner of Main and Railroad streets, comprising three rooms, 70 × 30, 40 × 60, and 10 × 40 feet in dimensions. The stock on hand is very extensive and comprises, in addition to hardware, a full assortment of manufacturers' and builders' supplies, carpenters', machinists', and farming tools, seeds, ammunition, cutlery, fishing tackle, iron and steel, steam pipe and drain pipe. These goods are obtained from the most reliable sources and are guaranteed to prove strictly as represented in every respect. An extensive wholesale and retail business is done, and the lowest market rates are quoted in every department, and as employment is given to three experienced and competent assistants all orders, whether large or small, are assured prompt attention and will be filled in the most accurate, careful and satisfactory manner.

Durkee, Stiles & Co., wholesale dealers in Groceries, Provisions, Kerosene Oil, Flour, Grain, Feed and Baled Hay, 90 and 94 Main Street, Willimantic, Conn.—There is a familiar old saying to the effect that a stream cannot rise higher than its source, and it is equally true that the retail establishment devoted to any special line of business cannot offer first-class inducements if they are obliged to depend upon second-class wholesale houses to furnish them with their supplies. It is therefore clear that every resident of Willimantic and vicinity is directly interested in the character of the local wholesale grocery houses, for groceries rank with the necessities of life and it is of the first importance to be able to buy them to the best possible advantage. The concern known as Durkee, Stiles & Co., may justly be regarded as the representative wholesale grocery house of this city, for the enterprise it conducts is of long and honorable standing, having been carried on for some time by Messrs. Buck, Durkee & Stiles previous to the present firm assuming control. Very extensive premises are occupied at Nos. 90 and 94 Main street, together with a spacious storehouse on Railroad street, and an immense stock is carried at all times, it being made up of staple and fancy groceries, provisions, kerosene oil, flour, grain, feed and baled hay, and being remarkably complete in every department. The firm are in a position to easily meet all honorable competition for they enjoy the most favorable relations with producers and have a well-earned reputation for quoting bottom prices as well as for handling goods that will give the best of satisfaction to the most select trade. Employment is given to six assistants, and orders are assured immediate and painstaking attention. The individual members of the firm are Messrs. E. M. Durkee, G. E. Stiles and G. M. Harrington, all of whom are widely known in business and in social circles.

Lincoln & Boss, dealers in Lumber, Coal and Builders' Materials. Yards, North Street and Opposite Depot. Office, North Street. Telephone Connection. Willimantic, Conn.—The enterprise conducted by Messrs. Lincoln & Boss may fairly be classed among the most distinctively representative undertakings carried on in this city, for it has been in operation for a number of years and has been so managed as to give it a reputation equal to the best. It was founded by Messrs. Loomer & Kingsley, who were succeeded by Mr. S. F. Loomer, he giving place to Messrs. L. & M. E. Lincoln, and they to Messrs. Lincoln, Smith & Co., who were succeeded by Messrs. Lincoln & Smith, Mr. M. E. Lincoln next assuming sole control and retaining it until the formation of the existing firm, in 1882. This is constituted of Messrs. M. Eugene Lincoln and Charles L. Boss, the former being a native of Windham and the latter of Willimantic. Mr. Lincoln has held various town offices and served as first selectman one year, and Mr. Boss has held the position of burgess. The firm deal extensively in lumber, coal, lime, cement, plaster, hair and builders' materials in general, utilizing yards on North street, and opposite the depot, and having an office on North street. The premises are connected by telephone and the arrangements for the prompt and accurate filling of orders are first-class in every respect, the employment of twenty experienced assistants and the carrying of an exceptionally large and complete stock putting the concern in a position to supply both their wholesale and their retail customers without appreciable delay. The lowest market rates are quoted at all times, and considering the standing of this house it seems almost unnecessary to add that the various commodities furnished may be implicitly depended upon to prove just as represented.

Union Shoe Store, Julius Pinney, Proprietor, C. F. Risedorf, Manager, 154 Main Street, Willimantic, Conn.—There are probably very few of our readers but what have experienced more or less difficulty in getting foot-wear to suit them, for it is a well-known fact that boots and shoes are among the hardest of all articles of wearing apparel to select. The most successful dealer is the man who recognizes the diversity of taste among his customers, and acts accordingly. Therefore after inspecting the stock carried at the Union Shoe Store, at No. 154 Main street, one feels no surprise at the very extensive business carried on, for it is plainly evident that provision is made for supplying widely varying wants. Boots and shoes for business, street and dress wear, are included in the assortment offered, and by no means the least noticeable characteristic of this establishment are the bottom prices quoted in the various departments. The Union Shoe Store was established in 1857, by Geo. C. Elliot, who was succeeded by the firm of Woisard & Mathieu about 1880, the present proprietor assuming control in 1888. Mr. Julius Pinney is a native of Connecticut, and his reputation for fair dealing and enterprise is already firmly established. The premises utilized are located at No. 154 Main street, and measure 75×30 feet. Three competent assistants are employed and Mr. C. F. Risedorf acts as manager of the establishment, and the large business transacted is due to his energy and close buying. Customers not only know what they are getting here, but also know that they are being supplied at the lowest market rates, and the stock is so large and varied that the most difficult feet can be fitted, while the latest novelties are always to be found therein.

Mrs. D. Kingsley, Millinery, No. 107 Main Street, Commercial Block, Willimantic, Conn.—Among the many fine establishments located on Main street, one of the most attractive in its line is that conducted by Mrs. D. Kingsley at No. 107, and located in Commercial Block. This establishment was founded in 1886 by its present proprietress, and from its inception has ranked among the first-class establishments in this line of trade in Willimantic. These millinery parlors comprise three large rooms, and are elegantly fitted up for the tasteful display of the large stock handled, which embraces a complete line of new and fashionable millinery, and in fact everything usually called for in a first-class millinery establishment. Six experienced assistants are employed, and all orders are promptly filled. It is with pleasure that we recommend Mrs. Kingsley and her establishment to the favorable attention of all our readers who have not patronized her, here they can obtain fresh goods of the latest designs and newest fashions at fair and reasonable prices. Mrs. Kingsley is a native of Willimantic, and is thoroughly experienced in all the details of her business, and well deserves the success she has achieved.

Pease & Edwards, dealers in Foreign and Domestic Dry and Fancy Goods and Notions, Franklin Block, Main Street, Willimantic, Conn.—There is an immense variety of articles now included under the head of dry and fancy goods, and the number of such is constantly increasing as the popular demand for novelties calls forth fresh fabrics and original “notions.” It naturally follows that the only way to offer anywhere near a complete assortment is to carry a very heavy as well as varied stock, and that to be found at the establishment conducted by Messrs. Pease & Edwards, in Franklin Block, Main street, is about as perfect an illustration of what we mean by a complete assortment as can be pointed out in the entire city, for it comprises foreign and domestic dry and fancy goods and notions in almost endless profusion and at the same time is composed exclusively of fresh, seasonable and saleable articles, the firm considering their store-space too valuable to be occupied by “back-number” goods. The partners are Messrs. Charles W. Pease and Robert Edwards, both of whom are natives of Cromwell, Conn. Operations were begun December 20, 1887, and a very extensive trade has been built up, the residents of Willimantic being not at all slow to recognize the advantages held out at this popular store. The premises consist of a double store, one portion measuring 75×25 feet and the other 60×20 feet, all necessary facilities being at hand to display the stock to excellent advantage. Employment is given to from ten to twelve assistants, and prompt and courteous attention is assured to every caller, while the prices quoted will bear the severest scrutiny and comparison.

F. F. Simmons, dealer in Confectionery, Ice Cream, Soda Water and Cigars, Chapman's block, Main Street, Willimantic, Conn.—This establishment, which ranks among the leading enterprises of its kind in this section of Willimantic, is one of the most popular. Confectionery of all kinds, also ice cream, soda water and cigars. Mr. F. F. Simmons, the proprietor, established the business in May, 1888, and to his superior skill, able management, and untiring industry, is due in a great measure, the progress and success which has been attained during its career. A large and varied stock is handled, including confectionery of all kinds, also soda water and ice cream, which are sold at both wholesale and retail. Large orders for families, parties and churches, supplied at liberal discount. The premises utilized by Mr. Simmons are 15×65 feet in dimensions and located at No. 188 Main street, Chapman's block. It is eligibly located, and is filled with as reliable a stock as can be found in any similar establishment. Mr. Simmons is a native of Blackstone, Mass. He is enterprising and energetic, and his business standing and general reputation, as well as the liberal manner in which the business is conducted, is a subject of the most favorable comment.

FREDERICK ROGERS, APOTHECARY.

Dr. Rogers is a registered pharmacist and commenced business in Willimantic twenty-five years ago. He has a complete stock of drugs and druggists' sundries, and gives special attention to compounding prescriptions and medicines for family use. His prices are reasonable. His location is

120 MAIN STREET.

Hillhouse & Taylor, dealers in Lumber, Coal, Wood and Builders' material, manufacturer of Sash, Doors, Blinds, Mouldings, Inside Finish, etc., Willimantic.—Considering the enormous and constantly increasing consumption of lumber and timber in this country, it may seem strange to those not especially acquainted with the subject that the supply has not long since been exhausted, but the fact is, no other nation in the world has so large an amount of merchantable timber as the United States, and the wasteful methods of the past, have generally been abandoned for a policy which is well calculated to perpetuate the supply for an indefinite period. It will aid one greatly in getting an idea of the importance and magnitude of the lumber trade, to visit the establishment conducted by Messrs. Hillhouse & Taylor, for this firm ranks with the leading Connecticut houses in their line of business, and have unsurpassed facilities for the filling of the most extensive orders at short notice. They carry an immense stock, comprising spruce, pine and hemlock and complete assortment of hard woods, also laths, shingles, brick, lime and cement. Quoting the very lowest market rates at all times and doing both a wholesale and retail business. In addition to their large trade in lumber, brick, lime, etc., they also manufacture doors, sashes, blinds, stair rail and balusters, mouldings, brackets, window and door frames, hard-wood finish and inside blinds; planing, sawing and turning are done to order. The handling of coal and wood, is another department of their business which is rapidly increasing in magnitude. As their sheds are adjacent to the railroad track, they enjoy special advantage in the way of receiving and shipping. A large force of assistants is employed and every order is assured immediate and painstaking attention. The firm is constituted of Messrs. James W. Hillhouse and George F. Taylor, both of whom are too widely known throughout this section of the State to require extended personal mention.

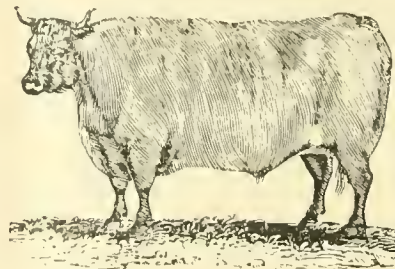
P. J. Carey, People's Clothing House, 148 Main Street, Willimantic, Conn.—The old saying, "Honesty is the best policy," is even more worthy of credit to-day, than was the case when it was originated, for people are generally more intelligent at the present time, than when education was not so common, and besides, there is more opportunity nowadays to detect sharp practice of any kind. The result is that a merchant who wishes to build up an extensive permanent trade, must keep faith with his customers, and this is especially the case in the clothing business, where competition is so keen and close. Other methods may succeed for a time, but that time is apt to be very short, and the results attained will compare very unfavorably with those noticeable in connection with the "People's Clothing House," which was established some seven years ago, and has always been conducted on the principle of giving full value for money received. Messrs. Walker & Carey, were the proprietors for some time, but since November, 1888, it has been under the sole control of Mr. P. J. Carey, who is known as the "People's Clothier," and well deserves the title, for he spares no pains to furnish fashionable, durable and well-fitting clothing at bottom prices, and he makes it a rule to represent things just as they really are and thus give customers an opportunity to choose intelligently. Two floors are utilized at No. 148 Main street, and an immense stock is carried, comprising all the latest novelties, as well as full lines of staple goods. Mr. Carey sells for cash, and to this fact, taken in connection with the great magnitude of his business, must be ascribed his ability to quote prices which are literally the lowest. Employment is given to five efficient assistants; and another thing which honestly entitles this establishment to the name of "People's Clothing House," is the fact that equally prompt, careful and polite attention is given to large and small buyers.

W. H. Latham & Co., Builders, and dealers in White Lead, Mixed Paints, Linseed Oil, Putty and Glass. Anti-Kalsomine, in all shades, for Walls and Ceilings; never scales. Painting and Paper Hanging; Willimantic, Conn.—In awarding contracts for building it is well to give due consideration to other things besides prices, for it is not always the lowest bidder who will give the most value for money expended. Since the firm of W. H. Latham & Co., began operations here they have built up a reputation for doing the best of work in their line, and it is particularly appropriate to say "built-up," for it is to the thoroughness and care that characterized the carrying out of the building operations entrusted to them that much of its present popularity is due. This is in every respect a representative house, and fully merits the cordial support that it has received. Among the many buildings constructed by this firm we would mention the United Bank Building, the Hooker House, the residences of Messrs. J. M. Hull, F. F. Webb, Mrs. Hyde Kingsley, and others; also the beautiful new theatre at New London, with many other buildings in various sections of the State. Messrs. W. H. Latham & Co. are in a position to figure on plans and specifications submitted to them, and they also have the reputation of carrying out their agreements in the spirit as well as to the letter, the result being that many well-informed persons in distant parts of the State give them the preference when placing contracts, being convinced that they can do the work fully as well, and as cheaply, as any other building concern in New England. The firm also deal in white lead, mixed paints, linseed oil, putty and glass; also in anti-kalsomine in all shades for walls and ceilings, which never scales. Orders are solicited for painting and paper-hanging. All orders will be promptly attended to, and executed in a thorough and satisfactory manner, as from forty to seventy experienced men are employed by this firm.

William G. Cummings, Undertaker. Dealer in Picture Frames, 11 Church Street, Willimantic.—As long as the present methods of disposing of the dead is continued (and there certainly seems to be no immediate prospect of its being superseded) the undertaker will hold a prominent and responsible position in the community, and it is gratifying to be able to state that as a general thing those who assume the delicate and onerous duties of this profession are honorable and competent men. In calling attention to the facilities possessed by Mr. William G. Cummings we feel that we are serving our readers, for it is always well to know the address of a thoroughly competent and reliable undertaker, and no one in this city is better entitled to be so classed than the gentleman in question. He opened his present establishment at No. 11 Church street, in 1889. The premises utilized comprise two floors, measuring 17 x 43 feet, and are very thoroughly fitted up, enabling every order to be promptly filled,

while the stock of coffins, caskets and funeral goods is varied and complete so that all tastes can be suited. Mr. Cummings is very reasonable in his charges, and gives careful personal attention to every order. One department of his business consists of the making of picture frames to order, and any desired style can be furnished at very short notice, the workmanship being of the best and the prices as low as the lowest.

John Bowman, Artist Tailor. Dealer in Foreign and Domestic Woolens, Gents' Furnishing Goods. 105 Main Street, Willimantic, Conn.—With a thorough knowledge of the business, and having acquired the reputation of expert, as a cutter of fashionable and artistic clothing, Mr. John Bowman has established at No. 105 Main street, what is now one of the most popular tailoring establishments in this city. It is doubtless equal in every department to any other in Willimantic, and is well arranged for the display of stock, which includes in addition to foreign and domestic woolens a choice assortment of gents' furnishing goods. The line of goods carried is such as to meet the wants of the most fastidious and fashionable. The stock of woolens, both foreign and domestic, shown by Mr. Bowman, is from the best manufacturers in America and England, and it embraces all the latest novelties. Eight competent assistants are employed, and the premises utilized measure 22 x 75 feet. Mr. Bowman is a native of Cumberland, England. He established his business here in 1870, and has acquired a well-deserved reputation for strict attention to business, liberality in all dealings, and care in the fit and fashion of garments, while qualities are guaranteed perfectly satisfactory, this fact having had much to do with the success which he has attained.



J. W. Webb, Marketman and provision dealer, 13 Turner's Block, Church Street, Willimantic, Conn.—It would probably be impossible to find an establishment more universally known in this vicinity than that conducted by Mr. J. W. Webb, at No. 13 Church street, and the more thorough an investigation is made around town, the more one is convinced in the idea that this enterprise ranks second to no other of a similar nature in Willimantic and vicinity. It was inaugurated by its present proprietor, and the business has not reached its present development and magnitude on account of good luck, but simply because the furnishing of uniformly superior articles at uniformly low prices, is sure to result in the attainment of a large trade. The premises occupied

are 20×45 feet in dimensions, and the stock handled includes meats of all kinds. No pains are spared to maintain the high reputation which the establishment has long since been accorded, and both as regards quality, and price, the articles handled will be found to give perfect satisfaction. Five assistants are required to properly handle the details of this extensive wholesale and retail business and customers are served with a precision and celerity which are both novel and gratifying. The proprietor of this prosperous enterprise is a native and selectman of Willimantic and is not only universally known throughout this locality, but also generally esteemed.



Freeman & Tracy, Jewelers and Opticians, (New Store) 112 Main Street, Opposite Church Street, Willimantic, Conn.—It is impossible to use too much care in the selection of jewelry, for there is no article of personal wear that is looked upon as more accurately representing the taste and position of its owner. Richness is to be sought for, while showiness is of course to be avoided, and the most satisfactory methods with which we are acquainted, to obtain jewelry that will please the eye and not offend the taste, is to visit such an establishment as that conducted by Messrs. Freeman & Tracy at No. 112 Main street, and make a choice from the many standard articles and fashionable novelties kept in stock. As this enterprise has been carried on for nearly a quarter of a century, its proprietors ought certainly to have a well-established reputation by this time, and such of our readers as live in Willimantic or vicinity need hardly be told what standing is held by Messrs. Freeman & Tracy, for this concern has ranked with the most reliable in the State for many years. This house was originally established in 1866 by Messrs. Walden & Freeman; in 1876 M. Leander Freeman assumed the management of affairs, and so continued until 1885 when Mr. Tracy was admitted as partner, since which date the firm style has been Freeman & Tracy. Mr. Freeman is a native of Pawtucket, R. I., and Mr. Tracy of South Manchester, Conn., and both are well-known and highly esteemed throughout Willimantic. The premises utilized are 30×65 feet in dimensions, and the assortment of jewelry and optical goods shown is a most complete and varied one. The extensive wholesale

and retail trade transacted requires the services of three efficient assistants. This firm are in a position to meet all honorable competition, and while they pay more attention to the quality of their goods than to the offering cheap articles, their prices will be found to compare favorably with those quoted at other establishments on goods of equal merit.

Wm. L. Williams (successor to David H. Clark), Livery, Sale and Boarding Stables. Hacks Furnished on all Occasions, Hearses and Carriages for Funerals. Carriages, Harnesses and Blankets for Sale. Church Street, Willimantic, Conn.—Among those engaged in the stable business in this city and vicinity none bear a higher reputation than Mr. William L. Williams, and we take pleasure in cordially recommending his establishment to all who wish to hire a first-class team, buy a horse or horse-furnishings of any description, or board a horse where he will be assured the very best of care and comfortable and healthful quarters. This may seem a somewhat enthusiastic recommendation, but it is fully justified by the facts, and we are confident that those who do business with Mr. Williams will have reason to thank us for calling attention to the unsurpassed facilities he offers. He is a native of Franklin, Conn., served as warden last year, and is extremely well-known personally throughout this vicinity. The stable carried on by him has been successfully conducted for more than twenty-five years, and has been in the possession of the present owner since April, 1885, he succeeding Mr. David H. Clark. A number of excellent horses and some easy and stylish vehicles are available for livery purposes, teams being furnished at short notice and at uniformly reasonable rates. Particular attention is given to furnishing hacks for all occasions, and a hearse and carriages will be provided for funerals at moderate expense. Employment is given to four competent assistants and as before stated, horses will be boarded in a thoroughly satisfactory manner. Mr. Williams has for some years given careful attention to the breeding of horses, and always has some desirable animals for sale at fair prices. Carriages, harnesses, blankets, etc., are also extensively dealt in, and at no establishment in Willimantic is more genuine value given for money received.

“**The Windham.**” Albert S. Turner, Proprietor, Corner Main and Church Streets, Willimantic.—The Hotel Windham has undergone extensive improvements, having moved the office to the ground floor, which has been fitted up in a very pleasing style and adapted to the wants of the public in general, and the traveling community in special. The house has been completely refitted with all the modern improvements, renovated throughout, and rechristened “The Windham.” A bar and billiard room have also been added, meeting the popular demand for the above changes. The house has been thoroughly

renovated and put in first-class condition, and now furnishes unequalled accommodations to commercial men and as a natural consequence is highly popular with that very important class of patrons. To begin with, its location is unsurpassed, being in the business centre of the city and but one minute from the depot. The building is a substantial four-story structure, containing sixty well-lighted, well-heated, well-ventilated and well-furnished guest rooms, together with other apartments devoted to various purposes, such as sample rooms, bath rooms, dining rooms, office, etc. The hotel is heated by steam, illuminated by electricity, furnished with electric call bells, and in short supplied with all modern conveniences from roof to cellar. Employment is given to twenty assistants, and if every guest is not well served and made to feel entirely at home, it is certainly not the fault of the proprietor of The Windham, for he spares no pains to bring about such a result and it is only fair to say is very successful in his efforts. The table is supplied with an abundance of finely-cooked food at all seasons, and will compare very favorably with that of many houses which claim to make a leading specialty of the culinary department. Taking everything into consideration, we know of no hotel in this section more deserving of prominent and favorable mention, and visitors to Willimantic will do well to take our advice and put up at The Windham, especially as the terms are very reasonable.

A. S. Turner, Druggist, Main Street, near Church, Willimantic, Conn.—This store is situated under the "Windham," and in size is about 80 × 30 feet. The fixtures are of solid ash. Mr. H. S. Turner is the proprietor, Mr. F. E. Turner, manager, and Henry K. Preston has charge of the prescription department. The stock consists of pure drugs, medicines, chemicals, paints, oils, varnishes, surgical instruments and appliances. Fine line of perfumes and toilet articles. He also manufactures a fine line of extracts and essences, and is proprietor of Turner's Florida Water, Fragrant Dentifrice, and Beef, Iron and Wine. It was established in 1882. Mr. Turner, spares no pains to guard against the possibility of even the slightest error, and has provided the most elaborate and improved facilities for the measuring and general handling of the drugs and chemicals dealt in. The preparation of physicians' prescriptions is recognized as the most important feature of the business, and the many orders daily filled show that the public are appreciative of the advantages here offered. Mr. Turner employs competent and polite assistants, so that despite the magnitude of the business, every caller is sure of receiving immediate and careful attention. The stock includes not only drugs, medicines and chemicals of every description, but also toilet and fancy articles, etc., the latest novelties being represented and moderate charges being made in connection with all the various articles handled.

HISTORICAL SKETCH

OF

COLCHESTER, CONN.

The town of Colchester occupies perhaps the most prominent position on the map of New London County, for it juts out so far into Hartford and Middlesex Counties that it catches the eye at once, and causes one, judging from appearances alone, to wonder why it is included in New London County, for by far the greater part of it is outside what, under ordinary circumstances, would be the county line. The township has been much reduced in area since original grant was made October 13, 1698, it then embracing large portions of what are now Salem and Marlborough. The record of the original grant, expressed in the quaint language of the seventeenth century, may be of interest:

“Att a Generall Court Holden at Hartford, October the 13th, 1698: This Court upon the petition of Divers of the inhabitants in the Countie of Hartford, Grant Lybertie for a plantation at or near the place called Jeremiah's farme, upon the rode to Newlondon, and Captn Daul Wetherell, Captn John Hamlin, Mr. Will Pitkin, Captn John Chester, Mr. Richard Christophers, and Captn Small Ffosdick they or the majr part of them are by this Court appointed to be a Committee to lay out a township there beginning at the North bound of twentie mile River and so to extend Southward to a River called deep River, And to Extend Eastward from the bounds of Haddum, Seven miles.”

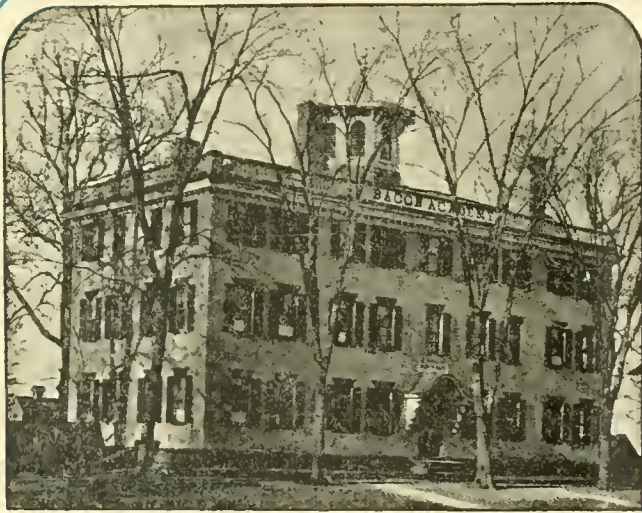
There seems to have been a serious dispute concerning the title to a goodly portion of the land held under this grant, for the following year representatives of the settlers in the new town appeared before the Court and complained that they were obstructed in the improvement and settlement of the plantation “By reason of severall persons that claim considerable tracts of land within the grant of said township, and particularly severall of the inhabitants of Saybrook.” The Court ordered all persons making such claims to prove them at the May term ensuing; and formally named the plantation Colchester and made it a part of New London County. But even after this matter was adjusted the settlers did not find the field open to them but met “with much discouragement in their Planting and Settling by Owaneco and the Moheags, that claim land within that township.” The Governor and his Council were requested to treat with the Moheags and “to agree with them to Quitt their claims to the Lands upon as Resonable termes as may be obtained.” In spite of the many claims made on the territory it was of but little value at first, owing to the immense tracts of excellent farming land which were available elsewhere, but as the

years went by and the population increased it became difficult to get good land without going far into the wilderness, and the location of Colchester was so desirable by reason of its nearness to Hartford, Middlesex, Norwich, and New London that it became one of the most popular settlements in the State, and the land gained so in value that such of the original proprietors as had retained their holdings became wealthy. The soil was very fertile and is so to-day, comparing favorably in that respect with the great majority of New England towns. The surface is generally uneven and the surrounding country is very picturesque, affording many delightful drives and walks. The boundaries of the town are Hartford and Tolland Counties and the town of Lebanon on the north; Lebanon on the east; the town of Salem and Middlesex County on the south, and Middlesex county on the west.

But few years elapsed after the first settlement before the townspeople felt that they must have a grist mill and a saw mill, and therefore at a legal town meeting held

November 29, 1703, they voted to give Israel and Samuel Wiatt "The liberty of Tow Strem to Bylede a grist mill and a saw mill, provided thay Bylde the mills forthwith and mantayen them from time to time for the towens yous." Sixty acres of land were also granted to the mill owners and among the conditions of the gift was one requiring them "To sell thar Bordes at twenty-two shilings pur thousand from time to time and at all times forever."

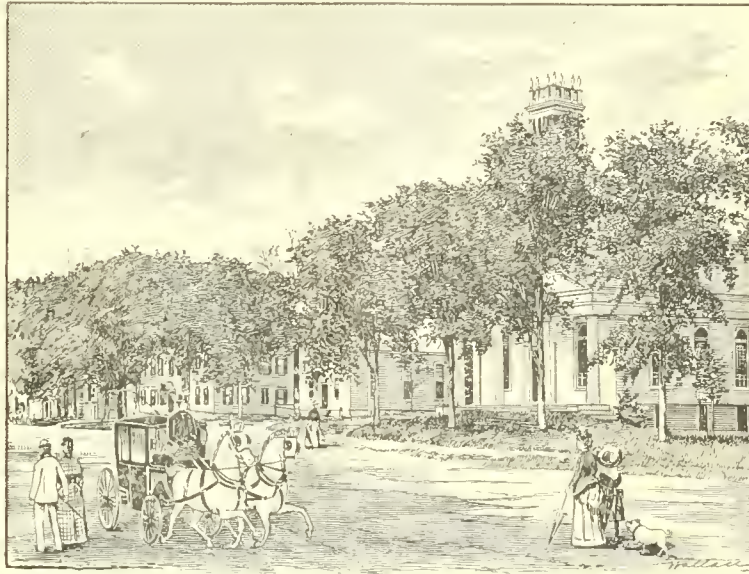
Three years later, November, 1706, land and a water privilege were granted for a fulling mill, the proprietor agreeing to maintain the mill in good repair and to full cloth as cheap as any other mill in the Colony.



BACON ACADEMY, COLCHESTER, CONN.

The settlers were as active in providing for their spiritual as for their material interests, the Colchester Congregational church being organized December 20, 1703, with Rev. John Bulkley as pastor. A church building was the next thing in order, and the vote passed in connection with this matter affords a curious commentary on the poverty of the people and the scarcity of things now so common. It was voted to build a house forty feet square, provided money enough was given to buy the nails and glass! This house was built in 1705 and in 1709 was sold to Ebenezer Coleman for eight pounds, to be paid in nails, the boards of the floor and all other loose boards and the pulpit being reserved. The second meeting house was built in 1708, and in 1771 a church edifice was erected which was considered one of the finest in the State, and was occupied about seventy years. The first Methodist services in town were held by the Rev. E. Washburn, who visited Colchester in 1806. A society was soon formed and circuit preaching was continued until 1843, when a church was built and Robert Allyn appointed pastor. The Baptist church was organized in 1836 and services were held in the Congregational Conference House until August, 1836, when a church building was completed. Calvary church was organized in 1865,

and the corner stone of the church edifice was laid in 1866 and the building finished in 1867. There is a largely attended Roman Catholic church in town but material from which to obtain facts relative to its history is not at hand. Schools were provided as promptly as a church was, the first schoolmaster beginning operations in 1705, and a schoolhouse being furnished six years later. The Bacon Academy, founded by Pierpont Bacon in 1800, has from the beginning been one of the leading institutions of the kind in Connecticut, and among its list of graduates are men who have made national reputations, prominent among them having been

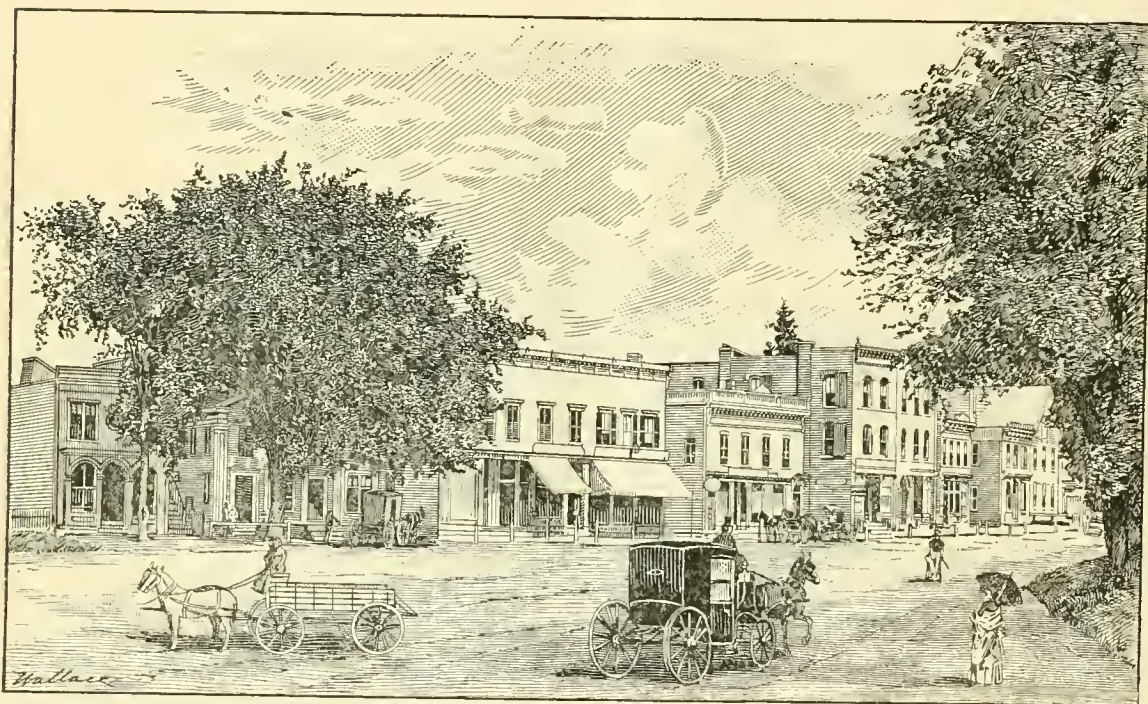


MAIN STREET, COLCHESTER.

Chief Justice Waite. The district schools have also been excellently managed and now hold a most satisfactory record for general efficiency. There is a well equipped public library in town and a savings bank which was founded in 1854 and during the past forty years has steadily gained in the confidence and esteem of the people. Various manufactures have been introduced into the town from time to time and prosecuted with more or less success, but it is to the production of rubber goods that credit must be given for the bulk of Colchester's development during the past forty years or more. The Hayward Rubber Company were organized in 1847 and the mills were under the active and remarkably able management of Nathaniel Hayward up to 1854. He acted as president of the company until his death, in 1865, and was a man of such strong individuality and force of character that he is remembered by many of the older residents of Colchester to this day. The business was continued with varying success but finally it was found expedient to close up the mills. Soon the enterprise was revived by the Colchester Rubber Company and has since been conducted with marked and gratifying success. Female labor is very largely utilized in rubber shoe making and a great proportion of the operatives come from the great cities, being glad to exchange the crowded tenements and vile air of such places for the spacious, homelike boarding houses and healthful breezes of

Colchester. The pay, too, is excellent, and as the company insist upon good character as an indispensable condition of a successful application for employment the work offers many attractions to the better class of women wage-earners.

Colchester village is situated on a high ridge, and the views of the surrounding country are varied and beautiful. Colchester Green is one of the loveliest of the many lovely parks to be found in New England, and the entire town has a most



MERCHANTS' ROW, COLCHESTER.

attractive air of thrift, the grounds being beautifully kept. The enterprise of the local merchants is conceded throughout the vicinity, Colchester being a noted trade centre and containing many stores at which late novelties as well as staple goods may always be obtained. The railroad facilities are excellent, and in short no town in the State combines more advantages as a place of residence or is more deserving of permanent prosperity.

LEADING BUSINESS MEN OF COLCHESTER

L. C. & C. F. Brown, dealers in Dry Goods, Groceries, Boots, Shoes, Trunks, Wall Papers, Flour, Meal, Feed, etc.—Other things being equal, it is of course advisable to procure as large a proportion of whatever goods may be required as possible at one store, for time and trouble are saved by so doing, and few of us have any time to throw away. It is sometimes argued that those who make a specialty of certain goods can offer greater inducements than general dealers, but “the proof of the pudding is in the eating,” and those who have made practical comparison of the advantages offered by Messrs. L. C. & C. F. Brown with those held out by special dealers, are convinced that that firm do as well by their customers as any retailers can do. The business was established in 1884, and has reached a point where the services of from four to five assistants are required in order to give the many orders prompt and careful attention. The premises occupied are very spacious, and contain an extensive and remarkably varied stock, comprising dry goods, groceries, boots and shoes, trunks, wall papers, flour, feed, meal and other commodities too numerous to mention. Merely a catalogue of it would exhaust many times our available space, but such a catalogue is not required for the residents of this section know that the firm constantly carry a full assortment, and that the goods it comprises may be safely depended upon to prove as represented. Both partners are natives of Canterbury, Conn.

H. P. Buell, Druggist and Pharmacist. Pure Drugs and Medicines. Colchester, Conn.—It is safe to say that no establishment in Colchester is more deserving of hearty and generous patronage than that conducted by Mr. H. P. Buell, for no establishment is of more genuine utility, or more liberally managed. Mr. Buell is a native of Hebron, Conn., and has carried on his present business since 1876, it having been founded in 1853 by Mr. C. H. Rogers. The present proprietor has held various town offices and has been Judge of Probate since 1888. He is a druggist and pharmacist, and carries a complete stock of pure drugs, medicines and chemicals, obtaining them from the most reliable sources and sparing no pains to handle as high a grade of goods as the market affords. Especial attention is given to the compounding of physicians' prescriptions, every facility being provided to ensure absolute accuracy in the smallest details of the work, and to enable orders to be filled at very short notice. The charges are uniformly moderate, as low, in fact, as is consistent with the use of materials of standard quality. The premises made use of comprise two floors of the dimensions of 24 x 30 feet, and contain, besides the articles already mentioned, a full line of paints, oils, varnishes, etc. Mr. Buell is prepared to furnish these in quantities to suit at bottom prices, and as employment is given to two assistants, all orders are assured immediate and careful attention.

William B. Otis, dealer in Drugs and Chemicals, Paints and Oils, Boots, Shoes, Rubbers, Jewelry and Sewing Machines, Colchester, Conn.—Mr. William B. Otis is a native of Colchester, and occupies a leading position among the active and successful business men of this section of the State, for he is prominent both in mercantile and public affairs and has long been thoroughly identified with the advancement of the best interests of the community. He has been engaged in business here for a number of years, and has served ten years as town treasurer and held other local offices, besides acting as State representative in 1871, 1879 and 1884. Mr. Otis does an extensive business and handles a great variety of merchandise, the premises utilized by him comprising two floors of the dimensions of 22 x 100 feet, and containing a heavy and complete stock of groceries, drugs and chemicals, paints and oils, boots, shoes, rubbers, jewelry, sewing machines and other commodities. The drugs, chemicals, etc., are obtained from the most reliable sources and may be depended upon for strength and purity, while they are furnished in quantities to suit at the very lowest market rates. The stock of footwear comprises the productions of some of the leading manufacturers, and it is so varied and complete that all tastes and all purses can be suited, and the most difficult feet fitted, the assortment of sizes and widths being very comprehensive. Indeed, in every department of this business all classes of trade are catered to, and as the goods are uniformly dependable, the prices low, and the service prompt and courteous is not surprising that a large and steadily increasing patronage should be enjoyed.

J. N. Adams, dealer in Dry Goods and Groceries, Flour, Meal, Boots and Shoes, Colchester, Conn.—Mr. J. N. Adams is a native of Canterbury, Conn., and has carried on business in Colchester for thirty years, during which time he has been so prominent in mercantile and public affairs as to have become one of the most widely known and highly esteemed business men in this section of the State. He has done much to advance the best interests of Colchester and vicinity and is prominently identified with the local savings bank of which he is secretary and treasurer. He erected the building in which the bank is located, and a large portion of it is utilized by him for store purposes, he carrying a very heavy stock of general merchandise, including dry goods, groceries, flour and meal, boots and shoes, and many other commodities too numerous to mention. Mr. Adams has held various important public offices and during the many years he officiated as trial justice he tried more cases in town than any one else who has ever held the position. He served as town clerk for four years and was State representative in 1869. It is hardly necessary for us to speak of Mr. Adams' business methods, they being thoroughly appreciated in this vicinity at least.

The public well understand that he strives to handle goods that will give the best of satisfaction in every respect, and they also understand that he is in a position to quote the lowest market rates on all the commodities dealt in. His stock is always complete in every department and sufficient assistance is employed to assure prompt, careful and polite attention to every caller.

Colchester Savings Bank.—One of the most successful merchants in this country—a man who, beginning with no capital but brains and industrious habits, has amassed a great fortune in legitimate trade—said in a recent interview, "Industrial schools are all very well in their way. It is, of course, highly important that practical instruction should be given in the art of earning money, but such instruction will avail but little to those ignorant of the art of saving it. I can point out twenty young men who are earning good wages where I can point out one who is systematically saving, and my experience convinces me that no other single characteristic affords such absolute assurance of permanent success as do prudent and economical habits." Such testimony as this is certainly worthy of respectful consideration, and the many who despise small savings, and live from hand to mouth, spending as they go, would do well to profit by the advice implied in those words and take advantage of present opportunities to accumulate a small capital which will not only make them more independent but will put them in a position to avail themselves of any favorable business chance which may present itself. The many excellent savings banks in this State afford ample facilities for the putting aside of small amounts, and not one of them is more entirely worthy of confidence than is the Colchester Savings Bank, which was incorporated in 1874 and has been most ably and conservatively managed from the start. Its affairs are administered by residents of this community, men widely and favorably known in financial and general business circles, and it goes without saying that the interests of depositors are perfectly safe in their hands. The president is Mr. S. C. Gillette, the vice-president, Mr. William Hayward, and the secretary and treasurer, Mr. J. N. Adams. All these gentlemen have held various local offices, and need no introduction to the residents of this section of the State. At the present time the bank holds about a quarter of a million on deposit and has a surplus over all liabilities of \$6,000. As high a rate of interest is paid as the market allows, and all unnecessary formality is dispensed with in the reception and payment of money, thus assuring the prompt transaction of business, and the avoidance of the excessive "red-tape" which seriously hampers the usefulness of some institutions of this kind. No useful precaution is neglected, however, and the popularity of the bank shows that the public fully endorse the methods employed in its management.

Park & Hammar, Contractors and Builders, Jobbing promptly attended to. Furniture Repairing a Specialty. Shop at Sprague's Old Stand, Colchester, Conn.—The importance of placing building contracts with reliable and responsible parties cannot be overestimated, for the most carefully prepared plans and specifications will not protect the interests of the builder if their carrying out be entrusted to incompetent, careless or dishonest hands. Therefore the residents of Colchester and vicinity have reason to congratulate themselves on having so dependable a firm as that of Park & Hammar to place their orders with, especially as this concern is prepared to figure very closely on all work submitted. Their shop is located at Sprague's old stand and is thoroughly fitted up, not only for the doing of ordinary carpenter work but also for furniture repairing and picture framing of which a specialty is made. Orders of this kind will be filled in a most satisfactory manner at short notice and at moderate rates, and jobbing of all kinds will be promptly and skillfully attended to, employment being given to twelve experienced assistants. The firm is made up of Messrs. A. R. Park and J. W. Hammar, both of whom have had long and varied experience in the business, and give careful personal supervision to the filling of orders.

G. O. Jackson, manufacturer and dealer in Harnesses, Blankets, Trunks, etc., Horse Goods of every Description, Worthington Block, Colchester, Conn.—Economy is a virtue no doubt, but there is true and there is false economy, and that it is false economy to purchase inferior harness is a fact which deserves careful consideration. The market is flooded with "cheap" harnesses, many of which are so finished as to look all right, but good stock and thorough workmanship cost money, and neither of them are present in these harnesses, as many purchasers have found to their sorrow. It is not necessary, however, to pay a fancy price in order to get a good article, and in proof of this we would refer our readers to the establishment conducted by Mr. George O. Jackson, in Worthington Block, for here may be found a very desirable stock of light and heavy harnesses, warranted in every respect and offered at uniformly moderate rates. Mr. Jackson is a native of South Coventry, Conn., and began business in Colchester in 1879. He has held the position of deputy sheriff since 1884, and is very widely and favorably known in business and social circles throughout this section. He occupies premises measuring 25 × 60 feet, and containing every necessary facility for harness manufacturing, repairing, etc., employment being given to three assistants, and orders being filled at very short notice. Besides harnesses Mr. Jackson deals largely in trunks and bags, and in blankets, whips, brushes, combs and horse furnishings of every description. His goods will prove as represented in every instance, and his prices are as low as the lowest.

C. H. Bailey, dealer in Dry Goods, Clothing, Groceries and Provisions, Boots, Shoes, etc., Colchester, Conn.—The old hymn says, "Man wants little here below," but it is difficult to accept that statement after visiting such an establishment as that conducted by Mr. C. H. Bailey, for a merchant of his extended experience is not likely to offer goods that are not wanted, and the magnitude and variety of his stock are remarkable. The assortment includes dry goods, clothing, groceries and provisions, boots, shoes, rubbers, etc., and is evidently selected with the purpose of catering to all tastes and all conditions, for it comprises all the standard grades, and is so complete that one must be peculiarly situated not to be able to find goods perfectly suited to his needs. Mr. Bailey was born in this town and has held various local offices during the nearly quarter of a century that he has carried on business here. He is universally known in this vicinity, and his straightforward and enterprising methods have not only had the effect of making his establishment widely popular, but have caused him to be highly esteemed by all who appreciate his consistent carrying out of the good old-fashioned policy of giving full value for money received. His stock always includes late novelties as well as full lines of staple goods, and the care shown in its selection is indicated by the uniform satisfaction expressed by patrons. Employment is given to five assistants, and callers are waited upon promptly and politely at all times.

Strong & Backus, wholesale and retail dealers in Flour, Meal, Grain, Fertilizers and Coal, Colchester, Conn.—The firm of Strong & Backus was formed in 1884, succeeding Mr. J. Gillette who carried on the business since 1877. The partners are Messrs. Edward L. Strong and John R. Backus, the former a native of Colchester, and the latter of Lebanon. Both these gentlemen are widely known hereabouts, having held various local offices, and Mr. Strong was State representative in 1889. The firm are wholesale and retail dealers in flour, meal, grain, fertilizers and coal, and have such extensive facilities as to be in a position to fill the largest orders without delay, the premises utilized covering an area of two acres. The main building is 40 × 60 feet in dimensions, and the plant of machinery includes an engine of thirty-horse power. The most popular brands of flour are constantly in stock, and are offered to consumers and the trade at the very lowest market rates. The sale of coal forms a very important department of the business, particular attention being given to supplying family trade and orders being delivered promptly at the time promised. Employment is given to five assistants, and the service is maintained at the highest standard of efficiency it being carefully supervised in every detail and no pains being spared to keep up the high reputation so long associated with this representative enterprise.

P. A. Dawley, Funeral Director, and dealer in Furniture, Carpets, etc., Colchester, Conn.—Mr. P. A. Dawley is a native of Rhode Island, but during the sixteen years that he has carried on business in Colchester has become so thoroughly identified with the advancement of the best interests of the town as to be looked upon as a representative citizen in the full sense of the word. Mr. Dawley has had long and varied experience as a funeral director, and is prepared to fill all orders entrusted to him in that capacity with fidelity, intelligence and dispatch. He will assume entire charge of funerals and furnish everything that is required, his facilities enabling him to execute all commissions at very short notice and at uniformly moderate rates. He deals extensively in furniture, carpets, etc., occupying two floors of the dimensions of 20 × 87 feet, and carrying a varied and desirable stock at all times. The assortment is sufficiently extensive and complete to enable all tastes and all purses to be suited, and those who wish to obtain articles that will prove precisely as represented, at the lowest market rates, would do well to give Mr. Dawley a call.

J. N. Strong, dealer in Choice Meats, Game, Poultry, Vegetables, Milk, etc., Colchester, Conn.—The enterprise, or rather the enterprises, carried on by Mr. J. N. Strong, are deserving of especially prominent mention for they are of no little benefit to the public and are very popular among all conversant with the methods employed in their management. Mr. Strong is a native of Colchester, and from the nature of his business has an unusually extensive acquaintance throughout this section. He is largely engaged in farming and stock-raising, and also carries on a first-class livery stable, and a retail meat and provision store. The premises utilized for the latter purpose have an area of 600 square feet, and always contain a very complete stock of choice meats, together with game and poultry of all kinds in their season. Vegetables, milk, etc., are also largely dealt in; all classes of trade being catered to and bottom prices quoted at all times. Customers are promptly and politely served, and in short there is excellent reason for the high degree of popularity this well-managed store enjoys. There are twenty horses in the livery stable, and the other accommodations are proportionally extensive, so it will be seen that Mr. Strong is in a position to do a very large business and to furnish teams at very short notice. The drives in the vicinity of Colchester are not surpassed in the State, and as Mr. Strong is very reasonable in his charges, the accommodations he offers are largely availed of.

Colchester House, R. B. Swan, proprietor, Colchester, Conn.—Colchester is one of the most attractive towns in Connecticut, and as it is also quite a business centre, it is visited by many strangers at all seasons of the year. Under these

circumstances the question of hotel accommodations assumes no little importance, and it is perfectly safe to assert that the enviable reputation Colchester enjoys among non-residents is due in a great measure to the nature of the accommodations provided at the Colchester House, for this is a thoroughly well-managed establishment, and without making any extravagant pretensions, affords a service decidedly superior to that generally obtainable outside the larger cities. The proprietor, Mr. R. B. Swan, is a native of East Haddam, Conn., and has been identified with his present enterprise since 1888. He spares no pains to secure the comfort of guests, and employs an ample force of competent assistants so that the hotel and its appointments are kept in first-class condition and the service is uniformly prompt and dependable. The Colchester House is very pleasantly located and contains twenty-eight sleeping rooms. The table is supplied with an abundance of seasonable food at all times of the year, and the cooking will compare favorably with that done at many hotels and restaurants making much greater pretensions in this department. The terms of the house are very reasonable, and those who put up here once will surely come again when they have occasion to revisit Colchester or vicinity.

E. C. Snow, Blacksmith, Carriage Builder and Repairer, Colchester, Conn.—The introduction of machinery has worked many radical changes during the past thirty or forty years, and its effects are not altogether good, for one of them has been to greatly reduce the number of really skilled mechanics. Manufacturing has been divided up into specialties, and a man may now work in a machine shop for years and then know only how to run some special machine or other, being actually no more of a mechanic in the full sense of the word, when he has had long experience than he was in the beginning. The blacksmith's trade has been affected considerably by this condition of affairs but not so much as other trades, and experience, ingenuity and skill are still required to command success in this branch of industry. No one in this section of the State has a higher reputation as a blacksmith than Mr. E. C. Snow, and the quality of the work turned out at his shop affords convincing evidence that this reputation is thoroughly well deserved. The business was founded in 1859 by Messrs. Henn & Williams, who were succeeded by Messrs. Snow & Daniels Bros., in 1861, Mr. Snow assuming sole control in 1874. He is a native of Colchester, and has a very large circle of friends throughout this section. The blacksmith shop is 26 × 50 feet in dimensions and contains all necessary facilities for the doing of horse-shoeing, general jobbing, etc. The carriage shop is 20 × 30 and two stories in height. Employment is given to three assistants, and orders are assured prompt and careful attention, first-class work being done at uniformly moderate rates.

F. T. Avery, dealer in Stoves, Tinware, Farming Tools, etc.; also Tin Roofer and Copper and Sheet Iron Worker, Colchester, Conn.—It is very poor economy to buy an inferior stove or to continue to use one that is “out of date,” for a modern first-class stove is not only convenient and easy to manage but is also so economical of fuel that it will soon “pay for itself” if used intelligently. There are almost endless varieties of cooking and heating stoves in the market, some of which are worth no more than their value as old iron, but it is easy to get one that will suit you if you order of a reputable concern. Mr. F. T. Avery makes a specialty of handling stoves and ranges, and his facilities and methods are such that we have no hesitation in guaranteeing satisfaction to those placing orders with him. He is prepared to quote the lowest market rates, and deals in the productions of the leading manufacturers; tinware, farming tools, kitchen furnishings, etc., are also extensively dealt in, and every order is assured prompt and painstaking attention. Employment is given to three competent assistants, and tin roofing, copper and sheet-iron work, etc., will be done in a thorough and skillful manner at short notice, and at moderate rates. The business carried on by Mr. Avery was established by Mr. O. W. Avery in 1857, and came into the possession of the present proprietor in 1873. He is a native of this town and is too well known here to render extended personal mention necessary.

Geo. J. Heydecker, Practical Baker, and dealer in Confectionery, Fruits, Nuts, Ice Cream, etc., Wheeler's Block, Colchester, Conn.—The public now generally understand that sickness is as often the result of eating improper food as of any other cause, and as a natural consequence more discrimination is exercised in the choice of food products than was formerly the case. That good articles are appreciated is proved by the success which Mr. George J. Heydecker has met with since beginning operations in Colchester in 1888, for this gentleman is a practical baker and spares no pains to supply his customers with bread, cake and pastry that is both healthful and palatable. He uses carefully selected materials, and follows the most approved methods in the manufacture of his goods, the result being that they are uniformly excellent in quality and cannot fail to prove satisfactory to the most fastidious. Mr. Heydecker deals also in confectionery, fruits, ice-cream, etc., utilizing premises located in Wheeler's Block, and carrying a large and complete stock at all times. He employs three assistants, and callers are assured immediate and courteous attention, while the prices quoted are as low as can be named on goods of standard quality.

R. C. Jones, Ready Made Clothing, Hats and Caps, Gents' Furnishing Goods, Colchester, Conn.—One need not be very old to be able to remember when ready-made clothing was worn only by those who could not afford custom garments, for it was poorly made, ill fitting, and unfashionable in cut, but this is all changed nowadays and by patronizing a reliable and enterprising house you may obtain clothing that cannot be distinguished from custom work, while its cost is very much less. The establishment carried on by Mr. R. C. Jones is a prime favorite with those who appreciate first-class clothing, and there is every reason why it should be, for one may always find here a large and complete assortment of seasonable garments, including the very latest fashionable novelties, while the prices are remarkably low and the goods are in every instance guaranteed to prove as represented. Mr. Jones is a native of Hebron and is universally and favorably known throughout this section. He gives careful personal attention to customers, and as employment is given to two assistants the service is prompt, accurate and obliging at all times. The store has an area of 1,000 square feet, and contains not only a full assortment of clothing for dress and working wear, but also a well-chosen stock of hats and caps, and gentlemen's furnishing goods, the styles being correct and the prices as low as the lowest. The stock is constantly being renewed and is sufficiently varied to suit all tastes and all purses.

Mrs. E. L. Kenyon, Millinery and Fancy Goods, Colchester.—The majority of ladies agree that it is as well to be “out of the world as out of the fashion,” and those residing in Colchester or vicinity have reason to congratulate themselves on the existence of the establishment conducted by Mrs. E. L. Kenyon, for as long as this continues under its present management there is no reason for being out of the fashion so far as millinery is concerned at least, as here may always be found an assortment comprising the latest novelties in hats, bonnets, trimmings and millinery goods in general, together with a varied and carefully chosen stock of fancy goods. Mrs. Kenyon is a native of Westchester, Conn., and has carried on her present enterprise since 1886, during which time she has built up an extensive and very desirable patronage and gained an enviable reputation for good taste and business ability. The premises utilized have an area of 1400 square feet and the stock is displayed to excellent advantage. Especial attention is given to two capable assistants, orders can be filled at short notice. Mrs. Kenyon quotes very reasonable prices and spares no pains to fully satisfy every customer.

2021

1

4



LIBRARY OF CONGRESS



0 014 112 054 2