

BULLETIN

OF

Lebanon Valley College

VOL. II

JANUARY, 1914

No. 2

CATALOGUE NUMBER

FORTY-SEVENTH ANNUAL
CATALOGUE

PUBLISHED BY LEBANON VALLEY COLLEGE, AT
ANNVILLE, PA., IN NOVEMBER, JANUARY,
APRIL, AND MAY





ADMINISTRATION BUILDING

BULLETIN

OF

Lebanon Valley College

Vol. 2

January, 1914

No. 2

CATALOGUE
NUMBER

PUBLISHED BY
LEBANON VALLEY COLLEGE
ANNVILLE, PA.

In November, January, April and May

CALENDAR

1913-1914

1913

- September 8-9, Examination and Registration of Students.
- September 10, Wednesday, College year began.
- November 21, Friday, Anniversary of Clonian Literary Society.
- November 27-28, Thanksgiving Recess.
- December 19, Friday, Christmas Recess began.

1914

- January 5, Monday, 1 p. m., Christmas Recess ended.
- January 19-23, Mid-year examinations.
- January 22, Thursday, Day of Prayer for Colleges.
- January 26, Monday, 7:45 a. m., Second Semester begins.
- February 8, Sunday, Day of Prayer for Students.
- March 18, 4:00 p. m., Spring Recess begins.
- March 25, 9:00 a. m., Spring Recess ends.
- April 3, Anniversary Kalozetean Literary Society.
- May 1, Anniversary Philokosmian Literary Society.
- May 27-28-29, Senior final examinations.
- May 30, Memorial Day.
- June 1-5, Final Examinations.
- June 6, 7:45 p. m., Academy Commencement.
- June 7, Sunday, 10:30 a. m., Baccalaureate Sermon by President G. D. Gossard, D.D.
 - 7:30 p. m., Address before the Christian Associations.
- June 8, Monday, 7:45 p. m., Exercises by the Graduating Classes in Music and Oratory.
- June 9, Tuesday, 9:00 a. m., Meeting of Board of Trustees.
 - 2:00 p. m., Class Day Exercises.
 - 7:45 p. m., Junior Oratorical Contest.
- June 10, Wednesday, 10:00 a. m., Forty-eighth Annual Commencement.

1914-1915

1914

- September 7-8, Examination and Registration of Students.
- September 9, Wednesday, 9:00 a. m., Instruction begins.
- November 20, Friday, Anniversary Clonian Literary Society.
- November 25, Wednesday, 4:00 p. m., Thanksgiving Recess begins.
- November 30, Monday, 9:00 a. m., Thanksgiving Recess ends.
- December 18, Friday, 4:00 p. m., Christmas Recess begins.

1915

- January 4, Monday, 1:00 p. m., Christmas Recess ends.
- January 18-22, Mid-year Examinations.
- April 1, 4:00 p. m., Easter Recess begins.
- April 5, 4:00, p. m., Easter Recess ends.
- June 2, Forty-ninth Annual Commencement.

THE CORPORATION

BOARD OF TRUSTEES

PRESIDENT G. D. GOSSARD, D.D., AND FACULTY, *Ex-Officio*

Representatives from the Pennsylvania Conference

	TERM EXPIRES
REV. JOHN W. OWEN, A.M., D.D., Dayton, O.	1914
REV. D. M. OYER, A.B., Boiling Springs	1914
S. H. BOWERS, Lemoyne	1914
GEORGE C. SNYDER, Hagerstown, Md.	1914
REV. WM. H. WASHINGTON, A.M., D.D., Chambersburg	1915
REV. J. E. KLEFFMAN, D.D., Baltimore, Md.	1915
REV. J. F. SNYDER, Red Lion	1915
REV. A. A. LONG, D.D., York	1916
REV. A. B. STATTON, D.D., Hagerstown, Md.	1916
W. O. APPENZELLER, Chambersburg	1916
REV. L. WALTER LUTZ, A.B., Chambersburg	1916

Representatives from the East Pennsylvania Conference

REV. D. D. LOWERY, D.D., Harrisburg	1916
REV. R. R. BUTTERWICK, D.D., Mountville	1916
REV. E. O. BURTNER, A.M., Palmyra	1916
G. F. BREINIG, Allentown	1914
I. B. HAAK, Myerstown	1914
DR. SETH A. LIGHT, Lebanon	1914
M. S. HENDRICKS, Shamokin	1915
S. F. ENGLE, Palmyra	1915
REV. D. E. LONG, A.B., Annville	1915
REV. H. E. MILLER, A.M., Lebanon	1915
HON. AARON S. KREIDER, Annville	1915
S. C. SNOKE, Philadelphia	1915

Representatives from the Virginia Conference

REV. E. E. NEFF, Reliance, Va.	1914
ELMER HODGES, Winchester, Va.	1914
PROF. J. N. FRIES, Berkeley Springs, Va.	1914
REV. A. S. HAMMACK, D.D., Dayton, Va.	1915
REV. W. L. GRUVER, D.D., Martinsburg, W. Va.,	1915
W. S. SECRIST, Keyser, W. Va.	1915

Trustees-at-Large—H. S. IMMEL, Esq., Mountville; WARREN A. THOMAS, Esq., 86 Latta Ave., Columbus, O.; A. J. COCHRAN, Esq., Dawson.

Alumni Trustees—PROF. H. H. BAISH, A.M., '01, Altoona; REV. I. E. RUNK, D.D., '99, Scottdale; REV. A. K. WIER, A.B., '00, Steelton.

OFFICERS AND COMMITTEES OF THE BOARD

Officers

<i>President</i> - - - - -	Rev. A. B. Statton, D.D.
<i>Vice President</i> - - - - -	Hon. A. S. Kreider
<i>Secretary and Treasurer</i> - - - - -	Rev. W. H. Weaver

Executive Committee

Hon. A. S. Kreider	W. H. Washinger
S. F. Engle	J. E. Kleffman

A. S. Hammack

Finance Committee

G. C. Snyder	H. H. Baish
J. A. Lyter	I. E. Runk

Elmer Hodges

Library and Apparatus Committee

J. E. Lehman	Elmer Hodges
I. B. Haak	D. M. Oyer

Faculty Committee

J. A. Lyter	H. H. Baish
A. B. Statton	W. F. Gruver

Auditing Committee

S. F. Engle	L. W. Lutz
-------------	------------

E. E. Neff

Grounds and Buildings

J. G. Stehman	S. H. Bowers
H. H. Shenk	W. F. Gruver

I. B. Haak

Endowment Fund Committee

D. D. Lowery	W. H. Washinger
Hon. A. S. Kreider	J. E. Kleffman
W. F. Gruver	A. S. Hammack

Farm Committee

Hon. A. S. Kreider	W. H. Washinger
	W. S. Secrist

Publicity Committee

H. H. Shenk	H. H. Baish
A. E. Shroyer	F. B. Plummer

H. E. Miller

*Committee on Revision of By-Laws**

J. A. Lyter	A. B. Statton
H. H. Baish	W. F. Gruver

*Special Committee

FACULTY

GEORGE DANIEL GOSSARD, D.D.

President

JOHN EVANS LEHMAN, A.M. Sc.D.

Secretary, and Professor of Mathematics and Astronomy

HIRAM HERR SHENK, A.M.

Professor of History and Political Science

SAMUEL HOFFMAN DERICKSON, M.S.

Professor of Biological Sciences

ALVIN E. SHROYER, B.D.

Professor of Greek and Instructor in Bible

HENRY E. WANNER, B.S.

Registrar, and Professor of Chemistry

FACULTY

LUCY S. SELTZER, A.B.

Professor of German

FALBA L. JOHNSON, A.M.,

Dean of Women, and Professor of English

ROBERT MACD. KIRKLAND, A.M.

*Josephine Bittinger Eberly Professor of Latin
Language and Literature, and Professor of French
Librarian*

SAMUEL O. GRIMM, B.Pd., A.B.

Instructor in Physics

MAY BELLE ADAMS

Professor of Oratory and Public Speaking

ROY J. GUYER, A.B., B.P.E.

Physical Director

CHARLES H. ARNDT

Assistant in Biology

HENRY E. SNAVELY

Assistant in History

PAUL L. STRICKLER

Assistant in Physical Laboratory

REV. D. E. LONG, A.B.

Field Secretary

Mrs. VIOLETTE NISSLEY FREED

Matron

ANNA GARMAN

Stenographer

HISTORY OF THE COLLEGE

Lebanon Valley College originated in the action of the East Pennsylvania Conference of the United Brethren Church at its annual session held at Lebanon in March, 1865. Resolutions were passed deciding the question of establishing a higher institution of learning to be located within the bounds of the East Pennsylvania or of the Pennsylvania Conference. One year later the committee appointed recommended in its report: First, the establishment of a school of high grade under the supervision of the church; second, to accept for this purpose the grounds and buildings of what was then known as the Annville Academy, tendered as a gift to the Conference; and, third, to lease the buildings and grounds to a responsible party competent to take charge of the school for the coming year. School opened May 7, 1866, with forty-nine students. By the close of the collegiate year one hundred and fifty-one were enrolled, thus demonstrating at once the need of such an institution in this locality and the wisdom of the founders.

In April, 1867, the Legislature granted a charter with full university privileges under which a College Faculty was organized with Rev. Thomas Rees Vickroy, Ph.D., as president, and Prof. E. Benjamin Bierman, A.M., as principal of the Normal Department. The same year the Philokosmian Literary Society was organized by the young men, additional land was purchased and a large brick building erected thereon with chapel, recitation rooms, president's office, and apartments for sixty boarding students. The building was not furnished and fully occupied till the fall of 1868.

The first regular commencement occurred June 16, 1870. About two years later opposition to the school manifested itself and President Vickroy stated in his report to the annual Conference that the attendance of students was reduced from one hundred to seventy-five, the cause of this diminution being persistent opposition on the part of certain brethren.

President Vickroy directed the affairs of the institution for five years, from 1866 to 1871. During his administration the charter was prepared and granted by the State Legislature, the laws and regulations for the internal workings framed and adopted, the curriculum established, and two classes—those of 1870 and 1871—were graduated. In June, 1871, Prof. Lucian H. Hammond was elected president. During his term of office five classes were graduated, the Clonian Literary Society organized by the ladies, and the College made steady and substantial progress, but failing health compelled him to resign in June, 1876.

Rev. David D. DeLong, D.D., became the third president. He found it necessary to reconstruct the Faculty and retain but two of the former teachers. The Kalozetean Literary Society was instituted to awaken in-

terest in literary work among the young men by means of a healthy rivalry, and the music department was organized. In the summer of 1883 a large two-story frame building was erected on College Avenue, containing art room, music rooms, the department of natural science, a museum and the College library. During his presidency one hundred and seven students were graduated, fourteen in music and ninety-three in the literary department.

After an interregnum of several months Rev. Edmund S. Lorenz, A.M., was elected president and took up the work with energy and ability. Enlargement was his motto and the friends of the College rallied to his support. Post graduate studies were offered. The *College Forum* made its appearance under the editorship of the Faculty. With a devotion that won the admiration of his friends he labored incessantly for nearly two years to make the College the peer of any in the State, but under this strain his health failed and he was obliged to retire at the close of the collegiate year of 1889.

The fifth president, Rev. Cyrus J. Kephart, D.D., assumed the duties of his office at the opening of the fall term in 1889. He secured creditable additions to the endowment fund, but because of discouraging conditions declined re-election at the close of the first year.

The question of re-locating the College agitated its constituency, divided its friends and greatly hindered its progress. Some were almost in despair, others were indifferent, while others hoped and waited for the best. Under these conditions the Board of Trustees met in special session July 28, 1890, and called Dr. E. Benjamin Bierman to the presidency. He was inaugurated on the evening of the sixth of November following. Buildings were renovated, a large number of students enrolled and the Mary A. Dodge Fund of ten thousand dollars received, "the interest of which only is to be loaned without charge to such pious young people as the Faculty of the College may deem worthy of help as students." The Silver Anniversary of the College was celebrated June 15, 1892, when money was raised to purchase about three acres of ground to be added to the college campus. With the experience of twenty-five years of earnest effort to combat opposition and overcome errors and misconceived notions of higher education and to build up an institution of learning creditable to the United Brethren Church, the friends of the College entered upon the second quarter of a century with new hope and aspiration.

President Bierman served successfully until the spring of 1897, when he was succeeded by Rev. Hervin U. Roop, Ph.D., who held the office till January 1, 1906, after which time the administration was in the hands of the Executive Committee and the Faculty until the election of Rev. A. P. Funkhouser, A.M., March 9, 1906.

The presidency of Dr. Roop stands out as the period when the group system in the College curriculum was introduced, when the athletic field

was acquired, when the disastrous fire of December 24, 1904, occurred, sweeping away the Administration Building in a few hours, and when several new buildings arose on the campus—Engle Music Hall 1899, and the Carnegie Library and Women's Dormitory in 1904. The recuperative powers of the institution were put to the test by the destruction of the main building. At a meeting held January 5, 1905, the friends of the College, resolved, amid unusual enthusiasm to rebuild at once and with the stimulus of a gift of fifty thousand dollars from Andrew Carnegie received by the President, who had previously secured \$20,000 from the same source, plans were matured by which to raise one hundred thousand dollars for this purpose. The erection of three new buildings was projected—the Men's Dormitory, the Central Heating Plant and the new Administration Building, the latter being completed under the supervision of President Funkhouser, whose term of office is marked also by a strenuous effort to straighten out the tangled threads in the financial skein and to meet the debt which rose to almost or altogether ninety thousand dollars. Bonds were issued to the amount of fifty thousand dollars and the co-operative college circles organized to relieve the financial conditions.

Rev. Lawrence Keister, S.T.B., D.D., was elected president of the College, June 10, 1907, at the annual session of the Board of Trustees. He solicited \$7,700 for the equipment of the Science Department, secured the Mills Scholarship of \$1,000 and the Immel Scholarship of \$2,000. The debt effort authorized by the Board, June 3, 1908, was carried forward successfully, \$50,000 having been pledged before January 1, 1909, according to the condition of the pledge which also required the continuation of the canvass to secure another \$50,000 in order to cover the entire debt. At the death of Rev. Daniel Eberly, D.D., July 9, 1910, whose will bears date of September 17, 1909, the College came into possession of property valued at about \$45,000, the major part being given for the endowment of the Latin Chair. According to the Treasurer's books the amount of outstanding bonds January 1, 1914 was \$40,000.

In June, 1912, President Keister presented his resignation to the Board of Trustees and in September the Rev. Dr. George D. Gossard, of Baltimore, Md., was elected president. He at once entered upon the duties of his office to which he brings conscientious devotion and intelligent enthusiasm.

GENERAL INFORMATION

The College is situated in Annville, a progressive and cultured town twenty-one miles east of Harrisburg in the beautiful, healthful and fertile Lebanon Valley.

BUILDINGS AND GROUNDS

There are seven buildings on the campus, the Carnegie Library, the

Engle Music Hall, the Women's Dormitory, the Men's Dormitory, the Academy Building, the Administration Building, and the Heating Plant.

THE CARNEGIE LIBRARY, a building of the Gothic style of architecture, erected in 1904, furnishes commodious quarters for the growing library of the College. Each department has its particular books for reference, in addition to the large number of volumes for general reference and study. An annual amount is appropriated by the Board of Trustees for the purchase of new books, and plans are being made for the enlargement of the library in order to meet the growing needs of the College.

Two large reading rooms on the first floor, splendidly lighted and ventilated, and beautifully furnished, are provided with the leading magazines and daily papers. Periodicals devoted to the special work of each department are here, as well as magazines of general literature. On the second floor are six seminar rooms designed to be equipped with the special works of reference for the various departments, where students doing the most serious work may study undisturbed.

THE ENGLE MUSIC HALL, of Hummelstown brownstone, erected in 1899, contains the college chapel, used for all large college gatherings, a director's office and studio, practice rooms, and a large society hall. The building is well equipped with pianos and a large pipe organ.

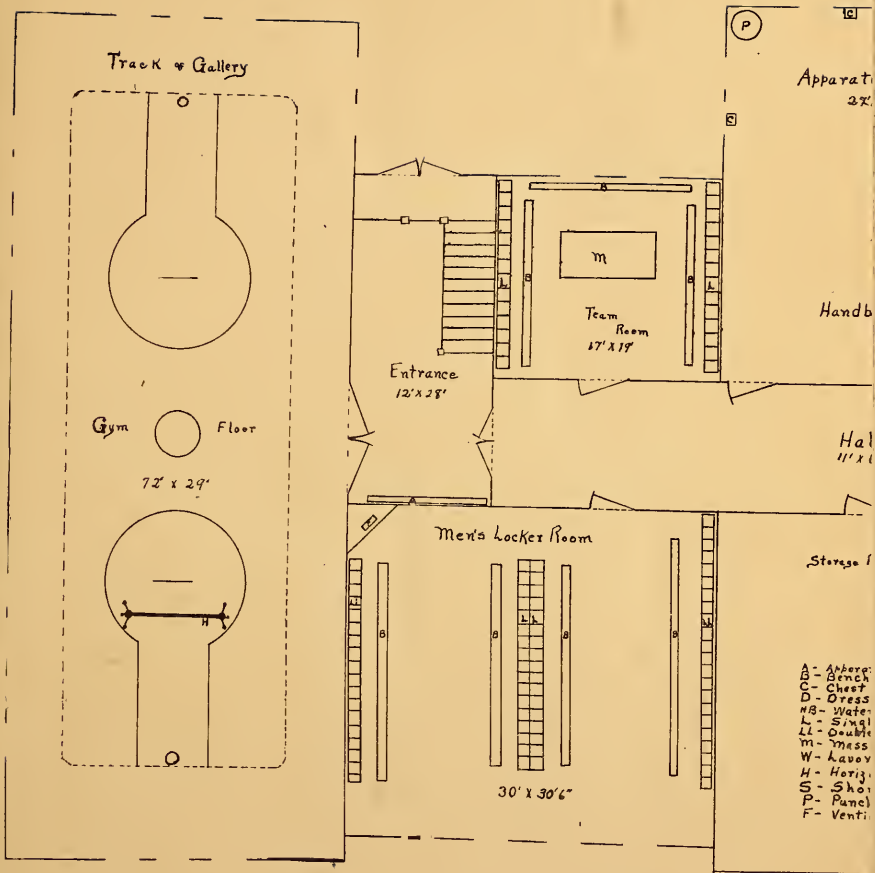
THE WOMEN'S DORMITORY was erected in 1905, and is a building of beautiful proportions. In addition to rooms which will accommodate forty-five students, there are a society hall, a dining hall, a well equipped kitchen, and laundry.

THE MEN'S DORMITORY is a modern structure of brick with Indiana limestone trimmings. It contains single and double rooms and sixteen suites of two bed-rooms with a separate study-room. These afford accommodations for eighty-five students. This building was also erected in 1905.

THE ACADEMY BUILDING, the original building of the institution, and acquired by gift in 1866 when the College was founded, has been remodeled and is now used by the Academy. The principal resides in the building with the Academy boys.

THE HEATING PLANT, erected in 1905, is in harmony with the buildings above described. It contains a low pressure heating system of the most perfect construction, and supplies the heat for all the buildings on the campus. It is constructed with a view to the installation of a lighting plant.

THE ADMINISTRATION BUILDING is the most important and central of the buildings. It is built of buff brick with terra cotta trimmings, three stories high. It contains the recitation rooms of the College and the laboratories of the science department. The department of art has here commodious and modern quarters. The administration offices of fire proof construction are on the first floor.



— Alumni Gymnasium of I

Engle Music Hall, the Women's Dormitory, the Men's Dormitory, the Academy Building, the Administration Building, and the Heating Plant.

THE CARNEGIE LIBRARY, a building of the Gothic style of architecture, erected in 1904, furnishes commodious quarters for the growing library of the College. Each department has its particular books for reference, in addition to the large number of volumes for general reference and study. An annual amount is appropriated by the Board of Trustees for the purchase of new books, and plans are being made for the enlargement of the library in order to meet the growing needs of the College.

Two large reading rooms on the first floor, splendidly lighted and ventilated, and beautifully furnished, are provided with the leading magazines and daily papers. Periodicals devoted to the special work of each department are here, as well as magazines of general literature. On the second floor are six seminar rooms designed to be equipped with the special works of reference for the various departments, where students doing the most serious work may study undisturbed.

THE ENGLE MUSIC HALL, of Hummelstown brownstone, erected in 1899, contains the college chapel, used for all large college gatherings, a director's office and studio, practice rooms, and a large society hall. The building is well equipped with pianos and a large pipe organ.

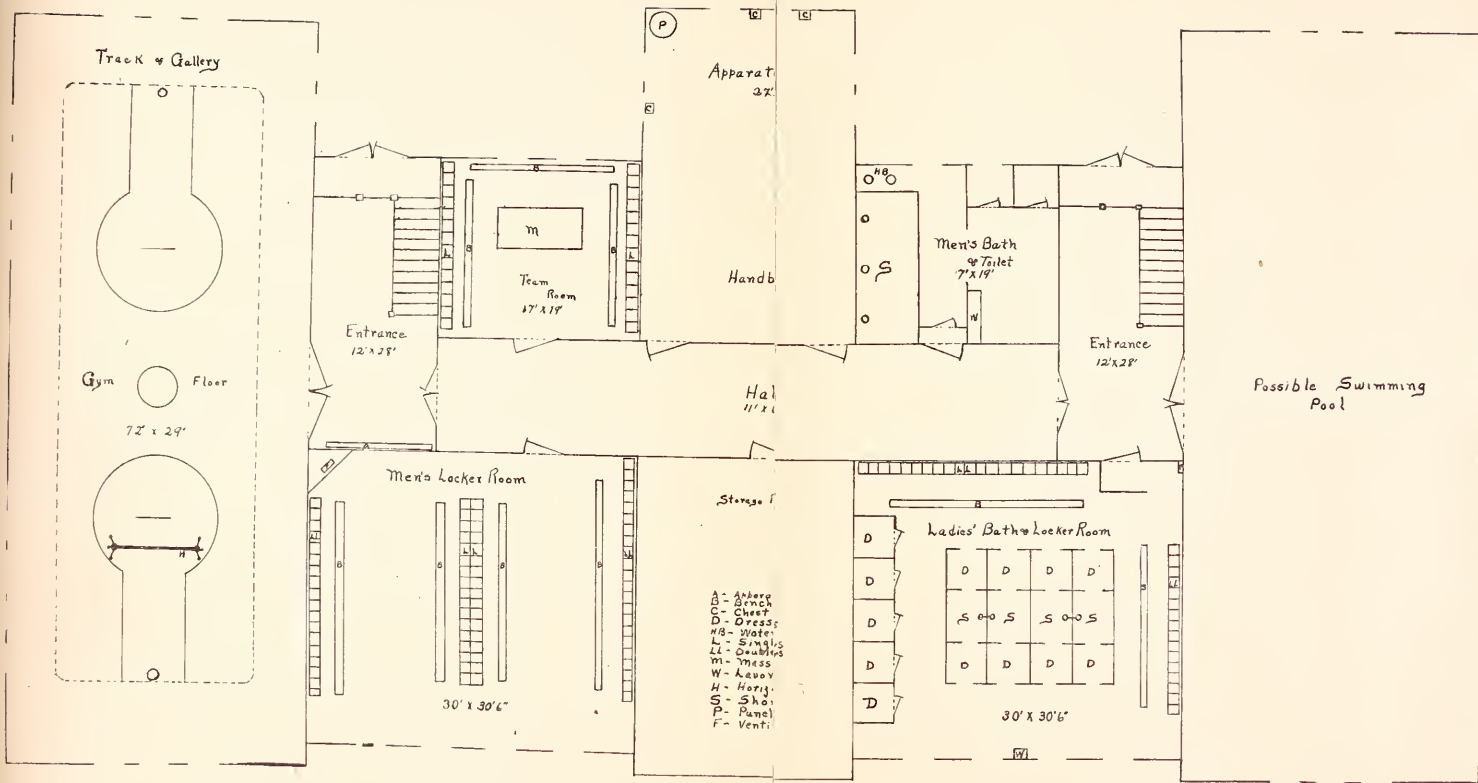
THE WOMEN'S DORMITORY was erected in 1905, and is a building of beautiful proportions. In addition to rooms which will accommodate forty-five students, there are a society hall, a dining hall, a well equipped kitchen, and laundry.

THE MEN'S DORMITORY is a modern structure of brick with Indiana limestone trimmings. It contains single and double rooms and sixteen suites of two bed-rooms with a separate study-room. These afford accommodations for eighty-five students. This building was also erected in 1905.

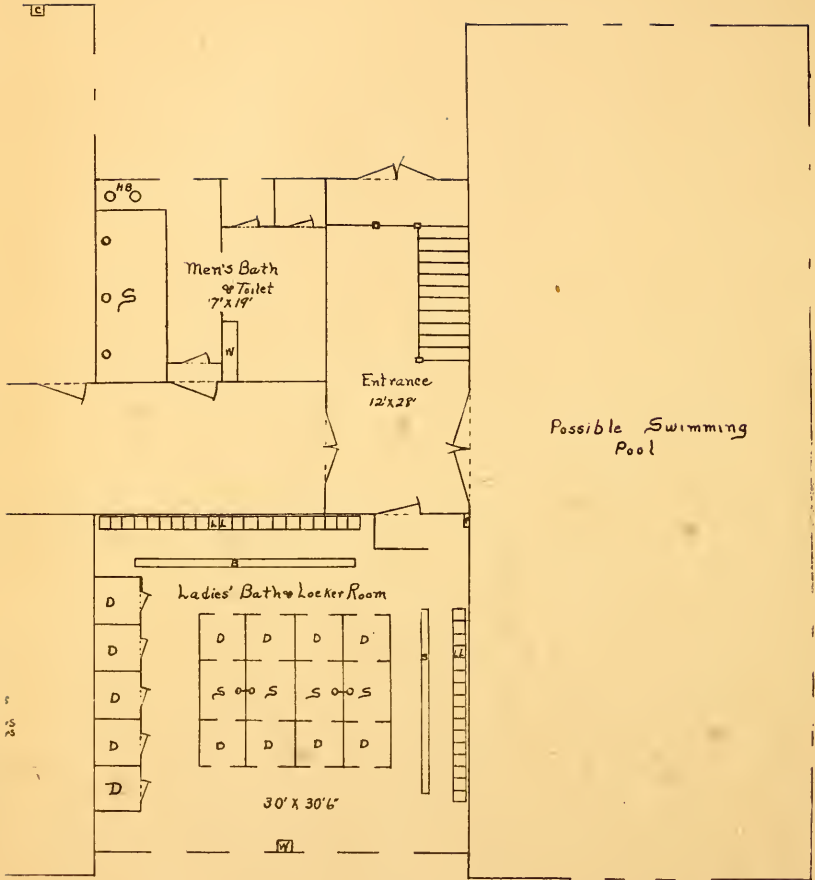
THE ACADEMY BUILDING, the original building of the institution, and acquired by gift in 1866 when the College was founded, has been remodeled and is now used by the Academy. The principal resides in the building with the Academy boys.

THE HEATING PLANT, erected in 1905, is in harmony with the buildings above described. It contains a low pressure heating system of the most perfect construction, and supplies the heat for all the buildings on the campus. It is constructed with a view to the installation of a lighting plant.

THE ADMINISTRATION BUILDING is the most important and central of the buildings. It is built of buff brick with terra cotta trimmings, three stories high. It contains the recitation rooms of the College and the laboratories of the science department. The department of art has here commodious and modern quarters. The administration offices of fire proof construction are on the first floor.



— Alumni Gymnasium of Mon Valley College —



non Valley College —

The new Alumni Gymnasium occupies the ground floor. Here are provided over 7,000 square feet of floor space for the use of the department of physical culture and the promotion of athletic activities. The gymnasium has, in addition to the gymnasium floor, separate locker rooms for the teams, for the men, and for the girls, an apparatus room, and the usual shower baths. A floor-plan of this greatly appreciated gift appears elsewhere in this catalogue.

To accommodate all these buildings, the campus, originally of ten acres, has been recently enlarged by purchase. It occupies a high point in the centre of the town of Annville and is within easy access of all trolley and railroad lines.

The athletic field of five and one-half acres is well located and admirably adapted to the purpose for which it is intended. On it are erected a grand stand and bleachers.

LABORATORIES

The entire northern half of the Administration Building is occupied by the Department of Science. The Department of Chemistry occupies the first floor; Physics the second, and Biology the third.

The laboratories of each department are constructed after the most approved modern methods, and students find everything arranged for their convenience. Stock rooms and special laboratories adjoin the general laboratories. The lecture rooms are provided with risers and Columbia tablet chairs.

RELIGIOUS WORK

Recognizing that most of its students come from Christian families, the College has always tried to furnish religious training. It believes in cultivating the heart as well as the mind, and encourages all wholesome means of promoting Christian influence.

Each school morning, a regular service is held in the college chapel, at which the students are required to be present. At this service there is singing, reading of Scripture, and prayer. Members of the Faculty conduct this service.

A students' prayer meeting is held once a week, and opportunities for Bible study and mission study are offered by the Christian Associations in addition to those afforded by the regular curriculum.

All resident students of the College are required to attend public worship in churches of their choice every Sunday.

The religious life during the past year has been earnest and helpful, and patrons may feel satisfied that high moral influences are being exerted constantly over their children.

COLLEGE ORGANIZATIONS

Christian Associations The College has flourishing Young Men's and Young Women's Christian Associations, which hold regular weekly devotional services and conduct special courses of Bible and mission study, often in charge of members of the Faculty.

Under these auspices numerous public lectures, entertainments, and socials are held, so that they contribute incalculably to the pleasure of the student body. They are the centre of the spiritual welfare of the students and deserve the hearty support of all connected with the College.

Literary Societies Excellent opportunities for literary improvement and parliamentary training are afforded by the societies of the College. There are three of these societies—one sustained by the young ladies, the Clonian, and two by the young men, the Kalozetean and the Philokosmian. They meet every Friday evening in their well furnished halls for literary exercises consisting of orations, essays and debates. These societies are considered valuable agencies in college work, and students are advised to unite with one of them.

Athletic Association The Athletic Association is composed of all the students of the College. The Athletic Association elects its own officers and the managers of the various athletic teams, also three members to the Athletic Executive Board.

The direct supervision of all athletics is in the hands of the Athletic Executive Board. This board is composed of two members of the Faculty, appointed by the President, two members of the Alumni Association, selected or elected by the Alumni Association, and three student members elected by the Athletic Association. The treasurer of the College is the treasurer of the Athletic Executive Board.

Biological Field Club The Biological Field Club offers to any student of the College an opportunity to collect, study, and discuss objects of interest in the field of living nature. Frequent excursions are made to places of special interest to members of the club.

The Mathematical Round Table The Mathematical Round Table is an organization of the students of the College who are interested in mathematical studies. Its object is to create interest in and love for the "exact science." Its meetings are held on the last Wednesday evening of each month. Papers on mathematical history and biography are read and discussed. Current events in the mathematical world and papers on various mathematical subjects have made the meetings very interesting and helpful.

Deutscher Verein The German Club has been organized by the students of the College who are especially interested in the study of the German language. Its meetings are held the third Wednesday of every month. Papers familiarizing the students with Ger-

many, its life, customs and literature are read. The meetings are conducted entirely in German. As a means of increasing conversational powers German games are introduced as an important part of the program.

LITERARY AND MUSICAL ADVANTAGES

During the college year, the student body has the privilege of hearing lectures and talks delivered by resident professors and other men of note in church and literary circles.

The department of music together with the department of public speaking presents a number of programs during the year for the pleasure and benefit of the general student body. Concerts and recitals by prominent musicians are given under the patronage of the department of music with the aim of creating in the student an appreciation for the best in art.

There is a lively interest in the drama. Various college organizations have presented Shakespearean and other plays of a high grade.

A further means of enjoyment and education is the course of lectures and concerts under the management of the Christian associations of the College.

ADMINISTRATION

Advisers The following are the advisers for the students in each of the five groups in which courses of instruction are offered: For the Classical group, Professor Shroyer; for the Mathematical-Physical, Professor Lehman; for the Chemical-Biological, Professor Derickson; for the Historical-Political, Professor Shenk; for the Modern Language, Professor Kirkland. The students of each group are amenable to the adviser in all matters of conduct, study and discipline. He is to grant leave of absence, permission to go out of town, and excuses. His approval is necessary before a student may register for or enter upon any course of study, or discontinue any work. He is the medium of communication between the Faculty and the students of his group. and in a general way stands to his students in the relation of a friendly counsellor.

Discipline It is earnestly desired that students may be influenced to good conduct and diligence by higher motives than fear of punishment. The sense of duty and honor, the courteous and generous feelings natural to young men and women engaged in literary pursuits, are appealed to as the best regulators of conduct. It is the policy of the administration to allow in all things as much liberty as will not be abused, and the students are invited and expected to cooperate with the Faculty; but good order and discipline will be strictly maintained and misconduct punished by adequate penalties. The laws of the College are as few and simple as the proper regulation of a community of young men and women will permit. The College will not place its stamp or bestow its

honors upon anyone who is not willing to deport himself becomingly. No hazing of any kind will be permitted. The government of the Men's Dormitory is under the immediate control of the Senior-Junior Council, a committee of students, authorized by the College authorities.

Classification The maximum number of hours, conditioned, permitted for senior standing is four; for junior standing, six, for sophomore, seven, and for freshman eight.

The permitted number of extra hours of work above that prescribed by the curriculum is limited by the student's record for previous years as follows:

- (a) Majority of A's—no limit.
- (b) Majority of B's—four hours.
- (c) Majority of C's—two hours.
- (d) Lower record than (C)—no extra hours.

Class Standing The scholarship of students is determined by result of examinations and daily recitations combined. The grades are carefully recorded.

Reports of standing will be made to parent or guardian at the end of each term when desired by them, or when the Faculty deems it expedient. The standing is indicated generally by classification in six groups, as follows.

A signifies that the record of the student is distinguished.

B signifies that the record of the student is very good.

C signifies that the record is good.

D signifies the lowest sustained record.

E (conditioned) imposes a condition on the student. Conditions incurred in January must be made up by June; conditions incurred in June must be made up by September. Failing to make up a condition at the time appointed is equal to a record of F.

F (failed completely) signifies that the student must drop or repeat the subject, and cannot be admitted to subjects dependent thereon.

If the student's record as a whole is poor, he may be required to repeat certain subjects, to repeat the year, or to withdraw.

Degree and Diploma The degree of bachelor of arts is conferred, by a vote of the Board of Trustees on recommendation of the Faculty, upon students who have satisfactorily completed 69 hours of work in any of the groups.

Graduate Work Since all its members are fully occupied with undergraduate work, the Faculty deems it unwise to offer any work for the degree of Master of Arts during the coming year. In rare cases sufficient resident work upon certain advanced courses may be outlined. But as special action would be required in each case, no detailed announcement can be made here. All inquiries about graduate work should be addressed to the President.

SCHOLARSHIPS AND LOANS

The College offers a limited number of one hundred and thirty-dollar free tuition scholarships to honor graduates of State Normal Schools and approved high schools and academies. One scholarship is allotted to the first honor graduate of our own academy.

The College also offers a one hundred and thirty-dollar scholarship to a literary graduate of Shenandoah Collegiate Institute, Dayton, Virginia, and a similar scholarship to a literary graduate of the Sugar Grove Academy, Sugar Grove, Pa. The recipients of these two scholarships are to be determined by the respective faculties of these institutions.

Graduates of high schools and academies whose standard is not equal to that of our own academy, may enter the senior year of the academy and become competitors for our own academy scholarship.

Honor graduates of preparatory schools who have conditions may be allowed to make them up in the freshman year. If the first semester's work shows a majority of A's and nothing less than B in all work including conditions, a scholarship may be awarded.

Bishop J. S. Mills Scholarship Fund

This fund established by a gift of \$1,000 is available.

H. S. Immel Scholarship Fund

This fund established by a gift of \$2,000 is available "for young men in college who are preparing for the ministry in the Church of the United Brethren in Christ."

Eliza Bittinger Eberly Fund

This fund consists of the income of a farm located near East Berlin, Adams County, Pa.

Daniel Eberly Fund

This fund is available and is to be loaned to worthy students seeking an education in college.

Mary A. Dodge Fund

The income from this fund is loaned to worthy students.

Charles B. Rettew Scholarship

This scholarship in Bonebrake Theological Seminary is limited to students from the East Pennsylvania Conference and Lebanon Valley College.

Dr. Henry B. Stehman Fund

This fund has been provided by Henry B. Stehman to help needy ministerial students.

The Executive Committee shall make scholarship awards.

EXPENSES

MATRICULATION AND PHYSICAL CULTURE.....	\$10 00
TUITION, COLLEGE.....	65 00

For twenty hours or less in the College, the tuition is \$65. Each additional hour for semester or half year \$1.90.

Children of ministers are required to pay one-half the regular tuition in the College.

When two members of one family attend college at the same time, ten per cent from the tuition charged is allowed.

The tuition of \$65 in the College does not apply to the Academy, Art, Oratory or Music departments.

All special students are required to pay a matriculation fee of from one to five dollars, and five dollars for Physical Culture.

All students taking regular work are required to pay a special college publication and Christian work fee of \$2. In consideration of the payment of the above fee the student receives the *College News* and privileges of the Christian Associations.

LABORATORY FEES, per semester.

Biology 1.....	\$ 3 00
Biology 2.....	6 00
Biology 3.....	6 00
Biology 4.....	5 00
Biology 5.....	5 00

A deposit of \$2.00 is required of each student who is assigned a locker in the biological laboratory as a guarantee of the care and return of the keys and apparatus. The treasurer will refund the deposit when a certificate from the department is presented stating that the keys and apparatus have been returned in good condition.

Chemistry 1.....	\$ 6 00
Chemistry 2.....	7 00
Chemistry 3.....	6 00
Chemistry 4.....	5 00
Chemistry 5.....	10 00

A deposit of \$3.00 is required of each student who is assigned a locker in the chemical laboratory. Any part of this breakage deposit unused will be refunded at the end of the course.

Physics 1.....	\$ 5 00
----------------	---------

All laboratory fees and deposits for each semester must be paid in advance. A student will not be assigned a locker or apparatus in any of the laboratories without a certificate from the Treasurer of the College stating that the fee has been paid and the deposit made.

GRADUATION FEE, payable thirty days prior to commencement, \$10.00.

Boarding

Regular students are charged \$3.50 per week, or \$133 per year, if paid in advance.

Five-day students, (fifteen meals), are charged \$2.50 per week, or \$95 per year, if paid in advance.

Day students may obtain meal tickets at the rate of twenty-five cents per meal, when paid in advance.

The College prefers that all students who room in the Dormitories should board at the College dining-hall.

Room Rent

In the Men's Dormitory and Women's Dormitory, when rooms are taken for one person only, the rates range from \$40 to \$80 per year. When rooms are taken for two persons the rates range from \$20 to \$60 for each student per year.

Light and heat, six to nine dollars per year.

Deposit Fee

A deposit fee of \$4 is required from each student who occupies a room in the Men's Dormitory.

Every student is charged with the furnishings of the room, at the opening of the school year, and if the furniture and room, and halls are in good condition when the students vacate, a portion, or all of the deposit fee is refunded.

Estimated Expenses

Depending upon the course or courses of study, a student in Lebanon Valley College, may take a year's work for \$240. This is the minimum and it does not include personal expenses nor laboratory fees. It includes the following items: Boarding, \$133; Tuition, \$65; Room rent, \$20; Matriculation and Physical Culture, \$10; Light and heat, \$6; College publication and Christian work fee, \$2; and in the Men's Dormitory a deposit fee of \$4, part of which may be returned.

For minimum of a year's expense in the Academy see page 56, where full particulars are given.

A rebate of \$5 will be allowed to any regular student in the College, receiving no other aid, who will pay in full at the opening of the school year, the entire amount of the year's expense.

Ten per cent will be added on all payments that are deferred more than ten days after the time when the installments are due.

These rates are fixed by special act of the Board of Trustees.

The regular College expenses are divided into four installments, and students are required to pay each installment in advance.

One-fifth of the expenses are due at the opening of the collegiate year; and one-fifth, November 1; three-tenths, January 5; and three-tenths, March 27.

Students who are candidates for degrees must make satisfactory settlement for all dues and bills before degrees are voted.

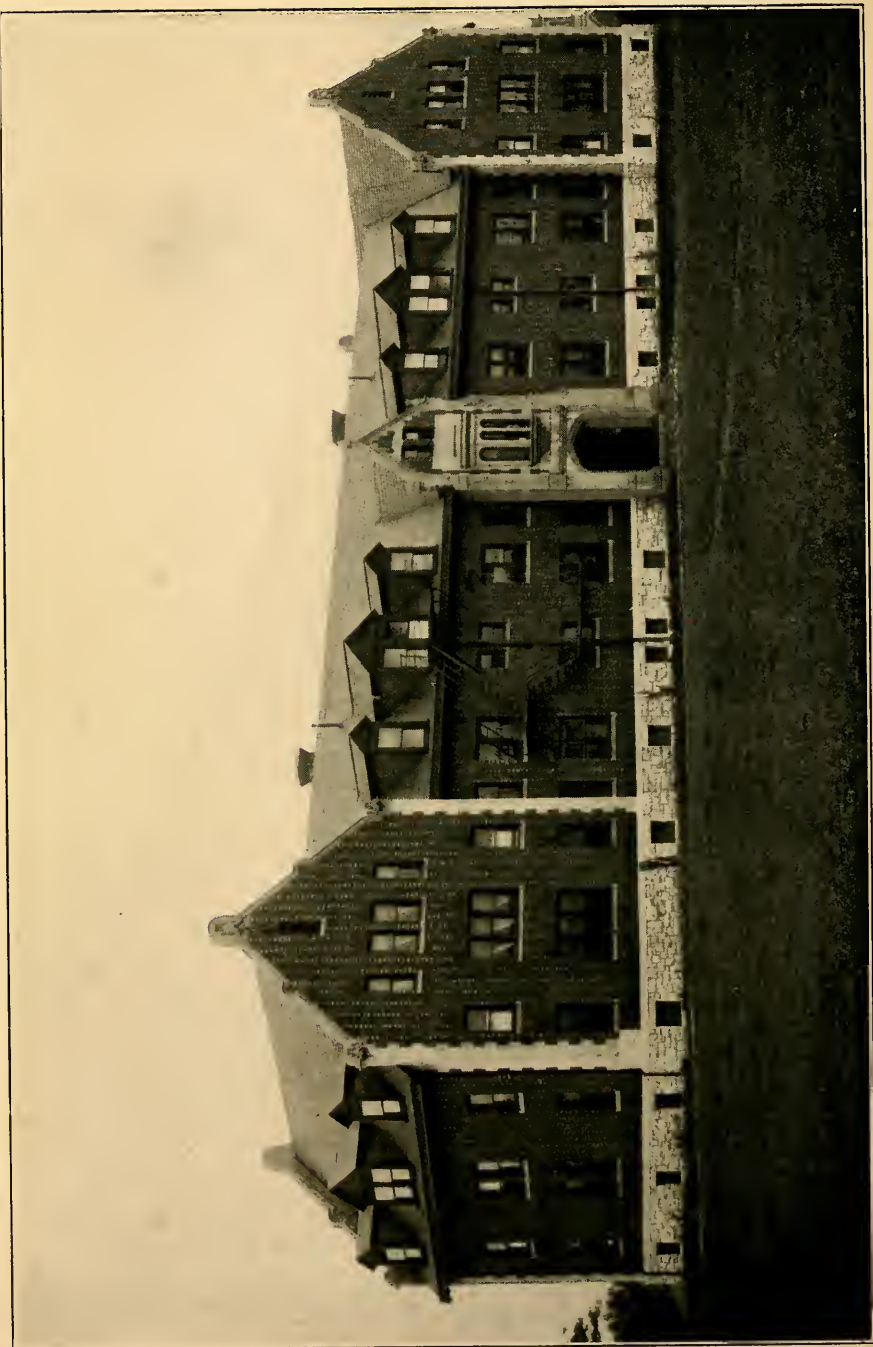
No reduction will be made for tuition and room-rent, for a semester, except for protracted sickness. In case of long continued illness, the loss is shared equally by the College and the student.

No reduction will be made for table board, for an absence of less than one week, and then only in case of sickness, or important duties that compel the student to be absent from his College work. Reductions cannot be allowed for banquet trips, or club trips, or athletic trips.

Students are required to furnish their own towels, napkins, soap, and all bed furnishings, except mattresses.

Any student who receives beneficiary aid from the College, may be called upon to render services to the College for all or part of the aid so received.

Opportunity for self-help is extended to a limited number of students in the College and in the Academy, who may serve as waiters, janitors or librarians. In each case the term of service is thirty-eight weeks. Close application is required to the work assigned. Neglect of duty is sufficient cause for the removal of the student from the position.



BOYS' DORMITORY

OUTLINE OF REQUIREMENTS FOR ADMISSION

The following is an outline of the requirements for admission to the Freshman class of Lebanon Valley College. A detailed description of the courses indicated in this outline appears in the catalogue of the College. An aggregate of fifteen units must be offered by the candidate for admission. Of these eleven and one-half units are required as specified and three and one-half units may be elected.

A unit represents the work of a school year of no less than thirty-six weeks, with five periods of at least forty-five minutes each per week, or four periods of one hour each per week. A unit therefore, is the equivalent of one hundred and eighty recitation periods of forty-five minutes each, or one hundred and forty-four periods of one hour each.

GROUP I English	English	3 units	Three units required
GROUP II Mathematics	Elementary Algebra	1 unit	Two and one-half units required, one of which must be Plane Geometry.
	Intermediate Algebra	$\frac{1}{2}$ unit	
	Plane Geometry	1 unit	
	Solid Geometry	$\frac{1}{2}$ unit	
	Plane Trigonometry	$\frac{1}{2}$ unit	
GROUP III Foreign Languages	Latin	4 units	Five units required, three of which must be Latin.
	German	3 units	
	French	3 units	
	Greek	3 units	
GROUP IV Physical Sciences	Physical Geog.	$\frac{1}{2}$ or 1 unit	Physics required. Chemistry required only for students intending to take Chemical-Biological Group.
	Physics	1 unit	
	Chemistry	$\frac{1}{2}$ or 1 unit	
GROUP V Biological Sciences	Botany	1 unit	Elective
	Zoölogy	1 unit	
	Physiology	1 unit	
GROUP VI History, Etc.	Greek and Roman	1 unit	One unit required.
	Mediaeval and Modern	1 unit	
	English	1 unit	
	Civics	$\frac{1}{2}$ unit	
	Economics	$\frac{1}{2}$ unit	
GROUP VII	Drawing	$\frac{1}{2}$ or 1 unit	One unit only may be elected.
	Domestic Science	$\frac{1}{2}$ unit	
	Agriculture	$\frac{1}{2}$ unit	
	Book-keeping	$\frac{1}{2}$ unit	
	Commercial Law	$\frac{1}{2}$ unit	
	Commercial Geog.	$\frac{1}{2}$ unit	
	Psychology	$\frac{1}{2}$ unit	
	Methods of Teaching	$\frac{1}{2}$ unit	

In case the requirements of a given Group are not fully met by the fifteen units selected, the studies necessary for such requirements must be taken in place of an elective in the regular college course. For example, if a student present three units of Latin and two of German for admission to a Group requiring four units of Latin he must include in his college course the equivalent of the fourth unit of Latin.

Candidates for admission should note carefully the following description of courses.

ENGLISH

Three units required

A thorough course in Advanced English Grammar, and a systematic course in English Composition and in the essentials of Rhetoric is required of all students. In addition to this and following the recommendations of the Conference on Uniform Entrance Requirements in English, books are prescribed for reading and practice, and for study and practice as follows:

a. Reading and Practice—(1914) Two units.

Group I. (Two to be selected.) The *Old Testament*, comprising at least the chief narrative episodes in Genesis, Exodus, Joshua, Judges, Samuel, Kings, and Daniel together with the books of Ruth and Esther; the *Odyssey*, with the omission, if desired, of Books I, II, III, IV, V, XV, XVI, XVII; the *Iliad*, with the omission, if desired, of Books XI, XIII, XIV, XV, XVII, XXI; Vergil's *Aeneid*. The *Odyssey*, *Iliad* and *Aeneid* should be read in English translations of recognized literary excellence. For any unit of this group a unit from any other group may be substituted.

Group II. (Two to be selected.) Shakespeare's *The Merchant of Venice*; *Midsummer Night's Dream*; *As You Like It*; *Twelfth Night*; *Henry the Fifth*; *Julius Caesar*.

Group III. (Two to be selected.) Defoe's *Robinson Crusoe, Part I*; Goldsmith's *Vicar of Wakefield*; either Scott's *Ivanhoe*, or *Quentin Durward*; Hawthorne's *The House of the Seven Gables*; either Dickens' *David Copperfield*, or *A Tale of Two Cities*; Thackeray's *Henry Esmond*; Mrs. Gaskell's *Cranford*; George Eliot's *Silas Marner*; Stevenson's *Treasure Island*.

Group IV. (Two to be selected.) Bunyan's *Pilgrim's Progress, Part I*; the *Sir Roger de Coverley Papers* in the "Spectator"; Franklin's *Autobiography* (condensed); Irving's *Sketch Book*; Macaulay's *Essays on Lord Clive* and *Warren Hastings*; Thackeray's *English Humourists*; *Selections* from Lincoln, including at least the two inaugurals, the speeches in Independence Hall and at Gettysburg, the *Last Public Address* and *Letter to Horace Greeley*, along with a brief memoir or estimate; Parkman's *Oregon Trail*; either Thoreau's *Walden*, or Huxley's *Autobiography* and selections from *Lay Sermons* including the address on *Improving Natural Knowledge*, *A Liberal Education*, and *A Piece of Chalk*; Stevenson's *Inland Voyage*, and *Travels with a Donkey*.

Group V. (Two to be selected.) Palgrave's *Golden Treasury* (First Series,) *Books II and III*, with special attention to Dryden, Collins, Gray, Cowper, and Burns; Gray's *Elegy in a Country Churchyard* and Goldsmith's *Deserted Village*; Coleridge's *Ancient Mariner* and Lowell's *The Vision of Sir Launfal*; Scott's *The Lady of the Lake*, Byron's *Childe Harold, Canto IV*, and *The Prisoner of Chillon*; Palgrave's *Golden Treasury* (First Series,) Book IV, with special attention to Wordsworth, Keats and Shelley; Poe's *The*

Raven; Longfellow's *The Courtship of Miles Standish*, and Whittier's *Snow Bound*; Macaulay's *Lays of Ancient Rome*, and Arnold's *Sohrab and Rustum*; Tennyson's *Gareth and Lynette*, *Lancelot and Elaine*, and *The Passing of Arthur*; Browning's *Cavalier Tunes*, *The Lost Leader*, *How They Brought the Good News from Ghent to Aix*, *Home Thoughts from Abroad*, *Home Thoughts from the Sea*, *Incidents of the French Camp*, *Hervé Riel*, *Pheidippides*, *My Last Duchess*, *Up at a Villa—Down in the City*.

b. Study and Practice—(One unit) Shakespeare's *Macbeth*; Milton's *L'Allegro*, *Il Penseroso* and *Comus*; Burke's *Speech on Conciliation with America*, or Washington's *Farewell Address* and Webster's *First Bunker Hill Oration*, Macaulay's *Life of Johnson* or Carlyle's *Essay on Burns*.

MATHEMATICS

a. Elementary Algebra, Algebra to Quadratics—One unit.

1. The four fundamental operations.
2. Factoring, determination of highest common factor and lowest common multiple by factoring.
3. Linear equations, both numerical and literal, containing one, two and three unknowns.

4. Problems depending on linear equations.

5. Radicals and the extraction of the square root of polynomials.

6. Fractional and negative exponents.

b. Quadratics and Beyond—One-half unit.

1. Quadratic equations, both numerical and literal.

2. Problems depending on quadratic equations.

3. The binomial theorem for positive integral exponents.

4. The formulas for the n th term and the sum of the terms of arithmetical and geometrical progressions.

5. Numerous problems chosen from mensuration, from physics and from commercial life.

The equivalent of Hawke's and others.

High School Algebra complete.

c. Plane Geometry—One unit.

1. The usual theorems and constructions.

2. The solution of numerous exercises, including problems of Loci.

3. The equivalent of Durell's Plane Geometry.

d. Solid Geometry—One-half unit.

1. The usual theorems, the properties and measurement of prisms, pyramids, cylinders and cones, the sphere and spherical triangle.

2. Applications to the mensuration of surfaces and solids.

e. Trigonometry—One-half unit.

1. Definitions and relations of the six trigonometric functions as ratios, circular measurements of angles.

2. Proofs of the principal formulas, and the transformation of trigonometric expressions by means of these formulas.

3. Solution of trigonometric equations.
4. The theory and use of logarithms.
5. The solution of right, oblique and spherical triangles with applications.

LATIN

Latin A—Three units.

A systematic course of five lessons a week extending over a period of three years is required.

The real test of the candidate's fitness is based upon his ability to read simple Latin prose, to explain constructions and idioms, and to turn simple Latin sentences into prose.

He should have studied grammar, elementary prose composition, 90 to 120 pages of *Nepos* (Lives) and *Caesar* (Gallic and Civil wars); also about 40 pages of *Cicero* and the first four books of Virgil or its equivalent in Latin poetry.

Latin B—One unit (optional.)

Virgil and *Ovid*, 6,000 to 10,000 verses or other equivalents not read in Latin A.

GREEK

1, 2 or 3 units

1. The equivalent of *White's First Greek Book*. Five recitations a week for at least thirty weeks. The candidates shall have read the equivalent of about eight chapters of *Anabasis* and show a knowledge of ordinary forms. One unit.

2. At least the first four books of the *Anabasis* together with the ability to turn short sentences into Greek. One unit.

3. The translation at sight of Attic prose and of Homer, constructions, idioms and prosody and the ability to translate a short passage of connected English narrative is required. One unit.

GERMAN

a. Elementary German—Two units.

During the first year the work should comprise:

1. Careful drill on pronunciation.
2. Drill on the rudiments of grammar.
3. Abundant easy exercises in reproduction and memory work.
4. The reading of 75 to 100 pages of graduated texts from a reader.

During the second year the work should comprise:

1. The reading of 150 to 200 pages of literature in the form of easy stories and plays.

2. Reproduction practice as before, both oral and written.

3. Continued drill on the rudiments of grammar.

Suitable stories and plays are as follows:

Wilhelmi's *Einer muss heiraten*, Bacon's *Im Vaterland*, Anderson's *Märchen*, Leander's *Träumereien*, Heyse's *L'Arrabbiata*, Hillern's *Hoher als die Kirche*, Storm's *Immensee*, Zschokke's *Der Zerbrochene Krug*, Stökl's *Unter dem Christbaum*, Baumbach's, *Der Schwiegersohn*.

b. Intermediate German—One unit.

The work should comprise, in addition to the elementary course, the reading of about 400 pages of moderately difficult prose and poetry together with constant drill in reproduction and grammatical drill, with special reference to the infinitive and the subjunctive.

Suitable reading matter can be selected from the following:

Freytag's *Die Journalisten*, Fouque's *Undine*, Goethe's *Hermann and Dorothea*, Lessing's *Minna von Barnhelm*, Schiller's *Der Neffe als Onkel*, *Wilhelm Tell*, *Die Jungfrau von Orleans* and others prescribed by the College Entrance Examination Board.

FRENCH

a. Elementary French—Two units.

The applicant should be able to pronounce French accurately, to turn simple English sentences into French and to answer questions on the rudiments of grammar.

The first year's work should comprise the rudiments of grammar, the reproduction of natural forms of expression and the reading of 100 to 175 duodecimo pages of graduated texts.

During the second year the work should comprise:

1. Constant practice in translating into French easy variations upon the texts read.
2. Frequent oral abstracts.
3. The mastery of the use of pronouns, pronominal adjectives, of all but the rare irregular verb forms and the simpler uses of the conditional and the subjunctive.
4. The reading of 400 to 500 pages of easy modern prose in the form of stories, plays, or historical or biographical sketches.

Suitable texts for the second year are:

About's *Le roi des montagnes*; Bruno's *Le tour de la France*; Mairet's *La tache du petit Pierre*; Mérimée's *Colomba*; Legouvé and Labiche's *La cigale chez les fourmis*; Le Bédolliere's *La Mère Michel et son chat*.

b. Intermediate French—One unit.

1. Constant practice in French paraphrasing.
2. Grammar in modern completeness.
3. Writing from dictation.
4. The reading of from 400 to 600 pages from suitable texts such as the following:

Corneille's *Le Cid*; Sandeau's *Le gendre de M. Poirier*; Daudet's *La Belle-Nivernaise*; Racine's *Athalie*, *Andromaque* and *Esther*; George Sand's plays and stories; Sandeau's, *Mademoiselle de la Sieglère*, and others.

PHYSICS

One unit

1. The study of a standard text book as Carhart and Chute's *High School Physics*, or Milikan and Gale's, *A First Course in Physics*.
2. Lectures and table demonstrations.
3. Individual laboratory work consisting of at least 30 experiments as required by the College Entrance Examination Board.
4. The course should include the following fundamental topics:
 - a. Introduction; Metric system, volume, density, weight and states of matter.
 - b. Mechanics: fluids and solids.
 - c. Heat.
 - d. Sound.
 - e. Light.
 - f. Magnetism.
 - g. Static Electricity.
 - h. Current Electricity.

The applicant must also present an approved laboratory note book of experiments performed, together with a certificate from the teacher of Physics stating the exact character and amount of work done under his supervision.

BOTANY

One unit

PART I. The General Principles of (a) Anatomy and Morphology, (b) Physiology, and (c) Ecology.

a. Anatomy and Morphology.

The seed, the shoot, specialized and metamorphosed shoots, the root, specialized and metamorphosed roots, the flower, the comparative and morphological study of four or more types, the fruit and the cell.

b. Physiology.

Roll of water in the plant, photosynthesis, respiration, digestion irritability, growth and fertilization.

c. Ecology.

Modifications, dissemination, crosspollination, light relations of green tissue and special habitats.

PART II. The natural History of the Plant Groups and classification.

A comprehensive study of the great natural groups of plants. Selections may be made from the following:

a. Algae. Pleurococcus, Sphaerella, Spirogyra, Vaucheria, Fucus, Nematium.

b. Fungi. Bacteria, Rhizopus or Mucor, Yeast, Puccinia, Corn Smut, Mushroom.

c. Lichens. Physcia (or Parmelia or Usnea).

- d. **Bryophytes.** In Hepaticae, Radula and in Musci, Mnium.
- e. **Pteridophytes.** In Filicineae, Aspidium, or equivalent, including the prothallus. In Equesetinae, Equisetum. In Lycopodineae, Lycopodium and Selaginella.
- f. **Gymnosperms.** Pinus or equivalent.
- g. **Angiosperms.** A monocotyledon and dicotyledon.

The applicant shall present a certified note-book of individual laboratory work of at least double the amount of time given to recitation. Special stress should be laid on accurate drawings and precise descriptions.

ZOÖLOGY

One unit

1. The general natural history—including general external structure in relation to adaptations, life histories, geographical range, relations to other plants and animals, and economic relations—of common vertebrates.

Suggested types are a mammal, bird, lizard, snake, turtle, newt, frog, dogfish or shark, bony fish, clam, snail, starfish, earthworm, hydra, sea-anemone, paramoecium.

Pupils should be familiar with orders of insects or with crustaceans, spiders and myriapods.

Actual examination of common animals with the above should be supplemented by reading giving natural history information.

Laboratory work required.

Certified note-books should be presented.

In general, the work as outlined by the College Entrance Examination Board will be accepted.

CHEMISTRY

One unit

The candidate's preparation should include:

1. Individual laboratory work, comprising at least forty exercises from a list of sixty or more as outlined by the College Entrance Examination Board.

2. Instruction by lecture-table demonstrations, to be used mainly as a basis for questioning upon the general principles involved in the pupil's laboratory investigations.

3. The study of at least one standard text-book, to the end that the pupil may gain a comprehensive and connected view of the most important facts and laws of elementary Chemistry. Brownlee and Other's *Principles of Chemistry* or its equivalent is required.

GEOGRAPHY

One unit

- a. The Earth as a Globe.
- b. The Ocean.

- c. The Atmosphere—including weather instruments and the U. S. Weather Map.
- d. The Land.
- e. Volcanoes.
- f. Rivers.
- g. Glaciers.
- h. Relation of man, plants and animals to climate, land forms, and oceanic areas.

A note-book certified to by the teacher in charge is required in all cases for one unit. Otherwise one-half unit only may be offered.

DRAWING

One unit

1. The applicant must be able to sketch with fairly steady and clean lines any figures or combinations of figures, polygons, spirals or the like.
2. He shall be able to sketch common objects such as furniture and utensils with reasonable accuracy and correctness of proportion.
3. Also to sketch from copy, enlarging or reducing dimensions, any simple object, such as a valve or title pattern.

A note-book with drawings both approved and certified to by the teacher must be presented in order to receive credit.

OUTLINE OF COURSES

Courses aggregating 69 hours in any group required for graduation. For fuller description of courses see pages 31-44

FRESHMAN

First Semester				
Group I	Group II	Group III	Group IV	Group V
<i>Classical</i>	<i>Chemical-Biological</i>	<i>Mathematical-Phys'c'l</i>	<i>Historical-Political</i>	<i>Modern Language</i>
hrs. Greek 1b 5 Latin 1 3 Mathematics 1 4 English 1a 2 French 1, or 3 German 1, or 3 Biology 1, 4 Physical Culture ½	hrs. Biology 1 4 Mathematics 1 4 English 1a 2 German 1 3 French 1 3 Bible 1 2 Physical Culture ½	hrs. Mathematics 1 4 English 1a 2 German 1 3 French 1 3 Bible 1 2 History 1 3 Physical Culture ½	hrs. English 1a 2 German 1 3 French 1 3 Bible 1 2 Mathematics 1 4 Latin 1, or 3 Greek 1b, or 5 Biology 1 4 Physical Culture ½	hrs. English 1a 2 German 1 3 French 1 3 Latin 1 3 Bible 1 2 Mathematics 1 4 Physical Culture ½
Second Semester				
hrs. Greek 1b 5 Latin 1 3 Mathematics 2 4 English 1a 2 French 1, or 3 German 1, or 3 Biology 1 4 Physical Culture ½	hrs. Biology 1 4 Mathematics 2 4 English 1a 2 German 1 3 French 1 3 Bible 1 2 Physical Culture ½	hrs. Mathematics 2 4 English 1a 2 German 1 3 French 1 3 Bible 1 2 History 1 3 Physical Culture ½	hrs. English 1a 2 German 1 3 French 1 3 Bible 1 2 Mathematics 2 4 Latin 1, or 3 Greek 1b, or 5 Biology 1 4 Physical Culture ½	hrs. English 1a 2 German 1 3 French 1 3 Latin 1 3 Bible 1 2 Mathematics 2 4 Physical Culture ½

SOPHOMORE

		Group I	Group II	Group III	Group IV	Group V
		<i>Classical</i>	<i>Chemical-Biological</i>	<i>Mathematical-Phys'c'l</i>	<i>Historical-Political</i>	<i>Modern Language</i>
First Semester		hrs. 3 Greek 1c Latin 2 English 2 English 1b Philosophy 1 History 1 German 2, or French 2 Bible 1 Physical Culture ½	hrs. 4 Biology 2, or Chemistry 1 Mathematics 3 Philosophy 1 English 2 English 1b History 1 Elective Physical Culture ½	hrs. 3 Mathematics 3 Chemistry 1 Philosophy 1 English 2 English 1b German 2 French 2 Physical Culture ½	hrs. 3 History 1 English 2 English 1b Philosophy 1 Biology 2, or Chemistry 1 Elective Physical Culture ½	hrs. 1 English 2 English 1b German 2 French 2 History 1 Philosophy 1 Biology 2, or Chemistry 1, or Latin 2 Physical Culture ½
Second Semester		3 Greek 1c Latin 2 English 2 English 1b Philosophy 2 History 1 German 2, or French 2 Bible 1 Physical Culture ½	4 Biology 2, or Chemistry 1 Mathematics 3 Philosophy 2 English 2 English 1b History 1 Elective Physical Culture ½	3 Mathematics 3 Chemistry 1 Philosophy 2 English 1b German 2 French 2 Physical Culture ½	3 History 1 English 2 English 1b Philosophy 2 Biology 2, or Chemistry 1 Elective Physical Culture ½	1 English 2 English 1b German 2 French 2 History 1 Philosophy 2 Biology 2, or Chemistry 1, or Latin 2 Physical Culture ½

JUNIOR

Group I	Group II	Group III	Group IV	Group V
<i>Classical</i>	<i>Chemical-Biological</i>	<i>Mathematical-Phys'c'l</i>	<i>Historical-Political</i>	<i>Modern Language</i>
hrs. 3 Greek 1 Latin 3 Philosophy 3 English 3 Economics 1 Biology 2, or Chemistry 1, or Physics 1	hrs. } 4 Biology 2, or Chemistry 1 } 4 Biology 3, or Chemistry 2 } 3 Mathematics 4 Economics 1 Elective 3	hrs. 4 3 Mathematics 4 Physics 1 Chemistry 2 Astronomy 4 Elective 2	hrs. 3 3 History 2 Economics 1 Philosophy 3, or } Education 1 } English 3 Elective 5	hrs. 3 3 English 3 English 4 German 3 French 3 Economics 1 History 2
3 Latin 3 Philosophy 4 English 3 Biology 2, or Chemistry 1, or Physics 1 Elective 3	} 4 Biology 2, or Chemistry 1 } 4 Biology 3, or Chemistry 1 } 3 Mathematics 5 Elective 6	3 4 4 6 Mathematics 5 Physics 1 Chemistry 3 Elective 6	3 3 History 3 Economics 2 Philosophy 4, or } Education 2 } English 3 Elective 5	3 2 3 3 3 English 3 English 8 German 3 French 3 History 3 Elective 3

First Semester

Second Semester

SENIOR

Group I		Group II		Group III		Group IV		Group V	
Classical		Chemical-Biological		Mathematical-Phys'c'l		Historical-Political		Modern Language	
Greek 2 Philosophy 5 History 4 Bible 3 Elective	hrs. 3 2 3 2 6	Biology 4, or Chemistry 6 Physics 1 Bible 3 Elective	hrs. 4 4 2 6	Mathematics 7 Physics 2 Bible 3 Elective	hrs. 3 4 2 7	History 4 History 5 Philosophy 5 Bible 3 Elective	hrs. 3 3 2 2 6	English 9 Philosophy 5 Bible 3 Elective	hrs. 3 2 2 9
Greek 2 Philosophy 5 History 4 Bible 3 Elective	3 2 3 2 6	Biology 4, or Chemistry 6 Physics 1 Bible 3 Elective	4 4 2 6	Mathematics 8 Physics 2 Bible 3 Elective	3 4 2 7	History 4 History 6 Philosophy 5 Bible 3 Elective	3 3 2 2 6	English 9 Philosophy 5 Bible 3 Elective	3 2 2 9

For elective studies not mentioned in the outline of courses see description of courses under Departments of Instruction, pages 31 to 44 of the catalogue.

PHILOSOPHY AND EDUCATION

Professorship of Philosophy and Education vacant collegiate year 1913-14.

PHILOSOPHY

1. Psychology—Three hours. First Semester.

Special emphasis will be upon (1) the application of psychological laws to practical life, and (2) the philosophical bearing of certain psychological principles. Thus, without departing from the mode of treatment appropriate to a natural science, this course will be made to serve as a general introduction to philosophy. Text-book, Angell's *Psychology*.

2. Logic—Three hours. Second Semester.

The intimate relation between Logic and Psychology will be emphasized throughout the course. From this point of view the traditional subject matter of elementary logic will be carefully discussed and the detection and classification of fallacies drilled upon. About half the time of the course will be given to Inductive Logic. Text-book, Hibben's *Logic: Deductive and Inductive*.

3. History of Ancient Philosophy—Two hours. First Semester.

In this course, and in its sequel, Philosophy 4, the aim will be (1) to trace the development of philosophy, pointing out what of permanent value each system, as it arose, contributed toward a final solution of the problem of the nature of being, and (2) to show the interaction between philosophic thought and the practical life of the period during which it flourished.

4. History of Modern Philosophy—Two hours. Second Semester.

The work will be critical as well as expository, and an effort will be made at reconstruction on the basis of the great systems of philosophy worked out from Descartes to Spencer.

5. Ethics—Two hours. Throughout the year.

This course will be primarily constructive and only in so far critical and historical as its constructive purpose demands. Much attention will be given to the practical bearing of the doctrine set forth on the pressing problems of today—such as individualism, the integrity of our social institutions, the problems which grow out of progress, etc.

Only Philosophy 1, 2, and 5 offered 1913-14.

EDUCATION

1. History of Education—Three hours. First Semester.

A study of pedagogical theories and practices, from the early days of China to the present with some reaction upon the doctrines discussed. Text-book Monroe's *Text Book in the History of Education*.

2. School Management—Three hours. Second Semester.

A consideration of the practical problems involved in class management and in school supervision.

3. The Principles of Education—Three hours. First Semester.

Discussion of the nature and ends of education, its psychological bases, general methods, etc. Text-book, Bagley's *The Educative Process*, with many library references. Either practice teaching or two theses will be required as a part of the work of the course.

4. Secondary Education—Three hours. Second Semester.

This course deals primarily with the American High School of today but some attention will also be given to the history of our secondary school system in the United States and to the secondary schools of Europe. The course will consist of two parts: (1) The general problems of the high school, and (2) The high-school curriculum. Text-books, Brown's *The American High School* and Johnson's *High School Education*. Either practice teaching or two theses.

DEPARTMENT OF LATIN

PROFESSOR KIRKLAND

1. **Freshman Latin**—Three hours. Throughout the year. The three units prescribed on page 22 for admission prerequisite.

I. In Language. General grammar with oral and written exercises.

II. In Literature. Historical, Sallust's *Conspiracy of Catiline*; epic, Vergil's *Aeneid*, Books VII- XII; philosophic, Cicero, *De Amicitia*.

III. In Life. Abbott's *Short History of Rome*, Johnston's *Private Life of the Romans*.

2. **Sophomore Latin**. Three hours. Throughout the year.

I. General grammar with written and oral exercises,

II. In Literature. Historical and biographic, Livy, Books I, II, and Tacitus' *Agricola*; lyric, Catullus, *Odes*; philosophic, Cicero, *De Officiis*.

In Life. Carter's *Religion of Numa*, Fairbank's *Mythology*.

3. **Junior Latin**. Three hours. Throughout the year.

I. In Language. General grammar with oral and written exercises.

II. In Literature. Historical, Livy, Books XXI, XXII, and Tacitus, *Germania*; lyric, Horace, *Odes*; critical, Quintilian, Book X.

III. In Life, Tarbell's *History of Greek Art*, Goodyear's *Roman Art*.

4. **Senior Latin**. Three hours. Throughout the year.

I. In Language. History of the Latin Language with oral and written exercises.

II. In Literature. Historical and epistolary, Tacitus, *Annals*, and Cicero's *Letters*; dramatic and satirical, Plautus, *Captivi*, and Horace's *Satires and Epistles*; critical, Cicero, *De Oratore*.

III. In Life. Mackail's *Latin Literature*.

DEPARTMENT OF FRENCH

PROFESSOR KIRKLAND

1. **First Year French**. Four hours first semester. Two hours second Semester.

Exercises in dictation and composition occupy one-third of the time throughout the year. Text-books, Fraser and Squair's *Grammar*, Mérimée, *Colomba*; Labiche et Martin, *Le voyage de Monsieur Perrichon*; Daudet, *Contes choisis*; Dumas, *L'Evasion du Duc de Beaufort*.

2. Second Year French. Three hours. Throughout the year.

The novel, drama, and lyric of the Nineteenth Century are touched upon; the subjunctive mood is studied; oral exercises are used; the history of French Literature is examined.

Text-books: Fraser and Squair's *Grammar*; Saintbury's *History of French Literature*; Dumas' *Monte-Cristo*; Tuckerman, *Simplicité*; About, *Le roi des Montagnes*; Racine, *Athalie*; Hugo, *Hernani*; Bowen's *Modern French Lyrics*.

3. Third Year French. Three hours. Throughout the year.

The study of Modern French Prose and of France's place in civilization. Books: Nodier, *Contes*; Hugo, *Notre-Dame de Paris*; Sand, *Indiana*; Pellissier, *Le mouvement littéraire du XIXe Siècle*; Balzac, *La Cousine Bette*; France, *Silvestre Bonnard*; Foncin, *Le Pays de France*.

GREEK LANGUAGE AND LITERATURE

PROFESSOR SHROYER

1b. Elementary Greek.—Five hours. Throughout the year.

Xenophon: Four Books of the *Anabasis*. Greek Prose.

2c. Advanced Greek.—Three hours. Throughout the year.

Homer: Three books of the *Iliad*, scansion, sight translation, epic poetry. Greek antiquities, Greek literature and Greek prose.

1. Junior Greek.—Three hours. Throughout the year.

Herodotus: Selections from several of the books are read. Review of the Greek historians and the Persian Wars.

Plato: *Apology and Crito*. The Athenian courts.

New Testament. Readings in the Pauline epistles.

2. Senior Greek.—Three hours. Throughout the year.

Xenophon, *Memorabilia*; or Demosthenes, *De Corona*. Socrates and the Socratic schools. The Attic oration.

Sophocles, *Oedipus Tyrannus*; or Aeschylus, *Prometheus Bound*. Development of the Greek Drama. Greek tragedy, comedy and theater.

3. Junior Elective Greek.—Three hours. Throughout the year.

New Testament: Readings in the gospels of *Mark* and *John* and in the *Pauline* and *Catholic epistles*. The object of this course is exegetical and practical. It will include a study of the synoptic gospels and a survey of the letters of Paul.

ENGLISH BIBLE

PROFESSOR SHROYER

1. Teacher Training.—Two hours. First Semester.

2. Bible Study by Doctrines.—Two hours. Second Semester.

3. **Life of Christ**—Two hours. First Semester. Mark as a guide with references to the other gospels.

*4. **Life of Paul**—Two hours. Second Semester. Acts and Pauline Epistles.

5. **Introduction to Bible Study**—Two hours. First Semester.

6. **Scientific Confirmation of Old Testament History**. Two hours. Second Semester.

7. **Introduction to the Study of Comparative Religions**. Two hours. One Semester. This course may be taken instead of either one of the above at the discretion of the teacher.

GERMAN LANGUAGE AND LITERATURE

PROFESSOR SELTZER

1. **Freshman German**—Three hours. Throughout the year.

Literature of the 19th century. Fouqué's *Undine*; Heine's *Die Harzreise*; Freytag's *Die Journalisten*; Scheffel's *Ekkehard*; Müller's *Deutsche Liebe*; *Deutsche Gedichte*; Wenkebach's Composition.

2. **Sophomore German**—Three hours. Throughout the year.

Literature of the 18th century. Representative works of Lessing, Schiller and Goethe will be read, discussed and compared.

3. **Junior German**—Three hours. Throughout the year.

General view of German Literature. Rapid reading of representative authors of each period; reading of selections from German History, Freytag's *Aus dem Jahrhundert des grossen Krieges*. Reports on assigned work.

4. **Middle High German**—Three hours. Throughout the year.

Wright's Middle High German Primer; *Ein Mittelhochdeutsches Lesebuch*; *Nibelungen Lied*; *Gundrun*; *Wolfram Von Eschenbach*, etc.

5. **Scientific German**—Three hours. Throughout the year.

Dippold's *Scientific German Reader*; *Über Bakerien*—Cohn. *Kurzer Abriss der Geschichte der Chemie* will be read.

ENGLISH LANGUAGE AND LITERATURE

PROFESSOR JOHNSON

1. **Theory and Practice of English Composition**—Two hours. Throughout the year.

This course includes a thorough study of technique and extensive writing of short and long themes. There are recitations, lectures and private conferences.

1b. **Critical Exposition**—Long and short themes. One hour. Throughout the year.

First Semester: Principles of criticism; analysis of prose essay style. Second Semester: Argumentation, translation and the analysis of the short story.

*Bible 3 and 4 may be taken instead of Bible 1 and 2 at the discretion of the teacher.



2. See Oratory I—Public Speaking.

3. **History of English Literature**—Three hours. Throughout the year.

This course deals with the work of all the leading authors from the earliest times to the present. Text-books: Moody and Lovett's History of English Literature, and Manly's English Poetry. Prerequisite 1b.

4. **History of American Literature**—Three hours. First Semester.

This course deals with the development of American Literature and its relation to English Literature. A careful study is made of representative authors. Not given 1913-1914.

5a. **English Literature of the Seventeenth Century**.—Three hours. First Semester.

The object of this course is to give the student a fairly complete knowledge of the literature produced in England under Charles I, the Commonwealth, and the later Stuarts. Particular attention is paid to the poetry of Dryden and Milton.

5b. **English Literature of the Eighteenth Century**—Three hours. First Semester.

The object of this course is to treat in a manner as exhaustive as possible the typical writers of the Eighteenth Century. Parallel reading and essays are required.

7. **The Poetry of Chaucer**—Three hours. Throughout the year.

Attention will be paid to the sources from which the poet drew his material and to the language, pronunciation, and versification which he employs.

8. **Prose Fiction**—Three hours. Second Semester.

The history and technique of the novel are outlined and discussed. Masterpieces from each period of development are studied and analyzed. Not given 1913-1914.

9. **Shakespeare as a Playwright**—Three hours. Throughout the year.

The development of the drama from the miracle plays to Shakespeare's time is traced. Shakespeare's plays are then taken up chronologically and studied from the standpoint of theatrical effectiveness.

10. **Advanced Composition**—Two hours. Throughout the year.

Given whenever a class of six applies for it. Course 9 is a prerequisite for the short-story hour. One hour is devoted to essay-writing, argument and debating; the other to short-story writing. Private conferences are required.

MATHEMATICS AND ASTRONOMY

MATHEMATICS

PROFESSOR LEHMAN

1. **Advanced Algebra**—Four hours. First Semester.

Covering ratio and proportion, variation, progressions, the binomial theorem, theorem of undetermined coefficients, logarithms, permutations and combinations, theory of equations, etc.

2. Plane and Spherical Trigonometry—Four hours. Second Semester.

Definitions of trigonometric functions, goniometry, right and oblique triangles, measuring angles to compute distances and heights, development of trigonometric formulae, solution of right and oblique spherical triangles, applications to Astronomy.

3. Analytic Geometry—Three hours. Throughout the year.

The equations of the straight line, circle, ellipse, parabola, and hyperbola are studied, numerous examples solved, and as much of the higher plane curves and of the geometry of space is covered as time will permit.

4. Differential Calculus—Three hours. First Semester.

Differentiation of algebraic and transcendental functions, maxima and minima, development into series, tangents, normals, evolutes, envelopes, etc.

5. Integral Calculus—Three hours. Second Semester.

Integrations, rectification of curves, quadrature of surfaces, cubature of solids, etc.

6. Plane Surveying—Three hours. Second Semester.

A study of the instruments, field work, computing areas, plotting, leveling, etc.

7. Differential Equations—Three hours. First Semester.

A course in the elements of differential equations. *Murray*.

Prerequisite, Mathematics 3, 4 and 5.

8. Analytic Mechanics—Three hours. Second Semester. *Bowser*.

Prerequisite, Mathematics 7.

ASTRONOMY

PROFESSOR LEHMAN

1. General Astronomy—Four hours. First Semester.

The department is provided with a fine four-and-a-half inch achromatic telescope equatorially mounted, of which the students make free use.

HISTORY AND POLITICAL SCIENCE

PROFESSOR SHENK AND MR. SNAVELY

1. Mediaeval and Modern History—Three hours. Throughout the year.

A general survey of the history of Western Europe from the barbarian invasions to the present time. Text-book, lectures, written tests, special papers, collateral readings. Harding, *Essentials in Mediaeval and Modern History*; Robinson's *Readings*. Required in all groups.

2. History of England—Three hours. First Semester.

The early development of the English Constitution, The Tudor dynasty, the Puritan Revolution and the Revolution of 1688.

3. Economic History of the United States—Three hours. Second Semester.

A study of the economic and industrial development of the United States.

4. United States Political and Constitutional History—Three hours. Throughout the year.

A full course covering the colonial and constitutional periods. An extensive reading course of original and secondary sources is required. Elson: *History of the United States*.

5. Political Science—Three hours. First Semester.

A study of various theories of the State and of the structure and province of government. Garner: *Elements of Political Science*.

6. International Law—Three hours. Second Semester.

A course in the Fundamental Principles of International Law. Much time is given to the study of important cases. Lawrence: *The Principles of International Law*.

ECONOMICS AND SOCIOLOGY

PROFESSOR SHENK

1. Economics—Three hours. First Semester.

A general course in economic theory, supplemented by consideration of practical current problems. Careful consideration will be given the different points of view of the leading economists. Johnson: *Introduction to Economics*.

2. Current Labor Problems—Three hours. Second Semester.

A course devoted to a study of the important labor problems of the present day: Strikes, labor organizations, employer's associations, arbitration, trade agreement, labor legislation, etc.

3. Theory of Sociology—Two hours. Throughout the year.

The course is intended to give the student a knowledge of the various theories of society together with the place of Sociology in the general field of learning.

BIOLOGY

PROFESSOR DERICKSON AND MR. ARNDT

1. Plant Biology—Four hours. Throughout the year.

Three lectures or recitations and two laboratory periods of two hours each, per week. The object of the course is to give the student a broad general knowledge of the plant kingdom. The form, structure and functioning of one or more types of each of the divisions of algae, fungi, liverworts, mosses, ferns and flowering plants, are studied. Special attention is given to the ontogeny and phylogeny of the several groups suggestive of evolution.

Experiments are performed in the laboratory to determine some of the relations of plants to water, gravitation, temperature and light. Several types of seeds are studied as to their structure, germination and development. The principles of classification are learned by the analysis and identification of representatives of at least twenty-five orders of spermatophytes.

The laboratory and class-room work is supplemented by frequent field trips.

Each student is supplied with a compound microscope, dissecting instruments, note and drawing materials, and portfolio.

Required of Freshmen in Chemical-Biological group. Elective for others.

Text-books: *Text-book of Botany*, Coulter, Barnes, and Cowles. Gray's *New manual of Botany, Laboratory and Field Manual of Botany*, Bergen and Davis.

2. Animal Biology—Four hours. Throughout the year.

Three lectures and two laboratory periods of two hours each, per week.

The principles of biology are learned by making a careful comparative study of representatives of several phyla of animals. The amoeba, euglena, paramecium, vorticella, sponge, hydra, starfish, earthworm, crayfish, grasshopper, mussel, amphioxus and frog are studied. A careful study is made of the embryology of the frog. The process of development is closely watched from the segmenting of the egg until metamorphosis takes place. Each student is taught the principles of technic by preparing and sectioning embryos at various stages of development. From these and other microscopic preparations the development of the internal organs and origin of tissues is studied. This is followed by a histological study of the tissues of the adult frog.

Each student is required to keep a record of all work done in the laboratory in carefully prepared notes and drawings.

For Sophomores in the Chemical-Biological group. Elective for others.

Text-books: Hegner's *College Zoölogy*, Holms', *The Frog*.

3. Comparative Vertebrate Antomy—Four hours. Throughout the year. Six hours' laboratory work and two conferences each week.

The course consists of the dissection and thorough study of a suctorial fish, a cartilaginous fish, a bony fish, an amphibian, a reptile, a bird and a mammal. Carefully labeled drawings are required of each student as a record of each dissection.

Text-books: Pratt's *Vertebrate Zoölogy*, Kingsley's *Text-book of Vertebrate Zoölogy*.

4. *Vertebrate Histology and Embryology—Four hours.

Histology.

Two conferences and six hours' laboratory work per week.

*Biology 3 and Biology 4 are given in alternate years. Biology 3 will be given in 1914-1915.

The normal histology of the human body is made the basis of the class work. Each student is required to acquire a practical knowledge of all phases of histological technic.

All the tissues as well as the structure of all of the organs of the body are studied. Each student prepares about one hundred and fifty slides.

Text-book: *A Manual of Histology and Organography*, Hill.

Elective for Juniors and Seniors.

Embryology—Second week in March to the end of the year. Two lectures and six hours laboratory work per week. The laboratory work is based on the development of the chick and comparisons made with that of the frog and mammal. A study is made of living embryos at various stages of development. These are later killed, prepared and sectioned by the student for the study of the development of the internal organs. Fully labeled drawings are required.

Text-book: *Introduction to Vertebrate Embryology*, Reese.

Elective for Juniors and Seniors.

CHEMISTRY

PROFESSOR WANNER AND MR. UHRICH

1. General Chemistry—Four hours. Throughout the year.

Three hours lectures and recitations and four hours laboratory work. Non-metals and their compounds.

Metals and their compounds, and some qualitative analysis.

The laboratory work comprises about two hundred and fifty experiments in general inorganic chemistry, followed by qualitative analysis.

Text-book: Remsen's *College Chemistry*.

While the course presupposes no previous knowledge of chemistry, it is advisable to have completed a course in elementary chemistry.

2. Qualitative Analysis—Four hours. First Semester.

One hour lecture and a minimum of eight hours laboratory work. First semester.

Pre-requisite Chemistry I.

Methods of separating and detecting the bases. The six groups.

Methods of separating and detecting the acids. The analysis of solids, including both acids and bases.

The laboratory work comprises: First, a study of the reactions of the metallic salts; Second, the separation and detection of the acids and bases.

The student is required to analyze a number of unknown substances both in solid and liquid form.

Text-book: Prescott and Johnson's *Qualitative Analysis*.

3. Quantitative Analysis—Four hours. Second Semester.

One hour lecture and a minimum of eight hours laboratory work. Second Semester.

Pre-requisite Chemistry 2.

A few simple gravimetric and volumetric determinations and a study of the chemical operations involved.

The determinations of the more important elements. The analysis of limestone. The analysis of a few common ores and alloys.

Text-book: Talbot's *Quantitative Analysis*.

4. Quantitative Analysis—Four hours. Throughout the year.

One hour lecture and eight hours laboratory work.

Pre-requisite Chemistry 3.

Advanced gravimetric analysis.

Advanced volumetric analysis.

Text-book: Fresenius, *Quantitative Analysis*.

5. Organic Chemistry—Four hours. Throughout the year.

Two hours lectures and six hours laboratory work.

Pre-requisite Chemistry I.

Introduction to, and study of the fundamental principles of organic chemistry.

The aliphatic compounds.

The aromatic compounds.

The laboratory work consists in the preparation and purification of a number of typical organic compounds.

Text-books: Remsen's *Organic Chemistry*, and Cohen's *Practical Organic Chemistry* (laboratory manual.)

6. Industrial Chemistry—Four hours lectures and recitation.

Pre-requisite Chemistry I.

A study of the practical applications of chemistry.

Trips are taken to industrial plants in the immediate vicinity.

Text-book: Thorpe's *Outlines of Industrial Chemistry*.

GEOLOGY

PROFESSOR WANNER

1. General Geology.—Four hours. Second Semester.

Four hours lectures and recitations.

Dynamical, structural and historical geology.

Also some practical work in the geological field trips in the immediate vicinity.

Text-book: Scott's *Introduction to Geology*.

AGRICULTURE

PROFESSOR WANNER

1. Agriculture—Four hours. First Semester.

Four hours lectures and recitations and four hours laboratory work. First Semester.

A study of the principles and some of the practical applications of farming.

Text-book: Warren's *Elements of Agriculture*.

PHYSICS

PROFESSOR GRIMM

1. General Physics—Four hours. Throughout the year. Three hours lecture and recitations and four hours laboratory work.

First Semester—Mechanics of solids, liquids and gases. Sound.

Second Semester—Heat, light, magnetism, and electricity.

The aim of the course is to give the student a good knowledge of college physics.

Text-books: Kimball's *College Physics*. Ames and Bliss's *Manual of Experiments in Physics*, Nichol's *Laboratory Manual of Physics and Applied Electricity*.

Prerequisite—Mathematics 1 and 2.

PHYSICAL CULTURE

The Physical work from the opening of school to December 1 consists of out-door sports, and, although not compulsory, all are urged to participate. Most stress is placed on the training of the Varsity football team, however, and as much attention as possible is given to the teaching of the rudiments to inexperienced men. Tennis is the other sport offered at this season. Fall tournaments for both men and women are arranged. Much interest has been shown recently in this sport. We now have three fine courts on the campus and if the interest continues more will have to be added.

Our indoor work begins December 1 and lasts until the end of the winter term. This work consists of gymnastic classes two days a week and is compulsory for all Sophomores, Freshman, and Preparatory students. One hour credit is received for this work. Juniors and Seniors may elect this course but receive no credit.

The work will consist of marching, calisthenic drills, elementary work on the heavy apparatus, folk dancing and group games.

The aim of the course will be to keep the students in good physical condition and to prepare them to handle similar work in grade or high schools.

Besides the required work, opportunity is given for basket ball, hand ball, volley ball, indoor base ball, and special apparatus work outside of class hours.

In the spring opportunity is given for baseball, track, and tennis. Representative teams are selected in each of these sports and schedules arranged with other colleges. The spring work, like that of the fall, is not compulsory but every student is urged to select at least one of these sports.

1. Freshman Physical Culture—One-half hour. Two hours per week, December 1 to April 1.

2. Sophomore Physical Culture—One-half hour. Two hours per week December 1 to April 1.

ORATORY AND PUBLIC SPEAKING

PROFESSOR ADAMS

The work of this department is primarily personal culture, the highest development of the personality of the student. "The development of the art of oratory is the development of the orator himself."

The course of Oratory affords opportunity for those who wish to develop their powers of expression either as interpreters or creative thinkers, through the interpretive study of the finest in literature. As the interpretation and adequate expression of the literature demands a high degree of mental activity at the moment of speech, and the student must think and feel with the author, his mental and spiritual powers are quickened with every step, and his progress tested by his ability to move his audience, the class.

The course requires two years of study of prescribed work. Upon the completion of the studies a certificate is awarded.

Students entering the regular course must have had a high school course or its equivalent.

GENERAL OUTLINE

1. Public Speaking. (English 2)
Orations, Debate, Extemporaneous Speaking, Impersonations.
2. Voice Training.
Vocal Technique, Placing, Tone Color.
3. Literary Interpretation.
Evolution of Expression; Laws of Art; Poetic Interpretation.
4. Dramatic and Platform Art.
Shakespeare, Dramatic Training, Deportment, Private Lessons.
5. Physical Training.
Expressive Physical Culture, Gesture, Response.
6. English and Literature.
Rhetoric, Composition, History of English Literature.
7. Pedagogy.
Psychology, Normal Training, Methods.

DESCRIPTION OF COURSES

1. **Public Speaking.** (English 2) One hour. Throughout the year. Required of Sophomores. Open to others at discretion of instructor.

This aims to give the student practice in the fundamentals of oral expression. Physical and voice exercises for securing poise, freedom and unity, breathing and articulation, placing and radiation of tones.

Study of the lives and methods of great orators. Drill in interpreting and delivering orations and other forms of literature.

Extemporaneous speaking, arguments, occasional speeches and original orations, impersonation, characterization, dramatic study and presentation of scenes from some of Shakespeare's plays.

2. Voice Training. Exercises for breath control, for freeing of voice by proper placing and direction of tone, purity, flexibility, radiation, resonance, and power; pitch, volume and inflection in emphasis. Tone color and form, ideal and imaginative qualities in tone. Diction.

Given daily throughout course.

3. Literary Interpretation. Development of the principles of Public Address.

a. Evolution of Expression. Two hours. Throughout the year. Study of selections from great orators, essayists, poets and dramatists. Practical drill work before class for developing power of student through application of principles to his individual needs. Personal criticism and guidance to bring out originality of Student.

b. Prefective Laws of Art. Two hours. Throughout the year. Expressive study of different forms of literature with particular attention to the laws of art which logically follow the sixteen steps of the Evolution. Dramatic work.

(Two hours credit in college is given for each of above courses, *a* and *b*, when taken with one private lesson a week.)

c. Poetic Interpretation. One hour. Throughout the year. Special interpretative and critical study of the great poets, with presentation and criticism before class, to acquaint student with masters of literary art, to develop appreciation of music and suggestiveness of poetry, and imaginative and poetic elements in work. Study of poetic forms.

Attention is given to the choice, adaptation, and abridgement of selections for public reading.

4. Dramatic and Platform Art. One hour. Throughout the year. Interpretation and dramatic study of Hamlet, Macbeth, Othello, Merchant of Venice, Julius Caesar and As You Like It. Presentation of prepared scenes for criticism. Practical work in stage business, deportment and grouping.

Platform deportment, correct bearing and presentation before audience. Platform methods and traditions. Pantomime, study of emotions. Freedom and responsiveness in bodily expression.

Sketches and plays are given from time to time during the year, which with the annual college play provide special dramatic training for many.

Private lessons, with attention to the special needs of the students, either in overcoming habits, or in personal development and repertoire, are given throughout the course to supplement the class work. More time is given to selections, arrangement of programs, writing introductions, etc. One hour a week.

5. Physical training. Exercises for securing poise, bearing, freedom and ease in movement; to gain control over body and render it responsive to thought. Response in bearing and dramatic attitudes. Gesture drill for definite expressions through different realms.

Given daily throughout course.

6. English and Literature.

Composition and Rhetoric. (English 1.)

English 1-b, and English Literature. (English 3.)

7. Psychology. Philosophy 1.

Normal Training and Methods. One hour. Throughout the year. Practice in teaching and class management. Under the direction and criticism of the instructor the Seniors conduct class work, lecture upon principles and discuss their application.

Recitals. A recital is given at least once a term for which the students are carefully prepared. These afford the students public platform practice by which they gain confidence and experience.

Each Senior is required to adapt and arrange a program for a public recital, from some piece of literature approved by the instructor.

TUITION

Matriculation and Physical Culture, \$6.00. Non-resident students may be exempted from physical culture.

All tuition is payable in advance. No reduction is allowed for absence for the first or second week of the terms, nor for lessons missed during the terms except in case of protracted illness.

Regular Course, fall term \$30, winter and spring terms each \$25.

Special courses in Literary Interpretation, with one private lesson a week, fall term, \$15, winter and spring terms, each \$12.50.

Private lessons, \$1.00.

Other classes will be formed when there is a call for any special line of work.

Fee for certificate, \$2.50.

REGISTER OF STUDENTS

Graduate Students

Fleming, Mervin R., A.B., B.D.	Baltimore, Md.
Linebach, Norman, L., A.B., B.D.	Hershey, Pa.
Mulhollen, Victor D., A.B.	Lebanon, Pa.

Seniors

Arndt, Charles H.	Annville, Pa.
Bachman, Catherine B.	Annville, Pa.
Charlton, Harry H.	N. Bellerica, Mass.
Harnish, Leray Bowers.	Carlisle, Pa.
Heffelfinger, Victor M.	Annville, Pa.
Landis, Edgar M.	Myerstown, Pa.
Lyter, Thomas B.	Harrisburg, Pa.
Lyter, John Bowman.	Harrisburg, Pa.
Meyer, E. May.	Annville, Pa.
Mutch, C. Edward.	Schuylkill Haven, Pa.
Olewiler, Howard L.	York, Pa.
Reddick, D. Leonard.	Walkersville, Md.
Risser, Blanche M.	Campbelltown, Pa.
Rodes, Lester A.	York, Pa.
Schmidt, Carl F.	Lebanon, Pa.
Smith, Edward H.	Annville, Pa.
Snavely, Henry Elias.	Lebanon, Pa.
Snyder, Martha E.	Chambersburg, Pa.
Stager, William S.	Lebanon, Pa.
Strickler, Paul L.	Lebanon, Pa.
Uhrich, Clarence H.	Hershey, Pa.
Urich, M. Josephine.	Annville, Pa.
Walters, J. Allen.	Lebanon, Pa.
Weidler, Russell M.	Coatesville, Pa.
Zimmerman, D. Ellis.	Annville, Pa.

Juniors

Bender, Harry M.	Annville, Pa.
Blough, Gideon L.	Annville, Pa.
Bowman, Paul J.	Middletown, Pa.
Eby, Ira Clyde.	Lebanon, Pa.
Engle, Ruth E.	Palmyra, Pa.
Engle, Ruth V.	Hummelstown, Pa.
Engle, Larene.	Hummelstown, Pa.
Gibble, Phares B.	Annville, Pa.
Houser, Ethel I.	Baltimore, Md.
Irwin, Mary L.	Harrisburg, Pa.

Jamison, Verling M.	Warsaw, Ind.
Jones, John O.	Paradise, Pa.
Kiracofe, Myra G.	Hagerstown, Md.
Leister, J. Maurice	Cocolamus, Pa.
Lerew, John W.	Dillsburg, Pa.
Mentz, Florence C.	York, Pa.
Ness, John H.	Yoe, Pa.
Orris, Mae Belle.	Steelton, Pa.
Shearer, Frank.	Harrisburg, Pa.
Snavely, Carl G.	Ramey, Pa.
Statton, Philo A.	Hagerstown, Md.
Stengle, Faber E.	Oberlin, Pa.
Stickel, Ralph.	Waynesboro, Pa.
Van Schaack, Frank M.	Harrisburg, Pa.
Weaver, Alvin L.	Annville, Pa.
Young, David E.	Manheim, Pa.
Zug, Lester B.	Chambersburg, Pa.

Sophomores

Beaverson, Naomi D.	York, Pa.
Black, Violet Blanche.	Annville, Pa.
Blauch, Victor R.	Annville, Pa.
Brenneman, C. E.	Windsor, Pa.
Brubaker, Raymond E.	Lebanon, Pa.
Crabill, Ralph E.	Hanover, Pa.
Curry, Conrad K.	Swatara Station, Pa.
Deitzler, C. J.	Fredericksburg, Pa.
Ernst, Ira Sankey.	Hagerstown, Md.
Evans, David J.	Lykens, Pa.
Gingrich, Ruth A.	Lebanon, Pa.
Gruber, E. Viola.	Campbelltown, Pa.
Hartz, Robert E.	Palmyra, Pa.
Heintzelman, Esther.	Chambersburg, Pa.
Heintzelman, S. Huber.	Chambersburg, Pa.
Hollinger, Joseph K.	Lebanon, Pa.
Holtzinger, Charles Henry.	Annville, Pa.
Innerst, J. Stewart.	Dallastown, Pa.
Light, Raymond H.	Annville, Pa.
Long, D. Mason.	Annville, Pa.
Long, John.	Annville, Pa.
Mathias, Josephine S.	Highspire, Pa.
McNelly, Willis.	Pottstown, Pa.
Moyer, Esther K.	Hershey, Pa.
Myers, Vera.	Longsdorf, Pa.
Oyler, Helen.	Chambersburg, Pa.

Shaud, Albert G.....	Annville, Pa.
Shenberger, Jacob F.....	Dallastown, Pa.
Snyder, Addie Ethel.....	Lebanon, Pa.
Whiskeyman, Ruth.....	Annville, Pa.
Whitmeyer, Paul.....	Annville, Pa.
Zuse, Clayton H.....	Myersville, Md.

Freshmen

Bachman, Esther M.....	Annville, Pa.
Bachman, Paul Theodore.....	Annville, Pa.
Bergdoll, Mary A.....	York, Pa.
Boeshore, Harry F.....	Lebanon, Pa.
Boltz, Kathryn A.....	Annville, Pa.
Brunner, Evan C.....	Myersville, Md.
Carl, Boyd C.....	Pine Grove, Pa.
Clark, Pauline.....	Hershey, Pa.
Dando, Harry S.....	Lebanon, Pa.
Dasher, Katherine.....	Harrisburg, Pa.
Daugherty, Mary Lucinda.....	Columbia, Pa.
Donohue, Joseph.....	Shamokin, Pa.
Durzulaitis, James.....	Mt. Carmel, Pa.
Engle, Allen B.....	Palmyra, Pa.
Fink, David.....	Annville, Pa.
Fink, Homer F.....	Annville, Pa.
Gantz, Lillian.....	Annville, Pa.
Garver, Mary E.....	Lebanon, Pa.
Gehrleindaub, Anna.....	Reading, Pa.
Hartman, Earl.....	Red Lion, Pa.
Herring, John H.....	Pine Grove, Pa.
Henry, Louise A.....	Annville, Pa.
Horstick, Charles B.....	Campbelltown, Pa.
Huber, Ruth Hershey.....	Williamson, Pa.
Kleffman, Albert Henry.....	Baltimore, Md.
Light, Claude F.....	Annville, Pa.
Loomis, Charles H.....	Harrisburg, Pa.
Long, Abram M.....	Annville, Pa.
Miller, Nancy Margaret.....	Lebanon, Pa.
Maul, H. C.....	Hanover, Pa.
Mutch, M. Ella.....	Schuylkill Haven, Pa.
Myers, Margaret.....	Altoona, Pa.
Page, Flora M.....	Lebanon, Pa.
Reigel, Harvey.....	Lebanon, Pa.
Risser, Harold W.....	Campbelltown, Pa.
Rutherford, Joseph D.....	Royalton, Pa.
Rupp, Russel.....	Harrisburg, Pa.

Sherk, A. Herman.....	Annville, Pa.
Shonk, Alvin E.....	Mt. Joy, Pa.
Smith, Florence O.....	Dallastown, Pa.
Snavey, Earl Russel.....	Ramey, Pa.
Snyder, Mabel.....	Lebanon, Pa.
Snyder, Lester F.....	Red Lion, Pa.
Stine, Frank L.....	Annville, Pa.
Swartz, Ross.....	Hummelstown, Pa.
Swartz, William K.....	Middletown, Pa.
Taylor, Ruth.....	Jersey Shore, Pa.
Umberger, Leroy O.....	Hummelstown, Pa.
Wagner, Paul S.....	Hershey, Pa.
Wagner, W. Dwight.....	Red Lion, Pa.
Wareheim, Esta.....	Baltimore, Md.
Weaver, Elta.....	Annville, Pa.
Wenrich, Marlin.....	Hummelstown, Pa.
Williams, Reuben W.....	York, Pa.
Wolfe, Violet I.....	Lebanon, Pa.
Zeigler, Edwin Harold.....	Elizabethville, Pa.
Ziegler, Helen E.....	York, Pa.

Special Students

Dubble, Anna I.....	Myerstown, Pa.
Eichelberger, Earl.....	Oberlin, Pa.
Huber, Michael K.....	Lickdale, Pa.
Keboch, F. D.....	Hershey, Pa.
Kendig, Lillian.....	Shippensburg, Pa.
Kratzer, Clayton C.....	Middleburg, Pa.
Kreider, Emma R.....	Lebanon, Pa.
Lynch, Clyde A.....	Harrisburg, Pa.
Lutz, P. Henry.....	Denver, Pa.
March, J. G.....	Dover, Pa.
Mickey, William Earl.....	Harrisburg, Pa.
Moll, Richard M.....	Robesonia, Pa.
Pell, Thomas.....	Lykens, Pa.
Spitler, H.....	Jonestown, Pa.
Steinhauer, Ruth.....	Lemoyne, Pa.
Von Bereghy, Marcel.....	Harrisburg, Pa.
Yarrison, Guy R.....	Carroll, Pa.

Oratory Students

Students doing special work in Oratory

Baker, Maude.....	Shippensburg, Pa.
Donmoyer, Jeanette.....	Lebanon, Pa.
Dubble, Anna.....	Myerstown, Pa.

Kreider, Kathryn.....	Palmyra, Pa.	
Leitheiser, Margaret.....	Hershey, Pa.	
McGowan, Jennie.....	Lebanon, Pa.	
Nissley, Mary.....	Middletown, Pa.	
Regular students in Oratory department.....		7
Students matriculated in other departments who receive instruction in oratory.....		15
		<hr/>
Total receiving instruction in oratory.....		22

SUMMARY

Graduate Students.....	3
Seniors.....	25
Juniors.....	27
Sophomores.....	32
Freshmen.....	57
Special Students.....	17
	<hr/>
Total in college.....	161
Academy.....	54
Conservatory.....	82
Department of Oratory.....	7
Department of Art.....	13
	<hr/>
Total in all departments.....	317
Names repeated.....	12
	<hr/>
Total Enrollment.....	305

DEGREES CONFERRED JUNE, 1913

Doctor of Divinity

I. E. Runk

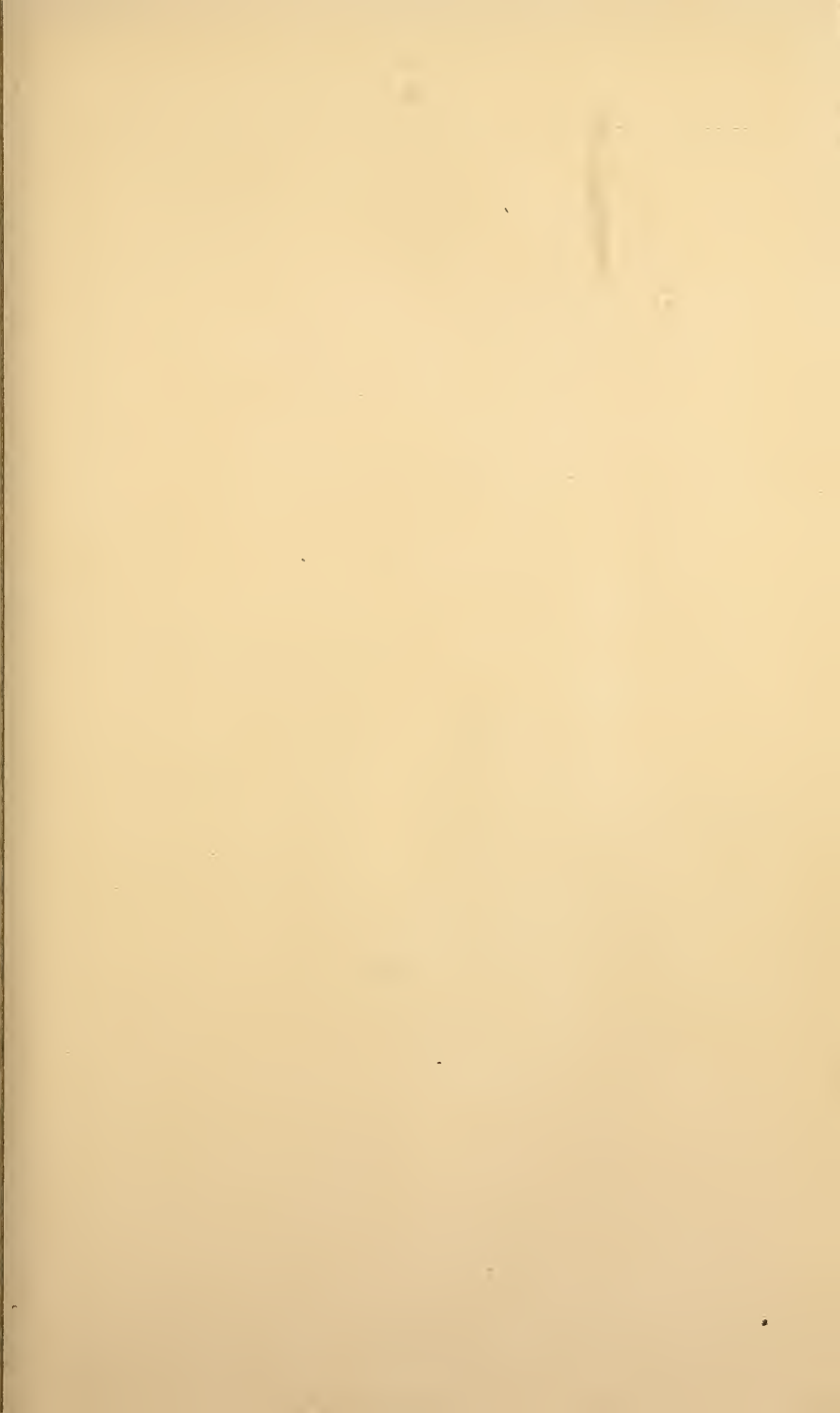
John W. Owen

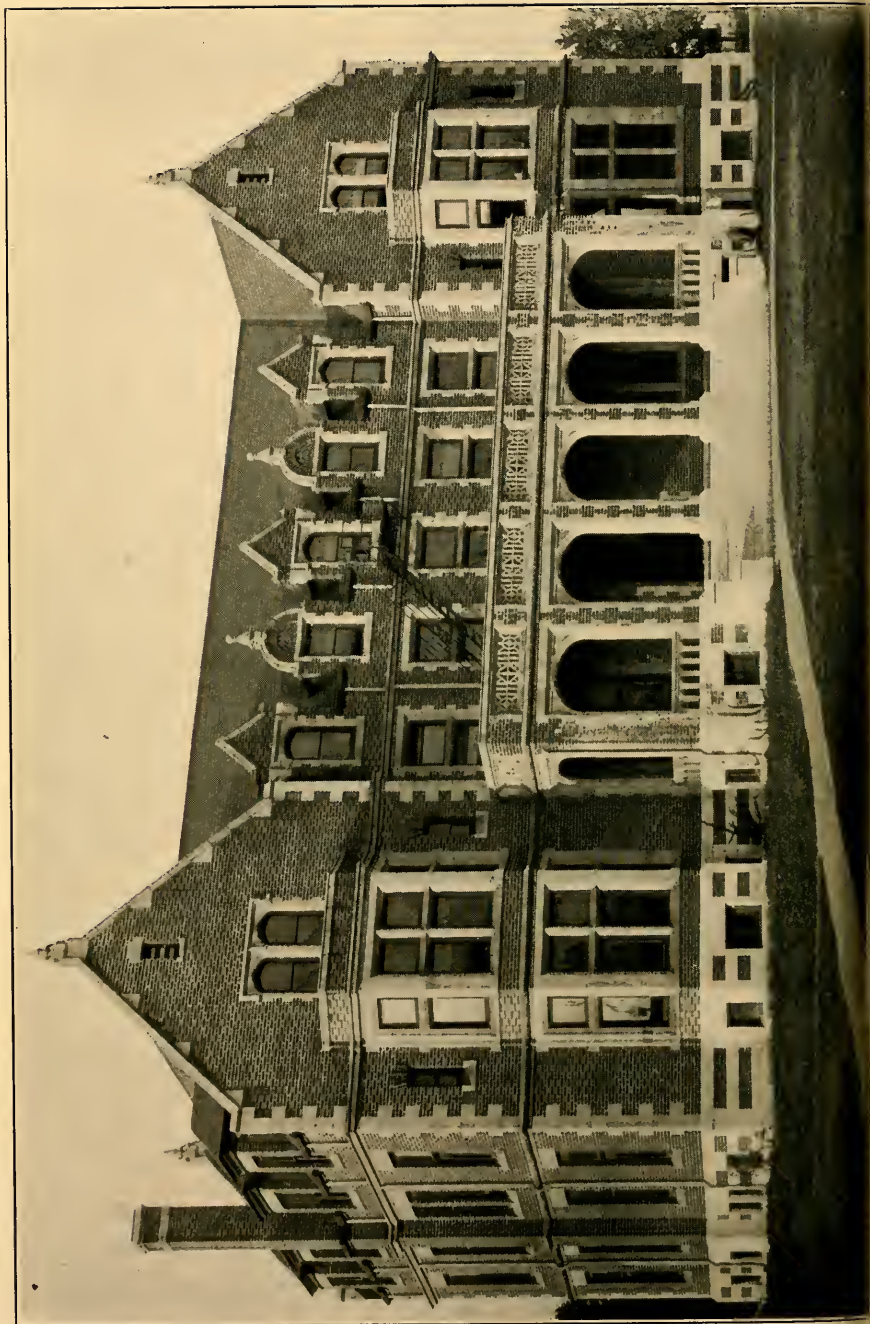
Master of Music

J. H. Ruebush

Bachelor of Arts

Boughter, Ezekiel Kephart	Ressler, Ivan L.
Christeson, Florence E.	Richie, G. Adolphus
Clippinger, Florence E.	Roberts, Palmer F.
Horne, Clara K	Sherk, John E.
Klinger, Landis R.	Spessard, Lottie May
Lehman, Edith M	Ulrich, Harry Edwin
Leininger, John F.	Ulrich, Charles Y.
Light, Boaz G	Wert, Mark Hopkins
Mulhollen, Victor D.	Williams, George Albert
Rechard, Elizabeth Hay	Yarkes, Edna E.
Zimmerman, Sara Esther	





Lebanon Valley Academy

Preparatory School

OF

Lebanon Valley College

FOUNDED 1866

ANNVILLE, PA.

SCHOOL CALENDAR

1913-1914

1913

September 8-9, Examination and Registration of Students.
September 10, Wednesday, College year began.
November 21, Friday, Anniversary of Clonian Literary Society.
November 27-28, Thanksgiving Recess.
December 19, Friday, Christmas Recess began.

1914

January, 5, Monday, 1 p. m., Christmas Recess ended.
January 19-23, Mid-year examinations.
January 22, Thursday, Day of Prayer for Colleges.
January 26, Monday, 7:45 a. m., Second Semester begins.
February 8, Sunday, Day of Prayer for Students.
March 18, 4:00 p. m., Spring Recess begins.
March 25, 9:00 a. m., Spring Recess ends.
April 3, Anniversary Kalozetean Literary Society.
May 1, Anniversary Philokosmian Literary Society.
May 27-28-29, Senior final examinations.
May 30, Memorial Day.
June 1-5, Final Examinations.
June 6, 7:45 p. m., Academy Commencement.
June 7, Sunday, 10:30 a. m., Baccalaureate Sermon by President G. D. Gossard, D.D.
7:30 p. m., Address before the Christian Associations.
June 8, Monday, 7:45 p. m., Exercises by the Graduating Classes in Music and Oratory.
June 9, Tuesday, 9:00 a. m., Meeting of Board of Trustees.
2:00 p. m., Class Day Exercises.
7:45 p. m., Junior Oratorical Contest.
June 10, Wednesday, 10:00 a. m., Forty-eighth Annual Commencement.

1914-1915

1914

September 7-8, Examination and Registration of Students.
September 9, Wednesday, 9:00 a. m., Instruction begins.
November 20, Friday, Anniversary Clonian Literary Society.
November 25, Wednesday, 4:00 p. m., Thanksgiving Recess begins.
November 30, Monday, 9:00 a. m., Thanksgiving Recess ends.
December 18, Friday, 4:00 p. m., Christmas Recess begins.

1915

January 4, Monday, 1:00 p. m., Christmas Recess ends.
January 18-22, Mid-year Examinations.
April 1, 4:00 p. m., Easter Recess begins.
April 5, 4:00, p. m., Easter Recess ends.
June 2, Forty-ninth Annual Commencement.

FACULTY

SAMUEL O. GRIMM, B.Pd., A.B.

Principal

ROY G. GUYER, A.B., B.P.E.

Latin

LESTER A. RODES

History and Mathematics

FLORENCE BOEHM

Drawing

PHILO A. STATTON

Mathematics

MARY I. IRWIN

English

EDGAR M. LANDIS

Physical Geography

FRANK M. VAN SCHAACK

English

CATHERINE B. BACHMAN

English

CHARLES H. ARNDT

Biology

PAUL L. STRICKLER

Assistant in Physical Laboratory

HISTORICAL

Lebanon Valley Academy was established in 1866. For forty-seven years it has cherished the ideals of full and accurate scholarship, and the development of character that fits one for the largest service to society. From its inception, college preparatory work has been its main purpose but its curriculum has been well adapted to the needs of those who have entered immediately into practical life or professional study.

BUILDING

The historic Academy Building has been completely remodeled at an expense of about \$3,000 and is now devoted entirely to the use of the Academy. The Academy building is now an imposing three-story structure facing Main street in the beautiful town of Annville and to the rear is the large college campus. The building is electrically lighted and heated by steam. It is provided with hot and cold water, shower baths and all modern conveniences. On the first floor are found the principal's office, general assembly room and reception room; on the second and third floors are provided the principal's apartments and accommodations for twenty-eight boys as well as a Society Hall.

EXAMINATIONS

Examinations are held at the close of each half year. Other examinations will be held whenever the completion of a subject warrants such examination. At this time reports are sent to parents and guardians. More frequent reports are sent when requested by parents. In the Academy records, A, signifies excellent; B, very good; C, fair; D, low but passing; E, conditioned; F, repeat in class. An "E" record may be removed by a test on any part of the course in which the record is poor. For such test a fee of one dollar is charged. An "F" may not be removed by a special examination.

For special tests, given on work not completed because of absence or otherwise, a fee of one dollar is charged. For special examinations a fee of two dollars is charged.

ADMISSION

The applicant should be at least twelve years of age. While no entrance examination is required it is expected that the applicant shall have completed the ordinary common school branches.

Each student should bring with him a certified statement of work done in the school last attended. Blanks for such certification will be provided by the school. Tentative credit will be given for work thus certified, and the student will be permitted to take up his work as near as possible where he left off, but any previous work found to be unsatisfactory will have to be repeated.

Students will be received at any time, but in general it is to the student's advantage to enter in September, or less preferably at the beginning of the second Semester. However, the applicant usually finds enough work if he enters at any time.

SUPERVISION

All students except day students are required to room in the Academy building where they are under the constant supervision of the principal. Thus they not only profit by such personal supervision, but they have opportunities for help and encouragement not possible to other students. Furthermore, living in an atmosphere of activity and application to work, the student can apply himself more effectively to his own work.

Association with boys from other sections, with boys of more experience, will necessarily enlarge the horizon of the boy who has always lived within limited territory and will increase his breadth of vision and augment his usefulness in a larger life than he could otherwise have known.

DISCIPLINE

The institution has very few rules and regulations. Nothing is required but that which is necessary for the smooth progress of the school and for the attainment of the best work from students. Our endeavor is to encourage industry, knowing that then occasions for discipline will seldom occur. The system is intended to teach boys and girls so that they may be able to care for themselves when they enter college or enter the fields of industrial or social activity. We extend no encouragement to the student who has vicious habits and is not inclined to be law abiding.

GRADUATION

Any student who has completed fifteen units of work as outlined in the courses of study, provided that he has completed three units of Mathematics, three units of English, three units of Latin, one unit of Science, and one unit of History, shall be entitled to the school diploma. If the candidate desires to enter Lebanon Valley College he shall arrange his work to meet the entrance requirements for the several courses.

Students having completed only a partial course will be given certificates for such work upon request.

EXPENSES

MATRICULATION AND PHYSICAL CULTURE.....	\$10.00
TUITION, PER YEAR.....	50.00

For twenty-four hours or less the tuition is \$50. Each additional hour per semester, or half-year, \$1.50.

Children of ministers are required to pay one-half regular tuition.

When two members of the same family attend school at the same time, a reduction of ten per cent from the tuition charge is allowed.

All students taking the work in the Academy are required to pay a special Publication and Christian Work fee of \$2. In consideration of the payment of the above the students receive the *College News* and the privileges of the Christian Associations.

Laboratory Fees

Elementary Physics, per semester	\$3.00
Elementary Chemistry, per semester	4.00
Biology	4.00

Boarding

Regular students are charged \$3.50 per week or \$133 per year, if paid in advance.

Five-day students are charged \$2.50 per week (fifteen meals) or \$95 per year, if paid in advance.

Day students may obtain meal tickets at the rate of twenty-five cents per meal, if paid in advance.

The authorities prefer that all students who room in the Academy Building should board at the Dining Hall.

Room-Rent

The rates in the Academy Building when rooms are taken for one person only, range from \$15 to \$50 per year. When two or more students occupy one room the rates range from \$10 to \$35 for each student per year.

A deposit fee of \$2 is required from each student who occupies a room in the Academy building.

Every student is charged with the furnishings of the room at the opening of the school year, and if the furniture and room and halls are in good condition when the students vacate, a portion or all of the deposit is returned.

The minimum expenditure in the Academy for one year may be as follows: Boarding \$133; Tuition \$50; Room Rent \$10; Matriculation and Physical Culture \$10; Publication and Christian work fee \$2; Deposit fee \$2, a portion of which may be returned. These items aggregate \$207, less \$5 if entire amount is paid in advance, which makes the minimum expenditure in the Academy \$202. This estimate does not include books, nor laboratory fees.

Ten per cent will be added to all payments that are deferred more than ten days after the time when the installments are due.

These rates are fixed by special act of the Board of Trustees. Failure to pay a bill before another falls due will exclude a student from classes and the privileges of the Academy.

The regular Academy expenses are divided into four installments, and students are required to pay each installment in advance. One-fifth of the expenses is due at the opening of the school year; one-fifth, November 1; three-tenths, January 5, and three-tenths, March 27

No reduction will be made for tuition and room-rent, for a semester,

except for protracted sickness. In case of long continued illness, the loss is shared equally by the Academy and the student.

No reduction will be made for table board, for an absence of less than one week, and then only in case of sickness, or important duties that compel the student to be absent from his Academy work. Reductions cannot be allowed for banquet trips, or club trips, or athletic trips.

Students are required to furnish their own towels, napkins, soap, and all bed furnishings, except mattresses.

Any student who receives beneficiary aid from the institution, may be called upon to render service for all or part of the aid so received.

Opportunity for self-help is extended to a limited number of students in the Academy, who may serve as waiters or janitors. In each case the term of service is thirty-eight weeks. Close application is required to the work assigned. Neglect of duty is sufficient cause for the removal of the student from the position.

DESCRIPTION OF COURSES

A unit represents a year's study in any subject and is reckoned to be a quarter of the entire amount of work required of each student. However, the four years of English aggregate but three units.

For graduation fifteen units are required. The following courses are required of all applicants.

Latin a, b and c.....	3	units
English a, b, c and d.....	3	units
Mathematics a, a-2, c and b or d.....	3	units
History.....	1	unit
Science.....	1	unit
Foreign Language.....	1	unit
—		
Total.....	12	units

The remaining 3 units may be chosen from the following list.

Physical Culture is required of all students for which one-half unit credit may be given.

OUTLINE OF COURSES

First Year

Latin a.....	Beginners' Latin.....	3	hours
English a.....	English Grammar and Classics.....	4	hours
Mathematics a.....	Advanced Arithmetic.....	4	hours
Mathematics a-2.....	First Year Algebra.....	5	hours
†Science a.....	Physical Geography.....	4	hours
†Drawing.....		4	hours

Second Year

Latin b.....	Caesar and Composition.....	4	hour
--------------	-----------------------------	---	------

English b	Rhetoric and Classics	4 hours
Mathematics c	Plane Geometry	4 hours
†History c	Ancient History	4 hours
†History d		
†Geometrical Drawing		4 hours

Third Year

Latin c	Cicero and Composition	4 hours
English c	American Literature and Classics	4 hours
German a	Beginner's German	4 hours
Science c	{ Biology { Elementary Chemistry }	4 hours
Science e		
†History b	English History	4 hours

Senior Year

Latin d	{ Virgil and Composition { Second Year German }	4 hours
German b		
Greek a	First Year Greek	5 hours
Science d	Elementary Physics	4 hours
English d	College Entrance Requirements	4 hours
Mathematics d	{ Solid Geometry { Second Year Algebra }	4 hours
Mathematics b		
History a	American History and Civics	4 hours

†Elective

*Required for graduates in Scientific Course.

**Choose one.

DESCRIPTION OF COURSES

ENGLISH

a-1. English Grammar—Advanced. First Semester. Four hours.

This course is required of all pupils who have not had high school grammar. Weekly themes are required. Reading: Irving's *Sketch Book* and Cooper's *The Last of the Mohicans*.

a-2. Composition and Rhetoric—Second Semester. Four hours.

Herrick and Damon's *New Composition and Rhetoric*.

Theme work based on experience and assignments for reading. Reading: *Scott's Ivanhoe*, Coleridge's *The Ancient Mariner*, Shakespeare's *The Merchant of Venice*, *Scott's Marmion*.

b. Composition and Rhetoric—Throughout the year. One hour.

Herrick and Damon's *New Composition and Rhetoric*.

Reading and Practice—Throughout the year. Three hours.

George Eliot's *Silas Marner*, Shakespeare's *As You Like It*, Addison and Steele's *The DeCoverly Papers*, Dickens' *A Tale of Two Cities*, Bunyan's *Pilgrim's Progress*, Goldsmith's *The Deserted Village*, Goldsmith's *The Vicar of Wakefield*.

c. American Literature—Throughout the year. One hour.

Newcomer's *American Literature*, rhetoric continued.

Reading and Practice—Throughout the year. Two hours.

Oral reading and careful study of Franklin's *Autobiography*, Hawthorne's *The House of Seven Gables*, Hawthorne's *Twice Told Tales*, Shakespeare's *Julius Caesar*, Tennyson's *Idyl's of the King*, Longfellow's *Narrative Poems*, Poe's *Poems and Tales*, Whittier's *Snowbound*.

Composition.—Throughout the year. One hour.

Weekly themes required.

d. Composition and Rhetoric—Throughout the year. One hour.

Herrick and Damon's *New Composition and Rhetoric* concluded. Weekly themes required.

English Literature—Throughout the year. One hour.

Newcomer's *English Literature*.

Reading and Practice—Critical study of the English classics prescribed for college entrance.

Shakespeare's *Macbeth*, Milton's *Minor Poems*, Tennyson's *The Princess*, Washington's *Farewell Address*, Webster's *Bunker Hill Oration*, Carlyle's *Essay on Burns*.

LATIN

The following Latin courses are arranged in accordance with the College Entrance Requirements.

Latin a—Beginners' Latin. Throughout the year. Five hours. One unit.

Pearson's *Essentials of Latin* is completed. Special emphasis is placed on the memorizing and classification of grammatical forms. Constant practice in turning short sentences illustrating the fundamental rules of syntax into Latin is required.

Latin b—Caesar. Throughout the year. Four hours. One unit.

Caesar's *Gallic Wars*, Books: I, IV. Thirty-six lessons in composition based on the text with as much sight reading as possible is required. Allen and Greenough's *Latin Grammar*.

Latin c—Cicero. Throughout the year. Four hours. One unit.

Cicero's *Manilian Law, Catiline I-IV* and *Pro Archais*. D'Oge's *Latin Composition*. Allen and Greenough's *Latin Grammar*.

Latin d—Virgil. Throughout the year. Four hours. One unit.

Virgil's *Aeneid I-VI*, Bennett's *Latin Composition*, Allen and Greenough's *Latin Grammar*.

Latin a, b and c are required for admission to the scientific courses in Lebanon Valley College. Latin a, b, c and d are required for admission to the Classical and Modern Language Courses of Lebanon Valley College.

HISTORY

History a—Throughout the year. Four hours. One unit.

American History and Civics. Detailed Study of American History with special attention to the History of the United States. The latter part of the year will be devoted to a consideration of national, state and county government.

This course is required of all candidates for graduation.

History b—Throughout the year. Four hours. One unit.

Walker's *Essentials of English History*. Offered 1914-1915.

History c and d—Throughout the year. Four hours. One unit.

Ancient History with special reference to Greek and Roman History and including a short introductory study of the more ancient nations and the chief events of the early middle ages, down to the death of Charlemagne. Offered 1913-1914.

GERMAN

a Beginning German—Four hours. Throughout the year. One unit.

Bacon's *German Grammar*, and the reading of 75 to 100 pages of graduated texts. Frequent reproduction from memory of sentences previously read.

b Second Year German—Four hours. Throughout the year. One unit.

Oral and written reproduction of the matter read in easy variations.

From 150 to 200 pages of literature are selected from the following list: Heyse's *L'Arrabbiata*; Hillern's *Höher als die Kirche*; Storm's *Immensee*; Leander's *Träumerein*; Zschokke's *Der Zerbrochene Krug*; Wilhelmi's *Einer muss heiraten*; Baumbach's *Der Schwiegersohn*.

MATHEMATICS

Mathematics a—Arithmetic. Half-year. Four hours. One-half unit.

Rapid but thorough review of all the fundamental processes. Special drill in fractions, mensuration, percentage, the metric system and modern business forms. Hamilton's *Arithmetic*.

Mathematics a-2—Throughout the year. Five hours. One unit.

Beginners' Algebra to quadratics. Hawkes, Luby and Touton's *First Course in Algebra*.

Mathematics b—Intermediate Algebra. Half-year. One-half unit.

Second year Algebra. This course must be offered for graduation by all candidates who do not offer Solid Geometry.

Mathematics c—Plane Geometry. Four hours. One unit.

Durell's *New Plane and Solid Geometry*. Taught largely from the standpoint of the original problems.

This course is required for graduation.

Mathematics d—Solid Geometry. Half-year. One-half unit.

Durell's *Solid Geometry*.

Courses a, a-2, c, and either b or d are required for graduation.

SCIENCE

Science a—Physical Geography. Half-year. Four hours. One-half unit.

Dryer's *Physical Geography*. The earth as a globe, the ocean, the atmosphere, the land, plains, plateaus, mountains, volcanoes, rivers, glaciers, geological formations and ages.

A summary of the relation of man, plants, and animals to climate, land forms, and oceanic areas.

Science c—Biology. One Semester. One-half unit.

An introductory consideration of the laws which apply to both animals and plants, and those principles which co-ordinate and correlate them. Conn's *Biology*.

Science d—Elementary Physics. Throughout the year. One unit.

Three hours recitation and two hours laboratory work per week.

Mechanics of solids, liquids and gases, heat, magnetism, electricity.

No previous knowledge of Physics is required for admission to this course.

Carhart and Chute's *Principles of Physics*. Forty experiments as outlined in the National Physics Note Book Sheets are required in the laboratory.

Science e—Elementary Chemistry. Half-year. One-half unit.

Two hours recitation and four hours laboratory work.

The aim of the course is to present Chemistry to the beginner in such a way as to enable him to grasp the fundamental principles and to help him to secure a working knowledge of the Science in the laboratory.

First Principles of Chemistry by Brownlee and others, and laboratory exercises accompanying same.

DRAWING

Free Hand Drawing—Half-year. Four hours. One-half unit.

Geometrical Drawing—Half-year. Four hours. One-half unit.

Drawing of geometrical figures, reconstruction of figures to a given scale, construction of scales to any given unit, projection of plane and solid figures, etc.

Morris' Geometrical Drawing.

PHYSICAL CULTURE

Academy Physical Culture. Two hours per week December 1 to April 1. Required of all preparatory students.

SUB-PREPARATORY COURSE

Sometimes students of mature age come to us not fully prepared to enter the Academy. They have for various reasons attended school for but a short time and find it embarrassing to enter the public schools with scholars so much younger than themselves. For these we make special provision whenever occasion demands. However, at least sixteen hours of regular Academy work is required.

ELECTION OF STUDIES

There is considerable room for election of courses that have a special value to students intending to specialize.

The principal advises students what subjects are fundamental to professional and engineering courses.

FACTS TO BE CONSIDERED

Although Academy students enjoy a number of the same features as college students, such as the use of an extended library, laboratories, the same social privileges, literary exercises, debates, Christian Associations,

etc., they are in many respects an entirely separate student body with their own interests, and conduct their own literary society and athletics.

SCHOLARSHIP

A one hundred and thirty dollar scholarship is awarded each year to the Academy graduate who has, according to the vote of the Faculty, attained the best class record and departed himself in accordance with the regulations.

REGISTER OF STUDENTS

Arndt, Raymond H.....	Columbia
Attinger, Frank S.....	Port Treverton
Baker, Harry P.....	Shippensburg
Bashore, David B.....	Hummelstown
Basler, Mary E.....	Hummelstown
Bender, Ruth E.....	Dillsburg
Berger, John L.....	Columbia
Bomberger, Irwin S.....	Palmyra
Bomberger, Joseph W.....	Annville
Boughter, Charles L.....	Oberlin
Brooks, Oliver R.....	Jonestown
Brown, Elmer.....	Pottstown
Buhrman, Norman A.....	Waynesboro
Case, Flora Lewis.....	Canton
Dehuff, George A.....	Royersford
Deibler, Walter E.....	Millersburg
Gemmill, Charles W.....	Windsoer
George, Herman E.....	Gracedale
Gingrich, Harry S.....	Annville
Gottschall, Lewis D.....	Philadelphia
Hallman, George W.....	Pottstown
Haverstock, George M.....	New Cumberland
Huber, Michael.....	Jonestown
Katerman, Harry W.....	Reinerton
Kreider, Kathryn P.....	Palmyra
Kottler, Harry.....	Hershey
Knoll, Sarah N.....	Annville
Light, Mark Y.....	Lebanon
Longenecker, C. R.....	Annville
Loser, Kathryn R.....	Progress
Lutz, Park H.....	Denver
Lynch, Clyde A.....	Harrisburg,
Machen, John.....	Waynesboro
MacDonald, J. R.....	New Holland
Mackert, C. L. R.....	Sunbury
McCann, C. H.....	Freelands, Md.
McClure, Robert P.....	Dillsburg
Oakes, John W.....	Pottstown
Reber, Irvin H.....	Sinking Springs
Robinson, Grace M.....	Palmyra
Romig, Howard O.....	Hershey
Ruth, Katie O.....	Sinking Springs

Sainz, Jose.....	Gibara, Cuba
Schaffer, Harry E.....	Annville
Shettel, Paul O.....	West Fairview
Stangle, Donald W.....	Taneytown, Md.
Wagner, Milton A.....	Lebanon
Wengert, Stanley A.....	Bellegrove, Pa.
Wheelock, Joel.....	West Depew, Wis.
White, E. A.....	Winsted, Conn.
Wine, Chester Harold.....	Wilmington, Del.
Wisner, J. Arthur.....	Upperco, Md.
Wrightstone, Harold K.....	Mechanicsburg
Zeigler, Roy R.....	Mechanicsburg
Regular students in Academy.....	54
Students matriculated in other departments who receive instruction in the Academy.....	32
	<hr/>
Total receiving instruction in the Academy.....	86

DIPLOMAS PRESENTED JUNE 7, 1913

Russel E. Hoffer

Harold W. Risser

Oscar E. Krenz

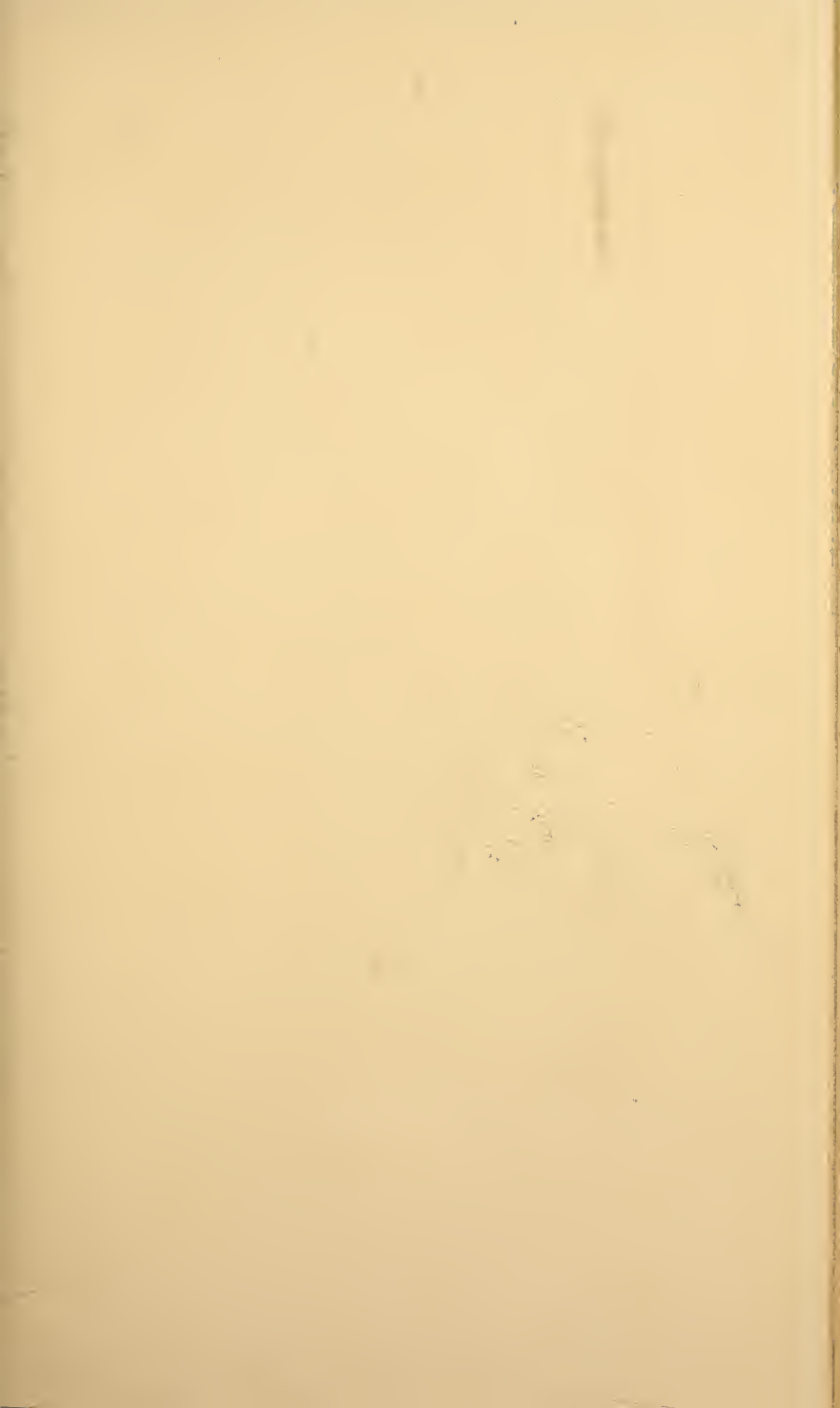
Mabel E. Snyder

Allen I. Meyer

LEBANON VALLEY COLLEGE SCHOLARSHIP AWARD

Oscar E. Krenz

Harold W. Risser





Conservatory of Music
and Art

FACULTY

E. EDWIN SHELDON, Mus.M.
Pianoforte, Pipe Organ, Counterpoint

IDA MANEVAL SHELDON, Mus.B.
Pianoforte, Harmony

GERTRUDE KATHERINE SCHMIDT
Voice, Musical History, Theory

ORA BELLE BACHMAN
Pianoforte, Ear Training, Sight Playing

MRS. Z. VONBERGY
Violin

FLORENCE S. BOEHM
Painting, Drawing

LOCATION AND EQUIPMENT

The Engle Music Hall is a handsome three-story stone structure. It contains a fine auditorium with large pipe-organ, director's room, studios, practice rooms, waiting-and writing-room for students' use, large society rooms, lavatories, etc. The whole building is lighted by electricity, and heated by steam, and designed and furnished with a view to having it complete in every respect for the study of music in all its branches. A complete musical education, from the very first steps to the highest artistic excellence, may be secured. The director will use every effort to obtain positions for those students who have finished the courses, and who may wish to teach or perform in public.

OBJECT

The department has for its object the foundation and diffusion of a high and thorough musical education. The methods used are those followed by the leading European conservatories. The courses are broad, systematic, progressive, and as rapid as possible. The conservatory offers the means for a complete education in musical art at a moderate cost.

DESCRIPTION OF COURSES

I. Pianoforte

The course in Pianoforte is divided into five divisions; Sub-Freshman, Freshman, Sophomore, Junior and Senior.

The course marked out, must, however, necessarily be varied according to the ability and temperament of the pupil. Many works must be studied by all, but there is much that may be essential for one student and not at all necessary for another. Individual instruction only is given.

A system of technics is used that is in line with the most approved methods. Special attention is paid to the development of a true legato touch and a clear, smooth technique. The use of the pedal so much neglected is emphasized. At the same time expression and interpretation are not neglected. Technical and theoretical ability is worthless, except as it enables the performer to bring out the beauties and meaning of the composer.

By a recent act of the Executive Board arrangements were made for a teacher to give instruction to children and others in the elementary grades of the pianoforte course at a cost within the reach of all. This work will be carried on according to the methods in use in the leading Conservatories.

For such instruction, the rate of tuition will be thirty cents per lesson. This enrollment as a regular student of the Conservatory will entitle the student to all privileges of the institution. The advantages to be derived from appearing in recital classes, receiving instruction in stage deportment, as well as opportunities for hearing and associating with other music students, are certain to act as incentives to better, more conscientious work.

Memorizing music is required of all students. It is a great acquisition to be able to perform a number of selections from memory.

Sight Reading—This, although to a certain extent a natural gift, can be greatly improved by systematic work. One who can read well has all music at his command, while a poor reader has but the few pieces which may have been learned.

Practice—Special effort is made to teach pupils how to practice. Difficult places are pointed out and the students are taught how to learn them in the quickest and most thorough manner. Quality is of more value than quantity in practice.

Ensemble Playing—It is impossible to overestimate the value of thorough training in duet, trio and quartette playing. Students are given drill in these as well as in accompaniment playing.

II. The Voice

Students contemplating work in this department should bear in mind two important facts; first that the natural ability to sing varies with every student, and secondly, that while the production of tone from any musical instrument is produced by artificial means, the elements that go to make up the human voice are composed of flesh and blood, subject to the most delicate nervous impulses.

Hence the course in the Study of Voice must be varied according to the needs of the individual and the success of the pupil depends largely upon the sympathetic insight of the teacher and the sincere cooperation in mind as well as body on the part of the student.

The old Italian Method as shown in Marchesi's "Art of Singing" will be used and exercises from other standard texts will be given to suit the needs of the individual student.

III. The Organ

The churches of our country are making an increasing demand for well-trained organists. The organ is no longer looked upon as an instrument solely for accompaniments and church use, but has taken its place among solo instruments and gained a distinct recognition from the music-loving public.

A large field, therefore, is open to the student of the organ. The work as outlined aims to provide a thorough training in all that pertains to a mastery of the organ for church or concert use. A two-manual Möller pipe organ is used in the Conservatory.

IV. The Violin

Among the stringed instruments, the Violin stands as one of the oldest and has always been admired for its beautiful and thrilling strains.

The musical possibilities within the compass of the violin are marvelous and unexcelled by any other instrument. The best artists of the olden

and modern times were skillful on the violin, and it appeals to those of the finest musical taste today.

Nowhere in English literature do we find a nobler or more glowing tribute to the violin than is the little poem penned by our own immortal "Autocrat" where he places the violin among the highest order of musical instruments.

V. Theoretical Music

Theoretical studies are essential to rapid and comprehensive sight reading and to excellence in the higher grades of music. Good pedaling depends on a knowledge of harmony, and memorizing is greatly facilitated by it.

An intelligent insight into the foundation, upon which rests the art of music, gives interest to the pupils in their playing and singing and makes them musicians, as well as performers.

RECITALS

Students' Evening Recitals. Each term recitals are given in which students, who have been prepared under the supervision of the instructors, take part. These recitals furnish incentives to study and experience in public performance.

Students' Recital Class. Students who are not sufficiently advanced to appear in the Evening Recitals are given experience in public performance in the Students' Recital Class. These classes are not open to the public. Rules governing Concert Department are brought to the attention of the students and each performer shown what is expected of him or her when before an audience. The result is a smoother and more satisfactory appearance in the Evening Recitals when assigned to such work.

Artist Recitals. Not less important than the daily class room work is the opportunity afforded students of hearing the representative works of the great masters performed by artists of recognized ability of this and foreign countries. These recitals have met with much favor and enthusiasm among the students and citizens.

Senior Recitals. Each candidate for graduation shall give a public recital during the last year.

OUTLINE OF COURSES LEADING TO DIPLOMA

	Fall Term	Winter Term	Spring Term
Freshman	†Piano, Voice, Pipe Organ or Violin English b Practice, 4 hours daily 1 4 10	†Piano, Voice, Pipe Organ or Violin English b Practice, 4 hours daily 1 4 10	†Piano, Voice, Pipe Organ or Violin English b Practice, 4 hours daily 1 4 10
Sophomore	Piano, Voice, Pipe Organ or Violin Harmony (Elementary) Musical History English c Practice, 4 hours daily 1 2 2 3 10	Piano, Voice, Pipe Organ or Violin Harmony (Chadwick) Musical History English c Practice, 4 hours daily 1 2 2 3 10	Piano, Voice, Pipe Organ or Violin Harmony (Chadwick) Musical History English c Practice, 4 hours daily 1 2 2 3 10
Junior	Piano, Voice, Pipe Organ or Violin Harmony (Chadwick) Theory of Music (Elson) German a Practice, 4 hours daily 1 2 2 4 10	Piano, Voice, Pipe Organ or Violin Ear Training Theory and Mus. Form German a Practice, 4 hours daily 1 2 2 4 10	Piano, Voice, Pipe Organ or Violin Ear Training Theory and Mus. Form German a Practice, 4 hours daily 1 2 2 4 10
Senior	Piano, Voice, Pipe Organ or Violin Simple Counterpoint Harmonic Analysis Psychology of Music Sight Playing Practice, 4 hours daily 1 1 1 2 1 10	Piano, Voice, Pipe Organ or Violin Simple Counterpoint Harmonic Analysis Psychology of Music Sight Playing Practice, 4 hours daily 1 1 1 2 1 10	Piano, Voice, Pipe Organ or Violin Double Counterpoint (Senior Recital) Sight Playing Practice, 4 hours daily 1 2 4 1 10

*Number of hours credit.

†Two one-half hours per week.

Fee for graduation diploma, \$6.00.

Conservatory students rooming in the dormitories are required to take not less than 15 hours work per week, one hour practice on piano or organ counting as one-half hour credit.

Candidates for graduation in piano shall have taken at least three terms in voice or organ. For graduation in voice or violin the student shall have at least three terms in piano. For organ the Sophomore year is required.

HOW TO BECOME A "FULL COURSE STUDENT" IN THE CONSERVATORY

To be a "full course student" in the Conservatory you will be required to carry one solo subject (piano, voice, or organ) and two theoretical branches, such as Harmony and Musical History. Two lessons, each one-half hour in length, are given each week in the solo subject. Classes in Harmony recite two hours per week. Classes in Musical History meet on alternate days for two hour-lessons per week. The course in Harmony requires four terms' work, while the course in Musical History may be completed in three terms.

The "full course student" engages four practice hours daily throughout the term.

One subject, such as German, French or English may be taken in the College or Academy by a "full course student" without additional charge.

The "full course student" will find the tuition as follows:

FALL TERM—Two lessons per week, as stated above

Piano or Voice.....	\$21 75
Harmony.....	10 00
Musical History.....	10 00
Piano practice, 4 hours daily.....	7 50
Matriculation Fee for the term.....	1 00

\$50 25

Voice or Piano added, 2 lessons per week....	\$21 75	additional
Organ, one lesson per week.....	15 00	additional
Organ practice, one hour daily.....	10 00	additional

WINTER TERM—Two lessons per week

Piano or Voice.....	\$15 75
Harmony.....	8 00
Musical History.....	8 00
Piano practice, 4 hours daily.....	6 25
Matriculation Fee for the term.....	1 00

\$39 00

Voice or Piano added, 2 lessons per week . . .	\$15 75	additional
Organ, one lesson per week	11 00	additional
Organ practice, one hour daily	9 00	additional

SPRING TERM—Rates same as the Winter term.

CERTIFICATES

REQUIREMENTS FOR CERTIFICATES

Complete course in pianoforte or in any of the other subjects, viz: voice, violin, harmony, theory, or history.

Fee for certificate, \$2.50.

DEGREE

REQUIREMENTS FOR DEGREE (Mus.B.)

Candidates must already have taken a diploma including theoretical course outlined on page 72.

Must have satisfactorily completed one year's work in Canon, Fugue and original composition.

Fee for degree, \$10.00.

TUITION

PIANO OR VOICE

Fall term	2 lessons per week	\$21 00
Fall term	1 lesson per week	11 25
Winter term	2 lessons per week	15 75
Winter term	1 lesson per week	8 25
Spring term	2 lessons per week	15 75
Spring term	1 lesson per week	8 25

SENIOR AND JUNIOR YEARS

Fall term	2 lessons per week	\$28 00
Fall term	1 lesson per week	15 00
Winter term	2 lessons per week	21 00
Winter term	1 lesson per week	11 00
Spring term	2 lessons per week	21 00
Spring term	1 lesson per week	11 00

SUB-FRESHMAN AND FRESHMAN PIANOFORTE

Under Assistant Teachers

Fall term	2 lessons per week	\$ 8 40
Fall term	1 lesson per week	4 50
Winter term	2 lessons per week	6 30
Winter term	1 lesson per week	3 30

Spring term.....	2 lessons per week.....	6 30
Spring term.....	1 lesson per week.....	3 30

PIPE ORGAN

Fall term.....	2 lessons per week.....	\$28 00
Fall term.....	1 lesson per week.....	15 00
Winter term.....	2 lessons per week.....	21 00
Winter term.....	1 lesson per week.....	11 00
Spring term.....	2 lessons per week.....	21 00
Spring term.....	1 lesson per week.....	11 00

HARMONY, MUSICAL HISTORY, EAR TRAINING, THEORY OR
PSYCHOLOGY OF MUSIC

Fall term.....	2 lessons per week.....	\$10 00
Winter or Spring term.....	2 lessons per week.....	8 00
Private lessons, each.....		75

COUNTERPOINT, CANON OR FUGUE

Fall term.....	2 lessons per week.....	\$12 00
Winter or Spring term.....	2 lessons per week.....	10 00

SIGHT PLAYING OR SIGHT SINGING

Fall term.....	1 lesson per week.....	\$ 5 00
Winter or Spring term.....	1 lesson per week.....	4 00

A charge of seventy-five cents for Fall term and fifty cents for Winter or Spring term will be made for use of Sight Playing Musical Library.

	FALL TERM	WINTER OR SPRING TERM
For use of instruments: Piano, one hour per day.....	\$ 3 00	\$2 50
Each additional hour.....	1 50	1 25
Pipe Organ, one hour per day.....	10 00	9 00
Matriculation and Physical Culture.....		\$8 00

Non-resident students may be exempted from Physical Culture.

Students taking piano, organ, or voice only are charged a matriculation fee of \$1.00, payable in advance.

Pipe organ students must pay at the rate of 20 cents an hour for organ blower when motor is not in use.

Regular music students are required to pay a special publication and Christian Work fee of \$2.00.

RULES AND REGULATIONS. No reduction is made for absence from the first two lessons of the term, nor for a subsequent individual absence. In case of long continued illness the loss is shared equally by the College and the student.

All tuition is payable in advance.

Pupils may enter at any time, but for convenience of grading, etc., the beginning of each term is the most desirable time.

All sheet music must be paid for when taken.

No pupil is allowed to omit lessons without a sufficient cause.

Reports showing attendance, practice and improvement in grade, will be issued at the close of each term.

For all further information as to any particular course, or combination of courses, rooms, boarding, etc., address

DIRECTOR OF THE CONSERVATORY,

LEBANON VALLEY COLLEGE,

ANNVILLE, PA.

CONSERVATORY OF MUSIC

Seniors

Arnold, John Fred.....	Lickdale
Light, Mary Lydia.....	Annvile
Painter, Mary Elizabeth.....	Hershey

Juniors

Barnet, Leroy Clarence.....	Middletown
Bensing, Mabel May.....	Lebanon
Campbell, Ray A. P.....	Shamokin
Shanaman, Mabel A.....	Richland

Sophomores

Gantz, Lillian Faith.....	Annvile
Hammer, Ruth.....	Penbrook
Hertzler, C. Luella.....	Manheim
Linebaugh, Percy M.....	York
Steinhauer, Ruth I.....	Lemoyne
Wyand, Mary Helen.....	Hagerstown, Md.

Freshmen and Specials

Anne, Edna M.....	Lancaster
Bacastow, Mrs. S. P.....	Hershey
Bachman, Sara Landis.....	Annvile
Bachman, Carl Michael.....	Annvile
*Bachman, Paul T.....	Annvile
*Basler, Mary E.....	Port Carbon
*Bender, Harry M.....	Annvile
*Blouch, Gideon L.....	Annvile
Boltz, Kathryn A.....	Annvile
Bomberger, Alice May.....	Palmyra
*Bomberger, Joseph.....	Annvile
Botts, George Frederick.....	Elizabethville
Bossard, Ada Catherine.....	Annvile

*Brightbill, Helen E.....	Annville
Brandt, Dana.....	Lebanon
*Carl, Boyd C.....	Pine Grove
Christeson, Florence.....	Annville
*Clarke, Pauline Hummel.....	Hershey
Clippinger, Florence.....	Shippensburg
*Curry, Conrad K.....	Swatara
Detweiler, Ruth.....	Palmyra
Detweiler, Iva.....	Annville
DeLong, Elizabeth Mae.....	Annville
Daugherty, Eva R.....	Annville
Daugherty, Paul A.....	Annville
*Deibler, Walter E.....	Millersburg
Donmoyer, Lucile Mae.....	Lebanon
*Dubble, Anna.....	Myerstown
Depew, Leroy.....	Lebanon
Eichelberger, Earl F.....	Oberlin
*Engle, Ruth E.....	Palmyra
Fink, Esther Mae.....	Annville
Folmer, Elsie M.....	Lebanon
Frantz, William.....	Lebanon
Grundrum, Myrtle S.....	Lebanon
Herr, Della M.....	Annville
Herr, S. Meyer.....	Annville
Hurdd, Newell.....	Lebanon
Gebhardt, Katherine.....	Annville
Jones, Marguerite.....	Lebanon
Kettering, Abigail S.....	Annville
Kettering, Josephine Y.....	Annville
Kettering, Fleeda M.....	Palmyra
Kratzer, Mrs. C. C.....	Middleburg
Krenz, Oscar.....	Dillsburg
Kreider, Rodney.....	Annville
Kreider, Louise.....	Annville
*Kreider, Kathryn P.....	Palmyra
Landis, Edna E.....	Hershey
Landis, Harold.....	Palmyra
Levan, Paul.....	Annville
Light, Katherine.....	Annville
Long, Laura.....	Annville
Mark, Marie Elizabeth.....	Annville
Meyer, Sarah L.....	Lebanon
Miller, Katherine.....	Lebanon
Moul, Horace.....	Hanover

Newgard, Martha B.	Annville,
Quigley, Ruth.	Red Lion
Ryland, Dora Ruth.	Cressona
Reist, Irving L.	Annville
*Risser, Blanche.	Campbellstown
Richards, Florence.	Lebanon
Roland, Effie.	Annville
Saylor, Gardner.	Annville
Saylor, Myrle V.	Annville
Shaak, Tasie.	Avon
*Shonk, Alvin E.	Mount Joy
Spangler, Mary S.	Lebanon
Sholly, Dorothy.	Annville
Silberman, Dora D.	Lebanon
*Snyder, Mabel E.	Lebanon
Speraw, Eva G.	Annville
*Stengle, Faber E.	Oberlin
Strickler, Ruth V.	Lebanon
Stine, Josephine.	Annville
Spessard, Edna R.	Chewsville, Md.
Turby, Myrle.	Palmyra
Thomas, Sara E.	Avon
*Urich, Josephine.	Annville
Wengert, Sarah C.	Lebanon
Weitzel, Stella.	Sinking Springs
*Wheelock, Joel.	W. Depew, Wis.
*Wine, Harold.	Chambersburg
Witman, Naomi.	Lebanon
Witman, H. John.	Lebanon
Yeagley, Mabel.	Lebanon
Zartman, Harvey.	Lebanon
Total.	101
Students receiving instruction in music, but not registered for private lessons.	22
Total.	123

*Students also matriculated in other departments.

ART DEPARTMENT

FLORENCE S. BOEHM, INSTRUCTOR

COURSE OF STUDY FOR CERTIFICATE

First Year—Drawing, sketching in pencil of various familiar objects, and drawing from geometric solids, good examples of proportion and perspective, and the principles of light and shade.

PAINTING—Flowers, fruit and leaves, models, casts and familiar objects. Elementary original composition.

MODELING—Fruit, vegetable forms and leaves from casts and nature; animals from the cast and prints. Elementary original composition.

Second Year—Charcoal drawing from casts. Painting in water colors and pastels from groups of still life, interiors, decorative subjects, flowers, draperies, and out-of-door sketching.

Third Year—Sketching from life. Painting in oils from still life and nature. Wash drawings in ink, water color, historic ornament. Studies in color harmony.

Teacher's Class—Principles and methods of drawing, modeling, blackboard drawing, lettering, brush work, sketching from life and water color.

Saturday work is offered for teachers and children who cannot take work during the week.

Keramics—Classes in china painting are instructed by the latest methods in conventional and naturalistic treatment. The china is fired in the institution, giving students an opportunity of learning how to fire their own china.

Miniature—Miniature painting on ivory.

Students who do not desire the certificate course may take special work along any line preferred.

EXPENSES

Matriculation and Physical Culture..... \$6 00

Non-resident students may be exempted from physical culture.

	FALL TERM	WINTER TERM	SPRING TERM
TUITION—One lesson a week.....	\$10 00	\$ 8 00	\$ 8 00
Two lessons a week.....	16 00	12 00	12 00
Children's beginning class.....	2 50	2 00	2 00
Children's advanced class.....	4 00	3 00	3 00
Special lessons.....75 cents each.		Matriculation Fee..	\$ 1 00

ART STUDENTS

Baker, Maude H.....	Shippensburg, Pa.
Christeson, Mary L.....	Annville, Pa.
Christeson, Florence E.....	Annville, Pa.

Henry, Martha B.....	Annville, Pa.
Kreider, Howard.....	Annville, Pa.
Mathias, Josephine.....	Highspire, Pa.
Shanaman, Mabel.....	Richland, Pa.
Shenk, Esther.....	Annville, Pa.
Stein, Catherine.....	Annville, Pa.
Stein, Mary.....	Annville, Pa.
Krum, Miss.....	Lebanon, Pa.
Wyand, Mary H.....	Hagerstown, Md.
Zimmerman, May.....	Lebanon, Pa.
Students in Art Department.....	13

INDEX

Academy.....	51
Admission.....	54
Courses.....	57
Examinations.....	54
Expenses.....	55
Faculty.....	53
Students in.....	64
Advisers.....	13
Agriculture.....	40
Art Department.....	79
Astronomy.....	36
Bible.....	33
Biology.....	37
Board of Trustees.....	3
Buildings and Grounds.....	9
Calendar.....	2
Carnegie Library.....	10
Chemistry.....	39
College Organizations.....	12
Corporation.....	3
Courses, College	
Outline of.....	27
Description of.....	31
Degrees Conferred.....	49
Degrees and Diplomas.....	14
Discipline.....	13
Economics.....	37
Education.....	31
English Language and Literature.....	34
Expenses, College.....	16
Academy.....	55
Department of Music.....	73
Department of Art.....	79
Faculty, College.....	5
Academy.....	53
Department of Music.....	68
French Language and Literature.....	32
General Information.....	9
German Language and Literature.....	34
Graduate Work.....	14

Greek Language and Literature.....	33
Geology.....	40
History.....	36
History of the College.....	7
Laboratories.....	11
Latin Language and Literature.....	32
Mathematics.....	35
Music Department.....	67
Courses.....	72
Oratory and Public Speaking.....	42
Philosophy.....	31
Physics.....	41
Physical Culture.....	41
Political Science.....	36
Religious Work.....	11
Register of Students, College.....	45
Academy.....	64
Department of Music.....	77
Department of Art.....	79
Requirements for Admission, College.....	19
Academy.....	54
Scholarships.....	15
Sociology.....	37