

BULLETIN
OF
Lebanon Valley College

Vol. 4

January, 1916

No. 2

CATALOG NUMBER

Forty-ninth Annual Catalog

PUBLISHED BY
LEBANON VALLEY COLLEGE
ANNVILLE, PA.

In November, January, April, and May



Digitized by the Internet Archive
in 2011 with funding from
LYRASIS Members and Sloan Foundation



BULLETIN
OF
Lebanon Valley College

Vol. 4

January, 1916

No. 2

**CATALOG
NUMBER**

PUBLISHED BY
LEBANON VALLEY COLLEGE
ANNVILLE, PA.

In November, January, April, and May

1916

JANUARY	FEBRUARY	MARCH
S. M. T. W. T. F. S.	S. M. T. W. T. F. S.	S. M. T. W. T. F. S.
. 1	. . . 1 2 3 4 5 1 2 3 4
2 3 4 5 6 7 8	6 7 8 9 10 11 12	5 6 7 8 9 10 11
9 10 11 12 13 14 15	13 14 15 16 17 18 19	12 13 14 15 16 17 18
16 17 18 19 20 21 22	20 21 22 23 24 25 26	19 20 21 22 23 24 25
23 24 25 26 27 28 29	27 28 29	26 27 28 29 30 31 .
30 31
APRIL	MAY	JUNE
. 1	. . . 1 2 3 4 5 6 1 2 3
2 3 4 5 6 7 8	7 8 9 10 11 12 13	4 5 6 7 8 9 10
9 10 11 12 13 14 15	14 15 16 17 18 19 20	11 12 13 14 15 16 17
16 17 18 19 20 21 22	21 22 23 24 25 26 27	18 19 20 21 22 23 24
23 24 25 26 27 28 29	28 29 30 31	25 26 27 28 29 30 .
30
JULY	AUGUST	SEPTEMBER
. 1	. . . 1 2 3 4 5 1 2
2 3 4 5 6 7 8	6 7 8 9 10 11 12	3 4 5 6 7 8 9
9 10 11 12 13 14 15	13 14 15 16 17 18 19	10 11 12 13 14 15 16
16 17 18 19 20 21 22	20 21 22 23 24 25 26	17 18 19 20 21 22 23
23 24 25 26 27 28 29	27 28 29 20 31	24 25 26 27 28 29 30
30 31
OCTOBER	NOVEMBER	DECEMBER
1 2 3 4 5 6 7	. . . 1 2 3 4 1 2
8 9 10 11 12 13 14	5 6 7 8 9 10 11	3 4 5 6 7 8 9
15 16 17 18 19 20 21	12 13 14 15 16 17 18	10 11 12 13 14 15 16
22 23 24 25 26 27 28	19 20 21 22 23 24 25	17 18 19 20 21 22 23
29 30 31	26 27 28 29 30	24 25 26 27 28 29 30
.	31

1917

JANUARY	FEBRUARY	MARCH
. . . 1 2 3 4 5 6 1 2 3 1 2 3
7 8 9 10 11 12 13	4 5 6 7 8 9 10	4 5 6 7 8 9 10
14 15 16 17 18 19 20	11 12 13 14 15 16 17	11 12 13 14 15 16 17
21 22 23 24 25 26 27	18 19 20 21 22 23 24	18 19 20 21 22 23 24
28 29 30 31	25 26 27 28	25 26 27 28 29 30 31
.
APRIL	MAY	JUNE
1 2 3 4 5 6 7	. . . 1 2 3 4 5 1 2
8 9 10 11 12 13 14	6 7 8 9 10 11 12	3 4 5 6 7 8 9
15 16 17 18 19 20 21	13 14 15 16 17 18 19	10 11 12 13 14 15 16
22 23 24 25 26 27 28	20 21 22 23 24 25 26	17 18 19 20 21 22 23
29 30	27 28 29 30 31	24 25 26 27 28 29 30
.

This Catalog was published for the year 1916-'17. For the year 1917-'18 school begins September 10, 1917. The rates for the year 1917-'18 will be slightly advanced. In the near future the Executive Committee will determine the changes to be made.

		registration of students.
		n.
	Friday	Anniversary Clonian Literary Society.
November 24	Wednesday 4:00 p.m.	Thanksgiving recess began.
November 29	Monday 9:00 a.m.	Thanksgiving recess ended.
December 22	Wednesday 4:00 p.m.	Christmas recess began.
January 5	Wednesday 9:00 a.m.	Christmas recess ended.
January 17-21	Monday-Friday	Mid-year examinations.
April 19	Wednesday 1:00 p.m.	Easter recess begins.
April 25	Tuesday 1:00 p.m.	Easter recess ends.
April 7	Friday	Anniversary Kalozetean Literary Society.
May 5	Friday	Anniversary Philokosmian Literary Society.
May 31-June 2	Wednesday-Friday	Senior final examinations.
June 5-9	Monday-Friday	Final examinations.
June 10	Saturday 7:45 p.m.	Academy commencement.
June 11	Sunday 10:30 a.m.	Baccalaureate sermon by Rev. S. D. Faust, D.D.
	7:30 p.m.	Annual address before Christian Associations.
June 12	Monday 11:00 a.m.	Annual Meeting of Board of Trustees.
	7:45 p.m.	Exercises by the graduating classes in Music and Oratory.
June 13	Tuesday 2:00 p.m.	Class day exercises.
June 14	Wednesday 8:00 p.m.	Address by Gov. M. G. Brumbaugh.
June 15	Thursday 9:00 a.m.	Alumni Class Reunions.
	2:00 p.m.	Pageant.
	7:00 p.m.	Address by Bishop W. M. Weekley, D.D. followed by banquet.
June 16	Friday 10:00 a.m.	Fiftieth Annual Commencement.

1916—1917

Sept. 11-12	Monday-Tuesday	Examination and registration of students.
September 13	Wednesday 9:00 a.m.	College year begins.
November 24	Friday	Anniversary Clonian Literary Society.
November 28	Tuesday 4:00 p.m.	Thanksgiving recess begins.
December 4	Monday 9:00 a.m.	Thanksgiving recess ends.
December 20	Wednesday 4:00 p.m.	Christmas recess begins.
January 3	Wednesday 9:00 a.m.	Christmas recess ends.
January 22-26	Monday-Friday	Mid-year examinations.
April 5	Wednesday 1:00 p.m.	Easter recess begins.
April 18	Tuesday 1:00 p.m.	Easter recess ends.
June 10	Sunday 10:30 a.m.	Baccalaureate sermon.
June 13	Wednesday 10:00 a.m.	Fifty-first Annual Commencement.

1910

JANUARY							FEBRUARY							MARCH							
S.	M.	T.	W.	T.	F.	S.	S.	M.	T.	W.	T.	F.	S.	S.	M.	T.	W.	T.	F.	S.	
					1				1	2	3	4	5			1	2	3	4		
2	3	4	5	6	7	8	6	7	8	9	10	11	12	5	6	7	8	9	10	11	
9	10	11	12	13	14	15	13	14	15	16	17	18	19	12	13	14	15	16	17	18	
16	17	18	19	20	21	22	20	21	22	23	24	25	26	19	20	21	22	23	24	25	
23	24	25	26	27	28	29	27	28	29					26	27	28	29	30	31		
30	31																				
APRIL							MAY							JUNE							
						1			1	2	3	4	5	6					1	2	3
2	3	4	5	6	7	8	7	8	9	10	11	12	13	4	5	6	7	8	9	10	
9	10	11	12	13	14	15	14	15	16	17	18	19	20	11	12	13	14	15	16	17	
16	17	18	19	20	21	22	21	22	23	24	25	26	27	18	19	20	21	22	23	24	
23	24	25	26	27	28	29	28	29	30	31				25	26	27	28	29	30		
30																					
JULY							AUGUST							SEPTEMBER							
						1			1	2	3	4	5						1	2	
2	3	4	5	6	7	8	6	7	8	9	10	11	12	3	4	5	6	7	8	9	
9	10	11	12	13	14	15	13	14	15	16	17	18	19	10	11	12	13	14	15	16	
16	17	18	19	20	21	22	20	21	22	23	24	25	26	17	18	19	20	21	22	23	
23	24	25	26	27	28	29	27	28	29	30	31			24	25	26	27	28	29	30	
30	31																				
OCTOBER							NOVEMBER							DECEMBER							
	1	2	3	4	5	6	7				1	2	3	4						1	2
8	9	10	11	12	13	14	5	6	7	8	9	10	11	3	4	5	6	7	8	9	
15	16	17	18	19	20	21	12	13	14	15	16	17	18	10	11	12	13	14	15	16	
22	23	24	25	26	27	28	19	20	21	22	23	24	25	17	18	19	20	21	22	23	
29	30	31					26	27	28	29	30			24	25	26	27	28	29	30	
														31							

1917

JANUARY							FEBRUARY							MARCH							
	1	2	3	4	5	6				1	2	3				1	2	3			
7	8	9	10	11	12	13	4	5	6	7	8	9	10	4	5	6	7	8	9	10	
14	15	16	17	18	19	20	11	12	13	14	15	16	17	11	12	13	14	15	16	17	
21	22	23	24	25	26	27	18	19	20	21	22	23	24	18	19	20	21	22	23	24	
28	29	30	31				25	26	27	28				25	26	27	28	29	30	31	
APRIL							MAY							JUNE							
	1	2	3	4	5	6	7				1	2	3	4	5					1	2
8	9	10	11	12	13	14	6	7	8	9	10	11	12	3	4	5	6	7	8	9	
15	16	17	18	19	20	21	13	14	15	16	17	18	19	10	11	12	13	14	15	16	
22	23	24	25	26	27	28	20	21	22	23	24	25	26	17	18	19	20	21	22	23	
29	30						27	28	29	30	31			24	25	26	27	28	29	30	

College Calendar

1915—1916

September 6-7	Monday-Tuesday	Examination and registration of students.
September 8	Wednesday 9:00 a.m.	College year began.
November 19	Friday	Anniversary Clonian Literary Society.
November 24	Wednesday 4:00 p.m.	Thanksgiving recess began.
November 29	Monday 9:00 a.m.	Thanksgiving recess ended.
December 22	Wednesday 4:00 p.m.	Christmas recess began.
January 5	Wednesday 9:00 a.m.	Christmas recess ended.
January 17-21	Monday-Friday	Mid-year examinations.
April 19	Wednesday 1:00 p.m.	Easter recess begins.
April 25	Tuesday 1:00 p.m.	Easter recess ends.
April 7	Friday	Anniversary Kalozetean Literary Society.
May 5	Friday	Anniversary Philokosmian Literary Society.
May 31-June 2	Wednesday-Friday	Senior final examinations.
June 5-9	Monday-Friday	Final examinations.
June 10	Saturday 7:45 p.m.	Academy commencement.
June 11	Sunday 10:30 a.m.	Baccalaureate sermon by Rev. S. D. Faust, D.D.
	7:30 p.m.	Annual address before Christian Associations.
June 12	Monday 11:00 a.m.	Annual Meeting of Board of Trustees.
	7:45 p.m.	Exercises by the graduating classes in Music and Oratory.
June 13	Tuesday 2:00 p.m.	Class day exercises.
June 14	Wednesday 8:00 p.m.	Address by Gov. M. G. Brumbaugh.
June 15	Thursday 9:00 a.m.	Alumni Class Reunions.
	2:00 p.m.	Pageant.
	7:00 p.m.	Address by Bishop W. M. Weekley, D.D. followed by banquet.
June 16	Friday 10:00 a.m.	Fiftieth Annual Commencement.

1916—1917

Sept. 11-12	Monday-Tuesday	Examination and registration of students.
September 13	Wednesday 9:00 a.m.	College year begins.
November 24	Friday	Anniversary Clonian Literary Society.
November 28	Tuesday 4:00 p.m.	Thanksgiving recess begins.
December 4	Monday 9:00 a.m.	Thanksgiving recess ends.
December 20	Wednesday 4:00 p.m.	Christmas recess begins.
January 3	Wednesday 9:00 a.m.	Christmas recess ends.
January 22-26	Monday-Friday	Mid-year examinations.
April 5	Wednesday 1:00 p.m.	Easter recess begins.
April 18	Tuesday 1:00 p.m.	Easter recess ends.
June 10	Sunday 10:30 a.m.	Baccalaureate sermon.
June 13	Wednesday 10:00 a.m.	Fifty-first Annual Commencement.

THE CORPORATION BOARD OF TRUSTEES

Representatives from the Pennsylvania Conference

Rev. A. A. Long, D.D.	York	1916
Rev. A. B. Statton, D.D.	Hagerstown, Md.	1916
W. O. Appenzellar	Chambersburg	1916
Rev. L. Walter Lutz, D.D.	Chambersburg	1916
Hon. W. N. McFaul	Baltimore, Md.	1917
John H. Stansbury	Green Mount, Md.	1917
Rev. D. M. Oyer, A.B.	Enola	1917
Rev. Wm. H. Washinger, A.M., D.D.	Chambersburg	1918
Rev. J. E. Kleffman, D.D.	Baltimore, Md.	1918
Rev. J. F. Snyder	Boiling Springs	1918
Rev. S. G. Ziegler, A.B., B.D.	Baltimore, Md.	1918
Rev. C. F. Flook	Myersville, Md.	1918

Representatives from the East Pennsylvania Conference

Rev. D. D. Lowery, D.D.	Harrisburg	1916
Rev. R. R. Butterwick, A.M., D.D.	Mountville	1916
Rev. E. O. Burtner, A.M., B.D.	Palmyra	1916
Isaiah Buffington	Elizabethville	1917
G. F. Breinig	Allentown	1917
*Rev. A. S. Beckley, A.B.	Shamokin	1917
Hon. Aaron S. Kreider	Annaville	1918
*S. F. Engle	Palmyra	1918
Rev. S. E. Rupp, A.M., D.D.	Harrisburg	1918
Rev. J. A. Lyter, A.M., D.D.	Harrisburg	1918
Rev. S. F. Daugherty, A.M., D.D.	Annaville	1918
**J. Raymond Engle, Esq.	Palmyra	1918
Rev. C. E. Mutch	Schuylkill Haven	1918

Representatives from the Virginia Conference

Rev. A. S. Hammack, D.D.	Dayton, Va.	1916
Rev. W. F. Gruver, D.D.	Martinsburg, W. Va.	1916
W. S. Secrist	Keyser, W. Va.	1917
Prof. J. N. Fries	Berkeley Spgs., W. Va., '17	
Rev. A. P. Funkhouser, D.D.	Harrisonburg, Va.	1918
Elmer Hodges	Winchester, Va.	1918

Trustees at Large

H. S. Immel	Mountville, Pa.	
Warren A. Thomas	31 Miami Av., Columbus, O.	
A. J. Cochran	Dawson, Pa.	
Jack Straub	Lancaster, Pa.	

Alumni Trustees

Rev. A. K. Wier, A.B. '00	Steelton, Pa.	1916
H. H. Hoy, A.B., '99	Millersburg, Pa.	1917
Prof. H. H. Baish, A.M., '01	Altoona, Pa.	1918

*Died. **Elected to succeed his father S. F. Engle.

OFFICERS AND COMMITTEES OF THE BOARD

Officers

President	-	-	-	Hon. A. S. Kreider
Vice President	-	-	-	Rev. L. Walter Lutz
Secretary and Treasurer	-	-	-	Rev. W. H. Weaver

Executive Committee

Hon. A. S. Kreider	W. H. Washinger
S. F. Engle	A. A. Long
	A. S. Hammack

Finance Committee

G. F. Breinig	H. H. Baish
Hon. W. N. McFaul	W. O. Appenzellar
	W. F. Gruver

Library and Apparatus Committee

D. M. Oyer	Isaiah Buffington
	John H. Stansbury

Faculty Committee

A. B. Statton	H. H. Baish
D. D. Lowery	W. F. Gruver

Auditing Committee

S. F. Engle	L. Walter Lutz
	W. F. Gruver

Grounds and Buildings

H. H. Shenk	W. O. Appenzellar
G. F. Breinig	W. F. Gruver

Endowment Fund Committee

D. D. Lowery	W. H. Washinger.
Hon. A. S. Kreider	W. O. Appenzellar
A. A. Long	W. F. Gruver

Farm Committee

Hon. A. S. Kreider	W. H. Washinger
	W. S. Secrist

Publicity Committee

A. E. Shroyer	H. H. Baish
J. E. Kleffman	L. Walter Lutz

FACULTY

GEORGE DANIEL GOSSARD, B.D., D.D.
President

JOHN EVANS LEHMAN, A.M., Sc.D.
Professor of Mathematics and Astronomy

HIRAM HERR SHENK, A.M.
Secretary and Professor of History and Political Science

SAMUEL HOFFMAN DERICKSON, M.S.
Professor of Biological Sciences

ALVIN E. SHROYER, B.D.
Professor of Greek and Bible

HENRY E. WANNER, B.S.
Registrar, and Professor of Chemistry

LUCY S. SELTZER, A.B.
Professor of German
(On leave of absence at Columbia University)

ROBERT MacD. KIRKLAND, A.M.
*Josephine Bittinger Eberly Professor of Latin
Language and Literature, and Professor of French
Librarian*

SAMUEL O. GRIMM, B.Pd., A.B.
Professor of Physics

EDNA SEAMAN, A.M.
Professor of English

EDITH M. LEHMAN, A.B.
Acting-Professor of German

SAMUEL F. DAUGHERTY, B.D., D.D.
College Pastor and Associate Professor of Bible

MAY BELLE ADAMS
Professor of Oratory and Public Speaking

ROY J. GUYER, A.B., B.P.E.
Physical Director

FACULTY

EMMA R. SCHMAUK, A.B.
Instructor in French

MARIAN A. REID, A.B.
Instructor in English and German

REUBEN W. WILLIAMS
Assistant in Zoölogy

NETTIE MAY SHOWERS
Assistant in Biology

V. EARLE LIGHT
Assistant in Biology

H. RUTH HEFFELMAN
Assistant in Zoölogy

M. ELLA MUTCH
Assistant in Zoölogy

EARL R. SNAVELY
Assistant in History

J. STUART INNERST
Assistant in History

ESTA WAREHEIM
Assistant in History

CHARLES W. GEMMILL
Assistant in Physical Laboratory

GEORGE A. DEHUFF
Assistant in Chemistry

S. HUBER HEINTZELMAN
Assistant in Psychology

MRS. VIOLETTE NISSLEY FREED
Matron

ANNA GARMAN
Stenographer

HISTORY OF THE COLLEGE

Lebanon Valley College originated in the action of the East Pennsylvania Conference of the United Brethren Church at its annual session held at Lebanon in March, 1865. Resolutions were passed deciding the question of establishing a higher institution of learning to be located within the bounds of the East Pennsylvania or of the Pennsylvania Conference. One year later the committee appointed recommended in its report: First, the establishment of a school of high grade under the supervision of the Church; second, to accept for this purpose the grounds and buildings of what was then known as the Annville Academy, tendered as a gift to the Conference; and, third, to lease the buildings and grounds to a responsible party competent to take charge of the school for the coming year. School opened May 7, 1866, with forty-nine students. By the close of the collegiate year one hundred and fifty-one were enrolled, thus demonstrating at once the need of such an institution in this locality and the wisdom of the founders.

In April, 1867, the Legislature granted a charter with full university privileges under which a College Faculty was organized with Rev. Thomas Rees Vickroy, Ph.D., as president, and Prof. E. Benjamin Bierman, A.M., as principal of the Normal Department. The same year the Philokosmian Literary Society was organized by the young men, additional land was purchased, and a large brick building erected thereon with chapel, recitation rooms, president's office, and apartments for sixty boarding students. The building was not furnished and fully occupied till the fall of 1868.

The first regular commencement occurred June 16, 1870. About two years later opposition to the school manifested itself and President Vickroy stated in his report to the annual conference that the attendance of students was reduced from one hundred to seventy-five, the cause of this diminution being persistent opposition on the part of certain brethren.

President Vickroy directed the affairs of the institution for five years, from 1866 to 1871. During his administration the charter was prepared and granted by the State Legislature, the laws and regulations for the internal workings framed and adopted, the curriculum established, and two classes—those of 1870 and 1871—were graduated.

In June, 1871, Professor Lucian H. Hammond was elected president. During his term of office five classes were graduated, the Clonian Literary Society organized by the ladies, and the College made steady and substantial progress, but failing health compelled him to resign in June, 1876.

Rev. David D. DeLong, D.D., became the third president. He found it necessary to reconstruct the Faculty and retain but two of the former teachers. The Kalozetean Literary Society was instituted to awaken interest in literary work among the young men by means of a healthy rivalry, and the music department was organized. In the summer of 1883 a large, two-story, frame building was erected on College Avenue, containing art room, music rooms, the department of natural science, a museum and the College library. During his presidency one hundred and seven students were graduated, fourteen in music and ninety-three in the literary department.

After an interregnum of several months Rev. Edmund S. Lorenz, A.M., was elected president and took up the work with energy and ability. Enlargement was his motto and the friends of the College rallied to his support. Post graduate studies were offered. The College Forum made its appearance under the editorship of the Faculty. With a devotion that won the admiration of his friends he labored incessantly for nearly two years to make the College the peer of any in the State, but under this strain his health failed and he was obliged to retire at the close of the collegiate year of 1889.

The fifth president, Rev. Cyrus J. Kephart, D.D., assumed the duties of his office at the opening of the fall term in 1889. He secured creditable additions to the endowment fund, but because of discouraging conditions declined re-election at the close of the first year.

The question of re-locating the College agitated its constituency, divided its friends, and greatly hindered its progress. Some were almost in despair, others were indifferent, while others hoped and waited for the best. Under these conditions the Board of Trustees met in special session July 28, 1890, and called Dr. E. Benjamin Bierman to the presidency. He was inaugurated on the evening of the sixth of November following. Buildings were renovated, a large number of students enrolled and the Mary A. Dodge Fund of ten thousand dollars received, "the interest of which only is to be loaned without charge to such pious young people as the Faculty of the College may deem worthy of help as students." The Silver Anniversary of the College was celebrated June 15, 1892, when money was raised to purchase about three acres of ground to be added to the college campus. With the experience of twenty-five years of earnest effort to combat opposition and overcome errors and misconceived notions of higher education, and to build up

an institution of learning creditable to the United Brethren Church, the friends of the College entered upon the second quarter of a century with new hope and aspiration.

President Bierman served successfully until the spring of 1897, when he was succeeded by Rev. Hervin U. Roop, Ph.D., who held the office till January 1, 1906, after which time the administration was in the hands of the Executive Committee and the Faculty until the election of Rev. A. P. Funkhouser, A.M., March 9, 1906.

The presidency of Doctor Roop stands out as the period when the group system in the College curriculum was introduced, when the athletic field was acquired, when the disastrous fire of December 24, 1904, occurred, sweeping away the Administration Building in a few hours, and when several new buildings arose on the campus—Engle Music Hall 1899, and the Carnegie Library and Women's Dormitory in 1904. The recuperative powers of the institution were put to the test by the destruction of the main building. At a meeting held January 5, 1905, the friends of the College, resolved, amid unusual enthusiasm, to rebuild at once, and with the stimulus of a gift of fifty thousand dollars from Andrew Carnegie, received by the President, who had previously secured twenty thousand dollars from the same source, plans were matured by which to raise one hundred thousand dollars for this purpose. The erection of three new buildings was projected—the Men's Dormitory, the Central Heating Plant, and the new Administration Building, the latter being completed under the supervision of President Funkhouser, whose term of office is marked also by a strenuous effort to meet the debt which rose to almost or altogether ninety thousand dollars. Bonds were issued to the amount of fifty thousand dollars and the co-operative college circles organized to relieve the financial conditions.

Rev. Lawrence Keister, S.T.B., D.D., was elected president of the College, June 10, 1907, at the annual session of the Board of Trustees. He solicited \$7,700 for the equipment of the Science Department, secured the Mills Scholarship of one thousand dollars, and the Immel Scholarship of two thousand dollars. The debt effort authorized by the Board, June 3, 1908, was carried forward successfully, \$50,000 having been pledged before January 1, 1909, according to the condition of the pledge which also required the continuation of the canvas to secure another fifty thousand dollars in order to cover the entire debt. At the death of Rev. Daniel Eberly, D.D., July 9, 1910, whose will bears date of September 17, 1909, the College came into possession of property valued at about forty-five thousand dollars, the major portion being given for the endowment of the Latin Chair. According to the Treasurer's books the amount of outstanding bonds April 1, 1912, was forty-three thousand dollars.

In June, 1912, President Keister presented his resignation to the Board of Trustees and in September the Rev. Dr. George D. Gossard, of Baltimore, Maryland, was elected president. He at once entered upon the duties of his office, to which he brings conscientious devotion and intelligent enthusiasm.

GENERAL INFORMATION

The College is situated in Annville, a progressive and cultured town twenty-one miles east of Harrisburg in the beautiful, healthful, and fertile Lebanon Valley.

BUILDINGS AND GROUNDS

There are seven buildings on the campus, the Carnegie Library, the Engle Music Hall, the Women's Dormitory, the Men's Dormitory, South Hall, the Administration Building, and the Heating Plant.

THE CARNEGIE LIBRARY, a building of the Gothic style of architecture, erected in 1904, furnishes commodious quarters for the growing library of the College.

Two large reading rooms on the first floor, splendidly lighted and ventilated, and beautifully furnished, are provided with the leading magazines and daily papers. Periodicals devoted to the special work of each department are here, as well as magazines of general literature. On the second floor are six seminar rooms designed to be equipped with the special works of reference for the various departments, where students doing the most serious work may study undisturbed.

THE ENGLE MUSIC HALL, of Hummelstown brownstone, erected in 1899, contains the college chapel, used for all large college gatherings, a directors' office and studio, practice rooms, and a large society hall. The building is well equipped with pianos and a large pipe organ.

THE WOMEN'S DORMITORY was erected in 1905, and is a building of beautiful proportions. In addition to rooms which will accommodate forty-five students, there are a society hall, a dining hall, a well-equipped kitchen, and laundry.

THE MEN'S DORMITORY is a modern structure of brick with Indiana limestone trimmings. It contains single and double rooms and sixteen suites of two bed-rooms with a separate study-room. These

afford accommodations for more than a hundred students. This building was also erected in 1905.

SOUTH HALL, the original building of the institution, and acquired by gift in 1866, when the College was founded, has been remodeled and is now used as a women's dormitory.

THE HEATING PLANT, erected in 1905, contains a low pressure heating system of the most perfect construction, and supplies the heat for all the buildings on the campus. It is constructed with a view to the installation of a lighting plant.

THE ADMINISTRATION BUILDING is the most important and central of the buildings. It is built of buff brick with terra cotta trimmings, three stories high. It contains the recitation rooms of the College and the laboratories of the science departments. The department of art has here commodious and modern quarters. The administration offices of fireproof construction are on the first floor.

The Alumni Gymnasium occupies the ground floor. Here are provided over seven thousand square feet of floor space for the use of the department of physical culture and the promotion of athletic activities. The gymnasium has, in addition to the gymnasium floor, separate locker rooms for the teams, for the men, and for the girls, an apparatus room, and the usual shower baths.

The campus, of twelve acres, occupies a high point in the center of the town of Annville and is within easy access of all trolley and railroad lines.

The athletic field of five and one-half acres is well located and admirably adapted to the purpose for which it is intended.

LABORATORIES

The entire northern half of the Administration Building is occupied by the Departments of Science. The Department of Chemistry occupies the first floor, Physics the second, and Biology the third.

The laboratories of each department are constructed after the most approved modern methods, and students find everything arranged for their convenience. Stock rooms and special laboratories adjoin the general laboratories. The lecture rooms are provided with risers and Columbia tablet chairs.

RELIGIOUS WORK

The College has always tried to furnish religious training, and encourages all wholesome means of promoting Christian influence. Each

morning a regular service is held in the college chapel, at which the students are required to be present.

A students' prayer-meeting is held once a week, and opportunities for Bible study and mission study are offered by the Christian Associations in addition to those afforded by the regular curriculum.

All resident students of the College are expected to attend public worship in churches of their choice every Sunday.

COLLEGE ORGANIZATIONS

Christian Associations The College has flourishing Young Men's and Young Women's Christian Associations, which hold regular weekly devotional services and conduct special courses of Bible and mission study.

Under these auspices numerous public lectures, entertainments, and socials are held, so that they contribute incalculably to the pleasure of the student body. They are the center of the spiritual welfare of the students and deserve the hearty support of all connected with the College.

Literary Societies Excellent opportunities for literary improvement and parliamentary training are afforded by the societies of the College. There are three of these societies—Philokosmian, Kalozetean, and Clonian, the latter sustained by the young ladies. They meet every Friday evening in their well-furnished halls for literary exercises. These societies are considered valuable agencies in college work, and students are advised to unite with one of them.

Athletic Association The Athletic Association is composed of all the students of the College. It elects its own officers and the managers of the various athletic teams. The direct supervision of all athletics is in the hands of the Physical Director and the College Administration Office. The treasurer of the College is the treasurer of the Association.

The Mathematical Round Table The Mathematical Round Table is an organization of the students of the College who are interested in mathematical studies. Its object is to create interest in and love for the "exact science." Its meetings are held on the last Wednesday evening of each month. Papers on mathematical history and biography are read and discussed. Current events in the mathematical world and papers on various mathematical subjects have made the meetings very interesting and helpful.

Deutscher Verein The German Club has been organized by the students of the College who are especially interested in the study of the German language. Its meetings are held the third Wednesday of every month. Papers familiarizing the students with Germany, its life, customs, and literature are read. The meetings are conducted entirely in German. As a means of increasing conversational powers, German games are introduced as an important part of the program.

Political-Science Club The Political-Science Club meets the second Wednesday evening of each month. Its discussions furnish a clearing-house for information on current political and sociological topics.

LITERARY AND MUSICAL ADVANTAGES

During the college year, the student body has the privilege of hearing lectures and talks delivered by men of note in church and literary circles.

The department of music together with the department of public speaking presents a number of programs during the year. Concerts and recitals by prominent musicians are given under the patronage of the Department of Music with the aim of creating in the student an appreciation for the best in art.

There is a lively interest in the drama. Various college organizations have presented Shakespearean and other plays of a high grade.

A further means of enjoyment and education is the course of lectures and concerts under the management of the Christian Associations of the College.

ADMINISTRATION

Advisers The following are the advisers for the students in each of the five groups in which courses of instruction are offered: For the Classical group, Professor Shroyer; for the Mathematical-Physical, Professor Lehman; for the Chemical-Biological, Professor Derickson; for the Historical-Political, Professor Shenk; for the Modern Language, Professor Seaman. The adviser's approval is necessary before a student may register for or enter upon any course of study, or discontinue any work. He is the medium of communication between the Faculty and the students of his group, and in a general way stands to his students in the relation of a friendly counselor.

Discipline The laws of the College are as few and simple as the proper regulation of a community of young men and women will permit. The government of the dormitories is under the

immediate control of the student councils, committees of students, authorized by the College authorities.

Classification Every student residing in the dormitory must take at least fifteen hours of work as cataloged. Any student failing to pass eight (8) hours of work at the close of each semester will be required to withdraw from the institution.

The maximum number of hours, conditioned, permitted for senior standing is four; for junior standing, six; for sophomore standing, seven; for freshman standing, six.

The permitted number of extra hours of work above that prescribed by the curriculum is limited by the student's previous record, as follows:

- (a) Majority of A's—six hours.
- (b) Majority of B's—three hours.
- (c) Lower record than majority of B's—no extra hours.

No student will be given credit for more than twenty-four (24) hours in any twelve months.

Credits for work done in other institutions for which advanced standing is desired must be submitted to a committee of the Faculty and a copy filed with the Registrar within six (6) weeks after matriculation.

Class Standing Reports of standing will be made to parent or guardian at the end of each term when desired by them, or when the Faculty deems it expedient. The standing is indicated generally by classification in six groups, as follows:

- A signifies that the record of the student is distinguished.
- B signifies that the record of the student is very good.
- C signifies that the record is good.
- D signifies the lowest sustained record.
- E (conditioned) imposes a condition on the student.

Failing to make up a condition at an appointed time is equal to a record of F.

F (failed completely) signifies that the student must drop or repeat the subject, and cannot be admitted to subjects dependent thereon.

If the student's record as a whole is poor, he may be required to repeat certain subjects, to repeat the year's work, or to withdraw.

Degree and Diploma The degree of Bachelor of Arts or Bachelor of Science is conferred, by a vote of the Board of Trustees on recommendation of the Faculty, upon students who have satisfactorily completed sixty-nine hours of work in any of the groups.

Graduate Work Since all its members are fully occupied with undergraduate work, the Faculty deems it unwise to offer any work for the degree of Master of Arts during the coming year. In rare cases sufficient resident work upon certain advanced courses may be outlined. But as special action would be required in each case, no detailed announcement can be made here. All inquiries about graduate work should be addressed to the President.

SCHOLARSHIPS AND LOANS

The College offers a limited number of one hundred and thirty dollar free tuition scholarships to honor graduates of State Normal Schools and approved High Schools and Academies. One scholarship is allotted to the first honor graduate of our own Academy.

The College also offers a one hundred and thirty dollar scholarship to a literary graduate of Shenandoah Collegiate Institute, Dayton, Va. The recipient of that scholarship will be determined by the Faculty of this institution.

Graduates of High Schools and Academies whose standard is not equal to that of our own Academy, may enter the senior year of the Academy and become competitors for our own Academy scholarship.

Honor graduates of preparatory schools who have conditions may be allowed to make them up in the freshman year. If the first semester's work shows a majority of A's and nothing less than B in all work including conditions, a scholarship may be awarded.

Bishop J. S. Mills Scholarship Fund

This fund, established by a gift of \$1,000, is available.

H. S. Immel Scholarship Fund

This fund, established by a gift of \$2,000 is available "for young men in college who are preparing for the ministry in the Church of the United Brethren in Christ."

Eliza Bittinger Eberly Fund

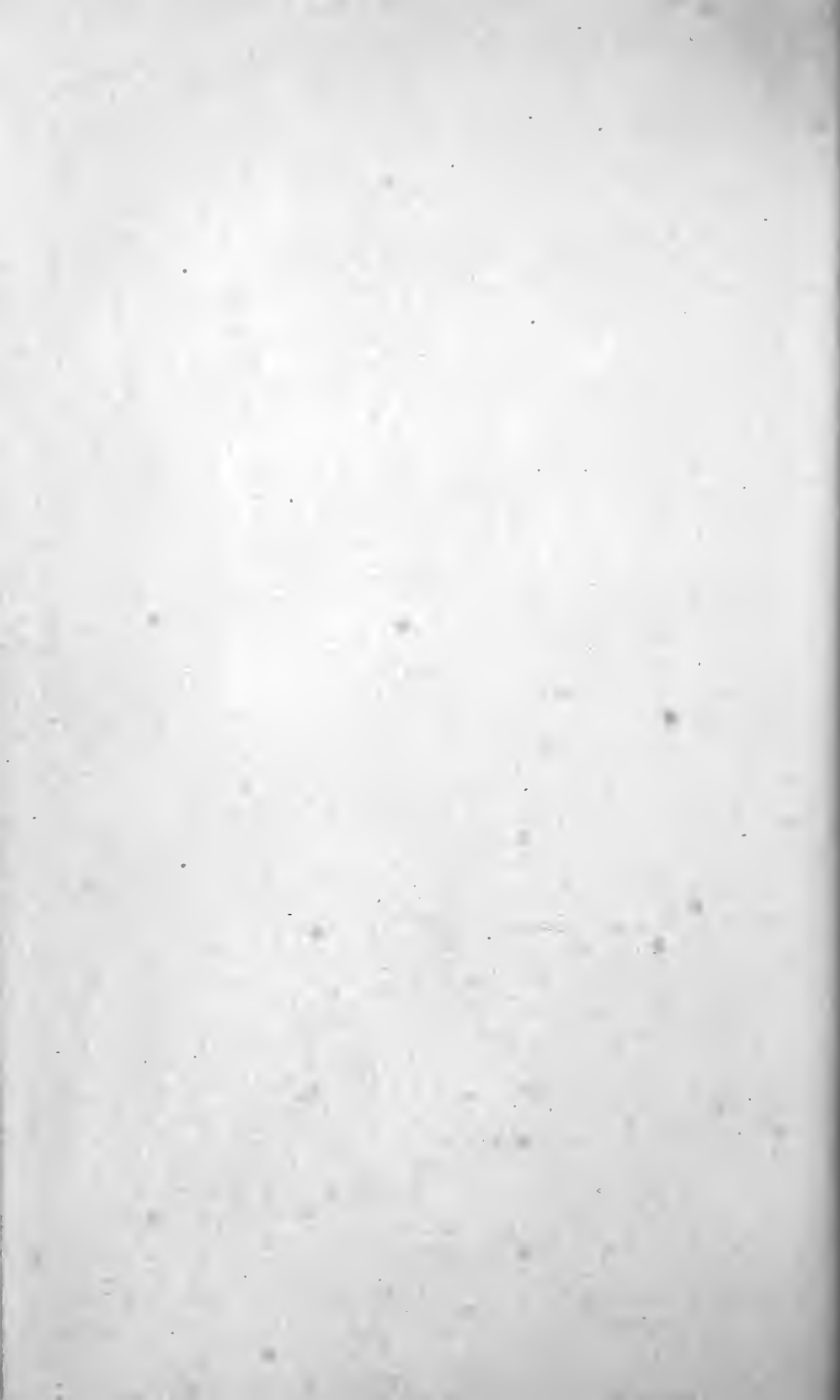
This fund consists of the income of a farm located near East Berlin, Adams County, Pa.

Daniel Eberly Fund

This fund is available and is to be loaned to worthy students seeking an education in college.



BOYS' DORMITORY



The Rev. H. C. Phillips Scholarship Fund

This fund established by a gift of \$1,300 in memory of Rev. H. C. Phillips, given by his wife and daughter is available for young men preparing for the ministry.

Mary A. Dodge Fund

The income from this fund is loaned to worthy students.

Charles B. Rettew Scholarship

This scholarship in Bonebrake Theological Seminary is limited to students from the East Pennsylvania Conference and Lebanon Valley College.

Dr. Henry B. Stehman Fund

This fund has been provided by Dr. Henry B. Stehman to help needy ministerial students.

The Executive Committee shall make scholarship awards.

EXPENSES

Matriculation and Physical Culture.....	\$11.00
Tuition, College	65.00

For twenty hours or less in the College, the tuition is \$65.00.

Each additional hour for semester or half-year, \$1.90.

Children of ministers are required to pay one-half the regular tuition in the College.

When two members of one family attend College at the same time, ten per cent. will be deducted from the tuition charged.

The tuition of \$65.00 in the College does not apply to the Academy, Art, Oratory, or Music departments.

All special students are required to pay a matriculation fee of from one to five dollars, and five dollars for Physical Culture.

All students taking regular work are required to pay a special college publication fee of one dollar. In consideration of the payment of the above fee, the student receives the College News.

Laboratory Fees, per semester :

Biology 1	\$3.00
Biology 2	6.00
Biology 3	6.00
Biology 4	6.00
Biology 5	6.00

A deposit of \$2.00 is required of each student who is assigned a locker in the biological laboratory, as a guarantee for return of the

keys and care of the apparatus. The treasurer will refund the deposit when a certificate from the department is presented, stating that the keys and apparatus have been returned in good condition.

Chemistry 1	\$7.00
Chemistry 2	7.00
Chemistry 3	7.00
Chemistry 4	5.00
Chemistry 5	10.00

A deposit of \$3.00 is required of each student who is assigned a locker in the chemical laboratory. Any part of this breakage deposit unused will be refunded at the end of the course.

Physics 1	\$3.50
Physics 2	5.00

A deposit fee of \$2.00 for Physics 1 and \$3.00 for Physics 2 will be charged.

All laboratory fees and deposits for each semester must be paid in advance. A student will not be assigned a locker or apparatus in any of the laboratories without a certificate from the Treasurer of the College stating that the fee has been paid and the deposit made.

Graduation Fee of \$10 is payable sixty days prior to commencement.

Boarding

Regular students are charged \$3.75 per week, or \$142.50 per year, if paid in installments, as follows: One-fifth at the opening of the College year, one-fifth November 1, three-tenths January 4, and three-tenths, March 25.

Five-day students (fifteen meals) are charged \$2.75 per week, or \$104.50 per year, if paid in installments as above. These rates do not include Thanksgiving, Christmas, and Easter vacations.

Day students may obtain meal tickets at the rate of twenty-five cents per meal, when paid in advance.

All students who do not room and board at home shall room in the Dormitories and board at the College Dining Hall unless special permission is granted to do otherwise by the Executive Committee.

Room Rent

In the Men's Dormitories and Women's Dormitories, when rooms are taken for one person only, the rates range from \$40 to \$80 per year. When rooms are taken for two persons the rates range from \$20 to \$60 for each student per year.

Light and heat, \$6 to \$9 per year from each student. One-half the regular rate will be charged for all additional lights installed.

Breakage Fee

A breakage fee of \$5 is required from each student who occupies a room in the Men's Dormitories.

Every student is charged with the furnishings of the room, at the opening of the school year, and held responsible for the same.

Estimated Expenses

Depending upon the course or courses of study, a student in Lebanon Valley College may take a year's work for \$240. This is the minimum and it does not include personal expenses or laboratory fees. It includes the following items: Boarding, \$142.50; Tuition, \$65; Room Rent, \$20; Matriculation and Physical Culture, \$11; Light and Heat, \$6; College publication fee, \$1, and in the Men's Dormitories a deposit fee of \$5.

A rebate of \$10.50 will be allowed to any regular student in the College, receiving no other aid, who will pay in full at the opening of the school year, the entire amount of the year's expense, for matriculation, Tuition, Boarding, Room Rent, Light, and Heat. This reduction of \$10.50 makes the minimum for the school year \$240.

For minimum of a year's expense in the Academy, see page 54, where full particulars are given.

Ten per cent. will be added on all payments that are deferred more than ten days after the time when the installments are due. These rates are fixed by special act of the Board of Trustees.

The regular College expenses are divided into four installments, and students are required to pay each installment in-advance, as follows:

One-fifth at the opening of the collegiate year, and one-fifth November 1; three-tenths January 4, and three-tenths March 25.

To cover expense in the Day students' rooms in South or North Hall, those occupying the same will be charged \$2 each.

When five or more day students occupy a dormitory room, each student will be charged \$22.50 for the year.

When a student leaves school or dormitories for any other reason except-sickness, he will be required to pay in full, as per bill rendered, to the time when the next installment falls due.

All students are required to make satisfactory settlement for all bills and dues before honorable dismissals are granted and before grades are given or recorded.

Students who are candidates for degrees or certificates must make full and satisfactory settlement with the College before degrees are voted and certificates given.

When a student retains his class standing, no reduction will be made for tuition, room rent, and fees for a semester, except for protracted sickness. In case of long continued illness, the loss is shared equally by the College and the student.

No reduction will be made for boarding, for an absence of less than ten days, and then only in case of sickness or important duties that compel the student to be absent from his college work. Reductions cannot be allowed for banquet trips, or club trips, or athletic trips.

Students are required to furnish their own towels, napkins, soap, and all bed furnishings except mattresses.

Opportunity for self-help is extended to a limited number of students in the College and in the Academy, who may serve as waiters, janitors, or librarians. In each case the term of service is thirty-eight weeks. Close application is required to the work assigned. Neglect of duty is sufficient cause for the removal of the student from the position.

Outline of Requirements for Admission to groups leading to the Bachelor of Arts Degree

The following is an outline of the requirements for admission to the Freshman Class of Lebanon Valley College. A detailed description of the courses indicated in this outline appears in the catalogue of the College. An aggregate of fifteen units must be offered by the candidate for admission. Of these eleven and one-half units are required as specified and three and one-half units may be elected.

A unit represents the work of a school year of no less than thirty-six weeks, with five periods of at least forty-five minutes each per week, or four periods of one hour each per week. A unit therefore, is the equivalent of one hundred and eighty recitation periods of forty-five minutes each, or one hundred and forty-four periods of one hour each.

Group 1 English	English		Three units required.
GROUP II Mathematics	Elementary Algebra	1 unit	Two and one- half units re- quired, one of which must be Plane Geom.
	Intermediate Algebra	½ unit	
	Plane Geometry	1 unit	
	Solid Geometry	½ unit	
	Plane Trigonometry	½ unit	
GROUP III Foreign Languages	Latin	4 units	Five units re- quired, three of which must be Latin.
	German	2 units	
	French	2 units	
	Greek	2 units	
GROUP IV Physical Sciences	Physical Geography	½ or 1 unit	Physics required. Chemistry re- quired only for students intend- ing to take Chem- ical Biological Group
	Physics	1 unit	
	Chemistry	½ or 1 unit	
GROUP V Biological Sciences	Botany	1 unit	Elective.
	Zoölogy	1 unit	
	Physiology	1 unit	
GROUP VI History, Etc.	Greek and Roman	1 unit	One unit required.
	Mediaeval and Modern	1 unit	
	English	1 unit	
	Civics	½ unit	
	Economics	½ unit	
GROUP VII	Drawing	½ or 1 unit	One unit only may be elected.
	Domestic Science	½ unit	
	Agriculture	½ unit	
	Bookkeeping	½ unit	
	Commercial Law	½ unit	
	Commercial Geography	½ unit	
	Psychology	½ unit	
	Methods of Teaching	½ unit	

In case the requirements of a given Group are not fully met by the fifteen units elected, the studies necessary for such requirements must be taken in place of an elective in the regular college course. For example, if a student presents three units of Latin and two of German for admission to a Group requiring four units of Latin, he must include in his college course the equivalent of the fourth unit of Latin.

Outline of Requirements for Admission to groups leading to the Bachelor of Science Degree

The following is an outline of the requirements for admission to the Freshman class of Lebanon Valley College. A detailed description of the courses indicated in this outline appears in the catalog of the College. An aggregate of fourteen and one-half units must be offered by the candidate for admission. Of these twelve units are required as specified and two and one-half units may be elected.

A unit represents the work of a school year of no less than thirty-six weeks, with five periods of at least forty-five minutes each per week, or four periods of one hour each per week. A unit therefore, is the equivalent of one hundred and eighty recitation periods of forty-five minutes each, or one hundred and forty-four periods of one hour each.

GROUP I English	English	3 units	Three units required.
GROUP II Mathematics	Elementary Algebra	1 unit	Three units required, one- half unit of which must be Solid Geometry.
	Intermediate Algebra	$\frac{1}{2}$ unit	
	Plane Geometry	1 unit	
	Solid Geometry	$\frac{1}{2}$ unit	
	Plane Trigonometry	$\frac{1}{2}$ unit	
GROUP III Foreign Languages	Latin	4 units	Two units. required.
	German	3 units	
	French	3 units	
	Greek	3 units	
GROUP IV Physical Sciences	Physics	1 unit	Two units required.
	Chemistry	1 unit	
GROUP V Biological Sciences	Botany	1 unit	One unit required.
	Zoölogy	1 unit	
GROUP VI History, Etc.	Greek and Roman	1 unit	One unit required.
	Mediaeval and Modern	1 unit	
	English	1 unit	
	Civics	$\frac{1}{2}$ unit	
	Economics	$\frac{1}{2}$ unit	
GROUP VII	Physiology	1 unit	Two and one-half units may be elected.
	Physical Geography	$\frac{1}{2}$ unit	
	Drawing	$\frac{1}{2}$ or 1 unit	
	Domestic Science	$\frac{1}{2}$ unit	
	Agriculture	$\frac{1}{2}$ unit	
	Bookkeeping	$\frac{1}{2}$ unit	
	Commercial Law	$\frac{1}{2}$ unit	
	Commercial Geography	$\frac{1}{2}$ unit	
	Psychology	$\frac{1}{2}$ unit	
	Methods of Teaching	$\frac{1}{2}$ unit	

DESCRIPTION OF COURSES

Candidates for admission should note carefully the following description of courses.

ENGLISH

Three Units Required

A thorough course in Advanced English Grammar, and a systematic course in English Composition and in the essentials of Rhetoric is required of all students. In addition to this and following the recommendations of the Conference on Uniform Entrance Requirements in English, books are prescribed for reading and practice, and for study and practice as follows:

a. Reading and Practice—1916. Two units.

Group I. (Two to be selected.) The *Old Testament*, comprising at least the chief narrative episodes in Genesis, Exodus, Joshua, Judges, Samuel, Kings, and Daniel, together with the books of Ruth and Esther; the *Odyssey*, with the omission, if desired, of Books I, II, III, IV, V, XV, XVI, XVII; the *Iliad*, with the omission, if desired, of Books XI, XIII, XIV, XV, XVII, XXI; Vergil's *Æneid*. The *Odyssey*, *Iliad*, and *Æneid* should be read in English translations of recognized literary excellence. For any unit of this group a unit from any other group may be substituted.

Group II. (Two to be selected.) Shakespeare's *The Merchant of Venice*, *Midsummer Night's Dream*, *As You Like It*, *Twelfth Night*, *Henry the Fifth*, *Julius Caesar*.

Group III. (Two to be selected.) Defoe's *Robinson Crusoe, Part I*, Goldsmith's *Vicar of Wakefield*, either Scott's *Ivanhoe* or *Quentin Durward*, Hawthorne's *The House of the Seven Gables*, either Dickens' *David Copperfield* or *A Tale of Two Cities*, Thackeray's *Henry Esmond*, Mrs. Gaskell's *Cranford*; George Eliot's *Silas Marner*, Stevenson's *Treasure Island*.

Group IV. (Two to be selected.) Bunyan's *Pilgrim's Progress, Part I*, the *Sir Roger de Coverley Papers* in the "*Spectator*," Franklin's *Autobiography* (condensed), Irving's *Sketch Book*, Macaulay's *Essays on Lord Clive* and *Warren Hastings*, Thackeray's *English Humorists, Selections* from Lincoln, including at least the two inaugurals, the speeches in Independence Hall and at Gettysburg, the *Last Public Address* and *Letter to Horace Greeley*, along with a brief memoir or esti-

mate, Parkman's *Oregon Trail*, either Thoreau's *Walden* or Huxley's *Autobiography* and selections from *Lay Sermons* including the address on *Improving Natural Knowledge, A Liberal Education, and A Piece of Chalk*, Stevenson's *Inland Voyage* and *Travels With a Donkey*.

Group V. (Two to be selected.) Palgrave's *Golden Treasury* (First Series) *Books II and III*, with special attention to Dryden, Collins, Gray, Cowper, and Burns; Gray's *Elegy in a Country Churchyard* and Goldsmith's *Deserted Village*, Coleridge's *Ancient Mariner* and Lowell's *The Vision of Sir Launfal*, Scott's *The Lady of the Lake*, Byron's *Childe Harold, Canto IV*, and *The Prisoner of Chillon*, Palgrave's *Golden Treasury* (First Series) Book IV, with special attention to Wordsworth, Keats and Shelley, Poe's *The Raven*, Longfellow's *The Courtship of Miles Standish*, and Whittier's *Snow Bound*, Macaulay's *Lays of Ancient Rome*, and Arnold's *Sohrab and Rustum*, Tennyson's *Gareth and Lynette, Lancelot and Elaine*, and *The Passing of Arthur*, Browning's *Cavalier Tunes, The Lost Leader, How They Brought the Good News from Ghent to Aix, Home Thoughts from Abroad, Home Thoughts from the Sea, Incidents of the French Camp, Herve Riel, Pheidippides, My Last Duchess, Up at a Villa—Down in the City*.

b. **Study and Practice**—(One unit) Shakespeare's *Macbeth*, Milton's *L'Allegro, Il Penseroso* and *Comus*, Burke's *Speech on Conciliation with America*, or Washington's *Farewell Address* and Webster's *First Bunker Hill Oration*, Macaulay's *Life of Johnson* or Carlyle's *Essay on Burns*.

MATHEMATICS

a. **Elementary Algebra, Algebra to Quadratics**—One unit.

1. The four fundamental operations.
2. Factoring, determination of highest common factor and lowest common multiple by factoring.
3. Linear equations, both numerical and literal, containing one, two, and three unknowns.
4. Problems depending on linear equations.
5. Radicals and the extraction of the square root of polynomials.
6. Fractional and negative exponents.

b. **Quadratics and Beyond**—One-half unit.

1. Quadratic equations, both numerical and literal.
2. Problems depending on quadratic equations.

3. The binomial theorem for positive integral exponents.
4. The formulas for the n th term and the sum of the terms of arithmetical and geometrical progressions.
5. Numerous problems chosen from mensuration, from physics, and from commercial life.

The equivalent of Hawke's and others.

High School Algebra complete.

c. Plane Geometry—One unit.

1. The usual theorems and constructions.
2. The solution of numerous exercises, including problems of Loci.
3. The equivalent of Durell's Plane Geometry.

d. Solid Geometry—One-half unit.

1. The usual theorems, the properties and measurement of prisms, pyramids, cylinders, and cones, the sphere and spherical triangle.
2. Applications to the mensuration of surfaces and solids.

e. Trigonometry—One-half unit.

1. Definitions and relations of the six trigonometric functions as ratios, circular measurements of angles.
2. Proofs of the principal formulas, and the transformation of trigonometric expressions by means of these formulas.
3. Solution of trigonometric equations.
4. The theory and use of logarithms.
5. The solution of right, oblique, and spherical triangles with applications.

LATIN

Latin a—Three units.

A systematic course of five lessons a week extending over a period of three years is required.

The real test of the candidate's fitness is based upon his ability to read simple Latin prose, to explain constructions and idioms, and to turn simple Latin sentences into prose.

He should have studied grammar, elementary prose composition, 90 to 120 pages of *Nepos* (Lives) and *Caesar* (Gallic and Civil wars); also about 40 pages of *Cicero* and the first four books of *Vergil* or its equivalent in Latin poetry.

Latin b—One unit (optional).

Vergil and *Ovid*, 6,000 to 10,000 verses or other equivalents not read in Latin A.

GREEK

Greek 1—One unit.

The equivalent of *White's First Greek Book*. Five recitations a week for at least thirty weeks. The candidates shall have read the equivalent of about eight chapters of *Anabasis* and show a knowledge of ordinary forms.

Greek 2—One unit.

At least the first four books of the *Anabasis* together with the ability to turn short sentences into Greek.

Greek 3—One unit.

The translation at sight of Attic prose and of Homer, constructions, idioms and prosody and the ability to translate a short passage of connected English narrative is required.

GERMAN

a. Elementary German—Two units.

During the first year the work should comprise:

1. Careful drill on pronunciation.
2. Drill on the rudiments of grammar.
3. Abundant easy exercises in reproduction and memory work.
4. The reading of 75 to 100 pages of graduated texts from a reader.

During the second year the work should comprise:

1. The reading of 150 to 200 pages of literature in the form of easy stories and plays.
2. Reproduction practice as before, both oral and written.
3. Continued drill on the rudiments of grammar.

Suitable stories and plays are as follows:

Wilhelmi's *Einer muss heiraten*, Bacon's *Im Vaterland*, Anderson's *Maerchen*, Leander's *Traeumereien*, Heyse's *L'Arrabbiata*, Hillern's *Hoher als die Kirche*, Storm's *Immensee*, Zschokke's *Der Zerbrochene Krug*, Stoekl's *Unter dem Christbaum*, Baumbach's *Der Schwiegersohn*.

b. Intermediate German—One unit.

The work should comprise, in addition to the elementary course, the reading of about 400 pages of moderately difficult prose and poetry together with constant drill in reproduction and grammatical drill, with special reference to the infinitive and the subjunctive.

Suitable reading matter can be selected from the following:

Freytag's *Die Journalisten*, Fouque's *Undine*, Goethe's *Hermann und Dorothea*, Lessing's *Minna von Barnhelm*, Schiller's *Der Neffe als Onkel*, *Wilhelm Tell*, *Die Jungfrau von Orleans* and others prescribed by the College Entrance Examination Board.

FRENCH

a. Elementary French—Two units.

The applicant should be able to pronounce French accurately, to turn simple English sentences into French and to answer questions on the rudiments of grammar.

The first year's work should comprise the rudiments of grammar, the reproduction of natural forms of expression and the reading of 100 to 175 duodecimo pages of graduated texts.

During the second year the work should comprise:

1. Constant practice in translating into French easy variations upon the texts read.
2. Frequent oral abstracts.
3. The mastery of the use of pronouns, pronominal adjectives, of all but the rare, irregular verb forms and the simpler uses of the conditional and the subjunctive.
4. The reading of 400 to 500 pages of easy, modern prose in the form of stories, plays, or historical or biographical sketches.

Suitable texts for the second year are:

About's *Le roi des montagnes*, Bruno's *Le tour de la France*, Mairret's *La tache du petit Pierre*, Merimee's *Colomba*, Legouve and Labiche's *La cigale chez les fourmis*, Le Bedolliere's *La Mere Michel et son chat*.

b. Intermediate French—One unit.

1. Constant practice in French paraphrasing.
2. Grammar in modern completeness.
3. Writing from dictation.
4. The reading of from 400 to 600 pages from suitable texts such as the following:

Corneille's *Le Cid*, Sandeau's *Le gendre de M. Poirier*, Daudet's *La Belle-Nivernaise*, Racine's *Athalie*, *Andromaque* and *Esther*, George Sand's plays and stories, Sandeau's *Mademoiselle de la Siegliere*, and others.

PHYSICS

Elementary Physics—One unit.

1. The study of a standard text-book as Carhart and Chute's *High School Physics*, or Milikan and Gale's *A First Course in Physics*.
2. Lectures and table demonstrations.
3. Individual laboratory work consisting of at least 30 experiments as required by the College Entrance Examination Board.
4. The course should include the following fundamental topics:

- a. Introduction, Metric system, volume, density, weight, and states of matter.
- b. Mechanics, fluids, and solids.
- c. Heat.
- d. Sound.
- e. Light.
- f. Magnetism.
- g. Static Electricity.
- h. Current Electricity.

The applicant must also present an approved laboratory note book of experiments performed, together with a certificate from the teacher of Physics stating the exact character and amount of work done under his supervision.

BOTANY

Elementary Botany—One unit.

PART I. The General Principles of (a) Anatomy and Morphology, (b) Physiology, and (c) Ecology.

a. Anatomy and Morphology.

The seed, the shoot, specialized and metamorphosed shoots, the root, specialized and metamorphosed roots, the flower, the comparative and morphological study of four or more types, the fruit and the cell.

b. Physiology.

Roll of water in the plant, photosynthesis, respiration, digestion, irritability, growth, and fertilization.

c. Ecology.

Modifications, dissemination, crosspollination, light relations of green tissue and special habitats.

PART II. The natural history of the plant groups and classification.

A comprehensive study of the great natural groups of plants. Selections may be made from the following:

a. Algae. Pleurococcus, Sphaerella, Spirogyra, Vaucheria, Fucus, Nematium.

b. Fungi. Bacteria, Rhizopus or Mucor, Yeast, Puccinia, Corn Smut, Mushroom.

c. Lichens. Physcia (or Parmelia or Usnea).

d. Bryophytes. In Hepaticae, Radula and in Musci, Mnium.

e. Pteridophytes. In Filicineae, Aspidium, or equivalent, including the prothallus. In Equisetinae, Equisetum. In Lycopodiinae, Lycopodium, and Selaginella.

f. **Gymnosperms.** Pinus or equivalent.

g. **Angiosperms.** A monocotyledon and dicotyledon.

The applicant shall present a certified note-book of individual laboratory work of at least double the amount of time given to recitation. Special stress should be laid on accurate drawings and precise descriptions.

ZOOLOGY

Elementary Zoölogy—One unit.

1. The general natural history—including general external structure in relation to adaptations, life histories, geographical range, relations to other plants and animals, and economic relations—of common vertebrates.

Suggested types are a mammal, bird, lizard, snake, turtle, newt, frog, dogfish or shark, bony fish, clam, snail, starfish, earthworm, hydra, sea anemone, paramoecium.

Pupils should be familiar with orders of insects or with crustaceans, spiders and myriapods.

Actual examination of common animals with the above should be supplemented by reading giving natural history information.

Laboratory work required.

Certified note-books should be presented.

In general, the work as outlined by the College Entrance Examination Board will be accepted.

CHEMISTRY

Elementary Chemistry—One unit.

The candidate's preparation should include:

1. Individual laboratory work, comprising at least forty exercises from a list of sixty or more as outlined by the College Entrance Examination Board.

2. Instruction by lecture-table demonstrations, to be used mainly as a basis for questioning upon the general principles involved in the pupil's laboratory investigations.

3. The study of at least one standard text-book, to the end that the pupil may gain a comprehensive and connected view of the most important facts and laws of Elementary Chemistry. Brownlee and Others *Principles in Chemistry* or its equivalent is required.

HISTORY

History a—One unit.

Ancient History, with special reference to Greek and Roman history, including also a brief study of the ancient civilization and bringing the study down to the death of Charlemagne.

History b—One unit.

Mediæval and Modern History, from the death of Charlemagne to the present time.

History c—One unit.

English History.

History d—One unit.

American History and Civics.

GEOGRAPHY

Physical Geography—One unit.

- a. The Earth as a Globe.
- b. The Ocean.
- c. The Atmosphere—including weather instruments and the United States Weather Map.
- d. The Land.
- e. Volcanoes.
- f. Rivers.
- g. Glaciers.
- h. Relation of man, plants, and animals to climate, land forms, and oceanic areas.

A note-book certified to by the teacher in charge is required in all cases for one unit. Otherwise one-half unit only may be offered.

DRAWING

Free-hand Drawing—One unit.

1. The applicant must be able to sketch with fairly steady and clean lines any figures or combinations of figures, polygons, spirals, or the like.
2. He shall be able to sketch common objects such as furniture and utensils with reasonable accuracy and correctness of proportion.
3. Also to sketch from copy, enlarging or reducing dimensions, any simple object, such as a valve or title pattern.

A note-book with drawings both approved and certified to by the teacher must be presented in order to receive credit.

Schedule of Lecture and Recitation Hours

	Monday	Tuesday	Wednesday	Thursday	Friday
7:45	Chapel				
8:00	German 2 Mathematics 1 & 2 (c) French 1 (a)	Greek 1, Chemistry 1 A French 1(a), English 6&7 German 2, History 3 Mathematics 1 and 2 (c)	Greek 1 French 1 (a) German 2 Mathematics 1 and 2 (c) English, 5	Greek 1 English 6 and 7 Mathematics 1 & 2 (c) History 3 Chemistry 1 A Biology 2	Greek 1 English 5 Physics 1 Chemistry 4
9:00	Bible 1 (a) Mathematics 1 & 2 (b) History 4 English 3 (a) Biology 2	Bible 1 English 2 English 5 Mathematics 1 and 2 (b) Economics 1 and 2 Biology 2	Latin 3 and 4 German 1 (a) English 4 Mathematics 1 and 2 (b) History 4 Physics 2	Latin 3 and 4 Economics 1 and 2 German 3 Mathematics 1 and 2 Biology 5	Latin 3 and 4 German 1 (a) English 2 Chemistry 5 History 4
10:00	Latin 1 and 2 Chemistry 2 and 3 History 2 Biology 1 (a) Economics 3	Philosophy 3 and 4 Chemistry 1 b Latin 1 and 2 Biology 1 (b) History 2 Bible 3 and 4	Philosophy 5 Latin 1 and 2 English 2 Mathematics 3 Biology 1 (a)	Philosophy 3 and 4 Mathematics 3 Bible 3 and 4 History 1 German 1 Chemistry 1 b	Philosophy 5 Mathematics 3 German 1 (c) History 1
11:00	Greek 2 Philosophy 1 and 2 German 1 (b) History 5 & 6 English 1 (a) Physics 2 Chemistry 4	Greek 2 Philosophy 1 and 2 German 1 (b) English 1 (a) Physics 2 Geology	Greek 2 Philosophy 1 and 2 English 1 (b) German 1 (c) Mathematics 7 Biology 5 Geology	English 2 English 1 (b) German 1 (b) Economics 3 Chemistry 5	Geology Biology 1 (b) History 2 Education 1 and 2
1:00	Greek a English 1 Physics 1 Education 1 and 2	Greek a Physics 1 English 3 (a) Education 1 and 2	Greek 9 Mathematics 4 and 5 Latin 5	Greek a German 1 (c) Mathematics 4 and 5	Greek 3 German 3 Mathematics 4 and 5
2:00	Greek 3 English 4 Mathematics 1 and 2 (c) French 1 (c)	Greek 3 English 3 (b) Mathematics 1 and 2 (c) French 1 (c)	English 3 (b) Economics 1 and 2	English 4 Mathematics 1 & 2 (c) French 1 (c)	English 4 Mathematics 1 and 2 (c)
3:00	Latin 5 German 5 Astronomy Mathematics 7	Greek 5 French 1 German 5 Mathematics 7 Astronomy	Astronomy French 1 German 5	Greek 5 French 1 German 5	Philosophy 3 and 4

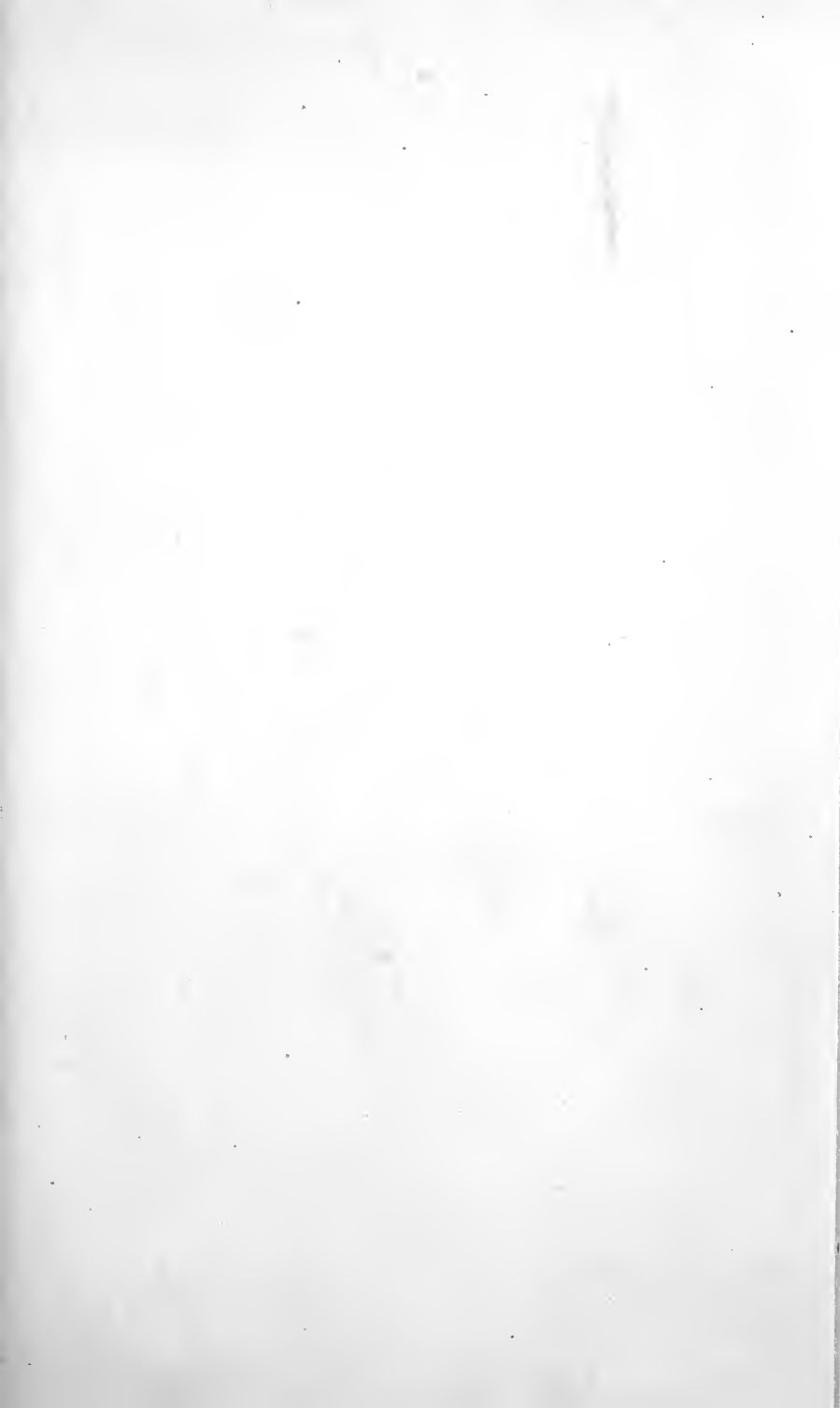
OUTLINE OF COURSES

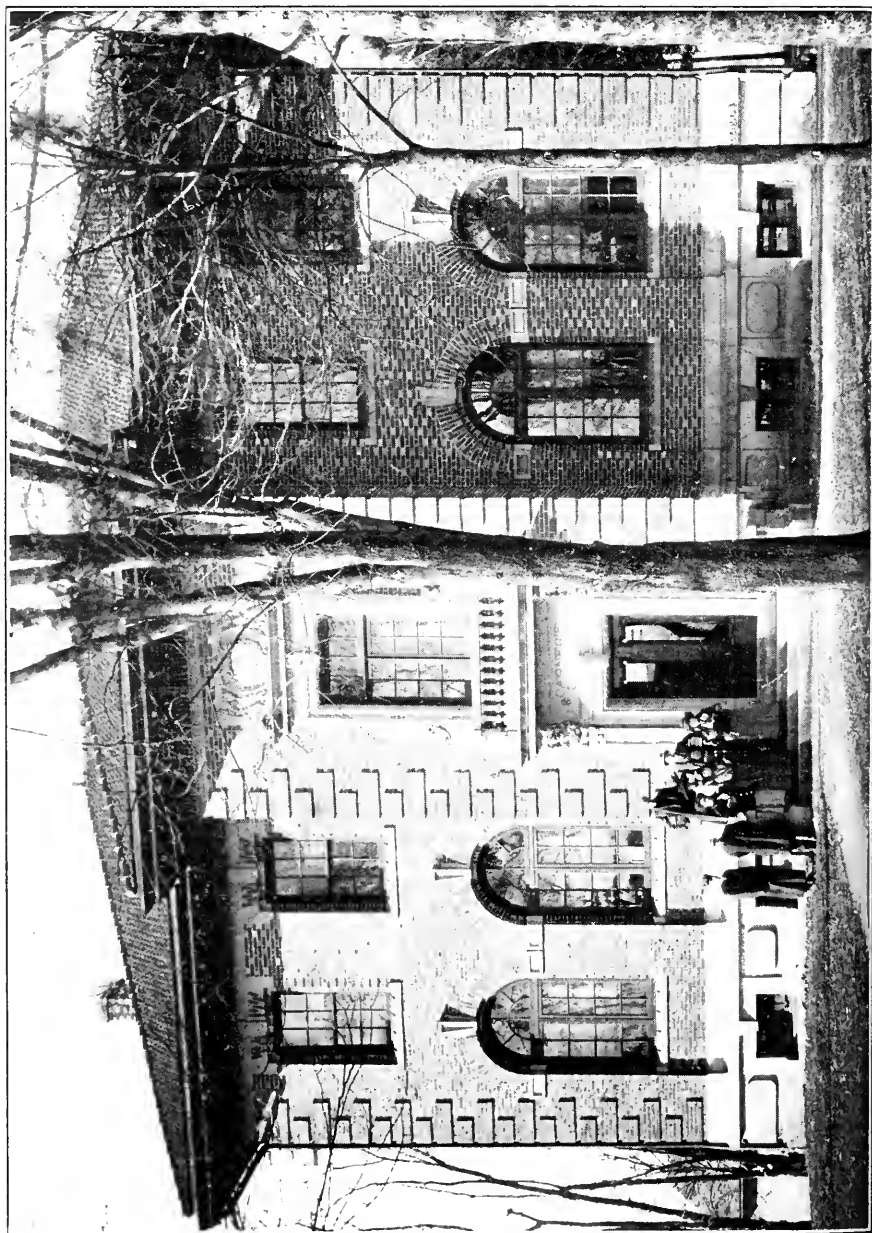
Courses aggregating 69 hours in any group required for graduation. For fuller description of courses see pages 23 to 49.

FRESHMAN

	Group I	Group II	Group III	Group IV	Group V					
	<i>Classical</i>	<i>Chemical-Biological</i>	<i>Mathematical-Physical</i>	<i>Historical-Political</i>	<i>Modern Language</i>					
	HOURS	HOURS	HOURS	HOURS	HOURS					
First Semester	Greek 1	3	Biology 1	3	Mathematics 1	4	History 1	4	English 1	2
	Latin 1a	3	Mathematics 1	4	English 1	2	English 1	2	English 2	1
	Mathematics 1	4	English 1	2	English 2	1	English 2	1	German 1	3
	English 1	2	English 2	1	*German 1	3	*German 1	3	French 1	3
	English 2	1	*German 1	3	French 1	3	French 1	3	Latin 1a	3
	French 1, or	3	French 1	3	Bible 1	2	Mathematics 1	2	Bible 1	2
	German 1, or	3	Bible 1	2	History 1	2	Latin 1a, or	2	Mathematics 1	4
	Biology 1	2	Physical Culture	½	Physical Culture	1	½ Greek, or	½	Physical Culture	½
	Bible 1	2	Elective		Elective		Physical Culture	½		
	Physical Culture	½								
Second Semester	Greek 1	3	Biology 1	3	Mathematics 2	4	History 1	2	English 1	2
	Latin 1b	3	Mathematics 2	4	English 1	2	English 1	2	English 2	1
	Mathematics 2	4	English 1	2	English 2	1	English 2	1	German 1	3
	English 1	2	English 2	1	German 1	3	German 1	3	French 1	3
	English 2	1	German 1	3	French 1	3	French 1	3	Latin 1b	3
	French 1, or	3	French 1	3	Bible 1	2	Mathematics 2	2	Bible 1	2
	German 1, or	3	Bible 1	2	History 1	2	Latin 1b, or	2	Mathematics 2	4
	Biology 1	2	Physical Culture	½	Physical Culture	½	½ Greek 1b, or	½	Physical Culture	½
	Bible 1	2			Elective		Physical Culture	½		
	Physical Culture	½								

*Candidates for the B.S. degree who have not offered German for admission may take German 5 or Latin 1a instead of German 1.





SOPHOMORE

Group I		Group II		Group III		Group IV		Group V	
<i>Classical</i>		<i>Chemical-Biological</i>		<i>Mathematical-Physical</i>		<i>Historical-Political</i>		<i>Modern Language</i>	
HOURS		HOURS		HOURS		HOURS		HOURS	
Greek 2	3	Biology 2, or	}	Mathematics 3	3	History 2	2	English 2	1
Latin 2a	3	Chemistry 1		Chemistry 1	4	English 2	1	English 3	2
English 2	2	Mathematics 3	3	Philosophy 1	3	English 2	2	German 2	3
English 3	1	Philosophy 1	3	English 3	3	Philosophy 1	3	French 2	3
Philosophy 1	3	English 2	1	German 2	3	Biology 2, or	}	History 2	2
History 2	2	English 3	1	Elective 2	2	Chemistry 1		4	Philosophy 1
German 2, or	}	History 2	2	Physical Culture	1/2	Bible 1	}	Biology 2, or	}
French 2		3	Elective	3	Physical Culture	1/2		Elective	
Physical Culture	1/2	Physical Culture	1/2			Physical Culture	1/2	Physical Culture	1/2
Greek 2	3	Biology 2, or	}	Mathematics 3	3	History 2	2	English 2	1
Latin 2b	3	Chemistry 1		Chemistry 1	4	English 2	1	English 3	2
English 2	2	Mathematics 3	3	Philosophy 2	3	English 3	2	German 2	3
English 3	1	Philosophy 2	3	English 3	3	Philosophy 2	3	French 2	3
Philosophy 2	3	English 2	1	German 2	3	Biology 2, or	}	History 2	2
History 2	2	English 3	1	Elective	2	Chemistry 1		4	Philosophy 2
German 2, or	}	History 2	2	Physical Culture	1/2	Bible 1	}	Biology 2, or	}
French 2		3	Elective	3	Physical Culture	1/2		Elective	
Physical Culture	1/2	Physical Culture	1/2			Physical Culture	1/2	Physical Culture	1/2

First Semester

Second Semester

JUNIOR

Group I	Group II	Group III	Group IV	Group V
<i>Classical</i>	<i>Chemical-Biological</i>	<i>Mathematical-Physical</i>	<i>Historical-Political</i>	<i>Modern Language</i>
HOURS	HOURS	HOURS	HOURS	HOURS
Greek 3 Latin 5 or 6 Philosophy 3 English 3 Economics 1 Biology 2, or Chemistry 1, or Physics 1	Biology 2, or } Chemistry 1 } Biology 3, or } Chemistry 2 } Mathematics 4 Economics 1 Elective	Mathematics 4 Physics 1 Chemistry 2 Astronomy Economics 2 Elective 1	History 3 Economics 1 Philosophy 3, or } Education 1 } English 3 Elective 6	English 4 English 5 German 3 French 3 Economics 1 History 3
Greek 3 Latin 6 or 5 English 3 Biology 2, or Chemistry 1, or Physics 1 Elective	Biology 2, or } Chemistry 1 } Biology 3, or } Chemistry 3 } Mathematics 5 Elective 6	Mathematics 4 Physics 1 Chemistry 3 Geology Elective 3	History 3 Economics 2 Philosophy 4, or } Education 1 } English 3 Elective 6	English 4 English 5 German 3 French 3 History 3 Elective 3

First Semester

Second Semester

SENIOR

Group I	Group II	Group III	Group IV	Group V
<i>Classical</i>	<i>Chemical-Biological</i>	<i>Mathematical-Physical</i>	<i>Historical-Political</i>	<i>Modern Language</i>
HOURS	HOURS	HOURS	HOURS	HOURS
Greek 4 Philosophy 5 History 4 Bible 3 Elective	Biology 4, or Chemistry 5 } Physics 2 Bible 3 Elective 6	Mathematics 7 Physics 2 Bible 3 Elective 7	History 4 History 5 Philosophy 5 Bible 3 Sociology Elective 4	English 6 Philosophy 5 Bible 3 Elective 9
Greek 4 Philosophy 5 History 4 Bible 3 Elective	Biology 4, or Chemistry 5 } Physics 2 Bible 3 Elective 6	Mathematics 8 Physics 2 Bible 3 Elective 7	History 4 History 6 Philosophy 5 Bible 3 Sociology Elective 4	English 7 Philosophy 5 Bible 3 Elective 9

For elective studies not mentioned in the outline of courses see description of courses under Departments of Instruction, pages 36 to 49 of the catalog.

PHILOSOPHY AND EDUCATION

PHILOSOPHY

1. **Psychology**—Three hours. First Semester.

Special emphasis will be upon (1) the application of psychological laws to practical life, and (2) the philosophical bearing of certain psychological principles. Thus, without departing from the mode of treatment appropriate to a natural science, this course will be made to serve as a general introduction to philosophy.

Text-book, Angell's *Psychology*.

2. **Logic**—Three hours. Second Semester.

The intimate relation between Logic and Psychology will be emphasized thruout the course. From this point of view the traditional subject matter of elementary logic will be carefully discussed and the detection and classification of fallacies drilled upon. About half the time of the course will be given to Inductive Logic.

Text-book, Hibben's *Logic: Deductive and Inductive*.

3. **History of Ancient Philosophy**—Two hours. First Semester.

In this course, and in its sequel, Philosophy 4, the aim will be (1) to trace the development of philosophy, pointing out what of permanent value each system, as it arose, contributed toward a final solution of the problem of the nature of being, and (2) to show the interaction between philosophic thought and the practical life of the period during which it flourished.

4. **History of Modern Philosophy**—Two hours. Second Semester.

The work will be critical as well as expository, and an effort will be made at reconstruction on the basis of the great systems of philosophy worked out from Descartes to Spencer.

5. **Ethics**—Two hours. Throughout the year.

This course will be primarily constructive and only in so far critical and historical as its constructive purpose demands. Much attention will be given to the practical bearing of the doctrine set forth on the pressing problems of to-day—such as individualism, the integrity of our social institutions, the problems which grow out of progress, etc.

EDUCATION

1. **History of Education**—Three hours. First Semester.

A study of pedagogical theories and practices, from the early days of China to the present, with some reaction upon the doctrines discussed.

2. **School Management**—Three hours. Second Semester.

A consideration of the practical problems involved in class management and in school supervision.

3. **Secondary Education**—Three hours. Second Semester.

This course deals primarily with the American High School of today but some attention will also be given to the history of our secondary school system in the United States and to the secondary schools of Europe. The course will consist of two parts: (1) The general problems of the high school, and (2) The high-school curriculum.

Either practice teaching or two theses.

DEPARTMENT OF LATIN

PROFESSOR KIRKLAND

A. Course for Beginners—Four hours. Thruout the year.

The elements of Latin Grammar. The reading of at least two books of *Caesar's Gallic War*, and as much as possible in Cicero's orations and in Vergil. This course will be accepted as the fulfillment of entrance conditions in Latin or for college credit if Latin has not been offered for entrance. (Not offered 1916-17.)

1. **Selections from Roman Historical Literature**—Three hours. First Semester.

Review of Latin Grammar. Prose Composition.

2. **Selections from Latin Poetry**—Three Hours. Second Semester.

The Study of Mythology.

3. **Horace, Odes and Epodes**—Three hours. First Semester.

History of Latin Literature.

4. **Selections from the Literature of the Early Empire**—Three hours. Second Semester.

The Study of Roman Life.

5. **Rapid Reading Course in Latin Poetry**—Two hours. Thruout year.

6. **Teachers' Training Course**—Four hours. Thruout year.

7. **Latin Comedy**. (Not offered 1916-17.)

8. **Latin Tragedy**. (Not offered 1916-17.)

HISTORY AND POLITICAL SCIENCE

PROFESSOR SHENK AND MESSRS. HEINTZLEMAN, INNERST, SNAVELY, MISS WAREHEIM

1. **Mediaeval and Early Modern History**—Two hours. Thruout the year. A study of the life and institutions of the Middle Ages; the Renaissance and the Reformation.

Thatcher and Schwill's *Europe in the Middle Ages*, Schwill's *Modern Europe*, Robinson's *Readings*.

2. **European History** from the accession of Louis XIV. to the present time. Two hours. Thruout the year.

Robinson and Beard, *The Development of Modern Europe, Volumes I and II*, Robinson's Readings.

3. History of England—Two hours. Thruout the year.

A brief review of the Anglo-Saxon period; a more thoro study of the period following the Norman Conquest, and an intensive study of the Tudor period and the Revolution.

Terry: *History of England*, Cheyney: *Introduction to the Social and Industrial History of England*, Cheyney: *Readings in English History*.

4. United States Political and Constitutional History—Three hours. Thruout the year.

A full course covering the colonial and constitutional periods. An extensive reading course of original and secondary sources is required. Elson: *History of the United States*, Macdonald: *Select Documents*.

5. Political Science—Three hours. First Semester.

A study of various theories of the state and of the structure and province of government. Garner: *Elements of Political Science*.

6. International Law—Three hours. Second Semester.

A course in the Fundamental Principles of International Law. Much time is given to the study of important cases. Lawrence: *The Principles of International Law*.

ECONOMICS AND SOCIOLOGY

PROFESSOR SHENK

1. Economics—Three hours. First Semester.

A general course in economic theory, supplemented by consideration of practical current problems. Careful consideration will be given the different points of view of the leading economists.

Bullock: *Introduction to Economics*.

2. Current Labor Problems—Three hours. Second Semester.

A course devoted to a study of the important labor problems of the present day: Strikes, labor organizations, employers' associations, arbitration, trade agreement, labor legislation, etc.

3. Theory of Sociology—Two hours. Thruout the year.

The course is intended to give the student a knowledge of the various theories of society together with the place of Sociology in the general field of learning.

MATHEMATICS

PROFESSOR LEHMAN

1. Advanced Algebra—Four hours. First Semester.

Covering ratio and proportion, variation, progressions, the binomial theorem, theorem of undetermined coefficients, logarithms, permutations and combinations, theory of equations, partial fractions, etc.

2. Plane and Spherical Trigonometry—Four hours. Second Semester.

Definitions of trigonometric functions, goniometry, right and oblique triangles, measuring angles to compute distances and heights, development of trigonometric formulae, solution of right and oblique spherical triangles, applications to Astronomy.

3. Analytic Geometry—Three hours. Thruout the year.

The equations of the straight line, circle, ellipse, parabola, and hyperbola are studied, numerous examples solved, and as much of the higher plane curves and of the geometry of space is covered as time will permit.

4. Differential Calculus—Three hours. First Semester.

Differentiation of algebraic and transcendental functions, maxima and minima, development into series, tangents, normals, evolutes, envelopes, etc.

5. Integral Calculus—Three hours. Second Semester.

Integrations, rectification of curves, quadrature of surfaces, cubature of solids, etc.

6. Plane Surveying—Three hours. Second Semester.

A study of the instruments, field work, computing areas, plotting, leveling, etc.

7. Differential Equations—Three hours. First Semester.

A course in the elements of differential equations. Murray.

Prerequisite, Mathematics 3, 4, and 5.

8. Analytic Mechanics—Three hours. Second Semester. *Bowser.*

Prerequisite, Mathematics 7.

ASTRONOMY

PROFESSOR LEHMAN

1. General Astronomy—Three hours. First Semester.

A course in descriptive astronomy. Reports on assigned readings. Important constellations and star groups are studied.

A fine four-and-a-half-inch achromatic telescope adds to the interest of the subject.

Open to Juniors and Seniors.

GERMAN LANGUAGE AND LITERATURE

PROFESSOR SELTZER AND MISS LEHMAN

1. Freshman German—Three hours. Thruout the year.

Literature of the 19th century. Fouque's *Undine*, Heine's *Die Harzreise*, Freytag's *Die Journalisten*, Scheffel's *Ekkehard*, Mueller's *Deutsche Liebe*; *Deutsche Gedichte*, Wenkebach's Composition.

2. Sophomore German—Three hours. Thruout the year.

Literature of the 18th century. Representative works of Lessing, Schiller and Goethe will be read, discussed, and compared.

3. Junior German—Two hours. Thruout the year.

General view of German Literature. Rapid reading of representative authors of each period; reading of selections from German History, Freytag's *Aus dem Jahrhundert des grossen Krieges*. Reports on assigned work.

4. Scientific German—Two hours. Thruout the year.

5. Beginning German—Four hours. Thruout the year.

Drill in the fundamentals of the language. Easy texts are read the second semester. Freshman requirement for those who do not offer German for entrance.

ENGLISH LANGUAGE AND LITERATURE

PROFESSORS SEAMAN, ADAMS, AND REID

1. Theory and Practice of English Composition—Two hours. Thruout the year.

This course includes a thoro study of technique and extensive writing of long and short themes.

2. Public Speaking—One hour. Thruout the year.

This course aims to give the students practice in the fundamentals of oral expression. Study of the lives and methods of great orators. Drill in interpreting and delivering orations and other forms of literature. Extemporaneous speaking, arguments, occasional speeches and original orations, impersonation, characterization, dramatic study and presentation of scenes from some of Shakespeare's plays.

3. History of English Literature—Two hours. Thruout the year.

This course deals with the work of all the leading authors from the earliest time to the present.

4. American Literature—Three hours. Thruout the year.

A course dealing with the lives and works of American writers from the Colonial to the present age.

5. Shakespeare—Three hours. Thruout the year.

The development of the drama is traced from its beginning to the end of the Elizabethan period. Shakespeare's plays are then critically studied.

6. Advanced Composition—Two hours. First Semester.

A course dealing with the principles of criticism and the analysis of the short story.

7. Chaucer—Two hours. Second Semester.

The Canterbury tales. A close study of the grammar and versification of the Chaucerian period.

DEPARTMENT OF FRENCH

PROFESSOR KIRKLAND AND MISS SCHMAUCK

1. First Year French—Three hours thruout the year.

Exercises in dictation and composition occupy one-third of the time throughout the year.

Text-books: Fraser and Squair's *Grammar*; Merimee, *Colomba*; Labiche et Martin, *Le voyage de Monsieur Perrichon*; Daudet, *Contes choisis*; Dumas, *L'Evasion du Duc de Beaufort*.

2. Second Year French—Three hours. Thruout the year.

The novel, drama, and lyric of the Nineteenth Century are touched upon; the subjunctive mood is studied; oral exercises are used; the history of French Literature is examined.

Text-books: Fraser and Squair's *Grammar*; Saintbury's *History of French Literature*; Dumas' *Monte-Cristo*; Tuckerman, *Simplicite*; About, *Le roi des Montagnes*; Racine, *Athalie*; Hugo, *Hernani*; Bowen's *Modern French Lyrics*.

3. Third Year French—Three hours. Thruout the year.

The study of Modern French Prose and of France's place in civilization.

Books: Nodier, *Contes*; Hugo, *Notre Dame de Paris*; Sand, *Indiana*; Pellissier, *Le mouvement litteraire du XIXe Siecle*; Balzac, *La Cousine Bette*; France, *Silvestre Bonnard*; Foncin, *Le Pays de France*.

GREEK LANGUAGE AND LITERATURE

PROFESSOR SHROYER

1. Elementary Greek—Three hours. Thruout the year.

Xenophon: Four Books of the *Anabasis*. Greek Prose.

2. Advanced Greek—Three hours. Thruout the year.

Homer: Three books of the *Iliad*, scansion, sight translation, epic poetry. Greek antiquities, Greek literature and Greek prose.

3. Junior Greek—Three hours. Thruout the year.

Herodotus: Selections from several of the books are read. Review of the Greek historians and the Persian Wars.

Plato: *Apology and Crito*. The Athenian courts.

New Testament. Readings in the Pauline epistles.

4. Senior Greek—Three hours. Thruout the year.

Xenophon, *Memorabilia*, or Demosthenes, *De Corona*. Socrates and the Socratic schools. The Attic oration.

Sophocles, *Oedipus Tyrannus*, or Æschylus, *Prometheus Bound*. Development of the Greek Drama. Greek tragedy, comedy, and theater.

5. Junior Elective Greek—Three hours. Thruout the year.

New Testament: Readings in the gospels of *Mark* and *John* and in the *Pauline* and *Catholic* epistles. The object of this course is exegetical

and practical. It will include a study of the synoptic gospels and a survey of the letters of Paul.

ENGLISH BIBLE

PROFESSOR SHROYER

1. **Teacher Training**—Two hours. First Semester.
2. **Bible Study by Doctrines**—Two hours. Second Semester.
- *3. **Life of Christ**—Two hours. First Semester. Mark as a guide with references to the other gospels.
- *4. **Life of Paul**—Two hours. Second Semester. Acts and Pauline Epistles.
5. **Introduction to Bible Study**—Two hours. First Semester.
6. **Scientific Confirmation of Old Testament History**—Two hours. Second Semester.
7. **Introduction to the Study of Comparative Religions**—Two hours. One Semester. This course may be taken instead of either one of the above at the discretion of the teacher.

*Bible 3 and 4 may be taken instead of Bible 1 and 2 at the discretion of the teacher.

BIOLOGY

PROFESSOR DERICKSON AND MESSRS. WILLIAMS AND LIGHT, MISSES SHOWERS, HEFFLEMAN, AND MUTCH

1. **General Biology**—Three hours. Thruout the year.

Two lectures or recitation and one laboratory period of two hours each week.

The object of the course is to acquaint the student with the essential structures and processes of living things.

Types of plants and animals are studied in the laboratory to illustrate the structure, properties, and activities of living protoplasm as manifested in individuals composed of a simple cell, of tissues, and of systems of organs. The principles of development, homology, classification, adaptation, evolution, and heredity are considered.

The course is fundamental and it or its equivalent is required for admission to all other courses in Biology.

Required of Freshmen in Chemical-Biological Course. Elective for others.

Text: Calkin's *Biology*.

2. ***Botany**—Four hours. Thruout the year.

Three lectures or recitations and two laboratory periods of two hours each, per week. The object of the course is to give the student a broad, general knowledge of the plant kingdom. The form, structure, and functioning of one or more types of each of the divisions of algae, fungi, liverworts, mosses, ferns, and flowering plants are studied. Special attention is given to the ontogeny and phylogeny of the several groups suggestive of evolution.

Experiments are performed in the laboratory to determine some of the relations of plants to water, gravitation, temperature, and light. Several types of seeds are studied as to their structure, germination, and development. The principles of classification are learned by the analysis and identification of representatives of at least twenty-five orders of spermatophytes.

The laboratory and class-room work is supplemented by frequent field trips.

Each student is supplied with a compound microscope, dissecting instruments, note and drawing materials, and portfolio.

Text-books: *Text-book of Botany*, Coulter, Barnes, and Cowles. Gray's *New Manual of Botany, Laboratory and Field Manual of Botany*, Bergen and Davis.

3. ***Zoölogy**—Four hours. Thruout the year.

Three lectures and two laboratory periods of two hours each, per week.

The principles of biology are learned by making a careful comparative study of representatives of several phyla of animals. The amoeba, euglena, paramecium, vorticella, sponge, hydra, starfish, earthworm, crayfish, grasshopper, mussel, amphioxus, and frog are studied. A careful study is made of the embryology of the frog. The process of development is closely watched from the segmenting of the egg until metamorphosis takes place. Each student is taught the principles of technic by preparing and sectioning embryos at various stages of development. From these and other microscopic preparations the development of the internal organs and origin of tissues is studied. This is followed by a histological study of the tissues of the adult frog.

Each student is required to keep a record of all work done in the laboratory in carefully prepared notes and drawings.

For Sophomores in the Chemical-Biological group. Elective for others.

Text-books: Hegner's *College Zoölogy*, Holms' *The Frog*.

*Biology 2 and Biology 3 are given in alternate years. Biology 2 will be given in 1916-1917.

4. ***Comparative Vertebrate Anatomy**—Four hours. Thruout the year. Six hours' laboratory work and two conferences each week.

The course consists of the dissection and thorough study of a suctorial fish, a cartilaginous fish, a bony fish, an amphibian, a reptile, a bird, and a mammal. Carefully labeled drawings are required of each student as a record of each dissection.

Text-books: Pratt's *Vertebrate Zoölogy*, Kingsley's *Text-book of Vertebrate Zoölogy*.

5. ***Vertebrate Histology and Embryology**—Four hours.

HISTOLOGY—Two conferences and six hours laboratory work per week. The normal histology of the human body is made the basis of the class work. Each student is required to acquire a practical knowledge of all phases of histological technic.

All the tissues as well as the structure of all of the organs of the body are studied. Each student prepares about one hundred and fifty slides.

Text-book: *A Manual of Histology and Organography*, Hill.

— Elective for Juniors and Seniors.

EMBRYOLOGY—Second week in March to the end of the year. Two lectures and six hours laboratory work per week. The laboratory work is based on the development of the chick and comparisons made with that of the frog and mammal. A study is made of living embryos at various stages of development. These are later killed, prepared, and sectioned by the student for the study of the *development of the internal organs*. Fully labeled drawings are required.

Text-books: *Chordate Development*, Kellicott; *Text-book of Embryology*, Prentiss.

Elective for Juniors and Seniors.

CHEMISTRY

PROFESSOR WANNER AND MR. DEHUFF

1 A. **Elementary Inorganic Chemistry**—Four hours. Thruout the year.

Two hours lectures, demonstrations, or recitations, and six hours laboratory work.

This course presupposes no previous knowledge of chemistry.

*Biology 4 and Biology 5 are given in alternate years. Biology 4 will be given in 1916-1917.

Individual laboratory practice, on the general principles involved in elementary chemistry, is required of each student. About two hundred selected experiments are required.

Text-book: Newell's *College Chemistry*.

1 B. General Inorganic Chemistry—Four hours. Thruout the year.

Two hours lectures or recitations and a minimum of six hours laboratory work.

Prerequisite—A high-school course in chemistry covering a year's work as outlined in the admission requirements. A more advanced course in general chemistry. A thoro study of the laws and theories of chemistry, the non-metallic and metallic elements and their compounds.

In the laboratory each student performs two hundred experiments selected from *A Laboratory Outline of General Chemistry* by Smith and Hale.

Text-book: *General Chemistry for Colleges* by Alexander Smith.

2. Qualitative Analysis—Four hours. First Semester.

One hour lecture or conference and a minimum of eight hours laboratory work.

Prerequisite—Chemistry I.

The theory and practice involved in the detection of the elements. Also the application of the electrolytic dissociation theory to qualitative analysis.

In the laboratory the student's knowledge of the subject is tested by frequent unknowns.

Text-book: *Qualitative Analysis* by A. A. Noyes.

3. Quantitative Analysis—Four hours. Second Semester.

One hour lecture and a minimum of eight hours laboratory work. Second Semester.

Prerequisite, Chemistry 2.

A few simple gravimetric and volumetric determinations and a study of the chemical operations involved.

The determinations of the more important elements. The complete analysis of limestone. The analysis of a few common ores and alloys.

Text-book: Talbot's *Quantitative Analysis*.

4. Quantitative Analysis—Four hours. Thruout the year.

One hour lecture and eight hours laboratory work.

Prerequisite Chemistry 3.

Advanced gravimetric analysis.

Advanced volumetric analysis.

Text-book: Fresenius, *Quantitative Analysis*.

5. Organic Chemistry—Four hours. Thruout the year.

Two hours lectures and six hours laboratory work.

Prerequisite Chemistry I.

Introduction to, and study of the fundamental principles of organic chemistry.

The aliphatic compounds.

The aromatic compounds.

The laboratory work consists in the preparation and purification of a number of typical organic compounds.

Text-books: Perkin and Kippin's *Organic Chemistry*, and Gatterman's *Practical Methods of Organic Chemistry*.

6. Industrial Chemistry—Four hours lectures and recitations.

Prerequisite, Chemistry I.

A study of the practical applications of chemistry.

Trips are taken to industrial plants in the immediate vicinity.

Text-book: Thorpe's *Industrial Chemistry*. (Not offered 1916-17.)

GEOLOGY

PROFESSOR WANNER

1. General Geology—Three hours. Second Semester.

Three hours lectures and recitations.

Dynamical, structural, and historical geology.

Also some practical work in the geological field trips in the immediate vicinity.

Text-book: Scott's *Introduction to Geology*.

PHYSICS

PROFESSOR GRIMM

Physics 1. General Physics—Four hours. Thruout the year.

Three hours lectures and recitation and four hours laboratory work per week. The course will be a thorough course in the fundamental principles of physical science and is especially intended as a preparation for Physics 2 and for those interested in the practical applications of physical laws and principles. This course may be taken by those who have had no High School Physics.

Text-book: Black and Davis' *Practical Physics*, and Davis' *Laboratory Manual*.

Laboratory hours Thursday and Friday afternoons and Saturday morning.

2. Advanced Physics—Four hours. Thruout the year.

Three hours lectures and recitation and a minimum of four hours laboratory work per week.

First Semester—Mechanics of solids, liquids, and gases. Sound.

Second Semester—Heat, light, magnetism, and electricity.

Text-books: Kimball's *College Physics*, Ames and Bliss' *Manual of Experiments in Physics*, Carhart's *Electrical Measurements*.

Prerequisites—Mathematics 1 and 2 and Physics 1 or its equivalent.

PHYSICAL CULTURE

The work begins December 1 and continues until the end of the winter term. The work consists of gymnastic classes two days a week. Two years' work in college is required for graduation. Aside from this, this work is required of all Resident, Special, and Resident Preparatory Students.

The work consists of marching, calisthenic drills, elementary work on the heavy apparatus, folk dancing, and group games.

The aim of the course will be to keep the students in good physical condition and to prepare them to handle similar work in grade or high schools.

In addition to the regular students required to take the work, instruction is being given during the year to fifty-three of the students of the local High School.

1. **Freshman Physical Culture**—One-half hour. Two hours per week, December 1 to April 1.

2. **Sophomore Physical Culture**—One-half hour. Two hours per week, December 1 to April 1.

ORATORY AND PUBLIC SPEAKING

PROFESSOR ADAMS

The work of this department is primarily personal culture, the highest development of the personality of the student. "The development of the art of oratory is the development of the orator himself."

The course requires two years of study of prescribed work. Upon the completion of the studies a certificate is awarded.

Students entering the regular course must have had a high-school course or its equivalent.

A recital is given at least once a term for which the students are carefully prepared. These afford the students public platform practice by which they gain confidence and experience.

Each Senior is required to adapt and arrange a program for a public recital, from some piece of literature approved by the instructor.

Description of Courses

1. **Public Speaking.** (English 2) One hour. Thruout the year. Required of Sophomores. Open to others at discretion of instructor.

This aims to give the student practice in the fundamentals of oral expression. Physical and voice exercises for securing poise, freedom, and unity, breathing and articulation, placing and radiation of tones.

Study of the lives and methods of great orators. Drill in interpreting and delivering orations and other forms of literature.

Extemporaneous speaking, arguments, occasional speeches and original orations, impersonation, characterization, dramatic study and presentation of scenes from some of Shakespeare's plays.

2. Voice Training. Exercises for breath control, for freeing of voice by proper placing and direction of tone, purity, flexibility, radiation, resonance, and power; pitch, volume, and inflection in emphasis. Tone color and form, ideal and imaginative qualities in tone. Diction.

Given daily thruout course.

3. Literary Interpretation. Development of the principles of Public Address.

a. Evolution of Expression. Two hours. Thruout the year. Study of selections from great orators, essayists, poets, and dramatists. Practical drill work before class for developing power of student through application of principles to his individual needs. Personal criticism and guidance to bring out originality of student.

b. Prefective Laws of Art. Two hours. Thruout the year. Expressive study of different forms of literature with particular attention to the laws of art which logically follow the sixteen steps of the Evolution. Dramatic work.

(Two hours credit in college is given for each of above courses, *a* and *b*, when taken with one private lesson a week.)

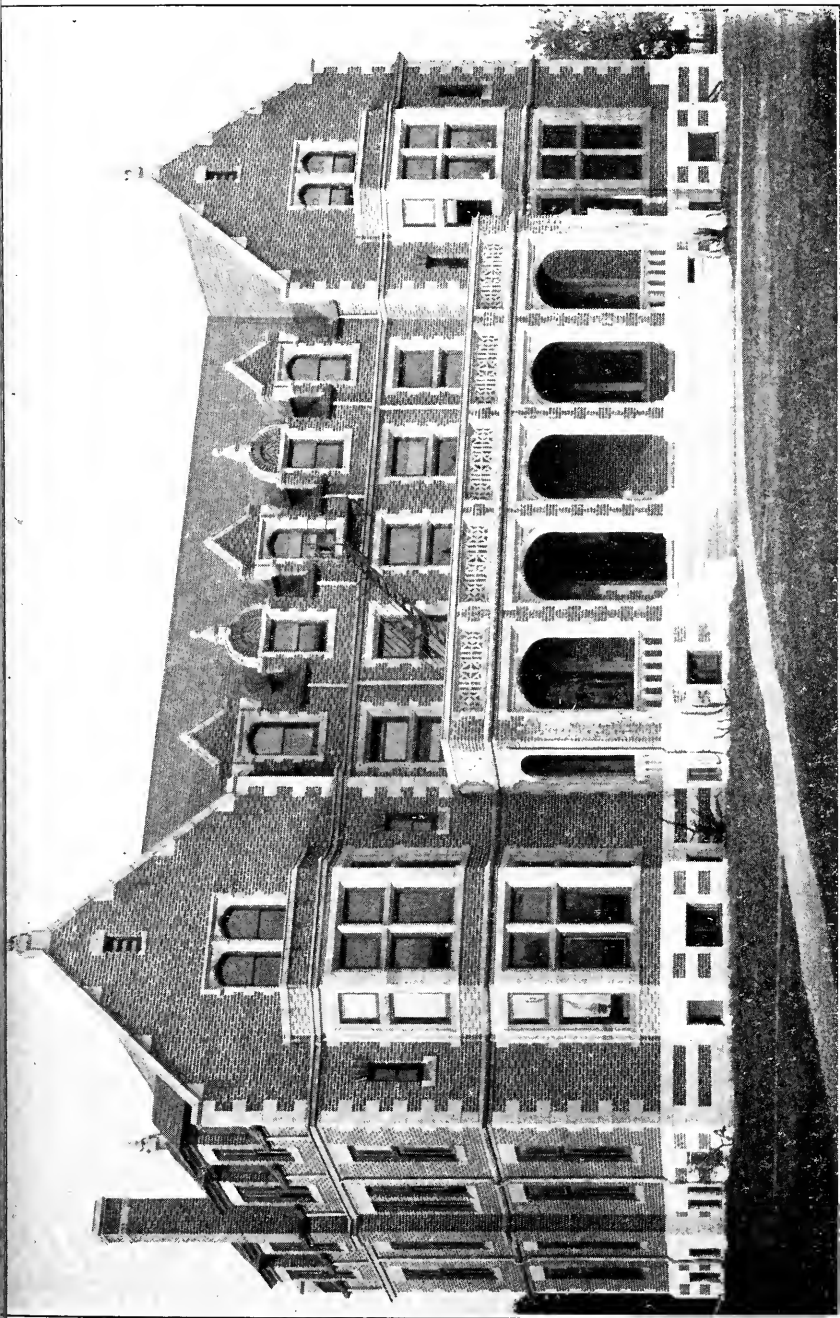
c. Poetic Interpretation. One hour. Thruout the year. Special interpretative and critical study of the great poets, with presentation and criticism before class, to acquaint student with masters of literary art, to develop appreciation of music and suggestiveness of poetry, and imaginative and poetic elements in work. Study of poetic forms.

Attention is given to the choice, adaptation, and abridgement of selections for public reading.

4. Dramatic and Platform Art—One hour. Thruout the year. Interpretation and dramatic study of Hamlet, Macbeth, Othello, Merchant of Venice, Julius Caesar, and As You Like It. Presentation of prepared scenes for criticism. Practical work in stage business, deportment, and grouping.

Platform deportment, correct bearing, and presentation before audience. Platform methods and traditions. Pantomime, study of emotions. Freedom and responsiveness in bodily expression.

Sketches and plays are given from time to time during the year, which, with the annual college play, provide special dramatic training for many.



LADIES' DORMITORY



Private lessons, with attention to the special needs of the students, either in overcoming habits, or in personal development and repertoire, are given throughout the course to supplement the class work. More time is given to selections, arrangement of programs, writing introductions, etc. One hour a week.

5. Physical Training. Exercises for securing poise, bearing, freedom and ease in movement; to gain control over body and render it responsive to thought. Response in bearing and dramatic attitudes. Gesture drill for definite expressions through different realms.

Given daily thruout course.

6. English Literature.

English Literature (English 3).

Composition and Rhetoric (English 1).

7. Psychology (Philosophy 1).

8. Normal Training and Methods—One hour. Thruout the year. Practice in teaching and class management. Under the direction and criticism of the instructor the Seniors conduct class work, lecture upon principles, and discuss their application.

TUITION

Matriculation and Physical Culture, \$6.00. Non-resident students may be exempted from physical culture.

All tuition is payable in advance. No reduction is allowed for absence for the first or second week of the terms, nor for lessons missed during the terms except in case of protracted illness.

Regular Course, \$80 per year, payable quarterly in advance.

Special courses in Literary Interpretation, with one private lesson a week, giving 2 hours credit, \$40 per year, payable quarterly in advance.

Private lessons, \$1.00.

Other classes will be formed when there is a call for any special line of work.

Fee for certificate, \$2.50.



LEBANON VALLEY ACADEMY

Preparatory School
OF
Lebanon Valley College

FOUNDED 1866

ANNVILLE, PA

FACULTY

SAMUEL O. GRIMM, B.Pd., A.B.

Principal

MARIAN A. REID, A.B.

English and German

J. STUART INNERST

Latin and History

RALPH E. CRABILL

Latin

ADDIE E. SNYDER

Latin

RUTH E. TAYLOR

Ancient History

ESTHER HEINTZLEMAN

Physical Geography

MARY DAUGHERTY

English

MARGARET MYERS

English

RUTH M. WHISKEYMAN

Algebra

CHARLES W. GEMMILL

Assistant in Physical Laboratory

PAUL S. WAGNER

Plane Geometry

ABRAM LONG

Arithmetic

GEORGE M. HAVERSTOCK

Solid Geometry

HISTORICAL

Lebanon Valley Academy was established in 1866. For forty-nine years it has cherished the ideals of full and accurate scholarship, and the development of character that fits one for the largest service to society. From its inception, college preparatory work has been its main purpose but its curriculum has been well adapted to the needs of those who have entered immediately into practical life or professional study.

EXAMINATIONS

Examinations are held at the close of each half year. Other examinations will be held whenever the completion of a subject warrants such examination. At this time reports are sent to parents and guardians. More frequent reports are sent when requested by parents. In the Academy records, A, signifies excellent; B, very good; C, fair; D, low but passing; E, conditioned; F, repeat in class. An "E" record may be removed by a test on any part of the course in which the record is poor. For such test a fee of one dollar is charged. An "F" may not be removed by a special examination.

For special tests, given on work not completed because of absence or otherwise, a fee of one dollar is charged. For special examinations a fee of two dollars is charged.

ADMISSION

The applicant should be at least twelve years of age. While no entrance examination is required, it is expected that the applicant shall have completed the ordinary common school branches.

Each student should bring with him a certified statement of work done in the school last attended. Blanks for such certification will be provided by the school. Tentative credit will be given for work thus certified, and the student will be permitted to take up his work as near as possible where he left off, but any previous work found to be unsatisfactory will have to be repeated.

Students will be received at any time, but in general it is to the student's advantage to enter in September, or less preferably, at the beginning of the second Semester. However, the applicant usually finds enough work if he enters at any time.

GRADUATION

Any student who has completed $14\frac{1}{2}$ units of work as outlined in the courses of study, provided that he has completed three units of Mathematics, three units of English, three units of Latin, one unit of Science, and one unit of History, shall be entitled to the school diploma. If the candidate desires to enter Lebanon Valley College he shall ar-

range his work to meet the entrance requirements for the several courses.

Students having completed only a partial course will be given certificates for such work upon request.

ESTIMATED EXPENSES

The minimum expenditure in the Academy for one year may be as follows: Boarding, \$142.50; Tuition, \$50; Room Rent, \$26; Matriculation and Physical Culture, \$11; Publication Fee, \$1; Breakage Fee, \$5. Total, \$235.50, less \$10.50 if entire amount is paid at the beginning of the year, which makes the minimum expenditure for Academy students, \$225.00.

Ten per cent. will be added to all payments that are deferred more than ten days after the time when the installments are due. These rates are fixed by special act of the Board of Trustees. Failure to pay a bill before another falls due will exclude a student from classes and the privileges of the Academy.

The regular Academy expenses are divided into four installments, and students are required to pay each installment in advance. One-fifth of the expenses is due at the opening of the school year; one-fifth November 1; three-tenths, January 4, and three-tenths March 25.

When a student retains his class standing, no reduction will be made for tuition, room rent, and fees for a semester, except for protracted sickness. In case of long continued illness, the loss is shared equally by the College and the student.

No reduction will be made for table board, for absence of less than ten days, and then only in case of sickness or important duties that compel the student to be absent from his school work. Reductions cannot be allowed for banquet trips, or club trips, or athletic trips.

Students are required to furnish their own towels, napkins, soap, and all bed furnishings except mattresses.

Opportunity for self-help is extended to a limited number of students in the College and in the Academy who may serve as waiters, janitors, or librarians. In each case the term of service is thirty-eight weeks. Close application is required to the work assigned. Neglect of duty is sufficient cause for the removal of the student from the position.

ACADEMY EXPENSES

Matriculation and Physical Culture.....	\$11.00
Tuition, per Year.....	50.00

For twenty-four hours or less the tuition is \$50. Each additional hour per semester, or half-year, \$1.50.

Children of ministers are required to pay one-half regular tuition.

When two members of the same family attend school at the same time, a reduction of ten per cent from the tuition charge will be made.

All students taking regular work in the Academy are required to pay a special Publication fee of \$1.00. In consideration of the payment of the above the student receives the College News.

Laboratory Fees

Elementary Physics, per semester.....	\$3.00
Elementary Chemistry, per semester.....	4.00
Biology	4.00

Boarding

Regular students are charged \$3.75 per week or \$142.50 per year, if paid in advance, as follows: One-fifth at the opening of the College year, one-fifth November 1, three-tenths January 4, and three-tenths March 25.

Five-day students are charged \$2.75 per week (fifteen meals) or \$104.50 per year, if paid in installments as above. These rates do not include Thanksgiving, Christmas, and Easter vacations.

Day students may obtain meal tickets at the rate of twenty-five cents per meal, if paid in advance.

All students who do not room and board at home shall room in the Dormitories and board at the College Dining Hall unless permission is granted to do otherwise by the Executive Committee.

Breakage Fee

A breakage fee of \$5.00 is required from each student who occupies a room in the Men's Dormitories. Every student is charged with the furnishings of the room, at the opening of the school year, and held responsible for the same.

DESCRIPTION OF COURSES

A unit represents a year's study in any subject and is reckoned to be a quarter of the entire amount of work required of each student. However, the four years of English aggregate but three units.

For graduation fourteen and one-half units are required. The following courses are required of all applicants.

Latin a, b, and c.....	3 units
English a, b, c, and d.....	3 units
Mathematics a, a-2, c, and b or d.....	3 units
History	1 unit
Science	1 unit
Foreign Language	1 unit

Total.....12 units

The remaining 2½ units may be chosen from the following list.

Physical Culture is required of all students for which one-half unit credit may be given.

OUTLINE OF COURSES

First Year

Latin a.....	Beginners' Latin.....	5 hours
English a.....	English Grammar and Classics.....	4 hours
Mathematics a.....	Advanced Arithmetic.....	4 hours
Mathematics a-2.....	First Year Algebra.....	4 hours
†Science a.....	Physical Geography.....	4 hours
†Drawing		4 hours

Second Year

Latin b.....	Cæsar and Composition.....	4 hours
English b.....	Rhetoric and Classics.....	4 hours
Mathematics c.....	Plane Geometry.....	4 hours
†History c } †History d }	Ancient History.....	4 hours
†Geometrical Drawing		

Third Year

Latin c.....	Cicero and Composition.....	4 hours
English c.....	American Literature and Classics.....	4 hours
German a.....	Beginner's German.....	4 hours
Science c } Science e }	{ Biology..... } { Elementary Chemistry..... }	4 hours
†History b.....		

Senior Year

Latin d } German b } Greek a }	{ Vergil and Composition..... } { Second Year German..... } { First Year Greek..... }	4 hours 4 hours 5 hours		
Science d.....			Elementary Physics.....	4 hours
English d.....			College Entrance Requirements.....	4 hours
Mathematics d } Mathematics b }	{ Solid Geometry..... } { Second Year Algebra..... }	4 hours		
History a.....			American History and Civics.....	4 hours

†Elective.

*Required for graduates in Scientific Course.

**Choose one.

DESCRIPTION OF COURSES

ENGLISH

a-1 English Grammar—Advanced. First Semester. Four hours.

This course is required of all pupils who have not had high-school grammar. Weekly themes are required. Reading: Irving's *Sketch Book* and Cooper's *The Last of the Mohicans*.

a-2. Composition and Rhetoric—Second Semester. Four hours.

Brooks' *Composition and Rhetoric. Book I.*

Theme work based on experience and assignments for reading. Reading: Scott's *Ivanhoe*, Coleridge's *The Ancient Mariner*, Shakespeare's *The Merchant of Venice*, Scott's *Marmion*.

b. Composition and Rhetoric—Thruout the year. One year.

Brooks' *Composition and Rhetoric. Book I.*

Reading and Practice—Thruout the year. Three hours.

George Eliot's *Silas Marner*, Shakespeare's *As You Like It*, Addison and Steele's *The De Coverly Papers*, Dickens' *A Tale of Two Cities*, Bunyan's *Pilgrim's Progress*, Goldsmith's *The Vicar of Wakefield*.

c. American Literature—Thruout the year. One hour.

Newcomer's *American Literature*, rhetoric continued.

Reading and Practice—Thruout the year. Two hours.

Oral reading and careful study of Franklin's *Autobiography*, Hawthorne's *The House of Seven Gables*, Hawthorne's *Twice Told Tales*, Shakespeare's *Julius Caesar*, Tennyson's *Idylls of the King*, Longfellow's *Narrative Poems*, Poe's *Poems and Tales*, Whittier's *Snowbound*.

Composition—Thruout the year. One hour.

Weekly themes required.

d. Composition and Rhetoric—Thruout the year. One hour.

Brooks' *Composition and Rhetoric, Book Two*, concluded. Weekly themes required.

English Literature—Thruout the year. One hour.

Newcomer's *English Literature*.

Reading and Practice—Critical study of the English classics prescribed for college entrance.

Shakespeare's *Macbeth*, Milton's *Minor Poems*, Tennyson's *The Princess*, Washington's *Farewell Address*, Webster's *Bunker Hill Oration*, Carlyle's *Essay on Burns*.

LATIN

The following Latin courses are arranged in accordance with the College Entrance Requirements.

Latin a—Beginners' Latin. Thruout the year. Five hours. One unit.

Smith's *Latin Lessons* is completed. Special emphasis is placed on the memorizing and classification of grammatical forms. Constant practice in turning short sentences illustrating the fundamental rules of syntax into Latin is required.

Latin b—Cæsar. Thruout the year. Four hours. One unit.

Cæsar's Gallic Wars, Books I—IV. Thirty-six lessons in composition based on the text with as much sight reading as possible is required. Allen and Greenough's *Latin Grammar*.

Latin c—Cicero. Thruout the year. Four hours. One unit.

Cicero's *Manilian Law*, *Cataline I-IV*, and *Pro Archais*, D'Oge's *Latin Composition*, Allen and Greenough's *Latin Grammar*.

Latin d—Vergil. Thruout the year. Four hours. One unit.

Vergil's *Acneid I-VI*, Bennet's *Latin Composition*, Allen and Greenough's *Latin Grammar*.

Latin a, b, c, and d are required for admission to the Classical and Modern Language Courses of Lebanon Valley College.

HISTORY

History a—Thruout the year. Four hours. One unit.

American History and Civics. Detailed Study of American History with special attention to the History of the United States. The latter part of the year will be devoted to a consideration of national, State, and county government.

This course is required of all candidates for graduation.

History b—Thruout the year. Four hours. One unit.

Walker's *Essentials of English History*. Offered 1916-1917.

History c and d—Thruout the year. Four hours. One unit.

Ancient History with special reference to Greek and Roman History and including a short introductory study of the more ancient nations and the chief events of the early middle ages, down to the death of Charlemagne. Offered 1915-1916.

GERMAN

a Beginning German—Four hours. Thruout the year. One unit.

Bacon's *German Grammar*, and the reading of 75 to 100 pages of graduated texts. Frequent reproduction from memory of sentences previously read.

b Second Year German—Four hours. Thruout the year. One unit.

Oral and written reproduction of the matter read in easy variations. From 150 to 200 pages of literature are selected from the following list: Heyse's *L'Arrabiata*; Hillern's *Hoehrer als die Kirche*; Storm's *Immensee*; Leander's *Trauemerein*, Zschokke's *Der Zerbrochene Krug*; Wilhelm's *Einer muss heiraten*; Baumbach's *Der Schwiegersohn*.

MATHEMATICS

Mathematics a—Arithmetic. Half-year. Four hours. One-half unit.

Rapid but thoro review of all the fundamental processes. Special drill in fractions, mensuration, percentage, the metric system, and modern business forms.

Hamilton's *Arithmetic*.

Mathematics a-2—Thruout the year. Five hours. One unit.

Beginner's Algebra to quadratics. Milnes' *Algebra*.

Mathematics b—Intermediate Algebra. Half-year. One-half unit. Second Year Algebra. This course must be offered for graduation by all candidates who do not offer Solid Geometry.

Mathematics c—Plane Geometry. Four hours. One unit.

Durell's *New Plane and Solid Geometry*. Taught largely from the standpoint of the original problems.

This course is required for graduation.

Mathematics d—Solid Geometry. Half-year. One-half unit.

Durell's *Solid Geometry*.

SCIENCE

Science a—Physical Geography. Half-year. Four hours. One-half unit.

Dryer's *Physical Geography*. The earth as a globe, the ocean, the atmosphere, the land, plains, plateaus, mountains, volcanoes, rivers, glaciers, geological formations and ages.

A summary of the relation of man, plants, and animals to climate, land forms, and oceanic areas.

Science d—Elementary Physics. Thruout the year. One unit.

Three hours recitation and two hours laboratory work per week.

Mechanics of solids, liquids, and gases, heat, magnetism, electricity.

No previous knowledge of Physics is required for admission to this course.

Millikan and Gale's *A First Course in Physics*. Forty experiments as outlined in the National Physics Note Book Sheets are required in the laboratory.

Science e—Elementary Chemistry. Thruout. One-half unit.

Two hours recitation and four hours laboratory work.

The aim of the course is to present Chemistry to the beginner in such a way as to enable him to grasp the fundamental principles and to help him to secure a working knowledge of the Science in the laboratory.

First Principles of Chemistry by Brownlee and others, and laboratory exercises accompanying same.

DRAWING

Free Hand Drawing—Half-year. Four hours. One-half unit.

Geometrical Drawing—Half-year. Four hours. One-half unit.

Drawing of geometrical figures, reconstruction of figures to a given scale, construction of scales to any given unit, projection of plane and solid figures, etc.

Morris' *Geometrical Drawing*.

PHYSICAL CULTURE

Academy Physical Culture. Two hours per week December 1 to April 1. Required of all preparatory students.

SUB-PREPARATORY COURSE

Sometimes students of mature age come to us not fully prepared to enter the Academy. They have for various reasons attended school for but a short time and find it embarrassing to enter the public schools with scholars so much younger than themselves. For these we make special provision whenever occasion demands. However, at least sixteen hours of regular Academy work is required.

ELECTION OF STUDIES

There is considerable room for election of courses that have a special value to students intending to specialize.

The principal advises students what subjects are fundamental to professional and engineering courses.

FACTS TO BE CONSIDERED

Although Academy students enjoy a number of the same features as college students, such as the use of an extended library, laboratories, the same social privileges, literary exercises, debates, Christian Associations, etc., they are in many respects an entirely separate student body.

SCHOLARSHIP

A one hundred and thirty dollar scholarship is awarded each year to the Academy graduate who has, according to the vote of the Faculty, attained the best class record and departed himself in accordance with the regulations.

Conservatory of Music
and Art

CONSERVATORY OF MUSIC
FACULTY

E. EDWIN SHELDON, Mus. M.
Pianoforte, Pipe Organ, Counterpoint

IDA MANEVAL SHELDON, Mus. B.
Pianoforte, Harmony

GERTRUDE KATHERINE SCHMIDT
Voice, Public School Music

ORA BELLE BACHMAN, Mus. B.
Pianoforte, Sight Playing

RAY PORTER CAMPBELL
Pianoforte, Musical History, Ear Training

ZELINE VON BEREGHY
Violin, 'Cello

FLORENCE S. BOEHM
Painting, Drawing

LOCATION AND EQUIPMENT

The Engle Music Hall is a handsome, three-story, stone structure. It contains a fine auditorium with large pipe-organ, director's room, studios, practice rooms, waiting and writing room for students' use, large society rooms, lavatories, etc. The whole building is lighted with electricity, and heated by steam, and designed and furnished with a view to having it complete in every respect for the study of music in all its branches. A complete musical education, from the very first steps to the highest artistic excellence, may be secured. The director will use every effort to obtain positions for those students who have finished the courses, and who may wish to teach or perform in public.

OBJECT

The department has for its object the foundation and diffusion of a high and thorough musical education. The methods used are those followed by the leading European conservatories. The courses are broad, systematic, progressive, and as rapid as possible. The conservatory offers the means for a complete education in musical art at a moderate cost.

DESCRIPTION OF COURSES

I. Pianoforte

The course in Pianoforte is divided into five divisions: Sub-Freshman, Freshman, Sophomore, Junior, and Senior.

The course marked out, must, however, necessarily be varied according to the ability and temperament of the pupils. Many works must be studied by all, but there is much that may be essential for one student and not at all necessary for another. Individual instruction only is given.

A system of technics is used that is in line with the most approved methods. Special attention is paid to the development of a true legato touch and a clear, smooth technique. The use of the pedal, so much neglected, is emphasized. At the same time expression and interpretation are not neglected. Technical and theoretical ability is worthless, except as it enables the performer to bring out the beauties and meaning of the composer.

By a recent act of the Executive Board arrangements were made for a teacher to give instruction to children and others in the elementary grades of the pianoforte course at a cost within the reach of all. This work will be carried on according to the methods in use in the leading Conservatories.

For such instruction, the rate of tuition will be thirty cents per lesson. This enrollment as a regular student of the Conservatory will entitle the student to all privileges of the institution. The advantages to be derived from appearing in recital classes, receiving instruction in stage department, as well as opportunities for hearing and associating with other music students, are certain to act as incentives to better, more conscientious work.

Memorizing music is required of all students. It is a great acquisition to be able to perform a number of selections from memory.

Sight Reading—This, although to a certain extent a natural gift, can be greatly improved by systematic work. One who can read well has all music at his command, while a poor reader has but the few pieces which may have been learned.

Practice—Special effort is made to teach pupils how to practice. Difficult places are pointed out and the students are taught how to learn them in the quickest and most thorough manner. Quality is of more value than quantity in practice.

Ensemble Playing—It is impossible to overestimate the value of thorough training in duet, trio, and quartet playing. Students are given drill in these as well as in accompaniment playing.

II. The Voice

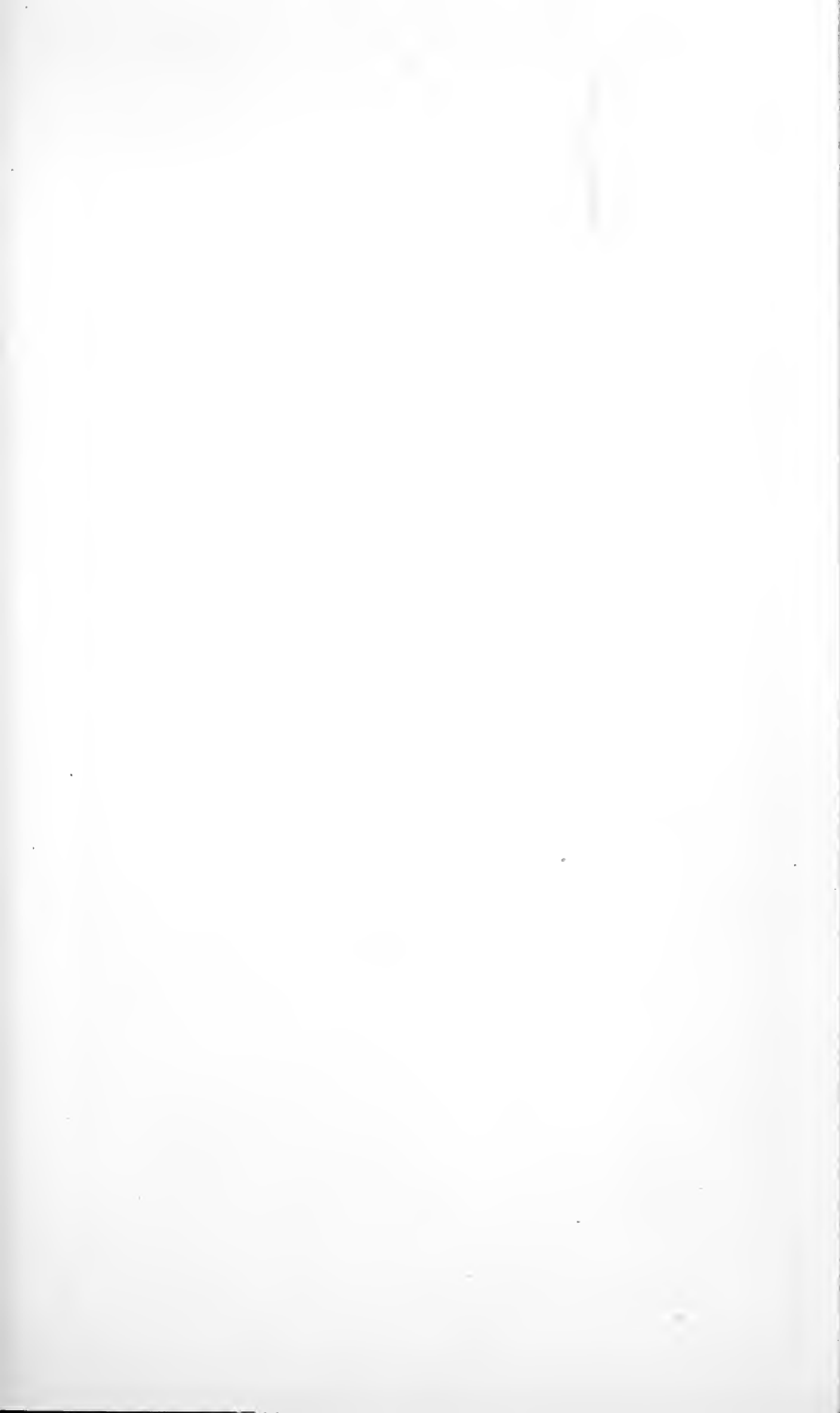
Students contemplating work in this department should bear in mind two important facts; first, that the natural ability to sing varies with every student, and secondly, that while the production of tone from any musical instrument is produced by artificial means, the elements that go to make up the human voice are composed of flesh and blood, subject to the most delicate nervous impulses.

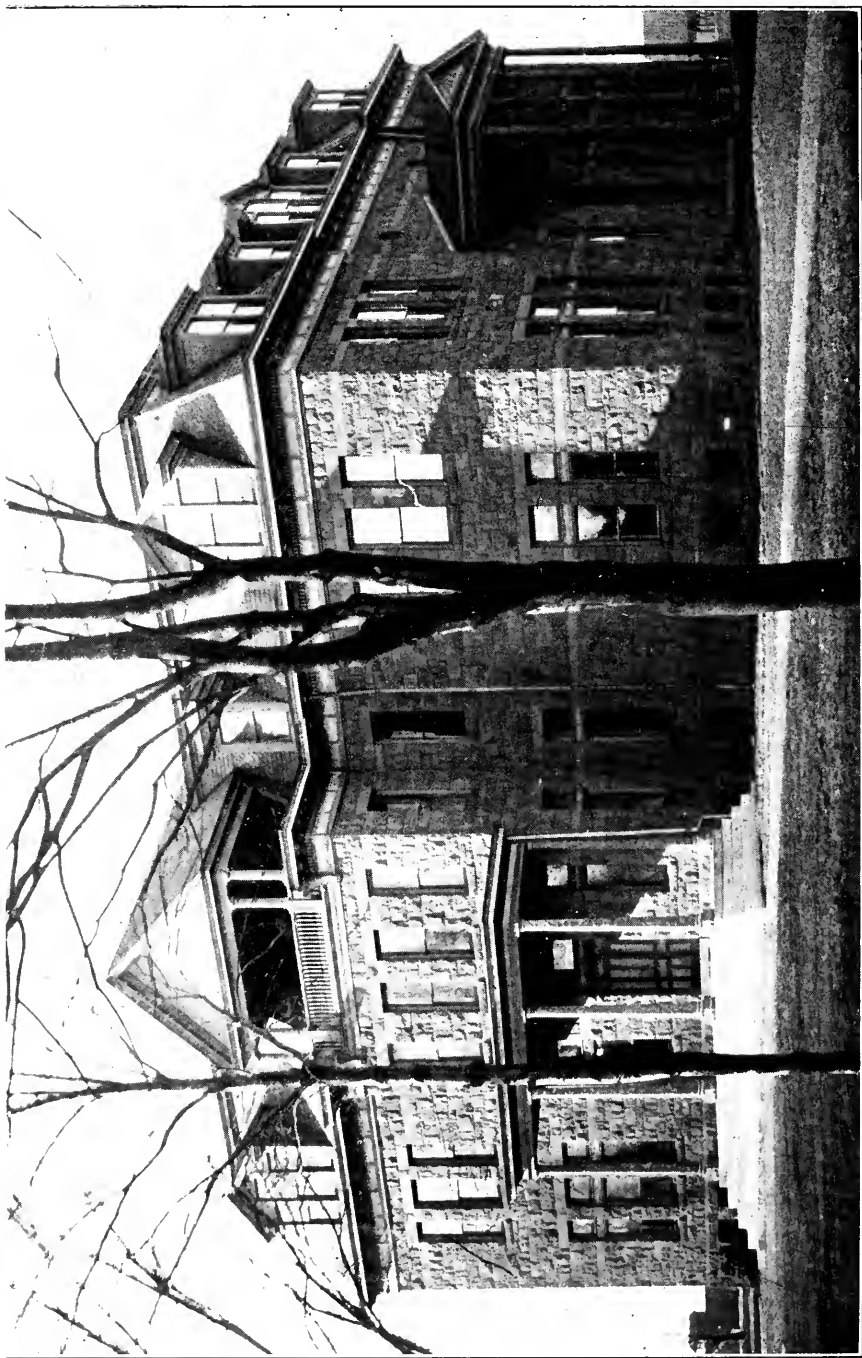
Hence the course in the Study of Voice must be varied according to the needs of the individual, and the success of the pupil depends largely upon the sympathetic insight of the teacher and the sincere co-operation in mind as well as body on the part of the student.

The old Italian method as shown in Marchesi's "Art of Singing" will be used and exercises from other standard texts will be given to suit the needs of the individual student.

III. Organ

The churches of our country are making an increasing demand for well-trained organists. The organ is no longer looked upon as an instrument solely for accompaniments and church use, but has taken its place among solo instruments and gained a distinct recognition from the music-loving public.





ENGLE CONSERVATORY

A large field, therefore, is open to the student of the organ. The work as outlined aims to provide a thorough training in all that pertains to a mastery of the organ for church or concert use. A two-manual Moller pipe organ is used in the Conservatory.

IV. The Violin

Among the stringed instruments, the Violin stands as one of the oldest and has always been admired for its beautiful and thrilling strains.

The musical possibilities within the compass of the violin are marvelous and unexcelled by any other instrument. The best artists of the olden and modern times were skillful on the violin, and it appeals to those of the finest musical taste to-day.

Nowhere in English literature do we find a nobler or more glowing tribute to the violin than is the little poem penned by our own immortal "Autocrat" where he places the violin among the highest order of musical instruments.

V. Theoretical Music

Theoretical studies are essential to rapid and comprehensive sight reading, and to excellence in the higher grades of music. Good pedaling depends on a knowledge of harmony, and memorizing is greatly facilitated by it.

An intelligent insight into the foundation, upon which rests the art of music, gives interest to the pupils in their playing and singing and makes them musicians, as well as performers.

RECITALS

Students' Evening Recitals. Each term recitals are given in which students, who have been prepared under the supervision of the instructors, take part. These recitals furnish incentives to study and experience in public performance.

Students' Recital Class. Students who are not sufficiently advanced to appear in the Evening Recitals are given experience in public performance in the Students' Recital Class. These classes are not open to the public. Rules governing Concert Department are brought to the attention of the students and each performer shown what is expected of him or her when before an audience. The result is a smoother and more satisfactory appearance in the Evening Recitals when assigned to such work.

Artist Recitals. Not less important than the daily class room work is the opportunity afforded students of hearing the representative works of the great masters performed by artists of recognized ability of this

and foreign countries. These recitals have met with much favor and enthusiasm among the students and citizens.

Conservatory students rooming in the dormitories are required to take not less than 15 hours work per week, one hour practice on piano or organ counting as one-half hour credit.

Candidates for graduation in piano shall have taken at least one year in voice or organ. For graduation in voice or violin the student shall have at least one year in piano. For organ the Sophomore year is required.

SOLOIST'S AND TEACHER'S COURSES

Two courses leading to the granting of the diploma will be offered beginning September 11, 1916. Both follow the same general course outlined on page 67.

The Soloist's Course requires a satisfactory appearance in the annual recital by the Junior Class and an individual recital during the Senior year.

The Teacher's Course is offered to those who wish to specialize for the teaching profession. Such pupils will be excused from the Junior and Senior recitals, but required to teach in the Normal department one hour per week for two years under the direction of a teacher of the Conservatory faculty in charge of such work. A Weekly Review Class conducted by the teacher directing this department will bring to the attention of these student-teachers points where their teaching may be improved, and essential principles underlying the work of the successful teacher.

OUTLINE OF COURSES LEADING TO DIPLOMA

	FIRST SEMESTER	SECOND SEMESTER
Freshman	†Piano, Voice, Pipe Organ, or Violin..... 1 Sight Singing 2 English b 4 Practice, 4 hours daily.....10	*HOURS Piano, Voice, Organ, or Violin..... 1 Sight Singing 2 English b 4 Practice, 4 hours daily.....10
Sophomore	†Piano, Voice, Organ, or Violin..... 1 Harmony (Elementary) 2 Musical History 2 English c 4 Practice, 4 hours daily.....10	Piano, Voice, Organ, or Violin..... 1 Harmony (Chadwick) 2 Musical History 2 English c 4 Practice, 4 hours daily.....10
Junior	†Piano, Voice, Organ, or Violin..... 1 Harmony (Chadwick) 2 Theory of Music (Elson)..... 2 German a 4 Practice, 4 hours daily.....10	Piano, Voice, Organ, or Violin..... 1 Ear Training (Heacox) 3 Musical Form (Cornell)..... 2 German a 4 Practice, 4 hours daily.....10
Senior	†Piano, Voice, Organ, or Violin..... 1 Simple Counterpoint (Bridge)..... 2 Psychology of Music (Bartholomew)..... 2 Sight Playing 1 Practice, 4 hours daily.....10	Piano, Voice, Organ, or Violin..... 1 Double Counterpoint (Jadassohn)..... 2 Harmonic Analysis (Lehman)..... 2 Sight Playing 1 Practice, 4 hours daily.....10 Senior Recital

*Number of hours credit. †Two one-half hours per week. Fee for graduation diploma \$6.00.

OUTLINE OF COURSE IN PUBLIC SCHOOL MUSIC

	FIRST SEMESTER	SECOND SEMESTER
	*HOURS	HOURS
First Year		
Piano and Voice (one lesson each).....	1	Piano and Voice
Harmony (Elementary)	2	Harmony (Chadwick)
Musical History	2	Musical History
Methods (Primary Grades)	2	Methods (Primary Grades)
Sight Singing	2	Sight Singing
Practice, 2 hours daily.....	5	Practice, 2 hours daily.....
Second Year		
Piano and Voice.....	1	Piano and Voice.....
Harmony (Chadwick)	2	Musical Form
Psychology of Music (Bartholomew)	2	School Management (College)
Methods (Grammar Grades).....	2	Methods (High School).....
Practice, 2 hours daily.....	5	Practice, 2 hours daily.....

*Number of hours credit.

Certificate at graduation \$2.50.

HOW TO BECOME A "FULL COURSE STUDENT" IN THE CONSERVATORY OF MUSIC

To be a "full course student" in the Conservatory you will be required to carry one solo subject (piano, voice, or organ) and two theoretical branches, such as Harmony and Musical History. Two lessons, each one-half hour in length, are given each week in the solo subject. Classes in Harmony recite two hours per week. Classes in Musical History meet on alternate days for two hour-lessons per week. The course in Harmony requires three semesters, while the course in Musical History may be completed in one year.

The "full course student" engages four practice hours daily throughout the year.

One subject, such as German, French, or English may be taken in the College or Academy by a "full course student" without additional charge.

The "full course student" will find the tuition as follows:

FIRST SEMESTER—Two lessons per week, as stated above

Piano or Voice.....	\$27 00
Harmony	13 00
Musical History	13 00
Piano Practice, 4 hours daily.....	10 00
Matriculation Fee	8 00

\$71 00

Voice or Piano added, 2 lessons per week.....\$27 00 additional

Organ, one lesson per week..... 18 00 additional

Organ practice, one hour daily..... 14 00 additional

SECOND SEMESTER—Rates and courses the same as first semester.

CERTIFICATES

REQUIREMENTS FOR CERTIFICATES

Complete course in pianoforte or in any of the other subjects, viz: voice, violin, harmony, theory, musical history, or public school music.

Fee for certificate, \$2.50.

DEGREE

REQUIREMENTS FOR DEGREE (Mus. B.)

Candidates must already have taken a diploma including theoretical course outlined on page 67.

Must have satisfactorily completed one year's work in Canon, Fugue, and Original Composition.

Fee for degree, \$10.00.

TUITION

(Each semester 18 weeks)

PIANO, VOICE, OR VIOLIN

First Semester2 lessons per week.....	\$27 00
First Semester1 lesson per week.....	13 50
Second Semester2 lessons per week.....	27 00
Second Semester1 lesson per week.....	13 50

SENIOR AND JUNIOR YEARS

Piano, Voice, Violin, or Organ

First Semester2 lessons per week.....	\$36 00
First Semester1 lesson per week.....	18 00
Second Semester2 lessons per week.....	36 00
Second Semester1 lesson per week.....	18 00

SUB-FRESHMAN AND FRESHMAN YEARS IN PIANO

First Semester2 lessons per week.....	\$10 80
First Semester1 lesson per week.....	5 40
Second Semester2 lessons per week.....	10 80
Second Semester1 lesson per week.....	5 40

PIPE ORGAN

First Semester2 lessons per week.....	\$36 00
First Semester1 lesson per week.....	18 00
Second Semester2 lessons per week.....	36 00
Second Semester1 lesson per week.....	18 00

HARMONY, MUSICAL HISTORY, EAR TRAINING, THEORY,
MUSICAL FORM, PSYCHOLOGY OF MUSIC, PUBLIC
SCHOOL METHODS, AND SIGHT SINGING

First Semester2 lessons (class) per week.....	\$13 00
Second Semester2 lessons (class) per week.....	13 00

COUNTERPOINT, CANON, FUGUE, OR COMPOSITION

First Semester2 lessons (class) per week.....	\$16 00
Second Semester2 lessons (class) per week.....	16 00

SIGHT PLAYING

First Semester1 lesson (class) per week.....	\$6 50
Second Semester1 lesson (class) per week.....	6 50

A charge of seventy-five cents each semester will be made for use of the Sight Playing Library.

Practice Piano, 1 hour, per Semester.....	\$ 4 00
Each additional hour, per Semester.....	2 00
Practice on Pipe Organ, 1 hour daily per Semester.....	14 00
Matriculation and Physical Culture.....	8 00

Non-resident students may be exempted from Physical Culture.

Students taking piano, organ, or voice only are charged a matriculation fee of \$1.00, payable in advance.

Pipe organ students must pay at the rate of 20 cents an hour for organ blower when motor is not in use.

Regular music students are required to pay a special publication and Christian Work fee of \$2.00.

Rates for Board and Room given on page 19.

RULES AND REGULATIONS. No reduction is made for absence from the first two lessons of the term, nor for a subsequent individual absence. In case of long continued illness the loss is shared equally by the College and the student.

All tuition is payable in advance.

In the case of a holiday declared by the faculty, no lessons will be given or money refunded.

Pupils may enter at any time, but for convenience of grading, etc., the beginning of each semester is the most desirable time.

All sheet music must be paid for when taken.

No pupil is allowed to omit lessons without a sufficient cause.

Reports showing attendance, practice, and improvement in grade will be issued at the close of each semester.

For all further information as to any particular course, or combination of courses, rooms, boarding, etc., address,

DIRECTOR OF THE CONSERVATORY,

Lebanon Valley College.

ART DEPARTMENT

FLORENCE S. BOEHM, INSTRUCTOR

COURSE OF STUDY FOR CERTIFICATE

First Year—Drawing, sketching in pencil of various familiar objects, and drawing from geometric solids, good examples of proportion and perspective, and the principles of light and shade.

Painting—Flowers, fruit and leaves, models, casts, and familiar objects. Elementary original composition.

Modeling—Fruit, vegetable forms and leaves from casts and nature; animals from the cast and prints. Elementary original composition.

Second Year—Charcoal drawing from casts. Painting in water colors and pastels from groups of still life, interiors, decorative subjects, flowers, draperies, and out-of-door sketching.

Third Year—Sketching from life. Painting in oils from still life and nature. Wash drawings in ink, water color, historic ornament. Studies in color harmony.

Teacher's Class—Principles and methods of drawing, modeling, blackboard drawing, lettering, brush work, sketching from life and water color.

Saturday work is offered for teachers and children who cannot take work during the week.

Keramics—Classes in china painting are instructed by the latest methods in conventional and naturalistic treatment. The china is fired in the institution, giving students an opportunity of learning how to fire their own china.

Miniature—Miniature painting on ivory.

Students who do not desire the certificate course may take special work along any line preferred.

EXPENSES

Matriculation and Physical Culture.....	\$6 00		
Non-resident students may be exempted from physical culture.			
	Fall	Winter	Spring
	Term	Term	Term
TUITION—One lesson a week.....	\$10 00	\$8 00	\$8 00
Two lessons a week.....	16 00	12 00	12 00
Children's beginning class.....	2 50	2 00	2 00
Children's advanced class.....	4 00	3 00	3 00
Special lessons.....	75 cents each.	Matriculation Fee.....	\$1 00

REGISTER OF STUDENTS

Seniors

Beaverson, Naomi D.....	York, Pa.
Bergdoll, Mary A.....	York, Pa.
Bodenhorn, Ellwood S.....	Annville, Pa.
Black, Blanche Violet.....	Annville, Pa.
Blauch, Victor R.....	Annville, Pa.
Crabill, Ralph E.....	Hanover, Pa.
Curry, Conrad K.....	Swatara, Pa.
Dando, Harry S.....	Minersville, Pa.
Daugherty, Mary L.....	Harrisburg, Pa.
Daugherty, Myrtle E.....	Annville, Pa.
Deitzler, C. J.....	Fredericksburg, Pa.
Detter, David F.....	Annville, Pa.
Ernst, Ira S.....	Williamson, Pa.
Evans, David J.....	Lykens, Pa.
Gingrich, Ruth A.....	Lebanon, Pa.
Gruber, E. Viola.....	Campbelltown, Pa.
Hartz, Robert E.....	Palmyra, Pa.
Heintzelman, Esther.....	Chambersburg, Pa.
Heintzelman, S. Huber.....	Chambersburg, Pa.
Hollinger, Joseph K.....	Lebanon, Pa.
Holzinger, Charles H.....	Princeton, N. J.
Innerst, J. Stuart.....	Dallastown, Pa.
Kleffman, Albert Henry.....	Baltimore, Md.
Kreider, Emma M.....	Lebanon, Pa.
Light, Raymond H.....	Annville, Pa.
Light, V. Earl.....	Annville, Pa.
Long, D. Mason.....	Mt. Joy, Pa.
Long, John.....	Mt. Joy, Pa.
March, James G.....	Dover, Pa.
Mathias, Josephine S.....	Highspire, Pa.
McNelly, Willis E.....	Annville, Pa.
Moll, Richard M.....	Robesonia, Pa.
Moyer, Esther K.....	Hershey, Pa.
Myers, Margaret E.....	Altoona, Pa.
Mickey, William E.....	Harrisburg, Pa.
Miller, Nancy Margaret.....	Pittsburgh, Pa.
Oyler, Helen E.....	Chambersburg, Pa.
Pugh, David B.....	Annville, Pa.
Shenberger, Jacob F.....	Dallastown, Pa.
Shonk, Alvin E.....	Mt. Joy, Pa.

Snyder, Addie	Lebanon, Pa.
Stambach, C. Guy.....	York, Pa.
Stine, F. L.....	Annville, Pa.
Taylor, Ruth M.....	Jersey Shore, Pa.
Von Bereghy, Marcel.....	Harrisburg, Pa.
Wareheim, Esta	Baltimore, Md.
Whiskeyman, Ruth M.....	Annville, Pa.
Witmeyer, Paul E.....	Annville, Pa.
Zuse, Clayton H.....	Casco, Mich.

Juniors

Bachman, Esther Margie.....	Annville, Pa.
Boeshore, Harry F.....	Lebanon, Pa.
Boltz, Ammon	Lebanon, Pa.
Brunner, Evan C.....	Myersville, Md.
Carl, William C.....	Annville, Pa.
Carter, Christine E.....	Meshoppen, Pa.
Clark, Pauline	Hershey, Pa.
Dasher, Katherine	Harrisburg, Pa.
De Huff, George A.....	Royersford, Pa.
Donohue, Joseph	Shamokin, Pa.
Fink, David R.....	Annville, Pa.
Fink, Homer F.....	Annville, Pa.
Foreman, Harry H.....	Hockersville, Pa.
Garver, Mary E.....	Lebanon, Pa.
Gonder, Ralph	Lykens, Pa.
Grube, Ray	Lititz, Pa.
Hand, Naomi Warman.....	Philadelphia, Pa.
Heffelman, Ruth Helen.....	New Cumberland, Pa.
Henry, A. Louise.....	Annville, Pa.
Herring, John H.....	Pine Grove, Pa.
Horstick, Charles B.....	Campbelltown, Pa.
Huber, Ruth Hershey	Williamson, Pa.
Hummel, J. Paul.....	Hunmelstown, Pa.
Kratzer, Clayton C.....	Middleburg, Pa.
Long, Abram M.....	Mt. Joy, Pa.
Longnecker, C. R.....	Palmyra, Pa.
Loomis, Charles H.....	Harrisburg, Pa.
McConel, William W.....	Portage, Pa.
Morrison, John E.....	Steelton, Pa.
Mutch, M. Ella.....	Schuylkill Haven, Pa.
Rhoades, Russell H.....	Elizabethville, Pa.
Risser, Harold W.....	Campbelltown, Pa.
Rupp, Russell	Harrisburg, Pa.

Rutherford, Joseph D.....	Royalton, Pa.
Shearer, Frank	Harrisburg, Pa.
Sherk, A. Herman.....	Annville, Pa.
Showers, Nettie	Connellsville, Pa.
Snavely, Earl Russell.....	Ramey, Pa.
Spitler, Harry	Lebanon, Pa.
Swartz, Ross	Hummelstown, Pa.
Swartz, William K.....	Middletown, Pa.
Umberger, LeRoy O.....	Hummelstown, Pa.
Wagner, Paul S.....	Hershey, Pa.
Wenrich, Marlin E.....	Hummelstown, Pa.
White, E. Harold.....	Winsted, Conn.
Williams, Reuben W.....	York, Pa.
Wolfe, Violet I.....	Lebanon, Pa.
Woomer, Elizabeth	Lebanon, Pa.
Yarrison, Guy R.....	Carroll, Pa.
Zeigler, Edwin Harold.....	Elizabethville, Pa.

Sophomores

Atticks, Robert M.....	Steelton, Pa.
Attinger, Frank	Port Trevorton, Pa.
Beidel, F. D.....	Steelton, Pa.
Beidler, Ada M.....	Lehighon, Pa.
Bender, E. E.....	Annville, Pa.
Bender, Ruth	Dillsburg, Pa.
Berger, John L.....	Columbia, Pa.
Blauch, Maurice	Annville, Pa.
Bortz, Emma	Lebanon, Pa.
Brown, Myrl	Rouzerville, Pa.
Bucher, Norman B.....	Mechanicsburg, Pa.
Case, Flora Lewis.....	Canton, Pa.
Colt, Hilda Fredericka.....	Meshoppen, Pa.
Davis, Dorothy E.....	Ebensburg, Pa.
Deitrich, LaRoy S.....	Palmyra, Pa.
Dunkel, Mildred Geneva.....	Lucknow, Pa.
Engle, Marguerite	Harrisburg, Pa.
Fasnacht, Walter Killian.....	Palmyra, Pa.
Foltz, Thomas	Elwood City, Pa.
Frost, Charles	Lebanon, Pa.
Gallatin, M. Elizabeth.....	Annville, Pa.
Gamble, Merab	Jersey Shore, Pa.
Garber, Dale W.....	Florin, Pa.
Gemmill, Charles W.....	Windsor, Pa.
Gingrich, Henry M.....	Florin, Pa.

Greenawalt, Owen P.....	Mt. Joy, Pa.
Gregory, David.....	Martinsburg, W. Va.
Hallman, George.....	Annaville, Pa.
Harris, Kathryn E.....	Harrisburg, Pa.
Haverstock, George M.....	New Cumberland, Pa.
Hoover, Helen.....	Chambersburg, Pa.
Hostetter, Herman.....	Cleona, Pa.
Isaacs, William Hugh.....	Forty Fort, Pa.
Jackowick, Joseph Anthony.....	Mt. Carmel, Pa.
Katerman, Harry W.....	Reinerton, Pa.
Kachell, W. H.....	Pottstown, Pa.
Keibler, Reno E.....	Annaville, Pa.
Keim, Raymond N.....	Enhaut, Pa.
Kennedy, Coleman Herbert.....	Palmyra, Pa.
Klinefelter, Claude B.....	Cleona, Pa.
Lefever, Rufus H.....	York, Pa.
Lorenz, Dorothy A.....	Roaring Springs, Pa.
Loser, Ruth K.....	Progress, Pa.
Martin, William.....	Rouzerville, Pa.
McCauley, Reno E.....	Annaville, Pa.
Mease, Ralph T.....	Palmyra, Pa.
Morrison, S. Franklin.....	Steelton, Pa.
Ness, Rufus R.....	Yoe, Pa.
Nissley, Raymond.....	Mt. Joy, Pa.
Potter, Norman.....	Coalport, Pa.
Rarig, Lester G.....	Catawissa, Pa.
Reber, Irving H.....	Sinking Spring, Pa.
Ruth, Katie O.....	Sinking Spring, Pa.
Schack, Helen E.....	Lebanon, Pa.
Schaeffer, Harry E.....	Avon, Pa.
Shannon, Carl.....	Richland, Pa.
Shannon, Paul.....	Richland, Pa.
Shettel, Paul O.....	York, Pa.
Simon, Adam Isaac.....	Schaefferstown, Pa.
Sloat, Ralph.....	Rockport, Pa.
Smith, Florence O.....	Dallastown, Pa.
Smith, E. Mae.....	Annaville, Pa.
Snoke, Hubert R.....	Shippensburg, Pa.
Stumbaugh, Eldridge M.....	Greencastle, Pa.
Suckling, Clara.....	Hollidaysburg, Pa.
Wine, Harold.....	Wilmington, Del.
Walter, Daniel E.....	Lebanon, Pa.
Walters, LeRoy.....	Ephrata, Pa.
Wrightstone, Harold K.....	Mechanicsburg, Pa.

Yetter, Harry S.....	Stevens, Pa.
Yingst, William Paul.....	Lebanon, Pa.
Ziegler, Helen E.....	York, Pa.

Freshmen

Allen, Edward.....	Pomfret, Conn.
Bachman, Susan C.....	Lebanon, Pa.
Baker, Benjamin P.....	Strasburg, Va.
Batdorf, Lottie.....	Womelsdorf, Pa.
✓ Beckley, Howard J.....	Hebron, Pa.
Blauch, Harry.....	Annville, Pa.
Bossard, Ada C.....	Annville, Pa.
Bouder, Norman M.....	Lebanon, Pa.
Boughter, Isaac.....	Pine Grove, Pa.
Boyer, Emma I.....	Reading, Pa.
✓ Bubb, Helen.....	Jersey Shore, Pa.
Bunderman, Walter Q.....	Lebanon, Pa.
Castetter, Edward F.....	Shamokin, Pa.
✓ Cook, Frank G.....	Quincy, Pa.
✓ Creighton, Mary L.....	Altoona, Pa.
Darcas, Luella.....	Lebanon, Pa.
✓ Davis, Frances Lucile.....	Ebensburg, Pa.
Deibler, Walter E.....	Millersburg, Pa.
Dundore, Samuel T.....	Mt. Ætna, Pa.
Early, Martha E.....	Palmyra, Pa.
Evans, William.....	Lykens, Pa.
Fasnacht, Anna B.....	Palmyra, Pa.
Fencil, Elizabeth K.....	Annville, Pa.
✓ Fulford, John H.....	Clearfield, Pa.
Gemmill, Edgil.....	York, Pa.
Gingrich, Kathryn S.....	Lickdale, Pa.
Haines, Ruth L.....	Philadelphia, Pa.
Heberlig, Raymond S.....	Highspire, Pa.
✓ Herr, Isaiah L.....	Lebanon, Pa.
Hilbert, Paul E.....	Allentown, Pa.
✓ Horn, Charles H.....	Red Lion, Pa.
✓ Huber, William.....	Lebanon, Pa.
Hughes, Ruth.....	York, Pa.
Imboden, J. Nissley.....	Hershey, Pa.
Jones, Lucia M.....	Lebanon, Pa.
✓ Ketterer, John P.....	Ellwood City, Pa.
✓ Kirst, Roy.....	Fredericksburg, Pa.
✓ Klinger, Arthur.....	Williamstown, Pa.
Kline, Frankie A.....	Tower City, Pa.

- ✓ Kottler, Harry E. Hershey, Pa.
- ✓ Krall, Howard N. Schaefferstown, Pa.
- ✓ Kreidler, Elesta Yoe, Pa.
- Lenhart, Miriam New Cumberland, Pa.
- ✓ Lerew, J. Austin. Dillsburg, Pa.
- ✓ Lewis, Frank Lebanon, Pa.
- ✓ Light, Allen H. Lebanon, Pa.
- ✓ Louser, Merle E. Lebanon, Pa.
- Lutz, Mary S. Chambersburg, Pa.
- Mackert, C. L. R. Sunbury, Pa.
- ✓ Mark, Violet K. Annville, Pa.
- McGinniss, John A. Littlestown, Pa.
- ✓ McLaughlin, Roy O. York, Pa.
- ✓ Mellon, Jacob Williamstown, Pa.
- Miller, Carrie A. Dallastown, Pa.
- Moore, Mabel E. Florin, Pa.
- Morrison, Miles C. Steelton, Pa.
- ✓ Murphy, John A. Rome, N. Y.
- ✓ Olewine, Raymond E. Myerstown, Pa.
- Peck, W. Daniel. Chambersburg, Pa.
- ✓ Peiffer, L. Wilson. Myerstown, Pa.
- ✓ Peters, J. Winton. Manheim, Pa.
- ✓ Price, William Chambersburg, Pa.
- ✓ Ramsey, Homer M. Lemasters, Pa.
- Rupp, J. Paul. Oberlin, Pa.
- Schmidt, Martha V. Lebanon, Va.
- ✓ Shaak, Lee S. Avon, Pa.
- Schach, Mary Tremont, Pa.
- ✓ Shetter, Claire A. York, Pa.
- Smith, H. Raymond. Windsor, Pa.
- Snively, Francis B. Ramey, Pa.
- Snyder, Grace Boiling Springs, Pa.
- Snyder, Rufus H. Manheim, Pa.
- ✓ Sterling, Anna Meshoppen, Pa.
- ✓ Summers, Chas. W. Myersville, Md.
- Tschudy, E. H. Lebanon, Pa.
- ✓ Van Campen, Charles B. Forty Fort, Pa.
- ✓ Wagner, V. Arthur. Hershey, Pa.
- ✓ Weakland, Basil F. Patton, Pa.
- Weidler, Edna May. Buffalo, N. Y.
- Williams, Louisa I. York, Pa.
- Wingerd, Mark Chambersburg, Pa.
- Wingerd, Ray Chambersburg, Pa.

✓ Witmer, Harry C.....	Mt. Joy, Pa.
Zeigler, Jesse O.....	Elizabethville, Pa.

Special Students

Adams, Thomas	Sunbury, Pa.
Amrhein, Irving	South Bethlehem, Pa.
Berry, Ralph	Hershey, Pa.
Bohan, Edward	Wiconisco, Pa.
Daniels, Wm. E.....	Akron, Pa.
Durbin, Frances	Ramey, Pa.
Eichelberger, Earl	Oberlin, Pa.
Evans, Ruth M.....	Lebanon, Pa.
Free, Walter	Red Lion, Pa.
Fridinger, Mertis	Annville, Pa.
Gensler, Howard E.....	Harrisburg, Pa.
Henninger, Edward J.....	Pinegrove, Pa.
Hershey, Virginia	Hershey, Pa.
Hocker, H. J.....	Hockersville, Pa.
Hughes, Walter D.....	Slatington, Pa.
Hughes, H. H.....	Manheim, Pa.
Jaeger, Gideon	Philadelphia, Pa.
Jacobs, Emory C.....	Richland, Pa.
Keating, William	Rome, N. Y.
Klopp, Lewis	Richland, Pa.
Knoll, Paul	Annville, Pa.
Kutz, George	Birdsboro, Pa.
Lynch, Clyde A.....	Harrisburg, Pa.
Rogers, Glover	Penbrook, Pa.
Wagner, M. A.....	Lebanon, Pa.
Weaver, Elta	Annville, Pa.
Williams, E. D.....	Eutonville, S. C.
Zerbe, A. W.....	Tremont, Pa.

Academy Students

Baker, Harry P.....	Shippensburg, Pa.
Bashore, David	Annville, Pa.
Barreto, J. F.....	Camaguey, Cuba
Bechtol, Carroll	Pottstown, Pa.
Behm, Ellen	Palmyra, Pa.
Bomberger, S. Ruth.....	Hershey, Pa.
Buckwalter, Russel	Portage, Pa.
Burtner, Robert R.....	Palmyra, Pa.
Byle, David	Annville, Pa.

Cretzinger, John I.....	Duncannon, Pa.
Davis, Elisha W.....	Ramey, Pa.
Engle, Harold G.....	Palmyra, Pa.
Erlenmyer, Martin L.....	Liverpool, Pa.
Fake, Norman I.....	Annville, Pa.
Fencil, Calvin F.....	Annville, Pa.
Gemmi, Lillian	Reading, Pa.
Gingrich, James L.....	Lebanon, Pa.
Goodyear, Wm. F.....	Sunbury, Pa.
Gundrum, Myrtle	Lebanon, Pa.
Hartman, Herbert.....	Willseyville, N. Y.
Hastings, E. Charles.....	Highspire, Pa.
Landis, Harold	Palmyra, Pa.
Machen, J. S.....	Waynesboro, Pa.
Meyer, Sarah L.....	Lebanon, Pa.
McMullen, Wm.	Philadelphia, Pa.
Martz, E. Warren.....	Palmyra, Pa.
Maxton, Frank	Columbia, Pa.
Moyer, Ellen E.....	West Hanover, Pa.
Mulhollen, Oscar.....	Wilmore, Pa.
Newlyn, Pomeroy	Hershey, Pa.
Ozar, Jack	Chicago, Ill.
Pickard, John George.....	Philadelphia, Pa.
Ramsey, Felix	Philadelphia, Pa.
Reinbold, Samuel L.....	Onset, Pa.
Rhoad, Edwin M.....	Grantville, Pa.
Rodriguez, A. A.....	Camaguey, Cuba
Shott, Fritz	Lykens, Pa.
Selter, James H.....	Middletown, Pa.
Shaver, Helen B.....	Robertsdale, Pa.
Shirk, Violet E.....	McAllisterville, Pa.
Simondett, A. C.....	Philadelphia, Pa.
Spangler, Roy	Palmyra, Pa.
Coll Torres, J. L.....	Camaguey, Cuba
Weierbach, Elvin C.....	Lebanon, Pa.
Wheelock, Joel	Depew, Wis.
Wunder, Wm. C.....	Spring City, Pa.
Zerr, Levi H.....	Geigers Mills, Pa.
Students regularly matriculated in the Academy.....	47
Students from other departments receiving instruction in the Academy.....	48
Total students in Academy.....	95

CONSERVATORY OF MUSIC

SENIORS

Ray Porter Campbell (Pipe Organ and Mus. B. Degree)	Shamokin
Lillian Faith Gantz (Piano)	Annville, Pa.
Kathryn Luella Hertzler (Piano)	Manheim, Pa.
Percy Mathias Linebaugh (Piano)	York, Pa.
Ruth Vena Strickler (Voice)	Lebanon, Pa.
Ora Belle Bachman (Public School Music)	Annville, Pa.

JUNIORS

Julia Rachael Dare (Piano)	Harrisburg, Pa.
Elizabeth Jenkins (Piano)	Minersville, Pa.
Fleeda Marie Kettering (Piano)	Palmyra, Pa.
Percy M. Linebaugh (Pipe Organ)	York, Pa.
Ethel May Strickler (Voice)	Lebanon, Pa.
Miriam Rhea Oyer (Public School Music)	Shippensburg, Pa.

SOPHOMORES

Florence M. Boeshore (Piano)	Lebanon, Pa.
Goodridge Greer (Piano)	York, Pa.
Jane Mary Lindsay (Piano)	Newville, Pa.
Florence Richards (Piano)	Lebanon, Pa.
Marie Richwine (Piano)	Ephrata, Pa.
Irma M. Rhoads (Piano)	Chambersburg, Pa.
Ruth R. Zoll (Piano)	Hershey, Pa.

FRESHMEN AND SPECIALS

Daniel Auchenbach	Lebanon, Pa.
Florence Adams	Lebanon, Pa.
*Ada Bossard	Annville, Pa.
Carl Bachman	Annville, Pa.
Fae Bachman	Annville, Pa.
Earl Bachman	Annville, Pa.
Amos C. Byle	Annville, Pa.
*Helen E. Bubb	Jersey Shore, Pa.
Perry E. Bicksler	Palmyra, Pa.
*Ralph Berry	Hershey, Pa.
Ruth Brunner	Annville, Pa.
*Ralph Crabill	Dillsburg, Pa.
*Jose L. Coll	Camaguey, Cuba
Paul Daugherty	Annville, Pa.
Margaret Daugherty	Annville, Pa.
Pauline Daugherty	Annville, Pa.
Helen Daugherty	Annville, Pa.

Carl Daugherty	Annville, Pa.
Eva Daugherty	Annville, Pa.
Leroy Depew	Lebanon, Pa.
*Dorothy Davis	Ebensburg, Pa.
*Lucile Davis	Ebensburg, Pa.
*Mildred Dunkel	Lucknow, Pa.
*Walter Deibler	Millersburg, Pa.
Elizabeth DeLong	Annville, Pa.
Lucile Donmoyer	Lebanon, Pa.
Serena Dullabahn	Lebanon, Pa.
*Ira S. Ernst.....	Williamson, Pa.
*Gladys Fencil	Annville, Pa.
Elsie Folmer	Lebanon, Pa.
Esther Fink	Annville, Pa.
Eugenia Fox	Annville, Pa.
John Gantz	Annville, Pa.
Mabel Gehret	Lebanon, Pa.
Lucile Gillman	Annville, Pa.
Sue Good	Lebanon, Pa.
Della Herr	Annville, Pa.
Meyer Herr	Annville, Pa.
*Rena Hoff	Mount Wolf, Pa.
Stella Hetrick	West Hanover, Pa.
Madeline Harrison	Lebanon, Pa.
*Louise Henry	Annville, Pa.
*Esther Heintzelman	Chambersburg, Pa.
Mrs. Edith Harnish.....	Annville, Pa.
*Mary Lucile Jones.....	Philadelphia, Pa.
Josephine Kettering	Annville, Pa.
Esther Kettering	Annville, Pa.
Abigail Kettering	Annville, Pa.
Leona Kohler	Yoe, Pa.
Martha Keeney	Hershey, Pa.
E. Irene Kline.....	Myerstown, Pa.
*Frankie Kline	Tower City, Pa.
*Kathryn Kreider	Palmyra, Pa.
*Dorothy Lorenz	Roaring Springs, Pa.
*V. Earl Light.....	Annville, Pa.
*Myrle Louser	Lebanon, Pa.
Edna Landis	Hershey, Pa.
Helen Landgraf	Lebanon, Pa.
*Mary S. Lutz.....	Chambersburg, Pa.
Margaret H. Miller.....	Middletown, Pa.
Benjamin Millard	Annville, Pa.

*Lottie Batdorf	Lebanon, Pa.
*Christina Carter	Meshoppen, Pa.
Anna N. Mowery	Hershey, Pa.
*Miles Morrison	Steelton, Pa.
*Ellen Moyer	West Hanover, Pa.
Florence Phillipy	Jonestown, Pa.
Effie Rohland	Annville, Pa.
Viola Rohland	Annville, Pa.
Margaret Roemig	Annville, Pa.
*Felix Ramsey	Philadelphia, Pa.
*Lester Rarig	Catawissa, Pa.
Eva Speraw	Annville, Pa.
Ethel Speraw	Annville, Pa.
Gardner Saylor	Annville, Pa.
Ida M. Smith	Annville, Pa.
Myrle Saylor	Annville, Pa.
Dorothy Sholly	Annville, Pa.
Margaret Sholly	Annville, Pa.
Edna Seaman	Allentown, Pa.
Josephine Stine	Annville, Pa.
Roy O. Stetzman	Palmyra, Pa.
*Dora Silberman	Lebanon, Pa.
*Arita Snyder	Keedysville, Pa.
*H. D. Spitler	Lebanon, Pa.
*Rachael Shenk	Annville, Pa.
Elizabeth Shaud	Annville, Pa.
Edna Tittle	Lebanon, Pa.
Myrle Turby	Palmyra, Pa.
*Marcel von Bereghy	Harrisburg, Pa.
Mary Will	Manheim, Pa.
Sara Wengert	Lebanon, Pa.
Stella Weitzel	Sinking Springs, Pa.
Emma Witmeyer	Annville, Pa.
Jessie Yaudis	Liberty, Pa.
*Jesse Ziegler	Elizabethville, Pa.

* Taking work in other departments.

Total registration in private lessons..... 115

Receiving instruction, but not registered for private lessons..... 27

Total..... 142

STUDENTS IN THE ORATORY DEPARTMENT, 1915-16

Boltz, Susan	Lebanon, Pa.
Brenisholtz, Loré	Elizabethtown, Pa.
Case, Flora	Canton, Pa.
Clark, Pauline	Hershey, Pa.
Curry, Conrad	Swatara Station, Pa.
Deitzler, Jonathan	Lebanon, Pa.
Eichelberger, Earl	Oberlin, Pa.
Gruber, Viola	Campbelltown, Pa.
Harris, Kathryn	Harrisburg, Pa.
Hartz, Robert	Palmyra, Pa.
Heffelman, Ruth	New Cumberland, Pa.
Hoff, Rena	Mt. Wolf, Pa.
Huber, Ruth	Williamson, Pa.
Jamison, Verling W.	Warsaw, Ind.
Kreider, Kathryn	Palmyra, Pa.
Musser, Sophia	Lebanon, Pa.
Mark, Violet	Annville, Pa.
McGowan, Jennie	Lebanon, Pa.
Oyler, Helen	Chambersburg, Pa.
Showers, Nettie	Connellsville, Pa.
Wolf, Florence	Lebanon, Pa.
Regular students in Oratory Department.....	7
Students matriculated in other departments.....	14
<hr/>	
Total receiving instruction in Oratory.....	21

ART STUDENTS

Irene Bodenhorn	Annville, Pa.
*Matilda Bohr	Lebanon, Pa.
Helen Brightbill	Annville, Pa.
Cora Brunner	Annville, Pa.
Florence Christeson	Annville, Pa.
Ruth Clendenen	Quarryville, Pa.
Julia Demler	Lebanon, Pa.
*Stella Felty	Lebanon, Pa.
Russell Gingrich	Palmyra, Pa.
Minnie Gossard	Annville, Pa.
Mrs. S. O. Grimm.....	Annville, Pa.
Rena Grace Hoff.....	Mt. Wolf, Pa.
Ruth Kelchner	Annville, Pa.
Violet Kettering	Annville, Pa.
Nancy Kreider	Annville, Pa.

Mrs. Clarence Lutz.....	Annville, Pa.
Laura Millard	Annville, Pa.
*Barbara Miller	Lebanon, Pa.
Helen E. Miller.....	Annville, Pa.
Mary M. Miller.....	Lebanon, Pa.
Vera Myers	Longsdorf, Pa.
**Mary M. Stine.....	Annville, Pa.
*Arita Snyder	Keedysville, Md.
Josephine Ulrich	Annville, Pa.

Matriculated Elsewhere but Taking Work in Art

Ora Bachman	Annville, Pa.
*Virginia Hershey	Hershey, Pa.
Ruth Heffelman	New Cumberland, Pa.
Ruth Loser	Paxtang, Pa.
*Josephine Mathias	Highspire, Pa.
*Mabel Mease	Palmyra, Pa.
Ellen Moyer	West Hanover, Pa.
Rachael Shenk	Annville, Pa.
Dora Silberman	Lebanon, Pa.
Mrs. E. E. Sheldon.....	Annville, Pa.
Elta Weaver	Annville, Pa.

* Complete work in Art.

** Died.

Regular students in the Art Department.....	24
Students matriculated in other departments but taking work in Art..	11
<hr/>	
Total in Art Department.....	35

DEGREES CONFERRED JUNE, 1915

DOCTOR OF LITERATURE

Fred Lewis Pattee, A.M.....	State College
-----------------------------	---------------

DOCTOR OF DIVINITY

Rev. S. E. Rupp, A.B.....	Harrisburg, Pa.
Rev. L. Walter Lutz.....	Chambersburg, Pa.

BACHELOR OF ARTS

Harry M. Bender	Ira C. Eby
Gideon L. Blanch	Ruth E. Engle
Paul J. Bowman	Ruth V. Engle
C. E. Brenneman	Phares B. Gibble

Ethel I. Houser
 Mary L. Irwin
 Verling W. Jamison
 John O. Jones
 Myra G. Kiracofe
 J. Maurice Leister
 John W. Larew
 Florence C. Mentz
 Vera Myers

John H. Ness
 Mae Belle Orris
 Emma R. Schmauck
 Carl G. Snavelly
 Faber E. Stengle
 Ralph Stickell
 Frank M. Van Schaack
 David E. Young
 Lester B. Zug

ACADEMY DIPLOMAS PRESENTED JUNE 6, 1914

Attinger, Frank S.
 Deibler, Walter E.
 Hallman, George W.
 Heberlig, Raymond S.
 Mackert, C. L. R.

McClure, Robert P.
 Smith, Raymond H.
 Snavelly, F. B.
 Wisner, J. Arthur

Lebanon Valley College Scholarship Award

J. Arthur Wisner

SUMMARY

Seniors	49
Juniors	50
Sophomores	72
Freshmen	84
Specials	28
	<hr/>
Total in College.....	283
College	281
Academy	47
Music	142
Oratory	21
Art	35
	<hr/>
Total in All Departments.....	528
Names repeated in Music, Oratory, and Art..	85
	<hr/>
Total Enrollment.....	443

INDEX

Academy	51
Admission	53
Courses	55
Examinations	53
Expenses	54
Faculty	52
Students in	79
Advisers	14
Art Department	72
Astronomy	39
Bible	42
Biology	42
Board of Trustees	4
Buildings and Grounds.....	11
Calendar	3
Carnegie Library	11
Chemistry	44
College Organizations	13
Corporation	4
Courses, College	
Outline of	32
Description of	23
Degrees Conferred	85
Degrees and Diploma.....	15
Discipline	14
Economics	38
Education	36
English Language and Literature.....	40
Expenses, College	17
Academy	54
Department of Music.....	70
Department of Art.....	72
Faculty, College	6
Academy	52
Department of Music.....	62
French Language and Literature.....	41

General Information	11
German Language and Literature.....	39
Graduate Work	16
Greek Language and Literature.....	41
Geology	46
History	37
History of the College.....	8
Laboratories	12
Latin Language and Literature.....	37
Mathematics	38
Music Department	61
Courses	63
Oratory and Public Speaking.....	47
Philosophy	36
Physics	46
Physical Culture	47
Political Science	37
Religious Work	12
Register of Students, College.....	73
Academy	79
Department of Music.....	81
Department of Art.....	84
Requirements for Admission, College.....	21
Academy	53
Schedule of Lecture and Recitation Hours.....	31
Scholarships	16
Sociology	38