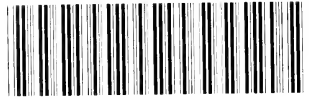


F 128

.61

.A1L52

LIBRARY OF CONGRESS



0 014 108 774 5

F 128

.61

.R1 L52

Copy 1

— THE —

LEONARD MANUAL

—OF THE—

• • CEMETERIES • •

OF—

NEW YORK AND VICINITY.

A HANDY GUIDE

Embodying a brief history and description of all the regular New York and neighboring cemeteries, their location and accessibility, together with an official list of prices of graves, lots and plots; a summary of the rules and regulations governing same, and such other information as will be found appropriate, interesting and valuable.

COMPILED AND PUBLISHED BY

J. H. LEONARD,

130 GREENWICH AVENUE,

NEW YORK

All rights reserved.

5728
.61
.A1 L52

THE LIBRARY OF
CONGRESS,
TWO COPIES RECEIVED
JUN. 25 1901
COPYRIGHT ENTRY
Dec 29, 1894
CLASS ~~XXX~~ No.
60919
COPY 2

COPYRIGHT,
J. H. LEONARD,
1901.

WABOL INT
29000 70

PREFACE.

Over one hundred and forty cemeteries are described and treated of this enlarged and up-to-date edition of Leonard's Manual of the Cemeteries and the information presented has been generally supplied by officials at the cemeteries referred to. The book describes all the regular cemeteries wherein interments are made within twenty-five miles of Greater New York and to an inquiring public as well as to those directly interested in cemeteries, full and essential information regarding prices and sizes of lots, plots and graves is also given. Countless graveyards there are in the vicinity of the metropolis dating back in some instances 200 years, but while most of them are merely relics of the past, events of importance and associations of historical value are connected with them which, however, do not come within the range of this work. This book is essentially a compendium of information respecting cemeteries now in operation and use and a new and most attractive feature of the same is the laws of the States of New York and New Jersey for the regulation of cemeteries. To cemetery officials and the public alike must this adjunct prove interesting and valuable.

Aside from the bodies buried in the old churchyards, it is estimated that there have been at least six million interments in the one hundred and forty regular cemeteries in the neighborhood of New York City during the last fifty years. Prior to that period churchyards and small isolated burying grounds in the rural districts received the remains of those who passed away. The wealth, artistic and landscape beauty of many of the cemeteries in and near the metropolis give evidence of the progress and advancement in interment and the cemeteries of New York rank with the best known and most beautiful in any part of the world.

This book occupies a distinct field of its own. It is unique in its scope and the very flattering reception former editions received have proved beyond doubt the public interest in cemetery literature. Reinforced by several new features the present edition should prove more attractive than its predecessors.

HORNTHAL & CO.,

NEW YORK.

MANUFACTURERS OF SUPERIOR GRADE

Funeral Supplies.



Long Distance Telephone Service:

2094—18th St. } OFFICE AND SALESROOM,
2095 } 10 EAST 22D STREET.

1131—38th St. } FUNERAL DEPARTMENT,
343 EAST 53D STREET.

1337—38th St.—FACTORY, 329-341 E. 53D ST.

COMPETENT CLERKS IN ATTENDANCE.

ALWAYS OPEN "DAY OR NIGHT" ALWAYS OPEN

FUNERAL DEPARTMENT THOROUGHLY EQUIPPED.

Licensed Embalmers, Hearses, Wagons, Coaches, Etc.,

For the WHOLESALE TRADE only.



Communicate with us for any business you may have
in New York or vicinity.

Established 1830.

H. E. TAYLOR & CO.,

154 East 23rd Street,

NEW YORK.

The Great ❄ ❄

Funeral Supply House

Manufacture Coffins, Caskets, Casket Hard-
ware, and a full line of

... FUNERAL GOODS ...

Licensed Embalmers,
Hearses, Hearse Wagons, Coaches.



ALWAYS OPEN.



WORK FOR UNDERTAKERS ONLY.

TELEPHONES: 79th Street 1290.

79th Street 1291.

79th Street 1292.

ACACIA CEMETERY.

WOODHAVEN, L. I.

OFFICE ON GROUNDS.

This cemetery is located at Woodhaven, L. I., and adjoins Bay-side Cemetery. It is 11 acres in extent and receives about 100 interments a year. The total number of interments to date about 250. It is reached by the Kings County Elevated Road to city line, thence via electric cars to cemetery.

Thomas Wanek is the Superintendent.

AHAWATH CHESEDS CEMETERY.

EAST WILLIAMBURGH, NEW YORK.

OFFICE ON GROUNDS.

This is a small Jewish cemetery situated in East Williamsburgh, near Lutheran Cemetery. It comprises about 13 acres, and it is said that there are over 700 bodies buried within its limits. It is reached from New York by the surface cars from Grand and Roosevelt Streets ferries, and the Long Island Railroad trains to Middle Village.

ARLINGTON CEMETERY.

ARLINGTON, HUDSON COUNTY, NEW JERSEY.

OFFICES, 239 WASHINGTON ST., JERSEY CITY, AND 349
BROAD ST., NEWARK, N. J.

Arlington Cemetery was founded in 1882, and opened in July of the following year. It embraces at present about 40 enclosed acres, and is one of the prettiest cemeteries in the State of New Jersey. It is located at Arlington, about six miles from Jersey City and Hoboken ferries, on the New York & Greenwood Lake Railroad, and can be reached from New York by that railroad and by the West Newark Avenue, Jersey City, and Belleville turnpikes. Already there have been about 4,000 interments; and the average number of interments for the last three years has been about 300 a year. Arlington claims the distinction of having been the first New Jersey cemetery to adopt the "landscape lawn plan," and the wisdom of this plan has been amply demonstrated in this cemetery.

PRICES.

Adult's single graves, including opening, 3x8x7 feet.....	\$16
Child's " " under 10 years, 7 feet deep.....	13
Infant's " " 3 feet x 6 inches long and 7 feet deep... ..	8
" " " 3 feet long and 7 feet deep.....	6

The price of plots range from \$100 and upwards, and contain 108 square feet, allowing for four graves. The erection of corner posts, sodding and perpetual care are included in the purchase price of each lot.

The charges for reopening graves are: Child's grave, \$4; adult's, \$5, and extra depth, \$6. Two interments are allowed in a single grave, and twelve hours' notice is required before the reopening of a grave can be secured.

BARON HIRSCH CEMETERY.

PORT RICHMOND, S. I.

OFFICE ON GROUNDS.

Baron Hirsch Cemetery is of Hebrew denomination and is situated on Rich avenue, near Vedder avenue, Port Richmond, Staten Island. It comprises 100 acres and is reached from St. George, S. I., via Bull's Head trolley. Abram Greenwald is Superintendent. Address 150 Richmond avenue, Port Richmond, S. I.

BAPTIST CEMETERY.

PATERSON, NEW JERSEY.

OFFICE ON GROUNDS, OAK AND LALEY STREETS.

No graves or lots are sold in the Baptist Cemetery. It is one of the oldest in Paterson and is small in extent. It belongs to the members of the Baptist Churches of that city and within recent years few interments have been made in it.

The cost of reopening a grave is \$4. The estimated number of bodies buried in this cemetery is 2,500.

BAYSIDE CEMETERY.

JAMAICA, L. I.

OFFICE ON GROUNDS.

About twenty acres comprise the extent of Bayside Cemetery, which is located in Jamaica, Long Island. The cemetery is reached by the electric cars from East New York or by the Long Island

Railroad to Woodhaven station. Over 600 bodies are buried in this cemetery. Single graves \$15 and upwards. Lots \$100 and upwards. Opening graves, adults \$3.50 and \$2.50, child, \$2 and \$1.50.

BAY VIEW CEMETERY.

JERSEY CITY, N. J.

OFFICE, 243 WASHINGTON ST., JERSEY CITY.

Bay View Cemetery is situated on Ocean Avenue, Greenville, Jersey City, two and one-half miles from Cortlandt and Desbrosses Street ferries, Jersey City, and lies adjacent to New York Bay Cemetery, being separated therefrom by Chapel Avenue. It is a comparatively new cemetery and its lots and plots are owned by prominent Jersey City residents, among others E. F. C. Young, a well-known banker of Jersey City. The cemetery was founded June 2, 1884, and opened in July, 1885. It is a beautiful cemetery, laid out on the lawn plan, and comprises seventeen and one-half acres. Over 4,000 bodies have been interred, and the average number of interments per year is 600. The grounds are divided into four sections known as Bay View Section, Edgewood Section, Morningside Section, and Cedar Lawn Section, and are reached by the Bayonne and Greenville trolley lines from the Pennsylvania ferry, Jersey City; from New York by Desbrosses Street and Cortlandt Street ferries, and by the Central Railroad of New Jersey, to Greenville Station. Single graves \$20 and \$30. Lots \$1.25 to \$1.50 per square foot. Opening graves, adult \$5, child \$4. As New York Bay Cemetery operates Bay View Cemetery, the size of graves and plots, cost of opening graves, number

of interments, etc., are about the same in both cemeteries. There is no vault.

Charles E. Souther is President; John W. Heck, Secretary and Treasurer, and Thomas W. Tilden is Superintendent.

BEECHWOOD CEMETERY.

NEW ROCHELLE, N. Y.

OFFICE ON GROUNDS.

Beechwood Cemetery, situated on Beechwood Avenue, New Rochelle, is about 30 acres in extent, and is reached by the New Haven Railroad. It is about 40 years old, and with an average of 150 interments per year. It is estimated that there are about 6,000 bodies buried in this cemetery.

The price of single graves is \$15, which includes the opening and the size 3x8x6 feet. The reopening charges are \$5 for adults and \$3 for children's graves. The plots range from \$260 to \$140, 18x20 feet and 9x18 feet. There is a vault for which a charge of \$20 is made for three months with a gradual rebate. J. G. Ross is the Superintendent.

BETHEL CEMETERY.

TOTTENVILLE, S. I.

Situated on Amboy Avenue, corner Church Street, Tottenville, Staten Island. W. A. Brown is Superintendent and he resides at Tottenville, S. I.

BERGEN CEMETERY.

BERGEN AVE. AND VROOM ST., JERSEY CITY, N. J.

OFFICE, 21 HOBOKEN AVE., JERSEY CITY.

About 50 interments are made annually in Bergen Cemetery, and it is estimated that there are over 2,000 bodies buried in its graves. It was opened in 1836 and is located corner of Bergen Avenue and Vroom Street, Jersey City, and is reached by the Montgomery Street or Newark Avenue cars from the Pennsylvania ferries, a mile and a half distant. No lots or graves are sold. Charges for reopening graves, \$6; two bodies to each grave and twelve graves to a plot. Ten hours' notice required for opening a grave, and the vault charge is \$2 a month.

B'NAI ABRAHAM CEMETERY.

532 S. ORANGE AVE., NEWARK, N. J.

OFFICE AT CEMETERY.

B'Nai Abraham is a small Jewish cemetery of five acres, located on South Orange Avenue, Newark, and belongs to the congregation of that name on Washington Street, in that city. It is reached by the South Orange Avenue cars from Market Street, Newark. It was opened in 1866 and contains about 700 bodies. The price of single graves is \$25, ordinary dimensions, while plots providing for eight and twelve graves cost \$200. One body is allowed to each grave, and the cost of reopening a grave is \$3. There is no vault.

B'NAI ISRAEL CEMETERY.

NO. 130 PATERSON STREET, PATERSON, N. J.

OFFICE AT CEMETERY.

A small Jewish cemetery is B'Nai Israel. It is situated on Paterson Street, Paterson, and is reached from New York by the Erie, Delaware, Lackawanna & Western, Susquehanna & Western Railroads, and the Paterson turnpike from Jersey City. It is owned by the B'Nai Israel congregation of Paterson. Several hundred bodies are buried in this cemetery.

B'NAI JESHURUN CEMETERY.

JAMAICA PLANK ROAD, L. I.

This small Jewish cemetery is located on Cypress Hills Road and adjoins Cypress Hills Cemetery.

B'NAI JACOB CEMETERY.

S. ORANGE AVE., NEWARK, N. J.

B'Nai Jacob Cemetery is five acres in extent and adjoins B'Nai Abraham Cemetery, on South Orange Avenue, Newark. It is the property of the local Jewish congregation of that name, and is cut up into single graves. The price of graves is \$25, 2x7 feet, and reopening \$3. The cemetery was opened in 1890 and since that period about 900 interments have taken place.

B'NAI JESHURUN CEMETERY.

LAUREL GROVE, PATERSON, N. J.

OFFICE AT CEMETERY.

B'Nai Jeshurun Cemetery is reached the same as Cedar Lawn Cemetery, and is situated at Laurel Grove, Paterson. It is a private Jewish burying ground and is small in extent. The B'Nai Jeshurun congregation of Paterson owns the cemetery.

CALVARY CEMETERY.

NEWTOWN, L. I.

OFFICE, 266 MULBERRY ST., NEW YORK.

Calvary Cemetery is by far the most important burial ground in the vicinity of New York, and, in fact, in the United States in point of interments, extent and the number of monuments and headstones that go to make it a wilderness of rising tombstones. It is the leading Roman Catholic cemetery of the metropolis, and has been such since its opening in August, 1848. It belongs to the diocese of New York, and it is managed by the Board of Trustees of St. Patrick's Cathedral, and they are responsible for its care and maintenance. The cemetery proper contains about 300 acres, although there is considerable additional land which may, as future occasions require, be converted into a burial ground.

The cemetery is about one and one-half miles from New York city, and is reached by ferries from East Tenth Street, East Twenty-third Street, East Thirty-fourth Street, and Roosevelt Street, and from Williamsburgh by the Grand and Houston Street ferries, thence by way of the Grand Street horse cars.

LEONARD'S
Cemetery Lot Bureau

130 GREENWICH AVENUE,
NEW YORK.

TELEPHONE, 303 18th STREET

IF you have for sale or desire to purchase a lot, plot or grave in any of the Cemeteries of New York and vicinity, CALL ON OR WRITE US, and we will secure a purchaser for you, or get you what you want under the most favorable terms. Select list of lots, plots and graves always on hand.

LOTS, PLOTS AND GRAVES WANTED.

Full information regarding laws of local Cemeteries, prices, rules, etc., furnished.

PUBLISHERS :

Leonard's Manual of the Cemeteries

THE OFFICIAL GUIDE OF THE CEMETERIES OF NEW YORK
AND VICINITY.

LEONARD'S
Cemetery Lot Bureau

130 GREENWICH AVENUE

NEW YORK

*
.. TELEPHONE, 303 18th STREET ..
*

If you have for sale or desire to purchase a lot, plot or grave in any of the Cemeteries of New York and vicinity

... CALL ON OR WRITE US ...

and we will secure a purchaser for you or get you what you want under the most favorable terms.

Select list of lots, plots and graves always on hand.

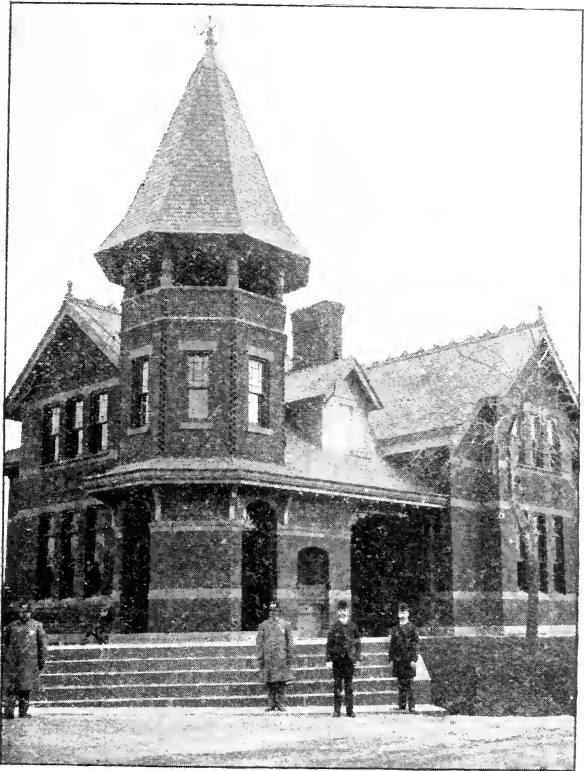
LOTS, PLOTS AND GRAVES WANTED.

Full information regarding laws of local Cemeteries, prices, rules, etc., furnished.

PUBLISHERS:

Leonard's Manual of the Cemeteries

*The Official Guide of the Cemeteries of New York
and Vicinity.*



CALVARY CEMETERY.

The grounds at present are laid out in numbered sections. The first ten sections are located in what is known as the Old Calvary, the succeeding Six Sections in the first New Calvary and Sections 17 and 18 and upwards are in those parts of the cemetery last opened. Plots, half plots, and quarter plots with graves make up the plan of sub-division of the grounds, but only the bodies of those persons who die in active Catholic faith and practice are allowed to be buried within its precincts. Since the cemetery was opened about 700,000 bodies have been interred and the considerable number of 18,000 represents the average yearly interments. There is a "poor" or free ground wherein are buried the bodies of the deserving poor of the diocese; but permission even for interment in this part is obtainable only upon the recommendation of a Catholic clergyman. All permits for interment must be obtained, and moneys paid at the New York office twenty-four hours in advance of the funeral, and this office is open daily from 8 A. M. to 4.30 P. M., except on Saturdays when it closes at 2 P. M. The office is not open on Sundays. The rules governing the enclosure of plots or graves prohibit the use of wood or wire. Monuments or headstones must be erected on foundations of solid masonry 16 inches thick, sunk to a depth of 9 feet, and must be built of stone, granite or marble. No removal of a body will be allowed between May 1 and Nov. 1.

John Hogan is Superintendent of the cemetery.

PRICES.

Single graves, 2x9x9 feet, \$15 and \$25, according to location, and exclusive of opening.

Plots of 16 graves, \$500 and upwards; fractional plots, \$125 and upwards. Temporary graves, \$7 and \$3. Opening graves, adult, \$7; children 7 to 14 years, \$5, and under 7 years, \$3. Vault charges:

RECEIVING VAULT.

Use of Vault per month or less, first month.....	\$3.00
“ “ “ “ after first month.....	2.00
“ “ “ “ for remains not to be interred in the Cemetery.....	5.00

In addition to these charges for use of vault, the interment fee must be paid in all cases before the remains are placed therein.

The Cemetery authorities may inter the remains in the Free Ground without notice, if they are not removed at or before the end of the second month.

CHARGES FOR REMOVAL.

One Adult to a new grave.....	\$7.00
“ Child to a new grave.....	3.00

These charges include opening and closing graves.

Additional bodies raised and moved:

Adult	\$3.00
Child	1.00

CEDAR GROVE CEMETERY.

CORONA, L. I.

OFFICES, 123 EAST 23D ST., NEW YORK, AND 887 MANHATTAN AVE., GREENPOINT.

Cedar Grove Cemetery was opened in August, 1893, and is located between Corona and Flushing, L. I., five and one-half miles from New York. It is the nearest cemetery to the upper end of the city from the East Ninety-ninth Street Ferry, and is reached also by the Long Island Railroad from East Thirty-fourth Street Ferry, or by the East Twenty-third, Thirty-fourth,

Roosevelt, Houston and Grand Street ferries. About 400 acres make up the cemetery, comprising over 40,000 plots, and since it was opened over 30,000 bodies have been interred. The lawn plan prevails in this cemetery with its accompanying restrictions regarding enclosures of graves, plots and lots, and a few hours' notice only is required to secure the opening of a grave.

The size of a single grave is 31-2x8 feet, price \$9 and \$15, including opening. Plots, 10x20, 11x10 and 20x20 admitting twelve, twenty-four and forty-eight graves, cost from \$50 to \$500. Plots are sold on the installment plan. Vault charges are \$15 for adult and \$13.50 for infant, but its use is free to a plot owner. The purchase of a plot secures the refunding of the vault tax. Three adult bodies are allowed to each grave. Cost of opening graves is included in purchase price. Reopening is \$5 for adult, and \$3.50 for child. Over 30,000 bodies are interred in this cemetery. J. Parker Sloane, President, Charles L. Sicardi, Comptroller; E. Dwight Church, Vice-President; J. W. Fraser, Secretary; J. E. MacAlpine, Superintendent.

CEDAR LAWN CEMETERY.

PATERSON, N. J.

OFFICE, PATERSON SAVINGS BANK BUILDING.

The cemetery is located in Paterson, N. J., on the boundary line between Market Street and Lake View, and is one of the leading cemeteries of that city. It is about 25 years old, and the estimated number of interments in it is 25,000. The price of a single grave is \$10, including opening. Plots range from \$40 and upwards. One body is allowed to each grave. The cost of reopening a grave is \$5.50 adult and \$4 child. Children's

graves are \$8, including opening. S. Heminsley is Superintendent, and twelve hours' notice is required for opening graves. A deposit of \$14 is necessary to place a body in the vault, and if a plot is purchased within three months from the time of placing a body in the vault \$6 of this is returned and the body removed to the plot without further expense.

CHEVRA B'NAI SHOLAU CEMETERY.

NEWTOWN, L. I.

OFFICE AT CEMETERY.

This is one of a number of small Jewish cemeteries in Newtown, L. I., and was opened eight years ago. It is reached from Long Island City the same as Macpelah Cemetery.

CITY CEMETERY OF NEW YORK.

HART'S ISLAND, N. Y.

OFFICE, 148 EAST 20TH ST., NEW YORK.

The City Cemetery of New York, or Potter's Field, is located on Hart's Island, on Long Island Sound, nearly opposite New Rochelle, and it is under the control of the New York City Department of Correction. The cemetery was opened April 20, 1869, and contains about 20 acres and receives its bodies from the city morgue. It is a cemetery of unclaimed dead. There are a number of trenches divided into graves, and three bodies are buried in each grave. It is estimated that there are about 125,000 bodies buried, and the average number interred yearly is about 5,000. The burials take place every day except Sunday,

and in the winter season on Tuesdays and Fridays only. A body can be secured from the City Cemetery by giving 24 hours' notice to the Department of Correction, and between May and November all exhumed bodies are placed in metallic cases hermetically sealed. The City Cemetery is reached by boat from the foot of East Twenty-sixth Street, which leaves daily. All removals are made only by permit from Board of Health of New York City.

CITY CEMETERY OF BROOKLYN.

FLATBUSH, L. I.

OFFICE, ALMSHOUSE, FLATBUSH, L. I.

The Potter's Field of Brooklyn is located in the town of Flatbush, near the County Buildings, and is nearly five miles from the Brooklyn Bridge. The unclaimed and pauper dead of Brooklyn are buried in it, and it is believed that there are several thousand bodies already interred in its graves. It is reached by way of Flatbush Avenue from Fulton Ferry, and Nostrand Avenue from Grand and Roosevelt Street ferries, New York.

CITY CEMETERY OF JERSEY CITY AND HOBOKEN.

SNAKE HILL, HUDSON CO., N. J.

OFFICE, COUNTY ALMSHOUSE, SNAKE HILL.

The Hudson County City Cemetery is located at Snake Hill, six miles from Christopher and Barclay Street ferries, Hoboken. It is reached by the trains of the Delaware, Lackawanna & Western Railroad to Secaucus Station, and by the turnpike from Jersey City to the former place.

CITY CEMETERY OF NEWARK.

WAVERLY, N. J.

OFFICE, OVERSEER OF THE POOR OF NEWARK.

About 20 acres of ground comprise this cemetery of the Newark pauper dead, and is situated at Waverly, just outside of the former city, on the line of the Pennsylvania Railroad.

CITY CEMETERY OF PATERSON.

NORTH PATERSON, N. J.

OFFICE, POORHOUSE, NORTH PATERSON, N. J.

This cemetery is situated back of the County Poorhouse in North Paterson, N. J., and the bodies of those persons who died as paupers in Paterson are buried in it.

CLINTON CEMETERY.

UNION AVENUE, IRVINGTON, N. J.

OFFICE, SPRINGFIELD AVE. AND CENTER ST., IRVINGTON,
N. J.

Clinton Cemetery is one of the oldest in the vicinity of Newark, N. J., and comprises eight acres. It was opened February 28, 1844, and there have been over 3,000 bodies interred. It is reached from Newark by the Clinton and Springfield Avenue cars.

A NATIONAL SPECIALTY..



The most successful improvement ever applied to burial caskets is the TRANSPARENT SILK SLIDE used in NATIONAL CASKETS exclusively. To the undertakers of the Metropolitan district especially it has proved valuable. In no other section of the country can such difficult places for the removal of caskets be found as here, and a device like the slide that removes the fear of glass breaking and causing a distressing accident is bound to be a success



NATIONAL HARDWARE,

especially designed for strength as well as beauty, is the most reliable. In endless variety at all branches of the

NATIONAL CASKET COMPANY.

NATIONAL CASKET CO

LEADING AND LARGEST MANUFACTURERS OF
FUNERAL GOODS
IN THE WORLD.



TWENTY-TWO BRANCHES.



Five fully equipped branches in the Metropolitan
district:

Nos. 48, 50, 52 GREAT JONES ST., N. Y.,

,, 151, 153, EAST 125th ST., N. Y.,

No. 40 MYRTLE AVE., cor. Pearl-St., BROOKLYN,

No. 651 BROADWAY, WILLIAMSBURG,

THIRD, GRAND & ADAMS STS., HOBOKEN, N. J.



EVERYTHING FOR UNDERTAKERS.

The price of single graves is \$13. Plots \$75, twelve graves; cost of reopening graves \$5, and two bodies to each grave. Twenty-four hours' notice for reopening.

CONSTABLE HOOK CEMETERY.

CONSTABLE HOOK, BAYONNE CITY, N. J.

OFFICE AT CEMETERY.

This cemetery is about 35 years old, and is located at Constable Hook, Bayonne City, N. J., seven miles from the Pennsylvania Railroad Jersey City ferries. The estimated number of bodies buried in it is 7,500, and the average yearly number of interments is fifty. Price of adult graves 2x8x6 feet is \$12, child's \$5. Reopening adult graves is \$5, child's \$3. The price of plots containing eight graves is \$50 and upwards. Twenty-four hours' notice for opening grave. N. D. Lockwood, Undertaker, Avenue D and Sixth Street, Bayonne City, is Superintendent.

CYPRESS HILLS CEMETERY.

CYPRESS HILLS, BROOKLYN, N. Y.

OFFICES, 1 MADISON AVE., NEW YORK, AND AT CEMETERY.

Cypress Hills is one of the leading and most beautiful cemeteries of New York, and one of the oldest in the modern class, having been opened in November, 1848. About 500 acres comprise its extent and it is estimated that it contains over 150,000 bodies. The average number of interments annually is about 2,500. The cemetery is reached from New York by the Grand Street, Roosevelt Street, and Twenty-third Street ferries to Broadway, Williamsburgh; thence by the Brooklyn Elevated

road to Ridgewood, whence cars run to the cemetery; trains of Atlantic Avenue, Brooklyn Rapid Transit, cars of the Long Island Railroad to Crescent Street, or from the Brooklyn Bridge and Fulton, Wall and South ferries, to Jamaica Avenue, thence by electric surface cars to the main entrance. The distance from New York is about seven miles. The grounds are laid out into sections, lots, plots, and graves, and are most picturesque in their geographical character, and handsome vaults and classic monuments make the cemetery a most attractive spot. Scores of benevolent, social, ecclesiastical, and humane societies own plots there, and the best of care and attention are given to their maintenance. William Miles is President of the cemetery, A. M. Fraser, Secretary, and R. F. Butt, Superintendent.

PRICES.

Prices of lots vary from \$60 to \$500 each, depending upon size and location. Single graves (including the charge for the first opening) are: For adults, \$15 and \$25; for children \$12. Subsequent interments may be made subject to the usual charge for reopening, \$4 and \$5. Vault charges, adult \$15, children up to 10 years \$10. If removed to lot within the cemetery within thirty days \$8 for an adult and \$4 for a child will be returned. Opening graves in private lots, usual depth six feet, \$6 and \$1 per foot additional for any extra depth. Children under 10 years \$5 and \$1 per foot for extra depth.

DUTCH REFORMED CEMETERY.

TOTAWA AVE., PATERSON, N. J.

OFFICE ON GROUNDS.

This old cemetery is located on Totawa Avenue, Paterson, and is used only by the members of the Dutch Reformed Church of

that city, who own plots in it. Graves or plots are not sold, and the price of opening a grave is \$4. The cemetery is reached from New York by the Erie, Delaware, Lackawanna & Western and New York, Susquehanna & Western Railroads. Estimated number of interments 2,500.

DUTCH REFORMED CEMETERY.

BERGEN AVE., JERSEY CITY, N. J.

Located on Bergen Avenue, one and a half miles from Pennsylvania Railroad ferries, Jersey City. Office of cemetery is at 21 Hoboken Avenue, Jersey City.

EDGEWATER CEMETERY.

EDGEWATER, N. J.

OFFICE AT CEMETERY.

Edgewater Cemetery is located at Edgewater, N. J., on the shore of the Hudson River opposite General Grant's tomb in Riverside Park, New York City. It is reached via the West Shore ferry foot of West Forty-second street, thence three miles by River road or by Fort Lee ferry foot of West One Hundred and Thirtieth Street. The cemetery comprises about two acres and was first opened during the Revolution. The annual interments during the past twenty years have averaged forty. The price of single graves is \$16, and size 2x3x6.6 feet. Plots with fourteen graves \$100 and upwards. Price of opening graves \$6. Two bodies to a grave. There is no vault.

EPISCOPAL CEMETERY.

PATERSON, N. J.

OFFICE, PATERSON, N. J.

This cemetery is located on Oak Street, Paterson, N. J., is

very old, and like the Dutch Reformed Cemetery in that city, it is the private burying ground for members of the local Episcopal Church. The price for opening a grave is \$4.

EVERGREENS CEMETERY.

BROOKLYN, N. Y.

OFFICE AT CEMETERY.

Evergreens Cemetery is situated in Brooklyn, and its main entrance is near the terminus of the Brooklyn Elevated Road, on Bushwick Avenue. It contains 300 acres, and was opened for burial purposes in 1851. It is regarded as a perfect rural cemetery by reason of its picturesque seclusion, and the natural beauties of its woods, knolls, dells and lakelets, and over \$500,000 have been expended in bringing it to its present state of perfection. It was originally organized under the Cemetery Act of 1847, but was reorganized under a special new act of the New York Legislature in 1870. It has about 170,000 bodies interred, and there is a yearly average of burials amounting to about 5,000. There are many fine monuments in the cemetery, and the Actors' Fund of America has a plot of considerable size. Twenty thousand bodies of sailors are buried in this cemetery, the different nationalities being represented by stone monoliths. The cemetery is reached by the Broadway (Brooklyn) ferries, thence via the Elevated Road to Ridgewood. Charles G. Bennett is President and Charles Pfeiffer Superintendent of the cemetery.

PRICES.

Single graves, adults, \$18, \$25 and \$30, including opening, and according to location; children under ten years, \$15.50 and \$18, according to location. Lots, \$75 to \$1,600. Opening graves costs for child, \$4. Adult coffin \$5, and adult box \$6. Single tem-

porary graves \$6 for adult, and \$3 for child. Vault charges are \$20 for six months for an adult, and \$15 for a child under ten years, and there is a rebate of \$15 and \$10 if a body is removed from the vault within three and six months. Three adult bodies are allowed to a single grave.

EVERGREEN CEMETERY.

ELIZABETH, N. J.

OFFICE ON GROUNDS, UPPER ROAD TO NEWARK.

Evergreen Cemetery was opened in 1853, and it is estimated that there are about 18,000 bodies buried in it. It is a cemetery of about 100 acres, and the average number of interments per year is about 600. This cemetery is reached from Newark by Freylinghuysen Avenue, and is divided into sections, lots, and graves. Single graves are \$7, \$9, \$13 and \$18, and opening for adult \$5, and child \$3.50. There is a vault charge of \$15 for child and \$20 for adult which is refunded less \$2 when a plot is purchased. One body is allowed to each grave, and eight hours' notice is required to secure an opening. Charles Russ is President, Edward S. Atwater, Secretary and Treasurer, and H. M. Looker, Superintendent.

EVERGREEN CEMETERY.

NEW BRUNSWICK, N. J.

OFFICE, NEW BRUNSWICK, N. J.

Eight acres comprise this cemetery, which is located at the head of Commercial Avenue, just outside of the city limits of

New Brunswick, N. J. It was founded in December, 1886, and opened the following year. The total number of interments have been about 600. The cemetery is reached from New York by the Pennsylvania Railroad, and Central Railroad of New Jersey to New Brunswick, thence via Commercial Avenue.

The size of single graves is 2.6x8x6 feet, and of plots, 12x17, 12x21, 16x21, 18x21, and 21x21 feet. The single graves cost \$6, and plots from \$50 to \$200, according to size and location. There are from twelve to twenty-one graves to each plot. Reopening grave for adult is \$3, and child, \$2. Vault charges are \$12, of which \$10 is refunded when a plot is purchased. Bornt Stevenson is Superintendent.

FAIRLAWN CEMETERY.

PATERSON, N. J.

SEE PATERSON CEMETERY.

FAIRMOUNT CEMETERY.

SOUTH ORANGE AVE., NEWARK, N. J.

OFFICE AT CEMETERY. ENTRANCE, 489 S. ORANGE AVE.

Fairmount is one of the leading, as well as one of the most beautiful, cemeteries of the city of Newark, N. J., and comprises one hundred acres, most of which is laid out in sections and lots. It is reached from any part of Newark by South Orange Avenue by carriage or by cars under the transfer system, and the subdivision of the grounds include family burial plots, single grave plots, society plots, and soldiers' plots. About 40 per cent. of the interments are made in single grave plots, comprising plots for adults, youth, and children. The cemetery was

incorporated in 1855, and the first interment was made the same year—that of Lewis J. Pierson, in lot 9, Section E. There have been about 35,000 interments, and the average number per annum is about 1,300. The lawn plan, with its prohibition of enclosures, has been adopted by this cemetery.

Single graves, 2 ft. 6 in. and under, \$7; 2 ft. 6 in. to 4 ft., \$12; over 4 ft. to 5 ft., \$18; over 5 ft., \$25. Lots range in price from \$205 to \$360, six, eight, ten and twelve graves. Opening adult grave costs \$5; youth's, \$4, and child's, \$3. One body is allowed to a single grave, except in the case of a child, which may be buried with a parent. Twenty-four hours' notice required to re-open a grave. The sum of \$25 is charged for the use of the receiving tomb for an adult, and \$20 for a child under twelve years; but \$17 are refunded in case of an adult, and \$15 for a child when a plot is purchased in the cemetery.

James A. Banister is President of the cemetery, John J. Henry, Secretary; Horace T. Brunley, Treasurer; Charles Nichols, Advisory Superintendent, and Sylvester C. Hulbert, Superintendent.

FAIRVIEW CEMETERY.

NEAR CASTLETON CORNERS, STATEN ISLAND, N. Y.

OFFICE, LAWRENCE STEERS, WEST NEW BRIGHTON, S. I.

Fairview Cemetery is situated on the Richmond Turnpike, near Castleton Corners, Staten Island, and commands an extensive view of the surrounding country. It is reached from New York by the Staten Island ferry to St. George, thence via the Richmond Turnpike. The distance is about $3\frac{1}{2}$ miles. The cemetery is about a dozen years old and comprises twelve acres. There have been about 900 interments and the average yearly interments number about seventy-five. Single graves measure 2.6x8x7 ft.

and 3x8x7 ft. and cost \$10 and \$12. Plots 10x17 ft. are sold for \$50, six graves, and 12x23 ft. from \$75 to \$100. There are from six to twelve graves to a lot, and the cost of reopening a grave is \$5, 6 ft. deep, with \$1 per extra foot. Two bodies allowed to single graves. The cemetery has no vault. Twenty-four hours' notice required to reopen graves. Lawrence Steers is Superintendent.

FLATLANDS CEMETERY.

FLATLANDS, L. I.

OFFICE, 1555 FLATBUSH AVE., BROOKLYN, N. Y.

Although Flatlands Cemetery is one of the smallest in the vicinity of New York, it is one of the oldest, burials having taken place within its limits as far back as 1686. It is generally supposed to have been an Indian burying ground. It is three acres in extent, and the estimated number of interments that have taken place is 2,200. There are about 20 interments per year. This cemetery is reached by the Brooklyn Bridge and Fulton ferry, thence by way of Flatbush Avenue to the cemetery entrance. The size of single graves is 3x9x6 ft., and the cost, \$10; reopening, \$6, and for less than 4 ft., \$4. The lots are 12x18 ft. with eight graves; but they are not sold. Two bodies to a single grave. Twenty-four hours' notice for reopening grave and \$1 extra fee is charged for shorter notice. There is no vault. Nicholas W. Brown is Superintendent.

FLOWER HILL CEMETERY.

BERGENWOOD AVE., NORTH BERGEN, N. J.

OFFICE ON GROUNDS.

This cemetery comprises about twenty acres, was organized in

1859, and was opened in 1884. It is situated on Bergenwood Avenue, on the New Hudson County Road, North Bergen, N. J., and is reached by West Forty-second Street and Jay Street ferries to Weehawken, one and one-half miles thence; also by the Christopher Street and Barclay Street ferries to Hoboken—four miles distant. The average number of interments per year is about 3,000. Price of single graves, 2x7x6 ft., is \$15; child under ten years, \$8; reopening grave, \$5 for adult and \$4 for a child, usual depth of 6 ft. Opening tombs, \$4. Plots, \$1, \$1.25 and \$1.50 per square foot, according to location. Vault charges are: Adult, \$25; child, \$20, with \$4 per month for adult and \$3 for child, to be removed within three months. Two bodies to each grave, and twenty-four hours' notice for reopening of grave.

FLUSHING CEMETERY.

FLUSHING, L. I.

OFFICE, 20 MAIN STREET, FLUSHING, L. I.

Flushing Cemetery is one of the best kept cemeteries in the vicinity of the metropolis, and is located one and one-half miles southeast of the village of Flushing, L. I. It comprises seventy-five acres and is reached by the Long Island Railroad from Hunters' Point, Jackson Avenue, Long Island City; East Ninety-second Street ferry to Astoria, and East Ninety-ninth Street ferry to College Point. The cemetery was opened in 1853 and the number of interments since that time have been about 7,500. The yearly average is 300. Single graves 3x8x6 cost \$10 and \$15 with perpetual care; child's, under ten years, \$6; plots ranging 100 to 600 square feet, 50 cents to 75 cents per foot, including perpetual care. Reopening graves, \$5 for adult; children, under ten years, \$3; opening vault under ground, \$5. Vault charges,

\$15 for adult; children, under ten years, \$10; if body is removed there are refunds of \$5 and \$2.50. Iron or wooden enclosures for graves or plots are not allowed in this cemetery. George Schlesinger, President; George Pople, Secretary, and W. T. James, Treasurer and Superintendent.

FOUNTAIN CEMETERY.

WEST NEW BRIGHTON, S. I.

OFFICE AT CEMETERY.

Fountain Cemetery is one of the small cemeteries on Staten Island, and is located on the Richmond Terrace, West New Brighton. It is reached by the Staten Island ferry to St. George. There are no plots in this cemetery. Prices of single graves, adult, \$10 and \$12; children, \$4 and \$8, according to location. Charges for reopening graves, adult, \$5; children, \$3.50

FRIENDLY HAND CEMETERY.

BROOKLYN, N. Y.

OFFICE AT CEMETERY.

This cemetery is one of a series of small ones located near Cypress Hills Cemetery and is reached by the same routes as the latter.

FRIENDS CEMETERY.

PROSPECT PARK, BROOKLYN, N. Y.

OFFICE ON GROUNDS.

Sixteen acres comprise Friends Cemetery, which is located in Prospect Park, Fifteenth Street and Eleventh Avenue, South

Brooklyn, about four miles from the Brooklyn Bridge. It is a Quaker burying ground and is reached from Fulton Street, Brooklyn, to Flatbush Avenue to Ninth Avenue, and through the latter thoroughfare to the cemetery entrance. The cemetery was founded in 1840 and opened in 1846. About 1,800 bodies have been interred, and there are about 30 interments per year. Price of single graves, 2.4x8x5.6 ft., \$10, to members of Society of Friends only. The plots, which are not sold, admit of eight and ten graves. Cost of opening a grave is \$6, and thirty-six hours' notice is required for same. Two bodies, as a rule, are allowed to a single grave. The cemetery is the property of the Monthly Meeting of the Society of Friends of New York and Brooklyn. James C. Stringham is Superintendent. Office, 725 E. 31st Street, Brooklyn.

GRAVESEND CEMETERY.

BROOKLYN, N. Y.

This cemetery is situated on Van Sicklen Street, town of Gravesend, in the Borough of Brooklyn, and is about seventy-five years old. It comprises about five acres and is reached from Brooklyn via the trolley or steam lines to Gravesend. No new lots or graves are sold, interments being confined to persons owning lots or graves. Price of opening graves is \$6 for adult and \$5 for child. Twenty-four hours' notice required. William Donly, of Van Sicklen Street and Neck Road, Gravesend, is keeper of the cemetery.

GREENLAWN CEMETERY.

PINELAWN, L. I.

OFFICE, BROAD EXCHANGE, NEW YORK CITY.

Greenlawn Cemetery is one of eleven proposed cemeteries owned by the Greenlawn Cemetery Association of this city, and

is located at Pinelawn Station, on the main line of the Long Island Railroad, 33 miles from the metropolis. The cemetery, which comprises 200 acres, was opened in 1899; is reached via the Long Island Railroad from Long Island City. Single graves, \$7.50, exclusive of opening. Plots of eight graves from \$60 to \$500, according to location. Opening graves, \$3. About 500 interments have been made in this cemetery.

GREENWOOD CEMETERY.

GOWANUS HEIGHTS, SOUTH BROOKLYN, N. Y.

OFFICE, 71 BROADWAY, NEW YORK.

Greenwood Cemetery was chartered April 18, 1838, was opened in 1840, and the first interment occurred September 5, of the latter year. It comprises 475 acres, and the art of the landscape artist has been exhausted in making this cemetery one of the most beautiful in the world. It is estimated that there are over 325,000 bodies buried in this cemetery. It is located about four miles from Brooklyn Bridge, and two miles from Hamilton Ferry, South Brooklyn. It is reached by the cars from Hamilton, South, Fulton, Catherine and Wall Street ferries, the Brooklyn Bridge, and the Grand, Houston and Roosevelt Street ferries from Williamsburgh. Some of the prominent persons buried in it are: DeWitt Clinton, James Gordon Bennett, Henry J. Raymond, Horace Greely, Lester Wallack, Peter Cooper, Gen. T. S. Dakin, Gen. O. McK. Mitchell, Gen. Geo. Cullom, Maj.-Gen. H. W. Halleck, Henry Ward Beecher, Gen. Henry W. Slocum, Henry Bergh and ex-Gov. Leon Abbett of New Jersey, and a host of others.

PRICES.

Single graves (including the charge for the first opening) may

be procured as follows:

For adults \$31.00

For children, under ten years of age..... 21.00

Subsequent interments may be made subject to usual charge for reopening.

CHARGES FOR OPENING GRAVES AND VAULTS.

Graves for adults, usual depth, six feet, \$6.00; seven feet, \$6.50; eight feet, \$7.00; nine feet, \$7.50; ten feet, \$8.50.

Graves for boxes exceeding twenty-six inches in width, will be \$1 extra.

Graves for children, under ten years, usual depth, six feet, \$5; eight feet, \$5.50; ten feet, \$6.50.

Vaults under ground, \$5; vaults in side hills, and above ground, \$4.

RECEIVING TOMB, CHARGES AND CONDITIONS.

For adults, \$35; for children, under ten years of age, \$25.

If removed to any lot or grave in the cemetery within three months, \$25 will be returned for adults, and \$17.50 for children.

If within six months, \$15 will be returned for adults, and \$10 for children.

If removed *from* the cemetery within six months, \$10 will be returned for adults, and \$7.50 for children.

If not removed within six months, nothing will be returned. If suffered to remain a longer period, it will be subject to the following charges: For three months, adults, \$6; children, \$3; for six months, adults, \$12; children, \$6. Charges for retentions must be paid in advance, at the office in New York, or at the cemetery. After thirty days default of payment of retention fee, bodies may be removed by said cemetery at its convenience, and interred in the lot reserved for that purpose. Bodies will not be allowed to remain in the tomb longer than one year, unless special arrangements are made with the cemetery authorities.

Catacombs for permanent use may be procured in the Mausoleum, in Vine-Dell, for \$100 each.

PLOTS.

Each full lot contains 378 square feet.

The form depends upon the peculiar surface of the ground and the character of the improvements contemplated. It may be square, oblong, circular, oval or irregular, according to circumstances. The ordinary form is 14 ft. by 27 ft., which will admit of fifteen adult graves, in three rows of five graves each.

The prices of full lots vary, generally from \$700 to \$2,500 each, depending upon the location.

Small lots will be sold as follows:

Lots 9 ft. by 10 ft. 6 in., which will admit of three adult graves, at \$220 and upwards, according to location.

Lots 12 ft. by 10 ft. 6 in., which will admit of four adult graves, at \$280 and upwards, according to location.

Lots 10 ft. by 19 ft., which will admit of six adult graves, at \$385 and upwards, according to location.

Orders for interments are received until 10.30 a. m., for afternoon of same day. If received after that hour for same day, one dollar extra will be charged. To avoid possible detention at the grave, orders should be given the day previous.

The size of the burial case governs the number of interments to single graves, but the usual number is from four to six.

GREENWOOD UNION CEMETERY.

RYE, N. Y.

This cemetery is located at Rye, Westchester County, N. Y., on the main line of the New York, New Haven and Hartford Railroad, and comprises about 60 acres. It is reached from the Grand Central Station. The cemetery belongs to the Rye Metho-

dist Episcopal Church. Single graves in public lots, adults, \$8; children, \$5, including opening. Opening graves, adult, \$5; children, \$3. Vault charges, adult, \$15, and children, \$7.50. Plots, \$100 and upwards.

GROVE CHURCH CEMETERY.

NEW DURHAM, N. J.

This small cemetery is situated on the Hudson County Boulevard, one-half mile from Weehawken ferry, and it is reached by the Union Hill line of cars from either the Hoboken or Weehawken ferries.

HEBREW CEMETERY.

TOMPKINSVILLE, S. I.

The Hebrew Cemetery is located on the Richmond Turnpike, near Clove Road, Tompkinsville, Staten Island, and is reached by the Staten Island ferry to St. George. The office is at 11 Elizabeth Street, Port Richmond.

HAZELWOOD CEMETERY.

RAHWAY, N. J.

This cemetery is located in Rahway, N. J., one and three-quarter miles from the latter station of the Pennsylvania Railroad on the road to Plainfield, N. J. It was opened in 1860 and comprises about 35 acres. There are about 1,500 bodies interred, and the average annual interments are about fifty. The price of

single graves is \$8, including opening. Plots 13x26, \$20 and upwards. Reopening grave, \$5; one body to a single grave. Vault charges are, opening and closing, \$2 and \$3 per month.

HOLY CROSS CEMETERY.

FLATBUSH, NEW YORK CITY.

OFFICE, ST. JAMES' R. C. CATHEDRAL, JAY AND CHAPEL STS., BROOKLYN.

Holy Cross Cemetery is located in the town of Flatbush, L. I., about six miles from Fulton ferry, and embraces 140 acres. It belongs to the Roman Catholic Diocese of Brooklyn, and received its first interment in July, 1849. It is reached from Fulton ferry and the Brooklyn Bridge to Flatbush Avenue, thence to cemetery; also by Williamsburgh ferries and Nostrand Avenue cars. The estimated number of interments in this cemetery is 250,000, and the average per year is 7,500. Size of single graves is 2x8x8 ft. and cost \$12.12; temporary graves, adult, \$7, and child, \$3.62. Plots, 16x16 ft., \$100, and admit of 16 graves. Reopening graves cost, adult, \$5.12; child, \$3.12. Four boxes to a single grave, and twenty-four hours' notice required for reopening. Vault charge is \$1, and no body is kept longer than one week. No wooden enclosure of graves or plots allowed. John T. Hamilton is Superintendent.

HOBOKEN CEMETERY.

NEW DURHAM, N. J.

OFFICE, 213 WASHINGTON ST., HOBOKEN, N. J.

Hoboken Cemetery is located at New Durham, N. J., two and a half miles from Weehawken ferry, and four miles from Barclay Street and Christopher Street ferries, Hoboken. It is reached

by the same routes as Flower Hill Cemetery. Single graves, \$20. Lots, 8x16 ft., \$96, and 75 cents per foot. Opening graves, adults, \$5; child, \$4. Vault charges, \$15 for adult and \$12 for child, with rebate for removal. Opening private vault, \$3.

HILLSIDE CEMETERY.

PLAINFIELD, N. J.

Hillside Cemetery is located on Park Avenue, Plainfield, N. J., on the main line of the Central Railroad of New Jersey and is reached by that road from either its Whitehall Street or Liberty Street ferries. It comprises 45 acres and was opened in 1886.

HOLY NAME CEMETERY.

WEST SIDE AVENUE, JERSEY CITY, N. J.

OFFICE AT CEMETERY.

The Cemetery of the Holy Name, otherwise known as the Hudson County Catholic Cemetery, was founded in 1867, and the first interment was made in April of that year. It comprises 100 acres, which are divided into sections, lots, plots and graves. The estimated number of interments is 60,000, and the average number per year is about 4,000. This cemetery is reached from New York by the Pennsylvania Railroad ferries to Jersey City to Montgomery Street, thence direct to the cemetery, or by the Pennsylvania Railroad to Marion Station, Jersey City. Price of single graves 2.3x7x7 ft., \$10, \$15, \$20 and \$25, according to location; plots, \$100 to \$800, according to size and location. Three graves to a lot, and sixteen graves to a plot. Two adult bodies to a single grave, which may be sunk deeper at 50 cents per foot, and charge of reopening graves, adult, \$5; child, \$3. Twenty-

•

four hours' notice required to reopen a grave. Vault charges \$1 per month, and price of opening a grave.

HOLY SEPULCHRE CEMETERY.

EAST ORANGE, N. J.

OFFICE, 107 WASHINGTON ST., NEWARK, N. J.

The Cemetery of the Holy Sepulchre is located in East Orange, N. J., and is reached from Newark by the South Orange Avenue cars to Grove Street. Between sixty and seventy acres comprise the extent of the cemetery which is divided into sections alphabetically arranged, and designated by names of saints. The first interment was in 1857. The estimated number of interments is 50,000, and about 2,000 bodies are interred yearly. Price of single graves, \$7; choice graves, \$12, exclusive of opening. Plots, six to twenty-four graves, \$70 to \$360, and upwards. This cemetery is owned by the Roman Catholic Diocese of Newark. Michael Rowe is Superintendent. Price of opening graves, adult and children, \$5, \$4 and \$3. Two adult or three children's bodies to a single grave. Twenty-four hours' notice required to reopen a grave.

HOLY SEPULCHRE CEMETERY.

NEW ROCHELLE, N. Y.

OFFICE AT CEMETERY.

The Cemetery of the Holy Sepulchre is situated in New Rochelle, N. Y., and is reached by the New York, New Haven & Hartford Railroad from this city. It comprises about 200 acres. Single graves 2x8x6 ft. cost \$13, including opening. Plots of four graves, \$30, and reopening \$5. Three adult bodies to a single grave.

HOLY TRINITY CEMETERY.

CENTRAL AVENUE, EAST NEW YORK, L. I.

OFFICE ON GROUNDS.

The Cemetery of the Holy Trinity or Raffener Cemetery, comprises about thirty acres and was opened in 1852. It is situated on Central Avenue, East New York, was known for years as the "Catholic branch of the Evergreens Cemetery," and is owned by the German Catholic Church of the Holy Trinity on Montrose Avenue, Brooklyn. It is four miles from Grand and Roosevelt Street ferries to Williamsburgh, and is reached also by these routes by the cars from Fulton, Wall and South ferries to East New York. Single graves, adults, \$9; under 12 years, \$7, \$6 and \$5. Reserved graves, \$10. Opening graves: For adults over 12 years, \$7; children from 9 to 12 years, \$5; children from 3 to 9 years, \$4; children under 3 years, \$3.50; still-born children, extra section, \$2.50; reserved graves, first opening, \$5. Graves for boxes are charged the half part more than the regular prices above mentioned. Philip Haslach is agent of the cemetery.

JERSEY CITY CEMETERY.

NEWARK AVENUE, JERSEY CITY, N. J.

OFFICE AT ENTRANCE, 437 NEWARK AVENUE.

Jersey City Cemetery, situated on Newark Avenue, Jersey City, is reached by Newark Avenue from the Pennsylvania Railroad, Jersey City, ferries. The cemetery was opened in 1831, and it is estimated that 17,000 bodies have been buried therein. The average number of interments per year is 250. The price of single graves is \$25; plots, \$110 to \$400. Right of burial under one year, \$3.50; with case, \$5; adult, \$10. Brick graves to hold two

bodies, \$50. Reopening graves, \$5 for adult, and \$4 for a child under ten years. Vault charges: Adult, \$10; child under ten years, \$8, with rebates for removals. John M. Jones is President, and Arthur Bradshaw, Secretary and Superintendent.

KENSICO CEMETERY.

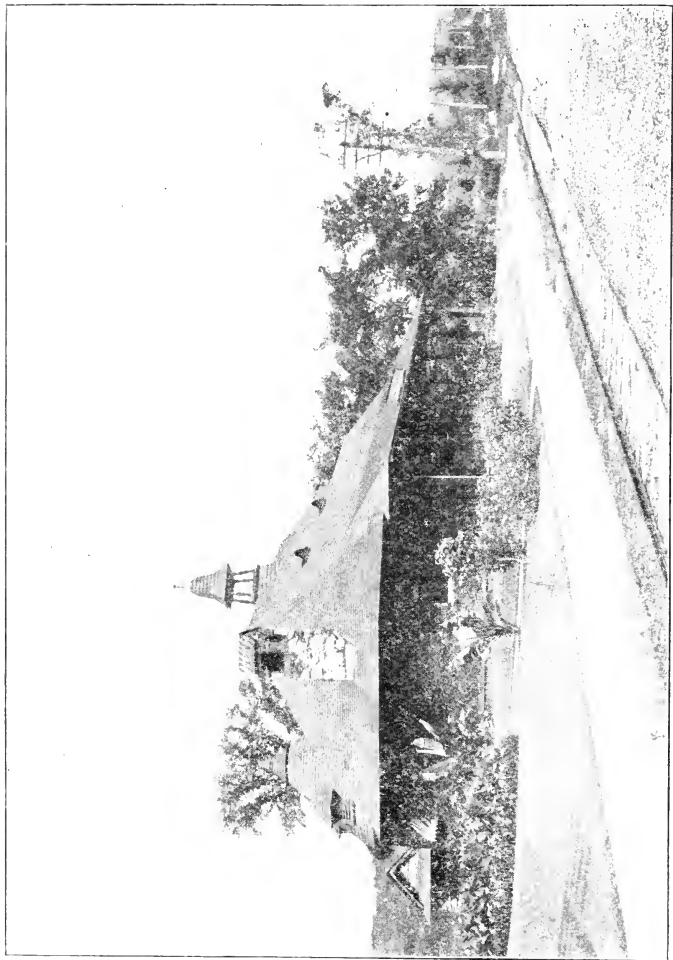
KENSICO, N. Y.

OFFICE, 16 EAST 42D STREET, NEW YORK.

Kensico Cemetery is one of the leading cemeteries of Greater New York. It is most picturesquely situated beyond Kensico, the first station north of White Plains, on the New York and Harlem Railroad, and within very few minutes ride from the city. The chief characteristic of the grounds is their elevation, and from plateaus ranging from 300 to 525 feet splendid views of Long Island Sound are obtained. The cemetery is reached by the Harlem Division of the New York Central and Hudson River Railroad, from the Grand Central Depot, and frequent trains, coupled with a very low excursion rate, render direct access to the cemetery very short and convenient. Although the cemetery is only a few years old there have been over 6,000 interments, and they are increasing monthly. It comprises 400 acres, a small portion of which remains unimproved, but the improved portion is made up of beautifully laid out lots, plots and graves. Already costly monuments have been erected by plot owners, and one of the most handsome as well as substantial receiving tombs in the country, with niches for 178 bodies, adorns a commanding spot in the cemetery.

PRICES.

All lots are sold at fixed rates, per square foot, the area varying from 100 feet to as many feet as may be required. Grass path



KENSICO CEMETERY,

lots 40 cents, 60 cents, 80 cents, \$1 and \$1.25 per square foot. Open path lots \$1 and \$1.25 per square foot. Avenue lots at 80 cents, \$1 and \$1.25 per square foot. Full lots contain 20x20, 400 square feet. Lots, three graves, 10x10, 100 square feet, \$40, \$60, \$80, \$100 and \$125. Corner posts for same, \$7.50. Lots, four graves, 7x20, 140 square feet, \$56, \$84, \$112, \$140 and \$175. Corner posts for same, \$9. Lots, six graves, 10x20, 200 square feet, \$80, \$120, \$160, \$200 and \$250. Corner posts for same, \$9. Lots, eight graves, 13x20, 260 square feet, \$156, \$208, \$260 and \$325. Corner posts for same, \$9. Lots, twelve graves, 20x20, 400 square feet, \$160, \$240, \$320, \$400 and \$500. Corner posts for same, \$12. There are also ten-grave lots, ranging from \$120 to \$375.

Opening graves in private lots for adults, usual depth, six feet, \$5. For children under ten years of age, \$4.

In single graves for adults, including opening seven feet deep, \$12. For children under ten years of age, \$8.

Special single graves in reserved lots, for adults, \$20. For children under ten years of age, \$15, including opening. Three bodies to a grave.

Interments made in the receiving tomb are subject to the following charges and conditions: A deposit of \$25 is required for each adult, and for each child under ten years of age \$18. Lot proprietors may have the temporary use of tomb without charge. For removal from receiving tomb within ten days, in the cemetery, the full amount of deposit will be returned. For removal within three months: If an adult, there will be returned \$20; if a child, there will be returned \$14. For removal within six months: If an adult, there will be returned \$13; if a child, there will be returned \$8.

If a body is not removed within six months, an extra charge of \$2 for an adult, and \$1 for a child, is made. A funeral car is run from the Grand Central Depot to the cemetery, making a special

train for fifty persons at \$60. If the car is attached to a regular train, the charge is \$40. For an ordinary passenger car attached to a regular train, \$35 is charged. For the conveyance of a body by train to the cemetery, \$1.

James F. Sutton is President of the cemetery; Allen S. Apgar, Vice-President; Samuel I. Knight, Secretary and Treasurer, and Reese Carpenter, Comptroller.

LAUREL GROVE CEMETERY.

PATERSON, N. J.

OFFICE, 293 MAIN STREET, PATERSON, N. J.

This cemetery was opened in 1888, and embraces 200 acres. It is situated on the Passaic River, one and one-half miles southwest of Paterson, N. J., and is reached by the Erie, New York, Susquehanna & Western, and Delaware, Lackawanna & Western roads to Paterson, thence by cars to the main entrance. So far, there have been about 7,000 interments in the cemetery, and the average yearly number of interments is about 700. The lawn plan prevails in this cemetery.

Price of single graves, 3.6x8x6 ft., adult, \$15, inclusive of opening; child's, \$12. An extra charge of 50 cents per foot is made for sinking a grave beyond six feet to ten feet. The price of lots or plots range from \$50 to \$250 and upwards. Cost of reopening of a grave, adult, \$6, according to depth; child's, \$4. Three bodies, adults, allowed to a single grave, and tomb charges, adults, \$12; child, under ten years of age, \$10. Twenty-four hours' notice required to secure reopening of a grave. Henry R. Crews is Superintendent.

The Kensico Cemetery

OFFICE:

16 EAST 42d STREET,

Telephone, 556 38th Street.

New York.



THE KENSICO CEMETERY. Forty-three minutes from Grand Central Depot. The undersigned trustees nine years ago selected one of the most picturesque spots of ground in Westchester County for a large cemetery for the Greater New York. Since then it has been improved and developed so that it is now conceded to be the peer of any modern cemetery, and the public in general are invited to inspect the same. It is conceded by those who have built tombs, mausoleums and monuments there, that the same cost makes twice the showing on our slopes and mounds, all natural, than in any other cemetery around New York. At No. 16 East 42d Street, the New York office, passes, time-tables and catalogues are cheerfully supplied.

JAMES F. SUTTON,	WM. E. DODGE STOKES,	CHAUNCEY M. DEPEW
HORACE C. DUVAL,	ALLEN S. APGAR,	ELIAS N. JOHNSON,
PHINEAS C. LOUNSBURY,	THOS. D. HUSTED,	GARDNER WETHERBEE
PRENTICE SHETHAR,	SAMUEL I. KNIGHT,	JOSEPH O. MILLER
HENRY H. LANDON,	ORLANDO T. CARPENTER,	REESE CARPENTER.

OFFICERS:

JAMES F. SUTTON, <i>President.</i>	SAMUEL I. KNIGHT, <i>Sec'y and Treas.</i>
ALLEN S. APGAR, <i>Vice-President.</i>	REESE CARPENTER, <i>Comptroller.</i>

LINDEN HILL CEMETERY.

EAST WILLIAMSBURGH, L. I.

OFFICE, 456 EAST HOUSTON STREET, NEW YORK.

Linden Hill, or Methodist Episcopal Cemetery is situated on Metropolitan Avenue, East Williamsburgh, three miles from the Grand and Roosevelt Street ferries. It is reached by the North Second Street cars from Grand Street, Houston Street and Roosevelt Street ferries, and by the Union Avenue cars from the Greenpoint ferries. The cemetery comprises about thirty acres, was opened in 1852, and the average number of interments per year is 1,000. The estimated number of bodies buried in the cemetery is 30,000. The size of single graves is 2x7x6 feet for adult, and 4x6 for child, price \$10 and \$6. Plots 10x10 and 10x20 feet range from \$30 to \$100, and upwards. Cost of reopening a grave is \$5 for adult and \$3 for child, and three adult bodies to a single grave. There are from four to eight graves to a plot, and twenty-four hours' notice required to reopen a grave. F. Hauscheldt is Treasurer and Superintendent.

LUTHERAN CEMETERY.

METROPOLITAN AVENUE, BROOKLYN, L. I.

OFFICES AT CEMETERY AND AT 25 NASSAU ST., NEW YORK.

Lutheran Cemetery was founded by the United Lutheran churches of New York, and chartered March 22, 1852. It comprises about 400 acres, was opened as a private cemetery in 1850, and is the leading German burying ground of the metropolis. It is located on Metropolitan Avenue, Middle Village, L. I., about

four miles from Grand Street and Roosevelt Street ferries, and is reached by the Long Island Railroad to Fresh Pond or Glendale, by the Williamsburgh ferries, and by all the Brooklyn lines via Myrtle Avenue. The estimated number of interments is 250,000, with a yearly average of about 8,000. Single graves 3x7x6 feet, public lots, are sold for \$15 for adult and \$9 for a child. Private lots: adult \$5, child \$3.50. Plots range from \$70 and upwards. There are nine graves to a plot and three adult bodies to a single grave. The vault charges are \$1 for child and \$2 for adult per month, with the price of a grave, which is refunded when a grave or plot is purchased in the cemetery. David Avenius is Superintendent.

MACPELA CEMETERY.

FRESH POND, BROOKLYN, L. I.

OFFICE ON GROUNDS.

Macpela Cemetery is a Jewish burial place about 40 acres in extent, and adjoins Cypress Hills Cemetery. It is reached by the same routes as the latter cemetery. The cemetery was founded in 1855, and belongs to the congregation Temple El-Bethel, Sixty-third Street and Lexington Avenue, New York. The prices of graves are \$25 and \$30, and plots \$200. Opening graves: adult \$3 and \$5, children \$1 and \$2.

MACPELAH CEMETERY.

NEW DURHAM, N. J.

OFFICES ON GROUNDS AND AT 108 WEST 25TH ST., N. Y.

This cemetery is located at New Durham, N. J., about four and one-half miles from the Hoboken ferries from Barclay and Chris-

topher Streets, and comprises ten acres. It is strictly a Protestant Cemetery, and is reached by the same routes as Hoboken Cemetery. The cemetery was opened in 1853 by the Third Reformed Presbyterian Church Society of New York, and there are over 18,000 bodies buried in it. The average number of interments per year is 150. Price of graves \$14 to \$20. Lots, 10x16 feet, \$100 and upward. Opening graves: adult, \$4, child \$4. No vault.

MANOR CEMETERY.

CROTON-ON-HUDSON, N. Y.

This cemetery is located at Croton-on-the-Hudson, about 25 miles from New York City, and is reached via the New York Central Railroad from Grand Central Station. The office is at 71 Broadway, New York City.

MAIMONIDES CEMETERY.

JAMAICA, L. I.

OFFICE ON GROUNDS.

Maimonides Cemetery comprises about seven and one-half acres, and is located on the Jamaica Plank Road, Jamaica, L. I., and is reached by the cars from the Williamsburgh ferries to East New York, thence by electric cars to the cemetery. It is a Hebrew cemetery and about 1,700 bodies have been buried in its graves. Single graves \$25; lots \$275 to \$500. Opening graves same as Macpelah Cemetery. John Benisch is Superintendent.

MAPLE GROVE CEMETERY.

JAMAICA, L. I.

OFFICE, 1286 BROADWAY, NEW YORK.

About 100 acres comprise Maple Grove Cemetery, which is located in the western part of the town of Jamaica, L. I., about

seven miles from Long Island City. It is reached by trains of the Long Island Railroad from Long Island City to Maple Grove, or to Morris Park or Richmond Hill Station; from Long Island City by Thompson Avenue from Newtown; from Greenpoint by the Hoffman Boulevard, and Williamsburgh by North Second Street. The cemetery was organized in February, 1875, and the first interment was made February 12, 1876. About 6,000 interments have been made since that time.

Price of single graves: adult \$12, including opening; child, under ten years, \$8.50. Opening adult's grave costs \$5; child's \$4. Lots ranging from 7x18 ft. to 16x25 ft., and admitting from four to fifteen adult graves, vary in price from 75 cents to \$2 per foot, according to location. For use of the receiving tomb, the charge of \$12 is made for an adult, and \$8.50 for a child; but the money is refunded if the body is removed to the cemetery ground within thirty days. If the body be removed from the cemetery, only one-half the deposit will be returned. The sum of \$2 per month is charged for keeping the body a longer period, but no body is allowed to remain longer than three months. For opening private vaults \$5 is charged. Twenty-four hours' notice required for opening a grave.

William S. Cogswell is President; Ferris S. Thompson, Vice-President; F. T. Adams, Secretary, and Charles S. Goodwin, Treasurer and Comptroller.

MARBLE CEMETERY.

SECOND STREET, NEAR SECOND AVENUE, NEW YORK.

OFFICE, 59 SECOND STREET, NEW YORK CITY.

This is an old and small cemetery situated on the north side of Second Street, near Second Avenue, New York, and comprises

about one-half a city block. The place is made up of vaults, and receives bodies largely for temporary purposes pending shipment. There have been about 1,200 interments in the cemetery, and the average number per year is about twenty, subject to the restrictions of the Board of Health of New York. There are 270 vaults on the grounds. The sum of \$10 is charged for opening a vault. For the use of the receiving tomb the sum of \$10 per month is charged for the first two months and \$5 per month thereafter.

MORAVIAN CEMETERY.

NEW DORP, S. I.

OFFICE AT CEMETERY.

Moravian Cemetery is located at New Dorp, Staten Island, New York City, and comprises 84 acres. It is one of the very oldest cemeteries in the vicinity of New York, having been established as the Moravian Church Cemetery in 1742. The cemetery is supposed to have been opened to the general public about 1820, and since that time about 15,000 interments have taken place. The average number of yearly interments is 250. The cemetery is reached by the Staten Island ferry to St. George, thence by Vanderbilt Avenue and Richmond Road to the main entrance. The distance is about five miles from St. George landing. In this cemetery is located the tomb of the Vanderbilt family, and among the prominent persons buried are: George William Curtis, Rev. Charles F. Deems, Col. Elliott F. Sheppard, William H. Vanderbilt and Commodore Cornelius Vanderbilt. Single graves \$9 for six feet deep, and \$1 per extra foot. Opening graves \$6, children \$4 to \$8, for six feet, and \$1 for each additional foot. Plots vary in price from 25 cents to \$1 per square foot, according to size and location. Two or three bodies allowed

to a grave, and twenty-four hours' notice for reopening same. Vault charges are \$20 for adult, and \$15 for children under ten years for a period of six months and no longer. Peter P. Heal is President and N. J. Ostrander, Treasurer and Superintendent.

MOUNT CALVARY.

WHITE PLAINS, N. Y.

OFFICE, RECTORY CATHOLIC CHURCH, WHITE PLAINS, N. Y.

This cemetery comprises about 70 acres, and is situated in North White Plains. It is only a few years old, and is reached from New York via White Plains, and the New York and Harlem Railroad.

The price of single graves is \$10 including opening. Plots are sold from \$50 and upwards. Two bodies allowed to each grave.

METHODIST CEMETERY.

MIDDLE VILLAGE, L. I.

This cemetery is two acres in extent, is over 130 years old, and includes the site of the Second Methodist Church in America. There are about 500 bodies interred in it, and it is reached by the electric cars from Williamsburgh.

MT. HOPE CEMETERY.

JAMAICA, L. I.

OFFICES ON GROUNDS AND AT 791 LEXINGTON AVENUE,
NEW YORK CITY.

This Jewish cemetery is made up of 12 acres, and is reached by the Long Island Railroad to Woodhaven, thence to East New

York, and by the Brooklyn Bridge and ferries, by cars to East New York. About 3,000 bodies are interred. Single graves \$25, lots \$125 to \$500. Opening graves same as Macpelah.

MT. HOPE CEMETERY.

MOUNT HOPE, WESTCHESTER COUNTY, N. Y.

OFFICE, 380 SIXTH AVENUE, NEW YORK.

Mount Hope Cemetery is situated at Mount Hope, Westchester County, five miles from the limits of the city of New York, and is reached by either the Sixth or Ninth Avenue Elevated Railroad, and the New York & Putnam Railroad from One Hundred and Fifty-fifth Street and Eighth Avenue, or by the main line of the New York Central & Hudson River Railroad by way of Hastings, which is one mile distant. One hundred and eighty acres comprise the grounds, and these are divided into sections, plots and lots, and so far over 1,300 interments have taken place. The average number of interments per year is about 150. The cemetery was founded in 1886, but it was not opened to the public until 1889.

The price of graves, usual size and depth, 6 feet is \$15 and \$25, lots, 75 cents a square foot. Charge for reopening a grave is \$5. Three adult bodies to a grave, and twenty-four hours' notice is usually required to reopen a grave. There is a vault charge of \$20 for adult and \$15 for child, but for parties intending to select plots, the use of the vault is free.

MT. NEBOH CEMETERY.

FRESH POND ROAD, CYPRESS HILLS, L. I.

OFFICE, 22 BIBLE HOUSE, NEW YORK CITY.

Mount Neboh Cemetery was founded in 1888, and opened the same year, and since that period over 2,500 interments have taken

place in its plots and graves. It is one of the leading Jewish cemeteries of New York, comprises about 15 acres, and is located on the Fresh Pond Road, in the rear of the Cypress Hills Cemetery. It is reached by the same routes as Cypress Hills Cemetery, and is a well-kept and excellently laid out cemetery.

The size of single graves is 7x4x6 ft., and cost \$25, including opening and closing. Plots containing 320 square feet, range from \$100 to \$500, and usually admit of fourteen graves. One body is allowed to a grave, and opening charges are \$5 for adult, and \$3 for a child under sixteen years. On three hours' notice a grave will be opened.

MT. OLIVET CEMETERY.

MASPETH, L. I.

OFFICE AT CEMETERY.

Mount Olivet Cemetery was founded and opened to the public in 1850, and contains about 13,000 bodies. It is situated on Grand Street, Maspeth, L. I., three and a half miles from the Grand and Roosevelt Street ferries, 60 acres in extent, and is reached by the cars from the Williamsburgh ferries. The annual number of interments is about 2,000.

The price of adult graves is \$15 and \$18, child \$9.50 to \$12. Grave without title, \$7 for adult and \$5 for child. The lots range from 9x11 to 18x22 ft., and cost from \$65 to \$200 and upwards. Reopening of a grave costs \$5 for adult, and \$4 for child. Three adult bodies are allowed to a grave, and two to lot or plot graves when opened six feet deep. Twelve hours' notice required for opening a grave. Vault charges require a deposit of \$20 for each adult body, and \$15 for each child under ten years. If the body is removed within thirty days \$18 and \$13 are returned. The regular vault charge is \$2 per month. C. M. Chamberlain is Superintendent.

MT. OLIVET CEMETERY.

ELIZABETH, N. J.

OFFICE, RECTORY ST. PATRICK'S CHURCH, ELIZABETH-
PORT, N. J.

This Catholic Cemetery was opened in 1870, and contains upwards of 6,000 bodies. It is located on Madison Avenue, Elizabeth, N. J., one mile from the city line, and is reached by the Pennsylvania Railroad, or Central Railroad of New Jersey to Elizabeth. It is about 45 acres in extent, and the yearly interments average 400.

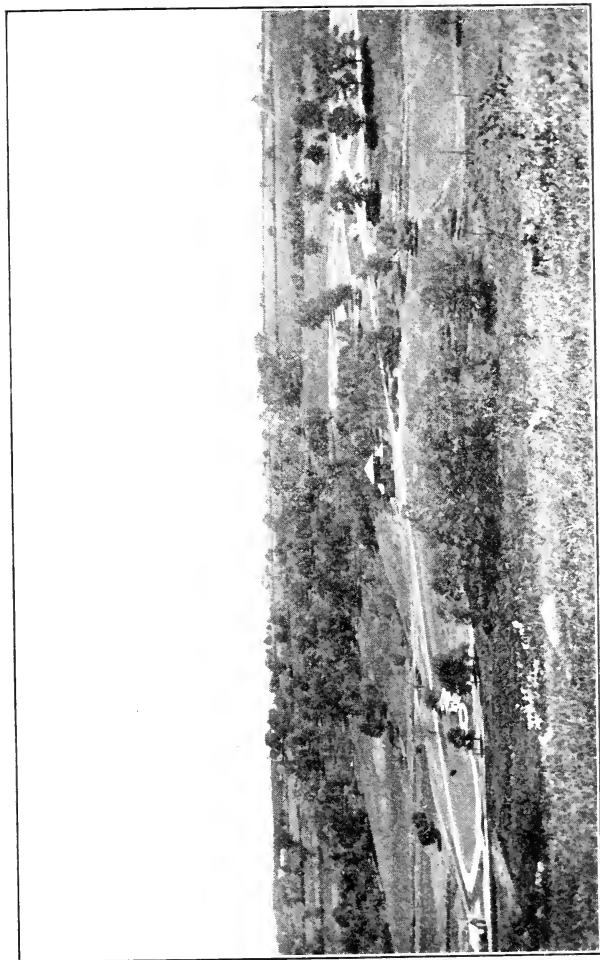
Price of single graves, \$7; child's grave, \$5. Lots vary in price according to location. Charges for reopening a grave are \$5 for adult, and \$3 for a child. Two adult, or three children's bodies allowed to each grave.

MT. PLEASANT CEMETERY.

WESTCHESTER COUNTY, N. Y.

OFFICE, 47 WEST 42D STREET, NEW YORK CITY.

One of the newest and most beautiful of the cemeteries of New York City is Mount Pleasant Cemetery, which is located near Kensico Village, Westchester County, N. Y. This cemetery is only 45 minutes from the Grand Central Depot, New York & Harlem Railroad, and it has been laid out on the park plan by the leading landscape artists. It is in every way a modern cemetery. It is not a profit-sharing corporation, all its income above the money



MOUNT PLEASANT CEMETERY.

expended for maintenance and improvement being devoted to philanthropic purposes.

Family plots of 100 square feet and upwards are offered for the present from 50 cents to \$2 per square foot, depending on the location. Particular attention is directed to the fact that, excepting moderate charges for whatever special work may be desired, the initial cost will be the final cost. No taxes are assessable upon plot owners, and the maintenance of the cemetery is incumbent upon the corporation for all time. Plot owners are, however, required to mark lots with corner stones within six months of date of purchase. Single graves are sold for \$12. Three bodies to a grave. The charge of digging graves is \$5. Land is also sold to societies in half-acre plots at special prices. A very unique receiving tomb is now nearing completion, for the use of which the usual charges with rebates will be made. Edward A. Petit is Controller of the cemetery and C. A. Long, Superintendent.

MT. PLEASANT CEMETERY.

BELLEVILLE AVENUE, NEWARK, N. J.

OFFICE, 791 BROAD STREET, NEWARK, N. J.

Mount Pleasant Cemetery is one of the oldest, and at the same time most beautiful cemeteries of Newark, N. J., and is located on Belleville Avenue in that city. It was founded January 24, 1844, and dedicated June 18th of the same year, and it is estimated that there are about 15,000 bodies interred within its limits. The cemetery comprises 50 acres. There are no single graves.

Lots and plots 25x25 ft. range in price from \$300 to \$1,000, according to location. There are twelve graves to each lot, and twenty-four graves to a plot. The price of opening lot and plot

graves range from \$2 to \$12, and one adult body is allowed to each grave. Twenty-four hours' notice is required to open a grave. Charges for receiving tomb are: For each adult, a deposit of \$30 will be required. If removed within fifteen days \$25 will be returned. If removed to any lot in the cemetery within three months \$20 will be returned. If removed to any lot in the cemetery within six months \$15 will be returned. If removed from the cemetery within six months \$10 will be returned. For each child, twelve years of age or under, a deposit of \$20 will be required. If removed within fifteen days \$15 will be returned. If removed within three months \$10 will be returned. If removed within six months \$5 will be returned. If not removed within six months, nothing will be returned. Extra charge for use of tomb \$2 per month.

MT. ST. MARY'S CEMETERY.

BLACK STUMP, FLUSHING, L. I.

OFFICE, RECTORY ST. MICHAEL'S CHURCH, FLUSHING, L. I.

This is an old cemetery and is located at Blackstump, between Flushing and Jamaica, L. I., and comprises about four acres in extent. The price of adult single graves 2.6x7x6 ft., usual size, is \$8, including opening; child's, \$7, and reopening grave is, adult \$3; child \$2; plots \$25 and upwards. Two bodies to a single grave. There is an average of about fifty interments in the cemetery every year.

THE MORGUE.

FOOT OF EAST 26TH STREET, NEW YORK CITY.

The Morgue of the city of New York is located at the foot of East Twenty-sixth Street, and has long been a place of peculiar

importance. It is the temporary depository for the unclaimed dead of the metropolis, and over 100,000 bodies have been received there since its opening many years ago. All bodies of persons who die in the public institutions of the Department of Charities and Correction of the city of New York are sent there preliminary to being buried in the City Cemetery or claimed by relatives or friends. All persons who die on the streets, are, as a rule, removed to the Morgue, as well as those dying in the different hospitals, which are unclaimed. Unclaimed bodies are usually kept forty-eight hours before burial in the City Cemetery. The number of bodies received at the Morgue yearly is about 8,000. Funerals take place from the Morgue every day, and in order to obtain a body, the regular burial permit from the Board of Health must invariably be presented.

MT. ZION CEMETERY.

LAUREL HILL, L. I.

OFFICES AT CEMETERY AND 147 PARK ROW, N. Y. CITY.

This is a Jewish cemetery and is located at Laurel Hill, Newtown, L. I. It is reached by the electric cars from Long Island City, or by carriage the same routes as to Cavalry Cemetery. Adult graves, \$10; children, one to thirteen years, \$6; under one year, \$3. Plots, sixteen adult graves, \$150 and upwards. Opening graves, adult, \$3, children \$2 and \$1.

NATIONAL CEMETERY.

CYPRESS HILLS, JAMAICA AVENUE, BROOKLYN, N. Y.

OFFICE ON GROUNDS.

This is a national cemetery and belongs to the United States Government. Its care and maintenance are vested with the Quartermaster's Department of the U. S. Army, and any soldier or

sailor of the civil war honorably discharged from service is entitled to a burial in the cemetery free of cost. The cemetery comprises fifteen and one-half acres and is divided into two parts, the "upper cemetery" and "lower cemetery," and the former lies within the enclosure of Cypress Hills Cemetery. The "lower cemetery" adjoins Salem Fields Cemetery on Jamaica Avenue. The "upper cemetery" was opened in 1862, and no more bodies are buried in its graves. The total number of bodies buried in this part is 3,928. There are about 1,800 bodies in the "lower cemetery," and in this portion there are about 80 interments per year. No graves are sold. Friends of soldiers or sailors buried in the cemetery may erect headstones, and the grave allotments are 4x8x6 ft. Twelve hours' notice required to secure the opening of a grave. The presentation of the discharge of a deceased soldier or sailor to the Superintendent will insure burial. E. Taubenspeck is Superintendent.

NEW UNION FIELDS.

NEWTOWN, L. I.

OFFICE AT CEMETERY.

New Union Fields Cemetery is a Jewish cemetery 21 acres in extent, and is located in Newtown, L. I. It is reached by the same routes as Macpelah Cemetery, and is owned by the latter corporation. Several hundred bodies are buried in this cemetery. E. Beck is Superintendent.

NEW YORK CEMETERY.

HACKENSACK, N. J.

OFFICE AT CEMETERY.

New York Cemetery comprises about seven acres, and is located in Hackensack, N. J. It was opened for interments in 1850 by

the Free Reformed Church of Hackensack, and held by that body until July 8, 1891, when it formally passed into the hands of the New York Cemetery Association, its present owners. It is reached from Hackensack, N. J., and by the New Jersey & New York and the New York, Susquehanna & Western Railroads to that place from New York.

Prices of single graves \$12 for adult, and \$7 for a child, including opening. Reopening adult grave is \$5, and child under twelve years, \$3. The depth of single graves is six feet for adult, and five feet for child. Vault charges are \$20 for adult, and \$15 for a child. There are about 3,500 bodies buried in this cemetery.

NEW YORK BAY CEMETERY.

OCEAN AVENUE, JERSEY CITY, N. J.

OFFICE AT CEMETERY.

New York Bay Cemetery is one of the largest Protestant burying grounds in Hudson County, N. J., and is located on Ocean and Chapel Avenues, Jersey City, N. J. It is, besides, one of the oldest cemeteries in the vicinity of New York, having been opened in 1849. Over 50,000 bodies have been interred in its plots and graves, and the number of annual interments is about 800. The cemetery comprises about 100 acres sloping to the waters of the bay. It is reached by trains of the Central Railroad of New Jersey to Greenville, Jersey City, and by Grand Street and Ocean Avenue cars from the Pennsylvania ferry.

Size of single graves 2.6x7x6 ft., and cost \$20 and \$25, according to location. Lots 8x10 ft. range in price from \$100 to \$150, and admit of four graves. Two interments, adult, to a single grave, and cost of reopening is \$5 for adult and \$4 for a child. Twenty-four hours' notice necessary to secure opening of a grave. Vault charges, \$21 for adult and \$19 for child.

S U M M E R

Security Fluids

ARE THE TESTED,
TRIED AND GUARANTEED

HEXAZONE

ESCO AND

UPTIMUM

No fear of failure when you use them !

Be PREPARED by ORDERING your SUPPLY in TIME—
N O W .

Manufactured Solely by

The Embalmers' Supply Co.

Main Office, Laboratory and Factory,

Westport, Conn.

NEW YORK.

CHICAGO.

ST. LOUIS.

Lewis E. Wood is President of the cemetery; Edward Hoos, Vice-President; James G. Hasking, Secretary and Treasurer, and Thomas W. Tilden, Superintendent.

NYACK RURAL CEMETERY.

NYACK, N. Y.

OFFICE, NO. 8 BROADWAY, NYACK, N. Y.

This is a comparatively new cemetery and is located just outside of Nyack, N. Y. It is reached by the Northern Railroad of New Jersey to Nyack. It comprises about 80 acres, and several hundred bodies have been interred in its plots and graves. Price of single graves \$8; plots \$50 and upwards. Opening graves \$5, and one body to a grave.

OAK HILL CEMETERY.

NYACK, N. Y.

OFFICE AT CEMETERY.

Oak Hill Cemetery is situated at Nyack, Rockland County, N. Y., and is reached by the Northern Railroad of New Jersey, or by ferry from Tarrytown, N. Y. It was founded in 1848 and opened in July of the same year. There have been about 6,500 bodies interred, and the average number of interments per year is 175. Single graves are sold at \$13 for adult, \$10 for children under ten years, and \$7 for infants, inclusive of opening. Plots vary from 25 cents to \$1 per foot, according to location. Opening of graves cost \$5 for adult, and \$4 for child. Opening vaults under ground is \$4, and tombs in side hills and above ground, \$3. Receiving tomb charges are, for opening tomb \$1; for each child

under ten years \$1 per month, and for each person over ten years \$2 per month.

OAKLAND CEMETERY.

YONKERS, N. Y.

OFFICE, 57 WARBURTON AVENUE, YONKERS, N. Y.

This cemetery comprises about 70 acres, and is located on Ashburton Avenue and Walnut Street, Yonkers, N. Y. It is reached by the New York Central & Hudson River Railroad, and New York & Putnam Railroad, and also by the road from Kingsbridge, New York City, by Central Avenue, and other avenues leading to Yonkers. It was founded in 1866, and opened to the public in the fall of 1867. About 3,000 bodies have been interred, and the annual interments average 150. Single graves, adult, are 2x6x6 ft., child's, 2x4x6 ft., and cost, including opening and closing, \$10 and \$7 in Nepperhan plot, and \$15 and \$10 in Terrace plot; Woodside plot, adult, \$18; child, \$12. The sum of \$1 is charged for sinking grave extra foot in depth. Lots vary in size from 14x27 ft. and upwards, but the standard size contains 378 superficial feet. Lot prices range from \$50 to \$600, according to location, and in lots 14x27 ft. twelve interments are allowed. Opening and closing adult graves \$6, and a child's \$5. Two bodies allowed to a grave. Receiving tomb charges are \$25 for adult and \$20 for child under ten years. Edward Weston, President; Robert P. Getty, Vice-President; J. Christy Bell, Jr., Secretary, and J. Harvey Bell, Treasurer.

OCEAN VIEW CEMETERY.

BOROUGH OF RICHMOND, NEW YORK CITY.

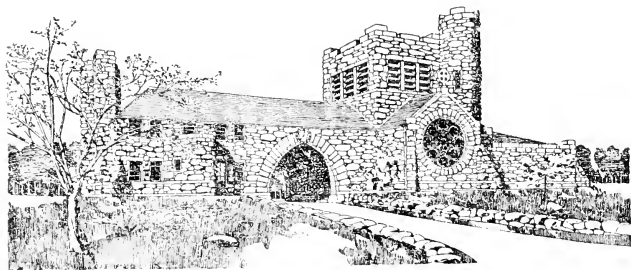
OFFICE, 220 BROADWAY, NEW YORK.

Ocean View Cemetery, because of its exceptional location, the grandeur of its ocean view, the picturesqueness of its natural

scenery, and its construction on the modern park plan, stands in the foremost rank of modern cemeteries, and is destined to be the most beautiful Necropolis of the city of New York.

Ocean View Cemetery is situated on Staten Island, less than one hour from the City Hall, New York. It is reached either by the Staten Island Rapid Transit Railroad, to Brendan Station, or by the Midland Electric Railroad to Richmond; carriages may go via the Boulevard, Amboy Road or Fresh Kill Road; all roads are macadamized. Ferries connect with Manhattan, Brooklyn, Bergen Point, N. J., Elizabethport, N. J., and Perth Amboy, N. J.

Ocean View Cemetery was organized October 16th, 1899, and improvements were begun in May, 1900. The first interment was



ENTRANCE TO OCEAN VIEW CEMETERY.

made in March, 1900, since which time many more have been made. The Cemetery comprises with its annex 442 acres, which are being laid out on the most modern plan, under the direct supervision of Mr. Daniel W. Langton, Secretary of the Society of American Landscape Architects. The grounds were selected with great care, special attention being given to the character of the soil, the topography of the land, abundance of beautiful trees, and magnificent ocean view; they were afterwards approved by the Board of Health of New York City as suitable for a modern

cemetery. Its advantages over the older cemeteries are location, easy accessibility, natural quietude, together with the protection of city police and lights. Many thousands of dollars have already been expended in improvements, and many hundreds of thousands will be expended in the future. Every lot will have perpetual care, without additional cost, provided for by a special fund set aside for that purpose.

PRICES.

Avenue lots, 10x10.....	\$60 and upwards
Gravel path lots, 10x10.....	50 and upwards
Grass path lots, 10x10.....	45 and upwards

Lots may be bought, either for cash or in installment of 50 cents per week and upwards. Single graves for adults \$10; children under ten years of age \$7; opening graves in private lots \$5; for children under ten years of age \$4.

Charles C. Dickinson is President of the cemetery; Walter H. Bunn, Vice-President and Comptroller; William J. Van Vleck, Treasurer; Louis W. Groat, Secretary; and John G. Pearse, Assistant Secretary and Treasurer.

OHEB SCHALOM CEMETERY.

SOUTH ORANGE AVENUE, NEWARK, N. J.

OFFICE AT CEMETERY.

Oheb Schalom Cemetery is a small Jewish cemetery on South Orange Avenue, Newark, N. J., one and one-half acres in extent, was opened in 1866, and is reached by South Orange Avenue in that city. There have been about 500 interments, and about 15 interments take place each year. Size of graves 2x7x6 ft., and cost \$50, plots 4x14 ft., \$100. The sum of \$3 is charged to open a grave, and one body allowed to each grave. There is no vault. The congregation of Oheb Schalom on Prince Street, Newark, owns the cemetery.

PATERSON AND FAIRLAWN CEMETERIES.

PATERSON, N. J.

Paterson Cemetery is situated on Goffle Road, and Fairlawn Cemetery on Ridgewood Road, Paterson, N. J., and both cemeteries are the property of Abraham Vermeulen of that city. The former comprises two acres divided into three sections, while the latter has 19 acres, and 18 sections. Paterson Cemetery was opened in 1869, and Fairlawn the early part of 1894. Both cemeteries are reached by the Erie and New York, Susquehanna & Western Railroads to Paterson. The average number of interments per year in Paterson Cemetery is 100. Single graves in Fairlawn Cemetery are \$10 for adult, and \$7 for child. Plots, \$50 to \$150. Cost of opening graves \$4 for adult, and \$3 for child. Three bodies to a single grave. No interments take place in these cemeteries on Sunday except in cases of contagious disease. There is no vault.

PRESBYTERIAN CEMETERY.

PATERSON, N. J.

OFFICE ON GROUNDS.

This cemetery is the property of the Presbyterian Church of Paterson, N. J., and is located at Market and Vine Streets. No graves are sold. Cost of opening a grave is \$4.

PELHAM CEMETERY.

CITY ISLAND, NEW YORK CITY.

OFFICE, MAIN STREET, CITY ISLAND.

This cemetery is located on Lafayette Avenue, City Island, New York City, and is reached from Bartow, on the Harlem River

branch of the New York, New Haven & Hartford Railroad. James Ketcham is Superintendent

QUAKER CEMETERY.

NEWTOWN, L. I.

Quaker Cemetery is situated in Newtown, L. I., and comprises one acre. It is reached by the North Second Street cars from Williamsburgh ferries. Over 500 bodies have been interred in this cemetery.

RAFFEINER CEMETERY.

CENTRAL AVENUE, BROOKLYN, N. Y.

SEE HOLY TRINITY CEMETERY.

RAHWAY CEMETERY.

RAHWAY, N. J.

OFFICE ON GROUNDS.

This cemetery was formerly known as Riverside Cemetery, and is situated on St. George's Avenue, Rahway, N. J. It is a very old cemetery, comprises about nine acres in extent, and belongs to the First Presbyterian Church of Rahway. It is reached by the Pennsylvania Railroad to Rahway. Several thousand bodies are buried in this cemetery. Single graves cost \$10, \$12 and \$15, and include opening. Opening a grave is \$5. Plots 50 cents per square foot, and one body to each grave.

RIDGEFIELD CEMETERY.

RIDGEFIELD, BERGEN COUNTY, N. J.

OFFICE AT CEMETERY.

Ridgefield Cemetery is the property of the Reformed Dutch Church of Ridgefield, N. J., and is over 100 years old. It comprises about 15 acres, and is reached by the Northern Railroad of New Jersey. Graves cost \$10; opening \$5. Lots, \$50 to \$150, according to location. Over 2,000 bodies are buried in this cemetery.

ROCKLAND CEMETERY.

SPARKILL, N. Y.

Rockland Cemetery is one of the most beautiful cemeteries in the vicinity of New York, and is situated on the west side of the Hudson, in Rockland County, New York. On its southeast lies Piermont, with Sparkill on its southwest. It is a part of the Palisade range, which rises at this point 500 feet high. On the east, facing the Tappan-Zee, it presents a bold front, covered with native forest. From the entrance gate, near its southwest corner, it rises in gentle slopes, with curves, terraces and plateaus, numerous and diversified. The cemetery, containing about 200 acres, was founded in 1847. About 3,000 bodies are interred in the cemetery. This cemetery is reached by the Northern Railroad of New Jersey to Sparkill Station, and Tappan Station on the West Shore Railroad. Single graves \$12 to \$20, according to location. Lots 400 square feet, \$200 and upwards, and admitting fifteen graves. Opening charges for grave, \$5; three bodies to a grave. Ten hours' notice required for opening a grave. Vault charges



ROCKLAND CEMETERY.

\$12 to \$20, and bodies may remain three months. Rebates on vault charges. No wooden, iron or hedge enclosures allowed. Martine and Sons are the Superintendents.

ROMAN CATHOLIC CEMETERY.

PATERSON, N. J.

This cemetery is situated just outside the city of Paterson, N. J., and comprises over 20 acres. It was opened in 1867, and over 12,000 bodies are buried in its plots and graves. The yearly interments average 600. It is reached by the Erie, and New York, Susquehanna & Western Railroads to Paterson, thence by two trolley lines. Lots are not sold to persons living outside the city of Paterson, except in cases where relatives wish to be buried with those who die in that city.

Single graves, usual size, \$8, and plots containing four graves \$40 to \$50. Opening a grave is \$3, and two bodies allowed to each grave. No vault.

ROSEDALE CEMETERY.

ORANGE, N. J.

Rosedale Cemetery is one of the oldest and most attractive cemeteries in Essex County, N. J., and is situated in the city of Orange, and townships of West Orange and Montclair. It contains about 90 acres. The distance from the Orange entrance to the Montclair entrance is one mile. About 15,000 interments have taken place in this cemetery, and the average number of interments annually is 600. The lawn plan prevails in the newer portion of this cemetery, and all lot enclosures are consequently prohibited.

Established Over 40 Years.

OWEN LEONARD & SON

Undertakers,

130 GREENWICH AVENUE, NEW YORK.

TELEPHONE, 303 18th STREET.

First-class Rubber-Tire Hearses & Coaches to Let

OUR SPECIALTIES:

LEONARD'S

Cemetery Lot Bureau

Agents for all the Cemeteries. We buy, sell and exchange lots, plots and graves, and furnish full information regarding local Cemetery laws, prices, etc. If you have a plot, lot or grave to sell, call on or write us.

LEONARD'S

Manual of the Cemeteries

The Official Guide of the Cemeteries of New York
and Vicinity.

Single graves 3x7x6 ft., cost from \$5 to \$15. Opening graves, \$5 adult; child, \$3. Three to ten graves are contained in a lot 10 feet square to 15x20 feet. Two bodies are allowed to a grave, and twenty-four hours' notice required to reopen same. Lots, 75 cents to \$1.25 per square foot. Receiving tomb charges are \$20 for adult and \$12 for child, with a rebate, according to period of time body is kept, but in warm weather boxes are required to be sealed.

ST. AGNES CEMETERY.

BOROUGH OF RICHMOND, NEW YORK CITY.

OFFICE, 220 BROADWAY, NEW YORK.

St. Agnes' Cemetery, lying side of the Ocean View Cemetery, commands a most beautiful view of the ocean, and being laid out on the modern park plan, with flowers, artificial lakes, and all the



ENTRANCE TO ST. AGNES' CEMETERY.

other decorative features of the landscape architect's art, is destined to be one of the leading cemeteries of New York City. St. Agnes' Cemetery was organized October 16th, 1899, and improvements were begun in May, 1900. Already many interments have been made. The cemetery comprises, with its annex, 442 acres,

which are being laid out on the most modern park plan, under the direct supervision of Mr. Daniel W. Langton, Secretary of the Society of American Landscape Architects. The grounds were selected with great care, special attention being given to the character of the soil, topography of the land, abundance of beautiful trees, and magnificent ocean view, and were afterward approved by the Board of Health of New York City as suitable for a modern cemetery. Its advantages over the older cemeteries are location, easy accessibility, natural quietude, together with the protection of city police and lights. Many thousands of dollars have already been expended in improvements, and many hundreds of thousands more will be expended in the future. Every lot will have perpetual care, without additional cost, provided for by a special fund set aside for that purpose.

PRICES.

Avenue lots, 10x10.....	\$60 and upwards
Gravel path lots, 10x10.....	50 and upwards
Grass path lots, 10x10.....	45 and upwards

Lots may be bought either for cash or on installment of 50 cents per week and upwards. Single graves for adults, \$10; children under ten years of age, \$7; opening graves in private lots, \$5; for children under ten years of age, \$4.

Charles C. Dickinson is President of the Cemetery; Walter H. Bunn, Vice-President and Comptroller; William J. Van Vleck, Treasurer; Louis W. Groat, Secretary; and John G. Pearse, Assistant Secretary and Treasurer.

ST. JOHN'S CEMETERY.

MIDDLE VILLAGE, L. I.

St. John Cemetery was opened in 1880 by Bishop Loughlin of Brooklyn, and was intended as an annex to the Holy Cross Cemetery in Flatbush. It is located in Middle Village, L. I., and con-

tains 170 acres, divided into sections, plots and graves. The estimated number of interments that have been made is 10,000. There are about 250 interments per year. Single graves 2x9x8 ft., \$12; temporary graves, \$3.62; plots, \$50 and upwards. Opening grave charges are, adult, \$5.12, and child, \$3.12. The vault charge is \$1, and no body is kept longer than one week. John McCloskey is Superintendent.

ST. JOHN'S CEMETERY.

ORANGE, N. J.

OFFICE, ST. JOHN'S CHURCH RECTORY, ORANGE, N. J.

This is a small Roman Catholic Cemetery about 50 years old, and is located alongside St. John's Church, White Street, Orange, N. J. It is reached by the Delaware, Lackawanna & Western and Erie Railroads, or from Newark by trolley cars. There is a considerable number of bodies buried in it, and the interments each year aggregate about fifty. Graves 2x6x7 feet, \$15, for adult and \$12 for child. Plots containing six graves, \$75. Opening graves, adult, \$5, child, \$3.

ST. JOHN'S CEMETERY.

YONKERS, N. Y.

OFFICE, ST. JOHN'S RECTORY, YONKERS, N. Y.

St. John's is a very old cemetery, and is located about one mile from the station of the New York Central & Hudson Railroad and New York & Putnam Railroad, in Yonkers, on the Saw Mill River Road. Single graves cost \$12. Opening, \$5.

ST. JOSEPH'S CEMETERY.

YONKERS, N. Y.

OFFICE, YONKERS, N. Y.

St. Joseph's Cemetery is situated on the Saw Mill River Road, on the Northern line of Yonkers, N. Y., about three miles from the station of the New York Central & Hudson River Railroad, and near the Neppera Park Station of the New York & Putnam Railroad. It contains 25 acres and was opened in 1877. About 4,000 interments have been made in the cemetery, and the average number of interments per year at present is 250. Single graves, \$8; children, \$5; plots, \$28, \$40, \$100, \$160; two bodies to a grave. Opening grave, adult, \$6; child, \$4.

ST. MARY'S CEMETERY.

RAHWAY, N. J.

OFFICE, ST. MARY'S R. C. CHURCH, RAHWAY, N. J.

This cemetery adjoins Hazelwood Cemetery on the north in Rahway, N. J., and was opened in 1860. It comprises one and one-half acres and belongs to St. Mary's Roman Catholic Church in that place.

Single graves are \$10, including opening, which is \$5. Plots 10 feet square, \$15. One body to a grave, and one day's notice to re-open same.

ST. MARY'S CEMETERY.

CLIFTON, S. I.

OFFICE AT CEMETERY.

St. Mary's Cemetery comprises seven acres, and is located at Parkinson Avenue, Clifton, Staten Island. It was opened to the

public January 1, 1862, and there have been about 4,000 interments. There are about 100 interments per year.

Single graves 2x7x6, \$7; plots 8x16 ft. containing six graves, \$50. Opening graves, box \$5; coffin \$4, and two bodies to a grave. Vault charge \$1 for over night; but a body is never kept in the vault longer than two days. Twelve hours' notice to open a grave, and two bodies to a grave.

ST. MARY'S CEMETERY.

YONKERS, N. Y.

OFFICE, RECTORY ST. MARY'S CHURCH, YONKERS, N. Y.

St. Mary's Cemetery is located two and one-half miles from Yonkers Station of the New York Central Railroad and about one-half mile from Nepperhan Station on the Putnam branch of the same road. It is a small and old burying ground. Single graves \$10, and opening \$5.

ST. MICHAEL'S CEMETERY.

ASTORIA, L. I.

OFFICE AT CEMETERY AND 225 WEST NINETY-NINTH STREET, NEW YORK CITY.

This Protestant Episcopal Cemetery is one of the oldest in the vicinity of New York, having been founded in 1850 by Rev. Thos. M. Peters of this city, and comprises about 100 acres. It is located on Flushing Avenue and Bowery Bay Road, Newtown, L. I., and is reached by either the East Thirty-fourth Street, or Ninety-second Street ferries. It is estimated that there have been over

40,000 interments. The number of interments per year is about 1,500. Single graves, \$16 for adult, and \$12 for child. Lots, \$30 and upwards. Opening grave is \$5 for adult and \$4 for a child. Opening tomb charges, \$16 adult, and \$12 child. If body be removed to a single grave in the public ground, no further charge will be made. If removed to a private lot, procured within three months, \$4.50 will be refunded for an adult, and \$2.50 for a child. If removed from the cemetery the charge of \$2 per month for an adult, and \$1.50 for a child will be made in addition to \$1 for removal. If not removed within six months the body will be interred in a grave prepared for that purpose. No enclosures of any kind are allowed, and twenty-four hours' notice is required to open grave.

ST. MONICA'S CEMETERY.

JAMAICA, N. Y.

St. Monica's Cemetery is located on Washington Street, Jamaica, Borough of Queens, New York City, and is reached via the Long Island Railroad and trolley lines. About 2,000 bodies have been interred in this cemetery, and the annual interments about 25. The office is at 42 Washington Street, Jamaica.

ST. NICHOLAS CEMETERY.

PASSAIC, N. J.

St. Nicholas Cemetery is situated on the Lodi Road, one mile outside of Passaic, N. J., and comprises about 15 acres. It is reached by the Erie Railroad to Passaic. About 1,000 interments have been made, and the price of a single grave is \$10, regular size and depth. Plots of four graves, \$25. Opening grave \$4, and two bodies to a grave. None but parishioners of St. Nicholas Church or members of their family can bury in this cemetery.

ST. PETER'S CEMETERY.

JERSEY CITY, N. J.

OFFICE, CEMETERY OF THE HOLY NAME, WEST SIDE AVENUE, JERSEY CITY, N. J.

St. Peter's Cemetery is the old Catholic burying ground of Jersey City, and was opened in 1857. It is situated on Tonnele Avenue, Jersey City, four blocks north of Newark Avenue, and comprises about five acres. Lots or graves have not been sold in this cemetery for the last 30 years. It was founded by fifteen Catholics of Jersey City, who turned over the property in 1873 to Archbishop Corrigan, who was then Bishop of Newark. The graves are 2.3x7x7 ft., and plots 7x9 feet. The plots originally sold for \$15, and graves \$5. Prices for opening graves, removals and rules, are the same as prevail in the Cemetery of the Holy Name, Jersey City, being under the same management.

ST. PETER'S CEMETERY.

WEST NEW BRIGHTON, S. I.

OFFICE, RECTORY ST. PETER'S R. C. CHURCH, WEST NEW BRIGHTON, S. I.

St. Peter's Cemetery is one of the oldest Catholic Cemeteries on Staten Island, and belongs to the St. Peter's Church, West New Brighton. It comprises about eight acres, divided into sections, lots and plots, and it is estimated that there are over 2,500 bodies buried in it. Price of single graves, 2.2x7x6 ft., \$15 for coffin and \$16 for box, including opening. Plot containing four graves, \$50. Reopening grave is \$5, and three bodies to a grave. Twenty-four hours' notice required to open a grave.

ST. PETER'S CEMETERY.

WESTCHESTER, NEW YORK CITY.

Located on Westchester Avenue, Westchester, New York City, adjoining St. Peter's Episcopal Church, to which it belongs. It is quite an old burial ground and contains several hundred bodies.

ST. RAYMOND'S CEMETERY.

WESTCHESTER, N. Y.

OFFICE AT CEMETERY.

This Catholic cemetery is situated in Westchester, N. Y., comprises thirty-five and three-fourths acres and is reached by the Harlem River Branch of the New York, New Haven & Hartford Railroad from East 129th Street, New York, or by electric cars from East 129th Street and Third Avenue. It is also reached by carriage by Westchester Avenue in the Annexed District. The cemetery is about 15 years old, artistically laid out into sections, plots and graves, and promises to be one of the most attractive Catholic burying grounds of the metropolis. Single graves cost \$15, including opening. Plots \$100 and upwards. Sixteen grave plots \$600. Reopening graves is \$6 for adult, \$5 for children under 14 years, and \$3 under seven years. Three bodies, as a rule, to each grave. Twenty-four hours' notice required for opening a grave. William Walsh is Superintendent.

SALEM FIELDS CEMETERY.

JAMAICA PLANK ROAD, BROOKLYN, N. Y.

OFFICE AT CEMETERY.

Salem Fields is by far the leading and most important Jewish cemetery in the vicinity of New York. It is one of the most

beautiful in the world because of the lavish care and labor bestowed on its maintenance and improvement, and therein are located some of the most artistic as well as costly monuments and family vaults to be found in any cemetery. Within its limits are the family plots and tombs of the wealthiest and most influential Hebrew residents of the metropolis, and the jealous interest taken in its improvement and embellishment by its owners is amply shown by its attractive and impressive appearance. The cemetery is located on the Jamaica Plank Road, Brooklyn, and lies opposite Cypress Hills Cemetery. Its area is about 200 acres, and it is owned by the Temple Emanu-El of New York City. It is reached by the same routes as Cypress Hills Cemetery. The grounds are laid out in family plots and graves, are watered, and the roads and paths are in asphalt. The cemetery was founded November 23, 1851, and opened in the early part of 1852. It is estimated that there are about 20,000 bodies interred, and the average number of interments per year is 300. Plots cost \$800 and upwards, according to location. The single graves are \$50 for adult and \$25 for child, and the cost of opening a grave is \$6 for adult and \$4 for child. There are from twelve to sixteen graves to a plot, and only one body is allowed to a grave. The receiving tomb charges are \$25 per month, and twenty-four hours' notice to secure opening of a grave. The rules governing enclosures of plots and the erection of headstones and monuments are very strict, and only granite or marble enclosures are permitted. Peter J. Hiltman is Superintendent.

SANDY HILL CEMETERY.

PATERSON, N. J.

Sandy Hill Cemetery is located on Market Street, near Carroll Street, in the city of Paterson, N. J., and comprises about sixteen city lots. It is a very old cemetery, and is controlled by a number of churches in that city. The cemetery is very little used, only by

ROB'T. D. BELL.

EDW. S. BECKER.

THE BELL Manufacturing Co.

UNDERTAKERS' SUPPLIES.

38 GREAT JONES ST.,

Telephone, 2831 Spring.

NEW YORK.

We We carry a complete line of Caskets, Robes, Linings and
Hardware.

C. FARRELL,

Boarding and Livery Stables,

261, 263 and 265 West 33d Street,

New York.

NEAR EIGHTH AVENUE.

FIRST-CLASS COACHES, COUPES AND LANDAUS.

Telephone, 309—38th St.

those who own graves or plots, but it is estimated that there are about 25 interments per year.

Plots or graves are not sold in this cemetery. The cost of opening a grave is \$4.

SCHRAALENBERG CEMETERY.

SCHRAALENBERG, N. J.

OFFICE AT CEMETERY.

This cemetery is situated in Schraalenberg, Bergen County, N. J., is principally owned by members of the local Protestant Church, and is controlled by the consistory of the church. It comprises four acres and is reached by the West Shore Railroad to Schraalenberg Station. It was opened in 1856, and over 1,000 interments have taken place in its plots and graves. There are about 20 interments each year. The graves are of regular size and cost \$5; plots, \$10. The cost of opening a grave is \$3, with the additional charge of \$2 for the attendance of the sexton, who is the Superintendent of the cemetery.

SHARETH ISRAEL CEMETERY.

NEWTOWN, L. I.

OFFICE AT CEMETERY.

Shareth Israel Cemetery is the Portuguese burial ground of New York, is situated in Newtown, L. I., and is reached by the same routes as Cypress Hills. It is a Jewish cemetery comprising about six acres. There are about 1,000 bodies buried.

SILVER MOUNT CEMETERY.

RICHMOND TURNPIKE, S. I.

OFFICE, RICHMOND ROAD, TOMPKINSVILLE, S. I.

Silver Mount Cemetery was incorporated September 6th, 1866,

and is located on the Richmond Turnpike, Staten Island. It is reached from New York by the Staten Island ferry to St. George, and comprises about 35 acres. It is a well-kept cemetery. It is estimated that there are about 7,000 bodies interred and the average yearly number of interments is 200. Size of single graves is 2x6x7 and cost \$10 for adult and \$5 for child. Plots 30 cents per square foot, and no plot contains less than six graves. Opening grave costs \$6 for adult and \$3 for child. Vault charges \$10 for three months. R. McNamara is Superintendent.

SILVER LAKE CEMETERY.

TOMPKINSVILLE, S. I.

This cemetery is located on the Richmond Turnpike near Silver Lake, Tompkinsville, Staten Island, and is reached from St. George. There have been about 5,000 interments with an average yearly number of 600. A. R. Gold, Stapleton, Staten Island, is Superintendent.

SLEEPY HOLLOW CEMETERY.

TARRYTOWN, N. Y.

OFFICE, 130 MAIN STREET, TARRYTOWN, N. Y.

This historic cemetery is the oldest in the vicinity of New York. It was established as a village graveyard in 1648, and embraces 151 acres picturesquely located on the east bank of the Hudson River, twenty-five miles from the metropolis by the New York Central & Hudson River Railroad. Its divisions and subdivisions include sections, plots and lots. A new section of 46 acres has been added, and it will be laid out on the lawn plan. The entire tract includes all of Sleepy Hollow, which is rich in legendary lore, having been made celebrated by Washington Irving, whose remains lie buried in the cemetery. It is traversed by the Pocantico River, and bounded on the westerly side by the Hudson River.

Its landscapes and river views are unusually beautiful. This cemetery is an ideal resting place for departed ones, combining historic memories, rural seclusion and artistic development. Sleepy Hollow Cemetery was incorporated in 1849. The number of interments that have taken place is estimated at 14,000, and there are about 300 interments each year.

PRICES.

Single graves: First adult, including sodding, \$10 and \$15; first infant, including sodding, \$6 and \$10; second interment, adult, including sodding, \$5; second interment, infant, including sodding, \$3; third interment, infant, including sodding, \$2. For any depth below six feet an extra charge of \$1 per foot is made. Second interments when made in the same grave in any private plot are subject to like charges as in the single grave. Ordinary brick graves, single, from \$14 to \$38, 3 feet 6 inches to 7 feet 6 inches. Grave for boxes exceeding 7 feet long 26 inches wide, \$1 extra. Orders received after 10.30 A. M. for opening graves for same day \$1 extra. The charge for interments requiring an adult grave to be opened on Sunday is \$7; for infant grave \$5, if the order be given after 12 o'clock noon on the Saturday preceding.

Each full lot contains 400 square feet. The ordinary lot is 16x25 ft., which will admit of fifteen adult graves, in three rows of five graves each. The prices of lots vary, generally from \$300 to \$800 each, depending upon the location. Lots 10x10 ft., three adult graves, \$75 and upwards; lots 12x10 ft., four adult graves, \$90 and upwards; lots 10x20 ft., six adult graves, \$150 and upwards. Opening grave, adults, including sodding, \$5; children under six years, \$3. Receiving tomb charges are: adult, \$15; child under six years, \$10. If removed to a plot or single grave in the cemetery within fifteen days from reception between May 1st and October 1st, or thirty days between October 1st and May 1st, a rebate of \$10 for adult or \$5 for a child will be made. If removed *from*

the Cemetery the charge of 50 cents per day for adults and 25 cents per day for children will be made in addition to the \$5 charge for opening vault and use of Catacomb from the day of reception. If not removed within fifteen days from May 1st or within thirty days from October 1st, the remains will be interred in the "Single Grave Division," *unless* arrangements are made with the Superintendent for Tomb Rent. There is also a special rate of \$2.50 per month for adults, and \$1.75 per month for infants in good lined cases. One dollar is charged for conveyance of bodies from the tomb to grave. Samuel Requa is President; W. T. Lockwood, Secretary and Superintendent, and Walter T. Sackett, Assistant Superintendent.

SPEER'S CEMETERY.

BERGEN AVENUE AND VROOM STREET, JERSEY CITY, N. J.

OFFICE, 21 HOBOKEN AVENUE, JERSEY CITY, N. J.

This cemetery is known as Speers' Cemetery and Bergen Cemetery. It is one and the same cemetery. For information regarding lots, etc., see Bergen Cemetery.

STATEN ISLAND CEMETERY.

RICHMOND TERRACE, WEST NEW BRIGHTON, S. I.

OFFICE, WEST NEW BRIGHTON, S. I.

Staten Island Cemetery was opened in 1850, organized July 1, 1893. It is situated on Richmond Terrace, West New Brighton, and is reached by the Staten Island Ferry to St. George. The distance from the latter place is about two and a half miles. Graves, adult, \$12; child, \$7. Lots, \$40 to \$75. Opening graves, \$5 for adult and \$3.50 for child.

TEMPLE BETHEL CEMETERY.

NEWTOWN, L. I.

OFFICE AT CEMETERY.

This Jewish Cemetery is situated in Newtown, L. I., and comprises ten acres. It is reached by the same routes as Cypress Hills. Several hundred bodies are buried in this cemetery.

TRINITY CEMETERY.

BROOKLYN, N. Y.

SEE HOLY TRINITY CEMETERY.

TRINITY CEMETERY.

NEW YORK CITY.

OFFICE, 187 FULTON STREET AND AT CEMETERY.

Trinity Cemetery is owned by the Trinity Church Corporation and was opened in 1843. It embraces about 36 acres and occupies the area between West 153d Street and West 155th Street, from Tenth Avenue to the North River. It is an unusually beautiful cemetery, well-kept and carefully guarded, for therein are located the family plots and tombs of some of the oldest and wealthiest families of New York City, including the Astors. It is reached by the Sixth and Ninth Avenue Elevated Road to 155th Street, or by the cable cars from 125th Street and Eighth Avenue. The estimated number of bodies buried in the cemetery is 19,000 and about 150 interments take place every year. No single graves or lots are sold. Opening grave \$8 for adult and \$6 for child. Receiving tomb charges are \$18 for adult and \$15 for child. Opening under ground vaults \$8 and over ground \$6. Twenty-four hours' notice is necessary to secure opening of a grave or vault.

UNION CEMETERY.

PALMETTO STREET, BROOKLYN, N. Y.

Closed and bodies removed to Cedar Grove Cemetery, Long Island.

UNION FIELD CEMETERY.

NEWTOWN, L. I.

OFFICE ON GROUNDS.

Union Field Cemetery is situated in Newtown, L. I., and is reached by the same routes as Cypress Hills. It comprises about 45 acres, and belongs to the Jewish congregation of New York that controls Macpelah Cemetery. About 15,000 interments have been made, with a yearly average of 300.

UNITED STATES CREMATION CO.

CREMATORY, FRESH POND, L. I.

OFFICE, 62 E. HOUSTON ST., NEW YORK.

The crematory and columbarium of the United States Cremation Company is located near Fresh Pond Station, Long Island Railroad, opposite Lutheran Cemetery, about four miles from the Brooklyn Bridge, and all East River ferries above that point. It is reached by Thirty-fourth Street ferry, James Slip ferry, and rail from Long Island City; Roosevelt, Grand Street, Broadway, Tenth Street and Twenty-third Street ferries, by North Second Street cars, Brooklyn, E. D., or by Bushwick Avenue cars and steam cars from Bushwick. From Brooklyn by the Myrtle Avenue, Greene and Gates Avenue cars, or Union Elevated Railroad to Ridgewood, and thence by Lutheran Cemetery cars.

The company charges \$30 for an incineration of an adult, and \$20 for a child under ten years, prepaid. Incinerations are made daily, and applications for the same must be made at the company's office with the regular permits as are procured for the burial of a body. All bodies are incinerated in the clothing as received, but no coffin or casket is allowed to be removed from the crematory but is burned up after the incineration takes place. The ashes are delivered at the company's office the day after the incineration. Louis Lange is President; D. W. Craig, Treasurer, and S. Berendsohn, Secretary.

UNITED STATES MARINE CEMETERY.

CLIFTON, S. I.

Located on Centre Avenue Clifton, Staten Island, and is reached by the trolley cars from St. George.

WASHINGTON CEMETERY.

PARKVILLE, L. I.

OFFICE AT CEMETERY AND 141 BROADWAY, NEW YORK.

Washington Cemetery was incorporated September 7, 1850, and comprises about 100 acres. It is situated between Gravesend and New Utrecht, Borough of Brooklyn, about seven miles from the Brooklyn Bridge, and is reached by the trolley lines from any part of Brooklyn to the Prospect Park & Coney Island Railroad station, corner Ninth Avenue and Twentieth Street, South Brooklyn, and Thirty-sixth Street and Ninth Avenue; thence by steam cars to Washington station. It is also accessible by the Prospect Park and Coney Island Boulevard,

which leads to the east entrance of the cemetery. There are about 10,000 lots of 400 square feet each in the cemetery, admitting in each lot about 16 adult interments. The cemetery is a Jewish burial ground, although there are many Christians interred in its graves. Thirty-three thousand bodies have been interred since the opening of the cemetery, and about 2,000 are interred yearly. Prices of lots range from \$50 upwards. Opening grave for adult, \$3; child under 10 years, \$2, and infant, \$1. One body to a grave. Four hours' notice required for opening grave. Simon Binswanger is Superintendent.

WEEHAWKEN AND PALISADE CEMETERY.

NEW DURHAM, N. J.

OFFICE AT CEMETERY.

This cemetery is situated on the Hackensack Plank Road in New Durham, N. J., opposite the town of Union, N. J., about two miles from the Hoboken ferries, and one mile from the West Shore Railroad ferry at Weehawken, N. J. It is reached by these ferries, and the Union Hill line of cars, which pass within two blocks of the entrance. It was founded in 1859, and opened in 1860, comprises about eighteen acres, divided into Protestant, Baptist and Catholic sections, and there have been about 19,000 interments in its plots and graves. The principal plot owners are German residents of Hoboken and Jersey City. Single graves cost from \$17 to \$25 for adult, and \$7 to \$10 for child. Lot graves are 2.6x7x6 ft. Lots, \$30 to \$165. Cost of opening graves is \$5 to \$8 for adult, and \$3 and \$4 for child, according to depth at \$1 per foot. One body to a single grave, and two bodies to a lot grave. Twelve hours' notice required for the opening of a grave.

WHITE PLAINS RURAL CEMETERY.

WHITE PLAINS, N. Y.

OFFICE AT CEMETERY.

This old and picturesque cemetery is situated about one mile north of White Plains depot on the New York and Harlem Railroad, and comprises about twenty-five acres. It was originally the local Methodist Church graveyard. Over 1,000 bodies have been interred. Single graves for adult, \$9, including opening, and child, \$5. Plots, 50 cents per square foot. Opening grave \$5 for adult, and \$3 for child. One body to a grave.

WOODLAND CEMETERY.

NEWARK, N. J.

OFFICE, 922 BROAD STREET, NEWARK, N. J.

Woodland Cemetery is situated in the westerly portion of Newark, N. J., near Eighteenth Avenue, and is reached from that city by Springfield Avenue. It was opened in 1855 and since that time about 30,000 bodies have been buried within its limits. The average number of interments per year is 1,200. The grounds comprise about thirty-five acres, which are divided into family lots and single graves. Size of single graves 2, 3, 4x7 ft. and cost \$4, \$8, \$12 and \$20. Plots, \$125 and upwards. Opening graves, \$3, \$4 and \$5, with \$1 extra for box between 5 and 7 ft. over extra, and vault charges \$5. Twenty-four hours' notice required to secure opening of grave.

WOODLAND CEMETERY.

RICHMOND TURNPIKE, STATEN ISLAND, N. Y.

OFFICE AT CEMETERY.

This cemetery comprises about ten acres and was opened in the year 1854. It is situated on the Richmond Turnpike, Town

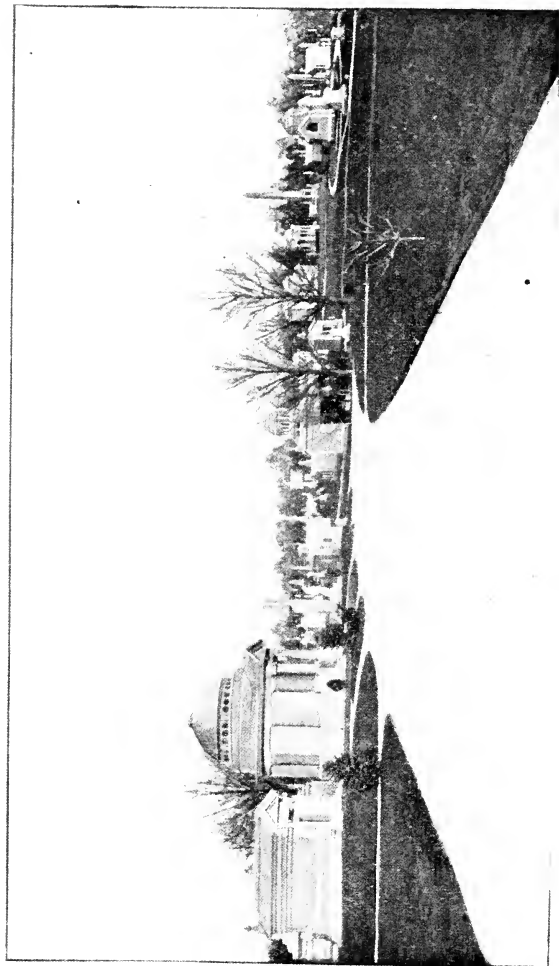
of Middletown, S. I., and is reached by the Staten Island ferry to St. George, the distance from the latter place being two miles. About 7,000 bodies have been buried in this cemetery, and the yearly number of interments is 160. Single graves \$10 for adult and \$6 for child. Lots 16x16 ft. \$65 and admit eight graves. Re-opening large grave, \$5; child's, \$3. Two adult bodies to a grave. Vault charge is \$10 for indefinite period of time. No green hoops or wood allowed for enclosure of lots. Michael Koffer is President and Superintendent of this cemetery.

WOODLAWN CEMETERY.

JEROME AVENUE, NEW YORK.

OFFICE, 20 EAST 23D ST., NEW YORK.

Woodlawn Cemetery is situated in the Twenty-fourth Ward, New York City, on the line of the New York & Harlem, and the New York, New Haven & Hartford Railroads, and it is reached by the former road as well as by Jerome Avenue from the Harlem River Bridge. It was organized December 29, 1863, and improvements were begun in the spring of 1864. The first interment was made January 14, 1865. The cemetery comprises 400 acres magnificently laid out under the lawn plan, for Woodlawn is one of the pioneers in adopting this principle for cemetery embellishment. The result is that this is one of the most beautiful cemeteries to be found in any part of the world. The development of the property to its present high state of beauty, has been enhanced by the erection of the most costly and imposing monuments and private tombs of any cemetery in the United States. Millions of dollars are represented in expenditures in beautifying the cemetery and in the erection of monuments and tombs, and the work continues to go on. The cemetery is laid out in about forty plots, each plot bearing an appro-



WOODLAWN CEMETERY.

priate name, and there is a number of artificial lakes, which with miles of the best of roads and paths, and the choicest trees and shrubs, combine to make it a beautiful city of the dead. There are about 2,000 annual interments, and the estimated number of bodies buried within the limits of this cemetery is about 59,000.

PRICES.

Avenue lots, \$1.50, \$1.75, \$2, \$2.50 and \$3 per square foot. Open path lots, \$1.75 and \$2 per square foot. Grass path lots, \$1.25, \$1.50 and \$1.75 per square foot. Lots admitting ten graves may be had for from \$400 to \$1,000, according to location. Corner posts for same, \$12. Lots admitting six graves, for \$250 to \$385, according to location. Corner posts for same, \$9. Lots admitting four graves, from \$162.50 to \$175, according to location. Corner posts for same, \$7 and \$9. Lots admitting three graves, for \$125 and \$165, according to location. Corner posts for same, \$7.

Price of adult grave, including opening, in Receiving Lot, \$50, with \$30 rebate if removed at any time. Single graves, including opening, \$40 for adult and \$30 for child under ten years. Two bodies to a single grave. Opening tombs, \$5; adult graves, usual depth of 6 ft., \$5, children's graves under ten years, \$4. Receiving tomb deposits are: \$30 for adult and \$24 for child under ten years. For placing a body in the Receiving Tomb a charge is made of \$5 per month for an adult and \$4 per month for a child. In all cases the body must be removed within three months. If removed from the cemetery an additional charge of \$5 for adults and \$4 for children is made. The charges, as above stated, will be deducted from the deposit. If not removed in three months, the remains will be interred in a grave prepared for that purpose.

Cost of funeral train, car Woodlawn, to cemetery and back is \$50; for car attached to passenger train, \$35; for ordinary car attached to passenger train, \$25; for conveyance of remains from

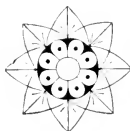
New York to Woodlawn, \$1; railroad fare, excursion, to cemetery, is 35 cents.

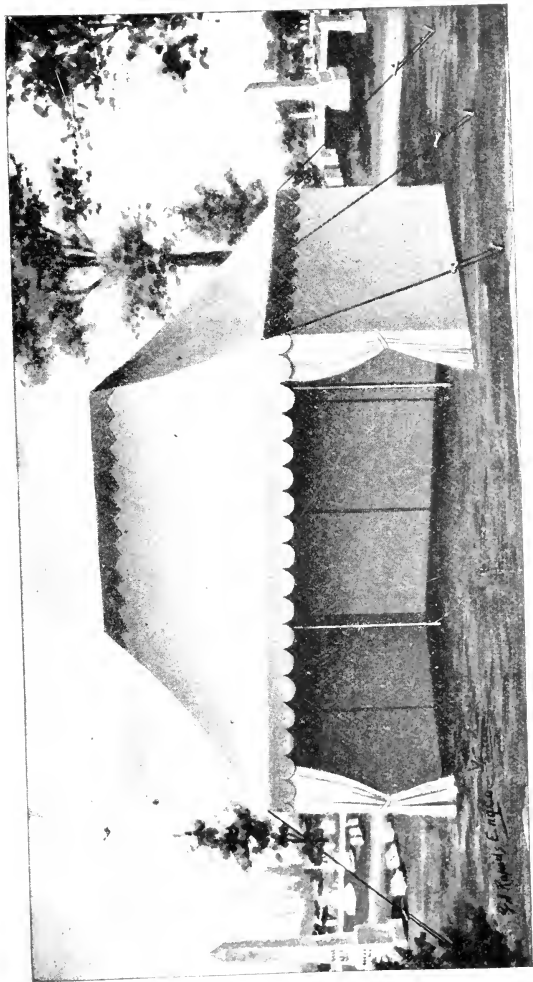
James D. Smith is President of Woodlawn Cemetery Corporation; Chas. H. Edgar, Vice-President; Charles S. Smith, Treasurer; William T. Booth, Secretary, and Stewart W. Smith, Assistant Treasurer. Henry J. Diering is Superintendent.

WOODROW CEMETERY.

HUGUENOT STATION, STATEN ISLAND.

Woodrow Cemetery is located near Huguenot Station on the Staten Island Rapid Transit Railway and is reached via St. George. Prices of lots, \$20 to \$30. Graves, \$5, and opening graves, \$5. C. Bogardus, Jr., is Superintendent.





DURFEE GRAVE TENTS.

Are unsurpassed for rainy, windy or hot days. They are not like the flimsy, one-day lemonade covers, but are substantially made with ridge poles, reinforced peak and portable walls. We make 126 styles and sizes. Our tents are used by leading cemeteries. *Send for circular, quality of material and prices.* **DURFEE EMBALMING FLUID CO., Grand Rapids, Mich.**

CEMETERY LAWS OF NEW YORK AND NEW JERSEY.

COMPILED BY H. D. LUCE, ESQUIRE,
OF THE NEW YORK BAR.

CEMETERY LAWS OF NEW YORK.

AN ACT RELATING TO MEMBERSHIP CORPORATION PASSED MAY 8, 1895.
CHAPTER 559 OF THE LAWS OF 1895.

ARTICLE III.

CEMETERY CORPORATIONS.

DEFINITION.

SECTION 40.—In this article the term burial includes the act of placing a dead human body in a mausoleum, vault or other proper receptacle for the dead, as well as in the earth; the term lot owner or owner of a lot means any person having a lawful title to the use of a lot, plot or part of either in a cemetery; and the term cemetery corporation means any corporation heretofore created for cemetery purposes under a law repealed by this chapter, or hereafter created under this article, but the general term cemetery corporation does not include a family cemetery corporation or a private cemetery corporation. This article does not apply to cemeteries belonging to religious or municipal corporations.

CERTIFICATES OF INCORPORATION.

SEC. 41.—Seven or more persons may become a cemetery corporation, by making, acknowledging and filing in the offices of the Secretary of State and of the Clerk of the county where the cemetery of such corporation, or a part thereof, is to be situated; a certificate specifying each county, town, city and village in which such cemetery or any part thereof is to be situated; the name of the proposed corporation; the times of holding its annual meetings; the number of its directors; from six, nine, twelve or fifteen; and the names of the persons to be directors until others are elected in their places, divided into three equal classes, each class to hold office until the first, second and third annual meetings thereafter, respectively.

Such certificate may also specify a percentage of the surplus proceeds of sales of lots, after payment of the purchase price of the real property of the corporation, to be invested as a permanent fund, the income of which shall be used for the improvement, preservation and embellishment of the cemetery grounds, and for no other purpose. Such certificate shall not be filed without the approval, endorsed thereupon or annexed thereto, of a Justice of the Supreme Court.

On filing such certificate, in pursuance of law, the signers thereof, their associates and successors shall be a corporation, in accordance with the provisions of such certificate.

CEMETERIES IN KINGS, QUEENS, ROCKLAND, WESTCHESTER AND ERIE COUNTIES.

SEC. 42.—A cemetery corporation shall not take by deed, devise or otherwise any land in either of the counties of Kings, Queens, Rockland, Westchester or Erie for cemetery purposes, or set apart any ground for cemetery purposes in either such county, unless the consent of the Board of Supervisors thereof be first obtained, which board may grant such consent upon such conditions, regulations and restrictions as, in its judgment, the public health or the public good may require. Notice of application to any such board for such consent shall be published once a week for six weeks in two newspapers of the county having the largest circulation therein, stating the time when the application will be made, a brief description of the lands proposed to be acquired, their location and the quantity thereof. All persons interested

therein may be heard on the presentation of such application; and if such consent is granted, the corporation may take and hold the lands designated in such consent, which shall not authorize any one corporation to take or hold more than two hundred and fifty acres. The Board of Supervisors of each such county may, from time to time, make such regulations as to the mode of burials in any cemetery in the county, as, in its judgment, the public health may require. (As amended by Chapter 193 of Laws of 1896.)

CORPORATE MEETINGS.

SEC. 43.—Public notice of each annual meeting of a cemetery corporation shall be given in a manner to be prescribed by its By-Laws. Each person of full age owning the use of a lot or plat, or part of either containing at least ninety-six square feet of land in the cemetery of the corporation, or if there be two or more owners of such lot, then one of them designated by a majority of such joint owners to represent such lot or plat, or part of either, may cast one vote for each such lot or plat, or part of either so owned, at the meetings of the corporation. Each owner of a certificate of stock heretofore lawfully issued, and each owner of a certificate of indebtedness of a cemetery corporation, may vote at the meetings of the corporation. Each owner of stock heretofore lawfully issued shall be entitled to one vote for each share of stock owned by him at the meetings of the corporation. Each owner of a certificate of indebtedness of a cemetery corporation shall be entitled to one vote at such meetings for each one hundred dollars of such indebtedness.

CHAPTER 745, OF THE LAWS OF 1900, PASSED MAY 3, 1900.

Section 44 is hereby amended so as to read as follows:

DIRECTORS.

SEC. 44.—The Directors of a cemetery corporation shall be elected at its annual meetings, by ballot, by the persons entitled to vote thereat. If at any such meeting one-fifth of the owners of lots or plats shall not, in person or by proxy, vote thereat, the Directors shall be chosen by the existing Directors, or a majority of them, unless such Directors shall, at such meeting, be chosen by a majority of the votes of the owners of certificates of stock or indebtedness. The term of office of a Director shall be three years. A vacancy in the office of a Direc-

tor shall be filled by appointment, by the remaining Directors, until the next annual meeting, when it shall be filled by election for the unexpired term. After the first annual meeting, no one but a lot owner shall be eligible to the office of Director. The Directors may change their number to either six, nine, twelve or fifteen, assigning, acknowledging and filing a supplemental certificate stating the number of Directors the corporation shall thereafter have, and thereafter there shall be elected at each annual meeting one-third of the number of Directors fixed by such certificate, but the Directors then in office shall continue in office until the expiration of their terms, excepting that in the county of Jefferson at any meeting the attendance of one-fifteenth of the owners of lots or plats will be sufficient to constitute a quorum for the election of Directors. (As amended by Chapter 745 of Laws of 1900.)

ACQUISITION OF PROPERTY.

SEC. 45.—If the certificate of incorporation or By-Laws of a cemetery corporation do not exclude any person from the privilege, on equal terms with other persons, of purchasing a lot or a burial in its cemetery, such corporation may, from time to time, acquire by condemnation, exclusively for the purposes of a cemetery, not more than two hundred acres of land in the aggregate, forming one continuous tract, wholly or partly within the county in which its certificate of incorporation is recorded, except as in this article otherwise provided, as to the acquisition of land in the counties of Kings, Queens, Rockland and Westchester. A cemetery corporation may acquire by condemnation, exclusively for the purposes of a cemetery, any real estate or any interest therein necessary to supply water for the uses of such cemetery, and the right to lay, re-lay, repair and maintain conduits and water pipes with connections and fixtures, in, through or over the lands of others; the right to intercept and divert the flow of waters from the lands of riparian owners, and from persons owning or interested in any waters. But no such cemetery corporation shall have power to take or use water from any of the canals of this State, or any canal reservoirs as feeders, or any streams which have been taken by the State for the purpose of supplying the canals with water. A cemetery corporation may acquire, otherwise than by condemnation, real property as aforesaid and additional real property, not exceeding in value two

hundred thousand dollars, for the purposes of the convenient transaction of its general business, no portion of which shall be used for the purposes of a cemetery.

A cemetery corporation may acquire, otherwise than by condemnation, additional real or personal property, absolutely or in trust, in perpetuity or otherwise; and use the same or the income therefrom in pursuance of the terms on which the same is acquired, for the following purposes, only:

1. The improvement or embellishment, but not the enlargement of its cemetery.

2. The construction or preservation of a building, structure, fence or walk therein.

3. The renewal, erection or preservation of a tomb, monument, stone, fence, railing or other erection or structure on or around any lot therein; or,

4. The planting or cultivation of trees, shrubs, flowers or plants in or about a lot therein.

A cemetery corporation may accept a conveyance of real property held by a religious corporation for burial purposes, or by Trustees for such purposes, if all such Trustees, living and residing in this State, unite in the conveyance, subject to all burdens, trusts and conditions to which the title of such grantors was subject. Lots previously sold in any such lands, and grants for burial purposes therein previously made, shall not be affected by any such conveyance; nor shall any grave, monument or other erection thereupon, or any remains therein, be disturbed or removed without the consent of the lot owner, or if there be no such owner, without the consent of the heirs of the persons whose remains are buried in such grave.

No cemetery shall hereafter be located in any city or incorporate village, without the consent of the Common Council of such city, or the Board of Trustees of such village, as the case may be.

SURVEYS AND MAPS OF CEMETERY.

Every cemetery corporation shall, from time to time, as land in its cemetery may be required for burial purposes, survey and sub-divide such land into lots or plats, with avenues, paths, alleys, walks and ornamental plats; and make and file a map thereof in the office of the corporation, open to the inspection of all persons. Any unsold lots, plats or parts of lots or plats, in which there

have not been any burials may, by order of the Directors, be re-surveyed and altered in shape or size, and properly designated on such maps.

RULES AND REGULATIONS.

SEC. 47.—The Directors of a cemetery corporation may make reasonable rules and regulations for the use, care, management and protection of the property of the corporation and of all lots, plats and parts thereof in its cemetery; for regulating the dividing mark between the various lots, plats and parts thereof, their size, shape, location and the size of erections thereupon; for prohibiting or regulating the erection of structures upon such lots, plats or parts thereof; for preventing unsightly monuments, effigies and structures within the cemetery grounds, and for the removal thereof; for regulating the introduction and care of plants, trees and shrubs within such ground; for the prevention of the burial in the lot, plat or part thereof, of a person not entitled to burial therein; for regulating or preventing disinterments; for the conduct of persons while within the cemetery grounds; and for the exclusion of improper persons therefrom and improper assemblages therein.

Such rules and regulations shall be plainly printed and publicly posted in the principal office of the corporation, and in such places upon the cemetery grounds as the Directors, by resolution, prescribe. The Directors may prescribe penalties to be paid by a person violating any such rule or regulation, not exceeding \$25.00 for each violation, which shall be recoverable by the corporation in civil action.

RECORD OF BURIALS.

SEC. 48.—A record shall be kept of every burial in the cemetery of a cemetery corporation, showing the date of the burial, the name, age and place of birth of the person buried, when these particulars can be conveniently obtained, and the lot, plat or part thereof, in which such burial was made. A copy of such record, duly certified by the Secretary of such corporation, shall be furnished on demand and payment of such fees therefor as are allowed the County Clerk for certified copies of records.

TITLE AND RIGHTS OF LOT OWNERS.

SEC. 49.—The Directors must fix and determine the prices of

the burial lots or plats, and keep a plainly-printed copy of the schedule of such prices publicly posted in the principal office of the corporation, open at all reasonable times to the inspection of all persons.

The corporation, unless its certificate of incorporation or By-Laws otherwise provide, shall, subject to its rules and regulations, sell and convey to any person, the use of the lots or plats designated on the map filed in the office of the corporation, on payment of the prices so fixed and determined, but need not sell and convey more than one lot or plat to one person. The conveyances of lots and plats shall be signed by the President or Vice-President and Treasurer of the Corporation. All lots, plats or parts thereof the use of which has been as conveyed as a separate lot, shall be indivisible, except with the consent of the lot owner and the corporation; and the use of the same for burial purposes, after the burial therein, shall be inalienable and be held in perpetuity by the grantee and his heirs, except as otherwise provided in this section; and on the death of the grantee shall descend to his heirs at law, or to such of them, or to such other person or persons, or to such other class or classes of persons, as may be designated in such conveyance. An heir may release to the other heirs, and a joint owner may release to the other joint owners, his interest therein, on conditions specified in the release, which shall be filed in the office of the corporation. The title of the grantee, or his heirs, shall not be affected by the dissolution of the corporation or its non-user of its corporate rights and franchises, or any act of forfeiture on its part, of any alienation of its property or incumbrance thereon made or suffered by it. If no burial be made in any such lot, or if all the dead bodies buried therein be lawfully removed therefrom, the owners thereof may, with the consent of the corporation, sell the use of such lot. The Secretary of the cemetery corporation shall file and record in its books all deeds of transfer. A lot owner may reconvey or devise to the corporation his right and title in and to any lot theretofore conveyed to him by such corporation.

APPLICATION OF PROCEEDS OF SALES OF LOTS.

SEC. 50.—At least one-half of the proceeds of the sales of the use of all lots and plats shall be applied to the payment of the purchase money of the real property acquired by the corporation

until such purchase money is paid, and the residue thereof shall be applied to preserving, improving and embellishing the cemetery ground and the avenues and roads leading thereto, and to defray the incidental expenses and liabilities of the corporation. After the payment of such purchase money, and the expense of surveying and laying out the cemetery, the proceeds of all sales of the use of lots and plats thereafter shall be applied only to the improvement, preservation and embellishment of such cemetery and the incidental expenses of the corporation. Such corporation may agree with the person from whom any lands are purchased for a cemetery to pay therefor a specified share not exceeding one-half of the proceeds of all sales of the use of lots and plats made from such land, and such share shall be first applied to the payment of such purchase money, and the residue thereof shall be applied to the preservation, improvement, and embellishment of the cemetery, and the incidental expenses of the corporation. Where lands have been so purchased, and are to be paid for as provided by this section, the prices of the use of lots and plats, fixed by the Directors, and in force when such purchase was made, shall not be changed, while the purchase-price remains unpaid, without the written consent of a majority in interest of the persons from whom the lands were purchased, their heirs, representatives or assigns.

BURIALS AND REMOVALS.

SEC. 51.—If there be more than one lot owner of a lot in the cemetery of a cemetery corporation, no body of a dead person shall be buried therein without the consent of all the owners of such lot, unless such person, at the time of his death was an owner of the lot, or a relative, wife or husband of an owner, or a relative of such wife or husband.

A dead body lawfully buried in a lot in such a cemetery may be removed therefrom, with the consent of the corporation, and the written consent of the owners of such lot, and of the surviving wife, husband, children, if of full age, and parents of the deceased. If the consent of any such person cannot be obtained, or if the corporation refuses its consent, the consent of the County Court of the county or the Supreme Court at a special term, held in the district, where the cemetery is situated, shall be sufficient. Notice of the application for the consent of the court must be given, at least eight days prior thereto, personally,

or, at least, sixteen days prior thereto, by mail, to the corporation or to the person not consenting, and to every other person on whom service of notice may be required by the court.

CHAPTER 761, OF THE LAWS OF 1900, PASSED MAY 4, 1900.

Section 52 is amended so as to read as follows:

TAXATION OF LOT OWNERS BY CORPORATION.

SEC. 52.—If the funds of a cemetery corporation, applicable to the improvement and care of its cemetery wholly outside of a city of the first or second class, or applicable to the construction of a receiving vault therein for the common use of lot owners, be insufficient for such purposes, the Directors of a corporation, not oftener than once in any year and for such purposes only, may levy a tax of two dollars on the owners of each lot, or, with the written consent of two-thirds of the lot owners, or with the concurrent vote of a majority of the lot owners, at an annual meeting, or at a special meeting duly called for such purpose, may levy a tax on the lot owners at a rate not exceeding five dollars for each lot of average value proportionately to the prices at which the lots were respectively sold by the corporation. Notice of such tax shall be served on the lot owners or where two or more persons are owners of the same lot, on one of them, either personally, or by leaving it at his residence, with a person of mature age and discretion, or by mail, if he resides in a city, town or village where the office of the corporation is not located. If such tax remain unpaid for more than thirty days after the service of such notice, the President and Secretary of the corporation may issue a warrant to the Treasurer of the corporation, requiring him to collect such tax in the same manner as school collectors are required to collect school taxes, and such Treasurer shall have the same power and be subject to the same liabilities in executing such warrant as the collector of school taxes has or is subject to by law in executing a warrant for the collection of school taxes. If the taxes so levied remained unpaid for five years, the amount thereof with interest shall be a lien on the unused portion of a lot, which is subject to such tax and no portion of a lot so taxed shall be used for the owner thereof for burial purposes, while any such tax remains unpaid. (As amended by Chapter 761 of Laws of 1900.)

EXPENSES OF IMPROVING VACATED LOT.

SEC. 53.—Whenever a person having a lot in the cemetery of a cemetery corporation shall vacate the same by a removal of all the dead buried therein, and leave such lot in a broken and unimproved condition for a period of one month or more from the date of such removal, the corporation may grade, cut, fill or otherwise change the surface thereof, for the improvement of the lot and the general improvement of the cemetery grounds, without reducing the area of the lot. The expense of such improvement not exceeding ten dollars, shall be chargeable to such lot. If the owners of such lot shall not, within six months after such expense has been incurred, repay to the corporation the amount chargeable to the lot, the corporation may sell the lot at public auction, upon the cemetery grounds, previous notice of such sale having been posted at the main entrance of the cemetery, and mailed to the owners of such lot at their last known postoffice address, at least ten days prior to the day of sale, and shall pay the surplus, if any, of the proceeds of such sale over such amount, on demand to the owners of such lot.

CERTIFICATES OF INDEBTEDNESS.

SEC. 54.—If a cemetery corporation be indebted for lands purchased for cemetery purposes, or for services rendered or materials furnished in preserving or improving its cemetery, the Directors thereof, by the concurring vote of a majority of their whole number, may, with the consent of the creditor to whom such indebtedness is owing, issue certificates under the corporate seal, signed by the President and Secretary, for the amount of such indebtedness, or a part thereof, payable at such times and drawing such a rate of interest and in such sums as may be agreed on with such creditor; but the amount of any certificate shall not be less than one hundred dollars, nor the rate of interest higher than the rate authorized by law. The certificate shall be transferable by delivery, unless otherwise provided on the face thereof; and the Directors shall keep in the books of the corporation an exact and true account of the number and amount of such certificates, the persons to whom issued, the time of maturity and the rate of interest. A separate account shall be kept in the books of the corporation of the certificates issued for the

purchase money of lands, and the certificates issued for debts incurred in preserving and improving the cemetery. The Directors shall set aside from the proceeds of sales of the use of lots and plats, such sums as they may deem necessary to pay said certificates at their maturity. Until such certificates are paid each holder thereof shall be entitled at all meetings of the corporation, to one vote for each one hundred dollars of such indebtedness held by him. The certificates issued pursuant to this section shall not be a lien upon any lot belonging to a lot owner.

CERTIFICATES OF STOCK HERETOFORE ISSUED.

SEC. 55.—If a cemetery corporation, incorporated under a law repealed by this chapter, has converted its outstanding indebtedness or certificates of indebtedness into certificates of stock, in pursuance of law, no interest shall accrue to the holders of such stock, but they shall receive annually or semi-annually a dividend thereon for their proportional part of the entire surplus or net receipts of the corporation over and above current expenses; or if the proportion of the net receipts or surplus which stockholder shall be entitled to receive shall have been fixed by agreement at the time of issuing such stock, such stockholders shall be entitled to receive dividends in accordance with such agreement. Such certificates of stock shall be transferable only on the books of the corporation on the surrender of the certificate, unless otherwise provided on the face thereof, and on every such surrender a new certificate of stock shall be issued to the person to whom the same has been transferred; and the holders of such stock shall be entitled, in person or by proxy, to one vote for every share thereof, at each meeting of the corporation. A register of the stock issued by the corporation shall be kept by its Directors showing the date of issue, the number of shares, the par value thereof, the name of each person to whom issued, the number of the certificates therefor; and all transfers of such stock shall be noted and entered in such register, and the certificates surrendered shall be deemed cancelled by the issue of a new certificate, and the surrendered certificate shall be destroyed. Any Director may become the holder or transferee of such stock for his own individual use or benefit. No such stock shall be a lien on the lot of any individual lot owner within the cemetery limits; and no other or greater liability of the corporation issuing such stock shall be created or deemed to exist than may be

necessary to enforce the faithful application of the surplus or net receipts of the corporation to and among the holders of the stock in the manner hereinbefore specified.

A cemetery which has heretofore issued such certificates of stock is a membership corporation and not a stock corporation.

CHAPTER 292, OF THE LAWS OF 1899, PASSED APRIL 10, 1899.

Entitled, "An Act Relative to Membership Corporations."

ANNUAL REPORT OF DIRECTORS.

SEC. II.—The Directors of every membership corporation, except a corporation for the prevention of cruelty to children or animals, and a corporation for promoting or maintaining the principles of a political party, created under or by a general or a special law, shall present at its annual meeting a report, verified by the President and Treasurer, or by a majority of the Directors, showing the whole amount of real or personal property owned by it, where located, and where and how invested, the amount and nature of the property acquired during the year immediately preceding the date of the report and the manner of the acquisition; the amount applied, appropriated or expended during the year immediately preceding such date, and the purposes, objects or persons to or for which such applications, appropriations or expenditures have been made; and the names and places of residence of the persons who have been admitted to membership in the corporation during such year, which report shall be filed with the records of the corporation and an abstract thereof entered in the minutes of the proceedings of the annual meeting. The Directors of every membership corporation, except a society for the prevention of cruelty to children or animals, a corporation for the promotion of agriculture and which holds annual agricultural fairs, and a corporation formed for promoting or maintaining the principles of a political party, shall be jointly and severally liable for any debt of the corporation contracted while they are Directors, payable within one year or less from the date it was contracted, if an action for the collection thereof, be brought against the corporation within one year after the debt becomes due, and an execution issued therein to the county where its office is, or where a certificate of its incorporation is filed, be returned wholly or partly unsatisfied; and if the action against the Directors to recover the amount unsatisfied be commenced within one year after the return of such

execution; provided, however, that no Director of a corporation formed for promoting or maintaining the principles of a political party shall be liable for any such debts, unless the contracting of the same shall have been specifically authorized by the Board of Directors at a meeting thereof, and assented to thereat by the Directors sort to be charged therewith.

CHAPTER 208, OF THE LAWS OF 1900, PASSED MARCH 23, 1900.

Relating to purchase, sale, mortgage and lease of real property.

PURCHASE, SALE AND LEASE OF REAL PROPERTY.

SEC.—13.—No purchase, sale, mortgage or lease of real property shall be made by a membership corporation, unless ordered by the concurring vote of at least two-thirds of the whole number of its Directors, provided, however, that when the whole number of Directors is not less than twenty-one, the vote of a majority of the whole number shall be sufficient. No real property of a membership corporation shall be leased without leave of the Court, for a longer period than five years, or sold or mortgaged. A mortgage may be executed to secure the payment of bonds issued or to be issued to different persons. The Court may grant leave to a membership corporation to convey real property without consideration, to another membership corporation created for the same or kindred purposes. If a mortgage of the real property of any such corporation be executed and delivered without leave of the Court, the Court may thereafter, on such proceedings as are required to obtain leave of the Court to mortgage such property, confirm such previously executed mortgage, and thereon such mortgage shall be as valid and of the same force and effect as if it had been executed and delivered with leave of the Court, except as to purchasers or encumbrancers of such real property, subsequent to the execution and delivery of such mortgage. A membership corporation may, if its By-Laws so provide, and pursuant to the provisions thereof, and without leave of the Court, convey to a member of the corporation a portion of its real property or the erection thereupon, of a cottage or other dwelling house with suitable out-buildings, on the terms and conditions that such portion, together with the buildings thereupon, shall belong to such member and on his death pass as part of his estate, to his heirs or devisees, but that the land, whereupon such buildings shall be erected, shall be inalienable by him or them, except to the corporation or to a member thereof,

and that such member in his life time, or after his death, his heirs or devisees may convey such interest in such property to the corporation, or to a member thereof for such sum as may be mutually agreed on, but not to any other person. Such conveyance may provide that the grantees of the interest in each lot so conveyed shall be entitled to one vote, either in person or by proxy, at all meetings of the corporation, if the By-Laws authorize such provision. Except as otherwise provided in this chapter no portion of a cemetery of a cemetery corporation which any person other than the corporation is entitled to use for burial purposes, or in which burials have been made and not lawfully removed, shall be sold, mortgaged or leased by the corporation.

CHAPTER 360, OF THE LAWS OF 1899, PASSED APRIL 18, 1899.
VISITATION OF SUPREME COURT.

SEC. 16.—All membership corporations with their books and vouchers, shall be subject to the visitation and inspection of a Justice of the Supreme Court, or of any person appointed by the Court for that purpose. If it appears to such Court by the verified petition of a member or creditor of any such corporation, that it, or its Directors, officers, or agents, have misappropriated any of the funds or property of the corporation, or diverted them from the purpose of its incorporation, or that it has acquired property in excess of the amount which it is authorized by law to hold, or engaged in any business other than that stated in its certificate of incorporation, it may order that a notice of at least eight days be served on the Directors of the corporation, with a copy of such petition, requiring them to show cause at a time and place to be therein specified, why they should not be required to make and file an inventory and account of the property, effects and liabilities of such corporation with a detailed statement of its transaction during the twelve months next preceding the granting of such order; and, if on the hearing of such application, no good cause is shown to the contrary, the Court may make an order requiring such inventory, account and statement to be filed, and proceed to take and state an account of the property and liabilities of the corporation, or appoint a referee for that purpose; and when such account is taken and stated, it may, after hearing all of the parties to the application, enter a final order determining the amount of property so held by the corporation, its annual income, whether any of the property or

funds of the corporation have been misappropriated or diverted, to any other purpose than that for which such corporation was incorporated, and whether such corporation has been engaged in any other business than that specified in its certificate of incorporation, from which final order and appeal may be taken by any party aggrieved, to the Appellate Division of the Supreme Court, and to the Court of Appeals; but no corporation shall be required to make and file more than one inventory and account in any one year, nor to make a second account and inventory, while proceedings are pending for the statement of an account under this section.

CEMETERY LAWS OF NEW JERSEY

AN ACT TO AUTHORIZE THE INCORPORATION OF RURAL CEMETERY ASSOCIATIONS AND REGULATE CEMETERIES. REVISION

APPROVED APRIL 9, 1875.

SECTION 1.—That any number of persons residing in this State, not less than seven, who shall desire to form an association for the purpose of procuring and holding lands to be used exclusively for cemetery or a place for the burial of the dead, may meet at such time and place as they or a majority of them may agree, and appoint a chairman and secretary by the vote of a majority of the persons present at the meeting, and proceed to form an association, by determining on a corporate name by which the association shall be called and known, and the number of trustees to manage the concerns of the association, which number shall not be less than three nor more than twelve, and thereupon may proceed to elect by ballot the number of trustees so determined on; and the chairman and secretary shall immediately after such election divide the trustees by lot into three classes; those of the first class to hold their office for one year; those of the second

class, two years, and those of the third class, three years; but the trustees of each class may be re-elected if they shall possess the qualifications hereinafter mentioned; the meeting shall also determine on what day in each year the future annual elections of trustees shall be held; and that any association now existing or that shall hereafter exist, under and by virtue of this act, may by ballot change its present number of trustees to any number not exceeding twelve or less than three, at any annual meeting, and that the Chairman and Secretary shall then make out a re-classification according to the requirements of this section of this act, and at the next subsequent election those trustees in the first class of the re-classification shall be elected, and subsequent elections shall conform to such re-classification, but no trustees shall be deemed out of his office till the term for which he was elected shall have expired, except by death, resignation or removal out of the State, in which last event his trusteeship shall be deemed terminated; and for the purpose of electing trustees at any meeting after organization of the association, every creditor of such association, in addition to his right to vote by virtue of his owning plats or lots according to section 5 of this act, shall be entitled to one vote for every four hundred dollars worth at par value of bonds, stock or other duly authorized evidences of debt he or she may own and hold against such association. (Approved March 14, 1879, as amended.)

SEC. 2.—That the Chairman and Secretary of the meeting shall within three days after such meeting make a written certificate, and sign their names thereto, and acknowledge the same before an officer authorized to take the proof and acknowledgement of conveyances in the county where such meeting shall have been held, which certificate shall state the names of the associates who attended such meeting, the corporate name of the association determined upon by the majority of the persons who met, the number of trustees fixed on to manage the concerns of the association, the names of the trustees chosen at the meeting, and their classification, and the day fixed on for the annual election of trustees; which certificate it shall be the duty of the Chairman and Secretary of such meeting to cause to be recorded in the Clerk's office in the county in which the meeting was held, in a book to be appropriated to the recording of certificates of incorporation.

SEC. 3.—That upon such certificate, duly acknowledged as

aforesaid, being recorded, the association mentioned therein shall be deemed legally incorporated, and shall have and possess the general powers and privileges of a corporation; the affairs and property of such association shall be managed by the trustees, who shall annually appoint from among their number a President and a Vice-President, and shall also appoint a Secretary and a Treasurer, who shall hold their places during the pleasure of the Board of Trustees; and the Trustees may require the Treasurer to give security for the faithful performance of the duties of his office.

SEC. 4.—That any association incorporated under this act, or under any special act, may take, by purchase or devise, and hold within the county in which the certificate of their corporation is recorded, or in a county adjoining thereto, lands not exceeding one hundred and twenty-five acres in extent, such lands to be adjoining each other and not exceeding in taxable value seventy-five thousand dollars, to be held and occupied exclusively for a cemetery for the burial of the dead; such land, or such part thereof as may, from time to time, be required for that purpose, shall be surveyed and sub-divided into lots or plots of such size as the Trustees may direct, with such avenues, paths, alleys and walks as the Trustees deem proper, and a map or maps of such survey shall be filed and kept in the office of the association, open to the inspection of the lot owners; the Trustees may sell and convey the lots or plots, and parts of lots or plots, designated on such maps upon such terms as shall be agreed, and subject to such conditions and restrictions as may be imposed upon the use of such lots or plots by rules or regulations now adopted, or hereafter to be adopted, by the Trustees of such association, the conveyances to be executed under the common seal of the association and signed by the President, or the Vice-President, and the Treasurer of the association; any association incorporated under this act may hold personal property to an amount not exceeding five thousand dollars, besides what may arise from the sale of lots or plots; provided, that any portion of the property of any such company, not actually set apart and used for burial purposes, shall be subject to taxation until the same has been so set apart and used for actual purposes of burial, excepting roads and walks actually graded and in use. (As amended by laws, approved May 9, 1889.)

SEC. 5.—(Amended by supplementary act, approved March 12,

1880, and by section 2 of the supplementary act approved March 17, 1893, post sections 17 and 47.)

SEC. 6.—That the Trustees, at each annual election, shall make reports to the lot proprietors of their doings, and of the management and condition of the property and concerns of the association; if the annual election shall not be held on the day fixed in the certificate of incorporation, or if, from any cause, Trustees should not be then elected, the Trustees shall have power to appoint another day, not more than sixty days thereafter, and shall give public notice of the time and place at which time the election may be held, with like effect as if holden on the day fixed on in the certificate; the office of the Trustees chosen at such time to expire at the same time as if they had been chosen at the day fixed by the certificate of incorporation.

SEC. 7.—That any association, incorporated pursuant to this act, may take and hold any property, real or personal, bequeathed or given upon trust to apply the income thereof, under the direction of the Trustees of such association, for the improvement or embellishment of such cemetery, or the erection or preservation of any buildings, structures, fences, or walks erected or to be erected, upon the lands of such cemetery association, or upon the lots and plats of any of the proprietors, or for the repair, preservation, erection or renewal of any tomb, monument, grave-stone, fence, railing or other erection in or around any cemetery, lot or plat, or for planting and cultivating trees, shrubs, flowers or plants in or around any such lot or plat, or for improving or embellishing such cemetery, or any of the lots or plats, in any other manner or form consistent with the design and purposes of the association, according to the terms of such grant, devise or bequest.

SEC. 8.—(This section amended by supplementary act approved March 14, 1879, section 56 post.)

SEC. 9.—That all lands lying within the bounds of any cemetery or burying ground belonging to or used by any religious society in this State, shall be reserved, for the use of the owners thereof, against all causes in action heretofore or hereafter arising, except upon mortgage thereof, and shall not be liable to be seized, taken or sold by virtue of any judgment, decree, order, execution or other process made or rendered by or issued out of any court in this State; provided, that all liens existing upon land, before the same is converted into burying grounds, shall

be exempt from the operation of this act.

SEC. 10.—That all lots or plats of ground designated on the map filed as aforesaid, and numbered as separate lots by the corporation, shall be indivisible, but may be held and owned in undivided shares; provided, that the boundaries of the unsold lots or plats of ground belonging to the corporation may be altered or amended, by and with the consent of a majority of the legal voters of said association present at any regular meeting of the corporation; and provided further, that a supplemental map or maps of said cemetery lands, with such alteration of boundaries shown thereon, be filed in the Clerk's office of the county in which the land be situated; one-half at least of the proceeds of all sales of lots or plots shall be first appropriated to the payment of the purchase money of the lands acquired by the association until the whole purchase money shall be paid, and the residue thereof to preserving, improving and embellishing the said cemetery grounds, and the avenues and roads leading thereto, and to defray the incidental expenses of the cemetery establishment; and after the payment of the purchase money, and the debts contracted therefor, and for surveying and laying out the land, the proceeds of all future sales shall be applied to the improvement, embellishment and preservation of such cemetery and for incidental expenses, and to no other purpose or object, so long as such embellishment is incomplete. (Amended and supplementary act approved February 24, 1882.)

SEC. 11.—That whenever the said land shall be laid off into lots or plats, and such lots or plats, or any of them, shall be transferred to individual holders, and after there shall have been an interment in a lot or plat so transferred, such lot or plat, from the time of such interment, shall be forever thereafter inalienable, and shall, upon the death of the holder or proprietor thereof, descend or go to the heirs-at-law or devisee of such holder or proprietor; provided, nevertheless, that any one or more of such heirs-at-law may release and convey to any other of the said heirs-at-law, or unto the widower, widow or next of kin of any deceased person interred in such lot or plat, his or their interest in the same, on such conditions as shall be agreed on and specified, a copy of which conveyance shall be recorded in the Clerk's office of the county within which the said cemetery shall be situated; and provided further, that the body of any deceased person shall not be interred in any such lot or plat, unless it be the

body of the person having at the time of such decease an interest in such lot or plat, or the relative of some person having such interest, or the wife of such person, or her relative, except by the consent of all persons having an interest in such lot or plat.

SEC. 12.—That any person who shall willfully destroy, mutilate, deface, injure, or remove any tomb, monument, grave-stone, building, or other structure, placed in any cemetery of any association incorporated under this act or otherwise, or any fence, railing, or other work for the protection or ornament thereof, or of any tomb, monument, or grave-stone, or other structure aforesaid, or of any lot or plat within such cemetery, or shall willfully destroy, cut, break, or injure any tree, shrub, or plant within the limits of such cemetery, shall be deemed guilty of a misdemeanor; and such offender shall also be liable in an action of trespass, to be brought in all such cases in the name of such association, to pay all such damages as shall have been occasioned by his unlawful act or acts; such money, when recovered, shall be applied by the Trustees to the reparation or restoration of the property so destroyed or injured.

SEC. 13.—That any cemetery association within this State, existing under special statute or by virtue of an incorporation under the general statutes of which this is a supplement, is hereby empowered to sell, purchase and exchange its lands and any lands adjoining its premises, for the purpose of straightening its lines; and to sell and dispose of such parts of its land as have not been laid out into burying lots, and appropriate the proceeds received therefrom in paying the debts and liabilities of the said association and improving the cemetery. (Supplementary act approved March 29, 1878.)

SEC. 14.—That any association incorporated as aforesaid may take and hold any property, real and personal, bequeathed or given in trust, to apply the income thereof under the direction of the Trustees or managers of such an association for the improvement or embellishment of such cemetery, or the erection or preservation of any buildings, structures, fences or walks erected or to be erected upon the lands of such cemetery association or upon the lot or plots of any of the proprietors, or for the repair, preservation, erection or renewal of any tomb, monument, grave-stone, fence, railing or other erection in and around any cemetery lot or plot, or for planting and cultivating trees, shrubs, flowers or plants in or around any such lot or plot, or for im-

proving or embellishing such cemetery or any of the lots or plots in any other manner or form consistent with the design and purposes of the association, according to the terms of such grant, devise or bequest. (Supplementary act approved March 29, 1878.)

SEC. 15.—That whenever any bonds heretofore legally issued by any association incorporated as aforesaid under the authority of law, are now due and unpaid, or shall hereafter become due, the managers or Trustees of any such association may renew ninety-five per centum of said indebtedness, or any less part thereof, by the issuing of the bonds of said association for that purpose, which said bonds shall be made payable at period of time not exceeding twenty years from the date of issuing the same, and shall draw such rate of interest not exceeding seven per centum per annum, and be issued in such sums as the managers or Trustees shall by resolution determine; which bonds shall be of the denomination of not less than fifty dollars or more than one thousand dollars, and shall be executed under the corporate seal of said association and the signature of the President thereof, and shall have coupons attached for every half-year's interest until due, payable at the office of the Treasurer thereof; which coupon shall be signed by said Treasurer and numbered to correspond with the bond to which they shall be respectively attached, and which said bonds shall be exempt from taxes as burial grounds or cemeteries are now by law exempt.

SEC. 16.—(Amended a supplementary act, approved March 14, 1879, being section 1 above.)

SEC. 17.—(Amendment of section 5, this section amended by section 47 post.)

SEC. 18.—That the rents, issues, profits, income and revenues derived from any and all lands lying within the bounds of any cemetery or burying ground belonging to, or used by, or held in trust for, any incorporated cemetery company in this State, may be taken and sequestered under and by virtue of the orders and decrees of the Court of Chancery of this State, according to the rules and practice of that Court, and applied by said Court of Chancery to the payment of any judgment recovered in any of the courts of this State against such cemetery company owning or using said lands; and that for that purpose the said Court of Chancery may, if necessary, appoint a receiver or receivers of the said rents, issues, profits, income and revenues (and take such order regarding the same as may be just and equitable), but

nothing in this act contained shall make the said lands liable to be seized, taken or sold, by virtue of any judgment, decree, order, execution or other process made or rendered by, or issued out of, any court in this State.

SEC. 19.—(Section 10 above.)

SEC. 20.—(Repealing clause in act approved February 24, 1882, amending section 10 above.)

SEC. 21.—(Supplementary act approved March 22, 1883, and amendatory act approved May 9, 1889, incorporated in section 4, above.)

SEC. 22.—(Supplementary act approved March 23, 1883.) That the lands which any association incorporated under the act to which this is a supplement, shall take and hold in any county of this State, under and by virtue of said act, shall adjourn and be contiguous to each other, and shall not consist of separate tracts in different places in the same county; provided, that this shall not be taken to apply to cemetery grounds which lie immediately opposite each other on different sides of any public road or roads.

SEC. 23.—(As amended by acts approved April 25, 1894, and by an act approved March 22, 1899.)

No more than three cemeteries shall be located or placed under and by virtue of said act to which this is a supplement, in any one city, township or town in any county of this State; provided, however, that nothing in this section shall prevent any cemetery association now incorporated from continuing, maintaining, enlarging and conducting any cemetery in any township of this State where such cemetery has been located and used for the past ten years successively; and provided further, that in any township of this State where the capacity of an existing cemetery is exhausted, so that no further plots can be purchased, an additional cemetery may be created or placed at not less than three miles from any other existing cemetery in said township, subject, however, to all laws or provisions thereof governing and regulating cemeteries in this State.

SEC. 24.—That the municipal authorities of the city, town and township in which any cemetery is or shall be located, shall have the power and authority to pass, alter and repeal ordinances to regulate interments, disinterments and the manner thereof, in any cemetery in said city, town or township, and to prescribe the penalty by fine not exceeding fifty dollars in each case, or by imprisonment in the county jail not exceeding ten days in each

case, or both, for any violation of any ordinance authorized by this act; and said municipal authorities or any authorized agent thereof shall have the power and authority, at all times, to enter into and upon any cemetery within the limits of said municipality, and examine into the condition of said cemetery, and whether the ordinances regulating the same are duly enforced.

SEC. 25.—That any recorder, police justice or justice of the peace in any city, town or township of this State, be and he is hereby empowered on oath, affirmation or affidavit, made according to law, that any person or persons has or have been guilty of a violation of any such ordinance as aforesaid, to issue a process either in the nature of a summons or of a warrant, as to him may seem most advisable, against the person or persons so violating such ordinances, which process shall, when in the nature of a warrant, be returnable forthwith, and when in the nature of a summons be returnable in five entire days, and such process shall state what ordinance the defendant or defendants named therein has or have violated, and in what manner; and on the return of such process, or at the time to which the same shall be adjourned, the said recorder, police justice or justice of the peace, as the case may be, shall proceed to hear the matter, and to determine and give judgment in the same, and if judgment be given for the plaintiff, execution shall forthwith issue against the goods, chattels and persons of the defendant or defendants, and all sums collected or recovered under this act shall be forthwith paid to the Treasurer or Collector of the city, town or township in which the same are collected, for the benefit of such municipality; provided, that in all cases where the fine or penalty shall exceed ten dollars, or where the punishment may be imprisonment, there may be a trial by jury, to be conducted as in cases triable by jury in the courts for the trial of small causes; provided, however, that said municipal authorities shall have the power to remit any penalty that may be inflicted or adjudged, upon application made to them.

SEC. 26.—That every cemetery association shall annually, within ten days after its annual election, file in the Clerk's office of the county wherein it is located, a certificate setting forth the names of the Trustees and officers of said association.

SEC. 27.—That all acts or parts of acts, inconsistent with this act, be and the same are hereby repealed, and that this act shall be deemed to be a public act, and shall take effect immediately.

SEC. 28.—(Supplementary act approved March 25, 1885.)

That every dead human body interred in any burying ground or cemetery within the limits of the State of New Jersey shall be buried so that the top of the outside coffin shall be at least four feet below the natural surface of the ground and shall be immediately covered with at least four feet of earth, soil or sand; except only the bodies of infants in boxes not more than four feet in length, which shall be so interred that the top of the outside box enclosing them shall be at least three feet and six inches below the natural surface of the ground, and they shall be immediately covered with at least three feet and six inches of earth, soil or sand; provided, this shall not apply where bodies are placed or buried in properly constructed private vaults, so as to prevent the escape of noxious or unhealthy gases therefrom.

SEC. 29.—(As amended March 24, 1890.)

That no dead human body shall be disinterred or removed from any grave, or burial place within the limits of this State between the first day of May and first day of November except by the direction of a competent court of this State for the purpose of criminal investigation; provided, however, that such disinterment or removal may be made at any time upon a permit being given for the purpose by the local Board of Health existing in the locality where such body is interred or entombed.

SEC. 30.—(As amended May 9, 1889.)

That no dead human body of any person who has died of small-pox, cholera, yellow-fever, ship or typhus, spotted, relapsing, or scarlet-fevers or from any new disease, publicly declared by the State Board of Health or by any county Board of Health to be epidemic or endemic and contagious, shall be disinterred or removed from any grave, tomb, vault or place of burial within the limits of this State at any time, unless the said body was originally interred in a metallic case, hermetically sealed, and then only by the order of and under the direction of the Board of Health within whose jurisdiction such body was buried; provided, however, that the provisions as to said metallic case shall not apply where said body shall have been buried or interred three years or more, and shall have died from other disease than small-pox, cholera or yellow-fever; and provided further, that it may be lawful to remove, for re-interment, between the first day of November and the first day of April in each year, within the limits of the same cemetery, the dead body

of any person that may have died from other disease than small-pox, cholera or yellow-fever; provided, that special permit therefor is first obtained from the Board of Health within whose jurisdiction such body shall be buried.

SEC. 31.—That no dead human body shall be permitted to remain longer than forty-eight hours in any receiving vault in this State, the depth of which is less than five feet below the natural surface of the ground, between the first day of May and the first of November; provided, this shall not apply to properly constructed receiving vaults which prevent the escape of noxious and unhealthy gases.

SEC. 32.—That the municipal authorities or Board of Health of any city, town, township or borough in this State, or their properly authorized agent or agents, shall have the power and authority at all times to enter into and upon any cemetery or burying ground within the limits of said municipality and examine into the condition of the same, and ascertain whether the laws regulating it are duly observed.

SEC. 33.—That it shall not be lawful to locate any new cemetery or burying ground, or to enlarge any cemetery or burying ground in this State without the consent and approval of the municipal authorities and Board of Health of the city, township, town or borough in which it is proposed to locate or enlarge said cemetery or burying ground, upon application in writing for that purpose made; and in case of the refusal of the municipal authorities and local Board of Health to grant the same, then the person or persons making application as aforesaid may apply to the State Board of Health, which shall have power to reverse the decision of the local authorities and grant the application; and in case the local authorities grant the permit to locate or enlarge any cemetery or burial ground and the same shall be deemed objectionable by the inhabitants of the city, town, township or borough where it is proposed to locate, then ten citizen free-holders thereof may apply to the State Board of Health, which shall have power to reverse the decision of the local authorities and prohibit said location or enlargement; and it is herein specially provided, that all persons making application as aforesaid, for the location or enlargement of any cemetery, shall accompany the same with a descriptive map of the premises they propose to occupy, a copy of which shall also be filed in the office of the State Board of Health; and provided further, that nothing in this section con-

tained shall apply to lands already purchased by any duly-organized cemetery company for burial purposes.

SEC. 34.—That any person violating any of the foregoing provisions of this act, and any person in charge of or exercising control over any cemetery or burial ground in this State, who shall knowingly permit or suffer such violation to be done, shall be deemed guilty of a misdemeanor, and on conviction thereof shall be punishable by fine not exceeding three hundred dollars, or imprisonment for six months, or both, in the discretion of the court.

SEC. 35.—That whenever any cemetery or burial ground or part thereof, by reason of its location or the too great number of bodies interred therein, or for any other cause, is dangerous to the public health, and it is unadvisable that any further interments be made therein, any municipal authority within whose limits any such cemetery or burial ground is situated, or any State or local Board of Health, may file a bill in the Court of Chancery, either in the name of the State on the relation of said complainant or otherwise, asking relief in the premises, and the procedure shall be according to the rules and practice of said court; and if it shall thereupon be determined by said court that any cemetery, burial ground, or any part thereof, for any of the reasons aforesaid is dangerous to public health or that further interments therein would be unadvisable, then said court shall have the power and authority, by injunction or otherwise, according to the practice of said court, to grant such relief as to said court shall seem proper and necessary for the protection of the public health.

SEC. 36.—That in case said court shall determine that the complainant or complainants are not entitled to any relief in any proceeding that may be taken under section 8 of this act (section 35 above), costs shall not be awarded as of course against said complainant, but only in case it shall appear to the Chancellor that no probable cause existed for bringing such suit.

SEC. 37.—That all acts or parts of acts inconsistent herewith be and the same are hereby repealed, and that this act shall be deemed a public act and take effect immediately.

SEC. 38.—(Supplementary act passed March 30, 1886.)

That in all cases where the grounds of any cemetery association have been laid out on a map or maps, on which there are portions of grounds not marked out into lots, and which have not

been laid out as a part and the same designated as such in the deeds given for burial lots in said cemeteries, or which have not been heretofore reserved and set apart for building purposes, and not laid out as avenues, it shall be lawful for the Trustees of such association to cause such portions of the grounds to be laid out into lots and sold for burial purposes; provided, however, that paths or other roadways shall be maintained to the lots already sold.

SEC. 39.—That all acts and parts of acts inconsistent with the provisions of this act be and the same are hereby repealed, and this act shall take effect immediately.

SEC. 40.—(Amendment of section 4 above and therein set forth in full.)

SEC. 41.—(Amendment of section 30 above, passed May 9, 1889, and therein set forth in full.)

SEC. 42.—(Repealing clause in amendatory act passed May 9, 1889.)

SEC. 43.—(Supplementary act approved March 24, 1890.)

That it shall be lawful for any cemetery association incorporated under the act to which this is a supplement, to change the name of such association and adopt a new name.

SEC. 44.—That any such change shall be adopted only by two-thirds vote of the lot owners of such association present at any regular meeting, ten days notice of such proposed change having been duly published in a newspaper printed and published in the city or county in which such cemetery is situated, or by notice duly served on each lot owner at least five days before such proposed change, and when so adopted, a certified statement of such change of name, signed by the President and attested by the Secretary, under the seal of the association, shall be filed in the office of the Clerk of the county wherein such cemetery is situated; and upon such filing, the name of such association shall be changed as stated in said certificate, and the said change shall have the same force and effect as if the altered provision had been contained in the original certificate of incorporation; but no change in the name of such association shall in any wise effect or alter its rights and privileges or liabilities, but such association shall be entitled to have, receive and hold, under its new name, any property which it formerly held or which may be hereafter given or bequeathed to it under its original name.

SEC. 45.—(Act amending section 29 above and therein set forth in full.)

SEC. 46.—(Supplementary act approved March 17, 1893.)

That the care and management of all cemetery associations incorporated under the provisions of the act to which this act is a supplement, or by virtue of any special charter, may be confided in a Board of Managers or Trustees, which Board shall consist of not less than three nor more than twelve managers or trustees, who shall be lot holders, and shall be elected at the annual meeting of the association, at which time the number of the said Board of Managers or Board of Trustees shall be determined; and the President and Secretary shall, immediately after such election, divide the managers and trustees, by lot, into three classes: those of the first class to hold their office one year, those of the second class two years, and those of the third class three years, but the managers or trustees of each class may be re-elected if they shall possess the requisit qualification at the time of their re-election; they shall also determine on what day in each future year the annual election of managers or trustees shall be held; the said board to have the exclusive superintendence of such association, with full power to appoint, employ, and discharge any or all of the officers or agents of said association, as they may deem expedient, and to fix the compensation of such officers or agents.

SEC. 47.—That the annual election for managers or trustees to supply the place of those whose term of office expires shall be held on the day selected, or at such time or at such hour and place as the Managers or Trustees shall direct, at which election shall be chosen such number of managers or trustees as will supply the places of those whose term expires; the managers or trustees chosen at any election subsequent to the first shall hold their places for three years, and until others shall be chosen to succeed them; the election shall be by ballot, and every person of full age, who shall be proprietor of a lot or plat in the cemetery of the association, or if there be more than one proprietor of any such lot or plat, then such one of the proprietors as the majority of the joint proprietors shall designate to represent such lot or plat, may either in person or by proxy give one vote for each lot or plat; provided, that no one person shall vote for more than one hundred plats or lots; and the person or persons receiving the largest number of the votes given at such election shall be managers or trustees to succeed those whose term of

office expires; and the managers or trustees shall have power to fill any vacancy in their number occurring during the period for which they hold their office; public notice of the annual election shall be given in such manner as the By-Laws of the association shall prescribe.

SEC. 48.—That no such manager or trustee shall be personally liable or responsible for the debts or obligations of any such association contracted after the passage of this act.

SEC. 49.—That all acts or parts of acts inconsistent with this act be and the same are hereby repealed.

SEC. 50.—(Amendment of section 23 above, which section was again amended March 22, 1889, and is therein set forth in full.)

SEC. 51.—(Supplementary act approved March 28, 1895.)

That associations incorporated under the said act or that may hereafter be incorporated thereunder shall have the power to acquire lands, additional to those already used for the purpose of sepulture, or lands required for such purpose, in case none have hitherto been acquired, for the purpose of enlarging the burial-ground or cemetery belonging to such association, to an extent not exceeding ten acres, and that such lands may be acquired either by purchase or gift or by condemnation.

SEC. 52.—That in case the Trustees of such association cannot agree with the owner or owners, or other person or persons interested in any lands which the said Trustees may desire to take, as to the amount of the compensation to be paid for the said lands, or in case any of said owners or other persons interested shall be under any incapacity or disability to contract for the same, then, and in every such case, it shall be lawful for any Justice of the Supreme Court of this State, upon application by said Trustees, and upon twenty days' notice to the owners and other persons interested in said lands, to appoint three disinterested commissioners, residents of the county in which the lands are situated, to assess and ascertain in value of the lands proposed to be taken, and the damage which said owners and persons interested may sustain by such taking; if any of the said Commissioners neglect or refuse to perform their duties the said Justice may appoint others in their stead; the said Commissioners shall appoint a time and place at which they shall meet to execute the duties of their appointment, and shall give twenty days' notice thereof to be given to the parties interested therein, at which time the said Commissioners shall meet and view the

premises and hear the parties interested and take evidence (if any be offered), for which purpose they shall have power to administer oaths and affirmations, and they may adjourn from day to day; the said Trustees shall exhibit to the said Commissioners, at their said meeting, a statement and description, in writing or by maps, of the lands sought to be taken; and the said Commissioners, upon being satisfied that it is necessary for the said cemetery association to acquire the said lands for burial purposes as aforesaid, shall ascertain and assess the value and damages aforesaid, and shall execute, under their hands and seals, or the hands and seals of the majority of them, an award to said association of the lands sought to be taken, which award shall contain a description of the said lands, and shall state the amount of damages and compensation therefor by them assessed in favor of such owner or owners, which award shall by them be acknowledged before an officer authorized to take the acknowledgment and proof of deeds for said county, and shall be recorded in the Clerk's office of the said county by the Clerk of said county; the notices required to be served by this section shall be in writing, and may be served either personally or by leaving at the dwelling-house or usual place of abode of the person required to be served therewith, with a member of his or her family above the age of fourteen years; in case it shall be impossible to make such service, then a publication of the said notice in a newspaper circulating nearest said lands for the full period of twenty days shall be sufficient; in case any of the owners are minors, the notice shall be served upon the parent or guardian of such minors; in case of other disability, publication in a newspaper as aforesaid shall be sufficient.

SEC. 53.—That before taking possession of said lands, the said association shall pay or tender to the owner or owners the amount of such compensation so awarded by the commissioners; or in case the said owner or owners cannot be found or shall refuse to accept the same, or shall be under any legal disability, then the said money shall be deposited with the Clerk of the Circuit Court of said county; and the award of said Commissioners and the payment or tender or deposit as aforesaid of the same shall vest in the said association the lands described in the said award, in all respects the same as if the said lands had been conveyed to said corporation by said owner or owners under their hands and seals.

SEC. 54.—That if either party feels aggrieved by said assessment and award, such party may appeal to the next or second term of the Circuit Court of said county, by petition and notice thereof served upon the opposite party in the same manner as hereinbefore directed, which petition and notice shall vest in said court's full power to hear and determine said appeal; and, if required, they shall award a venire for a jury to come before them, who shall hear and finally determine the issue under the direction of the court, as in other trials by jury; and it shall be the duty of the said jury to assess the value of the lands absolutely taken and the damages; and the said court shall have power to order a struck jury, or a jury of view, or both, to try any such appeal, and also to order any jury that may be impaneled and sworn to try any such appeal, to view the premises in question during such trial; but the right of the corporation to appeal from and dispute the correctness of any award shall not be waived or taken away by the paying or tendering the amount of the award and taking possession of the lands or exercising the rights covered by such award; and the right of any owner of any such lands in like manner shall not be waived or lost by the acceptance of the amount so awarded when tendered; upon the final determination of such appeal, the said court shall render judgment in favor of the one party and against the other, as the right and justice of the case shall require, and shall award to the parties substantially succeeding and prevailing in said appeal his, her or their costs of said appeal against the opposite party, and shall have power to enforce the judgment so rendered by execution as other judgments are enforced, and also by summary proceedings and attachment for non-payment thereof.

SEC. 55.—That the said Commissioners, in making their award, shall award such sum as in their judgment will be a reasonable compensation to the owners of any estate in the lands sort to be taken, designating the compensation awarded to each person owning an estate in said land; and the award and payment or tender or deposit shall vest in the said association all estates in said lands, whether present or future, vested or contingent.

SEC. 56.—(Supplementary act approved March 14, 1879.)

That the cemetery lands and property of any association (and bonds and mortgages given to secure the purchase money by act of 1868), formed pursuant to this act and actually used for cemetery purposes, shall be exempt from all public taxes, rates and

assessments, and shall not be liable to be sold on execution or be applied in payment of debts due from any individual proprietors; but the proprietors of lots or plats in such cemeteries, their heirs or devisees, may hold the same exempt therefrom so long as the same shall remain dedicated to the purpose of a cemetery, and during that time no street, road, avenue or thoroughfare shall be laid through such cemetery or any part of the lands held by such association for the purposes aforesaid, without the consent of the Trustees of such association, except by special permission of the Legislature of the State.

SEC. 57.—(Supplementary act approved April 13, 1876.)

That any person who shall unlawfully and willfully destroy, mutilate, deface, injure or remove any tomb, monument, gravestone, building or other structure placed in or upon any graveyard or burial plat in this State, or shall unlawfully and willfully cut, bark, break, injure, remove or destroy any tree, shrub or plant therein, or shall willfully break, injure, deface, remove or destroy the fence, hedge or railing enclosing such graveyard or burial plats, shall be deemed guilty of a misdemeanor, and such offender shall also be liable in an action of trespass, to be brought by the owner or owners, to pay all such damages as have been occasioned by his or her said unlawful acts.

SEC. 58.—That any person who shall bring any dog or dogs, goat or goats within the limits of any graveyard or burying plat in this State, shall for every such offense, upon conviction thereof before a Justice of the Peace of the county wherein said offense shall be committed, forfeit and pay the sum of two dollars for the use of the poor of the township or ward, and shall also be liable in an action of trespass at the suit of the owner or owners for all damages committed by said dog or dogs, goat or goats.

SEC. 59.—(Supplementary act approved April 3, 1878.)

That if at any time any cemetery company or association of this State, whether organized under any general or special act or acts of this State, is discovered to be without Trustees lawfully elected to manage its affairs, or if any cemetery association of this State has omitted and failed to hold an election for trustees or to elect trustees on the day designated and appointed in and by the provisions of law incorporating such cemetery company, it shall be lawful for every such cemetery association to proceed to hold an election for trustees of such association, three or more of the persons owning lots in the cemetery of such asso-

ciation first giving at least ten days' notice of the time and place of holding such election, which notice shall be published in one or more newspapers circulating in the county in which such cemetery is located, which election shall be by ballot and shall be held at the principal office or place of business of the said company in this State, at which election every person of full age, owning a lot in said cemetery, and in case of a joint or several ownership in any lot, then such one of the parties in interest as the majority of ownership in such lot shall designate to represent such lot, may, either in person or by proxy in writing, give one vote for each lot so owned; provided, no person shall give, as owner or by proxy, more than one hundred votes at such election for trustees, and the persons receiving the largest number of votes given at such election shall be and remain the lawful trustees of such company until their successors are lawfully appointed; and said trustees shall be chosen from the lot owners, and shall not exceed the number of trustees provided by law for such company.

SEC. 60.—(Supplementary act approved March 25, 1881.)

That the annual election of trustees, held after the election for trustees provided for in the first section of the act to which this is a supplement, shall be by ballot, and shall be held at the principal office or place of business in this State of such cemetery company or association in the said act provided for; at which annual elections every person of full age owning a lot in said cemetery, and in case of a joint or several ownership in any lot, then such one of the parties in interest as the majority of ownership in such lot shall designate to represent such lot, may, either in person or by proxy in writing, give one vote for each lot so owned; provided, no person shall give, as owner or by proxy, more than twenty-five votes at any one election for trustee; and the persons receiving the largest number of the votes given at such election shall be and remain the lawful trustees of such company until their successors are lawfully appointed; and said trustees appointed at such annual election shall be chosen from the lot owners, and shall not exceed the number of trustees provided by law for such company.

SEC. 61.—(Supplementary act approved June 22, 1886.)

That whenever the Board of Directors, Managers or Trustees of any cemetery association, company or corporation of this State, organized either under general or special law or laws, or

the body having the management of any cemetery in this State, by whatever name such body may be known, shall determine by resolution that, in their opinion, the interests of such cemetery association, company or corporation would be promoted by the sale of any portion of its lands not suitable for burial purposes, upon which no burials shall have been made, except such lands as have been dedicated for a park and so expressed in the deeds given for lots sold, or have been set aside for building purposes, for other than building purposes, and shall in such resolution particularly describe the portion of such lands which they propose to sell, such board or body shall, within one week after the passage of such resolution, give public notice, signed by the Secretary of such board or body, of the time and place when and where a meeting of the members of such association, company or corporation will be held to determine by vote whether such board or body shall be authorized to sell the lands described in such resolution.

SEC. 62.—That the public notice aforesaid shall contain the description of the lands proposed to be sold, and shall be published in two newspapers printed and published in the county wherein such cemetery may be situated, and shall be continued therein at least four weeks successively, once a week, next preceding the time for said meeting.

SEC. 63.—That if a majority of the votes cast at such meeting shall be in favor of such sale as aforesaid, then the board or body having the management of such cemetery shall be authorized and empowered to offer at public sale the lands so authorized to be sold.

SEC. 64.—That after such land as aforesaid shall have been offered at public sale and struck off to a bidder or bidders, the Secretary of such cemetery association, company or corporation shall call a meeting of the members thereof, by public notice, published in two newspapers printed and published in the county wherein such cemetery may be situated, for two weeks successively, once a week, next preceding the time for said meeting, at which meeting the members shall vote "to confirm" or "not to confirm" such sale or sales; and if a majority of the votes cast at such meeting shall be "to confirm" such sale or sales, the board or body having the management of such cemetery shall cause to be executed and delivered to the bidder or bidders good

and valid deed or deeds of conveyance for the lands so sold as aforesaid.

SEC. 65.—That the proceeds of such sale or sales shall be appropriated to the payment of the legal debts and liabilities of such cemetery association, company or corporation, and that the balance remaining after payment of such legal debts and liabilities shall be held by the board or body having the management of such cemetery as a permanent fund, and shall be safely invested by such board or body and the annual interest thereof expended by them upon said cemetery in repairs, improvements, ornamentation and other necessary expenses; provided, that no part of said interest shall be paid as fees or salary to any member of such board or body; and provided further, that in the case of any cemetery association, company or corporation, which is or may be composed in part of the holders of shares of capital stock and in part of the owners of burial lots, the proceeds of such sale or sales, after payment of legal debts and liabilities, shall be divided into two equal parts or shares, one of which parts or shares may be paid as a dividend to the holders of capital stock, and the other of which shall be held by the board or body having the management of such cemetery as a permanent fund, and shall be safely invested by such board or body and the annual interest thereof expended as aforesaid for repairs, improvements, ornamentation and other necessary expenses.

SEC. 66.—That the voting at any meeting of any cemetery association, company or corporation, called under the provisions of this act, shall, as to the rights and qualifications of voters and the manner of conducting the election, be regulated and controlled by the laws, rules and By-Laws which regulate the election of officers in any such cemetery association, company or corporation.

SEC. 67.—(Supplementary act approved April 1, 1887.)

That it shall be lawful for the Board of Directors, Trustees or Managers of any cemetery or burial grounds in this State under the management and control of such a board, to invest any surplus monies or funds of said cemetery or burial grounds accruing from the sale of lots, graves or any other sources, in first-class mortgages or State, county or city bonds bearing interest, and any and all interest accrued thereon shall be for the benefit of said cemetery or burial ground funds for maintaining and improving said cemetery or burial ground.

SEC. 68.—That all acts and parts of acts inconsistent with this act be and the same are hereby repealed.

SEC. 69.—(Supplementary act approved April 1, 1887.)

That it shall be lawful for any cemetery corporation incorporated under any special act of incorporation, whenever all of the lots into which the cemetery land is divided are disposed of, to acquire additional real estate for the purposes of such corporation, and to borrow money to pay for the same, and make and execute its bonds therefor; provided, however, that no such corporation shall borrow more than twenty-thousand dollars under the provisions of this act.

SEC. 70.—(Supplementary act approved March 12, 1890.)

Whereas, there exist in the rural districts of the State of New Jersey many private burying-grounds which from neglect have become unsightly and offensive to a wholesome public sentiment, or are owned and controlled without proper organization for the improvement, maintenance and preservation of said grounds; therefore,

That it shall be lawful for the owners of any lot or parcel of land used as a burying-ground located in any of the townships of this State, or a majority of such owners, to convey to any cemetery association organized under the laws of New Jersey their title to the unoccupied portion of said burying-ground, together with the control and management of all of said ground in conformity with the laws, regulating cemetery associations, on such terms as may be agreed upon between said parties; provided, that no assessment shall be made upon non-consenting owners for the care of graves and maintenance and improvements of the grounds therewith connected.

SEC. 71.—(Supplementary act, passed April 7, 1890.)

That in any cemetery in said State, belonging to any incorporated company or association having a Board of Managers or Directors, and whether such corporation shall have been or shall be incorporated under a special act of this State or by the general laws thereof, it shall be lawful for the owner and owners of any lot or lots therein to transfer and convey any such lot or lots to any person or persons, or to the cemetery association having charge of the cemetery in which such lot or lots are situate, notwithstanding any restriction or prohibition of the sale of lots contained in the general laws of said State concerning cemeteries, or in the charter of any cemetery company; provided,

however, that before any such transfer and conveyance shall be made, the Board of Managers or Directors of such cemetery association shall authorize such transfer and conveyance by a vote of at least three-fifths of the members of such board at a regular meeting of such board.

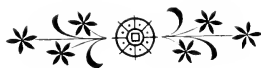
SEC. 72.—(Supplementary act approved February 14, 1893.)

That the Board of Managers, Directors or Trustees of any cemetery association, company or corporation of this State organized under any general or special law or laws, or the body having the management of any such cemetery, by whatever name such body may be known, may ordain, pass and put into execution such By-Laws as they may judge to be necessary and convenient for carrying into effect the objects of the association and for regulating such association; and may amend or repeal any By-Laws already in existence; provided, however, that no such change shall be made except by a vote of three-fourths of the total number of such managers, directors or trustees at a meeting thereof specially called to consider changes in the By-Laws.

SEC. 73.—(Supplementary act passed March 5, 1896.)

No new cemetery shall hereafter be established, nor shall any cemetery now existing be enlarged or any lands not now used for cemetery purposes be used for such purposes in cities of the first-class in this State, without the consent of common council and Board of Health of such city, to be expressed by resolution and the approval thereof by the Mayor of such city.

All acts and parts of acts inconsistent herewith be and the same are hereby repealed, and that this act shall take effect immediately.



INDEX.

CEMETERY	PAGE
Acacia	9
Ahawa Cheseds	9
Arlington	10
Baptist	11
Baron Hirsch	11
Bayside	11
Bay View	12
Beechwood	13
Bergen	14
Bethel	13
B'nai Abraham	14
B nai Jeshurun	15
B'nai Israel	15
B'nai Jacob	15
B'nai Jeshurun	16
Calvary	16
Cedar Grove	19
Cedar Lawn	20
Chevra B'nai Sholau.....	21
City Cemetery, New York.....	21
City Cemetery, Brooklyn.....	22
City Cemetery, Jersey City and Hoboken.....	22
City Cemetery, Newark.....	23
City Cemetery, Paterson.....	23
Clinton	23
Constable Hook	26

CEMETERY	PAGE
Cypress Hills	26
Dutch Reformed, Jersey City.....	28
Dutch Reformed (Paterson, N. J.).....	27
Edgewater	28
Episcopal	28
Evergreens	29
Evergreen, Elizabeth, N. J.....	30
Evergreen, New Brunswick, N. J.....	30
Fairlawn	31
Fairmount	31
Fairview	32
Flatlands	33
Flower Hill	33
Flushing	34
Fountain	35
Friendly Hand	35
Friends	35
Gravesend	36
Greenlawn	36
Greenwood	37
Greenwood Union	39
Grove Church	40
Hazelwood	40
Hebrew	40
Hillside	42
Holy Cross	41
Hoboken	41
Holy Name	42
Holy Sepulchre, East Orange, N. J.....	43
Holy Sepulchre, New Rochelle, N. Y.....	43
Holy Trinity	44
Jersey City	44

CEMETERY	PAGE
Kensico	45
Laurel Grove	48
Linden Hill	50
Lutheran	50
Macpela	51
Macpelah	51
Maimonides	52
Manor	52
Maple Grove	52
Marble	53
Methodist	55
Moravian	54
Mount Calvary	55
Mount Hope, Jamaica, L. I.....	55
Mount Hope, Westchester County, N. Y.....	56
Mount Neboh	56
Mount Olivet, Maspeth, L. I.....	57
Mount Oliver, Elizabeth, N. J.....	58
Mount Pleasant, Newark, N. J.....	60
Mount Pleasant, Westchester, N. Y.....	58
Mount St. Mary's.....	61
Morgue of New York City.....	61
Mount Zion	62
National	62
New Union Fields	63
New York	63
New York Bay.....	64
Nyack Rural	66
Oak Hill	66
Oakland	67
Ocean View	67
Oheb Schalom	69

CEMETERY	PAGE
Paterson	70
Pelham	70
Potter's Field (<i>see City Cemeteries</i>).....	21—23
Presbyterian	70
Quaker	71
Raffeiner	71
Rahway	71
Ridgefield	72
Rockland	72
Roman Catholic	74
Rosedale	74
St. Agnes	76
St. John, Brooklyn.....	77
St. John's, Orange, N. J.....	78
St. John's, Yonkers, N. Y.....	78
St. Joseph's	79
St. Mary's, Rahway, N. J.....	79
St. Mary's, Clifton, S. I.....	79
St. Mary's, Yonkers, N. Y.....	80
St. Michael's	80
St. Monica's	81
St. Nicholas	81
St. Peter's, Jersey City.....	82
St. Peter's, Staten Island	82
St. Peter's, Westchester, N. Y. C.....	83
St. Raymond's	83
Salem Fields	83
Sandy Hill	84
Schrallenberg	86
Shareth Israel	86
Silver Lake	87
Silver Mount	86

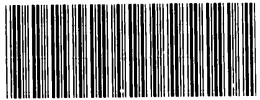
CEMETERY	PAGE
Sleepy Hollow	87
Speer's	89
Staten Island	89
Temple Bethel	90
Trinity, Brooklyn	90
Trinity, New York.....	90
Union, Brooklyn	91
Union Field	91
Union, Rye, N. Y. (<i>see Greenwood Union Cemetery</i>).....	39
United States Cremation Co.....	91
U. S. Marine	92
Washington	92
Weehawken and Palisade.....	93
White Plains Rural.....	94
Woodland, Newark, N. J.....	94
Woodland, Staten Island.....	94
Woodlawn	95
Woodrow	98

CEMETERY LAWS.

Cemetery Laws of New York.....	101
Cemetery Laws of New Jersey.....	115



LIBRARY OF CONGRESS



0 014 108 774 5

LIBRARY OF CONGRESS



0 014 108 774 5

LIBRARY OF CONGRESS



0 014 108 774 5