

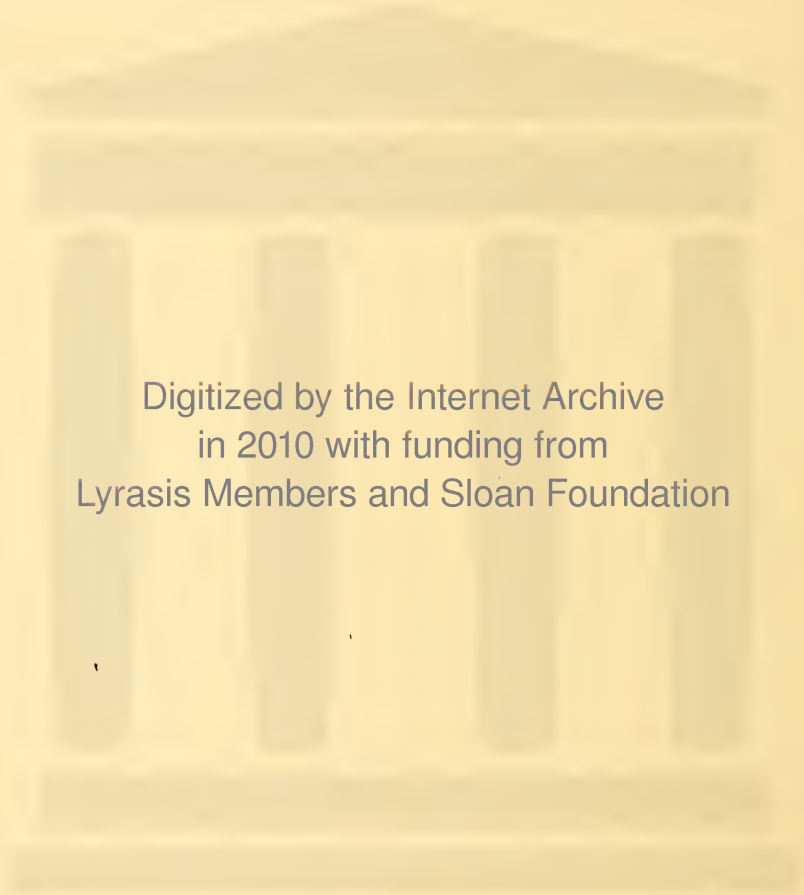


ESTABLISHED

1943



PROPERTY OF
PUBLIC RELATIONS OFFICE
UNION UNIVERSITY
JACKSON, TENNESSEE



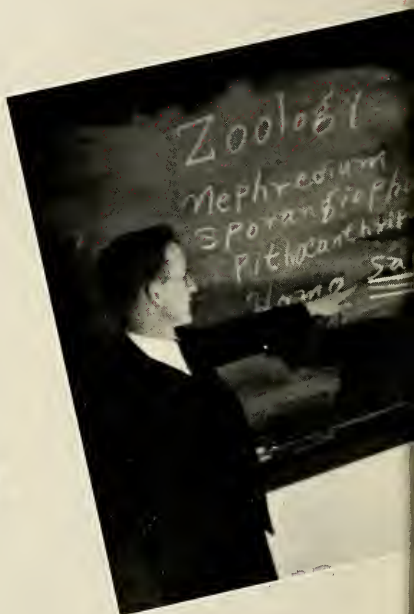
Digitized by the Internet Archive
in 2010 with funding from
Lyrasis Members and Sloan Foundation

<http://www.archive.org/details/lestweforget194300unio>

Memories
formally
UNION UNIVERSITY
linger



Calling back



departed days



Every Task Grows Lighter



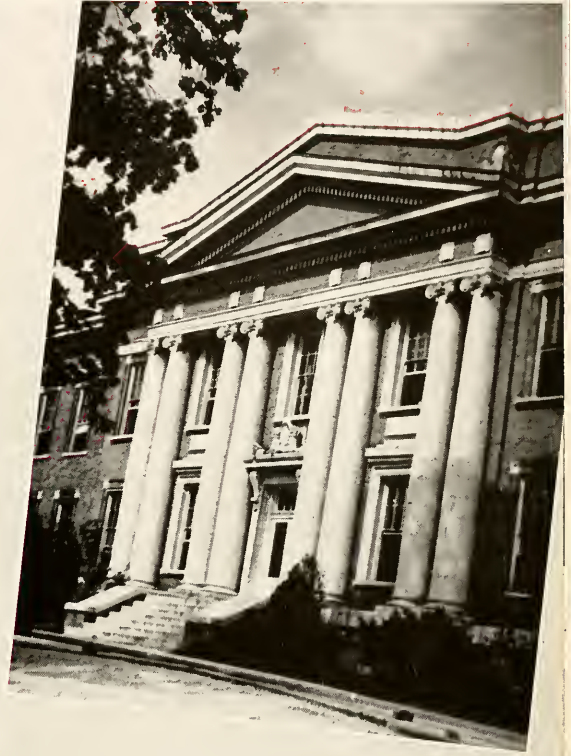
As We Sing Thy Praise



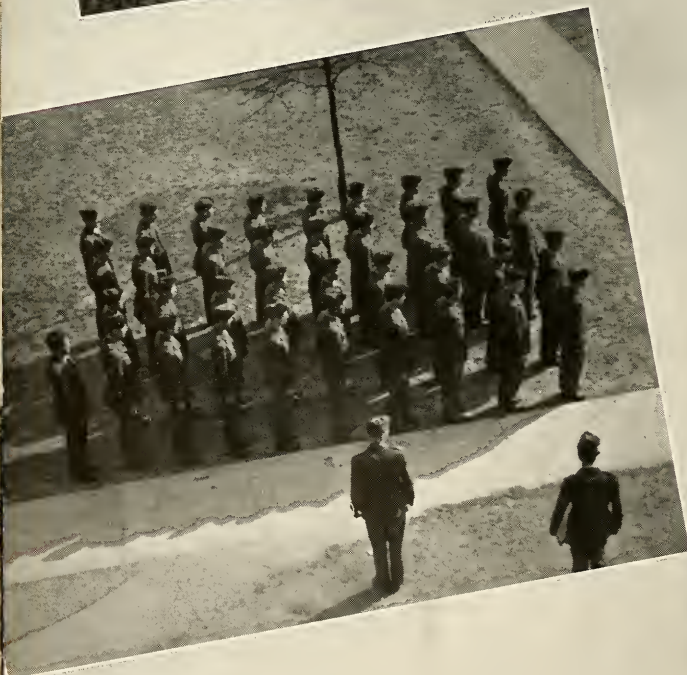
U N I O N , D E A R E S T



U N I O N

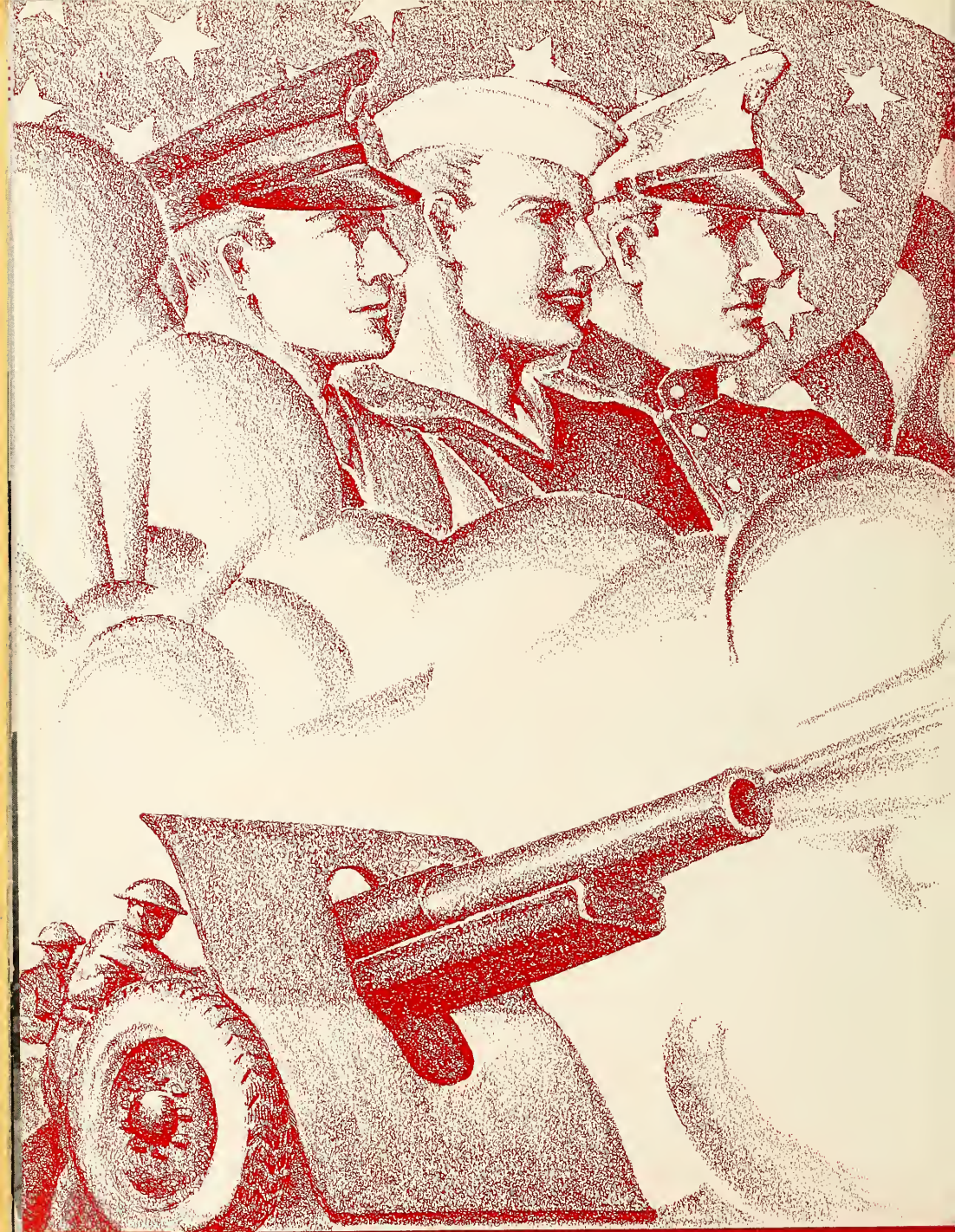


*Union
goes to*



University war





Dedication



TO YOU—WHEREVER YOU ARE, IN WHATEVER BRANCH OF SERVICE YOU ARE—TO YOU WHO SPENT FOUR YEARS IN UNION'S HALLS OF LEARNING; FOUR FLEETING YEARS OF JOYS AND SORROWS, HAPPINESS AND HEARTACHES; AND TO YOU WHO DIDN'T GET TO FINISH; YOU WHO WERE PERHAPS ONLY HALF WAY ALONG THE ROAD, BUT WHO ARE DEAR TO THE HEARTS OF YOUR MANY FRIENDS, AND TO YOU WHO WERE WITH US ONLY A SHORT TIME THIS YEAR, AS FRESHMEN; YOU WERE ONLY BEGINNING TO KNOW UNION AS SHE REALLY IS, BUT YOU WERE OURS FOR A WHILE AND WE SHALL CLAIM YOU THROUGHOUT THE YEARS—IT IS TO YOU, OUR BOYS IN SERVICE, THAT WE DEDICATE OUR YEARBOOK, TO HELP YOU REMEMBER UNION AS YOU KNEW HER, LEST WE FORGET.



DR. JOHN HURT
PRESIDENT

Dean S. S. Sargent has endeared himself to each of Union's students through his kindness, his generosity, and his never-failing patience toward each one. He is a true and loyal friend of Union and his worth and ability as dean have made for him a place which could be filled by no other.

He has shouldered the added responsibilities and duties which have come his way this year as a real man and we know that though the way is hard he will lead us on till victory is ours and Union takes up her peace-time duties again. We salute you, Dean Sargent!

■



D E A N S

Mrs. Dee E. Rice, who for many years was Dean of Women, has now taken upon herself added responsibilities as teacher and is proving her versatility in this field. She is not only head of the Latin Department but is now in charge of the Freshman English classes.

Now in charge of all the girls on Union's campus is Mrs. D. W. Luckey. Having formerly been matron of Crook Hall, she has now taken up her new duties in Lovelace Hall, leaving Crook for the soldiers on our campus to occupy. Her kindness in dealing with "her" girls has endeared her to each one.





T H E F A C U L T Y

MRS. M. M. SUMMAR Librarian

MISS SUELLA SUSONG Home Economics
 B.S., University of Tennessee, 1926; M.S., University of Tennessee, 1931.

DR. FRANK WELLS Education
 A.B., University of North Carolina, 1920; A.M., Columbia University, 1926; Ph.D., University of Iowa, 1928.

MRS. A. B. WILLIAMS, JR. Physical Education
 B.S., Alabama College, 1928; M.A., Peabody College, 1934.

MR. F. S. WISE History
 B.S.E., University of Arkansas, 1929; M.A., University of Arkansas, 1936.



MISS LOUISE SUBLETTE

better known to us as "Pris," has assumed greater responsibilities this year than ever, for, as hostess of Dorcas Hall, it is her duty to see that the soldiers on our campus are adequately fed and served.

MRS. RENA SUBLETTE

who is "Ma" to us students, is now hostess of the tea room where she efficiently feeds the regular college students who find fellowship and friendliness there, as well as food for their bodies.



A L M A M A T E R

(Tune—"Juanita")

O, Alma Mater, our affections cling to thee,
Faithful and loyal may we ever be.
May our Master's watchcare
O'er us one and all extend
'Till again in Union
Heart and voice we blend.

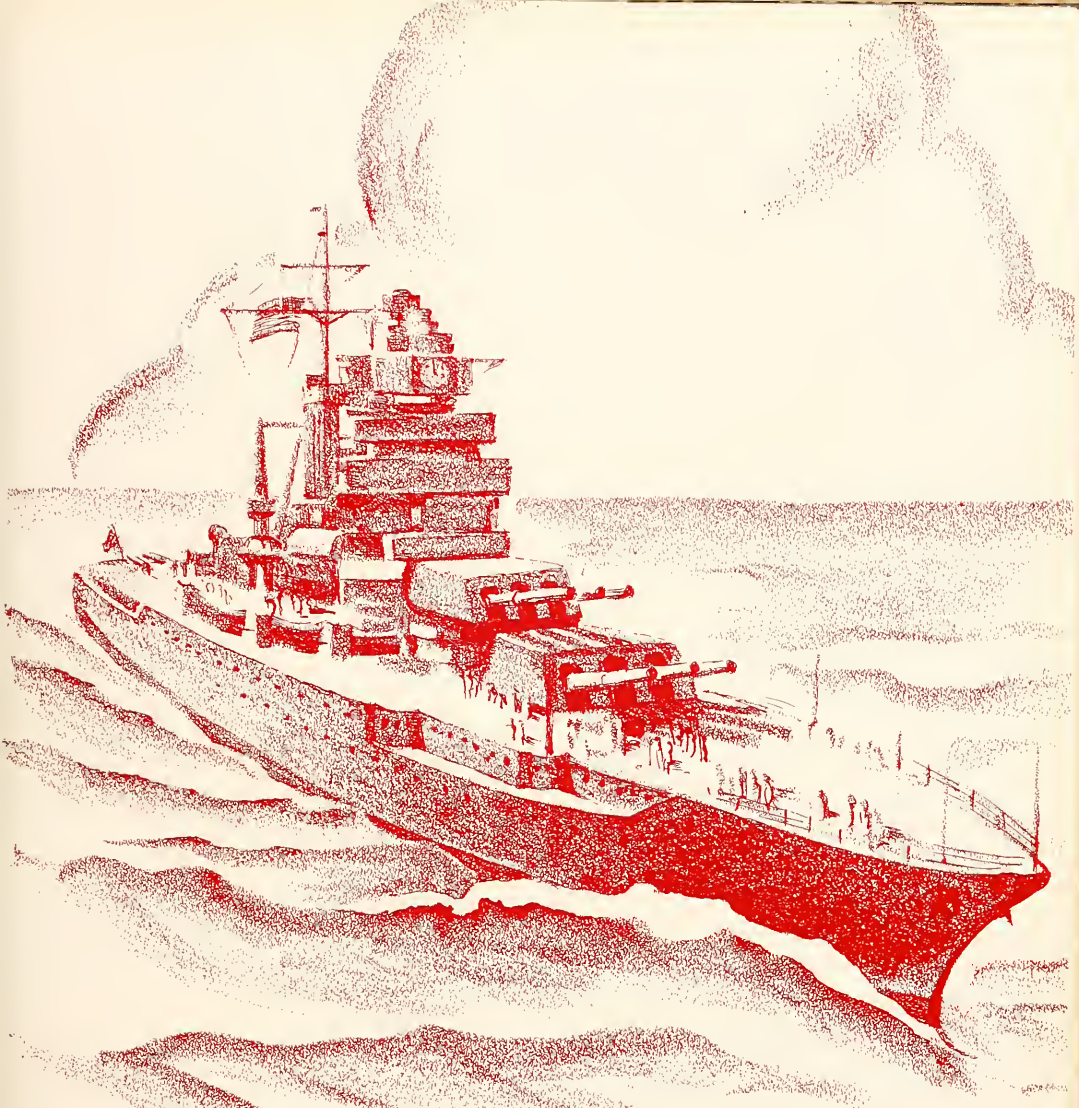
Dear Alma Mater, hear thy offspring's plighted vow!
Firmer and truer may we be than now.
Memory fondly lingers,
Calling back departed days.
Every task grows lighter
As we sing thy praise.

Loved Alma Mater, o'er us shed scholastic light,
E'en as we wander from thy halls tonight.
And though years divide us,
And in distant lands we roam,
Oft in dreams we'll gather
'Round our "Home Sweet Home."

Chorus:

Union, dearest Union,
Yes, we'll sing thy spreading fame!
Union, dearest Union,
Honored be thy name.

—Words by Frank Kimsey, Class of '21.

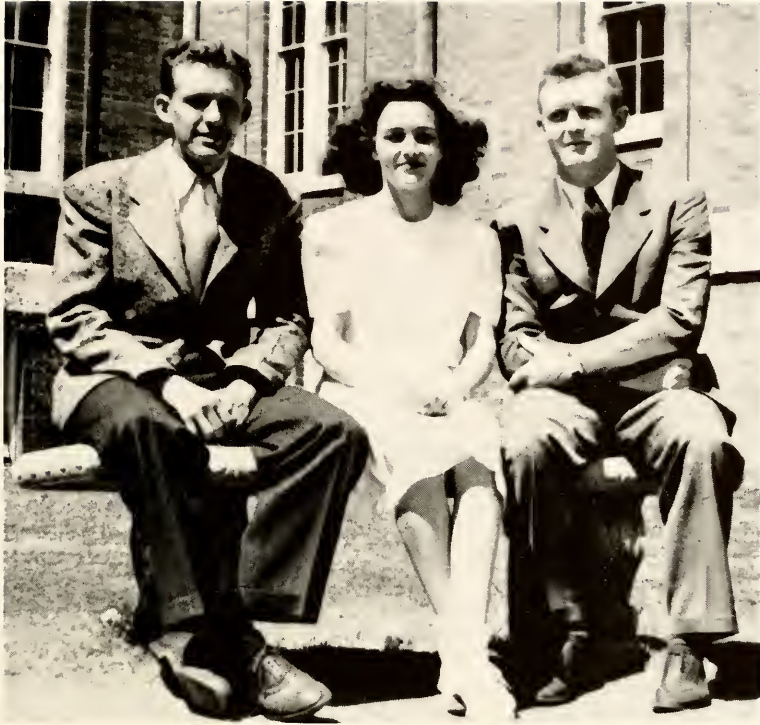


CLASSES



PRESIDENT OF STUDENT BODY

J. C. Dixon fulfilled students' expectations as president of the student body this year. He is a leader in the real sense of the word and we offer him our heartiest congratulations for a successful year!



RAYMOND JUDY President
J. C. DIXON Vice-President
BETH DeFORD Secretary

The class of 1943 chose for its officers three very capable leaders who have led their class successfully through this trying year. We offer them our heartiest congratulations.



SENIOR CLASS OFFICERS



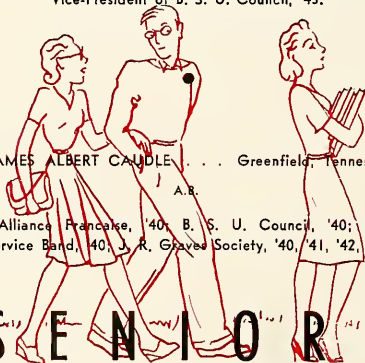
MERLE BASDEN Memphis, Tennessee
A.B.

L'Alliance Francaise, '41, '42, President, '41; "Cardinal and Cream" Staff, '42, Associate Editor, '43; Second Vice-President of B. S. U. Council, '43.

MARTHA LYNN CALDWELL Jackson, Tennessee
A.B.

Chi Omega
Fairfax Hall, '40; Ward-Belmont, '41; Hypatia, '43; Pan-American, '43.

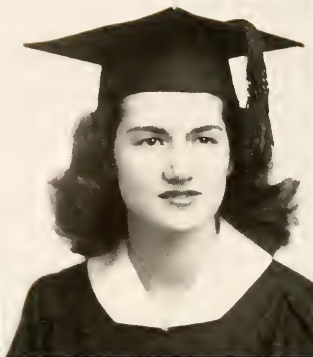
JAMES ALBERT CAUDLE Greenfield, Tennessee
A.B.
L'Alliance Francaise, '40; B. S. U. Council, '40; Life Service Band, '40; J. R. Graves Society, '40, '41, '42, '43.



JAMES COLE Paducah, Kentucky
A.B.

Alpha Tau Omega
Intramural Basketball, '40, '41; President of Freshman Class, '40; King of Homecoming, '41; Business Manager of "Lest We Forget," '42; Most Popular Boy, '42; Footlights Club, '42, '43; Business Manager of "Cardinal and Cream," '43; Kardinal Key Klub, '43.

S E N I O R S



HUGH GARRISON COLTHARP . Memphis, Tennessee
A.B.

Football, '40, '41, '42, '43; "U" Club, '41, '42, '43;
Basketball, '41, '42.

BRENDA JUSTINE DEES . . . Decaturville, Tennessee
B.S.

Zeta Tau Alpha

University of Tennessee Junior College, '40, '41; Hypatia,
'42, '43; Enonian Literary Society, '42, '43; Y. W. A.,
'42, '43; Tri-V, '42, '43, President, '43.

BETH LAUDERDALE DeFORD . . . Jackson, Tennessee
A.B.

Chi Omega

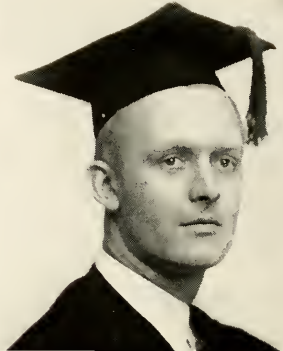
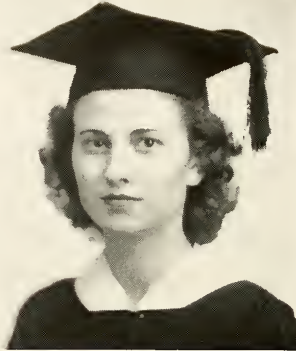
M. S. C. W., '40; Football Sponsor, '42; Secretary of
Junior Class, '42; S. A. E. Queen, '43; Hypatia, '43;
Footlights Club, '43; Secretary of Senior Class, '43.

CLARA JEANNE DeMENT . . . Jackson, Tennessee
A.B.

Chi Omega

Euphrosynean Literary Society, '40, '41, Vice-President,
'41; Reporter of Home Echo Club, '41; L'Alliance Fran-
caise, '40, '41, '43; Palladian Club, '42, '43, Treasurer
'42; Chorus, '40, '42, '43; Hypatia, '42, '43, President, '43;
Footlights Club, '42, '43, Assistant Editor of "Let's We
Forget", '42, Editor, '43; President of Cardinal Key
Klub, '43; B. S. U. Council, '43; Who's Who Among
Students in American Universities and Colleges, '43.

SENIORS



VIRGINIA DERRYBERRY Kenton, Tennessee

A.B.

Life Service Band, '41, '42, '43; Y. W. A., '41, '42, '43, President, '43; Kardinal Key Klub, '43; Palladian, '42, '43, Vice-President, '43; B. S. U. Council, '43.

JOHN CLEVELAND DIXON . . . Memphis, Tennessee

A.B.

Football, '40, '41, '42, '43, Alternate Captain, '42, '43; Basketball, '40; "U" Club, '41, '42, '43; J. R. Graves Society, '40, '41, '42, '43; Life Service Band, '41; Vice-President of Senior Class, '43; President of Student Body, '43.

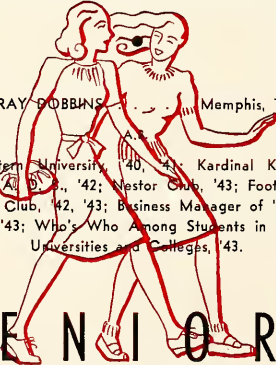
JULIUS RAY ROBBINS Memphis, Tennessee

Southwestern University, '40, '41; Kardinal Key Klub, '42, '43; A. D. S., '42; Nestor Club, '43; Football, '42, '43; "U" Club, '42, '43; Business Manager of "Lest We Forget," '43; Who's Who Among Students in American Universities and Colleges, '43.

JAMES T. FORD Paducah, Kentucky

A.B.

Alpha Tau Omega
Paducah Junior College, '40; Business Manager of "Cardinal and Cream," '41; Footlights Club, '41, '42; Debate Club, '41, '42, '43, President, '43; B. S. U. Council, '42; J. R. Graves Society, '41, '42, '43; Life Service Band, '42, '43, President, '43; Intramural Basketball, '41; Nestor Club, '42, '43, President, '43; Choral Club, '41, '42; Winner State Oratorical Tourney, '41; Winner Mid-South Oratorical Tourney, '42; Co-Winner of State, Mid-South, and Grand Eastern Debate Tourneys, '41, '42; L'Alliance Francaise, '41, '42; Latin Club, '42, '43, President, '43; Tau Kappa Alpha, President, '43.



S E N I O R S



CHARLES WOODROW HOOD . . . Avans, Georgia
A.B. and B.S.

J. R. Graves Society, '41, '42, '43; Pan-American Club, '41, '42, '43; Chorus, '41, '42, '43; Male Chorus, '41, '42, '43.

JAMES ALEXANDER JONES . . . Florence, Alabama
B.S.

Sigma Alpha Epsilon

Football, '40, '41, '42, '43, Captain, '42, '43; Little All-American, '42, '43; Member of Gray Squad in North and South Football Game, '43; Basketball, '40, '41, '42; President of "U" Club, '42, '43; Student Council, '43; Most Popular Boy, '43; Who's Who Among Students in American Universities and Colleges, '43.

JOHN CARSEY HUFFMAN . . . Mansfield, Tennessee
A.B.

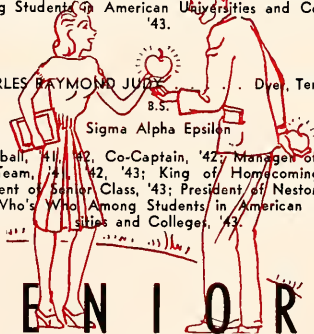
Sigma Alpha Epsilon

Memphis State College, '40, '41; B. S. U. Council, '42, '43, President, '43; B. S. U. State President, '43; Nestor Club, '42, '43, Secretary, '43; Life Service Band, '42, '43; J. R. Graves Society, '42, '43; History Club, '43; Footlights Club, '42, '43; Student Council, '43; Who's Who Among Students in American Universities and Colleges, '43.

CHARLES RAYMOND JUDD . . . Dyer, Tennessee
B.S.

Sigma Alpha Epsilon

Basketball, '41, '42, Co-Captain, '42; Manager of Football Team, '42, '43; King of Homecoming, '41; President of Senior Class, '43; President of Nestor Club, '43; Who's Who Among Students in American Universities and Colleges, '43.



SENIORS



MARY JO KEE Gibson, Tennessee
B.S.

Chi Omega

Euphrosynean, '40, '41, President, '41; Y. W. A., '40, '41, '42, '43; Palladian Club, '41, '42, '43, President, '42; Hypatia, '42, '43; Doctor's Club, '40, '41, '42, '43, Secretary, '41, '42; Secretary of Publication Governing Board, '42; "Lest We Forget" Staff, '42; Pan-Hellenic Council, '42, '43, Secretary, '43; Kardinal Key Klub, '43; Student Council, '43; Best All-Round Girl, '43; Who's Who Among Students in American Universities and Colleges.

WILMA ALENE LAY Savannah, Tennessee
B.S.

Tri V, '42, '43; L'Alliance Francaise, '42, '43.

MYNELCE McDURMON Memphis, Tennessee

Life Service Band, '40, '41, '42, Secretary, '41, Treasurer, '42; Y. W. A., '40, '41, '42, President, '42; Palladian Club, '42; Etchikan Literary Society, '40, '41, '42, President, '42; P. S. U. Council, '40, '41, '42.

MARLIN MILLS Tupelo, Mississippi
A.B.

SENIORS



CURRIE MOORE Brownsville, Tennessee

B.S.

J. R. Graves Society, '41, '42, '43, Secretary, '43; Life Service Band, '41, '42, '43, Vice-President, '42; Intramural Basketball, '42; Chorus, '42, '43; B. S. U. Council, '43.

BRAXTON SAMS Pulaski, Tennessee

A.B.

Union University, '39; Martin College, '41; Howard College, '42; Union University, '43; J. R. Graves Society, '39, '43; Life Service Band, '39; Chorus, '39, '43; Latin Club, '43.

LEONARD SANDERSON Mercer, Tennessee

A.B.

J. R. Graves Society, '40.

RUPERT JORDAN SEDBERRY, JR. Columbus, Kentucky

J. R. Graves, '40, '41, '42, '43, President, '43; Life Service Band, '40, '41, '42, '43; B. S. U. Council, '42, '43.



SENIORS



DWIGHT DEWITT SMOTHERS . . . Bartlett, Tennessee
A.B.

HOWARD SORENSEN Storden, Minnesota
A.B.

Wheaton College, '39; Southwestern Seminary, '40, '41;
J. R. Graves Society, '43; Life Service Band, '43; Chorus,
'43.



JAMES WALTON Springfield, Tennessee
B.S.

Alpha Tau Omega

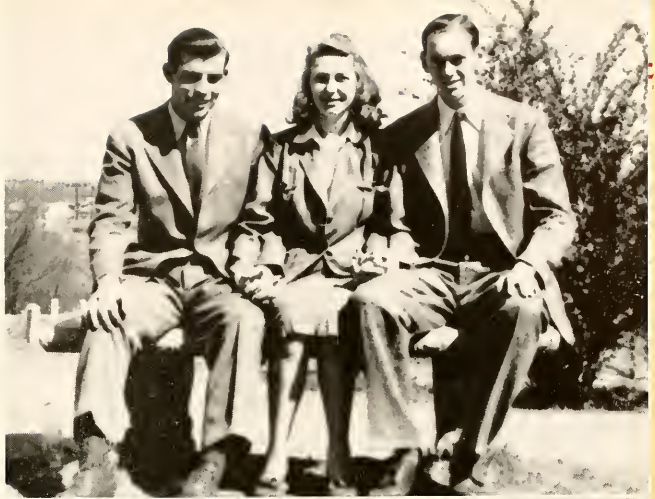
Doctor's Club, '40, '41, '42, '43, President, '41, '42;
Nester Club, '41, '42; Biology Lab Assistant, '40, '41.

SENIORS

JUNIOR CLASS

OFFICERS

WALLACE WILSON President
HUGH TATE Vice-President
BETTY COE Secretary



SOPHOMORE CLASS

OFFICERS

BOB HUNDLEY President
HOWARD KOLB Vice-President
ELIZABETH HENDERSON Secretary



FRESHMAN CLASS

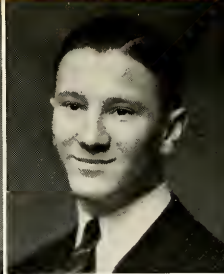
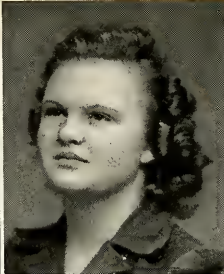
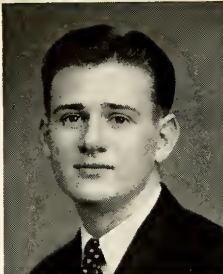
OFFICERS

VERLE MASTERS President
HERSCHELL PENNINGTON Vice-President
BETTY JUNE YOUNG Secretary

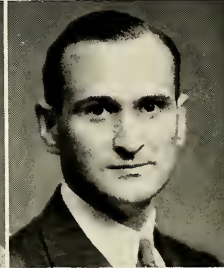
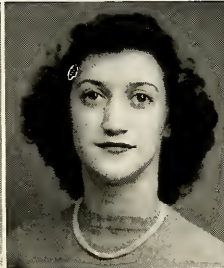
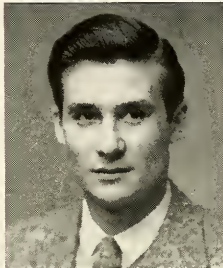


CLASS OF

E. B. BOWEN
Morris Chapel, Tennessee



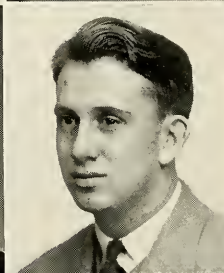
ELIZABETH BROWN
Jackson, Tennessee



VICTOR BROWN
Dickson, Tennessee

CHARLES BUTLER
Trenton, Tennessee

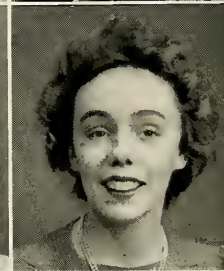
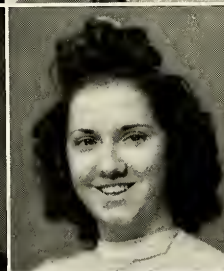
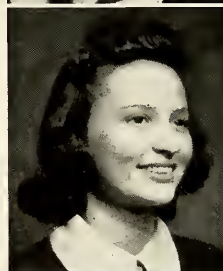
MABEL CAMP
Jackson, Tennessee



T. C. CAMPBELL
Jackson, Tennessee

BETTY COE
Centralia, Illinois

SHELBY COUNCE
Iuka, Mississippi

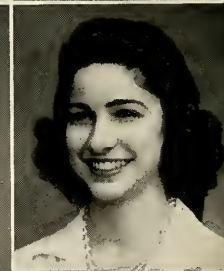
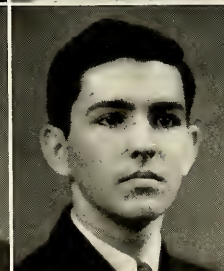


HELEN DAVIDSON
Jackson, Tennessee

MILDRED HALL
Jackson, Tennessee

ORA NELL HARRISON
Jackson, Tennessee

CAREY HESTER
Dyersburg, Tennessee

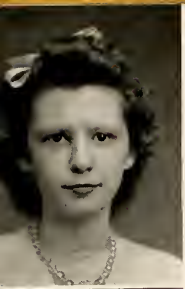


HERMAN JACOBS
Memphis, Tennessee

RAY JONES
Jackson, Tennessee

MILDRED MANLY
Jackson, Tennessee

NINETEEN FORTY-FOUR



MARY LOUISE MATTHEWS Bolivar, Tennessee



JESSIE NEWTON Hickman, Kentucky



DEWEY NORTHINGTON Sulligent, Alabama

EDNA EARLE PARKER Jackson, Tennessee

J. V. PARKER Lawrenceburg, Tennessee

FRANKLIN PASCHALL Puryear, Tennessee

LOUISE RAINES Humboldt, Tennessee

WILLIAM STOTT Brazil, Tennessee

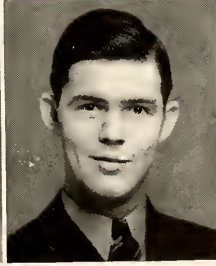
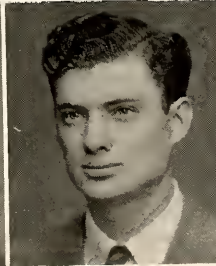
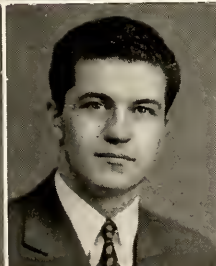
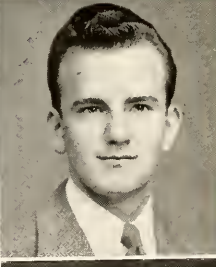
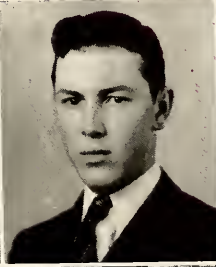
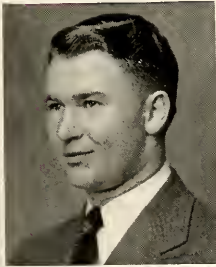
HUGH TATE Jackson, Tennessee

PAUL TURNER Covington, Tennessee

RALPH WILSON Osceola, Arkansas

FRED WOOD Memphis, Tennessee

EDITH YANCY Arlington, Kentucky

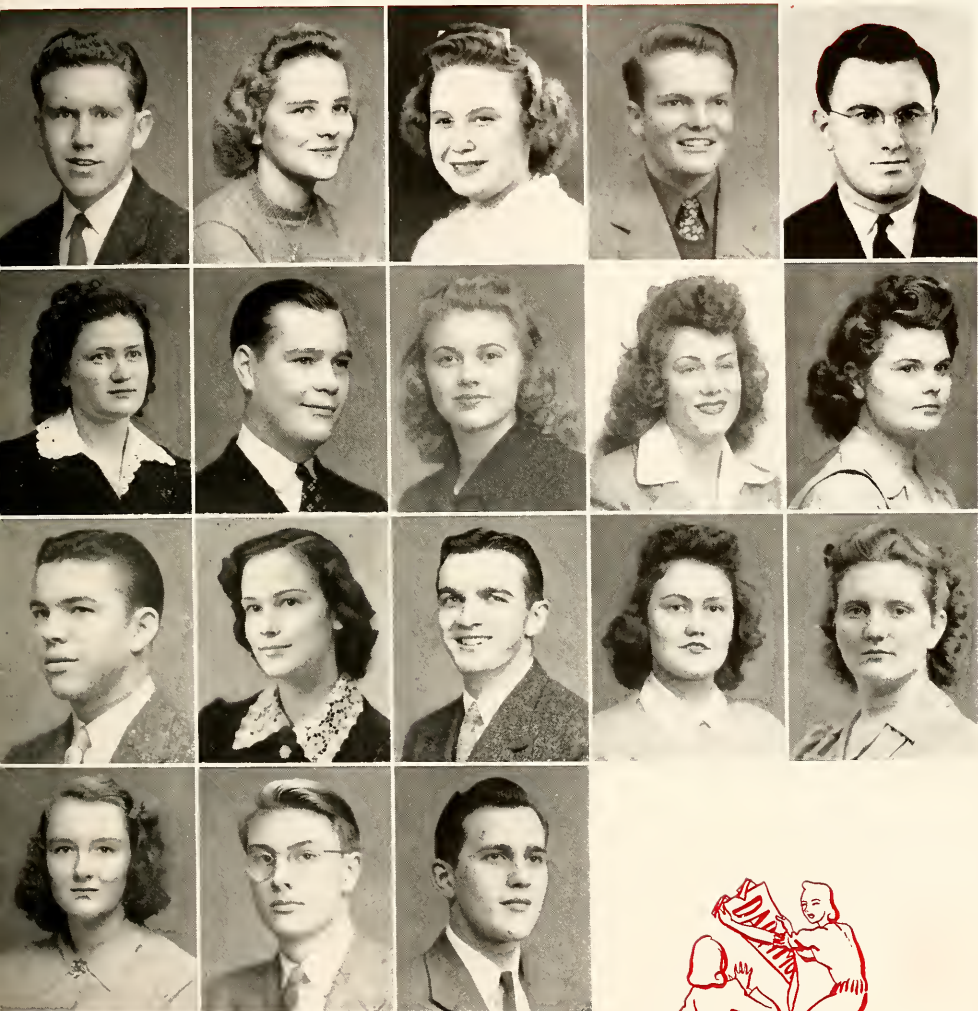


CLASS



ERNESTINE ANDERSON	Jackson, Tenn.	GORDON CROCKER	Bradford, Tenn.
CHRISTINE APPLETON	Trenton, Tenn.	MAE GIBSON	Parsons, Tenn.
CLAYTON BAKER	Holladay, Tenn.	JERRY LEE GLISSON	Dyer, Tenn.
LAVERNE BARHAM	Jackson, Tenn.	MARGARET GRAVES	Lawrenceburg, Tenn.
JOHN BECK	Jackson, Tenn.	HARRY HARP	Detroit, Mich.
EVELYN BENSON	Henderson, Tenn.	ELLENOR HARRISON	Jackson, Tenn.
ROBERT BENSON	Jackson, Tenn.	ELIZABETH HENDERSON	Greenville, Miss.
KATHRYN BIRMINGHAM	Jackson, Tenn.	RALPH HENDERSON	Jackson, Tenn.
LESTER COE	Centralla, Ill.	BOB HUNDLEY	Jackson, Tenn.
BETTY ANN COLE	Jackson, Tenn.	KENNETH JOBE	Blanche, Tenn.

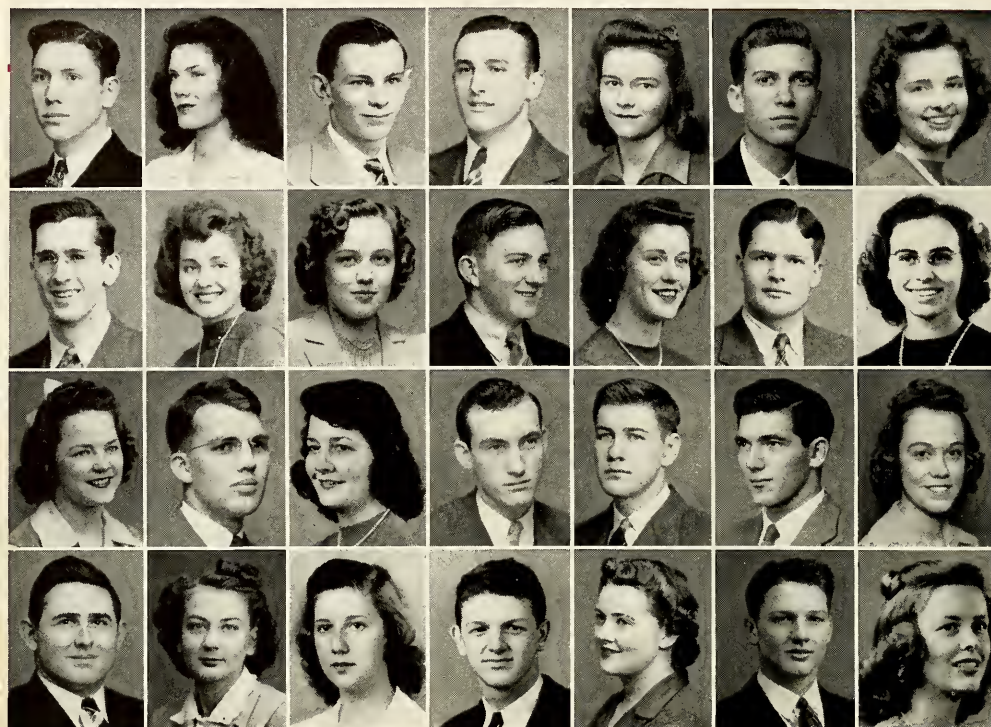
OF NINETEEN FORTY-FIVE



J. C. JOHNSON Tiptonville, Miss.
 LILLIE BELL JOHNSON Jackson, Tenn.
 GENEVA MANN Bells, Tenn.
 DICK MANSFIELD Phoenix, Ariz.
 BILLY McILWAIN Trenton, Tenn.
 MAE RUTH MICHAEL Selmer, Tenn.
 SAM PARKER Jackson, Tenn.
 ELIZABETH PARISH Jackson, Tenn.
 PAT PATTERSON Bradford, Tenn.

BILLYE PRICE Booneville, Miss.
 BOBBY SADLER Booneville, Miss.
 DORIS STALCUP Jackson, Tenn.
 CHARLES TAYLOR Alexandria, Va.
 FRANKIE WALLER Memphis, Tenn.
 MARGARET WEBBER Trenton, Tenn.
 MARY ELEANOR WELLS Jackson, Tenn.
 DAVID WHITE Hickman, Ky.
 LACY WILLIAMS Bells, Tenn.





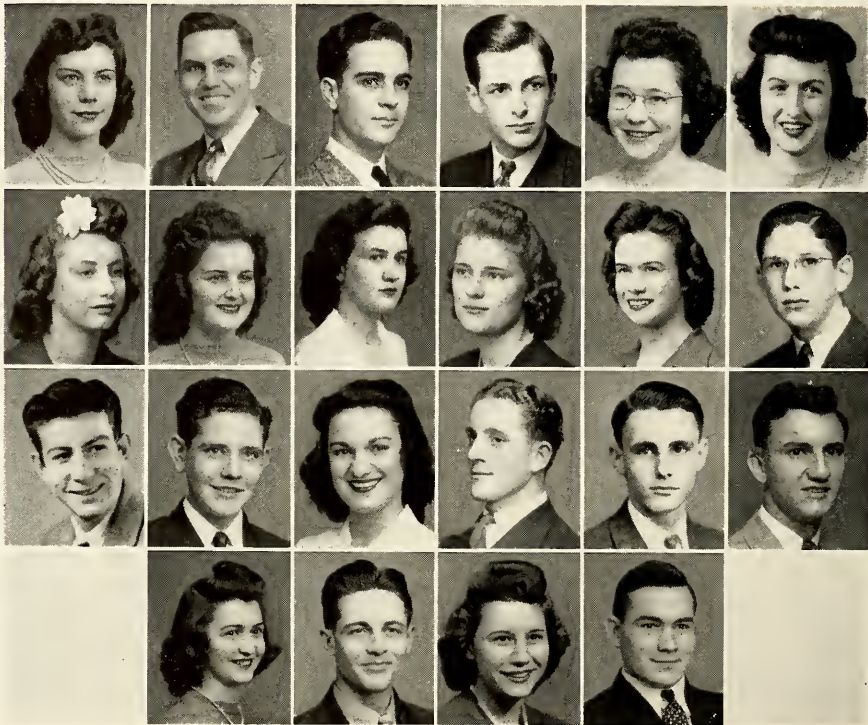
GRADY LEVOY BAKER Holladay, Tennessee
 MARTHA ELLEN BARR Dyer, Tennessee
 DAN BATES Cedar Rapids, Iowa
 JOHN WILL BATES Lobelville, Tennessee
 MARY JEAN BLYTHE Jackson, Tennessee
 WILLIAM BOLTON Jackson, Tennessee
 DOROTHY BOND Jackson, Tennessee
 RUDY BOULAND Jackson, Tennessee
 ANITA BURNETTE Jackson, Tennessee
 LORETTA CAMPBELL Jackson, Tennessee
 FRANK CARR Trenton, Tennessee
 MARTHA CHAMBERS Jackson, Tennessee
 THOMAS CRABTREE Bells, Tennessee
 VYDELLE CRAIG Jackson, Tennessee

MARY HELEN CROCKETT Corinth, Mississippi
 JOHN ED CURRY Mercer, Tennessee
 SARA DARLING Jackson, Tennessee
 FRANKLIN DAY Malesus, Tennessee
 JAMES DAY Laconia, Tennessee
 GORDON DORIAN New Orleans, Louisiana
 DOROTHY DOWLAND Trenton, Tennessee
 THOMAS DRAKE Cedar Hill, Tennessee
 BETTIE JANE EVANS Jackson, Tennessee
 ALICE EXUM Jackson, Tennessee
 MAX FORBIS Jackson, Tennessee
 LOUISE FREEMAN Jackson, Tennessee
 GREER GARROTT West Memphis, Tennessee
 ROSE GLYNN Jackson, Tennessee

C L A S S O F N I N E T E E N

JOHN HALL Jackson, Tennessee
ERIC HARP Detroit, Michigan
THOMAS HARWOOD Trenton, Tennessee
IRVIN HAYS, JR. Trenton, Tennessee
MARY KATHERINE HEARN Jackson, Tennessee
LOPEZ HESTER Tupelo, Mississippi
BOB JENNINGS Malesus, Tennessee
BEN JONES Trenton, Tennessee
JANE JONES Jackson, Tennessee
THEO LANE Sardis, Tennessee
MARY EVELYN LANKFORD Henry, Tennessee
EWELL LEE Jackson, Tennessee
JEANELLE LILES Humboldt, Tennessee
JAMES EDWARD LUNA Walnut, Mississippi
MARTHA MALLORY Jackson, Tennessee
MARY MALLORY Jackson, Tennessee
YERL MASTERS Paducah, Kentucky
ELOISE McCALLEN Jackson, Tennessee
MARY E. McLUCKIE Metropolis, Illinois
CHARLES MELTON Memphis, Tennessee
BLANCHE MILES Jackson, Tennessee
MARY EVELYN MONTGOMERY Rutherford, Tennessee
HELEN MOSS Bolivar, Tennessee
BETTY MYERS Herring, Tennessee
HILDA NASH Jackson, Tennessee
EUNICE NORTON Jackson, Tennessee
DORIS ONLY Jackson, Tennessee
EVELYN ONLY Jackson, Tennessee





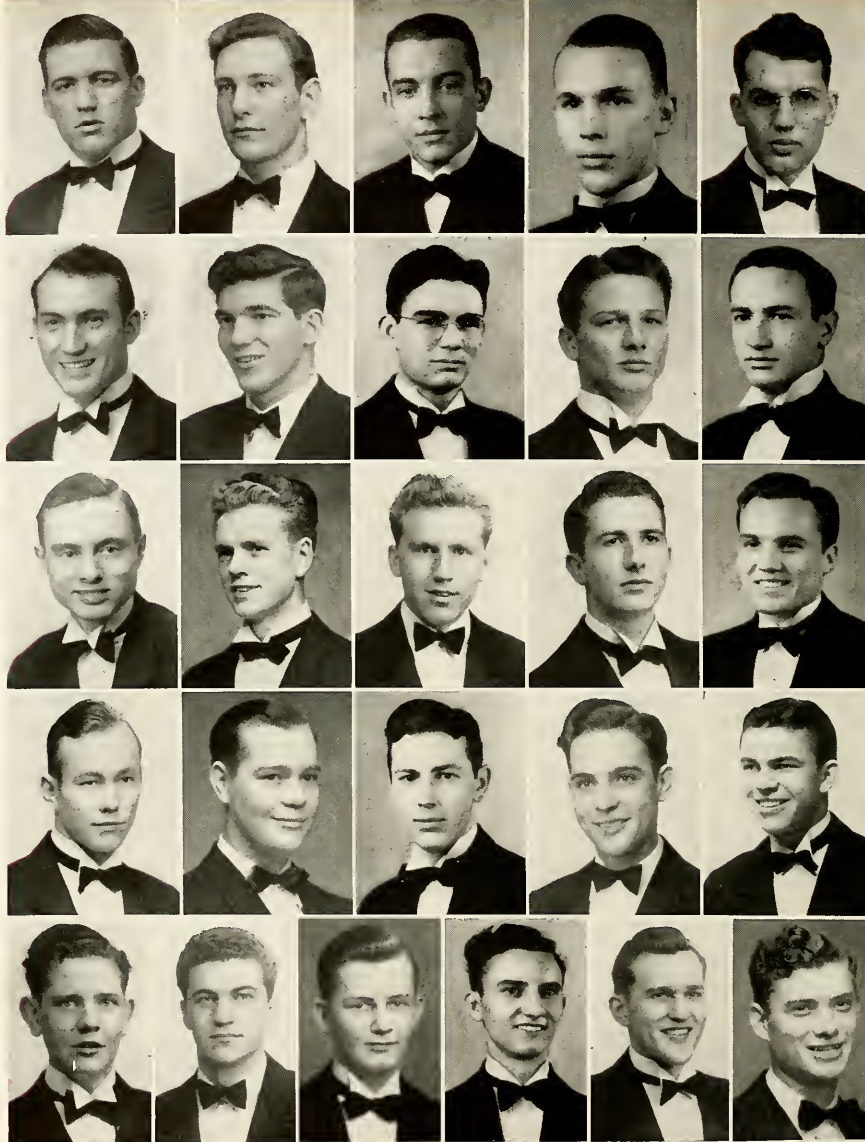
JANE ORR Murray, Kentucky
 OSCAR PATTERSON Bells, Tennessee
 HERSHEL PENNINGTON Tiptersville, Mississippi
 JIMMY PHILPOT Jackson, Tennessee
 VIRGINIA PIPER Ripley, Tennessee
 FRANCES POWELL Jackson, Tennessee
 BETTY JO ROBISON Lexington, Tennessee
 DOROTHY DELL SANDERS Humboldt, Tennessee
 JANIE SAUNDERS Jackson, Tennessee
 CHRISTINE SEDBERRY Jackson, Tennessee
 MOZELLE SMITH Waterford, Mississippi

ALVIN STOBAUGH Jackson, Tennessee
 ROBERT THOMAS Jackson, Tennessee
 EDWIN TOUNSEND Jackson, Tennessee
 SARA ANN TRAUGHBER Jackson, Tennessee
 DWAYNE TUCKER Bath Springs, Tennessee
 CURTIS VAUGHAN Memphis, Tennessee
 NOEL WEAVER Bemis, Tennessee
 MARTHA ANN WHITE Jackson, Tennessee
 HARRY WINTERS Benton, Kentucky
 BETTY JUNE YOUNG Jackson, Tennessee
 CLAUDE ZACHARY Dierks, Arkansas

CLASS OF NINETEEN FORTY-SIX



ORGANIZATIONS



First Row: Julian Brewer, Lester Coe, Jimmy Cole, James Condra, John Ed Curry. Second Row: Franklin Day, Gordon Dorian, J. T. Ford, Greer Gerrott, John Hall. Third Row: Bob Hundley, Kenneth Jobe, J. C. Johnson, Ben Jones, James McKee. Fourth Row: Dewey Northington, Sam Parker, Franklin Paschell, Herschel Pennington, Bobby Sadler. Fifth Row: Edwin Townsend, Paul Turner, Jimmy Walton, Noel Weaver, Lacy Williams, Ralph Wilson.

ALPHA TAU OMEGA



FRATRES IN FACULTATE

Prof. Russell Reid

Prof. Lynn Townsend

Prof. Bob Jelks

FRATRES IN UNIVERSITATE

Charles Boren

James Condra

J. C. Johnson

Bobby Sadler

Julian Brewer

Franklin Day

Howard Kolb

Paul Turner

Gordon Clinard

J. T. Ford

Jimmy McKee

Jimmy Walton

Lester Coe

Jimmy Frey

Franklin Paschall

Lacy Williams

Jimmy Cole

Bob Hundley

Herschel Pennington

Ralph Wilson

PLEDGES

Joe Burks

Peanut Graves

Wilson Livingston

Bill Sandlin

O. C. Cooper

John Hall

Joe Luckey

Dentis Taylor

John Curry

Tom Harwood

Dewey Northington

Edwin Townsend

Gordon Dorian

William Hutchinson

Sam Parker

Noel Weaver

Greer Garrott

Roy Johnston

A. M. Pounds, Jr.

W. A. West

Gil Gideon

Ben Jones

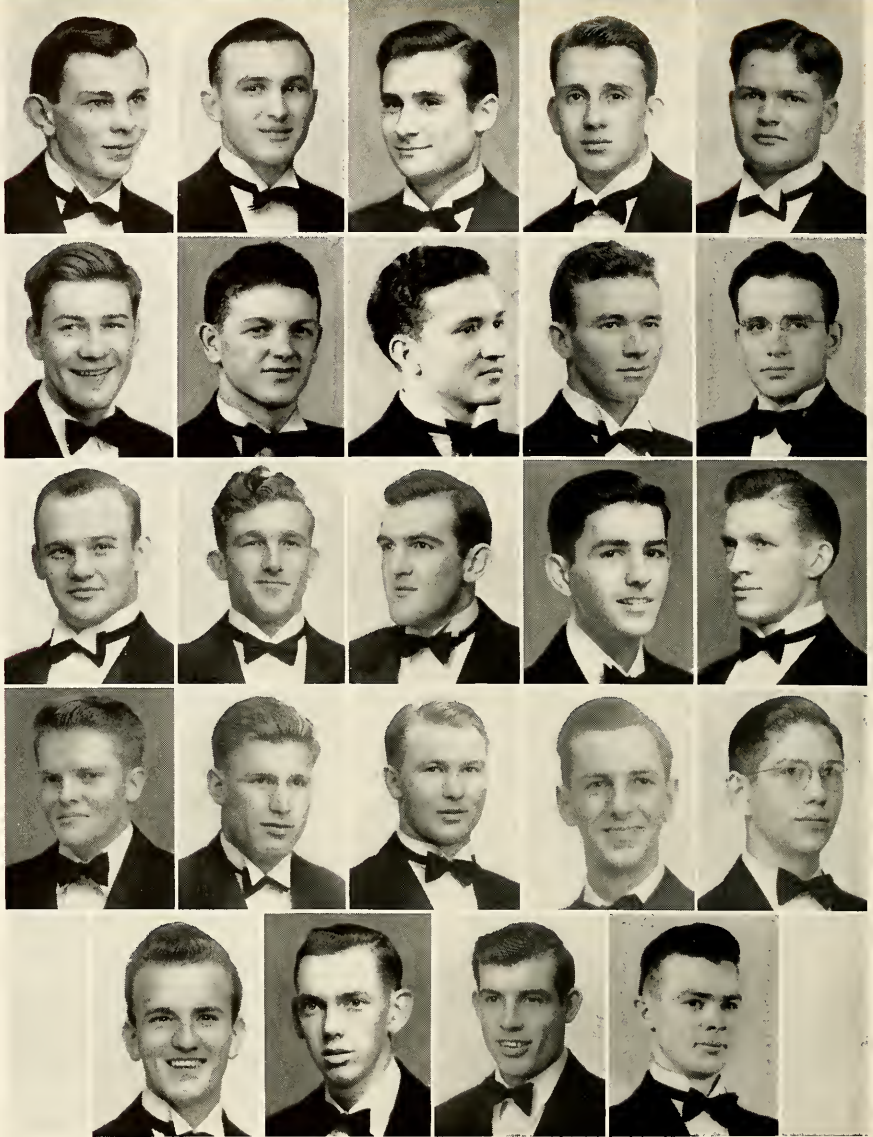
George Richardson

Claude Zachery

Alpha Tau Omega was founded at Richmond, Virginia, on September 11, 1865, by Otis Allan Glazebrook, Alfred Marshall, and Erskine Mayo Ross. The official organ is "The Palm," a quarterly established in 1880 and published regularly since that time. Frank W. Scott is the present editor. The badge of the fraternity is a cross formed of black enamel with a circular central

panel upon which is shown, in gold, a crescent near the top, three stars immediately below the crescent, the letter T in the center and at the bottom two hands clasped. The arms of the cross display the letters A and Ω vertically and the letters Ω and A horizontally. The colors are sky blue and old gold and the flower is the white tea rose. Beta Tau was established in 1893.





First Row: Dan Bates, John Will Bates, Charles Butler, Shelby Counce, Thomas Crabtree. Second Row: James Day, Max Forbis, Irvin Hays, Jr., Ralph Henderson, John Huffman. Third Row: Herman Jacobs, James "Casey" Jones, Ralph Jones, Ray Jones, Raymond Judy. Fourth Row: Dick Mansfield, Thomas Nield, J. V. Parker, Jimmy Philpot, Alvin Stobaugh. Fifth Row: William Stott, Hugh Tate, Wallace Wilson, Carl Young.

SIGMA ALPHA EPSILON



FRATER IN FACULTATE

Prof. C. H. Farnsworth

FRATRES IN UNIVERSITATE

Russell Birmingham
Charles Butler
Shelby Counce
James Day
James Diamond
Robert Elam

Max Forbis
Ralph Henderson
James Hoppers
Robert Holt
John Huffman

Ralph Jones
Ray Jones
Raymond Judy
Don Kelso
Dick Mansfield

Thomas Nield
Franklin Outlan
James Philpot
Irvin Rainey
Billy Stott
Hugh Tate

PLEDGES

Dan Arlo Bates
John Will Bates
Jack Fitzgerald

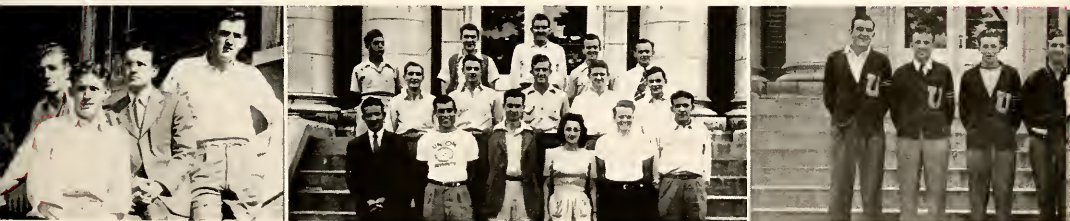
Irvin Hayes
Earl Hester
Herman Jacobs

James Jones
Billy McIlwain
J. V. Parker

Wallace Wilson
Carl Young

Sigma Alpha Epsilon was founded at the University of Alabama, March 9, 1845, by Noble Leslie Devotie, John B. Rudolph, John W. Kerr, Wade Foster, Nathan E. Cockrell, Abner Patton, Samuel Dennis, and Thomas C. Cook. The fraternity magazine, the "Record," is edited by Lauren S. Foreman and is published quarterly. The chapter publication is "The Lion's Roar."

The badge is diamond-shaped, a little less than an inch in diameter, and bears on a groundwork of black enamel the device of Minerva, with a lion crouching at her feet, above which are the letters $\Sigma \text{ A } \epsilon$ in gold. Below are the letters $\Phi \text{ A}$ on a white ground in a wreath. The colors are royal purple and old gold and the flower is the violet. Tennessee Eta Chapter was established in 1857.





First Row: Ernestine Anderson, Kathryn Birmingham, Mary Jean Blythe, Dorothy Bond, Martha Lynn Caldwell, Martha Chambers. Second Row: Sara Darling, Beth DeFord, Jeanne DeMent, Alice Exum, Louise Freeman, Rose Glynn. Third Row: Mrs. Mabel Hardin, Mary Katherine Hearn, Elizabeth Henderson, Martha Jane Jones, Mary Jo Kee, Jeanelle Liles. Fourth Row: Mildred Manly, Eloise McCallen, Helen Moss, Hilda Nash, Eunice Norton, Edna Earle Parker. Fifth Row: Pat Patterson, Elizabeth Parish, Frances Powell, Mrs. L. D. Rutledge, Janie Saunders, Mrs. M. M. Summar. Sixth Row: Sara Ann Traughber, Frankie Waller, Martha Ann White.

C H I O M E G A



SORES IN FACULTATE

Mrs. Mabel W. Hardin Mrs. A. W. Prince Mrs. M. M. Summar Mrs. L. D. Rutledge

OFFICERS

MARY JO KEE G. H.	ELIZABETH HENDERSON G. N. V.
JEANNE DeMENT G. T. B.	MILDRED MANLY G. M.
MARTHA LYNN CALDWELL G. K. A.	ELIZABETH PARISH H.
BETH DeFORD C. C.		

SORES IN UNIVERSITATE

Clarice Akin	Frances Cole	Mary Jo Kee	Betty Jo Patterson
Ernestine Anderson	Beth DeFord	Mildred Manly	Ann Stone
Kathryn Birmingham	Jeanne DeMent	Elizabeth Parish	Frankie Waller
Mary Jean Blythe	Elizabeth Henderson	Edna Earle Parker	Fanny White
Martha Lynn Caldwell			

PLEDGES

Dorothy Bond	Alice Exum	Jeanette Liles	Frances Powell
Martha Chambers	Louise Freeman	Eloise McCallen	Janie Saunders
Sara Darling	Rose Glynn	Helen Moss	Sara Anne Traugher
Dorothy Dowland	Mary Katherine Hearn	Hilda Nash	Martha Ann White
	Martha Jane Jones	Eunice Norton	

Chi Omega was organized at the University of Arkansas, April 5, 1895, by Ina May Boles, Jobelle Holcomb, Alice Carey Simonds, and Jeanne Marie Vincenheller. They were assisted in planning their organization by Dr. Charles Richardson, Kappa Sigma. Publications include the "Eleusis," is issued quarterly and edited by Christelle Ferguson; "The Owl," and the "Mysta-

gogue." The badge is a gold monogram of the letters X over the Ω, which letter displays on its arch the letters "P B Y H Σ" and an owl and skull and crossbones in black enamel. The X is set with pearls or diamonds, no other stones being allowed. The colors are cardinal and straw and the flower is the white carnation. Upsilon chapter was established in 1904-1911 and reestablished in 1924.





First Row: Laverne Barham, Martha Ellen Barr, Mable Camp, Loretta Campbell, Betty Coe, Betty Ann Cole. Second Row: Vydele Craig, Mary Helen Crockett, Helen Davidson, Brenda Dees, Mildred Hall, Carey Hester. Third Row: Lopez Hester, Mary Evelyn Lankford, Mary Mallory, Martha Mallory, Mrs. J. N. Mallory, Mary E. McLuckie. Fourth Row: Blanche Miles, Mary Montgomery, Jane Orr, Mrs. Dee E. Rice, Betty Jo Robison, Dorothy Dell Sanders. Fifth Row: Louise Scott, Mozelle Smith, Doris Stalcup, Mary Eleanor Wells, Betty June Young.

Z E T A T A U A L P H A



SARORES IN FACULTATE

Mrs. Dee E. Rice

Mrs. Howard Mansfield

Mrs. J. N. Mallory

OFFICERS

CHRISTINE CLINARD President
 BETTY COE Vice-President
 MILDRED HALL Secretary

HELEN DAVIDSON Treasurer
 BETTY ANNE COLE Guard
 MARY ELEANOR WELLS Historian

SORES IN UNIVERSITATE

Christine Clinard
 Betty Coe
 Betty Anne Cole

Brenda Dees
 Helen Davidson
 Mildred Hall

Carey Hester
 Martha Mallory
 Mary Mallory

Louise Scott
 Doris Stalcup
 Mary Eleanor Wells

PLEDGES

Martha Ellen Barr
 Loretta Campbell
 Mable Camp

Vydella Craig
 Mary E. McLuckie
 Mary Evelyn Lankford
 Mary E. McLuckie

Mary E. Montgomery
 Jane Orr
 Betty Jo Robinson
 Dorothy D. Sanders

Mozelle Smith
 Reba Steadman
 Betty June Young

Zeta Tau Alpha was founded October 15, 1898, at the Virginia State Normal School, Farmville, Virginia, by Maude Jones Horner, Alice Bland Coleman, Ethil Coleman Van Name, Ruby Leigh Orgain, Frances Yancey Smith, Della Lewis Hundley, Helen Crafford, Alice Welsh and Mary Jones Batte. The official magazine is the "Themis," and other publications include "The

Link," and "The Chain." "The Chain" is a newspaper published daily at conventions. The badge is an artistically shaped shield with a smaller black shield raised upon it. In the center is the symbolic five-pointed crowd, flanked by the initials Z T A. Below in Greek is the word ΘΕΜΙΣ. The colors are turquoise blue and steel gray and the flower is the white violet. Beta Omega Chapter was established in 1935.





First Row: Betty Coe, Mrs. Mabel Hardin, Mary Jo Kee.
 Second Row: Mildred Manly, Mrs. J. N. Mallory.

OFFICERS

CHRISTINE CLINARD	President
MARY JO KEE	Secretary
Mrs. J. N. Mallory	Betty Coe	Mildred Manly
	Mrs. Mable Hardin	



"We, the fraternity women of America, stand for preparation for service through the character building inspired in the close contact and deep friendship of fraternity life. To us, fraternity life is not the enjoyment of special privileges.

but an opportunity to prepare for wide and wise human service."

The college Pan-Hellenic was organized on the Union campus, January 30, 1936.

PAN - HELLENIC COUNCIL

S T U D E N T C O U N C I L

SENIORS

Casey Jones

Mary Jo Kee
Raymond Judy

John Huffman

JUNIORS

Dewey Northington

Ralph Jones

Charles Butler

SOPHOMORES

Bobbie Sadler

Frances Cole

FRESHMEN

Martha Ellen Barr



These members were elected each one by the members of his class as a representative on the Student Council. These ten students served for this year as a governing council of the student body.



H Y P A T I A

OFFICERS

JEANNE DeMENT	President
MILDRED MANLY	Secretary-Treasurer
BETTY COE	Reporter
MRS. MABEL HARDIN	Sponsor

MEMBERS

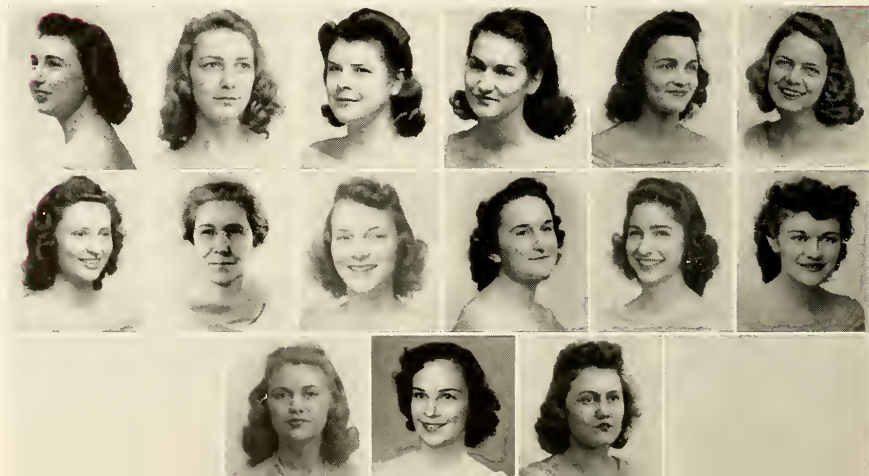
Martha Lynn Caldwell
Christine Clinard
Betty Coe
Helen Davidson
Brenda Dees
Beth DeFord

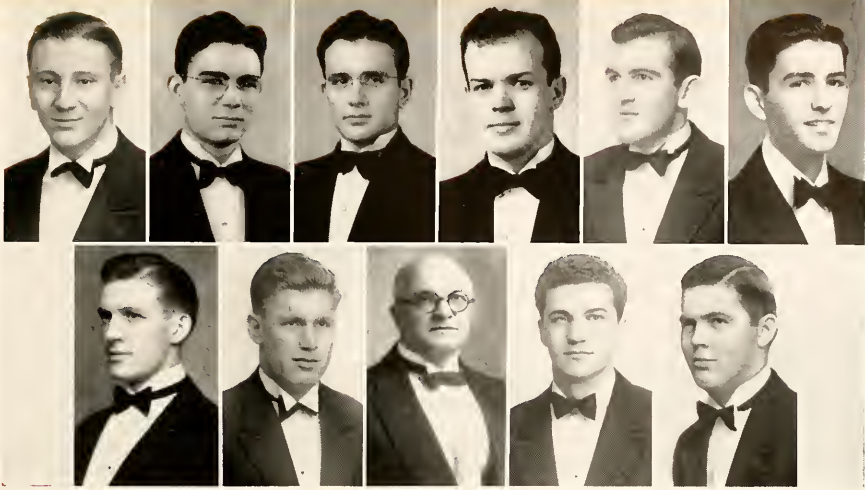
Jeanne DeMent
Mildred Hall
Mrs. Mabel Hardin
Elizabeth Henderson
Mary Jo Kee

Mildred Manly
Edna Earle Parker
Elizabeth Parrish
Doris Stallcup
Ann Stone
Frankie Waller

Hypatia is a literary organization, composed of sixteen members, which meets twice each month to enjoy a review of some outstanding literary work—a work which may range from the classics to the most modern. Under the guidance of Mrs. Hardin, the members are acquiring each year a deeper appreciation and a more thorough knowledge of the best in literature. Due to the war conditions the club has dispensed with the dinner meetings.

First Row: Martha Lynn Caldwell, Betty Coe, Helen Davidson, Brenda Dees, Beth DeFord, Jeanne DeMent.
Second Row: Mildred Hall, Mrs. Mabel Hardin, Elizabeth Henderson, Mary Jo Kee, Mildred Manly, Edna Earle Parker.
Third Row: Elizabeth Parrish, Doris Stallcup, Frankie Waller.





First Row: Victor Brown, J. T. Ford, John Huffman, James Irwin, Ralph Jones, Ray Jones. Second Row: Raymond Judy, Thomas Neild, Dr. A. W. Prince, Paul Turner, Fred Wood.

OFFICERS

RAYMOND JUDY President
 J. T. FORD Vice-President
 JOHN HUFFMAN Secretary-Treasurer
 DR. A. W. PRINCE Sponsor

MEMBERS

Victor Brown	John Huffman	Tommy Neild
Gordon Clinard	Ralph Jones	Dr. A. W. Prince
Ray Dobbins	Ray Jones	Paul Turner
J. T. Ford	Raymond Judy	Fred Wood
	Don Kelso	



The Nestor Club consists in membership of twelve Juniors and Seniors who have maintained good scholastic records, and one representative from the faculty, who has been for many years, Dr. Prince. The officers of the club are elected quarterly. The club has two dinner meetings each month, at which time papers are read and discussions held concerning current literary and scientific topics. The purpose of the club is to promote scholarship and encourage intelligent fellowship.

N E S T O R C L U B



First Row: Helen Davidson, Brenda Dees, Ora Nell Harrison, Wilma Lay. Second Row: Louise Raines, Miss Suella Susong.

MISS SUELLA SUSONG Sponsor

MEMBERS

- BRENDA DEES President
- ORA NELL HARRISON Vice-President
- HELEN DAVIDSON Secretary and Treasurer
- WILMA LAY Reporter
- LOUISE RAINES Reporter

Tri-V is a dinner club composed of junior and senior girls who have made high scholastic records in Home Economics. A paper on some specific research in the field of Home Economics is read by the hostess at each meeting. Members of Tri-V sponsor a number of interesting activities on the campus during the year. The purpose of the club is to promote interest in professional homemaking.

T R I - V C L U B

H O M E E C H O C L U B

OFFICERS

CHRISTINE APPLETON	President
ELIZABETH HENDERSON	Vice-President
MARGARET GRAVES	Secretary
NORA FRANCES FITZGERALD	Treasurer
BRENDA DEES	Tri-V Sponsor
MRS. M. M. SUMMAR	Mother
MISS SUELLA SUSONG	Sponsor
DOROTHY DELL SANDERS	Reporter

MEMBERS

Ernestine Anderson
Christine Appleton
Martha Ellen Barr
Evelyn Benson
Dorothy Bond
Frances Cole
Nora Frances Fitzgerald
Mae Gibson

Margaret Graves
Elizabeth Henderson
Lillie Belle Johnson
Mary E. McLuckie
Geneva Mann
Helen Moss
Betty Myers
Hilda Nash

Eunice Norton
Doris Only
Evelyn Only
Betty Jo Robinson
Dorothy Sanders
Doris Stallcup
Frankie Waller
Margaret Webber

Home-Echo, the Junior Home Economics Club, was organized in 1935. It has grown until it is now one of the outstanding clubs of the campus. Freshmen and Sophomore girls having an average of B in Home Economics are eligible for membership. The club meets twice each month at Crook Hall, with two girls as hostesses. Such programs as are of interest to the college girls and the home economics students are given. Members of this club assist the members of the Tri-V in many of their activities.

Motto: "Great home-makers from little Home-Echo's grow."

First Row: Ernestine Anderson, Christine Appleton, Martha Ellen Barr, Evelyn Benson, Dorothy Bond, Margaret Graves, Elizabeth Henderson. Second Row: Lillie Bell Johnson, Mary E. McLuckie, Helen Moss, Bettie Myers, Hilda Nash, Eunice Norton, Doris Only. Third Row: Evelyn Only, Frances Powell, Betty Jo Robinson, Dorothy Dell Sanders, Christine Sedberry, Miss Suella Susong, Frankie Waller, Margaret Webber.





First Row: Ernestine Anderson, Kathryn Birmingham, Mary Jean Blythe, Dorothy Bond, Martha Chambers, Alice Exum, Sara Darling. Second Row: Louise Freeman, Rose Glynn, Margaret Graves, Mary Katherine Hearn, Elizabeth Henderson, Martha Jane Jones, Jeanelle Liles, Eloise McCallen. Third Row: Helen Moss, Hilda Nash, Eunice Norton, Pat Patterson, Frances Powell, Janie Saunders, Sara Ann Traugher, Marthe Ann White.

OFFICERS

- ELIZABETH HENDERSON President
- FRANCES COLE Vice-President
- PAT PATTERSON Secretary
- MARGARET GRAVES Treasurer
- MRS. F. M. BLYTHE Sponsor

MEMBERS

- | | | |
|--------------------|----------------------|-------------------|
| Ernestine Anderson | Louise Freeman | Hilda Nash |
| Kay Birmingham | Rose Glynn | Eunice Norton |
| Mary Jean Blythe | Margaret Graves | Elizabeth Parrish |
| Dorothy Bond | Mary Katherine Hearn | Pat Patterson |
| Frances Cole | Elizabeth Henderson | Frances Powell |
| Martha Chambers | Jane Jones | Janie Saunders |
| Sara Darling | Jeanelle Liles | Sara Ann Traugher |
| Alice Exum | Eloise McCallen | Martha Ann White |

The Euphrosynean Literary Society is composed of young women who have as their motto: "Girls hand in hand for the best in science, music, art, and literature." A dinner meeting is held the first Thursday in each month. At this meeting a book review is given.

EUPHROSYNEAN LITERARY SOCIETY

ENONIAN LITERARY SOCIETY

OFFICERS

BETTY ANNE COLE	President
CAREY HESTER	Vice-President
MOZELLE SMITH	Secretary
MARY EVELYN MONTGOMERY	Treasurer
LOUISE SCOTT	Reporter
MRS. ELIZABETH LOYD	Sponsor

MEMBERS

Martha Ellen Barr	Helen Davidson	Jane Orr
Loretta Campbell	Brenda Dees	Betty Jo Robinson
Mable Camp	Mildred Hall	Dorothy Delle Sanders
Christine Clinard	Carey Hester	Louise Scott
Betty Coe	Mary Evelyn Langford	Mozelle Smith
Betty Anne Cole	Martha Mallory	Doris Stallcup
Vydele Craig	Mary Mallory	Mary Eleanor Wells
Mary Helen Crockett	Mary Elizabeth McLuckey	Betty June Young
	Mary Evelyn Montgomery	

The Enonian Literary Society is an organization for young women on Union's campus. It is composed of those who appreciate music, art and literature. The club meets twice each month with programs of the lives and works of current outstanding people.

The motto is: "Seek the noblest things in life." The colors are black and gold with the yellow tea rose as the flower.

First Row: Martha Ellen Barr, Mable Camp, Loretta Campbell, Betty Coe, Betty Ann Cole, Vydele Craig, Mary Helen Crockett. Second Row: Helen Davidson, Brenda Dees, Carey Hester, Mary Evelyn Lankford, Mrs. Elizabeth Loyd, Mary Mallory, Martha Mallory, Mary E. McLuckey. Third Row: Mary Evelyn Montgomery, Jane Orr, Betty Jo Robison, Dorothy Dell Sanders, Louise Scott, Mozelle Smith, Mary Eleanor Wells, Betty June Young.





First Row: Christine Appleton, Elizabeth Brown, Mable Camp, Betty Ann Cole, Jeanne DeMent, Virginia Derryberry, Ellenor Harrison. Second Row: Elizabeth Henderson, Mary Jo Kee, Mary Mallory, Martha Mallory, Edna Earle Parker, Mrs. L. D. Rutledge, Mary Eleanor Wells.

OFFICERS

MARY JO KEE	President
VIRGINIA DERRYBERRY	Vice-President
MARY ELEANOR WELLS	Secretary
MABLE CAMP	Treasurer
ELLENOR HARRISON	Reporter
MRS. L. D. RUTLEDGE	Sponsor

MEMBERS

Christine Appleton
Elizabeth Brown
Mable Camp
Betty Anne Cole
Frances Cole

Jeanne DeMent
Virginia Derryberry
Ellenor Harrison
Elizabeth Henderson
Mary Jo Kee

Mary Mallory
Martha Mallory
Edna Earle Parker
Mary Eleanor Wells
Mrs. L. D. Rutledge

True to their literary heritage and loyal to their ideals, "Taste, Industry, and Wisdom," the Palladians have maintained their pursuits of knowledge through the discussion of present-day news and the study of modern books presented by guest speakers.

PALLADIAN BREAKFAST CLUB

L'ALLIANCE FRANCAISE

OFFICERS

ANNE STONE	President
HELEN DAVIDSON	Secretary
CAREY HESTER	Treasurer
EDNA EARL PARKER	Reporter
C. L. PELL	Sponsor

MEMBERS

Rudy Bouland
Helen Davidson
Jeanne DeMent
Birdie Flowers
Louise Freeman

Carey Hester
Kenneth Jobe
Wilma Lay
Mary Louise Matthews
Billy McIlwain

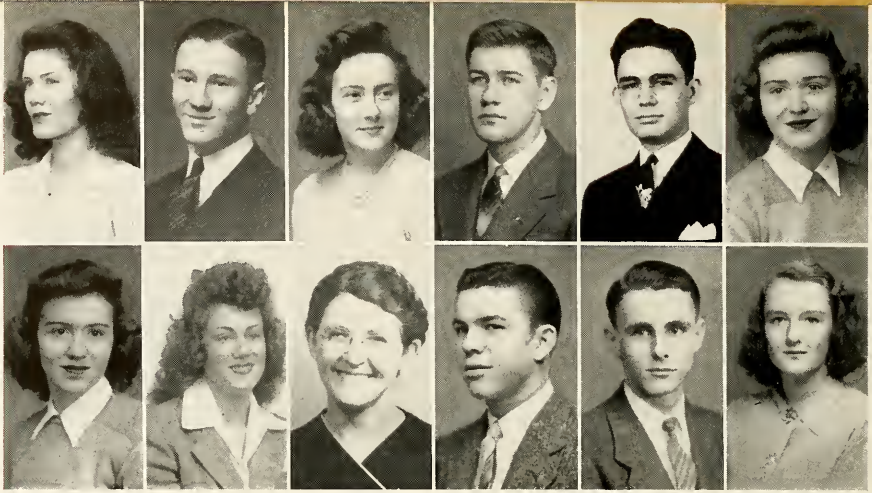
Edna Earl Parker
C. L. Pell
Louise Raines
Anne Stone
Hugh Tate



L'Alliance Francaise was organized in 1940 under the direction of Professor C. L. Pell and Dean S. S. Sargent. Its membership represents students with an appreciation and an aptitude for the French language and its culture, evidenced by scholastic proficiency and advanced standing in the department. Meetings are held informally and are planned toward the end of stimulating contact with French civilization and promoting conversational ability in the language.

First Row: Rudy Bouland, James Cole, Helen Davidson, Jeanne DeMent, Carey Hester, Wilma Lay. Second Row: Ewell Lee, Mary Louise Matthews, Edna Earle Parker, C. L. Pell, Louise Raines, Betty Jo Robison, Hugh Tate.





First Row: Martha Ellen Barr, Victor Brown, Betty Ann Cole, James Day, J. T. Ford, Mary Mallory. Second Row: Martha Mallory, Pat Patterson, Mrs. Dee E. Rice, Bobby Sadler, Curtis Vaughn, Mary Eleanor Wells.

OFFICERS

J. T. FORD	President
VICTOR BROWN	Vice-President
BETTY ANNE COLE	Secretary
BETTY JO PATTERSON	Treasurer
MARY ELEANOR WELLS	Reporter
MRS. DEE E. RICE	Sponsor

MEMBERS

Martha Ellen Barr
 Victor Brown
 Betty Anne Cole
 James Day
 J. T. Ford
 Martha Mallory

Mary Mallory
 Betty Jo Patterson
 Frances Powell
 Mrs. Dee E. Rice
 Bobby Sadler

Braxton Sams
 Leonard Sanderson
 Curtis Vaughn
 Mary Eleanor Wells
 Dr. John Jeter Hurt
 (Honorary)

The members of the Latin Club are young men and women who have made high scholastic records in Latin. The club meets the second and fourth Monday evenings of each month. The time is divided into three sections: business, programs on varied and selected subjects, and a social hour. One dinner meeting a quarter is held. The motto is: "Scientia Crescat."—"Let Knowledge Increase."

L A T I N C L U B

PAN - A M E R I C A N C L U B

OFFICERS

EDNA EARLE PARKER	President
LOUISE FREEMAN	Vice-President
ELIZABETH PARISH	Reporter
FRANKIE WALLER	Secretary-Treasurer
PROF. C. L. PELL	Sponsor

MEMBERS

John Beck
 Mary Jean Blythe
 Martha Lynn Caldwell
 Mabel Camp
 Ydelle Craig
 Sara Darling
 Virginia Derryberry

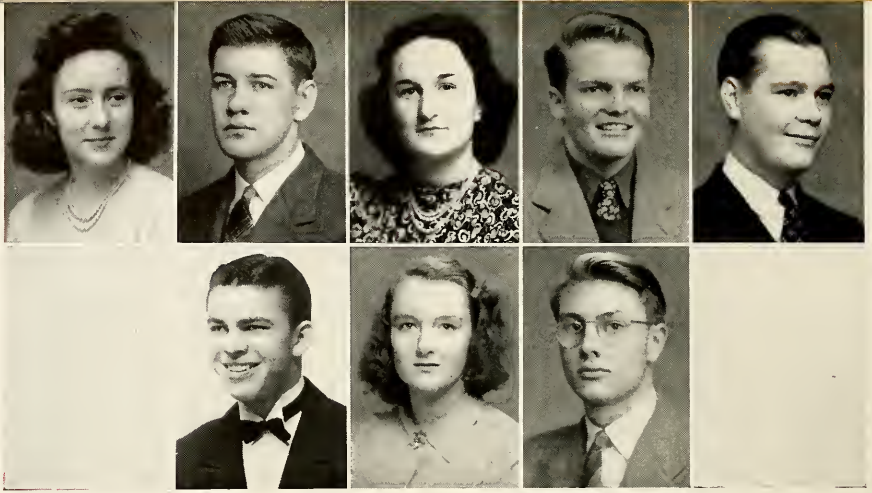
Louise Freeman
 Joseph Hines
 Jimmy Hoppers
 Herman Jacobs
 Theo Lane
 Mildred Manly
 Eloise McCallen
 Jean McClintock

Marlin Mills
 Edna Earle Parker
 Elizabeth Parish
 C. L. Pell
 Robert Sawyer
 Paul Turner
 Frankie Waller

The membership of Pan-American is made up of students high in scholastic record in Freshman, Sophomore, and advanced Spanish. A keen interest is prevalent among its members toward the culture and background of Spain and Spanish-speaking people. Interesting programs are planned for the development of the members along cultural lines. Each feels the importance and emphatic need of mastering this widely studied language.

First Row: Mary Jean Blythe, Martha Lynn Caldwell, Mable Camp, Ydelle Craig, Sara Darling, Virginia Derryberry. Second Row: Louise Freeman, Herman Jacobs, Theo Lane, Mildred Manly, Eloise McCalley, Edna Earl Parker. Third Row: Elizabeth Parish, C. L. Pell, Paul Turner, Frankie Waller.





First Row: Betty Ann Cole, James Day, Mary Jo Kee, Dick Mansfield, Sam Parker. Second Row: Bobby Sadler, Mary Eleanor Wells, David White.

OFFICERS

BOBBY SADLER	President
MARY ELEANOR WELLS	Vice-President
BETTY ANN COLE	Secretary-Treasurer
HERSCHEL PENNINGTON	Reporter

MEMBERS

Christine Appleton
 Levoy Baker
 Martha Ellen Barr
 Malcolm Cates
 Betty Coe
 Betty Ann Cole
 John Edgar Curry
 Franklin Day

James Day
 Betty Jane Evans
 James Frey
 Mary Jo Kee
 Dick Mansfield
 Wayne Mayfield
 Franklin Outlan

Sam Parker
 Herschel Pennington
 Irvin Rainey
 Bobby Sadler
 Janie Saunders
 Billy Stott
 Mary Eleanor Wells
 David White

The Doctor's Club, composed of the pre-medical students, functions for the promotion of the common interests of the group. It meets bi-monthly at which meetings outstanding local doctors give interesting and informative lectures. Once a month the club meets for an evening of informal recreation.

Professor Cavanaugh is the club's new sponsor and is continuing in the traditionally fine manner of his predecessors.

D O C T O R ' S C L U B

FOOTLIGHTS CLUB

OFFICERS

MILDRED MANLY	President
CHARLES BUTLER	Vice-President
BETTY COE	Secretary
FRANKLIN PASCHALL	Treasurer

MEMBERS

Dan Bates
 Evelyn Benson
 Kathryn Birmingham
 Mary Jean Blythe
 Anita Burnette
 Charles Butler
 Martha Chambers
 Betty Coe
 Lester Coe
 Betty Ann Cole
 Mary Helen Crockett
 Sara Darling
 Beth DeFord
 Jeanne DeMent
 Thomas Drake

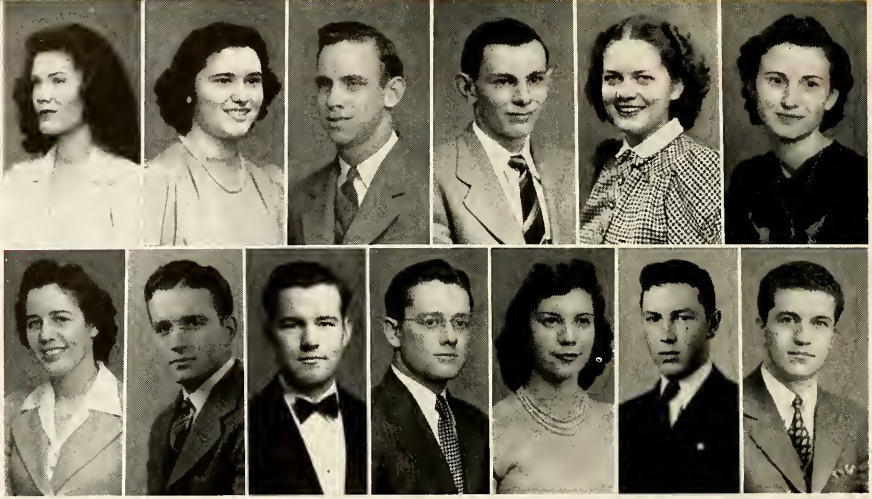
Jimmy Frye
 Rose Glynn
 Ellenor Harrison
 Irvin Hays
 Mary Katherine Hearn
 Carey Hester
 James Hoppers
 John Huffman
 Bob Hundley
 Martha Jane Jones
 Mrs. Elizabeth Loyd
 Mary Mallory
 Martha Mallory
 Mildred Manly
 Dick Mansfield

Verle Masters
 Eloise McCallen
 Helen Moss
 Edna Earle Parker
 Franklin Paschall
 Billye Price
 Irvin Rainey
 Louise Scott
 Mozelle Smith
 Sara Ann Traugber
 Paul Turner
 Mary Eleanor Wells
 Lacy Williams
 Ralph Wilson
 Martha Ann White

The Footlights Club was organized in 1939 by Mrs. Elizabeth Loyd, director of the Speech Department of Union University. The membership of the club is composed of students who have shown an interest in and a talent for work of a dramatic nature. The club sponsors one major production a year and several minor productions. The club seeks to promote a wider knowledge of and a more lasting interest in dramatic art.

First Row: Dan Bates, Kathryn Birmingham, Mary Jean Blythe, Anita Burnette, Charles Butler, Martha Chambers, Betty Coe, Lester Coe, Betty Ann Cole, Jimmy Cole. Second Row: Mary Helen Crockett, Sara Darling, Beth DeFord, Jeanne DeMent, Rose Glynn, Irvin Hays, Jr., Mary Katherine Hearn, Carey Hester, John Huffman, Bob Hundley. Third Row: Martha Jane Jones, Mrs. Elizabeth Loyd, Mary Mallory, Martha Mallory, Mildred Manly, Dick Mansfield, Eloise McCallen, Helen Moss, Edna Earle Parker, Franklin Paschall. Fourth Row: Billie Price, Louise Scott, Mozelle Smith, Charles Taylor, Sara Ann Traugber, Paul Turner, Mary Eleanor Wells, Martha Ann White, Lacy Williams, Ralph Wilson.





First Row: Martha Ellen Barr, Laverne Barham, Merle Basden, Dan Bates, Jeanne DeMent, Virginia Derryberry,
 Second Row: Ellenor Harrison, John Huffman, Charles Millican, Currie Moore, Jane Orr, Franklin Paschall,
 Paul Turner.

OFFICERS

JOHN HUFFMAN	President
MERLE BASDEN	First Vice-President
ELLENOR HARRISON	Second Vice-President
PAUL TURNER	Third Vice-President
GORDON CLINARD	Treasurer
Jane Orr	Martha Ellen Barr	Franklin Paschall
Howard Kolb		Tom Meredith
DR. W. MORRIS FORD	Pastor Advisor
MRS. FRANK BLYTHE	Faculty Advisor

MEMBERS

Clayton Baker	Jeanne DeMent	Tom Meredith
Martha Ellen Barr	Virginia Derryberry	Jane Orr
Merle Basden	Dr. W. Morris Ford	Franklin Paschall
Dan Bates	Ellenor Harrison	Chester Parker
Mrs. Frank Blythe	John Huffman	R. J. Sedberry
Gordon Clinard	Howard Kolb	Paul Turner
	Mildred Manly	

"We can do all things through Christ which strengtheneth us." (Philippians 4:13.)

The Baptist Student Union is the middle link of a three-link chain that binds the Church, the Student and the School together in the Master's work on the campus.

The Baptist Student Union Council is the executive body of all religious groups on the campus. The members of this council are elected annually by the student body and a representative from each religious organization and from each church is automatically elected to the council.

The outstanding event of the year was the State Convention which met at Nashville, Tennessee. Union was represented by John Huffman, State B. S. U. President, and also the local president. Paul Turner was elected third vice-president of the Convention for 1943.

B . S . U . C O U N C I L

Y . W . A .

OFFICERS

VIRGINIA DERRYBERRY	President
LOUISE FREEMAN	Vice-President
MAE GIBSON	Secretary
ELIZABETH HENDERSON	Treasurer
JANE ORR	Chorister



The Young Woman's Auxiliary has as its purpose the enlistment of the young women on the campus in active Christian service both at home and abroad. This is done by giving time, money, and talents, and also through prayer.

The watchword is: "They that are wise shall shine as the brightness of the firmament: and they that turn many to righteousness as the stars forever." (Daniel 12:3.)





OFFICERS

First Quarter

R. J. SEDBERRY	President	CLAYTON BAKER	Chorister
CURRY MOORE	Recording Secretary	BRAXTON SAMS	Pianist
CHARLES MILTON	Treasurer	DR. MATTHEWS	Critic
	JAMES CAUDLE	Marshal	

Second Quarter

R. J. SEDBERRY	President	CHARLES MILTON	Treasurer
FRANKLIN PASCHALL	Vice-President	J. T. FORD	Chorister
DAN BATES	Recording Secretary	BRAXTON SAMS	Pianist
	DR. MATTHEWS	Critic	

Third Quarter

R. J. SEDBERRY	President	CHARLES MILTON	Treasurer
D. D. SMOTHERS	Vice-President	CLAYTON BAKER	Chorister
LEONARD SANDERSON	Recording Secretary	BRAXTON SAMS	Pianist
FRED WOOD	Corresponding Secretary	BOB BENSON	Marshal
	DR. R. E. GUY	Critic	

MEMBERS

Clayton Baker
Dan Bates
Bob Benson
E. B. Bowen
Rudv Bowland
Victor Brown
Gordan Clinard
Gordan Crocker

Charles Dinks
Ray Dobbins
Gordan Dorian
Thomas Drake
J. T. Ford
Jerry Glisson
Dr. R. E. Guy
Harry Harp
John Huffman

Herman Jacobs
Verl Masters
Dr. L. B. Matthews
Tom Meredith
Curry Moore
Jesse Newton
Ernest Olds
Chester Parker
Braxton Sams

Leonard Sanderson
R. J. Sedberry
D. D. Smothers
Howard Sorenson
Paul Turner
Curtis Vaughn
Harry Winters
Fred Wood

The J. R. Graves Society of Religious Inquiry was organized in honor of Dr. J. R. Graves in 1877. The purpose of the society is to bring ministerial students face to face with the problems of the ministry and to give them practice and training in their life's work. The motto of

the society is "Search the Scriptures." Many members of the ministerial group serve as pastors of rural, village, and town churches in West Tennessee and adjoining states. These young preachers are making a mighty contribution to the progress of Baptists and the cause of Christ in the vicinity of the school.

J. R. GRAVES SOCIETY

L I F E S E R V I C E B A N D

OFFICERS

JERRY GLISSON	President
J. T. FORD	Vice-President
DORIS ONLY	Secretary
THOMAS DRAKE	Treasurer
HARRY HARP	Personal Service Chairman
CLAYTON BAKER	Chorister
VIRGINIA PIPER	Pianist

MEMBERS

Clayton Baker	Gordon Dorian	Tom Meredith
Levoy Baker	Thomas Drake	Mary McLuckie
Dan Bates	Nora Frances Fitzgerald	Mae Ruth Michael
Martha Ellen Barr	Bertie Flowers	Currie Moore
Rudy Bouland	J. T. Ford	Doris Only
E. B. Bouland	Jerry Glisson	Chester Parker
Victor Brown	Harry Harp	Virginia Piper
Loretta Campbell	John Huffman	Howard Sorenson
Vydele Craig	Herman Jacobs	Paul Turner
Gordon Crocker	Howard Kolb	Curtis Vaughan
Mary Helen Crockett	Theo Lane	H. A. West
Virginia Derryberry	Mary Evelyn Lankford	Fred Wood
Charles Dinkins	Verl Masters	Edith Yancy
Ray Dobbins	Charles Melton	Betty June Young

This organization is the only one of its kind on Union's campus. It is a religious organization for girls and boys who want their lives to be of maximum Christian service. Meetings are held weekly in the J. R. Graves room.



RUTLEDGE HISTORY CLUB

OFFICERS

FRANKLIN PASCHALL President
 VICTOR BROWN Vice-President
 ELIZABETH HENDERSON Secretary-Treasurer

MEMBERS

Bob Benson	Jeanette Liles	Mrs. Rutledge
Victor Brown	Mildred Manly	Mozelle Smith
Elizabeth Henderson	Franklin Paschall	Paul Turner
John Huffman	Elizabeth Parrish	Dr. Wise

The Rutledge History Club is a dinner club composed of members who are majoring in history or who show definite interest in the social sciences. Due to the war conditions, the club is continuing with only half as many meetings as usual. All reviews and programs of the club are in accord with the latest events of the world news.

First Row: Victor Brown, Elizabeth Henderson, John Huffman, Mildred Manly, Elizabeth Parrish. Second Row: Franklin Paschall, Mrs. L. D. Rutledge, Mozelle Smith, Paul Turner.





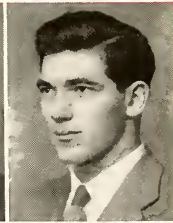
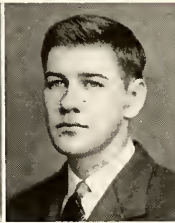
CONSERVATORY OF MUSIC

The music department at Union is under the direction of two very capable instructors—Mrs. A. Warren Prince and Mr. Cecil Bolton.

Mrs. Prince, director of the conservatory, is an artist of high rank. She is a concert pianist and teacher of widely recognized ability. She has studied extensively both in America and Europe. She also is an organist of note and has been organist of the First Baptist Church since her residence in Jackson. Mrs. Prince is a member of the National Federation of Music Clubs, the MacDowell Music Club and is Counselor of the Seventh District of Tennessee Federated Music Clubs. She also is a member of the Chi Omega fraternity and the Daughters of the American Revolution.

Mr. Bolton is both organist and choirmaster of Cavalry Baptist Church, and is pianist for all the major civic clubs of Jackson. He is a member of the American Guild of Organists, the MacDowell Music Club, and also Pi Kappa Alpha national fraternity. He has won all the contests offered by the Federation of Music Clubs. Each year he gives concerts throughout the Southern and Western states. Included in this year's tour were Mississippi, Tennessee, Kentucky, Illinois, and Oklahoma, where Mr. Bolton played in concerts for various music clubs.

First Row: Mary Jean Blythe, William Bolton, Mary Helen Crockett, James Day, Gordon Dorian. Second Row: Louise Freeman, Eloise McCallen, L. B. Matthews, Jr., Herman Jacobs, Katherine Jeffries. Third Row: Jane Orr, Betty Jean Pomeroy, Edith Yancy.





Again this year Union's male quartet has been much in demand. It has entertained us in chapel programs and has also been a source of pleasure

to various clubs and organizations. Due to war-time conditions it has not traveled this year as it has done previously.

MEMBERS

Roy Johnston

Woodrow Hood

Charles Taylor

Herman Jacobs

U N I O N ' S Q U A R T E T S

Having lost so many men to the armed forces this year the male chorus has been dismissed for the duration. Taking its place toward the

latter part of the year was the mixed quartet whose special numbers have been enjoyed greatly by the students of Union, and by all who have heard them.

MEMBERS

Herman Jacobs

Betty June Young

Martha Ellen Barr

Paul Turner





M I X E D C H O R U S

Forming the basis of a group in Union's Music Department is the mixed chorus out of which Professor Frank Charton takes his quartets and other smaller singing combinations.

Entertainments in chapel, a Christmas Cantata at Calvary Church, and a patriotic pageant, "The Song of America," have been only a portion of the work accomplished by Professor Charton with these singers.

MEMBERS

Sopranos

Mae Ruth Michael
Rose Glynn
Edith Yancy
Eunice Norton

Doris Only
Evelyn Only
Mildred Manly

Helen Davidson
Betty Ann Cole
Anita Burnette

Frances Powell
Martha Ellen Barr
Virginia Piper
Dorothy Dowland

Altos

Jeanne DeMent
Betty June Young

Betty Jean Pomeroy

Jane Orr

Hilda Nash
Loretta Campbell

Tenors

Charles Taylor
Charlie Boren

Herman Jacobs
Howard Sorenson

Ernest Olds
James Caudle

Currie Moore

Basses

Paul Turner
Roy Johnson
Woodrow Hood

David White
Clayton Baker

Franklin Day
Gordon Dorian

Alvin Stobaugh
Charles Melton

Accompanist
Cecil Bolton



DEPARTMENT OF SPEECH AND DRAMA

The Department of Speech and Drama, under the direction of Mrs. Elizabeth Loyd, has achieved outstanding recognition on the campus in drama, public speaking and interpretation.

Footlights Club was organized as the dramatic vehicle of the department in 1939. There were sixteen charter members. The present membership totals forty students, who have shown an interest in and talent for drama.

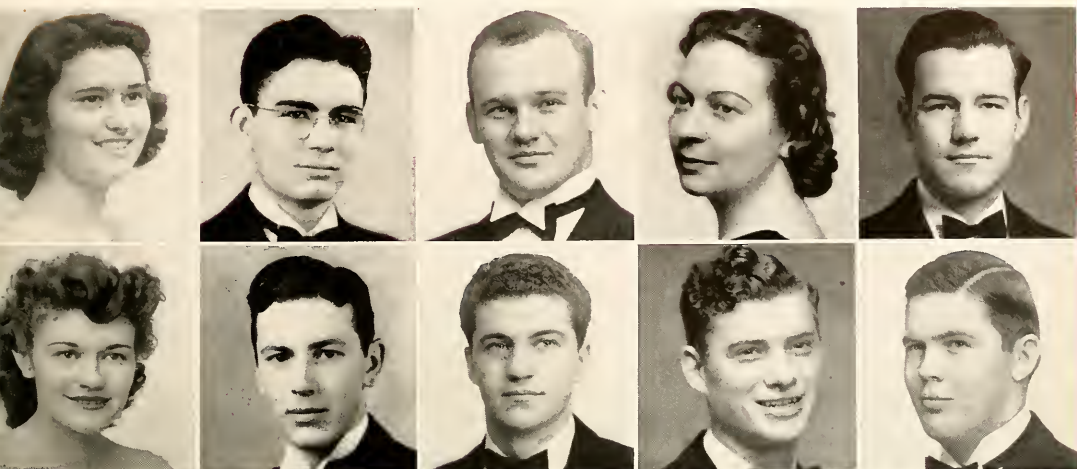
The club sponsors one major production each

year and one night devoted to one-act plays that is called "Variety Night." At this year's "Variety Night" three one-act plays were presented, namely: "Paul Faces the Tire Shortage" by Chris Sergel, "A Gown for the Bride" by Anne Martens, "The Humming Bird Hiccups" by Albert Carriere.

"The Girls Take Over," a top notch comedy of life in Washington, D. C. today, by Peggy Fernway, was the major achievement of the club.



TAU KAPPA ALPHA



First Row: Laverne Barham, J. T. Ford, Herman Jacobs, Mrs. Elizabeth Loyd, Charles Millican. Second Row: Edna Earle Parker, Franklin Paschall, Paul Turner, Ralph Wilson, Fred Wood.

Founded at Indianapolis, Indiana, on May 13, 1888. Colors: Light and Dark Purple. Official Publication: "The Speaker."

OFFICERS

J. T. FORD	President
FRANKLIN PASCHALL	Vice-President
LAVERNE BARHAM	Secretary-Treasurer
FRED WOOD	Reporter

FRATRES IN FACULTATE

C. H. Farnsworth	Lynn Townsend	Mrs. Elizabeth Loyd	Charles Millican
------------------	---------------	---------------------	------------------

FRATRES IN UNIVERSITATE

Laverne Barham	Herman Jacobs	Edna Earle Parker	Paul Turner
Edward Brandon	Verl Masters	Franklin Paschall	Ralph Wilson
Gordon Clinard	Tom Meredith	Hughie Ragan	Fred Wood
J. T. Ford			

Tau Kappa Alpha is the only national forensic fraternity which belongs to the National Council of Honor Societies. To be eligible for membership one must possess and display unusual forensic ability and have a high scholastic average.

The aim of this society is not social, but intellectual—purposing to discover and develop

the dramatic talent on the campus. Such activities as the Intramural Debate and Oratorical Tournament and the Mid-South High School Debate Tourney, which are always sponsored by T K A were canceled this year in cooperation with national regulations.



The editor of our 1943 "Lest We Forget," Jeanne DeMent, has done a grand job in putting out this "wartime" annual. In spite of priorities, rationing, and other war restrictions, Jeanne has given us a printed volume of memories of this epoch-making year. She has been capably assisted by Ray Dobbins as business manager and the other members of her staff.

STAFF

- | | | | |
|-----------------------------|---------------------|------------------------------|---------------|
| MILDRED MANLY | Assistant Editor | MARY ELEANOR WELLS | Class Editor |
| EDNA EARLE PARKER | Organization Editor | ELOISE McCALLEN | Class Editor |
| BETH DeFORD | Class Editor | WALLACE WILSON | Sports Editor |
| HERMAN JACOBS | Snapshot Editor | | |



' ' LEST WE FORGET ' ' STAFF



CARDINAL AND CREAM

The Cardinal and Cream this school year met its publication dates to perfection until January. It came out once a month for three months and with the remaining days of school it came out with considerable irregularity.

The first few issues experienced a change in make-up. It was decided later that the old style was the best and again the Cardinal and Cream was back in the groove it has been in for many years.

A screwball edition was edited again this year. It was perhaps the most discussed screwball edition Union has ever had, nevertheless it was the best.

The staff was headed by Wallace Wilson, editor; Merle Basden, associate editor. It included Bob Sullivan and Shelby Counce, sports editors; Mildred Manley, society editor; and Carey Hester, crack feature editor.

The staff varied from issue to issue but at one time or another the following contributed to the Cardinal and Cream: Anita Burnette, J. T. Ford, James Day, Betty Jo Robinson, Don Kelso, Earl Hester, Herman Jacobs, Ralph Wilson, Bob Sawyer, Betty Ann Cole, Jim Irwin, Ellenor Harrison, Dorothy Sanders, Bruce Wills, and Christine Clinard.



K A R D I N A L K E Y C L U B



First Row: Charlie Butler, Betty Coe, Betty Ann Cole, James Cole, Jeanne DeMent, Virginia Derryberry, John Haffmon, Herman Jacobs. Second Row: Mary Jo Kee, Mildred Manly, Dick Mansfield, Franklin Paschall, Betty Jo Patterson, Paul Turner, Mary Eleanor Wells, Fred Wood.

OFFICERS

JEANNE DeMENT	President
CHARLES BUTLER	Vice-President
BETTY COE	Secretary-Treasurer

MEMBERS

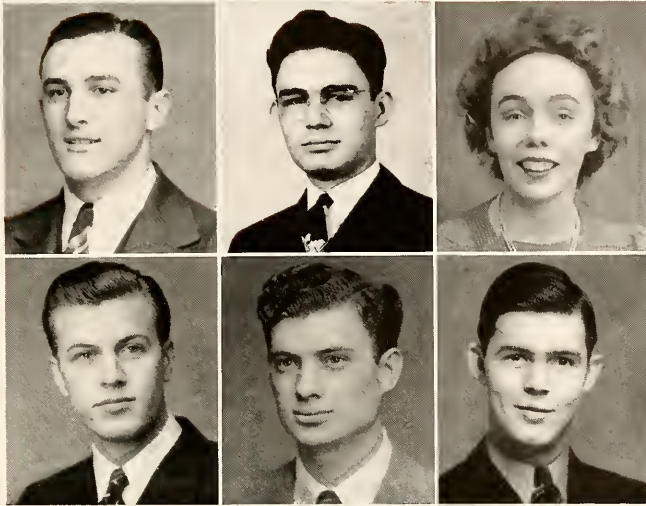
Mrs. Blythe	Christine Clinard	Mildred Manly
Charles Butler	Gordon Clinard	Dick Mansfield
Betty Coe	Jeanne DeMent	Franklin Paschall
Betty Anne Cole	Virginia Derryberry	Betty Jo Patterson
Frances Cole	John Huffman	Paul Turner
James Cole	Herman Jacobs	Mary E. Wells
	Mary Jo Kee	

The Kardinal Key Klub, a booster club, was organized to sponsor any movement for the betterment of our school spirit, clean sportsmanship, and love for our Alma Mater. It is one of the most outstanding organizations on the campus.

The membership consists of sixteen students

elected because of their outstanding interest in forwarding any project sponsored by the school, athletic or otherwise, one faculty adviser and the cheerleaders, who are elected by the student body.

The club has had much success this year in creating an unusually fine school spirit.



First Row: John Will Bates, J. T. Ford, Carey Hester. Second Row: Verl Masters, Ralph Wilson, Fred Wood.

OFFICERS

J. T. FORD	President	CARRIE HESTER	Secretary-Treasurer
FRED WOOD	Vice-President	C. H. FARNSWORTH	Coach

MEMBERS

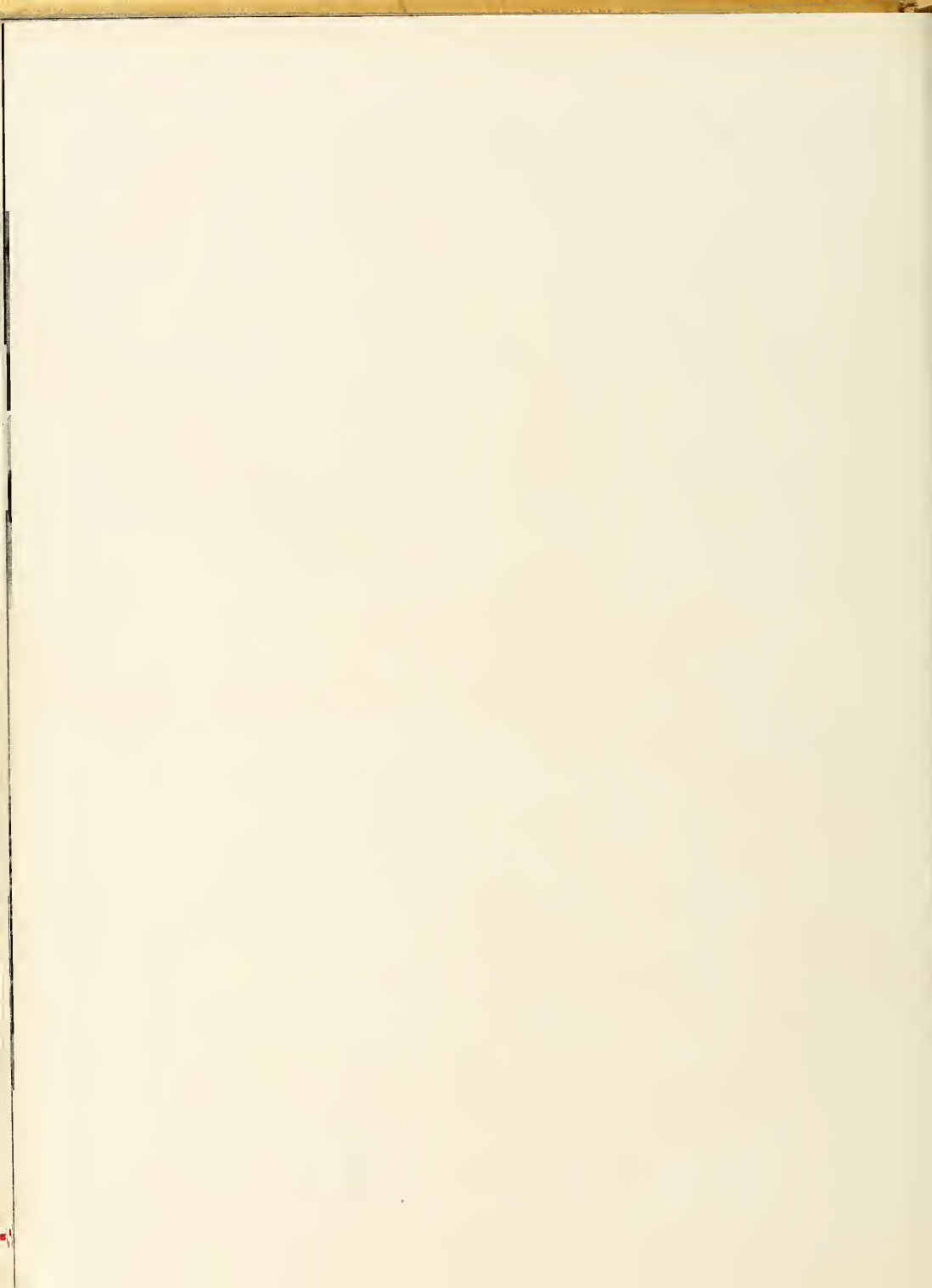
Martha Ellen Barr	J. T. Ford	Verl Masters	Hughie Ragan
Gordon Clinard	Carrie Hester	Tom Meredith	Fred Wood
C. H. Farnsworth			

Union has come to be recognized throughout the South as the producer of top-notch debate teams. During the 1942 season Union's crack debaters traveled extensively over the South and East. Clinard and Ford were teamed together in the Senior divisions to rank first in the State, Mid-South and Grand Eastern National Tournaments and placed second in the Southern, in all these encounters losing only to the University of Florida. The other teams were likewise successful, placing near the top in each contest, Fred Wood coming in for high individual honors.

Travel this year has been impossible and only one major contest, the Delta Tourney at Jackson, Mississippi, has been participated in by our teams. In this Frey, Wood and Ford were teamed together to win a cup in the Senior Division with Masters and Ragan coping a Junior trophy.

Union is proud of her success in forensic circles—Mr. Farnsworth has won for himself and his school widespread fame and glory in the training of students as public speakers, orators and debaters.

U N I O N D E B A T E C O U N C I L





ATHLETICS



CHEERING FOR THE
Bulldogs



Coaches

Union was indeed fortunate to have three very efficient men to guide the athletics this year. These are: Fred Delay, head coach; George Richardson, assistant line coach; and Harry Hurt, athletic director.

Coach Fred Delay finished his fifth season as head coach of the Union University Bulldogs in a blaze of glory. His charges won seven out of nine games and the two he lost were against Southeastern Conference competition.

For five seasons he has been shooting at the 200-point mark and this year the Union team climaxed that effort with 211 points and were held scoreless in one encounter. They held their opponents to a total of 75 points.

A burden was thrown on the squatty mentor when three of his assistants entered the armed forces. With the aid of 17 returning lettermen, however, and eight of those seniors, his load was lightened greatly.

Fred Delay spent five years building a winning team for Union and his last team for the duration

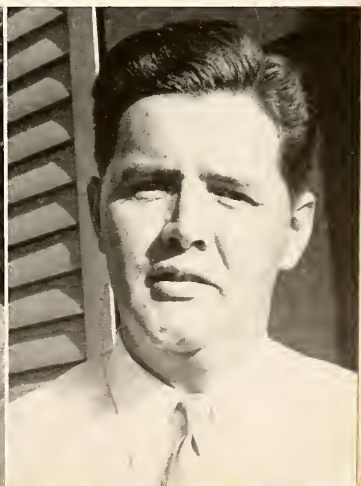
was the greatest Union has ever boasted. Fred Delay coached the first Union team ever to win an S. I. A. A. title.

George Richardson, line coach, is affectionately known to the squad as "Big George." George produced one of the best, if not the best line Union has ever had. Only 13 points were scored against the line in S. I. A. A. The Richardson-coached line held the highly touted Vanderbilt Commodores to 96 yards gained during the entire game.

George was more than a coach—he was a friend to all, and was respected by every one. He fathered the team on most of the trips when Coach Delay was away on scouting trips.

Harry Hurt, son of the president of Union, served as athletic director of the team. Taking care of the business end of the athletics Harry served admirably in every phase of his duty.

His duty called for arranging the schedule, taking care of the traveling duties and seeing that Union was getting a square deal from every angle.



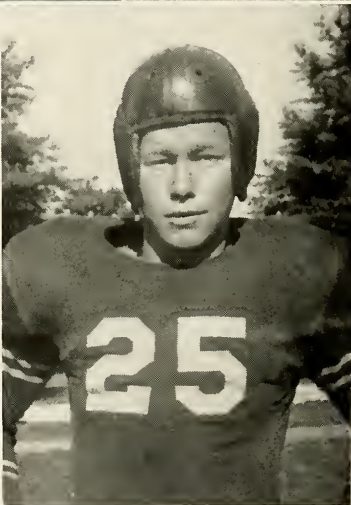


LETTER MEN

DON KELSO

"CASEY" JONES

RALPH JONES



JAMES MCKEE

DEWEY NORTHINGTON



JOE BURKS

HUGH COLTHARP

"TUBBY" TAYLOR

FOOTBALL SEASON

The Union Bulldogs emerged victorious in 7 of their 9 encounters during the autumn madness that had everybody agog for three glorious thrill-packed months. Decisively whipping the socks off the major teams of the S. I. A. A. and having only one close call and that was in the climax of the most successful year a Union football squad has ever enjoyed.

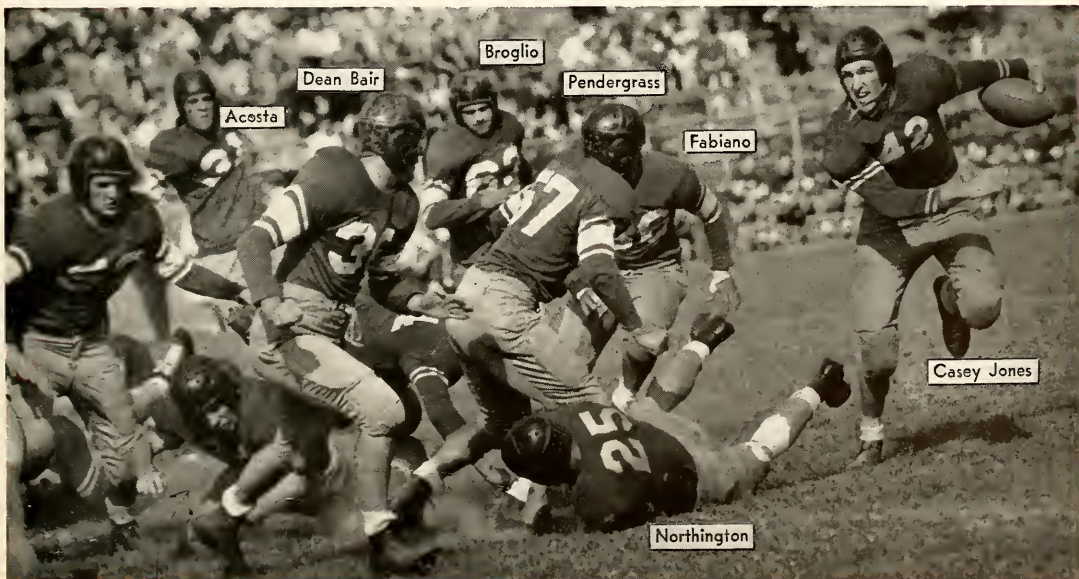
Losing their only two games was bad but they still have the satisfaction of knowing they were Southeastern foes who treated the Union gridgers to shame. Mississippi State handed Union a defeat in the first game of the year. Playing in weather equivalent to the tropics and on a slippery field the Union squad went down in defeat by a 35 to 2 count. Not only was the weather warm but the Red squad from Jackson had to be satisfied with only a few substitutions while the Maroons had more reserves than a W. P. A. breadline.

Casey Jones was at his best and it was he who set up the Union score with a beautiful spiraling boot that traveled far and settled out of bounds on the State six-inch line. The Maroons attempted to kick out but Jack Kaley rushed

through and blocked the boot for a safety and the only two points Union made.

Union crushed the U. T. Junior Vols 53 to 0 on Rothrock field and were off to a six-game winning streak. Casey Jones, the Galloping Ghost of Death Valley, was only in the fray a few spectacular moments as was the entire first team. The last quarter the Union Bull Pups took command and scored on the Junior Vols. A short aerial, Webb to Garrott, netted the score. Highlight of the night was the pass interception and the following dazzling spine-tickling run by freshman wingback Gil Gideon. He intercepted a pass on his 50 and covered at least 150 yards reversing his field and running laterally before getting into the clear on the 5-yard line and then he dropped the ball.

Union trimmed Murray State the following week 39 to 0. Casey Jones punted, passed, and ran the Thorobreds in the ground. He personally crossed the double stripe twice and passed for two more touchdowns. Early in the ball game, too, Casey took a 'Bred punt on his ten and gathering steam he crossed the 50-yard stripe with the throttle wide open. The Murray squad



FOOTBALL SEASON

couldn't even flag the Florence Express much less stop him, and the high-flying Jones crossed the goal line standing up after romping 90 yards behind some superb blocking by his comrades.

Defensively Ralph Jones, Wallace Wilson, J. C. Dixon, Hugh Coltharp, and Charles House were outstanding. Wilson leaped high to knock down a sure touchdown pass, keeping the Union slate clean in S. I. A. A. competition.

Union journeyed to Memphis and avenged the previous year's defeat when they thumped the tigers from Memphis State 30 to 0. Casey Jones scored twice, Coltharp took a pass for another, Dewey Northington bulled for another, and Kaley scored another one.

House, Henry Brazelton, Ed Brazelton, Dixon, Wilson, Parker, Brush and all that saw service did the school honor in the manner they played that day.

The Bulldogs entrained for Western Kentucky and came back to Jackson after a victorious week-end. It was Union all the way even though the Hilltoppers took the opening kick-off and were off like a house afire, but this didn't last long. Donovan Gary intercepted a Western

pass on the Union 42 and raced down the side lines untouched for the score. The crowd had hardly settled when Casey Jones opened up and twisted 16 yards for the second score. Wallace Wilson sneaked over for the third touchdown and Bobby Sadler counted for the fourth. Casey galloped again in the last quarter and set up the last score with a beautiful end sweep that was good for 30 yards. Sadler went across for the last score and when the final whistle blew Union had piled up 38 points to Western's 0.

The Big Red squad journeyed to Murray and beat the Thorobreds the second time, this time the count being 14 to 0. In a sea battle unequaled anywhere, the Bulldogs shoved across two early scores, and played defensive ball the rest of the fray relying on the beautiful punting of Casey Jones to keep them out of trouble.

Union defeated Ouachita Tigers the next week in a Homecoming game at Rothrock stadium for their sixth straight win. The perennial Arkansas champions came to Union boasting a record of not having lost a game in two years. They didn't bring their writeups along with them to



LETTERMEN

HENRY FORD BRAZELTON

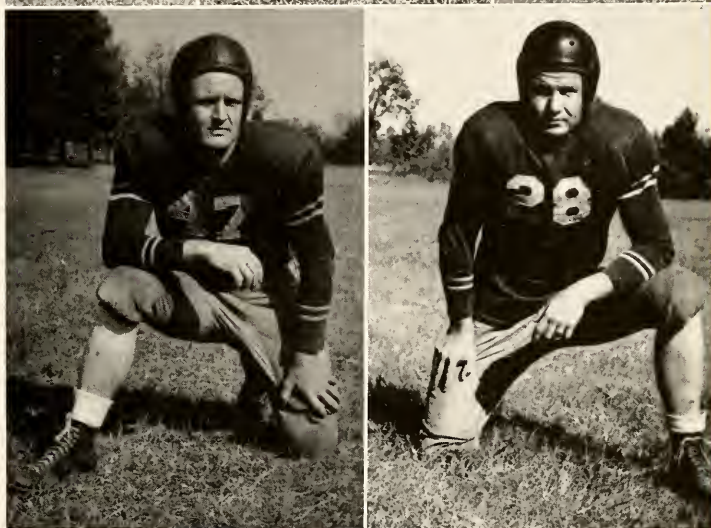
THOMAS NEILD

CHARLES HOUSE



J. C. DIXON

J. V. PARKER



WALLACE WILSON

JAMES DAVES

ROY JOHNSTON





LETTER MEN

ED BRAZELTON

BOBBY SADLER



RAY DOBBINS

BOB SULLIVAN



J. B. WITT

JAMES CONDRA

FOOTBALL SEASON

scare the Bulldogs and Union took the opening kick-off and marched across the goal line in five plays with Donovan Gary going across for the initial score. Casey was hitting his receivers in the eyes that night in spite of the fact that there was a muddy field and a slick ball. Three passes in succession netted the next score; first to brother Ralph, then to Coltharp, and again to Ralph across the goal.

Casey booted 13 times for an average of 47.5 that night; two punts going over 60 yards. He completed nine out of twelve attempts at passes.

Twice the Tigers held the Bulldogs for downs inside the 5-yard line. The Bulldogs' line was very effective and the Tigers never threatened seriously.

Union's victory string was snapped at Nashville when the Vanderbilt Commodores defeated Union 27 to 0 the next week. Jenkins, Rohling, Moore, and Rebrovich were too much, along with a bad case of fumbleitis developed on the part of the Union ball carriers. Casey Jones was the most outstanding player that day with his elusive running and long booting; breaking into the clear twice, once for 38 yards and an-

other for 52. Red Sanders, Vandy coach, said that he is one of the greatest backs ever to perform on McGugin field.

Union lowered the curtain on their thrill-packed season with a 14 to 13 victory over T. P. I. at Cookeville. The Tech Eagles pushed over a quick touchdown pass and led the Bulldogs until the second half started. Union, then, started the ball rolling behind the button-hole passing of Ed Brazelton. Union's second brother combination clicked for the first touchdown—Ed to Henry was all that was needed for it. The second score came when Ed heaved to Don Gary for 23 yards and a score. These two touchdowns came so fast the Eagles didn't know what had happened. Tom Nield kicked the all-important two points after the touchdowns.

Casey's punting was a big factor in the game, and fumbles were costly to the squad. Juggling the ball 8 times and 5 inside the T. P. I. 10-yard line the Union squad were really off their usual brilliant game.

Union finished the season with five wins and no losses in the S. I. A. A. and therefore laid claim to the conference title.





G I R L S '



VOLLEY BALL

BASKETBALL



S P O R T S



TENNIS



U CLUB . . .

OFFICERS

"CASEY" JONES	President
CHARLES HOUSE	Vice-President
WALLACE WILSON	Treasurer
HUGH COLTHARP	Sergeant-at-Arms

MEMBERS

Seniors

J. C. Dixon	James "Casey" Jones	Donovan Gary	Ray Dobbins
Charles House	Roy Johnston	Don Kelso	Hugh Coltharp
Jack Kaley			Raymond Judy

Juniors

Wallace Wilson	Dewey Northington	Henry Brazelton	Tom Nield
Ralph Jones			J. V. Parker

Sophomores

Joe Burks	James McKee	James Condra	Bobby Sedler
Bob Sullivan	James Daves	Dennis Taylor	Henry Brush

To be eligible for membership in the Union University "U" Club one must make a letter in a major sport.

The "U" Club's purpose is to promote a higher standard of athletics, and to promote better

cooperation between the athletes and the college.

It is financed by the members only with no outside help.





FEATURES



Pat Patterson

A. T. O. QUEEN



Beth De Ford

S. A. E. QUEEN



Pat Patterson

MOST BEAUTIFUL

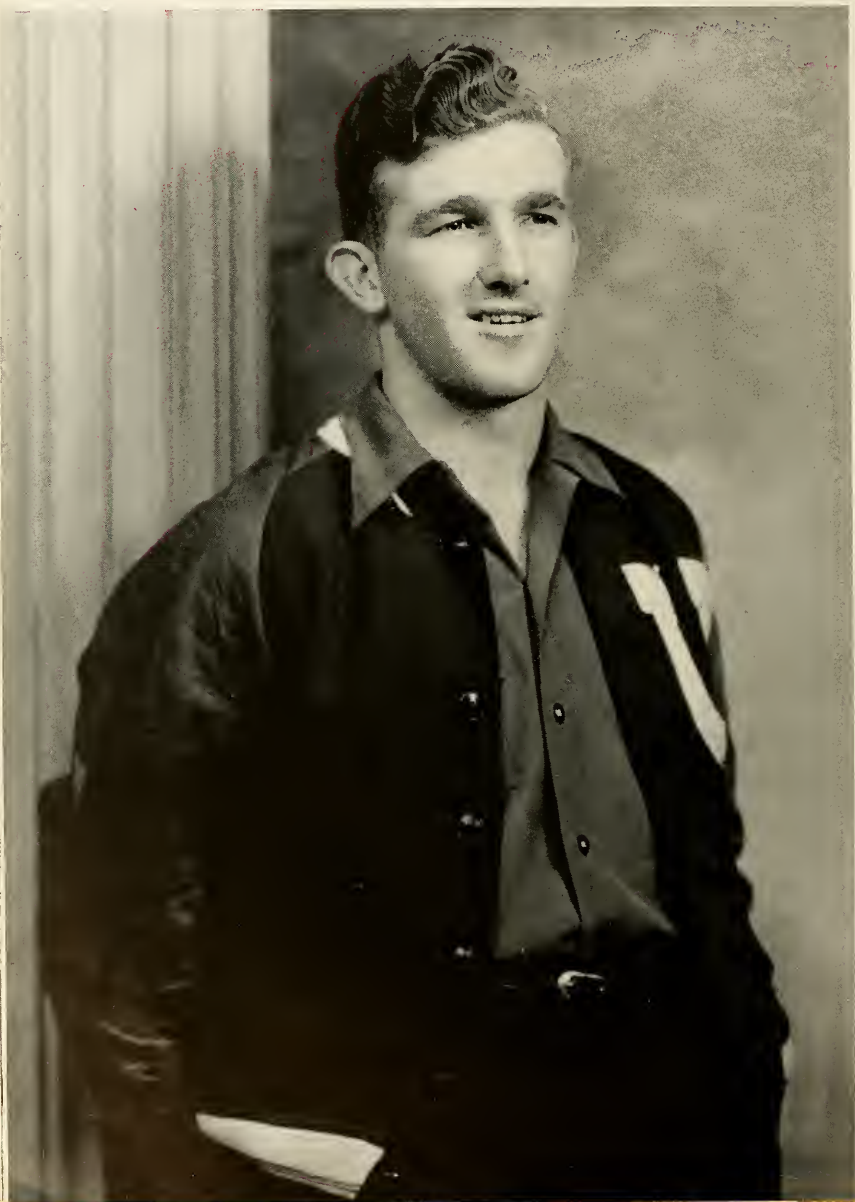
Mary Jo Kee

BEST ALL-ROUND



James "Casey" Jones

MOST POPULAR BOY

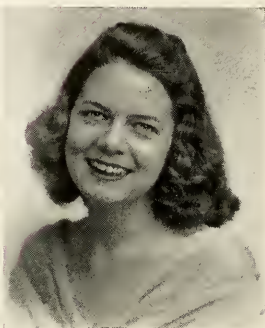
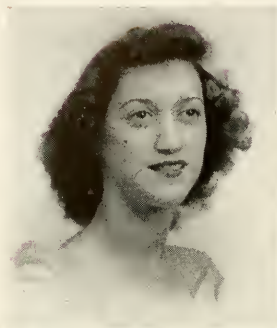




Franklin Paschall

BEST ALL ROUND BOY

W H O ' S W H O



MABLE CAMP

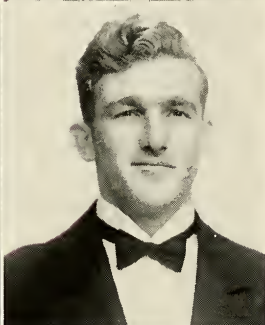
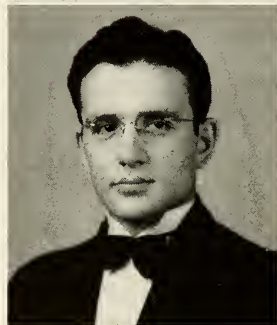
JEANNE DeMENT

JOHN HUFFMAN

"CASEY" JONES

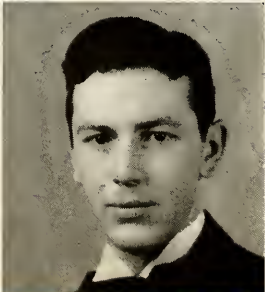
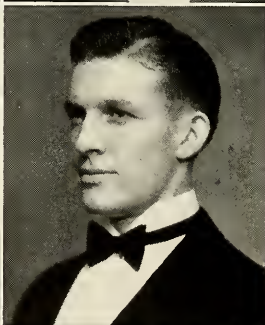
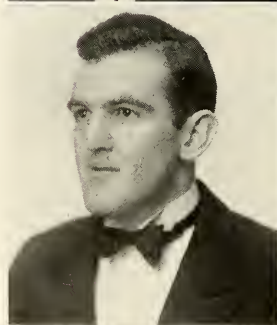
RALPH JONES

RAYMOND JUDY



MARY JO KEE

FRANKLIN PASCHALL



"Who's Who Among Students in American Universities and Colleges" is published each year for the purpose of recognizing outstanding college students from more than 500 universities and colleges all over the country. Members are selected on a basis of character, scholarship, leadership in extra-curricular activities, and possibility of future usefulness to business and society.



S N A P S H O T S



S N A P S H O T S



S N A P S H O T S



S N A P S H O T S

ADVERTISEMENTS

McCALL HUGHES

Varsity Town
Clothes

Slacks—Sweaters

144 N. Liberty

TRUOX CHEVROLET COMPANY

College and Church

Telephone 108

For economical transportation. We appreciate the business given us by Union faculty and student body.

Spencer Truox

John F. Cox



Have Your Eyes Scientifically Analyzed

DRS. LaGRANGE AND LaGRANGE
OPTOMETRISTS

118 E. Lafayette

Phone 148



Compliments of
WAHL'S SLIPPER SHOP
SAM WAHL

Warren's Nu-Way Shoe Shop
Work Done the Factory Way
Phone 1062
205 E. Main Street Jackson, Tenn.

Compliments of
DR. CLARENCE S. GOBELET
EYE SIGHT SPECIALIST
GLASSES FITTED
Phone 363 Jackson, Tenn.

WILSON GEYER CO.
Imperial Henna Glass
Wall Paper Paints Artists' Supplies

When Better Ice Cream and Dairy
Products are Made
MIDWEST
Will Make Them
MIDWEST DAIRY PRODUCTS CO.
Phone 322

"The Best Equipped Small Printing
Plant in the South"

LAYCOOK
PRINTING CO.

South Church Street Phone 917

BLACK AND WHITE STORE
PHONE 1662
Jackson's Largest One-Floor Department Store

COMPLIMENTS OF
VINEYARD'S
Say It With Flowers Phone 510

Best Wishes to Faculty and Student Body
PEREL & LOWENSTEIN
Credit Jewelers
213 E. Main St. Jackson, Tenn.

It is better to keep silent and let people
think you are dumb, than to speak and
remove all doubt.

COMPLIMENTS OF
THE FIRST NATIONAL BANK
OF JACKSON
CHARTER MEMBER FEDERAL RESERVE SYSTEM
MEMBER FEDERAL DEPOSIT INSURANCE CORPORATION

Band Instruments Sheet Music
WALLICK MUSIC CO.
Phone 578 217 E. College

When the Stomach Takes Out Taste
Intestade

B & B DRUG CO.

Phone 140 465 E. College

VISIT OUR STORE
You Will Find the Piano of Your Choice
W. E. MOORE PIANO CO.

214 E. Main Phone 339



Bulova-Hamilton-Gruen-Elgin Watches

Fine Diamonds Quality Gift Jewelry

L. P. JACKSON

JEWELER AND OPTOMETRIST

Jackson, Tenn.

COMPLIMENTS OF
**BEARE ICE & COAL
COMPANY**

Main Office—Jackson, Tenn.

OPERATING ICE PLANTS AND COAL
YARDS AT

BOLIVAR, JACKSON, HUMBOLDT
TRENTON, MILAN

Compliments of

BUDDIE & PAUL'S



COMPLIMENTS

**THE NATIONAL BANK OF
COMMERCE OF JACKSON**

JACKSON, TENNESSEE

Member Federal Reserve System
Member Federal Deposit Insurance Corporation

HOLLAND'S

Jackson's Dominant Store

Established 1871

Jackson, Tenn.

Building Materials Sherwin-Williams Paints

FIVE POINTS LUMBER CO.

W I L L I A M S

F I N E S H O E S A N D H O S I E R Y

JACKSON, TENN.

Taste **Dr. Pepper** *Flavor*
THAT GOOD FOR LIFE! 
FIVE CENTS

**ATLANTIC
LIFE INSURANCE COMPANY**

CARL P. SMITH
(General Agent)

E. E. STEPHENS
(Special Agent)

Office Over Bond Shoe Store
109½ E. Main Phone 927

For the Things You Want . . .
. . . at Prices You Like to Pay

DAVIS
★ ★ ★ ★ ★

Feminine Apparel

Buy U. S. War Bonds and Stamps

107 E. Lafayette

AL GLASS, Mgr.

Compliments of
CITY LUMBER COMPANY

COMPLIMENTS OF
H. M. FELSENTHAL CO.

The Home of Good Candies
110 West Main Phone 124

COMPLIMENTS
OF
UNION'S BOOK STORE

Melting Pot of Collegiate Life
and Ideas

BOOKS—DRINKS—CANDIES

LOUISE SUBLET

**McCOWAT-MERCER
PRESS**



Printers for Union University and Its
Predecessor, Southwestern Baptist Univer-
sity Since 1893

**BUDDE AND WEIS
MFG. CO.**

Designers and Builders of
HIGH GRADE CABINET WORK

CHURCH FURNITURE

JACKSON, TENNESSEE

FRED L. WEST

ROBERT L. WEST

WEST SERVICE

Distributors

CITIES SERVICE OILS

FEDERAL TIRES

BATTERIES

Phone 4400

222 W. Main Street

Jackson, Tennessee

THE FIRST BAPTIST CHURCH
CORDIALLY WELCOMES UNION STUDENTS TO
ALL SERVICES

Special Sunday School Classes and B.Y.P.U.'s for You

DR. MORRIS FORD, Pastor

**RUSSELL
TRANSFER COMPANY**

Baggage—Moving
Long Distance Hauling

INSURED J. M. LANKFORD, Manager
117 E. College St. Phone 115

Compliments of
G. H. ROBERTSON CO.
JACKSON, TENN.

Always a Friend of Union and
Students

HUGHIE RAGAN

**CONGER PARKER LUMBER &
SUPPLY CO.**

Union Ave. and I. C. R. R. Jackson, Tenn.
JACKSON, TENN.

Dry Cleaning • Call 520

"ONE DAY SERVICE"
PICK-UP and DELIVERY SERVICE

Hat Renovating

LUCILLE CLEANERS

College at Market HUGH JARRETT, Mgr.

BURNLEY'S FLOWER SHOP

Always Call
Charlie Burnley for Flowers

WEST JACKSON BAPTIST CHURCH

Cordially Invites All Union Students to
All Services

Corner Campbell and Daderick

DR. R. E. GUY, Pastor

WOOTTON'S STUDIO

For

BETTER PHOTOGRAPHS

207 E. Main

Telephone 27

Union University

JACKSON, TENNESSEE

Founded 1834



CO-EDUCATIONAL

A four-year college with a remarkable history of achievement as attested by its many successful alumni in all walks of life.

An institution which puts quality above quantity. Recognized and accredited by a great many graduate departments of larger universities.

Member of American Association of Colleges, of Liberal Arts College Movement, and of Tennessee Association of Colleges.

COURSES OR DEPARTMENTS

The regular course in the College of Arts and Science: English, Mathematics, the Sciences, Philosophy, Bible, Sociology, Greek, Latin, French, Spanish, German, and History.

REGULAR SUMMER SCHOOL

For Catalogue and Other Information, Address:

DR. JOHN JETER HURT, PRESIDENT

Compliments of
THE FRANCES SHOPPE

Ladies' Ready-to-Wear
112 North Church Phone 127

NATHAN'S

JACKSON, TENN.

Compliments of
ELITE CLEANERS

WM. (BILLY) MAINORD
Phone 446 Since 1912 Five Points

COMPLIMENTS
OF
BOND SHOE CO.

QUALITY FOOTWEAR
ALWAYS

107 East Main A. W. WILLIS, Mgr.

**McGEE-ROSS
HARDWARE CO.**

Headquarters for
Tennis and Sporting Goods
China and Gifts

Phone 2548

For 22 Years in Succession We Say
CONGRATULATIONS
LEXINGTON INN

Compliments of
PEARLOIS BEAUTY SHOPPE



Phone 546

BAXTER BOONE

RCA Victor Radio Records

308 LaFayette St. Jackson, Tenn.

100% for Union

EAT

MRS. SULLIVAN'S

Pecan Pies and Coconut Tarts

Phone 233

BAKED FRESH DAILY

Ask for Them by Name

461-463 E. College Jackson, Tennessee



Manufacturers of
The South's Finest
Flour, Meal, and
Stock Feeds

MODEL MILL CO.

Incorporated
Jackson-McKenzie, Tenn.

THE MOORE STUDIO

PICTORIAL HOME OF
THE CO-ED

Maintaining a standard of prompt,
courteous and efficient service—offer-
ing always the latest achievements in

PHOTOGRAPHIC ART



215 NORTH LIBERTY STREET
JACKSON, TENNESSEE

World's Largest Publishers

THIS BOOK DESIGNED AND PRINTED BY

Benson

PRINTING COMPANY ☆ NASHVILLE

of College Annals

Autographs

Autographs



PROPERTY OF
PUBLIC RELATIONS OFFICE
UNION UNIVERSITY
JACKSON, TENNESSEE



