



DAVID A. SMITH

David A. Smith

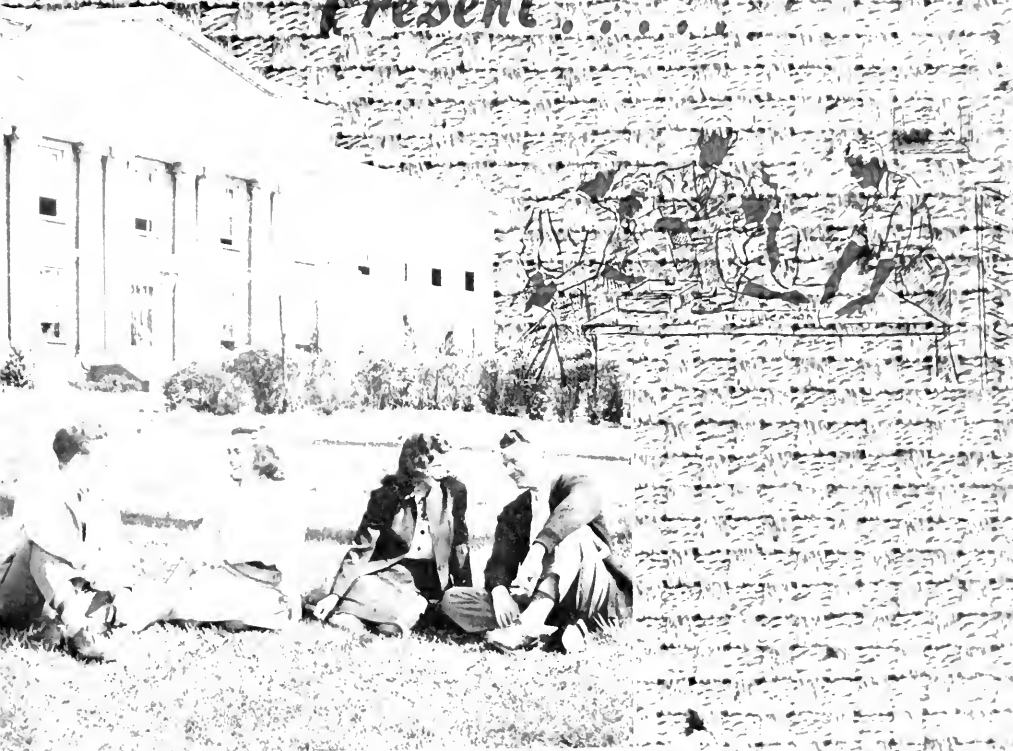
Digitized by the Internet Archive  
in 2010 with funding from  
Lyrasis Members and Sloan Foundation

<http://www.archive.org/details/lestweforget194700unio>





*The Students of*  
**UNION UNIVERSITY**  
*Present . . . . .*



THE 1947

**LEST WE FORGET**



SEPTEMBER  
OCTOBER

A N D

Registration marked the beginning  
[O]f the end? some wondered.  
Soon we found the tears were groundless.  
And the year proved to be  
One of Union's most eventful, and best.  
Football got the year off to a thrilling start;  
Things continued that way right through May!  
Teasley as coach, and Brown as captain served well.  
Aided no little by the colorful Rasputin.  
The 'Union Bulfinch' thanks to Secretary Troy Young.  
Keep the alumni happy.  
And don't think letters from home didn't have the same  
effect upon the students!





A Y E A R @ U N I O N



OCTOBER NOVEMBER

SUN. M  
7  
11.1  
21 2

SAT.  
5  
12  
19

October brought Homecoming and freshman week!  
Its 31 days were filled to the peak.  
Zeta's "Spirit of Homecoming" won the parade.  
Their float and Dot Stanley made the judges rave.  
Stanton bet on Georgetown  
While the nag of Guy and Tucker  
Was a sorry sight.

- Then came the game, 'twas loads of fun.  
To make it even better, Union won -  
A typical freshman we picture now -  
Just look at that geeb—boy, what a wow!  
As usual November was next on the scene—  
At this time spirituality reigned supreme.  
With "I'd Rather Have Jesus" the inspiring theme.



# HOME COMING - FRESHMAN WEEK

STUDENT FESTIVAL  
"I'D RATHER HAVE JESUS"  
REV. L.C. CATUN NOV. 6-15

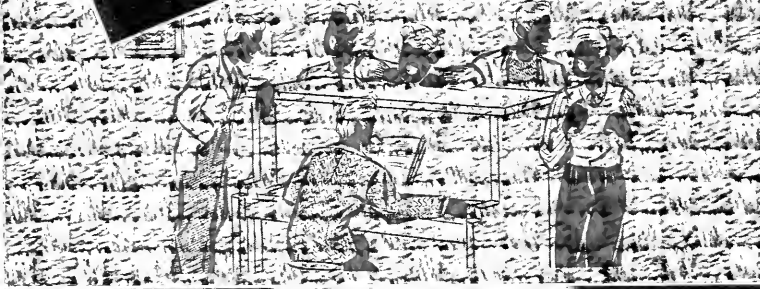




# FOOTBALL GAMES - REVIVALS







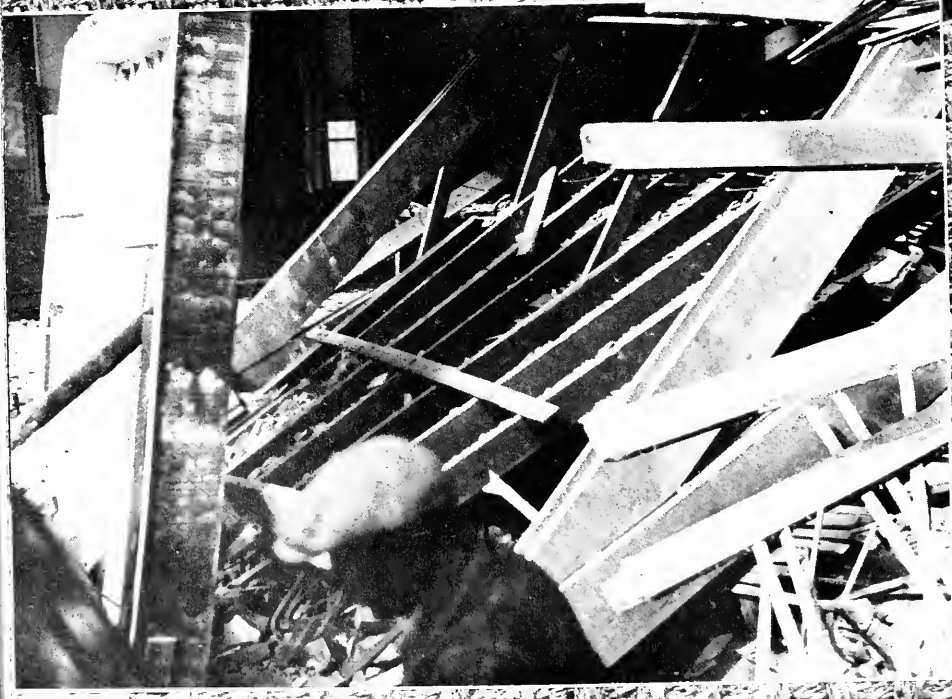


# JANUARY FEBRUARY

January and February months of snow  
Brought the dining hall cave-in;  
That was the biggest blow  
To the campus as a whole.  
Democratic elections flourished,  
And played a big role  
In student activities.  
Our team played to fans,  
Lusty and loud.  
Lusty won and they lost  
But they always made us proud!  
Humor of the month?  
Glynn Hayward, like a "badman of the border,"  
Brandished a gun, he said  
"To keep order!"



## BASKETBALL SNOW

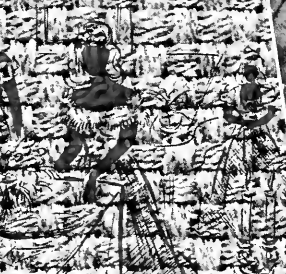






ELECTIONS - PLAYS - EXAMS





# SPRING FEVER

## MARCH

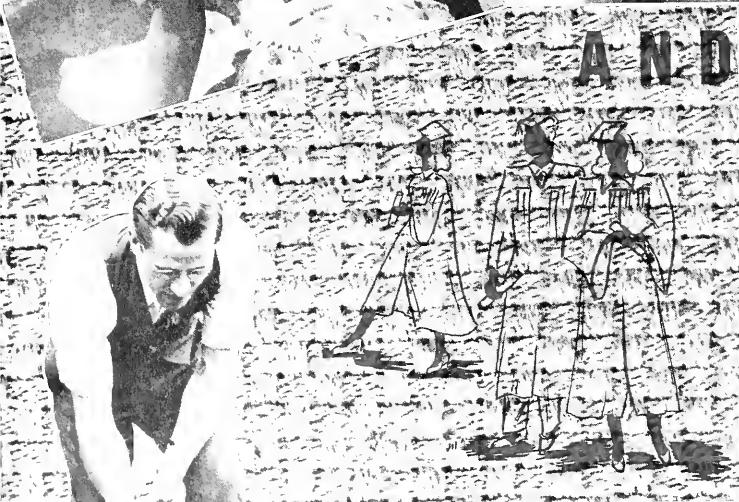
## APRIL

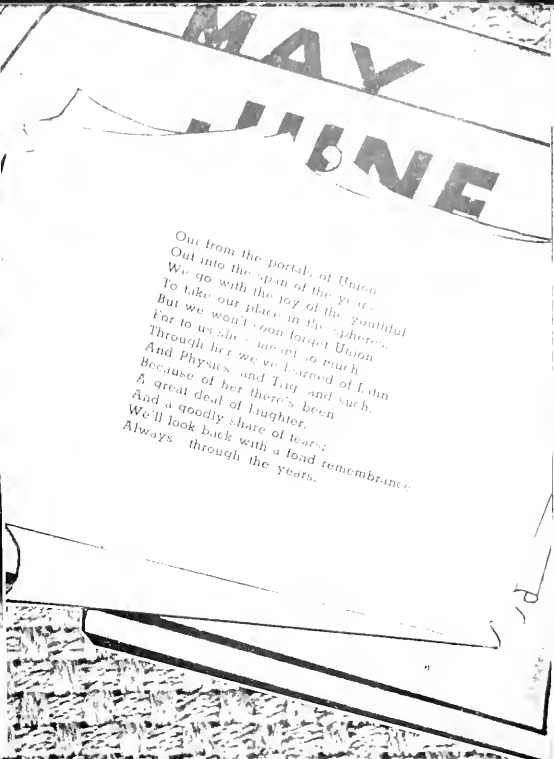
March saw beauty reigning supreme  
 As Lola was crowned as basketball queen.  
 "El Charro" was opened for our recreation.  
 Mexican murals made gay decorations.  
 Theo in blackface was hard to beat.  
 "Talkine Blues" was an unusual treat.  
 These corny hill billies from Life Service Band  
 Were part of a chapel program that really was grand.  
 April brought spring fever to John Bell too  
 While sister Mary Jane found plenty to do.  
 In April we think of pretty flowers: that's why  
 This picture of Dot Stanley meets our eye.  
 Because school was so near an end  
 We began to study our A's to win.



# BEAUTIES - FLOWERS







**MAY**  
**LINE**

Out from the portals of Union  
Out into the open of the year  
We go with the joy of the youthful  
To take our place in the spheres  
But we won't soon forget Union  
For to us she's meant so much  
Through her we've learned of Latin  
And Physics and Trig and such  
Because of her there's been  
A great deal of laughter,  
And a goodly share of tears;  
We'll look back with a fond remembrance  
Always through the years.



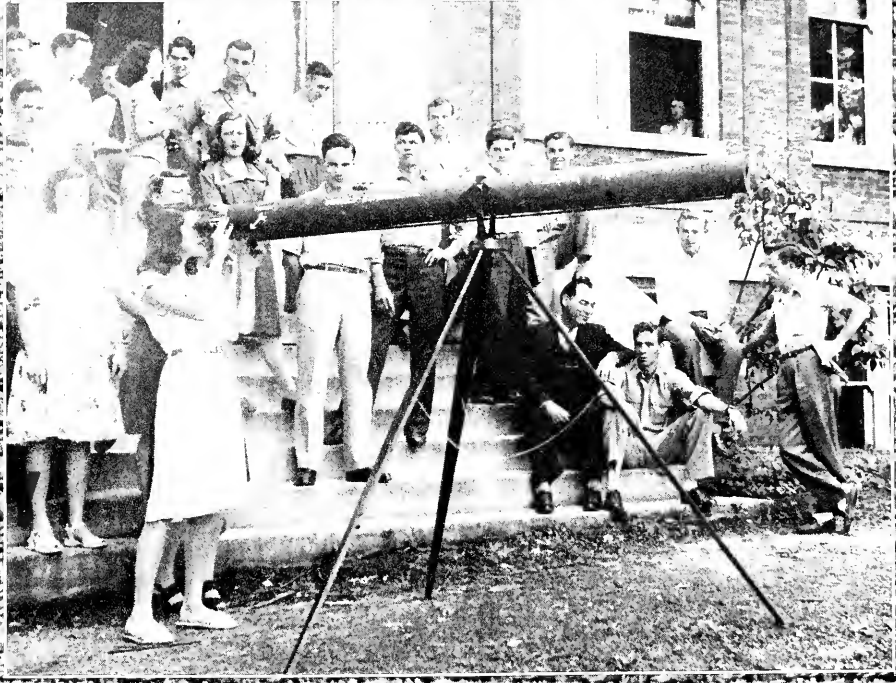
# FINALLY, GRADUATION



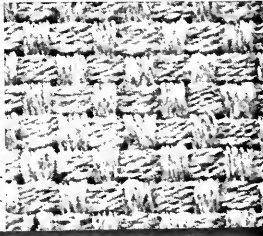
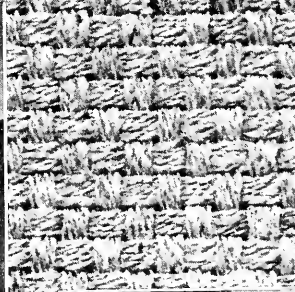




# And in particular



D A





# A N D N I G H T





# DEDICATION

To a spirit undaunted  
To a character strong and vigorous  
To an individual who is individualistic  
To a person whose loyalty to duty is exemplary  
To one, who has become a Symbol of Union University  
To our friend who has inspired us  
to you, Mrs. Summar, we the members of the 1947 Senior Class proudly ded-  
icate this annual . . .



# OUR PRESIDENT

Modest and soft-spoken, but progressive and iron-willed, Warren Francis Jones has served Union well as president for two years. During this time Union has seen her greatest period of physical expansion and her largest student enrollment.

WARREN F. JONES





# The

HARRIETT HELEN BLYTHE English

FRANK M. BLYTHE Business Manager

GRACE BRUCE Commerce

FLORA HAAS Biology

JULIA HAMMACK Public School Music and Choral Classes

MABEL HARDIN English

ANNE HAWKINS Voice

CAREY HESTER Assistant Librarian

BETTY JACOBS Secretary to Dean

WILLIAM A. KEEL Bible

ETHEL LUCKEY Walton Hotel

DIXIE MARTIN JONES Education, Psychology

MATTIE SANDERS  
Dean of Women



# FACULTY

BEULAH MALLORY Mathematics

JASPER N. MALLORY Mathematics

HAZEL MANSFIELD Secretary to President

FRANK MATURO Modern Languages

CHARLES MILLICAN Commerce

A. WARREN PRINCE Chemistry

MYRTIS RAMER Secretary to Dean

DEE RICE Latin; Hostess, Crook Hall

MRS. JAMES F. ROGERS Hostess, Lovelace Hall

THEO ROYER Mathematics

ROSA RUTLEDGE History, German

MRS. SAMUEL STANWORTH Piano and Theory

SAMUEL S. SARGENT  
Dean





# FACULTY

LOUISE SUBLETTE Dining Room

RENA SUBLETTE Dining Room

EMMA W. SUMMAR Librarian

AMOS TEASLEY Coach and Social Science

INA RANKIN TRENTHAM English and Social Science

SHANNON O. TRENTHAM Biology

FRANK L. WELLS Education and Psychology

FLOY S. WISE History

GRACE WILLIAMS Home Economics; Physical Education

TROY YOUNG Alumni Director





WADE CARVER

President

DAVID RAGAN

Vice-President

NOIS JETER

Secretary

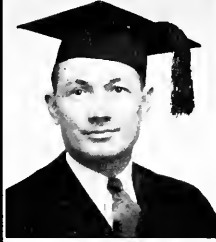
WILLIE FRANCES BRYANT

Treasurer

**S E N I O R   C L A S S**  
*Officers*

# SENIORS

Sam Parker



**ANNE  
ANDERSON**

Jackson, Tennessee

Chi Omega

A.B. English

Hypatia, '45, '46 (Reporter, '46); Home Echo, '43, '44, '45, '46 (President, '46); Euphrosynean, '43, '44; Madison County Club, '45, '46, '47; Footlights Club, '47; Chi Omega Pledge, '45-46; Associate Editor Last We Forget, '47; Cardinal and Cream Business Staff, '46, Reporter, '47; Play Tournament, '47; One-Act Play Night, '47; Spanish Club, '47; Seven Keys to Baldpate, '47.

**MARSHALL  
BOROUGHES**

Steele, Missouri

A.B. Religion

Booster Club, '46-47; Pioneer Club, '45, '46, '47, (Vice-President, '46-47); Footlights Club, '45-46, '47, (Vice-President, '46-47); JRG, '45-46, '46-47; Tau Kappa Alpha, '47; Basketball Team, '45-46; One-Act Play Night, '45; "Magnificent Obsession," '46; Play Tournament, '46; One-Act Play Night, '47; Stunt Night, '46; Southwest Baptist College; "Seven Keys to Baldpate," '47; Strickland Medal Contestant, '47.

**WILLIE FRANCES**

**BRYANT**

Booneville, Mississippi

Zeta Tau Alpha

A.B. Commerce

Pan-Hellenic, '46-47; Enonian, '44, '45, '46, '47; Mississippi Club Queen, '46; Secretary, '46-47; Footlights Club, '45, '46, '47; YWA, '44, '45, '46, '47; Life Service Band, '44-45; Glee Club, '44, '45; Treasurer of Senior Class, '47; Music Appreciation, '46-47; Spanish Club, '46-47.

**JAMES E.**

**BURRESS**

Trenton, Tennessee

Phi Delta

B.S. Commerce

West Tennessee Club, '45, '46, '47.

**WADE LESLEY**

**CARVER**

Alpha Tau Omega

A.B. History

History Majors, '46, '47; Rutledge History Club, '47, (President, '47); Booster Club, '46, '47, (President, '46, '47); West Tennessee Club, '44, '45, '46, '47, (President, '45, '46, '47); B.S.U. Council (Chorister, '43, '44, '45); JRG (Chorister, '43, '44), (President, '45, '46, '47); Life Service Band (Chorister, '44); (Vice-President, '46); Glee Club, (President, '45, '46, '47). Class President for four years; State B.S.U. President, '46; Worthy Master, A.T.O., '46; Athletic Committee, '46; President Adams Hall, '46, '47.

**PRINCE E.**

**CLAYBROOK**

Jackson, Tennessee

Sigma Alpha Epsilon

A.B. English

West Tennessee Club; Footlights, '39, '40, '41, '46, '47; JRG, '46-47; Glee Club, '39, '40, '41, '47; Tau Kappa Alpha, '46-47; "Death Takes A Holiday," '41; Veterans Club, '46, '47; Play Tournament, '46.

**CHARLES E.**

**CLOYD**

Marion, Kentucky

A.B. Bible

Kentucky Club; JRG, '45, '46, '47; A.D.S.; Council Adams Hall, '46; Campbellville Jr. College, '42, '43, '44; Secretary, JRG, Spring, '47.

**BETTY M.**

**CRAIG**

Marion, Kentucky

B.S. Mathematics

Palladians, '44-45, '45-46, (Secretary, '46, '47); Kentucky Club, '44-45, '45-46, '46-47; YWA, '44-45, '45-46, (Pianist), '46-47, (President Circle No. 2); Life Service Band, '44-45, (Pianist), '45-46, (Secretary); '46-47 (Pianist); Glee Club, '46-47, (Accompanist) '45-46; Mallory Math Club, '45-46, '46-47; Music Appreciation, '45-46, '46-47 (President).

**GEORGE L.**

**DOWD**

Jackson, Tennessee

B.S. History

University of the South, '43, '44; History Majors Club, '46, '47; Madison County Club, '46, '47; Veterans Club, '46, '47.

**JOAN**

**EASON**

Leapwood, Tennessee

Chi Omega

A.B. English

Chi Omega President, '47; Pan-Hellenic, '46-47, (Secretary, '47); Hypatia, '46, '47, (Vice-President, '46, Secretary-Treasurer '47); Palladians, '46, '47; Booster, '47; West Tennessee Club, '46, '47; Footlights Club, '46, '47; Glee Club, '46; Tau Kappa Alpha, '47; Play Tournament, '46; One Act Play Night, '47; Spanish Club, Vice-President, '47; Alpha Tau Omega Sweetheart, '47; Freed-Hardeman College; "Seven Keys to Baldpate," '47; Strickland Medal Contestant, '47.

**EVA MAE**

**ELDRIDGE**

Beaver Dam, Kentucky

A.B. English

Kentucky Club; YWA, '44, '45, '46, '47; Life Service Band, '44, '45, '46, '47; Glee Club, '44, '45, '46; Intramural Basketball, '46-47; Stunt Night, '46.

**CLINT O.**

**HANNA**

Silerton, Tennessee

B.S. Mathematics

West Tennessee Club; Mallory Math Club; Veterans Club.

**MARJORIE**

**HERRON**

Jackson, Tennessee

Chi Omega

B.S. Biology

Euphrosynean, '46-47, (Vice President, '46, '47); Madison County Club; Doctors Club, '46, '47; Footlights Club, '46-47; Lambuth College, '43, '44, '45.

**GEORGE**

**HOLLAND**

Jackson, Tennessee

B.S. History

Madison County Club; History Majors Club; Basketball Team, '46, '47.

**HERMAN E.**

**JACOBS**

Memphis, Tennessee

Sigma Alpha Epsilon

A.B. History

Eminent Archon Sigma Alpha Epsilon, '47; History Majors Club, '42, '43, '46, '47; Madison County Club; BSU; Vice-President, '46, '47; JRG, '42, '43, '47; Life Service Band, '42, '43; Glee Club, '41, '42, '43, '47; Tau Kappa Alpha, '41, '42, '43, '47; Last We Forget Photographer, '43, '47; Cardinal and Cream Photographer, '42, '43; Veterans Club, '46-47; Music Appreciation, '47; Cheerleader, '43, '47; Cardinal Key Club, '42, '43; Student Director Intramural Sports, '46-47; Student Council, '46-47, (Secretary, '46-47); Spanish Club, '42, '43, '46, '47; Male Quartet, '41, '42, '43, '46, '47; Mixed Quintette, '42, '43, '46, '47.

**HENRY GUY**

**JACKSON**

Springfield, Tennessee

A.B. Religion

Greater Tennessee Club; JRG, '44, '45, '46, '47, (Secretary, '46).

**NOIS**

**JETER**

Brownsville, Tennessee

Zeta Tau Alpha

A.B. English

Hypatia, '46, '47; Home Echo, '39, '40, '41; Enonian, '39, '40, '41, '46-47; West Tennessee Club; Footlights, '46, '47; YWA, '39, '40, '41, '46, '47; Glee Club, '39, '40, '41, '46, '47; Trio, '39, '40; Girls Ensemble, '46-47; Last We Forget Staff, '40; Cardinal and Cream Reporter, '39-40; Associate Editor, '46-47; Secretary, Senior Class, '46-47; Music Appreciation, '46-47; L'Alliance Francaise, '39-40; Cardinal Key Club, '39-40, '40-41; Strickland Medal Contestant, '47.

**LEARLENE**

**LEWRY**

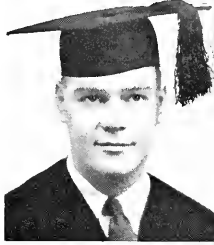
Rowland, North Carolina

B.S. Home Economics

Home Echo, '43, '44, '45, '46, '47, (Vice President, '46-47); Greater Circle Club, Vice-President, '46-47; YWA Circle Chairman, '46, '47; Life Service Band Secretary, '46-47; Glee Club, '45-46; Basketbal Team, '45, '46; U Club, '46-47; Reporter, Senior Class, '46, '47.

S E N I O R S

Theo Lancaster





**LILLIAN LUCILLE****McKINNEY**

Rural Hall, North Carolina

A.B. Religion

Greater Dixie Club; Footlights Club, '46-'47; YWA, '46-'47; (Civic Program Chairman); Life Service Band, '45-'46-'47; Glee Club, '47; One-Act Play Night, '47; Campbell Junior College.

**FRANCES EVELYN****NICELEY**

Perryville, Kentucky

A.B. English

Hypatia, '45-'46-'47; Kentucky Club, '45-'46-'47; Secretary, '46-'47; Latin Club, '46-'47; Campbellville Jr. College, '42-'43-'44; BSU Council, '43-'44; YWA Pianist, '45-'46-'47; Life Service Band, '45-'46; (Pianist) '46-'47; Secretary '46); Glee Club, '45-'46; Stunt Night, '45-'46-'47; A.D.S.

**JOHN B.****NICELEY**

Perryville, Kentucky

B.S. Mathematics

A.B. Religion

Kentucky Club, '45-'46-'47; JRG, '45-'46-'47; Glee Club, '45-'46-'47; Stunt Night, '46-'47; Veterans Club, '46-'47; Campbellville Jr. College, '39-'40-'40-'41; Carson-Newman, '41-'42; Mississippi State College, '43.

**SAM T.****PARKER**

Jackson, Tennessee

Alpha Tau Omega

B.S. Chemistry

Alpha Tau Omega Worthy Master, '46-'47; Doctors Club, '41-'42-'43-'45-'46-'47; [Vice-President '41-'42]; Business Manager, Cardinal and Cream, '41-'42; Freshman Class Vice-President, '41-'42; Veterans Club Vice-President, '45-'46.

**WILLIAM T.****PEPPEH, JR.**

Paducah, Kentucky

A.B. Bible

Booster Club, '45-'46-'46-'47; Kentucky Club; Footlights Club, '45-'46-'47; BSU Council, '46-'47; JRG, '35-'36-'36-'37-'45-'46-'46-'47; Life Service Band, '35-'36-'36-'37-'45-'46-'46-'47; Glee Club, '45-'46.

**W. T.****GEORGE H.****TURNER, JR.**

Chickamauga, Georgia

A.B. English

Greater Dixie Club; Latin Club, '47; Footlights Club, '45-'46-'47; BSU Council, President, '46-'47; JRG, '45-'46-'47; Life Service Band, '45-'46-'47; (Chorister '45-'46); Glee Club, '45-'46-'47; Music Appreciation, '46-'47; Campbellville Jr. College, '43-'44-'45.

**PILLOW**

Blytheville, Arkansas

B.S. History

History Majors Club, '45-'46-'47; Pioneer Club, '45-'46-'47; JRG, '45-'46-'47; Veterans Club, '46-'47.

**ANNE PRESSLEY**

Jackson, Tennessee

Zeta Tau Alpha

B.S. Chemistry and Biology

Treasurer, Zeta Tau Alpha, '46; Enonian, '43-'44-'45-'46-'47; Madison County Club, '44-'47; Doctors Club, '45-'46-'47.

**VIRGINIA MAE****PYRON**

Jackson, Tennessee

Zeta Tau Alpha

B.S. Commerce

Zeta Tau Alpha, President '46-'47; Historian '46; Pan-Hellenic, (President '46-'47); Enonian, '44-'45-'46-'47; Palladians, '46-'47; Booster Club, '46-'47; Madison County Club; Life Service Band, '44-'45; Let's We Forget Staff, '47; Music Appreciation, '46-'47; Mississippi State College for Women.

**DAVID****RAGAN**

Jackson, Tennessee

Alpha Tau Omega

A.B. English

Booster Club, '46-'47; Alpha Tau Omega Scribe, '45; Palm Reporter, '46; Madison County Club; Footlights Club, '45-'46-'47; (President '46-'47); Tau Kappa Alpha, '47; (Reporter '47); Organization Editor, Let's We Forget, '47; Editor-in-Chief, Cardinal and Cream, '45-'46-'46-'47; Stunt Night, '45; "Magnificent Obsession," '46; Play Tournament, '46; One-Act Play Night, '47; Spring Play, '47; Junior Class Reporter, '45-'46; Senior Class Vice-President, '46-'47; Music Appreciation, '47; Publicity Chairman, Focus Week, '46; Editor, Union, Barker, '44-'45; "Seven Keys to Baldpate," '47; Strickland Medal Contestant, '47.

**KATHERINE LOUISE****REAVES**

Memphis, Tennessee

Chi Omega

B.S. Chemistry

Pan-Hellenic, '46-'47; Home Echo, '44-'45-'46-'47; West Tennessee Club; Glee Club, '45; Annual Staff, '47.

**VERNON****SISCO**

Halls, Tennessee

A.B. Religion

West Tennessee Club; JRG, '46-'47.

**ANNIE LOU****SMITH**

Medon, Tennessee

A.B. Education

Madison County Club; Union University Band; Basketball; Enonian Literary Society.

**KATY JO****SMITH**

Toone, Tennessee

Zeta Tau Alpha

B.S. Chemistry

Home Echo, '45-'46; Enonian, '45-'46-'47; Booster Club, '45-'46; (Secretary); Doctors Club, '45-'46-'47; U. Club, '46-'47; Mallory Math Club, '45-'46-'46-'47.

**ALVIN L.****STOBAUGH**

Jackson, Tennessee

Sigma Alpha Epsilon

B.S. Commerce

Madison County Club.

**LYNDON T.****STONE**

Petersburg, Tennessee

Alpha Tau Omega

B.S. Mathematics

Greater Tennessee Club, '46-'47; Mallory Math Club, '46-'47; Veterans Club, '46-'47.

**NANCY JEAN****STONE**

Petersburg, Tennessee

Zeta Tau Alpha

B.S. Mathematics

Enonian, '46-'47; Greater Tennessee Club; YWA, '46-'47; Mallory Math Club, '46-'47; (Secretary '46-'47); Tennessee College for Women, '44-'45-'46.

**LACY EARL****WILLIAMS**

Bells, Tennessee

Alpha Tau Omega

B.S. Mathematics

Alpha Tau Omega Pledge Master, '46; Booster Club, '46-'47; West Tennessee Club, '47; Latin Club, '47; Footlights Club, '42-'47; Editor-in-Chief, Let's We Forget, '47; Drama's, A's, Hivites, '42-'46-'47; Junior Class Vice-President, '46-'47; Mallory Math Club, '47; Veterans Club, '47.



BARTON HALL  
ADMINISTRATION BUILDING



GLENN HARWOOD

President

LACY WILLIAMS

Vice-President

DOLLY BANDY

Secretary

JANET FORGY

Reporter

# JUNIOR CLASS

## *Officers*

# JUNIORS

Jim (Count) Frey



HELEN  
ADAMS  
Tupelo, Miss.

WANDA  
CULP  
Leachville, Ark.

AUDIE  
ANDERSON  
Marietta, Miss.

JUNE  
DARLING  
Jackson, Tenn.

DOLLY  
BANDY  
Danville, Ky.

MARTHA TUTTLE  
DAVIS  
Humboldt, Tenn.

TOM  
BRANDON  
Benton, Ky.

GEORGENE  
DAY  
Laconia, Tenn.

POLLY  
BRETT  
Jackson, Tenn.

JIMMIE  
DIAMOND  
Jackson, Tenn.

KATHERINE  
BROWN  
Memphis, Tenn.

JOHN  
DICKINSON  
Mercer, Tenn.

MERILYN  
COTTER  
Jackson, Tenn.

ROBERT  
ELAM  
Jackson, Tenn.

FRANCES  
CROSSON  
Jackson, Tenn.

JANE  
EVANS  
Jackson, Tenn.

LUDIE  
FEATHERSON  
Newbern, Tenn.

JEAN  
HICKS  
Elizabethtown, Ky.

GEORGE  
FERGUSON  
Covington, Tenn.

HERVEY  
HUDSON  
Brownsville, Tenn.

JANET  
FORGY  
Jackson, Tenn.

BOB  
HUNDLEY  
Mercer, Tenn.

JAMES  
FRANKS  
Falls Church, Va.

DALE  
JOHNSON  
Jackson, Tenn.

JAMES  
FREY  
Springfield, Tenn.

JOYCE  
JOHNSON  
Jackson, Tenn.

DOROTHY  
GOOGE  
Marietta, Miss.

HUBERT  
JONES  
Dyersburg, Tenn.

LE BERTA  
HART  
Booneville, Miss.

LE ROY  
JONES  
Staele, Mo.

GLYNN  
HARWOOD  
Memphis, Tenn.

THEO  
LANCASTER  
Jackson, Tenn.

# JUNIORS



Janie and Katie Escaping



JOY  
LILES  
Humboldt, Tenn.

ROBERT  
MIZELL  
Jackson, Miss.

WILLIAM  
LOGGINS  
Loberville, Tenn.

ANNIE KATE  
MOORE  
Greenfield, Tenn.

KENNETH  
MAYS  
Pinson, Tenn.

BILLY  
MOORE  
Jackson, Tenn.

MARY FRANCES  
MAYS  
Jackson, Tenn.

WILLIAM  
MOSIER  
Henderson, Tenn.

JOHN  
MEADOR  
Jackson, Tenn.

MARY JANE  
MURPHEY  
Rossville, Tenn.

BILLY  
McILWAIN  
Trenton, Tenn.

MARIE  
NABORS  
Smithville, Miss.

KATHERINE  
MILLER  
Bruceton, Tenn.

BETTY  
PEARCE  
Jackson, Tenn.

ALICE  
MIZELL  
Jackson, Miss.

GWEN  
PETWAY  
Benton, Ky.

JIMMIE  
PHILLIPS  
Jackson, Tenn.

MARY  
WALDROP  
Booneville, Miss.

DOLORES  
RANDOLPH  
Jackson, Tenn.

RACHEL  
WALDROP  
Booneville, Miss.

WILL HAYS  
ROBERTS  
Jackson, Tenn.

HENRY G.  
WEST  
Ecru, Miss.

VIOLET  
SILLS  
Yale, Tenn.

ANNA MAE  
WILLIAMS  
Paducah, Ky.

HAROLD  
SUBLETT  
Trenton, Tenn.

MARCELINE  
WILLIAMS  
Humboldt, Tenn.

ANNE  
TAYLOR  
Jackson, Tenn.

NANCY  
WILLIAMS  
Memphis, Tenn.

CHARLES  
TAYLOR  
Jackson, Tenn.

HAROLD  
WOOD  
Jackson, Tenn.

MRS. BILLIE

TURNER  
Covington, Tenn.



Left:  
MUSIC HOUSE  
Below:  
LOVELACE HALL





# SOPHOMORE CLASS

## *Officers*

ALFRED ROYER

President

JIMMY EAVES

Vice-President

BETTY JONES PEARCE

Secretary



# SOPHOMORES

Hand Full Jo and Marg



JOHN PRIMM  
ADAMS  
Trenton, Tenn.

JEANETTE  
BODKIN  
Trenton, Tenn.

JEAN  
CARLISLE  
Lucy, Tenn.

PEGGY  
DODSON  
Halls, Tenn.

J. B.  
FRYE  
Jackson, Tenn.

MILDRED  
HOLLAND  
Blue Springs Miss

JUNE  
ADAMS  
Union City, Tenn.

BLANCHE  
BOMER  
Brownsville, Tenn.

JUANITA  
CASTELLAW  
Maury City, Tenn.

RUTH  
DOWLAND  
Trenton, Tenn.

DEANE  
GRAVES  
Trenton, Tenn.

CLARA  
JANE  
HOLLOWAY  
Jackson, Tenn.

CALVIN  
ANDERSON  
Huntingdon, Tenn.

LOIS  
BOOTHE  
Burnsville, Miss.

GERALDINE  
CLARK  
Adamsville, Tenn.

CARL  
DUCK  
Mobile, Ala.

JANE  
HAMNER  
Jackson, Tenn.

CHARLES  
HUDSON  
Dyer, Tenn.

EDMUND  
ANTHONY  
Ripley, Tenn.

SHELBY  
DEE  
BREWER  
Hackleburg, Ala.

JIMMIE  
CLARK  
Union City, Tenn.

KATIE  
LOU  
DUNAGAN  
Trenton, Tenn.

O'NEAL  
HARDY  
Ripley, Tenn.

W. W.  
HUMPHREYS  
Memphis, Tenn.

BILLY  
BAXTER  
Jackson, Tenn.

PALMER  
BRIGGS  
Jackson, Tenn.

BETTY  
COGBURN  
Alamo, Tenn.

JIMMY  
EAVES  
Jackson, Tenn.

JOYCE  
ANN  
HARRISON  
Popular, Bluff, Mo.

JOSEPH  
ISAAC  
Jackson, Tenn.

JOHN  
BELL  
Louisville, Ky.

FRANK  
BRUER  
Jackson, Tenn.

FRED  
CROSSON  
Jackson, Tenn.

JEANNE  
EAVES  
Jackson, Tenn.

THOMAS  
HARWOOD  
Trenton, Tenn.

BILL  
IVY  
Paducah, Ky.

MARY  
JANE  
BELL  
Louisville, Ky.

HAROLD  
BRYANT  
Osceola, Ark.

GWYN  
DAILEY  
Hazel, Ky.

AUTRY  
EMMERT  
Jackson, Tenn.

IRVIN  
HAYES  
Trenton, Tenn.

DOROTHY  
JONES  
Dyersburg, Tenn.

BEVERLY  
BILLINGSLEY  
Jackson, Tenn.

CLARA  
BURDETT  
Martin, Tenn.

JAMES  
DEMING  
Henderson, Tenn.

EVELYN  
EPPS  
Courthland, Miss.

RALPH  
HENDERSON  
Jackson, Tenn.

DOROTHY  
KING  
Jackson, Tenn.

IRENE  
BISHOP  
Jackson, Tenn.

PAUL  
BURNS  
Pulaski, Tenn.

LUCILLE  
DEW  
Jackson, Tenn.

WALTER  
FINLEY  
Jackson, Tenn.

HARRY  
HICKMAN  
Petersburg, Tenn.

J. L.  
KNUPP  
Kavel, Ky.

EDWIN  
BIVENS  
Jackson, Tenn.

ELLIS  
BUSE  
Tupelo, Miss.

CAROLYN  
DODDS  
Columbus, Ga.

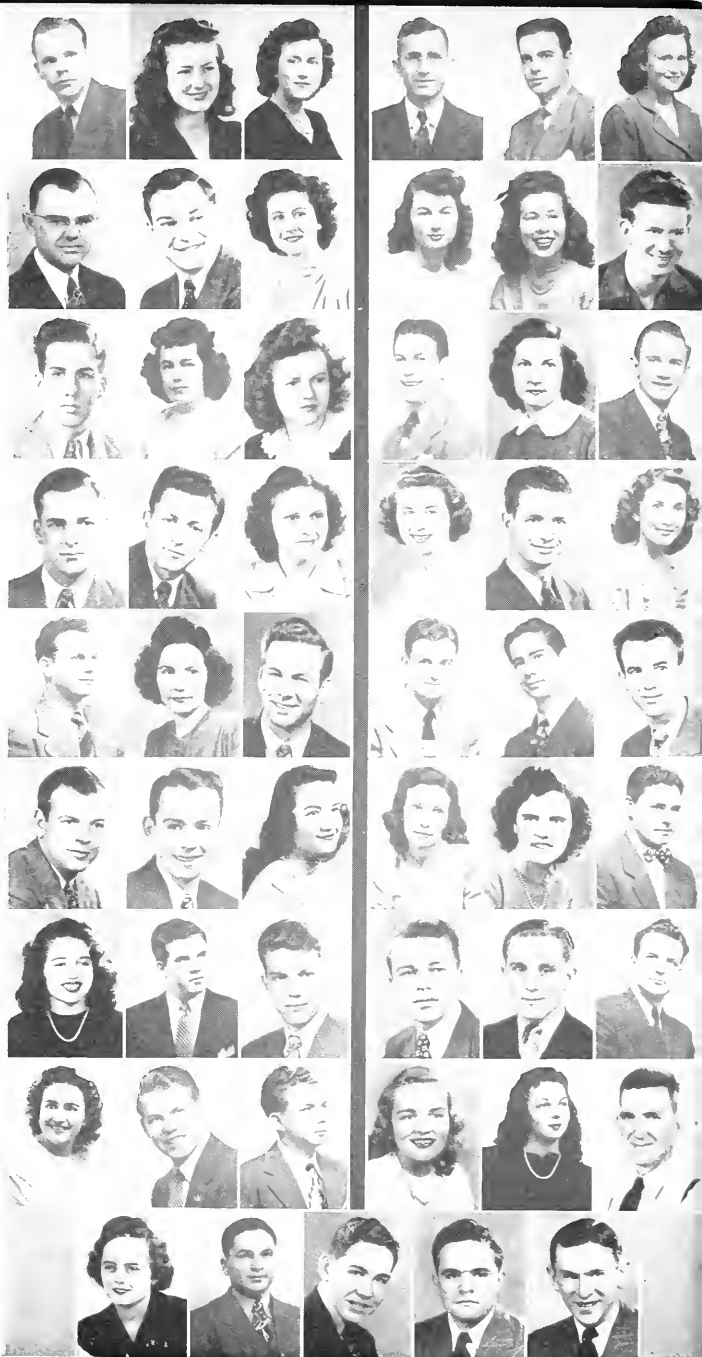
ALMA  
RUTH  
FRANKS  
Falls Church, Va

LOU  
ELLEN  
HILLS  
Lexington, Tenn.

BETTY  
LANON  
Jackson, Tenn.

# SOPHOMORES

Buddy (P) and Fred (W)



RALPH  
LAWLER  
Trenton, Tenn.

EVELYN  
MORELAND  
Booneville, Miss.

REGINA  
PEELER  
Stanton, Tenn.

H. G.  
ROBERTS  
Blue Springs, Miss.

MARY  
NELL  
SINCLAIR  
Jackson, Tenn.

DWAYNE  
TUCKER  
Parsons, Tenn.

VIRGINIA  
LEGGETT  
Gates, Tenn.

JEAN  
MURCHISON  
Jackson, Tenn.

E. E.  
PHILLIPS  
Henderson, Tenn.

MARGARET  
ANN  
ROGERS  
Jackson, Tenn.

MOLLIE  
SMITH  
Kenton, Tenn.

BILL  
TURNER  
Covington, Tenn.

GEORGIA  
MAE  
LOWRANCE  
Jackson, Tenn.

ELIZABETH  
NELSON  
Bells, Tenn.

JIMMIE  
PHILPOT  
Jackson, Tenn.

ALFRED  
ROYER  
Memphis, Tenn.

LORRAINE  
SMITH  
Memphis, Tenn.

LOLA  
USERY  
Bradford, Tenn.

CLYDE  
McCORD  
Beech Bluff, Tenn.

FAY  
OAKLEY  
Dyersburg, Tenn.

CLARENCE  
RANDOLPH  
Jackson, Tenn.

FRED  
SANDERS  
Humboldt, Tenn.

TRUDELL  
SMITH  
Decaturville, Tenn.

FRED  
WALDEN  
Tupelo, Miss.

BROOKS  
McLEMORE  
Jackson, Tenn.

JERE  
OMAR  
Jackson, Tenn.

MILDRED  
RICHARDSON  
Jackson, Tenn.

CHARLES  
SCATES  
Jackson, Tenn.

DOROTHY  
STANLEY  
Ripley, Tenn.

C. M.  
WARREN  
Clifton, Tenn.

MARGARET  
MABRY  
Water Valley, Miss.

MARY  
OSWALT  
Memphis, Tenn.

SARA  
FRANCES  
RILEY  
Tupelo, Miss.

KYLE  
SCATES  
Patroon, Texas

TOMMY  
STEADMAN  
Jackson, Tenn.

LYDA  
WHITE  
Jackson, Tenn.

MARVIN  
MILLER  
Jackson, Tenn.

THELMA  
PARKER  
Medon, Tenn.

WILLIAM  
ROARK  
Malesus, Tenn.

BILL  
SHELTON  
Jackson, Tenn.

JAMES  
HOLLAND  
STRAWN  
Jackson, Tenn.

THELMA  
WHITLOCK  
Pulaski, Tenn.

PERRY  
MOORE  
Jackson, Tenn.

BUDDY  
PATEY  
Tupelo, Miss.

JOYCE  
ROBERTS  
Jackson, Tenn.

ROY  
SIMMONS  
Henderson, Tenn.

J. W.  
TODD  
Lexington, Tenn.

ANDREW  
WILLIAMS  
Jackson, Tenn.

RUBY  
CLAIRE  
WILLIAMS  
Jackson, Tenn.

GEORGE  
WINSLOW  
Jackson, Tenn.

H. B.  
WOODWARD  
Wewoka, Okla.

HERSCHEL  
WOODY  
Humboldt, Tenn.

GLENN  
YANCEY  
Savannah, Tenn.



CROOK HALL



ROY SIMMONS

President

TOMMY STEDMAN

Vice-President

BUDDY PATEY

Treasurer

JACK HILLIARD

Reporter

# FRESHMAN CLASS

## *Officers*



# FRESHMEN

Tom (Strolling) Evans



JOYCE AUSTIN Taylor, Miss.	RAY BOONE Jackson, Tenn.	ELIZABETH CAMPBELL Bells, Tenn.	ED CONNER Ripley, Miss.	ALTON DANIELS LaGrange, Ga.	THOMAS ESTES Blue Mountain, Miss.
FRED BAKER Jackson, Tenn.	JOE BOMAR Steele, Mo.	ELIZABETH "PANN" CARR Tupelo, Miss.	JIM COOPER Greenfield, Tenn.	GENE DAVIS Gates, Tenn.	THOMAS EVANS Darden, Tenn.
JOE BAILEY Shelbyville, Tenn.	HUNTER BOND Jackson, Tenn.	REBA NELL CASEY Milan, Tenn.	JOE BROOKS COOPER Jackson, Tenn.	RICHARD De BERRY Humboldt, Tenn.	JOE EXUM Jackson, Tenn.
JEAN BALL Ripley, Tenn.	BILLY BOND Jackson, Tenn.	PEGGY CAUDLE Trenton, Tenn.	PAUL COOPER Jackson, Tenn.	WILLIAM DICKINSON Ripley, Tenn.	GEORGE FEATHERS Jackson, Tenn.
BOB BANE Booneville, Tenn.	STANLEY BOWDEN Covington, Tenn.	CELESTE CHAPMAN Lambert, Miss.	GENE COTEY Memphis, Tenn.	SOUTHALL DICKSON Jackson, Tenn.	J. L. FORD Jackson, Tenn.
CLIFFORD BARNES Beech Bluff, Tenn.	HERSHEL BREWER Savannah, Tenn.	JAMES CHATAM Humboldt, Tenn.	BOBBY COUCH Jackson, Tenn.	JACK DITTO Memphis, Tenn.	GENE FORRESTER Jackson, Tenn.
JAMES BARNETT Parsons, Tenn.	HOWARD RAY BREWER Henderson, Tenn.	ROSE CHESTER Trenton, Tenn.	MILTON COX Booneville, Miss.	WILBUR DOUGLAS Jackson, Tenn.	WILLIAM FOSTER Jackson, Tenn.
WILLIAM BERRETT Henderson, Tenn.	WALLENE BREWER Lavinia, Tenn.	GEORGE CLARK Benton, Ky.	DAMON CRABTREE Bells, Tenn.	B. B. DOUGLAS Ripley, Tenn.	WALLACE FOSTER Jackson, Tenn.
MILTON BASDEN Blue Springs, Miss.	MARY BREWER Lavinia, Tenn.	GRADY CLEMENT Jackson, Tenn.	FRANK CRAWFORD Memphis, Tenn.	GEORGE DRINKARD Ripley, Tenn.	MOZELLE FOWLER Martin, Tenn.
BILLIE BASS Trenton, Tenn.	JACK BROWN Vicksburg, Miss.	JEAN CLIFTON Memphis, Tenn.	PERRY CRIMM Trenton, Tenn.	CLARENCE DRIVER Humboldt, Tenn.	DAVID GARDNER Jackson, Tenn.
GERALDINE BECKHAM Luffs, Tenn.	FRED BRUMBELOW Hickory Valley, Miss.	JAMES CLOUD Henderson, Tenn.	MARTHA CROCKER Kenton, Tenn.	BOB EPPES Jackson, Tenn.	MARGARET GARNETT Mayfield, Ky.
LESTER BISHOP Camden, Tenn.	CHARLES BUNTIN Jackson, Tenn.	GLENN COLEMAN Trenton, Tenn.	RUSSELL CROUSE Dyer, Tenn.	MAXINE EPPS Courtland, Miss.	GILL GIDEON Whiteville, Tenn.
ROBERT BOGLE Atwood, Tenn.	JAMES BURDETTE Martin, Tenn.	EDMOND COLE Aberdeen, Miss.	CARROLL CURTIS Memphis, Tenn.	JEWEL EPPS Courtland, Miss.	SARA GILL Jackson, Tenn.

# FRESHMEN

Peg



W. T.  
GILL  
Bragg City, Mo.

HUGH  
HARROL  
Detroit, Mich.

JERE  
HUEY  
Milan, Tenn.

JOE  
KING  
Bemis, Tenn.

ELBERT  
McLAURIN  
Elaine, Ark.

JOE  
MEEKS  
Jackson, Tenn.

RUBY  
DEAN  
GLENN  
Iuka, Miss.

WAYMON  
HARRISON  
Mobile, Ala.

BROWN  
HUGHES  
Memphis, Tenn.

PAUL  
KING  
Jackson, Tenn.

LYDIA  
McLEMORE  
Lavinia, Tenn.

G. G.  
MIDDLETON  
Lexington, Tenn.

MARTHA  
SUE  
GOAD  
Jackson, Tenn.

DONALD  
HARTMAN  
Gates, Tenn.

GALE  
ISAMINGER  
Memphis, Tenn.

HAROLD  
KOFFMAN  
Jackson, Tenn.

JENNIE  
MAE  
McMINN  
Lavinia, Tenn.

T. E.  
MILLER  
Ripley, Tenn.

JESSIE  
GRAY  
Selmer, Tenn.

JOHN  
HENDREN  
Ripley, Tenn.

FRED  
JACOBS  
Humboldt, Tenn.

MARY  
LOU  
LANKFORD  
Ripley, Tenn.

DAVID  
McPEAKE  
Jackson, Tenn.

HOWARD  
MISKELLY  
Faulkner, Miss.

CLELL  
GREEN  
Booneville, Miss.

PEGGY  
HENRY  
Pontotoc, Miss.

CHARLES  
JOHNSON  
Tupelo, Miss.

BILL  
LEDBETTER  
Henderson, Tenn.

MERL  
McVEY  
Tupelo, Miss.

GERALD  
MONTGOMERY  
Lexington, Tenn.

TRIPPE  
GREEN  
LaGrange, Ga.

HERBERT  
HIGDON  
Memphis, Tenn.

FRANK  
JOHNSON  
Jackson, Tenn.

NORMAN  
LEVINE  
Woodsocket, R. I.

W. G.  
McWHORTER  
Jackson, Tenn.

JUNE  
MOORE  
Fullon, Miss.

BILLY  
GREGORY  
Jackson, Tenn.

STRATTON  
HILL  
Humboldt, Tenn.

JAMES E.  
JOHNSON  
Elaine, Ark.

LINDY  
LEWIS  
Kevil, Ky.

BOB  
MALONE  
Jackson, Tenn.

ROBERT  
MOORE  
Greenfield, Tenn.

MARY  
LEE  
HAILEY  
Brownsville, Tenn.

JACK  
HILLIARD  
Jackson, Tenn.

KATHERINE  
ANN  
JONES  
Jackson, Tenn.

JIMMY  
LITTLEFIELD  
Adamsville, Tenn.

GEORGE  
MARTIN  
Henderson, Tenn.

DAVID  
MORGAN  
Lutts, Tenn.

RAYMOND  
HALE  
Halls, Tenn.

JIMMIE  
HINSON  
McGehee, Ark.

TED  
JONES  
Humboldt, Tenn.

FRED  
LOLLAR  
Baldwyn, Miss.

KENNETH  
MARTINDALE  
Jackson, Tenn.

ROBERT  
MORRIS  
Detroit, Mich.

EVELYN  
HALEY  
Memphis, Tenn.

J. B.  
HOLLAND, JR.  
Jackson, Tenn.

WARREN  
JONES  
Jackson, Tenn.

SHAROLENE  
McAULEY  
Jackson, Tenn.

MARY  
JO  
MATHIS  
Jackson, Tenn.

BOB  
NAQUIN  
Nashville, Tenn.

ROBERT  
HALFACRE  
Jackson, Tenn.

MARIE  
HOPKINS  
Henning, Tenn.

ROBERT  
JORDAN  
Toone, Tenn.

EDWIN  
McCAULEY  
Jackson, Tenn.

WILLIAM  
MATHIS  
Tretzevant, Tenn.

SARAH  
ELIZABETH  
NEELY  
Jackson, Tenn.

ROBERT  
HAMBLIN  
Aberdeen, Miss.

RAY  
HOUSE  
Martin, Tenn.

JIMMIE  
JOYNER  
Huntingdon, Tenn.

JAMES  
McCUNE  
Memphis, Tenn.

BUFORD  
MATLOCK  
Jackson, Tenn.

ANN  
NORTON  
Jackson, Tenn.

MARK  
HAMRICK  
Jackson, Tenn.

WENDELL  
HUDIBERG  
Jackson, Tenn.

OZIER  
KELLY  
Jackson, Tenn.

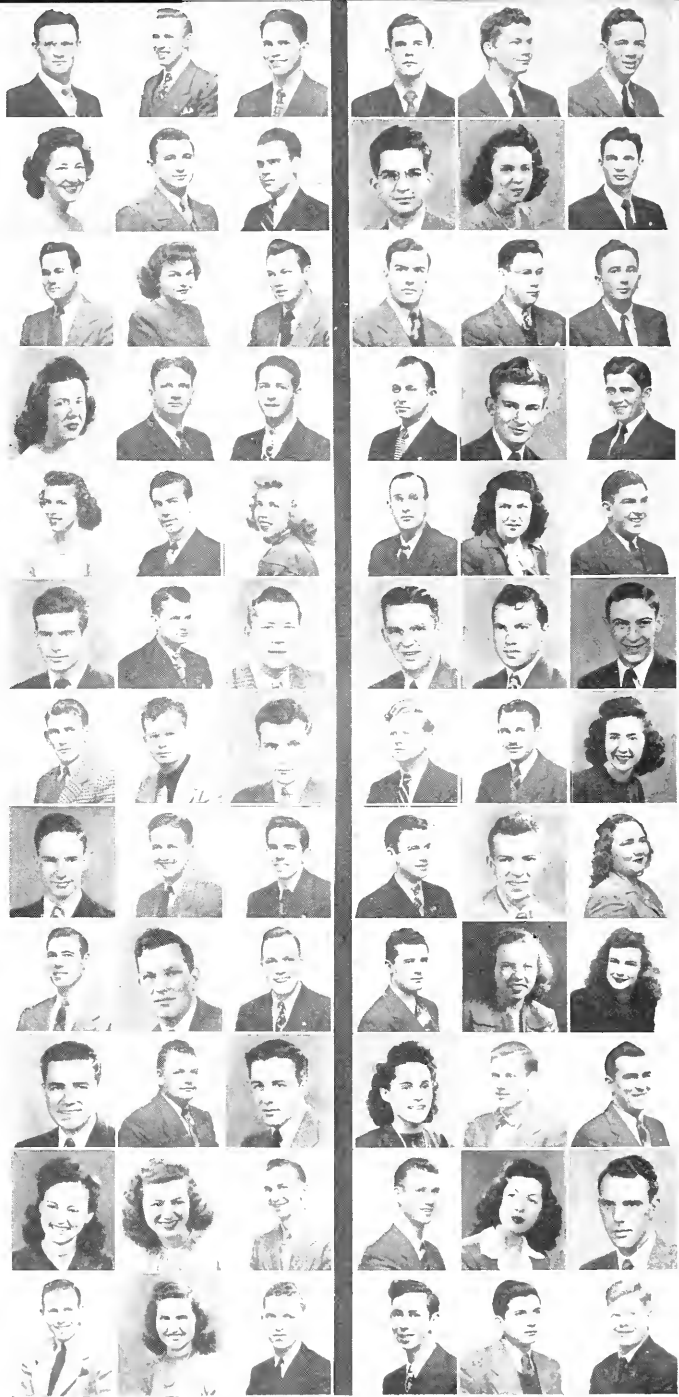
RALPH  
McINTYRE  
Houston, Texas

HARVEY  
MEEKS  
Trenton, Tenn.

JIMMIE  
OAKES  
Memphis, Tenn.

# FRESHMEN

J. Clark (Esq.)



W. B. OAKLEY  
Halls, Tenn.

JOHN L. POWERS  
Bethel Springs, Tenn.

SUE SCRIVENER  
Meridian, Miss.

BILLY OSBORNE  
Jackson, Tenn.

EMAJEAN RAGAN  
Jackson, Tenn.

BILL SCRUGGS  
Wallisburg, Ky.

HARRY PALMER  
Memphis, Tenn.

WILLIAM T. RAWLS  
Jackson, Tenn.

BARBARA SEWELL  
Jackson, Tenn.

HARRY PARSONS  
Shelbyville, Tenn.

WILLIAM R. REDDIN  
Pinson, Tenn.

WOODROW SHANKLIN  
Dyer, Tenn.

ROBERT PATTON  
Jackson, Tenn.

DAVID REID  
Denmark, Tenn.

JEAN SHELLABARGER  
Jackson, Tenn.

WILLIAM PATTON  
Jackson, Tenn.

ROBERT RICHARDSON  
Jackson, Tenn.

THOMAS SHELLEY  
Jackson, Tenn.

MARY LOIS PEYTON  
Memphis, Tenn.

MARY JEAN RIDDLE  
Jackson, Tenn.

FRED SHORT  
Jackson, Tenn.

JAMES PHILLIPS  
Corinth, Miss.

CARMACK ROBERTSON  
Jackson, Tenn.

ERNEST SIMMONS  
Humboldt, Tenn.

WILLIAM McKAY PHILLIPS  
Jackson, Tenn.

CHARLES ROBERTSON  
Jackson, Tenn.

ROY SIMMONS  
Jackson, Tenn.

MACK PHILLIPS  
Jackson, Tenn.

WAYMOND ROSS  
Beech Bluff, Tenn.

IRA SINGLETON  
Memphis, Tenn.

NELDA PICKLER  
Memphis, Tenn.

BILL SANDERLIN  
Memphis, Tenn.

HOBART SIPES  
Jackson, Tenn.

BILL POLLARD  
Greenfield, Tenn.

JOHN SANDERS  
Jackson, Tenn.

DAVID SMITH  
Memphis, Tenn.

JERRY SMITH  
Selmer, Tenn.

EDWARD TILLMAN  
Jackson, Tenn.

VIANA WEST  
Ecru, Miss.

LOWERY SNIPES  
Tupelo, Miss.

CHARLES TURNER  
Alamo, Tenn.

BARBARA WHITTLE  
Memphis, Tenn.

HERBERT SORRELL  
Memphis, Tenn.

WILLIARD VICKERY  
Tallahassee, Fla.

CLAUDE WILKINS  
Kosciusko, Miss.

WILLIAM H. SPARKS  
Henderson, Tenn.

TUBBY WALBURN  
LaGrange, Ga.

HOMER WILKINS  
Lexington, Tenn.

P. J. SPELLINGS  
McKenzie, Tenn.

BETTY WALDEN  
Nashville, Tenn.

DORIS ANN WILLIAMS  
Jackson, Tenn.

JANE STALLINGS  
Halls, Tenn.

BETTY RUTH WALKER  
Jackson, Tenn.

WILLIAM WILLIS  
Trenton, Tenn.

MAX STONE  
Petersburg, Tenn.

JAMES WALKER  
Booneville, Miss.

MURL WILLOUGHBY  
Jackson, Tenn.

HAROLD STOTT  
Spring Creek, Tenn.

WILLIAM P. WALKER  
Henderson, Tenn.

MILDRED WILROY  
West Helena, Ark.

MORRIS STRAYHORN  
Atwood, Tenn.

DAN WATTERS  
Blue Springs, Miss.

KEITH WILSON  
Bardwell, Ky.

JAMES W. SUMNERS  
Booneville, Miss.

JO WAXMUSKI  
Harriman, Tenn.

BERNARD WOODSON  
Jackson, Tenn.

GARY SURRETT  
Memphis, Tenn.

MARSHALL WELLS  
Memphis, Tenn.

LELAND YARBER  
Belmont, Miss.

JEAN TANNER  
Memphis, Tenn.

JOE WEST  
Ripley, Tenn.

EDGAR YARBRO  
Lexington, Tenn.



# STUDENT COUNCIL

## OFFICERS

JOHN MEADOR

President

HERMAN JACOBS

Secretary

## FACULTY

Dr. W. F. Jones

Dean S. S. Sargent

Dean Sanders

Prof. Charles Millican

## MEMBERS

Frank Bruer  
Robert Elam

Glynn Harwood

Herman Jacobs

John Meador

After an absence from the campus of several years, the Student Council reappeared in the school year 1945-46.

Membership in the Council is composed of representatives, one from each of the four classes, elected by the class. President of the Council is elected by the student body.

Council meetings are held monthly with the president of the school in his office. At such time, student affairs are discussed.

One of the main works of the Council was the creation of the Booster Club, whose

members often work side by side with those of the Student Council. Also, the southern inter-collegiate athletic committee of the school has student members appointed by the Council. This group also backed the election of the student body president.

The very nature of the organization makes it one of the most respected organizations on the campus. Considering this year's accomplishments, we can expect even greater things from this Council in the future.



## *Activities*





LACY WILLIAMS, Editor-in-Chief  
ANNE ANDERSON, Associate Editor



L—loyalty to Union and all we hold dear  
 A—for achievement all through the year  
 C—for courage to try new ideas  
 Y—yearning to put out an annual without  
 any peers.  
 W—for work he was willing to do  
 I—for integrity and interest too  
 L—for leadership which he did possess  
 L—liberty to others their ideas to express  
 I—for intelligence and  
 A—for ambition  
 M—eant  
 S—uccess in his position.

To Lacy Williams our editor-in-chief  
 We proudly offer this laurel leaf,  
 As a symbol of victory in your task  
 For a finer editor we could not ask.

For associate editor  
 Of our "Lest We Forget"  
 We chose Anne Anderson

## Lest We

A choice we knew we'd never regret  
 She gave of her time, her talent, her work  
 Not one little duty did she ever shirk.  
 She classified, sorted, identified, too  
 Pictures of you and you and you.  
 Her's was the job the manuscripts to write  
 On this she labored night after night.  
 A chief cannot work without a right hand  
 man  
 This job was capably filled by Anne.  
 This versatility and capability  
 Enabled her to be  
 The finest associate editor  
 That ever we did see.

OPPOSITE PAGE

### STAFF MEMBERS

To the other staff members, too  
 The credit for this annual is due.  
 They worked from morn till late at night  
 It left them looking like a fright.  
 They looked at pictures  
 Till their eyes were crossed  
 Still more taken by Herman  
 Into their laps were tossed.  
 From Moore's to Wooten's  
 They beat a path  
 To see their struggles  
 Made people laugh.  
 Till one fine day, they wore a grin.  
 'Twas the day the annual was handed in.

Our hats are off  
To big old Theo,  
He's a boy that can really go.  
His ability to get ads  
And money, too  
Helped him a  
Difficult job to do.  
He tramped all over this man's town  
Never letting discouragement  
Get him down.  
A helping hand he did extend  
Encouraging all with a cheery grin  
He was the business manager  
Of our "Lest We Forget"  
And we truly believe, the best one yet.

★

## Forget STAFF



THEO LANCASTER, Business Manager





DAVID RAGAN

DAVID RAGAN  
NOIS JETER  
"SPIKE" JONES



HELEN ADAMS

It was on February 25, 1946 that the Cardinal and Cream resumed publication after a three-year absence from Union's campus. At the helm then was David Ragan as editor. This year he repeated in that position, with Nois Jeter ably assisting, and "Spike" Jones doing more than his share as a very capable business manager.

The Cardinal and Cream fairly reported upon all the events of the school, and equally publicized the varied organizations upon the campus.

The cardinal principle of the paper, which frankly stated it never expected to be another New York Times, was, "Just to be a Good SCHOOL paper."

NOIS JETER

Editor  
Associate Editor  
Business Manager

**STAFF**

DOROTHY JONES  
HELEN ADAMS  
JIMMY PHILPOT  
JUNE ADAMS  
EUGENE COTEY  
PALMER BRIGGS  
JEAN RAGAN  
VIOLET SILLS  
ANNIE LAURA TOWATER  
MARCELINE WILLIAMS

Feature Editor  
News  
Sports  
Sports  
Circulation  
Humor  
Society  
Society  
Assistant Business Manager  
Assistant Business Manager

# CARDINAL AND CREAM



# VETERAN'S CLUB

The Veterans Club is an organization made up of the veterans of World War II. The purpose of this organization is to aid the students who are veterans in all benefits to further their education. This is the largest organization on the campus.

## OFFICERS

BILL TURNER	President
FRED SANDERS	Secretary-Treasurer
JACK HILLIARD	Reporter
H. G. ROBERTS	Sergeant-at-Arms

## MEMBERS

John Adams, Audie Anderson, Calvin Anderson, Robert Armour, Fred Baker, Joe Bailey, Gus Ballard, Robert Bane, Willford Barnes, James Barnette, William Barrett, Jack Barton, Milton Basden, Billio Bass, Taylor Beare, Lester Bishop, Edwin Bivens, Robert Blaine, Robert Blair, Arthur Blankenship, Joseph Bomar, Ray Boone, Stanley Bowden, Robert Bogle, Hershell Brewer, Howard Brewer, Shelby Brewer, William Bridges, William Brien, Palmer Briggs, Jack Brown, James Brown, Frank Bruer, Fred Brumbelow, Maurice Brumbelow, Harold Bryant, Charles Buntin, James Burdette, Ellis Buse, Newton Carver, Herman Cavender, Robert Chapman, James Clark, Ed Claybrook, Grady Clements, James Cloud, Eugene Cofer, Edwin Cole, Harold Coffman, Hugh Coltharp, Ed Conner, Calvin Cooper, Joe Cooper, Eugene Cotey, Bobby Couch, Milton Cox, Damon Crabtree, William Crawford, Perry Crim, Alton Daniels, Jr., James Daves, Gene Davis, James Davis, William Dawson, Richard DeBerry, James Deming, James Diamond, William Dickerson, Jack Ditto, Lydle Dickson, Quinton Dodson, George Dowd, Gerald Duncan, James Eaves, Robert Elam, Aury Emmert, Thomas Evans, Ermon Evans, Lee Ewing, Joe Exum, George Feathers, George Ferguson, Walter Finley, Gene Forrester, Billy Jack Foster, Billy Fox, James Frey, J. B. Frye, Fred Fugitt, David Gardner, David Gardner, Jr., Donovan Gary, Gill Gideon, James Goodwin, Jesse Grey, Clell Green, Trippe Green, Wayne Greer, Billy Gregory, Homer Guy, Robert Halfacre, Robert Hamlett, Mark Hamrick, Clint Hanna, O'Neal Hardy, Hugh Harrel, Kenneth Hartman, Glynn Harwood, Thomas Har-

wood, Irvin Hayes, John Hendren, Elvin Hensley, Jack Hilliard, James Hinson, John Holland, Herbert Hoover, Wendell Huduburg, Charles Hudson, Henry Huey, W. W. Humphreys, Bob Hundley, Carl Hutchison, Joseph Isaac, William Ivy, Herman Jacobs, Paul James, Charles Johnson, James Johnson, Jones Jones, Ted Jover, Robert Jordan, William Keenan, James Kelly, Joseph King, Paul King, Harold Koffman, Everette Laton, Theo Lancaster, Ralph Lawler, Bill Ledbetter, Horman Levine, William Loggins, Fred Loller, Thomas Maddux, Bobby Malone, Julius Marlow, George Martin, Kenneth Martindale, William Mathis, Buford Matlock, Kenneth Mays, John Meadow, Joe Meeks, Guest Middleton, Thomas Miller, William Mills, Howard Miskelley, Robert Mizell, Robert Morris, Eugene Morrow, William Mosier, Fred Muse, Edwin McCauley, Robert McCoy, James McCune, Bill McIlwain, Ralph McIntyre, Elbert McLaurin, Brooks, McLemore, Merle McVey, Robert Naquin, John Nicley, A. J. Northcutt, J. L. Oakes, Billy Osborne, Stoten Outlan, Billy Owen, Carmen Owens, Neal Owen, Richard Parker, Sam Parker, Harry Parsons, Roy Lee Patey, William Patton, Harry Phillips, Henry Phillips, James Phillips, William Phillips, James Philpot, W. T. Pillow, Billy Pollard, John Powers, Joe Pylon, William Rawls, William Reddin, Robert Richardson, William Roark, Henry Roberts, H. G. Roberts, Will Hays Roberts, Charles Robertson, Carmack Robertson, Waymond Ross, Bill Sanderlin, Fred Sanders, John L. Sanders, Andy Saunders, Charles Scates, Kyle Scates, William Scruggs, William Shelton, Fred Short, Ernest Simmons, Roy Lee Simmons, Roy Leonard Simmons, Ira Singleton, Hobart Sipes, Jerry Smith, Trudell Smith, Howery Snipes, Herbert Sorrell, William Sparks, Percy Spellings, Thomas Stedman, Alvin Stobaugh, Lyndon Stone, Morris Strayhorn, Harold Stott, Robert Stout, Harold Sublette, Bill Tatum, Charles Taylor, J. W. Todd, Dwayne Tucker, Charles Turner, Bill Turner, William Vickery, Jerre Voegeli, Laverne Walburn, Fred Walden, James Walker, Lavonia Washburn, Dan Waters, Frank Webb, Henry West, Joseph West, W. A. West, Ralph Whicker, Roy Whitworth, Claud Wilkins, Homer Wilkers, Andrew Williams, David Williams, Lacy Williams, William Willis, Murl Willoughby, Ernest Winslow, Hershel Woody, Lawrence Wright, Glen Yancey, Leland Yarber, Edgar Yarbro, Wade Yarbrough.



# X O



That pin they wear is like a magnet  
It pulls men in just like a dragnet.  
Whenever you need a sparkling date  
With these girls you have to rate.



These hard-working girls claim they have a finger in every campus pie. Known as big-time girls, they run true to form and throw an annual winter party of no-mean proportions. Eason keeps all the ladies on their toes, Day notes the gossip, while Murphey counts the cash and Forgy trains those outstanding pledges.



**First Row:**

Helen Adams, Anne Anderson, Beverly Billinsley, Marilyn Cotter, June Darling.



**Second Row:**

Martha Tuttle Davis, Georgene Day, Carolyn Dodds, Peggy Dodson, Ruth Dowland.



**Third Row:**

Joan Eason, Jane Evans, Janet Forgy, Jane Hamner, Mrs. Mable Hardin.



**Fourth Row:**

Margie Herron, Lou Ellen Hills, Clara Jane Holloway, Betty Lanon, Joy Liles.



**Fifth Row:**

Jean Murchison, Mary Jane Murphey, Sarah Neeley, Betty Jones Pearce, Regina Peeler.



**Sixth Row:**

Mary Dolores Randolph, Katherine Reaves, Mrs. Rosa Rutledge, Barbara Sewell, Jean Shellabarger.



**Seventh Row:**

Mary Nell Sinclair, Betty Ruth Walker, Lyda White, Marceline Williams.



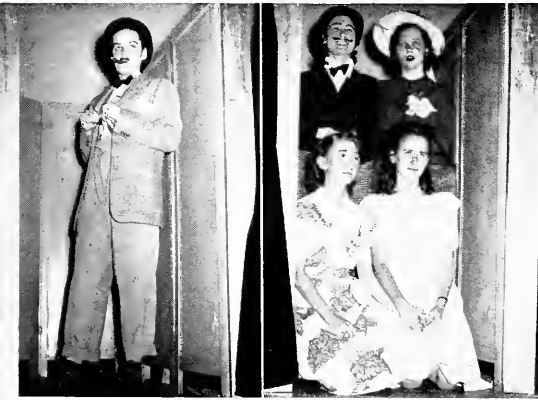
# ZETA



These cute little girls of Z.T.A.  
Have things going just their way.  
They're the "brainy bunch" at Union U,  
Popular, pretty, and talented too.



These girls are known far and wide as clever and good-looking and generally 'on the ball.' Famous for prize-winning homecoming float and classy parties. Pyron presides while Petway spends idle moments with the pledges. Johnson keeps records, while Mays boards the cash, refusing to sign checks.



**First Row:**

Jean Ball, Irene Bishop, Willie Frances Bryant, Laura Burney, Jean Carlisle.



**Second Row:**

Elizabeth "Pann" Carr, Reba Nell Casey, Celeste Chapman, Betty Cogburn, Frances Crosson.



**Third Row:**

Gwyn Dailey, Martha Goad Davidson, Sara Gill, Dorothy Googe, Evelyn Haley.



**Fourth Row:**

Joyce Ann Harrison, Peggy Henry, Miss Carey Hester, Mildred Holland, Nois Jeter.



**Fifth Row:**

Dale Kease Johnson, Joyce Johnson, Dorothy Jones, Katherine Ann Jones, Virginia Leggett.



**Sixth Row:**

Mrs. J. N. Mallory, Mrs. Howard Mansfield, Mary Frances Mays, June Moore, Marie Nabors.



**Seventh Row:**

Gwen Petway, Anne Pressley, Virginia Pyron, Emajean Ragan, Mrs. Dee Rice.



**Eighth Row:**

Mary Jean Riddle, Sara Frances Riley, Joyce Roberts, Violet Sils, Katy Jo Smith.



**Ninth Row:**

Jane Stallings, Dorothy Stanley, Nancy Stone, Annie Laurie Towater, Mary Waldrop.



**Tenth Row:**

Rachel Waldrop, Nancy Williams, Ruby Claire Williams.





# A T O



The A.T.O.'s are the boys to know  
With friendly smiles their faces glow  
Always regarded with high esteem  
These handsome lads are on the beam.



Parker and Carver preside and spend idle moments perfecting new methods of torture for pledges. Pope keeps records of the bull sessions, while Saunders advises the boys to conserve their (his) money. Famous for their winter formal and parties at Mother Edd's.



**First Row:**

Joe Bailey, James Barnett, Edwin Bivens, Hunter Bend, Chesley Bowden, Palmer Briggs.



**Second Row:**

Wade Carver, Colie Chandler, James Clark, Ed Connor, Frank Crawford, John Dickinson.



**Third Row:**

William Douglas, George Drinkard, Autry Emmert, Thomas Evans, James Frey, Homer Guy.



**Fourth Row:**

Roy Haggard, John Hendren, Jimmy Hinson, Herbert Hoover, Charles Hudson, Bob Hundley.



**Fifth Row:**

Hubert Jones, Theo Lancaster, Prof. F. J. S. Maturo, Ralph McIntyre, Brooks McLemore, Tom Miller.



**Sixth Row:**

Howard Miskelly, Fay Oakley, Jimmy Oaks, Sam Parker, Harry Persons, Bill Pollard.



**Seventh Row:**

David Pope, Duane Pope, David Regan, Fred Sanders, Andrew Saunders, Kyle Scates.



**Eighth Row:**

Herace Stokes, Lyndon Stone, Max Stone, Gary Surratt, Charles Turner, C. M. Warren.



**Ninth Row:**

Fred Walden, Joe West, Noel Weaver, W. A. West, Lacy Williams, Harold Willis.



**Tenth Row:**

Murl Willoughby, Harold Wood, Lawrence Wright, Edgar Yarbrow.



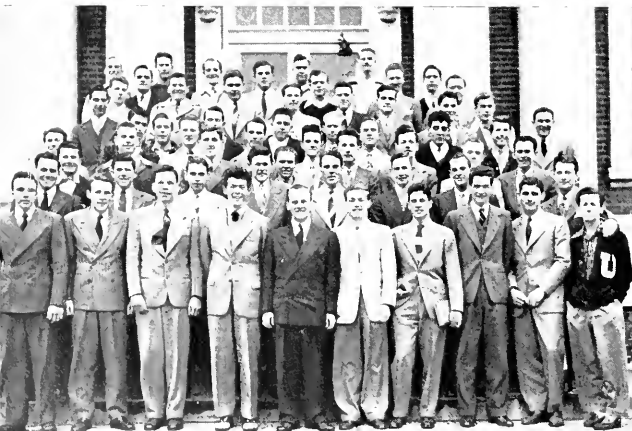
# ΣΑΕ



The SAE's are a lively crew  
And the socialites of Union U.  
They have the money and cars on  
the hill  
And strickly give the girls a thrill.

★

Noted for their Spring Splash.  
Really the athletic type. Chief en-  
gineer is Robert Elam. Crosson  
records the small talk, Phillips  
squanders the funds with reckless  
abandon; while Jacobs instructs  
the pledges. Jere Huey is chief  
godsend to the women, but Phil-  
pot raises a howl at this point.



**First Row:**

Robert Bogle, Billy Bond, Jack Brown, Frank Bruer, Harold Bryant, Wendel Cofer.



**Second Row:**

Ed Cole, Paul Cooper, Fred Crosson, Alton Daniels, Richard De Berry, James Diamond.



**Third Row:**

Clarence Driver, Robert Elam, Robert Epps, Lee Ewing, Joe Exum, George Ferguson.



**Fourth Row:**

Walter Finley, Gene Forrester, Wallace Foster, Gill Gideon, Bill Gregory, Ralph Henderson.



**Fifth Row:**

Stratton Hill, Jack Hilliard, Wendell Hudiberg, Jere Huey, Fred Jacobs, Herman Jacobs.



**Sixth Row:**

Frank Johnson, James Johnson, Ted Jones, Warren Jones, Jr., Don Joyner, Bill Keenan.



**Seventh Row:**

Harold Koffman, Ralph Lawler, James Kelly, Bill McIlwain, Elbert McLaurin, Merl McVey.



**Eighth Row:**

John Meador, Harvey Meeks, Billy Moore, Bob Naquin, Neal Owen, Buddy Patey.



**Ninth Row:**

Jimmy Phillips, Mac Phillips, Jimmy Philpot, H. G. Roberts, Will Hayes Roberts, Bill Sandlerlan.



**Tenth Row:**

Bill Shelton, Roy Simmons, Trudell Smith, Tommy Steadman, Alvin Stobaugh, James H. Strawn, Dwayne Tucker.



**Eleventh Row:**

Tubby Walburn, James Walker, Dan Waters, William Willis, Hershel Woody, Glen Yancey, Troy Young.



# ENONIAN LITERARY SOCIETY

## OFFICERS

VIOLET SILLS  
VIRGINIA LEGGETT  
EVELYN HALEY

President  
Vice-President  
Secretary

DOROTHY JONES  
JANE STALLINGS  
MISS JULIA HAMMACK

Treasurer  
Reporter  
Sponsor

## MEMBERS

Jean Ball  
Irene Bishop  
Willie Frances Bryant  
Elizabeth Ann Carr  
Jean Carlisle  
Reba Nelle Casey  
Celeste Chapman  
Betty Cogburn  
Frances Crosson  
Gwyn Dailey

Sara Gill  
Dorothy Googe  
Evelyn Haley  
Joyce Ann Harrison  
Peggy Henry  
Mildred Holland  
Nois Jeter  
Joyce Johnson  
Catherine Ann Jones

Dorothy Jones  
Virginia Leggett  
Mary Frances Mays  
Marie Nabors  
Gwen Petway  
Anne Pressley  
Virginia Pyron  
Emajean Ragan  
Mary Jean Riddle

Joyce Roberts  
Violet Sills  
Katy Jo Smith  
Jane Stallings  
Dorothy Stanley  
Nancy Stone  
Rachel Waldrop  
Nancy Williams  
Ruby Claire Williams

Enonian Literary Society is an organization composed of those young women on Union's campus who appreciate the finer things—music, art, and literature. Meeting twice each month the club presents programs featuring

the best in these fields, emphasizing the lives and works of current creative artists. Black and gold are the club colors. The yellow tea rose is the club flower. Motto: "Seek the noblest things in life."

First Row: Jean Ball, Irene Bishop, Willie Frances Bryant, Elizabeth Ann Carr, Jean Carlisle, Reba Nelle Casey, Celeste Chapman, Betty Cogburn, Frances Crosson. Second Row: Gwyn Dailey, Sara Gill, Dorothy Googe, Evelyn Haley, Joyce Ann Harrison, Peggy Henry, Mildred Holland, Nois Jeter, Joyce Johnson. Third Row: Catherine Ann Jones, Dorothy Jones, Virginia Leggett, Mary Frances Mays, Marie Nabors, Gwen Petway, Anne Pressley, Virginia Pyron, Emajean Ragan. Fourth Row: Mary Jean Riddle, Joyce Roberts, Violet Sills, Katy Jo Smith, Jane Stallings, Dorothy Stanley, Nancy Stone, Rachel Waldrop, Nancy Williams, Ruby Claire Williams.





First Row: Beverly Billingsley, Mrs. Frank Blythe, Carolyn Dodds, Peggy Dodson, Ruth Dowland, Jane Evans. Second Row: Alma Ruth Franks, Jane Hamner, Gale Isaminger, Jean Murchison, Sarah Neely, Regina Peeler. Third Row: Barbara Sewell, Mary Nell Sinclair, Betty Ruth Walker, Lyda White, Marceline Williams.

# EUPHROSYNEAN LITERARY SOCIETY

## OFFICERS

JEAN MURCHISON

President

SARAH NEELY

Secretary-Treasurer

MARGIE HERRON

Vice-President

MRS. FRANK BLYTHE

Sponsor

## MEMBERS

Beverly Billingsley

Jane Evans

Jean Murchison

Mary Nell Sinclair

Mrs. Frank Blythe

Alma Ruth Franks

Sarah Neely

Betty Ruth Walker

Carolyn Dodds

Jane Hamner

Regina Peeler

Lyda White

Peggy Dodson

Gale Isaminger

Barbara Sewell

Marceline Williams

Ruth Dowland

The Euphrosynean Literary Society is an organization made up of Chi Omega pledges and a few non-fraternity girls all having common literary interests. Founded essentially to promote and cultivate good literary taste and intelligent criticisms, the club meets

once a month. Interesting book reviews are given by members of the organization.

"Girls hand in hand for the best in science, music, art and literature" is the motto of Euphrosynean.

# B. S. U. C O U N C I L

## OFFICERS

GEORGE TURNER	President	THELMA WHITLOCK	Reporter
GWEN PETWAY	First Vice-President	DR. J. N. MALLORY	Faculty Advisor
HERMAN JACOBS	Second Vice-President	DR. FRED KENDALL	Pastor Advisor
TOM BRANDON	Third Vice-President	JOHN BELL	Life Service Bank Representative
ALMA RUTH FRANKS	Recording Secretary	LOIS BOOTHE	North Jackson Church Representative
ANNIE KATE MOORE	Corresponding Secretary	LUDIE FEATHERSTONE	South Royal Church Representative
CARL DUCK	Treasurer	BOB MIZELL	Calvary Church Representative
ALFRED ROYER	Chorister	JEAN HICKS	First Church Representative
MARGARET ANN ROGERS	Planist	DOROTHY JONES	West Jackson Church Representative
PAUL BURNS	Publicity Director		

The Baptist Student Union is an organization, not just on the campus but of the campus, in which we join hand and heart in Christian fellowship to make "Christ" live on our campus as we prepare ourselves for better service to Him and our fellowman.

Together with the First Baptist Church we were host to the State Baptist Student Union Convention, October 25-27, 1946. In the name of B. S. U. Brother L. G. Gatlin, Pastor of

the First Baptist Church of Pulaski, Tennessee, and former chaplain of the U. S. Navy, conducted a student revival during the fall quarter. The theme of the revival was "I'd Rather Have Jesus."

B. S. U. endeavors to wield a golden thread of influence that will help each student as an individual and Union University as a whole to put Christ preminent.

First Row: John Bell, Lois Boothe, Tom Brandon, Paul Burns, Carl Duck, Ludie Featherstone. Second Row: Alma Ruth Franks, Jean Hicks, Herman Jacobs, Dorothy Jones, Dr. Fred Kendall, Dr. J. N. Mallory. Third Row: Bob Mizell, Annie Kate Moore, Gwen Petway, Margaret Ann Rogers, Alfred Royer, George Turner, Thelma Whitlock.





First Row: Betty Craig, John Dickinson, Katy Lou Dunagan, Bob Hundley, Dr. J. N. Mallory, Mary Frances Mays. Second Row: Perry Moore, Jimmy Philpot, Nancy Stone, Harold Sublette, C. M. Warren, Lacy Williams, Harold Wood.

### OFFICERS

BOB HUNDLEY	President	NANCY STONE	Secretary-Treasurer
C. M. WARREN	Vice-President	DR. J. N. MALLORY	Sponsor

### MEMBERS

Betty Craig	Dr. J. N. Mallory	Jimmy Philpot	C. M. Warren
John Dickinson	Mary Frances Mays	Nancy Stone	Lacy Williams
Katy Lou Dunagan	Perry Moore	Harold Sublette	Harold Wood
Bob Hundley			

The Mallory Math Club is open to all mathematical majors and minors whose ability is outstanding. Though intended for upperclassmen, sophomores having twelve or more hours in math may be associate members.

It is the desire of the club to encourage wholesome research in mathematics and physics, and to foster good fellowship among students having a common bond in their mathematical studies.

# MALLORY MATH CLUB





### OFFICERS

MOLLIE SMITH

MARY OSWALT

DOROTHY JONES

JUNE ADAMS

President

Vice-President

Secretary

Treasurer

The Young Woman's Auxiliary has as its purpose to enlist the young women on the campus in active Christian service both at home and abroad. This is done by giving of time, money, talents and through prayer.

The watchword is: "They that be wise shall shine as the brightness of the firmament; and they that turn many to righteousness as the stars forever and ever." Daniel 12:3.

**T H E Y. W. A.**

# THE PALLADIANS

## OFFICERS

GWEN PETWAY	President	JANET FORGY	Secretary-Treasurer
ANNIE KATE MOORE	Vice-President	HELEN ADAMS	Reporter
MRS. ROSA D. RUTLEDGE		Sponsor	

## MEMBERS

Helen Adams	Janet Forgy	Betty Pearce	Annie Laurie Towater
Betty Craig	Alma Ruth Franks	Gwen Petway	Ann Taylor
Joan Eason	Annie Kate Moore	Virginia Pyron	Nancy Williams
Ludie Featherstone	Jean Murchison	Violet Sills	

Palladian is a literary society whose fifteen members are drawn equally from the ranks of Zeta Tau Alpha, Chi Omega, and the Independent women. Its meetings are held

twice monthly when literary reviews are given and group discussions held.

The original Palladian Literary Society was founded in 1886 and sponsored programs of dialogues, debating, and readings.



# HISTORY MAJORS CLUB

## OFFICERS

HUBERT JONES  
W. T. PILLOW

President  
Vice-President

TOM BRANDON  
HERVEY HUDSON

Secretary-Treasurer  
Reporter

## MEMBERS

Edwin Bivens  
Tom Brandon  
Wade Carver  
Carroll Curtis  
Carolyn Dodds  
George Dowd

James Franks  
James Frey  
Robert Hamblin  
Glynn Harwood  
Irvin Hayes  
George Holland

Hervey Hudson  
Herman Jacobs  
Hubert Jones  
Norman Levine  
Bill McIlwain  
Jean Murchison

Mary Lois Peyton  
William McKay Phillips  
W. T. Pillow  
Emajean Ragan  
Marshall Wells  
Dr. Floy Wise

The History Majors Club is an organization to promote closer fellowship among those who are pursuing a major in the field of history.

The regular meeting of the club is the first Tuesday evening of each month. At this meeting an historical film is shown, fol-

lowed by a forum consisting of reports on current events in the nations of the world. Following this is a period of informal discussion and refreshments.

The club was organized in 1945 under the sponsorship of Dr. Floy W. Wise, head of the history department.

First Row: Edwin Bivens, Tom Brandon, Wade Carver, Carroll Curtis, Carolyn Dodds, George Dowd.  
Second Row: James Franks, James Frey, Robert Hamblin, Glynn Harwood, Irvin Hayes, George Holland.  
Third Row: Hervey Hudson, Herman Jacobs, Hubert Jones, Norman Levine, Bill McIlwain, Jean Murchison.  
Fourth Row: Mary Lois Peyton, William McKay Phillips, W. T. Pillow, Emajean Ragan, Marshall Wells, Dr. Floy Wise.



# HYPATIA

## OFFICERS

JANET FORGY  
JUNE DARLING  
JOAN EASON

President  
Vice-President  
Secretary-Treasurer

FRANCES NICELY  
ANNE ANDERSON  
MRS. MABEL W. HARDIN

Program Chairman  
Reporter  
Sponsor

## MEMBERS

Helen Adams  
Anne Anderson  
Dolly Bandy  
June Darling  
Georgene Day

Joan Eason  
Eva Mae Eldridge  
Janet Forgy  
Mrs. Mabel W. Hardin

Jean Hicks  
Nois Jeter  
Joy Liles  
Annie Kate Moore

Mary Jane Murphey  
Frances Nicely  
Gwen Petway  
Dolores Randolph

Hypatia is a literary organization, composed of the English majors of the Junior and Senior classes. The club meets twice each month to enjoy a review of some outstanding

literary work—ranging from the classics to the most modern books.

Under the guidance of Mrs. Mabel W. Hardin, the members are acquiring a deeper appreciation of the best in literature.

First Row: Helen Adams, Anne Anderson, Dolly Bandy, June Darling, Georgene Day, Joan Eason. Second Row: Eva Mae Eldridge, Janet Forgy, Mrs. Mabel W. Hardin, Jean Hicks, Nois Jeter, Joy Liles. Third Row: Annie Kate Moore, Mary Jane Murphey, Frances Nicely, Gwen Petway, Dolores Randolph.





The main function of the Doctor's Club is to stimulate interest in all phases of pre-medical work. The club meets bi-monthly and programs are presented, made up of lectures given by local doctors, and papers

on medical subjects are read by members of the club.

Prof. S. O. Trentham is faculty sponsor of the club. It was originally organized back in 1938 by Dr. Reid Davis and twelve members of the student body.

### OFFICERS

JOHN MEADOR	President	MARGARET ANN ROGERS	Secretary
AUTRY EMMERT	Vice-President	PROF. S. O. TRENTHAM	Sponsor

### MEMBERS

#### First Row

Robert R. Bane	Mary Jane Bell	William House Bond	Velma Brown
James D. Barnett			Geraldine Clark

#### Second Row

Edwin H. Cole	Merilyn Cotter	Wanda Culp	Peggy Dodson
James F. Cooper			Clarence Driver

#### Third Row

Autry C. Emmert	David S. Gardner	Sara Gill	Margaret Jane Hamner
James D. Franks			Marjorie Herron

#### Fourth Row

Stratton Hill	Don Joyner	Charles L. Lewis	John R. Meador
Robert Glenn Jordan			Thomas E. Miller

#### Fifth Row

Marie Nabors	Sam T. Parker	Anne Pressley	Mary Delores Randolph
Robert G. Naquin			Margaret Ann Rogers

#### Sixth Row

Andrew Saunders	Jane Stallings	Robert Stanworth	James Holland Strawn
Katy Jo Smith			Sidney Gary Surratt

#### Seventh Row

S. O. Trentham	William C. Willis	Murl W. Willoughby
----------------	-------------------	--------------------

### MEMBERS NOT PICTURED

Paul Davenport	Carl A. Hutchison	Richard Parker	Norman E. Tillman
Hugh A. Deaton	Joseph H. King	William M. Phillips	J. W. Todd
Southall Dickson	Mary Jo Mathis	Bill Pollard	Charles L. Turner
George F. Drinkard	William N. Mathis	William R. Reddin	William P. Walker
Walter Finley	Kenneth S. Mays	Henry C. Roberts	Mildred Wilroy
William T. Gill	Robert Lee Moore	Carlene B. Smith	Joe T. Woodson
Jesse Mac Gray	William Blaine Mosier	Harold T. Stott	H. B. Woodward
Clell J. Green	Stoten Allen Outlan	Robert T. Stout	

# DOCTOR'S CLUB



# J. R. GRAVES SOCIETY

The J. R. Graves Society of Religious Inquiry was organized in honor of J. R. Graves in 1877. The purpose of the society is to bring ministerial students face to face with the problems of the ministry and to give them practice and training in their life's work.

The J. R. Graves Society has enriched the lives of hundreds of preachers during these 70 years of its continuity. The lives of these preachers in turn have blessed, and are still blessing the lives of Southern Baptists and others.

## OFFICERS

HENRY WEST  
GLYNN HARWOOD

President  
Vice-President

WILLIE JOHNSON  
CHARLES E. TAYLOR

Secretary-Treasurer  
Reporter

DR. R. E. GUY Critic

## MEMBERS

Ladell Armour  
Warren Armour  
M. M. Ayres  
Billy Baxter  
John Bell  
J. W. Bomar  
Marshall Boroughs  
Tom Brandon  
Perry Brookshire  
Paul Burns  
Wade Carver  
R. B. Chatman  
George Clark  
Ed Claybrook  
Charles Cloyd  
Stephen Cobb

Cal Cooper  
Eugene Cotey  
Russell Crouse  
Carroll Curtis  
Carl Duck  
Jimmy Eaves  
E. M. Evans  
J. L. Ford  
James Franks  
Lacy Freeman  
Leo Gailey  
Dr. R. E. Guy  
Robert Hamblin  
O'Neal Hardy  
Joe Harris  
Glynn Harwood

Irvin Hayes  
Herbert Higdon  
Hervey Hudson  
Brown Hughes  
W. W. Humphreys  
Henry Guy Jackson  
Herman Jacobs  
Willie Johnson  
Hubert Jones  
L. D. Kennedy  
J. L. Knupp  
John Lowrance  
Tom Maddux  
Dr. J. N. Mallory  
Clyde McCord  
James McCune  
Bill McIlwain

Ralph McIntyre  
Bob Mizell  
Gene Moffatt  
Glenn Morris  
John Niceley  
A. J. Northcut  
Willie B. Oakley  
R. B. Owens  
Gerald Palmer  
W. T. Pepper  
McKay Phillips  
W. T. Pillow  
Buran Richerson  
M. T. Robertson  
Waymond Ross  
Alfred Royer

Jerry Seabough  
Woodrow Shanklin  
Ira Singleton  
David Smith  
Chester Smith  
Jerbert Sorrell  
Charles Taylor  
James Tharp  
King Thetford  
Bill Turner  
Charles Turner  
George Turner  
Henry West  
Daniel Wigginton  
Courtney Wilson  
Keith Wilson

To aid the student in living a life of fruitful service while in college by preparation through group studies

and by practice through Christian work rendered, is the purpose of this band.

### OFFICERS

PAUL BURNS  
JOHN BELL  
LEARLENE LOWRY

President  
Vice-President  
Secretary  
LUDIE FEATHERSTON

JAMES McCUNE  
KATHERINE MILLER  
E. CARROLL CURTIS  
Treasurer

Choister  
Pianist  
Reporter

### MEMBERS

Joyce Austin  
June Adams  
Tom Brandon  
Lois Boothe  
Mary Brewer  
Paul Burns  
Dolly Bandy  
John Bell  
J. W. Bomar  
Lester Bishop  
Geraldine Clark  
Peggy Caudle  
Gene Cotey  
Jean Clifton  
E. Carroll Curtis  
Martha Crocker

Rose Chester  
George Clark  
Betty Craig  
Juanita Castellow  
Cal Cooper  
Wanda Culp  
Lucille Dew  
Carl Duck  
Katie Lou Dunagan  
Eva Mae Eldridge  
Jewel Epps  
Maxine Epps  
Jeane Eaves  
Jimmie Eaves  
E. M. Evans  
Ludie Featherston

Mozelle Fowler  
W. W. Humphreys  
Herbert Higdon  
Bob Hamblin  
Marie Hopkins  
Jean Hicks  
Irvin Hayes  
Evelyn Haley  
Gale Isaminger  
Dorothy Jones  
Dr. W. A. Keel  
Dorothy King  
J. L. Knupp  
L. D. Kennedy  
Mary Lou Langford  
Georgia Mae Lowrance

Learlene Lowry  
Annie Kate Moore  
Billy McIwain  
Lucille McKinney  
James McCune  
Glenn Morris  
Margaret Mabry  
Katherine Miller  
Jean Murchison  
Frances Niceley  
W. B. Oakley  
Jero Omar  
Gerald Palmer  
W. T. Pepper  
Waymond Ross  
Alfred Royer

Ira Singleton  
Sue Scrivener  
Lorraine Smith  
Kepler Sorrell  
Bill Scruggs  
David Smith  
Mollie Smith  
George Turner  
Jean Tanner  
Annie Laurie Towater  
Lola Usery  
Thelma Whitlock  
Jo Waxmunki  
Anna Mae Williams  
Keith Wilson  
Betty Walden



# LIFE SERVICE BAND





# RUTLEDGE HISTORY CLUB

First Row: Wade Carver, Carolyn Dodds, Brooks McLemore, Jean Murchinson.  
Second Row: Mrs. Rosa Rutledge, Mollie Smith, Nancy Williams.

The Rutledge History Club, organized by Professor and Mrs. Rutledge, in 1929, is composed of students who are majoring in history or show a marked interest in the cultural value of the history department.

The purpose of its members is to become better acquainted with the field of history and to become fully conscious of the place that the knowledge of history occupies in the lives of educated people.

## OFFICERS

WADE CARVER	President
CAROLYN DODDS	Vice-President
JEAN MURCHISON	Secretary-Treasurer
MRS. ROSA D. RUTLEDGE	Sponsor

## MEMBERS

WADE CARVER	BROOKS McLEMORE	MOLLIE SMITH
CAROLYN DODDS	JEAN MURCHISON	NANCY WILLIAMS
MRS. ROSA D. RUTLEDGE		



First Row: Willie Frances Bryant, Joan Eason, Mrs. Mabel W. Hardin. Second Row: Mrs. J. N. Mallory, Virginia Pyron, Katherine Reaves.

**OFFICERS**

VIRGINIA PYRON	President
JOAN EASON	Vice-President

**MEMBERS**

WILLIE FRANCES BRYANT	Zeta Tau Alpha Senior Representative
JOAN EASON	Chi Omega Representative
MRS. MABEL W. HARDIN	Chi Omega Faculty Sponsor
MRS. J. N. MALLORY	Zeta Tau Alpha Faculty Sponsor
VIRGINIA PYRON	Zeta Tau Alpha Representative
KATHERINE REAVES	Chi Omega Senior Representative

# PAN HELLENIC COUNCIL

The creed of Pan-Hellenic Council is this: "We, the fraternity women of America, stand for preparation for service through the character building inspired in the close contact and deep friendship of fraternity life. To us, fraternity life is not the enjoyment of special privileges, but an opportunity to prepare for wide and wise human service."

**OFFICERS**

CHARLES MILLICAN	President
HERMAN JACOBS	Vice-President
CAREY HESTER	Secretary-Treasurer
DAVID RAGAN	Reporter

**MEMBERS**

Marshall Boroughs	Herman Jacobs
Ed Claybrook	Theo Lancaster
Joan Eason	Mrs. Elizabeth Loyd
Carey Hester	Charles Millican
David Ragan	

# TAU KAPPA ALPHA

Tau Kappa Alpha was founded at Indiana University, May 13, 1888. Organized in 1926 as Alpha Phi Epsilon, it was chartered as Union chapter of T. K. A. when this fraternity absorbed A. P. E. in 1935.

A student, to be eligible for membership, must be in the upper twenty per cent scholastically, and must display unusual forensic ability having participated in speech activities of the school in a creditable manner for at least one year.

National publication of the fraternity is the "Speaker." The colors are purple and lavender.

The society annually sponsors a high school speech tournament, intramural contests and inter-collegiate debate contests.

First Row: Marshall Boroughs, Ed Claybrook, Joan Eason. Second Row: Carey Hester, Herman Jacobs, Theo Lancaster. Third Row: Mrs. Elizabeth Loyd, Charles Millican, David Ragan.





SCENE OF PLAY

**D R A M A**





"A play for every taste"—that must have been the thought of Mrs. Loyd as she chose the one-act plays that were produced in February. "How The Great Guest Came," "Time For Everything," and "My Late Espoused Saint" made up the One-Act Play Night program.

For the Spring Play "Seven Keys to Baldpate," with its clever comedy, its good acting, direction, blackmailers, thugs, and grafting politicians, was a welcome event. It can be marked up as another solid hit on Mrs. Loyd's scoreboard of successes.

# FOOTLIGHTS CLUB

The Footlights Club is under the direction of Mrs. Elizabeth Loyd, director of the Speech Department.

Membership of the club is composed of students who have shown an interest in, and a talent for, work of a dramatic nature. The club sponsored Stunt Night, Play Tournament, One-Act Play Night, and the major production, the Spring Play.

## OFFICERS

DAVID RAGAN	President
MARSHALL BOROUGHS	Vice-President
GEORGENE DAY	Secretary
GWEN PETWAY	Treasurer

## MEMBERS

First Row: Anne Anderson, Jean Ball, Palmer Briggs, Katharine Brown, Willie Frances Bryant, Reba Nell Casey, Jimmy Clark, Gene Coley.

Second Row: Georgene Day, Carolyn Dodds, Perry Dodson, Joan Eason, Janet Foray, Marjorie Herron, Carey Hester, Jack Hilliard.

Third Row: Clara Jane Holloway, Brown Hughes, Bob Hundley, Neis Jeter, Dale Kease Johnson, Katherine Ann Jones, Dorothy Jones, Theo Lancaster.

Fourth Row: Mrs. Elizabeth Loyd, Ralph McIntyre, Lucille McKinney, Gene Moffatt, Marie Nabors, Buddy Patey, Gwen Petway, David Ragan.

Fifth Row: Andrew Saunders, Roy Simmons, Kyle Scates, Dorothy Stanley, Tommy Stedman, Betty Ruth Walker, Jo Waxmumski, Lacy Williams.

Members Not Pictured: George Clark, Edward Claybrook, Jimmie Eaves, Joe Harris, Le Berta Hart, Sharonene McAuley, W. T. Pepper, James Tharp, George Turner.





Miss Julia Hammack came to our campus only in the fall of 1946, and has already made great strides toward making Union more acutely music-conscious.

She has reorganized the Glee Club and other such musical groups as the girls' ensemble, girls' trio, men's quartet, and double quartet. In general she has tremendously encouraged part harmony groups on the campus, and these groups, in turn, have added greatly to Union's reputation as a cultural center.

Miss Hammack, like her predecessor Mrs. Ruth Stallings, is a native Kentuckian, having been born in Sturgis, Ky. She received her A.B. degree from Murray State, and her M.A. at the American Conservatory of Music in Chicago. She has done postgraduate work at Westminster Choir College, Princeton, N. J.; and at Peabody Conservatory of Music, Baltimore, Maryland. Before coming to Union she taught at Dixon, Ky., Clarksville, and Hagerstown, Md.

#### MEMBERS

Edmund Anthony  
 Jean Ball  
 J. W. Bomar  
 Lois Boothe  
 Hershell Brewer  
 James E. Brown  
 Maurice Brumbelow  
 Margaret Burdette  
 Elizabeth Carr

Wade Carver  
 Betty Craig  
 Carroll Curtis  
 Martha Sue Davidson  
 Jack Ditto  
 Otis Couglas  
 Jean Hicks  
 Marie Hopkins  
 Nois Jeter

Leroy Jones  
 Jimmy Littlefield  
 Georgia Mae Lowrance  
 Margaret Mabry  
 Mary Frances Mays  
 Bill McIlwain  
 Willie B. Oakley  
 Jere Omar  
 Gerald Palmer

Joyce Roberts  
 Margaret Ann Rogers  
 Sue Scrivener  
 Herbert Sorrell  
 Jane Stallings  
 James Tharp  
 Mildred Wilroy  
 Ralph Whicker

# M I X E D C H O R U S



**MRS. SAMUEL STANWORTH**  
Head of the Music Department



**GIRLS ENSEMBLE**

Dolly Bandy, Elizabeth "Pann" Carr, Jeane Eaves, Alma Ruth Franks, Nois Jeter, Nelda Pickler, Jane Stallings, Annie Laurie Towater, Mildred Wilroy.



**GIRLS TRIO**

Alma Ruth Franks, Mildred Wilroy, Nelda Pickler

# GIRL'S ENSEMBLE



# MUSIC APPRECIATION CLUB

## MEMBERS

First Row: Edmund Anthony, James Burdette, Betty Craig, Lucille Dew, Jeanne Eaves, Alma Ruth Franks, Marie Hopkins, Herman Jacobs.

Second Row: Dorothy King, Margaret Mabry, Mary Frances Mays, Ralph McIntyre, Katherine Miller, Mary Jane Murphy, Jimmy Phillips, Nelda Pickler.

Third Row: Virginia Pyron, David Ragan, Violet Sills, Ann Tahlor, Mrs. R. S. Stanworth, Mildred Wilroy.

Other Members: (Not Pictured) Palmer Briggs, Jimmy Clark, Tom Evans, Betty Hipps, Harry Jerold Palmer, Jr., Mac Phillips, Emajean Ragan, Margaret Ann Rogers, Betty Seabough, Jo Waxmunski.

The music lovers of the campus, the people you hear discussing Mozart, Beethoven, and Chopin with as much ease as you would speak of Tom Sawyer—these are the members of the Music Appreciation Club. The aim of this organization is to promote a growing knowledge and appreciation of music among the student body.





First Row: Anne Anderson, Mary Brewer, Elizabeth Campbell, Georgene Day, Ruth Dowland, Jane Evans, Le Berta Hart, Virginia Leggett.  
 Second Row: Learlene Lowry, Margaret Mabry, Betty Pearce, Katherine Reaves, Jean Shellabarger, Jane Stallings, Mildred Wilroy, Mrs. B. C. Williams.

### OFFICERS

ANNE ANDERSON	President	KATHERINE REAVES	Reporter
LEARLENE LOWRY	Vice-President	GEORGENE DAY	Program Chairman
BETTY PEARCE	Secretary-Treasurer	MRS. B. C. WILLIAMS	Sponsor

### MEMBERS

Anne Anderson	Ruth Dowland	Learlene Lowry	Jean Shellabarger
Mary Brewer	Jane Evans	Margaret Mabry	Jane Stallings
Elizabeth Campbell	Le Berta Hart	Betty Pearce	Mildred Wilroy
Georgene Day	Virginia Leggett	Katherine Reaves	Mrs. B. C. Williams

"Home Echo" was organized in 1935 by members of the Home Economics Department and since that time has grown until it occupies a prominent place among other clubs on the campus.

Membership is limited to girls making a

scholastic average of "B" in Home Economics. The club meets twice each month. At these meetings programs of interest to all college girls, as well as home economics students, are presented.

The club motto is: "Great home-makers from little 'home echo's' grow."

# HOME ECHO CLUB



# MRS. CLUB

First Row: Jean Eaves, Alice Mizelle, Betty Pearce,  
 Second Row: Ann Taylor, Lucille Turner, Viana West.  
 Other Members: Elanche Baxter, Barbara Bruer, Martha Davis, Martha Danilson, Margaret Burdette, Theo Rover, Leona Richardson, Betty Seabough, Annie Kate Cooper, Gladys Ballard, Alma Harwood, Carlene Smith.

The Mrs Club is an organization for all married girls on the campus. The purpose of this club is to promote a closer fellowship among the wives. Problems and phases of religious work, entertainment, and qualifications which tend to make us better help-mates are discussed in the monthly meetings.

Because of her capability in helping with problems of wives, Mrs. W. A. Keel was chosen as sponsor for the club.

## OFFICERS

JEANE EAVES	President
ANNE TAYLOR	Vice-President
VIANA WEST	Secretary
MARGARET BURDETTE	Treasurer
ALICE MIZELL	Program Chairman
LUCILLE TURNER	Program Chairman

# S P A N I S H C L U B

El Ateneo is the nucleus for Sigma Delta Pi, the national honorary Spanish fraternity. Only the outstanding students of the Spanish classes are eligible for membership. The colors of the club are red, yellow, and green, taken from the Latin American flag.

The activities of the club include monthly

programs on Latin American life and culture and a series of lectures to the public on this subject. Celebrations observed are Bolivia Day, Pan-American Day, and Columbus Day to unite the two Americas in spirit. Later in the year a queen and retinue are chosen to reign over the court of the club.

First Row: Helen Adams, Anne Anderson, Irene Bishop, Katherine Brown, Willis Frances Bryant, Elizabeth Ann Carr, Frances Crosson, June Darling, Joan Eason. Second Row: Jean Eaves, Joyce Ann Harrison, Herman Jacobs, Joyce Johnson, Dorothy Jones, Warren Jones, Jr., Ann Taylor, Marcelline Williams, Nancy Williams. Not Pictured: Dolly Bandy, Beverly Billingsley, Clara Jane Holloway, June Moore, Jean Murchison, Elizabeth Nelson, Jean Tanner.





First Row: June Adams, Marshall Boroughs, Tom Brandon, Jim Cooper, Carolyn Dodds. Second Row: Joan Eason, Gene Forrester, Evelyn Haley, Hervey Hudson, Warren Jones, Jr. Third Row: Theo Lancaster, Charles Millican, Annie Kate Moore, Marie Nabors, Betty Pearce. Fourth Row: Virginia Pyron, David Ragan, Alfred Royer, Thelma Whitlock, Lacy Williams.

### MEMBERS

June Adams  
 Marshall Boroughs  
 Tom Brandon  
 Jim Cooper  
 Carolyn Dodds  
 Joan Eason  
 Gene Forrester  
 Evelyn Haley  
 Hervey Hudson  
 Warren Jones, Jr.

Theo Lancaster  
 Charles Millican  
 Annie Kate Moore  
 Marie Nabors  
 Betty Pearce  
 Virginia Pyron  
 David Ragan  
 Alfred Royer  
 Thelma Whitlock  
 Lacy Williams

### OTHER MEMBERS NOT PICTURED

Gus Ballard  
 Dale Johnson  
 Dorothy Jones

Robert Kennedy  
 W. T. Pepper  
 Tommy Steadman

To Unionites, The Booster Club is a "backer" club. The members are chosen by election from the geographical clubs in proportion to the number of members in these clubs.

The school paper, the election of cheer leaders, student body president, the two editors, school parties, and special programs are sponsored by the Booster Club.

It is the aim of the club to keep school life interesting and the students actively engaged in campus affairs.

# BOOSTERS CLUB



# RICE LATIN CLUB

Motto—Scientia Craesat

Colors—Purple and White

Flower—White Rose

A limited number of young men and women, sponsored by a member of the faculty, composed this club, which is both literary and social. Only students making a "B" average in Latin may belong. The purpose of the club is to grow in the knowledge of Latin and its background.

## OFFICERS

LEROY JONES  
 JOE BOMAR  
 GALE ISAMINGER  
 JAMES CHATHAM  
 MRS. DEE E. RICE

President  
 Vice-President  
 Secretary  
 Treasurer  
 Sponsor

## MEMBERS

### First Row

Joe Bomar	Jimmie Clark
James Chatham	John Dickinson
Alma Ruth Franks	

### Second Row

Woodrow Humphreys	Fred Jacobs
Gale Isaminger	Leroy Jones
William Phillips	

### Third Row

Nelda Pickler	David Keet
Frances Niceley	Mrs. Dee Rice
Will Hayes Roberts	

### Fourth Row

Alfred Royer	Herbert Sorrell
Ira Singleton	Lacy Williams
Hershel Woody	

### Members Not Pictured

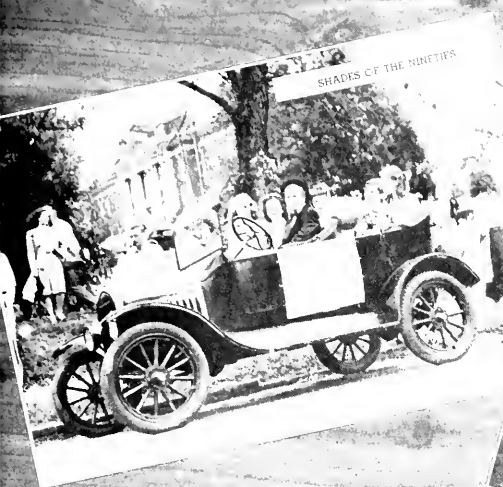
Robert Armour	George Turner
Jimmy Joyner	Larry Wright



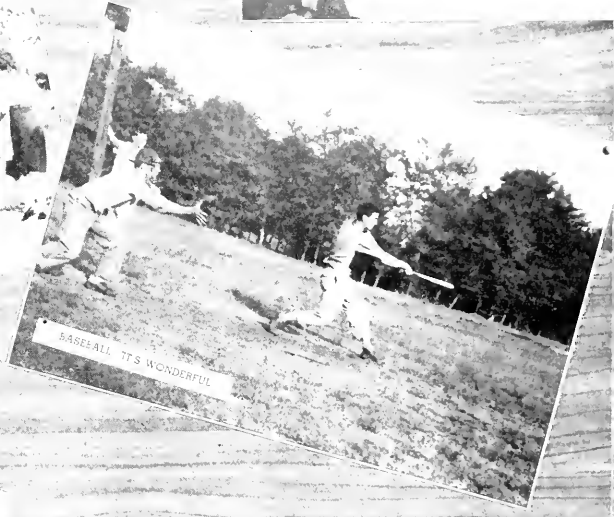
FOOD FOR THOUGHT



THE PROM QUEEN



SHADES OF THE THIRTIES



BASEBALL, IT'S WONDERFUL



LAUV'S FRIENDS



THE BOYS THROW A BIRTH PARTY



SONGBIRDS DELUXE



A GIRL A GUY A GAME



QUEEN OF THE HARDWOOD



WITH MALICE TOWARD SOME



NOW MOTHER



FISHING

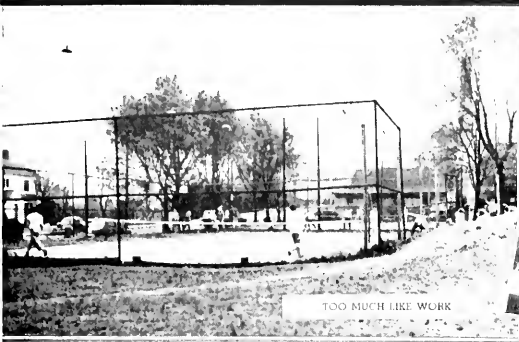


TOMIC UNSTREL SHOW

DID YOU HEAR THE ONE ABOUT...



B S H BYLINES



TOO MUCH LIKE WORK



SLIGHTLY OUT OF LINE



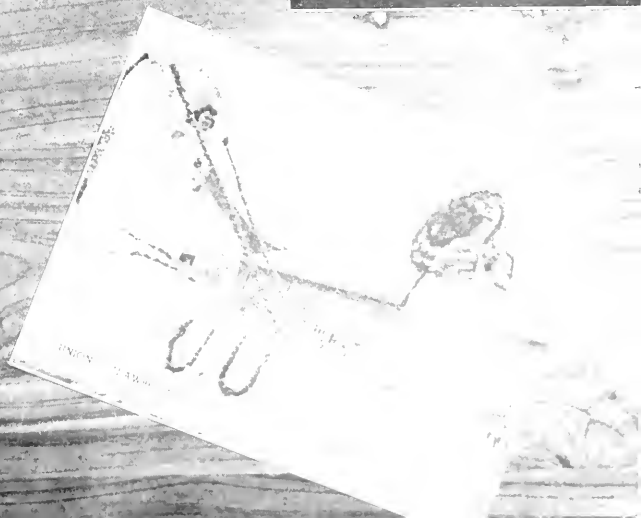
BEAR WITH ME



WHAT'S THIS - A DICE GAME?



PRELUDE TO A HUGE EVENING







PORTRAIT OF A MAN WITH HAIR



IT'S A RINGER



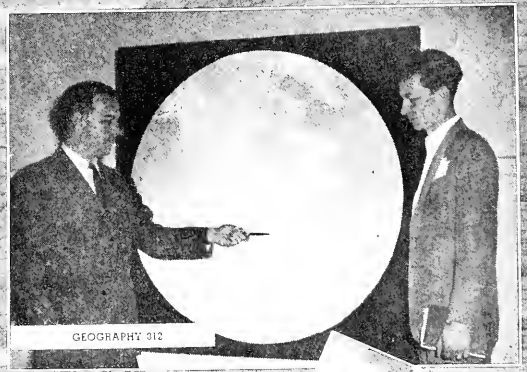
24 HOURS A DAY



CESARINA ROMEO AND VALENTINO



WOLVES IN THE WOODS



GEOGRAPHY 312



OFF TO THE HINTER LANDS!



BACKHAND SERENADE



*Features*

# MISS MARY DOLORES RANDOLPH

MOST BEAUTIFUL GIRL





---

**JIM DIAMOND**

MOST POPULAR BOY

# MISS MARY DOLORES RANDOLPH

QUEEN OF ALPHA TAU OMEGA





**MISS LE BERTA HART**

QUEEN OF SIGMA ALPHA EPSILON

# THEO LANDCASTER

---

BEST ALL-ROUND BOY





---

**MISS GWEN PETWAY**

BEST ALL-ROUND GIRL



# MISS LOLA USERY

---

BASKETBALL QUEEN





---

**MISS DOLLY BANDY**

FOOTBALL QUEEN

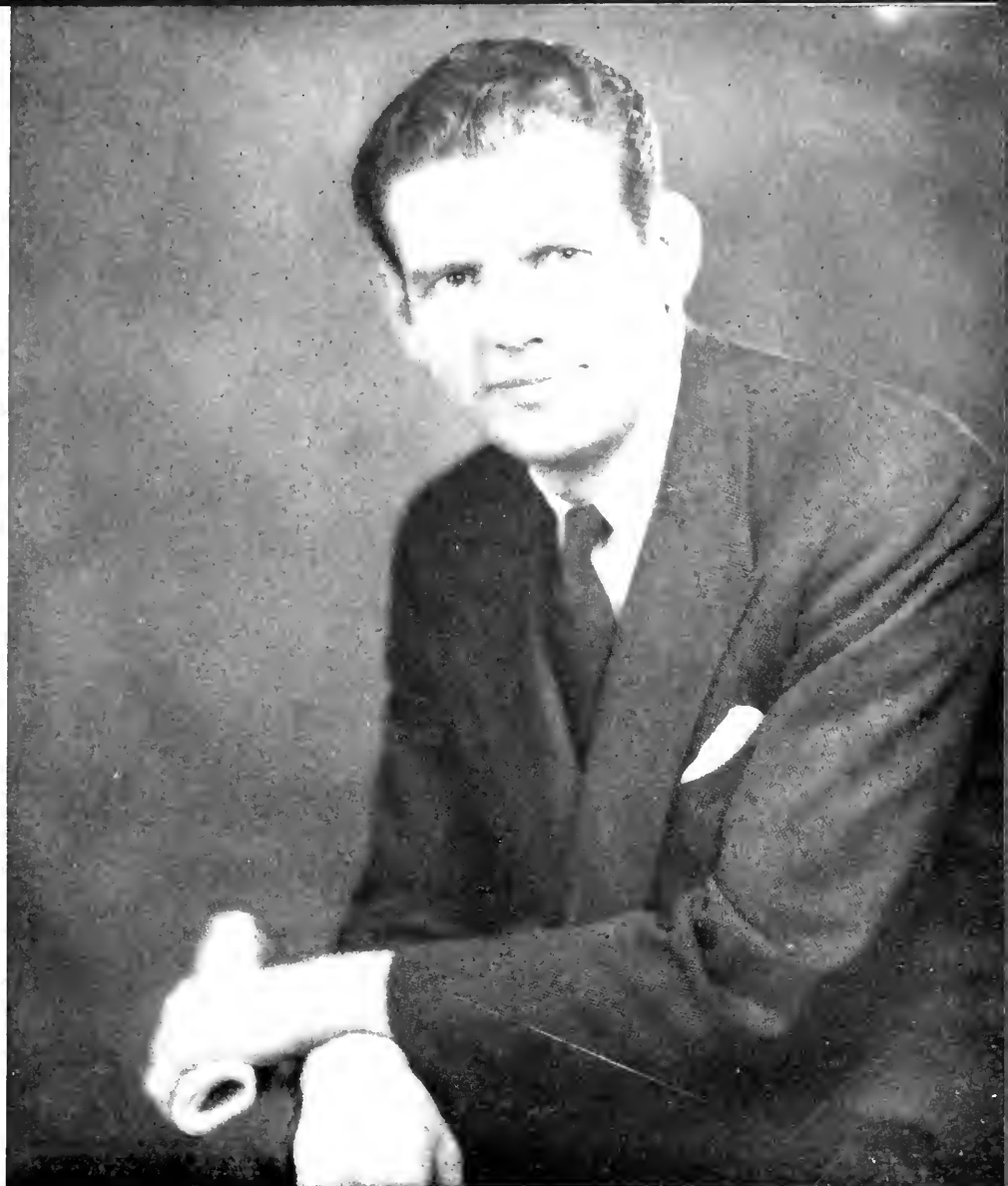
**ALPHA  
TAU  
OMEGA**

MISS JOAN EASON



MISS SARAH FRANCES RILEY

**SWEETHEARTS**



---

**GLYNN HARWOOD**

PRESIDENT OF STUDENT BODY



AND THE NIGHT SHALL BE FILLED WITH MUSIC



MUCH ADO ABOUT NOTHING



SHIEK OF THE STREET



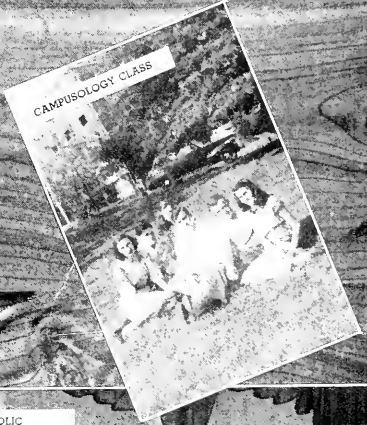
CHILLS RUN UP AND DOWN MY SPINE



SALLY AND HIPPS ON A TREE



WHO'S RIDDING WHO



CAMPUSOLOGY CLASS



THEN AND NOW



HAYLOFT FROLIC



*Athletics*



# “U” CLUB

The purpose of the Union University "U" Club is to promote better understanding and cooperation among the athletes of the college and to establish athletic activities on an ethical plan in keeping with high purposes of education.

Every man who has made a letter in athletics is eligible for membership in the "U" Club.

## OFFICERS

HUGH COLTHORPS	President
HAROLD KOFFMAN	Vice-President
GUS BALLARD	Secretary-Treasurer
TOMMY STEADMAN	Sergeant-at-Arms

## MEMBERS

George Ferguson, Tubby Walburn, Ray House, Elbert McLauren, Buddy Patey, Kenneth Martindale, Jack Hilliard, Fred Crosson, Bueford Matlock, Wendel Cofer, J. C. Davis, Clarence Randolph, Taylor Beare, Gill Gideon, Jimmy Joyner, Don Joyner, Billy Fox, Alton Daniels, Jack Brown, Bill Tatum, Glen Yancy, Jack Ditto, Milton Basden, Merle Willoughby, Fred Baker, James Stokes, W. G. McWhorter, Hershel Brewer, Charles Hudson.

# CHEERLEADERS

"They helped to lead us on to victory"

Georgene Day  
Herman Jacobs

Gwen Petway  
Gene Forrester

Clara Jane Holloway  
Frank Bruer

Carolyn Dodds





### COACHES

AMOS TEASLEY  
HOWARD MANSFIELD  
DONOVAN GARY

### COACHES AND CO-CAPTAINS

Left to right: Jack Brown, co-captain, Coach Amos Teasley, Coach Howard Mansfield, Coach Donovan Gary, Gill Gideon, co-captain.







# T H I S   W A S   O U R

After a four year lapse, the Bulldogs returned to the football field in '46. Coach Amos Teasley arrived on the campus and immediately started preparations. When the season opened only two men of the Cardinal and Cream squad had ever been on a college field. They were co-captains Jack Brown and Gil Gideon. The squad was composed almost entirely of freshmen.

In their first encounter the local lads

lowered the boom on Bethel to the tune of 20 to 0 on Union's home turf. Cumberland was next on the list and they fell 39 to 6 on the Bulldog's first road trip. In the next two games the fortunes of the Canines fell upon lean times. Middle Tennessee State brought down a surprisingly strong team to defeat the locals 14 to 7. Union out passed, out ran, out kicked and did everything but score the Vanderbilt "B" team to end up a

thrilling game 7 to 6. The red shirts came back to score a 14 to 0 win over Georgetown in the next gridiron battle. Then came the game with Morehead. We don't talk much about this game. The score was 55 to 6 and not in Union's favor.

The field at Louisville was conservatively described as muddy. It looked as if the Mississippi river had made a new bed.

Louisville took this one 25 to 0 when the Bulldog's aerial attack bogged down. Cumberland fell again by the score of 33 to 0.

The Ouachita game is considered by many to be the finest game of the season. At any rate it was the most thrilling. The Unionites pulled this one out of the fire in the final seconds when Jim "Candy" Joyner tucked a long pass from Jack "Slingshot"

# FOOTBALL SEASON

BULLDOGS IN ACTION





Spring Practice

**GILL GIDEON**  
Halfback



Brown under his arm and stepped across the goal. Jim scored all three of the touchdowns in this game to give the Union team a 21 to 19 edge. Elbert McLaurin's educated toe added the vital extra points. "Slew" Koffman, "Bubba" Beare and "Hands" Teas-

**RAY HOUSE, Center**



**HAROLD COFFMAN, Center**





**JACK BROWN**  
Quarterback

ley did everything but take up tickets in playing their finest game of the season.

In the final game with S. L. I. the locals were blanked for the second time of the

season in spite of a beautiful forty yard run by "Buddy" Patey. Final score was 25 to 0.

Although Coach Teasley will be the last to admit it, things look good for the coming

**FRED CROSSON, Guard**



**JIM JOYNER, End**



**BUBBA SELLER, Guard**



**JACK DITTO, Guard**





RED YAROUGH, End



JACK HILLARD, End



ELBERT McLAURIN, End



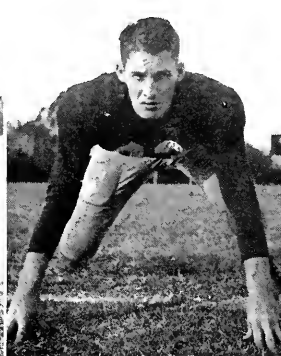
BUFORD METLOCK, End



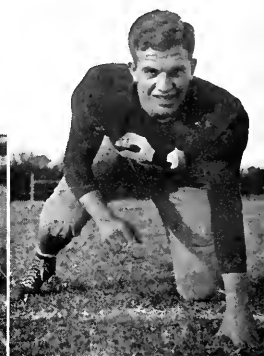
BUBBA BEARE, Tackle



WENDELL HUDIBERG, Tackle



GEORGE FERGUSON, Tackle



TOM STEDMAN, Tackle

season. Most of the Union squad of last year is back along with fresh talent. In a spring game with the powerful Murray State

aggregation, the Kentucky boys had their hands full to win 6 to 0.

BUDDY PATTEY, Halfback



KENNETH MARTINDALE, Fullback



JIM JOYNER, Halfback

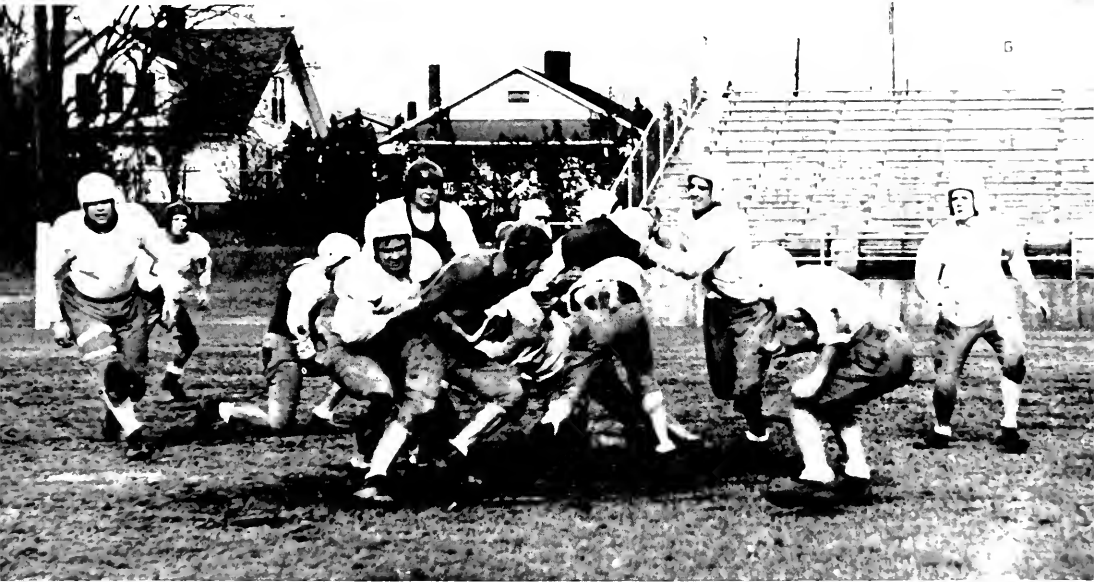


GLYNN YANCEY, Quarterback





WENDEL COFER, Guard



Fighting the Foe

DON JOYNER, Quarterback

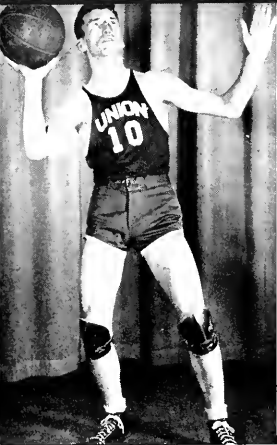
TUBBY WALDEN, Halfback

BILLY FOX, Fullback

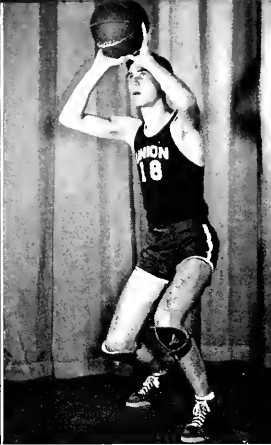
J. C. DAVIS, Fullback







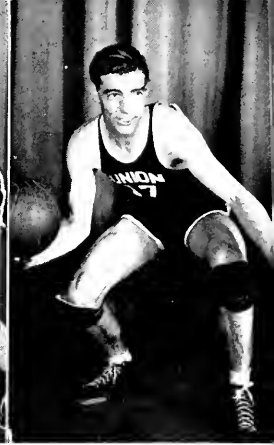
CARMEN OWENS, Forward



CHARLES HUDSON, Forward



FRED BARER, Forward



THEO LANCASTER, Center

# B A S K E T B A L L

The Union basketball squad was also composed almost entirely of first year players. The boys came out with a record of nine wins and ten defeats. The Bulldogs started the season off with a bang, winning five out of the first six. Then Coach Mansfield came down with the miseries and had to be sent to the hospital. Don Gary stepped in to capably fill Mr. Mansfield's number eleven shoes, during the few weeks the Coach was absent.

High point of the season was the defeat of Lambuth in the Tennessee College Tournament. The gun went off while the ball was in the air for the winning basket. Cumberland, a team previously flattened twice by the Bulldogs defeated the locals for consolation in the tournament. Co-Captains Carmen Owens and Charlie Hudson played outstanding ball all season and Owens was named on the All-Tournament team.

## SCORES

Union	58;	Paducah Jr. College	52
Union	43;	Austin Peay	60
Union	65;	Cumberland	47
Union	42;	Memphis State	38
Union	53;	Bethel	52
Union	55;	U. T. Jr. College	33
Union	42;	Austin Peay	62
Union	51;	Florence State Teachers	58
Union	49;	Delta State Teachers	71
Union	53;	Cumberland	42
Union	48;	Paducah Jr. College	49
Union	48;	U. T. Jr. College	46
Union	55;	Memphis State	67
Union	42;	Delta State Teachers	83
Union	67;	Florence State Teachers	53
Union	65;	Bethel	55
Union	53;	David Lipscomb	64
Union	42;	Lambuth	41
Union	50;	Cumberland	52

JIM JOYNER, Forward



GLYNN YANCER, Guard



MERLE WILLOUGHBY, Forward



GEORGE HOLLAND, Forward





HERSHEL BREWER



CHARLES HUDSON

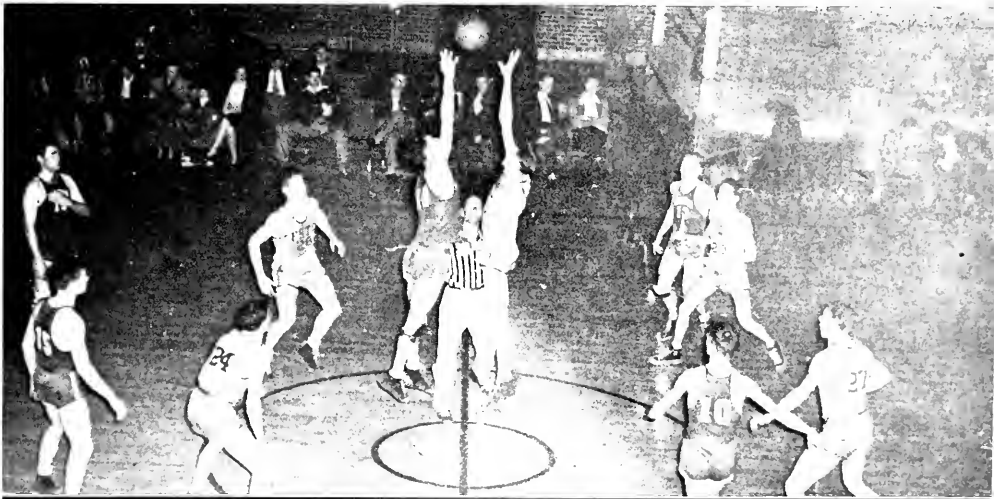


MILTON BASDEN



JAMES CHATHAM

OUR BULLDOGS IN ACTION



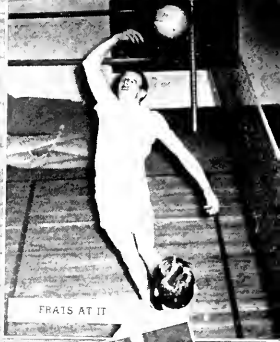




WATCH OUT GIRLS IT'S LOADED



SHE'S LOST



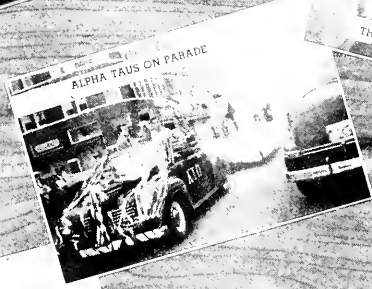
FRATS AT IT



THE SAME OLD STORY



FOUR TO ONE



ALPHA TAUS ON PARADE



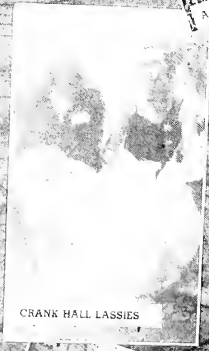
SAD SACKS



A THING OF BEAUTY IS A JOY TO



WATCH OUT BOYS THE DRINKS ARE ON YOU



CRANK HALL LASSIES



F. S.



BABES IN THE WOODS



DOLLY AT THE PAT



IN THE SPRING A YOUNG MAN'S FANCY



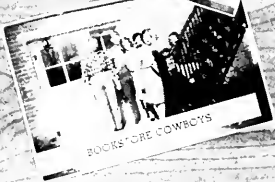
LOCK BOYS A FEMALE



MOST BEAUTIFUL



FRESHMAN PLAYS



ROCKS'ORE COWBOYS



IN THE SHOW



THE SONG



WELL I MADE IT THIS FAT



THE FIELDS

*W*E PROUDLY PRESENT THE  
PATRONS OF THIS EDITION OF "LEST  
WE FORGET" IN THE FOLLOWING  
PAGES.

1947 STAFF



World's Largest Publishers

THIS BOOK DESIGNED AND PRINTED BY

*Benson*

PRINTING COMPANY ☆ NASHVILLE

of College Annuals

# THE MOORE STUDIO

---

*Pictorial Home of the Co-Ed*

---

Maintaining a standard of prompt, courteous and efficient service—offering always the latest achievements in photographic art.



215 N. Liberty St.

Jackson, Tenn.

Between innings...  
have a Coke



BOTTLED UNDER AUTHORITY OF THE COCA-COLA COMPANY BY

## CONGER PARKER LUMBER AND SUPPLY CO.

Union Ave. and I.C.R.R.

Jackson, Tenn.

## McCALL HUGHES

VARSITY TOWN CLOTHES

144 N. Liberty

COMPLIMENTS

OF

# ROY SIMMONS USED CARS

"Used Cars That Can Be Used"



Tel. 4247

Jackson, Tenn.

# WOOTON STUDIO

PHOTOGRAPHS OF  
DISTINCTION



Telephone 27

207 E. Main

COMPLIMENTS

OF

# THE CHEF

"Where Students Meet"

DIAMONDS — WATCHES

QUALITY GIFT JEWELRY

## L. P. JACKSON



## WILSON-GEYER CO.

307 E. MAIN

Imperial Washable Wall Papers

HANNA PAINT PRODUCTS

COMPLIMENTS

# THE NATIONAL BANK OF COMMERCE OF JACKSON

JACKSON

TENNESSEE

Member Federal Reserve System

Member Federal Deposit Insurance Corporation





**WELCOME STUDENTS!**

TO THE

# **WEST JACKSON BAPTIST CHURCH**

(CORNER OF CAMPBELL AND DEADERICK)

On Direct Bus Line From Royal to the Church Door

**YOU WILL FEEL AT HOME IN THIS  
FRIENDLY ATMOSPHERE**

You are assured of educational and  
spiritual development through op-  
portunities for service

**DR. R. E. GUY, Pastor**





Norton Hall

THE SOUTHERN BAPTIST THEOLOGICAL SEMINARY

ELLIS A. FULLER, President

Louisville, Kentucky

## THE BOOTERY

Beautiful Shoes and Hosiery

COMPLIMENTS

OF

FENNER RADIO AND ELECTRICAL CO.



D.R. W. FRED KENDALL  
Pastor

WE INVITE YOU TO MAKE THIS  
YOUR CHURCH HOME WHILE  
IN JACKSON



T H E F I R S T B A P T I S T  
C H U R C H



EAST LAFAYETTE STREET

"Only Four Blocks From Union's Campus"



THE NEW  
**SOUTHERN**

Remember

THE READ HOUSE  
Chattanooga, Tenn.



THE DIXIE-CARLTON  
Birmingham, Ala.

THE OWENSBORO  
Owensboro, Ky.

Are Also

**ALBERT NOE HOTELS**

**SUCCESS  
STORY!**

An easy   
Economical   
Shopping trip at  
**Sears, Roebuck and Co.**  
ORDER OFFICE

Phone 4780

*Fox Cafe*

COMPLIMENTS

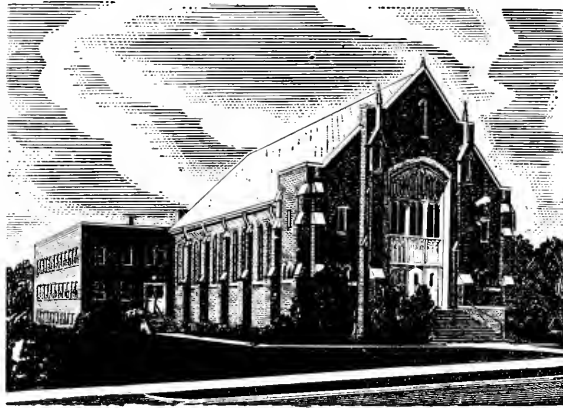
**WEST SERVICE**

222 W. Main Street

Jackson, Tennessee

# CALVARY BAPTIST CHURCH

Lexington Avenue at Tomlin Street



EXTENDS

CHRISTIAN GREETINGS AND FELICITATIONS



It is our earnest desire to provide an environment like the "church back home." Union students readily find a place to serve and train here at Calvary. We major in friendliness.

Affectionately,

*Wm. Walter Darnath*

SHEET MUSIC

MUSIC SUPPLIES

## *Wallick Music Company*

MUSICAL INSTRUMENTS

PIANOS

## ELITE CLEANERS

Five Points

BILLIE MAINFORD

Phone 446

Since 1912

HATS CLEANED AND BLOCKED

We Appreciate Your Business

Service That Satisfies

# TRUEX CHEUROLET COMPANY

+++

College and Church

Telephone 108

LAYCOOK PRINTING CO.

Best Equipped Small Printing Plant in the South

JACKSON, TENNESSEE

*Compliments of*

BOND SHOE COMPANY

ALWAYS SOMETHING NEW

NATHAN'S

JACKSON, TENNESSEE

*Congratulations Seniors*

PEREL AND LOWENSTEIN

Diamond Store of the South

211-215 E. Main

Jackson, Tenn.

Highland & College

*Lewis*  
&  
CO.

Phone 5187

PAINT — WALL PAPER — VENETIAN BLINDS

PIANOS—MUSICAL INSTRUMENTS—RECORDS  
RADIOS AND PLAYERS—SHEET MUSIC

**HARDEMAN MUSIC COMPANY**

Jackson, Tennessee

Authorized Maytag Dealer

Telephone 390

*Vineyards* FLOWER SHOP

320 E. Lafayette St.

*Say it with Flowers*

**HOLLAND'S**

Established 1871

JACKSON'S DOMINANT STORE



COMPLIMENTS  
OF  
FRANKLAND'S

BEARE ICE AND COAL COMPANY

Main Office—JACKSON

Operating Ice Plants and Coal Yards at

BOLIVAR, JACKSON, HUMBOLDT, TRENTON, MILAN

*Fall In Line . . .*

*Make Jackson Shine*

STANDARD DRUG COMPANY

"The Store of Courtesy and Carefulness"

Phones 158 and 159

COMPLIMENTS

## BURNLEY FLOWER SHOP

Phone 1120

210 E. Baltimore



**PEPSI-COLA**  
REG. U. S. PAT. OFF.



ELECTRICITY . . .

The power in which there is knowledge adds years to  
your life and life to your years —

## JACKSON ELECTRIC DEPARTMENT

## KIRBY - JONES FURNITURE CO.

*You Get More For Your Furniture  
Dollar Than Any Other Dollar You Spend*

Compliments of

*Rosenbloom's*

COMPLIMENTS

OF

**THE FIRST NATIONAL BANK**  
OF JACKSON

Charter Member Federal Reserve System

Member Federal Deposit Insurance Corporation

Serving this section since 1873

A BIGGER AND EVEN BETTER UNION  
UNIVERSITY IS THE THEME AND GOAL  
OF ALL OUR PATRONS.

WE, AS STUDENTS, ACKNOWLEDGE  
THEIR INTEREST AND CO-OPERATION.

# diffee drugs

COMPLIMENTS  
OF

## N O L E N ' S

JACKSON, TENNESSEE

AGAIN WE  
SAY  
CONGRATULATIONS  
SENIORS!



LEXINGTON  
INN

◆  
Have Your Eyes Scientifically  
Analyzed

DRS. LaGRANGE  
and LaGRANGE

OPTOMETRISTS

116 E. Lafayette

Phone 143  
◆

COMPLIMENTS OF THESE CHURCHES PASTORED BY  
UNION STUDENTS

**ANTIOCH BAPTIST CHURCH**

TIBBS, TENNESSEE

W. T. PILLOW, Pastor

**SALISBURY  
BAPTIST CHURCH**

SALISBURY, TENNESSEE

GLYNN HARWOOD, Pastor

**MADISON BAPTIST CHURCH**

HERMAN JACOBS, Pastor

**MERCER BAPTIST CHURCH**

MERCER, TENNESSEE

CHARLES TAYLOR, Pastor

**FIRST BAPTIST CHURCH**

HALLS, TENNESSEE

VERNON SISCO, Pastor

**COTTON GROVE  
BAPTIST CHURCH**

PRINCE ED CLAYBROOK, Pastor

**BETHEL "H"  
BAPTIST CHURCH**

JIMMY EAVES, Pastor

**SOUTHSIDE BAPTIST CHURCH  
MT. VERNON BAPTIST CHURCH**

W. B. OAKLEY, Pastor

**GATES BAPTIST CHURCH**

HUBERT JONES, Pastor



# UNION UNIVERSITY

JACKSON, TENNESSEE

Founded 1834



## CO-EDUCATIONAL

A four-year college with a remarkable history of achievement as attested by its many successful alumni in all walks of life. An institution which puts quality above quantity. Recognized and accredited by a great many graduate departments of larger universities.

Member of American Association of Colleges, of Liberal Arts College Movement, and of Tennessee Association of Colleges.

## COURSES OR DEPARTMENTS

The regular course in the College of Arts and Science: English, Mathematics, the Sciences, Philosophy, Bible, Sociology, Greek, Latin, Spanish, German, and History.



## REGULAR SUMMER SCHOOL



For Catalogue and Other Information, Address:

**DR. WARREN F. JONES, PRESIDENT**

---

*Autographs*

---

---

*Autographs*

---



---

*Autographs*

---





