




JUSTI MUM POCERUNT



Digitized by the Internet Archive
in 2010 with funding from
Lyrasis Members and Sloan Foundation

<http://www.archive.org/details/lestweforget195300unio>





ALL THE WORLD'S A STAGE,

And all the men and women merely players.
They have their exits and their entrances,
And one man in his time plays many parts,
His acts being seven ages. At first the infant,
Mewling and puking in the nurse's arms.
Then the whining schoolboy with his satchel
And shining morning face, creeping like snail
unwillingly to school. And then the lover,
Sighing like furnace, with a woeful ballad
Made to his mistress' eyebrow. Then a soldier,
Full of strange oaths, and bearded like the pard,
Jealous in honour, sudden, and quick in quarrel,
Seeking the bubble reputation
Even in the cannon's mouth. And then the justice,
In fair round belly with good capon lined,
With eyes severe and beard of formal cut,
Full of wise saws and modern instances;
And so he plays his part. The sixth age shifts
Into the lean and slippered pantaloon,
With spectacles on nose and pouch on side,
His youthful hose, well saved, a world too wide
For his shrunk shank; and his big manly voice,
Turning again toward childish treble, pipes
And whistles in his sound. Last scene of all,
That ends this strange eventful history,
Is second childishness and mere oblivion,
Sans teeth, sans eyes, sans taste, sans everything.

William Shakespeare
As You Like It, Act II, Scene VII

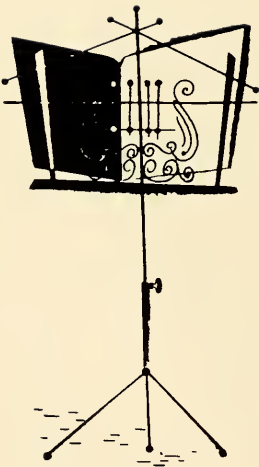
The Annual Staff of 1953

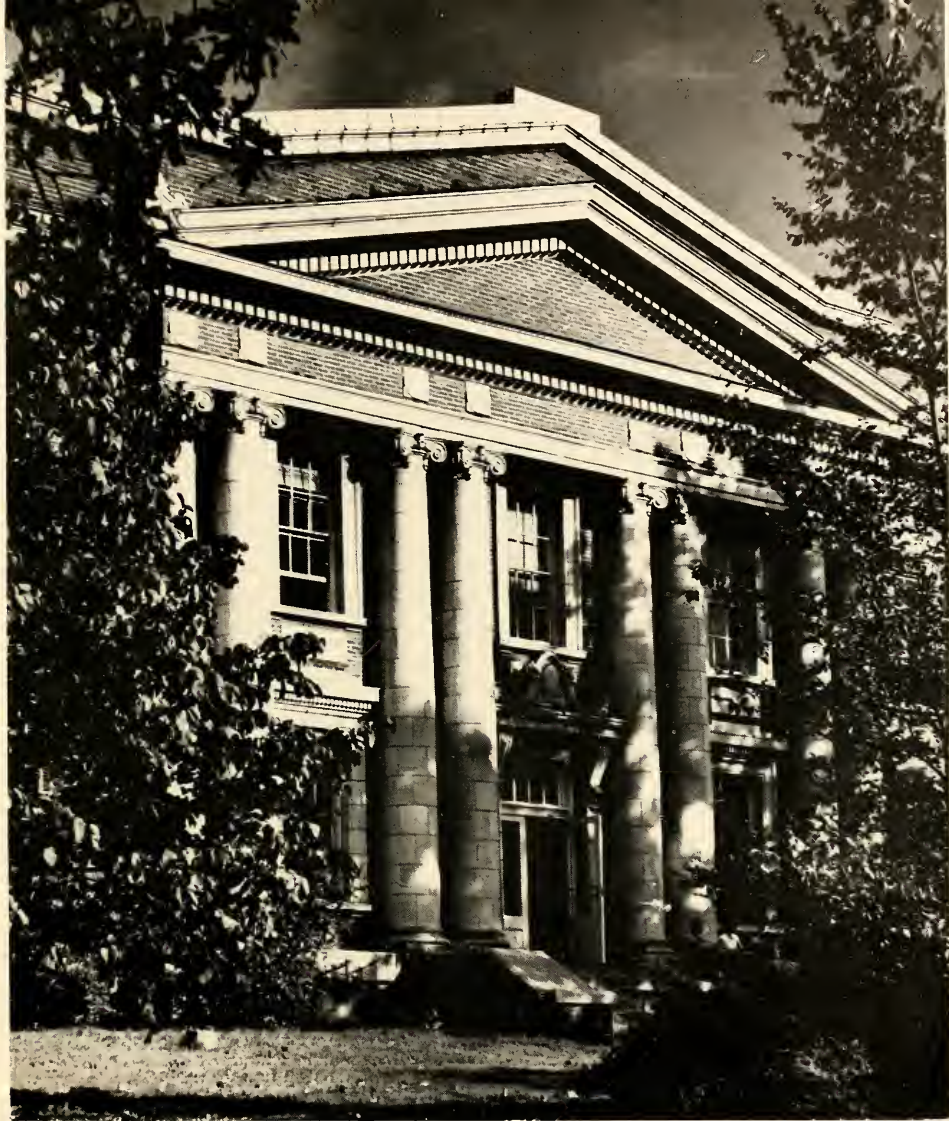
Editor	Carey Duncan
Business Manager	Juanita King
Assistant Editors	Christine Sisson Evelyn Holley
Consulting Editor	Orville Wilson
Art	Charles Vincent Anne Carolyn Hamilton Joan Shelton
Copy Editors	
Class	Betty Ruth Wilson Paula Clayton Virginia Sewell Peggy Jones
Honors	Betty Moore Jo Ann Bazemore Mary Walker Shoaf Divina Key
Organizations	Thelma Crews Betty Turner Emily Wieland Jane Albritton Peggy Thorne Tenny Vincent
Sports	Johnny Roberts Bobby Sims
Photography	Jimmy Sherrin Charlotte Peddy Doris Holloway James Tillman
Typists	Glenda Whittle Catherine Wright Bobbie Jean Strayhorn Frances Jones Lucy Nell Butler



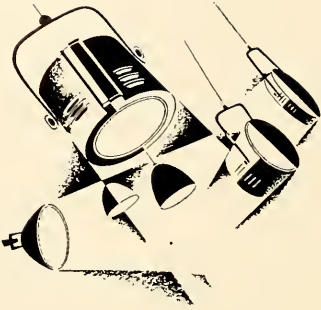
Foreword

All the world is a stage. Your years at Union comprise one act in the drama of your life. It is the aim of the **Lest We Forget** Staff of 1953 that through this publication you will be able to recall some of the scenes of Union activity. The year has been a good one—filled with many good things that warrant publication in a permanent form. So it is that we now present YOU, the students, lest we forget. Places! Emotions! Lights! Curtain Going Up!





Lest We Forget



Dedication

Mrs. D.W. Luckey

It is said that all the world is a stage. Let us think of Union as a stage where many actors play—some major roles, some supporting roles, some for a brief time, others for years. We, the annual staff of 1953, choose to honor one who has served Union long and faithfully. Beginning as hostess at Crook Hall, Mrs. Luckey has proved her usefulness in many positions on Union's Campus.

Gracious and kind, faithful and sincere, she is an invaluable member of Union's cast. A great store of common sense, a love for young people, a mother's heart, and a love for genuineness and beauty—these are only a few of her contributions.



Mrs. D. W. Luckey

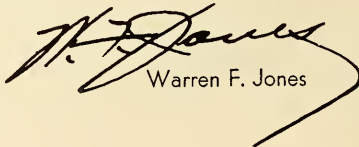
Dear Friends:

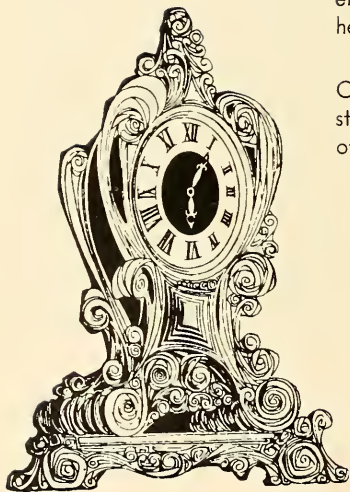
The theme "All The World's a Stage" chosen by the editorial staff of the year book brings vividly to our minds the many dramatic events that are taking place throughout the world today. It would be impossible to review or to appraise the significance of national and international affairs that affect the lives of all of us. Be that as it may, regardless of confusion that may exist in the social order, or tensions that tend to pull us off balance, there are always some forces that give us assurance that when the curtain is drawn and the scene is changed, certain great basic principles will still live and move on undamaged and untarnished. Such is the Christian college of which you are a part. Its influence through the years has been such as to develop Christian character and attitudes of service that have changed the scenes and have turned tragedy into victory.

You as students will go your separate ways and ultimately will become cast in life's drama, taking your place upon the world's stage. We have utmost confidence that you will aspire to the high ideals of your Alma Mater, you will play your part well, you will create for the coming generations better conditions than those which you have inherited.

Lest we forget the happy times spent in Union, the Christian spirit so contagious on its campus and the constructive influence of fellow students and teachers, read often the pages of your yearbook, LEST WE FORGET.

With all good wishes


Warren F. Jones





Dr. Warren F. Jones
President



Dr. Warren F. Jones, President

Dr. R. C. Briggs, Dean



Staff and Administration



DR. R. C. BRIGGS
Dean



FRANK M. BLYTHE
Business Manager

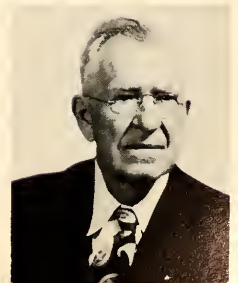


MRS. O. D. STONE
Registrar

TROY G. YOUNG
Alumni Secretary



DR. J. F. RAY
Audio-Visual Education



Staff and Administration



AUBREY JONES
Bursar



MRS. KELLY THURMAN
Secretary to the President



MRS. CICERO McCLURE
Secretary to the Dean

MRS. MARGIE VERTREES
Bookkeeper



MISS DORIS HOLLOWAY
Student Bookkeeper



Staff and Administration

MRS. ETHEL LUCKEY
Hostess, Student Union Building



MISS WILLIE MARGARET JOHNSON
Dietitian



Staff and Administration



SPURGEON BOYD
Assistant in Biology
B.S. Carson-Newman
M.A. George Peabody



FRANCIS BRIDGES
Acting Head of Business and Economics
B.S. U.S. Merchant Marine Academy
B.S. Georgia Inst. Technology
M.S. Georgia Inst. Technology



HUGHLAN POPE
Acting Head of Chemistry
B.S. Carson-Newman
M.S. University of Georgia



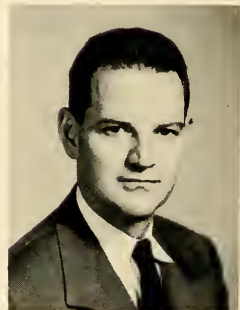
FRANK L. WELLS
Head of Education and Psychology
A.B. University of North Carolina
M.A. Columbia University
Ph.D. University of Iowa



DIXIE M. JONES
Professor of Psychology
A.B. Blue Mountain
M.A. George Peabody
Ph.D. George Peabody



MATTIE SANDERS
Dean of Woman
Assistant in Psychology
B.S. Central Missouri State
M.A. Columbia University



KELLY THURMAN
Head of English
A.B. West Kentucky State
M.A. University of Kentucky
Ph.D. University of Iowa

Staff and Administration



HARRIET HELEN BLYTHE
Assistant Prof. English
A.B., University of Oklahoma
M.A., George Peabody



ELIZABETH BRELAND LOYD
Instructor in Speech
A.B., Union University
Diploma, Whitworth College
Study; American Academy of
Dramatic Art, Columbia University



LUCILLE ROGERS
Head of Dramatics
A.B., Union University
M.A., Columbia University



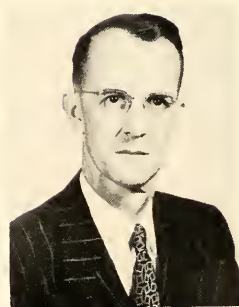
DEE E. RICE
Instructor in Latin
A.B., Ouachita College
B.S., Union University



CAROL SANDY
Acting Head in Languages
B.A., Simpson College
M.A., University of Iowa



**WILLIE MARGARET
JOHNSON**
Head of Home Economics
B.S., Union University
M.S., Iowa State



RALPH DONNELL
Head of Mathematics
A.B., Cumberland University
LL.B., Cumberland University
M.A., Vanderbilt University

Staff and Administration



WALTER KRUSCHWITZ
Head of Physics
Assistant in Mathematics
A.B. Taylor University
M.A. Vanderbilt



ALTON E. HARVEY
Head of Music
B.M. Mississippi Southern
M.M. Cincinnati College of Music



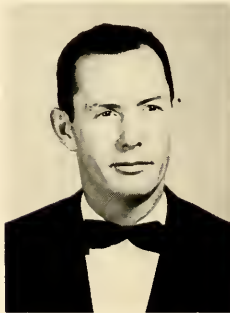
CHARLES M. DORN
Instructor in Art
B.A. Peabody
M.A. Peabody



JOHN M. HUGHES
Assistant in Music
Graduate Diploma Carson-Newman
A.B. Southwestern
M.S. Julliard School of Music
Ch.M. American Guild of Organists



MILCHRIST STANWORTH
Instructor in Piano
Northwestern University School of Music
Artists graduate diploma,
Northwestern School of Music



ROBERT JELKS
Head of Physical Education
A.B. Union University
M.A. Peabody



GRACE WILLIAMS
Assistant in Physical Education
B.S. Alabama College
M.A. George Peabody

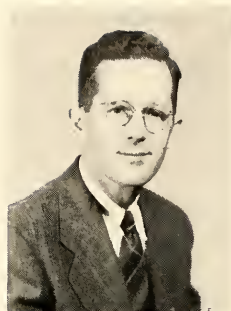
Staff and Administration



R. C. BRIGGS
Head of Religion
A.B. Southwestern State
Th.M. Southern Baptist Seminary
Th.D. Southern Baptist Seminary



T. O. HALL
Assistant in Bible
A.B. Hampden-Sidney
B.D. Southwestern Baptist
Th.M. Southwestern Baptist



CICERO McCLURE
Assistant in Bible
B.A. Columbia Bible College
B.D. Southwestern Baptist



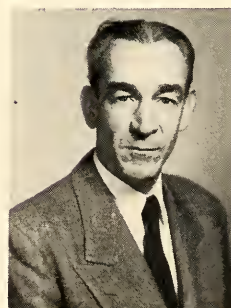
MAX CARRINGTON
Assistant in Business
A.B. University of Tennessee
M.A. University of Tennessee



WOODROW DAVIS
Acting Head in Social Science
A.B. Union University
M.A. George Peabody



ROSA DYER RUTLEDGE
Assistant in History
B.S. Union University
M.A. George Peabody



RICHARD H. WARD
Associate in Social Science
A.B. Carson-Newman
M.A. George Peabody



*President of The Student Body
Bobby Holland*



The Student Council

OFFICERS

Bobby Holland, President

Pete Belew, Vice-President

Dottie Carlson, Secretary

MEMBERS

Jean Maxey, Senior Representative

Jane Albritton, Junior Representative

Christine Sisson, Sophomore Representative

Keith Hill, Freshman Representative

Charles Gaba, Publications Representative

Barclay Newman, Religious Activities Representative

Marvin Fitts, Panhellenic Representative

Dr. Warren F. Jones

Dr. R. C. Briggs

Dean Mattie Sanders

Acting Advisor, Walter Kruschwitz

... and another year is past. For many it has been a period of happy labor, a time of wonderful experience, and a time of life-changing decisions. As I, a Senior, look upon my four years at Union, I see that all of these things have happened; and I will readily promise that they will be a part of every student's life who attends Union and who strives for them.

My prayer for Union is that she will continue to bless the lives of students as she has so vividly blessed mine.

Bob Holland
President of the Student Body



BARTON HALL

STUDENT UNION BUILDING



SUMMAR LIBRARY

LOVELACE HALL





Seniors

Senior Class Officers



President
BOB CHILDERS, B.A.

Football 1949-1953; U Club '49-'53; Sigma Alpha Epsilon; Freshman, Sophomore, and Junior Class Chaplain; Senior President; Most Popular Boy, 1952; Best All Around Boy, 1952, Who's Who in American Colleges and Universities.



Vice-President
BILLY BELEW

Alpha Tau Omega, President; U Club; Baseball; Vice-President Student Body two years; *Lest We Forget*, 1952.



Secretary-Treasurer
JEAN BUTLER

Secretary Senior and Sophomore Class; Footlights Club, 1949; Euphrosanean Literary Society, 1949; President of Hypatia; Miss Union, 1953; Home Economics Club; Who's Who in American Colleges and Universities.

Chaplain

BARCLAY NEWMAN

BSU State and Local President; Nestor Club President; Winner of M. E. Dodd Expository Writing Contest; President of Life Service Band; J. R. Graves Society; Student Council Member; Who's Who in American Colleges and Universities.



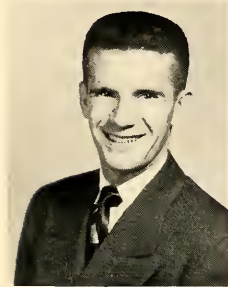


MAMON ALEXANDER,
A.B.



ELEANOR KATHLEEN
CONNER, A.B.

Chorus 1948-1952; Allegro Music Club
1948-1949; N.F.S.M. 1951-1952; YWA
1948-1953; Life Service Band; BSU
Council.



BILL BAKER,
A.B.

Alpha Tau Omega; Band 1949-1953;
Orchestra 1951-1953; Cheerleader;
Track.



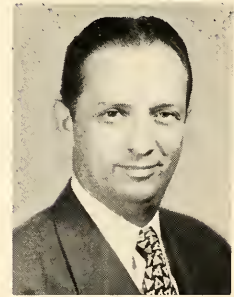
JAMES COTTEN
A.B.

Chorus President 1951-1953; Vice-Presi-
dent of Nestor Club 1951-1952; Nestor
Club 1951-1953; Who's Who in Ameri-
can Colleges and Universities.



JUNE BENNETT,
B.S.

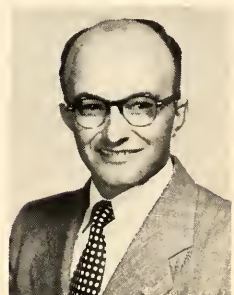
Life Service Band; Prince-Davis Science
Club, President; Student Summer Mis-
sionary (BSU).



J. T. DRACE,
A.B.



EDGAR CAMPBELL.
B.S.



BILL EMMIT,
A.B.

Allegro Club; Chorus; Male Quartet;
Phratra Club.



BYRON EPPS,
A.B.

Life Service Band President 1953; J. R. Graves Society; BSU Executive Council 1952-1953; Phratra Club, Vice-President 1951-1952; Cardinal and Cream Staff 1952; Chorus 1949-1953.



BOBBY HOLLAND,
A.B.

Sigma Alpha Epsilon; Student Body President 1952-1953; Editor of Let's We Forget 1952; Junior Representative to Student Council, BSU; Mixed Chorus; Football 1950; U Club; Who's Who in American Colleges and Universities; Sophomore Student Director of One Act Play.



ANN HAMILTON,
A.B.



GEORGE HOPKINS,
A.B.



SONNY HAWS,
B.S.

Basketball 1949-1953; Baseball 1949-1953; Co-Captain Basketball 1951-1952; Captain Basketball 1952-1953; Captain Baseball 1951-1952; Honorable Mention all VSAC 1952; All VSAC Team 1953; Alpha Tau Omega; Pledge Master 1952-1953; Vice-President of U Club 1952-1953; President of Adams Hall 1952-1953; Senior Most Likely to Succeed.



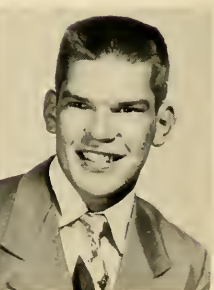
GEORGE HORTON,
A.B.

History Club; Nestor Club; J. R. Graves Society; BSU.



ANN HAYNES,
B.S.

Zeta Tau Alpha; Enonian Literary Society; Footlights Club; Sweetheart of Alpha Tau Omega; Basketball Royalty 1951-1952; Football Royalty 1952-1953; Cardinal and Cream Staff 1950; Union University Representative at Strawberry Festival 1952.



RALPH JOHNSON,
B.S.

Sigma Alpha Epsilon; Science Club; U Club; Football 1950-1952; Tennis 1953.



WAYNE JONES,
A.B.

History Club; Rice Latin Club; J. R. Graves Society; Life Service Band.



BLANCHE MELTON,
B.S.

Enonian 1950-1951; BSU; Zeta Tau Alpha; Enonian 1950; Chorus 1950-1953; Basketball Maid 1951; Secretary of ZTA 1951; Prince-Davis Science Club 1953.



JEAN MAXEY,
A.B.

Rutledge History Club; Chi Omega; Hypatia; Alpha Psi Omega; Footlights Club; BSU Senior Student Council Representative; Vice-President Sophomore; Junior Class Speaker; Most Popular Girl 1953; YWA; Cardinal and Cream Staff 1953.



HUBERT NEELEY,
B.S.

J. R. Graves Society; Secretary 1953; BSU.



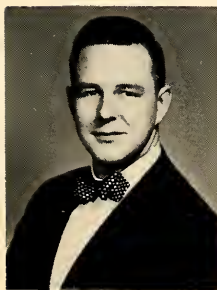
BILLY MAX MAYO,
B.S.

Sigma Alpha Epsilon; Basketball; Track; U Club.



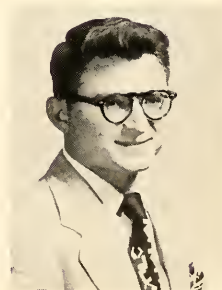
JAMES PIRTLE,
B.S.

History Club; Literary Festival.



THOMAS McCAGE,
A.B.

Mixed Chorus 1951-1953; Metropolitan Opera Auditions 1951-1952; Allegro Club 1951-1953; Superior Honors in National Federation of Music Clubs 1952-1953; Sewanee Music Conference 1952.



TED POPE,
A.B.

University Players.



GLENN RAINEY,
A.B.

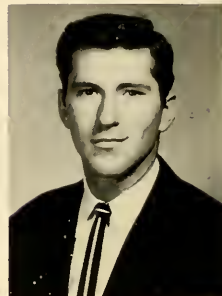
Sigma Alpha Epsilon E. A.; Treasurer; Delegate to Leadership School; BSU Treasurer; Panhellenic Council President; Student Council Member.



ROGER TEAGUE,
B.S.



JOHN ROARK,
B.S.



BOBBY THOMPSON,
B.S.

Football; Basketball; U Club President; Alpha Tau Omega Pledge Master, Treasurer.



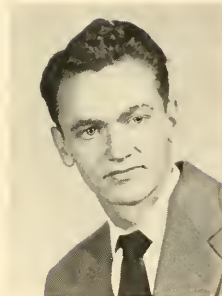
ROBERT N. SANDERS,
A.B.

Nestor Club Secretary 1952-1953; Rutledge Honorary History Club 1953; J. R. Graves Society 1949-1953; Program Chairman and President 1953; BSU Reporter 1952; Life Service Band 1950-1951; Vice-President 1951.



DONNA THOMPSON,
B.S.

Zeta Tau Alpha; Treasurer, Guard; Chorus; Footlights Club Secretary; Alpha Psi Omega President; Girls Intramural Committee.



WAYNE STONE



PEGGY THORNE,
B.S.

Chi Omega Treasurer 1951-1953; Science Club 1951-1953; Annual Staff 1951-1952; Footlights Club 1950-1951.



VALERIA VAUGHN,
A.B.

Life Service Band Secretary 1950-1951; YWA, Chairman of Circle 1950-1951; Rice Latin Club Secretary 1950-1952; BSU Council; Who's Who in American Colleges and Universities.



PATSY WHITE,
B.S.

Chi Omega Secretary 1951-1952; President 1952-1953; Footlights Club 1949-1950; Home Economics Club 1952-1953; Science Club 1950-1953; Football Maid 1952; President of Euphrosynean 1949-1950.



BARBARA WASHAM,
A.B.

Zeta Tau Alpha; Rush Chairman and Guard; Chorus; Footlights Club; Representative to Panhellenic; Minerva Club.



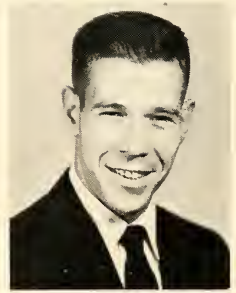
NANCY WILLIAMS,
B.S.

Chi Omega; Pledge Mistress 1951-1952; Vice-President Junior Class; Science Club, Chaplain 1951-1952; Most Popular Girl 1950-1951; Miss Union 1951-1952; Football Royalty 1950-1951; Footlights Club 1949-1950; Panhellenic Council 1952-1953; Secretary-Treasurer Phratra Club 1951-1952; Euphrosynean Society; Treasurer YWA 1951.



CATHERINE WATKINS,
A.B.

Transfer from Freed-Hardeman; Footlights; Camera Club; Chi Omega; Sigma Alpha Epsilon Queen; Football Queen; Senior Class Princess; First Maid to Queen Strawberry Festival.



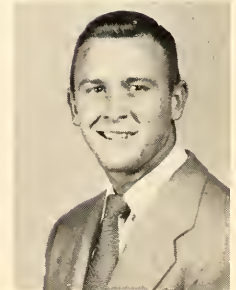
CHUCK WILLIAMS,
B.S.

Sigma Alpha Epsilon; U Club Vice-President 1950; Football 1949-1953; Football Captain 1952; Baseball.



HAROLD WEST,
A.B.

Nestor Club 1952-1953; J. R. Graves Society Secretary 1953; Science Club 1952-1953; Annual Staff 1952-1953; Philosophy Club 1953.



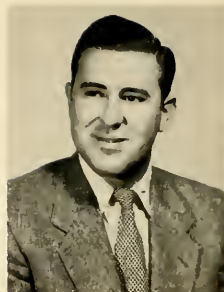
PAT WILLS,
B.S.

Sigma Alpha Epsilon E. W. 1951; U Club President 1952; Vice-President 1952; Football 1949-1952.



MARY HOWELL ANDERSON,
A.B.

Chi Omega; Alternate Maid to Strawberry Queen 1953.



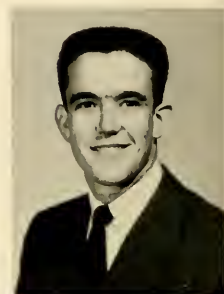
CHARLES VINCENT,
A.B.

J. R. Graves 1949-1953; Life Service Band 1949-1953; Alpha Tau Omega; Lest We Forget 1953.



ORVILLE WILSON,
A.B.

J. R. G.; Lest We Forget; Rutledge History Club; Rice Latin Club; Philosophy Club.



KENNETH MILLER,
B.S.

Football Squad; Track Squad; Alpha Tau Omega; U Club; Footlights Club; Most Popular Boy.

Seniors not pictured

WORLIE BALLARD

JO ANN BAZEMORE

FRED BIRMINGHAM

TOMMY BOLEN

RAYMOND CARLOCK

BILL COTTRELL

JEWELL FELKER

MARVIN FITTS

TED HALE

JERRY HUNT

GEORGE HUNTER

MARJORIE KEE

JOHN KNIGHT

KENNETH MILLER

J. M. PARKS

PANSY SANDERS

PEGGY SEWELL

FAYE STANFILL

JOHNNIE WILKINSON

CHARLES R. WILLIAMS

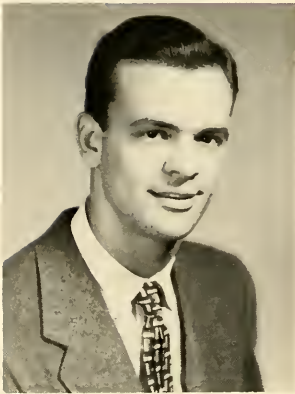


Juniors

Junior Class Officers



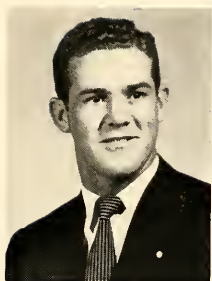
President
JAMES DISMUKE



Vice-President
CHARLES GABA



Secretary-Treasurer
JOAN SHELTON



JOHN ABLES



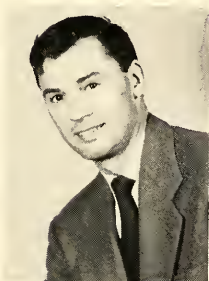
LAMAR BOOTH



JUANITA CARNEL



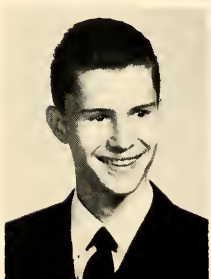
JANE ALBRITTON



JAMES BROWN



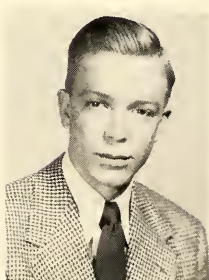
PAULA CLAYTON



BOB ATWOOD



JAMES CARLIN



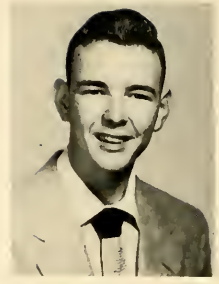
BILLY COLE



WALTER COLEMAN



CLIFTON COURTNEY, JR.



CAREY DUNCAN



BILL CONWAY



BLANTON CRASS



BOB DUNN



JOE COSTELLO



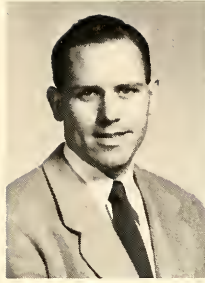
SUE CROCKER



ROY ELLIOT



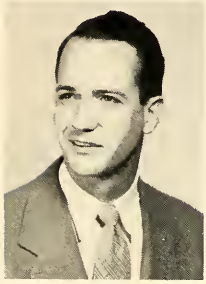
BETTY FRANKLIN



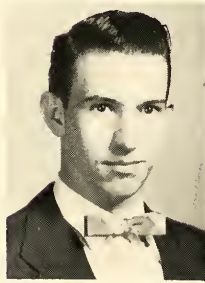
JOHN GILBERT



VERA HENRY



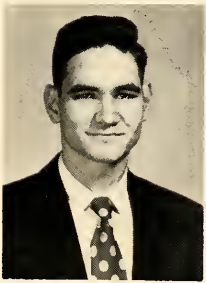
MAX FRENCH



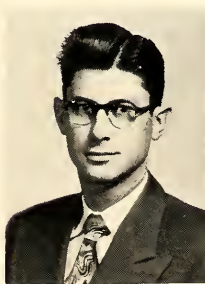
TOM HELTON



EVELYN HOLLEY



CHARLES GAY



ODIS HENDERSON



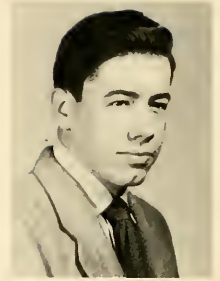
FRED KENDALL



DIVINA KEY



MARY KAY McBRIDE



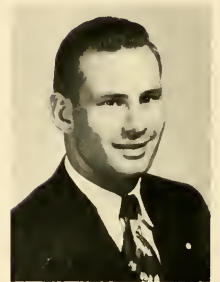
JOHN OUTLAN



MILDRED LASATER



J. D. MAY



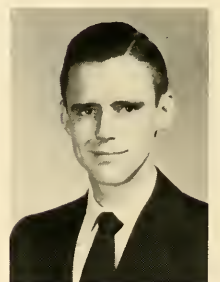
D. L. OWENS



BETTY McILWAIN



JO ANN MAZE



RICHARD PENUEL



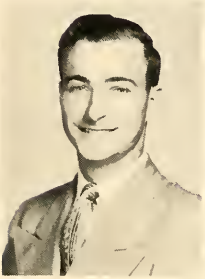
SYLVIA PHILLIPS



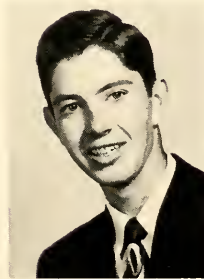
BILL THOMAS



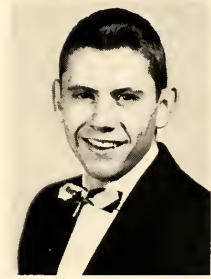
JOYCE YOUNG



JOHNNY SCONCE



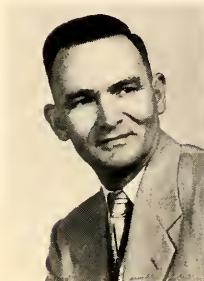
LEE THORNTON



DON YOUNG



RUTH SKELTON



COY THURSTON

Juniors Not Pictured

J. W. ABNEY

FLODELL APPLETON

ROBERT ERNEST BROWN

CHARLES CURRIER

ORVIND DANGEAU

PAUL R. DRUM

GENE GARRETT

HARRISON GOOCH

HILLIARD GOODE

JACK HALLIBURTON

BURKE HERRON

BILL HINTON

PAUL HOLMES

ROBERT INGRAHAM

TROY LEWIS

LOGAN LEWIS

VIRGINIA LEWIS

CARL LONG

BILLY McKISSACK

ROBERT K. MORRIS

ROGER MURRAY

JO ANN ROBERTS

JERRY JOHN ROBERTS

BOBBY SHANDS

RUSSELL WADDELL



Sophomores

Sophomore Class Officers



President
LEON MORRIS



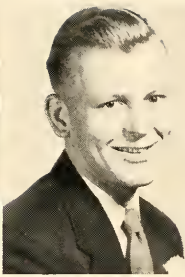
Vice-President
TOMMY SMOTHERS



Secretary-Treasurer
KITTY RAMSEY



MARIE ARMSTRONG



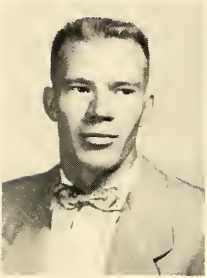
W. E. BLALACK



ALICE CLEMENT



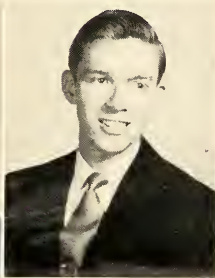
DORIS CRAWFORD



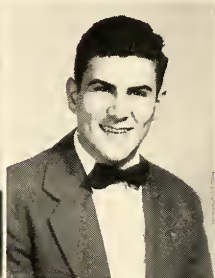
BOB ARNOLD



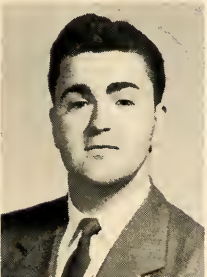
NANCY BREWER



ROYCE CRUCE



KENNETH CROCKER



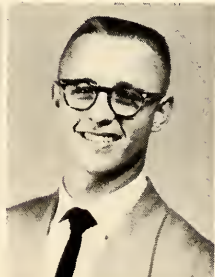
ASHLEY CHERRY



DOROTHY CASH



JANELL COTTRELL



CHARLES DOLLAR



CHARLES EDMONDS



BARBARA HARWELL



W. C. HENLEY



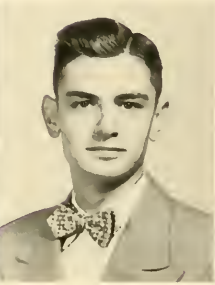
JOAN JETER



ELAINE ELKINS



CHARLYNE HATHAWAY



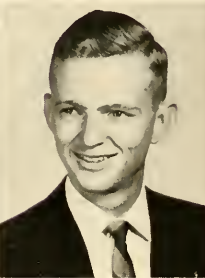
HARRELL HERRIMAN



ALBERTINE KYKER



CHARLES HARRIS



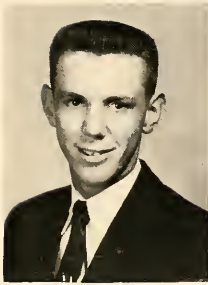
JIM HAYES



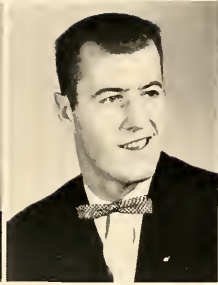
DIXIE HOWSE



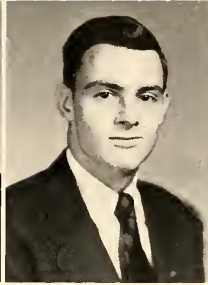
BILL McAFEE



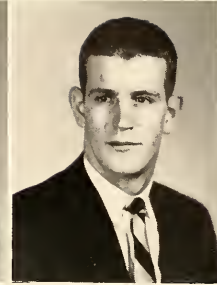
HUTSON McCORKLE



BOBBY JOE MORRIS



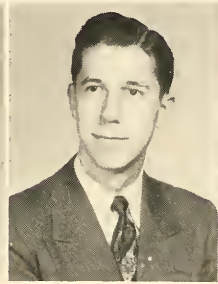
TOM NAEFF



RICHARD ROSS



HESTER McGill



DAVID MONTGOMERY



CHARLOTTE PEDDY



JOHN STOVALL



JOE MILLER



NANCY MURPHY



BARBARA POPE



BOBBIE JEAN STRAYHORN



RICHARD SUDMALIS



ZANE WELLS



PETE WILLIS



ROSANNE WILSON



ANITA TOLLEY



EMILY WIELAND



BILLY WALKER

Sophomores Not Pictured

HAROLD ALEXANDER

JULIA BENNETT

RUSSELL BRANDON

RUTH BROGDON

JAMES ROBERT BROWN

KENNETH BURKE

WILLIE SUE CARRINGTON

ROBERT CHARLES COBURN

JACK CRISWELL

DONALD DEATON

CLINTON EDMISTON

EDGAR GARY

LeROY GRISSOM

KENNETH HAWKINS

HARLAN HOGG

SADIE LOU JOHNSON

JUANITA KING

DAVID LUCKEY

BENNIE MORRISON

BOBBIE MULLINS

TURK MURCHISON

ROE NEAL

ANNA LAURA PALMER

JACK POLLARD

JOHN ROBERTS

EVERETTE BURTON ROBNETT

WILL ROGERS

VIRGINIA SEWELL

JOYCE SHELTON

MARY WALKER SHOAF

CHRISTINE SISSON

CHRISTINE TAYLOR

PEGGY WALKER

WILLIAM RAY WHITLOW

DAVID WILLIAMS

JOHN WOMACK



Freshmen

Freshman Class Officers



President
BOBBY BRIGGS



Vice-President
CAROLYN HILL



Secretary-Treasurer
CAROLYN JACKSON

Chaplain
GENE MCKAY





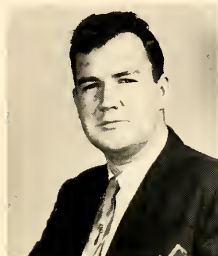
MARJORIE ABERNATHY



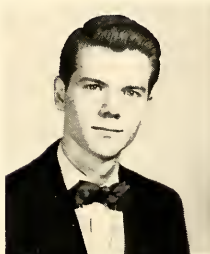
CHARLES RAY BOGGAN



LUCY NELL BUTLER



GENE ATKINS



HERRON BOND



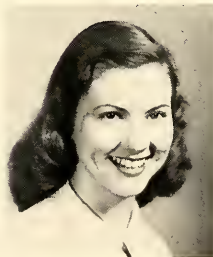
CLOVIS CARTER



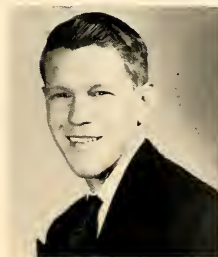
MARY ATWOOD



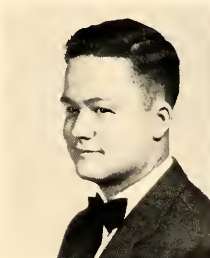
HENRY BRUKARDT



MARY CARTER



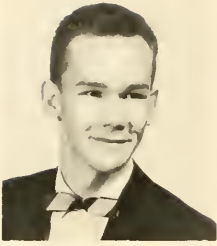
JOE FRANK BARNETT



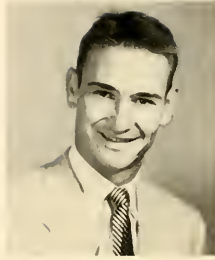
ROBERT BURKHEAD



ANN DUNN



JERRY CATES



GUY CORBIN



THELMA CREWS



JANICE COGBILL



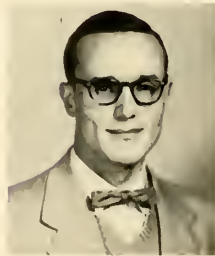
HAROLD COSBY



GEORGE CROCKER



DONALD COLEMAN



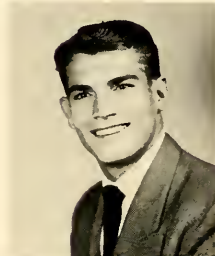
WILLARD CAYCE



ANITA CROUCH



CHARLOTTE COOK



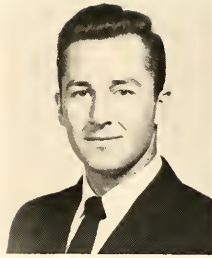
IRBY CRAWFORD



EVELYN DONNELL



DOROTHY DURHAM



VERNON FORSYTHE



BILLY HAMMONDS



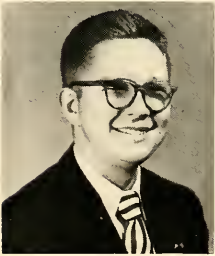
CHARLES DYER



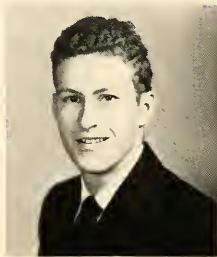
LALAH GEE



DORIS SUE HARDEE



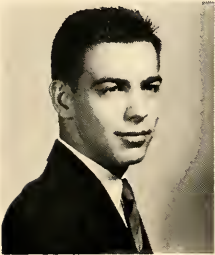
JOHNNY FANNING



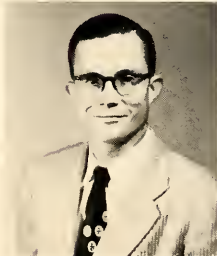
BOBBY GOODMAN



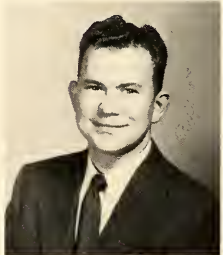
EUGENE HALL



MAC FIELDS



HENRY GREEN



ALFRED HART



WAYNE HEGLAR



JIMMIE JOHNSON



CARLIE ANN KING



JOYCE HENRY



FRANCIS JONES



REX KING



PAULINE HOLBROOK



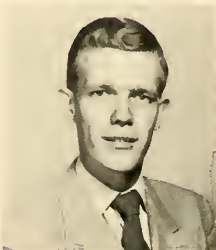
PEGGY A. JONES



ELAINE LEE



DORIS HOLLOWAY



LARRY KEE



LEONARD LOYD



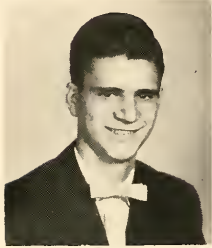
A. Q. McCLANAHAN



BETTY MOORE



PATSY RICKS



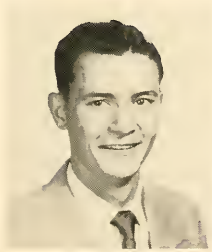
J. B. McCOMMON



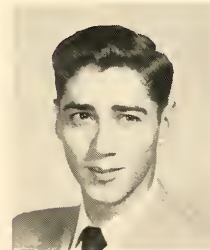
HERRON MORRIS



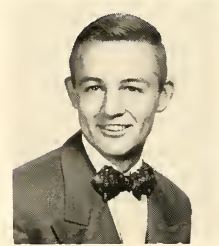
ELIZABETH RIDDLE



PAUL McNEESE



JAMES PARKER



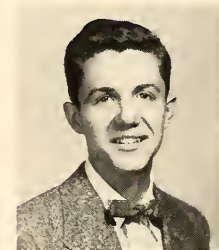
JOHNNY ROGERS



SYBYL McPEAKE



MARY PEARSON



JIMMY ROOKS



ROBERT SAUNDERS



MARION SMITH



BILLIE THOMAS



JEANETTE SCOTT



HAROLD SMITH



RALPH THOMAS



BILLY SERATT



DOVEY STAFFORD



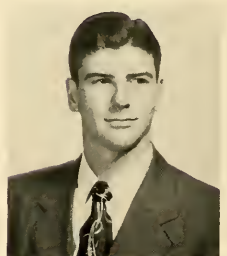
BETTY TIPLER



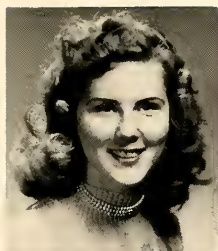
BOBBY SIMS



SUE TAYLOR



RUSSELL TUCK



PAT VINSON



BETTY RUTH WILSON



EDWIN YOUNG



JACKIE WEAVER



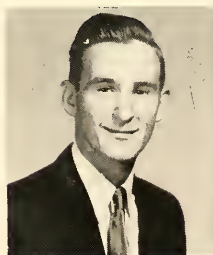
CATHERINE WRIGHT



BETTY TURNER



GLEND A WHITTLE



RONNIE WYLIE



BETTY WILLIAMS



ANNA WILLIAMS



MARJORIE YAGER

Freshmen Not Pictured

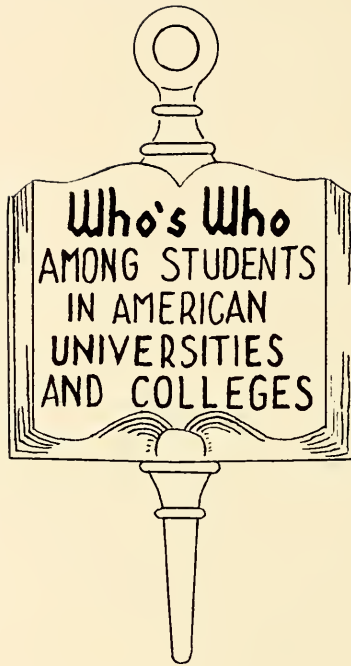
PAUL ALLEN
JOE BEARD
BILLY BLANKENSHIP
MARIAN BLAYLOCK
CECELIA BOYER
SPENCER BROWN
KENNETH BRUMLEY
DORTHA FAYE CAROTHERS
MARTHA ANN CARRINGTON
WILLARD CAYCE
BENNIE CRENSHAW
TED DUFFEY
ANNA DUNN
ROBERT DuVALL
EVELYN DONNELL
MARTHA EDWARDS
RONALD ENOCH
BETH EOFF
TOM FINNELLY
GEORGE FISHER
HARRY GARLAND
KEITH HILL
CAROLYN HUME
PEGGY F. JONES

GLEN KING
J. D. LANE
CHARLES MARAMAN
JUSTINE MOORE
JAMES NORWOOD
ROBERT PAFFORD
BOBBY PARRISH
MURRAY PEARSON
BEVERLY PICKLER
THOMAS PINSON
MAX PRIVETT
BILL RAY
JERRY REPLOGLE
JOHN ANDREW ROBERTS
JIMMY SHEARIN
FORREST SHEARON
LaVERNE SLOVER
NORRIS SMITH
EDDIE TRUETT
TENNY VINCENT
RAYMOND WHEELER
LARRY WHITE
MARTHA F. WILLIAMS
GLENDA WINCHESTER

JOE MACK WOOD



Honors



"Who's Who in American Colleges and Universities" is a national publication in which the biographies of outstanding college students appear. Persons named for this honor are selected on the basis of character, leadership, and scholarship, as well as participation in extra-curricular activities.

Public recognition of the worthy achievement of eight of the students of Union University has been made by their selection for this honor. Their pictures and thumb-nail sketches are given on the following four pages.

We are proud of every one of them and believe they will bear their honors humbly and effectively in the years to come.

Jean Butler

Jean Butler from Jackson, Tennessee has been a campus leader for four years. In her senior year she was selected by the student body as Miss Union University and was also elected secretary of the senior class. She is now president of Hypatia. While a sophomore she served as secretary of the class.



Who's Who



Barclay Newman

Magnetic character is the most noticeable factor in Barclay Newman. To see him is to be inspired. This Jackson, Tennessee boy has served as both state and local president of the Baptist Student Union. Last year he won the M. E. Dodd Expository Writing Contest. In his senior year he served as student council representative.



Valeria Vaughn

Charm and personality characterize Valeria Vaughn from Nashville, Tennessee. She has not only been an outstanding student at Union, excelling in dramatic activities, but she has also served as secretary of the Life Service Band, secretary of the Rice Latin Club, and she has often been a member of the Baptist Student Union Council.

Who's Who

George Hopkins

George Hopkins has been a great inspiration to all the students during his years in Union. He is from Atlanta, Georgia. He was a member of the band, the Philosophy Club, and the Nestor Club, an organization which honors outstanding scholarship. He has demonstrated a well-rounded personality.



Bob Childers

A winning personality is the keynote of Bob Childers. He serves now as president of the Senior class. He was elected Most Popular Boy and Best All Around Boy last year by members of the student body. He was an outstanding member of the football squad all four years. Bob is from Memphis, Tennessee.



Who's Who



James Cotten

From Jackson, Tennessee, Jim Cotten has proved himself an unusual student. He has served as Minister of Music at the Calvary Baptist Church at Jackson, Tennessee. He was elected president of Union's Mixed Chorus for two straight years. He is a member of the Nestor Club and has served as vice-president of that organization.



Ted Hale

Ted Hale is another excellent musician. Ted, from Eustis, Florida, has served as organist at Calvary Baptist Church at Jackson, Tennessee. He was chosen as organist for the Union Student Religious Emphasis Revival for two years straight. Ted has proved himself a well-rounded person.

Who's Who

Bobby Holland

Bobby Holland serves this year as President of the Student Body. Last year he was elected by the students as the editor of the annual, **Lest We Forget**. He has proved himself a leader in every field of activity. He was a member of the Football Squad in 1950.





Mr. Union

Charles Gaba



Miss Union

Jean Butler



Freshman Princess
CAROLYN JACKSON



Sophomore Princess
VIRGINIA SEWELL



Junior Princess
JANE ALBRITTON



Senior Princess
CATHERINE WATKINS





Best All Around Boy

Marvin Fitts



Best All Around Girl

Rosanne Wilson



Most Popular Boy

"Squirt" Miller



Most Popular Girl

Jean Maxey



AJO Sweetheart

Rosanne Wilson



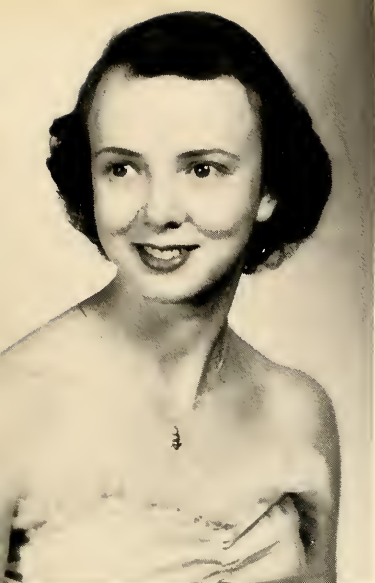
SAE Queen

Catherine Watkins



Football Queen

Catherine Watkins



Freshman Princess
LUCY NELL BUTLER



Sophomore Princess
ROSANNE WILSON



Junior Princess
JO ANN ROBERTS



Senior Princess
ANN HAYNES





Basketball Queen

Kitty Ramsey



Freshman Princess
JOYCE HENRY



Sophomore Princess
ROSANNE WILSON



Junior Princess
PAULA CLAYTON



Senior Princess
FAYE STANFILL





Most Handsome Boy

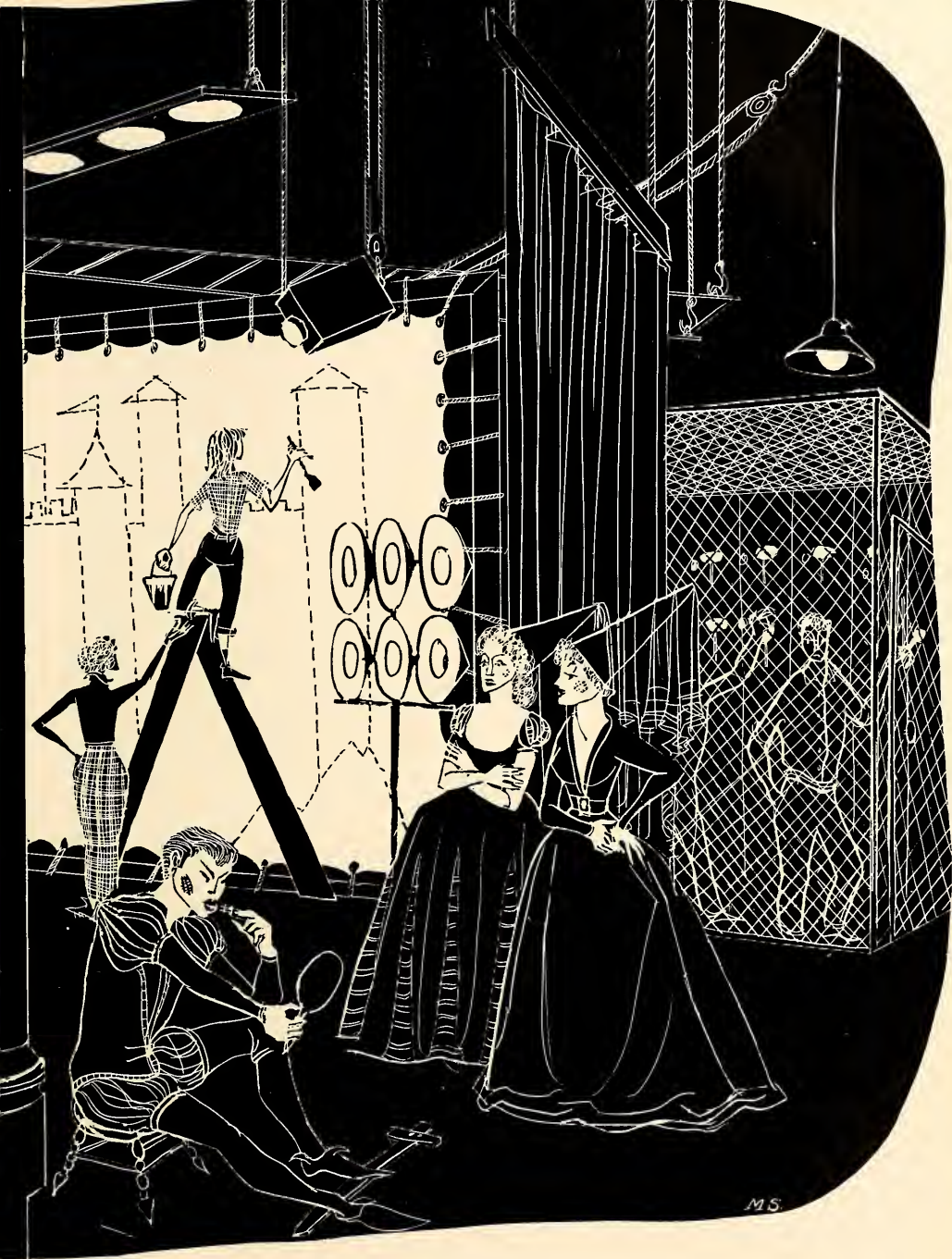
Worlie Ballard



Senior Most Likely to Succeed

Sonny Haws





MS



Strawberry Queen

Jo Ann Maze



First Maid

CATHERINE WATKINS

Second Maid

TENNY VINCENT





*Strawberry Queen
Miss Jo Ann Maze*



*The Queen
and
Her Court*



Presenting



In January the students elected ten girls by ballot, and these were designated as Union's ten most beautiful girls. Each girl had her picture made, and the pictures were sent to the John Robert Powers Modeling Agency in New York City for judging. From these ten girls, Mr. Powers selected four—an Annual Queen, Princess, and two Maids.

With pride we present to you—

The Annual Royalty of 1953





Annual Queen

Miss Jo Ann Maze



Annual Princess

Miss Mary Carter



Annual Maid

Miss Catherine Watkins



Annual Maid

Miss Virginia Sewell



MISS ANN HAYNES



MISS GLENDA WHITTLE



MISS AQUILLA McCLANAHAN

Other Entries



MISS JO ANN BAZEMORE



MISS CAROLYN JACKSON



MISS MARY KAY McBRYDE



Organizations

LEST
WE
FORGET
♦
♦
♦



CAREY DUNCAN
Editor



CHRISTINE SISSON
Assistant Editor

Once again the staff of **Lest We Forget** is presenting the result of long hours of work, sleepless nights, and overcut classes.

We have tried to present a beautiful volume, simple in theme and profuse in pictures. We have tried to faithfully present to you this year at Union University.



EVELYN HOLLEY
Assistant Editor





CHARLES GABA
Editor

The press has come to be synonymous with freedom of expression. In America that freedom extends even to the college campus. An unbiased publication, the **Cardinal and Cream** is a credit to Union University, and the pride of its students.

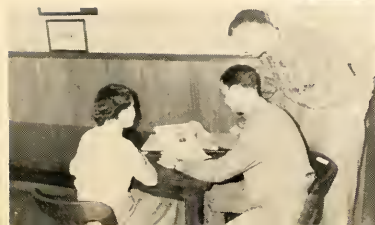


THELMA CREWS



PEGGY WALKER

CARDINAL and CREAM





Beta Tau Chapter of Alpha Tau Omega

Founded at Virginia Military Institute, Richmond, Virginia, September 11, 1865

Colors: Sky Blue and Old Gold

Flower: White Tea Rose

A flashback of the year's activity shows that 1952-53 has been a most memorable year for Beta Tau. Participation in every area of school life shows the versatility of the "typical fellows" of Union's campus.

These Beta Tau boys especially excel in the field of athletics. In football many important positions were occupied by A.T.O.'s. Jewel Felker served as co-captain of the team. In basketball the A.T.O.'s. ran rampant; Sonny Haws being a co-captain of the team. Brother Haws was further honored by being placed on the V.S.A.C. tournament team, and by receiving the DeLay trophy. In all other sports the A.T.O.'s. were always there to spark the teams.

There were many other honors won by A.T.O.'s. Charles Gaba was elected as "Mr. Union" and was also editor of **Cardinal and Cream**. Sonny Haws was selected as "Senior Most Likely to Succeed." Billy "Pete" Belew was elected Vice-President of the Senior Class and Vice-President of the Student Body. Leon Morris was President of the Sophomore Class, Tommy Smothers was Vice-President of the Sophomore Class, and Jack Criswell was Chaplain of the Sophomore Class. Carey Duncan was editor of the **Lest We Forget**.

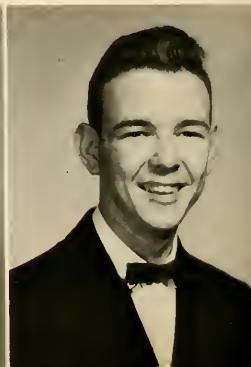
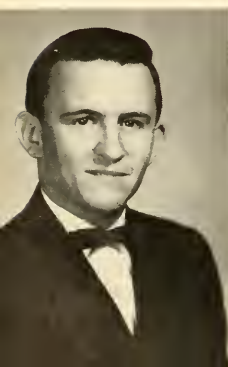
By combining numerous parties and socials, beautiful banquets, genuine brotherly fellowship, a wonderful sweetheart, and Mother Ed, one has a clear picture of the wonderful year experienced by the brothers of Beta Tau.

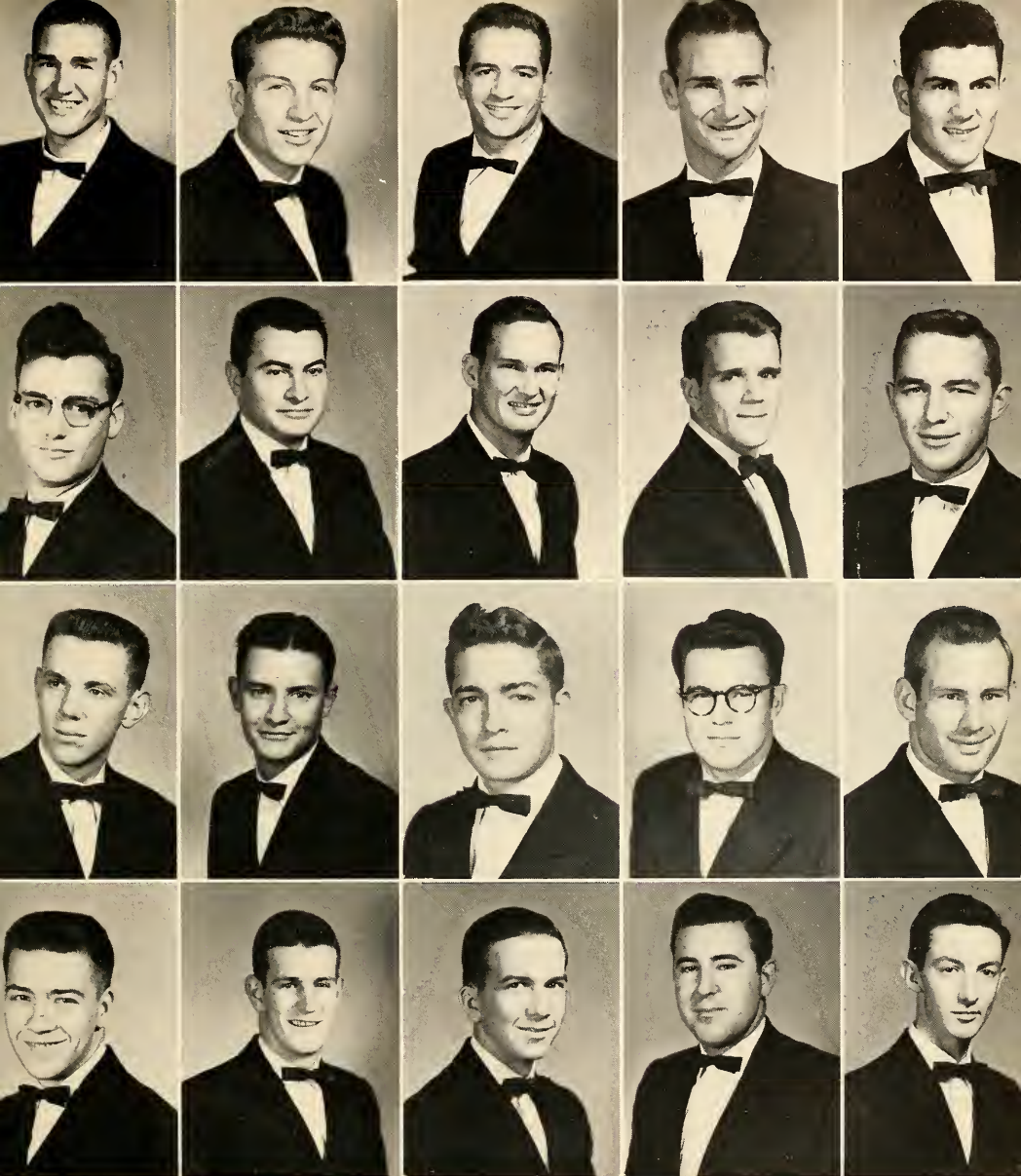
BILLY BELEW
W. M.

CHARLES GABA
W. C.

BOBBY THOMPSON
W. K. E.

CAREY DUNCAN
W. S.





First Row: Raymond Carlock, Walter Coleman, Bill Conway, Guy Corbin, Kenneth Crocker.

Second Row: Bob Dunn, Harold Fitts, Bud Gary, Jack Halliburton, Sonny Haws.

Third Row: Hutson McCorkle, Paul McNeese, Joe Miller, Leon Morris, D. L. Owens.

Fourth Row: Bobby Parrish, Richard Ross, Forrest Shearon, Charles Vincent, Billy Walker.

Fifth Row: Squirt Miller.

Not Pictured: Babe Felker, David Luckey, Tommy Smothers, Kenneth Hawkins, Bubba Arnold, Jack Criswell, Donald Deaton, Wes Forsythe, Joe Woods, Harrison Gooch, Bobby Goodman, Hugh Harvey, Buddy Pearson, Keith Hill, Paul Holmes, Bobby Moore, Larry White, Irby Crawford, Tom Finnely, John A. Roberts, John L. Roberts, Jimmy Shearin, Eddie Truett, Wayne Heglar.



Tennessee Eta Chapter of Sigma Alpha Epsilon

Founded at the University of Alabama, Tuscaloosa, Alabama,
March 9, 1856.

Colors: Royal Purple and Old Gold

Flower: Purple Violet

For the Sons of Minerva 1952-53 has been a year of wonderful fellowship. The Coronation Banquet and the Crowning of Miss Catherine Watkins as Queen highlighted the season of many social meetings. Founders' Day Banquet, Spring Splash, Christmas Party for the underprivileged boys, hayride, open house and numerous other gatherings at the house have proved that S.A.E's. and their dates know how to enjoy themselves.

An extra special treat came when Dr. Hugh Raines, prominent Memphis physician, invited the chapter over for an evening of fun, food and fellowship.

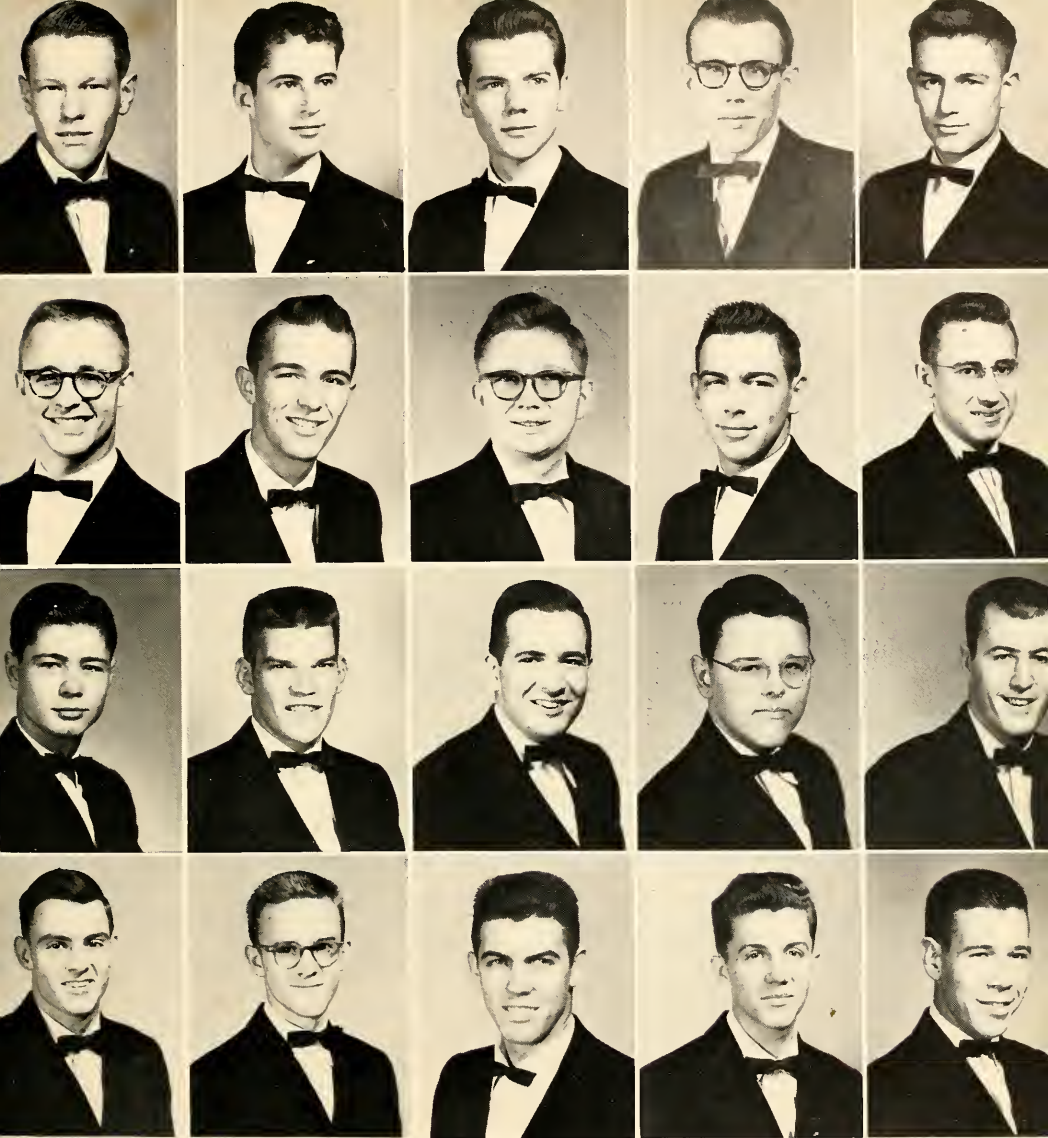
Recognizing the quality of the men of S.A.E., the campus has bestowed upon them many honors. Bob Holland led the Student Body as its President; Bob Childers was elected President of the Senior class as was James Dismuke of the Juniors and Bobby Briggs of the Freshmen. Ted Hale, Bob Childers and Bob Holland were elected to Who's Who. Most Handsome Boy was Worlie Ballard and Best-All-Around Boy, Marvin Fitts. On the B.S.U. Council Bob Holland was First Vice-President; Glenn Rainey, Treasurer; and Charles Dollar, "Baptist Student Magazine" representative. Leading the cheerleaders was Gene McKay. The Math Club had for its President and Vice-President respectively, Jerry Hunt and Billy McKissack. Charles Dollar acted as President of the Latin Club with James Dismuke as Vice-President.

In the realm of sports S.A.E's. showed their versatility by participating in every major sport. Charles (Chuck) Williams commanded Union's football team as Captain.

First Row: Glenn Rainey, Charles Gay, John Outlan, Bob Childers, Jerry Hunt.

Second Row: Burke Herron, Bob Holland, Pat Wills, Jim Hayes, James Dismuke.





First Row: Joe Barnett, Charles Boggan, Herron Bond, Bobby Briggs, Don Coleman.

Second Row: Charles Dollar, Ronald Enoch, John Fanning, Mac Fields, Marvin Fitts.

Third Row: Billy Hammonds, Ralph Johnson, Gene McKay, Herron Morris, Bobby Morris.

Fourth Row: Tommy Naef, Max Privett, Will Rogers, Jimmy Rooks, Charles Williams.

Not Pictured: Worlie Ballard, Tommy Bolen, Ted Hale, Bill McKissee, Tom Helton, Russell Waddell, Robert DuVall, Ray Powell, Billy Rhea Daster, Carl Jones, Bradley Pinson, Jerry Replogle, Bob Sims, Edwin Young, Bill Blankenship.



Upsilon of Chi Omega

Founded at the University of Arkansas, Fayetteville, Arkansas, April 5, 1895.

Colors: Cardinal and Straw.

Flower: White Carnation

Chi Omega has had a most successful year under the leadership of Patsy White, President; Paula Clayton, Vice-President Jane Albritton, Secretary; Peggy Thorne, Treasurer; Faye Stanfill, Pledge Mistress. The girls have made quite a record for themselves by capturing many of the honors on the campus. Among the honors captured are: S.A.E. Queen, Football Queen, Most Popular Girl, Cheerleaders, Football Maid, Basketball Maids, Student Council Members, Class Princesses, First-Second-and Alternate Maids to Most Beautiful Girl. These and other honors made Chi Omegas outstanding co-eds on the campus.

Fall and Spring Eleusinia, a weiner roast, a skating party, the formal banquet honoring the pledges, and a spring hayride were the high spots on the Chi Omega social calendar.

First Row: Patsy White, Jane Albritton, Peggy Thorne, Faye Stanfill, Nancy Williams.

Second Row: Catherine Watkins, Mary Walker Shoaf, Flodell Appleton, Joan Shelton, Jo Ann Bazemore.





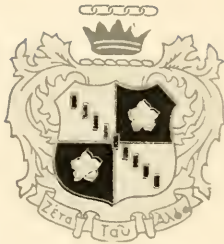
First Row: Mary Howell Anderson, Nancy Brewer, Lucy Nell Butler, Sue Crocker, Lelah Gee.

Second Row: Doris Hardee, Joyce Henry, Doris Holloway, Carolyn Hill, Frances Jones.

Third Row: Carlie Ann King, Jean Maxey, Nancy Murphy, Virginia Sewell, Bobbie Jean Strayhorn.

Fourth Row: Betty Tipler, Emily Wieland, Catherine Wright, Mrs. L. D. Rutledge.

Not Pictured: Paula Clayton, Peggy Jones, Evelyn Donnell, Tenny Vincent, Sara Cox.



Beta Omega of Zeta Tau Alpha

Founded at Longwood College, Farmville, Virginia, October 15, 1898.

Colors: Turquoise Blue and Steel Gray

Flower: White Violet

1952-1953 has been a busy and happy year for the "blue and gray" girls at Union. Wonderful parties including a "Mardi Gras" banquet have combined to make this year a spotlight year; one filled with fun and entertainment for the Zetas.

A flashback of the year's activity reveals that this likeable, personable group of co-eds took an active part in all phases of campus life, and that they made quite an outstanding name for themselves by capturing a host of Union's most coveted titles. Dixie Howse was elected cheerleader for the second consecutive year and secretary of the Footlights Club. Rosanne Wilson was chosen "Sweetheart of A.T.O.", Basketball Maid, Football Maid, and "Best-All-Around Girl", Dottie Carlson acted as secretary to the Student Council. Jo Ann Roberts was chosen Football Maid, Donna Thompson was elected president of Alpha Psi Omega. Mary Kay McBride was elected treasurer of Alpha Psi Omega, secretary of Minerva Club and campus beauty, and Vice-President of the Footlights Club. Ann Haynes was chosen Football Maid and a campus beauty. Kitty Ramsey received the secretaryship of the Sophomore class and Basketball Queen. Carolyn Jackson received the secretaryship of the Freshman class, Freshman Princess, and a campus beauty. Glenda Whittle was chosen a campus beauty and A. Q. McClannahan was elected cheerleader and a campus beauty.



First Row:

Dottie Carlson
Jo Ann Roberts
Marjorie Kee



Second Row:

Donna Thompson
Mary Kay McBryde
Barbara Washam



First Row: Cecilia Boyer, Clovis Carter, Janice Cogbill, Charlotte Cook, Thelma Crews.

Second Row: Barbara Harwell, Charlyne Hathaway, Ann Haynes, Polly Holbrook, Dixie Howse.

Third Row: Carolyn Jackson, A. Q. McClanahan, Blanche Melton, Betty Moore, Anna Laura Palmer.

Fourth Row: Mary Ruth Pearson, Beverly Pickler, Kitty Ramsey, Jeanette Scott, Christine Sisson.

Fifth Row: Christine Taylor, Betty Turner, Betty Ruth Wilson, Rosanne Wilson, Glenda Whittle.

Sixth Row: Mrs. Dee E. Rice.

Not Pictured: Joyce Shelton, Anita Tolley, Patsy Ricks.



ELIZABETH LOYD
Sponsor



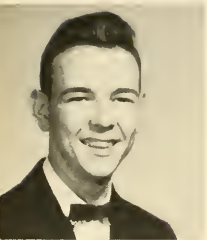
DONNA THOMPSON
President



JEAN MAXEY
Secretary



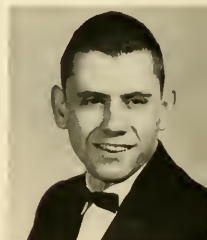
MARY KAY McBRIDE
Treasurer



CAREY DUNCAN

Alpha Psi Omega

Alpha Psi Omega, the national honorary dramatic fraternity on Union's campus, strives to advance dramatics to a continually rising level. Each member has been elected to membership on the basis of meritorious personal achievement in school dramatics.

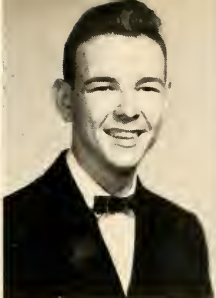
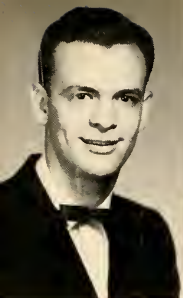


DON YOUNG

JOAN JETER

CHARLOTTE PEDDY





CHARLES GABA
President

CAREY DUNCAN
First Vice-President

DONNA THOMPSON
Second Vice-President

JEAN MAXEY
Secretary

DIXIE HOWSE
Treasurer

Footlights Club

The Footlights Club is under the direction of Mrs. Elizabeth Loyd, director of the Speech Department. Membership of the Club is composed of students who have shown an interest in and a talent for work in the fields of speech and dramatics.

MEMBERS

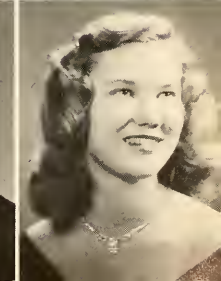
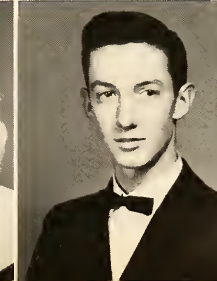
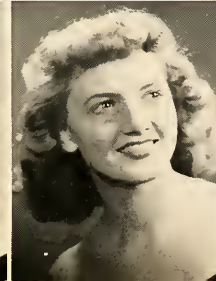
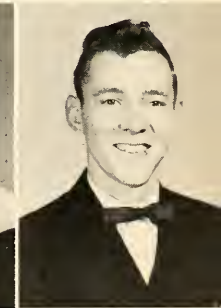
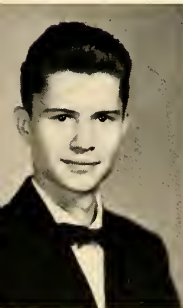
CHARLES GABA
CAREY DUNCAN
DONNA THOMPSON
MARY KAY McBRYDE
JEAN MAXEY
DIXIE HOWSE
DONNA THOMPSON
CHARLYNE HATHAWAY
MARY WALKER SHOAF

BOB ATWOOD
BENNIE MORRISON
JOAN SHELTON
BETTY TIPLER
BILLY WALKER
JOAN JETER
TOMMY HELTON
KATHRYN WATKINS
CHARLOTTE PEDDY

TOMMY SMOTHERS
MARY ATWOOD
ZANE WELLS
VIRGINIA SEWELL
PAULA CLAYTON
CHARLOTTE COOK
LUCY NELL BUTLER
SYBLE McPEAK
FRANCES JONES

First Row: Bob Atwood, Mary Atwood, Gene McKay, Betty Tipler, Bennie Morrison.

Second Row: Joan Jeter, Mary Walker Shoaf, Kathryn Watkins, Billy Walker, Syble McPeak.





MRS. BLYTHE
Sponsor



JEAN BUTLER
President



DOTTIE CARLSON
Vice-President



JEAN MAXEY
Secretary-Treasurer

Hypatia

Hypatia, composed of junior and senior girls possessing a high scholastic record, is an exclusive literary club. Twice each month the club meets to enjoy a review and criticism of some outstanding literary work. The meetings have proved invaluable in preparing the members for participation in clubs of this kind after they leave school.

MEMBERS

JEAN BUTLER
DOTTIE CARLSON
JEAN MAXEY
FLODELL APPLETON
SUE CROCKER
MARY HOWELL ANDERSON
JO ANN ROBERTS

VALERIA VAUGHN
MARJORIE KEE
ANN CAROLYN HAMILTON
JANE ALBRITTON
JOAN BAZEMORE
RUTH SKELTON
MRS. F. M. BLYTHE, Sponsor



MARY HOWELL ANDERSON



JANE ALBRITTON



ANN CAROLYN HAMILTON

FLODELL APPLETON

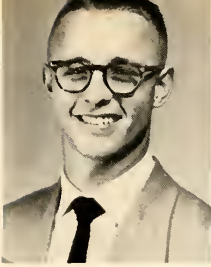


JOAN BAZEMORE



SUE CROCKER





CHARLES DOLLAR
President



JAMES DISMUKE
Vice-President



VALERIA VAUGHN
Secretary-Treasurer

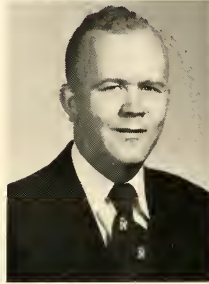


CAROLYN HILL

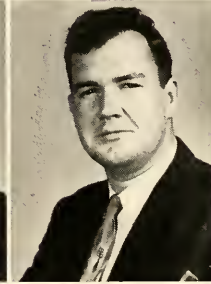
The Rice Latin Club



ELIZABETH RIDDLE



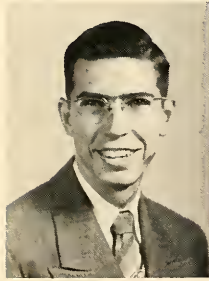
CLIFTON COURTNEY, JR.



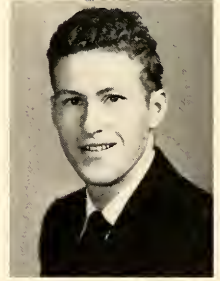
GENE ATKINS



DOROTHY CASH



HAROLD COSBY



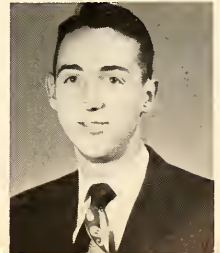
BOBBY GOODMAN

MRS. DEE E. RICE
Sponsor



The Rice Latin Club is an organization of students making high grades in Latin. The purpose of this club is to increase a member's knowledge of Latin and gain an insight into the Roman civilization, its laws, customs, religion and ordinary life, with a consequent appreciation of our indebtedness to the past.

CHARLES EDMONDS





Tommy Naef, Vice-President; Jean Maxey, Secretary; Roy Elliott, Treasurer; Mary Howell Anderson, Jackson Sun Reporter.

The Rutledge Honorary History Club



CHARLES DOLLAR



MAMON ALEXANDER



JIMMY PIRTLE



BOBBY SANDERS



GEORGE HORTON

The Rutledge Honorary History Club, an outgrowth of the Union University History Club, organized on November 18, 1929 for the purpose of encouraging a higher standard of scholarship, of gaining a greater appreciation of history, and of keeping abreast with the rapid world movements, is composed of members of the Social Science Faculty and of students either majoring or taking a first minor in history and who meet scholastic requirements. This club meets monthly and makes an historical tour each spring.



CHARLES WILLIAMS

MRS. L. D. RUTLEDGE
Sponsor



MR. R. H. WARD
Sponsor



MR. T. W. DAVIS
Sponsor



Nestor Club



First Row: Barclay Newman, President; Jim Cotten, Vice-President; Bob Sanders, Secretary-Treasurer; Troy Young, Sponsor; George Horton.

Second Row: Lee Thornton, Bill Thomas, Charles Williams, George Horton, James Carlin.

The Nestor Club, rated as Union's Phi Beta Kappa, consists of a faculty sponsor and twelve young men ranking highest in scholarship in the upper classes. The organization meets nine times during the year, once in joint session with Hypatia. After dinner, a paper is read by a member on any topic in which he is particularly interested and a joint discussion of current development follows.

Minerva Club

After a period of inactivity at Union University, the Minervas reorganized in the fall of 1950. The club is composed of the house mother, mothers, sisters, and sweethearts of the men of Tennessee Eta Chapter of Sigma Alpha Epsilon fraternity. Monthly meetings are held in the chapter house on the second Thursday evening.

Standing: Mrs. Harry Hudson; Jo Ann Maze; Catherine Watkins, Queen; Mary Kay McBryde, Secretary-Treasurer; Geraldine Edwards; Mrs. Wm. H. Bond.

Seated: Mrs. Kenneth Fanning; Mrs. W. F. McKissack, President; Mrs. Percy Glisson, Chapter mother; Mrs. B. J. Barnett; Mrs. H. H. Replogle.





Prince-Davis Science Club

OFFICERS

President June Bennett
 Vice-President..... George Crocker
 Secretary Billy Walker

The purpose of this club is to stimulate and perpetuate an interest in the Natural Sciences. Qualifications for membership are a major or a minor in one of the three sciences, Physics, Chemistry, or Biology, and a sincere interest in science. Each month, by rotation, one of the departments presents an excellent program connected with the work and study of that department.

MEMBERS

Peggy Thorne
 Blanche Melton
 Don Young
 Janice Cogbill

Virginia Sewell
 Patsy White
 Russell Tuck
 Flodell Appleton

Harold Cosby
 George Hunter
 Tenny Vincent
 Donald Montgomery

James Carlin
 Troy Lewis
 Carl Long
 David Luckey

Mallory Math Club

The Mallory Math Club is an organization for those students who have completed four quarters of college mathematics. This club is dedicated to the memory of the late Dr. James Mallory.

The purpose of the club is to encourage students to better scholarship in the field of mathematics. Meetings are held twice a month presenting material which would not be given in the classroom.





Religious Activities

J. R. Graves Society

The J. R. Graves Society of Religious Inquiry was founded in 1877. The Society helps the ministerial students to become familiar with their future problems and work. The purpose of this Society is to aid in qualifying its members for the gospel ministry by gaining practice in correctly expressing themselves in public and by extending their information on all religious questions.

MEMBERS

Bill Affolter
Harold Alexander
James Allen
Gene Atkins
Ormond Barnes
Bobby Briggs
R. C. Briggs
Henry Brukardt
Kenneth Brumley
K. E. Burke
Bob Burton
Bernard Campbell
Willard Cayce
Ashley Cherry
Bob Childers
Harold Cosby
Junior Courtney

Irby Crawford
Jack Criswell
Royce Cruce
C. P. Currier
Orvin Dangeau
Charles Dollar
Paul Drum
Ted Duffey
Byron Epps
Charles Edmonds
Rudolph Fitts
Max French
Charles Gaba
Harry Garland
Hilliard Goode
Bob Goodman
H. C. Green, Jr.

H. M. Gregory
D. S. Hall
T. O. Hall
Leon Harris
Carl Hart
Odis Henderson
George Horton
George Hunter
Wayne Jones
Fred Kendall
Rox King
Bill McAfee
Cicero McClure
D. B. McCommon
Gene McKay
Ewell McKinnie
Paul McNeese

J. D. May
Charles Maraman
Bob Morris
Leon Morris
Tommy Naef
Hubert Neely
Wilburn Nelson
Barclay Newman
Perry Parker
Jack Pollard
J. F. Ray
Bill Rogers
Bob Sanders
Robert Saunders
Johnny Sconce
Bill Seratt
Forrest Shearon

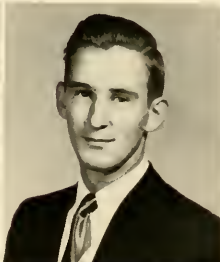
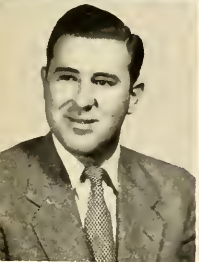
Harold Skaggs
Harold Smith
Norris Smith
Robert Stands
Dovey Stafford
Carnel Thedford
Bill Thomas
William Thornton
Coy Thurston
James Tillman
Charles Vincent
Maxell West
Zane Wells
Bill Whitlow
Pete Willis
Ronnie Wylie



First Row: Dr. R. C. Briggs, Coy Thurston.

Second Row: Charles Vincent, Max West, Ronald Wylie, Pete Willis, Gene Atkins.

Third Row: Bill Seratt, Johnny Sconce, Bob Sanders, Perry Parker.





First Row: Barclay Newman, Hubert Neely, Leon Morris, J. D. May, Paul McNeese.

Second Row: Gene McKay, Bill McAfee, Odis Henderson, Carl Hart, H. C. Green.

Third Row: Bob Goodman, Max French, Charles Edmonds, Byron Epps, Charles Dollar.

Fourth Row: Irby Crawford, Clifton Courtney, Harold Cosby, Willard Cayce, Bill Affolter.



First Row: Barclay Newman, President; Elaine Elkins, Second Vice-President; Jean Maxey, Third Vice- President; Jo Ann Maze, Secretary; Glenn Rainey, Treasurer.

Second Row: Charlotte Peddy, Hostess; Jean Butler, Publicity; Mary Kay McBryde, Religious Editor; Emily Wieland, Pianist; Byron Epps, Workshop Chairman.

Baptist Student Union Council

The Baptist Student Union is more an organism than an organization. It has as its purpose to link the local churches with the college students and to enlist the students in the service of Christ while in college.



Life Service Band

Life Service Band is an organization made up of men and women whose purpose in life is winning people to Christ. This purpose has been achieved through mission activities which include: jail services, street services, etc.

Y. W. A.



Watchword: They that are wise shall shine as the brightness of the firmament; and they that turn many to righteousness as the stars forever and ever.—Daniel 12:3.

Aim: Our aim is to unite the young women of the Southern Baptist Churches and colleges in an enduring missionary enterprise through which they shall show forth the beauty of holiness.

"That in all things He might have the pre-eminence."—Col. 1:18.

Dedication: . . . I will seek to maintain for myself a high standard of Christian living and will seek to be an example to others. I will strive to make my personal appearance, speech, and manner such as becomes the purity and beauty of Christlike character, living a radiant and convincing life in all social relationships.

OFFICERS

RUTH SKELTON
President

PEGGY WALKER
Vice-President

RUTH BROGDON
Secretary

EMILY WIELAND
Treasurer

CIRCLE CHAIRMEN
JANE ALBRITTON
Circle 1

MAMON ALEXANDER
Circle 2

CHRISTINE SISSON
Circle 3

CAROLYN JACKSON
Circle 4

MRS. S. F. BOYD
Sponsor



S
T
U
D
E
N
T



Christ Come Call



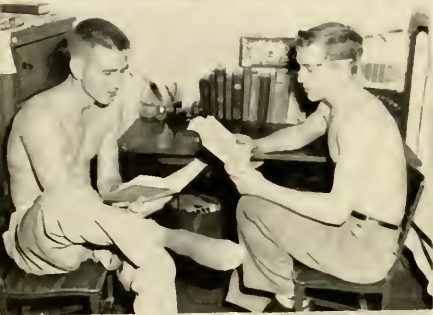
R
E
V
I
V
A
L



Christ Come Call









Sports

1952 SCHEDULE Union University Bulldogs

Union 7	Florence State 51
Union 6	Mississippi College 7
Union 0	Delta State 37
Union 40	U. T. of Martin 7
Union 7	Austin Peay 40
Union 7	Howard College 49
Union 19	Louisiana College 49
Union 14	Georgetown 6
Union 35	Southwestern 0

FOOTBALL

The Union Bulldog gridiron squad started practice the first of September, during the hottest part of the year. Needless to say, they soon warmed to the task before them. Forty-five men reported for practice and only twenty-six stayed out for football.

The Bulldogs played their first game on September 20 against a mighty Florence State team. The Bulldogs were outweighed and did not have the experience of the Florence State team. They therefore came out on the short end of the 51-7 score. The Bulldogs next went to Mississippi College where on the first play they scored a touchdown but it was called back. The next time the Bulldogs got the ball they again scored a touchdown, but this time it counted. The extra-point was wide. Later Mississippi College scored and made the extra-point to win 7-6. Delta State came next and the Mississippi boys won 37-0. These three games, however, showed promise of things to come and they did. On October 11, the victory hungry Bulldogs took the field against U. T. of Martin. When the game was over there was nothing left of the Martin team. The score was 40-7.

Probably the best game of the season was played against Austin Peay. It was a very hard fought contest. Player after player was injured, and before long reserve strength began to count. The Bulldogs were deep in Austin Peay territory many times, but they could not score. However, before the game was over, Walter Coleman ran eighty yards and with superb blocking scored the touchdown. The game ended 40-7 in favor of the Governors.

The Homecoming game was played on October 24 with Union's Bulldogs losing 24-7. Louisiana College beat the Bulldogs 49-19 in a grueling contest on November 1. The next two games Union showed great improvement and completely overwhelmed Georgetown and Southwestern by scores of 14-6 and 35-0 respectively.

COACHES

Union's athletic program this year was under the direction of Athletic Director and Head Coach Robert Jelks and Assistant Coach Harold Koffman. Both a well-rounded varsity and intramural program was provided, affording each student an opportunity to participate in some form of athletics.

Coach Robert Jelks was born in Tylertown, Mississippi and attended high school there. Upon graduation he entered Pearl River Junior College at Poplarville, Mississippi where he lettered in five sports. He entered Union University in '36 and took an active part in both football and basketball. He received his Master's Degree from George Peabody College. For nine years he coached at Grove High School in Paris, Tennessee, where he produced some of the state's finest football and basketball teams. For a short interval during World War II he came to Union as physical education instructor in the Air Corps Unit stationed here. He came to Union as athletic head the year before last to replace Coach Turney Ford.

Assistant Coach Harold Koffman was born at Trenton, Tennessee. He attended High School here in Jackson, Tennessee and later taught class and physical education at Jackson Junior High School. He graduated from Union University in 1950. He has been in the Marines and the Marine Reserve. He has four years of coaching experience. Coach Koffman has been quite active here at Union both as a business man and a coach. He is in charge of the book store, head coach of baseball, coach of "B" team in basketball and assistant football coach.

FOOTBALL ROSTER

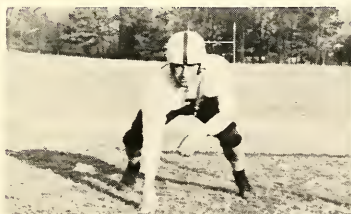
Name	Position	Weight
Tommy Bolen	B	180
Huntingdon, Tenn.		
Bob Childers	T	200
Memphis, Tenn.		
Walter Coleman	B	180
Trenton, Tenn.		
Don Deaton	E	175
Jackson, Tenn.		
Charles Dollar	C	165
Memphis, Tenn.		
Jewel "Babe" Felker	G	180
Corinth, Miss., Co-Captain		
Jerry Hunt	T	200
Jackson, Tenn.		
Carl Long	B	160
Jackson, Tenn.		
Kenneth Miller	B	160
Corinth, Miss.		
Bobby Joe Morris	E	190
Springfield, Tenn.		
John Roberts	G	195
Lexington, Tenn.		
Richard Ross	E	160
Paris, Tenn.		
Bobby Thompson	E	185
Corinth, Miss.		
Pat Wills	B	185
Memphis, Tenn.		
John Ables	E	180
Kosciusko, Miss.		
Bud Gary	E	180
Carney's Point, N. J.		
Irby Crawford	G	165
Memphis, Tenn.		
Joe Costello	G	180
Flora, Miss.		
Bill Ray	C	185
Jackson, Tenn.		
Russell Waddell	B	165.
Jackson, Tenn.		
Clinton Edminson	B	170
Munford, Tenn.		
Jack Halliburton	B	165
Ripley, Tenn.		
Jimmy Dismuke	G	165
Jackson, Tenn.		
D. L. Owen	B	184
Friar's Point, Miss.		
*Bill Conway	B	181
Birmingham, Ala.		
Glenn King	E	185
Henderson, Tenn.		
Guy Corbin	E	180
Spring Hill, Tenn.		
Chuck Williams	T	190
Nashville, Tenn., Co-Captain		



FELKER, Co-Captain; JELKS, Coach; WILLIAMS, Co-Captain
KOFFMAN, Coach



KENNETH MILLER, Back



BOBBY THOMPSON, End



BILL CONWAY, Back





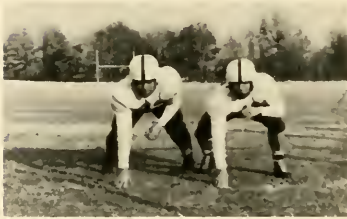
KING
Fullback



HUNT
Tackle



OWENS
Back



KING, Guard CRAWFORD, Guard



ROSS
End



RAY, Center WADDELL, Back



BOLEN
Back

LONG
Back



FELKER, Guard MORRIS, End

HALLIBURTON
Back



COLEMAN
Back





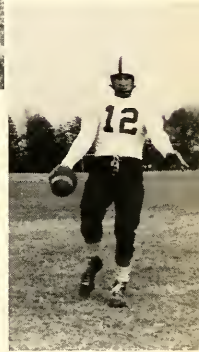
First Row: Halliburton, Miller, Bolen, Murray
 Second Row: Coleman, Forsythe, Owens



ROBERTS
 Guard



DEATON
 End



GARY
 End



DISMUKE
 Guard



EDMISTON
 Back



LEWIS
 Manager

CONWAY, MURCHISON, WADDELL, EDMISTON, STAFFORD



1952-1953 SCHEDULE

Union 65	Florence State 81
Union 57	Austin Peay 70
Union 55	Ole Miss 96
Union 69	Murray State 96
Union 69	Arkansas State 96
Union 87	Freed-Hardeman 54
Union 86	Florence State 83
Union 68	Southwestern 40
Union 77	Bethel 74
Union 89	Howard College 86
Union 57	David Lipscomb 67
Union 91	M. T. S. C. 74
Union 61	Arkansas State 76
Union 56	Delta State 74
Union 78	Arkansas State 81
Union 88	David Lipscomb 82
Union 73	Delta State 78
Union 94	Austin Peay 83
Union 59	M. T. S. C. 62
Union 93	Freed-Hardeman 55
Union 92	Southwestern 79
Union 69	Bethel 63

BASKETBALL

This season's basketball team will long be remembered as Haw's and Company. With such specialties as Sonny Haws' dangerous crisp shot, J. M. Parks' tip-ins, Raymond Carlock and Kenneth Hawkins' outside shots, the Bulldogs from Union U. were not to be denied. For reference ask Southwestern, Bethel, David Lipscomb, Lincoln Memorial, Freed-Hardeman, Austin Peay, Florence State, Howard and Middle Tennessee.

Parks will be remembered for his 33 points against Lincoln Memorial in the V.S.A.C. tournament. Haws for a magnificent job as captain and for scoring 34 points against Austin Peay. Carlock was not to be denied with his 21 points against Middle Tennessee and Hawkins with his usual 7 to 14 points against any opponent. The centers did not hit as well as last years', but with a combination of Deaton, Truett, Morris, and Garrett, who will all be back next year, Union U. won many outstanding games.

It will be hard to replace such fine players as Parks, Haws, Carlock, Worlie Ballard and Billy Mayo. Remaining players include Hutson McCorkle, Kenneth Hawkins, Richard Ross, Bobby Joe Morris, Don Deaton, Wayne Heglar, Eddie Truett, Don Coleman, Guy Corbin and Glenn King.

BASKETBALL

The 1952-1953 Bulldog Hoopsters proved to be one of the most improved teams to represent Union on the hardwood in many years. After defeating Bethel 69-63, the Bulldogs wound up in second place in the V.S.A.C. Conference and third in the V.S.A.C. tournament.

The nucleus of this year's team was formed around six returning lettermen from last year's squad. This group of Union lettermen received able support from a host of new-comers, who helped the Bulldogs tremendously. With this group of prospects and lettermen Coach Robert Jelks formed a team that was soon to show the ability it possessed.

The Bulldogs had an overall season record of 13 wins and 12 defeats including tournament play. Many of these losses were very close games and the Bulldogs played excellent ball.

After the season got rolling the Bulldogs showed everyone the reason that they wound up in second place in the V.S.A.C. One of the Bulldogs' best games was played against Bethel for the final game of the season. It was a nip and tuck battle that saw the Bulldogs come from behind, 13-18 at halftime. But Union outscored Bethel 20-15 in the third period and 14-10 in the last, to beat Bethel 69-63.

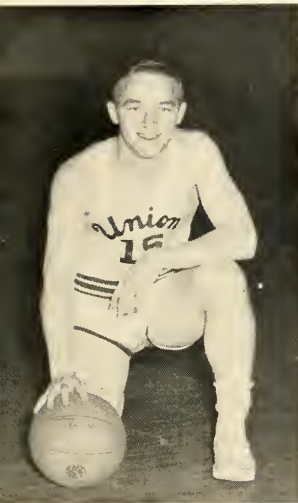
V.S.A.C. TOURNAMENT

Union 80	L. M. U. 72
Union 58	East Tennessee State 66
Union 68	David Lipscomb 64

1952-1953 ROSTER

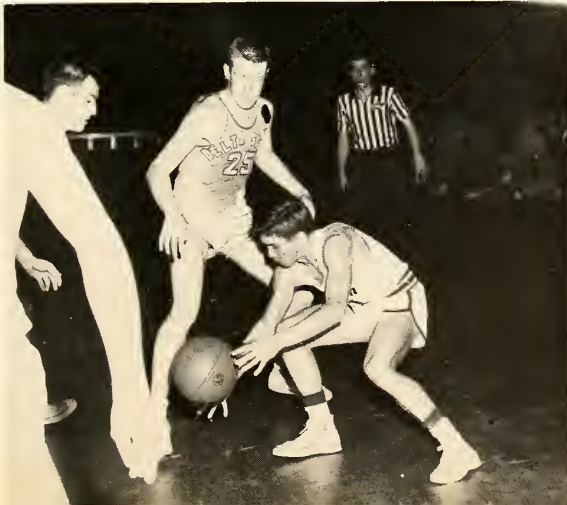
Name	Position	Height
Morris, Bobby Joe	C	6'5"
Springfield, Tenn.		
Mayo, Billy	F	5'11"
Bemis, Tenn.		
Perks, J. M.	F	6'2"
Paducah, Ky.		
Carlock, Raymond	F	6'2"
Guntown, Miss.		
Deaton, Don	F	6'3"
Jackson, Tenn.		
McCorkle, Hudson	F	6'1"
Halls, Tenn.		
Haws, Sonny*	G	5'11"
Paducah, Ky.		
Hawkins, Kenneth	G	5'6"
Selmer, Tenn.		
Ross, Richard	G	5'11"
Paris, Tenn.		
Garrett, Gene	C	6'4"
Corinth, Miss.		
Coleman, Don	G	6'0"
Central City, Ky.		
Heglar, Wayne	G	6'2"
Humboldt, Tenn.		
Truett, Eddie	C	6'3"
Jackson, Tenn.		
Corbin, Guy	F	6'0"
Spring Hill, Tenn.		
King, Glenn	F	6'1"
Henderson, Tenn.		
Ballard, Worlie	G	5'11"
Hamilton, Ala.		

*Captain



SONNY HAWS, Captain
3rd Team VSAC Conference
All Tournament VSAC

J. M. PARKS
3rd Team VSAC Conference
All Tournament VSAC





RAYMOND CARLOCK
Forward



WORLIE BALLARD
Guard



KENNETH HAWKINS
Guard



PARKS, HAWS, MORRIS, HAWKINS, CARLOCK



BOBBY JOE MORRIS
Center



HUTSON McCORKLE
Forward



DONALD DEATON
Forward



EDDIE TRUETT
Center



GENE GARRETT
Center



WAYNE HEGLAR
Guard



BILLY MAYO
Forward





Cheerleaders

LUCY NELL BUTLER, GENE MCKAY, JOYCE HENRY
A. Q. McCLANAHAN, BOB BURTON, DIXIE HOWSE





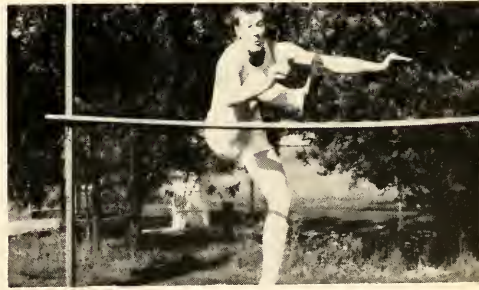
Track

MEMBERS

J. M. Parks, Captain
 Kenneth Miller
 Don Deaton
 Eddie Truett
 Guy Corbin
 Charles Dollar
 Hutson McCorkle
 Rex King
 Jack Halliburton
 Bill Baker
 Bobby Joe Morris
 Walter Coleman
 James Dismuke

SCHEDULE

April 11 Sewanee
 April 15 Ole Miss, Union, Southwestern
 April 24 Arkansas State, Union, Bethel
 May 4 Murray State
 May 9 T. I. A. C.



Tennis

CO-CAPTAINS

Don Young
Leonard Brown
Edwin Young

SCHEDULE

April 3	Illinois State Normal	April 27	Bethel
April 7	David Lipscomb	April 29	David Lipscomb
April 16	Paducah Junior College	May 1	Memphis State
April 21	Memphis State	May 7-9	T. I. A. C.
April 22	Ole Miss	May 16	U. T. Medical Division



MEMBERS

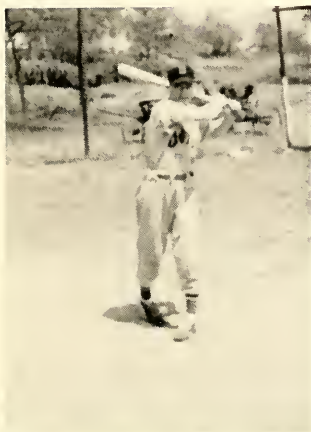
Bill Baker
Leonard Loyd
Don Coleman
Carl Long
Ralph Johnson
Charles Gaba
Keith Hill
Ray Powell
Troy Lewis



Baseball

SCHEDULE

April 2 Milkin
 April 10 Winona
 April 14 M. T.
 April 15 David Lipscomb
 April 18 David Lipscomb
 April 21 Memphis State
 April 23 Southwestern
 May 1 Memphis State
 May 4 Austin Peay
 May 6 M. T.
 May 8 Florence State
 May 15 Southwestern
 May 18 Austin Peay
 May 21-
 23 Play-offs



MEMBERS

Sonny Haws	First Base
Pete Belw	Second Base
Russell Waddell	Short Stop
John Gilbert	Third Base
Joe Costello	Catcher
Harrison Gooch	Left Field
John Ables	Center Field
D. L. Owens	Right Field
Kenneth Hawkins	Right Field
Leon Morris	Pitcher
Bobby Goodman	Pitcher
Clinton Edmiston	Pitcher
Wayne Hegler	Pitcher
Ralph Thomas	Pitcher
Gene McKay	Right Field
Jimmy Johnson	Pitcher





U Club

MEMBERS

- | | |
|------------------|------------------|
| Richard Ross | Bobby Thompson |
| "Squirt" Miller | Sonny Haws |
| Bill Ray | Carl Long |
| James Dismuke | Raymond Carlock |
| Jack Criswell | Kenneth Hawkins |
| Hutson McCorkle | Bobby Joe Morris |
| Charles Dollar | Worlie Ballard |
| Leonard Brown | Jerry Hunt |
| Don Young | Babe Felker |
| D. L. Owens | Walter Coleman |
| Troy Lewis | Pete Belew |
| Charles Williams | John Roberts |
| Pat Wills | Ralph Johnson |
| Bob Childers | Tommy Bolen |

One of the outstanding clubs on the campus is the "U" Club. This club is composed of Varsity lettermen in football, basketball, baseball, tennis, and track.

The purpose of the "U" Club is to promote better understanding and cooperation among athletic teams of the college, and to establish athletic activities in keeping with the high purpose of sportsmanship and education.

The highlight of the club was the annual banquet honoring each member for his participation in the club and in the sports program of Union.



Christmas Parade





Sonny Haws

WINNER OF THE DE LAY ATHLETIC AWARD



"The Importance of Being Earnest"

By Oscar Wilde

CAST

Algernon Moncrieff.....	Carey Duncan
Cecily Cardew.....	Lucy Nell Butler
Jack Worthington.....	Tommy Smothers
Gwendolyn Fairfax.....	Joan Jeter
Canon Chausable.....	J. W. Abney
Miss Prism.....	Valeria Vaughn
Lady Bracknell.....	Charlotte Peddy
Butler.....	Billy Walker

The Union University Players



"Rebecca"

By Daphne du Maurier

CAST

Beatrice.....	Ann Dunn
Robert.....	Billy Walker
Frank.....	Tommy Smothers
Frith.....	Jane Albritton
Giles.....	Bennie Morrison
Jack Favell.....	Ted Pope
Mrs. Danvers.....	Joan Jeter
William Tabb.....	Jimmy Rooks
Maxim de Winter.....	Carey Duncan
Colonel Julyan.....	Charles Dellar
Mrs. de Winter.....	A. Q. McClanahan



Music



Mr. Alton Harvey and Peggy Sewell, Voice Student

Studio



Mr. John Hughes and Elaine Elkins, Organ Student

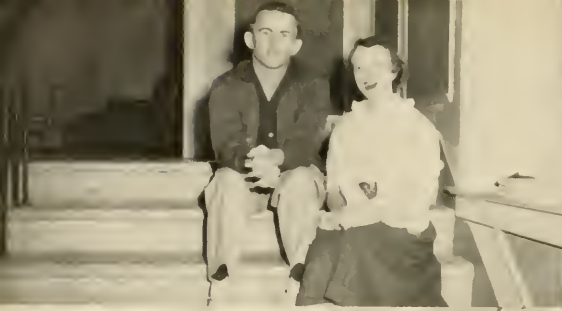


The Union University Girls' Trio

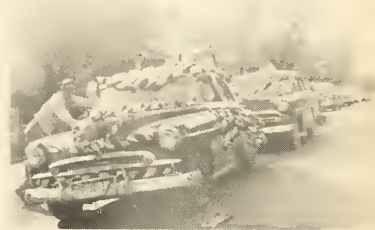
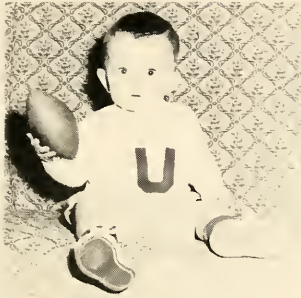
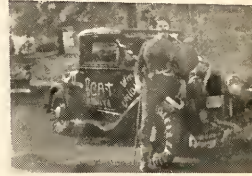
Miss Clovis Carter



The Union University Male Quartet



Freshman
Week



Social
Life





Advertisements



FINE YEARBOOKS
LAYOUT SERVICE
PERSONAL ATTENTION
EDITORIAL AND
BUSINESS AIDS



CLOSE COOPERATION
WITH STAFF AND
ADVISER
PLANNED BUDGET
POSITIVE DELIVERY
DATE

JACKSON,

TENNESSEE



Play Refreshed ... Have A Coke



Before the game, during the game,
after the game, a frosty bottle of ice-
cold Coca-Cola is so refreshing.

BOTTLED UNDER AUTHORITY OF THE COCA-COLA COMPANY BY
COCA-COLA BOTTLING WORKS
Jackson, Tennessee

For Your Gifts and
Jewelry Needs
Come to

ROBERT'S

"JACKSON'S FRIENDLY JEWELRY
STORE"



Engraving for Fraternities
and Sororities

*"For The Best In
Sporting Goods"*

come to

FRANKLAND'S

Market and Chester

Phone 7-5573

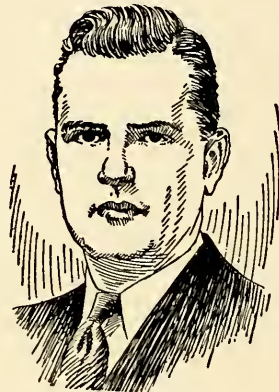
A Personal Invitation to You



Dr. Dobbins

DEAN OF THE SCHOOL OF RELIGIOUS EDUCATION

from



Dr. McCall

PRESIDENT OF SOUTHERN SEMINARY

to consider the advantages of attending
The School of Religious Education
at Southern Seminary

IF YOU are planning a career of Christian service after graduation, the comparatively new field of Religious Education offers a challenge and an opportunity. ¶Southern Seminary, world-famous for its School of Theology and nationally known for its distinguished School of Church Music, has now established a School of Religious Education — a two-year course earning the degree of Master of Religious Education. ¶We should like to send you catalog and illustrated brochures giving full particulars, including courses of study in each of the three Schools of the Seminary. **WRITE — NOW!**

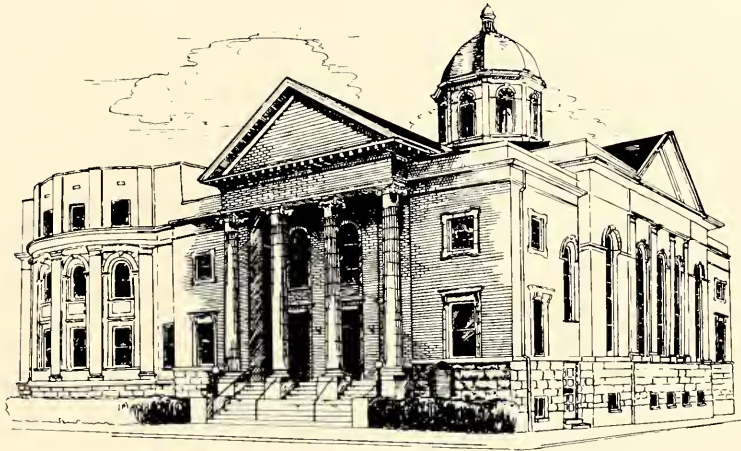


Southern Baptist **THEOLOGICAL SEMINARY**

LEXINGTON ROAD, LOUISVILLE, KY.

Duke K. McCall, *President*

THEOLOGY • RELIGIOUS EDUCATION • CHURCH MUSIC



YOU ARE ALWAYS WELCOME AT
THE
FIRST
BAPTIST
CHURCH

Lafayette at Cumberland

DR. W. FRED KENDALL, *Pastor*



Use
NATURAL GAS
for

COOKING
WATER HEATING
REFRIGERATION

AIR CONDITIONING
and
HEATING

WEST TENNESSEE GAS CO.

Compliments of

Ideal Plumbing And Heating Company

SECOND NATIONAL BANK

JACKSON, TENNESSEE

Capital and Surplus

\$500,000.00



OFFICERS

FRANK B. CALDWELL.....Chm. of Board	JOHN SAWYER.....	Cashier
R. M. WISDOM.....	President ALVIN MOORE.....	Assistant Cashier
PAUL H. RUSSELL.....	Vice-President ROBERT H. HAMILTON.....	Asst. Cashier
CLINT ROWLETT.....	Vice-President NORRIS WARLICK.....	Asst. Cashier
MRS. GRACIE MILLS.....	Asst. Cashier	

FOR SMART CAMPUS FASHIONS

... Naturally it's

Holland's

Jackson's Greatest Store

Since 1871

Featuring Favorite Campus Names like McGregor, Jantzen, Helen Harper, University Club, Bobby Brooks, Nardis and many more.

"TRANSPORTATION FOR ALL THE NATION"



Greyhound Bus Terminal

Main and Cumberland Streets

Jackson, Tennessee

Phone 7-1573

Englewood Baptist Church

Humboldt Highway

George Hunter, Pastor

Kenneth Burke, Song Director

WHITLOW'S SPORTING GOODS

Complete Line of
ATHLETIC EQUIPMENT FOR ALL SPORTS

215 N. Market

Jackson, Tennessee

Davidson Motor Company

AUTHORIZED HUDSON DEALER

Sales — Parts — Service

Used Cars Bought and Sold

Phone 2-1881

444 Poplar

Jackson, Tenn.

The Camera Shop

"Everything for Photography"

212 East Main

Phone 7-9971

Jackson, Tennessee

Compliments of

THE FIRST NATIONAL BANK

OF JACKSON

Charter Member Federal Reserve System

Member Federal Deposit Insurance Corp.

Serving this section since 1873

Compliments of

Warren's Grocery

And Market

IRBY STREET AT UNION UNIVERSITY



McGEE ROSS
211 EAST La Fayette St. **HARDWARE COMPANY** 214 EAST College St.
Phone 7-3308

COMPLIMENTS

L. P. JACKSON

Quality Jewelers

JACKSON, TENNESSEE

COMPLIMENTS

OF

Smith Furniture Company

One of the South's Leading Furniture Stores

JACKSON, TENN.



WELCOME STUDENTS!
TO THE
WEST JACKSON BAPTIST CHURCH

(CORNER OF CAMPBELL AND DEADERICK)

Our bus circles the campus four times Sundays
and twice on Wednesday nights.

YOU WILL FEEL AT HOME IN THIS
FRIENDLY ATMOSPHERE

YOU ARE ASSURED OF EDUCATIONAL AND SPIRITUAL
DEVELOPMENT THROUGH OPPORTUNITIES FOR SERVICE

REV. T. O. HALL, Pastor



PLUMBING, HEATING, ELECTRICAL AND INDUSTRIAL SUPPLIES
JACKSON, TENN.

McCALL HUGHES

VARSITY TOWN CLOTHES

114 N. Liberty

COMPLIMENTS

MURPHY TRACTOR COMPANY



SALES

SERVICE

PARTS



POPLAR EXT.

JACKSON, TENNESSEE

PHONE 2-1361

Rosenbloom's

YOUR STORE FOR FAMOUS BRANDS

210-212 E. Lafayette

Phone 7-3343

EVERYBODY KNOWS IT Experience is the best teacher!



NEW ORLEANS BAPTIST THEOLOGICAL SEMINARY

And the place to get real, honest-to-goodness pastoral and mission experience is on the most unique mission field in America—New Orleans!

Scholarly Faculty
Effective Evangelism
Practical Missionary
Activities

For information write
Roland Q. Leavell,
President
1220 Washington Avenue
New Orleans 13, La.

Offers standard degrees
B.D., Th.M., Th.D., B.R.E.
M.R.E., B.S.M., and M.S.M.

S. M. LAWRENCE COMPANY

COAL · COKE · ELECTRIC FANS · ALUMINUM AWNINGS
ALUMINUM SCREENS · CARRIER AIR CONDITIONING

532 E. Chester

Phone 7-8536

FOR YOUR INSURANCE NEEDS
SEE . . .

TENNESSEE VALLEY LIFE INSURANCE COMPANY

HOME OFFICE —
JACKSON, TENN.

G. T. HOLLAND,
President

In
Jackson
It's

Wahl's

SLIPPER SHOP

Nathan's
Stylish Apparel

Compliments of

BOND'S

"Jackson's Leading Shoe Store"

COMPLIMENTS

**THE NATIONAL BANK OF COMMERCE
OF JACKSON**

JACKSON

TENNESSEE

Member Federal Reserve System
Member Federal Deposit Insurance Corporation

Compliments of

Glen-More Clothes

W. P. Dabney & Son Furniture Co.

COMPLETE HOME FURNISHINGS

HOT POINT APPLIANCES

Church Street where College Passes

Jackson, Tenn.

Phone 7-5516

THE **NEW SOUTHERN**

For All Your Social Activities

Remember

THE READ HOUSE

Chattanooga, Tenn.

THE OWENSBORO

Owensboro, Ky.

Are Also

ALBERT NOE HOTELS

BURNLEY'S FLOWER SHOP

Baltimore St.

"ALWAYS

WELCOME

AT

CHARLIE'S"

WOOTTON'S STUDIO

PORTRAIT FRAMES

AND

COMMERCIAL PHOTOGRAPHS

207 E. Main St.

Phone 7-9036

CALVARY BAPTIST CHURCH

James A. Canaday, Pastor



NEAREST THE CAMPUS

A BEAUTIFUL HOUSE OF WORSHIP

WARMEST CHRISTIAN FELLOWSHIP

WHERE EVERY STUDENT IS WELCOME

Fox Restaurant

203 E. MAIN ST.

JACKSON, TENN.

JOHNSEY'S SHOE AND SPORTING GOODS REPAIR

N. Royal & I. C. R. R.

Telephone 7-1082 .

FRED JOHNSEY

HARRY JOHNSEY

Lewis
&
CO.

PAINT—WALLPAPER
VENETIAN BLINDS

HIGHLAND & COLLEGE

PHONE 7-7976

MOVING CRATING AND STORAGE

Telephone 7-1496

==== **RUSSELL TRANSFER CO.** ====

117 EAST COLLEGE STREET

J. M. LANKFORD

JACKSON, TENNESSEE

Lexington Inn



"Where Students Get Together"

Compliments of

THE BOOTERY

Compliments

BLACK And WHITE STORE

"Congratulations Seniors"

111 E. Lafayette

Phone 7-6366

WEST'S RESTAURANT

JOHN A. WEST, Owner
ULTRA MODERN
AIR CONDITIONED

218 East Main Street JACKSON, TENN.

JACKSON MARBLE & GRANITE WORKS

Located on Hollywood Drive
At Hollywood Cemetery Gate

JACKSON, TENN.

Index

Administration and Staff	10-13	Alpha Tau Omega	88-89
Ads	131-147	Annual Staff	86
Barton Hall	5	Cardinal and Cream Staff	87
Campus Scenes	20	Chi Omega	92-93
Christmas Parade	124	Footlights Club	97
Classes	21-52	Hypatia	98
Freshman	43-52	Mallory Math Club	102
Juniors	29-36	Minerva Club	101
Seniors	21-28	Nestor Club	101
Sophomores	37-42	Prince-Davis Science Club	102
Dedication	6-7	Rice Latin Club	99
Faculty	14-17	Rutledge History Club	100
Foreword	4	Sigma Alpha Epsilon	90-91
Honors	53-84	Zeta Tau Alpha	94-95
Annual Royalty	79-84	President's Message	8-9
A T O Sweetheart	66	President of the Student Body	18
Basketball Royalty	70-71	Religious Activities	103-108
Best All Around Boy	62	B S U	106
Best All Around Girl	63	J R G	104-105
Class Princesses	61	Life Service Band	106
Football Royalty	68-69	Revival	108
Miss Union	60	Y W A	107
Most Handsome Boy	72	Snaps	109-110
Most Popular Boy	64	128-130
Most Popular Girl	65	Sports	111-125
Mr. Union	59	Baseball	123
S A E Queen	67	Basketball	116-119
Senior Most Likely to Succeed.....	73	Cheerleaders	120
Strawberry Royalty	76-78	De Lay Trophy	125
Who's Who	54-58	Football	112-115
Introduction	1-3	Tennis	122
Music Studio	127	Track	121
Organizations	85-102	U Club	124
Alpha Psi Omega	96	Student Council	19
		Union University Players	126



