

'58



LEST WE FORGET

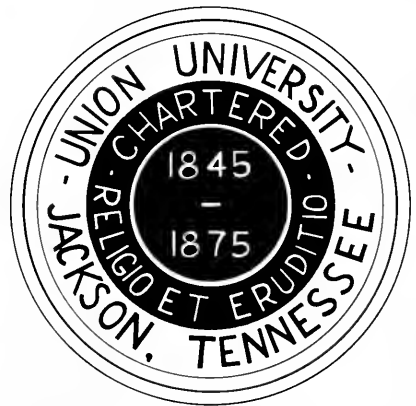


Digitized by the Internet Archive  
in 2010 with funding from  
Lyrasis Members and Sloan Foundation





Let Me  
Forget



# *The Annual Staff of 1958*

Editor .....	<i>Johnnie Barber</i>
Business Manager.....	<i>Kenneth Story</i>
Assistant Editor.....	<i>Bobby Agee</i>
Copy Editors	
Classes .....	<i>Ann Neal Pattat</i> <i>Nancy Jeffress</i>
Organizations .....	<i>Nancy Lee Smith</i> <i>Nelle Hulme</i>
Sports .....	<i>Bobby Agee</i>
Honors .....	<i>Becky Edwards</i>
Religion .....	<i>Ann Neal Pattat</i>
Photography .....	<i>Raymond Burke</i>
Typists .....	<i>Larry Gay Lane</i> <i>Miriam Watt</i> <i>Gayla Dennis</i>
Art .....	<i>Johnnie Barber</i>
Snapshots .....	<i>Carolyn Tisdale</i>
Advisors .....	<i>Mrs. Helen Blythe</i> <i>Dr. Kelly Thurman</i>



*The Administration Building*

# Campus Buildings...



Science Building



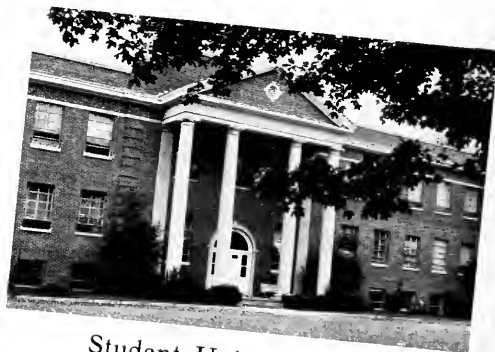
Adams Hall



Adams Annex



Gymnasium



Student Union Building

*... Campus Buildings*



Crook Hall



Jones Hall



Lovelace Hall



Administration Building



Library

## *Dedication . . .*

She is a queen who rules without tyranny, a quietly competent monarch, whose warm friendliness and sparkling sense of humor have endeared her to all her subjects.

Hers is a kingdom of volume-laden shelves and polished reading tables. She is queen Ruth Gibbons and the library is her realm. We are all her subjects in the quiet hours spent among the books. It is to her and her loyal cabinet that we owe the efficiency and effectiveness of our library.

Therefore, we the staff of the '57-'58 "*Lest We Forget*" offer this volume as our loving homage to Miss Ruth Gibbons, a queen who is adorned with kindness and who wears a smile as her crown jewel.



*Miss Ruth Gibbons*



Union University

*Jackson, Tennessee*

June 1, 1958

My Dear Friends:

It is fitting that the staff has selected BOOKS as the theme for the 1958 LEST WE FORGET. Books, around which so much of your college experience centers -- books, that convey to us the "precious life-blood of Master Spirits" -- books, the medium through which we inherit the treasures of the past -- books, that help us to understand the eras in which they were written and which in turn have influenced subsequent eras -- books, conveying to us "messages from human souls we never saw -- books, that arouse us, terrify us, teach us, comfort us, open their hearts to us as brothers."

Whitman has said, "Camerado, this is no book. Who touches this, touches a man." And so it is with your college yearbook. When you touch it you will touch not just a man, but many personalities -- your teachers whom you will revere more and more as the years pass; your college mates whose lives and characters have grown into your own, being secretly assimilated into the warp and woof of your personality until you and they have become a part of one another. Your yearbook can become a golden chain, a continuous reminder of such associations and friendships. It can become the "voice of the distant," making you heir to the intellectual and spiritual life of the meaningful experiences of college years.

To the staff I would extend, on behalf of the faculty and administration, sincere words of commendation for this volume; to the senior class, profound wishes that the days of your years may be many and filled with constructive and fruitful activity for the well-being of mankind; to the other members of the student body, the challenge to continue your education, returning to the campus with more determined minds, clearer objectives, more dedicated purpose to attain maximum benefits during the strategic years of college experience.

Through the months and years, read often LEST WE FORGET!

Sincerely,

Warren F. Jones  
President

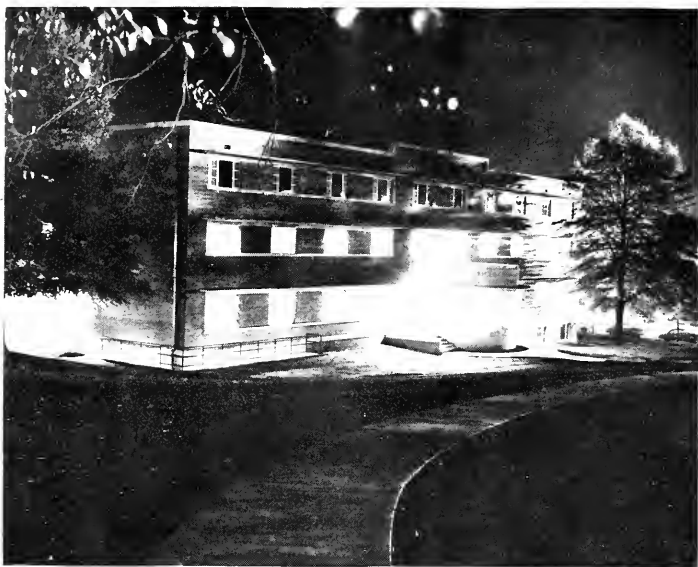




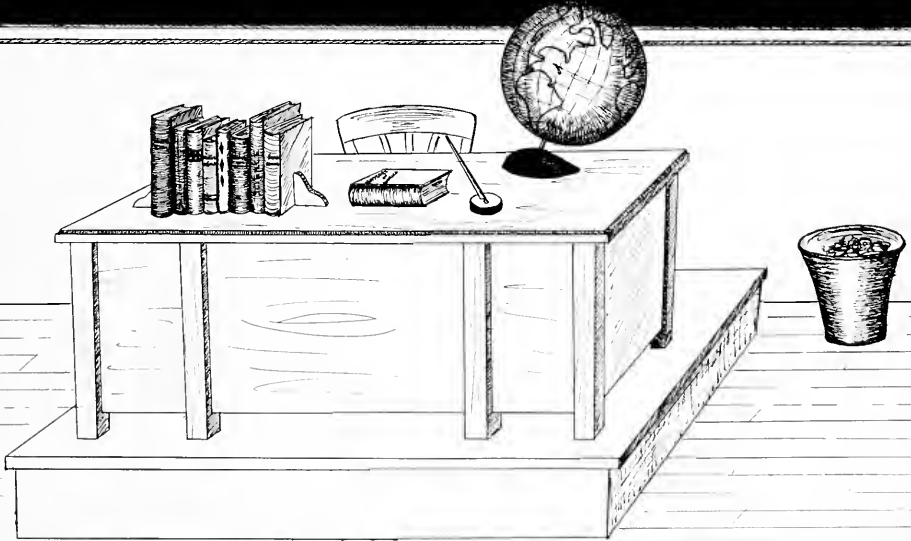
*Our President, Dr. Warren F. Jones*



DR. AND MRS. JONES  
*At Home*



# Administration





*Our Dean, Dr. F. E. Wright*

Dean and Mrs. Wright  
and Kay





*Dr. H. H. Boston, Vice-President*



*Frank M. Blythe*  
BUSINESS MANAGER

*Robert Sims*  
PUBLIC RELATIONS DIRECTOR



*Mrs. O. D. Stone*  
REGISTRAR  
DEAN OF WOMEN

# Staff



**ANNA FARRIS**  
*Library Assistant*



**O. D. STONE**  
*Manager Book Store*



**MRS. JAMES DAVIS**  
*Assistant Dietitian*



**GUY GEE**  
*Bursar*



**LENA RODGERS**  
*Hostess, Crook Hall*

# Staff



**VIRGINIA BARHAM**  
*Secretary to Registrar*



**ANN TAYLOR**  
*Business Office*



**PANSY WOOSTER**  
*Switchboard Operator*



**BETTY HIGGINS**  
*Secretary to Dean*



**JUANITA ALLEN (on leave)**  
*Secretary to Dean*

# Faculty . . .



**W. H. KIMZEY**  
*Professor of Old Testament and  
Philosophy*

A.B., Mercer University  
B.D., Southwestern Baptist Theological  
Seminary  
Th.D., Southwestern Baptist Theological  
Seminary



**DIXIE M. JONES**  
*Professor of Education and  
Director of Guidance*

A.B., Blue Mountain College  
M.A., George Peabody College  
Ph.D., George Peabody College



**SPURGEON BOYD**  
*Associate Professor of Biology*  
B.S., Carson-Newman College  
M.A., George Peabody College  
Additional graduate work, George Pea-  
body College and Vanderbilt University.



**ELISABETH FOSSEY**  
*Assistant Professor of Music*  
B.M., American Conservatory of Music  
M.M., American Conservatory of Music



**JOHN HUGHES**  
*Head of Dept. of Music and Art*  
A.B., Southwestern  
M.S., Julliard

Ch.M., American Guild of Organists  
All residence work completed toward  
Ph.D. in Musicology, Florida State Uni-  
versity.

Organ pupil of W. Townsend, Ply-  
mouth, England. Organ pupil of Marcel  
Dupre, Paris, France. Additional grad-  
uate work in harmony under Oliver  
Messiaen, Paris Conservatory, Paris,  
France.



**HARRIET HELEN BLYTHE**  
*Assistant Professor of English*  
A.B., University of Oklahoma  
M.A., George Peabody College



**RICHARD HIRAM WARD**  
*Head of Dept. of Social Sciences*

A.B., Carson-Newman College  
M.A., George Peabody College  
Ph.D., George Peabody College  
Additional graduate work at New Orleans  
Baptist Theological Seminary and Uni-  
versity of North Carolina.



# Faculty . . .



**ERNEST MUNTZ**

*Professor of Social Sciences*

B.S., Carson-Newman College  
M.A., George Peabody College  
Additional graduate work at Peabody  
College and Vanderbilt University



**ROSA DYER RUTLEDGE**  
*Assistant Professor of History*

B.S., Union University  
M.A., George Peabody College  
Additional Graduate Work, University  
of Wisconsin



**A. L. ALLEN**  
*Assistant Professor of Art*  
*(On Leave)*

B.S., Louisiana State University  
M.A., Louisiana State University  
Additional study Leland Stanford  
University



**RALPH T. DONNELL**  
*Head of Department of*  
*Mathematics*

A.B., Cumberland University  
LL.B., Cumberland University  
M.A., Vanderbilt University  
Two years additional work at University  
of Tennessee



**GRACE WILLIAMS**  
*Assistant Professor of*  
*Physical Education*

B.S., Alabama College  
M.A., George Peabody College  
Additional Graduate Work, Northwestern  
University



**ELIZABETH BRELAND LOYD**  
*Instructor in Speech*

Graduate diploma Ruth Bale, Whitworth  
College  
Additional study, Curry College, Boston;  
Alvance University of the Theater, New  
York; American Academy of Dramatic  
Art; Columbia University  
A.B., Union University  
Additional graduate work, University of  
Tennessee; Memphis State University



**ALLAN F. ARCHER**  
*Head of Department of Biology*

A.B., Harvard University  
M.A., University of Michigan  
Ph.D., University of Michigan



**JACK FARRIS**  
*Associate Professor of English*  
 A.B., Ouachita College  
 M.A., University of Michigan  
 Additional work, University of Michigan



**RUTH GIBBONS**  
*Librarian*  
 A.B., Union University  
 B.S., L.S., George Peabody College



**HIRAM BAREFOOT**  
*Associate Professor of Religion*  
 A.B., Mississippi College  
 B.D., New Orleans Baptist Theological Seminary  
 Th.D., New Orleans Baptist Theological Seminary



**FREDERIC LUBRANI**  
*Associate Professor of Music*  
 B.M., Cincinnati Conservatory of Music  
 B.S., University of Cincinnati  
 M.M., Cincinnati Conservatory of Music  
 Work completed for D.Mus.E., University of Cincinnati and Columbia



**H. C. WITHERINGTON**  
*Professor of Psychology*  
 M.A., University of Chicago  
 Ph.D., University of Chicago



**MABEL K. WARD**  
*Assistant Librarian*  
 A.B., Carson-Newman College  
 M.A., (L.S.), George Peabody College



**DAVID WEST**  
*Assistant Professor of Economics*  
 B.A., John Brown University  
 M.B.A., University of Arkansas



**JOSEPH C. WOOD, JR.**  
*Assistant Professor of Theory and Instrumental Music*  
 B.M., Boston University  
 M.M., Boston University  
 Additional graduate study at University of North Carolina



**CHARLES TAYLOR**  
*Professor of Greek and New Testament*

A.B., Union University  
B.D., Southern Baptist Theological Seminary  
Th.D., Southern Baptist Theological Seminary



**WILLIE MARGARET JOHNSON**  
*Dietician*  
*Department of Home Economics*

B.S., Union University  
M.A., Iowa State



**WARREN ADAMS**  
*Head of Department of Languages*

A.B., Baylor University  
M.A., Baylor University  
Additional Graduate Work, University of Texas and National University of Mexico



**KELLY THURMAN**  
*Head of Department of English*

A.B., Western Kentucky State College  
M.A., University of Kentucky  
Ph.D., University of Iowa



**WALTER KRUSCHWITZ**  
*Acting Head of Department of Physics and Assistant Professor of Mathematics*

A.B., Taylor University  
M.A., Vanderbilt University  
Additional Graduate Work, Vanderbilt University, University of Michigan



**M. R. CARRINGTON**  
*Assistant Professor of Business Education*

B.S., University of Tennessee  
M.S., University of Tennessee  
Additional Graduate Work, University of Tennessee



**WU-CHIEH CHENG**  
*Acting Head of Department of Chemistry*

B.S., in Chemistry, St. John's University, Shanghai, China  
M.S., in Chemistry, Kansas State College  
Ph.D., in Chemistry, Georgia Institute of Technology

**NOT PICTURED**

**MARION CROCKER**  
*Assistant Professor of English*

A.B., Limestone College  
M.R.E., Woman's Missionary Training School  
M.A., George Peabody College

**SHIRLEY VAVRA**  
*B.M., University of Louisville  
M.M., University of Indiana  
Additional Graduate Work, University of Indiana*



# Serious





*Senior Class Officers . . .*

*Standing, left to right, President, Johnny Kendall, Vice-President, Paul Simmons, and seated, Secretary, Janie Tomooka*

JOE DAVIS, B.A. . . . *Jackson, Tennessee*  
 B.S.U. Church Representative '55 . . . Footlights  
 Club '56 . . . German Club '56-'58 . . . Chorus '55-'58  
 . . . Male Ensemble '56-'58 . . . Class Plays '55-'57  
 . . . Transfer, Georgetown College.



CAROL EDMONDS, B.A. . . . *Jackson, Tennessee*  
 Chi Omega '54-'58 . . . F.T.A. '55-'58 . . . Spanish  
 Club '56-'58 . . . Hypatia '56-'58.

SYDNEY PORTIS, B.A. . . . *Jackson, Tennessee*  
 NEA '54-'58, Secretary '58 . . . B.S.U. Council '55  
 . . . Business Club '58 . . . Y.W.A. '54-'58.



GEORGE FISHER, B.S. . . . *Bemis, Tennessee*



RUTH AZBILL, B.A. . . . *Cooter, Missouri*  
 Y.W.A. '55-'58, Sec.-Treas. '57, Vice-Pres. '58, Circle  
 Pres. '58, Circle Program Chairman '57 . . . NEA  
 '56-'58, Membership Vice-Pres. '58 . . . Dormitory  
 Council '57-'58 . . . Life Service Band '55-'58, Vice-  
 Pres. '56, Sec.-Treas. '58 . . . B.S.U. Greater Council  
 '57-'58.

JIM BRANDON, B.A. . . . *Frankfort, Kentucky*  
 Alpha Tau Omega '54-'58, WKA '55, Worthy Master  
 '57-'58, Social Chairman '55-'57, Greek Council  
 '57-'58 . . . Footlights Club '57-'58 . . . Chorus '56-'57  
 . . . Most Popular Boy '57 . . . Escort to Miss Union  
 '57 . . . History Club '54-'55.



BILLY BUTLER, B.M. . . . *Jackson, Tennessee*

JOYCE BRYSON, B.A. . . . *Pickwick Dam, Tenn.*  
 NEA '55-'58 . . . B.S.U. Council '57-'58 . . . Y.W.A.  
 '55-'58, Community Missions Chairman '56, Prayer  
 Chairman '57, Circle Pres. '58.



JOAN GAREY, B.A. . . . *West Memphis, Arkansas*  
 Zeta Tau Alpha '56-'58, Historian '57-'58 . . . B.S.U.  
 '55-'58 . . . Y.W.A. '55-'58 . . . Union Chorus '55-'58  
 . . . Home Economics Club '58 . . . Transfer, Sienna  
 College, Memphis, Tennessee.

VAIL HIERS, B.M. . . . *West Palm Beach, Florida*  
 SAE '57-'58 . . . Band '56-'58, Vice-Pres. '57, Pres.  
 '57-'58 . . . Allegro '56-'58 . . . B.S.U. '56-'58 . . .  
 Transfer, Norman College, Norman Park, Ga.



JAMES WRIGHT DEATON, B.M. . . . *Jackson, Tenn.*  
 Sigma Alpha Epsilon, President '56, Pledge Trainer  
 '57 . . . Vice-President Greek Council '56 . . . Pres-  
 ident Band, '55 . . . Who's Who . . . Senior Play  
 '57 . . . Recipient of McDowell Club Scholarship  
 Award '54-'55.

NORMA KOLWYCK, B.A. . . . *Medina, Tennessee*  
 Los Picaros '55-'58 . . . F.T.A. '56-'57 . . . Student  
 NEA '57-'58 . . . Chorus '55-'58 . . . B.S.U. '54-'58 . . .  
 Y.W.A. '54-'58.

JIM MARTIN, B.A. . . . *Elvins, Missouri*  
 M.A. '54-'58, Secretary '55, Treasurer '56-'57, Vice-Pres.  
 '58 . . . B.S.U. '54-'58 . . . Footlights Club '57-'58 . . .  
 German Club '55-'58, President '56 . . . Nestor Club  
 '56-'58, Treasurer '57-'58 . . . Chorus . . . Male Ensem-  
 ble . . . Class Speaker '54-'55, '55-'56 . . . Class Pres-  
 ident '55-'56, '56-'57 . . . Student Council, Pres. '57-'58  
 . . . Most Eligible Bachelor '55-'56 . . . Best All-  
 Around Boy '56-'57 . . . Senior Boy Most Likely to  
 Succeed '58 . . . Who's Who Among American Col-  
 leges and Universities.

MARTHA LANIER, B.S. . . . *Brownsville, Tenn.*  
 ATO Sweetheart '55-'56 . . . Basketball Queen '55-'56  
 and again '57-'58 . . . Alpha Omicron Pi . . . Transfer,  
 Vanderbilt University, Nashville, Tenn.

CARL SIMMONS, B.S. . . . *Jackson, Tennessee*  
 Mallory Math Club '55-'58, President '57-'58.

PAUL SIMMONS, B.A. . . . *Martin, Tennessee*  
 Nestor Club '57-'58 . . . M.A. '56-'58 . . . Footlights  
 Club '57-'58 . . . Vice-Pres. of Senior Class '57-'58  
 . . . B.S.U. '56-'58 . . . Who's Who in American Col-  
 leges and Universities . . . Transfer, Southwest Bap-  
 tist College, Bolivar, Missouri.





BILL FLACK, B.A. . . . *Memphis, Tennessee*  
 B.S.U. '54-'58 . . . M.A. '54-'58 . . . *Cardinal and Cream*  
 Staff '56-'57 . . . *Lest We Forget Staff '56-'57.*



EMILY FLOWERS, B.A. . . . *Medina, Tennessee*  
 Zeta Tau Alpha '54-'58, Historian '56, Corresponding  
 Secretary '57, Scholarship Chairman '55-'56, Ritual  
 Chairman '57-'58 . . . Hypatia '56-'58, Vice-Pres. '56-  
 '57, Program Chairman '57-'58 . . . Student NEA '56-  
 '58 . . . Chorus '54-'58 . . . B.S.U. '54-'58 . . . Y.W.A.  
 '54-'58.

FRED FOWLER, B.A. . . . *Walsh, Colorado*  
 M.A. '54-'58 . . . Life Service Band '56-'57 . . . History  
 Club '57-'58 . . . B.S.U. Council '57 . . . F.T.A. '54-'56  
 . . . Transfer, Southwest Baptist College, Bolivar,  
 Missouri.



JOHN FREE . . . *Jackson, Tennessee*



DEAN CLARK, B.A. . . . *Raleigh, Tennessee*  
 Freshman Queen's Court '54-'55 . . . Shelbians '54-  
 '58, Secretary '57-'58 . . . Footlights Club '56-'58 . . .  
 Home Economics Club '55-'58, Secretary '56-'57,  
 Reporter '57-'58 . . . President, Jones Hall Dormitory  
 Council '57-'58 . . . NEA '55-'58, Social Chairman '57-  
 '58.

PEGGY TREVATHAN, B.S. . . . *Bowling Green, Ky.*  
 Freshman Queen's Court '54 . . . Home Economics  
 Club '54-'56, Reporter '54, President '55 . . . Miss  
 Home Economics '55-'56 . . . Y.W.A. '54-'58 . . . Chi  
 Omega '54-'58, Reporter '55, Greek Council Rep. '56-  
 '58, Rush Chairman '58 . . . B.S.U. '54-'58 . . . SAE  
 Queen '56-'57 . . . Minerva Club '56-'58 . . . Jr. Class  
 Secretary '56-'57 . . . Maid to Miss Union '58 . . .  
 10 Most Beautiful Girls '56-'58 . . . Jones Hall 2nd  
 Vice-Pres. '56-'57, Council Member '57-'58 . . . Student  
 Council '56-'57.



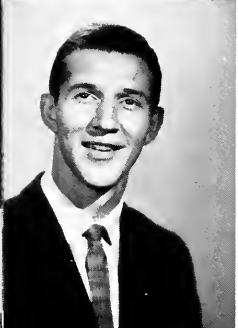
DON DILLINGHAM, B.M. . . . *Folsomdale, Kentucky*  
 B.S.U. Choir '54-'58 . . . Allegro Club '54-'58, Vice-  
 Pres. '57 . . . Chorus '54-'57.

EUGENE DUDLEY, B.A. . . . *Rector, Arkansas*



MARY CAROLINE ALLCOCK, B.A. . . . *Melber, Ky.*  
 Allegro Club '54-'58, Secretary-Treasurer '55-'56 . . .  
 Chorus '54-'58, Secretary '55-'56, Robe Chairman '55-'58 . . .  
 Student NEA '55-'58 . . . B.S.U. '54-'58 . . .  
 B.S.U. Council '54-'55, '55-'56 . . . B.S.U. Choir '54-'58 . . .  
 YWA '54-'58.

ROGER BULLARD, B.A. . . . *Memphis, Tennessee*  
 B.S.U. '54-'58 . . . Ministerial Association '54-'58 . . .  
 Nestor Club '56-'58, Vice-President '57-'58 . . .  
 Shelbians.



JOHNNY KENDALL, B.S. . . . *Nashville, Tennessee*  
 B.S.U. '54-'58 . . . German Club '55-'58 . . . Prince-Davis Science Club '54-'58 . . .  
 Class President '54-'55, '57-'58.

IRENE BARFIELD, B.A. . . . *Jackson, Tennessee*  
 Transfer: Tulsa University, Tulsa, Oklahoma.

CLYDE RAY BRIGGS, B.A. . . . *Wake Forest, N. C.*  
 Sigma Alpha Epsilon '54-'58, President '58, Rush Chairman '55-'56, Sports Mgr. '55-'57, Pledge Pres. '54 . . .  
 Tennis Team '55-'58 . . . Footlights Club '58 . . .  
 German Club '54-'55 . . . U Club '55-'58.

PAT BLANKENSHIP, B.A. . . . *Memphis, Tennessee*  
 Chi Omega '54-'58, Pledge Mistress '57-'58 . . . Alpha Psi Omega, Pres. '57-'58 . . . Dramatics Club, Sec. '56 . . .  
 Latin Club, Sec.-Treas. '57-'58 . . . Freshman Queen '54 . . .  
 Maid to Miss Union '55-'56, '56-'57 . . . Best All-Around Girl '55-'56 . . .  
 10 Most Beautiful '56-'58 . . . Cheerleader '54-'58 . . . Miss Union '57-'58 . . .  
 Who's Who . . . SAE Queen '57-'58 . . . B.S.U. 1st Vice-Pres. '57-'58.

ROBIN COFFMAN, B.S. . . . *Ripley, Tennessee*  
 A.T.O. '54-'58 . . . Baseball Team '54-'57 . . . U Club.

WILLIAM BICKERS, B.A. . . . *Ripley, Tennessee*  
 Sigma Alpha Epsilon '53-'57, Chaplain '55, Correspondent '54 . . .  
 Student Council '55-'56 . . . Nestor Club '55-'58, Vice-Pres. '56, Chaplain '57 . . .  
 Senior Class Speaker '58.



ELIZABETH ANN BRAY, B.A. . . . *Trenton, Tenn.*  
 Transfer student from Mississippi State College for  
 Women . . . History Club '56-'58 . . . Phi Alpha Theta  
 '56-'58, Sec. '58 . . . Hypatia '56-'58, Pres. '58 . . . Chi  
 Omega '55-'58, Sec. '58 . . . N.E.A. . . . Dorm Council  
 '58 . . . Student Council '57 . . . Play '55 . . . Who's  
 Who in American Colleges and Universities . . .  
 B.S.U. '55-'58 . . . *Cardinal and Cream Staff.*



JEROME BROWN, B.A. . . . *Memphis, Tennessee*  
 Chaplain of Freshman Class . . . Student Govern-  
 ment Representative of Sophomore Class . . . Band  
 Vice-Pres. '56 . . . Band Pres. '57 . . . M.A. '53-'58.

FRED COX, B.A. . . . *Poplar Bluff, Missouri*  
 Transfer, Southwest College, Bolivar, Missouri.



CAROL CHAMBERS, B.S. . . . *Jackson, Tenn.*



JAMES WATTS, B.S. . . . *Spring Creek, Tennessee*  
 Sigma Alpha Epsilon '56-'58 . . . Prince-Davis Science  
 Club '56-'58 . . . Who's Who in American Colleges  
 and Universities.

HAROLD W. HANNA, B.A. . . . *Bolivar, Tennessee*



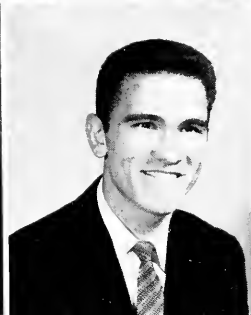
BILLY HAMMONDS, B.A. . . . *Jackson, Tennessee*  
 Allegro Club '55-'58 . . . M.A. '54-'58.

PATRICIA HAMMONDS, B.A. . . . *Jackson, Tenn.*  
 Allegro Club '54-'58, Social Chairman '57-'58 . . . Chi  
 Omega '54-'58 . . . B.S.U. '54-'58 . . . Chorus '54-'58.



LOYDELL SMITH, B.S. . . . *Henderson, Tennessee*  
 Chi Omega '54-'56, Social Chairman '56 . . . Prince-Davis Science Club '55-'57 . . . Footlights Club '56-'58 . . . Chorus '54-'58 . . . Annual Staff '55 . . . Paper Staff '56.

MARY NELL STENNETT, B.A. . . . *Corinth, Miss.*  
 B.S.U. '57-'58 . . . Y.W.A. '57-'58, Music Chairman '58 . . . Life Service Band '57-'58, Program Chairman '58 . . . Crook Hall Council President '58 . . . Transfer, Northeast Mississippi Jr. College, Booneville, Miss.



BILL STRICKLIN, B.A. . . . *Belgrade, Missouri*  
 M.A. '55-'57 . . . Footlights Club '56-'58 . . . Prince-Davis Science Club '56-'58 . . . Transfer, Flat River Jr. College, Flat River, Missouri.

NORRIS SMITH, B.A. . . . *Memphis, Tennessee*  
 M.A. '52-'58 . . . Life Service Band Pres. '53 . . . B.S.U. '52-'57, Treas. '55-'56 . . . Vice-Pres. of Sophomore Class '54-'55 . . . Chaplain '53-'54 . . . Footlights Club '55-'57, Treas. '55-'56 . . . Alpha Psi Omega '55-'58.

BETTY OWEN McCLELLAN, B.S. . . . *Old Hickory, Tennessee*  
 Campus Nurse '55-'58 . . . Prince-Davis Science Club '55-'58, Secretary '56-'57 . . . B.S.U. '55-'58.

HELEN KEMP, B.A. . . . *Jackson, Tennessee*  
 Zeta Tau Alpha '55-'58, Pres. '57.

ANN NEAL PATTAT, B.A. . . . *Somerville, Tennessee*  
 NEA '55-'58 . . . B.S.U. '54-'58 . . . Y.W.A. '54-'58 . . . Home Economics Club '54-'58 . . . Paper Staff '57-'58. . . Annual Staff '57-'58.

WILLIAM A. PUTMAN, B.A. . . . *Finley, Tennessee*



JAMES SPENCER, B.S. . . . *Jackson, Tennessee*  
 Transfer from Freed-Hardman.



CHARLES TAPP . . . *Memphis, Tennessee*

CAROLYN TISDALE, B.A. . . . *Whiteville, Tenn.*  
 Zeta Tau Alpha '55-'58, Treasurer '57-'58 . . . B.S.U.  
 Council '57-'58 . . . N.E.A. '55-'58, Treasurer '57-'58  
 . . . Annual Staff '58 . . . Rutledge History Club '54-  
 '55 . . . YWA '54-'58 . . . Life Service Band '55-'57.



JANE TOMOOKA . . . *Kahului, Maui, Hawaii*  
 YWA . . . B.S.U. . . . Senior Class Secretary . . .  
 Most Popular Girl.



ROGER VAN METRE, B.S. . . . *Elizabethtown, Ky.*  
 WKA in A.T.O. . . . A.T.O. '53-'58 . . . Science Club  
 '56-'57 . . . German Club '56 . . . Math Club '54-'58.

DICK VINCENT, B.S. . . . *Cuba, Kentucky*  
 Alpha Tau Omega '54-'58, Secretary '55, Treasurer  
 '56, Pledge Master '57-'58 . . . NEA '55-'58, Vice-Pres.  
 '56-'57 . . . Footlights Club '55-'57 . . . Student Council  
 '56-'58 . . . Intramural Director '57-'58.



JIMMY WALKER, B.S. . . . *Bethel Springs, Tennessee*  
 Transfer N.E.M.J.C., Booneville, Miss.

NANCY WARD, B.A. . . . *Rutherford, Tennessee*  
 Rutledge History Club '55-'58 . . . NEA '55-'57 . . .  
 Home Economics Club '58 . . . YWA '54-'58 . . .  
 B.S.U. '55-'58.



ANN BRIGHAM, B.A. . . . *Memphis, Tennessee*  
 Y.W.A. '54-'58 . . . B.S.U. '54-'58 . . . NEA '56-'58  
 . . . Home Economics Club '54-'58 . . . Hypatia '57-'58.

DON PACE

Sigma Alpha Epsilon '55-'58, Secretary '55, Treasurer '56, EDA '56, President '57 . . . German Club '56 . . . Union University Business Club '58, President '58 . . . Most Handsome Boy '55-'58 . . . Science Club '57.



HOYT WILSON, B.A. . . . *Fulton, Kentucky*  
 Ministerial Association '56-'57, President '58 . . .  
 B.S.U. Greater Council . . . Transfer: Murray State  
 College, Murray, Kentucky.

DOVEY STAFFORD, B.A. . . . Galloway, Tenn.

JANICE DOTSON, B.A. . . . *Dyersburg, Tennessee*  
 Alpha Psi Omega '54-'58 . . . Hypatia '56-'58 . . .  
 Zeta Tau Alpha '54-'58, Treasurer '56-'57, Historian  
 '55-'56 . . . Basketball Maid '58 . . . Escort to Miss  
 Union '55.



## JUNIORS NOT PICTURED

JERRY PAUL ARNOLD  
MELTON CROSBY AMBROSE  
MARY CAROLINE ALLCOCK  
BILLY FRANKLIN ALEXANDER  
THOMAS A. BUTLER  
BILLY JOE BROWN  
ANN MARIE BRIGHAM  
NANCY ANN BOWLIN  
MARGARET ANN BOULTON  
JAMES ARTHUR COLEMAN  
CRAFTON CLIFT  
JAMES SMITHTON CARTER  
ERNEST WELLBORN CARTER  
ROBERT CANNON  
PATRICIA DAVIS  
MECHA CATHERINE FREEMAN  
PRENTISS FERRELL  
JAMES BRUCK GLISSON  
JIMMY DON HOLLIEFIELD  
ELIZABETH ARLENE HENSON  
FRED COLEMAN HARVEY  
BILLY JOE HANEY  
ROBERT T. JOHNSON  
GEORGE GLAYDON LIFSEY  
BILLY EARL MURPHY  
JERRY LYNN MOORE  
HARRIET VIRGINIA METTS  
JOHN K. MEADOWS  
CARL THOMAS McNEILL  
ORVILLE McMAHAN  
ROBERT EUGENE McKENZIE  
JERRY PHILLIP NOWELL  
BOBBY JOE OSBORNE  
JOHNNY LYNCH ORR  
DOROTHEA JEAN OLIVER  
SHIRLEY FRANCES PRINCE

NELLIE BARNETTE PARIS  
TOMMY WOOD ROSE  
RONALD LEE ROGERS  
PAUL ERIE ROATAN  
J. V. REEVES  
KENNETH PRINCE STORY  
JAMES ARNOLD SPENCER  
JAMES E. SORRELL  
MARY ANN SMITH  
BEVERLY JANE SILKWOOD  
PAUL OTIS SANDERFER  
TOLBERT DAYTON TRAYLER  
D. C. UPTON  
BOBBY G. UPTON  
SARAH ELIZABETH WILLINGHAM  
ANN VAUGHN WELLONS  
DERRYL G. WATSON  
LAWRENCE ALLEN WALKER  
JIMMY KAY WALKER  
WILLARD RAY CAYCE  
MARILYN HEISNER COX  
WILLIAM ARMSTEAD DAVIS  
JAMES ROYCE DENNISON  
KENNETH BROOKS HARRIS  
CARL L. JONES  
EDWARD J. ONLY  
MRS. W. D. PARKS  
MARY T. SPENCER  
BARBARA ANN STALLINGS  
RONALD D. TEAGUE  
RICHARD WAKEFIELD  
VIRGINIA H. WENTWORTH  
ERLYN B. WEBB  
JOHN WYATT  
CHARLES EDWIN YOUNG  
MAX A. CROCKER

## SENIORS NOT PICTURED

ROGER BULLARD  
CLYDE RAY BRIGGS  
BILL BICKERS  
WILLIAM BIBLE  
IRENE BARFIELD  
CHARLES ALFRED GREATHOUSE  
FRANCES K. GILES  
CLARENCE S. HILL, JR.  
CHARLES HAUSSER  
JOHNNIE KENDALL  
ROGER MURRAY, JR.  
JAMES McTISSACK  
JACK CALVIN NAYLOR  
H. GORDON ORRELL  
CHARLES ROBERT PERKINS

JOHN WALTER ROSE  
JUSTICE SELPH  
JAMES HERBERT SEATON  
KEITH WOOSTER  
SYLVIA LUCILLE WILSON  
MARTHA WILLIAMS  
ROBIN COFFMAN  
LILLIOUS DAVIDSON COX  
MORRIS CROCKER  
GLADYS HISCOX  
ROBERT LIVINGSTON  
BERTIE DAVIS POLLARD  
PATRICIA SANSING  
RONALD MELVIN SKINNER  
DAN VITITOE, JR.

# DIAPER DAZE



DICK VINCENT



MARY N. STENNETT



HOYT WILSON



PAT HAMMONDS



PAUL SIMMONS



DON DILLINGHAM



BILLY BUTLER



ROGER BULLARD



ANN N. PATTAT



ROTH AZBILL

NORMA  
KOLWYCK



DON PACE



JOHNNY KENDALL



JOYCE BRYSON



BILLY HAMMONDS



# Juniors





*Junior Class Officers:*

*President—Peter Rhea Jones; Vice-President—Johnnie Barber; Secretary—Larry Gay Lane; Chaplain—Billy Murphy.*



JIM ANDERSON



JOHNNIE BARBER



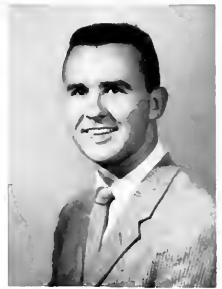
THEODORA  
BURDETTE



RAYMOND BURKE



MOLLIE BURNETTE



MAX CANNON



JOE CLIFT



GAYLA DENNIS



LINDA WILBANKS  
CORDLE





MARY ANN FRASER



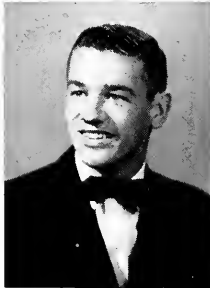
DELORES DORRIS



REX ENOCH



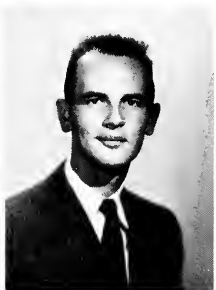
HAROLD  
GREENFIELD



WILLIAM GEORGE



SHIRLEY GORDON



BILL HAYNES



MYRNA GOEHRI  
HOLLAND



DON HOPPER



NANCY JEFFRESS



PETER RHEA  
JONES



LARRY GAY LANE



SHELBY LYNN



WILTON LYNN



ELLEN MILES



SANDRA MILLER



TOM MURCHISON



BOBBY NEWTON





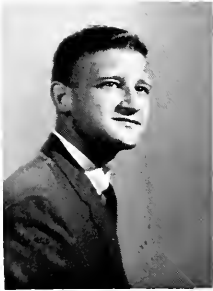
PHARRA LEE  
NEWSOM



DEMPLE NORVILL



JERRY PHILLIPS



JAMES SCOTT



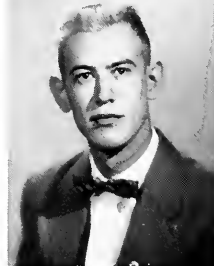
VIRGINIA RUTH  
PEARCE



B. A. RODDA, JR.



JAMES SMITH



BRUCE STEPHENS



MIRIAM WATT



BARBARA WILSON



BETTY WILLIAMS



TED CLARK



JERALD HILL



MARY ROY



JOHN B.  
McCOMMON



BILL PRIDDY



CHARLES HIGGINS



RAY POLLARD

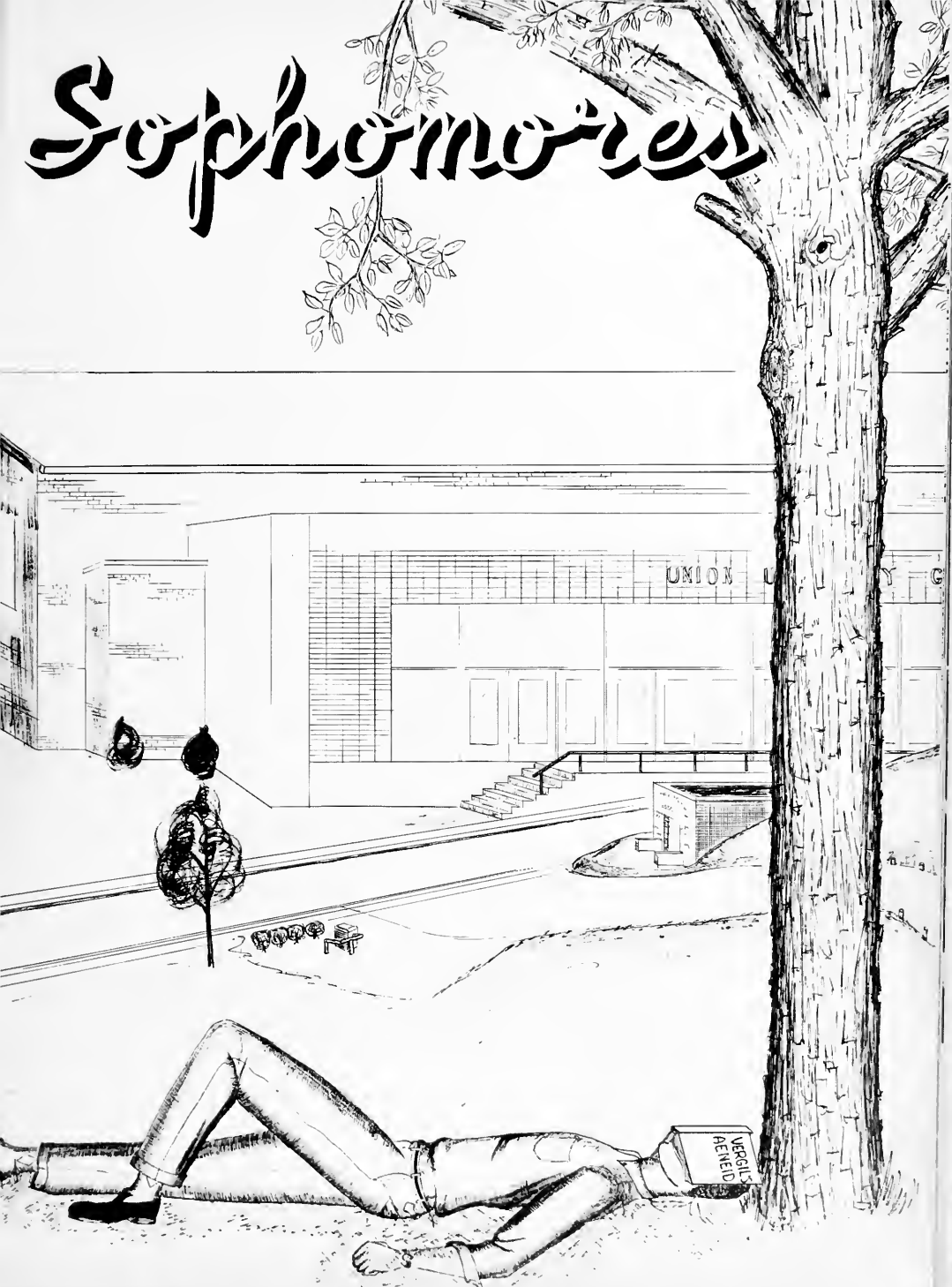


GAYLE UPTON





# Sophomores





*Sophomore Class Officers . . .*

President: Bill Howse, Vice-President: Bob Carpenter, Secretary: Elsie Young,  
Treasurer: Annette Clark, Chaplain: Lynn Eagan



KING ABERNATHY



BOBBY AGEE



EMILY CAVENDAR



ANNETTE CLARK



SHIRLEY BLEDSOE



RAYMOND BOSTON



LYNN EAGAN



ROSALEE FOLLIS



JANE FRIZZELL



JIM BAILEY



NINA SUE  
FLETCHER



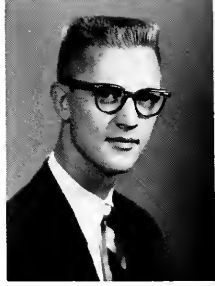
BEVERLY BLALACK



BILL CARVER



EUDORA JONES



BOBBY KENDIG



JOYCE HUTSON



JO HARGETT



BILL HOWSE



MARY ANN  
STEWART



JOE ELLIS

HARVEY GILL



BILL JACKSON

CAROLE GREEN

BILLY GRIFFIN



LAURA BETH HARVEY

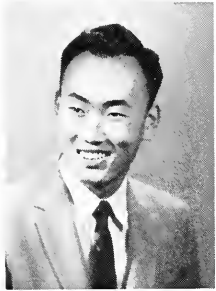
JOHN GIBBONS

ANITA LOWE





NYTA GARRETT



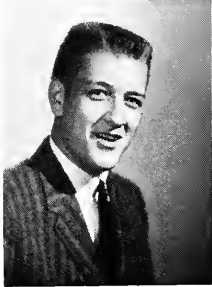
EUNG SUN KIM



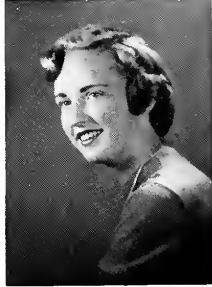
WILLIAM LEE



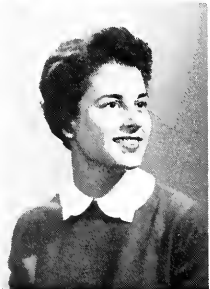
EVELYN  
MARBURY



LARRY PATTON



BETTY JO  
PENNINGTON



GAYLE PRATHER



MACKEY PUTMAN



BRYANT RAY



HILTON SCATES



MEREDITH SMITH



NANCY LEE SMITH



GEROL SWAIM



NANCY TAYLOR



MATT TOMLIN



JUDY VERNER



GLEND  
McDANIEL



SUE WALKER





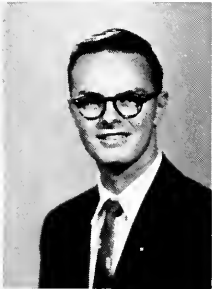
DAVE SHEPPARD



BARBARA JO  
SULLIVAN



HARRIET  
SCHROEDER



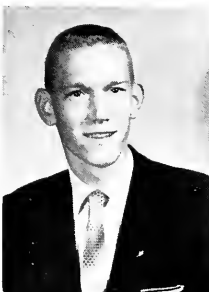
JAMES SHELTON



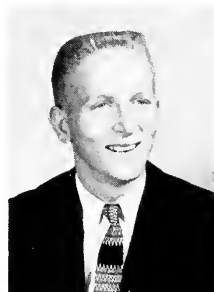
ANITA WEAVER



CLAUDE YAGER



TOMMY SMITH



CHARLES MILLER



ELSIE YOUNG





SHIRLEY PICKENS



DONALD DAVIS



DAVE CUNDIFF



CAROLYN MORSE



FRANKIE MILLER



SHIRLEY NEISLER



MARY ALICE  
WATKINS



DANNY DUNAGAN



## FRESHMEN NOT PICTURED

BILLY NOEL ALEXANDER  
 IMA CLAIRE ALEXANDER  
 OTIS RAY ALEXANDER, JR.  
 WARREN G. ALEXANDER  
 JAMES C. ALLCOCK, JR.  
 NANCY ARWOOD APPLEWHITE  
 KENNETH LEE ARNOLD  
 MARGARET AZBILL  
 JOHN BANE  
 JOHN THOMAS BARNES  
 VERDIA JEAN BEARD  
 JOE LEE BENTHALL, JR.  
 JOSEPH RAY BISHOP  
 SANDRA VIVIAN BISHOP  
 MARGARET LOU BLACKBURN  
 GLENDA LOU BLACKWOOD  
 DAVID DEWEY BLAKELY  
 JOE RICHARD BOBBITT  
 TED LEE BORUM  
 WANDA MARIE BOYD  
 G. WAYNE BROWN  
 A. MARIE BROWN  
 BETTY JEAN BUTLER  
 PHYLLIS CARLOTTA BUTTS  
 PHILIP CARLTON CARROLL  
 CLYDE CALVIN CATES  
 B. V. CATHY, JR.  
 DONA RAE CHAPMAN  
 DARRELL KEITH CHILCUTT  
 LAMAR RAY CHILDRESS  
 DONALD COLLOMP  
 THOMAS E. COX  
 OLIVE CRENSHAW  
 ROBERT ARTHUR CUMMINGS  
 GERALD BOARDMAN DANE  
 WILLIAM LEWIS DAVIS  
 DONALD RAY DEATON  
 CHARLES DANNY DeCOURLEY  
 GERRY DURELL DILWORTH  
 ALAN DRAKE  
 LENNY LATHAN ELLIS  
 JERRY EVANS  
 FLOYD FLAIRE FERRELL  
 PEGGY J. GALLAHER  
 BARNEY GARWOOD  
 NANCY ELIZABETH GAUGH

KENNETH PAUL GAULT  
 JESSIE GUY GEE  
 MARION D. GENTRY, JR.  
 WENDELL LEE GIBBS  
 JOHN DONALD GREENE  
 BILLY DENNIS GURLEY  
 PETE HALL  
 ROBERT EDDIE HAMLETT  
 ROBERT LOWREY HAYNIE  
 VIRGIL CROCKETT HAZLEWOOD  
 BILLY DALE HISE  
 JAN THOMAS HOLLOWAY  
 BONNIE SUE HOMESLY  
 GORDON RAY HOPKINS  
 HAROLD HOPKINS  
 WILLIAM ELLISTON HOPKINS  
 BARBARA RAMONA HURST  
 DONALD MERRELL JETER  
 ROY THOMAS JOHNSEY  
 EUNG SUN KIM  
 PATSY ANN KING  
 CORNELIA JANE KIRKSEY  
 WILLIAM LAUGHLIN  
 WALKER DEE LEACH  
 HERBERT LEE  
 JAMES THOMAS McAFEE  
 CHARLES LOUIS McCALL  
 LOUIS McEWEN  
 CHARLOTTE MAGILL  
 WILLIAM HAROLD MAYFIELD  
 WANDA LOU MAYO  
 WILLIAM ROBERT MARSHALL  
 BEVERLY ANNETTE MASK  
 JOAN BRADYDE METHENY  
 JIMMY CLAY MIDDLETON  
 SHELTON MERIDITH MITCHELL  
 JOHN PALMER MONTGOMERY  
 IRA LARRY MOORE  
 RAYMOND EARL MOTT  
 LYNN HARRIS MOUNT  
 FRANK MULLER, JR.  
 PATSY NAYLOR  
 JERRY DON OAKLEY  
 TERRY MARTIN OLIVER (withdrew)  
 MARY LEE ORR  
 CURTIS LEROY PARISH

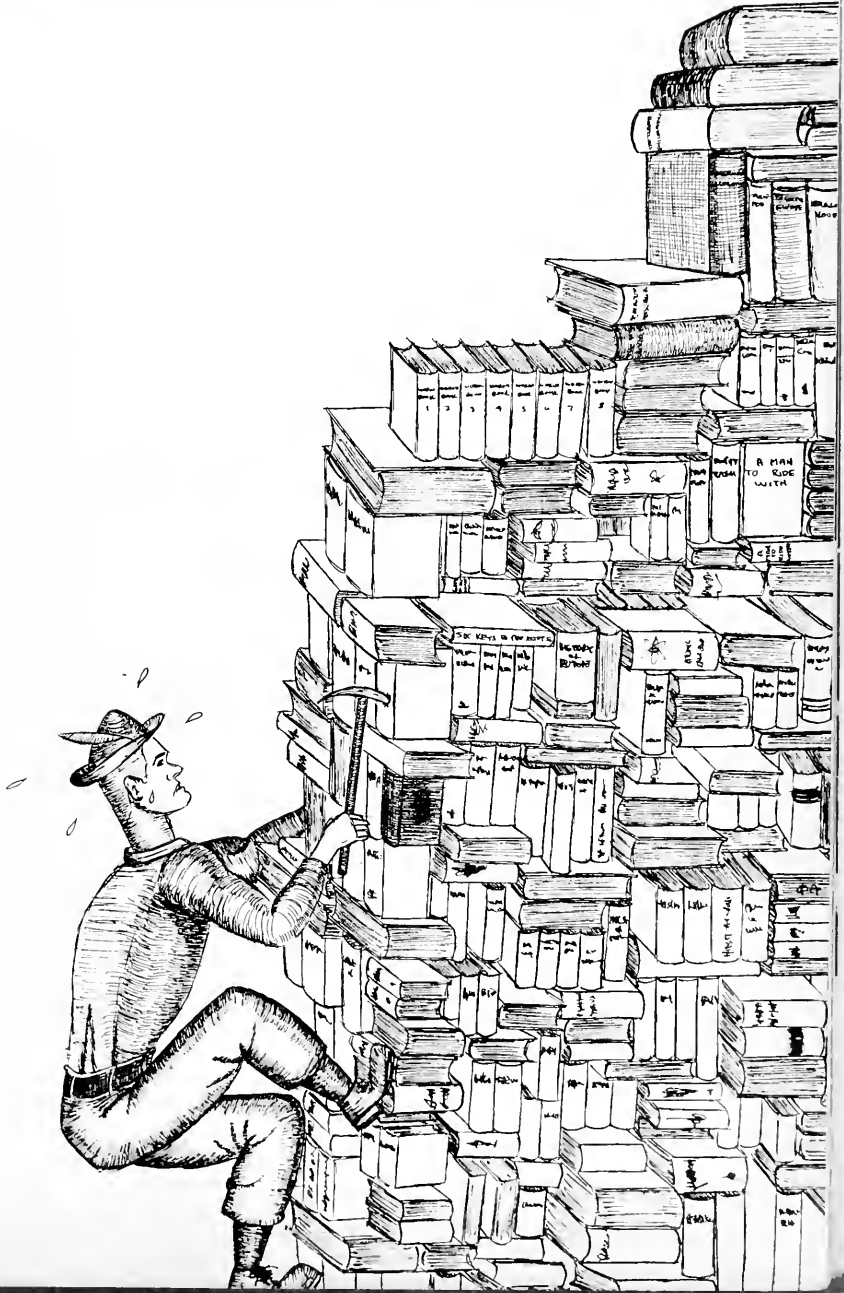
FRANKLIN K. PARKER  
 PEGGY JOYCE PEEPLES  
 ERNEST PERKINS  
 NATHAN HOWELL PILLOW  
 LINDA JEAN PORTIS  
 ELEANOR JANE POWELL  
 ROBERT EDWARD PULLEY  
 ROGER LEE RAMAGE  
 TILMAN LEON RIDGEWAY  
 NELDA JANE ROBINSON  
 PARKER ROE  
 DAVID ROOTE  
 LUE DEAN SAXTON  
 VELMA ROSE SCOTT  
 LLEWELLYN SELLERS  
 MARY DELAINE SHERBENOU  
 DEBRA LYNN SILKWOOD  
 DANNY DWIGHT SMITH  
 JOHN VERNON SNEAD  
 JERRY BEN SOUTHERLAND  
 JERRY LEE SPENCER  
 JAMES LARRY STEED  
 JOYCE MARIE STEVENSON  
 LOIS DALE STYERS  
 GLYNDIA LOUISE TATE  
 PAUL ROBERT TAYLOR  
 JERRY TEAGUE  
 WILLIAM CLARK TEAGUE  
 CHARLES EDD TIMBERLAKE  
 MARTHA ELIZABETH TOLAR  
 MARY ANN TUTTEROW  
 DARRELL VAILS  
 WILLIAM IRWIN VANN  
 JOHNNY MACK VISE  
 MAX THOMAS WALKER  
 KATIE ANN WEBB  
 RALPH ELLIOT WILLIAMS, JR.  
 ROBBIE MARIE WILSON  
 TED DYAND WIMBERLEY  
 ROBERT EDWARD WOMACK  
 JAMES WOOD  
 TRAVIS ALLEN WOODS  
 PANSY WOOSTER  
 JOHN RICHARD WORLEY

## SOPHOMORES NOT PICTURED

EMMET NATHAN AUSTIN, JR.  
 JAMES ARNOLD ATCHLEY  
 KENNETH ALEXANDER  
 ROYCE WILLIAM AGERTER  
 BILLY HALLIBURTON ADKERSON  
 ROUTH ANN BOWLES  
 MARY ELIZABETH BOULTON  
 LARRY DALE BOSTON  
 REX FARRIS BOND  
 WILLIAM NORTON BEARD  
 CECELIA ANN BAGGETT  
 KEILA SERENA CROSSWELL  
 JAMES CARL COUCH  
 JOHN STEWART CONYERS  
 NEWMAN BOBBY CARPENTER  
 JAMES ALLEN DINKINS  
 JOHN WAYNE DAVENPORT  
 CHARLES DAVID EVERS  
 JOHN DALTON FOX  
 JERRY DENE FORSYTHE  
 JAMES ALLEN FERGUSON  
 WILLIAM POLK GLOVER  
 WILLIAM RICHARD GEORGE  
 HAWTHORNE HAMPTON HURST  
 WILLIAM LEWIS HOWSE  
 DONALD CLAYTON HOLLAND  
 PEGGY JEAN HOLDER  
 BEN ALBERT HAY  
 WILLIAM RAYMOND HAWKINS  
 FRED HEWITT HARRIS  
 MANLEY HARDIN, JR.

WANDA BONITA HAMMONDS  
 JOE DAVIE HALL  
 PITTS JERRY JOYNER  
 THOMAS CALVIN KING  
 WILTON PORTER LYNN  
 LAUREN ADELBERT LOCKE  
 TED LEWIS  
 PHYLLIS HOYT LAWRENCE  
 RALPH EUGENE LASTER  
 TREBB MORTON MORRIS  
 RUFUS HENRY MOORE  
 MELVIN FAY MOORE  
 WILLIAM PORTER MAY  
 JESSE RICHARD MANN  
 DAVID ALFRED MALCOY  
 ALLEN RAY MCGINNIS  
 JOHN B. McCOMMON  
 BOBBY DEAN NEWTON  
 HARVELL MELL PRICE  
 JERRELL H. PARCHMAN  
 JOE ALBERT ROLAND  
 KILIAN ROEVER  
 MARLIN DEAN STEWART  
 HAROLD WAYNE STANFILL  
 JOHNNY LEE SMITH  
 ANDY JACK SIBLEY  
 ELEANOR BENNETT WREN  
 BRUCE G. WOODARD  
 ROSALYNE VIRGINIA WHITMILL  
 JERRY LEE WAGSTER

# Freshmen





*Freshman Class Officers . . .*

President: R. N. Graves, Vice-President: Allen Tinker,  
Secretary: Dianne Payne, Treasurer: Wayne Brown, Chaplain: Jerry Spencer

BASSELL ALEXANDER

JANICE BOREN



VANCE AMBROSE

PAT ANDREWS



LINDA BALTZELL

WALTER ALLISON



A. WAYNE BROWN

RITA BUTLER



SARAH BUTLER

JANE CHESTER



BETTY COWAN

DIXIE CLAMPITT



ELIZABETH DAVIS

BOBBY HIGHFILL



BARBARA DELONG

BARBARA DERRYBERRY

MARY DODSON

DON GARDNER



R. N. GRAVES

LINDA DELOACH



GARY HOLLAND

NELLE HULME



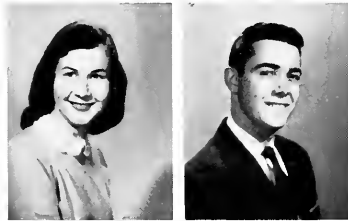
TOBY JACKSON

PEGGY LASTER



CAROL LEUTHGE

BARRY McCOMIC



BETTY McCULLEY

RUBY NEISLER



DIANNA PAYNE

FRANCES PERRY



ANIECE PETERSON

JANETTE POWELL



DORIS RIGGS

BETTY ROY



MARTHA ANN SEWELL

ALLEN TINKER

CAROLYN TOWNSEND

GWEN WEST



VIRGINIA WRIGHT

MALCOLM TIPTON





BETTY DUGARD

ALLEN GRAVES



LARRY GREEN

BECKY EDWARDS



MARION ELLIS

LEON HARRIS



LARRY HOOPAW

MARIE EVANS



ADRIENNE HATCHER

MARTHA ANN HAYES



SHELLEY HIGHSMITH

HAL LOVE



MARY STEPHEN HUDSON

ANN JOHNSON



JAMES PRENTISS

CAROLYN JOHNSON

BETTY JONES

JOE PRENTISS



ALICE LEDBETTER

PAT KIRBY



JEAN DOVE  
NANCY McCOLLUM



PEGGY McLEARY  
JEAN McLEMORE



BETTY MARBURY  
SONDRA MEDLIN



MARTHA MILAM  
CAROL MILLER



BILLIE SUE MOORE  
PATRICIA MORSE



DONNA RAE CHAPMAN

MARGARET AZBILL



SANDRA BISHOP

WANDA BOYD



MARIE BROWN

WAYNE BROWN

BETTY BUTLER

PHYLLIS BUTTS



BARBARA BLAKELY

GLEND A BLACKWOOD



LINDA PORTIS

LYNN MOUNT



ROGER RAMAGE

JANE POWELL



ROSE SCOTT

MARY DELAINE SHERBENOU



DEBRA SILKWOOD

NANCY GAY SMITH



JOHN SNEAD

JOYCE STEVENSON





LOIS STYERS

MARTHA TOLAR



MARY ANN TUTTEROW

RALPH WILLIAMS



ROBBIE WILSON

JAMES WOOD

LARRY MOORE  
LORAIN ARMSTRONG



ROGER RAMAGE  
HAROLD MAYFIELD



LINDA DEES  
BOBBY HIGHFILL



WAYNE SMITH  
BOB MARSHALL

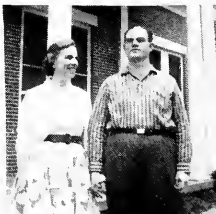
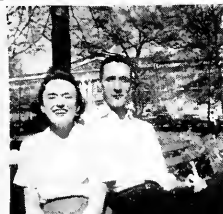


ERNIE PERKINS  
LLEWELLYN SELLARS



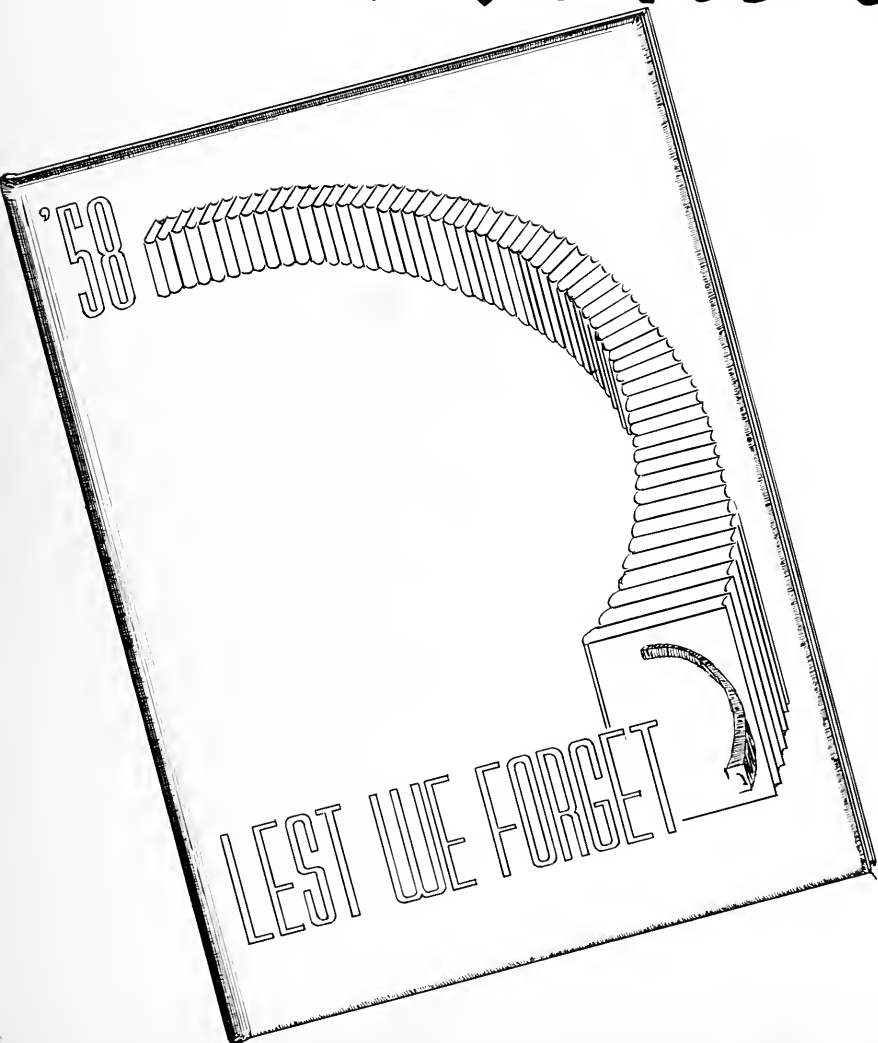
BEVERLY MASK  
JERRY DUNN

# Who's Whose





These we  
Honor...



*Who's Who*  
*among students in*  
*American Colleges and Universities*

*"Who's Who in American Colleges and Universities"* is a national publication in which recognition is given to outstanding college students. Upon approval by the college administration, these students are appointed on the basis of scholarship, leadership, character and extra-curricular activities.

Ten of the students of Union University have been selected and acknowledged publicly for their worthy accomplishments. Their pictures and lists of their activities appear on the following pages.

This is an honor of which one can be proud. We feel that in the years to come these who have been chosen will maintain and humbly bear this honor in the Union Tradition.

### JOHN KENDALL

John Kendall is the son of Dr. and Mrs. Fred Kendall of Nashville. Johnny is majoring in chemistry and minoring in English. He is a member of the B.S.U., German Club, Prince-Davis Science Club, and is now President of the Senior Class. He was also president of the class his freshman year and has served on the Student Council.



### ANN BRAY

Ann Bray, the daughter of Mr. and Mrs. E. E. Bray of Trenton, transferred to Union her sophomore year from Mississippi State College for Women. She is majoring in physical education and history. While at Union she has been active in the Student Council, Hypatia President, Rutledge History Club, Future Teachers of America, Chi Omega Social Sorority and Secretary of Phi Alpha Theta.



#### PAT BLANKENSHIP

Pat Blankenship, the daughter of Mrs. C. G. Blankenship of Memphis, is a religion major. She has been very active in all phases of campus life and is a member of the Student Council, which she has served as secretary, Y.W.A., Rutledge History Club, Footlights Club, Shelbians, Alpha Psi Omega honorary dramatics fraternity, and Chi Omega social sorority. She has been a member of Union's royalty every year and this year was elected unopposed as Miss Union.

#### ROGER BULLARD

Roger Bullard, son of Mr. and Mrs. R. M. Bullard of Memphis, is a ministerial student majoring in English and minoring in religion. Roger has been on the Dean's List consistently all four years and has the highest grade average in his class. He is a member of the B.S.U., the Ministerial Association, serving as program chairman for a term, Nestor Club, of which he is Vice-President, and the Shelbians.



### CHARLES TAPP

Charles Tapp is the son of Mr. and Mrs. M. B. Tapp of Memphis. He is a ministerial student majoring in religion and minoring in psychology. He is a member of the B.S.U., Ministerial Association, is President of the Nestor Club, a member of the Shelbians, and has served in various class offices including that of chaplain and vice-president.



### JAMES DEATON

James Deaton, son of Mr. and Mrs. Marvin Deaton of Jackson, is majoring in music and harmony. While at Union, Jimmy has been well known as a fine musician, playing in the band, various instrumental groups, and singing in the chorus. He is also a member of the B.S.U., Allegro Club, and Sigma Alpha Epsilon social fraternity, of which he has been president.



### JAMES WATTS

James Watts, son of Mr. and Mrs. R. W. Watts of Spring Creek, is majoring in chemistry and minoring in math. While at Union, James has been active in the Mallory Math Club and the Prince-Davis Science Club, serving as president in both. Also, he is a member of the Nestor Club, of which he is secretary, and Sigma Alpha Epsilon, of which he has been treasurer.

### PAUL SIMMONS

Paul Simmons, son of Mr. and Mrs. Dewey Simmons of Martin, is a ministerial student majoring in English. He transferred to Union from Southwestern Baptist Junior College, Bolivar, Missouri, in 1956. Since he has been at Union, Paul has been a member of the Ministerial Association, B.S.U., in which he has held several offices, and was elected class speaker this year.



### CAROL NEWBERRY EDMONDS

Carol Newberry Edmonds is the daughter of Mr. and Mrs. C. B. Newberry of Jackson. She is majoring in English and minoring in Spanish. She is a member of the Future Teachers of America, B.S.U., Y.W.A., Hypatia, and has served as secretary of Chi Omega and treasurer of Los Picaros Spanish Club.



### JIM MARTIN

Jim Martin, son of Mr. and Mrs. W. F. Smith of Bismarck, Missouri, is a ministerial student majoring in religion and sociology. Jim was president of his class, both his sophomore and junior years, and is now president of the student body. He is a member of the student council, B.S.U., and the Ministerial Association, which he has served as treasurer. He also holds membership in Nestor Club, of which he is treasurer, and the German Club. He was elected as Best All Around Boy his Junior year.



*Mr. and Miss Union...*

MISS PAT BLANKENSHIP AND BILLY MURPHY





*Best All-Round Boy and Girl...*

MISS BARBARA WILSON AND REX ENOCH



*Senior Escort*

PEGGY TREVATHAN



*Junior Escort*

BARBARA WILSON



*Sophomore Escort*

MARY ALICE WATKINS



*Freshman Escort*

PEGGY McLEARY



*Most Popular...*

MISS JANIE TOMOOKA AND JIM BRANDON



*Most Handsome Boy . . .* DON PACE



*Seniors Most Likely to Succeed*

MISS CAROL CHAMBERS *and* JIM MARTIN



*Mr. and Miss B. S. U....*

MISS SHIRLEY PRINCE *and* REX ENOCH



*SAE Queen . . .* PAT BLANKENSHIP





*AJO Sweetheart . . .* MIRIAM WATT



*Strawberry Queen . . .* MISS PEGGY McLEARY



*Court*



ALICE LEDBETTER



BARBARA WILSON



LLEWELLYN SELLARS



*Basketball Queen . . .*

MISS MARTHA ANN LANIER escorted by PAUL SANDERFER

Maids and Escorts, *clockwise*: Barbara Wilson and Larry Boston, Janice Dotson and Rex Enoch, Peggy Laster and Sonny Austin, Mary Orr and Ray Pollard.



*Union Meets Lambuth*





*Most*

PAT BLANKENSHIP



BARBARA WILSON

*Beautiful*

ELLEN MILES



DEMPLE NORVILL

*Most*



HARRIET METTS



LINDA DeLOACH



PEGGY GALLAHER



*Beautiful*

PEGGY TREVATHAN

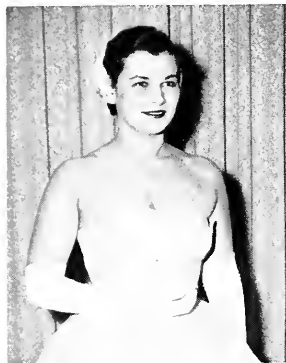


PEGGY McLEARY

LORRAINE ARMSTRONG



# *The Freshman Queen and Her Court*



BETTY COWAN



LORRAINE ARMSTRONG



QUEEN PEGGY GALLAHER

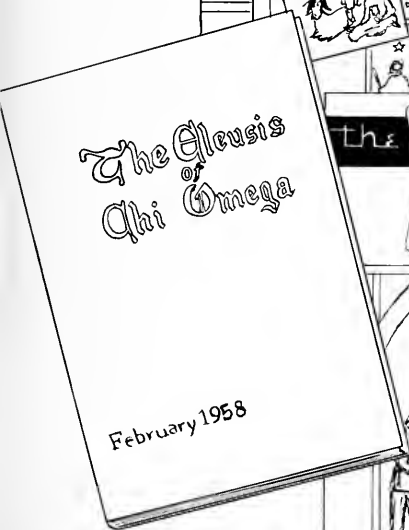
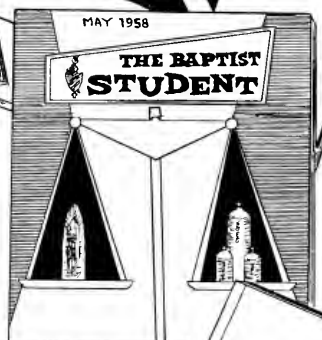


LINDA DeLOACH



LINDA BALTZELL

# Organizations





*President of Student Body . . .* JIM MARTIN



## *Student Council...*

*Beginning Back Row Left:* Ken Arnold, Paul Sanderfer, Larry Patton, Dick Vincent, Johnnie Barber, Peter Rhea Jones, Ken Story, Gayla Dennis, Billy Hammonds, Clyde Ray Briggs, Pat Blankenship, Myrna Holland, Miriam Watt, Jim Martin, Dr. Kelly Thurman, Sponsor.



*Left to Right: Larry Patton, Bobby Agee, Nelle Hulme, Mrs. Blythe, Becky Edwards, Miriam Watt and Gayla Dennis, Editor.*

## *Cardinal and Cream*

### STAFF MEMBERS

EDITOR .....	Gayla Dennis
BUSINESS MANAGER .....	Kenneth Story
SPORTS EDITOR .....	Bobby Agee
PHOTOGRAPHER .....	Raymond Burke
TYPIST .....	Nelle Hulme
REPORTERS: Larry Patton, Miriam Watt, Larry Gay Lane and Becky Edwards.	
SPONSORS .....	Mrs. Helen Blythe, Dr. Kelly Thurman



## *Lest We Forget*

*Left to Right: Johnnie Barber, Nancy Jeffress, Mrs. Blythe, Nelle Hulme, Becky Edwards, and Bobby Agee.*



FRED HARRIS E.D.A.



JOHNNIE BARBER  
E.T.



REX ENOCH  
E.R.



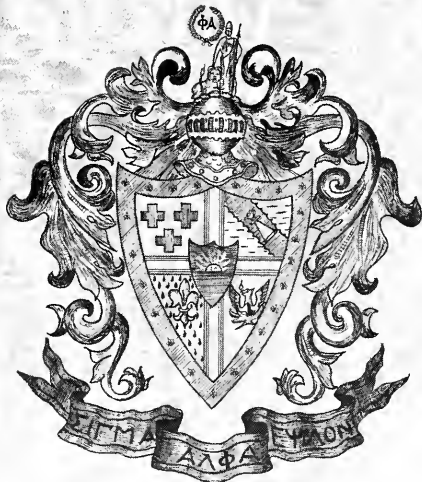
JOE ELLIS  
E.T.



DON HOLIFIELD E.D.A.



DON PACE  
E.A.



CLYDE BRIGGS  
E.A.

## Tennessee Eta Chapter Of Sigma Alpha Epsilon

FOUNDED: March 9, 1856 at the University of Alabama.

COLORS: Royal Purple and Old Gold

FLOWER: Violet

A fraternity house, a handshake, a badge, a name, a password,—these are not the things which make fraternity. Hearts bound in one accord, singing together, eating together, laughing together, working together, worshipping together, living together—these do make fraternity. This is Tennessee Eta of S.A.E. Christian ideals, heart deep relationships, brotherhood with all mankind; these are the very essence of Sigma Alpha Epsilon.

This was a year of memories, brimful with joy . . . as we crowned the lovely Miss Pat Blankenship at the Coronation Banquet; as needy children experienced an unexpected Christmas; and as eleven young men entered the circle of brotherhood . . . and a year of vigorous activity as the Sig Alphas excelled in sports; as they built a basement chapter room; as they traveled to Montgomery Bell for the splash; and as many worked in positions of campus leadership.

Here are a portion of our brothers' attainments: Rex Enoch was president of B.S.U., Jim Deaton and James Watts were elected to "Who's Who In American Colleges and Universities." Don Pace was elected Most Handsome Boy for the second time, James Watts was awarded a fellowship by the Atomic Energy Commission, Rex Enoch was elected Best All-Round. The S.A.E. queen, Pat Blankenship, was elected Miss Union. Clyde Briggs was elected Senior Class Representative to the Student Council. S.A.E. was represented on the staff of both publications. Johnnie Barber was editor of the "Lest We Forget!" and vice-president of the Junior Class. Bill Bickers was the Senior class speaker. Five Sig Alphas were on the Dean's list and there were many brothers in the numerous scholastic and interest groups on the campus.

This, then, is our fraternity—minds, moods, and motives. all varied yet harmonious.





*Left to Right:*

*Row One:* Jim Deaton, Jim McKissack, Bill Brown, George Fisher, Bill Haynes, Vail Hiers.

*Row Two:* Bill Priddy, James Watts, Rex Bond, Don Davis, Joe Hall, Bill Howse.

*Row Three:* Bill Haney, Gordon Orrell, David Roote, Tommy Smith, Vance Ambrose, Tommy Barnes.

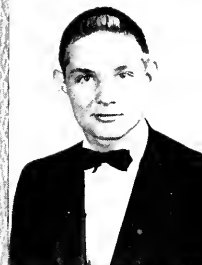
*Row Four:* John Gibbons, Harold Greenfield, Pete Hall, Hal Love, Barry McComic, Franklin Parker.

*Row Five:* Nathan Pillow, Danny Smith, Allen Graves, Roy Johnsey, Jim McAfee, B. A. Rodda.

*Row Six:* Jim Shelton, Charles Timberlake, Irwin Vann.



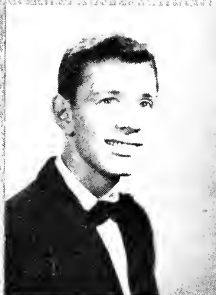
BOB CARPENTER  
WC



FRANKIE MILLER  
WKE

## Alpha Tau

FOUNDED: *Virginia Military Institute,*  
*Richmond, Virginia; Sept. 11, 1865.*



PETER RHEA JONES  
WM

## Omega Fraternity

COLORS: *Azure & Old Gold.*

FLOWER: *White Tea Rose.*

Founded as a national organization, not imitating nor opposing any existing Greek organization, Alpha Tau Omega was distinctive among fraternities in one respect; it chose Christ and Christianity, rather than any Hellenic philosophy, as its founding stone. In its ninety-three years of growth, ATO has expanded in its efforts "to bind men together in a brotherhood based upon eternal and immutable principles" until it is now an international system claiming 118 chapters.

During the year 1957-58, Beta Tau Chapter has done its part in advancing the ideals of Alpha Tau Omega. With some 40 brothers on campus, the Taus have taken part in almost every phase of campus activity. They were represented in eight class offices, with Brother R. N. Graves serving as President of the Freshman Class and Pledge Allan Tinker serving as Vice-President. Brother Peter Rhea Jones led the Junior Class as their President, and also doubled as Vice-President of the Student Body. Brother Bill Murphy was chosen as Mr. Union and was accompanied by four ATO escorts. Brother Jim Brandon was elected Most Poplar Boy on Campus and Brother Larry Patton served as feature editor for the *Cardinal & Cream*, as well as starring in the Spring Dramatic Presentation. Brothers Dick Vincent, Johnny Rose, and Tom Murchison served as Intramural Director, assistant Basketball coach and tennis coach, & Student Sports Publicity Director respectively.

In scholarship, Alpha Tau was 6.25 points above the All-Men's Average and more than nine points above the All-Fraternity Average. Brother R. N. Graves led the Chapter by maintaining an "A" average during his first two semesters. Taus were members of the Student Council, as well as all major clubs on campus, holding offices in seven of them. Included on the list of club members were four in the Nestor Club and three Alpha Psi Omegas. Brother Bob Carpenter is serving as the current B.S.U. president with six other brothers on the Council. In athletics, ATO won the Intramural football trophy for the second consecutive year. On the team which went on to win the NAIA Regional Championship, Alpha Tau placed nine brothers, including co-captains Orr & Scott. In track, tennis, and cross country, we were well represented and placed five brothers on the baseball team. In addition, ATO furnished the two male basketball cheerleaders.

The ATO social year was highlighted by numerous parties, the all-important Sweetheart Banquet, with the crowning of Miriam Watt as Chapter Sweetheart; the Founders' Day Banquet; and finally the week-end at Natchez Trace, the Spring Splash.

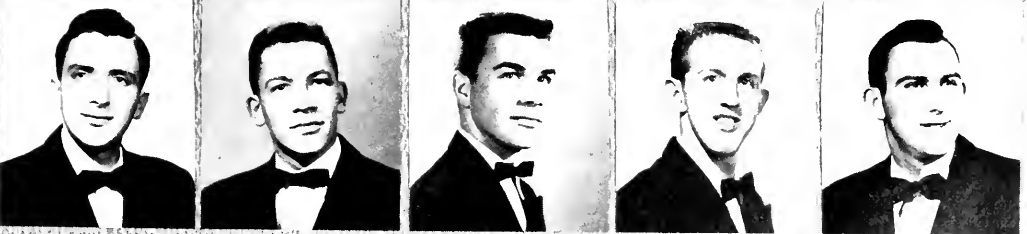
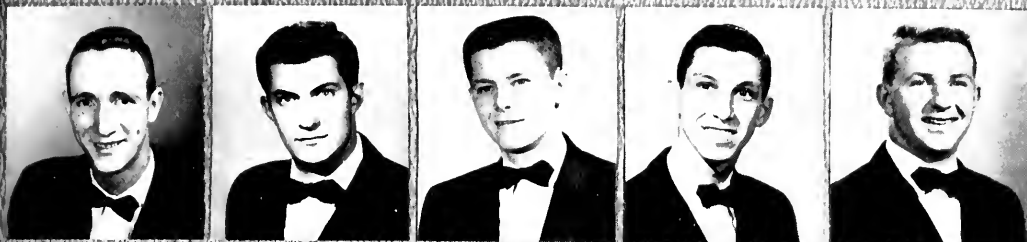
And now, as we wind up another successful year, we have a lot to look back upon and remember; the years with "Mother Ed" Stanfill as Chapter Mom; the service of Mrs. Wardie McGavney as house mother; the wonderful way in which "Maid Miriam" has reigned as Sweetheart; the summer spent remodeling the house; the meetings which lasted until the "two small hours"; the Saturday night dates at the house, the pledges winning the Home-Coming "Bulldog" Trophy—all these things which will never be recorded in the Fraternity annals. They, too, have played their part in making this a great year in the hearts of all Union Taus.

LARRY PATTON  
WKA



DAVE CUNDIFF  
WSC





*First Row:* Paul Sanderfer, Eddie Hamlett, Tom Murchison, Raymond Beston, Gerald Dame.  
*Second Row:* Bobby Highfill, John Montgomery, Polk Glover, Billy Murphy, Roy Collomp.  
*Third Row:* Jerry Spencer, Johnny Smith, Jerry Phillips, James Scott, Roger Van Metre.  
*Fourth Row:* Dalton Fox, Jim Brandon, Larry Boston, Jim Bailey, R. N. Graves.  
*Fifth Row:* James Allcock, Wayne Brown, Malcolm Tipton, Dave Evers, James Smith.

# Upsilon Of Chi Omega



President  
MIRIAM WATT



Treasurer  
CAROL EDMONDS



Rush Chairman  
PEGGY TREVATHAN



Secretary  
ANN BRAY



Vice-President  
VIRGINIA RUTH  
PEARCE

Founded at the University of Arkansas, Fayetteville, Arkansas, on April 5, 1895.

COLORS: *Cardinal and Straw*

FLOWER: *White Carnation*

The Upsilon Chapter of Union University endeavors in all phases of life to give truth and light to its open motto, "Hellenic culture and Christian ideals." Deep within the heart of each member is a wonderful bond of unbroken love and friendship. This bond grows with the years and is ever a source of enlightenment.

This year certainly was one of which to be proud and one in which much enjoyment was had. The Chi O's were the recipients of many awards and honors. Among these, Miss Union and escorts; Queen of Sigma Alpha Epsilon; Sweetheart of Alpha Tau Omega; Cheerleaders; Freshman Queen and Maids; Strawberry Queen; Representatives in the Ten Most Beautiful Girls. Three members, Ann Bray, Carol Edmonds, and Pat Blankenship were chosen for membership in Who's Who in American Colleges and Universities. Other Chi O's were basketball maids and class officers. Officers and membership were held in Hypatia Literary Society; Footlights Club; Alpha Psi Omega; Latin Club; Psi Alpha Theta; Minerva Club; *Lest We Forget* Staff; *Cardinal and Cream* Staff; Library Staff; Student Council with Miriam Watt serving as Secretary-Treasurer; B.S.U.; Prince-Davis Science Club; Spanish Club; and the Mallory Math Club.

Chi Omega's social life has been full this year beginning in the fall with a Supressed Desire Party, a chicken supper, a surprise party for actives, the annual Sweetheart Banquet, Fall and Spring Eleusinia, and climaxed with a spring outing. The civic activities included a Christmas party for a needy family, complete with Santa Claus and gifts; giving Thanksgiving and Christmas baskets, and selling papers for the Lions Club.

So, it is with mixed emotions of joy for a year well done and sadness for those who are leaving us, that we close this year. Memories of the year will live forever in our hearts and we will recount them many, many times. Next year, we know, will be another characterized by love and friendship.



*Top Row:* Carole Green, Larry Gay Lane, Meredith Smith, Mollie Burnett, Ellen Miles, Sandra Miller.  
*Second Row:* Annette Clark, Loydell Smith, Peggy McLeary, Pat Hammonds, Carol Miller, Carol Chambers.  
*Third Row:* Joyce Hutson, Robbie Wilson, Alice Ledbetter, Mary Stephen Hudson, Janice Boren, Barbara Derryberry.  
*Fourth Row:* Linda Baltzell, Phyllis Butts, Joan Metheny, Toby Jackson, Nancy Gay Smith, Nancy Bowlin.  
*Fifth Row:* Macky Putman, Becky Edwards, Martha Ann Hays, Betty Dugard, Carol Luethege, Lorraine Armstrong.  
*Sixth Row:* Joyce Stevenson, Adrienne Hatcher, Pat Kirby, Nancy Gaugh, Joyce Ann Brint, Mrs. L. D. Rutledge, *Chapter Mother*.  
*Not Pictured:* Pat Blankenship, Mary Ann Smith, Theodora Burdette, Harriet Metts, Patty Davis, Barbara Jo Roever, Serena Crosswell, Anne Bowles, Linda DeLoach, Betty Butler, Peggy Gallaher, Pharra Lee Newsom, Barbara Stallings, Gayle Driver, and Janette Powell.

# Beta Omega Of Zeta Tau Alpha

Founded at Longwood College, Farmville,  
Virginia, October 15, 1898.

COLORS: *Turquoise Blue & Steel Gray.*

FLOWER: *White Violet.*

Amid the colors of blue and gray the Zetas of 1957-58 have achieved success in every area of campus life. They have also deepened and widened their circle of friendship and love. Truly this exemplifies all of the standards which Zeta Tau Alpha represents.

Her outstanding officers have guided and directed the chapter through each successful undertaking.

Serving in leadership capacity were: *President*, Helen Kemp; *Vice-President*, Betty Jo Pennington; *Recording Secretary*, Glenda McDaniel; *Corresponding Secretary*, Delores Dorris; *Treasurer*, Carolyn Tisdale; *Historian*, Joan Garey; and *Rush Chairman*, Shirley Pickens.

Beta Omega added to its vast storehouse of memories with a Founder's Day Banquet, a Harvest Moon Party, a Thanksgiving basket for a needy family, a Christmas breakfast party, Spring Formal depicting a "Holiday in Hawaii," a spring hayride, Mother-Daughter Luncheon, Alumnae Tea, Senior Dinner honoring the senior members of the chapter, and many other informal chapter get-togethers.

Zeta Tau Alpha held representation in many activities on the campus. Some of these activities are: BSU, YWA, Home Economics Club, Hypatia, Business Club, University Chorus, Footlights Club, NEA, Rutledge History Club, Life Service Band, and publication staffs.

In rounding out the year's activities we of Beta Omega hope that the year of 1957-58 has been as happy and successful for others as it has been for us.



HELEN KEMP  
*President*



BETTY JO  
PENNINGTON  
*Vice-President*



GLENDa McDANIEL  
*Recording Secretary*



DELORES DORRIS  
*Corresponding Secretary*



CAROLYN TISDALE  
*Treasurer*



JOAN GAREY  
*Historian*

*Not Pictured*

PATRICIA MORSE  
DIXIE CLAMPITT  
BARBARA DeLONG  
LAURA BETH HARVEY  
JO DORRIS  
BETTY McCULLY  
SHIRLEY PICKENS  
GWENDOLYWN WEST



MARTHA MILAM



JANE CHESTER



MARION ELLIS



PEGGY HOLDER



EMILY FLOWERS



JANICE DODSON



WANDA MAYO



ELIZABETH DAVIS



MARY DODSON



BETTY SUE COWAN



BETTY JONES



PEGGY LASTER



JANE KIRKSEY



IMA ALEXANDER



CAROLYN TOWNSEND



MARTHA ANN SEWELL



JANE ROBINSON



NANCY McCOLLUM





*Left to Right—First Row: Shirley Prince, Student Assistant; Mrs. R. H. Ward, Assistant Librarian; Miss Ruth Gibbons, Head Librarian; Mrs. Jack Farris, Library Assistant; Nancy Jeffress, Student Assistant.*

*Second Row: Student Assistants: Judy Verner, Ellen Miles, Shirley Pickens, Lois Styers, Pat Morse, Harriet Schroeder.*

*Third Row: Emily Flowers, Nancy Gay Smith, John Gibbons, Bassell Alexander, Demple Norvill.*

*Not Pictured: Peggy Gallaher and Dick Wakefield.*

## *Library Staff*

Since the library is the focal point of the campus, an efficient staff is necessary to serve the students at all times. To render this service, sixteen students work under the supervision of Miss Ruth Gibbons, Mrs. Mabel Ward, and Mrs. Jack Farris.





*Seated:* Roger Bullard, Dr. Kelly Thurman, James Watts, and Charles Tapp.  
*Second Row:* Peter Rhea Jones, Tom Murchison, Billy Bickers, and Paul Simmons.  
*Third Row:* Crafton Clift, Jim Sorrell, Paul Sanderfer, Jim Martin, and Johnnie Barber.

## *Nestor Club . . .*

Once each month the thirteen members of the Nestor Club meet for an evening of enjoyable fellowship and discussion. This dinner club is composed of twelve student members and a faculty sponsor. The student members are selected on the basis of their scholastic achievement, all other things being equal. After dinner two of the members read original papers on any subject in which they happen to be particularly interested. Since 1931 one of the high points of the year has been the joint meeting with Nestor's sister club, Hypatia.

The Nestor Club was founded in 1913 by Prof. J. L. McAliley, then bursar and professor of Latin, himself a Union graduate. Nestor took its name from a classical theme. Nestor, a descendant of Prometheus, was the oldest and wisest of the Greek chieftains during the Trojan War. Dean A. W. Prince, professor of chemistry and co-founder of our Science Club, was Nestor's sponsor for many years. The guide for recent years has been Mr. Troy Young, a member during his student days, and sponsor while on the faculty and staff until his resignation this year. Since then Dr. Kelly Thurman has served in this capacity.

The fellowship experienced and ideals developed by these associations are of permanent value to each Nestor.



*First Row:* Emily Flowers, Patty Davis, Miriam Watt, Ann Brigham.  
*Second Row:* Dorotha Oliver, Ann Bray, Gayla Dennis, Larry Gay Lane,  
Carol Chambers.

## *Hypatia . . .*

Hypatia is devoted to the development of special knowledge in the literary field. Its membership is limited to Junior and Senior girls who possess a high scholastic record. Once each month the group meets to discuss recent developments in literature.

*Sponsor* ..... Miss Marian Crocker



## *Future Teachers of America*

### FRANK E. WELLS CHAPTER

*First Row:* Ann Bray, Ellen Miles, Paul Sanderfer, Virginia Ruth Pearce, Carolyn Tisdale.

*Second Row:* Ann Neal Pattat, Gayle Upton, Patsy King, Betty Marbury, Joyce Bryson, Mary Caroline Allcock.

*Third Row:* Miriam Watt, Evelyn Marbury, Dorotha Oliver, Larry Gay Lane, Norma Kolwyck, Emily Flowers, Ruth Azbill.

# Shelbians



*First Row:* Harriet Schroeder, Donna Rae Chapman, Barbara DeLong, Ann Baggett, Carole Green.

*Second Row:* Ralph Williams, Ann Bowles, Dean Clark, Anita Lowe, Nelle Hulme, Bobby Agee.

*Third Row:* Bill Jackson, Harriet Metts, Emily Cavendar, Gayla Dennis, Pat Andrews, Bob Carpenter.

*First Row:* Tommy King, Paul Sanderfer, Anita Lowe, Eudora Jones, Carol Chambers, Carl Simmons, Marlin Stewart.

*Second Row:* John Davenport, Allen Ray McGinnis, John Gibbons, Bruce Woodard, James Watts, Don Holifield, Hilton Scates.

# Mallory Math Club





*First Row:* Frances Giles, Patricia Sansing, Mary Carolyn Allcock, Mary DeLaine Sherbenow, Meredith Smith, Schelley Highsmith, Patty Davis, and Pat Kirby.

*Second Row:* Dickie Laughlin, Billy Butler, Mrs. Elisabeth Fossey, R. N. Graves, Bonnie Sue Homesly, Wanda Boyd, Dianna Payne, Martha Milam, Betty Butler, Sylvia Wilson, Carolyn Townsend, Serena Crosswell, Mary Stephen Hudson, Gerald Dunn, Mr. Wood.

*Third Row:* Richard Mann, James Smith, Jerry Nowell, Vail Hiers, John Conyers, James Allcock, Don Dillingham, Gerald Morrow, John Snead, William Tate, Melvin Childress, and Don Holland.

## *The Allegro Club*

The Allegro Club is composed of music majors and minors, the music faculty of Union, and all others interested in music. The purpose of the club is to stimulate interest in, and to encourage the study, appreciation, and enjoyment of music; and to develop the individual's ability to perform.

### OFFICERS

*President* ..... Don Dillingham

*Vice-President* ..... James Allcock

*Secretary-Treasurer* ..... Serena Crosswell



*First Row:* Harvey Gill, Royce Agerter, Jack Naylor, Mrs. Rutledge, Bobby Agee, Rex Enoch.

*Second Row:* Mary Roy, Virginia Ruth Pearce, Nancy Lee Smith, Fred Harvey, Sandra Miller, Carol Green.

*Third Row:* Johnnie Barber, Fred Cox, Gayla Dennis, Ann Bray, Jim Sorrell, Ernie Carter, Peter Rhea Jones.

## *Rutledge Honorary History Club*

The Rutledge Honorary History Club was founded on November 7, 1929, for the encouragement of study in the field of history and current events. The club stresses scholarship and its goal is membership in the National History Fraternity, Phi Alpha Theta

### OFFICERS:

*Sponsor* ..... Mrs. Rosa Dyer Rutledge  
*President* ..... Jack Naylor  
*Vice-President* ..... Jim Sorrell  
*Treasurer* ..... Raymond Boston  
*Secretary* ..... Virginia Ruth Pearce



*First Row:* Martha Williams, B. R. Coleman, Mrs. L. D. Rutledge, Judson Lambert.

*Second Row:* Jack Naylor, Betty Walker, Mallie Newsome, Mary Howell Anderson, Ann Bray.

*Third Row:* Prof. Ernest Muntz, Dr. R. H. Ward.

## *Delta Psi Chapter of Phi Alpha Theta*

The Delta Psi Chapter of Phi Alpha Theta, National Honorary Scholarship Fraternity in History, was the 119th national chapter and the first established in the State of Tennessee. It was established at Union University on October 17, 1953, by active and alumni members of the Rutledge Honorary History Club. Its purpose: to encourage research and writing.

### OFFICERS:

<i>Faculty Adviser</i>	Mrs. L. D. Rutledge
<i>President</i>	Betty B. Walker
<i>Vice-President</i>	Martha Williams
<i>Historian</i>	Mallie Newsome
<i>Secretary</i>	Ann Elizabeth Bray
<i>Treasurer</i>	Jack Naylor



MEMBERS: *First Row*—Bobby Kendig, Pat Blankenship, Jerol Swaim.

*Second Row*—Roger Bullard, Charles Greathouse, Johnny Barber, Mrs. Adams, Shirley Neisler, Ronny Rodgers, Harvey Gill.

## *Latin Club...*

The purpose of this club is to increase a member's knowledge of Latin and to gain an insight into the Roman civilization, its laws, customs, religion, and ordinary life, with a consequent appreciation of our indebtedness to the past.





*Seated:* Larry Gay Lane, Gayla Dennis, Annette Clark, Theodora Burdett.

*Standing:* Mr. Warren Adams, Carolyn Morse, Virginia Ruth Pearce, Shirley Gordon, Nyta Garrett, Carol Edmonds, Shirley Bledsoe, Mrs. Warren Adams.

## *Los Picaros*

## *Jill Eulenspiegel*

*Seated:* Jack Naylor, Bobby Joe Osborne, Verdia Beard, Tom Murchison, Mr. Warren Adams.

*Standing, 1st Row:* Bill Carver, Kilian Roever, William Beard, Allen Ferguson, Harvey Ray Gill, Joe Davis.

*Standing, 2nd Row:* Roger Bullard, John Henderson, Kenneth Story, Larry Patton, Prentiss Ferrell, Jim Anderson..





*Front Row:* Linda Portis, Glenda Blackwood, Peggy Laster, Jane Kirksey, Jo Hargett, Lynn Baltzell.

*Back Row:* Mrs. Williams, Ann Bray, Harriet Metts, Emily Cavender, Larry Gay Lane, Wanda Hammonds, Anita Weaver.

## *Girls' Physical Education Club*

The girls' physical education club is a newly formed organization on Union's campus. The purpose of having the club is to stimulate more girls to become interested in physical education, and to promote the girls' intramural program. To be eligible for membership, one must be a sophomore, majoring or minoring in physical education. Our sponsor is Mrs. B. C. Williams.

The officers for the club are as follows:

*President* ..... Larry Gay Lane  
*Vice-President* ..... Lynn Baltzell  
*Secretary* ..... Emily Cavender  
*Treasurer* ..... Anita Weaver, Betty Pennington  
*Intramural Director* ..... Harriet Metts



## *Home Economics Club*

*Seated:* Rosalie Follis, Beverly Blalack, Mrs. Johnson, Ann Neal Pattat, Ann Brigham.

*Second Row:* Gayle Prather, Jo Hargett, Sandra Miller, Carol Leuthge, Phyllis Butts.

*Back Row:* Joan Garey, Wanda Hammonds, Nancy Ward, Jean Dove, Carol Miller and Ann Baggett.



## *Alpha Psi Omega . . .*

LEFT TO RIGHT:

*First Row:* Carole Green, Pat Blankenship, Mrs. Loyd

*Second Row:* Anne Bowles, Theodora Burdette, Jim Brandon, Miriam Watt

*Third Row:* Larry Patton, Ray Pollard, Ted Clark, Bill Carver, Paul Sanderfer



*Pictured from left to right; Row one:* Larry Patton, Ray Pollard, Demple Norvill, and Paul Sanderfer.  
*Row Two:* Joyce Hutson, Carol Leuthge, Mrs. Elizabeth Loyd, Miriam Watt, Mary Delaine Sherbenou, Carol Green.  
*Row Three:* Ann Bowles, Larry Gay Lane, Theodora Burdette, Dean Clark, Nita Lowe, Marion Ellis, Pat Blankenship, and Wayne Brown.  
*Row Four:* Bill Carver, Paul Simmons, Ken Story, Ted Clark, Alan Tinker, R. N. Graves, Roger Bullard, and Jim Brandon.

## *Footlights Club...*

The purpose of the Footlights Club is to stimulate interest in dramatic art on the campus, to promote interest in dramatic presentations, and to offer a service to all students who are interested in dramatics.

It sponsors all play production, including a play tournament, one-act play night, and major productions during the year.

Membership in the club is composed of students who have shown an interest in and a talent for work in speech and dramatics.



*Pageant Pictures*

*Class Plays*



FRESHMAN  
PLAY



SENIOR PLAY



SOPHOMORE  
PLAY



JUNIOR PLAY



*"Three Blind Mice"*





*Union University Band . . .* MR. FREDERIC LUBRANI, *Director*

*Union University Chorus . . .* MR. JOHN HUGHES, *Director*





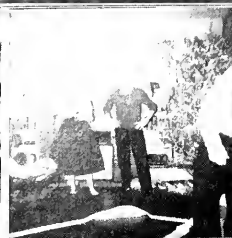


## *Business Club...*

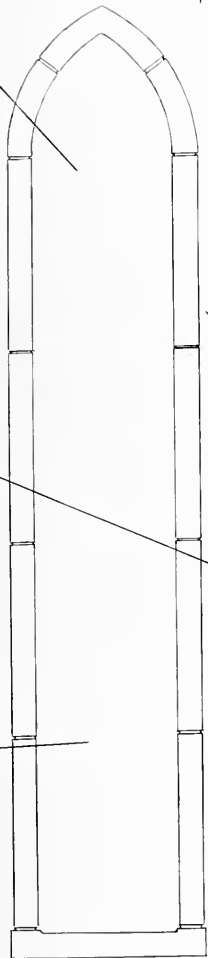
The purposes of this organization are to foster interest in business situations and practices of the American economy, to develop understanding of various business institutions, to develop business skills and leadership ability, to promote the ethical viewpoint among future business leaders, and to encourage social relations among students who are interested in business affairs.

### OFFICERS:

<i>President</i> .....	Don Pace
<i>Vice-President</i> .....	Clyde Ray Briggs
<i>Secretary</i> .....	Betty Marbury
<i>Treasurer</i> .....	Peggy Love
<i>Reporter</i> .....	Tom Murchison



# Religion





*Seated:* Bill Jackson, Hoyt Wilson, Dr. Barefoot, Peter Rhea Jones, Jim Martin.

*Standing, 1st Row:* Allen Tinker, Paul Simmons, Billy Griffin, Max Cannon, Harold Greenfield, Sydney Smith, Jim Anderson, Bill May, Roger Bullard.

*Standing, 2nd Row:* Fred Fowler, Bob Carpenter, Charles DeCourley, Earnest Carter, Reed Sanderlin, Charles McCall, Jim Coleman, Crafton Clift, Prentiss Ferrell.

*Standing, Back Row:* Fred Harvey, Max Walker, Jackie Guerin, Tom Roll, Ralph Williams, Ivan Hulsey, Donald Hopper, Harvey Ray Gill.

## *Union University Ministerial Association*

The Union University Ministerial Association was derived from the J. R. Graves Society which was founded in 1877. The Association helps the ministerial students to become familiar with their future problems and work. The purpose of the Association is to aid in qualifying its members for the gospel ministry by gaining practice in correctly expressing themselves in public and by extending their information on all religious questions.



CROOK HALL — CIRCLE 1



CROOK HALL — CIRCLE 2

*Y.W.A.*



JONES HALL — CIRCLE 1

*Y.W.A.*

JONES HALL — CIRCLE 2



JONES HALL — CIRCLE 3





*Seated:* Shirley Prince, Joyce Bryson, Judy Verner, Harriet Schroeder, Ann Brigham, and Gayle Upton.  
*Standing, First Row:* Paul Simmons, Nancy Taylor, Ellen Miles, Ann Baggett, Betty Marbury, Nancy Jeffress, Pat Blankenship, and Rex Enoch.  
*Standing, Second Row:* Harold Greenfield, Peter Rhea Jones, John Kendall, Johnnie Barber, Ray Pollard, and Bob Carpenter.

## *Baptist Student Union Council . . .*

The Baptist Student Union is more an organism than an organization. It has as its purpose to link the local churches with the college students in the service of Christ while in college.

### OFFICERS:

<i>President</i> .....	Rex Enoch
<i>First Vice-President</i> .....	Bob Carpenter
<i>Second Vice-President</i> .....	Ray Pollard
<i>Recording Secretary</i> .....	Gayle Upton
<i>Corresponding Secretary</i> .....	Ann Brigham
<i>Treasurer</i> .....	John Kendall



*B. S. U.*  
*Weekend Revival Teams*



*Seated at the Piano:* Ann Baggett and Rex Enoch.

*First Row:* Elsie Young, Shirley Neisler, Mary Elizabeth Bolton, Ann Brigham, Nelle Hulme, Harriet Schroeder, Virginia Wright, Delores Dorris, Carol Lenthge, Frances Perry, Margaret Bolton, and Dr. W. H. Kimzey, *Sponsor*.

*Second Row:* Gayla Dennis, Mary Nell Stennett, R. N. Graves, Ruth Azbill, King Abernathy, Charles McCall, Bobby Agee, Betty Lou Marbury, and Jane Frizell.

## *Life Service Band*

The aim of the Life Service Band is to use college days in life service for Christ by promoting projects and sponsoring missions, and to enlist every Christian in full time testimony whether he be a layman or a special religious worker. The activities of this group include jail services and nursing home services.



# MY HOPE IS IN THEE



B.S.U. CHOIR

## *Student Revival*

SUNRISE SERVICE





*The Library*





# Cross Country



CRAFTON CLIFT



KENNETH GAULT



LARRY STEED



BOBBY AGEE

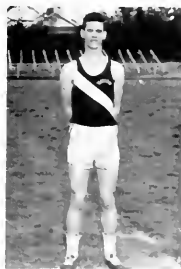
*Bottom Row, Left to Right:* Bobby Agee, Richard Smith, Larry Steed.  
*Standing:* Dave Malloy, Prentess Ferrell, Coach Bill Murphy, Kenneth Gault, Crafton Clift.



JOHNNY ORR



RICHARD SMITH



DAVE MALLOY



## NAIA Tournament

The National Association for Intercollegiate Athletics is an organization set up on a nation-wide basis for the purpose of promoting athletics in the small colleges and universities. Each state is a district and each year there is a district tournament to decide which team will go to the National tournament in Kansas City. This year when the district officials met in Nashville, they named as the four candidates to play in the district tournament: Lambuth, rated first in the tournament because of an impressive season's record; CBC of Memphis, rated second also because of an impressive record; Bethel College, rated third; and Union University, named because of its extremely tough schedule which included such teams as Mississippi State, Memphis State, and Ole Miss. The opening night activity saw Lambuth beat Bethel and in the 1st game of the night, Union beat CBC by a narrow score of 77-74. In the finals Union met Lambuth for the first time in almost a decade and surprisingly enough exquisite sportsmanship was shown. Again the Bulldogs came out on top by a score of 70-65 and gained a berth in the National Tournament in Kansas City.

The District 27 NAIA champs met Anderson College from Indiana in the first game of the national engagement, but the larger Indiana team came out on top by the score of 102-86. Johnny Orr, the big center from Athens, Alabama, was the star of the game when he massed the sum of 33 points.

After the District tournament was over, an all-tournament team was named and four of Union's starting five were named on this team; Johnny Orr, Jerry Forsythe, Jerry Moore, and William Lee.



Union University went into the VSAC tournament rated third in the conference, but without the two all-conference guards, Jerald Hill and William Lee, whose consistent high scoring helped the Bulldogs pile up such a good season's record. But, the Battling Bulldogs just wouldn't be held down because of a mishap. The first game was against a sharp Milligan crew, so, with a substitute guard and a forward moved back into another guard slot, the Bulldogs made their first bid. They came out on top by a fairly close score of 78-74. That left Belmont in the way. Twice before during the season the Bulldogs had met Belmont and the last time won by only one point. In the first game the two fine stand-in guards had scored over twenty points apiece and when the Belmont game was over, Union was again victorious by the score of 89-78 and the two stand-ins had again made over twenty points. That left one game as the deciding factor for who was to be VSAC champs. Austin Peay, the number one seeded team had gone all the way and now must face the game Union squad. Twice before during the season, the two teams had met and each had won a game. At the half-time, the game was tied, but at the close of the game, Austin Peay emerged victor but the fighting Bulldogs were Runner-up to the VSAC championship.

Named to the VSAC ALL TOURNAMENT team were three of Union's starting five. They were; Jerry Moore, Jerry Forsythe, and Johnny Orr.

## VSAC Tournament





**SEASONAL RECORD FOR THE UNION  
BULLDOGS  
1957-58**

**Overall Record 17-14**

UNION		
86	ATHENS COLLEGE	65
95	ATHENS COLLEGE	77
56	MISSISSIPPI STATE	80
69	MEMPHIS STATE	96
63	OLE MISS	95
59	SOUTHEAST MO. STATE	58
73	SOUTHWESTERN	67
56	C.B.C.	59
93	FLORENCE STATE	77
69	AUSTIN PEAY	67
66	DAVID LIPSCOMB	74
70	BETHEL	81
71	FLORENCE STATE	77
63	U.T.M.B.	67
98	LINCOLN MEMORIAL UNIV.	86
96	SOUTHWESTERN	79
85	BELMONT	72
78	U.T.M.B.	95
78	ARKANSAS STATE	72
60	AUSTIN PEAY	91
78	ARKANSAS STATE	95
105	BELMONT	104
80	C.B.C.	81
91	DAVID LIPSCOMB	84
126	BETHEL	96
	(VSAC TOURNAMENT)	
78	MILLIGAN	74
89	BELMONT	78
76	AUSTIN PEAY	86
	(N.A.I.A.) PLAYOFFS)	
77	C.B.C.	74
70	LAMBUTH	65
	(N.A.I.A. TOURNAMENT)	
86	ANDERSON COLLEGE	102

second in the VSAC Tournament in Nashville, playing without the services of their All-VSAC guards, William Lee and Jerald Hill, who were injured. Then when Austin Peay State College, the winner of the tournament, elected to take a bid to the NCAA Tournament, it left a vacancy for the spot to represent NAIA District 27 in the national tournament sponsored by the NAIA in Kansas City. So the Bulldogs, by virtue of their tough schedule and tremendous late-season showing, was named to the Playoffs which were held at Union's Gym, along with Lambuth, CBC of Memphis, and Bethel.

And the Bulldogs came through in fine style, rising from their last place seeding before the tournament to knock off the two top seeded teams, CBC and Lambuth, and for the first time in history qualified for a trip to a national tournament.

The victory in the finals of the Playoff over Lambuth, marked the first time the two schools had met in the last 10 years. In winning the tournament, Jack Russell's boys placed four men on the all-tournament team. Jerry Moore, Jerry Forsythe, Johnny Orr, and William Lee made the grade. Previously, in Nashville, the first three had made the All-Tournament Team of the VSAC.

The Bulldogs were defeated in their first game at Kansas City by Anderson College 102 to 86, but not before giving the Indiana boys a battle.

The entire team will be back next year; as there were no seniors on the squad and only 4 juniors. John Orr, Jerry Moore, and James Scott were three of the juniors and were elected tri-captains for the year.

William Lee proved to be a sensation in his sophomore year. The 6' guard from Lake City, Tennessee, amassed a total of 501 points for a 17.89 points per game average to lead the team in both departments. He also broke a gym record for the most points scored in one game when he poured in 39 against Bethel. Union set a team scoring record that night defeating the Wildcats 126 - 96.

Jerry Moore, in his first year of basketball at Union, was second in scoring and percentage and led the team in rebounds and added tremendous strength by performing well consistently.

Johnny Orr ran his year's total to 305 points and climaxed his season by scoring 33 points in the NAIA clash with Anderson, the highest of his career.

The Union Bulldogs had one of their finest seasons in recent years on the hardwoods as they battled through one of the toughest schedules in their history. To climax their season, the Bulldogs placed





UNION UNIVERSITY FRESHMAN  
BASKETBALL SCHEDULE AND SEASON  
RECORD

UNION

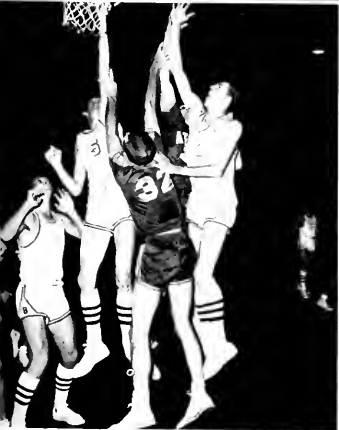
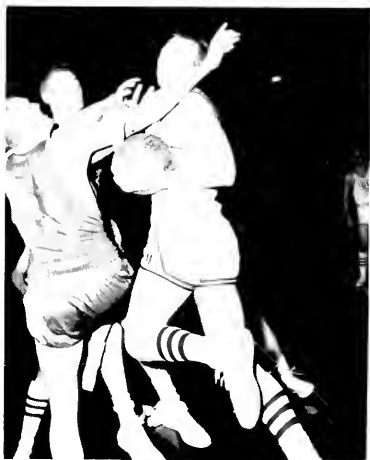
81	BLYTHEVILLE AIR FORCE BASE	89
71	NORTHEAST MISS. JR. COLLEGE	89
47	MISSISSIPPI STATE FRESHMAN	73
57	MEMPHIS STATE FRESHMAN	102
75	OLE MISS FRESHMAN	111
92	SOUTHWESTERN	79
57	DAVID LIPSCOMB	66
71	OLE MISS FRESHMAN	118
99	NORTHEAST MISS. JR. COLLEGE	77
72	MEMPHIS STATE FRESHMAN	86
87	SOUTHWESTERN	74
79	FREED-HARDEMAN	72
67	FREED-HARDEMAN	84
81	DAVID LIPSCOMB	86



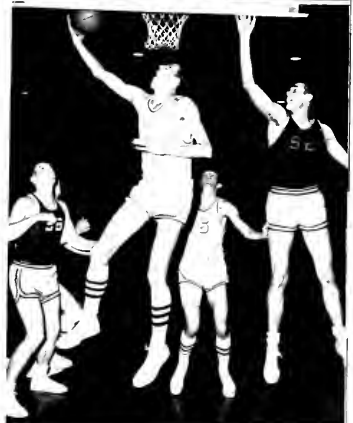
Right: Coach, I. RUSSELL

Left: Manager, J. JOYNER





*Action  
Shots*



# Spring Track...



*Left to Right, Bottom Row:* Tom Murchison, Richard Smith, Larry Steed, Bobby Agee, Otis Alexander.

*Second Row:* Dave Malloy, Crafton Clift, Charles Miller, Walter Allison.

*Back Row:* Jerry Phillips (manager); Wilton Lynn, Kenneth Arnold, Eddie Truett, Kenneth Gault, Charles Taylor, Coach.



**CRAFTON CLIFT;**  
*VSAC Champion mile and 2  
mile, 1957.*



**WILTON LYNN;**  
*Shot Putt, Discus, Javelin.*



**BILLY MURPHY;**  
*Pole Vault, Shot Putt, Discus,  
Javelin, High Hurdles, Low  
Hurdles, Broad Jump.*



**TOM MURCHISON;**  
*100 yd. dash, 220 yd. dash,  
Broad Jump.*



Left: **DAVE MALLOY**  
*2 miler.*  
Right: **KENNETH GAULT;**  
*mile and 880 yd. run.*



**BOBBY AGEE;**  
*440 yd. dash and mile relay.*



**KENNETH ARNOLD;**  
*Javelin*



**LARRY STEED;**  
*880 yd. run and mile relay.*



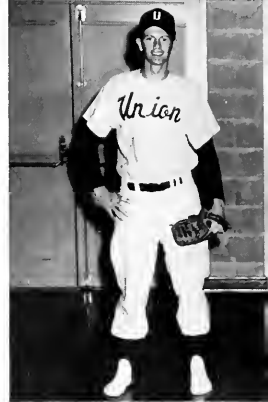
**RICHARD SMITH;**  
*Pole Vault.*



BOB CARPENTER



HARBERT LEE



BOB JOHNSON



JERRY FORSYTHE

## Baseball Schedule

April	1.....	WILLIAM JEWELL.....	HERE
	4.....	NORTH GEORGIA.....	THERE
	5.....	NORTH GEORGIA.....	THERE
	7.....	WESTERN CAROLINA.....	THERE
	10.....	AUSTIN PEAY.....	HERE
	11.....	WHEATON COLLEGE.....	HERE
	12.....	SOUTHWESTERN.....	HERE
	14.....	MEMPHIS STATE.....	THERE
	16.....	UTMB.....	THERE
	19.....	BETHEL.....	HERE
	22.....	MURRAY STATE.....	THERE
	26.....	DAVID LIPSCOMB.....	HERE
	28.....	BELMONT.....	HERE
May	3.....	DAVID LIPSCOMB.....	THERE
	5.....	UTMB.....	HERE
	7.....	BETHEL.....	THERE
	10.....	AUSTIN PEAY.....	THERE
	14.....	SOUTHWESTERN.....	THERE
	16.....	MEMPHIS STATE.....	HERE
	17.....	BELMONT.....	THERE
	20.....	MURRAY STATE.....	HERE



JERRY MOORE

JACK SIBLEY



JOHN MONTGOMERY



JOE ROLAND





PAUL TAYLOR



WILLIAM HOPKINS



RAY BISHOP



JAN HALLOWAY



*Managers, DUNAGAN,  
BRAUNER and SMITH*

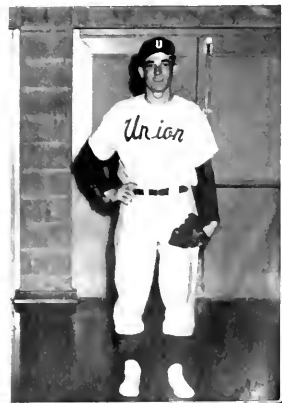


DAVE CUNDIFF

JERRY SPENSER

CLAUDE YEAGER

WILLIAM LEE





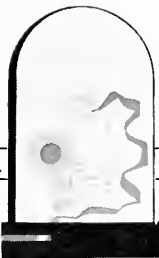
*Left to Right:* Clyde Ray Briggs, Dave Sheppard, Peter Ray Jones, Johnny Rose.

JOHNNY ROSE



CLYDE RAY BRIGGS





BULLETIN . . . . 1958 GRADS VISIT MODERN PRINTING-

LITHOGRAPHING PLANT. . . . STUDENTS VIEW FIRST HAND,

LATEST METHODS - EQUIPMENT USED IN PRODUCING TOP NOTCH ANNUALS

AND OTHER FINE WORK . . . . .



*McCowat-Mercer*  
*Press,*  
INCORPORATED

PRINTERS  
LITHOGRAPHERS  
*Jackson, Tennessee*



*A Friendly Church*

*A Spiritual Church*

*A Growing Church*

**FIRST BAPTIST CHURCH**

Lafayette at Cumberland



---

# CALVARY BAPTIST CHURCH

Nearest the Campus



JAMES CANADAY,  
Pastor

Warmest Christian Fellowship



ALBERT SKINNER,  
Minister of Music

*“Where Students Belong”*

---

## JOHNSEY'S SPORTING GOODS

433 N. Royal — Phone 7-1082 — Jackson, Tennessee

A. G. Spalding  
McGregor  
Bike Web Co.

John T. Riddell Co.  
Southern Ath. Co.  
Converse Rub. Co.

Fred Johnsey

Harry Johnsey

We Renovate All Types of Athletic Equipment

---

---

# WEST JACKSON BAPTIST CHURCH



Deaderick at Campbell

*"Where Union Students are Welcome and Wanted"*

DAVID Q. BYRD, Pastor

H. LOWREY HAYNIE, Minister of Music & Education

---



LAUNDRY &  
JACKSON CLEANERS

---

ONE OF THE SOUTH'S FINEST  
LAUNDRY AND DRY CLEANING PLANTS

---



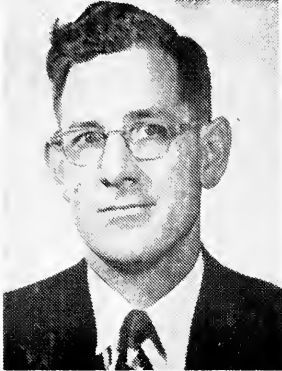
JACKSON, TENNESSEE  
PHONE 7-8557

---

---

*A Friendly Welcome  
Awaits You At*

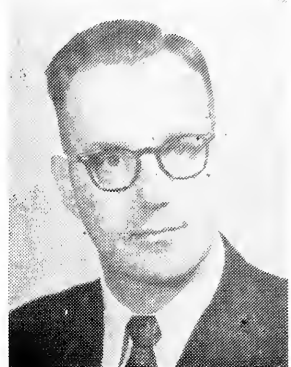
## **THE NORTH JACKSON BAPTIST CHURCH**



LAWRENCE E. GREEN,  
Pastor

"Growing up into Him in all Things"  
—Eph. 4:15

FAIRMONT AT MARTIN STREET



RAYMOND RICHEYSON  
Minister of Music

"While in Jackson you are cordially invited to make this Church your Church Home"

---

## **THE BOOTERY**

209 East Lafayette

Jackson, Tennessee

Compliments  
of

**GLEN-MORE CLOTHES**

Factory to You

108 E. Lafayette

Jackson, Tennessee

*Sand's Florist*

108 S. Liberty St.

Phone 7-9607

---

*Drink* **Dr Pepper**<sup>®</sup>  
THE FRIENDLY "PEPPER-UPPER"  
THAT NEVER LETS YOU DOWN!



---

## SECOND NATIONAL BANK

of Jackson

Capital and Surplus

\$500,000.00



1886

Three Score Years and Twelve

1958

---

---

Compliments of

# McGEE-ROSS

Restaurant Supply and Service Division

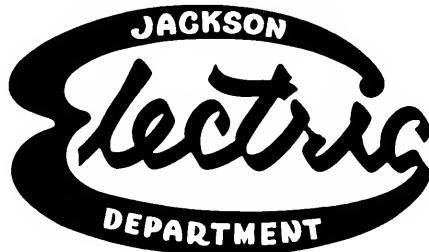
211 E. Lafayette St.

Phone 7-0731

---

Rosenbloom's  
For Famous Brands

---



Compliments

# Shainberg's Black and White Store

"CONGRATULATIONS SENIORS"

111 E. Lafayette

Phone 7-6366

---

---

# **THE MOORE STUDIO**

Portraits · Commercial Photographs · Kodak Finishing  
Phone 7-1296 215 N. Liberty Street

JACKSON, TENNESSEE

---

## *The New Southern*

"An Albert Noe Hotel"

Headquarters for All Your Social  
Activities and Civic Functions

---

Go



At

## **Walter's Service Station**

142 Lexington

Jackson, Tenn.

---

Compliments of

# **RAGLAND - POTTER AND CO.**

---

---

# WILSON-GEYER CO.

455 E. Main

Phone 7-2618

Imperial Washable Wall Papers

Hanna Paint Products

Art Supplies — Picture Framing

---

For The Best In  
PRESCRIPTION SERVICE

## HAYS AVENUE PHARMACY

Phone 7-4496

3 Blocks from Union

---

*Nathan's*  
Stylish Apparel

---

SERVING JACKSON AND MADISON COUNTY SINCE 1873

## The First National Bank

OF JACKSON

Charter Member Federal Reserve System

Member Federal Deposit Insurance Corp.

---

---

**ALBERT'S  
SLIPPER SHOP**

"Jackson's Most Popular Shoe Store"

*Vineyard's* Gift and  
Flower Shop

320 East Lafayette Street

Jackson, Tennessee

---

**WARREN'S GROCERY  
AND MARKET**

IRBY STREET AT UNION UNIVERSITY

---

**LEXINGTON INN**

*"Where Students Get Together"*

---

Drink

*Coca-Cola*

In Bottles

---



---

Every Modern Banking Convenience and Service

# The National Bank of Commerce

Jackson, Tennessee

Total Resources Over \$13,000,000.00

Member Federal Reserve System

Member Federal Deposit Insurance Corp.

---

## McCALL HUGHES

Varsity Town Clothes

Hyde Park Clothes

Lee and Disney Hats

114 North Liberty

J. Walter Knowles

---

### ELITE CLEANERS

Since 1912  
Service that Satisfies

Five Points

Phone 7-3546

Arthur Mainord

Mrs. Billy Mainord

---

The

### *Remnant House*

For Your Piece Goods

209 N. Liberty

---

### HARDEMAN MUSIC CO.

Winter Baldwin Organ  
Gulbranson and  
Conn & Olds Band Inst. Piano  
Sheet Music Teachers' Supplies

112 N. Liberty

---

### STEGALL SHOE CO.

115 N. Liberty  
Phone 7-1126

JACKSON TENNESSEE

Jarman Shoes For Men

---

*Burnett's*  
NATURALIZER  
BUSTER BROWN  
ROBLEE  
**SHOES**

213 E. Lafayette

Phone 7-1796

**THE CAMERA SHOP**

Your Kodak Dealer

Everything For Photography

212 East Main Street Jackson, Tenn.

*Burnley's Flower Shop*

Baltimore Street  
"Next to the Malco"

ALWAYS WELCOME AT CHARLIE'S

Day: 7-5541

Night: 7-1717

**W. P. DABNEY & SON  
FURNITURE CO.**

COMPLETE HOME FURNISHINGS  
R.C.A. APPLIANCES

Church Street where College Passes  
Phone 7-5516 Jackson, Tenn.

FOR YOUR GIFTS AND JEWELRY  
NEEDS COME TO

**ROBERT'S**

"JACKSON'S FRIENDLY JEWELRY STORE"

Engraving for Fraternities and Sororities

Compliments of

**W. W. SCATES and SONS**

Radiator and Wrecker Service

Compliments  
of

**STANDARD'S  
DRUG**

## WALLICK MUSIC CO.

Lester, Janssen Pianos      Olds, Holton  
Lowrey Organs              Band Instruments  
Band Music                  Teachers' Supplies

217 East College              Phone 7-4226

## GRABER'S

Pay CASH                      Pay LESS



The Light Refreshment

Compliments of

## THE MUTUAL MARKET

## TOM LAWLER'S INC.

"Office Outfitters"

Underwood                  A. B. Dick  
Typewriters                  Mimeographs

Visit Our Office Furniture Display

## BOONE 7 Hr. CLEANERS

121 Lexington                  Phone 7-9626  
Jackson, Tennessee

Compliments of

## Miss Howell's Book Shop

305 E. Lafayette              Jackson, Tenn.

Compliments of

*A Friend*

---

# **FOX RESTAURANT**

203 E. Main Street

Jackson, Tennessee

---

*Autographs*











