



**LEST WE FORGET**

**UNION UNIVERSITY**

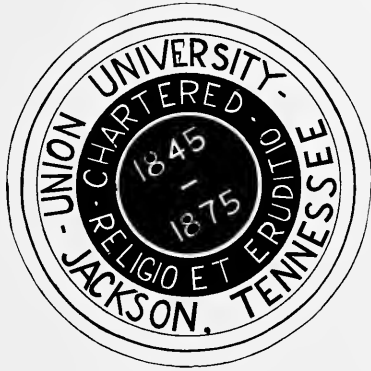
1959

PROPERTY OF  
PUBLIC RELATIONS OFFICE  
UNIVERSITY  
JACKSON, TENNESSEE

Digitized by the Internet Archive  
in 2010 with funding from  
Lyrasis Members and Sloan Foundation

<http://www.archive.org/details/lestweforget195900unio>





*Union University*

*presents*

*"Last We Forget"*

**- 1959 -**





# LEST WE FORGET

**Heritage Collection**  
**Summer Library**  
**1050 Union University Dr.**  
**Jackson, TN 38305**

LARRY PATTON . . . . . Editor  
MARY D. SHERBENOU,  
BUD DANCY . . . . . Art  
REX ENOCH . . . . . Business Manager  
RAYMOND BURKE . . . . . Photography

ADMINISTRATION BUILDING

# CAMPUS BUILDINGS



LOVELACE HALL  
ADAMS HALL  
JONES HALL  
ADAMS HALL ANNEX







CROOK HALL  
SUMMAR LIBRARY



STUDENT UNION BUILDING

SCIENCE BUILDING  
TIGRETT MEMORIAL GYMNASIUM





# DEDIC

Fourteen years ago Union University secured a president who has proved his ability in every area. Under his leadership Union soon became a member of the Southern Association of Colleges, erected new buildings, and expanded her entire program.

Behind every great man is a good woman, and this case is no exception. Dr. Dixie Marcum Jones, the vivacious little professor who glides through our halls, has been a source of inspiration in her home, in her classroom, and to hun-

# ATION



dreds who have been guided by her words of wisdom. Her love for Union is expressed in the words of the college hymn, which she wrote.

Students appreciate the ability of Dr. and Mrs. Jones, appreciate their work and their accomplishments, but most of all Union students are grateful for their warm hearts and their undying interest in youth.

Because of this we humbly dedicate this 1959 edition of *Lest We Forget* to our leaders . . . .

Dr. and Mrs. Warren F. Jones

# PRESIDENT'S MESSAGE

Musical Comedy is as characteristically American as going to college. It seems relevant, therefore, that the staff of *Lest We Forget* has selected Musical Comedy as the theme for the 1959 edition. Musical Comedy portraying life in American society and the college yearbook presenting a cross section of life on the college campus have their definite similarities. The lilting touches of good humor as found in *Porgy and Bess*; the satire of Gershwin's *Of Thee I Sing*; the freshness and genuineness of *Showboat*; and the beauty of *The King and I* are qualities that are inherent in the student body of the typical American college.

No longer does the librettist of the musical art need restrict himself to clichés, rather freedom of thought and expression characterize his purpose. Nor does the composer seek just good tunes, but a great score—the combination seeking to effect an organic relationship between dramatic theme and musical form.

Similarly the educational "librettist" sets a pattern for modern higher education that eliminates the practice of platitudes, but on the other hand proposes to stimulate freedom of thought and expression which when combined with initiative and a tone of living proposes to produce a harmonious relationship and a product acceptable to our society. These objectives are clearly identified and depicted through your yearbook.

Just as you in observing the performance of the musical-dramatic production experience the events vicariously, in like manner will you relive and assimilate the events of college life as you read and reread the contents of your yearbook. Therefore, let us read often *Lest We Forget*.

—Warren F. Jones  
President



# IN MEMORIAM:

DR. D. A. ELLIS



Because of his warm smile, his generous heart, his rich wisdom, his years of loyal service and his great soul, the memory of Dr. D. A. Ellis will be forever enshrined in the hearts of Union students.

The following lines written by Edwin Markham remind us of him:

And when he fell in whirlwind, he went down  
As when a lordly cedar, green with boughs,  
Goes down with a great shout upon the hills,  
And leaves a lonesome place against the sky.

"So when a great man dies,  
For years beyond our ken,  
The light he leaves behind him lies  
Upon the paths of men."

—Longfellow

The  
**PLAYBILL**  
for the St. James Theatre



**The King and I**

ADMINISTRATION  
"the **KING and I**"

MRS. O. D. STONE,  
Registrar, Dean  
of Women



DR. F. E. WRIGHT,  
Dean





FRANK M. BLYTHE,  
Business Manager



DR. H. H. BOSTON,  
Vice-President



O. D. STONE  
Manager, Book Store



LENA MAE ROGERS  
Hostess, Crook Hall



GUY GEE  
Bursar



MABEL K. WARD  
Assistant Librarian

A.B., Carson-Newman College  
M.A.,(L.S.) George Peabody  
College



MARY HIGGINS  
Secretary to  
President



MRS. JAMES DAVIS  
Assistant Dietician



MRS. BENTON BAKER  
Assistant Hostess,  
Jones Hall



MRS. GUY GEE  
Switchboard Operator

# STAFF



ANNA FARRIS  
Library Assistant



VIRGINIA BARHAM  
Secretary to Registrar



JUANITA ALLEN  
Secretary to Dean



ANN TAYLOR  
Business Office

F  
A  
C  
U  
L  
T  
Y



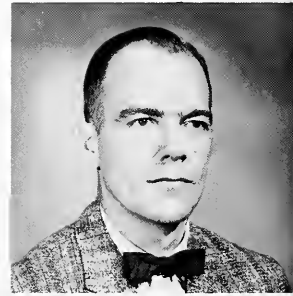
**GUANAVIERE WHEELER**  
Assistant Professor  
of Accounting  
Hostess of Jones Hall



**HARRIET HELEN BLYTHE**  
Assistant Professor of English  
A.B., University of Oklahoma  
M.A., George Peabody College



**JACK L. RUSSELL**  
Head of Department of Health  
and Physical Education and Director  
of Athletics  
B.S., Oglethorpe University  
M.S.P.E., Purdue University  
Additional study University of Arizona



**JACK FARRIS**  
Acting Head of the English  
Department  
B.A., Ouachita College  
M.A., University of Michigan  
Additional study, University of  
Michigan



**MARJORIE MUNTZ**  
Instructor of English  
A.B., Wheaton College  
Additional work, Blue Mountain  
College  
University of Rochester



**ERNEST MUNTZ**  
Professor of Social Sciences  
B.S., Wheaton College  
Additional Course Work Toward  
Ph.D. completed at University  
of Rochester



**SPURGEON BOYD**  
Associate Professor of Biology  
B.S., Carson-Newman College  
M.A., Peabody College  
Additional Work at Peabody  
College and Vanderbilt  
University



**RALPH T. DONNELL**

Head of Department of Mathematics  
A.B., Cumberland University  
LL.B., Cumberland University  
M.A., Vanderbilt University  
Additional Graduate Work, University  
of Tennessee



**HYRAN BAREFOOT**

Associate Professor of Religion  
A.B., Mississippi College  
B.D., New Orleans Baptist  
Theological Seminary  
Th.D., New Orleans Baptist  
Theological Seminary



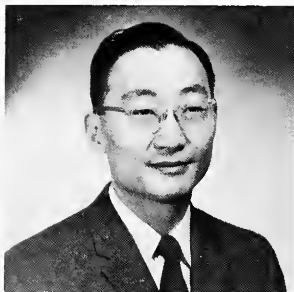
**JOHN V. MYERS**

Head of Department of  
Languages  
A.B., Wake Forest College  
M.A., Syracuse University  
Ph.D., University of  
North Carolina



**WILLIAM PERRYMAN**

Instructor in Piano and Theory  
B.M., University of Arkansas  
M.M., Indiana University  
Additional Graduate Work,  
University of Arkansas and  
University of Indiana



**WU-CHIEH CHENG**

Acting Head of Department of  
Chemistry  
B.S., St. John's University, Shanghai,  
China  
M.S., Kansas State College  
Ph.D., Georgia Institute of Technology



**JOHN HUGHES**

Head of Department of Music  
and Art  
A.B., Southwestern; M.S., Julliard;  
Ch.M., American Guild of Organists  
Residence work completed for Ph.D.,  
Florida State University  
Organ Pupil of W. Townsend, Plymouth,  
England; Marcel Dupre, Paris France;  
Additional Graduate Work under Oliver  
Messiaen, Paris Conservatory, Paris,  
France.



**RUTH GIBBONS**

Head Librarian  
A.B., Union University  
B.S., L.S., George Peabody  
College



**WILLIE MARGARET  
JOHNSON**

Dietician  
Department of Home Economics  
B.S., Union University  
M.A., Iowa State



**MARION CROCKER**

Assistant Professor of English  
A.B., Limestone College  
M.R.E., Woman's Missionary  
Training School  
M.A., George Peabody  
College



**ELIZABETH BRELAND  
LOYD**

Assistant Professor of Speech  
Graduate diploma Ruth Bale,  
Whitworth College; Additional  
Study, Curry College, Boston;  
Alvience University of the Theater,  
New York; American Academy of  
Dramatic Art; Columbia Univer-  
sity; A.B., Union University; M.A.,  
Memphis State University; Grad-  
uate Work, University of Tennessee



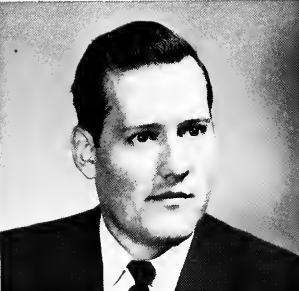
**GRACE WILLIAMS**

Assistant Professor of Physical Education  
B.S., Alabama College  
M.A., Peabody College  
Additional work, Northwestern University



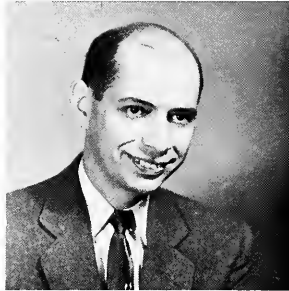
**ROSA DYER RUTLEDGE**

Assistant Professor of History  
B.S., Union University  
M.A., Peabody College  
Additional Work, University of Wisconsin



**M. R. CARRINGTON**

Professor of Business Education  
B.S., University of Tennessee  
M.S., University of Tennessee  
Additional Work, University of  
Tennessee, Colorado State  
College



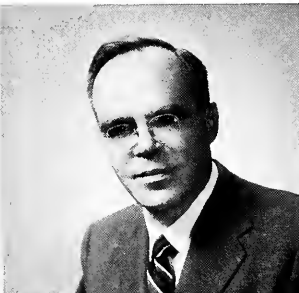
**WALTER KRUSCHWITZ**

Acting Head of Department of Physics  
and Assistant Professor of Mathematics  
A.B., Taylor University  
M.A., Vanderbilt University  
Additional Work, Vanderbilt University,  
University of Michigan



**FREDERIC LUBRANI**

Associate Professor of Music  
B.M., Cincinnati Conservatory  
of Music  
B.S., University of Cincinnati  
M.M., Cincinnati Conservatory  
of Music  
Work completed for D.Mus.E.,  
University of Cincinnati and  
Columbia



**ALLAN F. ARCHER**

Head of Department of Biology  
A.B., Harvard University  
M.A., University of Michigan  
Ph.D., University of Michigan



**A. L. ALLEN**

Assistant Professor of Art  
B.S., Louisiana State University  
M.A., Louisiana State University  
Additional study Leland Stanford Univer-  
sity, University of Arizona



**DAVID WEST**

Assistant Professor of Economics  
B.A., John Brown University  
M.B.A., University of Arkansas  
Additional Graduate work at the  
University of Arkansas



**W. H. KIMZEY**  
 Professor of Old Testament  
 and Philosophy  
 A.B., Mercer University  
 B.D., Southwestern Baptist  
 Theological Seminary  
 Th.D., Southwestern Baptist  
 Theological Seminary

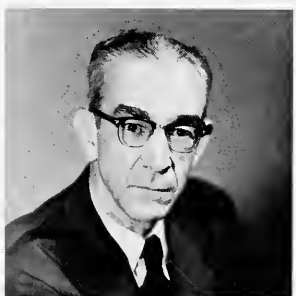
**ELISABETH FOSSEY**  
 Assistant Professor of Music  
 B.M., American Conservatory of Music  
 M.M., American Conservatory of Music

F  
A  
C  
U  
L  
T  
Y



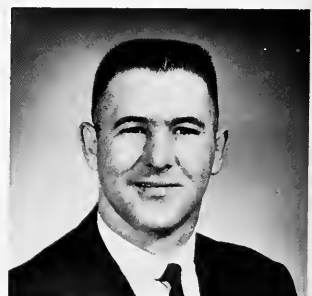
**CHARLES TAYLOR**  
 Professor of Greek and New Testament  
 A.B., Union University  
 B.D., Southern Baptist Theological  
 Seminary  
 Th.D., Southern Baptist Theological  
 Seminary

**DIXIE JONES**  
 Professor of Education and Director  
 of Guidance  
 A.B., Blue Mountain College  
 M.A., George Peabody College  
 Ph.D., George Peabody College

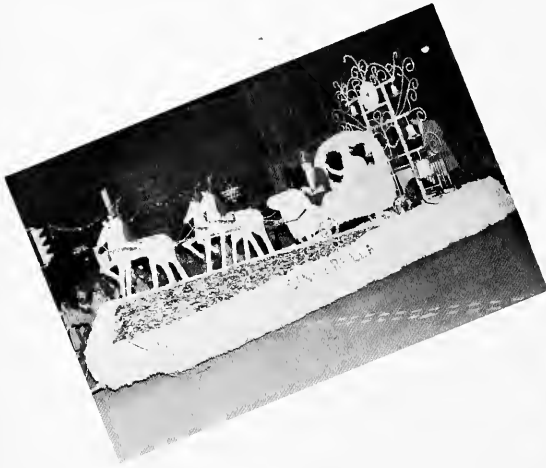


**H. C. WITHERINGTON**  
 Professor of Psychology  
 M.A., University of Chicago  
 Ph.D., University of Chicago

**RICHARD HIRAM WARD**  
 Head of Dept. of Social Science  
 A.B., Carson-Newman College  
 M.A., George Peabody College  
 Additional work at New Orleans Baptist  
 Theological Seminary and University of  
 North Carolina



**JOHN ROSE**  
 Instructor of Physical Education  
 B.S., Union University



One of the outstanding memories of Union is the prize-winning floats. These, under the direction of Mrs. Grace Williams, have won acclaim throughout West Tennessee for their beauty, originality, and artistic form. Here we have pictured a few, . . . lest we forget.





CLASS

FD

'59



SENIORS

"BELLS ARE RINGING"

# SENIOR CLASS OFFICERS



L. to r.: Ernie Carter, Treasurer; Billy E. Murphy, President; Dimple Norvill, Secretary; Tom Murchison, Vice-President; Johnny Orr, Chaplain



M. C. Ambrose



T. M. Ambrose



Farr

MELTON CROSBY AMBROSE, B.S. . . . Medina, Tennessee  
Transfer from Southwestern at Memphis, 1956 . . . History Club, Reporter.

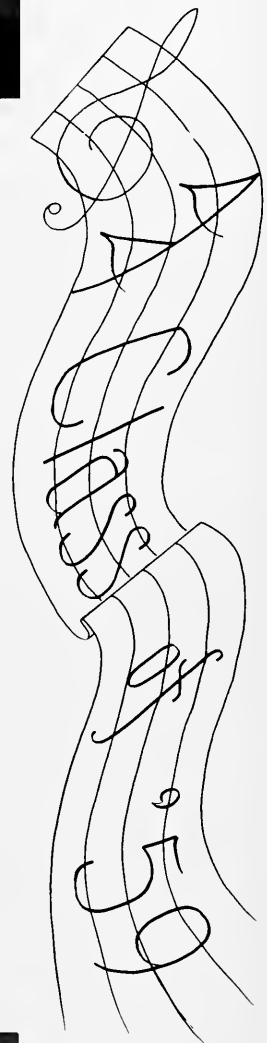
TREBOR MORRIS AMBROSE, B.S. . . . Medina, Tennessee  
Transfer from University of Tennessee, Martin Branch . . . Latin Club.

BETTY WILLIAMS FARR, B.A. . . . Greenfield, Tennessee  
Baptist Student Union '55-'59 . . . Executive Council '56-'57 . . . Choir '56-'59 . . . Young Women's Auxiliary '55-'59 . . . Spanish Club '58-'59 . . . Footlights '56-'59 . . . National Education Association '55-'56 . . . Class Plays . . . Dorm Council . . . Chorus '55-'59, Secretary '56-'59.

KENNETH PRINCE STORY, B.A. . . . Paducah, Kentucky  
Baptist Student Union '55-'59 . . . Ministerial Association '55-'57, '58-'59 . . . German Club '56-'58, V. P. '57 . . . Footlights '56-'58 . . . Student Govt. '57-'58 . . . Dorm Council '56-'57 . . . Cardinal & Cream Staff '56-'58, Business Manager '57-'58 . . . Lest We Forget Staff '56-'58, Business Manager '57-'58 . . . Chorus '55-'56.

JOHNNIE RUFUS BARBER, A.B. . . . Jackson, Tennessee  
Baptist Student Union '55-'59 . . . Nestor Club '57-'59, President '59 . . . Sigma Alpha Epsilon '55-'59, E.C. '56, Assn. Tr. '56, Social Chairman '56-'58, Treasurer '57 . . . Phi Alpha Theta '58 . . . History Club '55-'59, Vice-President '58 . . . Latin Club '57-'59, Vice-President '58-'59 . . . Class Speaker '56 . . . Class Vice-President '57 . . . Student Government '57-'58 . . . Cardinal and Cream Staff '57-'58 . . . Editor of Lest We Forget '58 . . . Track '56 . . . President SAE '59 . . . Who's Who '59 . . . Senior Escort to Mr. and Miss Union . . . Vice-President, Phi Alpha Theta '58-'59.

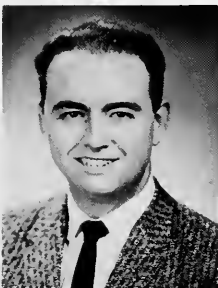
MARY ANN FRASER, B.A. . . . Litchfield, Illinois  
Transfer from Hannibal-LaGrange College, Hannibal, Missouri . . . Baptist Student Union '55-'59, Greater Council . . . Young Women's Auxiliary, Vice-President '58-'59.



Story

Barber

Fraser





Allcock



Anderson



Boulton



Butler



Brigham

MARY CAROLINE ALLCOCK, B.S. . . . *Melber, Kentucky*  
B.S.U. '54-'59, Church Representative '55 . . . Y.W.A. '54-'59, Circle Music Chairman '58 . . .  
Allegro Club '54-'59, Secretary-Treasurer '55 . . . Student National Education Association  
'55-'59 . . . Chorus '54-'59, Secretary '55, '56.

JAMES W. ANDERSON, B.A. . . . *Detroit, Michigan*  
Transfer from West Virginia Institute of Technology . . . Ministerial Association '56, '57, Vice-  
President '58 . . . Life Service Band '56 . . . German Club '57, '58 . . . Chorus.

MARGARET ANN BOULTON, B.A. . . . *Cades, Tennessee*  
Baptist Student Union '55-'59 . . . Young Women's Auxiliary '55-'59 . . . Life Service Band  
'55-'59, Vice-President '57, Vice-President '58-'59 . . . National Education Association '56-'59.

TOMMY BUTLER, B.A. . . . *Jackson, Tennessee*  
Los Picaros '56 . . . Sigma Alpha Epsilon, Assistant Treasurer '57, Pledge Commission '59,  
Editor, Lions Roar '56-'58 . . . Chorus '56-'59.

ANN MARIE BRIGHAM, B.A. . . . *Memphis, Tennessee*  
Baptist Student Union '54-'59, Corresponding Secretary '57-'58 . . . Young Women's Auxiliary  
'54-'59 . . . Life Service Band '54-'59 . . . Hypatia '57-'59 . . . Shelbians '54-'55 . . . Spanish  
Club '54-'55 . . . Home Economics Club '54-'58 . . . National Education Association '56-'59,  
Girls' Vice-President '57-'58, Program Chairman '58-'59 . . . Spring Plays Prompter '57.

GAYLA HOPE DENNIS, B.A. . . . *Memphis, Tennessee*  
Baptist Student Union '55-'59, Religious Editor '57-'58 . . . Young Women's Auxiliary '55-'59  
. . . Life Service Band '55-'58, Reporter '57-'58 . . . Hypatia '57-'58, Vice-President '57-'58  
. . . Shelbians '55-'59 . . . Phi Alpha Theta '59 . . . History Club '57-'58 . . . Spanish Club  
'56-'58, Vice-President '56-'57, President '57-'58 . . . Cardinal and Cream Editor '57-'58 . . .  
Lest We Forget Staff . . . Chorus . . . Who's Who.

SANDRA MILLER BROWN, B.S. . . . *Grand Junction, Tennessee*  
Campus Beauty '55-'56, Maid to Miss Union '55 . . . Maid to Freshman Queen '55 . . . Chl  
Omega '55-'59, Secretary '58-'59, Chapter Correspondent '57-'58 . . . History Club '57-'59,  
Secretary '58-'59 . . . Library Staff '58-'59.

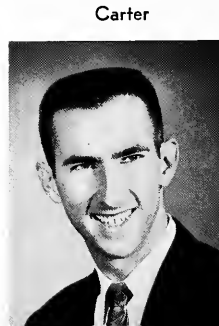
ERNEST WELBORN CARTER, B.A. . . . *Millington, Tennessee*  
Baptist Student Union '55-'59 . . . Ministerial Association '55-'59 . . . Life Service Band '55  
. . . Shelbians '55-'58 . . . History Club '58-'59 . . . German Club '55-'57 . . . Library Staff  
'57 . . . Senior Class Treasurer.



Dennis



Brown



Carter



Davis



Bowlin



Dorris



Dillingham



Enoch

**PATRICIA MAE DAVIS, B.M.** . . . Jackson, Tennessee  
Baptist Student Union '56-'58, Pianist '57-'58 . . . Hypatia '57-'58 . . . Chi Omega '55-'59  
. . . Allegro Club '55-'59, Secretary '56-'57, Program Chairman '57-'58 . . . Chorus '55-'59,  
Pianist '57-'59 . . . Library Staff Summer '57 and '58.

**NANCY ANN BOWLIN, B.S.** . . . Hickory Flat, Mississippi  
Transfer from Blue Mountain College . . . Baptist Student Union '57-'59 . . . Chi Omega '57-'59  
. . . Business Club '57-'59 . . . National Education Association '58-'59 . . . Dormitory Council  
'57-'58 . . . Chorus '57-'58.

**DELORES DORRIS, B.A.** . . . Bolivar, Tennessee  
Baptist Student Union '55-'59, Librarian '58 . . . Young Women's Auxiliary '55-'59, Secretary-  
Treasurer '57-'58 . . . Life Service Band '55-'58, Program Chairman '58 . . . Zeta Tau Alpha,  
Secretary '57-'58, Vice-President '58 . . . Student Government, Dormitory Representative '59;  
Dormitory Council '57-'59, First Vice-President '57-'58, Second Vice-President '58-'59 . . .  
Chorus.

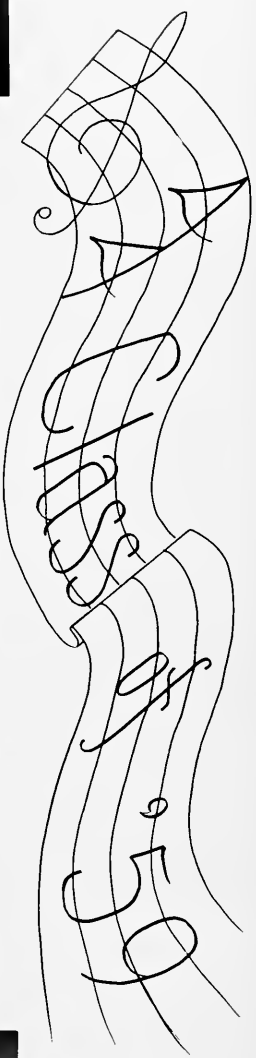
**GLENDIA S. DILLINGHAM, B.A.** . . . Jackson, Tennessee  
Baptist Student Union '55-'59 . . . Young Women's Auxiliary '55-'59 . . . Zeta Tau Alpha,  
Recording Secretary '57, Rit. Chairman '58 . . . Business Club, Social Chairman '58 . . .  
National Education Association.

**(JOE) REX ENOCH, B.S.** . . . Bolivar, Tennessee  
Best-All-Round Boy '58 . . . Vice-President of Student Body '59 . . . Mr. B.S.U. '58 . . . State  
Vice-President of Baptist Student Union '59 . . . Escort of Basketball Queen '58 . . . Baptist  
Student Union Summer Missionary to Hawaii '56 . . . Baptist Student Union Summer Missionary  
to Ohio '58 . . . Baptist Student Union '55-'59, President '58, Missions Chairman '57, Music  
Chairman '56, Revival Chairman '59 . . . Life Service Band, Music Chairman '57 . . . Sigma  
Alpha Epsilon, Chaplain, Secretary '58 . . . History Club . . . Track '57 . . . Class  
Representative '56 . . . Dormitory Council '59 . . . Band '59 . . . Chorus '59.

**PRENTESS FERRELL, B.A.** . . . Memphis, Tennessee  
Ministerial Association '55-'59 . . . Life Service Band '55-'59 . . . History Club '56-'58 . . .  
German Club '56-'58 . . . Cross Country '57 . . . Track '57 . . . Chorus '55-'59.

**SHIRLEY LAWANA GORDON, A.B.** . . . Covington, Tennessee  
Baptist Student Union '55-'59, Hostess '58-'59 . . . Young Women's Auxiliary '55-'59, Social  
Chairman '58-'59 . . . Baptist Student Union Choir '55-'59 . . . Spanish Club '57-'58 . . .  
National Education Association '58-'59 . . . Student Government '57-'58 . . . Dormitory Council  
'56-'58 . . . Chorus '55-'57.

**HAROLD LYNN GREENFIELD, B.A.** . . . Princeton, Kentucky  
Transfer from Bethel Jr. College . . . Baptist Student Union '59, Missions Chairman . . .  
Ministerial Association '59 . . . Sigma Alpha Epsilon, Pledge President, Chaplain . . .  
History Club.

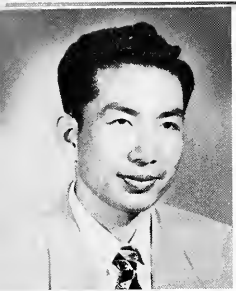


Ferrell

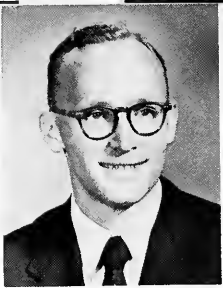
Gordon

Greenfield

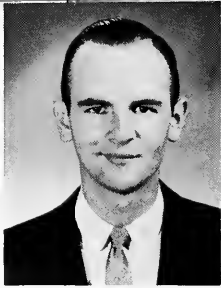




Kim



Harvey



Haynes



Wooster



Watt

**GUN-HYAK (MELVIN) KIM, B.S.** . . . Seoul, Korea  
Transfer from Madison College, Madison, Tennessee.

**FRED COLEMAN HARVEY, A.B.** . . . Hannibal, Missouri  
Transfer from Hannibal-LaGrange College . . . Baptist Student Union '56-'58 . . . Ministerial Association '56-'58 . . . History Club '57-'58.

**BILLY ARTHUR HAYNES, B.S.** . . . Jackson, Tennessee  
Sigma Alpha Epsilon, Warden '57 . . . Business Club . . . Lest We Forget Staff '57-'58  
Science Club '59.

**KEITH E. WOOSTER, B.A.** . . . Alpena, Michigan  
Ministerial Association . . . Class Plays . . . Lest We Forget Staff.

**MIRIAM McRAE WATT, B.A.** . . . Union City, Tennessee  
Sweetheart of Alpha Tau Omega '57-'58 . . . Baptist Student Union '55-'59 . . . Young Women's Auxiliary '55-'59 . . . Hypatia '57-'59, Secretary '57-'58 . . . Alpha Tau Omega '57-'58 . . . Chi Omega '55-'59, President, Rush Chairman . . . Alpha Psi Omega '58-'59, Secretary '58-'59 . . . Footlights '55-'59 . . . National Education Association '56-'59, Program Chairman '56-'57 . . . Class Plays, Freshman and Sophomore . . . Class Offices, Secretary of Sophomore Class '56-'57 . . . Student Government, Secretary '57-'58 . . . Cardinal & Cream Staff '57-'58 . . . Chorus '55-'57 . . . Greek Council '57-'59 . . . Who's Who '58-'59.

**JERALD PORTER HILL, B.S.** . . . Jackson, Tennessee  
Baptist Student Union '56-'59 . . . Alpha Tau Omega '56-'59 . . . U. Club '56-'59, Secretary . . . Basketball '55-'58, All Conference V.S.A.C. . . . Track '56 . . . Chorus '55-'56.

**ALBERT OWEN HERRINGTON, JR., B.M.** . . . Memphis, Tennessee  
Transfer from University of Tennessee, Memphis State University . . . Lambda Chi Alpha . . . Allegro Club '59 . . . Chorus '59.

**DONALD LANIER HOOPER, A.B.** . . . Tiptersville, Mississippi  
Baptist Student Union '55-'59 . . . Ministerial Association '55-'59.



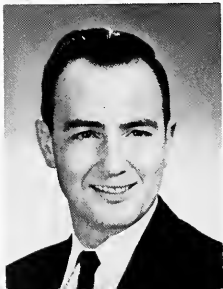
Hill

Herrington

Hooper

Johnson

Wilson





A. J. Hulsey



I. W. Hulsey



Jeffess

ROBERT T. JOHNSON, B.S. . . . Camden, Tennessee  
Alpha Tau Omega '57-'59 . . . Dormitory Council '57-'58 . . . U. Club '55-'59 . . . Baseball '55-'59.

BARBARA ANN WILSON, B.A. . . . Lake City, Tennessee  
Transfer from Carson Newman College . . . Junior Class Maid to Miss Union '57 . . . Junior Class Maid to Basketball Queen '57 . . . Best All Around Girl '57 . . . Cheerleader '56-'59 . . . Campus Beauty in Ten Most Beautiful '57 . . . Baptist Student Union '55-'59 . . . Young Women's Auxiliary '55-'59 . . . Student Govt., Secretary '57-'58 . . . Maid to Basketball Queen '57-'58 . . . Maid to Strawberry Queen '57-'58 . . . Miss Union '58-'59.

ALMA JEANNE HULSEY, B.A. . . . Jackson, Tennessee  
Transfer from Hannibal-LaGrange College . . . Baptist Student Union '56-'58 . . . Young Women's Auxiliary '56-'58 . . . National Education Association '56-'58.

IVAN WILLIAM HULSEY, A.B. . . . Jackson, Tennessee  
Transfer from Hannibal-LaGrange College . . . Baptist Student Union '56-'57 . . . Ministerial Association '56-'57 . . . Life Service Band '56-'57 . . . Chorus '55-'57.

NANCY A. JEFFRESS, B.A. . . . Fulton, Kentucky  
Baptist Student Union '55-'59, Librarian '57-'58, Corresponding Secretary '58-'59 . . . Young Women's Auxiliary '55-'58, President '57-'58 . . . Dormitory Council Vice-President '57-'58 . . . Cardinal and Cream Staff '57-'58 . . . Lest We Forget Staff '57-'58 . . . Library Staff '55-'58 . . . Senior Escort to Miss Union '59.

CLARICE EUDORA JONES, B.A. . . . Henderson, Tennessee  
Baptist Student Union '55-'59 . . . Young Women's Auxiliary '55-'59 . . . Math Club '55-'59 . . . National Education Association '55-'59 . . . Dormitory Council President '58-'59 . . . Chorus '59.

PETER RHEA JONES, B.A. . . . Dyersburg, Tennessee  
Escort to Mr. Union '57 . . . Baptist Student Union '55-'59, Alpha Tau Omega Representative '57 . . . Ministerial Association '55-'59, Program Chairman '57 . . . Nestor Club '57-'59 . . . Alpha Tau Omega '55-'59, W.C., W.M. . . . Phi Alpha Theta '58-'59 . . . History Club '57 . . . Latin Club '56 . . . U. Club '57 . . . Tennis '56, '57 . . . Class Speaker '56 . . . Class President '57-'58 . . . Student Government Vice-President '57-'58, President '58-'59 . . . Dormitory Council First Vice-President.

GEORGE GLAYDON LIFSEY, B.M. . . . Jackson, Tennessee



C. E. Jones



P. R. Jones



Lifsey





Lane



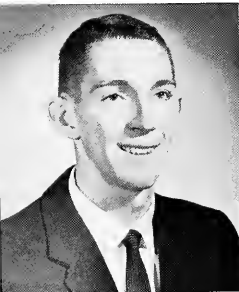
S. Lynn



Wilton Lynn



May



Moore

**LARRY GAY LANE, B.A.** . . . Jackson, Tennessee

Who's Who in American Colleges and Universities '58-'59 . . . Editor of *Lest We Forget* '56-'57 . . . Hypatia '57-'59, Secretary '58 . . . Chi Omega '55-'59, Personnel '56-'57, Pledge Trainer '58-'59 . . . Spanish Club '55-'59, Secretary '55-'56, Vice-President '57-'58, President '58-'59; Class officer '57-'58, Secretary of Junior Class . . . Physical Education Club, '58-'59, President . . . Student Government '56-'57 . . . NEA '56-'57 . . . Cardinal and Cream Staff '56-'57 . . . B.S.U. '55-'59 . . . Footlights Club '56-'59, Program Chairman '58-'59.

**SHELBY WHITNEL LYNN, B.A.** . . . Anna, Illinois

Transfer from Southern Illinois University, Carbondale, Illinois . . . Baptist Student Union . . . Home Economics Club . . . Chorus . . . Basketball Queen '59.

**WILLIAM PORTER MAY, B.A.** . . . Miami, Florida

Transfer from University of Miami . . . Ministerial Association '56-'58, Secretary '58.

**JERRY LYNN MOORE, B.S.** . . . Jackson, Tennessee

Transfer from Freed-Hardeman . . . Basketball Tri-Captain . . . Philo President . . . Tri-Captain —All VSAC . . . Baseball . . . U. Club, Vice President . . . Science Club.

**HARRIET VIRGINIA METTS, B.S.** . . . Memphis, Tennessee

Transfer from Blue Mountain College '56 . . . Basketball Maid '56 . . . Campus Beauty '56-'57 . . . Strawberry Queen '57-'58 . . . B.S.U. '56-'59 . . . Chi Omega '56-'59 . . . Shelbians '56-'59 . . . Footlights '56-'59 . . . Girls P.E. Club '58-'59 (Intramurals Director '58-'59) . . . Basketball (Intramurals) . . . Class Plays '56 . . . Girls P.E. Club (Intramurals Director) . . . Chorus '56 and '57.

**LAWRENCE ALLEN WALKER, B.S.** . . . Jackson, Tennessee

Track Team '56-'57

**JOHN KING MEADOWS, B.S.** . . . Lexington, Tennessee

Business Club, Vice-President '57-'59.

**DANIEL (TOM) MURCHISON, B.A.** . . . Sikeston, Missouri

ATO '56-'59, W. Sc. '57, Reporter '58 . . . *Lest We Forget* Staff '57 . . . Cardinal & Cream '56-'57, Associate Editor '57 . . . Track '56-'59 . . . Sports Publicity Director '58-'59 . . . Reporter Sophomore Class '57 . . . Vice-President Senior Class '59 . . . Who's Who in American Colleges and Universities '59 . . . German Club '56-'58 . . . Nestor Club '58-'59, Vice-President '59 . . . Business Club '58, Reporter '58 . . . Allegro Club '56 . . . U. Club '56-'59.



Metts

Walker

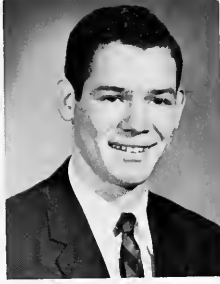
Meadows

Murchison

Murphy







Norvill

Nowell

Only

**BILLY F. MURPHY, B.A. . . . Ridgely, Tennessee**

Mr. Union '58 . . . Outstanding Performer VSAC Track Meet '58 . . . Alpha Tau Omega, Chaplain '57 . . . Latin Club '56 . . . U. Club '57-'59, President '58 . . . Cross Country Team '58 Track '56-'59 . . . Class Offices, Chaplain '58.

**DEMPLA NEAL NORVILL, B.A. . . . Bells, Tennessee**

Campus Beauty '56, '57, '58 . . . Baptist Student Union '55-'59, Greater Council '58-'59 . . . Math Club '55-'58 . . . Alpha Psi Omega '58-'59 . . . Footlights '57-'59 . . . National Education Association '55-'58 . . . Class Plays . . . Spring Plays . . . Library Staff . . . Ten Most Beautiful '55-'58 . . . Prince Davis Science Club '55-'56 . . . Young Women's Auxilliary '55-'59 . . . Class Secretary '59 . . . Maid to Strawberry Queen '55-'56 . . . Maid to Freshman Queen '55-'56.

**JERRY PHILLIP NOWELL, B.M. . . . Trenton, Tennessee**

Baptist Student Union '58-'59 . . . Alpha Tau Omega, Pledge Trainer '56, Member '55-'59 . . . Allegra Club '55-'59 . . . Band '55-'59 . . . Chorus '55-'56.

**EDWARD J. ONLY, B.S. . . . Jackson, Tennessee**

Alpha Tau Omega '55-'59, WKA '58.

**JOHNNY LYNCH ORR, B.A. . . . Athens, Alabama**

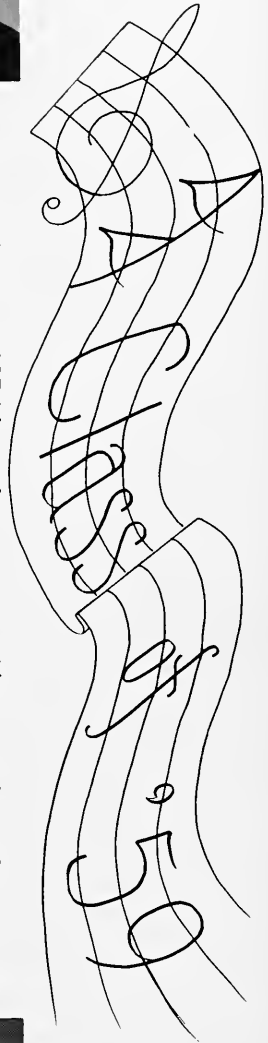
Escort to Miss Union '55-'56 . . . Alpha Tau Omega, Worthy Chaplain '56-'57 . . . U. Club '55-'59 . . . Basketball '56, '57, '58, (Captain '59) . . . Track '56, '57, '58 . . . Class Speaker '58 . . . Class Offices, Chaplain '56, '59 . . . Chorus '56, '58 . . . All VSAC '58 . . . All NAIA '58, Honorable Mention.

**JERRY C. PHILLIPS, B.S. . . . Jackson, Tennessee**

BSU '56-'59 . . . Alpha Tau Omega '57, '58, '59 . . . U. Club '58-'59 . . . Track '58, Manager.

**GAYLE UPTON POLLARD, B.A. . . . Jackson, Tennessee**

BSU Secretary '57-'58 . . . Young Women's Auxilliary, Social Chr. '57-'58 . . . Life Service Band '57-'58 . . . National Education Association . . . Chorus '55-'56 . . . Library '55-'56.



Orr

Phillips

Pollard





Osborne



Pearce



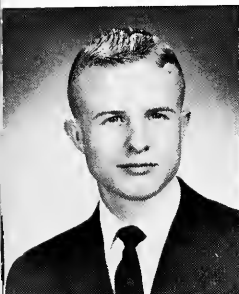
Pollard



Priddy



Prince



Alexander

**BOBBY JOE OSBORNE, B.S.** . . . Jackson, Tennessee  
Sigma Alpha Epsilon, '55-'59 . . . History Club '57-'59 . . . German Club '56-'58, President '57-'58 . . . Footlights '55-'56 . . . Pan Hellenic Council, President '57-'58.

**VIRGINIA RUTH PEARCE, B.A.** . . . Jackson, Tennessee  
Baptist Student Union '55-'59 . . . History Club '55-'59, Secretary '57-'58 . . . Phi Alpha Theta '58-'59, Secretary '58-'59 . . . Spanish Club '55-'58 . . . Footlights Club '56-'59 . . . NEA '55-'59, President '57-'58 . . . Student Government '56-'57, '58-'59 . . . Cardinal & Cream Staff '56-'57 . . . Editor of *Lest We Forget* '56-'57 . . . Chi Omega '55-'59, Vice-President '57-'58, President '58-'59 . . . President of Greek Council '58-'59 . . . Who's Who in American Colleges and Universities.

**RAY BLAUTOR POLLARD, B.A.** . . . Jackson, Tennessee  
Escort to Basketball Queen . . . Baptist Student Union '55-'58, Vice-President '57-'58 . . . Alpha Psi Omega '58-'59 . . . Class Speaker '56, Freshman . . . Class Officer, Vice-President, Sophomore '56-'57 . . . Chorus '58-'59.

**BILLY W. PRIDDY, B.S.** . . . Milan, Tennessee  
Sigma Alpha Epsilon '55-'59 . . . Business Club '57-'59 . . . Tennis Participation . . . Dorm Council . . . Band Participation.

**SHIRLEY PRINCE, B.A.** . . . Covington, Tennessee  
Miss B.S.U. '58 . . . B.S.U. Revival Chairman . . . Young Women's Auxiliary . . . Circle President . . . Library Staff, Student Assistant.

**BILLY FRANKLIN ALEXANDER, B.S.** . . . Trenton, Tennessee  
Alpha Tau Omega '56-'59, Palm Reporter '57 . . . Business Club '57-'59 . . . Science Club '57-'59.

**RONALD LEE ROGERS, B.A.** . . . Jackson, Tennessee  
B.S.U. '58 . . . Ministerial Association '55 . . . Latin Club '55-'59 . . . German Club '56-'59.

**BETTY P. RUPPE, B.A.** . . . Rutherfordton, North Carolina  
Transfer from Appalachian State Teachers' College . . . B.S.U. '54-'58 . . . Young Women's Association '54-'56 . . . Life Service Band '55-'56.



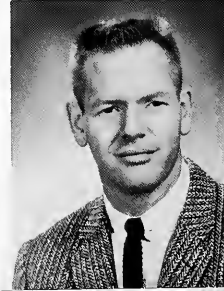
Rogers



Ruppe



Sanderfer



Scott



Miles



Burke



M. A. Smith

**PAUL O. SANDERFER, B.S.** . . . Union City, Tennessee  
 Escort to Basketball Queen '58 . . . B.S.U. '55-'59, Student Council Representative . . . Nestor Club '57-'59, Treasurer '58 . . . Alpha Tau Omega '55-'59, WKA '57 . . . Math Club '56-'59, Vice-President '57 . . . Science Club '56-'59 . . . Alpha Psi Omega '57-'59, Vice-President '57, President '58 . . . Footlights Club '56-'59, Treasurer '56, Vice-President '57 . . . National Education Association '56-'59, President '58 . . . Class Plays '56-'59 . . . Spring Plays '56-'59 . . . Class Speaker '56 . . . President '56, Parliamentarian '57 . . . Student Government-B.S.U. Representative '57 . . . Dorm Council '56-'57 . . . Who's Who '59.

**WILLIAM JOE SCOTT, B.S.** . . . Jackson, Tennessee

**ELLEN FRANCES MILES, B.A.** . . . Dresden, Tennessee  
 Campus Beauty '55, '56, '57 . . . Freshman Secretary . . . B.S.U. 3rd Vice-President for Tenn. B.S.U., State 3rd V.-P., Publicity Chairman '55-'58 . . . Y.W.A. Program Chairman, Vice-President . . . Life Service Band, Vice-President, Program Chairman '55-'57 . . . Chi Omega, Vice-President, Social Chairman '55-'58 . . . Spanish Club '57-'58 . . . Alpha Psi Omega, Secretary (Recording) '56-'58 . . . Footlights Club, Secretary, Program Chairman '55-'58 . . . NEA, Vice-President, Recorder '55, '57, '58 . . . Class Plays '55, '57 . . . Spring Plays '56, '57 . . . Class Officers, Secretary '55 . . . Dorm Council, Monitor '57 . . . Chorus '55, '56 . . . Library Staff '55-'58 . . . Who's Who '58-'59.

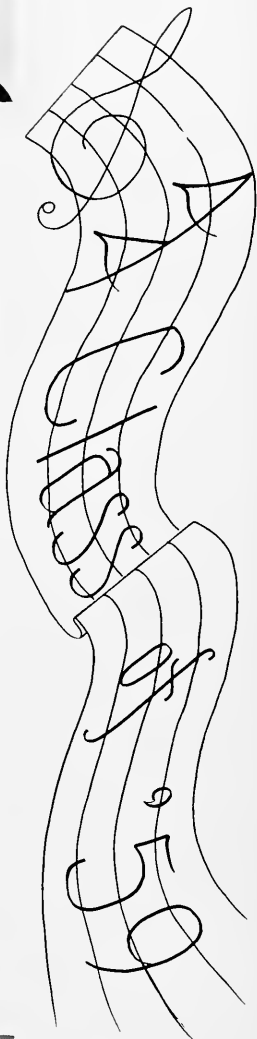
**RAYMOND CLEVELAND BURKE, B.S.** . . . Jackson, Tennessee  
 Baptist Student Union '55-'59, Publicity Director '56-'57 . . . Life Service Band, Boys' Vice-President '56-'57 . . . Shelbians '55-'59, Photographer and Publicity Chairman '57-'58 . . . Moth Club, Publicity Chairman . . . Business Club . . . Science Club . . . Footlights Club, Photographer . . . Class Representative '58 . . . Cardinal and Cream Staff '55-'59, Reporter '57-'58, Photographer '53-'59 . . . Let We Forget Staff, Photographer '55-'59.

**MARY ANN SMITH, B.A.** . . . Saulsbery, Tennessee  
 Baptist Student Union . . . Young Women's Auxiliary . . . Chi Omega . . . Home Ec. Club . . . Business Club . . . Future Teachers . . . Most Popular Girl '59 . . . Basketball Royalty '59.

**JAMES J. SMITH, B.A.** . . . Bolivar, Tennessee  
 Baptist Student Union '55-'58 . . . Ministerial Association '55-'58 . . . Alpha Tau Omega '55-'58 . . . Chorus.

**JAMES EDWARD SORRELL, B.A.** . . . Dyersburg, Tennessee  
 Nestor Club '57-'59, Chaplain '58-'59 . . . Alpha Tau Omega '55-'59 . . . History Club '57-'59, President '58-'59 . . . Footlights Club '57-'59 . . . Tennis '57 . . . Phi Alpha Theta '58-'59, Reporter '58-'59.

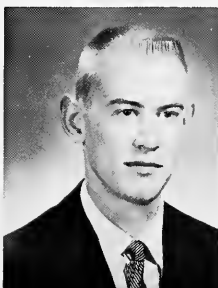
**BRUCE W. STEPHENS, B.S.** . . . Lexington, Tennessee  
 Business Club '57-'58, President '58-'59.



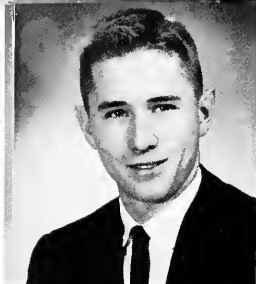
J. J. Smith



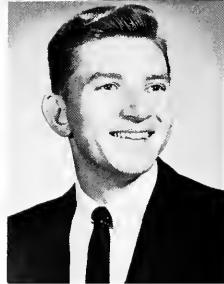
Sorrell



Stephens



Bolton



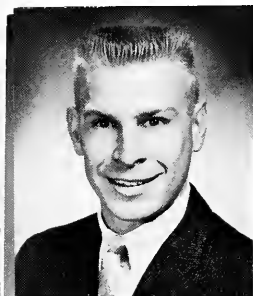
Watson



Higgins



Haney



Don Holfield

**EDWARD R. BOLTON, B.A.** . . . *Symsonia, Kentucky*  
Transfer from *Bethel College, Hopkinsville, Ky., and Belmont College, Nashville, Tennessee.*

**DERYL G. WATSON, B.A.** . . . *Bemis, Tennessee*  
Baptist Student Union . . . *Science Club.*

**CHARLES RAY HIGGINS, B.M.** . . . *Huntingdon, Tennessee*  
Transfer from *Belmont College* . . . *Allegro Club '57-'59.*

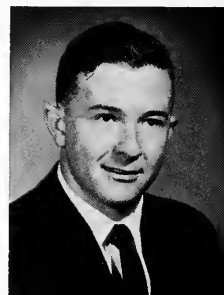
**BILLY JOE HANEY, B.A.** . . . *Bemis, Tennessee*  
*Sigma Alpha Epsilon*

**J. V. REEVES, B.A.** . . . *Darden, Tennessee*

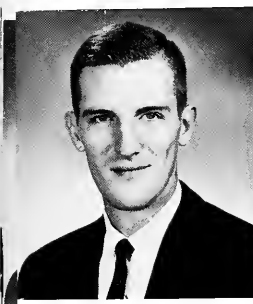
**JAMES SMITHTON CARTER, B.S.** . . . *Jackson, Tennessee*  
*Science Club '55, '57* . . . *Band Manager '56* . . . *Chorus '55.*

**WILLIAM NORTON BEARD, B.A.** . . . *Berkeley, Missouri*  
Transfer from *Hannibal-LaGrange College, Hannibal, Missouri* . . . *Ministerial Association '56-'57* . . . *German Club '58-'59.*

**JAMES BRUCE GLISSON, B.A.** . . . *Jackson, Tennessee*



Ronald Skinner



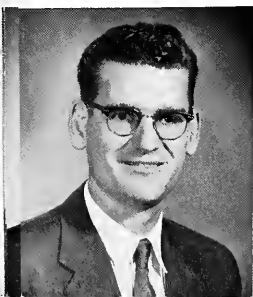
Fred Harris

Reeves

Carter

Beard

Glisson



WVBC  
FD  
06



JUNIORS  
"HAPPY HUNTING"

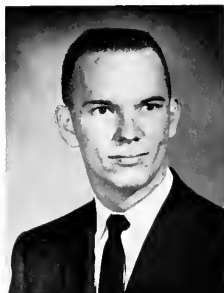
# JUNIOR CLASS OFFICERS



L. to r.: Bob Carpenter, Vice-President; Larry Patton, President; Carole Green, Secretary; Jerry Wagster, Treasurer; Bob Agee, Chaplain



King Abernathy



Billy Adkerson



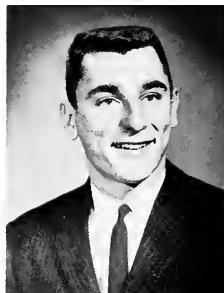
Margaret Azbill



Allen Ray Bartlett



Shirley Bledsoe



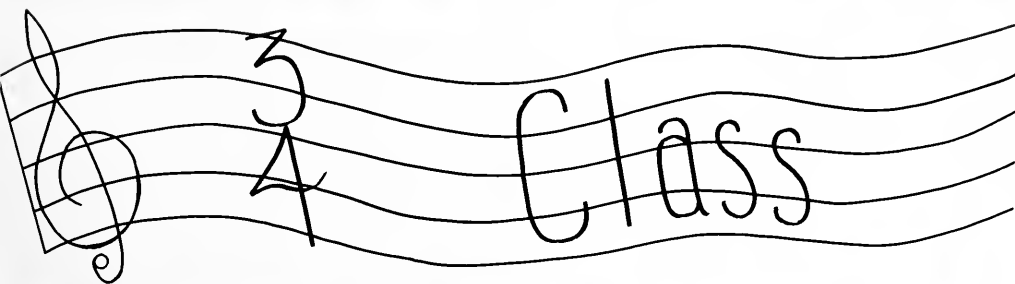
Larry Boston



Mary E. Boulton



Ann Bowles



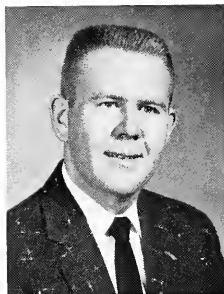
Marie Brown

Billy Ray Burch

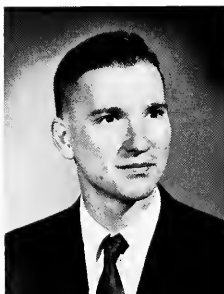
Bobby Newton

Bill Wilson

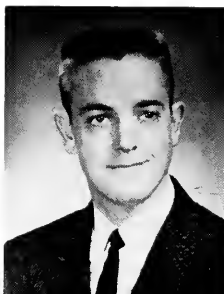




Bill Carver



B. V. Cathey, Jr.



Dave Cundiff



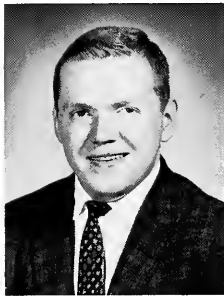
Dave Evers



Faye Wilbanks



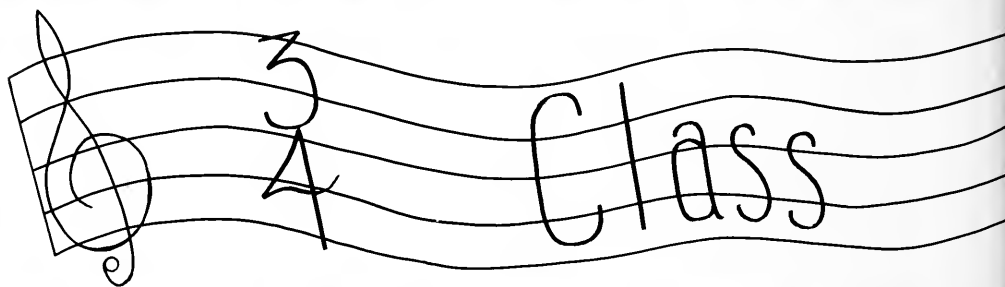
Lynn Eagan



Joe Ellis



Betty Lou Fletcher



Jane Frizzell



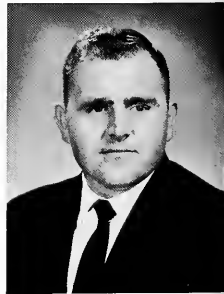
Nyta Garrett



Harvey Gill



H. H. Hurst







Polk Glover



Carol Greene



Barbara Greenfield



Jo Hargett



Peggy Hinton



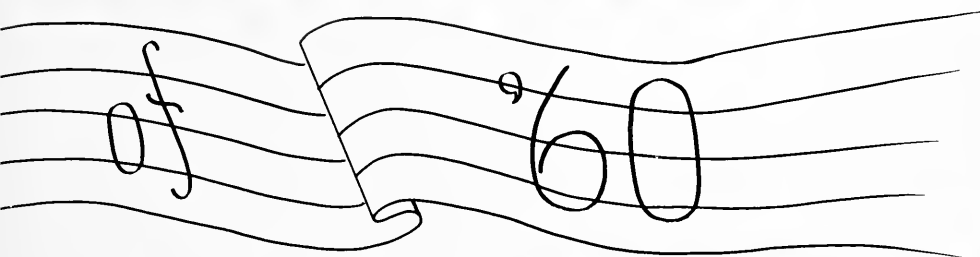
Bill Howse



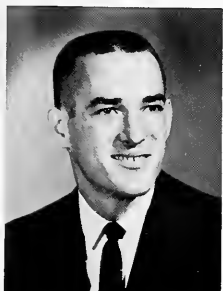
Bill Jackson



Bobby Kendig



William Lee



Anita Lowe

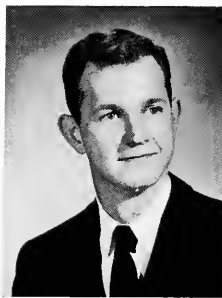




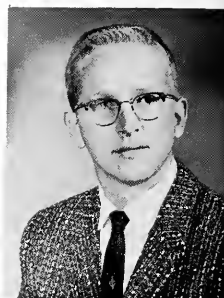
Jackie Maddox



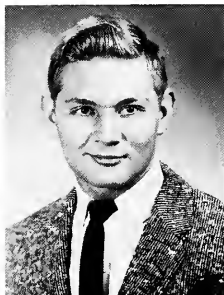
Evelyn Marbury



Archie Tillman Mays



Charles Miller



Frankie Miller



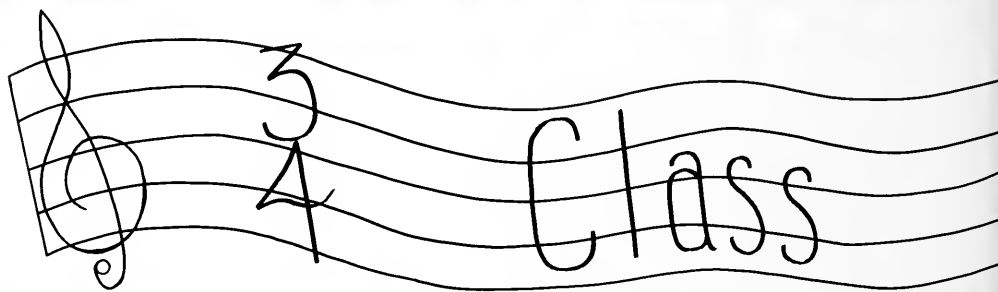
Darrell Molen



Betty Molen



Beverly Moore

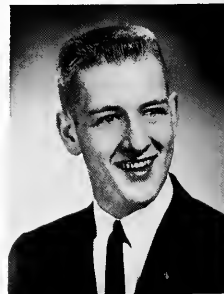


Carolyn Morse

Sally Morse

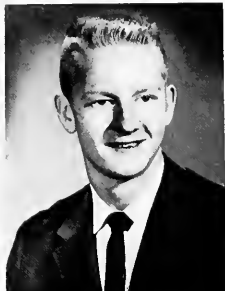
Shirley Neisler

Larry Patton





Betty Jo Penninton



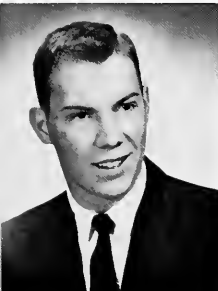
Nathan Pillow



Janis Plunk



Gayle Prather



Harvell Price



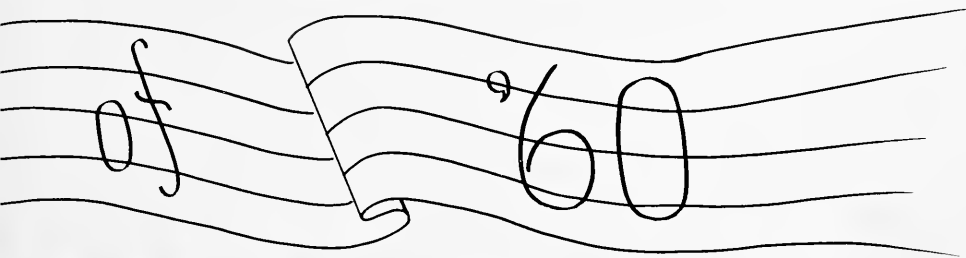
Mackey Putman



Bryant Ray



Eleanor Richardson



Reed Sanderlin

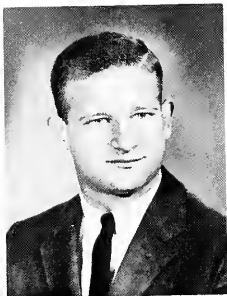


Harriett Schroeder



Rufus Moore

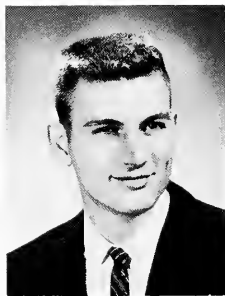




James Scott



David Sheppard



Jack Sibley



Jerry Wagster



Jerol Swain



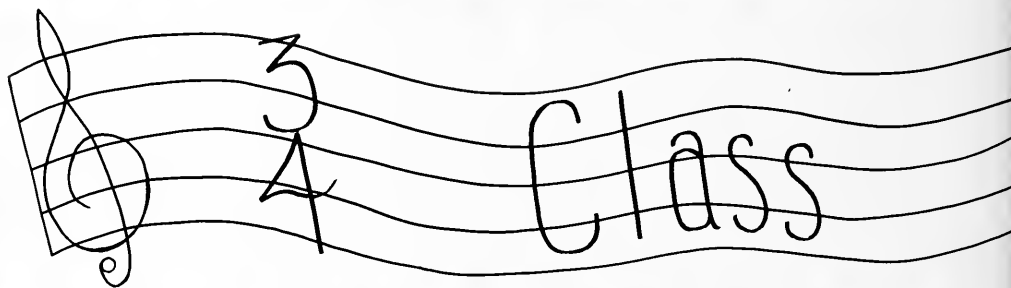
Joan Swift



Nancy Taylor



Nina Thomas

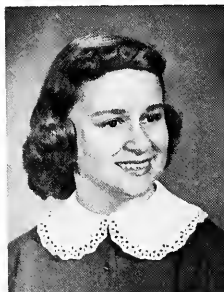


Judy Verner

Nancy Lee Smith

Sue Walker

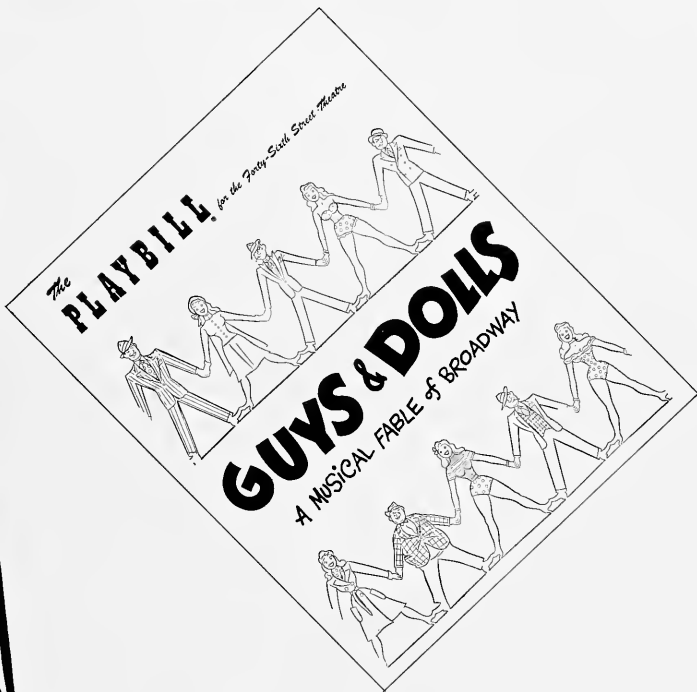
Mary Alice Watkins



WAVE

TO

6  
1



SOPHOMORES  
"GUYS & DOLLS"

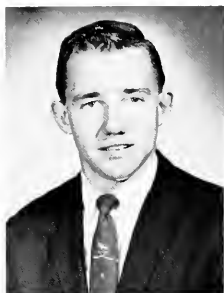
# SOPHOMORE CLASS OFFICERS



L. to r.: Wayne Brown, Vice-President; Joyce Stevenson, Secretary; Allan Tinker, Chaplain; Carolyn Townsend, Treasurer; R. N. Graves, President



James Allcock



Walter Allison



Vance Ambrose



Pat Andrews



Sarah Butler



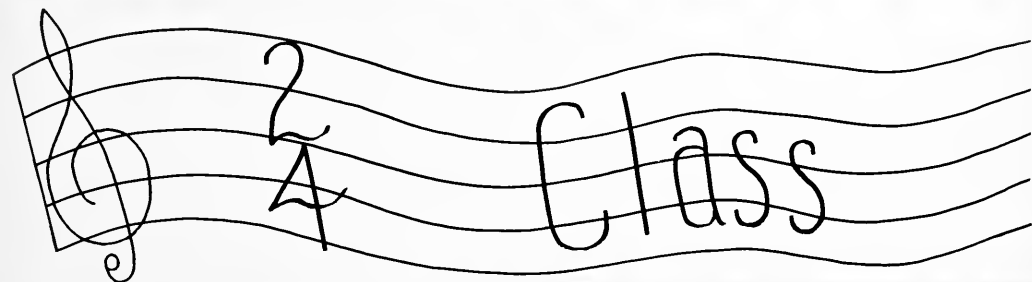
Glenda Blackwood



Reed Barber

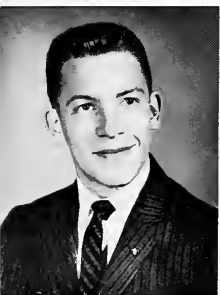


Paula Boatman



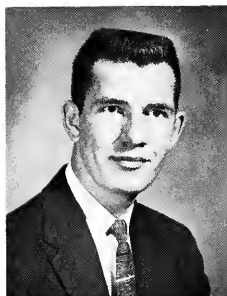
Wayne Brown

Verdia Beard

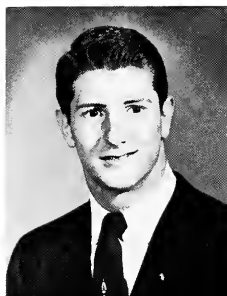




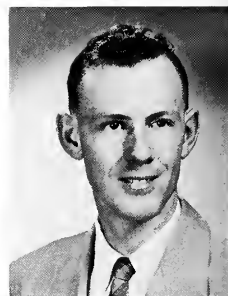
Sandra Bishop



Bob Brawner



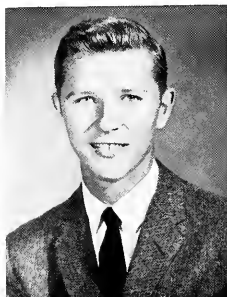
Roy Collomp



John Carman



Dixie Clampitt



Bobby Cummings



Keith Chilcutt



Betty Cowan



Linda Deloach



Barbara Derryberry



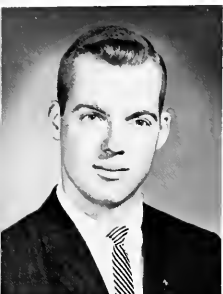
Mary Dodson



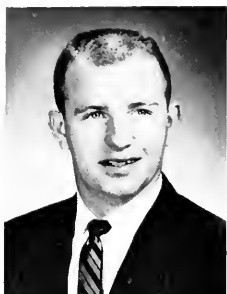
Elizabeth Davis







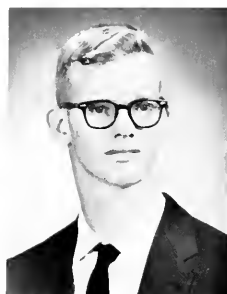
Danny Dunagan



Gerald Dame



Betty Davis



John Davenport



Jean Dove



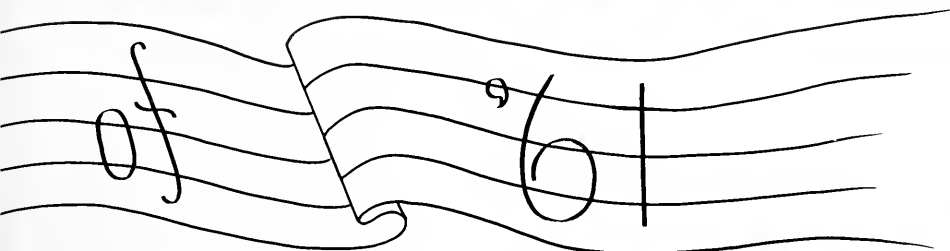
Marion Ellis



Becky Edwards



Nancy Gaugh



James Grant



R. N. Graves

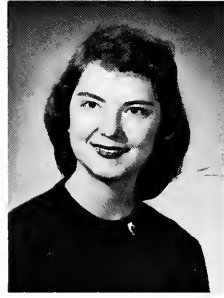




Adrienne Hatcher



Schelly Highsmith



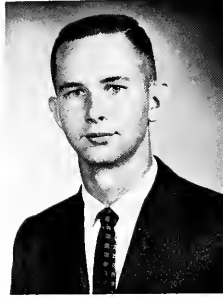
Mary S. Hudson



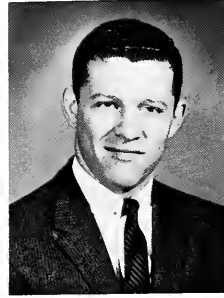
Eddie Hamlett



Bobby Haynie



Bob Highfill



Larry Hooppaw



William Hopkins



Barbara Hurst



Toby Jackson



Anne Johnson



Bill Jameson





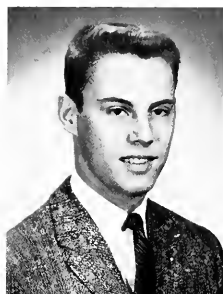
Patsy King



Jane Kirksey



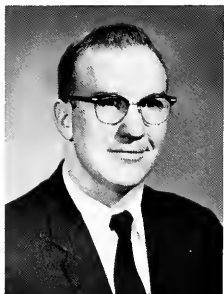
Peggy Laster



Dickie Laughlin



Alice Ledbetter



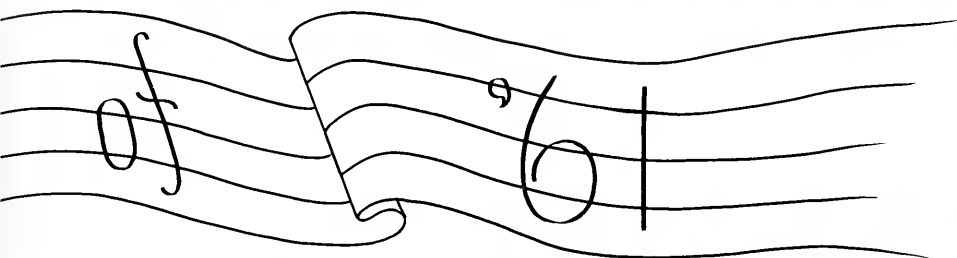
Charles McCall



Nancy McCollum



Robert McComic



Betty McCulley



Peggy McLeary





Jean McLemore



Betty Marbury



Martha Milam



John Montgomery



Pat Morse



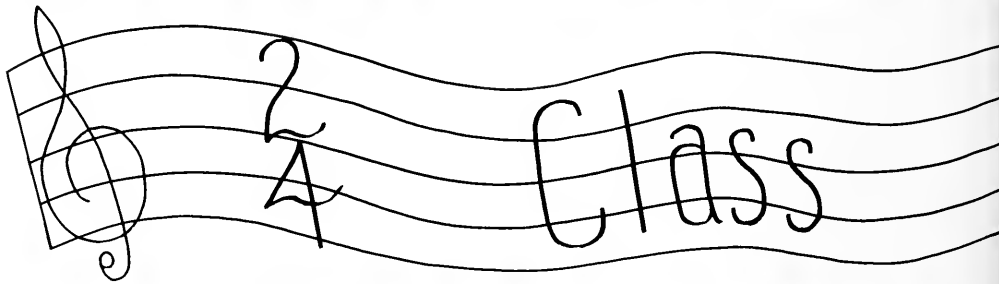
Franklin Parker



Dianna Payne



Frances Perry



Linda Portis

Jane Robinson

Betty Roy

Jerry Replogle





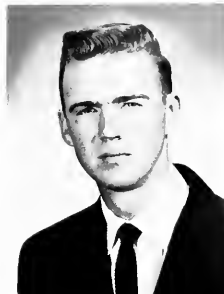
Larry Steed



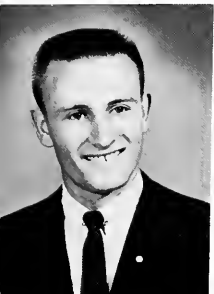
Debora Silkwood



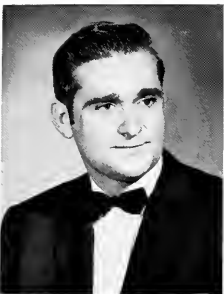
Mary D. Sherbenou



Danny Smith



Jerry Spencer



Jerol Smith



Nancy Gay Smith



Llewellyn Sellers



John Snead

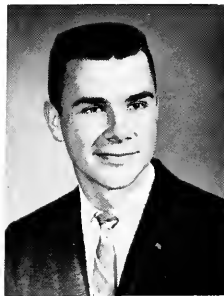


Lois Styers





Virginia Thomas



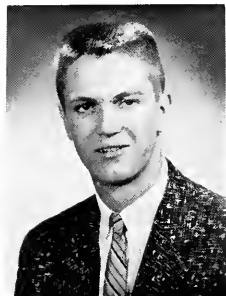
Malcolm Tipton



Martha Tolar



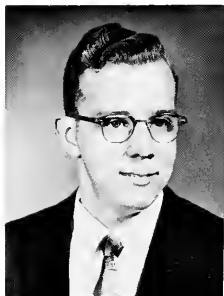
Carolyn Townsend



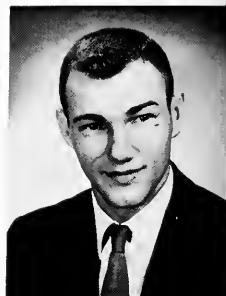
Paul Taylor



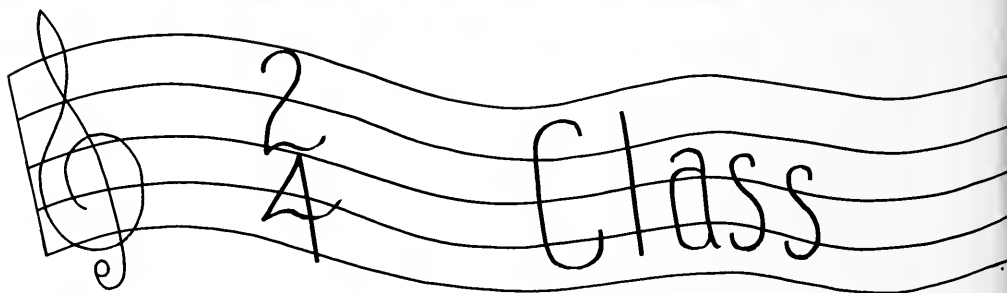
Irwin Vann



Ralph Williams



Max Walker

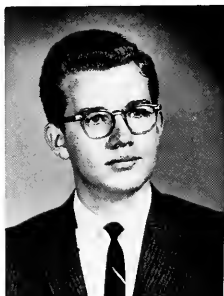


Hal Love

James McAfee

Tommy Barnes

John Worley





Robbie Wilson



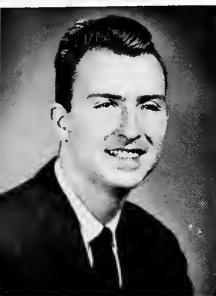
Carol Ann Miller



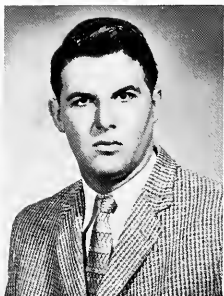
Lynn Baltzell



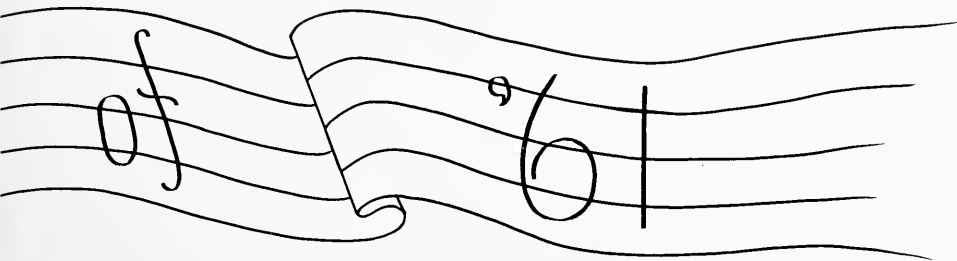
Carla Wigginton



Charles DeCourley



James Wood







C  
L  
A  
S  
S

O  
F

'62



FRESHMEN  
New Faces of '58

# FRESHMAN CLASS OFFICERS



L. to r.: "Pete" Smith, Vice-President; Bonnie Baker, Secretary; Gayle Alexander, Chaplain; Frank Jamison, President; Elaine Prather, Treasurer



Joyce Allen



Dianna Andrews



Terry Anderson



Jean Azbill



Jane Bailey



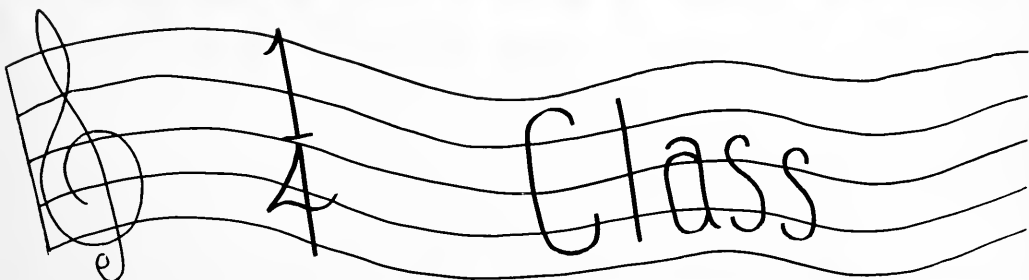
Bonnie Baker



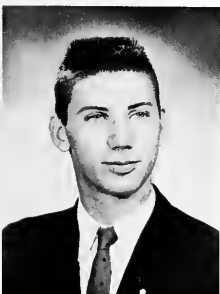
Mary Ann Baker



Jackie Baxter



Lee Belew



Shirley Blurton



Daryoosh Noparast  
"Jack Andrews"





Gary Borum



Carol Brock



Joyce Ann Browning



Sandra Brundige



Tom Burke



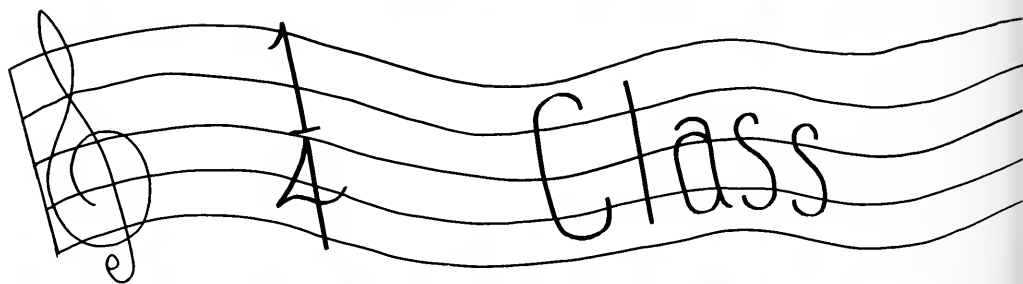
Charles Burkhead



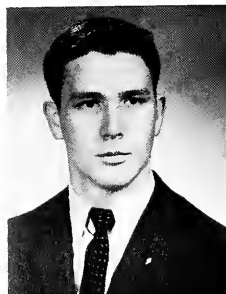
Joyce Ann Cannon



Sue Carson



Jim Bateman



Peggy Castleman



Betty Cavender

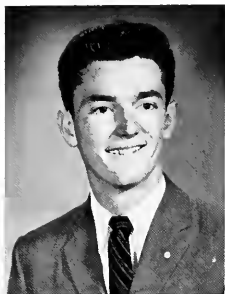


Sarah Chatham





Fred Cook



Dewey Corder



Anne Coughlan



Jimmy Daniel



Carolyn Davis



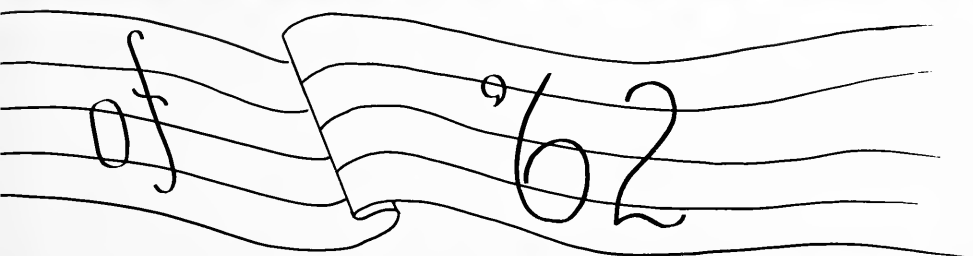
Glenn Davis



Jo Anna Davis



Kenneth Davis

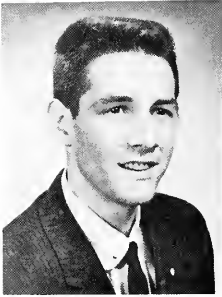


Vicki Dillow



Jimmy Douglass





Tommy Duffer



Kay Dunagan



Faith Dunn



Rose Anne Edmonson



Donna Finger



Etta Futrell



Carolyn Gage



Ruth Alice Gammon

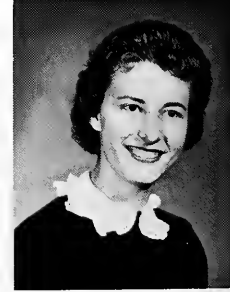
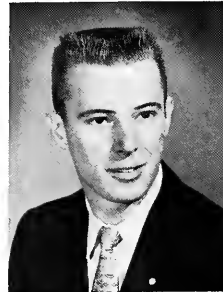
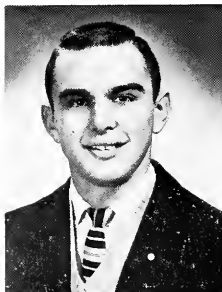


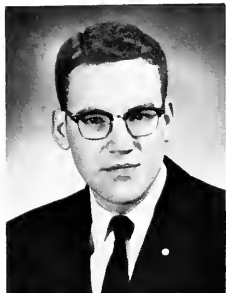
Bill Gettings

John Ginn

David Glisson

Joanne Godwin





Kathryn Greaves

Bill Greene

Nancy Green

Lyla Hardin



Royce Hardin

Sonny Hawkins

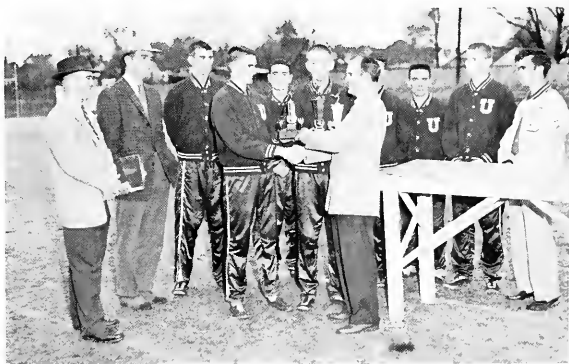
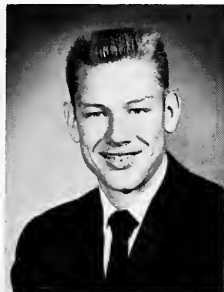
Weymuth Heuiser

Lois Highfill



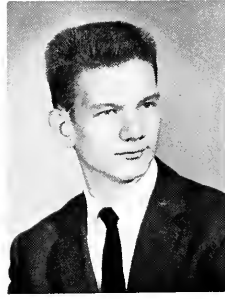
David Hopper

Susie Holloman

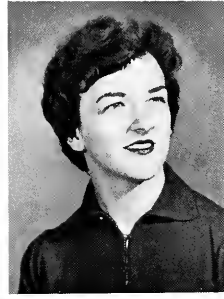




Martha Houston



Robert Hughes



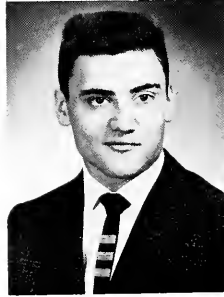
Linnie Hurdle



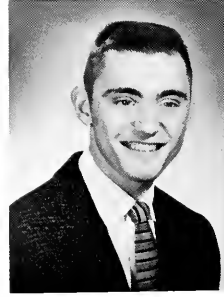
Bobby Hussey



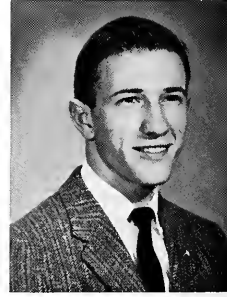
David Hyman



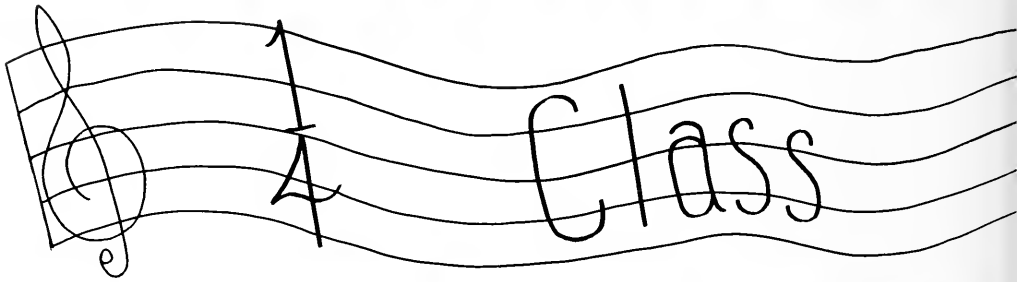
Gene Jacobi



Jim Jacobi



Frank Jamison



Anne Jones



Tresia Kerr



Sylvia Laird



Jere Ledsinger







Sally Lipe



Jack Livingston



Tommye Long



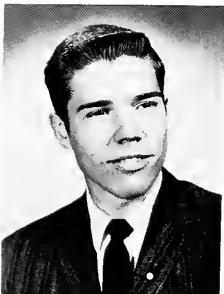
Betty McCartney



Elizabeth McClain



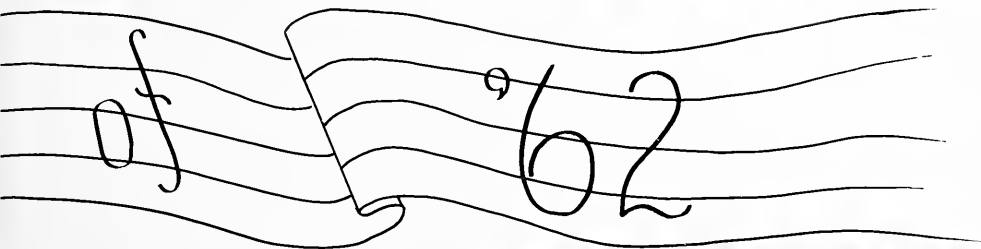
Shirley McElyea



Steve Martin



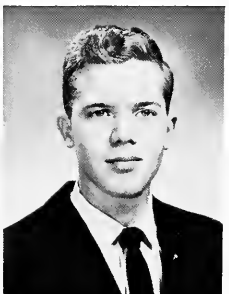
Shari Marvin



Linda Melton

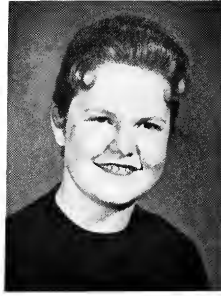


David Miller

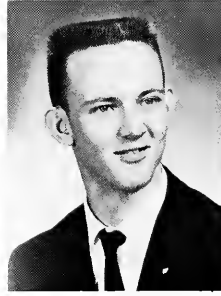




Billy Moore



Jo Morat



Bert Morris



Samuel Naylor



Bernita Norman



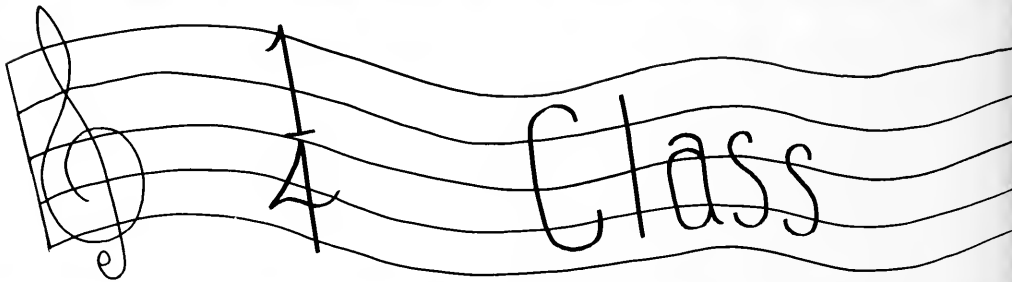
Tommy Norton



Sandra Nix



Rebecca Parker



Phillip Patterson



Donna Sue Pearson



Elaine Prather



Emily Pritchard





Sue Pope



Betty Ralph



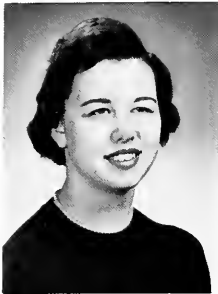
Jimmy Raynor



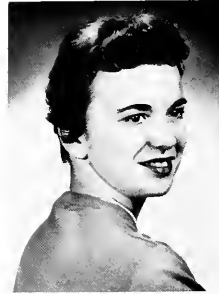
Shelby Reaves



Letitia Reynolds



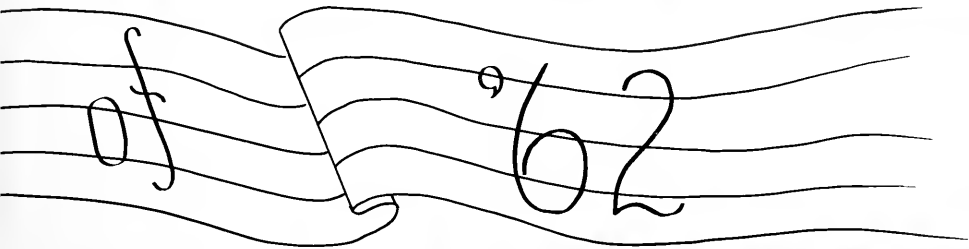
Shirley Reynolds



Harriet Rice



Anna Robertson



Carolyn Ross



Bonnie Shelley





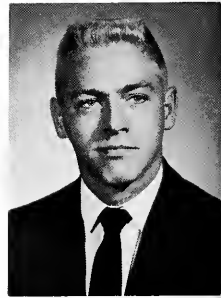
Marilyn Simmons



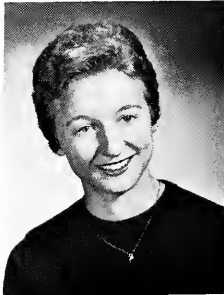
Juanita Sikes



Philip Smith



John Somers



Janet Southall Adkerson



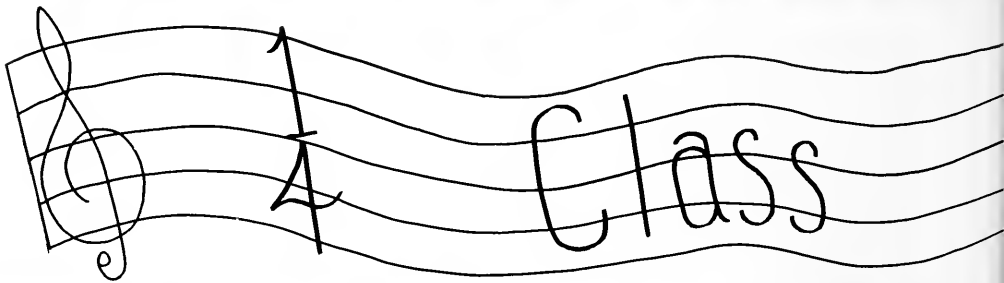
Betty Lu Smith



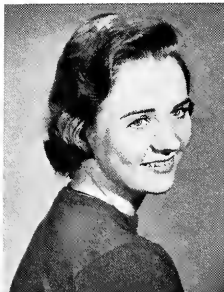
Dot Smith



John "Pete" Smith



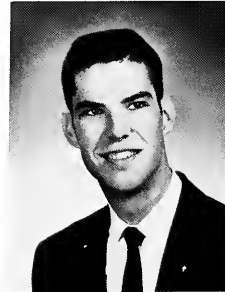
Linda Smith



Ronald Smith



Marion Snell



Peggy Stanfill





Polly Stone



Bill Sublette



Carolyn Swift



Don Taylor



Mary Ann Taylor



Glenda Thomas



Sarah Tubbs



Zelma Turnbo

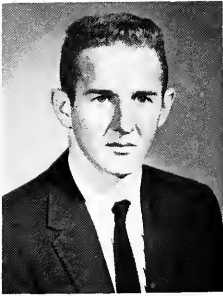


Lucy Turner



Tommy Vance





Bill Weinstein



Tom West



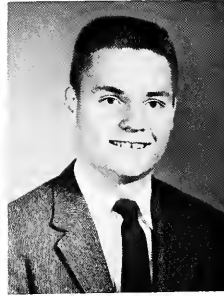
Marie Wiliford



Leone Williams



Anne Nell Wilson



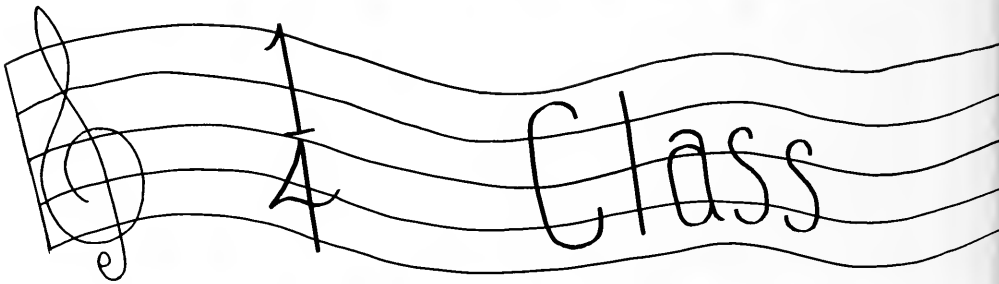
Charles Wingo



Joetta Zumwalt



Bonnie Golos



Elizabeth Story



Lockie Hatcher



Dean Moore



Nancy McLeary





*The "Oscar"*

**Honors**

# WHO'S WHO

"Who's Who among Students in American Colleges and Universities" is a national publication in which recognition is given to outstanding college students. These students are approved by the college administration and are appointed on the basis of scholarship, leadership, character and extra-curricular activities.

Public recognition has been given ten of the students at Union University for their worthy achievements. Their pictures and lists of their activities are given on the following pages.



## CAROL ETHEL CHAMBERS

Consistently appearing on the Dean's List, Carol Chambers of Jackson has excelled in the field of scholarship. The Student Body chose Carol as The Girl Most Likely to Succeed. She was a member of the Hypatia Club, National Education Association, Chi Omega, BSU and YWA, and served as Secretary of the Mallory Math Club.

Graduate school and teaching are Carol's future plans.



## DANIEL THOMAS MURCHISON

The wit of the campus is Tom Murchison of Sikeston, Missouri, whose keen sense of humor has been felt in many areas of campus life. Tom served in the following offices: Vice-President of the Senior Class; Associate Editor of the Cardinal and Cream; Vice-President of the Nestor Club; Reporter of the Sophomore Class, the Allegro Club and the Business Club; Reporter and later Program Chairman of the German Club, and WSc and Palm Reporter of Alpha Tau Omega. He has also participated in the BSU, Track Team and Cross-Country Team.

His next step is law school at Tulane University.



## PAUL OTIS SANDERFER

Paul Sanderfer from Union City is a boy of many talents. He has held the following offices: President of the Sophomore Class, Vice-President and later President of the National Education Association, Treasurer of the Nestor Club, Treasurer of his Sophomore Class, and Vice-President of the Mallory Math Club, WKA of Alpha Tau Omega and Counselor of Lovelace Hall. He has been a member of the Prince-Davis Science Club, and the BSU.

Paul plans to teach Chemistry and Physics after Graduate school. He has been granted a teaching fellowship at the University of Florida beginning in the fall of '59.

## MIRIAM McRAE WATT

Miriam Watt from Union City is one of the most industrious and capable of Union's students. Taking part in many phases of college life, she has served as Secretary for the following groups: Student Council, Sophomore Class, and the Hypatia Club. She was also a member of the Greek Council, of the Footlights Club, YWA, BSU, National Education Association, and the Cardinal and Cream Staff. Miriam served her sorority, Chi Omega, as Rush Chairman and later as President. In her Junior year, she was elected sweetheart of ATO.

Miriam aspires to be a teacher.



## PETER RHEA JONES

Peter Rhea Jones has shown himself to be one of the most capable leaders on the campus. He was elected Vice-President of the Student Body his Junior year and President of the Student Body his Senior year. Peter Rhea served as Junior Class President and was Sophomore Class Speaker; later he was Speaker for the Senior Class. Peter Rhea participated in Phi Alpha Theta, Rutledge History Club, was Vice-President of Adams Hall Council and Nestor Club, was Program Chairman of the Ministerial Association, WC and WM of Alpha Tau Omega, ATO Representative to BSU, and was also a member of the Latin club and the Tennis Team.

Graduate school for further study is on the agenda next for Peter Rhea.



## ELLEN MILES

From Dresden comes one of the most vivacious personalities at Union. Ellen Miles has played an important role in campus activities as: Secretary of the Freshman Class, the Footlights Club, Los Picaros Spanish Club, and YWA; Secretary and Recorder of Alpha Psi Omega; Vice-President and Recorder of the National Education Association; and Vice-President of Chi Omega. In BSU she served as third Vice-President in a State Office and on Union's campus, as Publicity Chairman, and Co-Editor of the BSU Newsletter. Ellen was the BSU Student Missionary to the Japanese in California.

Her plans include marriage and teaching.



## JOHNNIE RUFUS BARBER

Johnnie Barber, from Jackson, is recognized as one of the most versatile leaders on Union's campus. During his stay here at Union, Johnnie has served in the following capacities: Editor of *Lest We Forget*; Senior Escort to Mr. Union; Vice-President of the Junior Class, Phi Alpha Theta, the Rutledge History Club, the Latin Club; Sophomore Class Speaker; President of the Nestor Club; Treasurer of Sigma Alpha Epsilon and President his last semester. He has also served as a member of the Student Council, the Cardinal and Cream Staff, BSU and the Track Team.

Johnnie is planning to teach in a liberal arts college after graduate work.

## VIRGINIA RUTH PEARCE

Proving herself in many areas, Virginia Ruth Pearce is well-known on the campus for her leadership. She served as Co-Editor of *Lest We Forget*, as Secretary of Phi Alpha Theta, and of the Rutledge History Club, as President of the National Education Association, the Greek Council, and as a member of the Student Council, the Footlights Club, BSU, and Los Picaros Spanish Club. She was also Vice-President and later President of Chi Omega.

Teaching English is Virginia Ruth's ambition after graduate school.



## GAYLA HOPE DENNIS

One of the most gifted students on the campus is Gayla Dennis, who hails from Memphis. Gayla served as: Editor of the Cardinal and Cream and a member of the staff for three years, Student Council Representative, Religious Editor for the BSU, President of Phi Alpha Theta and the Jones Hall Council, and Vice-President and later President of the Hypatia Club and Los Picaros Spanish Club. She has actively participated in the Rutledge History Club, Lest We Forget Staff, YWA, Shelbians and Chorus.

The field of writing will be her profession upon completion of graduate school.



## LARRY GAY LANE

Friendliness is a quality that has made Larry Gay Lane of Jackson well-known to all Union students. She has served as Co-Editor of Lest We Forget, Secretary of the Junior Class and the Hypatia Club, President of the Physical Education Club, GM and Personnel of Chi Omega, and President of Los Picaros Spanish Club. She has also held membership in the Student Council, the Footlights Club, National Education Association, Cardinal and Cream Staff and BSU.

Larry Gay is a language major and plans to teach in a college after graduate school.

M  
O  
S  
T  
P  
O  
P  
U  
L  
A  
R



BOB CARPENTER  
MISS MARY ANN SMITH



M  
R.  
&  
M  
I  
S  
S  
U  
N  
O  
N

MISS BARBARA WILSON  
REX ENOCH

# ESCORTS TO... ♦♦♦

Miss Peggy Castleman  
Tom West



Miss Pat Andrews  
Malcolm Tipton



Sophomore  
Escorts

Freshman Escorts

♦♦♦ MR. & ♦♦♦



Junior Escorts



Miss Joyce Hutson  
Allan Bartlett

Senior Escorts



Miss Nancy Jeffress  
Johnnie Barber

# MISS UNION

BEST  
ALL  
ROUND



MISS LARRY GAY LANE  
DAVE CUNDIFF



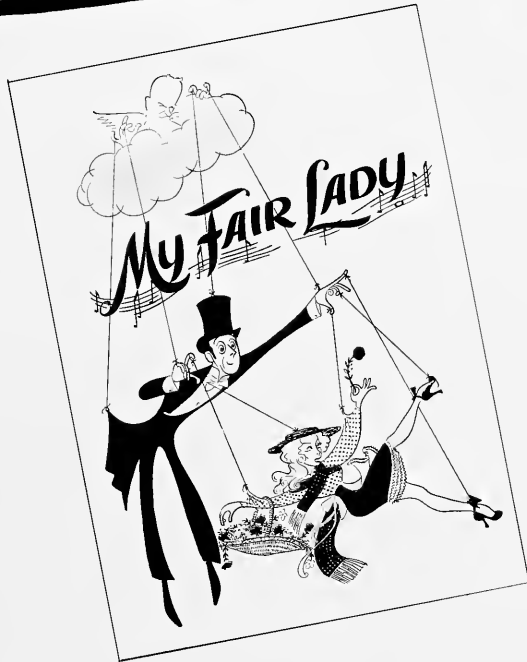
MISS GAYLA DENNIS  
PETER RHEA JONES

M  
O  
S  
T  
  
L  
I  
K  
E  
L  
Y  
  
T  
O  
  
S  
U  
C  
C  
E  
E  
D



DICKIE LAUGHLIN

M  
O  
S  
T  
  
H  
A  
N  
D  
S  
O  
M  
E  
  
E



# Campus Beauties

“MY

*Fair* LADY”

S  
A  
E  
Q  
U  
E  
E  
N



MISS ROBBIE WILSON



MISS PAT ANDREWS

A  
T  
O  
S  
W  
E  
E  
T  
H  
E  
A  
R  
T

B  
A  
S  
K  
E  
T  
B  
A  
L  
L  
Q  
U  
E  
E  
N



& C O U R T





Queen: Mrs. Shelby W. Lynn, escorted by Wilton Lynn  
From left to right: Ken Gault, Miss Elaine Prather, Joe Aden, Miss Lynn Baltzell, Miss Betty Jo Pennington, Miss Mary Ann Smith, Paul Taylor and Larry Boston

M  
I  
S  
S  
U  
N  
I  
V  
E  
R  
S  
I  
T  
Y



MISS BARBARA WILSON,  
Miss University

& COURT



Miss University and Court, l. to r., standing: Miss Marilyn Cunningham, Alternate; Miss Shirley Blurton, 2nd Maid; Miss Joyce Hutson, 1st Maid. Seated: Miss Barbara Wilson, Miss University.

# CAMPUS

---



Miss Betty Sue  
Cowan



Miss Demple Norvill



Miss Gayla Dennis

# FAVORITES

---



Miss Pat Andrews



Miss Barbara Wilson

# CAMPUS

---



Miss Ellen Miles



Miss Mary Ann Smith



Miss Miriam Watt

# FAVORITES

---



Miss Elaine Prather



Miss Peggy McLeary

F  
R  
E  
S  
H  
M  
A  
N  
Q  
U  
E  
E  
N



MISS ELAINE PRATHER

Miss Vicki Dillow

Miss Sue Pope

Miss Peggy Castleman

Miss Marilyn Cunningham

& COURT



The  
**PLAYBILL**  
for the Royale Theatre



· AFFAIRS OF STATE ·

# Organizations

"AFFAIRS OF STATE"



PETER RHEA JONES,  
Student Body President

# STUDENT COUNCIL



Pictured, Left to Right: Peter Rhea Jones, Barbara Wilson, Secretary; Rex Enoch, Vice-President; Carol Greene, Betty Sue Cowan. Standing: Bill Jackson, Larry Patton.

Pictured, Left to Right: Paul Sanderfer, Mary Anne Baker, Virginia Ruth Pearce, Delores Dorris, Mr. Ernest Muntz. Standing: Bobby Agee, Jerry Wagster.





L. to r., Bob Agee, Marion Ellis, Jerry Wagster.

# PUBLICATIONS



L. to r., Wayne  
Brown, Mrs. Blythe,  
Polly Stone, Shirley  
Bledsoe.

### CARDINAL AND CREAM STAFF

Editor, Bobby Agee; Sports, Larry Steed; Organizations, Marion Ellis; Features, Gayla Dennis; Exchange, Polly Stone; Business Manager, Jerry Wagster; Reporters, Bud Dancy, Betty Cowan, Wayne Brown, Joyce Stevenson and Shirley Bledsoe.

### LEST WE FORGET STAFF

Editor, Larry Patton; Art, Mary DeLaine Sherbenou and Bud Dancy; Business Manager, Rex Enoch; Photography, Raymond Burke; Staff, Ralph Williams, Shirley Bledsoe, Polly Stone, Marion Ellis, R. N. Graves; Sponsor, Mrs. Blythe.



L. to r., Rex Enoch, Larry Patton, Mrs. Blythe.

L. to r., Mary DeLaine Sherbenou, Ralph Williams, Kay Dunagan.



L. to r., Polly Stone, Marion Ellis, Shirley Bledsoe.



Delores Dorris  
Vice-President

Betty Jo Pennington  
President

Carolyn Townsend  
Treasurer

Marion Ellis  
Historian

Pat Morse  
Recording Secretary

Mary Dodson  
Corresponding Secretary



## Beta Omega of Zeta Tau Alpha

Founded at Longwood College, Farmville, Virginia, October 15, 1898

Colors: Turquoise Blue and Steel Gray

Flower: White Violet

Open Motto: Seek The Noblest

Love, friendship, fraternity, service, scholarship are implanted deeply within each Zeta's heart. The sisterhood of Zeta Tau Alpha spans the days in college and the years outside these ivy walls. The influence of Zeta as an international fraternity has been felt in more than one country.

Beta Omega of Zeta Tau Alpha has this past year attained success in many areas of campus life. Daughters of Themis have been chosen for Escorts to Miss Union, Maids of the Basketball Queen, Freshman Court, Ten Most Favorite Girls, Freshman and Varsity Cheerleaders, and Class Officers.

Wanda Mayo, Betty Sue Cowan, Mary Dodson, Ann Nell Wilson, Kay Dunagan, Marion Ellis, Delores Dorris, Pat Morris and Carolyn Townsend serve as officers in clubs at Union. Zetas have taken an active part in B.S.U., Life Service Band, NEA, Footlights Club, Hypatia, Rutledge History Club, Los Picaros, Home Economics Club, Business Club, Band Chorus, and Student Publications.

The social activities that have hi-lighted this year included a Zeta Pre-School Outing, Founders' Day Banquet, a Winter Wonderland Date Party, a Christmas breakfast party, the Mother-Daughter Luncheon, the spring banquet, the Alumnae Tea, a Senior Dinner honoring the senior members of the chapter, and other informal chapter get-togethers.

The Zetas gave in service for others a Thanksgiving basket; a Christmas party with Santa, baskets of food, toys, and clothes; and time in the Lions Club Paper Sale. Beta Omega contributed to the Zeta National Service Program which involves financing the Cerebral Palsy Equipment Manual and providing slides for the National Society for Crippled Children and Adults, Inc.

Fraternal love and friendship become more meaningful as the years go by and this year has been filled with all the emotions and events that make Zeta dearest to our hearts.



Jean McLemore



Martha Milam



Betty Ralph



Betty Cowan



Elizabeth Davis



Jane Bailey



Shari Marvin



Kay Dunagan



Jane Kirksey



Ann Nell Wilson



Sue Pope



Joann Gowan



Peggy Hinton



Sandra Brundige



Glenda Dillingham



Wanda Mayo



Beverly Moore



Nancy McCollum



Betty McCully



Jane Robinson



Donna Sue Pearson



Susie Hollamon



Carolyn Morse



Peggy Castleman



Martha Houston



## Upsilon Chapter of Chi Omega

Founded at the University of Arkansas, Fayetteville, Arkansas, on April 5, 1895.  
Colors: Cardinal and Straw. Flower: White Carnation.

The members of the Upsilon Chapter of Chi Omega exemplify its open motto, "Hellenic Culture and Christian Ideals." Instilled within the hearts of the members is a bond of unbroken love and friendship.

This year proved to be enjoyable and outstanding for the Chi Omegas in all phases of campus life. The Chi O's were the recipients of many awards and honors. Among these were Escorts to Miss Union, Maids to Basketball Queen, Maids to Miss University, Queen of Sigma Alpha Epsilon, Cheerleaders, Freshman Queen and Maids, Representatives in ten Campus Favorites, Best All-Around Girl, Most Popular Girl, and Who's Who in American Colleges and Universities. Offices and memberships were held in all campus organizations in which girls participate, including Hypatia Literary Society, Alpha Psi Omega, Rutledge History Club, Cardinal and Cream Staff, Student Council, and B.S.U.



As we come to the close of another wonderful year, we are full of sadness for those who are leaving us, but we are joyful over a successful year. Memories of this year will live forever in our hearts. Chi Omega's social life holds memories of a Hal-lowe'en Date Party, a stew supper, a surprise party for actives, chicken-bean supper, the annual Winter Banquet, Fall and Spring Eleusinia, and is climaxed with a spring outing. The civic activities included giving Thanksgiving and Christmas baskets, a Christmas party for a needy family, and selling papers for the Lions Club.

All this, and more, have played a part in making this a great year for the Upsilon Chapter of Chi Omega. Next year, we know, will be another characterized by love and friendship.



Officers, counterclockwise: Sandra Brown, Secretary; Larry Gay Lane, Pledge Trainer; Ellen Miles, Vice-President; Virginia Ruth Pearce, President; Carol Chambers, Treasurer; Miriam Watt, Rush Chairman; Meredith Smith, Chapter Correspondent; Carol Greene, Personnel; Anne Bowles, Social Chairman.





Robbie Wilson



Peggy McLeary



Patty Davis



Nancy Bowlin



Carol Miller



Harriett Metts



Mary Ann Smith



Elaine Prather



Joyce Hutson



Vicki Dillow



Linnie Hurdle



Alice Ledbetter



Linda DeLoach



Becky Edwards



Mackey Putman



Lynn Baltzell



Toby Jackson



Kathryn Greaves



Anne Johnson



Ann Jones



Mary Stephen  
Hudson



Harriett Rice



Ann Coughlan



Shirley Reynolds



Marilyn Simmons



Barbara Derryberry



Nancy Gaugh



Jo Anna Davis



Adrienne Hatcher



Letitia Reynolds



Weymuth Heuser



Bonnie Baker



Carol Luethge



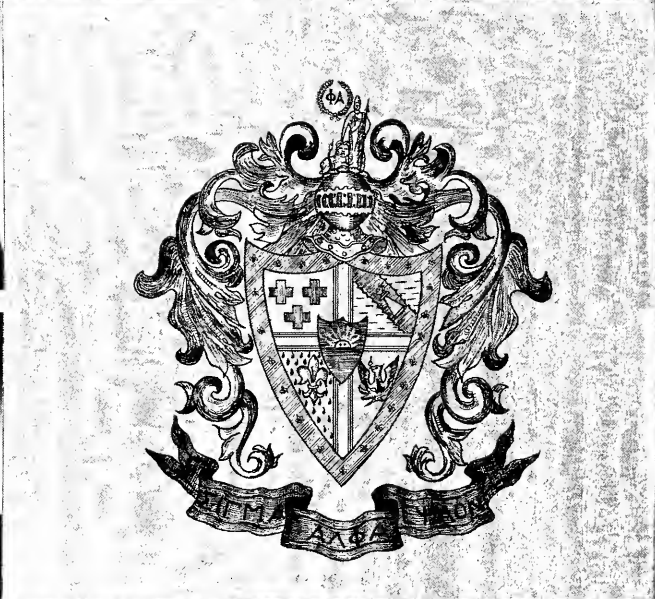
Joyce Stevenson

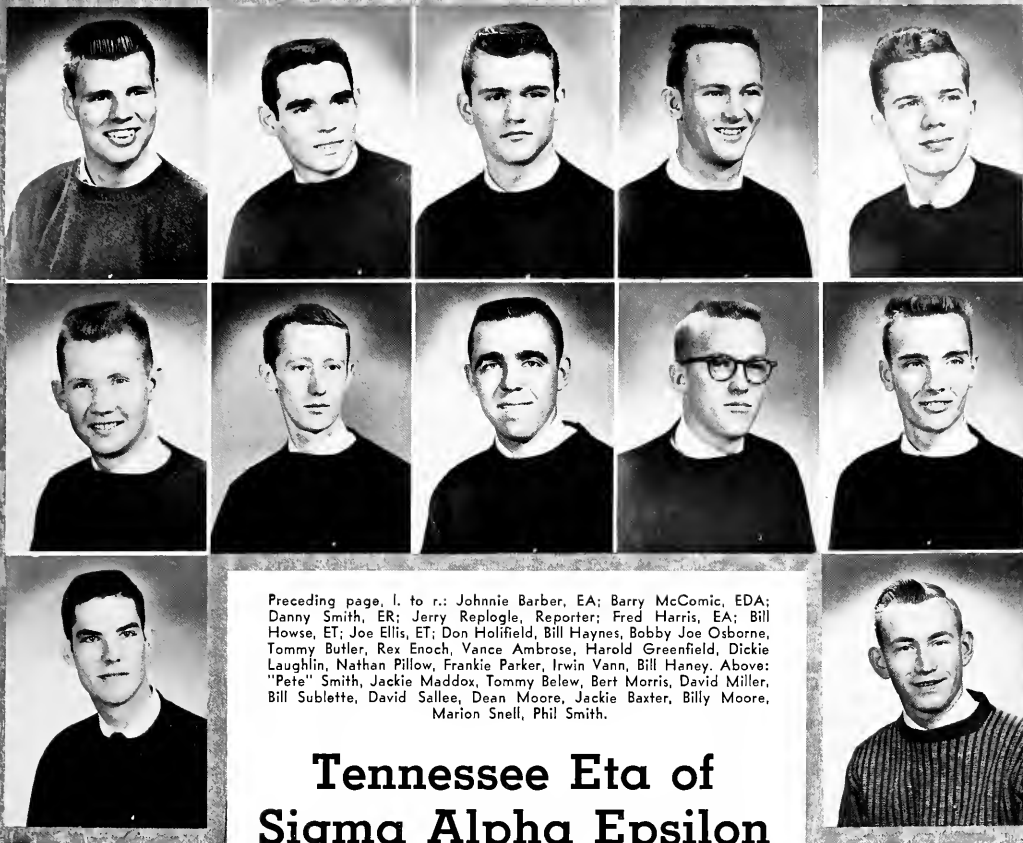


Shirley Blurton



Mrs. Rosa Rutledge,  
Sponsor





Preceding page, l. to r.: Johnnie Barber, EA; Barry McComie, EDA; Danny Smith, ER; Jerry Replogle, Reporter; Fred Harris, EA; Bill Howse, ET; Joe Ellis, ET; Don Holifield, Bill Haynes, Bobby Joe Osborne, Tommy Butler, Rex Enoch, Vance Ambrose, Harold Greenfield, Dickie Laughlin, Nathan Pillow, Frankie Parker, Irwin Vann, Bill Haney. Above: "Pete" Smith, Jackie Maddox, Tommy Belew, Bert Morris, David Miller, Bill Sublette, David Sallee, Dean Moore, Jackie Baxter, Billy Moore, Marion Snell, Phil Smith.

## Tennessee Eta of Sigma Alpha Epsilon

Founded: March 9, 1856 at the University of Alabama in Tuscaloosa.

Colors: Royal Purple and Old Gold

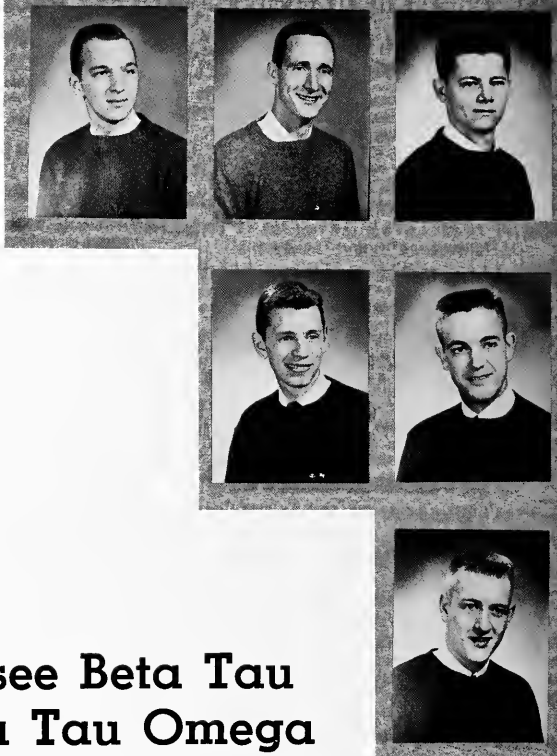
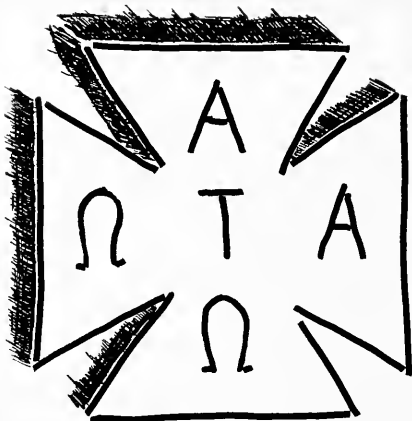
Flower: Violet

A Fraternity, a house, a handshake, a badge, a name, a password—these are not the things which make a fraternity. Hearts bound in one accord, singing together, eating together, laughing together, working together, worshipping together, living together—these make fraternity. This is Tennessee Eta of S. A. E. Christian ideals, heart deep relations, brotherhood with all mankind; these are the very essence of Sigma Alpha Epsilon.

This was a year of happiness, brimful with memories for our future . . . as we watched our queen, the lovely Miss Robbie Wilson, receive her crown at the Coronation Banquet; as the eyes of indigent children glittered with the joy of an unexpected Christmas; and as fifteen young men joined the ever widening circle of brotherhood . . . a year rippling with action as the Sig Alphs excelled in sports; as they journeyed to the Ozark Mountains for a week-end; as they went again to Montgomery Bell State Park for the annual spring splash and as many of the brothers filled vital positions of leadership on the campus.

These are a few of the achievements of our members this school year; Rex Enoch was vice-president of the student body; Barry McComie was an outstanding class speaker; Rex Enoch and John Barber were members of Nestor Club and John served as president; Dickie Laughlin was selected most handsome; Rex Enoch was elected Mr. Union by the student body and another S. A. E. was senior escort; Bill Brown and Tommy Butler monopolized the control board of a local radio station; and many more Sig Alphs were active in honorary fraternities, clubs, and in sports. In addition several S.A.E.'s were on the Dean's List and were outstanding scholastically.

This then is our fraternity—minds, moods, motives, all varied yet harmonious.



## Tennessee Beta Tau of Alpha Tau Omega

Founded: September 11, 1865; Virginia Military Institute; Richmond, Virginia

Colors: Sky Blue & Gold

Flower: White Tea Rose

The big white house on Main Street has once again this year been silent witness to the unique personal way in which Beta Tau has brought to some sixty brothers the idealism of the National Brotherhood. A successful year is ended.

The recognition of the capacities and character of the brothers of Beta Tau has been evidenced by the fact that eleven class officers, including all four presidents, were Taus; that Peter Rhea Jones has served as Student Body President and was also selected Most Likely to Succeed; that Larry Patton was elected to the yearbook editorship with Bob Agee editor of the Cardinal and Cream; that Bob Carpenter was dubbed by his fellow students "Most Popular Boy" and Dave Cundiff received their nod as Best All-round Boy; that two ATO's served as escorts to Mr. Union; that six other brothers were distinguished by holding the presidency of various clubs and organizations; and that others filled Student Council capacities.

This year Bob Carpenter has served admirably as President of the Baptist Student Union, teamed with six other brothers as Council members. The Student Public Relations Directorship has been enhanced by the wit and wisdom of Tom Murchison. Lovely Pat Andrews, sweetheart of Beta Tau, and her immediate predecessor, Miriam Watt, both received acclaim as Campus Favorites.



Wayne Brown, WSc.  
Walter Allison, WKA  
Jerry Wagster, WKE  
Allan Tinker, WC  
Bob Carpenter, WM



Top, l. to r.: R. N. Graves, Paul Sanderfer, Tom Murchison, Bob Brawner, Bill Murphy, James Scott, Harvell Price, Bob Highfill, Gerald Dame; second row, Peter Rhea Jones, Dave Cundiff, James Allcock, James Smith, Polk Glover, Jerry Nowell, Frankie Miller, Larry Boston; bottom row, Larry Patton, Billy Alexander, Bill Jackson, Bob Johnson, Dave Shepperd, Malcolm Tipton, Jerry Phillips.

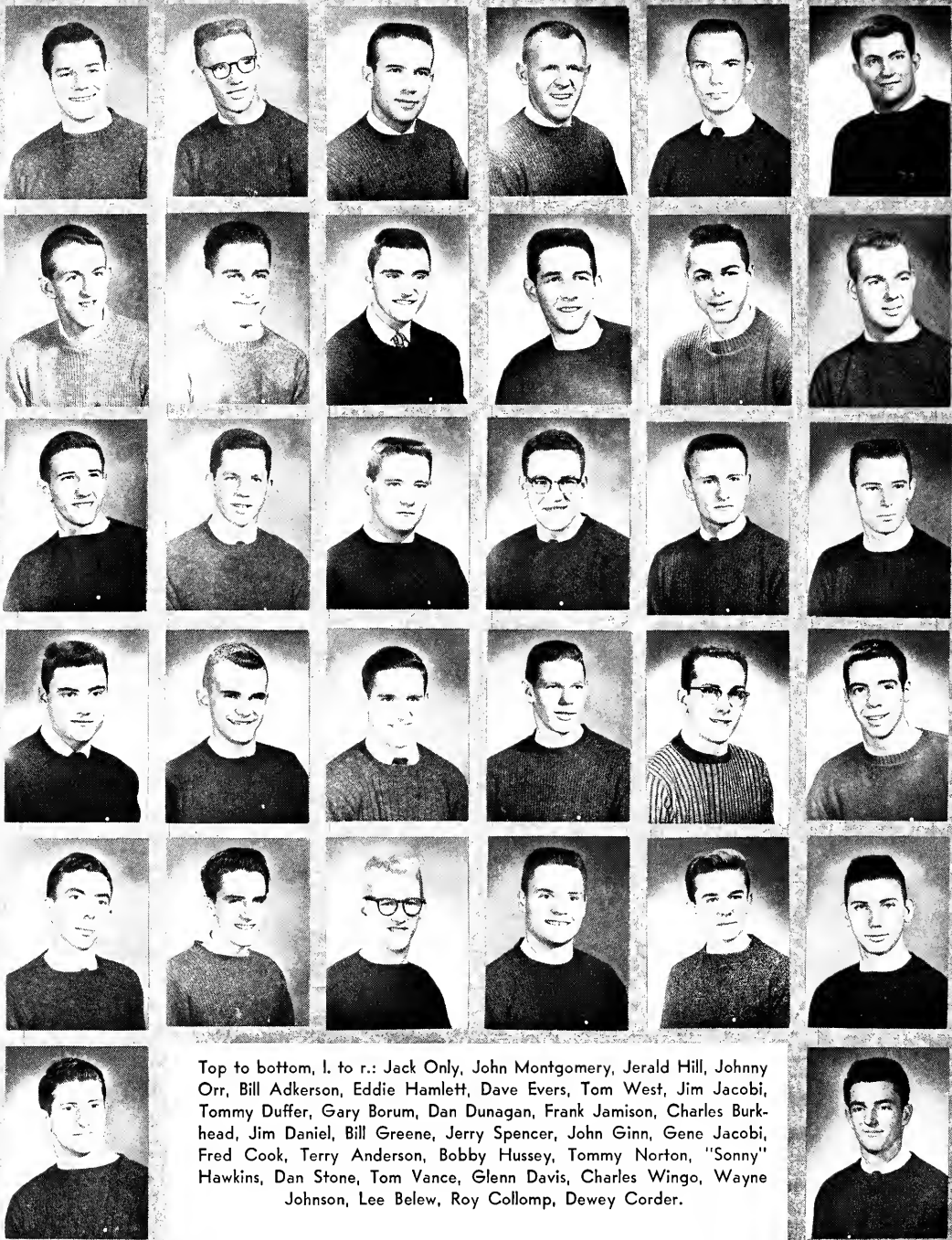
In 1958-59, the brothers again evidenced academic strength by furnishing six of the Nestor Club's twelve members, and by claiming R. N. Graves' 3.0 average as part of their scholastic record. The fact that Paul Sanderfer, Tom Murchison, and Peter Rhea Jones were picked for Who's Who evinces this scholastic prowess coupled with qualities of character and leadership. Beta Tau was also represented in Phi Alpha Theta, national honorary history fraternity.

Class plays this year saw eleven of fifteen male parts taken by Taus, with the subsequent fall production claiming ten brothers. Casting for the spring feature found brothers again in major roles. Four of Beta Tau's number have been recognized with membership in Alpha Psi Omega.

All of these activities are balanced on the physical side by the varsity teams having again this year been manned principally by Taus, and by the Chapter's intramural victories to date in basketball, football, and volleyball.

Les Rues de Paris were never more beautiful than the night they toasted the annual sweetheart banquet; nor was Natchez Trace ever more hospitable than to Taus and their guests at the Spring Splash. These and numerous other parties highlighted the ATO social year.

This tangible record is, however, only half the story, or less. For it is from far more basic achievements that these outward indications are derived; the friendships made and ideals developed in Beta Tau this year are the most important accomplishments. It is upon these that we will continue to build individually, long after the collective achievements of Tennessee Beta Tau, '58-'59, are forgotten.



Top to bottom, l. to r.: Jack Only, John Montgomery, Jerald Hill, Johnny Orr, Bill Adkerson, Eddie Hamlett, Dave Evers, Tom West, Jim Jacobi, Tommy Duffer, Gary Borum, Dan Dunagan, Frank Jamison, Charles Burkhead, Jim Daniel, Bill Greene, Jerry Spencer, John Ginn, Gene Jacobi, Fred Cook, Terry Anderson, Bobby Hussey, Tommy Norton, "Sonny" Hawkins, Dan Stone, Tom Vance, Glenn Davis, Charles Wingo, Wayne Johnson, Lee Belew, Roy Collomp, Dewey Corder.



L. to R., First Row: Judy Verner, Miss Ruth Gibbons, Mrs. Jack Farris, Mrs. R. H. Ward  
 Second Row: Ralph Williams, Sandra Brown, Rebecca Parker, Pat Morse, Harriet Schroeder, Nancy  
 Jeffress  
 Third Row: Tommy Barnes, Nancy Gay Smith, Demple Norvill, Lois Styres, Bettye Cliff, Ellen Miles,  
 Bob Carpenter

## Library Staff





Left to Right: seated, Mary DeLaine Sherbenou, Shelley Highsmith; first row, James Allcock, Dot Smith, Serena Crosswell, Pat Kirby, Sue Laine Hunt, Donna Finger, Mary Carolyn Allcock, Carolyn Townsend, Linda Smith, Meredith Smith, Mrs. Elisabeth J. Fossey; second row, Barbara Blakely, Martha Milam, Donna Pearson, Jerry Dunn, Bettye Clift, Vicki Dillow, Mary Ann Baker; third row, Bobby Newton, Melvin Childress.



James Allcock, President

## Allegro Club

The Allegro Club is composed of Music Majors and Minors, the music faculty of Union and all others with a special interest in music. The purpose of the club is to encourage the study, appreciation, and enjoyment of music; and, furthermore, to develop the individual's ability to perform.

Sponsor—Mrs. Elisabeth Fossey

President—James Allcock

Vice-President—Shelley Highsmith

Secretary-Treasurer—Mary D. Sherbenou



# UNION UNIVERSITY BAND AND CHORUS



Union University Chorus

Mr. John Hughes, Director



Union University Band

Mr. Frederic Lubrani, Director

# Alpha Psi Omega



L. to r., seated: Miriam Watt, Demple Norvill; standing, Bill Carver, Ellen Miles, Paul Sanderfer, Larry Patton.

Alpha Psi Omega, the national dramatic fraternity on Union's campus, strives to advance dramatics to a rising level. Each member has been elected to membership on the basis of meritorious personal achievement in school dramatics.

#### Officers:

Paul Sanderfer—President

Larry Patton—Vice-President

Miriam Watt—Secretary-Treasurer

# Footlights Club



## Officers:

President ..... Larry Patton  
Vice-President ..... Allan Tinker  
Secretary ..... Carol Luethge  
Treasurer ..... Wayne Brown  
Program Chairman ..... Larry Gay Lane



The purpose of Footlights Club is to stimulate interest in dramatic art on the campus, to promote interest in dramatic presentations, and to offer a service to all students who are interested in dramatics.

It sponsors all play productions, including a play tournament, one-act play night, and major productions.

During the year the club enjoys a number of social functions.





Junior Class

# CLASS PLAYS



Freshman Class



Sophomore Class



Senior Class

# "Everyman Today"



## CAST:

Everyman .....	Larry Patton	Scientist .....	Bill Carver
Wife .....	Joyce Hutson	Judge .....	Bill Wilson
Devil .....	Paul Sanderfer	Good .....	Vicki Dillow
Death .....	Bobby Todd	Evil .....	Wayne Johnson
Conscience .....	Alice Ledbetter	Secretary .....	Carol Luethege
General .....	Malcolm Tipton	Beauty .....	Mary Alice Watkins
Businessman .....	Wayne Johnson	Mother .....	Demple Norvill
Dictator .....	Larry Moore	Soldiers .....	Dan Stone
Intellect .....	R. N. Graves		Fred Cook
Politician .....	Bill Flack	Doctor .....	James Allcock

Directed by Mrs. Elizabeth B. Loyd

# "The Diary of Anne Frank"

(Due to a delayed production date, these photographs were taken during rehearsals.)



L. to r.: Tinker, Luethge, Ledbetter, Smith



L. to r.: Smith, Golos, Cooper



L. to r.: Williams, Baggett, Cooper, Barber



L. to r.: Norvill, Johnson, Frizzell, Graves, Smith

## CAST:

Mr. Frank .....	Sydney Smith
Mrs. Frank .....	Demple Norvill
Anne .....	Carol Luethge
Margot .....	Alice Ledbetter
Mr. Van Daan.....	R. N. Graves
Mrs. Van Daan .....	Jane Frizzell
Peter .....	Wayne Johnson
Miep .....	Bonnie Golos
Mr. Kraler .....	Dalton Cooper
Mr. Dussel .....	Allan Tinker

## PRODUCTION STAFF:

Bill Carver, Ralph Williams, Reed Barber, Ann Baggett, Bonnie Golos, Dalton Cooper

DIRECTED BY: Mrs. Elizabeth B. Loyd



Seated, l. to r.: Paul Sanderfer, Ellen Miles, Nancy Lee Smith, Ann Brigham, Mary C. Allcock, Margaret Ann Boulton. Standing, Emily Prichard, Lois Highfill, Sandra Bishop, Betty Fletcher, Linda Melton, Delores Dorris, Patsy King, Peggy Hinton, Anita Lowe, Peggy McLeary, Shari Marvin, Betty Marbury, Nyta Garrett, Evelyn Marbury, Katie Webb, Harriett Schroeder, Janis Plunk, Nancy Taylor.

## Frank E. Wells Chapter, Future Teachers of America

### Officers:

Paul Sanderfer .....	President
Ellen Miles .....	Vice-President
Betty Marbury .....	Secretary
Evelyn Marbury .....	Treasurer
Ann Brigham .....	Program Chairman



Seated: Jim Sorrell, Prof. Jack Farris, Johnnie Barber, Tom Murchison. Standing: Peter Rhea Jones, Jerol Swaim, Larry Patton, Harvey Gill, Paul Sanderfer, Bud Dancy, Bobby Kendig, Bobby Agee, Crafton Cliff. Not pictured: Rex Enoch.



Johnnie Barber,  
President

Composed of twelve student members and a faculty sponsor, Nestor Club meets once each month for an evening of fellowship and discussion. Members are elected primarily on the basis of scholarship. Once each year the group meets with Hypatia, Nestor's sister club.

Nestor Club was founded in 1913 and took its name from a classical theme. Nestor, a descendant of Prometheus, was the oldest and wisest of the Greek chieftains during the Trojan war.

Sponsor ..... Mr. Jack Farris

Officers:

Johnnie Barber .....	President
Tom Murchison .....	Vice-President
Paul Sanderfer .....	Treasurer
Crafton Cliff .....	Secretary
Jim Sorrell .....	Chaplain

## Nestor Club





First row, left to right: Larry Gay Lane, Gayla Dennis, Ann Brigham, Miss Marion Crocker; second row: Wanda Mayo, Meredith Smith, Patty Davis, Judy Verner, Verdia Beard; third row: Miriam Watt, Mary Ann Fraser, Janis Plunk, Marie Brown, Elsie Young.

Hypatia is devoted to the development of special knowledge in the literary field. Its membership is limited to Junior and Senior students who possess a high scholastic record. Once each month the group meets to discuss recent developments in literature.

Sponsor—Miss Marion Crocker

President—Gayla Dennis

Vice-President—Ann Brigham

Secretary-Treasurer—Larry Gay Lane

Program Chairman—Miriam Watt



Gayla Dennis,  
President

# Hypatia



Front row, left to right: Ernest Muntz, Ralph Williams, Betty Cowan, Bob Agee, Sandra Brown, Harold Greenfield; second row, Betty Molen, Nancy Lee Smith, Fred Harvey, Jerol Swain, Nathan Pillow, Pat Morse, Max Sharp, Mrs. L. D. Rutledge; third row, Faye Wilbanks, Jackie Maddox, Allen Bartlett, Prentis Ferrell, Darrell Molen, Ernie Carter, Jim Bailey, Bill Jackson, Royce Agerter, William Hopkins, Janice Boren.



Delegates to Little United Nations: L. to r., Ray Dixon, Johnnie Barber, Harvey Gill and Professor E. R. Muntz.

## Rutledge Honorary History Club

The Rutledge History Club was founded on November 7, 1929, for the encouragement of study in the field of history and current events. The club stresses scholarship and its goal is membership in the National History Fraternity, Phi Alpha Theta.

Sponsor—Mrs. Rosa Dyer Rutledge

President—Bob Agee

Vice-President—Harold Greenfield

Secretary—Sandra Brown

Treasurer—Ralph Williams



From left to right: Johnnie Barber, Vice-President; Gayla Dennis, President; Virginia Ruth Pearce, Secretary; Harvey Gill, Mallie Newsome, "Midge" Williams, Mrs. L. D. Rutledge, Sponsor; Ralph Williams, Barbara Hurst, Dr. R. H. Ward, Sponsor; Peter Rhea Jones.

## Delta Psi Chapter of Phi Alpha Theta

The Delta Psi Chapter of Phi Alpha Theta, National Honorary Scholarship Fraternity in History, was the 119th national chapter and the first established in the State of Tennessee. It was established at Union University on October 17, 1953, by active and alumni members of the Rutledge Honorary History Club. Its purpose: to encourage research and writing.

Sponsors .....	Mrs. L. D. Rutledge Dr. R. H. Ward
President .....	Gayla Dennis
Vice-President .....	Johnnie Barber
Secretary .....	Virginia Ruth Pearce



Gayla Dennis,  
President

# Business Club



L. to r., front to back: Marie Brown, Betty Marbury, Debra Silkwood, Glenda Dillingham, Tresia Kerr, Lois Styers, Sylvia Laird, Mary Dodson, Jere Walker, Larry Hooppaw, Polk Glover, James Couch, M. R. Carrington, Sponsor; Fred Harris, Bruce Stephens, President.

L. to r., front to back: Linda Melton, Joann Gowan, Joetta Zumwalt, Sue Walker, Jane Robinson, Peggy Castleman, Lennie Hurdle, Joyce Ann Browning, Ruth Alice Gammon, Danny Smith, Jean Azbill, Billy Haynes, Frankie Parker, David West, Sponsor.

The purposes of this organization are to foster interest in business situations and practices of the American economy, to develop understanding of various business institutions, to develop business skills and leadership ability, and to promote the ethical viewpoint among future business leaders.

- |                      |                                      |
|----------------------|--------------------------------------|
| Sponsors .....       | Mr. Max Carrington<br>Mr. David West |
| President .....      | Bruce Stephens                       |
| Vice-President ..... | Fred Harris                          |
| Secretary .....      | Betty Marbury                        |
| Treasurer .....      | Marie Brown                          |
| Reporter .....       | Mary Dodson                          |





L. to R.: (Seated), Carol Ann Miller, President; Margaret Azbill, Jo Hargett, Gayle Prather, Sandra Brown, Mary Ann Smith; (Standing), Carol Luethge, Joan Swift, Carolyn Swift, Miss Willie Margaret Johnson, Sponsor; Wanda Hammonds, Marilyn Simmons, Shelby Lynn, Ann Baggett.

## Home Economics Club



## U Club



Front row, l. to r.: Bill Murphy, Jerry Moore, Dave Cundiff, James Scott, William Lee, President; second row, Wilton Lynn, Ken Arnold, Bob Brawner, Harbert Lee, Jerry Phillips, Jerald Hill; third row, Jack Sibley, John Montgomery, Paul Taylor, Bob Johnson, Ken "Stick" Gault, Tom Murchison, John Orr.

L. to r., seated: Larry Steed, Wayne Brown, Judy Verner, Bob Highfill, Marlin Stewart; standing, Irwin Vann, Katie Webb, Bobby Haynie, Jerry Replogle, Bob Cummings, Patsy King, Raymond Mott, Allen Ray McGinnis, Nancy Gaugh, Walter Allison, Bruce Woodward, President; Eudora Jones, John Davenport, Ken Gault.

## Mallory Math Club



# Girls' P. E. Club



Left to Right—

Seated: Betty Pennington, Weymie Heuser,  
Jane Kirksey, Carolyn Johnson, Nancy  
McLeary

First row standing: Emily Pritchard, Joyce  
Stevenson, Larry Gay Lane, Lynn Baltzell

Second row standing: Peggy Stanfill, Sue  
Walker, Linda Portis, Glanda Blackwood,  
Peggy Laster

Not pictured: Mrs. B. C. Williams, sponsor



# Los Picaros (Spanish Club)

L. to r.: Nyta Garrett, Gayla Dennis, Prof. Walter Jacobi, Sponsor; Mary  
Ann Fraser, Larry Gay Lane, President; Shirley Gordon, Shirley Bledsoe,  
Diana Andrews, Ellen Miles, Bonnie Baker.

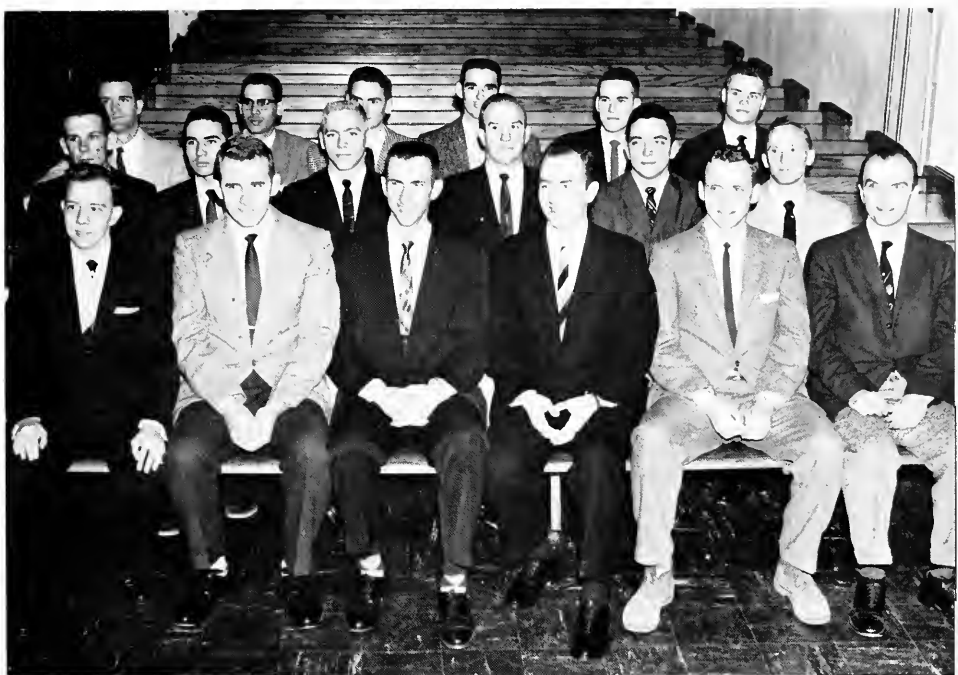


L. to r., front row: Harriett Schroeder, Anne Bowles, Caroline Johnson, Vance Ambrose, Elsie Young, President. Second row: Bassell Alexander, Bruce Woodward, Vice-President; Robbie Wilson, Don Gardner, Anita Lowe, Jane Frizzell, Larry Patton.



## Science Club



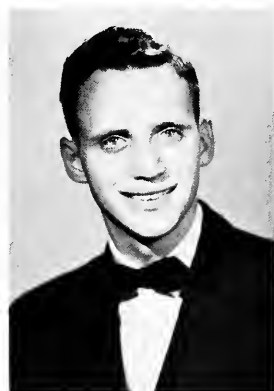


Front row, left to right: Ralph Williams, Cleo McClellan, Ernie Carter, Don Hopper, Harold Greenfield, Dr. Charles Taylor, Sponsor; second row, Jere Ledsinger, Gayle Alexander, Johnny Somers, Charles McCall, Bill Griffin, Fred Harvey; third row, Jim Anderson, John Henderson, Crafton Cliff, Jackie Maddox, Bill Greene, Charles Wingo.

## Ministerial Association

The Union University Ministerial Association was derived from the J. R. Graves Society, which was founded in 1877. The Association helps students to become familiar with special problems connected with their future work. Members gain practice in correctly expressing themselves in public and thereby extend their knowledge of religious subjects.

Sponsors .....	Dr. Charles Taylor
	Dr. Hyran Barefoot
President .....	Harold Greenfield
Vice-President .....	Ernie Carter
Secretary .....	Ralph Williams
Treasurer .....	Don Hopper
Program Chairman .....	Cleo McClellan



Harold Greenfield, President



Jones Hall Circle No. 2



Jones Hall Circle No. 3



Jones Hall Circle No. 1

# Y. W. A.



Crook Hall Circle No. 2



Crook Hall Circle No. 2

# Life Service Band



L. to r.: Eleanor Richardson, Mary Elizabeth Boulton, Ann Baggett, Fred Harvey, Betty Fletcher, Margaret Ann Boulton, Faye Wilbanks, and Shirley Neisler, President.

# Y. W. A.



Crook Hall Circle No. 1



Y.W.A. President and Queen,  
Nancy Taylor  
Advisor, Mrs. S. F. Boyd

# B S U



## EXECUTIVE COUNCIL

L. to r., ascending: Bob Carpenter, President; Ernie Carter, Executive Assistant; Carol Greene, Bill Jackson, Nancy Jeffress, Wayne Brown, Delores Dorris, Judy Verner, Harriett Schroeder, Mary D. Sherbenou, Nancy Taylor, Diana Payne, Mary C. Allcock, Martha Milam, Mary Ann Fraser, Shirley Gordon, Rex Enoch, James Allcock, Harold Greenfield, Jerry Dunn, Dr. Charles Taylor, Sponsor; Lynn Eagan, Larry Patton.



Bob Carpenter, President

The Baptist Student Union is more an organism than an organization. Its purpose is to link the local churches with the college students that they may more adequately serve Christ during their college days.

Sponsor—Dr. Charles Taylor

President—Bob Carpenter

Executive Assistant—Ernie Carter

Vice-Presidents—Wayne Brown & Bill Jackson



B. S. U. CHOIR



FRESHMAN COUNCIL  
 L. to r., top to bottom: Ann Nell Wilson,  
 Polly Stone, Tresia Kerr, Kay Dunagan,  
 Linda Smith, Bettye Clift, Frank Jamison,  
 Jo Morat, Mary Ann Baker, Tommye Long,  
 Shelby Reaves, Dewey Corder, President.



Dr. G. Allan West, Guest  
 Speaker, Religious Emphasis  
 Week



The  
**PLAYBILL**  
for the Forty-Sixth Street Theatre



“Down Yankees!”

ATHLETICS

“D **CENSORED** N YANKEES”

# Cheerleaders . . .



L. to r., Luethge, Hollamon, Martin, Heuiser, Cowan, Wilson, Dunagan, Vance, Prather, Laster.



Top to bottom: Dunagan, Heuiser, Prather, Hollamon.



L. to r., Luethge, Cowan, Martin, Vance, Wilson, Laster.

## CHEERLEADER SQUADS:

Freshman: Kay Dunagan  
Weymie Heuiser  
Susie Hollamon  
Elaine Prather

Varsity: Betty Cowan  
Peggy Laster  
Carol Luethge  
Steve Martin  
Tommy Vance  
Barbara Wilson



L. to r., Luethge, Martin, Cowan, Wilson, Laster, Vance.



# Cross Country



Front Row, Left to Right: Dave Malloy, Larry Steed, Gayle Alexander, Bobby Agee  
 Back Row: Crafton Cliff, William Hopkins, Ken Gault, John Ginn

## CROSS COUNTRY RECORD '58-'59

Oct. 8	Memphis State, Millington	Won
Oct. 14	Bethel	Won
Oct. 16	Southwestern	Won
Oct. 22	Memphis State	Won
Oct. 28	Bethel	Won
Nov. 5	Memphis State, Millington	Won
Nov. 8	Southwestern	Won
Nov. 14	V.S.A.C.	Won
Nov. 28	N.A.I.A. (Omaha, Nebr.)	12th

Coaches: A. L. Allen  
 John Rose



# BASKETBALL

The 1958-59 cage season was an exciting one for the Union Bulldogs, who supported one of the toughest schedules in Union history.

To climax their regular season, the Bulldogs entered the V.S.A.C. tournament at Belmont College in Nashville. In their first game in the tourney, Union met and conquered Tennessee Wesleyan College by a score of 86-76. Upon advancing to the quarterfinals, the Bulldogs ran into an unconquerable foe on the part of Austin Peay. In regular season play, the two teams had split in two games, each winning by one point on their home court. In the third meeting of these two teams, the Governors were able to subdue the Bulldogs 86-83.

For the second straight year, the Union Gymnasium was chosen as the site for the N.A.I.A. District 27 play-offs, thus making Union host team in the tournament. In the first game, Union defeated Carson-Newman by one point, 66-65. In the finals, Christian Brothers College of Memphis proved to be tough for the Bulldogs, who came out on the short end of a 67-51 score.

This season, four seniors, Johnny Orr, Jerry Moore, Jerald Hill and James Scott, saw an end to their brilliant and colorful basketball careers. Jerry Moore and Johnny Orr led the bulldogs in rebounds, while Jerald Hill was leading scorer with 411 points for a 14.1 average.

William Lee was second high in total points with 406, and highest in points per game with a 15.0 average. Lee and Ken Arnold led in total points in one game with 29 each. Jerry Moore led in most rebounds in a single game with 23.



# Varsity Squad



L. to r., kneeling: Jerry Moore, Johnny Orr, Jerald Hill; standing, Coach Russell, Harold Hopkins, William Lee, Jack Sibley, Keith Chilcutt, Dave Evers, Ken Arnold, Wilton Lynn, David Manley, Jackie Maddox, Dave Cundiff, manager; Jerry Joyner.

## VARSITY BASKETBALL RESULTS

Won 15, Lost 14

Union					
81	Athens	50	85	David Lipscomb	92
69	T.P.I.	107	72	Huntingdon College	71
78	Mississippi State	121	75	Athens College	67
81	Ole Miss	87	81	Bethel College	66
62	S.E. Missouri State	82	66	Belmont College	86
84	Florence State	81	94	U.T.M.B.	65
48	Murray State	95	80	Austin Peay	79
			78	David Lipscomb	89
	Southwestern Invitational Tourney		95	Huntingdon College	79
88	Quachita	79	80	Southwestern	82
76	Southwestern	85			
				V.S.A.C. Tournament	
91	Belmont	65	86	Tennessee Wesleyan	76
80	Florence State	65	83	Austin Peay	86
87	Southwestern	72			
67	Austin Peay	68		N.A.I.A. Playoffs	
68	U.T.M.B.	71	66	Carson-Newman	65
91	Bethel	85	51	C.B.C.	67

# Freshman Squad

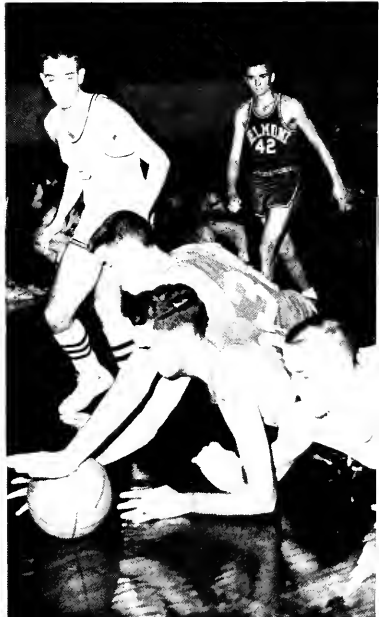
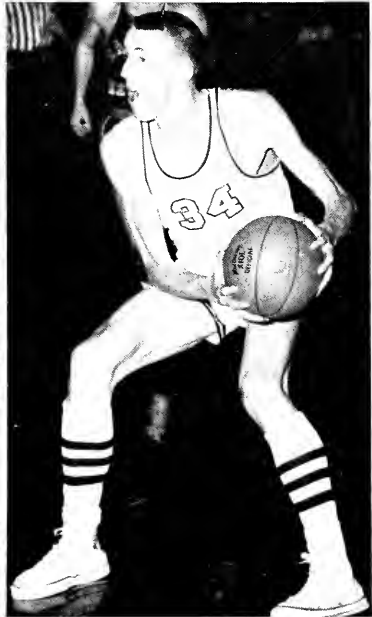
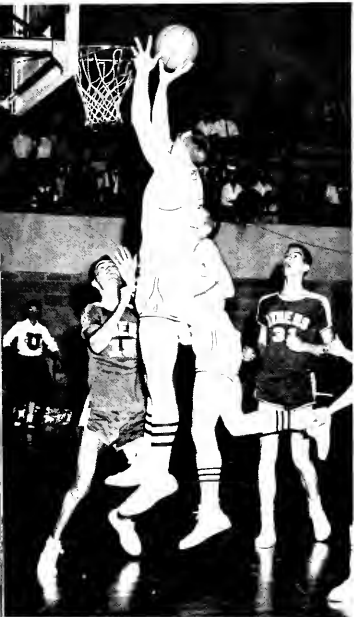
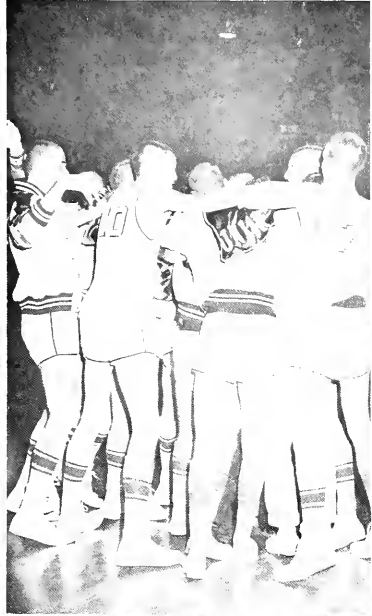


L. to r., kneeling, Joe Aden, Phil Vaughn; standing, Coach Rose, Otis Burba, Ken Davis, Larry Alexander, Otis Griffin, George Pritchett, Phil Walters, Tommy Duffer, Sonny Hawkins, and Dave Howell.

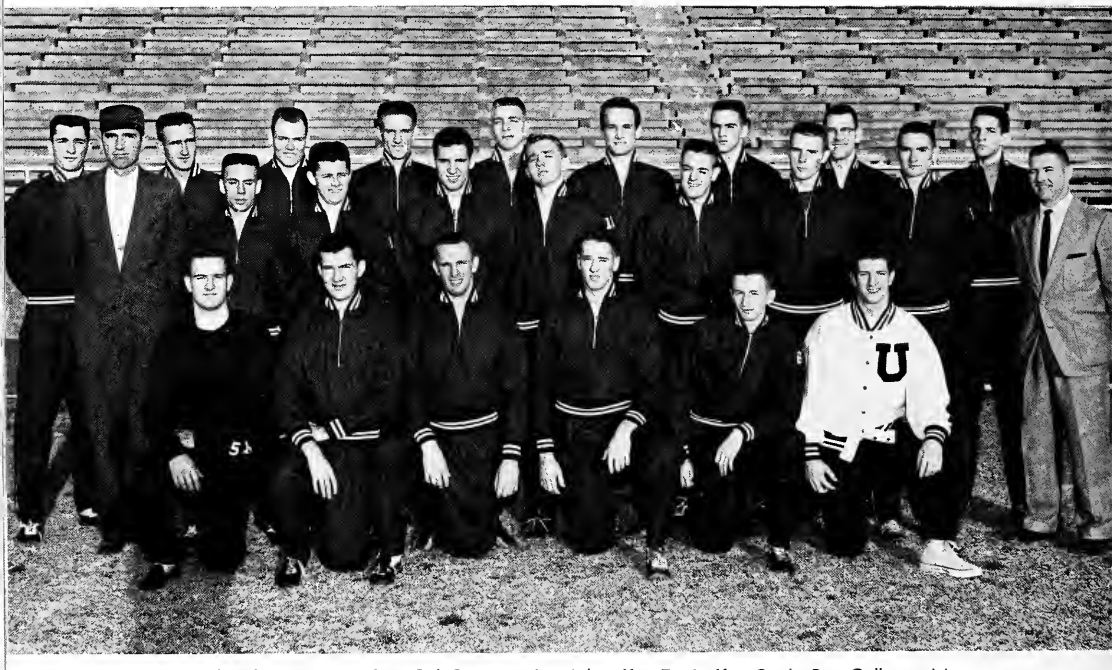
## FRESHMAN BASKETBALL SCHEDULE AND RESULTS

Won 10, Lost 8

Union					
77	Blytheville Air Force Base	56	94	Southern Baptist College	78
70	Tennessee Tech	75	91	David Lipscomb	73
64	Mississippi State	71	66	Ole Miss	70
74	Ole Miss	72	109	Freed-Hardeman	90
88	Memphis State	94	78	Memphis State	82
87	Murray State	89	129	Austin Peay	68
101	Southwestern	55	88	David Lipscomb	67
79	Austin Peay	83	126	Southern Baptist College	84
83	Freed-Hardeman	86	102	Southwestern	69



# Spring Track



L. to r., kneeling: Don Gardner, Bob Brawner, Joe Aden, Ken Davis, Ken Gault, Roy Collomp, Manager; standing: Larry Boston, Coach Al Allen, Larry Alexander, Larry Steed, Phil Walters, Tom Murchison, Keith Chilcutt, Terry Anderson, Otis Griffin, Walter Allison, Ken Arnold, Dave Cundiff, George Priehett, John Ginn, Wilton Lynn, Crafton Cliff, Tommy Duffer, Coach John Rose.

## 1959 SPRING TRACK SCHEDULE

March 27-28	Memphis Relays	Memphis
April 4	David Lipscomb	Here
April 7	Austin Peay	There
April 14	Murray State	Here
April 22	Southwestern	There
April 29	David Lipscomb	There
May 4	Austin Peay	Here
May 8-9	T. I. A. C.	Memphis
May 15-16	V. S. A. C.	



Tom Murchison, 100-yard dash, 200-yard dash and broad jump;  
Walter Allison, 100-yard dash, 200-yard dash.



Ken Arnold, javelin



Wilton Lynn, discus, shot putt,  
and javelin



Murphy, pole vault, hurdles, shot putt,  
and discus



L. to r.: Clift, mile and two-mile; Gault, mile and two-mile;  
Steed, 880 and 440-yard dash; Ginn, mile and 440-yard dash.

# Baseball

Harbert Lee,  
Shortstop  
Jerry Moore,  
Outfield



## 1959 BASEBALL SCHEDULE

March 26, 27, 28

Union University Invitational Tournament

March 30	Hillsdale
April 4	Calvin College
April 7	Southwestern
April 9	Memphis State
April 11	U. T. M. B.
April 14	Southwestern
April 21	Bethel College
April 23	Memphis State
April 25	David Lipscomb
April 29	Bethel College
May 2	Belmont College
May 5	U. T. M. B.
May 7	Austin Peay
May 9	David Lipscomb
May 13	Belmont College
May 16	Austin Peay
May 22-23	V. S. A. C.

Here  
Here  
Here  
Here  
There  
There  
There  
There  
Here  
There  
Here  
There  
Here  
Here  
Here

Bob Johnson,  
Outfield



L. to r.: Bill Lee, Manager; Coach Jack Russell; Jerald Hill, Manager



James Scott,  
2nd Base



John Montgomery  
Pitcher







Jack Sibley,  
Outfield  
Bill Owens,  
Catcher  
John Moody,  
Infield



Phil Vaughn,  
Pitcher & Outfield  
Bill Fry,  
2nd Base  
Charles Wingo,  
Catcher



Alf Barnett,  
Pitcher  
Dewey Corder,  
Shortstop  
William Hopkins,  
Outfield & 1st Base



Joe Roland  
3rd Base  
Paul Taylor,  
Pitcher  
"Sonny" Hawkins,  
Outfield



## Tennis Team

L. to r., kneeling, Ray Dixon, Billy Alexander; standing, Coach Rose, Tom West, Glenn Davis, Charles Burkhead.



## Golf Team

L. to r., Don Morris, Dan Stone, Tommy Hall, Dave Shepperd.



**FLASH . . . .**

**1959 GRADS VISIT MODERN  
PRINTING-LITHOGRAPHING  
PLANT . . . .  
STUDENTS VIEW FIRST HAND,  
LATEST METHODS—EQUIPMENT  
USED IN PRODUCING  
TOP NOTCH ANNUALS  
AND OTHER FINE WORK**



*Mc Cowat - Mercer*  
*Press,*  
INCORPORATED

PRINTERS  
LITHOGRAPHERS  
*Jackson, Tennessee*



# Calvary Baptist Church

NEAREST THE CAMPUS

James Canaday  
Pastor

Albert Skinner  
Minister of Music

# Star

## LAUNDRY & JACKSON CLEANERS

---

ONE OF THE SOUTH'S FINEST  
LAUNDRY AND DRY CLEANING PLANTS

---



JACKSON, TENNESSEE  
PHONE 7-8557

---

*The Bootery*

209 E. LAFAYETTE

Jackson, Tennessee

Drink

*Coca-Cola*

In Bottles

---

*Burnley's  
Flower Shop*

Baltimore Street  
"Next to the Malco"

ALWAYS WELCOME AT CHARLIE'S

Day: 7-5541

Night 7-7177

*Serving Jackson and Madison  
County Since 1873*

**The  
FIRST NATIONAL  
BANK  
OF JACKSON**

Charter Member Federal  
Reserve System

Member Federal Deposit  
Insurance Corp.



# First Baptist Church

*A Friendly Church*

*A Spiritual Church*

*A Growing Church*

---

# SECOND NATIONAL BANK

of Jackson

Capital and Surplus  
\$500,000.00



1886

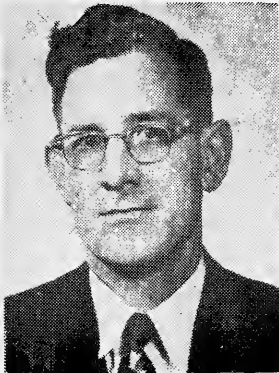
Three Score Years and Thirteen

1959

---

*A Friendly Welcome  
Awaits You At*

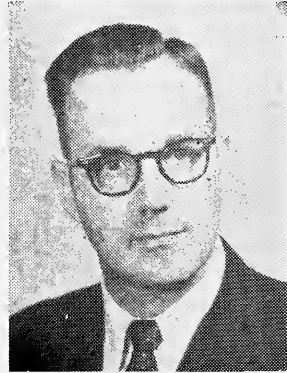
## THE NORTH JACKSON BAPTIST CHURCH



LAWRENCE E. GREEN,  
Pastor

"Growing up into Him in all Things"  
—Eph. 4:15

FAIRMONT AT MARTIN STREET



RAYMOND RICHERSON  
Minister of Music

"While in Jackson you are cordially invited to make this Church your Church Home"

---



## LEXINGTON INN

*"Where Students Get Together"*

---

Go



At

## Walter's Service Station

142 Lexington

Jackson, Tenn.

---

## WARREN'S GROCERY AND MARKET

IRBY STREET AT UNION UNIVERSITY

---



---

# Nathan's

Stylish Apparel

---

For The Best In  
PRESCRIPTION SERVICE

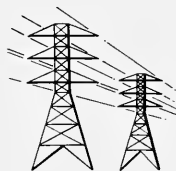
## HAYS AVENUE PHARMACY

Phone 7-4496



3 Blocks from Union

---



---

## The New Southern

"An Albert Noe Hotel"

Headquarters for All Your Social  
Activities and Civic Functions

---

**Burnett's**  
NATURALIZER  
 BUSTER BROWN  
 ROBLEE **SHOES**

213 E. Lafayette Phone 7-1796



The Light Refreshment



Compliments of  
**MISS HOWELL'S  
 BOOK SHOP**

305 E. Lafayette  
 Jackson, Tennessee

**W. P. DABNEY & SON  
 FURNITURE COMPANY**

COMPLETE HOME FURNISHINGS  
 R. C. A. APPLIANCES  
 HOTPOINT APPLIANCES  
 Church Street Where College Passes  
 Phone 7-5516 Jackson, Tenn.

**BOONE 7 Hr. CLEANERS**

121 Lexington Phone 7-9626  
 Jackson, Tennessee

Compliments  
 of



**STANDARD  
 DRUGS**

**WALLICK MUSIC  
 COMPANY**

Kimball Pianos Band Instruments  
 Koehler-Campbell Pianos Conn  
 Olds  
 Selmer  
 Holton  
 Band Music  
 217 E. College



FOR YOUR GIFTS AND JEWELRY  
 NEEDS COME TO

**ROBERT'S**

*"JACKSON'S FRIENDLY JEWELRY STORE"*

Engraving for Fraternities and Sororities



**JOHNSEY'S  
SPORTING  
GOODS**

433 N. Royal  
Jackson, Tenn.  
Phone 7-1082

Complete Line of  
Sporting Goods

**"It Pays to Play"**

*Drink* **Dr Pepper®**  
THE FRIENDLY "PEPPER-UPPER"  
THAT NEVER LETS YOU DOWN!





## **WEST JACKSON BAPTIST CHURCH**

DAVID Q. BYRD, Pastor

H. LOWREY HAYNIE, Minister of Music

---

**Photography By**

# GERRELL'S

***"Where Photography Is An Art"***

200 Commercial Building

Phone 7-0821

JACKSON, TENNESSEE

PORTRAITS  
WEDDINGS

COMMERCIAL  
INDUSTRIAL

*Holland's*

*Jackson's Greatest Store*

**Fox**

**Restaurant**

203 E. Main Street

Jackson, Tennessee

Compliments of

**RAGLAND-POTTER  
AND CO.**

**WILSON-GEYER  
COMPANY**

455 E. Main

Phone 7-2618

**Imperial Washable Wall Papers**

**Hanna Paint Products**

**Art Supplies—**

**Picture Framing**



*Colonial  
Is  
Good  
Bread*

Compliments of

**McGEE-ROSS**

Restaurant Supply and  
Service Division

211 E. Lafayette St.

Phone 7-0731

*Vineyard's* Gift and  
Flower Shop

320 East Lafayette Street

Jackson, Tennessee

**McCALL-HUGHES**

Varsity Town Clothes

Hyde Park Clothes

Lee and Disney Hats

*Rosenbloom's*  
For Famous Brands



**Announcing . . .**

**LAYCOOK  
PRINTING  
CO.**

"The best equipped small  
printing plant in the South"

Telephone 2-3466  
Church St. S. of Chester  
Jackson, Tenn.

*Sand's Florist*

108 S. Liberty St.

Phone 7-9607

Compliments  
of

**GLEN-MORE CLOTHES**

Factory to You

108 E. Lafayette Jackson, Tennessee

Compliments of

*Remnant House*

209 N. Liberty

**"For Your Piece Goods"**

**STEGALL SHOE CO.**

115 N. Liberty  
Phone 7-1126

JACKSON, TENNESSEE

Jarman Shoes For Men

**ELITE CLEANERS**

Since 1912  
Service that Satisfies

Five Points Phone 7-3546  
Arthur Mainord Mrs. Billy Mainord

**HARDEMAN MUSIC  
COMPANY**

Selmer, Bundy, Conn & Olds Band Inst.  
Sheet Music  
Baldwin Organ and Piano  
Teachers' Supplies  
112 N. Liberty

**HUDSON'S  
RECORD  
SHOP**



"Hear the world in music through  
stereophonic sound"

308 E. Lafayette Jackson, Tennessee

---

Every Modern Banking Convenience and Service

# The National Bank of Commerce

Jackson, Tennessee

Total Resources Over \$14,000,000.00

Member Federal Reserve System

Member Federal Deposit Insurance Corp.

---

## PATRONIZE

## OUR ADVERTISERS

---









**Heritage Collection**  
**Summer Library**  
1050 Union University Dr.  
Jackson, TN 38228

