


1961

Lest We Forget

Summer Library
Union University
Jackson, Tennessee



Digitized by the Internet Archive
in 2010 with funding from
Lyrasis Members and Sloan Foundation

<http://www.archive.org/details/lestweforget196100unio>

LEST WE
FORGET



1961

FOREWORD

No one can deny the effect of the ancient Greeks on our lives, nor the important role of the so-called classic studies on education. With these two thoughts in mind and with the need of a unifying agent and an art motif, a "Greek" theme was incorporated into this book. So here and there, you will find columns, statues, Greek symbols, and Greek people walking around—casual reminders of a people who still live, in part, in us. It is hoped that they are causal, though, and especially, not burdening to you; for this is not a book about Greeks, but a book about you and your college.

A small number of you made this book possible. I would be remiss if I did not emphatically acknowledge the hard work and co-operation of my staff—particularly my Associate Editor. You should thank them for their honest endeavors.

With these few thoughts in mind we, the *Lest We Forget* Staff of 1961, submit this book to you with the hope that you will sincerely consider it your yearbook.

Jim Bateman, *Editor*

LEST WE FORGET STAFF

<i>Editor</i>	Jim Bateman
<i>Associate Editor</i>	Mary Ann Baker
<i>Photography Editor</i>	J. L. Whitten
<i>Art Editor</i>	Tully Daniel
<i>Staff</i>	Joyce Smith, Bill Pounds, Betty Baker
<i>Literary Editor</i>	Nancy Ward
<i>Staff</i>	Linda Wheat
<i>Class Sections Editor</i>	Patsy Hutson
<i>Sports Editors</i>	Kay Hanebuth, Tommy Barnes
<i>Business Manager</i>	Gerald Dame
<i>Photographers</i>	J. L. Whitten, Bill Ellis, Burnett Sasseen
<i>Sponsor</i>	Mrs. Jessie Smith



DEDICATION

When one thinks of the life of the Greeks, he immediately realizes that it embodies many different areas. The emphasis on athletics, religion, philosophy, and higher learning has kept the Greek culture in the eye of humanity for centuries. This theme has been chosen for the '61 yearbook; therefore, it should be dedicated to someone who reflects these ideas. Such a man is Dr. Charles Taylor.

Dr. Taylor's enthusiasm for athletics has expressed itself in many ways. In every phase of Union's athletic program he has shown himself willing and able to assist in making Union well known. Whether he is coaching the tennis, golf, or cross-country team or keeping the records for track and basketball, his moral support is always evident. As head of the Athletic Committee, he scouts for new prospects for the coming year.

As head of the Religion Department, Dr. Taylor's teaching has exemplified

itself in the classroom and in his own philosophy of life. His sincerity in and knowledge of his field matter have created a desire among his pupils to learn and to apply the principles by which he lives day in and day out. Some students know well his qualifications as a counselor for personal as well as academic problems. Others have worked with him in the Baptist Student Union and the Ministerial Association. The entire student body knows him for his friendly smile and greeting as they pass him on campus. In addition to his many accomplishments here at Union, the versatile Dr. Taylor has been pastor of the Ararat Baptist Church for the past five years.

For these reasons, we, the staff of the 1960-'61 *Lest We Forget*, sincerely dedicate this edition to Dr. Charles Taylor in appreciation of his many contributions to the spirit of Union.





DR. CHARLES TAYLOR

PRESIDENT'S MESSAGE

Greek culture has contributed so much to the areas of learning found in the American college of arts and sciences that it is eminently fitting that the year-book of our college be a symbol of Greek influence. The staff deserves commendation for their ingenuity in making this selection.

For twenty-five centuries the elements of Greek literature, art, music, science, dramatics, sports and principles of government have been woven into Western civilization. From Homer's "*Iliad*" to contemporary writers; from Phidias' statue of Athena to modern sculpture; from the sports of old Athens, the birth-

place of the Olympics, to the track and field of the 20th century universities; from "*Plato's Republic*" to "*Goals for America*"; and from the "*Golden Age of Pericles*" to the democracy of our day, we observe unmistakable similarities.

Lest we forget the identity of our rich heritage; the impact of cultural influences of ancestor nations; and the ties of college experiences and friendships, let us read often—*Lest We Forget*.

Best wishes to every reader.

Sincerely,

Warren F. Jones, *President*

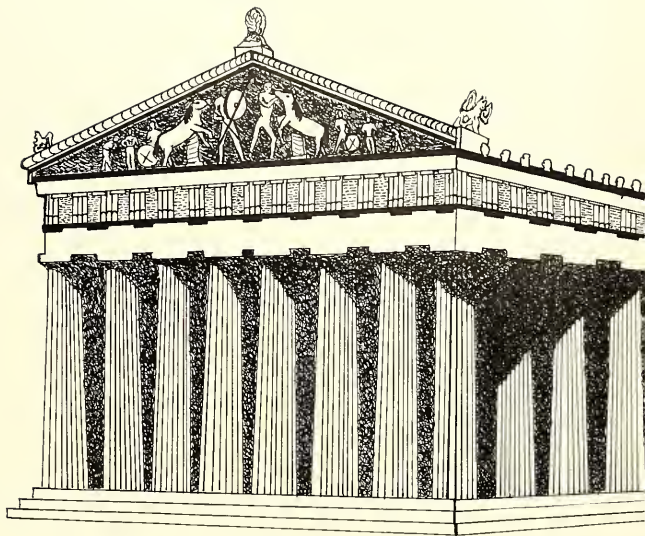
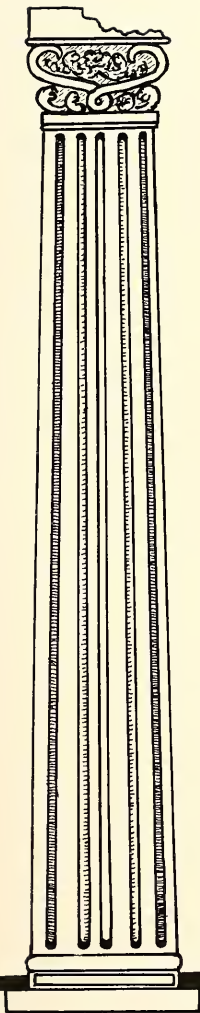




DR. WARREN F. JONES

TABLE OF CONTENTS

Section	Page
Administration	9
Staff	12
Faculty	14
Seniors	18
Juniors	31
Sophomores	41
Freshmen	53
Honors	69
Organizations	96
Greeks	98
Academic Clubs	111
Dramatics	122
Music	126
Publications	130
Student Government	132
Religion	134
Sports	139
Campus Life	156
Advertisements	167



ADMINISTRATION



DR. H. H. BOSTON
Vice-President

DR. F. E. WRIGHT
Academic Dean and Dean of Men





MR. FRANK M. BLYTHE
Business Manager



MRS. GLADYS STONE
Registrar and Dean of Women



MISS RUTH GIBBONS
Librarian

STAFF



JERRY PENICK
Acting Public Relations Director



WILLIE MARGARET
JOHNSON
Dietician



JESSIE GUY GEE
Bursar



MABEL K. WARD
Assistant Librarian



ANNE S. TAYLOR
Assistant Registrar



EVELYN DAVIS
Assistant Dietician



JESSIE S. SMITH
Assistant Bursar



O. D. STONE
Manager, Bookstore



LAURA WINSLOW
Secretary to President

Not pictured: J. FRANKLIN RAY, *Audio-Visual Education*
PEGGY BRIGGS, *Typist, Library*

STAFF



ELOUISE GRAVES
Secretary to Dean



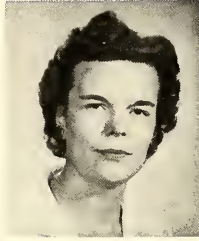
SARAH BAXTER
Secretary to Dean of Women



ADRIENNE H. DAVIS
Bookkeeper



GAIL DOWD
Bookkeeper



DORIS W. GEE
Switchboard Operator



JEAN DANIEL
Faculty Secretary



PATTY HERRINGTON
Accompanist, Music Dept.



LENA ROGERS
Hostess, Crook Hall



KATIE STEWART
Hostess, Jones Hall

Not pictured: Elise Caldwell, *Hostess, Crook Hall*; Lucille Baker, *Assistant Hostess, Jones Hall*;
James A. Stratton, *Superintendent, Buildings and Grounds*.

FACULTY



RALPH T. DONNELL
*Chairman, Division of
 Natural Science
 Head of Department of
 Mathematics*

A.B., Cumberland University
 L.L.B., Cumberland University
 M.A., Vanderbilt University
 Additional Graduate Work,
 University of Tennessee



JOHN HUGHES
*Chairman, Division of
 Fine Arts
 Head of Department of
 Music and Art*

A.B., Southwestern, M.S.,
 Juhiard. Ch.M., American Guild
 of Organists.
 Ph.D., Florida State University.
 Organ Pupil of W. Townsend,
 Plymouth, England. Organ Pupil
 of Marcel Dupre, Paris, France.
 Additional Work in harmony
 under Olover Messiaen, Paris
 Conservatory, Paris, France.



R. H. WARD
*Chairman, Division of
 Social Sciences
 Head, Department of History*

A.B., Carson-Newman College
 M.A., George Peabody College
 for Teachers
 Ph.D., George Peabody College
 for Teachers
 Study at New Orleans Seminary
 and Southern Seminary
 Post-doctoral study, University
 of North Carolina



WILLIS H. KIMZEY, JR.
*Chairman, Division of
 Humanities
 Associate Professor of
 Religion*

B.A., Mercer University
 B.D., Southwestern Baptist
 Theological Seminary
 Th.D., Southwestern Baptist
 Theological Seminary



ALLAN F. ARCHER
*Head of Department of
 Biology*

A.B., Harvard University
 M.A., University of Michigan
 Ph.D., University of Michigan
 Additional study, Yale University
 and Cornell University



WU-CHIEH CHENG
*Head of Department of
 Chemistry*

B.S., St. John's University,
 Shanghai, China
 M.S., Kansas State University
 Ph.D., Georgia Institute of
 Technology



JOHN V. MYERS
*Head of Department of
 Languages*

B.A., Wake Forest College
 M.A., Syracuse University
 Ph.D., University of North
 Carolina



JACK L. RUSSELL
Director of Athletics

B.S., Oglethorpe University
 M.S.P.E., Purdue University
 Additional study, University of
 Arizona



CHARLES D. TAYLOR
*Head of Department of
 Religion and Philosophy*

A.B., Union University
 B.D., Southern Baptist
 Theological Seminary
 Th.D., Southern Baptist
 Theological Seminary



ROBERT H. GAUGH
*Acting Head of Department
 of English*

B.A., Union University
 M.A., Vanderbilt University
 Graduate work, University of
 North Carolina and University
 of Texas

FACULTY



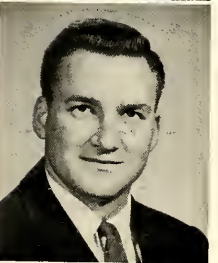
WILLIAM E. CALLAHAN
Assistant Professor of Religion

A.B., Florence State College
B.D., New Orleans Baptist Theological Seminary
Th.D., New Orleans Baptist Theological Seminary



WALTER H. KRUSCHWITZ
Head, Department of Physics, Professor of Mathematics

A.B., Taylor University
M.A., Vanderbilt University
Additional Graduate Work, Vanderbilt University and University of Washington
Ph.D., University of Michigan



WILLIAM G. DANIEL
Instructor, Mathematics

B.S., Arkansas State Teachers College
Additional Graduate Work, University of Tennessee



ELISABETH JARRELL FOSSEY
Associate Professor of Music

B.M., American Conservatory of Music, Chicago, Illinois
M.M., American Conservatory of Music, Chicago, Illinois



FREDERIC LUBRANI
Associate Professor of Music

B.M., Cincinnati Conservatory of Music
B.S., University of Cincinnati
M.M., Cincinnati Conservatory of Music
Work completed for D. Music Ed., Columbia



JOSEPH H. BLASS
Instructor, Voice and Sacred Music

A.B., University of Alabama
M.S.M., Southern Baptist Theological Seminary



ROSS REID
Instructor of Music Theory and Piano

B.M., Northwestern University
M.M., Northwestern University



WARNER HUTCHISON
Assistant Professor of Theory and Instrumental Music

B.S.M., Southwestern Baptist Theological Seminary
M. Mus., North Texas State College



DIXIE JONES
Professor of Education and Director of Guidance

A.B., Blue Mountain College
M.A., George Peabody College
Ph.D., George Peabody College



JAMES A. PATE
Acting Head of Departments of Education and Psychology

B.S., Howard College
A.B., University of Alabama
M.A., University of Alabama
Ed.D., University of Alabama

FACULTY



J. FOSTER ELDREDGE
*Assistant Professor of
 Foreign Language*
 A.B., Howard College
 M.A., Vanderbilt University



SPURGEON F. BOYD
*Associate Professor
 of Biology*

B.S., Carson-Newman College
 M.A., George Peabody College
 Additional Graduate Work at
 University of Georgia, Vander-
 bilt, Peabody, and University
 of Oregon



ERNEST G. MUNTZ
Professor of Social Science

B.A., Wheaton College
 Ph.D., The University of
 Rochester



JOHN R. BARBER
Instructor of Social Studies

B.A., Union University
 M.A.T., Vanderbilt University



ROSA D. RUTLEDGE
*Assistant Professor of History
 and Geography*

B.S., Union University
 M.A., George Peabody College
 Graduate Work at University
 of Wisconsin



ALVIN L. ALLEN
Associate Professor of Art
 B.S., Louisiana State University
 M.A., Louisiana State University
 Additional study at Stanford
 University, University of Arizona
 and University of Colorado



OLEN BRYANT
Assistant Professor of Art
 B.S., Murray State College
 M.F.A., Crawbrook Academy of
 Art
 Additional Work at Cleveland
 Institute of Art



HELEN S. BLYTHE
Assistant Professor of English

A.B., University of Oklahoma
 M.A., George Peabody College



MARION CROCKER
Assistant Professor of English

B.A., Limestone College
 M.R.E., Woman's Missionary
 Training School
 M.A., George Peabody College



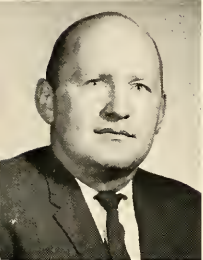
MARJORIE MUNTZ
Instructor of English
 A.B., Wheaton College
 Additional Work, Blue Mountain
 College, and University of
 Rochester

FACULTY



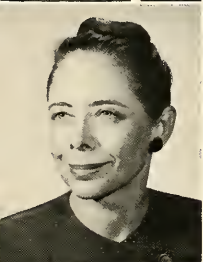
FLORA PRINCE
Assistant Professor of English
B.S., Alabama Polytechnic Institute
M.A., Alabama Polytechnic Institute
M.R.E., Carver School of Missions and Social Work

ELIZABETH BRELAND LOYD
Assistant Professor of Speech
A.B., Union University
M.A., Memphis State University
Additional Work, Curry College, Alviene University of Theater, American Academy of Dramatic Art, Columbia University, University of Tennessee



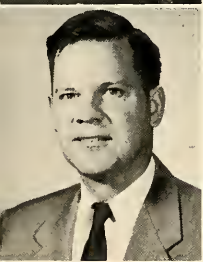
JOHN T. BUSS
Acting Head of Department of Business and Economics
B.S., Arkansas State College
M.B.A., University of Arkansas
Additional Graduate Work, University of Arkansas
Study at Industrial Institute of Economics, Kaiserslautern, Germany

JOHN ROSE
Instructor of Physical Education
B.S., Union University
Graduate Work, George Peabody College



NELL ADAMS LaFON
Instructor of Business Education
B.S., Memphis State
M.A., George Peabody College

JOSEPHINE F. COOK
Assistant Professor of Home Economics
B.S., Colorado State University
M.A., Michigan State University

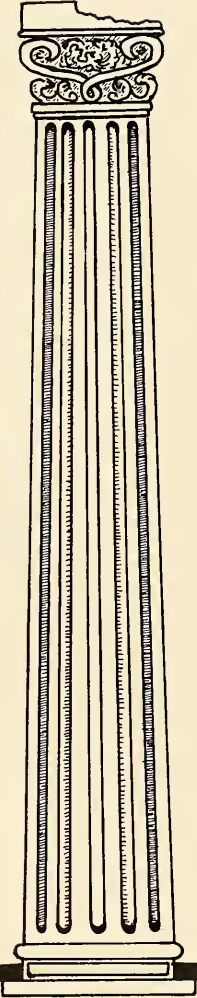


SHERMAN W. McCORD
Instructor of Business Administration
B.S., Oklahoma State University
M.B.A., University of Tulsa

GRACE WILLIAMS
Assistant Professor of Physical Education
B.S., Alabama College
M.A., Peabody College
Additional Work, Northwestern University



Not Pictured: Louis Snellgrove, *Professor of Psychology*; Beverly Striplin, *Assistant Professor of Biology*; Ernest Dike, *Engineering*; Mrs. Lubrani, *Music*; Margaret Roberson, *Music*; James Roberson, *Music*; Francis Wolf, *Instructor, Stringed Instruments*; Sylvia Hills, *Personality Development*.



CLASS
OF
1961



SENIORS

SENIOR CLASS OFFICERS



Standing, left to right: Max Walker, Chaplain; Malcolm Tipton, Vice-President; Allen Tinker, President; Pat Andrews, Secretary-Treasurer; Bob Highfill, Student Council Representative.

CLASS OF '61

JAMES C. ALLCOCK, JR.,
B.M.

Melber, Kentucky

B.S.U. '57-'61, Choir Director '59-'60, Revival Team Chairman '60-'61, Life Service Band '57-'60; Alpha Tau Omega '57-'61, Music Chairman; Allegro Club '57-'61, Vice-President '58, President '59-'60; Phi Mu Alpha Sinfonia '59-'61, Historian; Spring Plays '57; Dorm Council '59-'60; Band '57-'61; Chorus '58-'61; Library Staff '57-'59; Intramural Rep. '59-'60.



LINDA ROSEMARY
BALTZELL, B.S.

Washington, D.C.

Maid to Basketball Court '59-'60; First alternate to Miss University '59; Senior Escort to Miss Union '61; Cheerleader '59-'61; Freshman Court Maid '58; Chi Omega '58-'61, Social Chairman '60; Pledge Mistress '61; Footlights '59-'61; N.E.A. '61; Girls P. E. Club, President '60-'61; Sophomore and Senior Class Plays.



PATRICIA ANN
ANDREWS, B.S.

Memphis, Tennessee

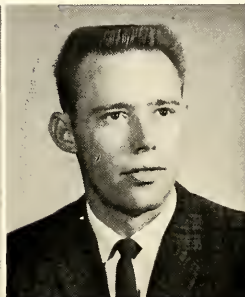
Escort to Mr. and Miss Union '58; Most Popular '59; Campus Favorite '58, '59; Miss Union '61; A.T.O. Sweetheart '59; B.S.U. '59, Social Chairman; Y.W.A. '57-'60; Science Club '57-'60; Program Chairman '59, President '60; Senior Class Secretary.



JOHN THOMAS BARNES,
B.S.

Humboldt, Tennessee

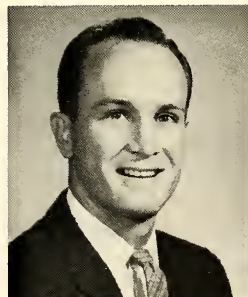
Sigma Alpha Epsilon '57-'61, Chi Omega '57-'61, Scholarship Chairman, E.D.A.; Interfraternity Council, Vice-President '61; Science Club '57-'61, N.E.A. '59-'60; Class Play '61; *Let's Forget* Staff '61; Library Staff '57-'61.



KENNETH LEE ARNOLD,
B.S.

Dyersburg, Tennessee

Basketball '57-'61; Track '57-'61; Student Council '57-'59; Dorm Monitor '59-'60; U Club.



PEGGY JANICE BOREN,
B.A.

Jackson, Tennessee

Delegate to Little U.N. '60; B.S.U. '57-'61; Y.W.A. '57-'61; Chi Omega '57-'61, Recommendations Chairman, Rush Chairman '61; Owen Law Club, Secretary '60; Interfraternity Council, Treasurer; History Club '57-'61, Secretary '60, Vice-President '61; Spanish Club '57-'59; Footlights '58-'60; N.E.A. '57; Class Plays '59-'60; Spring Play '60; *Cardinal and Cream*, Society and Political Editor; Chorus '57-'60.



BONNIE LUCILLE BAKER,
B.A.

Jackson, Tennessee

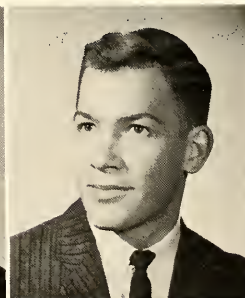
B.S.U.; Chi Omega '58-'61, Herald '59, Social Chairman '61; Interfraternity Council '61; Spanish Club '58-'60; Footlights '60-'61; Home Ec. Club '61; N.E.A. '60-'61; Class Play '59; Freshman and Sophomore Class Secretary; Traveling Chorus '59.



GEORGE WAYNE
BROWN, B.S.

Union City, Tennessee

Who's Who in American Colleges and Universities '61; B.S.U. Vice-President '59; Nestor Club '60-'61, Treasurer '61; A.T.O. '57-'61, Secretary '59, Chaplain '60, Pledge Trainer '61; Interfraternity Council '59-'61, President '60; Math Club '57-'60; Alpha Psi Omega '59-'61; Footlights '58-'61, Treasurer '58, Vice-President '59; Class Plays '57-'60; Freshman Class Speaker; Treasurer, Freshman Class; Vice-President, Sophomore Class; President, Senior Class; Student Government '59-'61, President '61; *Cardinal and Cream* Staff '57-'58; *Let's Forget*, Editor '60; Band '57.

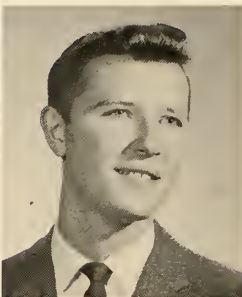


CLASS OF '61

SARAH JEAN BUTLER,
B.S.

Jackson, Tennessee

Transfer from Belmont College;
B.S.U. '58-'61; Y.W.A. '58-'60;
N.E.A. '60-'61; Girls' P.E. Club
'58-'61.



ROBERT ARTHUR
CUMMINGS, B.S.

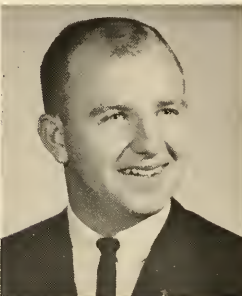
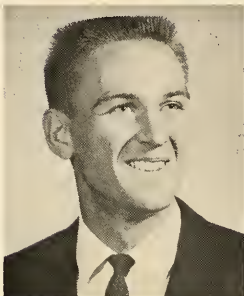
Jackson, Tennessee

Math Club '58-'61; Business Club
'60-'61.

DARRELL KEITH
CHILCUTT, B.S.

Buchanan, Tennessee

N.E.A. '59-'61; U Club '58-'61;
Basketball '57-'61; Cross Country
'57-'61; Dorm Council
'60-'61.



GERALD B. DAME, B.S.

Chaffee, Missouri

Alpha Tau Omega '57-'61; Busi-
ness Club '58-'61; Vice-President
'61; *Let We Forget* '59-'61;
Business Manager; Band '57-'61,
Manager and Librarian '57 and
'61.

DIXIE LEE CLAMPITT,
B.A.

Jackson, Tennessee

Who's Who in American Colleges
and Universities '61; Y.W.A.
'58-'61, President '58, Secretary
'59; Hypatia '60-'61, Secretary
'61; Spanish Club '58-'59.



CAROLYN SUE DAVIS,
B.A.

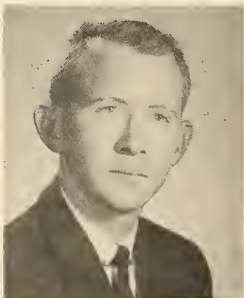
Yorkville, Tennessee

B.S.U. '57-'61; Y.W.A. '57-'61,
Publicity Chairman '60; Life
Service Band '60-'61; B.S.U.
Choir '59-'61; Business Club '61;
N.E.A. '61; Linguae Mundi '61,
Greek Representative; Chorus '57-
'61; Spring Play '60.

JAMES CARL COUCH, B.S.

Jackson, Tennessee

B.S.U. '55-'60; Sigma Alpha
Epsilon, Warden '57; Business
Club '57-'58; Science Club '56.



LEALICE BISHOP
DEHONEY, B.A.

Jackson, Tennessee

CLASS OF '61

**BARBARA JANE
DERRYBERRY, B.S.**
Jackson, Tennessee

B.S.U. '57-'61; Y.W.A. '57-'59;
Chi Omega '57-'61; Reporter '61;
Science Club '57-'61; N.E.A. '61;
Chorus '58-'59.



**MARION ANITA ELLIS,
B.A.**

Marion, Tennessee

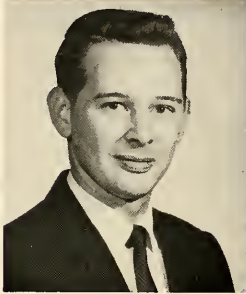
Zeta Tau Alpha '57-'61, Historian-Reporter '59, '61, Ritual Chairman '60; *Lest We Forget* Staff '58-'60; *Cardinal and Cream* Staff '57-'61, Editor '60, Organization Editor '59.



**ROBERT FORD DILLS,
B.M.**

Dyersburg, Tennessee

Transfer from Belmont College; Life Service Band '54-'56; Alpha Tau Omega '57; Allegro Club '61; Band '57; Chorus '54-'57.



**ETTA LOUISE FUTRELL,
B.A.**

Jackson, Tennessee

B.S.U. '57-'61; Y.W.A. '58; Chi Omega '57-'61, Social and Civic Chairman '61; Business Club '58, '61; N.E.A. '61.



**ELIZABETH ANN
DUGARD, B.A.**

Saltillo, Mississippi

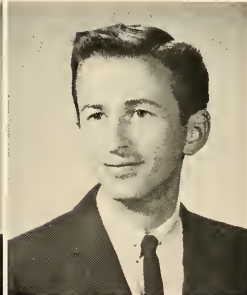
Transfer from Itawamba Junior College; B.S.U. '57-'61; Y.W.A. '60-'61; Spanish Club '59-'61, Reporter '60; Footlights '60-'61; N.E.A. '60-'61; Spring Play '61; Dorm Council '61.



KEN PAUL GAULT, B.S.

Knoxville, Tennessee

Mr. Union '61; Best All Round '60; Who's Who in American Colleges and Universities '61; Nestor Club '59-'61; Alpha Tau Omega '59-'61; Math Club '57-'61; U. Club '57-'61; Freshman Basketball; Cross Country '57-'61, Captain '61; Track '57-'61; Y.S.A.C. Cross Country Champion '60-'61.



**BENITA KAY DUNAGAN,
B.S.**

Yorkville, Tennessee

Maid to Miss Union '59; Who's Who '61; Freshman Cheerleader '58; B.S.U. '57-'61; Y.W.A. '57-'61; Hypatia, alternate '59, member '60; Z.T.A. '57-'61, Activities Chairman '59, President '60; Seminar; Interfraternity Council, President '60; Associate Justice '60; Dorm Council '59-'61, President '61; *Lest We Forget* '58.



POLK GLOVER, B.S.

Obion, Tennessee

Cheerleader; B.S.U. '56-'60; Alpha Tau Omega '57-'60; Allegro Club '56-'57; Business Club '57-'60; Chorus '56-'60.



CLASS OF '61

VIRGINIA W. GRIFFIN,
B.A.

Brighton, Tennessee

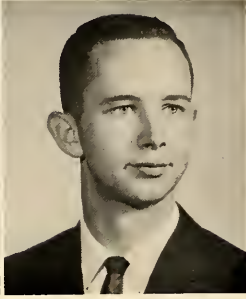
B.S.U. '57-'58; Y.W.A. '57-'58;
Life Service Band '57; Hypatia
'59; Latin Club '57; Secretary
'57.



BOB REECE HIGHFILL,
B.S.

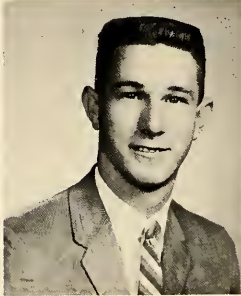
Nashville, Tennessee

P.S.U. '57-'59; Nestor Club '59-
'61, President '61; Alpha Tau
Omega '57-'61, Public Relations
'60; Math Club '57-'61; Senior
Class Student Council Represent-
ative.



JARRIS MANLEY
HARDIN, B.S.

Madon, Tennessee



SHELLEY THEDA
HIGHSMITH, B.A.

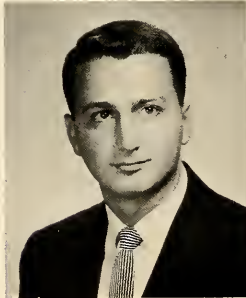
Collierville, Tennessee

Who's Who in American Colleges
and Universities '61; Sigma
Alpha Iota '59-'61, Chaplain '59;
Y.W.A. '57-'61, Secretary '58-
'59; Hypatia '59-'61, President
'61; Allegro Club '57-'59, Vice-
President '59; Chorus '57-'59;
Library Staff '59-'61.



ROBERT HAYNIE, B.S.

Jackson, Tennessee



LARRY DEAN HOOPAW,
B.S.

Mound City, Illinois

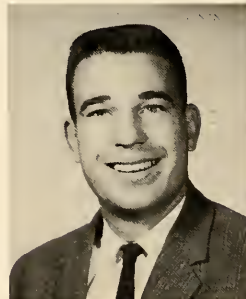
B.S.U. '57-'58; Law Club '61;
Business Club '58-'61, Program
Chairman '60, President '61;
Basketball '57; Chorus '58-'60.



WILLIS WAYNE
HENSON, B.A.

Grand Rivers, Kentucky

Transfer from Bethel College;
M.A. '57-'61.



WILLIAM ELLISTON
HOPKINS, B.S.

Cornington, Tennessee

History Club '59-'61, Treasurer
'61; X.E.A. '61; U Club '58-
'61; Councilman '57-'61; Basket-
ball Manager '60; Baseball '57-
'61; Cross Country '57-'61,
Captain '59; Track '59; Adams
Hall President '61.



CLASS OF '61

ELIZABETH ANN JOHNSON, B.A.

Madison, Tennessee

B.S.U. '57-'61; Y.W.A. '57-'59; Chi Omega '57-'61, Chapter Correspondent '57-'61; Business Club '60-'61; N.E.A. '60-'61; Chorus '57-'59.



NANCY CAROLYN McCOLLUM, B.A.

Jackson, Tennessee

B.S.U. '57-'61; Y.W.A. '57-'61; Zeta Tau Alpha '57-'61, Recording Secretary '60; Chorus '57-'59; Business Club '58-'61; N.E.A. '58-'61.



PATSY ANN KING, B.S.

Lavinia, Tennessee

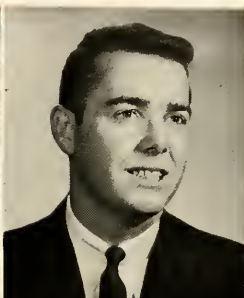
B.S.U. '57-'61; Y.W.A. '57-'61; Math Club '59-'61, Secretary and Treasurer '61; N.E.A. '57-'61, Secretary '60, President '61; Dorm Representative '60; Counselor '61; Vice-President of Dorm '60.



ROBERT BARRY McCOMIC, B.S.

Memphis, Tennessee

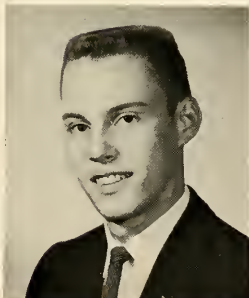
Sophomore Class Speaker; Nestor Club '59-'60, Vice-President '60; Sigma Alpha Epsilon '57-'61, E.D.A. '58, P.T. '59; E.A. '60; Interfraternity Council '59-'60; Student Court '59-'60; Math Club '58-'60; Footlights Club '59-'60; Class Plays '59-'60; Stage Band '58-'59.



WILLIAM WHITE LAUGHLIN, B.S.

Jackson, Tennessee

Escort to Mr. and Miss Union '59, '60; Most Handsome '59; Sigma Alpha Epsilon '57-'61, Correspondent '60; Allegro Club '57-'58; Band '57-'61; Stage Band '57-'59.



SHIRLEY ANN McELYEA, B.A.

Ridgely, Tennessee

B.S.U. '58-'61; Y.W.A. '58-'61; Business Club '59-'61, N.E.A. '61.



CAROL ANN LUETHGE, B.A.

St. Louis, Missouri

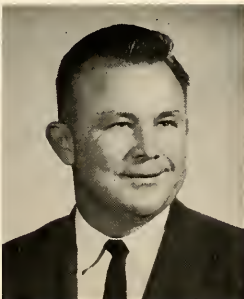
Best All Round Girl '60; Campus Favorite '60; Who's Who '61; Cheerleader '57-'60; B.S.U. '57-'61; Y.W.A. '57-'60; Life Service Band '58, '61; Chi Omega '57-'61, Activities Chairman '60, Personnel Chairman '61; Linguae Mundi '61; Home Ec. Club '57-'61, Vice-President '59; Alpha Psi Omega '59-'61, Secretary '59-'61; Footlights '57-'61, Secretary '58-'60; N.E.A. '59-'61; Girls' P.E. Club '61; Class Plays '57-'61, Spring Plays '57-'60; Best Actress '59; Junior Class Speaker; Student Court Justice; Cardinal and Cream Staff '59-'61; Chorus '59-'61.



LOUIS HAROLD McEWEN, B.S.

Jackson, Tennessee

Transfer from California Polytechnic College; Business Club '57-'60.



CLASS OF '61

WANDA JEAN
McLEMORE, B.A.
Gibson, Tennessee

B.S.U. '57-'61; Y.W.A. '57-'61;
Life Service Band '57-'58; Zeta
Tau Alpha '58-'61, Magazine
Chairman '61; Seminar, Class
Play '58; Footlights '58-'61;
Chorus '57-'59.



CAROL ANNE MILLER,
B.S.

Grand Junction, Tennessee

B.S.U. '57-'61; Y.W.A. '57-'58;
Chi Omega '57-'61, Chapter Cor-
respondent '60, Secretary '61;
Home Ec. Club '57-'61, President
'59, Treasurer '60; N.E.A. '60-
'61; Dorm Representative '61;
Dorm Council '59-'61, Secretary
'60, Vice-President '61; Chorus
'59-'60.



NANCY JANE
McMASTER, B.S.
Madon, Tennessee

Transfer from East Tennessee
State College; B.S.U. '61;
N.E.A. '61; Girls' P.E. Club '61.



REBECCA EDWARDS
MILLER, B.A.

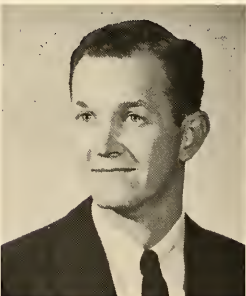
Fulton, Kentucky

B.S.U. '57-'60; Y.W.A. '57-'59;
Chi Omega '58-'61, Treasurer
'61; Pastor's Helpmates '59-'61,
President '61; Home Ec. Club
'61; N.E.A. '58-'60; *Let's* '61
Forget Staff '58.



A. TILLMAN MAYS, B.A.
Jackson, Tennessee

Transfer from Lambuth College;
M.A. '61.



JOHN PALMER
MONTGOMERY, B.A.

Chaffee, Missouri

Alpha Tau Omega '57-'61,
W.S. '60; Business Club '58-
'61; U Club '57-'61; Baseball
'57-'61; Chorus '57.



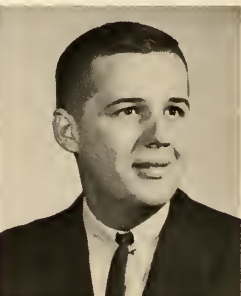
MARTHA JO MILAM,
B.A.

Memphis, Tennessee

B.S.U. '57-'61; Y.W.A. '57-'61;
Zeta Tau Alpha '57-'61, Rush
Chairman '60, Vice-President '61;
Interfraternity Council '60;
Allegro Club '57-'61, Social
Chairman '59; President of
Crook Hall '61; Chorus '57-'61.



LARRY IRA MOORE
Jackson, Tennessee



CLASS OF '61



BILLY SUE MORGAN,
B.A.
Ridgely, Tennessee



LINDA JANE PORTIS,
B.S.

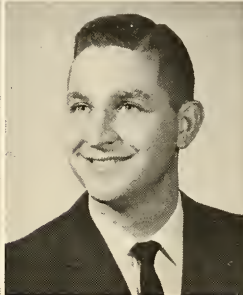
Jackson, Tennessee

B.S.U. '57-'61; Y.W.A. '57-'61, President '59, Program Chairman '58, Secretary '60; N.E.A. '59-'61; Girls' P.E. Club '57-'61, Reporter '59.



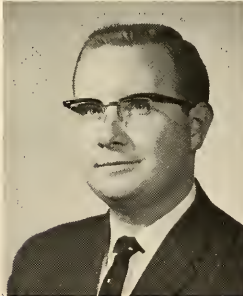
RUBY PATRICIA MORSE,
B.S.
Medina, Tennessee

D.S.U. '57-'61, Greater Council '58-'59; Y.W.A. '57-'60, Vice-President '60; Zeta Tau Alpha '57-'61, Secretary '59, Treasurer '60; History Club '58-'61; N.E.A. '59-'61; Monitor '59-'60; Library Staff '57-'61.



JERRY L. SCRUGGS, B.A.
Fruitland, Tennessee

M.A. '60; Nestor Club '59-'60, Chaplain '60; Justice of Student Court '60; History Club '58-'60.



BOBBY DEAN NEWTON,
B.M.
Fulton, Kentucky

Pi Mu Alpha, Treasurer '61; Allegro Club '56-'61, President '57; Chorus '57-'61.



**MARY DELAINE
SHERBENOU, B.M.**
Milan, Tennessee

Who's Who in American Colleges and Universities '61; Sigma Alpha Iota Treasurer '61; B.S.U. '57-'61, Missions Chairman '60; Y.W.A. '57-'61, Reporter '59, President '60; Life Service Band '60; Allegro Club '57-'61, Secretary '58-'60; Alpha Psi Omega '59-'61; Footlights '59-'61; Dorm Counselor '60; *Let's Ho Forget* Art Editor '58-'60; Band '57-'61; Chorus '57-'61.



BETTY COWAN ONLY,
B.A.
Collierville, Tennessee

Campus Favorite '59; Freshman Court; Cheerleader '57-'59; Who's Who '61; Representative to the Little U.N. '60; B.S.U. '57-'60; Y.W.A. '57-'60; Zeta Tau Alpha '57-'61, Social Chairman '58, Vice-President '60; History Club '58-'61, Reporter '60; Student Council Representative '58-'59.



DOROTHY NELL SISCO,
B.A.

Flint, Michigan

Transfer from Michigan State University; B.S.U. '59-'61; Y.W.A. '59-'61, Secretary-Treasurer '61; Zeta Tau Alpha '59-'61; Allegro Club '59-'61; Chorus '59-'61.

CLASS OF '61

JOHN VERNON SNEAD,
B.M.

Troy, Tennessee

B.S.U. '57-'58; Allegro Club '57-'61; German Club '60; Business Club '58; Chorus '57-'61.



JOYCE MARIE STEVENSON,
B.M.

St. Louis, Missouri

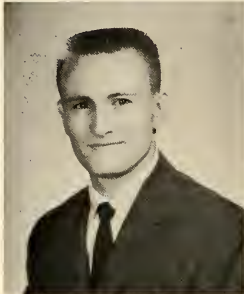
Campus Favorite '59; Who's Who in American Colleges and Universities '61; Sigma Alpha Iota '59-'60; B.S.U. '57-'61; Y.W.A. '57-'58; Allegro Club '57-'61; Footlights '59-'61; N.E.A. '61; Girls' P.E. Club '58-'61; Class Plays '59-'61; Sophomore Class Secretary; Student Government Reporter '59; Treasurer '61; Dorm Council '59; *Cardinal and Cream Staff* '59; Band '59-'61; Chorus '57-'61.



JERRY LEE SPENCER,
B.A.

Osceola, Arkansas

M.A. '57-'61; Chorister '60; Life Service Band '58-'59; Alpha Tau Omega '57-'61; Cheerleader '57-'58; Footlights '58-'60; U Club '58-'60; Baseball '58; Track '59; Class Play '58; Spring Play '58; Class Speaker '59; Class Chaplain '58, '60; Dorm Council '59; Student Body Chaplain '61.



SARAH PAULINE STONE,
B.A.

Camden, Tennessee

Sigma Alpha Iota '60-'61, Charter Vice-President; B.S.U. '57-'61, Freshman Council, Executive Council; Y.W.A. '57-'61, Vice-President '59, Treasurer '61; Hypatia '60-'61; History Club '57-'60; Allegro Club '57-'60, Program Chairman '60; German Club '59-'61; Dorm Representative; Monitor '60; Vice-President of Dorm '61; *Cardinal and Cream Staff*, Editor '61; *Let We Forget Staff* '59; Band '57-'61; Chorus '58.



PEGGY SUE STANFILL,
B.S.

Luray, Tennessee

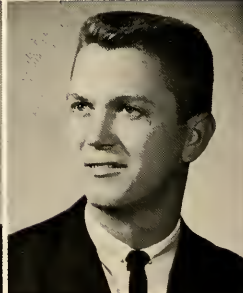
Science Club '59-'61; Program Chairman '61; N.E.A. '61; Girls' P.E. Club '59; Chorus '59.



PAUL ROBERT TAYLOR,
B.S.

Trezevant, Tennessee

Alpha Tau Omega '58-'61; Business Club '59-'61; U Club '57-'61; Basketball '57; Baseball '57-'61.



JAMES LARRY STEED,
B.S.

Jackson, Tennessee

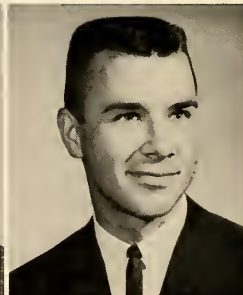
Math Club '57-'61; U Club '57-'61; Cross Country '57-'60; Track '57-'61; *Cardinal and Cream Staff* '58-'60; *Let We Forget Staff* '58-'60.



MALCOM THOMPSON TIPTON,
B.S.

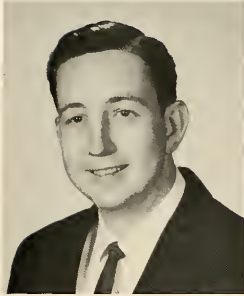
Union City, Tennessee

Sophomore Escort to Mr. and Miss Union; B.S.U. '58-'61; Alpha Tau Omega, Secretary '58, Historian '60; Footlights; Class Plays '58-'59; Spring Play '58; Class Vice-President '60; Councilman '59.



CLASS OF '61

MATTHEW TOMLIN
Jackson, Tennessee



JOYCE LARENE WALLS,
B.A.

Kennett, Missouri

Who's Who in American Colleges and Universities; B.S.U. '58-'61; Y.W.A. '58-'61; Hypatia '61; Phi Alpha Theta '61; History Club '59-'61; Footlights '59-'61; N.E.A. '59-'61; Spring Play '60; Library Staff '60.



REBECCA CAROLYN TOWNSEND, B.M.
Parsons, Tennessee

Campus Favorite '60; Who's Who in American Colleges and Universities; Sigma Alpha Iota '60-'61, Secretary '61; B.S.U. '57-'61; Y.W.A. '57-'61; Hypatia '59-'61, Vice-President '61; Zeta Tau Alpha '57-'61, Treasurer '59, President '60; Interfraternity Council '59-'61, Vice-President '60; Allegro Club '59-'61; Footlights '58-'61; Class Play '58; Class Treasurer '59, Secretary '60; Student Government Representative '61; Band '57-'59; Chorus '57-'61.



KATIE ANN WEBB, B.S.

Ripley, Tennessee

B.S.U. '57-'61; Y.W.A. '57-'61; Math Club '59-'61; N.E.A. '59-'61; Counselor '59-'61; Monitor '59.



MARTHA E. TOLAR, B.A.
Ridgely, Tennessee

B.S.U. '52-'58; Y.W.A. '57-'60.



LEONE WILLIAMS, B.A.

Union City, Tennessee

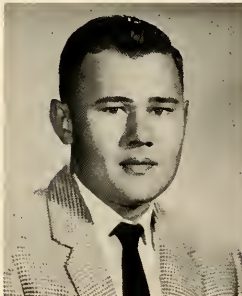
B.S.U. '58; Life Service Band '60; Hypatia '60; N.E.A. '60; Dorm Council '59; Chorus '60.



JERE PEARSON WALKER,
B.S.

Jackson, Tennessee

Business Club '58-'60.



LINDA SMITH WILLIAMS

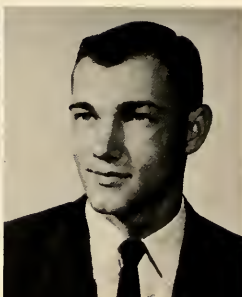
Jackson, Tennessee



CLASS OF '61

**RALPH ELLIOT
WILLIAMS, JR., B.A.**
Memphis, Tennessee

Delegate to Little U.N. '59; B.S.U. '57-'61; M.A. '57-'61; Secretary '58; Treasurer '60; President '61; Life Service Band '57-'61; Shelbians '57-'59; Phi Alpha Theta '59-'61; Treasurer '60; President '61; History Club '58-'61; Treasurer '59; German Club '60; Alpha Psi Omega '61; Footlights '59-'61; Class Play '60; Spring Play '60; Library Staff '58-'61; Cardinal and Cream Staff '57-'59; *Lest We Forget* Staff '58-'60.



**MAX THOMAS WALKER,
B.A.**

Gibson, Tennessee

M.A. '57; Class Chaplain '61; Chorus '59.

**ANNE NELL WILSON,
B.A.**

Brownsville, Tennessee

Who's Who Among Students in Colleges and Universities; B.S.U. '57-'61; Y.W.A. '57-'61; Zeta Tau Alpha '57-'61; Treasurer '61; Math Club '59-'61; President '61; N.E.A. '59-'61; Dorm Counselor '60.



**WALTER MURRAY
ALLISON, B.S.**

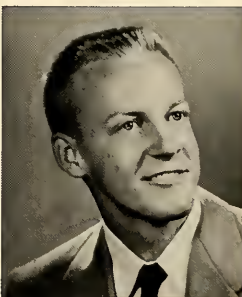
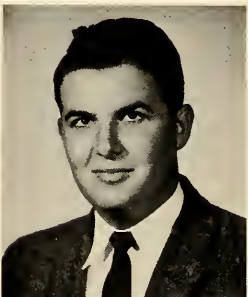
Tiptonville, Tennessee

B.S.U. Vice-President '59-'60; Nestor Club '60-'61; Secretary '61; Alpha Tau Omega '57-'61; W.S.C., W.K.A., W.G., W.M.; Math Club '58-'61; Science Club '59-'60; U Club '59-'60; President '60; Track '57-'60; Class Play '60.

JAMES A. WOOD, B.S.

Byrdstown, Tennessee

B.S.U. '57-'61; Science Club '59-'61; N.E.A. '59-'61; Councilman '58-'61; Basketball Manager '57; Cross Country Trainer '60.



**RAYMOND EARL MOTT,
B.S.**

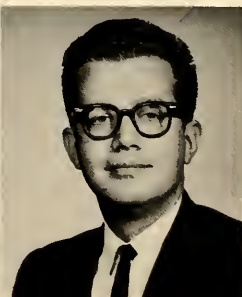
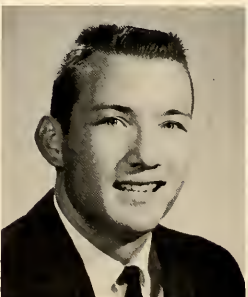
Jackson, Tennessee

Math Club '58-'61, Vice-President '60.

**JERRY DON OAKLEY,
B.A.**

Wingo, Kentucky

B.S.U. '57-'61; M.A.; Alpha Tau Omega; Sophomore Class Speaker.

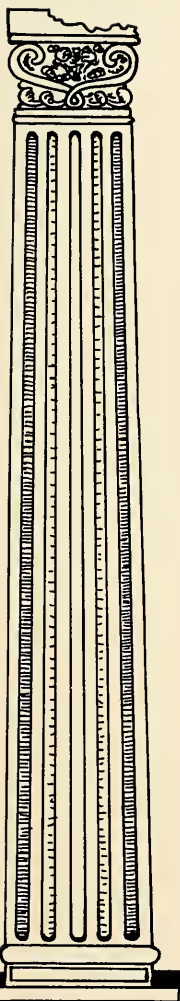


JAMES McAFFEE

Jackson, Tennessee

CLASS
OF
1962

JUNIORS





Standing, left to right: Charles Wingo, Chaplain; Gayle Alexander, President; Elaine Prather, Secretary-Treasurer; Glenn Davis, Vice-President; Mary Ann Baker, Student Council Representative.

JUNIOR CLASS OFFICERS

CLASS OF '62



JOE ADEN
Dongola, Illinois



GAYLE ALEXANDER
Trenton, Tennessee



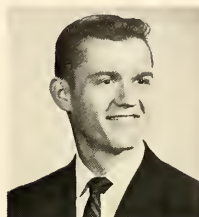
JOYCE ALLEN
Jackson, Tennessee



TERRY ANDERSON
Knoxville, Tennessee



JANE BAILEY
Memphis, Tennessee



TOMMY BELEW
Jackson, Tennessee



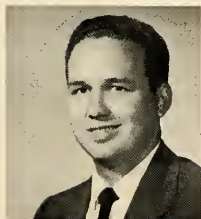
JIM BATEMAN
Selmer, Tennessee



MARY ANN BAKER
Jackson, Tennessee



ROBERT BOOKER
Jackson, Tennessee



HARRY BOWMAN
Huron, Tennessee



CHARLES BURKHEAD
Jackson, Tennessee

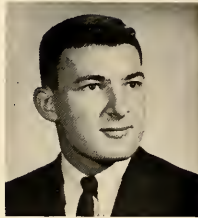


BETTY CAVENDER
Memphis, Tennessee

CLASS OF '62



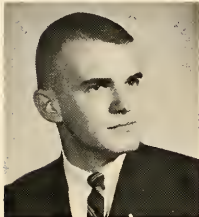
SARAH CHATHAM
Humboldt, Tennessee



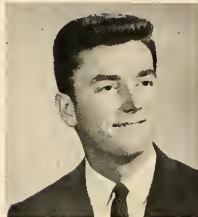
DAVID CLAYTON
Union City, Tennessee



BETTYE CLIFT
Newbern, Tennessee



FRED COOK
Jackson, Tennessee



DEWEY CORDER
Maplewood, Missouri



CARL COX, JR.
Richmond, Missouri



BONNIE COUCH
Jackson, Tennessee



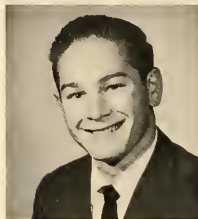
HARLEN CROSSON
Brownsville, Tennessee



GLENN DAVIS
Jackson, Tennessee



DIANA DUNN
Alamo, Tennessee



TONY EASTMAN
Jackson, Tennessee



FLOYD FREE
Jackson, Tennessee

CLASS OF '62



MARY H. FREEMAN
Bells, Tennessee



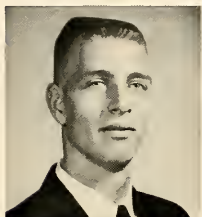
ANN FULLER
Memphis, Tennessee



JO NELL GILLUM
Russellville, Kentucky



DAVID GLISSON
Dyer, Tennessee



OTIS GRIFFIN
Millington, Tennessee



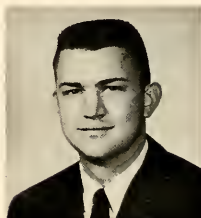
WILLIAM GREENE
Memphis, Tennessee



JOHN HAMILTON
Augusta, Kansas



FREDDIE HAWKINS
Elizabethtown, Kentucky



GARY HELTON
Corinth, Mississippi



WEYMUTH HEUISER
Sikeston, Missouri



LOIS HIGHFILL
Memphis, Tennessee



JOHN HINSON
Bolivar, Tennessee

CLASS OF '62



MARILYN DAME
Jackson, Tennessee



JIMMY DANIEL
Union City, Tennessee



KEITH HUFFMAN
Tuscumbia, Missouri



TOMMY HUMPHREYS
Humboldt, Tennessee



FRANK JAMISON
Jackson, Tennessee



BARBARA JELKS
Paris, Tennessee



CAROLYN JOHNSON
Jackson, Tennessee



WAYNE JOHNSON
Jackson, Tennessee



ANN JONES JAMISON
Yazoo City, Mississippi



JIMMY JONES
Fulton, Kentucky



JERE LEDSINGER
Kenton, Tennessee



SALLY LIPE
Steeleville, Illinois

CLASS OF '62



NANCY McCARTHEY
Baldwin, Mississippi



BETTY McCARTNEY
Bradford, Tennessee



MARY McDANIEL
Covington, Tennessee



MARIE MARSHALL
Russellville, Kentucky



SHARI MARVIN
Anna, Illinois



LAURA MEFFORD
Memphis, Tennessee



DEAN MOORE
Newbern, Tennessee



KENNETH NEWMAN
Jackson, Tennessee



WESLEY NICHOLASS
Oxford, Mississippi



REBECCA PARKER
Humboldt, Tennessee



JOHN PIPPIN
Kevil, Kentucky



SUE POPE
Bolivar, Tennessee

CLASS OF '62



ELAINE PRATHER
Woodland Mills, Tennessee



MARILYN PRICE
Lebanon, Tennessee



EMILY PRITCHARD
Huntingdon, Tennessee



BETTIE RALPH
Goodlettsville, Tennessee



SHELBY REAVES
Greenfield, Tennessee



BEVERLY RICHARDSON
West Plains, Missouri



DAVID SALLEE
Memphis, Tennessee



LEWIS SEWELL
Newbern, Tennessee



JUANITA SIKES
Jackson, Tennessee



BETTYLU SMITH
Jackson, Tennessee



CAROL ANN SMITH
Memphis, Tennessee



LINDA STENNETT
Corinth, Mississippi

CLASS OF '62



JOHN SOMERS
Rutherford, Tennessee



DAN STONE
Jackson, Tennessee



BILL SUBLETTE
Jackson, Tennessee



WALTER TATE
Jackson, Tennessee



BETTY TAYLOR
Trenton, Tennessee



MARY ANN TAYLOR
Jackson, Tennessee



GLEND A THOMAS
Jackson, Tennessee



JUDITH THOMPSON
Columbus, Ohio



JULIA TILLMAN
Jackson, Tennessee



NANCY TIPTON
Jackson, Tennessee



JAMES TOLAR
Ridgely, Tennessee



LUCY TURNER
Linneus, Missouri

CLASS OF '62



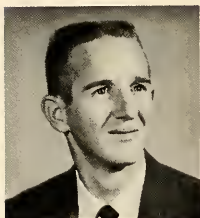
ZELMA TURNBO
Milan, Tennessee



MARY ANN TUTTEROW
Knoxville, Tennessee



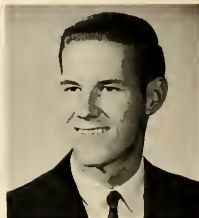
TOMMY VANCE
Memphis, Tennessee



BILL WEINSTEIN
Whitehaven, Tennessee



TOM WEST
Milan, Tennessee



JERRELL WHITE
Kuttawa, Kentucky



CHARLES WINGO
Jackson, Tennessee



PAUL WOODFORD
Savannah, Tennessee



BEVERLY YATES
Jackson, Tennessee



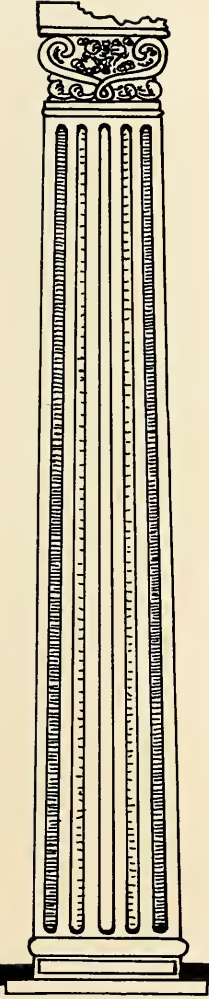
JOETTA ZUMWALT
Poplar Bluff, Missouri



SHIRLEY BLURTON
Jackson, Tennessee



DUNAWAY CONNER
Ripley, Tennessee



CLASS
OF
1963

SOPHOMORES



Standing, left to right: Freddie Sandidge, Secretary; Delbert Coggins, President; Linda Schaeffer, Treasurer; Phil Jeffress, Vice-President; Roy Jones, Chaplain; Bill Jones, Student Council Representative.

SOPHOMORE CLASS OFFICERS

CLASS OF '63



PEGGY ALLEN
Memphis, Tennessee



JAMES ALLISON
Jackson, Tennessee



BARBARA BALL
Memphis, Tennessee



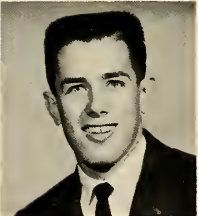
JERRY BASKIN
Covington, Tennessee



FRANCIS BEARD
Las Vegas, Nevada



VIRGINIA BOULTON
Cades, Tennessee



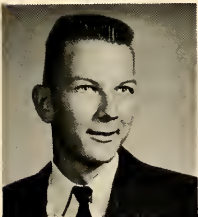
JIMMY BRYANT
Jackson, Tennessee



JIMMY BULLARD
Jackson, Tennessee



ELSIE BULLINGTON
Atwood, Tennessee



CHARLES CARTER
Jackson, Tennessee



CAROLYN CHEEK
Jackson, Tennessee



SANDY CHILDRESS
Memphis, Tennessee

CLASS OF '63



DELBERT COGGINS
Memphis, Tennessee



BILL COOKSEY
Jackson, Tennessee



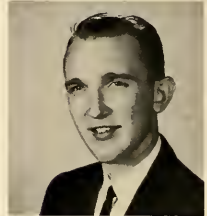
JIMMY CONNER
Jackson, Tennessee



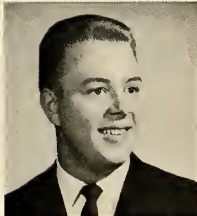
SUE CROUCH
Jackson, Tennessee



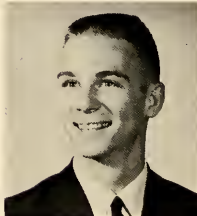
ANN CROWELL
Sikeston, Missouri



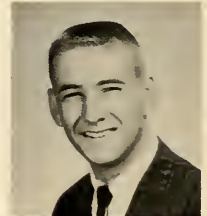
WAYNE CURRY
Jackson, Tennessee



TULLY DANIEL
Jackson, Tennessee



BARRY DILL
Jackson, Tennessee



FRANK DYER
Memphis, Tennessee



CAROL ELLISON
Memphis, Tennessee

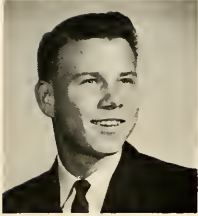


JANICE ELROD
Jackson, Tennessee



CHARLOTTE FOWLKES
Jacksonville, Florida

CLASS OF '63



JERE FRANCIS
Brownsville, Tennessee



WELTON GADDY
Paris, Tennessee



GENE GROOMS
Huntingdon, Tennessee



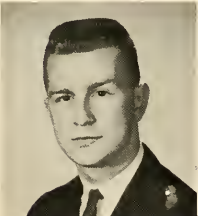
BETTY LOU GURLEY
Bath Springs, Tennessee



KAY HANEBUTH
Jackson, Tennessee



LINDA HANEY
Kingsport, Tennessee



JERRY HART
Trimble, Tennessee



RONNIE HAWKINS
Stanton, Tennessee



JERRY HAYNIE
Jackson, Tennessee



JANET HINES
Halls, Tennessee



BECKY HOLT
Parsons, Tennessee



ONEIDA HOOKER
Eads, Tennessee

CLASS OF '63



RUTH HORNE
Jackson, Tennessee



NANCY HORTON
Mayfield, Kentucky



JULIA HUMPHREYS
Humboldt, Tennessee



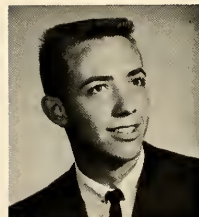
PATSY HUTSON
Paris, Tennessee



KAREN HYSMITH
Finger, Tennessee



PAT JEFFRESS
Fulton, Kentucky



PHIL JEFFRESS
Fulton, Kentucky



WILMA JOHNS
Milan, Tennessee



ROY JONES
Dyersburg, Tennessee



JAMES JOWERS
Dyersburg, Tennessee



MARY KARNAZES
Halls, Tennessee



JIMMIE KEY
Jackson, Tennessee

CLASS OF '63



TOMMY KING
Rutherford, Tennessee



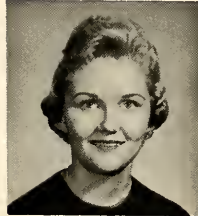
MARY LAUGHLIN
Jackson, Tennessee



LARRY LeGRAND
Poplar Bluff, Missouri



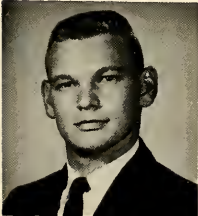
VIRGINIA LEWIS
Jackson, Tennessee



SHARON LYON
Jackson, Tennessee



TOMMY McDEARMAN
Halls, Tennessee



BILLY MARTIN
Jackson, Tennessee



MARILYN MARTIN
Paris, Tennessee



JUDY MEADOR
Jackson, Tennessee



ANNE MITCHELL
Milan, Tennessee



KEN MORRIS
Puryear, Tennessee



CHARLENE MUIR
Memphis, Tennessee

CLASS OF '63



SAMMY NAYLOR
Bells, Tennessee



MONA NERREN
Mercer, Tennessee



RONNIE OWENS
Memphis, Tennessee



MARILYN OWENS
Hickman, Kentucky



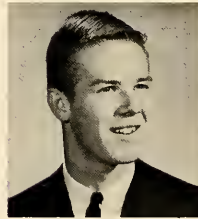
SYLVIA PARKER
Goodlettsville, Tennessee



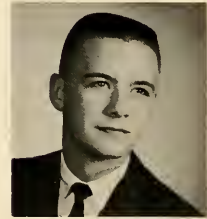
LARRY PASCHALL
Puryear, Tennessee



JOAN PATTON
Jackson, Tennessee



BOB PAVELONIS
Harrisburg, Illinois



BILL PERKINS
Jackson, Tennessee



GWEN PHILLIPS
Dyersburg, Tennessee

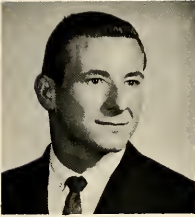


SHIRLEY POPE
Trimble, Tennessee



DELMA PRESCOTT
Friendship, Tennessee

CLASS OF '63



VAUGHAN PRUITT
Memphis, Tennessee



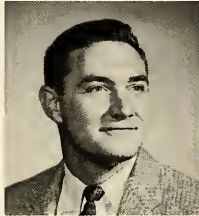
GLENN RADFORD
Dresden, Tennessee



JOHNNY REAMS
Bells, Tennessee



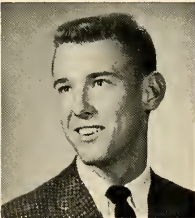
GEORGE-ANNE RICHMOND
Henderson, Kentucky



JIMMY RODGERS
Memphis, Tennessee



NANCY ROWE
Memphis, Tennessee



BENNY RUSHING
Jackson, Tennessee



ROSE ANN RUSSELL
Columbus, Kentucky



FREDDIE SANDIDGE
Memphis, Tennessee



DUANE SARGEANT
Jackson, Tennessee



BURNETT SASSEE
Paducah, Kentucky



ANNETTE SASSER
Middleton, Tennessee

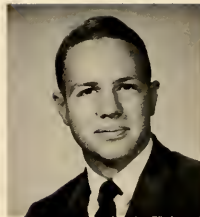
CLASS OF '63



VIRGINIA SCARBOROUGH
Memphis, Tennessee



LINDA SCHAEFER
Jackson, Tennessee



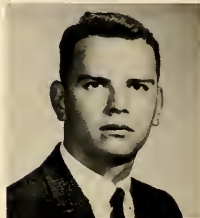
JOE BILL SISSON
Sikeston, Missouri



JERALD SMITH
Bolivar, Tennessee



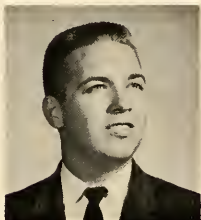
JUDY STRANGE
Alamo, Tennessee



HUNTER TAYLOR
Jackson, Tennessee



ANN THOMAS
Gibson, Tennessee



DAN TICKLE
Dyersburg, Tennessee



BECKY TIPLER
Grand Junction, Tennessee



TOMMY UPCHURCH
Buchanan, Tennessee



JOHN VAUGHN
Memphis, Tennessee



NANCY WARD
Jackson, Tennessee

CLASS OF '63



SYRENA WATRIDGE
Humboldt, Tennessee



BILLY WATSON
Oakfield, Tennessee



ANNIE WELCH
Bells, Tennessee



ALICE FAYE WEST
Humboldt, Tennessee



LINDA WHEAT
Jackson, Tennessee



J. L. WHITTEN
Jackson, Tennessee



ALICIA WILKERSON
Selmer, Tennessee



JUDY WILKES
Memphis, Tennessee



PATSY WILLIAMS
Memphis, Tennessee



YVONNE WINGO
Jackson, Tennessee



RALPH WINSLOW
Jackson, Tennessee

SENIORS NOT PICTURED

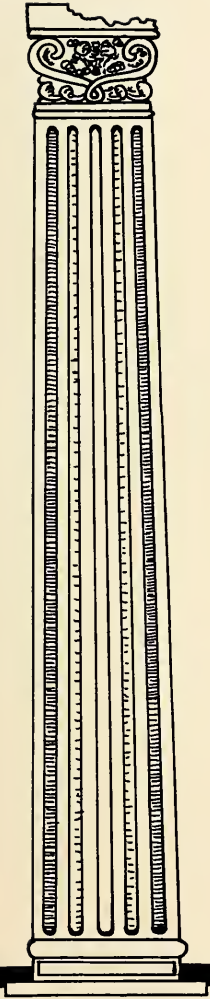
Blakely, David—*Jackson, Tennessee*
 Butler, Tommy—*Jackson, Tennessee*
 Crenshaw, Olive C.—*Jackson, Tennessee*
 Crocker, Morris—*Jackson, Tennessee*
 Davis, Donald Ray—*Jackson, Tennessee*
 Grant, James N.—*Alamo, Tennessee*
 Harris, Fred H.—*Jackson, Tennessee*
 Lee, Harbert—*Ripley, Tennessee*
 Parks, Martha N.—*Brownsville, Tennessee*

Pate, Thomas H.—*Dyersburg, Tennessee*
 Patterson, Kathryn—*Jackson, Tennessee*
 Pillow, Nathan—*Jackson, Tennessee*
 Presson, Donald Ray—*Bemis, Tennessee*
 Sacchini, Louis—*Monessen, Pennsylvania*
 Speight, Mary Etta—*Caruthersville, Missouri*
 Tinker, Allen—*Jackson, Tennessee*
 Weaver, Billy—*Jackson, Tennessee*

JUNIORS NOT PICTURED

Climer, Donna Sue—*Bells, Tennessee*
 Collump, Roy—*Memphis, Tennessee*
 Congiardo, Frank—*Selmer, Tennessee*
 Coughlan, Martha Ann—*Ripley, Tennessee*
 Davis, Kenneth—*Savannah, Tennessee*
 Deaton, Donald—*Jackson, Tennessee*
 Denston, William—*Hopkinsville, Kentucky*
 Dozier, W. Grady—*Gainesville, Texas*
 Dunn, Gerald—*Alamo, Tennessee*
 Dunn, Mary Faith—*Jackson, Tennessee*
 Emerson, David Isaac—*Bolivar, Tennessee*
 Englert, Johnny—*Humboldt, Tennessee*
 Evans, Donald—*Newbern, Tennessee*
 Garland, Beverly—*Birmingham, Alabama*
 Gee, J. Guy—*Jackson, Tennessee*
 Holmberg, Carole—*Salem, Illinois*
 Horne, Adron Noble—*Jackson, Tennessee*
 Horne, Reggie—*Jackson, Tennessee*
 Kirby, Pat—*Jackson, Tennessee*
 Lambert, Troy Terrell—*Tylertown, Mississippi*
 Ledbetter, James Eugene—*Henderson, Tennessee*

Long, Tommy—*Memphis, Tennessee*
 Mebane, Howell—*Cedar Grove, Tennessee*
 Miller, David—*Poplar Bluff, Missouri*
 Morris, Donald—*Dyersburg, Tennessee*
 Pollard, Mary Jean—*Jackson, Tennessee*
 Rose, Linda DeLoach—*Jackson, Tennessee*
 Simmons, Harold—*Memphis, Tennessee*
 Smith, Gerald—*Covington, Tennessee*
 Smith, Thomas—*Sturgis, Kentucky*
 Swanner, Joseph—*Jackson, Tennessee*
 Thadford, J. C.—*Medina, Tennessee*
 Thadford, Ruth—*Medina, Tennessee*
 Tillman, Miriam—*Jackson, Tennessee*
 Tutor, Thomas—*Covington, Tennessee*
 West, Mary G.—*Jackson, Tennessee*
 West, William—*Jackson, Tennessee*
 White, Ernest—*Medina, Tennessee*
 Williams, Norman—*Dyer, Tennessee*
 Willis, Bennett—*Rutherford, Tennessee*
 Wolfe, James B.—*Michie, Tennessee*



CLASS
OF
1964

FRESHMEN

FRESHMAN CLASS OFFICERS



Left to right: Bill Powers, Chaplain; Rich Emerson, President; Joan Davidson, Treasurer; Diana Jerdan, Secretary; Mack Taylor, Student Council Representative.

CLASS OF '64



EDDIE ARQUITT
Sedalia, Missouri



ANN BABB
Jackson, Tennessee



BETTY SUE BAKER
Jackson, Tennessee



RONNIE BAKER
Poplar Bluff, Missouri



NADINE BARHAM
Lewisburg, Tennessee



PAT BELEW
Huntingdon, Tennessee



LINDA BENNETT
Jackson, Tennessee



MAX BISHOP
Brownsville, Tennessee



EDWANA BOUCHER
Dyer, Tennessee



WANDA BOWMAN
Jackson, Tennessee



JUDY BOYER
Portageville, Missouri



JIMMY BRATCHER
Springfield, Tennessee

CLASS OF '64



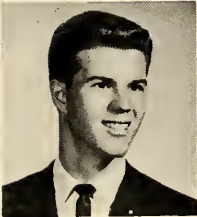
JAMES BRAZIER
Shawneetown, Illinois



LYNDA BROWN
Memphis, Tennessee



EVALYN BURCH
Memphis, Tennessee



JOHN BYNUM
Jackson, Tennessee



MARY CAMPBELL
Camden, Tennessee



DAN CLAIBORNE
Brownsville, Tennessee



ELEANOR COKER
Memphis, Tennessee



BARBARA COLE
Jackson, Tennessee



ANN CONNELL
McKenzie, Tennessee



JIMMY COVINGTON
Union City, Tennessee

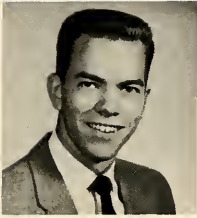


JUDY CRAVENS
Jackson, Tennessee



BOBBY CROWE
Memphis, Tennessee

CLASS OF '64



NOLAN CRUSE
Sonora, Kentucky



WINBURN CURLIN
Brownsville, Tennessee



CAROL CURRY
Jackson, Tennessee



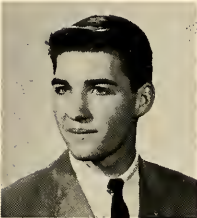
JOAN DAVIDSON
Memphis, Tennessee



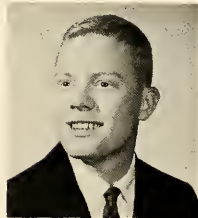
CHERRY DILL
Huntingdon, Tennessee



BILL DUKE
Jackson, Tennessee



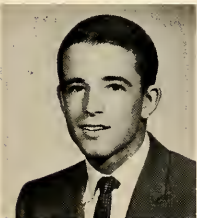
BILLY DUNN
Jackson, Tennessee



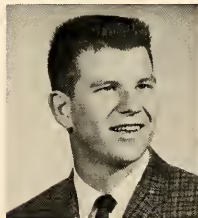
TOMMY DYER
Halls, Tennessee



SHEILA ELDER
Jackson, Tennessee



BILL ELLIS
Memphis, Tennessee



RICH EMERSON
Saulsbery, Tennessee



DALE ENOCH
Bolivar, Tennessee

CLASS OF '64



JERRY EPPS
Poplar Bluff, Missouri



JANICE FLATT
Dyersburg, Tennessee



MARTHA GAIL FOOTE
Memphis, Tennessee



JOHNNIE FOX
Trezevant, Tennessee



ERNEST FREEMAN
Brownsville, Tennessee



DON GARRISON
Memphis, Tennessee



MARTHA GILBERT
Lexington, Tennessee



JANICE GOOD
Memphis, Tennessee



JANEEN GOOGE
Jackson, Tennessee



LINDA GREENUP
Bradford, Tennessee



MARIETTA GRIFFIN
Halls, Tennessee



JOYCE GRISHAM
Beeb Bluff, Tennessee

CLASS OF '64



SANDRA GURLEY
Dyersburg, Tennessee



SAM GUTHRIE
Memphis, Tennessee



DELORES HALL
Memphis, Tennessee



JOAN HARRIS
Dyersburg, Tennessee



TOM HAWKINS
Monessen, Pennsylvania



ROBERT HAYWOOD
Stanton, Tennessee



GONNIE HOLMES
Memphis, Tennessee



CAROL HUMPHREY
Springfield, Tennessee



LINDA HURT
Paris, Tennessee



ANITA HUTCHERSON
Ripley, Tennessee



DIANA JERDEN
Memphis, Tennessee



SANDRA JOHNSON
Jackson, Tennessee

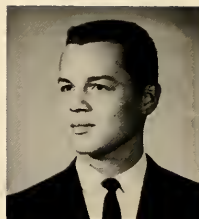
CLASS OF '64



NEAL JONES
Jackson, Tennessee



CAROLYN JONES
Dyersburg, Tennessee



ED JONES
Benton, Kentucky



JIMMY JONES
Dyersburg, Tennessee



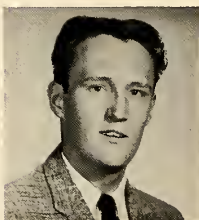
TOMMY JONES
Martin, Tennessee



CAROLYN JORDAN
Grand Junction, Tennessee



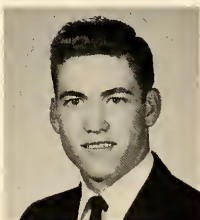
JANETTE JORDAN
Lexington, Tennessee



JIMMY JOWERS
Lexington, Tennessee



HILDA KEE
Humboldt, Tennessee



TOMMY KELLEY
Dyersburg, Tennessee

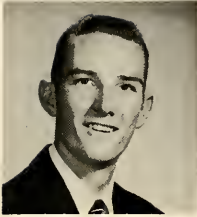


JANICE KENT
Memphis, Tennessee



DON KING
South Fulton, Tennessee

CLASS OF '64



WARREN KOCH
Metropolis, Illinois



FRED KORTE
Metropolis, Illinois



JERRY KUYKENDALL
Jackson, Tennessee



MOLLY LAWRENCE
Jackson, Tennessee



DONNA LIVINGSTON
Memphis, Tennessee



LINDA LOONEY
Henry, Tennessee



JOE McCALEB
Memphis, Tennessee



SANDRA McDANIEL
Jackson, Tennessee



LINDA McWILLIAMS
Owensboro, Kentucky



BECKY MANESS
Jackson, Tennessee

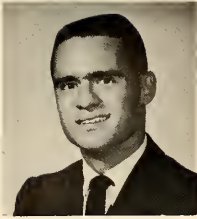


GRETA MASSA
Barlow, Kentucky



BRENDA MAYO
Milan, Tennessee

CLASS OF '64



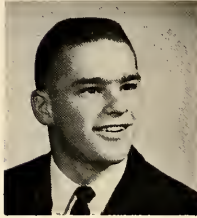
JERRY MELSON
Savannah, Tennessee



JUDY MELTON
Camden, Tennessee



DAVID MELVIN
Bradford, Tennessee



TONY MIDDLETON
Memphis, Tennessee



CAROL MILAM
Memphis, Tennessee



LINDA MILES
Bradford, Tennessee



DIANNE MILLS
Memphis, Tennessee



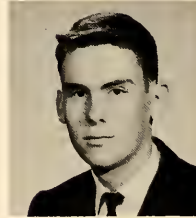
ROBERT NEWELL
Humboldt, Tennessee



DOUG PARKER
Trenton, Tennessee



CLAUDE PETERS
Bolivar, Tennessee



JERRY PETERS
Jackson, Tennessee



BECKY MORTON
Memphis, Tennessee

CLASS OF '64



PAT PHELAN
Trenton, Tennessee



GEORGE POLLARD
Memphis, Tennessee



JUDY POTTS
Holland, Missouri



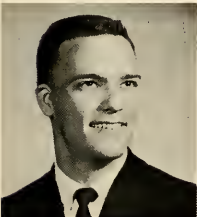
BILL POUNDS
Jackson, Tennessee



BEVERLYN POWELL
Braggadocio, Missouri



BARBARA POWERS
Jackson, Tennessee



BILLY POWERS
Columbus, Georgia



FLOYD PRICE
Chewalla, Tennessee



KAYE PRITCHETT
Dyersburg, Tennessee



BETTY PULLIAM
Jackson, Tennessee

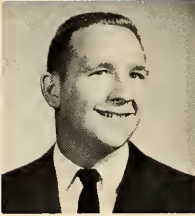


JIMMY PULLIAM
Bolivar, Tennessee



GLENDA QUEEN
Ripley, Tennessee

CLASS OF '64



BOB QUINT
Metropolis, Illinois



CAROLYN RAINES
Brownsville, Tennessee



LARRY RAY
Paris, Tennessee



SHEILA RHODES
Jackson, Tennessee



SANDRA RUTLEDGE
Dyer, Tennessee



BETTY SANDERS
Memphis, Tennessee



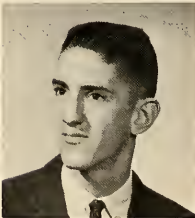
BARBARA SASSER
Halls, Tennessee



KELIA SHANKS
New Madrid, Missouri



FRANCES SINKS
Jackson, Tennessee



JOE SMITH
Jackson, Tennessee



JOYCE SMITH
Collierville, Tennessee

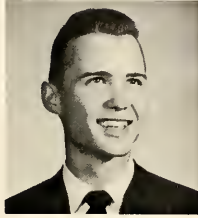


LARRY SMITH
Atwood, Tennessee

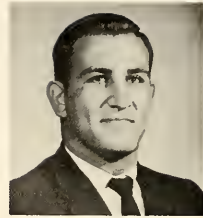
CLASS OF '64



SAM SMITH
Memphis, Tennessee



LARRY SNEED
Obion, Tennessee



BILL SPENCER
Jackson, Tennessee



MARTY SPRINGER
Memphis, Tennessee



CLARA STEWART
Florence, Alabama



GAIL STEWART
Memphis, Tennessee



JIMMY TANNER
Brighton, Tennessee



MACK TAYLOR
Dresden, Tennessee



ALICE JEAN THORNE
Bruceton, Tennessee



LOUISE TOWATER
Medina, Tennessee



ANNETTE TREECE
Trenton, Tennessee



HUGH TURNER
Memphis, Tennessee

CLASS OF '64



SANDRA TWILLA
Dyersburg, Tennessee



BENNY VANCE
Memphis, Tennessee



CHARLES VANTREESE
Jackson, Tennessee



JUDY VAUGHN
Bolivar, Tennessee



CLARICE VERNON
Friendship, Tennessee



KAY WALTON
Vandalia, Illinois



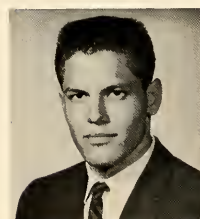
ED WALTON
Caruthersville, Missouri



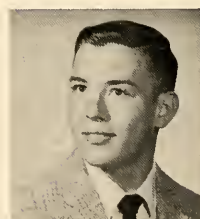
NANCY WATKINS
Steele, Missouri



DOTTIE WATSON
Jackson, Tennessee



DAVID WEEKS
Jackson, Tennessee

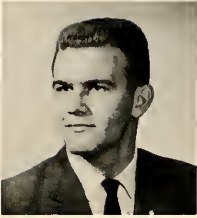


JOHN EARL WELLS
Brighton, Tennessee



JIMMY WILLIAMS
Dyer, Tennessee

CLASS OF '64



LARRY WILSON
Jackson, Tennessee



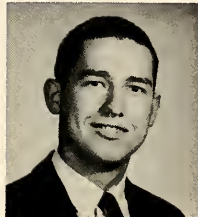
WAYNE WOODS
Sikeston, Missouri



LIBBY WOOLEY
Memphis, Tennessee



JOE WRIGHT
Shawneetown, Illinois



PAUL WRIGHT
Humboldt, Tennessee



BARBARA WYATT
Portageville, Missouri



SOPHOMORES NOT PICTURED

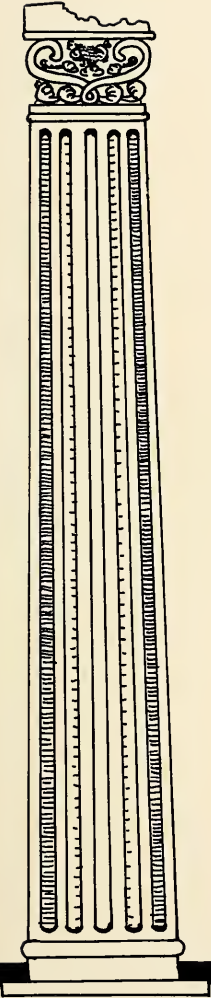
Adams, Johnnie—*Jackson, Tennessee*
 Allridge, Lester Wayne—*Jackson, Tennessee*
 Appleton, Jane—*Milan, Tennessee*
 Barker, Larry—*Jackson, Tennessee*
 Bishop, Bonnie—*Bolivar, Tennessee*
 Brewer, Billy Fred—*Bemis, Tennessee*
 Bullard, Reed—*Memphis, Tennessee*
 Campbell, Robert—*Humboldt, Tennessee*
 Cannon, Joyce—*Halls, Tennessee*
 Childress, Melvin—*Sharon, Tennessee*
 Coley, Flora—*Jackson, Tennessee*
 Combs, James—*Newbern, Tennessee*
 Cox, Fanny Jane—*Jackson, Tennessee*
 Crawford, Deryl—*Bolivar, Tennessee*
 Critchfield, William—*Halls, Tennessee*
 Davis, Barbara—*Jackson, Tennessee*
 Dunlap, Barbara—*Tyrinble, Tennessee*
 Durley, Marie—*Tyro, Mississippi*
 Flowers, Shirley—*Medina, Tennessee*
 Gaba, John—*Alamo, Tennessee*
 Griggs, Joe—*Jackson, Tennessee*
 Haggard, Odis—*Parsons, Tennessee*
 Harrell, Tommy—*Decaturville, Tennessee*
 Highsmith, June—*Jackson, Tennessee*
 Hornbeak, Ann—*Union City, Tennessee*

Jaco, James Harold—*Jackson, Tennessee*
 Johnsey, Roy—*Jackson, Tennessee*
 Johnson, Jackie—*Goodlettsville, Tenn.*
 Jones, William—*Dyersburg, Tennessee*
 Kam, Sang—*Seoul, Korea*
 Kelley, Talmadge—*Dyersburg, Tennessee*
 Knight, Nelda—*Jackson, Tennessee*
 Lewis, Dorothy—*Jackson, Tennessee*
 Littrell, Glynda—*Jackson, Tennessee*
 Love, Hal—*Jackson, Tennessee*
 McAfee, Wallace—*Memphis, Tennessee*
 Morse, James—*Jackson, Tennessee*
 Orrell, Marie—*Jackson, Tennessee*
 Owen, Billy—*Pryorburg, Kentucky*
 Pannell, Evelyn—*Memphis, Tennessee*
 Pittman, Albert—*Memphis, Tennessee*
 Pulliam, Janice—*Jackson, Tennessee*
 Rogers, Linda—*Luray, Tennessee*
 Sapp, Barry—*Winchester, Massachusetts*
 Sapp, Gene—*Winchester, Massachusetts*
 Sartin, June—*Memphis, Tennessee*
 Smith, Vernon—*Jackson, Tennessee*
 Teague, Janice—*Detroit, Michigan*
 Timberlake, Charles—*Humboldt, Tennessee*

FRESHMEN NOT PICTURED

Allen, Andrea—*Humboldt, Tennessee*
 Bain, William—*Jackson, Tennessee*
 Baker, Barbara—*Memphis, Tennessee*
 Banks, Grady—*Memphis, Tennessee*
 Benton, Joseph—*Glennville, Georgia*
 Blackstock, David—*Jackson, Tennessee*
 Bond, Joe—*Humboldt, Tennessee*
 Boone, James—*Jackson, Tennessee*
 Burruss, Henry—*Huron, Tennessee*
 Byford, Joseph—*Memphis, Tennessee*
 Coffman, Betty—*Jackson, Tennessee*
 Cole, William—*Jackson, Tennessee*
 Collins, Ronnie—*Jackson, Tennessee*
 Cook, Billy—*Caruthersville, Missouri*
 Copeland, William—*Bells, Tennessee*
 Dalton, Robert—*Oakfield, Tennessee*
 Davidson, Ronnie—*Paris, Tennessee*
 Dougan, John Pat—*Jackson, Tennessee*
 Douglas, Donnel—*Lavonia, Tennessee*
 England, Margie—*Jackson, Tennessee*
 Fowler, James—*South Falton, Tennessee*
 Gardner, George—*Jackson, Tennessee*
 Garner, Tony—*Raleigh, Tennessee*
 Gary, Nancy—*Memphis, Tennessee*
 Gilbert, Martha—*Lexington, Tennessee*
 Gordan, Shirley—*Jackson, Tennessee*
 Green, Herman—*Flint, Michigan*
 Han, Bill—*Seoul, Korea*
 Haney, Austin—*Milan, Tennessee*
 Hawks, Clifford—*Humboldt, Tennessee*
 Hogue, Allen—*Halls, Tennessee*
 Hurt, Mary Ella—*Jackson, Tennessee*
 Johns, Sylvia—*Jackson, Tennessee*
 Jones, Billy—*Blytheville, Arkansas*

Jones, James—*Dyersburg, Tennessee*
 Kemper, Harold—*Jackson, Tennessee*
 Knipper, Adrian—*Bolivar, Tennessee*
 Lackie, Sue—*Jackson, Tennessee*
 Langley, Shannon—*Jackson, Tennessee*
 Malone, Charles—*Ripley, Tennessee*
 Martindale, Linda—*Jackson, Tennessee*
 Moore, Hugh—*Jackson, Tennessee*
 Neal, Sandra—*Jackson, Tennessee*
 Nichols, Delores—*Birmingham, Alabama*
 Oller, Gary Wayne—*Jackson, Tennessee*
 Palmer, Mike—*Jackson, Tennessee*
 Parker, Douglas—*Trenton, Tennessee*
 Piercey, Winston—*Oakfield, Tennessee*
 Pipping, Oscar—*Jackson, Tennessee*
 Potter, Jerry—*Shawneetown, Illinois*
 Province, Charles—*Jackson, Tennessee*
 Replogle, David—*Medina, Tennessee*
 Robertson, Joe—*Humboldt, Tennessee*
 Rutledge, Sandra—*Dyer, Tennessee*
 Scallions, James—*Jackson, Tennessee*
 Sellari, Dan—*Brownsville, Tennessee*
 Siler, Tommie—*Dyersburg, Tennessee*
 Simonton, Beth—*Memphis, Tennessee*
 Smith, Billy—*Jackson, Tennessee*
 Stubblefield, William H.—*Humboldt, Tennessee*
 Taylor, Gail—*Malesus, Tennessee*
 Theford, Kencelia—*Bradford, Tennessee*
 Thornton, Mary Alice—*Jackson, Tennessee*
 Thrasher, Andy—*Selmer, Tennessee*
 Walch, Barbara—*Memphis, Tennessee*
 Wiggins, Bobby—*Jackson, Tennessee*
 Crockett, Dennis—*Portageville, Missouri*
 Smith, Sam—*Centralia, Illinois*



HONORS

WHO'S WHO

One of the most coveted honors given to college students is that of "Who's Who among Students in American Colleges and Universities." The qualifications: leadership, scholarship, character and extra-curricular activities serve as the basis by which these seniors are approved by the college administration.

Twelve students have been given this honor in recognition of their achievements and contributions while at Union University. The pictures and activities of these twelve are presented on the following pages.



GEORGE WAYNE BROWN

George Wayne Brown, whose glowing personality radiates to all who know him, is a science major from Union City, Tennessee. Wayne is very active in campus affairs, having been Vice-President of B.S.U., Treasurer of the Nestor Club, Treasurer and Vice-President of Footlights, member of the band, the Math Club and Alpha Psi Omega. He has participated in the class plays, was Freshman Class Speaker, Editor of the LEST WE FORGET and reporter for the Cardinal and Cream. Wayne has served as President of the Interfraternity Council and of the Student Government. He is a member of Alpha Tau Omega and has served as Rush Chairman, Secretary, Chaplain and Pledge Master. As Treasurer, Vice-President and President of his class, Wayne has shown his leadership abilities.

Wayne's future plans include graduate study with the intention of research in or teaching of nuclear physics.



KEN PAUL GAULT

Ken Paul Gault, from Knoxville, Tennessee, has shown his versatility in many ways. He was a member of the Nestor Club, the Alpha Tau Omega fraternity, Math Club, and the U Club. The student body has chosen him as Best All 'Round Boy and Mr. Union. His achievements in athletics are many: Freshmen Basketball; Cross Country, Captain 1960; Track Captain 1961; Most Valuable Track Athlete in VSAC; and VSAC Cross Country Champion for two years.

After graduation, Ken plans to study at the University of Tennessee and enter the field of engineering.



JOYCE STEVENSON

Well known for her warm personality and varied roles in campus life, Joyce Marie Stevenson hails from St. Louis, Missouri. Her musical ability has shown through her participation in the Band, University Singers, Allegro Club, and Sigma Alpha Iota, serving as program and social chairman. She was a member of B.S.U., Y.W.A., Footlights, N.E.A., and Girls' P.E. Club, and showed her dramatic talents in the Class Plays. Her sorority, Chi Omega, chose her as Reporter and President, while the student body chose her as campus favorite.



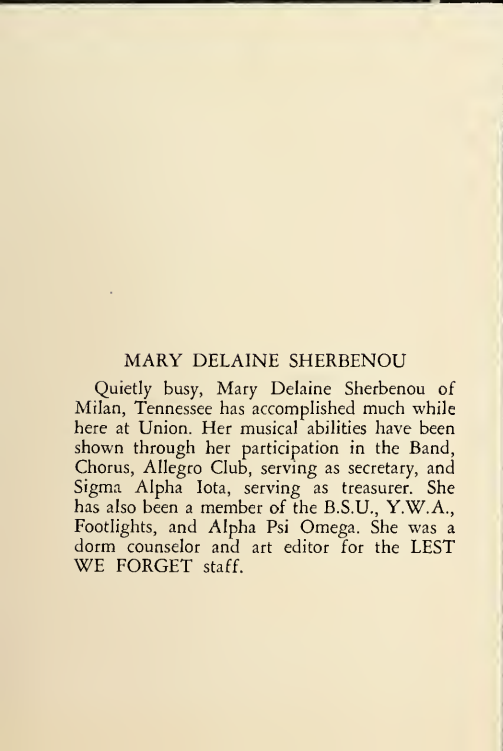
SHELLEY HIGSMITH

Schelley Highsmith, who comes from Collierville, Tennessee, is one of Union's most industrious and capable students. She has served as Vice-President of the Allegro Club, Secretary of the Y.W.A., chaplain of Sigma Alpha Iota, and President of Hypatia. She was a member of the Chorus and the Library Staff.



CAROLYN TOWNSEND

Quiet and busy, Carolyn Townsend has been a fine example as the perfect Union student during her years here. She is majoring in music and is from Parsons, Tennessee. The clubs she has participated in are: Footlights, Allegro, B.S.U. and Y.W.A. She has been in the Band, Chorus and on the staff of the Class Plays. Carolyn has been Secretary and Treasurer of her class, B.S.U. representative to the Student Council, Vice-President of the Interfraternity Council, Corresponding Secretary of S.A.I., Vice-President of Hypatia, and has held the offices of Treasurer and President of her sorority, Zeta Tau Alpha. She was a campus favorite last year.



MARY DELAINE SHERBENOU

Quietly busy, Mary Delaine Sherbenou of Milan, Tennessee has accomplished much while here at Union. Her musical abilities have been shown through her participation in the Band, Chorus, Allegro Club, serving as secretary, and Sigma Alpha Iota, serving as treasurer. She has also been a member of the B.S.U., Y.W.A., Footlights, and Alpha Psi Omega. She was a dorm counselor and art editor for the LEST WE FORGET staff.





KAY DUNAGAN

Kay Dunagan, from Yorkville, Tennessee, is a girl of many talents. She has been an escort to Miss Union and a cheerleader. She has been a member of B.S.U., Y.W.A., and secretary to N.E.A.; she has served as snapshot editor of LEST WE FORGET, President of the Dorm Council, Associate Justice of the Student Court, President of Interfraternity Council, President and Activities Chairman of Zeta Tau Alpha, and member of Hypatia. Kay is getting a B.S. degree.

CAROL ANN LUETHGE

Carol Ann Luethge, vivacious and versatile, from St. Louis, Missouri, has played an important role in the campus activities. Carol has been an officer in the following organizations: Alpha Psi Omega, Y.W.A., Home Economics Club and Footlights Club. She has been Best Actress of the year, Junior Class Speaker, drama editor and Chi Omega Reporter to the Cardinal and Cream, and Student Court Justice. Carol has also served as a member of the Latin Club, B.S.U., Girls' P.E. Club, University Singers, the Class Plays and the Spring Plays, and the National Education Association. She has been an asset to her sorority, Chi Omega, by serving as the Activities Chairman and Personnel Chairman.





BETTY COWAN ONLY

Friendliness is a quality that has made Betty Only well known to her fellow students. She was a member of the B.S.U., Y.W.A., N.E.A., and Reporter for the History Club. She has served her sorority, Zeta Tau Alpha, as social chairman and Vice-President, and was Best Member in 1959. She was her Sophomore Class Student Council Representative, served on the Dorm Council, and was chosen to be a cheerleader and member of the Freshman Court, and Campus Favorite.



ANNE NELL WILSON

Showing her capabilities in many areas, Anne Nell Wilson, from Brownsville, Tennessee, is highly thought of by her fellow students. While she consistently appeared on the Dean's List, she was also active in B.S.U., serving as Vice-President, Y.W.A., Hypatia, elected Program Chairman, N.E.A., and the Math Club, serving as President. She was a Dorm Counselor and her sorority, Zeta Tau Alpha, elected her Scholarship Chairman and Treasurer.

DIXIE LEE CLAMPITT

Dixie Lee Clampitt, one of Union's most studious personalities, has certainly demonstrated herself worthy to be a member of "Who's Who." She also has been a member of the Y.W.A., serving as President and Secretary. Dixie has been secretary of Hypatia and a member of the Spanish Club. She is from Jackson, and will receive a B.A. degree.



JOYCE LAVERNE WALLS

Joyce Laverne Walls, who is a transfer from Memphis State Baptist School of Nursing, has made an outstanding record in scholastics. She was a member of B.S.U., Y.W.A., Hypatia, History Club, Footlights, and Phi Alpha Theta. She has had a part in campus dramatics and has been on the Library Staff.



MISS PAT ANDREWS AND MR. KEN GAULT

MR. AND MISS UNION

The titles of Mr. and Miss Union are among the highest honors that can come to a student. These two are elected by the student body and must meet a number of qualifications. They must be either a Junior or a Senior and enrolled at Union for all their college days. This, as well as appearance, scholarship, popularity, loyalty, school spirit, and personality, all combine to make the type persons for our Mr. and Miss Union.

AND



SENIOR MAID AND ESCORT

Miss Lynn Baltzell

Mr. Walter Allison

JUNIOR MAID AND ESCORT

Miss Elaine Prather

Mr. Dan Stone



COURT

SOPHOMORE MAID AND ESCORT

Miss Syrena Watridge
Mr. Phil Jeffress



FRESHMAN MAID AND ESCORT

Miss Becky Maness
Mr. Mack Taylor



Miss Elaine Prather and Mr. Gayle Alexander

MOST POPULAR



Miss Lucy Turner and Mr. Frank Jamison

BEST ALL 'ROUND



Miss Polly Stone and Mr. Wayne Brown

MOST LIKELY TO SUCCEED



Mr. Ken Arnold

MOST HANDSOME



Miss Elaine Prather

MISS UNIVERSITY



Standing, left to right: First Maid, Miss Judy Melton; Second Maid, Miss Syrena Watridge; Alternate, Miss Sue Pope. Seated: Miss University, Miss Elaine Prather.

AND COURT



Miss Elaine Prather

BASKETBALL QUEEN



Left to right: Mr. Willam Hopkins, Miss Carolyn Johnson, Mr. John Montgomery, Miss Delores Nichols, Mr. Paul Taylor, Miss Elaine Prather, Miss Becky Maness, Mr. Benny Rushing, Miss Weymuth Heuiser, Mr. Jim Bryant.

AND COURT

CAMPUS



Miss Joyce Stevenson



Miss Lynn Baltzell

FAVORITES

Miss Carolyn Townsend



Miss Kay Dunagan

CAMPUS



Miss Lucy Turner



Miss Joan Patton

FAVORITES

Miss Pat Andrews



Miss Freddie Sandidge

CAMPUS FAVORITES



Miss Elaine Prather



Miss Becky Maness



Miss Connie Holmes

FRESHMAN QUEEN



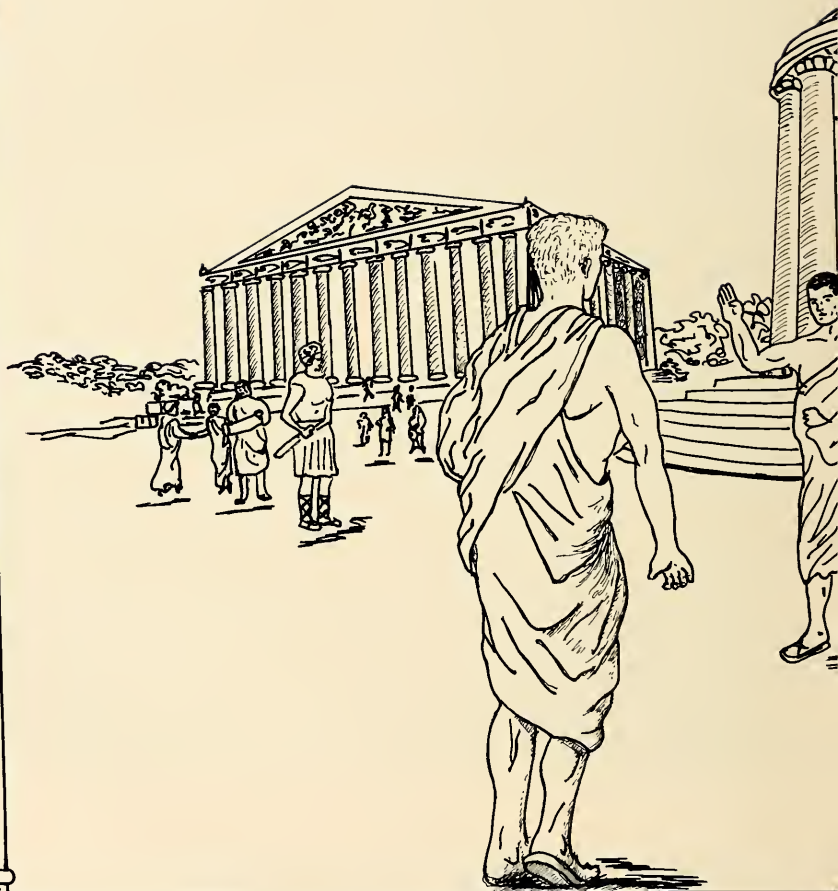
Miss Joan Patton

QUEEN
of
SIGMA ALPHA EPSILON



Miss Lucy Turner

SWEETHEART
of
ALPHA TAU OMEGA





ORGANIZATIONS



Recording Secretary
NANCY MCCOLLUM



President
KAY DUNAGAN



Vice-President
MARTHA MILAM



Corresponding Secretary
SHARI MARVIN



Treasurer
ANNE NELL WILSON



Historian
MARION ELLIS



BETA OMEGA OF ZETA TAU ALPHA

Founded at Longwood College, Farmville, Virginia,
October 15, 1898

Colors: Turquoise Blue and Steel Gray

Flower: White Violet

Open Motto: To Seek the Noblest

Beta Omega of Zeta Tau Alpha has found the meaning of love, friendship, sisterhood, and fraternity to widen and deepen as this year unfolded. The year of 1960-61 will be remembered as a successful year in every area of fraternity life.

In service to others . . . Zetas gave a party every month to the victims of Cerebral Palsy in the Jackson area. The chapter also contributed to the Zeta Tau Alpha National Service Program which is Cerebral Palsy. At Thanksgiving, Zetas shared baskets of goods with needy families. At Christmas time, Zetas provided food, clothing, and toys for a family of five, creating the Christmas Spirit in their home and in Zetas' hearts. Zetas sold Lions' Club papers and collected for the Heart Fund. These are the events Zetas look forward to as a time of sharing with others.

In fun and fellowship . . . Zetas laughed through the gay swirl of parties that lasted all year. The Big-Little Sister Steak Supper, the "Prisoners of Zeta" Date Party, the Big-Little Sister Pre-Dawn Christmas Party, the "Southern Garden" Date Party, the Mother-Daughter Luncheon, the Spring

Banquet, the Senior Dinner, the Picnic, and the coke parties filled each month with festivities.

In campus activities . . . Zetas contributed to campus life in every area.

Sue Pope, Bettie Ralph, and Shari Marvin were active participants in the dramatic productions. Sue Pope provided the entertainment for the half-time ceremonies of the Homecoming Game. Zetas are also active in the band, chorus, and other clubs.

Leaders of the campus, Kay Dunagan, Betty Cowan Only, Carolyn Townsend, and Anne Nell Wilson were selected for Who's Who in American Colleges and Universities. In the capacity of President, Kay Dunagan and Marty Milam led the dormitory councils of Jones and Crook Hall. Zetas served on the Student Council and Student Court.

Selected for popularity, Kay Dunagan and Carolyn Townsend were chosen as "Campus Favorites" and Connie Holmes was chosen Freshman Queen by the Freshman class. For beauty, Sue Pope was selected as alternate to Miss University.

In the sharing of joys and sorrows, in the discipline of responsibility and leadership, in the songs and laughter, Zetas have found the true meaning of sisterhood. It will be this that will be remembered in years to come.



BETTY ONLY



CAROLYN TOWNSEND



JEAN MCLEMORE



PAT MORSE



BETTIE RALPH



DOT SISCO



SUE POPE



JUDY STRANGE



WILMA JOHNS



PATTY CURTIS



CAROL ELLISON



CAROLYN CHEEK



GERTIE PARKER



LINDA SCHAEFER



MONA NERREN



JANICE TEAGUE



MARILYN OWENS



GLYNDIA LITRELL



ALICE WEST



BONNIE BISHOP



GWEN PHILLIPS



CHARLOTTE FOWLKES



ANTOINETTE HIGHSMITH



JOYCE SMITH



CONNIE HOLMES



MARTHA GAIL FOOTE



SANDRA GURLEY



DONNA LIVINGSTON



DIANA JERDEN



BARBARA WALSH



JUDY CRAVENS



LINDA BROWN



EDWANA BOUCHER



EVALYNN BURCH



CAROL HUMPHREYS



SHEILA ELDER



ANN BABB



JANE MCMASTERS



ANDREA ALLEN



NADINE BARHAM



JANICE KENT



CAROL CURRY



LOUISE TOWATER



ANN CONNELL



BETH SIMONTON



CAROLYN JONES



BRENDA MAYO



CAROL MILLER



LINDA LOU BENNETT



CAROLYN RAINES



TOMMY BARNES
EA



BARRY MCCOMIC
Past EA



DEAN MOORE
EDA



PHIL JEFFRESS
ER



JERRY HAYNIE
EW



BILL SUBLETTE
ET

TENNESSEE ETA OF SIGMA ALPHA EPSILON

Sigma Alpha Epsilon is one of those collegiate social organizations which started as a local group and developed into a huge society with chapters on campuses throughout the United States. It was organized by eight scholarly men at the University of Alabama, March 9, 1856; its ritual being based on Christian principles, and its ideals being those qualities inherent in the true gentleman.

Tennessee Eta Chapter here at Union has as rich a heritage as any chapter, being founded 104 years ago when Union University was located at Murfreesboro, Tennessee. Through these many years of pleasant association, Tennessee Eta has grown as Union has grown, with the chapter still retaining its position as an asset to the social life of the campus.

This past year has furnished many events that will someday serve as memories of our days at Union . . . the coronation of the lovely Miss Joan Patton as our Chapter Queen; the wide-eyed wonder of four little boys to whom S.A.E. was "Santa Claus"; that exciting night when the chap-

ter went "down to the bowery" for the Queen's party; the completion of a successful rush season and the pride at later seeing these men earn the right to wear the "big pin."

We can also remember fondly the many positions and honors that have been gained by a portion of our Brothers, such as: Vice-President of the Student Body, Vice-President of the Sophomore Class, Editor of *Lest We Forget*, membership in the History Club and Math Club, offices in Phi Alpha Theta, the Nestor Club, and Phi Mu Alpha; participation in the Band and Chorus, and escorts to the Basketball Queen and to Mr. and Miss Union. These things we mention not to be boastful, but because of the genuine pride we feel in the success of our Brothers.

This is our chapter—it has a background of tradition and sentiment, a membership of fame and distinction, and in every way its members have every right to feel honest and genuine pride in membership in Tennessee Eta of Sigma Alpha Epsilon.



HUNTER TAYLOR



JOHN HINSON



BOB CAMPBELL



JAMES COUCH



DAVID SALLEE



KINNIE DISMUKE



J. L. WHITTEN



DON EVANS



JAMES McAFEE



TULLY DANIEL



LARRY LeGRAND



JOHN VAUGHN



DAVID MILLER



TOMMY BELEW



BILLY RAY MARTIN



ED JONES



BILLY DUNN



BILLY POUNDS



RAY NEUDECKER



GARY CROWELL



JOHN BYNUM



BILL COOKSEY



RALPH THOMAS



CHARLES VANTREESE



BILL PERKINS



JAMES RAY ALLISON



TOM HAWKINS



CHARLES MARSTON



CAROL MILLER
Secretary



JOYCE STEVENSON
President



LUCY TURNER
Vice-President



BECKY MILLER
Treasurer



LYNN BALTZELL
Pledge Mistress



CAROL LUETHGE
Personnel Chairman



ANNE JOHNSON
Chapter Correspondent



MARILYN MARTIN
Herald

UPSILON OF CHI OMEGA

Founded at the University of Arkansas, Fayetteville, Arkansas, on April 5, 1895.

Colors: Cardinal and Straw
Flower: White Carnation

The Upsilon Chapter of Union University endeavors in all phases of life to give truth and light to its open motto, "Hellenic culture and Christian ideals." Instilled within the hearts of each member is a wonderful bond of unbroken love and friendship. This bond grows with the years and is ever a source of enlightenment.

This year has been one of which to be proud and one which will always be remembered by each Chi Omega. One of the brightest spots of our year was the completion of our beautiful lodge. Regally occupying the address of 340 N. Hays, this contemporary structure of old-brick and red wood is a "dream" come true for Upsilon chapter. Also this year, the Chi O's were recipients of many awards and honors. Among these: Escorts to Miss Union; Basketball Queen and her maids; Seven representatives in the Ten Campus Favorites; Queen of Sigma Alpha Epsilon; Sweetheart of Alpha Tau Omega; Cheerleaders, Freshmen and Varsity; Miss University and the first two maids; Representatives to Little United Nations; Most Popular Girl; Best all-around Girl; and two members in Who's Who in American Colleges and Universities. Our members are active in the student government also. Chi O's held the offices of student Council secretary and reporter, while another Chi O is a justice on the Student Court. Upsilon found many of its members active in such fields as physical education, music and dramatics. Other Chi O's

were class officers, and held offices and membership in all campus organizations in which girls participate.

As we come to the close of another wonderful year we are full of sadness for those who are leaving us, but we are joyful over a successful year. We have strived as always to realize that each member's success is measured by the strength of the desire to succeed. As Chi Omegas, we have sought to be democratic rather than exclusive, and to adopt the deep meaning behind the words "to be womanly always, to be discouraged never."

Memories of this year will live forever in our hearts. Chi Omega's social life has been a full one. We will fondly remember our fall date party, "Tea House of the Chi Omegas" held orderly style on the polished hardwood floor of our then empty lodge. Also we will recall the surprise party for the actives, Chicken-Bean Supper, Dinner Party, Open House, informal Saturday luncheons, our Spring Banquet—the fabulous "Fandango," Fall and Spring Eleusinia, Senior Picnic, Spring outing and the Mother and Daughter Banquet. The Civic activities included Thanksgiving and Christmas baskets, a Christmas party for a needy family—complete with Santa Claus and gifts, and selling papers for the Lions' charity drive.

And so it is with dreams fulfilled, and memories of a great year, that we close this year. Memories of it will always be held dear and we will recount them many, many times. Next year, we know, will be another characterized by love and friendship.



JANICE BOREN



SHIRLEY BLURTON



BARBARA DERRYBERRY



MARILYN DAME



ANN JAMISON



NANCY WARD



JANET HINES



SANDY CHILDRESS



EMILY PRITCHARD



MIRIAM TILLMAN



BECKY TIPLER



BONNIE BAKER



ANN FULLER



ONEIDA HOOKER



JANIS PULLIAM



MARY ANN BAKER



BETTY TAYLOR



BARBARA JELKS



JOAN PATTON



JOYCE ANN BROWNING



NANCY HORTON



ANN THOMAS



ALICIA WILKERSON



ETTA FUTTRELL



NANCY TIPTON



TOMMYE LONG



LAURA MEFFORD



ANN MCCOMIC



FREDDIE SANDIDGE



SYRENA WATRIDGE



VIRGINIA LEWIS



MARY LAUGHLIN



SUE CROUCH



JUDY BOYER



JANEEN GOOGE



DELORES HALL



PATSY HUTSON



BRYNDA WILLIAMS



LIBBY WOOLEY



KAY HANEUTH



BETTY BAKER



BECKY MORTON



SHEILA RHODES



NANCY MCCARTHY



JUDY MELTON



MARTY SPRINGER



BECKY MANESS



JUDY VAUGHN



BARBARA COLE



SHIRLEY POPE



MOLLY LAWRENCE



SANDY NEAL



SANDRA MCDANIEL



GAIL STEWART



LINDA MILES



BARBARA SASSER



JOAN DAVIDSON



ELEANOR COKER



MARY CAMPBELL



CAROLYN JORDAN



DELORES NICHOLS



BETTY PULLIAM



WALTER ALLISON
W'M



FRANK JAMISON
W'KE



CHARLES WINGO
W'C



GLENN DAVIS
W'SC



MALCOLM TIPTON
W'KA



BETA TAU OF ALPHA TAU OMEGA

This year, as for 67 consecutive years, Beta Tau of Alpha Tau Omega has served the students, faculty and traditions of Union University. Located on a campus steeped in heritage and tradition, Beta Tau is ever ready to stand fourth and proclaim the benefits of Greek fellowship and the principles of Christian teaching.

The men of Beta Tau have again excelled in all phases of campus activities. They hold such offices as president of the Student Body; president and vice-president of the senior class; president of the sophomore and freshmen classes and vice-president of the junior class.

As always, ATO is the most outstanding group on campus, with brothers excelling in all phases of athletic life. Outstanding contributions were made to the basketball team this season by Brothers Bob Pavelonis and Joe Smith. On the baseball team six of the starting nine players are ATO's, with Brothers Paul Taylor and John Montgomery serving as co-captains. The same situation holds true with the rest of the teams engaged in spring sports. On the golf team, three of the four men on the team are Taus. Brothers fill five of the six positions on the Tennis team. These are but some of the ways in which Taus are serving the athletic traditions of Union University and Beta Tau.

Taus came through this year in campus elections. Brother Ken Gault was crowned Mr. Union and our past sweetheart, Miss Pat Andrews, was elected Miss Union. Most recently, Brother Frank Jamison was elected best all-around boy and our present sweetheart, Miss Lucy Turner, was selected as one of the ten campus favorites. On a national scope, the two men selected by the faculty to represent Union in Who's Who in American Colleges and Universities were both Taus, Brothers Wayne Brown and Ken Gault.

Scholastically, ATO has maintained its usual high record. Represented in the Nestor Club, men's honorary scholastic club, eight out of its twelve members are Taus with Brother Bob Highfill serving as President of this organization.

The social life of Beta Tau is something to remember. Who could forget the Coronation Banquet in November when lovely Lucy Turner was crowned ATO Sweetheart.

This is but a small tribute to pay to the men who compose this fraternity, but they can never forget the years spent in service and brotherhood in ATO. The future holds great promise, more years of dedication to the principles and ideals of Beta Tau of Alpha Tau Omega.



DAN STONE



DELBERT COGGINS



WAYNE BROWN



DAVID CLAYTON



DUNAWAY CONNER



TERRY ANDERSON



DEWEY CORDER



TOM UPCHURCH



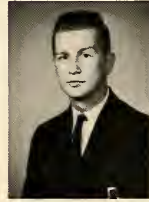
JAMES ALLCOCK



JIM BULLARD



TOM WEST



JERRY HART



FRED COOK



REGGIE HORNE



JOHNNY REAMS



JERRY SPENCER



WAYNE JOHNSON



BILL SISSON



JERRY BASKIN



JERRY OAKLEY



GENE GROOMS



PAUL TAYLOR



TOM VANCE



LARRY MOORE



GERALD DAME



CHARLES BURKHEAD



JIMMY BRYANT



JERRY DUNN



WELTON GADDY



BILL GREENE



JIM DANIELS



BOB PAVELONIS



JERALD SMITH



RICH EMERSON



JOHN MONTGOMERY



JAMES JOWERS



ED ARQUITT



JIM PULLIAM



TONY MIDDLETON



WAYNE WOODS



JOE SMITH



LARRY RAY



JERRY KUYKENDALL



BENNY VANCE



LARRY SMITH



JIM COVINGTON



CHARLES CARTER



HUGH TURNER



Front row: Kay Dunagan, Tommy Barnes.

Second row: Sue Pope, Bonnie Baker, Joyce Stevenson, Hunter Taylor, Carolyn Townsend.

Third row: Wayne Brown, Tommye Long, Frank Jamison.

Fourth row: Walter Allison, Dean Moore.

INTERFRATERNITY COUNCIL

<i>President</i>	KAY DUNAGAN
<i>Vice-President</i>	TOMMY BARNES
<i>Secretary</i>	BONNIE BAKER
<i>Treasurer</i>	FRANK JAMISON



Left to right, seated: Mr. Reid, Tony Garner, Alicia Wilkerson, Becky Tipler, Brynda Williams, Pat Kirby, Sharron Lyon, David Clayton.

Second row: Mary Ann Baker, Carolyn Townsend, Mary D. Sherbenou, Marilyn Owens, Marty Milam, Carolyn Cheek, Gail Taylor, Dot Sisco, Judy Boyer.

Third row: Carolyn Jones, Bettye Clift, Cherry Dill, Janeen Googe, Nelda Knight, Ann Coughlan, Virginia Boulton.

Standing, left to right: J. L. Whitten, Bob Dills, Tommy Belew, Clarice Vernon, Jerry Haynie, Bill Powers, Charles Marston, Ralph Winslow, Frank Congiaro, Tom Hawkins, Louis Sacchini, John Sneed, Bill Weinstein, Ronnie Collins, Bill Watson, Jerald Smith, James Ray Allison, Melvin Childress, James Allcock, Bobby Newton.

THE ALLEGRO CLUB

The Allegro Club is composed of Music Majors and Minors, the music faculty of Union and all others with a special interest in music. It develops the individual's ability

to perform by sponsoring a recital after each meeting. It is a social club dedicated to the study, appreciation, and enjoyment of music.

OFFICERS

<i>President</i>	DAVID CLAYTON
<i>Vice-President</i>	JERRY HAYNIE
<i>Secretary-Treasurer</i>	BRYNDA WILLIAMS
<i>Social Chairman</i>	BECKY TIPLER
<i>Program Chairman</i>	PAT KIRBY
<i>Scrapbook Chairman</i>	SHARRON LYON
<i>Publicity Chairman</i>	ALICIA WILKERSON



Seated: Louis Sacchini, Ralph Winslow.

Standing, left to right: Bill Greene, Bill Watson, Charles Marston, Wayne Woods, Tom Hawkins, Bobby Newton, James Ray Allison, Jerry Haynie, Tommy Belew, Mr. Hutchison, Ronnie Collins, Dan Emerson, Bill Powers, Frank Congiardo, John Snead, Bill Weinstein, J. L. Whitten, Mr. Roberson, Mr. Reid.

PHI MU ALPHA SINFONIA

Phi Mu Alpha Sinfonia, professional music fraternity for men, is the largest fraternity of any kind in the world. Its purposes are to advance the cause of music in America, foster the mutual welfare and brotherhood of music students, develop the truest fraternal spirit among its members and encourage

loyalty to the Alma Mater. The local chapter was founded in 1960. The group is active in maintaining concessions for high school music contests on the campus and in providing programs and projects of cultural interest to the community.

OFFICERS

<i>President</i>	JERRY HAYNIE
<i>Vice-President</i>	JAMES RAY ALLISON
<i>Secretary</i>	BILL WATSON
<i>Treasurer</i>	BOBBY NEWTON
<i>Historian</i>	JAMES ALLCOCK
<i>Pledge Master and Warden</i>	LOUIS SACCHINI



Left to right, seated: Patti Herrington, Alicia Wilkerson, Joyce Stevenson, Becky Tipler, Mary Ann Baker, Mary D. Sherbenou, Carolyn Townsend, Polly Stone.

Left to right, standing: Ann Coughlan, Marilyn Owens, Carolyn Cheek, Schelley Highsmith, Linda Williams.

SIGMA ALPHA IOTA

Sigma Alpha Iota, national professional music fraternity for women, was founded at the University School of Music, Ann Arbor, Michigan, in 1903. Union's Gamma Sigma chapter was organized April 26, 1960, with 14 members, 3 patronesses, and 2 advisors as charter members.

The chapter meets formally once each month and aims for the highest possible music scholarship. Membership is by invitation to those of high excellence in musicianship.

Flower: Red Rose

Colors: Crimson and White

Publication: Pan Pipes

Open Motto: "*Vita Brevis, Ars Longa.*"

Officers include: *President*, Mary Ann Baker; *Vice-President*, Polly Stone; *Recording Secretary*, Patti Herrington; *Corresponding Secretary*, Carolyn Townsend; *Treasurer*, Mary D. Sherbenou; *Chaplain*, Schelley Highsmith; *Sergeant-at-Arms*, Ann Coughlan; *Editor*, Linda Smith.



Standing, First row: Gettie Parker, Joyce Walls, Carolyn Townsend.
Second row: Kay Dunagan, Mary Ann Baker, Marie Marshall, Anne Nell Wilson, Lucy Turner.
Third row: Polly Stone, Leone Williams, Dixie Clampitt, Betty Cavender.
Not pictured: Shelley Highsmith.

HYPATIA CLUB

Hypatia is devoted to the development of special knowledge in the literary field. Its membership is limited to Junior and Senior students who possess a high scholastic record. Once each month the group meets to discuss recent developments in literature.

Hypatia is named for a woman, who, as a celebrated astronomer and mathematician of the 5th century, became the center of a group of persons of learning and distinction in Alexandria.

OFFICERS

<i>President</i>	SHELLEY HIGSMITH
<i>Vice-President</i>	CAROLYN TOWNSEND
<i>Secretary</i>	DIXIE CLAMPITT
<i>Reporter</i>	MARY ETTA SPEIGHT
<i>Program Chairman</i>	ANNE NELL WILSON
<i>Sponsor</i>	MISS MARION CROCKER



Seated, left to right: Barry McComic, Dan Stone, David Miller, Wayne Brown, Bob Highfill.
Standing, left to right: Jim Bateman, Frank Jamison, Prof. Allen, Jerry Scruggs, Charles Wingo, Ken Gault, Walter Allison.

NESTOR CLUB

Nestor Club was founded in 1913 and took its name from a classical theme. Nestor, a descendant of Prometheus, was the oldest and wisest of the Greek chieftains during the Trojan War.

Composed of twelve student members and

a faculty sponsor, Nestor Club meets once each month for an evening of fellowship and discussion. Members are elected primarily on the basis of scholarship. Once each year this group meets with its sister club, Hypatia.

OFFICERS

<i>President</i>	BOB HIGHFILL
<i>Vice-President</i>	BARRY MCCOMIC
<i>Secretary</i>	WALTER ALLISON
<i>Treasurer</i>	WAYNE BROWN
<i>Chaplain</i>	JERRY SCRUGGS
<i>Sponsor</i>	MR. AL ALLEN



Front row, left to right: Jimmie Kee, James McAfee, Larry Hoopaw, Tommy Vance, David Glisson.
Standing: Shirley McElyea, Mr. McCord, Carolyn Davis, Patsy Williams, Mr. Buss, Ann Jamison, Joe Bill Sisson, Nancy Watkins, Ann Johnson, Bobby Cummings, Peggy Allen, Jane Bailey, Johnny Hinson, Elaine Prather, Mary Ann Taylor, Bill Sublette, Judy Potts, Etta Futtrell, Mrs. LaFon.

BUSINESS CLUB

The purposes of this organization are to foster interest in business situations and practices of the American economy, to develop understanding of various business institutions, to develop business skills and leadership ability, and to promote the ethical viewpoint among future business leaders.



OFFICERS

<i>President</i>	LARRY HOOPAW
<i>Vice-President</i>	GERALD DAME
<i>Secretary</i>	ELAINE PRATHER
<i>Treasurer</i>	ANN JAMISON
<i>Publicity Chairman</i>	DAVID GLISSON

PHI ALPHA THETA

OFFICERS

PresidentRALPH WILLIAMS
Vice-PresidentCHARLES WINGO
SecretaryJOYCE WALLS
TreasurerHUNTER TAYLOR
ReporterROY JONES
Faculty AdvisorMRS. L. D. RUTLEDGE

The Delta Psi Chapter of Phi Alpha Theta, National Honorary Scholarship Fraternity in history, encourages research and writing. Ralph Williams, president, read on December 27, 1960, a paper entitled "Tempest in a Boston Teacup" before the Thirty-ninth Anniversary National Convention held in New York City.



Standing, left to right: Ralph Williams, Roy Jones, Mrs. Rutledge, Dr. Ward, Joyce Walls, Dr. Muntz, Hunter Taylor.

RUTLEDGE HISTORY CLUB

The Rutledge Honorary History Club has functioned continuously since its organization on November 21, 1929. It encourages a wider knowledge of history; emphasizes scholarship; and serves as a proving ground for membership in Delta Psi Chapter of Phi Alpha Theta.

OFFICERS

PresidentDEAN MOORE
Vice-PresidentJANICE BOREN
SecretaryJUANITA SIKES
TreasurerBILL JONES
ReporterROY JONES
SponsorROSA D. RUTLEDGE

Seated, left to right: Bettylu Smith, Lucy Turner, Barbara Dunlap, Mrs. Rutledge, Joyce Walls, Betty Only.
Standing: Jerry Scruggs, Dr. Ward, Nathan Pillow, Dean Moore, Pat Morse, Vaughn Pruitt, Juanita Sikes, Hunter Taylor, Freddie Sandidge, Bill Jones, Alice West, Roy Jones, Janice Boren, Dr. Muntz, Jerry Baskins, Ralph Williams.





HOME ECONOMICS CLUB

Seated, left to right: Kay Dunagan, Marilyn Dame, Bonnie Baker, Janet Hines, Carol Ann Miller, Mrs. Cook, *Sponsor.*

Standing, left to right: Kenelia Thetford, Zelma Turnbo, Jane McMaster, Brenda Mayo, Pat Jeffress, Judy Vaughn.

Seated, left to right: Gwen Phillips, Nancy Horton, Laura Mefford, Ann Fuller.

Standing, left to right: Frank Jamison, Bennett Willis, Jimmy Jones, Linda Rogers, Wallace McAfee, Katie Webb, Bobby Cummings, Patsy King, David Miller, Floyd Free, Anne Nell Wilson, Prof. Donnell, Larry Steed.



MALLORY MATH CLUB

President
ANNE NELL WILSON

Vice-President
FLOYD FREE

Secretary
PATSY KING

Sponsor
MR. R. T. DONNELL



Seated, left to right: Becky Morton, Libby Wooley, Gail Stewart, Joan Harris, Mary Ann Taylor, Karen Highsmith, Carol Luethege, Joyce Allen.

Standing, left to right: Linda Hurt, Roy Jones, Ken Newman, Julia Humphreys, Molly Lawrence, Freddie Sandidge, Sandy Childress, Barbara Dunlap, Jane Appleton, Laura Mefford, Annie R. Welch, Becky Holt, Nancy Rowe, Marilyn Martin, Kay Hanebuth, Polly Stone, Glenda Queen, Winston Piercy, Shirley Pope, Walter Tate, Patsy Hutson.

LINGVAE MUNDI

OFFICERS

<i>President</i>	CHARLENE MUIR MOTT
<i>Vice-President:</i>	
Latin	BARBARA DAVIS
Greek	CAROLYN DAVIS
Spanish	MARY ANN TUTTEROW
German	MONA NERREN
French	MARY KARNAZES
<i>Secretary-Treasurer</i>	LINDA ROGERS
<i>Social Secretary</i>	MARY FREEMAN
<i>Reporter</i>	EUGENE GROOMS
<i>Sponsor</i>	DR. MYERS



Seated: Linda Rogers, Dr. Myers, Charlene Muir Mott.
Standing: Mary Karnazes, Mary Ann Tutterow, Barbara Davis, Mona Nerren, Mary Freeman, Gene Grooms.



Left to right: Sarah Chatham, David Melvin, Ann Fuller, Jere Francis, Harlan Crosson, Pat Andrews, James Wood, Glenn Davis, Betty Cavender, Wallace McAfee, Peggy Stanfill, Tommy Upchurch.

SCIENCE CLUB



Left to right: Bennett Willis, Patt Curtis, Betty Gurley, Larry Baker, Carol Ellison, Betty McCartney, Norman Williams, Gertie Parker, Larry LeGrand, James Jowers, James Morse.



Seated, left to right, first row: Becky Holt, Barbara Dunlap, Lois Highfill, Emily Pritchard, Alice West, Betty McCartney, Peggy Stanfill.

Second row: Linda Miles, Mary Ann Tutterow, Barbara Sasser, Mary Karnazes, Evalynn Burch, Rebecca Parker, Nancy Rowe, Linda Portis, Kay Dunagan, Sally Lipe, Shari Marvin, Sarah Chatham, Ann Thomas.

Standing: Patsy King, Carolyn Davis, Judy Boyer, Betty Cavender, Nancy McCarthy, Syrena Watridge, Kenneth Newman, Elaine Prather, Linda Rogers, Ann Jamison, Mary McDaniel, Joyce Stevenson, Leone Williams, Bettye Clift, Pat Andrews, Katie Webb, Zelma Turnbo, Oneida Hooker, Evelyn Pannell, Nancy Watkins, Virginia Scarborough, Ann Crowell, Carol Homburg, Shirley Pope, Mary Ann Taylor, Joyce Allen, Dr. Pate.

STUDENT NATIONAL EDUCATION ASSOCIATION

OFFICERS

- President*PATSY KING
- Vice-President*NANCY ROWE
- Secretary*KAY DUNAGAN
- Treasurer*ALICE WEST
- Reporter*LINDA ROGERS
- Program Chairman*MARY ANN TUTTEROW
- Sponsor*DR. PATE





Standing, left to right: Mary D. Sherbenou, Shari Marvin, Wayne Johnson, Carol Luethge, Mrs. Loyd, Allen Tinker, Bettie Ralph, Fred Cook, Barbara Jelks.

ALPHA PSI OMEGA

Alpha Psi Omega, the national dramatic fraternity on Union's campus, strives to advance dramatics to a rising level. Each mem-

ber has been elected to membership on the basis of meritorious personal achievement in school dramatics.

OFFICERS

<i>Producer</i>	ALLEN TINKER
<i>Director</i>	WAYNE JOHNSON
<i>Stage Manager</i>	CAROL LUETHGE
<i>Cast Director</i>	MRS. ELIZABETH LOYD



FOOTLIGHTS CLUB

The purpose of Footlights Club is to stimulate interest in dramatic art on the campus, to promote interest in dramatic presentations, and to offer a service to all students who are interested in dramatics.

It sponsors all play productions, including a play tournament, one-act play night, and major productions.

During the year the club enjoys a number of social functions.



OFFICERS

<i>President</i>	WAYNE JOHNSON
<i>Vice-President</i>	FRED COOK
<i>Secretary</i>	BARBARA JELKS
<i>Treasurer</i>	SHARI MARVIN
<i>Sponsor</i>	MRS. ELIZABETH LOYD

DRA



LIFE WITH
FATHER



MATICS



CLASS PLAYS



MISSILE OF REDEMPTION



UNION UNIVERSITY SYMPHONIC BAND



Mr. Frederic Lubrani, *Director*



UNION UNIVERSITY CHORUS

Dr. John Hughes, *Director*





BRASS CHOIR



BRASS QUARTET

STAGE BAND





WOODWIND ENSEMBLE

GIRLS' TRAVELLING QUARTET



CLARINET CLASS



Editor JIM BATEMAN
Associate Editor
 MARY ANN BAKER
Photography Editor
 J. L. WHITTEN
Art Editor TULLY DANIEL
Staff JOYCE SMITH
 BILL POUNDS
 BETTY BAKER
Literary Editor
 NANCY WARD
Staff LINDA WHEAT
Class Sections Editor
 PATSY HUTSON
Sports Editors
 KAY HANEBUTH
 TOMMY BARNES
Business Manager
 GERALD DAME
Photographers
 J. L. WHITTEN
 BILL ELLIS
 BURNETT SASSEEN
Sponsor
 MRS. JESSIE SMITH



STUDENT



LEST WE FORGET



Editor
POLLY STONE

Assistant Editor
DELBERT COGGINS

Business Managers
WAYNE JOHNSON
FRANK DYER

Sports Editor
DALE ENOCH

Proofreader
CAROL LUETHGE

Exchange Editors
JANICE GOOD
LIBBY WOOLEY

Feature Writers
GLENN DAVIS
W. T. TATE

Photographer
BILL ELLIS

Sponsor
MRS. HELEN BLYTHE

PUBLICATIONS

CARDINAL AND CREAM



REPORTERS

J. L. WHITTEN, BARBARA DERRYBERRY,
GENE GROOMS, LINDA RODGERS,
LINDA BROWN, ROY JONES,
LINDA WILLIAMS, BARBARA DUNLAP,
ANN FULLER, JANICE BOREN,
MARION ELLIS, ANN CROWELL,
TOMMY UPCHURCH, JUDY STRANGE,
MARY KARNAZES, ANNETTE SASSER,
BARBARA WALSH, LUCY TURNER,
JOE BILL SISSON, SYRENA WATRIDGE,
BILL BROWN, ED JONES, DAVID GLISSON



Left to right: Dr. Muntz, Faculty Advisor; Bill Brown, Parliamentarian; Joyce Stevenson, Secretary; Lucy Turner, Reporter; Jerry Spencer, Chaplain; Tommy Belew, Vice-President; Wayne Brown, President.

STUDENT COUNCIL OFFICERS



Standing: Pat Andrews, Chief Justice.

Seated: Jerry Scruggs, Carol Luethege, Gayle Alexander.

Not pictured: Kay Dunagan, Dan Stone, Barry McComic.

STUDENT COURT



First row, left to right: Lucy Turner, Joyce Stevenson, Wayne Brown, Tommy Belew.
Second row: Bob Highfill, Mary Ann Baker, Bill Brown, Gertie Parker.
Third row: Joe Smith, Betty Cavender, Carolyn Townsend, Dr. Muntz.
Fourth row: Frank Jamison, Carol Ann Miller, Bill Owens, Polly Stone.
Fifth row: Bill Jones, Mack Taylor, Pat Andrews, Jerry Haynie.

STUDENT COUNCIL



EXECUTIVE COUNCIL

Standing, left to right: Nancy Horton, Roy Jones, Gayle Alexander, Polly Stone, Tommye Long, Dr. Ward, Carolyn Townsend, Bettye Clift, Lucy Turner, Beverly Garland, Becky Tipler, Mary D. Sherbenou, Betty McCartney, Tommy Belew, Jimmy Rogers, James Allcock.

The Baptist Student Union is more an organism than an organization. Its purpose is to link the local churches with the college students that they may more adequately serve Christ during their college days.

President GAYLE ALEXANDER
Sponsor DR. HIRAM WARD

MINISTERIAL ASSOCIATION



Seated, left to right: Kenneth Morris, Roy Jones, Talmadge Kelley, J. C. Thedford, Ralph Williams, Dr. Callahan.
Second row: Ronnie Davidson, James Combs, John Pippin, Austin Haney, Jetrell White, John Vaughn.
Third row: Welton Gaddy, Ronnie Owens, Don Garrison, Lewis Sewell, Barry Dill, Gayle Alexander, Burnett Sasscen.
Fourth row: Johnny Adams, Carl Cox, Keith Huffman, Vaughn Pruitt, Herman Green, Joseph Byford, Grady Dozier, Floyd Price.
Fifth row: William Denston, Willis Henson, Thomas Smith, Robert Booker, Adrian Knipper, Bobby Wiggins.
Sixth row: Tillman Mays, Matt Tomlin, Jerry Scruggs, James Rogers, Paul Woodford, Mack Taylor, Jim Covington, Duane Sergeant.

The Union University Ministerial Association was derived from the J. R. Graves Society, which was founded in 1877. The Association helps students to become familiar with special problems connected with their

future work. Members gain practice in correctly expressing themselves in public and thereby extend their knowledge of religious subjects.

Sponsor.....DR. CALLAHAN



LIFE SERVICE BAND

Queen

Mary D. Sherbenou

Maid

Delma Prescott

Rebecca Parker

Bettye Clift



Y. W. A. ROYALTY



Seated: Mary D. Sherbenou, Judy Vaughn, Evelyn Pannell, Marty Milam.

Standing: Mrs. Taylor, Barbara Wyatt, Delma Prescott, Annette Sasser, Mary Freeman.

OFFICERS

President
Mary D. Sherbenou

Vice-President
Bettye Clift

Secretary
Dot Sisco

Program Chairman
Rebecca Parker

Sponsor
Mrs. Ann Taylor

Y. W. A.



Jones Hall Circle I



Jones Hall Circle II



Crook Hall Circle

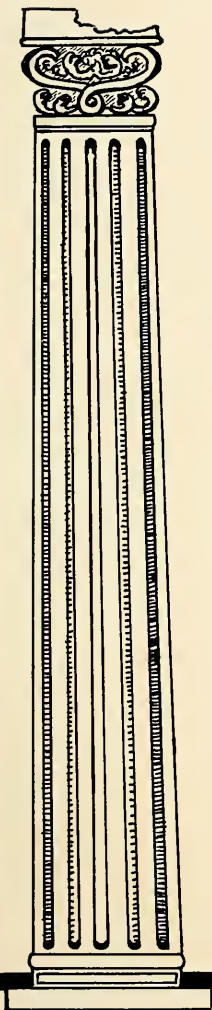


Lovlace Hall Circle I

Y. W. A.



Lovlace Hall Circle II



SPORTS

CROSS COUNTRY



First row, left to right: Coach Rose, Mike Palmer, Paul Wright, Larry Steed, Bill Ellis.
Second row, left to right: Albert Pittman, Bill Hopkins, Eddie Walton, Ken Gault, Larry Ray.

SCHEDULE

UNION

15	Florence State	50
19	University of Tennessee	36
25	Southwestern	38
19	Memphis State University	34
16	Florence State	56
Second Place—Union Invitational		
26	Murray State	29
19	Memphis State University	42
23	Southwestern	37
Champions—VSAC & NAIA		
Fourteenth Place—NCAA		



"Have team, will travel!"



"Look, Mom! No cavities!"



"Hey Coach! Let's take a break!"



"The Big Four!"

GIRLS' P. E. CLUB



First row, left to right: Jane McMaster, Bobbie Baker, Syrena Watridge, Shari Marvin, Betty McCartney, Carol Luethge.

Second row: Judy Thompson, Elaine Prather, Ann Crowell, Emily Pritchard, Linda Portis.

Third row: Barbara Jelks, Lynn Baltzell, Joyce Stevenson, Sarah Fesmire.

Fourth row: Joyce Ann Browning, Nancy McLeary, Weymuth Heuser.

The P. E. Club is an organization for girls majoring or minoring in physical education. One may also gain membership by earning 300 points in the intramural system. The club's purpose is to promote physical education activities for girls on campus.

This past year the club enjoyed sponsoring a cross-country invitation meet. During the homecoming activities, a tea was given, honoring visiting athletes. The annual spring outing was a fun-filled affair. Mrs. B. C. Williams is the able sponsor of this club.



Cheering the '60-'61 Bulldogs to victory were the following Varsity Cheerleaders:

WAYNE JOHNSON
 BARBARA DUNLAP
 FREDDIE SANDIDGE
 ELAINE PRATHER
 LYNN BALTZELL
 WELTON GADDY

ALTERNATES:
 WEYMUTH HEUISER
 REGGIE HORN

CHEERLEADERS



The Freshman Cheerleaders consisted of:

BOBBY CROWE
 BECKY MORTON
 DIANNE MILLS
 BECKY MANESS
 MARTY SPRINGER
 DIANA JERDEN
 JOHN EARL WELLS



BASKETBALL



First row, left to right: Joe Aden, Ken Arnold.

Second row: Coach Russell, Robert Newell, Jerry Potter, Bob Quint, Joe Smith, Robert Replogle, Jim Brazier, Fred Korte, Otis Griffin, Warren Koch, Glenn Radford, Sonny Hawkins, Ken Davis, Bob Pavelonis, Billy Jones, Larry Wilson.

BASKETBALL SCORES

UNION

86	NICHOLS STATE
59	MISSISSIPPI STATE
81	S. E. MISSOURI STATE
89	C. B. C.
91	ST. BERNARD
69	S. E. MISSOURI STATE
110	BETHEL
97	SOUTHWESTERN
64	AUSTIN PEAY
69	C. B. C.
74	BELMONT
69	U. T. M. B.
62	DAVID LIPSCOMB
63	ATHENS

82	63
115	74
93	65
78	67
92	53
86	100
96	93
83	56
96	69
76	66
84	55
68	64
64	68
60	

UNION

AUSTIN PEAY	81
ATHENS	58
MEMPHIS NAVY	58
U. T. M. B.	61
DAVID LIPSCOMB	60
SOUTHWESTERN	74
BETHEL	79
V. S. A. C. Tournament	
KING COLLEGE	54
MILLIGAN COLLEGE	50
AUSTIN PEAY	70
CARSON NEWMAN	69
N. A. I. A. District Playoff	
CARSON NEWMAN	76





GOLF TEAM



BILL HAN



DAN STONE



Left to right: DAN STONE, DON MORRIS, DR. JOHN MYERS, RONNIE BAKER, BILL HAN.

GOLF SCHEDULE

April 7	St. Bernard
April 10	Murray State
April 19	Austin Peay
April 21	Murray State
April 24	St. Bernard
April 25	Austin Peay
April 28-29	T.I.A.C.
May 9	Southwestern
May 12	Southwestern
May 15	V.S.A.C.



DR. JOHN MYERS



RONNIE BAKER

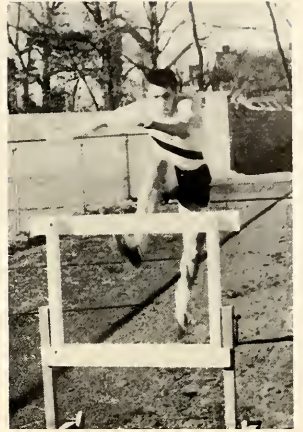
SPRING TRACK

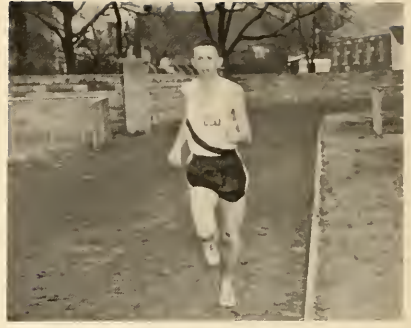


First row, left to right: Sam Guthrie, Larry Steed, Bill Cook, Tony Middleton, Dan Sallari.
Second row: Coach Rose, Jerry Melson, Terry Anderson, Robert Newell, Ken Gault, Larry Ray, Mike Palmer, Danny Cobb.
Third row: Bill Jones, Jim Brazier, Ken Arnold, Glenn Radford, Eddie Walton, Jimmy Bryant.

SCHEDULE

March 25	Mississippi College	Here
April 1	Memphis Relays	There
April 8	Southwestern	There
April 11	Southeast Missouri	Here
April 22	Austin Peay	There
April 29	David Lipscomb	Here
May 2	Harding College	There
May 6	T.I.A.C.	
May 9	Austin Peay	Here
May 13	V.S.A.C.	



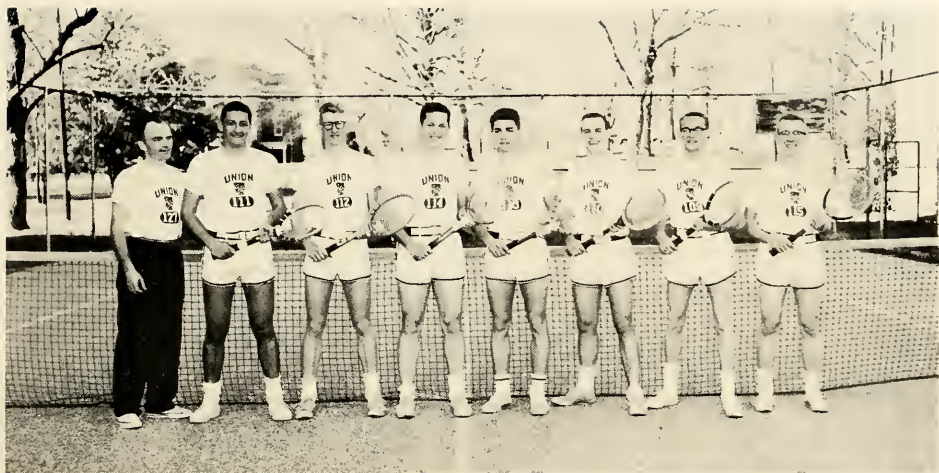




SPRING TRACK



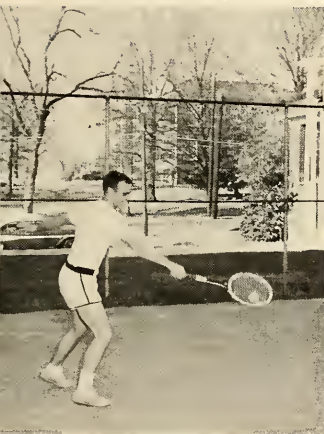
TENNIS



Left to right: Dr. Charles Taylor, Welton Gaddy, Glen Davis, Charles Burkhead, Billy Dunn, Dunaway Conner, Jimmy Covington, Bob Womack.

SCHEDULE

April 7	St. Bernard	There	April 28	Austin Peay	Here
April 10	U.T.M.B.	There	April 29	David Lipscomb	There
April 21	Austin Peay	There	May 1	U.T.M.B.	Here
April 22	David Lipscomb	Here	May 4-5	T.I.A.C.	
April 24	St. Bernard	Here	May 11-12	V.S.A.C.	



DUNAWAY CONNER



BILLY DUNN



GLENN DAVIS

BASEBALL



First row, left to right: Bob Quint, Bill Brewer, Bill McDaniel, Clay Emling, Jerry Baskin, David Blackstock, Dewey Corder, Paul Taylor, Bob Pavelonis, Danny Claiborne.

Second row: Coach Russell, Donnel Douglas, Warren Koch, Jimmy Conner, Benny Rushing, William Hopkins, Larry Wilson, Bill Owens, Charles Wingo, Ed Jones, Sammy Smith, John Montgomery.

SCHEDULE

Illinois Wesleyan	Here	David Lipscomb	Here
Valparaiso	Here	U.T.M.B.	There
Valparaiso	Here	Belmont	There
Western Illinois	Here	Austin Peay	Here
William Jewell	Here	Memphis State	There
Hillsdale	Here	Bethel	Here
Hillsdale	Here	David Lipscomb	There
Southwestern	Here	Southwestern	There
Memphis State	Here	Belmont	Here
U.T.M.B.	Here	Austin Peay	There
Bethel	There		



Edwin Jones, *infield*

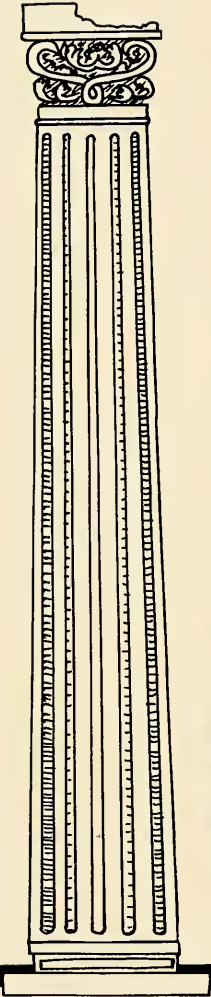
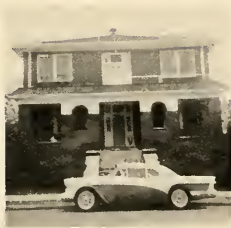


Clay Emling, *outfield*
Bill McDaniel, *infield*



Jimmy Conner, *outfield*
Benny Rushing, *infield*



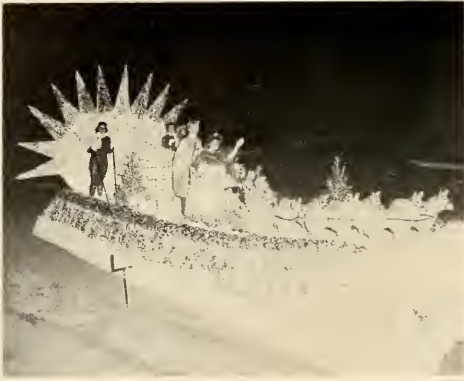




CAMPUS LIFE





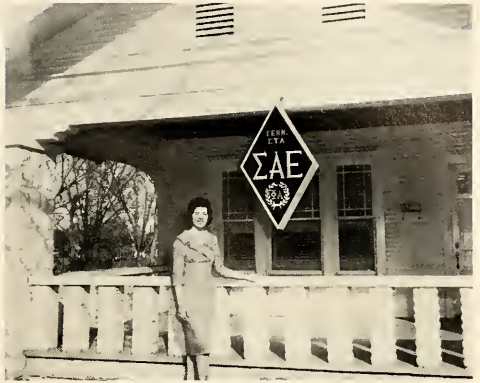








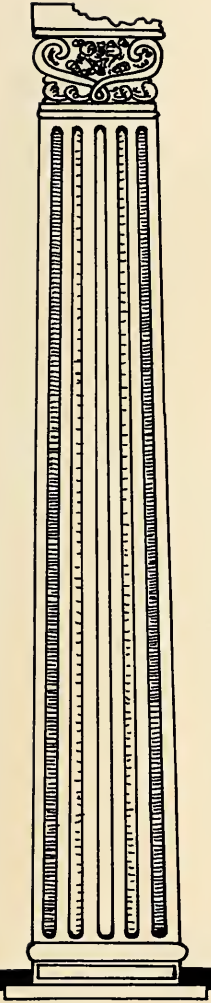






Miss Elaine Prather, National Honey Bee Queen

Congratulations from the '61 Lest We Forget Staff!



ADVERTISEMENTS



BLAND'S D-X SERVICE

D-X

Gas and Oils

**Prompt - Courteous
Service**

**Road Service
Washing - Polishing
X-pert Lubrication**

EMERY BLAND, Prop.

LEXINGTON & HAYS AVES. • PHONE 2-1101 • JACKSON, TENN.

MOORE STUDIO

OWNED & OPERATED BY DEVON DOOLEY



*Pictorial
Home
of
the
Co-ed*

*A
Studio
of
Distinction*

*Offering always the latest and best achievements
of
PHOTOGRAPHIC ART*

215 N. LIBERTY

PHONE 7-1296

JACKSON, TENNESSEE

CAREERS ARE DIFFERENT NOW!



Equitable Living Insurance makes the difference

JACKSON, TENNESSEE

Frank L. Reed, District Manager *

ASSOCIATES

Aubrey Reed*

John W. (Jack) Robinson*

F. Evans Wilson, Jr.*

V. A. Cooper

HUMBOLDT, TENNESSEE

Jim Briggs
R. A. Long

CORINTH, MISSISSIPPI

Bruix Brumley

PARIS, TENNESSEE

R. M. Jelks*

UNION CITY, TENNESSEE

Sam Carpenter

BROWNSVILLE, TENNESSEE

Edwin Felker*

MILAN, TENNESSEE

K. A. McRee

LEXINGTON, TENNESSEE

E. R. Scott

DECATURVILLE, TENNESSEE

Paul D. Rice*

COVINGTON, TENNESSEE

William N. Scruggs

HENDERSON, TENNESSEE

R. W. (Dick) Stewart*

* Union University Alumni

The **Equitable** Life Assurance Society of the United States

DISTRICT OFFICE: 202 W. BALTIMORE, JACKSON, TENNESSEE



For The Best In
PRESCRIPTION SERVICE

HAYS AVENUE PHARMACY

Phone 7-4496



3 Blocks from Union

Holland's

Jackson's Greatest Store

Compliments
of

MUTUAL MARKETS
1 and 2

Compliments
of
FIVE POINTS
MOBILGAS
SERVICE STATION

PHONE 7-1786

Bond Shoe Company

Jackson's Leading Shoe Store

109 E. Main

Tel. 7-1006

**WARREN'S GROCERY
AND MARKET**

IRBY STREET AT UNION UNIVERSITY

Nathan's
Stylish Apparel

Compliments of

Discount Jewelry House

"Where Your Dollar Goes Twice as Far"

213 E. MAIN ST.

PHONE 2-5421

Compliments
of

GLEN-MORE CLOTHES

Factory to You

108 E. Lafayette

Jackson, Tennessee

CONGRATULATIONS
SENIOR

Present Your "Lest We Forget"

For

FREE CONEY DOG

AT

Dog N Suds Restaurant

Humboldt Highway - At City Limits

Compliments of

**RAGLAND-POTTER
AND CO.**

BE SOCIABLE, HAVE A PEPSI



THE LIGHT REFRESHMENT

Drink
Dr Pepper

frosty,
man,
frosty!



Compliments of

Shainberg's

Values for your family and home

111 EAST LAFAYETTE • TELEPHONE 2-5526 • JACKSON, TENNESSEE

**Serving Jackson and Madison
County Since 1873**

The FIRST NATIONAL BANK OF JACKSON

Charter Member Federal
Reserve System

Member Federal Deposit
Insurance Corp.

Compliments of

McGEE-ROSS

Restaurant Supply and
Service Division

211 E. Lafayette St.

Phone 7-3306

Announcing . . .



LAYCOOK PRINTING CO.

"The best equipped small
printing plant in the South"

Telephone 2-3466

Church St. S. of Chester
Jackson, Tenn.

Compliments of

Wahl's

SLIPPER SHOP
JACKSON, TENNESSEE



LEXINGTON INN

"Where Students Get Together"

The Bootery

209 E. LAFAYETTE

Jackson, Tennessee



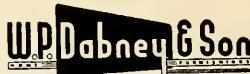
The student's jeweler for diamond knowledge
 Gifts — Engraving (Greek)
 Watch Repair

"A trusted jeweler is your best advisor"

207 E. Main

Tel. 2-1877

Compliments of



Church Street Where College Passes
 PHONE 7-5516 JACKSON, TENN.

NATIONAL BANK OF COMMERCE

THREE CONVENIENT LOCATIONS



HIGHLAND PARK BRANCH
1426 HIGHLAND



MAIN BANK
LAFAYETTE & LIBERTY



MOTOR BANK
ROYAL & LAFAYETTE

MEMBER OF F.D.I.C.

MEMBER OF FEDERAL RESERVE SYSTEM

TOTAL RESOURCES OVER \$17,000,000.00

Compliments
of

THE HUT

HIGHLAND PARK

WALICK MUSIC COMPANY

Lester Pianos



Band Instruments
King
Conn
Selmer
Holton
Band Music

Sheet Music and Teachers' Supplies
217 E. College

HUDSON'S RECORD SHOP



"Hear the world through stereophonic sound"

308 E. Lafayette • Jackson, Tenn.

Phone 7-3891

ROBERT'S

"Home of Big Diamond Values"

Engraving for Fraternities and Sororities

Open An Account In Three Minutes

Compliments
of



**STANDARD
DRUGS**

Thrasher's Cloth Shop

CHURCH & LAFAYETTE ST.
JACKSON, TENN.

Piece Goods, Drapery, Upholstery
ALL SEWING NEEDS

ATTEND SERVICES AT THE
PRAYER CONDITIONED

West Jackson Baptist Church

Sunday School: 9:30
Morning Worship: 10:50

Training Union: 6:15
Evening Worship: 7:30

MID-WEEK PRAYER SERVICE — WEDNESDAY, 7:45 P.M.

DAVID Q. BYRD, Pastor

H. LOWREY HAYNIE, Minister of Music & Ed.

Our Church Bus will pick you up and deliver you at your dormitory door



RESTAURANT

1334 HIGHLAND AVENUE
TELEPHONE 7-0331
JACKSON, TENN.

Compliments of

**MISS HOWELL'S
BOOK SHOP**

305 E. Lafayette
Jackson, Tennessee



VAUGHN'S MEATS, INC.

PORTION CONTROLLED
MEATS

PHONE 2-5575

Calvary Baptist Church

NEAREST
THE
CAMPUS



WILSON-GEYER COMPANY

455 E. Main

Phone 7-2618

Imperial Washable Wall Papers
Hanna Paint Products
Art Supplies—
Picture Framing



STEGALL SHOE CO.

111 N. Liberty

Phone 7-1126

JACKSON, TENNESSEE

Home of "Miss America" teenage
Department

McCALL-HUGHES

Varsity Town Clothes

Lee and Disney Hats

Enro Shirts

Elite Cleaners

SINCE 1912

"Service That Satisfies"

Free Pick-up and Delivery

Phone 7-3546

Laundry & Dry Cleaning

ONE - HOUR SERVICE

ON COLLEGE AT FIVE POINTS

ZENITH

PAUL COFFMAN



Furniture & Appliances

The Frigidaire Appliances in the Home
Economics Department are Furnished
and Serviced by us

2446 Beech Bluff Rd.

Phone 7-1210

Compliments
of

THE MALCO

Compliments
of

DOTSON FLOOR CO.

**COFFEE
CUP**



"HOME STYLE COOKING"

211 Main Street

Phone 2-4086

Compliments of

John E. Parker CO.
SEEDS · HARDWARE · GIFTS · TOYS

Albert's

Jackson's Most Popular Fashion Store

Footwear - Sportswear - Dresses



Left to right: Jim Bateman, Mary Ann Baker, Mr. Scale Johnson, Mrs. Jessie Smith, J. L. Whitten.

Mc Cowat - Mercer
Press,
INCORPORATED
JACKSON, TENNESSEE

*Where annuals . . . and all printed
matter . . . receive tender, loving
care.*

Left to right: Gerald Dame, Betty Sue Baker, Kay Hancock, and Mr. Gordon Check.



The New Southern

"An Albert Noe Hotel"

Headquarters for All Your Social
Activities and Civic Functions

Rosenbloom's

For Famous Brands



FRED

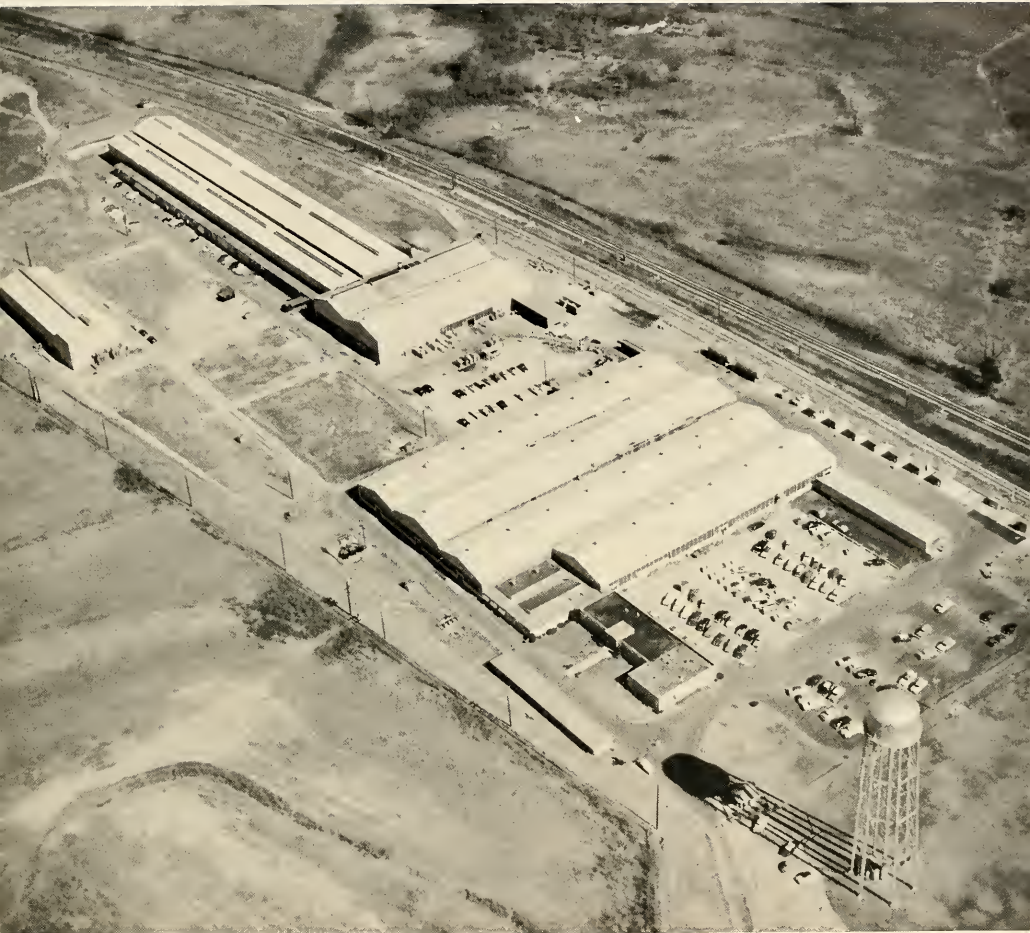
HARRY

JOHNSEY'S SPORTING GOODS

443 N. Royal
Jackson, Tenn.
Phone 7-1082

Complete Line of
Sporting Goods

"It Pays to Play"



CONSOLIDATED ALUMINUM CORPORATION

1100 RICHMOND STREET — JACKSON, TENNESSEE

SALES



SERVICE

VOLKSWAGEN

Caldwell Motors, Inc.

TELEPHONE 2-2504

316 E. Chester

Jackson, Tenn.

Rainey Furniture Co., Inc.

209 East Main Street

PHONE 7-6441 & 7-4843

Fox Restaurant

"FOR OVER FORTY YEARS" JACKSON'S BEST

Week Day Lunches 65c to \$1.25 Sundays — Full Course Dinner \$1.50 to \$2.75
Sandwiches 25c up Pies From Our Own Bakery 20c - 25c cut

— WE SPECIALIZE ON STEAKS and SEAFOOD —

203 E. MAIN

PHONE 7-8911

Coca-Cola

REG. U.S. PAT. OFF.

Enjoy
TOM'S TOASTED
Peanuts



Tom's Peanut Butter Sandwiches
Delicious Candies

JOHN D. GRAHAM
DISTRIBUTOR

Diffee's APOTHECARY

104 NORTH MARKET STREET
JACKSON, TENN.

PHONES 7-6771 & 7-6772



First Baptist Church

A Friendly Church

A Spiritual Church

A Growing Church

THE SECOND NATIONAL BANK

OF JACKSON

THREE QUARTERS OF A CENTURY
IN THE ORIGINAL LOCATION

Now !!

Three

Convenient

Banking Sites

MEMBER — F. D. I. C.

HAYS & LEXINGTON GULF SERVICE

310 LEXINGTON AVENUE, CORNER OF HAYS



All Students & Faculty Ask About Our Courtesy Specials

PHONE 7-7381

DIAMONDS — WATCHES

Silver - China - Jewelry

Quality Gift Jewelry

L. P. JACKSON

QUALITY JEWELERS

104 E. LAFAYETTE

JACKSON, TENN.



**FLOWER
and
GIFT SHOP**

320 E. LAFAYETTE
JACKSON, TENNESSEE



TENNESSEE VALLEY LIFE INSURANCE BUILDING

HOME OFFICE LOCATED IN JACKSON, TENNESSEE

OFFICERS

GORDON BROWNING	President
H. AUBREY BROWN	Agency Vice-President
HOMER H. WALDROP	Vice-President and General Counsel
A. F. JERNIGAN	Vice-President
J. T. BARHAM	Treasurer
ROBERT L. HUNDLEY	Secretary
CHARLES COBURN	Assistant Secretary
DR. JOHN E. POWERS	Medical Director



**LAUNDRY &
JACKSON CLEANERS**

ONE OF THE SOUTH'S FINEST
LAUNDRY AND DRY CLEANING PLANTS



JACKSON, TENNESSEE
PHONE 7-8557

Tigrett
INDUSTRIES

INFANT FURNITURE
PLAY EQUIPMENT
SPORTING GOODS
TOYS



Patented Products of Quality
JACKSON, TENNESSEE

BOONE
LAUNDRY-CLEANERS

7 HOUR SERVICE

121 Lexington Ave.

Phone 7-9626



Burnley's Flower Shop

Baltimore Street
"Next to the Malco"

"OFFERING THE BEST IN FLOWERS & SERVICE"

ALWAYS WELCOME AT CHARLIE'S

Day: 7-5541

Night: 7-7177

Burnett's
NATURALIZER
BUSTER BROWN
ROBLEE
SHOES

213 E. Lafayette

Phone 7-1796

Compliments of

A Friend

PATRONIZE

OUR ADVERTISERS

CROCKER'S PLUMBING & HOME BUILDER'S SUPPLY

"FOR FASTER, MORE EFFICIENT SERVICE"

OUR TRUCKS ARE RADIO EQUIPPED

PHONE 7-9030

222 SYCAMORE

Autographs

