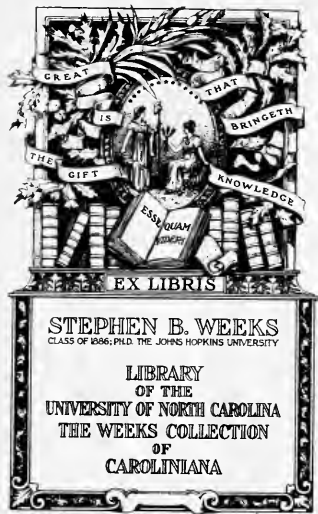


Cp 971.6
L76L

Linville.



Gp971.6 - L76

UNIVERSITY OF N.C. AT CHAPEL HILL



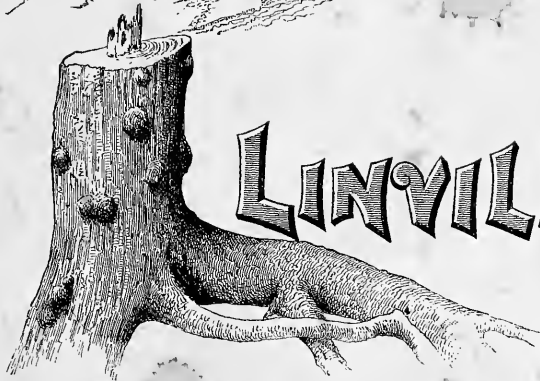
00032739029

THE NORTH CAROLINA COLLECTION

THIS TITLE HAS BEEN MICROFILMED

THIS ITEM
ON THE CARP-





LINVILLE







FOREST SCENE.

Introductory.



In future, Linville will depend for advertising, mainly upon its intrinsic merits as seen by the public.

But, as at the Battle of Lexington, "The first shot that was heard around the world," had to be fired, so this pamphlet is sent forth as an introduction.





EMMONS AND GRANDFATHER MOUNTAINS FROM BELOW LINVILLE. .

EXPLANATORY.

Since 1887, the LINVILLE IMPROVEMENT COMPANY, a corporation composed of capitalists from Boston, New York, Philadelphia, North and South Carolina, Missouri and Kansas, has been selecting the lands, perfecting titles, making surveys, and doing the preliminary work necessary in planning a resort for health and pleasure.

The selection of a place was the most important step. Mr. S. T. Kelsey, an experienced town-builder, after making a thorough examination and study of the mountains of Western North Carolina, became satisfied that on the headwaters of the Linville River, in Mitchell County, was a location peculiarly adapted to the contemplated enterprise.

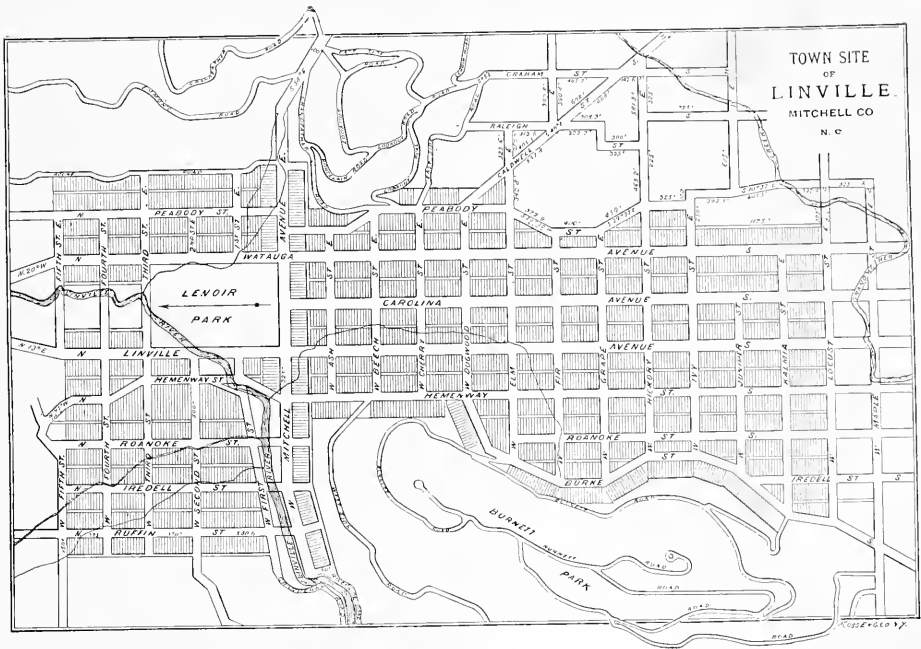
Upon his recommendation this site was chosen, and the place was naturally and appropriately named LINVILLE, from the river on which it was located.

Sufficient land was bought so that there would be no obstacle in the way of laying out the ground to the best advantage and in the most approved manner.

The Enterprise is of such magnitude that the Company find it advisable to devote their entire attention to improving the property; and believe that the best means of doing this is by concentrating their efforts in making good streets, avenues and roads, in such manner as to be of the greatest permanent benefit to the place. It will be their endeavor to retain the beautiful natural features, and so to utilize them, that LINVILLE will be unique and unrivaled.

We believe that the public will appreciate the effort and understand the situation. On reaching LINVILLE, therefore, do not expect to find a finished town. A foundation is being laid with care and skill, and those coming in are expected to help build the superstructure.

TOWN SITE
OF
LINVILLE
MITCHELL CO
N. C.



WESTERN NORTH CAROLINA

has already a wide reputation for healthfulness, and for the beauty of its scenery.

With its rapid development, it becomes more and more famous as a resort for pleasure and health.

From North, South, East and West thousands visit the section summer and winter; hotels are filled the entire year, and railroad travel is continuous.

From this it is obvious, that the region excels both Northern and Southern resorts, where hotels are open for only a few months each season.

The annual influx of visitors has caused villages to spring up and grow into towns without seeking it, and towns are growing into cities.

Railroads which have heretofore avoided the mountain ranges, because of expense, now see their importance, and in many directions are preparing to penetrate them.

Western North Carolina, with its valuable forests, rich soil, promising mineral resources, pure water and fine climate, has now entered an era of great progress.

LINVILLE.

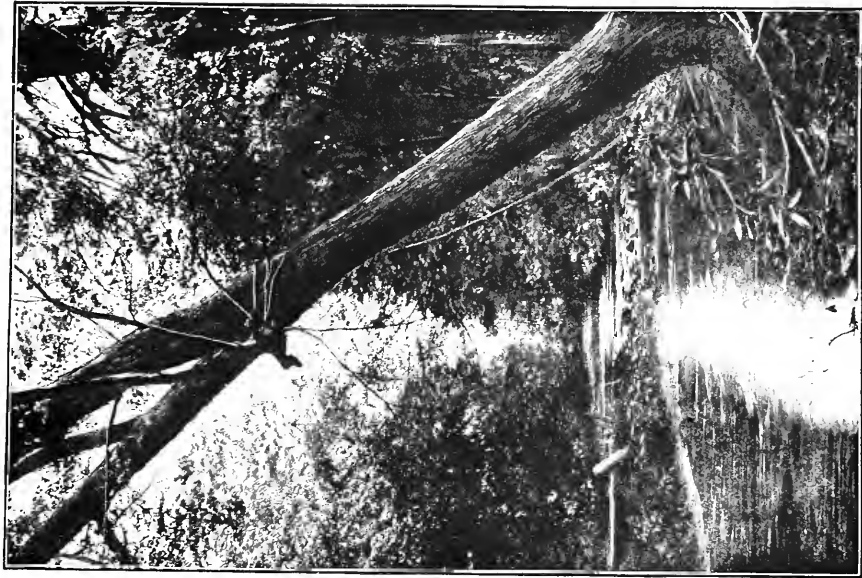
In many respects Linville is essentially different from any enterprise yet started in North Carolina, and, as far as we know, in this country.

Its points of distinction will commend it. They are due in part to natural advantages not obtainable elsewhere, and in part to the fact, that it has been laid out for a large place; every necessity and requirement for the future has been considered and, as far as practicable, provided for in the beginning.

The usual custom of choosing a railroad crossing for a town site, has been departed from.

The site has been chosen independently, upon the merits of the location, and will command railroad facilities as they become necessary; surrounding gaps rendering it easily accessible.

The tract, with little grading, is sufficiently level for fine streets, and at the same time is undulating enough for thorough drainage.



LINVILLE RIVER

At various levels, upon different slopes, every protection from and exposure to sun and wind can be found, so that persons locating for summer, winter or permanent homes, can select building sites to suit their tastes and needs.

The principal avenues are laid out 100 feet wide; streets, 75 feet; alleys, 25 feet; blocks, 325 feet square; regular lots 25 x 150 feet each.

Outside of the town site proper, a large boundary is being laid off so that each part will be applied to the purpose to which it seems best adapted. Here the roads are being arranged with the idea of securing the combined advantages of town and rural life; while communicating directly with the centre, many of them, however large the town may grow, need not become business thoroughfares, and we can conceive of no contingencies that would tempt public or private interests to make anything of them but rural grounds. Along these roads, suburban lots will be sold of dimensions to suit the lay of the land and the wants of purchasers.

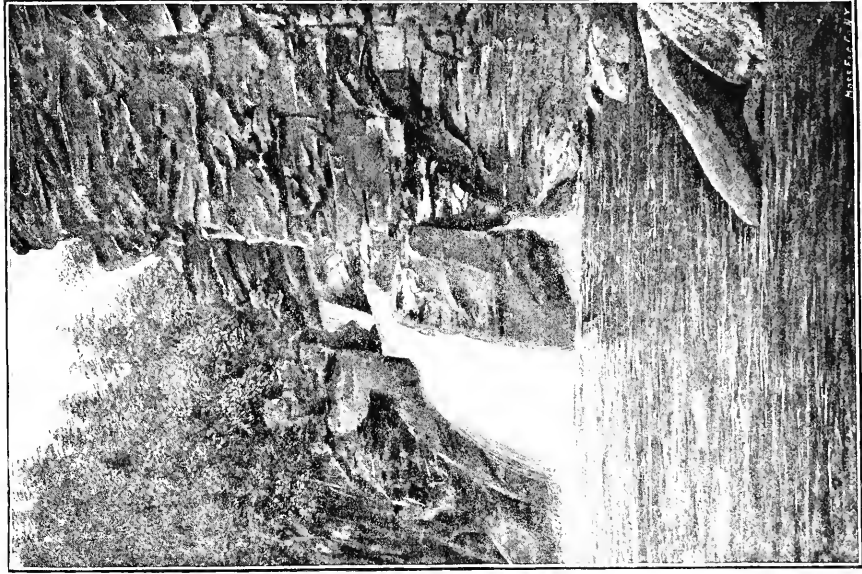
Two avenues, with a strip of forest between, which will be left as a park, extend northward along each side of the Linville river to its source.

In the plans, out-door games have been provided for—tennis, archery, ball and cricket; and suitable grounds have been reserved for fair-grounds and a trotting course.

Linville being situated about latitude 36° and longitude 82° and having an elevation ranging from 3,800 feet at the town site, to about 6,000 feet, the highest peak of the Grandfather mountain, has a remarkable

CLIMATE.

The atmosphere is pure and invigorating. In summer the air is cool, the thermometer seldom, going above 85° , with an average of about 65° . The winters are short and, unlike those of the North, are not continuous. Occasionally the mercury falls below zero, and sometimes the ground will be frozen or covered with snow for two or three weeks, but usually the farmer can work in the ground much of the time, and the invalid finds but few days uncomfortably cold for out-door exercise.



LINVILLE FALLS

APR 1917

With temperate winters and cool summers, pure air and water, and fine climate

THE HEALTHFULNESS

of Linville is assured. For many years past tired, nervous people, and those suffering from malarial poison and throat and lung troubles, have frequented this region and have, we believe, been invariably benefited.

While Linville has an excellent outlook as a business centre, its chief claim is as a pleasure and health resort.

Health and recreation go naturally together; and where, in the United States, can a place be found with summer and winter climate so equable, or with finer air or purer water? a place where nature does more toward relieving the cares and ills of man, or where one can locate with a better assurance of good health and long life?

Literary people and brain-workers, especially, will find Linville suited to their wants. The altitude gives an invigorating atmosphere which acts as a tonic and goes far toward overcoming fatigue and making life profitable and pleasant.

SCENERY.

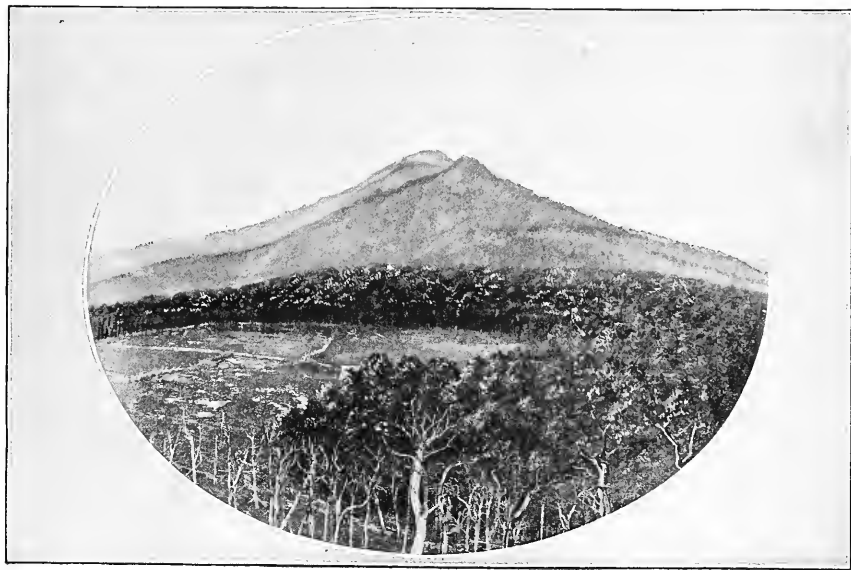
Prominent among the points of interest in the vicinity are Table Rock, Hawks-bill (the Towers of Linville), Grandmother Mountain, Blowing Rock, The Pinnacles, Lost Cove Cliff, Yellow, Roan and Sugar Mountains, Bynums Bluff and Linville Falls; but undoubtedly the greatest attraction in this region, in fact in North Carolina, is the

GRANDFATHER MOUNTAIN.

It has a ruggedness and grandeur not possessed by any other peak in the Eastern States.

Toward the summit, except where broken by sharp peaks and precipitous cliffs, it is covered with a growth of spruce and balsam, giving it a dark, sombre appearance.

Being the highest point in the Blue Ridge, it is the pinnacle of the great water-shed east of the



GRANDFATHER MOUNTAIN.

Mississippi. From its slopes streams flow in all directions, some finding their way into the Peedee and Santee Rivers and thence into the Atlantic Ocean; others running into the Tennessee and Great Kanawha, and through them to the Gulf of Mexico.

Towering high above the surrounding peaks the Grandfather affords a magnificent view

From its top can be seen the great ranges and cross ranges of the Apalachian chain for more than one hundred and fifty miles; the peaks of Otter, in Virginia; the Cumberland Mountains, of Kentucky and Tennessee; the great bald-headed Roan; the Linville Towers; the lofty Blacks, and lesser ranges, peaks and hills innumerable. Between the mountain ranges lie beautiful, quiet valleys, dotted with farms and traversed by sparkling streams. To the East and South-east the foot-hills recede in wavy undulations until the vision is lost in the plains of the Atlantic slope.

The Grandfather Mountain has been reserved as an extensive park, where the natural features of mountain and forest will be protected. Here, high above human habitation, is a supply of cold,

PURE WATER.

sufficient to meet all future demands. Hurrying down from the steep slopes, through dense, cool forests, the numerous branches of the Linville unite, to form a stream of rare beauty, which, after running for fourteen miles, with gradual fall, through a gently rolling valley, plunges suddenly into a narrow gorge, among rugged, precipitous cliffs, forming the LINVILLE FALLS; whence, after resting for a moment in a deep, clear pool, it rushes as a turbulent, boisterous torrent into the distant lowlands.

ROADS.

To the Parks and all points of interest, drives and bridle paths are being laid out with care to secure easy grade; running over smooth, level lands, through dense forests, almost shutting out



FROM GRANDFATHER MOUNTAIN AT DAYBREAK.

the light of day, along the crests of narrow ridges giving extensive views, around steep mountain sides, over mountain torrents, amid overhanging rocks and rugged cliffs, this system of roads will stand unrivaled. Here, at different elevations, the naturalist will find in close proximity the

FAUNA AND FLORA,

found in the lowlands only by traveling over 1,500 to 2,000 miles of latitude.

Birds that do not summer in the low country, except in the extreme north, remain here the year round, while those common to the country farther south, are regular summer visitors.

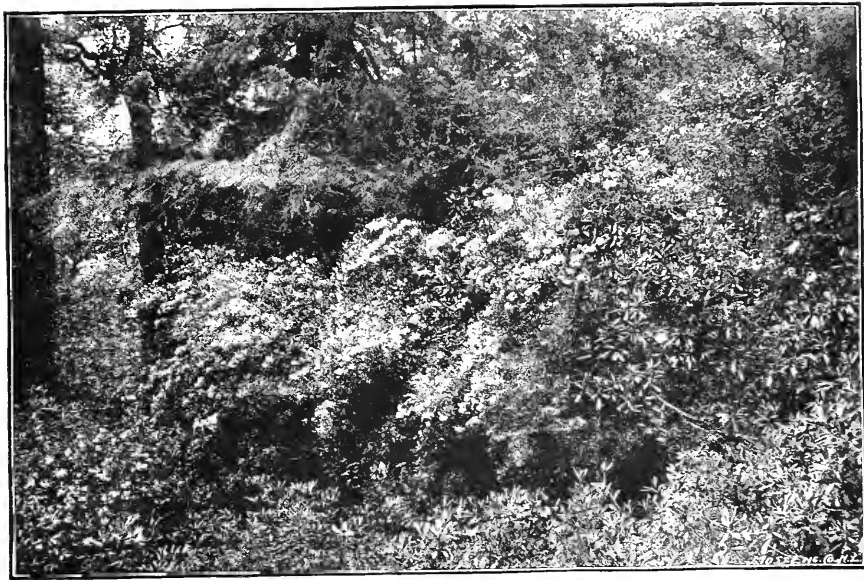
Within a half day's ramble one may meet with balsam, spruce, beech, birch, maple, ash, oak, poplar, lin, buckeye, gum, magnolia and most other trees common to the northern and central States, with others native only to the South. Nowhere else have we seen such a variety and profusion of wild flowers, or such a continuation of unfolding beauty, from the opening of the Arbutus and and Claytonia to the fading of the Aster and the Golden Rod.

THE GEOLOGICAL FORMATIONS

are among the oldest, and being highly crystalline afford an interesting and profitable field for investigation and enterprise.

Here, in Mitchell county, are the richest mines of "North Carolina Mica"—known as the standard and within ten miles are the noted Cranberry iron mines.

Good building stone is plentiful and easily obtained. Clay, suitable for bricks of best quality, is found and is being developed. Slate is abundant, and, though untested, seems to be of excellent quality.



KALMIA AND RHODODENDRON

THE SURROUNDING LANDS

are fertile and well adapted to agriculture, grazing, sheep-raising and dairying. Blue grass grows luxuriantly and forms an excellent sod for lawn or pasture.

All grain crops grown in the northern States do well, and fruits and vegetables grow to perfection.

Much of the land is still covered by the original forests of valuable timber. Desirable farms and tracts of timber and mineral lands can be bought at reasonable figures and will rapidly appreciate in value.

Linville is the natural

BUSINESS CENTRE

for a large fertile section of country, which will be rapidly settled and has no important town as a distributing point.

Because of the quantity of fine timber, ash, oak, poplar, maple, cherry, birch, lin, etc., this section offers superior advantages to wood-working industries.

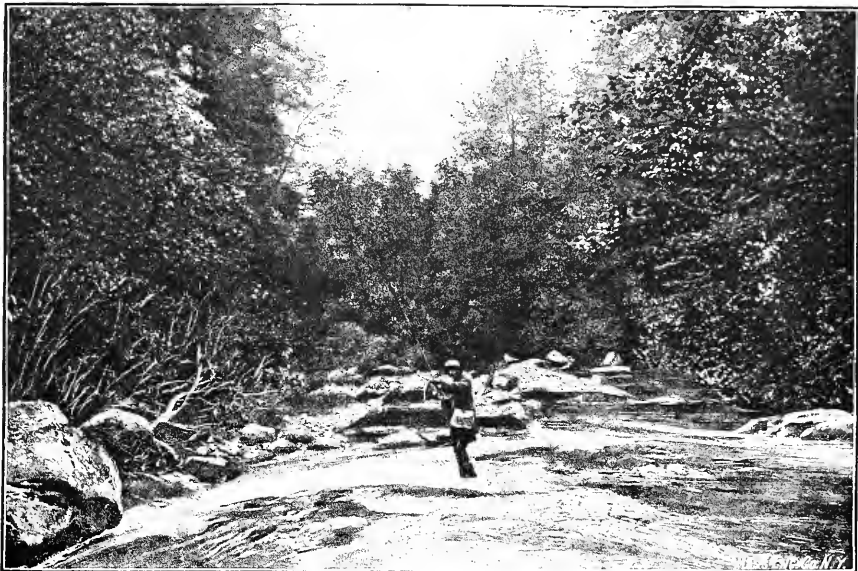
The Linville Improvement Company own a quantity of timber which will not be sold for shipment, but will be furnished at low prices for home use and manufacture.

There is sufficient oak and hemlock bark to supply a large tanning industry for many years.

ARTISANS.

At Linville will be found an opening for the various industries usually started in a growing place. Builders, carpenters, brick-layers, furniture-makers, shoe makers and others will find employment. Persons of all occupations will find in Linville good health, inexpensive living and pleasant surroundings in a climate where a greater amount of work can be done than in sections where the vitality is taxed by bad air and impure water.

There is no place where one enjoys more refreshing sleep, a better appetite or feels better able to work



TROUT FISHING IN THE LINVILLE

BUSINESS SITES

and suburban lots will be sold to all wishing to locate, engage in business or interest themselves in Linville, at such figures that they can realize a good profit on their investments.

Prices will be given on application

CHURCHES, SCHOOLS AND LIBRARIES.

Several of the leading Christian denominations have already stated their determination to erect houses of worship in Linville. Some of them will doubtless build the coming season.

Linville, because of its healthful location, is peculiarly suited for an educational centre, and the Improvement Company will aid liberally in the establishment of first-class institutions of learning, libraries, museums, and whatever else is practicable and desirable for the welfare of the community

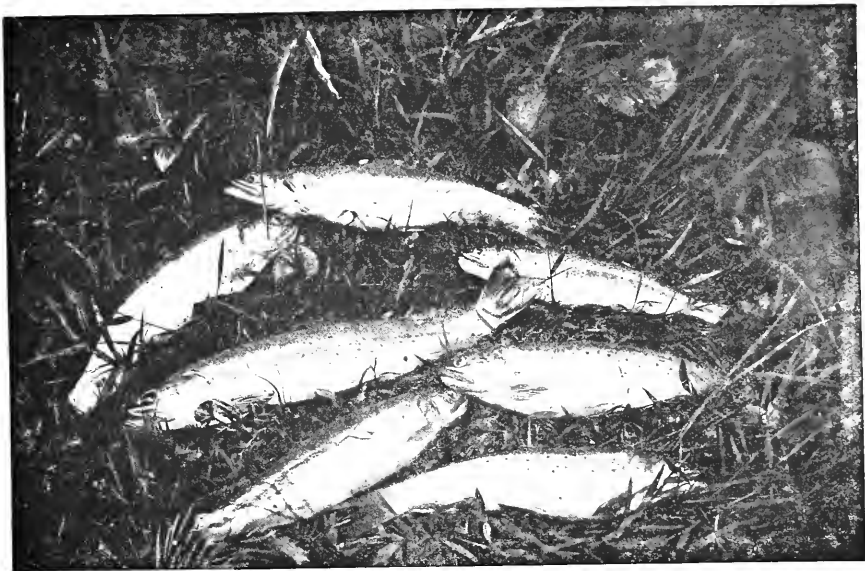
HOTEL.

A comfortable, well-furnished hotel is now open for the accommodation of guests, at reasonable rates. Visitors to this section will also find accommodation at Cranberry, Blowing Rock, Cloudland, Linville Falls and Grandfather Mountain.

FISHING.

Within a radius of three miles, the Grandfather Mountain being the centre, are the head-waters of eight streams: the Watauga, Boone Fork, Linville, West Fork, Grandmother Fork, Wilson's Creek, Banners Elk and North Toe Rivers.

Being well stocked with mountain trout, they furnish, in proper season, excellent sport.



MOUNTAIN TROUT FROM THE LINVILLE

Microfilmed
SOLINET/ASERL PROJECT

RAILROADS.

Linville is so situated that the extension of several railroads, now being built and in contemplation, will pass through the town site. The Southern and Western Air Line, being built from Shelby to Cranberry, will pass through Linville when completed.

At present the terminus of the East Tennessee and Western North Carolina Railroad, is ten miles distant at Cranberry, that of the Chester and Lenoir thirty miles distant, at Lenoir. The Atlanta, Asheville and Baltimore, and branches from the Charleston, Cincinnati and Chicago, the Atlantic and Danville, and the Norfolk and Western, are being talked of and are among the possibilities.

HOW TO COME.

The best way, at present, is via the East Tennessee, Virginia and Georgia Railroad to Johnson City Tenn. (through Pullman cars); thence via the East Tennessee and Western North Carolina Railroad, through very fine scenery, to Cranberry Hotel or Elk Park, whence conveyance can be had to Linville.

Parties from the South can come to Cranberry; or to Lenoir, and thence by way of Blowing Rock; or to Morganton, and thence by Piedmont Springs to Linville.

FOR FURTHER INFORMATION, ADDRESS

LINVILLE IMPROVEMENT CO.,

Linville, Mitchell Co.,

NORTH CAROLINA.

MAP
OF COUNTRY SURROUNDING
LINVILLE.

