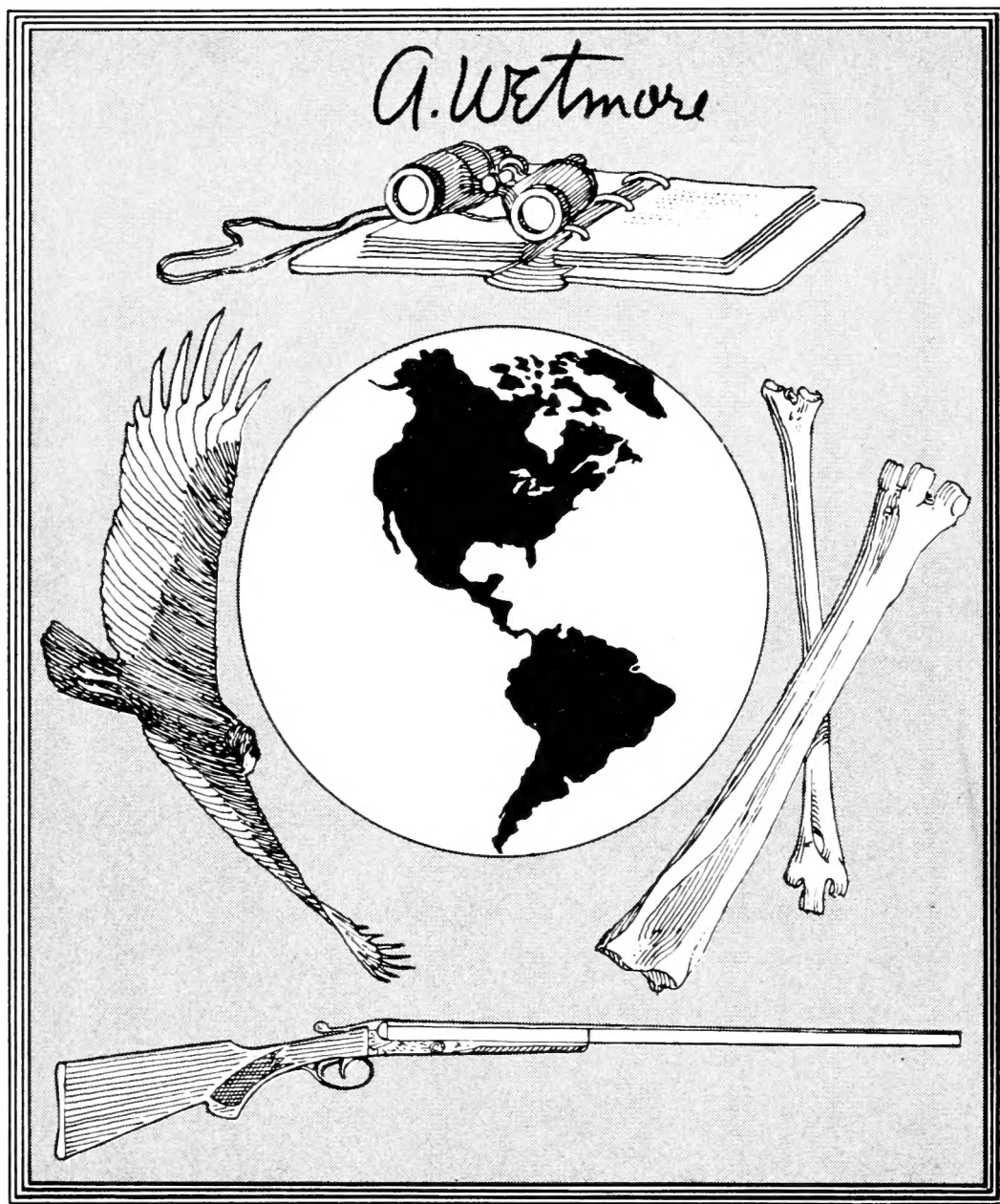


1681

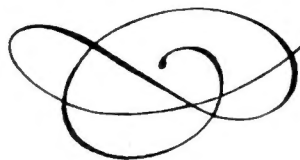
141824

BIRD

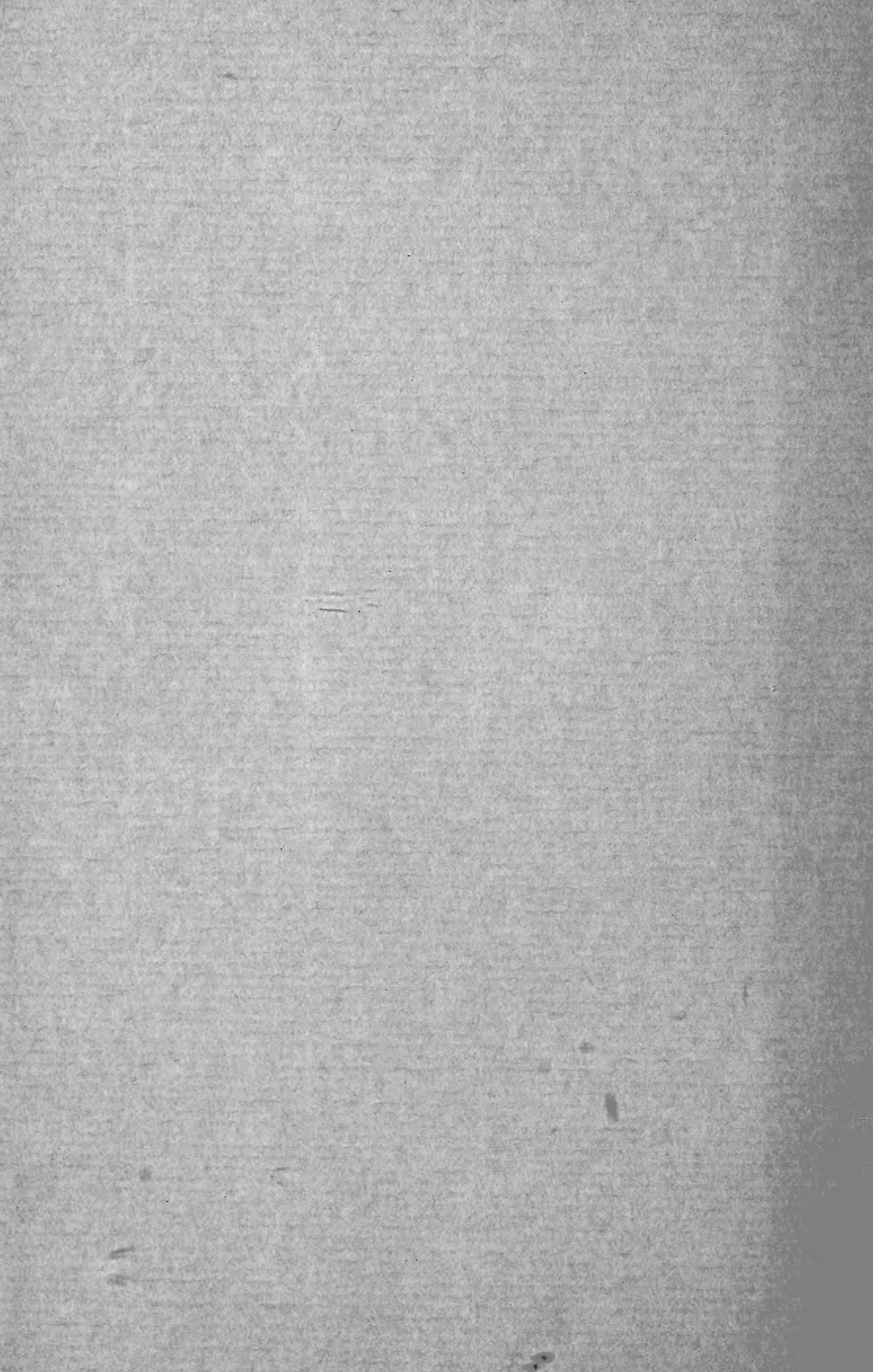
Smithsonian Institution
Libraries



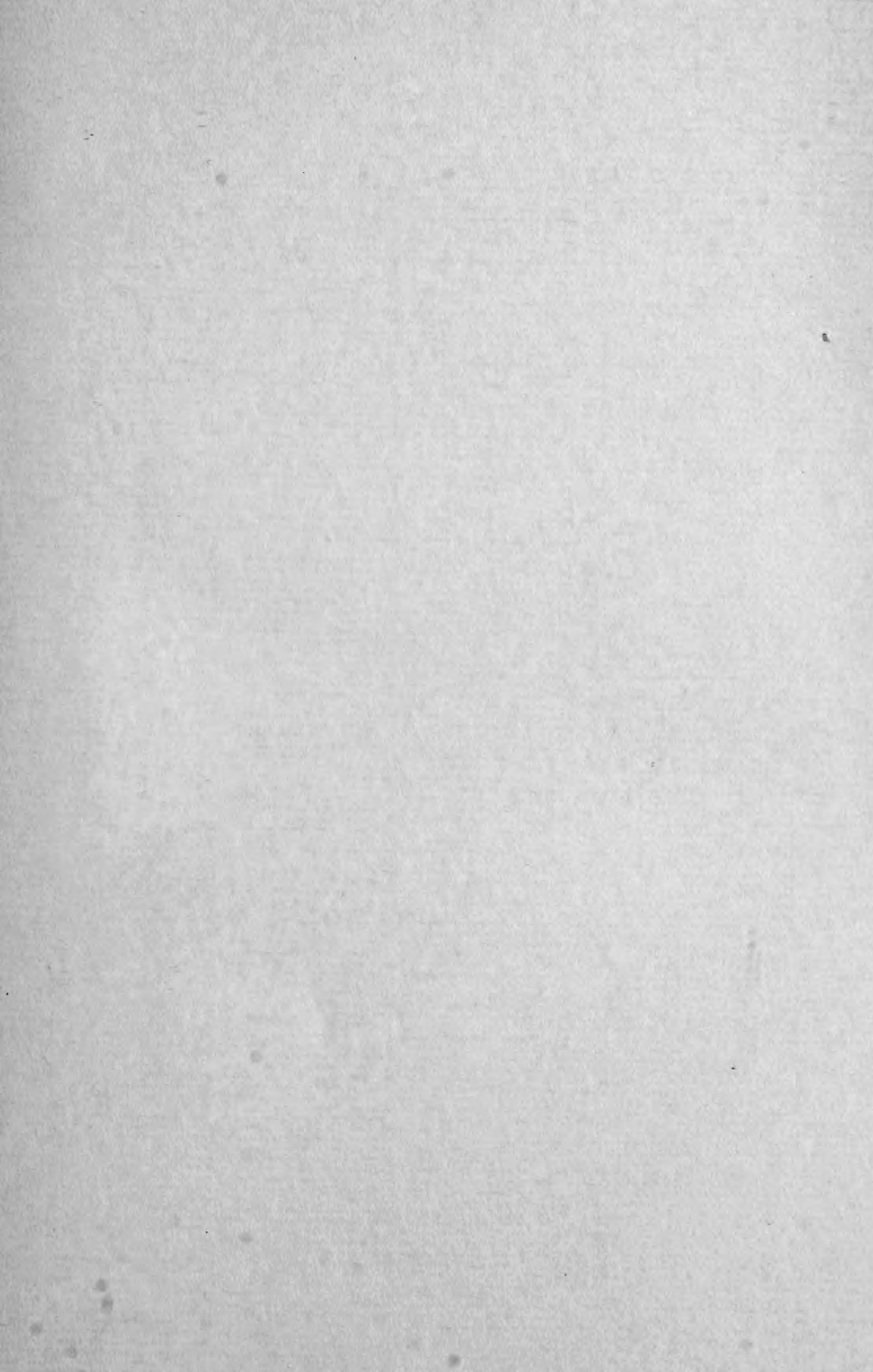
Alexander Wetmore
1946 *Sixth Secretary* 1953

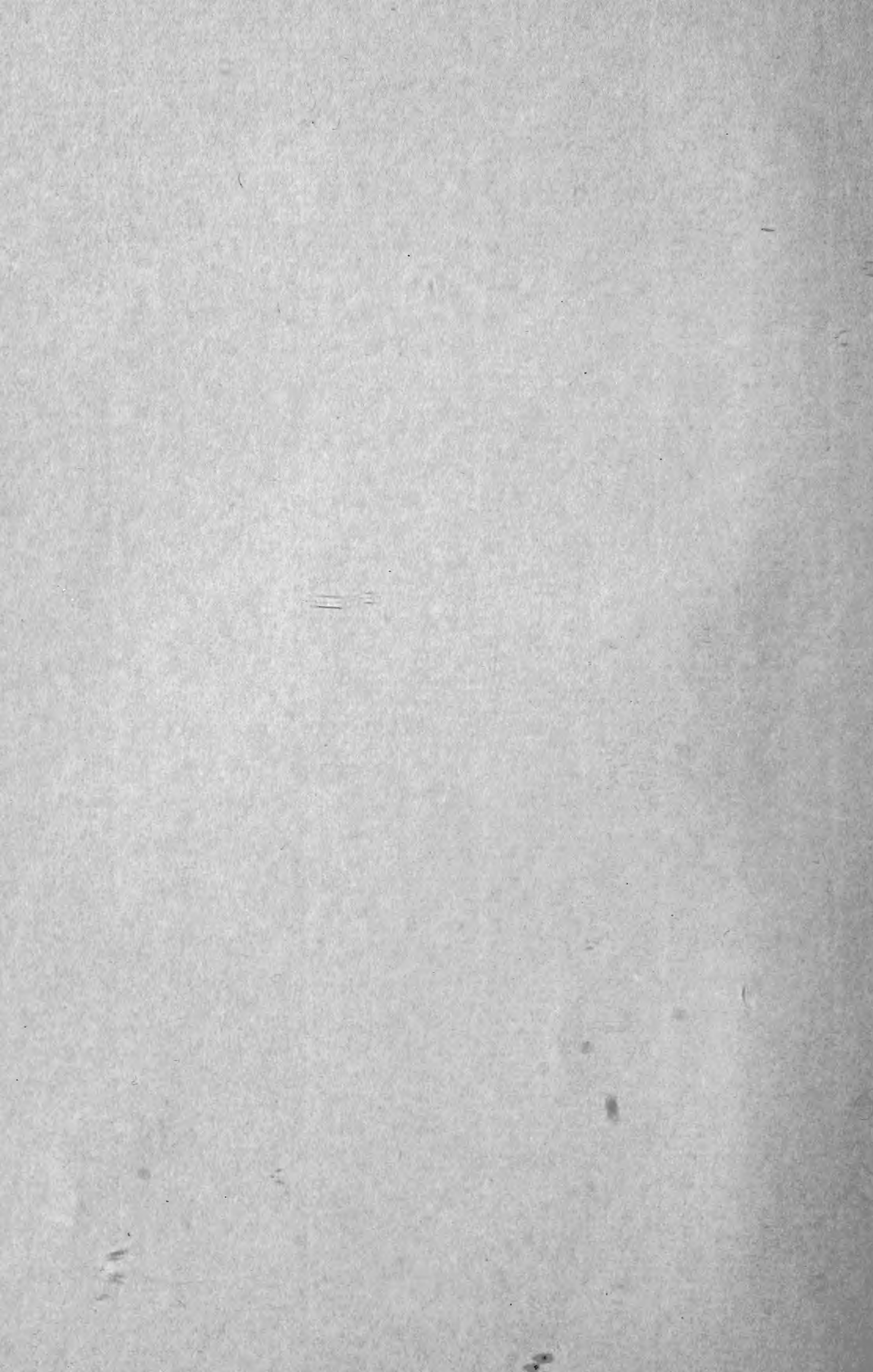


(Massach











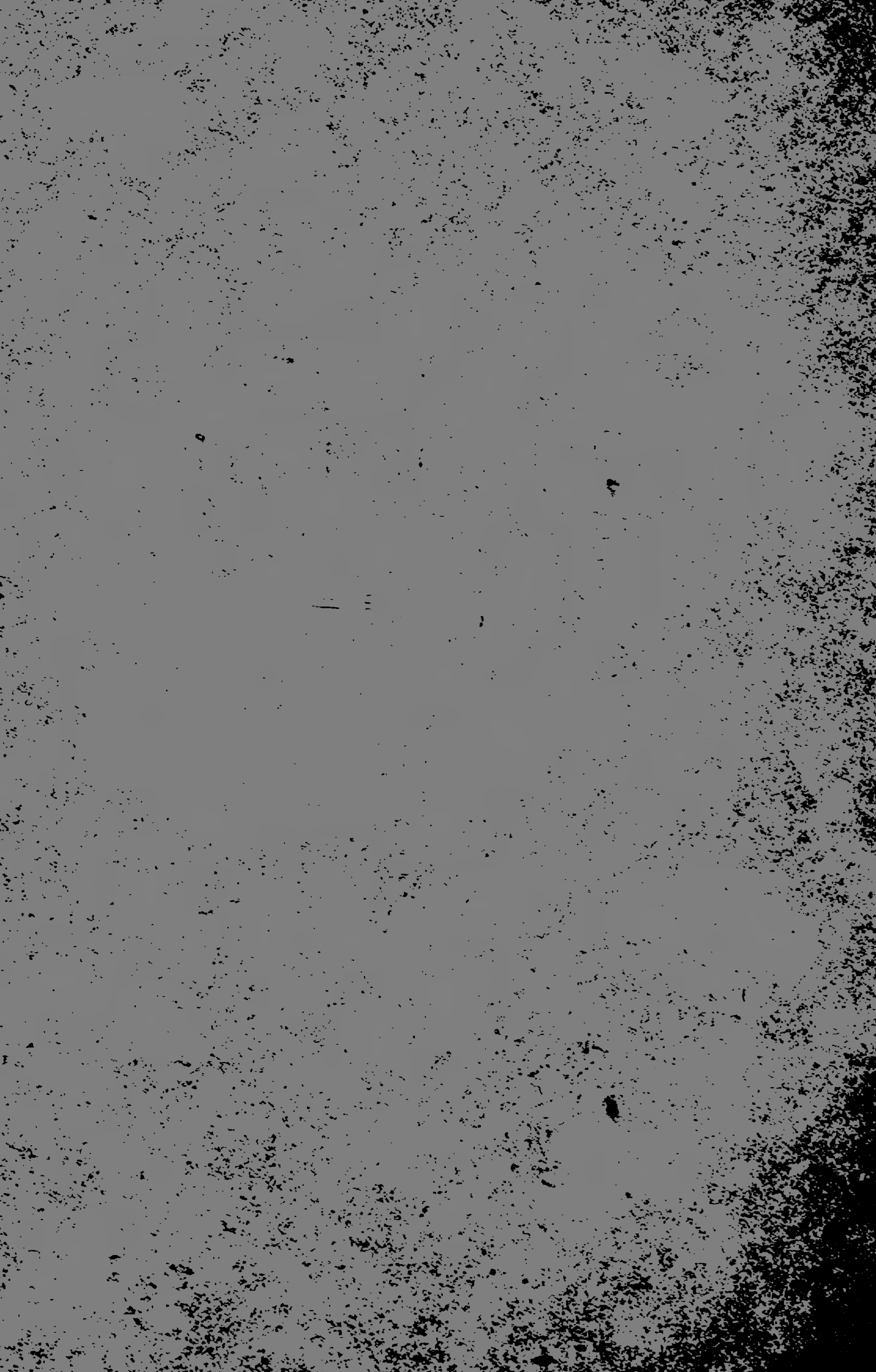


LIST OF BIRDS OF DOVER

BY

ALBERT PITTS MORSE

Extract from History of Dover, Mass., by Frank Smith, 1897



BIRDS.

The following list of birds is not designed to be a contribution to ornithology, but to present in brief form as correct and complete an enumeration of the bird-fauna of Dover as it is practicable to procure at the present time, and thereby stimulate observation. It is the result of personal observations made during many years, partly in Dover, but more largely in those portions of Sherborn, Natick, and Wellesley immediately adjoining, and, in addition, of verbal notes communicated by other persons living in the vicinity. Owing to the lack of resident observers a list of local records would of necessity be so meagre as to be of little use, and would give an erroneous impression of the fauna. Persons desirous of obtaining fuller information on this subject should consult the "Annotated List of Birds of Wellesley and Vicinity," published by the author of the present list.

All of the species enumerated have been noted within a short distance, nearly all within a mile, of the town boundaries, and most of them in the town itself. Additional species, chiefly of the water-birds and shore-birds, doubtless occur from time to time, records of which in the immediate vicinity I have been unable to secure.

The economic importance of birds is often overlooked even by those who are most benefited. They are one of nature's most efficient means for keeping in check the myriads of injurious insects with which the agriculturist has to contend. As a class, even the predaceous birds — the hawks and owls — do vastly more

good than harm, destroying multitudes of field-mice and other small rodents of the farm, though individuals often merit and receive condemnation and punishment at the hands of the irate poultry-raiser.

In addition to their economic importance the birds appeal most forcibly to our æsthetic sense. The wooing and mating, and building of the nest, the eggs — dumb miracles of life, the rearing of the brood, the instinct that draws them irresistibly to dare the perils of the unknown in extended journeys at the appointed time,— these have appealed to the sympathies of mankind since the remotest ages. In their cries find expression all the gladsomeness of day and the weirdness of night, the freedom of the plain and the mystery of the forest, the hopefulness of dawn, the serenity and trust of evening, the yearning of spring and the melancholy of autumn. In their silence is death.

Holboëll's Grebe, Red-necked Grebe, *Colymbus holboëllii*.¹ Occasional on river; migrant.

Horned Grebe, "Crested Grebe," *Colymbus auritus*. Occasional on river; migrant.

Pied-billed Grebe, "Dipper," *Podilymbus podiceps*. Common on river in fall.

Loon, *Urinator imber*. Frequently seen on neighboring ponds in fall and spring.

Dovekie, "Little Auk," *Alle alle*. A number were seen after a severe storm a score of years ago.

American Herring Gull, *Larus argentatus smith-*

¹ The terminology and sequence of species is that adopted by the American Ornithologists' Union.

sonianus. A large gull, probably of this species, was found dead in the west part some years ago.

Bonaparte's Gull, *Larus philadelphia*. Has been taken on neighboring ponds.

Tern, *Sterna* sp. (?) Examples are occasionally seen about neighboring lakes after hard storms.

Greater Shearwater, *Puffinus gravis*. A specimen was taken on the Cheney estate several years ago.

American Merganser, "Sheldrake," *Merganser americanus*. Occasional on river and common on neighboring ponds in spring.

Hooded Merganser, *Lophodytes cucullatus*. Scarce. Has been taken on the river in spring.

Mallard, *Anas boschas*. Has been taken in former years, now rare.

Black Duck, *Anas obscura*. Common in fall. A few breed.

Baldpate, *Anas americana*. Has been taken on neighboring ponds.

Green-winged Teal, *Anas carolinensis*. Formerly common on the river in fall, but now scarce.

Blue-winged Teal, *Anas discors*. Scarce, formerly not uncommon.

Wood Duck, *Aix sponsa*. Common. Summer resident. Most numerous in August and September.

Lesser Scaup Duck, Little Blackhead, *Aythya affinis*. Occasional on neighboring ponds.

Ring-necked Duck, *Aythya collaris*. Occasional on neighboring ponds.

Golden-eye, "Whistling," *Clangula clangula americana*. Common in spring on neighboring ponds. Sometimes seen on the river.

Buffle-head, *Charitonetta albeola*. Occasional on neighboring ponds. Migrant.

American Scoter, *Oidemia americana*. Occasional on neighboring ponds. Migrant.

Surf Scoter, *Oidemia perspicillata*. Occasional on neighboring ponds. Migrant.

Ruddy Duck, *Erismatura jamaicensis*. Not uncommon in fall.

Canada Goose, Wild Goose, *Branta canadensis*. Usually seen in numbers when migrating. Occasionally a flock alights in the river or neighboring lakes.

Bittern, "Stake-driver," *Botaurus lentiginosus*. A not uncommon summer resident.

Great Blue Heron, *Ardea herodias*. Common along the river in spring and late summer.

American Egret, White Heron, *Ardea egretta*. Mr. A. L. Babcock, of Sherborn, states that a specimen of this species was killed by Mr. Abram Bigelow on the river some years ago.

Green Heron, *Ardea virescens*. Common along the river in summer.

Black-crowned Night Heron, *Nycticorax nycticorax naevius*. Frequently seen in spring and summer.

Virginia Rail, *Rallus virginianus*. Not uncommon. Summer resident, but seldom seen until fall.

Sora, Carolina Rail, "Meadow Hen," *Porzana carolina*. Common summer resident. Most often seen in September.

Florida Gallinule, *Gallinula galeata*. Rare.

American Coot, *Fulica americana*. Not uncommon in fall.

American Woodcock, *Philohela minor*. Migrant. Common in flights. A few breed.

Wilson's Snipe, *Gallinago delicata*. Locally common in spring and fall.

Dowitcher, Red-breasted Snipe, *Macrorhamphus griseus*. Occasional.

Least Sandpiper, *Tringa minutilla*. Occasional.

Greater Yellowlegs, *Totanus melanoleucus*. Occasional.

Yellowlegs, *Totanus flavipes*. Occasional after storms in summer.

Solitary Sandpiper, *Totanus solitarius*. Common in midsummer along the river.

Spotted Sandpiper, "Teeter-tail," *Actitis macularia*. Common summer resident.

Killdeer, *Aegialitis vocifera*. Rare. Has been seen in former years.

Bob-white, Quail, *Colinus virginianus*. Common resident.

Ruffed Grouse, "Partridge," *Bonasa umbellus*. Common resident.

Passenger Pigeon, *Ectopistes migratorius*. Very rare. Formerly common summer resident.

Mourning Dove, *Zenaidura macroura*. A not uncommon summer resident.

Marsh Hawk, *Circus hudsonius*. Summer resident. Rather common, especially in spring and fall.

Sharp-shinned Hawk, "Chicken Hawk," *Accipiter velox*. Common summer resident. Very troublesome to young poultry.

Cooper's Hawk, *Accipiter cooperii*. Occasionally met with. Breeds.

American Goshawk, *Accipiter atricapillus*. Rarely seen, in fall and winter.

Red-tailed Hawk, "Hen-hawk," *Buteo borealis*. Not uncommon. Breeds.

Red-shouldered Hawk, "Hen-hawk," *Buteo lineatus*. Not uncommon. Breeds.

Bald Eagle, *Haliaeetus leucocephalus*. Very rare. One specimen shot and another seen, at South Sherborn, some years ago.

Pigeon Hawk, *Falco columbarius*. Scarce.

American Sparrow Hawk, *Falco sparverius*. Occasionally seen.

American Osprey, Fish Hawk, *Pandion haliaëtus carolinensis*. Frequently seen along the river.

American Barn Owl, *Strix pratincola*. Accidental. One specimen taken several years ago and now in museum of Wellesley College.

American Long-eared Owl, *Asio wilsonianus*. Not uncommon. Resident.

Short-eared Owl, *Asio accipitrinus*. Rather rare.

Barred Owl, *Syrnium nebulosum*. Scarce, but occasionally seen in fall.

Saw-whet Owl, *Nyctala acadica*. Not common. Resident, or winter visitor.

Screech Owl, *Megascops asio*. Common resident.

Great Horned Owl, *Bubo virginianus*. Frequently taken. Resident.

Snowy Owl, *Nyctea nyctea*. Rarely seen, in fall or winter.

American Hawk Owl, *Surnia ulula caparoch*. Very rare, but has been taken in this vicinity.

Yellow-billed Cuckoo, *Coccyzus americanus*. Common summer resident.

Black-billed Cuckoo, *Coccyzus erythrophthalmus*. Common summer resident.

Belted Kingfisher, *Ceryle alcyon*. Not uncommon summer resident.

Hairy Woodpecker, *Dryobates villosus*. Not uncommon visitor in fall and winter.

Downy Woodpecker, *Dryobates pubescens medianus*. Common resident.

Arctic Three-toed Woodpecker, *Picoides arcticus*. Very rare.

Yellow-bellied Sapsucker, *Sphyrapicus varius*. Frequently seen in migrations.

Red-headed Woodpecker, *Melanerpes erythrocephalus*. Irregular visitor. Sometimes not rare in fall.

Flicker, Golden-winged Woodpecker, *Colaptes auratus*. Common summer resident. A few pass the winter.

Whip-poor-will, *Antrostomus vociferus*. Common summer resident.

Nighthawk, *Chordeiles virginianus*. Not uncommon. Summer resident.

Chimney Swift, *Chætura pelagica*. Abundant summer resident.

Ruby-throated Hummingbird, *Trochilus colubris*. Common summer resident.

Kingbird, *Tyrannus tyrannus*. Very common summer resident.

Crested Flycatcher, *Myiarchus crinitus*. Scarce and somewhat local summer resident.

Phœbe, Pewee, *Sayornis phæbe*. Common summer resident.

Olive-sided Flycatcher, *Contopus borealis*. Formerly rather common, now rare.

Wood Pewee, *Contopus virens*. Common summer resident.

Yellow-bellied Flycatcher, *Empidonax flaviventris*.
Not uncommon migrant.

Least Flycatcher, "Chebec," *Empidonax minimus*.
Very common summer resident.

Horned Lark, *Otocoris alpestris*. Rarely seen in
spring and fall.

Blue Jay, *Cyanocitta cristata*. Abundant resident.

American Crow, *Corvus americanus*. Common
resident.

Bobolink, *Dolichonyx oryzivorus*. Common summer
resident.

Cowbird, *Molothrus ater*. Common summer resident.

Red-winged Blackbird, *Agelaius phoeniceus*. Abun-
dant summer resident.

Meadowlark, *Sturnella magna*. Common summer
resident.

Orchard Oriole, *Icterus spurius*. Rare summer resi-
dent.

Baltimore Oriole, *Icterus galbula*. Common summer
resident.

Rusty Blackbird, *Scolecophagus carolinus*. Common
migrant, especially numerous in fall.

Bronzed Grackle, Crow Blackbird, *Quiscalus quiscula*
æneus. Common. A few breed. Often appears in
very large flocks in fall.

Evening Grosbeak, *Coccothraustes vespertinus*. Sev-
eral specimens were taken just across the river in South
Natick and Wellesley early in 1890, during an incur-
sion of this species from the West.

Pine Grosbeak, *Pinicola enucleator*. Irregular winter
visitor, sometimes common.

Purple Finch, *Carpodacus purpureus*. Common sum-
mer resident. Sometimes a few winter.

English Sparrow, *Passer domesticus*. Common resident.

Red Crossbill, *Loxia curvirostra minor*. A not uncommon winter visitor.

White-winged Crossbill, *Loxia leucoptera*. Scarce. Irregular winter visitor.

Redpoll, *Acanthis linaria*. Common but irregular winter visitor.

American Goldfinch, *Spinus tristis*. Common resident.

Pine Siskin, *Spinus pinus*. Rare fall and winter visitor.

Snowflake, Snow Bunting, *Plectrophenax nivalis*. Common but irregular winter visitor.

Vesper Sparrow, Grass Finch, *Poocætes gramineus*. Common summer resident.

Savanna Sparrow, *Ammodramus sandwichensis savanna*. Common migrant, most numerous in fall.

Grasshopper Sparrow, Yellow-winged Sparrow, *Ammodramus savannarum passerinus*. Rare summer resident.

White-crowned Sparrow, *Zonotrichia leucophrys*. Scarce. Occasionally seen in spring.

White-throated Sparrow, *Zonotrichia albicollis*. Common in spring and fall.

Tree Sparrow, *Spizella monticola*. Common in colder months.

Chipping Sparrow, Chippy, *Spizella socialis*. Abundant summer resident.

Field Sparrow, *Spizella pusilla*. Common summer resident.

Slate-colored Junco, Black Snowbird, *Junco hyemalis*. Abundant transient visitor in fall and spring, less common in winter.

Song Sparrow, *Melospiza fasciata*. Abundant summer resident. Sometimes seen in winter.

Swamp Sparrow, *Melospiza georgiana*. Common summer resident.

Fox Sparrow, *Passerella iliaca*. Common in spring and fall.

Towhee, Chewink, *Pipilo erythrophthalmus*. Common summer resident.

Cardinal, *Cardinalis cardinalis*. Casual. Several specimens have been seen, but some were doubtless escaped cage-birds.

Rose-breasted Grosbeak, *Zamelodia ludoviciana*. Common summer resident.

Indigo Bunting, *Passerina cyanea*. Rather common summer resident.

Scarlet Tanager, *Piranga erythromelas*. Common summer resident.

Purple Martin, *Progne subis*. Scarce, local, summer resident.

Cliff Swallow, Eaves Swallow, *Petrochelidon lunifrons*. Scarce, local, summer resident.

Barn Swallow, *Chelidon erythrogastria*. Abundant summer resident.

Tree Swallow, White-bellied Swallow, *Tachycineta bicolor*. Summer resident, locally common. Abundant in migrations.

Bank Swallow, *Clivicola riparia*. Locally common summer resident.

Cedar Waxwing, Cedarbird, *Ampelis cedrorum*. Common summer resident. Frequently occurs in winter.

Northern Shrike, Butcherbird, *Lanius borealis*. Rather common winter visitor.

- Red-eyed Vireo, *Vireo olivaceus*. Common summer resident.
- Warbling Vireo, *Vireo gilvus*. Common summer resident.
- Yellow-throated Vireo, *Vireo flavifrons*. Locally common summer resident.
- Blue-headed Vireo, *Vireo solitarius*. Common in spring. Rarely breeds.
- White-eyed Vireo, *Vireo noveboracensis*. Rare summer resident.
- Black and White Warbler, *Mniotilta varia*. Common summer resident.
- Golden-winged Warbler, *Helminthophila chrysoptera*. Scarce summer resident.
- Nashville Warbler, *Helminthophila rubricapilla*. Common migrant, less common summer resident.
- Northern Parula Warbler, *Compsothlypis americana usneæ*. Common in spring.
- Cape May Warbler, *Dendroica tigrina*. Rare migrant.
- Yellow Warbler, *Dendroica æstiva*. Common summer resident.
- Black-throated Blue Warbler, *Dendroica cærulescens*. Scarce migrant.
- Myrtle Warbler, Yellow-rumped Warbler, *Dendroica coronata*. Abundant migrant.
- Magnolia Warbler, *Dendroica maculosa*. Rather common in spring.
- Chestnut-sided Warbler, *Dendroica pensylvanica*. Plentiful in spring, less common as a summer resident.
- Bay-breasted Warbler, *Dendroica castanea*. Rare migrant.
- Blackpoll Warbler, *Dendroica striata*. Common migrant.

Blackburnian Warbler, *Dendroica blackburniæ*. Scarce migrant. Sometimes not uncommon.

Black-throated Green Warbler, *Dendroica virens*. Common summer resident.

Pine Warbler, *Dendroica vigorsii*. Common summer resident.

Yellow Palm Warbler, *Dendroica palmarum hypochrysea*. Common migrant.

Prairie Warbler, *Dendroica discolor*. Locally common summer resident.

Ovenbird, *Seiurus aurocapillus*. Very common summer resident.

Water Thrush, *Seiurus noveboracensis*. Not uncommon in spring.

Connecticut Warbler, *Geothlypis agilis*. Rarely seen, in fall.

Maryland Yellowthroat, *Geothlypis trichas*. Abundant summer resident.

Wilson's Warbler, *Sylvania pusilla*. Scarce migrant.

Canadian Flycatching Warbler, *Sylvania canadensis*. Not uncommon in spring.

American Redstart, *Setophaga ruticilla*. Common summer resident. Somewhat local.

American Pipit, Titlark, *Anthus pensilvanicus*. Very common locally in fall. Less numerous in spring.

Catbird, *Galeoscoptes carolinensis*. Abundant summer resident.

Brown Thrasher, *Harporhynchus rufus*. Common summer resident.

House Wren, *Troglodytes ædon*. Scarce. Occasionally one is seen in spring.

Winter Wren, *Troglodytes hiemalis*. Occasionally seen in fall and winter.

Short-billed Marsh Wren, *Cistothorus stellaris*.
Locally common summer resident.

Long-billed Marsh Wren, *Cistothorus palustris*.
Locally common summer resident.

Brown Creeper, *Certhia familiaris americana*. Not
uncommon in colder months.

White-breasted Nuthatch, *Sitta carolinensis*. Com-
mon resident.

Red-breasted Nuthatch, *Sitta canadensis*. Irregular
in colder months, sometimes common in late fall.

Chickadee, *Parus atricapillus*. Abundant resident.

Hudsonian Chickadee, *Parus hudsonicus*. Casual.
One specimen taken in Wellesley, near Cheney estate,
in fall.

Golden-crowned Kinglet, *Regulus satrapa*. Common
during colder months.

Ruby-crowned Kinglet, *Regulus calendula*. Not un-
common migrant.

Wood Thrush, *Turdus mustelinus*. Rather common
summer resident.

Wilson's Thrush, Veery, *Turdus fuscescens*. Com-
mon summer resident.

Hermit Thrush, *Turdus aonalaschkæ pallasii*. Not
uncommon migrant.

Robin, *Merula migratoria*. Abundant summer resi-
dent. Sometimes a few winter.

Bluebird, *Sialia sialis*. Common summer resident.

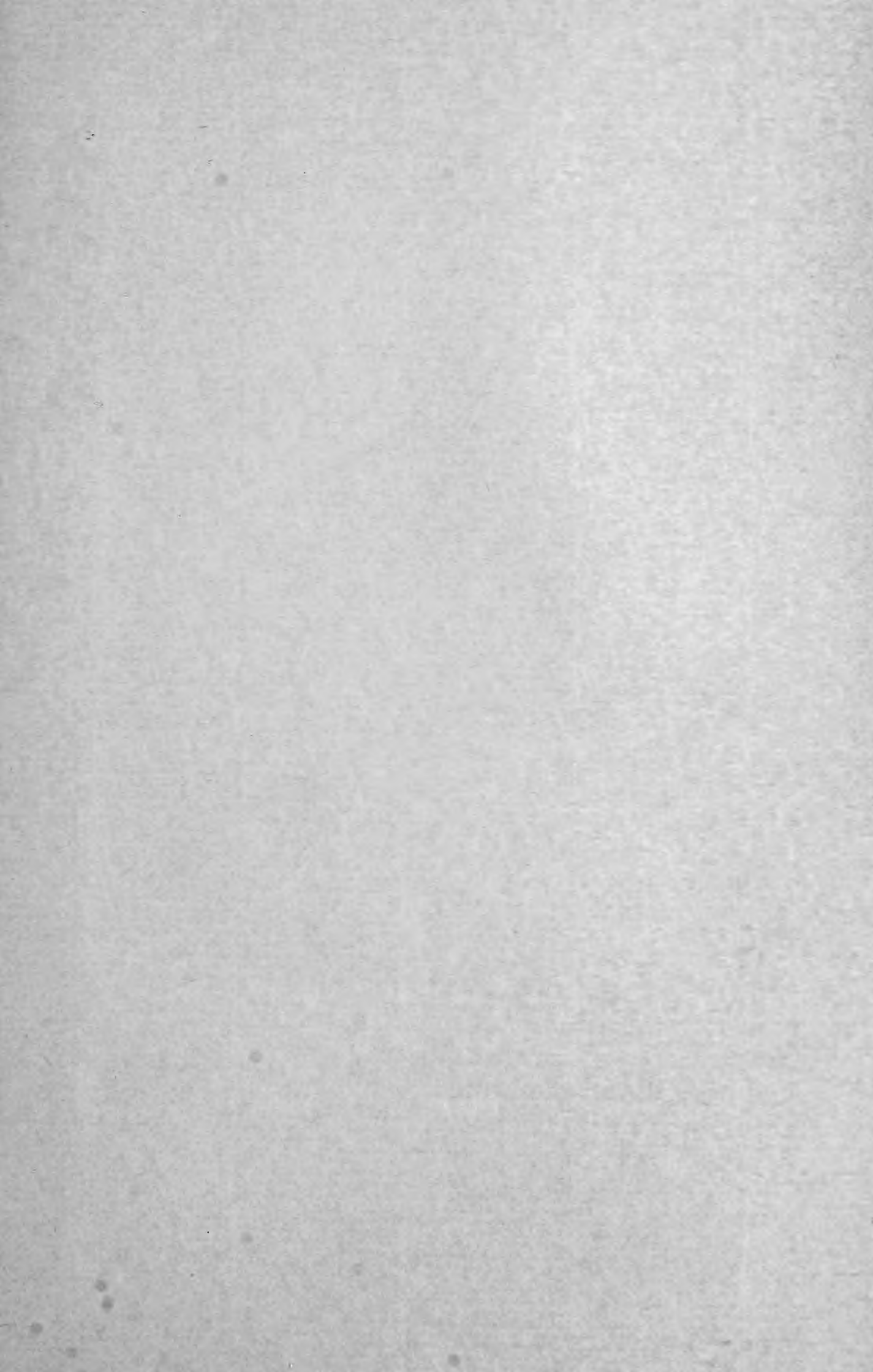
















SMITHSONIAN INSTITUTION LIBRARIES



3 9088 00318453 8

nhbird QL684.M4M884
List of birds of Dover /