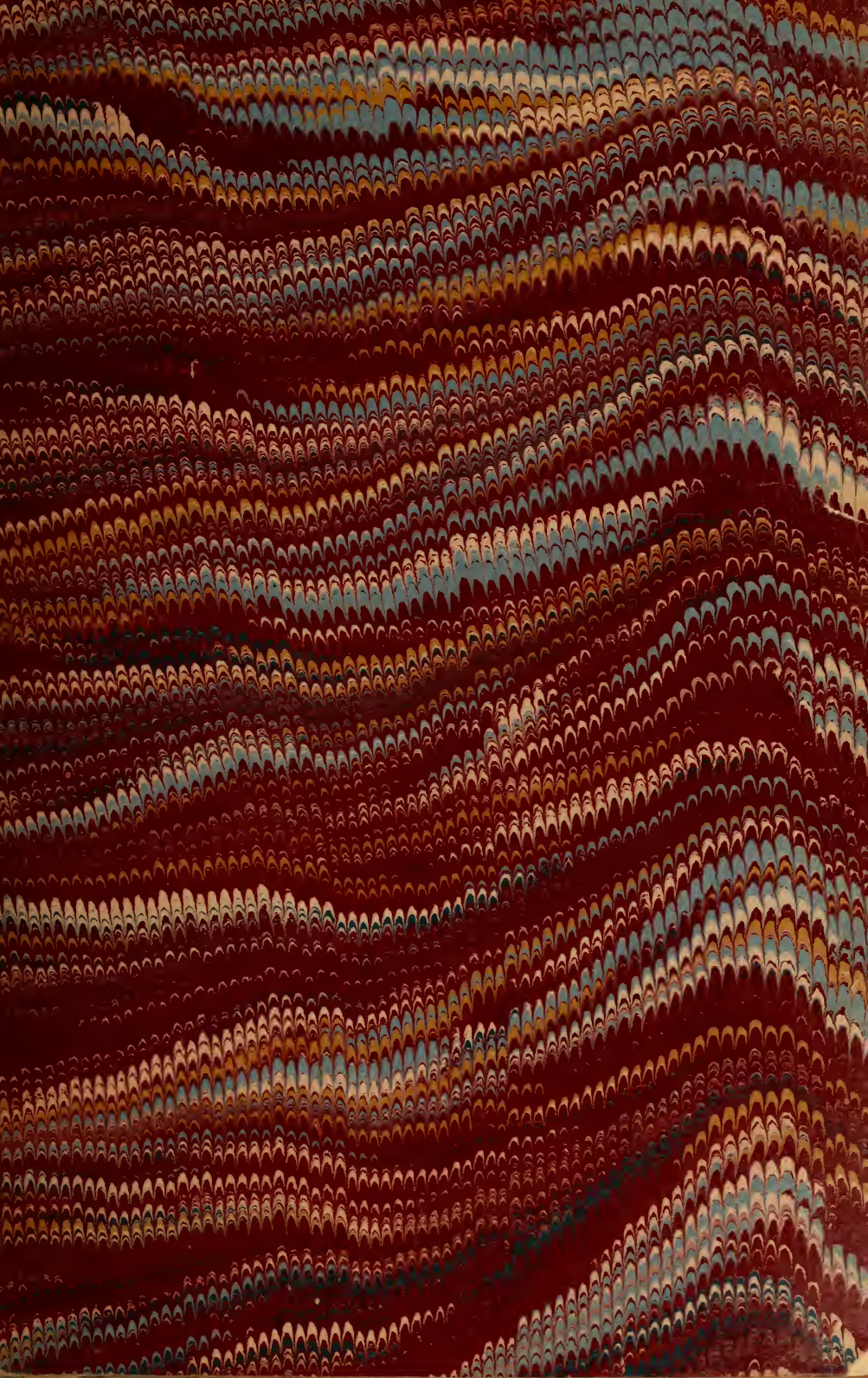


LIBRARY OF THE  
JOHN G. JOHNSON COLLECTION  
CITY OF PHILADELPHIA





364 4-49

INTERNATIONAL ACADEMY OF DESIGN

LOAN EXHIBITION

1893

AGENCY OF  
AMERICAN CIRCUIT ART ASSOCIATIONS.  
**Permanent Exhibition**

---

---

AND SALE GALLERY.

A Constant Succession of Works by the best Artists—  
AMERICAN AND FOREIGN.

147 East 23d Street, New York.

J. HARRISON MILLS, DIRECTOR.

---

## HORTON'S ICE CREAM

is always pure and reliable, and is the best and most popular Ice  
Cream in the world. Try it—you will like it.

DEPOTS: 305 Fourth Ave., 598 Sixth Ave., 302 Columbus Ave.,  
142 West 125th St., 115 Park Row, N.Y., and 495 Fulton St.,  
Brooklyn.

Telephone at each address.

---

## T. A. WILMURT & SON,

54 East 13th Street, New York.

MAKERS OF

## FINE GOLD PICTURE FRAMES.

---

*Paintings Restored. Regilding and Repairing neatly done.*

---

WATER COLORS, ENGRAVINGS AND PHOTOGRAPHS MOUNTED  
AND FRAMED.

CATALOGUE

LOAN EXHIBITION

1893

---

NATIONAL ACADEMY OF DESIGN

CORNER 23D STREET AND FOURTH AVE.

NEW YORK.

---

The Knickerbocker Press.

# GENERAL COMMITTEE ON LOAN EXHIBITION.

SAMUEL P. AVERY,  
JAMES A. GARLAND,  
THOMAS B. CLARKE,

ALFRED E. M. PURDY,  
HENRY G. MARQUAND,  
HEBER R. BISHOP,

PARKE GODWIN.

## COUNCIL.

THOMAS W. WOOD, PRESIDENT,  
F. D. MILLET, VICE-PRESIDENT,  
J. C. NICOLL, CORRESPONDING SECRETARY,  
GEO. H. SMILLIE, RECORDING SECRETARY,  
ALFRED JONES, TREASURER.

EASTMAN JOHNSON,  
LOUIS C. TIFFANY,  
GEORGE W. MAYNARD,

JOHN ROGERS,  
EDWIN H. BLASHFIELD,  
H. BOLTON JONES

## COMMITTEE ON DECORATIONS.

GEORGE W. MAYNARD,

J. C. NICOLL.



## INTRODUCTORY NOTE.

Over a year ago the Council discussed the desirability of holding, during the summer of 1893, an exhibition that would fairly represent the class of art objects owned by private collectors in this city, and early last winter the project took shape in the hands of a few gentlemen who met at the Century Club and after a number of conferences appointed a small committee for action, consisting of Messrs. Samuel P. Avery, Jas. A. Garland, Thomas B. Clarke, and the Secretary of the Academy. These gentlemen at once took the matter in charge, and, with the cordial assistance of members of the General Committee, whose names appear on the preceding page, have secured a most valuable and interesting collection.

It has been the aim of those in charge to show a moderate number of carefully selected objects properly displayed, rather than a more extensive exhibition of those more commonly shown.

Should any profits arise, they will be given to the Academy for much needed improvements in its schools and other departments.

Works have been loaned by the following persons:

WM. LORING ANDREWS,  
SAMUEL P. AVERY,  
PERRY BELMONT,  
AUGUST BELMONT,  
OLIVER H. P. BELMONT,  
MRS. WM. T. BLODGETT,  
THOMAS B. CLARKE,  
LOCKWOOD DE FOREST,  
JAMES A. GARLAND,  
JAMES W. GERARD.  
JOSEPH P. HOWARD,  
COLLIS P. HUNTINGTON,  
HENRY G. MARQUAND,  
J. C. NICOLL.  
HENRY SAMPSON,  
LOUIS C. TIFFANY,  
CORNELIUS VANDERBILT,  
DR. G. H. WYNKOOP.

## PERMANENT FUND.

The Permanent Fund is devoted to the purchase and improvement of real estate used by the Academy, and for no other purpose, except that any income from the Fund may be used for current expenses.

It is in charge of trustees chosen by donors to the fund, with the President, Secretary, and Treasurer as *ex-officio* trustees.

A contribution of twenty-five thousand dollars constitutes the donor a trustee for life, with twenty-five admissions to every exhibition, and five cards to each reception given by the Academy. Also three free scholarships to the Art Schools.

A contributor of one thousand dollars receives ten admissions to every exhibition, and two cards to each reception, and one free scholarship.

A contributor of five thousand dollars receives the same privileges, with the right to transmit them to a legal heir in perpetuity.

## THE BELMONT COLLECTION.

The collection of paintings made by the late Hon. August Belmont has been known for many years throughout the art world as one of the most famous in this country, but has been seen by but few outside the owner's personal acquaintances, as he never loaned his pictures for promiscuous exhibition, although he several times opened his gallery for the benefit of certain charities. Once before the National Academy of Design has benefited by this liberality, in 1876, when it held a loan exhibition in connection with the Metropolitan Museum of Art (then in Fourteenth Street), for the assistance of both institutions; and now the sons, Hon. Perry Belmont, Mr. August Belmont, and Mr. O. H. P. Belmont, have generously placed the collection in charge of the Academy, where there will be the only opportunity for the public to see it in its entirety previous to its division.

Mr. Belmont was one of the earliest collectors of fine paintings in this city, and while he was United States Minister at The Hague he secured many fine examples of artists then in vogue but now rarely seen, and his collecting (as well as weeding out) continued nearly to the close of his life. This has resulted in bringing together a class of works of such solid merit that they will be always interesting, even without the latest fashionable (and possibly ephemeral) fads in art.

# PAINTINGS.

## SOUTH GALLERY.

### THE BELMONT COLLECTION

NO. 1 TO NO. 65 INCLUSIVE.

#### DE NEUVILLE (ALPHONSE MARIE).

Born at St. Omer, Pas de Calais, 1836. Originally a law student in Paris, but later adopted art. Pupil of Picot and Pils. Made a specialty of military subjects. Medals 1859 and 1861. Legion of Honor, 1873. Officer of Legion, 1881. Died in Paris, 1885. De Neuville was the founder of the powerful and modern school of military art which has succeeded that of his master Pils and Horace Vernet.

##### 1. THE PRISONERS.

#### CLAYS (PIERRE JEAN).

Born at Bruges, 1819. Pupil of Gudin. Legion of Honor, 1875. Chevalier of the Order of Leopold. Medals (E. U.) 1867, 1878.

##### 2. MARINE.

#### MICHEL (GEORGES).

(Georges) Michel, whose works have only lately been admitted to the honors of the Luxembourg and Louvre, was the founder of Montmartre as an artistic colony. He has painted it in all its aspects, but when Michel lived (1763 to 1843) it was a wild and unfrequented spot, and before his time none of the artists regarded it with any favor, but Michel found in it a mine of picturesqueness. After him came Géricault, Decamps, Jules Dupré, Théo. Rousseau, and others.

##### 3. LANDSCAPE.

## VAUTIER (BENJAMIN).

Genre painter, born at Morges, on Lake Geneva, April 24, 1829. Pupil at Geneva of Hébert and of Lugardon, then (1850) in Düsseldorf of the Academy and of Jordan; studied peasant life in the Black Forest and in the Berne Highlands, then, attracted by Knaus, went in 1856 to Paris, and six months later settled in Düsseldorf. Has since attained a position by the side of Knaus as one of the great painters of popular life. Member of Berlin, Vienna, Munich, Antwerp, and Amsterdam Academies. Professor in 1866. Gold medals: Berlin, 1864; Paris, 1865, 1866; 2d class, 1867; 1st class, 1878; Order of Francis Joseph, 1868; Order of Red Eagle; Order of St. Michael, 1869; L. of Honor, 1878

## 4. SCHOOL EXAMINATION.

## MEYER (JOHANN HENDRIK LOUIS).

Born in Amsterdam in 1809, died at Utrecht, April 3, 1866. Marine painter, pupil of Westenberg and Pieneman. Medals: Paris, 1842, 1844, 1845; Angiers, 1842; Boulogne, 1844; Brussels, 1851; L. of Honor, Order of Lion, 1847; Order of Leopold, Commander Order of Oaken Crown. 1855; Member of St. Petersburg Academy in 1845. Lake of Galilee is his most important work in this country.

## 5. THE SHIPWRECKED.

## SCHREYER (ADOLF).

Was born in Frankfort-on-the-Main, May 9, 1828. Animal painter, pupil of Städel Institute, Frankfort. Studied the horse in the riding-school and anatomically, then in Stuttgart, Munich, and Düsseldorf; travelled in 1848 with Prince Thurn and Taxis through Hungary, Wallachia, and Southern Russia; accompanied the Austrians on the march through the Danubian principalities in 1854; visited Syria and Egypt in 1856, Algiers in 1861; lived in Paris until 1870, when he settled at Kronberg, near Frankfort. Member of Antwerp and Rotterdam Academies. Medals: Brussels, 1863; Paris, 1864, 1865, 1867; Munich, 1876; Order of Leopold, 1866; Court painter to Grand Duke of Mecklenburg, 1862.

## 6. WALLACHIAN TEAM.

## RICO (MARTIN).

Was born in Madrid. Architecture painter; pupil of Federico de Madrazo; then studied in Paris and Rome. Medals: Paris, Legion of Honor, 1878. Best known by Venetian subjects.

## 7. GARDEN NEAR VENICE.

## BELLANGÉ (JOSEPH LOUIS HIPPOLYTE).

Born at Paris, 1800. Pupil of Gros. Officer of Legion of Honor.

## 8. WOUNDED VOLTIGEUR.

## DUPRÉ (JULES).

Born at Nantes, 1812. As a boy he studied design in the porcelain manufactory of his father, but had no other art training. One of the strongest and most original of the modern French school of landscape painters. Officer of the Legion of Honor.

## 9. EVENING.

## GROLLERON (P.).

## 10. FRENCH PRISONERS.

## COURANT (MAURICE).

Born at Havre, 1847. Pupil of Meissonier. Medal, 1870.

## 11. COAST VIEW.

## CHAVET (J. VICTOR).

Born at Aix, 1822. Pupil of Roqueplan. Medals, 1853, 1855, 1857. Legion of Honor, 1859.

## 12. THE BILLIARD SALOON.

## DIAZ DE LA PEÑA (NARCISO-VIRGILIO).

Born at Bordeaux of Spanish parents, in 1803. Died from the bite of a viper, 1876.

Self-taught. Painted figures, but is best known by his landscapes, many of his most important works being owned in this country.

Legion of Honor, 1851.

## 13. LANDSCAPE.

## MUNKÁCSY (MIHÁLY).

Born at Munkács, Hungary, October 10, 1846. Real name Michael Lieb. Genre and history painter; for six years apprenticed with a carpenter at Arad before enabled to devote himself to art, which he first studied under a portrait painter at Gynla; became pupil of Vienna Academy; then, in Munich, of Franz Adam, under whose guidance he made rapid progress and won three first prizes; went, in 1867, to Düsseldorf and, incited by Knaus and Vautier, devoted himself to genre painting, and in 1869 at once established his fame with the Last Day of a Condemned Man. In 1872 he removed to Paris, where his works found great favor; in 1876 he began to take his subjects from Paris life, and with his Milton entered upon a new field, adopting also a new method of coloring. Medals: Paris, 1870; second class, 1874; of Honor, 1877; Officer, 1878; Member of Munich Academy, 1881.

14. HEAD OF CHRIST. *Jan*

## KEYSER (NICAISE DE).

Born at Sandvliet near Antwerp, August 26, 1813. History and genre painter. Pupil of Joseph Jacobs and of Antwerp Academy. Medals: Brussels, 1836; Paris, 1840; Order of Leopold, 1839; Officer, 1855; Order of St. Michael, 1851; Order of Lion, 1844 Legion of Honor, 1862, and other medals.

15. MARINO FALIERO AND ANGIOLINA RECEIVING THE SENTENCE OF STENO. *270 37*

## BOSBOOM (JOHANNES), The Hague.

Born at The Hague, 1817. Pupil of Van Bree. Knight of the Order of the Lion, of the Crown of Oak, and of the Order of Leopold.

16. CHURCH INTERIOR. *270 37*

## SCHWARTZE (JOHAN GEORG).

Was born at Amsterdam, October 20, 1814, died there August 27, 1874. Historical, genre, and portrait painter, pupil of Leutze in Philadelphia, whither he went with his parents early in life, then



studied at the Düsseldorf Academy in 1838-44 under Schadow, Sohn, and Lessing. Member of Amsterdam Academy in 1844. Great gold medal, Amsterdam, 1860.

17. PORTRAIT OF A HEAD. *2-24*

VELTON (W.).

18. HORSE MARKET. *2-24*

GIRARD (FIRMIN).

Born at Poncin (Ain), May 31, 1838. Genre painter, pupil of Gleyre; paints fresh and brightly colored pictures of trivial subjects. Medals: 3d class, 1863; 2d class, 1874.

19. THE TOILET. *4-10*

MEYER (J. H. LOUIS).

20. SUNSET. *4-10*

VELTON (W.).

21. THE HUNT EQUIPAGE. *2-24*

FRÈRE (PIERRE EDOUARD).

Born at Paris, 1819; died 1893. Pupil of Delaroche. A popular painter of subjects taken from humble life in France. Legion of Honor, 1855.

22. INDUSTRY. *2-24*

BOUGEREAU (WILLIAM ADOLPHE).

Born at La Rochelle, 1825. Pupil of Picot. Grand Prize of Rome, 1850. Legion of Honor, 1859. Member of the Institute of France, 1876. Officer of the Legion of Honor, 1876. Medal of Honor, *Exposition Universelle*, 1878. Knight of the Order of Leopold, 1881.

The Twins is one of his most popular works, well known from numerous reproductions.

23. THE TWINS. *W. Bougeureau*

## MILLET (JEAN FRANÇOIS).

Born at Gréville, October 4, 1814. Genre painter. Pupil of Delacroix. A peasant himself in origin, his representations of peasant life were painted with a comprehension of its pathos such as no other painter has reached. His best work began in 1849 with contributions to the Salon, which were continued up to 1870. Medals, 1853, 1864, 1867. Legion of Honor, 1868.

## 24. PEASANT AT WORK.

## ROBERT (LOUIS LÉOPOLD).

Was born at La Chaux-de-Fonds, Neuchâtel, Switzerland, May 13, 1794; died in Venice, March 25, 1835. Genre painter, pupil of David in Paris, whither he had gone with the engraver, Charles Ghirardet, his first instructor. After winning the second grand prix for engraving (1814), and frequenting for a short time the studio of Gros in 1815, he returned home, where he painted many excellent portraits and found a patron in M. Roullet Mezerac, who offered him the means to go to Rome in 1818; there he devoted himself to painting scenes from the life of the people. This he did with a poetry which raised his popular subjects to the dignity of history, and made him equal to the foremost artists of his time. In 1824 he won the first prize in Paris. Medal, Paris, 1822. Legion of Honor, 1831.

## 25. THE GYPSY.

## VERNET (ÉMILE JEAN HORACE).

History and genre painter, born in Paris, June 30, 1789; died there January 17, 1863. Son and pupil of Carle Vernet, and pupil of Moreau and Vincent. In 1812 he won a first medal by his Taking of an Intrenched Camp. In 1814 Napoleon decorated him with the Cross of the Legion of Honor for gallant conduct at the defence of the Barrière de Clichy, which battle he subsequently painted in 1820. In 1826 he became a member of the Institute; in 1828-1839 he was director of the French Academy in Rome. Officer Legion of Honor, 1825; Commander, 1842; Grand Officer, 1862; Medal of Honor, Paris Exhibition, 1855.

## 26. THE STORMING OF CAIRO.

## TROYON (CONSTANT).

Landscape and animal painter. Born at Sèvres, August 28, 1810; died in Paris, February 21 March, 1865. Pupil of Riocreux and Poupart, and influenced by Roqueplan to study nature, for which he showed an individual feeling in his first exhibited works, 1836. Visited Holland in 1847 and completed his education. After 1848 introduced cattle into his landscapes. Rose to be one of the greatest of modern French landscape painters. Medals: third class, 1838; second class, 1840; first class, 1846, 1848, 1855; Legion of Honor, 1849.

## 27. CATTLE GRAZING.

## MEISSONIER (JEAN LOUIS ERNEST), R. A.

Born in Lyons, February 21, 1815. Genre painter. Pupil of Léon Cogniet. Medals 1840, 1841, 1843, 1848, 1855, 1867, 1878. Legion of Honor, 1846; Officer, 1856; Commander, 1867; Grand Officer, 1878. Member of Institute, 1861; Munich Academy, 1867; Honorary Member Royal Academy, London, and other academies.

## 28. THE CHESS PLAYERS.

## BLÉS (DAVID).

Born at the Hague, September 19, 1821. Genre painter. Pupil of Kruseman. Studied in Paris 1841-43. Afterwards visited Belgium and England. Order of Iron Crown, 1850; Leopold, 1855; Legion of Honor, 1870.

## 29. DOMESTIC SCENE.

## MADOU (JEAN BAPTISTE).

Born in Brussels, January 26, 1796; died there April 3, 1877. Genre painter, pupil of P. J. C. François. His genre scenes from 18th century are often humorous. Member of Brussels and Antwerp academies. Medal and Legion of Honor, 1855; Order of Lion Commander of Order of Leopold, 1863.

## 30. THE GUARD HOUSE.

## ROUSSEAU (PIERRE ÉTIENNE THÉODORE).

Born in Paris, April 15, 1812 ; Died at Barbizon, December 22, 1867. Landscape painter, pupil of Rémond 1826, and of Lethière. Medals, 1834, 1849, 1855 ; of honor, 1867 ; Legion of Honor, 1852.

31. LANDSCAPE. *By Rousseau*

## LEYS (BARON HENDRIK).

Born in Antwerp, February 18, 1815 ; died there August 25, 1869. History and genre painter, pupil of his brother-in-law, F. de Brackeleer, and of Antwerp Academy under Wappers ; at first adhered to the style of the former, but afterwards imitated the French romanticists and the old Flemish masters. In 1835-39 he visited Paris and Holland ; in 1852, 1859 and 1863, Germany ; in 1855, Paris ; in 1862, London. Great gold medal in Brussels, 1835, Paris 1855 and 1867 ; Order of Leopold, 1840 ; Officer, 1856 ; Commander, 1867 ; Legion of Honor, 1862 ; made Baron in 1862. Member of the Brussels Academy in 1845. *1856*

32. MARGUERITE LEAVING CHURCH. *1856*

## WYLD (WILLIAM).

Was born in London ; contemporary. Landscape and architecture painter ; studied mostly in travelling in Italy, Spain, and Algiers, and settled in Paris. His water-colors are especially creditable. Medals : 3d class, Paris, 1839 ; 2d class, 1841 ; Legion of Honor, 1855. *W*

## 33. LANDSCAPE.

## PIENEMAN (JAN WILLEM).

Born near Amsterdam, 1779. History and portrait painter. Pupil of Amsterdam Academy, where he won several medals. Mostly self-taught. Director of the Royal Gallery at the Hague in 1815 and of the Amsterdam Academy in 1820.

34. DEATH-BED OF WILLIAM OF ORANGE. *W*

## DAUBIGNY (CHARLES FRANÇOIS).

Born in Paris, 1817. Died, 1878. Pupil of his father and of Delaroche. Officer of the Legion of Honor. Famous for his landscape paintings and etchings, many of which are owned by Americans.

35. MORNING LANDSCAPE. *Muse*

## MADOU (JEAN BAPTISTE).

36. OLD FRIENDS. *0001*

## DECAMPS (ALEXANDRE GABRIEL).

Born in Paris March 3, 1803. Died at Fontainebleau August 22, 1860. History, landscape, and genre painter. Pupil of Abel de Pujol, David, and Ingres.

37. ITALIAN WASHERWOMEN. *87 pt*

## TROYON (CONSTANT).

38. CATTLE DRINKING. *0001*  
*[1161]*

## GÉRÔME (JEAN LÉON).

Born Vesoul May 11, 1824. History and genre painter; pupil of Paul Delaroche, whom he accompanied to Rome, and of Gleyre after his return from Italy. Obtained a 3d class medal for his *Cock Fight* in 1847, and increased his reputation by his *Anacreon* in the following year. Then visited Russia, where he painted a successful picture of Russian musicians, and Egypt, whence he brought back valuable material afterwards treated (1857). Medals: 3d class, 1847; 2d class, 1848, 1855; of Honor, 1867, 1874, 1878; for sculpture, 1878; Legion of Honor, 1855; Officer, 1867; Commander, 1878; member of Institute, 1865. Professor in École des Beaux Arts, 1863.

39. SLAVE MARKET. *111*

## KOEKKOEK (BAREND CORNELIS).

Born at Middelburg, Zeeland, October 11, 1803; died at Cleves, April 5, 1862. Landscape painter, son and pupil of Johannes Hermanns Koekkoek (marine painter), and student of Amsterdam Academy under Schelfhout and Van Oos; in 1841 founded an Academy of Design at Cleves. Member of Rotterdam and St. Petersburg Academies in 1840. Orders of the Lion (1839) and of Leopold (1842); Legion of Honor; Gold Medals in Amsterdam (1840), Paris (1840 and 1843), and The Hague.

40. LANDSCAPE. *land*

## STEVENS (ALFRED).

Genre painter, pupil of the Paris École des Beaux Arts, then in Brussels of Nabez, and in Paris of Roqueplan. Was born in Brussels, May 11, 1828. He acquired great fame with his graceful representations of elegant modern interiors, enlivened with women's and children's figures. Medals: Brussels, 1851; Paris, 3d class, 1853; 2d class, 1855; 1st class, 1867, 1878. Order of Leopold, 1855; Officer, 1863, afterwards Commander. Legion of Honor, 1863; Officer, 1867; Commander, 1878. Commander of Austrian Order of Francis Joseph, and of Bavarian Order of St. Michael.

41. THE STUDENT. *Stev*

## MERLE (HUGUES).

Born at St. Marcellin (Isère) March 1, 1823; died in Paris March 26, 1881. Genre painter, pupil of L. Cogniet; painted life-size pictures of subjects taken from the life of the poor. Medals: 2d class, 1861, 1863; Legion of Honor, 1866.

42. THE GOOD SISTER. *Merle*

## ACHENBACH (ANDREAS).

Born at Hesse Cassel, 1815. Pupil of Schirmer, Düsseldorf Academy. Member of the Academies of Berlin, Amsterdam, and Antwerp. Knight of the Order of Leopold and the Legion of Honor.

43. LANDSCAPE. *Achenbach*

## DETTI (CESARE).

Born in Rome. Genre painter, pupil of Academy of San Luca, Rome.

## 44. THE SERENADE.

## VIBERT (JEHAN GEORGES).

Was born in Paris, Sept. 30, 1840. Genre painter, pupil of Picot and Barrias. Medals: 1864, 1867, 1868; 3d class, 1878; Legion of Honor, 1870.

## 45. THE REPRIMAND.

## GUES' (A).

## 46. THE ANTE-CHAMBER.

## DETAILLE (JEAN BAPTISTE ÉDOUARD).

Born at Paris, 1848. Pupil of Meissonier. Legion of Honor, 1873. Officer of the Legion of Honor, 1881.

## 47. LES INCROYABLES.

## ACHENBACH (ANDREAS).

## 48. COAST OF SICILY, CAPRI.

## KNAUS (LUDWIG).

One of the leaders of the younger Düsseldorf School, and the foremost genre painter in Germany. Born at Wiesbaden, Oct. 10, 1829. Pupil of Düsseldorf Academy under Sohn and Schadow in 1846-52, studied then in Paris until 1860; visited Italy in 1857-58; lived in Berlin in 1861-66, and at Düsseldorf from 1866 to 1874. Professor at the Berlin Academy from 1874 to 1884, when he resigned. Member of the Vienna, Berlin, Munich, Amsterdam, Antwerp, and Christiania Academies. Medals: Paris, 2d class, 1853; 1st class, 1855, 1857, 1859; Medal of Honor, 1867. Legion of Honor, 1859; Officer, 1867; Knight of Prussian Order of Merit, etc., and many medals.

## 49. GOING TO THE DANCE.

## OUVRIÉ (PIERRE JUSTIN).

Born in Paris, May 9, 1806; died at Rouen, Oct. 21, 1879. Landscape, history, portrait, and genre painter. Pupil of Abel de Pujol and Chatillon. Medals 1831, 1843, 1855. Legion of Honor, 1854.

50. AMSTERDAM. *256*

## ACHENBACH (ANDREAS).

51. MOONLIGHT. *920*

## DELAROCHE (PAUL).

Born at Paris, 1797. Member of the Institute. Officer of the Legion of Honor. Began by painting landscapes under Watelet. Afterwards studied under Baron Gros and devoted himself to portraits and historical subjects. His most important work is the "Hemicycle," in the École des Beaux Arts, Paris: the finished story for which is in the W. T. Walters Collection in Baltimore.

52. CHRIST THE CONSOLER. *100*

## GALLAIT (LOUIS).

Born at Tournay, March 10, 1810. History, portrait, and genre painter. Pupil of Tournay Academy. Having obtained the first prize at Ghent in 1831, he studied at Antwerp Academy, and in 1834 went to Paris, where his portraits and historical paintings were soon highly esteemed. His Abdication of Charles V., painted at Brussels in 1841, placed him at once at the head of Belgian portrait-painters, and won for him the Belgian Order of Leopold and the French Legion of Honor. The city of Brussels struck a medal in his honor.

53. DUKE OF ALBA AND VARGAS. *874 100*

## OMMEGANCK (BALTHAZAR PAUWEL).

Born in Antwerp, December 26, 1755; died there January 18, 1826. Animal and landscape painter, pupil of H. J. Antonissen; painted especially sheep. Rector of Guild of St. Luke, Antwerp, in 1789, and professor in Academy in 1796. He was one of the envoys sent to Paris to procure the restitution of pictures taken by Napoleon.

54. LANDSCAPE WITH SHEEP. *100*



## PLASSAN (ANTOINE ÉMILE).

Born at Bordeaux, September 29, 1817. Genre painter. Medals: 3d class, 1852, 1857, 1859; Legion of Honor, 1859; Medal, Philadelphia Exposition, 1876.

## 55. THE ALBUM.

## CHAVET (J. VICTOR).

## 56. THE LETTER.

## FAUVELET (JEAN).

Born at Bordeaux, June 19, 1819. Genre and flower painter. Pupil of Lacour the younger. Last exhibited in Salon, 1869. Medal 2d class, 1848.

## 57. THE PROMENADERS.

## BILLET (PIERRE).

Born at Cantin. Friend of Jules Breton, who assisted him in his studies. Medals at Paris and Vienna.

## 58. BRITTANY PEASANT GIRL.

## BIERSTADT (ALBERT), N.A.

Born in Düsseldorf, Germany, 1830. Landscape painter. Spent his youth in New Medford, Mass. Studied in Düsseldorf and Rome four years. Returned to United States in 1857, and again visited Europe in 1867, 1878, and 1883. Elected N.A. in 1860. Medals in Austria, Germany, Bavaria, and Belgium. Legion of Honor, 1867. Order of St. Stanislaus, 1869. Medal, 1872.

## 59. THE BURNING SHIP.

## CALAME (ALEXANDRE).

Born at Vevay, May 28, 1810; died March 19, 1864. Landscape painter. Pupil in Geneva of Diday. Medals, 1839, 1840. Legion of Honor, 1842.

## 60. SWISS LAKE.

SCHREYER (ADOLF).

61. THE HALTING PLACE.

MICHAEL (MAX).

Born in Hamburg, March 23, 1823. Genre painter. Pupil of Dresden Academy, then in Paris of Couture. Professor at Berlin Academy since 1875.

62. FATHER'S BIRTHDAY.

ZIEM (FELIX).

Born at Beaune (Côte d'Or), February 25, 1821. Architecture and marine painter, pupil of Art School at Dijon; travelled in 1845-48 in Southern France, Italy, and the East. His pictures, particularly his views of Venice, have won for him a world-wide reputation. Medals: 3d class, 1851, 1855; 1st class, 1852. Legion of Honor, 1857; Officer, 1878.

63. CANAL GRANDE, VENICE.

NUYEN (WYNAND JAN JOSEPH).

Born at The Hague, March 4, 1813, died there, June 2, 1839. Landscape and marine painter, pupil of Schelfhout. Member of Academy of Amsterdam.

64. VIEW IN HOLLAND.

MADRAZO (RAIMUNDO DE).

Born in Rome, July 24, 1841. Genre and portrait painter, pupil of his father, and student in Paris at the École des Beaux Arts, and later of Léon Cogniet. Medal: 1st class, 1878; Legion of Honor, 1878.

65. THE CORYPHEE.

# WEST GALLERY

## THE BELMONT COLLECTION.

NO. 66 TO NO. 111 INCLUSIVE.

### FROMENTIN (EUGÈNE).

Born at La Rochelle, October 24, 1820. Died at St. Maurice, August 27, 1876. Genre painter, pupil of Rémond and Cabat. Visited Algiers in 1846 and 1852, and brought home many sketches from which he painted his characteristic pictures of Oriental life. Medals: 2d class, 1849, 1857; 1st class, 1859. Legion of Honor, 1859; Officer, 1869.

66. BEDOUINS.

### DETAILLE (ÉDOUARD).

67. RIFLE PRACTICE.

### VILLEGAS (JOSÉ).

Contemporary. Genre painter, pupil of Mariano Fortuny, whose manner he follows. Studio in Rome.

68. SPANISH SCENE.

### JOHNSON (EASTMAN), N.A.

Born in Lovell, Me. Genre and portrait painter. Studied in Düsseldorf 1849-51; later studied in Italy, Paris, Holland, and four years at The Hague. His most popular works are those depicting American life, many of which have been engraved and lithographed. Elected N.A. in 1860.

69. THE PICTURES.

BRIAS (C.).

70. THE SPORTSMAN.

CHAPLIN (CHARLES JOSHUA). Paris.

Born at Andelys, 1825. Pupil of Drolling. Legion of Honor, 1865. Officer of Legion of Honor, 1877.

71. THE DOVE.

HEILIGERS (A.).

72. DUTCH INTERIOR.

IRVING (J. BEAUFAIN), N.A.

Born, Charleston, S. C., in 1826, died in 1877. Genre painter. In 1851, studied with Lentze in Düsseldorf, and after painting there several years, lived in Charleston, until he finally settled in New York, about 1865. Elected an A.N.A. in 1869, and N.A. in 1872.

73. THE WINE TASTERS.

MESGRIGNEY (F. DE).

74. ON THE SEINE.

CAPOBIANCHI (V.).

75. THE SLIPPER SHOP.

HENNER (JEAN JACQUES). Paris.

Born in Alsace, 1829. Pupil of Drolling and Picot. Prix de Rome, 1858. Legion of Honor, 1873.

76. NYMPH.

JACQUE (CHARLES ÉMILE). Paris.

Born in Paris, 1813. Has a widely extended and well-earned reputation, both in this country and abroad, as an animal and landscape painter, engraver, and etcher. Legion of Honor, 1867.

77. THE FLOCK.

## BONHEUR (MARIE ROSA).

Born in Bordeaux, 1822. Daughter and pupil of Raymond Bonheur; began by copying in the Louvre. Her first two pictures, exhibited at Bordeaux in 1841, attracted much attention and were followed by others, which established her world-wide fame. During the Franco-Prussian war her studio and residence were respected by special order of the Crown Prince of Prussia. Elected member of Antwerp Institute in 1868. Medals: 3d class, 1845; 1st class, 1848, 1855; 2d class, 1867; Legion of Honor, 1865; Leopold Cross, 1880; Commander's Cross of Royal Order of Isabella the Catholic, 1880.

## 78. RENDEZVOUS DE CHASSE.

## DELESSARD (A.).

## 79. RABBITS.

## TROYON (CONSTANT).

## 80. THE WATER CART.

## GEYER (PROF. JOHANN).

Born at Augsburg, Jan. 1, 1807; died there, Nov. 26, 1875. Genre painter, pupil of Augsburg Art School and of Munich Academy under Clemens Zimmermann. Visited France and Belgium, and was, from 1833 until 1865, professor at the Polytechnic School in Augsburg. Treated rococo genre scenes with exquisite humor.

## 81. BARON MUNCHAUSEN.

## WILLEMS (FLORENT).

Genre painter. Born at Liège, Jan. 8, 1823. Pupil of Mechlin Academy; studied especially the old Dutch masters, and attracted attention as early as 1840; the great success of his picture, exhibited in Paris in 1844, induced him to settle there. Medals: Paris, 3d class, 1844; 2d class, 1846; 1st class, 1855, 1867, 1878. Legion of Honor, 1853; Officer, 1864; Commander, 1878. Officer of Order of Leopold, 1851.

## 82. THE ARTIST.

DETAILLE (J. B. ÉDOUARD).

83. SOUVENIR DES GRANDES MANŒUVRES.

DELESSARD (A.).

84. CHICKENS.

HÉBERT (ANTOINE-AUGUSTE-ERNEST). Paris.

Born at Grenoble, 1817. Pupil of David d'Angers and Delaroche. Prix de Rome, 1839. Made member of the Institute and Commander of the Legion of Honor in 1874. Painted genre subjects in a sentimental but practical style.

85. THE SAYOYARD.

WINTER (LOUIS DE).

Born at Antwerp, March 23, 1819. Landscape and marine painter, pupil at Antwerp Academy. Gold medal, Brussels, 1854. Order of Leopold, 1861.

86. COAST VIEW.

MARCKE (ÉMILE VAN).

Landscape and animal painter, pupil of Troyon. Born at Sèvres, August 20, 1827. Medals: 1867, 1869, and 1870; 1st class, 1878; Legion of Honor, 1872.

87. LANDSCAPE WITH CATTLE.

TAIT (ARTHUR FITZWILLIAM), N. A.

Was born at Livesey Hall, near Liverpool, Aug. 5, 1819. Landscape and animal painter, pupil of Royal Institution, Manchester, but chiefly self-taught. Went to New York in 1850, and was elected N. A. in 1858; visited Europe in 1874. Studio in New York City.

88. PARTRIDGES.

MEYER (J. H. LOUIS).

89. LAKE OF GALILEE.

## ROBBE (LOUIS).

Born at Courtray, Nov. 17, 1806. Animal and landscape painter, self-taught, studying from nature since 1833; settled at Courtray in 1830, and in Brussels in 1840. Medals at Brussels 1839-42; Paris 3d class, 1844; 2d class, 1855. Legion of Honor, 1845. Order of Leopold, 1843; Officer, 1863. Spanish Order of Charles III., 1844; Member of Amsterdam Academy, 1855. Studio in Brussels.

59 90. LANDSCAPE WITH SHEEP.

## DELESSARD (A.).

91. DUCKS.

## BECKER (ERNEST ALBERT).

Born in Berlin, Oct. 22, 1830. From his skill as a cattle painter was surnamed Kuh-Becker (Cow-Becker) which he accepted by signing his pictures "2. Becker."

92. PEASANT WOMAN OF WURTEMBERG.

## MEYERHEIM (FRIEDERICH ÉDOUARD).

Born in Dantzic, 1808. Pupil of his father and the Berlin Academy. Member of Berlin Academy, 1836. Professor, 1855. Order St. Michael, 1859. Medals, 1848, 1850, 1855. Died in 1879. His two sons are living German painters of distinction.

93. DINNER TIME.

## SCHELFHOUT (ANDREAS).

Landscape painter, born at The Hague, February 16, 1787, died there, April 19, 1870. Pupil of Breckenheimer, and one of the most prolific modern masters. Member of Amsterdam, Brussels, Ghent, and Hague Academies. Order of Lion, 1839; Order of Leopold, 1845; medals at Antwerp, Brussels, Ghent, and The Hague.

94. ICE SCENE WITH SKATERS.

## ST. JEAN (SIMON).

Flower painter. Pupil of the school at Lyons and of Augustin Thierriat. Born in Lyons, October 13, 1808; died at Écully, July 3,

1860. Justly called the modern Van Huysum, whom he approaches in detail and color, though hardly his equal in selection of material and play of light. Medals: 3d class, 1834; 2d class, 1841, 1855; Legion of Honor, 1843.

95. FRUITS AND FLOWERS.

RIEDEL (AUGUST).

Was born at Baireuth, December 27, 1802, died in Rome, August 8, 1883. Genre and portrait painter, pupil of Munich Academy under Peter von Lauger; went in 1828 to Rome, where he adopted a manner differing widely from the academic style, and excelling in brilliancy of coloring, which made his pictures very popular. Was member of and professor in Accademia di S. Luca in Rome, member of Berlin, Munich, Vienna, and St. Petersburg Academies.

96. ITALIAN PEASANT GIRL.

HOVE (HÜBERTUS VAN).

Was born at The Hague in 1814, died at Antwerp in 1865. Architecture and landscape painter; son and pupil of B. J. Van Hove, and pupil of Hendrick Van de Sande Backhuyzen; settled at Antwerp. Gold medal 1852; Order of Leopold, 1857.

97. FLEMISH TAVERN.

CASANOVA (ANTONIO).

Born at Tortosa, Spain. Pupil of Claudio Lorenzale at Barcelona and at the Madrid Academy under Frederico de Madrazo; then studied at Rome and finally in Paris. Historical and genre painter, the latter winning him fame and fortune, choosing themes inspired with a sly drollery, which he executes in a sympathetic spirit.

98. THE MONK DENTIST.

TRAYER (JEAN BAPTISTE JULES).

Born in Paris in 1824. Genre painter, pupil of his father and Legnien. Paints family scenes in which the heads are of superior merit. Medals: 3d class, 1853, 1855.

99. MORNING HOURS.



## FAIVRE (TONY).

Born at Besançon, May 24, 1830. Genre, portrait, and decorative painter, pupil of Picot. Medal 1864.

## 100. GOING TO PROMENADE.

## BOUGHTON (GEORGE H.), N. A.

Born in England 1834. Family removed to Albany, N. Y., in 1837. Sold one of his earliest works to the American Art Union in 1853. Went to Paris in 1859, and to London in 1861, where he has since resided. Elected National Academician 1871. Associate of the Royal Academy 1879.

## 101. DISMAL SWAMP.

## DE HAAS (M. F. H.), N. A.

Born at Rotterdam, 1832. Pupil of the Academy at Rotterdam, and of Louis Meyer at The Hague, whom he after assisted in his work. Mr. Belmont was a frequent visitor at this master's studio and became much interested in young de Haas urging him to come to America. The artist was, however, more attracted by a position in the Dutch navy at the time, but was afterward induced to give this up and come to New York by letters from Mr. Belmont who was largely instrumental in establishing his American reputation. Appointed Artist to the Dutch Navy in 1857. Elected Associate of the National Academy of Design in 1859, and Academician in 1857.

## 102. THE SHIPWRECK.

## SCHELFHOUT (ANDREAS).

## 103. WINTER SCENE IN HOLLAND.

## MEYER (J. H. LOUIS).

## 104. MOONLIGHT.

## JACQUET (JEAN GUSTAVE).

Born at Paris 1846. Pupil of Bouguereau. Portrait and genre painter. Legion of Honor, 1879.

## 105. RETURN FROM MARKET.

## TIDEMAND (ADOLF).

Was born at Mandal, Norway, Aug. 14, 1814; died in Christiania, Aug. 25, 1876. Genre painter, pupil in 1832-37 of Copenhagen Academy under Hildebrandt and Schadow; went in 1842 to Munich, thence to Rome, and returned during the same year to Norway, where he executed several orders from the King, and painted portraits for the University of Christiania; in 1846-48 he lived again in Düsseldorf, where he settled permanently in 1849, spending the summer months usually in Norway. Contributed essentially by his excellent works to the fame of the Düsseldorf school, and was made professor. Member of Christiania, Stockholm, Copenhagen, Berlin, Dresden, Vienna, Amsterdam, and Rotterdam Academies. Medals in Berlin, 1848; Paris, 1855; Besançon; Vienna, 1873, etc. Swedish Order of Vasa; Norwegian Order of Olaf; Prussian Order of Red Eagle: Legion of Honor.

## 106. GRANDMOTHER'S STORY.

## DILLENS (ADOLF.)

Born at Ghent, January 2, 1821; died there in January, 1877. History and genre painter, brother and pupil of Hendrik D.; first works were historical, but later exhibited pictures illustrative of Zealand peasant life. Medals: Brussels, 1848, 1850, 1854; Paris, 3d class, 1855; Order of Leopold, 1862; member of Amsterdam Academy 1866.

## 107. PAYING TOLL.

## GUILLEMIN (ALEXANDRE MARIE).

Born in Paris, 1817; died in 1880. Pupil of Gros. Painted genre subjects in Brittany and the Pyrenees; also hunting pieces. Legion of Honor, 1861.

## 109. THE MISER.

## BONNAT (LÉON JOSEPH FLORENTIN).

Born at Bayonne, 1833. Genre and portrait painter. Pupil in Madrid of F. de Madrazo, and in Paris of Léon Cogniet. Second Grand Prix 1858. Medals 1861, 1863, 1869; of Honor 1869. Legion of Honor 1867; Officer, 1874; Commander, 1882.

## 110. ITALIAN GIRL.

## GELLI (F.).

## 111. PISTOL PRACTICE.

## NORTH GALLERY.

112 TO 143 INCLUSIVE.

GRISON (—).

112. THE BRIDE'S DOOR, STRASBURG  
CATHEDRAL.

DELACROIX (EUGÈNE).

113. THE TRIUMPH OF HERCULES (ARIS-  
TOTLE).

114. THE TRIUMPH OF HERCULES (CICERO).

Sketches for his decoration of the Hotel de Ville, destroyed by fire  
in the last Paris Commune.

Lent by Mrs. Wm. T. Blodgett.

DIAZ (NARCISO VIRGILIO DE LA PEÑA).

115. DIANA SETTING OUT FOR THE CHASE.  
From the Secretan collection.

Lent by Mr. C. P. Huntington.

KNAUS (PROFESSOR LUDWIG).

116. CHARITY.

Lent by Mr. C. P. Huntington.

DROUAIS (GERMAIN JEAN).

117. CHILD AND DOG.

Lent by Mrs. Wm. T. Blodgett.

ROUSSEAU (PIERRE ÉTIENNE THÉODORE).

118. FONTAINEBLEAU—AUTUMN.

Lent by Mrs. Wm. T. Blodgett.

DEMONT (ADRIEN).

119. LANDSCAPE AT COURRIERS.

Lent by Mr. Samuel P. Avery.

LELY (SIR PETER).

120. JENNIE DEERING,

A friend of the Wharton family. From the Cholmondeley Collection.

Lent by Mr. C. Vanderbilt.

ALLSTON (WASHINGTON), A.R.A.

Born at Waccamaw, S. C., Nov. 5, 1779. History and portrait painter. Graduated from Harvard in 1800, and in 1801 entered the schools of the Royal Academy, London, of which his countryman, Benjamin West, was then president. In 1818 he was elected an Associate of the Royal Academy, and in the same year returned to America, residing in Boston. He died at Cambridgeport, Mass., July 9, 1843.

121. THE LIBERATION OF ST. PETER BY  
THE ANGEL.

Lent by Mr. C. Vanderbilt.

PALIZZI (GIUSEPPE).

122. LANDSCAPE WITH CATTLE.

From the Belmont Collection.

SANDRAERT (JOACHIM DE).

123. PORTRAIT OF THE ARTIST.

Lent by Mr. Wm. Loring Andrews.

## LELY (SIR PETER).

Born at Soest in 1617; died in London, November 30, 1680. Flemish school; portrait painter, pupil of Pieter de Grebber in Haarlem, but on coming to England with William of Orange in 1643, he so closely studied the manner of Van Dyck, who had just died, that his earlier portraits often approach the great master's style. For thirty years he was the most popular portrait painter in England.

## 124. ANN LEE, MARCHIONESS OF WHARTON,

daughter of Sir Henry Lee. She was an accomplished authoress, and died in 1685.

From the Cholmondeley Collection. Lent by Mr. C. Vanderbilt.

## FROMENTIN (EUGÈNE).

125. MEETING OF ARAB TRIBES IN THE  
DESERT.

Lent by Mrs. Wm. T. Blodgett.

## VAN GOYEN (JAN).

## 126. LANDSCAPE; HOLLAND.

Lent by Mr. Wm. Loring Andrews.

## GREUZE (JEAN BAPTISTE).

Born at Tournus, August 21, 1725, died in Paris, March 21, 1805. French school; genre and portrait painter. Pupil in Lyons of Grandor, and in Paris of the Academy in 1755.

## 127. PORTRAIT OF A BOY.

From the Demidoff Collection, 1880. Lent by Mr. C. Vanderbilt.

## STUART (GILBERT).

## 128. DANIEL DENISON ROGERS, ESQ.

Lent by Mr. John Rogers, N. A.

## LAWRENCE (SIR THOMAS), R. A.

## 129. PORTRAIT OF CAROLINE FRY.

Lent by Mr. Joseph P. Howard.

## STUART (GILBERT).

Born in Narragansett, R. I., December 3, 1755. After some unaided efforts, he received instruction from Cosmo Alexander, whom he accompanied to Scotland in 1772. The death of his master left him to shift for himself, and after struggling awhile at the University of Glasgow, he returned home. In 1775 he went to England and found a friend and master in Benjamin West, who employed him as an assistant. In 1785 he opened a studio of his own with great success. In 1792 he returned to America. After working two years in New York, Philadelphia, and Washington, Stuart settled in Boston, where he resided until his death, July 27, 1828. His portraits show great insight into character, and are remarkable for their simplicity of means. Among the best are those of *Washington*, of whom Stuart was the painter par excellence.

## 130. PORTRAIT OF JAMES HEATH, A.E.

English line engraver. Born 1757; died 1834. [He engraved and published (1800) the engraving of Stuart's full length of Washington painted for the Marquis of Lansdowne.] Painted at London about 1789.

Lent by Mr. Samuel P. Avery.

## 131. PORTRAIT OF WASHINGTON. (Known as the Gibbs-Channing portrait.)

Painted in 1795. This is the representative picture of Washington's first sitting to Stuart in September, 1795. This originated the first type of the Washington painting by Stuart showing the *right* side of the face—three other pictures only belong to this type,—and is different from the much-copied portrait known as the "Athenæum" one (now in the Boston Museum of Fine Arts), the result of the second sitting in 1796. That, as is well known, shows the *left* side of the face; and the chief criticism passed upon it has always been the constraint about the mouth, due to ill-fitting dental plates. Unlike the Athenæum portrait, this is complete as to the body and background. The Gibbs Washington was sold by Stuart at an early date to his warm personal friend, Colonel George Gibbs, then of New York, with the statement that it was on the easel while Washington was sitting and worked upon from life. At a later period it was transferred to his sister, the wife of the Rev. William Ellery Channing, and from her it descended to her son, Dr. William F. Channing; thus the picture had never been out of the possession of the Gibbs-



seven colorists of the world," placing him with Titian, Giorgione, Correggio, Tintoretto, Veronese, and Turner.

*Very important*  
134. ELIZABETH SEYMOUR, COUNTESS OF NORTHUMBERLAND.

Married Hugh Smithson, Duke of Northumberland, in 1740, and died December 5, 1776. She was the daughter of Algernon, Duke of Somerset.

Lent by Mr. Henry G. Marquand.

GAINSBOROUGH (THOMAS), R.A.

*at the L*  
135. PORTRAIT OF DAVID GARRICK.

Lent by Mr. Joseph P. Howard.

HOPPNER (JOHN), R.A.

*See p.*  
136. HEBE.

Lent by Mr. Joseph P. Howard.

ROMNEY (GEORGE).

*L. B. B.*  
137. THE SHY CHILD.

Lent by Mr. Henry G. Marquand.

WALKER (ROBERT).

An English portrait painter of great merit under the Commonwealth. An imitator of Van Dyck; he painted the Protector, Admiral Blake, Sir Thomas Browne, and other notables, and is known as "Cromwell's portrait painter." His works are in the principal English galleries. He died in 1658.

*John*  
138. IRETON (GENERAL HENRY).

Born near Nottingham, 1611; married Cromwell's daughter, Bridget; commanded the left wing at the battle of Naseby; wounded and made prisoner. Accompanied Cromwell to Ireland, 1649; he crowned his military career by the taking of Limerick, where he died of the pestilence in 1651.

Lent by Mr. Samuel P. Avery.



## ROMNEY (GEORGE).

Born at Dalton-le-Furness, England, December 15, 1734. Died at Kendal, November 15, 1802. He established himself in London in 1775, where, until 1797, when he removed to Hampstead, he divided public patronage as a portrait painter with Reynolds and Gainsborough.

139. MRS. WELLS, *NÉE* MARY DAVIES.

Born about 1750. Married Wells, an actor, in Shrewsbury; he deserted her. Confined in the Fleet prison, she met a Jew foreigner named Tumball, became a Jewess, and ever after used his name.

Lent by Mr. Henry G. Marquand. *Byington - 1870*

## HOPPNER (JOHN), R.A.

## 140. LADY ALMERIA CARPENTER.

Sir Joshua Reynolds also painted her in 1769. *Jan. 1871 - 18*

Lent by Mr. Henry G. Marquand. *1880*

## DIETERICY (CHRISTIAN WILHELM).

141. NYMPH BATHING. *Not found*

Lent by Mr. Wm. Loring Andrews.

## HOPPNER (JOHN), R.A.

## 142. PERCY BYSSHE SHELLEY, as a youth.

Lent by Mr. Henry G. Marquand. *1870*

## GAINSBOROUGH (THOMAS), R.A.

143. PORTRAIT OF MRS. THRALE. *Not found*

Lent by Mr. Joseph P. Howard. *1870*

EAST GALLERY

NO. 144 TO 173 INCLUSIVE.

VAN GOYEN (JAN).

144. DUTCH TOWN. (1645)

Lent by Mr. Samuel P. Avery.

GUILLEMIN (ALEXANDRE MARIE).

145. THE BIRD CAGE.

LE BRUN (MADAME VIGÈE).

Born in Paris, April 16, 1755, died there in March 30, 1842. French school; portrait, history, and landscape painter. Taught drawing by her father and by Briard, painting by Doyen and Joseph Vernet, and at the age of 16 had painted many portraits. In 1783 she was made a member of the French Academy.

146. PORTRAIT OF MADAME DE POLIQUAC.

Lent by Mrs. Wm. T. Blodgett.

SEIGNAC.

147. THE YOUNG COOK.

DIAZ (NARCISO).

148. FIDELITY.

ACHENBACH (ANDREAS).

149. OFF OSTEND.

TASSAERT (OCTAVE).

150. POVERTY.

LEROLLE (HENRY).

151. THE END OF THE DAY.

Lent by Dr. G. H. Wynkoop.

TWIBILL (GEORGE W.), N.A.

152. COL. JOHN TRUMBULL.

FLAMM (ALBERT).

153. ROMAN CAMPAGNA.

BOUGHTON (GEORGE H.), N.A.

154. WANDERING THOUGHTS.

WEST (BENJAMIN).

155. DEATH OF GEN'L WOLFE.

Lent by Mr. Wm. Loring Andrews.

FRÈRE (PIERRE EDOUARD).

156. FINISHING THE MEAL.

RAPHAEL.

157. HEAD OF MADONNA.

GUILLEMIN (ALEXANDRE MARIE).

158. THE PET CHILD.

JACOMIN (M. F.).

159. FOREST OF MARLY.

Lent by Mr. Samuel P. Avery.

GIFFORD (SANDFORD R.), N.A.

160. MT. MANSFIELD.

KENSETT (J. F.), N.A.

161. GLIMPSE THROUGH THE WOOD.

LAMENIAS (—).

162. PULL UP THE HILL.

DELACROIX (EUGÉNE).

163. THE TRIUMPH OF HERCULES (JUPITER).

Sketch for his decoration of Hotel de Ville.

Lent by Mrs. Wm. T. Blodgett.

LENBACH (FRANZ).

164. PORTRAIT.

Lent by Mr. J. C. Nicoll.

JUNGLING (FRED.).

165. THOUGHTS OF FAR AWAY.

Lent by Mr. J. C. Nicoll.

VAN RUYSDAEL (JACOB).

166. LANDSCAPE.

Lent by Mr. James W. Gerard.

LAMBINET (ÉMILE).

167. LANDSCAPE.

PEELE (JOHN T.), A.N.A.

168. THE PET.

NOEL (JULES).

169. COAST SCENE.

LEMMENS (E.).

170. BARNYARD.

JACQUET (JEAN GUSTAVE).

171. THE RED PLUME.

LAMBINET (ÉMILE).

172. THE VILLAGE.

*Jan Ry - Ua*

DUVERGER (THÉOPHILE EMMANUEL).

173. THE MUSIC LESSON.

## CORRIDOR.

### TAPESTRIES, RUGS, INLAID WOODS.

NO. 1 TO NO. 24 INCLUSIVE.

1. CHINESE IMPERIAL BANNER carried in procession on State occasions.
2. Spanish silk tapestry.  
Lent by Mr. Henry G. Marquand.

NO. 3 TO NO. 10 INCLUSIVE,

#### Indian inlaid panels.

Lent by Mr. Lockwood de Forest.

11. Embroidered Persian prayer rug.  
Lent by Mr. Samuel P. Avery.
12. Portuguese tapestry. Mythological subject.
13. Genoese velvet. XVII. Century.  
Lent by Mr. Henry G. Marquand.
14. Persian rug.
15. Japanese gown.
16. Old Italian velvet.

17. Japanese actor's gown.
18. Indian embroidered cover.
19. Indian embroidery.  
Lent by Mr. Louis C. Tiffany.
20. Turkish embroidery in gold and braid.  
Lent by Mr. Samuel P. Avery.
21. Landscape (tapestry).  
Lent by Mr. Henry G. Marquand.
22. Persian silk carpet. XVI. Century.  
Lent by Mr. Henry G. Marquand.
23. Cybele and Triptolemus.  
Lent by Mr. Henry G. Marquand.
24. Persian needlework on silk.  
Lent by Mr. Samuel P. Avery.

Nine large bronze pieces in Corridor and Land-  
ing.

Lent by Mr. Heber R. Bishop.

PORCELAINS, BRONZES, CLOISONNÉS,  
GREEK ART OBJECTS, ETC.

SOUTH GALLERY.

CASES A, B, C, D, E, F, G.

OLD DECORATED CHINESE PORCELAINS.

Case A is filled with varieties of the rare black hawthorn pattern. The rose family has splendid representation in Case B. In Case C beautiful egg-shell lanterns and roseback plates may be viewed. Case D protects three notable blue and white hawthorn ginger jars and four tall tiger-lily vases; Case E, a famous lot of hard paste blue and white vases. Case F contains a rare gathering of powder blue specimens, and Case G a group of famille verte pieces of early origin. Mr. Garland's contributions cover the fifteenth, sixteenth, seventeenth, and eighteenth centuries, and afford an opportunity of study such as has never before been offered in this country.

Loaned by James A. Garland, Esq.



## EAST GALLERY.

## CASES H, I, &amp; J.

OLD CHINESE SINGLE COLOR AND SOFT  
PASTE BLUE AND WHITE PORCELAINS.

FROM XIV. TO XVIII. CENTURIES INCLUSIVE.

Case H contains a remarkable lot of blue and white soft paste and egg-shell porcelains made during the sixteenth, seventeenth, and eighteenth centuries. Each object is of exceptional quality, many are unique. A selection of rare old single-color pieces may be viewed in Case I; and Case J is filled with a superb collection of red glazes and the famous peach-bloom tints. Some most valuable pieces are here displayed. Descriptive cards will be found in the cabinets.

Loaned by Henry Sampson, Esq.

## CORRIDOR.

### CABINET K.

A collection of books, bound in silver and silver-gilt covers, repoussé, chased, or engraved. Executed by French, German, and Italian artists of the seventeenth and eighteenth centuries. The books are mainly of a devotional character, and printed in the German and French languages. Books so bound were prized as heir-looms, and often the covers served for different contents, as abuse or caprice dictated; often destroyed for the value of the metal. Such examples have become exceedingly rare. The obverse sides are generally of a different design from that of the front.

Loaned by Samuel P. Avery.

## NORTH GALLERY.

Loaned by Samuel P. Avery.

## CASE L.

## CLOISONNE AND OTHER ENAMELS.

It has been thought that the word "enamel" was originally derived from the Hebrew expression of "Haschmal," used by the prophet Ezekiel, but perhaps he meant thereby to designate a metal. The low Latins write it "smaltum," the Italians "smalto," the Germans "smeltzen," and the French "émail," which is the same as the English "enamel." This is all that even the most learned in such matters have yet been able to discover on the subject. What workman was the first to use enamel? and in what century did he live? The answers to these questions are scarcely better ascertained.

Enamel is actually glass more or less colored with metallic oxides, either opaque or transparent, which, after a considerable amount of baking, absolutely adheres to the metallic plate, be it copper, iron, or glass on which it is placed.

But as there is a vast difference in its various applications, they have been classed into sections, namely, "cloisonné and champlevé enamels"; in cloisonné, or walled enamels, the designs are made by soldering edgewise upon a metal surface movable

cloisonnés or partitions, and so projecting as to form a multitude of cells in which the enamel pastes of various colors are placed, and, after being vitrified by repeated firings, are finally ground and polished to a smooth surface. In *champlevé*, or encrusted enamels, the metal base required to form the design is hollowed out, leaving the divisions in relief, and the pastes are filled in these divisions.

Translucent enamels are those in which the designs are engraved upon metal grounds, and afterwards covered with transparent enamel, through which the patterns may be seen. In painted enamels, the enamel is spread over the surface, and treated in the same way as porcelain or glass, the designs being painted in enamel colors with a brush at the whim and fancy of the artist.

Everything goes to prove that the cloisonné enamels are the oldest, and that they are of Oriental origin. The *Champlevé* embossed enamels are only a new development of the same, introduced into Europe in the eleventh century. The art of enamelling upon copper is of great antiquity; the earliest specimens existing are those which have been found with the mummies in Egypt. The Greeks and Etruscans were cognizant of enamel, even of that which was termed painter's enamel. The art was undoubtedly practised in China in very early times, and introduced into Europe in the middle ages no doubt by the desire to imitate pieces of cloisonné and other enamels which were imported from Persia, India, or China.

In Case L these fascinating branches of enamel art have a superb representation. The exhibit is composed mostly of Chinese cloisonné, dating from

perhaps the middle of the fifteenth century, to the Kien-long period, 1736 to 1795. The few pieces of Champlévé are Chinese and probably of the seventeenth century.

#### CASE M

is filled with fine old Chinese Cloisonné enamels, the property of George A. Baker, Esq. The objects shown in this case are from the famous Maignac sale, London, 1892.

#### CASES N AND O

contain distinguished examples of Chinese and Japanese metal-work. Iron and bronze are the metals used, and wonderful art objects have been produced. Large bronze incense burners and ornaments have been placed in the corridor for decoration. Descriptive cards will be found in the cabinets.

Loaned by Heber R. Bishop, Esq.

---

## WEST GALLERY.

The grand Terra Cotta Greek Vase in the centre of the gallery is known as the Capo di Monte Vase. Period, III. Century B.C.

#### CASE P

has been filled with perfect Greek vases, large and small, all of pure form and made in the best periods. Chosen from the private collection of Thomas B. Clarke.

## GREEK VASES.

It is not only the archæological student to-day who is interested in these subjects, for the recent development in art taste has led to the gathering of beautiful antiquities for household embellishment by many amateurs throughout this country. Ancient Greek vases of noble form and handsome decoration possess attractions because of their beauty of outline, and for the reason that they invite investigation of the great art epochs they represent. An opportunity is also afforded to compare the work of modern times with them. All specimens of Greek pottery are not beautiful, but in the collection made for this exhibition the uppermost idea has been to bring together veritable things that specially exemplify the beauty of form. The examples shown are classified as follows: Amphora, a receptacle for wine, oil, and honey. The Calpis and Hydria were used for holding water. The Oinochoe and Prochous were pitchers for pouring water. Wine and water were mixed in the Crater, Kelebe and Oxybaphon. The Aryballos and Lekythos held perfume and ointment, and the Kylix, Kantharos, and Scyphos were drinking vessels.

The remarkably perfect condition of the objects in this collection will be commented upon. Some vases were taken from the tombs just as they now appear. Others were wholly or partly covered with incrustation. When such deposit has hidden any part of the painting it has been removed by an acid bath and the original surface and drawing are revealed.

The miniature specimens in the cabinet are of unusual merit and rarity.

## CASE Q.

## TERRA COTTA STATUETTES AND GROUPS

FROM THE PRIVATE COLLECTION OF THOMAS B. CLARKE.

The art objects shown under this heading are the results of recent excavations in Greece and Asia Minor. The difficulty of getting rare antiquities from Greece to-day makes it impossible to indicate with absolute accuracy the location of the "finds." In Asia Minor the Turkish law forbids research and the exportation of antiquities. It is certain, however, that the Myrina district has furnished many groups. The first doubts about the integrity of the Asia Minor and Greek groups have now almost entirely ceased. The groups are made in moulds like the Tanagra figurines. As yet no duplicates have been found. The artist seems, even in groups of similar design, to have treated the figures and draperies differently in each composition. The original coloring and gilding have almost entirely disappeared and parts of the first coating of white alone hides the original tint of the clay.

The specimens shown are productions of artists of the third and fourth century B.C. Some figures and groups show the realistic side of life while others portray mythological ideas. The impression that these artistic objects produce is profound.

A few fine specimens of Greek and Roman glass may be viewed in this case.

---

NOTE.—American paintings may be viewed during the summer months at the Fifth Avenue Art Galleries, 366-368 Fifth Avenue, between 34th and 35th Streets. The Exhibition is given under the management of the Art House of Thomas B. Clarke.

"A highly informing book."—BROOKLYN TIMES.

## \* Art for Art's Sake \*

Seven University Lectures on the Technical Beauties of Painting. By JOHN C. VAN DYKE, L.H.D., Professor of the History of Art in Rutgers College. With 24 reproductions of Representative Paintings. 12mo. . . \$1.50

"Such a book has long been absolutely needed. Prof. Van Dyke has a full command of his subject and he makes every point clear. Surely every one will profit greatly by a perusal of this admirable volume."—*Boston Beacon*.

Sold by all booksellers, or sent, prepaid, by

**CHARLES SCRIBNER'S SONS, 743-745 Broadway, New York**

*N. Clark*

RESTAURATEUR,

22 West Twenty-third Street, opposite Fifth Avenue Hotel.

Banquet Hall Suitable for large Dinners, Receptions or Theatre Parties.  
Receptions, Luncheons, and Dinners Served at Private Residences.

## SUMMER NOVELS

### MARKED "PERSONAL."

By ANNA KATHARINE GREEN, author of "The Leavenworth Case." Fifth edition. Cloth, \$1.00; paper, 50 cents.

"The reader's interest in the exciting events is not allowed to flag for an instant. Mystery and tragedy are mixed with all the author's well-known ability and power."—*Philadelphia Record*.

### A CONFLICT OF EVIDENCE.

By R. OTTOLENGUI, author of "An Artist in Crime," etc. 16mo, paper, 50 cents; cloth, \$1.00.

### AN ARTIST IN CRIME

By R. OTTOLENGUI. 16mo, paper, 50 cents; cloth, \$1.00.

"One may safely say that it ranks with the best detective novels yet published in this country."—*Boston Times*

"An Artist in Crime" is the best detective story which has been published in several years."—*New Haven Palladium*.

### A LITERARY COURTSHIP

Under the Auspices of Pike's Peak. By ANNA FULLER, Author of "Pratt Portraits." 12mo, illustrated, \$1.00.

### PRATT PORTRAITS:

Sketched in a New England Suburb. By ANNA FULLER. Third edition. 16mo, \$1.00.

"One of the richest and most worthy contributions to American literature of the past decade. With a pen positively photographic this skilful writer has limned the portraits of this New England family, Pratt by name and so thoroughly New England by nature."—*Rochester Herald*.

\*\* Notes on New Books, a quarterly bulletin; prospectus of the Knickerbocker Nuggets, Heroes, and Story of the Nations Series, sent on application.

G. P. PUTNAM'S SONS

NEW YORK  
27 WEST TWENTY-THIRD STREET

LONDON  
24 BEDFORD STREET, STRAND.



# SCHAUS' ART GALLERY,

4 FIFTH AVENUE. . . . . MADISON SQUARE

---

The attention of Lovers of High Art is invited to our representative collection of

## OIL PAINTINGS.

BY MODERN ARTISTS OF THE FIRST ORDER.

## WATER-COLOR DRAWINGS

FROM NOTABLE STUDIOS.

A large assortment of the Best Remarque and Artists' Proofs.

## ETCHINGS AND ENGRAVINGS,

Including the latest Paris and London Publications.

---

# THE FIFTH AVENUE SAFE DEPOSIT CO.,

ENTRANCE THROUGH

Second National Bank, 190 Fifth Avenue,

COR. 23D STREET

The vaults of this Company are **ENTIRELY OUTSIDE** the building, and  
are absolutely

## FIRE AND BURGLAR PROOF.

**F. W. DEVÖE & CO.**

OFFICES: FULTON ST. COR. WILLIAM · NEW YORK

MANUFACTURERS OF

HOUSE PAINTERS' COLORS  
 COACH AND CAR COLORS  
 FINE VARNISHES  
 FRESCO COLORS · BRUSHES  
 ARTISTS' MATERIALS  
 ARCHITECTS' AND ENGINEERS SUPPLIES




CELEBRATED HATS,  
 AND  
 LADIES' ROUND HATS AND BONNETS,  
 AND THE DUNLAP SILK UMBRELLA.

178 & 180 FIFTH AVE., BET. 22D AND 23D STS., AND 181 BROADWAY,  
 NEAR CORTLANDT ST., NEW YORK; PALMER HOUSE,  
 CHICAGO; 914 CHESTNUT ST., PHILADELPHIA.

GOLD MEDAL AWARDED, PARIS EXPOSITION, 1889.

AGENCIES IN ALL PRINCIPAL CITIES.







