

Los Angeles
◦ ILLUSTRATED ◦

F

859

.L8-8

LIBRARY OF CONGRESS.

Chap. Copyright No.

Shelf

UNITED STATES OF AMERICA.

© © Los Angeles, ©

© Illustrated. ©

✱ IN ALBERTYPE.

9160

COPYRIGHT, 1889, by STOLL & THAYER,
47 S. Spring St., Los Angeles, Cal.

The Albertype Company, New York.

F

.18:8

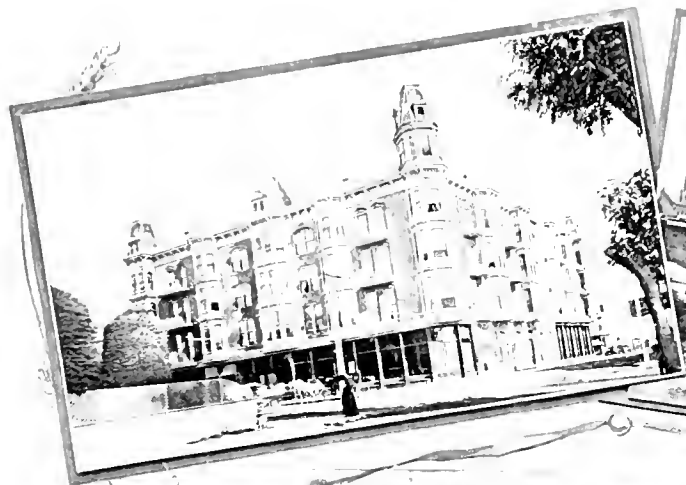
1/2 6-13



LOS ANGELES, LOOKING SOUTH EAST FROM FIRST STREET HILL.



LOS ANGELES, FROM FIRST STREET HILL.



WESTMINSTER HOTEL.

LEPPER TREE.

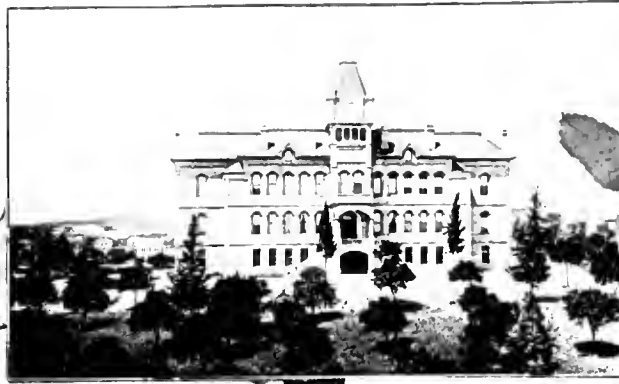
SADLER HOUSE.



BRYSON & BONEBRAKE BLOCK.



CALIFORNIA BANK BUILDING.



ST. VINCENT COLLEGE.

NORMAL SCHOOL.

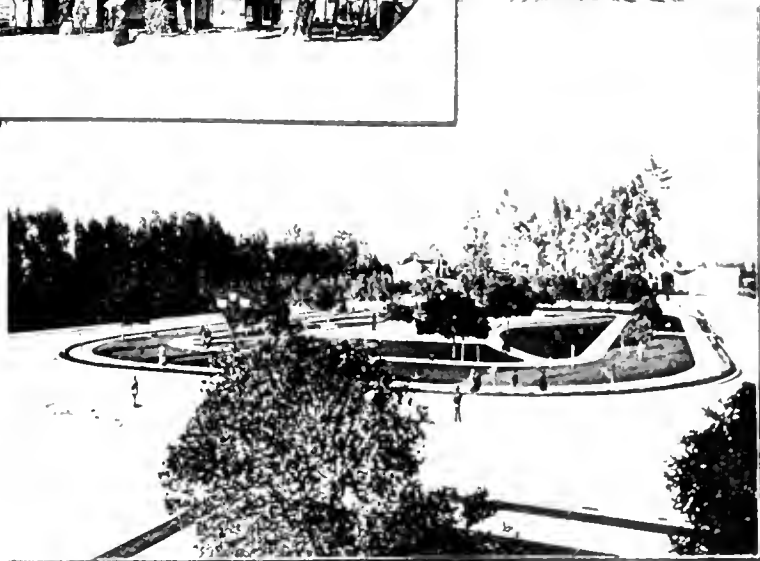
ELLIS COLLEGE.



CROCKER MANSION.



ADOBE HOUSE AND PEPPER TREES.



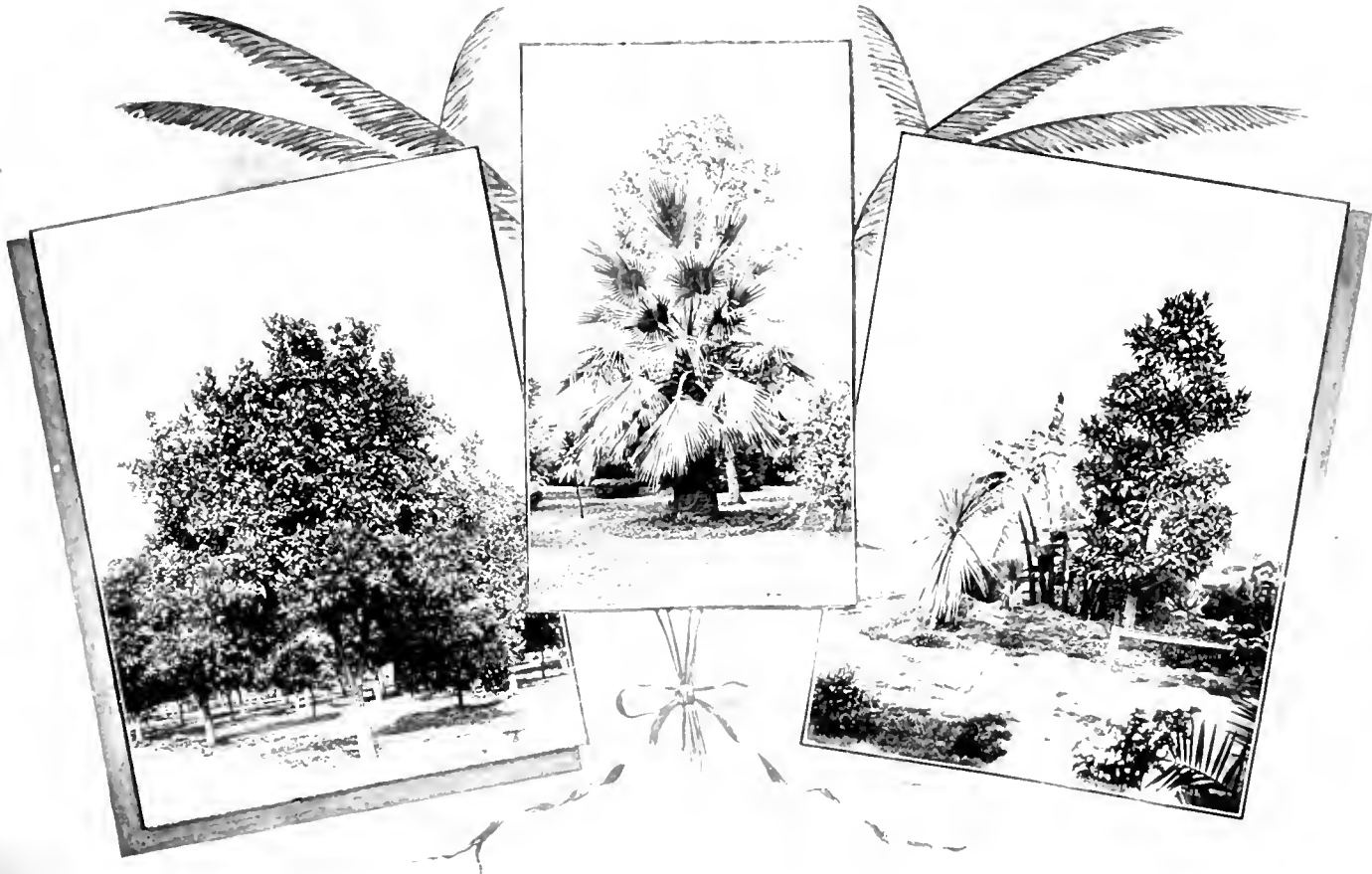
ST. JAMES PARK.



NEW COURT HOUSE.



CITY HALL.



ORANGE TREES IN BLOSSOM.

FAN PALM.

RUBBER TREE AND BANANA PLANT.



TIMES BUILDING.

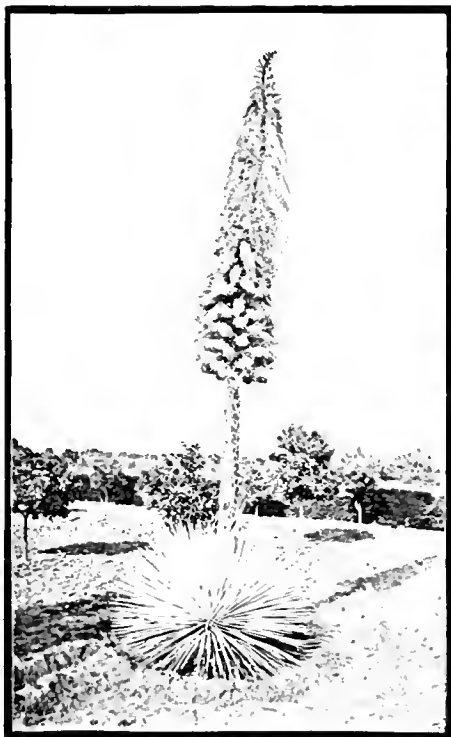


LOS ANGELES THEATRE.

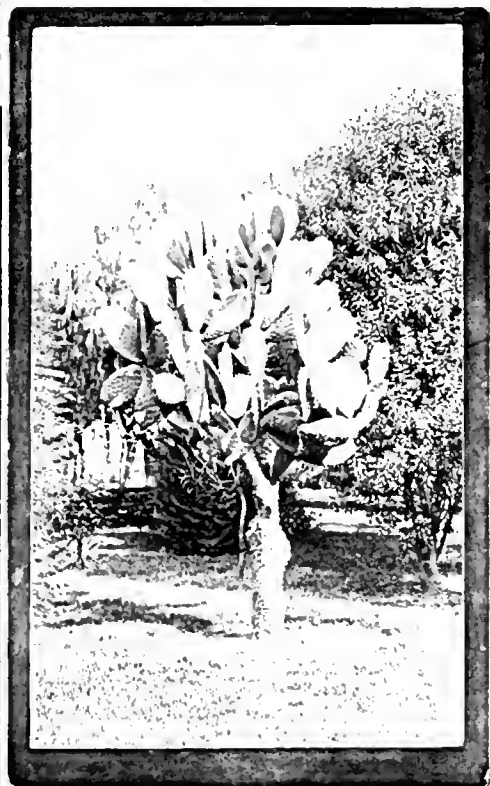


SOUTHERN PACIFIC DEPOT.

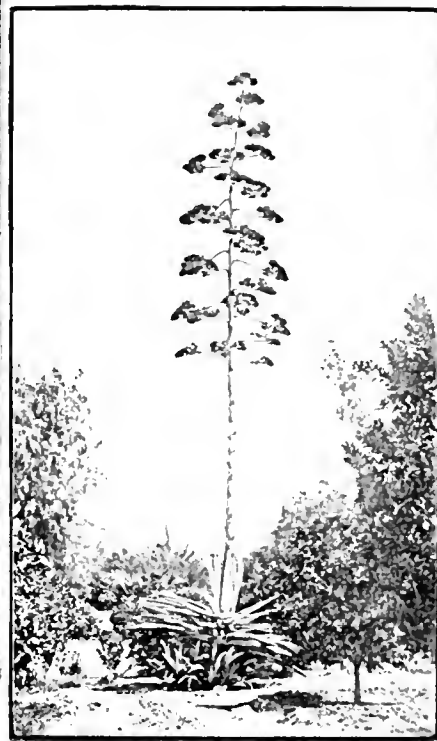




SPANISH BAYONET.



CACTUS

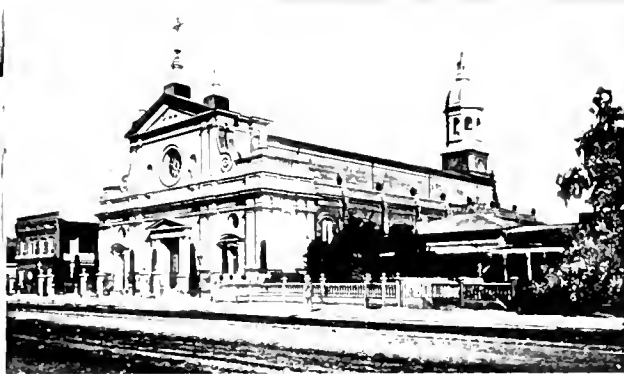


CENTURY PLANT IN BLOSSOM.



CHINESE QUARTER,
MAIN STREET, NORTH FROM TEMPLE BLOCK.

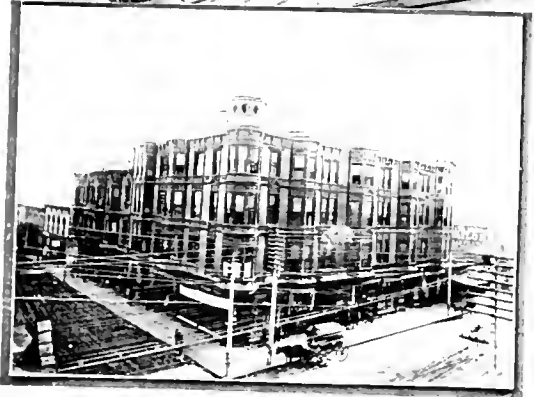
NORTH SPRING STREET,
HILL STREET, BETWEEN 7TH AND 8TH STREET.



FORK STREET METHODIST CHURCH.

ST. ATHANASIA CATHEDRAL,
SAN GABRIEL MISSION, ESTABLISHED 1774.

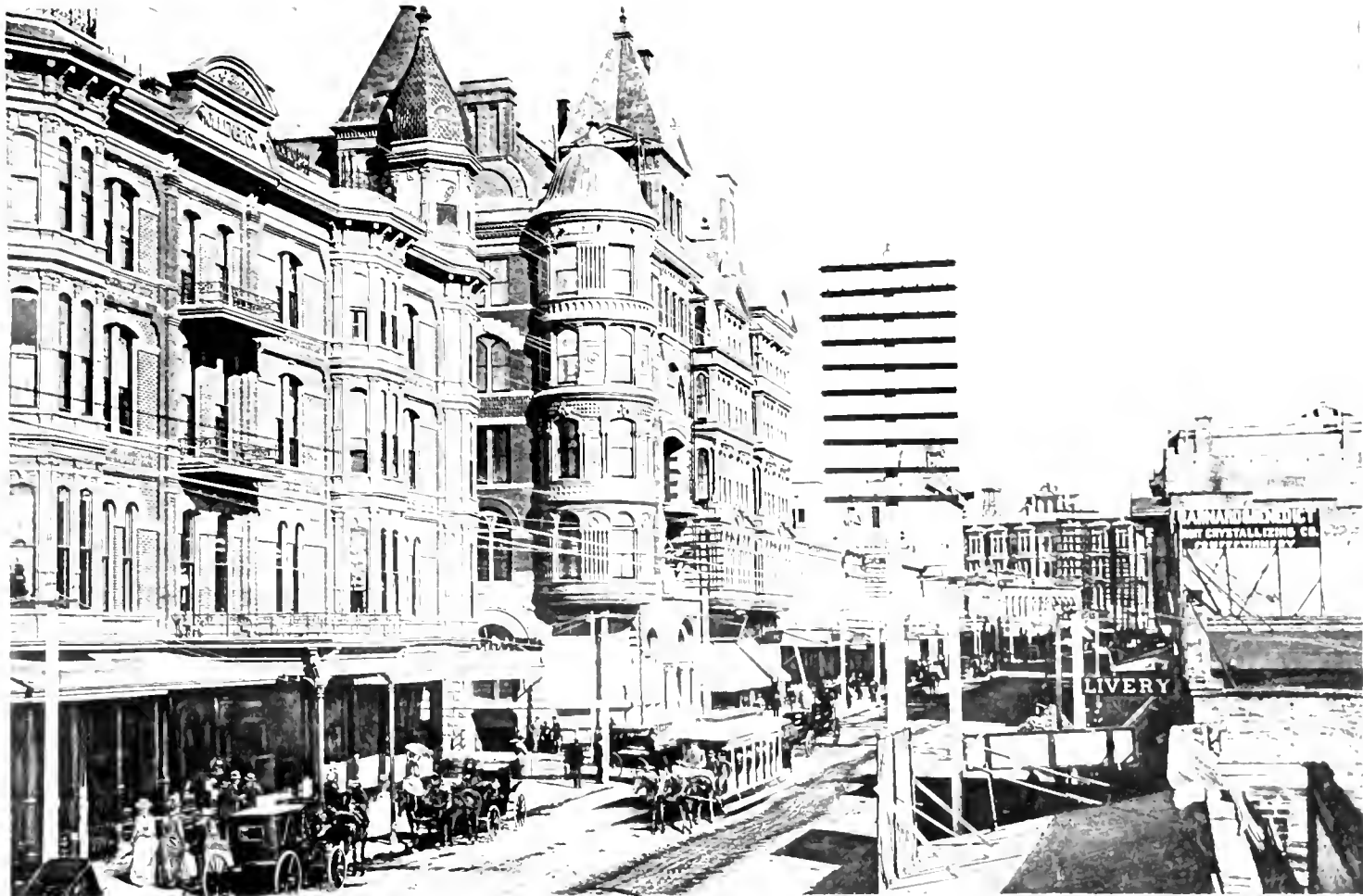
FIRST PRESBYTERIAN CHURCH.



NEW U. S. HOTEL,
WILSON BLOCK.

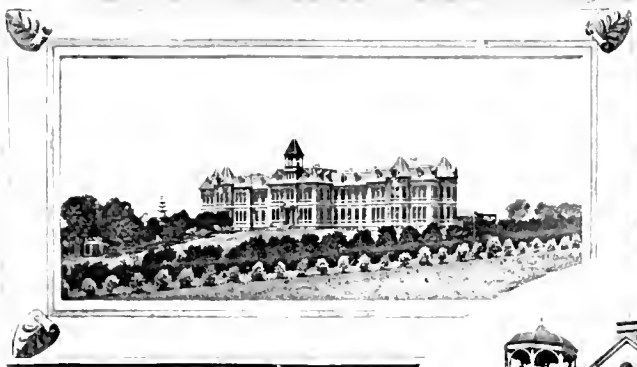
TEMPLE BLOCK,
YUCCA TREE.

LOS ANGELES NATIONAL BANK,
PHILLIPS'S BLOCK.



SOUTH SPRING STREET, LOOKING NORTH.





SISTERS' HOSPITAL
BAKER BLOCK.

MISSION LOS ANGELES, BUILT 1524.

EVERGREEN HOTEL,
MAIN AND TENTH STREET HOTEL.



LEMON TREE.



OSTRICH FARM,
OLD LAMBS OF SAN PEDRO STREET.



ORCHARD FARM.



BURRO.



DATR PALM.



VONBURG RESIDENCE, FIGUEROA STREET.



PALMS, FERNS AND CENTURY PLANTS.



TRINITY CATHOLIC CH.
BELLEVUE TERRACE.



TRINITY CATHOLIC CH.
V. M. C. A. BUILDING.



TRINITY CATHOLIC CH.
E. K. & D. E. HILL STREET.

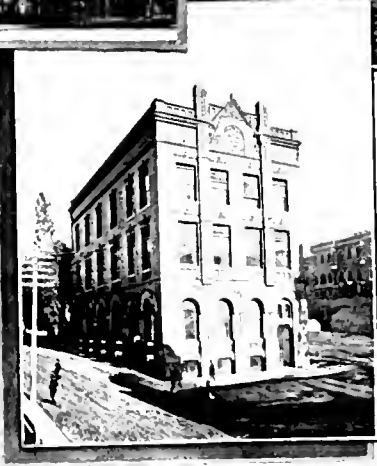




BELL TOWER—SAN GABRIEL MISSION,
ORANGE TREE, WITH FRUIT AND BLOSSOMS.

RESIDENCE OF S. TYLER.

RESIDENCE OF DR. MONROE, ADAMS STREET,
GARDEN ON THIRD STREET IN MIDWINTER.



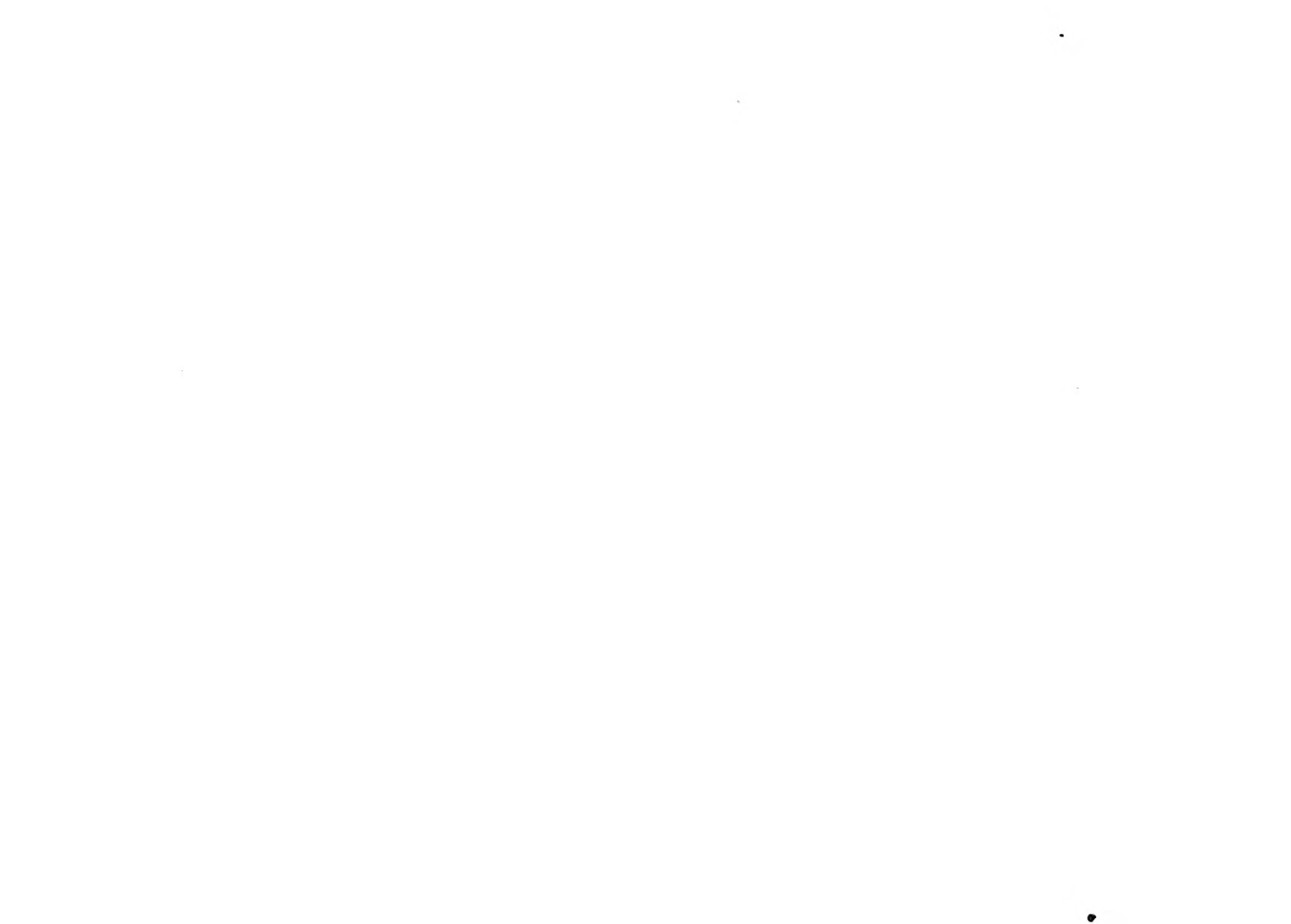
HOLLENBECK HOTEL.

EASTWOOD BUILDING.

CALLAHAN BUILDING.

EASTWOOD BUILDING.

ROSE.





OLIVE STREET RESIDENCE,
GARDEN GROUP IN WINTER.

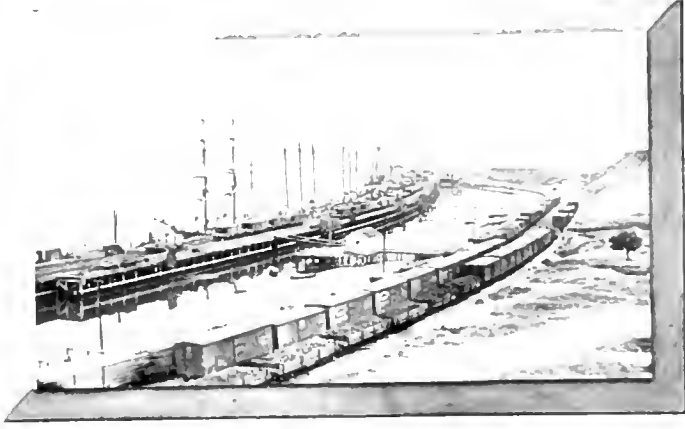


BRADBURY MAN, 1877.
MRS. BARCLAY'S COLLEGE, SEASIDE STREET,
LA MAR, CALIF., 1884.



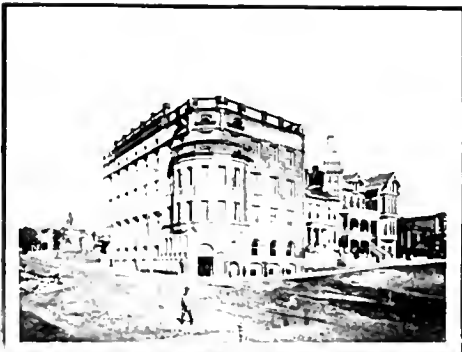
HOTEL DU PARC,
THE SALLE AU VANDERBILT, CALIF., 1884.





OSTICH FARM—KENTWOOD, O.
FROM BUNKER HILL, LOOKING NORTH EAST.

SIXTH STREET PARK,
SAN PEDRO HARBOR.



UNIVERSITY OF SOUTHERN CALIFORNIA,
LOS ANGELES RIVER.

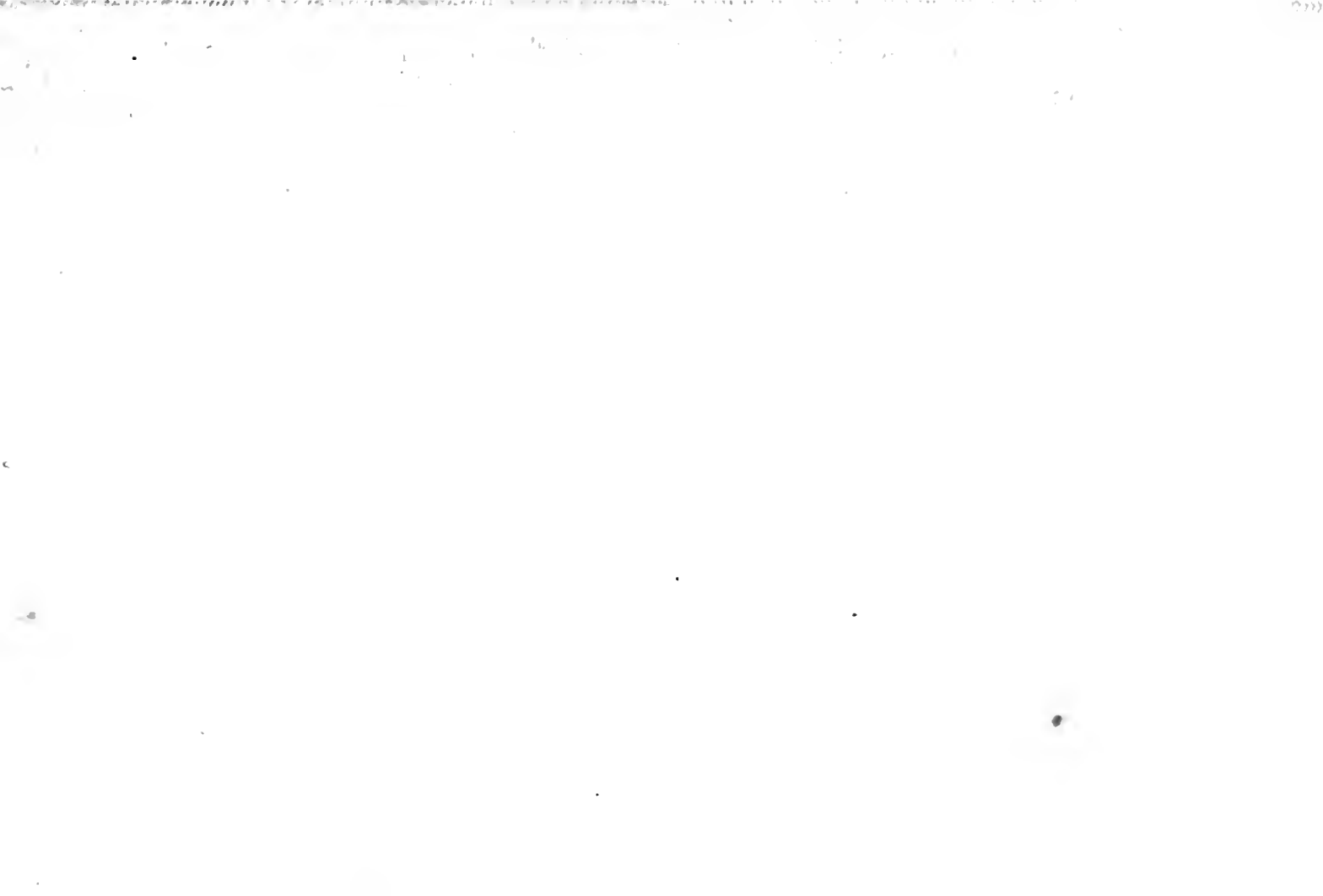
WOMEN'S CHRISTIAN TEMPERANCE UNION,
CENTRAL BAPTIST CHURCH.

PALIST COLLEGE,
SANTA MONICA BEACH.



ORANGE PICKING AND PACKING.





LIBRARY OF CONGRESS



0 017 168 857 7