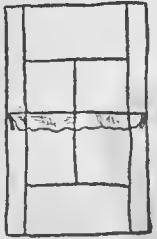


THE  
LOTUS

1 2 3 4

# CAMPUS OF PEACE COLLEGE

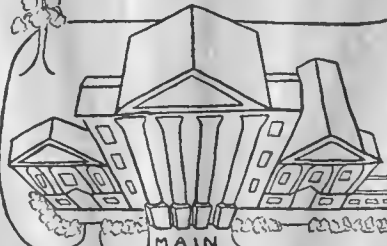


PSGA HUT



LAUNDRY

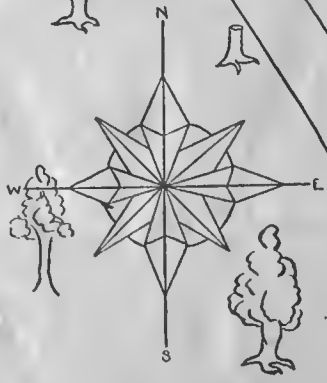
ART STUDIO  
SCIENCE LAB



MAIN



EAST

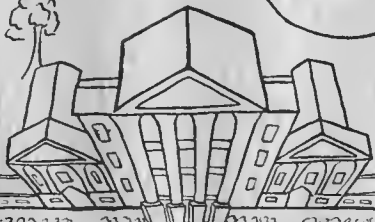


1933

Sallye Josey



# CAMPUS OF PEACE COLLEGE



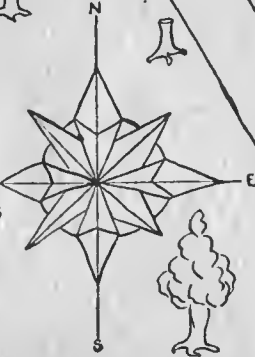
STUDENTS' PARK

ART STUDIO SCIENCE LAB

MAIN

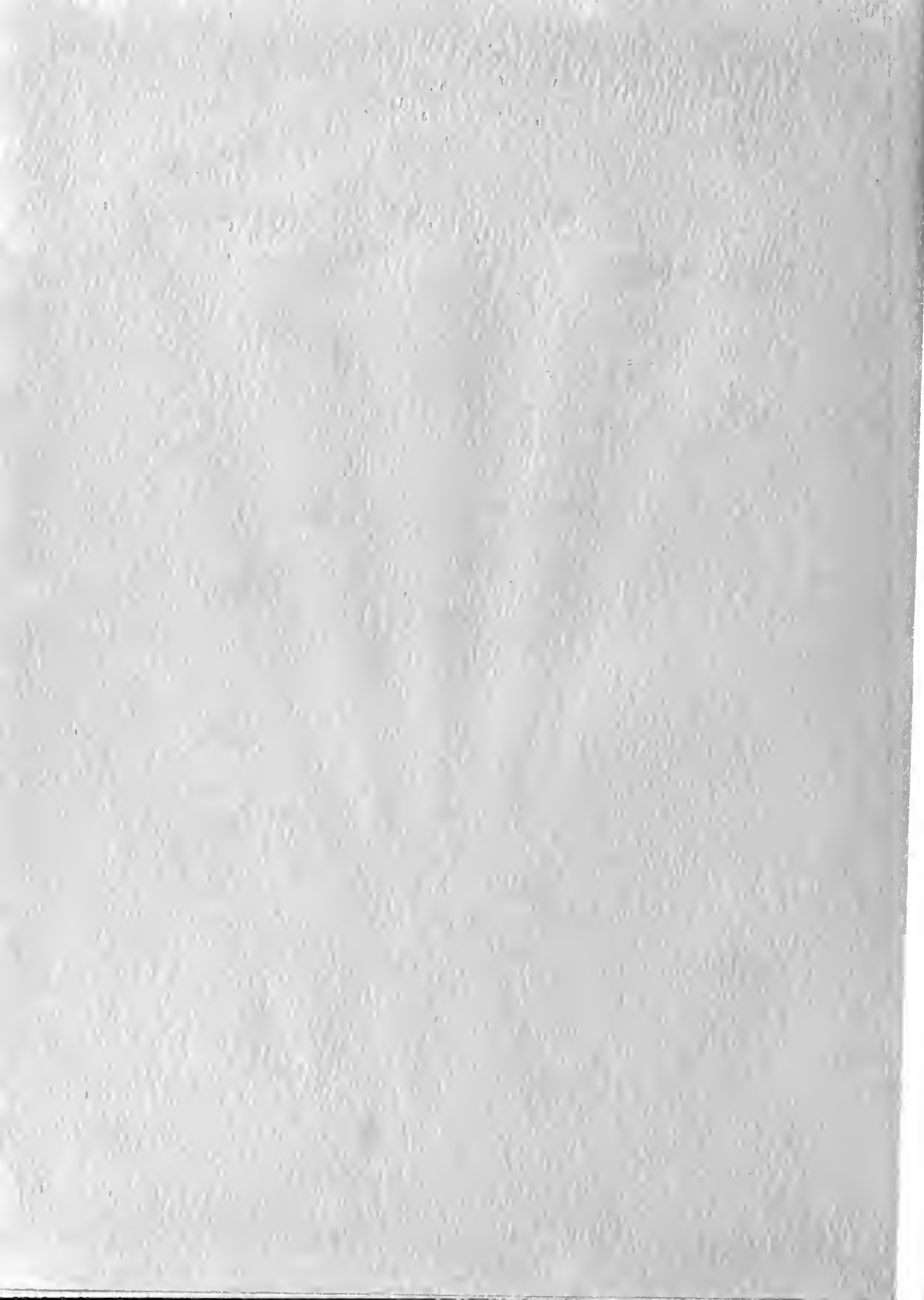
WEST

EAST



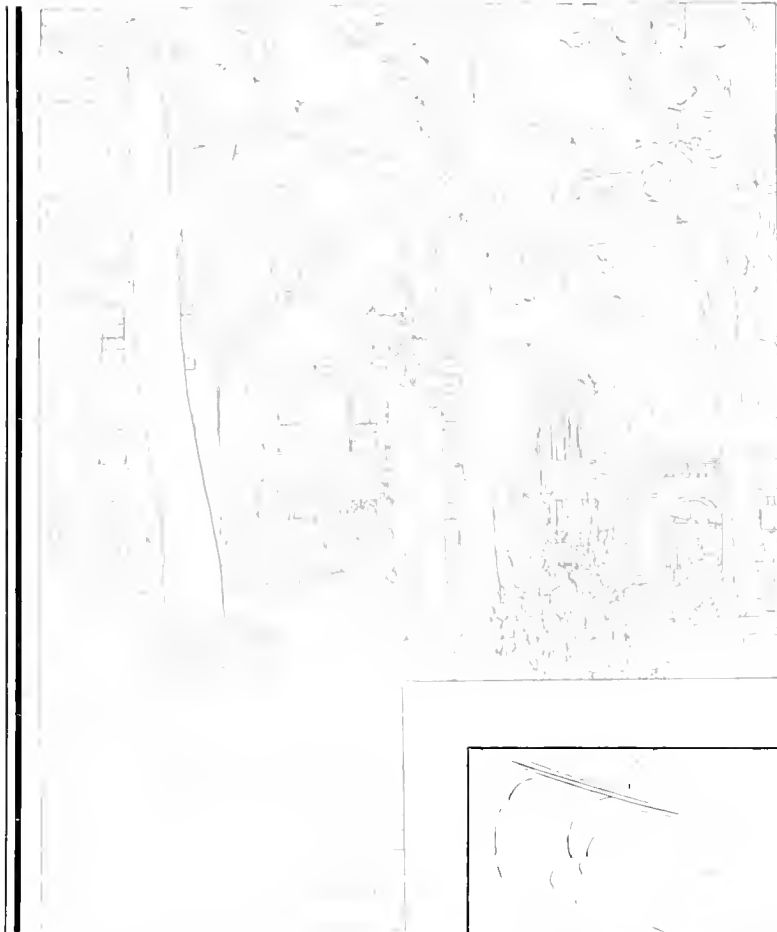
1979

Sallye Josay

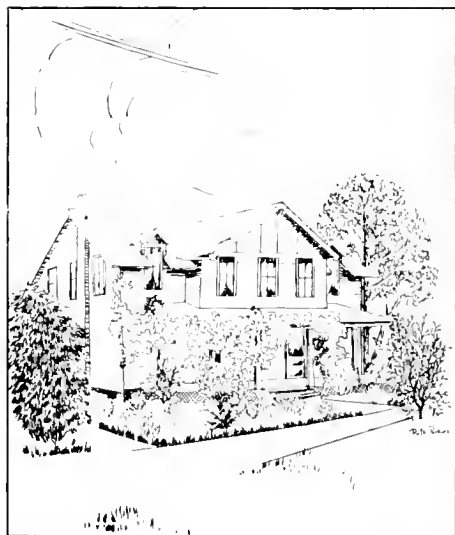


**Ex Libris**





*Burwell Memorial Library*



*Science Building*

*The*

# LOTUS

*Nineteen Thirty-nine*

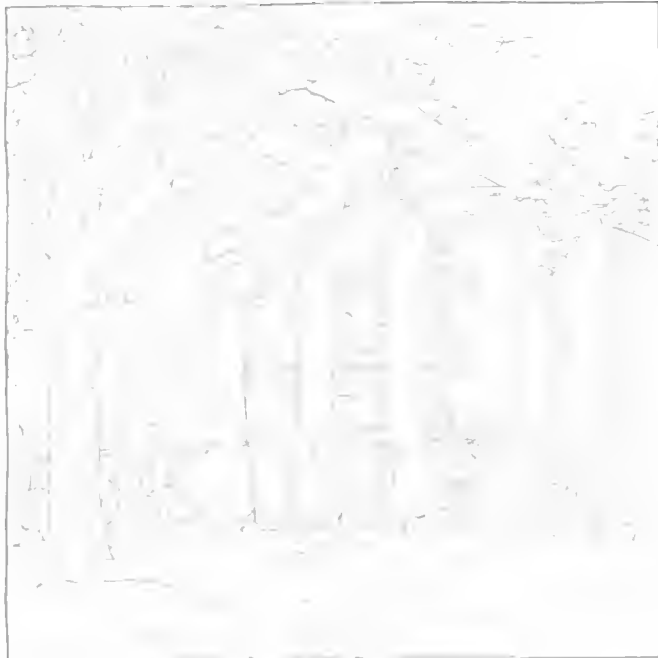
KATHERINE RAINEY  
*Editor*


ELIZABETH MORDECAI  
*Business Manager*

*Main  
Building*

---

---





# Dedication . . .

We dedicate this the 38th volume of THE LOTUS, to those honored men and women who, in the past, have made Peace what she is today. With the passage of time, it is ours to prove the merit of their work and to uphold the ideals of our school as they have done.







# Foreword . . .

As the world moves forward in its social, cultural, and scientific achievements to a greater civilization, so Peace does her part in the building of healthy minds and bodies and in the formation of strong characters, which will, in turn, be a vital part of this greater civilization. We have tried to show how, in the course of years, Peace has grown. Therefore, in presenting the LOTUS of 1939, we have chosen as our theme "The March of Time."



# Contents

BOOK ONE	<i>The College</i>
BOOK TWO	<i>Classes</i>
BOOK THREE	<i>Organizations</i>
BOOK FOUR	<i>Athletics</i>
BOOK FIVE	<i>Features</i>
BOOK SIX	<i>Advertising</i>



*East Building*



# THE COLLEGE











DR. W. C. PRESSLY  
*President*

Our much esteemed President, who is always generous with encouragement, advice, and sympathy, and whose interest in us is never failing.





MISS MAY McLELLAND

*Dean*

Our understanding Dean, who has endeared herself to us all by her ready sympathy, sound judgment, and loving thoughtfulness.

# Faculty



JONES  
BOSWELL  
DARSIE  
RAYNOR

WORTH  
MYERS  
SALLS  
STEELE

CLARK  
PUGH  
RICHARDS  
KUHNS

MARTHA GASH BOSWELL  
*English*

AMELIA CLARK  
*Registrar*

MRS. JAMES DARSIE  
*Physical Education*

LOVIE JONES  
*Director Music Department*

WINIFRED KUHNS  
*Mathematics*

MARTHA MYERS  
*Music Practice Supervisor*

MABEL PUGH  
*Art*

ANNE W. RAYNOR  
*French, Spanish*

JANE LEIGHTON RICHARDS  
*History, Economics*

HELEN HARRIET SALLS  
*English*

LUCY E. STEELE  
*Bible*

MRS. OLIVE P. WORTH  
*English, Latin*

# Faculty

COUCH

SHARPE

GRAMMER

CURRIE, I. W.



STAUDT

CAVANAUGH

WHITESIDES

CURRIE, L.



BOARD

NOBLE

JONES

TURNER



HELEN BOARD  
*Voice, Dramatics*

LETITIA CURRIE  
*Psychology, History*

MRS. TENNIE B. SHARPE  
*Matron, Head of Infirmary*

MRS. LUCILLE CAVANAUGH  
*Librarian*

ETHEL GRAMMER  
*Dietitian*

MRS. NELLIE P. STAUDT  
*Organ*

MRS. W. A. COUCH  
*Commercial Subjects*

PERRY LEE JONES  
*Science*

MRS. W. D. TURNER  
*Hostess*

IDA WITHERS CURRIE  
*Commercial Subjects*

MARY P. NOBLE  
*French*

BERTIE LEE WHITESIDES  
*Home Economics*



AT EASE

Faculty meeting

Always together

Attention, please!

Mrs. Turner

Our President

Going to English?

Miss Pugh in last year's  
snow storm

Old Pals

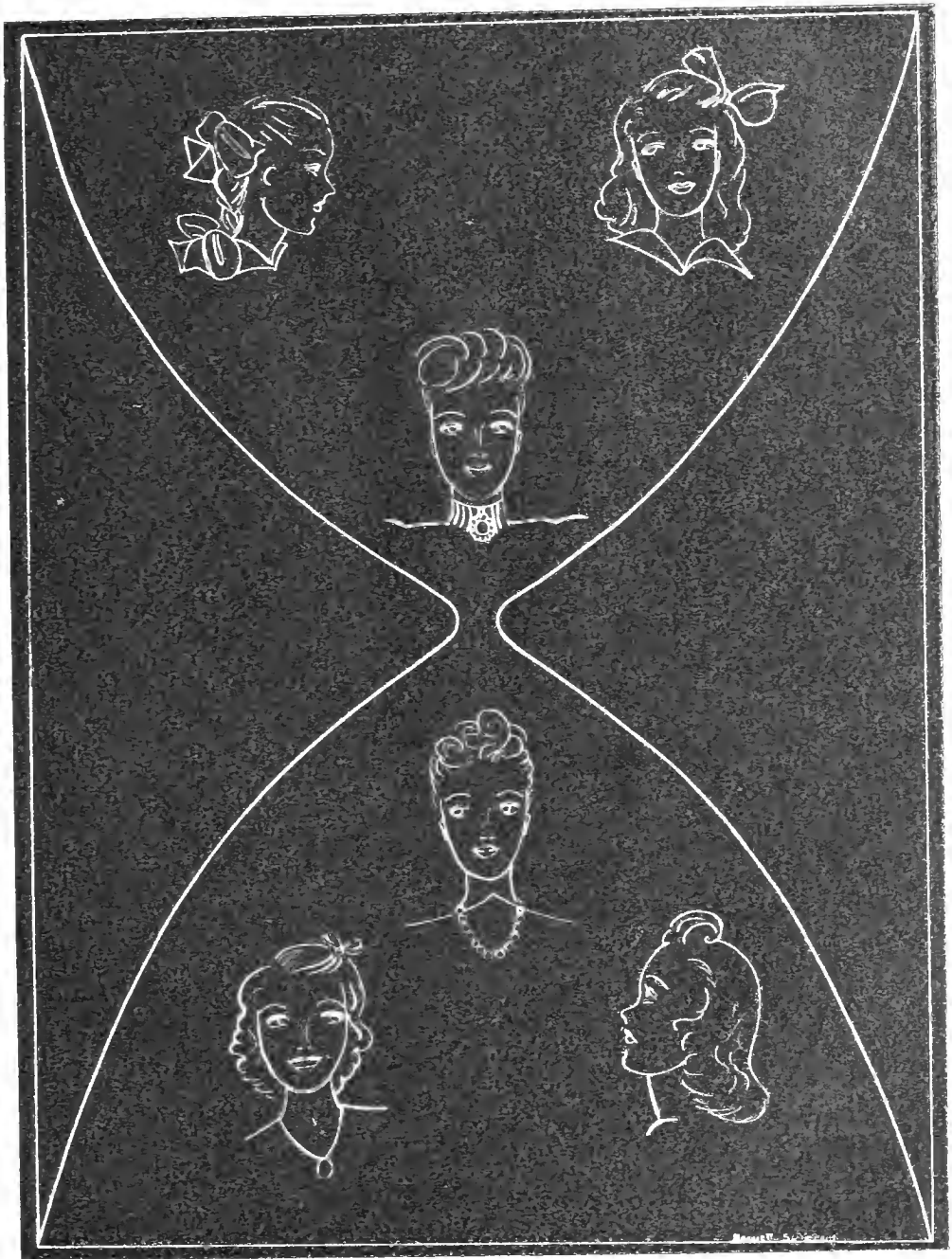
History class!

Does the sign mean Annie  
Lou?

Going shopping?

They "Revere-d" my  
"Preps!"

Psychologically speaking—



CLASSES



## Senior Officers

GRETCHEN BALDWIN  
*President*

MARY ELIZABETH MANSON  
*Vice President*

JAMES MOFFATT PRESSLY  
*Mascot*

CAROLINE DEVANE  
*Secretary*

DORIS ASKEW  
*Treasurer*



# SENIORS

LOLA FRANCES ANDREWS

"L. F."

Raleigh, N. C.

Sigma Phi Kappa.

*Amoco sweaters; Bill; dances; doughnuts; week-ends.*

RUTH ANDREWS

"Andy"

Rosboro, N. C.

Sigma Phi Kappa; Archery, '39.

*Men; mail; butterscotch pie; State.*



MILDRED ARNAIZ

"Milba"

Raleigh, N. C.

Pi Theta Mu.

*Dancing; tennis; swimming; reading.*

DORIS ASKEW

"Dorrie"

Raleigh, N. C.

Sigma Phi Kappa; Glee Club, '38, '39; Treasurer, Senior Class, '39; Secretary, Day Student Council, '39.

*Steak and potatoes; football; sewing.*



## THE LOTUS



# SENIORS

GRETCHEN BALDWIN

"Gee"

*Dunn, N. C.*

Sigma Phi Kappa; Hockey Team, '38, '39; P.S.C.A. Cabinet, '39; President, Senior Class, '39; Vice President, Student Council, '39; College Head, Field Ball, '39; Privileged Honor Roll.

*Holidays; food; dancing; hockey.*



LOUMETA BARDEN

"Meta"

*Orrum, N. C.*

Sigma Phi Kappa.

*Basketball; fourth floor; hiking; food.*



SARAH BEARD

"S. B."

*Atkinson, N. C.*

Sigma Phi Kappa; Vice President, '39; Glee Club, '38, '39; May Court, '38; Assistant Business Manager, Lotus, '39; Current Events Club, '39; Most Charming, '39.

*Week-ends; water; red and black stickers; nail polish.*

JANE BEATY

"Jane"

*Rulrigh, N. C.*

Sigma Phi Kappa; Glee Club, '38, '39.

*Wrightsville Beach; turnips; chocolate ice cream.*



# SENIORS

MARY ELIZABETH BISEGLIA

"Deede"

*Kansas City, Mo.*

Pi Theta Mu; Pi Play, '38; Glee Club, '38; Hockey Team, '38, '39; Papyrus Club, '38, '39; Associate Editor *Lotus*, '38, Assistant Editor, *Lotus*, '39; Senior Class Representative, Student Council, '39; P.S.C.A. Cabinet, '39; Photographers Club, '39; Hiking Leader, '39.

*Rain; chocolate cake; cozy rooms; conferences.*



MARION GREY BLACK

"M. G."

*Raleigh, N. C.*

Sigma Phi Kappa; Sig Play, '38; Dramatic Club, '38, '39; Papyrus Club, '38, '39; Literary Editor, *Voices of Peace*, '39; Class Poet, '39; Gamma Phi.

*Ping-pong; Ridgecrest; olives; cats.*



ANNE BOICE

"Becky"

*Whitville, N. C.*

Sigma Phi Kappa; Sig Play, '38; Papyrus Club, '38, '39, Vice President, '39; Literary Editor, *Voices of Peace*, '39; Dramatic Club, '39; Current Events Club, '39; Daughters Club.

*The Blue Danube; steak; sailing; Myrtle Beach.*



FLORENCE BOSTICK

"Flossie"

*Raleigh, N. C.*

Pi Theta Mu, Vice President, '39; Pi Play, '38; Papyrus Club, '38, President, '39; Senior Section Editor, *Lotus*, '39; Glee Club, '38, '39; Class Testator, '39.

*Candid snapshots; Liebstraum; music boxes; mail; chairs.*

# SENIORS

ANNA BELLE BOYD

"Annabella"

*Columbus, Ga.*

Sigma Phi Kappa; Papyrus Club, '38, '39; Business Manager, *Voices of Peace*, '39; Advertising Staff, *Lotts*, '38, '39; Glee Club, '38, President, '39; P.S.C.A. Cabinet, '39; Tennis Team, '38, '39; Hockey Team, '38, '39, Captain, '38; Horseback, '38, '39, College Head, '39; Privileged Honor Roll.

*Prunes; snow; not studying; painting; apples.*



SWANNANOVA BRANCH

"Swanee"

*Raleigh, N. C.*

Sigma Phi Kappa; Dramatic Club, '38, '39; Advertising Staff, *Lotts*, '39.

*Hiking; concerts; tennis; books; fluffy white cats.*



HELEN BRENT

"Brent"

*Kilmarnock, Va.*

Pi Theta Mu; *Lotts* Staff, '39; Archery, '38; College Head, '39; Horseback, '38, '39; Privileged Honor Roll.

*Sardines; horses; chow dogs; canoes.*

JUDITH BULLOCK

"Judy"

*Red Springs, N. C.*

Pi Theta Mu, President, '39; Pi Play, '38; P.S.C.A. Cabinet, '38, Treasurer, '39; Hockey Team, '38; College Head, '39; Soccer Team, '38; Softball, '38; Archery, '39; Glee Club, '38, '39; Dramatic Club, '39; Current Events Club, '39; Photographers Club, '39.

*Symphonies; pencils; Virginia; Pie.*



# SENIORS

LUCY LEE BUTLER  
"Lee"

*Raleigh, N. C.*

Sigma Phi Kappa.

*West Point uniforms; football; perfume.*

HELEN PURDIE CLARK  
"Purdie"

*Fayetteville, N. C.*

Sigma Phi Kappa; President Student Body, '39; Junior Representative, Council, '38; P.S.C.A. Cabinet, '38, Vice President, '39; Associate Editor, LORRS, '38; Business Staff, LORRS, '38, '39; Glee Club, '38; Hockey Team, '38, '39; College Head of Tennis, '39; May Court, '38; Miss Peace; Gamma Phi; Privileged Honor Roll.

*Sleep; pruns; football; to talk; sailboats.*



DOROTHY COATES  
"Dot"

*Raleigh, N. C.*

Pi Theta Mu.

*State; dancing; swimming; ice cream sodas.*

SALLIE PITT COBB  
"Pickle"

*Pinebluffs, N. C.*

Pi Theta Mu; Pi Marshall, '38; Glee Club, '38, '39; Business Staff, LORRS, '39; Hockey Team, Captain, '39; Daughters Club; Gamma Phi.

*Fraternities; classical music; week-ends; tall brunettes; specials.*



# SENIORS

LAURITA COKER  
"Rita"  
*Society Hill, S. C.*

Sigma Phi Kappa.

*Grand pianos; Persian cats; chocolate sodas; Buicks.*

MARGARETHA BRINN CRAIG  
"Brinn"  
*Raleigh, N. C.*

Sigma Phi Kappa, Treasurer, '38; Sig Play, '37; Current Events Club, '37, '38; Dramatic Club, '37, '38, '39, Vice President, '37, '38.

*"Honey and Almonds"; drama: "Cousin Robert."*



ELEANOR CROMARTIE  
"Sissy"  
*Garland, N. C.*

Sigma Phi Kappa; Hockey Team, '38, '39; Tennis, '38.

*Little Henry; lime mints; movies; holidays.*

MARY JANE DAFFIN  
"Daffy"  
*Gerrardstown, W. Va.*

Pi Theta Mu; Glee Club, '38; Dramatic Club, '38, President, '39.

*Mountains; fireplaces; cats; nail polish.*



# SENIORS

GEORGIE DEES  
"Buckie"

*Greensboro, N. C.*

Pi Theta Mu; Pi Play, '38; Glee Club, '39; Hockey Team, '38, '39; Photographers Club, President, '39; Travelers Club, Vice President, '39; Snapshot Editor, *Lotus*, '39.

*Horses; trailers; jolloppies; eating.*



CAROLINE DEVANE  
"Talley"

*Fayetteville, N. C.*

Sigma Phi Kappa; Secretary, Senior Class, '39.

*Week-ends; Bunny Goodman; blue; Mexicali Rose; Saturdays.*



JEANNE DOZIER  
"Mrs."

*Raleigh, N. C.*

Pi Theta Mu; Business Staff, *Lotus*, '38, '39.

*German Police dogs; chocolate nut sundaes; State.*

VERA RUTH EDWARDS  
"Vec"

*Raleigh, N. C.*

Sigma Phi Kappa; Papyrus Club, '38, '39.

*Swing music; chocolate candy; chewing gum; journalism.*



# SENIORS

MARTHA DE ROSSET ELLER

"Mart"

Wadesboro, N. C.

Pi Theta Mu; Papyrus Club, '38, '39; Typing Editor, *Voices of Peace*, '39; Student Body Representative, Council, '39.

*Typing; tennis; reading; organ music.*

MARGARET FISHER

"Peggy"

Elizabethtown, N. C.

Pi Theta Mu; Secretary, '39; Chief Marshal, '38; Travelers Club, '39; Hockey Team, '39.

*Moon River; lime suckers; gold fish; White Lake; week-ends.*



CLAIRE FREEMAN

"Clarene"

Ralrigh, N. C.

Pi Theta Mu; Papyrus Club, '38, Secretary-Treasurer, '39; Exchange Editor, *Voices of Peace*, '39; Glee Club, '39; Senior Representative, Day Student Council, '39; Gamma Phi.

*Chewing gum; tennis; opera; hamburgers; shoes.*

EDNA HATHCOCK

"Tubby"

Ralrigh, N. C.

Sigma Phi Kappa.

*T. Dorsey; chocolate ice cream; Star Dust; fuzzy dogs; Fords.*



# SENIORS

DOROTHY YVETTE HEDGPETH  
"Dot"

*Roanoke, N. C.*

Sigma Phi Kappa.

*Blue; 7-Up's; shoes; tie pins; student supplies.*

HANNAH HOBBY  
"So Little"

*Raleigh, N. C.*

Pi Theta Mu; Glee Club, '38, '39.

*Canary Birds; Richmond, Va.; barbecues; white hankies; dogs.*



RUBY HUNT  
"Corpy"

*Jonesboro, N. C.*

Sigma Phi Kappa.

*Sleep; week-ends; goldfish; Bing Crosby.*

ELIZABETH WILLA HUTCHINSON  
"Betsy"

*Bladenboro, N. C.*

Sigma Phi Kappa; Glee Club, '38.

*Shoes; chocolate; dancing; Carolina Beach; chewing gum.*





# SENIORS

ELIZABETH JENKINS  
"Libby"

*Henderson, N. C.*

Sigma Phi Kappa; President, Junior Class, '38; P.S.C.A., '38, President, '39; Glee Club, '38, '39; Associate Editor, *Lores*, '38; Business Staff, *Lores*, '39; Student Council, '39; Nominating Committee, '39; Privileged Honor Roll.

*Eating; golf; sleep; travel.*

MARGARET JEWELL  
"Mess"

*Raleigh, N. C.*

Sigma Phi Kappa.

*Swimming; dancing; tennis; bowling.*



POLLY ANNA JOHNSON  
"Josh"

*Cary, N. C.*

Pi Theta Mu.

*Fannies; stamps; twins; tall men; athletics.*

REBECCA JOHNSTON  
"Becky"

*Littleton, N. C.*

Sigma Phi Kappa; Tennis, '38; Hockey, '38, '39; Soccer, '38.

*Sleep; mail; movies; athletics.*



# SENIORS

ALDA ELLEN JONES  
"Dick"

*Nashville, N. C.*

Sigma Phi Kappa; Glee Club, '38, '39.

*Pennsylvania; brunettes; tennis; ice cream.*

SALLYE SPEARS JOSEY  
"Sallye"

*Wilson, N. C.*

Sigma Phi Kappa, President, '39; Glee Club, '38; Hockey Team, '38, '39; Soccer Team, '38; Nominating Committee, '39; Papyrus Club, '38, '39; Art Editor, *Voices of Peace*, Loris, '39; Photographers Club, '39; Class Prophet, '39.

*Beaches; dessert night; Wilmington.*



JOSEPHINE LANGDON  
"Jo"

*Linden, N. C.*

Sigma Phi Kappa, Secretary, '38; Treasurer, '39.

*Sleep; swimming; shoes; brunettes.*

JEAN LINDSAY  
"Duck"

*St. Pauls, N. C.*

Pi Theta Mu; President, Athletic Association, '39; Travelers Club, '39; Hockey Team, '38, '39.

*Sweat shirts; mail; athletics; ice cream; everybody.*



# SENIORS

MARTHA LONGEST

"Shorty"

*Rocky Mount, N. C.*

Sigma Phi Kappa; Sig Play, '38; Cheer Leader, '38; Athletic Board, '39; Cutest.

*Dancing; week-ends; movies; tennis.*

MARY ELIZABETH MANSON

"Mary Liz"

*McKenny, Va.*

Sigma Phi Kappa; P.S.C.A. Cabinet, Secretary, '39; Secretary, Student Council, '39; Vice President, Senior Class, '39; Vice President, Glee Club, '39; Dramatic Club, '38, '39; Advertising Staff, Lorus, '39; Hiking Leader, '39; Privileged Honor Roll.

*"Ole Virginia"; mail; carnivals; scrapbooks.*



ELIZABETH MORDECAI

"Bet"

*Raleigh, N. C.*

Pi Theta Mu; Advertising Staff, Lorus, '38, Business Manager, '39.

*Football; candy; books; Little Drug.*

ELIZABETH CONSTANCE NEAL

"Betty"

*Raleigh, N. C.*

Sigma Phi Kappa.

*New Jersey; green Pontiac; clothes; swing music.*



# SENIORS

DECIE PALMER  
"Dick"  
Raleigh, N. C.

Sigma Phi Kappa.

*Dancing; shoes; "Hurry"; football.*

FRANCES PARKER  
"Frankie"  
Raleigh, N. C.

Pi Theta Mu.

*Music; tall brambles; football; Wake Forest.*



SARA KATHERINE PARKER  
"Flop"  
Lillington, N. C.

Pi Theta Mu; Daughters Club, '39; Hiking Leader, '38;  
*Narrac escapes; tall brambles; October 16, 1938; holidays.*

RUTH EDITH PERKINS  
"Perk"  
Goldboro, N. C.

Sigma Phi Kappa.

*Miss Pugh; landscapes; peppermint candy; travel.*



# SENIORS

CAROLYN PIERCE

"Caro"

Raleigh, N. C.

Sigma Phi Kappa.

State dances; Buicks; Taming Dorsey; toy dogs; gardenias.

RUTH YOUNG POLLARD

"Noonsie"

Raleigh, N. C.

Sigma Phi Kappa; Papyrus Club, '38, '39.

Fluffy kittens; ice cream; chocolate fudge; hair boxes.



JULIA PROCTOR

"Julie"

Wilson's Mills, N. C.

Pi Theta Mu.

State; hiking; candy; cats; football.

KATHERINE ANNE RAINEY

"Kit"

Raleigh, N. C.

Sigma Phi Kappa, Treasurer, '39; Editor-in-Chief, *Loves*, '39; President, Day Student Council, '39; Secretary, Junior Class, '38; Dramatic Club, Secretary-Treasurer, '38; Glee Club, '38; Papyrus Club, '38, '39; Hockey Team, '38, '39; Hiking Leader, '38; May Court, '38; Versatility.

Virginia; crystal bottles; gardenias; baby rattles; toy boxes.

# SENIORS

MARY SUE ROTHGEB

"Sweet Sue"

Raleigh, N. C.

Pi Theta Mu.

*Movies; ragdolls; dopes with ice cream; red.*

SALLIE MOORE SLOAN

"Sallie"

Garland, N. C.

Sigma Phi Kappa; Glee Club, '38; Hockey Team, '38, '39,  
Photographers Club, '39; Travelers Club, '39.

*Pickles; Chapel Hill; White Lake.*



MARJORE SNOW

"Snow White"

Fayetteville, N. C.

Sigma Phi Kappa; Athletic Board, '38; Hiking Leader, '38,  
'39; Papyrus Club, '38, '39.

*Carolina; Lincoln Zephyrs; chocolate milk; mail; dancing.*

HARRIETT SUTHERLAND

"Dot"

Laurinburg, N. C.

Sigma Phi Kappa; Marshall, '38; Secretary, Sigma Phi Kappa,  
'39; Current Events Club, '39; May Court, '38; May Queen,  
'39; Most Attractive, '39.

*Sleep; Bing Crosby; "For You"; deviled crabs.*

# SENIORS

SARA FRANCES TERRELL  
"S. F."

*Rahigh, N. C.*

Pi Theta Mu.

*Clark Gable; hair up—on other people; costume jewelry; dancing.*

RUTH GOODRICH THOMAS  
"Precious"

*Henderson, N. C.*

Sigma Phi Kappa; Current Events Club, '39; Hockey Team, '38, '39; Archery Club, '38, '39; Horseback Riding, '38; Travelers Club, '39; Photographers Club, '39.

*Football; Duke; midnight feasts; health; Miss Kuhns.*



GERTRUDE TOLLISON  
"Gertie"

*Rahigh, N. C.*

Pi Theta Mu.

*Candy; Dodge; dancing; Georgia.*

DOROTHY VEREEN  
"Dot"

*Rahigh, N. C.*

Pi Theta Mu; Papyrus Club, '38, '39.

*Flying; reading; boats; bike riding.*



# SENIORS

MARIE THAYER WEAVER

"Sister"

Raleigh, N. C.

Sigma Phi Kappa.

*Barbecue; chocolate milk; State; skirts; Benny Goodman.*

HELEN WETHERINGTON

"Weather"

Clarks, N. C.

Pi Theta Mu; Hockey Team, '39.

*Green; dopes; brunettes; Kay Kyser; tulips.*



SUSAN WHITEFIELD

"Funie"

Ashboro, N. C.

Sigma Phi Kappa; Editor, *Voices of Peace*, '39; Treasurer, Student Council, '39; Papyrus Club, '38, '39; Glee Club, '38; Hockey Team, '38, '39; Class Historian, '39; Gamma Phi.

*Food; being almost late; walking; hot biscuits.*

MARIE WILLIAMS

"Junie"

Kenansville, N. C.

Sigma Phi Kappa.

*Yankees; brunettes; Football; Sigma Alpha Mu.*





# SENIORS

MARY WINSLOW  
"Bud"

*Raleigh, N. C.*

Pi Theta Mu; Glee Club, '38, '39; Papyrus Club, '38, '39; Assistant Business Manager, *Voices of Peace*, '39.

*Tennis; symphonies; cake; house plans; road maps.*

MARGARET MAY WOLFF  
"Gorgie"

*Raleigh, N. C.*

Pi Theta Mu.

*Black Buicks; drums; swimming; darning.*



## Class Poem

Dear Nineteen Hundred Thirty-nine,

To you

I write this farewell note, to send you forth  
With my maternal blessing, I regret  
That you must go and leave your sisters and  
Your loving Alma Mater, but I know  
The time has come for you to take your leave  
And go out on your shining journey to  
A far-off goal set up among the stars.  
My child, I've trained you well these last two years,  
And I have planted in your heart ideals  
Which you will keep and cherish as you go  
Up yonder distant path unto your heart's  
Desire. A long and arduous way it is  
Which you must tread, my white-clad pilgrim girl,  
And one which leads up steeply, mountain path  
Which sometimes you will find 'tis hard to climb,  
'Tis up and up and up again until  
It seems to reach the very sky, and then  
Upon the utmost crag, there you will find  
A city set and diademed in stars,  
An alabaster city shining bright,  
Your goal and purpose of your journeying,  
An ideal worthy all the trials and  
The struggle you must undergo; so, child,  
Stop not in any pleasant valley you  
May find along the way, but still press on  
Until you've reached resplendant heights, until  
You've come unto the very city of  
Your deepest heart's desire. I send you forth  
With all high hopes, best wishes--and I know  
You will not fail.

Your Alma Mater, Peace

MARION GREY BLACK, *Poet.*

NORTH CAROLINA

WARE COUNTY

Peace Junior College for Women, city of Raleigh, May 29, 1939

We, the class of '39, having reflected on our past deeds at Peace and having looked into possible future conditions at our Alma Mater, do hereby bequeath to certain parties our most valuable possessions, hoping that as time marches on, said possessions will be of some service to those we have left behind.

ARTICLE I

Section 1. To the faculty, we leave our love and best wishes for a "Peaceful" Peace after we are gone.

Sec. 2. To Dr. Pressly, we leave a schedule that will never incur conflicts.

Sec. 3. To Miss McLelland, we leave a student body of girls who drop their absence and tardy excuses in the right box.

Sec. 4. To Miss Richards, our class sponsor, we leave our heartfelt gratitude, and the hope that the next class that she sponsors will measure up to our wonderful qualities.

Sec. 5. To Miss Letitia Currie, we leave a psychology class that takes dictation in shorthand.

ARTICLE II

Section 1. To the Juniors, we leave our place as Seniors, also a little encouragement, and a great deal of sympathy.

Sec. 2. To the Preps, we leave a copyright to the expression "Hi-Yo, Silver" so they can win the stunt every year.

ARTICLE III

Section 1. To Pearl, Mamie, and the duty girls, we leave a bell for every room in the dormitories so they won't use all their strength running up and down the steps.

Sec. 2. To Mr. Gargus, we leave a family of "Rosebuds" to keep him from being lonesome at night.

Sec. 3. To the hall maids, we leave girls who love to clean their own rooms.

ARTICLE IV

Section 1. To next year's Miss Peace, Kit Rainey leaves her versatility, Sarah Beard leaves her charm, and Shorty Longest leaves her cuteness.

Sec. 2. To posterity; Mary Jane Duffin, Ruth Thomas, Helen Brent, and Buckie Dees leave their Red Pajamas, Smock, Beer Jacket, and Cowhide Stool.

Sec. 3. To Loys Turnage and Jean Perkins; Deede and Sallye leave their "Wreck of the Hesperus" room in 319 Main.

Sec. 4. To next year's Council: Martha Eller, Mary Liz Manson, Purdie Clark, Gretchen Baldwin, and Libby Jenkins leave their executive ability.

Sec. 5. To Doris Peele, Kathleen Leonard, and Annie Lou Denning; Susan Whitfield leaves the taming of 4th floor, knowing that these quiet ones will hold down any frivolous Juniors next year.

Sec. 6. To Sara Sutton, Mimi Shaw, Leola Prince, Ethel Lytel, and Betsy Wells; Eleanora Cromartie, Edna Hathecock, Margaretha Craig, Betty Neal, and Jane Beaty leave their Venus de Milo figures.

Sec. 7. To Tony Smith, Gladys Sorenson, and Louise Niernsee; Margaret Fisher and Sara K. Parker leave their well-used and carefully followed Handbooks to guide these Juniors in perfect behavior next year.

Sec. 8. To the boarders; the day students leave their privileges with the hope that they will be used well, but not worn out.

Sec. 9. To the ambitious; Marion Grey Black leaves her poetic ability, Judy Bullock leaves her drawing ability, Jean Lindsay leaves her remarkable capacity to memorize poetry, and Laurita Coker leaves her silent nature.

Sec. 10. To Nancy Teague, Sallie Cobb leaves her nickname, "Piekle."

Sec. 11. To Mutt Andrews, Anne Boice leaves her ability to express herself.

Sec. 12. To Alice Roberson and Christina Creekmore; Harriet Sutherland and Caroline DeVane leave their blonde beauty.

Sec. 13. This is an unlucky section, so we'll omit it.

Sec. 14. To Caroline Newbold, Betsy Hutchinson leaves her dancing ability.

ARTICLE V

As executor of this our last will and testament we name our trusted successors, the Juniors, to carry out in full each and every clause herein contained.

In witness whereof, we, the Class of 1939, do hereunto set our hands and seals, this twenty-ninth day of May, in the year of Our Lord, 1939.

Class of '39,

FLORENCE BOSTICK, *Testator*.

Witnesses:

DOPEY,

FERRINAND,

F. D. R. JONES.

## AS WE WERE

Martha Longest  
Jeanne Dozier  
Decie Palmer  
Lucy Lee Butler  
Dorothy Vereen  
  
Vera Edwards  
Susan Whitfield  
Florence Bostick  
Gretchen Baldwin  
Rebecca Johnston  
Deede Bisechia  
Jean Lindsay  
  
Sallie Moore Sloan  
Kit Rainey  
  
Harriet Sutherland  
Sallye Josey  
Ruth Pollard  
  
Mary Sue Rothgeb  
Sara K. Parker  
Dorothy Hedgpath  
Claire Freeman



# AS WE WERE



Marie Williams

Georgie Dees

Hannah Hobby

Judy Bullock

Mary Elizabeth Manson

Frances Parker

Margaret Fisher

Marian Grey Black

Martha Eller

Swannanoah Branch

Helen Wetherington

Ruth Goodrich Thomas

Sarah Beard

Mary Winslow

Carolyn Pierce

Marie Weaver

Libby Jenkins

Eleanor Cromartie

Margaretha Craig

OF 1939

# History

May 28, 1939

The night before graduation

Dear Diary,

How time does march on! Just think, practically two years have passed since we were entering the portals of dear old Peace for the first time, ignorant and very frightened Freshmen. And now, tomorrow night, we step forth from the stage to receive that scroll of paper which shall testify to the world at large that we have completed the course, and, incidentally, our period of life here at Peace. Yet, it is thrilling, too, to think that we shall be a part of that great mass of crimson roses against shimmering white dresses which for sixty-six Commencements have received diplomas from Peace.

Those first gay weeks of rushing and parties, which helped us to get over that feeling of homesickness—shall I ever forget them! And then came the necessity of settling down to hard study. Our first serious choice as a unified Junior group was the selection of class president, Libby Jenkins, small in stature but dynamic in personality, and our representative on the Student Council, Helen Purdie Clark.

Then came the Christmas pageant and the decoration of the traditional Christmas tree by our class.

Junior-Senior came soon after our return from the holidays. It was planned like a tour to distant lands (with an orchestra, too!). We proudly hoped it was a success.

Marshals for the two literary societies came from our class. They were Margaret Fisher, Chief Marshal, Pi; Sallie Cobb and Marion Grey Mitchell, Pi; Harriet Sutherland and Evelyn Crumpler, Sig.

Weren't we proud when the pulchritude of several members of our class was given tribute in the selection of the May Court of 1938? Harriet Sutherland was the Sleeping Beauty around whom the theme of May Day was centered. Among the Queen's attendants were: Helen Clark, Kit Rainey, Sarah Beard, Mildred Ferguson, Laura Ellis, Evelyn Crumpler, and Nell Clifton.

And then Commencement, 1938, and we were busy thinking of ourselves as the new seniors! There was much excitement, and many congratulations at the end of the year over selections of officers for the coming year '38-39. Helen Clark was made the responsible President of the Student Body. Libby Jenkins, our first class president, became head of the P.S.C.A. Our new class president was Gretchen Baldwin.

Honors go to the day students for the many positions of responsibility they have held this year. Kit Rainey edited *The Lotus*, our annual, with the efficient assistance of her Business Manager, Elizabeth Mordecai. (Figuratively speaking, these two are the oldest members of our class, since they were Prep students at Peace, too.) Florence Bostick was the able president of the Papyrus Club, as well as Class Testator. Marion Grey Black, a brilliant student, was our Class Poet. Under the exertions of Kit Rainey, president of the Day Students, the new Day Student Council came into existence. Members of this body were: Doris Askew, Claire Freeman, Betty Lou Fletcher, Margaret Martin, and Fran Rainey.

The school magazine, *Voices of Peace*, was edited by Susan Whitfield and Anna Belle Boyd, as Editor and Business Manager, respectively.

This year, the Daughters Club was revived by Mrs. Worth, our faculty adviser for the annual. Seniors whose mothers or grandmothers attended Peace are Sallie Pitt Cobb, Anne Boice, Betsy Hutchinson, Sara K. Parker, Elizabeth Mordecai, Julia Proctor, and Sallie M. Shann.

And then, Diary dear, we started this year some work with other student organizations! We are proud for our school to become a member of the N. C. Collegiate Press Association. Both our annual and magazine became members of that organization this year. But we are prouder yet to have charter members of the Gamma Phi Chapter of Phi Theta Kappa, the national Junior College Honor Society; Claire Freeman, Helen Purdie Clark, Sallie Pitt Cobb, Marion Grey Black, and Susan Whitfield.

We aren't forgetting Stunt Night, when we presented "A Peace-ful Night." We thought it clever, but the judges decided to "Revere the Prep."

More exams, and finally spring and vacation.

The last of the year has been made delightful by the many entertainments given to our class Junior-Senior, and graduation parties galore.

It is sad to think that we must part with these experiences, like none we shall have elsewhere, but the fact that we may take their memory with us through the rest of our lives somewhat compensates for their loss. Rich in Christian influences and the gay fellowship of our Peace days, we go forward tomorrow with heads held high and smiles that hide our tears.

SESAN WHITFIELD, *Historian*.

# Time Marches On!

As radio announcer and controller of television at Peace College, I am announcing today the 30th anniversary of the graduation of the class of '39, which is again the most talked of class of Peace. Miss McFarland and her assistants, Jane Beatty and Helen Brent, who have long been tired of the noise made by autogyros, tied to 4th floor windows, have gotten Margaret Jewell, Frances Parker, and Mildred Ferguson interested in giving us new hangars, and we are taking this occasion to dedicate them.

We think it appropriate that this dedication falls, not only on our 30th anniversary, but also the graduation day at Peace. The daughters of Vera Edwards, Lola F. Andrews, Gertrude Tollison, Betty Neal, and Dorothy Coates are graduating, like their mothers, with flying colors, and unlike their mothers, in flying-togs.

Since Peace has become so air-minded, and the expeditions sent to the North and South Poles have been so successful, Polly Anna Johnson, instructor of aeronautics, has undertaken an expedition, accompanied by Elizabeth Moredeai, Jeanne Dozier, Kit Rainey, Ruth G. Thomas, and Ruth Pollard. Since they are necessarily absent, they have expressed their congratulations to the class of '39 in a just-received rocket message.

We are very sorry that some of our classmates cannot be with us today. Judith Bullock has become the second Jeanette MacDonald, and is working on the same lot with Carolyn Pierce, who is directing the directors how to direct. Decie Palmer, Swannanoa Branch, and Hannah Hobby were prevented from coming as they are in Germany competing in the Olympics. Mary E. Munson and Edna Hathcock are spending some time in Switzerland, where they have taken up skiing.

We are glad that so many of our classmates are here with us, and I will tell you briefly what each one has been doing. First, I will introduce the Faculty members from the class of '39. Jo Langdon and Doris Askew are Miss Pugh's assistants. The athletic department has become so large that Mrs. Darsie has Jean Lindsay in charge of riding; Alda Jones, gymnastics, and Betsy Hutchinson, swimming. Claire Freeman and Marie Weaver are the assistant dietitians, and Mary Jane Dahn, a well known psychiatrist, is helping the Dean with her "problem children."

Now as to the doings of our other class members. Sallie M. Sloan successfully submits and interprets subtle jokes for silly symphonies. Susan Whitfield is editor of the magazine *The Voices of the Women of America*. Sarah Beard, Margaretha Craig, Margaret Fisher, and Martha Longest are living on an island in the Pacific where they have formed an old maid's retreat. They send messages, but even for love of their classmates, they will not venture out into the world where one may chance upon a few miles. Helen Clark, in spite of all that she has had to say, has not found it presumptuous to become speaker of the House. As a poet, Marian Grey Black is to 1969 what Edna St. Vincent Millay was to 1939. Deede Bisceglia has invented a new kind of lipstick that is luminous in the dark. Anna Belle Boyd and Libby Jenkins are living on a farm in Arizona and are proving to us that they can "Live Alone and Like It," "Orchids On Your Budget" and all. Gretchen Baldwin, Ruby Hunt, and Florence Bostick are the official chaperons for the Peace Formals. Georgie Dees has just written the best seller "Hold Your Man." Sara K. Parker, leading debutante of 1939, now has a finishing school for sub-debs in Washington. Margaret Wolf's smile still beams at us—from tooth paste ads. Sallie Cobb has disproved the theory that gentlemen prefer blondes, and Anne Boice has just published her latest book, "How to Lengthen Your Line."

I would like to take this occasion to announce other gifts given by members of our class. Dorothy Hedgpeth, Rebecca Johnston, Martha Eller, Harriet Sutherland, and Caroline Devane have recently replaced the old elevators which the girls have grown so tired of, with escalators. Dorothy Verden, Sarah E. Terrell, Marjorie Snow, and Mary Winslow have furnished each room with telephones and television. Lucy Lee Butler, Mildred Arnaiz, and Helen Wetherington have also arranged for each girl to have a chaise longue, equipped with various shades of slip covers in order to fit the lounge's mood. Julia Proctor, Laurita Coker, and Mary Sue Rothgeb, the famous interior decorating trio, have just finished doing over the central hall and the parlors, and Eleanor Cronartie and Ruth Perkins have landscaped the campus.

And so the class of '39 marches on!

SALLYE JOSLY, Prophet.

## *Junior Officers*

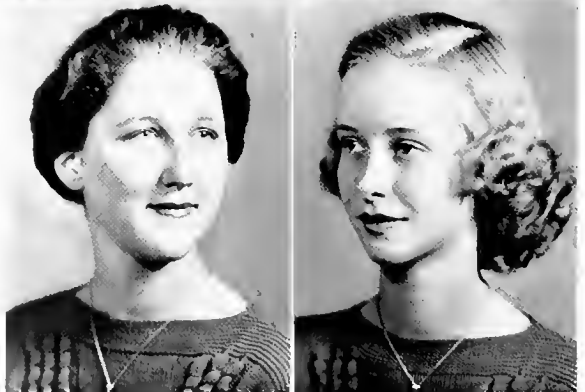
ETHEL LYTCH  
*President*

LEAH JONES  
*Vice President*



MIRIAM MCINTIRE  
*Secretary*

HARRIETTE WEST  
*Treasurer*





# JUNIORS

MILDRED ANDREWS  
*Enfield, N. C.*  
Pi Theta Mu

MILDRED ASKEW  
*Raleigh, N. C.*  
Sigma Phi Kappa

EDITH BAGGETT  
*Dunn, N. C.*  
Sigma Phi Kappa

MARY BAKER  
*Raleigh, N. C.*  
Pi Theta Mu

EDITH BALLANCE  
*Raleigh, N. C.*  
Pi Theta Mu

NEEL WALKER BELL  
*Raleigh, N. C.*  
Sigma Phi Kappa

ROSALIE BEST  
*Dunn, N. C.*  
Sigma Phi Kappa

VIRGINIA BLANCHARD  
*Wallace, N. C.*  
Sigma Phi Kappa

VIRGINIA BLAND  
*Pittsboro, N. C.*  
Sigma Phi Kappa

PEGGY BLUE  
*Laurinburg, N. C.*  
Sigma Phi Kappa

MARY BOONE  
*Raleigh, N. C.*  
Sigma Phi Kappa

MARY FRANCES BERTON  
*Raleigh, N. C.*  
Sigma Phi Kappa

GERAIDINE CHAMBERS  
*Raleigh, N. C.*  
Sigma Phi Kappa

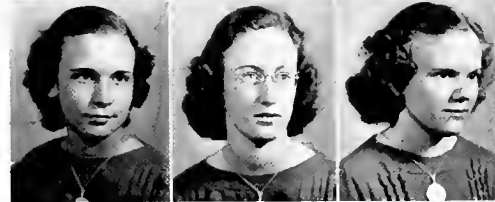
LUCY CLARK  
*Wilmington, N. C.*  
Sigma Phi Kappa

ELEN COCHRAN  
*Matthews, N. C.*  
Pi Theta Mu

ALICE COVINGTON  
*Raleigh, N. C.*  
Pi Theta Mu

RUBY CRAIG  
*Raleigh, N. C.*  
Sigma Phi Kappa

RUTH CRAIG  
*Raleigh, N. C.*  
Sigma Phi Kappa



# JUNIORS



FRANCES CRAVEN  
*Raleigh, N. C.*  
Sigma Phi Kappa

ALLEN CRAWFORD  
*McCollers, N. C.*  
Pi Theta Mu

CHRISTINA CREEKMORE  
*Raleigh, N. C.*  
Pi Theta Mu



FRANCES CREEK  
*Hyman, N. C.*  
Pi Theta Mu

MIRIAM CREW  
*Pleasant Hill, N. C.*  
Pi Theta Mu

ELLEN CURRIE  
*Racford, N. C.*  
Sigma Phi Kappa



BILLIE DANIELLY  
*Raleigh, N. C.*  
Pi Theta Mu

MARTHA LOU DANIELLY  
*Raleigh, N. C.*  
Pi Theta Mu

ARLAIDE DARDEN  
*Ayden, N. C.*  
Pi Theta Mu



ANNIE LOU DAVIS  
*Oxford, N. C.*  
Sigma Phi Kappa

EVELYS DAVIS  
*Montco, N. C.*  
Sigma Phi Kappa

MARIA DAVIS  
*Wilmington, N. C.*  
Sigma Phi Kappa



VIRGINIA DAWSON  
*Rocky Mount, N. C.*  
Sigma Phi Kappa

ANNIE LOU DENNING  
*Dunn, N. C.*  
Sigma Phi Kappa

ALBERTA DICKINSON  
*Fremont, N. C.*  
Pi Theta Mu



AGATHA DOUGLAS  
*Washington, N. C.*  
Sigma Phi Kappa

ETHEL DOYLE  
*Cary, N. C.*  
Pi Theta Mu

MARY LILY DUNCAN  
*Raleigh, N. C.*  
Sigma Phi Kappa

# JUNIORS

NANCY EARLY  
*Raleigh, N. C.*  
Sigma Phi Kappa

JOYCE EDWARDS  
*Raleigh, N. C.*  
Sigma Phi Kappa

ANNE EVANS  
*Henderson, N. C.*  
Sigma Phi Kappa

MARY HELEN FARLOW  
*Raleigh, N. C.*  
Sigma Phi Kappa

BLANCHE FARMER  
*Wilson, N. C.*  
Sigma Phi Kappa

BETTY LOU FLETCHER  
*Raleigh, N. C.*  
Pi Theta Mu

JOHNSIE FREEMAN  
*Humble, N. C.*  
Sigma Phi Kappa

SOPHIE FULCHER  
*Raleigh, N. C.*  
Pi Theta Mu

MARY FULGHUM  
*Raleigh, N. C.*  
Sigma Phi Kappa

MARGERY GARRIS  
*Raleigh, N. C.*  
Pi Theta Mu

MARY FRANCIS GIRLING  
*Raleigh, N. C.*  
Pi Theta Mu

DORIS GODDARD  
*Upper Nyack, N. Y.*  
Sigma Phi Kappa

LOUISE GOODMAN  
*Mount Ulla, N. C.*  
Sigma Phi Kappa

JEAN GRANTHAM  
*Fairmont, N. C.*  
Sigma Phi Kappa

MAY SUMNER GRIFFITH  
*Washington, D. C.*  
Pi Theta Mu

POLLY GUERRANT  
*Collozoy, Va.*  
Sigma Phi Kappa

HILDA HARPER  
*Rocky Mount, N. C.*  
Sigma Phi Kappa

BETSY ANN HAYES  
*Raleigh, N. C.*  
Sigma Phi Kappa



# JUNIORS



KATHERINE HIGHSMITH  
*Raleigh, N. C.*  
Sigma Phi Kappa

MARY ANN HODGIN  
*Red Springs, N. C.*  
Pi Theta Mu

ANSE HOLMES  
*Goldsboro, N. C.*  
Sigma Phi Kappa



ETHEL HOWELL  
*Wilmington, N. C.*  
Sigma Phi Kappa

FRANCES HUDSON  
*Raleigh, N. C.*  
Sigma Phi Kappa

JEAN HUDSON  
*Grimesland, N. C.*  
Sigma Phi Kappa



HAZEL HURT  
*Fayetteville, N. C.*  
Sigma Phi Kappa

BETTIE LEE JOHNSON  
*Smithfield, N. C.*  
Sigma Phi Kappa

LILLIAN JOHNSON  
*Cary, N. C.*  
Pi Theta Mu



LEAH CLARK JONES  
*Wilson, N. C.*  
Sigma Phi Kappa

MARY KNOWLES  
*Wallace, N. C.*  
Sigma Phi Kappa

VARINA LASLEY  
*Greensboro, N. C.*  
Pi Theta Mu



MARY LOIS LAUGHRIDGE  
*Marion, N. C.*  
Pi Theta Mu

EDITH LEAVISTER  
*Raleigh, N. C.*  
Sigma Phi Kappa

KATHLEEN LEONARD  
*Vandemere, N. C.*  
Pi Theta Mu



ANN LEWIS  
*Hamlet, N. C.*  
Sigma Phi Kappa

HAZEL LEWIS  
*Hemp, N. C.*  
Pi Theta Mu

ETHEL LYTCH  
*Laurinburg, N. C.*  
Sigma Phi Kappa

# JUNIORS

LUCILLE MACMILLAN  
*Fayetteville, N. C.*  
Sigma Phi Kappa

SARA BRUCE McALEE  
*Rocky Mount, N. C.*  
Sigma Phi Kappa

NANCY McCRARY  
*Raleigh, N. C.*  
Pi Theta Mu

MARY LOUISE McCUSTON  
*Mount Olive, N. C.*  
Sigma Phi Kappa

NELL McDONALD  
*Raleigh, N. C.*  
Sigma Phi Kappa

MIRIAM McINTIRE  
*Wilmington, N. C.*  
Sigma Phi Kappa

LUCY McNELLY  
*Moorestville, N. C.*  
Sigma Phi Kappa

MARY WHITE McNELLY  
*Conover, N. C.*  
Sigma Phi Kappa

KATHLEEN McPHERSON  
*Shiloh, N. C.*  
Pi Theta Mu

MARGARET MARTIN  
*Raleigh, N. C.*  
Sigma Phi Kappa

MARGORIE MATTHEWS  
*Sauford, N. C.*  
Pi Theta Mu

ELIASOR MOFFETT  
*Fayetteville, N. C.*  
Sigma Phi Kappa

CATHERINE MORRISON  
*Greensboro, N. C.*  
Sigma Phi Kappa

MARY SLATER MUSH  
*Concord, N. C.*  
Sigma Phi Kappa

CAROLINE NEWBOLD  
*Wilmington, N. C.*  
Sigma Phi Kappa

LOUISE NIERNSE  
*Southport, N. C.*  
Sigma Phi Kappa

FRANCIS PAUL  
*Raleigh, N. C.*  
Pi Theta Mu

VIRGINIA PABLER  
*Montgomery, Ala.*  
Pi Theta Mu



# JUNIORS



DORIS PELL  
*Goldsboro, N. C.*  
Sigma Phi Kappa

ELIZABETH PELLY  
*Kinston, N. C.*  
Pi Theta Mu

JEAN PERKINS  
*Stokes, N. C.*  
Sigma Phi Kappa



SARAH PORTER  
*Raleigh, N. C.*  
Sigma Phi Kappa

LOLA PRISSEL  
*Lawrenceville, Va.*  
Sigma Phi Kappa

LUCILLE PROCTOR  
*Wilson's Mills, N. C.*  
Pi Theta Mu



BETTY JO PURCELL  
*Pineville, N. C.*  
Sigma Phi Kappa

BETSY ANNE REID  
*Raleigh, N. C.*  
Pi Theta Mu

MAE RHYNE  
*Aberdeen, N. C.*  
Sigma Phi Kappa



DORITA RYENSBARK  
*Goldsboro, N. C.*  
Pi Theta Mu

SARAH ROACH  
*Raleigh, N. C.*  
Sigma Phi Kappa

ALICE ROBEBSON  
*Hertford, N. C.*  
Sigma Phi Kappa



LENA ROWE  
*Harrisville, N. C.*  
Sigma Phi Kappa

MYRTLE SAUNDERS  
*Roanoke, Va.*  
Sigma Phi Kappa

MARY LOUISE SCHWILBERT  
*Goldsboro, N. C.*  
Sigma Phi Kappa



GERALDINE SEWELL  
*Raleigh, N. C.*  
Sigma Phi Kappa

Laura SELF  
*Raleigh, N. C.*  
Sigma Phi Kappa

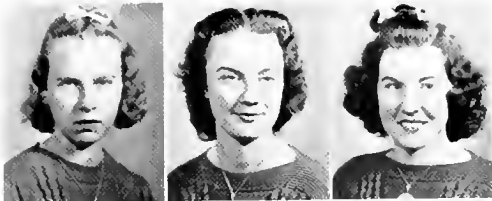
MIRIAM SHAW  
*Howards, Pa.*  
Sigma Phi Kappa

# JUNIORS

JANET SMITH  
*Westfield, N. J.*  
Sigma Phi Kappa

MARY EMMA SMITH  
*Littleton, N. C.*  
Sigma Phi Kappa

GLADYS SOBENSON  
*Henderson, N. C.*  
Sigma Phi Kappa



FRANCES SOUTHERLAND  
*Wallace, N. C.*  
Sigma Phi Kappa

LILLIE STEERS  
*Reidsville, N. C.*  
Pi Theta Mu

LOUISE STREWALT  
*High Point, N. C.*  
Pi Theta Mu



BETTY SLOAN STOWE  
*Belmont, N. C.*  
Sigma Phi Kappa

ANNA SUTTON  
*Fayetteville, N. C.*  
Sigma Phi Kappa

SARAH SUTTON  
*Kinston, N. C.*  
Pi Theta Mu



EMILY SUYCOTT  
*Raleigh, N. C.*  
Sigma Phi Kappa

NANCY TEAGUE  
*Winston-Salem, N. C.*  
Sigma Phi Kappa

MARY LOUISE THOMPSON  
*Fairmont, N. C.*  
Sigma Phi Kappa



LOYS TURNAGE  
*Ayden, N. C.*  
Sigma Phi Kappa

KATHERINE TURNER  
*Raleigh, N. C.*  
Sigma Phi Kappa

RACHEL WALKER  
*Wade, N. C.*  
Sigma Phi Kappa



ALICE WALL  
*Wake Forest, N. C.*  
Sigma Phi Kappa

CORA LEE WALLER  
*Raleigh, N. C.*  
Pi Theta Mu

NABELLE WATRINS  
*Wake Forest, N. C.*  
Pi Theta Mu



# JUNIORS



SUSE WIERS  
*Clayton, N. C.*  
Pi Theta Mu

LAURA WELLS  
*Raleigh, N. C.*  
Pi Theta Mu

BETSY WELLS  
*Raleigh, N. C.*  
Pi Theta Mu



CATHERINE WELSH  
*Wilmington, N. C.*  
Sigma Phi Kappa

HARRIETT WEST  
*Raleigh, N. C.*  
Sigma Phi Kappa

JEAN WHITE  
*Hertford, N. C.*  
Sigma Phi Kappa



LUCILE WHITLEY  
*Goldboro, N. C.*  
Sigma Phi Kappa

BLANCHE WILLIAMS  
*Raleigh, N. C.*  
Sigma Phi Kappa

MARY COOK WILDFORD  
*Anander, N. C.*  
Sigma Phi Kappa



MOLLY YLVERTON  
*Fremont, N. C.*  
Sigma Phi Kappa

## SPECIAL STUDENTS



VIRGINIA CAPPS  
*Raleigh, N. C.*  
Pi Theta Mu

MILDRED FERGUSON  
*Washington, N. C.*  
Pi Theta Mu



LOTTIE J. OSTERWIS  
*Maracaiba, Venezuela*  
Sigma Phi Kappa

EMMA LOE UCHERCH  
*Yanceyville, N. C.*  
Sigma Phi Kappa



# JUNIORS



PAULINE ABERNATHY  
*President*

BLANCHE HUDSON  
*Vice President*

DOROTHY HULE  
*Secretary*

BETSY NEAL COOPER  
*Treasurer*

PAULINE ABERNATHY  
Pi Theta Mu  
Raleigh, N. C.

BETSY NEAL COOPER  
Pi Theta Mu  
Raleigh, N. C.

KATHERINE FORB  
Pi Theta Mu  
Raleigh, N. C.



SUE GANT  
Pi Theta Mu  
Raleigh, N. C.

BLANCHE HUDSON  
Sigma Phi Kappa  
Raleigh, N. C.

DOROTHY HULE  
Sigma Phi Kappa  
Atlanta, Ga.



ANGELA LOPEZ  
Sigma Phi Kappa  
Camaguey, Cuba

EMMA THOMAS ROSE  
Sigma Phi Kappa  
Henderson, N. C.

SUSIE ANN WILSON  
Pi Theta Mu  
Raleigh, N. C.



GANT  
ROSE

LOFT

LOPEZ  
WILSON

# JUNIOR PREPS

DOROTHY BULLOCK  
 ANNE CUNNINGHAM  
 JEAN CUNNINGHAM  
 FRANCES HERRING  
 MARJORIE LUCK  
 MARY DAWSON McCOTTER  
 JEAN MATHESON  
 FRANCES RAINLY  
 GLADYS SATTERWHITE  
 MARY GORDON WALTERS  
 ANNA LEE YOUNG  
 BETSY BARROW  
 MARY HOLT DREWRY  
 YOLANDA LOPEZ  
 SHIRLEY NEWELL  
 BETTY OSTERWIN  
 LUCIE RICHARDSON  
 ELIZABETH DANIELS  
 ELIZABETH BELL  
 SALLIE BAILLY  
 EDITH BAILEY  
 KATHERINE WALSER  
 SARAH EMILY PARKER  
 NANCY NORRIS  
 ERNESTINE McCORD  
 MARGARET GOOLD  
 RHODA DANIELS  
 MARY WHITE WOODARD  
 ANNE TODD  
 MARY ANN SLAUGHTER  
 HARRIET PRESSLY





# ORGANIZATIONS



# ORGANIZATIONS

## *Christian Association*



ELIZABETH JENKINS  
*President*

HELEN CLARK  
*Vice President*  
Chairman Program Committee

MARY ELIZABETH MANSON  
*Secretary*  
Chairman Morning Watch

JUDITH BULLOCK  
*Treasurer*  
Chairman Finance Committee

CAROLINE NEWBOLD  
Chairman Foreign Missions Committee

MARY WHITE McNEELY  
Chairman Music Committee

CATHERINE WELSH  
Chairman Social Service Committee

GRETCHEN BALDWIN  
Honorary Member  
President Senior Class

ANNA BELLE BOYD  
Chairman Social Committee

DOROTHY HUE  
Chairman Enrollment Committee

MARY ELIZABETH BISCIGLIA  
Chairman Home Missions Committee

MARIA DAVIS  
Chairman Publicity Committee



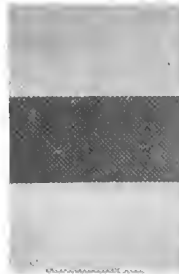
# ORGANIZATIONS



## *Student Council*

HELEN CLARK  
*President*

GRETCHEN BALDWIN  
*Vice President*



MARY ELIZABETH MANSON  
*Secretary*

SUSAN WHITEFIELD  
*Treasurer*



ELIZABETH JENKINS  
*President, P.S.C.A.*

JEAN LINDSAY  
*President, Athletic Association*

MARTHA ELLER  
*Representative, Student Body*

MARY ELIZABETH BISCEGLIA  
*Representative, Senior Class*



# ORGANIZATIONS

## *Day Student Council*

KATHERINE RAINEY  
*President*



CLAIRE FREEMAN  
*Representative, Senior Class*

DORIS ASKEW  
*Secretary*

MARGARET MARTIN  
*Representative, Junior Commercial*

BETTY LOU FLETCHER  
*Representative, Junior Academic*

FRANCES RAINEY  
*Representative, Preparatory Class*



## ORGANIZATIONS



KATHERINE RAINEY  
*Editor-in-Chief*

ELIZABETH MORDECAI  
*Business Manager*

### *The Lotus*

The oldest record of publication of *THE LOTUS* goes back to 1902. We cannot say whether this is the first annual published at Peace, but we are certain the issue of 1939 will not be the last, because *THE LOTUS*, in presenting a view of school life and activities, is an integral part of Peace.

It has been a privilege and a pleasure to produce *THE LOTUS*. We have tried to please you, and to give you a book among the pages of which you will find pleasure in the years to come.

I wish to take this opportunity of thanking all those whose interest and co-operation have made this publication possible. Dr. Pressly's patience in explaining details, Mrs. Worth's advice and help, have more than lightened the task of the staff. The assistant editor, Deede Biscaglia, has been more than willing at all times to assist. To Florence Bostick, the seniors owe appreciation for the splendid material which she has prepared for their section. The efficiency of our associate editors, Laura Self, Betsy Peery, and Mary Louise Schweikert, has been an inspiration to the whole staff. To Miss Mabel Pugh, our art adviser, and to Sallye Josey, our art editor, we owe deepest gratitude for the excellent work the art staff has done for this annual. Helen Brent has been more than valuable in editing the athletic section; Georgie Dees has been seen frequently around the campus with a camera, and the results are to be seen in this book; and last, but by no means least, we are indebted to Mildred Ferguson for the humor in this publication.

Without the efforts of the business staff, the most tireless work of the editorial staff would have been in vain. Under the efficient management of Elizabeth Mordecai, Sarah Beard, and Miss Kirkpatrick, our advertising staff has done an admirable piece of work.

We hope that you will like this book as much as we have liked editing it for you.

KATHERINE RAINEY, *Editor*.

## THE LOTUS



# ORGANIZATIONS

## *Editorial Staff*



*Back row:* Josye, Dees, Bostick, Schwiekart.  
*Front row:* Ferguson, Bisceglia, Peery.

MARY E. BISCEGLIA	<i>Assistant Editor</i>	SALLYE JOSY	<i>Art Editor</i>
SARAH BEARD	<i>Assistant Business Manager</i>	GEORGIE DEES	<i>Snapshot Editor</i>
FLORENCE BOSTICK	<i>Senior Section Editor</i>	LURA SELF	} <i>Associate Editors</i>
HELEN BRENT	<i>Athletics Editor</i>	MARY LOUISE SCHWIEKERT	
MILDRED FERGUSON	<i>Joke Editor</i>	BETSY PEERY	

## *Business Staff*



Cobb, Roberson, Boyd, Newhold, Harper, Sutton, A., Beard, Welsh, Mordecai, Teague, Manson, Winslow, Hayes, Grantham, Darden, Dozier, Pace, Clark.

## ORGANIZATIONS

### *Papyrus Club*



*Colors:* Blue and White

*Flower:* Iris

*Back row:* Boice, Freeman, Bostick (*President*), Whitfield, Boyd, Rainey.

*Second row:* Pollard, Peery, Josey, Eller, Black, Winslow.

*Front row:* Vereen, Biscaglia, Ferguson, Snow, Edwards.

### *Voices of Peace*

The magazine, *Voices of Peace*, was first published so far as records show in December 1889. A second copy was published the next month, January 1890. This first volume had a staff of six editors and a business manager. At this time, the magazine was issued six times a year by the literary society. There is also a copy of Volume III, Number 1 issued in December 1894. Copies of these old issues are to be seen in the Burwell Library.

*Voices of Peace* then seems to have been discontinued until January 1920. At this time, four copies a year were issued alternately by the two literary societies. The editor-in-chief alternated from the two societies. Dorothy Blount served as editor for the Sigma Phi Kappa society, and Dorothy Lunley was editor for the Pi Theta Mu society. Their assistants were four associate editors and four business managers. These older issues are quite similar to the general make-up of the magazine today; however, there are more pages in these earlier issues, and in every issue quite a few pages are devoted to very interesting advertisements. Each issue contained a Peace directory, giving the officers of the various organizations and classes.

*Voices of Peace* was issued fairly regularly until the year 1922-23, when there is no record of its publication. It was revived again in December 1924, under the

# ORGANIZATIONS

editorship of Olive Pittman, '25 (Mrs. D. C. Worth). The staff then consisted of five associate editors and a business manager. Publication continued until May 1931, when it was again discontinued due to the depression.

In the fall of 1936 the Papyrus Club was organized. Its membership is limited to fifteen seniors and fifteen juniors who are elected each year on the basis of their work in English and their interest in journalism. The *Voices of Peace* appeared again in December 1936, under the auspices of the Papyrus Club. The copies for 1936-37 were mimeographed. The staff consisted of an editor-in-chief, a business manager, an assistant business manager, two literary editors, two news editors, and a feature editor. In the following year, the published issues with which we are familiar were begun.

## *The Staff*

SUSAN WHITFIELD  
*Editor-in-Chief*

ANNABELL BOYD  
*Business Manager*

MARY WINSLOW  
*Assistant Business Manager*

MARGON GREY BLACK  
ANNE BOICE  
*Literary Editors*

CLAIRE FREEMAN  
*Exchange Editor*

BETSY PEERY  
*Feature Editor*

SALLY JOSEY  
*Art Editor*

MARTHA ELLER  
*Typing Editor*

MISS HELEN SALLS  
MISS MARTHA BOSWELL  
*Faculty Advisers*



*Back row:* Eller, Freeman, Winslow, Josey, Black.  
*Front row:* Peery, Boyd, Whitfield, Bostick, Boice.

ORGANIZATIONS



*Sigma Phi Kappa*

SALLY JOSEY  
*President*

SARAH BEARD  
*Vice President*

HARRIET SUTHERLAND  
*Secretary*

JOSEPHINE LANGDON  
*Treasurer*

MISS MARTHA MYERS  
*Faculty Advisor*

KATHERINE RAINEY  
*Treasurer*

ORGANIZATIONS



*Pi Theta Mu*

JUDITH BULLOCK  
*President*

MARGARET FISHER  
*Secretary*

FLORENCE BOSTICK  
*Vice President*  
MISS MARTHA BOSWELL  
*Faculty Adviser*

MISS MARY NOBLE  
*Faculty Adviser*

BITSY ANSE REID  
*Treasurer*

OF 1939

# ORGANIZATIONS

## *Glee Clubs*



MISS BOARD, *Director*

### JUNIOR GLEE CLUB

*Officers*

PAULINE ABERNATHY, *President*  
SEL GANT, *Secretary and Treasurer*

FRANCIS RAINEY, *Vice President*  
BLANCHE HUDSON, *Librarian*



### SENIOR GLEE CLUB

*Officers*

ANNA BELLE BOYD, *President*  
JOHNSIE FREEMAN, *Secretary and Treasurer*

MARY ELIZABETH MANSON, *Vice President*  
MILDRED ASKEW, *Librarian*

# ORGANIZATIONS

## *The Penny Players*

"The Penny Players," the dramatic club of Peace College, was founded in 1936 by a group of students who desired to pursue the study of dramatic art.

A brief study of voice, diction, and play construction constitutes our fall activities. Several one-act plays are given as a culmination of these studies.

In the winter the chief project is the production of a three-act play. Radio training and play writing occupy the spring term. A thorough course in make-up is also included.

### *Officers*

MARY JANE DALLIN	<i>President</i>	ELLEN COCHRAN	<i>Vice-President</i>
MARY LILY DUNCAN	<i>Secretary-Treasurer</i>	MARGARET CRAIG	<i>Stage-Manager</i>
MISS ELLEN BOARD		<i>Director</i>	



*Back row:* Black, Griffith, Craig, Manson, Roberson, Covington, Leonard, Bullock.  
*Second row:* Dallin, Highsmith, Duncan, Dickinson, Branch.  
*Front row:* Sewell, Cochran.

## ORGANIZATIONS

### *Daughters Club*



The Daughters Club is composed of girls whose parents or grandparents came to Peace. Among this year's members are Edith and Sallie Bailey, who are the fourth generation of their family to attend Peace. Other members are: Harriette West, daughter of Hattie Randolph; Lara Self, daughter of Sara Cowles; Sallie Pitt Cobb, daughter of Ida Ruth Pitt; Betsy Hutelinson, daughter of Susie Ward Brown; Sara Katherine Parker, daughter of Blanche Johnson; Edith and Sallie Bailey, daughters of Edith Pon; Rosalie Best, daughter of Florence Vestal; Anne Boice, daughter of Sue Thackston; Elizabeth Daniels, granddaughter of Addie Bagley; Mary Holt Drewry, granddaughter of Kittie Holt; Eleanor Gattis, daughter of Phillip Gattis; Blanch Hudson, daughter of Mary White; Elizabeth Mordecai, daughter of Georgia Davis; Julia and Lucille Proctor, daughters of Lossie Vinson; Lucie Richardson, daughter of Annie Reade Lewis; Sidney Anne Wilson, daughter of Elsie Stockard; Sallie Moore Sloan, daughter of Sallie Lassiter; and Miss Martha Myers, daughter of Henrietta Anderson Booth.



# ORGANIZATIONS

## *Photographers Club*



*Organized, 1938*

*Symbol: Kodak*

*GEORGIE DEES  
MARY WHITE McNEELY  
FRANCES RAINEY*

*Purpose: The study of Photography*

*Officers*

*Sponsor, Miss Boswell*

*Colors: Black and White*

*President  
Vice President  
Secretary and Treasurer*

## *Travelers Club*



*Organized, 1938*

*LOTTI J. OSTERWEN  
GEORGIE DEES  
JEAN LINDSAY*

*Purpose: The study of World Travel*

*Officers*

*Sponsor, Miss L. Currie*

*President  
Vice President  
Librarian*



CLAIRE FREEMAN



FLORENCE BOSTICK



GRETCHEN BALDWIN



KATHERINE RAINEY



LURA SELF



GERALDINE SEAWELL



JOYCE EDWARDS



CAROLINE NEWBOLD



BETTY LOU FLETCHER

# SCHOLARSHIP CLUB 1938 - 1939



PAULINE ABERNETHY



ERNESTINE McCORD



KATHRINE FORT



BLANCHE HUDSON



DOROTHY HUIE



FRANCES RAINEY



MARJORIE LUCK



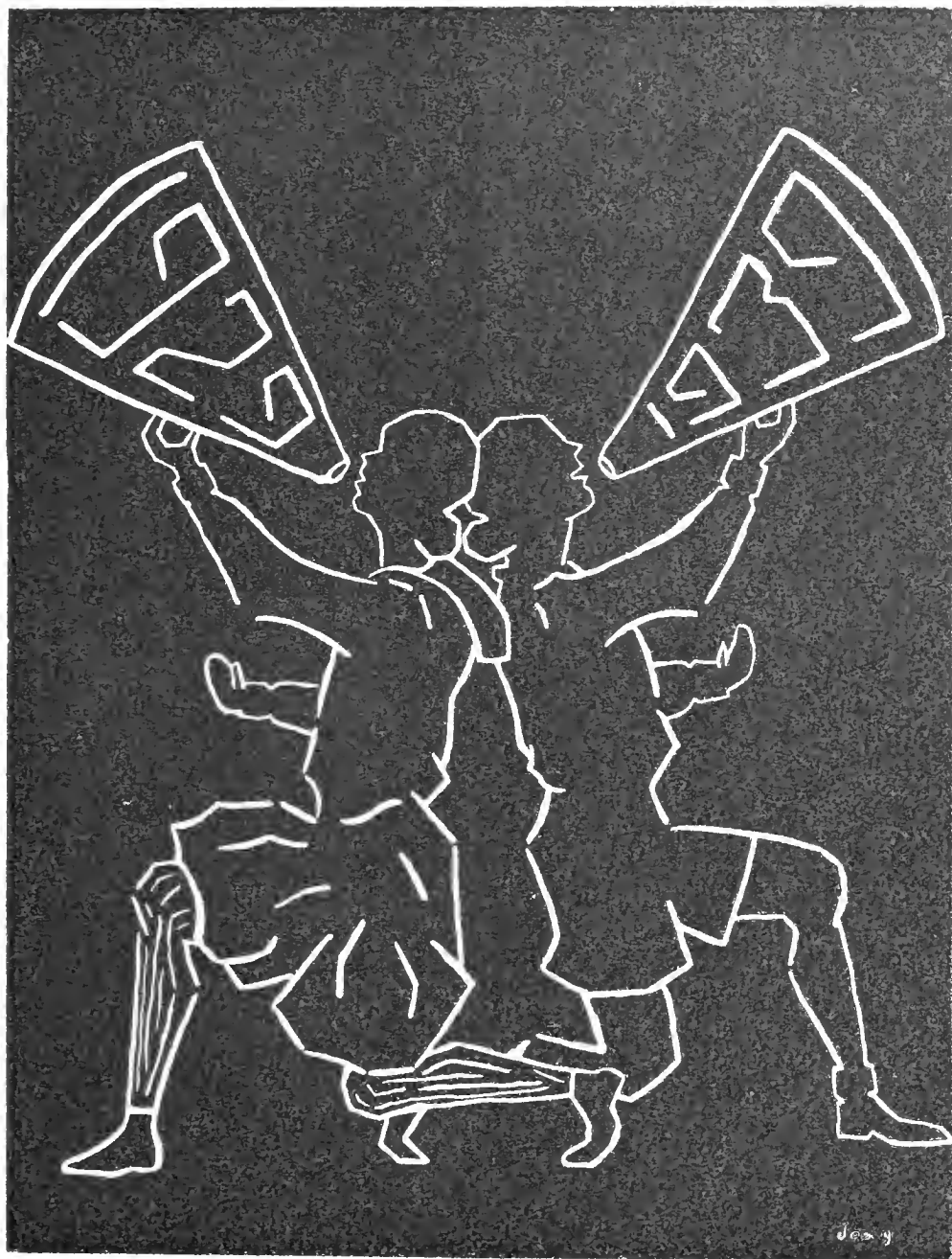
BETTIE OSTERWIN



HARRIET PRESSLY



SALLIE BAILEY



# ATHLETICS



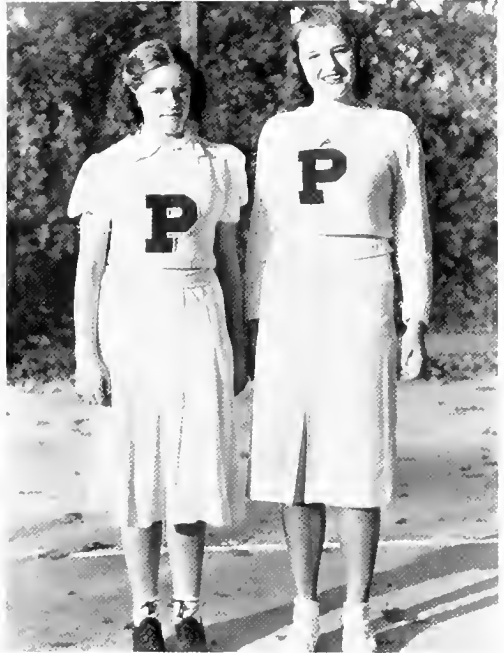


*Athletic Association*

JEAN LINDSAY  
*President*

*Monogram Girls*

HARRIET PRESSLY  
FRANCES RAINEY





Judy Betlock, *Head*

## *Hockey*

For the past two years, hockey has been one of the most popular sports offered at Peace. Each year, three teams are organized: Senior, Junior, and Prep. During the time we have had hockey at Peace, the girls have taken an enthusiastic interest in the sport. Many have shown unusual skill in the development of such feats as passing, dribbling, and tackling. The Peace girls feel that, in this modern age, women should become a live factor in the field of sports.

The students who do not play on the various teams give their loyal support to their classmates who fight for them on the hockey field. The hard fought games in the tournaments at the end of the season prove that the girls receive valuable training in teamwork and sportsmanship by participating in this athletic activity.

### *Senior Team*



Baldwin, Clark, Dees, Josey, Cobb, Ferguson, Boyd, Barden, Thomas, Lindsay, Whitfield, Fisher, Bisceglia, Johnston, Bullock, Cromartie, Sloan (not in picture) Davis, Rainey.

*Junior Team*



Sutton, A., Blue, Stirewalt, Currie, Holmes, Smith, M. E., Laughridge, Johnson, B., Stowe, Welsh, Newbold, Lytch, Shaw, McNeely, M. W., Goddard, Guerrant.

*Prep Team*



Drewry, Parker, Daniels, Walscr, Raincy, Pressly, Cunningham, J., McCotter, Slaughter.



HELEN BURST, *Head*

## Archery

Archery, a new sport at Peace in '38, has become one of the major sports this year. The students at Peace find this one-time weapon of the American Indian a pleasing pastime. They realize the value received from such a sport as archery, for activity in this field develops a keen eye, a steady hand, and a good posture.

Peace girls find the standard English bow well suited to their individual taste. Various colored crests are painted on the arrows to prevent confusion of scores when the arrows are taken from the target. Quite a number of students have their equipment, and show signs of becoming real Robin Hoods.



Goodman, Harper, Perkins, Lindsay, Schweikert, Brent, Andrews, Thomas, Pressly, Ferguson, Roach, Chambliss.



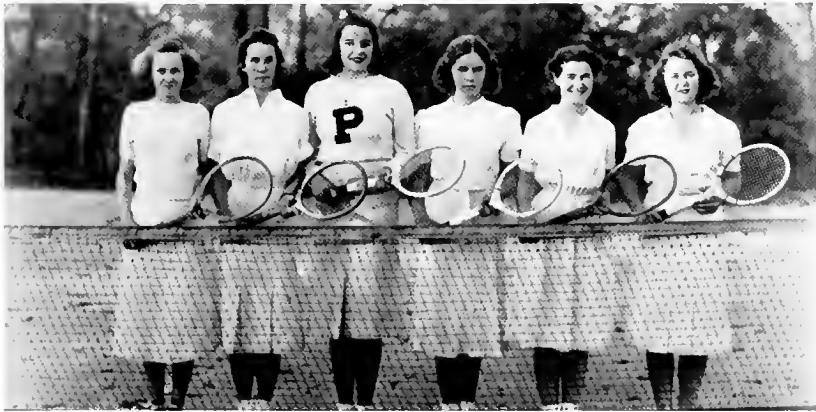
# Tennis

Peace has three excellent tennis courts, which are available to the students throughout the entire school year. Each girl is asked to supply her own racket and balls. This sport gives the Peace girl a chance to exercise during her leisure time. Instructions for playing tennis are given in gym classes during the fall term.

Tennis was one of the most popular sports indulged in by former daughters of Peace, who tripped lightly across the tennis courts in their voluminous skirts, in pursuit of elusive tennis balls. Today, during the warm spring days of March and April, the courts fairly teem with the activity of students practicing for the singles and doubles tournaments which are played off the first weeks in May. In '38 the Athletic Association at Peace sent representatives to take part in the tennis tournament of the annual College Play Day, which was held at Duke University.



HELEN CLARK, *Head*



Cromartie, Lindsay, Rainey, F. Pressly, Bullock, Boyd.



GERTIE S. BALDWIN, *Head*

## *Field Ball*

Field Ball is a new sport at Peace this year. This game has replaced basketball, which was offered at Peace in the days when the middie blouse and long black bloomers were in vogue as a gym costume. In field ball, the girls find a source of lively and beneficial play out-of-doors. Under the expert guidance of Mrs. James Darsie, head of physical education department, the girls have taken an active interest in this game. Out of the number of girls eligible, teams are selected to represent the different classes; Senior, Junior, and Prep. The tournament games are played off the last of March, before the spring vacation.

With such an enthusiastic start the girls at Peace hope to continue with the game and make it one of the leading sports Peace has to offer.

## *Bicycle Club*

Most Peace girls enjoy bicycling around the campus and in the vicinity of the college.



MILDRED FERGUSON, *Head*



Chambless, Rowe, Parker, Daniels

## *Horseback Riding*

Horseback riding is increasing in popularity year by year at Peace. The girls go a few miles out of the city of Raleigh to the riding club. Well gaited and safe horses are used. Many happy jaunts are taken together on the bridle paths through the beautiful Carolina countryside.

The modern daughters of Peace thoroughly enjoy this wholesome sport. The girls ride English style. Expert instruction is given by the Physical Education instructor. If a girl has not ridden before, it is possible for her to remain in the riding ring to receive instruction before going out on the trail.



ANNABELLE BOYD, *Head*

## *Hiking*

Hiking groups are highly organized and each girl in school is given the opportunity to hike every day if she so wishes.



Snow, Manson, Bisceglia, Haie

# Cheer Leaders

MIRIAM McINTIRE  
*Junior*

EMMA THOMAS ROSE  
*Prep*

CAROLINE DIVANE  
*Senior*



Gay 90's Chorus

Six day Bike Race



Th' Winnah!

Scene I: Seniors headed goal-ward



In the window we must go!

Scene II: Seniors still headed godward



Bull's eye!

Three of a kind

"I can't afford a carriage!"





# FEATURES





## *Marshals*

MIRIAM SHAW, *Chief Marshal*  
Sigma Phi Kappa

ANNA SUTTON  
Pi Theta Mu

SARAH SUTTON  
Sigma Phi Kappa

MARY EMMA SMITH  
Pi Theta Mu

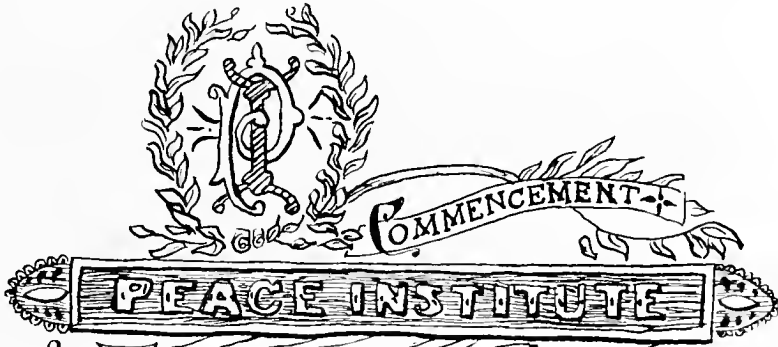
BETSY WELLS  
Sigma Phi Kappa



*May Queen*

HARRIETT  
SUTHERLAND





Exercises June 10<sup>th</sup> at 8 P.M.



ANNUAL ADDRESS BY

Rev. I. M. Smith of  
Washington, N.C.

Annual Concert

June 11<sup>th</sup> 8 P.M.

Class of '19

Graduates

Miss Alice B. Kralich of S.C. Miss Laura G. McCants of S.C.  
Miss Alice Mae Rice of Va. Miss Lucy E. Humphrey of N.C.

J. 0229

Models of 1939

*Best Sport*

JEAN LINDSAY



*Personality*

SALLYE JOSEY



*Versatility*

KATHERINE RAINEX

*Cutest*

MARTHA LONGEST



*Most Charming*

SARAH BEARD



*Most Attractive*

HARRIETT SUTHERLAND



*Miss Peace*

HELEN PURDIE CLARK

# FALL

Hello, everybody!

"Hold it now—"

Shall I pose?

Praise Allah!

Book Week

Have an acorn?

Flat Foot Floogie!

Buckie

Rush Week the fountain

Lindsay

Hen session

Now don't go near the water!

Black Colton Stockings

Susan and Sarah

Five in a row

"Mary Liz"

Henry—as was!

Silly Symphony



# WINTER



Did you have a good  
time, roommate?

Sunday afternoon

Day students like this  
new walk!

Yo-o heave ho!

"Robin Hood" Bullock

Number twelves

Triumvirate

Come on up!

Peculiar tastes

Boon-Isely's bound

My public!

Shadows on the snow

Dramatics student?

Fountain from 4th floor

Betsy

Jes' relaxin'

Can't look down on these  
Juniors now!

How does Deede rate?

# SPRING

Here comes the mail-man.

Birds in a wilderness

Look away, look away!

Why the come-hither look, Fran?

Hospital zone

Look out behind you!

Strolling along--

Getting studious, Margaret?

Commencement

"Tween chapel and lunch

Carry me back to ol' Vir-ginny!

International Relations Committee

"The pause that re-freshes"

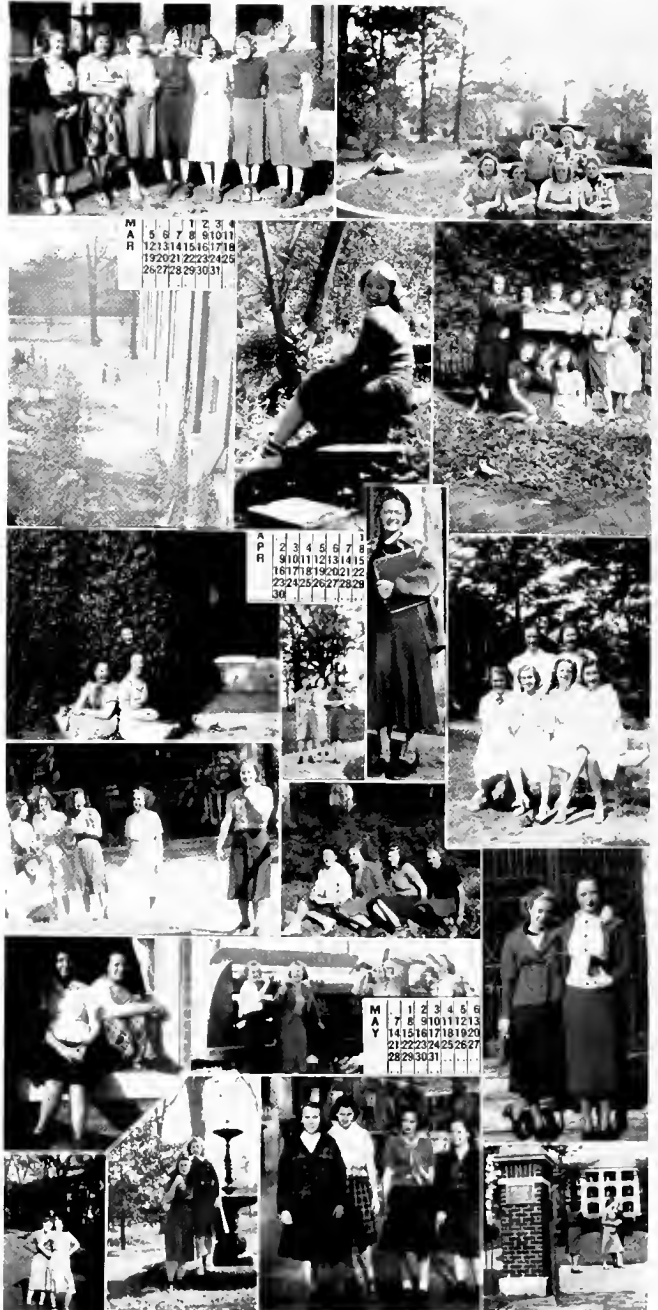
The "Shakespeare" sisters

What goes on here?

Pals (?)

Four of a kind

Pillar to Post





## *Alma Mater*

In the heart of Carolina,  
'Neath its skies of blue,  
Stands our noble Alma Mater,  
Glorious to view,  
Classic in her brood proportions,  
Looks she proudly down—  
Reared against the arch of heaven,  
With the stars for crown.

### *Chorus*

Lift the chorus, speed it onward;  
Let it never cease;  
Hail to thee, our Alma Mater;  
Hail, all hail to Peace!

Clambering o'er the walls and columns  
Historic ivies twine,  
As pure love and tenderest memory  
In our hearts enshrine  
Days of toil and days of pleasure,  
Happiness and joy  
Hardship, struggles without measure,  
Days without alloy,

Honored be our Alma Mater,  
Honored for her past;  
Honored in the living present,  
Let her honors last!  
Long as time shall tell the story,  
Long as hearts are true,  
May her name be crowned with glory  
And honors ever new!

MISS NANNIE DINWIDDIE.



==== PATRONIZE OUR ADVERTISERS ====

Dr. No Yong Park: Now what is this lovely institution most noted for?  
Georgie: Oh, I don't know. Restrictions, I guess.

## HUDSON - BELK COMPANY

Raleigh's Largest Department Store



WE APPRECIATE YOUR PATRONAGE  
AND LOOK FORWARD  
WITH PLEASURE  
TO  
SERVING YOU  
IN THE FUTURE

Margie Snow: I heard you were out on a joy ride Sunday night.  
Va. Dawson: It is not so. None of us were killed or even injured.

Amie Lou Davis: Well, Ethel, reckon I gotta leave you all and get on back to Oxford.  
Ethel (the maid): We're certainly going to miss you, Miss Davis, but I surely hope you don't get seasick on your voyage.

## TAYLOR'S

The Show Place of the Carolinas

Buy all your needs at this good store and you will  
never make a mistake

DRESSES : SUITS : COATS : COSTUMES : FURS : UNDERWEAR  
GLOVES : HOSIERY : SCARFS : JEWELRY  
BAGS : LUGGAGE : NOVELTIES



## TAYLOR'S

The Show Place of the Carolinas

### PROVIDENT MUTUAL LIFE INSURANCE COMPANY

OF PHILADELPHIA

— Organized 1865 —

Make your later years happy with  
a retirement life income

**FRANK M. HARPER & SON**

District Agents

RALEIGH, NORTH CAROLINA

### HOWARDS & CAROLINA CLEANERS, Inc.

116 Harrison Avenue

Cleaning - Pressing - Altering  
Dyeing

TELEPHONE 4068

*Our Motto: Odorless work of the highest  
quality and prompt, courteous  
Service*

### JOHN ASKEW

PAINTING AND  
INTERIOR DECORATING

Estimates made in and  
out of town

Telephone 2706 402 Glenwood Ave.

### PATRONIZE PIGGLY WIGGLY

For the Best  
GROCERIES - FRESH MEATS  
FRESH FRUITS AND  
VEGETABLES

Attractive Stores - Courteous Service  
Reasonable Prices

*Home Owned Home Managed*

### PIGGLY WIGGLY

Your Patronage Appreciated

Catherine W.: Why is Wilmington Street like the road to Heaven?  
Anne H.: Because it leads to Peace.

Miss Currie: How long did you spend on your Shorthand preparation, Sara?  
Sara Kathryn: About half an hour, railroad time.  
Miss C.: Railroad time? How's that?  
Sara K.: Oh, thirty minutes, counting all stops and delays.

<p>It pays to make <b>E FIRD'S</b> your shopping place • YOU SAVE MONEY</p>	<p><b>PERSON STREET SANDWICH SHOP</b> • 610 North Person Street TELEPHONE 3380</p>
<p>FOR PURE CLEAR CRYSTAL <b>ICE</b> AND HIGH GRADE <b>COAL</b> — — — — — PHONE 492 — — — — — <b>CAPITAL ICE AND COAL CO.</b> Incorporated 600 West Hargett Street</p>	<p><b>BROGDEN PRODUCE COMPANY</b> • Wholesale <b>FRUITS PRODUCE</b> RALEIGH, NORTH CAROLINA</p>
<p><b>BRANTLEY'S &amp; SONS</b> Expert Druggists 1910 Fine Sodas</p>	<p><b>Edenton Street Methodist Sunday School</b> Welcomes the Peace College Girls DR. JOHN C. GLENN, <i>Pastor</i> C. A. HULLON, <i>Supt. of Sunday School</i></p>

Junior, talking to Miss Myers: Is there a teacher on duty in here tonight?

Mrs. Darsie (in gym class): Lie on your backs and work your feet as though you were riding a bicycle.

Emma Thomas Rose stops.

Mrs. D.: Why have you stopped?

E. T. R.: I'm coasting.

<p><b>GEO MARSH CO.</b> (Incorporated)</p> <p>Wholesale Distributors <b>FINE FOOD PRODUCTS</b></p> <p>Raleigh, N C</p>	<p><b>CONFIDENCE</b></p> <p>The young Ladies of Pence who are sensitive to quality appeal and those who instinctively buy where complete confidence may be placed are among our most welcome customers.</p> <p>It is ever the policy of this Company to continue to merit such confidence by constant attention to the proper relations of quality and price.</p> <p><b>BOYLAN-PEARCE, Inc.</b> "Raleigh's Shopping Center"</p>
<p><b>DAIRY PRODUCTS</b></p> <p>PASTEURIZED MILK BUTTER - EGGS BIERLEY'S ORANGEADE</p> <p><b>ICE CREAM</b> at Better Drug Stores and Soda Fountains</p> <p><b>Pine State Creamery</b> Glenwood Avenue Telephone 3910</p>	<p>You are always <b>WELCOME</b> at <b>WALGREEN'S</b></p> <p>We appreciate your business</p>
<p><b>WELCOME</b> <b>STUDENTS AND FACULTY</b> - - To <b>WOMBLE'S BEAUTY SHOPPE</b> "Specialists in Permanent Waving" <b>ALL LICENSED BEAUTICIANS</b> — PHONE 1783 — 225 Pace Street Raleigh, North Carolina</p>	<p><b>California Fruit Store</b></p> <p>30 Years as the Headquarters and Meeting Place for College Students Speaks for Quality and Service</p> <p><b>LUNCHES : CANDIES</b> <b>SODAS : FRUIT</b></p>

Jean Lindsay: No mam, I can't tell you what visceral organs are.

Miss Currie: Why, Miss Lindsay, don't you remember Horace's bulging sides?

Prince: Gee, this is a funny world to live in.  
Mutt: Yes, and so few of us get out of it alive.

**Welcome**  
STUDENTS AND FACULTY  
To  
**POOLE'S BEAUTY SHOPPE**  
*We Specialize in*  
ALL LINES OF BEAUTY CULTURE  
*Including Expert Haircutting*  
PHONE 3165  
7 West Hargett Street



"The Family Laundry Service which we are now using is Fine and my shirts are just right."

"Yes dear I wish I had known of the Capital City Laundry long ago." You too, can enjoy this fine laundry service, just call 74.

"Use 'despair' in a sentence."

"We had a flat tire today, so Pop had to use de spare."

Mary Emma: Why don't you take this dictation in shorthand?  
Johnsie: I want to be able to read this.

## BYNUM PRINTING COMPANY

---

BETTER PRINTING

---

692 — PHONES — 693

Mr. Gargis: Come out from under that table!  
Louise Stirewalt (emerging shamefacedly): Oh, please, Mr. Garbydue, don't tell on me. I just had to take a twelve o'clock cut.



Fran: When do we start studying brains?

Miss Perry Lee Jones: Not until we have something to work on.

MAKE  
**BOON-ISELEY DRUG CO.**  
YOUR HEADQUARTERS

We Carry a Complete Line of all  
Well-known

PERFUMES, COLD CREAMS  
and FACE POWDER

**Cut Rate Drugs**  
**Candies - Sodas**

**WE DELIVER - PHONE 96**

*Neiman's*  
INC

JEWELERS-SILVERSMITHS  
RALEIGH, N.C.

Teacher: When was the first arc-light used?

Tommy: In Noah's ark!

Ernestine: One of my ancestors came over on the Mayflower.

Sarah Emily: Oh, really? How long is he going to stay?

## MEREDITH COLLEGE

RALEIGH, N. C.

A STANDARD COLLEGE FOR YOUNG WOMEN

Courses offered in Arts and Sciences, in Music, in Art, leading to the  
B.A. and B.S. degrees.

Prepares for life, for vocation, or for further study  
Charges reasonable.

For catalogue or further information write

**CHAS. E. BREWER**

President

Nell Mc.: But honestly, I turned just as I signaled.

Irate driver: That's just the trouble. How was I to read your mind a little earlier?

Miss Kuhns: The only two things we have to do are die when we are dead and pay taxes while we are living.

<p>Your Patronage Appreciated</p> <p><b>AMBASSADOR, STATE, PALACE and CAPITOL</b></p> <p>Operated by</p> <p><b>NORTH CAROLINA THEATRES, Inc.</b></p> <p>THE BEST IN PHOTOPLAYS, VAUDEVILLE and STAGE SHOWS AT POPULAR ADMISSION PRICES</p>	
<p><b>COXE - FERGUSON DRUGS</b></p> <p>•</p> <p>PRESCRIPTIONS</p> <p>•</p> <p>Corner Salisbury and Hillsboro Streets</p> <p>•</p> <p><b>Raleigh, North Carolina</b></p>	<p><b>OAK CITY LAUNDRY</b></p> <p>436 S. Salisbury Street</p> <p>•</p> <p><b>TRICLENE</b></p> <p><b>Odorless Dry Cleaning</b></p> <p>•</p> <p>Hats Cleaned and Blocked Rugs Shampooed</p> <p>•</p> <p>PHONES 180 and 181</p>
<p><b>ELLISBERG'S</b></p> <p>Raleigh's Smartest Shop</p> <p>THE STYLE CENTER FOR THE SMART COLLEGE GIRL</p> <p>126 Fayetteville Street</p>	<p>OPEN EVENINGS</p> <p><b>VANITY BEAUTY SHOP</b></p> <p><i>"Creator of Better Permanent Waves"</i></p> <p>We appreciate the patronage of both Faculty and Students of Peoce College</p> <p>PHONE 2278</p> <p>529 N. Person Street</p>

Miss Currie (dictating notes): Hurry up, Miss Perkins.  
Hilda H. (absentmindedly): Would you repeat that, please?

Miss McL.: I'm going to give you a piece of my mind. . . .  
Sallye: Just a little piece, please.

## CAROLINA COACH COMPANY

Carolina Owned and Operated

The Most Beautiful Coaches on the Highway

Low Fares

Frequent Schedules

NATION-WIDE SERVICE

### JANTZEN SWIM SUITS

Are

Distinctive and Smart

Select Yours From

**Lewis Sporting Goods Co.**

112 West Hargett Street

Visit The

### Largest DRUG STORE in the City

We Carry the most complete  
stocks of Nationally Adver-  
tised

**PATENTS - COSMETICS  
SUNDRIES**

222 FAYETTEVILLE ST. **Eckerd's** RALEIGH, N. C.  
OF RALEIGH, N. C., INC.  
"CREATORS OF REASONABLE DRUG PRICES"

**Fountain and Luncheonette  
Service**

**Use Your Credit**

— at —

**HERBERT ROSENTHAL**

BEAUTIFUL SHOES

DRINK

**ORANGE CRUSH**

and

**NU GRAPE**

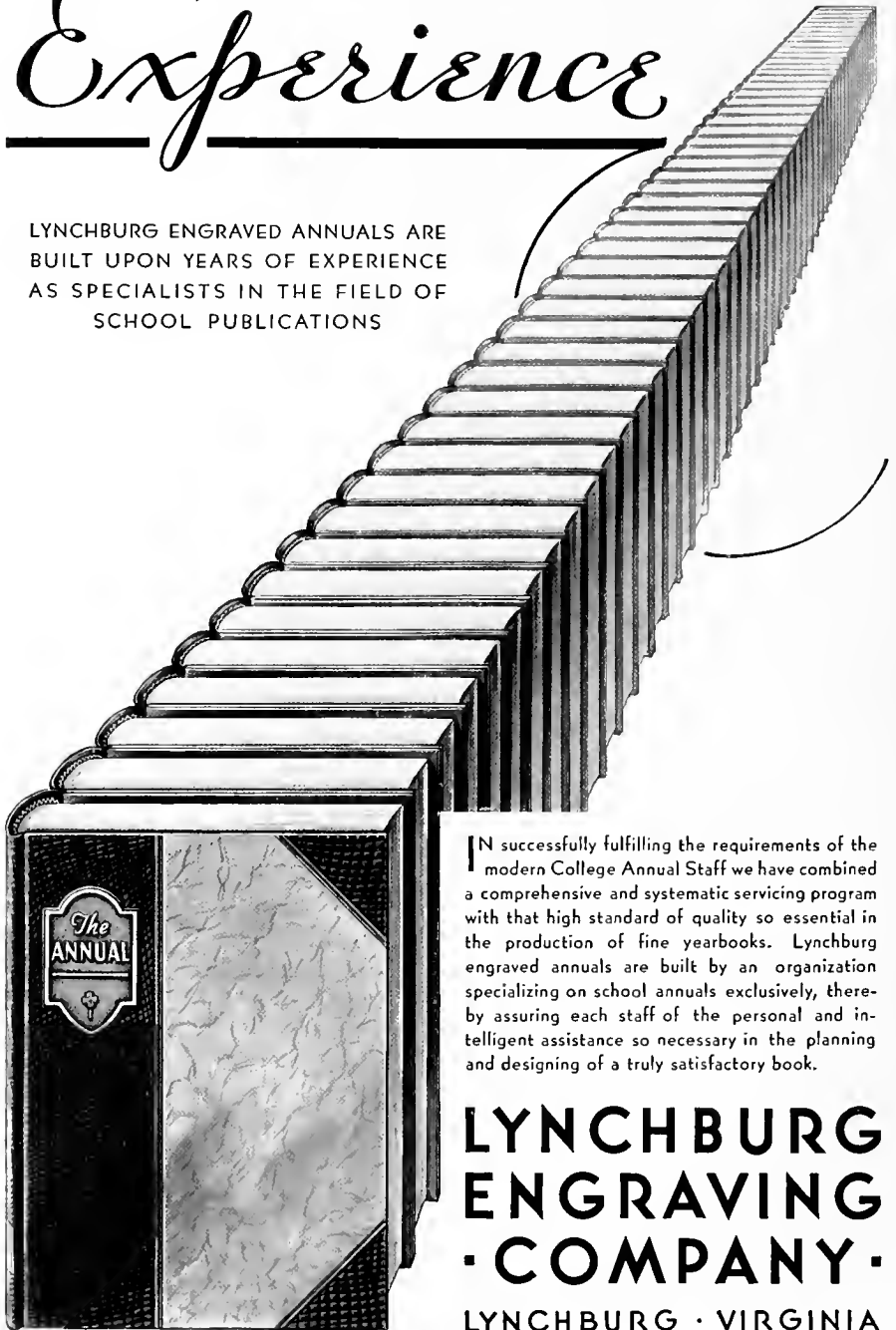
Two Outstanding Flavors

**PHONE 544**

Annabelle (to father): I am a big gun at school these days.  
Mr. Boyd: Well, I want to hear a better report from you at the end.

# Experience

LYNCHBURG ENGRAVED ANNUALS ARE  
BUILT UPON YEARS OF EXPERIENCE  
AS SPECIALISTS IN THE FIELD OF  
SCHOOL PUBLICATIONS



IN successfully fulfilling the requirements of the modern College Annual Staff we have combined a comprehensive and systematic servicing program with that high standard of quality so essential in the production of fine yearbooks. Lynchburg engraved annuals are built by an organization specializing on school annuals exclusively, thereby assuring each staff of the personal and intelligent assistance so necessary in the planning and designing of a truly satisfactory book.

**LYNCHBURG  
ENGRAVING  
· COMPANY ·**

LYNCHBURG · VIRGINIA

*Builders of Better Annuals*

Mary Eliz.: You look all broken up. What's wrong?  
Ellen Cochran: I wrote home for money for a study lamp.  
M. E.: Well, what of it?  
Ellen: They sent me the lamp.

## A CAREER AND YOUR HOME

---

A promising future is often-times sacrificed on the altar of household drudgery. You have planned a career—yet, you, like all other women, will some day want the pleasures and comforts of a home of your own. Must you abandon the work for which you are prepared in favor of the home? Not in this age of electrical conveniences! You can manage a home successfully and at the same time carry on with your vocation or profession. Electrical appliances will provide you with the necessary time and perform your household tasks efficiently and economically

---

**CAROLINA POWER & LIGHT COMPANY**

State Bull Session: The girls at Peace are very religious. Every time we walk in, they say "Ah-men!"

Miss Raynor: Girls, please give me a little Christmas present by not passing the biscuits until I'm through serving.

Agatha D.: Well, just this once, but don't think we're going to spoil you.

Office Phone 3778      Plant Phone 4221

**HOOD-MODEL DRY CLEANING  
COMPANY**

"Ask the Folks We Serve"

Main Office: 13 S. Wilmington Street

Plant: 606 N. Person Street

**Raleigh, N. C.**



Everything in Fine Jewelry  
Watch Repairing A Specialty

ALL WORK GUARANTEED

**THE FIRST PRESBYTERIAN CHURCH  
AND  
SUNDAY SCHOOL  
OF RALEIGH, NORTH CAROLINA**

Extends a welcome to college girls. It is our hope that you will make this your church home during your stay in Raleigh. There are special classes organized in our Sunday school for college girls.

REV. P. D. MILLER, D.D., Pastor  
DAVID WORTH, Superintendent of Bible School

Mary Lois: That's a fine airship you're drawing—but where's the pilot?  
Hazel Lewis: Oh, he's still in the ink bottle.

Anne Boice (proctoring): Girls, light bell has rung. Be sure and sign up.  
Julia and Lucille: You can't make us sign up 'cause we're Proctors, too.

Sally Cobb: I certainly do like that skirt you are wearing.  
Miriam McL.: Yeah, take it. I can wear the other one.

Jean Matheson reports Miss Boswell as saying the period of American Literature immediately following the Civil War is called the "Resurrection."

<p><b>You Will Enjoy Shopping</b> at <b>PRESTON, Inc.</b> Raleigh, North Carolina</p>	<p><b>FLOWERS!</b> Cut Flowers - Corsages Graduation Bouquets Decorations PHONE 4170 <b>J. J. FALLON CO., Inc.</b> <i>"We Grow the Flowers We Sell"</i></p>
<p>Raleigh                      Wilson</p> <p><b>G. S. TUCKER &amp; BROS.</b> Incorporated E. Hargett Street Raleigh, N. C.</p> <p>FURNITURE and HOME FURNISHINGS</p> <p>We Appreciate Your Patronage</p> <p>Clayton                      Smithfield</p>	<p>PEACE COLLEGE CLASS RINGS AND PINS SOCIETY PINS AND NOVELTY JEWELRY Walter B. Anderson <b>L. G. BALFOUR PRODUCTS</b> Richmond, Virginia</p> <hr/> <p><b>DRINK</b> <i>Coca-Cola</i> <b>in bottles</b></p>
<p>Ellen Currie: Why are term papers like prison terms? Bettie Jo: They both are just a series of sentences.</p> <p>Aunt Lulu: Shall I sweep this rug? Jean L.: Goodness, no! That's Judy's cleanest towel!</p>	

Miss Noble: Tell me the number of bales of cotton exported from the United States for any one year.

K. Walsler: In 1491, none.

A miss is as good as her smile.

## STROP TAXI COMPANY

— DAY AND NIGHT SERVICE —

25c a Trip in City Limits, 1 or 4 - Each Stop is a Full Trip

REASONABLE RATES for OUT OF TOWN TRIPS

ALWAYS — READY

3800 — PHONE — 3800

Call Us for the Correct Time

### DILLON SUPPLY CO.

MILL SUPPLIES

Heating Equipment  
Modern Machine Shop

RALEIGH                      DURHAM  
ROCKY MOUNT

TRY



IT'S *Richer and Fresher*

"INSIST ON LANCE'S"

### LANCE PACKING CO., Inc.

Candies and Peanut Products

PHONE 3463-W

R. E. GRAHAM, Representative

Raleigh, N. C.

### BARBOUR PRODUCE CO.

Dealer in

FRUITS and PRODUCE

Wholesale Only

Phone 2664 - Res. Phone 3013-J

At City Market

# *Mangel's*

UNDERWEAR, DRESSES, COATS AND SUITS

Fan Tan Hosiery

Blanche Farmer (new typist, after rapid-fire dictation): Now, Mr. Jones, what did you say between "Dear Sir" and "Sincerely yours?"



Miss Board (at the table): Why, I'm having to loosen my belt again today.  
Doris Peel: Why, that's nothing, I've gained so much that I've stopped wearing them.

## PERSON STREET PHARMACY

Three Stores

PERSON STREET

CAMERON PARK

HAYES BARTON

P. D. GATTIS, Prop

**A COMPLETE LINE OF NATIONALLY ADVERTISED DRUGS**

Plus a Selected Assortment of Toilet Items

**Soda Our Specialty**

Vick Moore B. E. Dennis Earl Johnson

### MOORE & JOHNSON CO.

*"For 15 Years Raleigh's Leading  
Insurance Agency"*

INSURANCE - SURETY BONDS

Lawyers Building

RALEIGH, NORTH CAROLINA

### Southern School Supply Company

School - Laboratory and  
Library Supplies

Raleigh, N. C.

Phone 2079 702 N. Person St.

### PENNY'S SHOE SHOP

We strive to give our patrons  
the best in workmanship  
and material

Corner Person and Pace Streets

### J E A N S

SMART SHOP  
for

SMART WOMEN

Styles of Individuality

RALEIGH, NORTH CAROLINA

### JOB P. WYATT & SONS COMPANY

HARDWARE . IMPLEMENTS

DU PONT PAINT : VARNISH : OIL

SEEDS : PLANTS : BULBS

RALEIGH, NORTH CAROLINA

Emma Thomas (waiting for the drug store boy): I wish he'd come on.  
Mary Holt: Here he comes now, by that department house.

Nell W.: I can't even cheat on the chemistry exam.  
Alice Wall: Why? Does your conscience hurt?  
Nell W.: No, I don't take chemistry.

# PEACE

## A JUNIOR COLLEGE FOR WOMEN

PALEIGH, NORTH CAROLINA

For the Education and Culture of Young Women

- I COLLEGE COURSES
- II COURSES PREPARATORY TO COLLEGE COURSES
- III SPECIAL COURSES IN ART, PIANO, VOICE, EXPRESSION,  
HOME ECONOMICS, AND COMMERCIAL SUBJECTS

SITUATION Location in capital city affords special opportunities, delightful social advantages; athletics supervised indoor and outdoors by physical director. Special attention to individual development. Climate permits outdoor life all winter

FOR CATALOGUE OR OTHER INFORMATION,  
WRITE

THE PRESIDENT

# PEACE

A Junior College for Women  
PALEIGH, NORTH CAROLINA

Tramp: Lady, how about a dollar for a cup of coffee?  
Miss Ida Currie: Since when was coffee a dollar?  
Tramp: Look, lady, you tend to your business and I'll tend to mine.

Mrs. Worth: Anne, what is your favorite play by an American author?  
Anne Cunningham: Shakespeare's *Merchant of Venice*.



**W. H. KING DRUG CO.**

Wholesale Drugs

Phone 245 117 S. Wilmington St.  
RALEIGH, N. C.

Compliments of  
**T. H. BRIGGS & SONS, Inc.**  
"Carolina's Oldest Wholesale  
and  
Retail Hardware House"  
Raleigh, N. C.  
Established 1865 Phone No. 45

ASK FOR  
**GOLDEN TAP  
GRAPEFRUIT JUICE**  
At the Soda Fountain. And insist  
upon being served in  
DIXIE CUPS  
**Garland C. Norris Company**

**WAKE THEATRE**

Welcome Peace  
Raleigh's Reasonable Price  
Theatre

W. E. TRULL W. R. TRULL

**TRULL  
Plumbing & Heating Co.**

Plumbing - Heating  
Coal Stokers - Roofing  
Air Conditioning  
Phone 1964 411½ Fayetteville St.

A CONTRIBUTION

To further the interest of  
**THE LOTUS**

From a Friend

**ADLER'S CINDERELLA**

*Creators of Beautiful Footwear*  
For Style, Quality and Comfort  
Choose Your Selection at

**ADLER'S**

For Economy Visit our  
Bargain Basement

Miss Richards: Tomorrow is George Washington's birthday.  
Blanche Hudson: How old will he be?

Miss Kuhns: Getting answers about locus from your students is like pulling hen's teeth.  
Dumb Day Student: Does a hen have teeth?

## THE PHOTOGRAPHS

In This Annual Were Made by

# DUNBAR AND DANIEL

134 Fayetteville Street

RALEIGH, N. C.

Largest College Annual Photographers  
in the South

FINE PORTRAITS

PROMPT SERVICE

*Autographs*

A group were discussing comparative size of their home towns. Some one said, "I don't suppose Hertford is big enough to even have water works." The lady from Hertford replied, "Oh, yes, we do! The boats sail up and down on it all the time."

*Autographs*



## BUILDERS DREAMS

**V**ISIONS created by the imagination precede the achievement of any really great accomplishment. The ability to weave the threads of imagination into the finished fabric is equally important.

It has been the privilege of the EDWARDS & BROUGHTON COMPANY to cooperate with the staff in creating their vision into material form.

Such cooperation is one of the "visions" which precede the building of a successful business, and is a part of the working policy of the EDWARDS & BROUGHTON COMPANY.

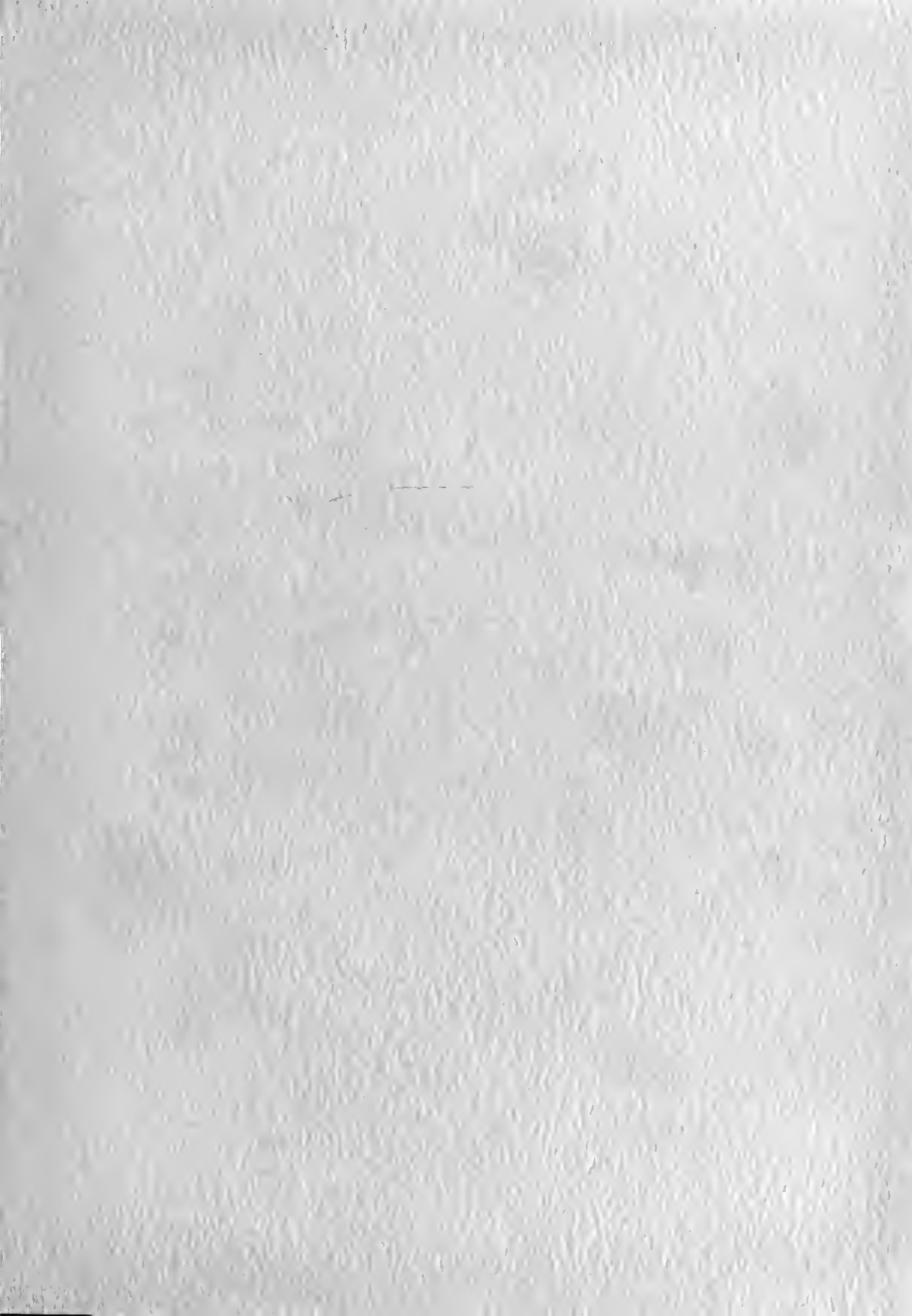
To those Staffs desiring complete cooperation, we offer unexcelled service.

You, too, may be proud of your annual.

*Correspondence is Invited*

EDWARDS & BROUGHTON CO.

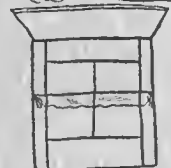
RALEIGH, NORTH CAROLINA



# CAMPUS OF PEACE COLLEGE



PSGA HUT

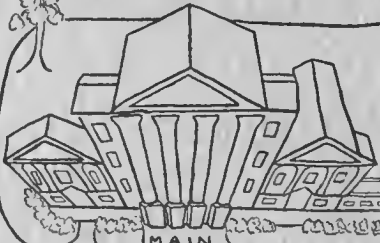


GARAGE



LAUNDRY

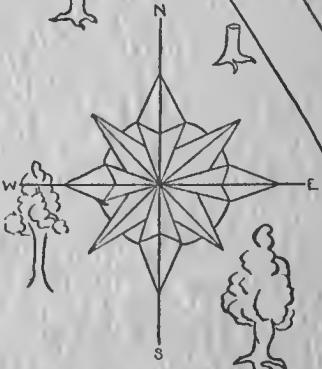
ART STUDIO  
SCIENCE LAB



MAIN



EAST



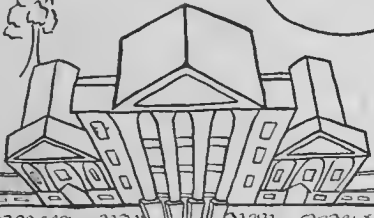
1939

Sallye Jones

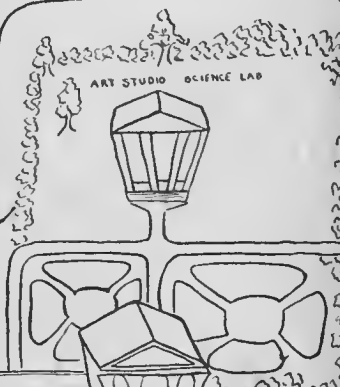




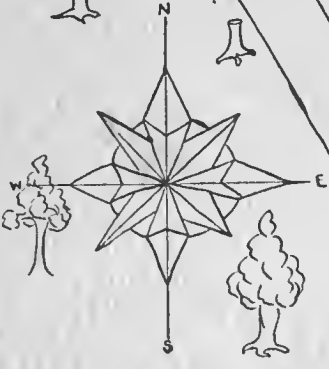
POCA HUT



MAIN



EAST



Sallye Jolley

