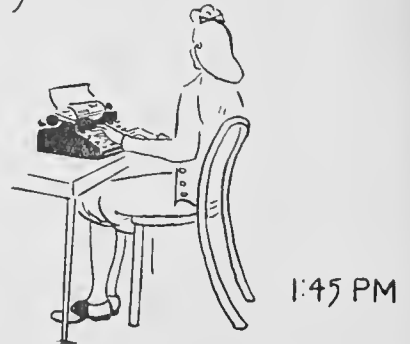
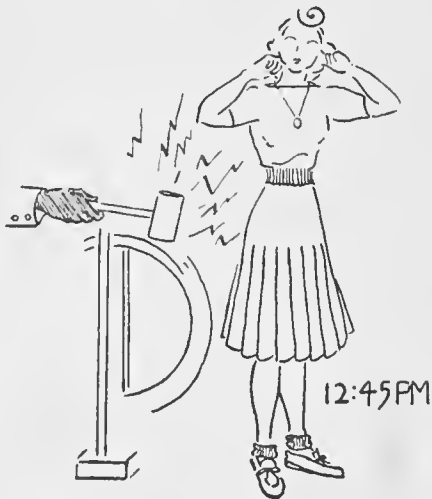
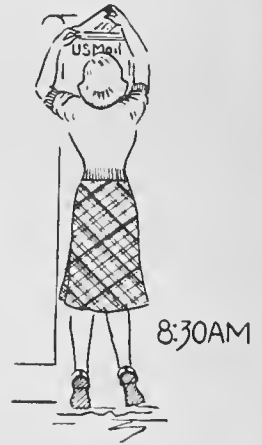
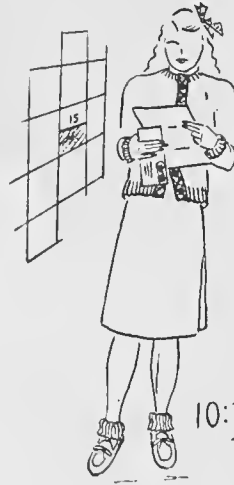
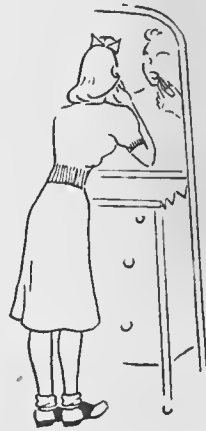


The
LOTUS
1943



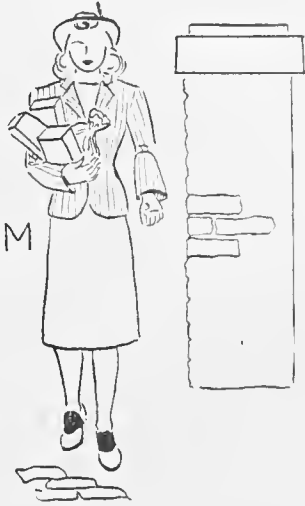
45
25
15
10

office copy

2:30 PM



5:30 PM



9:00 PM



4:15 PM



9:45 PM



10:05 PM



10:15 PM



10:30 PM

Sarah Bruce McAfee





Ex Libris . . .

BETTY STONEBANKS

Editor

HARRIET PRESSLY

Business Manager

The

"In the heart of Carolina" we have lived together for a happy year of college life. We've shared joys and heartaches alike in a year which has given each of us a formula for happiness.

Peace has been good to us. She has freely offered us the best of life's gifts and has endowed us with a sense of the beauty that comes in living with others. We've been happy here and most of us have written our Mothers expressing contentment with Peace life. With each new day we have added another paragraph to our letters as the story of the traditions of other days has unfolded itself before our eyes.

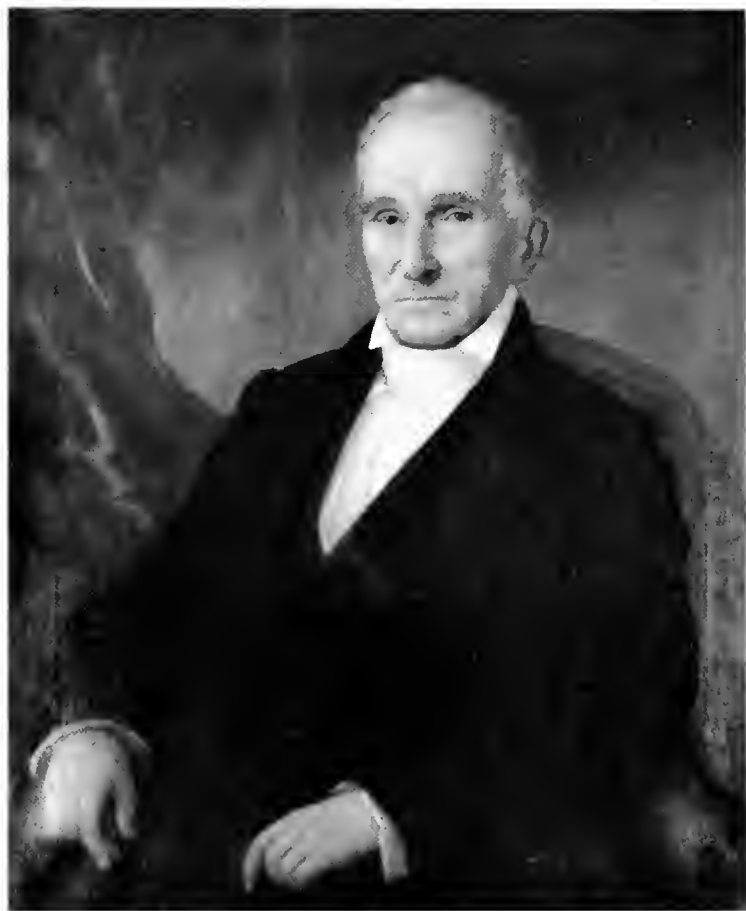
We came in green as the grass on front campus. We gradually learned what the bells meant and this was an accomplishment! And after we had acquired knowledge of this kind, we become acquainted with girls who have proved real friends. Throughout the year we, together with our new friends, have experienced happy events. We've upheld traditions and begun new ones.

During the year we have been to rush parties — to a Kid Party, on

Lotus for 1943

a Cruise, and to a Circus — and have pledged. We have been initiated and have been to a banquet. We've joined clubs and have gone to receptions. We've had trials and tribulations with Stunt Night and Society Plays — and with studying. We've been inspired anew by Candlelighting Services, Morning Watch, and the Christmas Pageant. Two weeks of importance have been Religious Emphasis Week and Peace Loyalty Week. We've played against each other in competitive sports. And now at the end of the year we have Baccalaureate Services, Class Day — with the pinning of the colors and the planting of the rose bush, and Graduation.

And so, we have come to realize that socially, scholastically; and spiritually Peace is a school of traditions. We have seen the spirit of Peace girls who have come before us and left us our traditions. We — because of a year rich in memorable events — have helped to build Peace while she has helped to build us. In the tomorrows that come we will look back on the yesterdays at Peace and think of the thousands of girls who have led happy lives here. Then we will feel again that surge of joy that WE are Peace girls!



WILLIAM PEACE

FOUNDER OF PEACE

Born: March 7, 1773. Died: July 11, 1865.



Dearest Mother,
Administration,
faculty, and
Council — these
are the ones who
understandingly
directed our efforts
to become Peace Girls



Main
Building



*Dr. W. C. Pressly and
Miss May McLelland*

For true understanding, for unflinching interest, for thoughtful guidance, for genuine friendship—for all these things which made our years at Peace both fruitful and pleasant ones, we are deeply grateful to our President and to our Dean.



Executive Committee, seated: Mr. John Pasco, Mr. R. A. Snow, K. G. Hudson, Chairman, Dr. John Rhodes, B. W. Kilgore.
Standing: Dr. W. C. Pressly, Mr. J. C. Allison, Rev. M. O. Sommers.

Owned and controlled by the Presbyterians of North Carolina, Peace is governed by a board of trustees whose members are appointed by five Presbyteries—Albemarle, Orange, Granville, Kings Mountain, and Wilmington—by the First Presbyterian Church of Raleigh, and by the board itself.

The following, arranged in the order of their appointment, comprise the board: K. G. Hudson, Chairman, Raleigh, N. C.; B. W. Kilgore, Raleigh, N. C.; Mrs. Josephus Daniels, Raleigh, N. C.; Mrs. C. C. McAllister, Fayetteville, N. C.; Mrs. W. N. Reynolds, Winston-Salem, N. C.; Mrs. B. R. Lacy, Raleigh, N. C.; Mrs. Robert Wyatt, Raleigh, N. C.; Mrs. George Avinger, Laurinburg, N. C.; Mrs. Anna Baker Fenner, Tarboro, N. C.; Rev. Harry Whitmore, D.D., Wilmington, N. C.; Mrs. B. Frank Mebane, Spray, N. C.; Mrs. E. L. McKee, Sylva, N. C.; Thomas O'Berry, Goldsboro, N. C.; Rev. W. M. Baker, Mebane, N. C.; Mr. J. M. Baird, Oxford, N. C.; Rev. R. A. White, D.D., Mooresville, N. C.; H. H. Littrell, Rocky Mount, N. C.; Dr. F. L. Knight, Sanford, N. C.; Rev. L. R. Scott, D.D., Goldsboro, N. C.; Rev. W. S. Patterson, Lowell, N. C.; Rev. P. D. Patrick, Kings Mountain, N. C.; Rev. M. C. MacQueen, Clinton, N. C.; Rev. W. D. McInnis, Henderson, N. C.; Mr. W. E. Leggett, Durham, N. C.; Rev. M. O. Sommers, Raleigh, N. C.; Mr. J. C. Allison, Raleigh, N. C.; Mr. John Pasco, Raleigh, N. C.; Mr. Raymond Snow, Raleigh, N. C.; Dr. John Rhodes, Raleigh, N. C.; William C. Pressly, Secretary-Treasurer, Raleigh, N. C.

Dedicated to . . .



MRS. DAVID C. WORTH

Mrs. David C. Worth

An alumna, a former teacher of English, and a friend to Peace, Mrs. David C. Worth is loved by all who know her. It is fitting, therefore, that We, the Senior Class, dedicate this, THE LOTTS OF 1943, to her.

As a student, she was a well-liked leader; as a teacher, she was friendly, sympathetic, sincere, and patient; as our friend, she is always an inspiration.

In her graduation dress.



Several years ago—with the same twinkle in her eye.



And now, at home with Mr. Worth, Olive Pitt, and David, Jr.



Faculty

MRS. DOROTHY PETERSON ALDEN, B.M., *Violin*

MRS. LUCILLE CAVENAUGH, B.P., A.B. in L.S., *Librarian*

MISS AMELIA CLARK, *Registrar*

MISS MARJORIE CLARK, *Secretary*

MRS. DAISY JONES COUCH, A.B., A.M., *Commercial Subjects*

Miss Georgia Hewson, Miss Amelia Clark, Miss Mary Kirkpatrick, Miss Marjorie Clark.





Mrs. Dorothy Alden, Miss Helen Scoggins, Mrs. Nellie Staudt, Miss Lovie Jones, Miss Elizabeth Gearhart.

MISS DELLA MARGARET CORTNER, A.B., A.M., *English*

MISS RUTH GATLIN, A.B., Ed.M., *Psychology, History*

MISS ELIZABETH GEARHART, B.M., M.M., *Voice, Dramatics*

MISS ETHEL GRAMMER, *Dietitian*

DR. HUBERT HAYWOOD, M.D., *Attending Physician*

Faculty

Faculty

MISS GEORGIA HEWSON, *Matron and Head of Infirmary*

MISS LOVIE JONES, *Piano*

MISS MARY KIRKPATRICK, *Bursar*

MISS WINIFRED M. KUHNS, A.B., B.E., M.S., *Mathematics*

MISS TORA MARIE LARSEN, A.B., A.M., *Commercial Subjects*

MISS MAXALYNN MOURANE, A.B., A.M., *French*

Miss Margaret Couner, Miss Helen Salls, Miss Mary Elizabeth Thomas, Mrs. Sara Goff Turner, Miss Winifred Kuhns, Miss Mabel Pugh.





Seated: Mrs. Francis Williams, Mrs. Daisy Couch. *Standing:* Mrs. Lucille Cavenaugh, Miss Tora Larsen, Dr. Annie Louise Wilkerson.

MISS MABEL PUGH, *Art, History of Art*

MRS. ELIZABETH MURRAY QUISENBERRY, B.S., *Science (First term)*

MRS. BIRDIE MCKINNEY ROWLAND, *Assistant Dean*

MISS HELEN HARRIET SALLS, A.B., A.M., *English*

MISS HELEN SCOGGINS, B.M., *Piano, Harmony, School Accompanist*

MRS. NELLY PHILLIPS STAUDT, B.M., *Organ*

Faculty

Faculty

MISS LUCY E. STEELE, A.B., A.M., *Bible, Spanish*

MISS MARY ELIZABETH THOMAS, A.B., A.M., *History, Economics*

MRS. SARA GOFF TURNER, *Hostess*

MISS BERTIE LEE WHITESIDES, B.S., A.M., *Home Economics*

DR. ANNIE LOUISE WILKERSON, B.S., M.D., *Health*

MRS. FRANCES MORRIS WILLIAMS, A.B., *Physical Education*

MISS BEVERLY STEINERT, A.B., *Science (Second term)*

Seated: Miss Lucy Steele, Miss Maxalynn Mourane, Miss Ruth Gatlin, Mrs. Birdie Rowland, Miss Bertie Lee Whitesides. *Standing:* Mrs. Elizabeth Quisenberry, Miss Ethel Grammet.



Tribute to



Miss Amelia Clark

This year the Senior Class of 1943 has the happy honor of paying tribute to Miss Amelia Clark, Registrar of the College, Sponsor of the 'Daughters' and Granddaughters' Club, and a sincere friend to all students. By her willingness to help others, her efficient work in the bookstore, and her ready smile, Miss Clark has completely won our hearts. The entire group wishes for her more joy and happiness in the years ahead.



MARGARET MASSEY
President

Student Council

Government at Peace is based on the co-operative plan. Students and administration work together in seeking to reach a better understanding of campus problems. A group of girls elected by the student body compose the Student Council. Meeting weekly, the Council considers disciplinary questions and executes plans for the betterment of student life. The Student Council also sponsors certain traditional Peace activities, an outstanding one being the annual Student Body Reception.



Seated: Dorothy Richeson, Jo Beatty, Margaret Massey, Jane Cusick. *Standing:* Maryana Smith, Gora Drake, Mary Dalrymple, Patsy Short, Alta Kellogg. *Not photographed:* Marion Morton, Betty Jean Downes, Dora Batts.

Day Student Council

Helping the day students feel part of school life is the purpose of the Day Student Council, who work hand in hand with the Student Council. The problems involved in adjustment to college life are brought before the Council and discussed toward a worthy solution. The Council has six members who meet every two weeks.



BETTY STONEBANKS
President



Seated: Harriet Pressly, Betty Stonebanks, Betsy Snipes, Rosa Winborne. *Standing:* Louise Highsmith, Nell Harris.

Our Learned Professors



Miss Steele . . . the Misses Clark smile before breakfast . . . Miss Mourane sunning . . . the hostess at the gate . . . Miss Hewson . . . Mrs. Williams before the ban . . . Dr. Pressly at home.

I shall remember
as lasting friends
all the girls —
seniors, juniors,
and preps. They
made Peace
lively as well
as serious.



East
Building

Snappy Seniors



Dignified roomies on tour . . . there seems to be a gay time at hand . . . not listening to "Pottia," "Dud?" . . . Roomies, but not particularly dignified . . . all in white . . . "Jo," our president, looks the situation over . . . now, "Pogony" . . . looking real hard, we can see Shaw, Grant, Dot, and Cusick.

Senior Class

JO BEATTY
President

MARGARET JONES
Secretary

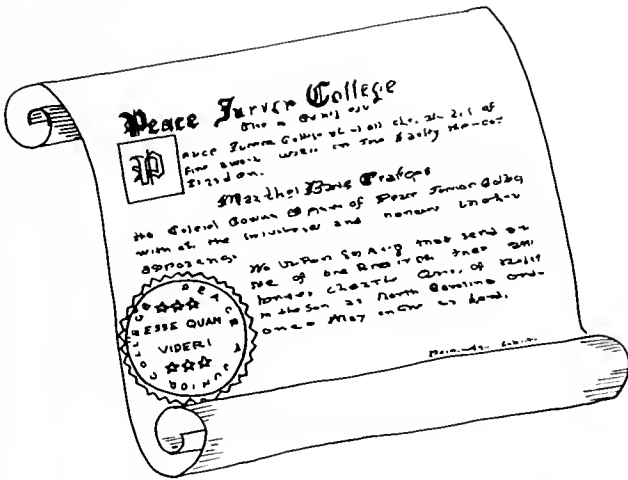
HELEN SHAW
Vice President

DOROTHY RICHESON
Treasurer

MRS. FRANCES WILLIAMS
Sponsor



JANE SOMMERS
Mascot



The meriting Seniors, who so capably handed down to the new girls the standards and traditions of Peace—who are looked up to and followed in all the activities—

Mrs. Williams
Jones
Richeson
Beatty
Shaw





JANE BEAMAN
Raleigh, N. C.

Honey

Rho Delta Chi, Marshal '43.

State and Carolina dances. Long fingernails. Chicken choumein, "Super" evening dresses.



JOSEPHINE BEATTY
Ivanhoe, N. C.

Jo

Pi Theta Mu; President of Senior Class '43; Vice President of Student Council '43; Hockey '43; Privileged Honor Roll '43.

"There are such Things." Stuffed animals. Blue. Chocolate pie. Red roses.



ELIZABETH DAVIS BEATTY
Raleigh, N. C.

Lib

Sigma Phi Kappa; President of Sigma Phi Kappa '43; Editorial Staff of LOTUS '42, '43; Stunt Night '42, '43; Christmas Pageant '42; Society Play '42; Treasurer of Class '42; Sisters' Club '43.

Pink ice cream. Third Floor Main. Malt-A-Plenties. "Marines' Hymn."

Seniors

DOROTHY GILBERT BEDDINGFIELD
Raleigh, N. C.

Dot

Pi Theta Mu.

Houbigant. Slipping classes. "Summertime." Gardenias.



FLORRIE BEST
Dunn, N. C.

Florrie

Sigma Phi Kappa.



KATHRYN BLALOCK
Waynesville, N. C.

Kat

Alpha Pi Epsilon '42. President '43; Society Play '42;
Nominating Committee '43; Christmas Pageant '43; Stunt
Night '43; Privileged Honor Roll '43.

*The mountains. Uniforms, Superman. Drug stores. Juke
boxes.*



1943



MARY NELL BOYETTE
Carthage, N. C.

Droop

Pi Theta Mu, Marshal '13; Stunt Night '12; Tennis '12,
'13; Basketball '12.

Horses, Fox hounds, Sports, Army Air Corps.



JOYCE LYNN CARROLL
Turkey, N. C.

Joyce

Pi Theta Mu.

Jean Gabin, the Free French.



ELIZABETH CARTER
Wallace, N. C.

Lib

Sigma Phi Kappa; Granddaughters' Club '12, '13; May
Day '12.

*Chocolate sodas, Tall men, "At Last," The Citadel,
Week-ends.*

Seniors

KATHRYN MCKAY CREECH
Bethesda, Md.

Kitty

Pi Theta Mu; Glee Club '42, '43; Choir '42, '43; Vice
President of Granddaughters' Club '42, '43; Advertising
Staff of Lotus '43; Stunt Night '42, '43; Society Play
'42; Archery Club '42.

Vary, Roommate, Convertibles, Window ledges.



ANNE ELIZABETH CROOM
Knightdale, N. C.

Lib

Rho Delta Chi; Scholarship Club '42, '43; Alpha Pi
Epsilon '43.

Red, Chocolates, Sleep, Room 204 M; Curly hair.



ELIZABETH LYDIA CULBRETH
Fayetteville, N. C.

Betty

Pi Theta Mu; Play Day '43.

"Serenade in Blue," A.A.F., Dancing, Good food, Orchids.



1943



BETSY FLORINE CURRIN
Rowland, N. C.

Florine

Rho Delta Chi; Scholarship Club '43; Elsie Robertson Art Club, Secretary '43.

Mack, Blue, Home, Teddy bears, Babies, Roommate, Main 204.



ELEANOR JANE CUSICK
Kingsport, Tenn.

Janie

Rho Delta Chi; P.S.C.A. Cabinet '42, Vice President '43; Phi Theta Kappa '42, President '43; Sigma Pi Alpha '43; Privileged Honor Roll '42, '43; Treasurer of Student Council '43; Editorial Staff of Lotus '43; Christmas Pageant '42, '43; Stunt Night '42, '43; Scholarship Club '42, '43; Hockey '43; Orchestra '43; Outstanding Senior '43; Glee Club '43; Choir '43.

Tennessee, Ghost stories, Roommate, D.D.L., Puppies, Storms, Open fires, Home.



MARY BURKE DALRYMPLE
Jonesboro, N. C.

Mary

Pi Theta Mu, Vice President '43; President of Athletic Association '43; Student Council '43; Hockey '42, '43; Basketball '42; Softball '42; Bicycling '42; Monogram Club '43; Stunt Night '42; Christmas Pageant '42; May Court '42; May Queen '43; Play Day '43.

Horses, White carnations, Teddy bears, Brother Bob, "Blue Danube."

Seniors

BETTY JEAN DOWNES

Cape Charles, Va.

Betty Jean

Sigma Phi Kappa; Business Staff of LOTUS '43; Dees Camera Club '42; Christmas Pageant '42; Student Council '43.

Orchids. Clothes. Negro babies. Chowmein.



CORA MACCORMAC DRAKE

Bennettsville, S. C.

Cora

Rho Delta Chi, Secretary '43; Papyrus Club, Treasurer '42, '43; Daughters' and Granddaughters' Club, President '42, '43; Glee Club, Secretary '42; Student Council '43; P.S.C.A. Cabinet, Treasurer '43; Scholastic Club '42, '43; Sigma Pi Alpha '43; Dees Camera Club '42; Christmas Pageant '42; Phi Theta Kappa '43.

Malt-a-plenties. The library. British sailors. W. J., Junior-Senior.



JANE DUDLEY FRANCIS

Waynesville, N. C.

Dud

Pi Theta Mu; Stunt Night '42, '43; Art Club '43; Softball '42; Play Day '43; Society Play '42; Hockey '43; Elsie Robertson Art Club '43.

Convertibles. Red roses. Kay Kyser. Carolina. Horses. "Dearly Beloved." Cherry pie.



1943



MARGUERITE GASKIN
Smithfield, N. C.

Maggie

Pi Theta Mu; Hockey '41; Granddaughters' Club '41,
'42, '43.

A.C.C., Wilson, Rain, Swimming, "Tonight We Love,"



REBEKAH JEAN GLENN
Raleigh, N. C.

Kimosabi

Sigma Phi Kappa, Treasurer '43; Christmas Pageant '43;
Stunt Night '42, '43; Editorial Staff of LOTUS '43.

*V-mail, "Portia Faces Life," C-cards, Moron jokes, Curb
service, Convoys.*



ELIZABETH McARTHUR GORE
Raeford, N. C.

Lib

Sigma Phi Kappa; Elsie Robertson Art Club '43.

Cats, Pastel colors, Art, Music, French.

Seniors

MARGARET GRANT
Mocksville, N. C.

Margaret

Rho Delta Chi; Christmas Pageant '42; Basketball '42;
Archery '42, '43; Hockey '43; Sisters' Club '43.

Smooth music, Movies, Sleep, Moron Jokes, Red, Peace.



JANE GUTHRIE
Pearisburg, Va.

Jane

Rho Delta Chi; Business Staff of LOTUS '43; S.C.A.
Delegate '43; Stunt Night '43; Hockey '42, '43; Basket-
ball '42; Play Day '43.

*Bitter chocolate, "Hyperbole," Virginia, "The Swinging
Doors," Carnations.*



ANN PAISLEY HENDRIX
Raleigh, N. C.

Hendrix

Sigma Phi Kappa.

*"Indiscreet," Walking in the rain, Red roses, "There Are
Such Things."*



1943



ELEANOR WINFREY JOHNSON
Pittsboro, N. C.

Eleanor

Sigma Phi Kappa; Dees Camera Club '42, '43; Sigma Pi Alpha '43; Dramatics Club '42, '43; Scholarship Club '43.

Ronald Regan, Malt-a-plenties, My roommate, Music boxes, Bracelets.



MARGARET JANE JONES
Laurinburg, N. C.

Margaret

Rho Delta Chi; Privileged Honor Roll '42, '43; Health Queen '42; Art Editor of LOTUS '43; Elsie Robertson Art Club, President '43; Secretary of Class '43; Hockey '43.

100+, Smoke, Art lab, Discussions.



ANNIE LUCIA MCCALLUM
Rowland, N. C.

Annie

Rho Delta Chi; Scholarship Club '43; Christmas Pageant '42; Phi Theta Kappa '43.

Butch, Home vacation, Letters, Fun, People Traveling, Infirmary hall.

Seniors

KATE MCKIMMON

Raleigh, N. C.

"Miss Tums"

Rho Delta Chi; Glee Club '42.

Week-ends, Dances, Sweetheart roses, Chanel No. 5.



MARGARET POGUE MASSEY

Hampden-Sydney, Va.

Poguey

Pi Theta Mu; Christmas Pageant '42; P.S.C.A. Cabinet '42, '43; Business Staff of LOTUS '43; Privileged Honor Roll '42, '43; Society Play '42; President of Student Council '43; "Miss Peace" '43; Hockey '42.

Red roses, Football games, Blue, "Night and Day," Harry James, Home.



MARION BOYD MORTON

Oxford, N. C.

Mernie

Sigma Phi Kappa; Vance-Granville Club '42, '43; Student Council '43; Phi Theta Kappa '42, Secretary '43; Hockey '43.

"Stardust," Johnny, Letters, Red.



1943



REBECCA VENABLE MORTON
Oxford, N. C.

Becky

Sigma Phi Kappa; Vance-Granville Club '42, President '43.

Navy. Specials. "I Love You." Candy. Week-ends.



SUSAN CAROLYN NEWHAM
Raleigh, N. C.

Sue

Pi Theta Mu; Marshal '43; Stunt Night '42; Society Play '42.

Horses. Air Corps. Letters. Beech-Nut. Traveling.



HARRIET BYRNE PRESSLY
Raleigh, N. C.

Harree

Rho Delta Chi. Treasurer '43; Phi Theta Kappa '42, '43; Papyrus Club '42, '43; Editor-in-Chief of *Voices of Peace* '43; Business Staff of *LOTT'S* '42, Business Manager '43; Vice President of Day Student Council '43; Scholarship Club '42, '43; Granddaughters' Club '42, '43; Monogram Club '42, '43; Hockey Head '42; Tennis '42; Outstanding Senior '43; Stunt Night '43; Sigma Pi Alpha '43.

Tennis. Third period. Third floor long hall. Fourth floor short hall.

Seniors

MARY ELIZABETH RHODES
Lincolnton, N. C.

Betty

Rho Delta Chi, President '43; Sigma Pi Alpha '42, President '43; P.S.C.A. Cabinet '42, Secretary '43; Privileged Honor Roll '42, '43; Vice President of Class '42; Phi Theta Kappa '43; Stunt Night '42, '43; Scholarship Club '42, '43; Outstanding Senior '43.

Open fires, Sunday nights, Steaks, Long talks, Green.



DOROTHY RICHESON
Waynesville, N. C.

Dot

Pi Theta Mu, Treasurer '43; Student Council, Secretary '43; P.S.C.A. Cabinet '42, '43; Treasurer of Class '43; Society Play '42; Stunt Night '42, '43.

Mountains, Chocolate pie, Stuffed animals, Main 325.



HELEN MARTIN SHAW
Fayetteville, N. C.

Shaw

Sigma Phi Kappa; P.S.C.A. Cabinet '42; Junior Class Representative on Council '42; Glee Club '42, '43; Privileged Honor Roll '42; Christmas Pageant '42, '43; Outstanding Senior '43; Stunt Night '42, '43; Play Day '42; Alpha Pi Epsilon '43; Typing Editor of LOTT'S '43; Trio '42.

Davidson, Lavender, Air Mails, Singing with Bobbie, Tweed perfume, Chocolate ice cream, Virginia, Food, "Tater Pie."



1943



PATSY AVONNE SHORT
Shelby, N. C.

Patsy

Sigma Phi Kappa; Privileged Honor Roll '42, '43; Student Council '43; Chief Marshal '43; Advertising Staff of LOTUS '43; Dees Camera Club '43; Dramatic Club '43; Nominating Committee '43.

Bracelets, Angora, Sketching.



MARYANA SMITH
Kingsport, Tenn.

Yana

Sigma Phi Kappa; P.S.C.A. Cabinet '42, President '43; Student Council '43; Christmas Pageant '42, '43; Business Staff of LOTUS '42; Papyrus Club '42, '43; Hockey '42, '43; Ping Pong '42; Stunt Night '42; Outstanding Senior '43.

"Von," Fourth floor long hall, Food, Iceland, Tennessee, "Be Strong, Peace Girls, Be Strong," Quiet Hour.



YVONNE LEE SMITH
Farmville, N. C.

Von

Rho Delta Chi, Marshal '43; Dees Camera Club, Vice President '43; Ping Pong '42; Tennis '42, '43; Stunt Night '43.

Lemon Pie, Telephone calls, Mail, Walgreen's, "Do You Care?" Farmville, Brother Bobby, Yana, Fourth floor long hall, Quiet hour.

Seniors

BETSY WILLS SNIPES
Raleigh, N. C.

Snipes

Rho Delta Chi; Secretary-Treasurer of Day Student Council '43.

"Je Reviens," Rain, Sunset, Hamburgers, Orchids, "There Will Never Be Another You."



EMMA IONA SOUTHERLAND
Smithfield, N. C.

Homer

Pi Theta Mu.

Carolina, Chocolate pie, "Boyette."



SARAH ELIZABETH STONEBANKS
Raleigh, N. C.

Stoney

Sigma Phi Kappa; Cheer Leader '42; Papyrus Club '42, '43; Editorial Staff of LOTUS '42, Editor-in-Chief '43; Scholarship Club '43; Day Student Council, President '43; Outstanding Senior '43.

Blue, Betty, Smiles, Sunday nights, "Mississippi," "The Little Drug."



1943



BETTY TATUM
Tatum, S. C.

Betty

Sigma Phi Kappa, Secretary '43; Christmas Pageant '42; Glee Club '42; Granddaughters' Club '42, '43; Editorial Staff of LOTUS '43; Society Play '42; Privileged Honor Roll '43.

Cadets, Traveling, Violets, "Why Don't You Do Right?" Uniforms.



GLADYS ELIZABETH TAYLOR
Raleigh, N. C.

Gladys

Pi Theta Mu.

Mais Qui perfume, Red roses, Long letters, "At Last."



BELLE FAUCETTE THORP
Oxford, N. C.

Belle

Sigma Phi Kappa; Vance-Granville Club '41, '42, '43.
312 East, Scrappy, S.T.C., The New Yorker, Stationery.

Seniors

MARGARET TUCKER
Winston-Salem, N. C.

Tuck

Rho Delta Chi. Cheer Leader '43; Granddaughters' Club '42, '43; Stunt Night '43; Hockey '43.

That potty Patty. "Swinging Doors." Mr. King's Boys.



GRACE WALKER
Ahoskie, N. C.

Grace

Pi Theta Mu; Business Staff of LOTUS '42.

Bill. Bill. Bill.



BETTY WHELESS
Louisburg, N. C.

Betty

Pi Theta Mu; Christmas Pageant '42.

"Teeny," 305 Main. Chocolate ice cream. Kittens. Saturday afternoons.



1943



JANE CORRINE WILSON

Raleigh, N. C.

Jane

Pi Theta Mu, Secretary '43.

Twenty-five-cent-double features, Onions, "There Are Such Things," Walking.



MARY ALICE WILSON

Raleigh, N. C.

Mary Alice

Pi Theta Mu; Glee Club '43; Granddaughters' Club '42, '43.

Voice, Air Corps, Midnight snacks, "Every Night About This Time," Medical Corps.



ROSA VAUGHAN WINBORNE

Raleigh, N. C.

Vaughan

Rho Delta Chi; Day Student Council Sergeant-at-Arms '43.

Dancing, Movies, Summer.

Seniors

*Presenting Our Special
Peace Seniors...*



May Queen

Miss Mary Burke Dalrymple



Miss Peace

Miss Margaret Poque Massey



Maryana . . . because she's President of the Peace Student Christian Association, a member of the Papyrus Club and the Student Council . . . because of her sunny disposition, her generosity, and her inspiring enthusiasm for every worthwhile undertaking.

Shaw . . . because she's Vice President of the Senior Class, a member of Alpha Pi Epsilon, and typist for the LOTUS . . . because of her grand sense of humor and her sympathetic understanding . . . because she's lively, lovable, and loyal.



Betty... because she's President of the Rho's, President of Sigma Pi Alpha, Secretary of Peace Student Christian Association, a member of the Privileged Honor Roll and Phi Theta Kappa . . . because of her outstanding personality and her brilliant mind . . . because she's interesting, intelligent, and invaluable.



Stoney... because she's Editor-in-Chief of the Lotus, President of the Day Students, a member of the Papyrus Club . . . because of her constant loyalty and her unfailing energy . . . because she's clever, capable, and cute.



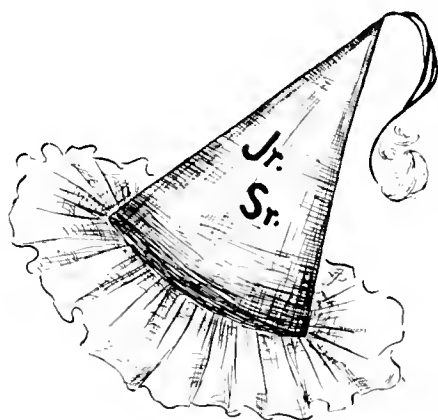
Harree... because she's Editor of *Voices of Peace*, Business Manager of the LOTUS, Vice President of the Day Student Council, Treasurer of Rho Delta Chi, and Vice President of Phi Theta Kappa . . . because her quiet poise and her attractive manner make her truly an A-1 Peace girl.



Janie... because she's President of Phi Theta Kappa, Vice President of the Peace Student Christian Association, Treasurer of the Council, and a member of the Privileged Honor Roll . . . because of her ready willingness to help others, her quiet, assured leadership, and her devotion to the higher things at Peace.

Junior Class

And here, the Juniors, who came in green (time was all they asked), view with anticipation the day when they, too, will no longer be underclassmen.



LINDA COBB
President

MARGARET FOUNTAIN
Vice President

CAROLYN TATUM
Secretary

BOBBIE REINS
Treasurer

MISS ELIZABETH GEARHART
Class Sponsor

Bobbie Reins
Cobb
C. Tatum
Fountain





BETTY ABERLY, New Bern, N. C., *Rho Delta Chi*
 JOYCE ALLEN, Raleigh, N. C., *Sigma Phi Kappa*
 ELIZABETH ANDREWS, Raleigh, N. C., *Sigma Phi Kappa*
 SYBLE ARNETTE, Chatham, N. C., *Pi Theta Mu*
 ALFA BARNES, Raleigh, N. C., *Sigma Phi Kappa*
 LOUISE BARNES, Rose Hill, N. C., *Pi Theta Mu*
 DORA BATES, Fremont, N. C., *Sigma Phi Kappa*
 HAZEL BAICOM, Durham, N. C., *Pi Theta Mu*
 ELOISE BAZEMORE, Raleigh, N. C., *Sigma Phi Kappa*
 JACQUELINE BENTON, Roseboro, N. C., *Sigma Phi Kappa*
 FLORENCE BIBERSTEIN, Burgaw, N. C., *Pi Theta Mu*
 LILLIAN BONEY, Rocky Mount, N. C., *Pi Theta Mu*
 CAMILLA BOONE, Jackson, N. C., *Pi Theta Mu*
 ELLEN BOYETTE, Carthage, N. C., *Pi Theta Mu*
 HELEN BRASWELL, Whitakers, N. C., *Sigma Phi Kappa*
 MARGARET BROOKS, Raleigh, N. C., *Pi Theta Mu*
 JEAN BRYAN, Wilmington, N. C., *Pi Theta Mu*
 SALLY BRYAN, Oxford, N. C., *Pi Theta Mu*
 NANCY BURDEN, Anclater, N. C., *Sigma Phi Kappa*
 JUANITA CATES, Raleigh, N. C., *Pi Theta Mu*

Juniors

- ELEANOR CLARK, Rosindale, N. C., *Pi Theta Mu*
 LINDA COBB, Pinetops, N. C., *Pi Theta Mu*
 VIRGINIA CAHOON, Raleigh, N. C., *Pi Theta Mu*
 JANE CONNELLY, Flemington, Pa., *Sigma Phi Kappa*
 ALTA RUTH COOKE, Wendell, N. C., *Pi Theta Mu*
- JOYCE COOPER, Cary, N. C., *Pi Theta Mu*
 MAE CRITCHER, Raleigh, N. C., *Pi Theta Mu*
 MARY FRANCES CURRIN, Oxford, N. C., *Sigma Phi Kappa*
 HORIENSE DAY, Oxford, N. C., *Sigma Phi Kappa*
 MARY LOUISE DIXON, Roxboro, N. C., *Sigma Phi Kappa*
- DOROTHY DUKES, Ahoskie, N. C., *Rho Delta Chi*
 BETTY WHITNELL DUFFEY, Raleigh, N. C., *Sigma Phi Kappa*
 FRANCES ANN EARLE, Louisburg, N. C., *Pi Theta Mu*
 BETTY ELLIOTT, Chadbourne, N. C., *Pi Theta Mu*
 MARTHA FAISON, Faison, N. C., *Sigma Phi Kappa*
- ANNE FITCHETT, Dobb, N. C., *Sigma Phi Kappa*
 RHODA FITZPATRICK, Rousemont, N. C., *Rho Delta Chi*
 MARY BRYAN FLEMING, Raleigh, N. C., *Pi Theta Mu*
 JEAN FLOWERS, Zebulon, N. C., *Pi Theta Mu*
 MARGARET FOUNTAIN, Rocky Mount, N. C., *Sigma Phi Kappa*



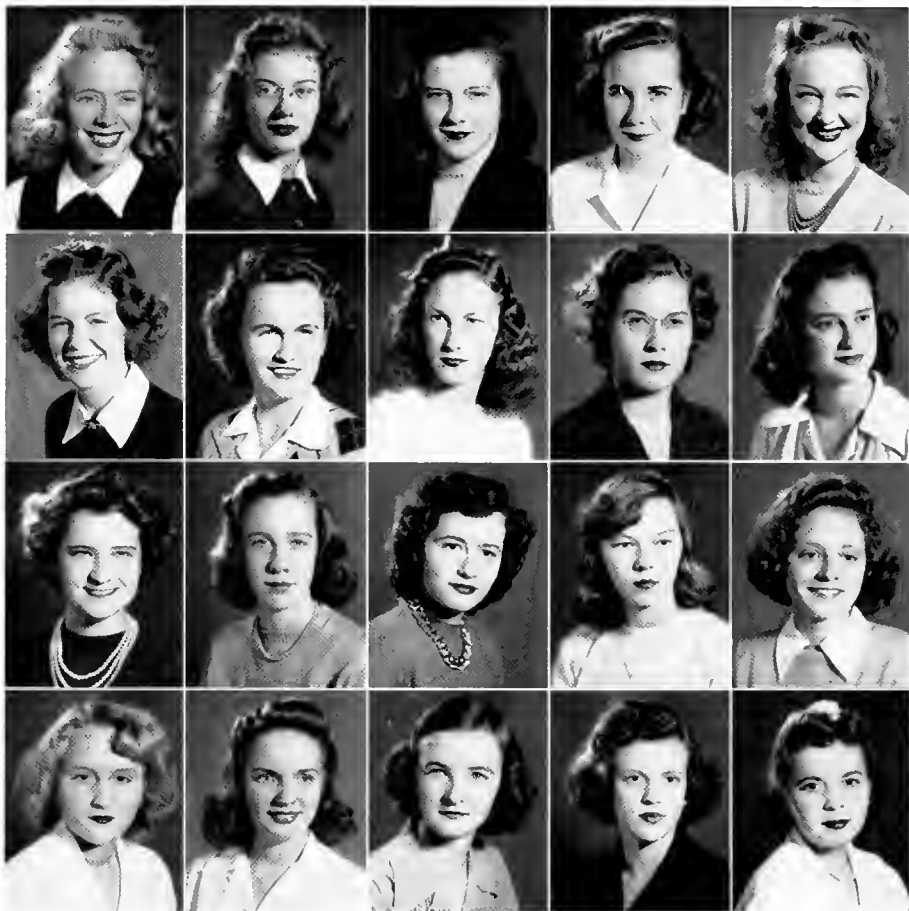


DORIS FRANKS, Raleigh, N. C., *Pi Theta Mu*
 IRENE FRYE, Raleigh, N. C., *Sigma Phi Kappa*
 EMILY GAHR, Fayetteville, N. C., *Sigma Phi Kappa*
 OLIVIA GARRETT, Roxboro, N. C., *Pi Theta Mu*
 FRANCIS GOAD, Raleigh, N. C., *Sigma Phi Kappa*
 ELLANOR GOWLER, Gilton, N. C., *Pi Theta Mu*
 JEAN GRAY, New Beth, N. C., *Rho Delta Chi*
 ELIZABETH GRISSOM, Kittrell, N. C., *Rho Delta Chi*
 CORNELIA GRISSOM, Kittrell, N. C., *Rho Delta Chi*
 JANE HARRIS, Wake Forest, N. C., *Pi Theta Mu*
 NELL HARRIS, Raleigh, N. C., *Pi Theta Mu*
 MARY FRANCES HASKINS, Kinston, N. C., *Pi Theta Mu*
 CARMEL HENDERSON, Raleigh, N. C., *Pi Theta Mu*
 ELIZABETH HENDERSON, Davidson, N. C., *Pi Theta Mu*
 MARTHA ANN HIGH, Raleigh, N. C., *Sigma Phi Kappa*
 LOUISE HIGHSMITH, Raleigh, N. C., *Sigma Phi Kappa*
 EVELYN HILL, Orange, Va., *Rho Delta Chi*
 MARGARET HOLLER, Union Mills, N. C., *Sigma Phi Kappa*
 MARY JOEL HONEYCUTT, Raleigh, N. C., *Pi Theta Mu*
 KATHERINE HUDSON, Wanhaw, N. C., *Rho Delta Chi*

Juniors

- BETTY JACKSON, Fort Benning, Ga., *Sigma Phi Kappa*
 HELEN JONES, Hope Mills, N. C., *Pi Theta Mu*
 LEE MAE JONES, Wendell, N. C., *Pi Theta Mu*
 MARY JONES, New Bern, N. C., *Sigma Phi Kappa*
 ELSIE KELLER, Raleigh, N. C., *Pi Theta Mu*
- ALTA KELLOGG, Wilson, N. C., *Rho Delta Chi*
 DELLA LANCASTER, Rocky Mount, N. C., *Pi Theta Mu*
 ALICE RUTH LEE, Waycross, Ga., *Pi Theta Mu*
 NANCY LINBERRY, Raleigh, N. C., *Sigma Phi Kappa*
 JULIANNE LOTT, Waycross, Ga., *Pi Theta Mu*
- MARY KATHRYN LOVELACE, Raleigh, N. C., *Pi Theta Mu*
 HORTENSE McCRAY, Roanoke, Va., *Pi Theta Mu*
 CATHERINE MACON, Wake Forest, N. C., *Pi Theta Mu*
 MARY LOU MARTIN, Elon College, N. C., *Pi Theta Mu*
 CHARLOTTE MASON, Angier, N. C., *Pi Theta Mu*
- MARY MIDDLETON, Warsaw, N. C., *Sigma Phi Kappa*
 ELIZABETH MILLS, Raleigh, N. C., *Sigma Phi Kappa*
 MARY FRANCES MITCHELL, Raleigh, N. C., *Sigma Phi Kappa*
 JANIE MITCHENER, Edenboro, N. C., *Pi Theta Mu*
 GERALDINE MOORE, Raleigh, N. C., *Pi Theta Mu*





ROSA MOORE, Raleigh, N. C., *Sigma Phi Kappa*
 JACKIE MORRISON, Charlotte, N. C., *Pi Theta Mu*
 SHIRLEY MYATT, Raleigh, N. C., *Sigma Phi Kappa*
 ANNE NEWBOLD, Wilmington, N. C., *Rho Delta Chi*
 FLORA NORRIS, Raleigh, N. C., *Sigma Phi Kappa*
 MARY ELIZABETH PARHAM, Henderson, N. C., *Pi Theta Mu*
 BETTY PATRICK, Kings Mountain, N. C., *Pi Theta Mu*
 MARY PILRCL, Raleigh, N. C., *Sigma Phi Kappa*
 ELIZABETH PURCELL, Laurinburg, N. C., *Rho Delta Chi*
 JANET QUINCY, Chapanoke, N. C., *Pi Theta Mu*
 BOBBIE REINS, Lenoir, N. C., *Rho Delta Chi*
 ANN ROWLAND, Henderson, N. C., *Sigma Phi Kappa*
 JEAN SADLER, Oakland, Fla., *Sigma Phi Kappa*
 GRACE SILLEPARD, Kinston, N. C., *Sigma Phi Kappa*
 FRANCIS SHOLES, Lynchburg, Va., *Sigma Phi Kappa*
 NELLIE SUE SIMMONS, Lumberton, N. C., *Pi Theta Mu*
 MARY ANN SLAUGHTER, Raleigh, N. C., *Pi Theta Mu*
 CATHERINE SLOAN, Garland, N. C., *Sigma Phi Kappa*
 ANNE SPLEB, Oxford, N. C., *Pi Theta Mu*
 HAZEL SPELL, Farmville, N. C., *Pi Theta Mu*

Juniors

- CHARLOTTE STANTON, Sanford, N. C., *Rho Delta Chi*
 MARY ALICE STELL, Wake Forest, N. C., *Pi Theta Mu*
 JOYCE TALTON, Clayton, N. C., *Pi Theta Mu*
 ANNE TATE, Gastonia, N. C., *Rho Delta Chi*
 CAROLYN TATE M. TATUM, S. C., *Sigma Phi Kappa*
 MARJORIE TEISER, Henderson, N. C., *Pi Theta Mu*
 PEGGY THEBAULT, Raleigh, N. C., *Sigma Phi Kappa*
 DORIS THEODORE, Lumberton, N. C., *Pi Theta Mu*
 DOROTHY THOMASON, New Bern, N. C., *Pi Theta Mu*
 CONNIE THOMPSON, New Bern, N. C., *Sigma Phi Kappa*
 ANN THORNTON, Fountain City, Tenn., *Pi Theta Mu*
 MARTHA THORPE, Chimney Rock, N. C., *Pi Theta Mu*
 LUCY THURSTON, Taylorsville, N. C., *Pi Theta Mu*
 REBECCA TOMLINSON, Black Creek, N. C., *Pi Theta Mu*
 ROSA VINSON, Goldsboro, N. C., *Pi Theta Mu*
 CHRISTINE WADDELL, Fair Bluff, N. C., *Pi Theta Mu*
 CAROLYN WALKER, Poplar Branch, N. C., *Pi Theta Mu*
 REBEKAH WALL, Grifton, N. C., *Sigma Phi Kappa*
 JIMMIE WELLS, Canton, N. C., *Pi Theta Mu*
 MINNIE LOU WELLS, Kinston, N. C., *Pi Theta Mu*





JULIA WESKETT, New Bern, N. C., *Sigma Phi Kappa*
 GLORIA WEST, New Bern, N. C., *Pi Theta Mu*
 VIRGINIA WHITAKER, Raleigh, N. C., *Pi Theta Mu*
 EVELYN WHITE, Raleigh, N. C., *Sigma Phi Kappa*
 EDYTHE WILLIAMS, Varina, N. C., *Pi Theta Mu*
 DORIS MARIE WILSON, High Point, N. C., *Pi Theta Mu*
 EMMA WRENN, Cary, N. C., *Pi Theta Mu*

Not photographed:

JEAN CRAVEN, Charlotte, N. C.
 LEORA CURRIN, Oxford, N. C.
 ESTHER THORN, Selma, N. C.

Juniors

Joyful Juniors



Sunday afternoon? . . . The day of horrors . . . Pat . . . Expecting someone? . . . Those energetic day students . . . One shoe on and one shoe off . . . Hold 'er, Jackson . . . Bucky and the Army . . . Parham at ease . . . What a pyramid!



Preparatory Students

And last, but not least, come our "Preps." Of course they do not form so large a part of the college as the others, but Peace, though it might be *peaceful*, certainly wouldn't be Peace without 'em.

ALYCE WHITTED
President

PATTY SILLIMAN
Vice President

JANEY LOUGEE
Secretary

JANE BROWN
Treasurer

MISS MAVALYNN MOURANE
Class Sponsor



Lougee
P. Silliman
Whitted
Brown

FRANCES ALFORD, Raleigh, N. C., *Sigma Phi Kappa*
 DOROTHY ANDREWS, Chapel Hill, N. C., *Pi Theta Mu*
 NANNIE LOU AUSTIN, Raleigh, N. C., *Sigma Phi Kappa*



GRACE BILLINGS, Lexington, N. C., *Pi Theta Mu*
 JANE BROWN, Washington, D. C., *Rho Delta Chi*
 KATHLEEN BUCHANAN, Welch, W. Va., *Pi Theta Mu*



PENN BURN, Rocky Mount, N. C., *Sigma Phi Kappa*
 VIOLA BYRUM, Charlotte, N. C., *Sigma Phi Kappa*
 LOIS CRIME, New Bern, N. C., *Sigma Phi Kappa*



GRACE GLASGOW, Charlotte, N. C., *Pi Theta Mu*
 ANA GRANT, Mocksville, N. C., *Rho Delta Chi*
 SUNNY GROVES, Chapel Hill, N. C., *Sigma Phi Kappa*



JOYCE HANSEN, Millville, N. J., *Rho Delta Chi*
 LILLIAN LEGRAND, Shelby, N. C., *Sigma Phi Kappa*
 JANIE LOUGEE, Limerick, Maine, *Sigma Phi Kappa*



MARY McLELLAND, Mooresville, N. C., *Pi Theta Mu*
 ANNIE VELNA NANCE, Asheboro, N. C., *Pi Theta Mu*
 SARAH EMILY PARKER, Raleigh, N. C., *Sigma Phi Kappa*



Preps



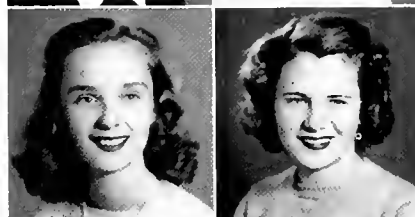
EDYTHE PITTMAN, Oak City, N. C.

DORIS JEAN REA, Charlotte, N. C., *Sigma Phi Kappa*



BETTY SAUNDERS, Hemp, N. C., *Pi Theta Mu*

DOROTHEA SILLIMAN, Lexington, N. C., *Sigma Phi Kappa*



PATTY SILLIMAN, Lexington, N. C., *Sigma Phi Kappa*

KITTY SMITH, Moncure, N. C., *Pi Theta Mu*



MARIBETTA SMITH, Mocksville, N. C., *Rho Delta Chi*

JEANNE SLESSMUTH, Wilson, N. C., *Rho Delta Chi*



ANNE SWART, Raleigh, N. C., *Sigma Phi Kappa*

ALICE WHITFIELD, Gallup, New Mexico, *Rho Delta Chi*

Not photographed:

CORNELIA MOFFIT, Sanford, N. C.

GERALDINE MOORE, Raleigh, N. C.

ANNA WORTH, Lake Waccamaw, N. C.

MARY WOODWARD, Raleigh, N. C.

Prepared Preps



An Senior, an Junior, and two preps . . . Whitted the witted . . . Pardon us, Rowland's a Junior . . . "Vi" on "that day" . . . Yoo, hoo, girls! . . . Lougee "home on the range" . . . A frown and a smile.

Our Day



That wonderful place—the post office!

Looking in on Miss Cortner's class.

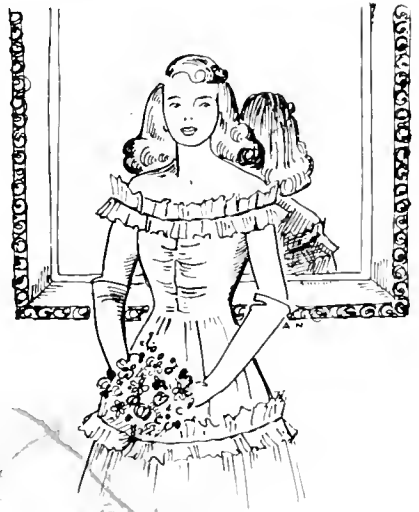


On Friday afternoon in Chemistry lab.

Relaxing in the Living room.



School life
first - wouldn't
have been com-
plete without
our societies
and clubs
which made us
well-rounded.



Library



Marshals

JANE BEAMAN
Rho Delta Chi

SARAH ENTSMINGER
Sigma Phi Kappa

SUSAN NEWHAM
Pi Theta Mu

YVONNE SMITH
Rho Delta Chi

PATSY SHORT
Sigma Phi Kappa

NELL BOYETTE
Pi Theta Mu

Sigma Phi Kappa

SARAH ENTSMINGER
Vice President

BETTY TATUM
Secretary

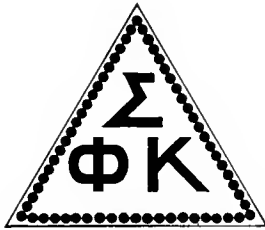
JEAN GLENN
Treasurer

MISS MABEL PUGH
Sponsor

MISS MARJORIE CLARK
Co-Sponsor



LIB BEATY
President



This is Station WSIG, bringing you the news summary and the highlights of a successful year at Peace. The Sigs' offensive campaign was launched with an open house, while the second front was definitely opened with hot dogs and popcorn and all the fun at the Circus party. Propaganda in the form of posters and candy helped, too. The society's next big push to the front honored its new members with a banquet at the Carolina Hotel. Some headlines long to be remembered are 'Sigs, Loyal Sigs' . . . Society Play Presented . . . Pugh, the Swordswallower . . . Our Teams Compete in Sports . . . Candlelight Initiation Held.





BETTY PATRICK
President

Pi Theta Mu

MARY DALRYMPLE
Vice President

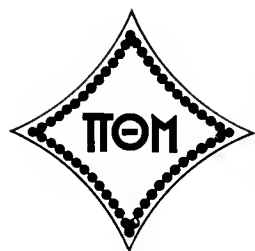
JANE WILSON
Secretary

DOT RICHESON
Treasurer

MISS MARY ELIZABETH THOMAS
Sponsor

MISS WINIFRED KUHN
Co-Sponsor

Extra! Extra! Read all about it . . . Pi Theta Mu starts year off by getting 71 new members . . . Makes it the largest society at Peace . . . Old girls rushed new girls by having kid party . . . Emma was Negro mammy with "Dud" and Glasgow as babies . . . Skipping period party with food galore . . . Formal initiation . . . Banquet in Virginia Dare Ballroom . . . Miles of fun . . . Dancing afterwards . . . "Pi's stand for the best, the highest Peace can strive for" . . . Truly the Pi's will cherish their society always.



Rho Delta Chi

ALYCE WHITTED
Vice President

CORA DRAKE
Secretary

HARRIET PRESSLY
Treasurer

MISS MARY KIRKPATRICK
Sponsor

MISS BERTIE LEE WHITESIDES
Co-Sponsor



BETTY RHODES
President



Cablegram: Peace Headquarters— U.S.S. Rho— We of Rho Delta Chi lifted anchor at rush party. Off with smooth sailing . . . Tokens on pillows . . . Initiation . . . The banquet at Port Carolina . . . Mrs. Pressly's "I just can't breathe" . . . Eating hot dogs in the cabin . . . "Stand up and Cheer for Rho Delta Chi" . . . Dropped anchor after smooth run . . . Everybody on board happy.





KATHRYN BLALOCK
President

Alpha Pi Epsilon

Alpha Pi Epsilon is a National Honorary Secretarial Society. As an outstanding junior college which gives an enriched course in the secretarial field, Peace qualified for and organized a chapter in 1912. This is the Tau chapter.

The objective of Alpha Pi Epsilon is to professionalize the status of the college-trained secretary. Membership is restricted to students of superior scholarship, personality, and character.



Croom, Blalock, Shaw.

Phi Theta Kappa

In 1939, Peace established the Gamma Phi Chapter of Phi Theta Kappa, National Scholastic Honor Society, which functions in a junior college as Phi Beta Kappa does in the four-year college.

Membership in this organization is obtained by invitation and is limited to ten per cent of the academic student body. There are eleven members of the Gamma Phi Chapter. Members are chosen for scholarship, character, and leadership. The organization seeks to emphasize the development of these and other similar characteristics.



JANE CUSICK
President



First row: Rhodes, Tate, Thompson.
Second row: Drake, Fountain, M. Morton, Cusick, Pressly, McCallum.



BETTY RHODES
President

Sigma Pi Alpha

An interesting and instructive organization, the Theta chapter of Sigma Pi Alpha has as its purpose the bringing about of a better understanding between students and between nations by studying together their languages and their culture.

Our chapter here at Peace was established in 1939. We are the only junior college having the distinctive honor of having been granted a charter for a local chapter. Our headquarters is our brother college N. C. State. This year our annual tea, banquet, and dance was a joint one with N. C. State and Meredith. Our regular meetings are every third Friday night, at which time we discuss problems of other nations with natives of those nations and obtain a general cultural background of them.



*First row: Tate, Cusick.
Second row: E. Johnson, Thompson, Drake, Rhodes, Fountain, Purcell.*

Scholastic Honors

After the first term is completed, scholastic honors are announced. These are presented in two honor rolls, the first consisting of girls who make all grades of 90 or above, and the second consisting of those who make an average of 90 or above on all courses.

SENIORS: Jane Cusick, Kingsport, Tenn.; Betty Rhodes, Lincolnton, N. C.; Harriet Pressly, Raleigh, N. C.; Annie Lucia McCallum, Rowland, N. C.; Cora Drake, Bennettsville, S. C.; Elizabeth Croom, Raleigh, N. C.; Patsy Short, Shelby, N. C.; Betty Stonebanks, Raleigh, N. C.; Eleanor Johnson, Pittsboro, N. C.

JUNIORS: Ann Tate, Gastonia, N. C.; Margaret Fountain, Rocky Mount, N. C.; Connie Thompson, New Bern, N. C.; Joyce Talton, Clayton, N. C.; Nell Harris, Raleigh, N. C.; Nancy Linberry, Raleigh, N. C.; Mary Alice Stell, Raleigh, N. C.; Elizabeth Purcell, Laurinburg, N. C.; Dora Batts, Fremont, N. C.; Lillian Boney, Rocky Mount, N. C.; Jean Gray, New Bern, N. C.; Jean Flowers, Zebulon, N. C.; Mary Louise Dixon, Roxboro, N. C.

PREPARATORY STUDENT: Nannie Lou Austin, Raleigh, N. C.



Privileged Honor Roll

The girls who are elected to the Privileged Honor Roll receive the highest honor conferred on students at Peace. Elected jointly by faculty and students, members are chosen for character, conduct, scholarship, and integrity. These girls are entrusted with definite responsibilities as well as certain privileges and rights.

Jones, Cusick, Rhodes, Short, Massey.



Papyrus Club

Creative writing has been an interest of Peace girls for a number of years. In 1936, under the auspices of Miss Helen H. Salls, head of the English Department, the Papyrus Club was begun. Its purpose is to encourage and promote creative writing and to develop and increase dependability.

Each year the girls in the Papyrus Club are responsible for getting out the school magazine, *Voices of Peace*, to which any Peace girl may contribute articles.



HARRIET PRESSLY
Editor-in-Chief



*First row: Reins, Sholes, Second row: Suesmuth, Brown, Pressly, Cobb,
Third row: Drake, Glenn, M. Smith, Stonebanks.*



BETTY STONEBANKS
Editor-in-Chief

The Lotus

From within the walls of a busy staff room comes this, your LOTUS of '43. It was begun last summer with the planning of the dummy and the signing of contracts—and high hopes of a pleasing product. With the opening of school, we pleaded for your schedules and finally completed the picture-taking project. We wrote copy, rewrote copy, rerevrote copy; we clipped engraver proofs, pasted them in the dummy; we

proof read; we chose color schemes; we worked out a cover design; we had fun.

Not orchids this year, but new tires and "B" cards should be your gift—and mine—to Miss Corner, our photographer, our engraver, and our printer for their unflinching help and their patient advice. Also many thanks to the staff and the art editors for their work.

We've worked, we've played, we've had staff meetings—and fun. We hope that you like the resulting edition of THE LOTUS.

EDITORIAL STAFF

Associate Editors

LJB BEATY, JANE CUSICK, JEAN GLENN, BETTY TATUM

Assistant Editors

CATHERINE SLOAN, FRANCES SHOLES, LINDA COBB, CONNIE THOMPSON

MARGARET JONES
Art Editor

ANNE NEWBOLD
Assistant Art Editor

HELEN SHAW
Typing Editor



The Lotus

Do we want to go for ads? We'd love to. Sunny days, rainy days, cold days—well, almost any kind—found us, the girls on the Business Staff of the *LOTUS*, donning our best clothes and starting for town. With the help of Miss Mary Kirkpatrick, our adviser, we planned trips to the various business firms. Many of us literally saw Raleigh for the first time. We had to go to so many out-of-the-way places—the market, wholesale houses, bottling companies. It was hard work, but fun. Fun to know that we've helped give you this, the 1913 *LOTUS*.



HARRIET PRESSLY
Business Manager

BUSINESS STAFF

Kitty Creech, Jane Guthrie, Betty Jean Downes, Mary Katherine Lovelace, Lib Henderson, Patsy Short, Jerry Moore, Sarah Entsminger, and Margaret Fountain.





CORA DRAKE
President

Daughters of Peace

The purpose of this organization is to carry on the traditions as set by "Peace Girls" who have gone before, and to build up new standards for those "Peace Girls" who are to come afterwards. The club also endeavors to promote school spirit by cooperating in the activities of the school.

The requirement for membership is that every girl have a parent or grandparent who is an alumna of Peace College.

Front row: Katherine Bunn (daughter of Mavis Lindsey), Rocky Mount, N. C.; Grace Glasgow (granddaughter of Grace McPheeters), Charlotte, N. C.; Elizabeth Purcell (daughter of Anna Buchanan), Laurinburg, N. C.; Mary Alice Wilson (daughter of Ruth Buffalo), Raleigh, N. C.; Margaret Tucker (daughter of Virginia Myers and granddaughter of Margaret Steele), Winston-Salem, N. C.; Kathryn Creech (granddaughter of Catherine McKay), Bethesda, Md.; Cora Drake (granddaughter of Cora MacCormac), Bennettsville, S. C.

Second row: Flora Norris (granddaughter of Julia Rebecca Creech), Raleigh, N. C.; Kate McKimmon (daughter of Willa Norris), Raleigh, N. C.; Emma Wrenn (daughter of Wrennie Candle), Cary, N. C.; Janie Mitchener (granddaughter of Gertrude Waddell), Edenton, N. C.; Katherine Hudson (granddaughter of Sara Howard), Waxhaw, N. C.

Third row: Linda Cobb (daughter of Ida Ruth Pitt), Pinetops, N. C.; Cornelia Thompson (daughter of Bleeck Cornelius), New Bern, N. C.; Marguerite Gaskin (daughter of Maggie Vinson), Smithfield, N. C.; Carolyn Tatum (daughter of Elizabeth Croom, granddaughter of Maude Dinwiddie, and great-granddaughter of Dr. James Dinwiddie), Tatum, S. C.; Sally Bryan (daughter of Sally Crudup), Oxford, N. C.; Catherine Sloan (daughter of Anabel Sloan), Garland, N. C.

Fourth row: Martha Faison (daughter of Lena Linberger and granddaughter of Lola Davis), Faison, N. C.; Kathleen Buchanan (granddaughter of Kathleen Evans), Welch, W. Va.; Lillian LeGrand (granddaughter of Minna Gaston), Shelby, N. C.; Harriet Pressly (daughter of Dr. W. C. Pressly), Raleigh, N. C.; Betty Tatum (daughter of Elizabeth Croom, granddaughter of Maude Dinwiddie, and great-granddaughter of Dr. James Dinwiddie), Tatum, S. C.; Joyce Hansen (daughter of Emma Newkirk), Millville, N. J.

Not in picture: Florrie Best (granddaughter of Florence Vestal), Dunn, N. C.; Mary Bryan Fleming (granddaughter of Catherine McKay), Raleigh, N. C.



Vance-Granville Club



Seated: Parham, M. Morton, Speed, R. Morton, President, Rowland, E. Grissom, S. Bryan.
Standing: Day, Lougee, Currin, Thorp, Teiser, C. Grissom.

Dees Camera Club



First row: Saunders, Smith, Johnson, Elliott, Entsminger, President. *Second row:* Tomlinson, Wall, Sholes, Groves.

Glee Club

Organized again this year by Miss Elizabeth Gearhart, the new voice teacher, the Glee Club is offered to any student interested in group singing. The entire student body thoroughly enjoyed the music rendered during the regular chapel services and on special occasions. The regular accompanist of the Glee Club is Miss Helen Scoggins, of the music faculty.

Under the competent direction of Miss Gearhart, the Glee Club, Choir, and soloists presented a delightful Christmas cantata describing the Birthday of the Christ Child as seen through the eyes of a child.



First row: Lincherry, E. Andrews, Sadler, A. Grant, Cahoon, Cusick, Purcell, Eutsinger, M. Jones, Shaw, Glasgow.

Second row: Baucom, Highsmith, Billings, Newbold, Creech, Thompson, Wilson, Patrick, McCray, Reins.

The following program was given:

Processional—O Come All Ye Faithful *Adeste Fideles*

Scripture—REV. M. O. SOMMERS

O Holy Night *Adolphe Adam*

MISS GEARHART and MRS. ALDEN

Prayer—REV. M. O. SOMMERS

The First Christmas *Louis A. Coerne*

A cantata describing the Day of the Holy Child as seen by the eyes of a child.

Glee Club, Choir and Soloists

Narrator ELIZABETH PURCELL

Joseph KATHRYN CREECH

Mary MARY ALICE WILSON

Shepherd Boy LOUISE HIGHSMITH

Director ELIZABETH GEARHART

Accompanist HELEN SCOLLINS

Recessional: Hark! The Herald Angels Sing *Mendelssohn*





MARGARET JONES
President

Elsie Robertson Art Club

This year 1943 a need was felt for more interest in creative art. A group of us got together and formulated the nucleus for the Art Club. We called our club the Elsie Robertson Art Club. The club was named for Mrs. Stewart Robertson, who has been a real "Club Mother" to us. Requirement for entrance into the club is simply a genuine desire to see beauty. It was a real thrill to the charter members, when the new Elsie Robertsons were tapped in chapel on a particular Friday.



Back row: Norris, Bynum, Wall, Barden, Miss Pugh, Newbold, Francis. *Middle row:* Gore, Jones, Mrs. Robertson, Sholes, Lougee. *Front row:* Stanton, Currin, Ann Robertson (mascot), Crump, Bunn.

We have
lived active
religious lives
as we have
tried to help
"make Christ
more real on
our campus."



The Chapel

Peace Student Christian Association



MARYANA SMITH
President

"To make Christ more real on our campus" is the purpose of the Peace Student Christian Association. Every Peace girl is a member of this organization which seeks to meet the spiritual needs of each individual. The work of the Christian Association is directed by a cabinet composed of twelve girls who are chosen from the junior and senior classes by the sponsor and the out-going cabinet. This group guides the activities of the association in channels of worship, religious instruction, and recreation. Under the sponsorship of the P.S.C.A.

are the Sunday evening vespers and the daily morning watch services. The Christian Association seeks to make religion a more vital part of the life of every Peace girl.

Seated: Rhodes, Richeson, Cusick, Patrick, Smith, Drake.
Standing: Newbold, Parcell, Massey, Miss Steele, Reins, Weskett.



A favorite spot for having fun is the P.S.C.A. cabin. Marshmallows never taste better than when they are toasted here.



These two pictures illustrate the effectiveness of the Peace Student Christian Association. Under the supervision of Miss Lucy Steele, the cabinet plans a year-long program to impress the purpose and the pledge made by each girl at the beginning of the year. And throughout the year, the carrying-out of this program effects the success of its purpose.



An outstanding activity in which all the girls enthusiastically participate comes at Thanksgiving when, at a chapel service, we share the Thanksgiving "goodies."

Christmas Pageant



A tradition which means much to the people of Raleigh as well as to Peace girls is the Christmas Pageant. The Peace Student Christian Association Cabinet sponsors the pageant.

What fun
we've had in
sports! You should
have seen our
society hockey
teams play in
keen competi-
tion.



Athletic
Field





MARY DALRYMPLE
President

Peace Athletic Association

Every Peace girl is automatically a member of the Athletic Association if she studies physical education. Since over two-thirds of the student body are members, there is a genuine interest in athletics. As a source of income, the Association sponsors the "Little Store" and is completely responsible for its operation. Any girl may voluntarily work in the store to gain points toward her athletic "P."



The society cheer
leaders: Margaret
Tucker, *Rho*; Jerry
Moore, *Pi*; Rosa
Moore, *Sig*.

"Just Sample"



Shown above are five girls, active participants in some of the minor sports at Peace. They are Rebecca Tomlinson, basketball; Sarah Entsminger, softball; Charlotte Stanton, archery; Betty Patrick, bicycling; and Kathleen Buchanan, golf.



Hockey

Peace girls have discovered that the game of hockey offers thrills, spills—and fun—but is not for frills. They have been enthusiastic about the game in the coldest weather and on the windiest day. Excitement runs high in a stiff hockey game—maybe that's why the girls like it so much. Above is an action shot.

These *Sig* players look as though they were victorious on the field of sport today. We wonder!





Something's wrong—the *Pi* players look happy too. Maybe each team beat one of the others. Maybe?

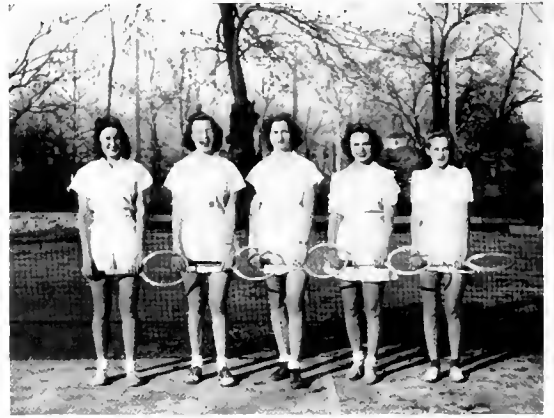
Because of the competition between societies, it is the custom of the Athletic Association to sponsor a hockey tournament each year. Not only does this tournament help the girls win points toward their letter, but also the winning society is awarded points toward the society cup.

The *Rho* girls look just as happy. Probably, it just proves our point—Peace girls like hockey!



Tennis

Tennis is the most popular sport with Peace girls. From early autumn right through the coldest winter and into spring, the tennis enthusiasts are continually at it. Every spring during tournament week the tennis lovers develop a stiff rivalry and put their hearts into the battle for the net championship. At right are pictured a group of tennis followers, and below is an action picture snapped last fall.



So, Mother,
Peace has had
depth, dignity,
democracy soon
I'll be home to
tell you more. Now
I must go shopping.
Love,
Your Peace Girl



The
Fountain



E. Johnson: Miss Whitesides, I know where you can get an extra job.
Miss Whitesides (tragedy): Where?
E. Johnson: I saw in an ad today: Wanted—Woman to sew buttons on the fourth floor.

Brantley & Son

Expert Druggists
1910

Fine Sodas

Ask for

GOLDEN TAP GRAPEFRUIT JUICE

At the Soda Fountains. And insist
upon being served in
DIXIE CUPS

Garland C. Norris Co.

DAIRY PRODUCTS

PASTEURIZED MILK
BUTTER : EGGS

Insist on the Best—

PINE STATE
ICE CREAM

PINE STATE
CREAMERY CO.

Glenwood Avenue
PHONE 2-3911

THE FIRST PRESBYTERIAN CHURCH

AND

SUNDAY SCHOOL

OF RALEIGH, NORTH CAROLINA

Extends a welcome to college girls. It is our hope that you will make this your church home during your stay in Raleigh. There are special classes organized in our Sunday school for college girls.

M. O. SOMMERS, Pastor

KAPL G. HUDSON, Superintendent of Bible School

He (in the parlor): Dearest, will you marry me?

M. Massey: John, I can't marry you, but I shall always respect your good taste.

Miss McLelland: And where have you been for the last week?
Lillian Legrand: Stop me if you've heard this one before.

HUDSON-BELK COMPANY

RALEIGH'S LARGEST DEPARTMENT STORE



*We Appreciate Your Patronage
and Look Forward
With Pleasure
to
Serving You
in the Future*

M. Fountain: A certain young man sent me some flowers this morning.

C. Sloan: Don't say "a certain young man," my dear. None of them are certain until you've got them.

Miss Steele (in Bible Class): Now, Sally, what can you tell me about Goliath?
S. Bryan: Goliath was the man David rocked to sleep.

Compliments of

T. H. Briggs & Sons, Inc.

*"Carolina's Oldest Wholesale
and
Retail Hardware House"*

Established 1865

Phone 2-2025

"INSIST ON LANCE'S"

LANCE PACKING CO., Inc.

Candies and Peanut Products

Phone 2-0728

R. E. GRAHAM, Representative
Raleigh, N. C.

A. Grant: You can't believe everything you hear.

A. Whitted: No, but you can repeat it.

H. Baucum: Don't you think a real friend ought to feel sympathetic when one needs money?

Mary F. H.: I think a good many friends in such cases are touched.

N. Boyette (in store): I wish some college clothes.

Salesgirl: Athletic, humorous, or studious?

BYNUM PRINTING COMPANY

BETTER PRINTING

PHONE 6417

Mary D.: My true love is so forgetful sometimes.
Patsy S.: Isn't he! At the party last night I had to keep reminding him it's you he's engaged to and not me.

Miss McLelland (absent-mindedly to duty girl): Sort these old letters into alphabetical order and throw them away.

"ROTHMOOR COATS"
"KENMOOR COATS"

EXCLUSIVELY
IN RALEIGH AT

EFIRD'S
DEPARTMENT STORE

Neiman's
INC.

JEWELERS-SILVERSMITHS
RALEIGH N.C.

MEREDITH COLLEGE

ACCREDITED liberal arts college: Southern Association of Colleges and Secondary Schools, American Association of University Women, Association of American Universities.

PROGRESSIVE educational program in terms of Christian character and service. Distinguished record of student honors. Excellent library facilities. Effective honor system.

ATTRACTIVE location in Raleigh, "the educational center of the State." Beautiful campus of 170 acres. Modern fireproof dormitories with generous provision for social activities.

Write for catalogue and folder of views.

CARLYLE CAMPBELL, President, Raleigh, North Carolina.

THE PHOTOGRAPHS

in this Annual were made by

DANIEL AND SMITH STUDIO

134 Fayetteville Street

RALEIGH, N. C.



College Annual Specialists



Fine Portraits

Prompt Service

Mrs. Quisenberry: Rebecca, what is an octopus?
R Tomlinson: It is an eight-sided cat.

E. Gahr: Betty, I bet you don't know the difference between a dog and a tree.
B. Jackson: Well, what is the difference?
E. Gahr: A tree is covered with bark, while dog seems to be lined with it.

Geo. Marsh Co.

(Incorporated)

Wholesale Distributors

Fine Food Products

Raleigh, N. C.

DILLON SUPPLY CO.

Mill Supplies

Heating Equipment

Modern Machine Shop

RALEIGH DURHAM
ROCKY MOUNT

J. Quiney: Did you take a shower this morning?
Dud Francis: Why, is one missing?

J. Hansen: I paid my fourth visit to the beauty shop today.
R. Fitzpatrick: Strange, you can't seem to get waited on, dear.

Mrs. Quisenberry (in class): How many ribs have you?
Penn Bunn: I don't know; I'm so ticklish I never could count them.

For those smart,
young styles you
love to wear . . .



TAYLOR'S

*The Showplace of
the Carolinas*

Miss L. Jones (while uptown): Miss McLelland, do you need any shoes?
Miss McL.: No.
Miss L. Jones: Neither do I, but let's go into this shoe store and rest while they try some on us.

Dearest One -

As I write to you now, with your picture before me, I think of the many pleasant hours we spent together. Remember how we used to try to get Jimmie to go to bed, so we could be alone? . . . and the fun we had making candy on the electric range? With sugar rationed we can't make any more candy, but thanks to the Power Company we can still use all the electricity we need.

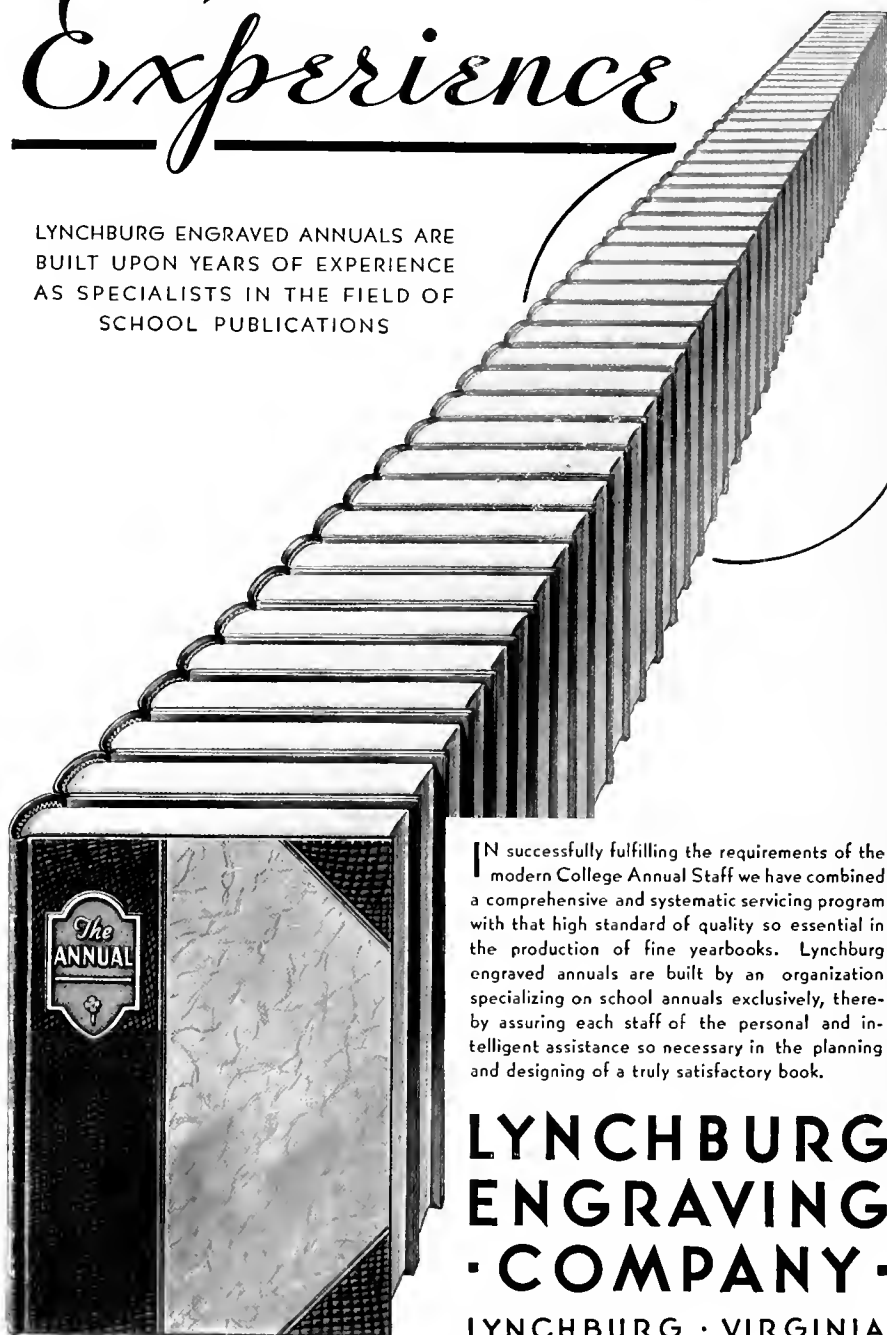
You remember John Smith, I'm sure. He's working at an essential war job now with the Power Company. He told me his company had plenty of power for us and for all the war plants and military posts in this area, and that it is not letting anything stop it from keeping power humming through its lines twenty-four hours a day. That's the way everyone is working here. They're doing all they can to keep you supplied with the things you need . . . and they're buying war bonds and stamps regularly to help pay for them.



Carolina POWER & LIGHT Company

Experience

LYNCHBURG ENGRAVED ANNUALS ARE
BUILT UPON YEARS OF EXPERIENCE
AS SPECIALISTS IN THE FIELD OF
SCHOOL PUBLICATIONS



IN successfully fulfilling the requirements of the modern College Annual Staff we have combined a comprehensive and systematic servicing program with that high standard of quality so essential in the production of fine yearbooks. Lynchburg engraved annuals are built by an organization specializing on school annuals exclusively, thereby assuring each staff of the personal and intelligent assistance so necessary in the planning and designing of a truly satisfactory book.

**LYNCHBURG
ENGRAVING
· COMPANY ·**

LYNCHBURG · VIRGINIA

Builders of Better Annuals

Photographer (while taking pictures of the council): Please look pleasant, girls, and in a few moments you may resume your natural expressions.

<p>Barbour Produce Co. <i>Dealer in</i> FRUITS and PRODUCE <i>Wholesale Only</i> Phone 4424 Res. Phone B366 At City Market</p>	<p>We Deliver Dial 7588 Halifax Street Grocery 601 Halifax Street Choice Meats : Quality Groceries Fresh Fruits and Vegetables Raleigh, N. C.</p>
<p>Vick Moore - B. E. Dennis - Earl Johnson MOORE & JOHNSON CO. "For 19 Years Raleigh's Leading Insurance Agency" Insurance : Surety Bonds Lawyers Building RALEIGH, NORTH CAROLINA</p>	<p>J E A N ' S <i>The Treasure House of Fashion For College Girls and their Mothers</i></p>
<p>NORTH CAROLINA EQUIPMENT CO. ROAD MACHINERY : SUPPLIES CONSTRUCTION EQUIPMENT</p> <p>Raleigh Statesville Phone 8836 Phone 345</p> 	

Miss Salls (in English class): Kathleen, what is an optimist?
K. Buchanan: An optimist is one who can always see the bright side of the other fellow's misfortunes.

Patrick: Hello, Casick. Are you on bad terms with your roommate? She's sticking her tongue out at you.

Casick: Oh, Kitty's all right. She gave me a letter to mail, and she's merely reminding me that I must seal it up.

W. E. TRULL W. R. TRULL

**TRULL PLUMBING
& HEATING CO.**

*Plumbing : Heating
Coal Stokers
Air Conditioning*

Phone 6353 411 1/2 Fayetteville St.

**BROGDEN
PRODUCE COMPANY**

Wholesale
**FRESH FRUITS and
VEGETABLES**

409-15 West Martin Street
RALEIGH, N. C.

**OAK CITY
LAUNDRY**

436 South Salisbury Street



TRICLENE

Odorless Dry Cleaning



**HATS CLEANED and BLOCKED
RUGS SHAMPOED**

PHONE 4478

Raleigh Wilson

G. S. Tucker & Bros.
Incorporated

East Hargett Street
Raleigh, N. C.

**FURNITURE and
HOME FURNISHINGS**

We Appreciate Your
Patronage

Clayton Smithfield


Alta Cooke: Why didn't you catch that glass before it fell?
C. Stanton: I can't help it if the glass lost its balance!

G. Shepherd: Miss Hewson, my room reminds me of a prison.
Miss Hewson: Well, Grace, it's all a matter of what one is used to.

J. Mitchner: What's the matter?
A. Newbold: I wrote an article on fresh milk, and Miss Goutner condensed it.

Miss Hewson: Look out for the worms in your apple, Belle.
Belle Thorp: When I eat my apple, the worms have to look out for themselves.

Sarah E.: Betty, get me three cans of peaches packed in syrup.
 B. Tatum (just back from the Halifax): Sarah, they didn't have any peaches packed in syrup all were packed in U.S.A.

<p style="text-align: center;">PATRONIZE PIGGLY WIGGLY <i>For the Best GROCERIES - FRESH MEATS</i> FRESH FRUITS and VEGETABLES Attractive Stores Courteous Service Reasonable Prices <i>Home Owned Home Managed</i> PIGGLY WIGGLY <i>Your Patronage Appreciated</i></p>	 <p style="text-align: center;"><i>Raleigh's Smartest Shop</i> THE STYLE CENTER FOR THE SMART COLLEGE GIRL 126 Fayetteville Street</p>
<p style="text-align: center;"><i>For Pure Clear Crystal</i> ICE <i>and High Grade</i> COAL PHONE 5589 CAPITAL ICE AND COAL CO. Incorporated 600 West Hargett Street</p>	<div style="text-align: center;"> <hr style="width: 10%; margin: 0 auto;"/> <hr style="width: 10%; margin: 0 auto;"/> <hr style="width: 10%; margin: 0 auto;"/> <p style="text-align: center;">LEWIS' Inc. <i>"Largest Sporting Goods</i> <i>Store in South"</i></p> <hr style="width: 10%; margin: 0 auto;"/> <hr style="width: 10%; margin: 0 auto;"/> <hr style="width: 10%; margin: 0 auto;"/> </div>
<p style="text-align: center;">PERSON STREET PHARMACY PERSON STREET : Two Stores : HAYES BARTON P. D. GATTIS, <i>Proprietor</i> <i>A Complete Line of Nationally Advertised Drugs</i> <i>Plus a Selected Assortment of Toilet Items</i> SODA OUR SPECIALTY</p>	

L. Cobb: You know, today seems just like Thursday.
 A. Tate: Today *is* Thursday!

Evelyn H.: What do you think of the square dance Saturday night, Bobbie?
Bobbie R.: It's going to be plenty drippy!
Evelyn H.: Guess I'll wear my raincoat and galoshes then.



W. H. KING DRUG CO.

Wholesale Drugs

Phone 2-0525

117 South Wilmington Street
RALEIGH, N. C.

**SAY
BAMBY
BREAD**

ROYAL BAKING CO.

DIAL 4661

Raleigh, N. C.

**Edenton Street Methodist
Sunday School**

Welcomes the Peace
College Girls

DR. A. J. HOBBS, *Pastor*

C. A. DILLON, *Supt. of Sunday School*

**PROVIDENT MUTUAL LIFE
INSURANCE COMPANY**

OF PHILADELPHIA
Organized 1865

*Make your later years happy with
a retirement life income*

FRANK M. HARPER & SON
District Agents
RALEIGH, NORTH CAROLINA

PEACE COLLEGE CLASS RINGS AND PINS

Society Pius and Novelty Jewelry

Walter B. Anderson

L. G. BALFOUR PRODUCTS
RICHMOND, VIRGINIA

Betty Rhodes: Have you a book called "Man, the Master of Women"?
Mrs. Cavanaugh: The fiction books are over there on the right.

Miss Marjorie Clark: I've an invention that will make a fortune.

Miss Amelia Clark: What now?

Miss Marjorie Clark: It's an extra key for my typewriter. When I don't know how to spell a word, I hit that key and it makes a blur that might be an *e*, an *a*, or any other letter like that.

DUKE UNIVERSITY

SCHOOL OF NURSING

DURHAM, N. C.

The entrance requirements are intelligence, character, and for the duration of the War, one quarter or one semester of College. Classes will be admitted April 1, 1943 and January 27, 1944. The Diploma of Graduate Nurse is awarded after three years.

The annual tuition of \$100.00 covers the cost of maintenance and uniforms. Loan funds covering the annual tuition are available.

Catalogue, application form, and information about the B.S. degree requirements may be obtained by writing to:

The Dean

Duke School of Nursing

Durham, North Carolina



Compliments

ECKERD'S

PRESCRIPTION

DRUG STORE



Senior studying English: Now, let me see, in this period—Robinson Crusoe wrote *Daniel Defoe*.

In the confusion: Do you spell the President's name the same way you do Harriet's?

STROP TAXI COMPANY

Day and Night Service

ALWAYS

READY

5811 — DIAL — 5811

Oldest and Most Reliable

Miss Steele: This examination will be conducted on the honor system. Please take seats three apart and in alternate rows.

Purcell: What made you resign from the choir, Shaw?
Shaw: I was absent from chapel Friday and someone asked if the organ had been mended.

Boylan-Pearce, Inc.



*"Raleigh's
Shopping Center"*

FLOWERS!

*Cut Flowers Corsages
Graduation Bouquets
Decorations*

PHONE 8347

J. J. FALLON CO., Inc.

"We Grow the Flowers We Sell"

CALIFORNIA RESTAURANT

Famous for
**BRUNSWICK STEW
FRIED CHICKEN
VIRGINIA HAM
and CORN BREAD**

111 Fayetteville Street
Raleigh, N. C.

JOHN ASKEW

PAINTING AND
INTERIOR DECORATING

*Estimates made in and
out of town*

Telephone 6824 402 Glenwood Ave.



"The Family Laundry Service which we are now using is Fine and my shirts are just right."
"Yes dear, I wish I had known of the Capital City Laundry long ago." You too, can enjoy this fine laundry service, just dial 8873.

CONTRIBUTED

CAROLINA COACH COMPANY

Our poor little moron, Grace Glasgow, took a bale of hay to bed with her to feed her nightmare.

M. Tucker (to council): "There ain't no use
New laws to make,
We've got more now
Than we can break!"

JOB P. WYATT & SONS COMPANY

HARDWARE : IMPLEMENTS

DU PONT PAINT : VARNISH : OIL

SEEDS : PLANTS : BULBS

RALEIGH, NORTH CAROLINA

DRINK

Coca-Cola

in Bottles

● The task of Education is to look beyond the present and to prepare for the future. More than ever before, Queens is determined to undertake this task.

Sound education in the liberal arts and vocational subjects at moderate expense.

Preparation for university graduate work.

Development of personal interests in extra-curricular activities.

For catalogue and further information, write HUNTER B. BLAKEY, President

QUEENS COLLEGE

CHARLOTTE, NORTH CAROLINA

**Southern School
Supply Company**

*School : Laboratory and
Library Supplies*

Raleigh, N. C.

Diamonds

Watches

Jolly's
Leaders Since 1881

Jewelers

Jewelry

Silverware

Your Patrouage Appreciated

**Ambassador, State, Palace, Capitol
and Varsity**

Operated by

NORTH CAROLINA THEATRES, Inc.

**THE BEST IN PHOTOPLAYS, VAUDEVILLE and STAGE SHOWS
AT POPULAR ADMISSION PRICES**

Miss Thomas (in history class): Margaret Jones, in what battle did General Wolfe, when hearing of victory, cry, "I die happy"?

M. Jones: I think it was his last battle.

AUTOGRAPHS

THE ALMA MATER

In the heart of Carolina,
 'Neath its skies of blue,
Stands our noble Alma Mater,
 Glorious to view.
Classic in her broad proportions,
 Looks she proudly down—
Reared against the arch of heaven,
 With the stars for crown.

Chorus

Lift the chorus, speed it onward;
 Let it never cease;
Hail to thee, our Alma Mater;
 Hail, all hail, to Peace!

Clambering o'er the walls and columns
 Historic ivies twine,
As pure love and tenderest memory
 In our hearts enshrine
Days of toil and days of pleasure,
 Happiness and joy,
Hardships, struggles without measure,
 Days without alloy.

Honored be our Alma Mater,
 Honored for her past;
Honored in the living present,
 Let her honors last,
Long as time shall tell the story,
 Long as hearts are true,
May her name be crowned with glory
 And honors ever new!

—MISS NANNIE DINWIDDIE.



BUILDERS DREAMS

VISIONS created by the imagination precede the achievement of any really great accomplishment. The ability to weave the threads of imagination into the finished fabric is equally important.

It has been the privilege of the EDWARDS & BROUGHTON COMPANY to cooperate with the staff in creating their vision into material form.

Such cooperation is one of the "visions" which precede the building of a successful business, and is a part of the working policy of the EDWARDS & BROUGHTON COMPANY.

To those Staff desiring complete cooperation, we offer unexcelled service.

You, too, may be proud of your annual.

Correspondence is invited

EDWARDS & BROUGHTON CO.
RALLIGH, NORTH CAROLINA

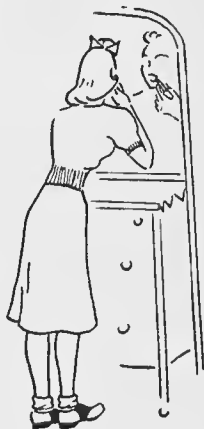




7:30 AM



7:45 AM



7:55 AM



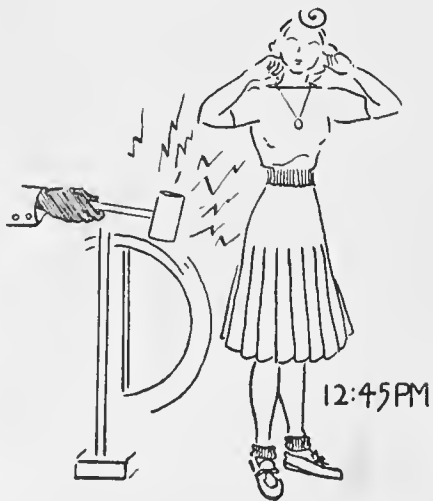
8:00 AM



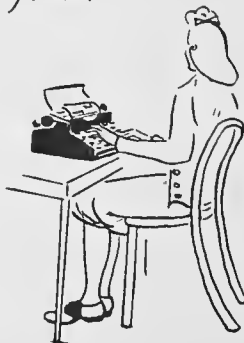
10:30 AM



8:30 AM



12:45 PM

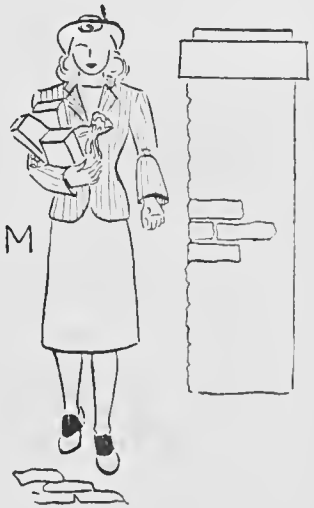


1:45 PM

2:30 PM



5:30 PM



9:00 PM



4:15 PM



9:45 PM



10:05 PM



10:15 PM



10:30 PM

Sarah Bruce McAfee

