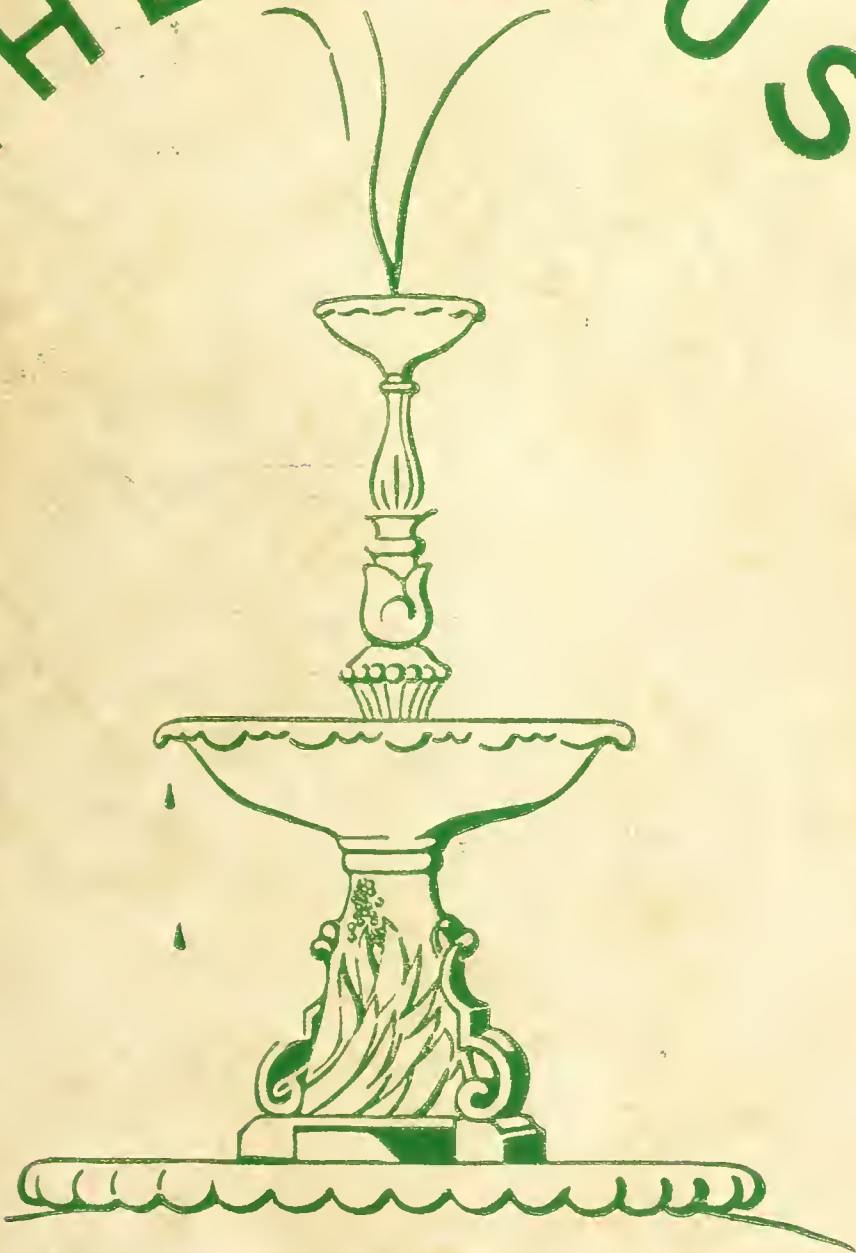


THE LOTUS



1951



Digitized by the Internet Archive
in 2010 with funding from
University of North Carolina at Chapel Hill

<http://www.archive.org/details/lotus1951peac>

Alice Jones
WORK ANNUAL





PEACE COLLEGE



THE 1951

LOTUS

JACQUELINE OWEN

Editor

JANE POPE

Business Manager

THROUGH THE YEARS

FOREWORD

We present, along with a heart full of memories, this, our annual of 1951. One half a century has melted away since the first "Lotus" was presented the student body of Peace College. We take pride in the fact that this year's staff had the honor and privilege of editing the fiftieth annual. We have endeavored as closely as possible to portray life here in reality, as seen through the eyes of the administration, faculty, and students down THROUGH THE YEARS. . . .



CONTENTS



1926

Our Dedication
To Dr.



As a token of our appreciation for his guidance and understanding, we, the class of 1951, respectfully dedicate this volume of our life at Peace to our president, Dr. W. C. Pressly.

We feel as though we speak not only for ourselves, but for all the Peace girls



1951

and Tribute Pressly

whom he has served during his twenty-five years as president of our college.

For his enthusiasm in our activities, for his untiring efforts to develop the potentialities of Peace, for his unfaltering friendship, we shall always love and respect Dr. Pressly.



ALMA MATER

In the heart of Carolina,
 'Neath the skies of blue,

Stands our noble Alma Mater,
 Glorious to view.

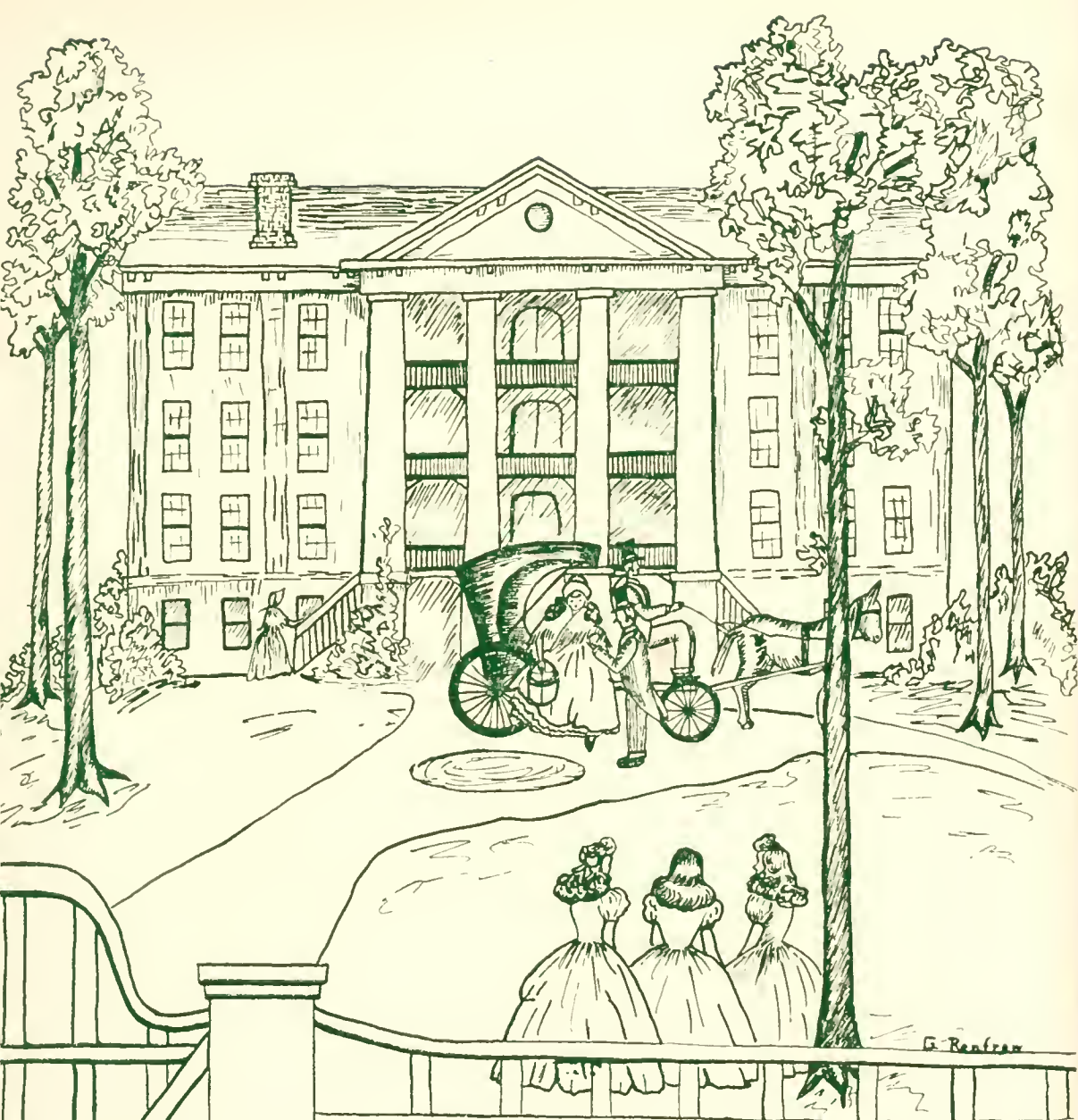
Classic in her broad proportions,
 Looks she proudly down—

Reared against the arch of heaven,
 With the stars for crown.

Chorus

Lift the chorus, speed it onward;
 Let it never cease;

Hail to thee, our Alma Mater;
 Hail, all hail, to Peace!



COLLEGE

ADMINISTRATION

DR. W. C. PRESSLY

President

Dr. Pressly's friendly counsel and guidance have meant much to the students of this college generation. His devotion to the most minute of individual problems and personal interest in the solution of these problems are the qualities which best characterize him in the eyes of all Peace girls.



MISS MAY McLELLAND

Dean

We respect and feel a great admiration for our dean whose never-failing interest in all our activities has won for her a large place in our hearts. She has been our ideal adviser in every way.

FACULTY



MISS LYDA BAUCOM
Secretary to the President

MISS DAISY C. BEAN
Supervisor of Buildings and
Grounds

MRS. NELL WADE BOOTH
Commercial Subjects, A.B.



MISS ELIZABETH CALDWELL
History, A.B., M.A.

MISS MOSELLE C. CAMP
Piano, B.M., M.M.

MR. A. M. CUNNINGHAM
Assistant to the President, B.S.



MRS. W. H. DARDEN
Hostess

MRS. SALLY L. DAVIS
Nurse

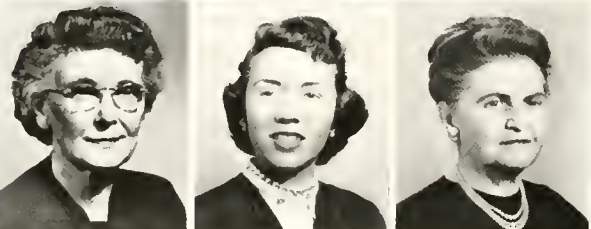
MRS. NANCY F. PHILLIPS
Voice, B.M.



MISS JOYCE FOWLER
Health and Ph. Ed., A.B.

MISS MARY MEARES GALT
French, A.B., M.A.

MISS FRANCES GOLDEN
Registrar



MISS ETHEL GRAMMER
Dietitian

MISS MARY JO HAYNES
English, A.B., A.M.

MISS ALICE WELCH JONES
Librarian, A.B., B.S., L.S.

FACULTY

MISS LOVIE J. JONES

Piano

MISS MARY KIRKPATRICK

Bursar

MISS WINIFRED H. KUHNS

Mathematics, A.B., B.E., H.S.



MISS RACHEL McELROY

Spanish and Psy., A.B., M.A.

MISS JULIA OATES

English, A.B., M.A.

MRS. AUSTIN PATTERSON

Science, B.S., M.A.



MISS MABEL PUGH

Art, History of Art

MRS. A. T. ROTHROCK

Hostess

MISS THETIS SHEPHERD

Commercial Subjects, A.B., M.A.



MRS. NELLY P. STAUDT

Organ, B.M.

MISS LUCY E. STEELE

Bible, A.B., M.A.

MISS RUTH ANN WALKER

Commercial Subjects, A.B., M.S.



Not Pictured:

MISS BERTIE L. WHITESIDES

Home Economics, B.S., M.A.



Executive Committee: K. G. Hudson, Chairman; J. C. Allison; John Pasco; Dr. John Rhodes; Raymond Snow; James W. Kilgore; and William McPherson.

BOARD OF TRUSTEES

K. G. Hudson, Chairman	Raleigh, N. C.
Mrs. C. C. McAlister	Fayetteville, N. C.
Mrs. B. R. Lacy	Raleigh, N. C.
Mrs. Robert Wyatt	Raleigh, N. C.
Mrs. George Avinger	Laurinburg, N. C.
Rev. Harry Whitmore, D.D.	Thomasville, N. C.
H. H. Littrell	Rocky Mount, N. C.
Dr. F. L. Knight	Sanford, N. C.
Rev. W. S. Patterson	Davidson, N. C.
J. C. Allison	Raleigh, N. C.
John Pasco	Raleigh, N. C.
Dr. John Rhodes	Raleigh, N. C.
R. A. Snow	Raleigh, N. C.
Rev. James M. McChesney	Goldsboro, N. C.
Rev. William Crowe, Jr., D.D.	Wilmington, N. C.
Ralph W. Bruin	Henderson, N. C.
Mrs. Thomas Stamps	Raleigh, N. C.
Mrs. Julian Hutaff	Fayetteville, N. C.
Henry Walker	Kinston, N. C.
James W. Kilgore	Raleigh, N. C.
William McPherson	Raleigh, N. C.
Rev. William B. Hood	Wallace, N. C.
Rev. Chalmers F. McCutchen	Sanford, N. C.
Rev. John Mack Walker	Roanoke Rapids, N. C.
John Holbrook	Lowell, N. C.
Rev. James Sprunt, D.D.	Raleigh, N. C.
Kelvin Gray	Raleigh, N. C.
William C. Pressly, Secretary-Treasurer	Raleigh, N. C.

ADVISORY BOARD



Seated, Left to right: Mrs. Emerson Fountain; Mrs. Walter P. Sprunt; Mrs. Rufus Wilson; Mrs. George Matthis. Standing: Mrs. E. B. Keith; Mrs. H. L. Moore, Mrs. Charles Moore; Mrs. George Currie; Mrs. J. W. Vann; Mrs. W. D. Pearce; Mrs. Willard Goley; Mrs. Montford Wales; Mrs. R. M. Costner.



Seated, Left to right: Mrs. George F. Avinger; Mrs. Josiah William Bailey; Mrs. Robert Wyatt; Mrs. Julian Johnson. Standing: Miss Nell Hay; Mrs. Frank W. Sherwood; Mrs. Barber Towler; Mrs. James Johnson; Mrs. Herbert Combs; Mrs. Hoyt Hackney; Mrs. Julian Hutaff; Mrs. Thomas Stamps.





READIN

RITIN

RIT/METIC

CLASSES



OUR SENIORS



CHRISTIE THOMAS
Mascot



MISS JOYCE FOWLER
Sponsor

ANNE SEAWELL
President

JACQUELINE OWEN
Secretary

ENNIS QUINN
Vice-President

RUTH WILSON
Treasurer



Seawell, Quinn, Owen, Wilson



Atkins, Hellon LaRue Pi Theta Mu
Raleigh, N. C.

Business Staff "Lotus" '50; Day Student Council, Secretary '51; Pi Theta Mu, Refreshment Committee '51.

Smiles, "Pubba," Navy, Bond Street, Brown eyes.



Bailey, Ida Pauline Rho Delta Chi
Cocoa, Fla.

Florida, sense of humor, Louise, having fun.



Beard, Helen Sigma Phi Kappa
Hillsboro, N. C.

Basketball Club '50; Hockey Team '50, '51.

Carolina, food, stuffed animals, weekends, Bill.

Black, Leslie Louise Sigma Phi Kappa
Charlotte, N. C.

Student Council '51; P.S.C.A. Cabinet, Social Chairman '51; P.H.R. '51; Phi Theta Kappa, Secretary '51; Sigma Phi Alpha '51; Editorial Staff "Lotus" '51; Stunt Night '50; Scholastic Honors '50, '51; Christmas Pageant '50; Easter Pageant '50 '51.

Tommy, chicken, home, cats, "How Deep Is the Ocean."



Blair, Adelaide Womble Sigma Phi Kappa
Pittsboro, N. C.

Chapel Choir '50, '51; Glee Club '50, '51, President '51; Joint Voice Recital '50; P.S.C.A. Cabinet '50, '51; Stunt Night '50; Easter Pageant '50, '51; Christmas Pageant '49, '50; Soloist for Society Banquet '49, '50; Scholastic Honors '50.

Angel food cake, "Smoke Gets in Your Eyes," Tigress, John? housekeeping.



Bullock, Susan Sigma Phi Kappa
Stovall, N. C.

P.S.C.A. Cabinet '50, '51, Secretary '51; Papyrus Club '50, '51, President '51; Privileged Honor Roll '50, '51; Scholastic Honors '50, '51; Christmas Pageant '49, '50; Easter Pageant '50, '51; Phi Theta Kappa '50, '51; Treasurer '51; Sigma Pi Alpha '50, '51, Vice-President '51; Editor "Voices of Peace" '51.

Fried chicken, lilacs, "Star Dust," Granville County.



Currin, Dorothy Sigma Phi Kappa
Oxford, N. C.

Sigma Phi Kappa, Secretary '51; International Relations Club '50, '51; Christmas Pageant '49.

Dances, earrings, Bond Street, mail, "All My Love."



DeLand, Bertha Jean Sigma Phi Kappa
Belgium Congo, Africa

International Relations Club '48, '49, '50, '51; Papyrus Club '48, '49, '50, '51; Glee Club '50, '51; "Time" Current Event Contest Winner '49. Scholastic Honors '50; Movie Projector '48, '49, '50, '51; Christmas Pageant '50; Stunt Night '50, '51.

Tommy Mack, Africa, music, picture taking, visiting the Askews.



Dickinson, Margaret Pi Theta Mu
Raleigh, N. C.

Scholastic Honors '50, '51; Papyrus Club '51, Treasurer '51; Business Staff "Lotus" '51; Pi Theta Mu, Treasurer '51.

Floyd, Germany, Jus' two mo' years, Carolina-bound.





Dudley, Laura Frances Sigma Phi Kappa
Fayetteville, N. C.

Scholastic Honors '50; Glee Club '50; International Relations Club '50; Christmas Pageant '50, '51.

Harold, out-of-bounds-Dudley, laughing, "Be Mine."



Forbes, Rosalyn Sigma Phi Kappa
Poplar Branch, N. C.

May Day '50.

Living for week ends, a true friend, tiny, Nags Head, "La Vie en Rose."



Goodman, Christine Pi Theta Mu
Sanford, N. C.

Glee Club '50, '51.

"Nevertheless," Bill, Saturday night dancing, '41 Olds.

CLASS OF '51

Harrell, Jewell Blye Sigma Phi Kappa
Oxford, N. C.

Athletic Association, Secretary '51; Sigma Phi Kappa, Treasurer '51; Basketball Club '50, '51; Editorial Staff "Lotus," Typing Editor '51; Christmas Pageant '50; Outstanding Player Volleyball Team '50.

Mail, basketball, "Dan," Woodhue, "If."



Herring, Grace Evelyn Sigma Phi Kappa
Dunn, N. C.

Student Council Secretary '51; P.S.C.A. Cabinet '51; Privileged Honor Roll '51; Sigma Phi Kappa, Marshal '50, '51; May Court, Maid of Honor '51; May Day '50; Alpha Pi Epsilon '50, '51; Scholastic Honors '50, '51; International Relations Club '50; Basketball Club '50, '51; Christmas Pageant '50, '51; Easter Pageant '50; Outstanding Senior.

Basketball, "Yesterdays," Straw hat, State, dancing.

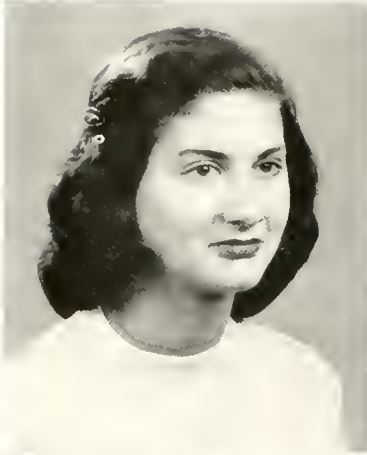


Herring, Louetta Sigma Phi Kappa
Newton Grove, N. C.

Scholastic Honors '50, '51; International Relations Club '51.

Our Christmas bride, Everett, "Night and Day," Woodhue, Blue Ridge madness.
Mrs. Carr!





Howell, Alice Gordon Sigma Phi Kappa
Asheville, N. C.

Athletic Association '50; Christmas Pageant '50; Sigma Phi Kappa, President '51, Social Committee '51; Society Banquet Committee '51.

Dances, tall boys, breakfast, Asheville.



Huneycutt, Sarah Elizabeth Pi Theta Mu
Raleigh, N. C.

"Peanut," Billy, Little Nell, "Diamonds are a Girl's Best Friend."



Johnson, Betsy June Pi Theta Mu
Raleigh, N. C.

Secretary Junior Class '50; Decoration Committee Junior-Senior '50; Papyrus Club '50, '51; Pi Theta Mu, President '51; Toastmistress, Society Banquet '51; Scholastic Honors '50, '51; Editorial Staff "Lotus," Assistant Editor '51.

Leon, Pfeiffer, chevrolet, flashing dimples, laughter.

Knott, Janis Sigma Phi Kappa
Knightdale, N. C.

Wake Forest, Navy!!, "My Foolish Heart,"
Mountains, 322 Main.



Lilly, Cora Jane Pi Theta Mu
Raleigh, N. C.

Pi Theta Mu Marshal '51, Decoration Committee
'51; Scholastic Honors '50, '51.

Basketball, "Lana," Heaven Sent, Bill, "No
Other Love."

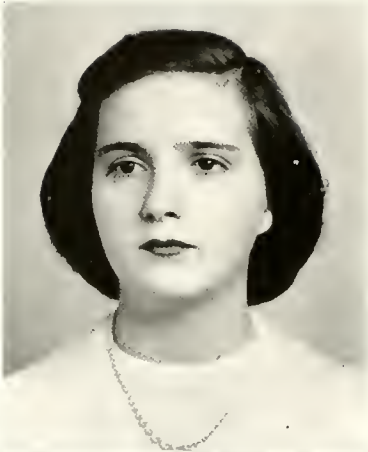


Lloyd, Joyce Pi Theta Mu
Raleigh, N. C.

Scholastic Honors '50, '51.

Auburn vs Texas, Hutch, mucho men, "My
Foolish Heart," the look!





McIntyre, Anne McMillian Sigma Phi Kappa
Raleigh, N. C.

Sigma Phi Kappa, Marshal '50; Business Staff "Lotus," '50, '51;

Vetville, "Mrs." degree, June Bride, blue eyes.



McQueen, Virginia Murphy Sigma Phi Kappa
Fayetteville, N. C.

P.S.C.A. Cabinet '50, '51; Cheerleader '50; Christmas Pageant '49, '50; Sigma Phi Kappa, Vice-President '50; Easter Pageant '50; Stunt Night '50, '51; May Day '50; Privileged Honor Roll '51; President of Student Body '51; Miss Peace '51.

People, "They Didn't Believe Me," ear-rings, Carolina.



Malone, Chloe Rho Delta Chi
Rome, Georgia

Stunt Night '50, '51; Cheerleader '50; Athletic Association '50, '51; Society Representative '51; Rho Delta Chi, Marshal '51; Spanish Club '50.

Tommy, K.A. (U of Georgia), "Stardust," dimples, dancing eyes.

Martin, Nancy Jane Pi Theta Mu
Raleigh, N. C.

Phi Theta Mu, Marshal '51.

George, Sigma Nu, pint-sized, "If," always sighing.



Miller, Carolyn Rho Delta Chi
Cornelius, N. C.

Rho Delta Chi, President '51; Daughter-Granddaughter Club, Vice-President '50; Society Volleyball and Basketball Games '50, '51; Stunt Night '50, '51.

"Always," bridge fiend, wasp waist, cats, dancing.



Morgan, Flora Lou Rho Delta Chi
Maxton, N. C.

Art Club, Program Chairman '50, Vice-President '51; Christmas Pageant '50; Student Council '51.

Misie, "All the Things You Are," flowers, dogs, chicken.





Owen, Jacqueline Sigma Phi Kappa
Winter Park, Florida

Editorial Staff "Lotus" '50, '51, Editor-in-Chief '51; Sigma Pi Alpha, '50, '51, President '51; May Day '50; Christmas Pageant '50; Scholastic Honors '50, '51; Senior Class Secretary '51; Daughters and Granddaughters' Club '50, '51; Vice-President '51; Outstanding Senior.

Dry wit, Tommy, Emory, Sigma Nu, Florida.



Pace, Ann Sigma Phi Kappa
Oxford, N. C.

Athletic Council '50; Secretary-Treasurer, Athletic Association '50; Basketball Club '50, '51; Laboratory Assistant '50, '51; International Relations Club '50, '51; Papyrus Club '50, '51; Privileged Honor Roll '51; Easter Pageant '50; Christmas Pageant '50; Scholastic Honors '50.

Chris, "If," Duke, those big brown eyes, Nags Head.



Peterson, Mary Frances Sigma Phi Kappa
Kerr, N. C.

May Court '50, '51; Art Club '51, Secretary; Christmas Pageant '50; May Queen '51; Marshal '50, '51; International Relations Club '51; Basketball Club '50, '51.

"Lewis," clothes, sparkling eyes, dancing, "Turkey."

Phillips, Anne Rho Delta Chi
Franklin, N. C.

Sigma Pi Alpha '50, '51; Phi Theta Kappa '50, '51, Vice-President '51; Rho Delta Chi, Vice-President '51; Business Staff "Lotus" '51; Papyrus Club '50; Christmas Pageant '49, '50; Scholastic Honors '50, '51; May Day '50.

Dancing, mountains, "Buddies," peanuts, State College.



Pope, Jane Sigma Phi Kappa
Wallace, N. C.

Business Staff "Lotus" '50, '51, Business Manager '51; International Relations Club '51; Daughters and Granddaughters Club '50, '51; Privileged Honor Roll '51; Christmas Pageant '50; Scholastic Honors '50, '51.

Pork chops, Jimmie, red roses, going home.



Prince, Patricia Rho Delta Chi
Fuquay Springs, N. C.

Don, "Hair of Gold, Eyes of Blue," Duke, blue, Wrightsville.





Quinn, Ennis Rho Delta Chi
Greensboro, N. C.

Christmas Pageant '49; Rho Delta Chi, Chief Marshal, '50, '51; Daughters and Granddaughters Club '50, '51, President '50; Senior Class Vice-President '51; Entertainment Committee '51.

Allan vs. Bill, "I'll Get By," beach parties, husky laugh, platinum blonde.



Renfrow, Gilda Sigma Phi Kappa
Lucama, N. C.

Art Club '50, '51; Papyrus Club, Vice-President '51; Sigma Pi Alpha '50, '51, Secretary Treasurer '51; Stunt Night '50; Scholastic Honors '50, '51; Editorial Staff "Lotus" '51.

Brown eyes, "Sunrise Serenade," Walt, overseas mail, desserts.



Rhodes, Mildred Pi Theta Mu
Raleigh, N. C.

Pi Theta Mu, Secretary '51; Business Staff "Lotus" '51.

"Millie," Donel, "My Foolish Heart," laugh for us!

Rouse, Mattie Gore Pi Theta Mu
Raleigh, N. C.

Papyrus Club '50, '51, Secretary-Treasurer '50;
Business Manager "The Voices of Peace" '50;
Editorial Staff "Lotus" '51.

"Mickey," "Again," dancing, Epistles, mountains and beach.



Schreffler, Madelyn Pi Theta Mu
Raleigh, N. C.

Papyrus Club '50, '51; "Voices of Peace",
Co-Art Editor '50, Art Editor '51; Art Club, '50;
Chairman Decorations Committee, Junior-Senior
Dance '50; Society Dance '50; Editorial
Staff "Lotus," Art Editor '51; Pi Theta Mu, Vice-
President '51; Scholastic Honors '51; Day Student
Council, President '51; Outstanding Senior.

John, West Point, Plebe's Christmas, mail,
Army-A.



Seawell, Anne Woodward Sigma Phi Kappa
Carthage, N. C.

P.S.C.A. Cabinet '50, Social Service Chairman
'51; Student Council, Treasurer '50, '51;
Junior Class President '50; Senior Class President
'51; Phi Theta Kappa '50, '51, President
'51; Sigma Pi Alpha '50, '51; Scholastic Honors
'50, '51; Editorial Staff "Lotus" '50, '51; Glee
Club '50; Christmas Pageant '49, '50; Easter
Pageant '50, '51; Athletic Association '50;
Stunt Night '50, '51; Outstanding Senior.

Kenney, Kenney, Kenney, Kenney, Kenney.





Sharp, Eutha

Rho Delta Chi

Harrelsville, N. C.

Business Staff "Lotus" '51; Junior Class Treasurer '50; Glee Club '50; P.S.C.A. Cabinet '50, '51, President '51; Student Council '51; Christmas Pageant '49, '50; Stunt Night '50; Privileged Honor Roll '51; Scholastic Honors '50, '51; Outstanding Senior.

Full o' gum, new "Oids," outstanding, Harrelsville.



Stallings, Bettie

Rho Delta Chi

Louisburg, N. C.

Art Club '50, '51; Papyrus Club '50; Christmas Pageant '50; Business Staff "Lotus" '51; Scholastic Honors '50, '51.

"Begin the Beguine," football games, jokes, roses, summer-time.



Tart, Melrose

Sigma Phi Kappa

Dunn, N. C.

Student Council '51; Privileged Honor Roll '51; May Day '50; International Relations Club '50; Athletic Association '50, '51, President '51; Basketball Club '50, '51; Captain '50; Social Committee, Chairman '51; Outstanding Basketball Player '50; Scholastic Honors '50, '51; Outstanding Senior.

Dancing, "Stacy," basketball, mail, "Night and Day."

Tisdale, Nellie Sigma Phi Kappa
New Bern, N. C.

Privileged Honor Roll '51; Art Club '50, '51,
President '51; International Relations Club '51;
Entertainment Committee '50.

Golf, "Woodhue," yellow rose, dances, week
ends.



Waddell, Martha Frances Sigma Phi Kappa
Fair Bluff, N. C.

Easter Pageant '50; International Relations Club
'50, '51.

Candy, "You'll Never Walk Alone," "Cricket,"
mail, sleep.



Waters, Mabel Sigma Phi Kappa
Faison, N. C.

Papyrus Club '51; May Day '50.

Dances, sleeping, 402 Horne Street, bananas,
roses.





Weeks, Rose Ina Sigma Phi Kappa
Roanoke, Va.

P.S.C.A. '50, '51, Vice-President '51; International Relations Club '50, '51, Vice-President '51; Glee Club '50; Student Council '51, Treasurer '51; Privileged Honor Roll '51; Stunt Night '50; Outstanding Senior.

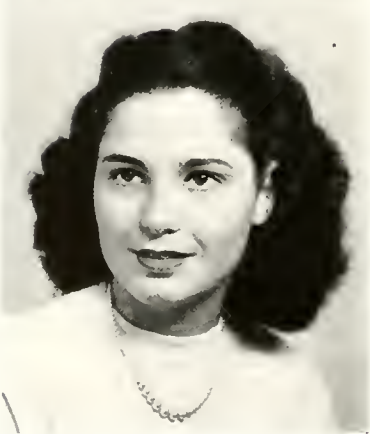
"Old Virginy," 301 Main, Bobby, fun plus.



Williams, Mary Ann Pi Theta Mu
Raleigh, N. C.

Scholastic Honors '50.

John, Greensboro, "Thinking of You," cousin, chevrolet.



Williams, Mary Frances Rho Delta Chi
Raleigh, N. C.

Scholastic Honors '50, '51.

Carolina, Basketball, Plymouth, cousin.

Wilson, Irma Ruth Pi Theta Mu
Raleigh, N. C.

Alpha Pi Epsilon '50, '51; Senior Class Treasurer '51; Scholastic Honors '50, '51.

"My Friend Irma," basketball, "No Other Love," "Rufus."



CLASS POEM

Strong as your columns,
Serene as your name,
These, and many more
Were the dreams that became
Ours for the time
That we were yours.
And now, all too soon,
You push us through your doors.
The current will not be too bright
For the vision makes sure our steps
And clear our sight,
And with hearts too o'erflowing,
With devotion to tell
Together we chorus
Our last fond farewell.

Sue Bullock

CLASS HISTORY

Our long awaited chance had come and we were away from home, in our first year at college. Yes, high school days had passed, and we had made our way to college with its new friends, environment, and wide range of learning.

Soon the leaves on the campus had turned gold and orange, and we realized that summer had certainly passed and with it our memories of the past few months. Homesickness, worry, and just plain old laziness had had quite a hand in getting us settled to our new routine of life. With these experiences, though, we realized that we were finally grown and must face a few troubles and tasks all alone.

Rat week, football games, Thanksgiving, dances at State and here at Peace too, soon helped us to learn to love our college life. Of course, we can't forget those occasional week-ends at home when everyone marvelled over the latest hair do or fad.

The Junior class of 1950 elected its officers early in the year. Ann Seawell, president; Natalie Lancaster, vice-president; Betsy June Johnson, secretary; and Eutha Sharp, treasurer. Miss Joyce Fowler was class sponsor.

Soon the Society banquet had come and gone and we were in the midst of first quarter exams. What a relief to finish finally and to know that there were only two more weeks until we'd be going home for Christmas. During these weeks came the P.S.C.A. Pageant, Christmas Carols, and our big Christmas dinner.

Trains, planes, cars, and busses carried us home and brought us back. Campus Missions and the Week of Sharing were upon us and we quickly got back into swing. Stunt night gave everyone a big laugh even though we didn't win the prize.

Spring arrived and brought with its clear newness, the dances at other colleges and those here too. Lovely dresses and flowers were ushered in at the Society dances and Junior-Senior. Soon after May Day, we were looking forward to going home.

Commencement came and many of our friends graduated. We could hardly wait for the next year when we would take their place.

What can be said of summer vacation? No word could describe the individual joy of each student. Yet, there was a gladness when the doors of Peace again opened and we met with happiness those whom we

already knew. We were no longer strangers, but were at a place which we knew and liked.

Class officers again were chosen for our final year. Anne Seawell, president; Enniss Quinn, vice-president; Jacqueline Owen, secretary; and Ruth Wilson, treasurer.

Classes and work began with each student aware of the dangers and uncertainty of our age. Wars had come and passed before, but only now did we realize the real intensity. Yes, we studied and played too, but with a more serious understanding of our motives.

Traditional rush week, the Christmas pageant, and vacation were soon over again. The week of Sharing, Campus Missions, "Peanut" week, Stunt night, and the Society dance were soon a part of the past. It was hard to realize that time for graduation was just around the corner.

The Junior-Senior was anticipated and proved a big success. Thanks can never be adequately expressed to the Juniors for their fine expression of friendship. Lovely new dresses again filled every girl's dreams, and of course that "someone" who maybe wouldn't be able to admire and enjoy the loveliness with her.

Finally, we were no longer having to wait, but the day had come. Could it be possible that there in the midst of our happiness was also a little sadness. Friends whom we would never see again and Peace as it would never appear to us again. Although our eyes did sting with tears of happiness and regret mingled together, we gratefully thanked Peace for what it had given us. Then, we walked quickly away from the little brick walk and into a wide street that led to a world of success and happiness.

Rosalyn Forbes



PROPHECY

May 31, 1971
La Rue Atkins Hotel
New York City

Dear Miss Fowler,

In conducting my 1971 "Around the World Tour" for the DeLand By-Way-Of-Africa Travel Bureau, I have run into such an astounding number of my old classmates from Peace College that I thought you would be interested to hear about them—perhaps to recall the trials and tribulations of sponsoring them through two gruelling, but happy, years of junior college in 1950 and '51, or just to see how they have developed through the years.

The night before we sailed, we went to the Phillips-Owen Supper Club, where we dined and danced to the music of "Snooky" Blair's orchestra. As you know, our "Ad" is the latest sensation with her bophoogie version of "Aida."

Our ship sailed bright and early the next morning and the ensuing days at sea with Louetta Herring Carr and her husband, now ambassador to the new province of In-thestixi were simply marvelous. She seems quite carried away with their new home.

Who do you suppose met us at the pier in Liverpool? It was none other than "Micky" Rouse who is now sole owner of the "You-Bring-It-We'll-Swing-It" Crane Company. What a small world!

Boots Black flew us over to Paris where we stopped off a few days for sightseeing leaving Boots to join Tom in Vienna. One of the most interesting sights we saw was our former May Queen, Mary Frances Peterson, modeling hats in Madam Quinn's Petite Salon.

When we arrived in Switzerland, we found Dr. Pace's name on everyone's lips. "Life" photographer, "Slick" Bullock, was interviewing her concerning her discovery of that new miracle drug which prevents the iron in the blood from rusting and removes spots from before the eyes. We also took skiing lessons from the famous Dot Currin, who is the world's lightest skier, even since taking the Weeks' Weight Gaining Course which Rosie incorporated two years after her marriage to Dr. I. C. Poorly, who just patented new contact lenses for seeing-eye dogs.

In Rome we watched Royal Callis perform her "Dance of the Eleven Rings." She looked simply devastating in her spike heeled sandals, stunning veils, and a ring in her nose, as well as ten on her toes.

Florence and Venice were delightful too, but, as our time was limited we proceeded on to the Dead Sea, where we found a chain of Miller-American Hot-Dog Stands. Carolyn always attributes her outstanding success in the business to the fact that she gets her



salt absolutely free—just raves about the location! She said that Eutha Sharp had been through a number of times conducting tours of the Holy Land.

Pat Prince flew us over to Cairo in her husband's new underground helicopter; there we found Flora Lou Morgan, Cleopatre's successor, living in a rehabilitated pyramid. On a trip down the Nile we saw Chloe Malone, who had fallen overboard and narrowly escaped being eaten by an alligator. She has invented a few type chewing gum with hydromatic gears which shift it from one side of the mouth to the other. In one village we found the Stallings Undertaking Parlors and Ginny McQueen running for Chieftainess. According to popular opinion Ginny will soon be Queen of Egypt.

When we parachuted into the Congo, we were met by Tart Taxis driven by "Speed" Herring and "Pokey" Harrell. Our stay there was short, but we did see one performance of Schreffler's trained elephants before we left.

In the Union of South Africa we stopped to see the Lloyd-Lilly Black Diamond Mine, went on to Capetown, and, finally sailed to Siam. Our interpreter in Siam was none other than little old Jane Pope, who has made a fortune on her new patent medicine "Havacall."

Rosalyn Forbes, who met us in Hong Kong, was selling especially designed Coolie hats for people with two heads—such an original idea! Of course you know that Mabel Waters is in China now raising silk worms.

The Dudley-Huneycutt Sheep Ranch is one of the most interesting spots in Australia. Some of their sheep are six feet tall, because of Laura's use of "Groaninch" in the drinking water.

We were welcomed in Hawaii by Senator Ruth Wilson with her aide Dr. Betsy June Johnson of Raleigh. Christine Goodman did some expert pearl diving before we left, and, as our clipper took off for Chile, we saw two beautiful hulu dancers in grass skirts waving goodbye. We recognized Mildred Rhodes and Mary Ann Williams.

Passing through Chile we saw Alice Howell, who is an engineer now in Chile's largest Nitrate Mine. A week later we found Jan Caldwell starting an insurrection in Bolivia—she'll probably run for president when it all blows over.

In Panama we found Helen Beard riding whales through the canal and Janis Knott running for Treasurer of the International Anti-Pepsi Cola Co. In Mexico we found Waddell's Hot Tamale Shoppe on the Rio Grandee. Nancy Jane Martin is roping cattle in Texas.

When I arrived in New York, a little weary from the trip, I saw Gilda Renfrow on her way to the art gallery to display her latest impressionistic masterpiece. Bobby Carter, her press agent, had a terrible time beating off the autograph hounds.

That just about takes care of everybody. I knew you'd be delighted to hear that we're all living sane, sensible, and successful lives, since our graduation.

Very untruthfully yours,
Woodie Seawell
Class Prophet



LAST WILL AND TESTAMENT

We, the class of 1951, being of sound body and mind, (we hope), do hereby present this last will and testament in order to confer upon our successors the exalted position of Peace seniors, which is their rightful inheritance.

ARTICLE I

To the Junior Class:

To you, we leave our sincere wishes for future success in your oncoming year at Peace. May you hold dear to your hearts the ideals and high standards of Peace girls. We wish you a very pleasant year in your studies and recreation.

ARTICLE II

Section 1: To Dr. Pressly: To you, we leave our heartiest gratitude for your patience and sympathy in dealing with our problems. You have been at all times a wise counselor, a kind friend, and a champion of all good causes.

Section 2: To Miss McLelland: To you, we bequeath five cents for the fertilizer fund, along with a plea to forgive us for our late requests. Your patience and cheerful outlook will be remembered by every Peace girl as she journeys through life.

ARTICLE III

To Miss Fowler, Our Sponsor:

To you, we leave a special thanks for your interest in us and for your guidance. May you have the greatest satisfaction that only comes with a job well done. You deserve it.

ARTICLE IV

To The Teachers:

To you, we leave a wish that in the years ahead you will remember with pleasure the class of '51 and take pride in the accomplishments for which you have prepared us.

ARTICLE V

To Various Individuals:

Section 1. We, Virginia McQueen and Madelyn Schreffler, leave our leadership ability to our successors with the hope that they will have as grand a year as ours.

Section 2. I, Adelaide Blair, leave my outstanding singing voice to Ann Gresham, the female Frank Sinatra of Peace.

Section 3. I, Mary Frances Peterson, bequeath my title of "Queen" to my successor.

Section 4. I, B. J. DeLand, leave my love for horses to Ann Turlington.

Section 5. I, Gilda Renfrow, leave my love for mail from overseas to Elizabeth Law.

Section 6. I, Martha Waddell, leave my vitamin pills to Mary Thorpe.

Section 7. We, Rose Ina Weeks and Jane Pope, leave our State College careers to any who are brave enough to attempt to make the grade.

Section 8. I, Alice Howell, leave my place at the bridge table to Julia Satherwaite.

Section 9. I, "Gussie" Pace, leave my nickname to Peggy Barnes.

Section 10. I, Flora Lou Morgan, will my seat in study hall to Jo Anne Jackson on one condition—she must send me a composition on "How to Study and Dream of Love and Life and a Knight in Shining Sport Clothes All At the Same Time."

Section 11. I, Sue Bullock, leave Morning Watch to whoever believes the statement: "Early to bed and early to rise."

- Section 12. I, Bobby Carter leave—I hope.
- Section 13. I, Helen Beard, leave my love for chocolate pie to Betty Cook.
- Section 14. I, Mabel Waters, leave my week ends in Raleigh to Shirley Smith.
- Section 15. I, Laura Dudley, bequeath a few inches of my stature to Catherine Rhodes and Ann Best.
- Section 16. I, Grace Herring, leave my pleasing ways and wonderful disposition to Wini Boggs and Peg Howe.
- Section 17. I, Melrose Tart, will my high basketball scores to next year's team.
- Section 18. I, Margaret Dickinson, will to Mary Ross Anderson, as one small person to another, my consolation in the fact that "fine things come in small packages."
- Section 19. We, Louetta Herring Carr and Pat Prince, leave our ability to be boarding students and day students in the space of one year to all engaged students who want to try it.
- Section 20. I, Mary Royal Callis, will my ability to capture the boys in the First Presbyterian Sunday School Class to Sylvia Workman.
- Section 21. I, Janet Caldwell, leave my love for the Southland to Mary Lou Wygant. Happy Hunting, Mary Lou.
- Section 22. I, Chloe Malone, leave my chewing-gum to Miss Caldwell's history classes.
- Section 23. I, Ennis Quinn, leave my blond hair to Martha Edwards and Lucy Ray so that they can throw out the peroxide bottle.
- Section 24. I, Carolyn Miller, leave "rat" day to next year's Society Presidents with this advice! "You'll be sorry!"
- Section 25. I, Jewell Harrell, leave my friendly ways and my ability to make friends to Pat Lomax and Joan Massey, remembering "that to him who hath shall be given."
- Section 26. I, Mickey Rouse, leave my knowledge of athletes to a deserving history student.
- Section 27. I, Ann Seawell, leave my "please dust" notes from Miss Bean and my clothes line to Becky Hundley and Nancy Powell. Have fun, girls.
- Section 28. I, La Rue Atkins, leave my cheery smile and good-humor to Jo Ann Didwick.
- Section 29. I, Christine Goodman, leave my Business Filing set to Jane Chambers, (I hope it arrives in time.)
- Section 30. I, Sarah Huneycutt, leave my "A" in English to a deserving student.
- Section 31. I, Janis Knott, leave for Knightdale.
- Section 32. I, Ruth Wilson, leave my secretarial ability to Elizabeth Law.
- Section 33. I, Mildred Rhodes, leave my Bible Notes to June Philips.
- Section 34. We, Nancy Martin and Jane Lilly, leave our marshal duties to any two cute Pi's.
- Section 35. I, Joyce Lloyd, leave my organ practice and peace and quiet to Mrs. Staudt.
- Section 37. I, Dot Currin, leave my ability to get along with Miss May to Barbara Townsend.
- Section 38. We, Jackie Owen and Anne Phillips, leave Barbara Wheeler our ability to write English Composition.
- Section 39. I, Bettie Stallings, leave my little sister at Peace for another year.
- Section 40. I, Rosalyn Forbes, leave my moody spells to Betty Jo Floyd.
- Section 41. I, Betsy June Johnson, will my winning personality and ability to be known by both boarding and day students to Martha Seymour.

Signed, sealed, and declared to be the last will and testament of the class of 1951.

Witnesses

Nancy Payne
Anne Seawell

Class lawyer

Boots Black

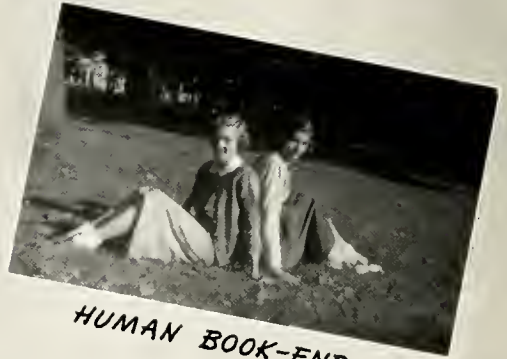
SMILE



"THE BIG FIVE"



JUS' SITTING 'N' KNITTING'



HUMAN BOOK-ENDS



THREE HEADS ARE BETTER THAN ONE!



"THE GLEAM AND THE DREAM"!

PLEASE



WELL, I'LL BE HANGED!



THAT FIRST DAY OF SCHOOL!



LOOK! NO CAVITIES!



LOOK MA! I'M DANCING!



WE AREN'T CRAZY;
WE JUST ACT LIKE IT!

OUR JUNIORS



MRS. NELL BOOTH
Sponsor

WINIFRED BOGGS
President

PEGGY GRADY
Secretary

ANNE HUNT
Vice-President

PAT LOMAX
Treasurer



Boggs, Hunt, Lomax, Grady

JUNIORS



Alexander, Jane Greenville
Rho Delta Chi

Almond, Claudia Kenbridge, Va.
Sigma Phi Kappa

Anderson, Doris Foster Raleigh
Pi Theta Mu



Arthur, Shirley E. Kings Mountain
Sigma Phi Kappa

Atkins, Mildred Anthony Clinton
Sigma Phi Kappa

Axe, Elizabeth Taylor Raleigh
Sigma Phi Kappa



Bailey, Mary Jane Raleigh
Pi Theta Mu

Barker, Betty Jane Raleigh
Pi Theta Mu

Barnes, Peggy Waldine Lucama
Sigma Phi Kappa



Bellios, Constance Laurinburg
Sigma Phi Kappa

Best, Ann Henderson
Sigma Phi Kappa

Blue, Margaret Sanford
Rho Delta Chi



Boggs, Winifred B. Chester, Va.
Rho Delta Chi

Bosworth, Charlene Long
Sigma Phi Kappa Winston-Salem

Bougades, Constance G. Raleigh
Sigma Phi Kappa

OUR JUNIORS



Brewer, Betty Dale Winston-Salem
Sigma Phi Kappa

Bunn, Eva Jeanette Lucama
Sigma Phi Kappa

Burch, Bobbie Jean Raleigh
Sigma Phi Kappa



Cain, Barbara Jeanne Fayetteville
Sigma Phi Kappa

Carr, Mary Ann Godwin
Sigma Phi Kappa

Chambers, Wanda J. Taylor, Tex.
Pi Theta Mu



Clarke, Nancy Peck Brevard
Rho Delta Chi

Cook, Elizabeth C. Lakeview
Sigma Phi Kappa

Copeland, Barbara Ann Apex
Sigma Phi Kappa



Corbett, Margaret E. Ivanhoe
Sigma Phi Kappa

Crabtree, Frances Mae Raleigh
Pi Theta Mu

Creighton, Peggy Anne Raleigh
Pi Theta Mu



Didawick, Jo Ann Millbrook
Pi Theta Mu

Eatman, Betty Carol Raleigh
Pi Theta Mu

Edwards, Nancy Lee Belhaven
Sigma Phi Kappa

Faircloth, Mavorine Four Oaks
Pi Theta Mu

Floyd, Betty Jo Chadbourne
Rho Delta Chi

Grady, Peggy Ann Raleigh
Pi Theta Mu

Gwyn, Bobbie Jean Aberdeen
Sigma Phi Kappa

Haithcock, Peggy Raleigh
Sigma Phi Kappa

Hardee, Mary Lucille Raleigh
Pi Theta Mu

Hartman, Blanche Raleigh
Rho Delta Chi

Havelos, Elle Tommy Fayetteville
Sigma Phi Kappa

Hawley, Margaret A. Fayetteville
Sigma Phi Kappa

Haywood, Hilda G. Mt. Gilead
Sigma Phi Kappa

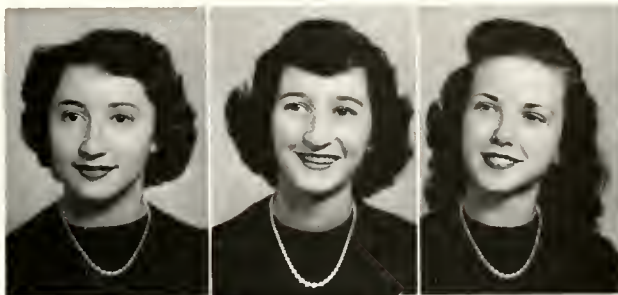
Hicks, Anne Walstonburg
Rho Delta Chi

Holland, Molly Greensboro
Rho Delta Chi

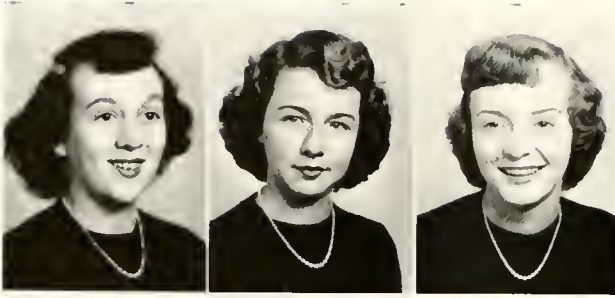
Honeycutte, Pauline Angier
Sigma Phi Kappa

Hopkins, Janice Marjorie Cary
Pi Theta Mu

Howe, Peggy Anne Gastonia
Sigma Phi Kappa



OUR JUNIORS



Humphries, Betty J. Raphine, Va.
Rho Delta Chi

Hundley, Rebecca Jean Norlina
Sigma Phi Kappa

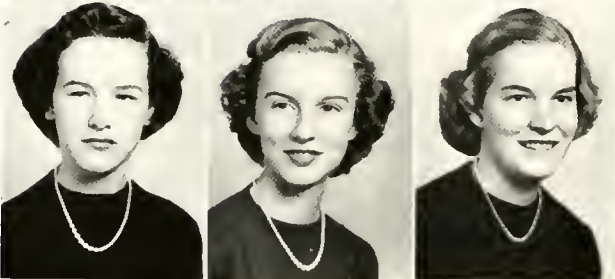
Hunt, Anne Sanford
Sigma Phi Kappa



Jackson, Joanne Wallace
Sigma Phi Kappa

Johnson, Billie Jean Raleigh
Pi Theta Mu

Johnston, Doris Raleigh
Pi Theta Mu



Johnston, Martha Raleigh
Pi Theta Mu

Jones, Mildred Alice Raleigh
Pi Theta Mu

Kirk, Jessie L. Independence, Va.
Sigma Phi Kappa



Law, Elizabeth Pelham
Sigma Phi Kappa

Lee, Nelva Rae Fairmont
Sigma Phi Kappa

Lomax, Princess Ann Salisbury
Sigma Phi Kappa



Massey, Joan Selma
Sigma Phi Kappa

Meador, Marguerite Scott
Rho Delta Chi Daytona Beach, Fla.

Minshew, Betty Carolyn Raleigh
Rho Delta Chi

CLASS OF '52

Park, Frances Moring Raleigh
Pi Theta Mu

Parrish, Mable Eloise Benson
Sigma Phi Kappa

Parsons, Betty Belle Jasper, Ga.
Rho Delta Chi



Payne, Nancy Charlotte
Rho Delta Chi

Pena, Isora Matanzas, Cuba
Sigma Phi Kappa

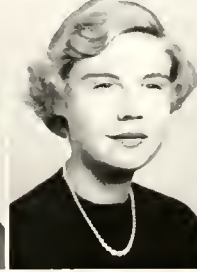
Poole, Sarah Elizabeth West End
Rho Delta Chi



Powell, Nancy R. Wilmington
Sigma Phi Kappa

Ray, Lucie Lane Leaksville
Rho Delta Chi

Rhodes, Catherine Monroe
Sigma Phi Kappa



Rich, Peggy Elizabeth Raleigh
Pi Theta Mu

Robinson, Dixie Lois Macclesfield
Sigma Phi Kappa

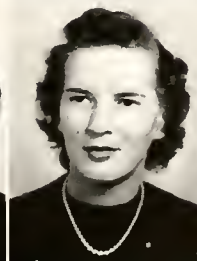
Robinson, Mary Ann Raleigh
Pi Theta Mu



Rouse, Etta Mae Hope Mills
Pi Theta Mu

Rowan, Ann Walker Waxhaw
Sigma Phi Kappa

Santelmann, Betsy Jane
Sigma Phi Kappa Arlington, Va.



OUR JUNIORS



Seymour, Martha Loretta Raleigh
Pi Theta Mu

Sharp, Polly Ann Raleigh
Pi Theta Mu

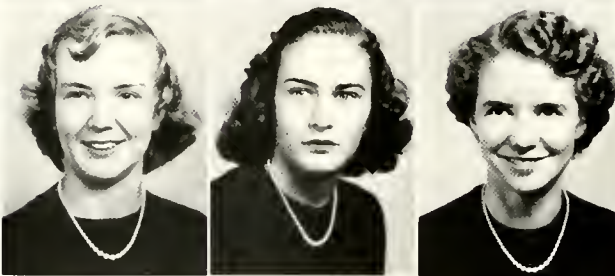
Shaw, Marguerite Rose Raleigh
Pi Theta Mu



Smith, Gailya Morrisville
Pi Theta Mu

Smith, Nancy Joe Greenville
Rho Delta Chi

Smith, Shirley Roanoke, Va.
Rho Delta Chi



Smith, Susan Christiansburg, Va.
Rho Delta Chi

Smithdeal, Sarah Ann Raleigh
Sigma Phi Kappa

Stallings, Anne Macon Louisburg
Rho Delta Chi



Tanner, Betsy J. Kenbridge, Va.
Sigma Phi Kappa

Taylor, Betty Ward Raleigh
Pi Theta Mu

Thomas, Frances Mae Lillington
Sigma Phi Kappa



Thorpe, Mary Eugenia Oxford
Sigma Phi Kappa

Turlington, Virginia Anne Dunn
Sigma Phi Kappa

Waters, Frances Anne New Bern
Rho Delta Chi

CLASS OF '52

Whaley, Helen Owen Victoria, Va.
Sigma Phi Kappa

Wheeler, Barbara Jean Henderson
Rho Delta Chi

Wheless, Dorothy Jane Louisburg
Rho Delta Chi

White, Jane Rock Hill, S. C.
Sigma Phi Kappa

Whitfield, Phyllis Warsaw
Sigma Phi Kappa

Williams, Rebecca Jane Rose Hill
Sigma Phi Kappa

Williams, Sybil Raleigh
Pi Theta Mu

Winfree, Shirley Mae Raleigh
Pi Theta Mu

Wise, Lillie Ellen Carthage
Sigma Phi Kappa

Workman, Sylvia Lee Tarboro
Sigma Phi Kappa

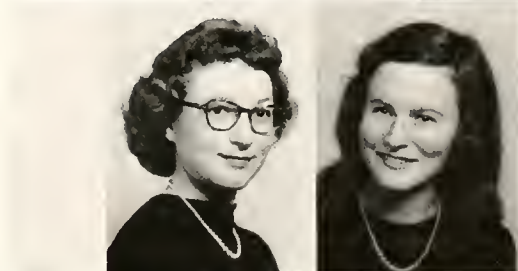
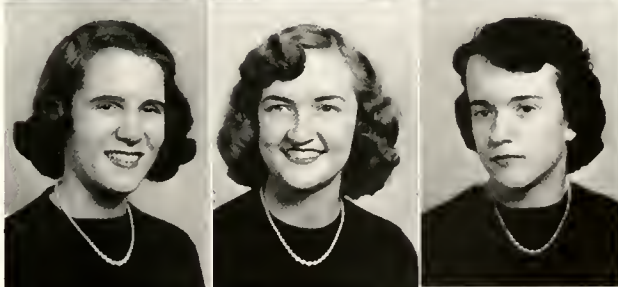
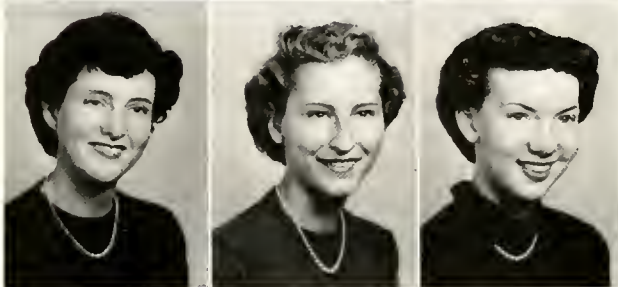
Wright, Mary Jo Cary
Pi Theta Mu

Wygant, Mary L. Marlboro, N. Y.
Sigma Phi Kappa

Roberson, Frances Raleigh

Wensil, Jane Raleigh

Not Pictured:
Wright, Nancy Ann Raleigh
Rho Delta Chi



RACHEL COFFEY
President



PATRICIA CORBETT
Secretary

JUNE WALDMANN
Vice-President

HELEN TURLINGTON
Treasurer

MISS JOSEPHINE HAYNES
Sponsor

OUR SENIOR PREPS

PREPARATORY IV



Coffey, Corbett, Turlington, Waldmann



Preparatory IV

First row, left to right: Elizabeth Allen, Kinston, N. C., Rho Delta Chi; Sikes Blanton, Shelby, N. C., Rho Delta Chi; Ida Brinkley, Colerain, N. C., Sigma Phi Kappa; Janice Bullock, Kenly, N. C., Sigma Phi Kappa; Rachel Coffey, Raleigh, N. C., Sigma Phi Kappa; Patricia Corbett, Swansboro, N. C., Rho Delta Chi. Second row: Jacquelyn Lee Crawley, Raleigh, N. C., Pi Theta Mu; Elizabeth Dalrymple, Raleigh, N. C., Pi Theta Mu; Martha Perry Edwards, Franklin, Va., Rho Delta Chi; Ann Floyd, Hazlehurst, Ga., Rho Delta Chi; Evelyn Griffin, Marshville, N. C., Rho Delta Chi.

First row, left to right: Anne Elise Hardy, Maury, N. C., Rho Delta Chi; Annie Laurie Helms, Charlotte, N. C., Rho Delta Chi; Eleanor Gay Herring, Albertson, N. C., Sigma Phi Kappa; Elizabeth Jenkins, Fayetteville, N. C., Rho Delta Chi; Mary Goldston Jordan, Raleigh, N. C.; Second row: Mary Margaret McCurdy, Raleigh, N. C., Pi Theta Mu; June Phillips, Raleigh, N. C., Sigma Phi Kappa; Elaine Shumaker, Raleigh, N. C., Rho Delta Chi; Barbara Southern, Roanoke, Va, Rho Delta Chi; Helen Turlington, Jacksonville, N. C., Rho Delta Chi; June Waldman, Cincinnati, Ohio, Sigma Phi Kappa.



PREP IV SUPERLATIVES



Clockwise from top:

- Ida Brinkley
- Helen Turlington
- Evelyn Griffin
- June Phillips
- Peggy McCurdy
- Janice Bullock
- Elaine Shumaker
- Patricia Corbett

- Wittiest
- Best All-Round
- Most Popular
- Prettiest
- Most Athletic
- Most Likely To Succeed
- Most Talented
- Sweetest

OUR JUNIOR PREPS

PREPARATORY III

BUNNY BLOODWORTH
President



BEBE EVANS
Secretary

JANE FRIST
Vice-President

ELSIE EUBANKS
Treasurer

MRS. NANCY PHILLIPS
Sponsor



Frist, Evans, Bloodworth, Eubanks

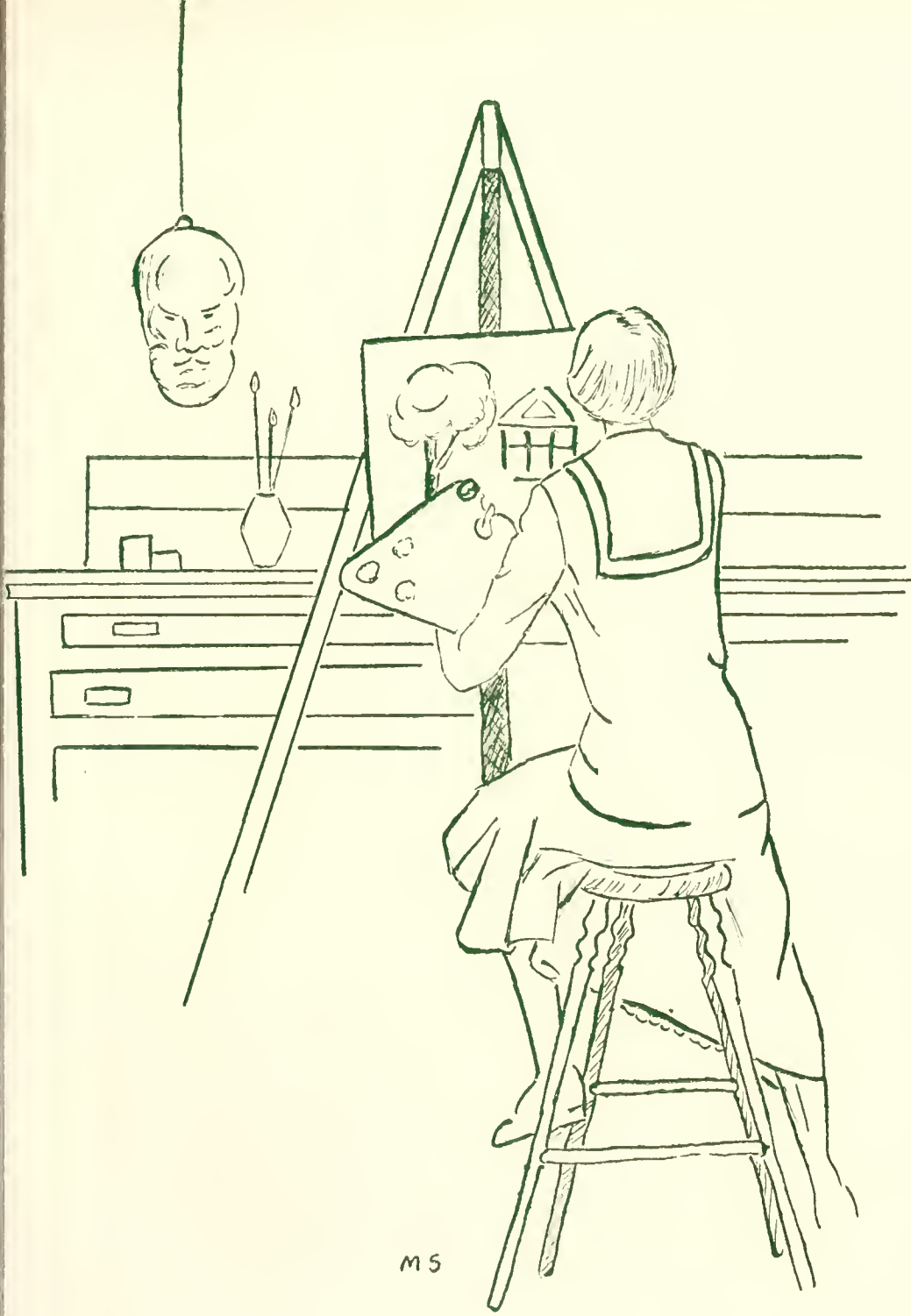


Preparatory III

First row, left to right: Mary Ross Anderson, Etowah, Tenn., Rho Delta Chi; Mary Clyde Cooper, Cary, N. C., Rho Delta Chi; Elsie Carolyn Eubanks, Kinston, N. C., Rho Delta Chi; Beatrice Wilson Evans, Edenton, N. C., Rho Delta Chi; Jane Elizabeth Frnst, Mobile, Ala., Sigma Phi Kappa. Second row: Ann Gresham, Richmond, Va., Rho Delta Chi; Betty Gray McCaskill' Bethune, S. C., Sigma Phi Kappa; Julia LeWare Satterthwaite, Farmville, N. C., Rho Delta Chi; Barbara Elaine Townsend, Charlotte, N. C., Sigma Phi Kappa; Jean Marie Warwick, Greenville, S. C., Rho Delta Chi.



ACTIVITIES



MS





NO! HE DIDN'T!

Caught!!!



FOOD, FOOD, FOOD!



WHOSE ICEBOX DID YOU RAID?



*HOPE THE BANISTERS
AREN'T SPLINTERY, KIDS!*



HOW'D THIS GET HERE!



EVERYONE HAS TO GET IN THE ACT



DAY STUDENTS' BAZAAR

BOARDING STUDENT COUNCIL



VIRGINIA McQUEEN
President

The Student Council is composed of nine members who are elected by popular vote. They are placed on their honor to maintain order and uphold the Standards and Ideals of Peace College. The desire of the Peace Student Government is to achieve a government by and for the girls.



Tart, Black, Weel s, Herring, McQueen, Seawell, Sharp, Morgan, Boggs

DAY STUDENT COUNCIL

The purpose of the Day Student Council is to foster the interests of the day student group in all school activities. The Council holds the students as individuals in high regard and makes every effort to work with them in such a way as to create a cooperative and united group.



MADELYN SCHREFFLER
President



Creighton, Atkins, Schreffler, Robinson

THE LOTUS

Editorial Staff

The 1951 "Lotus" presents to you its fiftieth annual—a record of your year at Peace College. Between these covers you will find your friends, your class leaders, your society sisters, and your faculty.

So with pride, yet not without misgivings, and with special thanks to all who cooperated so splendidly at every opportunity, we present you with the 1951 "Lotus."



BETSY JUNE JOHNSON
Assistant Editor

JACQUELINE OWEN
Editor



Standing, left to right: Harrell, Black, Seawell, Rouse, Payne, Renfrow, Jackson. Seated: Schreffler, Owen, Johnson



Pope, Axe, Phillips, Rhodes, Stallings, Sharp, Turlington, Howe, Crabtree

BUSINESS STAFF

In the early fall we, the members of the Business Staff of the "Lotus," undertook the all-important task of financing the Annual. Enthusiastic and determined, we planned our campaign and with the help of our adviser, Miss Mary Kirkpatrick, made many trips to town both on foot and in the school car. The success of the 1951 "Lotus" was ever our goal, and we hope that our part in the Annual has helped in some measure to produce a book which will be enjoyed by all Peace Students



JANE POPE
Business Manager

OF 1951

PEACE STUDENT CHRISTIAN ASSOCIATION



EUTHA SHARP
President

The religious activities on campus are embodied in the Peace Student Christian Association. The association, of which each girl in school is a member, is directed by a cabinet of four officers and eight chairmen of causes with Miss Lucy Steele as faculty adviser.

The first vesper program in the fall is a dedication candlelight service with an old Peace girl as speaker.

All through the year the P.S.C.A. sponsors morning watch, weekly hall prayers, special Sunday night hymn sings, the regular Sunday night vesper programs with special services at Thanksgiving, a Christmas pageant, in the spring a week of sharing, and Peanut week. Once a month there is a guest speaker. The last service of the year is a re-dedication candlelight service with a Peace Alumna as speaker.

We chose as our theme verses for the year Philippians 4:13; Romans 8:28: "I can do all things through Christ which strengtheneth me" . . . "And we know that all things work together for good to them that love God."



Seated, left to right: Herring, Seawell, Bullock, Sharp, Weeks, McQueen. Standing: Blair, Barnes, Haywood, Howe, Workman, Black, Callis.

I. R. C.

The International Relations Club is composed of Peace girls who are interested in current events and current problems. The club meets twice a month for lectures, discussions, and debates. The programs are presented by students and outside speakers.

The Peace International Relations Club is affiliated with the Carnegie Endowment for International Peace and seeks to do its part to encourage the whole campus in careful reading, thinking, and analysis of critical problems of our time.

Among the numerous activities of the club this past year has been the making of a United Nations Flag which was presented to the school.



ROSE INA WEEKS
Vice-President



Center: **BETSY JANE TANNER**, President



Bullock, Phillips, Seawell, Black

PHI THETA KAPPA



ANNE SEAWELL
President

Founded at Stephens College in Fulton, Missouri, The Phi Theta Kappa Fraternity is the National Junior College Honorary Scholastic Society. Gamma Phi of Peace College is one of the many chapters of the society.

The high objectives of the Phi Theta Kappa are expressed in the official song:

Give us Wisdom, God, we pray,
That our lives grow day to day
May reflect on all around us
That great gift which now has bound us.



Standing, left to right: Phillips, Seawell, Owen. Seated: Renfrow, Bullock, Black.

SIGMA PI ALPHA

The Theta Chapter of the Sigma Pi Alpha was established at Peace in 1939. The Sigma Pi Alpha is a national honorary language fraternity, which seeks to promote interest in other lands and languages. Membership in this organization is based on general scholastic work as well as upon special ability in language study. The organization is sponsored by Miss Mary Meares Galt and Miss Rachel McElroy.



JACQUELINE OWEN
President



PAPYRUS CLUB

The Papyrus Club is one of the oldest organizations at Peace College. It is a literary organization whose purpose is to encourage creative writing among the students. The "Voices of Peace," a student magazine, is published under the sponsorship of the Papyrus Club. The Papyrus Club encourages a broader education in the field of literature.



SUSAN BULLOCK
President

THE DAUGHTERS AND GRANDDAUGHTERS CLUB

The Daughters and Granddaughters club consists of the daughters and granddaughters of former "Peace girls." Its purpose is to carry on the traditions of Peace.

Officers:

President: Winifred Boggs

Vice-President: Jackie Owen

Secretary-Treasurer: Rebecca Williams



WINIFRED BOGGS



Standing, left to right: Williams, Owen, Boggs; Seated: Pope, Wygant, Quinn, Atkins.



Harrell, Whaley, Tart, Malone, Carter, Gresham

ATHLETIC ASSOCIATION



MELROSE TART
President

The Peace girls find recreation between their academic pursuits in their athletic activities. The Athletic Council, together with its sponsor, Miss Joyce Fowler, work out a well-rounded program for physical development, sportsman-like competition, and interesting diversion throughout the year.

Tennis tournaments are features of the fall and spring. The volleyball tournaments and inter-class hockey games are also conducted in the fall. During the winter basketball season, there is a keen spirit of rivalry among the students in the society tournament.

Every student at Peace is encouraged to take part in sports and to inspire higher ideals in sportsmanship.

CAUGHT IN THE ACT



SWISH —!



GORGEOUS GUSSIES!



IF WE DON'T WIN IT'S A SHAME



OH! MY ANKLE!



VOLLEY DOLLIES

ART CLUB

The Elsie Robertson Art Club was formed in 1943 for the purpose of helping the students gain a greater and fuller appreciation of art.

Under the excellent supervision of Miss Mabel Pugh, it is an organization which exists for all those interested in art. The interest of the Art Club is centered around the programs at the monthly meetings, as well as outside lectures, exhibits, and social gatherings which are in the interest of art.

Each year the club is responsible for presenting a scholarship to a worthy Peace Student.



NELLIE TISDALE
President



GLEE CLUB



ADELAIDE BLAIR
President

One of the most vital organizations on the Peace College Campus is the Glee Club. Under the excellent supervision of Mrs. Nancy Phillips, it is an organization which exists primarily for the purpose of bringing together all members of the student body who have the desire and ability for ensemble singing. For the members this has been a year filled with much hard work as well as pleasure.

During the year the club presented its annual Christmas, spring, and commencement concerts.



RHO DELTA CHI

What does Rho Delta Chi mean? It means a society which stands for honor and loyalty as well as school spirit.

The day of informal initiation was fun for the old Rho's but how the new Rho's suffered! Rush week ended with a "carnival" in the gym.

The society banquet, competition in sports and society dance made all Rho's feel proud of their society. When they see the society colors (red'n white), they all say, "Stand up and cheer for Rho Delta Chi."



CAROLYN MILLER
President





SIGMA PHI KAPPA



ALICE HOWELL
President

Sigs, loyal Sigs, yes, that is what Sigs are—loyal to school, society, and sisters.

The Sig Rush Week opened with a "bang up" Mock Wedding and closed with the impressive installation of pledges.

The society banquet, close competition in sports with the other societies, society dance, plus many happy hours spent in close fellowship that only the Sigma Phi Kappa can have, filled the year with memorable experiences!

PI THETA MU



BETSY JUNE JOHNSON
President

Recipe for happiness: take one well-rounded Peace girl; flavor with fun and good times; add a touch of genuineness; mix with humor! What have you? Why, a Pi, of course. The Pi's have had a lot of fun this year at their various activities . . . initiation . . . society banquet . . . Basketball . . . society dance. Most important of all this year the Pi's inaugurated a Christmas basket project which includes the giving of toys, clothing, and food to a needy family. With the interest shown by all the members in our various enterprises we are assured that Pi Theta Mu will always "stand for the highest Peace can strive for."





FEATURES



Marshals



NANCY MARTIN
ΠΘΜ



CHLOE MALONE
ΡΔΧ



ENNISE QUINN
CHIEF MARSHAL



BETTY JEAN HUMPHRIES
ΡΔΧ



JANE LILLY
ΠΘΜ



MARY FRANCES PETERSON
ΣΦΚ



GRACE HERRING
ΣΦΚ

ALPHA PI EPSILON

Alpha Pi Epsilon, the National Secretarial Honor Society, strives to develop character, scholarship, intelligence, leadership, and common sense, as well as skill in secretarial achievement.

The Tau Chapter, established at Peace College in 1942, is sponsored by Miss Thetis Shepherd.



RUTH WILSON
GRACE HERRING



Herring, Sharp, Weeks, McQueen, Bullock, Tart

PRIVILEGED HONOR ROLL

Refinement . . . poise . . . cooperativeness . . . scholarship . . . integrity.

For these achievements we salute you with pride, our P.H.R.
Not pictured: Louise Black, Mary Royal Callis, Ann Pace, Jane Pope, Betsy Jane Tanner.



SCHOLASTIC HONORS

Senior Academic: Louise Black, Adelaide Blair, Susan Bullock, Janet Caldwell, Louetta Herring Carr, Bertha Jean DeLand, Margaret Dickinson, Rosalyn Forbes, Jacqueline Owen, Ann Pace, Anne Phillips, Jane Pope, Anne Seawell, Eutha Sharp, Bettie Stallings.

Senior Commercial: Grace Herring, Betsy June Johnson, Jane Lilly, Joyce Lloyd, Nancy Martin, Gilda Renfrow, Madelyn Schreffler, Melrose Tart, Ruth Wilson.

Junior Commercial: Mary Ann Carr, Jayne Chambers, Nancy Clarke, Barbara Copeland, Frances Crabtree, Peggy Creighton, Mavorine Faircloth, Pauline Honeycutt, Elizabeth Law, Patsy Lomax, Nancy Powell, Peggy Rich, Anne Rowan, Martha Seymour, Polly Sharp.

Preparatory IV: Janice Bullock, Patsy Corbett, Jane Dalrymple, Evelyn Griffin, Beth Jenkins, Elaine Shumaker, Barbara Southern, Helen Turlington.

Preparatory III: Mary Ross Anderson, Bebe Evans, Jane Frist.

OUTSTANDING

GRACE HERRING

Correctly named, this young lady is an excellent example of grace. Her friendly ways have done much toward winning the hearts of her fellow students. Grace is active in both school work and sports. Although she is a member of the Privileged Honor Roll and the Alpha Pi Epsilon, she finds time to play basketball, to be a marshal, and to be in the May Court and Christmas pageant. Grace seems to have a bright future before her.



MARY ROYAL CALLIS

"Royal," as she is known to all the girls at Peace, is gifted with an attractiveness and unselfishness that is not often equalled. Her bright personality makes friends of everyone she meets. She is a willing worker and has helped to make the Christmas and Easter pageants a success. Also as an excellent student, she is a member of the Privileged Honor Roll and P.S.C.A. Cabinet.



SENIORS

JACQUELINE OWEN

Peace College's thanks go to the State of Florida for the loan of "Jackie" Owen. For the past year, Jackie has been the guiding spirit behind the "Lotus" and that is quite a job. "Jackie's" two years at Peace have been filled with activity. She is president of the Sigma Pi Alpha, secretary of the Senior Class, and vice-president of the Daughters and Granddaughters Club. "Jackie's" industriousness and charm should take her far.



MADELYN SCHREFFLER

Who is the hardest working Day student at Peace College? Why, Madelyn Schreffler, of course. Madelyn takes great interest in everything and particularly art. She has been more than successful as Art Editor of the "Voices of Peace" and the "Lotus." As President of the Day Students, Madelyn has set an excellent example of school spirit and ingenuity for her successors to follow. She is also Vice-President of the Pi Theta Mu Society and a very active member of the Papyrus Club. Her future looms bright and promising.



ANNE WOODWARD SEAWELL

Outstanding is really the word for "Woody." Her sparkling personality and ready wit have helped her win many honors. She is president of the Pi Theta Kappa and was president of her class in both her junior and senior year. As a member of the P.S.C.A. Cabinet, Student Council, Sigma Phi Alpha, Editorial Staff of the "Lotus," Glee Club, and Athletic Association, she has contributed much to Peace College.



EUTHA SHARP

A fine attitude, high ideals, and bright personality—these are some of Eutha's fine qualities. Her considerate ways and willing spirit makes everyone her friend. As president of the P.S.C.A., she has added much to the religious life of Peace. She is a member of the Privileged Honor Roll, Student Council, Glee Club, and the Business Staff of the "Lotus." She also acted as treasurer for the junior class last year.

OUTSTANDING



MELROSE TART

A privileged Honor Roll member with a mind for sports, that's Melrose Tart. Melrose has played on the basketball team for two years and was elected outstanding basketball player of the year. This year she was elected president of the Athletic Association. Melrose also finds time to be an active member of the Student Council and International Relations Club and to take part in May Day.

ROSE INA WEEKS

A living example to prove that personality and intelligence do come in the same package is Rose Ina. She has proved her capability in many ways and at many times — as president of the P.S.C.A. and the International Relations Club. She is also a member of the Glee Club, Student Council, and Privileged Honor Roll. Her friendliness and sincerity will take her to the heights of success.



SENIORS



MARY FRANCES PETERSON

May Queen



GRACE HERRING

Maid of Honor



VIRGINIA McQUEEN

Miss Peace



OH, TO BE IN TEXAS!



WOW!



PARTY, PARTY!



JOLLY OLDE ST. IDA!



*ALL DRESSED UP AND
SOMEPLACE TO GO*



GEN-U-WINE SNOW!



DON'T JUST STAND THERE!
DO SOMETHING!



NO! NO! I'M YOUR FRIEND, IDA!



AIN'T LOVE GRAND?



CHLO-O-O-E!



WHATCHA SAY, LUCY RAE?



"RATS"!



STOP WHEN YOU GET
TO YOUR ELBOW, NANCY!

TRADITION



THROUGH THE YEARS

ADVERTISING SIZES



B. MINSHEW



VERY BEST WISHES

—TO—

PEACE COLLEGE

The Store with the Electric Stairways

HUDSON-BELK COMPANY

Ellisberg's

*Raleigh's
Smartest Shop*

*Breakfast Served
Grade A Sanitation*

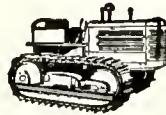
Person Street Restaurant
610 N. Person Street on U.S. No. 1
RALEIGH, N. C.

*Pay attention ~~what~~ you eat
Pay ~~more~~ attention ~~where~~ you eat*

GUS ARETAKIS, Mgr.

NORTH CAROLINA EQUIPMENT CO.

Construction, Industrial and Logging Equipment
Contractors' and Municipal Supplies



"International Diesel Power"

RALEIGH

WILMINGTON

GUILFORD

CHARLOTTE

ASHEVILLE

YELLOW CAB CO.

5811

—DIAL—

5811

Quick and Careful Service

RALEIGH, N. C.

ROYSTER'S

*A Standard for
Quality Candies
Since 1865*

*J. E. STATHACOS, Manager
RALEIGH, N. C.*

Neiman's

JEWELERS-SILVERSMITHS
RALEIGH, N.C.

**Serving North Carolina Better
Because it Serves the Nation Best**

=====
*More thru no-change Buses,
to more places, than any
other Nationwide Bus
System.*
=====



CAROLINA

TRAILWAYS

Member National Trailways Bus System

Adler's ... of Raleigh
For Women Who Love Elegance in Footwear

MEREDITH COLLEGE

ACCREDITED liberal arts college: Southern Association of Colleges and Secondary Schools, American Association of University Women, Association of American Universities.

PROGRESSIVE educational program in terms of Christian character and service. Distinguished record of student honors. Excellent library facilities. Effective honor system.

ATTRACTIVE location in Raleigh, "the educational center of the State." Beautiful campus of 170 acres. Modern fireproof dormitories with generous provision for social activities.

Write for catalogue and folder of views.

CARLYLE CAMPBELL, President

Raleigh, North Carolina

FLOWERS!

Cut Flowers Corsages

Graduation Bouquets

Decorations

Phones 8347 - 2-0795

J. J. FALLON CO.
Inc.

"We Grow the Flowers We Sell"

JAMES E. THIEM

"Everything for the Office"

SHEET MUSIC

RECORDINGS

STATIONERY

and

LEATHER GOODS

Dial 2-2913

107 and 108 Fayetteville Street

RALEIGH, N. C.

CONGRATULATIONS
CLASS OF 1951

Miriam's

16 W. Hargett St.
Phone 2-2905
RALEIGH, N. C.

SAY

**BAMBY
BREAD**



ROYAL BAKING CO.

Dial 4661
RALEIGH, N. C.

For Pure Clear Crystal

ICE

and High Grade

COAL

Phone 5589



**CAPITAL
ICE AND COAL CO.**
Incorporated

600 West Hargett Street

ROSE'S 5-10-25c STORES

133 Stores Serving the South

in Raleigh at Cameron Village

PINE STATE

• MILK •
ICE CREAM

•
Pine State Creamery Co.

RALEIGH, N. C.

**J. G. BALL
COMPANY**

=====
**Wholesale
Grocers**

=====
320 West Davie Street
RALEIGH, N. C.

WALLER AND SMITH STUDIO
OFFICIAL PHOTOGRAPHERS FOR THE LOTUS

12 EAST HARGETT STREET

DILLON SUPPLY COMPANY

INDUSTRIAL MACHINERY & EQUIPMENT

RALEIGH

DURHAM

ROCKY MOUNT

GOLDSBORO

HONEYCUTT CLEANERS

Main Plant: 605 Newbern Ave.
PHONE 3-1696

Branches: 227 Pace Street
114 W. Martin Street

YOUR CLEANING
*Is Our Problem
and Business*

IT IS A PLEASURE TO
SERVE YOU

QUEENS COLLEGE

A fully accredited liberal arts
College for women, Queens offers
a core of cultural education with
opportunities for specialization in
numerous fields.

B.A. and B.S. DEGREES

For information, write
THE REGISTRAR
CHARLOTTE, N. C.

JAMES H. ANDERSON COMPANY

CLEANING SUPPLIES

P. O. Box 342

418 W. Peace Street

Dial 3-2750

RALEIGH, NORTH CAROLINA

LAND'S INC.

RALEIGH'S LEADING
CREDIT JEWELERS

*Never Any Interest or
Carrying Charges*

137 Fayetteville Street
Dial 2-3751

Underwood Corporation

SALES and SERVICE

FRANK E. BAKER

1211 Hillsboro Street
Phone 2-1943

*Compliments
of*

**LEWIS SPORTING
GOODS STORE**

**Edenton Street Methodist
Sunday School**

*Welcomes the Peace
College Girls*

DR. HOWARD P. POWELL, *Pastor*
C. A. DILLON, *Supt. of Sunday School*

JOB P. WYATT & SONS COMPANY

HARDWARE : IMPLEMENTS

DU PONT PAINT : VARNISH : OIL

SEEDS : PLANTS : BULBS

RALEIGH, NORTH CAROLINA

**ECKERD'S
DRUG STORE**

*"Creators of Reasonable
Drug Prices"*

222 Fayetteville Street
RALEIGH

**PERSON STREET
VARIETY STORE**

SCHOOL SUPPLIES
EVERYDAY NEEDS

Complete Five and Ten

702 North Person Street

GOLDEN TAP

*Orange Juice - Grapefruit Juice
Blended Juice*

Garland C. Norris Co.

**CAUDLE'S
SHOE SHOP**

Raleigh's Finest

Serving Raleigh Since 1928

Dial 5636

Ivey Taylor Co. RALEIGH

Congratulations

to the Women of the

Class of 1951

It has been a pleasure to have served many of you during your years at "PEACE." It is our hope to merit your patronage throughout the coming years.

Your Patronage Appreciated
**Ambassador, Capitol, Varsity
and Tower Drive-in**

Operated by
NORTH CAROLINA THEATRES, Inc.
THE BEST IN PHOTOPAYS, VAUDEVILLE and STAGE SHOWS
AT POPULAR ADMISSION PRICES

ALLISON-LEINSTER, INC.

PHONE: 2-1632 FOR INSURANCE

Raleigh B. and L. Building
RALEIGH, N. C.

J. C. ALLISON
Pres.

MRS. SARAH L. COWPER
Vice-Pres.

J. A. LEINSTER
Secy.-Treas.

Insurance Service Since 1908

VISIT THE SOUTH'S MOST MODERN MUSIC STORE

STEPHENSON MUSIC COMPANY

"The Music Center"

2011 Cameron Street

Cameron Village

RALEIGH, NORTH CAROLINA

MOTHER  AND  DAUGHTER
FASHIONS

FLORA MACDONALD COLLEGE

Red Springs, North Carolina

Member: Southern Association of Colleges and Secondary Schools and
National Association of Schools of Music.

Congratulations to the graduates of PEACE COLLEGE. You are invited to visit Flora Macdonald College and learn of the wonderful opportunities that are available for your continued growth and development.

MARSHALL S. WOODSON, Th.D.

President

BROGDEN PRODUCE COMPANY, Inc.

Wholesale

FRESH FRUITS and VEGETABLES

109-15 West Martin Street
RALEIGH, NORTH CAROLINA

Established 1905

The Atlantic Fire Insurance Company

HOME OFFICE : RALEIGH, NORTH CAROLINA

Invites inquiries from all "Peace Girls" and their parents as to our policy covering WORLD WIDE insurance on Jewelry, Wedding Presents and Furs from almost every type of damage to which these articles are subject at very low rates.

Phone us Nos. 2-4671 - 2-4672 or Address us at Box 150, Raleigh

STANDARD MOTOR PARTS CO., INC.

Complete
AUTO PARTS
Service

HENDERSON, N. C.

JOHN ASKEW

PAINTING AND
INTERIOR DECORATING

*Estimates made in and
out of town*

Telephone 6824 110 Glenwood Ave.

THE KNITTING NOOK

Miss MARY J. HADLEY, *Mgr.*

ARGYLE SOCKS, TIES
and SWEATERS

133 Fayetteville Street
Phone 2-0486

Phones 3-5503-4 104 Glenwood Ave.
Raleigh, N. C.

Compliments of
MATTHEWS SHADE CO.

Authorized Manufacturers of
FLEXALUM
VENETIAN BLINDS



BOYLAN-PEARCE

"Raleigh's Shopping Center"

Person Street Pharmacy

PERSON STREET

J. E. TRADWELL, *Proprietor*

*A Complete Line of Nationally
Advertised Drugs*

Plus a Selected Assortment
of Toilet Items

SODA OUR SPECIALTY

FERGUSON'S HARDWARE

HARDWARE AND
HOUSEHOLD SUPPLIES

"We Specialize in Service"

2904 Hillsboro Street
Phone 2-4877

Wherever You Go—



*Remember This Seal . . .
It's Your Assurance of the BEST!*

BOWLING
SKATING



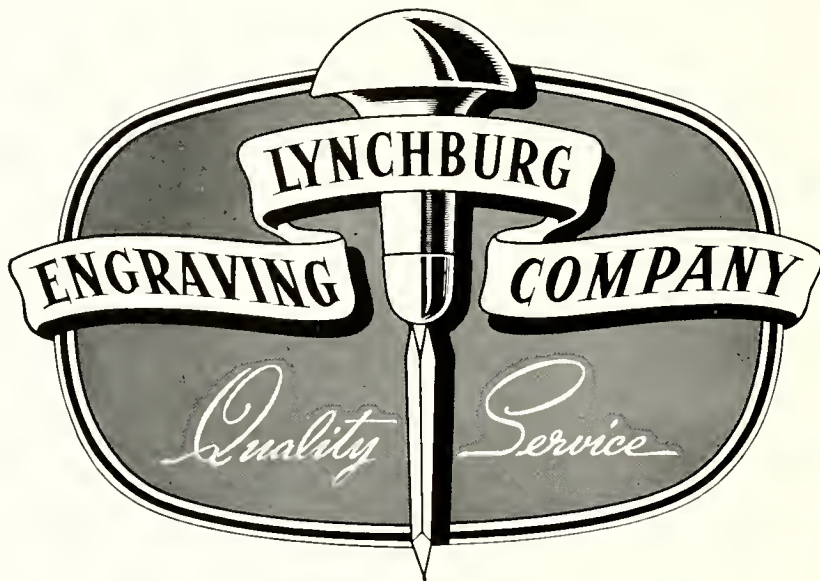
Brooks Recreation Center

712 Tucker Street

Compliments of

THE STANDARD SUPPLY CO., INC.

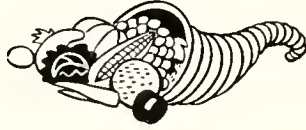
RALEIGH, NORTH CAROLINA



Designers and engravers of
the South's finest school
publications



LYNCHBURG, VIRGINIA



AMERICANS HAVE MORE OF EVERYTHING

You hear a lot of talk about the advantages of making our government socialistic. Don't be fooled. Freedom —and that's the American Way—pays off, and here's proof: Americans are only one sixteenth of the world population. Yet we produce almost one third of the world's goods. No other system beats that.

Remember when people urge that our government go socialistic by taking over the electric industry — steel — railroads — medicine and so on — that Americans have more of everything than anybody else. Freedom did it and never forget it. It makes a lot of difference to *you*.

CAROLINA POWER & LIGHT COMPANY



W. H. KING DRUG CO.
Wholesale Drugs

Phone 2-0525
117 South Wilmington Street
RALEIGH, N. C.

DUKE UNIVERSITY
SCHOOL OF NURSING
DURHAM, N. C.

The next class will be admitted September 15, 1951. Only one class is admitted each year.

Basic entrance requirements are scholastic aptitude, aptitude for nursing and integrity. The academic requirements are 16 units of high school and one year of college, including chemistry, biology or zoology and English. Annual tuition cost is \$100 and covers the cost of instruction. Maintenance is supplied by Duke Hospital. Students buy their own uniforms and books.

Graduates of the Duke University School of Nursing, upon recommendation from the Dean of the School of Nursing, may apply for admission to Woman's College of Duke University and if admitted will be eligible for a degree by fulfilling the requirements. Credit will be given for the work in the School of Nursing and for college courses acceptable to Woman's College.

Application forms and bulletins may be obtained from: Dean, Duke University School of Nursing, Duke Hospital, Durham, North Carolina.

MORGAN JONES
COTTONS

Are

"Yours for a Lovely Home"

BEDSPREADS

DRAPES

SCATTER RUGS

BATH SETS

DISH CLOTHS

DISH TOWELS

Produced in North Carolina

SOLD BY FINE STORES EVERYWHERE

MORGAN-JONES, INC.

58 Worth Street
NEW YORK, N. Y.

**McNair's Yield-Tested
Seed Company, Inc.**

WHOLESALE SEED GROWERS

of

Watermelon : Crotalaria : Tobacco
Soybeans : Cotton : Wheat
Corn : Oats : Lespedeza
Hybrid Seed Corn

*All of Our Seed Are Grown
on McNair's Own Farms*

By

**McNair's Yield-Tested
Seed Company, Inc.**

Phone 388
LAURINBURG, N. C.

**CLYDE COOPER'S
BAR-B-Q**

*Parties and Clubs
Served*

WE SERVE IN OR OUT OF TOWN
PARTIES

T. CLYDE COOPER

Dial 7614
109 East Davie Street
RALEIGH, N. C.

“The Appliances Most Women Want Most”

GENERAL



ELECTRIC

*It Is Never Too Early to Plan Your Wonderful
All-Electric General Electric Kitchen*

Walker Martin, Inc.

DISTRIBUTORS

RALEIGH

GREENSBORO

CHARLOTTE

PHONE 9711

THE SMART SHOP

THELMA RILLY, *Beauty Consultant*

FINEST COSMETICS
AND PERFUMES

227 South Salisbury Street
RALEIGH, N. C.

Compliments of

T. H. Briggs & Sons, Inc.

*"Carolina's Oldest Wholesale
and
Retail Hardware House"*

Established 1865

Phone 2-2025

OCCIDENTAL LIFE INSURANCE COMPANY

LAURENCE F. LEE, PRESIDENT

HOME OFFICE: RALEIGH, NORTH CAROLINA

BYNUM PRINTING COMPANY

BETTER PRINTING

PHONE 6417

EARL JOHNSON B. E. DENNIS
HARRY MOORE BILL WARD

Moore & Johnson Co.

"For 27 Years Raleigh's Leading
Insurance Agency"

Insurance : Surety Bonds

Insurance Building
RALEIGH, NORTH CAROLINA

**GOODMAN'S
LADIES' SHOP**

"The Little Shop

Around the Corner"

HALIFAX STREET GROCERY

601 Halifax Street

CHOICE MEATS : QUALITY GROCERIES

FRESH FRUITS AND VEGETABLES

RALEIGH, NORTH CAROLINA

FINCH'S

The Newest Most Modern

DRIVE INN

With an

Air Conditioned Dining Room

For Your Convenience

De Soto Plymouth

Rawls Motor Company

RALEIGH, N. C.

**LEON BYRUM
OPTICIANS**

Phone 2-0538
117 West Hargett Street
RALEIGH, N. C.

PATRONIZE
PIGGLY WIGGLY

*For the Best GROCERIES - FRESH MEATS
FRESH FRUITS and VEGETABLES
FROZEN FOODS*

*Attractive Stores - Courteous Service
Reasonable Prices*

Home Owned Home Managed

PIGGLY WIGGLY

Your Patronage Appreciated

**HAYES BARTON
PHARMACY**

P. D. GATTIS II. J. GATTIS

2000 Fairview Road
DIAL 2-4641

PEACE COLLEGE CLASS RINGS AND PINS

Society Pins and Novelty Jewelry

WALTER B. ANDERSON

L. G. BALFOUR PRODUCTS

RICHMOND, VIRGINIA

"Insist on Lance's"

LANCE PACKING CO., Inc.

CANDIES and
PEANUT PRODUCTS

Phone 3-9293
W. P. MATTHEWS, *Representative*
RALEIGH, N. C.

Compliments

of a

FRIEND





