



1953 LOTUS



BURWELL LIBRARY
PEACE





PEACE COLLEGE
RALEIGH, NORTH CAROLINA

RUNNELL VIRGINIA
1913



BETSY FORT
Editor



DORIS CRAWFORD
Business Manager



The

LOTUS

1 9 5 3

CONTENTS

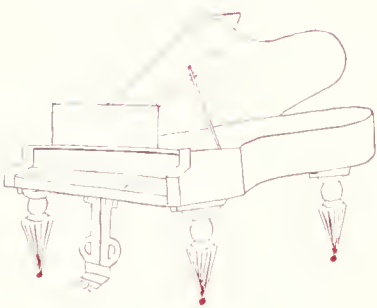
THE COLLEGE 9

THE CLASSES 15

THE ACTIVITIES 49

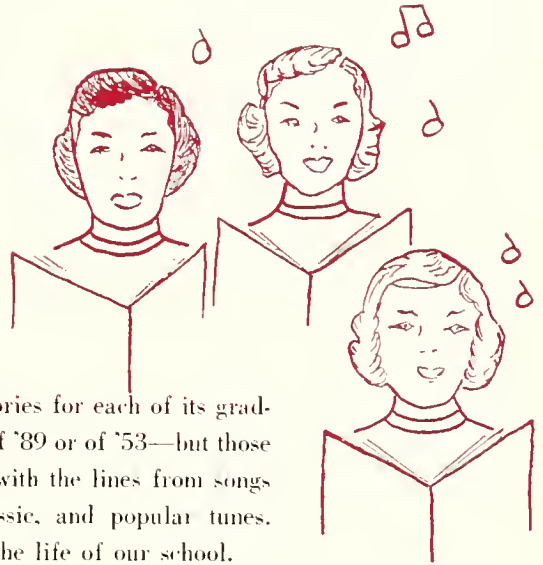
THE FEATURES 73

THE ADS 81



12259

FOREWORD



Peace holds a confusion of memories for each of its graduates—whether she be of the class of '89 or of '53—but those memories are strangely interfused with the lines from songs and strains from classic, semi-classic, and popular tunes. For music is an important part of the life of our school.

From the first day that we entered her doors, there has been music in our lives at Peace. The chapel is filled with echoes of voices of all Peace girls singing praises—with echoes of organ strains and Peace girls marching in recessional—with echoes of piano recitals, hesitant tunes or compositions extended in true art—with echoes of song, of organ, of piano—with girls singing—with music.

This year the LOTUS offers a picture of life at Peace with music as its background—a reminder that music is happiness and that music is a memory of Peace.



DEDICATION

As we considered the theme for our annual this year, strains of soft music seemed to sing in the background. Music at Peace College has been, for generations of Peace Girls, personified in the blithe little lady who tripped with light step through the halls and into their hearts. And so the musical overtones, meaningful and persistent, prompted us to the dedication of our annual.

Because of our love and admiration for her and because of her love for music, which has become the theme of her life, we dedicate the LOTUS of 1953 to our dear Miss Lovie—

MISS LOVIE JONES



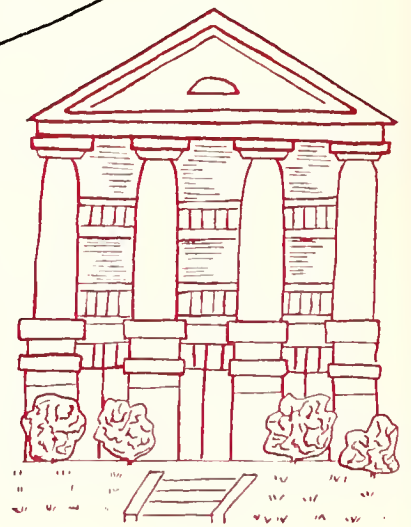


MISS MARY KIRKPATRICK

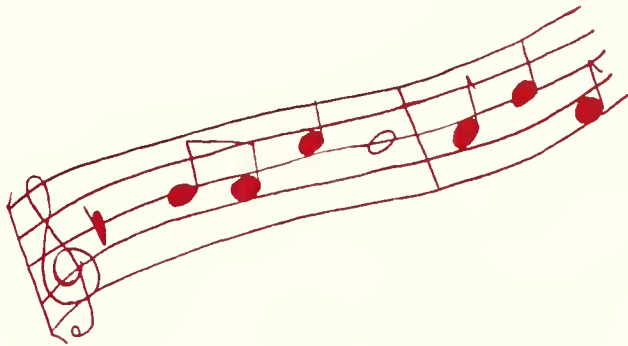
TRIBUTE

Every LOTUS published at Peace for the past 26 years is a concrete tribute to Miss Mary Kirkpatrick, who, through her undying interest, faithful service, and untiring effort, has encouraged those who lacked faith in their project, reprimanded those who were given to sloth, and prodded those who would have been procrastinators.

Miss Kirk, as we affectionately call her, through her graciousness in helping with the advising of the annual this year, as she has done for so many years before, has endeared herself to all who have worked with her; and her faithfulness in seeking advertisements, has made us proud of a job well-done. It is with a true feeling of gratitude to our business advisor that we pay special tribute to Miss Mary Kirkpatrick in our LOTUS of 1953.



The
COLLEGE



ADMINISTRATION



DR. W. C. PRESSLY

Advice, consideration on the day of schedule sheets; a warm smile when we pass him in the hall; letters, conferences, friendliness in his office; a ray of understanding when he leads us in chapel services—that's our president, Dr. Pressly.

MISS MARGARET HALL

She came to us as an "old Peace girl" but remained as our "new Dean." Yet within this short time she has gained our respect and admiration through her sincere interest in us, and her diligent work for us. Through the years to come she will remain in our hearts as "our Dean."



ADVISORY BOARD



Seated: Mrs. C. B. Barrus, Mrs. Hunter Dalton, Sr., Mrs. John Farrior, Mrs. J. P. Barksdale, Mrs. D. C. Worth, Mrs. Josiah William Bailey. *Standing:* Mrs. George Currie, Mrs. Dewitt Clark, Mrs. George Jackson, Mrs. James Swails, Mrs. W. D. Pearce, Mrs. George Matthis, Mrs. Willard Goley, Mrs. Frank Lea, Mrs. Rudy Fonville, Mrs. Waylon Blue, Mrs. Hoyt Hackney, Mrs. C. C. Todd. *Not pictured:* Mrs. George Tibbals, Mrs. W. R. Harris, Mrs. L. J. Kirkland, Mrs. Robert Craedick, Mrs. Paul Mauney, Mrs. H. L. Moore, Mrs. T. C. Stamey, Mrs. C. H. Hood, Mrs. Herbert Combs, Mrs. Emerson Fountain, Mrs. Rufus D. Wilson.

BOARD OF TRUSTEES

Karl G. Hudson, Chairman.....	Raleigh, N. C.	Rev. Harry Whitmore.....	Thomasville, N. C.
Mrs. George Avinger.....	Laurinburg, N. C.	Rev. Don Carson.....	Raleigh, N. C.
Mrs. Julian Hutaff.....	Fayetteville, N. C.	Mrs. George Finch.....	Thomasville, N. C.
James D. Kilgore.....	Raleigh, N. C.	William McPherson.....	Raleigh, N. C.
Mrs. C. C. McAlister.....	Fayetteville, N. C.	William C. Pressly.....	Raleigh, N. C.
E. B. Manning.....	Roanoke Rapids, N. C.	J. C. Allison.....	Raleigh, N. C.
Dr. John Rhodes.....	Raleigh, N. C.	Kelvin Gray.....	Raleigh, N. C.
R. A. Snow.....	Raleigh, N. C.	Dr. James Sprunt.....	Raleigh, N. C.
Henry Walker.....	Kinston, N. C.	Edmund B. Crow, Jr.....	Wilson, N. C.

FACULTY



MISS LYDA BAUCOM
Secretary to the President

MISS DAISY BEAN
Supervisor of Buildings and Grounds

MRS. NELL W. BOOTH
Commercial Subjects, A.B.



MISS ELIZABETH CALDWELL
History, A.B., A.M.

MRS. FRANCES DARDEN
Hostess

MRS. SALLY DAVIS
Nurse, R.N.



MRS. ELEANOR DIXON
Commercial Subjects, A.B., A.M.

MISS JOYCE FOWLER
Health and Physical Education, A.B.

MISS FRANCES GOLDEN
Registrar, A.B., A.M.



MISS ROSE ELLEN GOODRICH
Science, B.S., A.M.

MISS ETHEL GRAMMER
Dietitian

MISS COLLEEN JOHNSON
Piano, B.M., M.M.



MISS ALICE WELCH JONES
Librarian, A.B., B.S., L.S.

MRS. LILLIAN TYLER JONES
Home Economics, B.S., M.S.

MISS MARY KIRKPATRICK
Bursar

FACULTY

MISS WINIFRED M. KUHN
Mathematics, A.B., B.E., M.S.

MISS WYNELLE LEWIS
Spanish, A.B., A.M.

MISS JULIA OATES
English, A.B., A.M.



MISS MABEL PUGH
Art, History of Art

MRS. MARY ELIZABETH RHODES
Commercial Subjects, A.B.

MISS LUCY E. STEELE
Bible, A.B., A.M.



MRS. NELLY P. STAUDT
Orgaa, B.M.

MISS HELEN TARVER
Voice, Theoretical Music, A.B., A.M.

MISS ANN TYSOR
French, A.B., A.M.



DR. SANFORD WINSTON
*Psychology, and Sociology,
A.B., Ph.D.*



SNAPS



Familiar Faces and Figures!

The CLASSES





SENIOR CLASS OFFICERS

RAYE KING	<i>President</i>
BARBARA NORRIS	<i>Vice-President</i>
EL NADAL	<i>Secretary-Treasurer</i>
MISS FRANCES GOLDEN	<i>Sponsor</i>

CLASS POEM

We, the Class of fifty-three,
Raise our voices in praise of thee,
For the hours of study, of rest and play,
For the time of fellowship at the close of day,
For the kindness shown us when we were new,
Dear Peace, we extend a hearty "thank you"!
The time has come to bid you adieu
But, dear Peace, memories will linger forever of you.

BETSY FORT.

MASCOT

RALPH WILLIAM GERBER





ANNETTE ELIZABETH AGEE

Stuart, Va.

"True to her work, her word, her friends."

Rho Delta Chi '52, '53; Glee Club '52; Christmas Pageant '52, '53; P.S.C.A. Cabinet '53; Stunt Night '53.



FRANCES GARY AGER

Chapel Hill, N. C.

"A gentle mind by gentle deed is known."

Rho Delta Chi '52, '53; Papyrus Club '52, '53.



EDITH PAGE BEALE

Raleigh, N. C.

*"The game of life she plays fair,
Always with a distinguished air."*

Pi Theta Mu '53; Scholastic Honors '53; Papyrus Club '52, '53; Day Student Council, Vice-President '53.

THE SENIORS

BARBARA ANN BEDDINGFIELD

Millbrook, N. C.

*"There is a garden in her face,
Where roses and white lilies grow."*

Pi Theta Mu '52, '53; Glee Club '52, '53;
Day Student Council, President '53; Stunt
Night '53.



MAUDE SIKES BLANTON

Shelby, N. C.

"A merry heart doth good like sunshine."

Rho Delta Chi, '51, '52, '53; May Day '51,
'52, '53; Stunt Night '52, '53; Papyrus Club
'53; Athletic Council '53.



ELIZABETH JORDON BRUIN

Henderson, N. C.

*"A jolly unselfish personality is
the greatest gift of all."*

Sigma Phi Kappa '52, President '53; May Day
'52; Christmas Pageant '52, '53; Stunt Night
'52, '53; I. R. C. '52, '53; Art Club '52, Presi-
dent '53; P. H. R. '53; Annual Staff '53; Class
Historian '53; Outstanding Senior '53.





ADELAIDE RAY CLARK

Newland, N. C.

*"Nature made her what she is
and destroyed the pattern."*

Sigma Phi Kappa '52, '53; May Day '52;
Glee Club '52, '53; Christmas Pageant '52,
'53; P.S.C.A. Cabinet '53; P. H. R. '53;
Scholastic Honors '53; Society Council '53;
Annual Staff, Assistant Editor '53.



SUSAN C. CORK

Charleston, W. Va.

*"Her eyes as stars of twilight fair
Like twilight, too, her dusky hair."*

Rho Delta Chi '52, '53; May Day '52; Christ-
mas Pageant '52, '53; Art Club '52, '53; Stunt
Night '52, '53; Glee Club '52, '53; Papyrus
Club '52, '53.



DORIS CATHERINE CRAWFORD

Rowland, N. C.

*"Within her tender eye the heaven of
April, with its changing light."*

Sigma Phi Kappa '52, Secretary '53; Art
Club '52; Christmas Pageant '52; Easter
Pageant '52; Scholastic Honors '53; Stunt
Night '52, '53; Annual Staff, Business Man-
ager '53.

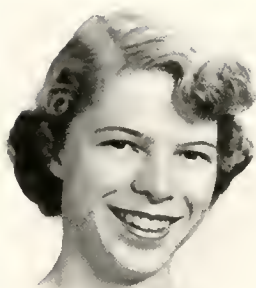
THE SENIORS

BETSY McDONALD FORT

Raleigh, N. C.

*"Intellect and grace doth join together
to make a perfect woman."*

Pi Theta Mu '52, '53; Class Poet '52, '53;
Scholastic Honors '52, '53; Stunt Night '53;
Annual Staff, Editor-in-Chief '53; Outstanding
Senior '53.

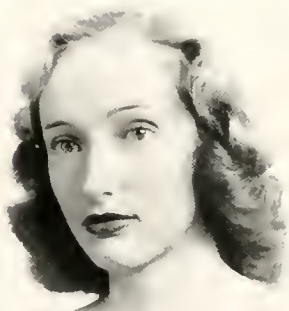


KATHRYN FANNETTE GORE

Raeford, N. C.

*"A face with gladness o'er spread
Soft smiles by human kindness bred!"*

Sigma Phi Kappa '52, '53; Glee Club '52;
May Day '52; Art Club '52; Athletic Council
'52, '53; I. R. C. '52, '53; Papyrus Club, Vice-
President '52, President '53; Stunt Night '52,
'53; P.S.C.A. '52, Secretary '53; Student
Council '53; Outstanding Senior '53.



OVEDA JUNE HALSTEAD

Raleigh, N. C.

"A tender heart, a loyal mind."

Pi Theta Mu '52, Marshal '53; Phi Theta
Kappa '52, Vice-President '53; Sigma Pi
Alpha '52, President '53; Day Student Coun-
cil, Secretary '53; Papyrus Club '53; Art
Club '53.





JOAN MARIE HESTER

Wendell, N. C.

"A kind heart is a fountain of gladness."

Sigma Phi Kappa '53; Stunt Night '53.



CHARLOTTE DICKSON HOWE

Gastonia, N. C.

*"A smile for all, a greeting glad,
An amiable, jolly way she had."*

Sigma Phi Kappa '52, '53; Christmas Pageant '52; Stunt Night '52, '53; Scholastic Honors '52, '53; P. H. R. '53; Student Council, Treasurer '53; Nominating Committee '53; P.S.C.A. Cabinet, Vice-President '53; Alpha Phi Epsilon '53; Outstanding Senior '53.



REBA RAMONA KING

Fayetteville, N. C.

*"Pretty, sweet, gay and kind,
A treasure rare and hard to find."*

Sigma Phi Kappa '52, '53; Junior Class President '52; Student Council '52, Vice-President '53; P.S.C.A. Cabinet '52, Treasurer '53; Easter Pageant '52; May Day '52; Art Club, Secretary-Treasurer '52; I. R. C. '52, '53; Senior Class President '53; Christmas Pageant '53; Miss Peace '53; Phi Theta Kappa, President '53; Sigma Phi Alpha, Secretary-Treasurer '53; Stunt Night '53.

THE SENIORS

COLLEGE

ELEANOR GRACE MOOSE

Raleigh, N. C.

"Good nature goes a long way on the road to success."

Phi Theta Mu '53; Scholastic Honors '53.



PEGGY ANN MYERS

Laurinburg, N. C.

"Better to be small and cast a light than to be large and cast a shadow."

Sigma Phi Kappa '52, '53; Glee Club, Accompanist '52; Easter Pageant '52; May Day '52; Annual Staff '52; Christmas Pageant '52, '53; P. H. R. '52, '53; Stunt Night '52, '53; Daughters and Granddaughters Club, Secretary '52, '53; Scholastic Honors '52, '53; Sigma Pi Alpha '52, Secretary '53; Phi Theta Kappa '52, Secretary '53; P.S.C.A. Cabinet '53; Student Council, President '53; Outstanding Senior '53.



EL LANE NADAL

Wilson, N. C.

"Her charming ways, her friendly smile Make her friendship well worth while."

Sigma Phi Kappa '52, Vice-President '53; Easter Pageant '52; I. R. C. '52, Secretary-Treasurer '53; Scholastic Honors '52, '53; Daughters and Granddaughters Club '52, Vice-President '53; Annual Staff '52, '53; Christmas Pageant '52; Class Secretary-Treasurer '53; Stunt Night '53.



OF 1953



BARBARA NORRIS

Fair Bluff, N. C.

*"Good nature is the beauty of the mind,
and, like personal beauty, wins the hardest
heart."*

Sigma Phi Kappa '52, '53; Scholastic Honors
'52, '53; Christmas Pageant '52, '53; Stunt
Night '52, '53; I. R. C. '53; Class Poet '53;
Class Vice-President '53.



ELIZABETH ANN PARKER

Rocky Mount, N. C.

*"The simple virtues of willingness and alert-
ness will lead to success."*

Rho Delta Chi '52, '53; May Day '52; Christ-
mas Pageant '52, '53; Stunt Night '52, '53;
Scholastic Honors '52, '53; P.S.C.A. Cabinet
'52, President '53; Easter Pageant '52, '53;
Student Council '53; P. H. R. '53; I. R. C. '53;
Outstanding Senior '53.



HELEN BOWERS PATTON

Sanford, N. C.

*"She is herself, the collection of all good
things."*

Rho Delta Chi '52, '53; Christmas Pageant
'52; Glee Club '52; Volleyball, Basketball
'52, '53; Stunt Night '53; Student Coun-
cil '53; Athletic Council, President '53.

THE SENIORS

COLLEGE

MARY HOPE PHILLIPS

Scotland Neck, N. C.

"A gentle mind by gentle deed is known."

Rho Delta Chi '52, '53; Volleyball, Softball '52; Stunt Night '52, '53; Athletic Council '53; Annual Staff, Typist '53.



KAY FRANCIS RYALS

Benson, N. C.

"Her winning personality and beautiful countenance please all."

Rho Delta Chi '52, Marshal '53; May Court '52; Athletic Council '52, '53; Stunt Night '53.



IDA JEAN SANDLIN

Raleigh, N. C.

"It is a friendly heart that has plenty of friends."

Pi Theta Mu '52, '53.



OF 1953



JANET LOUISE STEPHENSON

Varina, N. C.

*"This merry, fun-loving brunette
has a way about her you can't forget."*

Rho Delta Chi '52, '53; Stunt Night '52, '53;
Papyrus Club '52, Secretary '53; Annual Staff
'53; Society Council '53; Scholastic Honors
'53.



EVELYN JOYCE WALLACE

Fayetteville, N. C.

*"Laughing cheerfulness throws sunbeams
on all the paths of life."*

Rho Delta Chi '52, Secretary '53; Stunt Night
'52; May Day '52; Softball '52, '53; Scho-
lastic Honors '53; Athletic Council '53.



MURIEL LOARINE WELDON

Louisburg, N. C.

*"With virtue and quietness one can conquer
the world."*

Sigma Phi Kappa '52, '53; Stunt Night '52,
'53.

THE SENIORS

BARBARA WHEELER

Henderson, N. C.

"A thing of beauty is a joy forever."

Rho Delta Chi '52, Chief Marshal, President '53; Christmas Pageant '52; Student Council '52, '53; May Queen '53.



LYNDA ELLEN WILSON

Gastonia, N. C.

*"Her smile was like a rainbow
flashing from a misty sky."*

Sigma Phi Kappa '52, '53; Program Chairman '52; Daughters and Granddaughters Club '52, President '53; Art Club '52, '53; P.H.R. '53; May Court, Maid of Honor '53; Stunt Night '53; Annual Staff, Art Editor '53; P.S.C.A. Cabinet '53; Nominating Committee '53; Christmas Pageant '53; Outstanding Senior '53.



SALLY MAE WILSON

News Ferry, Va.

*"She is kind as she is fair.
For beauty lives with kindness."*

Sigma Phi Kappa '52, Marshal '53; Class Secretary-Treasurer '52; May Court '52; Volleyball '52; Christmas Pageant '52, '53; Stunt Night '52, '53; Student Council, Secretary '53; P. H. R. '53; Outstanding Senior '53.



SNAPS



Were You There?

CLASS HISTORY

Class of '53

Settling back in my seat, I felt our flying saucer dip toward the ground. As I looked to see whom Peggy Myers, my pilot, was saluting this time, I saw two of our classmates—El Nadal and Barbara Norris. They were en route to Canterbury. This brought up the subject of old school days as Peggy said, "I remember the first time I saw El; it was at the hall party that first night. The whole day had been filled with registering, buying books, unpacking, and meeting everyone. But that night we began to feel our homesickness and the fellowship of the party surely did help."

"I remember," I answered, "and the next day when the old girls came, we got to know them at the P. S. C. A. campus party."

"We selected Miss Golden as our Class Sponsor, and Raye King as our President. The biggest event of those first months to me," said Peggy, "was Rush Week. It was the one incident to make us feel important; and after weeks of debating over which society to join, we finally pledged."

"And then, Rat Day—the longest day of the year! Waking up at dawn, our day had been a mixture of crawling up steps, counting the holes in the tennis net, washing clothes, making beds, and being the lowest type of slave. But our spirits were lifted with the beautiful formal invitations. We were Rats no longer!"

"Our Society Banquet was most exciting. To this day I remember that luscious food."

"And do you remember," Peggy said, "that year Peace had her first visitation week ends? We co-operated with Dr. Presly and the student council by writing friendly letters of invitation to high school students. We went all out—from wiener roasts on the back campus to dances on Saturday nights."

"Yes, it was loads of fun. The whole year seemed so amazing to us. We didn't know what Peace would pull out of its pocket next. At Thanksgiving, the P. S. C. A. gave baskets of food to a beloved part of our Peace family, the faithful maids on the hall and in the laundry, and Irene and Mabel, who brought us those longed-for telephone calls. We felt more grateful as we ate our delicious dinner on Thanksgiving evening."

Peggy's face dropped as she said, "Our first college exams followed!"

"But they passed quickly, Peggy, and we soon began singing, 'Two more weeks 'till vacation!' Many of us had the privilege of being in the traditional Christmas Pageant and others participated in the Christmas Cantata. At Christmas Dinner that night we ate, sang, and looked forward to two weeks at home."

"Didn't the rest of the year fly? Spring Holidays ran right into our Junior-Senior, which we felt was a great success. The warmer weather brought May Day."

"It was about this time, Peggy, we elected you as president of our Student Body and

Raye King to lead our class again the coming year."

"We watched the seniors graduate and I wondered how they felt, didn't you?"

"It was a sad but joyous occasion," I answered, "and it wasn't long before we were trying to fill their shoes!"

"No, those three months of vacation seemed like three days. But somehow coming back to Peace as a senior was quite different from coming for the first time as a freshman. We were glad to see our friends and we had never known such privileges. We were now Seniors!"

"Wasn't it the most fun rushing the new girls? Yet, the whole time, back deep in our minds, we were scheming for even meaner and more horrible consequences for them on Rat Day."

Peggy remarked about our fine Society Banquet, which was by no means a let down that year, and quickly reminded me, "And we witnessed Peace's first Thanksgiving week-end holidays—four days!"

"We came back to exams though, remember?"

"Yes, but then came the Christmas events with almost three glorious weeks at home!"

"When we returned, we had three visitation week ends, stunt night, and exams. These passed the time until Spring Holidays. And how about our Junior-Senior?"

"Wasn't it perfect!" answered Peggy. "The Juniors were grand to us, and we had a wonderful time!"

"We were so proud of our May Court that year. Barbara Wheeler was selected as our May Queen and Lynda Wilson, Maid of Honor."

"All too soon, we selected our graduation invitations, bought our white dresses and began practicing Class Day," Peggy recalled.

"Yes, and closed those two wonderful years with the Peace graduation exercise. Tears filled our eyes. We were proud to graduate from Peace and in our hearts this day we still keep memories of our President, Dean, Teachers, and the many friends we made in the days which were the happiest of our lives."

ELIZABETH BRUIN.



SNAPS



No MAN'S Land!

CLASS PROPHECY

An Open Letter to the Class of 1953:

Another oil well "came through" the other day; so I grabbed a few thousand dollars and decided to go to Europe. My first visit was to England. While I was in London, I happened to stop by the Tabard Inn—and there was Barbara Norris leading tours to Canterbury. Well, she always did say that she was going to work in Europe. I decided to sign up for one of Barbara's tours because we had a lot of talking to catch up on.

One of the first things Barbara asked me was if I had seen Adelaide Clark. At the time, Adelaide was over in the Swiss Alps teaching some of the natives to sing "She'll Be Coming 'Round the Mountain."

I asked Barbara if any of the other girls that we were in school with were abroad. She said that Joyce Wallace and Janet Stephenson had just returned to the States from Paris where they had been studying the Can-Can. They're teaching it at the Alma Mater now.

Also Lynda Wilson was in Paris—pardon, *si l vous plait, Mme.* Lynda Wilson. She is in charge of design this year at the Folies Berger.

Frances Ager was expected to arrive soon. Her thoroughbreds had made millions at Louisville and now she was going to try for a few pounds at Churchill Downs.

Just then a deafening roar shook us and as we looked up there was a flying saucer. No, that wasn't a man from Mars in it—

it was—Peggy Myers. Well, of course, I'd heard that she was running the Myers Transport Service advertising 45 minute non-stop flights from New York to London, but I'd never expected this. As Peggy leaned out to wave to us, someone else joined her. It was Libby Bruin. We later learned that Libby was on her way to Madrid to make Spanish records of "Just My Bill."

Barbara said that surely I had news of some of the girls—so I began.

Doris Crawford is running the baseball concession at the State Fair. That's the one where you throw baseballs at some "Guy's" head.

Sikes Blanton has invented a radio clock that instead of waking you up to music wakes you up with the aroma of coffee and provides a cup for you 20 minutes later when you get up.

Ann Parker has been elected to one of the highest executive jobs at Peace. She has complete and absolute charge of the Laundry Lists. Charlotte Howe is working at Peace, too. She divides her time between helping Rosa in the laundry and her job as assistant to Miss Hall.

Kay Ryals is playing first typewriter with the Boston Pops Orchestra this year.

Barbara Wheeler is taking good care of the future Dr. Harris. She's cooking over at the Sigma Nu house at Chapel Hill.

Raye King is professor of mathematics at Kuhns College.

Sally Wilson wears a true "angelic smile" now 'cause at last she's Mrs. "Em."

Some of the girls have done real well for themselves in the "book-making" business. Betsy Fort is in the Annual Publishing Business. She's with Edwards & Broughton & Fort. Joan Hester is Assistant to Under-Assistant's Assistant for Dr. Einstein's Assistant. They are under contract to the State of North Carolina to compile and edit a new algebra book. Mickey Halstead and Page Beale are writing a new history book to include the "Annette Purchase"—that's the new name for the Appalachian Mountains. Annette Agee simply had to have more land to raise more apples on. To take care of the demand, the A&P Stores are expanding facilities—that's the Agee & Patton Stores, of course. Helen still hasn't decided whether or not to open the store every day after lunch.

Eleanor Moose is handling all dates between Peace Girls and State boys. She's Secretary to the Chancellor over at State.

Muriel Weldon spends most of her time surveying her tobacco plantation in Daddy's Buick, except for a little time that she finds to spend with Hubby, Don Price.

Haynes never got a car to take Mary Hope Phillips riding in, but I hear that they really enjoy their helicopter.

Susan Cork is Choir Director at Marshall College. She's trying to make enough money to keep Bill in school so that one day he can keep all the little Bills in school.

Business in the Men's Department of Hudson-Belk has really picked up. Barbara Beddingfield is manager now.

Jean Sandlin was Mrs. Revelle while we were at school. She's still happily married for 12 good reasons.

Barbara and I had just about caught up on conversation and were approaching the outskirts of Canterbury when we heard a familiar voice shouting, "Peanuts, popcorn, ice cold tea, hot roasted crumpets," and there was Fannette Gore. The three of us sat down and began to talk. Barbara and I really had a lot to tell Fannette and we kept thinking that she would think of something to say to us.

Well, there you are! If you are ever in Texas or Oklahoma, you can probably locate me picking up a few more thousand at one of my oil wells.

As ever,

EL NADAL.



THE LAST WILL AND TESTAMENT

We, the class of 1953, having in our possession certain valuable qualities and privileges, do, out of the kindness of our hearts, leave this, our last will and testament, that these qualities may be distributed among those needing them most.

ARTICLE I

Section 1

To the faculty we leave our thanks for the inspiration and guidance which they have given us, for without their planning and leadership, we could not have succeeded.

Section 2

To Dr. Pressly we leave unending gratitude for his interest in each of us, for he has done for us more than we could ever thank him for.

Section 3

To Miss Hall, for her direction over us which gives us only memories of happiness, we leave our love and our deepest thanks.

Section 4

To Miss Golden, our class sponsor, we leave our highest compliments for her direction over our class activities and her backing us at all times.

ARTICLE II

Section 1

To the juniors we leave our honored seats as seniors vacant. Along with these they may have our senior privileges; we hope that they may not be too overcome with our generosity. We sincerely hope that the best may be theirs as they fill those desired positions.

ARTICLE III

Section 1

I, Joan Hester, leave my phone calls from my brother to some lonely girl, Betty Reese Sugg in particular.

Section 2

I, Barbara Wheeler, leave my week ends in Chapel Hill to Frances Civils.

Section 3

I, Barbara Norris, leave my love for Raleigh to Sue Sims.

Section 4

I, Charlotte Howe, leave my "position" with Miss Hall to Dot McDonald.

Section 5

I, Kay Ryals, leave my numerous telephone numbers at State College to the girls who will check by my room and pick them up.

Section 6

I, Adelaide Clark, leave my shyness to the Preps.

Section 7

I, Helen Patton, leave warm-up suits for all the girls taking gym next year.

Section 8

I, Sally Wilson, leave my angel costume to the next "true" blonde.

Section 9

I, Doris Crawford, leave a new "soft" sofa to anyone who can get to it first.

Section 10

I, Page Beale, leave my seat in the library to Nancy Cameron.

Section 11

I, Muriel Weldon, leave my agreeable personality to Virginia Jones.

Section 12

I, Joyce Wallace, leave my crazy antics to the next occupants of my room and hope that council members don't live below them.

Section 13

I, Sikes Blanton, leave my versatile hair to Shirley Councilman.

Section 14

I, Susan Cork, leave my "solo" ability to Faye Jackson.

Section 15

I, Janet Stephenson, leave my love of breakfast to Patsy Pauls.

Section 16

I, Barbara Beddingfield, leave a special maid for the Day Students' room.

Section 17

I, Annette Agee, leave my vim and vigor to Sylvia Morrow.

Section 18

I, Frances Ager, leave my "horse collection" to decorate the mantle in the girls' living room.

Section 19

I, Oveda Halstead, leave free notebook paper to the girls taking history, so they won't go in debt.

Section 20

I, El Nadal, leave room 319 in perfect order to someone who will keep it that way.

Section 21

I, Lynda Wilson, leave my full mail box empty.

Section 22

I, Ann Parker, leave my Tuesday after-

noon meetings to the next president of the Christian Association.

Section 23

I, Mary Hope Phillips, leave my typewriter to someone who will need it as much as I did.

Section 24

I, Raye King, leave my title of "Miss Peace" to some deserving soul.

Section 25

I, Eleanor Moose, leave my love for earrings to anyone who likes to wear them.

Section 26

I, Betsy Fort, leave my ability to get things done to Katie Hatchell.

Section 27

I, Libby Bruin, leave my enthusiasm for getting the "Sigs" on top to next year's president.

Section 28

As president of the student body, I, Peggy Myers, leave my responsibilities to someone who doesn't need to rest like I do.

Section 29

I, Fannette Gore, leave—for Carolina.

Witnesses

BETSY FORT
ADELAIDE CLARK

Testator

FANNETTE GORE





JUNIOR CLASS OFFICERS

ANN BOSTIC	<i>President</i>
JEAN PEAKE	<i>Vice-President</i>
MARY ROSS ANDERSON	<i>Secretary</i>
SALLY BULLOCK	<i>Treasurer</i>
MRS. MARY ELIZABETH RHODES	<i>Sponsor</i>

BETTY SUE ADCOCK Cary
Sigma Phi Kappa



FRANCES MERLE AIKEN Fuquay Springs
Rho Delta Chi

MARY ROSS ANDERSON Etowah, Tenn.
Rho Delta Chi

SARAH JANE ANDREWS Jacksonville, Fla.
Rho Delta Chi



BARBARA AMELIA AUMACK Milburn, N. J.
Sigma Phi Kappa

CAROL ANNE BAGLEY Raleigh
Pi Theta Mu

MARTHA LA VERNE BAGLEY Raleigh
Pi Theta Mu



JANET SUE BEEKER Raleigh
Rho Delta Chi

MARTHA GODFREY BLACK Sanford
Sigma Phi Kappa

JACQUELIN AGNES BLACKMAN Benson
Rho Delta Chi



LOU ANN BOSTIC Clinton
Sigma Phi Kappa

MARY ELIZABETH BRIGHT Elizabeth City
Rho Delta Chi

SALLY ANN BULLOCK Stovall
Sigma Phi Kappa



SYLVIA KATHERINE BURNETT Burgaw
Rho Delta Chi

EMMA WRAY BURNETTE Garner
Pi Theta Mu

JUNIORS



MILDRED MOORE CAMERON Broadway
Sigma Phi Kappa

NANCY JOAN CAMERON Lake Waccamaw
Sigma Phi Kappa

SHIRLEY LA VERNE CAMERON Lillington
Rho Delta Chi

HELEN BRICE CARR Rocky Mount
Rho Delta Chi

ALICE LOU CARTER Wallase
Rho Delta Chi

CATHERINE VIRGINIA CARTER Wilson
Pi Theta Mu

PATRICIA CLAIRE CARTER Raleigh
Pi Theta Mu

PRISCILLA JEANNE CHAFFEE Raleigh
Pi Theta Mu

JUNE MARILYN CHAMBLEE Washington
Pi Theta Mu

ZELLA FRANCES CIVILS Kinston
Sigma Phi Kappa

GOLDIE ARLENE COOPER Raleigh
Rho Delta Chi

MARY CLYDE COOPER Cary
Pi Theta Mu

PATRICIA ANNE CORBETT Swansboro
Rho Delta Chi

SHIRLEY FRANCES COUNCILMAN Bonlee
Rho Delta Chi

AGNES KAREN CRAWFORD New Bern
Sigma Phi Kappa

JUNIORS

PATRICIA ANN CRESS Salisbury
Rho Delta Chi

DELIA ANN DAUGHTRY Clinton
Rho Delta Chi

MARY ANN DAVIS Raleigh
Pi Theta Mu

ROSE MARIE DENNIS Louisburg
Rho Delta Chi

ROSE ADELAIDE DICKINSON Raleigh
Pi Theta Mu

GLADYS CHERRY EDMONDSON Oak City
Rho Delta Chi

PHOEBE ELEANOR FAIR Asheville
Sigma Phi Kappa

GWENDOLYN FUSSELL Rose Hill
Rho Delta Chi

JOYCE LEE GRANTHAM Four Oaks
Sigma Phi Kappa

NANCY COOPER GREEN Raleigh
Rho Delta Chi

MARY NANCY HAMBRIGHT Shelby
Rho Delta Chi

AURELIA ELIZABETH HARTON Millbrook
Pi Theta Mu

KATIE SIMS HATCHELL Lumberton
Rho Delta Chi

GAYLE DURHAM HAYES Raleigh

HARRIETTA HEATON Roxboro
Sigma Phi Kappa



JUNIORS



BETTY LOU HOCKADAY	Raleigh
Rho Delta Chi	
PATSY ANN INMAN	Laurinburg
Rho Delta Chi	
ALICE LOUISE JACKSON	New Bern
Sigma Phi Kappa	
ELEANOR FAY JACKSON	Dunn
Sigma Phi Kappa	
MARY ANNE JOBE	Raleigh
Pi Theta Mu	
VIVIAN RAY KELLY	Rockingham
Rho Delta Chi	
ETHEL HELEN KING	Raleigh
Pi Theta Mu	
JOPE LANKKAMP	Raleigh
Pi Theta Mu	
IRIS ETHELYN LEE	Coward, S. C.
Sigma Phi Kappa	
SHIRLEY GREY MASSEY	Raleigh
Pi Theta Mu	
JO ANNE McCAIN	Kinston
Sigma Phi Kappa	
DOROTHY ADDIE McDONALD	Lillington
Sigma Phi Kappa	
DIXIE GREY McEWEN	Clarkton
Sigma Phi Kappa	
JUNE DALE McLAMB	Benson
Rho Delta Chi	
BEVERLY MILLIANS	Atlanta, Ga.
Sigma Phi Kappa	

JUNIORS

CAROLYN SIMPSON MITCHELL Jacksonville
Sigma Phi Kappa

SYLVIA NEMAN MORROW Albemarle
Sigma Phi Kappa

HENRIETTA J. O'QUINN Lillington
Sigma Phi Kappa

ANN NEWMAN PAGE Rocky Mount
Rho Delta Chi

MARION SHELLY PAGE Elm City
Rho Delta Chi

CAROL JEAN PARKER Woodland
Sigma Phi Kappa

BETTY JEAN PARRISH Raleigh
Pi Theta Mu

PATSY JONES PAULS Fayetteville
Rho Delta Chi

JEAN CAROL PEAKE Kinston
Sigma Phi Kappa

REBECCA F. PERRY Zebulon
Pi Theta Mu

LILLIE EARL PIERCE Raleigh
Pi Theta Mu

NANCY WALL RAGAN High Point
Rho Delta Chi

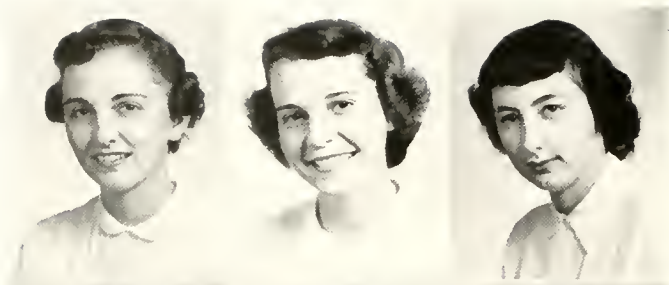
JANIE DEANS REID Rocky Mount
Rho Delta Chi

ROSLYN YORK SHELTON Badin
Rho Delta Chi

MADelyn ALBINA SIMPSON Jacksonville
Sigma Phi Kappa



JUNIORS



EVELYN GERTRUDE SPENCER Raleigh
Pi Theta Mu

BETTY REESE SUGG Snow Hill
Rho Delta Chi

BETTY ANN TALTON Rocky Mount
Rho Delta Chi



PATRICIA CAROLYN TAYLOR Garner
Sigma Phi Kappa

SARAH ELLEN THOMPSON Raleigh
Pi Theta Mu

ANN MARIE TRENT Raleigh
Sigma Phi Kappa



VICTORIA PORTIA VALLAS Raleigh
Pi Theta Mu

NANCY ELOISE WALTON Jacksonville
Sigma Phi Kappa

SARA ELIZABETH WARREN Wilmington
Sigma Phi Kappa



SARAH FRANCES WARREN Clinton
Sigma Phi Kappa

EMILY JEAN WESTBROOK Clinton
Rho Delta Chi

SHIRLEY ANN WHITE Raleigh
Sigma Phi Kappa



CLAIRE WILSON Bethel
Rho Delta Chi

NONA MAE WYNN Raleigh
Pi Theta Mu

JUNIORS

SNAPS



Inside Stuff!



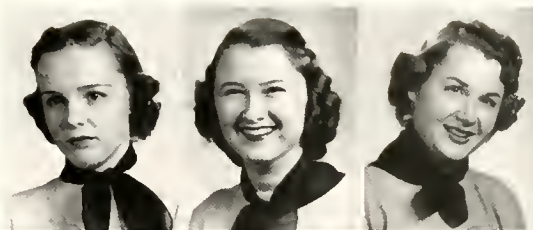
PREP IV OFFICERS

MARY KENT	<i>President</i>
SUSAN WHITENER	<i>Vice-President</i>
PAT WELTON	<i>Secretary</i>
BARBARA BELL	<i>Treasurer</i>
MISS ELIZABETH CALDWELL.....	<i>Sponsor</i>

Mary Ann Baynes Hurdle Mills
Rho Delta Chi

Barbara Bell Currie
Sigma Phi Kappa

Patricia Ann Cole Yanceyville
Rho Delta Chi



Elizabeth Jane Dorsett Siler City
Sigma Phi Kappa

Doris Jean Frizzell Charlotte
Sigma Phi Kappa

Mary A. Kent Mamaroneck, N. Y.
Rho Delta Chi



Barbara Elaine Latiolais Dothan, Ala.
Sigma Phi Kappa

Belle Atkins Lee Faison
Rho Delta Chi

Shirley Ann Miles Norfolk, Va.
Rho Delta Chi



Mary Ann Munn Candor
Rho Delta Chi

Billie Jean Scott Raleigh
Rho Delta Chi

Jacquelyn Grace Sigley Durham
Rho Delta Chi



Edna Ann Smith Fairmont
Rho Delta Chi

Alice Marie Vesper Cameron, Wis.
Rho Delta Chi

Patricia Burwell Welton Vernon, Ala.
Sigma Phi Kappa



Susan Ann Whitener Alexandria, Va.
Sigma Phi Kappa

Polly Ann Wilkerson Kenly
Sigma Phi Kappa



PREP IV

SENIOR SUPERLATIVES



EDITH THOMPSON
MOST LIKELY TO SUCCEED



PAT WELTON
BEST ALL AROUND



SUSAN WHITENER
PRETTIEST



MARY KENT
MOST POPULAR



BELLE LEE
SWEETEST



BILLY JEAN SCOTT
MOST ATHLETIC



BARBARA BELL
WITTIEST



SALLY WILKERSON
MOST TALENTED



PREPARATORY III

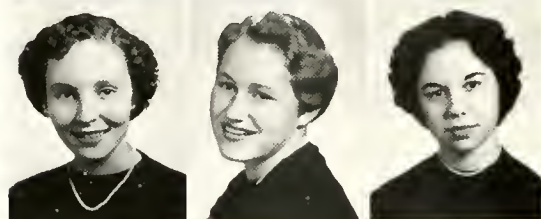
MARGARET BOYLAN	<i>President</i>
ELAINE ROGERS	<i>Vice-President</i>
BETSY MCKINNON	<i>Secretary</i>
OLIVE TATE	<i>Treasurer</i>
MISS WYNELLE LEWIS	<i>Sponsor</i>



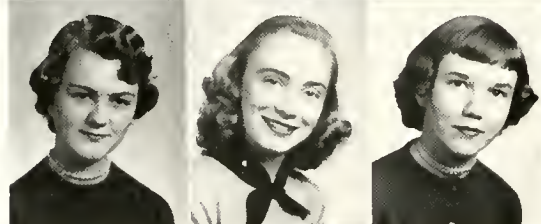
Ruth Gay Alexander
Signal Mountain, Tenn.
Rho Delta Chi
Margaret Tucker Boylan Raleigh
Pi Theta Mu
Lillian Lou Britt Raleigh
Pi Theta Mu



Betty Jean Caudle Raleigh
Pi Theta Mu
Johnsie Louise Ferguson
Southern Pines
Rho Delta Chi
Eleanor Fay Garroway Greensboro
Rho Delta Chi



Peggy Lane Johnson Kipling
Rho Delta Chi
Mary Frances Joyner Farmville
Sigma Phi Kappa
Constance Ann McCachern Concord
Rho Delta Chi



Elizabeth Hall McKinnon Red Springs
Sigma Phi Kappa
Margaret H. Reitzel Newton
Rho Delta Chi
Elaine Anne Rogers Dillon, S. C.
Rho Delta Chi



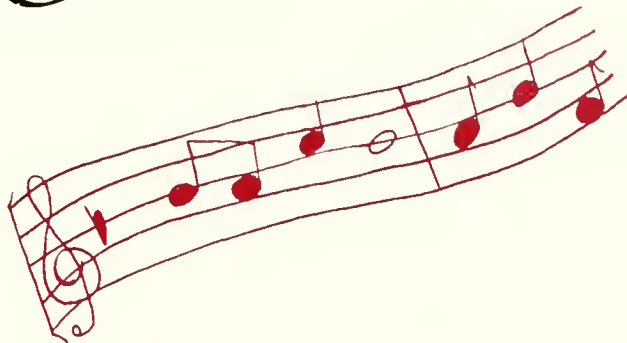
Cecilia Sue Sims Colorado Springs, Col.
Rho Delta Chi
Olive Seagroves Tate Chadbourn
Rho Delta Chi
Josephine Elizabeth Thore
Pilot Mountain
Sigma Phi Kappa



Mary Baynor Whitley Stantonsburg
Sigma Phi Kappa

PREP. III

The
ACTIVITIES



BOARDING STUDENT COUNCIL



PEGGY MYERS
President

The purpose of the Student Government at Peace is to maintain order and to promote the interests of the student body. The nine members of the council are elected by popular vote. Each council member takes a pledge of honor to uphold the ideals of Peace and to set an example of good citizenship. The council plans and sponsors many campus activities throughout the year.



Patton, Wheeler, Howe, Wilson, Myers, King, Parker, Gore, Bostic

DAY STUDENTS COUNCIL

Although the Day Students are not always on the campus, we feel that we are just as much a part of Peace as the Boarding Students. We try to uphold the morals, standards, and ideals of our Alma Mater at all times. The wonderful memories of our fellowship at Peace will linger in our thoughts always.



BARBARA BEDDINGFIELD
President



Halstead, Beale, Beddingfield, Cooper

LOTUS



BETSY FORT
Editor

EDITORIAL STAFF

It's spring again, and the Lotus Staff has worked hard through the long winter months to bring to you with the newness of the season a new LOTUS of 1953. We have tried to bring in its pages what we hope will be, in years to come, a musical picture of your past year at Peace.

To our wonderful advisor, Miss Oates, we wish to extend our love and "thanks" for pulling us through our trials and helping us to bring you this LOTUS.

ADELAIDE CLARK
Assistant Editor

LYNDA WILSON
Art Editor



Wilson, Clark, Fort, Nadal, Becker, Phillips

1953

BUSINESS STAFF

Let's get annual ads today! During all kinds of weather—on warm days, cold days, cloudy days, rainy days—the business staff has visited business firms to solicit money for the support of our LOTUS.

We hope that as you read the LOTUS, you will not overlook the section of ads, for these ads show which business establishments are interested in the success of our annual.

To Miss Mary Kirkpatrick, who has devoted much of her time to advising us and going with us, we would like to express our appreciation.



DORIS CRAWFORD
Business Manager

MARY CLYDE COOPER
Assistant Business Manager



Cooper, Bruin, Crawford, Morrow, Spencer, Corbett, Bostic, Stephenson

P. S. C. A.



ANN PARKER
President

The religious activities on our campus are centered around the Peace Student Christian Association. Each girl in school is a member of the association which has a cabinet composed of four officers and eight chairmen, with Miss Lucy Steele as our faculty advisor.

The purpose of the Peace Student Christian Association is to try to make Christ a personal reality in the life of each Peace girl. Through our Morning Watch Services, Hall Prayers, and our Sunday Night Vesper Programs, we try to bring each girl to the expression of her faith and growing convictions.



Seated: Wilson, Clark, King, Parker, Steele, Howe, Core, Warren, Myers. *Standing:* Bullock, Agee, Anderson, Councilman.

DAUGHTERS AND GRANDDAUGHTERS CLUB

The members of the Daughters and Granddaughters Club are those girls whose mothers or grandmothers are alumnae of Peace. This club helps to carry on the traditions of those things which make a "Peace Girl" love Peace.



LYNDA WILSON
President



Myers. Black. Nadal. Wilson, Crawford. Carter. Aiken



Halstead. King. Myers



RAYE KING
President

PHI THETA KAPPA

The purpose of the Phi Theta Kappa is to promote scholarship, leadership, and fellowship among students of junior colleges everywhere. We continually strive together to attain greater heights and uphold our motto of wisdom, aspiration, and purity.

ALPHA PI EPSILON

ALPHA—ACCURACY

PI—DEPENDABILITY

EPSILON—EFFICIENCY



BARBARA NORRIS
President

It is a distinctive honor to be a member of Alpha Pi Epsilon—the National Honorary Secretarial Society.

Membership in this society is restricted to students of superior scholarship, personality, and character.

The objective of Alpha Pi Epsilon is to professionalize the status of the college-trained secretary.



Howe, Norris



Myers, Halstead, King



OVEDA HALSTEAD
President

SIGMA PI ALPHA

The Sigma Pi Alpha is a national honorary language fraternity formed to stimulate an interest in and to acquire a more intimate knowledge of the language, people, and customs of other countries and to bring about a better understanding between these countries and our own. The Theta Chapter was established at Peace in 1939 to give recognition to those girls who have an unusual interest in languages and scholastic work.

I. R. C.

The International Relations Club, which is composed of Peace girls who are interested in current events and problems, meets once a month. Programs are presented at the meetings by students and outside speakers. Lectures, discussions, and debates are featured at the meetings.

The club seeks to promote an interest on the campus in World Affairs and to encourage study of world problems of our time.



MARY ROSS ANDERSON
President





ART CLUB



LIBBY BRIEN
President

The Elsie Robertson Art Club has been successful this year and has made many accomplishments. We have learned to appreciate beauty, and the club has done much to arouse our interest in learning. With our advisor, Miss Pugh, we have attended meetings and exhibits which have added much to our club life.



THE CHOIR

One of the most active organizations at Peace College is the Choir. Under the excellent direction of Miss Helen Tarver, it is a means for all who enjoy singing and music to meet together. The Choir presents Christmas and Spring Concerts, assists in Chapel services, sings for several Sunday morning services at the First Presbyterian Church, and provides musical programs for various outside organizations and churches. The members have enjoyed their work this year.



MARY ROSS ANDERSON
President



Seated, left to right: Cook, Whitener, Gore, Stephenson, Smith, Cole, Alexander. Standing: Walton, Heaton, Ager, Councilman, Talton, Beale, Garroway, Thore, Bagley.



FANNETTE GORI
President

PAPYRUS CLUB

The Papyrus Club is a literary club for prospective writers. Not only is it for those with a talent for creative work but its main objective is to encourage writing by everyone. We have lots of fun working together to publish our newspaper, the *Papyrus News*, and we take great pride in presenting our work to the school.

PI THETA MU

Pi recipe: Take one well-rounded Peace girl; flavor with fun and good times; add a touch of genuineness; mix with humor! What have you? Why, a Pi, of course.

We have had lots of fun this year at our various activities . . . initiation . . . society banquet . . . bazaars . . . and society party. With the interest shown by all the members in our various enterprises, we are assured that Pi Theta Mu will always "stand for the highest Peace can strive for."



MARY CLYDE COOPER
President



SIGMA PHI KAPPA



LIBBY BRUIN
President

From beginning to end the Sigs were really on the ball this year. The dances, sports tournaments, banquets, and Rat Day, as well as our helpful projects—these we will keep and treasure in our hearts when we think of our days at Peace.



Whitener, Wilson, Bruin, Nadal, Crawford, Bostic

RHO DELTA CHI

The Rho's have really had fun this year, although we had stiff competition from the Sigs. We were thrilled with our Carnival during Rush Week, which brought us fifty-two loyal Rhos. We'll always remember our candlelight service on November 7, when our new girls took their vows and became members of the best—Rho Delta Chi!



BARRARA WHEELER
President





Patton, Johnson, Corbett, Ryals, Broetzman, Wallace, Whitener, Bostic, Jackson, Phillips, McEwen, McCain, Blanton, Peake, Gore.

ATHLETIC ASSOCIATION



HELIX PATTON
President

The Athletic Association gives us relaxation from our academic work and is a time for fun and fellowship for everyone.

With the aid of our sponsor and friend, Miss Joyce Fowler, we are able to maintain our "Little Store" and to provide you with the treats that you long for.

May we all urge better sportsmanship within Peace, from the Overhead pass to the Backhand serve.

SNAPS



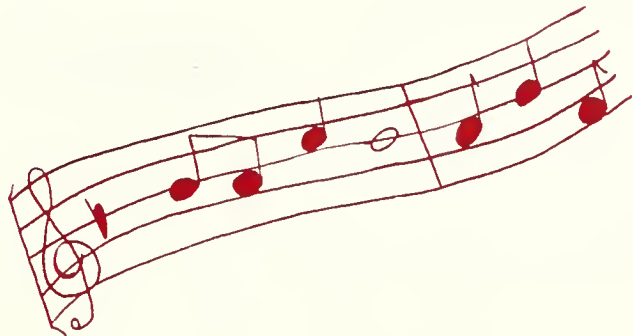
Athletes at Work!

SNAPS



Traditions of Peace

The
HONORS



MARSHALS

BARBARA WHEELER
Chief Marshal

VICKIE VALLAS
H. G. M.

OVEDA HALSTEAD
H. G. M.

KAY RYALS
P. Δ. X.

LINDA JOHNSON
P. Δ. X.



SALLY WILSON
Σ Φ Κ

FANNETTE GORE
Σ Φ Κ

PRIVILEGED HONOR ROLL



Adelaide Clark. Charlotte Howe. Sally Wilson. Barbara Wheeler.
Ann Parker. Elizabeth Bruin. Peggy Myers. Lynda Wilson, Mary
Ross Anderson.



SCHOLASTIC HONORS

SENIOR ACADEMIC: Page Beale, Adelaide Clark, Doris Crawford, Oveda Halstead, Raye King, Peggy Myers, El Nadal, Ann Parker.

SENIOR COMMERCIAL: Betsy Fort, Charlotte Howe, Eleanor Moose, Barbara Norris, Janet Stephenson, Joyce Wallace, Sally Wilson.

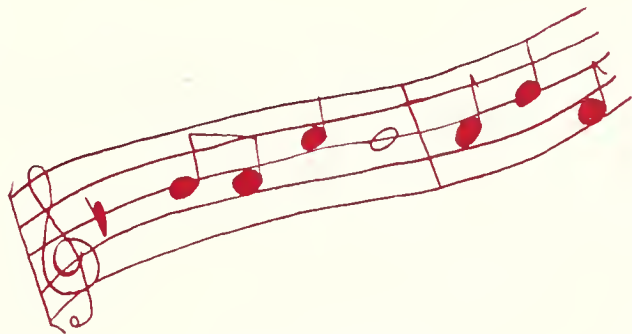
JUNIOR ACADEMIC: Mary Ross Anderson, Sarah Andrews, Janet Becker, Sally Bullock, June Chamblee, Shirley Councilman, Rose Dickinson, Gwen Fussell, Harri Heaton, Jopie Lankkamp, Sylvia Morrow, Sara Elizabeth Warren, Shirley White.

JUNIOR COMMERCIAL: Frances Aiken, Ann Bostic, Betty Bright, Shirley Cameron, Bruce Carr, Pat Carter, Pat Cress, Cherry Edmondson, Rita Harton, Patsy Inman, Faye Jackson, Ethelyn Lee, Shirley Massey, Henrietta O'Quinn, Shelly Page, Deans Reid, Roslyn Shelton, Madelyn Simpson, Evelyn Spencer, Pat Taylor, Sarah Frances Warren, Claire Wilson.

SENIOR PREPARATORY: Patricia Cole, Mary Kent, Billie Jean Scott, Patricia Welton, Susan Whitener, Polly Wilkerson.

JUNIOR PREPARATORY: Betty Caudle, Shirley Estes, Betsy McKimmon.

The
FEATURES





Miss Peace, Raye King



May Queen, Barbara Wheeler

OUTSTANDING



BETSY FORT

As editor-in-chief of the '53 LOTUS, Betsy has done a remarkable piece of work. She is also a member of the Pi Theta Mu Society and has attained Scholastic Honors for two successive years. Her winning smile and vivacious personality will long be remembered by her classmates. The fact that Betsy is a Day Student does not handicap her campus activities, because she is the first to arrive in the morning and last to leave in the afternoon. Betsy is the perfect example of personality and intelligence; there is no doubt but that her future will be filled with success.



ELIZABETH BRUIN

She is known to Peace girls as "Libby," but she will not be remembered just for her name but for the sunshine she brings into each girl's life. Besides being on the Privileged Honor Roll, she is president of the Sigma Phi Kappa Society, is on the Annual Staff, and is Class Historian. She has also taken part in the Christmas Pageant and May Day program. These show her variety of abilities. It is Libby who gave the "Sigs" the push they needed, but she will not need a push to reach the top.

SENIORS

FANNETTE GORE

Outstanding is certainly the word for Fannette. Faithful in every duty, she was a member of the Peace Student Christian Association for two years. She served as president of the Papyrus Club, as a cheerleader for the Sigma Phi Kappa, and as a member of the Student Council, the Athletic Association, the Art Club, and the International Relations Club. She was a perfect actress for Stunt Night and also found time to participate in May Day. What a bright future an attractive Christian girl like Fannette has!



CHARLOTTE HOWE

Charlotte's abundance of vitality is the key to her winning personality. Truly an outstanding senior, she is vice-president of the P.S.C.A., treasurer of the Student Council, and a member of the Alpha Phi Epsilon Society, the Nominating Committee, and the Privileged Honor Roll. She has achieved scholastic honors, and has also found time to take part in Stunt Night and the Christmas Pageant. A capable girl like Charlotte will surely win success in anything she undertakes, and we are sure that she won't be long in reaching the top.





OUTSTANDING

PEGGY MYERS

An outstanding senior indeed is this vivacious little brunette. As president of the Student Council, Peggy has worked hard to lead us in a way that would uphold the high standards of Peace. Peggy is a P.H.R. and a member of the P.S.C.A. Cabinet. As a member of the Sigma Pi Alpha and Phi Theta Kappa Societies she shows that leadership is not the only quality she possesses. We are sure that the light she has cast at Peace will continue to be seen as she climbs to the top.



ANN PARKER

As president of the Peace Student Christian Association, Ann has been a wonderful influence on our religious life at Peace. A P.H.R. and a member of the I.R.C., she takes part in many school activities. She also finds time to participate in and carry through a superb Christmas Pageant. There is no question about her future for we know that the friendly, sweet smile and her willingness to work will put her well on the road to success.

SENIORS

LYNDA WILSON

Lynda's outstanding creative ability is of great value to her. She takes great interest in art work, and has done a fine job as Art Editor of *The Lotus* this year. Her dark attractiveness led her classmates to choose her to serve as Maid of Honor in the May Court. Lynda is president of the Daughters and Granddaughters Club, a member of the P.S.C.A. Cabinet and the P.H.R. Her reward for her kindness and helpfulness will surely be the goal she hopes to attain.



SALLY WILSON

"Still water runs deep" might well apply to Sally Wilson, who in her own quiet way goes about doing efficiently all the things that fall her lot—and more. She is secretary of the Student Council, a Privileged Honor Roll member, and a marshal. In addition she is a member of the Sigma Phi Kappa Society, has taken part in Stunt Night, and has served as an attendant in the May Court. The fact that Sally is most competent and reliable will lead her to succeed in whatever she undertakes.





ALMA MATER

In the heart of Carolina,
 'Neath the skies of blue,

Stands our noble Alma Mater,
 Glorious to view.

Classic in her broad proportions,
 Looks she proudly down—

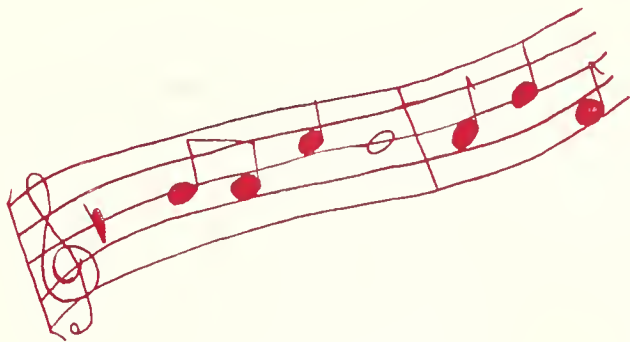
Reared against the arch of heaven,
 With the stars for crown.

CHORUS

Lift the chorus, speed it onward;
 Let it never cease:

Hail to thee, our Alma Mater;
 Hail, all hail, to Peace!

The
ADS



*The following firms are sponsoring the 1953 LOTUS
and we gratefully acknowledge their support:*

T. H. BRIGGS & SONS, INC.
BROGDEN PRODUCE COMPANY, INC.
LEON BYRUM OPTICIANS
CAROLINA POWER & LIGHT COMPANY
ECKERD DRUGS, INC.
EFIRD'S DEPARTMENT STORE
ELLISBERG'S, INC.
GARNER'S ESSO SERVICE
GOODMAN'S LADIES' SHOP
HILKER BROTHERS
JEFFRIES JEWELERS
THE KNITTING NOOK. Mary J. Hadley, Mgr.
LEWIS SPORTING GOODS
MOTHER AND DAUGHTER STORES, INC.
NORTH CAROLINA THEATRES, INC.
PIGGLY WIGGLY STORES
PINE STATE CREAMERY CO.
ROYSTER'S CANDIES
STATE THEATRE
H. STEINMETZ, FLORIST
STEPHENSON MUSIC COMPANY
TYSON'S GIFT AND ART WARES

Very Best Wishes

to the Class

of 1953

HUDSON-BELK COMPANY

Eastern Carolina's Largest Store

Edenton Street Methodist
Sunday School

*Welcomes the Peace
College Girls*

DR. HOWARD P. POWELL, *Pastor*
C. A. DILLON, *Supt. of Sunday School*

*Jean's
of Raleigh*

MORGAN JONES COTTONS

ARE

"Yours for a Lovely Home"

Bedspreads

Drapes

Rugs

Bath Sets

Dish Cloths

Dish Towels

PRODUCED IN NORTH CAROLINA
SOLD BY FINE STORES EVERYWHERE

MORGAN-JONES, INC.

53 Worth Street
NEW YORK, N. Y.



*Continuous Quality
Is Quality You Trust*

GOLDEN TAP

*Orange Juice
Grapefruit Juice
Blended Juice*

Garland C. Norris Co.

NEIMAN'S

Jewelers - Silversmiths

RALEIGH, N. C.

Best Wishes From

**NORTH CAROLINA EQUIPMENT
COMPANY**

**CONSTRUCTION, INDUSTRIAL & LOGGING EQUIPMENT
CONTRACTORS' & MUNICIPAL SUPPLIES**

"International Diesel Power"



RALEIGH
GREENVILLE

WILMINGTON
GUILFORD

CHARLOTTE
ASHEVILLE

ROSE'S 5-10-25c STORES

133 STORES SERVING THE SOUTH

In Raleigh at Cameron Village

B & C SUNDRY SHOP

705 North Person Street

SANDWICHES DRINKS
SUNDRIES

All Nationally Advertised Merchandise
at Minimum Fair Trade Prices

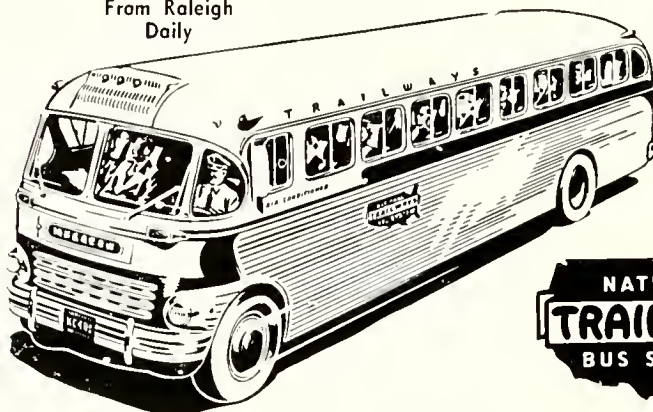
"The Friendly Shop"

VILLAGE RESTAURANT

Cameron Village

RALEIGH, N. C.

Over
100 Departures
From Raleigh
Daily



Take Trailways. The Route of the Thru Liners

VIRGINIA
Crabtree

FOOD SERVICE EQUIPMENT
AND UTENSILS

THE JOHN HOOS CO. OF
NORTH CAROLINA, Inc.

1209 Hillsboro Street
RALEIGH, N. C.
Telephone 3-0062

NATIONAL ART SHOP

Interior Decorators

621 Hillsboro Street

Phone 24740

RALEIGH, N. C.



ALLISON-LEINSTER, INC.

Phone 2-1632 For Insurance

Raleigh B. and L. Building

RALEIGH, N. C.

Insurance Service Since 1908

J. C. ALLISON
President

MRS. SARAH L. COWPER
Vice-President

J. A. LEINSTER
Secretary-Treasurer

Balentines
RESTAURANT

**HOOD-MODEL
DRY CLEANING COMPANY**

"Ask the Folks We Serve"

Main Office—117 E. Morgan St.

Plant—606 N. Person St.

PHONES 23015 - 22362

DILLON SUPPLY COMPANY

INDUSTRIAL MACHINERY & EQUIPMENT

Raleigh

Durham

Rocky Mount

Goldsbora

**CLYDE COOPER'S
BAR - B - Q**

**PARTIES AND CLUBS
SERVED**

*We Serve In or Out of
Town Parties*

T. CLYDE COOPER
DIAL 7614
109 East Davie Street
RALEIGH, N. C.

Compliments of

**CAPITAL
Ice and Coal Co.**

Incorporated

600 West Hargett Street
PHONE 5589

**Ice
Coal
Fuel Oil**

BOYLAN-PEARCE

"Raleigh's Shopping Center"

Yellow Cab Co.
5811 — DIAL — 5811

Quick and Careful Service

RALEIGH, N. C.

JAMES E. THIEM

"Everything for the Office"

SHEET MUSIC

RECORDINGS

STATIONERY

and

LEATHER GOODS

DIAL 2-2913

RALEIGH, N. C.

FLOWERS!

Cut Flowers Corsages

Graduation Bouquets

Decorations

PHONES 8347 - 2-0795

J. J. FALLON CO.

Inc.

*"We Grow the Flowers
We Sell"*

WALLER AND SMITH STUDIO

Official Photographers for THE LOTUS

12 East Hargett Street

MEREDITH COLLEGE

ACCREDITED LIBERAL ARTS COLLEGE: Southern Association of Colleges and Secondary Schools, American Association of University Women, National Association of Schools of Music.

PROGRESSIVE EDUCATIONAL PROGRAMS in terms of Christian character and service. Distinguished record of student honors. Excellent library facilities. Effective honor system.

ATTRACTIVE LOCATION IN RALEIGH. "The Educational Center of the State." Beautiful campus of 170 acres. Modern fireproof dormitories with generous provisions for social activities.

Write for Catalogue and Folder of Views

CARLYLE CAMPBELL, *President*



W. H. KING DRUG CO.

Wholesale Drugs

Phone 2-0525

117 South Wilmington Street

RALEIGH, N. C.

HONEYCUTT CLEANERS

Main Plant:

605 Newbern Avenue
PHONE 3-1696

Branches:

22 Pace Street

114 W. Martin Street



*Your Cleaning
Is Our Problem
and Business*

*It Is a Pleasure To
Serve You*

CONGRATULATIONS
CLASS OF 1953

Miriam's

Cameron Village

Phone 3-3851

RALEIGH, N. C.

**McNair's Yield-Tested
Seed Company, Inc.**

WHOLESALE SEED GROWERS
OF FIELD SEED



*All of Our Seed Are Grown
on McNair's Own Farms*

By

**McNair's Yield-Tested
Seed Company, Inc.**

Phone 388
LAURINBURG, N. C.

Say

**BAMBY
BREAD**



Royal Baking Co.

Dial 2-4661

RALEIGH, N. C.

BYNUM PRINTING COMPANY

BETTER PRINTING

Phone 6417

FERGUSON'S HARDWARE
HARDWARE AND
HOUSEHOLD SUPPLIES

"We Specialize in Service"

2904 Hillsboro Street
Phones: 2-4877 - 2-3030

EARL JOHNSON B. E. DENNIS
HARRY MOORE BILL WARD

MOORE & JOHNSON CO.

*"For 29 Years Raleigh's Leading
Insurance Agency"*

INSURANCE - SURETY BONDS
Insurance Building
RALEIGH, N. C.

JOLLY'S

Established 1881

*Jewelers
and
Silversmiths*

C. P. DAWKINS, *Mgr.* Tel. 2-4892

Carolina Typewriter Co.

115 S. Salisbury St.
RALEIGH, N. C.
STANDARD AND
PORTABLE TYPEWRITERS
ADDING MACHINES
DUPLICATORS

FINCH'S

The Newest, Most Modern
Drive Inn



*With an
Air Conditioned Dining Room
For Your Convenience*

DESOTO PLYMOUTH

**RAWLS
MOTOR COMPANY**

RALEIGH, N. C.

JOHN ASKEW

PAINTING AND
INTERIOR DECORATING

*Estimates Made in and
Out of Town*

Telephone 6824
110 Glenwood Avenue

Phones 3-5503-4 3815 Hill-boro St.

Compliments of

MATTHEWS SHADE CO.

Authorized Manufacturer of

FLEXALUM
VENETIAN BLINDS

**HAYES BARTON
PHARMACY**

P. D. GATTIS H. I. GATTIS

2000 Fairview Road
DIAL 2-4641

James H. Anderson Company

CLEANING SUPPLIES

P. O. Box 342

418 W. Peace Street

DIAL 3-2750

RALEIGH, NORTH CAROLINA

Compliments of

CAROLINA PRINTING COMPANY

RALEIGH, NORTH CAROLINA

HALIFAX STREET GROCERY

601 Halifax Street

CHOICE MEATS : QUALITY GROCERIES

FRESH FRUITS AND VEGETABLES

RALEIGH, NORTH CAROLINA

The Atlantic Fire Insurance Company

Home Office : Raleigh, North Carolina

Invites inquiries from all "Peace Girls" and their parents as to our policy covering World Wide insurance on Jewelry, Wedding Presents, and Furs from almost every type of damage to which these articles are subject at very low rates.

Phone Us Nos. 2-4671 or 2-4672 or Address Us at Box 150, Raleigh

CAUDLE'S SHOE SHOP

RALEIGH'S FINEST

Serving Raleigh Since 1928

Dial 5636

PEACE COLLEGE CLASS RINGS AND PINS
SOCIETY PINS AND NOVELTY JEWELRY

WALTER B. ANDERSON

L. G. BALFOUR PRODUCTS
RICHMOND, VIRGINIA

Compliments of

JOB P. WYATT AND SONS CO.

Founded in 1881

Box 631

RALEIGH, N. C.

ADLER'S OF RALEIGH

SHOES FOR WOMEN

*Who Love Elegance
in Footwear*

Be Sure to Visit Our Budget Department
Ambassador Theatre Building

LYNCHBURG ENGRAVING COMPANY

QUALITY SERVICE

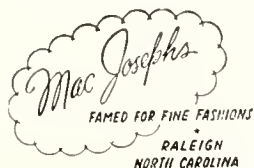
*Designers and Engravers
of the
South's Finest School
Publications*



LYNCHBURG, VIRGINIA

Compliments of

**FIRST-CITIZENS
BANK AND TRUST
COMPANY**



PERSON STREET PHARMACY

620 North Person Street

A Complete Line of Nationally Advertised Drugs
Plus a Selected Assortment of Toilet Items

Soda Our Specialty

PERSON STREET VARIETY STORE

702 North Person Street

School Supplies and Everyday Needs
Complete Five and Ten
J. E. TREADWELL, *Proprietor*

Compliments of

AVON COSMETICS

★ ★ ★ ★ ★

WELCOME YOUR FRIENDLY REPRESENTATIVE
WHEN SHE CALLS

Duke University

SCHOOL OF NURSING

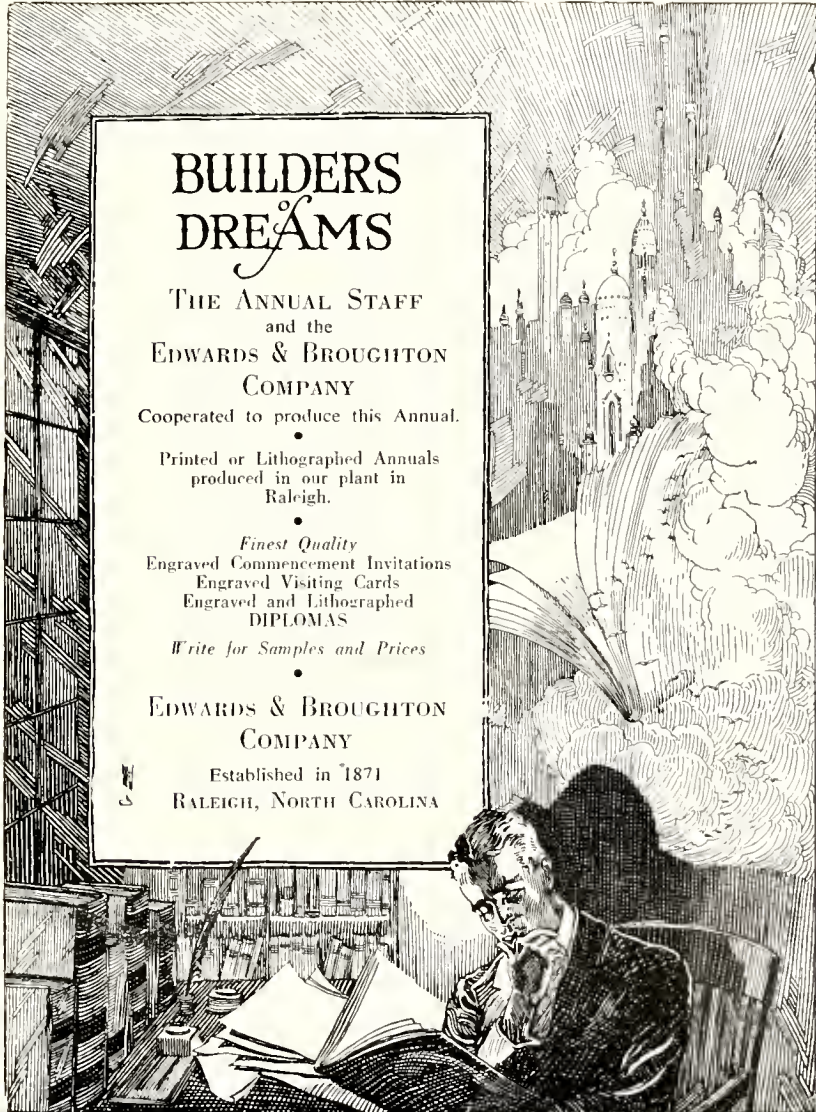
DURHAM, N. C.

Announces two new programs open to graduates of high schools. Students who have attended college will have their credits evaluated for advanced standing in the School of Nursing in the four-year course leading to the degree of Bachelor of Science in Nursing, and will be able in some instances to finish the course in three years.

The basic entrance requirements are scholastic aptitude, aptitude for nursing, and integrity. The academic requirements are 16 units of high school credit.

Application forms and bulletins may be obtained from: Dean, School of Nursing, Hanes House, Duke University, Durham, North Carolina

AUTOGRAPHS



BUILDERS DREAMS

THE ANNUAL STAFF
and the
EDWARDS & BROUGHTON
COMPANY

Cooperated to produce this Annual.

Printed or Lithographed Annuals
produced in our plant in
Raleigh.

Finest Quality
Engraved Commencement Invitations
Engraved Visiting Cards
Engraved and Lithographed
DIPLOMAS

Write for Samples and Prices

EDWARDS & BROUGHTON
COMPANY

Established in 1871
RALEIGH, NORTH CAROLINA

AUTOGRAPHS



BOWEN LIBRARY
PRAIRIE

FOR REFERENCE
Do Not Take From This Room

