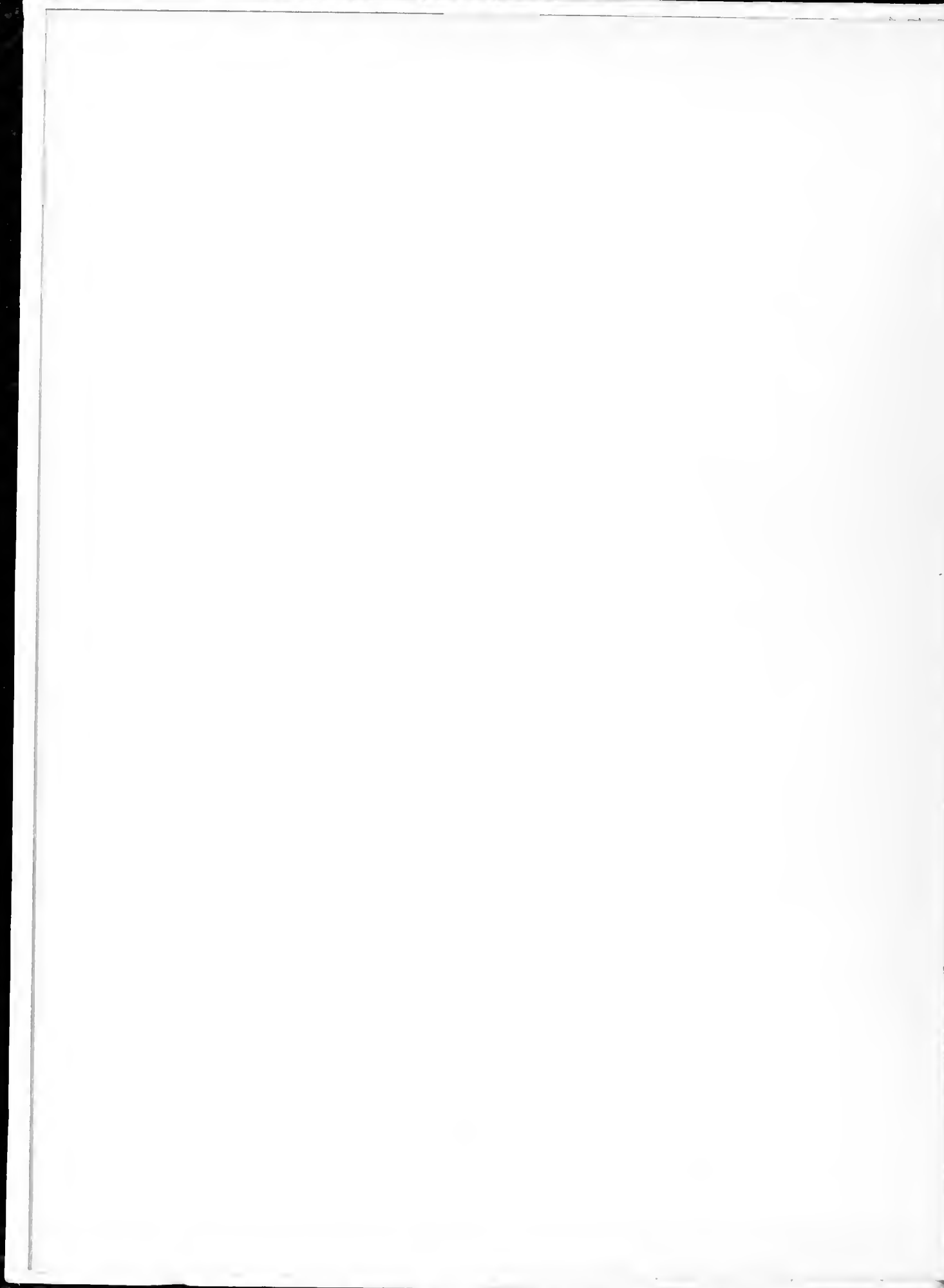

1986

LOTUS



Alumnae Office



Lotus

MAIN BUILDING
ADMINISTRATION



*Table of
Contents*

*Opening
Faculty
Classes
Dorms
Sports
Organizations
Features
Directory
Advertisements
Closing*

1986

It's Just An Old Fountain . . .

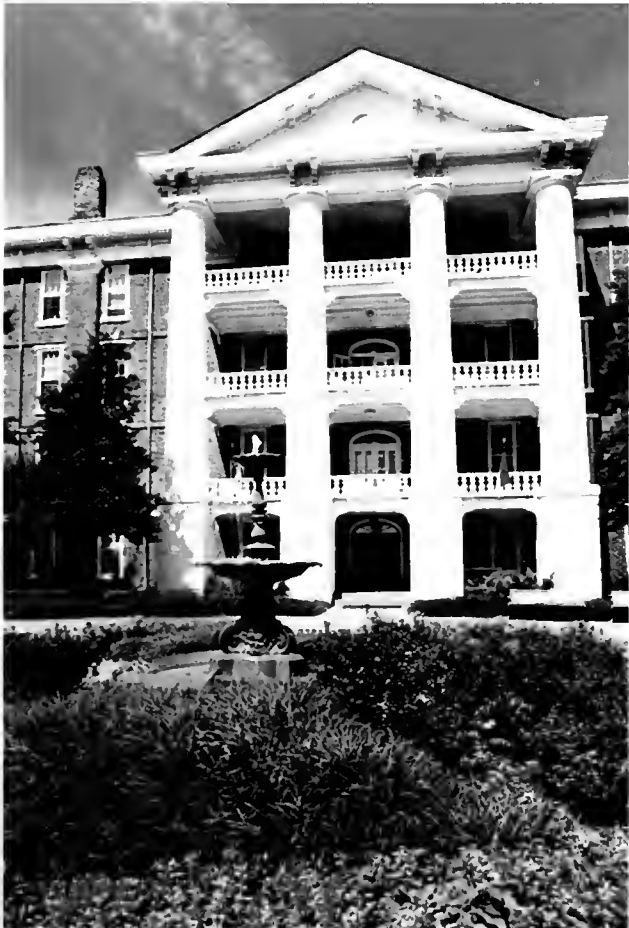


*I*t's just an old moss green fountain, not too fancy, quietly gurgling and splashing its sparkling waters, oblivious to its surroundings. To the outsider, this fountain — one of the first things visitors of Peace College

see — would seem unimpressive and unimportant. However, this impression could be no further from the truth. What seems like a mere fountain is actually the foundation of precious memories for every Peace girl. In fact, this special

fountain, in many ways, represents every Peace girl.

Like laughter bubbling over from a beautiful girl, suds surprisingly fill the fountain when lively girls decide it's time for its bath. These same girls may



traditionally "dunk" a friend in the fountain for a shocking birthday present, the ultimate symbol of friendships which develop while at Peace. At times, the fountain freezes, causing sharp icicles to be suspended from its basins. In

the same sense, when times are tough and people are cold, we, too, "freeze up" and develop sharp edges. But soon, the warmth comes and the glistening waters joyfully splash again. Perhaps the fountain best represents

the unity shared by Peace girls, for it is around the fountain that girls join together at Christmas to sing carols and at Graduation to sing the Alma Mater. Although girls come and go from Peace, the old

green fountain always remains, keeping a part of each girl forever. And as the waters of the fountain continuously flow, memories of each girl continuously grow.

Main . . . The Heart of Peace College!



The first two years of one's college career are the most important and formative. Peace has always been known for its students' development during these two years. One former administrator of Peace commented, "The school commends itself to those seeking a school for their daughter for its home-like arrangements, its constant attention to the moral and physical welfare of the students, its healthful surroundings, and its superior faculty." Peace prides itself on its family atmosphere. As soon as a student arrives at Peace, she feels this spirit of friendship and love.

How many of you remember the sophomores struggling to carry your tons of luggage up two or three flights of stairs? Or, a gift from your "Big sister" waiting for you in your dorm room, just when you were beginning to feel homesick? What about sitting on the balcony, talking with friends while rating the guys as they came to pick up their favorite "Peace" girl? Or, standing on front campus or Main balconies to be serenaded by "frat" pledges? Main will always hold dear memories in every Peace girl's heart:

*In the heart of Carolina,
'Neath its skies of blue,
Stands our noble Alma Mater,
Glorious to view . . .*





Fads and Fashions change every year, but one thing remains the same — Peace girls stay on top of the styles! Picking out the perfect outfit for a night out on the town can be a frustrating and crucial task, requiring much style and taste. Dressed to kill (or at least to find a cute "dude"), the typical fashion plate is seen in stirrup pants and a "HOT" paisley shirt.

However, this sense of style does not end when the sun rises. Our trendy friends stumble into their 8:15 classes in innovative outfits chosen with only one eye open. This casual fashion begins with a sweatshirt boasting one's favorite fraternity or A.C.C. College, followed by a pair of personalized or stolen boxer shorts. The outfit is not complete, however, until a pair of high top tennis shoes and a "SWATCH" watch — the more unusual, the better — are added.

Yet the most important element of fashion is individuality. Although Peace girls are infamous for sharing clothes, each outfit looks new and exciting on each girl. The reason why — these girls have **STYLE!**



STUDENTS

WITH

STYLE



WRITING IS A BREEZE AT PEACE



The fourth annual Peace College Writing Institute got off to a lively start on July 28, 1985. With 76 students and 6 faculty members, the adventure in writing began. The Director, Dr. Janet Wester, laughingly referred to the two-week course, for which students receive two hours of college credit, as an intensive, fast-paced experience "somewhere between a quality summer camp and a military boot camp." By

August 10, when tired Peace girls went home for a week's break before beginning their fall semester, there was general agreement that, though the work had been hard and the schedule had been rigorous, much had been accomplished.

Wearing their own special tee-shirts testifying that they had survived the Institute, 76 "college-wise" students bid new friends "Adieu" but made eager plans for reunion on August 18.

Perhaps, however, what the Institute meant can best be described by one of the students. Nan Swertfeger says, it "prepared me for college in many ways. I had the opportunity to meet all the Peace English professors and get to know them. I also met some of my very best friends that I will ever have. Most of all, I learned a lot about writing that should help me a great deal in years to come."







As freshmen, we had only just begun to grow. But, in two years each one of us has blossomed, much like the roses we carry at graduation. The years have had thorns, and many times we've wondered, "Are the rewards really worth the struggle?" But on that glorious day in May, when the beautiful white gown and long white gloves are donned, we know this moment was worth every priceless second.

As freshmen, we had only just begun to love. But, in our two years, each one of us has developed friendships which distance will never sever. We have loved honestly and dearly, as we never thought ourselves capable. Many of us have learned to love ourselves. And on that anxiously awaited graduation day, we are surrounded by those dearest to us, and we realize, "Yes, we have loved!"

As freshmen, we had only just begun

to live. Naive and insecure, we were forced to stand on our own two feet. We found out who we really were and what unlimited potential each individual has.

And on that day of overflowing emotion, we realize that our lives are in our hands. We have only ourselves and the part of Peace College that we will always have with us. And as we graduate, we know that, once again

We've only just begun!

*WE'VE
ONLY
JUST
BEGUN*



PEACE

C What three Peace traditions do Freshmen worry about during the first three weeks of school?

P What professor had a burning bush?

R How many six-packs can you have in your refrigerator?

M What is Domino's phone number?

C What do Freshmen have during the first four weeks of school which Sophomores do not?

P Which two professors married Peace girls?

R What is the best beverage served at a Peace function?

M Where was the "real" party at the Christmas Dance?

C Who traditionally wins Stunt Night?

P What course is required for graduation from Peace?

R What sends students running through Main doors at 11:59 M-Th?

M In what year was Peace founded?

C What is the tradition of graduation?

P What time do most students usually get up for their 8:15?

R What is a "VW"?

M Who won the 1985-86 Powder Puff football game? What was the score?

TRIVIA

C Handbook test, swimming test, saying the Honor pledge.

P Mr. Thomas

R Zero

M 821-2330

C Study cuts

P Mr. Crossno and Mr. Smith

R Punch

M the Sheraton

C Sophomores

P Religion 101-102

R 12 o'clock curfew

M 1857

C White formals and red roses

P 8:14

R Verbal warning

M Sophomore, 20-0

BE A PART OF



We've all heard the old saying, "If walls could talk, what would they say?" At Peace it might sound something like this:

"Uh-Oh, they've been shopping."

"Yep — looks like somebody's got Mom's credit cards."

"Gosh, she's already got so many clothes she has to keep them all over the floor!"

"Look, a new poster."

"Ouch! Don't they know they're not supposed to use push pins on us?"

"Boy, would you look at that poster — what a body!"

"Listen. They even got some new tapes."

"You know, we walls may not be able to dance, but shaking like we do when those stereos get cranked is the next best thing!"

"That's for sure. Over the years, the music's changed, but our shaking hasn't!"

"Neither have the girls, really. I mean, each one is special and unique, but they all share the same laughter and tears; they all complain when their neighbors tell them to be quiet; they all keep erratic hours, then can't understand why they're tired . . ."

"And they all gossip over popcorn!"

"And fight over which "SOAP" is the best . . ."

"But, most importantly, they all share love with one another . . ."

"And a certain quality that makes them all special Peace girls!"



PEACE LIFE



*So I hope
that I can
always
remember*

...



*From the Kitchen of 1985-86 Lotus
Recipe for "Simple Memories"*

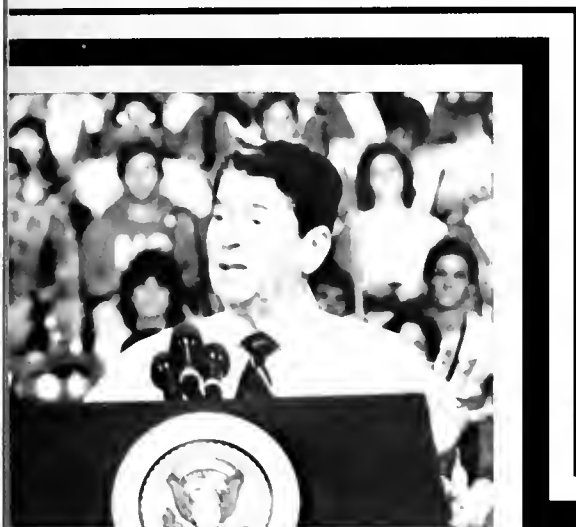
Ingredients:

- 1 warm smile that picked you up when you were feeling low*
- 1 handful of friends who were always willing to help*
- 1 irreplaceable friendship with a special girl*
- 1 armload of "silent" buddies who faithfully listened to all your problems*
- 1 generous serving of friendly talks*

Directions: Mix all ingredients together in the block of 15 E. Peace St., adding lots of love. And in two years you will have created the most special "simple" memories of your life!

Chef's Note: We, the 1985-86 Lotus staff, would like to hereby dedicate this yearbook to the Class of 1986, because they are not only vital ingredients of this recipe, but also experts at making memories.





*... all the
treasured
memories
we shared*

...

FACULTY

FACULTY

FACULTY

FACULTY

FACULTY

FACULTY

FACULTY

FACULTY

FACULTY

FACULTY

FACULTY

FACULTY

FACULTY

FACULTY

FACULTY

FACULTY

FACULTY

FACULTY

FACULTY

FACULTY

FACULTY

FACULTY

FACULTY

FACULTY

FACULTY

FACULTY

FACULTY

FACULTY

FACULTY

FACULTY

FACULTY

FACULTY

FACULTY

FACULTY

Administration

Dr. S. David Frazier

As we look back on memories of Peace College, we remember the Faculty and Administration with a smile. The Faculty and Administration are the backbone of the College. Because they care about each student, the time we spend here is special. Most of the faculty and administration not only know our names, but also know something about each of us.

With their help and support, each girl finds her place at Peace. Even though we do not always express our appreciation for their help, we are grateful to know that someone cares how we are doing and is willing to assist us in any way they can.

President Frazier supports all the College's activities. He not only finds time to do his own complex job, but he also finds time to attend the home basketball games, plays, and concerts. Often he expresses his appreciation for our efforts by sending us encouraging words or goodies.



Dr. Staples is the one who tries to help us put forth our best efforts in academics. She is there to hear our troubles with courses and, sometimes, to call us in and encourage us to work harder for success in course work.

Dean Edwards and Liz Thurston spend a great deal of time planning activities to get the students involved. They work with the Student Government and the Recreation Association to plan such events as the Fall Dance, Faculty Action, Spring Fling, Big Sister/Little Sister events, and intramurals.



Mr. Eugene Lilley, Business Manager
Mrs. Cynthia Wyatt, Director of Admissions



Mrs. Jane Kanipe, Director of Financial Aid and Assistant to the President
Mrs. Madra Britt, Registrar



Ms. Cynthia Ball, Director of Development
Mrs. Jennifer Spiker, News Director



Ms. Janice Edwards



With other faculty and Administration members' help, events at Peace provide cherished memories. Dean Edwards, for example, often finds time to interact with the students by breaking out her shorts and tennis shoes for a game of basketball.

Dr. Helen C. Staples



Our time at Peace becomes more special because of the care and concern of these dedicated people. With their support and their expertise, we grow and mature in ways of which we can be proud. Thanks to them each Peace girl finds her own special place at Peace College.



Mrs. Polly Flowe, Alumnae Director
Ms. Liz Thurston, Director of Student Activities



Mrs. Sally Davis, Assistant Director of Admissions
Ms. Mona Hall, Admissions Counselor



Mrs. Cindy Seymour, Admissions Assistant



Faculty

The faculty of Peace College is a unique and special group of people. They genuinely care about the students as individuals and about each student's progress in their class. The professors offer office hours so students can feel free to call upon their teachers for additional help. This individual attention is what makes the time at Peace College a special period of learning.



*Mrs. Nancy Adamczyk, P.E.
Dr. Jean Bauso, English
Mrs. Margaret Black, Music*



*Dr. Sally Buckner, English
Mr. John Crossno, History
Mrs. Patricia Dale, P.E.*



*Dr. Emilie de Luca, French
Dr. Anne Fountain, Spanish
Ms. Martha Harrison, Business*





Because the classes are relatively small, students are able to ask questions freely in class. For instance, in math, students do not feel intimidated to stop the professor and ask questions. A great deal of class time is spent answering students' questions. The Biology classes at Peace are strictly lecture, but the students are able to ask questions. Lab also allows students to expand their knowledge.



*Ms. Ruth Hopkins, P.E.
Dr. Korrel Kanoy, Psychology
Mrs. Doris Kincade, Home Economics*



*Mrs. Joy Lopez, Math
Mrs. Trudie McGarvey, Biology
Ms. Lori J. Park, Sociology*



*Ms. Carolyn Parker, Art
Mr. Archie Ritchie, Math
Ms. Adair Robertson, Math*



The Fine Arts Department at Peace College has a lot to offer students. Ms. Virginia Vance, head of the Music Department, devotes a great deal of time to each of her students. Mr. Smith, skilled in voice and instruction, is also an asset to the Music Department. For students interested in piano, Mrs. Black is devoted to instruction of Piano. The English and Drama department of Peace also provides excellent opportunities for students. The students complete a Liberal Arts education at Peace by looking at Religion in a historical view point.



Mr. Richard Rottschaefter, Drama
 Mr. James Smith, Music
 Dr. Bes Spangler, English



Mrs. Linda Stevens, Business
 Dr. Robert Sturdivant, Religion
 Rev. George A. Thomas, Religion



Mr. James Tilley, P.E.
 Dr. Wayne Tyner, History
 Mrs. Lynn Usher, Business





Besides having an excellent faculty to enhance each student's stay at Peace, Peace has other services that provide excellent guidance. The Writing Center is a lifesaver for every freshman doing her first paper. The English faculty provide their assistance to all students who want help in all aspects of paper-writing. Peace students spend a great amount of time studying psychology, biology, chemistry, math, and English in the library. The librarians are very helpful for students doing research.



Ms. Virginia Vance, Music
 Dr. Janet Wester, English
 Dr. Johnnie-Marie Whitfield, Chemistry



Librarians

Mrs. Judy Williams, English
 Mr. James Wolfe, Biology



Not Pictured
 Mrs. Helen Phillips

Mr. Paul King
 Mrs. Barbara Hawkins
 Mrs. Helen Phillips

The Student Services department at Peace assists the students in many ways. Every student visits the infirmary at least once a semester for a cold or sore throat. The nurses are concerned about the students' welfare, and they continually check-up on the students. While the infirmary takes care of the students' health, the maintenance department tends to the health of the physical plant. The maintenance staff fixes all things that Peace girls can break. The Counseling Center guides students with the many important decisions they face while at Peace.



Student Services



Mrs. Connie Grant, Counselor
Mrs. Sarah Evans, Counselor
Mrs. Dawn Childers, Nurse



Mrs. Cindy Grant, Nurse
Mr. Tom Martin, Director of Food Services
Mr. Larry Griffin, Accountant



Mr. Paul Johnson, Supervisor of Maintenance
Mrs. Mary Vargas, Director of Housekeeping
Mrs. Cassie O'Neal, Assistant Manager of Food Services



Secretarial Staff

V S S C F F



The Secretarial Staff at Peace is truly the lifeline of Peace College. They take care of the behind-the-scene aspects that regulate the functions of Peace. Each office has a secretarial staff that carries out the duties necessary for that office. There are secretaries in Admissions, in the Registrar's office, in the Business office, in the Dean's office, and in President Frazier's office who handle the paper work that students received before they came to Peace and throughout their stay here.



*Mrs. Pamela Bond, Secretary to the President
Mrs. Verne Futrell, Assistant Accountant*



*Mrs. Nancy Kirby, Secretary to Alumnae Director
Mrs. Rebecca Leggett, Secretary to Business Manager
Mrs. Rachel Manning, Secretary to Dean of Students*



*Mrs. Hope Sawyer, Admissions Secretary
Mrs. Kathy Prince, Secretary to Registrar
Mrs. Cindy Stilwell, Secretary to Academic Dean*

The switchboard workers handle all incoming calls to Peace. A visitor can always tell when it is a holiday at Peace because the switchboard is bombarded with flowers. Every Peace girl impatiently waits a call from the switchboard saying that she has a caller. The security guards not only issue parking tickets, but also patrol the campus, making students' stay at Peace a safe one. Students buy miscellaneous items in the bookstore that gets them from one weekend to the next.



*Ms. Norma Winstead,
Development Assistant
Mrs. Nancy Weekman,
Admissions Secretary
Mrs. Kathy Williams, Admissions
Secretary*



*Ms. Karen Haulman,
Switchboard
Mrs. Dorothy Casey,
Switchboard*



Staff

*Mr. Neal Andrews, Security and
Safety
Ms. Mary Hill, Assistant
Director of Housekeeping
Mrs. Sallie Goad, Bookstore*



*Not Pictured
Ms. Mary Hill*





The Resident Directors of Peace have a lot of responsibility. They greet each incoming student with a smile and a helping hand. The Resident Directors have to make sure that all their girls are in on time every night. They make sure that the students unplug everything before going home on holidays. Resident Directors also assist the Resident Assistants with any problems they face. When students have work orders to be turned in, the Resident Directors have to report the problem to maintenance.

Polly Flowe has the responsibility of directing the alumnae affairs. One of the fun activities that she heads up is the Peace Phonathon to encourage annual giving from alumnae. Students have the opportunity to help Peace by not only asking alumnae for pledges but also updating alumnae files. There are two fun-filled weeks of phone calling in which the students compete for the greatest number of pledges and the largest number of promised dollars.

Resident Hall Directors



*Ms. Yvonne Casto, Main
Ms. Bea Roberson, Ross*



*Mrs. Jeannett Smith, Finley
Ms. Phyllis Grose, East
Ms. Cynthia Vargas, Blount
House*



CLASSES

CLASSES

CLASSES

CLASSES

CLASSES

CLASSES

CLASSES

CLASSES

CLASSES

CLASSES

CLASSES

CLASSES

CLASSES

CLASSES

CLASSES

CLASSES

CLASSES

CLASSES

CLASSES

CLASSES

CLASSES

CLASSES

CLASSES

CLASSES

CLASSES

CLASSES

CLASSES

CLASSES

CLASSES

CLASSES

CLASSES

CLASSES

CLASSES

CLASSES

Sophomores



Heather Nickersan Acasia



Roberta Charlene Addison



Amy Laura Allen



Donna Ann Allen



Elizabeth Jean Amelia



Laura Jean Ammons



Melissa Lea Bame



Carol Robin Barefoot



Sherry Gwyn Barham



Mary Kathryn Barrington



Jennie Grey Bierce



Laura Ann Bierce



Laura Leigh Bishop



Belinda Faye Blackwood



Julie Elizabeth Band



Karen Evette Bond



Sharon Evon Bond



Rebecca Diann Bowen



Kimberly Ann Bright



Caralyn Leigh Brock



Sheila Annette Brown



Patricia Ann Buck



Lisa Christine Cabler



Andrea Leigh Canady



Kimberly Joyce Capps



Geneva Ann Carlton



Amy Elizabeth Clark



Lisa Ann Clark



Mary Camille Corpening



Angela Michelle Courtney



Cynthia Lucille Davis



Sheila Kay Davis



Vonnie Lucille Dawson



Dawn Marie Dillon



Cynthia Gail Dixon



Anne Grace Doggett



Monica Anne Duncan



Mary Ellen Dunning



Katherine Mace DuPree



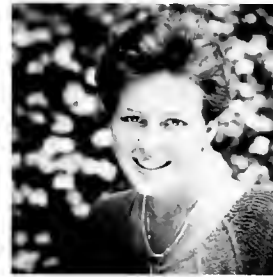
Darcy Ellen Dye



Tina Elizabeth Eakes



Donna Jeanne Edwards



Elizabeth Ann Edwards



Jill Lynette Edwards



Geri Laraine Ellis



Robin LaRae Elmore



Jennifer Lynn Engle



Virginia Anne English



Nancy Jill Falls



April Lynn Faw



Patricia Churn Fentress



Karen Ayn Flora



Tracy Elizabeth Fogarty



Carmen Suzanne Fowler



Danna Michelle Frazier



Rebecca Murray Frye



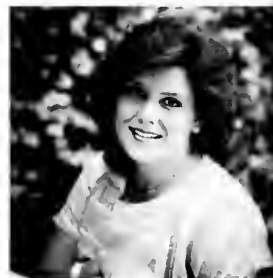
Tammy Cheryl Fullbright



Cheryl Kay Fulp



Mary Elliott Futrell



Elizabeth Shannon Garrett



Jennifer Lynn Gibson



Pamela Lee Gillikin



Patricia Olene Gloney



Alice Susan Gordon



Susan Jill Gordon



Donna Jeanette Gore



Phyllis Allison Grose



Sarah Smith Grubbs



Lorraine Salter Gupton



Rita Lynn Hamilton



Sherri Dawn Hastings



Kimberly Lynn Heath



Sarah Katherine Hickman



Deanna Leigh Holder



Margaret Hawkins Holding



Morgaret Elizabeth Hopkins



Margaret Lee Hughes



Frances Elizabeth Hunter



Susan Denise Huntley



Cheryl Leo Inman



Myra Leigh Jackson



Sheila Renee Jenkins



Jennifer Lynn Jewell



Billie Maria Jahson



Letitia Marie Johnson



Susan Abernathy Johnson



Susan Sherrard Jahson



Suzanne Johnson



Melissa Lane Janes



Suellen Kiff



Susan Hatcher Kincheloe



Elizabeth Anne Kivett



Marta Michelle Latta



Marcia Lynne Lee



Paige Lorraine Lemans



Kathryn Davis Leonard



Melanie Dee Leonard



Candy Denine Little



Jennifer Anne Long



Rhonda Gail Lang



Lisa Goodwin Lovvorn



Gina Maria Lowery



Elizabeth Elmore Lutz



Donna Elaine Lynch



Jeanne Ann Marvel



Andrea Elizabeth McBride



Liesl Lane McIntosh



Michelle Yvette McLean



Laura Benton McLeod



Jacqueline Marie Melvin



Ann Mary Michniak



Melodee Leigh Moody



Jan Margaret Moser



Brenda Cheryl Neel



Anne Garner Nelson



Jill Carolyn Nies



Ara Carolyn Pappendick



Kimberlee Ann Pennington



Christie Michelle Perkins



Angela Dawn Phillips



Jeanne Susanne Pistone



Leso Anne Pittmon



Frieda Grace Powell



Kimberly Lynne Qualls



Tanya Ann Quick



Elizabeth Elaine Reeves



Cynthia Dawn Register



Stephanie Joy Reynolds



Suson Freeman Riddle



Kimberly Anne Rist



Kimberly Dawn Roberson



Wyndi Alden Roberson



Stacey Michele Rotchford



Nicole Louise Rowland



Serena Hess Russoli



Rebecca Lynn Sandy



Melanie Gray Saunders



Catherine Scott Schenck



Kimberly Lane Schenk



Elizabeth Waring Sechrist



Paula Ann Sewell



Melissa Ann Sills



Karen Gray Sizemore



Lisa Michelle Skinner



Anne Tracy Slane



Amy Christine Smith



Elizabeth Lambertson Smith



Nancy Elizabeth Smith



Patricia Lynn Smith



Wendy Wade Smith



Cindy Alisa Spear



Shannon Rae Stamey



Laura Jane Stanley



Judith Dell Steen



Mary Elizabeth Stewart



Donna Lisa Stone



Caroline Elizabeth Stovall



Catherine Grant Strickland



Teresa Ann Strickland



Michele Marion Strong



Julia Wright Stuart



Bridget Dawn Sutton



Tracey Denise Sutton



Patricia Jane Taylor



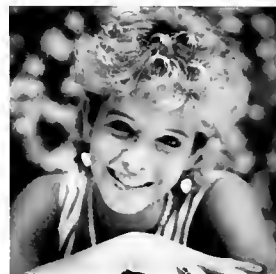
Charla Ann Thomas



Mary Leigh Thomas



Angela McQueen Thompson



Nancy Ann Thompson



Donna Lynn Torrence



Deanna Lea Vann



Cynthia Mae Vargas



Kathy Jo Vernelson



Angela Marie Wallace



Jeanna Elizabeth Ward



Dawn Elizabeth Waters



Catherine Elizabeth Watkins



Sharon Lynn Watkins



Dana Ann Watson



Sharon Renee Weaver



Charlotte Webb



Sherri Denise Wentz



Deborah Lillian West



Leigh Ann Wilder



Elizabeth Anne Wilkinson



Amy Elizabeth Williams



Pamela Rae Williams



Johnna Lynn Wilson



Tanya Ann Womble



Sandra Lynn Woods



Catherine Elizabeth Woolard



Sherri Ann Worley



Shawna Patricia Yeomans

Freshman



*Shari Lynne Alexander
Laura Jane Allen
Merri Catherine Amos
Patricia Ann Anderson
Wendy Sheryl Arnette*



*Julia Hanna Atkinson
Tyretta Lynne Averette
Elizabeth Pinckney Ballard
Kathy Lynn Bell
Sharon Ann Best*

Erika Lin Bishop
 Toni Michelle Bishop
 Sherrie Dawn Bissette
 Kathy Dawn Blanton
 Angela Michel Bondurant



Sherry Lynn Bridges
 Angela Louise Britt
 Misty Jo Britton
 Jan Caroline Broadway
 Ginny Lynne Brown



Jo-elle Littitia Brown
 Tracy Ann Brown
 Marga Somers Brumagim
 Billie Burney
 L. Paige Capps



Donna Elaine Carney
 Nareen Bridget Carrall
 Gregg Louise Casper
 Melissa Jane Clark
 Sherri Lynne Clark



LaTanya D. Clemons
 Kimberly Jean Coats
 Karen Denise Cnpeland
 Nilitah Katherine Cody
 Anna Marie Coleman



Barbara Lynn Crews
 Kelly Annette Crisp
 Karen Leigh Crutchfield
 Kelly Margaret Cunningham
 Elizabeth Dannette Daly





Marlou Renea Daneley
Davina Rae David
Cynthia Ruth Davis
Deborah Lynn Davis
Shirley Rochelle Davis



Elizabeth Susann Dawkins
Margaret Dawson
Kristine Kelly Despres
Paula Brooks Dickerson
Dawn Susan Distelcamp



Debra Ann Dixon
Shannon Theresa Duffey
Katie Maria Dukeshire
Kelly Rae Durham
Mary C. Eddy



Melodie Fay Edwards
Elizabeth Anne Eitel
Jane Elizabeth Everett
Amy Lou Farlow
Tammy Louise Farmer



Vivian Louise Fish
Beatrice Diane Flowers
Joan Elizabeth Floyd
Jennifer Wingate Forbes
A. Michelle Formyduval



Martha Ruth Fountain
Mary Sue Franklin
Kimberly Jayne Freeman
Kristine Rene Freshour
Anna Lee Gallagher

Holly Michelle Gorrison
 Kathy Truitt Gilgo
 Martyn Faye Gillespie
 Cynthia Marie Grey
 Laura Elizabeth Griffin



Jennifer Carol Griffith
 Cherie Ann Haislip
 Kimberly Lynne Hall
 Abbey Cherry Hompton
 Julie Ann Hordee



Rebecca Murry Harrelsan
 Laura Meador Harris
 Mary Laura Harris
 Danielle Leigh Hassler
 Cissy Hawkins



Karen Elizabeth Heath
 Lisa Maria Hester
 Hollis Lee Heuson
 Jone McIntyre Hill
 Kimberly Dawn Hill



Melissa Ann Hobbs
 Demetrae Lynn Holfield
 Jonice Golbraith M. Holland
 ToyRett Buie Hood
 Rebecca Lynn Hard



Blair Anne Hornick
 Deborah Lee House
 Stephanie Fuller Hause
 Toni Lynn Hughes
 Down Marie Ikner





Kim Diane Jackson
 Jennifer Jarvis
 Sorah M. Johnston
 Amy Lee Johnson
 Jane Woodbury Johnson



Judith Becker Johnson
 Miriam Louise Johnson
 April Elaine Jones
 Charlotte Luvette Jones
 Mary Catherine Jones



Joyce Elizabeth Kaylor
 Kimberly Elaine Keeling
 Kim L. Kelly
 Sharon Leigh Kidney
 Leslie Lee King



Lorri Fleming Kiser
 Jennifer K. Lail
 Elizabeth Sawyers Lamb
 Anna Walston Lane
 Anne Marie LaPierre



Cheryl Ann Lawson
 Robin Lee
 Susan Elizabeth Lekson
 Kimberly Paige LeMaster
 Mary-Margaret Lennon



Deborah B. Leong
 Cheryl Alice Lewis
 Amy Jean Lilley
 Sherri Lee Linker
 Christine Lucos

Marguerite Elizabeth Marsh
 Susan Elaine Marshall
 Angela Marie Mason
 Dana Marie Mason
 Reine Dawn Mason



Lamara Ann Massey
 Jill Annette Mauldin
 Tamara Dawn Maxbauer
 Virginia Lynne Maxwell
 Corinna Marie Mayer



Amy Elizabeth McLaughlin
 Camilla Ann McLean
 Melanie Grayce McLean
 Gina Kay McMasters
 Carmen Michelle Metts



Lisa Jane Mickschut
 Susan Ashley Miller
 Melissa Bennett Mizelle
 Carol Lynette Money
 Audrey Annette Morris



Susan Ann Morris
 Angela Dale Marton
 Carrie Frances Moseley
 Martha Shannon Mucci
 Mary Shannon Murphy



Deborah Kay Myers
 Elizabeth Neel
 Jill Annette Newsome
 Lou Ann Nobles
 Frances Michelle Nardan





Amy Jayce Nordon
Anne Lamb O'Harrow
Mary Hart Oswald
Laurie Beth Outlaw
Anglea Jean Overton



Wendy Leigh Owens
Mary Elizabeth Pace
Lisa Marie Palmieri
Sherry Nyla Parrish
Barbara Lynn Pearson



Brandy Elizabeth Perkins
Dawn Michelle Perry
Cynthia Alpha Pinston
Margaret Melin Plunkett
Halli Anne Poole



Dora Price
Tammie Michael Price
Jackie Michelle Puryear
Patti Ann Quinn
Ginger Lyn Rimmer



Elizabeth Ann Rinehart
Melinda Lou Rinehart
Kris Ellen Rivenbark
Amy Lynn Robbins
Tonya Ramel Robinsan



Toni Ann Rockow
Linda Beth Rosa
Ingrid Elizabeth Rass
Amy Ruth Rowland
Karina Anne Sanders

Tracey F. Sevilla
 Kelly Ann Shive
 Susann Leanne Slaughter
 Elizabeth Leigh Smith
 Kimberly Lynn Smith



Mary Virginia Smith
 Nita Maney Smith
 Soma Leigh Smith
 Nancy Kennon Sneed
 Candace Ruth Somers



Kathleen Robert Somers
 Mylena Rhea Spangler
 Lisa Ann Spears
 Angela Denise Stone
 Annette Denise Stone



Kathryn Morgan Stockett
 Patricia Sue Strickland
 Sandy Glen Stroud
 Angie Sach
 Sara Elizabeth Sutton



Sylvia Nani Swertfeger
 Marian Lorraine Swindell
 Leigh Ellen Sykes
 Kimberly Ann Taibi
 Tracey Lee Tanner



Joy Elaine Taylor
 Holly Jo Temple
 Jacqueline Carla Thomas
 Jami Alicia Thomas





*Carol Elaine Thompson
Robin Mary Thompson
Elizabeth May Trevathan
Wendy Patricia Turner
Tamala Faith Twyman*



*Kimberly Lynn Vaughan
Tonja Elizabeth Venable
Kimberly Kay Walker
Rhonda Lou Wallace
Molly Lynn Ward*



*Virginia Wooten Ward
Amy Elizabeth Warner
Janet Elizabeth Warren
Elizabeth Ashley Wasson
Cynthia Carol Webb*



*Mary Margaret West
Angie Kay Whaley
Becky Anne White
Kelli Lynne White
Jane Connell Williams*



*Melody Faith Williams
Teresa Anne Williams
Susan Lee Wimberly
Suzanne Bea Winslow
Beige Woodard*



*Lynn Ann Woodard
Melinda Lee Woods
Lynda Kathryn Wrenn*

DORMS

DORMS

DORMS

DORMS

DORMS

DORMS

DORMS

DORMS

DORMS

DORMS

DORMS

DORMS

DORMS

DORMS

DORMS

DORMS

DORMS

DORMS

DORMS

DORMS

DORMS

DORMS

DORMS

DORMS

DORMS

DORMS

DORMS

DORMS

DORMS

DORMS

DORMS

DORMS

DORMS

DORMS

First Ross South



First Ross North

"Blessed are they who have the gift of making friends, for it one of God's best gifts. It involves many things, but above all, the power of going out of one's self, and appreciating whatever is noble and loving in another." (Thomas Hughes)
The small, loving atmosphere found at Peace is what makes it so special. Friendships made here usually last a lifetime, and what is a better way to start a friendship than to live with someone?





Second Ross



Third Ross



Dorm life is a special part of college life. At Peace, the kindling of these friendships begins on move-in day. How many people will ever forget the sophomores lined up outside the dorms ready to carry all your luggage up all those steps? And once all of your boxes, crates, suitcases, and bags of "necessities" for college life have been brought up to your once-lonely dorm room, you begin the tedious task of unpacking and arranging everything.

Second East



Third East



But once again, a friendly voice asks, "Need any help?" The tedious task becomes fun with a helping hand. Soon, as the two of you become lost in a world of laughter, you both realize you both have the same fears — "Will I make any friends? What will college be like?" Suddenly, someone else wanders in. "Could you tell me what time — Debbie! I didn't know you were on this floor! Who is your roomie? How was your summer? You'll never believe what I heard . . ." Thus the gossiping begins,

Guest Quarters



Day Students



Blount House



and time is lost among hours of reminiscing.

After classes begin, we learn how important studying is, but even amidst studying for BIG tests and writing papers, we still have time for study-break to walk to Krispy Kreme or Hardee's with friends. But, once serious studying begins, we prop up against our dependable "husbands," grab a bag of chips or a bowl of popcorn and a Tab or Diet Coke, and bury our heads in the books.

Second Main



Third Main

How many people will ever forget the mad race against late time to beat curfew from the ever-so popular Main balconies? Those balconies have withstood water fights, private talks with friends who lend "shoulders to cry on," girls cheering nervous Frat pledges serenading their favorite girls' school, and RATE-A-GUY, a favorite past-time of the girls.

Although Peace has been called a "suitcase college," life does exist on the weekends at Peace. A common sight on



Fourth Main



Saturday mornings is groups of girls gathered around the tables in Ross basement either gossiping or studying while waiting on laundry to finish. "Jill, I had the best time last night at ACC, and you will never guess who I saw . . . YES! Mr. SAE himself!!! He asked me to their formal . . . Of course I said I'd go! What did you do last night? I bet you broke every rule in the Handbook!"

As exam week approaches, so does the looming figure . . . our lovable RA.

First Finley



Second Finley

"During exam week, study hours will be observed strictly. I have my warning sheets ready. But, enough of that, good luck on your exams!" Why would anyone with such little compensation want to put up with so many hassles? "I love my girls"; it's that simple," one RA commented. The RA is someone to confide in when times get tough, when the waters get rocky, or when we've had a spat with our roommate. Even though she may gripe about the noise level, she's



Third Finley



our friend . . . she's our RA.

The year is almost over, and graduation is just around the corner. We fill all those boxes, crates, and suitcases, as we prepare to go home, but those pictures of home have been replaced by mementos of two wonderful years at Peace. "You know, Lu, I'm really going to miss this hole in the wall next year. I don't even want to leave . . . if Dean Edwards had been a fly on the wall-man, oh man . . ."

SPORTS

SPORTS

SPORTS

SPORTS

SPORTS

SPORTS

SPORTS

SPORTS

SPORTS

SPORTS

SPORTS

SPORTS

SPORTS

SPORTS

SPORTS

SPORTS

SPORTS

SPORTS

SPORTS

SPORTS

SPORTS

SPORTS

SPORTS

SPORTS

SPORTS

SPORTS

SPORTS

SPORTS

SPORTS

SPORTS

SPORTS

SPORTS

SPORTS

SPORTS

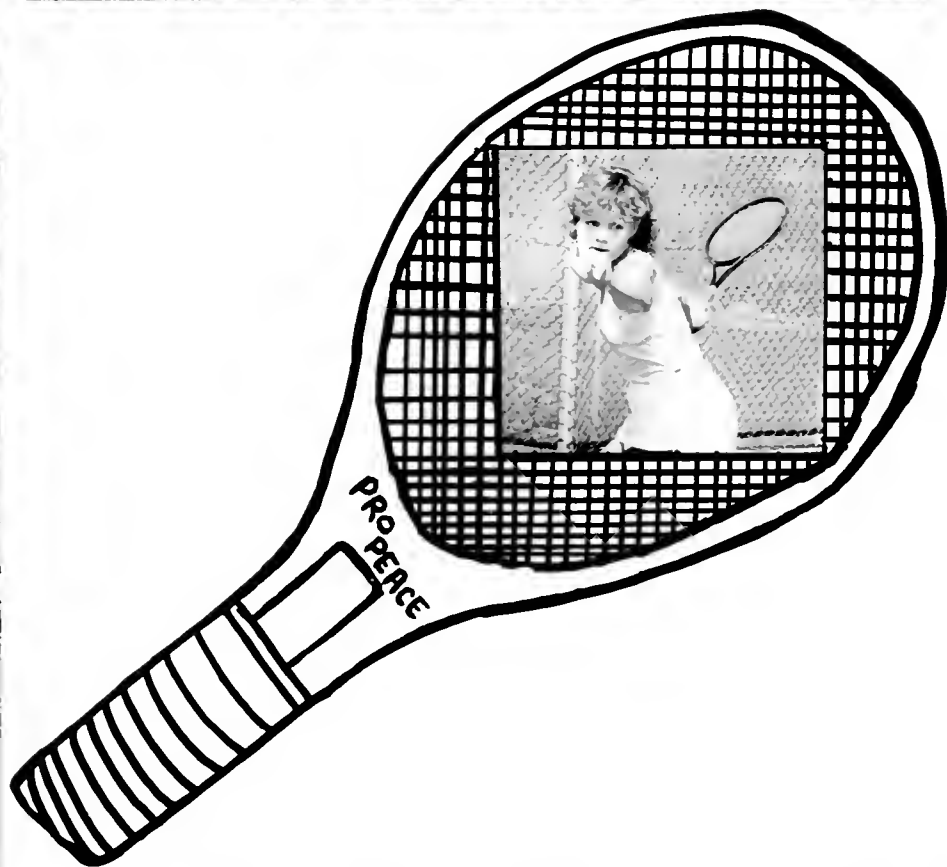
Tennis

Giants Serve Up A Winning Season

The Peace College Fall tennis team up an impressive 20-8 overall record for their 1985 season. The Giant squad posted this outstanding record by being composed of some of the best female tennis players within North Carolina, South Carolina, Virginia, and Georgia. The squad consisting of five freshmen and three sophomores served up a magnificent record that is sure to be one of the greatest in Peace College history. The determination of this strong-willed squad made them overpower opponents such as East Tennessee State, East Carolina, Appalachian State, Radford University, and Davidson College. The tennis team consisted of talented young women such as Anna Coleman, Kim Pennington, Kim Vaughan, Nita Smith, Elizabeth Lutz, Katie Dukeshire, Tracy Fogarty, and Sharon Kidney. With a line up as strong as this, the Peace College Fall tennis team was a definite challenge to all of their opponents.

Also, to maintain the prestige of tennis abilities, the team finished sixth in the 1985 NJCAA Women's Tennis Championship in Ocala, Florida. This squad developed their winning season under the leadership of fourth-year coach, Ruth Hopkins.





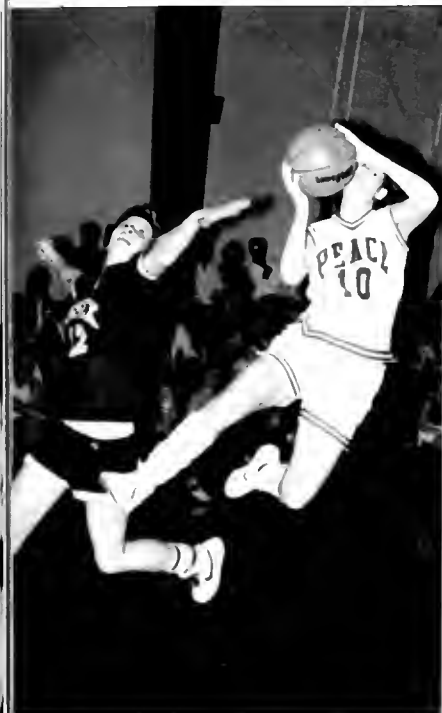
BASKETBALL

Giants Soar To New Heights

The Peace Giants, led by five experienced sophomores and six freshmen, opened the 1985-'86 season strong, rolling off sixteen wins after an initial loss. Through hard work at strenuous practices and enthusiasm during the games, the team defeated 18 of their opponents while falling only to three.

Three starters returning from last year's squad are Laura Stonley, Jeannie Bierce, and Jeonne Marvel. These three girls are key leaders and are expected to provide a lift for their teammates. In addition to these sophomores, twins, Karen and Sharon Bond, return this year to provide speed in the back court. Combined with these sophomores are two freshmen starters: LaTanya Clemons and Kim Kelly, and four more strong, experienced freshmen: Karen Copeland, Toni Lynn Hughes, Korina Sanders, and Jenny Steele. It is evident from watching these young stars play that Peace definitely doesn't lack depth; Coach Tilley utilizes play from all of his squad. Last year, Coach Tilley stated, "Positive strides have been made this year, and the future of Peace College basketball looks very bright." Peace basketball is definitely much brighter and has soared to new heights.



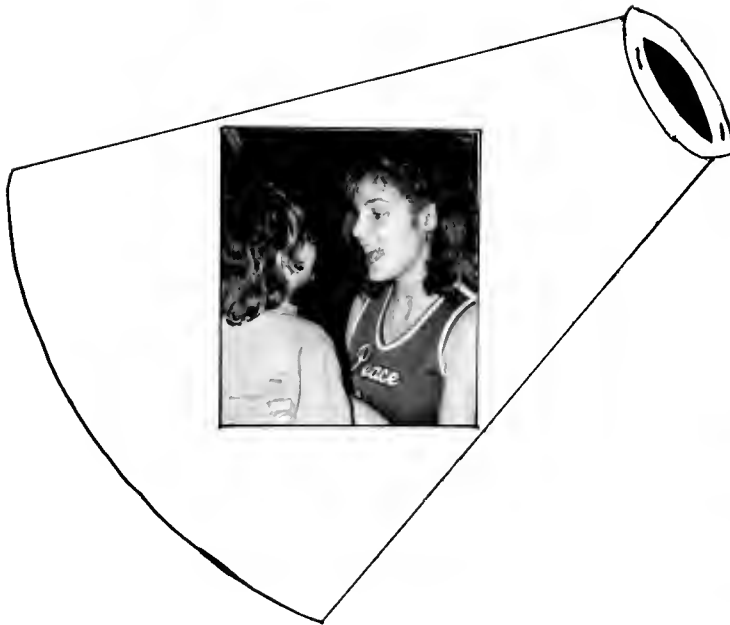


CHEERLEADERS

We've Got SPIRIT!

Although this year's squad was small in number, only five members, they were still able to elevate spirits and rally the crowd during basketball games. The squad was limited to ground stunts but engaged in some energetic cheers under the leadership of the captain of the team.

As in previous years, the cheerleaders were required to dress out and attend the Giants' home basketball games. The girls also energetically boosted the spirits of the crowd and cheered the basketball team on to numerous victories.



Dancing The Night Away

The Peace Pacers are a performing jazz troupe and are a part of the Department of Physical Education. Membership into the group is through audition only. The group's purpose is the development of competent performers through studying dance in every form and through a variety of performances during the year.



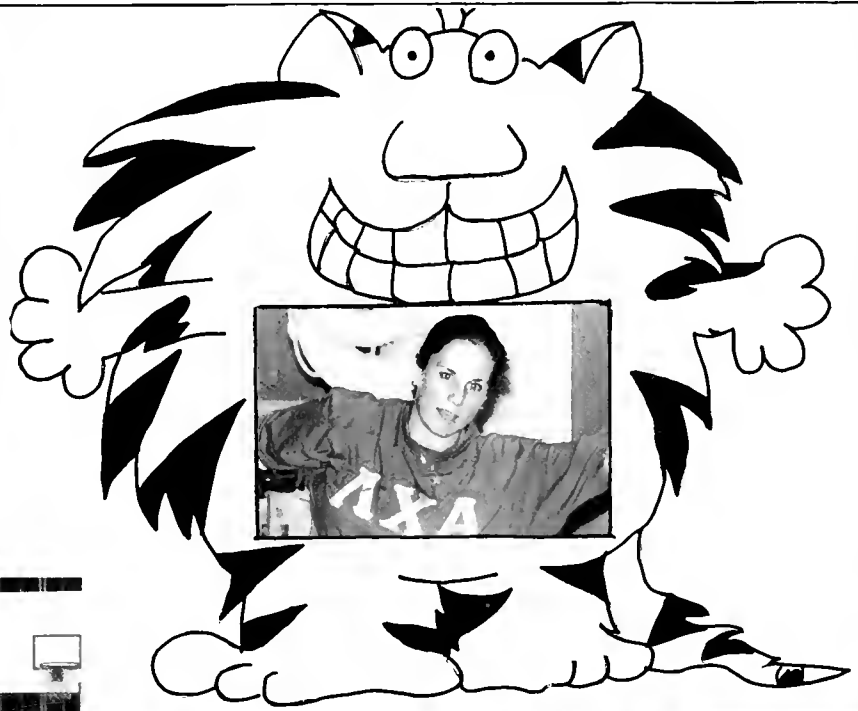
INTRAMURALS

Let's Play

One of the most enthusiastic groups at Peace College is the Intramurals Association in which the officers emphasize the fact that those who can't play make the games the most fun. The intramurals at Peace offer a great deal of fun and excitement as well as togetherness. The activities of this year's program included everything from softball, UNO, basketball, badminton, Ping-pong, tennis, soccer, bowling, spades, and volleyball to the adventures of hitting the ski slopes. So, by examples such as these, one can see that the Student Body has a lot to get involved in.

Most of the sports in intramurals are dorm competition, but the team sports are always a favorite of the students. Some of the Annual Intramural Activities included the Annual Powder-Puff Football games during Parents' Weekend and the Haunted Run. The powder-puff game ended in a usual sophomore win. The Haunted Run took place in October, 1985 and was a huge success this year. The participants included the student body as well as several athletic Faculty-staff members, and even Dr. Bauso's darling baby daughter was strolled through the 2.5 mile track. The participants of the race received t-shirts with the ever-popular intramurals monsters, which were designed by Tanya Quick. First place went to Lorinna Sanders, while Cyndi Davis took last place. With exciting experiences as these throughout the year, the entire Peace family can get involved!





ORGANIZATIONS
ORGANIZATIONS
ORGANIZATIONS
ORGANIZATIONS
ORGANIZATIONS
ORGANIZATIONS
ORGANIZATIONS
ORGANIZATIONS
ORGANIZATIONS
ORGANIZATIONS
ORGANIZATIONS
ORGANIZATIONS
ORGANIZATIONS
ORGANIZATIONS
ORGANIZATIONS
ORGANIZATIONS
ORGANIZATIONS
ORGANIZATIONS
ORGANIZATIONS

ORGANIZATIONS
ORGANIZATIONS
ORGANIZATIONS
ORGANIZATIONS
ORGANIZATIONS
ORGANIZATIONS
ORGANIZATIONS
ORGANIZATIONS
ORGANIZATIONS
ORGANIZATIONS
ORGANIZATIONS
ORGANIZATIONS
ORGANIZATIONS
ORGANIZATIONS
ORGANIZATIONS
ORGANIZATIONS
ORGANIZATIONS
ORGANIZATIONS
ORGANIZATIONS
ORGANIZATIONS

PEACE STUDENT GOVERNMENT ASSOCIATION



Elizabeth Edwards — Secretary



Jennifer Engle — Parliamentarian



Need a helping hand?



"Jengle" takes a break from Econ.

"Could I have your attention, please? Our meeting will now come to order," Lori states, as a room full of sleepy officers chatter about the previous weekend. Thus begins the Tuesday morning student government meetings in the boardroom. "Geneva, do you have any news? How about you, Dana? Kathy, is there any PSRA news? How about the big F-U-N badminton tournament?"

The Peace Student Government Association (PSGA) encourages student involvement in the various campus activities. Student involvement is one of the major reasons for success at Peace; the more students who become involved, the closer the classes become. During PSGA meetings, which anyone may attend, the student leaders, along with Dean Edwards and Liz Thurston, discuss different activities which affect both the students and the College. Student government sponsors such activities as freshman orientation, the Fall Dance, the Christmas Chain, Stunt Night, the Spring Fling, the Spring Dance, and the newest activity, Fall Fest, a week of class competitions before the Fall Dance, which student government hopes will become a tradition at Peace.



Lori Gupton — President



Jeannie heads toward the BIG Red Springs.



Paige Lemons — Day Student Representative

Donna Torrence, Shannon Garrett, Tammy Fullbright, and Jenna Ward

Jeannie Ammons — Vice President



Smile pretty for the camera, Dean Edwards.



Write that English paper, Dana!



Lori, you can't avoid the camera!

*PEACE
STUDENT
CHRISTIAN
ASSOCIATION*



*PSCA President, Geneva Carlton
PSCA Vice-President, Lisa Lovvorn*



*PSCA cabinet shares a laugh during a meeting.
PSCA cabinet*



The Peace Student Christian Association, an organization of fun-filled fellowship, encourages the development of Christian character among all members of the Peace group. This organization provides students with the opportunities for worship on campus and provides students with what is equally important, opportunities for Christian service in the off-campus community. Along with the P.S.C.A., the administration and P.S.G.A. help maintain Christian standards of living in all phases of college life.

Some of the ways the P.S.C.A. helps promote this Christian character are with the following activities: PEANUT WEEK, which creates new friendships; STUDENT-FACULTY Picnics, which strengthen student-faculty relationships; VOLUNTEER PROGRAMS, which provide students with the opportunities to help "outsiders"; BIBLE STUDIES, which creates a better understanding of the Bible; and most importantly, the Big Sister/Little Sister Program, in which a sophomore becomes a caring Big Sister to one or more freshmen. Also, the P.S.C.A. provides students with the opportunity for worship and service. Some service and worship projects are Thanksgiving Baskets, Christmas Toys, Holy Week, Religious Enrichment Week, and Holiday Candlelight and Communion services.

As President and Vice President of this organization, we have grown closer to God, and we hope that we have encouraged others to become better Christians. Along with the help from the supporting cabinet, we hope that the P.S.C.A. has gained respect from students and faculty. Our main goal this year was to make the P.S.C.A. one of the best organizations at Peace College. For this reason, our motto will be "IN ORDER TO ACHIEVE, YOU HAVE TO BELIEVE!"

Thanks to all of you for making the P.S.C.A. what we would like it to be.

Love,
Geneva Carlton
Lisa Lovvorn



Mr. Thomas says something amusing during Wednesday's chapel.



An unusual scene; it must not be Wednesday.

Lisa and Jeanna discuss PSCA business.

PEACE STUDENT RECREATION ASSOCIATION

*Intramurals tomorrow night, Darcy.
We're a team.*

Jenny Gibson — Vice-President



Laura Stanley — Secretary



Officers join the fun.



Kathy Vernelson — President



SOPHOMORES DO IT RIGHT!

PARTICIPATE! DON'T SPECTATE!
RECREATE! ASSOCIATE! The Peace Student Recreation Association (PSRA) sponsors different intramurals throughout the year. This year the BIG rivalry in softball was between Ross and Main, captured here by Jenny Gibson.

Championship Chatter

*It was the final softball game.
 The girls were filled with glee.
 The teams to meet were Ross and Main.
 Both hoped for victory.
 The girls from Ross let out a cheer.
 To know they'd have last bat.
 The girls from Main were filled with fear.
 Ross was sure of that.
 The first three innings quickly passed.
 And neither team could score.
 Then finally in the fourth at last.
 Ross hit the ball and more.
 As Main went up to bat they knew
 This chance would be their last.
 The tension mounted, grew and grew.
 They had to make the runs and fast.
 Main quickly brought the score to nine,
 And Ross began to sweat.
 But then three outs gave them the sign.
 They hadn't lost it yet.
 With two outs and bases full,
 Main knew they had to hold.
 The batter on her hat did pull,
 Looking mighty bold.
 The pitcher pitched the ball with flair
 And made the batter swing.
 And as the ball sailed through the air,
 A win for Ross did ring.
 Now Main I know that's not quite right,
 But give a poet her dues.
 Its no fun of truth to write.
 Especially when you lose.*



Tanya Quick — PSRA Assistant



GO, Stan, GO!!!



Kathy, are YOU afraid of the Killer Hill?

Honor Court

A famous author once said, "Folsehood is cowardice, truth is courage." This statement could not be more evident in a college community; going away to college for anyone allows new freedoms, but responsibility comes with any new freedom. This newly found freedom is often difficult for freshmen to deal with. One of the freedoms present at Peace is the choice of honesty; the Honor System, which is an essential part of life here at Peace, is based on the personal integrity of each student. The success of our Honor System is the responsibility of every girl on campus; this responsibility cannot be taken lightly.

The success of the Honor System on a campus such as ours relies upon each individual's character. Honesty must be a daily occurrence, not just in front of the faculty or administration, but in the classroom, on the basketball and tennis courts, in the dorm, or even off campus. Walter Lippmann, in *A Preface to Morals*, states this idea well:

He has honor if he holds himself to an ideal of conduct though it is inconvenient, unprofitable, or dangerous to do so.

Each individual's personal ethics dictate the manner in which she reacts to everyday situations. Reacting in an honorable manner can create conflicts with friends, but making the right decision gives one pride.

The responsibility to uphold and cherish the ideals of the Peace honor code is ours the moment we say our pledge and sign our names.

Dana Watson



Kathy Vernelson, Lori Gupton, Dana Watson, Michelle McLean, Geneva Carlton



Are PSGA meetings THAT interesting, Michelle?



Another picture Dana?



You may be excused, Lori.



Dana Watson — President



Will your room EVER be clean, Dana?



Michelle McLean — Secretary

Sophomore Class Officers

The Sophomore officers have won the trust and admiration of their classmates, who depend upon them to take care of the class business and to represent them well. Sophomore officers take special care to make the year special for those whose time Peace is speeding by so fast.

Officers must maintain a 2.0 grade point average in order to hold their positions. Eligibility is determined at the end of each semester. Usually, class officers are chosen from serious, diligent students who are happy to serve their friends and to look after their interests.



Paula Sewell — Vice-President



Something Funny, Paula?



Raygina Lentz — President

Are you awake, Corinna?



Freshmen Class Officers

The Freshman officers are students who have made a name for themselves in a short while, for they are elected during their first semester at Peace. They are eager to provide leadership and do their jobs with great zest. These girls are gregarious and energetic and are usually well on their way to other important leadership roles.

Freshmen officers have a big job in looking after the interests of their class, especially in the many contests between sophomores and freshmen. Yet they keep class spirit high and give all activities their best.



Billie Burney, Tracey Tanner, Corinna Mayer



Freshmen Spirit

Sigma Delta Mu

Sigma Delta Mu is a National Spanish Honor Society for Junior Colleges. To be eligible for membership, a student must have an overall GPA of 3.0, maintain a B in Spanish, and be genuinely interested in the Hispanic culture. Members sponsor an annual Christmas party and the International Food Festival. The members enjoy periodic dining at Spanish restaurants in the area.

Shannon Garrett

"Sigma Delta Mu says 'Queso!'"

Phi Theta Kappa

"The old Phi Theta Kappas' still at the head of the class."

Phi Theta Kappa is a National Honor Fraternity for Junior Colleges. Peace College's chapter is the Gamma Phi chapter. Tapping ceremonies are held semi-annually to invite into membership those full-time students in the upper ten per cent of the class who show good citizenship qualities. Second semester freshmen must have a 3.7 grade point average and sophomores a 3.5 cumulative GPA to be considered for induction. A formal ceremony is held in the spring to induct all newly invited members. To remain in good standing, members must maintain a 3.3 GPA. The members of Phi Theta Kappa offer a free tutorial service to fellow Peace students.

Sherry Wentz



Marshals

The marshals are the nine students who have the highest grade point average. They are chosen in the second semester of their freshman year, based on work complete during their first semester at Peace. The marshals serve at such functions as baccalaureate, graduation, and convocation.

"The Marshals, stepping up even further at Peace."



Daughters And Granddaughters

The Daughters and Granddaughters Club is sponsored by Mrs. Polly Flowe. Under her leadership, the club enjoys many activities which include raising money for the scholarship fund and decorating the Christmas tree in Main parlor. Members include those Peace students whose mothers, grandmothers, or great-grandmothers graduated from Peace.

Lisa Skinner

"Daughters and Granddaughters keeping the Peace generations going."



Resident Assistants

"Everyone please take your seat!"

Being a Resident Assistant requires commitment and hard work, but it can be one of the most rewarding positions on Peace campus. Each Resident Assistant is in charge of approximately twenty-five girls. Her job is to pass information to these girls, handle any floor problems that arise, and maintain a quiet atmosphere. Resident Assistants are also responsible for organizing activities such as the Dating Seminar, 'orm parties, and educational programs. One advantage of being an RA is the opportunity to create new friendships. Also, the group gets to know RA's from nearby campuses, and they get more involved in Peace activities. Although the responsibilities can be quite a burden, the girls' appreciation, expressed either through words or actions, makes it all worthwhile.

Kim Qualls



"Goofing around"



"Welcome to Peace, Freshman, right this way."



*Darcy Dye — Chairperson
"Even RA's need a break sometimes!"*



BIBLE STUDY

Bible Study is a group of students who meet once a week for a time of fellowship. The group meetings consist of discussions about problems and concerns which the students may have, and also discussions of prayer concerns and misunderstandings which the students share with each other. Bible Study offers students a chance to meet informally in a group and learn more about their Christian religion.

Special friendships made through Bible Study.



The Bible Study gang poses for the camera.

Bible Study once again posing for the camera; just what do they really do, model or study?



Blood Drive

The Blood Drive at Peace College, organized by the Peace College Christian Association, is an important event because it allows students to donate their blood to the Red Cross, and help to save many lives. The Red Cross was in much need of blood, and because of the generosity and caring of Peace students, the greatest amount of blood was donated this year.

Lisa and a Red Cross nurse help keep the Blood Mobile a smooth, flowing process.

Is she dead or just giving blood?



Jeannie Ammons begins the brave blood donating process.



Circle K

Circle K is the largest collegiate service organization. Its membership is open to all college students who are willing to provide assistance to the surrounding community. Members seek to help those less fortunate families who need assistance and cheer. At Thanksgiving, Circle K collects canned food for the needy. At Christmas, Circle K collects toys to delight and surprise many small children whose stockings may otherwise be bare on Christmas morning. Members find joy in being of service to others. They also enjoy participation in dinners and conferences for Circle K members.



"Circle K, small but productive."

Choir

With music so ably directed by Mr. James Smith, the Peace College choir sing for Chapel services each Wednesday. In their bright green robes and with their cheerful, well-trained voices, they add much to the worship service. On special occasions, certain choir members will perform solo numbers for everyone's enjoyment.



Mr. Smith, Choirmaster

The choir always ready with a song.

Chamber Singers

The Chamber Singers are fourteen talented students who must audition before they win a coveted place in the group. Many of these girls are at Peace on a music scholarship. Each week they give a great deal of time to practicing and learning new music.

In the first semester they usually perform at least once at the First Presbyterian Church in Raleigh. During second semester they journey to other churches in North Carolina to share their music. They also sing special numbers at graduation.

The Chambers sometimes visit convalescent homes to bring cheer to the sick. At other times they may sing for weddings in Peace Chapel or at special activities in the community.

Chamber Singers

Peace Times

The Peace Times Staff

The Peace Times newspaper underwent many drastic, but advantageous changes this year, and became a magazine in style, content, and layout. It also became more personal and creative. We decided to write about people, places, and things that apply solely to Peace College students, faculty, and staff, yet keep our readers in touch with the world and society as well. Like the newspaper, the staff was reconstructed by changing from four editors doing everything for the newspaper, to five editors specializing in different areas, but unifying and agreeing on the product in the end. For example, I was the Editor-in-Chief, which means that I was responsible for making assignments and making sure that all work was completed and went smoothly. Dawn Dillon and Leigh Brock were the layout editors, and they constructed the design for every newspaper. Susan Riddle and Donna Edwards were the copy editors who collected, screened, edited, and returned copy to be published. We also had photographers Judith Steen and Sandy Stroud, innumerable writers, and Tammy Taylor, our artist. But our success would not have been as great if we had not had Mrs. Jenny Spiker, the News Director, to guide, advise, and add her input to every meeting, decision, and paper. She taught us the skills that were necessary for efficient, interesting, and professional product and allowed us to experiment with our own creative styles.

Ann Doggett



The Peace Times Editors — Ann Doggett, Dawn Dillon, Donna Edwards, Leigh Brock, and Susan Riddle.



Ann Doggett — Editor-in-Chief

Prism

The Prism staff gives Peace College students an opportunity to grow through creative writing. The staff kept busy this year by promoting literary growth on campus through the publication of the college's literary magazine. The Prism staff consists of a group of students who annually publish the magazine, and also plan and host Cider House. The staff sponsors a contest for the submission of entries for publication. For each of the two categories, poetry and prose, three winners are selected for cash prizes. Cider House is an evening of literary enrichment in which one locally renowned guest author reads excerpts from his or her most recent publication. Also, students and faculty members read a few favorite poems or journals.

Donna Edwards



Prism staff



Dr. Bauso — Faculty Representative

LOTUS

In addition to enthusiasm and creativity, producing a yearbook takes a great deal of hard work and determination. When the finished product arrives in April, everyone is thankful that all the hard work has paid off, and the yearbook becomes a treasure which will hold special memories for years to come.

No matter how hard the staff members work, the editors always fear not meeting a deadline. Co-editor, Dana Watson, describes this fear in the following poem:

Such Is the Life

Desperation hits as the clock
Strikes twelve, and the deadline nears.
The typewriter keys fly as the keyboard
Is oitacked by distraught typists.
Frantic editors rush around the room,
Checking this and checking that.
Layouts lay strown about the
Publication room,
Both complete and incomplete.
"Artboard, we need more artboard!"
"Where's the artboard for pages 50 and 51?"
"Do we have all the copy?"
"Is there too much copy on page 75?"
The quest continues, and the time
Draws nearer to five.
With the room all in disarray,
A panic overcomes the editors
As they search for pictures and
Picture tabs.
Once all the pictures are cropped and
Labeled, the tremendous task of
Checking the precious contents off begins.
"Captions, where are the captions?"
"Where is the box, the tape, the
Packaging labels?"
"Will we survive?"
As the last treasure is laid in the box,
The mad dash for the post office
Begins, and the editors begin to relax.
But, upon arrival, they realize
They had not checked the clock —
The time was 5:05.

Although a situation like this one would be an editor's nightmare, we, as a staff, have been fortunate enough not to have it happen. Each of us on the 1986 Lotus staff hopes that this year's book has captured the special memories both in writing and on film, and we hope that when you look back at the yearbook in twenty or fifty years, you will remember the good times we shared at Peace.





Opening — Rita Hamilton, Denise Huntley, Dana Watson
Division — Rita Hamilton, Denise Huntley
Faculty — Shannon Garrett, Lee Hughes, Laura McLeod
Classes — Rita Hamilton, Denise Huntley
Dorms — Rita Hamilton, Denise Huntley, Sherry Parrish, Dana Watson
Sports — Lynn Woodard, Dana Watson
Organizations — Susan Johnson, Dana Watson
Features — Michelle Nordan, Tanya Quick, Kim Rist
Directory — Kim Rist, Dana Watson
Closing — Denise Huntley, Rita Hamilton, Dana Watson
Ads — Kim Byrd, Cindi Davis
Typing — Patricio Anderson, Dawn Ikner
Art — Debbie Hause, Tanya Quick, April Jones
Photography — Lynn Woodard, Kathy Bell, Melody Williams
Advisors — Janet Wester, Liz Thurston
Other photographers — Hugh Cashion, Audrey Ward

FEATURES
FEATURES
FEATURES
FEATURES
FEATURES
FEATURES
FEATURES
FEATURES
FEATURES
FEATURES
FEATURES
FEATURES
FEATURES
FEATURES
FEATURES
FEATURES
FEATURES
FEATURES
FEATURES
FEATURES
FEATURES

(rt.) Freshman Nancy Sneed and her mother discuss college life

(below) The "Mean Dean" sets a new style for refs



(above) Kathy and the "Verns" enjoy a delicious Peace Picnic

(rt.) Lisa Trevathan relaxes with her mother



Parents' Weekend

As the whirling college life can often cause students to lose touch with home, Peace sets aside a special weekend for the family. Parents' Weekend, Sept. 27-28, gave parents a chance to see their daughter's new home and catch up on the new events in her life. Parents first attended abbreviated classes where professors described the class and how much they enjoy teaching each girl. Then the parents were off to a big lunch, so they could have

energy for the rest of the day's excitement, including the big Powder-Puff Football game between the Freshman and Sophomores. The day ended on a perfect note with a variety show featuring not only talented students, but alumni and parents as well! Sunday morning President Frazier hosted a brunch and special chapel services were held. After parents left even a few Sophomores could be seen with tears in their eyes.



(above) Peace's very own "Monkees"

(t.) "Toots" and Shirley Carlton show Peace students how to really shag!

Mother-Daughter

Also known as a time for clean rooms and nice clothes, Mother-Daughter weekend is a time for Peace girls to spend with their favorite ladies. Held Nov. 8 & 9, this year's event began with hors d'oeuvres, hugs, and kisses. After dinner Fri. night, mothers and daughters were entertained by the fall production of "Spoon River Anthology." Sat. morning the Peace Pacers performed and a delicious brunch was served, then the afternoon was free for shopping! The weekend then ended the way it began, with hugs and kisses and lots of love.



(above) Sunning with Mom
(rt.) Barbara chats with her Mother
(below) A big hug for a favorite lady



(above) "In the swing of things" with Mom
(rt.) Secrets are revealed in "M-D Game"

Father Daughter Weekend

Father-Daughter weekend, an established Peace tradition, is a time when fathers and daughters can come together and experience that loving Peace spirit. The entire weekend is filled with fun activities and is directed towards togetherness. Once the fathers arrive on Saturday, they begin their weekend at Peace with the annual basketball game. The Pence Pacers then delight both fathers and daughters with their halftime performance. Following the game, there is a great performance of yet another Peace tradition, Stunt Night. But the big event of the weekend is still to come. Later that evening, dinner and dancing is held in Belk Hall. Here dads and daughters can dance the night away. It's weekends like Father-Daughter that make Peace the special place it is.



Peanut Week

As the switchboard in Main became flooded with small gifts it became evident that "Peanut Week" had officially begun. "Peanut Week", sponsored each year by PSCA, promotes friendships at Peace by becoming secret pals or "peanuts." Students and Faculty members who participate leave small gifts — the more

creative the better — for their "peanut". The week also provides friends a chance to leave "gag" gifts in the name of the unsuspecting peanut! However, the truth comes out when the week ends and everyone's peanut is revealed.



(above) A peanut secretly drops off a gift for her lucky girl
(rt.) Liz Thurston's peanut makes her "Queen for the Day"



(above) More gifts!?!
(rt.) Peanuts for a peanut
(below) Presents wait anxiously



Dating Game and

As dating is the number one pastime at Peace College, it is only appropriate that "The Dating Game" is one of the favorite fall activities. Patterned after the TV version, it gives four lucky girls a chance to win a dinner date with contestants from NC State and Campbell.

What a "Macho Man!"

Who will it be, Myra Leigh?

The anxious contestants

Embarrassed, John?



Embarrassed, John?



Seminar

Another fall dating activity is the dating seminar. The annual question-and-answer session allows Peace girls to find out the man's point-of-view from State guys. Although some of the questions made them blush, the guys were great at proving a new perspective for us all!



Waiting for a man's point-of-view



NC State boys tell all!

Fall Dance

This year's Fall Dance was a new Peace tradition beginning this year. Prior to the dance, the week is filled with games and class competitions. The combination of the weekly activities and the dance is called Fall Fest. This fall festival breaks the monotony of semester, as well as unites the various classes and entire student body. This year's dance was held in Belk Hall. As the music blared, decked-out couples filed in one by one. All students seemed to enjoy themselves immensely. Fall Fest was surely a success.



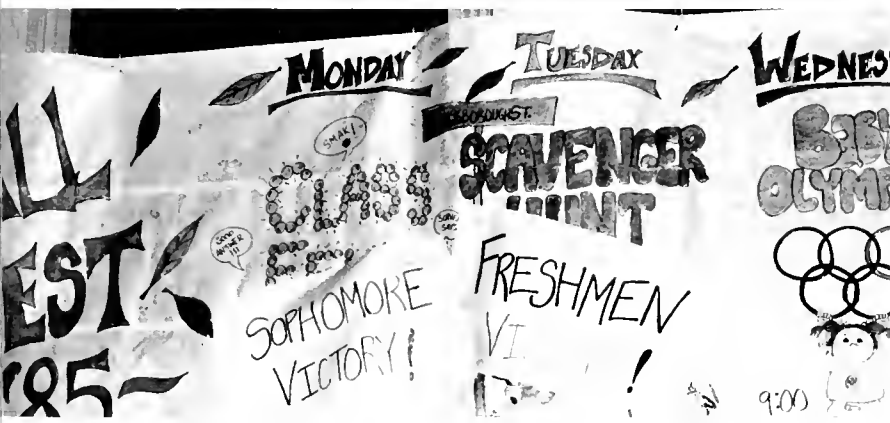
Sophomores Dominate!!

Fall Fest

This year Peace students began a new tradition — Fall Fest: a series of activities to promote unity through competition. Sophomores took the lead by winning "Class Feud," but the Freshmen evened things up the next night in the "Scavenger Hunt." The Sophomores came back at "Baby Olympics" Wed. night and kept the lead due to a tie between the "Freshman Express" and the "Classy Sophomores" at dinner Thurs. night. Thus, the Sophomores took the first Fall Fest championship title! To prove that the 1st annual Fall Fest was a success, everyone celebrated the week's excitement Sat. night at the Fall Dance.



"Good Answer!"



A series of activities . . .



. . . building unity through competition!

NCSU-UNC

Anyone who has lived in N.C. knows that the biggest, longest-running rivalry is that between NCSU AND UNC. Well, Peace gave fans a chance to prove their loyalty at the annual State-Carolina dinner. Dressed in red or blue, boisterous students filled the air with cheers for their favorite ACC team. As was evident by all the paw and foot prints on girls' faces, Peace College truly is Wolfpack and Tarheel stomping ground!!!

(rt.) These Tarheels go WILD!
(below) State fans decorate



Joy and Lori back the pack

Carolina fever hits Peace

C-A-R-O-L-I-N-A!

Thanksgiving

This year's Thanksgiving Buffet had an added excitement as it landed on the final night of Fall Fest. Rather than the traditional attire, students dressed according to their classes' theme. Thus, the feast was attended by bag-ladies and prostitutes from the "Freshman Express" and a group of "Classy Sophomores." The costumes and decorations provided lots of laughter and enthusiasm, creating an atmosphere of good cheer and reminding everyone how much we have for which to be thankful.



Freshmen decked out in their finest



(top) Gregg Casper's holiday manners

Peace's own bag ladies



Is that seconds or thirds. Cormen?



Kathy puts on a class act!



A cool cornucopia

STUNT NIGHT

This year's Stunt Night, the annual competition between the Freshman and Sophomore classes, took the audience from inside the wandering minds of Freshmen to the sunny Bahamas with Sophomores. On Stunt Night, each class performs a twenty-minute skit which is judged by Peace alumni on the basis of talent, participation, enthusiasm, and overall performance. This year, the entertaining evening was held Feb. 6, with an encore performance for Father-Daughter enjoyment on Feb. 8.

The Freshman skit, "Mind Over Matter," brought to life the thoughts of freshmen as they "suffer" through Mr. Thomas' Religion class. The role of Mr. Thomas was expertly performed by Lisa Mickschutz, who captured each of his idiosyncrasies in a hilarious manner. As class began, students' thoughts drifted from the Old Testament to more pressing matters — hangovers, hunger pains, dates, concerts, clothing dilemmas, and deficiency slips. Class ended with an outburst of the song "Shout!"



Panicked sophomores rush to the water's edge, deciding they'll try to swim home.



The Freshman Finale — choruses of "Shout!" and "We Love You, Sophomores"



One freshman's "nightmare" of a daydream — the Geek she met the night before.



Stranded sophomores grab onto the one thing they know they can count on — good friends!



Invasion of a strange island culture? No, just the Soph



Lisa Mickschutz captures Mr. Thomas perfectly — from his grey hair all the way down to his argyle socks!



This "Twisted Sister" comes to life in the thoughts of Margo Brumagin's wandering mind.



Visions of sugarplums are no match for these jelly beans

(below) Miami Vice's Don Johnson (played here by Karen Sizemore): I'd wake up to him any day!



The Sophomore skit was one of "Sinking Ships and Soaring Sophomores." As they set sail for their greatly anticipated graduation cruise to the Bahamas, the "graduated" sophomores ran into a terrible storm and were shipwrecked on a deserted island. Led by the hysterical Marta Latta and the calm Jenö Marvel, the group reflected on the future, which they fear they may never see. However, they all decided that as long as they're all together — as friends — they really will be all right. As they fell asleep, Lesa Pittman sang her tear-jerking version of the song "Friends." And when they woke up the next morning, the stranded sailors were saved by "Miami Vice" stars.

Because both skits were exceptional the judges took over thirty minutes to decide who the winner was. However, knowing they couldn't call it a tie, they announced that the Sophomores were victorious. Yet the Freshmen were winners too, for it was revealed later that this Freshman production was the best ever. Most importantly, both classes proved that with a little hard work and a LOT of creativity — anyone can be a star!



more version of future dancers!



Pee Wee Herman Mania takes over this delirious dancing duo.

Big/Lil' Sis

During her two years at Peace, each girl becomes part of a new Peace family. The first member of this family she will adopt is her big sister. Sponsored by PSCA, the Big-Lil' Sis program provides sophomores a chance to take freshmen "under their wings." The relationship usually begins with a letter during the summer or a welcoming gift on moving in day, but the big "kick-off" is the Big/Lil' Sis picnic where "sisters" compete in fun games. As water balloons are tossed and girls struggle in the famous "tug-of-war," friendships develop and a new family is adopted!

(rt., top) A new Peace family

(rt., middle) Mmm-Mmm good!

(rt.) Peace College Special Olympics



(above) "We love each other!"

(below) waiting for "the Captain's" chicken



Lynette Johnson swoons in "H.M.S. Pinafore."



Drama

Under the direction of Drama teacher Rick Rottschaefer, Peace College Drama has taken on new dimensions. The Spring production of "H.M.S. Pinafore" and Fall production of "Spoon River Anthology," both ambitious undertakings for the young Drama Department, were exceptional. The performances by our own aspiring actresses and local actors were top-notch. Also to be commended were set and costume designers for their excellent job of setting the perfect atmosphere for two truly superb productions.



The 1985 cast of "H.M.S. Pinafore"



Sara Sutton in "Spoon River"
"Spoon River Anthology"



Christmas Chain

The Christmas chain is one of Peace's most exciting and memorable traditions. Sometimes the Peace girls get loaded down with final exams and forget what the Christmas spirit is all about. The Christmas chain unites the entire Peace student body as one family. The residents of Ross begin the chain by joining hands one by one and then moving on to the other dorms to add on to the chain. Once the chain is complete, they all surround the fountain and sing Christmas carols. It's this type of togetherness that unites the student body and helps to create a real Christmas spirit.



Christmas At The Frazier's

Not only do the women who attend Peace have the opportunity to feast early at the special dinner; they also are invited to a Christmas reception at the home of Dr. Frazier. Dr. Frazier welcomes his friends, and of course his Peace family, into his home for hor d'oeuvres and delectable desserts. Everyone is surely in the Christmas spirit by now.



MISS PEACE

"She is . . .

- Outstanding
- Glowing
- Thoughtful
- Concrete
- Happy
- Strong
- Silly
- Smart
- Supportive
- Boy Crazy
- Caring
- Aware
- Hyper
- Involved
- Christian
- Fun-loving
- Lovable
- Bubbly
- Understanding
- Friendly
- Busy
- Talkative
- Dependable
- Warm
- Sincere
- Herself
- Rare

She is Peace!

She is Miss Peace!

She is Lori Gupton!"

Angela Thompson



OUTSTANDING



"This outstanding Sophomore always has a "Hello" for everyone she sees and a smile permanently expressed on her face and in her eyes. . . . She always finds time to help, to talk, or just to listen. I know this sophomore as my roommate, but all of you know her as Amy Allen."

Ara Pappendick



"Her smile, her personality, and her involvement in the school make her a friend in all aspects. When I think about her, these verses keep running through my mind — 'Keep smiling, keep shining, knowing you can always count on me, for sure, that's what friends are for.' She's an outstanding friend and sophomore . . . Geneva Carlton."

Carmen Fowler



"One unique characteristic about this outstanding sophomore is that she doesn't ask for much help, but she yields great work. However, when it comes to others needing help, she's always there — ready and waiting with ideas. I know that I can always count on her, no matter what, because she's never unwilling to help a friend. She's truly outstanding: She's Darcy Dye."

Amy Allen



"Have you ever wondered what it takes to be happy-go-lucky, crazy, and someone everyone likes? Have you ever wondered who's really behind the scenes, in charge of all the committees? Have you ever wondered what type of person is totally involved — from Choir to Intramurals? Then it's time you meet this outstanding sophomore . . . Jeannie Ammons."

Anne Garner Nelson



"This unique young lady possesses many qualities which make her both a wonderful friend and person. Throughout our years as friends, I've noticed how she longs to touch others with love and concern. But, not only does she have heart of gold, but also the desire to reach for the stars in all aspects of her life. This outstanding sophomore is no other than . . . Donna Frazier."

Michelle McLee

SOPHOMORES



"This sophomore is someone who's always on the go but always has time for you. She may be busy, but never too busy to listen to a friend. Her love for this school will never cease, because her heart will always be here at Peoce. Lookin' for Lori? I think I hear her voice. As an outstanding sophomore, you've made the right choice — Lori Gupton."

Joy Reynolds



"Whenever I'm down, this person lifts me up. She won't allow me to pout. Instead, she makes me smile. This girl is special to the school, but most of all she's special to me. This outstanding sophomore is — Dana Watson."

Lu Dowson



"This girl puts God at the center of her life, others next, and then herself. She has a strong family bond and cares very much about the people around her. She loves working with people and getting involved. She is someone I care about and admire a great deal — Roygina Lentz."

Shannon Garrett

"The person I would like to introduce is one that's always smiling. She's a very dependable person who has the rare quality of being truly hard working. She is a very conscientious worker in all areas. This person takes no duties lightly and fulfills them to her utmost ability. The outstanding sophomore I would like to introduce to you is — Lisa Lovvorn."

Paula Sewell



"She's always there with help to lend, if you have a problem and need a friend. Her friendly smile and fun attitude will lift your spirits and brighten your mood. I've worked with her; I've found her a great friend. She's certainly someone on whom I depend. This outstanding sophomore, as I'm sure you've learned, is known as Kathy or Vern. She is — Kathy Vernelson."

Jenny Gibson

MAY QUEEN



May Queen

If there is one person on this campus who you will always see smiling, it is Geneva Carlton. Her "bubbly" personality and ever-smiling appearance are what earned her the well-deserved title of May Queen. "Happiness is a sunbeam which may pass through a thousand bosoms without losing a particle of its original ray; nay, when it strikes on a kindred heart, like the converged light on a mirror; it reflects itself with a redoubled brightness — It is not perfected till it is shared." Jane Porter.

Maid of Honor

Anne Gerner Nelson, likewise, has an energetic personality which never stops. She is always there with a smile on her face. Her glow is what earned her the title of Maid of Honor.

"Blessed are they who have the gift of making friends, for it is one of God's best gifts. It involves many things, but above all, the power of going out of one's self, and appreciating whatever is good and noble and loving in another." Thomas Hughes



MAY COURT

Sophomores

LORI GUPTON:
*"A friend is someone who fills our lives with
 beauty and joy and grace
 And makes the world we live in a better and
 happier place."*

Anonymous

RAYGINA LENTZ
*"For what is your friend that you should
 seek him with hours to kill?
 Seek him always with hours to live.
 For it is his to fill your need, but not your
 emptiness. And in the sweetness of friendship
 let there be laughter . . ."*
 Kahlil Gibran

LISA LOVVORN:
*"A friend is someone we turn to when our
 spirits need a lift
 A friend is someone we treasure, for true
 friendship is a gift."*

Anonymous

ANGELA THOMPSON:
*"Golden threads for golden deeds,
 Rosy tints for dreams some true;
 For friendships earned and
 Friendships held
 Are tints of heavenly blue."
 Ruth Cravens*

Freshmen

BILLIE BURNEY:
*Champion the right to be yourself.
 Dare to be different
 And to set your own pattern;
 Live your own life,
 And follow your own star."*

Lin Young

CORINNA MAYER:
*"The best of life is that which ever reaches
 upward and strives toward better things."
 James Miller*

AMY McLAUGHIN:
*"A bright word
 when said with a smile,
 a happy word
 when sent with good wishes,
 a warm word
 when shared with a friend."*

Mary Hughes

SARA SUTTON:
*"Happiness is something we create in our
 mind,
 It's not something you search for and so
 seldom find —
 It's just waking up and beginning the day."
 Anonymous*





Geneva Carlton

Geneva can always be seen smiling brightly whether it be on her way to class or a PSGA meeting. Geneva is currently the president of PSCA, and as acting president, she is always willing to help with a problem or just sit and chat with a Peace girl. She may also be recognized for high academic achievements. She is presently vice-president of Phi Theta Kappa, a member of Sigma Delta Mu, and on the Dean's List. Geneva's most outstanding qualities are her warm heart and comforting smile.



Karen Flora

Karen keeps busy by serving as a Resident Assistant on third Ross, while also working in both the Writing Center and the Computer Center. She is a recipient of the prestigious Jones Scholarship, and has proven herself worthy of this honor. She is also a member of Phi Theta Kappa, is a marshal, and is on the Dean's List.

WHO'S WHO

Who's Who is a national organization recognizing students for their academic and extracurricular activities, citizenship, and special love and dedication toward Peace College. Each year, the faculty is responsible for choosing these students which best represent the spirit and unity of Peace.



Donna Frazier

Donna serves as secretary of both Phi Theta Kappa and Circle K. She also serves as a marshal for her academic excellence as a freshman. In addition to all of this, she keeps busy this year by working in the library and as a Resident Assistant on fourth Main, and serving as a member of the PSCA cabinet.

Tammy Fulbright

Tammy, recipient of a Trustee Scholarship, has accomplished much during her two years at Peace. She is a marshal, Student Life Committee Chairperson, and a member Phi Theta Kappa. She is also on the Dean's List, and finds time to work in the Computer center.





Dana Watson

Dana can seldom be found in her dorm room; her many activities keep her on the go constantly. She serves as Honor Court President and Co-Editor of the yearbook. However, she does not allow her busy schedule to interfere with her studies. She is a member of the two honor fraternities at Peace: Phi Theta Kappa and Sigma Delta Mu. She is also a recipient of an Honors scholarship.



Sherri Wentz

Sherri upholds the high academic standards expected of Jones scholars. She remains busy by singing in the Chamber Singers, serving as president of Phi Theta Kappa, working as a Resident Assistant on Third Finley, and as a computer lab assistant. She is also a marshal and a Dean's List student.



Rhonda Long

Rhonda, an Honor Scholarship recipient, is active in Peace's two honor fraternities, Phi Theta Kappa and Sigma Delta Mu, a Spanish honor society. She is also a marshal, a Dean's List scholar, and winner of the Penney Award for the most outstanding work in freshman English.



Jenna Long

Jenna is also a Jones scholar, is active in Peace's two honor fraternities, Phi Theta Kappa and Sigma Delta Mu, a Spanish honor society. She is also a marshal and a Dean's List scholar.



Lori Gupton

Lori "Gup" is seldom seen without a smile, and is a student who deserves the title "outstanding sophomore." Lori, who was president of her class as a freshman, now serves as the student body president, which makes her a member of the Honor Court. Lori also enjoys participating in intramurals.

DIRECTORY

DIRECTORY

DIRECTORY

DIRECTORY

DIRECTORY

DIRECTORY

DIRECTORY

DIRECTORY

DIRECTORY

DIRECTORY

DIRECTORY

DIRECTORY

DIRECTORY

DIRECTORY

DIRECTORY

DIRECTORY

DIRECTORY

DIRECTORY

DIRECTORY

DIRECTORY

DIRECTORY

DIRECTORY

DIRECTORY

DIRECTORY

DIRECTORY

DIRECTORY

DIRECTORY

DIRECTORY

DIRECTORY

DIRECTORY

DIRECTORY

DIRECTORY

DIRECTORY

DIRECTORY

Sophomores



Memphis, TN 38127; Darcy Ellen Dye, 100 Paddock Lane, Greer, SC 29651; Tina Elizabeth Eakes, 700 Vandora Avenue, Garner, NC 27529; Donna Jeanne Edwards, 6424 Brandywine Drive Raleigh, NC 27607; Elizabeth Ann Edwards, 3705 St. Regis Drive, Gastonia, NC 28051; Jill Lynette Edwards, 43 Kensington Street, Lumberton, NC 28358; Geri Laraine Ellis, 291 Westwood Drive Goldsboro, NC 27530; Robin LaRae Elmore, 205 Tyree Road, Kinston, NC 28501; Jennifer Lynn Engle, 1916 Wandering Way, Charlotte, NC 28226; Virginia Anne English, 1011 Pine Needle Thomasville, NC 27360; Nancy Jill Falls, 400 Pearl Avenue, Kannapolis, NC 28081; April Lynn Faw, PO Box 779, Wilkesboro, NC 28697; Patricia Churn Fentress, 506 River Road, Washington, NC 27889; Karen Ayn Flora, Route 1, Box 242, Wilkesboro, NC 28697; Tracey Elizabeth Fogarty, 9 Beneta Court, Savannah, GA 31406; Carmen Suzanne Fowler, 225 Harris Avenue Raeford, NC 28376; Donna Michelle Frazier, PO Box 607, Bladenboro, NC 28320; Rebecca Murray Frye, 712-B Westchester Drive, High Point, NC 27260; Tammy Cheryl Fullbright, 344 S. Royal Tower Dr., Irmo, SC 29063; Donna JoAnne Fuller, Route 1, Box 195-A, Buffalo Jct. VA 24529; Cheryl Kay Fulp, 905 Sioux Drive Jacksonville, NC 28540; Mary Eillott Futrell, 1425 Lafayette Avenue, Rocky Mount, NC 27801; Elizabeth Shannon Garrett, PO Box 164, Louisburg, NC 27549; Jennifer Lynn Gibson, 316 Westminster Rd., Lumberton, NC 28358; Pamela

Heather Nickerson Acasio, 116 Meadow Lark Road, Goldsboro, NC 27530; Roberta Charlene Addison, 3510 Thamesford Road, Fayetteville, NC 28301; Amy Laura Allen, Route 6, Box 201, Laurinburg, NC 28352; Donna Ann Allen, Route 1, Box 187, Pantego, NC 27860; Elizabeth Jean Amelia, 1626 Briarcliffe Dr., Sanford, NC 27330; Jane Elizabeth Ammons, 4001 Daytona Road, Fayetteville, NC 28301; Laura Jean Ammons, 517 East 2nd Avenue, Red Springs, NC 28377; Cynthia Jill Baker, 212-33rd Avenue, NW Hickory, NC 28601; Melissa Lea Bame, PO Box 416, Carolina Beach, NC 28428; Carol Robin Barefoot, 1210 Brookside Dr., Wilson, NC 27893; Sherry Gwyn Barham, 637 Durham Road, Wake Forest, NC 27587; Mary Kathryn Barrington, 904 Lynn St., New Bern, NC 28560; Donna Michelle Bell, 2021 St. Andrews, Greensboro, NC 27408; Jeannie Grey Bierce, 203 Dearing Dr., Knightdale, NC 27545; Laura Ann Bierce, 203 Dearing Dr., Knightdale NC 27545; Laura Leigh Bishop, 440 Beverly Circle, Matthews, NC 28105; Belinda Faye Blackwood, 203 Cook Road, Elon

College, NC 27244; Julie Elizabeth Bond, 906 Sharpe St., Selma, NC 27576; Karen Evette Bond, 105 Weldon Dr., Dudley, NC 28333; Sharon Evon Bond, 105 Weldon Dr., Dudley NC 28333; Rebecca Diann Bowen, Rt. 4, Box 86, Carthage, NC 28327; Elizabeth Barrington Bracey, 2313 Foxcroft Road, Wilson, NC 27893; Kimberly Ann Bright, Rt. 6, Box 167, Elizabeth City, NC 27909; Carolyn Leigh Brock, 103 South Magnolia St., Raeford, NC 28376; Sheila Annette Brown, PO Box 577, Sneads Ferry, NC 28460; Patricia Ann Buck, Rt. 1, Box 234 New Bern, NC 28560; Kimberly Ann Byrd, 103 Bluegrass Dr., Garner, NC 27529; Lisa Christine Cabler, PO Box 954, Highlands, NC 28741; Andrea Leigh Canady, Rt. 1, Box 149, Sneads Ferry, NC 28460; Kimberly Joyce Capps, 5207 McAlpine Road, Charlotte, NC 28226; Geneva Ann Carlton, 405 E. Southerland St., Wallace, NC 28466; Amy Elizabeth Clark, 4107 Foxcroft Road, Charlotte, NC 28211; Lisa Ann Clark, PO Box 631, Siler City, NC 27344; Mary Camille Corpening, PO Box 158, Youngsville, NC 27596; Angela Michelle Courtney, 3912 Gloucester Road, Rocky Mount, NC 27801; Cynthia Lucille Davis, Rt. 2, Box 97, Rowland, NC 28383; Sheilda Kay Davis, Rt. 4, Box 505F, Newton, NC 28658; Vonnie Lucille Dawson, Rt. 2, Box 137, Stantonsburg, NC 27883; Dawn Marie Dillon, 108 Glenwood Trail, Southern Pines, NC 28387; Cynthia Gail Dixon, 409 Fletcher Drive, Raleigh, NC 27603; Anne Grace Doggett, 8416 Sawyer Drive, Raleigh, NC 27612; Monica Anne Duncan, 524 Parkwood Lane, Goldsboro, NC 27530; Mary Ellen Dunning, Route 1, Box 301, Garysburg, NC 27831; Katherine Mace Dupree, 3132 Birchfield Drive,



Lee Gillikin, Olde Harbor Townes, Apt. #8 Beaufort, NC 28516; Patricia Olene Glancy Route 5, Box 699-A, Newport, NC 28570; Alic Susan Gordon, 1305 Cloverdale Drive, Wilson NC 27893; Susan Jill Gordon, 1102 Griffith Road Monroe, NC 28110; Donna Jeanette Gore, Route 6, Box 197, Clinton, NC 28328; Shelia Rene Greene, Route 6, Box 6B6, Lenoir, NC 28645; Sarah Smith Grubbs, Route 3, Lakeside Drive Walnut Cove, NC 27052; Lorraine Salter Gupton, 813 Oakland Avenue, Rocky Mount, NC 27801; Rita Lynn Hamilton, Route 1, Box 17, Pantego NC 27860; Sherri Dawn Hastings, 110 Shamrock Road, Shelby, NC 28150; Kimberl Lynn Heath, 1024 Indian Head Estates, Snow Hill NC 28580; Tracey Lynn Hedgpeth, 3431 Sparrow Hawk Court, Wilmington, NC 28403; Sara Katherine Hickman, 1903 Stanton Road, Kinston





NC 28501; Deanna Leigh Holder, Route 11, Box 1084, Sanford, NC 27330; Margaret Hawkins Holding, 536 Caldwell Drive, Concord, NC 28025; Margaret Elizabeth Hopkins, 116 Sanday Lane, Southern Pines, NC 28387; Margaret Lee Hughes, PO Drawer B, Parkton, NC 28371; Frances Elizabeth Hunter, 1103 Greenway Place, High Point, NC 27262; Susan Denise Huntley, 2403 Hillcrest Drive, Monroe, NC 28110; Cheryl Lea Inman, 911 Meadow Lane, Martinsville, VA 24112; Myra Leigh Jackson, 414 Woodhaven Drive, Burlington, NC 27215; Rawn Michele Jenkins, 1100 Woodland Road, Petersburg, VA 23805; Sheila Renee Jenkins, 333 West Boney Street, Wallace NC 28466; Jennifer Lynn Jewell, 1801 Beech Tree Street, Greensboro, NC 27408; Billie Maria Johnson, 1805 Lake Drive, Laurinburg, NC 28352; Letitia Marie Johnson, 905 Evans Street, Morehead City, NC 28557; Susan Sherrard Johnson, 2804 Pinehurst Drive, Kinston, NC 28501; Susan Abernathy Johnson, 406 West Cumberland Street, Dunn, NC 28334; Melissa Lane Jones, Route 2, Box 4, Ebony, VA 23845; Suellen Kiff, 801 Academy Street, Ahoskie, NC 27910; Susan Hatcher Kincheloe, 3909 Hawthorne Road, Rocky Mount, NC 27801; Elizabeth Anne Kivett, 600 Broad Street, Statesville, NC 28677; Jennifer Allison Lail, 137 34th Avenue, NW, Hickory, NC 28601; Marta Michelle Latta, PO Box 965, Nashville, NC 27856; Marcia Lynne Lee, 116 Plantation Road, Morehead City, NC 28557; Paige Lorraine Lemons, Route 1, Box 414, Apex, NC 27502; Raygina Elizabeth Lentz, 250 Stonewall Circle, Concord, NC 28025; Kathryn Davis Leonard,

2213 Charlotte Drive, Charlotte, NC 28203; Melanie Dee Leonard, Route 18, Box 40, Lexington, NC 27292; Candy Denine Little, Route 4, Box 58-C, Greenville, NC 27834; Jennifer Anne Long, 101 O'Neill Court, Jamestown, NC 27282; Rhonda Gail Long, Route 5, Box 436-AA, Louisburg, NC 27549; Lisa Goodwin Lovvorn, 4917 Shadow Valley Dr., Fairfax, VA 22030; Gina Maria Lowery, 200 Seven Oaks 27-E, Durham, NC 27704; Elizabeth Elmore Lutz, 801 Phillips Street, Shelby, NC 28150; Donna Elaine Lynch, Route 2, Box 110, Lawrenceville, VA 23868; Jeanne Ann Marvel, 503 Turnpike Road, Laurinburg, NC 28352; Andrea Elizabeth McBride, 442 South Main Street, Mocksville, NC 27028; Liesl Lane McIntosh, 600 Hickory Street, Troy, NC 27371; Michelle Yvette McLean, PO Box 949, Bladenboro, NC 28320; Laura Benton McLeod, 509 N. Main Street, Raeford, NC 28376; Jacqueline Marie Melvin, 335 Oberlin Court, Fayetteville, NC 28303; Ann Mary Michniak, 5013 Huntingdon Drive, Raleigh, NC 27606; Melodee Leigh Moody, Rt. 2, Box 319, Wake Forest, NC 27587; Jan Margaret Moser, 307 Larry Drive, Kannapolis, NC 28081; Brenda Cheryl Neel, Rt. 1, Box 305A, Princeton, NC 27569; Lesia Kay Neighbors, Rt. 3, Box 389, Dunn, NC 28334; Anne Garner Nelson, PO Box 359, South Boston, VA 24592; Jill Carolyn Nies, PO Box 777, Seven Lakes, West End, NC 27376; Ara Carolyn Pappendick, Rt. 1, Box 419-B, Rocky Point, NC 28457; Kimberlee Ann Pennington, 302 Coalport Road, Richmond, VA 23229; Christle Michelle Perkins, 3639 Mill Run, Raleigh, NC 27612; Angela Dawn Phillips, Rt.1, Box 276-11, Burlington, NC 27215;



Jeanne Susanne Pistone, PO Box 1029, Roanoke Rapids, NC 27870; Lesa Anna Pittman, 432 Westbury Road, Charlotte, NC 28211; Frieda Grace Powell, 301 Fairfield Road, Fayetteville, NC 28303; Kimberly Lynne Qualls, 10 Misti Pines, Littleton, NC 27850; Tanya Ann Quick, 211 South Hillcrest Drive, Goldsboro, NC 27530; April Fay Raynor, Rt. 1, Box 413, Garner, NC 27529; Elizabeth Elaine Reaves, 171 Creek Woods Apts., Leesburg, GA 31763; Cynthia Dawn Register, Rt. 1, Box 193-A, Cove City, NC 28523; Stephanie Joy Reynolds, Rt. 6, Box 189A, Clinton, NC 28328; Susan Freeman, 2119 Lakeland Drive, Sanford, NC 27330; Kimberly Anne Rist, 4360 Arbor Way, Charlotte, NC 28211; Kimberly Dawn Roberson, Rt. 1, Box 830, Williamston, NC 27892; Wyndi Alden Roberson, 212 Sunset Drive, Williamston, NC 27892; Stacey Michele Rotchford, 1340 Princeton Avenue, Gastonia, NC 28054; Nicloe Louise Rowland, 831 Park Avenue, Roanoke Rapids, NC 27870; Serena Hess Russoli, 516 East Rosemary Street, Chapel Hill, NC 27514; Rebecca Lynn Sandy, 100 Valley Court, Jacksonville, NC 28540; Melanie Gray Saunders, Rt. 1, Box 300, Nashville, NC 27856; Catherine Scott Schenck, 120 Morton Street, Shelby, NC 28150; Kimberly Lane Schenk, 812

Stamey, Rt. 2, Box 809-B, Forest City, NC 28043; Laura Jane Stanley, 106 Crest Hill Road, Jamestown, NC 27282; Judith Dell Steen, 10049 Downeys Wood Court, Burke, VA 22015; Mary Elizabeth Stewart, 310 Woodland Drive, Jacksonville, NC 28540; Donna Lisa Stone, Rt. 2, Box 346-B, Middlesex, NC 27557; Caroline Elizabeth Stovall, Rt. 5, Box 183, Oxford, NC 27565; Catherine Grant Strickland, 1505 Wildlife Circle, Lexington, NC 27292; Teresa Ann Strickland, 3241 Vardaman Avenue, Hope Mills, NC 28348; Julia Wright Stuart, 1037 Greentree Drive, Charlotte, NC 28211; Bridget Dawn Sutton, Rt. 1, Box 103A, Cove City, NC 28523; Tracey Denise Sutton, 612 Avondale Avenue, Rocky Mount, NC 27801; Patricia Jane Taylor, 6641 Lynndale Drive, Raleigh, NC 27612; Charla Ann Thomas, 5922 Sun creek Court, Raleigh, NC 27606; Elizabeth Paige Thomas, 1301 Rowan Street, Dunn, NC 28334; Mary Leigh Thomas, 608 Florham Drive, High Point, NC 27260; Angela McQueen Thompson, 2601 McMillan Avenue, Lumberton, NC 28358; Nancy Ann Thompson, 200 Brinkley Road, Greenville, NC 27834; Donna Lynn Torrence, 201 Redcliff Road, Lenoir, NC 28645; Andrea Lynne Twiford, 6206 Sugar and Wine Road, Monroe, NC 28110; Deanna Lea Vann, 101 Mourning Dove Lane, Goldsboro, NC 27530; Kathy Jo Vernelson, Rt. 5, Box 261, Greenville, NC 27834; Angela Marie Wallace, Rt. 7, Box 19, Mocksville, NC 27028; Jeanna Elizabeth Ward, 2512 Evans Street, Morehead City, NC 28557; Dawn Elizabeth Waters, PO Box 62, Seven Springs, NC 28578; Catherine Elizabeth Watkins, 3537 Carolyn Drive, Raleigh, NC 27604; Dana Ann Watson, 2405 Hoffman Street, Gastonia, NC 28054; Sharon Renee Weaver, 1835 Garner Road, Clayton, NC 27520; Donna Kay Weavil, Rt. 2, Box 51, Clarkton, NC 28433; Charlotte Webb, PO Box 2033, Highlands, NC 28741; Sherri Denise Wentz, 8403 Nathanael Greene Lane, Charlotte, NC 28212; Deborah Lillian West, Rt. 1, Box 223E, Warsaw, NC 28398; Marsha Diane West, 3980 Kings Cross Road, Lumberton, NC 28358; Leigh Ann Wilder, 103 Ronaldsby Drive, Cary, NC 27511; Elizabeth Anne Wilkinson, 330 Washington Street, Roanoke Rapids, NC 27870; Amy Elizabeth Williams, 806 Ragsdale Road, Jamestown, NC 27282; Pamela Rae Williams, 130 North Hills Drive, Wilmington, NC 28405; Johnna Lynn Wilson, 2519 Roberts Avenue, Lumberton, NC 28358; Tanya Ann Womble, 43 Piperscheck Road, Wilmington, NC 28405; Sandra Lynn Woods, 1618 Spencer Avenue, New Bern, NC 28560; Catherine Elizabeth Woolard, 1206 Holly Circle, Washington, NC 27889; Sherri Ann Worley, Rt. 6, Box 624-E, Henderson, NC 27536; Shawna Patricia Yeomans, 919 Etha Drive, Newport News, VA 23602; Casandra Paige Zipsir, 15 Powell Road, Newport, NC 28570; Betty Taylor Beasley, 4601 Paisley Court, Raleigh, NC 27604; Betty Jo Christian, 130 Sycamore Street, Cary, NC 27511; Susan Watkins Davis, 2913 Hostetler Street, Raleigh, NC 27609; Elizabeth Sawyers Lamb, 2640 Reynolds Road, Winston-Salem, NC 27106; Colleen Denise McDonald, 3712 Lail Court, Bryn Mawr, Raleigh, NC 27606; Jacqueline Mann Perry, 3440 Apache Drive, Raleigh, NC 27609; Alice T. Pysher, 3528 Carolyn Drive, Raleigh, NC 27604; Susan Brown Skidmore, 123 Hudson Street, Raleigh, NC

27603; Betty J. Straughn, 127 Stratford Drive, PO Box 354, Wendell, NC 27591; Lilla Maria Taylor, 215 Hillcrest Road, Raleigh, NC 27605; Mary Alice Willson, 3705 Stonehaven Drive, Raleigh, NC 27609; Maggie H. Wynne, 915 Holt Drive, Raleigh, NC 27609



Burning Bush Drive, Pleasant Garden, NC 27313; Kristyn Marie Schmidt, 2408 Williamsburg Drive, Wilson, NC 27893; Elizabeth Waring Sechrist, PO Box 1728, Statesville, NC 28677; Paula Ann Sewell, PO Box 536, Jacksonville, NC 28540; Melissa Ann Sills, Rt. 1, Box 259-B, Bunnlevel, NC 28323; Karen Gray Sizemore, 105 Moore Street, Graham, NC 27253; Lisa Michelle Skinner, PO Box 1055, Topsail Island, NC 28445; Ann Tracy Slane, 3413 Pinehurst Road, Statesville, NC 28677; Amy Christine Smith, 2300 Wolfe Ridge Rd., Charlotten, NC 28210; Elizabeth Lambertson Smith, 507 Shady Circle Drive, Rocky Mount, NC 27801; Julie Anne Smith, 407 Wards Bridge Road, Warsaw, NC 28298; Nancy Elizabeth Smith, Rt. 2, Box 65, Pleasant Garden, NC 27313; Patricia Lynn Smith, Rt. 1, Box 5A, Eden, NC 27288; Wendy Wade Smith, 505 Garrison Drive, Kings Mountain, NC 28086; Cindy Alisa Spear, Rt. 1, Box 51-A, Farmville, NC 27828; Shannon Rae



Freshmen



Shari Lynne Alexander, 201 Raindrop Court, Raleigh, NC 27609; Laura Jane Allen, 213 McCoy Road, Salisbury, NC 28144; Merri Catherine Amos, 231 Bellewood Drive, Henderson, NC 27536; Patricia Ann Anderson, Route 2, Box 511, Vanceboro, NC 28586; Wendy Sheryl Arnette, 1206 Faison Ave., Fayetteville, NC 28304; Julia Hanna Atkinson, 3415 Langdale, High Point, NC 27260; Tyretta Lynne Averette, Route 5, Box 969, Hillsborough, NC 27278; Elizabeth Pinckney Ballard, 1022 South Boundary, Rock Hill, SC 29730; Robann Ross Beach, 6153 Green Hollow Court, Springfield, VA 22152; Kathryn Lynn Bell, 2524 Falcon Crescent, Virginia Beach, VA 23454; Sharon Ann Best, 2005 Azalea Drive, Goldsboro, NC 27530; Erika Lin Bishop, 521 Bayshore Dr., Wilmington, NC 28405; Toni Michelle Bishop, 263 Shadsford Blvd., Fayetteville, NC 28304; Sherrie Dawn Bissette, PO Box 216 Bailey, NC 27807; Kathy Dawn Blanton, PO Box 92, Wallace, NC 28466; Angela Michel Bondurant, 840 W. Chatham Street, Cary, NC 27511; Sherry Lynn Bridges, 425 North Mercer Street, Rocky Mount, NC 27801; Angela Louise Britt, 113 Augusta Drive, Statesville, NC 28677; Misty Jo Britton, 403 Adele Street, Hamlet, NC 28345; Jan Caroline Broadway, 310 Mercer Street, Yaupon Beach, NC 28461; Jo-elle Lilitia Brown, 601 New Liberty Road, New Bern, NC 28560; Tracy Ann Brown, PO Box 5, White Oak, NC 28399; Virginia Lynne Brown, PO Box 572, Angier, NC 27501; Margo Somers Brumagim, 11725 Quay Road, Oakton, VA 22124; Wilhelmina McConner Burney, 2405 Elizabeth Avenue, New Bern, NC 28560; Lee Paige Capps, 1018 Sycamore Street, Rocky Mount, NC 27801; Donna Elaine Carney, 208 Madison Street, Roanoke Rapids, NC 27870; Noreen Bridget Carroll, 8509 Lakewood Drive, Raleigh, NC 27612; Gregg Louise Casper, PO Box 852, Swansboro, NC 28584; Melissa Jane Clark, Route 2, Box 129-B, Raleigh, NC 27610; Sherri Lynne Clark, 2817 Croix Place, Raleigh, NC 27614; LaTanya Demetria Clemons, Route 6, Box 350-M, Chapel Hill, NC 27514; Kimberly Jean Coats, 210 South McKay Street, Dunn, NC 28334; Nillah Katherine Cody, 145-20th Avenue NW, Hickory, NC 28601; Anna Marie Coleman, 506 Northside Dr., Lexington, NC 27292; Karen Denise Copeland, Route 3, Box 277, Apex, NC 27502; Barbara Lynn Crews, PO Box 373, Halifax, VA 24558; Kelly Annette Crisp, 2616 Kanuga Road, Hendersonville, NC 28739; Karen Leigh Crutchfield, 178 Greensward Quay, Virginia Beach, VA 23454; Ruth Marie Cumbee, 1313 Garden Crest Circle, Raleigh, NC 27609; Kelly Margaret Cunningham, PO Box 812, Salisbury, NC 28144; Marlee Yvette Daigle, 323 Hawthorne Drive, Asheboro, NC 27203; Elizabeth Dannette Daly, 304 Lombard Street, Clayton, NC 27520; Marlou Renea Daniele, 7409 Mine Shaft Road, Raleigh, NC 27609; Davina Rae David, Route 3, Box 41, Goldsboro, NC 27530; Cynthia Ruth Davis, 2106 Steeplechase Drive, New Bern, NC 28560; Deborah Lynn Davis, 107 Buck Hill Road, Monroe, NC 28110; Shirley Rochelle Davis, Route 2, Box 228, Warsaw, NC 28398; Elizabeth Susann Dawkins, PO Box 399, Monroe, NC 28110; Margaret Hill Dawson, Route 2, Box 46, Stantonsburg, NC 27883; Paula Brooks Dickerson, 316 Gary Street, Henderson, NC 27536; Dawn Susan Distelcamp, 905 7th Ave., Apt. 42-7, Garner, NC 27529; Debra Ann Dixon, 129 Wellington Court, Rocky Mount, NC 27801; Shannon Theresa Duffey, 504 Edgehill Road, New Bern, NC 28560; Kathleen Maria Dukeshire, PO Box 9174 Plaza, Greensboro, NC 27408; Kelly Rae Durham, 1207 Logan Court, Jacksonville, NC 28540; Mary Catherine Eddy, 7037 North Ridge Drive, Raleigh, NC 27609; Melodie Faye Edwards, 1618 Lynne Avenue, Henderson, NC 27536; Elizabeth Anne Eitel, Route 1, Box 575-C, Forest City, NC 28043; Jane Elizabeth Everett, 2213 Creston Road, Raleigh, NC 27608; Amy Lori Farlow, 104 Sandra Drive, Jamestown, NC 27282; Tammy Louise Farmer, 22 Parkwood Drive, Ahoskie, NC 27910; Vivian Louise Fish, 6475 Hilltop Road, Willow Springs, NC 27592; Beatrice Diane Flowers, 737 Catawba Street, Raleigh, NC 27609; Joan Elizabeth Floyd, PO Box 216, Fairmont, NC 28340; Jennifer Wingate Forbes, 102 Tanoak Court, Suffolk, VA 23434; Andrea Michelle FormyDuval, Route 4, Box 402B, Whiteville, NC 28472; Martha Ruth Fountain, 229 Timberlane Drive, Rocky Mount, NC 27801; Mary Sue Franklin, 1500 Core Point Road, Ernul, NC 28527; Kimberly Jayne Freeman, PO Box 92, Jamestown, NC 27282; Kristine Rene' Freshour, 83 King's Drive, Hickory, NC 28601; Anna Lee Gallagher, PO Box 254, Swansboro, NC 28584; Holly Michelle Garrison, 107 Canterbury Road, Southern Pines, NC 28387; Kathy Truitt Gilgo, PO Box 8383, Hobucken, NC 28537; Marilyn Faye Gillespie, 2121 Balboa Road, Raleigh, NC 27603; Cynthia Marie Grey, 188 Hahn Place, SE, Concord, NC 28025; Laura Elizabeth Griffin, 210 Dogwood Drive, Washington, NC 27889; Jennifer Carol Griffith,



93 Webb Court, Morehead City, NC 28557; Cherie Ann Haislip, 109 Briarcliff Circle, Roanoke Rapids, NC 27870; Kimberly Lynne Hall, 102 Robin Road, Oxford, NC 27565; Abbey Cherry Hampton, PO Box 94, Oak City, NC 27857; Julie Ann Hardee, PO Box 3151; North Myrtle Beach, SC 29582; Rebecca Murry Harrelson, 5216 Sedgfield Drive, Raleigh, NC 27609; Laura Meador Harris, 328 Bufridge Drive, Mechanicsville, VA 23111; Mary Laura Harris, 201 Idlewood Drive, Kannapolis, NC 28081; Danielle Leigh Hassler, 200 Virginia Ann Avenue, Hamlet, NC 28345; Callie Jane Hawkins, 1510 Pamela Drive, Monroe, NC 28110; Karen Elizabeth Heath, Route 1, Box 316, Hookerton, NC 28538; Lisa Marie Hester, Route 1, Box 416, Bladenboro, NC 28320; Hollis Lee Hewson, Box 306, Pinehurst, NC 28374; Jane McIntyre Hill, 103 Elmhurst Drive, Lumberton, NC 28358; Kimberly Dawn Hill, 1807 Spencer Avenue, New Bern, NC 28560; Melissa Ann Hobbs, Route 5, Box 143-B, Clinton, NC 28328; Demetrae Lynn Holielfield, Route 3, Box 307, Zebulon, NC 27597; Janice Galbraith Munro Holland, 5305 Quail Meadow Drive, Raleigh, NC 27609; Tay Rett Buie Hood, Box 37, Pink Hill, NC 28572; Rebecca Lynn Hord, 602 Kintyre Drive, Monroe, NC 28110; Blair Anne Hornick, Route 2, Box 113-A, Apex, NC 27502; Deborah Lee House, 836 Allen Avenue, Roanoke Rapids, NC 27870; Stephanie Fuller House, 105 Rex Heights, Louisburg, NC 27549; Toni Lynn Hughes, Route 1, Box 98, Merry Hill, NC 27957; Dawn Marie Ikner, PO Box 252, Laurinburg, NC 28352; Kimberly Diane Jackson, 1602 Peace Street, Henderson, NC 27536; Jennifer Annabel Jarvis, PO Box 248, Swan Quarter, NC 27885; Amy Lee Johnson, Route 8, Box 145, Henderson, NC 27536; Jane Woodbury Johnson, 1128 Cridland Rd., Greensboro, NC 27408; Judith Becker Johnson, 104 Grayson Court, Knightdale, NC 27545; Miriam Louise Johnston, 124 Ashbury Road, Greenville, NC 27834; Sarah Margaret Johnston, 318 Summit Drive, Sanford, NC 27330; April Elaine Jones, 510 Park Avenue, Roanoke Rapids, NC 27870; Charlotte Luvell Jones, 604 Tilghman Drive, Apt. 3-B, Dunn, NC 28334; Mary Catherine Jones, 1208 Castalia Drive, Cary, NC 27511; Joyce Elizabeth Kaylor, 305 Cheshire Place, Wilmington, NC 28403; Kimberly Elaine Keeling, 317 Ridgecrest Drive, Lexington, NC 27292; Kimberly Lynn Kelly, Route 1, Carthage, NC 28327; Sharon Leigh Kidney, 19 Andrews Street, Charleston, SC 29418; Leslie Lee King, 200-32nd Avenue, NW, Hickory, NC 28601; Lorraine Fleming Kiser, Route 4, Box 270, Huntersville,

NC 28078; Anne Marie LaPierre, 3531 Rosewood Drive, Lumberton, NC 28358; Jennifer Kaye Lail, 909 Merry Street, Dunn, NC 28334; Anna Walston Lane, 3759 Jamestown Court, Raleigh, NC 27609; Cheryl Ann Lawson, 512 Martine Road, Fayetteville, NC 28305; Kimberly Paige LeMaster, 223 Livermore Drive, Fayetteville, NC 28304; Robin Suzanne Lee, Route 1, Box 166, Roper, NC 27970; Susan Elizabeth Lekson, 1600 Lumarka Drive, Charlotte, NC 28212; Mary Margaret Lennon, Route 1, Box 628, Clarkton, NC 28433; Deborah Bou-Ling Leong, 4201 Regency Drive, Mississauga, ON L5C379, Canada; Cheryl Alice Lewis, 510 Hilliard Drive, Fayetteville, NC 28301; Amy Jean Lilley, Route 2, Box 660, Williamston, NC 27892; Sherri Lee Linker, 1007 Clyde Drive, Jacksonville, NC 28540; Ellen Christina Lucas, Route 1, Box 497, Linden, NC 28356; Marguerite Elizabeth Marsh, 209 Selkirk Trail, Southern Pines, NC 28387; Susan Elaine Marshall, Lot 11, Ramsey's Tr. Pk., Hubert, NC 28539; Angela Marie Mason, 604 Kinston Street, Washington, NC 27889; Dana Marie Mason, Route 5, Box 10, Dunn, NC 28334; Reine' Dawn Mason, Box 580, Kotzebue, AK 99752; Lamara Ann Massey, Route 1, Box 113, Spring Hope, NC 27882; Jill Annette Mauldin, 1205 Daybrook Drive,

Kannapolis, NC 28081; Tamara Dawn Maxbauer, Route 3, Box 19-B, Ahoskie, NC 27910; Virginia Lynne Maxwell, PO Box 87, Pink Hill, NC 28572; Corrina Marie Mayer, 10 Wild Lark, Greensboro, NC 27408; Amy Elizabeth McLaughlin, Route 3, Box 523, Mooresville, NC 28115; Camilla Ann McLean, 712 Forest Hill Dr., South Hill, VA 23970; Melanie Grayce McLean, 214 West Stevens Street, Wallace, NC 28466; Gina Kay McMasters, 249 Hickory Dr., Asheboro, NC 27203; Carmen Michelle Metts, PO Box 301, Trenton, NC 28585; Lisa Jane Mickschutz, Route 3, Box 298-J, Wake Forest, NC 27587; Susan Ashley Miller, 1208 Kingsbrook Road, Greenville, NC 27834; Melissa Bennett Mizelle, 1112 Country Ridge Road, Raleigh, NC 27609; Carol Lynette Money, Route 10, Box 491, Lexington, NC 27292; Audrey Annette Morris, 917 Pembroke Avenue, Ahoskie, NC 27910; Susan Ann Morris, 1501 Anderson Street, Wilson, NC 27893; Angela Dale Morton, Box 21 Merrimac Drive, Apex, NC 27502; Corrie Frances Moseley, 3705 Sage Drive, Greensboro, NC 27410; Martha Shannon Mucci, 3605 Mansfield, Rocky Mount, NC 27801; Mary Shannon Murphy, Route 1, Box 146-C, Youngsville, NC 27596; Deborah Kay Meyers, 292 Bonanza Drive, Fayetteville,



NC 28303; Elizabeth Neel, 233 Highland Forest Dr., Matthews, NC 28105; Jill Annette Newsome, 309 Maryland Avenue, Emporia, VA 23847; Lou Ann Nobles, Route 1, Box 105, Orrum, NC 28369; Frances Michelle Nordan, 1604 Vallemede Road, Greensboro, NC 27410; Amy Joyce Nordon, PO Box 514, Marners, NC 27552; Anne Lamb O'Harrow, 331 East Main Street, Belhaven, NC 27810; Mary Hart Oswald, 405 North Raleigh Street, Wallace, NC 28466; Laurie Beth Outlaw, 115 Greenbriar Road, Roanoke Rapids, NC 27870; Angela Jean Overton, Route 5, Box 8W, Oxford, NC 27565; Wendy Leigh Owens, 1509 RaeFord Road, Fayetteville, NC 28305; Mary Elizabeth Pace, 30 Westminister Drive, Jacksonville, NC 28540; Lisa Marie Palmieri, Route 12, Box 797-C, Fayetteville, NC 28306; Sherry Nyla Parrish, 3420 Barbour Mill Road, Clayton, NC 27520; Barbara Lynn Pearson, 710 East Beech St., Goldsboro, NC 27530; Brandy Elizabeth Perkins, PO Box 280, Biscoe, NC 27209; Dawn Michelle Perry, Route 1, Box 950, Hertford, NC 27944; Cynthia Alpha Pinkston, 4018 Welmont Drive, Fayetteville, NC 28304; Margaret Melin Plunkett, Route 1, Box 290 AAA, Fayetteville, NC 28301; Holliday Anne Poole, 2628 Fairview Road, Raleigh, NC 27608; Dorolyn Price, Route 9, Box 424, Chapel Hill, NC 27514; Tammie Machael Price, 517 Pinecrest Avenue, Roanoke Rapids, NC 27870; Jackie Michelle Puryear, Box 10, Cates Court, Hillsborough, NC 27278; Patricia Ann Quinn, 408 Valley Rd., Sanford, NC 27330; Ginger Lyn Rimmer, 507 Evelyn Avenue, Kannapolis, NC 28081; Elizabeth Ann Rinehart, 912 West Queen Ext., Edenton, NC 27932; Melinda Lou Rinehart, 17 Highland Avenue, Ashland, OH 44805; Kris Ellen Rivenbark, 105 Parliament Drive, Wilmington, NC 28405; Amy Lynn Robbins, 235 Walnut Street, Statesville, NC 28677; Tonya Ramel Robinson, 4502 Coventry Rd., Fayetteville, NC 28304; Toni Ann Rockow, 800 Thatcher Way, Raleigh, NC 27609; Linda Beth Rosa, 504 Northcliff Drive, Raleigh, NC 27609; Ingrid Elizabeth Ross, 1413 East 14th Street, Greenville, NC 27834; Sarah Melissa Rowan, 903 Center Street, Ashland, OH 44805; Amy Ruth Rowland, 408 Thompson Road, Garner, NC 27529; Korina Anne Sanders, 101 Haldane Drive, Southern Pines, NC 28387; Denise Lynn Sawyer, 1810 Township Circle, Raleigh, NC 27609; Tracey Frandot Sevilla, 414 Mosby Drive, SW, Leesburg, VA 22075; Suzette La, Shae Shaw, 6136-B St. Giles Street, Raleigh, NC 27612; Kelly Ann Shive, 2132 Bertha Street, Kannapolis, NC 28081; Susan LeAnne Slaughter, 102 Olde Heritage Road, Kannapolis, NC



28081; Anita Maney Smith, Route 4, Box 790, Albemarle, NC 28001; Elizabeth Leigh Smith, 2607 Westchester Drive, Fayetteville, NC 28303; Kimberly Lynn Smith, 3337 Bragg Drive, Wilmington, NC 28403; Mary Virginia Smith, PO Box 94, Dunn, NC 28334; Sonia Leigh Smith, 1408 Canterbury Road, Raleigh, NC 27608; Nancy Kennon Sneed, 209 Churchill Drive, Greenville, NC 27834; Candace Ruth Somers, 1608 East Yacht Drive, Long Beach, NC 28461; Kathleen Robert Somers, 1608 East Yacht Drive, Long Beach, NC 28461; Mylena Rhea Spangler, Route 2, Box 284-A, Summerfield, NC 27358; Lisa Ann Spears, 1905 Partridge Drive, Fayetteville, NC 28304; Jennifer Melanie Steele, 5702 Old Oak Ridge Road, Greensboro, NC 27410; Kathryn Morgan Stockett, Route 15, Box 466, Raleigh, NC 27612; Angelia Denise Stone, 2206 Piney Plains Road, Cary, NC 27511; Annette Denise Stone, 2206 Piney Plains Road, Cary, NC 27511; Patricia Sue Strickland, 2448 Dartmouth Drive, Fayetteville, NC 28304; Sandra Glen Stroud, 221 Magnolia Avenue, Mocksville, NC 27028; Nancy Angela Such, 3110 Hickory Hill Drive, Sanford, NC 27330; Sara Elizabeth Sutton, Route 1, Box 588, Sylva, NC 28779; Sylvia Nani Swertfeger, 221 Meadowbrook Drive, Smithfield, NC 27577; Marian Lorraine Swindell, 1137 Damascus Drive, Wendell, NC 27591; Leigh Ellen Sykes, PO Box 44, Pink Hill, NC 28572; Kimberly Ann Taibi, 1205 Hillside Drive, S., N. Myrtle Beach, SC 29582; Tracey Lee Tanner, 5813 Dobson Drive, Fayetteville, NC 28301; Joy Elaine Taylor, Route 1, Box 297, Kinston, NC



28501; Tammy Ann Taylor, Route 2, Box 173-A, Williamston, NC 27892; Holly Jo Temple, PO Box 548, Zebulon, NC 27597; Jacqueline Carla Thomas, 3916 Butler Blvd., Raleigh, NC 27604; Jami Alicia Thomas, Route 4, Box 666, Dunn, NC 28334; Carol Elaine Thompson, PO Box 414, Maxton, NC 28364; Robin Mary Thompson, 414 Willowbrook, NC 27511; Elisabeth May Trevathan, 1908 Fairview Way, Greenville, NC 27834; Wendy Patricia Turner, 323 Covil Ave., Wilmington, NC 28403; Tamala Faith Twyman, 1501 Windbur Place, Raleigh, NC 27609; Kimberly Lynn Vaughan, 4504 Indian Wells Dr., Greensboro, NC 27406; Tonia Elizabeth Venable, 125 Rainbow Court, Cary, NC 27511; Kimberly Kay Walker, 3509 Campbell Road, Raleigh, NC 27606; Rhonda Lou Wallace, Route 6, Box 311-B, Greenville, NC 27834; Molly Lynn Ward, Box 714 Bermuda Run, Advance, NC 27006; Virginia Wooten Ward, 3400 Windsor Drive, New Bern, NC 28560; Amy Elizabeth Warner, 2119 Laura Lane, High Point, NC 27260; Janet Elizabeth Warren, 2121 Middle Road, Fayetteville, NC 28301; Elizabeth Ashley Wasson, Route 5, Box 5-A, Kinston, NC 28501; Sharon Lynn Watkins, Route 7, Box 158-M, Raleigh, NC 27614; Cynthia Carol Webb, 230 Creekrige Drive, Rocky Mount, NC 27801; Mary Margaret West, 94 Union Street North, Concord, NC 28025; Angela Kaye Whaley, 2124 Bertha St., Kannapolis, NC 28021; Becky Anne White, Rt. 3, Box 133-B, Edenton, NC 27932; Kelli Lynne White, PO Box 246, Hertford, NC 27944; Jane Connell Williams, 724 Gimghoul Road, Chapel Hill, NC 27514; Melidd Faith Williams, 1320 Horne Street, Rocky Mount, NC 27801; Teresa Anne Williams, Rt. 1, Box 42 - M, Holly Springs, NC 27540; Susan Lee Wimberley, 3128 Amherst Road, Rocky Mount, NC 27801; Suzanne Bea Winslow, PO Box 665, Hertford, NC 27944; Beige LeeAnn Woodard, 2235 Canterhury Drive, Kannapolis, NC 28081; Lynn Ann Woodard, 207 McCormick Dr., Maxton, NC 28364; Melinda Lee Woods, 1618 Spencer Avenue, New Bern, NC 28560; Lynda Kathryn Wreen, Rt. 3, Box 135, Oxford, NC 27565.



MEMORIES . . . MEMORIES . . .

A LIFETIME OF FRIENDS

Although the education Peace girls receive is important, no one will forget the friendships that are formed while here at school. These friendships are strong bonds which last a lifetime, but it is the silly, little things which are so

special. No one will ever forget what her roommate looks like when she wakes up at eight o'clock on a Monday morning. Or, who can forget filling out her wardrobe by sneaking into a suitemate's closet, traveling four hours in a cramped car to see an Alabama concert, meeting that special guy at a frat with your best friend cheering you on, studying in large groups with buckets of popcorn and Pepsi for Mr. Thomas' final exam, keeping your roommate awake while she types your Western Civ. term paper,



road-tripping to Chapel "Thrill" for a night of adventure, getting "dressed up" every Wednesday for Chapel, or dunking that special friend in the fountain for her birthday? All of these memories, which began as we freshmen tried to make ourselves comfortable in our new home, come to an end as we sophomores graduate as one big, happy family in May.

One song which appropriately expresses our love for one another is *Friends*, by Michael W. Smith.

Friends

MEMORIES . . . MEMORIES . . .



*Packing up the dreams God planted
In the fertile soil of you
Can't believe the hopes He's granted
Means a chapter in your life is
through
But we'll keep you close as always
It won't even seem you've gone
Cause our hearts in big and small
ways
Will keep the love that keeps us strong*



*and friends are friends forever
If the Lord's the Lord of them
And a friend will not say "never"
Cause the welcome will not end
Though it's hard to let you go
In the Father's hand we know
That a lifetime is not too long to live as
friends.*

Michael Smith



*When graduation day arrives in May,
although the close of two wonderful
years will have arrived, the friendships
will live on. For friends, like a song, will
play on forever in our hearts, and the
memories these friends create will play
on forever in our minds, like the last song
that is heard on the radio. One last look.*

*As important as friends are to each of
us while at Peace, the lasting memories
which are captured on film make rem-
iniscing in years to come possible.*



MEMORIES . . . MEMORIES . . .

Therefore, we hope that you will treasure your two years here at Peace, and the friendships which you made. And, also, that when you can no longer see that special person everyday, you will be able to pick up your old yearbook and remember, as if it were yesterday.

*Rita Hamilton
Denise Huntley
Dana Watson*



MEMORIES . . . MEMORIES . . .

A Special Friend



ADVERTISEMENTS

ADVERTISEMENTS

ADVERTISEMENTS

ADVERTISEMENTS

ADVERTISEMENTS

ADVERTISEMENTS

ADVERTISEMENTS

ADVERTISEMENTS

ADVERTISEMENTS

ADVERTISEMENTS

ADVERTISEMENTS

ADVERTISEMENTS

ADVERTISEMENTS

ADVERTISEMENTS

ADVERTISEMENTS

ADVERTISEMENTS

ADVERTISEMENTS

ADVERTISEMENTS
ADVERTISEMENTS
ADVERTISEMENTS
ADVERTISEMENTS
ADVERTISEMENTS
ADVERTISEMENTS
ADVERTISEMENTS
ADVERTISEMENTS
ADVERTISEMENTS
ADVERTISEMENTS
ADVERTISEMENTS
ADVERTISEMENTS
ADVERTISEMENTS
ADVERTISEMENTS
ADVERTISEMENTS
ADVERTISEMENTS
ADVERTISEMENTS
ADVERTISEMENTS
ADVERTISEMENTS
ADVERTISEMENTS
ADVERTISEMENTS



Your
ol'
Buddy
Ernest!

PERSON STREET PHARMACY

702 N. Person Street
Raleigh, N.C. 27604
Phone 832-6432
Serving Peace College for 60 Years

Monday-Saturday
9AM-6PM

Closed
Sunday

Mordecai Florist & Bridal Shop



**BRIDAL GOWNS — BRIDESMAID GOWNS
MOTHER OF THE BRIDE
FORMAL, PROM & COCKTAIL GOWNS
TUXEDO RENTALS AND COMPLETE FLORAL
SERVICES**

**832-6447
707 N. PERSON ST.**

**WE HONOR
ALL MAJOR
CREDIT CARDS**

**GIFTS &
ACCESSORIES**

Mike Hutzler, photographer

Best Wishes To
Peace College

A. E. Finley & Associates, Inc.



CONSTRUCTION EQUIPMENT DISTRIBUTORS

RALEIGH - CHARLOTTE - W.COLUMBIA

**ARA
FOOD SERVICE**

Hudson Belk

We're here for you!

When you need an expert's advice on makeup, wedding planning, or decorating your first apartment, we're here to help!

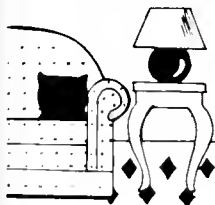
Cosmetic makeovers.

Let Hudson Belk point the way to better looking skin, new makeup techniques and fresh fragrance ideas. To arrange a complimentary makeover with a consultant from your favorite line, come by or call!



Bridal Registry. We want to help turn your "dream wedding" into reality. Our Bridal Consultants will help you choose the perfect wedding day fashions, answer all your etiquette questions, and enter your gift choices in Hudson Belk's Bridal Registry.

Table Top Plan. It's the easy way to pay for the china, crystal and flatware you'll soon be needing. With approved credit, you can take up to 24 months to pay... with no down payment, and no finance charges. Ask for complete details.



Interior Designers. Spend a few minutes with a Hudson Belk Interior Designer. You'll describe your decorating problems, she'll make a few suggestions... and together, you'll devise a workable plan for your home and budget! To arrange a complimentary consultation, call or come by our Crabtree Valley store.

SHOP DOWNTOWN, MONDAY AND FRIDAY 10:00 TIL 9:00 TUESDAY THROUGH THURSDAY 10:00 TIL 5:30 PHONE 832-5851 CRABTREE VALLEY AND CARY VILLAGE, MONDAY THROUGH SATURDAY, 10:00 TIL 9:30 PHONE CRABTREE VALLEY 782 7010 CARY VILLAGE 467-5050

Phone: 919 782-1183

Bride's World

North Hills Mall
RALEIGH, N.C. 27609



WHITE OAK DAY CARE, INC.

Rt 2, White Oak Road
Garner, N.C. 27529

Phone: 779-0467

Hours: 6:30 am - 6:00 pm

"Your Child's Home Away From Home"

LOCALLY OWNED & OPERATED BY JANET HICKMAN

"SCHOOL MUSIC SPECIALISTS"

Burrage Music Company
4900 GREEN ROAD
RALEIGH, NC 27604

P.O. BOX 58040
ZIP 27658

OFFICE 919-872-0211
NC WATS 800-662-7318

*Congratulations
Class of '86!!*

Theo Davis and Sons

Compliments of
JOHNSON-LAMBE CO.
For the Best in Sporting Goods



- CORSAGES
- CUT FLOWERS
- GRADUATION
BOUQUETS

"We Grow the Flowers We Sell"

Fallon's Florist

Established 1920

Quail Corners
Shopping Center

878-8077

St. Mary's St.

828-4134

Remember
SMITH STUDIO
for

Application Photos
Gift Portraits
Debutante Portraits
Engagement &
Bridal Portraits

Smith Studio
2420 Wake Forest Rd
Raleigh, N.C. 27608
834-6491



When our deadlines came this year, many times we found ourselves unable to do everything that had to be done. We always knew we could depend on two special people to dedicate their time to help us type copy. We, the editors of the 1985-86 Lotus, would like to sincerely thank Dawn Ikner and Patricia Anderson for their many hours of help.

*Denise Huntley
Dana Watson
Rita Hamilton*

**Congratulations
Class of '86**

**Garland C.
Norris Company**

A complete line of professional quality
housekeeping and janitorial supplies

**JAMES H. ANDERSON
CO., INC.**

FLOOR MAINTENANCE MATERIAL
SANITARY SUPPLIES —
EQUIPMENT

418 W. PEACE STREET
RALEIGH, NC

EUROPEAN AUTO SERVICE

**510 WEST MORGAN ST
RALEIGH, NC 27603
832-8142**

**Moore & Johnson
Insurance Co., Inc.**

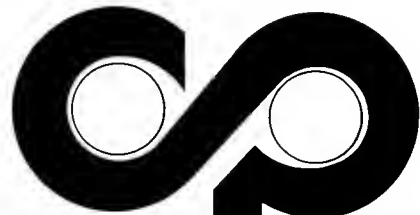
828-8942

Pensions — Group Plans — Estate Analysis
Individual & Business Life and A & H

Earl Johnson Harry Moore
John Duncan Bill Ward
Merrit Jones Vick Moore
Herman Satterwhite

400 Oberlin Road
Raleigh, NC

Outstanding printing,
delivered on time, is the only
kind we do



Commercial Printing Co.

P. O. Box 2319 Raleigh, N. C. 27602 919/832-2828

Coke is it!

Capitol Coca-Cola Bottling Co.

We, the Lotus staff would also like to express our appreciation to Dr. Janet Wester, Liz Thurston, and Jenny Spiker for their many contributions to the production of this yearbook. Thanks goes to Dr. Wester for the many hours of work she willingly gave, to Liz Thurston for her work in coordinating our photographers, and to Jenny Spiker for donating pictures to the yearbook. Without their willingness to help us, we would not have been able to put together this yearbook for you.

The Lotus Staff



Congratulations Graduates!!

Keep smiling and keep dreaming!
I LOVE YOU ALL
Inez Small

Otis, Bo, and Shur:

Thank you for being such wonderful "roommates". This has been a wonderful sophomore year. You have been supportive through the good and the bad. May 10 will be a sad day for us, because we will be scattered. But, just remember Chapel Hill, Greensboro, Grooveland, and LaLaVille will be just a call away. I LOVE YOU ALL —

Lorraine

ELMS: Thanks for making our sophomore year special; each of you hold a dear place in my heart. Best wishes in all of your future endeavors. Love Ya, "D"

Firestarter: "Ring that BELL." You've been a great roommate. Take care and good luck next year. Love ya, "D"

Lu: "Keep smiling. Keep shining . . . That's what friends are for . . ."

Thanks for being there when I needed a friend. Always remember, there is something special about you, you are like no one else — Be proud in that fact!! Love always, "D".

Donna Torrence: You've been a special "lift" and inspiration to me while at Peace. "Good friends are rare. I am happy to say that you are a 'friend' to me, for it is a word to which I attach a great deal of importance. — Paul Gauguin." Love and friendship always, "X".



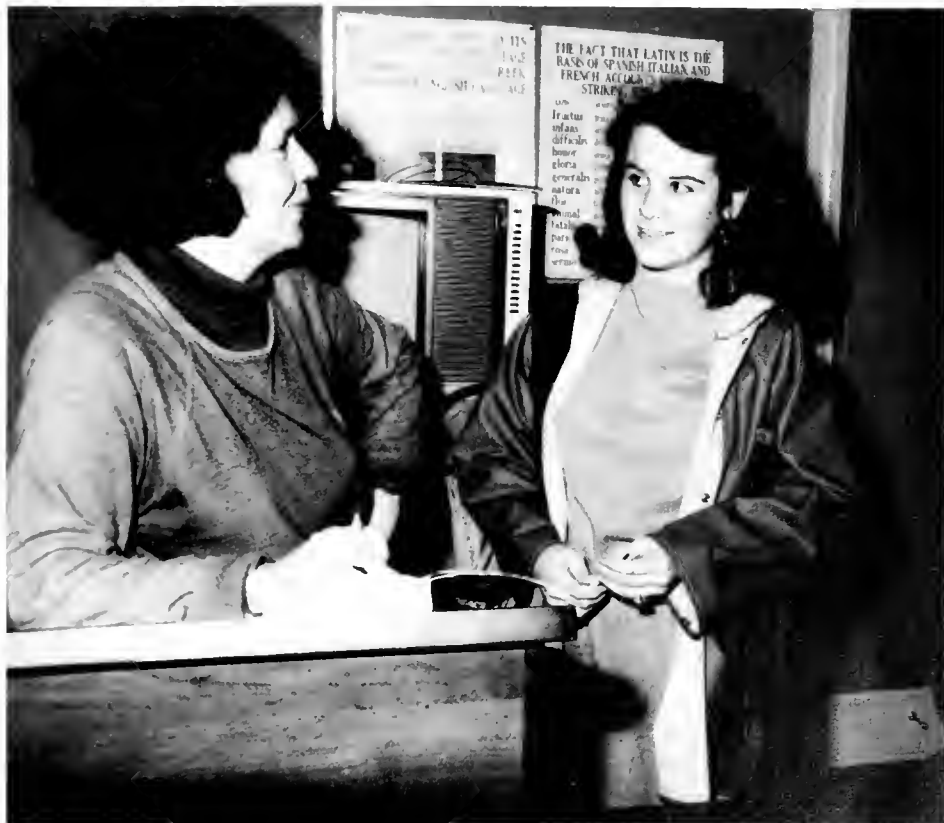
A Peace Girl Comes Home

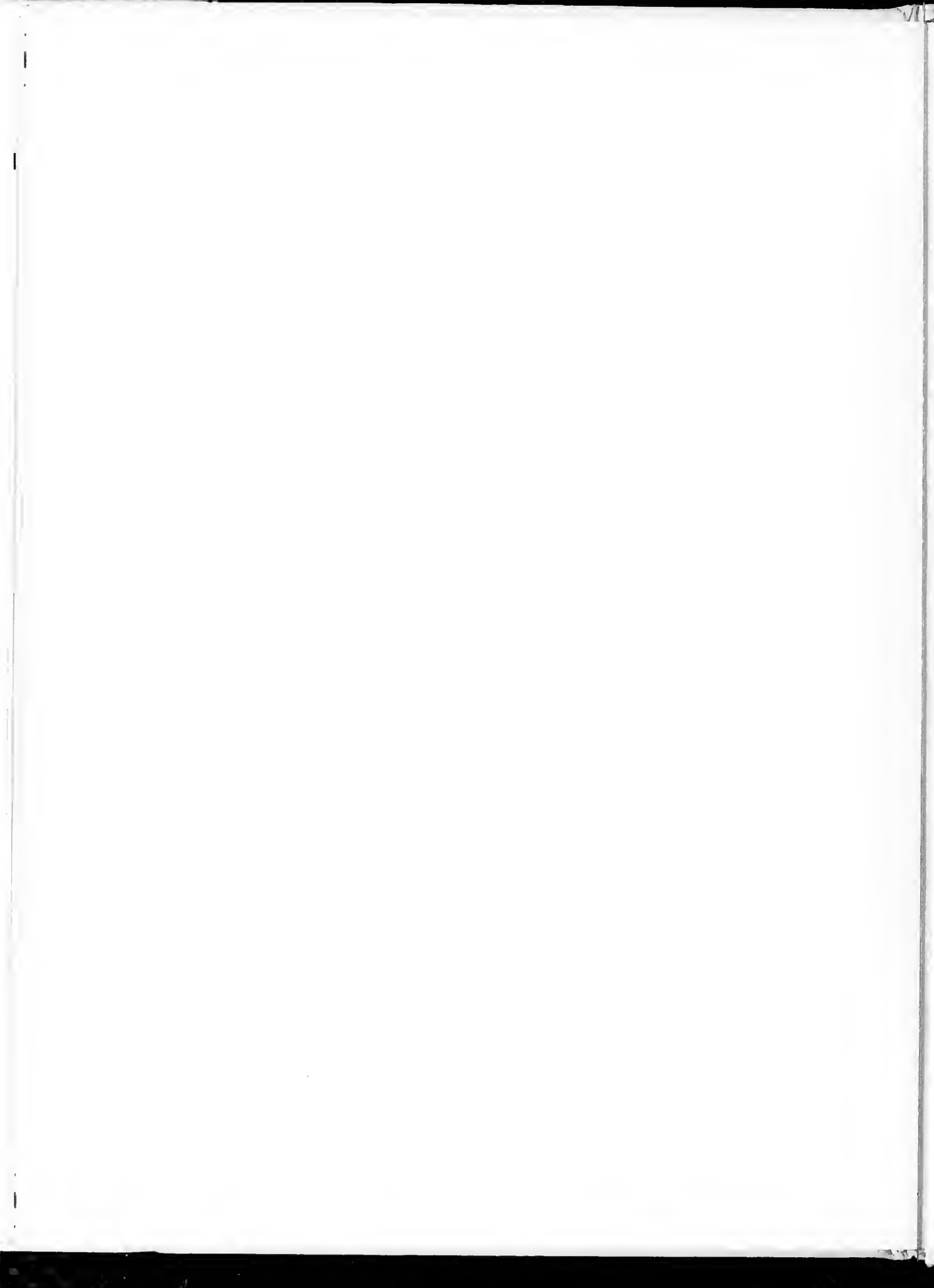


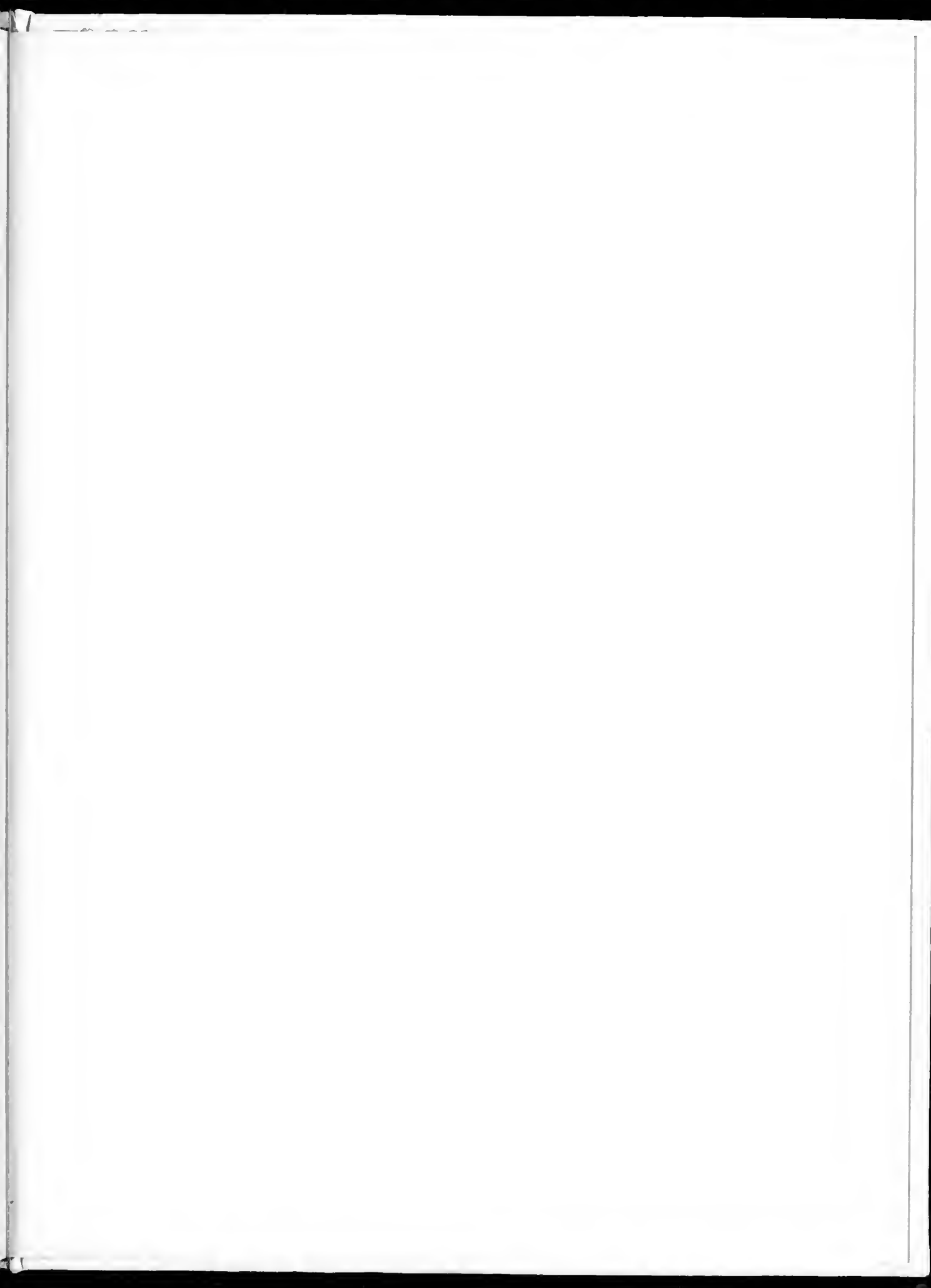
*Dr. Gail Godwin, a 1957 alumna of Peace College and 1959 graduate of UNC, was here from February 10-14 as the Goodman Visiting Scholar. Dr. Godwin, who holds a Ph.D. from the University of Iowa, is an author of national significance. Her fifth novel, *A Mother and Two Daughters*, sold nearly two million copies and was on *The Best Seller List* for four months. Her sixth novel, *The Finishing School*, has received critical acclaim and has recently been published in paperback.*

*Dr. Godwin lives in Woodstock, New York, and she interrupted her busy writing schedule to spend a week with Peace students. Since all Peace Freshmen had read *A Mother and Two Daughters*, they were excited to have Dr. Godwin teach a class in which they could ask questions and talk informally with her.*

Dr. Godwin also did a reading for the public and conducted a workshop for high school and college creative-writing teachers. In all activities, Dr. Godwin was interesting, witty, and gracious, exuding the charm of the Peace girl who discovered that she could go home again.









HUNTER PUBLISHING COMPANY

• Winston-Salem

• North Carolina

Joe Allegood, Wilson, North Carolina

