

LIBRARY



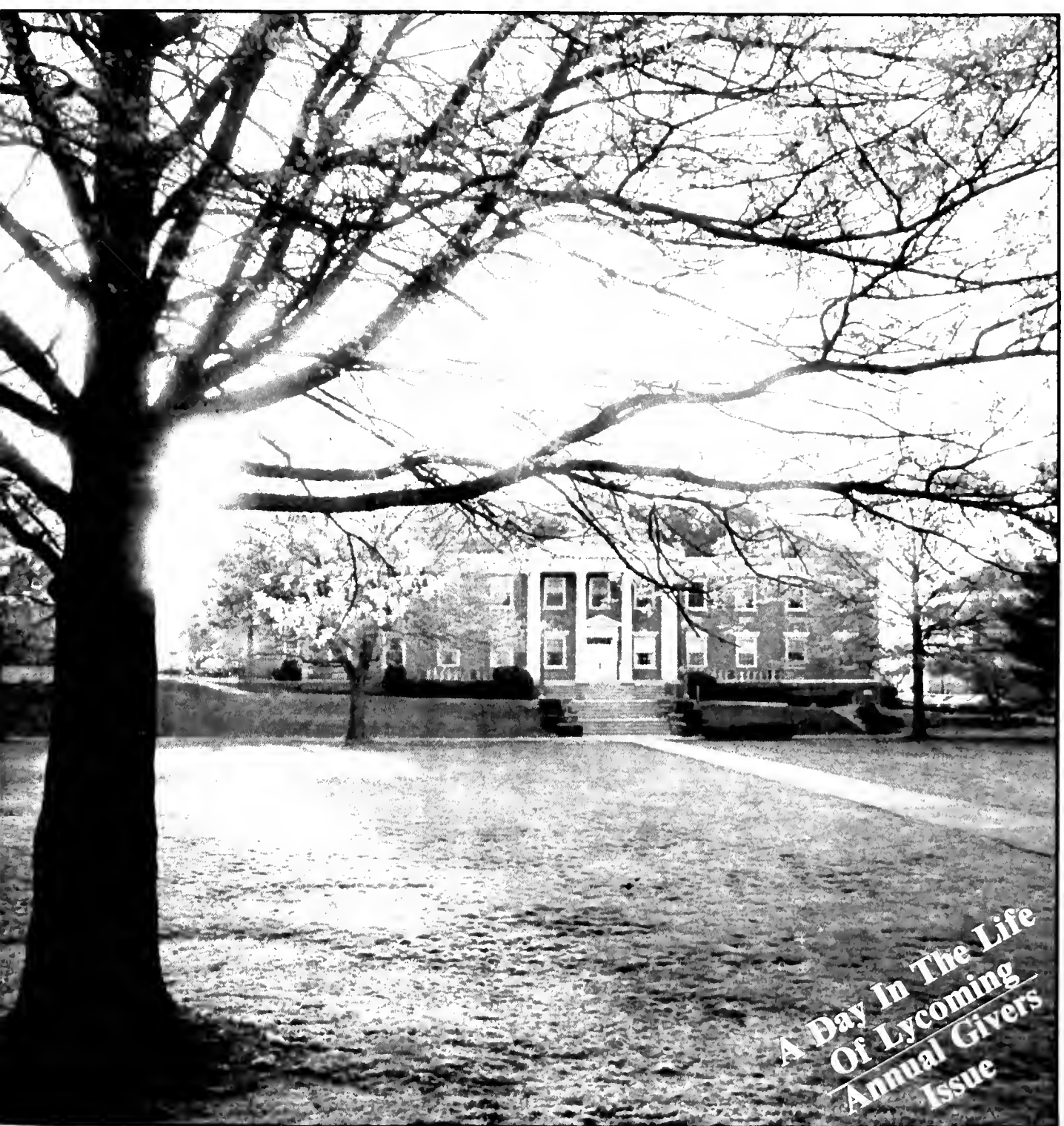






# LYCOMING

## QUARTERLY



*A Day In The Life  
Of Lycoming  
Annual Givers  
Issue*

WILLIAMSPORT, PENNSYLVANIA, FEBRUARY 3RD. It is another cold night in what now seems like an endless succession of such winter evenings.

While the Lycoming campus sleeps secured in a feeling of inner warmth, Carol Gamble is busy preparing baked goods, which will grace the breakfast tables in the dining hall. Thus begins another day in the 176 year history of Lycoming College.

Last September when the idea of doing a story about the people and events during a typical day in the life of Lycoming College was first raised, one immediate problem surfaced. "Who is going to write it?" was the question most frequently asked.

It was a fair question since the project was ambitious to say the least and needed to be undertaken concurrent to a number of other time consuming projects. A dedicated and talented group of eight individuals undertook the task of presenting a microcosm of life behind the scenes at Lycoming. With the exception of *Jane Cunnion*, associate editor of the *Lycoming Quarterly* and *Lisa Engel*, assistant editor, the remainder of the project staff were Lycoming College students. *Catherine Chadwick '88*, an English major, served as coordinating editor during her internship in the public relations office. Her keen eye for grammar and editorial consistency proved invaluable. She also found time to look beyond the classroom and capture the flavor of the demanding schedules of two faculty members. *Cindy Smith '88*, a mass communication major, got up at the crack of dawn and followed the early morning activities of Chris MacGill, alumni director and full time mother. *Tom Speicher '89*, shares his anxiety and excitement before the most important broadcast of his career. *Stephanie Ross '90*, reminds us that behind the computers are dedicated people in the Computer Services office who provide extraordinary service with little fanfare. *Kim Kaiser '88*, another mass communication major, shares Ann Blumer's thoughts and feelings on being the wife of a college president.

During this 24 hour period we will meet some of the dedicated personnel who provide a myriad of services in support of the College. Their stories are important because it is this support structure which nourishes the institution.

A Day In The Life Of Lycoming College offers a different insight into the joy, hope, frustration, and excitement that sustains our College. We hope you enjoy these vignettes.

*Mark Levine*

Mark Neil Levine  
Managing editor



Jane Cunnion



Lisa Engel



Catherine Chadwick



Cindy Smith



Tom Speicher



Stephanie Ross



Kim Kaiser



Mark Levine



# THE QUARTERLY

OLYMPIC REFLECTIONS .....Page 2



STARRY NIGHTS .....Page 4



A DAY IN THE LIFE OF LYCOMING .....Special Insert



LIST OF CONTRIBUTIONS THE CAMPAIGN .....Page 10



SPORTS .....Page 5

ALUMNI NEWS .....Page 8

DEVELOPMENT NEWS .....Page 6

CLASS NOTES .....Page 25

Lycoming Quarterly September issue (ISSN No. 0887-2902) is published quarterly and distributed at no cost to the recipients by the Director of Publications, Lycoming College, 700 College Place, Williamsport, PA 17701-5192. POSTMASTER: Send address change to Lycoming Quarterly, Lycoming College, 700 College Place, Williamsport, PA 17701-5192.

Editorial Staff: Mark Neil Levine, managing editor  
Jane A. Cunnion, associate editor  
Lisa Engel, assistant editor  
Bill Byham, sports editor

Class Notes and Alumni News: Office of Alumni and Parent Relations

Production Credits: Typeset and Printed by Precision Printers, Inc.  
Designed by Mark Neil Levine and Jane A. Cunnion

Photo Credit: Mark Neil Levine, Jane A. Cunnion, Keith Vanderlin, Bettman Archives

Cover Photo: Keith Vanderlin  
Volume 4, No. 2

**Cover Photo:** The dawn of a new morning. The sun rises behind Long Hall and bathes the quad in the glow of another Day In The Life Of Lycoming College.

By Dr. Richard Hughes

When I attended the 1984 Olympic Games in Los Angeles, I expected to see simply athletic competitions. I experienced, however, a joyous spectacle rich in religious rituals. Reciting the sacred oath, lighting and extinguishing the torch were religious actions. At each venue we were asked to stand and listen in silence to the Olympic hymn. The procession of athletes followed, accompanied by Greco-Roman fanfares. As I anticipate the 1988 games in Seoul, I wish to reflect on the nature of the Olympic religion.

The Olympic games descend from the sacrificial festivals of ancient Greek religion. One of the oldest sources is the twenty-third chapter of the *Iliad*. Patroclus dies in battle, and his friend Achilles organizes the rituals of mourning. Achilles says that he would cut the Trojans' throats in anger. Bulls, goats and sheep are sacrificed. Achilles grieves inconsolably as he burns the bones of Patroclus. The bones are taken from the ashes, wrapped in fat, and placed in an urn.

Achilles also orders athletic competitions to be conducted. Prizes are given to the victors. One is a silver bowl, another the bronze tripod, in which the sacrificial meat is roasted for eating. If we ask ourselves why the mourning ritual would include athletic contests the answer will reveal the essence of the Olympic religion.

In the Greek heroic age death was viewed as the adversary. Death struck down the living as an assault. The impact of death naturally provoked in the survivors an intense rage and desire for vengeance. The funeral games provided an outlet of the bereavement hostility. Instead of killing, the survivors would compete against one another in contests. The games released a constructive aggression as a substitute for violent retaliation.

The Olympics grew out of the funeral games. The first list of victors was published in 776 B.C.E. The games were held in Olympia, because a shrine for the god Zeus had already been established there by the tenth century. Originally, the games lasted five days. Sacrifices were made on the first, third, and fifth days. The climax occurred on the evening of the third day. By the light of the full moon, one hundred oxen were slain at the altar. The thigh bones were removed and burned on the altar, since they were the most pleasing to Zeus. The heap of ashes became an epiphany of the sacred.

The arena was 200 meters long, and it was called the *stadion*. The 200 meter dash, also named the *stadion*, ended at the altar. The winner of the *stadion* had the honor of igniting the torch and burning the thigh bones. The other athletes and spectators watched the lighting of the torch and witnessed the conquest of death through the power of sacrifice. The *stadion* remained associated with the torch, and it continued to be the premier event until the twenty-fifth Olympiad in 680 B.C.E. The chariot race was introduced then as a variant of the 200 meter dash.

The athletes were professional. The Greek term for athlete (*athleion*) means to compete for a prize. Valuable prizes were awarded. For example, the winner of the 200 meter dash in 400 B.C.E. won the equivalent of \$67,800. Olympic champions often became famous and wealthy men. When they died, they received blessings. Some were even exalted as heroes, and their deeds were preserved in the oral memory.

The Greek term for game is *agon*. This masculine noun is the source of our word agony. Competitions were agonizing in the sense of a struggle to a purpose of victory or death. The Greeks never used the word for rest. The term for play is related to *agone*. The Olympic competitors were seasoned veterans, and they were not afraid of pain. In play the goal is to overcome the opponent. The Italian name for a Venice Lombardy tennis player is *agone*, which means "winning." The proper behavior of a winner is to be gracious and to

With the *agon* the Greeks distinguished between aggression and violence. This distinction evolved particularly in boxing, which was introduced in 688 B.C.E. By the first century of the Christian era, the athlete was regarded as superior to the warrior. For example, the funeral oration for the young boxer Melancomas extols the courage and self-control of the athlete. A warrior like Achilles may possess courage, but he lacks self-control. A warrior needs to kill in order to prevent his opponent from ever returning. The athlete allows his opponent to come back for another contest.

The Olympic games were performed regularly every four years for a millennium. If wars were being fought, truces would be declared. The competitions convened during the "dog days of summer." This season represented one of the foundation myths of the game. The dog was identified with the wolf. The ancestors of the athletes, the prehistoric hunters, had adopted the predatory ways of the wolf. The political task of the games was to ritualize aggression in nonviolent forms. The athletes were to tame the cunning of the wolf.

This foundation myth of the wolf was preserved in the story of Damarchos. He was the boxing champion in 400 B.C.E. During the sacrifice to Zeus, Damarchos was changed into a wolf. A restoration of his humanity was promised, if he refrained from eating human flesh for nine years. He agreed and came back as a man in the tenth year. In compliance with the myth the Olympic athletes had to eat a vegetarian diet with cheese and figs 30 days before the games.

The Olympics were eventually abolished by Christianity in 393 C.E. Theodosius, the Christian Emperor of Rome, imposed the ban on February 24, 391: "No person shall pollute himself with sacrificial animals... neither slaughter an innocent victim... nor approach the shrines..." The decree presumed that the death of Jesus had been the perfect sacrifice. Hence, no other sacrifices were needed.

For most of the Christian era the Olympic games were not performed. They were reopened in Athens in 1896. 285 athletes competed in 42 events. The founder of the modern games was the French aristocrat Baron Pierre de Coubertin. He envisaged a religion of sport. Coubertin established the Olympic movement as "a religion with church, dogma, and cult."

His inspiration came not from Greece but from late nineteenth century Victorian England. In Victorian society athletics were amateur. Amateurism was an elitist ideology intended to justify the play of upper class boys. Professional meant lower class. Coubertin and his associates failed to realize that the ancient athletes were professional. On purely ideological grounds they erroneously projected the notion of amateurism onto the ancient Greek texts.

After the Olympics were established for amateurs, they were promoted on restrictive class and racial lines. The sportswriter Caspar Whitney declared that the games should remain amateur forever so as to exclude "lower class vermin." Avery Brundage advocated the same bias, while heading the International Olympic Committee between 1952 and 1972. His aristocratic religion of sport masked a chronic resentment against Jim Thorpe, the prototype of the poor professional. Thorpe had defeated Brundage in the decathlon of the fifth Olympiad in 1912.

Since the fifth Olympiad, pure amateurism has survived in the closed world of rowing. Oarsmen are obsessive-compulsive personalities who row in a primal rage. The techniques are transmitted in an oral tradition and justified by the hero myth. The code of the crew includes the acceptance of pain, humility, and loyalty to the opponent. While these virtues conform to the Olympic spirit, they presuppose the wealth of upper class society. This hereditary privilege is what separates the amateur

from the ancient athlete. A renunciation of inherited wealth was required in the ancient funeral games.

The Olympic religion poses a fundamental alternative to the Hebrew-Christian tradition. The Jew or Christian views the desire for excellence as sinful pride. Shame must be resolved in public expiation, but agonistic religion lacks a sacrament of penance. Both Judaism and Christianity seek to control envy through an ethic of equality. For example, the New Testament Parable of the Laborers in the Vineyard (Matt. 20:1-10) says the first shall be last and the last first before God.

In American society the religion of sport seems to displace the biblical egalitarianism. Dominance hierarchies are celebrated as ends in themselves. The biblical vision of equality becomes eschatological. This dichotomy has never existed, however, in Greek culture. The reason is that Greek Christianity transfers the *agon* from the sacrifice to the spirit. Instead of making sacrifices, we become co-participants with God in the spiritual life. Existence is a struggle for transfiguration within the divine passion. To be transfigured is to become an athlete of God.

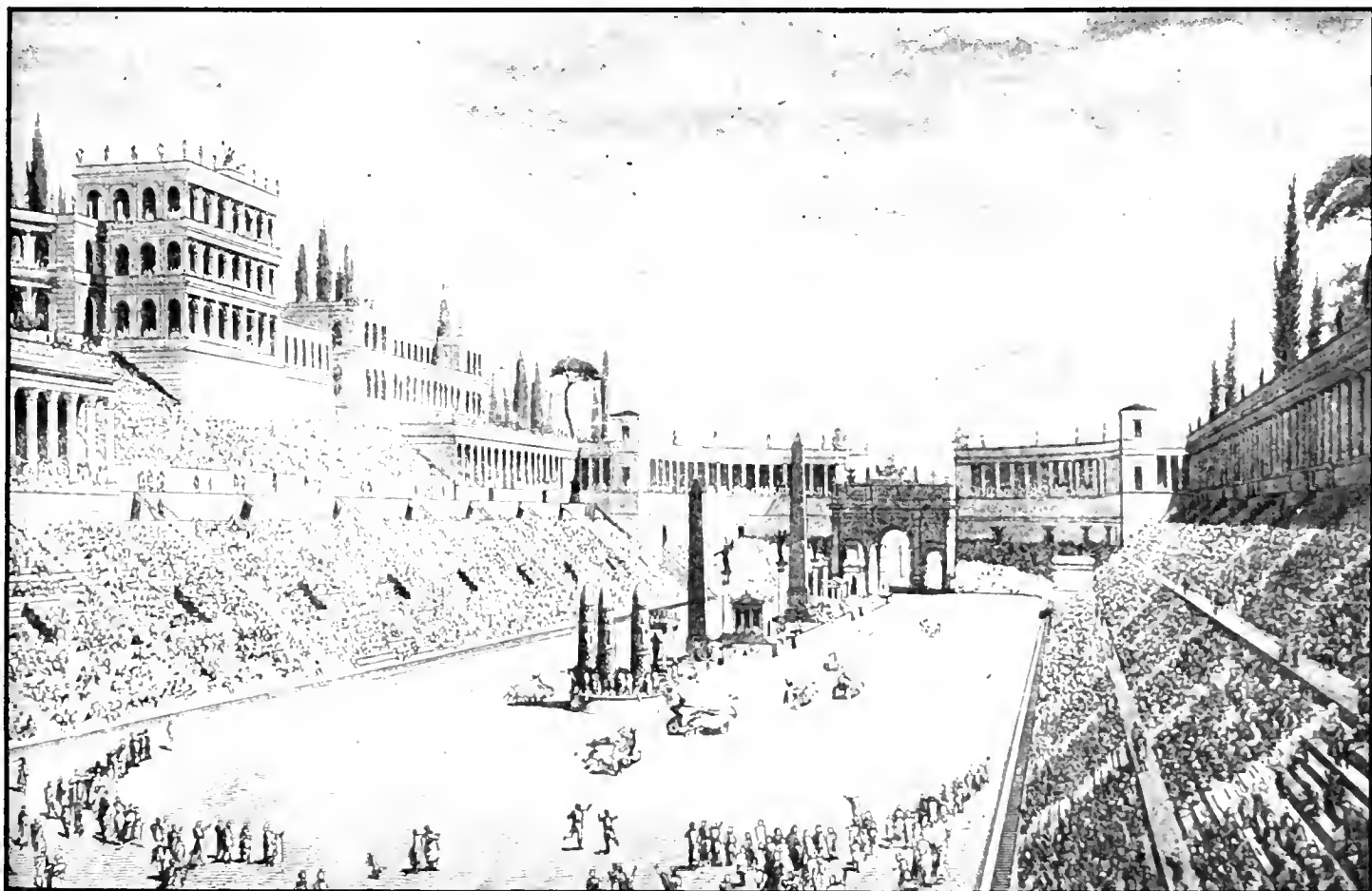
The forthcoming Olympiad will have an appropriate setting in Seoul. South Korea is quite similar to Greece. When I visited Korea in 1971, I found the land to be rugged and austere, particularly near the Great Wall north of Seoul. The people are

passionate, affective personalities, fascinated by the interplay of sorrow and romance. These psychic opposites are poignantly expressed in the songs of the blind shamans who wander the cities by night.

The people conceive of life as an aggressive struggle against demonic forces. Consequently, the Korean experience is best expressed in one of the oldest rituals of aggression, the primitive exorcism. I witnessed an exorcism for demon-possessed people outside of Seoul. In a deep ecstatic trance the shaman danced with a gleaming silver dagger clenched in her teeth and blood smeared on her cheeks. As an heir of the ancient hunters, she expelled the demons by throwing fresh meat at them.

When the torch is lit beside the Han River, it will burn in a land scorched by the primal sacrifice of war. In this unique and vibrant country, where envy co-exists with totalitarian tendencies, the games will be hosted by people who certainly know the meaning of sacrifice. The twenty-fourth Olympiad will convene in the fall, however, after the "dog days of summer." Will the ritual power of the games tame the cunning of the wolf? A successful Olympiad will be measured by a political triumph of nonviolent aggression.

Richard Hughes is associate professor of religion at Lycoming College.



*Olympic Games: An Ancient Stadium*

By: Mark Neil Levine

The 1988-89 Lycoming College Artist Series will be highlighted with an appearance by The New York City Opera National Company performing Verdi's opera "La Traviata" on February 1, 1989. The opera is the poignant story of Violetta,

the consumptive courtesan, who sacrifices all for love. Verdi's masterpiece will be supported with a thirty-piece orchestra; subtitles will be projected onto a screen suspended above the stage providing a simultaneous translation of the opera.

The "Starry Nights" series begins on September 29 with the Northeastern Philharmonic in an 8 p.m. appearance. Included in the program are Beethoven's Second Piano Concerto with Jeffrey Kahane, piano soloist. Bruckner's Fourth, "The Romantic Symphony" will also be performed.

Broadway returns to Williamsport on October 24th at 8 p.m. with The Mystery of Edwin Drood. The lively, madcap murder mystery, is the only musical in theatre history that lets the audience decide which character should be the murderer. The show combines the twists and turns of a mystery with the high-spirited fun of an English Music Hall. The show received five 1986 Tony Awards, including Best Musical.

On December 3rd at 8 p.m. Barbara Cook will sing Broadway standards and "Tin Pan Alley" favorites. Cook is probably best remembered as the original Marian, the librarian, in "The Music Man."

The Pilobolus Dance Theatre, innovators in pop-dance, bring their widely acclaimed combination of dance, acrobatics, theatre and mime to Williamsport on March 31 at 8 p.m. Now in their 16th year, Pilobolus is as crazy as the Marx Brothers, as clever as Houdini in raising the language of dance to new heights.

All Lycoming College Artist Series events will be at the Capitol Theatre. Season subscription information can be obtained by calling 321-4048, Monday - Friday, 10:00 a.m. - 4:00 p.m.

Mark Neil Levine, managing editor of the *Lycoming Quarterly*, is director of public and media relations at Lycoming College



THE NORTHEASTERN PENNSYLVANIA  
PHILHARMONIC  
September 29, 1988 — 8 p.m.



October 24, 1988 — 8 p.m.



BARBARA COOK  
December 3, 1988 — 8 p.m.



LA TRAVIATA  
February 1, 1989 — 8 p.m.



PILOBOLUS DANCE THEATRE  
March 31, 1989 — 8 p.m.

By: Bill Byham

Several small items need to be expressed in this space of the *Quarterly* pertaining to the Lycoming athletic programs, thus the change in basic format.

One of those items deals with the sports Hall of Fame and the issue of nominees to that select group. The selection committee meets in June to review nominees. At the last meeting there was concern about the lack of nominees, with only a handful of names submitted for the committee to work with in selecting the Class of 1988.

There have been many great players in all sports over the years at Lycoming and the former Dickinson Seminary. Through some periods of that history, names and records have been lost, not kept or forgotten by those on the present selection committee. Therefore, the only way the selection committee can really do the task of selecting Hall of Fame members is to have the *Quarterly* readers get involved in the process.

The requirements are not all that difficult. The Hall is open to former athletes who have earned a degree and are now five or more years out of the College. There is also an opening in the regulations for nominating past coaches for consideration to the Hall. Also, a person once nominated may be renominated.

The Hall of Fame was created in response to those who participated in the athletic program. It is not the sole responsibility of a very small group of people who make up the selection committee to make those decisions as to the names inducted into the Hall. There is a definite need for input from alumni.

Nominations should be mailed to: Frank Girardi, Athletic Director, Athletic Department, Lycoming College, Williamsport, PA 17701.

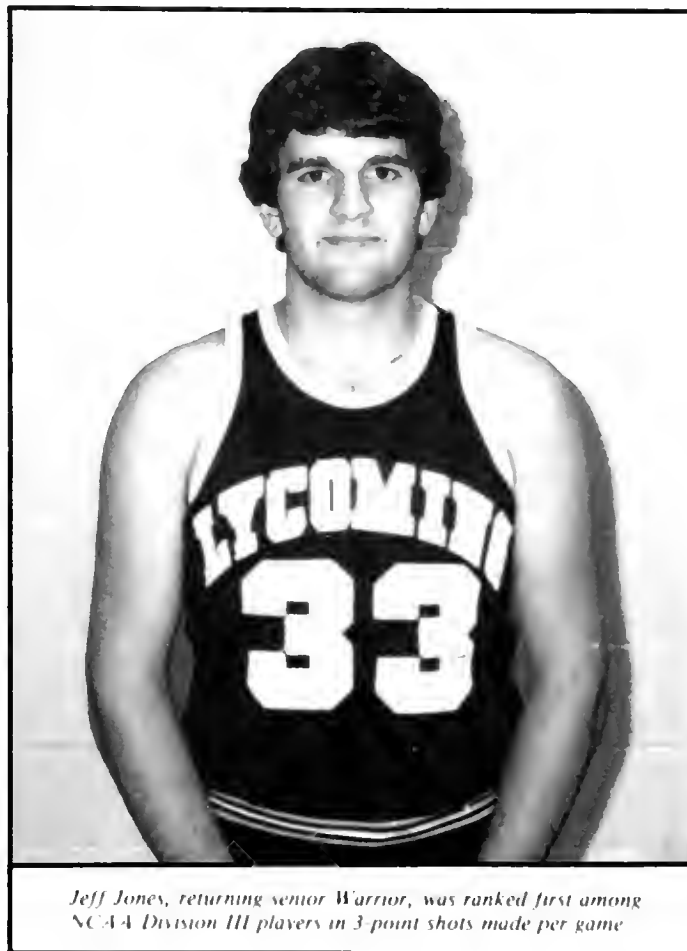
The Class of 1988 has seven persons selected to the Hall of Fame. Les Dye from the Dickinson Seminary era; the late Dave Busey, former coach and athletic director; Jerry Butler and Jeff Wert, past Warrior footballers; Robin (Wert) Lawrence, field hockey; Bill Kehrig, wrestling; and Dick O'Donnell, basketball. This class will be formally inducted into the Hall on Friday evening, September 30, 1988 at the Williamsport Country Club. They will also be introduced to the Homecoming Day crowd during halftime of the football game.

Lycoming had two former football players involved with the professional game over the spring and summer months of this year.

Rusty Fricke '86, played the Arena Football season with the team from Pittsburgh while Larry Barretta '86, played pro football in Italy.

Fricke, the holder of several Lycoming kicking and scoring records, tied an Arena Football League field goal record with a 49-yard boot. The field of play is only 50-yards long and the goal posts are but 9 feet wide. Barretta, holder of just about every Warrior passing record, played in Italy as a tailback. Under the rules of the league a team could have three American players if none of those players was a quarterback. If the

American was a QB then that team was limited to just one player from the states. Barretta, no stranger to running with the football while at Lycoming, averaged nearly 100-yards rushing per game.



*Jeff Jones, returning senior Warrior, was ranked first among NCAA Division III players in 3-point shots made per game*

The Lycoming name was very prominent through the 1987-88 athletic year wherever the NCAA News was circulated. The Warriors, in football, closed their season ranked first (rushing defense), second (total defense) and third (scoring defense) among Division III teams in the nation. Freshman cornerback, Rick Bealer (West Point, PA) was ranked 11th nationally in punt returns.

The Warrior football program will enter 1988 as the 14th ranked team in the nation in regards to a winner percentage through the first seven years of the 1980's.

Coach Kim Rockey's Lady Warriors (21-7) closed their season ranked 18th in the Top 20 Division III poll and ranked third in the NCAA Mid East region. Both were firsts for Lycoming College basketball.

Jeff Jones from the Warrior men's basketball program was ranked first among NCAA Division III players in 3-point shots made per game. Jones, who will be back for his senior year, averaged 4.2 3-point conversions per game last season on his way to a 419 point season. Jones also ended up ranked in the Top Ten of the nation by making 97 of 184 3-point attempts for a .527 seasonal average.

The Campaign for Lycoming College has recently passed \$8.4 million in gifts and pledges toward the total program goal of \$13.3 million. Several major gifts, including a new Charitable Remainder Unitrust and a gift of a farm, were responsible for this significant increase since the Campaign was launched publicly in April.

The Unitrust, established by a Seminary alumnus, will provide annual income to the donor then be used to create a new, endowed student loan fund at the end of the donor's life.

The farm was given to the College by a Williamsport resident. By transferring the property to Lycoming, the donor avoided paying tax on the farm's appreciation and received an income tax deduction for the full fair market value of the property.

Proceeds from the sale of the land will be directed, at the donor's request, to assist with The Campaign for Lycoming College.

After several letters, frequent telephone conversations and a few personal visits, many Lycoming alumni and special friends of Mort Rauff have successfully established a new \$10,000 endowed scholarship fund at the College.

In the June 1986 issue of the *Quarterly*, a story written by Dr. Walter H. Manning '64 described this project as an attempt to create an appropriate, meaningful, lasting tribute to Mort Rauff, "a highly respected coach and friend of the Lycoming swimmers from 1960 through 1972." The scholarship is designed to provide financial assistance for a talented and deserving Lycoming swimmer. Only the interest earned annually will be awarded in order to insure that the scholarship will remain a permanent part of the College's endowment.

With this new fund, the legacy of caring and concern for student athletes which epitomized Mort's tenure at Lycoming will live on for generations to come through the lives of the scholarship recipients. Many thanks to all those alumni and friends who helped make this possible.

**GIFTS AND PLEDGES FOR  
THE CAMPAIGN FOR LYCOMING COLLEGE**  
(as of 7/31/88)

*By Source*

Alumni	\$2,765,112
Trustees	959,605
Friends	2,560,685
Business and Industry	820,916
Foundations - Trust Funds	1,043,700
Church	196,066
Other Organizations	34,562
Gifts-in-kind	24,522
<b>GRAND TOTAL</b>	<b>\$8,405,168</b>

*By Designation*

New Science Center	\$2,361,865
Lycoming College Fund	969,201
Quasi-Endowment (unrestricted)	190,000
Admissions House	103,350
Endowment - Scholarships	459,992
Endowment - Other	1,638,406
Campus Improvements	235,975
Campaign General	2,436,379
<b>GRAND TOTAL</b>	<b>\$8,405,168</b>

A Williamsport native and current resident, who has asked to remain anonymous, recently completed a \$10,000 pledge to create a new, endowed Faculty Teaching Award as her gift to *The Campaign for Lycoming College*. An annual \$1,000 prize from the interest earned on this endowed fund will be awarded to junior faculty members in recognition of their "outstanding service in classroom instruction."

Commenting on this gift, Dean Shirley Van Marter said, "I am delighted that we will now be able to honor one of our faculty who has provided inspiration to students at Lycoming College. The new Faculty Teaching Award will make it possible for the College to provide tangible recognition to those special teachers who have the unique ability to bring wonder and excitement to the learning process."

By: Kimberley Kaiser '88

Graduation. It's unbelievable how much power these ten letters can have over a student's emotions. As my graduation day drew near, I began to feel like I was on a never ending roller coaster ride. Some days I would wake up and be all excited at the thought of starting a new chapter in my life. As soon as a friend would say "Remember when..." however, I was overcome with sadness at the thought of forever leaving my home-away-from-home: Lycoming College.

After all the congratulations, hugs, and promises to keep in touch were over, I thought this "graduation syndrome" would soon subside. I was wrong. These feelings became magnified as I attempted to unpack four years of my life into my bedroom at home.

I never before realized just how much College paraphernalia I had saved: a 1984-85 student handbook, various concert ticket stubs, a plastic-toy Warriors' football, and direction's to the famous Hiawatha boat ride. Why had I bothered to save these trivial items? I asked myself this question and initially decided that I had just neglected throwing this type of "College stuff" away. The real reason came to me, however, as I began filling up a trash can with what I thought was clutter: I wanted to have momentos from the best four years of my life.

***"I can find comfort, however, not only through cherished memories but also in knowing that I will always be a "Lyco" student at heart."***

I realized that I had become a victim of sentimentality, however, when boxes of Lycoming College momentos covered every inch of walking space in my bedroom. After carefully sorting through everything again, I managed to get all the important "must save" items into one large box.



*Kimberley Kaiser, '88 graduate, reflects on her collegiate experiences at Lycoming*

My most important momentos from Lycoming, however, cannot be touched or seen by anyone but myself. These consist not only of memorable times spent with friends, but also of the knowledge that I gained through the assistance of friendly, caring professors. These precious "College momentos" will be with me forever, and I have my parents to thank for giving them to me. Without all their love and support, my dream of graduating from College would never have come true.

As a relatively "new" Lycoming alumna, I have come to believe that "graduation syndrome" never goes away entirely. There will always be friends or special times that I miss. I can find comfort, however, not only through cherished memories but also in knowing that I will always be a "Lyco" student at heart.

Kimberley Kaiser '88 graduated with a B.A. in mass communication this past May.

## **Class of 1980: Take Note!!!**

It is the policy of the Career Development Center to retain credential files for a seven year period. The class of 1980 is scheduled for deletion December 1. Alumni from the class of '80 who are seeking employment may wish to retain and update their file. Please notify the Career Development Center in

writing, or call (717) 321-4034, if you desire to continue your file.

This notice applies only to credential files in the Career Development Center. It *does not apply to the registrar's file*, which includes your grade transcripts, and which is kept permanently!

At the June 1988 meeting of the Alumni Association Executive Board, approval was given to establish an endowment for the *Alumni Award for Faculty Excellence*. The criteria, procedures and award adopted for this prize are as listed below.

The Award shall be presented to a faculty member who demonstrates teaching excellence; is actively involved in student life outside the classroom; provides support for campus activities and events; and devotes service to community and their church/synagogue. Current faculty members who have served Lycoming College for at least ten (10) years and who have not received the *Alumni Award for Faculty Excellence* during the previous ten (10) years shall be eligible.

The faculty, through a three (3) person committee, will nominate up to three (3) eligible faculty members for the Award prior to the Spring meeting of the Alumni Association Executive Board (AAEB). The faculty committee shall consist of the three (3) most recent recipients of the Award who are currently faculty members. In the event that there are not three (3) such

faculty members available, the faculty personnel committee, or any successor entity, will fill any vacancies in the faculty committee making the nominations.

The Senior Class will also nominate up to three (3) eligible faculty members for the Award prior to the Spring meeting of the AAEB. Members of the Senior Class will receive at least two (2) written notices detailing the criteria for the Award and explaining their responsibility in selecting nominees. Members of the Senior Class will be mailed a ballot consisting of all eligible faculty members and the three (3) faculty members receiving the most votes shall constitute the nominees of the Senior Class.

After reviewing nominations from the faculty and the Senior Class, the Alumni Association Executive Board will select the recipient of the Award at its Spring meeting. The selection process will consist of a review of all nominations by a committee of the AAEB, with such committee making a recommendation to the AAEB. The AAEB may consider other eligible faculty members for the Award. Although it is intended that the Award be presented annually, the AAEB may elect to forego a presentation of the Award at any time and for any reason.

This past summer, alumni regional gatherings were hosted by James G. Scott '70, Boston; Barry C. Hamilton '70, Philadelphia; Kent I. Baldwin '64, Williamsport; John

M. Obzud '73, Baltimore and Charles J. Kocian '50, Washington, DC.



*Cruising down the river on an enjoyable summer night*



*Popular alumni event this summer - Washington, DC - alumni (left), spent summer days bespeaking for a leisurely luncheon trip*



The Award will consist of a memento and a cash prize of \$1000. The recipient will be announced and the Award will be presented at the Alumni Dinner held during Homecoming Weekend.

The Executive Board encourages members of the Lycoming College Alumni Association to help endow this prize. The goal set to provide the cash prize is \$10,000. Alumni making gifts to the College who wish to support this project need only designate their gift to the *Alumni Award for Faculty Excellence* and their contribution will be added to those already provided by members of the Alumni Association Executive Board.

Hopefully the goal will be reached so that the first annual award can be presented at Homecoming 1989.

With this fund, the Alumni Association Executive Board hopes to recognize those special members of the faculty who have given years of distinguished service to the Lycoming College campus community. As Patricia MacBride Krauser '68, president of the Alumni Association, remarked, "From their knowledge - we learned; through their guidance - we grew; by their hands - we were molded. Now with our gifts - we can say thank you."

## Memorials

During the 1987-88 fiscal year, gifts were received in memory of the following people or for new or established memorial funds.

In memory of:

Mr. and Mrs. Benjamin Alpert  
 Dr. Sheridan W. Bell  
 The Rev. William "Ben" Gould  
 Mr. Raymond W. Hall  
 Mr. William C. Heilman, Jr.  
 Mr. Walter Heim  
 Mrs. Thelma Diefenbacher Himes  
 Dr. and Mrs. E. W. Low  
 Mrs. Sarah Shuey North  
 Mr. and Mrs. Walter Staman  
 Mrs. Ruth Stern  
 Mrs. Barbara Schiele Swales  
 Mr. William P. Wilson  
 The Ronald Beemer Memorial Scholarship Fund  
 Jeanne Louise Little Memorial to the  
   C. Daniel Little Award In Political Science  
 The Morton Rauff Memorial Scholarship Fund  
 The Christopher Adam & Harriet Lane Rubright Family  
 The Nathan A. Scheib Memorial Music Fund  
 The Samuel Willard Memorial Scholarship Fund

Gifts made to Lycoming College in memory of a friend or loved one hold special significance for both the donor and the College. Such gifts are encouraged and fully respected in all regards.

Many alumni and friends make large gifts to the College through a properly prepared will or by a trust arrangement that becomes effective in accord with one's own estate plans. There are annuities and "living" trust arrangements, too, that provide income for life and a deferred gift to the College. Many of our currently endowed scholarships were established in this manner.

For the first time in the history of Lycoming College, gifts for a single fiscal year exceeded the \$3.5 million mark!

This record amount comes at a time when the College has announced its largest-ever capital campaign, the focus of which is to construct a new multilevel science facility and to secure endowment which will assure the continuing quality of academic programs into the 21st century.

This year's annual program, involving more than 50 volunteers and led by Richard W. DeWald '61, an alumnus of Lycoming College and a member of its Board of Trustees, resulted in a total of \$3,538,726 for capital projects, endowment and current operations. This represents a 66% increase in total gift income over last fiscal year.

Although record giving occurred during the same year in which the most dramatic adjustment to the stock market since 1929 took place, a smaller number of donors than last year participated. Alumni participation was off 5.6%, while donor participation overall fell 2%. The number of leadership gifts also plateaued just under last year's numbers with a 2.2% drop.

The Lycoming College Fund—those gifts which help meet annual operating expenses—plateaued 2.6% above last year's mark, \$341,179 in 1987-88 as compared to \$332,476 in 1986-87.

The Founders Circle, introduced this fiscal year to recognize leadership gifts of \$2,500 or more to Lycoming College, had a charter membership of 48 members. Other clubs showing increases in membership were the President's Cabinet (\$1,000-\$2,499) and Associates Club (\$250-499).

Commenting on this significant level of support, Dr. Blumer said, "Alumni and friends across the country are proud of what they see happening at Lycoming. They realize that independent institutions gain additional strength and vitality from philanthropic contributions. All of our benefactors recognize that every gift makes something special happen on our campus."

When asked why 1987-88 was so successful, Dr. Blumer responded, "This was the gift year in which we publicly launched *The Campaign for Lycoming College*. Most of the \$3.5 million has been designated to one or more of the components of our Campaign."

*(Gifts and grants received by Lycoming College to help meet annual operating expenses.)*

\$350,000					\$341,179
				\$332,476	
300,000			\$284,938		
250,000		\$201,267			
200,000					
150,000	\$136,244				
100,000					
	1983-84	1984-85	1985-86	1986-87	1987-88

*(Alumni and friends who contribute to the educational programs of Lycoming College.)*

2,500				2,443	2,395
			2,164		
2,000		1,985			
		1,778			
1,500					
1,000					
% alumni participation	1983-84	1984-85	1985-86	1986-87	1987-88
	17%	18%	20%	21%	19.4%

*(Gifts and grants received by Lycoming College for all purposes—capital, endowment and operating.)*

	1987-88	1986-87	1985-86	1984-85
Alumni	\$ 249,808	\$ 452,423	\$ 171,684	\$ 103,482
Trustees (non-alumni)	6,125	12,900	4,951	6,060
Friends	60,350	62,611	71,385	24,322
Faculty and Administration	4,365	6,111	15,910	4,266
Business	275,898	241,187	111,967	81,930
Foundations	384,029	112,117	165,986	45,686
F L C	17,286	20,453	24,680	26,142
Other Organizations	45,920	77,190	71,242	910
Church	68,683	61,396	65,987	41,015
Gifts in Kind	197,659	135,600	29,167	2,884
Requests	1,767,517	445,501	244,747	18,526
CHHP		81,385	228,290	248,805
Gifts in Kind	996	416,646	505,019	484,386
	\$2,125,520	\$1,711,015	\$1,088,414	

*(Alumni and friends whose contributions are at leadership club levels of \$100 or more.)*

800				740	724
700					
600			587		
500		458			
400		329			
300					
	1983-84	1984-85	1985-86	1986-87	1987-88

# DEAD PERSONS

## Tower Society

*"The TOWER SOCIETY is a group of alumni and friends of Lycoming College who care about and have made thoughtful provisions in their estate plans for the future of Lycoming College and her students."*

*Membership in the Tower Society is open to any individual who establishes some type of future provision plan to support the educational objectives of the College. Commitments can include bequests, life income trusts, gift annuities, life insurance or other special deferred gift plans.*

*The following alumni and friends have notified us that they have included Lycoming College in their estate plans and we hereby recognize their personal, philanthropic commitments with sincere appreciation.*

William J. Ainsworth '63  
 Donald Alan Armstrong '73  
 Eph and Bess Baker  
 Stanton D. Barclay '18  
 Howard C. Beach '49  
 Mark G. Beals '56  
 Helen Louise Beesley  
 Robert A. Bentz '66  
 Shallimar L. Sholley Beshore '51  
 Geneva Rich Bickel '24  
 Kenneth C. Blood '70  
 Edward H. Blumer  
 Dale V. '59 and  
 Mary (Hoffman) '60) Bower  
 Jeffrey M. Burd '80  
 William E. Burland '72  
 Marjorie M. Busey  
 Richard A. Clark '68  
 Lois M. Congdon '59  
 George R. Converse '62  
 William E. Cornelius '53  
 John J. Dascher '65  
 David L. '78 and  
 Barbara (Seece '77) Dearing  
 Walter C. De Gering, Jr. '53  
 James M. DeRose '69  
 David E. Detwiler, III '75  
 Richard L. Dill '75  
 Ida Mae Dittmar '23  
 Richard A. '64 and  
 Susan (Norton '64) Doolittle  
 Robert L. Eaker '51  
 James F. Edgeworth, Sr. '56  
 Samuel H. Evert '34  
 Robert D. Eyster '67  
 Donald E. '68 and  
 Marilyn (Phillippy '70) Failor  
 Mare C. Fallon '79  
 Peter W. '70 and  
 Stella '71 Faranda-Diedrich  
 Raymond D. Fravel '58  
 Daniel G. Fultz '57  
 Nanette L. Neudeck Gefreh '75

Matthew T. '58 and  
 Mary (Keliher '79) Gibbs  
 Donald E. Goshorn '68  
 William C. Gross '67  
 Wellard R. Guffy '50  
 Barry C. Hamilton '70  
 James W. Harding '38  
 John F. Harkins '50  
 William D. Hartman '62  
 Gerald L. Hawk '66  
 Richard T. '68 and  
 Mary-Jane (Swanson '68) Hedden  
 Luther D. Heim  
 Irene M. Henry  
 David A. Herdman '71  
 Paul L. Herring '59  
 R. Carla Higdon '64  
 Kenneth E. Himes  
 Helen Clarke Holder '33  
 Albert T. Holt '29  
 Charles H. Howe '61  
 William R. Hyman '55  
 Anne E. Palmer Jayson '52  
 Nancy Goetz Jones '78  
 William G. Karniol '62  
 John M. Kline '29  
 Morgan V. Knapp '35  
 Stanley F. Knock, Jr. '49  
 Jan Kuczma '60  
 Eugene E. '57 and  
 Jane (Keyte '55) Landon  
 Herbert D. Landon '70  
 James G. and Fern Law  
 John H. '80 and  
 Diane (Stirone '79) Lea  
 Robert G. Little '63  
 Frank B. and  
 Carolyn-Kay (Miller '63) Lundy  
 Gilbert S. Macvaugh, Sr. '27  
 C. Edgar Manherz '26  
 E. Lowell Markey, II '68  
 Walter G. and Beulah McIver  
 W. Gibbs McKenney '37  
 David R. Miller '69  
 Charles Mitchell '54  
 John W. Montgomery '72  
 Bernadine Decker Nancarrow '23  
 Eleanor Black Nichols '30  
 Fred A. Pennington '32  
 Helen Reece '27  
 Floyd A. Roller, 60  
 Dorothy Cohick Rosenberg '49  
 Leonard H. Rothermel '25  
 Mary Landon Russell '33  
 Paul E. Sabin '62  
 Jeffrey A. Seeley '77  
 Robert H. Seewald '49  
 Drue Sherman '64  
 C. Virginia Bryan Smith '30  
 John W. Snyder '52  
 Margaret Knittle Strine '34  
 Louise H. Stryker  
 Nathan W. Stuart '36  
 David B Sykes '38  
 Grace J. Tomb '15  
 Marjorie D. Treyz

Joseph H. Velott '56  
 Ross M. Vickers '19  
 William C. Wallis '62  
 Clyde E. Way '37  
 Ned E. Weller '54  
 David K. Whitfield '74  
 Harley R. and Mary Davis Worthington  
 Mark E. Zickler '83

## Founders Circle

*Individuals who make an annual contribution of \$2500 or more are distinguished by membership in the Founders Circle.*

Mr. & Mrs. Donald E. Armstrong (he '48)  
 Mr. & Mrs. Eph Baker  
 Mr. & Mrs. Kent T. Baldwin (he '64)  
 Rev. Edward H. Blumer  
 Mr. & Mrs. David Y. Brouse '47 & '46  
 Mr. & Mrs. Richard H. Confair  
 Mr. & Mrs. Richard W. DeWald (he '61)  
 Mr. Robert A. Elder '33  
 Mr. Dale K. Erdly '71  
 Mr. & Mrs. Daniel G. Fultz '57 & '57  
 Estate of Mrs. B. Joyce Smithson Glad '63  
 Rev. Dr. Eduardo Guerra  
 Mr. Michael J. Hayes '63  
 Mrs. Edward P. Heether  
 Mr. Luther D. Heim  
 Mrs. Walter J. Heim  
 Mr. & Mrs. K. Alan Himes '59 & '60  
 Dr. Kenneth E. Himes  
 Mr. Morgan V. Knapp '35  
 Mr. & Mrs. Charles J. Kocian (he '50)  
 Mrs. Peggy L'Heureux  
 Mrs. Frank W. Lowry  
 Mr. & Mrs. John W. Lundy  
 Miss Margaret A. MacMullan  
 Dr. W. Gibbs McKenney '37  
 Mr. & Mrs. G. Jackson Miller  
 Mr. Harold C. Myers  
 Dr. & Mrs. Fred A. Pennington (he '32)  
 Mr. & Mrs. William E. Pickelner  
 Dr. Kenneth A. Polcyn '58  
 Miss Helen Reece '27  
 Mr. G. Walter Reed Jr.  
 Mr. Leonard H. Rothermel '25  
 Mr. & Mrs. Robert L. Shangraw (he '58)  
 Dr. & Mrs. Donald E. Shearer (he '59)  
 Mr. & Mrs. Harold H. Shreckengast Jr.  
 '50 & '45  
 Estate of Emily W. Simpson  
 Mr. Jeffrey W. Smith '72  
 Dr. & Mrs. James H. Spotts (he '53)  
 Dr. & Mrs. Elmer B. Staats (she '30)  
 Mr. & Mrs. Marvin H. Staiman (she '47)  
 Mr. & Mrs. J. Richard Stamm '76 & '76  
 Mr. Steven J. Stout '72  
 Mrs. Dorothy J. Streeter  
 Ms. Virginia W. Stryker  
 Mr. David B Sykes '38  
 Mr. & Mrs. Russell W. Twigg '74 & '74  
 Mr. Ross M. Vickers '19

*Individuals who make an annual contribution of \$1000-\$2499 are distinguished by membership in the President's Cabinet*

Mr. William F. Amsworth '63  
 Mr. Robert L. Allen '68  
 Ms. Cynthia K. Armstrong '86  
 Mr. Willard M. Arnold '39  
 Mrs. William F. Askev  
 Mr. & Mrs. Norman F. Aten (he '59)  
 Mr. Howard C. Beach '49  
 Dr. & Mrs. Frederick F. Blumer  
 Mr. & Mrs. Leo A. Calisti '59 & '56  
 Mr. Robert R. Chatterton  
 Mr. & Mrs. David G. Colrick '62 & '65  
 Mrs. Margaret Rich Corson '14  
 Mr. & Mrs. William W. Tellers  
 Dr. & Mrs. Floyd B. Fischer  
 Mr. Mark A. Gubbon '83  
 Mr. Arthur A. Haberberger '59  
 Dr. & Mrs. Robert F. Hancox '65 & '64  
 Dr. James W. Harding '38  
 Mr. Carl O. Heiber '63  
 Mrs. Helen Louise Clarke Holder '33  
 Mrs. Patricia Baldino Houck '57  
 Mr. James C. Hubbard '66  
 Mr. William G. Karniol '62  
 Mr. & Mrs. Robert S. Lowry (she '72)  
 Mr. & Mrs. Frank B. Lundy (she '63)  
 Mr. & Mrs. John C. Lundy  
 Mr. Richard H. Lundy  
 Estate of Paul D. Maneval  
 Mr. Richard D. Mase '62  
 Mr. & Mrs. Edward Patrone  
 Dr. & Mrs. Norman B. Ream Jr. '68 & '68  
 Mr. & Mrs. John Rich M. (she '42)  
 Col. & Mrs. Marshall F. Sanders '36 & '36  
 Mr. John Y. Schreyer  
 Mr. & Mrs. J. Michael Schweder '71 & '72  
 Dr. Mary R. Schweikle '63  
 The Hon. & Mrs. Clinton W. Smith  
 '55 & '59  
 Dr. & Mrs. Nathan W. Stuart (he '36)  
 The Rev. Stratford C. Taylor '43  
 Mr. Alvin M. Younger Jr. '71

*Individuals who make an annual contribution of \$500-\$999 are distinguished by membership in the Dean's List*

Mrs. Dorothy A. Corson Acton '65  
 Mr. & Mrs. Lawrence W. Argenbright  
 '73 & '75  
 Mr. & Mrs. William F. Baker '57 & '60  
 Mrs. Rebecca Shepherd Browne '16  
 Capt. Elizabeth F. Checchia '73  
 Mr. & Mrs. Roosevelt F. Clark  
 Dr. Royer R. Conant '62  
 Mr. John F. Cupp '57  
 Mr. & Mr. Millard G. Diehl  
 Mr. & Mr. Donald F. Taylor '68 & '70  
 Mr. & Mr. Paul G. Gilmore  
 Mr. Jane H. Kelley '74  
 Mr. Timothy G. Kitchen '69

Mr. & Mrs. Guy C. Koser  
 Dr. Charles D. Lamade '75  
 Mr. & Mrs. George D. Langberg  
 Dr. & Mrs. Robert G. Little '63 & '65  
 Mr. & Mrs. Richard H. Lundy Jr.  
 Mr. Robert Lytle  
 Mr. Frederick F. Martin '70  
 Mr. D. Stephen Martz '64  
 Mrs. John C. McCune  
 Mr. & Mrs. Wade M. Miller '83 & '82  
 Ms. Debra A. Oberg '87  
 Mr. & Mrs. John Oberg  
 Mr. & Mrs. John I. Person Jr. (she '37)  
 Ms. Melody E. Hamer Pompa '68  
 Mr. Robert E. Remaley '60  
 Mr. & Mrs. Richard I. Schmid  
 Mr. & Mrs. David L. Schoch '73 & '73  
 Miss Joann F. Shurm '72  
 Mr. Charles D. Springman '59  
 Mr. & Mrs. Larry R. Strauser (he '59)  
 Mr. John J. Tarditi Jr. '62  
 Mr. & Mrs. James W. Techtmann  
 '75 & '78  
 Mr. & Mrs. Douglas P. Tump '76 & '77  
 Dr. Shurley A. Van Marter  
 Dr. Willis W. Willard III '58

*Individuals who make an annual contribution of \$250-\$499 are distinguished by membership in the Associates Club.*

Mr. N. Mark Achenbach '58  
 Mr. & Mrs. John J. Albarano  
 Rev. & Mrs. Albert L. Beemer  
 Mrs. Elizabeth Rich Bell '28  
 Mr. & Mrs. Bruce Benson '51 & '54  
 Dr. Timothy J. Bingaman '65  
 Mr. & Mrs. Frederick F. Blumer '81 & '82  
 Mr. H. Spencer Born '32  
 Mr. & Mrs. Dale V. Bower '59 & '60  
 Mr. Ronald F. Bower '72  
 Mr. Harold L. Brooks '57  
 Mr. & Mrs. Clarence W. Burch  
 Mr. & Mrs. Daniel J. Burchstead  
 F. J. G. H. Ridge Canaday Jr. '66  
 Mr. & Mrs. Harold D. Chapman  
 Mrs. Anna F. Chughnsky  
 Mr. & Mrs. Robert W. Chilton  
 Mrs. Cynthia Pennington Clippinger '66  
 Dr. & Mrs. Kenneth F. Cooper  
 Rev. Mr. & Mrs. Robert Curry  
 Mr. & Mrs. James DeMore  
 Mr. A. S. DiGiacinto  
 Mr. & Mrs. William F. Diltz  
 Mr. M. LaRue Drake  
 Lt. Col. Herbert W. Drescher '51  
 Mr. Robert F. Laker '51  
 Dr. William F. Evans '72  
 Mrs. Carole F. Curry Ledock '67  
 Mr. Robert W. Ferrell Jr. '40  
 Miss Melinda F. Fowler '72  
 Dr. George S. Fox '69  
 Mr. David F. Freet '68  
 Mr. Thomas R. Gallagher '23  
 Mr. William H. Gallagher '57  
 Dr. & Mrs. David W. Graden '79 & '79  
 Dr. Earl G. Guver '50  
 Mr. Richard C. Haas '55  
 Mr. Michael J. Hamilton '82  
 Ms. Susan F. Beauvais Hammell '69  
 Mr. Robert I. Hart '59  
 Mr. & Mrs. Henry O. Heiser Jr.  
 Mr. Vernon L. Heyner Jr. '53  
 Dr. Daniel F. Hill '61  
 Mr. Kenneth A. Holdren '79  
 Mr. John G. Hollenback '47  
 Mr. R. Gary Houck '67  
 Mr. James B. Howe '64  
 Mr. Thomas W. Hunsberger '74  
 Mr. & Mrs. M. Raymond Jamison  
 Mr. James M. Jeffers '61  
 Mr. & Mrs. Edward C. Johnson '53 & '67  
 Col. James T. Johnson '27  
 Mr. & Mrs. John M. Kline '29 & '28  
 Rev. Stanley F. Knock Jr. '46  
 Col. & Mrs. Walter A. Lenz  
 Dr. Walter H. Manning '64  
 Mr. Richard J. McBrinn '71  
 Dr. Charles W. McCall '73  
 Mr. & Mrs. Samuel R. McKelvey  
 Mr. & Mrs. J. Barton Meyer  
 Mr. Richard A. Miller '73  
 Mr. Charles M. Mitchell '54  
 Mrs. Joyce Leahy Monico '79  
 Mr. Joseph A. Jr. &  
 Dr. Lillian Weekes Montasano '73 & '73  
 Ms. Nancy Davis Morris '78  
 Mr. & Mrs. Wayne J. Morse '71 & '73  
 Mrs. Bernadine Decker Nancarrow '23  
 Ms. Leeann R. Newton '83  
 Mr. & Mrs. Charles Paris (she '70)  
 Mr. Vic Patti '72  
 Dr. Charles E. Peterson Jr. '50  
 Mr. William E. Petter '64  
 Mr. Robert J. Pontician '59  
 Mr. & Mrs. Alfred J. Ricciardi  
 Mr. Michael B. Rich '40  
 Mr. & Mrs. Logan A. Richmond '54 & '69  
 Mr. David W. Roberts '77  
 Mr. Richard A. Russell '70  
 Mr. Ronald J. Sachatello '68  
 Mr. Byron Y. Samuels '66  
 Mr. & Mrs. Paul O. Shapiro '56 & '58  
 Dr. Martin R. Sher '64  
 Mr. & Mrs. Franklin F. Shuck '49 & '40  
 Mr. Larry D. Snyder '68  
 Ms. Kathryn Starzer-Farrell '70  
 Mrs. Helen Poticher Steele '32  
 Mr. James S. Steele '80  
 Mr. & Mrs. James Stoveken  
 Mr. Harold F. Stugart '62  
 Mr. David P. Swales '68  
 Ms. Barbara Lovenduski Sylk '73  
 Mr. John C. Teasley '73  
 Mr. Lawrence Tischler '67  
 Mr. & Mrs. Gerald A. Turecek  
 Mr. & Mrs. Christopher A. Viggiano  
 '75 & '75  
 Mr. Stephen M. Wolf '55  
 Mr. & Mrs. Tom H. Woodruff Jr.  
 '80 & '81  
 Dr. & Mrs. Clyde H. Wurster  
 Dr. & Mrs. Robert S. Yasui  
 Mr. Barry G. Yerger '59  
 Mr. Ralph E. Zeigler Jr. '70  
 Mr. Gerald G. Zellner '70

## Centenary Club

*Individuals who make an annual contribution of \$100-\$249 are distinguished by membership in the Century Club.*

- Mr. & Mrs. George Abdo  
Miss Kathy J. Acuff '70  
Miss Linda M. Ahnert '68  
Mr. & Mrs. Richard Aiken  
Mrs. Katherine M. Keliher Albertini '66  
Mr. Ralph Alberts  
Mrs. Harold J. Alsted  
Mrs. Sophia (Cindy) Green Altieri '75  
Mr. Dudley N. Anderson '68  
Mr. Joseph Antiga  
Mrs. Bonnie Byers Arneill '66  
Mrs. Charlotte L. Sanders Arnold '42  
The Rev. Kenneth R. Arthur '58  
Mr. Thomas M. Aubrey Jr. '58  
Mr. Edward L. Bagnarelli  
Mr. & Mrs. Timothy N. Bahnuk '74 & '74  
Rev. Edgar R. Baker '60  
Ms. Joyce Baker-Brown '69  
Mr. Kenneth W. Barber '74  
Dr. Stanton D. Barclay '18  
Mr. Philip J. Barlett '70  
Mr. & Mrs. Thomas R. Beamer '74 & '75  
Mrs. Angela R. McElwain Bednarczyk '68  
Ms. Nancy Beecher-Christy '76  
Dr. Richard L. Behan '64  
Mrs. Marie A. White Bell '58  
Mr. & Mrs. Henry W. Belock '50 & '44  
Mr. & Mrs. Robert L. Bender '59 & '60  
Mr. & Mrs. Raymond L. Benner  
Mr. William Benzel  
Mr. Kenneth M. Berdine '52  
Mr. Donald E. Berger '50  
Mrs. Dorothy Logan Rogers Bernhardt '22  
Mr. & Mrs. Paul H. Besancon Jr. '76 & '77  
Mr. Laurens S. Beyland '67  
Mr. & Mrs. John R. Biggar '66 & '66  
Mr. & Mrs. Jeffrey D. Billman '77 & '76  
Mr. William H. Bishop '73  
Mrs. Myra Davis Blaney '69  
Mrs. Cynthia J. Schlegel Blevins '67  
Mr. Donald F. Bohensky '58  
Mr. Robert L. Bonnell '48  
Mr. Gerald C. Borland '30  
Mr. & Mrs. James Bower Sr.  
Mr. & Mrs. Barry L. Boyer '64 & '64  
Mr. & Mrs. Edwin A. Boyer '73 & '73  
Mr. & Mrs. James B. Boyer '69 & '71  
Mrs. John C. Brachbill  
Mr. Michael A. Bradley '79  
Mr. John Brauss  
Mr. & Mrs. Jack L. Breitenbach '51 & '41  
Mr. & Mrs. Robert H. Broccolo  
Mrs. Sharon Kay McGinnis Brodbeck '81  
Mr. Paul A. Brooks '77  
Mr. & Mrs. L. R. Brophy (she '87)  
Mr. Edward M. Broscoe '33  
Mr. James F. Brown '65  
Mrs. Lois Gilbert Brown '72  
LCDR. Patricia Sharpley Brown '77  
Mr. & Mrs. John L. Bruch Jr. '40 & '42  
Mr. David Brumberg '42  
Mr. & Mrs. Kenneth R. Brungard  
'50 & '50  
Mr. & Mrs. Robert J. Burger '85 & '85  
Mr. Christopher M. Burns '86  
Mr. Richard K. Burrows '55  
Mr. Gary L. Camp '66  
Mrs. Jean Gardner Camp '59  
Lt. Gwendolyn M. S. Canfield '75  
Mr. James E. Case '72  
Mr. & Mrs. Harry Chin  
Mrs. Diane Kwiatkowski Christiano '73  
Mr. Chris P. Christie '65  
Mr. & Mrs. Paul Chulock  
Chu Il Chun '66  
Ms. Rita A. Ciurlino '84  
Rev. Janet Bryant Clark '81  
Mr. Murl E. Clark '73  
Mr. & Mrs. Peter B. Coleman '71 & '73  
Mr. Robert W. Colley '55  
Mrs. Z. H. Confair  
Mr. James S. Conville '86  
Rev. Edward J. Coover '66  
Mr. Ralph R. Cranmer  
Mr. & Mrs. Donald Creamer  
Mrs. Karen Kolodziej Creamer '85  
Mr. Robert P. Crockett '61  
Mrs. Arlette Scott Crooks '26  
Mr. William D. Crooks III '40  
Mr. Robert L. Curry Jr. '69  
Mr. David C. D'Angelo '76  
Mr. Ronald E. Danks '65  
Mr. & Mrs. Burton E. Darrow '32 & '33  
Dr. John J. Dascher '65  
Miss Kristine D. Datre '75  
Mrs. Raymond A. Davis  
Mr. Louis J. DeFebo '59  
Mr. & Mrs. David DeLaura  
Dr. James M. DeRose '69  
Miss Andrea C. DeVito '83  
Mr. Thomas W. Decker '66  
Mr. Raymond C. Desor  
Dr. David E. Detwiler III '75  
Dr. Alyce M. Dickinson '74  
Mrs. Patricia Gortner Dietrich '64  
Miss Ida May Dittmar '23  
Mr. John P. Donahue '80  
Mr. & Mrs. Richard A. Doolittle '65 & '64  
Mr. & Mrs. Richard M. Dore  
Mr. & Mrs. Robert Dore  
Dr. Samuel J. Dornsife  
Mr. & Ms. Arthur E. Dorval Jr. '71 & '71  
Mrs. Nancy Fry Doult '53  
Mr. Robert S. Duff '64  
Mr. Read P. Dunn III '66  
Ms. Donna M. Dunning '67  
Dr. John H. Dunston '63  
Mr. & Mrs. Donald Duryea  
Mr. & Mrs. Russel L. Duryea  
Mr. Lester H. Dye '38  
Mr. Henry H. Dyer '47  
Mr. Ints Dzelgalvis '60  
Dr. & Mrs. Herbert A. Ecker Sr.  
The Hon. Robert W. Edgar '65  
Mrs. Carolyn Moday Edwards '61  
Mr. Jack K. Eichelberger '50  
Mr. James B. Ekey '82  
Mrs. Carol Durrwachter Empet '65  
Mr. & Mrs. Frank Englund  
Mr. Paul L. Erickson '65  
Mr. & Mrs. David Ermer  
Mr. & Mrs. John B. Ernst '58 & '57  
Mrs. Janet Dittmar Farley '60  
Mr. David M. Farrell '74  
Mr. Malcom C. Farrow IV '69  
Mrs. W. Arthur Faus  
Mr. Richard H. Felix '56  
Mrs. Gail Reichard Feustel '67  
Mr. Mark Finkelstein '85  
Mr. & Mrs. Thomas J. Finn '70 & '78  
Mr. Robert M. Fisher '51  
Dr. Warren L. Fisher '67  
Mrs. Susan Bartz Flanagan '75  
Mr. & Mrs. A. Roy Flanigan Jr. '39 & '33  
Mr. Joseph A. Fletcher '76  
Ms. R. Janice Fletcher '71  
Mrs. Emelia Mattson Forse '33  
Mr. & Mrs. Robert M. Fortenbaugh  
Mr. Thomas J. Fowlston '74  
Mr. & Mrs. Charles F. Fox III '69 & '71  
Dr. & Mrs. David A. Franz  
Mrs. Anna Netta Livingston Frick '49  
Mr. & Mrs. Ronald A. Frick (he '83)  
Mrs. Carol J. Shaffer Fulmer '37  
Mr. & Mrs. James V. Fulmer '48 & '48  
Dr. Carl L. Gamba '37  
The Rev. Michael R. Gardy '66  
Mrs. Barbara A. Hawes Garner '63  
Mr. & Mrs. David D. Gathman '69 & '69  
Mr. & Mrs. John C. Gault  
Mr. Joseph P. Gaus '53  
Dr. William H. Gehron Jr. '38  
Mr. Darian O. George '68  
Mr. & Mrs. Patrick Gibbons  
Mr. & Mrs. Matthew T. Gibbs '58 & '63  
Mr. & Mrs. William Gibson III '59 & '41  
Dr. & Mrs. Casimir D. Gieniec '59 & '59  
Mr. Kevin T. Gillen '80  
Mr. Jay J. C. Ginter '70  
Mr. & Mrs. Frank L. Girardi  
Mr. Gordon W. Gladstone '70  
Mr. & Mrs. Charles L. Gleason  
Mr. James L. Glenn '72  
Mr. & Mrs. Oliver J. Glidewell '56 & '56  
Dr. William E. Glosser Jr. '27  
Mr. George D. Golden '59  
Mrs. Helen Mallalieu Golder '33  
Dr. Jorge F. Gonzalez '80  
Dr. Gary L. Goodear '62  
Mr. John P. Graham  
Mr. Donald W. Grier '59  
Mr. & Mrs. Robert W. Griggs '50 & '50  
Mrs. Dorothy Stecker Halfmann '37  
Mr. Stuart L. Hall Jr. '77  
Mr. T. Max Hall '56  
Dr. Susan Thistlethwaite Hanowell '69  
Ms. Meg Hansen-Carpenter '76  
Mr. & Mrs. Max E. Harbach '47 & '46  
Mrs. Beverlee E. Arnds Harbin '60  
Miss Elsie May Harding  
Mr. C. Fred Harris '60  
Mr. John D. Harrison Jr. '69  
Mr. & Mrs. William Hartshorn  
Mr. Francis C. Harvey Jr. '81  
Mr. Robert L. Hawthorne Jr. '73  
Mr. & Mrs. Richard T. Hedden '68 & '68  
Mrs. Martha Wentzel Heffelfinger '42  
Mr. Carl W. Heide '67  
Miss Barbara B. Heim '83  
Miss Jean T. Heller '47  
Mr. & Mrs. David A. Herdman '71 & '72

- Mr. & Mrs. Gilbert B. Herrick '65 & '66  
 Mr. Owen F. Herring  
 The Rev. Paul F. Herring '59  
 Mr. & Mrs. Randall G. Herring  
 Mrs. Mary Snyder Hertzler '38  
 Mr. Sanford A. Heumann '59  
 Mr. Robert G. Hewitt '57  
 Mrs. M. Lynn Salmoms Hilboldt '70  
 Mr. Richard C. Hiler '70  
 Mrs. Virginia Farnsworth Hill '32  
 Mrs. Mildred English Hively '56  
 Mr. & Mrs. John C. Hodgins '69 & '71  
 Mr. Leslie I. Hoeltzel '67  
 Mr. & Mrs. B. Michael Hollick '63 & '61  
 Mr. Albert I. Holt '29  
 Dr. & Mrs. Soo W. Hong  
 Mr. Harry H. Hoover '62  
 Mr. & Mrs. Stephen W. Howe '78 & '78  
 Mr. Donald W. Hughes '72  
 Mr. Ronald G. Hughes '58  
 Rev. Mahlon D. Hurlbert Jr. '52  
 Mr. Harold S. Hurwitz '50  
 Mr. & Mrs. Robert W. Huyck '54 & '54  
 Mr. Milo J. Ireland '50  
 Mrs. C. F. Jackson  
 Mr. David J. Jackson '64  
 Mr. Curtis C. Jacobs '65  
 Mr. & Mrs. William F. Jacobs Jr.  
 '62 & '63  
 Mr. & Mrs. Dennis M. Jakubowicz  
 '71 & '71  
 Mr. & Mrs. Paul R. John  
 Mr. & Mrs. Earl M. Jonas  
 Mr. & Mrs. Robert J. Jones  
 Mr. & Mrs. Allen Jordan  
 Mr. & Mrs. William S. Jula '69 & '70  
 Ms. Priscilla Freas Kates '67  
 Mr. Ralph W. Kaye '66  
 Mr. & Mrs. Philip Kehoe  
 Mr. & Mrs. Ralph F. Kelchner  
 Mr. Rodney B. Keller '72  
 Mr. Seth D. Keller '65  
 Ms. Cynthia I. Kellogg '78  
 Dr. & Mrs. Gerdi D. Kelsey '63 & '63  
 Mr. Craig A. Kern '72  
 Rev. George R. Kibbe '53  
 Mr. Frank M. Kindler '77  
 Dr. Donald I. Kirk  
 Miss Jean I. Kirk '78  
 Mrs. Martha Hickerson Kirk '62  
 Mr. Dennis I. & Dr. Harriet J. Kitzman  
 '59 & '59  
 Mr. & Mrs. Gerald W. Klein '72 & '69  
 Dr. Richard M. Kline '51  
 Mr. Norwood F. Klotz Jr. '80  
 Mr. & Mrs. Paul C. Knauth '48 & '48  
 Rev. & Mrs. John R. Knauth '37 & '37  
 Mrs. Grace Myers Kohler '18  
 Mr. Dale N. Krapf '67  
 Dr. & Mrs. David J. Krauser '68 & '68  
 Mr. Tom V. Krug Jr. '71  
 Mr. & Mrs. George I. Kuhlman  
 Mr. & Mrs. Arnold Kuhn  
 Mr. John F. Kuska Jr. '75  
 Dr. & Mrs. R. Andrew Lady '49 & '51  
 Ms. Joanne Gerber Lamade '42  
 Mr. Herbert D. Landon '70  
 Mr. & Mrs. Bart F. Landzert '81 & '82  
 Mr. Daniel R. Langdon '73  
 Mrs. Beverly Ekey Langley '73  
 Mr. & Mrs. Robert D. Langley '71 & '76  
 Mr. & Mrs. John E. Larson '63 & '63  
 Mr. Roger I. Larson '76  
 Dr. & Mrs. Anthony J. Lataghata  
 '74 & '75  
 Mrs. Jean Sykes LeCompte '28  
 Mrs. Elizabeth Miller Leach '45  
 Mr. & Mrs. Robert J. Leahy '75 & '77  
 Mr. Gerald A. Lechliter '67  
 Mr. David B. Lee '61  
 Mr. Charles A. Lechman III '63  
 Mr. David M. Leonard '64  
 Mr. Erman E. Lepley Jr. '78  
 Mr. William L. Levegood '76  
 Mr. & Mrs. Mark N. Levine  
 Mr. John M. Lindemuth '27  
 Mrs. Alice Berger Lloyd '27  
 Mr. J. Randolph Loefiger '71  
 Mr. Anthony R. Lorenzo  
 Mr. Charles W. Luppert '63  
 Mr. Charles W. Luty '35  
 Mr. Thomas P. Lyon '57  
 Mr. & Mrs. Creighton W. MacGill  
 '75 & '77  
 Mrs. Margaret Cornely MacNab '27  
 Dr. Sherry L. Macpherson '74  
 Mr. Joseph R. Maiolo III '79  
 Mrs. Henrietta Shope Malone '34  
 Mr. John R. Marek '74  
 Mr. & Mrs. John F. Marshall '48 & '50  
 Rev. Dr. Harvey W. Marsland  
 Dr. & Mrs. John E. Marthinsen '70 & '70  
 Mrs. Michelle F. Martz '79  
 Mr. & Mrs. Ernest E. Maw  
 Mr. & Mrs. Gerald S. May  
 Mr. Jesse A. May Jr. '65  
 Mr. Harry E. McCloskey '42  
 Ms. Kimberly L. McClune '86  
 Mr. & Mrs. Peyton McDonald  
 Mr. Timothy D. McDonald '78  
 Mr. Gerard I. McGinn '78  
 Mrs. Mary McGovern  
 Mr. & Mrs. Walter G. Melver  
 Mr. E. Donald McKernan '51  
 Mr. Robert J. McKernan '53  
 Mr. Mark C. Melachlan '75  
 The Rev. & Mrs. Edward S. McLaughlin  
 '38 & '38  
 Mr. Desmond McManus '66  
 Dr. Norman B. Medow '60  
 Mrs. Ann Wear Melander '65  
 Dr. Timothy F. Merkel '64  
 Col. Rhoda Pontz Messer '51  
 Mr. & Mrs. Clarence I. Miller '54 & '51  
 Dr. William R. Miller '69  
 Mr. Louis J. Miorelli '61  
 Ms. Kay Monks  
 Mr. & Mrs. Rafael Moreno  
 Miss Mary Grim Mosser '34  
 Prof. Michael C. Musheno '69  
 Mr. Jack A. Myers '70  
 Mr. & Mrs. Robert A. Myers  
 Mr. Laura Hensler Nally '70  
 Mr. Ardith Miller Namenson '62  
 Mr. & Mrs. William P. Naulty  
 Mr. George A. Nichols '59  
 Mr. Wiltred R. Niklaus '59  
 Mr. Stuart Chambers Noctor '82  
 Mr. George R. Nye '27  
 Mrs. Diane Yeagle O'Neil '69  
 Dr. & Mrs. Earl A. O'Neill  
 The Rev. John D. O'Neill '52  
 Mr. & Mrs. Paul K. Olandt '64 & '62  
 Mr. Brian D. Oliva '83  
 Dr. Roger W. Opdahl  
 Mrs. Suzanne Caldwell Orris '79  
 Mr. & Mrs. Peter Ostwald '70 & '70  
 Mr. Anthony L. Overdurf '50  
 Mr. & Mrs. Dennis Paczkowski  
 Mr. & Mrs. Randall L. Parker '68 & '68  
 Mr. J. Barry Patterson '62  
 Mr. & Mrs. Robert D. Paul '65 & '63  
 Ms. Anna V. Payne '68  
 Mr. William G. Pearson Sr. '67  
 Dr. Arnold O. D. Peterson '48  
 Mr. Jonathon G. Phillips '57  
 Ms. Katherine Piccolo  
 Mr. James A. Pietrovito '71  
 Mr. & Mrs. Edward Pietrzak  
 Dr. & Mrs. John F. Piper Jr.  
 Mr. William M. Pitman '65  
 Mrs. Carol Cropp Pittenger '61  
 Mrs. John L. Pitts III  
 Dr. & Mrs. Richard Pizzano  
 Mr. & Mrs. Charles M. Plankenhorn  
 (she '61)  
 Mr. Richard E. Powers '50  
 Mr. Warren W. Pruess '64  
 Mr. Robert R. Pumphrey '29  
 Dr. & Mrs. John A. Radspinner (she '67)  
 Mrs. Elaine G. Rauff  
 Mr. Jeffrey W. Rauff '72  
 Dr. Carl L. Reams '62  
 The Rev. & Mrs. David L. Reed '71 & '71  
 Miss Linda J. Reph '84  
 Mr. James T. Rich '49  
 Mr. Dennis R. Richmond '73  
 Mr. Frank A. Richmond '69  
 Mr. Norman L. Richmond '72  
 Mrs. Jeanne Seals Riggs '73  
 Dr. Janet A. Rodgers  
 Mr. Murray C. Rosen '65  
 Mr. & Mrs. Murray I. Ross '69 & '69  
 Mr. Robert E. Ruffaner '63  
 Mrs. Kendra Shuey Ruhl '71  
 Mr. Robert W. Rundle '58  
 Mrs. Mary Landon Russell '33  
 Dr. Seth W. Russell '29  
 Mr. Larry H. Sanders '64  
 Mr. & Mrs. William Sandmeyer (she '43)  
 Mr. William F. Sarno '37  
 Mr. Stevan F. Sayre '66  
 Dr. & Mrs. Richard L. Scheaffer '62 & '63  
 Mrs. Beverly Scheib  
 The Rev. Walter M. Schell  
 Mr. & Mrs. Alexander J. Schmerling  
 Ms. Barbara Schmidt-Kemp '76  
 Mr. & Mrs. David W. Schneider '79 & '78  
 Mr. J. Robert Schrader Jr. '50  
 Mr. Eugene J. Schramm '50  
 Mrs. Jane Sornberger Schultz '30  
 Mr. & Mrs. David I. Schultze '65 & '65  
 Mr. James G. Scott '70  
 Mrs. Sandra Myers Scott '70  
 Ms. Patricia I. Stere Sears '66  
 Mr. Robert H. Seewald '49  
 Mr. Gary B. Sensenich '66

# A Day In The Life Of Lycoming College

►4:28 a.m. - **Dining Hall:** Long before the sun rises, or any College student even thinks about waking up, Carol Gamble is busy baking for the College. At 4:30 a.m. Carol and her early morning co-hort, Lucille Eck, put the key in the door and begin their day of making good food for the College. This morning Carol is making blueberry coffee cake. She checks the board for any special event baking. By 7 a.m. six other workers have arrived. Amidst the buzzing of others making sandwiches, mixing up egg salad, and cooking made-to-order eggs, Carol realizes that she has brownies to bake for teen-star Debbie Gibson, who will be in concert tomorrow night in Lamade Gymnasium. She smiles and says, "My sixteen year old daughter would be excited about this!" After almost seven years of baking for Lycoming, she knows that her chocolate chip cookies, coffee cakes, and special request birthday cakes, help make a student's day a little sweeter.

—Jane Cunnion



*Carol Gamble is the baker for Lycoming College.*

►5:00 a.m. - **Chris MacGill's home:** The alarm clock screams at 5:00 a.m. every day during the working week. A hand reaches over to turn it off and the day begins for Chris MacGill. Each day Chris takes care of morning chores, one of which happens to be a three-mile walk. Then it's off to waking her two little ones, Jeffrey, 5, and Matthew, 6. The boys, having made the important decision of whether to wear Disney World or G.I. Joe clothes, clamour downstairs into the kitchen. Meanwhile, Creighton, Chris's husband, who has awakened to the smell of scrambled eggs and bacon, slowly descends the stairs into the "culinary palace."

Chris continues her daily routine of selecting what food will go into the boy's lunchboxes today. Creighton assumes the duty of packing his own lunch, and then takes the boys to Bostley School for another fun-filled day.

At this point, Chris is ready to face the calmer atmosphere of the office. She says, "I have to be flexible in this job. It's difficult to finish anything you start in a certain block of time because of unexpected phone calls and situations that arise. Actually, that is what makes my job so exciting." Ready to answer any concerns and questions of alumni, administrators, faculty, and students, Chris adds charisma to Lycoming in an enthusiastic and professional manner.

—Cindy Smith



*Chris MacGill is director of alumni and parent relations.*

►7:10 a.m. - **Bookstore:** At 7:10 a.m., Betty Beck enters the College bookstore. As manager, Betty's first responsibility is to set up the cash register. She then goes around the one-room store straightening and restocking merchandise on the shelves. At 7:45, the bookstore opens and Betty is joined by her two assistants, Pearl Ringler and Barbara Bowes. The rest of their day can be summarized in one word: paperwork.

Filling out order forms, counting and recording inventory, as well as unpacking and pricing supplies are jobs shared by all three women. The time of year has a great influence, however, on the type of paperwork being done. Right now, the major concern is with inventory because the bookstore's fiscal year ends on the first of July. This means that all the merchandise in the stockroom as well as on the shelves must be counted and recorded in the supply records. Betty then decides what supplies need to be ordered for the following fall semester depending upon how well they sold this semester.

Working in the bookstore is like walking on a treadmill; once the textbooks are ordered for one semester the process begins all over again for the next. Keeping in touch with publishing companies to find out what textbooks are coming out in new editions as well as keeping track of credit records after books have been returned are just some of the responsibilities that go into ordering textbooks.

The reason Betty, Pearl, and Barbara work so hard is for the students. According to Pearl, the busiest time of day is the afternoon. Selling stamps, ringing-up school supplies, and helping students locate books are all part of a day's work, which ends at 4:00. Five days a week these three women help to keep the College running by not only providing the students with textbooks, but also with Lycoming memorabilia. Betty says about her job, "There are so many different things to do all the time. We never get bored."

—Kimberley Kaiser



*Barbara Bowes, Betty Beck and Pearl Ringler, Lycoming's bookstore ladies*

**►7:33 a.m. - Mail Room:** At 7:33 a.m., Jack Gohrig unlocks the door of the mail room. Mail was picked up earlier at the local post office and now waits to be sorted into piles of "office" and "student" mail. With a large volume of mail, this task can become very time consuming, but with the help of the students who work part-time in the mail room, Jack completes the task with efficiency.

It is now 10 o'clock, and United Parcel Service makes their delivery. Jack fills out notes that remind the students who have received packages of when these parcels can be picked up. By noon, all the mail is sorted and "pigeon-holed" in the student mail boxes. The faculty and numerous campus offices received their mail earlier in the day.

At mid-afternoon, Jack climbs into a grey Toyota van and drives around campus to pickup the office mail. When he returns to the mail room, Jack sorts the on-campus mail from the outgoing mail. He postmarks all the business mail and waits for the mailman to make his pickup at 4 o'clock. It is now 4:30. Jack has completed his day and packs things up to go home.

Jack has been working at Lycoming for 11 years. What does he like best about his job? Jack says, "I get

a good feeling when I deliver packages from home to students. They smile, jump up and down, and get all tickled." It sounds like Jack is in training for Santa Claus' job!

—Kimberley Kaiser



*Coordinator of Lycoming's mailroom, Jack Gohrig.*

**►8:00 a.m. - President's office:** It's 8:00 a.m. and the President of Lycoming College, Dr. Frederick Blumer, is preparing himself for the first of two employee administrative forums. Earlier this morning, he was having breakfast at the monthly Chamber of Commerce meeting which was followed by a quick session on the phone with Drexel Burnham bonding company. The challenge of funding bonds for the new science facility is just beginning and quick phone calls such as these often turn out to be quite important. Being a college president calls for the talents of a juggler, especially when trying to balance limited resources with grand expectations.

Already it's been a busy day for Dr. Blumer as he answers numerous questions from employees concerning everything from health benefits to salaries. Glancing at his watch and realizing it is almost noon, the president concludes the forum, and heads out the door for a



luncheon with community leaders. After lunch, Dr. Blumer is back on the phone with the bond company. Decisions must be made, and just a one day delay can result in millions of dollars being spent. His secretary then peeks in, informing him of the success of this morning's forum. To Dr. Blumer, the morning seems like years ago.

Now it's time for yet another meeting, this one with the Board of Managers of the Williamsport Hospital. Despite his busy schedule on campus, Dr. Blumer believes serving his community is not only necessary but fulfilling as well. By 5:00 most classes are over and the majority of campus employees have gone home. Yet Dr. Blumer returns to his office.

There are memos to dictate, correspondence to sign, and a dinner meeting with the board of trustees that must be attended to before the day is over.

—Jane Cunnion



*President of Lycoming College, Dr. Frederick E. Blumer, takes time to answer questions during an administrative forum.*

**►8:15 a.m. - Computer center:** It is 8:15 a.m. on a dismal February morning—the kind of day where you just want to stay in bed and pull the covers over your head. But not Sharon Vedder. Bright-eyed and alert, she enters the computer center ready to face another productive day. After working in the Lycoming College computer center for three years, Sharon, programmer/operator, knows what to expect throughout the course of her day.

Her first phone call comes from the Registrars Office. At their request, Sharon prints the mailing labels of the

graduating seniors and delivers them upon completion. Before leaving Long Hall, Sharon spots a jar of chocolates in the lobby. With her hand in the jar, she sheepishly grins and says, "Chocolate is my greatest temptation. I enjoy a piece every morning before 10:00."

Back at her office she sorts through the mail and waits for her next mission. Just as she takes another bite of chocolate, the phone rings again. This time the request comes from the Admissions House. Diligently, Sharon works to complete the job.

There is rarely a dull moment in Sharon's day. Aside from making labels, she prints memos and grade report sheets, grades scantron tests for professors, works with the computer system and does a host of other things.

Sharon's assistance is invaluable and is part of the life line of the computer center.

—Stephanie Ros



*Sharon Vedder is a computer programmer/operator for the College.*

**►9:17 a.m. - Academic center:** Surrounded by an "organized" disarray of books, papers, pens and half a cup of now cold coffee, Professor John Hollenback of the business department prepares for his 10:00 class. He sits at his desk, tie and jacket resting on the chair behind him, with his shirt sleeves rolled up and his top button undone, scanning the chapter to be discussed today. Coming across material that warrants stronger emphasis than is given in the text, he heads for the filing cabinet searching for the dittos that will supplement the reading

With a friendly smile, he asks the secretary to Xerox 30 copies before class begins.

Satisfied that his lecture is properly prepared, Professor Hollenback returns to his office intent on shortening the stack of papers that towers above his desk. A series of small interruptions, however, prevent him from completing this task. First, a student drops by, looking for help with a homework assignment. After explaining the assignment they chat about upcoming campus events such as a Tour Choir concert and a library forum that the business department is sponsoring. Professor Hollenback advised his student, "Be sure and go to both events. If you don't like it, you never have to do it again but you should always try something new." Shortly after the student leaves, the phone rings. It's good news—a friend of his was able to arrange for a guest speaker to present a lecture for a retail management class. Checking his calendar, he smiles and says, "Oh, that'll be wonderful! I like to get a wide range of speakers and expose the students to the different approaches to marketing that are out there."

Interruptions concluded for the moment, Professor Hollenback looks at half a pile of graded papers and notices the time: 9:50 a.m.—time to roll down the shirt sleeves, button up the collar and retrieve the tie and jacket. All things back in their proper order, he picks up his books, lecture notes and makes only one quick stop on his way to class—at the secretary's office to pick up 30 freshly made copies.

—Catharine Chadwick



Recently retired Professor of Business Administration, John Hollenback prepares for class.

► **10:13 a.m. - Purchasing office:** It's another manic Monday for Emily Buchle, coordinator of facilities scheduling and purchasing. The weekend mail, stacked in multiple piles, begins to slide ever so slowly across her desk, like lava spewing forth from a volcano.

"Who knows what evil lurks within these envelopes and packages?" Emily says, a sly smile creasing across her face.

As Lycoming's depository for "mail without a home," the pile could reveal anything from science beakers to bills in search of routing to a proper department.

Emily is a self-described "flak catcher." The slogan around Long Hall is, "If anything goes wrong, ask Emily." For more than forty years, five presidents, countless students, administrators, and visitors have done just that. If you want to schedule a room for a meeting, ask Emily. If your commencement gown no longer fits, Emily has the answer. If your organization needs a meeting room or you need a shoulder to cry on—Emily Biichle is the one.

As she begins the process of finding "homes" for the hundreds of pieces of mail strewn across her desk, the telephone rings. Another department needs Emily's help. After fixing "another mess" she leans back in her chair and reflects. "Sometimes it seems as though the calls and requests will never end. But you know something, I would be lost without them."

So, too, would Lycoming College without Emily Biichle.

—Mark Neil Levine



Emily Buchle, coordinator of facility scheduling for the College, pours over a tiny "mountain of mail."

► **11:02 a.m. - Career Development Center:** It's 11:15 a.m. and Dean Joanne Day of the Career Development Center is in her office waiting for today's two recruiters from Roadway Services Inc. to finish up their morning interviews. Having worked very closely with seniors in designing their resumes, guiding their career choices, and even performing mock job interviews, Dean Day is eager to hear how they are making out now that the real interviews are here.

One senior, who's in the hallway signing up for an interview with a future recruiter, asks Dean Day for her

opinion on the best time to schedule an interview. "I think the best time is in the morning. I look at it similar to an early admissions policy. Interviewing in the morning can help show that you're interested and willing to make an effort for that particular job."

As the recruiters conclude their morning's business, Dean Day is busy at her office computer, printing reminders for those who are participating in the "Wine, Dine and Act Fine" program. This program teaches students proper dining etiquette. Initially, Dean Day started this program as a way to help students who go to on-sight interviews that include lunch with company



*Associate Dean of Students for Career Development, Joanne Day.*

officials. "You wouldn't believe how particular some companies can be. Students were actually missing out on job opportunities because they were eating with the wrong fork." Student response to "Wine, Dine and Act Fine" has been enthusiastic, partly for the opportunity to enhance social and interviewing skills and partly for the opportunity to enjoy a free home cooked meal and a variety of fine wines during wine tasting.

By 11:50 the last student leaves and the Roadway recruiters, Tom Finn, a Lycoming alumnus, and Terry Dagen, generously offer comments on how the first

interviewees performed. After making notes on what they've said, Dean Day realizes it is now time to exercise her own social skills as she takes Finn and Dagen out for lunch.

—Catharine Chadwick

► **1:01 p.m. - Switchboard:** "Good afternoon, Lycoming College, may I help you?" These words are synonymous with Rose Pfaff as she answers one of the many phone calls of the day. Rose is Lycoming's switchboard operator who welcomes and directs calls and questions concerning the College.

Rose is a mixture of friendliness and genuine concern for others, which explains why many students refer to her as their "mom" away from home.

Preparedness is the key to her job. "I search and seek out information dealing with any College-related function or activity so I know what's going on." And that she does! From new faculty and administration, to new swimming pool hours, Rose has the answer.

A candy jar always sits on her counter enticing individuals to reap in its sweet offerings while visiting with her. Her small office is the core of the hustle and bustle of campus happenings. With her amiable manner, Rose makes everyone feel at home at Lycoming College.

—Cindy Smith



*Rose Pfaff, the switchboard operator, is the "voice" of Lycoming.*

► 1:07 p.m. - **Library:** It's just past 1:00 p.m. but you won't see Marlene Bowen sitting at her desk preparing for the afternoon. In fact, you will rarely see her in one place for any length of time. While other personnel stroll in from their lunch break, Marlene, audio visual assistant, is already hard at work.

Hidden beneath camera bags and video equipment, she scurries through Pennington Lounge, and trudges up the stairs to the third floor. She glances at her watch, and realizes she has ample time to drop off equipment at the physics lab and then deliver movies to faculty members before her deadline.

With that assignment completed, she quickly descends to the first floor and enters the equipment room. Scanning the film library, she selects the movies needed for the 2:15 showing. She tucks each movie under her arm and heads toward her destination.

"I get a lot of exercise while I'm working," she says hurrying down the stairs. "But even with all this running around I still don't feel it's enough, so I walk every night."

Students, faculty and staff depend on Marlene's punctuality. "It's all a matter of timing and preparation. I know what I must do at the beginning of each day, so I plan accordingly," she says confidently. Thanks to Marlene, "The show always goes on."

—Lisa Engel



*Audio Visual Assistant, Marlene Bowen, keeps things in focus*

► 2:12 p.m. - **President's Home:** As the president's wife, Mrs. Blumer's daily life revolves around both the academic and social events at the College. Mrs. Blumer especially enjoys entertaining guests of the College,

organizing projects for special events, and decorating. (The Admissions House is an example of her multi-talents.)

Currently, Mrs. Blumer is working on a project for Homecoming '88. With the help of several volunteers, she is designing and sewing a quilt that will have the names of each senior class president since 1949, embroidered within each square of the quilt. The quilt will be on display during Homecoming Weekend 1988, and afterwards it will be used in the guest room of the Admissions House as a bedspread. Mrs. Blumer learned how to make quilts twelve years ago. Since then she has made several quilted pillows and blankets which she now uses to decorate her own home.



*Ann Blumer, wife of College President Dr. Frederick Blumer.*

One activity that Mrs. Blumer helps organize, especially for students, is "Wine, Dine and Act Fine." This three-session dinner course teaches students the etiquette of fine dining. Students learn not only proper etiquette for dining, but also how to act as host and hostess of a dinner party. Mrs. Blumer works hard planning and preparing all the dinner menus. At the last session, both she and President Blumer worked as waiters for a mock dinner party, which is held in their home. "It is important for students to learn how to dine properly once they are out in the business world," believes Mrs. Blumer.

Kimberley Kaiser

► 2:42 p.m. - **Print Shop:** Ric Cowher's job, reduced to simplest terms, is to make a good impression. As press operator, he makes three million good impressions annually, a figure that keeps the small, but efficient print shop nestled in the basement of Long Hall very busy.

Today is no exception as Ric coaxes the balky Addressograph 1250 into churning out a brochure for one of the College's departments. Through patience and



Ric Cowher, press operator for the College, makes millions of "good impressions" annually.

persistence Ric is finishing one of the nearly 12,000 jobs he handles during the year. Numbers alone do not tell the entire story. Two and three color jobs, including posters, direct mail pieces, flyers, brochures and booklets offer continual printing challenges.

In addition to being a perfectionist, Ric must also serve as repairperson, inventory control clerk, and on occasion, creative artist. There is no time to sit around and wait for the company's repairperson unless the problem is major. Usually a little adjustment here, a tension setting there, keeps the presses humming.

Ric's biggest nemesis is time. "Some people think that we're like a dry cleaning shop—in by 9 out by 5. Unfortunately it isn't that simple." On any given day there are usually 40 jobs in some stage of pre- or post-printing. "Fortunately, the majority of people give us enough time," he adds.

What about those who don't? Ric smiles and points to the sign by the side of his desk: "Shall I rush your rush job before I rush the rush job I was rushing when you rushed in?"

—Mark Neil Levine

►3:30 p.m. - **Emily Jensen's Office:** Walking down to her office, Dr. Emily Jensen, English department chairperson, can feel her co-workers' enthusiasm in the air. Earlier this morning she listened to a lecture given by a young woman applying for a job with the English department. Even now, at 3:30 in the afternoon, the faculty are still a buzz with comments and impressions of the candidate. Sharing their excitement, Dr. Jensen enters a co-worker's office, "Isn't this great? I think we've really got something here." With just these two casual comments a very impromptu, yet important faculty meeting takes off. The faculty proceed to discuss the candidate's innovative approach to teaching poetry.

"I feel the students reacted quite positively, didn't you?" inquires Dr. Jensen. Part-time faculty member Peg Cronin replies, "Emily, you have to get that woman to teach here!"

After taking the necessary steps to set the wheels in motion for hiring a new professor, Dr. Jensen retires to her office to work on a paper she'll be presenting at a medieval conference in Michigan. Medieval literature and the works of Chaucer are among Dr. Jensen's greatest loves. "As an adult Chaucerian, I am able to study the most lewd stories that I want to under the guise of a respectable topic. What more can you ask for in a job?" As she makes the finishing touches on her presentation, she realizes it's time to quit for the day. She proceeds to lock up her file cabinet, fill up her briefcase and head out the door when suddenly her colleague from the corner office, Dr. Rife, yells out, "Hey, Emily! How about a stop at Brandon's?" With a sneaky smile on her face, she grabs her coat and replies, "Whose treat is it this time?"

—Catharine Chadwick



Dr. Emily Jensen, Chaucerian scholar, works on a paper she'll present at a medieval conference.

►5:31 p.m. - **Lamade Gymnasium:** Something big is going to happen tonight. I can feel it as I trudge towards Lamade Gymnasium with WRLC's remote equipment strapped on my back.

Perhaps it is the rare sight of sunshine in Williamsport during February or having just eaten at Hardee's instead of enjoying Chinese night at the cafeteria that has me in a pleasant mood. Regardless, I have an inkling it is going to be a special night for the Lycoming women's basketball program and the school's radio station, WRLC-FM.

Tonight is the station's third basketball broadcast in three days and the 23rd of the season. We have had some good games up to this point, but the majority of



Mike Juran (left) and Tom Speicher prepare for their "biggest" game of the year

them are meshed together in my mind. We need an exciting contest to revive us because the punishing pace of school work, broadcasting, and other activities is taking its toll on myself, analyst Jay Tanenbaum and our chief statistician Mike Juran.

Arriving at Lamade 90 minutes before the game, I relax and enjoy the silence of the empty gym. Having a large chapter of mass media law to read back in my room, of course, has nothing to do with my early arrival. I just came to shoot some baskets before the game. After all, it gets frustrating calling basketball contests for four months and never getting to shoot baskets yourself.

When I arrive, I immediately connect our phone line and hook up our mixer. Conditions seem perfect for me to shoot some hoops because a basketball is available, and I can not embarrass myself since there are only a handful of people in the gym to witness my proficiency.

After shooting baskets for 10 minutes, it's time to start doing some work in preparation for the broadcast. I talk briefly with Coach Kim Rockey and student coach Ken Weingartner. I can always tell from Ken how the Lady Warriors will do. If he seems confident, the team normally wins. If Ken seems unsure, the game usually winds up being a tough one. Ken is very confident this night, a good sign, despite the fact the opposition is conference power Elizabethtown.

People are starting to fill up Lamade and it's time to break down and get all the information needed for the broadcast. I peruse Lycoming's statistics and write down information I have on Elizabethtown. After talking with an Elizabethtown official on the

pronunciations of their players' names, I'm relieved to find there aren't any Bertha Bensevengoes on the team!

With only 20 minutes to air time, Jay arrives from choir and Mike ambles over from his dorm. The broadcast team is ready to go. We check our equipment, review the Elizabethtown names, and count down to air time.

The game is exciting and the broadcast sounds fine. It is a night I will long remember as the Lady Warriors down the nationally ranked Lady Jays 60-54. It is a big night for women's basketball at Lycoming and it makes all the work and time that goes into covering the sport worthwhile. However, there is little time for celebration. It is now 9 p.m. and time for both a WRMC meeting and that chapter in mass media law.

—Tom Speicher

► **11:58 p.m. - Lamade Gymnasium:** The roar of the crowd and the chant of 'Go Lady Warriors' have faded from Lamade Gymnasium and have now turned to distant echoes. Earlier in the evening a huge crowd saw the Lady Warriors basketball team beat nationally ranked Elizabethtown.

Now the only sounds are the whistling and baritone singing of Gene Todd, night custodian. "Mean Gene", as he is affectionately known, is busy putting the gym back together. In between rolling the bleachers back and restoring the floor for tomorrow morning's physical education classes, Gene shares his own philosophy and wit. A firm believer in the order of the universe, Gene completes his discourse on man's place in the universe... "a really insignificant role when compared against the whole cosmos." Although a Taoist in theory, Gene sums up his personal philosophy this way. "Do unto others isn't a bad place for people to begin in trying to understand each other and make the earth a better, safer place in which to live."

Somehow the thought seems appropriate as the new day dawns.

—Mark Neil Levine



"Mean Gene" Todd, night custodian at Lamade Gymnasium, dispenses homespun philosophy and wit while going about his job.

- Mr. H. Donald Sestina '57  
 Mrs. Mary.Helen Foehl Shaffer '38  
 Mr. & Mrs. Carl F. Shannon '73 & '74  
 Mr. James W. Sheaffer  
 Mr. Vincent L. Sherman '49  
 Mr. Richard H. Sherwood '69  
 Ms. Meredith M. Shinn '83  
 Mr. & Mrs. Thomas M. Shivetts '70 & '72  
 Mr. & Ms. P. David Shoemaker '66 & '66  
 Mr. Steven S. Shuey '73  
 Miss Kathryn E. Siburt '71  
 Mr. James C. Simatos '80  
 Mr. & Mrs. William R. Sims (he '38)  
 Mrs. Dorothy Toy Singly '61  
 Mr. Wallace T. Skok Jr. '70  
 Mr. Alden T. Smith Jr. '65  
 Dr. & Mrs. C. Jeffrey Smith '73 & '73  
 Mr. J. Dennis Smith '68  
 Mrs. Joan Purpura Smith '69  
 Mr. & Mrs. Steven T. Smith '69 & '70  
 Dr. Thomas W. Snee '65  
 Mr. Robert L. Snyder II '73  
 Mr. Thomas C. Sommers '65  
 Dr. Otto L. Sonder Jr. '46  
 Mr. & Mrs. Thomas D. Spittler '55 & '54  
 Mrs. Evelyn Reigel Steiner '65  
 Mr. & Mrs. Kenneth J. Steiner  
 Capt. C. Alan Stephan '57  
 Rev. Dr. & Mrs. Wallace F. Stettler  
 Mr. Richard M. Stewart '75  
 Mr. Charles J. Stockwell '36  
 Mrs. Kay Goodman Stover '49  
 Mr. Ronald B. Strattan Jr. '66  
 Mrs. D. Keigh Cronauer Strauser '58  
 Mrs. Margaret Knittle Strine '34  
 Mrs. Esther L. Williams Strongman '73
- Miss Louise Stryker  
 Ms. Katharine R. Sudekum '74  
 Mr. & Mrs. Lothar Sudekum  
 Mr. Donald M. Suica '76  
 Mr. & Mrs. Francis Sullivan  
 Ms. Karen A. Suplee '75  
 Dr. H. Lawrence Swartz '57  
 Mr. & Mrs. Robert W. Tannahill  
 Dr. Carl B. Taylor '30  
 Mr. Richard C. Taylor Jr. '69  
 Mr. & Ms. James B. Teller '81 & '84  
 Mr. & Mrs. George Terrat Jr. '51 & '50  
 Mr. William Terwilliger  
 Mr. & Mrs. Thomas Teufel (she '54)  
 Dr. William D. Todhunter  
 Rev. Dr. C. Philip Torrance  
 Mr. David B. Travis '61  
 Dr. Robert L. Treese '50  
 Mr. B. Joseph Troisi '42  
 Mr. & Mrs. Charles E. Trump  
 Mr. Albert G. VanZanten '62  
 Mr. John W. Vanderland '64  
 Mr. Burke R. Veley '60  
 Dr. & Mrs. Joseph M. Virgulti '82 & '81  
 Mr. & Mrs. Elliott Von Culin  
 Mr. William C. Wallis '62  
 Mr. Michael A. Warehime '64  
 Mr. & Mrs. David S. Warner '85 & '85  
 Mr. Eric J. Wasser '72  
 Mrs. Linda Cooney Wasser '68  
 Ms. Alicelynn Watson '70  
 Mr. Richard C. Watters '70  
 Mr. Thomas C. Way '69  
 Mr. Kurt R. Wease '79  
 Mrs. Elizabeth H. Weaver  
 Dr. & Mrs. H. Bruce Weaver
- Miss Ona R. Weimer '49  
 Mrs. Patricia Marr Weisenburger '78  
 Mr. David F. Werner '72  
 Mr. Robert G. Wharton Jr. '34  
 Mr. Donald M. Whistler '61  
 Mrs. Jean M. White '48  
 Mrs. Kathleen McKinnon White '68  
 Mr. Richard E. Wienecke '66  
 Mr. David A. Williamson '69  
 Ms. Sara Ann Williamson  
 Mr. & Mrs. Dean Willis  
 Mr. & Mrs. Lee Willis  
 Mr. John B. Willmann '38  
 Mr. Walter W. Wilt '65  
 Mr. & Mrs. Charles L. Wirth Sr. '38 & '38  
 Mr. & Mrs. Luther Wise  
 Mr. R. Kenneth Witzel '75  
 Dr. Daniel E. Wolfe '67  
 Mr. J. James Wolfe '73  
 Mr. Kenneth B. Wolfe '51  
 Mr. Lee W. Wolfe '63  
 Ms. Beverly M. Wolff '68  
 The Hon. Robert J. Wollet '54  
 Mr. & Mrs. James T. Wolyniec (he '60)  
 Mr. & Mrs. Gary R. Womelsdorf  
 Mrs. Evelyn Kilshaw Woodworth '76  
 Mr. & Mrs. Glenn T. Wootton '63 & '65  
 Dr. & Mrs. Russell N. Worobec  
 Mr. Howard L. Worth '58  
 Dr. & Mrs. Daniel C. Wurster '63 & '63  
 Mrs. Janina West Yates '77  
 Dr. Dennis G. Youshaw '61  
 LCDR. John Marshall M. Yurchak '78  
 Mr. Francis E. Zanella '73  
 Dr. & Mrs. Andrew H. Zecha '49 & '50  
 Rev. Dr. Elwood C. Zimmerman '44  
 Dr. & Mrs. Melvin C. Zimmerman

### Parents & Friends

- Mr. & Mrs. George Abdo  
 Mr. & Mrs. Jacob Adams  
 Mr. & Mrs. John Ahern  
 Mr. & Mrs. Richard Aiken  
 Mr. & Mrs. Michael Albanese  
 Mr. & Mrs. John J. Albarano  
 Mr. Ralph Alberts  
 Mrs. Dorothy Allen  
 Mr. & Mrs. Herbert Allmers  
 Mrs. Harold J. Alsted  
 Mr. & Mrs. Bruce Altschuler  
 Mr. & Mrs. Joseph Amato  
 Mr. & Mrs. Henry C. Andersen Sr.  
 Mr. Joseph Antiga  
 Mrs. Janis E. Arp  
 Mr. & Mrs. Robert Ashman  
 Mr. William H. Askey  
 Mrs. William T. Askey  
 Mr. Edward L. Bagnarelli  
 Mr. & Mrs. Eph Baker  
 Mr. Frank Banko  
 Mr. & Mrs. Robert Barbieri  
 Mr. & Mrs. Juergen Bauer  
 Mr. & Mrs. Harold A. Bauman  
 Mr. & Mrs. Carl Bednarski  
 Rev. & Mrs. Albert L. Beemer  
 Mr. & Mrs. Raymond L. Benner  
 Mr. William Benzel  
 Mrs. Virginia Berard  
 Mrs. Gloria Berman  
 The Rev. Edward H. Blumer  
 Dr. & Mrs. Frederick E. Blumer  
 Dr. Gary M. Boerckel  
 Mr. & Mrs. Paul Bonelli  
 Mr. & Mrs. Richard Botwinick
- Mr. & Mrs. David Bowen  
 Mr. & Mrs. James Bower Sr.  
 Mr. & Mrs. Loren Bower  
 Dr. Robert G. Bowers  
 Mr. & Mrs. Stephen Boyd  
 Mr. & Mrs. John R. Boyda  
 Mrs. John C. Brachbill  
 Ms. Theresa M. Brady  
 Mr. John Brauss  
 Mr. & Mrs. James Brazill  
 Mr. & Mrs. Clarence A. Brink  
 Mrs. Judith Broccolo  
 Mr. & Mrs. Robert H. Broccolo  
 Mr. & Mrs. Leon Brokenshire  
 Mr. L. R. Brophy  
 Mr. Bryan Brown  
 Mr. & Mrs. Luke Brown  
 Mr. & Mrs. Clarence W. Burch  
 Mr. & Mrs. Daniel J. Burchstead  
 Mr. John A. Burkholder Jr.  
 Mrs. Charles J. Campbell  
 Mr. & Mrs. Francis F. Cappo Jr.  
 Mr. & Mrs. Ronald Ceres  
 Mr. Robert R. Chatterton  
 Mr. & Mrs. Alexander Chesonis  
 Mrs. Anna F. Chigliński  
 Mr. & Mrs. Robert W. Chilton  
 Mr. & Mrs. Harry Chin  
 Dr. Frederick E. Christian  
 Mr. & Mrs. Robert Christie  
 Mr. & Mrs. Paul Chulock  
 Mr. & Mrs. Ronald Clark  
 Mr. & Mrs. Roosevelt L. Clark  
 Mr. & Mrs. Randall Cober  
 Mr. & Mrs. Fredric Coffey  
 Mrs. Z. H. Confair  
 Mrs. Elsie V. Connahan
- Mr. & Mrs. Joseph Conville  
 Dr. & Mrs. Kenneth L. Cooper  
 Dr. & Mrs. John Cowden  
 Mr. Richard L. Cowher  
 Mrs. Elizabeth G. Cowles  
 Mr. Ralph R. Cranmer  
 Mr. & Mrs. Donald Creamer  
 Mr. & Mrs. James H. Crognale  
 Mr. & Mrs. William H. Cummings  
 Rev. Mr. & Mrs. Robert Curry  
 Mr. & Mrs. Joseph Dalaimo  
 Mr. & Mrs. William R. Dameron Jr.  
 Mr. & Mrs. Frank Damian  
 Mrs. Raymond A. Davis  
 Mr. & Mrs. Anthony DeAngelo  
 Mr. & Mrs. David DeLaura  
 Mrs. Nancy H. DeWald  
 Mr. & Mrs. Clarence Deitrich  
 Dr. LeRoy F. Derr  
 Mr. Raymond C. Desor  
 Mr. & Mrs. Alexander Dever  
 Mr. A. S. DiGiaccio  
 Mr. & Mrs. Charles DiOrio  
 Mr. & Mrs. Gerald J. Diehl  
 Mr. & Mrs. Millard G. Diehl  
 Mr. & Mrs. William L. Diltz  
 Mrs. Sally Dolan  
 Mr. & Mrs. Richard M. Dore  
 Mr. & Mrs. Robert Dore  
 Dr. Samuel J. Dornsife  
 Mr. & Mrs. David Downs  
 Mr. M. LaRue Drake  
 Mr. & Mrs. Leo E. Duncan  
 Mr. & Mrs. Donald Duryea  
 Mr. & Mrs. Russel L. Duryea  
 Mr. James Benedict Earley  
 Dr. & Mrs. Herbert A. Ecker Sr.
- Mrs. Elizabeth Edgerton  
 Mr. & Mrs. Richard C. Emmert  
 Mr. & Mrs. David Ermer  
 Mr. & Mrs. Anthony J. Esposito  
 Mrs. June L. Evans  
 Mr. J. Robert Fahnestock  
 Mr. & Mrs. Louis J. Fanelli  
 Mr. Robert W. Faus  
 Mrs. W. Arthur Faus  
 Mr. & Mrs. William W. Fellers  
 Mr. & Mrs. S. Salvatore Ferraro  
 Rev. & Mrs. Clifford Field  
 Dr. & Mrs. Floyd B. Fischer  
 Mr. Edward T. Flory  
 Mr. & Mrs. John A. Fochtman  
 Mr. & Mrs. Mathew Foner  
 Mr. & Mrs. Franklin Forney  
 Mr. & Mrs. Robert M. Fortenbaugh  
 Mr. & Mrs. Nunzio Fortuna  
 Dr. & Mrs. David A. Franz  
 Mr. & Mrs. Charles Friel  
 Dr. & Mrs. Edward G. Gabriel  
 Mr. & Mrs. James R. Gallagher  
 Rev. & Mrs. Roland E. Garvin  
 Mr. & Mrs. John C. Gault  
 Mr. & Mrs. Ronald Gauthier  
 Mr. & Mrs. Patrick Gibbons  
 Mr. E. Layton Gilbert Jr.  
 Mrs. Joan C. Gingrich  
 Mr. & Mrs. Frank L. Girardi  
 Mr. & Mrs. Charles L. Gleason  
 Mr. & Mrs. Milton Glenn  
 Mr. & Mrs. Harry H. Gorman  
 Mr. John P. Graham  
 Mrs. Mary Jane Green  
 Mr. Bernard Greenberg  
 Mr. Charles F. Greevy III

- Mr. & Mrs. Vincent Grimes  
 Mr. & Mrs. Roland Groder  
 Mrs. Ann Guastella  
 Rev. Dr. Eduardo Guerra  
 Mrs. Susan Hall  
 Ms. Barbara A. Hammaker  
 Rev. Mr. & Mrs. Paul F. Hannatord  
 Mr. & Mrs. William Hartshorn  
 Mr. & Mrs. Bruce Harvey  
 Mr. & Mrs. Duane Harvey  
 Mr. & Mrs. Francis C. Harvey  
 Mr. & Mrs. John Hayden  
 Mrs. Flame Heilman  
 Mr. Luther D. Heim  
 Mrs. Walter J. Heim  
 Mr. & Mrs. Henry O. Heiser Jr.  
 Mr. & Mrs. Randall G. Herring  
 Mr. David Heyman  
 Mrs. Bernadine G. Hileman  
 Dr. Kenneth I. Himes  
 Mr. & Mrs. Merlin Hoch  
 Ms. Joan Y. Hoffman  
 Mr. & Mrs. Jay E. Holland  
 Mr. & Mrs. Richard I. Holthaus  
 Dr. & Mrs. Soo W. Hong  
 Mr. & Mrs. Douglas A. Hottle  
 Dr. & Mrs. George W. Howe  
 Dr. Richard A. Hughes  
 Dr. & Mrs. Harold H. Hutson  
 Mr. & Mrs. Albert Ioppolo  
 Mrs. C. E. Jackson  
 Mr. & Mrs. M. Raymond Jamison  
 Mr. & Mrs. Robert Janet  
 Mr. & Mrs. James H. Jenkin  
 Mr. Michael D. Jenkins  
 Dr. Emily R. Jensen  
 Rev. Dr. Maud K. Jensen  
 Dr. Moon H. Jo  
 Mr. & Mrs. Paul R. John  
 Mr. & Mrs. Robert W. Johnson  
 Mr. & Mrs. Earl M. Jonas  
 Mr. & Mrs. Robert J. Jones  
 Mr. & Mrs. Allen Jordan  
 Mr. & Mrs. Philip Kehoe  
 Mr. & Mrs. Hoyt Keeser  
 Mr. & Mrs. Ralph I. Kelchner  
 Mr. & Mrs. Frederick Keller  
 Ms. Leatha Anne Kieser  
 Mr. & Mrs. George King  
 Dr. Donald I. Kirk  
 Dr. & Mrs. Charles A. Knouse  
 Mr. & Mrs. Paul Koester  
 Mr. & Mrs. Maynard Kohler  
 Mr. & Mrs. Edmond I. Kollhoff  
 Mr. & Mrs. Guy C. Koser  
 Mrs. Dorothy Krause  
 Mr. & Mrs. Charles A. Krebs  
 Mr. & Mrs. Frank Krein  
 Mr. & Mrs. Charles Kremer  
 Mr. & Mrs. George I. Kuhlman  
 Mr. & Mrs. Arnold Kuhn  
 Mr. & Mrs. William R. Laboski  
 Mr. & Mrs. George D. Langberg  
 Col. & Mrs. Walter A. Lenz  
 Mr. & Mrs. Mark N. Levine  
 Mr. & Mrs. James Little  
 Mr. & Mrs. William R. Lockwood  
 Mr. & Mrs. George Logan  
 Mr. Anthony R. Lorenzo  
 Mrs. Frank W. Lowry  
 Mr. Robert S. Lowry  
 Mr. & Mrs. John W. Lundy  
 Mr. Richard H. Lundy  
 Mr. & Mrs. Richard H. Lundy Jr.  
 Evcoming College Library Staff  
 Evcoming College Nursing Honor Society  
 Mrs. Margaret A. MacMullan  
 Mr. & Mrs. John Malasavage  
 Mr. Paul D. Maneval\*  
 Dr. & Mrs. Robert I. B. Maples  
 Mr. & Mrs. Daniel Marcantonio  
 Mr. & Mrs. Harold Marple  
 Rev. Dr. Harvey W. Marsland  
 Mr. & Mrs. James Matoushek  
 Mr. & Mrs. Ernest I. Maw  
 Mr. & Mrs. Gerald S. May  
 Mrs. Mary Mazzecca  
 Mr. & Mrs. James McAuley  
 Mrs. Sandra McCarty  
 Mrs. John C. McCune  
 Mr. & Mrs. Peyton McDonald  
 Mr. & Mrs. Robert I. McFarren  
 Mr. George McConley  
 Mrs. Mary McGovern  
 Mr. & Mrs. William McGuinness  
 Mr. & Mrs. Walter G. McIver  
 Mr. & Mrs. Samuel R. McKelvey  
 Mr. & Mrs. William McKenna  
 Mr. & Mrs. William L. McLane  
 Mr. & Mrs. J. Barton Meyer  
 Rev. & Mrs. Roy Meyer  
 Mrs. Donna R. Miller  
 Ms. Kay Monks  
 Mr. & Mrs. Richard Moore  
 Mr. & Mrs. Tenner Moore  
 Mr. & Mrs. Rafael Moreno  
 Mr. Roger A. Mott  
 Mrs. Anna C. Moyer  
 Mr. & Mrs. Clyde Mullen  
 Mr. & Mrs. Donald Munson  
 Mr. Harold C. Myers  
 Mr. & Mrs. Robert A. Myers  
 Mr. Robert Nagle  
 Mr. & Mrs. Alexander Nagurney  
 Mr. & Mrs. William P. Naulty  
 Mr. & Mrs. Hugh D. Newman  
 Mrs. Elsie Skvir Nierle  
 Mr. & Mrs. Edward Nitch  
 Mr. & Mrs. Franklin Noll  
 Nursing Class of 1988  
 Dr. & Mrs. R. Michael O'Brien  
 Mr. Gerald S. O'Loughlin  
 Dr. & Mrs. Earl A. O'Neill  
 Mr. & Mrs. S. J. O'Shell  
 Mr. & Mrs. John Oberg  
 Mr. & Mrs. Earnest F. Oberlin  
 Mr. & Mrs. William Onorato  
 Mrs. Theesa Oplinger  
 The Rev. George I. Overley  
 Mr. & Mrs. Bernard Paiega  
 Mr. Gerard A. Paicitti  
 Mr. & Mrs. Dennis Paczkowski  
 Dr. Kathleen D. Pagana  
 Dr. & Mrs. Frank H. Parcels  
 Mr. Charles Paris  
 Mr. & Mrs. Louis Pasquarella  
 Mr. & Mrs. Edward Patrone  
 Mr. & Mrs. John P. Peracchio  
 Ms. Katherine Piccolo  
 Mr. & Mrs. Edward Pietrzak  
 Dr. & Mrs. John I. Piper Jr.  
 Mrs. John I. Pitts III  
 Dr. & Mrs. Richard Pizzano  
 Mr. David W. Poeth  
 Mrs. Eileen Pollick  
 Mrs. Mary Porter  
 Mr. & Mrs. William Powers  
 Mr. & Mrs. Phil Prowant  
 Mr. & Mrs. Charles D. Pudish  
 Dr. John A. Radspinner  
 Mrs. Flame G. Raulf  
 Mr. & Mrs. Gary Reed  
 Mr. G. Walter Reed Jr.  
 Mr. & Mrs. Thomas Rees  
 Mr. & Mrs. Eric Reil  
 Mr. & Mrs. Merlin Rehm  
 Mr. & Mrs. Steven Rhoades  
 Mr. & Mrs. John Rice  
 Mr. & Mrs. Dennis I. Riley  
 Mr. & Mrs. Donald I. Riley  
 Mrs. Doris Riley  
 Dr. Stephen I. Robinson  
 Mr. & Mrs. Junior W. Rockey  
 Mr. Charles Rodgers  
 Dr. Janet A. Rodgers  
 Mr. Whitey Rodgers  
 Mr. & Mrs. Julius Rosato  
 Mr. Paul Rothrock  
 Mr. William Sandmeyer  
 Mr. & Mrs. J. I. Santolero  
 Mrs. Carole Saunders  
 Mr. Clarence Schaeffer  
 Mr. & Mrs. Charles Scharbie  
 Mrs. Beverly Scheib  
 The Rev. Walter M. Schell  
 Mr. & Mrs. James Schilling  
 Mr. & Mrs. Richard I. Schmid  
 Mrs. Herman I. Schneebeli  
 Mr. John Y. Schreyer  
 Mr. & Mrs. Dennis C. Schutz  
 Mr. & Mrs. Peter H. Scudder  
 Mr. John H. Secor  
 Mr. & Mrs. Richard I. Sell  
 Mr. & Mrs. Karl Sennewald  
 Mr. & Mrs. Robert Shaner  
 Mr. & Mrs. John J. Sharpe Jr.  
 Mr. James W. Sheatter  
 Mr. & Mrs. David Shearman  
 Mr. & Mrs. Gordon Sheriff  
 Rev. & Mrs. Drue Sherman  
 Estate of Emily W. Simpson  
 Mrs. Jean Sims  
 Mr. & Mrs. George Skala  
 Mr. & Mrs. Francis Slattery  
 Mr. & Mrs. Michael Smedile  
 Mr. & Mrs. Donald Smith  
 Mr. & Mrs. Frank Snyder  
 Mrs. Mary Spotts  
 Mr. & Mrs. Andrew Srodin  
 Dr. Elmer B. Staats  
 Mr. & Mrs. Donald Steffen  
 Mr. & Mrs. Kenneth J. Steiner  
 Mr. William H. Stern  
 Rev. Dr. & Mrs. Wallace F. Stettler  
 Mr. & Mrs. Robert S. Stevens  
 Mr. & Mrs. Vernon Stoltzhus  
 Mr. & Mrs. James Stoveken  
 Mrs. Dorothy J. Streeter  
 Miss Louise Stryker  
 Ms. Virginia W. Stryker  
 Mr. & Mrs. Lothar Sudekum  
 Mr. & Mrs. Francis Sullivan  
 Mr. & Mrs. William Swartwood  
 Mr. & Mrs. David A. Swavely  
 Mr. Charles A. Szybist  
 Mr. & Mrs. W. W. Taggart  
 Father John Tamalis  
 Mr. & Mrs. Dominick Tamasi  
 Mr. & Mrs. David Tanenbaum  
 Mr. & Mrs. Robert W. Tannahill  
 Mr. & Mrs. Thomas Terry  
 Mr. William Terwilliger  
 Mr. Thomas Teutel  
 Dr. William D. Todhunter  
 Mr. & Mrs. John Topley  
 Mr. & Mrs. Daniel R. Topolski  
 Rev. Dr. C. Philip Torrance  
 Mr. & Mrs. Carmine Toto  
 Mr. & Mrs. John Towey  
 Dr. Donald H. Treese  
 Mr. & Mrs. Charles E. Trump  
 Mr. & Mrs. Gerald A. Turecek  
 Mr. & Mrs. Richard Umstead  
 Mr. & Mrs. Murrell VanBlarcom  
 Dr. Shirley A. Van Marter  
 Mr. & Mrs. Leonard Vignola  
 Mr. & Mrs. Elliott Von Culin  
 Mr. & Mrs. Laurence R. Walker Jr.  
 Rev. Dr. Frank Lewis Walley  
 Mr. James Walsh  
 Mr. & Mrs. James Ward  
 Mr. & Mrs. Ross F. Warner  
 Mr. & Mrs. Howard Watson  
 Mrs. Elizabeth H. Weaver  
 Dr. & Mrs. H. Bruce Weaver  
 Mr. & Mrs. Terry Weaver  
 Mr. & Mrs. Bruce Weingartner  
 Mr. & Mrs. William Westerhoff  
 Dr. John M. Whelan Jr.  
 Dr. & Mrs. Stanley I. Wilk  
 Mrs. Agnes I. Willard  
 Mrs. Dale Williams  
 Ms. Sara Ann Williamson  
 Mr. & Mrs. Dean Willis  
 Mr. & Mrs. Luther Wise  
 Mrs. Patricia S. Wittig  
 Ms. Mary I. Wixted  
 Mrs. Joyce Wolyniec  
 Mr. & Mrs. Gary R. Womelsdorf  
 Mr. & Mrs. Walter Woods  
 Dr. & Mrs. Russell N. Worobec  
 Dr. & Mrs. Clyde H. Wurster  
 Mr. & Mrs. James Wynne  
 Dr. & Mrs. Robert S. Yasui  
 Ms. Helen Yura  
 Dr. & Mrs. Robert A. Zaccaria  
 Dr. & Mrs. Melvin C. Zimmerman  
 Mr. & Mrs. Leon Zook  
 Mr. & Mrs. Robert Zwiebel  
 \*Deceased  
 Mrs. Janis E. Arp  
 Mr. William L. Baker  
 Ms. Susan K. Beidler  
 Dr. Frederick E. Blumer  
 Dr. Gary M. Boerckel  
 Mr. Dale V. Bower  
 Mr. Clarence W. Burch  
 Mrs. Anna F. Chiglinsky  
 Miss Rita A. Ciurlino  
 Mr. Richard L. Cowher  
 Mrs. Elizabeth G. Cowles  
 Mr. Robert L. Curry Jr.  
 Mrs. June F. Evans  
 Mr. Robert W. Faus  
 Dr. David A. Franz  
 Dr. Edward G. Gabriel  
 Mr. Frank I. Girardi  
 The Rev. Dr. Eduardo Guerra  
 Mrs. Mary E. Herring  
 Mrs. Bernadine G. Hileman  
 Mr. John G. Hollenback  
 Dr. Richard A. Hughes  
 Mr. Michael D. Jenkins  
 Dr. Emily R. Jensen  
 Dr. Moon H. Jo  
 Mrs. Abby S. Levine  
 Mr. Mark N. Levine  
 Mrs. Christina E. MacGill  
 Mrs. Dorothy E. Maples  
 Dr. Robert J. B. Maples  
 Mr. Samuel R. McKelvey  
 Mr. J. Barton Meyer  
 Mr. Bradley I. Nason  
 Dr. R. Michael O'Brien  
 Dr. Roger W. Opdahl  
 Dr. Kathleen D. Pagana  
 Ms. Juliann E. Pawlak  
 Dr. John F. Piper Jr.  
 Mrs. Margaret P. Piper  
 Mrs. Constance C. Plankenhorn  
 Mr. David W. Poeth  
 Mr. Jeffrey L. Richards  
 Mr. Logan A. Richmond  
 Mrs. Mary I. Russell  
 Mr. Larry R. Strauser  
 Dr. Shirley A. Van Marter  
 Mrs. Deborah E. Weaver  
 Dr. H. Bruce Weaver  
 Dr. John M. Whelan Jr.  
 Mr. Richard E. Wienecke  
 Dr. Stanley I. Wilk  
 Mrs. Patricia S. Wittig  
 Dr. Robert S. Yasui  
 Dr. Robert A. Zaccaria  
 Mr. Ralph F. Zeigler Jr.  
 Mrs. Gail M. Zimmerman  
 Dr. Melvin C. Zimmerman  
 Mr. David Y. Brouse  
 Mr. Leo A. Calistri  
 Mr. Harold D. Chapman  
 Mr. Richard H. Contair  
 Mr. Richard W. DeWald  
 Mr. Daniel G. Fultz  
 Mr. Paul G. Gilmore  
 Dr. Robert I. Hancox  
 Mr. K. Alan Himes  
 Mr. Seth D. Keller  
 Mrs. Peggy I. Heureux



Dr. Robert G. Little  
 Mr. John C. Lundy  
 Mr. D. Stephen Martz  
 Mr. Richard D. Mase  
 Dr. W. Gibbs McKenney  
 Mr. G. Jackson Miller  
 Dr. Fred A. Pennington  
 Mr. John E. Person Jr.  
 Mr. William Pickelner  
 Mrs. Marguerite G. Rich  
 Dr. Mary R. Schweikle  
 Mr. Robert L. Shangraw  
 Dr. Donald E. Shearer  
 Mr. Harold H. Shreckengast Jr.  
 The Hon. Clinton W. Smith  
 Rev. Dr. Wallace F. Stettler  
 Dr. Nathan W. Stuart  
 The Rev. Stratford C. Taylor  
 Dr. Willis W. Willard III

#### Companies - Trust Funds

Charles V. Adams Trust  
 Mabel Alexander Trust  
 John Connelly Foundation  
 Alfred A. DiCenso-  
 Robert L. Ellison  
 Foundation, Inc.  
 Foundation for Independent  
 Colleges, Inc., of Pennsylvania  
 John Vincent Low Estate  
 Emmett C. Roop Trust  
 Rubright Trust  
 L. B. Smith Cultural  
 Foundation, Inc.  
 L. B. Smith Educational  
 Foundation, Inc.  
 Donald B. & Dorothy Stabler  
 Foundation  
 The Surdna Foundation  
 Williamsport Foundation  
 Williamsport Kiwanis Foundation

#### Manufacturers - Trade Associations - Publishing - Other

Advanced Technology Center  
 AMP, Inc.  
 AT&T Foundation  
 Abbott Laboratories  
 Aetna Life & Casualty  
 Air Products & Chemicals  
 Ralph S. Alberts Co., Inc.  
 Alcan Aluminum  
 Allied Corporation Foundation  
 American Cyanamid Co.  
 American Hoechst Corporation  
 Anheuser-Busch Foundation  
 Arthur Andersen & Co.  
 Atlantic Transport Co.  
 Bank of Boston  
 Barber Memorial Home, Inc.  
 Beecham Labs, Inc.  
 Bell Atlantic Corporation  
 Bell Communication  
 Benson Thomson Agency, Inc.  
 Harris D. Berry & Associates  
 Bitner School Bus  
 Black & Decker Corporation  
 Boeing Company  
 Boyers IGA  
 Brooks Real Estate  
 Brunswick Foundation  
 Bubba's Breakaway  
 Burger King  
 Butler Manufacturing Co.  
 Foundation  
 CIGNA Corporation  
 Canteen Vending Company  
 Capital Cities/ABC, Inc.  
 Carpenter Technology Corporation  
 Foundation  
 Central Coca-Cola Bottling Co.  
 Century 21  
 Century Place, Inc.  
 Chautauqua Gas Drilling  
 Chesebrough Ponds, Inc.

Chubb & Son, Inc.  
 Cobbler's, Inc.  
 Combustion Engineering, Inc.  
 Communications Technology  
 Applications, Inc.  
 Commonwealth Bank & Trust  
 Commonwealth of Pennsylvania  
 CompuDyne Corporation  
 Confair Bottling Co., Inc.  
 Connaught Lab.  
 Continental Corporation Foundation  
 Coopers & Lybrand Foundation  
 Corning Glass Works Foundation  
 Crum and Forster  
 Cupp Bonding Agency  
 DeMore's Catering  
 Delorean Research Limited  
 Dice Drug Company  
 Dominos Pizza  
 Dow Chemical U.S.A.  
 Dresser Foundation, Inc.  
 Dun & Bradstreet Corp. Foundation  
 Englund's  
 Equitable of Iowa  
 Equitable of U.S.  
 Era Curabba Realty  
 Exxon Educational Foundation  
 GEICO  
 GTE Corporate Communication  
 GTE Foundation  
 Gannett Foundation  
 Gates & Seaman  
 General Electric Foundation  
 General Foods Fund  
 Growing Garden  
 HCA Foundation  
 HERCO  
 Honeywell Foundation  
 Hartford Insurance  
 Hollidaysburg Trust Co.  
 Home Care Corporation  
 Horrigan-American, Inc.  
 Hunsberger Office Supply  
 IBM Corporation  
 Ingersoll-Rand  
 International Business Products  
 J. C. Penney  
 James Case Enterprises, Inc.  
 James River Corporation  
 Jeffers & Associates  
 Jersey Shore State Bank  
 Johnson & Higgins of Texas, Inc.  
 Johnson & Johnson  
 Kendall Landscape Company, Inc.  
 Keystone Business Forms  
 Kocher Photo  
 Koppers Company Foundation  
 Lamco Communications, Inc.  
 Lamco Foundation  
 Landon Associates  
 Lilly & Company  
 Lucas-Rodgers  
 Lunaire Environmental, Inc.  
 Mahanoy Valley Door  
 Main Street Apartments  
 Manning Associates  
 Marathon Oil Foundation, Inc.  
 Marsh & McLennon Company  
 Martin-Marietta Corporation  
 Foundation  
 Maw & McKennell, Inc.  
 May Department  
 R. J. McBrinn, Inc.  
 Mellon Bank  
 Merchants Bank NA  
 Merck Company Foundation  
 Merrill Lynch & Company, Inc.  
 Merrill Lynch & Company  
 Foundation  
 Metropolitan Life Foundation  
 Michael Associates  
 Mid-State Beverage Company  
 Midlantic National Bank,  
 National Bank South  
 Mobil Foundation  
 Montgomery Plumbing Supply Co.

Montour Auto Service Company  
 Morgan Guaranty Trust Co. of NY  
 Morrison-Knudsen  
 Mutual Press Clipping Service, Inc.  
 Nestle Foods  
 National Can Corporation  
 National Society Colonial Daughters  
 of the 17th Century  
 New Jersey Bell  
 North American Phillips  
 Northeast Utility  
 Northern Central Bank  
 Northwestern Mutual Life Insurance  
 Oaks Printing Co.  
 PA Higher Education Assistance  
 Agency  
 PA Lumbermans  
 PA Power & Light Co.  
 Peat Marwick Mitchell Foundation  
 PepsiCo  
 Pfizer, Inc.  
 Philadelphia National Bank  
 Philip Morris, Inc.  
 Pickelner Heating Co.  
 Plankenhorn Stationery Co.  
 Pneumo Abex Corp.  
 Precision Printers, Inc.  
 Price Waterhouse Foundation  
 RUST International Corp.  
 Raytheon Company  
 Reader's Digest Foundation  
 Realty Marts International  
 C. A. Reed  
 Reynolds Metals Co. Foundation  
 Snap-on-Tools  
 Snyder's of Hanover  
 Sanders Mortuary  
 Sandoz, Inc.  
 Schering-Plough Foundation, Inc.  
 Schlegel Corporation  
 Schwab & Company, Inc.  
 Sears-Roebuck Foundation  
 Seiler's Food Service  
 Shell Oil Company  
 SmithKline Beckman Foundation  
 Squibb Corporation  
 St. Paul Companies  
 Staiman Brothers  
 State Farm Companies Foundation  
 State Farm Insurance  
 Sterling Drug, Inc.  
 Sun Company, Inc.  
 Sun Gazette Company  
 Swank, Inc.  
 T. Rowe Price Associates  
 TRW Electronics Foundation  
 Terry Wild Studio  
 The Tanger Company  
 Union Pacific Company  
 United Methodist Church -  
 Central PA Conference  
 United Methodist Church -  
 Eastern PA Conference  
 United Methodist Church -  
 Wyoming Conference  
 US Fidelity & Guaranty Co.  
 USAir  
 Union Camp Corporation  
 Unisys  
 United Jersey Banks  
 United Telephone System  
 D. J. Vannucci Pharmacy  
 Virginia Power  
 Warner-Lambert Company  
 Westvaco Foundation  
 Williamsport National Bank  
 Williamsport Sheraton Inn  
 Willits Body Shop  
 J. James Wolfe Agency  
 Woolrich Woolen Mills  
 Xerox Foundation  
 Arthur Young Foundation

#### 20% Participation

Corson, Margaret Rich

#### 25% Participation

Forbes, Marguerite Derstine

#### 10% Participation

Browne, Rebecca Shepherd

#### 25% Participation

Hagerman, Miriam Luke

#### 28% Participation

Barclay, Stanton D.  
 Kohler, Grace Myers

#### 33% Participation

Vickers, Ross M.

#### 12% Participation

Dugger, Marjorie Ruth Barclay

#### 25% Participation

Wagner, Norman R.  
 Whitbeck, Joyce Flegal

#### 30% Participation

Bernhardt, Dorothy Logan Rogers  
 Camarinos, Anargyros E.  
 Maconaghy, Samuel J.  
 Mearkle, Etelka Kiffer

#### 29% Participation

Ditmar, Ida May  
 Gallagher, Thomas R.  
 Nancarow, Bernadine Decker  
 Rosenberg, Martha Spanogle  
 Yehl, Adalena Jackson

#### 6% Participation

Hann, Victor B.

#### 26% Participation

Barnhart, Elizabeth Beard  
 Courtney, Dorothy Moore  
 Hughes, Braden P.  
 Rothermel, Leonard H.  
 Smyth, Marguerite Schlegel

#### 16% Participation

Crooks, Arlette Scott  
 McCahan, George R.  
 Prior, Roger M.  
 Watkins, Elizabeth V.

#### 27% Participation

Canon, Miriam Haefner  
 Fraser, Gladys Long  
 Glosser, William E. Jr.  
 Johnson, James T.  
 Lindemuth, John M.  
 Lloyd, Alice Berger  
 MacNab, Margaret Cornely  
 Nye, George R.  
 Reece, Helen

#### 23% Participation

Amoss, Ernestine Oehrli  
 Amoss, Howard M.  
 Bell, Elizabeth Rich  
 Cornwell, Anna Moul  
 Goodrich, Eva Taylor

Hunt, Robert M. Sr.  
Kline, Kathryn L. Turner  
LeCompte, Jean Sykes

### 11% Participation

Holt, Albert I.  
Kline, John M.  
Pumphrey, Robert R.  
Russell, Seth W.

### 30% Participation

Berkheiser, Lucile Corson  
Borland, Gerald C.  
Cornelius, Elizabeth M. Thomas  
Nichols, Eleanor Black  
Schultz, Jane Sornberger  
Staats, Margaret Rich  
Taylor, Carl B.  
Walker, Cynthia Willard

### 22% Participation

Clevenger, Helen I.  
Dutfield, Jeanne M. Reese  
Laler, Charlotte Mark  
Geigle, Ralph C.  
Gould, Olive Long  
Kopp, Martha J.  
Snell, C. Helene Ritter  
Williams, I. Teora

### 18% Participation

Born, H. Spencer  
Darrow, Burton I.  
Heintzelman, Elizabeth V. Allison  
Hill, Virginia Larnsworth  
Long, James S.  
Magee, James W.  
Pennington, Fred A.  
Spotts, Dorothy Long  
Steele, Helen Poticher

### 40% Participation

Bennett, Louise Nett  
Broscoe, Edward M.  
Conner, Harry H.  
Darrow, Ann Evans  
Elder, Robert A.  
Hanigan, Dorothy Bennett  
Legal, Irwin S.  
Lorse, Imelia Mattson  
Odeon, Helen Kohler  
Golder, Helen Malliecu  
Holder, Helen Louise Clarke  
Lotgren, Nina Cummings  
Miller, Donald H. G.  
Robbins, Edgar D.  
Rubendall, Marion B.  
Russell, Mary Landon  
Sechrist, Laura A.  
Troxell, Helen Vollmer

### 25% Participation

Gehr, Margaret K. Reeder  
Haimmatt, Ann Sinclair  
Laidig, Robert V.  
Malone, Henrietta Shope  
Mossler, Mary Grun  
Putman, Rhea Wagner  
Strine, Margaret Knittle  
Tupper, Jane Schwoerer  
Wharton, Robert G. Jr.  
Williams, Burton I.

### 17% Participation

Hubb, Robert M. Sr.  
Garson, Jeanne Clark  
Garson, William H.  
Kessel, Vivian Bullock  
Knapp, Morgan A.  
Lutz, Charles W.  
M. Bride - Alice Hoffman  
Sanderon - Louise Casner  
Seawell - Grace Dixall  
Woolf - E. W. B. C.

### 19% Participation

Butler, Marion McCloud  
Keemer, Ieland W.  
Mark, Grace D.  
Mowry, Dorothy Hyde  
Rhoads, Philip A.  
Sanders, Marshall F.  
Sanders, Thursa Bakesy  
Stockwell, Charles J.  
Stuart, Nathan W.  
Sutherland, Mabel Stewart  
Thomas, Mary MacLaren  
Waltz, Olive Foulk

### 32% Participation

Atherton, Louisa M.  
Barrett, Dorothy Welliver  
Bower, Eleanor Keagle  
Bower, Richard W.  
Fulmer, Carol J. Shaffer  
Gamba, Carl L.  
Halfmann, Dorothy Stecker  
Heermans, Anna Haines  
Hetler, Florence Walters  
Huber, Lola Kurtz  
Knaul, John R.  
Knaul, Leona Fisher  
McKenney, W. Gibbs  
Person, Charlotte Lepel  
Rubendall, Everett W.  
Sarno, William E.  
Smay, Robert E.  
Smith, Percy F.  
Welliver, H. Richard

### 33% Participation

Dye, Lester H.  
Fraleigh, Ruth F. Witherite  
Gehron, William H. Jr.  
Harding, James W.  
Hayes, Robert B.  
Hertzler, Mary Snyder  
Himes, Carl I.  
Jennings, Frederick F.  
Marks, Faylene H. Hottenstein  
McInroe, Chester A.  
McLaughlin, Edward S.  
McLaughlin, Grace Gillner  
Shaffer, Mary Helen Foehl  
Shroy, John F.  
Sims, William R.  
Sykes, David B.  
Visscher, Vera Winter  
Willmann, John B.  
Wirth, Charles I. Sr.  
Wirth, Marion Rice

### 25% Participation

Arney, Beverly Hall  
Arnold, Willard M.  
Collins, Dan S.  
Davis, Craig I.  
Ertel, Elizabeth Sinclair  
Hanigan, A. Roy Jr.  
Fuller, Sue Rathmell  
Hoadley, Maxwell I.  
Hospers, Alice Schmelzle  
Jennings, Minerva P. Goodman  
Riegel, George F. III  
Shoemaker, Albertina Willmann  
Weisel, Mildred Staiman  
Young, Charles A.

### 20% Participation

Bruch, John I. Jr.  
Chrisman, Elizabeth Lepel  
Crooks, William D. III  
Etimadi, Catherine Lewis  
Ferrell, Robert W. Jr.  
Glennie, Marian Myers  
Hoadley, Miriam Birchard  
Huskin, Mary Jane Gieckner  
Ickes, John D.

Linck, Anne Staver  
Mankey, John I.  
Mattson, K. Virginia Gilbert  
Rich, Michael B.  
Shick, Cecelia Campbell  
Siebert, Annetta Maneval  
Tereshinski, Thomas J.

### 16% Participation

Breitenbach, M. Forrest Birkenstock  
Fwing, Helen L. Johnson  
Gibson, Jean Ault  
Greene, Sarah Weiss  
Greenwood, Anna Jane Brugler  
Hayes, John S.  
Hilsner, Anna Belle Birkenstock  
Knudson, Martha J. Powdermilk  
Shipman, Alice Walton  
Spencer, M. Jean Mumford  
Welker, Jean Hamilton

### 20% Participation

Arnold, Charlotte I. Sanders  
Berthold, E. Jean Grammer  
Billman, Phyllis Parsons  
Bruch, Sarah Bubb  
Brumberg, David  
Carson, Ruth P.  
Diehl, Charles A.  
Heltfingler, Martha Wentzel  
Isbell, Earl W.  
Kelly, Violet Rothermel  
Laedlein, Frank H.  
Lamade, Joanne Gerber  
McCloskey, Harry F.  
McCormick, Margaret Rowland  
Odell, Frank H.  
Rich, Marguerite Gehron  
Troisi, B. Joseph  
Wurster, Georgene Hassenplug

### 24% Participation

Horsley, Marguerite Rettew  
Karpinski, Doris Mell  
Kohl, Rachel Andrews  
Laedlein, Dorothy Bird  
Morrison, A. Allen Jr.  
Phillips, Rosemary Wagar  
Robbins, Jean Christine  
Rombro, Morris  
Sandmeyer, Dorothy Ferrell  
Sullivan, Robert J.  
Taylor, Stratford C.  
Wise, Margaret Browne

### 17% Participation

Barton, June S. Kerr  
Belock, Doris Miller  
Britt, Blanche Beck  
Burkholder, Ruth Armstrong  
Spangle, Nancy Bodine  
Wentzler, Virginia Keyte  
Zimmerman, Elwood C.

### 23% Participation

Brucklacher, Ruth D.  
Cavanaugh, Olive E. Babcock  
Dowling, Barbara K. King  
Teach, Elizabeth Miller  
Myers, Gladys R.  
Nace, Jane Wilson  
Shreckengast, Doris Edwards

### 14% Participation

Brouse, Mary Jo Ault  
DeWald, Esther Wheeland  
Harbach, Phyllis Gladewitz  
Knisely, Lillian Jane Holland  
Knock, Stanley E. Jr.  
Sonder, Otto E. Jr.  
Steele, Betty Fry  
Warg, Carlene A.

### 15% Participation

Bastian, William C.  
Berninger, Lois Gettis  
Brouse, David Y.  
Buck, John J.  
Cotner, Jane Yoder  
Crist, Jean Moore  
Dahlgren, Carl E.  
Dahlgren, Virginia Moore  
Dyer, Frederick G.  
Dyer, Henry H.  
Dyer, Mary Lou Van Hook  
Harbach, Max E.  
Heller, Jean T.  
Hollenback, John G.  
Kaufman, Jean L. Young  
Lockspeiser, Patricia Ferguson  
Racine, Andre M.  
Rohm, Beatrice DeSau  
Staiman, Jean Alpert

### 15% Participation

Armstrong, Donald E.  
Bonnell, Robert I.  
Clark, Lynn M.  
DeWald, Omar F. Jr.  
Edkin, Anna Shultz  
Fulmer, Elaine Abercrombie  
Fulmer, James V.  
Hill, William J.  
Kaseman, Paul W.  
Knauff, Harriet Morgan  
Knauff, Paul C.  
Kocher, Herbert J.  
Leinbach, Paul W.  
Maneval, David R.  
Marshall, John F.  
Peterson, Arnold O. D.  
White, Jean M.  
Zeisloff, James H.

### 29% Participation

**Class Agent:**  
Thomas E. Anderman  
Anderman, Thomas E.  
Beach, Howard C.  
Erick, Anna Netta Livingston  
Hill, Shirley Goetel  
Houseknecht, Myra E. Holland  
Kohler, R. Beryl Potter  
Lady, R. Andrew  
McCormick, Clifford C. Jr.  
Mingle, Barbara Stenger  
Retkwa, John S.  
Rich, James T.  
Rosenberg, Dorothy Colick  
Seewald, Robert H.  
Sherman, Vincent I.  
Shick, Franklin E.  
Smay, R. Bruce  
Stover, Kay Goodman  
Weimer, Ona R.  
Zecha, Andrew H.

### 26% Participation

**Class Agent:**  
J. Robert Schrader Jr.  
Ammons, Harold A.  
Annes, Paul I.  
Askins, J. Stewart  
Barto, Harold I.  
Barto, Virginia Herlt  
Belock, Henry W.  
Berger, Donald F.  
Bondi, Richard W.  
Brobst, James K.  
Brungard, Kenneth R.  
Brungard, Pauline Marie Pribble  
Durney, Lucy Tremayne  
Fischberger, Jack K.  
Fisher, Charles W.  
Good, Morris I.  
Griggs, Jacqueline A. Brouse  
Griggs, Robert W.

Lester H. Dye '38 and Jean Alpert Staiman '47 served as class agents for all classes of the Dickinson Seminary and Junior College years 1914 to 1948.

Guyer, Earl G.  
 Hinkelman, Doloris A. Good  
 Hinkelman, Richard H.  
 Hurwitz, Harold S.  
 Ireland, Milo J.  
 Keller, James J.  
 Kocian, Charles J.  
 Marshall, Cree Martin  
 Mintz, Max S.  
 Overdorf, Anthony L.  
 Peterson, Charles E. Jr.  
 Powers, Richard E.  
 Rinzler, Milton S.  
 Ripple, Donald L.  
 Rosenberg, Stanley G.  
 Schrader, J. Robert Jr.  
 Schramm, Eugene J.  
 Shreckengast, Harold H. Jr.  
 Stevens, Marjorie Bender  
 Summerson, Lee M.  
 Terrat, Wincie Emery  
 Treese, Robert L.  
 Watts, Paul H.  
 Winter, John I.  
 Zecha, Helen Lee

**Class of 1981**

**17% Participation**

**Class Agent:**  
**John P. Maltby**

Benson, Bruce  
 Breitenbach, Jack L.  
 Callenberger, Kenneth R.  
 Chaves, Antoinette Ripepi-Gateley  
 Drescher, Herbert W.  
 Eaker, Robert L.  
 Edwards, LeRoy G. Jr.  
 Fisher, Robert M.  
 Gaul, Shirley N. Williams  
 Houseknecht, Ellis B. Jr.  
 Huffman, William H. C. III  
 Ironside, Frederick M. Jr.  
 Kline, Richard M.  
 Lady, Nancy Haney  
 Maton, Joanne Thompson  
 McKernan, F. Donald  
 McShane, Joan Krimm  
 Messer, Rhoda Pontz  
 Miller, Jean Berry  
 Newcomer, E. Scott  
 Shellman, Clyde J.  
 Strobel, Eugene L.  
 Succop, Nancy Noah  
 Terrat, George Jr.  
 Wolfe, Kenneth B.

**Class of 1982**

**11% Participation**

**Class Agent:**  
**Nancy Hall Brunner**

Arney, Helen I. Troisi  
 Berdine, Kenneth M.  
 Brennan, Thomas M.  
 Dempsey, Thomas W.  
 Dingle, Richard C.  
 Hampton, Richard L.  
 Holtzman, Donald G.  
 Hurlbert, Mahlon D. Jr.  
 LeVan, Paul R.  
 Mintz, Priscilla Morlock  
 Nelson, Gloria Ness  
 Norman, Fred W.  
 O'Neill, John D.  
 Shellman, Doris Wise  
 Snyder, John W.  
 Williams, Anna Jean Kuhns

**Class of 1983**

**17% Participation**

**Class Agent:**  
**Fred Y. Legge**

Adams, Donald B.  
 Archer, Roland L.  
 Cruickshank, John D.  
 Dock, Stanford L.  
 Doutt, Nancy Fry  
 Easty, John R.  
 Fegely, Margaret A. Maconaghy  
 Gaul, Benjamin L.  
 Gaus, Joseph P.  
 Hevner, Vernon L. Jr.  
 Johnson, Edward C.  
 Joyner, Bruce D.  
 Kane, Samuel C. III  
 Kennedy, Jeannine Fulton

Kibbe, George R.  
 Kramer, George C. Jr.  
 Kunes, Ruth M. Morgan  
 Legge, Fred Y.  
 McKernan, Robert J.  
 Mosher, Donald R.  
 Robb, Herbert R.  
 Shurer, Edward G. Jr.  
 Sowers, Miles C.  
 Spotts, James H.  
 Winner, Thomas D. Jr.  
 Zutterling, P. Richard

**Class of 1984**

**15% Participation**

**Class Agent:**  
**Roger B. Ludlum**

Benson, Delores Carnill  
 Berninger, Robert C.  
 Debole, Barbara Brown  
 Gold, James H.  
 Huyek, Esther L. Fry  
 Huyek, Robert W.  
 Ludlum, Roger B.  
 Medley, Virginia Giles  
 Miller, Clarence L.  
 Mitchell, Charles M.  
 Owen, June Platz  
 Richmond, Logan A.  
 Schramm, Robert F.  
 Snyder, Ruth Pannebaker  
 Spitzer, Donna Ertel  
 Teufel, Doris Heller  
 Weller, Ned E.  
 Wollet, Robert J.

**Class of 1985**

**14% Participation**

**Class Agent:**  
**Thomas D. Spitzer**

Block, Robert B.  
 Burrows, Richard K.  
 Colley, Robert W.  
 Good, Menno E.  
 Gorgas, Nellie F.  
 Green, Margaret J. Taylor  
 Green, William D.  
 Haas, Richard C.  
 Morgan, Gladys Lybolt  
 Smith, Clinton W.  
 Spitzer, Thomas D.  
 Williams, William M.  
 Wolf, Stephen M.

**Class of 1986**

**14% Participation**

**Class Agent:**  
**T. Max Hall**

Anderson, George R.  
 Calistri, Judith Fry  
 Dilker, Harold B.  
 Edgeworth, James F. Sr.  
 Felix, Richard H.  
 Fisher, Bruce D.  
 Glidewell, Ethel Bowman  
 Glidewell, Oliver J.  
 Hall, T. Max  
 Hively, Mildred English  
 Hoover, Rayallen  
 Klees, Eleanor Altman  
 Lunt, E. LaRue  
 Nordberg, Rebecca Miller  
 Shapiro, Paul O.  
 Snyder, Karle L.

**Class of 1987**

**20% Participation**

**Class Agent:**  
**Patricia Baldino Houck**

Baker, William L.  
 Bender, Janet Hunter  
 Branyan, Nancy Norris  
 Branyan, R. Donald  
 Brooks, Harold L.  
 Bubb, William C.  
 Ciraulo-Eisenberg, Marianna  
 Cochran, Mary Black  
 Coudriet, Norbert L.  
 Cupp, John E.  
 Ernst, Nancy Woolever  
 Fultz, Daniel G.  
 Fultz, Helen Holler  
 Gallagher, William H.  
 Hewitt, Robert G.  
 Horn, Herman S.

Horn, Nancy Dorrance  
 Houck, Patricia Baldino  
 Kelts, Arthur R.  
 Kilburn, Mary Mitchell  
 Konow, Carol Scott  
 Langnas, George  
 Lyon, Thomas P.  
 McArthur, Barbara Gresh  
 Phillips, Jonathon G.  
 Raker, William L.  
 Sarson, Gene E.  
 Secol, Stephan H.  
 Seidel, Charles F.  
 Sestina, H. Donald  
 Smith, Edward W.  
 Stephan, C. Alan  
 Swartz, H. Lawrence  
 Tehou, Cynthia Lim  
 Tietbohl, Ronald N.

**Class of 1988**

**22% Participation**

**Class Agent:**  
**Thomas M. Aubrey Jr.**

Achenbach, N. Mark  
 Ahn, George B. III  
 Arthur, Kenneth R.  
 Aubrey, Thomas M. Jr.  
 Avery, Evelyn Olver  
 Bell, Marie A. White  
 Bohensky, Donald F.  
 Carter, Sherwood D. Jr.  
 Darrow, G. William  
 Delgalvis, Nicholas  
 DiCenso, Barbara Reed  
 Dingler, Lewis D.  
 Ernst, John B.  
 Faddis, E. Noel  
 Gibbs, Matthew T.  
 Guffick, William R. Jr.  
 Haas, Robert V.  
 Hertzler, Nelson B.  
 Hodge, Ruth Perry  
 Hoover, Robert L.  
 Horn, Frederick D.  
 Hughes, Ronald G.  
 Humes, William D.  
 King, John H. Jr.  
 Luhr, Franklin J.  
 Mann, Yvonne Otterbridge  
 Mathias, Beverly Current  
 Nowak, Jackie Snyder  
 Polcyn, Kenneth A.  
 Raffensperger, Kaye Squires  
 Raffensperger, Marlin C.  
 Rundle, Robert W.  
 Shangraw, Robert L.  
 Shapiro, Virginia Shepard  
 Strauser, D. Keigh Cronauer  
 Willard, Willis W. III  
 Worth, Howard L.  
 Yawger, J. Bryson  
 Youtz, Betsy L.

**Class of 1989**

**20% Participation**

**Class Agent:**  
**Nancy Hall Gieniec**

Ament, Ronald K.  
 Aten, Norman E.  
 Bender, Robert L.  
 Benway, Gerald L.  
 Boinske, Eugene E.  
 Bower, Dale V.  
 Bryan, James A.  
 Calistri, Leo A.  
 Camp, Jean Gardner  
 Carey, Rosemary Cheatle  
 Combs, Agnes Cruickshank  
 Congdon, Lois M.  
 Curtis, C. Robert  
 Curtis, Shirley L.  
 DeFebo, Louis J.  
 Gibson, William III  
 Gieniec, Casimir D.  
 Gieniec, Nancy Hall  
 Golden, George D.  
 Grier, Donald W.  
 Haberberger, Arthur A.  
 Hakes, John E.  
 Hart, Robert T.  
 Herring, Paul L.  
 Heumann, Sanford A.  
 Himes, K. Alan  
 Joe, John  
 Kitzman, Dennis L.

Kitzman, Harriet Jones  
 Klein, Robert E.  
 Leutze, Robert E.  
 Martz, G. Robert  
 Morris, Margaret McComas  
 Nichols, George A.  
 Niklaus, Wilfred R.  
 Pontician, Robert J.  
 Ratner, Richard P.  
 Schaeffer, Louise R.  
 Shearer, Donald E.  
 Smith, Mary Johnson  
 Spiegel, Donna Stebner  
 Springman, Charles D.  
 Staib, Richard J.  
 Strauser, Larry R.  
 Troisi, James L.  
 Yerger, Barry G.

**Class of 1990**

**21% Participation**

**Class Agent:**  
**Herbert G. Kane**

Baker, Edgar R.  
 Baker, Carol Ergott  
 Bender, Ann Harper  
 Berry, Charles H.  
 Biacchi, Lawrence L.  
 Bower, Mary Hoffman  
 Brungard, Joseph D.  
 Cassel, Donald L.  
 Cox, John R.  
 DeBono, Robert C.  
 Dzelgalvis, Ints  
 Farley, Janet Dittmar  
 Harbin, Beverlee E. Arnds  
 Harris, C. Fred  
 Himes, Diane M. Zurinsky  
 Huffman, Kay Stenger  
 Kline, Arthur B.  
 Loomis, Eleanor Layton  
 Mathias, Richard W.  
 McCall, Barbara Nason  
 McCormick, A. Sue Bingaman  
 McCormick, Jay H.  
 Medow, Norman B.  
 Morris, Raymond L. Jr.  
 Neights, Gary M.  
 Ostrander, Shirley A.  
 Price, Barbara Neff  
 Raudabaugh, Richard L.  
 Remaley, Robert F.  
 Schlesinger, George C.  
 Schofield, Carol Hane  
 Swales, Barbara Schiele  
 Taylor-Appleby, M. Eileen  
 Veley, Burke R.  
 Williams, James L.  
 Wolyniec, James T.

**Class of 1991**

**18% Participation**

**Class Agent:**  
**Carol Cropp Pittenger**

Conn, Eugene S.  
 Crockett, Robert P.  
 Curtis, Patricia Campbell  
 DeWald, Richard W.  
 Edwards, Carolyn Moday  
 Gardner, Harold B.  
 Hill, Daniel E.  
 Hill, Marsha L. Elliott  
 Hollick, Jo Anne Ernest  
 Howe, Charles H.  
 Irwin, Richard B.  
 Jeffers, James M.  
 Judson, W. Garrett  
 Kerr, Frank L.  
 Koetzner, Kenneth L.  
 Lee, David B.  
 Loomis, David J.  
 Miorrelli, Louis J.  
 Pittenger, Carol Cropp  
 Plankenhorn, Constance Cupp  
 Reed, Deanna Werkheiser  
 Rosenstock, Edward H.  
 Sedergran, Carl Harper  
 Singley, Dorothy Toy  
 Steadman, Linda Hodge  
 Steinbacher, Betty Martin  
 Thomas, Edward A.  
 Travis, David B.  
 Whistler, Donald M.  
 White, Silas D.  
 Willard, John E.  
 Yearick, Graydon L.

Young, William R.  
Yonkawa, Dennis G.

**20<sup>th</sup> Participation**

**Class Agent:**  
**J. Barry Patterson**

Berry, Harris D. Jr.  
Bonacuse, Joseph A.  
Burnham, David W.  
Coblick, David G.  
Conant, Roger R.  
Ersoli, Nancy Lease  
Gage, Mary Klepper  
Goodear, Gary I.  
Heiney, David M.  
Heiney, Donna M. Michael  
Hill, Carl E.  
Hill, Janet Nichols  
Hoover, Harry H.  
Jacobs, William I. Jr.  
Karnol, William G.  
Kaufman, Loke H.  
Kerr, Roberta Corter  
Kirk, Martha Hickerson  
Kuehne, Carol Sieman  
Mase, Richard D.  
McNally, Virginia Grabinski  
Miller, Clinton I.  
Morrow, Fred I. Jr.  
Samenson, Ardith Miller  
Saxon, Onalee Barton  
Olandt, Connie Zeigler  
Owens, Blake C.  
Parsons, Arthur John Jr.  
Patterson, J. Barry  
Reams, Carl I.  
Scheffler, Richard I.  
Sherwood, Robert C.  
Shoemaker, James O.  
Stueart, Harold I.  
Tarditi, John I. Jr.  
VanZanten, Albert G.  
Wallis, William C.  
Young, Ruth Ann Whidden

**27<sup>th</sup> Participation**

**Class Agent:**  
**Charles W. Fuppert**

Ainsworth, William J.  
Aves, Betty Moore  
Babel, Dolores Dunlap  
Benson, Robert I.  
Boice, Beverly Quail  
Brodsky, Clementine Klein  
Bunce, Joseph O. III  
Carr, Donna Deitrick  
Corbett, I. Bruce  
Corbett, Ruthellen Morgan  
Doolin, Jerry R. Jr.  
Dunston, John H.  
Eortin, Thomas D.  
Garner, Barbara A. Hawes  
Gibbs, Mary K. Keliher  
Hayes, Michael J.  
Heber, Carl O.  
Hollick, B. Michael  
Hudson, Marvin I. Jr.  
Jacobs, Carol Ewigg  
Jones, Roberta K.  
Kelly, Hilda Scott  
Kelley, Gerdi D.  
Kelvey, Sandra Hopt  
Kestman, Alan M.  
Lands, William I.  
Larson, John I.  
Larson, Patricia Young  
Lehman, Charles A. III  
Little, Robert G.  
Lundy, Carolyn Miller  
Luppert, Charles W.  
Machall, Jane E. Rust  
McKee, James R.  
McNally, Bruce A.  
McNolly, B. Victor  
McNolla, Diane Stebbin  
Munroigh, Judith Hobbs  
Munroigh, Richard P.  
O'Keefe, Sidney B.  
Patterson, J. Barry  
Phillips, John H.  
Ruffner, Robert E.  
Sandberg, Marjorie R.  
Schaeffer, Nancy  
Schwartz, Marjorie R.

Semor, Thomas G.  
Shook, Gladys Brass  
Shupp, Kathryn Rickert  
Swales, Alva C.  
Swick, Karen Rundquist  
Waltz, Carol Harris  
Webster, Janice M.  
Wolfe, Lee W.  
Wootton, Glenn I.  
Wurster, Daniel C.  
Wurster, Margery Schrader  
Zeisloff, Ann Bennett

**13<sup>th</sup> Participation**

**Class Agents:**  
**Barry I. Boyer and**  
**Nancy Snyder Boyer**

Baldwin, Kent I.  
Behan, Richard I.  
Birkmire, John A. III  
Black, Richard I.  
Boyer, Barry I.  
Boyer, Nancy Snyder  
Buckler, Anne B. Pittmeier  
Custer, Robert S.  
Dietrich, Patricia Gortner  
Doolittle, Susanne Norton  
Duff, Robert S.  
Hancox, Judith E. Hale  
Harvath, James I.  
Howe, James B.  
Hutchinson, Donna Potter  
Jackson, David J.  
Knowlton, Margaret  
Leonard, David M.  
Lillard, Carol Oot  
Manning, Walter H.  
Martz, D. Stephen  
McKenzie, Carol R.  
McNeer, Larry M.  
McNeil, John S.  
Merkel, Timothy I.  
Olandt, Paul K.  
Petter, William I.  
Pruess, Warren W.  
Reed, Opie I.  
Riese, Ruth Ann Long  
Sanders, Larry H.  
Sher, Martin R.  
Snowden, Joan Kocsis  
Vanderland, John W.  
Wallace, Terry S.  
Warehime, Michael A.  
Wirth, Larry I.  
Yerkes, Leslie Stuart

**18<sup>th</sup> Participation**

**Class Agent:**  
**Murray C. Rosen**

Acton, Dorothy A. Corson  
Bartlow, K. Paul  
Bender, Richard W.  
Bingaman, Timothy J.  
Blatchley, Ronald C.  
Bohn, William W. Jr.  
Bosley, Dorothy Bosak  
Brown, James I.  
Brown, Robert J. Jr.  
Bugter, Carole Jacobus  
Chance, Ann G.  
Christie, Chris P.  
Coblick, Joanne Korengo  
Crist, Miriam I.  
Custer, Judith Merk  
Danks, Ronald I.  
Dascher, John J.  
Doolittle, Richard A.  
Edgar, Robert W.  
Empet, Carol Durrwachter  
Erickson, Paul I.  
Hadd, Bruce R.  
Hoore, Leona Glenn  
Gross, S. Thomas I.  
Hancox, Robert E.  
Harrison, Ronald D.  
Henry, Kenneth S. Jr.  
Henry, Louise D. Gosler  
Herrick, Gilbert B.  
Hoover, Thomas G.  
Jacobs, Corry C.  
Keller, Seth D.  
Langdon, William H.  
Little, Bjorg Storbve  
Marland, Dorothy Hays

Maurer, Martin G. Jr.  
May, Jesse A. Jr.  
McCallus, John I.  
Melander, Ann Wear  
Paul, Robert D.  
Pitman, William M.  
Powell, Thomas J.  
Roblyer, Judith Waring  
Rosen, Murray C.  
Schultze, David I.  
Schultze, Wm Watson  
Smith, Alden I. Jr.  
Snee, Thomas W.  
Sommers, Thomas C.  
Steiner, Evelyn Reigel  
Watson, Henrietta Hoch  
Whitebread, Gail Kleintob  
Wilt, Walter W.  
Wootton, Suzanne Thomas

**21<sup>st</sup> Participation**

**Class Agent:**  
**Byron Y. Samuels**

Albertin, Katherine M. Keliher  
Arnell, Bonnie Bvers  
Bartlow, Tina Patterson  
Bay, Robert A.  
Biggar, John R.  
Biggar, Shirley M. Wunderly  
Burton, Deanna Matzen  
Camp, Gary I.  
Campbell, Charles J.  
Canaday, H. Ridge Jr.  
Chun, Chu H.  
Clippinger, Cynthia Pennington  
Cohen, Michael R.  
Coover, Edward J.  
Corter, Ronald W.  
Dailey, Nancy M. Mayer  
Decker, Thomas W.  
Dunn, Read P. III  
Eidam, John R.  
Frankenfield, Joe V.  
Gardy, Michael R.  
Henry, Marilyn A. Smith  
Henry, Paul B.  
Herrick, Suzanne Evans  
Hubbard, James C.  
Kaufman, Glenn F.  
Kaye, Ralph W.  
LaDelta, Elaine Kothe  
Macensky, Margaret Bourdeaux  
Macensky, Samuel S.  
Matter, Charles I.  
McManus, Desmond  
Milner, Dorothy Kuntz  
Morrison, Kitty Traxler  
Nash, Patricia Ammel  
Nolder, Deanna Miller  
Nolder, Donald C.  
Rash, Richard C.  
Resnick, Nancy Singley  
Robinson, Kathleen Coleman  
Samuels, Byron Y.  
Sayre, Stevan I.  
Sears, Patricia E. Stere  
Sensenich, Gary B.  
Shater, D. I. Brinton  
Shoemaker, Lois M. Loncoske  
Shoemaker, P. David  
Shouldice, Robert G.  
Strattan, Ronald B. Jr.  
Warg, Dennis E.  
Wienecke, Richard I.  
Wildasin, Robert I.

**22<sup>nd</sup> Participation**

**Class Agent:**  
**R. Gary Honck**

Arnck, W. Thomas  
Bennett, Edith J. Krotze  
Bepler, Gary I.  
Bevland, Lauren S.  
Blevins, Cynthia J. Schlegel  
Bosdyk, Paul R.  
Boynston, Barbara Anderson  
Coblick, Alan G.  
Daughenbaugh, John S.  
Davis, Carol M.  
Davis, Richard C.  
Dunning, Donna M.  
Eidam, Elaine M. Wetzel  
Eidam, Carolyn I.  
Eidam, Carole Curry

Feustel, Gail Reichard  
Fisher, Warren I.  
Freeman Hann, Carol  
Greessy, Gloria D. Zeigler  
Heide, Carl W.  
Hoeltzel, Leslie I.  
Houck, R. Gary  
Hoyt, Arlyne J.  
Johnson, Kathryn Baldwin  
Karash, Matthew D.  
Kates, Priscilla Freas  
Kraft, Dale S.  
Lerna  
Lechliter, Gerald A.  
Lunt, Ann Eck  
Lyon, Penelope Field  
Mallory, John A.  
Manna, Evalyne Curtis  
Miller, Katherine Filwood  
Missigman, Maria Louise Festa  
Murphy, Constance Byrd  
Nordberg, Judith A.  
Palmquist, Dawn Dunning  
Palmquist, James R.  
Pearson, William G. Sr.  
Podsen, Henry J. Jr.  
Pugh, Wade W.  
Radspinner, Helen McMillin  
Rich, Michelene  
Robinson, Paul I.  
Ronca, Robert A.  
Rounsaville, Paul H.  
Schaefer, Marian Avery  
Shafer, Cornelia Greaves  
Siebert, Judith S.  
Spring-Greenberg, Hayne Myers  
Steil, Kenneth M.  
Tischler, Lawrence  
Tremaine, Melinda Alford  
Vincent, Stephen H.  
Warg, Astrida Kalms  
Wilson, John M. Jr.  
Wolfe, Daniel I.  
Wood, Ruth Rendle  
Wrigley, Michael S.

**25<sup>th</sup> Participation**

**Class Agent:**  
**Angela McElwan Hednarczyk**

Adams, John B.  
Ahner, Linda M.  
Allen, Robert I.  
Anderson, Dudley S.  
Balcerzak, Kathleen Whitfield  
Barclay, Eugene W.  
Bednarczyk, Angela R. McElwan  
Boatman, H. William W. Jr.  
Bosdyk, Billie Ingraham  
Boskovich, Barry S.  
Bower, Walter H. Jr.  
Bradbury, Patricia McGuigan  
Brandt, Thomas E.  
Brown, Janet Bastian  
Burbank, Jane Weller  
Cohen, Linda Fey  
Consoil, Judith K. Deebel  
Dyer, Carol Graham  
Dyer, William W.  
Eimiger, Linda S.  
Eustine, Raymond W. Jr.  
Everstine, Bruce  
Faylor, Donald I.  
Freet, David E.  
Freymoyer, Jean Oberholtzer  
George, Darian O.  
Gordon, Richard R.  
Gray, Marilyn A. Morgan  
Grimm, Charles I.  
Griff, Helen C. Turner  
Halteman, David S.  
Hedden, Mary Jane Swanson  
Hedden, Richard I.  
Higgins, Robert I. Jr.  
Hinkel, Elizabeth Cook  
Hinkel, I. Stephen  
Hinkle, James I.  
Hodge, Allan B.  
Hoobler, Marion Nielsen  
Howorth, Susan A. Shields  
Infantino, Thomas J.  
Irwin, Gail Hite  
Keiper, Douglas I.  
Kelley, Sandra Ingulh  
Krauser, David J.  
Krauser, Patricia MacBride  
LaRata, Jacquelyn G. Jones

Lefkowitz, Robert S.  
 Markey, E. Lowell II  
 Milroy, Mary Ann Fornalick  
 Mitchell, William P.  
 Moffatt, Joan Steiner  
 Ochej, Helen W.  
 Olias, Fred L.  
 Parker, Randall L.  
 Parker, Susan Hoffman  
 Payne, Anna V.  
 Pompa, Melodye Hamer  
 Prindible, Robert C.  
 Ream, Donna Wertz  
 Ream, Norman B Jr.  
 Reynolds, Keith  
 Roblauskas, Carol Paytas  
 Sachatello, Ronald J.  
 Seaman, Laurance B.  
 Smith, J. Dennis  
 Smith, Nancy C. Woodland  
 Snyder, Donald R.  
 Snyder, Larry D.  
 Snyder, Tim A.  
 Solomon, Laurence G.  
 Springer, Ruth Miller  
 Swales, David P.  
 Timms, Marilyn Hannold  
 Tipton, Tem Bulleit  
 Tracy, Barbara Micchelli  
 Warren, Judith Heiser  
 Wasser, Linda Cooney  
 White, Kathleen McKinnon  
 Wild, Terry  
 Wilt, Richard S.  
 Wolff, Beverly M.  
 Woodard, Ruth Raker  
 Younkens, Penny English

#### Class of 1969

### 20% Participation

#### Class Agent:

#### Malcolm C. Farrow IV

Andes, William J.  
 Arnholt, Kenneth L.  
 Baissa, Marilyn Hall  
 Baker-Brown, Joyce  
 Bladt, William A.  
 Blaney, Myra Davis  
 Boyer, James B.  
 Bramstedt, Mary Malloy  
 Buchanan, Terrance L.  
 Castner, Sandra Freitag  
 Chilton, James A.  
 Chilton, Susan Strohmer  
 Christie, James W.  
 Curry, Robert L. Jr.  
 DeRose, James M.  
 Deal, Frances P.  
 Farrow, Malcolm C. IV  
 Fox, Charles F. III  
 Fox, George S.  
 Fry, Arthur L.  
 Gathman, Beatrice Baird  
 Gathman, David D.  
 Goldstein, Molly S. Bushnell  
 Good, Juanita Robinson  
 Hammell, Susan F. Beauvais  
 Hanowell, Susan Thistlethwaite  
 Harrison, John D. Jr.  
 Hodgins, John C.  
 Hurr, Wayne M.  
 Jerva, David J.  
 Jula, William S.  
 Kitchen, Timothy G.  
 Klein, Linda Haigh  
 Lefkowitz, Pamela Martin  
 McLaughlin, Jean Gamble  
 Miller, David R.  
 Miller, Diane E.  
 Miller, William R.  
 Murdock, Linda Netherton  
 Musheno, Michael C.  
 O'Neil, Diane Yeagle  
 Olias, Alice Lutz  
 Osgood, Sandra Derr  
 Pickles, Janet Olpp  
 Raymond, Stanley S. Jr.  
 Richmond, Eloisa D'Agostino  
 Richmond, Frank A.  
 Ross, Linda Wabschall  
 Ross, Murray L.  
 Rupert, Richard A.  
 Santucci, Mark A.  
 Schaeffer, Peter B.  
 Seaman, Susan Gates  
 Sherwood, Richard H.  
 Smith, Joan Purpura

Smith, Steven T.  
 Stanley, Ronald J.  
 Stere, Linda K.  
 Stont, Nancy Peterson  
 Strychowski, Cheryl DePree  
 Taylor, Richard C. Jr.  
 Tray, P. Jay  
 Walker, Robert W.  
 Walker, Sally Walton  
 Way, Thomas C.  
 Well, Jacqueline Titus  
 Well, Thomas G.  
 Williamson, David A.

#### Class of 1970

### 23% Participation

#### Class Agent:

#### Richard A. Russell

Abrams, Judy L. Dayton  
 Acuff, Kathy J.  
 Andes, Cynthia A. Joseph  
 Azzalina, Joseph A. Jr.  
 Barlett, Philip J.  
 Bowers, Nancy J. Corter  
 Brewer, Stephen P.  
 Browne, Philip L.  
 Campbell, Melvin H. Jr.  
 Caplan, Henry H.  
 Chapter, Linda Ropp  
 Cohick, Patricia K. Graham  
 Croyle, Thomas B.  
 Diehl, Karen L.  
 Downey, Carol Edgerton  
 Evans, Susan C. Stewart  
 Failor, Marilyn J. Phillippy  
 Faranda-Diedrich, Peter W.  
 Finn, Thomas J.  
 Flanigan, A. Roy III  
 Ginter, Jay J. C.  
 Gladstone, Gordon W.  
 Greene, Kenneth L. Jr.  
 Hafer, Forest E. Jr.  
 Handy, Scott E.  
 Harper, Frank W. III  
 Hilboldt, M. Lynn Salmons  
 Hiler, Richard C.  
 Jadlocki, Joseph F. Jr.  
 Jadlocki, Judith Stembacher  
 Jula, Nancy Geib  
 Kettells, Carol Devitt  
 Landon, Herbert D.  
 Lindstrom, Lana Falejev  
 Marthinsen, John E.  
 Marthinsen, Laraine Danielsen  
 Martin, Frederick E.  
 Martin, James H.  
 Martin, Sally Brehm  
 Myers, Jack A.  
 Myers, Robert A.  
 Nally, Laura Hensler  
 Ostwald, Peter  
 Ostwald, Susan Ludwig  
 Paris, Betty J.  
 Pickles, William W.  
 Potter, Daryl Van Pelt  
 Pumphrey, Janet G.  
 Robinson, Norman C.  
 Russell, Richard A.  
 Schenk, David W.  
 Scott, James G.  
 Scott, Sandra Myers  
 Shivetts, Thomas M.  
 Siegrist, Raymond  
 Skok, Wallace T. Jr.  
 Smith, Martha Schneider  
 Spencer, Cheryl Dawn Eck  
 Starzer-Farrell, Kathryn  
 Tanger, Andrew B.  
 Turnbaugh, William A.  
 Ulmer, Harry T.  
 Underwood, Charles E.  
 Watson, Alicelynn  
 Watters, Richard C.  
 Yaw, E. Eugene  
 Ziegler, Ralph E. Jr.  
 Zellner, Gary G.

#### Class of 1971

### 24% Participation

#### Class Agent:

#### Peter B. Coleman

Alsop, Robyn A. Johnson  
 Baldi, Robert O.  
 Barfoot, Gretchen Knipe  
 Boyer, Kathleen Morse  
 Burnet, Edwin S.

Carlson, John P.  
 Chesney, Robert V.  
 Christie, Shirley Goebel  
 Coleman, Peter B.  
 Crowe, Carol Vaira  
 Crowe, John P.  
 Dorval, Arthur E. Jr.  
 Dorval, Nancy L. Firestine  
 Downey, Donn E.  
 Dreese, Darryl R.  
 Erstine, Gwendolyn L. Gehman  
 Erdly, Dale K.  
 Faranda-Diedrich, Stella  
 Flanigan, Leah Bird  
 Fletcher, R. Janice  
 Flood, Pamela Kennedy  
 Fox, Virginia May  
 Frey, David C.  
 Gelsman, Caroline Flinchbaugh  
 Genter, Edward J. III  
 Guenther, Nancy Anderman  
 Hafey, Susan C. Kaufman  
 Harding, David B.  
 Hartz, John C.  
 Heap, Elizabeth J.  
 Herdman, David A.  
 Hodgins, Linda Notarangelo  
 Hogan, Stephen W.  
 Houser, John L.  
 Jakubowicz, Denise Schultz  
 Jakubowicz, Dennis M.  
 Jones, Randy S.  
 Kauffman, Charles A.  
 Kauffman, Marilyn Miceli  
 Krug, Tom V. Jr.  
 Langley, Robert D.  
 Loehger, J. Randolph  
 Lovett, J. Michael  
 MacAdam, Douglas W.  
 Marsden, Paul D.  
 McBrinn, Richard J.  
 McElwee, Ronald S.  
 Moody, James H.  
 Morse, Wayne J.  
 Pietrovito, James A.  
 Pino, Alfred  
 Reed, David L.  
 Reed, Diane Hinson  
 Rhoads, Lynn Wallis  
 Ruhl, Kendra Shuey  
 Schaeffer, Joan Gregory  
 Schiller, Marilyn  
 Schweder, J. Michael  
 Scionti, William A.  
 Siburt, Kathryn E.  
 Smith, James W.  
 Smith, Lauren Connolly  
 Snow, Lawrence T.  
 Stuart, Roxanne Alnutt  
 Swift, Carolyn VanBlarcom  
 Tosi, Alice Wiggins  
 Tosi, Frank E.  
 Wilson, Marcia Gordon  
 Younger, Alvin M. Jr.  
 Zack, Richard T.

#### Class of 1972

### 22% Participation

#### Class Agent:

#### Gerald W. Klein

Armbrust, Keith D.  
 Barlett, Janet Truzak  
 Barnes, Scott G.  
 Block, Barbara Edleman  
 Bower, Ronald L.  
 Bracciale, Anthony R.  
 Briar, George M. Jr.  
 Brown, Lois Gilbert  
 Bucher, Theodore G.  
 Burd, Ronald G.  
 Campbell, Ann Marie (Mitzi) Bensinger  
 Case, James E.  
 Clevenger, Robert L.  
 Croyle, Ruth Wilkinson  
 Dreese, Donna Fisher  
 Evans, William E.  
 Fowler, Melinda L.  
 Glenn, James L.  
 Govus, Dale McLeod  
 Harer, M. Peter  
 Havens, Pamela F.  
 Herdman, Mary Kruk  
 Howell, Cynthia Payne  
 Hughes, Donald W.  
 Hutson, Betsy Reed  
 Hutson, Mark W.  
 Keller, Rodney B.  
 Kern, Craig A.  
 Kern, Detlef  
 Kessler, Barbara Goodyear  
 Klein, Gerald W.  
 Layton, Carolyn Clifford  
 Layton, Robert W.  
 Looloian, James W.  
 Lovett, Ruth Hackley  
 Lowry, Rosanna Roles  
 Malkin, Ann C.  
 Martinsen, Margaret McGuigan  
 Maurer, Gail Pearce  
 Mileto, Judith Aikens  
 Montgomery, John W.  
 Noyes, Susan E.  
 Patti, Vic  
 Pawlak, Juliann T.  
 Rauff, Jeffrey W.  
 Ravert, John G.  
 Rhoads, Richard W.  
 Richmond, Norman L.  
 Robinson, Cathy Peters  
 Rupert, Alison Semerino  
 Schenk, Susan Dietrich  
 Schweder, Annette Weaver  
 Sector, Douglas J.  
 Shaw, Robert W.  
 Shirm, Joann E.  
 Shivetts, Deborah Endweiss  
 Smith, Jeffrey W.  
 Stotler, William A.  
 Stout, Steven J.  
 Tanger, Sandra Goodyear  
 Walker, Richard D.  
 Wange, Holly Curry  
 Wasser, Eric J.  
 Werner, David F.  
 Winner, James R. III

#### Class of 1973

### 22% Participation

#### Class Agent:

#### John C. Teasley

Armstrong, Donald A.  
 Bamberger, David W. Jr.  
 Beail, Bernard E.  
 Bishop, William H.  
 Bond, Melanie R.  
 Boyer, Edwin A.  
 Boyer, Harold R.  
 Boyer, Margaret Proctor  
 Brodeur, Linda Ann Mahn  
 Calvert, Alan B.  
 Carver, Terry L.  
 Checchia, Elizabeth J.  
 Christiano, Diane Kwiatkowski  
 Clark, Murl E.  
 Clarke, Christine Wilshusen  
 Coleman, Christine Warren  
 Colesworthy, Pamela Banes  
 Davenport, Jennifer M. Torr  
 DiMichele, Lucinda Hamilton  
 DiMichele, Stephen W.  
 Durney, Katherine S.  
 Evans Grove, Deborah  
 Fertig, Allen R.  
 Graham, Frances Barraclough  
 Graybill, Robert A.  
 Hanrahan, Phyllis Mongiello  
 Hawthorne, Robert I. Jr.  
 Homm, Nancy L. French  
 Hunt, Marian Elizabeth McConnell  
 Incognito, James N.  
 Jackson, David Blaine  
 Jones, Barbara J.  
 Langdon, Daniel R.  
 Langley, Beverly Ekey  
 Langston, Joan F. Schrade  
 Lloyd, David M.  
 Lyter, John R.  
 McCall, Charles W.  
 Miller, Richard A.  
 Montesano, Joseph A. Jr.  
 Morgan, Joan M.  
 Morse, Linda Messerschmidt  
 Moyer, Robert W.  
 Muthler, Stephen K.  
 Nice, Joyce M. Michaud  
 Obzud, John M.  
 Peterson, Daniel I.  
 Peterson, Sue Cooper  
 Raub, Thomas G.  
 Rhodes, Alan C.  
 Richmond, Dennis R.  
 Riggs, Jeanne Seals  
 Schoch, Carol Marsland  
 Schoch, David L.

Shannon, Carl F.  
 Sharretts, Timothy B.  
 Shepherd, T. Patrick  
 Shuey, Steven S.  
 Smith, C. Jeffrey  
 Smith, Nancy I. Tucciarone  
 Smith, William I. III  
 Snyder, Robert I. II  
 Snyder, Susan I.  
 Solis, William M.  
 Stoka, William J.  
 Stopper, Benjamin I. Jr.  
 Stopper, Pamela Leece  
 Strongman, Esther I. Williams  
 Svik, Barbara Lovenduski  
 Teasles, John C.  
 Thompson, Newell I. III  
 Ulmer, Ellen Siegel  
 Webster, David G.  
 Weekes, Lillian  
 Wilson, Frances J.  
 Wojcik, Kathleen Brett  
 Wolte, J. James  
 Wood, J. Ann Bell  
 Zanella, Francis I.

**16<sup>th</sup> Participation**

**Class Agents:**  
 Russell W. Twigg and  
 Jeanne Hurley Twigg

Argenbright, Lawrence W.  
 Bahniuk, Linda Knechel  
 Bahniuk, Timothy S.  
 Barber, Kenneth W.  
 Barnhart Klein, M. Louisa  
 Barrow, Cheryl Bennett  
 Beamer, Thomas R.  
 Bloem, Linda J.  
 Breitenbach, Robert W.  
 Brewer, Linda Cech  
 Brown, Jane Spare  
 Courtright, Patricia Staleantz  
 Credo, Richard G.  
 Cusack, Peter R.  
 Dawson, Barry P.  
 Dickinson, Alyce M.  
 Draude, Theodore R.  
 Farish, Vicki G.  
 Farrell, David M.  
 Fowlston, Thomas J.  
 Franklin, David I.  
 Graham, James W.  
 Hammett, David I.  
 Howes, Michael I.  
 Hughes, Diane Stalker  
 Hunsberger, Thomas W.  
 Kaczmarezyk, Joseph M.  
 Kelley, James H.  
 Kelman, Jane Hutson  
 Korner, Esther Leppler  
 Kownacki, Raymond I.  
 Lasher, William G.  
 Latagliata, Anthony I.  
 Lipsyev, Peter I.  
 Luce, Karen G.  
 Macpherson, Sherry I.  
 Marck, John R.  
 McColl, Kathleen A.  
 M. Donald, Ian B.  
 Patton, Bonnie I.  
 Patton, Gail I.  
 Pisano, Kathleen Kelly  
 Reed, Diana Brouse  
 Richards, Jeffrey I.  
 Romeo, Ann Rosbach  
 Romeo, Larry R.  
 Scherok, George R.  
 Shannon, Christine Smith  
 Stack, Andrew I.  
 Starb, Jane I.  
 Stauffer, Jerry I.  
 Stoecker, Leigh Ann  
 Sudekum, Katharine R.  
 Tarrabill, Robert S.  
 Temple, Michelle Loree  
 Temple, Rodney D.  
 Twigg, Jeanne Hurley  
 Twigg, Russell W.  
 Wynn, Todd A.

**17<sup>th</sup> Participation**

**Class Agent:**  
 Luis S. Argenbright

Argenbright, Luis S. (Class Agent)

Argenbright, Lois E. Smires  
 Baird, Suzanne Hoagland  
 Beamer, Gail S. Gleason  
 Bernard, David B.  
 Bertin, Dana I.  
 Bott, David I.  
 Bowers, Gregory S.  
 Brouse, Charles W.  
 Caldwell, Richard A.  
 Cantfield, Gwendolyn M. S.  
 Craver, Holly C.  
 Dattre, Kristine D.  
 Detwiler, David I. III  
 Ernest, Alice Parrrott  
 Hanagan, Susan Bartz  
 Gamej, Susan Mueller  
 Gave, Kathleen Tighe  
 Getreih, Nanette Neudeck  
 Gonzalez, Diane I. Morgan  
 Gonzalez, Rick I.  
 Kaczmarezyk, Carolyn Hanlon  
 Knutsen, Alice I. Pedersen  
 Koppenheller, William C.  
 Kuska, John I. Jr.  
 Lamade, Charles D.  
 Latagliata, Patricia Zimmer  
 Leahy, Robert I.  
 Lynch, Carolne Marple  
 MacGill, Creighton W.  
 McCreery, Katherine Clendinning  
 McLaughlan, Mark C.  
 Milici, Anthony J.  
 Morse, Frank I.  
 Munyan, Clifford R. III  
 Pasanello, Michael A.  
 Person, Kathryn Davis  
 Pisarz, Constance Dickman  
 Schwenke, Barbara Aubrey  
 Snook, Carol I.  
 Stewart, Richard M.  
 Suplee, Karen A.  
 Techtmann, James W.  
 Thompson, Jill Fisher  
 Thompson, Louis W. III  
 VanArman, Peter W.  
 Viggiano, Christopher A.  
 Viggiano, Nancy A. O'Bryan  
 Wav, Kevin H.  
 Winters, Keith G.  
 Witzel, R. Kenneth  
 Yerkes, Andrea Bauer

**20<sup>th</sup> Participation**

**Class Agent:**  
 Gary Tapkas

Albright, Cynthia G. Bacon  
 Baldi, Karen A.  
 Beecher-Christy, Nancy  
 Besancon, Paul H. Jr.  
 Billman, Carol McDivitt  
 Bissonette, Kim R.  
 Bobbs, Donna Jean Shelley  
 Carpenter, Meg Hansen  
 Conklyn, William I. III  
 D'Angelo, David C.  
 DeMaio, Darlene Sheater  
 DiMarco, Gwendolyn M. Bailey  
 DiMarco, John C. Jr.  
 Drake, Thomas G.  
 Egan, Timothy M.  
 Heagle, Constance Eddy  
 Hetcher, Joseph A.  
 Grieco, Joseph A. Jr.  
 Grove, John P.  
 Hamby, E. Denise  
 Hem, Thomas H.  
 Jenkin, Debra A.  
 Jones, Virginia Haller  
 Keely, Peter W.  
 Kumble, Gerald I.  
 Kroc, Vicki Numaier  
 Langley, Esther Mellish  
 Larson, Roger I.  
 Levegood, William I.  
 Mazzante, Marilouise  
 McLagan, Haydn I.  
 Meyer, Kris Glover  
 Peiffer, Fenny, Debra  
 Piecko, Jill Krieger  
 Roberts, Steven D.  
 Rommelt Scott, Linda A.  
 Ruiz, Anthony I.  
 Ruiz, Louise A. Hewson  
 Schmidt, Dennis A.  
 Schmidt Kemp, Barbara  
 Sellers, Jerro Luzzo

Serburn, Steve  
 Shorb, John C.  
 Simmers, William C.  
 Solis, Audrey Nuhle  
 Stamm, S. Deborah Norman  
 Stamm, J. Richard  
 Stevens Puspunen, Gail  
 Stewart, Kathy Bever  
 Stewart, Robert B.  
 Sunca, Donald M.  
 Tapkas, Gary  
 Tillman, Holly Wells  
 Trump, Douglas P.  
 Vurgason, Deborah Harrison  
 Wilk, Rhona W.  
 Woodworth, Evelyn Kilshaw  
 Yuch, Ronald J.

**23<sup>rd</sup> Participation**

**Class Agent:**  
 Frank M. Kindler

Andersen, Gail M.  
 Bellino, Philip A.  
 Belton, Nancy West  
 Bennett, Ruth Buckingham  
 Besancon, Lynn Martin  
 Best, Howard J.  
 Billman, Jeffrey D.  
 Blake, Kathleen A.  
 Brooks, Paul A.  
 Brown, Patricia Sharpley  
 Courtright, Philip A.  
 Dearing, Barbara Seese  
 Farace, Joanne Cutler  
 Gaughan, W. Clark  
 Gingrich, John A.  
 Glennon, Michael J.  
 Graybill, Gary R.  
 Green, John C.  
 Hall, Stuart I. Jr.  
 Hand, Thomas B. Jr.  
 Heck, Steven I.  
 Hofmann, Nancy Hubka  
 Hopler, Clifford H.  
 Irvin, Mark R.  
 Johnson, John  
 Kaiser, Keith A.  
 Karabinus, Cynthia Miller  
 Keely, Anne Johnson  
 Kepler, Andrea Besancon  
 Kumble, Susan Weis  
 Kindler, Frank M.  
 Leng, Deborah Whitfield  
 Leopold, Deborah Joan Hoffman  
 MacGill, Christina Eck  
 Matyas, Debra Fredericks  
 McAllister, Scot A.  
 McNaughton, Francis J.  
 Miller, Stephanie K.  
 Nason, Bradley I.  
 Noll, Robert J.  
 O'Meara, Cathryn Seamens  
 Petmunas, Susan Fracaroli  
 Pettit-Waldner, Linda  
 Pittingolo, Joseph I. Jr.  
 Pownall, Suzanne F.  
 Raczkowski, Toni Panetta  
 Roberts, David W.  
 Rodabaugh, Beth Bergen  
 Schaefer, Donald J.  
 Seelev, Jeffrey A.  
 Shorb, Nancy Sullivan  
 Smith, Stanley A.  
 Soprano, Michael I.  
 Soto, Marco A.  
 Spang, Jeffrey W.  
 Spangler, Stephanie Malay  
 Steffens, Ellen Simpson  
 Tillman, Thomas I.  
 Trump, Debra Lingo  
 Tucker, Bruce R.  
 Volpe, Carmine M.  
 Williams, David C.  
 Williams, Deborah Stites  
 Yates, Janina West  
 Yerkes, Mark A.

**24<sup>th</sup> Participation**

**Class Agents:**  
 Stephen W. Howe and  
 Leigh Thompson Howe

Bellino, Diane Yuska  
 Bennett, Judith Christie

Bierly, Raye Francis  
 Bird, Edward K.  
 Bird, Jane Snyder  
 Bloomer, David W.  
 Boyle, Amy Franzen  
 Burnstein, Lawrence A.  
 Cahoon, Marieann J. Smyrl  
 Carter, Jeannie Firsching  
 D'Addio, Lisa M.  
 Dearing, David I.  
 DiMarco, James A.  
 Dodd, Janet Fustis  
 Donahue, Jacqueline Yost  
 Donnelly, Elaine Michewicz  
 Dougherty, Diane Davies  
 Dougherty, Richard A.  
 Ekblom, Mary Ann Gilbody  
 Emerson, T. Scott  
 Finn, Ruth Cloud  
 Glennon, Karen Rohrs  
 Gold, Edward D.  
 Gudmundson, Joyce R.  
 Honthumb, Deborah D.  
 Howe, Leigh Ann Thompson  
 Howe, Stephen W.  
 Jalonski, Martin P.  
 Johnson, Dominic G.  
 Johnson, Gwendolyn Sterling  
 Jones, Nancy G. Goetz  
 Kellogg, Cynthia L.  
 Kepler, Douglas R.  
 Kirk, Jean I.  
 Kovalick, Susan J.  
 Kowal, Anna Maria K.  
 Kuder, Joseph M. III  
 Laylor, Lynette I.  
 Lepley, Erman E. Jr.  
 Lesnewich, Robert K.  
 Marshall, Roberta A.  
 McDonald, Timothy D.  
 McGinn, Gerald I.  
 Mmier, David S.  
 Morris, Nancy Davis  
 Opper, Mary Lou Ralston  
 Paquette, Ann Marcinkevich  
 Peterson, Terry I.  
 Phillips, Gertrude P.  
 Rodabaugh, Craig A.  
 Rosequist, Mary J.  
 Rzomp, Kimberly McCarthy  
 Schneider, Nanka Arsenovic  
 Sharkey, Susan J.  
 Simone, Frank J.  
 Sinsabaugh, Debra Bower  
 Spangler, Russell J. Jr.  
 Stocco, Linda Bjorlo  
 Stocco, Michael J.  
 Stites, John B.  
 Techtmann, Mehelle Monell  
 Thompson, Cathy I.  
 Weaver, Mary Price  
 Wersenburger, Patricia Marr  
 Young, Jeffrey R.  
 Yurchak, John Marshall M.

**19<sup>th</sup> Participation**

**Class Agent:**  
 David W. Schneider

Bradley, Michael A.  
 Butler, Gerald P. Jr.  
 Carlucci, Philip I. Jr.  
 Chilson, Roger D.  
 Daly, Eugene I. Jr.  
 Davenport, Stephen I.  
 Davis, Laurie Grete  
 Duff, Keith J.  
 Duthield, Susan Kern  
 Ekblom, Robert I.  
 Ehrman, Ann Weitzel  
 Goetting, Keith J.  
 Gracia, Stephanie Benanti  
 Graden, David W.  
 Graden, Nancy Miller  
 Gray, David A.  
 Grubb, Carol A. Gross  
 Herring, Kathy Moyer  
 Holdren, Kenneth A.  
 Hovey, Steven R.  
 Kaszuba, Cynthia A.  
 Kelly, Timothy J.  
 Lang, Leonard I. H. Jr.  
 Lochner, Deborah Crompton  
 Lochner, Robert I. Jr.  
 Lockley, Robert M.  
 Lockley, Sharon Batten  
 Maulo, Joseph R. III

Martz, Michelle F.  
 McCreary, Glenn E.  
 McDowell, Glenn D.  
 Miller, Francis D.  
 Monico, Joyce Leahy  
 Neil, Donald B. Jr.  
 Orris, Suzanne Caldwell  
 Petersen, Diana J.  
 Schneider, David W.  
 Simone, Anna Nawalany  
 Smith, Michael A.  
 Trevisan, John A. Jr.  
 VanSyckle, Timothy J.  
 Vilushis, David W.  
 Wease, Kurt R.  
 Wood, Daniel C. L.  
 Young, Janet Arcoleo  
 Young, Kim Kramer  
 Young, Roy N.

#### Class of 1980

#### 14% Participation

##### Class Agent:

**Donna Petrizzi LaRosa**

Barth, Christine Dinsmore  
 Bellairs, Laurie Leshar  
 Bonshock, Michael R.  
 Burd, Jeffrey M.  
 Carlucci, Denise Greak  
 Carter, Eloise Bachman  
 Cowher, Kathy Moriarity  
 Cowing, Craig L.  
 Curry, Drew C.  
 Donahue, John P.  
 Edenfield, Edward J. IV  
 Falcone, Mary-Margaret Maffai  
 Firestine, Susan C.  
 Firsching, Nadine K.  
 Fultz, D. Mark  
 Gillen, Kevin T.  
 Gonzalez, Jorge F.  
 Hall-Sloter, Jolene  
 Huff, D. Tim  
 Kendrick, Catherine Gregory  
 Klotz, Norwood E. Jr.  
 Kuder, Karen Kapitan  
 LaRosa, Donna Petrizzi  
 Merlo, Richard A.  
 Petrik, Laurie Shea  
 Poukish, Daniel A.  
 Rea, Franco  
 Russell, Steven J.  
 Simatos, James C.  
 Sloter, Stanley W.  
 Smith, Jennifer Lynch  
 Steele, James S.  
 Tinkham, Jonathan A.  
 Vinci, Karen Ensslen  
 Whitaker, Charles N.  
 Woodruff, Tom H. Jr.  
 Wool, Lisa K.

#### Class of 1981

#### 19% Participation

##### Class Agent:

**Heather Manley Virgulti**

Batista, Mary Schlesinger  
 Blumer, Frederick E.  
 Bonshock, Terre Pensyl  
 Bower, Harold E. Jr.  
 Brodbeck, Sharon Kay McGinnis  
 Burd, Richard A.  
 Burnett, Carl D. III  
 Butcher, Donna Brown  
 Calkins, Dawn Dunbar  
 Cappelto, Lawrence G.  
 Clark, Janet Bryant  
 Clark, Karen S.  
 Colantuono, Thomas J.  
 DeJoseph, Paul M.  
 Donahue, Debra Suplee  
 Edenfield, Christine Price  
 Engler, Timothy F.  
 Falcone, Mark A.  
 Gorga, Gina Shimshidian

Haefner, Charles J.  
 Hannaford, David C.  
 Harvey, Francis C. Jr.  
 Jones, Stephanie L.  
 Landzert, Bart L.  
 Mack, Ronald  
 McCabe, Edward M.  
 Nelson, Linda Schneider  
 Nezelek, Patricia A.  
 Oberlin, David A.  
 Pahls, Jane E.  
 Rampolla, Nancy B.  
 Reese, Diane L.  
 Rogers, Anthony R.  
 Shaner, Chris E.  
 Shipe, Nancy Harman  
 Teller, James B.  
 Turner, Donna Cressey  
 Virgulti, Heather Manley  
 Woodring, Mark D.  
 Woodruff, Tami H. Spittler

#### Class of 1982

#### 12% Participation

##### Class Agent:

**Joseph M. Virgulti**

Baloutine, Susan  
 Blumer, Elizabeth A. Rabold  
 Boumaia, Cynthia Strand  
 Cadmus, Charles E.  
 Cowles, Lisa J.  
 DeMarco, Kathryn Dahli  
 Deitrick, Janice Aurand  
 Ekey, James B.  
 French, Ronald S.  
 Gehres, Amy  
 Hackman, Cheryl Lynn  
 Hamilton, Michael J.  
 Huber, Sharon Beck  
 Irish, Peter A.  
 Krein, Diane Merrill  
 Landzert, Isabel Van Deusen  
 Macksoud, Michelle A.  
 Martin, Joan Agnor  
 McCreedy, James E. III  
 Miller, Kimbra Swigart  
 Noctor, Shari Chambers  
 Penfield, Thomas A.  
 Poticher, Heidi Leshar  
 Schultz, Steven B.  
 Sweet, Rebekah B.  
 Virgulti, Joseph M.  
 Wood, Gerald J.  
 Wood, Margaret Combs  
 Woodring, Cathryn Parr

#### Class of 1983

#### 22% Participation

##### Class Agent:

**Ellen M. Callanan**

Bates, Bonnie Spease  
 Bates, Randolph H.  
 Baylor, Nancy J.  
 Boin, Ellen Stickle  
 Callanan, Ellen Talbert  
 Compton, Lori A.  
 DeVito, Andrea C.  
 Downing, Julie Wilcox  
 Faber, James H.  
 Ferrara, Marianne K.  
 Foris, Andrew J.  
 Erick, Ronald A.  
 Fusaro, Theresa C.  
 Gibbon, Mark A.  
 Harris, Ronald W.  
 Heim, Barbara B.  
 Hein, Laura Leah Davis  
 Hill, Kathleen C.  
 Hoover, Kenneth A.  
 Horn, Timothy R.  
 Hudson, Daniel J.  
 Kimura, Russell G.  
 Kowalick, Andrew J.  
 Maurer, James J.  
 McArtney, Barbara J.

Migliarese, Joseph  
 Miller, Wade M.  
 Mitchell, Julia K.  
 Moore, Kimberly Paul  
 Moses, Douglas E.  
 Muchnikoff, Lee D.  
 Newton, Lecann R.  
 Oliva, Brian D.  
 Orthey, W. Scott S.  
 Pace, Sharon A.  
 Range, Monica J.  
 Read, Robin A.  
 Reichenbacher, Gail E.  
 Robinson, Janet L.  
 Ryall, Susan E.  
 Santoleri, Michael J.  
 Shaffer, Lillian M.  
 Shinn, Meredith M.  
 Stamm, Susan J.  
 Steckler, Gail D.  
 Valentine, Perry W.  
 Wert, Jeffrey R.  
 Yanuzzi, Peter M.

#### Class of 1984

#### 10% Participation

##### Class Agent:

**George A. Umstead**

Anderman, Lynea  
 Bender, Craig E.  
 Betz, John G.  
 Brannon, W. Price  
 Callanan, John D.  
 Ciurlimo, Rita A.  
 Estes, Larry D.  
 Faber, Lisa Hollen  
 Horn, Teresa Cox  
 Inglis, William R.  
 Johnson, Carol F.  
 Kirn, Deanna Cappel  
 Mazzone, Victoria Shields  
 McDonald, Patricia M.  
 McGeorge, Anne K.  
 Noone, Joseph C.  
 Reph, Linda J.  
 Seykot, James J.  
 Smith, Josephine Elia  
 Smith, Peter C. Jr.  
 Teller, Lisa Walton  
 Umstead, George A.

#### Class of 1985

#### 5% Participation

##### Class Agent:

**Karen Kolodziej Creamer**

Burger, Patricia Loomis  
 Burger, Robert J.  
 Combs, Heather A.  
 Creamer, Karen Kolodziej  
 Downing, Jeffrey H  
 Engel, Ellen S.  
 Finkelstein, Mark  
 Hudson, Beth Gorman  
 Ownes, Susan Leone  
 Rees, Ronald S.  
 Spellman, Patrick J.  
 Warner, David S.

#### Class of 1986

#### 14% Participation

##### Class Agent:

**Elizabeth J. Barrick**

Aderhold, Scott C.  
 Altenderfer, Meg L.  
 Armstrong, Cynthia K.  
 Barger, Ruth A.  
 Barrick, Elizabeth J.  
 Bigelow, Janice Eck  
 Burns, Christopher M.  
 Carl, Bruce M.  
 Carl, Julie Persun  
 Chapman, Kent D.  
 Conroy, Kathleen M.  
 Conville, James S.

Cummings, Dodd E.  
 Evans, Wende I.  
 Fessick, Peter F.  
 Franzetti, James P.  
 Galayda, Joseph  
 Geisel, John W. II  
 Jobson, Paul D.  
 Kern, Michael J.  
 Loveless, Susan E.  
 McClune, Kimberly I  
 Mele, Dawn L.  
 Minick, James R.  
 Murphy, Kevin W.  
 Persing, Julie A.  
 Reed, J. Scott  
 Rees, Susan Snyder  
 Ripic, Shell Jo Seymour  
 Shaner, Cindy Sherwood  
 Sisson, Laurence I.  
 Sittler, Mark C.  
 Smith, GERALYN M.  
 Snyder, Constance B.  
 Thomson, Jay  
 Zataveski, Walter J.

#### Class of 1987

#### 9% Participation

##### Class Agent:

**E. Lynn McManness**

Bower, Kay Y.  
 Brophy, Mary C.  
 Buonato, Michelle A.  
 Butz, Ruth Anne  
 Dougherty, Maureen T.  
 Ecker, John E.  
 Fricke, Heberton E.  
 Gustafson, Catherine J.  
 Jenkins, Dawn E.  
 Mabus, Nancy E.  
 McManness, E. Lynn  
 Oberg, Debra A.  
 Wagner, Herbold III  
 Welch, Vivian G.  
 Yacuboski, Michael  
 Young, James A. Jr.

#### Class of 1988

Keegan, John M.  
 Knowles, Laura A.  
 Manion, Martin M.  
 Reichenbach, Heidi S.  
 Robison, Tobey M

#### Class of 1988 Gift

*The most recent graduating class has pledged to endow a scholarship for Lycoming College. Nearly half of the students in the Class of 1988 made commitments to the project which will aid senior students who have special needs.*

Every effort is made to assure that the names published in the gifts and contributions issue of the *Lycoming Quarterly* are correct. If you have been incorrectly listed, please notify the Development Office at Lycoming College and a correction will appear in a subsequent issue.

MILDRED MCGAHAN is currently a resident of Sycamore Manor Nursing Home, Montourville, PA.

GEORGE R. McCAHAN has received a letter from Bishop May acknowledging his 59 years of service as a clergyman in the Central PA Conference of the United Methodist Church. He continues to work as a psychologist in the Greenville, SC area.

DANIEL S. COLLINS is the co-editor of the book, *Renaissance Historicism Selections from English Literary Renaissance*. He is a Professor Emeritus of the University of Massachusetts.

ANNA NETTA LIVINGSTON FRICK is retired from teaching this year. She resides in State College, PA.

BRUCE D. JOYNER is a family services counselor at Sierra View Memorial Park. He resides in Yuba City, CA.

ELOISE C. SNYDER, Professor Emerita of Pennsylvania State University, is presently president of the Snyder Company, Inc. of Columbia, SC. She resides in Columbia.

MILES C. SOWERS retired this year after 27 years of service as an accountant for the federal government. He and his wife live in Chambersburg, PA.

ROBERT G. HEWITT retired this year from the East Ramapo Central School District, NY, after 30 years of teaching. He resides in the Bronx.



**JAMES E. TALLMAN '57**, a licensed nursing home administrator, has assumed the position of president of the PA. Association for/of Non-Profit Homes for the Aging (PANPHA). This organization promotes the advocacy of dignity, service and independence for the aging. In 1979, he was the recipient of the Region III Award for "Outstanding Commitment and Service to Children", by the U.S. Department of Health, Education and Welfare.

*James E. Tallman 1957*

DENNIS L. KITZMAN has retired this year as personnel director of the Rochester Telephone Corporation where he was employed since he graduated from Lycoming. He will accompany his wife, HARRIET (JONES '59), to Japan this year, where she will be a visiting professor, while on leave from the University of Rochester. They reside in Pitsford, NY.

LAURALEE JONES is a flight attendant for United Air Lines and a beauty consultant for Amera Cosmetics, Inc. She resides in Woodbury, CT.

JOHN TARDINI was re-elected vice president of the NJ Conference on Mayors and elected to the Board of Trustees of the West Jersey Health and Hospital Foundation. He resides in Haddonfield, NJ.

DAVID LEONARD recently joined the Re-Max Realty firm of Columbia, MD as an associate broker. He was elected president of the Howard County Realtors Million Dollar Club. He resides with his wife, Marlene, and daughters, Marcy and Jennifer, in Columbia.

LEE E. PURNELL has been appointed Northeast Regional Sales Manager for Unix products for Samma Corporation, a supplier of word processing software.

PAUL L. ERICKSON is the owner of Paul L. Erickson Real Estate Appraisals, Santa Rosa, CA. He and his wife, Dorothy, reside in Santa Rosa with their four children.

ELAINE KOTHE LADELFA has joined Rocketdyne's newly formed Space Station software engineering staff working on the electric power system design for NASA's space station. She resides in the San Fernando Valley, Los Angeles, CA.

RICHARD C. RASH was recently appointed pastor of the Clatskane United Methodist Church, Oregon. His responsibilities also include the Rainier United Methodist Church.

BARBARA VanLENTEN has received her MS in Social Work from West Chester University.

DONALD E. FAILOR, owner of Donald E. Failor Associates, a Harrisburg insurance agency, has been named to the board of directors of The First Bank and Trust Company of Mechanicsburg. He resides in Camp Hill, PA.

MARION NIELSEN HOOBLER has received the Norfolk Catholic Schools Teacher Recognition Award for grades six through eight. She has just completed ten years of service. She resides in Norfolk, VA.

GLENN L. STEVENS has been named executive vice president and chief operating officer of Farm Credit Banks of Baltimore, MD. He resides in Shrewsbury, PA with his wife and daughter.



**DONNA WILLITS THOMAS, CTC** is president of Will Travel, Horsham, PA, has become a member of the Northwest Airlines Travel Agency Advisory Board for the Eastern Region. She has been featured in a nationwide advertising campaign for the PARS commercial computer.

**KATHLEEN McKINNON WHITE** is the chief executive officer of English Originals, LTD, a company that imports gift items from England. She and her husband, Bill, reside in Los Altos, CA, with their two sons.

**LINDA FERN CHASE BROWN** is currently speaking in her area on the topic of keeping handicapped children at home rather than institutionalizing them. Her son, Aaron, age 7, is severely handicapped. She resides in Madison, WI with her husband, Benjamin, and two sons.

**THOMAS K. HERRON** is the executive vice president of account services for The Marcom Group. He resides in Reston, VA.

**RICHARD HILER** is the director of sales and has ownership in Humanicare International Company, North Brunswick, NJ. He resides in Rockaway.

**HERBERT D. LANDON** has been elected vice president of New York Life Insurance Company Executive Committee of the Agents Advisory Council. He is one of the top 100 agents of New York Life.

**SUSAN KAUFMAN HAFEY** opened her law practice in 1986. She is on the Board of Directors of the Manassas, VA City of Crime Solvers. She also chairs the Prince William Bar Association Grievance Committee. She resides in Manassas.

**DAVID A. HERDMAN**, a senior attorney, Trademarks, at Kellogg Company, Battle Creek, Michigan, is responsible for maintaining the United States and international intellectual property rights of Kellogg and its subsidiaries. He resides in Battle Creek with his wife, Christie, and sons, Edwin and Michael.

**DALE McLEOD GOVUS** resides in North Carolina, where she and her husband operate a small computer manufacturing company.

**BARBARA GOODYEAR KESSLER** is a realtor at Stewart Realtors, Carlisle, PA. She and her husband, Stanley, reside in Carlisle.

**ROBERT CHILTON** has been named vice president of purchasing for Phillips Office Products in the Harrisburg, PA area.

**WILLIAM COILEY** has been named director of marketing at Suncom, Inc., a vocational rehabilitation facility. His duties include community relations, acquiring subcontracting work and managing Suncom's Speaker's Bureau. He resides in Bloomsburg, PA.

**KATHLEEN McCOLL HUBER** received her Master of Business Administration from Rider College. She and her husband, Robert, reside in Maryland.

**DAVID BOTT** is employed in litigation support group of the firm of Coopers and Lybrand, Houston, TX. He and his wife, Vicki, reside in Houston with their daughter, Allison.

**PAIGE M. MILLER** is a personnel analyst for the PA Department of Health. She resides in Summerdale.

**CLIFFORD R. MUNYAN III** is an assistant professor of management at Glasboro State College, NJ. He teaches courses in management, information systems, decision support systems and business policy simulation. He resides in Maple Shade.

**JOAN ARMSTRONG CARNEY** is a teacher/reading specialist for the Long Beach Island School District, New Jersey. She resides in Cedar Run.

**GARY R. COLBERG** has been named senior vice president, hospital operations, of Methodist Evangelical Hospital, Louisville, KY.

**MARDI GOLDMANN HAYT** is a realtor associate for Fox and Lazo Realtors, Inc. She resides with her husband, Gregory, in Princeton, NJ.

**DAVID SMITH** was promoted into the Finance Department at AT&T in Murray Hill, NJ as a financial specialist. He and his wife, JODIE (WHITE '78), reside in Lebanon, with their two daughters.

**ROBERT C. VOWLER** has been elected vice president and chief operating officer of the Milton S. Hershey Foundation, Hershey, PA.

**SALLY BOWES HAMADY** has joined Skaare Public Relations, Pittsburgh, as vice president. She is responsible for managing and expanding their marketing communications services.

**DIANE Q. STEINER L'ESTRANGE** has been named an assistant vice president of National Westminster Bank, USA. She serves the bank's Controller's Division. She resides in Amity Harbor, NY with her husband, Brian.

**JAMES PROPERT** received his M.Ed degree from the University of South Florida. He is currently teaching with his wife, Sue, at Cape Coral High School in Florida.

**MARK R. WILKINSON** is an accounting and office services manager with the DuPont Company, Wilmington, DE. He and his wife, Nancy, live in Newark.

**DONALD B. NEIL** has been promoted to an account representative with the 3M Electrical Products Division. He and his wife, Sande, reside in Williamstown, NJ, with their two children.

**CATHERINE M. CARSON NORRIS** is employed by Blue Cross and Blue Shield, Florham Park, NJ. She and her husband, Tom, reside in Summit.

**JOANNE E. HULLINGS POTOK** is the registrations supervisor of the Warminster General Hospital. She resides in Bristol, PA, with her husband, John.

**BRADLEY WILLIAMS** is a teacher at York High School, VA. The Associated Press sports writers in VA voted him, "Coach of the Year" for leading his girls' varsity basketball team to their 2nd consecutive state championship. He is attending William and Mary College working towards his master's degree. He resides with his wife and son, Trent, in Williamsburg.

**MICHAEL R. BONSHOCK** received a juris doctor degree from The Dickinson School of Law.

ROY W. CROWL is currently a student at the Navy Post Graduate School, Monterey, CA.

BASH CHIRYSSOS finished his Internal Medicine Residency at South Baltimore General Hospital in June. He will begin a fellowship in Cardiology at Cabrini Medical Center, NY. He and his wife, Tina, live in Manhattan.

RICHARD P. DRIVER, JR. graduated from the University of South Carolina School of Medicine, Columbia, SC. He will begin a residency in obstetrics and gynecology at West Virginia University hospitals. He and his wife, Mary, reside in Columbia, with their son, Richard.

NADINE K. FIRSCHING is working for NCNB National Bank. She resides in Durham, NC.

KAREN ENSSLEN VINCE is currently working for C&P Telephone Company in business sales. She and her husband reside in Huntingtown, MD.

MARK ABRAH-COPINHAVER is an operations manager for Wahl Photographic. He also directs for a theatre company in Chicago, "The Play's the Thing Productions." He resides in Oak Park, IL.

DAVID C. HANNAFORD was appointed controller for Burgdorf Realtors, Inc., Summit, NJ.

CHARLES PERSING, JR. was ordained to the priesthood of the Roman Catholic Diocese of Harrisburg in St. Patrick's Cathedral.

NANCY B. RAMPOLLA was promoted to manager of programming and operations at SFT Corporation, Wayne, PA. She is living in the Valley Forge area.

VICKIE MYERS STANKATHIS received a master's degree in business administration from the University of Buffalo. She is working at Sisters of Charity Hospital in Buffalo as a planning analyst. She and her husband, Joe, reside in Orchard Park, NY.

MICHAEL A. WACLAWSKI recently deployed aboard amphibious command ship USS Blue Ridge with 9th Marine Expeditionary Brigade on Okinawa. He will participate in exercises which are designed to improve combat readiness of the Republic of Korea and U.S. forces

REBECCA A. FOSTER received her master of science degree in art education from Penn State University. She resides in Oregon.

SHARON E. BECK HUBER is a tax accountant for Coopers and Lybrand, Philadelphia, PA. She and her husband, Henry, reside in Wayne.

NANCY SHENISE MAYNARD is the personnel director for the law firm of Gaston, Snow, Beekman and Bogue, New York, NY.

STEPHEN E. TARNOWSKI recently graduated from Temple Law School. He is currently a regulator attorney for the New Jersey Department of Environmental Protection. He and his wife reside in Philadelphia, PA.

HIDI R. REY DIMINICK is employed in senior international analysis by National Starch and Chemical. She and her husband, Brian, reside in Frenchtown, NJ.

RONALD HARRIS received his master's degree from Penn State University. He is currently working for GTE Sylvania, managing materials procurement and scheduling.

BARBARA HEIM has been promoted to the plant personnel manager of Frito-Lay's Chamblee, GA plant.

DAWN RIPEY was graduated from Yale Repertory Theatre. She has done work in the Properties Department for various stage productions including an opera in Santa Fe, New Mexico and for the academy award winning short film, "Molly's Pilgrim" for State West in Springfield, MA. She is currently working as a Property Artisan with the Ge Va Theatre in Rochester, NY. She resides in Rochester.

PERRY VALENTINI is the assistant general manager of Holiday Inn, Middtown Philadelphia. He resides with his wife, Patricia, in King of Prussia, PA.

BRIAN A. BOHR recently reported for duty with 4th Marine Division, Harrisburg, PA. He joined the Marine Corp Reserves in 1981.

CAROL E. JOHNSON was chosen an "Outstanding Young Educator," for the Williamsport, PA area by the Greater Williamsport Area in 1988.

ANNE McGEORGE was promoted to account executive for the Washington, DC office of SMS, serving as project manager installing IBM-based systems in hospitals, such as the Capital Hill Hospital in DC. She resides in West Chester, PA.

EMILIO JOHN MORRONE has passed his CPA exam and is currently employed by Filipos, McDonald and Abbott, Certified Public Accountants, Bethlehem, PA. He and his wife, Leslie, reside in Bethlehem.

M. MICHAEL PECKMAN has been appointed director of public relations and volunteer services at the Pottsville Hospital, Pottsville, PA. He will coordinate the volunteer services for the Pottsville Hospital and Warne Clinic.

LINDA STEINBACHER RAAP is employed by C.A. Reed as a staff artist. She resides with her husband, Curtis, in Cogan Station, PA.

DANIEL B. STEVENS is the regional sales manager for Altell Supply Company, Edison, NJ. His wife, LISA (HOLOPIGIAN '86), is a claims adjuster for American International Group, Hartford, CT. They reside in Springfield, MA.

MARK FINKELSTEIN is a systems engineer for Electronic Data Systems (EDS) in New Jersey. He is also the head of PC Workgroup development for AT&T's CPC sites. He resides in Parsippany, NJ.

SALLIE L. SNOW SHARER is a production artist at Chapel Printing in Newtown Square. She and her husband, Daniel, reside in Drexel Hill.

DENNIS J. YONKIN has received his L.D. degree from Ohio Northern University.

JOHN A. GUMMO has received his J.D. degree from Ohio Northern University.

JANICE ECK is currently working as a public accountant for Frantz, Warrick, Strack and Associates, Bethesda, MD.

## Marriages

Verna Joyce Perry and RICHARD C. RASH '66, May 27, 1988, Rainier, OR.

BARBARA (GOODYEAR '72) and Stanley Kessler, September 12, 1987, Camp Hill, PA. Attendants included: SANDRA TANGER '72, matron of honor, ELIZABETH MASLAND '76 and ANNE GANOE '81, bridesmaids, and ROBERT GANOE '81, an usher.

KATHLEEN McCOLL '74 and Robert Allan Huber, May 29, 1988.

MARDI (GOLDMANN '76) and Gregory S. Hayt, April 30, 1988, Princeton, NJ.

CATHERINE MURRAY CARSON '79 and Tom Brewster Norris, October 10, 1988, Summit, NJ.

JOANNE E. HULLINGS '79 and John W. Potok, September 12, 1987, Bristol, PA. Attendants included: NANCY CALLERY '79, maid of honor and ANN WEITZEL FUHRMAN '79, a bridesmaid.

MICHELLE (MARTZ '79) and Binh Thanh Nguyen, April 11, 1987.

Teresa Doyle and RICK ADAMS '80, January 16, 1988, Naval Base, Orlando, FL. RICHARD DRIVER '80, was best man.

SHARON E. BECK '82 and Henry J. Huber, Jr., October 24, 1987, Moorestown, NJ.

NANCY J. SHENISE '82 and E. Thomas Maynard, May 14, 1988.

HEIDI RUTH REY '83 and Brian Thomas Diminick, April 9, 1988, Baptistown, NJ.

PATRICIA M. McDONALD '84 and PERRY VALENTINE '83, June 11, 1988. Participants included: PATRICIA FORDER '84, DOREEN BURKE '84, SUSAN CIAMPA '84, EILEEN McDONALD '88, MICHAEL BURD '82, WILLIAM VADINSKY '83 and MATTHEW McDONALD '88.

Leslie Ann Linberg and EMILIO JOHN MORRONE '84, May 21, 1988, Easton, PA. Participants included: REMBERTO EUGENIDES '84.

SALLIE LEE SNOW '85 and Daniel Jewett Sharer, May 28, 1988, Wayne, PA.

Katherine Libinski and MICHAEL CHARLES WYATT '85, April 16, 1988, Netcong, NJ.

SUSAN BOMGARDNER '86 and Timothy J. Farmer, May 7, 1988, Hershey, PA. CARA L. DeCORD '86 was an attendant.

JANICE ECK '86 and David S. Bigelow, May 21, 1988.

LISA AMY HOLOPIGIAN '86 and DANIEL BURKE STEVENS '84, February 13, 1988, Livingston, NJ.

DEBORA L. FLORY '87 and Michael Mancuso, December 26, 1987, East Stroudsburg, PA. Bridesmaids included: KATHLEEN MULLER '87 and JULIA E. FLORY '90.

ELIZABETH DAWN FANNING '88 and William B. Flick, July 18, 1987, Williamsport, PA.

## Deaths

A daughter, Lara Jeanelle, to Dorothy and PAUL L. ERICKSON '65, February 16, 1988.

A son, Jacob Henry, to Jancy and R. GARY HOUCK '67, May 14, 1988.

A son, Michael Allan, to CHRISTIE (KRUK '72) and DAVID HERDMAN '71, May 9, 1988.

A daughter, Alison Beth, to Debbi and JAN B. McDONALD '74, August 30, 1987.

A daughter, Allison Yvonne, to Vicki and DAVID BOTT '75, March 23, 1988.

A son, Matthew Paull, to DEBRA (LINGO '77) and DOUGLAS TRUMP '76, January 19, 1988.

A son, Christopher David, to Mary Jo and RICHARD P. BELENSKI '77, February 2, 1988.

A son, Zachary Edward, to Lisa and MARK DRAKE '78, February 28, 1988.

A daughter, Amy Lynne, to JULIE (EIGHMEY '78) and WILLIAM LEFFLER '79, January 6, 1988.

A son, Evan Michael, to KIMBERLEE (HOFFMAN '79) and Michael Fredo, March 19, 1988.

A daughter, Cambria Faull, to MICHELLE (MARTZ '79) and Binh Thanh Nguyen.

Twin daughters, Rebecca Ann and Sarah Christine, to ANN (WEITZEL '79) and Dennis Fuhrman, January 11, 1988.

A daughter, Stephanie Marie, to Sharyn and KENNETH G. CADEMATORI '83, July 3, 1988.

A son, to CINDY L. (BARRETT '84) and TIMOTHY J. GLUNK '85, April 20, 1988.

A son, Patrick David, to Leslie F. and JOHN D. CLARKE '84, April 11, 1988.

A son, Brady Lee, to WENDY J. (GILSON '86) and Barry W. Walter, May 18, 1988.

A daughter, Jessi Mae to Diane and MARC A. HAAS '86, April 8, 1988. Grandfather is RICHARD C. HAAS '55.

## Deaths Continued

1919 - CORRECTION: MILDRED MEGAHAN was incorrectly listed as deceased in the June, 1988 *Lycoming Quarterly*. She is currently a resident of Sycamore Manor Nursing Home, Montoursville, PA.

1919 - ANN FLOCK FOX died April 26, 1988 in Sarasota, FL, where she had lived for the past nineteen years. She is survived by her husband and two sons.

1929 - MARGUERITE H. HARTMAN THOMAS died May 1, 1988. She had been living at the Williamsport Home. She is survived by her husband, Edward.

1930 - CYNTHIA WILLARD WALKER died June 15, 1988 in Baltimore, MD following a lengthy illness. She was the sister of the late Rev. Dr. Willis W. Willard, Jr., class of 1926. She is survived by her husband and two sons.

1933 - CLEMENT O. ARCHER died May 18, 1988 in Baltimore, MD. He had worked for the Baltimore Gas and Electric Company for forty-four years. He is survived by his wife, a daughter and a son.

1937 - ROBERT E. SMAY died May 6, 1988 in Quakertown, PA. He served as the Bureau Manager of Hellertown, PA for nine years. He is survived by his wife, two sons and two daughters.

1954 - ARTHUR TAYLOR EAKER, Lieutenant Colonel, U.S. Army (retired) died November 23, 1987. He had been a resident of Muncy, PA. He is survived by his wife, RUTH VANDERSLOOT EAKER, '22.

1957 - WELDON F. SHAFFER died April 22, 1988. He had lived in Williamsport, PA.



After twenty-six years of dedicated teaching at Lycoming, Dr. James K. Hummer, professor of chemistry, has retired. Following graduation from Tufts College in 1946, Hummer pursued his master of science degree at Middlebury College in 1950, and in 1956 he was awarded

the doctor of philosophy degree from the University of North Carolina.

Dr. Hummer began his career at Lycoming in 1962. In 1970 he took a one year sabbatical to study with 1969 Nobel Peace Prize winner professor D.M.R. Bartron, in London, at the Imperial College of Science and Technology.

Dr. Hummer was responsible for an NSF chemistry grant in 1965 for Lycoming's chemistry department. A large portion of that grant was used to purchase an infra-red spectrophotometer, for use in the analysis of organic compounds and experiments in physical chemistry.

The board of trustees has adopted an alcoholic beverage policy along the lines of proposals being offered in the state Legislature.

The new policy, which becomes effective with the fall semester, is the work of a task force comprising students, faculty and staff. The task force is the result of a series of demonstrations last September which followed an administration decision to scrap drinking policies that basically permitted students to police themselves. The administration cited liability concerns for its action.

In keeping with the new policy, the college will provide additional recreational alternatives to drinking for students.

Dr. R. Michael O'Brien, dean of student services, says the board has agreed to increase funding for student activities, including intramural sports, longer gym hours, as well as movies and other entertainment.

An intensive alcohol education program was initiated as part of student orientation. Any campus group which is likely to hold a function at which alcohol is served must send its officers to an educational forum.



*Mummy in the making gets some finishing touches during a special summer education program for elementary school students at Lycoming*



*Work on a state-of-the-art science building at Lycoming is proceeding right on schedule. The multi-level building, which will contain a greenhouse, biology and chemistry laboratories, classrooms and offices, is expected to be completed in early 1990*

## New Radio Show Debuts

Lycoming College Focus, a one hour public affairs radio discussion program, made its debut on Sunday evening, August 14th. Hosted by Mark Levine, director of public and media relations, the inaugural program featured President Frederick E. Blumer and Lucia Solorzano, education editor of *U.S. News & World Report*. The topic was "Preparing For the 21st Century—The Future of Higher Education in America."

The monthly program provides a forum for faculty and college administrators to share their expertise in a lively, one hour talk/discussion show. Lycoming College Focus airs at 7:06 pm on the Williamsport CBS affiliate, WWPA, 1340 AM. Alumni and friends are invited to listen and participate with their questions and comments.

The next program airs on Sunday, September 11th and features Dr. Robert Yasui, Lycoming College surgeon, discussing his critically acclaimed book, "The Yasui's of Hood River, Oregon." Dr. Yasui traces his family's settling in Oregon and the hardships they endured during the World War II internment of Japanese-Americans by the United States.

## Lycoming Receives NMR



*Chriis MacDonald (left), assistant professor of chemistry and David Franz, associate professor of chemistry and department chair, conduct an experiment with the Nuclear Magnetic Resonance Spectrometer (NMR). NMR spectroscopy is a technique by which magnetically active nuclei (such as hydrogen and certain isotopes of other elements) can be exploited in order to determine molecular structure. The magnetically aligned nuclei are then bombarded by radio waves. The absorption of the radio waves causes the nuclei to break free of the magnetic field. (In other words the nuclei "resonate".) A signal is generated by the absorption of the radio waves. The same technique is the basis for the use of MRI (Magnetic Resonance Imaging), a powerful diagnostic tool in a clinical setting.*

## Thank You Letters

To The Editor:

Congratulations on the fine job with the *Quarterly*. I enjoy reading each copy and learning of the great progress of our School. Of course, there was extreme interest in the recent coverage written by Dr. Carl Taylor. He was a student in the Seminary at the time I enrolled in the first class in the Jr. College in 1929.

Thanks!

Respectfully,  
Ralph C. Geigle  
(Class of 1931 Jr. College)

To The Editor:

Loved "Phobias" from the March, 1988 issue.

Nice to know I'm not goofing off when I'm sitting around thinking of unwashed screens, grungy oven, curtains to be hemmed, etc. I'm having an ergasiophobic day; justifiable procrastination, right?

My classmate, Dr. Jack Peril, and my friend's mother, Ernestine Zaner, died. I should write Gloria King.

Loved the "Testimony to Logan" — in fact, the whole issue.

Thank you.

Sincerely,  
Shirley D. Bonaker '52  
(Mrs. Arthur J. Bonaker)

## Deaths In The College Community

**FRANK J. KAMUS** — Former director of admissions at Lycoming College died February 2, 1988, after being stricken with an illness at Wilkes College, where he was assistant dean of admissions. During his tenure at Lycoming the College achieved an enrollment of 1643 full-time students, the highest in the institutions history. He is survived by his wife, Marjorie, of Jersey Shore, PA, a daughter and a son.

**HELEN GRAHAM** — Wife of Professor Emeritus of English, John P. Graham, died February 15, 1988, after suffering a heart attack at her home in South Williamsport. She was a retired school teacher. In addition to Professor Graham, she is survived by a daughter, Patricia Cohick '70, and a son, Thomas C. '64.

**PATRICIA SHAEFFER** — Wife of Associate Professor Emeritus of music, James W. Shaeffer, died June 2, 1988. She had retired as a teacher in the Loyalsock Township School District. In addition to Professor Shaeffer, she is survived by three sons.

