

MONTANA HIGHWAY MAP

S
912.1786
H3m
1942

MONTANA STATE LIBRARY
930 East Lyndale Avenue
Helena, Montana 59601



1942
Published by the
STATE HIGHWAY COMMISSION

"TRAVEL
STRENGTHENS AMERICA"

Barcode in hand?

"Welcome to the Land of the Shining Mountains"

WE want your stay within our borders to be so pleasant that you will return many times. Our opportunities for recreation are unlimited; our scenery is magnificent; our topography is varied and the courtesy and hospitality of our people are unending.

Montana is the third largest state in the Union. It is larger than Maine, New Hampshire, Vermont, Massachusetts, Rhode Island, Connecticut, New York, New Jersey, Delaware and Maryland combined, but thirty-fifth in the amount of revenue available for highway construction and maintenance. Our distances are great and our population sparse. It has been a problem to keep pace with the requirements of the motoring public. Ten years ago the mileage of paved highways in this state was negligible. Today we have approximately 5,000 miles of paved roads.

Of necessity our money has to be spread thin, each year the standard has been raised to meet the demands of modern traffic. Our highways are being straightened, widened, and heavy grades are being ironed out.

Due to climatic conditions our construction season coincides with our period of heaviest travel—the tourist season. We make every effort to arrange the handling of traffic through and around construction work so that

motorists will suffer the minimum inconvenience. Every man associated with this department is instructed to render every courtesy and assistance to our guests.

The foregoing is in no sense an apology for our highways. We are proud of the progress made during the past decade. It will, however, perhaps answer hasty and thoughtless criticism sometimes inspired by unusual circumstances which individuals may encounter. We know the old saw about "all work and no play," and it becomes the duty of every American who is immersed in the activities of this national defense to take a little time out for rest and recreation and the consequent recuperation.

Reaching this point, we are proud to invite the attention of the prospective tourist to the claims of Montana upon his active interest. Mother Nature was prodigal in lavishing her allure upon our good State. Here we have to offer a kaleidoscopic pattern that will many times over repay the traveler. We have the low lands and the high lands; we have the "bad lands" and the amazingly rich lands; we have the mighty rivers and the fascinating lakes; we have three of the main entrances to the Nation's Wonderland, Yellowstone National Park; we have all of magnificent Glacier National Park—and all of these are to be easily and comfortably reached by the most modern means and that will furnish in every mile a thrill that will never be forgotten.

So, in this time of national stress Montanans expect every tourist to consider a trip to our Northwest in the 1942 season. Our people are a friendly folk and here you will find a welcome that will warm the cockles of the heart every time the event of the world.

Historical Markers have been erected along the highways for your pleasure and information. We are always open to suggestions and are glad to give you information on any subject pertaining to Montana. Address your communications to the Montana Highway Department, Helena, Montana.

We wish you the best of luck

MONTANA HIGHWAY DEPARTMENT

Yellowstone National Park open to Motorists May 1st to October 15th

MONTANA

The Abiding and Soul-Satisfying

ON the note that "Travel Stagnates America," Montana, the Treasure State, lifts her song of invitation to the tourist who may be planning a "See America First" trip for 1942. In these trying times most people are living on a sort of bread and butter diet, and it is known of all men that this cannot be maintained indefinitely without danger of failure of some part of the delicate human mechanism.

We know the old saw about "all work and no play," and it becomes the duty of every American who is immersed in the activities of this national defense to take a little time out for rest and recreation and the consequent recuperation.

Reaching this point, we are proud to invite the attention of the prospective tourist to the claims of Montana upon his active interest. Mother Nature was prodigal in lavishing her allure upon our good State. Here we have to offer a kaleidoscopic pattern that will many times over repay the traveler. We have the low lands and the high lands; we have the "bad lands" and the amazingly rich lands; we have the mighty rivers and the fascinating lakes; we have three of the main entrances to the Nation's Wonderland, Yellowstone National Park; we have all of magnificent Glacier National Park—and all of these are to be easily and comfortably reached by the most modern means and that will furnish in every mile a thrill that will never be forgotten.

So, in this time of national stress Montanans expect every tourist to consider a trip to our Northwest in the 1942 season. Our people are a friendly folk and here you will find a welcome that will warm the cockles of the heart every time the event of the world.

Cordially yours,

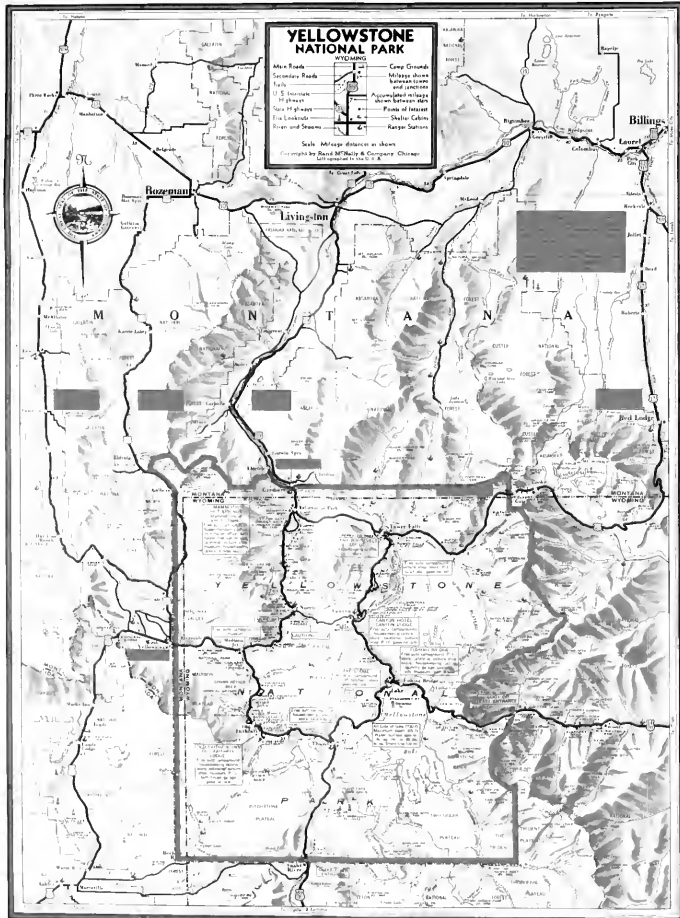
 Governor.

Points of Interest

- Badlands, weird and alluring natural formations, near Glendive, Jordan and Terry.
- Bonneck, "Ghost town," first capital of Montana.
- Boo's Paw Battlefield, Chief Joseph's surrender, Chinoak
- Big Hole Battlefield, retreat of Chief Joseph, Wisdom
- Big Horn Canyon, Spectacular Canyon, south of Hardin.
- Big Spring, gushing 61,000,000 gallons of water daily, forming the famous trout stream, Big Spring Creek, Lewistown.
- Boz Hill Cemetery, they died with their boots on, Billings
- Bozeman-West Yellowstone, through scenic Gallatin Canyon to Yellowstone National Park.
- Capital of Montana, paintings and collection, Helena.
- Cavity Range, Telling with its crystal caves, ice caves, Hell's Forty Acres, catacombs, Traverine Mountain and extinct geyser cones, the strange story of the ages, near Lewistown
- Chain Of Lakes Drive, beautiful lakes and virgin timber, between Kalispell and Libby.
- Charley Russell Studio, relics and paintings, Great Falls.
- Coal, strip mining on large scale, south of Forsyth
- Copper and Zinc Electrolytic Refineries, Great Falls.
- Copper Mines, in "Richton Hill on Earth," the most unique mining center in the world, Butte.
- Cowboy Museum, relics of the old days, Great Falls
- Custer Battlefield, Custer's last stand, Crow Agency
- Falls of Missouri River, Four majestic falls, Great Falls.
- Flothead Lake, largest body of fresh water west of Great Lakes, between Polson and Kalispell.
- For Keogh, early day important Army Post, Miles City.
- Fort Peck Dam, largest earth-filled dam in the world; length of reservoir 180 miles, million acre game preserve, Glasgow.
- Gates of the Mountains, spectacular canyon, near Helena
- Giant Spring, largest fresh water spring in the world; year round temperature of 52 degrees, Great Falls.
- Glacier National Park, twisted and tumbled mountains, 80 glaciers, 250 lakes (Fish hatchery at Creston).

- Grasshopper Glacier, millions of grasshoppers imprisoned in ice, near Cooke City.
- Indian Caves, museum of archaeological discoveries, Billings
- Kootenai Falls, scenic falls and river gorge, Libby.
- Lewis and Clark Memorial, explorers camp site, Armosted, Livingston-Gardiner, all year water level route to Yellowstone National Park.
- Lumbering, large saw mill operations at Bonner, Columbia Falls, Hot Springs, Kalispell, Libby, Polson, Missoula and Somers.
- Medicine Rocks, Indian ceremonial grounds, Ekalaka.
- Morrison Cove State Park, marvelous limestone cavern, guide service, near Whitehall.
- Museum of Plains Indians, Indian Art and Industry, Browning
- National Bison Range, near Ravalli.
- Pompeys Pillar Rock, lone rock formation, Pompeys Pillar
- Powder River Cattle Country, near Miles City, Terry and Broadus
- Prehistoric Replicate Bones, on display at Glendive.
- Red Lodge-Cooke City, over famous Highway to Yellowstone National Park
- Robbers Roost, early day rendezvous of road agents, between Sheridan and Virginia City
- Signal Butte, vantage point used by Sioux and Cheyenne Indians for smoke signals, Miles City
- Smelters, located at Anaconda (world's biggest smoke stack), and East Helena
- St. Ignace Mission, early day Catholic Church, beautiful mural paintings, St. Ignace
- St. Mary's Mission, log church, first in Montana, Stevensville
- Three Forks of Missouri River, Three Forks.
- Three Forks-Ennis-West Yellowstone, through historic Madison Valley to Yellowstone National Park
- Virginia City, second Capital of Montana, famous mining camp with museum of pioneer relics.
- Whitefish Lake Region, a year round sportland, offering golf, watersports, skiing, hunting and fishing for the giant Mackinac trout, Whitefish.

Glacier National Park open to Motorists May 1st to October 15th



GENERAL INFORMATION

Montana ("Mountainous"), nickname—the Treasure State
 Area, 146,997 square miles or 94,078,080 acres.
 Population (1940), 559,456. Density, 3.8 per sq mile

MONTANA RADIO STATIONS

Helena KPTA 1540 Z Net, NBC Red and Blue
 Butte KGBR 1370 Z Net, NBC Red and Blue
 Bozeman KRBM 1450 Z Net, NBC Red and Blue
 Billings KGHL 790 NBC Red and Blue
 Great Falls KFBZ 1310 Columbia
 Missoula KGVO 1070 Columbia
 Miles City KRIF 1340
 Kalispell KGJZ 1420
 Wolf Point KGCK 1480

INDIAN RESERVATIONS AND TRIBES

Blackfeet—Pegant and Blackfeet.
 Crow—Crow or Absaroka
 Flathead—Salish, Kootenai, Pend d'Oreille, Kalispell.
 Fort Belknap—Gros Ventre and Anishinabe
 Fort Peck—Assiniboinne and Yankton Sioux
 Rocky River—Cree.
 Tongue River—Northern Cheyenne.
 For information on Indians write to: Museum of Plains Indians, Browning, Montana.

RUINS OF OLD FORTS AND TRADING POSTS

Fort Assimprou, So. of Havre
 Fort Belknap, So. of Havre
 Fort Benton, So. of Fort Benton
 Fort Cinnah, So. of Ronan
 Fort Gilbert, N. of Sulfur
 Fort Logan, N. W. of White Sulphur Springs
 Fort Maguire, W. of Grass Range
 Ft. Murrells, N. E. of Winnett
 Ft. Owen, E. of Stevensville
 Ft. Peck, site of Fort Peck Dam
 Ft. Shaw, W. of Great Falls
 Ft. C. F. Smith, So. of Hardin
 Ft. Union, So. of Bozaville

National Forests—Primitive Areas in Montana

Most of undeveloped National Forest areas of outstanding scenic beauty, under the supervision of the U. S. Forest Service. They contain peaks, glaciers, lakes, streams, mountain meadows, an abundance of wild game and fish. Here are to be found trails for saddle and pack trips as well as camping spots for motorists.

There are eight of these areas in Montana (one extends into Northern Idaho), having a total of nearly three and one-half million acres.

The size and location of the areas are as follows:

Anaconda-Pintler	145,000 acres, southwest of Anaconda
Bearfoot	930,000 acres, south of Columbus
Bob Marshall	995,000 acres, stretched from Chouteau, Kallispell or Missoula
Selway-Bitterroot	1,870,000 acres, south of Missoula
Abnaskia	64,000 acres, south of Livingston
Cabinet	90,000 acres, near Libby
Mission Mountains	73,500 acres, near Ronan
Spanish Peaks	50,000 acres, south of Bozeman

Montana contains about 30,000 square miles of National Forests and 1,000 square miles of State Forests.

For information on forests write to: U. S. Forest Service, Missoula, Montana.

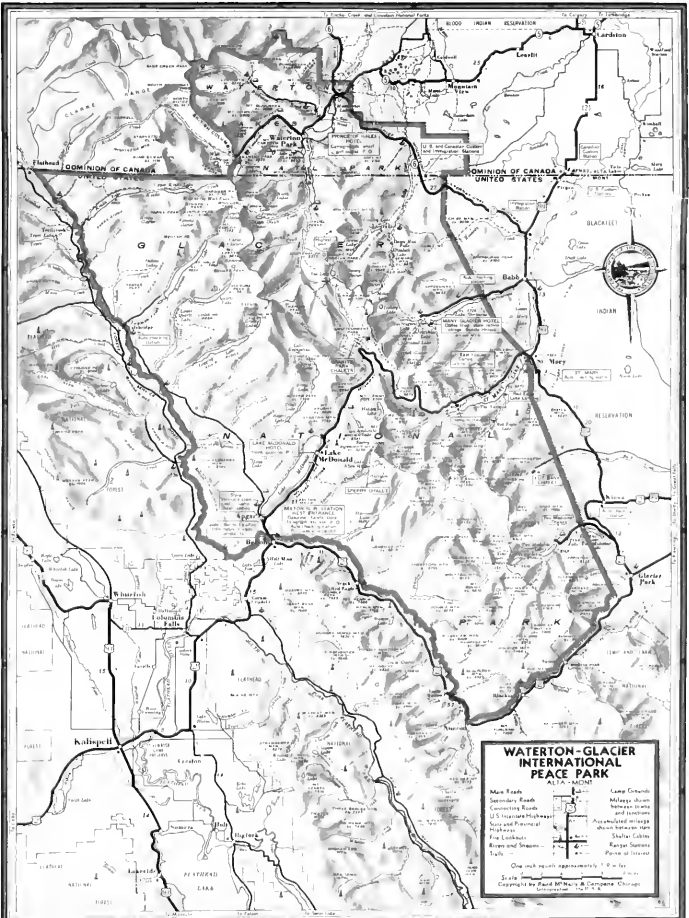
FISHING AND HUNTING LICENSES AND FEES

Resident Bird and Fish License	\$ 2.00
Resident Big Game	1.00
Sportsman License	5.00
Non-Resident Seasonal Fishing License	5.00
Non-Resident 10-Day Limited Fishing	10.00
Non-Resident Bird	10.00
Non-Resident Big Game	30.00

For information on Hunting and Fishing write to: Montana Fish and Game Commission, Helena, Montana.

LAKES—RIVERS—MOUNTAINS

The State has 1,200 Lakes and 40 Rivers. It has 30 Mountains over 10,000 ft. high. The highest is Granite Peak, 12,800 ft.



MONTANA MILEAGE TABLE

	Anaconda	Baker	Big Timber	Billings	Boulder	Bozeman	Broadus	Butte	Chester	Chinook	Choteau	Circle	Columbus	Conrad	Cut Bank	Deer Lodge	Dillon	Elkaka	Forsyth	Fort Benton	Glasgow	Glendive	Great Falls	Hamilton	Hardin	Harlowton	Havre	Helena	Hysham	Jordan	Kalspell	Leistown	Libby	Livingston	Malta	Miles City	Missoula	Phillipsburg	Pleantywood	Poison	Red Lodge	Roundup	Ryegate	Scobey	Shelby	Sidney	Stanford	Superior	Terry	Thompson Falls	Townsend	Virginia City	White Sulphur Spr's	Wibaux	Winnett	Wolf Point		
Anaconda		497	181	263	61	121	436	25	306	310	182	480	221	236	282	25	79	537	371	216	449	496	173	80	313	215	288	80	343	414	231	282	320	147	378	416	107	29	596	178	291	285	245	553	262	548	236	168	456	210	114	99	157	526	336	499		
Baker	497		316	459	376	161	472	452	368	462	127	276	468	518	488	501	40	126	448	229	79	405	577	210	298	300	433	154	166	638	296	727	320	300	81	550	524	216	621	294	228	228	224	494	131	342	611	117	653	399	471	356	49	242	179			
Big Timber	181	316		275	346	60	255	173	273	327	143	498	430	155	105	24	185	356	190	233	411	315	190	261	132	49	305	161	162	243	402	111	491	34	395	235	278	210	449	349	110	119	79	406	279	367	127	339	275	381	127	155	105	345	163	461		
Billings	263	459	275		121	436	25	306	310	182	480	221	236	282	25	79	537	371	216	449	496	173	80	313	215	288	80	343	414	231	282	320	147	378	416	107	29	596	178	291	285	245	553	262	548	236	168	456	210	114	99	157	526	336	499			
Boulder	61	121	436	25		121	436	25	306	310	182	480	221	236	282	25	79	537	371	216	449	496	173	80	313	215	288	80	343	414	231	282	320	147	378	416	107	29	596	178	291	285	245	553	262	548	236	168	456	210	114	99	157	526	336	499		
Bozeman	121	376	60	142		121	436	25	306	310	182	480	221	236	282	25	79	537	371	216	449	496	173	80	313	215	288	80	343	414	231	282	320	147	378	416	107	29	596	178	291	285	245	553	262	548	236	168	456	210	114	99	157	526	336	499		
Broadus	436	161	255	173	442		315	96	411	533	449	461	208	215	467	517	449	440	201	125	447	310	165	404	516	192	296	471	416	153	165	367	295	726	289	381	80	533	465	297	604	233	226	266	305	493	212	341	594	120	636	382	410	350	190	241	260	
Browning	255	535	320	370	205	276		534	241	103	187	73	428	360	85	35	230	307	575	419	173	326	476	130	274	420	271	165	175	440	371	103	239	192	302	255	454	27	266	473	156	430	317	301	430	59	469	193	270	494	210	209	301	237	177	263	123	319
Butte	25	472	156	238	36	96	411		292	296	168	454	196	222	272	38	66	512	346	202	435	471	159	105	288	194	274	66	318	388	246	256	335	122	364	391	122	54	582	193	266	364	224	539	248	523	222	183	431	225	93	74	136	501	310	485		
Chester	306	452	323	373	256	327	533	292		84	166	325	363	70	68	281	358	492	422	138	223	373	133	386	423	274	62	226	443	374	206	242	295	306	152	491	330	317	370	259	433	320	304	327	44	366	196	373	413	313	260	352	235	403	296	273		
Chinook	310	368	237	377	260	331	449	296	84		194	241	367	154	152	285	362	408	414	98	139	289	137	386	427	278	22	230	442	307	290	246	379	310	68	369	347	321	286	343	437	324	308	243	128	282	200	408	329	397	264	356	239	419	300	189		
Choteau	182	462	247	297	132	203	461	168	166	194		364	287	96	100	157	234	502	346	100	333	412	57	258	347	198	172	102	367	298	176	166	265	229	262	381	219	193	480	229	357	244	228	437	122	464	120	280	421	283	136	268	159	442	200	383		
Circle	480	127	309	267	430	369	208	454	325	241	364		307	370	393	450	483	167	173	339	102	48	307	551	257	260	263	395	201	66	531	198	620	383	173	128	512	486	140	583	327	214	254	97	369	100	244	573	88	615	361	428	178	144	52			
Columbus	221	276	40	42	227	100	215	196	363	367	287	309		293	343	234	225	316	150	273	411	275	230	301	352	94	345	201	122	243	442	151	531	77	243	195	318	250	412	389	70	95	119	406	319	327	167	379	235	421	167	195	445	305	126	343		
Conrad	236	468	253	303	266	257	462	292	70	154	96	370	293		50	211	288	508	352	106	293	418	63	312	353	209	132	156	373	304	188	172	277	236	222	387	273	247	440	241	363	250	334	297	266	436	126	334	422	295	190	282	165	448	266	343		
Cooke	260	358	147	124	266	139	297	235	419	423	342	391	349	399	273	236	398	232	329	493	357	268	340	174	196	401	240	204	325	481	255	570	113	491	277	357	289	494	428	64	177	213	488	375	409	274	418	317	460	206	179	184	387	247	443			
Cut Bank	282	518	303	353	236	307	517	272	68	123	340	510	343	50	257	334	558	402	156	291	441	113	308	403	254	130	202	423	354	138	222	287	286	220	439	282	939	438	191	413	300	284	395	24	434	176	305	477	245	236	378	215	471	276	341			
Deer Lodge	25	488	194	276	74	134	449	286	381	285	157	450	343	211	257	92	528	362	191	424	487	148	105	326	190	263	55	356	384	208	252	297	160	353	407	44	54	571	155	304	260	220	528	337	539	211	145	447	187	89	112	132	517	306	474			
Dillon	79	501	185	267	102	125	440	66	358	362	234	483	225	288	334	92	541	375	268	501	225	159	317	223	340	132	347	417	300	285	389	151	430	420	116	108	623	247	295	293	253	580	314	552	288	237	460	279	122	57	165	530	339	535				
Elkaka	537	40	356	274	499	161	512	492	368	462	502	167	316	508	58	541	166	488	269	119	445	617	250	338	430	473	194	206	678	336	767	390	340	121	590	564	256	631	334	268	308	264	534	171	382	651	157	693	439	511	396	89	282	219				
Eureka	298	683	469	518	338	409	682	313	251	335	221	576	509	232	183	275	367	723	567	321	474	624	278	328	568	419	313	308	588	519	67	387	67	435	602	131	269	621	120	579	465	449	578	207	617	341	234	642	174	342	387	380	654	441	524			
Forsyth	371	126	160	108	333	250	125	346	421	414	346	173	150	350	320	402	367	663	332	275	125	289	451	84	172	404	307	28	130	522	180	611	224	346	45	474	398	262	495	168	102	142	270	378	177	226	485	85	527	243	230	155	172	225				
Fort Benton	216	448	233	283	166	237	440	202	138	98	100	339	273	106	156	191	268	488	332	237	387	43	292	333	184	76	136	353	284	276	152	365	216	166	367	253	227	384	324	343	230	214	341	132	380	106	314	407	356	170	262	145	417	206	287			
Gardiner	204	407	91	173	210	347	179	363	367	286	400	131	293	343	217																																											