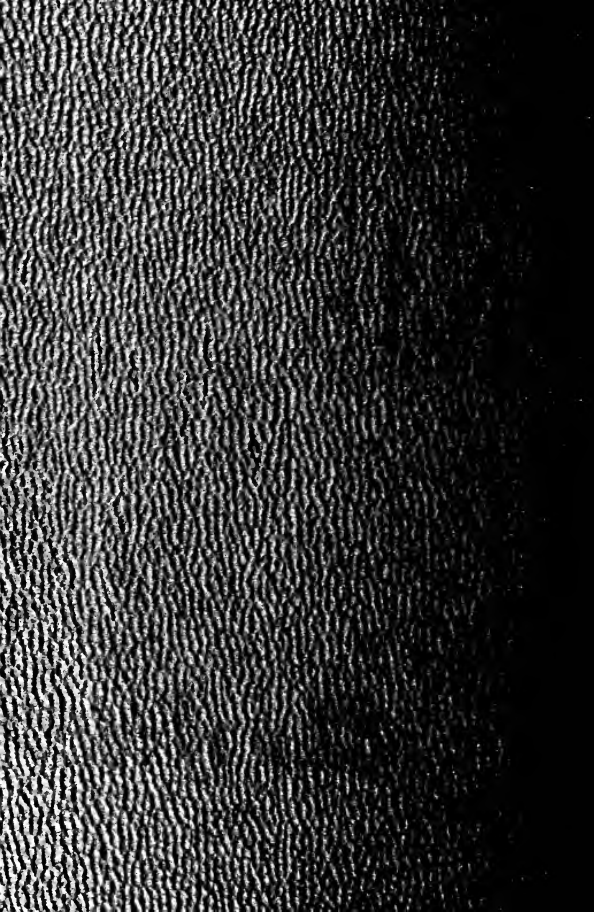


M

Class of 1957



The staff dedicates the
1953-1954 Year-Book to
Dr. Harry C. Ford,
President of the
University of Maryland







The 1953-1954

m book

Handbook of the

Class of 1957

University of Maryland

College Park, Maryland



Looking across the mall to Anne Arundel Hall



● foreword

TO MEMBERS OF THE FRESHMAN CLASS:

You are beginning the higher phase of your formal education in the great University of a great State—a State of tradition where education is classed among the superior attributes, and where the enlightenment of our citizens was advocated and encouraged from earliest colonial times.

The University of Maryland offers excellent opportunities for a good general education or for specialized courses. It has a good and devoted faculty. The members of that faculty are anxious to help you—through teaching, advice and counsel—but the faculty cannot do your learning for you. That is up to you. Treat the opportunity which is offered you here as something valuable—something worth having and worth nourishing.

The University of Maryland will do its part if you do yours. With kindest regards and best wishes for all of you, I am

Sincerely

T. R. McKELDIN
Governor



◀ *Symons Hall, the home of the Agriculture College*

Calendar of Events

FALL SEMESTER

September

- 12-20 Saturday-Sunday—Panhellenic
 Rushing
- 15-20 Tuesday-Sunday—Freshman Week
 September 15—Convocation
 September 16-18—Registration,
 first semester
 September 16—Terrace Dance
 September 17—Deans' Meetings
 September 18—Freshman Mixer
 September 19—Barn Dance
 September 20—Student Religious
 Council Reception
- 19 Saturday—Missouri Football Game—
 Away
- 21 Monday—Instruction begins
- 25 Friday—President's Reception
 Fraternity Rushing begins—Open
 House
- 26 Saturday—Washington and Lee Foot-
 ball Game—Senior Day—Home
- October
- 2 Friday—Independent Student's Asso-
 ciation—Open House

- 3 Saturday—Clemson Football Game—
Away
- 9 Friday—Panhellenic Dance
- 10 Saturday—Georgia Football Game—
Band Day—Home
Penn State—Soccer
- 11 Sunday—Fraternity Rushing ends
- 13 Tuesday—Current Events Forum
- 15 Thursday—Fall Convocation—
Faculty and Students
- 16 Friday—Agriculture Council Square
Dance
- 17 Saturday—North Carolina Football
Game—Football Weekend—Away
- 19-23 Monday-Friday—Career Week
Miami Football Game—Away
Independent Students' Association
Barn Dance
- 29 Thursday—National Symphony Or-
chestra—Astrid Vainay
- 31 Saturday—South Carolina Football
Game—Homecoming Game
Homecoming Dance
- November
- 3-7 Tuesday-Saturday—University
Theater
- 7 Saturday—George Washington Foot-
ball Game—Away
- 12 Thursday—Alpha Lambda Delta—
10% Tea

- 13 Friday—Rossborough Dance
 14 Saturday—University of Mississippi
 Football—Dad's Day—Home
 17 Tuesday—Current Events Forum
 21 Saturday—Alabama Football Game—
 AFROTC Day—Home
 26-29 Thursday-Sunday—Thanksgiving Re-
 cess
 November 25 — Wednesday after
 last class—Thanksgiving recess
 begins
 November 30—Monday at 8:00 a. m.
 —Thanksgiving recess ends

December

- 4 Friday—Harmony Hall
 8-12 Tuesday-Saturday — University
 Theater
 13 Sunday—Messiah or Christmas Ora-
 torio
 15 Tuesday — Sigma Alpha Epsilon
 Christmas Service
 16 Wednesday — Associated Women's
 Students Christmas Pageant
 19-Jan. 3 Sat.-Mon.—Christmas Recess
 December 19—Saturday after last
 class—Christmas recess begins

January

- January 4—Monday at 8:00 a. m.
 —Christmas recess ends
 8 Friday—National Symphony Orches-
 tra—Leopold Stokowsky

- 9 Saturday—Snowball Dance
 13-17 Wednesday-Sunday—Art Exhibit
 14 Thursday—Symphony—William
 Kappell
 14-15 Thursday-Friday—Fabric Festival
 20 Wednesday—Charter Day
 21-28 Thursday-Thursday—First Semester
 Exams

SECOND SEMESTER

February

- 3-5 Wednesday-Friday—Registration,
 second semester
 5 Friday—Interfraternity Ball
 8 Monday—Instruction begins
 13 Saturday—Campus Club Valentine
 Dance
 16- Tuesday-Sunday—Panhellenic Rush-
 Mar. 7 ing
 18 National Symphony Orchestra and
 Chapel Choir
 20 Saturday—Square Dance Jamboree
 22 Monday—Washington's Birthday,
 holiday
 22-28 Monday-Sunday—Religious Emphasis
 Week
 24 Wednesday—Hillel Skit Night
 26 Friday—Sophomore Promenade

March

- 1-6 Monday-Saturday—Campus Chest
 4 Thursday—Women's Chorus and Glee
 Club

- 9-13 Tuesday-Saturday—University Theater
- 17-19 Wednesday-Friday—Modern Dance
- 19 Friday—Junior Promenade
- 24-27 Wednesday-Saturday—Aqualiners Water Show
- 25 Thursday—Maryland Day Convocation
- April
- 1 Thursday—National Symphony Orchestra—Oscar Levant
- 2 Friday—International Fiesta
- 6-7 Tuesday-Wednesday—Gymkana Home Show
- 9 Friday—Freshman Promenade
- 16-20 Friday-Monday—Easter Recess
 April 15—Thursday after last class
 —Easter recess begins
 April 20—Tuesday at 8:00 a. m.—
 Easter recess ends
- 22 Thursday—Band Concert
- 23 Friday—Agricultural Council Square Dance
- 24 Saturday—Block and Bridle Livestock Show
- 27- Tuesday-Saturday—University
 May 1 Theater

May

- 1 Saturday—Military Ball
6 Thursday—Interfraternity Sing
7 Friday—Home Economics Open House
9 Sunday—Mothers' Day—Choir Festival
11 Tuesday—May Day
13 Thursday—Military Day
14 Friday—Rossborough Dance
17-28 Monday-Friday—Art Exhibit
19 Wednesday—Honors and Awards Assembly
27- Thursday-Friday—second semester
June 4 exams
30 Sunday—Baccalaureate Exercises
31 Monday—Memorial Day, holiday
- ## June
- 5 Saturday—Commencement Exercises

SUMMER SESSION

- June 21 Monday—Registration, Summer Session
June 22 Tuesday—Summer Session begins
July 30 Friday—Summer Session ends

Note: As the *M-Book* went to press, the full schedule of Athletic events was not complete. However, Maryland's football schedule is as shown.

General Information

ACADEMIC

Since the object of attending a University is to receive the best possible education, it is necessary for each student to attend classes regularly. Classes begin on the hour and last for 50 minutes. If a teacher fails to appear for his class, students are not required to remain. However, they must wait a specified length of time before they may leave: 20 minutes for a Dean, 15 minutes for a Doctor, and 10 minutes for an instructor.

At the University there is no unlimited cut system. Each instructor usually informs his class at the beginning of the course how he will handle cuts. After three unexcused absences, a student is reported to his Dean and his parents are notified. Too many absences lower a grade and may eventually result in a complete course failure.

To drop a course, the student must do so before a set time each semester, as specified in the semester's schedule of classes. Permission from the student's Dean and a small fee are required to drop a subject.

Exams usually include three one-hour exams and a two-hour final in each course. If a student misses an exam, he may take a make-up exam upon permission of the instructor and payment of a \$1.00 fee to the registrar.

ACTIVITIES FEE

All students on the undergraduate level pay a Student Activities Fee during registration. This fee supports such activities as student publications, the University Theater and Clef and Key productions, dances and other campus activities open to the entire student body.

ATHLETIC FEE

This fee is also paid at registration. The fee covers the cost of admission to all inter-collegiate sport events held on the College Park campus. An athletic coupon book is issued to each student, and a prescribed coupon from this book must be presented at each event for admittance. Along with the necessary coupon, the book holder must show his ID card at the time of admittance.

BOOKS AND SUPPLIES

The Student Supply Store in the Administration building basement serves the needs of the student body by selling school supplies and the required texts for the courses offered each semester. The store also carries a full line of novelty and souvenir items.

COMMUNICATIONS

Also located in the Ad building basement is the campus post office. Each student is assigned a post office box at registration which he will share with one or more other students during the academic year. The post office handles regular mail, communications from the University and its organizations to the student.

The post office sells stamps, but full mailing facilities can be had at the College Park post office located in the shopping area across from the South Gate.

Campus telephones may be used to make on-campus calls. Off-campus calls may be made on pay phones located in the dormitories and other campus buildings.

Telegrams may be sent from the campus telephone exchange located in the east end of the Education building basement. Incoming wires are either delivered or phoned to student residences on campus. The U. of Md. phone number is WA 7-3800 and dorms may be requested from the operator.

BOARD

All students living "on the hill" (in the permanent dorms) are required to eat in the Dining Hall. Dining Hall cards are issued at registration. All other students must make their own arrangements. A cafeteria is located on the lower floor of the Dining Hall, serving meals at reasonable rates. There are several eating establishments in the nearby College Park area, and several Greek-letter houses take in a few boarders.

The Recreation Hall on the southwest side of campus provides snacks and short orders for all students. This is a favorite meeting place for that "coffee break" between classes.

Next to the famous Rossborough Inn on the boulevard is the University Dairy, serving ice cream and other dairy products every day except Sunday.

INFIRMARY

The University Infirmary is located west of the Dining Hall. It is staffed by the University physician and nurse, providing routine medical service to all undergraduate students. The phone number of the Infirmary is Extension 326 on campus phones.

LAUNDRY

The University does not provide a laundry service for the students. However, there are several laundry and dry cleaning concerns in College Park. Several dorms have coin-operated automatic washers and dryers. Students may also mail their laundry home at the usual postal rates.

LIBRARY

The University library and the library annex are open 7:30 a.m. until 10 p.m., Monday through Friday, 7:30 a. m. to 5 p. m. on Saturday, and from 3 p. m. until 10 p. m. on Sunday.

Reserve books may be taken out at 8 p. m. on weekdays and returned at eight the next morning. Books taken from the loan desk may be taken for a 14-day period and may be renewed.

Overdue books from the loan desk receive a five cent per day fine, and overdue books taken from the reserve shelves are fined according to the number of minutes and/or hours late.

MEETING ROOMS AND ARRANGEMENTS

Details on reserving meeting rooms for on-campus functions may be found in the current issue of the Academic Regulations bulletin.

PARKING AND TRAFFIC

All students, members of the staff and faculty are assigned parking lot spaces during registration. All autos are registered and are assigned a parking lot sticker which must be displayed prominently on the rear window of the car. Parking on campus roads is forbidden. Traffic and parking regulations are enforced by State Police.

PUBLICATIONS DISTRIBUTION

The *Diamondback* is available in the basement of the Ad building, Library, Rec Hall, Dining Hall and in most classroom buildings.

The *Old Line* is also distributed at the same places on campus. The *Terrapin* is distributed to individual students in the middle of May. The *M-Book* is given to all incoming freshmen at fall registration, and may be picked up at the Student Publications Office in Building GG by freshmen beginning in February.

TRANSPORTATION

College Park is served by the Greyhound and Trailways bus lines. Local bus lines serve Washington and the nearby suburban areas. Greyhound schedules and tickets are obtained in the Varsity Grill. Trailways and local bus information is found in the College Park Delicatessen.

RECREATION HALL

Located next to the Women's Field House, the "Rec Hall" serves all students in many ways. There is a large and a small lounge, providing the latest in periodicals. The large lounge boasts a TV set, and the small one may be used for meetings.

The Rec Hall also provides facilities for cards, pool, and chess. There is also an adequate snack bar in the charge of genial Bill Hoff.

TICKET DISTRIBUTION

Tickets for dance, musical and dramatic productions are handled by the University Theater box office located in the Education building basement. The box office usually opens one week prior to the run of a production.

LIVING ACCOMODATIONS

Arrangements for living in University dormitories should be made with Assistant Dean of Women, Marian Johnson for women and Men's Dormitory Manager, Robert James, for men. Off-campus accommodations are handled by the Assistant Dean of Men, Doyle Royal.

LOST AND FOUND

Students may turn in or recover articles at the campus police station located at the North Gate.

Whom To See . . .

<i>For</i>	<i>See</i>	<i>Where</i>	<i>Phone</i>
Absences	Dean of College	Dean's Office	
Admissions	G. Watson Algire	See Student Directory Administration	396
Alumni	Dave Brigham	Rossborough	366
Athletic Teams :			
Baseball	Burton Shipley	Coliseum	501
Basketball	Bud Millikan	Coliseum	501
Boxing	Frank Cronin	Armory	370
Cross-Country	Jim Kehoe	Armory	370
Football	Jim Tatum	Coliseum	242
Golf	Frank Cronin	Armory	370
Lacrosse	Jack Faber	Education	231
Rifle		Armory	370
Soccer	Doyle Royal	Administration	375
Tennis	Doyle Royal	Administration	375
Track	Jim Kehoe	Armory	370
Wrestling	William Krouse	Armory	370
Bills	Cashier	Administration	340
Dramatics	Warren L. Strausbaugh	Classroom	291
Employment :			
Full Time	Lewis M. Knebel	Administration	411
Part Time	Dean Eppley	Administration	338
Women's	Miss Binns	Dean of Women	271
Fraternities	John Martin	WA 7-9849	
Health	Dr. Bishop	Infirmery	326
Housing :			
Men's	Robert James	Dorm C	319
Women's	Miss Johnson	Dean of Women	359
Graduate School	Dr. Bamford	Education	232
ISA	Pete Sarant		363

Whom To See . . .

<i>For</i>	<i>See</i>	<i>Where</i>	<i>Phone</i>
Intramurals :			
Men's	Jim Kehoe	Armory	370
Women's	Dorothy Deach	Field House	267
Library	Loan Desk	Library	259
Lost & Found	Campus Police	North Gate	315
Mail	Ralph Brown	Administration	386
Meeting Rooms :			
Day	Dean Cotterman	Administration	327
Night	George Morrison	Administration	371
Men's League	Donald Goldstein	Office O-12	328
Military	Col. Ambrose	Armory	261, 351
Music :			
Band	Robert Landers	Armory	449
Men's Glee Club	Dr. Randall	Music	207
Chapel Choir	Mr. Springman	Music	207
Orchestra	Robert Landers	Armory	449
Women's Chorus	Charles Haslup	Music	207
Problems :			
Men's	Dean Eppley	Administration	338
Study	Dean or Advisor	Respective Office	
Vocational	Psych. Dept.	DD	295
Women's	Dean Stamp	Dean of Women	293
Publications :			
<i>Diamondback</i>	Elin Lake	GG 5	258
<i>M-Book</i>	B. Ann Bennett	GG 5	258
<i>Old Line</i>	B. Ann Bennett	GG 5	361
<i>Terrapin</i>	Bill Holland	GG 5	361
Scholarships	Dean Cotterman	Administration	327
SGA	Craig Fisher	Administration	363
Social Life	Miss Binns	Dean of Women	271
Sororities	Molly Turner		UN 4-9829
Student Life			
Committee	Dean Reid	BPA	423
Summer School	Dr. Devilbiss	Education	234
Women's League	Mary Jo Turner	Dorm III	438

What to Bring to College—Men

One of the biggest headaches for the student who plans to live on campus for the first time is the problem of what to bring with him in the line of clothes and furnishings for his room. After a semester of many adjustments, most students manage to learn what items are necessary to live comfortably in their home away from home. However, a few words of advice may go a long way in helping the student living away from home for the first time.

It is a good idea to see the room you have been assigned to before moving in. Also, it is a good idea to meet your roommate(s) if this is at all possible. Not all dormitories are built alike, and dormitory rooms vary in size and closet facilities. By talking it over



with your prospective roommate you can decide between yourselves what furnishings, such as radios and lamps, you will want to bring.

A typical room for two men may have a closet and chest of drawers for each of you, a large study table with two chairs, and either a double bunk or two singles. If you desire to make your accommodations as home-like as possible, you may hang curtains, install floor lamps and bring that old easy chair sitting in the attic. Of course, no equipment of the university may be changed, altered or damaged in any way.

As for clothes to bring, this matter is up to the individual concerned. This is not a fashion book, and a student cannot be told what he should or should not wear. However, students are advised to be sensible and practical in their dressing habits whether they are attending classes, sport events or going out on dates. Maryland is not a "coat and tie" college, nor is it a "blue jean" school.

It cannot be said any one particular clothing fad has caught on here at Maryland. Many men on campus wear khaki trousers and white shirts to classes, but even this cannot be considered "standard." Letter awards and sweaters with high school colors are taboo on campus. They may have meant something in high school, but have little recognition value at Maryland.

What to Bring to College, Coeds

So you want to know what to bring to college! Just remember that your life away from home will demand many of the same things that were necessary when you lived at home. If it rained sometimes at home, count on double that amount here at Maryland and be sure to bring a slicker and boots.

To be safe and sure of the best wardrobe, buy carefully and tastefully. Avoid that pale champagne cashmere with rhinestone and pearl trimming and look for some easy-to-care-for pullovers to match your skirts. If you aren't sure of the best in college fashions, avoid buying all of your clothes until after you have returned to school for a week or two, and check on what the upper class, experienced gal goes for.

The best advice from a college shop or a large department store may be far from the needs of a truly busy and practical coed. Warm wool skirts, easily pressed, should mix and match your 4 or 5 favorite sweaters. Cardigans and at least one blazer will provide in-between weather warmth. Saddles still lead the field, with loafers close behind.

Come cold weather, you will need a comfortable and practical coat for class.

And of course, don't forget your dressy clothes, gloves, and a hat for Sunday. The Saturday night parties and dates call for

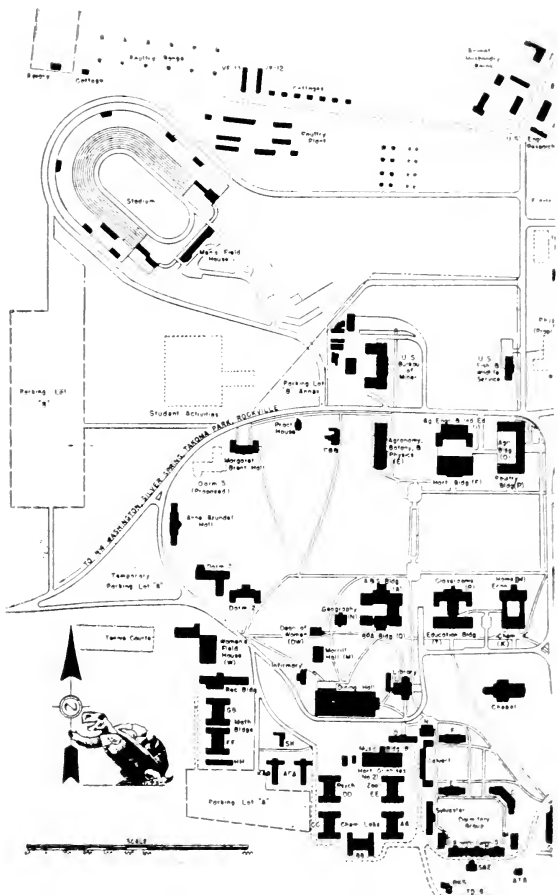
something special in heels and hose. In the other extreme, a pair of well-worn dungarees and soft shirt fill the bill for lounging and studying in the dorm or house.

Now in the line of furnishings . . . white ruffle curtains that need laundering every two weeks aren't the best idea. Try tailored decoration schemes with comfort and practicability in mind.

Good lighting is most important. Radio, rugs and records make your new home more relaxing. Dont bring all the personal dust-catchers, tho'! Your books and current wardrobe alone will take up every square inch of space, without having to harbor the collection of knick-knacks!

In other words, perspective 4.00 scholar, social whirler, and activity hounder, bring to college essential and practical items . . . to allow yourself plenty of time to enjoy your coming year!

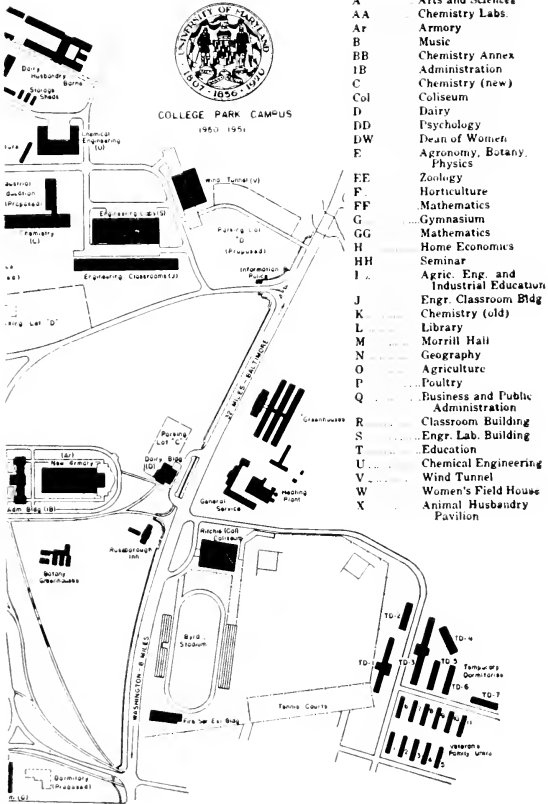




UNIVERSITY OF MARYLAND

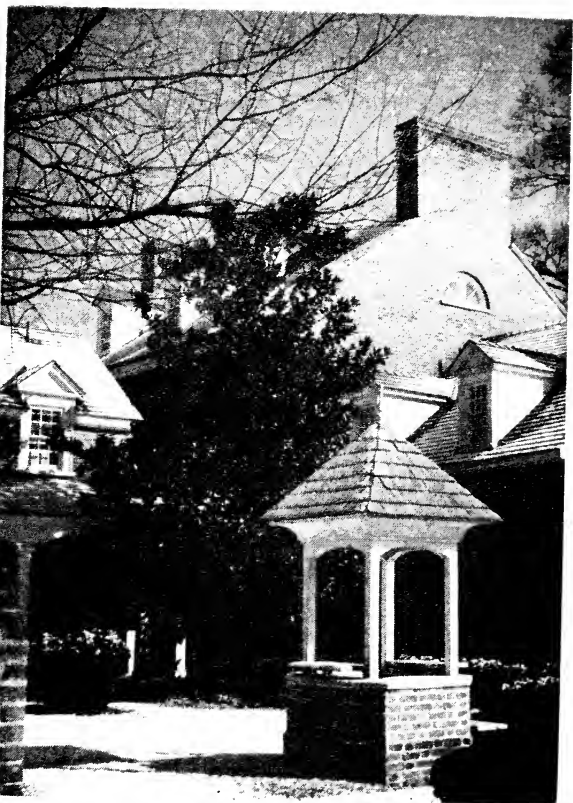


COLLEGE PARK CAMPUS
1950-1951



INDEX

- A Arts and Sciences
- AA Chemistry Labs.
- Ar Armory
- B Music
- BB Chemistry Annex
- 1B Administration
- C Chemistry (new)
- Col Coliseum
- D Dairy
- DD Psychology
- DW Dean of Women
- E Agronomy, Botany,
Physics
- EE Zoology
- F Horticulture
- FF Mathematics
- G Gymnasium
- GG Mathematics
- H Home Economics
- HH Seminar
- I Agric. Eng. and
Industrial Education
- J Engr. Classroom Bldg
- K Chemistry (old)
- L Library
- M Morrill Hall
- N Geography
- O Agriculture
- P Poultry
- Q Business and Public
Administration
- R Classroom Building
- S Engr. Lab. Building
- T Education
- U Chemical Engineering
- V Wind Tunnel
- W Women's Field House
- X Animal Husbandry
Pavilion



Marland's oldest structure—the Rosborough Inn

● history and traditions

You are now entering into a phase of your life which you will always cherish. College memories are among the happiest ones, and the University of Maryland has many such memories to offer. Your first experience in college tradition will probably be the "Hello Habit." As you walk through the campus greet your new friends with a cheerful hello.

Your pride in the University of Maryland will increase as you visit the Rossborough Inn and the Chapel, attend convocations and sport activities, and enjoy the Homecoming dance and May Day. As the year goes on, you will find yourself engulfed in Maryland tradition. For example, you will begin class each hour to the sound of "Maryland, My Maryland" drifting from the Chapel tower.

During your first year at Maryland University you will be introduced to her tradition and history which enrich campus life and are cherished by the Maryland alumni.

History . . .

The University of Maryland dates back to 1807, when the first school of the University, the College of Medicine, was founded in Baltimore. In the more than 140 years since its founding, the University has expanded, both physically and scholastically until it now occupies a position as one of the leading universities in the country.

After the College of Medicine was founded, there followed within a few years the establishment of several other professional schools. The School of Law was added in 1823, the School of Dentistry in 1882, the School of Nursing in 1889, and in 1904, the Maryland College of Pharmacy.

At College Park, in 1856, Maryland State College, the first agricultural college in the United States was established under the name of the Maryland Agricultural College. The college was financed by the sale of stock at \$25 a share.

In 1862, this college became, in part, a state institution with the passage of the Land Grant Act by Congress. It was one of the first schools to benefit from this act and the subsequent federal aids to education.

In 1920, the professional schools of the University of Baltimore, and the Maryland State College in College Park were merged to form what is now known as the University of Maryland.



University Seal . . .

Maryland's Great Seal, the oldest of the state seals, was sent to the province of Maryland in 1648 by Lord Baltimore. More than 300 years old, the seal is the only state seal of strictly heraldic character.

The escutcheon bears the Calvert and Crosslands arms quartered. The first and fourth quarters are the Calvert Arms. The second and third quarters are from the Crossland, Baltimore's maternal arms. An earl's coronet and full-faced helmet are surmounted on the quarterings. These indicate Lord Baltimore's rank in America. The Calvert crest rests on the helmet.

The escutcheon is supported on one side by the figure of a farmer, and on the other by that of a fisherman—symbols of each of Lord Baltimore's estates, Maryland and Avalon. Below the figures is the scroll bearing the Calvert motto: "Fatti Maschii Parole Famine," which means "Deeds are Males; words, females." On a border encircling the seal is the legend: University of Maryland . . . 1807 . . . 1856 . . . 1920.

Traditions . . .

Maryland, like all colleges, has traditions freshmen learn to love, and others remember long after college days are over.

As soon as school starts, the football season begins; many traditions surround the Old Liner's love of sports and celebrations. Pep rallies before the game encourage school spirit. Testudo, the huge mascot for the University, used to rest on a pedestal in front of the Coliseum, and was usually found missing early in the season. Traced from school to school, he invariably returned just before a big game. Now, however, the bronze prodigal is permanently stationed at the entrance of Byrd Stadium; his wandering days have come to a close—we hope!

Homecoming highlights the fall season, when old grads return for the game, a queen is crowned, fraternity and sorority houses are resplendent with decorations, all the women wear chrysanthemums and everyone attends the Homecoming Dance. The annual Freshmen-Sophomore tug-of-war over Paint Branch Creek precedes the game.

The Rossborough Club presents its annual three dances during the year.

At Christmas time a pageant is held, following the lighting of a Christmas tree. Dur-

ing the week preceding Christmas vacation, carols ring out on the campus between classes. The carols are played from the dining hall.

When spring comes, one of the important events is the Interfraternity Sing, followed by May Day, one of the most colorful spectacles at the University. The May Queen's Crowning, the tapping of outstanding junior women by Mortar Board, and a pageant presented to entertain the queen are part of the traditional program.

At this time, too, one of Maryland's keenest rivals, Johns Hopkins, is encountered in the annual lacrosse game between the two schools. This meeting is one of the more rousing events of the athletic year. Campaigning and electioneering for student government and class offices make very lively campus elections every spring.

The year is not complete without a visit to the Tunnel. Tradition has it that a couple must kiss on their first trip through this secluded spot.

Just before graduation the annual Honors and Awards Assembly is held, in which recognition of scholarship, sports, ROTC, and other phases of University life is given.

With graduation exercises, the seniors leave the University life behind them, but keep its memories always in their hearts.

● administration

TO MEMBERS OF THE FIRST YEAR CLASS:

University life basically is a hard, dull routine in which men and women work long hours to achieve their educational ambitions.

There are times when every student becomes discouraged, but at such moments he should think of the splendid goal that he is seeking to achieve.

Every student should remember that he or she will succeed only by his or her own efforts and by diligent application to the routine of study.

It is true, though, the the members of the Faculty of the University are friends of the students and stand ready to help students to translate their ambitions and resolves into actual achievements.

It will always be a pleasure to have you come to see me whenever you feel that I can be of help and I am sure that every member of the Faculty feels the same way.

Sincerely,
H. C. BYRD,
President





*Dean
of
Women*

It is with a great deal of pleasure that through the pages of the *M Book* I am able to extend a hearty and cordial welcome to all new and returning students. To the new students may I say I hope your years here will be busy, happy, profitable ones. I hope you will love our campus, enjoy its beauty, and respect our traditions. You will find Maryland a friendly place, and lasting friendships will be made during your college years. A college education is both a privilege and a responsibility. See that you make the most of this great opportunity which you are fortunate enough to have.

The door of my office and those of my assistants are always open to you. We want to know you, so stop by and get acquainted.

ADELE H. STAMP,
Dean of Women

It is indeed a great pleasure to welcome the Class of 1957 and I hope each member of the class will have many interesting and broadening experiences during their sojourn at the University of Maryland.

College life is co-operative and all must work for the success of the individual and the individual must work for the success of the group. Here at Maryland you will find the faculty, administration, and student body glad to assist you.

The Department of Student Welfare, as the name implies, is constituted to assist students where needed and all members of the department will be glad to have you come to visit with them for a friendly chat or to discuss a problem.

GEARY F. EPPLEY,
Dean of Men

*Dean
of
Men*



Board of Regents

Chairman.....William P. Cole, 1958
Treasurer.....Harry H. Nuttle, 1957

E. Paul Knotts, 1954
B. Herbert Brown, Jr., 1960
Mrs. John L. Whitehurst, 1956
Charles P. McCormick, 1957
Arthur O. Lovejoy, 1960
Edward P. Holter, 1959
Louis L. Kaplan, 1961
Edmund S. Burke, 1959
C. Ewing Tuttle, 1962

The year following a board member's name denotes the expiration of his particular term of office.

Officers of Administration

Harry C. Byrd, President of the University
Geary F. Eppley, Dean of Men and Director
of Student Welfare
Adele H. Stamp, Dean of Women
Edgar F. Long, Dean of Students
Harold F. Cotterman, Dean of Faculty

Ronald Bamford, Dean of Graduate School
Gordon M. Cairns, Dean of Agriculture
Leon P. Smith, Dean of College of Arts and
Sciences
J. Freeman Pyle, Dean of College of Business
and Public Administration
Wilbur Devilbiss, Dean of College of Educa-
tion, Director of Summer School
J. Ben Robinson, Dean of School of Dentistry
S. S. Steinberg, Dean of College of Engineer-
ing
M. Marie Mount, Dean of College of Home
Economics
Roger Howell, Dean of School of Law
H. Boyd Wylie, Dean of School of Medicine
Joseph R. Ambrose, Dean of College of Mili-
tary Science
L. M. Fraley, Dean of College of Physical
Education, Recreation and Health
Florence M. Gipe, Dean of School of Nursing
Noel E. Foss, Dean of School of Pharmacy
Ray Ehrensberger, Dean of College of Special
and Continuation Studies
Paul Nystrom, Director of Instruction, College
of Agriculture
G. Watson Algire, Director of Admissions
George W. Fogg, Director of Personnel
George O. Weber, Business Manager
Alma H. Preinkert, Registrar

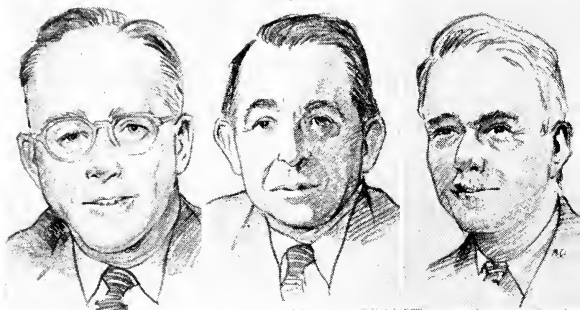


Top row, left to right: *Dean Wilbur Devilbiss*, College of Education; *Dean M. Marie Mount*, College of Home Economics.



Bottom row, left to right: *Dean J. Freeman Pyle*, College of Business and Public Administration; *Dean Harold F. Cotterman*, of Faculty; *Dean L. M. Fraley*, College of Physical Education.





Top row, left to right: *Dean Gordon M. Cairns*, College of Agriculture; *Dean S. S. Steinberg*, College of Engineering; *Dean Leon P. Smith*, College of Arts and Sciences.

• • • know your deans

Bottom row, left to right: *Dean Ray Ehrensberger*, College of Special and Continuation Studies; *Dean Joseph R. Ambrose*, College of Military Science.



*This symbolic gesture shows the beginning of a
new SGA*



● S G A

Let me take this opportunity to extend to you a hearty and sincere welcome to our campus community at the University of Maryland.

The student body and the Student Government Association are glad to have you with us. We hope your stay at the University will be both fruitful and pleasant in that you will achieve your academic goals and be active participants in campus life.

Maryland has a lot to offer you. Judging from the freshman classes which have preceded you, you have much to offer Maryland. The University has moved steadily ahead in many fields—education, research, athletics, and extra curricular activities. Just as we seniors have been a part of this growing and expanding process, you, too, will have an integral part in our alma mater's future.

This will not come about by the mere saying of these words, but will be the result of your interest and participation in campus affairs. We cannot urge you too strongly to become good scholars and good citizens—it is up to you, Class of 1957!

CRAIG FISHER
SGA President



Student Government Association

The University's organization for self-representation, the Student Government Association, is composed of three divisions: the Executive Council, the Men's League, and the Women's League.

Heading the SGA is the Executive Council, the student group which decides questions of student policy, appropriates activity funds, acts upon suggestions for improvement, and supervises all extra-curricular activities, through its various committees. All students are welcome to attend the Council's meetings which are held every two weeks.

The Men's and Women's Leagues are responsible for the enforcement of campus regulations.

Your student activities fee, appropriated through the SGA, finances dances, the University Theater, student publications, and other student activities.

Meet your SGA and class officials, and ask questions about student activities. You are urged to help the Association perform its actual work by joining committees. Only by maintaining an acute interest in campus affairs can you help to bring the improvements which many feel are needed.

Elections

Student Government Association and class offices are filled by elections which take place in the spring. If three candidates for offices are nominated, a primary is held a week prior to the final election. Any student having a 2.0 over-all average may run for an office. Candidates for Executive Council posts must be nominated from the floor of the SGA at a special designated meeting. Class office candidates must procure a specified number of petition signatures prior to the deadline in order to run. Normally an assembly is held at which candidates state their qualifications.

Committees

The Student Government Association operates through the use of committees, set up by the Executive Council. All students are eligible to work on SGA committees.

Chairmanships are open to those students writing a letter of application listing their qualifications and experience.

Sub-committee chairmen are selected to serve under the chairman on the basis of experience.

SGA committees under the constitution are Ways and Means, Elections, Organization and Procedure, and special committees as the need arises.

Student Government Association

Executive Council

<i>President</i>	Craig Fisher
<i>Vice-President</i>	Johnny Martin
<i>Secretary</i>	Frances White
<i>Treasurer</i>	Bill Bass
<i>President, Men's League</i>	Donald Goldstein
<i>President, AWS</i>	Mary Jo Turner
<i>Fraternity Representative</i>	Rennie Smith
<i>Sorority Representative</i>	Eileen Reinhart
<i>Independent Representative</i>	Barbara Paton
<i>Independent Representative</i>	Chuck Keffer
<i>Delegate at Large</i>	Jeanne Peake
<i>Delegate at Large</i>	Mary Margaret Mueller
<i>Delegate at Large</i>	George Kemp
<i>President, Senior Class</i>	Dave Bowers
<i>President, Junior Class</i>	Ray Browning
<i>President, Sophomore Class</i>	Ed Speer
<i>President, Freshman Class</i>	To be elected

The president of the Executive Council has named the following committees: Student Welfare, Social Affairs, Campus Improvement, Student Activities, Constitution, Campus Chest, Freshman Orientation, Homecoming, Dad's Day, Student Union, Cultural Program, Public Relations, Traffic Appeals, and Job Placement.

Class Officers 1953-54

Senior Class

<i>President</i>	Dave Bowers
<i>Vice-President</i>	Don Willard
<i>Secretary</i>	Marianne Allen
<i>Treasurer</i>	Don Smith
<i>Historian</i>	Molly Turner
<i>Sergeant-at-Arms</i>	Wayne Smith
<i>Men's League Rep.</i>	Don Tindal
<i>AWS Representative</i>	Phyllis Zelko

Junior Class

<i>President</i>	Ray Browning
<i>Vice-President</i>	Carl Friedler
<i>Secretary</i>	Maxine Moffett
<i>Treasurer</i>	Robert Montgomery
<i>Historian</i>	Carol Chenoweth
<i>Sergeant-at-Arms</i>	James Gordon
<i>Men's League Rep.</i>	Harvey Betts
<i>AWS Representative</i>	Kitty Patrick

Sophomore Class

<i>President</i>	Ed Speer
<i>Vice-President</i>	Charles LaMason
<i>Secretary</i>	Joy Cosgrove
<i>Treasurer</i>	Stan Fisher
<i>Historian</i>	Pat King
<i>Sergeant at-Arms</i>	Pat Hoover
<i>Men's League Rep.</i>	Dave Walker
<i>AWS Representative</i>	Barbara Lape

Associated Women Students

<i>President</i>	Mary Jo Turner
<i>Vice-President</i>	Joy Covert
<i>Secretary</i>	Wanda Mehring
<i>Treasurer</i>	Maureen Quinn

You, as a new woman student will soon find that you will be a part of AWS, helping to fulfill its goals for the general welfare of the women students. AWS formulates, administers, and interprets the rules governing women students.

Every woman student is a member of the Associated Women Students, which serves as a governing body for women students and encourages their participation in student life. The Dean of Women's staff constitutes the Advisory Board of AWS.

The organization consists of four divisions: the Executive Council, Residence Council, Judicial Board, and Academic Board. The Executive Council is the active administration organization consisting of AWS officers, Judicial Board chairman, Dormitory presidents, Panhellenic representative, ISA representative, Daydodger's Club representative, and International Club representative.

The Legislative Council consists of those members of the Executive Council in addition to all of the residence hall presidents. The Judicial Board maintains a high level of personal and group standards of behavior in the college community. The Academic Board endeavors to improve student-faculty relationships.

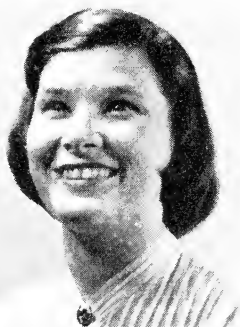
Hello—we are more than glad to have you join us! We are glad because we want to share with you the privileges of a student at the University of Maryland. Here we may learn the values of life and the most fruitful ways of living it.

Privilege always carries with it responsibility. If you wish to learn, you must make an effort to do so. We of AWS join the faculty in offering to you every possible assistance in that effort.

You are a member of our Associated Women Students as soon as you become a student here. Our office, in the Dean of Women's Building, is your office, too.

We hope you will also join us in our very rewarding social, cultural, and scholastic activities. We'll be seeing you soon.

MARY JO
TURNER,
AWS President



Men's League

As the President of the Men's League, and therefore, as one of your student representatives, I would like to take this time to welcome each and every one of you to the University of Maryland.

We here at Maryland think we have the best University in America. I am sure after you get settled here you will think the same.

Here at Maryland there is a place for everyone, the athlete, the musician, the singer, the dancer, the writer, the actor, and the scholar.

Your talents will be welcomed into many extra curricular activities, but do not forget scholarship. Far too many of the students who came before you forgot the main reason that

they came to college was to get an education and after they graduated they were sorry they had not studied more. So study!

If I can be of any service to you, please do not fail to call on me. Best of luck to you all.

DON GOLDSTEIN
(Glip)

Men's League Pres.



President.....Donald (Glip) Goldstein
Vice-President.....Charles Moore

The men's representative body on campus, the Men's League, assists the Dean of Men in administering University rules and regulations, and assists the dorm manager in enforcing the code of conduct. The League is divided into two sections—the Executive Council and the Dormitory Council. .

The Executive Council, in addition to the above officers is composed of elected representatives of each class, Alpha Phi Omega, Interfraternity Council and Independent Students' Association.

The Dormitory Council functions as a disciplinary board for offenders of the dormitory regulations and also works to encourage dormitory activity and comradeship through the proctors.

The proctors are students who maintain order and discipline in the dormitories by seeing quiet hours are observed for studying, rooms are kept clean, and other dormitory regulations are observed. Proctors also act as advisors and counsellors to the students.

Each year the Council awards a bronze cup to the graduating man who has done most for male students on campus.

Among the several purposes of honor societies on the campuses of American universities are the recognition of excellence in scholarship as well as superior citizenship, character, and leadership.

There are many well known national honoraries on the campus of the University of Maryland. Two of them recognize academic achievement during the freshman year. Others award membership for superior accomplishments in the several colleges and many departments of the University. One, Phi Kappa Phi, extends membership to students in all colleges and departments.

All honor societies maintain very high standards for eligibility and membership is something to be highly valued. Election to an honorary is within the grasp of every student who is willing to strive for distinction in his chosen field.



Being tapped for membership in any honorary is an experience to be remembered through the years as it is an honor that come only to those few who excel in some phase of university life.

JAMES H. REID
Chairman, Student
Life Committee

May Day Queen ►

● honoraries



. . . *Study Hints*

As a college freshman, you will find the study habits you form now of the greatest importance in the coming four years. For the best results, two hours study is recommended for each hour of class. Here are some points to help you get the best point average:

1. Have a study schedule and stick to it.
2. Have a definite place in which to study.
3. Choose a time with the fewest distractions possible
4. Read the material before each lecture—you'll find the class more interesting.
5. Don't cram for exams—review your notes from day to day.
6. Take notes carefully and completely. Use ink! When the test comes, you will have your own set of facts.

Graduate

Sigma Xi

Founded at Cornell University, 1886

Established at University of Maryland, 1927

President.....Dr. Michael J. Pelczar

Vice-President...Dr. Willard W. Green

Secretary.....Dr. Francis C. Stark

Treasurer.....Dr. Clyde S. Shaffner

Elections to Sigma Xi, an honorary research fraternity, are made from those faculty members and graduate students who have demonstrated ability in research and the natural sciences.

Freshman Scholarship

ALPHA LAMBDA DELTA

National Women's Freshman Honor Society
Founded at the University of Illinois, 1924
Established at University of Maryland, 1932

President.....Mira Gogate
Vice-President.....Anita R. Wilson
Secretary.....Marjorie E. Hall

Freshman women attaining 3.5 or above during their first semester or during their entire freshman year are eligible for membership.

PHI ETA SIGMA

National Men's Freshman Honor Society
Founded at the University of Illinois, 1923
Established at University of Maryland, 1940

President.....Bob Winkler
Vice-President.....Thomas Mortimer
SecretaryGil Rosenthal

Freshmen men maintaining a 3.5 average for the first semester or for the whole freshman year are eligible for membership.

Leadership

Mortar Board

Founded at Swarthmore College, 1918

Established at University of Maryland, 1934

President.....Lorraine Jorgensen

Vice-President.....Frances White

SecretaryMary M. Mueller

Junior women who have fulfilled the requirements of leadership and service and who have maintained at least a 2.7 average during their first two and a half years are selected for membership in Mortar Board. Tapping of members takes place during the traditional May Day ceremonies on the College Park campus.

Other undergraduate members include:

Barbara Ann Bennett

Jane Cahill

Jeanine Eberts

Jean Happ

Elizabeth McDaniel

Barbara Paton

Jeanne Peake

Bettie Rossmann

Barbara Riggs Stiles

Peggy Topping

Molly Turner

Betty Woodard

Omicron Delta Kappa

*Founded at Washington and Lee University,
1914*

Established at University of Maryland, 1927

PresidentJohn Martin
Vice-President.....William Bass
Secretary.....Robert Fischer

This national men's leadership honor society recognizes campus men on the basis of their leadership and service, character, scholarship, fellowship and concentration to democratic ideals. Outstanding men are recognized from the following phases of campus life: drama, scholarship, publications, athletics, social, and religion.

Other undergraduate members include:
Donald Goldstein
Craig Fisher

Senior Scholastic

Phi Kappa Phi

Founded at University of Maine, 1897

Established at University of Maryland, 1920

President.....Dr. Francis S. Grubar

Vice-President.....Dr. Ray A. Murray

Secretary-Treasurer

Miss Lenna Gross

Corresponding Secretary

Miss Jane Crow

Seniors in the upper ten percent of their college are eligible for membership in this scholastic fraternity. Tappings are held in the fall semester when the highest ranking senior in each college and the upper ten percent of each college are tapped.

Departmental

Alpha Zeta

National Honorary Agriculture Fraternity

Founded at Ohio State University, 1897

Established at University of Maryland, 1920

President.....Robert J. Fegan

Secretary.....Floyd M. Wyatt

Membership is open to students who are in the upper two-fifths of their class and who have completed one and one half years in the College of Agriculture. Other requirements are good character and leadership.

Alpha Kappa Delta

National Honorary Sociology Fraternity
Founded at University of Southern Cal., 1920
Established at University of Maryland, 1946

PresidentThelma W. Gelkin
Vice-PresidentMeyer Greenberg
Sec.-Treas.Elizabeth Poisal
AdvisorDr. Peter Lejins

Eligibility is based on junior and senior standing, maintenance of an overall 3.0 average and completion of 18 credits in sociology courses.

Alpha Chi Sigma

Professional Chemical Fraternity
Founded at University of Wisconsin, 1902
Established at University of Maryland, 1927

President.....Frank D. Wolffe
Vice-President.....Lillian A. Moats
Secretary.....Larry A. Miller
Advisor.....Dr. Fletcher P. Veitch

Chemistry or chemical engineering majors having a 2.5 scholastic average are eligible for membership.

Beta Alpha Psi

National Honorary Accounting Fraternity
Founded at University of Illinois, 1919
Established at University of Maryland, 1936

President.....George E. Henkel
Vice-President.....J. William Biggs
Secretary.....Marjorie G. Kinsinger
Advisor.....Prof. John A. Daiker

Beta Alpha Psi requires members to have a 3.0 average in all accounting courses, and a 2.0 average in other subjects. Membership is also based on passing an entrance exam and the writing of a research paper.

Beta Gamma Sigma

National Commerce Honorary Fraternity
Founded at the University of California, 1913
Established at University of Maryland, 1932
President.....Dr. J. Allan Cook
Secretary-Treasurer
Dean James H. Reid

Gamma Beta

Men's Music Honorary
Founded at University of Maryland, 1950
President.....William J. Praus
Vice-President.....Marvin C. Fuchs
Secretary.....Tasso Mavrides
Men with a 2.0 overall average and who have been active in one or more of campus musical organizations are recognized by Gamma Beta.

Delta Sigma Pi

Professional Business Fraternity
Founded at New York University, 1907
Established at University of Maryland, 1950
President.....E. Ralph Bufkin
Vice-President.....Edward E. Lugenbeel
Secretary.....Richard E. Cox
Open to all male students in the College of Business and Public Administration who maintain an average of or higher than the overall men's average.

Iota Lambda Sigma

National Industrial Education Professional Fraternity

Established at University of Maryland, 1941

President.....Erving Zorb
Vice-President.....Otis White
Secretary.....Walter Heiderman
Advisor.....Prof. Glenn D. Brown

Iota Lambda Sigma promotes recognition of professional training in the field of industrial education and the recognition of high scholarship.

Omicron Nu

National Honorary Home Economics Fraternity

Founded at Michigan State College, 1912

Established at University of Maryland, 1937

President.....Deidre P. Tierney
Vice-President.....Alice M. Phillips
Secretary.....Valerie VanDerwerker
Treasurer.....Marilyn F. Carey
Advisor.....Miss Jane Crow

Students in the College of Home Economics who have maintained high scholarship are recognized by Omicron Nu. The local chapter also honors the freshman woman who attains the highest average in the college.

Sigma Alpha Omicron

Professional Bacteriological Society

Founded at Washington College, 1925

Established at University of Maryland, 1932

President.....Leo R. DiLiello

Vice-President.....David Wayne Smith

TreasurerJohn Arth

Secretary.....Janice M. Campbell

Advisor.....Dr. Norman C. Laffer

A minimum of twelve credits in bacteriology and a 2.5 overall average are required of juniors and seniors for membership.

Sigma Pi Sigma

Honorary Physics Society

Founded at University of Maryland, 1948

PresidentFrank D. Enck

Vice-President.....Donald J. Belknap

Secretary.....Jack Dickson

Treasurer.....Charles B. Izard

Open to physics majors with a better-than-average scholastic record.

Tau Beta Pi

National Honorary Engineering Fraternity

Founded at Lehigh University, 1885

Established at University of Maryland, 1942

Students in the College of Engineering who have maintained an academic standing in the upper fifth of their senior class, or upper eighth of the junior, are considered for tapping in this fraternity.

Phi Alpha Theta

History Honorary Society

Founded at University of Maryland, 1948

President.....Colburn B. Lovett

Vice-President.....Irving L. Becker

Secretary.....Bettie E. Rossmann

Tapping requirements for this history honorary require a 2.7 overall average with a 3.0 average in 18 credits of history, six of which must be in advanced courses.

Phi Alpha Xi

Honorary Floriculture Fraternity

Established at University of Maryland, 1950

President.....W. R. Jenkins

Vice-President.....Ralph O. Barnett

Secretary.....Joseph G. Giampaoli

Members must have a 2.5 overall average and a 3.0 average in horticulture subjects. Phi Alpha Xi brings men and women together who share a mutual interest in ornamental horticulture and floriculture.

Phi Delta Kappa

National Education Fraternity

Founded at University of Indiana, 1906

Established at University of Maryland, 1942

PresidentDon Hennick

Vice-President.....Abraham Granek

Recording Secretary.....Tom Bush

Advisor.....Dr. Arthur M. Ahalt

Membership is open to graduate and undergraduate students in their junior and senior years who are preparing for careers in the field of education.

Upsilon Upsilon

Woman's Music Honorary

Founded at University of Maryland, 1951

President Millie Layton

Vice-President Joyce Ames

Secretary..... Betty Woodard

Treasurer..... Lois Harvey

Open to music majors who have a 2.0 overall.

Recognition Societies

Gate and Key Society

*Founded at George Washington University,
1922*

Established at University of Maryland, 1950

President..... Bernie J. Gross

Vice-President..... Ivan J. Shefferman

Secretary..... Bob J. Cottone

Fraternity men are elected on the basis of their contributions to their fraternity.

National Collegiate Players

National Dramatic Honorary

Founded at the University of Wisconsin, 1919

Established at University of Maryland, 1947

President..... Jane Cahill

Vice-President..... Bill Price

Secretary-Treasurer Borah Burman

Advisor..... Mr. Warren Strausbaugh

Students with junior or senior standing who have made outstanding contributions to the University Theater are tapped by NCP.

Pi Delta Epsilon

National Journalism Honorary Fraternity

Founded at Syracuse University, 1909

Established at University of Maryland, 1930

PresidentJim Hansen

Vice President.....Lorraine Jorgensen

Secretary-Treasurer...Bettie Rossmann

Pi Delta Epsilon taps students who have worked on student publications for two years or who have held a major editorial position for one year.

Sigma Tau Epsilon

Women's Recreational Honorary Society

Founded at University of Maryland, 1940

President.....Shirley Steele

Vice-PresidentWilma Brown

Secretary-TreasurerRita Bikowsky

Sigma Tau Epsilon honors those coeds who have shown cooperation, the willingness to work for and who have been of service to the Women's Recreational Association.

Pi Sigma Alpha

Honorary Political Science Fraternity

Founded at University of Texas, 1920

Established at University of Maryland, 1938

PresidentDon Piper

Vice-PresidentRussell Rourke

SecretaryRuss Rooks

AdvisorDr. Reuben Steinmeyer

Membership is based on honor work in the department of Government and Politics.

*The Gankana Troup Maculand's acrobatic
ambassadors*

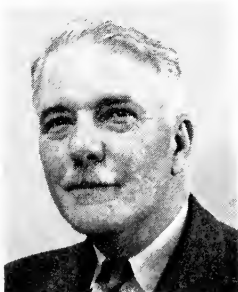


● organizations

College professors and administrative officers unanimously agree (which is rare, I assure you!) that study comes first for their students; their habitual tendency to disagree among themselves becomes evident on the question of the importance of extra-curriculum activities in higher education. I, for one, place a high value on the educational potential of such activities and, therefore, firmly believe in the encouragement of student organizations.

Obviously each student is most apt to devote his energies to that field of activity in which he feels he has some competence; interest and ability naturally have an affinity for each other. This basis for choosing activities is not only natural, but valid. However, since college life is higher education, some thought should be given by the individual concerned not only to what he can contribute, but also to what he can acquire. College is not only a preparation for life, but a part of life itself. Take your place in this community and its groups.

LEON P. SMITH
Dean of Arts and
Sciences



Student Life Committee

The Faculty Committee on Student Life serves as one of the most important forces on the University of Maryland campus. It is the connecting link between the student body and the Administration and serves to advise the Student Government Association.

Its main function is that of approving all activities sponsored by the various student organizations on campus. The committee, appointed by the President of the University, is composed of faculty members who are interested in the several aspects of campus life.

Members of Student Life Committee are:

Dean James H. Reid, Chairman
Professor Russell B. Allen
Dean Geary Eppley
Mr. Robert James
Professor Amihud Kramer
Dr. Clarence A. Newell
Colonel Douglas M. Peck
Professor George D. Quigley
Professor Warren L. Strausbaugh
Coach James M. Tatum
Dr. Charles E. White
Miss Dorothy W. Binns
Dr. Susan E. Harman
Miss Alma H. Preinkert
Dean Adele H. Stamp

For further information on all of the organizations in this section consult the Club News column of the Diamondback.

Athletic

AQUALINERS

President.....Peggy Hogan
Vice-President.....Molly Turner
Secretary.....Judy Cohen
Treasurer.....Pat Keen
Faculty Advisor Miss Doris Neyendorf

It is not necessary to be in the Esther Williams class to join the group, because club members learn while they swim on Tuesday nights.

GYMKANA

President.....E. Byron Milligan
Vice-President.....George Terrell
Secretary.....Billie Jess
TreasurerPaul Summers
Faculty Advisor.....Dr. David Field

Open to all coeds and men interested in gymnastics, tumbling, dancing, and other forms of exhibition activities, the Gymkana Troupe practices on Wednesday evenings in preparation for its annual campus Home Show.

JUDO CLUB

PresidentDouglas Davis
Secretary-TreasurerDick Buck
Faculty Advisor.....Irving Linkow

Under the instruction of Jim Tanemori and Major Donn F. Draeger of the Washington Judo Club, members develop mastery of this sport during their Wednesday and Saturday meetings.

RIDING CLUB

<i>President</i>	Joe Schneider
<i>Vice-President</i>	Dawn Ryan
<i>Secretary</i>	Ana Karavangelos
<i>Treasurer</i>	Diane Woods
<i>Faculty Advisor</i>	Dr. John E. Foster

Horses and horsemanship are the interests of Riding Club members. These interests are stimulated with numerous trail parties, lectures and movies on riding, and preparation for the club's annual horse show.

SAILING CLUB

<i>Commodore</i>	Richard Heintz
<i>Secretary-Treas.</i>	Martha Ransopher

Besides spending weekends sailing, the club, a member of the Inter-Collegiate Yacht Racing Association, holds parties and bi-monthly, Tuesday night meetings.

SKIING REBELS CLUB

<i>President</i>	William James Campbell
<i>Vice-President</i>	John Ainsworth
<i>Secretary</i>	Ellen Lang
<i>Treasurer</i>	Kwang Chen
<i>Faculty Advisor</i>	Doyle Royal

Weekend ski trips to Lake Placid, Alpine Meadows, and other northern resorts are the featured activities of this group. Between trips, skiing enthusiasts study techniques of the sport through lectures and training films presented at their Wednesday night meetings.

WOMEN'S PHYSICAL EDUCATION MAJORS CLUB

President.....Betty Sale
Vice-PresidentEve Levine
Secretary.....Virginia Fawsett
Faculty Advisor.....Dr. Dorothy Mohr

This organization is for all women majoring in physical education in order that they may learn more about their profession and become better acquainted with other majors.

WOMEN'S RECREATIONAL ASSOCIATION

President.....Shirley Schwartz
Vice-President.....Shirley Steele
Recording Secretary.....Nan Weinman
Corr. SecretaryRita Bajkowska

The women's recreational program is coordinated by WRA. Throughout the year this organization plans bowling, tennis, badminton, basketball, softball, volleyball, and swimming tournaments for dormitory, independent, and sorority competition.

Civic and Service

AMERICAN RED CROSS

Officers will be elected in the fall.

All Red Cross projects on campus are sponsored by the University unit. Last year the Blood Donorship Drive promoted by the group gathered 264 pints of blood for the Red Cross.

ALPHA PHI OMEGA

<i>President</i>	Edward Polivka
<i>Vice-President</i>	David Walker
<i>Secretary</i>	Lawrence Flenner
<i>Faculty Advisor</i>	George Fogg

Membership in APO is reserved for all men who have been Boy Scouts. While service to others is the guiding principle of this national fraternity, APO also has a full social program.

DAYDODGERS CLUB

<i>President</i>	Ed Chapin
<i>Vice-President</i>	Jared Collard
<i>Secretary</i>	Wilma Brown
<i>Treasurer</i>	Mary McAndrews
<i>Faculty Advisor</i>	Doyle Royal

All commuting students are invited to attend Monday meetings in the Rec Hall.

INDEPENDENT STUDENT ASSOCIATION

<i>President</i>	Pete Sarant
<i>Vice-President</i>	Dave Walker
<i>Secretaries</i>	Lyla Erb Amanda Wall
<i>Faculty Advisor</i>	John Daiker

To provide a group for students not affiliated with fraternities and sororities is the main purpose of the ISA. This organization, which meets on Monday nights, provides an active social and cultural program for its members.

Departmental

AGRICULTURAL ECONOMICS CLUB

President.....Earl B. Miller

SecretaryTony Cruit

Faculty Advisor

Professor Luther B. Bohanan

Students interested in participating in discussions led by prominent speakers in agricultural economics are invited to attend meetings of the Agricultural Economics Club held on the second and fourth Thursdays of each month.

AGRICULTURAL STUDENT COUNCIL

PresidentJames Arnold

Vice-President.....Eugene Gogel

SecretaryHenry Gerhart

Faculty Advisors.....Dr. Paul Nystrom

Dr. Francis Stark

Representatives from the various agricultural clubs are members of the Agricultural Student Council which co-ordinates the activities of the ten campus agricultural organizations.

AMERICAN INSTITUTE OF CHEMICAL ENGINEERING

President.....James Hoffmann

Vice-PresidentErich Schlaile

SecretaryEdward DeVries

Faculty Advisor.....Richard S. Fey

AIChE, the student affiliate of the national organization, strives to promote and advance the profession of chemical engineering among all majors.

AMERICAN INSTITUTE OF ELECTRICAL ENGINEERS AND INSTITUTE OF RADIO ENGINEERS (Joint Student Branch)

Chairman.....Otto J. Blumenstein

Vice--Chairmen

Thomas R. Evans (AIEE)

Wayne DeMoss (IRE)

Secretaries

Loren M. Goodman (AIEE)

Elmer A. Woodin (IRE)

TreasurerEugene G. Michael

Faculty Advisors

Professor Lawrence J. Hodgins (AIEE)

Professor Henry W. Price (IRE)

Through sponsorship of speakers and group discussion the local student chapter of AIEE and IRE promote interest in electrical engineering. Juniors and seniors who submit an application to any officer of the group may become members.

AMERICAN MARKETING ASSOCIATION

Officers to be elected in the fall.

Faculty AdvisorsDr. J. Allen Cook

Dr. Irving I. Raines

Open to all marketing majors, the American Marketing Association furthers its aim of showing the development of practices of leading national marketing associations through professional meetings. Authorities on the field of marketing are often invited to speak at these meetings.

AMERICAN SOCIETY OF CIVIL ENGINEERING

President Gerald Longanecker
Vice-President..... Fred Ward
Secretary and Treasurer to be elected from the junior class.
Faculty Advisor... Dean S. S. Steinberg

This organization provides an opportunity for sophomore, junior, and senior civil engineering students to become acquainted and hear competent speakers discuss the civil engineering profession.

AMERICAN SOCIETY OF MECHANICAL ENGINEERS

President..... Robert Stephens
Vice-President..... Charles M. Harman
Secretary..... Alan P. Haines
Treasurer..... Thomas G. Steinmetz
Faculty Advisor..... Redfield W. Allen

Sophomore, junior, and senior students in civil engineering are eligible for membership in this organization, whose aim is to bring majors into contact with the various aspects of their field.

ASTRONOMY CLUB

Director..... John Dawson

If you would like to see Jupiter or Saturn, join the Astronomy club. Club members devote their time to telescope building and the study of astronomy. Once a year the group holds an observationist night when club members put their telescopes into action. Meetings are announced in the *Diamondback*.

BLOCK AND BRIDLE

<i>President</i>	George Wood
<i>Vice-President</i>	David Daniel
<i>Secretary</i>	Mary Blackhall
<i>Treasurer</i>	James Schaeffer
<i>Faculty Advisors</i> ...	Mr. Richard Brown Professor Malcolm Kerr

To stimulate student interest in Animal and Dairy Husbandry is the aim of this organization. To further its aim the club sponsors a student livestock show and judging contest each year. Meetings are held on the first and third Tuesday of the month.

BUSINESS EDUCATION CLUB

<i>Officers to be elected in the fall.</i>	
<i>Faculty Advisors</i> ...	Miss Eileen Costello Mr. Arno Knapper

The Business Education Club aims to bring students with a common interest together for the purpose of developing competent, enthusiastic business teachers. A program presenting guest speakers is featured.

CHILDHOOD EDUCATION CLUB

<i>Officers to be elected in the fall.</i>	
<i>Faculty Advisors</i> ...	Mrs. Lois Paradise Mrs. Alice Powell

This group will hold three Tuesday afternoon assemblies during the semester. These assemblies will revolve around a program of speakers and social activities.

COLLEGIATE 4-H CLUB

PresidentMary Blackhall
Vice-PresidentRita Rogers
SecretaryDorothy Williams
Treasurer.....Joe Seidel
Faculty Advisor

Miss Margaret Ringler

This organization is for former 4-H club members and other interested students, voted into the group, who wish to further on campus the 4-H ideals and be of assistance to the state 4-H club office. Meetings are held on the first and third Thursday of the month.

DAIRY SCIENCE CLUB

President.....John Lloyd
Vice-President.....Gerald Lentz
SecretaryMaija Vilums
Treasurer.....J. Nelson Langdon
Faculty Advisors.....Dr. John Pou

Dr. Wendell Arbuckle

This club offers students interested in the dairy field a chance to obtain information on the production and manufacturing techniques in the dairy industry.

ENGINEERING STUDENT COUNCIL

Chairman.....Dean S. S. Steinberg
No other officers.

To co-ordinate the activities of the students in the College of Engineering is the objective of this council. Presidents of the engineering societies and elected representatives of the engineering classes comprise the members of this organization.

FRENCH CLUB

<i>President</i>	Waldemar Matias
<i>Vice-President</i>	Jose A. Font
<i>Secretary</i>	Mildred Finley
<i>Treasurer</i>	Dino Sfreddo
<i>Faculty Advisor</i>	

Dr. Leonora C. Rosenfield

In order that French students become better acquainted, this club promotes programs and social affairs during the school year.

FUTURE FARMERS OF AMERICA

<i>President</i>	Morris Favorite
<i>Vice-President</i>	Jim Arnold
<i>Secretary</i>	Neri Clark
<i>Treasurer</i>	Paul Coblentz
<i>Faculty Advisor</i>	Dr. Ray Murray

The FFA is an organization devoted to developing competent rural agricultural leadership qualities. Membership is open to any male agriculture student who is either enrolled in agricultural education, a former FFA member, or is interested in agriculture, rural education, and the club.

FUTURE TEACHERS OF AMERICA

<i>President</i>	James Van Ness
<i>Vice-President</i>	Lois Schnydman
<i>Secretary</i>	Virginia Holloway
<i>Treasurer</i>	Bill Aiken
<i>Faculty Advisor</i>	Miss Marie Bryan

The FTA is an undergraduate chapter of the National Education Association.

HOME ECONOMICS CLUB

President.....Mary Margaret Mueller
Vice-President.....Joyce Riggs
Secretary-Treasurer.....Lynn Propf
Faculty Advisors.....Dean Marie Mount
Miss Nancy Mearig

This club affords Home Economics majors a chance to become better acquainted with one another. The club program includes speakers, food demonstrations, and fashion shows.

INDUSTRIAL EDUCATION ASSOCIATION

President.....William Breon
Vice-President.....Alfred W. Little
Secretary.....Orville Deming
Treasurer.....George Wu
Faculty Advisor.....Glen D. Brown

IEA is open to all students interested in industrial education.

INSTITUTE OF AERONAUTICAL SCIENCES

Chairman.....Henry Tucker
Vice-Chairman.....Thomas Field
Secretary-Treasurer
Albert Kalbfeisch
Faculty Advisor.....Gene Hertler

The IAS strives to facilitate the interchange of technical ideas among aeronautical engineers by presenting speakers and films at their monthly meetings.

INSTITUTE OF FOOD TECHNOLOGY

Chairman.....Eugene Gogel
Vice-Chairman.....Neil Beecher
Secretary-TreasurerBernard Twigg
Faculty Advisor.....Dr. Edgar P. Walls

One of the newest organizations on campus, the Institute of Food Technology was formed for the purpose of bringing together students interested in the food field. The second Tuesday of every month is the official meeting day.

MATH CLUB

Officers to be elected in the fall.
Advisor.....Dr. Stuart Haywood

This club is open to anyone interested in mathematics and is not limited to math majors.

NATIONAL MUSIC EDUCATOR'S CONFERENCE

President.....Harold Closson
Vice-PresidentJeannette Muir
Secretary-Treasurer...Virginia Mullins
Faculty Advisor.....Mrs. Mary Kemble

The purpose of this group, which is open to all music majors and minors, is to advance knowledge in the field of music. Plans for the club year include attendance at state and national convention meetings to discuss music education.

PHILOSOPHY CLUB

Officers to be elected in the fall.

*Faculty Advisor.....*Dr. John Robinson

This organization brings together students interested in discussing philosophical theories of the past and present and in listening to guest lectures.

PLANT INDUSTRY

Officers to be elected in the fall.

Faculty Advisors

Dr. Thomas Ronningen

Dr. Russell Brown

The Plant Industry Club strives to bring together students in botany, horticulture, and agronomy. Speakers, movies, and slides are presented at club meetings held on the second and fourth Thursdays of each month.

PRESS CLUB

*President*Bill Cahill

*Vice-President.....*Ronnie Brooks

*Secretary.....*Kathy Desmone

*Treasurer.....*Jim Garcia

Faculty Advisor

Professor Donald Krimel

The Press Club, composed of journalism and public relations majors and minors, publicizes University events through news bulletins they prepare for local papers and handles the publicity for the Campus Chest drive.

PROPELLOR CLUB

President.....Charles H. Day
Vice-President.....John O. Koch
Secretary-TreasurerRoger Lausch
Faculty Advisor...Dr. Charles A. Taff

This organization is open to transportation majors. At semi-monthly club meetings guest speakers from national traffic and water associations inform the group on their field of endeavor.

RUSSIAN CLUB

No^a officers
Faculty Advisor

Mrs. Marie Boborykine

Students who are studying the Russian language prepare a Russian evening during the school year which is highlighted by a play presented in Russian. Students studying this language meet occasionally to discuss Russian customs and arts and converse in that tongue.

SOCIETY FOR THE ADVANCEMENT OF MANAGEMENT

President.....James Bray
Secretary.....Robert Dorsey
Treasurer.....Joseph Kotowski

Open to all students majoring in management, the Society for the Advancement of Management sponsors discussion groups and speeches concerning the theory and practice of modern scientific principles of management. Meetings are held monthly.

SOCIOLOGY CLUB

President.....Lester G. Thomas
Vice-PresidentSara Carter
Secretary and Treasurer

To be elected in the fall:

Faculty Advisor.....Dr. Peter Lejins

Twice a month, junior and senior sociology students meet to participate in a club program which consists of sociological movies, guest speakers, discussions on sociological problems, and social gatherings.

SPANISH CLUB

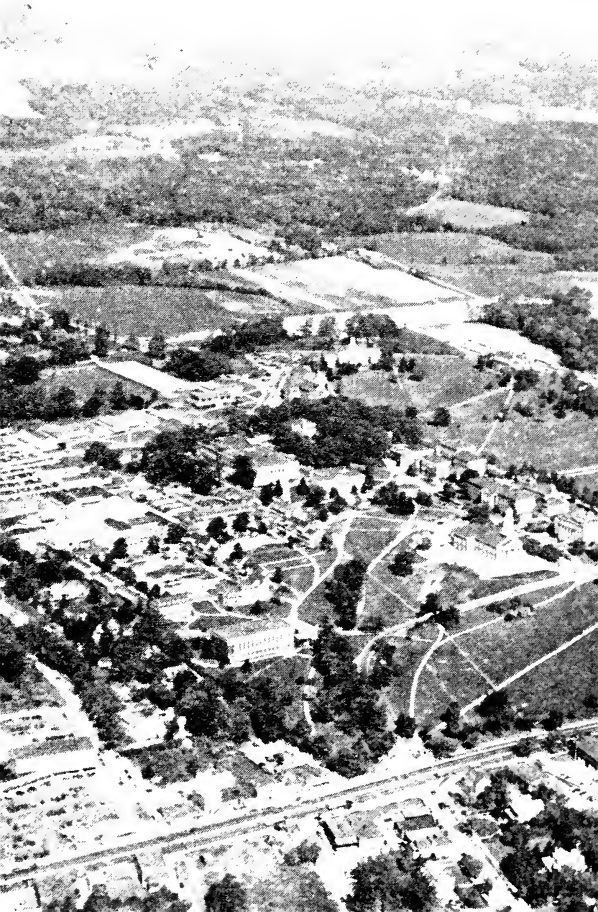
President.....Alice Scott
Vice-President..... Percy Goody
SecretaryPeggy Culbertson
Treasurer.....Sabra Baker
Faculty Advisor.....Miss Ann Norton

Through field trips and speakers the Spanish Club offers students an opportunity to know more about the life, customs, and language of Spanish countries. Last year the club's activities included a Spanish dinner at El Mexico restaurant, viewing the movie "Don Juan in Hell," and listening to speakers from the Pan American Union. The group meets on Thursdays.

VETERINARY SCIENCE CLUB

Officers to be elected in the fall.

This club participates in discussions on the veterinary field. Members, veterinary science majors, often assist local veterinarians.





Recreational

BALLROOM DANCE CLUB

Officers to be elected in the fall.

If you want to progress beyond the two-step stage or brush up on your mambo, the Ballroom Dance Club is for you. Every Tuesday night an instructor is present in the Old Gym to give dance pointers to club members.

CAMPUS CONJURERS

President.....Graham Holland
Vice-PresidentBob Cooke
Secretary-Treasurer...Jerry Hammond
Faculty Advisor.....Bernie Works

The Campus Conjurors prove that the hand is quicker than the eye while they exchange tricks of the trade at their Tuesday night meetings.

CHESS CLUB

President.....Frank Lanza
Vice-PresidentCharles Hodgson
TreasurerMike Schulman
Faculty AdvisorsDr. A. L. Ward
Miss Marie Bryan

“Check mate,” the battle cry of the Chess Club, can be heard every Thursday afternoon at 4 p.m. in the Rec Hall. At that time the Chess Club practices for tournaments with schools in the Washington and Baltimore areas.

INTERNATIONAL CLUB

<i>President</i>	Hasan Hasan
<i>Vice-President</i>	John Ostrander
<i>Secretary</i>	Pat Chambers
<i>Treasurer</i>	Carmen Guevara
<i>Faculty Advisor</i>	Arthur Hamilton

The main purpose of this organization is to provide a common meeting ground for representatives of all nations on campus in order to promote friendship and understanding. Any student, American or foreign may attend meetings which are held on Friday evenings in the Rec Hall.

INTERNATIONAL RELATIONS CLUB

Officers to be elected in the fall.

Faculty Advisor.....Dr. Richard Bauer

This club meets for the purpose of discussing the international situation. Students interested in attending the monthly meetings should contact Dr. Bauer.

MARYLAND FLYING ASSOCIATION

<i>President</i>	Theodore Stadel
<i>Vice-President</i>	Ralph Kloetzli
<i>Secretary</i>	Diane De Martino
<i>Treasurer</i>	Jean Danforth
<i>Faculty Advisor</i>	

Capt. Harvey Sorenson

The Maryland Flying Association offers inexpensive flying to students who are already "birdmen" and flying instruction to those who would like to get up into the wild blue yonder.

AMATEUR RADIO ASSOCIATION

PresidentBruce Packham
Vice-PresidentRobert Forward
Recording Secretary

B. Joy Dobrovolny

Each Wednesday night at 7:30 p. m. the "hams" or amateur radio enthusiasts can be heard over the air waves of station W3EAX at the University.

ROSSBOROUGH CLUB

President.....Charles Moore
Vice-PresidentJoe Cover
Secretary.....Janice Brewer
Faculty AdvisorMr. Doyle Royal

The main function of the Rossborough Club is the sponsorship of dances for the entire student body.

TERRAPIN TRAIL CLUB

PresidentJohn Thayer
Vice-President.....Frank Mallory
Secretary.....Alita Sites
Faculty Advisor

Miss Martha Haverstick

If you like the great outdoors, the Terrapin Trail Club is the group for you.

WMUC

ManagerBarry Glass
Business Manager.....Charles Brailer

Students interested in all phases of radio production from script writing to engineering will find that working on the staff of WMUC, the campus radio station, is their "meat".

Student Union

One of the first things a new visitor to the Maryland campus notices is the prevalence of new construction going on at the University; Maryland is and has been steadily growing in size as well as rank in the post-war period.

Of more immediate interest to many students will be the completion of the long-awaited Student Union. Aside from the construction of the Chapel, no other building on campus has been of more interest to the student body than the Union—*their* building.

Scheduled for a next summer opening was the General Activities building. However, this project, which includes the 17,000-seat auditorium, is behind schedule due to changes in the original plans. One of these changes now includes the addition of a men's swimming pool in this large building. Completion date is now set for the fall of 1954.

Other constructions are being made on the campus. East of the Boulevard a ten-unit fraternity-sorority row project is nearing completion for occupancy this fall. Sororities to move into their new homes include Gamma Phi Beta, Sigma Kappa, Kappa Alpha Theta, Alpha Epsilon Phi and Pi Beta Phi. Their fraternity neighbors will be Delta Tau Delta, Sigma Alpha Epsilon, Lambda Chi Alpha, Phi Sigma Kappa and Phi Kappa Sigma.

● drama
and
music





Romeo and Juliet
one of University
Theater's out
standing
presentations

Each year an increasing number of students are discovering the wealth of pleasure, satisfaction, and friendship to be found by participating in the University's Music and Drama activities. Performances by the Men's Glee Club, the Women's Chorus, and the University Theater are annual highlights, cherished long among campus memories.

Students who are interested in singing or acting should report immediately to the auditions and tryouts when they are announced. Others, who have preference for backstage work, will find many possibilities and should register their interests with the theater's technical director.

UT offers three major plays and several studio performances to provide constant opportunities for newcomers. Each spring the theater and music organizations jointly present a musical production, which allows full expression of campus talent in singing, dancing, and acting. All of this work, play, and congenial companionship makes a rich contribution to the University's cultural program.

DR. GROVER C.
NIEMEYER

Assistant Professor,
Speech



University Theater

<i>President</i>	Jerry Gough
<i>Vice-President</i>	Caroline Hogan
<i>Secretary</i>	Eleanor Weinstein
<i>Business Manager</i>	Jane Cahill
<i>Publicity Chairman</i>	Ruth Bauman
<i>Faculty Advisors</i>	Rudolph Pugliese, E. Thomas Starcher, Bernhard Works, Earl Meeker

University Theater is one of the most outstanding and active organizations on the campus. It presents four major productions and several centrally staged shows each year. Tryouts are held for acting and the people are chosen on ability instead of previous experience. Backstage workers sign up on committee lists found on the Speech department bulletin board. Notices of these tryouts are posted on campus and listed in the *Diamond-back* before each production. Students may be elected to membership in UT after participation in at least three campus dramatic shows.

The cast of "Hello Out There," traveled to Philadelphia where the production won honors. It was the first production to win all four drama awards in the Cultural Olympics, these being for: best actress, best actor, best directing and best producing.

Plans for the coming year include such plays as "The Male Animal," Goethe's "Faust," and "Blithe Spirit."

Clef and Key

<i>President</i>	William Rogers
<i>Vice-President</i>	Richard Holmes
<i>Secretary</i>	Dale Jackson
<i>Treasurer</i>	Jesse Cowan

Clef and Key is a combination men's and women's chorus which joins with University Theater and the Modern Dance Club to present the annual musical production. A recent production was "A Connecticut Yankee" presented last April.

Clef and Key gives a student who is musically inclined a chance to display his talent by appearing in and helping produce operettas. The group meets every other Tuesday in the Music building except when they are at work in a show.

Membership is attained in Clef and Key by attending three consecutive meetings. Tryouts are held before each production for all interested students.

The director of Clef and Key is Mr. Rudolph Pugliese. In addition to the regular plans for this coming semester, the organization plans to visit a few of the nearby hospitals to put on small musical shows.



Claf and Key and University Theater combine efforts in "A Connecticut Yankee"

Men's Glee Club

<i>President</i>	Ed Gantt
<i>Vice-President</i>	How Glosson
<i>Secretary</i>	Bob Benson
<i>Treasurer</i>	Harry White

The Men's Glee Club is one of the most laudable groups on campus. Last year they were commended by leading musical authorities as an outstanding men's choral organization. Inasmuch as there is a certain amount of group activity and work for every performance, each individual gains much enjoyment from singing as a group.

All men interested in singing as a group are invited to join the Men's Glee Club. They hold rehearsals every Tuesday and Thursday afternoon at three o'clock.

Women's Chorus

<i>President</i>	Jeannette Muir
<i>Vice-President</i>	Alice Scott
<i>Secretary</i>	Luann Crogan
<i>Treasurer</i>	Sandra Sowder
<i>Librarian</i>	Anna MacJacquette
<i>Historian</i>	Mary Ann Ward

This year will mark the twentieth anniversary of the Women's Chorus. Its members are anticipating an eventful year as it has long been an outstanding musical organization. Women who enjoy singing are invited to attend the tryouts to be held this fall.

Rehearsals are held each Tuesday and Thursday afternoon at three in the Music Building under the direction of Mr. Charles Haslup. Concerts are held throughout the year on campus and for outside organizations. They often combine with the Men's Glee Club for special programs.

This year, the Women's Chorus is planning to sing at the Naval Academy in Annapolis in addition to the numerous other engagements that have been planned.

University of Maryland Band

<i>President</i>	Bill Dussman
<i>Vice-President</i>	Clarence Reynolds
<i>Secretary</i>	Betty Jean Endslow
<i>Drum Major</i>	Bill Stokes
<i>Drum Majorette</i>	Betty Woodard

A football game without a band is only half a game!

Maryland's "Red and White Band" has worked in earnest with the drum majors and majorettes and they have become a skilled drill team in working out intricate field formations. Therefore, they promise everyone the best in entertainment at football games, parades, concerts, pep-rallies, May Day and musical shows.

There will be a sign-up list in the armory during registration week for band members and drum majorettes.

University Orchestra

<i>Director</i>	Mr. J. M. Powers
-----------------------	------------------

The orchestra meets at six-thirty every Tuesday evening in the Band Room in the Armory. Everyone participating not only gains the practical experience of working with an orchestra but also benefits from working with the social group.

Modern Dance Club

PresidentLynne Langstroth
Secretary-TreasurerIna Stulman
PublicityBarbara Dodd
Faculty Adviser—

Mrs. Dorothy Madden

Modern Dance is dancing by expression and feeling. The University's Modern Dance Club represents this kind of dance in their annual concerts, special recitals, and programs with University Theater and Clef and Ke7. All choreography is done by the students themselves.

One need not have experience to become a member of the Modern Dance Club: membership is open to all students on campus. Meetings are held every Tuesday and Thursday evening at six-thirty in the dance room of the Women's Field House.

This year the club is planning to give concerts for Howard University, Salisbury, the Corcoran Art Gallery and various high schools.

Each year an increasing number of students are discovering the wealth of pleasure, satisfaction, and friendship to be found by participating in the University's Music and Drama activities.

● religion

Chapel Spires Like Fingers . . . Pointing Faith Godward.

Side by side with the symbols of academic discipline as expressed in class rooms and laboratories, the Chapel of the University of Maryland bears witness that religious faith and intellectual integrity go hand in hand in building a whole person.

Here, chaplains of many faiths join together in an active religious ministry to the students at the University. Services conducted for members of specific faiths and denominations go side by side with joint worship experiences that all may share.

Through competent counselling opportunities by trained personnel, students and chaplains are brought into a personal relationship hard to measure in its fullest implications.

When a great state university takes the lead in making possible such expressions, religious minds everywhere rejoice in such leadership. The Chapel of the University of Maryland, as a focus of religious faith, serves ever to remind us of the necessity of maintaining the life of the spirit in terms of the Creator who made us.

REVEREND JESSE W. MYERS,
Presbyterian Chaplain

*The steeple reaches towards the student's
highest ideals*



Religious Emphasis Week

"Be Still And Know That I Am God," was the theme of the 1953 Religious Emphasis Week.

Designed to make students more aware of their religious needs and of the facilities open to them, the week includes both individual club meetings and interfaith activities..

Throughout the week, the program brings to the campus outstanding religious speakers, forums, seminars, and suppers. Fireside chats are held in the dormitories and in the sorority and fraternity houses.

University Chapel Choir

Meeting once a week, Wednesday, 3:00 p. m. to 5:00 p. m., the Chapel choir offers students an opportunity to participate in the Sunday services in the Chapel. Under the direction of Mr. Fague Springman, the newly-organized group has been able to supplement its regular activities by concerts with the National Symphony Orchestra and by participation in the coast-to-coast broadcast of the Memorial Day Services in Washington.

Religious Counselors' Office

Religious guidance and information of campus and nearby church services are available in the offices of the religious counselors located in the Chapel.

Student Religious Council

<i>President</i>	Robert Winkler
<i>Vice-President</i>	Mike Potash
<i>Secretary</i>	Joan Hinchman
<i>Treasurer</i>	Patrick O'Donnell

The Student Religious Council, advised by the faculty's Religious Life Committee, is the student organization for interfaith co-ordination on campus. The council meets every Tuesday at 4 p.m. in the west council room of the Chapel to plan and promote activities in which all denominations participate. The SRC sponsors a yearly Religious Emphasis Week as its main activity.

For further information on all of the organizations in this section consult the Club News column of the Diamondback.

Brethren Students

Prior to this year, the students of the Brethren faith were members of the Albright-Otterbein Christian Fellowship. However, due to too small club membership for the past few years, the club will not function this year. Brethren students are invited to join with the Wesley Foundation in its services and activities.

The Church of the Brethren pastor for the campus is Reverend George E. Schnabel.

Baptist Student Union

<i>President</i>	Betty Jean Porter
<i>Vice-President</i>	Margaret David
<i>Secretary-Treasurer</i>	
	Mary Jean Prescott
<i>Advisor</i>	Mr. Howard Rees

Noonday devotionals, open to all students, are held in the west council room of the Chapel by the Baptist Student Union. The group also meets every other Wednesday night at 7:30 p.m. in the Chapel for prayer and fellowship. The Union welcomes students of all faiths to join in its social and religious activities.

Westminster Foundation

<i>President</i>	Bruce Urich
<i>Vice-President</i>	Paul Eckles
<i>Secretary</i>	Pat Kemp
<i>Treasurer</i>	Mary Rose
<i>Advisor</i>	Rev. Jesse Myers

The Presbyterian students on campus invite you to join with them in their program of study and prayer. Meeting every Wednesday night in the Rec Hall at 7:30 p. m. the Westminster Foundation also holds a weekly Bible study class on Tuesday at 4:00 p. m. in the Chapel. The club also sponsors a Sunday supper club meeting at the Riverdale Presbyterian Church at 5:30 p.m.

Maryland Christian Fellowship

President.....William Wiley

Vice-President.....John Park

Recording Secretary

Haruko Ishiyama

TreasurerJohn Corrick

This inter-denominational student-led group is geared to help students to a vital experience of God in their lives through a varied and practical program on discussions, panels, outstanding speakers, and personal counselling. It is affiliated with Inter-Varsity Christian Fellowship.

Newman Club

PresidentJohn Miller

Vice-Presidents

Barbara Hammond (women)

Patrick O'Donnell (men)

Secretary.....Mary Lou Baluta

Treasurer.....Ann McIntyre

AdvisorReverend Claude Kean

Serving Catholic students on campus, the Newman Club sponsors religious, intellectual and social activities. Meeting every first and third Wednesday in the Armory Lounge, at 7:30 p. m., the club participates in discussions, movies, picnics, an annual freshman Catholic Mixer, and a "Snow Ball Dance" in February.

Daily Mass is held at 6:30 a. m. in the Chapel, and the Rosary is said at 6:00 p. m. Sunday mass is held at 9:15 a. m. and 11:00 a. m.

Wesley Foundation

<i>President</i>	Don Piper
<i>Vice-President</i>	Jean Spencer
<i>Secretary</i>	Bonnie Cubler
<i>Treasurer</i>	Biz Happ
<i>Advisor</i>	Reverend James T. Bard

Providing an organization for Methodist students and their friends, the club meets every Wednesday evening at 7:30 p.m. in the University Methodist Church. A supper club held every Sunday evening at 5:30 p.m. provides both food and fellowship to students and two annual retreats supplement the religious programs.

Canterbury Club

<i>President</i>	Geraldine Hemming
<i>Vice-President</i>	Amenie Phillips
<i>Secretary</i>	Fairfax Urner
<i>Treasurer</i>	Carolyn Cricker
<i>Advisors</i>	Reverend William A. Beal Reverend Nathaniel Acton

The Canterbury Club is the Episcopal students' organization on campus. You are invited to take part in the business meetings held every second and fourth Wednesday in the Armory lounge at 7:30 p.m., and to join with the group for Sunday evening supper club at 5:00 p. m. in the Parish Hall on Dartmouth Avenue.

Christian Science Club

President.....To Be Elected
Vice-President.....Elizabeth Mouser
Secretary.....Delight Pearce
Treasurer.....Robert Woods
Advisor.....Dr. James B. Shanks

The Christian Science Club meets every Thursday at 7:00 p. m. in the Chapel conference room.

Hillel Foundation

President.....Larry Packel
Vice-President.....Gordon Weinberg
Secretary.....Rita Solomowitz
Treasurer.....Shirley Weintraub

The Hillel Foundation of B'nai B'rith brings to Jewish students on campus a program of religious and cultural activities.

Monday afternoon at 4:00 the group meets in the Chapel and meets again on Wednesday at 4:00 for a discussion program.

Lutheran Student Association

President.....Betty Schmick
Vice-President.....Vernon Miller
Secretary.....Jean Freise
Treasurer.....Bill Kuehn
Advisor.....Miss Ruth Engelbrecht

Students are invited to join by attending the Wednesday evening meetings at 7:30 p.m. in the Rec. Hall.

Religious Counsellors

Church of the Brethren

Rev. George E. Schnabel
4th and Rittenhouse Sts., N.W., D. C.

Baptist.....Mr. Howard Rees
2100 "I" St., N.W., D. C.

Catholic.....Father Claude Keane, O..F.M.
14th and Shepherd Sts., N.E., D. C.

Disciples of Christ.....Rev. A. A. Azlein
5717 Chillum Heights Drive, Hyattsville, Md.

Christian ScienceMr. James Watt
Hay Adams House, D. C.

Episcopal.....Rev. Nathaniel Acton
St. Andrews Rectory, College Park, Md.
Rev. William A. Beal, University Chapel

JewishRabbi Meyer Greenberg
4505 Knox Road, College Park, Md.

Lutheran.....Rev. Otto Reimherr
4806 Cherokee St., College Park, Md.
Miss Ruth Engelbrecht, Ass't
4335 Rowalt Dr., Apt. 303, College Park, Md.

Maryland Christian Fellowship
Counselor to be selected

Methodist.....Rev. James T. Bard
4505 Fordham Lane, College Park, Md.

Presbyterian.....Rev. Jesse W. Myers
5001 56th Place, Hyattsville, Md.

Local Churches

Baptist

University Baptist Chapel
Agriculture Auditorium
Chapel

Christian

Mt. Rainier Christian Church
Bunker Hill Rd. & 33rd St., Mt. Rainier, Md.

Disciples of Christ

National City Christian Church
14th and Thomas Circle, N.W., Wash., D. C.

Episcopal

St. Andrew's Episcopal Church
College and Yale Aves., College Park, Md.

Evangelical United Brethren

Albright Memorial Church
4th and Rittenhouse Sts., Wash., D. C.

Jewish

Hillel Foundation
4505 Knox Road, College Park, Md.

Lutheran

Hope Lutheran Church
Armory Lounge, Campus

Methodist

University Methodist Church
University Lane, College Park, Md.

Presbyterian

Riverdale Presbyterian Church
Rittenhouse St. and Rhode Island Avenue,
Riverdale, Md.

Roman Catholic

St. Jerome's Catholic Church
5207 43rd Ave., Hyattsville, Md.

● sororities

The University of Maryland Panhellenic Association invites every new coed to participate in sorority rushing. During these next four years, a sorority can do much to make your college life full and exciting. Besides helping you adjust to this large campus and providing a second home where you can establish congenial friendships, the close ties of sorority life can do much to help you develop broader viewpoints, more understanding, loyalty, graciousness, and social responsibility.

When you rush, look each group over carefully, for they all have their good points. If you don't receive the bid of your choice, don't worry. There are many groups in which you can be a happy member, and the Panhellenic Council is proud of all the fine sororities on campus. If you don't find a nook in a sorority, there are many other organizations that can give you a well-rounded college experience.



All we ask is that you take an active interest in campus life, and if we can help you do it, we want to.

MOLLY TURNER
Panhellenic President



Sororities join in the spirit of a pre game pep rally

Panhellenic Council

<i>President</i>	Molly Turner
<i>Vice-President</i>	Kathleen Patrick
<i>Secretary</i>	Janet Gadd
<i>Treasurer</i>	Rita Bajkowska
<i>Rush Chairman</i>	Alice Johnson

The purpose of the Panhellenic Council is to serve as a group to promote cooperation in inter-society relationships, to maintain high scholarship and social standards and to compile rules governing rushing, pledging, and initiation of sorority women.

Important Rush Rules

All sorority women and students interested in rushing should be familiar with, understand, and adhere to these rush rules.

Formal rushing is the period beginning on September 12, 1953, with open house teas, and continuing until pledging on September 20, 1953. Rush functions will be held at specified times only. Alpha Epsilon Phi, Phi Sigma Sigma, and Sigma Delta Tau will interrupt their rush program with the observance of Yom Kipper holidays, pledging their women a few days later than the other sororities.

No women, except sorority actives, pledges and rushes may be present for rush functions. Rushees will be allowed to visit sorority houses for specified functions only.

Standard Panhellenic Rules

Any woman eligible for matriculation at the University and un-affiliated with any National Panhellenc Fraternity is eligible for rushing.

During rush week, if a woman expresses her preference in writing, or formally accepts a bid, or wears a sorority's colors during open rushing following rush week, she is ineligible to pledge another sorority.

A pledgeship expires one calendar year from the date of pledging at which time the student is eligible to pledge another sorority. This rule is binding to any campus on which the student may matriculate.

Initiation of any pledge results from the completion of fifteen credit hours in the preceding semester at the University with at least a C average and no failures for that semester. These women must be students in good standing and cleared with the Dean of Women's office.

ALPHA CHI OMEGA

Gamma Theta Chapter

Founded at De Pauw University in 1885

Established at University of Maryland in 1948

President.....Alice Phillips

Vice-President.....Barbara Ann Bennett

Secretary.....Helen Wilma Brown

Treasurer.....Peggy Lee Kendall

ALPHA DELTA PI

Beta Phi Chapter

Founded at Wesleyan Female College in 1851
Established at University of Maryland in 1940

President.....Marianne Allen
Vice-President.....Luann Crogan
Secretary.....Joan Richardson
Treasurer.....Dorothy Fisher

ALPHA EPSILON PHI

Alpha Mu Chapter

Founded at Bernard College in 1909
Established at University of Maryland in 1943

President.....Eleanor Weinstein
Vice-President.....Sue Cohen
Secretary.....Myra Spectre
Treasurer.....Elaine Hurowitz

ALPHA GAMMA DELTA

Alpha Nu Chapter

Founded at Syracuse University in 1904
Established at University of Maryland in 1947

President.....Terry DelGreco
Vice-President.....Joy Covert
Secretary.....Margery Condron
Treasurer.....Sara Carter

ALPHA OMICRON PI

Pi Alpha Chapter

Founded at Bernard College in 1897
Established at University of Maryland in 1924

President.....Mary Felice Cohn
Vice-President.....Mary Broumas
Secretary.....Nancy England
Treasurer.....Wanda Lee Gates

ALPHA XI DELTA

Beta Eta Chapter

Founded at Lombard College in 1893

Established at University of Maryland in 1934

President.....Carole Jarchow
Vice-President.....Dorothy Hooker
SecretaryJean Peckham
Treasurer.....Patricia Lacey

DELTA DELTA DELTA

Alpha Pi Chapter

Founded at Boston University in 1888

Established at University of Maryland in 1934

President.....Earleen Feldman
Vice-President.....Ellen Lundvall
Secretary.....Caroline Hogan
Treasurer.....Val VanDerwerker

DELTA GAMMA

Beta Sigma Chapter

Founded at Lewis School in 1873

Established at University of Maryland in 1945

President.....Barbara Elaine Griffin
Vice-President.....Sally Harmony
Secretary.....Lillian Rae Davis
Treasurer.....Mary Alice Longfellow

GAMMA PHI BETA

Beta Beta Chapter

Founded at Syracuse University in 1847

Established at University of Maryland in 1940

President.....Alice Scott
Vice-PresidentShirley Stockman
Secretary.....Laura Drew
Treasurer.....Helen Shea

GAMMA SIGMA

Established at University of Maryland in 1949

PresidentMarilyn Bruya
Vice-President.....Kay Pinto
SecretaryAlita Sites
TreasurerDorothy Hansel

KAPPA ALPHA THETA

Gamma Mu Chapter

Founded at De Pauw University in 1870

Established at University of Maryland in 1947

PresidentLorraine Jorgensen
Vice-President.....Katherine Reno
Secretary.....Judith Atkinson
TreasurerMolly Turner

KAPPA DELTA

Alpha Rho Chapter

Founded at Virginia State Normal School in 1897

Established at University of Maryland in 1929

PresidentJeanne Peake
Vice-PresidentFrancis White
Secretary.....Bette Rittenhouse
Treasurer.....Shirley Stahl

KAPPA KAPPA GAMMA

Gamma Psi Chapter

Founded at Monmouth College in 1870

Established at University of Maryland in 1929

PresidentShirley Steele
Vice-President.....Lorene Ladd
Secretary.....Joan Eccles
Treasurer.....Beth Mouser

PHI SIGMA SIGMA

Beta Alpha Chapter

Founded at Hunter College in 1913

Established at University of Maryland in 1936

President.....Eileen Reinhart

Vice-President.....Ellen Julius

Secretary.....Adrienne Kirstein

Treasurer.....Sonya Holzweig

PI BETA Phi

Maryland Beta Chapter

Founded at Mommouth College in 1867

Established at University of Maryland in 1944

President.....Ann Gerkin

Vice-President.....Ann Burnside

Secretary.....Judy Conroy

Treasurer.....Joan M. Kelly

SIGMA DELTA TAU

Alpha Theta Chapter

Founded Nationally in 1917

Established at University of Maryland in 1951

President.....Edith Stark

Vice-President.....Betty Cornblatt

Secretary.....Barbara Cierler

Treasurer.....Edith Brill

SIGMA KAPPA

Beta Zeta Chapter

Founded at Colby College in 1847

Established at University of Maryland in 1940

President.....Jean Fisher

Vice-President.....Joyce Ames

Secretary.....Rita Bajkowska

Treasurer.....Ann Essex

GREEK ADDRESSES—

- Alpha Chi Omega—4603 Calvert Rd., Un. 4-9893
 Alpha Delta Pi—4603 College Ave., Wa. 7-9864
 Alpha Epsilon Phi—4317 Lehigh Rd., Wa. 7-9701
 Alpha Epsilon Pi—7303 Yale Ave., Un. 4-9785
 Alpha Gamma Delta—Campus—Un. 4-9806
 Alpha Gamma Rho—7511 Princeton Ave., Wa. 7-9831
 Alpha Omicron Pi—4517 College Ave., Wa. 7-9871
 Alpha Tau Omega—4611 College Ave., Wa. 7-9849
 Alpha Xi Delta—4517 Knox Rd., Wa. 7-9720
 Delta Delta Delta—4604 College Ave., Wa. 7-9795
 Delta Gamma—4502 College Ave., Wa. 7-9844
 Delta Kappa Epsilon—7505 Yale Ave., Wa. 7-9520
 Delta Sigma Phi—4300 Knox Rd., Wa. 7-9770
 Delta Tau Delta—4312 Knox Rd., Un. 4-9780
 Gamma Phi Beta—Campus—Wa. 7-9773
 Kappa Alpha—4400 Knox Rd., Un. 4-9833
 Kappa Alpha Theta—Campus—Un. 4-9829
 Kappa Delta—4610 College Ave., Wa. 7-9759
 Kappa Kappa Gamma—7407 Princeton Av., Wa. 7-9886
 Lambda Chi Alpha—7506 Dickinson Ave., Un. 4-9864
 Phi Alpha—4509 Calvert Rd., Wa. 7-9513
 Phi Delta Theta—4605 College Ave., Wa. 7-9884
 Phi Kappa Sigma—4302 Knox Rd., Un. 4-9828
 Phi Kappa Tau—7405 Dickinson Ave., Un. 4-9886
 Phi Sigma Kappa—4609 College Ave., Un. 4-9851
 Phi Sigma Sigma—4812 College Ave., Wa. 7-9828
 Pi Beta Phi—7514 Rhode Island Ave., Un. 4-9885
 Pi Kappa Alpha—4400 Lehigh Rd., Wa. 7-9891
 Sigma Alpha Epsilon—4314 Knox Rd., Wa. 7-9707
 Sigma Alpha Mu—4310 Knox Rd., Wa. 7-9845
 Sigma Chi—4600 Norwich Rd., Un. 4-9807
 Sigma Kappa—Campus—Wa. 7-9861
 Sigma Nu—4617 Norwich Rd.—No Phone
 Sigma Phi Epsilon—7303 Hopkins Ave., Un. 4-9770
 Sigma Pi—7406 Dickinson Ave., Un. 4-9771
 Tau Epsilon Phi—4607 Knox Rd., Wa. 7-9766
 Tau Kappa Epsilon—Engel Terrace, Ha. 2-9684
 Theta Chi—7401 Princeton Ave., Wa. 7-9733
 Zeta Beta Tau—4802 Calvert Rd., Un. 4-9786

LOCATION OF FRATERNITY AND SORORITY HOUSES

KAT

AGD

ΣK

dining hall

library

ΔΣΦ

ΦΚΣ

ΣAM

KA

ΣAE

ATA

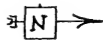
AEΦ

TKA

chapel

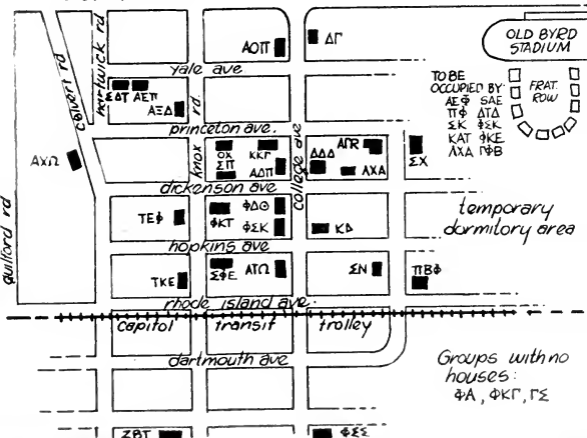
TUNNEL

CAMPUS



ΓΦΒ

U.S. ROUTE 1



Groups with no houses:
ΦA, ΦΚΓ, ΓΣ

● fraternities



The Interfraternity Council of the University of Maryland welcomes you to the full enjoyments and benefits of the college fraternal system.

The twenty-five Greek fraternities on this campus will engage in the fall rush program within one week from registration. I urge you to visit them all and to make your final choice only after careful thought.

The fraternity which you choose will constitute your brothers for the duration of your college career.

A fraternity's purposes are manifold. It assists the freshman in orientating himself to a new life on campus, encourages scholarship, and furnishes living quarters. It helps to crystallize habits, broadens outside interests, and increases social poise. It provides training and prepares the college graduate for his future as an American citizen.

Wishing you the best of success while in college and in fraternity life, I am

Sincerely yours,

JOHN MARTIN
IFC President



◀ *The long awaited sorority and fraternity row becomes a reality*

Fraternity Criteria

The National Interfraternity Conference, founded in 1908, serves to bring about closer harmony among the 64 national fraternities in the group. Annually, national undergraduate councils and college administrators attend a conference, the results of which are reported in the NIC yearbook.

A fraternity criteria, which serves to advance fraternity-education institution cooperation, was submitted by NIC executives in 1934 and approved by the American Association of Deans and Advisors of Men. It reads as follows:

1. That the objectives and activities of the fraternity should be in entire accord with the aims and purposes of the institutions at which it has chapters.
2. That the primary loyalty and responsibility of a student . . . with his institution are to the institution, and that . . . a chapter of a fraternity involves the definite responsibility . . . for the conduct of the individual.
3. That the fraternity should promote conduct consistent with good morals and good taste.
4. That the fraternity should create an atmosphere which will stimulate substantial intellectual progress and superior intellectual achievement..

Interfraternity Council

<i>President</i>	John Martin, Jr.
<i>Vice-President</i>	Bernie Gross
<i>Secretary</i>	William Kline
<i>Treasurer</i>	Ray Hagle
<i>Faculty Advisor</i>	Dean Geary Eppley

The Interfraternity Council is composed of representatives of each of the fraternities on campus who meet to promote and maintain friendly and cooperative relations among the fraternities.

Each year the IFC sponsors fraternal intramural sports and presents activity cups to the outstanding fraternities. Highlight of the year is the Interfraternity Ball held at a Washington hotel for all Greek men and their dates. The Interfraternity Council also presents several scholarships to deserving men.

Fraternity rushing is supervised by the Council with the cooperation of each fraternity to assure each rushee an opportunity to visit every chapter.

ALPHA EPSILON PI

Delta Deuteron Chapter

Founded at New York University, 1913

Established at University of Maryland, 1914

<i>President</i>	Arnold Pazornik
<i>Vice-President</i>	Arthur Litofsky
<i>Secretary</i>	Joe Jacobs
<i>Treasurer</i>	Robert Stienlauf

ALPHA GAMMA RHO

Alpha Theta Chapter

Founded at Illinois State University, 1908

Established at University of Maryland, 1928

PresidentThomas Weller

Vice-President.....Hance Pepper

Secretary.....Philip C. Kearney

Treasurer.....Ken Roche

ALPHA TAU OMEGA

Epsilon Gamma Chapter

Founded at Virginia Military Institute, 1865

Established at University of Maryland, 1930

President.....Steve Volchko

Vice-President.....Anthony Abato

SecretaryPhilip Hilbish

TreasurerRichard Cox

DELTA KAPPA EPSILON

Kappa Delta Chapter

Founded at Yale University, 1844

Established at University of Maryland, 1952

President.....Gerald F. Ryan

Vice-PresidentEdward C. Mehm

Secretary.....Algot Brant

TreasurerRonald McDonald

DELTA SIGMA PHI

Alpha Sigma Chapter

Founded at City College of New York, 1899

Established at University of Maryland, 1924

President.....Petro Kosmides

Vice-President.....William Collinge

SecretaryRobert Karwacki

TreasurerDave Somers

DELTA TAU DELTA

Delta Sigma Chapter

Founded at Bethany College, 1859

Established at University of Maryland, 1948

President Philip R. Shays

Vice-President Nealson Smart

Secretary John Torbert

Treasurer William Campbell

KAPPA ALPHA

Beta Kappa Chapter

Founded at Washington and Lee, 1865

Established at University of Maryland, 1914

President James Faulkner

Vice-President William Boyer

Secretary Charles Hennick

Treasurer Robert Yeatman

LAMBDA CHI ALPHA

Epsilon Pi Chapter

Founded at Boston University, 1909

Established at University of Maryland, 1932

President Ralph Palumbo

Vice-President William Bass

Secretary Wesley Sauter

Treasurer Marshall Megginson

PHI ALPHA

Epsilon Chapter

*Founded at George Washington University,
1914*

Established at University of Maryland, 1917

President Manfred Sklar

Vice-President Gerald Traub

Secretary Anton Grobani

Treasurer Stanley Brown

PHI DELTA THETA

Alpha Chapter

Founded at Miami University, 1848

Established at University of Maryland, 1930

President.....John R. Rice
Vice-President.....Ronald Brooks
Secretary.....Richard Yates
Treasurer..... Thomas Kovalinsky

PHI KAPPA GAMMA

Founded at University of Maryland, 1949

President.....John Gates
Vice-President.....Tom Ryan
Secretary.....George Neimeyer
Treasurer.....Charles Ceska

PHI KAPPA SIGMA

Alpha Zeta Chapter

Founded at University of Pennsylvania, 1850

Established at University of Maryland, 1899

President.....Bob Busch
Vice-President.....Bob Surrick
Secretary.....Neils Frandsen
Treasurer.....Walt Ruppert

PHI KAPPA TAU

Founded at University of Miami, 1906

Established at University of Maryland, 1949

President.....William Cadle
Vice-President.....Reyburn Browning
Secretary.....Anthony Prizio
Treasurer.....Lester Wittig

PHI SIGMA KAPPA

Eta Chapter

Founded at Massachusetts Agricultural College, 1874

Established at University of Maryland, 1923

President.....Donald L. Myers

Vice-PresidentJames Starnes

Secretary.....Louis Decatur

Treasurer.....Bruce Palmer

PI KAPPA ALPHA

Delta Psi Chapter

Founded at University of Richmond, 1868

Established at University of Maryland, 1952

President.....Charles Walters

Vice-President.....Bob Cottone

SecretaryLouis Collomb

TreasurerKen Andrews

SIGMA ALPHA EPSILON

Maryland Beta Chapter

Founded at University of Alabama, 1856

Established at University of Maryland, 1943

President.....Edward F. Stanfield

Vice-PresidentEdward Updegraff

Secretary.....Charles C. Hight

Treasurer.....Charles Bucy

SIGMA ALPHA MU

Sigma Chi Chapter

Founded at City College of New York, 1909

Established at University of Maryland, 1933

PresidentDonald Caplan

SecretaryNathan Stofberg

TreasurerGordon Becker

SIGMA CHI

Gamma Chi Chapter

Founded at Miami University, 1885

Established at University of Maryland, 1929

President.....Charles Miller

Vice-PresidentDon Willard

SecretaryBob Linn

TreasurerRollie Willis

SIGMA NU

Delta Pi Chapter

Founded at Virginia Military Institute, 1869

Established at University of Maryland, 1917

President.....James G. Sullivan

Vice-President.....Howard Trittipee

SecretaryAndy Williams

TreasurerRichard Averill

SIGMA PHI EPSILON

Maryland Beta Chapter

Founded at University of Richmond, 1901

Established at University of Maryland, 1949

President.....William Kline

SecretaryDonald Tracey

Treasurer.....Gordon Wootton

SIGMA PI

Alpha Chi Chapter

Founded at Vincennes University, 1897

Established at University of Maryland, 1948

President.....James L. Hills

Vice-President.....James M. Wells

Secretary.....Grover Warneke

Treasurer.....Thomas G. Harris

TAU EPSILON PHI

Tau Beta Chapter

Founded at Columbia University, 1910

Established at University of Maryland, 1925

President.....Ivy Shefferman

Vice-President.....Lonnie Rubin

Secretary.....Charles Yumkas

Treasurer.....Lowell Glazer

TAU KAPPA EPSILON

Beta Delta Chapter

Founded at Illinois Wesleyan, 1899

Established at University of Maryland, 1946

President.....Roland N. Thompson

Vice-President.....William Spies

Secretary.....Charles LaMason

Treasurer.....Dale D. Krolicki

THETA CHI

Alpha Psi Chapter

Founded at Norwich University, 1856

Established at University of Maryland, 1929

President.....Allan Burk

Vice-President.....Raymond Hoffman

Secretary.....Richard Proctor

Treasurer.....Adolph Brueckmann

ZETA BETA TAU

Beta Zeta Chapter

Founded at Columbia University, 1894

Established at University of Maryland, 1948

President.....Charles Cahn

Vice-President.....Stanley Trivas

Secretary.....Richard Stein

Treasurer.....David Rudow



● athletics

Athletics, both intercollegiate and intramural-wise, play an important part in the college career of every student of the University. There is an excellent intramural program the year around for students who do not make the varsity teams.

The Athletic Council sponsors an intercollegiate program in all sports at the University. Every student at the University is invited and urged to come out for these sports.

Don't wait for a special invitation or don't assume you are not good enough for the best. If you can't make the team, join with the rest of the student body in being the extra player in the stands to create the spirit which makes the men who finally earn the honor to represent you play their best. If you can't play a sport, be a sport. The morale of the student body is important to the caliber of your athletic teams.

JAMES TATUM
Director of Athletics



◀ *A capacity crowd at Byrd Stadium*

Commentary . . .

For over sixty years the University of Maryland has participated in college sports, but never has there been such emphasis on school improvement as in the last five years. Under the supervision of the Director of Athletics James Tatum, all major sports have progressed, and have established prominent standings for *Red and White* among other major colleges in the nation.

In the last three years of intercollegiate activity Maryland teams have a record of 266 victories against 124 defeats and nine ties. However, this is an incomplete picture of how far the home team has come in the last few years. Suffice it to say Maryland is gaining steadily as a sports might to be reckoned with.

The Terrapin teams are members of the National Collegiate Athletic Association, and the United States Inter-Collegiate Lacrosse Association. More recently Maryland joined up with North Carolina, South Carolina, Wake Forest, Duke, Clemson and North Carolina State to form the Atlantic Coast Conference.

Maryland fans are currently looking forward to the completion of a new 17,000-seat indoor auditorium, scheduled for a fall opening next year. This project now under construction will be one of the few of its type on the east coast. It will house all indoor sport activities, including track, basketball, wrestling and boxing. The building will also bring together under one roof the entire College of Physical Education.

Statistics . . .

From fall to spring 1952-53 was a year of beautiful victories. Starting with the football teams first win of the season over Missouri University on September 20, right up until the tennis teams last win of the year on May 16, Maryland's varsity teams have been adding new chapters in the history books. Below are the overall-dual team competition records—they stand on their own.

Fall And Winter

	<i>Won</i>	<i>Lost</i>	<i>Tied</i>
Football	7	2	0
Basketball	15	8	0
Cross-Country	4	1	0
Soccer	7	1	1
Wrestling	6	1	0
Boxing	3	3	1
	—	—	—
	42	16	2

Spring

	<i>Won</i>	<i>Lost</i>	<i>Tied</i>
Baseball	15	5	5
Lacrosse	8	3	0
Golf	7	2	0
Tennis	10	2	0
Rifle	5	0	0
Track	5	0	0
	—	—	—
	50	12	0
	—	—	—
Total	92	28	2

Football

Head CoachJAMES M. TATUM
Boasting a 39-win, 9-loss, and 3-tie record for his five years with the Red Shirts, Coach Jim Tatum took a 14-game winning streak into the 1952 grid season. On November 15 the Rebels of Mississippi handed the Liners their first defeat since October 4, 1950. The outcome of the game was such a surprise the Associated Press awarded "Ole Miss" "the greatest upset of the year." The following week, bad luck followed the Old Liners to Mobile, and 'Bama handed the home team another defeat.

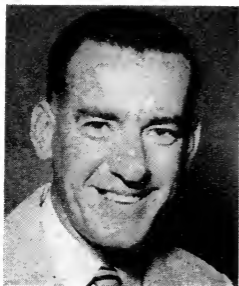
However, Maryland maintained a memorable record in many departments. Offensively the gridders were ninth nationally with 3,395 yards gained, and an average of 377.6 yards per game. Quarterback Jack Scarbath used his famous option play coupled with his deadly passing, netting 59 completions in 173 attempts.

Number one receiver for the All-America quarterback was Lloyd Colteryahn, who was on the receiving end of 32 completions, tallying five Terp TD's for a total of 593 yards gained.

On defense, tackle Dick Modze'ewski made nine out of eleven consensus polls, and was *Look* magazine's "Lineman of the Year."

Maryland's power in action





Cross Country and Indoor Track

CoachJIM KEHOE

Coach Jim Kehoe's cross country team turned in another outstanding season despite the fact their 29-win streak in dual meets was snapped by Navy in the opening match of the year.

Losing to the Middies, 28-27, the Terp harriers went on to defeat Pennsylvania, North Carolina, Duke and Richmond. John Tibbetts was the first man home in every race except against Richmond.

During the indoor track season, Maryland consistently made first in the relays, the 100-yard dash and the pole vault. The mile relay team won the Conference relay at the *Evening Star* games, and they also took the Southern Conference title.

Also at the *Evening Star* games, the two-mile relay team took first. Mel Schwartz and George Butler always scored in the pole vault, while Dave Matthews won every century he entered.

Soccer



CoachDOYLE ROYAL

For the first time in four years Coach Doyle Royal's soccer team didn't win the Southern Conference crown.

Although the Terp pitchmen finished undefeated in four conference games and tied champion Duke, 1-1, the Blue Devils played and won two more league games giving them the title on percentage points.

Among the victims of the Terrapin booters were Washington and Lee, North Carolina State, John Hopkins, Loyola, North Carolina and Georgetown. The only loss was in the opening game to Penn State.

Coach Royal will be faced with the problem of filling his outside positions, two halfback slots, and a fullback post as this season opens.

Tom Baden was rated All-America and All-South for the Liners, while Hector Ormachea, Jim Deider and Mario Eterovic received All-South recognition.



Basketball

CoachBUD MILLIKAN

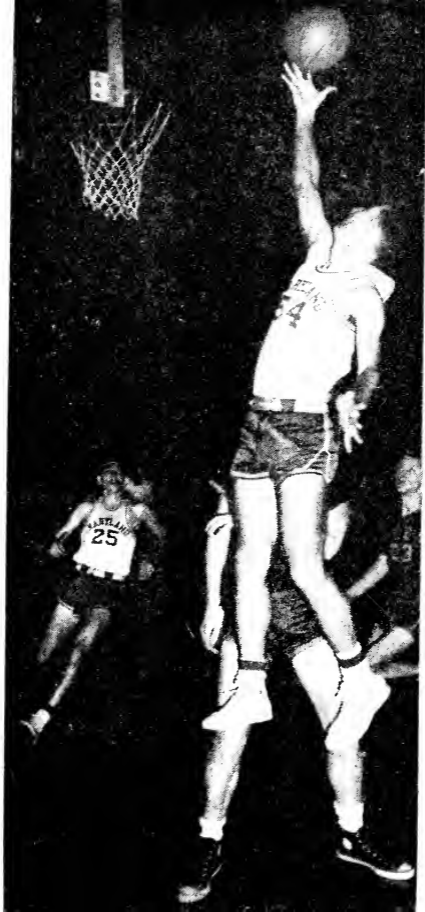
Registering an impressive 15-win, 8-loss overall record, Maryland's basketball team advanced to the semi-finals of the Southern Conference play-offs before losing to champion Wake Forest, 61-59.

This marked the third successive year Coach Bud Millikan has had the hardwood five *up* for the tournament.

The defensively-minded Terps finished second nationally in total team defense as they held all their opponents to an average of 54.3 points per game last season.

Gene Shue led the team in nearly every department during the season, scoring a total of 508 points. This new record breaks that of 265 chalked up by Lee Brawley in the 1951-52 season.

Walkin' On Air! ►





Wrestling

Coach WILLIAM KROUSE

For the third straight year the grapplers have whisked through their season with an outstanding team record of six wins, one lost and no ties. The Terps ended up the season capturing the Southern Conference championship by scoring 40 points in that tournament.

Stepping into the winners' circle with eight of the team's compilation of 37 wins was Rodney Norris. The red-head has been 137-pound Conference champ for two years and was voted last year the "Most Outstanding Wrestler of the Southern Conference Tournament for 1953."

Backing Norris are the Fischer brothers, Bob and Ernie. The latter has lost only a single match in 44 tries, and has been 167-pound champ for two years. On the other hand, Bob has been 157-pound division champ for the same period. Team captain Jack Shanan was another consistent winner, winning the 182-pound Conference crown.

Boxing



CoachFRANK CRONIN

Although his charges wound up with the record of three wins, three losses, and three ties last winter, Coach Frank Cronin is happy over the 1953-54 outlook.

With six of his 1952 mainstays returning, the big problem is to find replacements for Jackie Letzer, superlative performer at 132 pounds, and Cal Quenstedt, heavyweight, who went undefeated in nine bouts and won the Eastern Intercollegiate Championship.

Included among the returning Maryland mittmen are Gary Garber, former Army-wide bantamweight champion, Gary Fisher, Bob Theofield, Russ Eddy, Ronnie Rhodes and Bill McInnis.

Draws were gained against South Carolina (in a return match), LSU and Syracuse in the Sugar Bowl Classic at New Orleans. Terp champs in the Sugar Bowl were Garber, Letzer, Theofield and Quenstedt.

Track

CoachJIM KEHOE

What Maryland's track team lacked in individual stars it filled up with an exceptionally well-balanced squad during the '53 campaign. Showing a scoring potential in every event the Terps captured the Southern Conference Championship, went undefeated in five straight dual matches and won the DCAAU title.

Under the tutelage of Coach Jim Kehoe the thin-clads swept their second straight conference championship by taking five first places and tying for another. Dave Matthews, victor in the 100 and 220-yard dashes, was the only Maryland double winner. Jim Pentzer's first in the 440-yard dash and Kenny Thornton's win in the 880-yard run were the other single victories. Mel Schwarz, who tied for first in the pole-vault, and the mile relay team of Phil Stroup, Thornton, Pentzer and Burke Wilson completed the select circle.



Rifle

CoachHARLAND GRISWOLD

With two All-Americans setting the pace, the varsity rifle team won the National Intercollegiate Championship, went undefeated in five straight dual matches and broke the existing collegiate five-man shoulder-to-shoulder record.

After finishing second in the Nationals in '51 the riflemen, coached by Colonel Harland Griswold, went on to extend their consecutive winning streak to seventeen. Their team-score of 1,442 out of a possible 1,500 broke the former collegiate high-total of 1,437.

Roy Ister on the '51 All-America team led his team with a 288.8 average. Both he and Elwood Barton, who maintained a 286.6 average, were chosen on the '52 All-America squad.

The team average for its five shoulder-to-shoulder matches was 1,436.6.



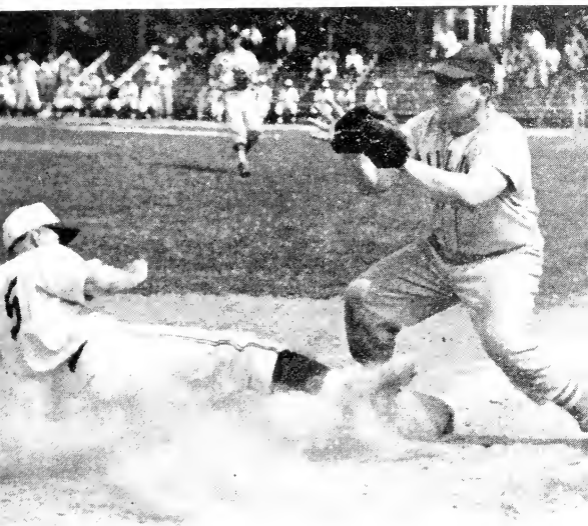
Baseball

CoachH. BURTON SHIPLEY

The Maryland baseball team, sprinkled liberally with freshmen, turned in one of the most outstanding records in the history of Terrapin baseball.

Coach Burton Shipley completed his 30th year of coaching by leading his charges to a 16-win, five-loss record. In addition, following a year's absence, the Terp diamondmen tied for the conference Northern Division title and participated in the Southern Conference play-offs.

Led by the heavy hitting of Chester Hanulak and Dave Zatz, returning to the Maryland diamond after serving in the Army, plus the fine pitching of Connie Hemphill and Ray DeSibio, the Terps got away to a slow start and then proceeded to mow down all opposition in their race for the title.



Hanulak Steals Another One

Tennis

CoachDoyle Royal

The tennis team which loses only one man by graduation, shut out its opponents seven times out of its 10-wins and 2-defeats for head Coach Doyle Royal.

Royal, who coaches soccer in the fall, featured junior Mel Huyett in the number one spot throughout most of the year. Huyett lost twice in ten matches. Number two position was filled by John Myers, 9-2, while senior, Dennis Hevener had a 10-2 record in the third slot. Hevener also teamed up with Bud Leightheiser to go undefeated in the doubles.

Jack Clifford, Terry Birch, Rollie Willis and Paul Ekel rounded out the squad.

The Terps did not participate in the '52 Southern Conference Tournament because of the nearness of Maryland's final exams to the tournament date. The year before the Liners tied Duke for the championship both with a 11-win and 1-loss record.

Golf

CoachFRANK CRONIN

An impressive seven wins and two defeats in dual competition wound up another successful season for Coach Frank Cronin's golf team.

Number one man for the linkmen was senior Bill Ruppert, District of Columbia junior match play champion, who posted a 6-2 record in that slot. Great excitement was stirred up over the fine showing of freshman Jim DiPiro. The New York lad was a metropolitan champion from that state, and he copped eight out of nine matches while compiling a 73 stroke average.

Other team members are Carl Kronneberger, also with eight wins out of nine matches, Bill McFerran and Bob Steinwedel. Melvin Arnold and Ed Fitzgerald complete the squad membership.

Practice sessions and home matches for the Terps are played at the eighteen-hole course of the Prince Georges Country Club not far from the campus.



Lacrosse

Coaches.....JACK FABER and
AL HAGEY

The loss of two All-Americans, and the graduation of eleven of eighteen lettermen put coaches Jack Faber and Al Heagy in quite a spot for the opening of the 1953 lacrosse season.

Nevertheless, a squad composed of ten freshmen, eight sophomores and nine junior-seniors just missed winning the national inter-collegiate championship. By May 9, the Liners had a seven-win, two-loss record and were ranked second in the nation.

Top berth was held by undefeated Army, and the Terps met the West Pointers in their next game. Trailing three goals at the half-time, Maryland pulled up to a five-five tie before succumbing 10-8.

Attackman Rennie Smith was sensational on offensive. He led the team scoring with 14 goals and 17 assists.

Tricky Little Devil! ►





Women's Intramurals

*Women's Director...*DOROTHY DEACH

Another group striving for recognition in the activities field is the Women's Recreation Association. Directed by Dr. Dorothy Deach, the aggregation offers coeds a long list of activities featuring bowling, swimming, badminton, basketball, tennis, archery and volleyball.

Run by the students themselves the WRA is open to any woman student on campus and all coeds are considered members when they enroll at Maryland. Setting up tournaments between the dorms and the sororities, giving trophies and awards to the victors; and assisting in the officiating are the main functions of the club.

Yearly, the organization sponsors a "Sports Day" which brings intramural groups and members of the District-Maryland Federation of College Women to the University to compete with one another.

Women's Pool

Open now for two full years the women's swimming pool is located in the annex of the Women's Field House. Recreational swimming is carried on Monday through Friday between 4 p. m. and 5:15 p. m. and from 7 p. m. until 9 p. m.

Last year, the WRA presented a water festival in which students participated. The affair, which is to become an annual event, is called the "Aquamarine Show."

Measuring 75 feet by 35 feet the pool is the newest in design and is ideal for competitive as well as recreational swimming.

Men's Intramurals

Center of attraction for the University's male enrollment is the Armory. In this building and on the two huge fields adjacent to it, more than 4,500 men participate in an intramural program composed of 26 separate forms of competition.

Under the direction of Jim Kehoe, leagues are formed and then divided into the open and fraternity divisions. The fraternities vie for the honor of winning the gold activities cup, which is presented annually to the Greek organization which has amassed the most points during the year. Individual first and second place winners receive gold and silver medals for their respective efforts.

Freshmen Sports

From the "tiniest seeds comes the tallest corn" and so it is with the talent supplied from the freshman sports to the varsity. In the professional ranks it's the minor league team that supplies the new material and in college it's the Frosh squad that supplies it.

Although a limited schedule is planned for the freshmen, the main purpose is to look over and develop material for the years ahead. Every student is urged to try out for one of these squads. Ample notice of the first practice is given several weeks before the opening date. Remember, there is a place for you in Maryland athletics if you want it.

Frosh Basketball

Coached by Dick Koffenberger, former guard at Maryland in 1951-52, the freshmen basketball team played a total of twelve games, winning five while dropping seven.

Plenty of height was the teams biggest asset and it got considerable attention from varsity Coach Millikan. Team high scorer, Bob Kessler, stands 6 feet 5 inches while center Ralph Hicks is 6 feet 6 inches. Other team starters include Marv Long, 6 feet 3 inches, Bob Hall, 6 feet 1 inch and John Sandbower, 6 feet 4 inches.

Frosh Baseball

With a limited squad to work with, Coach Shipley scheduled only one game for the Frosh, and they dropped that one to the Naval Academy Plebes, 8-6.

In the short time they performed, several players showed varsity possibilities. Catcher Dick Nuth and first-baseman Jim Connolly both hit home-runs, and third-baseman Tom Mason collected two of the ten Maryland hits. Although giving up ten hits in the nine innings he worked, pitcher Bill Weiss also showed varsity potential.





Full O' Pep!!!

● songs and cheers

Maryland prides itself on its school spirit which is kept at a high ebb by such groups as the Student Activities Committee and the cheerleaders. SAC sponsors pep rallies, the football card section and "meet the team" jaunts; while the cheerleaders practice long and hard to see that Maryland cheering is full of vim and vigor.

The work of these groups, however, cannot be successful if it is not met with student interest. One of the best ways to support school spirit is to know the school songs and cheers; it is difficult to yell loudly and strongly for your team without knowing the cheers.

Not all of these conveyors of school spirit are linked with the past. Eager to keep cheering fresh, SAC and the cheerleaders sponsored a cheer contest last spring and as a result the *Maryland Swing* and *Boom Bam* will be introduced this Fall.

And so, to become a genuine Maryland rooter, it is important to learn both the old and new Maryland songs and cheers.

Songs

Alma Mater

Words and music by Robert Kinney, '40
(see back end sheet)

Victory Song

(see page 176)

Terrapin Drinking Song

Music by Wilmer Orpwood, Jr., '43

Words by A. Manley Powell, '41

Drink to the Terrapin!

All bold hearted men.

We have no fear of hell,

For we're loyal sons and fellows,

Drink to the Terrapin

May God bless her sons!

When the toast is in the cup,

Bottoms up! Bottoms up!

To Maryland.

Sons of Old Maryland

Sons of old Maryland

Old Maryland needs you!

Stand by your colors, boys,

And to them e'er be true!

Fight for old Maryland,

Old Liners stand,

Defenders of the Black and Gold

Throughout the land!

Cheers

Red Hot Yell

Our team is red hot,
Our team is red hot,
Our team is red hot,
Red Hot, Red Hot, Red Hot.

Locomotive

MMMM AAAA RRRR YYYY
LLLL AAAA NNNN DDDD
Maryland
Team Team Team

Whistle Cheer

Whistle—Rah
Whistle—Rah
Maryland
Fight

Boom Bam

Boom Bam
Sizzle-ah-
Maryland Terrapins
Rah

Maryland Swing

M-M M-A-R-Y,
L-L L-A-N-D,
M-A-R-Y
L-A-N-D,
Fight, Team, Fight!

U. M. Rah Rah

U. M. Rah Rah
U. M. Rah Rah
U. Rah
M. Rah
U. M. Rah Rah
Fight, Team, Fight!

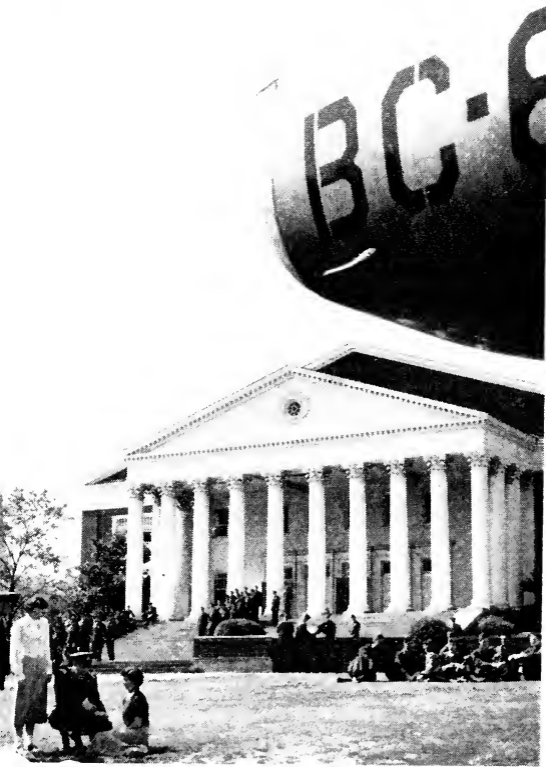
Maryland Sway

M-A-R-Y-L-A-N-D
Mary-Land
Fight, Team, Fight!

Terrapin

T-E-R-R-A-P-I-N
T-E-R-R-A-P-I-N
Fight, Team, Fight!

● military



In this country we believe that our youth should have the opportunity to rise to any station commensurate with their abilities.

At the University of Maryland the opportunity to become a well-balanced citizen and a responsible Air Force officer is afforded each student in the Reserve Officers' Training Corps.

In unpredictable times like these, with the ghastly game being played abroad, the liberty we have accepted so casually is a hazard. Too long has our security creaked and groaned from our national habit of indifference to military precautions.

If a student wants to become an Air Force officer—if he desires to acquire information, to understand the problems of today and to grow in character—then he belongs in Maryland's cadet corps

Remember, that "without discipline our Air Force is a mob; without morale it is a hollow shell. Possessing both, it is invincible!"

JOS. R. AMBROSE
Dean of
Military Science



◀ *Some of Maryland's AFROTC*

AFROTC Events

The two most important events on the AFROTC calendar are held in the spring. The first of these is the Military Ball, which provides a welcome break in the drill program and gives every cadet the chance to show off his best girl. New members of the honorary military societies are also tapped at the Ball.

The AFROTC year actually culminates in Military Day, which features a review by the Governor of the State of Maryland, competitive drill, exhibits and demonstrations, and presentations of awards to outstanding cadets.

These events stimulate interest in the Air Force program and augment the scholastic curriculum.

Last year the ROTC program was transferred from the Continental Air Command to the Air University, which brings with it plans for slightly different organization of the academic program.

The High Command

Operations of the AFROTC unit are supervised by half a hundred regular Air Force personnel, who must keep detailed records on each cadet in the largest AFROTC unit in the country as well as provide classroom and drill instruction.

The Commanding Officer in the organization is the Professor of Air Science and Tactics, who coordinates the activities of the unit. This position is held by Colonel Joseph R. Ambrose, who is in his second year as CO and recently returned from a tour of duty in the Far East.

Angel's Flight

The Angel's Flight is composed of coeds who are chosen by the various squadrons as sponsors for their units. The purpose of these sponsors is to improve the "esprit de corps" of the air division as well as to act as hostesses to families and visitors on various occasions.

Any girl is eligible to become a member of the Angel's Flight, since she is selected by the cadets themselves. The new members are presented annually at the Military Day ceremonies.

The Angel's Flight is organized in conjunction with the Arnold Air Society and is the local branch of a nation-wide organization which is represented at all co-educational colleges and universities which have AFROTC units.

This year's Air Division sponsor is Elizabeth Cave, with Elizabeth McDaniel, Mary Broumas, and Jeanine Eberts as the three wing sponsors. There are twenty-six other individual unit sponsors.

Scabbard and Blade

<i>President</i>	Richard Bland
<i>Vice-President</i>	Michael Troiano
<i>Secretary</i>	Don Tindal
<i>Treasurer</i>	Richard Jansson
<i>Faculty Advisor</i>	Lt. Col. John Grier

Scabbard and Blade is a national military leadership honorary fraternity for advanced ROTC students. It recognizes leadership,

A 3.0 average must be maintained in ROTC 3.0 average must be maintained in ROTC courses, with a 2.5 average in other academic subjects. Members are tapped annually at the Military Ball.

Arnold Air Society

<i>Commanding Officer,</i>	Frederick Hudson
<i>Executive Officer,</i>	Delabarre Sullivan
<i>Operations Officer</i>	Robert Stephens
<i>Adjutant Recorder</i>	Daniel Arris
<i>Treasurer</i>	William E. Fischer
<i>Public Relations</i>	Edward Power

The Arnold Air Society is an honorary society composed of advanced cadets who have demonstrated exceptional leadership ability, high scholastic standing, and interest in the Air Force.

AFROTC Band

Officers to be selected in fall from advanced corps band members
Faculty Advisor.....Lt. Robt. L. Landers

The AFROTC Band is composed of members of basic AFROTC. Bandsmen are signed up at registration and membership is open to all freshmen and sophomores.

The purpose of the band is to participate in and provide music for military formations such as convocations, parades, and Military Day. Members of the band are distinguished by their red and white aiguilletes.

Pershing Rifles

CommanderClarence Gaddy
Executive OfficerDonald L. Hoover
Operations OfficerRobert Winkler
AdjutantHarry White
Drill OfficerCharles Johnson
First SergeantGordon Fell

The Pershing Rifles is composed of basic cadets interested in precision drilling. The PR's give drill demonstrations, engage in competition with units from other schools, and supply honor guards and ushers at campus functions such as May Day, throughout the year.

Members are signed up during registration and are distinguished on the campus by their blue and white shoulder cords and white gloves.

● publications

Hi Freshmen,

Student publications play a very important part in the campus life.

Here are some facts you should know about them. The *Diamondback* newspaper is published Tuesdays and Fridays. The *Old Line* magazine is issued every six weeks or so, and the *Terrapin* yearbook is delivered annually in May. The "*M*" *Book*, which you are now reading, is printed for all incoming students.

These publications are the student's opportunity to express themselves in fact and fancy, in story and photograph, in layout and makeup and in business and editorial. All publications are eagerly sought and read by the students.

Look through the brief descriptions on the following pages and decide which one you want to work on. *All students*, including those with business and editorial abilities, are invited and requested to help with any of these publications. A campus career in student publications is rewarding in many ways. There is always a need for new and fresh talent in the publications offices. Freshmen should begin work on publications during their first year so they will be ready for major positions in later years.

JIM HANSEN,
President, Pi Delta Epsilon

A publication staff at work ►



Publications Board

As a faculty-student body, the Publications Board is responsible for the selection of editors, managing editors and business managers of all Student Government Association supported publications. All appointments are made on the basis of a written application, experience, and the applicant's ability to do the job in the most professional manner.

The Publications Board this year will be headed by Prof. Alfred A. Crowell, head of the Journalism Department. Other members of the faculty include Dean James Reid, Student Life Committee chairman; Prof. Donald Krimel, Journalism department; and a faculty advisor to publications to be named.

Student representatives on the board include: Craig Fisher, SGA president; Jim Hansen, Pi Delta Epsilon president; and Elin Lake, William Holland, and Ann Bennett, editors of the *Diamondback*, *Terrapin*, and the *Old Line* and *M-Book* respectively. Miss Bennett is editor of the last two mentioned publications.

University Publications

The Maryland Magazine

Published six times yearly by the Maryland alumni, this magazine is of special interest to former students at the University. The magazine carries a full range of articles and pictures about the campus and the alumni.

The magazine can be purchased at the Student Supply Store or may be subscribed to by writing General Alumni Secretary David Brigham, Rossborough Inn, Campus.

University Catalogs

There is a separate catalog published for each college at the College Park campus, and for each of the professional schools in Baltimore. Each catalog contains the course offerings; requirements for degrees, and the required curricula of each college.

A general catalog is published each year describing entrance requirements of the University, and containing information regarding costs, fees, facilities, and other information.

The Academic and General Regulations bulletin includes attendance and residence requirements for degrees, traffic regulations, and arrangements for social functions. Catalogs or bulletins may be picked up at the Publications Office, located in Room 28 of Symons Hall.

The Diamondback

<i>Editor-in-Chief</i>	Elin Lake
<i>Managing Editors</i> —	
Adele Chidakel, Neal Durgin	
<i>Makeup Editor</i>	Terry Emsweller
<i>Copy Editors</i> —	
Don Betz, Barbara Dodd	
<i>Executive News Editor</i> —	
Richard Manning	
<i>Feature Editors</i> —	
Sabra Baker, Paul Linder	
<i>Social Page Editors</i> —	
Jean Spencer, Shirley Steele	
<i>Sports Editors</i> —	
Frank Weedon, Harvey Casbar-	
ian, Ray Ashley, Pete Lamphier.	
<i>Business Mgr.</i>	Jim Garrity

Although it has not been decided whether or not the *Diamondback* will be published two or three times weekly this year, the campus tabloid will continue to inform the student body of all the latest news on the local college scene. Staffed by students with a wide range of experience and ability, the *DBK* will soon become a reading habit you won't want to miss.

The Old Line

Editorial Staff

<i>Editor</i>	Barbara Ann Bennett
<i>Managing Editor</i>	Mike Potash
<i>Associate Editors</i>	Jane Cahill Jeanne Peake
<i>Makeup Editor</i>	Stan Harrison
<i>Art Editor</i>	Mo Lebowitz
<i>Humor Editor</i>	Pete Peterson
<i>Copy Editor</i>	Jean Spencer
<i>Contributing Editor</i> —	Lorraine Jorgensen

Business Staff

<i>Business Mgr.</i>	Danny Melchoir
<i>Asst. Business Mgr.</i>	Barbara Dean
<i>Advertising Mgr.</i>	George Barthel
<i>Exchange and Subscription Mgr.</i> —	Margot Tully
<i>Circulation Mgr.</i>	Bryan Bailey
<i>Office Mgr.</i>	Shirley Thompson

Published six times during the school year, the *Old Line* magazine is an outlet for creative writing, college humor and feature articles. Like the other student publications there will be a berth on its staff for any freshman who is willing to take the time and effort to contribute his talent to the magazine and for the enjoyment of the student body.

the
old line



Terrapin

EditorBill Holland
Business ManagerJeanine Eberts
Managing EditorBettie Rossmann
Rest of staff to be appointed in the fall

The most ambitious single-edition student publication is *The Terrapin*, the annual pictorial yearbook which requires a year of diligent work in order to meet its May Day release date. It is on this day the first copy of the annual is presented to the May Day Queen. The 1952 edition was recently awarded the Pi Delta Epsilon award for excellence in photography.

Other Student Publications

Several clubs, academic departments, fraternities and sororities publish bulletins, annuals, newspapers, magazines and newsletters during the college year. Most of these organs are staffed by students, offering a worthwhile extra-curricula activity for those interested in this work.

One of these publications is *The Fraternity Way*, a pictorial handbook published by the Interfraternity Council each year. The purpose of this magazine is to acquaint freshmen with the college fraternity system on the Maryland campus.

university of maryland

1957
TERRAPIN

The Student Directory

Published early in the fall semester, the Student Directory lists the names of the faculty, staff members, and students at the University by name, local address, and home address.

The Directory also contains the names and presidents of clubs, honoraries, sororities, fraternities, and organizations. A small fee is charged for each copy, and it may be purchased in the Student Supply Store.

Pi Delta Epsilon Awards

Pi Delta Epsilon gives two awards each year: one to the outstanding freshman in publications, and the other to the senior who has contributed most to student publications in his four years at the University.

The first award, named the E. A. Coblentz Memorial Cup (in honor of a former *Diamondback* business manager who was killed in Korea last year) went to Don Uhrbrock, photographer for the *M-Book* and other publications.

The senior award went to Eddie Herbert, a June graduate who had served on the staffs of WMUC, the *Old Line*, and the *Diamondback*.

M Book

<i>Editor</i>	Barbara Ann Bennett
<i>Managing Editor</i>	Bob McNally
<i>Copy Editor</i>	Jeanne Peake
<i>Business Mgr.</i>	Judy Antrim
<i>Sports Editor</i>	Ronnie Brooks
<i>Art Editor</i>	Mo Lebowitz
<i>Photographers</i> —	
	Don Uhrbrock and Phil Geraci

Staff

Barbara Dodd	Glory Ann Slone
Jean Spencer	Eileen Brown
Jane Weiderhold	Alice Scott
Wilma Brown	Shirley Stahl
Bob Giffin	Jay Gadd
Joan Obaugh	Mina Schlegal
Liz McDaniels	Harvey Casbarian
Lila Erbe	Loretta Bickford

Nicknamed the "Frosh Bible," the *M-Book* is prepared at the end of each academic year for the incoming freshman class in the fall. As a handbook for neophyte Maryland scholars, the *M-Book* is a useful reference publication, containing as much information about the University as it is possible to put together in one small handy volume.

Index

Administration	32
Associated Women Students	46
Athletics	130
Calendar of Events	6
Drama and Music	88
Fraternities	118
General Information	12
History and Traditions	26
Honoraries	50
Know Your Deans	38
Maps :	
Campus	24
Fraternity-Sorority	117
Men's League	48
Military	156
Organizations	64
Publications	162
Religion	98
Songs and Cheers	152
Sororities	108
Student Government Association	40
Class Officers	45
Executive Council	44
What to Bring :	
Coeds	22
Men	20
Whom to See	18

1953

:

1954

:

1955

JULY 1953
S M T W T F S
..... 1 2 3 4
5 6 7 8 9 10 11
12 13 14 15 16 17 18
19 20 21 22 23 24 25
26 27 28 29 30 31 ..
.....

AUGUST
S M T W T F S
..... 1
2 3 4 5 6 7 8
9 10 11 12 13 14 15
16 17 18 19 20 21 22
23 24 25 26 27 28 29
30 31

SEPTEMBER
S M T W T F S
... 1 2 3 4 5
6 7 8 9 10 11 12
13 14 15 16 17 18 19
20 21 22 23 24 25 26
27 28 29 30

OCTOBER
S M T W T F S
..... 1 2 3
4 5 6 7 8 9 10
11 12 13 14 15 16 17
18 19 20 21 22 23 24
25 26 27 28 29 30 31
.....

NOVEMBER
S M T W T F S
1 2 3 4 5 6 7
8 9 10 11 12 13 14
15 16 17 18 19 20 21
22 23 24 25 26 27 28
29 30

DECEMBER
S M T W T F S
... 1 2 3 4 5
6 7 8 9 10 11 12
13 14 15 16 17 18 19
20 21 22 23 24 25 26
27 28 29 30 31

JANUARY 1954
S M T W T F S
..... 1 2
3 4 5 6 7 8 9
10 11 12 13 14 15 16
17 18 19 20 21 22 23
24 25 26 27 28 29 30
31

FEBRUARY
S M T W T F S
.. 1 2 3 4 5 6
7 8 9 10 11 12 13
14 15 16 17 18 19 20
21 22 23 24 25 26 27
28

MARCH
S M T W T F S
... 1 2 3 4 5 6
7 8 9 10 11 12 13
14 15 16 17 18 19 20
21 22 23 24 25 26 27
28 29 30 31

APRIL
S M T W T F S
..... 1 2 3
4 5 6 7 8 9 10
11 12 13 14 15 16 17
18 19 20 21 22 23 24
25 26 27 28 29 30 ..
.....

MAY
S M T W T F S
..... 1
2 3 4 5 6 7 8
9 10 11 12 13 14 15
16 17 18 19 20 21 22
23 24 25 26 27 28 29
30 31

JUNE
S M T W T F S
... 1 2 3 4 5
6 7 8 9 10 11 12
13 14 15 16 17 18 19
20 21 22 23 24 25 26
27 28 29 30

JULY 1954
S M T W T F S
..... 1 2 3
4 5 6 7 8 9 10
11 12 13 14 15 16 17
18 19 20 21 22 23 24
25 26 27 28 29 30 31
.....

AUGUST
S M T W T F S
1 2 3 4 5 6 7
8 9 10 11 12 13 14
15 16 17 18 19 20 21
22 23 24 25 26 27 28
29 30 31

SEPTEMBER
S M T W T F S
..... 1 2 3 4
5 6 7 8 9 10 11
12 13 14 15 16 17 18
19 20 21 22 23 24 25
26 27 28 29 30 ...
.....

OCTOBER
S M T W T F S
..... 1 2
3 4 5 6 7 8 9
10 11 12 13 14 15 16
17 18 19 20 21 22 23
24 25 26 27 28 29 30
31

NOVEMBER
S M T W T F S
.. 1 2 3 4 5 6
7 8 9 10 11 12 13
14 15 16 17 18 19 20
21 22 23 24 25 26 27
28 29 30

DECEMBER
S M T W T F S
..... 1 2 3 4
5 6 7 8 9 10 11
12 13 14 15 16 17 18
19 20 21 22 23 24 25
26 27 28 29 30 31 ..

JANUARY 1955
S M T W T F S
..... 1
2 3 4 5 6 7 8
9 10 11 12 13 14 15
16 17 18 19 20 21 22
23 24 25 26 27 28 29
30 31

FEBRUARY
S M T W T F S
... 1 2 3 4 5
6 7 8 9 10 11 12
13 14 15 16 17 18 19
20 21 22 23 24 25 26
27 28

MARCH
S M T W T F S
... 1 2 3 4 5
6 7 8 9 10 11 12
13 14 15 16 17 18 19
20 21 22 23 24 25 26
27 28 29 30 31 ...
.....

APRIL
S M T W T F S
..... 1 2
3 4 5 6 7 8 9
10 11 12 13 14 15 16
17 18 19 20 21 22 23
24 25 26 27 28 29 30
.....

MAY
S M T W T F S
1 2 3 4 5 6 7
8 9 10 11 12 13 14
15 16 17 18 19 20 21
22 23 24 25 26 27 28
29 30 31

JUNE
S M T W T F S
..... 1 2 3 4
5 6 7 8 9 10 11
12 13 14 15 16 17 18
19 20 21 22 23 24 25
26 27 28 29 30 ...

**Maryland, we're all behind you,
Wave high the Black and
Gold.**

**For there is nothing half so
glorious**

As to see our team victorious.

We've got the team, boys,

We've got the steam, boys,

**So keep on fighting, don't
give in!**

M-A-R-Y-L-A-N-D (yell)

Maryland will win!

Hail! Alma Mater!

Hail to thee, Maryland!

Steadfast in Loyalty

For Thee We Stand.

Love for the Black and Gold,

Deep in our hearts we hold,

Singing thy praise forever,

Throughout the land.

