

41
3-0.73
1362m

class of 1959

m

m-book

*university of maryland
college park, maryland*

class of 1959

Archives

UPUB

\$30.001

1955/56



the 1955 m-book is dedicated to the freshman class with the hope that it will serve as an informative and friendly guide throughout their first year at the university of maryland

this is your year . . .

You walk away from the Coliseum and the opening assembly in a sort of puzzled wonder—Can there be that many new students just entering like myself?

Walking down the Mall path to the Armory, you take in the geometrically planned campus, a conglomeration of new buildings and historical ones, landscaped into postcard perfection. The campus eye-appeal has attracted you. But it is the teeming life of the “little metropolis” that will complete the chain that ties you to it.

First there is the social season, beginning with sorority rushing and followed later in the semester by fraternity rushing. Teas, parties, smokers and pledging make the world go round. Besides Greek flngs are a vast assortment of Orientation week activities for you. From the placement test, where you wonder if you can skip English I, to the Freshman Mixer at the end of the week, where the typical freshman couple is picked, the spotlight is on the frosh.

The football season—crash, bang, fizz, whamm!—pep rallies, torchlight parades, car caravans to greet the returning Terps at National Airport, and that weekend of weekends, Homecoming, when the Greeks compete for decorations and floats, old grads take



Testudo, a Maryland tradition, the often kidnapped symbol of Terp Town, now rests on a permanent base in front of the Byrd Stadium field house.

over the campus, and you escort that special girl to the game and the dance.

With the change in seasons, a thick white snow will usually cover the green just as the Chapel Chimes sound Christmas Carols between classes. The Yuletide Pageant in the Chapel, the lighting of the outdoor tree, the Greek Christmas formals, and that long, long holiday . . .

All the while things are buzzing in the Central Auditorium. University Theater has given two productions already and perhaps one in-the-round besides. The Kappa Alpha minstrel and the Modern Dance Concert fill other nights.

As the last hours of the morning are spent

before the last final exam in January, thoughts begin turning to a quick escape from College Park between semesters. Then—What—registration again?

Spring semester brings with it the class proms, the Frosh prom for you, the Interfraternity Sing, and Spring Week. This comparatively new innovation is devoted to a week of entertainment just before June exams. A sample of regular events—the Turtle Derby; the annual musical revue, "Interlude"; May Day and Mortar Board tapping of junior women.

We're ahead of the times. It is almost impossible to forget the hectic spring elections for Student Government, the Women-Pay-All Dance, the Sadie Hawkins Race, the No-Shave Week, and Ag Weekend.

Many things more will be left for you to discover alone, most significant—the sense of accomplishment after the long, toilsome study period during and well after lecture halls and labs have passed on, the joy in meeting and working with others, and the warmth of college friendships.

In simplest language, all we old upperclassmen can tell you is—make the most of it here in "Terp Town!"

highlights of the school year

1955-56

september—

- 20-24 Orientation
- 23 President's Reception
- 24 Home Game—U.C.L.A.
- 26 Instruction begins
- 29 Fraternity Rushing

october—

- 8 Home Game—Dad's Day—Wake
 Forest
- 15 Away Game—North Carolina
- 20 Convocation
- 21 Panhellenic Pledge Formal
- 22 Away Game—Syracuse
- 28-
- Nov. 4 University Theater
- 29 Homecoming Day—South
 Carolina

november—

- 5 Home Game—Louisiana State—
 R.O.T.C. Day
- 10 National Symphony
- 19 Home Game—George Washing-
 ton—Band—Senior Day
- 23 Thanksgiving Recess begins
- 28 Thanksgiving Recess ends

december—

- 2-3 and
6-10 University Theater
2 Dedication of Student Activities
Building
2 First Home Basketball game—
Virginia
3 AWS Regional Convention
5 Basketball with Alumni
7 Basketball with Soviet
Olympic Team
11 THE MESSIAH—University
Choir
16 Rossborough Club Christmas
Formal
20 Christmas Recess begins

january—

- 20 Charter Day
24 Study Day
25-Feb. 1 First Semester Examinations

february—

- 7-10 Registration—Second Semester
13 Classes begin
16 National Symphony
22 Washington's Birthday Holiday
23 National Symphony

march—

- 3 AWS Women Pay All Dance
- 9-10 and
13-17 University Theater
- 22 National Symphony
- 23 Junior Prom
- 26 Maryland Day Observance
- 27 Panhellenic Orphans Party
- 29 Easter Recess begins

april —

- 3 Easter Recess ends
- 19 Inter-Fraternity Sing
- 20 Sophomore Prom
- 27-28 University Theater

may—

- 1-5 University Theater
- 10 Military Day
- 15-18 Spring Week
- 15 AWS May Day Tea
- 30 Memorial Day Holiday
- 31 Study Day

june—

- 1-8 Second Semester Examinations
- 3 Baccalaureate Exercises
- 9 Commencement Exercises



*the Taliaferro Building, home of the College of
Business and Public Administration*

—Terrapin photo

table of contents

from the president	11
history	12
administration	16
student government association	26
associated women students	33
men's league	34
honor societies	35
organizations	51
clubs	52
religion	75
publications	84
entertainment and music	91
sororities	99
fraternities	107
independent students association	119
afrotc	120
athletics	125
maryland pep	141
general information	148



Dr. Wilson H. Elkins, a Phi Beta Kappa and three letter man, was born in Medina, Texas, in 1908. He attended the University of Texas where he received B.A. and M.A. degrees. In 1933 he was awarded a Rhodes Scholarship to Oxford University where he attained Bachelor of Literature and Doctor of Philosophy degrees in 1936. In 1938 he became president of San Angelo Junior College and in 1949 he went to Texas Western to hold the same position. He was inaugurated as president of the University of Maryland on October 29, 1954.

from the president . . .

Each year we lose a number of students through graduation and we welcome a larger number of freshmen who begin their pursuit of higher education. A very large percentage of the newcomers have average ability or above but, unfortunately, a much smaller percentage graduate. The loss is too high, although some of it is quite natural.

Too many students come to the University without seriousness of purpose, and they fail to apply their abilities. Most failures are due to lack of application and not to deficiencies.

I urge you to consider the benefits you will derive from the completion of a college course of study. It affords you an opportunity for advancement. It is clearly in your interest to do your best. Good luck all of the way.

Wilson H. Elkins
President

history



Symbolic of the University's ever continuing growth are construction scenes such as this one on the new Student Activities Building.

The University of Maryland dates back to 1807, when the first school of the University, the College of Medicine, was founded in Baltimore. In more than 140 years since its founding, the University has expanded, both physically and scholastically, until it now occupies a position as one of the leading universities in the country.

After the College of Medicine was founded,

there followed within a few years the establishment of several other professional schools. The School of Law was added in 1823, the School of Dentistry in 1882, the School of Nursing in 1889, and in 1904, the Maryland College of Pharmacy.

At College Park, in 1856, the Maryland State College, the first agricultural college in the United States, was established under the name of the Maryland Agricultural College.

In 1862, this college became, in part, a state institution with the passage of the Land Grant Act by Congress. It was one of the first schools to benefit from this act and the subsequent federal aids to education.

In 1920, the professional schools of the University of Baltimore and the Maryland State College in College Park were merged to form what is now known as the University of Maryland.

maryland today

The University of Maryland is not limited by the College Park and Baltimore boundaries—it stretches overseas to virtually every part of the western world through the College of Special and Continuation Studies founded in 1949. The CSCS program is not a correspondence course; it consists of classroom courses taught by instructors who must be approved

by the dean of their respective college in College Park.

Although much of the overseas program is directed at military personnel, there is a Munich Day-time program for the sons and daughters of U. S. government, military, and civilian personnel in Germany.

In typical American classrooms, they earn credit at a fully accredited American college established overseas under the supervision of the dean of CSCS. The Munich students publish their own newspaper, *The Continental Collegiate*; their yearbook is not the just plain *Terrapin*, but the *Bavarian Terrapin*.

CSCS also maintains a vast educational program in the State and surrounding area bringing the University to the four million square mile mark with over 150 sites.

the university seal

Maryland's Great Seal, the oldest of the state seals, was sent to the province of Maryland in 1648 by Lord Baltimore. More than 300 years old, the seal is the only state seal of strictly heraldic character.

The escutcheon bears the Calvert and Crosslands arms quartered. The first and fourth

quarters are the Calvert Arms. The second and third quarters are from the Crossland, Baltimore's maternal arms. An earl's coronet and full-faced helmet are surmounted on the quarterings. These indicate Lord Baltimore's rank in America. The Calvert crest rests on the helmet.

The escutcheon is supported on one side by the figure of a farmer and on the other by that of a fisherman—symbols of each of Lord Baltimore's estates, Maryland and Avalon. Below the figures is the scroll bearing the Calvert motto: "Fatti Maschii Parole Famine," which means "Deeds are Males; words, females." On a border encircling the seal is the legend: University of Maryland . . . 1807 . . . 1856 . . . 1920.





● **administration**

board of regents

(The year following a board member's name denotes date of expiration of his term of office.)

William P. Cole, Jr., *Chairman*.....1958
Mrs. John L. Whitehurst,
Vice-Chairman1956

B. Herbert Brown, *Secretary*.....1960
Harry H. Nuttle, *Treasurer*.....1957
Louis L. Kaplan, *Asst. Secretary*.....1961
Edmund S. Burke, *Asst. Treasurer*.....1959
Edward F. Holter1959
Arthur O. Lovejoy1960
Charles P. McCormick1957
C. Ewing Tuttle1962
Thomas B. Symons1963

◀
*at the head of the Mall the Administration Building,
"nerve center" of the University*

—Terrapin photo



*from the
dean of
women*

It gives me a great deal of pleasure to welcome all new and returning students to the University for the year 1955-56.

We hope you will like our campus, enjoy its beauty and respect our traditions. You will find Maryland a friendly place and you will form lifelong friendships here. Let me urge those of you who are fortunate enough to have both the privilege and the responsibility of a college education to make the most of it.

The door of my office and the doors of my assistants are always open to you. We want to know you and we want you to know us, so stop by and get acquainted.

Adele Hagner Stamp

Welcome to the members of the Class of 1959 and other new students. I am indeed happy that you have decided to join our fine student body and will study under our excellent faculty.

Feel free to ask questions of anyone on the campus as you will find the faculty, the administration, the staff, and upperclassmen willing to assist you.

Stop by my office at any time for a social visit or discussion of a problem.

Geary Eppley

***from the
dean of
men***





Dr. Ronald Bamford
*Dean of the Graduate
School*

meet your deans

Dr. Gordon Cairns
College of Agriculture

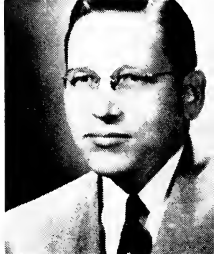


Dr. S. S. Steinberg
College of Engineering





Dr. J. Freeman Pyle
*College of Business and
Public Administration*



Dr. Vernon Anderson
College of Education

Dr. Lester M. Fraley
*College of Physical
Education*

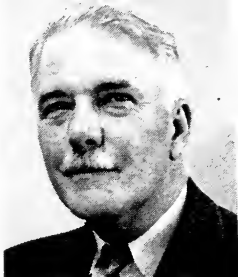


Col. Joseph Ambrose
*College of Military
Science*





Dr. Harold Cotterman
Dean of the Faculty



Dr. Leon P. Smith
*College of Arts and
Sciences*

Dr. Ray Ehrensberger
*Dean of College of
Special and Continua-
tion Studies*

Dean Marie Mount
*College of Home
Economics*



officers of the administration

- Wilson H. Elkins, *President of the University*
Harry C. Byrd, *President Emeritus*
Harold F. Cotterman, *Dean of the Faculty*
Ronald Bamford, *Dean of the Graduate School*
Gordon M. Cairns, *Dean of Agriculture*
Paul E. Nystrom, *Director of Instruction, College of Ag., and Head, Department of Agricultural Economics and Marketing*
James M. Gwin, *Director, Agricultural Extension Service*
Irvin C. Haut, *Director, Agricultural Experiment Station and Head, Department of Horticulture*
Leon P. Smith, *Dean of the College of Arts and Sciences*
J. Freeman Pyle, *Dean of the College of BPA*
Myron S. Aisenberg, *Dean of the School of Dentistry*
Vernon Anderson, *Dean of the College of Education*
S. Sidney Steinberg, *Dean of the Glenn L. Martin College of Engineering and Aeronautical Sciences*
Wilbert J. Huff, *Director, Engineering Experiment Station*
M. Marie Mount, *Dean of the College of Home Economics*
Roger Howell, *Dean of the School of Law*
William S. Stone, *Director of Medical Education and Research*

H. Boyd Wylie, *Dean of the School of Medicine*

Florence M. Gipe, *Dean of the School of Nursing*

George H. Buck, *Director of the University Hospital*

Joseph R. Ambrose, *Dean of the College of Military Science*

Noel E. Foss, *Dean of the School of Pharmacy*

Lester M. Fraley, *Dean of the College of Physical Education, Recreation, and Health*

Ray W. Ehrensberger, *Dean of the College of Special and Continuation Studies*

Geary F. Eppley, *Director of Student Welfare and Dean of Men*

Adele H. Stamp, *Dean of Women*

Edgar F. Long, *Dean of Students*

G. Watson Algire, *Director of Admissions and Registration*

Norma J. Azlein, *Associate Director of Registration*

Dorothy L. Powell, *Associate Director of Admissions*

David L. Brigham, *Alumni Secretary*

James M. Tatum, *Director of Athletics and Head Football Coach*

George O. Weber, *Business Manager*

George W. Morrison, *Associate Director and Supervising Engineer of Physical Plant*

C. Wilbur Cissel, *Comptroller*

Charles L. Benton, *Director of Finance and Business*

Howard Rovelstad, *Director of Libraries*

George W. Fogg, *Director of Personnel*

George W. Warren, *Director of Procurement*

Harvey L. Miller, *Director of Publications and Publicity*

Harry A. Bishop, *Director of the Student Health Service*

John P. O'Reagan, *Commandant of Cadets, Air Force R.O.T.C.*

student life committee

Dean James H. Reid, *Chairman*

G. Watson Algire

Dr. Robert L. Allen

Geary F. Eppley

Robert C. James

George D. Quigley

Warren L. Strausbaugh

James H. Tatum

Charles E. White

Mary O. Handy

Dr. Susan E. Harman

Adele H. Stamp

and Presidents of Student Government Association, Men's League, and Associated Women Students



the SGA is in session—a Tuesday evening scene

—photo by Glenn Sears

● **student government
association**

sga activities

It will soon become customary for you to pick up the latest copy of the *Diamondback*, campus tri-weekly, and read of the latest controversy, proposal, debate, decision, or what have you, involving the Student Government Association. For this is an active group, dedicated to satisfying the needs of students and regulating principles and policies. The SGA is divided into three parts:

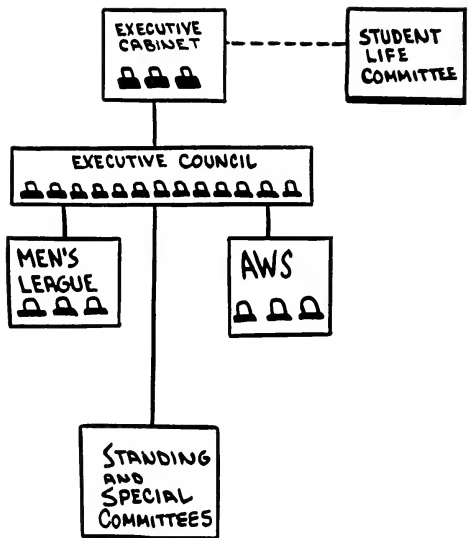
Executive Council: The council is the policy-making group. Duties include appropriation of funds from the student activity fee, paid at registration, for dances, University Theater, athletic events, publications, and other open student activities. A meeting is held every two weeks on Tuesday night in the Student Union Bull Room. All students are invited to attend.

Men's League: The league is responsible for enforcement of campus regulations concerning men students. Duties cover men's dorms.

Associated Women Students: The AWS handles much the same job as Men's League for women students at the University.

elections

With three or more candidates competing for any SGA or class office, a primary election



will be held several weeks before the Spring Elections. All candidates must have a 2.0 academic average.

Frosh elections are held in October. All freshmen who secure petitions from the SGA office and have the required number of freshman signatures prior to the deadline may run for office.

committees

The Executive Council determines chairmanships, which are open to all students who submit applications to the SGA office stating their qualifications. Sub-committee chairmanships and committee members are chosen by the chairman on the basis of experience.

Committees under SGA are Ways and Means, Elections, Organization and Procedure, Student Welfare, Social Affairs, Campus Improvement, Student Activities, Constitution, Campus Chest, Freshman Orientation, Homecoming, Dad's Day, Student Union, Cultural Program, Public Relations, Traffic Appeals, Job Placement, and Who's Who.

As a new student, you may be appointed to any committee by submitting an application to the SGA office during the first two weeks of school. Application should include qualifications and experience, campus or home address, telephone.

Class prom chairmanships are announced in

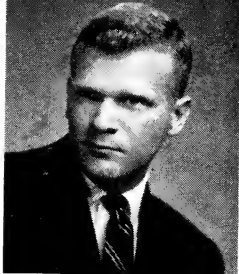
the *Diamondback* as to dates of application. Applications may be made in the fall for Dad's Day and Homecoming, two big football weekends.

Campus Chest conducts a consolidated drive for charities every spring on the College Park campus. Campus Chest Week, the Sophomore Carnival, and the Ugliest Man on Campus Contest are all fund-raising projects in the spring. Applicants may join different phases of the drive.

executive council

<i>President</i>	Charles Wickard
<i>Vice-President</i>	Bruce "Bo" Berlage
<i>Secretary</i>	Beverly J. Stubbs
<i>Treasurer</i>	Dave Rudow
<i>President, Men's League</i>	Dale Jarvis
<i>President, AWS</i>	Anna Karavangelos
<i>Fraternity Representative</i>	Ed Gantt
<i>Sorority Representative</i> —	Shirley Matthews
<i>Independent Representatives</i> —	Micky Wetzel and Ralph Crosby
<i>Delegate-at-Large</i>	Mary Lee Hudes
<i>Delegate at-Large</i>	Pat Killingsworth
<i>Delegate-at-Large</i>	Sandra Sowder
<i>President, Senior Class</i>	Tom Lescalleet
<i>President, Junior Class</i>	Jerry Hartdagen
<i>President, Sophomore Class</i> —	Howard Miller
<i>President, Freshman Class</i>	To be elected

*from
the sga
president*



Welcome to the campus of the University of Maryland! This is your university, and the Student Government Association hopes that you will become an integral part of it just as it will, in the chaotic days of Freshman Orientation, become a part of you.

In welcoming you to the University I would like to emphasize that just as this is your university so are we of the executive council *your student government*.

The University of Maryland is old in years and traditions but in its ideas and continuing growth it retains a feeling of dynamic youth. In the coming year there will be new plans to discuss and new problems to solve.

I hope that this letter will serve as an open bid to the members of the class of 1959 to attend our meetings, give us your suggestions, and visit our offices in the Student Union building whenever you have the opportunity.

CHARLIE WICKARD

class officers 1955-56

Senior Class

<i>President</i>	Tom Lescalleet
<i>Vice-President</i>	Herb Brubaker
<i>Secretary</i>	Ronnie Trattler
<i>Treasurer</i>	Jan Bechtoldt
<i>Historian</i>	Pris Pilgrim
<i>Sergeant-at-Arms</i>	Dave Uhlfelder
<i>Men's League Rep.</i>	Dick Stein
<i>AWS Representative</i>	Betty DeMello

Junior Class

<i>President</i>	Jerry Hartdagen
<i>Vice-President</i>	John Stramski
<i>Secretary</i>	Kate Williams
<i>Treasurer</i>	Fred Applestein
<i>Historian</i>	Ginger Miles
<i>Sergeant-at-Arms</i>	Ron Stubin
<i>Men's League Rep.</i>	Vince Palumbo
<i>AWS Representative</i>	Gail Blum

Sophomore Class

<i>President</i>	Howard Miller
<i>Vice-President</i>	Tom Jarrell
<i>Secretary</i>	Jackie DuMars
<i>Treasurer</i>	John Halliday
<i>Historian</i>	Jan Orndorff
<i>Sergeant-at-Arms</i>	Sheldon Dagurt
<i>Men's League Rep.</i>	Joe Meadow
<i>AWS Representative</i>	Ellen Urban

associated women students women's league

PresidentAnna Karavangelos
Vice-PresidentPat Callahan
SecretaryBarbara Rothman
TreasurerJudy Spencer

AWS is the campus governing body for women students, which formulates and administers the standards of conduct and campus rules and is responsible for maintaining personal and group standards of behavior.

Daydodgers are just as much a part of AWS as on-campus students. Any women interested in working on AWS committees can sign up at registration or at the AWS office any afternoon in the Student Union Building.

The Executive Council coordinates the activities of its subdivisions: the Residence Council, composed of dormitory and sorority house presidents; the Judicial Board, governing board for campus women's regulations; and the Academic Board, responsible for encouraging high standards and stimulating intellectual activity.



Anna Karavangelos

men's league

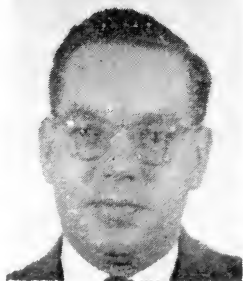
<i>President</i>	Dale Jarvis
<i>Vice-President</i>	George Giavasis
<i>Secretary</i>	Jon Dumond
<i>Treasurer</i>	John Dorsey

Men's League, the representative body for male students, is divided into two sections, the Executive Council and the Dormitory Council. The League assists the Dean of Men's Office in administering University rules and regulations.

The Executive Council is composed of the League officers and elected representatives of each class, Interfraternity Council, Independent Students' Association, and Alpha Phi Omega, service fraternity.

The Dormitory Council is the disciplinary board for offenses against dorm regulations, encourages dorm activity, and maintains healthful standards of living in dormitories.

Dorm proctors are chosen from upperclassmen and assigned by the University for maintenance of order and discipline in the men's dormitories.



Dale Jarvis



Carmen Guerrero, May Queen of 1955, enters the Ad. Building through a line of Mortar Board tappers —photo by Vic Holm

● honor societies

freshman scholastic

alpha lambda delta

National Women's Freshman Honor Society
Founded at the University of Illinois, 1924
Established at University of Maryland, 1932

PresidentMarjorie Persion
Vice-PresidentMargie Gates
SecretaryNancy Sneed
TreasurerJohanna Martin

Freshman women who attain a 3.5 average or above during their first semester or as a cumulative average during their freshman year are eligible for membership.

phi eta sigma

Founded at the University of Illinois, 1923
Established at University of Maryland, 1940

PresidentJerry Hartdagen
Vice-PresidentHoward Miller
SecretaryBarry Wiseman
TreasurerGerard Schlimm
Senior AdvisorTy Hartsing

Men attaining a 3.5 average or above during either the first semester or the entire freshman year are eligible for membership.

senior scholastic

phi kappa phi

Founded at the University of Maine, 1897
Established at the University of Maryland,
1920

PresidentProf. James H. Reid
Vice-President.....Dr. Wm. P. Walker
Sec'y.-Treas.Miss Lenna Gross

Only seniors in the upper 10% of their class are eligible for membership in this honor society dedicated to unity and democracy of education. Faculty and graduate students are also eligible. Tappings are held twice a year—in the fall and in the spring.

sigma xi

Graduate Research Fraternity
Founded at Cornell University, 1886
Established at University of Maryland, 1927

PresidentDr. Clyne Shaffner
Vice-President.....Dr. Francis C. Stark
Vice-President, Baltimore—

Dr. Edward C. Dobbs
SecretaryDr. Carroll E. Cos
TreasurerDr. Sherman Ross

Membership is limited to those who have or are to receive their PHD's, and who have demonstrated unusual ability in individual research efforts.

recognition

mortar board

Founded at Swarthmore College, 1918

Established at University of Maryland, 1934

PresidentBarbara Dodd

Vice-President—

Patricia Killingsworth

SecretaryJoan Kellerman

TreasurerJudy Peterson

Faculty Advisors.....Miss Mary Handy,

Mr. Warren Strausbaugh,

Dr. George Woods

Membership in Mortar Board is one of the highest honors that a senior woman may receive because selection is done on the basis of leadership, service, and scholarship. Mortar Board taps second semester junior women at the annual May Day pageant.

Other undergraduate members include:

Barbara Dean

Dorothy Delaney

Barbara Fiock

Rheda Greenberg

Anna Mae Jacqueline

Anna Karavangelos

Pat King

Rhea Mermelstein

Pat Murray

Dorothy Williams

omicron delta kappa

*Founded at Washington and Lee University,
1914*

Established at University of Maryland, 1927

PresidentCharles Wickard

Vice-PresidentEd Gantt

SecretaryTom Shipley

Faculty Advisor.....Prof. Russell Allen

ODK is the highest award for men on campus. It bases selection on service, character, scholarship, fellowship, and adherence to democratic ideals in campus life. In addition, tappees are selected for their outstanding leadership in the fields of drama, scholarship, publications, athletics, social, and religion. Winter tapping is traditionally held at the ODK banquet.

Other undergraduate members are:

Dave Singleton

Wendell Johnson

diamond

Established at University of Maryland, 1954

<i>President</i>	Marty Jackson
<i>Vice-President</i>	Donna Weber
<i>Secretary</i>	Nancy Antrim
<i>Treasurer</i>	Elaine Escery

Sorority women attaining junior standing and a 2.3 overall average are tapped twice a year in the fall and at the annual spring Inter-Fraternity sing on the basis of outstanding service within their respective groups. Each sorority can select three women from among its membership every year.

gate and key

Established at University of Maryland, 1950

<i>President</i>	Richard Stein
<i>Vice-President</i>	Paul Dauray
<i>Secretary</i>	Sam Penn
<i>Treasurer</i>	Earl LaVoie

Fraternity men who have been outstanding in their contributions and service for their Greek organization are tapped each year at the Inter-Fraternity Ball.

alpha zeta

National Honorary Agriculture Fraternity

Founded at Ohio State University, 1897

Established at University of Maryland, 1920

PresidentJohn Jarrett

Vice-PresidentJames Smith

SecretaryLewis Dove

TreasurerElmer Cooper

Faculty AdvisorsOrman Street

H. Hoffmeister

D. Scott

Students who are in the upper two-fifths of their class and who have completed one and one-half years in the College of Agriculture are eligible for membership in this honorary. Alpha Zeta stresses good character and leadership.

alpha chi sigma

Professional Chemical Fraternity

Founded at University of Wisconsin, 1902

Established at University of Maryland, 1927

PresidentThomas Murphy

Vice-PresidentTyler Hartsing

Faculty Advisor—

Dr. Fletcher P. Veitch

To be eligible for membership a student must be majoring in chemistry or chemical engineering and have an average of 2.5 or above.

alpha kappa delta

National Honorary Sociology Fraternity
Founded at the University of Southern Cal.,
1920

Established at University of Maryland, 1946

PresidentLyla Erbs

Vice-PresidentSamuel Suls

SecretaryAlice Riddleberger

Faculty AdvisorDr. Peter Lejins

Junior and senior standing, maintenance of an overall 3.0 academic average and completion of 18 credits in sociology courses comprise the requirements for membership in this society.

art society

Founded at University of Maryland, 1955

PresidentWarren Allin

Vice-PresidentGib Petrina

SecretaryBarbara Fiock

TreasurerDonald Montano

Faculty Advisor—

Col. James P. Wharton

This "fine arts" honorary selects members who have had their paintings selected as the painting of the month, judgments of which are held in February and June.

beta alpha psi

National Honorary Accounting Fraternity
Founded at the University of Illinois, 1919
Established at University of Maryland, 1936

PresidentHerbert Wickre
Vice-PresidentJohn Wagner
SecretaryWoodrow Jenkins
TreasurerJohn Cherrix
Faculty Advisor.....Prof. John Daiker

Juniors who have a 3.5 academic average in all accounting courses, and 3.0 average in other subjects are eligible for membership.

beta gamma sigma

National Commerce Honorary Fraternity
Founded at University of California, 1913
Established at University of Maryland, 1937

Faculty Advisor.....Prof. Allen Fisher

Stressing the spread of education in the science of business, honesty, and integrity, Beta Gamma Sigma fraternity seeks to encourage scholarship in the field of business.

delta sigma pi

Professional Business Fraternity

Founded at New York University, 1907

Established at University of Maryland, 1950

PresidentHenzo Bozzonetti

Vice-PresidentMike Daskalakis

SecretaryConway Harding

TreasurerJames Bray

Faculty Advisor—

Prof. Arthur S. Patrick

All men students in the College of Business and Public Administration maintaining an average equal to, or higher than, the overall men's average are eligible for membership.

iota lambda sigma

National Industrial Education Professional Fraternity

Established at University of Maryland, 1941

PresidentAurburn Lamb

SecretaryJohn Klaer

TreasurerDr. William F. Tierney

Faculty Advisors—

Dr. Glenn D. Brown,

Dr. R. Lee Hornbake

Recognition of high scholarship is the basis for selection of members. Iota Lambda Sigma's purpose is to promote recognition of professional training in industrial education.

kappa kappa psi

National Men's Music Honorary

Sigma Xi Chapter

Established at University of Maryland, 1955

PresidentRobert Drechsler

Vice-PresidentAlbert Tase

SecretaryGerald Hammond

TreasurerAustin Rhoads

Faculty Advisor—

Capt. Robert L. Landers

Eligibility for men students is dependent upon active participation in one or more music organizations on campus and an overall 2.0 academic average.

national collegiate players

National Dramatic Honorary

Founded at the University of Wisconsin, 1919

Established at University of Maryland, 1947

PresidentRheda Greenberg

Vice-PresidentRichard Holmes

Sec'y.-Treas.Rhea Mermelstein

Eligibility for membership in NCP is limited to juniors and seniors who have made an outstanding contribution to the University Theatre group and have been active in play-production.

omicron nu

National Honorary Home Economics Fraternity

Founded at Michigan State College, 1912

Established at University of Maryland, 1937

PresidentDorothy Williams

Vice-PresidentBarbara Dodd

SecretaryPat Murray

TreasurerMaretta Long

Faculty AdvisorMiss Jane Crow

Recognition of Home Economics students who have maintained high scholarship is the primary function of Omicron Nu. The freshman woman attaining the highest average in the college is also honored by the local chapter.

phi alpha theta

History Honorary Society

Founded at University of Maryland, 1948

PresidentMinna Weinstein

Vice-PresidentWesley Sauter

SecretaryEdward Hingirs

Faculty AdvisorDr. Richard Bauer

Requirements for membership include maintenance of a 2.7 overall academic average plus a 3.0 average in 18 credits of history. Six of these must be in advanced courses.

phi alpha xi

Honorary Floriculture Fraternity

Established at University of Maryland, 1950

Officers will be elected in the fall.

A 2.5 overall average and a 3.0 average in horticulture subjects are the requirements for membership in Phi Alpha Xi, which strives to bring students interested in the field of horticulture together.

phi delta kappa

National Education Fraternity

Founded at University of Indiana, 1906

Established at University of Maryland, 1942

PresidentGus Westerberg

Vice-PresidentFred Dunn

Sec'y.-Treas.Charles Stewart

Faculty Advisor.....Prof. Arthur Ahalt

Graduate and undergraduate students in their junior and senior years who are planning careers in the field of education are eligible for membership.

pi delta epsilon

National Journalism Honorary Fraternity

Founded at Syracuse University, 1909

Established at University of Maryland, 1930

PresidentHal Burdett

Vice-PresidentCharles Wickard

Sec'y.-Treas.Carmen Ebandjieff

Junior and senior students who have done outstanding work in publications for two years or who have held a major editorial position for one year are eligible for membership.

pi sigma alpha

Honorary Political Science Fraternity

Founded at University of Texas, 1920

Established at University of Maryland, 1938

Officers to be elected in the fall.

Interest and outstanding work in the Department of Government and Politics are the requirements for this society.

sigma alpha eta

Honorary Speech Fraternity

Founded at University of Maryland, 1954

PresidentJoan Kellerman

Vice-PresidentPat Graner

SecretaryMargie Legg

TreasurerAlan Glick

Faculty Advisor...Mrs. Dorothy Craven

The creation and stimulation of student interest in the field of speech therapy and hearing and the encouragement of professional growth by providing learning experiences not offered in the formal course structure are the purposes stressed in this fraternity.

sigma alpha omicron

Professional Bacteriological Society

Founded at Washington College, 1925

Established at University of Maryland, 1925

PresidentGretchen Glick
Vice-PresidentPatricia Herbert
SecretaryMary Armsworthy
TreasurerHilda Willis
Faculty Advisor.....Dr. N. C. Laeffer

Any junior or senior is qualified to join if he has a 2.5 overall academic average and a minimum of twelve credits in bacteriology.

sigma pi sigma

Honorary Physics Society

Founded at University of Maryland, 1948

PresidentJohn Quinn
Vice-PresidentDavid Levine
Faculty Advisor—

Dr. Aaron Krumbein

Physics majors with a better than average scholastic record are eligible for membership in Sigma Pi Sigma.

sigma tau epsilon

Women's Recreational Honor Society

Founded at University of Maryland, 1940

Acting Chairman.....Judy Peterson
Officers to be elected in the fall.

Students who have maintained an overall average of 2.5 and have done outstanding work in some field of women's recreation or have been active in the Women's Recreation-

al Association are tapped in the spring at the annual banquet.

tau beta pi

National Honorary Engineering Fraternity
Founded at Lehigh University, 1885

Established at University of Maryland, 1942

PresidentJames R. Gouge, Jr.

Vice-PresidentMartin Burdick

SecretaryDennis Hanley

Faculty Advisors—

Dean S. S. Steinberg

Prof. R. B. Allen

Prof. L. D. Hodgins

R. W. Hurlbrink, Jr.

Engineering students who are academically in the upper fifth of the senior class or upper eighth of the junior class are considered for membership in this fraternity.

upsilon upsilon

Music Honorary Society

Founded at University of Maryland, 1951

Officers to be elected in the fall.

Elected to membership in Upsilon Upsilon are those music majors who have participated actively in musical clubs on campus or who have attained a 2.0 overall academic average in music subjects.

Block and Bridle members "bone-up" on the finer points of fitting and showing

—DBK photo



● organizations

● clubs

accounting club

<i>President</i>	John Wagner
<i>Vice President</i>	John Daskalakis
<i>Secretary</i>	Preston Insley
<i>Treasurer</i>	Donald Cook
<i>Social Chairman</i>	Jack Cherrix
<i>Faculty Adviser</i>	Prof. Leroy Lee

The Accounting Club is open to all students but especially to majors in accounting. At their monthly Wednesday meetings the group is entertained by informative speakers, some very prominent in the accounting field.

agricultural economics club

<i>President</i>	James B. Fountain
<i>Vice President</i>	William Langston
<i>Secretary</i>	Julius Csorba
<i>Treasurer</i>	Guy Haviland
<i>Faculty Adviser</i>	Dr. George Beal

Informal discussions between the graduate, and undergraduate students and the faculty make up the major part of the monthly Tuesday meetings of this club. Prominent people in the field of agriculture also address the group on current agricultural topics.

agricultural student council

<i>President</i>	Ronald A. Jones
<i>Vice President</i>	Adrian M. Remsberg
<i>Secretary</i>	James H. Smith
<i>Faculty Adviser</i>	Dr. Malcolm Kerr

The council works to coordinate activities between the various clubs in the college of agriculture. It administers the Agriculture Student loan fund aid, and sponsors two square dances a year.

alpha phi omega

PresidentCharles Kemp
Vice PresidentC. Marchal Fuller
SecretaryMichael Patchan, Jr.
TreasurerDennis LeBlanc
Faculty Advisor Mr. George W. Fogg

This national service fraternity serves the campus community by sponsoring the APO Book Exchange and the Ugly Man Contest for Campus Chest, and by taking charge of coat checking and refreshments sales at dances.

amateur radio

PresidentJames Gouge
Vice PresidentAnton Thom
TreasurerCarl Bernhardt
SecretaryJoy Dobrovolny
Faculty Advisor Major Joseph Booth

The Amateur Radio Association, located in the basement of the Old Gym can be heard on station W3EAX at 7:30 on Wednesday. The group contacts other "hams," listens to lectures, and enjoys transmitter hunts.

american institute of chemical engineering

PresidentJanice Kelly
Vice PresidentLawrence Holter
SecretaryMichael Welch
TreasurerRobert Marshand
Faculty AdvisorDr. Albert J. Huff

AIChE offers guest speakers and technical movies at their bi-monthly Wednesday meetings. A student affiliate of the national organization, AIChE strives to promote and advance the field of chemical engineering.

american institute of electrical engineers and radio engineering

ChairmanJames R. Gouge, Jr.
Vice Chairman ...Lawrence A. O'Neill
TreasurerRichard A. Castle
Secretary-Treasurer

Donald G. Blakely (AIEE)
Jules P. Sussman (IRE)

Faculty Advisors

Prof. Lawrence J. Hodgins (AIEE)
Prof. Henry W. Price (IRE)

At the monthly meetings of the AIEE and IRE, members enjoy a variety of programs which include speakers and group discussions. Seniors, juniors, and sophomores who are interested in membership should submit an application to any of the officers.

american society of civil engineers

<i>President</i>	Mark Schweizer
<i>Vice President</i>	John Balducci
<i>Secretary</i>	Nelson Kulda
<i>Treasurer</i>	Fred Stephens
<i>Faculty Advisor</i>	Prof. J. Cournyn

The main purpose of the club is to give Civil Engineering students an insight into the profession which they have selected. The program includes guest speakers, a visit with the professional engineers club of Baltimore and the Civil Engineers Picnic.

american society of mechanical engineers

<i>President</i>	Dennis Hanley
<i>Vice President</i>	James Shoemaker
<i>Secretary</i>	John Hudal
<i>Treasurer</i>	John Klein
<i>Faculty Advisor</i>	Prof. A. B. Eyler

Once a month on Wednesday nights, the mechanical engineers meet for a program of speakers or films on subjects of interest to them. Each spring the club holds a banquet for all students in mechanical engineering.

aqualiners

<i>President</i>	Charlotte Culp
<i>Secretary</i>	Binky Varey
<i>Treasurer</i>	Billie Lore

Faculty Advisor—

Miss Doris Neyendorf

The Aqualiners, the swimming club, presents an annual water show for the student body. Group meetings are devoted to learning the techniques of synchronized swimming.

block and bridle

PresidentRonnie Wade

Vice-PresidentGeorge Arnold

SecretaryNancy Sears

Faculty Advisors—

Prof. Malcolm Kerr

Mr. Richard Brown

A member of the National Block and Bridle club, this group sponsors the annual student livestock judging contest and the fitting and showing contest to further its aim of stimulating interest in animal and dairy husbandry.

calvert debate society

PresidentWilbur Hockersmith

Vice PresidentRobert Watkins

SecretaryWilliam Graves

TreasurerBurton Boroff

Faculty Advisor

Mr. Harold R. Gillis

To offer training and experience in debate and debating techniques is the aim of the Calvert Debate Society. Special speakers are

invited to attend the bi-monthly, Thursday evening meetings at the Student Union. Debates are held both at home and away, giving the student a chance to express his views on current topics.

chess club

PresidentMoon Cha
Vice PresidentJohn Wall
SecretaryMelvin Leon
TreasurerHoward Whitlock
Faculty Advisor Mr. Stanley Holberg

This group meets on Tuesday and Thursday at 4 p.m. in the Game Room in the Student Union. The club sponsors a team to compete with other organizations in this area and has in the past been quite successful in competition.

childhood education club

PresidentJoan Essex
Vice PresidentEsther Turk
SecretaryJoan Shields
TreasurerSandy Dahne
Faculty Advisor Mrs. Margaret Stant

Open to all majors in elementary education, this Club meets every first Tuesday of the month. The club sends packages to Korea and Greek orphanages and also sponsors a scholarship fund for the purpose of sending a girl to Vassar for the summer to learn more about Childhood Education.

collegiate 4-h club

PresidentNorman G. Smith
Vice PresidentDorothy J. Jones
SecretaryEleanor L. Smith
TreasurerManie C. Pfefferkorn
Faculty AdvisorMerle L. Howes

Open to all former 4-H members and interested students, the club sponsors speakers and square dances, and holds picnics and parties.

dairy science

PresidentVernon Hussman
Vice PresidentWilliam Powell
Secretary-TreasurerWalter Kinsey
Faculty Advisor ...Dr. Joseph Mattick

On the second Tuesday of the month, the group meets to obtain up-to-date information on the dairy industry. The club sponsors the dairy section of the annual fitting and showing contest and produces the *Dairy Yearbook*.

daydodgers club

Officers to be elected in the fall.
Faculty AdvisorMr. Doyle Royal

The weekly meetings of the Daydodgers Club are to solve and share commuter problems. The club handles ride arrangements for students. Entertainment is offered at meetings for the enjoyment of the group.

driver training club

<i>President</i>	Nathaniel Safford
<i>Vice President</i>	Kenneth Heisler
<i>Secretary</i>	Leon Katz
<i>Treasurer</i>	Corinne FoDore
<i>Faculty Advisor</i>	Dr. Weigand

At weekly meetings the Driver Training Club works to promote safety on the highways through actual driver training lessons and through lectures by noted safety authorities.

economics discussion club

<i>President</i>	John E. Wagner
<i>Vice President</i>	Howard L. Conkney
<i>Secretary</i>	Jessie McCowen
<i>Treasurer</i>	Robert Whitman
<i>Faculty Advisor</i>	Dr. Gruchy

The Economics Club is open to all students in the field of economics. The meetings consist of speakers and discussion of problems that are pertinent to the economic world.

engineering student council

<i>Chairman</i>	Dean S. Steinberg
-----------------------	-------------------

This council co-ordinates the activities of the students in the College of Engineering. The council is comprised of presidents of the engineering societies and representatives of the various engineering classes.

future farmers of america

<i>President</i>	Milton Webster
<i>Vice President</i>	Daniel Lindsey
<i>Secretary</i>	Elmer Cooper
<i>Treasurer</i>	John Mott
<i>Faculty Advisor</i>	Dr. Ray Murray

The FFA is devoted to development of competent and aggressive rural and agricultural leadership qualities. It is open to all agricultural education students or those who are interested in any phase of agriculture and rural life. The club meets monthly on a Thursday night.

future teachers of america

<i>President</i>	Mary Bowman
<i>Vice President</i>	Bernard Mackey
<i>Secretary</i>	Elinore Weiss
<i>Treasurer</i>	Betty Zucker
<i>Faculty Advisor</i>	Dr. Fern Schneider

The FTA is open to all education majors and to students who are interested in education. This organization aims to acquaint students with various fields and jobs open in education. The main activity is to send one delegate to the State MAFTA.

home economics club

<i>President</i>	Dorothy Williams
<i>Vice President</i>	Kate Williams
<i>Secretary-Treasurer</i>	Kathy Krueger
<i>Faculty Advisor</i>	Miss Nancy Mearig

The monthly meetings held on Thursday afternoons are comprised of guest speakers from department stores and service centers of particular interest to Home Economics majors. A joint meeting is also held with the International and Future Farmers of America clubs.

industrial education association

PresidentJohn Carrigan
Other officers to be elected in the fall.
Faculty Advisor—

Prof. Glen D. Brown

All students enrolled in Industrial Education are invited to join this organization at its bi-monthly meetings, which generally include a guest speaker. I. E. A.'s social events include Hallowe'en and Christmas parties, a spring picnic and the Industrial Education Open House.

institute of aeronautical sciences

PresidentWilliam Sekscienski
Vice-PresidentCharles Stouffer
SecretaryGeorge Maggos
TreasurerJohn Clark
Faculty Advisor.....Mr. Robert Rivello

A spring banquet and picnic highlight the IAS Year. Speakers are invited to enlighten the students on various topics connected with aeronautical sciences at the monthly meetings held on Wednesday evenings.

institute of food technology

Officers to be elected in the fall.
Faculty Advisor—

Dr. Robert C. Wylie

The IFT plans field trips every two months to many different food processing plants. In addition to the field trips, prominent speakers are invited to address the group at their Tuesday bi-monthly meetings.

international club

PresidentSavas Dimitriades
Vice-PresidentRaffi Turian
SecretaryGloria Mugerza
TreasurerJolene Litzinger
Faculty Advisor—

Prof. Furman Bridgers

The purpose of this club, which meets every Friday night in the Student Union Building, is to better the relationship between American and foreign students on campus. The agenda for meetings consists of speakers, group and panel discussions, and movies. Main social functions are the Annual International Fiesta and hayrides once or twice each semester.

international relations club

PresidentBruce Hetherington
Vice-PresidentGerald Hartdagen
SecretaryCharles Sorrie
TreasurerThomas Moseley

Faculty Advisor...Dr. Horace Harrison
Meeting on alternate Wednesdays in the Student Union Building, the International Relations Club aims to give participating students a better and more intelligent understanding of current international problems.

judo club

PresidentCharles Lomas
Vice-PresidentJack Weiner
Sec'y.-Treas.Robert Fuller
Faculty Advisor...Dr. George Weigand

This club participates in Judo contests with other clubs on the East Coast. Activity in these contests are an integral part of Judo as a sport in the United States. They meet every Tuesday and Thursday to develop their skills for Judo as a means of self-defense and for sport.

louisa parsons nursing club

PresidentNancy Kirk
Vice-PresidentCynthia Piper
SecretaryKhriste McKenzie
Social ChairmanBarbara Peterson
(*New officers to be elected late in
September*)

Faculty Advisor—

Miss Margaret Hayes

The Nursing Club, which meets every first and third Thursday of the month, is open to

all women enrolled in the nursing curriculum. Every year the group sponsors a needy family at Christmas time, entertains a group of orphans at a picnic, and donates its services at the blood bank.

management club

Officers to be elected in the fall
Faculty Advisor—

Dr. Robert A. Goodell

At the monthly meetings of the Management Club, executives in management present to the members first hand information on management. The club holds a dance and banquet in the spring. Freshmen interested in attending these meetings should contact Dr. Goodell for the time and place of the meetings.

marketing association

Officers to be elected in the fall.
Faculty Advisor.....Dr. J. Allen Cook

The Marketing Association, an affiliate of the American Marketing Association, strives to bring to association members methods and practices of leading marketing organizations in the United States. The time and day of meetings can be found on the Marketing Bulletin Board in Room 141 in the BPA Building.

maryland flying association

<i>President</i>	Bob Bramhall
<i>Vice-President</i>	Pete Ludewig
<i>Secretary</i>	Mary Hawes
<i>Treasurer</i>	L.Wallis Alves
<i>Faculty Advisor</i>	Captain Riley

During the weekly Tuesday meetings, students are given the opportunity to learn to fly at the College Park airport and obtain a pilot's license upon completion of their training. An annual party at the end of the year tops the club's social calendar.

math club

Faculty Advisor...Dr. Stuart Haywood

At present the Math Club is petitioning to become a chapter of the national mathematics honorary. Students interested in becoming a part of this organization should contact Dr. Haywood of the Mathematics Department.

men's press club

President

Other officers to be elected in the fall

Faculty Advisor—

Prof. Donald W. Krimel

Striving to stimulate interest in journalism, the Men's Press Club sponsors the clinic por-

tion of the Maryland Scholastic Press Association Convention, publishes the Department of Journalism and Public Relations Alumni News Letter, and tentatively plans to sponsor a current events forum. Meetings are held weekly on Wednesday afternoons in the Journalism Building.

mr. and mrs. club

<i>President</i>	Gerald Shirley
<i>Vice-President</i>	George Weinkam
<i>Secretary</i>	Loretta Marshall
<i>Treasurer</i>	Phil Mondon
<i>Social Chairman</i>	Carl Carlson
<i>Faculty Advisor</i>	Dr. Earl S. Beard

Meeting every other Friday, the Mr. and Mrs. Club provides a social meeting ground for the married students on campus through card parties, informal parties, picnics, and movies. They also provide baby sitter lists and other information to aid young married couples in adjusting to campus life.

national music educators conference

<i>President</i>	Anna Jacquette
<i>Vice-President</i>	Barbara Browning
<i>Sec'y.-Treas.</i>	Richard Holmes
<i>Faculty Advisor</i>	Mrs. Mary Kemble

Activities of this club include attending the All-State Chorus, Band, and Orchestra, and Music Sectional meetings. Speakers and pan-

els comprise the monthly Thursday meetings of the National Music Educators Conference.

philosophy club

ChairmanGershon Kekst

Faculty Advisor.....Dr. John Robinson

All students are invited to join the group discussion of the Philosophy Club. The discussion centers around philosophical questions of past and present. Notice of the bi-monthly meetings will be published in the *Diamond-back* and broadcast over WMUC.

physics journal club

PresidentJohn Davis

Vice-PresidentAlbert Altman

Sec'y.-Treasur.Barbara Castle

Faculty AdvisorDr. John Toll

At informal weekly meetings on Friday, recent important journal articles in modern physics are reported on and discussed by graduate students. The club is open to both students and faculty.

plant industry club

PresidentJohn Jarrett

Vice-PresidentWilliam Thomas

Sec'y.-Treas.Paul Schilke

Faculty Advisor.....Dr. Orman Street

The Plant Industry Club consists mainly of Agriculture students, but anyone may join.

The meetings, held every second and fourth Thursday of each month in H. P. Patterson Hall, include speakers from Beltsville, group discussions, and movies.

propellor club

PresidentJames W. Boyer
Vice-PresidentWinfield W. Dudley
Sec'y.-Treas.Henry Passi
Faculty AdvisorDr. T. L. Dawson

The Propellor Club, a student affiliate of the national organization of transportation men, attempts to bridge the gap between classroom study and the practical application of classroom theory by taking field trips to airports, harbors, and traffic departments of industrial firms, and visiting the I. C. C. hearings on rate and route cases.

radio and television guild

PresidentRichard Churchville
Vice-PresidentAnn Williams
SecretaryCharlotte Taylor
TreasurerBill Weinstein
Faculty Advisors—

Prof. George F. Batka
Mr. Thomas Alyward

The aim of the club is to give all interested students the opportunity for experience in radio production, both technical and dramatic, at their weekly Wednesday meetings. The

club members produce radio scripts and an annual TV show over WMAR-TV in Baltimore, visit stations, and sponsor guest speakers.

riding club

<i>President</i>	Phyllis Heflin
<i>Vice-President</i>	Fred Weber
<i>Secretary</i>	Judy Fairall
<i>Treasurer</i>	Ed Reilley

The Riding Club, which meets every second and fourth Tuesday presents an annual horse show. This year the club plans to hold movies and invite speakers to their meetings in addition to the riding trips and beach parties they have held in the past.

rossborough club

<i>President</i>	Charles Hogg
<i>Vice-President</i>	Gene Longeletto
<i>Secretary</i>	Marian Fischer
<i>Treasurer</i>	Virginia Miles
<i>Faculty Advisor</i> —	

Assistant Dean of Men,
Doyle Royal

The Rossborough Club, the oldest club on campus, is a service organization which sponsors school dances. The Rossborough Christmas dance, highlighted with the coronation of the Rossborough Queen, is a Maryland tradition.

sailing club

<i>Commodore</i>	Warren W. Smith
<i>Vice Commodore</i>	James Schoocraft
<i>Secretary</i>	Nancy J. Carboy
<i>Treasurer</i>	Delores Watkins
<i>Rear Commodore</i>	Val Dulay
<i>Faculty Advisor</i>	Dr. Cumberland

Advance notice of club meetings are posted on bulletin boards around the campus. This club provides an opportunity for interested students to sail and learn more about the sport. They participate in approximately five regattas a semester, usually in Washington, D. C. and sometimes as far away as Long Island, N. Y.

sociology club

<i>President</i>	Rebecca Sparkman
<i>Vice President</i>	Sam Suls
<i>Secretary and Treasurer to be elected in fall.</i>	

Open to all students interested in sociological problems, this club meets every other Thursday in Woods Hall. The program for this year includes movies, discussions, and many prominent speakers.

spanish club

<i>President</i>	Delores Gambino
<i>Vice President</i>	Bill Galloway
<i>Secretary</i>	Pat Murray

TreasurerTony Rodriguez

Faculty Advisors—

Miss Ann Norton &
Mrs. Graciela Nemes

To promote better understanding of the countries of Spain and Latin America, the Spanish Club usually presents a program of movies, speakers, panel discussions, music, and dancing. The climax of the bi-monthly Tuesday night meetings is the annual picnic and Spanish dinner off-campus.

student unit of the american red cross

PresidentFlorence Hiser

Faculty Advisor—

Assistant Dean of Women,
Julia Billings

The Student Unit of the American Red Cross sponsors all Red Cross projects on campus. The most outstanding project is the Campus Blood Drive. The organization also sends hostesses to square dances held at Walter Reed and Bethesda Naval Hospital and arranges student variety shows for servicemen at local camps and hospitals. The club is open to all students.

terrapiin ski club

PresidentJames W. Houck, Jr.

Vice PresidentDavid Grant

SecretaryBarbara Anderson

TreasurerBetty Larsen

Faculty AdvisorDoyle Royal

During the past year, color ski movies and speakers provided the programs for the Thursday night meetings of the ski club. Between November and March the club went on six ski trips and visited some of the northern ski resorts.

terrapiin trail club

PresidentJoseph Csorba

SecretarySue Karstens

TreasurerDick Rockwell

Faculty Advisor—

Dr. Dolores L. Pierson

The Terrapin Trail Club is organized to give students an opportunity to go on day trips to nearby scenic areas and also to participate in overnight trips to distant areas. Meetings are held on Thursday, twice a month.

veterans club

PresidentAlbert G. Tase, Jr.

Vice PresidentDick Atwell

SecretaryBetty O'Hern

TreasurerBob Shuppert

Faculty AdvisorMr. Bill Hoff

The Vets Club donates blood to Walter Reed Hospital as a yearly project. Among the group's social activities are beach parties, dances, and movies.

veterinary science club

PresidentSpencer Street

Vice PresidentHap Fader

SecretaryAmos Palmer

TreasurerCharles Cassidy

Faculty Advisors—

Major W. W. Wallenstein &

Colonel J. R. Sperry

Membership in this club is open to all students interested in the field of Veterinary Science. The aim of this club is to give an insight into opportunities in this field of work. The club meets every second and fourth Tuesday of the month.

weight lifting

PresidentHarold Joffe

Vice PresidentAi Di Renzo

SecretaryPete Bachman

Physical fitness and recreation are the aims of this newly-formed club. Meetings are held Monday and Wednesday nights in the Old Gym basement.

women's business club

PresidentShirley Bachman

Vice PresidentJanice Kinsler

SecretaryPat Duvall

TreasurerJoan Heilman

HistorianMarilyn Jarvis

The Women's Business Club sponsors speakers

to discuss business subjects. Each year they plan a Christmas Party along with various field trips. They are planning to install a chapter of Phi Chi Theta, national women's business fraternity, on this campus.

women's physical education majors club

PresidentFreda E. Martin
Vice PresidentPeggy Powell
SecretaryMary Lucas
TreasurerPhyllis Tilghman
Faculty AdvisorDr. Dorothy Mohr

This organization's objectives are to help P.E. majors learn more about their profession and to become better acquainted with other majors in their field. It meets every third Thursday at the Women's Field House.

women's press club

PresidentRonni Trattler
Vice PresidentCarmen Ebandjieff
SecretaryMickey Wetzel
TreasurerStewart Berry
PublicityJohanne Talley
SocialJoan Heilman
Faculty AdvisorMr. Joseph Phipps

The Women's Press Club, which was organized last year, meets on alternate Wednesdays in the Journalism Building. Among the activities for last year were sponsorship of free movies for the student body and publicity for the Campus Chest Drive.



a Sunday service in the Chapel

—photo by Phil Geraci

● **religious clubs**

student religious council

<i>President</i>	Paul Eckel
<i>Treasurer</i>	George Kline
<i>Secretary</i>	Nancy Antrim

The interfaith group on campus, the Student Religious Council serves to coordinate the activities of all religious groups on campus.

Advised by the Religious Life Committee, a faculty organization, the Council, composed of representatives of each of the religious clubs at the University, meets each Tuesday afternoon at 4 p.m. in the Council Room of the Chapel.

The Council's main project of the year is Religious Emphasis Week. It sponsors the fireside chats held several times a year at fraternity and sorority houses and dormitories, and Chapel services.

Through its varied religious activities, the council tries to stress the importance of making religion a part of college life.

religious counselors' offices

Religious guidance and information about campus and nearby church services are available in the offices of the religious counselors located in the Chapel.

baptist student union

PresidentLeRoy Rudasill
Vice-PresidentMarjorie Persion
SecretaryMary Woster
(Above are 1954-55 officers, election
will be held in October)

Students of all faiths are welcome to join the Union members in their activities. The group holds noon-day devotions Monday through Friday in the West Conference Room of the Chapel and has regular meetings on Wednesday nights at 7:30. Members of the Union strive to relate their college life to their religious life.

Advisor—Mr. Howard Rees
2003 Evarts Street, N.E.
Washington, D. C.

Church—University Baptist Chapel
Agricultural Auditorium
Campus

canterbury club

PresidentRalph Evans
Vice-PresidentJim Etherton
SecretaryRae Mitchell
TreasurerDick Scott

The Canterbury Club, the Episcopal group on campus, has a program of prayer fellowship, service, and study. Weekly on Wednesday nights the group meets at the Parish House of St. Andrew's Church in addition to Sunday

night suppers at the Parish House. The group has at least one retreat a year and gives an annual Christmas party for the children of the Episcopal Home.

Advisor—Rev. William A. Beal
4302-B Hartwick Road
College Park, Md.

Church—St. Andrew's Episcopal Church
College Avenue
College Park, Md.

christian science club

PresidentJacqueline King
Vice-PresidentJohn Rehme
TreasurerPete Moreland
SecretaryDavid Grant

A non-social group, the Christian Science Club meets regularly on Thursday evenings for testimonials and Bible studies in the Chapel Conference Room. Their meetings correspond to regular Wednesday evening meetings held in Christian Science Churches in accordance with the plan provided in the Manual of the Mother Church of Boston.

Students are welcome to visit the reading desk maintained in the Christian Science Office in the Chapel.

Advisor—Dr. James B. Shanks
211 Tecumseh Street
Hyattsville, Md.

Church—First Church of Christian Science, Hyattsville, Md.

hillel foundation

<i>President</i>	Bill Weinstein
<i>Vice-President</i>	Jerry Sussman
<i>Treasurer</i>	Calvin Clamburger
<i>Secretary</i>	Diane Yassel

The group binding the mutual cultural interests of the Jewish students is the Hillel Foundation. This group, a part of B'nai B'rith, also encourages interfaith activities. One of the highlights of the year is the Hillel Skit Night, usually held in early spring. The Jewish organizations present skits and a cup is presented to the winning group.

Hillel has its own house on Yale Avenue where the group holds weekly meetings. The house is open all the time for informal get-togethers and discussions.

All Jewish students are encouraged to register for Hillel at the beginning of the year.

Advisor—Rabbi Meyer Greenberg
4602 Calvert Road
College Park, Md.

Church—Hillel Foundation
7505 Yale Avenue
College Park, Md.

lutheran student association

<i>President</i>	Steve Kolumbar
<i>Vice-President</i>	Wayne Ritcher
<i>Secretary</i>	Barbara Fund
<i>Treasurer</i>	Wallie Lord

The aim of the Association is to encourage Lutheran students to coordinate their religious life with their social life. Besides their regular Wednesday night meetings at 7:30, the LSA co-sponsors a worship and supper club on Sunday evenings at 5:30 with the Canterbury Club. These suppers are held at St. Andrews Parish Home.

All students are welcome to join the LSA or attend their meetings. Information may be obtained from the advisor in the Chapel.

Advisor—Rev. Otto Reimherr
4806 Cherokee Street
College Park, Md.

Church—Trinity Lutheran Church
30th Ave. & Bunker Hill Road
Mount Rainier, Md.

maryland christian fellowship

PresidentRobert Boudier
Vice-PresidentOlga Havas
SecretaryBetty Ives
TreasurerBill Doster

The Maryland Christian Fellowship, affiliated with the National Inter-Varsity Christian Fellowship, is the non-denominational religious club on campus.

The purpose of the club is to learn and practice true religious principles. Interested students should consult the *Diamondback* for the time and place of meetings.

Formal meetings are held once a week in the Chapel on the week night suitable to most of the members. Informal meetings are called when there is a guest speaker or when an officer or member of the National Inter-Varsity is to speak.

newman club

<i>President</i>	Pete Gillis
<i>Women's Vice-President</i>	Sibyl Klak
<i>Men's Vice-President</i>	Michael Ruddy
<i>Secretary</i>	Julie Beattie
<i>Treasurer</i>	Paul Gillis

The Newman Club, the largest religious club on the campus, offers religious, social, and educational activities for Catholic students.

Club meetings are held the first and third Wednesdays of each month at 7:30 p.m. in the Student Union. Periodically, the club sponsors lectures, which have varied from courtship and marriage discussions to studies and education.

An annual affair for the Club is the Snow Ball Dance in midwinter. Other social activities include picnics, movies, and mixers. There is a mixer during the first two weeks of school in September. Mass is held daily at 6:30 or 7:00 a.m. and a daily Rosary is held at 6 p.m. First Friday masses are held twice in the evening.

Sunday masses are held at 8:15, 10:15, and

11:15 a.m. in the Chapel.

Advisor—Father P. J. Kennedy, O.F.M.
Holy Name College
District of Columbia

Church—Chapel

wesley foundation

PresidentFred T. Plybon

Vice-President—

Barbara Ann Ketelsen

SecretaryJeanette Sowers

TreasurerCharlotte Graham

Serving the students on the campus, the Wesley Foundation provides a strong bond of fellowship for Methodists and their friends. The students hold weekly prayer meetings on Wednesday nights at 7:30 at the University Methodist Church. A Sunday night supper club is held in the Wesley Lounge of the Church at 5:30 p.m. All students are welcome to join the Foundation by signing up during registration or by visiting the Chapel.

Wesley, which is often referred to as the Methodist students' "home away from home," also sponsors a fall and spring retreat with the purpose of bringing the student closer to God.

Advisor—Dr. William Smith
5000 42nd Avenue
Hyattsville, Md.

Church—University Methodist Church
University Lane
College Park, Md.

westminister foundation

PresidentBill Weinstein
Vice-PresidentGerald Loper
Sec'y.-Treas.Marilynn Morton

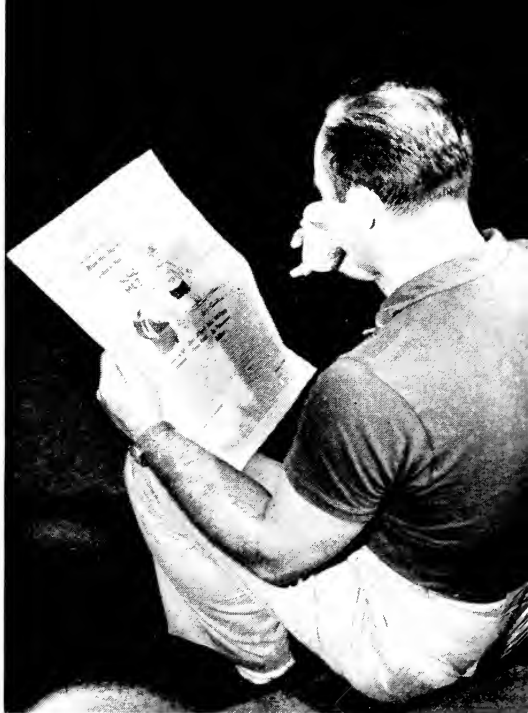
Stressing the brotherhood of man is the primary goal of the Westminister Foundation. The foundation encourages the Presbyterian student to make his college life a full Christian life. Membership is open to all interested students.

Under the guidance of the advisor, meetings are held every Wednesday at 7:30 p.m. in the Chapel, and Sunday evenings at the Riverdale Presbyterian Church.

The group visits nearby churches, teaches Sunday School, and speaks at Young People's Groups.

Advisor—Rev. Jesse Myers
5001 56th Place
Hyattsville, Md.

Church—Riverdale Presbyterian Church
Rittenhouse St. and Rhode
Island Avenue
Riverdale, Md.



● publications

publications board

The Publications Board provides faculty-student cooperation in regard to all publications and their particular problems.

The Board consists of the chairman, Professor Alfred Crowell, and three faculty members: Dean James Reid of the Student Life Committee; Robert Carey, Publications Faculty Advisor; and Professor Donald Krimel of the Journalism Department.

Student members of the board include Roger Keith, editor of the *Diamondback*; Barbara Dodd, *M-Book* editor; Biddie Bickford, *Old Line* editor; and Audrey Nicoloudis, editor of the *Terrapin*. Other student members are Hal Burdett, president of Pi Delta Epsilon, journalism honorary; and Charles Wickard, president of the Student Government Association.

During the latter part of the spring semester, the board appoints the editor, managing editor, and business manager for the four publications for the following year. All students in publications work must meet a scholastic overall average of 2.0, and must have a minimum 2.0 average in the semester of their appointment.



the campus reading habit—a pause between classes
—photo by John Eichler

pi delta epsilon banquet

Pi Delta Epsilon, National Collegiate Journalism Honorary, highlights its year with the annual Publications Banquet. Following initiation ceremonies for spring tappers, the banquet features a presentation of awards to outstanding persons in the field of publications at the University.

The E. A. Coblentz Memorial Cup, given in honor of a former *Diamondback* business manager killed in Korea, is presented to the freshman who has done outstanding work during his first year in publications.

The senior who has contributed the most to publications during his four years is awarded the William H. Hottel award, which honors a former publications advisor.

National Pi Delta Epsilon medals of merit are awarded to the outstanding man and woman in journalism at the University.

During the banquet the editor of each publication recognizes members of his staff who have rendered outstanding service during the year. Those chosen are awarded certificates and keys.

Entertainment for the affair is provided by skits produced by the staffs of each publication.

m-book

<i>Editor</i>	Barbara Dodd
<i>Managing Editor</i>	Jane Hagerton
<i>Copy Editor</i>	Jerry Jewler
<i>Business Manager</i>	Sandra Sowder
<i>Office Manager</i>	Audrey Boyer

Editorial Staff:

Loretta Bickford	Mary McLaughlin
Mike Blake	Theodore Metzler
Polly Brobst	Gabe Phillips
Pat Callahan	Curt Prins
Jerry Doubroff	Glory Ann Sloane
Carmen Ebandjieff	Lee Spielman
Ed Gantt	Kate Waters
Johnny Johnston	Clare Wootten

Editorial Assistants:

Mary Armsworthy	Barbara Lore
Barbara Campbell	Gail Talavast
Jennie Hancock	John Zane
Ginger Miles	Andrew McLaughlin
Cynthia Sowder	Anne Wiederhold

Photographers:

John Eichler	Vic Holm
Phil Geraci	Glenn Sears
Jerry Jewler	

Work on this pocket-sized guide to the school year is done in the spring semester and carries into the first part of the summer. The staff is selected from written applications submitted to the editor during the spring semester.

diamondback

- Editor*Roger Keith
Managing Editors—
Carmen Ebandjieff, Jerry Jewler,
Mickey Wetzel
Copy Editors—
Gabe Phillips, Marilyn Strub,
Kate Waters
Assistant Copy Editors—
Barbara Fund, Dick Toth
News Editors—
Mike Blake, Sam Riddlebarger,
Clare Wootten
Feature Editors—
Pat Connor, Ralph Crosby
Editorial Page Editors—
Virginia Cronin, Denyse Maucere,
Mary Nunn
Sports Editors—
Tony Anastasi, Hal Burdett,
Jerry Taylor
Chief PhotographerJohn Eichler
Editorial Office Mgr.Jo McClelland
Business ManagerBill MacDonald
Advertising ManagerKaye Nichols

The *Diamondback* is issued three times a week—Monday, Wednesday and Friday. There are plenty of opportunities for would-be journalists, photographers, artists, and those with a business mind to gain experience in newspaper production.

old line

EditorBiddie Bickford
Managing EditorCharles Rayman
Associate Editors—

Charles Wickard, Joe Honick
Art Editor (To be named)
Copy EditorMarilyn Strub
Asst. Copy EditorMargie Gates
Make-Up EditorBarbara Dodd
Photo EditorVic Holm
Business ManagerBruce Berlage
Asst. Business Mgrs.—

Pat Garner, Sandra Sowder
Exchange ManagerDiane Young
Office ManagerFran Ferris

Striking out in its own inimitable fashion, the *Old Line*, literary-humor magazine, brings the best in chuckles, features, and fiction to its readers.

Membership on the staff is open in the editorial and business fields, and contributions are accepted from members and non-members. There are openings on the staff for typists, photographers, artists, and assistants, too.

The *Old Line* is printed six times during the school year.

terrapin

EditorAudrey Nicoloudis
Managing EditorBoyd Madary
Associate EditorsCissie Woods,
Pat Killingsworth, Frankie Schoenberg,

<i>Music and Drama Editor</i>	Pat Callahan
<i>Organizations Editor</i>	Jane Eble
<i>Seniors Editor</i>	Joan Faye
<i>Chief Photographer</i>	Vic Holm
<i>Sports Editor</i>	Charlie Raymond
<i>Sorority Editor</i>	Kate Williams
<i>Residence Editor</i>	Ed Covahey
<i>Business Manager</i>	Tom Lescalleet

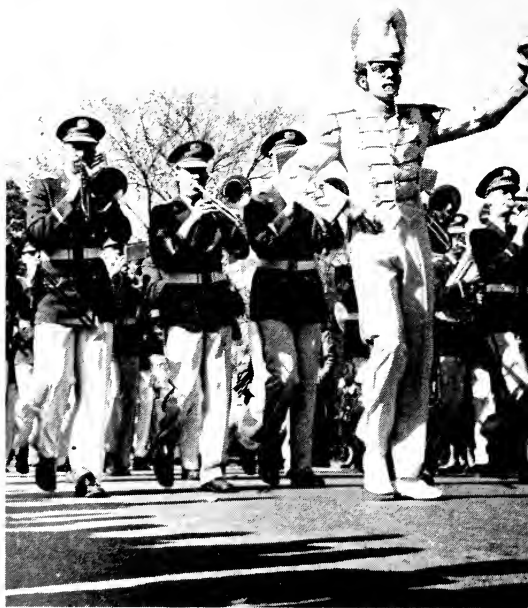
The *Terrapin*, student yearbook, issued in the middle of May, provides a pictorial review of the social, academic, sporting, religious, and political events that have taken place in our campus community.

Staff membership is open to all students, and meetings are held each Wednesday at 7 p.m. in the *Terrapin* office in the Journalism Building. Typists, feature writers, and those interested in office management are needed and should apply to the editor.

publications distribution

The *Diamondback* and *Old Line* are available in the Student Union Building lobby, Dining Hall, and in some centrally located classroom buildings. The *Terrapin* is distributed individually during May. The *M-Book* is given to all incoming freshmen at registration.

the Red and White Band—Maryland pep personified
▶
—Terrapin photo



● **entertainment and music**

gymkana

<i>President</i>	Richard Heintz
<i>Vice-President</i>	Dick Haberstroh
<i>Secretary</i>	Marjorie Jones
<i>Treasurer</i>	Steck Brink
<i>Historian</i>	Stapler Shields
<i>Faculty Advisor</i>	Mr. Paul Simmers

For the tumble of a lifetime join Gymkana! Utilizing tumbling, gymnastics, and other forms of exhibition activities, Gymkana is organized into a show troupe which has traveled as far as the Azores and Iceland to bring the University of Maryland spirit to men in the military service.

The group practices regularly on Wednesday nights in the old gymnasium. Students interested in Gymkana activities may sign up during registration or attend rehearsals.

During the school year the group performs at local high schools on Friday evenings and highlights its year with the annual Home Show on campus. The best trouper awards are presented at this time. For this coming year a trip to Bermuda is on the agenda.

dance group

<i>President</i>	Joy Cosgrove
<i>Vice President</i>	Pat Lazenby
<i>Secretary-Treasurer</i>	Rheda Greenberg
<i>Faculty Advisor</i>	Miss Dorothy Madden

The dance group is open to all students regardless of previous training because it has the twofold purpose of introducing dance to the campus and giving students an opportunity to learn its techniques.

The annual spring concert tops the list of group activities. As a basis for dance composition in past concerts the men in the group have used John Steinbeck's "Of Mice and Men" while the group has utilized James Thurber's "The Last Flower" and Dante's "Inferno."

Throughout the year members of the demonstration group give dance demonstrations at area high schools. Members of the group participate in the annual May Day pageant and in the Clef and Key—UT musical.

Meetings are held on Tuesday evenings—the beginning group at 6 p.m. and the advanced at 7:15 p.m. Tryouts are held for those desiring membership in the advanced group.

university theater

PresidentDavid B. Singleton

Vice-President.....Rhea B. Mermelstein

SecretaryLaurie Sollish

Faculty Advisors—

Rudolph Pugliese, Thomas Starcher,

Bernard Works, Lyle V. Mayer,

and Grover C. Niemeyer

The requirements for membership in this cam-

pus thespian society is a minimum of work on three campus shows on stage or behind the scenes. Group members must work on at least one show a year.

At least four major productions are held annually in the Central Auditorium in the basement of the Education Building, in addition to several centrally-staged productions in the Speech Building (Woods Hall). Last year, productions included "Volpone," "Pygmalion," and "Summer and Smoke" by Tennessee Williams.

As its final splash, UT combines with Clef and Key to present the annual spring musical comedy which last spring was "Finian's Rainbow." Past productions have been "Good News," "A Connecticut Yankee" and "Anything Goes."

The *Diamondback* prints advance notices of tryouts and ticket sales. Students interested in working backstage with group may sign up at the Speech Department bulletin board.

wmuc

Station ManagerEdward Wright

Director of Business.....Jim Toland

Director of Broadcasting—

Gershon Kekst

Chief Engineer.....Ralph Rushworth

Chief AnnouncerJerry Huley

WMUC is the campus answer to students interested in all phases of radio work—script

writing, announcing, engineering, business, and research.

The Radio Board, consisting of members of the faculty appointed by the president, appoints students to managerial positions.

Besides entertaining the student body with complete campus coverage of all events, WMUC was host at the Intercollegiate Broadcasting System convention last April.

WMUC is planning for the coming year the first collegiate full-time network in this section and a "Yearbook in Sound" in which WMUC will tape all important campus activities, edit them and make a long playing record available to the student body.

chapel choir

<i>President</i>	Dick Andersen
<i>Vice-President</i>	Danny Johnson
<i>Secretary</i>	Becky Sparkman
<i>Treasurer</i>	Tom Cahoon

Throughout the school year this group sings at least once for every major denominational group on campus. At Christmas the choir traditionally performs Handel's *Messiah*.

During the last school year the choir served as hosts for high school choruses from all over the state participating in choral day at the University, presented Mahler's *Second Symphony* with the National Symphony Orchestra, at Constitution Hall and sang for both Gov-

ernor McKeldin's and President Elkin's inauguration concerts.

Students interested in membership in the group should sign up during registration in the Armory or during rehearsals, which are held in the Chapel from 3 to 5 p.m. on Monday and Wednesday .

clef and key

<i>President</i>	Mike Littleton
<i>Vice-President</i>	Ken Zareswitz
<i>Secretary</i>	Doris Johnson
<i>Treasurer</i>	Jessie Cowan
<i>Faculty Advisor</i>	Mr. Glen Carew

Clef and Key denotes music and acting. The foremost project of this group is the spring musical with University Theater, which last spring was "Finian's Rainbow."

The group also brings its singing, dancing, and acting talents to patients in Walter Reed and Bethesda Naval Hospitals.

Membership is open to students who attend three consecutive meetings of the organization which are held every other Tuesday in the Music Building. Tryouts for the musical are open to non-members.

men's glee club

<i>President</i>	Ed Gantt
<i>Vice-President</i>	Dick Anderson
<i>Secretary</i>	Bob Lennox
<i>Treasurer</i>	Ralph Quinn

Faculty Advisor—

Mr. Fague Springmann

School spirit was heightened during the football season as the voices of Men's Glee Club resounded through Byrd Stadium. The group set a new precedent by singing perennial favorites such as "Sons of Old Maryland" and the "Halls of Ivy" during football half times.

During the year the glee club performed with the National Symphony Orchestra, presented a campus concert, and sang for Memorial Day Services at Arlington National Cemetery.

Men interested in membership should sign up during registration in the Armory or attend the 5 p.m. Tuesday and Thursday rehearsals on the second floor of the Armory.

red and white band

PresidentTom Shipley
Vice-PresidentFred Froehlich
Sec'y.-Treas.Roland Swanson
Faculty Advisor—

Capt. Robert Landers

The Red and White Band and its accompanying majorette corp bring color and school spirit to pep rallies, sports events, and parades. It convenes in concert form for May Day and a spring concert.

Rehearsals are held twice a week in the Armory Band Room and on campus to practice music and precision drills. Students inter-

ested in band or majorette membership should register with this group in the Armory during registration.

orchestra

PresidentNancy Eliot
Vice-PresidentBarbara Dickie
Sec'y.-Treas.Suzanne Hood

Students, faculty, and non-University people may join the Orchestra. Plans for the coming year include three concerts and participation in the UT-Clef and Key musical.

Rehearsals will be held from 6:30 to 8 p.m. on a day and at a place to be announced.

women's chorus

PresidentAnna Mae Jacquette
Vice-PresidentBecky Sparkman
SecretaryPat Colton
TreasurerBetty Spangler
Faculty Advisor—

Mr. Fague Springmann

Chorus activities last year included a concert with the National Symphony Orchestra, a recital on Memorial Day for President Eisenhower in conjunction with the Men's Glee Club, and a concert at the Naval Academy in Annapolis.

Women's Chorus is a regular one-credit course. Women should schedule it with their advisors.



a bit of sisterly help

—Terrapin photo

● **sororities**

panhellenic council

<i>President</i>	Eleanor Salmon
<i>Vice-President</i>	Allison Boykin
<i>Secretary</i>	Shiela Bryden
<i>Treasurer</i>	Judy Spencer
<i>Faculty Advisor</i>	Dean Mary Handy

The purpose of the Panhellenic Council is to promote closer cooperation in inter-sorority relationships, to maintain high scholarship and social standards, and to formulate and uphold rules governing rushing, pledging, and initiation of sorority women. Each sorority is represented by one voting member. The Council annually sponsors the fall Pledge Dance, and last spring it held "Car Wash Day" to raise money for Campus Chest, and an Easter egg roll on the Mall for orphans.



junior council

This group, composed of pledge representatives of each sorority, aims to acquaint representatives with the function of the Panhellenic Council.

Eleanor Salmon

standard panhellenic rules

Rushing is held at the beginning of each semester. Second semester rushing will take place in February. Informal rushing follows the formal rushing periods and lasts up to a council-set deadline.

Any woman eligible for matriculation at the University and unaffiliated with any National Panhellenic Fraternity is eligible for rushing.

There is a silence period which extends from the beginning of formal rushing to pledging and applies to all sorority girls. During this period they may not converse with the rushees at any time other than at registered rush functions.

A pledgeship expires one calendar year from the date of pledging at which time the student is eligible to pledge another sorority. This rule is binding to any campus in which the student may matriculate.

Initiation of any pledge results from the completion of fifteen credit hours in the preceding semester at the University with at least a C average and no failures for that semester. These women must be students in good standing.

alpha chi omega "Alpha Chi"

Founded at DePauw University, 1885

Gamma Theta Chapter

Established at University of Maryland, 1948

PresidentAnne Wiederhold

Vice-PresidentShirley Matthews

SecretaryMary Lou Luecking

TreasurerAudrey Boyer

alpha delta pi "A D Pi"

Founded at Wesleyan Female College, 1851

Beta Phi Chapter

Established at University of Maryland, 1940

PresidentAnna Mae Jacquette

Vice-PresidentKit Embree

SecretaryEva McIntire

TreasurerGinger Miles

alpha epsilon phi "A E Phi"

Founded at Bernard College, 1909

Alpha Mu Chapter

Established at University of Maryland, 1943

PresidentPaula Salganik

Vice-PresidentDonna Weber

SecretaryHelene Buckhantz

TreasurerPhyllis Segal

alpha gamma delta "Alpha Gam"

Founded at Syracuse University, 1904

Alpha Nu Chapter

Established at University of Maryland, 1947

<i>President</i>	Penny Wood
<i>Vice-President</i>	Betty Larsen
<i>Secretary</i>	Lynn Propf
<i>Treasurer</i>	Dorothy Jones

alpha omicron pi

“A O Pi”

Founded at Bernard College, 1897

Pi Delta Chapter

Established at University of Maryland, 1924

<i>President</i>	Pat Killingsworth
<i>Vice-President</i>	Audrey Nicoloudis
<i>Secretary</i>	Cissy Woods
<i>Treasurer</i>	Anne Thompson

alpha xi delta

“Alpha Xi”

Founded at Lombard College, 1893

Beta Eta Chapter

Established at University of Maryland, 1934

<i>President</i>	Mary Lou Jent
<i>Vice-President</i>	Diane Hanrahan
<i>Secretary</i>	Dolores Gambino
<i>Treasurer</i>	Johanna Kerr

delta delta delta

“Tri Delt”

Founded at Boston University, 1888

Alpha Pi Chapter

Established at University of Maryland, 1934

<i>President</i>	Ellen Carson
<i>Vice-President</i>	Sally Miller
<i>Secretary</i>	Carolyn Miller
<i>Treasurer</i>	Judy Peterson

delta gamma**“D G”***Founded at Lewis School, 1873***Beta Sigma Chapter***Established at University of Maryland, 1945**PresidentDottie Kordes**Vice-PresidentDottie Williams**SecretaryEtta Ray Black**TreasurerJean Price***gamma phi beta****“Gamma Phi”***Founded at Syracuse University, 1847***Beta Beta Chapter***Established at University of Maryland, 1940**PresidentDiane Hunter**Vice-PresidentDuane Phillips**SecretaryMartha Jackson**TreasurerLois Taylor***kappa alpha theta****“Theta”***Founded at DePauw University, 1870***Gamma Mu Chapter***Established at University of Maryland, 1947**PresidentAnn Andrews**Vice-PresidentEileen Brown**SecretaryVirginia Miller**TreasurerDarrilyn Sigley***kappa delta****“K D”***Founded at Virginia State Normal School, 1897***Alpha Rho Chapter***Established at University of Maryland, 1929*

PresidentBobbie Dean
Vice-PresidentMary Lou Hines
SecretaryDot Swiss
TreasurerMina Schlegel

kappa kappa gamma **“Kappa”**

Founded at Monmouth College, 1870

Gamma Psi Chapter

Established at University of Maryland, 1929

PresidentNancy Antrim
Vice-PresidentDiane Young
SecretaryBarbara Stephens
TreasurerClare Wolford

phi sigma sigma **“Phi Sig”**

Founded at Hunter College, 1913

Beta Alpha Chapter

Established at University of Maryland, 1936

PresidentFrances Schoenberg
Vice-PresidentPhyllis Samuelson
SecretarySandra Kahne
TreasurerGail Blum

pi beta phi **“Pi Phi”**

Founded at Monmouth College, 1867

Maryland Beta Chapter

Established at University of Maryland, 1944

PresidentEsther Reid
Vice-PresidentFran Harris
SecretaryPeggy Gross
TreasurerMarylyn Burns

sigma delta tau

"S D T"

Founded at Cornell University, 1917

Alpha Theta Chapter

Established at University of Maryland, 1951

PresidentLee Spielman

Vice-PresidentRita Solomowitz

SecretaryAnn Binder

TreasurerFaye Canter

sigma kappa

Founded at Colby College, 1847

Beta Zeta Chapter

Established at University of Maryland, 1940

PresidentPatricia Flynn

Vice-PresidentBessie Mae Hughes

SecretaryMary Ellen McMahon

TreasurerMarjorie Moeller

after the victory is over . . .

—photo by Ed Downing



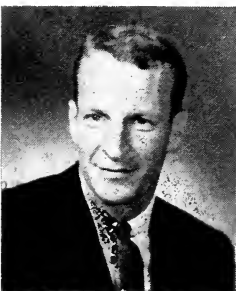
● fraternities

interfraternity council

<i>President</i>	Larry Brant
<i>Vice-President</i>	Paul Dauray
<i>Secretary</i>	Ed Gantt
<i>Treasurer</i>	Dave Rudow
<i>Faculty Advisor</i> ...	Dean Geary Eppley

The IFC, composed of representatives of the 24 national campus fraternities, strives to promote and maintain friendly and cooperative relations between the various fraternity groups.

The council sponsors the fraternity athletic program, the Interfraternity Ball, Greek Week, the Interfraternity Pledge Council, and the magazine, *Fraternity Way*, presents



Larry Brant

awards for participation in campus activities and scholastic achievement, and organizes and supervises the fraternity rushing program each semester.

Fraternity rushing will formally open on September 29, with a meeting of the Council and all men interested in pledging a fraternity.

the pledge council

The Interfraternity Pledge Council is under the direct supervision of the IFC and is re-organized every semester with each new pledge class.

Two pledges from each fraternity meet twice a month to plan a pledge project that will be of service to the University or community, discuss their mutual problems, and receive information from their advisor that will help them to be better fraternity men and future fraternity leaders.

alpha epsilon pi

“A E Pi”

Founded at New York University, 1913

Delta Deuteron Chapter

Established at University of Maryland, 1914

PresidentPaul Smelkinson

Vice-PresidentLeonard Monfred

SecretaryMorton Greenberg

TreasurerPhilip Steel, Jr.

alpha gamma rho

“A G R”

Founded at Illinois State University, 1908

Alpha Theta Chapter

Established at University of Maryland, 1928

PresidentRonald A. Jones

Vice-PresidentRonald Wade

SecretaryRalph E. Moore

TreasurerJohn Wilbur

alpha tau omega**"A T O"***Founded at Virginia Military Institute, 1865***Epsilon Gamma Chapter***Established at University of Maryland, 1930**PresidentTom Mason**Vice-PresidentPaul Dauray**SecretaryBob Carr**TreasurerTom Robinson***delta kappa epsilon****"Deke"***Founded at Yale University, 1844***Kappa Delta Chapter***Established at University of Maryland, 1952**PresidentWilliam Graves**Vice-PresidentEdward Twining**SecretaryJohn Belt**TreasurerThomas Phillips***delta sigma phi****"Delta Sig"***Founded at City College of New York, 1899***Alpha Sigma Chapter***Established at University of Maryland, 1924**PresidentRichard Rowell**Vice-PresidentLloyd Reed**SecretaryJames Hockersmith**TreasurerTheodore Becker***delta tau delta****"Delt"***Founded at Bethany College, 1859***Delta Sigma Chapter***Established at University of Maryland, 1948*

PresidentOscar Mueller
Vice-PresidentJohn O'Neil
SecretaryLlewellyn Heigham, Jr.
TreasurerGerald Hartdagen

kappa alpha

"K A"

Founded at Washington and Lee, 1865

Beta Kappa Chapter

Established at University of Maryland, 1914

PresidentJohn Lowe
Vice-PresidentWilliam Waesche
SecretaryButler Church
TreasurerJ. R. Speicher

lambda chi alpha

"Lambda Chi"

Founded at Boston University, 1909

Epsilon Pi Chapter

Established at University of Maryland, 1932

PresidentRobert Hanko
Vice-PresidentRobert Dunham
SecretaryCarroll Reynolds, Jr.
TreasurerG. Wayne Berry

phi alpha

"Phi Alph"

Founded at George Washington Univ., 1914

Epsilon Chapter

Established at University of Maryland, 1917

PresidentDavid Uhlfelder
Vice-PresidentEarl Flack
SecretaryJay I. Brown
TreasurerS. Harold Cohen

phi delta theta "Phi Delt"

Founded at Miami University, 1848

Alpha Chapter

Established at University of Maryland, 1930

PresidentJohn Apel

Vice-PresidentVal Dancico

SecretaryThomas Morrison

TreasurerF. Terrill Schroeder

phi kappa sigma "Phi Kap"

Founded at University of Pennsylvania, 1850

Alpha Zeta Chapter

Established at University of Maryland, 1899

PresidentEdward Speer

Vice-PresidentEdward Covahey

SecretaryJoseph Schinstock

TreasurerClayton Roop

phi kappa tau "Phi Tau"

Founded at University of Miami, 1906

Beta Omicron Chapter

Established at University of Maryland, 1950

PresidentWilliam Kennerly

Vice-PresidentEjner Johnson

SecretaryStanley Bennett

TreasurerJames Willson

phi sigma kappa "Phi Sig"

Founded at Massachusetts Agricultural College, 1874

Eta Chapter

Established at University of Maryland, 1923

PresidentJames Colmitra
Vice-PresidentRobert Cooke
SecretaryAllyn Myers, Jr.
TreasurerGeorge Harrison

pi kappa alpha

“Pi K A”

Founded at University of Richmond, 1868

Delta Psi Chapter

Established at University of Maryland, 1952

PresidentCecil Brown
Vice-PresidentRobert Bischoff
SecretaryDonald Hughes
TreasurerJames Ripple

sigma alpha epsilon

“S A E”

Founded at University of Alabama, 1856

Maryland Beta Chapter

Established at University of Maryland, 1943

PresidentRichard Stanfield
Vice-PresidentJohn Snyder
SecretaryJerry Doubroff
TreasurerJohn Feeney

sigma alpha mu

“S A M”

Founded at City College of New York, 1909

Sigma Chi Chapter

Established at University of Maryland, 1933

PresidentNathan Stofberg
SecretaryLawrence Kobren
TreasurerSamuel Penn

sigma chi**"Sigma Chi"**

Founded at University of Miami, 1885

Gamma Chi Chapter

Established at University of Maryland, 1929

PresidentFrederic Stillwagen

Vice-PresidentEdward Niner

SecretaryCharles Ravolie

TreasurerJohn Stramski

sigma nu**"Sigma Nu"**

Founded at Virginia Military Institute, 1869

Delta Phi Chapter

Established at University of Maryland, 1917

PresidentAlton Smith

Vice-PresidentRobert Rudner

SecretaryThomas Murphy

TreasurerH. Dale Jarvis

sigma phi epsilon**"Sig Ep"**

Founded at University of Richmond, 1901

Maryland Beta Chapter

Established at University of Maryland, 1949

PresidentRobert Yager

Vice-PresidentCharles McKeown

SecretaryDale Davis

TreasurerTheodore Metzler

sigma pi**“Sigma Pi”***Founded at Vincennes University, 1897***Alpha Chi Chapter***Established at University of Maryland, 1948**President*Larry DeShazer*Vice-President*Dale Butler*Secretary*Richard Van Splinter*Treasurer*Arthur Press**tau epsilon phi****“T E P”***Founded at Columbia Univesity, 1910***Tau Beta Chapter***Established at University of Maryland, 1925**President*Jerry Kobernick*Vice-President*Monroe Sandburg*Secretary*Martin Pollinger*Treasurer*Daniel Suls**tau kappa epsilon****“Teke”***Founded at Illinois Wesleyan, 1899***Beta Delta Chapter***Established at University of Maryland, 1946**President*Frank White, III*Vice-President*Duncan Prendergast*Secretary*Richard Gossom*Treasurer*Joseph Kunkel

theta chi

“Theta Chi”

Founded at Norwich University, 1856

Alpha Psi Chapter

Established at University of Maryland, 1929

President Stan Paulus

Vice-President Jim Shoemaker

Secretary Gib Petrina

Treasurer John Crowl

zeta beta tau

“Z B T”

Founded at Columbia University, 1894

Beta Zeta Chapter

Established at University of Maryland, 1948

President David Rudow

Vice-President Edward Sapperstein

Secretary Sheldon Press

Treasurer Harold Pollin

greek addresses

Fraternities

Alpha Epsilon Pi—7303 Yale Avenue, UN. 4-9875

Alpha Gamma Rho—7511 Princeton Ave., WA. 7-9831

Alpha Tau Omega—4611 College Avenue, WA 7-9849

Delta Kappa Epsilon—4317 Lehigh Road, WA. 7-9520

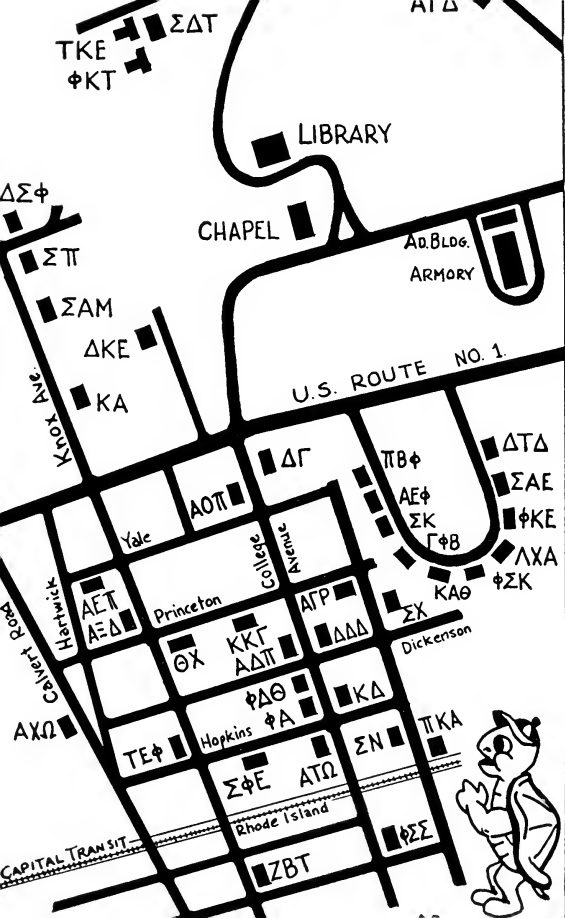
Delta Sigma Phi—4300 Knox Road, WA. 7-9770

Delta Tau Delta—No. 3 Fraternity Row, WA. 7-9719

Kappa Alpha—4400 Knox Road, UN. 4-9833

Lambda Chi Alpha—No. 6 Fraternity Row,
WA. 7-9778

Phi Alpha—4609 College Avenue, WA. 7-9557



- Phi Delta Theta—4605 College Avenue, WA. 7-9884
 Phi Kappa Sigma—No. 5 Fraternity Row, UN. 4-9828
 Phi Kappa Tau—Campus, UN. 4-9886
 Phi Sigma Kappa—No. 7 Fraternity Row, UN. 4-9851
 Pi Kappa Alpha—7514 Rhode Island Avenue,
 WA. 7-9891
 Sigma Alpha Epsilon—No. 4 Fraternity Row,
 WA. 7-9707
 Sigma Alpha Mu—4310 Knox Road, WA. 7-9845
 Sigma Chi—4600 Norwich Road, UN. 4-9807
 Sigma Nu—4617 Norwich Road, WA. 7-2664
 Sigma Phi Epsilon—7403 Hopkins Avenue, UN. 4-9770
 Sigma Pi—4302 Knox Road, UN. 4-9771
 Tau Epsilon Phi—4607 Knox Road, WA. 7-9766
 Tau Kappa Epsilon—Campus, UN. 4-9765
 Theta Chi—7401 Princeton Avenue, WA. 7-9733
 Zeta Beta Tau—4802 Calvert Road, UN. 4-9786

Sororities

- Alpha Chi Omega—4603 Calvert Road, UN. 4-9893
 Alpha Delta Pi—4603 College Ave., WA. 7-9684
 Alpha Epsilon Phi—11 Fraternity Row, WA. 7-9701
 Alpha Gamma Delta—Campus, UN. 4-9806
 Alpha Omicron Pi—4517 College Ave., WA. 7-9871
 Alpha Xi Delta—4517 Knox Road, WA. 7-9720
 Delta Delta Delta—4604 College Ave., WA. 7-9795
 Delta Gamma—4502 College Ave., WA. 7-9844
 Gamma Phi Beta—9 Fraternity Row, UN. 4-9801
 Kappa Alpha Theta—8 Fraternity Row, UN. 4-9829
 Kappa Delta—4610 College Ave., WA. 7-9759
 Kappa Kappa Gamma—7407 Princeton Ave.,
 UN. 4-9886
 Phi Sigma Sigma—4812 College Ave., WA. 7-9828
 Pi Beta Phi—12 Fraternity Row, UN. 4-9885
 Sigma Kappa—10 Fraternity Row, WA. 7-9861
 Sigma Delta Tau—Campus, WA. 7-9513

● isa

PresidentRalph Crosby
Officers to be elected in the fall.

The ISA is an affiliate of the National Independent Students' Association which co-ordinates over 80 ISA chapters in large universities throughout the country.

It is a low cost social organization designed to provide social activities for the independent students on campus, to interest them in campus activities, and to promote their general welfare.

Students can become ISA members by attending the weekly Monday night meetings or by applying for membership at registration.

The ISA participates in the University intramural program, sponsors the autumn Barn Dance, holds parties for its members, maintains a year round program featuring distinguished speakers, and produces the *Maryland Independent* the ISA's weekly newspaper.



Ralph Crosby



● **afrotc**

the afrotc program

Every Tuesday and Thursday morning, from mid-October to December and again in late spring, the green fields on either side of the Armory are covered by a blanket of blue . . . Air Force Blue . . . and drill begins again for the second largest Air Force Reserve Officers' Training Corps in the United States.

Drill is supplemented by instruction in classrooms. Basic ROTC, or the first two years, is required for every male student on campus, unless he is exempt by previous military service. Should a student enter as an upper-classman, he must complete two years or take ROTC until graduation, whichever occurs first.

Third and fourth year programs may be elected after a careful screening, both mental and physical, by the governing board. Upon completion of the four year (basic plus advanced) training program, the student may either become a second lieutenant in the U. S. Air Force, the Air Force Reserve Corp, or the Air National Guard. ROTC is embodied within a separate headquarters in the basement of the Armory.

Colonel Joseph R. Ambrose, Dean of the College of Military Science, is the Commanding Officer who co-ordinates the activities of



Old Glory passes in review

—photo by Vic Holm

the unit. Over fifty regular Air Force personnel, who must keep detailed records on each cadet, compose Col. Ambrose's staff.

arnold air society

CommanderGilbert Petrina
Executive Officer.....Paul Lambrides
ComptrollerDavid R. Forward
Operations Officer.....Raymond Curtiss
Adjutant Recorder

William Hoffmeyer

The Arnold Air Society is a military fraternal organization of elected membership whose purpose is to develop leadership in Air Force Officers and to create a more efficient relationship among the cadets.

Open to advanced cadets only, the group cooperates with the Air Force and the Civil Air Patrol to further promote missions of the two groups.

The national organization of the Arnold Air Society, composed of more than 160 units, moved its headquarters to the University for the coming year with University cadets holding the national offices.

scabbard and blade

CaptainCharles Johnson
First LieutenantLawrence O'Neil
Second LieutenantMartin Burdick
First SergeantDonald Weber

Scabbard and Blade is the honor society for

advanced cadets. Eligibility requirements are a 2.5 overall average and a 3.0 in Air Science. The organization has a precision drill unit using sabres.

the vanderberg guard

Commanding OfficerEdward Niner

The Vandenberg Guard is a precision drill unit composed of basic cadets.

The Guard was granted a charter on campus this past spring at Military Day ceremonies, and is the only Air Force honor group for basic cadets.

pershing rifles

CaptainRonald Palmer

Executive OfficerRichard Donnelly

AdjutantLawrence Larkin

Operations OfficerThomas Lee

Supply OfficerRobert Reedy

First SergeantPhilip Shade

Pershing Rifles is an honor guard of basic cadets. The group has a precision drill team and participates in regimental competition among companies in the area. Activities include field trips to nearby bases and flights around the country.

afrotc band

Drum MajorJerry Hammond

The Air Force Reserve Officers' Training

Corps Band is composed of AFROTC cadets and is open to any cadet who plays a musical instrument. The band practices during drill periods and plays for drills and formations. Uniforms and instruments are furnished by the federal government. The present band is composed of 80 men.

angel flight

Air Division Commander

Betty Larsen

First Wing Commmander

Arline Beman

Second Wing Commander

Sara Cronin

Third Wing Commander


Sandra Stack

Faculty Advisor

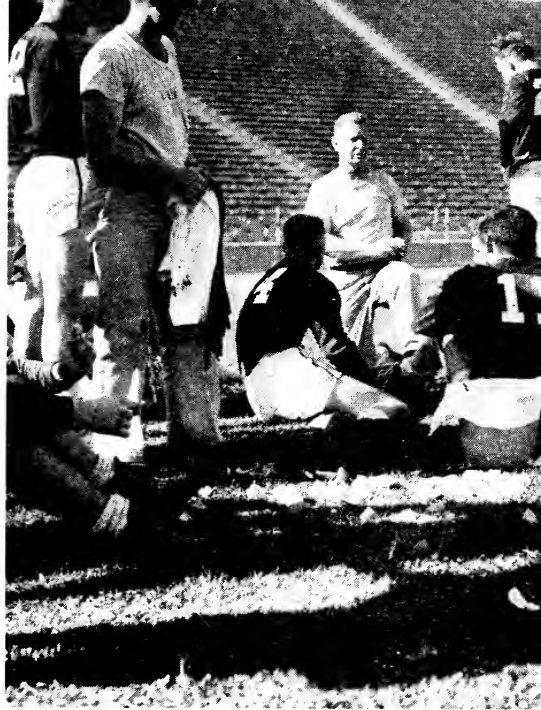
Capt. Maurice Gibson

The Angel Flight is a group of coeds selected by the squadrons, one for each, to sponsor them. The main duties of the group are to bolster the morale of the cadets, to serve as hostesses for visiting military dignitaries, and to sponsor in conjunction with the Arnold Air Society, the annual Air Force Ball.

The "Angels" can easily be identified at campus military ceremonies by their blue and gold caps and capes.

half time pow-wow for Coach Faber's men 

—photo by Glenn Sears



● **athletics**

football

Jim Tatum

Director of Athletics



Topped off by a 74-13 rout of Missouri on Thanksgiving Day, Maryland finished off the '54 season with a record of seven wins, two losses, and one tie, while being ranked eighth nationally.

The Terps' only set-backs were at the hands of UCLA and Miami, both by a total of seven points. Wake Forest deadlocked the Liners 13-13 early in the season.

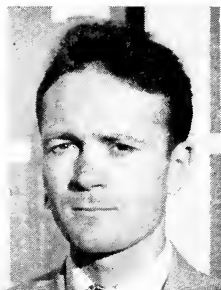
Co-Captains Dick Bielski and John Irvine provided the main scoring punch for the Marylanders who rolled up 280 points, while holding their opponents to only 67.

Bob Pellegrini, a guard last season, has been shifted to center to give the Terrapins more strength in the middle of the line. Pellegrini along with Bill Walker will be Maryland's two top All-American prospects.



Paul Kramer completes a pass during the UCLA game.

soccer



Doyle Royal

Coach

Maryland maintained their seven straight year record of winning all conference soccer games. This includes both the Atlantic Coast and Southern Conferences.

Under Coach Doyle Royal's direction the Terps compiled an overall record of five wins, three set-backs, and two ties. In conference play the booters picked up three wins and one tie on the way to the ACC crown.

Otto Winkelmann won the ACC individual scoring crown with 13 markers for the season.

Only four lettermen were lost due to graduation, while Coach Royal can look forward to 14 returning letter wearers.

Coach "Sully" Krouse's grapplers brought another ACC title back to College Park—this time, the conference wrestling crown. Maryland won the title on the strength of a 5-0 record in ACC matches. This was the fifth straight year that Maryland has won their conference championship.

In the individual tournament Roney Carroll, Mike Sandusky, and Danny Little captured their weight class titles. Little, who won all five of his ACC regular season bouts was named the "Outstanding Wrestler" of the tournament.



wrestling

"Sully" Krouse
Coach



cross country

Jim Kehoe

Coach

The liners added another ACC crown to their growing list, as they captured the conference cross country meet held at College Park.

Jim Beatty of North Carolina set a new course record of 18:07.8 minutes, but it was not enough to beat the Terp harriers, who finished on top with 36 points. North Carolina was second with 26, while Duke captured the third position.

Burr Grim battled Beatty for the lead throughout the race, but Beatty pulled ahead near the finish to win by 20 yards.

Coach Jim Kehoe's harriers finished seventh in the NCAA cross country meet held at East Lansing Michigan, participating against the top cross country teams in the nation.

indoor track

Coach ----- Jim Kehoe

Defending champion, Maryland lost the indoor track title to North Carolina by one half point, 36-35½. It was sweet revenge for the Tar Heels who had previously lost the cross country title to Maryland.

The University's team participated in four other meets in addition to the ACC championships. Joe Hemler set a new record in the D.C. AAU meet when he was clocked in the time of 1:14.1 for the 600 yard run. In the relay events, Maryland captured the D.C. AAU mile relay, and broke records in both two and four mile relays in the VMI Winter Relays.

Carl Party won the two mile handicap race in 9:20.7 at the New York A.C. games in Madison Square Garden, to highlight a fine season over the banked boards.

outdoor track

Coach ----- Jim Kehoe

Burr Grim, the sensational sophomore, paved the way with four victories in the mile run on the cinders, as the Terps won four of the six meets in which they competed.

In addition to the dual meet and local championship victories in the mile, Grim set a meet record in the IC-4A Championships, running the mile distance in 4:09.9.

Maryland, defending ACC outdoor track champions, failed to hold that position as North Carolina knocked the Terps from the top by a scant margin of $1\frac{1}{4}$ points. In the previous year's championship meet the Terps turned back Carolina by just $1\frac{1}{2}$ points.

basketball



Bud Millikan

Coach

Compiling a record of 19 wins and 6 losses, the hoopsters finished one of the finest seasons in years.

Bob Kessler, led the Terps to a successful defense of the All-American City Tournament, as the Liners dumped Cincinnati, 78-61. For his efforts Kessler was placed on the first five of the All-Tourney Team.

The Terps, who at one time were rated as high as sixth in the nation, pulled off one of the upsets of the year when they tripped North Carolina State 68-64.

All games this year will be played in the New Student Activities Building with a seating capacity of 13,500.

Although winning only four of their thirteen matches, the linksmen look ahead to brighter days. This year Coach Frank Cronin can call on several returning veterans and a bumper crop of golfers up from the freshman team.

The Terps started and finished the season strong, but during the middle weeks they lost seven straight matches before putting together a victory.

Opening the season against South Carolina, the Terrapins drove out a 16½ to 10½ victory. The season's finale was even better for the Marylanders, as they drubbed Johns Hopkins 9 to 0.

golf



Frank Cronin
Coach



baseball

H. Burton Shipley
Coach

On the diamond, the Terps finished with a mediocre 8-10 record, but with the noticeable improvement of several of the younger players at the end of the season, the Liners could easily "go all the way" this season.

Coach Burton Shipley, who this spring completed his 33rd year at College Park, can look forward to the return of Bill Walker who led the team in batting with .349 mark; Charlie Pratt, .326; Bob Murray, .306; and Ralph Ward, .302. Catcher Phil Calder, used most in a pinch-hitting role, boasted a lofty .375 average.

In the pitching department, four fine hurlers will be back, along with two freshmen moundsmen. Russ Duffey, Bob Weiss, Stan Bobb, and Bob Carr are due to see a great deal of duty on the hill, as are George Gaffney and Don Henderson, up from the frosh team.

rifle

Coach ---M/Sgt. Harold Blume

Under the direction of coach M/Sgt. Harold Blume the Maryland marksmen compiled a record of 8 wins and 3 losses, while winning their section of the National Rifle Association Section Match.

Firing in the William Randolph Hearst Matches, the Terps managed to outshoot the other Air Force teams for the victory.

Linn Savage led the individual shooters for the year with an average of 284.10 out of a possible 300 per match.

tennis

Coach -----Doyle Royal

Highlighted by the brilliant play of sophomore Dave Freishtat, the netters stroked their way to eight wins, while only suffering four setbacks.

One of the Terps' most impressive wins came at the hands of Clemson, when the Marylanders took all six single matches, four of them straight sets. Against Johns Hopkins, the College Parkers put on a repeat performance, capturing every match, with eight of them in straight sets.



Jack Faber and Al Heagy
Co-Coaches

lacrosse

For the first time since 1940, Maryland won the National Lacrosse Championship, along with the first undefeated season in the school's history.

The championship was in doubt until Maryland rallied in the last period of the Navy game to defeat the defending champion 9-8.

Leading the Terps were All-American candidates Charles Wicker, Rennie Smith, John Simmons, Ben Goertemiller, Jim Keating, Dick Corrigan, and sophomore goalie Jim Kappler.

Only four lettermen were lost from last year's team, and the Terps should look forward to another great season.

freshman sports

Freshman teams are sponsored in almost every sport at Maryland. Playing a regular schedule of games, the Frosh contests attract almost as much attention as the Varsity games. Individuals wishing to try out for a freshman team should watch the *Diamondback* for announcements of tryouts.

intramurals

In addition to the intercollegiate athletic setup, a complete intramural program is carried on. Under the direction of Track Coach James Kehoe, the program is divided into two divisions—the open and fraternity leagues.

All undergraduate males are eligible for the open league, while play in the fraternity league is restricted to actives and pledges of the various fraternities.

Touch football, basketball, softball, wrestl-

ing, boxing, gymnastics, golf, tennis, horse-shoes, track, cross-country, bait-casting, bowling, foul shooting, table tennis, badminton, volleyball, and weight lifting make up the 'mural schedule.

Additional information may be obtained by picking up an intramural handbook in the office located in the Armory, or by calling extension 470.

"m" club varsity

PresidentRoney Carroll
Vice-PresidentVince Palumbo
TreasurerMartin Parks
Faculty Advisor.....William E. Krouse

Membership is open only to men who have successfully earned their varsity monograms. The present membership is circa 150 men, who represent every team on campus.

women's recreation association

PresidentJudy Peterson
Vice PresidentBarbara Headlee
SecretaryAnne Wiederhold
TreasurerCarolyn McVeary
Faculty AdvisorDr. Ellen Harvey

To promote and supervise physical, social, and recreational activities among Maryland University coeds is the purpose of WRA.

Throughout the year WRA sponsors various sport tournaments between the dorms and sororities. Cups are awarded to the victorious teams after the annual banquet at the close of the school year. Besides sports activities this organization sponsors other recreational activities which are planned at monthly meetings.

Each spring WRA awards the Participation Cup to the most deserving group, and for those women who fulfill special requirements, membership in Sigma Tau Epsilon, the Women's Physical Education Honorary, is the reward.



Miss Dorothy Deach
Women's Director



*the card section follows the signal
—Terrapin photo*

● pep

maryland spirit

It isn't very often that a Maryland student can lead an intelligent conversation after a football game in Byrd Stadium—he just hasn't got any voice to talk with.

Led by the cheerleaders at every home game, the Terp Town stands vibrate to a rousing crescendo throughout each play. Listen for the traditional chanting of the Victory Song and the counting of points after every Terrapin score. Be prepared to join in or it won't be long until you can't help but add your voice to the chant.

Students not only join cheering sections at games, but form car caravans to meet the team at National Airport on their return from away games, march in pre-game parades, and yell in pep and noise rallies as effigies of weekend opponents are burned in blazing bonfires.

Card sections, sponsored by the Student Activities Committee, will be featured this year during both the football and basketball seasons. The sections will be filled by far-sighted rooters who arrive early at games wearing white sweaters, shirts or blouses.

The most effective way to back the team and the cheerleaders is to learn the school songs and cheers. It will be hard to forget them after your first home game!

student activities committee

<i>President</i>	Jerry Sidle
<i>Vice-President</i>	Jim Shoecraft
<i>Secretary</i>	Jay Long
<i>Treasurer</i>	Ed Schmidt
<i>Card Section</i>	Morty Lebo
<i>Pep Rallies</i>	Jerry Sauerbrie

SAC is the hub which moves the giant wheel of student activities on campus. At bi-monthly meetings representatives from the dorms, Greeks, and Independents, as well as any other interested students, plan pep rallies and "away" weekends. Syracuse University is the destination for this year's gala "away" weekend.

Aside from sports activities SAC is responsible for the increasingly popular Spring Week which features the Turtle Derby, Mad Hatters Parade, and a dance on the Mall.

cheerleaders

CaptainAudrey Nicoloudis
"Go team—go!" Catchy cheers led by agile cheerleaders stimulate an eager crowd to urge its team to victory.

It looks so simple, but hours of hard work are behind the limber movements and precision timing of the cheerleaders. These spirited figures, in their red and white uniforms, are a familiar sight at pep rallies and all sports events. Tryouts, held in the fall, are open to all students who maintain a 2.0 average,

*Here are just a few of Maryland's favorite
songs and cheers.*

sons of old maryland

Sons of old Maryland
Old Maryland needs you!
Stand by your colors, boys,
And to them e'er be true!
Fight for old Maryland,
Old Liners stand,
Defenders of the Black and Gold
Throughout the land!

terrapiin drinking song

Music by Wilmer Orpwood, Jr., '43

Words by A. Manley Powell, '41

Drink to the Terrapin!
All bold hearted men.
We have no fear of hell,
Fore we're loyal sons and fellows,
Drink to the Terrapin
May God bless her sons!
When the toast is in the cup,
Bottoms up! Bottoms up!
To Maryland.

maryland! my maryland!

Thy sons and daughters throng they door,
Maryland! My Maryland!
Their hearts and hopes they bring to thee,
Maryland! My Maryland!
And place them in thy custody,
Proud hearts that pledge their love for thee:—
They come from mountain, farm and shore,
Maryland University!

Go forth, brave youth, throughout the state:—
Maryland! My Maryland!
And your actions show her great:
Maryland! My Maryland!
Thy Alma Mater's name and fame,
Oh, keep alive her holy flame,
Until all hearts as one exclaim,
Maryland! My Maryland!

Cheer, three times cheer, and one cheer more,
For Maryland! dear Maryland!
Send forth that cry from hill to shore:—
Maryland University!
Fair mother of our brightest dreams,
Blest giver of life's precious things
To thee each heart its service brings:—
Maryland! My Maryland!

The "Victory Song," which is sung at all pep rallies, is printed on the back end sheet.

maryland cheers

LOCOMOTIVE

M-M-M-M

A-A-A-A

R-R-R-R

Y-Y-Y-Y

L-L-L-L

A-A-A-A

N-N-N-N

D-D-D-D

Mary.....Land!

Fight Team Fight!

SOUND OFF

(leaders): Sound Off!

(stands): One! Two!

(leaders): Hit it again!

(stands): Three! Four!

(leaders): Maryland Count!

(all): M-A-R-Y-L-A---N-D!

GIMEE-GIMEE

(leaders) Gimee an M!

(stands) M!

(leaders) Gimme an A!

(stands) A!

(etc. spelling MARYLAND)

(Leaders) What do you have?

(stands) MARYLAND!

U.M. RAH RAH

U.M., Rah! Rah!

U.M., Rah! Rah!

U. Rah!

M. Rah!

U.M., Rah! Rah!

Fight Team Fight!

MARYLAND SWING

M! M! M—A—R—Y

L! L! L—A—N—D

M—A—R—Y

L—A—N—D

Fight, team, fight!

LONG CHEER—SHORT CHEER

(leader) Give me a long cheer,

(stands, extending arms) Yeaaa . . .

(leader) Give me a short cheer,

(stands, extending arm) Yea!

(leader) Give me a silent cheer.

(stands, extend arm only)

Each year SAC and the cheerleaders sponsor a cheer contest so that school cheers will remain fresh and lively.



● general information

academic

All students are expected to attend classes regularly. Classes begin on the hour and last for 50 minutes. If a teacher fails to appear for his class, students must wait 20 minutes for a dean, 15 minutes for a doctor and 10 minutes for an instructor before leaving.

At the University, there is no unlimited cut system. Each instructor usually informs his class at the beginning of the course how he will handle cuts. After three unexcused absences, a student is reported to his dean and his parents are notified. Too many absences lower a grade and may eventually result in a complete course failure.

To drop a course, the student must do so before a set time each semester, as specified in the semester's schedule of classes. Permission from the student's dean and a small fee are required to drop a subject.

Students may drop a required course only at the discretion of the dean of the College.

The number of exams given during a semester is determined by the instructor. Usually, two or three one-hour exams plus a two-hour final are given in each course. If a student misses an exam, a makeup test may be taken upon permission of the instructor and payment of a one dollar fee to the registrar.

◀ *registration—just follow the crowd*
—Terrapin photo

activities fee

The activities fee, paid at registration, supports publications, dances, and other activities open to students.

athletic fee

The fee covers the cost of admission to all inter-collegiate sport events held on the College Park campus, and is represented by the Athletic book received at registration, which must be shown with ID card at all games.

board

All students living in dormitories are required to eat in the Dining Hall. Dining Hall cards are issued at registration. All other students must make their own arrangements. A cafeteria is located on the lower floor of the Dining Hall and in the Student Union Building, serving meals at reasonable rates. There are several eating establishments in the nearby College Park area, and several Greek-letter houses take in a few boarders.

Next to the famous Rossborough Inn on the boulevard is the University Dairy, serving ice cream and other dairy products every day except Sunday.

communications

Located in the basement of the Student Union Building is the campus Post Office. During

registration, each student is assigned a post office box, which he shares with one or more students. The post office handles regular mail and communications from the University and its organizations to the student.

Campus telephones may be used to make on-campus calls. Off-campus calls are made on pay phones located in the dormitories and other campus buildings.

Telegrams may be sent from the telephone exchange located in the east end of the Education Building basement. Incoming wires are either delivered or phoned to student residences on campus. The University phone number is WARfield 7-3800 and dorms may be requested from the operator.

"Will it go out today?"—a typical scene in the campus post office.



dress on campus

Dress on campus is, of course, at the discretion of the student, however, propriety should be observed.

Dress during school hours is informal, but neat. Definite restrictions on campus include the wearing of shorts or slacks on campus by coeds.

infirmary

The University Infirmary is located west of the Dining Hall. It is staffed by the University physician and nurses and provides routine medical service to all undergraduate students.

laundry

The University does not provide laundry service for the students. However, there are several laundry and dry cleaning concerns in College Park. Several dorms have coin-operated automatic washers and dryers. Students may also mail their laundry home at the usual postal rates.

library

The University library and the library annex are open from 7:30 a.m. until 10 p.m., Monday through Friday; 7:30 a.m. to 5:00 p.m. on Saturday; and from 3:00 p.m. until 10 p.m. on Sunday.

Reserve books may be taken out at 8:00 p.m.

on weekdays and returned at eight the next morning. Books taken from the loan desk may be taken for a 14-day period and may be renewed.

Overdue books from the loan desk receive a five cent per day fine, and overdue books taken from the reserve shelves are fined according to the number of minutes and/or hours late.

lost and found

Students may turn in or recover articles at the campus police station located at the North Gate.

parking and traffic

Automobile parking lot stickers are issued during registration to all students, members of the staff, and faculty. The stickers designate the lot which must be used by the registrant on campus. A list of traffic and parking regulations is issued to all auto registrants.

Anyone receiving a ticket on campus is privileged to appeal his case to the Traffic Appeals Board which meets once a month.

student activities building

Soon to be completed is the new Student Activities Building. This modern structure will be one of the largest of its kind, having a seating capacity exceeding 12,000.

It will be the site of all future University

basketball games. Also included in the building will be a men's swimming pool and specially equipped rooms for boxing, weight-lifting, etc.

student drectory

The Student Directory, a compilation of all student and faculty addresses plus campus departmental telephone extensions is sold at the Student Supply Store generally in late September.

student employment

Students interested in part-time employment should check in the placement office located on the first floor of the Administration Building.

student union building

Located on the northwest end of the campus is the Student Union Building. Among conveniences afforded students are the campus post office Student Supply Store, "Terp Inn" (the campus snack-bar), recreational facilities, meeting facilities, and offices of various student organizations.

ticket distribution

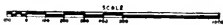
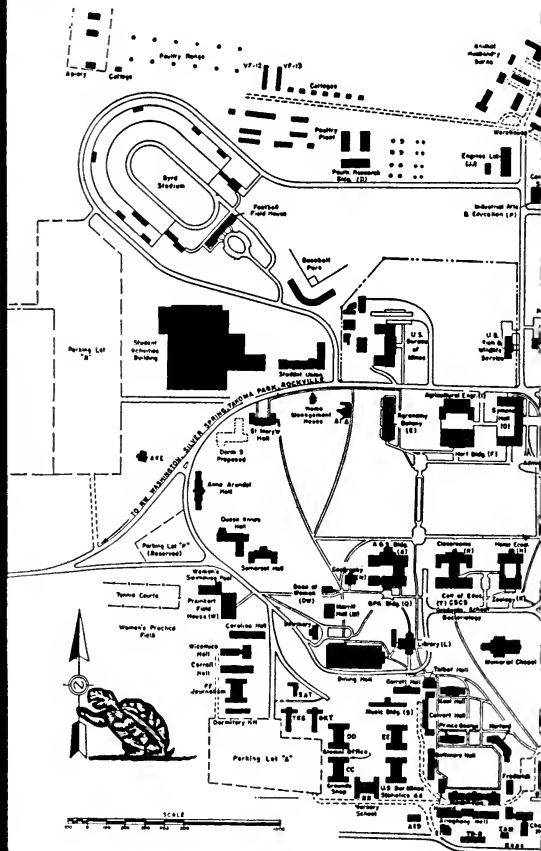
Tickets for musical and dramatic productions are handled by the University Theater box office located in the Education Building basement.

transportation

College Park is served by the Greyhound bus line. Local bus companies connect the University with Washington and nearby suburban areas. Greyhound schedules and tickets are obtained in the Varsity Grill on the Boulevard.

whom to see . . .

<i>For</i>	<i>See</i>	<i>Where</i>	<i>Phone</i>
Absences	Dean of College	Dean's Office consult student directory	
Admissions	G. Watson Algire	Administration,	396, 325
Alumni	Dave Brigham	Rossborough,	366
Bills	Cashier	Administration,	340
Employment :			
Full Time	Lewis Knebel	Administration,	411
Part Time	Dean Eppley	Administration,	338
Health	Dr. Bishop	Infirmery,	326
Housing :			
Men's	Robert James, Doyle Royal,	Dormitories, Off-campus,	319 375
Women's	Miss M. Mar- garet Jamison	Dean of Men's Office Dean of Women's Office,	447
Mail	Ralph Brown	Student Union,	386
Meeting Rooms :			
Day	Dean Cotterman	Administration,	327, 389
Night	George Weber		230
Problems :			
Men's	Dean Eppley	Administration,	338
Women's	Dean Stamp	Dean of Women,	293
Study	respective dean or advisor or Vocational Psychology Department DD		
Scholarships	Dean Cotterman	Administration,	327
Summer School	Dr. Anderson	Education,	234



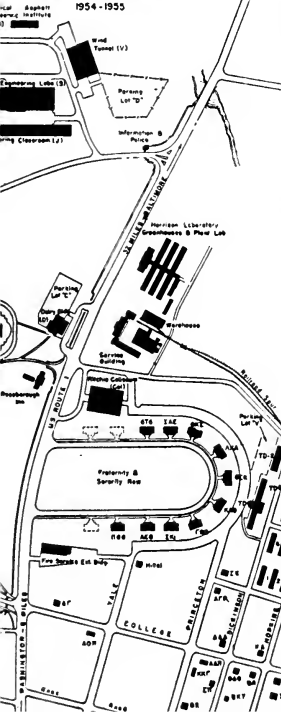
UNIVERSITY OF MARYLAND

Maryland



COLLEGE PARK CAMPUS

1954-1955



BUILDING CODE LETTERS FOR CLASS SCHEDULES

- A Arts & Sciences - Francis Scott Key Hall
- AR Armory
- B Music
- BB Nursery School
- IB Administration
- C Chemistry
- Col Coliseum
- O Dairy-Turner Laboratory
- DD Temporary Classroom
- DW Dean of Women
- E Agronomy - Botany - W. J. Patterson Hall
- EE Counseling Center
- F Horticulture - Holzofel Hall
- FF JOURNALISM
- G Ritchie Gymnasium
- H Home Economics - Margaret Brent Hall
- I Agricultural Engr. - Shriver Laboratory
- J Engr Classroom Bldg
- K Zoology - Silvester Hall
- L Library - Sheemaker Building
- M Morrill Hall
- N Geography
- O Agriculture - Symons Hall
- P Industrial Arts & Education - J. M. Patterson Bldg
- Q Business & Public Administration - Talliferro
- R Classroom Building - Woode Hall
- S Engr Laboratories
- T Education - Stinner Building
- U Chem. Engr.
- V Wind Tunnel
- W Fraibert Field House
- X Judging Pavilion
- Y Mathematics
- Z Physics
- II Poultry - Jull Hall
- JJ Engines Research Lab (Molecular Physics)

Scarities Not Shown —

Alpha Chi Omega

Alpha Xi Delta

Fraternities Not Shown

Alpha Epsilon Pi

Zeta Beta Tau

Phi Kappa Gamma

Tau Epsilon Phi

Chil. Defense Training Bldg

Four years pass all too quickly—your first year at the University of Maryland marks the “home stretch” for the senior class. At the close of your first year, the senior class will take part in scenes such as this one during the baccalaureate service.



Hail! Alma Mater!
Hail to thee, Maryland!
Steadfast in Loyalty
For Thee We Stand.
Love for the Black and Gold,
Deep in our hearts we hold,
Singing thy praise forever,
Throughout the land.

Words and music by Robert Kinney, '40

index

administration	16
associated women students	33
afrote	120
athletics	125
clubs	52
entertainment and music	91
fraternities	107
general information	148
greek addresses	116
highlights of the school year	5
history	12
honor societies	35
maps:	
campus	156
greek	117
men's league	34
publications	84
religion	75
songs and cheers	144
sororities	99
student government association:	
class officers	32
executive council	30
whom to see	155

**Maryland, we're all behind you,
Wave high the Black and Gold.
For there is nothing half so
glorious**

**As to see our team victorious.
We've got the team, boys,
We've got the steam, boys,
So keep on fighting, don't
give in!**

M-A-R-Y-L-A-N-D (yell)

Maryland will win!



Md

379.3

M3' m

1,55,56

